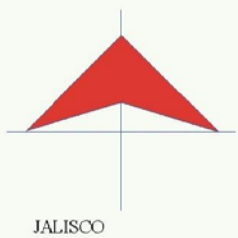


# 11 GUANAJUATO



MAPA INDICE  
 [15] Num. Indice  
 2007

# CARRETERAS AFORADAS

Num.	CARRETERA
INDICE	
1	ACAMBARO - ZINAPECUARO
2	DOLORES HIDALGO - OJUELOS DE JALISCO
3	IRAPUATO - GUADALAJARA
4	LEON - AGUASCALIENTES
5	LEON - AGUASCALIENTES (CUOTA)
6	LEON - SAN FELIPE TORRES MOCHAS
7	MANUEL DOBLADO - LA PIEDAD
8	ACAMBARO - CELAYA
9	CELAYA - DOLORES HIDALGO
10	CORTAZAR - VALLE DE SANTIAGO
11	ENT. BEGOÑA - ENT. PRESA DE MANANTIALES
12	ENT. LA FORTALEZA - CORTAZAR
13	MUNGUIA - LAS ADJUNTAS
14	ENT. SAN MIGUEL DE ALLENDE - DR. MORA
15	SANTA TERESA - SILAO
16	GUANAJUATO - SANTA RITA
17	GUANAJUATO - LOS INFANTES
18	IRAPUATO - LEON
19	LEON - MANUEL DOBLADO
20	LIBRAMIENTO DE ABASOLO
21	LIBRAMIENTO DE SALAMANCA
22	LIBRAMIENTO DE SALVATIERRA
23	LIBRAMIENTO DE SAN LUIS DE LA PAZ
24	NUEVO LIBRAMIENTO DE IRAPUATO
25	NUEVO LIBRAMIENTO DE LEON
26	RAMAL A LAS ADJUNTAS
27	RAMAL A SAN DIEGO DE LA UNION
28	RAMAL A SAN JOSE ITURBIDE
29	SALAMANCA - JUVENTINO ROSAS
30	SALVATIERRA - CORTAZAR
31	SALVATIERRA - ENT. YURIRIA
32	SAN LUIS DE LA PAZ - CAÑADA DE MORENO
33	SAN LUIS DE LA PAZ - GUANAJUATO
34	SAN LUIS DE LA PAZ - SAN JOSE ITURBIDE
35	SILAO - LA ROMITA
36	ENT. BUENAVISTA - SAN MIGUEL DE ALLENDE
37	ENT. DE ZARAGOZA - SAN FELIPE
38	T. C. (VILLA DEL PUEBLITO - HUIMILPAN) - CORONEO
39	TEPATITLAN - LAS ADJUNTAS
40	JALOSTOTITLAN - PURISIMA DE BUSTOS
41	LA NORIA - ACAMBARO
42	MARAVATIO - ACAMBARO
43	MORELIA - SALAMANCA
44	QUERETARO - IRAPUATO (CUOTA)
45	QUERETARO - IRAPUATO (LIBRE)
46	QUERETARO - SAN LUIS POTOSI

GUANAJUATO

1 CARR : ACAMBARO - ZINAPECUARO

CLAVE: 00417

RUTA : MEX-120

AÑO : 2006

L U G A R	E S T A C I O N				C L A S I F I C A C I O N V E H I C U L A R E N P O R C I E N T O .												
	KM	TE	SC	TDPA	A	B	C2	C3	T3S2	T3S3	T3S2R4	OTROS	A	B	C	K'	D
ACAMBARO	0.00	3	0	3109	87.3	2.5	7.4	0.7	0.6	0.0	0.0	1.5	87	3	10	0.105	0.547
LIM. EDOS. TERM. GTO. PPIA. MICH.	12.80	0	0														
ZINAPECUARO	25.00	1	0	3240	94.0	1.3	1.7	1.1	0.6	0.4	0.1	0.8	94	1	5	0.089	0.511

2 CARR : DOLORES HIDALGO - OJUELOS DE JALISCO

CLAVE: 00107

RUTA : MEX-051

AÑO : 2006

L U G A R	E S T A C I O N				C L A S I F I C A C I O N V E H I C U L A R E N P O R C I E N T O .												
	KM	TE	SC	TDPA	A	B	C2	C3	T3S2	T3S3	T3S2R4	OTROS	A	B	C	K'	D
DOLORES HIDALGO	0.00	3	0	4098	72.6	9.3	5.1	6.3	2.2	2.3	0.1	2.1	73	9	18	0.111	0.500
X. C. LEON - SAN FELIPE	51.38	1	0	2109	74.1	11.2	4.2	4.2	2.9	2.2	0.0	1.2	74	11	15	0.098	0.502
X. C. LEON - SAN FELIPE	51.38	3	0	2138	77.2	9.9	4.6	2.5	2.3	2.3	0.0	1.2	77	10	13	0.086	0.504
T. IZQ. OCAMPO	87.47	1	0	1966	74.8	7.7	7.6	5.0	1.7	1.6	0.0	1.6	74	8	18	0.089	0.504
T. IZQ. OCAMPO	87.47	3	0	1559	75.4	7.8	7.9	4.0	2.0	1.6	0.0	1.3	75	8	17	0.102	0.510
LIM. EDOS. TERM. GTO. PPIA. JAL.	104.10	0	0														
T. C. SAN LUIS POTOSI - LAGOS DE MORENO	113.50	1	0	1596	77.8	5.7	7.8	6.5	1.2	0.2	0.7	0.1	77	6	17	0.085	

3 CARR : IRAPUATO - GUADALAJARA

CLAVE: 00114

RUTA : MEX-090-110

AÑO : 2006

L U G A R	E S T A C I O N				C L A S I F I C A C I O N V E H I C U L A R E N P O R C I E N T O .												
	KM	TE	SC	TDPA	A	B	C2	C3	T3S2	T3S3	T3S2R4	OTROS	A	B	C	K'	D
IRAPUATO	0.00	0	0														
T. IZQ. QUERETARO - IRAPUATO (CUOTA)	2.78	1	1	14120	84.4	5.5	4.9	2.6	1.2	0.6	0.1	0.7	84	6	10	0.100	0.508
T. IZQ. QUERETARO - IRAPUATO (CUOTA)	2.78	1	2	12963	84.4	5.3	5.1	2.5	1.1	0.8	0.0	0.8	85	5	10	0.101	0.508
T. IZQ. QUERETARO - IRAPUATO (CUOTA)	2.78	3	1	9389	80.2	5.9	5.9	4.5	1.6	1.0	0.1	0.8	80	6	14	0.104	0.505
T. IZQ. QUERETARO - IRAPUATO (CUOTA)	2.78	3	2	10613	83.3	5.3	4.6	3.2	1.6	0.9	0.0	1.1	84	5	11	0.108	0.505
T. DER. CUERAMARO	15.00	3	1	7069	73.1	5.8	8.7	3.9	4.7	2.5	0.2	1.1	73	6	21	0.096	0.521
T. DER. CUERAMARO	15.00	3	2	7270	72.8	5.1	8.6	4.3	4.3	2.9	0.1	1.9	73	5	22	0.079	0.521
ABASOLO	30.00	1	1	7937	74.7	7.4	6.5	4.1	3.4	1.7	0.2	2.0	75	7	18	0.106	0.503
ABASOLO	30.00	1	2	8201	73.9	7.8	7.8	4.2	3.2	2.2	0.1	0.8	74	8	18	0.109	0.503
ABASOLO	30.00	3	1	6931	69.7	7.9	6.4	6.0	5.0	3.7	0.1	1.2	70	8	22	0.105	0.506
ABASOLO	30.00	3	2	6836	73.0	9.0	7.0	4.0	3.0	2.6	0.1	1.3	73	9	18	0.112	0.506
PENJAMO	50.65	1	1	12592	70.4	8.9	4.7	7.1	4.5	2.7	0.2	1.5	70	9	21	0.109	0.509
PENJAMO	50.65	1	2	12143	77.6	8.3	4.1	5.2	2.5	1.2	0.3	0.8	78	8	14	0.137	0.509
PENJAMO	50.65	3	0	13700	65.9	10.3	7.9	6.8	4.7	2.6	0.1	1.7	66	10	24	0.090	0.504
T. DER. MANUEL DOBLADO	83.87	1	0	13705	71.0	7.7	8.7	6.8	2.6	2.0	0.4	0.8	71	8	21	0.097	0.500

GUANAJUATO

3 CARR : IRAPUATO - GUADALAJARA

CLAVE: 00114

ruta : MEX-090-110

AÑO : 2006

L U G A R	E S T A C I O N			CLASIFICACION VEHICULAR EN PORCIENTO .												
	KM	TE	SC TDPA	A	B	C2	C3	T3S2	T3S3	T3S2R4	OTROS	A	B	C	K'	D
LIM. EDOS. TERM. GTO. PPIA. MICH.	86.37	0	0													
LA PIEDAD	87.00	3	0 11330	70.0	9.2	7.4	6.7	4.2	1.9	0.1	0.5	70	9	21	0.116	0.510
T. IZQ. YURECUARO	100.00	3	0 8971	73.6	8.5	6.2	5.4	3.8	1.6	0.2	0.7	73	9	18	0.083	0.510
LIM. EDOS. TERM. MICH. PPIA. JAL.	102.10	0	0													
DEGOLLADO	105.40	1	0 4935	61.4	12.1	10.1	7.5	4.4	2.2	1.4	0.9	61	12	27	0.094	
AYOTLAN	134.00	1	0 5573	66.7	12.2	6.2	5.1	4.9	2.3	1.7	0.9	67	12	21	0.092	
ATOTONILCO EL ALTO	157.00	1	0 5108	71.0	5.3	5.3	8.7	5.3	2.0	1.4	1.0	71	5	24	0.086	
ATOTONILCO EL ALTO	157.00	3	0 8528	72.5	10.2	5.4	4.0	3.0	1.8	1.7	1.4	73	10	17	0.094	
X. C. SAN MIGUEL EL ALTO - LA BARCA	158.60	3	0 7600	65.4	10.5	7.3	6.1	5.6	2.8	1.5	0.8	65	11	24	0.078	
T. IZQ. OCOTLAN	188.00	1	0 6770	68.7	10.2	5.5	5.6	5.6	1.9	1.7	0.8	69	10	21	0.090	
T. DER. LIBRAMIENTO ZAPOTLANEJO	215.80	1	0 10604	68.6	10.7	6.3	4.3	5.2	2.7	1.1	1.1	68	11	21	0.086	
T. DER. LIBRAMIENTO ZAPOTLANEJO	215.80	3	1 6564	69.4	11.8	6.4	6.2	3.1	0.6	1.2	1.3	69	12	19	0.094	0.507
T. DER. LIBRAMIENTO ZAPOTLANEJO	215.80	3	2 6742	73.9	7.8	5.2	5.2	2.5	2.1	1.2	2.1	74	8	18	0.106	0.507
ZAPOTLANEJO	217.60	0	0													

4 CARR : LEON - AGUASCALIENTES

CLAVE: 00167

ruta : MEX-045

AÑO : 2006

L U G A R	E S T A C I O N			CLASIFICACION VEHICULAR EN PORCIENTO .												
	KM	TE	SC TDPA	A	B	C2	C3	T3S2	T3S3	T3S2R4	OTROS	A	B	C	K'	D
LEON	0.00	0	0													
T. DER. LIBRAMIENTO DE LEON	11.00	1	0 10498	76.0	2.9	8.8	6.0	3.3	1.6	0.1	1.3	76	3	21	0.090	0.510
T. DER. LIBRAMIENTO DE LEON	11.00	3	0 8898	72.7	5.7	9.8	7.5	2.4	0.8	0.0	1.1	72	6	22	0.104	0.500
T. IZQ. CENTRO DE LEON	12.00	3	1 4670	73.8	6.5	5.2	6.0	5.3	2.1	0.0	1.1	73	7	20	0.096	0.505
T. IZQ. CENTRO DE LEON	12.00	3	2 4573	75.2	8.0	5.9	5.4	2.7	1.7	0.0	1.1	75	8	17	0.158	0.505
LIM. EDOS. TERM. GTO. PPIA. JAL.	16.00	0	0													
X. C. SAN LUIS POTOSI - LAGOS DE MORENO	44.18	1	0 7575	71.2	8.8	5.2	5.6	4.4	1.5	1.1	2.2	71	9	20	0.080	
ENCARNACION DE DIAZ	88.20	1	0 7089	77.6	5.5	5.6	3.5	4.1	1.4	1.1	1.2	77	6	17	0.082	
T. IZQ. LIBRAMIENTO DE ENCARNACION DE DIAZ	89.18	3	0 9929	71.7	9.3	6.9	3.7	4.1	2.3	0.6	1.4	72	9	19	0.071	
LIM. EDOS. TERM. JAL. PPIA. AGS.	104.20	0	0													
T. IZQ. AEROPUERTO DE AGUASCALIENTES	110.20	1	1 6795	67.9	10.2	5.6	5.8	5.2	2.4	1.8	1.1	68	10	22	0.079	0.512
T. IZQ. AEROPUERTO DE AGUASCALIENTES	110.20	1	2 7031	75.6	6.5	4.9	5.5	3.8	2.6	0.6	0.5	75	7	18	0.070	0.512
T. IZQ. AEROPUERTO DE AGUASCALIENTES	111.00	3	1 10967	73.9	7.7	4.8	4.7	4.8	1.5	1.4	1.2	74	8	18	0.065	0.519
T. IZQ. AEROPUERTO DE AGUASCALIENTES	111.00	3	2 10171	76.8	6.0	3.8	4.8	3.8	1.8	1.7	1.3	77	6	17	0.072	0.519
T. DER. ESTACION ARELLANO	118.40	3	1 12776	72.7	6.4	4.7	5.2	4.9	2.3	1.8	2.0	73	6	21	0.081	0.519
T. DER. ESTACION ARELLANO	118.40	3	2 13695	74.9	5.4	4.7	5.1	4.7	2.9	0.7	1.6	75	5	20	0.072	0.519

GUANAJUATO

4 CARR : LEON - AGUASCALIENTES

CLAVE: 00167

RUTA : MEX-045

AÑO : 2006

L U G A R	E S T A C I O N				C L A S I F I C A C I O N V E H I C U L A R E N P O R C I E N T O .												
	KM	TE	SC	TDPA	A	B	C2	C3	T3S2	T3S3	T3S2R4	OTROS	A	B	C	K'	D
AGUASCALIENTES	129.40	1	1	14270	67.3	10.2	5.8	7.1	4.1	2.9	1.5	1.1	67	10	23	0.072	0.511
AGUASCALIENTES	129.40	1	2	12008	76.3	4.7	5.6	4.8	3.9	2.4	1.7	0.6	76	5	19	0.080	0.511

5 CARR : LEON - AGUASCALIENTES (CUOTA)

CLAVE: 00013

RUTA : MEX-45D

AÑO : 2006

L U G A R	E S T A C I O N				C L A S I F I C A C I O N V E H I C U L A R E N P O R C I E N T O .												
	KM	TE	SC	TDPA	A	B	C2	C3	T3S2	T3S3	T3S2R4	OTROS	A	B	C	K'	D
T. C. IRAPUATO - LEON	0.00	0	0														
CASETA DE COBRO LEON	23.50	2	0	7145													
LIM. EDOS. TERM. GTO. PPIA. JAL.	26.00	0	0														
CASETA DE COBRO ENCARNACION	88.74	2	0	7405													
LIM. EDOS. TERM. JAL. PPIA. AGS.	103.90	0	0														

6 CARR : LEON - SAN FELIPE TORRES MOCHAS

CLAVE: 11036

RUTA : GTO

AÑO : 2006

L U G A R	E S T A C I O N				C L A S I F I C A C I O N V E H I C U L A R E N P O R C I E N T O .												
	KM	TE	SC	TDPA	A	B	C2	C3	T3S2	T3S3	T3S2R4	OTROS	A	B	C	K'	D
LEON	0.00	3	1	2797	79.6	3.7	6.3	5.4	1.6	1.2	0.0	2.2	79	4	17	0.098	0.502
LEON	0.00	3	2	2622	79.1	6.1	8.5	3.0	1.3	1.1	0.0	0.9	79	6	15	0.117	0.502
X. C. LIBRAMIENTO DE LEON	6.50	3	0	3916	69.9	7.5	14.2	5.1	0.8	0.2	0.0	2.3	69	8	23	0.089	0.502
LIM. EDOS. TERM. GTO. PPIA. JAL.	17.00	0	0														
LIM. EDOS. TERM. JAL. PPIA. GTO.	38.00	0	0														
SAN FELIPE TORRES MOCHAS	98.00	1	0	1346	74.7	8.2	8.4	5.8	1.0	1.1	0.1	0.7	75	8	17	0.140	0.501

7 CARR : MANUEL DOBLADO - LA PIEDAD

CLAVE: 11028

RUTA : MEX-037

AÑO : 2006

L U G A R	E S T A C I O N				C L A S I F I C A C I O N V E H I C U L A R E N P O R C I E N T O .												
	KM	TE	SC	TDPA	A	B	C2	C3	T3S2	T3S3	T3S2R4	OTROS	A	B	C	K'	D
MANUEL DOBLADO	0.00	3	0	2165	77.6	5.8	9.6	3.4	1.5	1.0	0.5	0.6	77	6	17	0.105	0.503
LIM. EDOS. TERM. GTO. PPIA. JAL.	11.00	0	0														
LIM. EDOS. TERM. JAL. PPIA. GTO.	23.00	0	0														
T. DER. SAN JOSE DE LA PAZ	29.00	1	0	2071	78.8	5.1	8.8	3.8	0.8	0.6	0.4	1.7	79	5	16	0.106	0.502
T. DER. SAN JOSE DE LA PAZ	29.00	3	0	2200	75.8	5.6	9.4	4.6	1.1	1.0	0.4	2.1	75	6	19	0.119	0.504
T. C. IRAPUATO - GUADALAJARA	45.00	1	0	5427	79.1	5.2	9.1	3.4	0.9	0.5	0.3	1.5	79	5	16	0.087	0.503

GUANAJUATO

8 CARR : ACAMBARO - CELAYA

CLAVE: 11066

RUTA : MEX-051

AÑO : 2006

L U G A R	E S T A C I O N				C L A S I F I C A C I O N V E H I C U L A R E N P O R C I E N T O .												
	KM	TE	SC	TDPA	A	B	C2	C3	T3S2	T3S3	T3S2R4	OTROS	A	B	C	K'	D
ACAMBARO	0.00	3	0	5477	92.1	3.3	2.5	0.5	0.5	0.4	0.1	0.6	92	3	5	0.119	0.517
T. IZQ. INCHAMACUARO	13.50	1	0	3381	84.2	0.6	6.7	2.5	1.3	1.5	0.5	2.7	84	1	15	0.093	0.502
SALVATIERRA	33.00	3	0	4353	76.1	4.5	5.0	4.8	3.4	2.4	0.0	3.8	76	5	19	0.091	0.521
T. DER. TARIMORO	43.60	3	0	9894	76.0	4.2	4.6	4.6	3.7	2.7	0.0	4.2	76	4	20	0.085	0.526
T. DER. RINCON DE TAMAYO	59.60	3	0	9901	75.4	4.9	5.2	4.9	3.4	2.4	0.0	3.8	75	5	20	0.079	0.511
X. C. LIBRAMIENTO DE CELAYA	69.70	1	1	6865	75.1	8.7	5.0	3.9	3.4	2.5	0.0	1.4	75	9	16	0.090	0.515
X. C. LIBRAMIENTO DE CELAYA	69.70	1	2	7277	69.5	15.1	5.6	4.5	1.8	1.4	0.0	2.1	70	15	15	0.084	0.515
CELAYA	71.50	0	0														

9 CARR : CELAYA - DOLORES HIDALGO

CLAVE: 11109

RUTA : MEX-051-GTO

AÑO : 2006

L U G A R	E S T A C I O N				C L A S I F I C A C I O N V E H I C U L A R E N P O R C I E N T O .												
	KM	TE	SC	TDPA	A	B	C2	C3	T3S2	T3S3	T3S2R4	OTROS	A	B	C	K'	D
X. C. QUERETARO - IRAPUATO (CUOTA)	3.90	1	1	9969	84.5	3.6	3.6	3.3	1.5	0.2	0.0	3.3	84	4	12	0.122	0.503
X. C. QUERETARO - IRAPUATO (CUOTA)	3.90	1	2	9712	81.1	4.2	4.0	4.7	2.2	0.4	0.0	3.4	81	4	15	0.111	0.503
X. C. QUERETARO - IRAPUATO (CUOTA)	3.90	3	1	9991	68.2	9.9	8.0	7.0	4.4	1.8	0.2	0.5	68	10	22	0.090	0.506
X. C. QUERETARO - IRAPUATO (CUOTA)	3.90	3	2	8805	73.2	8.5	6.5	6.4	3.4	1.4	0.1	0.5	73	9	18	0.095	0.506
T. IZQ. JUVENTINO ROSAS	6.92	3	1	5266	80.3	4.0	4.4	2.9	3.1	2.1	0.2	3.0	80	4	16	0.101	0.504
T. IZQ. JUVENTINO ROSAS	6.92	3	2	5176	77.1	7.3	4.0	3.4	3.2	2.6	0.1	2.3	77	7	16	0.107	0.504
X. C. SANTA CRUZ - SAN JUAN DE LA VEGA	12.44	3	1	4506	79.3	6.9	4.6	3.8	2.4	1.1	0.3	1.6	79	7	14	0.106	0.502
X. C. SANTA CRUZ - SAN JUAN DE LA VEGA	12.44	3	2	4545	73.1	8.1	6.4	4.9	3.6	1.6	0.1	2.2	73	8	19	0.099	0.502
COMONFORT	24.50	1	0	6840	74.8	7.0	9.1	4.9	1.5	1.5	0.1	1.1	75	7	18	0.100	0.508
SAN MIGUEL DE ALLENDE	49.90	1	0	5386	70.4	8.6	7.8	6.9	2.9	1.8	0.0	1.6	70	9	21	0.093	0.504
T. IZQ. ATOTONILCO	65.60	1	0	3818	78.3	3.5	4.4	4.6	4.6	2.4	0.0	2.2	78	4	18	0.105	0.500
T. IZQ. ATOTONILCO	65.60	3	0	3812	73.6	6.9	12.1	4.5	1.2	0.6	0.0	1.1	73	7	20	0.086	0.506
T. C. SAN LUIS DE LA PAZ - GUANAJUATO	85.42	1	0	3122	79.7	3.7	6.4	3.2	3.1	1.8	0.0	2.1	79	4	17	0.104	0.505

10 CARR : CORTAZAR - VALLE DE SANTIAGO

CLAVE: 11016

RUTA : MEX-GTO-017

AÑO : 2006

L U G A R	E S T A C I O N				C L A S I F I C A C I O N V E H I C U L A R E N P O R C I E N T O .												
	KM	TE	SC	TDPA	A	B	C2	C3	T3S2	T3S3	T3S2R4	OTROS	A	B	C	K'	D
CORTAZAR	0.00	3	0	4146	87.9	0.3	6.5	2.7	1.0	0.4	0.5	0.7	88	0	12	0.078	0.509
T. C. MORELIA - SALAMANCA	29.20	1	0	4409	89.3	0.2	6.4	2.2	0.7	0.3	0.4	0.5	89	0	11	0.079	0.514







GUANAJUATO

18 CARR : IRAPUATO - LEON

CLAVE: 11123

RUTA : MEX-045

AÑO : 2006

L U G A R	E S T A C I O N				C L A S I F I C A C I O N V E H I C U L A R E N P O R C I E N T O .												
	KM	TE	SC	TDPA	A	B	C2	C3	T3S2	T3S3	T3S2R4	OTROS	A	B	C	K'	D
T. DER. NUEVO LIBRAMIENTO	8.80	3	1	14354	80.2	5.2	4.0	3.0	3.5	2.9	0.2	1.0	80	5	15	0.130	0.502
T. DER. NUEVO LIBRAMIENTO	8.80	3	2	14141	79.0	4.7	5.3	3.4	3.0	2.0	0.1	2.5	79	5	16	0.123	0.502
T. C. GUANAJUATO - LOS INFANTES	26.44	3	1	9589	74.5	4.0	6.0	7.0	3.7	3.2	0.0	1.6	74	4	22	0.099	0.504
T. C. GUANAJUATO - LOS INFANTES	26.44	3	2	9419	73.5	8.0	6.6	4.2	3.4	3.0	0.0	1.3	73	8	19	0.118	0.504
X. C. SANTA TERESA - SILAO	36.85	1	1	11460	77.0	4.3	5.9	4.8	3.5	2.2	0.0	2.3	77	4	19	0.133	0.503
X. C. SANTA TERESA - SILAO	36.85	1	2	11592	75.1	6.3	7.4	3.8	3.1	2.4	0.0	1.9	75	6	19	0.155	0.503
X. C. SANTA TERESA - SILAO	36.85	3	1	12836	75.9	5.6	6.7	5.0	3.2	2.0	0.0	1.6	75	6	19	0.100	0.515
X. C. SANTA TERESA - SILAO	36.85	3	2	12095	76.9	7.4	7.1	3.6	2.4	1.3	0.1	1.2	77	7	16	0.108	0.515
T. DER. AEROPUERTO	57.77	3	1	14100	71.3	9.9	6.3	4.3	3.7	3.0	0.0	1.5	71	10	19	0.104	0.502
T. DER. AEROPUERTO	57.77	3	2	14214	75.0	7.1	6.7	4.9	3.3	2.0	0.0	1.0	75	7	18	0.121	0.502
LEON	68.99	1	1	19636	80.2	4.8	5.1	3.2	3.3	1.9	0.0	1.5	80	5	15	0.112	0.513
LEON	68.99	1	2	20317	75.3	4.9	7.1	4.3	3.3	2.5	0.0	2.6	75	5	20	0.094	0.513

19 CARR : LEON - MANUEL DOBLADO

CLAVE: 11069

RUTA : GTO-037

AÑO : 2006

L U G A R	E S T A C I O N				C L A S I F I C A C I O N V E H I C U L A R E N P O R C I E N T O .												
	KM	TE	SC	TDPA	A	B	C2	C3	T3S2	T3S3	T3S2R4	OTROS	A	B	C	K'	D
LEON	0.00	3	1	9737	62.5	8.7	6.6	9.8	2.7	7.2	0.2	2.3	62	9	29	0.117	0.500
LEON	0.00	3	2	9754	68.8	8.1	7.3	6.6	2.4	4.3	0.1	2.4	69	8	23	0.105	0.500
X. C. LEON - AGUASCALIENTES (CUOTA)	4.60	3	1	8144	69.0	5.1	9.9	6.6	2.7	4.2	0.0	2.5	69	5	26	0.103	0.508
X. C. LEON - AGUASCALIENTES (CUOTA)	4.60	3	2	8407	70.2	7.3	7.8	7.6	2.2	3.5	0.0	1.4	70	7	23	0.113	0.508
SAN FRANCISCO DEL RINCON	23.00	1	1	6817	67.1	8.9	7.3	6.4	2.4	6.2	0.2	1.5	67	9	24	0.098	0.500
SAN FRANCISCO DEL RINCON	23.00	1	2	6809	66.7	9.1	9.9	7.3	2.5	2.7	0.1	1.7	67	9	24	0.151	0.500
PURISIMA DE BUSTOS	26.00	1	1	7416	67.9	5.5	8.2	6.3	2.8	6.8	0.3	2.2	67	6	27	0.087	0.512
PURISIMA DE BUSTOS	26.00	1	2	8266	73.8	5.1	10.1	4.7	2.0	2.8	0.1	1.4	74	5	21	0.094	0.512
T. DER. SAN JULIAN	29.00	1	0	5244	71.6	5.0	9.9	4.9	3.6	2.9	0.2	1.9	72	5	23	0.102	0.505
T. DER. SAN JULIAN	29.00	3	0	2548	38.7	1.3	2.6	2.5	0.3	50.6	0.0	4.0	39	1	60	0.121	0.502
T. IZQ. GUADALUPE DE JALPA	51.00	3	0	2380	76.1	8.0	6.7	3.5	1.6	2.6	0.2	1.3	76	8	16	0.108	0.505
MANUEL DOBLADO	68.00	1	0	2897	38.7	3.1	2.9	2.2	1.1	0.3	49.9	1.8	39	3	58	0.117	0.509

20 CARR : LIBRAMIENTO DE ABASOLO

CLAVE: 11011

RUTA : GTO

AÑO : 2006

L U G A R	E S T A C I O N				C L A S I F I C A C I O N V E H I C U L A R E N P O R C I E N T O .												
	KM	TE	SC	TDPA	A	B	C2	C3	T3S2	T3S3	T3S2R4	OTROS	A	B	C	K'	D
T. C. IRAPUATO - GUADALAJARA (1° ACCESO)	0.00	3	1	5673	57.1	10.9	10.5	6.2	6.1	7.4	0.2	1.6	57	11	32	0.117	0.510

GUANAJUATO

20 CARR : LIBRAMIENTO DE ABASOLO

CLAVE: 11011

RUTA : GTO

AÑO : 2006

L U G A R	E S T A C I O N				CLASIFICACION VEHICULAR EN PORCIENTO .												
	KM	TE	SC	TDPA	A	B	C2	C3	T3S2	T3S3	T3S2R4	OTROS	A	B	C	K'	D
T. C. IRAPUATO - GUADALAJARA (1º ACCESO)	0.00	3	2	5584	57.9	10.2	9.8	7.0	6.0	6.7	0.3	2.1	58	10	32	0.108	0.510
T. C. IRAPUATO - ZAPOTLANEJO (2º ACCESO)	2.50	0	0														

21 CARR : LIBRAMIENTO DE SALAMANCA

CLAVE: 11002

RUTA : MEX

AÑO : 2006

L U G A R	E S T A C I O N				CLASIFICACION VEHICULAR EN PORCIENTO .												
	KM	TE	SC	TDPA	A	B	C2	C3	T3S2	T3S3	T3S2R4	OTROS	A	B	C	K'	D
T.C. QUERETARO - IRAPUATO LIBRE	1.50	3	0	16892	68.9	6.7	7.2	6.2	4.7	3.3	0.0	3.0	69	7	24	0.079	0.502
T.C. QUERETARO - IRAPUATO LIBRE	7.50	1	0	17515	68.4	6.4	6.7	7.3	4.2	2.7	2.7	1.6	69	6	25	0.092	0.502

22 CARR : LIBRAMIENTO DE SALVATIERRA

CLAVE: 11012

RUTA : GTO

AÑO : 2006

L U G A R	E S T A C I O N				CLASIFICACION VEHICULAR EN PORCIENTO .												
	KM	TE	SC	TDPA	A	B	C2	C3	T3S2	T3S3	T3S2R4	OTROS	A	B	C	K'	D
T. C. ACAMBARO - CELAYA	0.00	0	0														
T. C. SALVATIERRA - (T. C. MORELIA - SALAMANCA)	2.50	3	0	14322	66.7	13.1	6.4	4.4	3.8	3.0	0.2	2.4	67	13	20	0.076	0.501
T. C. ACAMBARO - CELAYA	4.50	1	0	7814	81.9	0.6	3.8	2.8	2.8	2.7	3.3	2.1	81	1	18	0.081	0.553

23 CARR : LIBRAMIENTO DE SAN LUIS DE LA PAZ

CLAVE: 11014

RUTA : GTO

AÑO : 2006

L U G A R	E S T A C I O N				CLASIFICACION VEHICULAR EN PORCIENTO .												
	KM	TE	SC	TDPA	A	B	C2	C3	T3S2	T3S3	T3S2R4	OTROS	A	B	C	K'	D
T. C. SAN LUIS DE LA PAZ - GUANAJUATO	0.00	3	1	1768	82.1	7.5	4.6	2.2	1.5	1.3	0.0	0.8	82	8	10	0.114	0.507
T. C. SAN LUIS DE LA PAZ - GUANAJUATO	0.00	3	2	1881	83.4	6.9	5.0	1.9	1.2	1.0	0.0	0.6	83	7	10	0.107	0.507
T. C. SAN LUIS DE LA PAZ - CAÑADA DE MORENO	3.60	1	1	1062	84.7	7.7	5.0	1.8	0.5	0.0	0.0	0.3	84	8	8	0.083	0.503
T. C. SAN LUIS DE LA PAZ - CAÑADA DE MORENO	3.60	1	2	924	80.4	8.3	6.5	2.8	1.4	0.4	0.0	0.2	81	8	11	0.096	0.503

24 CARR : NUEVO LIBRAMIENTO DE IRAPUATO

CLAVE: 11132

RUTA : MEX

AÑO : 2006

L U G A R	E S T A C I O N				CLASIFICACION VEHICULAR EN PORCIENTO .												
	KM	TE	SC	TDPA	A	B	C2	C3	T3S2	T3S3	T3S2R4	OTROS	A	B	C	K'	D
T. C. QUERETARO - IRAPUATO (CUOTA)	0.00	3	1	2510	74.8	7.7	7.4	4.5	2.0	1.4	0.1	2.1	74	8	18	0.110	0.507
T. C. QUERETARO - IRAPUATO (CUOTA)	0.00	3	2	2760	75.1	7.9	7.9	4.7	1.6	1.2	0.1	1.5	75	8	17	0.119	0.507
T. C. IRAPUATO - LEON	11.20	1	1	5742	73.4	6.5	7.9	6.3	2.4	1.6	0.0	1.9	73	7	20	0.098	0.501
T. C. IRAPUATO - LEON	11.20	1	2	5524	72.9	7.8	7.9	5.2	2.8	1.6	0.0	1.8	73	8	19	0.101	0.501

GUANAJUATO

25 CARR : NUEVO LIBRAMIENTO DE LEON

CLAVE: 11133

RUTA : GTO

AÑO : 2006

L U G A R	E S T A C I O N				C L A S I F I C A C I O N V E H I C U L A R E N P O R C I E N T O .												
	KM	TE	SC	TDPA	A	B	C2	C3	T3S2	T3S3	T3S2R4	OTROS	A	B	C	K'	D
T. C. IRAPUATO - LEON	0.00	3	1	9529	73.2	8.5	7.4	7.1	1.1	0.7	0.0	2.0	73	9	18	0.115	0.500
T. C. IRAPUATO - LEON	0.00	3	2	10238	71.4	10.1	7.0	5.7	2.3	1.4	0.0	2.1	71	10	19	0.086	0.500
T. DER. IBARRILLA	9.58	3	1	8143	74.8	10.0	3.7	4.6	2.7	2.2	0.0	2.0	75	10	15	0.109	0.505
T. DER. IBARRILLA	9.58	3	2	8293	77.5	5.7	4.5	6.1	3.3	1.5	0.0	1.4	77	6	17	0.093	0.505
T. C. LEON - AGUASCALIENTES	18.39	1	0	11355	70.1	10.5	7.5	5.0	3.0	2.0	0.0	1.9	70	11	19	0.097	0.502

26 CARR : RAMAL A LAS ADJUNTAS

CLAVE: 11820

RUTA : MEX

AÑO : 2006

L U G A R	E S T A C I O N				C L A S I F I C A C I O N V E H I C U L A R E N P O R C I E N T O .												
	KM	TE	SC	TDPA	A	B	C2	C3	T3S2	T3S3	T3S2R4	OTROS	A	B	C	K'	D
T. C. MANUEL DOBLADO - LA PIEDAD	0.00	3	0	1076	40.8	3.5	4.1	0.7	0.2	50.3	0.0	0.4	40	4	56	0.106	0.516
ENT. LAS ADJUNTAS	10.00	1	0	949	77.6	7.2	7.5	4.2	1.3	1.0	0.0	1.2	78	7	15	0.129	0.507

27 CARR : RAMAL A SAN DIEGO DE LA UNION

CLAVE: 11818

RUTA : GTO

AÑO : 2006

L U G A R	E S T A C I O N				C L A S I F I C A C I O N V E H I C U L A R E N P O R C I E N T O .												
	KM	TE	SC	TDPA	A	B	C2	C3	T3S2	T3S3	T3S2R4	OTROS	A	B	C	K'	D
T. C. SAN LUIS DE LA PAZ - GUANAJUATO	0.00	3	0	1850	76.7	2.6	17.1	2.5	0.4	0.1	0.0	0.6	76	3	21	0.139	0.505
SAN DIEGO DE LA UNION	31.00	0	0														

28 CARR : RAMAL A SAN JOSE ITURBIDE

CLAVE: 11201

RUTA : MEX

AÑO : 2006

L U G A R	E S T A C I O N				C L A S I F I C A C I O N V E H I C U L A R E N P O R C I E N T O .												
	KM	TE	SC	TDPA	A	B	C2	C3	T3S2	T3S3	T3S2R4	OTROS	A	B	C	K'	D
T. C. QUERETARO - SAN LUIS POTOSI	0.00	3	1	2016	82.0	4.4	5.5	4.3	1.2	0.9	0.0	1.7	82	4	14	0.128	0.507
T. C. QUERETARO - SAN LUIS POTOSI	0.00	3	2	2487	84.5	4.6	5.9	2.3	0.9	0.5	0.0	1.3	84	5	11	0.085	0.507
SAN JOSE ITURBIDE	6.00	1	1	2382	84.3	5.9	4.8	2.4	0.6	0.8	0.0	1.2	84	6	10	0.084	0.504
SAN JOSE ITURBIDE	6.00	1	2	2214	83.5	5.7	5.4	3.1	0.8	0.6	0.0	0.9	83	6	11	0.089	0.504

29 CARR : SALAMANCA - JUVENTINO ROSAS

CLAVE: 11817

RUTA : GTO

AÑO : 2006

L U G A R	E S T A C I O N				C L A S I F I C A C I O N V E H I C U L A R E N P O R C I E N T O .												
	KM	TE	SC	TDPA	A	B	C2	C3	T3S2	T3S3	T3S2R4	OTROS	A	B	C	K'	D
SALAMANCA	0.00	3	0	2222	76.6	8.5	7.1	4.3	0.9	0.8	0.0	1.8	76	9	15	0.099	0.505
JUVENTINO ROSAS	20.00	1	0	1145	66.3	8.8	17.5	3.3	1.2	1.3	0.0	1.6	66	9	25	0.091	0.504

GUANAJUATO

30 CARR : SALVATIERRA - CORTAZAR

CLAVE: 11327

RUTA : GTO

AÑO : 2006

L U G A R	E S T A C I O N				CLASIFICACION VEHICULAR EN PORCIENTO .												
	KM	TE	SC	TDPA	A	B	C2	C3	T3S2	T3S3	T3S2R4	OTROS	A	B	C	K'	D
T. C. ACAMBARO - CELAYA	0.00	3	0	2748	90.4	0.2	5.4	1.3	0.8	0.7	0.2	1.0	91	0	9	0.105	0.517
CORTAZAR	31.80	1	0	2590	74.6	7.1	6.5	5.1	1.9	1.9	0.1	2.8	75	7	18	0.100	0.529

31 CARR : SALVATIERRA - ENT. YURIRIA

CLAVE: 11013

RUTA : MEX

AÑO : 2006

L U G A R	E S T A C I O N				CLASIFICACION VEHICULAR EN PORCIENTO .												
	KM	TE	SC	TDPA	A	B	C2	C3	T3S2	T3S3	T3S2R4	OTROS	A	B	C	K'	D
T. C. ACAMBARO - CELAYA	0.00	3	0	7924	77.3	8.1	7.0	2.4	1.3	2.2	0.1	1.6	77	8	15	0.082	0.502
T. IZQ. SANTIAGO MARAVATIO	8.00	1	0	6949	72.1	7.4	9.8	2.9	2.5	2.0	0.1	3.2	72	7	21	0.085	0.508
YURIRIA	27.00	1	0	5491	71.2	9.8	10.2	3.6	1.5	2.2	0.1	1.4	71	10	19	0.084	0.501
T. C. MORELIA - SALAMANCA	30.00	1	0	8634	72.1	9.3	6.4	6.2	1.5	1.9	0.1	2.5	72	9	19	0.071	0.502

32 CARR : SAN LUIS DE LA PAZ - CAÑADA DE MORENO

CLAVE: 11134

RUTA : MEX

AÑO : 2006

L U G A R	E S T A C I O N				CLASIFICACION VEHICULAR EN PORCIENTO .												
	KM	TE	SC	TDPA	A	B	C2	C3	T3S2	T3S3	T3S2R4	OTROS	A	B	C	K'	D
SAN LUIS DE LA PAZ	0.00	3	0	2559	78.4	7.8	6.4	3.8	1.7	1.6	0.1	0.2	78	8	14	0.100	0.506

33 CARR : SAN LUIS DE LA PAZ - GUANAJUATO

CLAVE: 11108

RUTA : MEX-110

AÑO : 2006

L U G A R	E S T A C I O N				CLASIFICACION VEHICULAR EN PORCIENTO .												
	KM	TE	SC	TDPA	A	B	C2	C3	T3S2	T3S3	T3S2R4	OTROS	A	B	C	K'	D
SAN LUIS DE LA PAZ	0.00	0	0														
T. IZQ. SAN JOSE ITURBIDE	1.74	3	1	3663	82.0	3.9	6.9	3.0	0.9	1.2	0.0	2.1	82	4	14	0.085	0.503
T. IZQ. SAN JOSE ITURBIDE	1.74	3	2	3303	78.1	7.9	5.9	4.0	0.9	1.5	0.0	1.7	78	8	14	0.106	0.503
X. C. QUERETARO - SAN LUIS POTOSI	8.31	3	0	3858	77.2	9.5	7.3	2.1	0.3	1.5	0.0	2.1	77	10	13	0.097	0.502
T. DER. SAN DIEGO DE LA UNION	39.45	1	0	3061	81.2	4.6	4.8	3.0	2.5	2.3	0.0	1.6	81	5	14	0.106	0.503
T. IZQ. SAN MIGUEL DE ALLENDE	42.92	1	0	3105	75.6	10.7	6.4	3.5	1.2	1.5	0.0	1.1	75	11	14	0.122	0.501
T. DER. LIBRAMIENTO DE DOLORES HIDALGO (1° ACCESO)	47.00	1	1	3281	77.9	12.2	5.1	2.9	0.5	0.8	0.1	0.5	78	12	10	0.132	0.505
T. DER. LIBRAMIENTO DE DOLORES HIDALGO (1° ACCESO)	47.00	1	2	3212	78.9	10.2	5.7	3.1	0.7	0.9	0.0	0.5	79	10	11	0.107	0.505
DOLORES HIDALGO	48.40	3	0	2308	81.9	8.5	4.5	1.5	0.6	1.6	0.0	1.4	81	9	10	0.132	0.502
T. DER. OJO DE AGUA	61.29	1	0	1392	81.1	6.2	5.8	2.4	0.6	1.9	0.1	1.9	81	6	13	0.123	0.509
OJO DE AGUA DE CALVILLO	70.80	1	0	1435	79.6	7.3	6.5	2.7	0.9	1.2	0.1	1.7	80	7	13	0.119	0.508
SANTA ROSA	90.40	1	0	1493	79.2	7.8	5.2	3.4	1.2	1.6	0.1	1.5	79	8	13	0.158	0.507
GUANAJUATO	103.30	1	0	1871	78.3	8.0	5.2	4.2	1.8	1.3	0.0	1.2	78	8	14	0.130	0.503

GUANAJUATO

34 CARR : SAN LUIS DE LA PAZ - SAN JOSE ITURBIDE

CLAVE: 11046

RUTA : GTO

AÑO : 2006

L U G A R	E S T A C I O N				C L A S I F I C A C I O N V E H I C U L A R E N P O R C I E N T O .												
	KM	TE	SC	TDPA	A	B	C2	C3	T3S2	T3S3	T3S2R4	OTROS	A	B	C	K'	D
SAN LUIS DE LA PAZ	0.00	3	0	2043	84.1	7.4	5.0	1.8	0.1	0.6	0.0	1.0	84	7	9	0.115	0.503
ESTACION POZO	8.00	3	0	1684	85.2	6.5	3.7	2.6	0.6	0.5	0.0	0.9	85	7	8	0.094	0.505
X. C. ENT. SAN MIGUEL ALLENDE - DR. MORA	21.50	1	0	1520	82.3	6.0	4.9	6.0	0.0	0.3	0.1	0.4	82	6	12	0.107	0.505
SAN JOSE ITURBIDE	36.50	1	0	2341	81.6	6.3	5.8	3.4	0.4	0.5	0.0	2.0	82	6	12	0.081	0.501

35 CARR : SILAO - LA ROMITA

CLAVE: 11029

RUTA : GTO

AÑO : 2006

L U G A R	E S T A C I O N				C L A S I F I C A C I O N V E H I C U L A R E N P O R C I E N T O .												
	KM	TE	SC	TDPA	A	B	C2	C3	T3S2	T3S3	T3S2R4	OTROS	A	B	C	K'	D
SILAO	0.00	3	0	4212	82.2	8.2	5.0	2.2	0.6	0.9	0.0	0.9	82	8	10	0.107	0.510
ROMITA	13.00	0	0														

36 CARR : ENT. BUENAVISTA - SAN MIGUEL DE ALLENDE

CLAVE: 00111

RUTA : MEX

AÑO : 2006

L U G A R	E S T A C I O N				C L A S I F I C A C I O N V E H I C U L A R E N P O R C I E N T O .												
	KM	TE	SC	TDPA	A	B	C2	C3	T3S2	T3S3	T3S2R4	OTROS	A	B	C	K'	D
T. C. QUERETARO - SAN LUIS POTOSI	0.00	3	0	4388	71.6	8.2	10.7	5.1	1.5	1.2	0.0	1.7	72	8	20	0.105	0.500
T. IZQ. GUADALUPE	12.00	1	0	3502	75.2	9.4	9.7	4.3	0.5	0.2	0.0	0.7	76	9	15	0.103	0.505
SAN MIGUEL DE ALLENDE	35.11	1	0	3822	74.5	6.9	12.0	4.0	1.0	0.5	0.0	1.1	74	7	19	0.095	0.504

37 CARR : ENT. DE ZARAGOZA - SAN FELIPE

CLAVE: 00240

RUTA : MEX-037

AÑO : 2006

L U G A R	E S T A C I O N				C L A S I F I C A C I O N V E H I C U L A R E N P O R C I E N T O .												
	KM	TE	SC	TDPA	A	B	C2	C3	T3S2	T3S3	T3S2R4	OTROS	A	B	C	K'	D
T. C. QUERETARO - SAN LUIS POTOSI	0.00	3	0	2856	75.2	6.9	7.9	4.0	2.4	1.4	0.0	2.2	75	7	18	0.081	0.504
LIM. EDOS. TERM. S.L.P. PPIA. GTO.	32.00	0	0														
SAN FELIPE	72.00	1	0	1510	76.6	6.1	8.1	4.6	1.9	1.7	0.1	0.9	77	6	17	0.161	0.504

38 CARR : T. C. (VILLA DEL PUEBLITO - HUIMILPAN) - CORONEO

CLAVE: 00155

RUTA : QRO-GTO

AÑO : 2006

L U G A R	E S T A C I O N				C L A S I F I C A C I O N V E H I C U L A R E N P O R C I E N T O .												
	KM	TE	SC	TDPA	A	B	C2	C3	T3S2	T3S3	T3S2R4	OTROS	A	B	C	K'	D
T. C. VILLA DEL PUEBLITO - HUIMILPAN	0.00	3	0	1744	80.3	6.8	5.7	4.2	1.6	1.4	0.0	0.0	80	7	13	0.166	0.509
LIM. EDOS. TERM. QRO. PPIA. GTO.	20.00	0	0														
CORONEO	45.20	1	0	1952	94.6	1.1	3.0	0.4	0.2	0.0	0.0	0.7	95	1	4	0.112	0.554

GUANAJUATO

39 CARR : TEPATITLAN - LAS ADJUNTAS

CLAVE: 00141

RUTA : JAL/MEX-084

AÑO : 2006

L U G A R	E S T A C I O N				C L A S I F I C A C I O N V E H I C U L A R E N P O R C I E N T O .												
	KM	TE	SC	TDPA	A	B	C2	C3	T3S2	T3S3	T3S2R4	OTROS	A	B	C	K'	D
T. C. LAGOS DE MORENO - GUADALAJARA	0.00	3	0	4819	80.2	3.0	6.2	5.3	1.5	1.3	1.9	0.6	80	3	17	0.082	
X. C. SAN MIGUEL EL ALTO - LA BARCA	34.00	3	1	4065	70.4	10.3	7.2	4.6	3.4	1.8	1.4	0.9	71	10	19	0.099	0.506
X. C. SAN MIGUEL EL ALTO - LA BARCA	34.00	3	2	4704	75.9	9.7	7.4	3.2	1.4	1.1	0.7	0.6	76	10	14	0.076	0.506
ARANDAS	46.00	3	0	5237	79.0	8.6	6.9	2.0	1.1	0.6	1.0	0.8	79	9	12	0.096	
T. DER. JESUS MARIA	58.00	3	0	2355	81.6	4.7	6.3	3.5	1.5	1.1	1.0	0.3	81	5	14	0.089	
X. C. MANUEL DOBLADO - LA PIEDAD	91.00	1	0	1865	75.7	5.8	9.1	5.3	1.8	1.3	0.0	1.0	75	6	19	0.136	0.501
LIM. EDOS. TERM. JAL. PPIA. GTO.	95.00			0													
T. C. MUNGUIA - LAS ADJUNTAS	100.00	1	0	1196	70.6	8.3	10.2	7.8	1.0	0.8	0.0	1.3	71	8	21	0.116	0.504

40 CARR : JALOSTOTITLAN - PURISIMA DE BUSTOS

CLAVE: 00142

RUTA : JAL-GTO

AÑO : 2006

L U G A R	E S T A C I O N				C L A S I F I C A C I O N V E H I C U L A R E N P O R C I E N T O .												
	KM	TE	SC	TDPA	A	B	C2	C3	T3S2	T3S3	T3S2R4	OTROS	A	B	C	K'	D
JALOSTOTITLAN	0.00	3	0	3463	80.9	9.6	4.4	1.6	0.6	1.4	1.1	0.4	80	10	10	0.102	
SAN MIGUEL EL ALTO	19.00	3	0	4171	80.8	9.4	4.2	2.6	1.0	1.1	0.5	0.4	81	9	10	0.090	
SAN DIEGO DE ALEJANDRIA	63.00	3	0	3108	80.0	6.8	4.1	4.2	1.2	1.4	1.7	0.6	80	7	13	0.083	
LIM. EDOS. TERM. JAL. PPIA. GTO.	66.00			0													
PURISIMA DE BUSTOS	78.00	1	0	2874	82.8	5.4	6.6	2.2	1.0	1.1	0.1	0.8	83	5	12	0.106	0.501

41 CARR : LA NORIA - ACAMBARO

CLAVE: 00131

RUTA : MEX-120

AÑO : 2006

L U G A R	E S T A C I O N				C L A S I F I C A C I O N V E H I C U L A R E N P O R C I E N T O .												
	KM	TE	SC	TDPA	A	B	C2	C3	T3S2	T3S3	T3S2R4	OTROS	A	B	C	K'	D
LA NORIA	0.00	3	0	3602	75.2	10.1	7.7	3.4	1.6	0.7	0.3	1.0	75	10	15	0.102	0.515
AMEALCO	34.66	1	0	2895	81.5	5.9	6.1	2.9	1.7	0.8	0.2	0.9	81	6	13	0.094	0.513
AMEALCO	34.66	3	0	2459	68.3	8.6	8.9	7.7	2.3	2.9	0.0	1.3	68	9	23	0.090	0.503
LIM. EDOS. TERM. QRO. PPIA. MICH.	41.16			0													
LIM. EDOS. TERM. MICH. PPIA. GTO.	55.45			0													
CORONEO	59.35	3	0	1838	79.3	6.5	5.2	4.1	1.9	0.8	0.1	2.1	79	7	14	0.083	0.508
JERECUARO	79.70	3	0	3307	93.9	0.1	5.1	0.3	0.1	0.1	0.0	0.4	94	0	6	0.106	0.520
ACAMBARO	111.10	1	0	4341	88.9	1.6	4.5	1.8	1.1	0.5	0.4	1.2	88	2	10	0.093	0.514

GUANAJUATO

42 CARR : MARAVATIO - ACAMBARO

CLAVE: 00418

RUTA : MEX-061

AÑO : 2006

L U G A R	E S T A C I O N				C L A S I F I C A C I O N V E H I C U L A R E N P O R C I E N T O .												
	KM	TE	SC	TDPA	A	B	C2	C3	T3S2	T3S3	T3S2R4	OTROS	A	B	C	K'	D
MARAVATIO	0.00	3	0	7100	75.6	8.0	7.7	2.7	1.8	1.4	0.5	2.3	76	8	16	0.099	0.527
LIM. EDOS. TERM. MICH. PPIA. GTO.	9.00	0	0														
TARANDACUAO	13.00	3	0	2518	81.4	2.8	4.2	3.6	2.0	2.3	0.7	3.0	81	3	16	0.099	0.540
ACAMBARO	39.00	1	0	2587	79.5	4.6	4.5	2.7	2.5	1.9	0.8	3.5	79	5	16	0.088	0.551

43 CARR : MORELIA - SALAMANCA

CLAVE: 00124

RUTA : MEX-043

AÑO : 2006

L U G A R	E S T A C I O N				C L A S I F I C A C I O N V E H I C U L A R E N P O R C I E N T O .												
	KM	TE	SC	TDPA	A	B	C2	C3	T3S2	T3S3	T3S2R4	OTROS	A	B	C	K'	D
MORELIA	0.00	0	0														
X. PERIFERICO MORELIA	2.70	3	1	16028	78.0	8.2	6.5	4.1	1.0	0.8	0.2	1.2	78	8	14	0.077	0.502
X. PERIFERICO MORELIA	2.70	3	2	16127	73.8	9.5	6.3	5.9	1.4	1.2	0.1	1.8	73	10	17	0.083	0.502
T. DER. ZINAPECUARO	8.85	1	1	11199	75.3	10.6	6.4	3.6	1.6	0.9	0.6	1.0	75	11	14	0.105	0.500
T. DER. ZINAPECUARO	8.85	1	2	10307	71.9	10.1	8.0	4.5	2.0	1.7	0.1	1.7	72	10	18	0.112	0.500
T. DER. ZINAPECUARO	8.85	3	1	7452	83.8	4.9	4.2	3.1	1.6	1.1	0.2	1.1	84	5	11	0.085	0.503
T. DER. ZINAPECUARO	8.85	3	2	6928	79.8	5.2	5.1	4.1	2.2	2.0	0.0	1.6	80	5	15	0.095	0.503
CUITZEO	33.64	1	0	8695	76.4	8.2	6.5	3.0	2.0	1.9	0.1	1.9	77	8	15	0.079	0.508
CUITZEO	33.64	3	0	7203	75.0	9.1	5.5	3.7	2.3	2.1	0.0	2.3	75	9	16	0.086	0.507
LIM. EDOS. TERM. MICH. PPIA. GTO.	47.12	0	0														
T. IZQ. MOROLEON	52.36	1	1	2370	68.0	10.9	6.5	5.4	1.9	2.1	0.5	4.7	68	11	21	0.084	0.503
T. IZQ. MOROLEON	52.36	1	2	1996	66.6	13.7	5.8	4.8	2.3	1.4	0.4	5.0	66	14	20	0.097	0.503
URIANGATO	54.22	3	1	1975	67.8	5.2	3.9	3.4	4.5	5.1	4.1	6.0	68	5	27	0.098	0.521
URIANGATO	54.22	3	2	2144	59.1	6.2	4.2	5.2	5.9	6.3	5.3	7.8	59	6	35	0.098	0.521
T. DER. YURIRIA	61.36	3	0	5473	66.7	15.7	3.8	3.7	3.1	2.8	0.3	3.9	66	16	18	0.088	0.504
MAGDALENA DE ARACEO	77.10	1	0	5399	71.6	9.1	8.1	3.5	2.4	2.6	0.2	2.5	72	9	19	0.083	0.510
MAGDALENA DE ARACEO	77.10	3	0	5756	76.0	9.3	6.9	2.8	1.1	1.1	0.0	2.8	76	9	15	0.079	0.510
T. DER. JARAL DEL PROGRESO	87.00	1	0	4889	68.6	9.3	9.2	5.2	2.8	3.1	0.0	1.8	69	9	22	0.093	0.511
T. DER. JARAL DEL PROGRESO	87.00	3	0	6277	75.2	8.1	3.1	2.5	3.2	2.9	1.4	3.6	75	8	17	0.084	0.535
X. C. LIBRAMIENTO DE SALAMANCA	105.10	1	0	10189	67.9	10.0	8.8	5.4	2.9	2.4	1.7	0.9	68	10	22	0.080	0.502
SALAMANCA	108.00	1	1	6605	70.7	9.3	7.4	5.3	3.5	2.2	0.0	1.6	71	9	20	0.088	0.503
SALAMANCA	108.00	1	2	6784	70.5	8.6	8.4	4.7	1.9	2.8	0.0	3.1	70	9	21	0.083	0.503

GUANAJUATO

44 CARR : QUERETARO - IRAPUATO (CUOTA)

CLAVE: 00423

ruta : MEX-045D

AÑO : 2006

L U G A R	E S T A C I O N				C L A S I F I C A C I O N V E H I C U L A R E N P O R C I E N T O .												
	KM	TE	SC	TDPA	A	B	C2	C3	T3S2	T3S3	T3S2R4	OTROS	A	B	C	K'	D
QUERETARO	0.00	3	1	11584	76.2	10.2	5.4	2.0	2.1	1.9	0.0	2.2	76	10	14	0.119	0.504
QUERETARO	0.00	3	2	12108	72.8	12.1	4.7	3.1	2.4	1.8	0.0	3.1	73	12	15	0.110	0.504
CASETA DE COBRO QUERETARO	7.00	2	1	18467													
CASETA DE COBRO QUERETARO	7.00	2	2	18467													
LIM. EDOS. TERM. QRO. PPIA. GTO.	8.97	0	0														
X. C. CELAYA - SAN MIGUEL ALLENDE	44.10	1	1	8446	68.2	9.5	9.3	6.4	1.6	1.8	0.2	3.0	68	10	22	0.097	0.502
X. C. CELAYA - SAN MIGUEL ALLENDE	44.10	1	2	8364	68.2	9.7	9.1	6.5	1.7	1.6	0.1	3.1	68	10	22	0.088	0.502
T. IZQ. SALAMANCA	81.54	1	1	7563	67.7	8.7	4.9	5.9	7.9	1.2	2.4	1.3	67	9	24	0.094	0.506
T. IZQ. SALAMANCA	81.54	1	2	7754	67.2	9.2	4.5	6.1	7.9	1.6	2.3	1.2	67	9	24	0.082	0.506
T. IZQ. SALAMANCA	81.54	3	1	7862	68.4	8.5	5.3	5.6	8.0	1.1	1.7	1.4	68	9	23	0.095	0.503
T. IZQ. SALAMANCA	81.54	3	2	7766	68.2	8.5	5.4	5.7	8.1	1.1	1.6	1.4	68	9	23	0.096	0.503
CASETA DE COBRO SALAMANCA	87.20	2	2	8992													
T. DER. LIBRAMIENTO DE IRAPUATO	96.30	1	1	7905	70.5	9.9	7.1	5.1	2.5	2.4	0.0	2.5	70	10	20	0.095	0.502
T. DER. LIBRAMIENTO DE IRAPUATO	96.30	1	2	7972	71.4	10.0	6.4	5.0	2.1	2.5	0.4	2.2	71	10	19	0.131	0.502
T. DER. LIBRAMIENTO DE IRAPUATO	96.30	3	1	4699	72.1	8.8	7.2	5.0	2.8	2.2	0.0	1.9	72	9	19	0.100	0.503
T. DER. LIBRAMIENTO DE IRAPUATO	96.30	3	2	5229	72.3	10.1	7.4	4.5	2.8	2.3	0.0	0.6	72	10	18	0.104	0.503
T. C. IRAPUATO - ZAPOTLANEJO	104.70	0	0														

45 CARR : QUERETARO - IRAPUATO (LIBRE)

CLAVE: 00154

ruta : MEX-045

AÑO : 2006

L U G A R	E S T A C I O N				C L A S I F I C A C I O N V E H I C U L A R E N P O R C I E N T O .												
	KM	TE	SC	TDPA	A	B	C2	C3	T3S2	T3S3	T3S2R4	OTROS	A	B	C	K'	D
QUERETARO PONIENTE	0.00	3	1	17030	75.6	3.7	6.5	4.2	4.4	2.6	0.0	3.0	75	4	21	0.132	0.516
QUERETARO PONIENTE	0.00	3	2	16975	74.9	5.0	5.7	4.4	3.7	3.3	0.0	3.0	75	5	20	0.088	0.516
T. DER. VILLA DEL PUEBLITO	6.67	3	1	8886	75.6	5.0	5.2	4.0	4.2	2.9	0.0	3.1	76	5	19	0.114	0.503
T. DER. VILLA DEL PUEBLITO	6.67	3	2	8791	76.9	4.7	4.7	4.1	3.6	2.9	0.1	3.0	77	5	18	0.131	0.503
LOS ANGELES	12.60	3	0	14535	78.6	3.8	6.1	4.5	3.1	2.2	0.0	1.7	78	4	18	0.105	0.503
T. IZQ. APASEO EL ALTO	28.37	3	0	12390	70.3	8.5	5.9	5.8	2.6	2.9	0.6	3.4	70	9	21	0.085	0.508
T. DER. APASEO EL GRANDE	40.11	3	0	15205	75.7	4.0	5.1	3.9	4.9	2.7	0.0	3.7	76	4	20	0.068	0.503
T. IZQ. LIBRAMIENTO DE CELAYA OTE.	49.90	1	0	22373	72.1	5.3	5.1	4.5	5.7	5.1	0.2	2.0	72	5	23	0.065	0.506
T. IZQ. LIBRAMIENTO DE CELAYA PTE.	55.61	3	0	22977	71.8	8.0	5.3	4.8	3.7	2.8	0.4	3.2	72	8	20	0.065	0.501
T. IZQ. CORTAZAR	67.50	3	1	9653	69.7	9.4	5.5	5.6	3.8	3.6	0.4	2.0	70	9	21	0.086	0.503
T. IZQ. CORTAZAR	67.50	3	2	9306	70.9	9.8	5.2	4.1	5.2	2.2	0.0	2.6	71	10	19	0.092	0.503
T. IZQ. LIBRAMIENTO DE SALAMANCA	93.80	1	1	11041	73.8	6.8	5.3	5.5	3.4	2.6	0.4	2.2	74	7	19	0.086	0.501
T. IZQ. LIBRAMIENTO DE SALAMANCA	93.80	1	2	10978	74.3	6.4	5.7	5.3	3.9	2.5	0.4	1.5	75	6	19	0.086	0.501



GUANAJUATO

45 CARR : QUERETARO - IRAPUATO (LIBRE)

CLAVE: 00154

ruta : MEX-045

AÑO : 2006

L U G A R	E S T A C I O N				C L A S I F I C A C I O N V E H I C U L A R E N P O R C I E N T O .												
	KM	TE	SC	TDPA	A	B	C2	C3	T3S2	T3S3	T3S2R4	OTROS	A	B	C	K'	D
IRAPUATO	113.70	1	1	14560	72.1	8.6	5.3	4.5	4.8	3.0	0.1	1.6	72	9	19	0.083	0.502
IRAPUATO	113.70	1	2	13344	69.8	8.3	5.1	4.3	5.1	3.0	2.8	1.6	70	8	22	0.096	0.502

46 CARR : QUERETARO - SAN LUIS POTOSI

CLAVE: 00165

ruta : MEX-057

AÑO : 2006

L U G A R	E S T A C I O N				C L A S I F I C A C I O N V E H I C U L A R E N P O R C I E N T O .												
	KM	TE	SC	TDPA	A	B	C2	C3	T3S2	T3S3	T3S2R4	OTROS	A	B	C	K'	D
QUERETARO	0.00	0	0														
T. DER. LIBRAMIENTO DE QUERETARO	6.28	3	1	17351	77.3	4.8	5.0	3.9	3.7	3.0	0.0	2.3	77	5	18	0.116	0.502
T. DER. LIBRAMIENTO DE QUERETARO	6.28	3	2	17201	79.0	5.7	4.7	3.4	2.5	2.4	0.0	2.3	79	6	15	0.153	0.502
T. IZQ. JURIQUILLA	15.63	3	1	14528	77.6	5.0	6.1	4.5	3.4	2.3	0.0	1.1	78	5	17	0.151	0.501
T. IZQ. JURIQUILLA	15.63	3	2	14477	76.7	5.1	5.9	4.3	3.3	3.1	0.0	1.6	77	5	18	0.128	0.501
T. IZQ. SAN MIGUEL DE ALLENDE	28.53	1	1	10363	77.5	5.0	5.4	4.6	3.6	2.3	0.0	1.6	77	5	18	0.146	0.501
T. IZQ. SAN MIGUEL DE ALLENDE	28.53	1	2	11968	76.3	6.8	4.2	4.5	3.6	2.3	0.0	2.3	76	7	17	0.148	0.501
T. IZQ. SAN MIGUEL DE ALLENDE	28.53	3	1	8395	74.2	7.2	6.8	3.9	3.2	2.8	0.0	1.9	74	7	19	0.122	0.503
T. IZQ. SAN MIGUEL DE ALLENDE	28.53	3	2	8506	71.5	4.9	5.9	5.3	6.1	3.1	0.0	3.2	71	5	24	0.108	0.503
LIM. EDOS. TERM. QRO. PPIA. GTO.	35.53	0	0														
X. C. SAN JOSE ITURBIDE - EL ARENAL	46.83	1	1	8469	64.5	7.6	7.3	5.2	8.2	4.8	0.2	2.2	64	8	28	0.109	0.503
X. C. SAN JOSE ITURBIDE - EL ARENAL	46.83	1	2	8579	64.7	7.8	6.6	6.1	6.7	5.5	0.1	2.5	64	8	28	0.111	0.503
X. C. ENT. SAN MIGUEL DE ALLENDE - DR. MORA	61.93	1	1	7430	74.7	6.6	5.9	3.6	2.7	3.1	0.4	3.0	74	7	19	0.102	0.506
X. C. ENT. SAN MIGUEL DE ALLENDE - DR. MORA	61.93	1	2	8325	70.7	7.3	7.2	4.1	4.2	3.4	0.5	2.6	71	7	22	0.091	0.506
X. C. SAN LUIS DE LA PAZ - GUANAJUATO	86.68	1	1	8566	59.9	6.6	8.6	7.9	8.3	6.0	0.0	2.7	59	7	34	0.087	0.504
X. C. SAN LUIS DE LA PAZ - GUANAJUATO	86.68	1	2	8423	67.2	9.4	7.3	5.3	5.3	3.2	0.0	2.3	68	9	23	0.088	0.504
T. IZQ. SAN DIEGO DE LA UNION	119.10	3	1	8213	70.1	8.4	6.3	4.0	4.7	3.9	0.2	2.4	70	8	22	0.111	0.505
T. IZQ. SAN DIEGO DE LA UNION	119.10	3	2	8253	62.4	9.9	7.4	6.4	7.7	4.1	0.1	2.0	62	10	28	0.100	0.505
LIM. EDOS. TERM. GTO. PPIA. S.L.P.	126.30	0	0														
T. IZQ. SANTA MARIA DEL RIO	155.90	3	1	7334	70.6	4.8	7.1	6.2	3.9	4.5	0.4	2.5	70	5	25	0.096	0.500
T. IZQ. SANTA MARIA DEL RIO	155.90	3	2	7334	71.7	7.3	4.9	5.5	3.6	3.7	0.3	3.0	72	7	21	0.108	0.500
T. IZQ. VILLA DE REYES	176.40	1	1	8111	72.1	4.9	5.0	4.4	5.5	5.3	0.4	2.4	72	5	23	0.105	0.503
T. IZQ. VILLA DE REYES	176.40	1	2	8221	70.4	5.6	5.3	4.9	5.7	5.0	0.4	2.7	70	6	24	0.105	0.503
T. IZQ. VILLA DE REYES	176.40	3	1	7577	72.6	4.8	4.8	4.4	5.4	5.2	0.4	2.4	72	5	23	0.081	0.504
T. IZQ. VILLA DE REYES	176.40	3	2	7712	70.6	5.4	5.1	4.9	5.7	5.0	0.5	2.8	71	5	24	0.081	0.504
X. C. LIBRAMIENTO DE SAN LUIS POTOSI	184.80	1	1	8093	72.6	4.8	4.9	4.5	5.4	5.2	0.4	2.2	72	5	23	0.080	0.501
X. C. LIBRAMIENTO DE SAN LUIS POTOSI	184.80	1	2	8139	70.4	5.5	5.3	5.0	5.6	5.0	0.5	2.7	70	6	24	0.082	0.501
X. PERIFERICO SAN LUIS POTOSI	197.50	1	1	20303	72.4	6.0	5.6	5.3	6.2	2.1	0.1	2.3	72	6	22	0.088	0.510

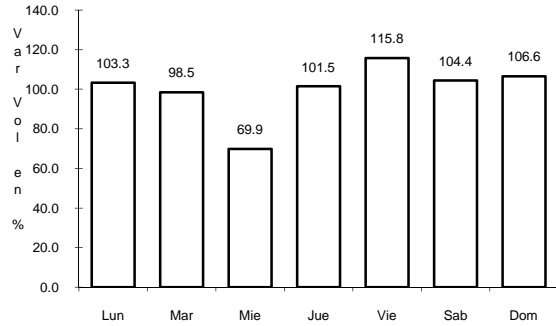




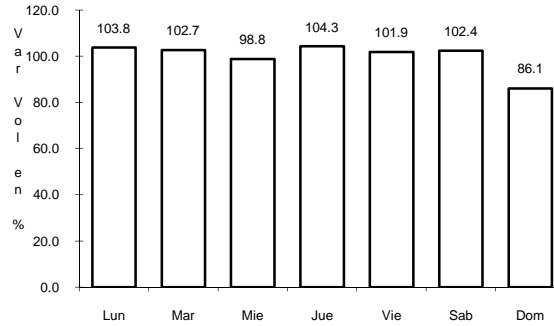
4 CARR: LEON - AGUASCALIENTES

CLAVE: 00167

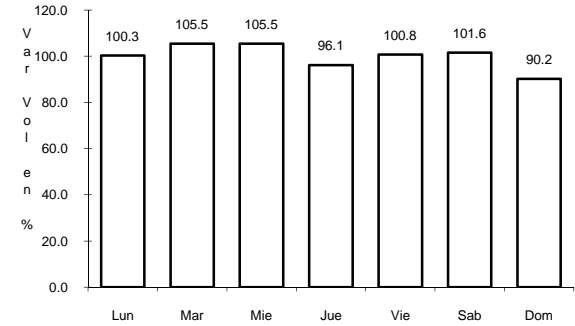
ruta: MEX-045



Km: 11.00 Tipo: 1 Sent: 0



Km: 129.38 Tipo: 1 Sent: 1

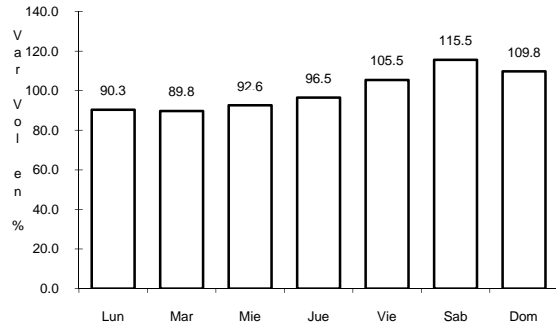


Km: 129.38 Tipo: 1 Sent: 2

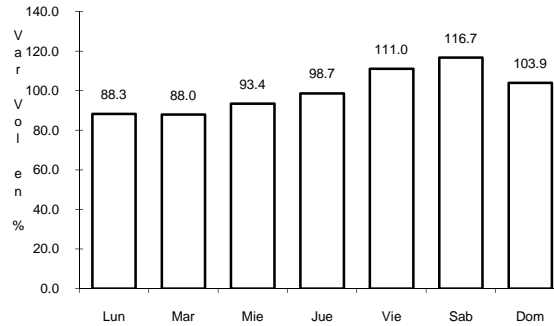
5 CARR: LEON - AGUASCALIENTES (CUOTA)

CLAVE: 00013

ruta: MEX-45D



Km: 23.50 Tipo: 2 Sent: 0

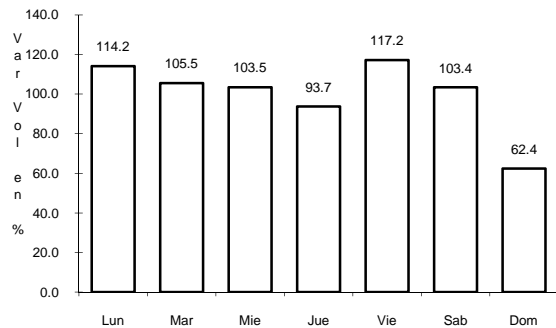


Km: 88.74 Tipo: 2 Sent: 0

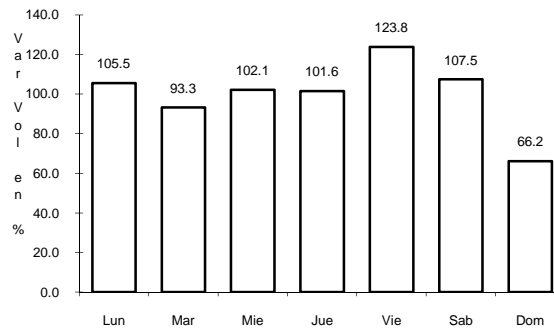
6 CARR: LEON - SAN FELIPE TORRES MOCHAS

CLAVE: 11036

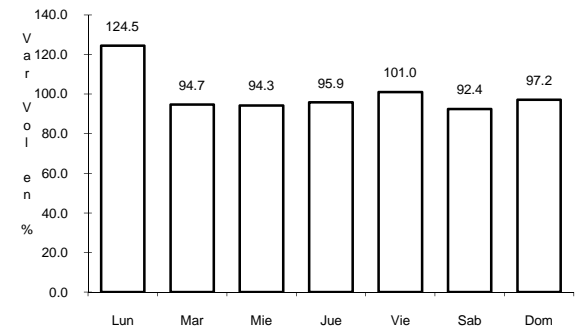
ruta: GTO



Km: 0.00 Tipo: 3 Sent: 1



Km: 0.00 Tipo: 3 Sent: 2

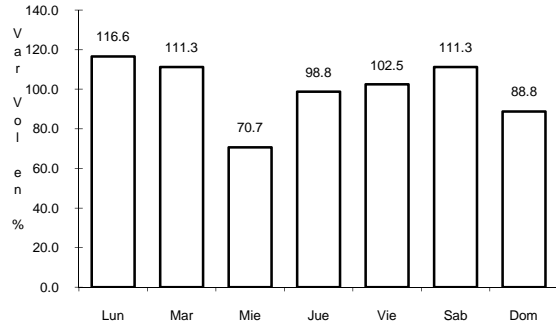


Km: 98.00 Tipo: 1 Sent: 0

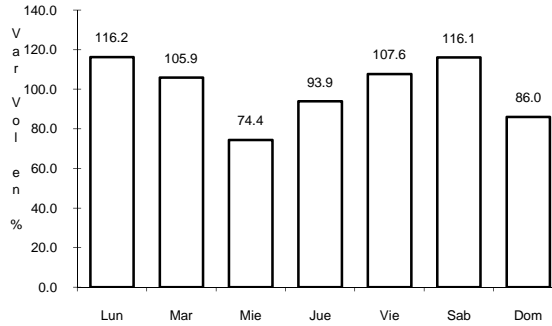
7 CARR: MANUEL DOBLADO - LA PIEDAD

CLAVE: 11028

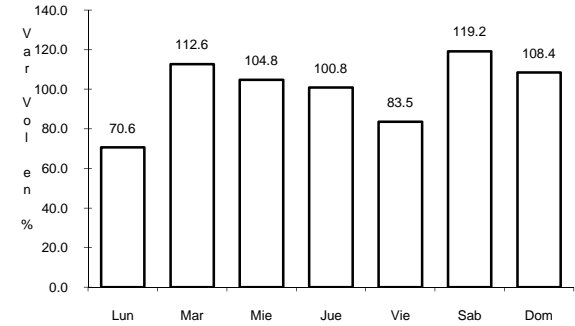
RUTA: MEX-037



Km: 0.00 Tipo: 3 Sent: 0



Km: 29.00 Tipo: 3 Sent: 0

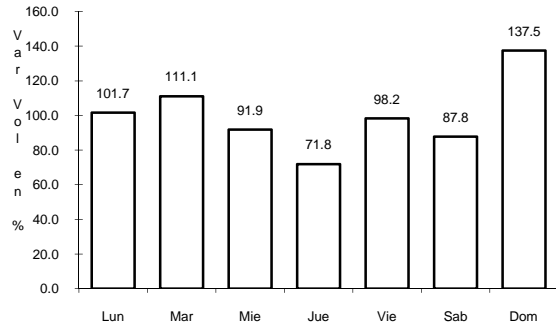


Km: 45.00 Tipo: 1 Sent: 0

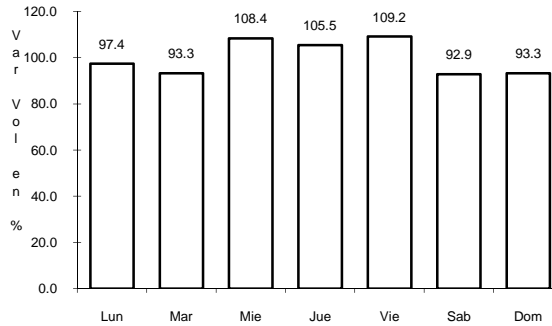
8 CARR: ACAMBARO - CELAYA

CLAVE: 11066

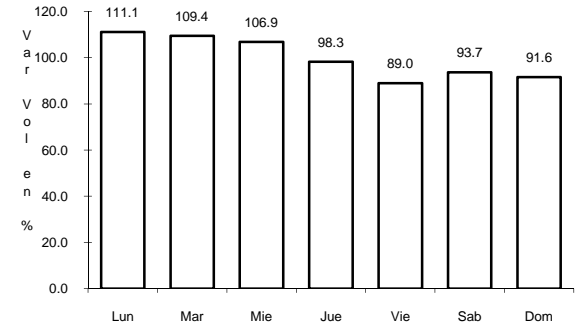
RUTA: MEX-051



Km: 0.00 Tipo: 3 Sent: 0



Km: 69.70 Tipo: 1 Sent: 1

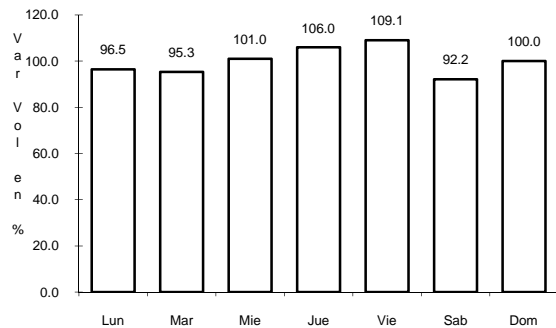


Km: 69.70 Tipo: 1 Sent: 2

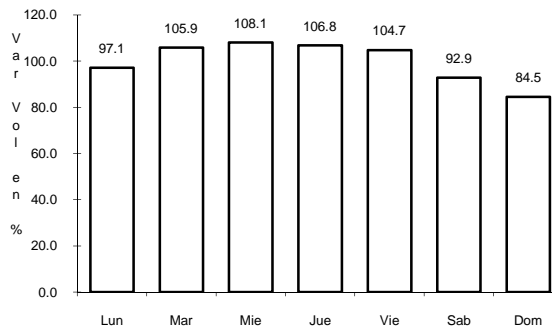
9 CARR: CELAYA - DOLORES HIDALGO

CLAVE: 11109

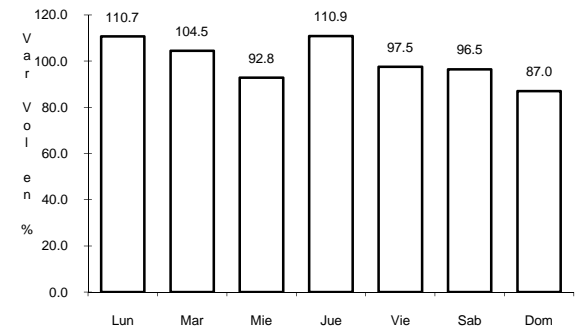
RUTA: MEX-051-GTO



Km: 3.90 Tipo: 1 Sent: 1



Km: 3.90 Tipo: 1 Sent: 2



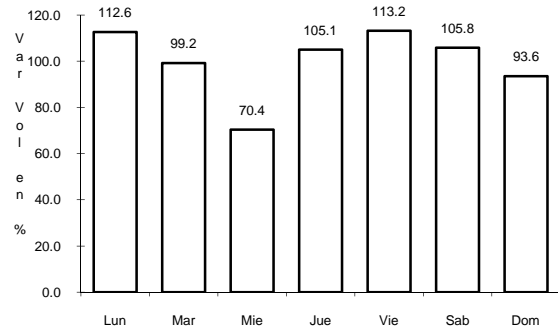
Km: 85.42 Tipo: 1 Sent: 0



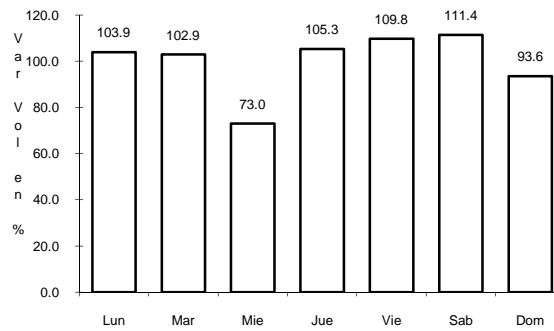
13 CARR: MUNGUIA - LAS ADJUNTAS

CLAVE: 11815

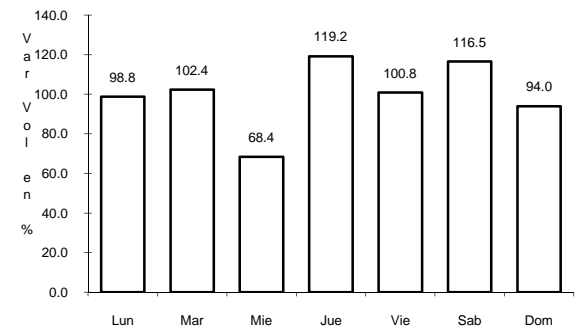
RUTA: MEX



Km: 0.00 Tipo: 3 Sent: 0



Km: 27.00 Tipo: 3 Sent: 0

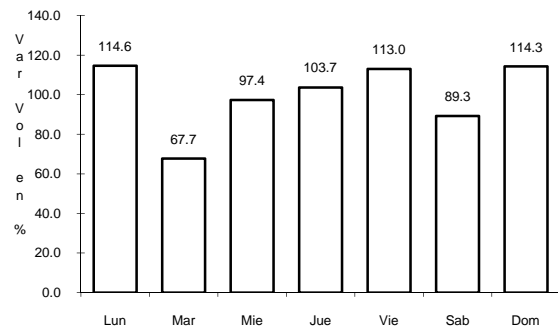


Km: 57.00 Tipo: 1 Sent: 0

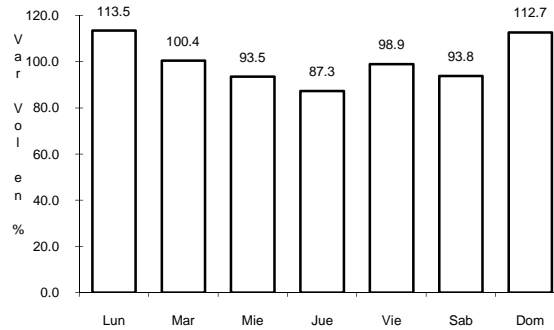
14 CARR: ENT. SAN MIGUEL DE ALLENDE - DR. MORA

CLAVE: 11001

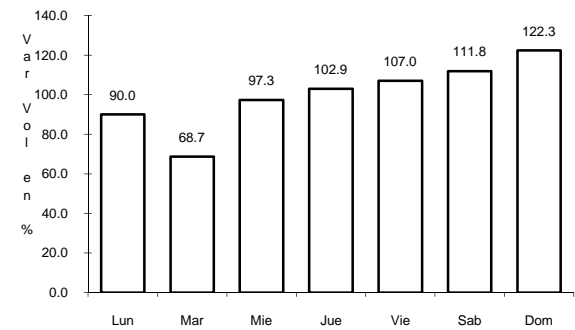
RUTA: MEX-GTO-001



Km: 0.00 Tipo: 3 Sent: 0



Km: 32.00 Tipo: 3 Sent: 0

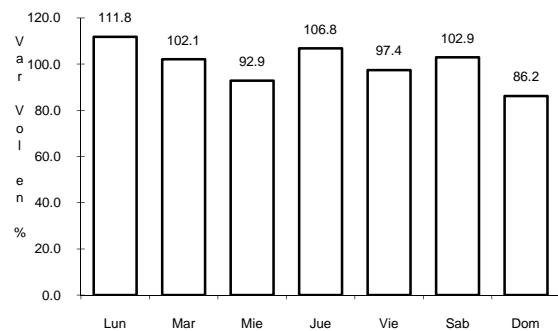


Km: 38.00 Tipo: 3 Sent: 0

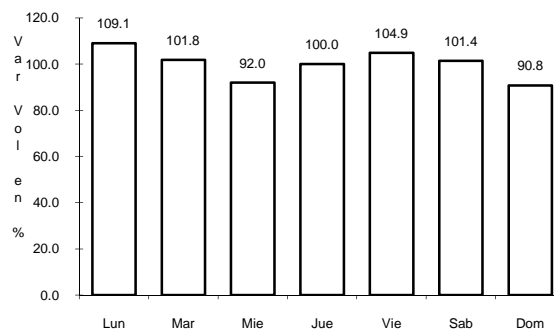
15 CARR: SANTA TERESA - SILAO

CLAVE: 11070

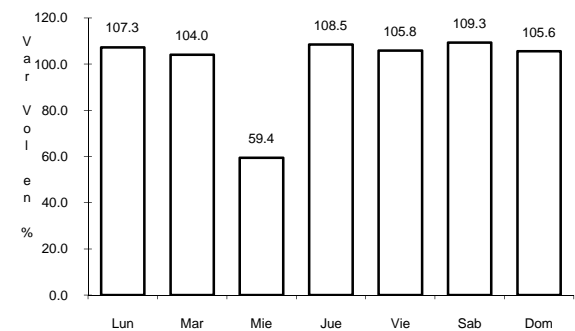
RUTA: MEX



Km: 0.00 Tipo: 3 Sent: 0



Km: 12.00 Tipo: 1 Sent: 1

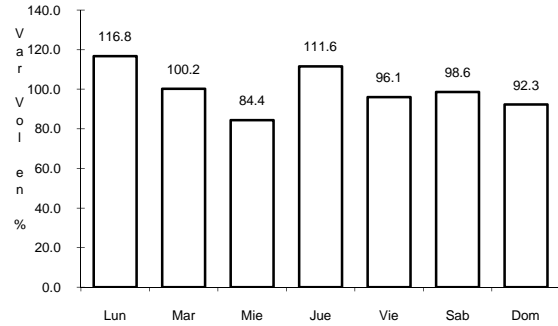


Km: 12.00 Tipo: 1 Sent: 2

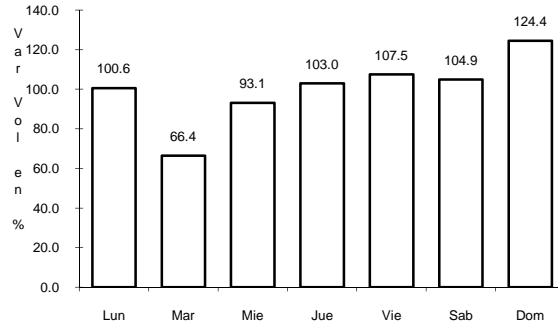
16 CARR: GUANAJUATO - SANTA RITA

CLAVE: 11810

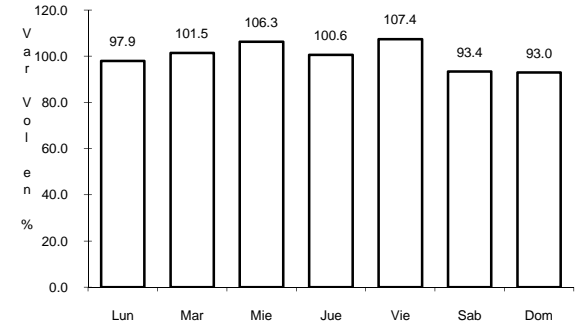
RUTA: GTO



Km: 0.00 Tipo: 3 Sent: 0



Km: 35.45 Tipo: 3 Sent: 0

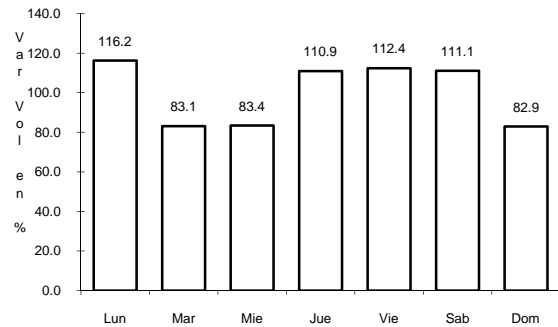


Km: 92.00 Tipo: 1 Sent: 0

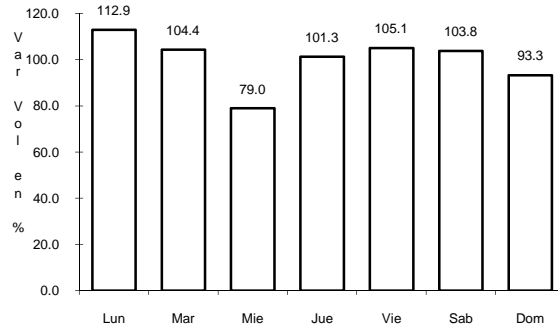
17 CARR: GUANAJUATO - LOS INFANTES

CLAVE: 11067

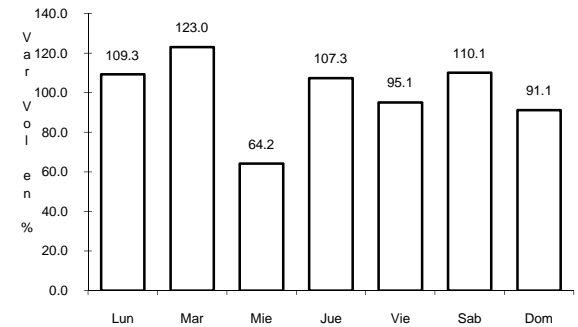
RUTA: MEX-110-GTO



Km: 0.00 Tipo: 3 Sent: 0



Km: 12.77 Tipo: 1 Sent: 0

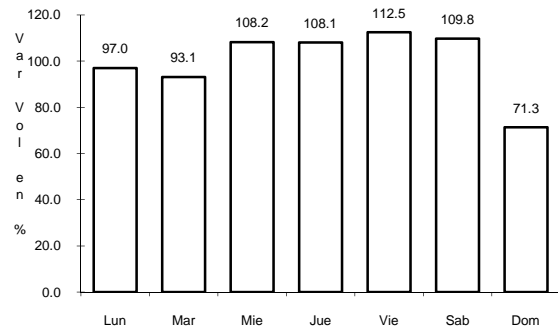


Km: 22.00 Tipo: 1 Sent: 0

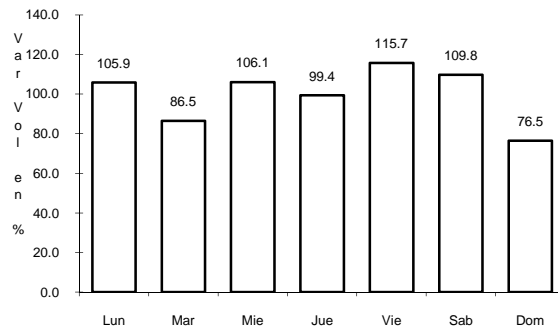
18 CARR: IRAPUATO - LEON

CLAVE: 11123

RUTA: MEX-045



Km: 8.80 Tipo: 3 Sent: 1



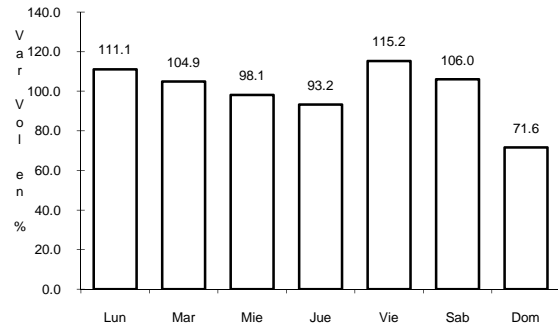
Km: 8.80 Tipo: 3 Sent: 2



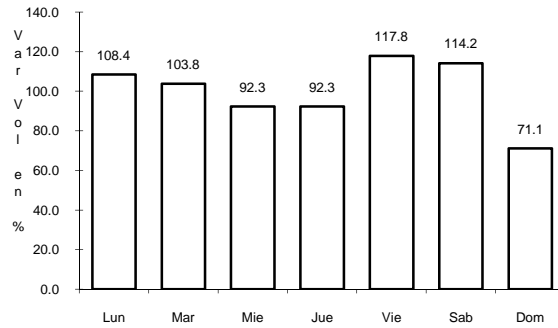
19 CARR: LEON - MANUEL DOBLADO

CLAVE: 11069

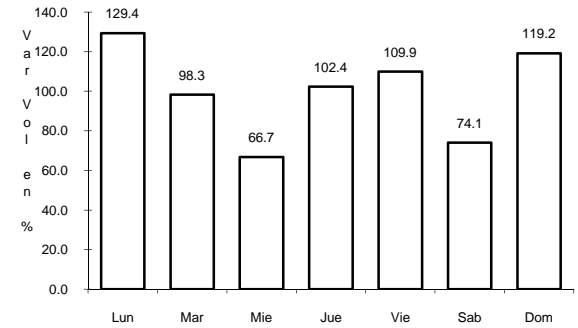
ruta: GTO-037



Km: 0.00 Tipo: 3 Sent: 1



Km: 0.00 Tipo: 3 Sent: 2

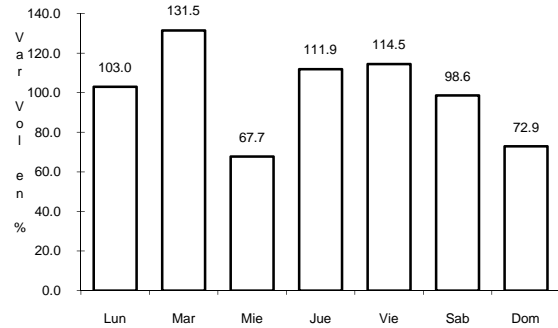


Km: 68.00 Tipo: 1 Sent: 0

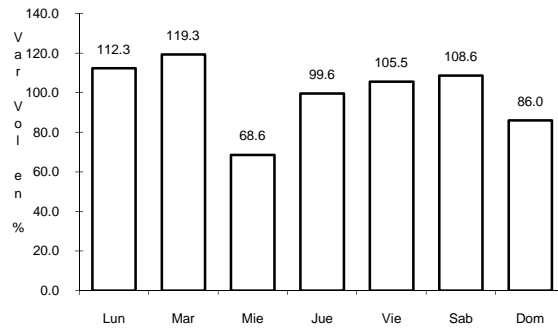
20 CARR: LIBRAMIENTO DE ABASOLO

CLAVE: 11011

ruta: GTO



Km: 0.00 Tipo: 3 Sent: 1

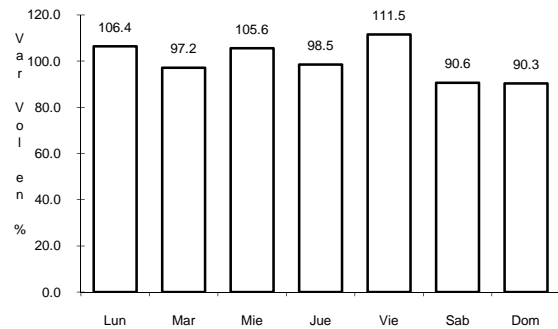


Km: 0.00 Tipo: 3 Sent: 2

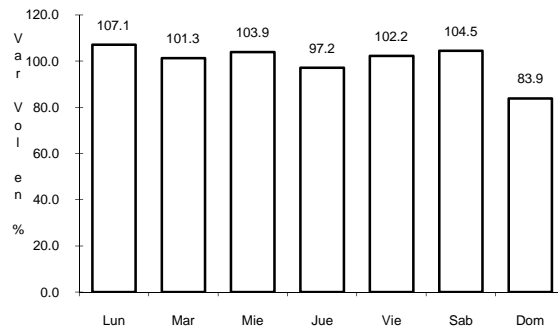
21 CARR: LIBRAMIENTO DE SALAMANCA

CLAVE: 11002

ruta: MEX



Km: 1.50 Tipo: 3 Sent: 0



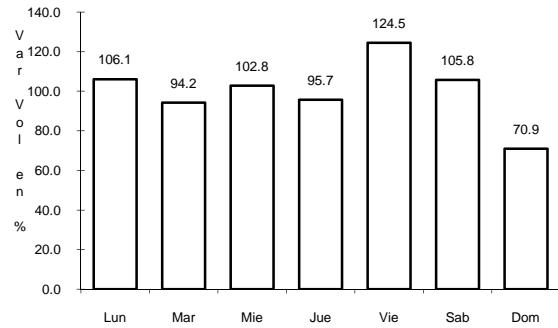
Km: 7.50 Tipo: 1 Sent: 0



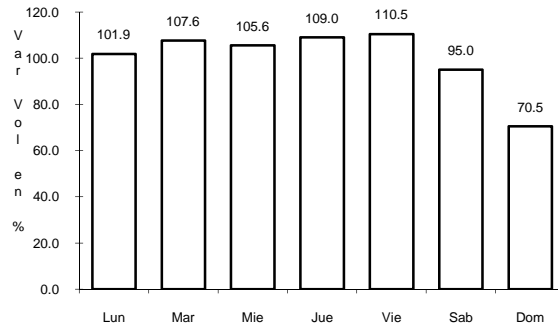
25 CARR: NUEVO LIBRAMIENTO DE LEON

CLAVE: 11133

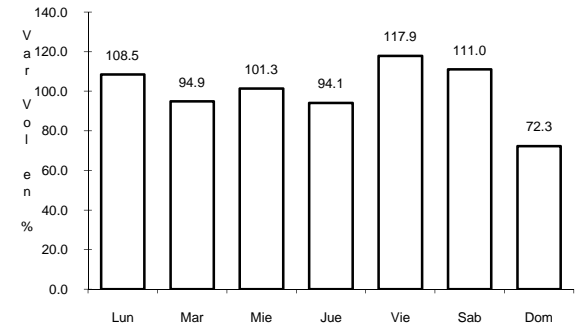
RUTA: GTO



Km: 0.00 Tipo: 3 Sent: 1



Km: 0.00 Tipo: 3 Sent: 2

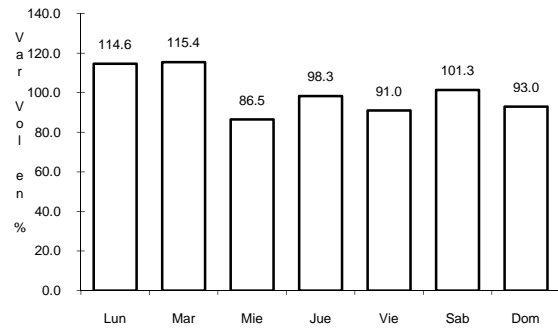


Km: 18.39 Tipo: 1 Sent: 0

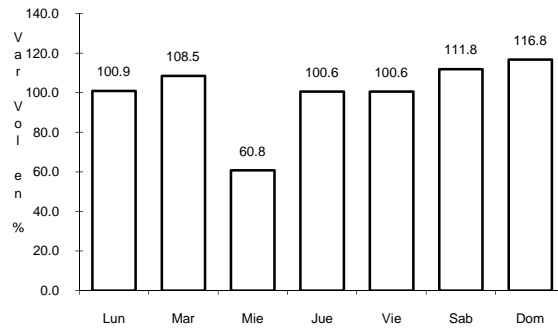
26 CARR: RAMAL A LAS ADJUNTAS

CLAVE: 11820

RUTA: MEX



Km: 0.00 Tipo: 3 Sent: 0

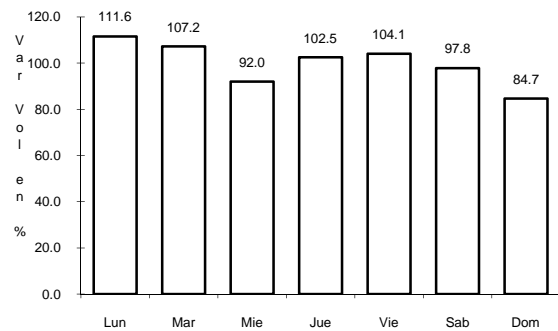


Km: 10.00 Tipo: 1 Sent: 0

27 CARR: RAMAL A SAN DIEGO DE LA UNION

CLAVE: 11818

RUTA: GTO



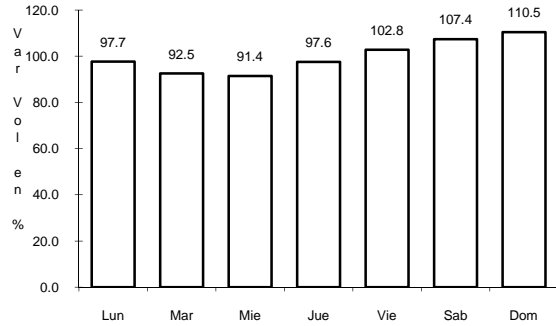
Km: 0.00 Tipo: 3 Sent: 0



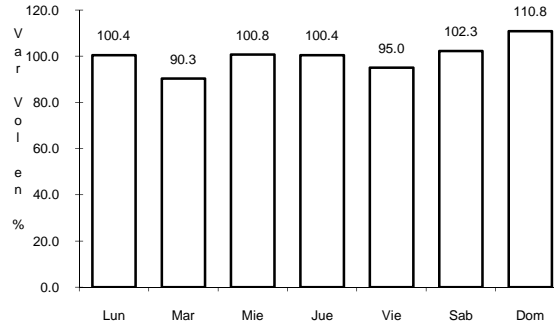
31 CARR: SALVATIERRA - ENT. YURIRIA

CLAVE: 11013

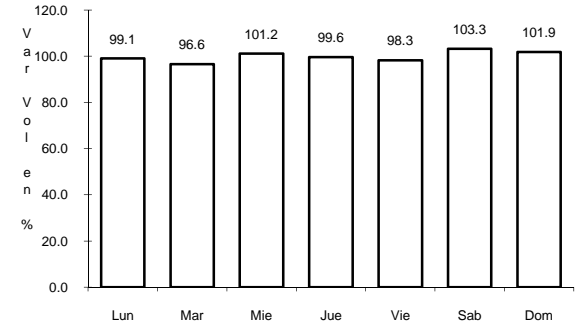
RUTA: MEX



Km: 0.00 Tipo: 3 Sent: 0



Km: 27.00 Tipo: 1 Sent: 0

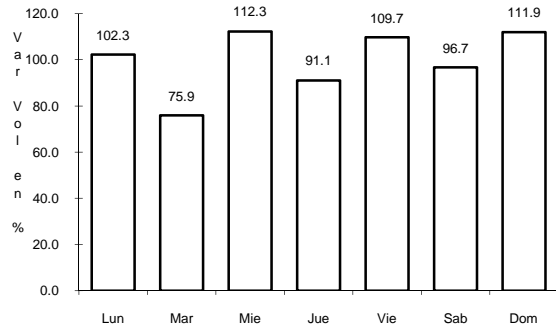


Km: 30.00 Tipo: 1 Sent: 0

32 CARR: SAN LUIS DE LA PAZ - CAÑADA DE MORENO

CLAVE: 11134

RUTA: MEX

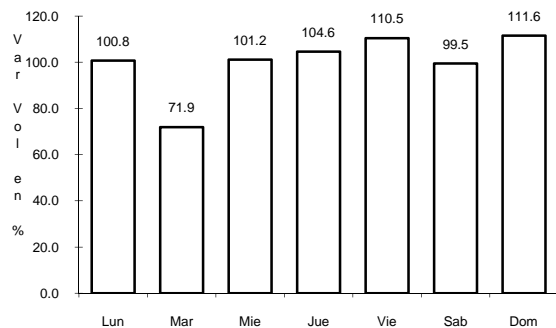


Km: 0.00 Tipo: 3 Sent: 0

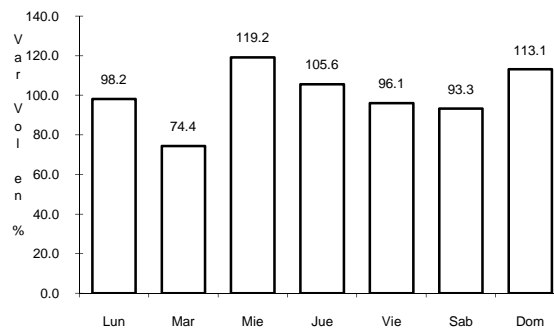
33 CARR: SAN LUIS DE LA PAZ - GUANAJUATO

CLAVE: 11108

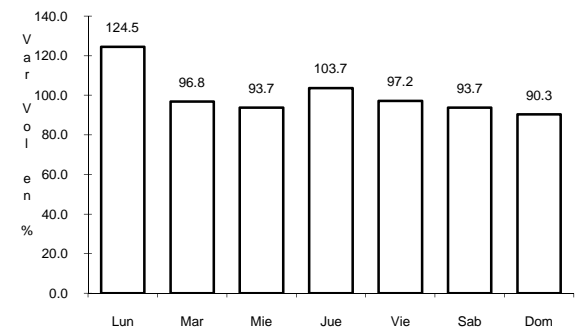
RUTA: MEX-110



Km: 1.74 Tipo: 3 Sent: 1



Km: 1.74 Tipo: 3 Sent: 2

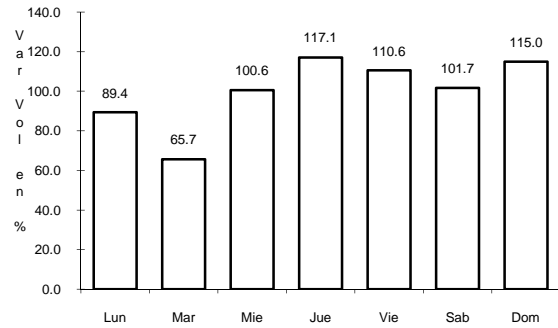


Km: 103.29 Tipo: 1 Sent: 0

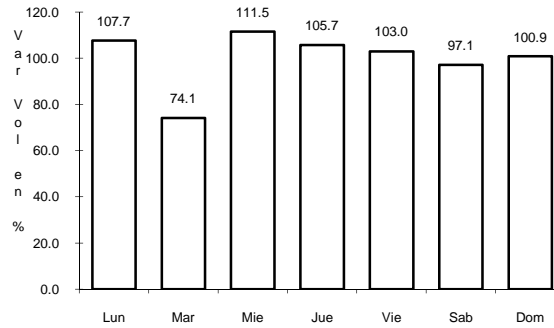
34 CARR: SAN LUIS DE LA PAZ - SAN JOSE ITURBIDE

CLAVE: 11046

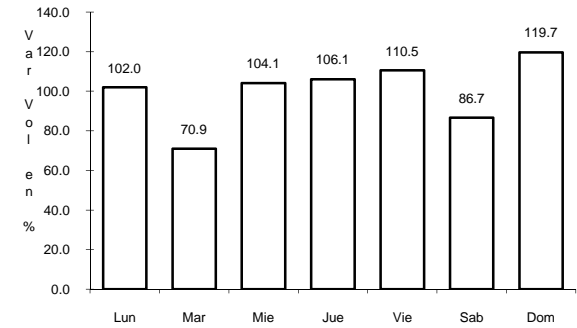
RUTA: GTO



Km: 0.00 Tipo: 3 Sent: 0



Km: 8.00 Tipo: 3 Sent: 0

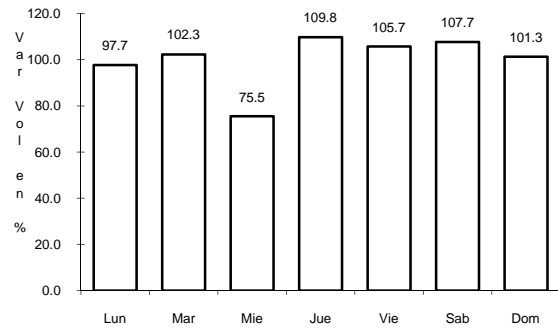


Km: 36.50 Tipo: 1 Sent: 0

35 CARR: SILAO - LA ROMITA

CLAVE: 11029

RUTA: GTO

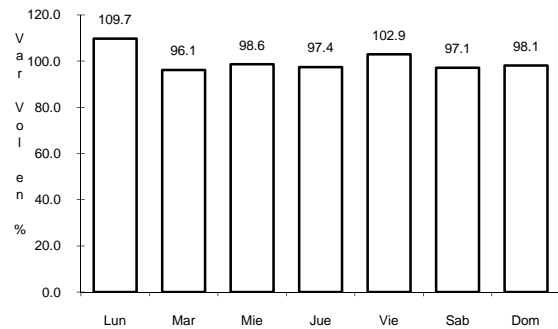


Km: 0.00 Tipo: 3 Sent: 0

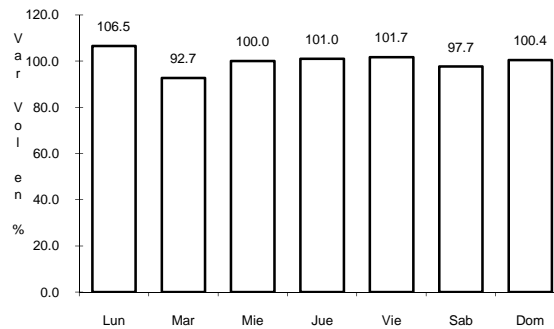
36 CARR: ENT. BUENAVISTA - SAN MIGUEL DE ALLENDE

CLAVE: 00111

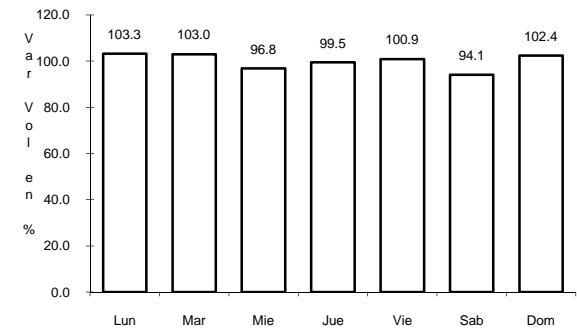
RUTA: MEX



Km: 0.00 Tipo: 3 Sent: 0



Km: 12.00 Tipo: 1 Sent: 0



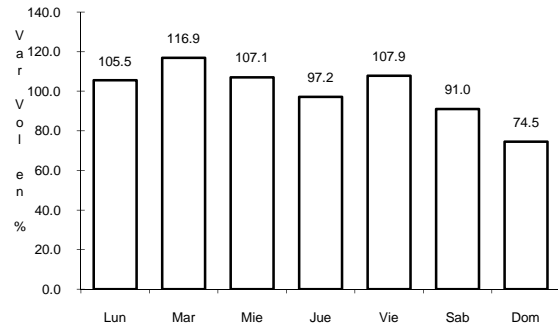
Km: 35.11 Tipo: 1 Sent: 0



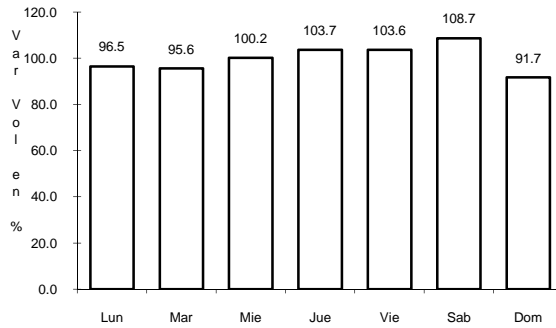
40 CARR: JALOSTOTITLAN - PURISIMA DE BUSTOS

CLAVE: 00142

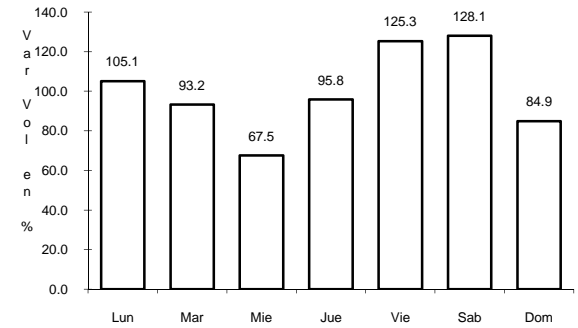
RUTA: JAL-GTO



Km: 0.00 Tipo: 3 Sent: 0



Km: 63.00 Tipo: 3 Sent: 0

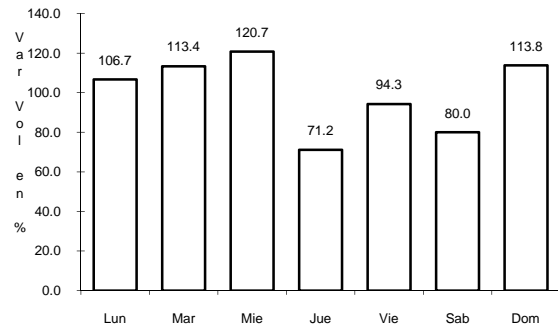


Km: 78.00 Tipo: 1 Sent: 0

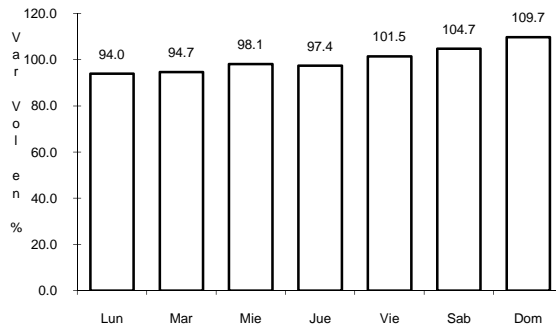
41 CARR: LA NORIA - ACAMBARO

CLAVE: 00131

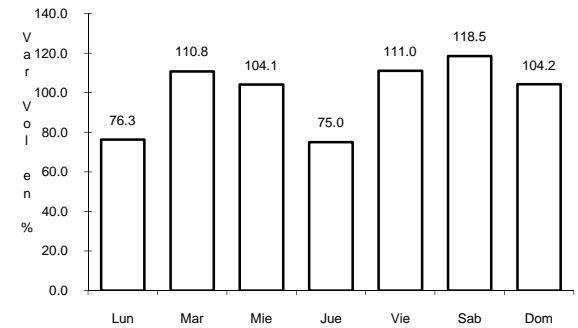
RUTA: MEX-120



Km: 0.00 Tipo: 3 Sent: 0



Km: 59.35 Tipo: 3 Sent: 0

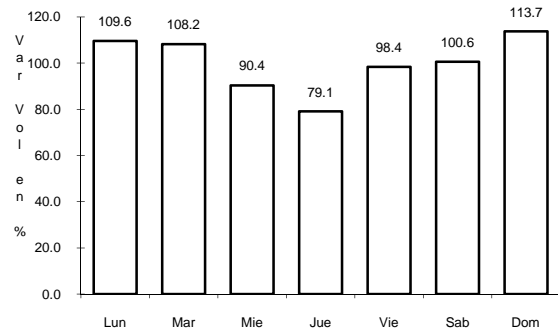


Km: 111.12 Tipo: 1 Sent: 0

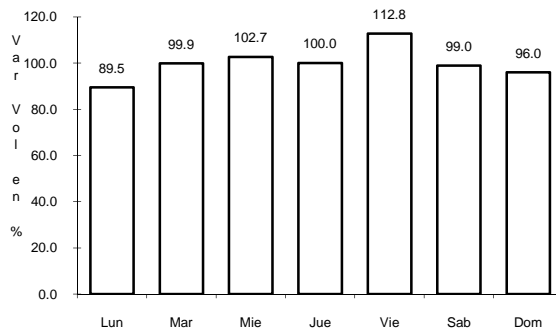
42 CARR: MARAVATIO - ACAMBARO

CLAVE: 00418

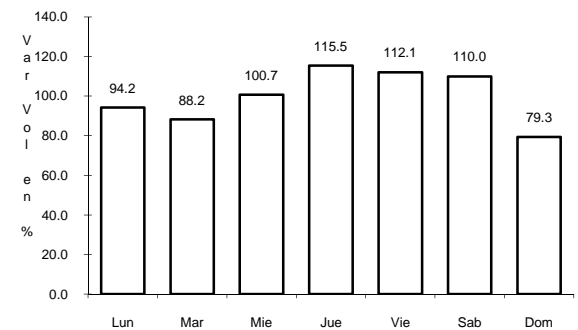
RUTA: MEX-061



Km: 0.00 Tipo: 3 Sent: 0



Km: 13.00 Tipo: 3 Sent: 0



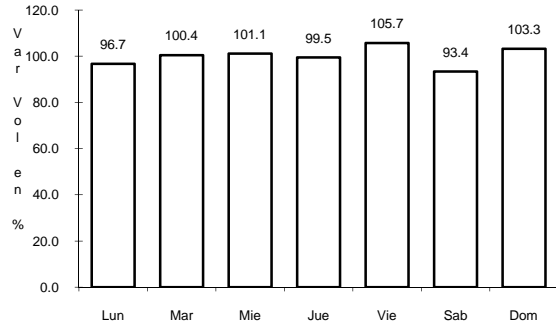
Km: 39.00 Tipo: 1 Sent: 0



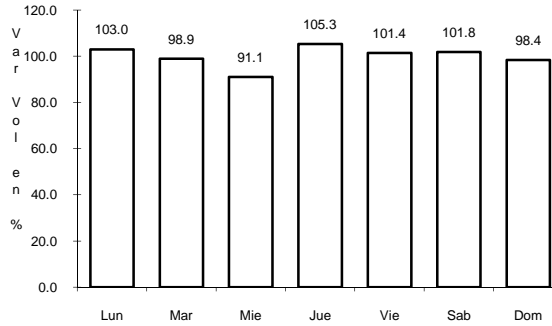
43 CARR: MORELIA - SALAMANCA

CLAVE: 00124

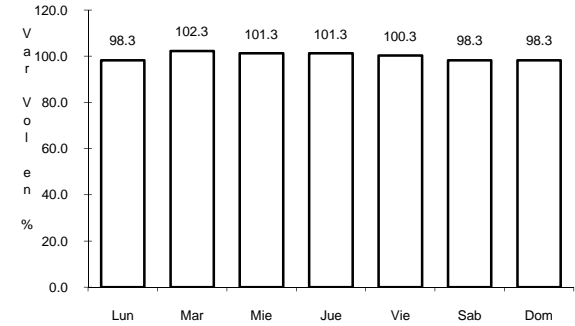
RUTA: MEX-043



Km: 2.70 Tipo: 3 Sent: 1



Km: 2.70 Tipo: 3 Sent: 2

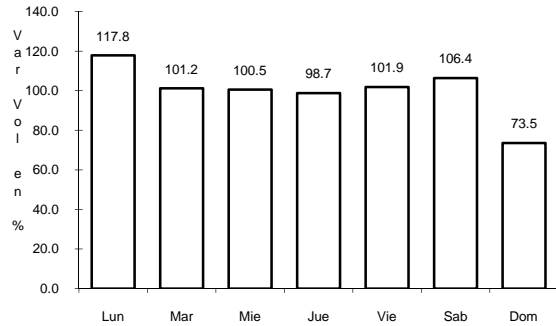


Km: 105.10 Tipo: 1 Sent: 0

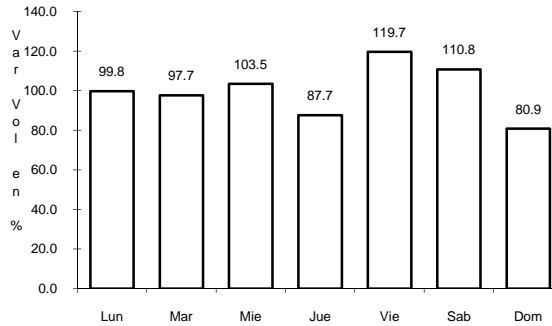
44 CARR: QUERETARO - IRAPUATO (CUOTA)

CLAVE: 00423

RUTA: MEX-045D



Km: 0.00 Tipo: 3 Sent: 1

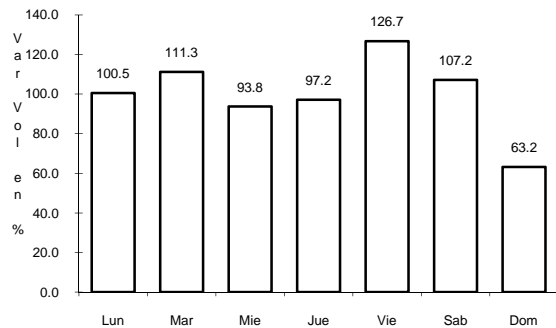


Km: 0.00 Tipo: 3 Sent: 2

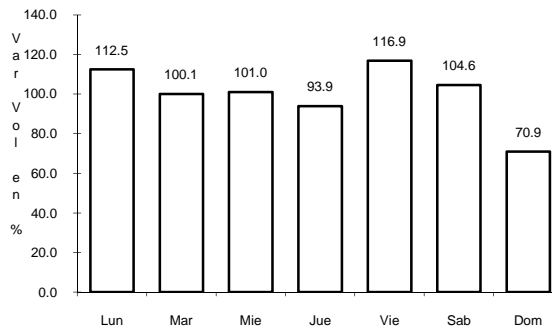
45 CARR: QUERETARO - IRAPUATO (LIBRE)

CLAVE: 00154

RUTA: MEX-045



Km: 0.00 Tipo: 3 Sent: 1



Km: 0.00 Tipo: 3 Sent: 2

