

TABASCO

Núm. INDICE	CARRETERA	RUTA
---- FEDERAL LIBRE ----		
1	COATZACOALCOS - VILLAHERMOSA	MEX-180
2	EL SUSPIRO - TENOSIQUE	MEX-203
3	MALPASO - EL BELLOTE	MEX-187
4	SAN MARCO - PALIZADA	MEX-217
5	VILLAHERMOSA - CD. DEL CARMEN	MEX-180
6	VILLAHERMOSA - ESCOPETAZO	MEX-195
7	VILLAHERMOSA - FRANCISCO ESCARCEGA	MEX-186
---- ESTATAL LIBRE ----		
8	BENITO JUAREZ - AGUA DULCE	TAB-VER
9	BENITO JUAREZ - TEPETITAN	TAB
10	CACAOS - LA GRANJA	TAB
11	CARDENAS - PARAISO	TAB
12	CHICHICAPA - ENT. LA LIBERTAD	TAB
13	COMALCALCO - EL GOLPE	TAB
14	EL BELLOTE - SANTA CRUZ	TAB
15	ESTACION MACUSPANA - VERNET	TAB-041
16	FRONTERA - T. C. (JALAPA - JONUTA)	TAB
17	GREGORIO MENDEZ MAGAÑA - REFORMA DE OCAMPO	CHIS
18	JALAPA - JONUTA	TAB
19	NICOLAS BRAVO - T. C. (EL BELLOTE - SANTA CRUZ)	TAB
20	PAILEBOT - CUAUHTEMOTZIN	TAB
21	PARAISO - EL LIMON	TAB
22	PASO DE CUNDUACAN - ESTACION JUAREZ	TAB-CHIS
23	PLAYAS DEL ROSARIO - TEAPA	TAB-001
24	RAMAL A BALANCAN	TAB
25	RAMAL A LAZARO CARDENAS	TAB
26	RAMAL A LIBERTAD	TAB
27	RAMAL A SALTO DEL AGUA	TAB-CHIS
28	RAMAL A SAN ANTONIO	TAB
29	RAMAL A SANCHEZ MAGALLANES	TAB
30	RAMAL A TAMULTE DE LAS SABANAS	TAB
31	RAMAL A TAPIJULAPA	TAB
32	REFORMA - DOS BOCAS	TAB
33	REYES HERNANDEZ - VILLA ALDAMA	TAB
34	SAMARIA - AMATITAN	TAB
35	T. C. (CARDENAS - PARAISO) - CARLOS GREEN	TAB
36	T. C. (EL SUSPIRO - TENOSIQUE) - LA LIBERTAD	CHIS-TAB
37	TIERRA NUEVA - FRANCISCO RUEDA	TAB
38	TULIPAN - CUNDUACAN	TAB
39	VILLAHERMOSA - COMALCALCO	TAB
40	VILLAHERMOSA - LUIS GIL PEREZ	TAB
41	VILLAHERMOSA - T. C. (P. DE CUNDUACAN - ESTACION JUAREZ)	TAB
42	ZAPATERO - T. C. (JALAPA - JONUTA)	CHIS-TAB

27 TABASCO

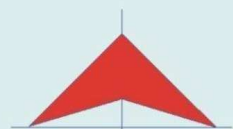
Secretaría de Comunicaciones y Transportes

MAPA INDICE

15 Num. Indice

2009

GOLFO DE MEXICO



TABASCO

1 CARR : COATZACOALCOS - VILLAHERMOSA

CLAVE: 00528

RUTA : MEX-180

AÑO : 2008

L U G A R	E S T A C I O N				C L A S I F I C A C I O N V E H I C U L A R E N P O R C I E N T O .												
	KM	TE	SC	TDPA	A	B	C2	C3	T3S2	T3S3	T3S2R4	OTROS	A	B	C	K'	D
COATZACOALCOS	0.00																
CASETA DE COBRO PTE. COATZACOALCOS	3.00	1	0	13743	71.8	4.0	3.2	0.9	6.0	2.9	7.7	3.5	71.8	4.0	24.2	0.087	0.504
CASETA DE COBRO PTE. COATZACOALCOS	3.00	2	0	19743	93.2	6.8	0.0	0.0	0.0	0.0	0.0	0.0	93.2	6.8	0.0		
X. C. PAJARITOS - NANCHITAL	6.53	1	0	15663	71.0	3.3	7.4	1.6	5.6	2.4	6.0	2.7	71.0	3.3	25.7	0.091	0.502
X. C. PAJARITOS - NANCHITAL	6.53	3	0	12437	72.4	2.4	4.7	1.1	6.3	3.0	7.9	2.2	72.4	2.4	25.2	0.095	0.508
T. DER. PUENTE ANTONIO DOVALI JAIMES	14.60	1	0	8192	75.0	3.4	5.1	1.9	4.1	3.1	5.9	1.5	75.0	3.4	21.6	0.092	0.502
T. DER. PUENTE ANTONIO DOVALI JAIMES	14.60	3	1	6020	58.7	4.7	4.7	6.1	11.8	3.2	9.5	1.3	58.7	4.7	36.6	0.096	0.503
T. DER. PUENTE ANTONIO DOVALI JAIMES	14.60	3	2	6083	50.1	4.5	4.4	6.0	12.8	4.8	13.5	3.9	50.1	4.5	45.4	0.146	0.503
T. DER. LAS CHOAPAS	36.00	3	1	6322	64.1	3.8	3.3	4.3	11.0	3.3	8.7	1.5	64.1	3.8	32.1	0.077	0.501
T. DER. LAS CHOAPAS	36.00	3	2	6301	65.9	3.9	3.3	4.3	10.4	3.3	7.4	1.5	65.9	3.9	30.2	0.081	0.501
LIM. EDOS. TERM. VER. PPIA. TAB.	41.48																
T. IZQ. VILLA LA VENTA	47.26	3	0	2760	75.9	5.5	6.2	3.5	2.8	4.5	1.4	0.2	75.9	5.5	18.6	0.085	0.503
T. IZQ. CAMPO MAGALLANES	65.20	1	0	3328	62.8	8.9	7.7	12.1	3.0	3.3	0.5	1.7	62.8	8.9	28.3	0.079	0.500
T. IZQ. CAMPO MAGALLANES	65.20	3	0	6054	65.7	10.4	7.0	7.4	3.9	3.3	1.3	1.0	65.7	10.4	23.9	0.082	0.503
PICO DE ORO	88.50	1	0	6600	77.2	5.6	6.1	3.4	3.2	2.8	0.5	1.2	77.2	5.6	17.2	0.079	0.502
PICO DE ORO	88.50	3	0	6990	78.0	5.2	5.8	3.3	3.7	2.2	0.5	1.3	78.0	5.2	16.8	0.077	0.503
CARDENAS	122.10	1	0	8844	79.4	3.6	6.1	3.2	3.8	2.3	0.5	1.1	79.4	3.6	17.0	0.066	0.509
CARDENAS	122.10	3	1	9072	75.4	4.8	5.4	4.8	4.1	3.0	1.3	1.2	75.4	4.8	19.8	0.084	0.506
CARDENAS	122.10	3	2	9277	74.2	4.8	5.1	4.4	5.4	3.3	1.0	1.8	74.2	4.8	21.0	0.085	0.506
T. IZQ. SAMARIA	132.50	3	1	10681	77.0	5.0	4.7	3.7	5.1	2.1	1.9	0.5	77.0	5.0	18.0	0.071	0.510
T. IZQ. SAMARIA	132.50	3	2	11110	73.1	4.9	4.9	3.9	5.5	2.3	3.7	1.7	73.1	4.9	22.0	0.083	0.510
CUCUYULAPA	134.80	1	1	10759	73.8	5.7	4.7	5.5	4.4	4.2	1.6	0.1	73.8	5.7	20.5	0.079	0.505
CUCUYULAPA	134.80	1	2	10957	75.1	5.6	4.9	5.7	2.8	4.3	1.3	0.3	75.1	5.6	19.3	0.068	0.505
T. DER. LA REFORMA	148.80	1	1	12848	70.8	3.7	1.6	2.0	8.6	4.0	5.7	3.6	70.8	3.7	25.5	0.086	0.516
T. DER. LA REFORMA	148.80	1	2	13686	72.3	3.9	1.9	2.0	8.0	3.8	5.5	2.6	72.3	3.9	23.8	0.092	0.516
T. DER. LA REFORMA	148.80	3	1	15150	68.9	4.4	1.6	1.9	6.9	3.7	8.6	4.0	68.9	4.4	26.7	0.086	0.508
T. DER. LA REFORMA	148.80	3	2	14669	72.7	4.0	1.0	1.2	5.4	5.3	7.1	3.3	72.7	4.0	23.3	0.091	0.508
VILLAHERMOSA	171.20	1	1	18049	71.7	5.7	1.3	1.3	6.0	2.7	7.1	4.2	71.7	5.7	22.6	0.091	0.520
VILLAHERMOSA	171.20	1	2	19589	70.5	5.7	1.1	1.3	7.8	2.7	6.1	4.8	70.5	5.7	23.8	0.093	0.520

2 CARR : EL SUSPIRO - TENOSIQUE

CLAVE: 00276

RUTA : MEX-203

AÑO : 2008

L U G A R	E S T A C I O N				C L A S I F I C A C I O N V E H I C U L A R E N P O R C I E N T O .												
	KM	TE	SC	TDPA	A	B	C2	C3	T3S2	T3S3	T3S2R4	OTROS	A	B	C	K'	D
ENT. EL SUSPIRO	0.00	3	0	4809	92.1	4.3	1.0	0.8	0.6	0.4	0.1	0.7	92.1	4.3	3.6	0.087	0.513

TABASCO

2 CARR : EL SUSPIRO - TENOSIQUE

CLAVE: 00276

RUTA : MEX-203

AÑO : 2008

L U G A R	E S T A C I O N				C L A S I F I C A C I O N V E H I C U L A R E N P O R C I E N T O .												
	KM	TE	SC	TDPA	A	B	C2	C3	T3S2	T3S3	T3S2R4	OTROS	A	B	C	K'	D
LIM. EDOS. TERM. CHIS. PPIA. TAB.	8.00																
EMILIANO ZAPATA	8.61	3	0	4675	92.4	3.9	1.6	0.7	0.4	0.1	0.1	0.8	92.4	3.9	3.7	0.083	0.504
T. DER. LA LIBERTAD	12.10	3	0	2168	85.0	4.8	2.2	0.7	1.2	0.6	3.8	1.7	85.0	4.8	10.2	0.110	0.507
T. IZQ. BALANCAN	32.60	1	0	2162	86.5	5.1	4.2	1.3	0.8	0.4	0.1	1.6	86.5	5.1	8.4	0.097	0.502
T. IZQ. BALANCAN	32.60	3	0	1707	88.2	6.6	1.7	1.5	0.6	0.2	0.0	1.2	88.2	6.6	5.2	0.096	0.508
ESTACION ZAPATA	53.00	1	0	1329	75.9	8.3	2.5	3.3	1.4	8.2	0.0	0.4	75.9	8.3	15.8	0.150	0.505
ESTACION ZAPATA	53.00	3	0	1631	78.4	6.4	3.7	2.9	1.5	5.6	0.0	1.5	78.4	6.4	15.2	0.121	0.502
TENOSIQUE	75.30																

3 CARR : MALPASO - EL BELLOTE

CLAVE: 00137

RUTA : MEX-187

AÑO : 2008

L U G A R	E S T A C I O N				C L A S I F I C A C I O N V E H I C U L A R E N P O R C I E N T O .												
	KM	TE	SC	TDPA	A	B	C2	C3	T3S2	T3S3	T3S2R4	OTROS	A	B	C	K'	D
PRESA MALPASO	0.00																
LIM. EDOS. TERM. CHIS. PPIA. TAB.	43.99																
LIM. EDOS. TERM. TAB. PPIA. CHIS.	44.59																
LIM. EDOS. TERM. CHIS. PPIA. TAB.	45.26																
LIM. EDOS. TERM. TAB. PPIA. CHIS.	45.63																
LIM. EDOS. TERM. CHIS. PPIA. TAB.	55.04																
MACABIL (LA ESTRELLA)	70.12	1	0	2423	79.9	2.8	5.2	4.8	4.3	2.3	0.0	0.7	79.9	2.8	17.3	0.096	0.503
ESTACION CHONTALPA	75.69	1	0	3928	83.5	3.7	5.8	2.3	1.2	0.3	0.0	3.2	83.5	3.7	12.8	0.078	0.507
ESTACION CHONTALPA	75.69	3	0	3964	85.7	3.7	5.3	1.5	0.8	1.0	0.0	2.0	85.7	3.7	10.6	0.103	0.503
T. IZQ. FRANCISCO RUEDA	90.49	1	0	3291	87.0	3.6	3.0	1.7	1.3	1.2	0.0	2.2	87.0	3.6	9.4	0.086	0.504
T. IZQ. FRANCISCO RUEDA	90.49	3	0	4722	86.2	3.7	3.4	2.0	1.4	1.2	0.4	1.7	86.2	3.7	10.1	0.100	0.508
HUIMANGUILLO	98.03	1	0	6348	79.2	5.6	2.1	2.7	3.1	1.7	2.5	3.1	79.2	5.6	15.2	0.083	0.506
HUIMANGUILLO	98.03	3	0	7087	76.3	4.3	7.6	7.8	2.3	0.4	0.0	1.3	76.3	4.3	19.4	0.098	0.502
CARDENAS	117.60	1	0	9275	79.6	3.6	6.8	5.7	1.8	1.2	0.0	1.3	79.6	3.6	16.8	0.078	0.500
CARDENAS	117.60	3	0	9869	64.9	4.2	15.3	7.2	4.9	1.8	0.3	1.4	64.9	4.2	30.9	0.084	0.501
TULIPAN	134.70	3	0	6868	73.9	4.4	2.5	7.8	4.0	1.7	3.1	2.6	73.9	4.4	21.7	0.072	0.519
T. DER. CUNDUACAN	141.70	1	0	6731	72.7	3.3	5.2	5.6	4.8	2.2	2.2	4.0	72.7	3.3	24.0	0.092	0.527
T. DER. CUNDUACAN	141.70	3	0	6788	76.3	4.9	7.3	3.7	2.7	1.8	1.2	2.1	76.3	4.9	18.8	0.078	0.504
T. DER. JALPA	153.50	1	0	7901	81.5	5.5	3.3	0.1	4.7	0.9	1.9	2.1	81.5	5.5	13.0	0.080	0.504
T. DER. JALPA	153.50	3	0	12341	73.4	4.9	1.2	0.8	7.1	2.1	6.2	4.3	73.4	4.9	21.7	0.076	0.504
PARAISO	176.90	1	0	12762	83.4	4.7	1.7	0.9	3.5	1.3	1.3	3.2	83.4	4.7	11.9	0.115	0.507
PARAISO	176.90	3	0	7803	85.0	4.3	2.8	0.7	3.2	0.7	1.0	2.3	85.0	4.3	10.7	0.151	0.508

TABASCO

6 CARR : VILLAHERMOSA - ESCOPETAZO

CLAVE: 00104

ruta : MEX-195

AÑO : 2008

L U G A R	E S T A C I O N				CLASIFICACION VEHICULAR EN PORCIENTO .												
	KM	TE	SC	TDPA	A	B	C2	C3	T3S2	T3S3	T3S2R4	OTROS	A	B	C	K'	D
VILLAHERMOSA	0.00	3	0	15189	82.9	4.7	3.2	2.7	1.7	1.9	0.2	2.7	82.9	4.7	12.4	0.099	0.519
PARRILLA	10.00	1	0	15351	81.9	5.0	4.0	1.7	2.4	2.8	1.4	0.8	81.9	5.0	13.1	0.084	0.502
PARRILLA	10.00	3	0	13578	82.9	5.7	3.9	1.8	1.8	1.8	1.4	0.7	82.9	5.7	11.4	0.068	0.503
T. IZQ. SUBTE. GARCIA	20.00	3	0	6119	87.0	5.2	2.0	1.5	1.4	1.3	1.1	0.5	87.0	5.2	7.8	0.100	0.501
LA ARENA	44.00	1	0	4403	79.4	4.7	5.1	2.4	3.5	2.0	1.8	1.1	79.4	4.7	15.9	0.076	0.512
T. IZQ. TEAPA	54.80	1	0	6614	79.3	4.9	6.3	3.0	2.7	1.9	1.3	0.6	79.3	4.9	15.8	0.089	0.501
T. IZQ. TEAPA	54.80	3	0	4241	82.8	2.5	3.7	1.2	3.0	0.5	0.7	5.6	82.8	2.5	14.7	0.084	0.504
LIM. EDOS. TERM. TAB. PPIA. CHIS.	61.42																
PICHUCALCO	76.00	1	0	3160	71.1	4.0	1.5	6.3	3.6	4.3	1.5	7.7	71.1	4.0	24.9	0.069	0.502
PICHUCALCO	76.00	3	0	2509	93.1	4.2	2.3	0.1	0.1	0.0	0.0	0.2	93.1	4.2	2.7	0.081	0.521
SOLUSUCHIAPA	112.00	1	0	1711	80.1	5.1	4.2	3.0	2.1	1.8	1.3	2.4	80.1	5.1	14.8	0.109	0.505
SOLUSUCHIAPA	112.00	3	0	1394	78.4	4.2	6.0	3.9	2.3	1.8	0.0	3.4	78.4	4.2	17.4	0.121	0.516
RAYON	146.00	1	0	1309	88.4	4.3	2.8	0.8	1.6	0.4	0.4	1.3	88.4	4.3	7.3	0.115	0.512
JITOTOL	197.80	1	0	1305	79.2	4.6	5.2	3.2	2.2	3.3	0.7	1.6	79.2	4.6	16.2	0.132	0.516
BOCHIL	211.00	1	0	2145	78.8	4.4	3.9	2.7	2.9	3.3	1.1	2.9	78.8	4.4	16.8	0.108	0.514
IXTAPA	247.00	1	0	2211	80.8	5.0	4.1	1.8	1.7	3.1	1.4	2.1	80.8	5.0	14.2	0.102	0.512
ESCOPETAZO	259.00	1	0	2179	83.6	3.9	2.5	1.8	3.0	2.7	1.0	1.5	83.6	3.9	12.5	0.119	0.504

7 CARR : VILLAHERMOSA - FRANCISCO ESCARCEGA

CLAVE: 00092

ruta : MEX-186

AÑO : 2008

L U G A R	E S T A C I O N				CLASIFICACION VEHICULAR EN PORCIENTO .												
	KM	TE	SC	TDPA	A	B	C2	C3	T3S2	T3S3	T3S2R4	OTROS	A	B	C	K'	D
VILLAHERMOSA	0.00	3	1	8925	73.2	4.6	1.0	4.3	8.8	2.3	3.4	2.4	73.2	4.6	22.2	0.097	0.503
VILLAHERMOSA	0.00	3	2	8827	70.8	4.8	0.9	4.2	10.2	3.5	3.7	1.9	70.8	4.8	24.4	0.084	0.503
T. IZQ. AEROPUERTO	12.00	1	1	9595	85.0	0.0	1.7	1.8	4.4	2.2	1.4	3.5	85.0	0.0	15.0	0.075	0.501
T. IZQ. AEROPUERTO	12.00	1	2	9554	88.7	0.0	1.0	1.3	3.9	1.3	1.0	2.8	88.7	0.0	11.3	0.085	0.501
X. C. CACAOS - LA GRANJA	32.46	1	0	9309	58.0	14.6	2.3	3.3	9.5	3.8	5.4	3.1	58.0	14.6	27.4	0.110	0.513
X. C. CACAOS - LA GRANJA	32.46	3	0	7344	75.3	14.5	3.4	2.3	1.4	1.1	0.3	1.7	75.3	14.5	10.2	0.115	0.502
X. C. JALAPA - JONUTA	40.00	3	0	6326	68.8	9.8	7.5	6.8	4.4	1.7	0.2	0.8	68.8	9.8	21.4	0.075	0.511
T. IZQ. MACUSPANA	46.20	1	0	6719	74.0	5.9	5.6	4.6	4.6	2.2	1.7	1.4	74.0	5.9	20.1	0.078	0.508
T. IZQ. MACUSPANA	46.20	3	0	7466	47.8	7.3	3.0	5.1	5.8	3.8	15.3	11.9	47.8	7.3	44.9	0.074	0.505
X. C. ESTACION MACUSPANA - VERNET	54.30	1	0	6588	62.6	4.9	6.2	5.7	9.0	3.3	6.7	1.6	62.6	4.9	32.5	0.074	0.507
T. DER. CHIVALITO (EST. PINO SUAREZ)	70.00	1	0	6297	62.5	5.3	6.1	5.0	9.2	3.4	6.9	1.6	62.5	5.3	32.2	0.076	0.506
T. DER. CHIVALITO (EST. PINO SUAREZ)	70.00	3	0	7130	61.4	8.3	4.7	4.1	9.4	3.5	7.0	1.6	61.4	8.3	30.3	0.069	0.512
T. DER. ESTACION ZOPO	71.00	1	0	5846	63.8	5.0	5.1	4.8	9.7	2.9	7.2	1.5	63.8	5.0	31.2	0.075	0.509

TABASCO

7 CARR : VILLAHERMOSA - FRANCISCO ESCARCEGA

CLAVE: 00092

RUTA : MEX-186

AÑO : 2008

L U G A R	E S T A C I O N				C L A S I F I C A C I O N V E H I C U L A R E N P O R C I E N T O .												
	KM	TE	SC	TDPA	A	B	C2	C3	T3S2	T3S3	T3S2R4	OTROS	A	B	C	K'	D
T. DER. ESTACION ZOPO	71.00	3	0	7196	68.6	7.4	5.3	4.8	5.9	2.2	4.9	0.9	68.6	7.4	24.0	0.081	0.501
LIM. EDOS. TERM. TAB. PPIA. CHIS.	76.90																
T. IZQ. BONANZA	88.00	1	0	4886	78.6	0.0	3.8	2.6	7.8	4.6	0.0	2.6	78.6	0.0	21.4	0.102	0.503
T. IZQ. JONUTA	101.00	1	0	4202	62.9	6.5	5.8	1.4	8.4	3.6	7.8	3.6	62.9	6.5	30.6	0.090	0.508
T. IZQ. JONUTA	101.00	3	0	4081	76.9	4.7	2.2	1.1	4.2	2.3	2.0	6.6	76.9	4.7	18.4	0.090	0.509
X. C. CATAZAJA - PALENQUE	114.00	1	0	4609	63.3	5.3	5.4	1.3	6.5	5.6	9.8	2.8	63.3	5.3	31.4	0.086	0.503
X. C. CATAZAJA - PALENQUE	114.00	3	0	4191	64.6	5.5	5.3	0.8	9.6	3.4	8.5	2.3	64.6	5.5	29.9	0.076	0.502
T. DER. EMILIANO ZAPATA	134.70	1	0	3821	62.4	6.7	7.1	2.6	5.4	3.1	3.6	9.1	62.4	6.7	30.9	0.086	0.529
T. DER. EMILIANO ZAPATA	134.70	3	0	3374	62.9	7.6	8.3	0.4	6.5	0.9	0.8	12.6	62.9	7.6	29.5	0.084	0.511
LIM. EDOS. TERM. CHIS. PPIA. TAB.	140.70																
LIM. EDOS. TERM. TAB. PPIA. CAMP.	152.50																
T. IZQ. PALIZADA	154.10	1	0	2628	64.0	24.3	2.1	1.2	3.1	1.8	1.0	2.5	64.0	24.3	11.7	0.080	0.512
T. IZQ. PALIZADA	154.10	3	0	3132	55.3	4.6	6.4	2.2	10.3	3.3	5.1	12.8	55.3	4.6	40.1	0.081	0.501
T. DER. CANDELARIA	233.40	1	0	3919	65.6	3.2	5.7	3.3	7.6	3.9	7.7	3.0	65.6	3.2	31.2	0.092	0.508
T. DER. FELIPE ANGELES	253.00	1	0	2729	54.7	2.4	10.3	3.6	8.9	3.6	6.7	9.8	54.7	2.4	42.9	0.103	0.512
T. IZQ. SABANCUY	274.10	1	0	3133	81.5	3.3	4.8	3.2	2.5	2.4	0.0	2.3	81.5	3.3	15.2	0.087	0.506
FRANCISCO ESCARCEGA	297.00	1	0	5528	80.8	4.4	1.8	3.2	3.0	2.6	1.3	2.9	80.8	4.4	14.8	0.080	0.508

8 CARR : BENITO JUAREZ - AGUA DULCE

CLAVE: 00202

RUTA : TAB-VER

AÑO : 2008

L U G A R	E S T A C I O N				C L A S I F I C A C I O N V E H I C U L A R E N P O R C I E N T O .												
	KM	TE	SC	TDPA	A	B	C2	C3	T3S2	T3S3	T3S2R4	OTROS	A	B	C	K'	D
BENITO JUAREZ	0.00	3	0	1680	76.8	6.6	5.8	3.3	3.6	2.2	1.1	0.6	76.8	6.6	16.6	0.093	0.506
LA VENTA	18.00	1	0	2692	86.2	4.4	4.3	1.7	1.5	0.2	0.2	1.5	86.2	4.4	9.4	0.149	0.518
LA VENTA	18.00	3	0	2654	84.3	4.6	6.7	3.6	0.3	0.2	0.2	0.1	84.3	4.6	11.1	0.138	0.521
LIM. EDOS. TERM. TAB. PPIA. VER.	26.00																
AGUA DULCE	33.00	1	0	2697	91.1	2.7	0.6	0.3	1.9	0.4	0.8	2.2	91.1	2.7	6.2	0.120	0.515

9 CARR : BENITO JUAREZ - TEPETITAN

CLAVE: 27204

RUTA : TAB

AÑO : 2008

L U G A R	E S T A C I O N				C L A S I F I C A C I O N V E H I C U L A R E N P O R C I E N T O .												
	KM	TE	SC	TDPA	A	B	C2	C3	T3S2	T3S3	T3S2R4	OTROS	A	B	C	K'	D
BENITO JUAREZ	0.00																
X. C. JALAPA - JONUTA	1.50	3	0	3019	90.6	2.7	1.8	0.3	2.3	0.4	0.7	1.2	90.6	2.7	6.7	0.086	0.503
LIMBANO BLANDIN	18.50	1	0	737	82.8	3.3	7.7	4.0	0.5	0.5	0.1	1.1	82.8	3.3	13.9	0.117	0.503

TABASCO

9 CARR : BENITO JUAREZ - TEPETITAN

CLAVE: 27204

RUTA : TAB

AÑO : 2008

L U G A R	E S T A C I O N				C L A S I F I C A C I O N V E H I C U L A R E N P O R C I E N T O .												
	KM	TE	SC	TDPA	A	B	C2	C3	T3S2	T3S3	T3S2R4	OTROS	A	B	C	K'	D
LIMBANO BLANDIN	18.50	3	0	446	91.3	6.4	1.1	0.3	0.4	0.0	0.1	0.4	91.3	6.4	2.3	0.112	0.501
TEPETITAN	20.00	1	0	725	91.0	2.5	3.8	1.1	0.4	0.5	0.2	0.5	91.0	2.5	6.5	0.109	0.501

10 CARR : CACAOS - LA GRANJA

CLAVE: 27002

RUTA : TAB

AÑO : 2008

L U G A R	E S T A C I O N				C L A S I F I C A C I O N V E H I C U L A R E N P O R C I E N T O .												
	KM	TE	SC	TDPA	A	B	C2	C3	T3S2	T3S3	T3S2R4	OTROS	A	B	C	K'	D
CACAOS	0.00	3	0	1338	89.2	3.4	1.5	1.6	1.0	2.2	0.2	0.9	89.2	3.4	7.4	0.135	0.507
X. C. VILLAHERMOSA - FRANCISCO ESCARCEGA	16.00	3	0	3468	80.2	2.8	5.3	2.7	3.0	1.0	2.0	3.0	80.2	2.8	17.0	0.092	0.527
T. C. JALAPA - JONUTA	39.00	1	0	4217	87.8	5.4	0.2	0.4	2.8	0.8	1.5	1.1	87.8	5.4	6.8	0.103	0.500

11 CARR : CARDENAS - PARAISO

CLAVE: 27117

RUTA : TAB

AÑO : 2008

L U G A R	E S T A C I O N				C L A S I F I C A C I O N V E H I C U L A R E N P O R C I E N T O .												
	KM	TE	SC	TDPA	A	B	C2	C3	T3S2	T3S3	T3S2R4	OTROS	A	B	C	K'	D
T. C. COATZACOALCOS - VILLAHERMOSA	0.00	3	0	4658	89.6	3.3	2.4	2.9	0.3	0.2	0.0	1.3	89.6	3.3	7.1	0.089	0.502
T. IZQ. EL GOLPE	22.00	1	0	1533	80.2	4.3	4.6	4.4	1.0	0.9	0.0	4.6	80.2	4.3	15.5	0.102	0.505
T. IZQ. EL GOLPE	22.00	3	0	1051	74.3	3.1	9.0	5.8	3.9	0.9	0.8	2.2	74.3	3.1	22.6	0.085	0.501
COMALCALCO	37.00	3	0	5257	87.2	3.6	0.9	1.0	3.5	1.8	1.1	0.9	87.2	3.6	9.2	0.088	0.504
PARAISO	52.00	1	0	3506	81.5	2.4	2.6	1.4	5.4	1.6	3.1	2.0	81.5	2.4	16.1	0.090	0.501

12 CARR : CHICHICAPA - ENT. LA LIBERTAD

CLAVE: 27100

RUTA : TAB

AÑO : 2008

L U G A R	E S T A C I O N				C L A S I F I C A C I O N V E H I C U L A R E N P O R C I E N T O .												
	KM	TE	SC	TDPA	A	B	C2	C3	T3S2	T3S3	T3S2R4	OTROS	A	B	C	K'	D
CHICHICAPA	0.00	3	0	2349	89.8	2.6	3.2	0.6	1.8	0.3	0.5	1.2	89.8	2.6	7.6	0.074	0.506
NICOLAS BRAVO	10.00	3	0	2320	92.6	2.2	1.3	0.4	1.5	0.4	0.5	1.1	92.6	2.2	5.2	0.106	0.507
ENT. LA LIBERTAD	18.00	1	0	2707	89.7	4.9	2.5	0.3	0.7	0.2	0.2	1.5	89.7	4.9	5.4	0.096	0.510

13 CARR : COMALCALCO - EL GOLPE

CLAVE: 27102

RUTA : TAB

AÑO : 2008

L U G A R	E S T A C I O N				C L A S I F I C A C I O N V E H I C U L A R E N P O R C I E N T O .												
	KM	TE	SC	TDPA	A	B	C2	C3	T3S2	T3S3	T3S2R4	OTROS	A	B	C	K'	D
T. C. MALPASO - BELLOTE	0.00																
COMALCALCO	0.00	3	0	10745	77.8	3.2	4.1	0.2	6.3	1.7	2.6	4.1	77.8	3.2	19.0	0.065	0.516

TABASCO

13 CARR : COMALCALCO - EL GOLPE

CLAVE: 27102

RUTA : TAB

AÑO : 2008

L U G A R	E S T A C I O N				C L A S I F I C A C I O N V E H I C U L A R E N P O R C I E N T O .												
	KM	TE	SC	TDPA	A	B	C2	C3	T3S2	T3S3	T3S2R4	OTROS	A	B	C	K'	D
TECOLUTILLA	15.00	1	0	4224	83.8	4.5	3.5	0.4	4.2	0.6	0.9	2.1	83.8	4.5	11.7	0.078	0.503
TECOLUTILLA	15.00	3	0	3310	83.4	6.4	2.2	0.4	3.6	0.8	1.0	2.2	83.4	6.4	10.2	0.087	0.530
T. DER. LAZARO CARDENAS	20.00	3	0	1555	82.6	3.5	8.0	0.5	1.8	1.5	0.3	1.8	82.6	3.5	13.9	0.070	0.501
CARLOS GREEN	24.00	3	0	1576	88.5	2.8	3.5	0.4	1.9	0.6	0.5	1.8	88.5	2.8	8.7	0.093	0.502
EL GOLPE	34.00	1	0	353	76.7	3.1	12.2	2.3	1.8	0.5	0.0	3.4	76.7	3.1	20.2	0.108	0.519

14 CARR : EL BELLOTE - SANTA CRUZ

CLAVE: 27105

RUTA : TAB

AÑO : 2008

L U G A R	E S T A C I O N				C L A S I F I C A C I O N V E H I C U L A R E N P O R C I E N T O .												
	KM	TE	SC	TDPA	A	B	C2	C3	T3S2	T3S3	T3S2R4	OTROS	A	B	C	K'	D
BELLOTE	0.00	3	0	2889	86.9	3.5	1.9	0.6	3.4	1.3	0.9	1.5	86.9	3.5	9.6	0.103	0.514
T. DER. CHICHICAPA	8.00	3	0	2131	87.4	3.8	2.9	0.9	2.4	0.5	0.8	1.3	87.4	3.8	8.8	0.094	0.512
IGNACIO ALLENDE	35.00	1	0	2240	83.2	2.8	5.9	3.6	2.0	0.5	1.0	1.0	83.2	2.8	14.0	0.113	0.514
IGNACIO ALLENDE	35.00	3	0	2134	88.9	2.7	5.1	1.1	0.7	0.8	0.6	0.1	88.9	2.7	8.4	0.103	0.508
SANTA CRUZ	40.00	1	0	2284	79.7	6.2	7.1	0.9	3.7	0.8	0.6	1.0	79.7	6.2	14.1	0.118	0.504

15 CARR : ESTACION MACUSPANA - VERNET

CLAVE: 27091

RUTA : TAB-041

AÑO : 2008

L U G A R	E S T A C I O N				C L A S I F I C A C I O N V E H I C U L A R E N P O R C I E N T O .												
	KM	TE	SC	TDPA	A	B	C2	C3	T3S2	T3S3	T3S2R4	OTROS	A	B	C	K'	D
ESTACION MACUSPANA	0.00																
X. C. VILLAHERMOSA - FRANCISCO ESCARCEGA	11.00	1	0	1422	80.2	6.1	5.9	3.6	2.2	0.6	0.5	0.9	80.2	6.1	13.7	0.122	0.507
X. C. VILLAHERMOSA - FRANCISCO ESCARCEGA	11.00	3	0	1682	89.6	5.6	2.7	0.6	0.9	0.0	0.1	0.5	89.6	5.6	4.8	0.093	0.503
BELEM	20.50	1	0	6934	88.4	3.8	1.0	0.4	2.7	0.6	0.6	2.5	88.4	3.8	7.8	0.070	0.516
BELEM	20.50	3	0	2139	91.7	3.0	2.6	0.4	1.1	0.4	0.1	0.7	91.7	3.0	5.3	0.094	0.501
X. C. CACAOS - LA GRANJA	25.50	3	0	1003	92.1	4.1	0.7	0.9	0.8	0.5	0.5	0.4	92.1	4.1	3.8	0.096	0.512
VERNET	32.50	1	0	661	89.1	5.8	3.3	0.8	0.4	0.3	0.0	0.3	89.1	5.8	5.1	0.104	0.511

16 CARR : FRONTERA - T. C. (JALAPA - JONUTA)

CLAVE: 27081

RUTA : TAB

AÑO : 2008

L U G A R	E S T A C I O N				C L A S I F I C A C I O N V E H I C U L A R E N P O R C I E N T O .												
	KM	TE	SC	TDPA	A	B	C2	C3	T3S2	T3S3	T3S2R4	OTROS	A	B	C	K'	D
FRONTERA	0.00																
X. C. VILLAHERMOSA - CD. DEL CARMEN	1.00	3	0	846	88.8	2.2	1.9	3.6	0.9	0.3	0.4	1.9	88.8	2.2	9.0	0.130	0.511
T. C. JALAPA - JONUTA	123.00	1	0	1678	88.3	3.9	4.2	2.6	0.2	0.2	0.0	0.6	88.3	3.9	7.8	0.098	0.502

TABASCO

17 CARR : GREGORIO MENDEZ MAGAÑA - REFORMA DE OCAMPO

CLAVE: 00103

RUTA : CHIS

AÑO : 2008

L U G A R	E S T A C I O N				C L A S I F I C A C I O N V E H I C U L A R E N P O R C I E N T O .												
	KM	TE	SC	TDPA	A	B	C2	C3	T3S2	T3S3	T3S2R4	OTROS	A	B	C	K'	D
GREGORIO MENDEZ MAGAÑA	0.00	3	0	1443	82.2	5.2	5.0	1.6	2.7	3.0	0.1	0.2	82.2	5.2	12.6	0.082	0.506
LIM. EDOS. TERM. TAB. PPIA. CHIS.	3.00																
T. C. BENEMERITO DE LAS AMERICAS - PALENQUE	21.00	1	0	1342	94.7	3.7	1.0	0.3	0.1	0.0	0.0	0.2	94.7	3.7	1.6	0.098	0.519
REFORMA DE OCAMPO	22.00																

18 CARR : JALAPA - JONUTA

CLAVE: 27107

RUTA : TAB

AÑO : 2008

L U G A R	E S T A C I O N				C L A S I F I C A C I O N V E H I C U L A R E N P O R C I E N T O .												
	KM	TE	SC	TDPA	A	B	C2	C3	T3S2	T3S3	T3S2R4	OTROS	A	B	C	K'	D
JALAPA	0.00	3	0	2277	86.0	5.1	4.5	0.2	2.3	0.2	0.3	1.4	86.0	5.1	8.9	0.099	0.501
X. C. VILLAHERMOSA - FRANCISCO ESCARCEGA	15.00	1	0	1667	95.5	2.4	0.0	0.0	1.1	0.1	0.2	0.7	95.5	2.4	2.1	0.073	0.508
X. C. VILLAHERMOSA - FRANCISCO ESCARCEGA	15.00	3	0	1563	93.1	1.8	0.2	0.0	1.5	1.0	1.2	1.2	93.1	1.8	5.1	0.113	0.506
BELEM	24.00	1	0	1464	92.5	3.9	0.8	0.5	1.2	0.2	0.2	0.7	92.5	3.9	3.6	0.073	0.581
T. IZQ. CACAOS	39.00	1	0	3040	95.0	1.5	1.1	0.0	1.3	0.3	0.1	0.7	95.0	1.5	3.5	0.084	0.503
CD. PEMEX	43.00	1	1	4058	86.5	3.8	1.0	0.8	2.3	0.9	1.7	3.0	86.5	3.8	9.7	0.123	0.509
CD. PEMEX	43.00	1	2	4198	88.5	3.8	0.9	0.5	2.8	0.5	0.9	2.1	88.5	3.8	7.7	0.107	0.509
CD. PEMEX	43.00	3	0	3400	89.1	4.9	0.9	0.2	2.7	0.6	0.5	1.1	89.1	4.9	6.0	0.095	0.504
JONUTA	97.50	1	0	1775	90.2	4.2	2.5	1.4	0.7	0.6	0.0	0.4	90.2	4.2	5.6	0.124	0.503

19 CARR : NICOLAS BRAVO - T. C. (EL BELLOTE - SANTA CRUZ)

CLAVE: 27010

RUTA : TAB

AÑO : 2008

L U G A R	E S T A C I O N				C L A S I F I C A C I O N V E H I C U L A R E N P O R C I E N T O .												
	KM	TE	SC	TDPA	A	B	C2	C3	T3S2	T3S3	T3S2R4	OTROS	A	B	C	K'	D
NICOLAS BRAVO	0.00	3	0	1206	84.2	0.0	11.0	3.2	0.0	0.3	0.2	1.1	84.2	0.0	15.8	0.109	0.508
T. C. BELLOTE - SANTA CRUZ	22.00	1	0	650	89.9	3.8	4.4	0.4	0.7	0.1	0.2	0.5	89.9	3.8	6.3	0.137	0.503

20 CARR : PAILEBOT - CUAUHTEMOTZIN

CLAVE: 27112

RUTA : TAB

AÑO : 2008

L U G A R	E S T A C I O N				C L A S I F I C A C I O N V E H I C U L A R E N P O R C I E N T O .												
	KM	TE	SC	TDPA	A	B	C2	C3	T3S2	T3S3	T3S2R4	OTROS	A	B	C	K'	D
PAILEBOT	0.00	3	0	789	92.4	4.7	1.7	0.5	0.1	0.2	0.0	0.4	92.4	4.7	2.9	0.119	0.505
CUAUHTEMOTZIN	23.00	1	0	340	93.4	4.0	1.1	0.6	0.0	0.6	0.0	0.3	93.4	4.0	2.6	0.100	0.502

TABASCO

21 CARR : PARAISO - EL LIMON

CLAVE: 27108

RUTA : TAB

AÑO : 2008

L U G A R	E S T A C I O N				C L A S I F I C A C I O N V E H I C U L A R E N P O R C I E N T O .												
	KM	TE	SC	TDPA	A	B	C2	C3	T3S2	T3S3	T3S2R4	OTROS	A	B	C	K'	D
PARAISO	0.00	3	0	2178	75.8	3.3	0.9	1.2	5.2	9.6	2.2	1.8	75.8	3.3	20.9	0.090	0.507
LIMON	6.00	1	0	1710	76.7	3.5	3.4	0.7	5.8	3.5	3.6	2.8	76.7	3.5	19.8	0.100	0.502

22 CARR : PASO DE CUNDUACAN - ESTACION JUAREZ

CLAVE: 00588

RUTA : TAB-CHIS

AÑO : 2008

L U G A R	E S T A C I O N				C L A S I F I C A C I O N V E H I C U L A R E N P O R C I E N T O .												
	KM	TE	SC	TDPA	A	B	C2	C3	T3S2	T3S3	T3S2R4	OTROS	A	B	C	K'	D
PASO DE CUNDUACAN	0.00	3	0	7080	80.0	3.5	6.3	4.9	1.7	1.6	1.2	0.8	80.0	3.5	16.5	0.073	0.509
LIM. EDOS. TERM. TAB. PPIA. CHIS.	9.00																
SANTA TERESA 2° SECC.	18.00	3	0	3040	86.6	5.0	1.6	2.0	1.4	2.2	0.0	1.2	86.6	5.0	8.4	0.101	0.502
ESTACION JUAREZ	57.80	1	0	2490	84.3	5.5	2.5	1.6	1.9	0.3	0.6	3.3	84.3	5.5	10.2	0.088	0.504

23 CARR : PLAYAS DEL ROSARIO - TEAPA

CLAVE: 27203

RUTA : TAB-001

AÑO : 2008

L U G A R	E S T A C I O N				C L A S I F I C A C I O N V E H I C U L A R E N P O R C I E N T O .												
	KM	TE	SC	TDPA	A	B	C2	C3	T3S2	T3S3	T3S2R4	OTROS	A	B	C	K'	D
T. C. VILLAHERMOSA - ESCOPETAZO	0.00	3	0	4679	78.9	6.2	2.7	2.9	3.4	2.3	0.3	3.3	78.9	6.2	14.9	0.085	0.537
X. C. VILLAHERMOSA - ESCOPETAZO	3.00	3	0	4839	87.6	3.4	1.6	1.1	2.3	0.7	1.0	2.3	87.6	3.4	9.0	0.102	0.518
CACAOS	7.00	3	0	3185	76.3	8.7	2.9	4.1	2.1	4.0	0.2	1.7	76.3	8.7	15.0	0.095	0.501
JALAPA	23.00	1	0	3980	87.3	4.7	1.2	0.3	3.2	1.1	0.9	1.3	87.3	4.7	8.0	0.094	0.509
JALAPA	23.00	3	0	3227	83.8	4.1	4.1	0.5	4.6	1.0	0.7	1.2	83.8	4.1	12.1	0.093	0.521
T. IZQ. TACOTALPA	39.00	1	0	2283	85.6	4.3	2.7	2.2	2.4	1.1	1.1	0.6	85.6	4.3	10.1	0.095	0.505
T. IZQ. TACOTALPA	39.00	3	0	2995	83.1	4.5	4.2	1.1	3.3	1.4	0.7	1.7	83.1	4.5	12.4	0.094	0.515
TEAPA	54.00	1	0	3979	90.9	2.9	1.0	0.2	2.5	0.4	0.7	1.4	90.9	2.9	6.2	0.097	0.501

24 CARR : RAMAL A BALANCAN

CLAVE: 27078

RUTA : TAB

AÑO : 2008

L U G A R	E S T A C I O N				C L A S I F I C A C I O N V E H I C U L A R E N P O R C I E N T O .												
	KM	TE	SC	TDPA	A	B	C2	C3	T3S2	T3S3	T3S2R4	OTROS	A	B	C	K'	D
T. C. EL SUSPIRO - TENOSIQUE	0.00	3	0	1483	84.0	4.5	4.1	1.0	0.3	4.0	1.0	1.1	84.0	4.5	11.5	0.096	0.503
BALANCAN	24.00	1	0	1317	84.2	5.8	0.4	1.7	1.9	1.4	0.7	3.9	84.2	5.8	10.0	0.130	0.510

TABASCO

25 CARR : RAMAL A LAZARO CARDENAS

CLAVE: 27208

RUTA : TAB

AÑO : 2008

L U G A R	E S T A C I O N				C L A S I F I C A C I O N V E H I C U L A R E N P O R C I E N T O .												
	KM	TE	SC	TDPA	A	B	C2	C3	T3S2	T3S3	T3S2R4	OTROS	A	B	C	K'	D
T. C. COMALCALCO - EL GOLPE	0.00	3	0	1377	83.7	3.5	2.9	2.0	2.0	0.8	0.8	4.3	83.7	3.5	12.8	0.143	0.504
LAZARO CARDENAS	14.00	1	0	1109	94.9	2.4	0.9	0.8	0.0	0.0	0.0	1.0	94.9	2.4	2.7	0.096	0.502

26 CARR : RAMAL A LIBERTAD

CLAVE: 27205

RUTA : TAB

AÑO : 2008

L U G A R	E S T A C I O N				C L A S I F I C A C I O N V E H I C U L A R E N P O R C I E N T O .												
	KM	TE	SC	TDPA	A	B	C2	C3	T3S2	T3S3	T3S2R4	OTROS	A	B	C	K'	D
T. C. CARDENAS - PARAISO	0.00	3	0	3639	89.4	3.6	2.3	0.7	1.4	0.4	0.4	1.8	89.4	3.6	7.0	0.140	0.535
LIBERTAD	8.50	1	0	2679	84.8	3.7	1.5	4.5	2.4	2.4	0.0	0.7	84.8	3.7	11.5	0.097	0.504

27 CARR : RAMAL A SALTO DEL AGUA

CLAVE: 00069

RUTA : TAB-CHIS

AÑO : 2008

L U G A R	E S T A C I O N				C L A S I F I C A C I O N V E H I C U L A R E N P O R C I E N T O .												
	KM	TE	SC	TDPA	A	B	C2	C3	T3S2	T3S3	T3S2R4	OTROS	A	B	C	K'	D
T. C. VILLAHERMOSA - FRANCISCO ESCARCEGA	0.00	3	0	802	89.8	3.7	0.5	2.3	0.9	0.2	1.5	1.1	89.8	3.7	6.5	0.100	0.508
LIM. EDOS. TERM. TAB. PPIA. CHIS.	12.00																
SALTO DEL AGUA	17.00	1	0	816	78.0	7.0	1.4	2.9	0.9	8.6	0.0	1.2	78.0	7.0	15.0	0.121	0.502

28 CARR : RAMAL A SAN ANTONIO

CLAVE: 27003

RUTA : TAB

AÑO : 2008

L U G A R	E S T A C I O N				C L A S I F I C A C I O N V E H I C U L A R E N P O R C I E N T O .												
	KM	TE	SC	TDPA	A	B	C2	C3	T3S2	T3S3	T3S2R4	OTROS	A	B	C	K'	D
T. C. VILLAHERMOSA - FRANCISCO ESCARCEGA	0.00	3	0	465	87.3	10.1	0.1	0.7	0.6	1.0	0.1	0.1	87.3	10.1	2.6	0.088	0.507
T. DER. BALANCAN	24.00	1	0	887	78.7	3.8	7.1	1.9	1.6	2.1	1.3	3.5	78.7	3.8	17.5	0.095	0.501
T. DER. BALANCAN	24.00	3	0	1517	82.6	5.3	5.3	1.1	0.9	1.2	0.9	2.7	82.6	5.3	12.1	0.108	0.502
EL TRIUNFO	72.00																

29 CARR : RAMAL A SANCHEZ MAGALLANES

CLAVE: 27016

RUTA : TAB

AÑO : 2008

L U G A R	E S T A C I O N				C L A S I F I C A C I O N V E H I C U L A R E N P O R C I E N T O .												
	KM	TE	SC	TDPA	A	B	C2	C3	T3S2	T3S3	T3S2R4	OTROS	A	B	C	K'	D
T. C. COATZACOALCOS - VILLAHERMOSA	0.00	3	0	1310	89.6	5.7	1.0	1.2	0.5	0.4	0.0	1.6	89.6	5.7	4.7	0.115	0.503
CAMPO MAGALLANES	13.00	1	0	900	82.5	4.5	5.1	4.4	1.4	1.1	0.0	1.0	82.5	4.5	13.0	0.099	0.502
CAMPO MAGALLANES	13.00	3	0	1508	79.5	3.3	5.7	8.8	1.5	1.0	0.0	0.2	79.5	3.3	17.2	0.096	0.501
SANCHEZ MAGALLANES	33.00	1	0	1137	89.9	3.2	2.4	0.6	1.3	0.6	0.6	1.4	89.9	3.2	6.9	0.110	0.511

TABASCO

30 CARR : RAMAL A TAMULTE DE LAS SABANAS

CLAVE: 27080

RUTA : TAB

AÑO : 2008

L U G A R	E S T A C I O N				C L A S I F I C A C I O N V E H I C U L A R E N P O R C I E N T O .												
	KM	TE	SC	TDPA	A	B	C2	C3	T3S2	T3S3	T3S2R4	OTROS	A	B	C	K'	D
T. C. VILLAHERMOSA - CD. DEL CARMEN	0.00	3	0	2302	92.8	2.6	2.0	0.3	1.4	0.1	0.2	0.6	92.8	2.6	4.6	0.084	0.502
TAMULTE DE LAS SABANAS	7.00																

31 CARR : RAMAL A TAPIJULAPA

CLAVE: 27200

RUTA : TAB

AÑO : 2008

L U G A R	E S T A C I O N				C L A S I F I C A C I O N V E H I C U L A R E N P O R C I E N T O .												
	KM	TE	SC	TDPA	A	B	C2	C3	T3S2	T3S3	T3S2R4	OTROS	A	B	C	K'	D
T. C. PLAYAS DEL ROSARIO - TEAPA	0.00	3	0	1802	85.1	4.0	3.3	1.8	2.4	1.5	0.7	1.2	85.1	4.0	10.9	0.099	0.505
TAPIJULAPA	20.00	1	0	1256	83.5	4.8	4.6	1.8	2.7	0.4	0.4	1.8	83.5	4.8	11.7	0.109	0.501

32 CARR : REFORMA - DOS BOCAS

CLAVE:

RUTA : TAB

AÑO : 2008

L U G A R	E S T A C I O N				C L A S I F I C A C I O N V E H I C U L A R E N P O R C I E N T O .												
	KM	TE	SC	TDPA	A	B	C2	C3	T3S2	T3S3	T3S2R4	OTROS	A	B	C	K'	D
REFORMA	0.00	3	0	11950	81.5	3.1	2.0	1.2	5.8	1.4	2.8	2.2	81.5	3.1	15.4	0.090	0.504
DOS BOCAS	53.00	1	0	6932	81.7	3.8	2.1	1.4	3.1	2.2	2.9	2.8	81.7	3.8	14.5	0.098	0.500

33 CARR : REYES HERNANDEZ - VILLA ALDAMA

CLAVE: 27119

RUTA : TAB

AÑO : 2008

L U G A R	E S T A C I O N				C L A S I F I C A C I O N V E H I C U L A R E N P O R C I E N T O .												
	KM	TE	SC	TDPA	A	B	C2	C3	T3S2	T3S3	T3S2R4	OTROS	A	B	C	K'	D
REYES HERNANDEZ	0.00	3	0	2318	79.9	4.8	2.5	0.4	4.3	1.4	3.5	3.2	79.9	4.8	15.3	0.120	0.509
T. C. (CARDENAS - PARAISO) - CARLOS GREEN	9.00	1	0	2359	73.8	5.9	3.6	0.8	5.6	4.8	3.0	2.5	73.8	5.9	20.3	0.090	0.508

34 CARR : SAMARIA - AMATITAN

CLAVE: 27114

RUTA : TAB

AÑO : 2008

L U G A R	E S T A C I O N				C L A S I F I C A C I O N V E H I C U L A R E N P O R C I E N T O .												
	KM	TE	SC	TDPA	A	B	C2	C3	T3S2	T3S3	T3S2R4	OTROS	A	B	C	K'	D
T. C. COATZACOALCOS - VILLAHERMOSA	0.00	3	0	3136	80.6	3.1	7.0	2.8	1.8	1.8	1.1	1.8	80.6	3.1	16.3	0.078	0.502
CUNDUACAN	17.00	1	0	3245	89.9	4.1	2.3	1.1	0.5	0.4	0.5	1.2	89.9	4.1	6.0	0.073	0.506
CUNDUACAN	17.00	3	0	2479	88.5	4.5	2.6	1.3	0.6	0.2	0.4	1.9	88.5	4.5	7.0	0.073	0.501
AMATITAN	31.40	1	0	4308	82.4	5.7	2.3	2.2	4.1	0.5	1.1	1.7	82.4	5.7	11.9	0.100	0.501

TABASCO

35 CARR : T. C. (CARDENAS - PARAISO) - CARLOS GREEN

CLAVE: 27111

RUTA : TAB

AÑO : 2008

L U G A R	E S T A C I O N				C L A S I F I C A C I O N V E H I C U L A R E N P O R C I E N T O .												
	KM	TE	SC	TDPA	A	B	C2	C3	T3S2	T3S3	T3S2R4	OTROS	A	B	C	K'	D
T. C. MALPASO - EL BELLOTE	0.00																
T. C. CARDENAS - PARAISO	0.00	3	0	2154	90.0	3.4	1.2	0.8	1.4	0.3	1.9	1.0	90.0	3.4	6.6	0.117	0.509
T. DER. REYES HERNANDEZ	12.50	3	0	3188	76.5	5.2	3.9	8.4	3.5	0.4	0.8	1.3	76.5	5.2	18.3	0.105	0.506
CARLOS GREEN	15.70	1	0	1447	79.9	4.7	1.0	2.5	1.5	2.6	1.1	6.7	79.9	4.7	15.4	0.129	0.500

36 CARR : T. C. (EL SUSPIRO - TENOSIQUE) - LA LIBERTAD

CLAVE: 00062

RUTA : CHIS-TAB

AÑO : 2008

L U G A R	E S T A C I O N				C L A S I F I C A C I O N V E H I C U L A R E N P O R C I E N T O .												
	KM	TE	SC	TDPA	A	B	C2	C3	T3S2	T3S3	T3S2R4	OTROS	A	B	C	K'	D
T. C. EL SUSPIRO - TENOSIQUE	0.00	3	0	1584	80.6	5.9	1.3	2.5	5.8	1.9	0.0	2.0	80.6	5.9	13.5	0.129	0.504
LIM. EDOS. TERM. TAB. PPIA. CHIS.	8.00																
LA LIBERTAD	10.00	1	0	1127	80.1	6.9	1.9	2.5	4.0	3.7	0.8	0.1	80.1	6.9	13.0	0.138	0.504

37 CARR : TIERRA NUEVA - FRANCISCO RUEDA

CLAVE: 27110

RUTA : TAB

AÑO : 2008

L U G A R	E S T A C I O N				C L A S I F I C A C I O N V E H I C U L A R E N P O R C I E N T O .												
	KM	TE	SC	TDPA	A	B	C2	C3	T3S2	T3S3	T3S2R4	OTROS	A	B	C	K'	D
TIERRA NUEVA	0.00	3	0	1468	89.9	4.2	3.6	1.4	0.4	0.1	0.3	0.1	89.9	4.2	5.9	0.095	0.504
OCUAPAN	14.00	3	0	719	77.6	4.6	7.7	3.5	2.1	1.8	1.6	1.1	77.6	4.6	17.8	0.083	0.501
T. IZQ. ENCOMENDADERO	31.00	1	0	683	83.0	5.1	8.4	1.1	0.2	1.5	0.6	0.1	83.0	5.1	11.9	0.100	0.501
T. IZQ. ENCOMENDADERO	31.00	3	0	677	84.6	5.1	8.1	0.9	0.1	0.4	0.8	0.0	84.6	5.1	10.3	0.099	0.502
FRANCISCO RUEDA	71.00	1	0	428	90.0	2.9	4.2	2.0	0.6	0.0	0.3	0.0	90.0	2.9	7.1	0.129	0.505

38 CARR : TULIPAN - CUNDUACAN

CLAVE: 27115

RUTA : TAB

AÑO : 2008

L U G A R	E S T A C I O N				C L A S I F I C A C I O N V E H I C U L A R E N P O R C I E N T O .												
	KM	TE	SC	TDPA	A	B	C2	C3	T3S2	T3S3	T3S2R4	OTROS	A	B	C	K'	D
T. C. MALPASO - BELLOTE	0.00	3	0	5453	72.8	3.4	8.2	6.4	3.6	3.0	1.1	1.5	72.8	3.4	23.8	0.100	0.547
T. DER. MOTE	14.00	1	0	6078	81.4	5.2	4.4	3.7	0.7	0.6	0.0	4.0	81.4	5.2	13.4	0.080	0.500
CUNDUACAN	15.00	1	0	3064	78.9	5.4	4.5	5.2	2.0	1.7	1.5	0.8	78.9	5.4	15.7	0.081	0.503

TABASCO

42 CARR : ZAPATERO - T. C. (JALAPA - JONUTA)

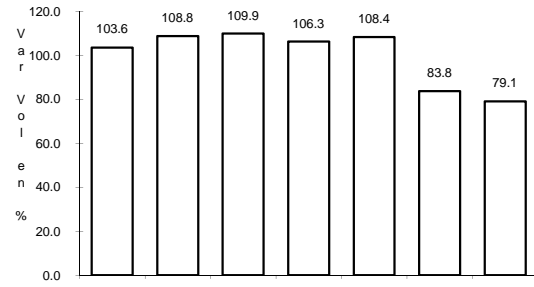
CLAVE: 00061

RUTA : CHIS-TAB

AÑO : 2008

L U G A R	E S T A C I O N				CLASIFICACION VEHICULAR EN PORCIENTO .												
	KM	TE	SC	TDPA	A	B	C2	C3	T3S2	T3S3	T3S2R4	OTROS	A	B	C	K'	D
T. C. JALAPA - JONUTA	41.00	1	0	795	94.8	0.7	3.1	0.0	0.4	0.2	0.0	0.8	94.8	0.7	4.5	0.113	0.506

1 CARR: COATZACOALCOS - VILLAHERMOSA

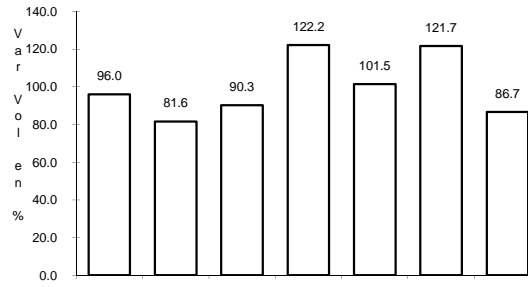


Km: 6.53

Tipo: 1

Sent: 0

CLAVE: 00528

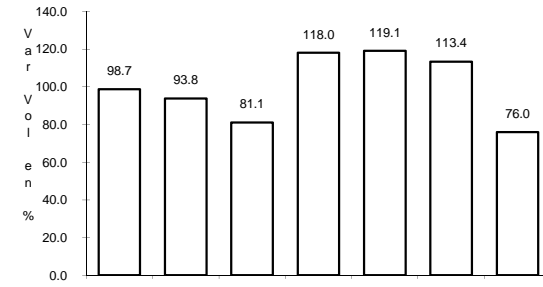


Km: 171.15

Tipo: 1

Sent: 1

RUTA: MEX-180

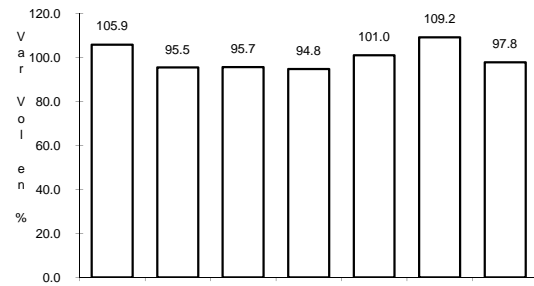


Km: 171.15

Tipo: 1

Sent: 2

2 CARR: EL SUSPIRO - TENOSIQUE

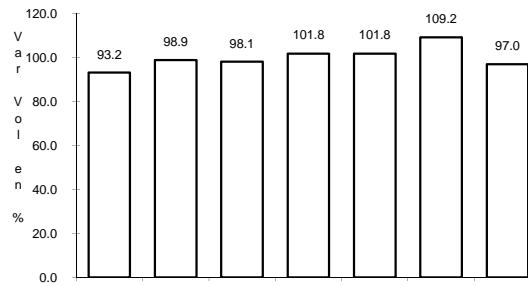


Km: 0.00

Tipo: 3

Sent: 0

CLAVE: 00276

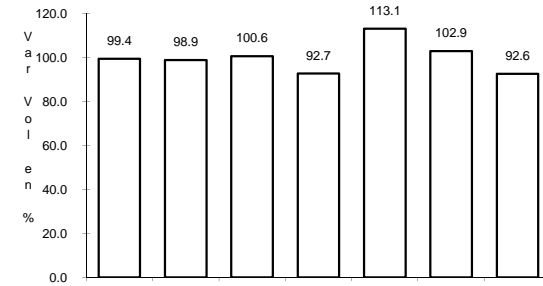


Km: 32.60

Tipo: 1

Sent: 0

RUTA: MEX-203

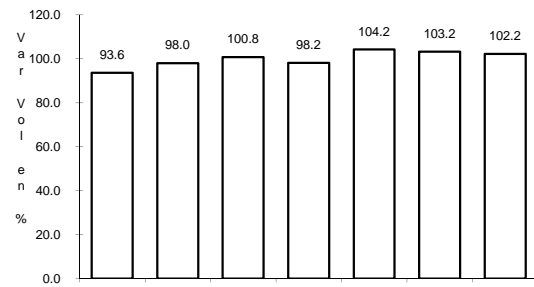


Km: 53.00

Tipo: 3

Sent: 0

3 CARR: MALPASO - EL BELLOTE

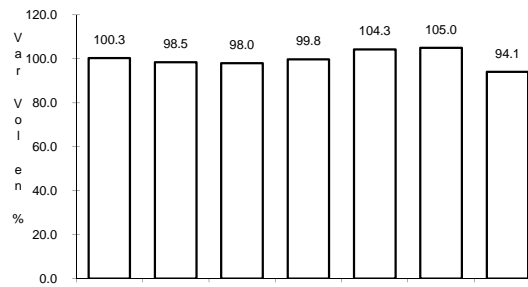


Km: 70.12

Tipo: 1

Sent: 0

CLAVE: 00137

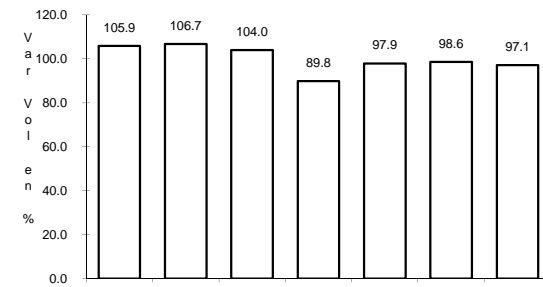


Km: 134.70

Tipo: 3

Sent: 0

RUTA: MEX-187

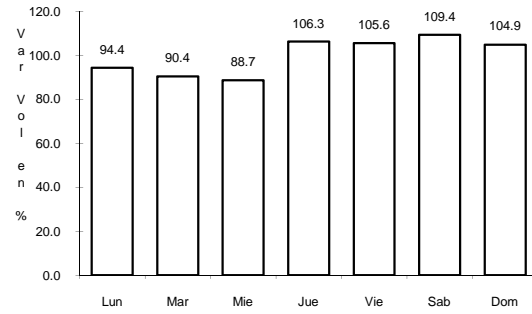


Km: 182.00

Tipo: 3

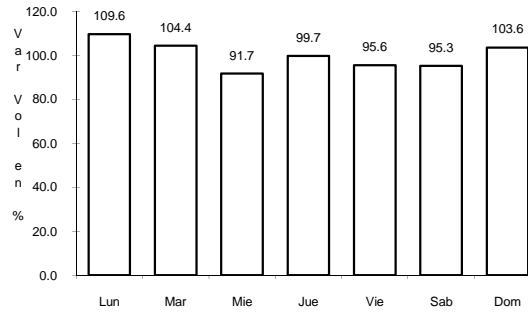
Sent: 0

4 CARR: SAN MARCO - PALIZADA



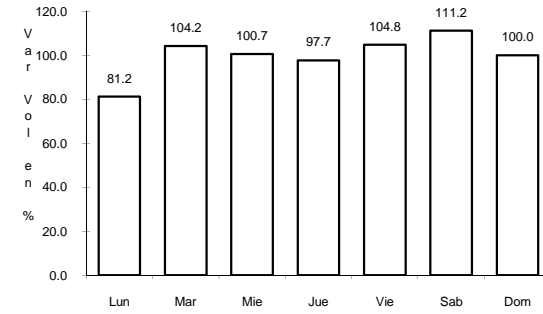
Km: 0.00 Tipo: 3 Sent: 0

CLAVE: 00490



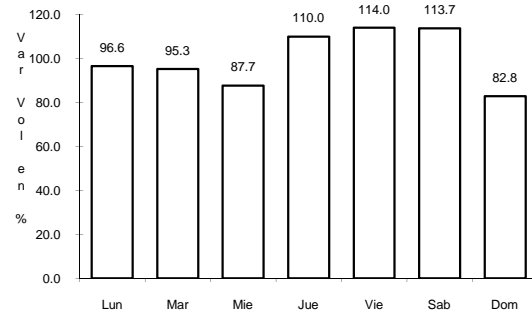
Km: 46.20 Tipo: 1 Sent: 0

ruta: MEX-217



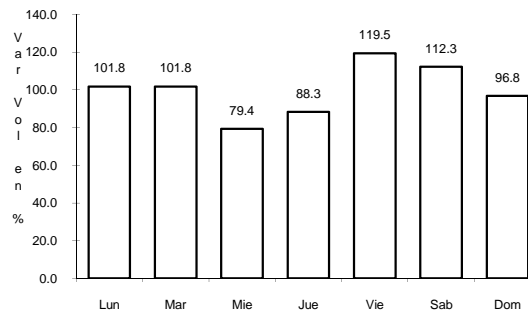
Km: 46.20 Tipo: 3 Sent: 0

5 CARR: VILLAHERMOSA - CD. DEL CARMEN



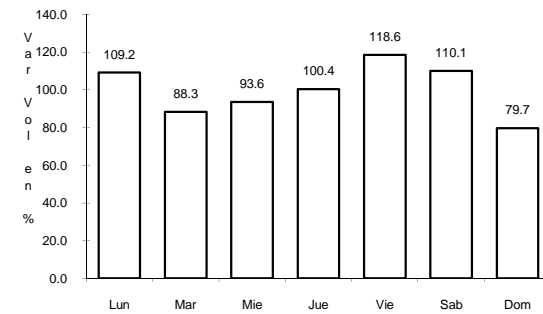
Km: 4.30 Tipo: 3 Sent: 0

CLAVE: 00064



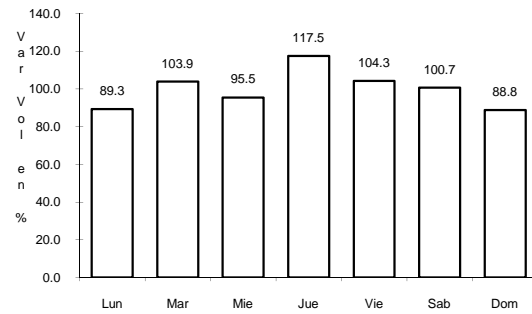
Km: 78.00 Tipo: 3 Sent: 0

ruta: MEX-180



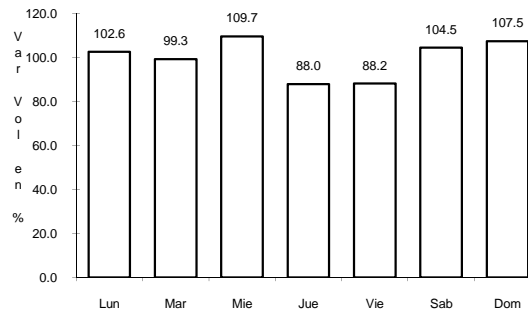
Km: 163.17 Tipo: 1 Sent: 0

6 CARR: VILLAHERMOSA - ESCOPETAZO



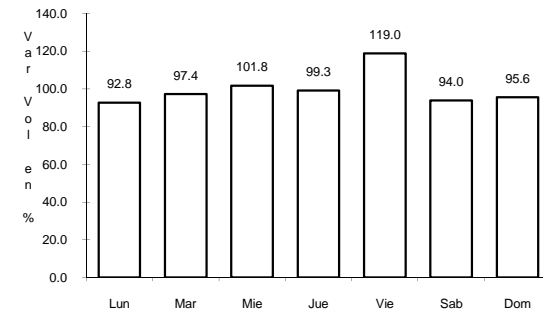
Km: 0.00 Tipo: 3 Sent: 0

CLAVE: 00104



Km: 112.00 Tipo: 3 Sent: 0

ruta: MEX-195

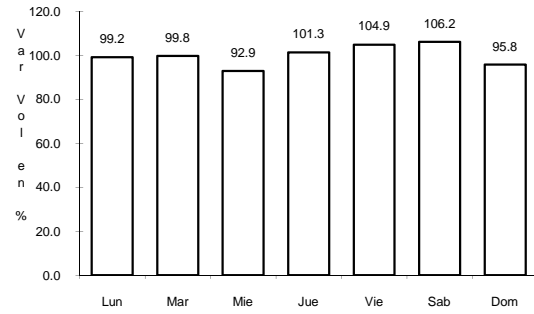


Km: 259.00 Tipo: 1 Sent: 0

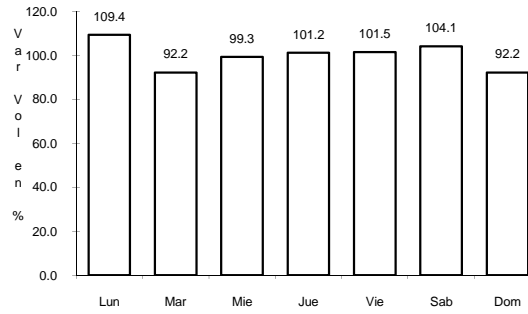
7 CARR: VILLAHERMOSA - FRANCISCO ESCARCEGA

CLAVE: 00092

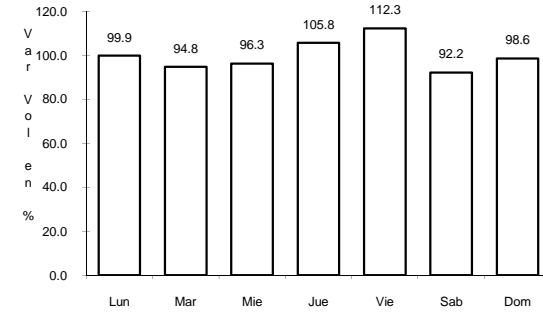
ruta: MEX-186



Km: 0.00 Tipo: 3 Sent: 1



Km: 0.00 Tipo: 3 Sent: 2

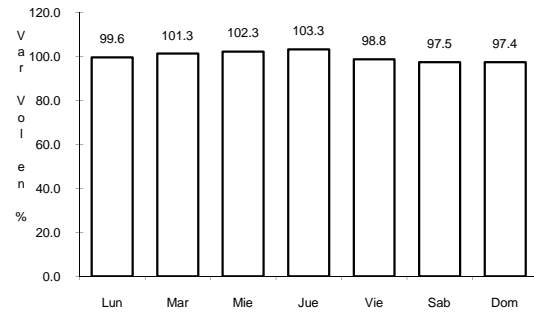


Km: 297.04 Tipo: 1 Sent: 0

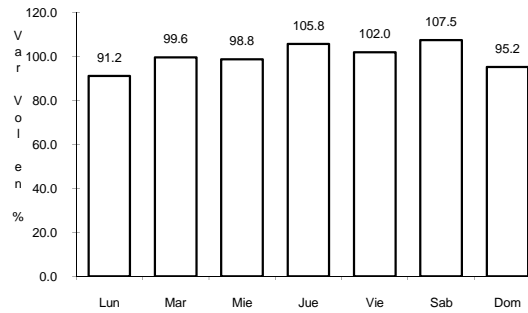
8 CARR: BENITO JUAREZ - AGUA DULCE

CLAVE: 00202

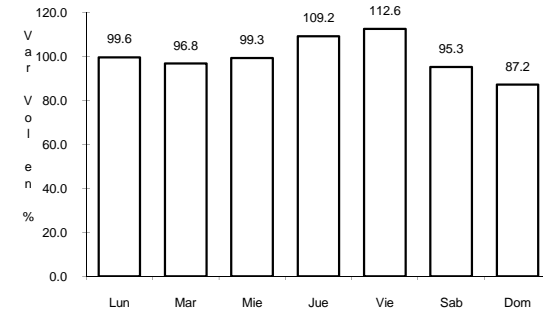
ruta: TAB-VER



Km: 0.00 Tipo: 3 Sent: 0



Km: 18.00 Tipo: 1 Sent: 0

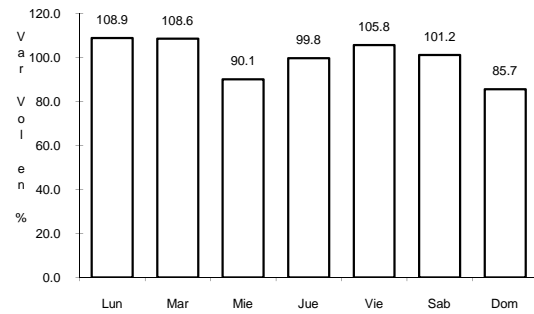


Km: 33.00 Tipo: 1 Sent: 0

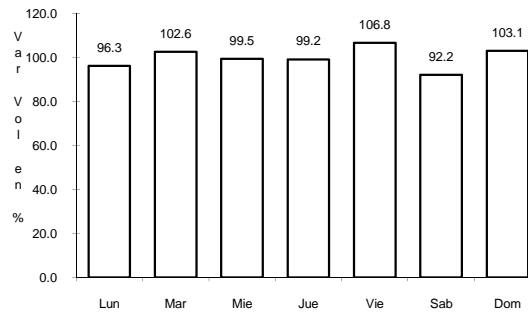
9 CARR: BENITO JUAREZ - TEPETITAN

CLAVE: 27204

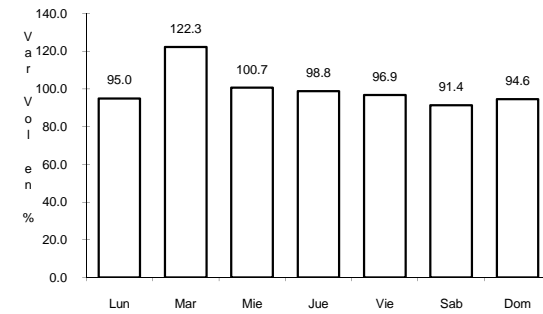
ruta: TAB



Km: 1.50 Tipo: 3 Sent: 0

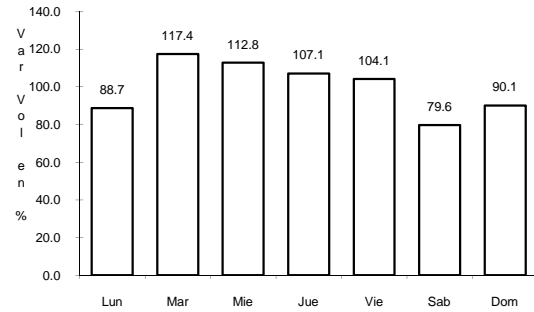


Km: 18.50 Tipo: 1 Sent: 0



Km: 20.00 Tipo: 1 Sent: 0

10 CARR: CACAOS - LA GRANJA

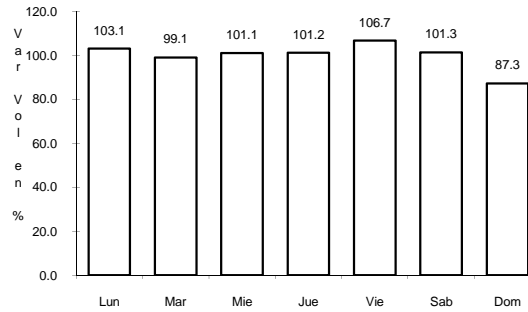


Km: 0.00

Tipo: 3

Sent: 0

CLAVE: 27002

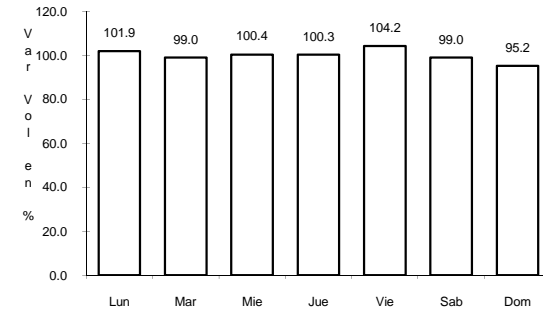


Km: 16.00

Tipo: 3

Sent: 0

RUTA: TAB

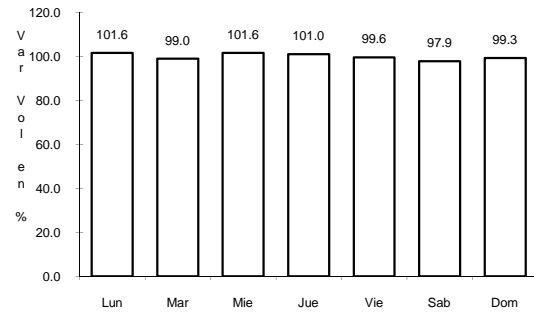


Km: 39.00

Tipo: 1

Sent: 0

11 CARR: CARDENAS - PARAISO

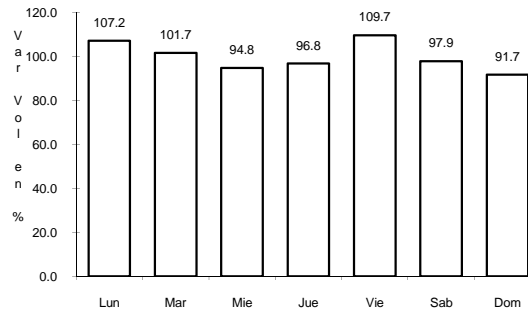


Km: 0.00

Tipo: 3

Sent: 0

CLAVE: 27117

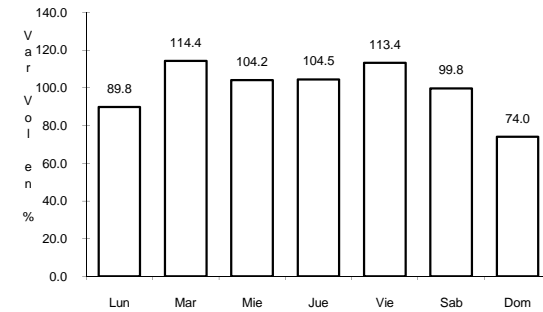


Km: 22.00

Tipo: 3

Sent: 0

RUTA: TAB

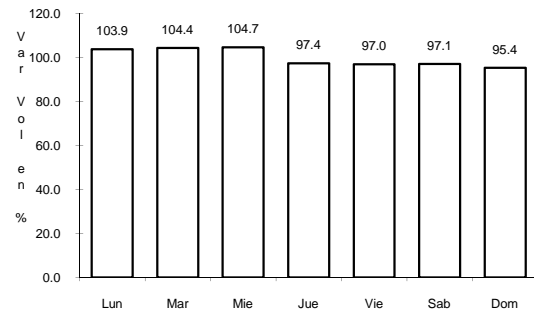


Km: 52.00

Tipo: 1

Sent: 0

12 CARR: CHICHICAPA - ENT. LA LIBERTAD

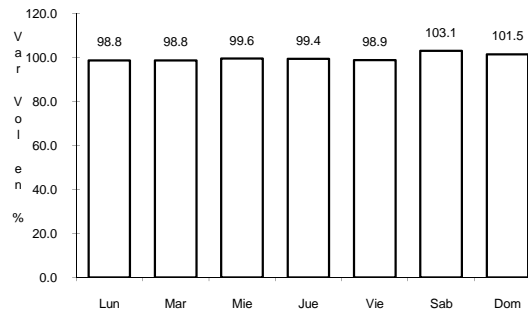


Km: 0.00

Tipo: 3

Sent: 0

CLAVE: 27100

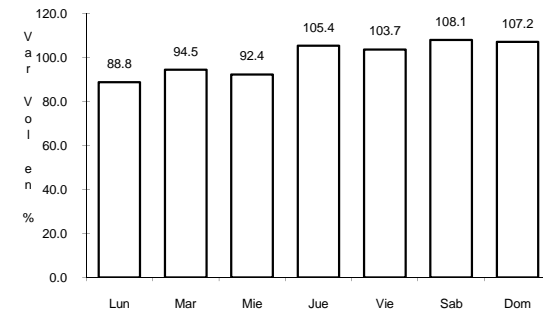


Km: 10.00

Tipo: 3

Sent: 0

RUTA: TAB



Km: 18.00

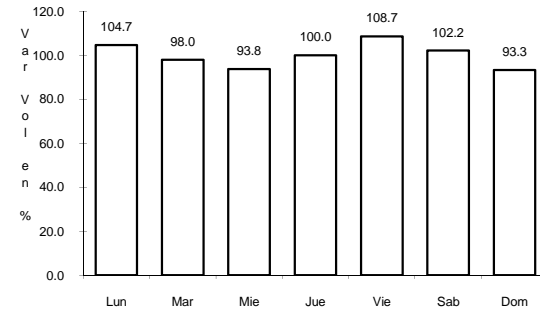
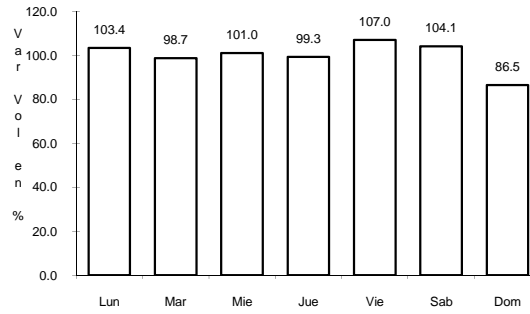
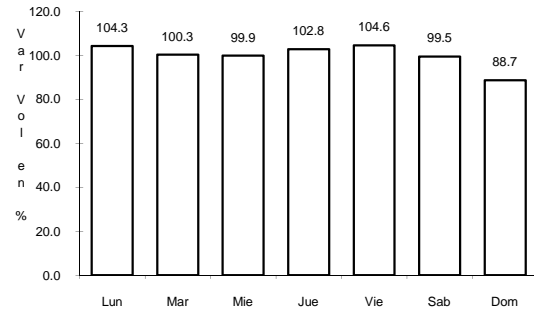
Tipo: 1

Sent: 0

13 CARR: COMALCALCO - EL GOLPE

CLAVE: 27102

RUTA: TAB



Km: 0.00 Tipo: 3 Sent: 0

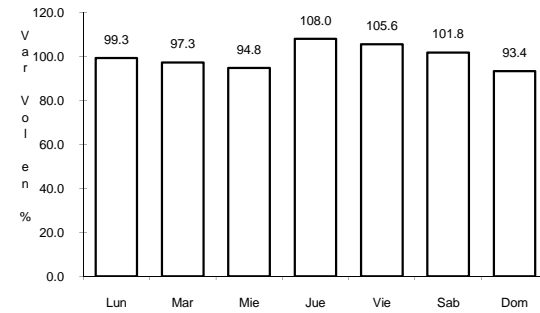
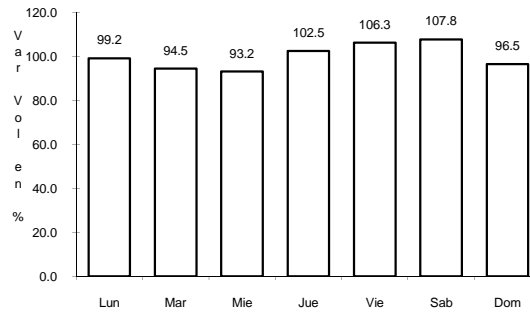
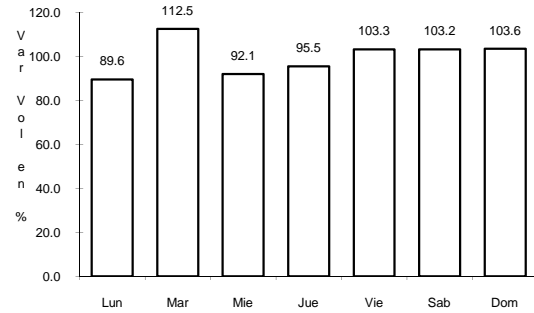
Km: 15.00 Tipo: 1 Sent: 0

Km: 34.00 Tipo: 1 Sent: 0

14 CARR: EL BELLOTE - SANTA CRUZ

CLAVE: 27105

RUTA: TAB



Km: 0.00 Tipo: 3 Sent: 0

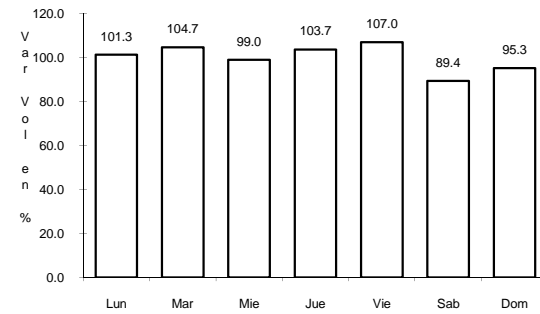
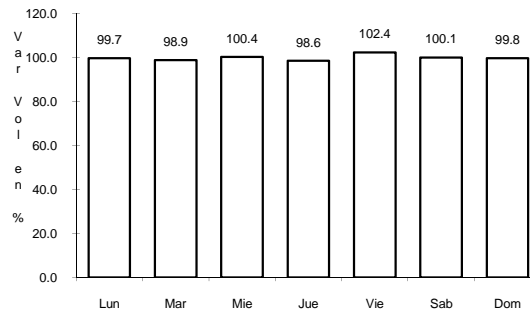
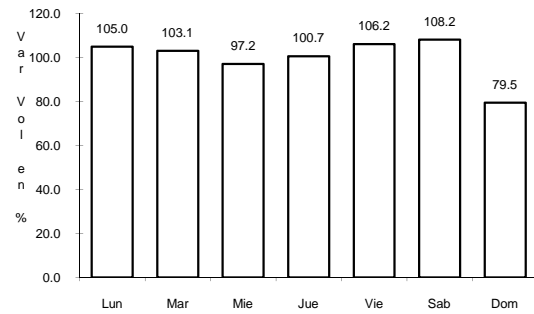
Km: 35.00 Tipo: 1 Sent: 0

Km: 40.00 Tipo: 1 Sent: 0

15 CARR: ESTACION MACUSPANA - VERNET

CLAVE: 27091

RUTA: TAB-041



Km: 11.00 Tipo: 1 Sent: 0

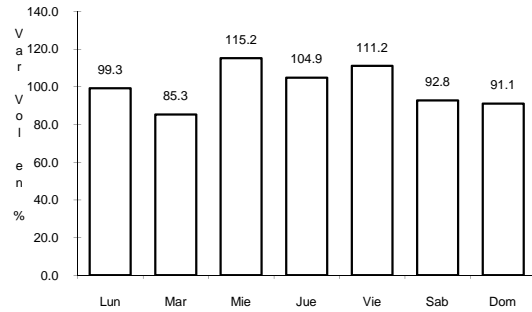
Km: 20.50 Tipo: 1 Sent: 0

Km: 32.50 Tipo: 1 Sent: 0

16 CARR: FRONTERA - T. C. (JALAPA - JONUTA)

CLAVE: 27081

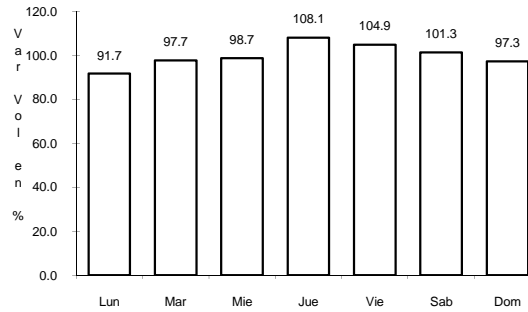
RUTA: TAB



Km: 1.00

Tipo: 3

Sent: 0



Km: 123.00

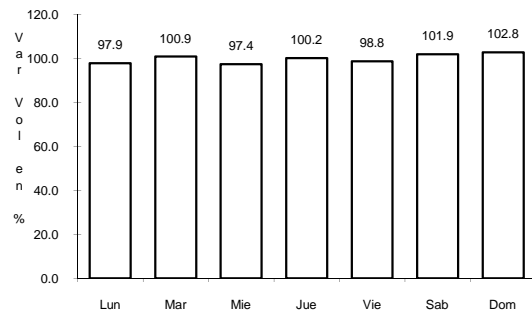
Tipo: 1

Sent: 0

17 CARR: GREGORIO MENDEZ MAGAÑA - REFORMA DE OCAMPO

CLAVE: 00103

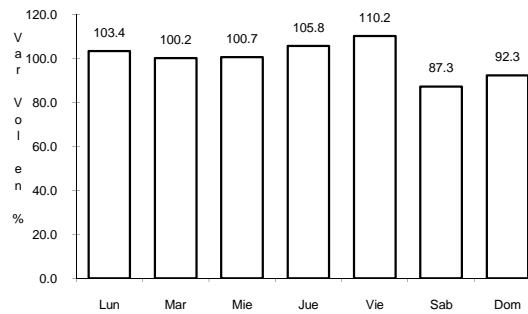
RUTA: CHIS



Km: 0.00

Tipo: 3

Sent: 0



Km: 21.00

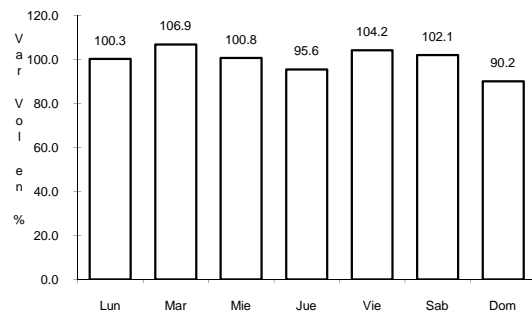
Tipo: 1

Sent: 0

18 CARR: JALAPA - JONUTA

CLAVE: 27107

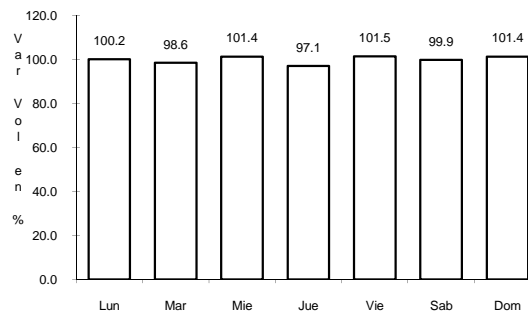
RUTA: TAB



Km: 0.00

Tipo: 3

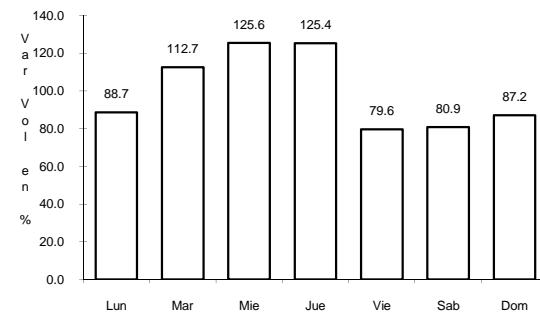
Sent: 0



Km: 39.00

Tipo: 1

Sent: 0



Km: 97.50

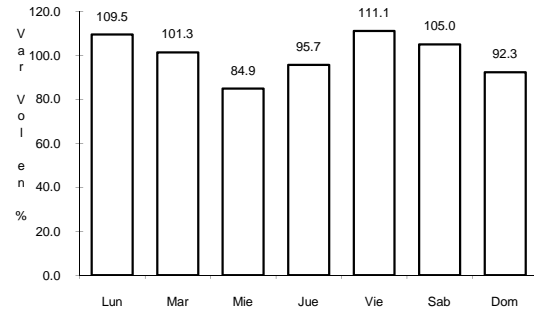
Tipo: 1

Sent: 0

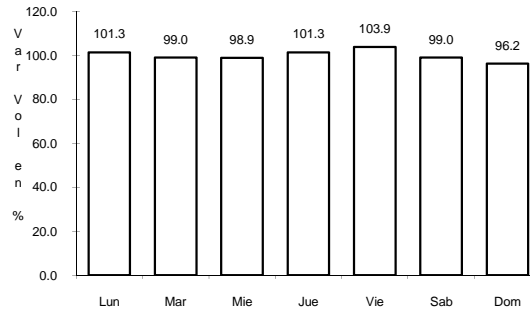
19 CARR: NICOLAS BRAVO - T. C. (EL BELLOTE - SANTA CRUZ)

CLAVE: 27010

RUTA: TAB



Km: 0.00 Tipo: 3 Sent: 0

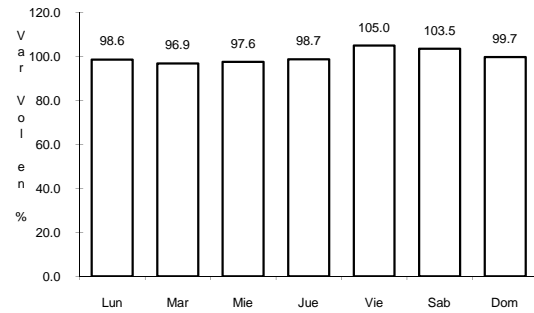


Km: 22.00 Tipo: 1 Sent: 0

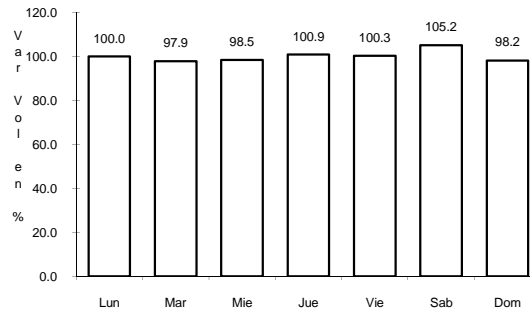
20 CARR: PALEBOT - CUAUHTEMOTZIN

CLAVE: 27112

RUTA: TAB



Km: 0.00 Tipo: 3 Sent: 0

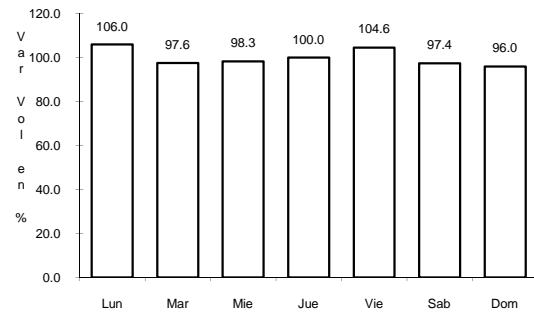


Km: 23.00 Tipo: 1 Sent: 0

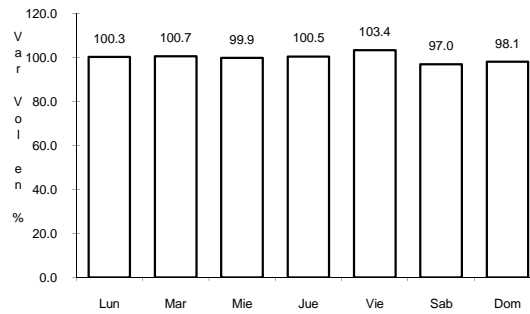
21 CARR: PARAISO - EL LIMON

CLAVE: 27108

RUTA: TAB



Km: 0.00 Tipo: 3 Sent: 0

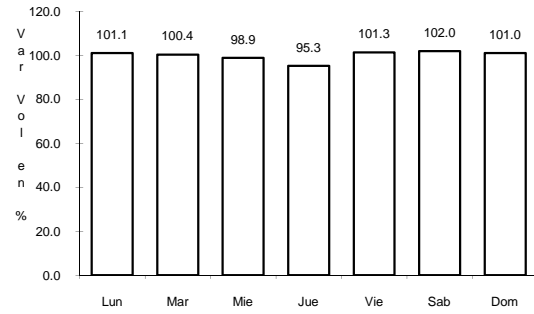


Km: 6.00 Tipo: 1 Sent: 0

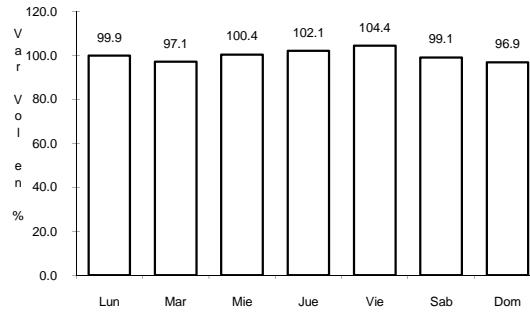
22 CARR: PASO DE CUNDUACAN - ESTACION JUAREZ

CLAVE: 00588

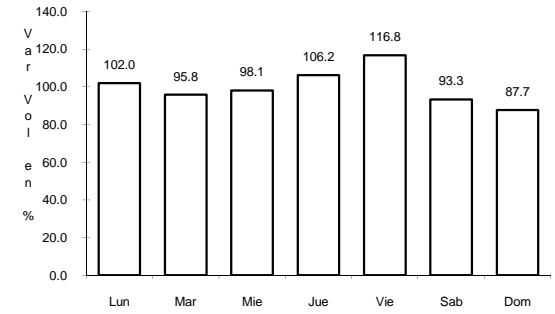
ruta: TAB-CHIS



Km: 0.00 Tipo: 3 Sent: 0



Km: 18.00 Tipo: 3 Sent: 0

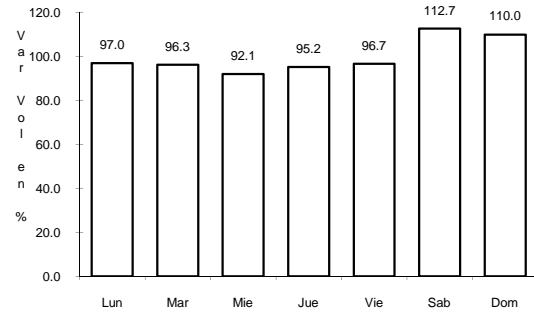


Km: 57.80 Tipo: 1 Sent: 0

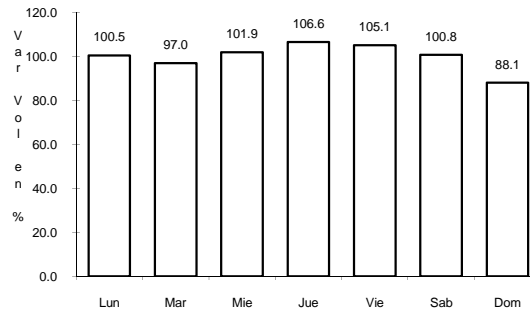
23 CARR: PLAYAS DEL ROSARIO - TEAPA

CLAVE: 27203

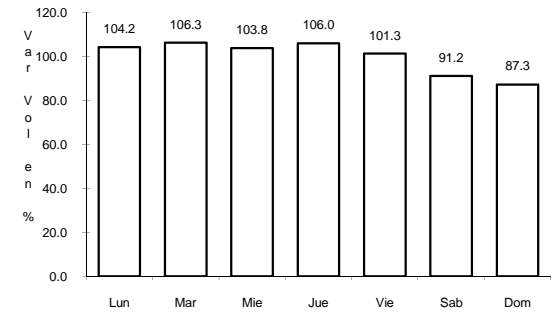
ruta: TAB-001



Km: 0.00 Tipo: 3 Sent: 0



Km: 39.00 Tipo: 1 Sent: 0

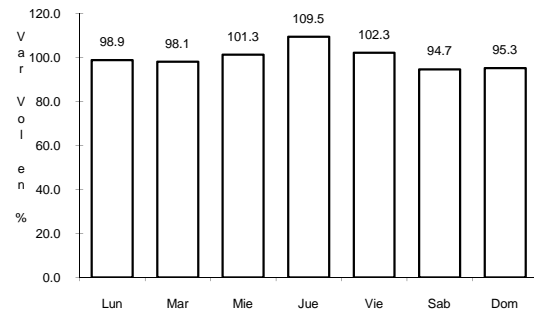


Km: 54.00 Tipo: 1 Sent: 0

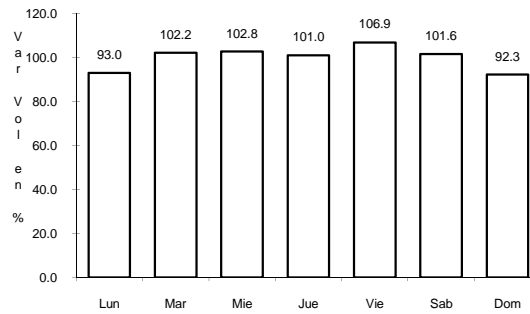
24 CARR: RAMAL A BALANCAN

CLAVE: 27078

ruta: TAB



Km: 0.00 Tipo: 3 Sent: 0

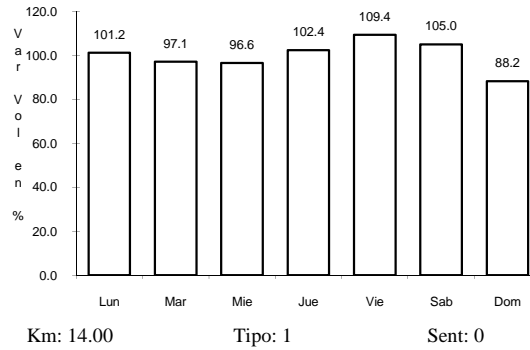
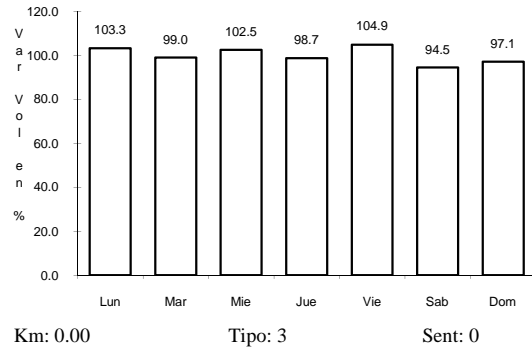


Km: 24.00 Tipo: 1 Sent: 0

25 CARR: RAMAL A LAZARO CARDENAS

CLAVE: 27208

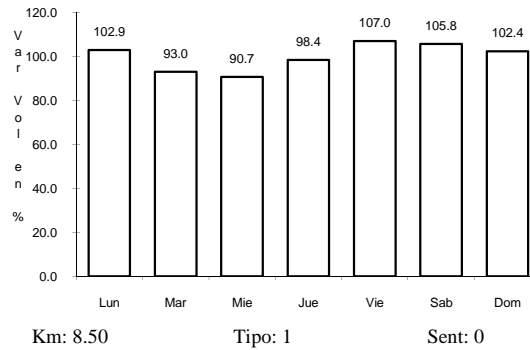
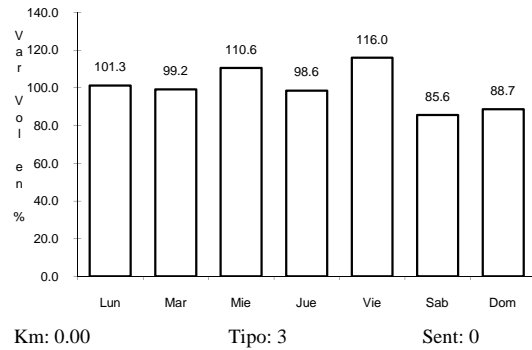
RUTA: TAB



26 CARR: RAMAL A LIBERTAD

CLAVE: 27205

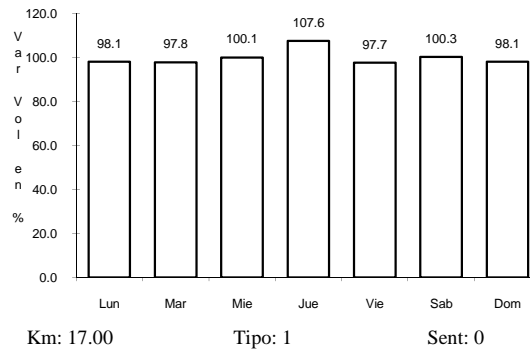
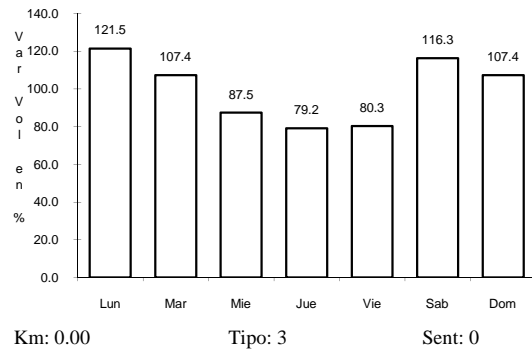
RUTA: TAB



27 CARR: RAMAL A SALTO DEL AGUA

CLAVE: 00069

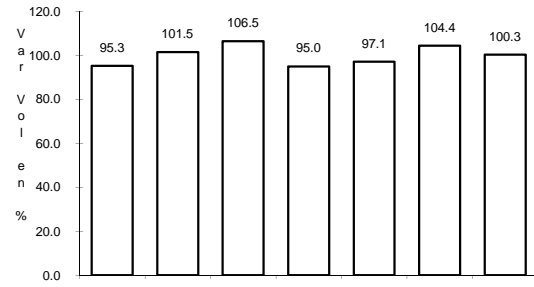
RUTA: TAB-CHIS



31 CARR: RAMAL A TAPIJULAPA

CLAVE: 27200

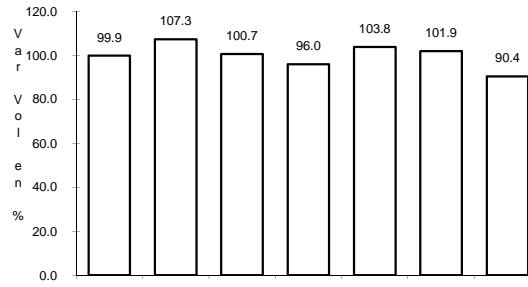
RUTA: TAB



Km: 0.00

Tipo: 3

Sent: 0



Km: 20.00

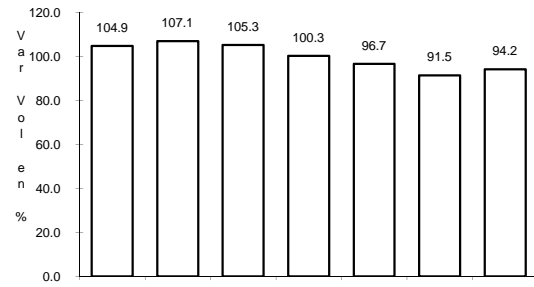
Tipo: 1

Sent: 0

32 CARR: REFORMA - DOS BOCAS

CLAVE:

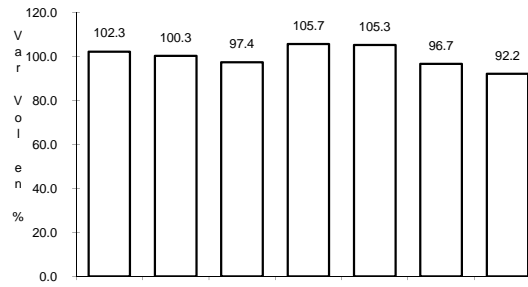
RUTA: TAB



Km: 0.00

Tipo: 3

Sent: 0



Km: 53.00

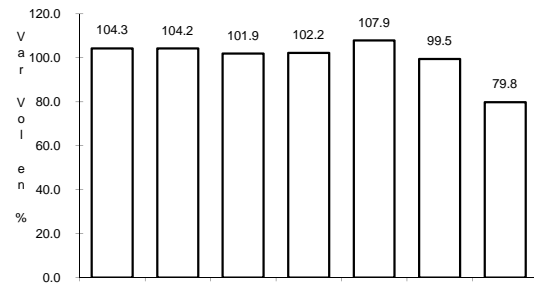
Tipo: 1

Sent: 0

33 CARR: REYES HERNANDEZ - VILLA ALDAMA

CLAVE: 27119

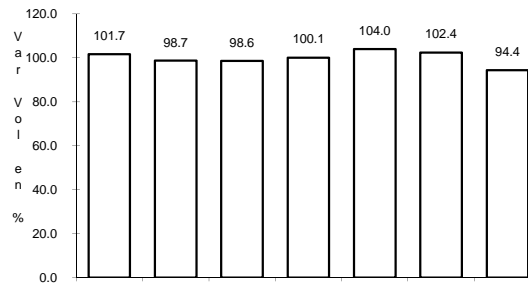
RUTA: TAB



Km: 0.00

Tipo: 3

Sent: 0



Km: 9.00

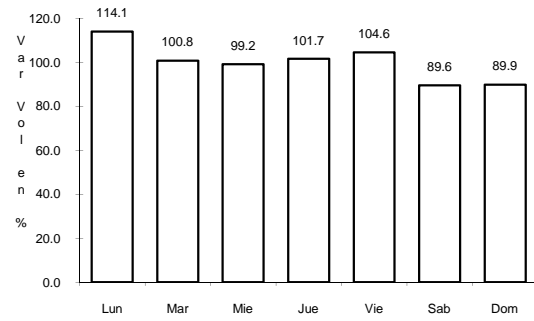
Tipo: 1

Sent: 0

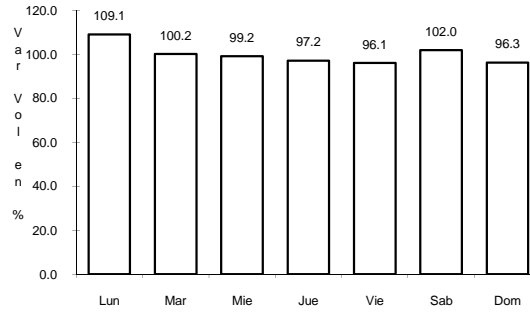
34 CARR: SAMARIA - AMATITAN

CLAVE: 27114

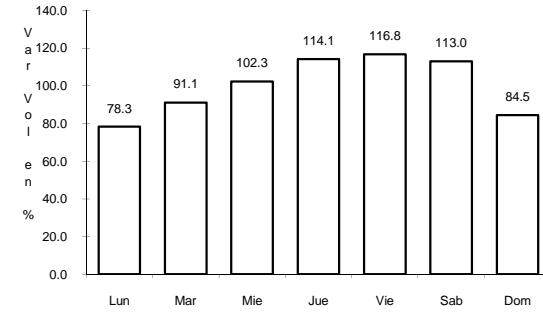
RUTA: TAB



Km: 0.00 Tipo: 3 Sent: 0



Km: 17.00 Tipo: 1 Sent: 0

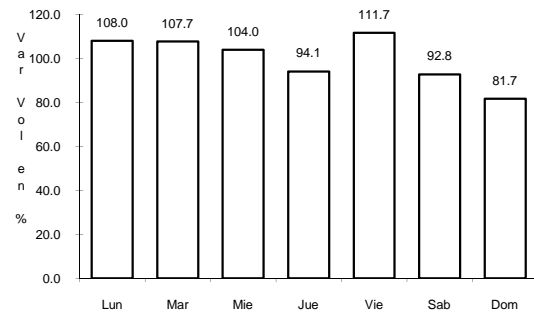


Km: 31.40 Tipo: 1 Sent: 0

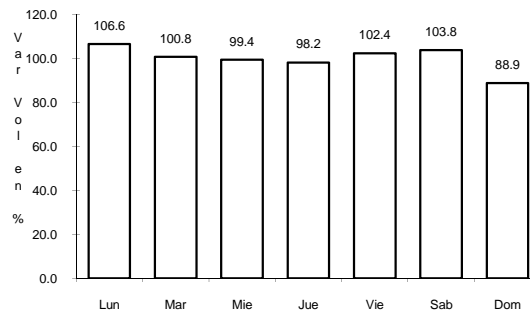
35 CARR: T. C. (CARDENAS - PARAISO) - CARLOS GREEN

CLAVE: 27111

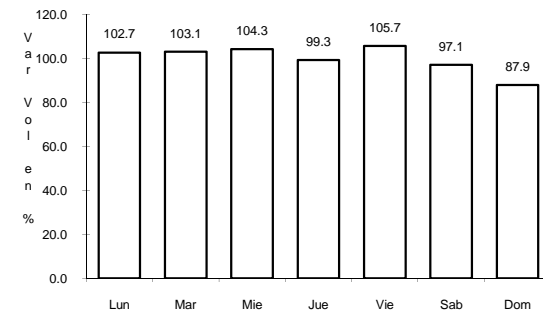
RUTA: TAB



Km: 0.00 Tipo: 3 Sent: 0



Km: 12.50 Tipo: 3 Sent: 0

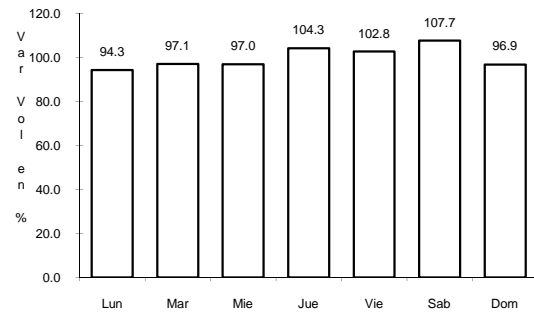


Km: 15.70 Tipo: 1 Sent: 0

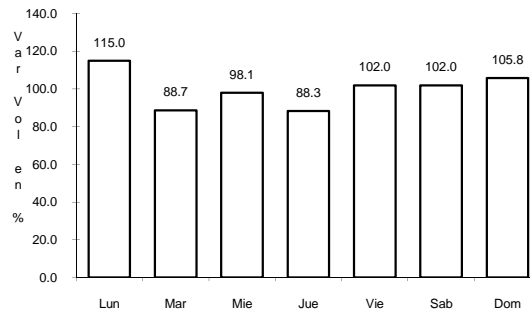
36 CARR: T. C. (EL SUSPIRO - TENOSIQUE) - LA LIBERTAD

CLAVE: 00062

RUTA: CHIS-TAB



Km: 0.00 Tipo: 3 Sent: 0

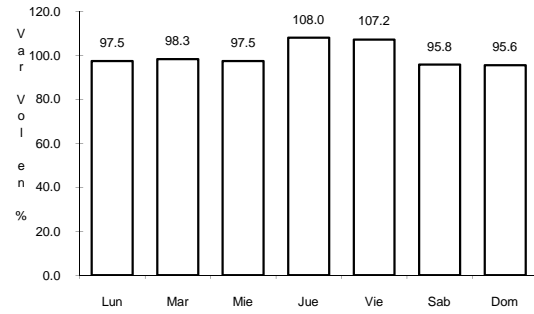


Km: 10.00 Tipo: 1 Sent: 0

37 CARR: TIERRA NUEVA - FRANCISCO RUEDA

CLAVE: 27110

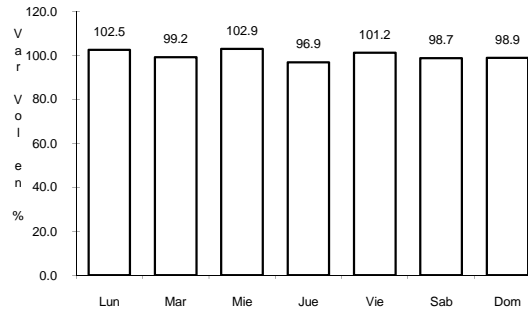
RUTA: TAB



Km: 0.00

Tipo: 3

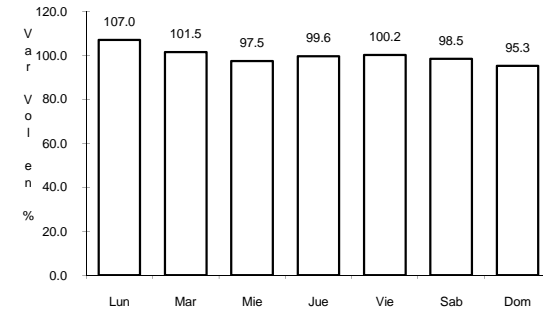
Sent: 0



Km: 31.00

Tipo: 1

Sent: 0



Km: 71.00

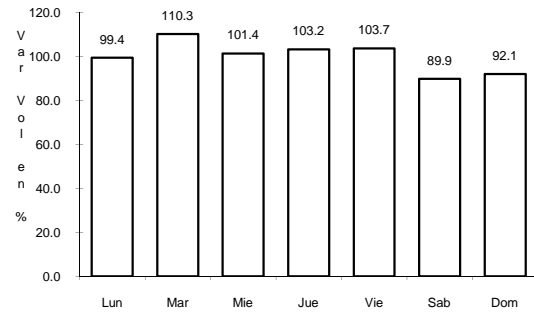
Tipo: 1

Sent: 0

38 CARR: TULIPAN - CUNDUACAN

CLAVE: 27115

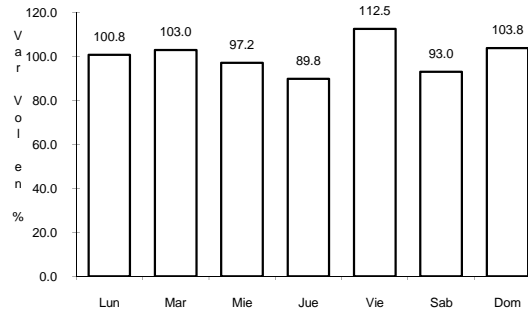
RUTA: TAB



Km: 0.00

Tipo: 3

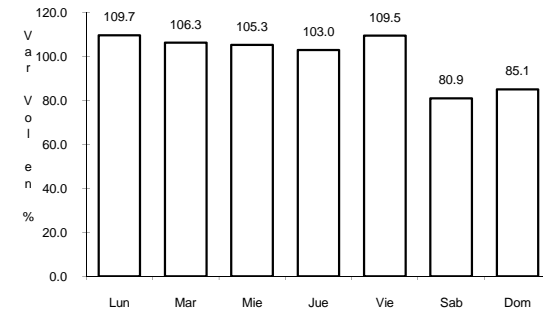
Sent: 0



Km: 14.00

Tipo: 1

Sent: 0



Km: 15.00

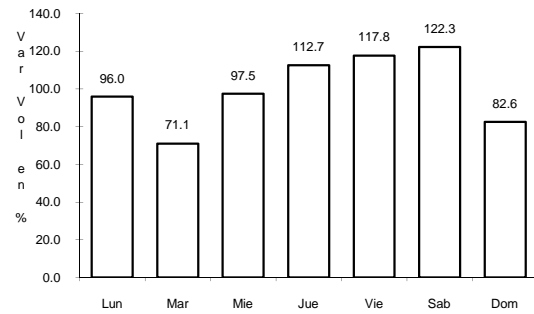
Tipo: 1

Sent: 0

39 CARR: VILLAHERMOSA - COMALCALCO

CLAVE: 27021

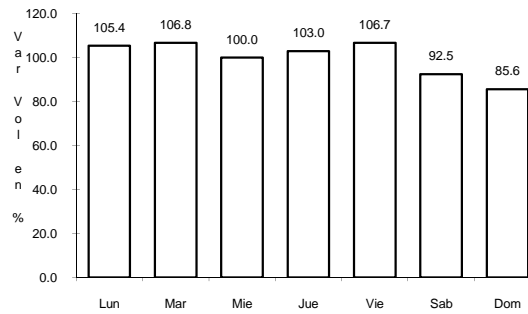
RUTA: TAB



Km: 0.00

Tipo: 3

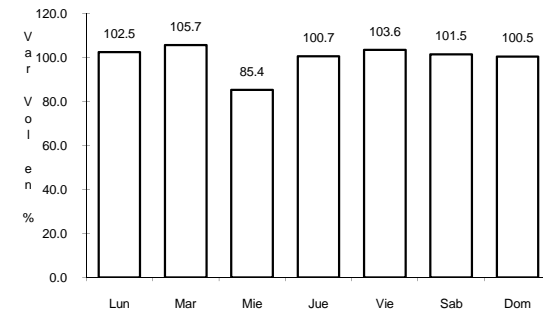
Sent: 1



Km: 0.00

Tipo: 3

Sent: 2



Km: 50.70

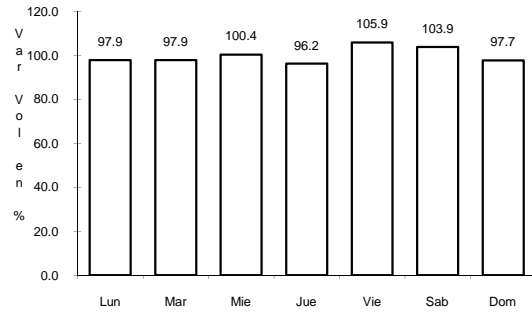
Tipo: 1

Sent: 0

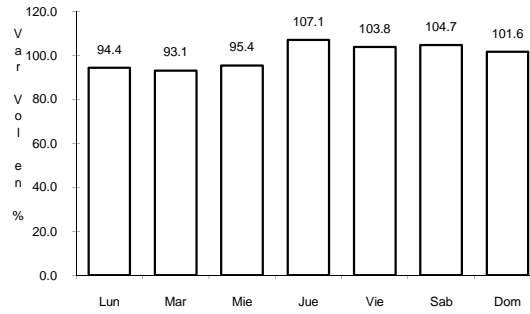
40 CARR: VILLAHERMOSA - LUIS GIL PEREZ

CLAVE: 27206

RUTA: TAB



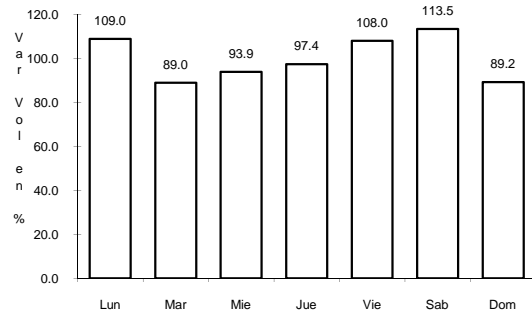
Km: 0.00 Tipo: 3 Sent: 0



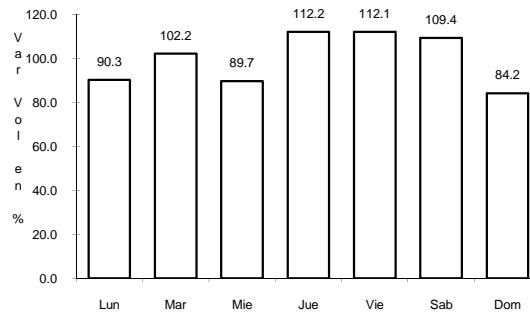
Km: 22.00 Tipo: 1 Sent: 0

41 CARR: VILLAHERMOSA - T. C. (P. DE CUNDUACAN - ESTACION JUA CLAVE: 27106

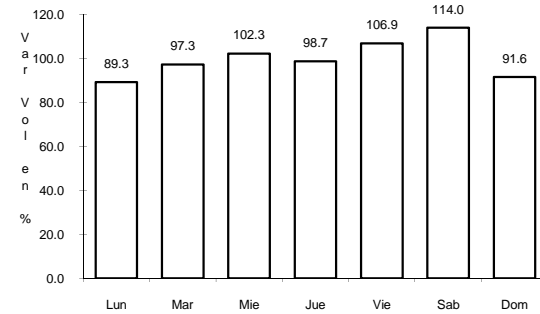
RUTA: TAB



Km: 0.00 Tipo: 3 Sent: 0



Km: 19.00 Tipo: 3 Sent: 0

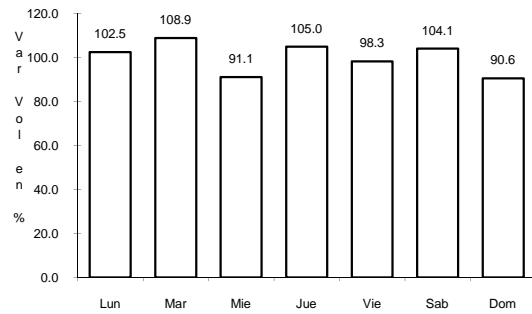


Km: 25.20 Tipo: 1 Sent: 0

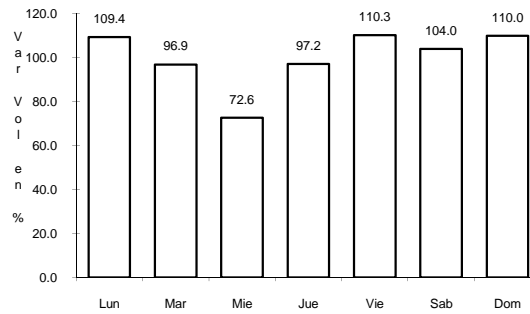
42 CARR: ZAPATERO - T. C. (JALAPA - JONUTA)

CLAVE: 00061

RUTA: CHIS-TAB



Km: 0.00 Tipo: 3 Sent: 0



Km: 41.00 Tipo: 1 Sent: 0