

BAJA CALIFORNIA

No. INDICE	CARRETERA	RUTA
---- RED FEDERAL LIBRE ----		
1	ENSENADA - EL CHINERO	MEX-003
2	ENSENADA - LAZARO CARDENAS	MEX-001
3	LAZARO CARDENAS - PUNTA PRIETA	MEX-001
4	MEXICALI - SAN FELIPE	MEX-005
5	MEXICALI - TIJUANA	MEX-002
6	PARADOR PUNTA PRIETA - BAHIA DE LOS ANGELES	MEX-012
7	PUNTA PRIETA - GUERRERO NEGRO	MEX-001
8	RAMAL A AEROPUERTO DE MEXICALI	MEX
9	RAMAL A SANTA MARIA	MEX
10	SAN FELIPE - CHAPALA	MEX-005
11	SONOITA - MEXICALI	MEX-002
12	TECATE - EL SAUZAL	MEX-003
13	TIJUANA - ENSENADA (LIBRE)	MEX-001
---- RED FEDERAL DE CUOTA ----		
14	LIBRAMIENTO MEXICALI (CUOTA)	MEX-D
15	MEXICALI - TIJUANA (CUOTA)	MEX-002D
16	TIJUANA - SAN MIGUEL (CUOTA)	MEX-001D
---- RED ESTATAL LIBRE ----		
17	ALGODONES - ISLAS AGRARIAS GRUPO B	BC-008
18	EJIDO BENITO JUAREZ - EJIDO CHIAPAS	BC-061
19	EJIDO MONTERREY - MAZON	BC-003
20	EL FARO - ESTACION COAHUILA	BC-004
21	LA PUERTA - T. C. (MEXICALI - ESTACION COAHUILA)	BC-010
22	MEXICALI - ALGODONES	BC-002
23	MEXICALI - ESTACION COAHUILA	BC-001
24	MEXICALI - PROGRESO	BC-005
25	SANTA ROSA - ENT. PACHUCA	BC-006

BAJA CALIFORNIA

3 CARR : LAZARO CARDENAS - PUNTA PRIETA

CLAVE: 02319

RUTA : MEX-001

AÑO : 2009

L U G A R	E S T A C I O N				C L A S I F I C A C I O N V E H I C U L A R E N P O R C I E N T O .												
	KM	TE	SC	TDPA	A	B	C2	C3	T3S2	T3S3	T3S2R4	OTROS	A	B	C	K'	D
LAZARO CARDENAS	0.00	3	0	10100	81.3	3.1	6.1	2.5	3.2	1.6	0.9	1.3	81.3	3.1	15.6	0.073	
ROSARIO DE ARRIBA	53.70	1	0	2587	83.3	3.0	3.7	1.8	5.1	1.9	0.9	0.3	83.3	3.0	13.7	0.071	
ROSARIO DE ARRIBA	53.70	3	0	4117	86.0	2.5	4.0	2.5	2.8	1.0	0.8	0.4	86.0	2.5	11.5	0.078	
T. DER. EMILIANO ZAPATA	80.00	3	0	1199	83.8	3.1	6.7	1.4	2.5	0.8	1.4	0.3	83.8	3.1	13.1	0.074	
SAN AGUSTIN	140.00	1	0	1565	82.8	2.8	4.9	1.9	4.1	2.1	1.2	0.2	82.8	2.8	14.4	0.070	
SAN AGUSTIN	140.00	3	0	1252	81.9	2.5	5.3	2.4	3.4	1.4	2.8	0.3	81.9	2.5	15.6	0.073	
SAN LUIS	173.00	1	0	1491	87.5	1.8	4.1	1.9	2.6	0.6	1.4	0.1	87.5	1.8	10.7	0.073	
RANCHO CHAPALA	222.80	1	0	1575	84.0	4.7	4.6	2.6	1.5	0.5	2.0	0.1	84.0	4.7	11.3	0.072	
PARADOR PUNTA PRIETA	275.70	1	0	1422	84.0	3.9	5.6	2.0	2.7	0.6	0.8	0.4	84.0	3.9	12.1	0.076	

4 CARR : MEXICALI - SAN FELIPE

CLAVE: 02096

RUTA : MEX-005

AÑO : 2009

L U G A R	E S T A C I O N				C L A S I F I C A C I O N V E H I C U L A R E N P O R C I E N T O .												
	KM	TE	SC	TDPA	A	B	C2	C3	T3S2	T3S3	T3S2R4	OTROS	A	B	C	K'	D
MEXICALI	0.00	3	1	14546	82.3	3.2	4.7	2.3	3.6	2.2	1.1	0.6	82.3	3.2	14.5	0.075	0.516
MEXICALI	0.00	3	2	15535	80.2	3.3	5.2	3.1	4.0	2.6	0.6	1.0	80.2	3.3	16.5	0.085	0.516
LA PUERTA	32.00	1	1	5325	79.7	4.8	5.0	1.8	4.5	2.0	1.5	0.7	79.7	4.8	15.5	0.085	0.504
LA PUERTA	32.00	1	2	5403	81.7	4.0	5.7	2.1	3.5	1.7	0.6	0.7	81.7	4.0	14.3	0.092	0.504
T. IZQ. ESTACION COAHUILA	39.00	1	1	3652	82.1	4.6	3.7	2.3	3.3	2.1	1.6	0.3	82.1	4.6	13.3	0.096	0.514
T. IZQ. ESTACION COAHUILA	39.00	1	2	3866	82.7	4.4	4.1	2.5	3.9	1.2	0.9	0.3	82.7	4.4	12.9	0.093	0.514
T. IZQ. ESTACION COAHUILA	39.00	3	0	4240	84.1	2.5	4.3	1.9	3.3	1.4	1.7	0.8	84.1	2.5	13.4	0.084	
EL CHINERO	141.00	1	0	2705	82.6	3.0	5.2	2.1	3.3	1.9	1.3	0.6	82.6	3.0	14.4	0.099	
EL CHINERO	141.00	3	0	2386	84.5	4.2	5.0	2.4	1.7	0.8	1.4	0.0	84.5	4.2	11.3	0.096	
SAN FELIPE	189.60	1	0	7069	86.3	4.5	4.3	1.9	1.9	0.5	0.4	0.2	86.3	4.5	9.2	0.085	

5 CARR : MEXICALI - TIJUANA

CLAVE: 02082

RUTA : MEX-002

AÑO : 2009

L U G A R	E S T A C I O N				C L A S I F I C A C I O N V E H I C U L A R E N P O R C I E N T O .												
	KM	TE	SC	TDPA	A	B	C2	C3	T3S2	T3S3	T3S2R4	OTROS	A	B	C	K'	D
MEXICALI	0.00																
COLONIA PROGRESO	7.80	3	1	8070	82.0	3.9	4.0	2.6	4.5	1.3	0.8	0.9	82.0	3.9	14.1	0.084	0.505
COLONIA PROGRESO	7.80	3	2	8246	79.6	4.1	4.9	2.6	5.6	1.3	0.7	1.2	79.6	4.1	16.3	0.117	0.505
LAGUNA SALADA	25.00	1	1	6728	79.7	2.9	4.8	1.5	5.6	2.8	1.9	0.8	79.7	2.9	17.4	0.100	0.501
LAGUNA SALADA	25.00	1	2	6749	81.2	3.8	4.7	1.6	5.4	1.8	0.7	0.8	81.2	3.8	15.0	0.122	0.501
LA RUMOROSA	67.60	1	0	6697	73.2	3.8	7.2	2.6	7.4	3.7	1.3	0.8	73.2	3.8	23.0	0.112	

BAJA CALIFORNIA

12 CARR : TECATE - EL SAUZAL

CLAVE: 02097

RUTA : MEX-003

AÑO : 2009

L U G A R	E S T A C I O N				C L A S I F I C A C I O N V E H I C U L A R E N P O R C I E N T O .												
	KM	TE	SC	TDPA	A	B	C2	C3	T3S2	T3S3	T3S2R4	OTROS	A	B	C	K'	D
TECATE	0.00	3	0	8778	82.2	3.6	6.6	1.4	3.7	1.1	1.0	0.4	82.2	3.6	14.2	0.086	
T. DER. VALLE DE LAS PALMAS	27.80	1	0	4221	83.9	2.9	4.7	1.3	5.0	1.3	0.7	0.2	83.9	2.9	13.2	0.093	
EL TEZTERAZO	48.80	3	0	3268	78.1	2.9	4.8	1.7	8.5	2.6	0.8	0.6	78.1	2.9	19.0	0.118	
T. IZQ. SAN MARCOS	63.50	1	0	2551	78.4	3.1	7.9	1.2	5.5	2.3	1.0	0.6	78.4	3.1	18.5	0.118	
EL PORVENIR GUADALUPE	74.80	3	0	3573	84.1	2.9	5.4	1.3	3.7	1.2	0.6	0.8	84.1	2.9	13.0	0.109	
LAS PALMAS	85.00	1	0	4762	79.6	3.4	7.0	1.3	5.1	1.5	1.2	0.9	79.6	3.4	17.0	0.118	
SAN ANTONIO DE LAS MINAS	93.90	1	0	6377	82.0	2.4	7.3	1.9	3.9	1.2	0.7	0.6	82.0	2.4	15.6	0.121	
EL SAUZAL	104.50	1	0	7168	82.3	2.7	6.6	2.2	3.7	1.0	0.6	0.9	82.3	2.7	15.0	0.084	

13 CARR : TIJUANA - ENSENADA (LIBRE)

CLAVE: 02099

RUTA : MEX-001

AÑO : 2009

L U G A R	E S T A C I O N				C L A S I F I C A C I O N V E H I C U L A R E N P O R C I E N T O .												
	KM	TE	SC	TDPA	A	B	C2	C3	T3S2	T3S3	T3S2R4	OTROS	A	B	C	K'	D
TIJUANA	0.00																
X. C. TIJUANA - SAN MIGUEL (CUOTA)	22.00	1	1	23395	81.7	4.9	5.8	2.7	1.9	1.2	0.9	0.9	81.7	4.9	13.4	0.074	0.515
X. C. TIJUANA - SAN MIGUEL (CUOTA)	22.00	1	2	24813	81.9	5.0	5.7	1.9	1.7	1.4	1.4	1.0	81.9	5.0	13.1	0.071	0.515
ROSARITO	25.94	1	1	15985	79.9	4.5	5.5	2.9	2.5	1.4	1.7	1.6	79.9	4.5	15.6	0.077	0.525
ROSARITO	25.94	1	2	17669	80.0	4.6	5.8	3.3	2.3	1.9	1.1	1.0	80.0	4.6	15.4	0.077	0.525
ROSARITO	25.94	3	0	13716	79.4	4.7	5.2	3.1	3.6	1.5	1.4	1.1	79.4	4.7	15.9	0.094	
T. IZQ. AUTOPISTA	46.12	1	0	8965	88.9	2.0	3.0	1.4	2.4	1.0	0.8	0.5	88.9	2.0	9.1	0.096	
POBLACION PLAZA SANTA MARIA	56.98	1	0	3411	88.1	2.2	3.3	1.8	2.5	0.8	0.9	0.4	88.1	2.2	9.7	0.114	
LA MISION	64.98	1	0	3263	86.8	2.7	3.8	2.4	1.9	0.8	1.2	0.4	86.8	2.7	10.5	0.093	
T. IZQ. COLONIA GUADALUPE	82.90	1	0	3177	87.6	1.8	3.7	1.2	3.4	1.2	0.6	0.5	87.6	1.8	10.6	0.104	
ENT. SAN MIGUEL	95.80	1	0	2849	86.1	2.8	4.9	1.3	2.2	1.3	1.1	0.3	86.1	2.8	11.1	0.094	
EL SAUZAL	102.00	3	1	12570	79.6	2.4	6.8	2.1	3.5	1.2	2.0	2.4	79.6	2.4	18.0	0.091	0.503
EL SAUZAL	102.00	3	2	12430	79.4	3.3	7.8	1.7	4.1	1.9	0.9	0.9	79.4	3.3	17.3	0.078	0.503
ENSENADA	110.00																

14 CARR : LIBRAMIENTO MEXICALI (CUOTA)

CLAVE:

RUTA : MEX-D

AÑO : 2009

L U G A R	E S T A C I O N				C L A S I F I C A C I O N V E H I C U L A R E N P O R C I E N T O .												
	KM	TE	SC	TDPA	A	B	C2	C3	T3S2	T3S3	T3S2R4	OTROS	A	B	C	K'	D
T.C. SONOITA - MEXICALI	0.00	3	0	2678	62.1	1.6	2.5	3.9	21.6	2.7	4.2	1.4	62.1	1.6	36.3	0.086	
CASETA DE COBRO MEXICALI	16.00	2	0	2779	65.5	1.4	2.7	3.6	19.0	3.0	3.6	1.2	65.5	1.4	33.1		
T.C. MEXICALI - TIJUANA	41.00	1	0	2598	65.6	1.5	2.5	3.5	19.2	2.7	3.9	1.1	65.6	1.5	32.9	0.071	

BAJA CALIFORNIA

15 CARR : MEXICALI - TIJUANA (CUOTA)

CLAVE: 02011

RUTA : MEX-002D

AÑO : 2009

L U G A R	E S T A C I O N				C L A S I F I C A C I O N V E H I C U L A R E N P O R C I E N T O .												
	KM	TE	SC	TDPA	A	B	C2	C3	T3S2	T3S3	T3S2R4	OTROS	A	B	C	K'	D
T. C. MEXICALI - TIJUANA	0.00																
LA RUMOROSA	19.35	3	1	4403	79.2	8.1	3.1	0.9	6.0	0.4	1.9	0.4	79.2	8.1	12.7	0.091	0.505
LA RUMOROSA	19.35	3	2	4318	78.3	7.8	3.0	1.2	6.3	0.5	2.3	0.6	78.3	7.8	13.9	0.083	0.505
CASETA DE COBRO EL HONGO	68.76	1	0	5353	78.5	7.5	3.3	1.0	6.5	0.5	2.2	0.5	78.5	7.5	14.0		
CASETA DE COBRO EL HONGO	68.76	2	0	5927	79.8	7.0	3.2	1.0	6.0	0.5	2.0	0.5	79.8	7.0	13.2		
CASETA DE COBRO EL HONGO	68.76	3	1	4169	80.0	6.2	3.4	0.8	6.7	0.5	1.9	0.5	80.0	6.2	13.8	0.093	0.510
CASETA DE COBRO EL HONGO	68.76	3	2	4347	79.7	7.6	2.6	1.0	5.9	0.6	2.0	0.6	79.7	7.6	12.7	0.102	0.510
CASETA DE COBRO TIJUANA	124.60	1	0	5735	78.3	8.2	2.7	1.0	7.2	0.6	1.4	0.6	78.3	8.2	13.5		
CASETA DE COBRO TIJUANA	124.60	2	0	7387	79.4	6.8	2.9	1.0	7.3	0.8	1.2	0.6	79.4	6.8	13.8		
CASETA DE COBRO TIJUANA	124.60	3	0	6493	79.1	7.7	2.6	0.9	7.2	0.7	1.2	0.6	79.1	7.7	13.2		
CASETA DE COBRO TIJUANA	124.60	3	1	4635	79.4	7.9	2.1	0.8	7.4	0.8	1.0	0.6	79.4	7.9	12.7	0.094	0.501
CASETA DE COBRO TIJUANA	124.60	3	2	4657	78.8	8.0	2.4	1.1	7.4	0.6	1.0	0.7	78.8	8.0	13.2	0.089	0.501
TERMINA AUTOPISTA PRINCIPIA TIJUANA	138.00																

16 CARR : TIJUANA - SAN MIGUEL (CUOTA)

CLAVE: 02100

RUTA : MEX-001D

AÑO : 2009

L U G A R	E S T A C I O N				C L A S I F I C A C I O N V E H I C U L A R E N P O R C I E N T O .												
	KM	TE	SC	TDPA	A	B	C2	C3	T3S2	T3S3	T3S2R4	OTROS	A	B	C	K'	D
TIJUANA	0.00																
CASETA DE COBRO PLAYAS DE TIJUANA	9.70	2	0	11690	97.4	1.1	0.7	0.4	0.4	0.0	0.0	0.0	97.4	1.1	1.5		
CASETA DE COBRO ROSARITO	35.43	2	0	7330	91.9	2.7	2.2	0.4	2.2	0.2	0.3	0.1	91.9	2.7	5.4		
T. C. TIJUANA - ENSENADA (LIBRE)	98.20																
CASETA DE COBRO ENSENADA	98.60	2	0	10403	87.1	2.3	3.3	0.8	5.3	0.3	0.8	0.1	87.1	2.3	10.6		

17 CARR : ALGODONES - ISLAS AGRARIAS GRUPO B

CLAVE: 02006

RUTA : BC-008

AÑO : 2009

L U G A R	E S T A C I O N				C L A S I F I C A C I O N V E H I C U L A R E N P O R C I E N T O .												
	KM	TE	SC	TDPA	A	B	C2	C3	T3S2	T3S3	T3S2R4	OTROS	A	B	C	K'	D
ALGODONES	0.00	3	0	6145	92.7	0.9	4.0	0.6	0.5	0.1	0.9	0.3	92.7	0.9	6.4	0.089	
T. IZQ. CD. MORELOS	14.00	1	0	5561	92.4	1.6	2.3	1.3	0.7	0.3	1.4	0.0	92.4	1.6	6.0	0.092	
MERIDA	20.30	3	0	2526	91.2	1.9	3.9	1.1	0.9	0.1	0.9	0.0	91.2	1.9	6.9	0.098	
T. IZQ. EJIDO LAZARO CARDENAS	31.50	1	0	3049	91.7	2.0	3.5	1.0	0.9	0.1	0.8	0.0	91.7	2.0	6.3	0.085	
ISLAS AGRARIAS GRUPO B	55.50	1	0	5127	87.7	2.5	5.4	1.8	0.9	0.6	0.9	0.2	87.7	2.5	9.8	0.088	

BAJA CALIFORNIA

22 CARR : MEXICALI - ALGODONES

CLAVE: 02012

RUTA : BC-002

AÑO : 2009

L U G A R	E S T A C I O N				C L A S I F I C A C I O N V E H I C U L A R E N P O R C I E N T O .													
	KM	TE	SC	TDPA	A	B	C2	C3	T3S2	T3S3	T3S2R4	OTROS	A	B	C	K'	D	
T. C. MEXICALI - SAN FELIPE	0.00																	
EJIDO PUEBLA	12.00	3	0	8830	88.6	1.0	5.3	2.1	1.0	0.6	0.9	0.5	88.6	1.0	10.4	0.080		
T. C. GEOTERMICA - ESTACION DELTA	31.50	1	0	6363	91.4	1.0	4.1	1.0	1.0	0.2	0.8	0.5	91.4	1.0	7.6	0.104		
X. C. MEXICALI - ESTACION COAHUILA	37.70	1	0	6794	90.1	1.0	4.9	1.0	1.0	0.5	0.9	0.6	90.1	1.0	8.9	0.096		
X. C. MEXICALI - ESTACION COAHUILA	37.70	3	0	5531	90.4	1.0	4.5	1.0	1.2	0.3	1.1	0.5	90.4	1.0	8.6	0.090		
X. C. EJIDO MONTERREY - MAZON	49.65	1	0	5514	90.0	1.6	5.2	1.0	1.0	0.3	0.6	0.3	90.0	1.6	8.4	0.092		
X. C. EJIDO MONTERREY - MAZON	49.65	3	0	1984	89.8	1.2	6.0	1.1	0.9	0.2	0.7	0.1	89.8	1.2	9.0	0.090		
T. IZQ. TRES DE MARZO	60.50	1	0	2237	88.5	3.2	4.6	1.1	1.0	0.6	0.6	0.4	88.5	3.2	8.3	0.098		
X. C. SONOITA - MEXICALI	72.00	1	0	2697	81.2	4.6	7.0	3.3	1.2	1.0	1.7	0.0	81.2	4.6	14.2	0.139		
X. C. SONOITA - MEXICALI	72.00	3	0	4316	87.1	2.4	6.7	1.3	1.0	0.4	0.8	0.3	87.1	2.4	10.5	0.087		
PACHUCA	83.00	1	0	4885	89.8	2.5	3.2	0.7	1.2	0.3	2.2	0.1	89.8	2.5	7.7	0.091		
ALGODONES	94.46	1	0	3330	89.0	2.7	5.0	1.8	0.5	0.2	0.4	0.4	89.0	2.7	8.3	0.085		

23 CARR : MEXICALI - ESTACION COAHUILA

CLAVE: 02016

RUTA : BC-001

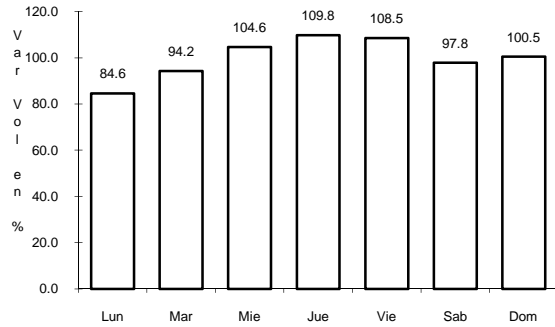
AÑO : 2009

L U G A R	E S T A C I O N				C L A S I F I C A C I O N V E H I C U L A R E N P O R C I E N T O .												
	KM	TE	SC	TDPA	A	B	C2	C3	T3S2	T3S3	T3S2R4	OTROS	A	B	C	K'	D
MEXICALI	0.00	3	1	11952	84.3	3.3	4.8	2.4	2.5	1.4	0.7	0.6	84.3	3.3	12.4	0.079	0.515
MEXICALI	0.00	3	2	12683	84.8	2.8	5.9	2.8	1.7	1.0	0.8	0.2	84.8	2.8	12.4	0.101	0.515
T. IZQ. AEROPUERTO	11.30	1	1	6461	84.8	2.7	6.0	2.1	1.4	0.6	2.1	0.3	84.8	2.7	12.5	0.074	0.505
T. IZQ. AEROPUERTO	11.30	1	2	6587	85.2	2.6	5.8	2.1	1.7	0.8	1.8	0.0	85.2	2.6	12.2	0.068	0.505
ISLAS AGRARIAS GRUPO A	14.10	1	0	14253	83.5	4.3	5.7	2.1	1.7	1.2	1.0	0.5	83.5	4.3	12.2	0.073	
X. C. SONOITA - MEXICALI	30.79	1	0	5014	89.5	2.5	3.7	1.4	1.1	0.5	0.8	0.5	89.5	2.5	8.0	0.089	
X. C. SONOITA - MEXICALI	30.79	3	0	4992	89.9	1.8	4.7	1.2	0.9	0.4	0.9	0.2	89.9	1.8	8.3	0.089	
EJIDO NUEVO LEON	46.83	1	0	6436	84.5	2.6	8.8	1.2	1.0	0.4	1.0	0.5	84.5	2.6	12.9	0.080	
EJIDO NUEVO LEON	46.83	3	0	7763	90.1	1.2	4.6	1.0	1.2	0.4	0.8	0.7	90.1	1.2	8.7	0.085	
T. DER. LA PUERTA	60.26	1	0	4079	88.7	2.0	4.2	2.1	1.1	0.7	0.9	0.3	88.7	2.0	9.3	0.085	
X. C. EL FARO - ESTACION COAHUILA	71.30	1	0	1959	89.7	1.2	2.7	1.2	2.1	1.1	1.6	0.4	89.7	1.2	9.1	0.095	
T. DER. LEONA VICARIO	80.50	1	0	2177	88.5	1.0	5.8	1.7	1.6	0.5	0.9	0.0	88.5	1.0	10.5	0.093	
ESTACION COAHUILA	96.65	1	0	1990	88.4	1.4	5.6	1.7	1.2	0.4	0.8	0.5	88.4	1.4	10.2	0.084	

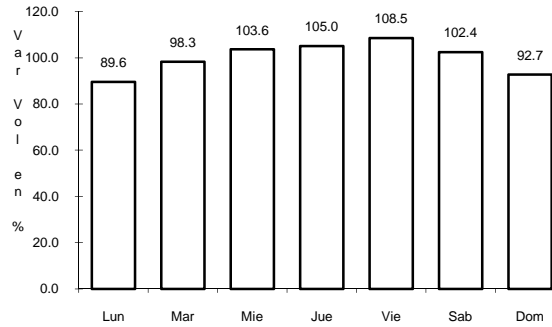
7 CARR: PUNTA PRIETA - GUERRERO NEGRO

CLAVE: 00321

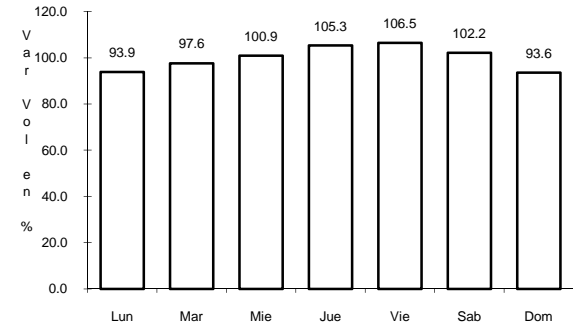
ruta: MEX-001



Km: 0.00 Tipo: 3 Sent: 0



Km: 70.10 Tipo: 3 Sent: 0

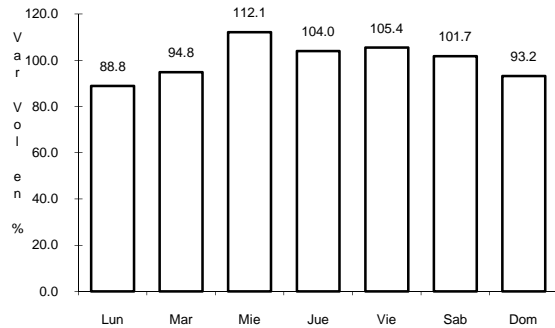


Km: 130.00 Tipo: 1 Sent: 0

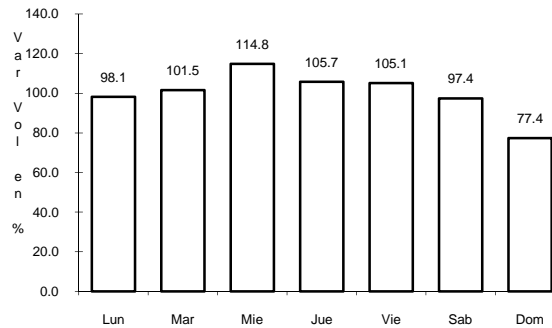
8 CARR: RAMAL A AEROPUERTO DE MEXICALI

CLAVE: 02321

ruta: MEX



Km: 0.00 Tipo: 3 Sent: 0

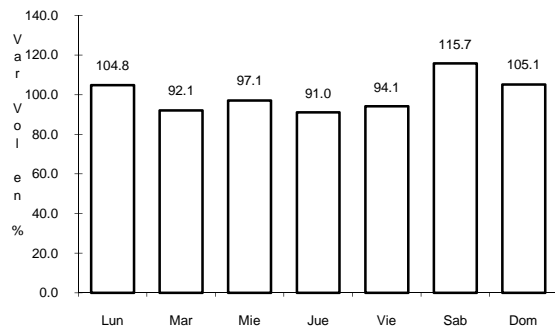


Km: 10.00 Tipo: 1 Sent: 0

9 CARR: RAMAL A SANTA MARIA

CLAVE: 02506

ruta: MEX

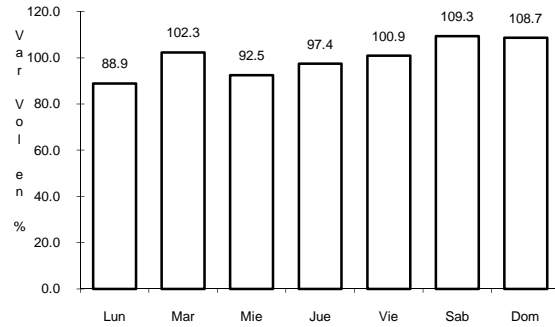


Km: 0.00 Tipo: 3 Sent: 0

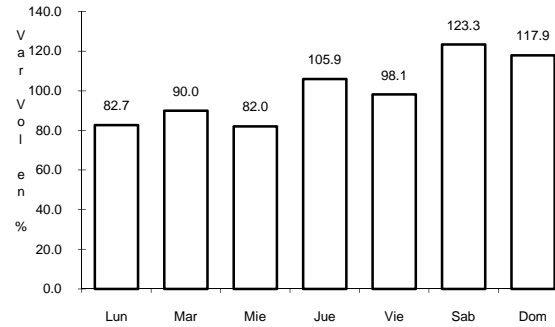
10 CARR: SAN FELIPE - CHAPALA

CLAVE: 02503

RUTA: MEX-005



Km: 0.00 Tipo: 3 Sent: 0

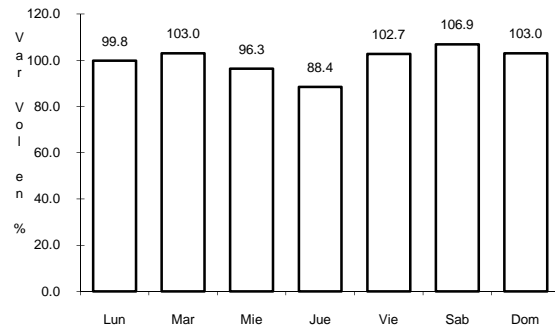


Km: 75.46 Tipo: 3 Sent: 0

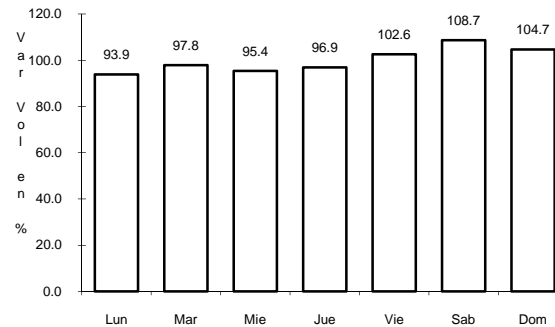
11 CARR: SONOITA - MEXICALI

CLAVE: 00081

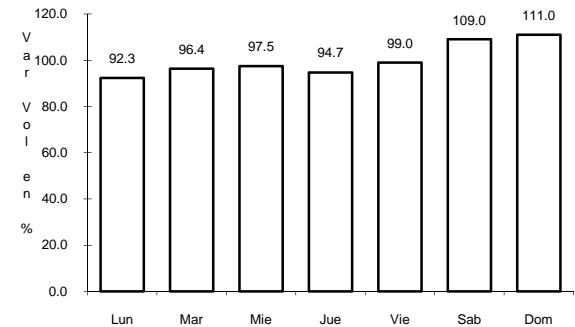
RUTA: MEX-002



Km: 0.00 Tipo: 3 Sent: 0



Km: 256.47 Tipo: 1 Sent: 1

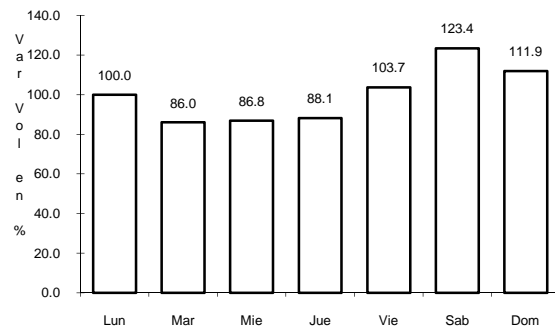


Km: 256.47 Tipo: 1 Sent: 2

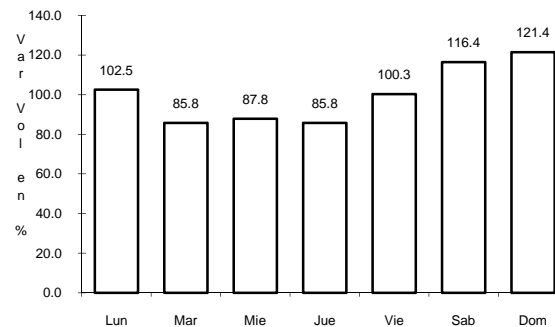
12 CARR: TECATE - EL SAUZAL

CLAVE: 02097

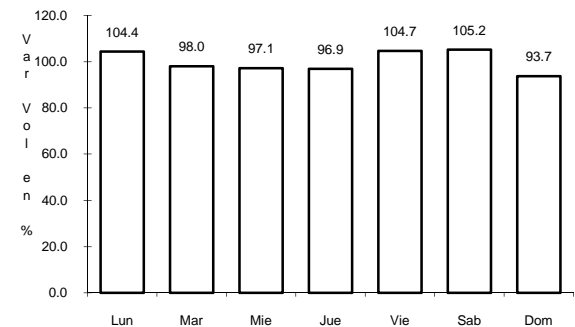
RUTA: MEX-003



Km: 0.00 Tipo: 3 Sent: 0



Km: 48.80 Tipo: 3 Sent: 0

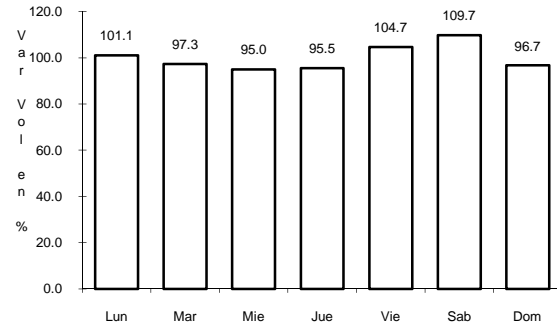


Km: 104.53 Tipo: 1 Sent: 0

13 CARR: TIJUANA - ENSENADA (LIBRE)

CLAVE: 02099

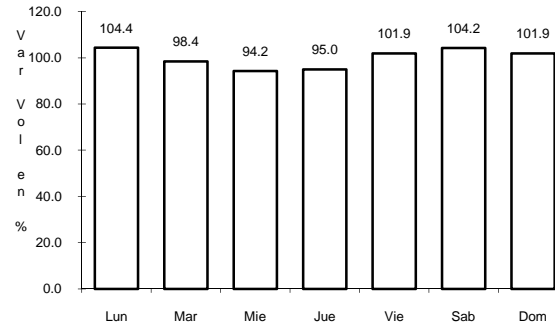
RUTA: MEX-001



Km: 22.00

Tipo: 1

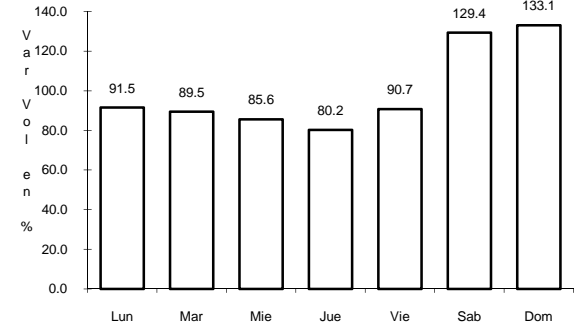
Sent: 1



Km: 22.00

Tipo: 1

Sent: 2



Km: 56.98

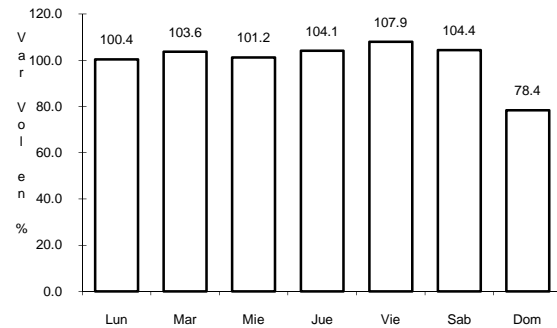
Tipo: 1

Sent: 0

14 CARR: LIBRAMIENTO MEXICALI (CUOTA)

CLAVE:

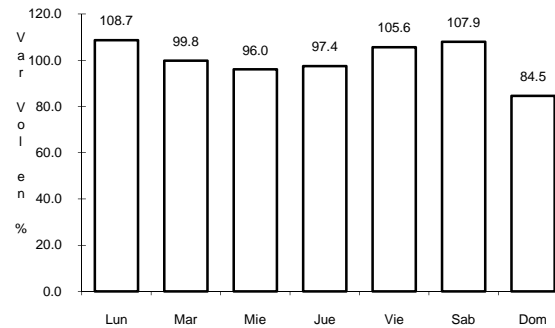
RUTA: MEX-D



Km: 0.00

Tipo: 3

Sent: 0



Km: 41.00

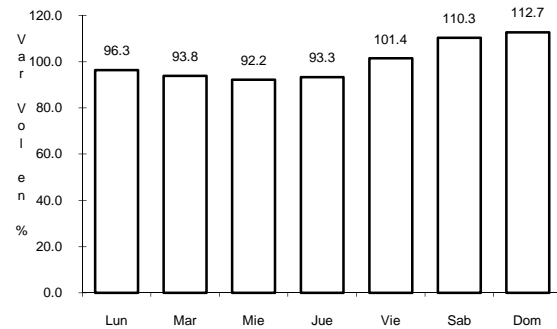
Tipo: 1

Sent: 0

15 CARR: MEXICALI - TIJUANA (CUOTA)

CLAVE: 02011

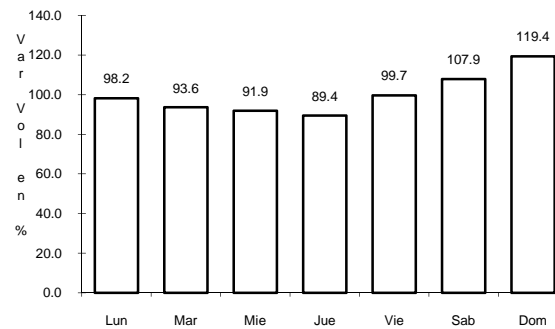
RUTA: MEX-002D



Km: 19.35

Tipo: 3

Sent: 1



Km: 19.35

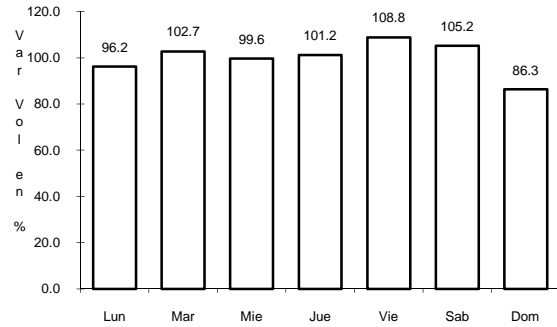
Tipo: 3

Sent: 2

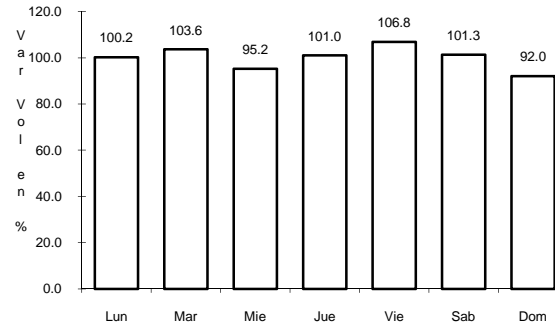
20 CARR: EL FARO - ESTACION COAHUILA

CLAVE: 02013

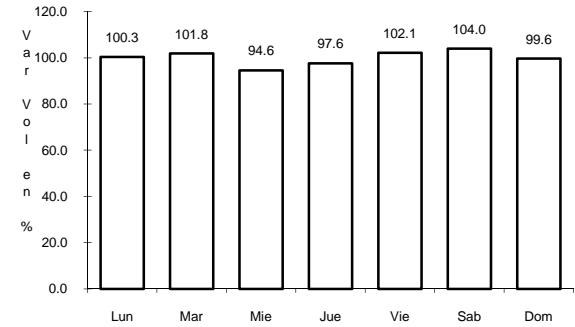
RUTA: BC-004



Km: 0.00 Tipo: 3 Sent: 0



Km: 16.30 Tipo: 1 Sent: 0

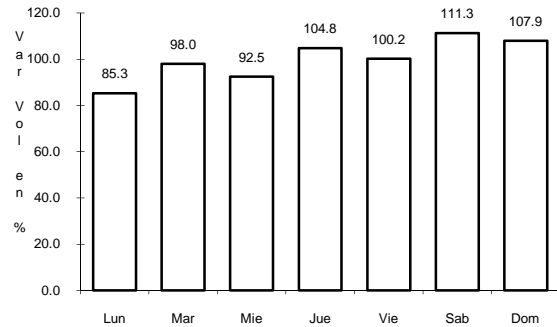


Km: 34.50 Tipo: 1 Sent: 0

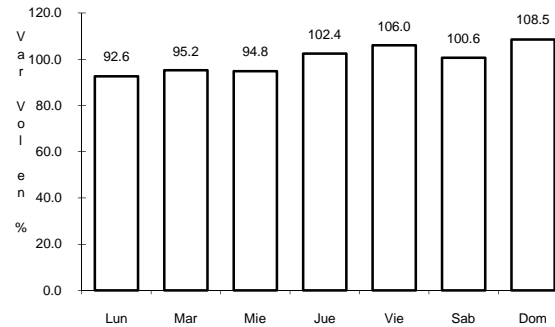
21 CARR: LA PUERTA - T. C. (MEXICALI - ESTACION COAHUILA)

CLAVE: 02502

RUTA: BC-010



Km: 4.60 Tipo: 1 Sent: 0

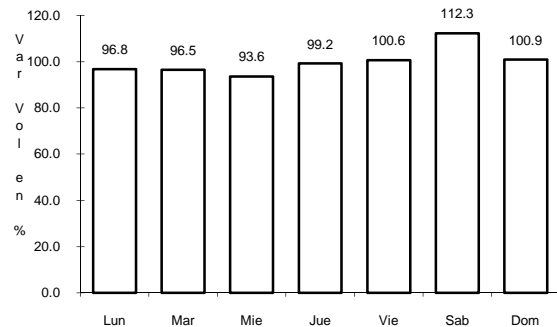


Km: 9.00 Tipo: 3 Sent: 0

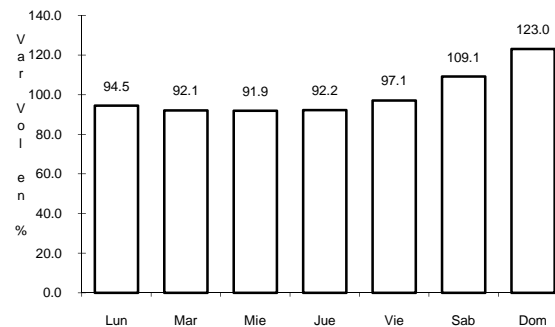
22 CARR: MEXICALI - ALGODONES

CLAVE: 02012

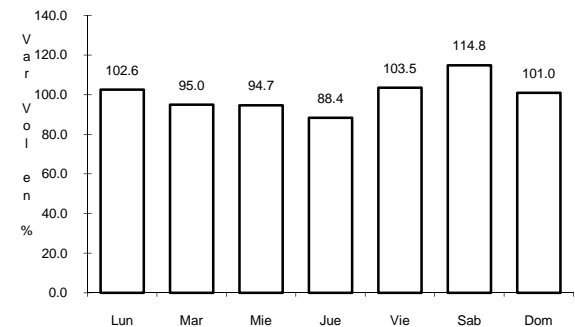
RUTA: BC-002



Km: 12.00 Tipo: 3 Sent: 0



Km: 49.65 Tipo: 1 Sent: 0



Km: 94.46 Tipo: 1 Sent: 0

