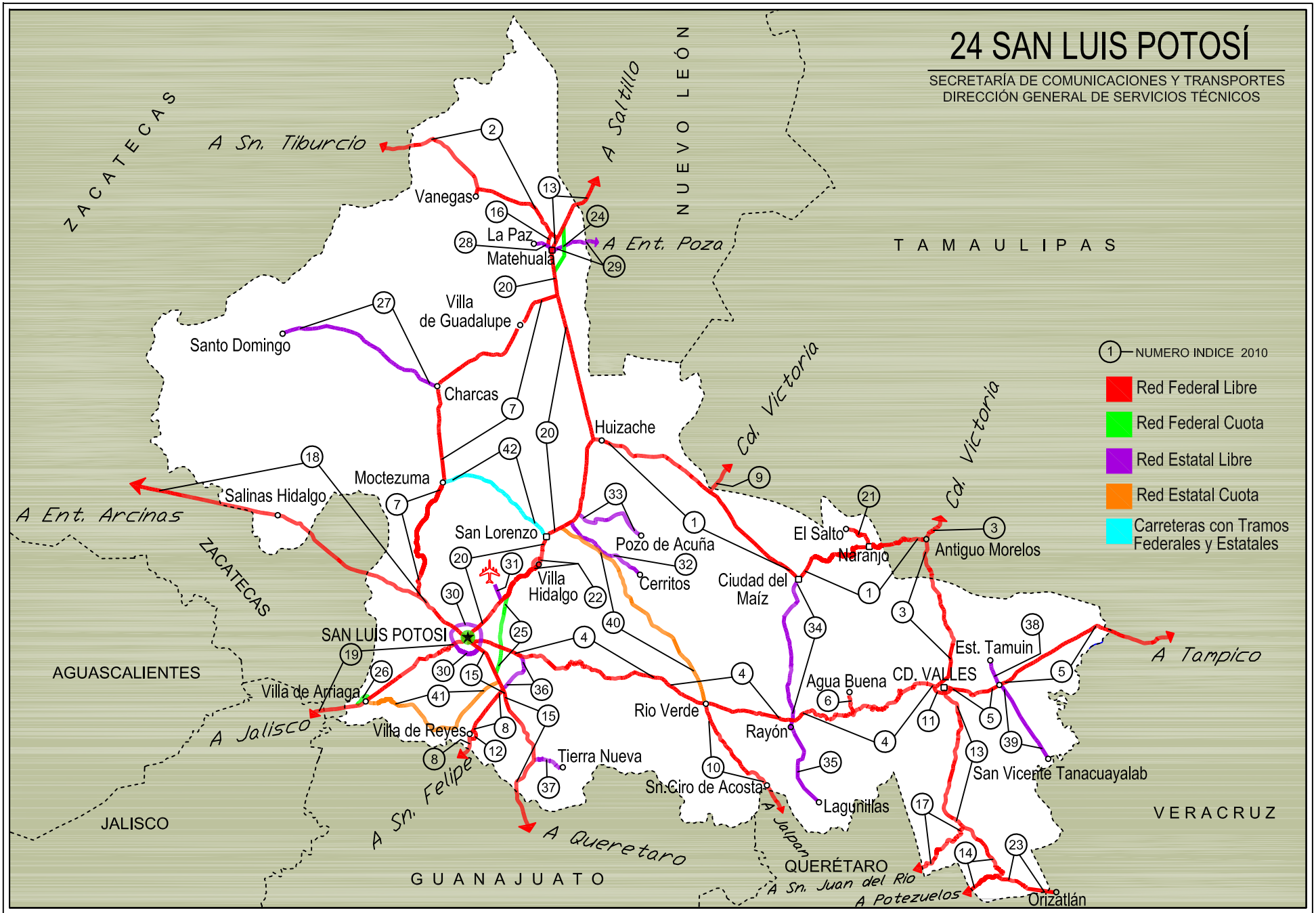


SAN LUIS POTOSI

No. INDICE	CARRETERA	ruta
---- RED FEDERAL LIBRE ----		
1	ANTIGUO MORELOS - ENT. EL HUIZACHE	MEX-080
2	CARBONERA - T. C. (ENT. MORELOS - SALTILLO)	MEX-062
3	CD. VALLES - CD. VICTORIA	MEX-085
4	CD. VALLES - SAN LUIS POTOSI	MEX-070
5	CD. VALLES - TAMPICO	MEX-070
6	EL CLARIN - AGUA BUENA	MEX-070
7	ENT. AHUALULCO - ENT. LA BONITA	MEX-063
8	ENT. DE ZARAGOZA - SAN FELIPE	MEX-037
9	ENT. TULA - CD. VICTORIA	MEX-101
10	JALPAN DE SERRA - RIO VERDE	MEX-069
11	LIBRAMIENTO DE CD. VALLES	MEX-070
12	LIBRAMIENTO DE VILLA DE REYES	MEX-037
13	MATEHUALA - ENT. PUERTO MEXICO	MEX-057
14	PORTEZUELO - CD. VALLES	MEX-085
15	QUERETARO - SAN LUIS POTOSI	MEX-057
16	RAMAL A OJO DE AGUA	MEX-062
17	SAN JUAN DEL RIO - XILITLA	MEX-120
18	SAN LUIS POTOSI - ENT. ARCINAS	MEX-049
19	SAN LUIS POTOSI - LAGOS DE MORENO	MEX-070-080
20	SAN LUIS POTOSI - MATEHUALA	MEX-057
21	T. C. (ENT. EL HUIZACHE- ANT. MORELOS)-EL SALTO	MEX
22	T. C. (S.L.P. - MATEHUALA) - VILLA HIDALGO	MEX
23	TAMAZUNCHALE - SAN FELIPE ORIZATLAN	MEX-102
---- RED FEDERAL DE CUOTA ----		
24	LIBRAMIENTO DE MATEHUALA (CUOTA)	MEX-D
25	LIBRAMIENTO ORIENTE DE SAN LUIS POTOSI (CUOTA)	MEX-057D
26	LIBRAMIENTO VILLA DE ARRIAGA (CUOTA)	MEX-080D
---- RED ESTATAL LIBRE ----		
27	CHARCAS - VILLA SANTO DOMINGO	SLP-017
28	MATEHUALA - LA PAZ	SLP
29	MATEHUALA - LA POZA	SLP-029
30	PERIFERICO DE SAN LUIS POTOSI	SLP-032
31	RAMAL A AEROPUERTO DE S. L. P.	MEX-057
32	RAMAL A CERRITOS	SLP-007
33	RAMAL A POZO DE ACUÑA	SLP-009
34	RAYON - CD. DEL MAIZ	SLP
35	RAYON - LAGUNILLAS	SLP-011
36	SANTO DOMINGO - CERRO GORDO	SLP-022
37	T. C. (QRO - S.L.P.) - TIERRA NUEVA	MEX-057
38	TAMUIN - ESTACION F.F.C.C. TAMUIN	SLP-040
39	TAMUIN - SAN VICENTE TANCUAYALAB	SLP-014
---- RED ESTATAL DE CUOTA ----		
40	CERRITOS - RIO VERDE (CUOTA)	SLP-D
41	SAN LUIS POTOSI - VILLA DE ARRIAGA (CUOTA)	SLP-D
---- CARRETERAS CON TRAMOS FEDERAL Y ESTATAL ----		
42	SAN LORENZO - MOCTEZUMA	MEX-069-SLP-012

24 SAN LUIS POTOSÍ

SECRETARÍA DE COMUNICACIONES Y TRANSPORTES
DIRECCIÓN GENERAL DE SERVICIOS TÉCNICOS



SAN LUIS POTOSI

1 CARR : ANTIGUO MORELOS - ENT. EL HUIZACHE

CLAVE: 00136

RUTA : MEX-080

AÑO : 2009

L U G A R	E S T A C I O N				C L A S I F I C A C I O N V E H I C U L A R E N P O R C I E N T O .												
	KM	TE	SC	TDPA	A	B	C2	C3	T3S2	T3S3	T3S2R4	OTROS	A	B	C	K'	D
ANTIGUO MORELOS	0.00	3	0	2525	75.7	10.2	7.1	0.8	2.3	0.7	1.7	1.5	75.7	10.2	14.1	0.076	0.510
NUEVO MORELOS	19.28	1	0	3658	77.6	9.7	5.6	0.6	3.0	0.7	1.4	1.4	77.6	9.7	12.7	0.080	0.500
LIM. EDOS. TERM. TAMPS. PPIA. S.L.P.	25.00																
EL NARANJO	32.00	1	0	3496	75.2	12.7	5.4	0.6	2.5	0.8	1.3	1.5	75.2	12.7	12.1	0.086	0.501
EL NARANJO	32.00	3	0	3641	73.4	12.0	7.8	0.7	2.9	0.6	1.4	1.2	73.4	12.0	14.6	0.075	0.500
CD. DEL MAIZ	86.00	3	0	2068	76.0	10.6	6.5	0.7	2.7	0.7	1.5	1.3	76.0	10.6	13.4	0.085	0.503
T. DER. TULA	141.20	3	0	2577	73.7	11.6	7.6	0.8	2.9	0.8	1.5	1.1	73.7	11.6	14.7	0.073	0.516
T. C. SAN LUIS POTOSI - MATEHUALA (ENT. EL HUIZACHE)	198.80	1	0	3412	76.7	9.0	7.8	0.6	2.6	0.8	1.4	1.1	76.7	9.0	14.3	0.072	0.528

2 CARR : CARBONERA - T. C. (ENT. MORELOS - SALTILLO)

CLAVE: 00218

RUTA : MEX-062

AÑO : 2009

L U G A R	E S T A C I O N				C L A S I F I C A C I O N V E H I C U L A R E N P O R C I E N T O .												
	KM	TE	SC	TDPA	A	B	C2	C3	T3S2	T3S3	T3S2R4	OTROS	A	B	C	K'	D
CARBONERA	0.00	3	0	2358	80.7	5.7	4.1	2.8	3.4	1.3	0.6	1.4	80.7	5.7	13.6	0.079	0.522
CEDRAL	18.00	1	0	2130	83.2	4.6	3.3	1.6	3.6	2.1	0.5	1.1	83.2	4.6	12.2	0.081	0.523
CEDRAL	18.00	3	0	1771	82.7	5.6	3.5	2.7	1.9	1.3	0.8	1.5	82.7	5.6	11.7	0.082	0.500
LIM. EDOS. TERM. S.L.P. PPIA. ZAC.	79.20																
T. C. ENT. MORELOS - SALTILLO	112.00	1	0	1189	86.0	3.7	4.7	2.7	0.9	0.9	0.3	0.8	86.0	3.7	10.3	0.091	0.501

3 CARR : CD. VALLES - CD. VICTORIA

CLAVE: 00509

RUTA : MEX-085

AÑO : 2009

L U G A R	E S T A C I O N				C L A S I F I C A C I O N V E H I C U L A R E N P O R C I E N T O .												
	KM	TE	SC	TDPA	A	B	C2	C3	T3S2	T3S3	T3S2R4	OTROS	A	B	C	K'	D
CD. VALLES	0.00	3	0	5086	83.5	4.4	4.4	2.5	2.0	1.7	1.5	0.0	83.5	4.4	12.1	0.072	0.502
LIM. EDOS. TERM. S.L.P. PPIA. TAMPS.	50.40																
ANTIGUO MORELOS	66.90	1	0	2652	81.4	2.9	2.7	4.3	3.5	1.5	2.7	1.0	81.4	2.9	15.7	0.079	0.510
ANTIGUO MORELOS	66.90	3	0	3820	80.3	5.7	3.9	1.0	4.3	1.4	2.5	0.9	80.3	5.7	14.0	0.076	0.511
CD. MANTE	98.00	1	0	4779	81.2	4.4	3.1	1.7	4.3	1.5	2.5	1.3	81.2	4.4	14.4	0.071	0.503
T. IZQ. OCAMPO	110.00	3	0	3269	81.3	2.2	10.8	0.8	2.3	0.3	1.0	1.3	81.3	2.2	16.5	0.081	0.505
T. IZQ. GOMEZ FARIAS	132.80	3	0	3266	80.0	4.4	7.7	1.3	2.4	0.5	0.5	3.2	80.0	4.4	15.6	0.086	0.516
T. IZQ. LLERA DE CANALES	170.00	3	0	4859	82.4	8.5	2.7	1.2	2.9	0.7	0.5	1.1	82.4	8.5	9.1	0.087	0.508
T. DER. GONZALEZ	172.50	3	0	4158	78.3	6.3	4.4	1.1	4.9	1.3	2.7	1.0	78.3	6.3	15.4	0.087	0.511
CD. VICTORIA	232.00	1	0	6598	79.6	6.5	3.3	1.0	5.0	1.4	2.4	0.8	79.6	6.5	13.9	0.070	0.502

SAN LUIS POTOSI

4 CARR : CD. VALLES - SAN LUIS POTOSI

CLAVE: 24135

RUTA : MEX-070

AÑO : 2009

L U G A R	E S T A C I O N				C L A S I F I C A C I O N V E H I C U L A R E N P O R C I E N T O .												
	KM	TE	SC	TDPA	A	B	C2	C3	T3S2	T3S3	T3S2R4	OTROS	A	B	C	K'	D
CD. VALLES	0.00	3	0	9143	78.7	4.9	4.3	3.8	3.0	3.9	1.1	0.3	78.7	4.9	16.4	0.074	0.510
T. DER. DAMIAN CARMONA	31.25	3	0	3604	78.8	5.7	4.4	3.5	2.4	3.9	1.0	0.3	78.8	5.7	15.5	0.079	0.506
T. DER. CANOAS	75.40	1	0	3409	77.9	4.2	5.1	4.3	3.1	4.1	1.0	0.3	77.9	4.2	17.9	0.088	0.503
X. C. CARDENAS - RAYON	93.00	1	0	4447	79.3	4.8	5.0	3.5	2.4	3.8	0.9	0.3	79.3	4.8	15.9	0.077	0.506
X. C. CARDENAS - RAYON	93.00	3	0	4780	78.6	4.8	5.3	3.6	2.8	3.6	1.0	0.3	78.6	4.8	16.6	0.075	0.503
RIO VERDE	133.80	1	0	6240	85.7	2.5	2.8	0.8	3.8	1.0	0.9	2.5	85.7	2.5	11.8	0.082	0.509
RIO VERDE	133.80	3	0	7061	83.7	4.2	3.8	2.8	2.2	1.8	1.4	0.1	83.7	4.2	12.1	0.074	0.509
T. DER. GUAXCAMA	161.00	3	0	3016	86.1	3.5	4.0	3.2	1.4	0.7	0.9	0.2	86.1	3.5	10.4	0.080	0.504
T. IZQ. ZARAGOZA	239.50	1	0	3398	80.9	3.3	3.1	4.7	2.2	2.2	1.1	2.5	80.9	3.3	15.8	0.072	0.508
T. IZQ. ZARAGOZA	239.50	3	0	4061	79.9	3.9	3.3	4.1	3.7	3.4	0.2	1.5	79.9	3.9	16.2	0.076	0.508
X. LIB. OTE. DE SAN LUIS POTOSI	255.00	1	0	4494	81.8	3.0	2.1	3.1	4.3	2.0	1.5	2.2	81.8	3.0	15.2	0.072	0.509
X. PERIFERICO DE SAN LUIS POTOSI	257.40	1	1	9959	82.5	2.0	1.7	2.0	4.8	1.6	1.5	3.9	82.5	2.0	15.5	0.068	0.503
X. PERIFERICO DE SAN LUIS POTOSI	257.40	1	2	10064	82.6	2.1	1.6	2.0	4.9	1.5	1.4	3.9	82.6	2.1	15.3	0.064	0.503
SAN LUIS POTOSI	261.90																

5 CARR : CD. VALLES - TAMPICO

CLAVE: 00138

RUTA : MEX-070

AÑO : 2009

L U G A R	E S T A C I O N				C L A S I F I C A C I O N V E H I C U L A R E N P O R C I E N T O .												
	KM	TE	SC	TDPA	A	B	C2	C3	T3S2	T3S3	T3S2R4	OTROS	A	B	C	K'	D
CD. VALLES	0.00	3	0	6980	84.9	2.3	1.1	1.2	4.8	1.4	3.2	1.1	84.9	2.3	12.8	0.073	0.500
T. DER. SANTA ELENA	15.25	3	0	6804	83.8	2.3	0.9	1.3	6.0	1.2	3.5	1.0	83.8	2.3	13.9	0.070	0.505
TAMUIN	29.60	1	0	5549	82.3	2.8	1.1	1.2	5.7	1.3	4.6	1.0	82.3	2.8	14.9	0.075	0.508
EBANO	79.00	1	0	9119	83.4	3.1	1.0	1.1	4.5	1.2	4.5	1.2	83.4	3.1	13.5	0.071	0.504
EBANO	79.00	3	0	5191	83.7	2.9	0.8	1.3	4.5	1.6	3.9	1.3	83.7	2.9	13.4	0.071	0.504
LIM. EDOS. TERM. S.L.P. PPIA. VER.	83.00																
T. DER. PANUCO	103.00	1	0	4301	83.6	2.7	1.0	1.2	5.1	1.5	3.8	1.1	83.6	2.7	13.7	0.068	0.510
T. DER. PANUCO	103.00	3	0	3678	76.6	3.9	2.7	0.7	6.6	2.6	4.6	2.3	76.6	3.9	19.5	0.094	0.500
T. C. ANAHUAC - EL PRIETO	128.40	1	0	6231	72.2	4.8	3.7	1.9	5.5	3.1	5.0	3.8	72.2	4.8	23.0	0.067	0.509
T. C. ANAHUAC - EL PRIETO	128.40	3	1	6276	71.2	4.4	3.3	1.8	6.3	3.7	5.0	4.3	71.2	4.4	24.4	0.068	0.504
T. C. ANAHUAC - EL PRIETO	128.40	3	2	6372	71.2	4.5	3.4	1.7	6.3	3.8	5.0	4.1	71.2	4.5	24.3	0.071	0.504
LIM. EDOS. TERM. VER. PPIA. TAMP.	133.80																
TAMPICO	138.00	1	0	14976	73.4	2.5	2.0	1.5	7.5	2.8	5.6	4.7	73.4	2.5	24.1	0.071	0.502

SAN LUIS POTOSI

6 CARR : EL CLARIN - AGUA BUENA

CLAVE: 24283

RUTA : MEX-070

AÑO : 2009

L U G A R	E S T A C I O N				C L A S I F I C A C I O N V E H I C U L A R E N P O R C I E N T O .												
	KM	TE	SC	TDPA	A	B	C2	C3	T3S2	T3S3	T3S2R4	OTROS	A	B	C	K'	D
T. C. CD. VALLES - SAN LUIS POTOSI	0.00	3	0	1481	84.0	2.7	8.4	0.6	1.6	0.8	0.5	1.4	84.0	2.7	13.3	0.080	0.503
AGUA BUENA	11.23	1	0	2049	82.2	3.2	9.4	0.5	2.3	0.3	0.6	1.5	82.2	3.2	14.6	0.089	0.501

7 CARR : ENT. AHUALULCO - ENT. LA BONITA

CLAVE: 24258

RUTA : MEX-063

AÑO : 2009

L U G A R	E S T A C I O N				C L A S I F I C A C I O N V E H I C U L A R E N P O R C I E N T O .												
	KM	TE	SC	TDPA	A	B	C2	C3	T3S2	T3S3	T3S2R4	OTROS	A	B	C	K'	D
T. C. SAN LUIS POTOSI - ENT. ARCINAS	0.00	3	0	3494	77.7	6.6	8.4	3.7	0.4	0.3	1.0	1.9	77.7	6.6	15.7	0.083	0.507
AHUALULCO	11.00	3	0	3158	78.4	10.0	2.8	0.9	3.3	1.8	1.0	1.8	78.4	10.0	11.6	0.084	0.506
MOCTEZUMA	59.00	1	0	1714	82.4	5.5	7.0	3.2	0.4	0.4	0.8	0.3	82.4	5.5	12.1	0.088	0.507
CHARCAS	100.00	1	0	1933	83.3	5.5	6.8	3.0	0.2	0.3	0.5	0.4	83.3	5.5	11.2	0.075	0.509
CHARCAS	100.00	3	0	1170	82.5	5.7	7.6	2.1	0.5	0.5	0.6	0.5	82.5	5.7	11.8	0.095	0.510
T. C. SAN LUIS POTOSI - MATEHUALA	169.90	1	0	906	85.5	5.0	4.6	2.4	0.5	0.6	0.7	0.7	85.5	5.0	9.5	0.083	0.503

8 CARR : ENT. DE ZARAGOZA - SAN FELIPE

CLAVE: 00240

RUTA : MEX-037

AÑO : 2009

L U G A R	E S T A C I O N				C L A S I F I C A C I O N V E H I C U L A R E N P O R C I E N T O .												
	KM	TE	SC	TDPA	A	B	C2	C3	T3S2	T3S3	T3S2R4	OTROS	A	B	C	K'	D
T. C. QUERETARO - SAN LUIS POTOSI	0.00	3	0	5804	73.0	3.7	4.6	3.2	9.1	2.3	2.8	1.3	73.0	3.7	23.3	0.065	0.509
LIM. EDOS. TERM. S.L.P. PPIA. GTO.	32.00																
SAN FELIPE	72.00	1	0	3598	73.8	3.4	3.8	2.6	9.5	2.7	2.8	1.4	73.8	3.4	22.8	0.065	0.501

9 CARR : ENT. TULA - CD. VICTORIA

CLAVE: 00179

RUTA : MEX-101

AÑO : 2009

L U G A R	E S T A C I O N				C L A S I F I C A C I O N V E H I C U L A R E N P O R C I E N T O .												
	KM	TE	SC	TDPA	A	B	C2	C3	T3S2	T3S3	T3S2R4	OTROS	A	B	C	K'	D
T. C. ANTIGUO MORELOS - EL HUIZACHE	0.00	3	0	1985	68.7	4.9	1.5	2.6	5.8	5.4	5.6	5.5	68.7	4.9	26.4	0.103	0.504
LIM. EDOS. TERM. S.L.P. PPIA. TAMP.	2.40																
T. DER. TULA (1° ACCESO)	38.00	1	0	4602	64.5	4.4	1.6	2.1	8.7	5.8	7.7	5.2	64.5	4.4	31.1	0.076	0.501
T. DER. TULA (2° ACCESO)	41.95	3	0	3506	66.9	4.6	1.6	2.6	7.2	5.6	6.1	5.4	66.9	4.6	28.5	0.086	0.501
JAUMAVE	112.70	1	0	4688	69.8	4.0	1.5	2.2	6.2	6.2	5.3	4.8	69.8	4.0	26.2	0.072	0.530
JAUMAVE	112.70	3	0	5536	64.1	4.3	4.4	4.5	9.5	4.7	6.9	1.6	64.1	4.3	31.6	0.067	0.515
CD. VICTORIA	180.00	1	1	3155	69.0	3.3	0.4	1.3	7.9	6.3	6.4	5.4	69.0	3.3	27.7	0.070	0.504
CD. VICTORIA	180.00	1	2	3200	68.4	3.2	0.5	1.4	7.9	6.6	6.4	5.6	68.4	3.2	28.4	0.088	0.504

SAN LUIS POTOSI

10 CARR : JALPAN DE SERRA - RIO VERDE

CLAVE: 00265

RUTA : MEX-069

AÑO : 2009

L U G A R	E S T A C I O N				C L A S I F I C A C I O N V E H I C U L A R E N P O R C I E N T O .												
	KM	TE	SC	TDPA	A	B	C2	C3	T3S2	T3S3	T3S2R4	OTROS	A	B	C	K'	D
JALPAN DE SERRA	0.00	3	0	3403	90.0	2.8	1.4	0.8	2.5	0.1	0.9	1.5	90.0	2.8	7.2	0.072	0.501
T. IZQ. CONCA	35.01	1	0	1919	89.9	3.2	1.2	0.7	2.3	0.1	1.0	1.6	89.9	3.2	6.9	0.092	0.507
ARROYO SECO	48.60	1	0	1075	90.5	2.5	3.0	1.4	1.6	0.4	0.3	0.3	90.5	2.5	7.0	0.079	0.515
LIM. EDOS. TERM. QRO. PPIA. S.L.P.	52.27																
SAN CIRO DE ACOSTA	69.42	1	0	1180	87.5	3.7	3.8	2.2	1.5	1.1	0.2	0.0	87.5	3.7	8.8	0.089	0.505
SAN CIRO DE ACOSTA	69.42	3	0	3187	92.2	3.2	0.5	0.3	2.5	0.1	0.5	0.7	92.2	3.2	4.6	0.075	0.503
RIO VERDE	105.40	1	0	5534	86.7	3.2	3.7	1.7	2.2	1.5	1.0	0.0	86.7	3.2	10.1	0.081	0.502

11 CARR : LIBRAMIENTO DE CD. VALLES

CLAVE: 24205

RUTA : MEX-070

AÑO : 2009

L U G A R	E S T A C I O N				C L A S I F I C A C I O N V E H I C U L A R E N P O R C I E N T O .												
	KM	TE	SC	TDPA	A	B	C2	C3	T3S2	T3S3	T3S2R4	OTROS	A	B	C	K'	D
T. C. CD. VALLES - SAN LUIS POTOSI	0.00	3	0	6875	78.8	6.0	5.4	3.3	2.7	1.4	1.2	1.2	78.8	6.0	15.2	0.082	0.509
T. C. CD. VALLES - TAMPICO	11.54	1	0	4308	78.3	5.1	6.4	3.8	2.3	1.6	1.1	1.4	78.3	5.1	16.6	0.090	0.500

12 CARR : LIBRAMIENTO DE VILLA DE REYES

CLAVE: 24010

RUTA : MEX-037

AÑO : 2009

L U G A R	E S T A C I O N				C L A S I F I C A C I O N V E H I C U L A R E N P O R C I E N T O .												
	KM	TE	SC	TDPA	A	B	C2	C3	T3S2	T3S3	T3S2R4	OTROS	A	B	C	K'	D
T. C. ENT. ZARAGOZA - SAN FELIPE	0.00	3	0	4051	77.7	6.3	6.9	4.4	1.6	1.5	0.1	1.5	77.7	6.3	16.0	0.075	0.522
T. C. VILLA DE REYES - BLEDOS	3.10																

13 CARR : MATEHUALA - ENT. PUERTO MEXICO

CLAVE: 00405

RUTA : MEX-057

AÑO : 2009

L U G A R	E S T A C I O N				C L A S I F I C A C I O N V E H I C U L A R E N P O R C I E N T O .												
	KM	TE	SC	TDPA	A	B	C2	C3	T3S2	T3S3	T3S2R4	OTROS	A	B	C	K'	D
MATEHUALA	0.00	3	0	12267	44.8	8.8	4.1	10.0	5.8	4.9	17.0	4.6	44.8	8.8	46.4	0.074	0.521
T. IZQ. CEDRAL	8.47	1	0	11994	49.9	7.7	3.3	8.7	4.9	3.8	15.7	6.0	49.9	7.7	42.4	0.074	0.505
T. IZQ. CEDRAL	8.47	3	1	5221	44.6	6.7	4.3	9.8	5.7	4.4	19.6	4.9	44.6	6.7	48.7	0.076	0.505
T. IZQ. CEDRAL	8.47	3	2	5326	46.3	7.6	3.0	9.3	4.7	3.9	20.6	4.6	46.3	7.6	46.1	0.073	0.505
LIM. EDOS. TERM. S.L.P. PPIA. N.L.	24.64																
SANTA ANA	59.65	1	1	5895	45.2	8.1	3.7	10.3	5.3	4.5	17.6	5.3	45.2	8.1	46.7	0.062	0.501
SANTA ANA	59.65	1	2	5862	45.2	8.2	3.8	10.5	5.5	4.4	17.3	5.1	45.2	8.2	46.6	0.063	0.501
T. DER. LINARES	129.00	3	1	6039	45.3	9.1	3.9	10.4	6.3	6.0	13.1	5.9	45.3	9.1	45.6	0.064	0.505
T. DER. LINARES	129.00	3	2	5922	45.3	9.3	3.7	10.5	6.3	5.9	13.2	5.8	45.3	9.3	45.4	0.063	0.505

SAN LUIS POTOSI

13 CARR : MATEHUALA - ENT. PUERTO MEXICO

CLAVE: 00405

RUTA : MEX-057

AÑO : 2009

L U G A R	E S T A C I O N				C L A S I F I C A C I O N V E H I C U L A R E N P O R C I E N T O .												
	KM	TE	SC	TDPA	A	B	C2	C3	T3S2	T3S3	T3S2R4	OTROS	A	B	C	K'	D
SAN RAFAEL	177.20	1	1	6395	44.4	8.4	3.6	9.5	7.8	6.9	14.6	4.8	44.4	8.4	47.2	0.065	0.505
SAN RAFAEL	177.20	1	2	6525	44.5	8.6	3.5	9.6	7.8	6.7	14.4	4.9	44.5	8.6	46.9	0.066	0.505
ENT. PUERTO MEXICO	206.00																

14 CARR : PORTEZUELO - CD. VALLES

CLAVE: 00023

RUTA : MEX-085

AÑO : 2009

L U G A R	E S T A C I O N				C L A S I F I C A C I O N V E H I C U L A R E N P O R C I E N T O .												
	KM	TE	SC	TDPA	A	B	C2	C3	T3S2	T3S3	T3S2R4	OTROS	A	B	C	K'	D
PORTEZUELO	0.00	3	0	5057	85.3	6.0	1.7	1.4	1.4	0.8	0.7	2.7	85.3	6.0	8.7	0.071	0.511
T. DER. TASQUILLO (2° ACCESO)	10.50	1	0	3240	84.0	7.2	1.6	1.7	1.5	0.8	0.7	2.5	84.0	7.2	8.8	0.075	0.501
T. IZQ. ZIMAPAN (1° ACCESO)	32.00	1	0	3785	84.5	2.2	1.3	4.7	1.7	1.8	0.9	2.9	84.5	2.2	13.3	0.073	0.504
T. IZQ. ZIMAPAN (1° ACCESO)	32.00	3	0	1649	86.8	4.1	0.3	2.7	2.9	1.2	0.8	1.2	86.8	4.1	9.1	0.081	0.505
LA ESTANCIA	41.00	3	0	1300	77.7	2.7	6.1	1.6	3.7	1.8	1.7	4.7	77.7	2.7	19.6	0.095	0.506
TRANCAS	51.00	3	0	1669	85.2	0.6	4.3	3.1	3.9	1.2	0.6	1.1	85.2	0.6	14.2	0.090	0.510
JACALA	98.60	3	0	1793	91.3	4.4	0.8	0.2	1.8	0.1	0.6	0.8	91.3	4.4	4.3	0.105	0.504
ZACATE GRANDE	143.10	1	0	1918	84.6	3.4	0.4	1.5	3.8	2.4	1.4	2.5	84.6	3.4	12.0	0.096	0.505
T. IZQ. PISAFLORES	154.00	3	0	1740	83.5	4.0	0.4	1.5	3.8	2.7	1.6	2.5	83.5	4.0	12.5	0.079	0.507
LIM. EDOS. TERM. HGO. PPIA. S.L.P.	168.60																
TAMAZUNCHALE	192.80	1	0	3444	88.0	3.1	3.6	1.9	0.9	1.3	0.8	0.4	88.0	3.1	8.9	0.066	0.513
T. IZQ. XILITLA	228.80	1	0	4171	73.2	4.5	11.0	1.7	3.6	1.1	2.2	2.7	73.2	4.5	22.3	0.082	0.506
T. IZQ. XILITLA	228.80	3	0	2085	80.7	5.6	5.8	3.8	1.7	2.0	0.4	0.0	80.7	5.6	13.7	0.082	0.506
T. IZQ. AQUISMON	252.50	1	0	4235	77.5	7.6	8.3	2.7	1.7	1.5	0.7	0.0	77.5	7.6	14.9	0.090	0.503
AGUA HEDIONDA	265.00	1	0	4480	72.1	8.4	6.8	5.8	3.7	2.1	1.1	0.0	72.1	8.4	19.5	0.084	0.501
CD. VALLES	300.00	1	0	5022	73.0	8.5	6.2	5.0	3.8	2.2	1.3	0.0	73.0	8.5	18.5	0.073	0.502

15 CARR : QUERETARO - SAN LUIS POTOSI

CLAVE: 00165

RUTA : MEX-057

AÑO : 2009

L U G A R	E S T A C I O N				C L A S I F I C A C I O N V E H I C U L A R E N P O R C I E N T O .												
	KM	TE	SC	TDPA	A	B	C2	C3	T3S2	T3S3	T3S2R4	OTROS	A	B	C	K'	D
QUERETARO	0.00																
T. DER. LIBRAMIENTO DE QUERETARO	6.28	3	1	17653	50.8	4.5	5.0	7.0	16.1	7.1	7.1	2.4	50.8	4.5	44.7	0.078	0.502
T. DER. LIBRAMIENTO DE QUERETARO	6.28	3	2	17504	49.4	4.1	4.5	5.9	20.9	4.9	7.2	3.1	49.4	4.1	46.5	0.065	0.502
T. IZQ. JURQUILLA	15.63	3	1	18261	48.5	4.0	5.7	7.5	18.6	5.7	7.0	3.0	48.5	4.0	47.5	0.084	0.510
T. IZQ. JURQUILLA	15.63	3	2	19004	45.7	3.5	6.7	7.7	20.4	6.1	7.1	2.8	45.7	3.5	50.8	0.091	0.510
T. IZQ. SAN MIGUEL DE ALLENDE	28.53	1	1	13403	43.2	5.3	5.8	6.9	21.1	6.7	8.8	2.2	43.2	5.3	51.5	0.073	0.501

SAN LUIS POTOSI

18 CARR : SAN LUIS POTOSI - ENT. ARCINAS

CLAVE: 00134

RUTA : MEX-049

AÑO : 2009

L U G A R	E S T A C I O N				C L A S I F I C A C I O N V E H I C U L A R E N P O R C I E N T O .												
	KM	TE	SC	TDPA	A	B	C2	C3	T3S2	T3S3	T3S2R4	OTROS	A	B	C	K'	D
T. IZQ. PANFILO NATERA	139.00	1	0	6119	71.9	3.3	3.5	4.5	5.9	5.5	3.2	2.2	71.9	3.3	24.8	0.077	0.502
ENT. ARCINAS	163.00	1	0	5759	72.9	3.7	3.1	3.4	4.6	6.8	3.3	2.2	72.9	3.7	23.4	0.071	0.507

19 CARR : SAN LUIS POTOSI - LAGOS DE MORENO

CLAVE: 00133

RUTA : MEX-070-080

AÑO : 2009

L U G A R	E S T A C I O N				C L A S I F I C A C I O N V E H I C U L A R E N P O R C I E N T O .												
	KM	TE	SC	TDPA	A	B	C2	C3	T3S2	T3S3	T3S2R4	OTROS	A	B	C	K'	D
SAN LUIS POTOSI	0.00	3	1	6137	73.9	6.2	6.1	3.4	4.8	1.9	0.3	3.4	73.9	6.2	19.9	0.067	0.504
SAN LUIS POTOSI	0.00	3	2	6240	73.9	6.3	6.1	3.3	4.8	1.8	0.4	3.4	73.9	6.3	19.8	0.067	0.504
X. PERIFERICO SAN LUIS POTOSI	8.41	3	0	8460	73.5	5.3	6.2	4.7	4.6	2.5	0.2	3.0	73.5	5.3	21.2	0.071	0.506
EL TEPETATE	41.90	1	0	5100	76.2	4.3	5.7	3.7	3.4	1.9	0.3	4.5	76.2	4.3	19.5	0.072	0.512
EL TEPETATE	41.90	3	0	4583	75.7	3.6	4.6	4.5	4.1	1.8	1.5	4.2	75.7	3.6	20.7	0.073	0.510
VILLA DE ARRIAGA	61.90	3	0	4962	77.7	4.5	5.7	3.1	3.1	2.1	0.5	3.3	77.7	4.5	17.8	0.073	0.502
LIM. EDOS. TERM. S.L.P. PPIA. ZAC.	70.23																
LIM. EDOS. TERM. ZAC. PPIA. JAL.	82.94																
OJUELOS DE JALISCO	83.20	1	0	6598	73.6	8.1	5.5	3.9	3.9	2.4	1.6	1.0	73.6	8.1	18.3	0.073	
OJUELOS DE JALISCO	83.20	3	0	5264	76.0	7.5	4.9	3.9	3.8	3.2	0.5	0.2	76.0	7.5	16.5	0.086	
X. C. LEON - AGUASCALIENTES	146.90	1	0	6031	77.4	6.1	5.4	4.0	3.8	2.0	1.0	0.3	77.4	6.1	16.5	0.105	
LAGOS DE MORENO	150.00																

20 CARR : SAN LUIS POTOSI - MATEHUALA

CLAVE: 24508

RUTA : MEX-057

AÑO : 2009

L U G A R	E S T A C I O N				C L A S I F I C A C I O N V E H I C U L A R E N P O R C I E N T O .												
	KM	TE	SC	TDPA	A	B	C2	C3	T3S2	T3S3	T3S2R4	OTROS	A	B	C	K'	D
SAN LUIS POTOSI	0.00																
X. PERIFERICO DE SAN LUIS POTOSI	7.36	3	1	11307	63.9	5.4	4.3	4.2	10.3	4.6	4.7	2.6	63.9	5.4	30.7	0.067	0.500
X. PERIFERICO DE SAN LUIS POTOSI	7.36	3	2	11312	63.9	5.3	4.2	4.2	10.4	4.7	4.6	2.7	63.9	5.3	30.8	0.068	0.500
VENTURA (X. NUEVO LIBRAMIENTO DE SLP.)	33.20	3	1	4969	52.5	10.2	5.8	6.8	11.4	5.9	6.0	1.4	52.5	10.2	37.3	0.068	0.504
VENTURA (X. NUEVO LIBRAMIENTO DE SLP.)	33.20	3	2	5049	54.2	8.6	5.8	7.0	11.0	5.4	6.8	1.2	54.2	8.6	37.2	0.071	0.504
T. DER. VILLA HIDALGO	45.94	1	1	6196	53.8	8.6	7.2	6.0	10.6	5.2	7.3	1.3	53.8	8.6	37.6	0.064	0.500
T. DER. VILLA HIDALGO	45.94	1	2	6201	54.4	8.3	7.4	6.1	10.1	5.1	7.1	1.5	54.4	8.3	37.3	0.069	0.500
T. IZQ. VILLA ARISTA	61.35	1	1	6763	52.3	8.0	8.5	6.9	11.5	4.9	6.6	1.3	52.3	8.0	39.7	0.064	0.505
T. IZQ. VILLA ARISTA	61.35	1	2	6902	51.7	9.6	6.8	6.0	9.8	6.1	8.5	1.5	51.7	9.6	38.7	0.066	0.505
T. DER. GUADALCAZAR	75.70	1	1	6219	55.7	9.0	6.2	6.1	8.8	5.3	7.4	1.5	55.7	9.0	35.3	0.072	0.501
T. DER. GUADALCAZAR	75.70	1	2	6256	59.0	7.3	6.9	5.8	8.1	4.7	6.8	1.4	59.0	7.3	33.7	0.069	0.501

SAN LUIS POTOSI

20 CARR : SAN LUIS POTOSI - MATEHUALA

CLAVE: 24508

RUTA : MEX-057

AÑO : 2009

L U G A R	E S T A C I O N				CLASIFICACION VEHICULAR EN PORCIENTO .												
	KM	TE	SC	TDPA	A	B	C2	C3	T3S2	T3S3	T3S2R4	OTROS	A	B	C	K'	D
T. DER. GUADALCAZAR	75.70	3	1	6843	58.4	8.9	6.6	5.7	8.3	4.8	5.8	1.5	58.4	8.9	32.7	0.071	0.525
T. DER. GUADALCAZAR	75.70	3	2	6777	51.2	9.5	8.7	6.8	11.0	4.1	7.2	1.5	51.2	9.5	39.3	0.071	0.525
T. DER. CD. DEL MAIZ	109.60	3	1	5909	54.4	9.7	7.5	6.8	9.0	5.2	5.8	1.6	54.4	9.7	35.9	0.071	0.501
T. DER. CD. DEL MAIZ	109.60	3	2	5925	55.5	7.8	8.5	6.8	8.8	5.3	6.0	1.3	55.5	7.8	36.7	0.074	0.501
LA BONITA	171.40	1	1	4933	51.9	9.8	8.5	6.4	9.0	4.7	8.4	1.3	51.9	9.8	38.3	0.066	0.502
LA BONITA	171.40	1	2	4964	52.6	9.3	6.0	6.5	11.2	5.4	7.6	1.4	52.6	9.3	38.1	0.074	0.502
MATEHUALA	187.40	1	1	5755	57.6	8.3	6.4	5.9	9.3	4.7	6.0	1.8	57.6	8.3	34.1	0.066	0.504
MATEHUALA	187.40	1	2	5846	53.6	7.0	8.8	7.1	8.7	4.8	8.4	1.6	53.6	7.0	39.4	0.076	0.504

21 CARR : T. C. (ENT. EL HUIZACHE- ANT. MORELOS)-EL SALTO

CLAVE: 24204

RUTA : MEX

AÑO : 2009

L U G A R	E S T A C I O N				CLASIFICACION VEHICULAR EN PORCIENTO .												
	KM	TE	SC	TDPA	A	B	C2	C3	T3S2	T3S3	T3S2R4	OTROS	A	B	C	K'	D
T. C. EL HUIZACHE - ANT. MORELOS	0.00	3	0	2469	82.7	1.5	2.5	8.6	1.5	0.8	2.4	0.0	82.7	1.5	15.8	0.080	0.507
SALTO DEL AGUA	12.00																

22 CARR : T. C. (S.L.P. - MATEHUALA) - VILLA HIDALGO

CLAVE: 24619

RUTA : MEX

AÑO : 2009

L U G A R	E S T A C I O N				CLASIFICACION VEHICULAR EN PORCIENTO .												
	KM	TE	SC	TDPA	A	B	C2	C3	T3S2	T3S3	T3S2R4	OTROS	A	B	C	K'	D
PASO POR VILLA HIDALGO	0.00	3	0	1961	70.9	7.8	6.3	3.3	4.9	2.7	2.6	1.5	70.9	7.8	21.3	0.096	0.534
PASO POR VILLA HIDALGO	10.20	1	0	1960	72.7	8.5	5.8	2.6	4.8	3.1	1.7	0.8	72.7	8.5	18.8	0.086	0.500

23 CARR : TAMAZUNCHALE - SAN FELIPE ORIZATLAN

CLAVE: 00609

RUTA : MEX-102

AÑO : 2009

L U G A R	E S T A C I O N				CLASIFICACION VEHICULAR EN PORCIENTO .												
	KM	TE	SC	TDPA	A	B	C2	C3	T3S2	T3S3	T3S2R4	OTROS	A	B	C	K'	D
T. C. PORTEZUELO - CD. VALLES	0.00	3	0	7583	87.5	3.4	2.3	0.8	2.0	1.2	1.2	1.6	87.5	3.4	9.1	0.081	0.506
LIM. EDOS. TERM. S.L.P. PPIA. HGO.	18.50																
SAN FELIPE ORIZATLAN	27.10	1	0	2902	86.1	3.9	2.6	0.7	2.4	1.0	1.4	1.9	86.1	3.9	10.0	0.074	0.511

SAN LUIS POTOSI

24 CARR : LIBRAMIENTO DE MATEHUALA (CUOTA)

CLAVE:

RUTA : MEX-D

AÑO : 2009

L U G A R	E S T A C I O N				C L A S I F I C A C I O N V E H I C U L A R E N P O R C I E N T O .												
	KM	TE	SC	TDPA	A	B	C2	C3	T3S2	T3S3	T3S2R4	OTROS	A	B	C	K'	D
T.C. SAN LUIS POTOSI - MATEHUALA	0.00	3	0	7004	44.6	4.4	4.4	4.2	33.4	2.8	5.3	0.9	44.6	4.4	51.0	0.065	0.503
CASETA DE COBRO MATEHUALA	7.00	2	0	7124	43.8	4.2	4.8	3.8	34.7	2.7	5.2	0.8	43.8	4.2	52.0		
T.C. MATEHUALA - ENT. PUERTO MEXICO	14.20	1	0	7238	46.6	4.3	5.3	4.4	32.0	2.4	4.3	0.7	46.6	4.3	49.1	0.068	0.511

25 CARR : LIBRAMIENTO ORIENTE DE SAN LUIS POTOSI (CUOTA)

CLAVE: 24009

RUTA : MEX-057D

AÑO : 2009

L U G A R	E S T A C I O N				C L A S I F I C A C I O N V E H I C U L A R E N P O R C I E N T O .												
	KM	TE	SC	TDPA	A	B	C2	C3	T3S2	T3S3	T3S2R4	OTROS	A	B	C	K'	D
T. C. QUERETARO - SAN LUIS POTOSI	0.00																
X. C. CD. VALLES - SAN LUIS POTOSI	11.20	1	1	4019	34.5	3.8	5.3	4.2	39.7	4.7	7.0	0.8	34.5	3.8	61.7	0.080	0.504
X. C. CD. VALLES - SAN LUIS POTOSI	11.20	1	2	3952	44.8	3.5	4.8	5.2	29.0	4.8	6.9	1.0	44.8	3.5	51.7	0.078	0.504
CASETA DE COBRO SAN NICOLAS DE LOS JASSOS	11.22	2	0	9108	38.3	3.6	4.8	4.4	35.3	5.3	7.4	0.9	38.3	3.6	58.1		
T. C. SAN LUIS POTOSI - MATEHUALA	33.76	1	1	4135	34.7	3.5	4.6	5.2	38.2	6.0	7.1	0.7	34.7	3.5	61.8	0.072	0.502
T. C. SAN LUIS POTOSI - MATEHUALA	33.76	1	2	4099	44.8	3.5	4.3	4.7	30.4	5.1	6.3	0.9	44.8	3.5	51.7	0.073	0.502

26 CARR : LIBRAMIENTO VILLA DE ARRIAGA (CUOTA)

CLAVE:

RUTA : MEX-080D

AÑO : 2009

L U G A R	E S T A C I O N				C L A S I F I C A C I O N V E H I C U L A R E N P O R C I E N T O .												
	KM	TE	SC	TDPA	A	B	C2	C3	T3S2	T3S3	T3S2R4	OTROS	A	B	C	K'	D
T.C. SAN LUIS POTOSI - LAGOS DE MORENO	0.00	3	0	3386	65.3	3.4	3.3	4.6	11.4	7.7	2.3	2.0	65.3	3.4	31.3	0.069	0.500
T.C. SAN LUIS POTOSI - LAGOS DE MORENO	5.00																

27 CARR : CHARCAS - VILLA SANTO DOMINGO

CLAVE: 24624

RUTA : SLP-017

AÑO : 2009

L U G A R	E S T A C I O N				C L A S I F I C A C I O N V E H I C U L A R E N P O R C I E N T O .												
	KM	TE	SC	TDPA	A	B	C2	C3	T3S2	T3S3	T3S2R4	OTROS	A	B	C	K'	D
CHARCAS	0.00	3	0	979	78.2	4.6	6.8	7.4	0.3	0.8	0.9	1.0	78.2	4.6	17.2	0.071	0.501
VILLA SANTO DOMINGO	75.00																

28 CARR : MATEHUALA - LA PAZ

CLAVE: 24621

RUTA : SLP

AÑO : 2009

L U G A R	E S T A C I O N				C L A S I F I C A C I O N V E H I C U L A R E N P O R C I E N T O .												
	KM	TE	SC	TDPA	A	B	C2	C3	T3S2	T3S3	T3S2R4	OTROS	A	B	C	K'	D
MATEHUALA	0.00	3	0	3245	84.4	4.4	3.8	1.9	1.7	1.7	0.6	1.5	84.4	4.4	11.2	0.080	0.503
LA PAZ	10.00	1	1	1457	84.4	5.3	2.6	1.9	1.7	2.3	0.4	1.4	84.4	5.3	10.3	0.083	0.516

SAN LUIS POTOSI

38 CARR : TAMUIN - ESTACION F.F.C.C. TAMUIN

CLAVE: 24022

RUTA : SLP-040

AÑO : 2009

L U G A R	E S T A C I O N				C L A S I F I C A C I O N V E H I C U L A R E N P O R C I E N T O .												
	KM	TE	SC	TDPA	A	B	C2	C3	T3S2	T3S3	T3S2R4	OTROS	A	B	C	K'	D
TAMUIN	0.00	3	0	3920	82.0	5.5	5.3	0.9	3.0	0.3	1.0	2.0	82.0	5.5	12.5	0.082	0.508
ESTACION F.F.C.C. TAMUIN	10.00	1	0	1406	82.4	5.2	5.1	0.8	3.1	0.3	1.2	1.9	82.4	5.2	12.4	0.080	0.506

39 CARR : TAMUIN - SAN VICENTE TANCUAYALAB

CLAVE: 24027

RUTA : SLP-014

AÑO : 2009

L U G A R	E S T A C I O N				C L A S I F I C A C I O N V E H I C U L A R E N P O R C I E N T O .												
	KM	TE	SC	TDPA	A	B	C2	C3	T3S2	T3S3	T3S2R4	OTROS	A	B	C	K'	D
TAMUIN	0.00	3	0	3893	81.4	6.8	5.2	2.5	1.6	1.6	0.9	0.0	81.4	6.8	11.8	0.085	0.505
SAN VICENTE TANCUAYALAB	37.62																

40 CARR : CERRITOS - RIO VERDE (CUOTA)

CLAVE:

RUTA : SLP-D

AÑO : 2009

L U G A R	E S T A C I O N				C L A S I F I C A C I O N V E H I C U L A R E N P O R C I E N T O .												
	KM	TE	SC	TDPA	A	B	C2	C3	T3S2	T3S3	T3S2R4	OTROS	A	B	C	K'	D
CERRITOS	0.00	3	0	2670	72.3	5.2	7.4	4.8	4.7	3.2	1.5	0.9	72.3	5.2	22.5	0.084	0.508
VILLA JUAREZ	58.00	3	0	3626	78.2	3.2	6.4	3.1	4.5	3.0	0.8	0.8	78.2	3.2	18.6	0.077	0.507
RIO VERDE	103.00	1	0	3210	75.3	3.3	7.5	4.0	4.6	3.4	1.1	0.8	75.3	3.3	21.4	0.066	0.507

41 CARR : SAN LUIS POTOSI - VILLA DE ARRIAGA (CUOTA)

CLAVE: 24209

RUTA : SLP-D

AÑO : 2009

L U G A R	E S T A C I O N				C L A S I F I C A C I O N V E H I C U L A R E N P O R C I E N T O .												
	KM	TE	SC	TDPA	A	B	C2	C3	T3S2	T3S3	T3S2R4	OTROS	A	B	C	K'	D
T. C. QUERETARO - SAN LUIS POTOSI	0.00	3	0	2607	74.6	6.3	5.8	4.2	3.1	3.6	2.4	0.0	74.6	6.3	19.1	0.072	0.519
VILLA DE ARRIAGA	77.00	1	0	2817	75.5	5.6	6.4	3.7	2.5	4.2	2.1	0.0	75.5	5.6	18.9	0.076	0.518

42 CARR : SAN LORENZO - MOCTEZUMA

CLAVE: 24016

RUTA : MEX-069-SLP-01

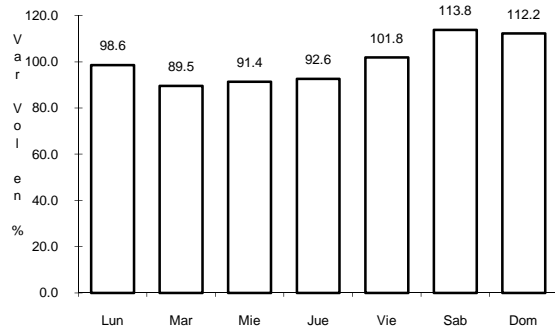
AÑO : 2009

L U G A R	E S T A C I O N				C L A S I F I C A C I O N V E H I C U L A R E N P O R C I E N T O .												
	KM	TE	SC	TDPA	A	B	C2	C3	T3S2	T3S3	T3S2R4	OTROS	A	B	C	K'	D
T. C. SAN LUIS POTOSI - MATEHUALA	0.00	3	0	1015	77.8	2.7	9.1	2.8	3.9	1.2	1.2	1.3	77.8	2.7	19.5	0.092	0.518
MOCTEZUMA	54.00	1	0	648	81.7	4.3	5.9	2.5	3.2	1.4	0.9	0.1	81.7	4.3	14.0	0.092	0.506

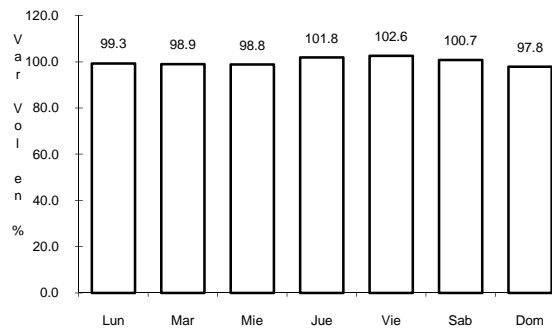
7 CARR: ENT. AHUALULCO - ENT. LA BONITA

CLAVE: 24258

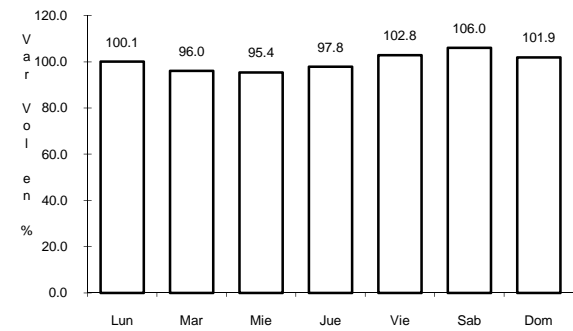
RUTA: MEX-063



Km: 0.00 Tipo: 3 Sent: 0



Km: 59.00 Tipo: 1 Sent: 0

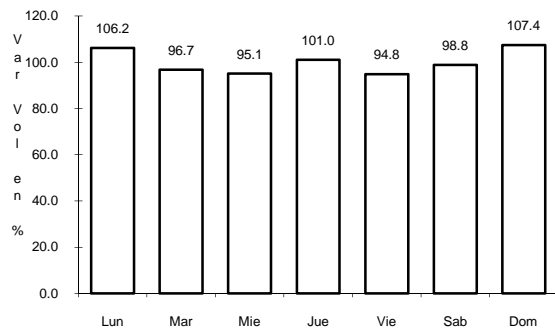


Km: 169.90 Tipo: 1 Sent: 0

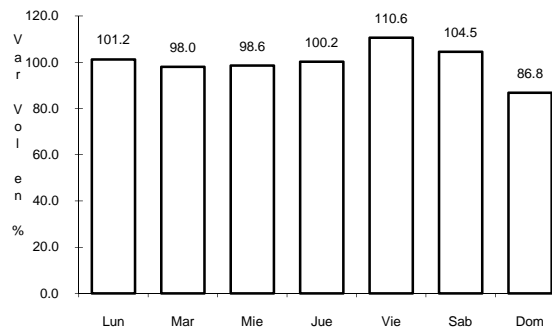
8 CARR: ENT. DE ZARAGOZA - SAN FELIPE

CLAVE: 00240

RUTA: MEX-037



Km: 0.00 Tipo: 3 Sent: 0

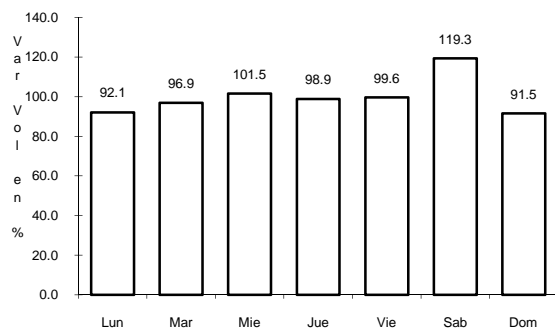


Km: 72.00 Tipo: 1 Sent: 0

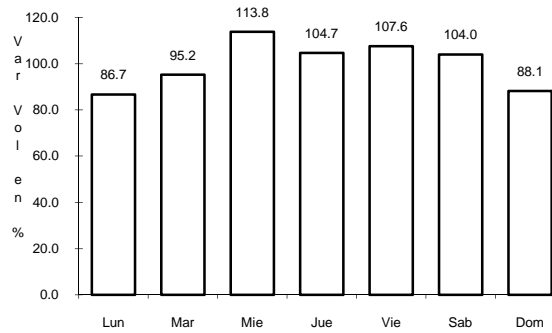
9 CARR: ENT. TULA - CD. VICTORIA

CLAVE: 00179

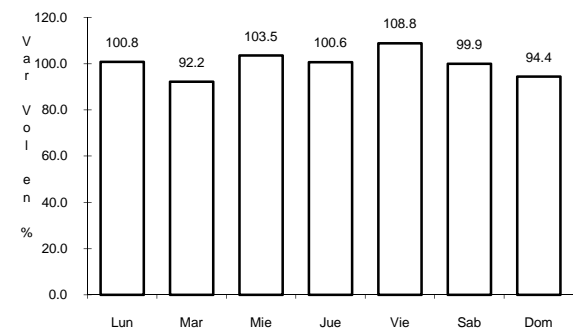
RUTA: MEX-101



Km: 0.00 Tipo: 3 Sent: 0



Km: 180.00 Tipo: 1 Sent: 1

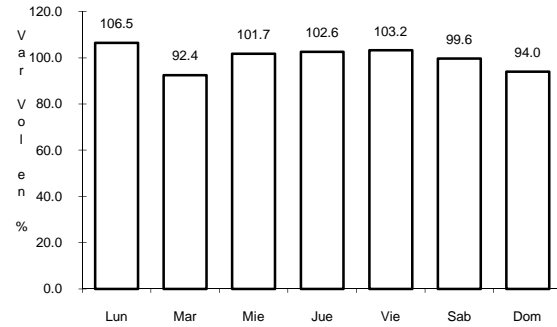


Km: 180.00 Tipo: 1 Sent: 2

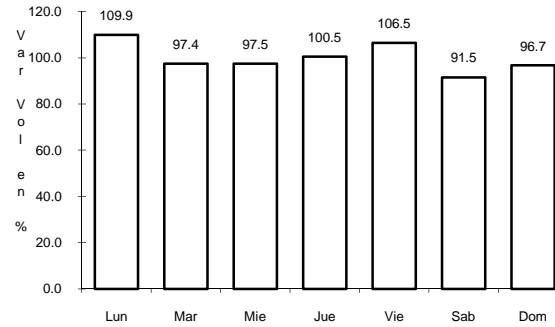
10 CARR: JALPAN DE SERRA - RIO VERDE

CLAVE: 00265

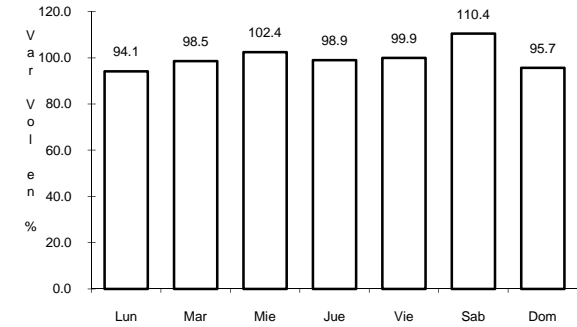
ruta: MEX-069



Km: 0.00 Tipo: 3 Sent: 0



Km: 48.60 Tipo: 1 Sent: 0

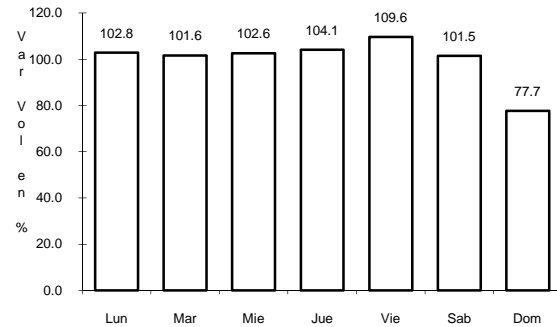


Km: 105.43 Tipo: 1 Sent: 0

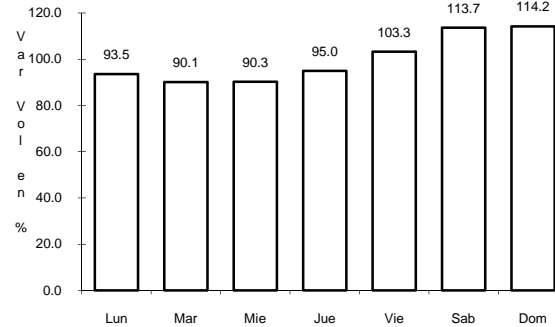
11 CARR: LIBRAMIENTO DE CD. VALLES

CLAVE: 24205

ruta: MEX-070



Km: 0.00 Tipo: 3 Sent: 0

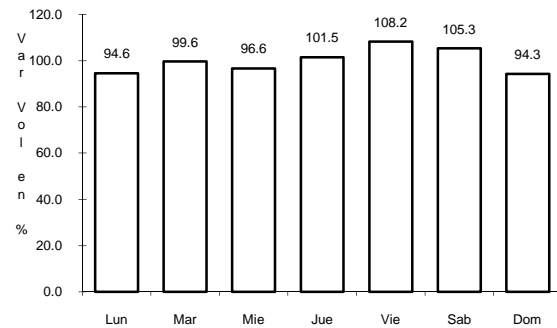


Km: 11.54 Tipo: 1 Sent: 0

12 CARR: LIBRAMIENTO DE VILLA DE REYES

CLAVE: 24010

ruta: MEX-037

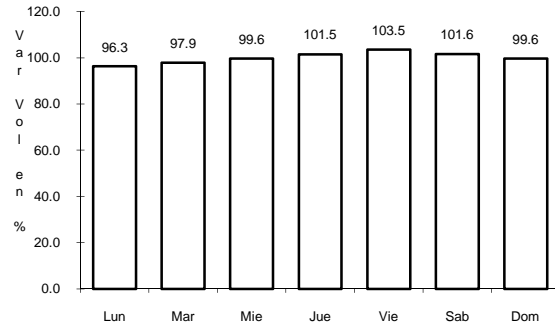


Km: 0.00 Tipo: 3 Sent: 0

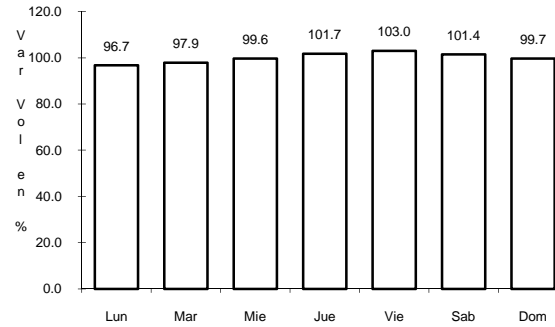
19 CARR: SAN LUIS POTOSI - LAGOS DE MORENO

CLAVE: 00133

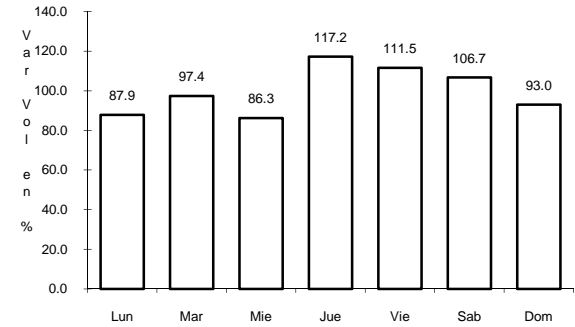
RUTA: MEX-070-080



Km: 0.00 Tipo: 3 Sent: 1



Km: 0.00 Tipo: 3 Sent: 2

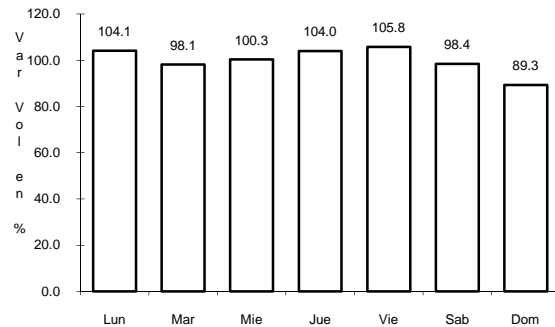


Km: 146.90 Tipo: 1 Sent: 0

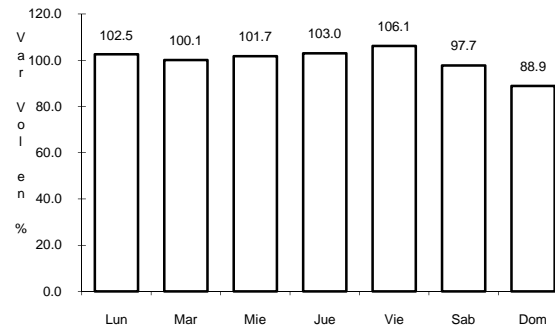
20 CARR: SAN LUIS POTOSI - MATEHUALA

CLAVE: 24508

RUTA: MEX-057



Km: 7.36 Tipo: 3 Sent: 1

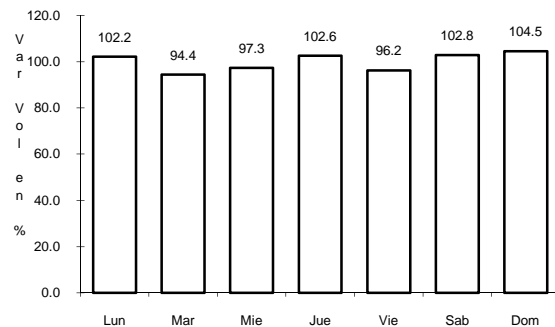


Km: 7.36 Tipo: 3 Sent: 2

21 CARR: T. C. (ENT. EL HUIZACHE- ANT. MORELOS)-EL SALTO

CLAVE: 24204

RUTA: MEX

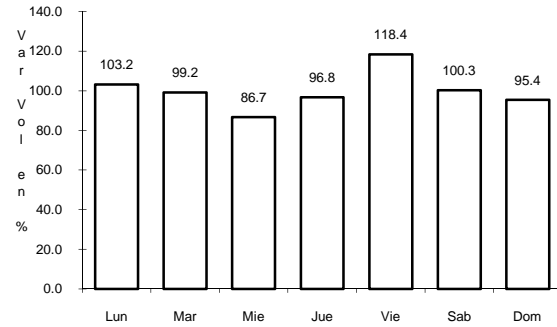


Km: 0.00 Tipo: 3 Sent: 0

25 CARR: LIBRAMIENTO ORIENTE DE SAN LUIS POTOSI (CUOTA)

CLAVE: 24009

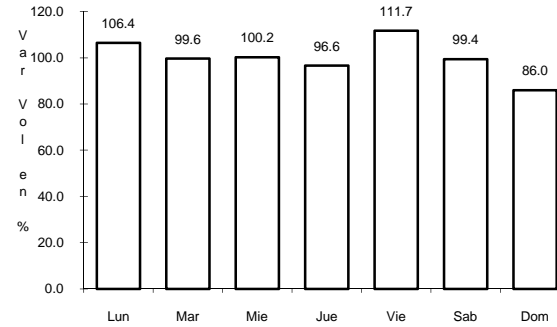
RUTA: MEX-057D



Km: 11.20

Tipo: 1

Sent: 1



Km: 11.20

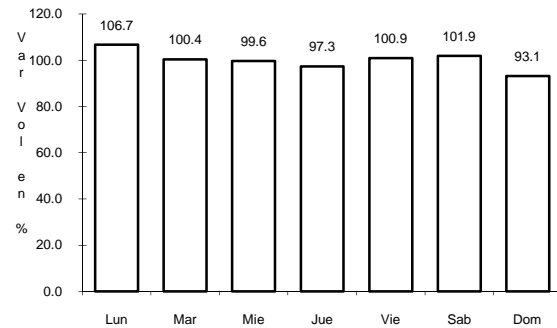
Tipo: 1

Sent: 2

26 CARR: LIBRAMIENTO VILLA DE ARRIAGA (CUOTA)

CLAVE:

RUTA: MEX-080D



Km: 0.00

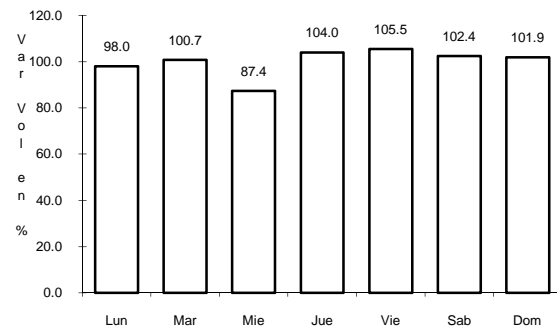
Tipo: 3

Sent: 0

27 CARR: CHARCAS - VILLA SANTO DOMINGO

CLAVE: 24624

RUTA: SLP-017



Km: 0.00

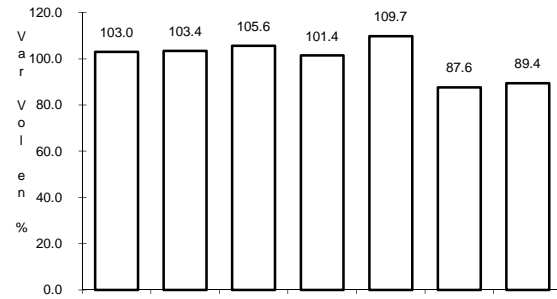
Tipo: 3

Sent: 0

31 CARR: RAMAL A AEROPUERTO DE S. L. P.

CLAVE: 24206

RUTA: MEX-057



Km: 0.00

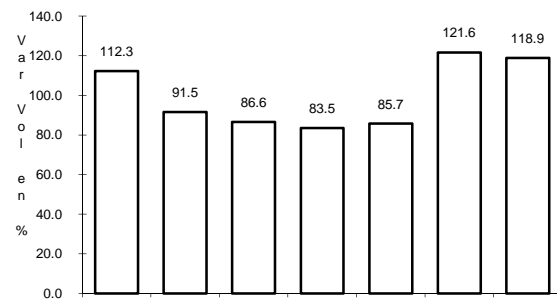
Tipo: 3

Sent: 0

32 CARR: RAMAL A CERRITOS

CLAVE: 24615

RUTA: SLP-007



Km: 0.00

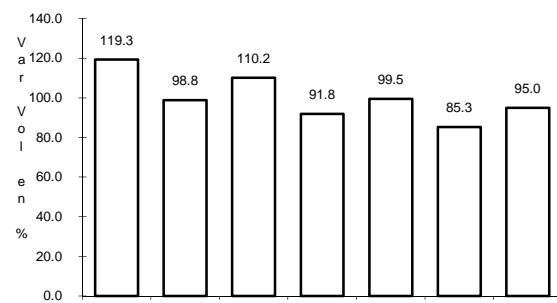
Tipo: 3

Sent: 0

33 CARR: RAMAL A POZO DE ACUÑA

CLAVE: 24626

RUTA: SLP-009



Km: 0.00

Tipo: 3

Sent: 0

