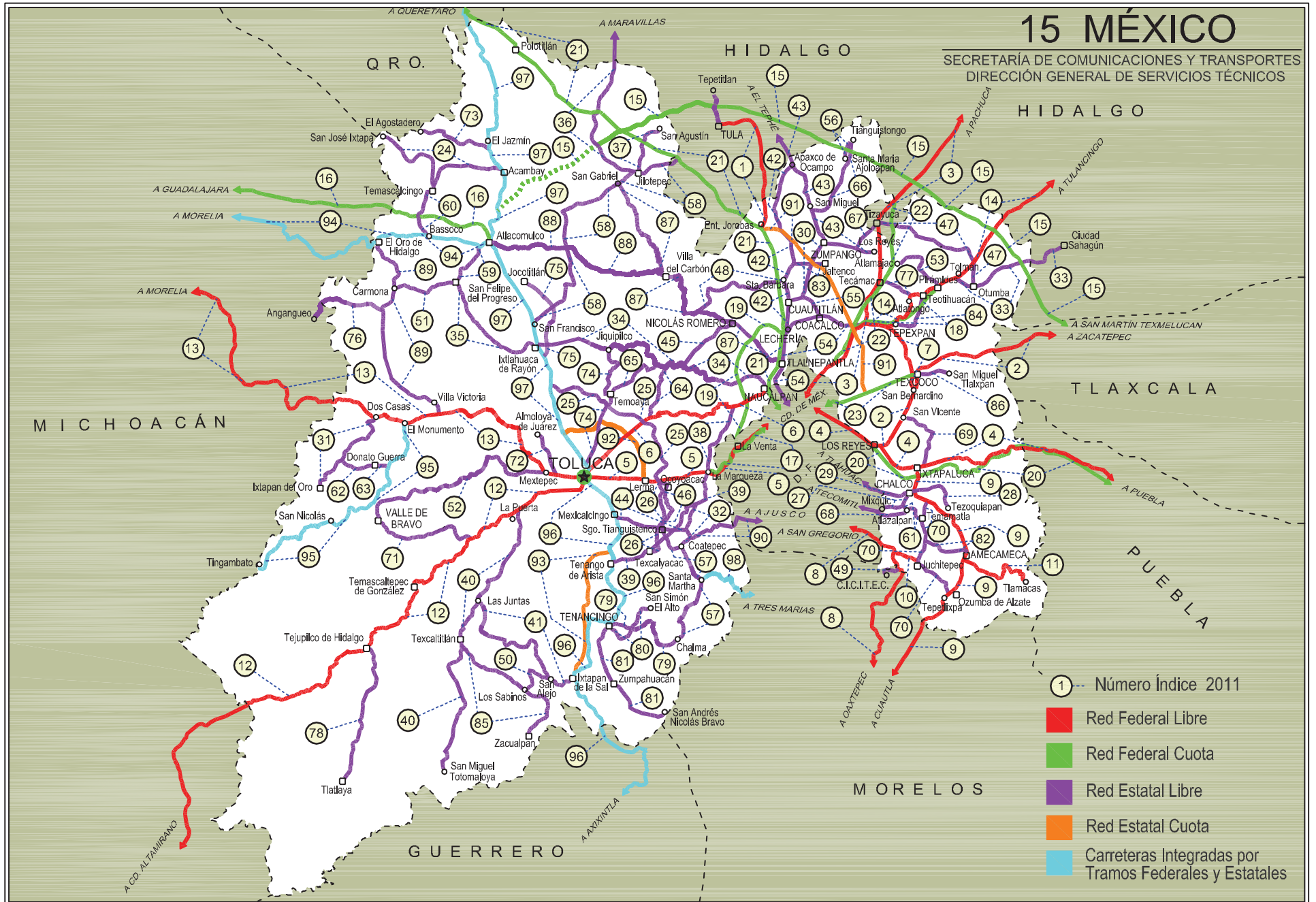


MEXICO

No. INDICE	CARRETERA	ruta	No. INDICE	CARRETERA	ruta
<b>---RED FEDERAL LIBRE---</b>					
1	ENT. JOROBAS - TULA	MEX-087	50	SAN ALEJO - LOS SABINOS	EM-007
2	LOS REYES - ZACATEPEC	MEX-136	51	SAN FELIPE DEL PROGRESO - CARMONA	EM-003
3	MEXICO - PACHUCA (LIBRE)		52	SAN LUIS MEXTEPEC - VALLE DE BRAVO	EM-001
4	MEXICO - PUEBLA (LIBRE)	MEX-085	53	SAN MARTIN DE LAS PIRAMIDES - SAN MIGUEL	
5	MEXICO - TOLUCA	MEX-150	54	ATLAMAJAC	EM
6	NAUCALPAN - TOLUCA	MEX-015	55	SAN PEDRO BARRIENTOS - ECATEPEC	EM
7	SAN BERNARDINO - TEPEXPAN	MEX-134	56	SANTA ELENA - COACALCO	EM
8	SAN GREGORIO - OAXTEPEC	MEX-138	57	SANTA MARIA AJOLOAPAN - TIANGUISTONGO	EM
9	SANTA BARBARA - IZUCAR DE MATAMOROS		58	SANTIAGO TIANGUISTENCO - CHALMA	EM-004
10	T. C. (SAN GREGORIO - OAXTEPEC) - JUCHITEPEC	MEX-142	59	SANTO DOMINGO - T. C. (MEXICO - QUERETARO (CUOTA))	EM-011-HGO
11	T. C. (SANTA BARBARA - HUAJUAPAN) - TLAMACAS	MEX-115-160	60	T. C. (ATLACOMULCO - MORELIA) - SAN FELIPE DEL	
12	TOLUCA - CD. ALTAMIRANO	MEX	61	PROGRESO	EM
13	TOLUCA - MORELIA	MEX-134	62	T. C. (ATLACOMULCO - MORELIA) - TEMASCALCINGO	EM-033
14	VENTA DE CARPIO - T. C. (PACHUCA - TUXPAM)	MEX-015	63	T. C. (CHALCO - MIXQUIC) - TEMAMATLA	EM
		MEX-132	64	T. C. (DOS CASAS - IXTAPAN DEL ORO) - DONATO	
			65	GUERRA	EM-057
			66	T. C. (EL MONUMENTO - TINGAMBATO) - DONATO	
			67	GUERRA	EM
			68	T. C. (IXTLAHUACA DE RAYON - NAUCALPAN) -	
			69	MAYORAZGO	EM-004
			70	T. C. (IXTLAHUACA DE RAYON - NAUCALPAN) - TEMOAYA	EM
			71	T. C. (LOS REYES - EL TEPHE) - TIANGUISTONGO	EM
			72	T. C. (LOS REYES - EL TEPHE) - TIZAYUCA	EM-HGO
			73	T. C. (MEXICO - MIXQUIC) - SAN PABLO ATLAZALPAN	EM-106-DF
			74	T. C. (MEXICO - PUEBLA (LIBRE)) - SAN VICENTE	EM
			75	T. C. (SANTA BARBARA - HUAJUAPAN) - TEPETLIXPA	EM
			76	T. C. (TOLUCA - CD. ALTAMIRANO) - VALLE DE BRAVO	EM
			77	T. C. (TOLUCA - MORELIA) - ALMOLOYA DE JUAREZ	EM-046
			78	T. C. (TOLUCA - PALMILLAS) - AGOSTADERO	EM
			79	T. C. (TOLUCA - PALMILLAS) - JIQUIPILCO	EM-053
			80	T. C. (TOLUCA - PALMILLAS) - JOCOTITLAN	EM
			81	T. C. (V. VICTORIA - EL ORO DE HIDALGO) - ANGANGUEO	EM-003-MICH
			82	TECAMAC - ENT. ATLATONGO	EM
			83	TEJUPILCO DE HIDALGO - TLATLAYA	EM-008
			84	TENANCINGO - CHALMA	EM
			85	TENANCINGO - SAN SIMON EL ALTO	EM
			86	TENANCINGO DE DEGOLLADO - SAN ANDRES NICOLAS	
			87	BRAVO	EM
			88	TENANGO DEL AIRE - AMECAMECA	EM
			89	TEOLOYUCAN - JALTENCO	EM
			90	TEPEXPAN - SAN JUAN TEOTIHUACAN	EM
			91	TEXCALTITLAN - ZACUALPAN	EM-007
			92	TEXCOCO - SAN MIGUEL TLAIXPAN	EM
			93	TLALNEPANTLA - SAN GABRIEL	EM-005-004
			94	VILLA DEL CARBON - ATLACOMULCO	EM-005
			95	VILLA VICTORIA - EL ORO DE HIDALGO	EM-014-004
			96	XALATLACO - EL AJUSCO	EM-DF
			<b>---RED ESTATAL DE CUOTA---</b>		
			97	CIRCUITO EXTERIOR MEXIQUENSE (CUOTA)	EM-D
			98	LIBRAMIENTO NORORIENTE DE TOLUCA (CUOTA)	EM-D
			99	TOLUCA - IXTAPAN DE LA SAL (CUOTA)	EM-D
			<b>---CARRETERAS INTEGRADAS POR TRAMOS FEDERALES Y ESTATALES---</b>		
			100	ATLACOMULCO - MORELIA	EM-005-MEX-126
			101	EL MONUMENTO - TINGAMBATO	
			102	TOLUCA - AXIXINTLA	MEX-EM
			103	TOLUCA - PALMILLAS	EM-MEX-055
			104	TRES MARIAS - SANTA MARTHA	EM(D)-MEX-055
			105		MEX-106-EM

# 15 MÉXICO

SECRETARÍA DE COMUNICACIONES Y TRANSPORTES  
DIRECCIÓN GENERAL DE SERVICIOS TÉCNICOS



MEXICO

1 CARR: ENT. JOROBAS - TULA

CLAVE: 00159

RUTA: MEX-087

AÑO: 2010

LUGAR	ESTACION				CLASIFICACION VEHICULAR EN PORCIENTO								COORDENADAS						
	KM	TE	SC	TDPA	A	B	C2	C3	T3S2	T3S3	T3S2R4	OTROS	A	B	C	K'	D	LATITUD	LONGITUD
T. C. MEXICO - QUERETARO (CUOTA)	0.00	3	1	7484	67.2	3.6	6.9	2.2	11.7	3.8	3.9	0.7	67.2	3.6	29.2	0.086	0.511	19.831018	-99.245839
T. C. MEXICO - QUERETARO (CUOTA)	0.00	3	2	7809	66.8	3.8	7.3	2.3	11.9	3.4	3.7	0.8	66.8	3.8	29.4	0.077	0.511	19.830994	-99.245840
LIM. EDOS. TERM. MEX. PPIA. HGO.	5.90																		
T. DER. ATOTONILCO	21.50	1	0	9405	67.9	2.6	6.9	2.6	11.3	4.2	3.8	0.7	67.9	2.6	29.5	0.072	0.503	19.956523	-99.244600
TULA DE ALLENDE	37.70	1	0	7357	67.7	2.5	6.5	2.3	11.5	4.4	4.5	0.6	67.7	2.5	29.8	0.084	0.502	20.054343	-99.307531

2 CARR: LOS REYES - ZACATEPEC

CLAVE: 00052

RUTA: MEX-136

AÑO: 2010

LUGAR	ESTACION				CLASIFICACION VEHICULAR EN PORCIENTO								COORDENADAS						
	KM	TE	SC	TDPA	A	B	C2	C3	T3S2	T3S3	T3S2R4	OTROS	A	B	C	K'	D	LATITUD	LONGITUD
T. C. MEXICO - PUEBLA (LIBRE)	0.00																		
T. IZQ. LA MAGDALENA	3.35	3	1	40669	65.5	4.6	6.4	5.0	12.3	3.0	2.8	0.4	65.5	4.6	29.9	0.061	0.500	19.375843	-98.943467
T. IZQ. LA MAGDALENA	3.35	3	2	40588	65.4	4.6	6.4	5.0	12.6	2.8	2.8	0.4	65.4	4.6	30.0	0.062	0.500	19.375853	-98.943448
T. IZQ. CHIMALHUACAN	8.45	1	1	22484	67.1	4.3	6.2	4.8	11.5	2.8	2.9	0.4	67.1	4.3	28.6	0.058	0.501	19.413378	-98.920231
T. IZQ. CHIMALHUACAN	8.45	1	2	22609	66.6	4.5	6.0	4.7	12.2	2.7	2.9	0.4	66.6	4.5	28.9	0.062	0.501	19.413378	-98.920228
T. C. SAN BERNARDINO - TEPEXPAN	17.00	3	1	16610	65.4	4.6	6.3	5.4	12.0	2.9	3.0	0.4	65.4	4.6	30.0	0.068	0.500	19.484609	-98.885935
T. C. SAN BERNARDINO - TEPEXPAN	17.00	3	2	16591	65.8	4.6	6.5	5.3	11.9	2.8	2.7	0.4	65.8	4.6	29.6	0.072	0.500	19.484472	-98.885952
TEXCOCO	23.02	3	1	11285	65.0	4.6	6.8	5.1	12.3	2.9	2.9	0.4	65.0	4.6	30.4	0.066	0.529	19.524088	-98.863656
TEXCOCO	23.02	3	2	10043	67.4	4.2	5.9	4.9	11.7	2.8	2.7	0.4	67.4	4.2	28.4	0.068	0.529	19.524072	-98.863672
T. IZQ. TEPETLAOXTOC	30.03	1	1	13092	65.6	4.2	6.3	5.4	12.5	2.9	2.7	0.4	65.6	4.2	30.2	0.065	0.502	19.545935	-98.826179
T. IZQ. TEPETLAOXTOC	30.03	1	2	12981	67.1	4.5	6.3	4.9	11.5	2.6	2.7	0.4	67.1	4.5	28.4	0.064	0.502	19.545806	-98.826148
T. DER. TOTOLAPAN	42.00	3	0	10146	64.9	4.4	6.6	4.9	13.0	2.9	2.9	0.4	64.9	4.4	30.7	0.067	0.501	19.556917	-98.730528
LIM. EDOS. TERM. MEX. PPIA. TLAX.	43.15																		
CALPULALPAN	59.58	3	0	11522	66.9	4.1	6.1	4.7	12.1	2.8	2.9	0.4	66.9	4.1	29.0	0.065	0.502	19.588240	-98.550948
T. DER. NANACAMILPA	71.76	3	0	12497	65.3	4.6	6.6	5.4	12.0	2.9	2.8	0.4	65.3	4.6	30.1	0.061	0.502	19.526193	-98.479961
HUEYOTLIPAN	88.21	3	0	12700	66.3	4.5	6.1	4.8	12.2	2.9	2.8	0.4	66.3	4.5	29.2	0.061	0.501	19.469505	-98.341360
XALTOCAN	108.10	1	0	15314	66.8	4.3	6.3	5.0	11.8	2.8	2.6	0.4	66.8	4.3	28.9	0.060	0.502	19.424670	-98.217284
APIZACO	117.74	1	1	16296	66.0	4.4	6.3	5.2	11.9	2.9	2.9	0.4	66.0	4.4	29.6	0.068	0.523	19.414058	-98.161856
APIZACO	117.74	1	2	17846	67.2	4.3	6.1	5.2	11.5	2.7	2.6	0.4	67.2	4.3	28.5	0.070	0.523	19.414058	-98.161856
APIZACO	117.74	3	0	18578	65.2	4.4	6.5	5.3	12.4	2.8	3.0	0.4	65.2	4.4	30.4	0.061	0.501	19.413309	-98.134629
T. DER. CUAXOMULCO	119.85	3	0	14265	65.2	4.7	6.2	5.3	12.5	2.9	2.8	0.4	65.2	4.7	30.1	0.059	0.505	19.413231	-98.115286
T. IZQ. XALOSTOC	126.67	3	1	8310	66.4	4.5	6.0	5.2	11.9	2.7	2.9	0.4	66.4	4.5	29.1	0.065	0.503	19.389518	-98.052532
T. IZQ. XALOSTOC	126.67	3	2	8223	66.5	4.4	6.3	5.1	11.7	2.8	2.8	0.4	66.5	4.4	29.1	0.068	0.503	19.389518	-98.052532
T. IZQ. LIBRAMIENTO DE HUAMANTLA	141.70	1	1	7782	65.6	4.4	6.4	5.0	12.2	3.0	3.0	0.4	65.6	4.4	30.0	0.065	0.504	19.319454	-97.943901
T. IZQ. LIBRAMIENTO DE HUAMANTLA	141.70	1	2	7891	67.2	4.0	6.1	4.8	12.1	2.6	2.8	0.4	67.2	4.0	28.8	0.065	0.504	19.319454	-97.943901



MEXICO

4 CARR: MEXICO - PUEBLA (LIBRE)

CLAVE: 00449

RUTA: MEX-150

AÑO: 2010

LUGAR	ESTACION				CLASIFICACION VEHICULAR EN PORCIENTO								COORDENADAS						
	KM	TE	SC	TDPA	A	B	C2	C3	T3S2	T3S3	T3S2R4	OTROS	A	B	C	K'	D	LATITUD	LONGITUD
MEXICO	0.00																		
LIM. EDOS. TERM. DF. PPIA. MEX.	18.66																		
T. DER. CHALCO	28.85	1	1	29749	77.3	5.2	5.2	3.8	4.3	3.0	0.7	0.5	77.3	5.2	17.5	0.061	0.514	19.310998	-98.904164
T. DER. CHALCO	28.85	1	2	28130	77.1	5.1	5.0	3.7	4.7	3.4	0.6	0.4	77.1	5.1	17.8	0.067	0.514	19.310998	-98.904164
T. DER. CHALCO	28.85	3	1	10498	76.7	5.0	5.4	3.4	3.6	3.7	1.7	0.5	76.7	5.0	18.3	0.070	0.534	19.312461	-98.896713
T. DER. CHALCO	28.85	3	2	10299	76.8	4.9	5.3	3.3	3.5	3.9	1.8	0.5	76.8	4.9	18.3	0.079	0.534	19.312461	-98.896713
IXTAPALUCA	31.06	3	0	26955	77.4	5.1	6.5	2.9	3.9	2.9	1.0	0.3	77.4	5.1	17.5	0.067	0.513	19.316135	-98.873811
T. DER. C. MEXICO - PUEBLA (CUOTA) (RIO FRIO)	62.06	1	0	5058	79.8	6.2	5.4	1.7	3.1	2.0	1.1	0.7	79.8	6.2	14.0	0.088	0.563	19.347284	-98.673345
T. DER. C. MEXICO - PUEBLA (CUOTA) (RIO FRIO)	62.06	3	0	3591	77.4	6.1	5.6	3.3	4.1	1.9	0.8	0.8	77.4	6.1	16.5	0.065	0.525	19.352991	-98.663091
LIM. EDOS. TERM. MEX. PPIA. PUE.	62.98																		
SAN MARTIN TEXMELUCAN	70.00	1	0	11140	82.4	5.3	4.9	2.2	2.1	1.7	0.8	0.6	82.4	5.3	12.3	0.059	0.505	19.304105	-98.455175
X. C. MEXICO - PUEBLA (CUOTA)	74.10	3	0	16458	80.5	5.4	6.3	2.4	2.2	2.0	0.9	0.3	80.5	5.4	14.1	0.060	0.508	19.265670	-98.430821
HUEJOTZINGO	88.00	1	0	11788	81.4	5.4	5.2	1.9	3.7	1.3	0.7	0.4	81.4	5.4	13.2	0.071	0.506	19.174764	-98.414240
HUEJOTZINGO	88.00	3	0	13097	81.2	5.3	5.4	1.8	3.4	1.5	0.8	0.6	81.2	5.3	13.5	0.065	0.504	19.148787	-98.397997
T. IZQ. AEROPUERTO	92.80	1	1	6320	81.6	5.5	5.2	1.9	3.2	1.3	0.9	0.4	81.6	5.5	12.9	0.061	0.501	19.136336	-98.377211
T. IZQ. AEROPUERTO	92.80	1	2	6341	81.0	5.6	5.1	1.9	3.3	1.7	1.0	0.4	81.0	5.6	13.4	0.060	0.501	19.136407	-98.377151
T. DER. CHOLULA	101.00	1	0	17845	81.1	5.2	5.0	1.8	4.4	1.0	0.9	0.6	81.1	5.2	13.7	0.069	0.507	19.074140	-98.319047
T. DER. CHOLULA	101.00	3	1	12616	81.4	5.4	5.8	2.2	2.4	1.4	0.8	0.6	81.4	5.4	13.2	0.070	0.506	19.070026	-98.312313
T. DER. CHOLULA	101.00	3	2	12293	82.2	5.1	5.3	2.3	2.7	1.1	0.7	0.6	82.2	5.1	12.7	0.067	0.506	19.070093	-98.312276
PUEBLA	131.00																		

5 CARR: MEXICO - TOLUCA

CLAVE: 00447

RUTA: MEX-015

AÑO: 2010

LUGAR	ESTACION				CLASIFICACION VEHICULAR EN PORCIENTO								COORDENADAS						
	KM	TE	SC	TDPA	A	B	C2	C3	T3S2	T3S3	T3S2R4	OTROS	A	B	C	K'	D	LATITUD	LONGITUD
MEXICO	0.00																		
ENT. CONSTITUYENTES Y REFORMA	12.84	3	1	74041	81.0	5.3	4.4	1.1	3.6	3.1	1.0	0.5	81.0	5.3	13.7	0.065	0.500	19.385791	-99.247675
ENT. CONSTITUYENTES Y REFORMA	12.84	3	2	74090	80.7	5.5	4.6	0.9	3.7	2.8	1.1	0.7	80.7	5.5	13.8	0.066	0.500	19.385783	-99.247673
T. DER. CUAJIMALPA (1º ACCESO)	20.56	1	1	34095	77.2	6.0	5.6	0.7	6.7	2.3	0.8	0.7	77.2	6.0	16.8	0.060	0.515	19.363641	-99.280896
T. DER. CUAJIMALPA (1º ACCESO)	20.56	1	2	35309	78.0	6.5	5.9	1.0	5.2	2.4	0.5	0.5	78.0	6.5	15.5	0.057	0.515	19.363641	-99.280891
T. IZQ. DESIERTO DE LOS LEONES	23.96	1	1	29135	78.6	6.1	5.3	0.5	5.4	2.5	0.7	0.9	78.6	6.1	15.3	0.067	0.503	19.337004	-99.311530
T. IZQ. DESIERTO DE LOS LEONES	23.96	1	2	28818	75.5	6.8	6.3	0.8	5.9	3.0	0.9	0.8	75.5	6.8	17.7	0.068	0.503	19.337048	-99.311540
LIM. EDOS. TERM. D.F. PPIA. MEX.	33.44																		
T. DER. HUIXQUILUCAN	33.98	1	1	23931	78.4	6.2	5.4	0.8	5.2	2.6	0.8	0.6	78.4	6.2	15.4	0.059	0.501	19.295736	-99.359220
T. DER. HUIXQUILUCAN	33.98	1	2	24021	78.3	6.7	6.1	0.9	4.2	2.7	0.6	0.5	78.3	6.7	15.0	0.061	0.501	19.295733	-99.359222

MEXICO

5 CARR: MEXICO - TOLUCA

CLAVE: 00447

RUTA: MEX-015

AÑO: 2010

LUGAR	ESTACION				CLASIFICACION VEHICULAR EN PORCIENTO								COORDENADAS						
	KM	TE	SC	TDPA	A	B	C2	C3	T3S2	T3S3	T3S2R4	OTROS	A	B	C	K'	D	LATITUD	LONGITUD
X. C. AMOMOLULCO - STGO. TIANGUISTENCO	47.26	1	1	34526	83.4	2.9	4.1	0.8	5.0	2.4	0.8	0.6	83.4	2.9	13.7	0.078	0.537	19.282485	-99.479214
X. C. AMOMOLULCO - STGO. TIANGUISTENCO	47.26	1	2	29793	81.0	3.4	5.2	1.0	4.8	2.6	1.3	0.7	81.0	3.4	15.6	0.078	0.537	19.281860	-99.480390
T. DER. LERMA - IZQ. SAN PEDRO TULTEPEC	51.71	1	1	31337	79.1	3.9	5.4	1.0	5.2	3.2	1.6	0.6	79.1	3.9	17.0	0.085	0.501	19.284045	-99.504930
T. DER. LERMA - IZQ. SAN PEDRO TULTEPEC	51.71	1	2	31204	77.9	3.7	4.7	0.8	6.3	4.6	1.3	0.7	77.9	3.7	18.4	0.084	0.501	19.280176	-99.503445
T. IZQ. SAN MATEO ATENCO (BAJA)	52.00	3	1	11553	78.1	3.6	5.9	0.7	7.0	2.4	1.8	0.5	78.1	3.6	18.3	0.088	0.507	19.285461	-99.533183
T. IZQ. SAN MATEO ATENCO (ALTA)	52.00	3	1	36005	78.1	3.8	5.2	0.1	7.0	4.2	1.0	0.6	78.1	3.8	18.1	0.080	0.502	19.285711	-99.543275
T. IZQ. SAN MATEO ATENCO (BAJA)	52.00	3	2	11239	79.0	3.4	6.4	1.0	5.9	2.8	1.0	0.5	79.0	3.4	17.6	0.087	0.507	19.285461	-99.533183
T. IZQ. SAN MATEO ATENCO (ALTA)	52.00	3	2	36278	81.1	3.5	5.8	0.6	5.6	1.8	1.0	0.6	81.1	3.5	15.4	0.079	0.502	19.285711	-99.543275
X. C. LIBRAMIENTO DE TOLUCA (BAJA)	62.20	1	1	11237	76.7	4.2	6.1	1.4	5.4	4.5	1.2	0.5	76.7	4.2	19.1	0.093	0.503	19.288353	-99.617474
X. C. LIBRAMIENTO DE TOLUCA (ALTA)	62.20	1	1	33057	76.3	3.9	5.9	0.5	6.6	4.6	1.5	0.7	76.3	3.9	19.8	0.085	0.500	19.287956	-99.617384
X. C. LIBRAMIENTO DE TOLUCA (ALTA)	62.20	1	2	33111	77.2	4.1	5.8	0.1	6.9	4.3	1.1	0.5	77.2	4.1	18.7	0.089	0.500	19.287956	-99.617384
X. C. LIBRAMIENTO DE TOLUCA (BAJA)	62.20	1	2	11380	80.8	3.9	4.9	0.9	4.8	3.8	0.4	0.5	80.8	3.9	15.3	0.084	0.503	19.288353	-99.617474
TOLUCA	66.00																		

6 CARR: NAUCALPAN - TOLUCA

CLAVE: 15056

RUTA: MEX-134

AÑO: 2010

LUGAR	ESTACION				CLASIFICACION VEHICULAR EN PORCIENTO								COORDENADAS						
	KM	TE	SC	TDPA	A	B	C2	C3	T3S2	T3S3	T3S2R4	OTROS	A	B	C	K'	D	LATITUD	LONGITUD
T. C. MEXICO - QUERETARO (CUOTA) (PASO INFERIOR)	0.00																		
T. DER. LOMA LINDA	3.13	3	1	28920	64.8	4.6	3.5	2.3	8.4	5.8	9.9	0.7	64.8	4.6	30.6	0.071	0.504	19.459494	-99.255819
T. DER. LOMA LINDA	3.13	3	2	29655	66.2	4.4	3.7	2.4	7.6	5.3	9.5	0.9	66.2	4.4	29.4	0.071	0.504	19.459487	-99.255818
T. IZQ. CHICHICASPA	12.72	3	0	12303	66.7	4.2	3.9	2.6	9.2	4.9	8.1	0.4	66.7	4.2	29.1	0.075	0.509	19.441142	-99.320719
T. DER. XOLOTEPEC	39.46	3	0	12027	62.5	4.9	3.8	3.9	9.1	5.2	9.8	0.8	62.5	4.9	32.6	0.061	0.503	19.415101	-99.490331
T. IZQ. EL CERRILLO	53.18	3	0	17099	66.3	4.6	4.3	2.0	7.4	5.1	9.6	0.7	66.3	4.6	29.1	0.064	0.502	19.366536	-99.569318
T. C. TOLUCA - PALMILLAS	63.30	1	1	17603	66.7	4.9	4.5	1.5	6.9	5.6	9.3	0.6	66.7	4.9	28.4	0.081	0.515	19.315894	-99.631740
T. C. TOLUCA - PALMILLAS	63.30	1	2	18729	66.1	5.0	4.4	1.8	7.5	5.4	9.0	0.8	66.1	5.0	28.9	0.082	0.515	19.315887	-99.631755

7 CARR: SAN BERNARDINO - TEPEXAN

CLAVE: 15053

RUTA: MEX-138

AÑO: 2010

LUGAR	ESTACION				CLASIFICACION VEHICULAR EN PORCIENTO								COORDENADAS						
	KM	TE	SC	TDPA	A	B	C2	C3	T3S2	T3S3	T3S2R4	OTROS	A	B	C	K'	D	LATITUD	LONGITUD
T. C. LOS REYES - ZACATEPEC	0.00	3	1	17493	82.1	3.4	4.2	1.0	2.1	2.9	3.9	0.4	82.1	3.4	14.5	0.062	0.507	19.490449	-98.898011
T. C. LOS REYES - ZACATEPEC	0.00	3	2	17028	82.3	3.5	4.1	1.1	2.0	2.7	3.8	0.5	82.3	3.5	14.2	0.062	0.507	19.490435	-98.898096
T. DER. TEXCOCO	2.08	1	1	18662	82.5	3.4	3.9	1.1	2.0	2.6	4.0	0.5	82.5	3.4	14.1	0.065	0.501	19.498945	-98.895748
T. DER. TEXCOCO	2.08	1	2	18769	82.6	3.5	4.0	0.9	1.9	2.5	4.1	0.5	82.6	3.5	13.9	0.060	0.501	19.498974	-98.895726

MEXICO

7 CARR: SAN BERNARDINO - TEPEXPAN

CLAVE: 15053

RUTA: MEX-138

AÑO: 2010

LUGAR	ESTACION				CLASIFICACION VEHICULAR EN PORCIENTO								COORDENADAS						
	KM	TE	SC	TDPA	A	B	C2	C3	T3S2	T3S3	T3S2R4	OTROS	A	B	C	K'	D	LATITUD	LONGITUD
T. DER. TEXCOCO	2.08	3	1	11301	83.3	3.9	2.4	1.6	2.5	2.1	3.7	0.5	83.3	3.9	12.8	0.077	0.500	19.513847	-98.894340
T. DER. TEXCOCO	2.08	3	2	11300	83.6	3.7	2.4	1.5	2.5	2.0	3.8	0.5	83.6	3.7	12.7	0.074	0.500	19.513869	-98.894326
X. C. CHINCONCUAC - SAN FRANCISCO ACUEXCOMAC	10.80	1	1	15548	81.3	4.2	3.4	2.0	3.7	2.5	2.4	0.5	81.3	4.2	14.5	0.083	0.504	19.556884	-98.911640
X. C. CHINCONCUAC - SAN FRANCISCO ACUEXCOMAC	10.80	1	2	15457	81.2	4.0	3.3	2.1	3.8	2.6	2.3	0.7	81.2	4.0	14.8	0.083	0.504	19.556873	-98.911643
T. DER. ENT. MORELOS - PIR MIDES (CUOTA)	22.38	1	1	19843	83.2	4.4	2.6	2.0	3.5	3.1	0.6	0.6	83.2	4.4	12.4	0.072	0.504	19.603067	-98.942469
T. DER. ENT. MORELOS - PIR MIDES (CUOTA)	22.38	1	2	19671	83.4	4.2	2.5	2.3	3.6	3.0	0.5	0.5	83.4	4.2	12.4	0.069	0.504	19.603186	-98.942883
T. C. VENTA DE CARPIO - T. C. (PACHUCA - TULANCINGO)	23.12	1	1	17694	82.3	6.1	2.9	2.4	2.9	2.5	0.6	0.3	82.3	6.1	11.6	0.082	0.504	19.609888	-98.951265
T. C. VENTA DE CARPIO - T. C. (PACHUCA - TULANCINGO)	23.12	1	2	18057	82.4	6.1	2.8	2.3	2.9	2.4	0.8	0.3	82.4	6.1	11.5	0.085	0.504	19.609920	-98.951293

8 CARR: SAN GREGORIO - OAXTEPEC

CLAVE: 00901

RUTA: MEX-142

AÑO: 2010

LUGAR	ESTACION				CLASIFICACION VEHICULAR EN PORCIENTO								COORDENADAS						
	KM	TE	SC	TDPA	A	B	C2	C3	T3S2	T3S3	T3S2R4	OTROS	A	B	C	K'	D	LATITUD	LONGITUD
SAN GREGORIO	0.00	3	0	8496	93.0	1.5	5.0	0.4	0.1	0.0	0.0	0.0	93.0	1.5	5.5	0.056	0.505	19.244804	-99.054653
X. C. MILPA ALTA - SAN LORENZO TLACOYUCAN	9.00	3	0	6949	93.3	1.4	4.8	0.4	0.1	0.0	0.0	0.0	93.3	1.4	5.3	0.067	0.507	19.180138	-99.029136
LIM. EDOS. TERM. D.F. PPIA. MEX.	18.80																		
LIM. EDOS. TERM. MEX. PPIA. MOR.	28.50																		
T. DER. SAN FELIPE NERI	33.80	1	0	4115	93.1	1.4	5.0	0.4	0.1	0.0	0.0	0.0	93.1	1.4	5.5	0.065	0.503	19.035434	-98.941887
T. DER. TLALNEPANTLA	40.50	3	0	5075	92.8	1.5	5.2	0.4	0.1	0.0	0.0	0.0	92.8	1.5	5.7	0.060	0.501	19.004422	-98.990278
TLAYACAPAN	48.50	3	0	6507	92.8	1.5	5.2	0.4	0.1	0.0	0.0	0.0	92.8	1.5	5.7	0.063	0.501	18.939974	-98.974432
T. DER. YAUTEPEC	53.00	3	0	11526	92.9	1.6	5.0	0.4	0.1	0.0	0.0	0.0	92.9	1.6	5.5	0.063	0.506	18.919497	-98.970495
OAXTEPEC	56.00																		

9 CARR: SANTA BARBARA - IZUCAR DE MATAMOROS

CLAVE: 00451

RUTA: MEX-115-160

AÑO: 2010

LUGAR	ESTACION				CLASIFICACION VEHICULAR EN PORCIENTO								COORDENADAS						
	KM	TE	SC	TDPA	A	B	C2	C3	T3S2	T3S3	T3S2R4	OTROS	A	B	C	K'	D	LATITUD	LONGITUD
T. C. MEXICO - PUEBLA (LIBRE)	0.00	3	1	16555	78.6	4.1	4.7	1.5	4.9	3.6	2.1	0.5	78.6	4.1	17.3	0.071	0.515	19.310959	-98.896970
T. C. MEXICO - PUEBLA (LIBRE)	0.00	3	2	16456	78.5	4.4	4.8	1.6	4.8	3.4	1.9	0.6	78.5	4.4	17.1	0.065	0.515	19.310959	-98.896970
X. C. MEXICO - PUEBLA (CUOTA)	3.61	3	1	28455	78.0	4.1	4.2	1.5	5.5	5.0	1.3	0.4	78.0	4.1	17.9	0.071	0.500	19.285247	-98.880524
X. C. MEXICO - PUEBLA (CUOTA)	3.61	3	2	28434	78.6	3.8	4.8	1.6	5.2	4.0	1.5	0.5	78.6	3.8	17.6	0.069	0.500	19.285247	-98.880524
CHALCO	8.00	3	1	19900	77.8	4.2	5.3	1.4	6.5	2.2	1.9	0.7	77.8	4.2	18.0	0.073	0.504	19.250490	-98.875605
CHALCO	8.00	3	2	20794	79.8	4.3	4.4	1.2	5.8	2.1	1.6	0.8	79.8	4.3	15.9	0.070	0.504	19.250490	-98.875605
T. DER. JUCHITEPEC	12.46	3	1	11099	79.3	4.6	5.7	1.7	4.3	2.1	1.9	0.4	79.3	4.6	16.1	0.065	0.504	19.239108	-98.854441
T. DER. JUCHITEPEC	12.46	3	2	11270	81.6	4.5	4.1	1.4	3.9	1.9	2.0	0.6	81.6	4.5	13.9	0.067	0.504	19.239108	-98.854441





MEXICO

11 CARR: T. C. (SANTA BARBARA - HUAJUAPAN) - TLAMACAS

CLAVE: 15073

RUTA: MEX

AÑO: 2010

LUGAR	ESTACION				CLASIFICACION VEHICULAR EN PORCIENTO								COORDENADAS						
	KM	TE	SC	TDPA	A	B	C2	C3	T3S2	T3S3	T3S2R4	OTROS	A	B	C	K'	D	LATITUD	LONGITUD
T. C. SANTA BARBARA - IZUCAR DE MATAMOROS	0.00	3	0	2301	87.3	3.2	4.6	1.4	2.5	0.2	0.3	0.5	87.3	3.2	9.5	0.068	0.512	19.109667	-98.774992
SAN PEDRO NEXAPA	6.00	3	0	1347	85.5	3.7	5.0	2.5	1.9	0.3	0.7	0.4	85.5	3.7	10.8	0.063	0.515	19.082952	-98.730328
TLAMACAS	28.00	1	0	1196	85.9	4.9	5.0	3.2	0.3	0.1	0.1	0.5	85.9	4.9	9.2	0.069	0.507	19.085576	-98.648222

12 CARR: TOLUCA - CD. ALTAMIRANO

CLAVE: 00020

RUTA: MEX-134

AÑO: 2010

LUGAR	ESTACION				CLASIFICACION VEHICULAR EN PORCIENTO								COORDENADAS						
	KM	TE	SC	TDPA	A	B	C2	C3	T3S2	T3S3	T3S2R4	OTROS	A	B	C	K'	D	LATITUD	LONGITUD
T. C. TOLUCA - AXIXINTLA	0.00																		
T. IZQ. CAPULTITLAN	1.78	3	1	7731	77.3	2.8	3.8	2.5	7.9	1.5	3.6	0.6	77.3	2.8	19.9	0.080	0.504	19.256430	-99.683508
T. IZQ. CAPULTITLAN	1.78	3	2	7841	77.9	2.4	3.7	2.6	8.0	1.4	3.7	0.3	77.9	2.4	19.7	0.081	0.504	19.256417	-99.683521
T. DER. ZINACATEPEC	10.21	3	0	16404	82.3	2.0	4.5	1.2	7.3	1.6	0.6	0.5	82.3	2.0	15.7	0.067	0.501	19.251464	-99.751868
T. IZQ. SULTEPEC	18.72	3	0	5839	83.0	2.3	5.0	1.7	2.3	2.0	3.3	0.4	83.0	2.3	14.7	0.063	0.503	19.213060	-99.808625
T. DER. VALLE DE BRAVO	52.00	3	0	5365	79.3	5.4	6.3	3.9	2.5	1.6	0.4	0.6	79.3	5.4	15.3	0.068	0.504	19.147639	-99.919722
TEMASCALTEPEC	68.76	1	0	3750	82.9	4.0	4.2	3.3	2.9	1.3	1.2	0.2	82.9	4.0	13.1	0.084	0.509	19.046738	-100.052974
TEMASCALTEPEC	68.76	3	0	4282	80.9	3.9	4.7	3.0	3.9	1.8	1.3	0.5	80.9	3.9	15.2	0.078	0.504	19.041248	-100.040966
T. IZQ. SAN DIEGO CUENTLA	84.34	3	0	3851	82.3	4.4	4.7	2.5	3.0	1.6	1.2	0.3	82.3	4.4	13.3	0.079	0.510	18.964391	-100.084356
TEJUPILCO DE HIDALGO	100.76	1	0	3724	80.0	6.3	4.9	2.8	2.8	1.8	0.9	0.5	80.0	6.3	13.7	0.076	0.501	18.923180	-100.145638
TEJUPILCO DE HIDALGO	100.76	3	0	3808	78.6	5.9	5.5	3.3	2.9	2.0	1.1	0.7	78.6	5.9	15.5	0.083	0.510	18.903273	-100.163124
CUADRILLA DE LOPEZ	113.20	3	0	2744	81.5	4.2	4.9	2.5	2.7	2.4	1.6	0.2	81.5	4.2	14.3	0.075	0.509	18.875234	-100.228242
T. IZQ. BEJUCOS	147.57	1	0	2345	79.8	5.1	5.7	3.3	2.5	1.8	1.1	0.7	79.8	5.1	15.1	0.085	0.502	18.784852	-100.421194
LIM. EDOS. TERM. MEX. PPIA. GRO.	148.00																		
CUTZAMALA	196.00	1	0	4334	84.3	4.0	4.9	1.7	1.7	1.9	1.0	0.5	84.3	4.0	11.7	0.067	0.501	18.488113	-100.578415
LIM. EDOS. TERM. GRO. PPIA. MICH.	201.00																		
LIM. EDOS. TERM. MICH. PPIA. GRO.	210.30																		
CD. ALTAMIRANO	216.00	1	0	5484	90.2	3.3	2.9	1.1	1.4	0.5	0.3	0.3	90.2	3.3	6.5	0.064	0.501	18.382654	-100.651043

13 CARR: TOLUCA - MORELIA

CLAVE: 00448

RUTA: MEX-015

AÑO: 2010

LUGAR	ESTACION				CLASIFICACION VEHICULAR EN PORCIENTO								COORDENADAS						
	KM	TE	SC	TDPA	A	B	C2	C3	T3S2	T3S3	T3S2R4	OTROS	A	B	C	K'	D	LATITUD	LONGITUD
TOLUCA	0.00																		
X. C. LIBRAMIENTO DE TOLUCA	1.00	3	1	23703	80.4	6.6	6.5	1.8	1.4	1.9	1.0	0.4	80.4	6.6	13.0	0.066	0.507	19.288095	-99.684989
X. C. LIBRAMIENTO DE TOLUCA	1.00	3	2	23030	80.5	6.7	6.6	1.7	1.5	1.8	1.0	0.2	80.5	6.7	12.8	0.066	0.507	19.288132	-99.684960
T. DER. ALMOLOYA DE JUAREZ	4.70	3	1	18822	80.0	6.5	6.3	2.4	1.9	1.6	1.0	0.3	80.0	6.5	13.5	0.069	0.509	19.293868	-99.724084

MEXICO

13 CARR: TOLUCA - MORELIA

CLAVE: 00448

RUTA: MEX-015

AÑO: 2010

LUGAR	ESTACION				CLASIFICACION VEHICULAR EN PORCIENTO								COORDENADAS						
	KM	TE	SC	TDPA	A	B	C2	C3	T3S2	T3S3	T3S2R4	OTROS	A	B	C	K'	D	LATITUD	LONGITUD
T. DER. ALMOLOYA DE JUAREZ	4.70	3	2	19544	79.7	6.4	6.1	2.6	2.1	1.7	1.1	0.3	79.7	6.4	13.9	0.067	0.509	19.293879	-99.724093
T. IZO. VALLE DE BRAVO	7.50	3	0	11567	81.2	6.2	6.0	2.3	1.7	1.1	1.0	0.5	81.2	6.2	12.6	0.064	0.502	19.309687	-99.756160
T. DER. VILLA VICTORIA	46.39	1	0	11575	81.0	5.1	4.1	1.5	4.7	1.7	1.6	0.3	81.0	5.1	13.9	0.074	0.504	19.417823	-99.990853
T. DER. VILLA VICTORIA	46.39	3	0	9148	81.6	4.9	4.1	1.4	4.5	1.6	1.6	0.3	81.6	4.9	13.5	0.075	0.510	19.416975	-100.007827
T. IZO. VALLE DE BRAVO	54.40	1	0	7859	80.5	7.0	3.5	1.9	3.7	1.6	1.3	0.5	80.5	7.0	12.5	0.080	0.504	19.398224	-100.059795
T. IZO. VILLA DE ALLENDE	64.08	1	0	11418	80.7	7.8	3.4	1.9	3.1	1.5	1.0	0.6	80.7	7.8	11.5	0.063	0.511	19.410507	-100.138893
T. IZO. VILLA DE ALLENDE	64.08	3	0	4831	83.3	5.8	3.5	1.9	3.2	1.1	1.0	0.2	83.3	5.8	10.9	0.073	0.501	19.410709	-100.141731
LIM. EDOS. TERM. MEX. PPIA. MICH.	70.20																		
T. DER. LIBRAMIENTO DE HEROICA ZITACUARO	92.80	1	0	11175	75.9	8.3	7.0	2.5	2.6	2.1	0.9	0.7	75.9	8.3	15.8	0.060	0.524	19.449843	-100.309240
T. DER. ANGANGUEO	106.33	3	0	8930	79.7	6.5	4.8	2.2	2.4	1.7	1.9	0.8	79.7	6.5	13.8	0.085	0.504	19.487080	-100.384026
T. IZO. JUNGAPERO	114.30	3	0	6173	78.6	6.4	5.4	2.6	3.0	1.4	2.1	0.5	78.6	6.4	15.0	0.074	0.512	19.485195	-100.445578
CD. HIDALGO	144.61	1	0	9248	79.5	6.7	5.8	3.0	2.7	1.1	0.8	0.4	79.5	6.7	13.8	0.063	0.506	19.672642	-100.519101
T. IZO. TZITZIO	188.30	1	0	705	76.8	7.2	6.3	3.3	2.6	2.4	0.5	0.9	76.8	7.2	16.0	0.091	0.506	19.652470	-100.953515
PERIFERICO DE MORELIA	238.60	1	0	3349	76.3	8.0	6.3	4.6	1.8	1.7	1.1	0.2	76.3	8.0	15.7	0.068	0.503	19.688279	-101.117986
MORELIA	240.10																		

14 CARR: VENTA DE CARPIO - T. C. (PACHUCA - TUXPAM)

CLAVE: 00455

RUTA: MEX-132

AÑO: 2010

LUGAR	ESTACION				CLASIFICACION VEHICULAR EN PORCIENTO								COORDENADAS						
	KM	TE	SC	TDPA	A	B	C2	C3	T3S2	T3S3	T3S2R4	OTROS	A	B	C	K'	D	LATITUD	LONGITUD
T. C. MEXICO - PACHUCA (LIBRE)	0.00																		
T. DER. TEXCOCO	6.42	3	0	20602	74.5	5.8	6.3	4.3	5.1	2.2	1.5	0.3	74.5	5.8	19.7	0.069	0.501	19.610432	-98.943760
TEPEXPAN	7.57	3	0	10213	84.9	3.2	3.5	2.7	2.5	2.6	0.3	0.3	84.9	3.2	11.9	0.059	0.501	19.622955	-98.934204
ACOLMAN	12.42	1	0	8500	83.4	3.0	5.0	1.5	2.9	2.2	1.4	0.6	83.4	3.0	13.6	0.074	0.508	19.632760	-98.917603
TEOTIHUACAN	20.70	3	0	6364	82.3	2.8	3.8	1.3	6.0	0.8	2.6	0.4	82.3	2.8	14.9	0.066	0.501	19.682083	-98.880642
T. DER. OTUMBA	31.79	1	0	7271	85.5	2.3	3.4	1.6	3.2	0.9	2.2	0.9	85.5	2.3	12.2	0.068	0.506	19.718237	-98.802012
T. DER. OTUMBA	31.79	3	0	6618	86.7	2.0	3.4	1.7	3.0	0.6	2.1	0.5	86.7	2.0	11.3	0.068	0.513	19.721423	-98.790834
X. C. TIZAYUCA - OTUMBA	37.85	1	1	5731	83.2	4.3	3.0	2.6	1.9	1.5	2.9	0.6	83.2	4.3	12.5	0.071	0.502	19.750905	-98.757610
X. C. TIZAYUCA - OTUMBA	37.85	1	2	5787	83.3	4.1	3.1	3.0	1.5	1.8	2.4	0.8	83.3	4.1	12.6	0.089	0.502	19.750909	-98.757657
X. C. TIZAYUCA - OTUMBA	37.85	3	1	6803	81.3	2.5	4.5	2.2	4.8	1.6	2.3	0.8	81.3	2.5	16.2	0.080	0.514	19.760330	-98.749963
X. C. TIZAYUCA - OTUMBA	37.85	3	2	6982	82.2	2.3	4.1	2.3	4.6	1.6	2.2	0.7	82.2	2.3	15.5	0.097	0.514	19.760354	-98.749968
LIM. EDOS. TERM. MEX. PPIA. HGO.	51.00																		
X. C. PACHUCA - CD. SAHAGUN	54.00	3	1	6813	76.7	4.7	6.5	4.2	4.3	1.8	1.3	0.5	76.7	4.7	18.6	0.072	0.514	19.881702	-98.658857
X. C. PACHUCA - CD. SAHAGUN	54.00	3	2	6769	75.0	4.8	6.8	3.9	5.4	2.1	1.4	0.6	75.0	4.8	20.2	0.066	0.514	19.881711	-98.658863
X. C. CALPULALPAN - EL OCOTE	64.17	1	1	6336	71.6	4.9	7.1	5.2	6.0	3.0	1.5	0.7	71.6	4.9	23.5	0.098	0.503	19.918312	-98.585631



MEXICO

16 CARR: ATLACOMULCO - ZAPOTLANEJO (CUOTA)

CLAVE: 00018

RUTA: MEX-015D

AÑO: 2010

LUGAR	ESTACION				CLASIFICACION VEHICULAR EN PORCIENTO								COORDENADAS						
	KM	TE	SC	TDPA	A	B	C2	C3	T3S2	T3S3	T3S2R4	OTROS	A	B	C	K'	D	LATITUD	LONGITUD
T. C. TOLUCA - PALMILLAS	0.00																		
CASETA DE COBRO SAN JUANICO	3.76	2	0	7699	81.6	6.9	4.2	2.8	2.3	0.7	1.2	0.3	81.6	6.9	11.5			19.830594	-99.905264
LIM. EDOS. TERM. MEX. PPIA. MICH.	21.20																		
CASETA DE COBRO CONTEPEC	33.10	2	0	7471	80.1	6.3	4.8	3.4	2.7	0.9	1.4	0.4	80.1	6.3	13.6			19.876112	-100.177002
CASETA DE COBRO ZINAPECUARO	102.017	1	0	6439	82.3	6.5	3.6	2.2	2.7	0.7	1.6	0.4	82.3	6.5	11.2			19.901803	-100.788575
CASETA DE COBRO ZINAPECUARO	102.017	2	0	7114	82.9	6.0	3.6	2.2	2.6	0.7	1.6	0.4	82.9	6.0	11.1			19.901803	-100.788575
CASETA DE COBRO ZINAPECUARO	102.017	3	0	6629	82.3	6.3	3.6	2.3	2.7	0.7	1.7	0.4	82.3	6.3	11.4			19.901803	-100.788575
CASETA DE COBRO PANINDICUARO	207.00	1	0	5490	80.8	5.6	4.1	2.9	3.6	0.7	1.9	0.4	80.8	5.6	13.6			19.972227	-101.756953
CASETA DE COBRO PANINDICUARO	207.00	2	0	5820	81.1	5.4	4.1	2.9	3.5	0.7	1.9	0.4	81.1	5.4	13.5			19.972227	-101.756953
CASETA DE COBRO PANINDICUARO	207.00	3	0	4838	80.4	6.1	4.0	2.7	3.7	0.6	2.1	0.4	80.4	6.1	13.5			19.972227	-101.756953
CASETA DE COBRO ECUANDUREO	260.00	1	0	6131	80.3	5.6	4.3	3.1	3.7	0.8	1.8	0.4	80.3	5.6	14.1			20.175038	-102.191318
CASETA DE COBRO ECUANDUREO	260.00	2	0	8122	79.7	6.9	4.1	3.0	3.5	0.8	1.7	0.3	79.7	6.9	13.4			20.175038	-102.191318
CASETA DE COBRO ECUANDUREO	260.00	3	0	6667	78.9	7.0	4.2	3.1	3.9	0.8	1.8	0.3	78.9	7.0	14.1			20.175038	-102.191318
LIM. EDOS. TERM. MICH. PPIA. JAL.	297.00																		
CASETA DE COBRO OCOTLAN	326.00	1	0	10534	67.0	5.1	4.7	4.4	10.1	2.2	5.7	0.8	67.0	5.1	27.9			20.405873	-102.738901
CASETA DE COBRO OCOTLAN	326.00	2	0	11366	68.9	4.7	4.6	4.2	9.5	2.0	5.4	0.7	68.9	4.7	26.4			20.405873	-102.738901
CASETA DE COBRO OCOTLAN	326.00	3	0	9650	71.2	5.4	4.7	3.6	7.9	1.2	5.3	0.7	71.2	5.4	23.4			20.405873	-102.738901
T. C. ZAPOTLANEJO - GUADALAJARA (CUOTA)	375.00																		

17 CARR: CONSTITUYENTES - LA MARQUESA (CUOTA)

CLAVE: 00446

RUTA: MEX-015D

AÑO: 2010

LUGAR	ESTACION				CLASIFICACION VEHICULAR EN PORCIENTO								COORDENADAS						
	KM	TE	SC	TDPA	A	B	C2	C3	T3S2	T3S3	T3S2R4	OTROS	A	B	C	K'	D	LATITUD	LONGITUD
T. C. MEXICO - TOLUCA (LIBRE) (PUENTE CONAFRUT)	0.00	3	1	27621	91.7	5.9	1.4	0.4	0.3	0.1	0.2	0.0	91.7	5.9	2.4	0.067	0.502	19.380635	-99.251119
T. C. MEXICO - TOLUCA (LIBRE) (PUENTE CONAFRUT)	0.00	3	2	27446	92.6	5.2	1.2	0.4	0.3	0.1	0.2	0.0	92.6	5.2	2.2	0.069	0.502	19.380683	-99.251159
CASETA DE COBRO SANTA FE	3.60	1	0	54270	92.2	5.5	1.3	0.4	0.3	0.1	0.2	0.0	92.2	5.5	2.3			19.363393	-99.267326
CASETA DE COBRO CONTADERO	9.40	1	0	40981	89.7	7.3	1.7	0.5	0.4	0.1	0.3	0.0	89.7	7.3	3.0			19.335817	-99.311209
CASETA DE COBRO LA VENTA	10.00	1	0	38135	89.1	7.8	1.8	0.5	0.4	0.1	0.3	0.0	89.1	7.8	3.1			19.332891	-99.314468
CASETA DE COBRO LA VENTA	10.00	1	1	19019	88.6	8.1	2.0	0.5	0.4	0.1	0.3	0.0	88.6	8.1	3.3	0.079	0.504	19.335120	-99.308593
CASETA DE COBRO LA VENTA	10.00	1	2	18710	88.7	8.3	1.7	0.5	0.4	0.1	0.3	0.0	88.7	8.3	3.0	0.074	0.504	19.335110	-99.308588
CASETA DE COBRO LA VENTA	10.00	2	0	54875	89.3	6.2	2.1	0.7	1.0	0.2	0.4	0.1	89.3	6.2	4.5			19.332891	-99.314468
CASETA DE COBRO LA VENTA	10.00	3	1	26436	89.2	6.0	2.2	0.8	1.0	0.2	0.5	0.1	89.2	6.0	4.8	0.062	0.500	19.326828	-99.316929
CASETA DE COBRO LA VENTA	10.00	3	2	26405	89.5	6.0	2.0	0.8	0.9	0.2	0.5	0.1	89.5	6.0	4.5	0.059	0.500	19.326808	-99.316923
LIM. EDOS. TERM. D.F. PPIA. MEX.	18.66																		
T. C. MEXICO - TOLUCA (LIBRE) (LA MARQUESA)	19.20	1	1	20937	88.4	6.6	2.3	0.9	1.0	0.2	0.5	0.1	88.4	6.6	5.0	0.072	0.551	19.300692	-99.366205



MEXICO

20 CARR : MEXICO - PUEBLA (CUOTA)

CLAVE: 00450

RUTA: MEX-150D

AÑO: 2010

LUGAR	ESTACION				CLASIFICACION VEHICULAR EN PORCIENTO								COORDENADAS						
	KM	TE	SC	TDPA	A	B	C2	C3	T3S2	T3S3	T3S2R4	OTROS	A	B	C	K'	D	LATITUD	LONGITUD
MEXICO	0.00																		
LIM. EDOS. TERM. D.F. PPIA. MEX.	17.71																		
T. IZQ. LOS REYES	20.00	3	1	60901	83.7	4.8	5.3	2.7	2.2	0.4	0.7	0.2	83.7	4.8	11.5	0.077	0.510	19.350377	-98.986289
T. IZQ. LOS REYES	20.00	3	2	63465	83.9	4.8	5.0	2.7	2.3	0.4	0.7	0.2	83.9	4.8	11.3	0.080	0.510	19.350377	-98.986289
CASETA DE COBRO CHALCO	32.00	1	0	76791	83.9	4.6	5.2	2.7	2.3	0.4	0.7	0.2	83.9	4.6	11.5			19.292069	-98.881723
X. C. SANTA BARBARA - IZUCAR DE MATAMOROS	32.14	1	1	43936	83.2	4.7	5.6	2.7	2.5	0.4	0.7	0.2	83.2	4.7	12.1	0.079	0.508	19.292644	-98.887311
X. C. SANTA BARBARA - IZUCAR DE MATAMOROS	32.14	1	2	45351	84.3	4.6	4.9	2.6	2.3	0.4	0.7	0.2	84.3	4.6	11.1	0.068	0.508	19.292644	-98.887311
X. C. SANTA BARBARA - IZUCAR DE MATAMOROS	32.14	3	1	18117	76.3	8.3	6.5	3.5	3.3	0.3	1.4	0.4	76.3	8.3	15.4	0.077	0.505	19.293945	-98.879151
X. C. SANTA BARBARA - IZUCAR DE MATAMOROS	32.14	3	2	17974	75.8	8.6	6.8	3.4	3.3	0.3	1.4	0.4	75.8	8.6	15.6	0.070	0.505	19.293945	-98.879151
CASETA DE COBRO SAN MARCOS	33.30	2	0	27450	75.1	8.6	7.0	3.7	3.4	0.3	1.5	0.4	75.1	8.6	16.3			19.296361	-98.870726
LIM. EDOS. TERM. MEX. PPIA. PUE.	63.20																		
T. IZQ. RIO FRIO	63.79	3	1	12298	75.3	8.5	6.6	3.8	3.5	0.3	1.6	0.4	75.3	8.5	16.2	0.080	0.533	19.352145	-98.662908
T. IZQ. RIO FRIO	63.79	3	2	12849	74.5	8.9	7.2	3.7	3.5	0.3	1.5	0.4	74.5	8.9	16.6	0.098	0.533	19.352145	-98.662908
T. IZQ. TLAXCALA	90.61	1	1	15484	73.3	7.9	5.0	4.0	5.6	0.9	2.8	0.5	73.3	7.9	18.8	0.067	0.509	19.276193	-98.440898
T. IZQ. TLAXCALA	90.61	1	2	16040	71.4	8.7	5.1	4.1	6.2	1.0	3.0	0.5	71.4	8.7	19.9	0.063	0.509	19.276218	-98.440905
T. IZQ. TLAXCALA	90.61	3	1	15866	71.5	8.1	5.6	4.4	6.1	0.9	2.9	0.5	71.5	8.1	20.4	0.075	0.515	19.260772	-98.416126
T. IZQ. TLAXCALA	90.61	3	2	14945	71.6	8.5	5.0	4.2	6.1	0.9	3.2	0.5	71.6	8.5	19.9	0.084	0.515	19.260835	-98.416076
CASETA DE COBRO SAN MARTIN TEXMELUCAN	91.00	2	0	38271	72.1	8.3	5.2	4.2	5.8	0.9	3.0	0.5	72.1	8.3	19.6			19.241098	-98.385680
LIM. EDOS. TERM. PUE. PPIA. TLAX.	103.00																		
LIM. EDOS. TERM. TLAX. PPIA. PUE.	107.00																		
T. C. PUEBLA - TLAXCALA	124.90																		

21 CARR : MEXICO - QUERETARO (CUOTA)

CLAVE: 00411

RUTA: MEX-057-MEX-057D

AÑO: 2010

LUGAR	ESTACION				CLASIFICACION VEHICULAR EN PORCIENTO								COORDENADAS						
	KM	TE	SC	TDPA	A	B	C2	C3	T3S2	T3S3	T3S2R4	OTROS	A	B	C	K'	D	LATITUD	LONGITUD
MEXICO	0.00																		
LIM. EDOS. TERM. D.F. PPIA. MEX.	11.30																		
CASETA DE COBRO TEPOTZOTLAN	43.01	2	0	44648	67.6	5.6	6.8	4.8	11.2	1.1	2.5	0.4	67.6	5.6	26.8			19.715358	-99.207587
ENT. JOROBAS	56.18	1	1	30395	67.5	5.5	7.0	5.0	11.0	1.1	2.5	0.4	67.5	5.5	27.0	0.070	0.506	19.822613	-99.246170
ENT. JOROBAS	56.18	1	2	29636	66.4	5.6	7.1	5.1	11.7	1.1	2.6	0.4	66.4	5.6	28.0	0.071	0.506	19.822618	-99.246166
ENT. JOROBAS	56.18	3	1	27017	67.1	5.7	6.6	4.9	11.6	1.1	2.6	0.4	67.1	5.7	27.2	0.073	0.502	19.829119	-99.257183
ENT. JOROBAS	56.18	3	2	26818	68.0	5.2	6.6	4.8	11.4	1.1	2.5	0.4	68.0	5.2	26.8	0.073	0.502	19.829132	-99.257174
LIM. EDOS. TERM. MEX. PPIA. HGO.	59.85																		
T. DER. TEPEJI DEL RIO	69.36	1	1	23011	57.1	4.7	7.0	7.4	16.9	1.9	4.4	0.6	57.1	4.7	38.2	0.089	0.509	19.878429	-99.339888





MEXICO

22 CARR: MEXICO - TIZAYUCA (CUOTA)

CLAVE: 00432

RUTA: MEX-085D

AÑO: 2010

LUGAR	ESTACION				CLASIFICACION VEHICULAR EN PORCIENTO								COORDENADAS						
	KM	TE	SC	TDPA	A	B	C2	C3	T3S2	T3S3	T3S2R4	OTROS	A	B	C	K'	D	LATITUD	LONGITUD
T. C. MEXICO - PACHUCA (LIBRE)	0.00																		
LIM. EDOS. TERM. D.F. PPIA. MEX.	9.86																		
CASETA DE COBRO SAN CRISTOBAL	21.00	1	0	99997	89.5	4.8	3.4	1.3	0.7	0.1	0.2	0.0	89.5	4.8	5.7			19.587792	-99.042025
CASETA DE COBRO REVOLUCION	22.80	1	0	75509	88.5	4.6	4.1	1.5	0.9	0.1	0.3	0.0	88.5	4.6	6.9			19.602793	-99.038090
ENT. MORELOS	23.28	3	1	19537	88.2	4.8	4.2	1.5	0.9	0.1	0.3	0.0	88.2	4.8	7.0	0.076	0.512	19.624145	-99.027017
ENT. MORELOS	23.28	3	2	18624	88.6	4.5	4.1	1.5	0.9	0.1	0.3	0.0	88.6	4.5	6.9	0.072	0.512	19.624172	-99.026962
CASETA DE COBRO OJO DE AGUA	25.00	2	0	62434	85.4	6.3	4.7	1.7	1.4	0.2	0.3	0.0	85.4	6.3	8.3			19.618818	-99.029462
T. IZQ. TECAMAC	35.62	3	1	12435	84.7	6.6	5.0	1.7	1.5	0.2	0.3	0.0	84.7	6.6	8.7	0.115	0.501	19.717616	-98.960486
T. IZQ. TECAMAC	35.62	3	2	12377	85.5	6.2	4.8	1.6	1.4	0.2	0.3	0.0	85.5	6.2	8.3	0.108	0.501	19.717609	-98.960491
LIM. EDOS. TERM. MEX. PPIA. HGO.	49.60																		
X. C. OTUMBA - TIZAYUCA	53.45	1	1	13372	85.6	6.2	4.7	1.7	1.3	0.2	0.3	0.0	85.6	6.2	8.2	0.115	0.507	19.810335	-98.945744
X. C. OTUMBA - TIZAYUCA	53.45	1	2	12982	86.0	5.9	4.7	1.6	1.3	0.2	0.3	0.0	86.0	5.9	8.1	0.108	0.507	19.810335	-98.945741
T. C. MEXICO - PACHUCA (LIBRE)	60.50	1	1	13210	84.9	6.4	5.0	1.8	1.4	0.2	0.3	0.0	84.9	6.4	8.7	0.109	0.515	19.882952	-98.937543
T. C. MEXICO - PACHUCA (LIBRE)	60.50	1	2	12435	85.5	6.5	4.4	1.7	1.4	0.2	0.3	0.0	85.5	6.5	8.0	0.110	0.515	19.882993	-98.937542

23 CARR: PEÑON - TEXCOCO (CUOTA)

CLAVE: 15010

RUTA: MEX-136D

AÑO: 2010

LUGAR	ESTACION				CLASIFICACION VEHICULAR EN PORCIENTO								COORDENADAS						
	KM	TE	SC	TDPA	A	B	C2	C3	T3S2	T3S3	T3S2R4	OTROS	A	B	C	K'	D	LATITUD	LONGITUD
PEÑON	0.00																		
CASETA DE COBRO PEÑON Y TEXCOCO	0.00	2	0	28698	87.6	3.7	3.7	2.4	1.5	0.7	0.3	0.1	87.6	3.7	8.7			19.458550	-99.033673
T. C. SAN BERNANDINO - TEPEXPAN	16.50	1	1	14249	86.0	4.0	4.0	2.0	1.9	0.8	0.8	0.5	86.0	4.0	10.0	0.068	0.501	19.505899	-98.902339
T. C. SAN BERNANDINO - TEPEXPAN	16.50	1	2	14196	86.2	4.1	4.1	2.0	1.8	0.7	0.6	0.5	86.2	4.1	9.7	0.065	0.501	19.505901	-98.902311

24 CARR: ACAMBAY - SAN JOSE IXTAPA

CLAVE: 15037

RUTA: EM

AÑO: 2010

LUGAR	ESTACION				CLASIFICACION VEHICULAR EN PORCIENTO								COORDENADAS						
	KM	TE	SC	TDPA	A	B	C2	C3	T3S2	T3S3	T3S2R4	OTROS	A	B	C	K'	D	LATITUD	LONGITUD
ACAMBAY	0.00																		
TEMASCALCINGO	20.00	1	0	4601	89.1	3.3	2.6	0.2	3.9	0.4	0.3	0.2	89.1	3.3	7.6	0.076	0.502	19.929888	-100.003363
SAN JOSE IXTAPA	37.00	1	0	1100	92.4	2.5	3.0	0.3	0.7	0.1	0.5	0.5	92.4	2.5	5.1	0.068	0.511	20.018138	-100.104314

MEXICO

25 CARR: AMOMOLULCO - T. C. (TOLUCA - PALMILLAS)

CLAVE: 15022

RUTA: EM-036

AÑO: 2010

LUGAR	ESTACION				CLASIFICACION VEHICULAR EN PORCIENTO								COORDENADAS						
	KM	TE	SC	TDPA	A	B	C2	C3	T3S2	T3S3	T3S2R4	OTROS	A	B	C	K'	D	LATITUD	LONGITUD
T. C. MEXICO - TOLUCA	0.00																		
AMOMOLULCO	0.30	3	0	9155	76.4	7.4	6.9	3.1	2.2	2.3	1.0	0.7	76.4	7.4	16.2	0.087	0.503	19.296342	-99.485487
X. C. NAUCALPAN - TOLUCA	19.10	1	0	8336	77.3	4.9	4.8	1.0	6.4	1.2	3.7	0.7	77.3	4.9	17.8	0.083	0.513	19.401314	-99.517726
X. C. TOLUCA - TEMOAYA	29.10	1	0	7136	77.8	5.0	6.5	2.3	4.0	1.3	2.4	0.7	77.8	5.0	17.2	0.083	0.507	19.440220	-99.605149
T. C. TOLUCA - PALMILLAS	46.60	1	0	1975	86.3	4.5	3.6	1.9	1.1	0.5	1.4	0.7	86.3	4.5	9.2	0.080	0.503	19.481436	-99.729424

26 CARR: AMOMOLULCO - TEXCALYACAC

CLAVE: 15059

RUTA: EM

AÑO: 2010

LUGAR	ESTACION				CLASIFICACION VEHICULAR EN PORCIENTO								COORDENADAS						
	KM	TE	SC	TDPA	A	B	C2	C3	T3S2	T3S3	T3S2R4	OTROS	A	B	C	K'	D	LATITUD	LONGITUD
T. C. MEXICO - TOLUCA	0.00																		
X. C. MEXICALcingo - XALATLACO	13.10	3	0	3218	84.8	5.0	4.1	2.0	1.7	1.7	0.1	0.6	84.8	5.0	10.2	0.076	0.504	19.180034	-99.490672
ALMOLOYA DEL RIO	17.00	1	0	3377	83.8	5.0	4.4	1.7	2.4	1.7	0.1	0.9	83.8	5.0	11.2	0.075	0.511	19.166608	-99.492571
ALMOLOYA DEL RIO	17.00	3	0	1848	86.3	4.3	4.5	1.7	1.3	0.9	0.6	0.4	86.3	4.3	9.4	0.063	0.500	19.143922	-99.486588
X. C. LA MARQUESA - TENANGO DE ARISTA	22.00	3	0	1855	87.2	4.2	4.5	1.5	0.8	1.0	0.2	0.6	87.2	4.2	8.6	0.073	0.500	19.142247	-99.485634
TEXCALYACAC	24.00																		

27 CARR: CHALCO - MIXQUIC

CLAVE: 00171

RUTA: EM-DF

AÑO: 2010

LUGAR	ESTACION				CLASIFICACION VEHICULAR EN PORCIENTO								COORDENADAS						
	KM	TE	SC	TDPA	A	B	C2	C3	T3S2	T3S3	T3S2R4	OTROS	A	B	C	K'	D	LATITUD	LONGITUD
CHALCO	0.00	3	1	11553	90.0	3.8	1.5	0.6	2.6	0.2	0.8	0.5	90.0	3.8	6.2	0.060	0.501	19.239655	-98.909696
CHALCO	0.00	3	2	11489	90.2	3.7	1.6	0.6	2.4	0.3	0.7	0.5	90.2	3.7	6.1	0.062	0.501	19.239655	-98.909696
LIM. EDOS. TERM. MEX. PPIA. D.F.	8.00																		
MIXQUIC	10.00	1	0	5484	89.5	4.5	1.1	0.9	2.6	0.1	0.8	0.5	89.5	4.5	6.0	0.061	0.501	19.224732	-98.945028

28 CARR: CHALCO - SAN MATEO TEZOQUIAPAN

CLAVE:

RUTA: EM

AÑO: 2010

LUGAR	ESTACION				CLASIFICACION VEHICULAR EN PORCIENTO								COORDENADAS						
	KM	TE	SC	TDPA	A	B	C2	C3	T3S2	T3S3	T3S2R4	OTROS	A	B	C	K'	D	LATITUD	LONGITUD
CHALCO	0.00	3	0	15364	84.1	3.8	1.8	1.8	6.0	1.1	0.7	0.7	84.1	3.8	12.1	0.078	0.506	19.261846	-98.883547
SAN GREGORIO CUAUTZINGO	4.50	1	0	13782	83.4	4.0	1.9	1.9	6.3	1.1	0.7	0.7	83.4	4.0	12.6	0.079	0.504	19.263180	-98.870662
SAN MATEO TEZOQUIAPAN	14.00	1	0	2273	87.4	4.6	1.6	1.6	2.3	1.0	0.8	0.7	87.4	4.6	8.0	0.067	0.504	19.231458	-98.817845

MEXICO

29 CARR: CHALCO - TLAHUAC

CLAVE: 00170

RUTA: EM-DF

AÑO: 2010

LUGAR	ESTACION				CLASIFICACION VEHICULAR EN PORCIENTO								COORDENADAS						
	KM	TE	SC	TDPA	A	B	C2	C3	T3S2	T3S3	T3S2R4	OTROS	A	B	C	K'	D	LATITUD	LONGITUD
CHALCO	0.00	3	1	10488	87.4	4.1	2.1	1.9	2.2	1.5	0.4	0.4	87.4	4.1	8.5	0.065	0.501	19.250270	-98.918876
CHALCO	0.00	3	2	10526	87.4	4.0	2.2	2.0	2.1	1.6	0.3	0.4	87.4	4.0	8.6	0.064	0.501	19.250270	-98.918876
LIM. EDOS. TERM. MEX. PPIA. D.F.	7.50																		
TLAHUAC	12.00	1	0	6444	88.0	3.5	2.0	2.4	1.8	1.4	0.4	0.5	88.0	3.5	8.5	0.073	0.507	19.264138	-98.991879

30 CARR: CUAUTITLAN - ZUMPANGO DE OCAMPO

CLAVE: 15020

RUTA: EM-035

AÑO: 2010

LUGAR	ESTACION				CLASIFICACION VEHICULAR EN PORCIENTO								COORDENADAS						
	KM	TE	SC	TDPA	A	B	C2	C3	T3S2	T3S3	T3S2R4	OTROS	A	B	C	K'	D	LATITUD	LONGITUD
CUAUTITLAN	0.00	3	1	14703	82.7	5.9	3.5	2.5	2.4	1.8	0.5	0.7	82.7	5.9	11.4	0.079	0.517	19.675452	-99.157175
CUAUTITLAN	0.00	3	2	15716	83.6	5.7	3.6	2.3	2.3	1.4	0.4	0.7	83.6	5.7	10.7	0.078	0.517	19.675465	-99.157147
MELCHOR OCAMPO	6.02	3	0	12040	84.0	5.5	3.9	2.3	2.1	1.2	0.4	0.6	84.0	5.5	10.5	0.066	0.500	19.714856	-99.140009
T. C. LOS REYES - EL TEPHE	19.15	1	0	7471	84.1	5.3	3.4	2.4	2.5	1.5	0.3	0.5	84.1	5.3	10.6	0.083	0.501	19.786479	-99.111152

31 CARR: DOS CASAS - IXTAPAN DEL ORO

CLAVE: 15033

RUTA: EM-002

AÑO: 2010

LUGAR	ESTACION				CLASIFICACION VEHICULAR EN PORCIENTO								COORDENADAS						
	KM	TE	SC	TDPA	A	B	C2	C3	T3S2	T3S3	T3S2R4	OTROS	A	B	C	K'	D	LATITUD	LONGITUD
T. C. TOLUCA - MORELIA	0.00	3	0	3564	90.4	4.1	2.5	1.7	1.2	0.1	0.0	0.0	90.4	4.1	5.5	0.059	0.505	19.410482	-100.141609
IXTAPAN DEL ORO	31.50	1	0	1971	90.3	4.2	2.7	1.7	1.1	0.0	0.0	0.0	90.3	4.2	5.5	0.075	0.505	19.266740	-100.264617

32 CARR: ENT. CRUZ DE LA MISION - SAN NICOLAS COATEPEC

CLAVE: 15009

RUTA: EM-005

AÑO: 2010

LUGAR	ESTACION				CLASIFICACION VEHICULAR EN PORCIENTO								COORDENADAS						
	KM	TE	SC	TDPA	A	B	C2	C3	T3S2	T3S3	T3S2R4	OTROS	A	B	C	K'	D	LATITUD	LONGITUD
T. C. LA MARQUESA - TENANGO DE ARISTA	0.00	3	0	1426	85.1	4.6	6.6	0.9	1.5	0.5	0.6	0.2	85.1	4.6	10.3	0.067	0.509	19.228032	-99.394818
XALATLACO	16.30	1	0	1458	84.4	4.7	7.0	1.4	1.0	0.9	0.3	0.3	84.4	4.7	10.9	0.071	0.502	19.193746	-99.407316
SAN NICOLAS COATEPEC	18.50																		

33 CARR: ENT. TOLMAN - CD. SAHAGUN

CLAVE: 00119

RUTA: EM-009-HGO

AÑO: 2010

LUGAR	ESTACION				CLASIFICACION VEHICULAR EN PORCIENTO								COORDENADAS						
	KM	TE	SC	TDPA	A	B	C2	C3	T3S2	T3S3	T3S2R4	OTROS	A	B	C	K'	D	LATITUD	LONGITUD
T. C. VENTA DE CARPIO - TULANCINGO	0.00	3	0	10189	79.9	4.2	4.6	1.3	4.6	1.8	2.8	0.8	79.9	4.2	15.9	0.069	0.512	19.714545	-98.791006
OTUMBA	5.00	3	0	5812	79.6	4.0	5.1	1.3	4.6	1.4	3.5	0.5	79.6	4.0	16.4	0.073	0.505	19.710361	-98.743305

MEXICO

33 CARR: ENT. TOLMAN - CD. SAHAGUN

CLAVE: 00119

RUTA: EM-009-HGO

AÑO: 2010

LUGAR	ESTACION				CLASIFICACION VEHICULAR EN PORCIENTO								COORDENADAS						
	KM	TE	SC	TDPA	A	B	C2	C3	T3S2	T3S3	T3S2R4	OTROS	A	B	C	K'	D	LATITUD	LONGITUD
T. DER. JALTEPEC	21.00	3	0	6333	78.8	4.2	5.5	2.6	4.3	2.1	1.9	0.6	78.8	4.2	17.0	0.067	0.506	19.749583	-98.653407
LIM. EDOS. TERM. MEX. PPIA. HGO.	25.00																		
CD. SAHAGUN	32.00	1	0	4562	80.1	4.3	6.4	1.9	3.4	1.9	1.5	0.5	80.1	4.3	15.6	0.072	0.509	19.752413	-98.603384

34 CARR: IXTLAHUACA DE RAYON - NAUCALPAN

CLAVE: 15004

RUTA: EM-003

AÑO: 2010

LUGAR	ESTACION				CLASIFICACION VEHICULAR EN PORCIENTO								COORDENADAS						
	KM	TE	SC	TDPA	A	B	C2	C3	T3S2	T3S3	T3S2R4	OTROS	A	B	C	K'	D	LATITUD	LONGITUD
IXTLAHUACA DE RAYON	0.00	3	0	5506	83.4	6.3	5.7	2.6	1.0	0.0	0.6	0.4	83.4	6.3	10.3	0.066	0.506	19.567889	-99.744982
JIQUIPILCO	18.00	3	0	1236	81.9	6.8	6.5	2.7	0.9	0.4	0.5	0.3	81.9	6.8	11.3	0.067	0.503	19.564163	-99.597802
T. IZQ. SANTA ANA JILOTZINGO	56.60	1	0	1315	83.4	6.1	6.0	1.4	1.0	0.9	0.9	0.3	83.4	6.1	10.5	0.068	0.503	19.521870	-99.468563
SAN MATEO NOPALA	75.00	1	0	4507	84.5	5.8	5.0	1.4	1.3	1.0	0.5	0.5	84.5	5.8	9.7	0.069	0.518	19.497677	-99.287043
T. C. MEXICO - QUERETARO (CUOTA)	80.00																		

35 CARR: IXTLAHUACA DE RAYON - SAN FELIPE DEL PROGRESO

CLAVE: 15005

RUTA: EM

AÑO: 2010

LUGAR	ESTACION				CLASIFICACION VEHICULAR EN PORCIENTO								COORDENADAS						
	KM	TE	SC	TDPA	A	B	C2	C3	T3S2	T3S3	T3S2R4	OTROS	A	B	C	K'	D	LATITUD	LONGITUD
IXTLAHUACA DE RAYON	0.00	3	0	3834	86.6	4.7	3.3	1.5	1.4	1.2	0.8	0.5	86.6	4.7	8.7	0.064	0.510	19.573586	-99.785995
SAN MIGUEL	16.00	3	0	3339	86.6	4.8	3.5	1.3	1.0	1.0	1.0	0.8	86.6	4.8	8.6	0.080	0.501	19.580754	-99.867788
SAN FELIPE DEL PROGRESO	32.00	1	0	6173	83.8	5.8	2.8	1.5	3.7	1.3	0.8	0.3	83.8	5.8	10.4	0.073	0.515	19.708017	-99.945763

36 CARR: JILOTEPEC - MARAVILLAS

CLAVE: 00015

RUTA: EM-HGO

AÑO: 2010

LUGAR	ESTACION				CLASIFICACION VEHICULAR EN PORCIENTO								COORDENADAS						
	KM	TE	SC	TDPA	A	B	C2	C3	T3S2	T3S3	T3S2R4	OTROS	A	B	C	K'	D	LATITUD	LONGITUD
JILOTEPEC	0.00	3	0	6011	82.5	5.8	4.6	1.1	3.4	1.2	1.0	0.4	82.5	5.8	11.7	0.077	0.504	19.954140	-99.549666
X. C. MEXICO - QUERETARO (CUOTA)	21.30	1	0	1557	81.2	6.2	4.9	1.2	2.7	1.9	1.2	0.7	81.2	6.2	12.6	0.076	0.510	20.081603	-99.630422
X. C. MEXICO - QUERETARO (CUOTA)	21.30	3	0	2329	81.6	6.0	4.3	1.3	3.2	1.4	1.2	1.0	81.6	6.0	12.4	0.073	0.507	20.098133	-99.626265
ACAZUCHITLAN	29.00	1	0	2633	80.5	6.4	3.9	1.5	3.3	2.0	1.3	1.1	80.5	6.4	13.1	0.073	0.506	20.144420	-99.599381
LIM. EDOS. TERM. MEX. PPIA. HGO.	29.30																		
MARAVILLAS	36.40	1	0	1623	80.8	6.3	3.9	1.5	3.2	2.0	1.2	1.1	80.8	6.3	12.9	0.079	0.511	20.197022	-99.584001
T. C. EL SAUCILLO - AMEALCO	40.00	1	0	1759	81.3	6.3	3.6	1.5	3.2	1.9	1.2	1.0	81.3	6.3	12.4	0.087	0.537	20.234827	-99.595428



MEXICO

41 CARR: LAS JUNTAS - IXTAPAN DE LA SAL

CLAVE: 15023

RUTA: EM-012

AÑO: 2010

LUGAR	ESTACION				CLASIFICACION VEHICULAR EN PORCIENTO								COORDENADAS						
	KM	TE	SC	TDPA	A	B	C2	C3	T3S2	T3S3	T3S2R4	OTROS	A	B	C	K'	D	LATITUD	LONGITUD
T. C. LA PUERTA - SAN MIGUEL TOTOLMALOYA	0.00	3	0	1768	87.2	2.2	2.9	4.0	0.3	0.6	2.0	0.8	87.2	2.2	10.6	0.059	0.507	19.009597	-99.898686
COATEPEC HARINAS	35.16	1	0	3457	89.0	1.4	2.7	2.9	0.9	0.4	2.3	0.4	89.0	1.4	9.6	0.077	0.512	18.921167	-99.778093
COATEPEC HARINAS	35.16	3	0	3884	88.4	1.8	2.4	2.9	1.2	0.4	2.4	0.5	88.4	1.8	9.8	0.080	0.502	18.905692	-99.770511
IXTAPAN DE LA SAL	56.06	1	0	9261	88.1	2.0	2.4	3.1	1.0	0.8	2.3	0.3	88.1	2.0	9.9	0.063	0.500	18.832308	-99.693846

42 CARR: LECHERIA - APAXCO

CLAVE: 15018

RUTA: EM-006

AÑO: 2010

LUGAR	ESTACION				CLASIFICACION VEHICULAR EN PORCIENTO								COORDENADAS						
	KM	TE	SC	TDPA	A	B	C2	C3	T3S2	T3S3	T3S2R4	OTROS	A	B	C	K'	D	LATITUD	LONGITUD
T. C. SAN PEDRO BARRIENTOS - ECATEPEC	0.00	3	1	18875	78.0	4.0	1.2	2.3	6.4	3.8	3.6	0.7	78.0	4.0	18.0	0.084	0.513	19.594274	-99.188729
T. C. SAN PEDRO BARRIENTOS - ECATEPEC	0.00	3	2	17939	80.1	3.5	1.4	2.0	6.0	3.3	3.2	0.5	80.1	3.5	16.4	0.085	0.513	19.594279	-99.188739
CUAUTITLAN	8.60	3	0	11408	79.3	3.1	2.9	1.6	6.0	3.2	3.1	0.8	79.3	3.1	17.6	0.067	0.502	19.685570	-99.185793
T. IZQ. TEPOTZOTLAN	13.04	3	0	13632	81.1	3.9	1.6	1.5	5.4	2.9	3.0	0.6	81.1	3.9	15.0	0.075	0.504	19.716048	-99.194161
TEOLOYUCAN	21.00	3	0	9178	79.3	3.6	1.5	2.2	6.3	2.8	3.5	0.8	79.3	3.6	17.1	0.071	0.501	19.767333	-99.197667
HUEHUETOCA	26.50	3	0	6910	79.2	3.3	1.7	2.2	5.8	3.7	3.6	0.5	79.2	3.3	17.5	0.073	0.502	19.846977	-99.210043
APAXCO	45.70	1	0	6314	79.5	4.1	1.6	1.7	5.8	3.4	3.2	0.7	79.5	4.1	16.4	0.077	0.501	19.964416	-99.175854

43 CARR: LOS REYES - EL TEPHE

CLAVE: 00021

RUTA: EM-HGO

AÑO: 2010

LUGAR	ESTACION				CLASIFICACION VEHICULAR EN PORCIENTO								COORDENADAS						
	KM	TE	SC	TDPA	A	B	C2	C3	T3S2	T3S3	T3S2R4	OTROS	A	B	C	K'	D	LATITUD	LONGITUD
T. C. MEXICO - PACHUCA (LIBRE)	0.00																		
LOS REYES	1.35	3	1	7576	79.3	4.9	5.6	5.9	1.1	2.5	0.2	0.5	79.3	4.9	15.8	0.069	0.500	19.769774	-98.996657
LOS REYES	1.35	3	2	7578	79.3	4.5	5.8	5.4	1.0	2.9	0.4	0.7	79.3	4.5	16.2	0.070	0.500	19.769764	-98.996650
ZUMPANGO	15.35	1	1	7344	79.4	4.9	5.9	1.3	4.6	2.6	0.6	0.7	79.4	4.9	15.7	0.071	0.539	19.792149	-99.072524
ZUMPANGO	15.35	1	2	7527	79.4	4.9	5.9	1.2	4.5	2.6	0.7	0.8	79.4	4.9	15.7	0.068	0.539	19.792162	-99.072534
ZUMPANGO	15.35	3	0	12340	79.0	4.9	5.5	1.2	5.3	2.9	0.5	0.7	79.0	4.9	16.1	0.077	0.502	19.820643	-99.115098
TEQUIQUIAC	29.00	1	0	8339	76.6	5.8	6.1	1.5	6.4	2.1	1.1	0.4	76.6	5.8	17.6	0.074	0.513	19.902227	-99.144290
APAXCO	39.00	3	1	4085	74.3	5.1	6.6	3.0	5.9	2.5	1.9	0.7	74.3	5.1	20.6	0.075	0.502	19.987862	-99.182814
APAXCO	39.00	3	2	4114	74.4	5.3	6.6	3.0	5.8	2.4	1.7	0.8	74.4	5.3	20.3	0.076	0.502	19.987906	-99.182779
LIM. EDOS. TERM. MEX. PPIA. HGO.	40.00																		
T. IZQ. ATOTONILCO (1º ACCESO)	42.00	1	0	7405	78.8	6.0	5.2	1.8	3.2	2.0	2.2	0.8	78.8	6.0	15.2	0.066	0.500	19.997455	-99.187583
TLAXCOAPAN	52.00	3	0	8604	78.8	5.9	5.0	1.5	4.6	1.9	1.6	0.7	78.8	5.9	15.3	0.073	0.500	20.104666	-99.221705
TLAHUELILPA DE OCAMPO	60.00	3	1	6546	81.2	6.1	4.7	1.4	4.2	1.1	1.0	0.3	81.2	6.1	12.7	0.082	0.514	20.136471	-99.234858
TLAHUELILPA DE OCAMPO	60.00	3	2	6935	81.4	5.7	4.5	1.5	3.8	1.5	1.1	0.5	81.4	5.7	12.9	0.085	0.514	20.136478	-99.234798



MEXICO

47 CARR: OTUMBA - TIZAYUCA

CLAVE: 00012

RUTA: EM-HGO

AÑO: 2010

LUGAR	ESTACION				CLASIFICACION VEHICULAR EN PORCIENTO								COORDENADAS						
	KM	TE	SC	TDPA	A	B	C2	C3	T3S2	T3S3	T3S2R4	OTROS	A	B	C	K'	D	LATITUD	LONGITUD
OTUMBA	0.00	3	0	5099	74.5	6.2	5.8	6.0	3.2	1.9	1.9	0.5	74.5	6.2	19.3	0.077	0.502	19.709540	-98.757980
X. C. VENTA DE CARPIO - TULANCINGO	6.00	3	0	3260	71.1	5.6	7.1	4.7	4.1	2.8	3.9	0.7	71.1	5.6	23.3	0.087	0.508	19.755331	-98.756723
TEMASCALAPA	26.50	3	0	3389	75.2	6.3	6.4	4.5	3.1	1.4	2.4	0.7	75.2	6.3	18.5	0.073	0.501	19.830287	-98.916718
LIM. EDOS. TERM. MEX. PPIA. HGO.	29.00																		
TIZAYUCA	37.10	1	1	4041	82.1	6.5	1.5	1.4	4.3	1.4	1.9	0.9	82.1	6.5	11.4	0.095	0.513	19.838188	-98.962287
TIZAYUCA	37.10	1	2	3833	81.9	6.5	1.2	1.5	4.8	1.4	1.8	0.9	81.9	6.5	11.6	0.088	0.513	19.838198	-98.962300

48 CARR: PUENTE GRANDE - SAN JOSE DEL VIDRIO

CLAVE: 15016

RUTA: EM-021

AÑO: 2010

LUGAR	ESTACION				CLASIFICACION VEHICULAR EN PORCIENTO								COORDENADAS						
	KM	TE	SC	TDPA	A	B	C2	C3	T3S2	T3S3	T3S2R4	OTROS	A	B	C	K'	D	LATITUD	LONGITUD
SANTA BARBARA	0.00																		
TEPOTZOTLAN	3.00	3	0	8136	79.1	6.4	5.8	1.0	4.4	1.6	0.9	0.8	79.1	6.4	14.5	0.077	0.503	19.707343	-99.235352
T. DER. ARCOS DEL SITIO	14.00	3	0	3409	77.2	7.1	6.1	1.4	2.8	2.8	1.4	1.2	77.2	7.1	15.7	0.066	0.502	19.702143	-99.320967
T. C. TLALNEPANTLA - SAN GABRIEL	33.00	1	0	4779	79.9	6.6	5.7	1.2	2.5	1.9	1.6	0.6	79.9	6.6	13.5	0.071	0.500	19.646277	-99.391347

49 CARR: RAMAL A JUCHITEPEC

CLAVE:

RUTA: EM

AÑO: 2010

LUGAR	ESTACION				CLASIFICACION VEHICULAR EN PORCIENTO								COORDENADAS						
	KM	TE	SC	TDPA	A	B	C2	C3	T3S2	T3S3	T3S2R4	OTROS	A	B	C	K'	D	LATITUD	LONGITUD
ENT. C. (SAN GREGORIO - OAXTEPEC)	0.00	3	0	2441	84.0	3.1	5.6	2.1	2.2	1.1	0.8	1.1	84.0	3.1	12.9	0.079	0.507	19.114835	-98.927580
JUCHITEPEC	6.51																		

50 CARR: SAN ALEJO - LOS SABINOS

CLAVE: 15038

RUTA: EM-007

AÑO: 2010

LUGAR	ESTACION				CLASIFICACION VEHICULAR EN PORCIENTO								COORDENADAS						
	KM	TE	SC	TDPA	A	B	C2	C3	T3S2	T3S3	T3S2R4	OTROS	A	B	C	K'	D	LATITUD	LONGITUD
T. C. IXTAPA DE LA SAL - LAS JUNTAS	0.00	3	0	2748	91.2	2.6	1.7	1.6	1.3	0.2	1.0	0.4	91.2	2.6	6.2	0.074	0.501	18.835865	-99.733037
T. C. VUELTA DEL AGUA - ZACUALPAN	15.00	1	0	1947	89.4	3.3	2.3	2.1	1.3	0.2	0.9	0.5	89.4	3.3	7.3	0.067	0.500	18.813819	-99.789668

51 CARR: SAN FELIPE DEL PROGRESO - CARMONA

CLAVE: 15036

RUTA: EM-003

AÑO: 2010

LUGAR	ESTACION				CLASIFICACION VEHICULAR EN PORCIENTO								COORDENADAS						
	KM	TE	SC	TDPA	A	B	C2	C3	T3S2	T3S3	T3S2R4	OTROS	A	B	C	K'	D	LATITUD	LONGITUD
SAN FELIPE DEL PROGRESO	0.00	3	0	5196	83.9	4.8	3.8	2.6	2.9	1.3	0.5	0.2	83.9	4.8	11.3	0.089	0.520	19.704258	-99.965223





MEXICO

55 CARR: SANTA ELENA - COACALCO

CLAVE: 15057

RUTA: EM

AÑO: 2010

LUGAR	ESTACION				CLASIFICACION VEHICULAR EN PORCIENTO								COORDENADAS						
	KM	TE	SC	TDPA	A	B	C2	C3	T3S2	T3S3	T3S2R4	OTROS	A	B	C	K'	D	LATITUD	LONGITUD
T. C. CUAUTITLAN - ZUMPANGO DE OCAMPO	0.00	3	0	16220	79.1	3.1	3.7	1.4	4.8	3.3	3.9	0.7	79.1	3.1	17.8	0.068	0.505	19.672472	-99.157528
T. C. BARRIENTOS - ECATEPEC	9.30	1	1	15353	78.6	3.3	3.8	1.0	5.5	3.2	3.8	0.8	78.6	3.3	18.1	0.082	0.516	19.638467	-99.113001
T. C. BARRIENTOS - ECATEPEC	9.30	1	2	16376	79.1	3.2	3.7	1.2	5.2	3.0	3.7	0.9	79.1	3.2	17.7	0.075	0.516	19.638367	-99.112968

56 CARR: SANTA MARIA AJOLOAPAN - TIANGUISTONGO

CLAVE:

RUTA: EM

AÑO: 2010

LUGAR	ESTACION				CLASIFICACION VEHICULAR EN PORCIENTO								COORDENADAS						
	KM	TE	SC	TDPA	A	B	C2	C3	T3S2	T3S3	T3S2R4	OTROS	A	B	C	K'	D	LATITUD	LONGITUD
SANTA MARIA AJOLOAPAN	0.00	3	0	2144	89.3	4.0	2.9	0.9	1.2	0.5	0.5	0.7	89.3	4.0	6.7	0.074	0.506	19.984494	-99.042437
TIANGUISTONGO	3.00																		

57 CARR: SANTIAGO TIANGUISTENCO - CHALMA

CLAVE: 15013

RUTA: EM-004

AÑO: 2010

LUGAR	ESTACION				CLASIFICACION VEHICULAR EN PORCIENTO								COORDENADAS						
	KM	TE	SC	TDPA	A	B	C2	C3	T3S2	T3S3	T3S2R4	OTROS	A	B	C	K'	D	LATITUD	LONGITUD
SANTIAGO TIANGUISTENCO	0.00																		
X. C. LA MARQUESA - TENANGO DE ARISTA	2.00	3	0	8048	83.3	5.4	4.1	1.2	3.2	1.1	1.3	0.4	83.3	5.4	11.3	0.083	0.508	19.156191	-99.463284
SAN NICOLAS COATEPEC	8.80	1	0	6381	82.4	5.1	4.5	1.5	4.2	0.8	1.0	0.5	82.4	5.1	12.5	0.082	0.501	19.137710	-99.435773
SAN NICOLAS COATEPEC	8.80	3	0	5531	82.4	5.3	4.2	1.7	3.2	1.2	1.7	0.3	82.4	5.3	12.3	0.069	0.505	19.127492	-99.425618
T. IZQ. LAGUNAS DE ZEMPOALA	19.80	3	0	3053	81.2	5.6	4.8	1.5	4.7	0.6	1.2	0.4	81.2	5.6	13.2	0.081	0.502	19.053340	-99.383495
OCUILAN DE ARTEAGA	34.00	3	0	4053	81.4	5.7	4.5	1.3	5.0	0.5	1.0	0.6	81.4	5.7	12.9	0.077	0.506	18.983251	-99.424646
CHALMA	42.50																		

58 CARR: SANTO DOMINGO - T. C. (MEXICO - QUERETARO (CUOTA))

CLAVE: 00433

RUTA: EM-011-HGO

AÑO: 2010

LUGAR	ESTACION				CLASIFICACION VEHICULAR EN PORCIENTO								COORDENADAS						
	KM	TE	SC	TDPA	A	B	C2	C3	T3S2	T3S3	T3S2R4	OTROS	A	B	C	K'	D	LATITUD	LONGITUD
T. C. TOLUCA - PALMILLAS	0.00	3	0	3416	85.8	3.2	5.4	1.1	1.9	1.7	0.6	0.3	85.8	3.2	11.0	0.086	0.502	19.621584	-99.775667
X. C. LOS REYES - IXTLAHUACA	6.11	3	0	3389	83.0	6.6	4.8	1.5	1.5	1.5	0.4	0.7	83.0	6.6	10.4	0.071	0.501	19.656558	-99.727121
X. C. VILLA DEL CARBON - ATLACOMULCO	23.94	3	0	4549	85.1	4.0	4.6	1.8	1.9	1.1	0.5	1.0	85.1	4.0	10.9	0.058	0.508	19.789513	-99.702869
T. DER. CHAPA DE MOTA	42.70	1	0	6306	84.2	4.0	4.9	1.5	3.2	1.2	0.5	0.5	84.2	4.0	11.8	0.083	0.502	19.925861	-99.582528
LIM. EDOS. TERM. MEX. PPIA. HGO.	63.34																		
T. C. MEXICO - QUERETARO (CUOTA)	65.84	1	0	6124	85.4	4.2	3.8	1.3	3.3	0.9	0.5	0.6	85.4	4.2	10.4	0.072	0.501	19.978702	-99.441375

MEXICO

59 CARR: T. C. (ATLACOMULCO - MORELIA) - SAN FELIPE DEL PROGRESO

CLAVE: 15006

RUTA: EM

AÑO: 2010

LUGAR	ESTACION				CLASIFICACION VEHICULAR EN PORCIENTO								COORDENADAS						
	KM	TE	SC	TDPA	A	B	C2	C3	T3S2	T3S3	T3S2R4	OTROS	A	B	C	K'	D	LATITUD	LONGITUD
T. C. ATLACOMULCO - MORELIA	0.00	3	0	8518	82.2	3.4	4.9	1.6	5.6	1.3	0.4	0.6	82.2	3.4	14.4	0.071	0.504	19.775213	-99.903859
SAN FELIPE DEL PROGRESO	10.50	1	0	10372	82.8	3.6	4.6	1.0	4.5	1.3	1.4	0.8	82.8	3.6	13.6	0.073	0.510	19.734096	-99.942461

60 CARR: T. C. (ATLACOMULCO - MORELIA) - TEMASCALCINGO

CLAVE: 15019

RUTA: EM-033

AÑO: 2010

LUGAR	ESTACION				CLASIFICACION VEHICULAR EN PORCIENTO								COORDENADAS						
	KM	TE	SC	TDPA	A	B	C2	C3	T3S2	T3S3	T3S2R4	OTROS	A	B	C	K'	D	LATITUD	LONGITUD
T. C. ATLACOMULCO - MORELIA	0.00	3	0	5089	87.7	4.5	3.2	1.2	1.4	0.8	0.5	0.7	87.7	4.5	7.8	0.063	0.503	19.810093	-100.020326
CUACHOTITLAN	10.00	1	0	4409	86.9	3.2	3.3	1.0	2.6	1.7	0.5	0.8	86.9	3.2	9.9	0.070	0.506	19.858845	-100.044414
TEMASCALCINGO	15.00	1	0	4531	86.9	3.0	3.5	0.9	3.1	1.7	0.3	0.6	86.9	3.0	10.1	0.067	0.509	19.906625	-100.022363

61 CARR: T. C. (CHALCO - MIXQUIC) - TEMAMATLA

CLAVE: 15075

RUTA: EM

AÑO: 2010

LUGAR	ESTACION				CLASIFICACION VEHICULAR EN PORCIENTO								COORDENADAS						
	KM	TE	SC	TDPA	A	B	C2	C3	T3S2	T3S3	T3S2R4	OTROS	A	B	C	K'	D	LATITUD	LONGITUD
T. C. CHALCO - MIXQUIC	0.00	3	0	5233	81.7	4.1	3.9	1.0	5.0	1.5	2.1	0.7	81.7	4.1	14.2	0.085	0.500	19.229545	-98.914602
LOS REYES ACATLIZHUAYAN	5.66	3	0	4920	82.4	4.6	4.6	1.3	3.5	1.7	1.1	0.8	82.4	4.6	13.0	0.064	0.503	19.204496	-98.873187
TEMAMATLA	7.05	1	0	3524	78.0	6.3	5.1	1.6	5.1	1.8	1.3	0.8	78.0	6.3	15.7	0.066	0.501	19.200398	-98.872718

62 CARR: T. C. (DOS CASAS - IXTAPAN DEL ORO) - DONATO GUERRA

CLAVE: 15034

RUTA: EM-057

AÑO: 2010

LUGAR	ESTACION				CLASIFICACION VEHICULAR EN PORCIENTO								COORDENADAS						
	KM	TE	SC	TDPA	A	B	C2	C3	T3S2	T3S3	T3S2R4	OTROS	A	B	C	K'	D	LATITUD	LONGITUD
T. C. DOS CASAS - IXTAPAN DEL ORO	0.00	3	0	2319	78.1	7.8	4.5	4.6	1.3	2.2	0.9	0.6	78.1	7.8	14.1	0.088	0.502	19.316510	-100.215049
DONATO GUERRA	9.00	1	0	2255	76.1	8.8	5.2	5.1	2.4	1.8	0.4	0.2	76.1	8.8	15.1	0.062	0.507	19.309342	-100.148815

63 CARR: T. C. (EL MONUMENTO - TINGAMBATO) - DONATO GUERRA

CLAVE: 15035

RUTA: EM

AÑO: 2010

LUGAR	ESTACION				CLASIFICACION VEHICULAR EN PORCIENTO								COORDENADAS						
	KM	TE	SC	TDPA	A	B	C2	C3	T3S2	T3S3	T3S2R4	OTROS	A	B	C	K'	D	LATITUD	LONGITUD
T. C. EL MONUMENTO - TINGAMBATO	0.00	3	0	2132	83.6	4.8	3.9	2.1	1.8	2.3	0.9	0.6	83.6	4.8	11.6	0.085	0.500	19.299552	-100.115528
DONATO GUERRA	7.30	1	0	2462	84.8	4.8	3.3	2.0	1.7	2.1	0.7	0.6	84.8	4.8	10.4	0.099	0.514	19.305500	-100.145966



MEXICO

69 CARR: T. C. (MEXICO - PUEBLA (LIBRE)) - SAN VICENTE

CLAVE: 15041

RUTA: EM

AÑO: 2010

LUGAR	ESTACION				CLASIFICACION VEHICULAR EN PORCIENTO								COORDENADAS						
	KM	TE	SC	TDPA	A	B	C2	C3	T3S2	T3S3	T3S2R4	OTROS	A	B	C	K'	D	LATITUD	LONGITUD
T. C. MEXICO - PUEBLA (LIBRE)	0.00	3	1	13641	85.5	2.6	3.4	1.3	4.0	1.3	0.8	1.1	85.5	2.6	11.9	0.068	0.520	19.317883	-98.870767
T. C. MEXICO - PUEBLA (LIBRE)	0.00	3	2	13214	84.7	2.7	4.1	1.0	4.3	1.6	0.9	0.7	84.7	2.7	12.6	0.067	0.520	19.317883	-98.870767
CHICOLAPAN DE JUAREZ	14.20	3	0	9604	86.9	2.5	5.6	2.2	0.9	0.5	1.1	0.3	86.9	2.5	10.6	0.061	0.500	19.416291	-98.915254
T. C. LOS REYES - ZACATEPEC	16.20																		

70 CARR: T. C. (SANTA BARBARA - HUAJUAPAN) - TEPETLIXPA

CLAVE: 15570

RUTA: EM

AÑO: 2010

LUGAR	ESTACION				CLASIFICACION VEHICULAR EN PORCIENTO								COORDENADAS						
	KM	TE	SC	TDPA	A	B	C2	C3	T3S2	T3S3	T3S2R4	OTROS	A	B	C	K'	D	LATITUD	LONGITUD
T. C. SANTA BARBARA - IZUCAR DE MATAMOROS	0.00	3	1	8150	82.8	3.3	1.8	1.6	5.3	2.4	2.1	0.7	82.8	3.3	13.9	0.072	0.504	19.238481	-98.858549
T. C. SANTA BARBARA - IZUCAR DE MATAMOROS	0.00	3	2	8195	82.9	3.4	1.9	1.7	5.5	2.1	2.0	0.5	82.9	3.4	13.7	0.067	0.504	19.238481	-98.858549
TEMAMATLA	4.43	1	0	9246	84.7	3.3	3.0	0.8	3.9	1.8	2.2	0.3	84.7	3.3	12.0	0.077	0.501	19.214496	-98.868421
TENANGO DEL AIRE	10.35	1	0	8129	82.6	4.2	3.6	1.8	5.0	0.9	1.5	0.4	82.6	4.2	13.2	0.074	0.501	19.159755	-98.863299
JUCHITEPEC	17.58	1	0	5211	83.1	3.7	3.4	1.5	5.3	1.0	1.4	0.6	83.1	3.7	13.2	0.067	0.501	19.106422	-98.881832
TEPETLIXPA	29.45	1	0	3287	85.4	3.4	4.7	1.7	2.0	0.9	1.2	0.7	85.4	3.4	11.2	0.068	0.500	19.036472	-98.810996

71 CARR: T. C. (TOLUCA - CD. ALTAMIRANO) - VALLE DE BRAVO

CLAVE: 15572

RUTA: EM

AÑO: 2010

LUGAR	ESTACION				CLASIFICACION VEHICULAR EN PORCIENTO								COORDENADAS						
	KM	TE	SC	TDPA	A	B	C2	C3	T3S2	T3S3	T3S2R4	OTROS	A	B	C	K'	D	LATITUD	LONGITUD
T. C. TOLUCA - CD. ALTAMIRANO	0.00	3	0	2367	88.6	2.8	3.3	1.2	1.4	1.1	1.0	0.6	88.6	2.8	8.6	0.077	0.511	19.149878	-99.919434
EL FRESNO	17.00	1	0	3606	87.0	2.9	3.6	1.6	1.5	1.5	1.1	0.8	87.0	2.9	10.1	0.077	0.509	19.147684	-100.066495
VALLE DE BRAVO	25.00	1	0	16410	89.0	2.1	2.8	1.2	1.4	1.7	1.2	0.6	89.0	2.1	8.9	0.063	0.512	19.183341	-100.120892

72 CARR: T. C. (TOLUCA - MORELIA) - ALMOLOYA DE JUAREZ

CLAVE: 15029

RUTA: EM-046

AÑO: 2010

LUGAR	ESTACION				CLASIFICACION VEHICULAR EN PORCIENTO								COORDENADAS						
	KM	TE	SC	TDPA	A	B	C2	C3	T3S2	T3S3	T3S2R4	OTROS	A	B	C	K'	D	LATITUD	LONGITUD
T. C. TOLUCA - MORELIA	0.00	3	1	4746	86.3	5.5	5.3	1.3	0.5	0.4	0.3	0.4	86.3	5.5	8.2	0.076	0.504	19.302150	-99.726300
T. C. TOLUCA - MORELIA	0.00	3	2	4824	85.5	5.9	5.4	1.3	0.6	0.5	0.4	0.4	85.5	5.9	8.6	0.079	0.504	19.302168	-99.726295
ALMOLOYA DE JUAREZ	10.00	1	0	9238	85.1	5.7	5.7	1.9	0.5	0.4	0.4	0.3	85.1	5.7	9.2	0.078	0.503	19.364566	-99.752627



MEXICO

77 CARR: TECAMAC - ENT. ATLATONGO

CLAVE: 15070

RUTA: EM

AÑO: 2010

LUGAR	ESTACION				CLASIFICACION VEHICULAR EN PORCIENTO								COORDENADAS						
	KM	TE	SC	TDPA	A	B	C2	C3	T3S2	T3S3	T3S2R4	OTROS	A	B	C	K'	D	LATITUD	LONGITUD
T. C. MEXICO - TIZAYUCA (CUOTA)	1.10	3	0	10454	73.0	5.6	10.3	4.4	3.2	2.7	0.2	0.6	73.0	5.6	21.4	0.068	0.504	19.708775	-98.957904
T. C. VENTA DE CARPIO - T. C. (PACHUCA - TULANCINGO)	8.30	1	0	6027	71.4	6.0	10.1	4.9	3.8	3.3	0.1	0.4	71.4	6.0	22.6	0.065	0.501	19.682960	-98.903279

78 CARR: TEJUPILCO DE HIDALGO - TLATLAYA

CLAVE: 15060

RUTA: EM-008

AÑO: 2010

LUGAR	ESTACION				CLASIFICACION VEHICULAR EN PORCIENTO								COORDENADAS						
	KM	TE	SC	TDPA	A	B	C2	C3	T3S2	T3S3	T3S2R4	OTROS	A	B	C	K'	D	LATITUD	LONGITUD
TEJUPILCO DE HIDALGO	0.00	3	0	2263	89.2	2.6	4.4	1.2	1.0	0.9	0.2	0.5	89.2	2.6	8.2	0.088	0.508	18.879602	-100.141289
TLATLAYA	50.00																		

79 CARR: TENANCINGO - CHALMA

CLAVE: 15024

RUTA: EM

AÑO: 2010

LUGAR	ESTACION				CLASIFICACION VEHICULAR EN PORCIENTO								COORDENADAS						
	KM	TE	SC	TDPA	A	B	C2	C3	T3S2	T3S3	T3S2R4	OTROS	A	B	C	K'	D	LATITUD	LONGITUD
T. C. TOLUCA - AXIXINTLA	0.00	3	0	4376	88.2	2.9	1.5	1.4	3.9	1.1	0.5	0.5	88.2	2.9	8.9	0.072	0.502	18.962306	-99.584417
MALINALCO	28.65	1	0	5164	88.7	3.1	1.9	1.0	3.5	0.6	1.0	0.2	88.7	3.1	8.2	0.081	0.502	18.961486	-99.490696
CHALMA	36.86	1	0	3112	88.6	2.5	1.9	1.0	3.4	1.1	1.0	0.5	88.6	2.5	8.9	0.080	0.502	18.925182	-99.441748

80 CARR: TENANCINGO - SAN SIMON EL ALTO

CLAVE: 15042

RUTA: EM

AÑO: 2010

LUGAR	ESTACION				CLASIFICACION VEHICULAR EN PORCIENTO								COORDENADAS						
	KM	TE	SC	TDPA	A	B	C2	C3	T3S2	T3S3	T3S2R4	OTROS	A	B	C	K'	D	LATITUD	LONGITUD
TENANCINGO	0.00	3	0	4995	83.3	3.1	0.7	0.2	6.2	1.8	4.3	0.4	83.3	3.1	13.6	0.075	0.500	18.947553	-99.581663
SAN MIGUEL TECOMATLAN	8.80	1	0	2719	80.7	3.7	2.0	1.8	7.0	1.0	3.6	0.2	80.7	3.7	15.6	0.056	0.508	18.971139	-99.529861
SAN SIMON EL ALTO	11.00	1	0	1635	81.0	4.7	2.2	1.4	7.2	0.1	3.1	0.3	81.0	4.7	14.3	0.068	0.503	18.996246	-99.510228

81 CARR: TENANCINGO DE DEGOLLADO - SAN ANDRES NICOLAS BRAVO

CLAVE:

RUTA: EM

AÑO: 2010

LUGAR	ESTACION				CLASIFICACION VEHICULAR EN PORCIENTO								COORDENADAS						
	KM	TE	SC	TDPA	A	B	C2	C3	T3S2	T3S3	T3S2R4	OTROS	A	B	C	K'	D	LATITUD	LONGITUD
TENANCINGO DE DEGOLLADO	0.00	3	0	3125	80.5	2.4	1.7	3.1	6.0	5.7	0.2	0.4	80.5	2.4	17.1	0.068	0.523	18.953167	-99.597528
ZUMPAHUACAN	18.00	1	0	3648	80.5	2.1	1.6	3.2	5.5	6.1	0.5	0.5	80.5	2.1	17.4	0.071	0.502	18.842215	-99.591152
SAN GASPAR	27.00	1	0	1063	83.5	1.7	1.3	2.5	5.6	4.2	0.6	0.6	83.5	1.7	14.8	0.065	0.509	18.783011	-99.546291
SAN ANDRES NICOLAS BRAVO	39.00	1	0	851	85.2	2.6	1.3	1.6	7.1	1.5	0.0	0.7	85.2	2.6	12.2	0.062	0.503	18.762056	-99.474857

## MEXICO

82 CARR: TENANGO DEL AIRE - AMECAMECA

CLAVE: 15074

RUTA: EM

AÑO: 2010

LUGAR	ESTACION				CLASIFICACION VEHICULAR EN PORCIENTO								COORDENADAS						
	KM	TE	SC	TDPA	A	B	C2	C3	T3S2	T3S3	T3S2R4	OTROS	A	B	C	K'	D	LATITUD	LONGITUD
TENANGO DEL AIRE	0.00	3	0	3269	88.3	5.2	3.4	1.4	0.6	0.5	0.3	0.3	88.3	5.2	6.5	0.084	0.504	19.147927	-98.850936
AMECAMECA	10.00	1	0	3764	88.5	5.0	3.4	1.4	0.6	0.5	0.3	0.3	88.5	5.0	6.5	0.080	0.568	19.130862	-98.781521

83 CARR: TEOLOYUCAN - JALTENCO

CLAVE:

RUTA: EM

AÑO: 2010

LUGAR	ESTACION				CLASIFICACION VEHICULAR EN PORCIENTO								COORDENADAS						
	KM	TE	SC	TDPA	A	B	C2	C3	T3S2	T3S3	T3S2R4	OTROS	A	B	C	K'	D	LATITUD	LONGITUD
TEOLOYUCAN	0.00	3	0	2702	85.5	3.7	3.0	1.6	2.9	1.3	1.2	0.8	85.5	3.7	10.8	0.082	0.501	19.750323	-99.148921
JALTENCO	27.00	1	0	3825	84.4	3.0	3.9	1.5	3.5	1.2	1.7	0.8	84.4	3.0	12.6	0.071	0.500	19.750356	-99.108136

84 CARR: TEPEXPAN - SAN JUAN TEOTIHUACAN

CLAVE: 15055

RUTA: EM

AÑO: 2010

LUGAR	ESTACION				CLASIFICACION VEHICULAR EN PORCIENTO								COORDENADAS						
	KM	TE	SC	TDPA	A	B	C2	C3	T3S2	T3S3	T3S2R4	OTROS	A	B	C	K'	D	LATITUD	LONGITUD
TEPEXPAN	0.00	3	0	5249	83.6	4.0	1.9	0.3	5.2	1.3	3.2	0.5	83.6	4.0	12.4	0.077	0.503	19.614810	-98.925737
XOMETLA	8.50	1	0	3704	83.1	3.9	1.9	0.1	3.9	5.5	1.3	0.3	83.1	3.9	13.0	0.076	0.502	19.639446	-98.884812
SAN JUAN TEOTIHUACAN	14.40	1	0	3002	81.7	4.1	2.5	0.1	3.6	6.2	1.6	0.2	81.7	4.1	14.2	0.073	0.501	19.672543	-98.872116

85 CARR: TEXCALTITLAN - ZACUALPAN

CLAVE: 15031

RUTA: EM-007

AÑO: 2010

LUGAR	ESTACION				CLASIFICACION VEHICULAR EN PORCIENTO								COORDENADAS						
	KM	TE	SC	TDPA	A	B	C2	C3	T3S2	T3S3	T3S2R4	OTROS	A	B	C	K'	D	LATITUD	LONGITUD
T. C. LA PUERTA - SAN MIGUEL TOTOLMALOYA	0.00																		
ALMOLOYA DE ALOUISIRAS	8.00	1	0	2876	91.8	1.1	0.4	1.3	2.3	1.3	1.2	0.6	91.8	1.1	7.1	0.075	0.503	18.866824	-99.898182
ZACUALPAN	43.00	1	0	1388	92.7	1.5	1.8	1.5	1.1	0.5	0.4	0.5	92.7	1.5	5.8	0.063	0.504	18.725176	-99.776113

86 CARR: TEXCOCO - SAN MIGUEL TLAIXPAN

CLAVE: 15040

RUTA: EM

AÑO: 2010

LUGAR	ESTACION				CLASIFICACION VEHICULAR EN PORCIENTO								COORDENADAS						
	KM	TE	SC	TDPA	A	B	C2	C3	T3S2	T3S3	T3S2R4	OTROS	A	B	C	K'	D	LATITUD	LONGITUD
TEXCOCO	0.00	3	1	8558	79.2	4.5	1.1	1.3	7.2	1.8	4.6	0.3	79.2	4.5	16.3	0.069	0.500	19.514131	-98.867239
TEXCOCO	0.00	3	2	8553	79.4	4.6	1.3	1.2	7.0	1.6	4.4	0.5	79.4	4.6	16.0	0.070	0.500	19.514129	-98.867224
SAN MIGUEL TLAIXPAN	7.40	1	1	2931	77.8	3.9	2.8	2.3	6.3	1.5	5.2	0.2	77.8	3.9	18.3	0.063	0.504	19.510072	-98.814728
SAN MIGUEL TLAIXPAN	7.40	1	2	2973	77.6	4.0	2.9	2.4	6.3	1.3	5.0	0.5	77.6	4.0	18.4	0.065	0.504	19.510056	-98.814729



MEXICO

87 CARR: TLALNEPANTLA - SAN GABRIEL

CLAVE: 15002

RUTA: EM-005-004

AÑO: 2010

LUGAR	ESTACION				CLASIFICACION VEHICULAR EN PORCIENTO								COORDENADAS						
	KM	TE	SC	TDPA	A	B	C2	C3	T3S2	T3S3	T3S2R4	OTROS	A	B	C	K'	D	LATITUD	LONGITUD
TLALNEPANTLA	0.00																		
X. C. MEXICO - QUERETARO (CUOTA)	2.97	3	1	25586	87.2	6.9	4.9	0.8	0.1	0.1	0.0	0.0	87.2	6.9	5.9	0.070	0.508	19.539184	-99.222782
X. C. MEXICO - QUERETARO (CUOTA)	2.97	3	2	26372	88.0	6.3	4.7	0.8	0.1	0.1	0.0	0.0	88.0	6.3	5.7	0.070	0.508	19.539191	-99.222764
LA COLMENA	12.90	3	0	34801	87.5	6.5	5.0	0.8	0.1	0.1	0.0	0.0	87.5	6.5	6.0	0.069	0.515	19.612191	-99.299424
T. DER. TEPOTZOTLAN	26.98	1	0	9746	87.8	6.3	4.8	0.9	0.1	0.1	0.0	0.0	87.8	6.3	5.9	0.060	0.524	19.646012	-99.391698
T. DER. TEPOTZOTLAN	26.98	3	0	7662	87.8	6.4	4.8	0.8	0.1	0.1	0.0	0.0	87.8	6.4	5.8	0.073	0.502	19.646708	-99.392536
VILLA DEL CARBON	48.40	1	0	4757	87.9	6.4	4.7	0.8	0.1	0.1	0.0	0.0	87.9	6.4	5.7	0.082	0.511	19.720541	-99.452739
VILLA DEL CARBON	48.40	3	0	4412	87.8	6.1	5.1	0.8	0.1	0.1	0.0	0.0	87.8	6.1	6.1	0.079	0.511	19.734508	-99.480792
CHAPA DE MOTA	67.60	1	0	1167	87.1	6.8	5.1	0.8	0.1	0.1	0.0	0.0	87.1	6.8	6.1	0.088	0.503	19.810123	-99.515316
T. C. SAN FRANCISCO - ENT. OJO DE AGUA	81.96																		

88 CARR: VILLA DEL CARBON - ATLACOMULCO

CLAVE: 15011

RUTA: EM-005

AÑO: 2010

LUGAR	ESTACION				CLASIFICACION VEHICULAR EN PORCIENTO								COORDENADAS						
	KM	TE	SC	TDPA	A	B	C2	C3	T3S2	T3S3	T3S2R4	OTROS	A	B	C	K'	D	LATITUD	LONGITUD
T. C. TLALNEPANTLA - SAN GABRIEL	0.00	3	0	1994	88.6	3.6	4.7	1.1	1.4	0.5	0.1	0.0	88.6	3.6	7.8	0.086	0.513	19.736477	-99.481251
T. DER. SAN BARTOLO MORELOS	25.00	1	0	3014	88.6	3.6	4.5	1.2	1.5	0.5	0.1	0.0	88.6	3.6	7.8	0.081	0.514	19.764233	-99.671349
X. C. SANTO DOMINGO - T. C. (MEXICO - QUERETARO (CUOTA))	29.00	3	0	3868	89.1	3.4	4.3	1.2	1.4	0.5	0.1	0.0	89.1	3.4	7.5	0.082	0.503	19.785299	-99.703477
ATLACOMULCO	50.00	1	0	6726	88.3	3.5	4.7	1.3	1.6	0.5	0.1	0.0	88.3	3.5	8.2	0.068	0.501	19.793683	-99.866513

89 CARR: VILLA VICTORIA - EL ORO DE HIDALGO

CLAVE: 15025

RUTA: EM-014-004

AÑO: 2010

LUGAR	ESTACION				CLASIFICACION VEHICULAR EN PORCIENTO								COORDENADAS						
	KM	TE	SC	TDPA	A	B	C2	C3	T3S2	T3S3	T3S2R4	OTROS	A	B	C	K'	D	LATITUD	LONGITUD
VILLA VICTORIA	0.00	3	0	7086	85.8	3.1	3.8	0.5	2.9	1.7	1.5	0.7	85.8	3.1	11.1	0.076	0.505	19.448056	-100.017778
T. IZQ. ANGANGUEO	34.00	1	0	3514	85.3	3.4	4.2	0.6	2.6	1.8	1.5	0.6	85.3	3.4	11.3	0.089	0.503	19.646349	-100.125697
T. C. ATLACOMULCO - MORELIA	57.00	1	0	3530	84.1	3.7	4.7	0.3	3.1	1.5	1.8	0.8	84.1	3.7	12.2	0.079	0.502	19.786971	-100.135089

90 CARR: XALATLACO - EL AJUSCO

CLAVE: 00017

RUTA: EM-DF

AÑO: 2010

LUGAR	ESTACION				CLASIFICACION VEHICULAR EN PORCIENTO								COORDENADAS						
	KM	TE	SC	TDPA	A	B	C2	C3	T3S2	T3S3	T3S2R4	OTROS	A	B	C	K'	D	LATITUD	LONGITUD
T. C. ENT. CRUZ DE LA MISION - SAN NICOLAS COATEPEC	0.00	3	0	2029	81.2	6.9	4.5	2.3	2.4	1.7	0.2	0.8	81.2	6.9	11.9	0.070	0.502	19.160133	-99.404586
LIM. EDOS. TERM. MEX. PPIA. D.F.	17.70																		
T. C. CIRCUITO DEL AJUSCO	27.60	1	0	1096	80.6	6.1	4.1	2.5	2.8	2.7	0.2	1.0	80.6	6.1	13.3	0.085	0.506	19.207161	-99.276427

MEXICO

91 CARR: CIRCUITO EXTERIOR MEXIQUENSE (CUOTA)

CLAVE:

RUTA: EM-D

AÑO: 2010

LUGAR	ESTACION				CLASIFICACION VEHICULAR EN PORCIENTO								COORDENADAS						
	KM	TE	SC	TDPA	A	B	C2	C3	T3S2	T3S3	T3S2R4	OTROS	A	B	C	K'	D	LATITUD	LONGITUD
T.C. MEXICO - QUERETARO	0.00	3	1	8147	61.2	7.3	6.5	7.4	12.8	1.9	2.5	0.4	61.2	7.3	31.5	0.076	0.509	19.823988	-99.222746
T.C. MEXICO - QUERETARO	0.00	3	2	8433	60.0	7.6	6.7	7.7	13.3	1.8	2.5	0.4	60.0	7.6	32.4	0.080	0.509	19.823979	-99.222729
CASETA DE COBRO JOROBAS	0.30	2	0	11417	60.6	7.4	6.9	7.6	12.6	1.9	2.6	0.4	60.6	7.4	32.0			19.819852	-99.239795
T.C. AUTOPISTA PEÑON - TEXCOCO	46.40	1	1	18627	60.0	7.1	7.1	7.8	13.2	1.8	2.6	0.4	60.0	7.1	32.9	0.078	0.502	19.475332	-99.012903
T.C. AUTOPISTA PEÑON - TEXCOCO	46.40	1	2	18473	59.8	7.8	6.6	7.7	13.1	1.9	2.7	0.4	59.8	7.8	32.4	0.076	0.502	19.475327	-99.012898

92 CARR: LIBRAMIENTO NORORIENTE DE TOLUCA (CUOTA)

CLAVE:

RUTA: EM-D

AÑO: 2010

LUGAR	ESTACION				CLASIFICACION VEHICULAR EN PORCIENTO								COORDENADAS						
	KM	TE	SC	TDPA	A	B	C2	C3	T3S2	T3S3	T3S2R4	OTROS	A	B	C	K'	D	LATITUD	LONGITUD
T.C. MEXICO - TOLUCA	0.00	3	0	11129	77.7	5.3	5.4	3.6	3.3	2.4	1.8	0.5	77.7	5.3	17.0	0.073	0.505	19.296930	-99.521053
T.C. TOLUCA - PALMILLAS	29.50																		

93 CARR: TOLUCA - IXTAPAN DE LA SAL (CUOTA)

CLAVE:

RUTA: EM-D

AÑO: 2010

LUGAR	ESTACION				CLASIFICACION VEHICULAR EN PORCIENTO								COORDENADAS						
	KM	TE	SC	TDPA	A	B	C2	C3	T3S2	T3S3	T3S2R4	OTROS	A	B	C	K'	D	LATITUD	LONGITUD
T.C. TOLUCA - AXIXINTLA	0.00	3	0	5462	80.4	3.8	5.0	2.8	4.5	1.8	1.2	0.5	80.4	3.8	15.8	0.079	0.505	19.122291	-99.597090
IXTAPAN DE LA SAL	45.00	1	0	6088	81.7	4.3	4.0	2.2	4.3	2.0	1.0	0.5	81.7	4.3	14.0	0.076	0.500	18.852674	-99.671759

94 CARR: ATLACOMULCO - MORELIA

CLAVE: 00151

RUTA: EM-005-MEX-126

AÑO: 2010

LUGAR	ESTACION				CLASIFICACION VEHICULAR EN PORCIENTO								COORDENADAS						
	KM	TE	SC	TDPA	A	B	C2	C3	T3S2	T3S3	T3S2R4	OTROS	A	B	C	K'	D	LATITUD	LONGITUD
ATLACOMULCO	0.00	3	0	9519	82.2	4.8	5.1	1.3	4.5	1.0	0.5	0.6	82.2	4.8	13.0	0.068	0.503	19.786773	-99.896923
T. IZQ. SAN FELIPE DEL PROGRESO	3.60	3	0	11728	84.9	5.3	2.5	1.7	1.8	2.5	0.5	0.8	84.9	5.3	9.8	0.067	0.501	19.788166	-99.906104
T. DER. TEMASCALINGO	16.40	3	0	6749	86.0	4.8	2.6	1.8	2.0	1.5	0.5	0.8	86.0	4.8	9.2	0.065	0.502	19.809071	-100.019579
EL ORO DE HIDALGO	30.00	1	0	6266	85.5	4.8	2.8	2.3	2.1	1.2	0.5	0.8	85.5	4.8	9.7	0.078	0.501	19.807906	-100.117741
LIM. EDOS. TERM. MEX. PPIA. MICH.	31.00																		
TLALPUJAHUA	37.00	3	0	4273	80.6	5.7	4.5	2.5	3.9	2.3	0.3	0.2	80.6	5.7	13.7	0.083	0.512	19.793725	-100.187885
MARAVATIO DE OCAMPO	79.00	1	0	4839	81.3	4.7	4.0	2.7	3.7	2.5	0.6	0.5	81.3	4.7	14.0	0.074	0.506	19.885078	-100.429587
X. C. ENT. HUAJUMBARO - SAN JOSE	120.00	1	0	3329	80.6	5.0	4.6	3.0	3.4	2.5	0.6	0.3	80.6	5.0	14.4	0.084	0.513	19.822230	-100.821859
QUERENDARO	127.00	1	0	6058	81.7	5.2	4.2	2.6	2.8	2.5	0.5	0.5	81.7	5.2	13.1	0.071	0.504	19.806395	-100.876613
ZONA INDUSTRIAL LIBRAMIENTO DE MORELIA	167.70	1	1	10121	81.3	5.2	4.4	2.7	3.1	2.3	0.4	0.6	81.3	5.2	13.5	0.080	0.503	19.719108	-101.150557
ZONA INDUSTRIAL LIBRAMIENTO DE MORELIA	167.70	1	2	10007	81.1	4.9	4.3	2.9	3.6	2.1	0.5	0.6	81.1	4.9	14.0	0.082	0.503	19.719108	-101.150557

MEXICO

94 CARR: ATLACOMULCO - MORELIA

CLAVE: 00151

RUTA: EM-005-MEX-126

AÑO: 2010

LUGAR	ESTACION				CLASIFICACION VEHICULAR EN PORCIENTO								COORDENADAS						
	KM	TE	SC	TDPA	A	B	C2	C3	T3S2	T3S3	T3S2R4	OTROS	A	B	C	K'	D	LATITUD	LONGITUD
MORELIA	169.20																		

95 CARR: EL MONUMENTO - TINGAMBATO

CLAVE: 15039

RUTA: MEX-EM

AÑO: 2010

LUGAR	ESTACION				CLASIFICACION VEHICULAR EN PORCIENTO								COORDENADAS						
	KM	TE	SC	TDPA	A	B	C2	C3	T3S2	T3S3	T3S2R4	OTROS	A	B	C	K'	D	LATITUD	LONGITUD
T. C. TOLUCA - MORELIA	0.00	3	0	5126	87.8	3.0	4.2	1.2	2.6	0.3	0.5	0.4	87.8	3.0	9.2	0.076	0.501	19.397194	-100.066744
T. DER. DONATO GUERRA	16.94	3	0	4316	87.3	2.9	4.2	1.6	2.4	0.4	0.6	0.6	87.3	2.9	9.8	0.089	0.511	19.298428	-100.115585
T. IZQ. VALLE DE BRAVO	32.30	1	0	3795	88.8	2.8	3.9	1.2	2.2	0.3	0.5	0.3	88.8	2.8	8.4	0.075	0.502	19.232690	-100.127644
T. DER. COLORINES	48.72	1	0	4643	87.9	2.6	4.2	0.7	2.5	0.6	1.0	0.5	87.9	2.6	9.5	0.078	0.507	19.188016	-100.211518
T. DER. IXTAPAN DEL ORO	51.25	1	0	2854	87.1	2.9	4.4	1.7	1.7	0.5	1.0	0.7	87.1	2.9	10.0	0.088	0.503	19.181242	-100.238943
TINGAMBATO	98.10																		

96 CARR: TOLUCA - AXIXINTLA

CLAVE: 00122

RUTA: EM-MEX-055

AÑO: 2010

LUGAR	ESTACION				CLASIFICACION VEHICULAR EN PORCIENTO								COORDENADAS						
	KM	TE	SC	TDPA	A	B	C2	C3	T3S2	T3S3	T3S2R4	OTROS	A	B	C	K'	D	LATITUD	LONGITUD
TOLUCA	0.00																		
T. IZQ. METEPEC	4.74	1	1	22093	77.3	4.5	5.2	1.0	6.3	2.2	2.9	0.6	77.3	4.5	18.2	0.084	0.506	19.242672	-99.601883
T. IZQ. METEPEC	4.74	1	2	22656	77.3	4.4	5.7	0.8	6.4	2.1	2.6	0.7	77.3	4.4	18.3	0.087	0.506	19.242672	-99.601883
MEXICALcingo	8.80	1	1	19454	80.9	3.9	7.3	1.0	2.2	1.4	2.6	0.7	80.9	3.9	15.2	0.087	0.509	19.221792	-99.592677
MEXICALcingo	8.80	1	2	20190	77.5	4.1	5.0	0.7	7.3	2.2	2.4	0.8	77.5	4.1	18.4	0.091	0.509	19.221752	-99.592830
MEXICALcingo	8.80	3	1	15820	80.4	4.2	5.8	0.7	3.8	1.7	2.7	0.7	80.4	4.2	15.4	0.077	0.503	19.200306	-99.584972
MEXICALcingo	8.80	3	2	15611	78.2	4.6	5.7	1.5	4.4	2.0	2.9	0.7	78.2	4.6	17.2	0.077	0.503	19.200444	-99.584944
T. DER. CALIMAYA	12.70	3	1	15767	80.1	4.1	5.9	1.2	4.9	1.1	2.3	0.4	80.1	4.1	15.8	0.082	0.501	19.181024	-99.577922
T. DER. CALIMAYA	12.70	3	2	15800	76.3	5.7	6.4	1.0	5.3	1.8	2.9	0.6	76.3	5.7	18.0	0.075	0.501	19.181024	-99.577922
TENANCINGO	44.80	3	0	7756	82.4	4.2	3.5	2.2	4.0	1.8	1.3	0.6	82.4	4.2	13.4	0.078	0.502	18.965290	-99.601843
T. IZQ. VILLA GUERRERO	56.84	3	0	9524	82.6	3.7	4.0	2.5	3.7	1.8	1.0	0.7	82.6	3.7	13.7	0.067	0.501	18.965167	-99.644778
IXTAPAN DE LA SAL	80.00	1	1	3593	81.6	4.0	4.1	2.9	4.0	1.9	1.2	0.3	81.6	4.0	14.4	0.068	0.501	18.851815	-99.675148
IXTAPAN DE LA SAL	80.00	1	2	3580	82.1	4.1	4.0	2.4	3.9	1.9	1.3	0.3	82.1	4.1	13.8	0.071	0.501	18.851815	-99.675148
IXTAPAN DE LA SAL	80.00	3	1	3378	82.0	4.3	4.3	2.6	3.2	1.9	1.3	0.4	82.0	4.3	13.7	0.075	0.501	18.831641	-99.667959
IXTAPAN DE LA SAL	80.00	3	2	3398	81.7	4.2	4.5	2.8	3.2	1.9	1.3	0.4	81.7	4.2	14.1	0.074	0.501	18.831641	-99.667959
TONATICO	86.20	3	0	4077	81.8	4.3	4.7	2.1	3.8	1.7	1.1	0.5	81.8	4.3	13.9	0.065	0.501	18.801148	-99.658627
LIM. EDOS. TERM. MEX. PPIA. GRO.	98.50																		
CACAHUAMILPA	120.30	1	0	2455	82.1	4.1	4.8	2.0	3.4	1.8	0.9	0.9	82.1	4.1	13.8	0.064	0.518	18.685104	-99.514664

MEXICO

96 CARR: TOLUCA - AXIXINTLA

CLAVE: 00122

RUTA: EM-MEX-055

AÑO: 2010

LUGAR	ESTACION				CLASIFICACION VEHICULAR EN PORCIENTO								COORDENADAS						
	KM	TE	SC	TDPA	A	B	C2	C3	T3S2	T3S3	T3S2R4	OTROS	A	B	C	K'	D	LATITUD	LONGITUD
T. C. CUERNAVACA - CHILPANCINGO	125.30	1	0	1576	82.1	5.0	5.1	2.1	3.5	0.6	0.9	0.7	82.1	5.0	12.9	0.065	0.511	18.621665	-99.508311

97 CARR: TOLUCA - PALMILLAS

CLAVE: 00496

RUTA: EM(D)-MEX-055

AÑO: 2010

LUGAR	ESTACION				CLASIFICACION VEHICULAR EN PORCIENTO								COORDENADAS						
	KM	TE	SC	TDPA	A	B	C2	C3	T3S2	T3S3	T3S2R4	OTROS	A	B	C	K'	D	LATITUD	LONGITUD
TOLUCA	0.00																		
T. IZQ. CALIXTLAHUACA DE RAYON (BAJA)	7.21	3	1	5532	76.9	6.2	7.0	2.8	4.5	1.4	0.9	0.3	76.9	6.2	16.9	0.073	0.505	19.339369	-99.670435
T. IZQ. CALIXTLAHUACA DE RAYON (ALTA)	7.21	3	1	14564	78.1	6.1	6.5	2.5	4.3	1.3	0.9	0.3	78.1	6.1	15.8	0.075	0.501	19.339404	-99.670412
T. IZQ. CALIXTLAHUACA DE RAYON (BAJA)	7.21	3	2	5427	76.3	6.7	7.1	2.5	4.8	1.4	0.9	0.3	76.3	6.7	17.0	0.071	0.505	19.339394	-99.670411
T. IZQ. CALIXTLAHUACA DE RAYON (ALTA)	7.21	3	2	14484	76.1	6.8	7.1	2.6	4.9	1.3	0.9	0.3	76.1	6.8	17.1	0.074	0.501	19.339387	-99.670404
EL DORADO	16.00	1	1	15441	77.9	6.3	6.3	2.7	4.5	1.2	0.8	0.3	77.9	6.3	15.8	0.071	0.508	19.402848	-99.714002
EL DORADO	16.00	1	2	15923	77.8	6.0	6.6	2.5	4.6	1.3	0.9	0.3	77.8	6.0	16.2	0.073	0.508	19.402845	-99.714001
IXTLAHUACA DE RAYON	35.58	3	0	24764	77.9	6.1	6.6	2.6	4.4	1.2	0.9	0.3	77.9	6.1	16.0	0.062	0.507	19.581529	-99.763637
PASTEJE	45.20	1	1	8506	78.0	6.1	6.3	2.5	4.6	1.3	0.9	0.3	78.0	6.1	15.9	0.082	0.501	19.668931	-99.800868
PASTEJE	45.20	1	2	8465	77.3	6.5	6.5	2.5	4.7	1.3	0.9	0.3	77.3	6.5	16.2	0.080	0.501	19.668864	-99.800928
ATLACOMULCO	65.00	1	1	14412	78.2	6.0	6.5	2.6	4.3	1.2	0.9	0.3	78.2	6.0	15.8	0.082	0.503	19.778219	-99.862895
ATLACOMULCO	65.00	1	2	14571	76.8	6.4	6.8	2.7	4.8	1.3	0.9	0.3	76.8	6.4	16.8	0.084	0.503	19.778187	-99.862904
ATLACOMULCO	65.00	3	0	9362	77.9	6.2	6.3	2.5	4.7	1.3	0.8	0.3	77.9	6.2	15.9	0.087	0.517	19.815256	-99.871454
ACAMBAY	85.64	3	0	9118	77.9	3.5	5.1	3.0	7.4	1.5	1.3	0.3	77.9	3.5	18.6	0.072	0.556	19.970639	-99.865973
T. DER. ACULCO DE ESPINOZA	104.43	3	0	6924	76.4	3.9	5.3	3.1	8.0	1.7	1.3	0.3	76.4	3.9	19.7	0.076	0.511	20.088332	-99.863253
T. DER. POLOTITLAN	122.73	1	0	7081	77.6	3.4	5.3	3.1	7.6	1.5	1.2	0.3	77.6	3.4	19.0	0.076	0.510	20.228733	-99.902547
LIM. EDOS. TERM. MEX. PPIA. QRO.	128.10																		
T. C. MEXICO - QUERETARO	131.52	1	0	10552	78.2	3.5	5.2	2.9	7.0	1.6	1.3	0.3	78.2	3.5	18.3	0.070	0.510	20.283359	-99.931453

98 CARR: TRES MARIAS - SANTA MARTHA

CLAVE: 00172

RUTA: MEX-106-EM

AÑO: 2010

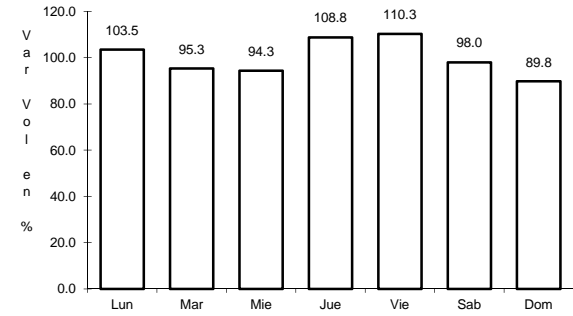
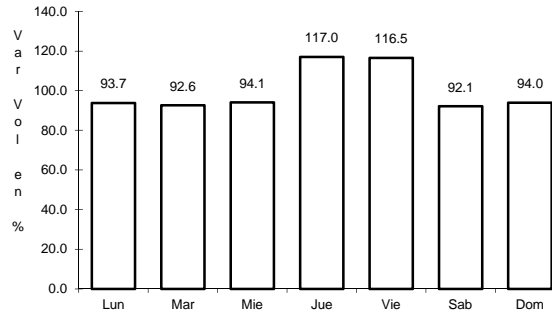
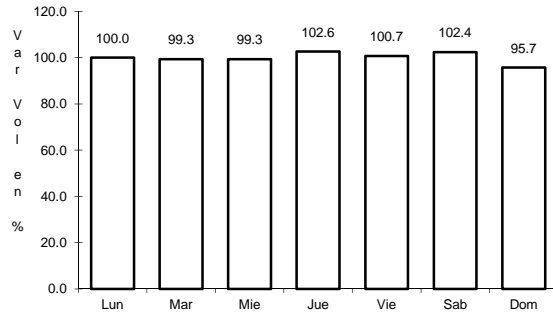
LUGAR	ESTACION				CLASIFICACION VEHICULAR EN PORCIENTO								COORDENADAS						
	KM	TE	SC	TDPA	A	B	C2	C3	T3S2	T3S3	T3S2R4	OTROS	A	B	C	K'	D	LATITUD	LONGITUD
TRES MARIAS	0.00	3	0	5052	81.2	5.0	6.4	3.0	2.1	1.2	0.6	0.5	81.2	5.0	13.8	0.066	0.508	19.047376	-99.250251
LAGUNA DE ZEMPOALA	14.00																		
LIM. EDOS. TERM. MOR. PPIA. MEX.	14.50																		
SANTA MARTHA	28.35	1	0	2146	78.9	6.7	5.5	3.5	1.7	2.1	1.1	0.5	78.9	6.7	14.4	0.082	0.509	19.063129	-99.379544



4 CARR: MEXICO - PUEBLA (LIBRE)

CLAVE: 00449

ruta: MEX-150



Km: 28.85 Tipo: 1 Sent: 1

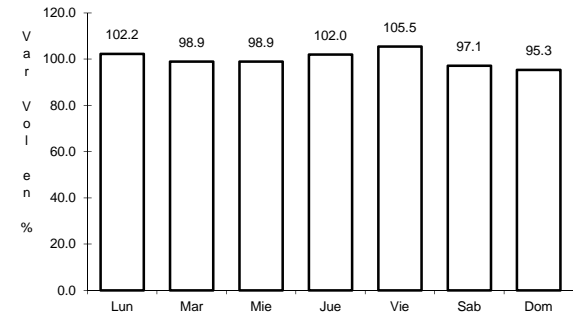
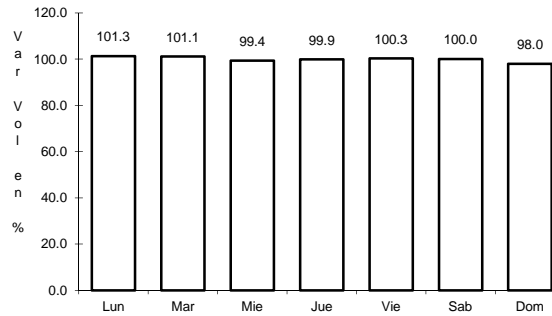
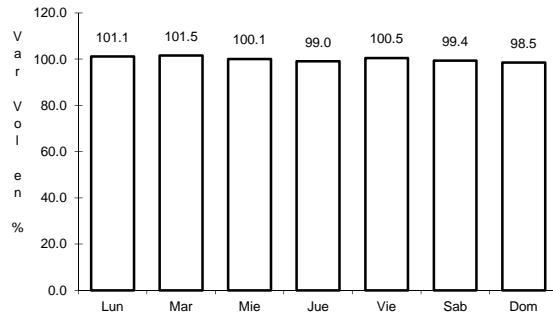
Km: 28.85 Tipo: 1 Sent: 2

Km: 101.00 Tipo: 1 Sent: 0

5 CARR: MEXICO - TOLUCA

CLAVE: 00447

ruta: MEX-015



Km: 12.84 Tipo: 3 Sent: 1

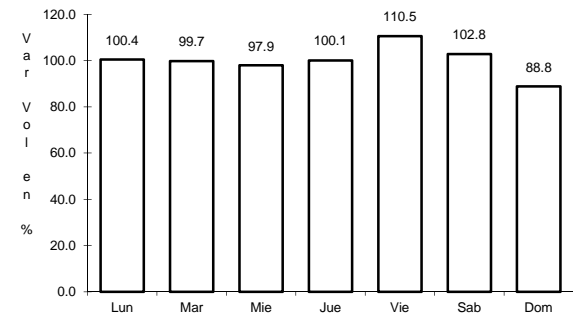
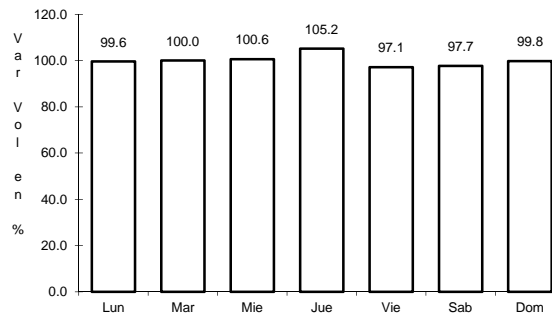
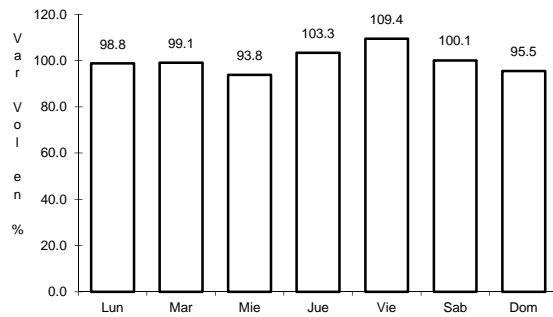
Km: 12.84 Tipo: 3 Sent: 2

Km: 51.71 Tipo: 1 Sent: 1

6 CARR: NAUCALPAN - TOLUCA

CLAVE: 15056

ruta: MEX-134



Km: 3.13 Tipo: 3 Sent: 1

Km: 3.13 Tipo: 3 Sent: 2

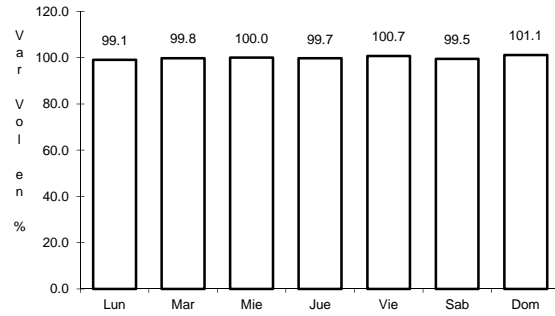
Km: 53.18 Tipo: 3 Sent: 0



10 CARR: T. C. (SAN GREGORIO - OAXTEPEC) - JUCHITEPEC

CLAVE: 15575

ruta: MEX



Km: 0.00

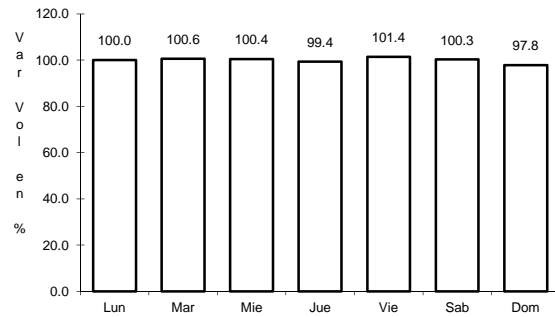
Tipo: 3

Sent: 0

11 CARR: T. C. (SANTA BARBARA - HUAJUAPAN) - TLAMACAS

CLAVE: 15073

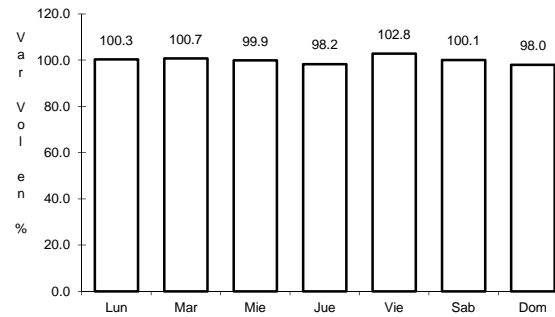
ruta: MEX



Km: 0.00

Tipo: 3

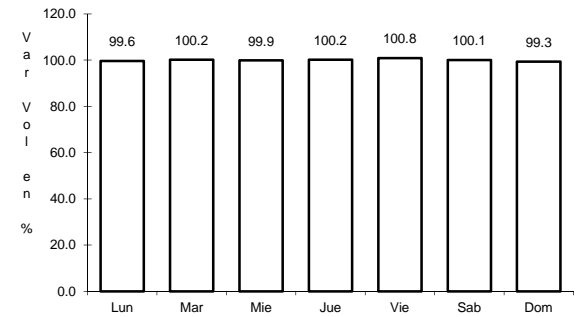
Sent: 0



Km: 6.00

Tipo: 3

Sent: 0



Km: 28.00

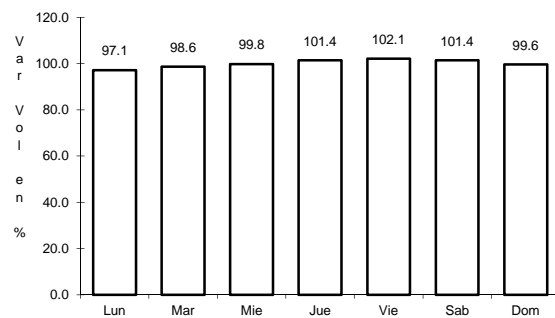
Tipo: 1

Sent: 0

12 CARR: TOLUCA - CD. ALTAMIRANO

CLAVE: 00020

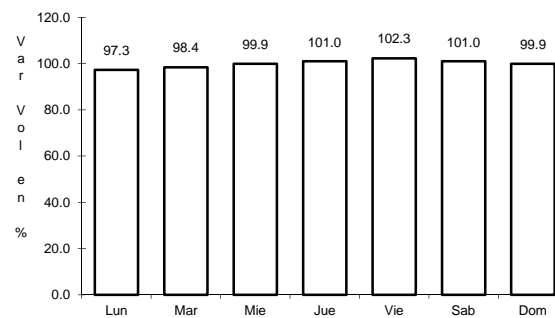
ruta: MEX-134



Km: 1.78

Tipo: 3

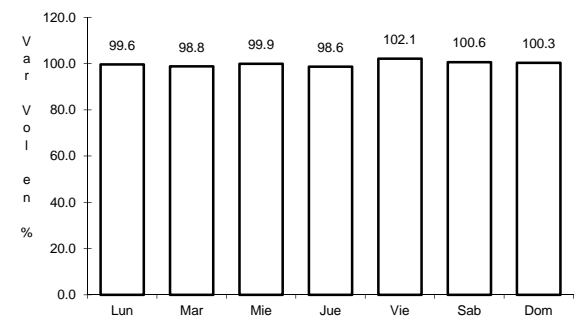
Sent: 1



Km: 1.78

Tipo: 3

Sent: 2



Km: 216.00

Tipo: 1

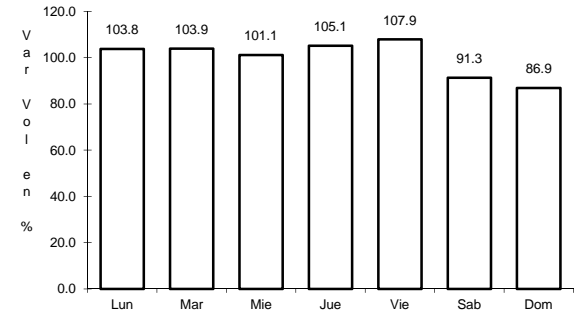
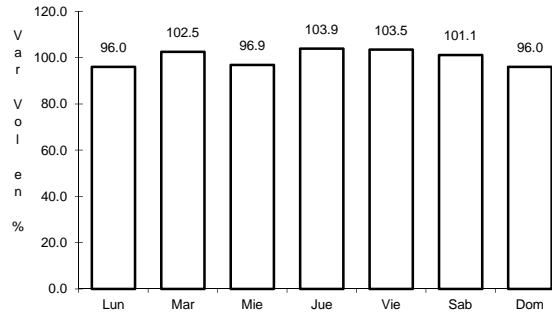
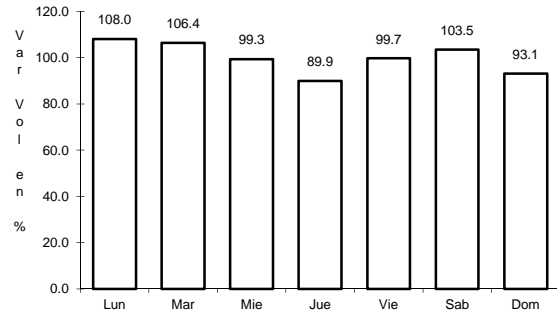
Sent: 0



13 CARR: TOLUCA - MORELIA

CLAVE: 00448

ruta: MEX-015



Km: 1.00

Tipo: 3

Sent: 1

Km: 1.00

Tipo: 3

Sent: 2

Km: 238.60

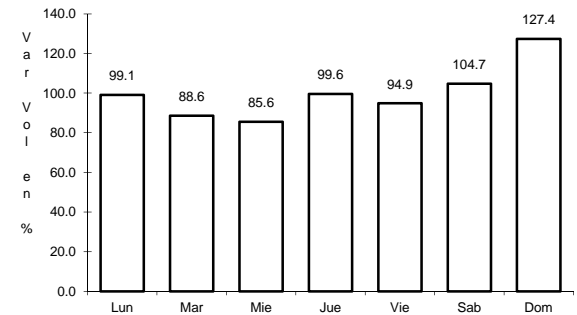
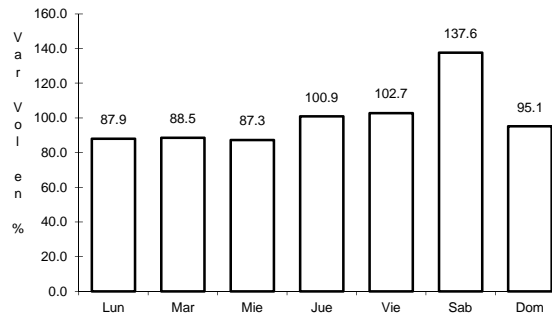
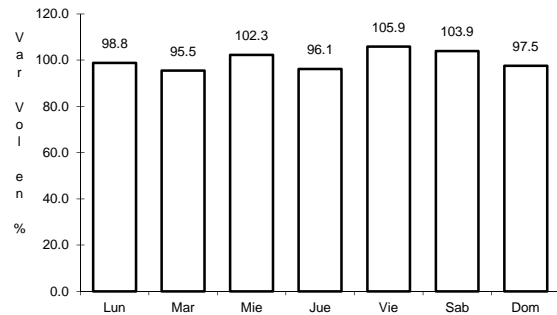
Tipo: 1

Sent: 0

14 CARR: VENTA DE CARPIO - T. C. (PACHUCA - TUXPAM)

CLAVE: 00455

ruta: MEX-132



Km: 6.42

Tipo: 3

Sent: 0

Km: 84.08

Tipo: 1

Sent: 1

Km: 84.08

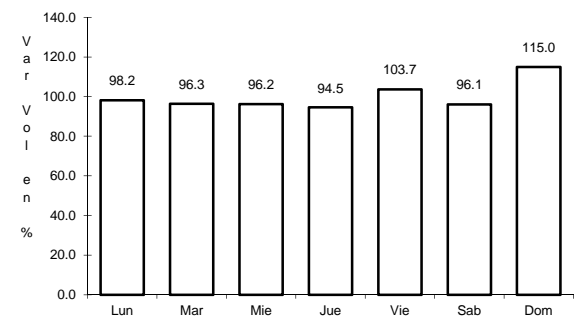
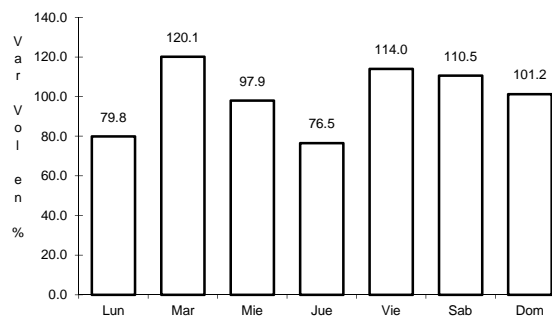
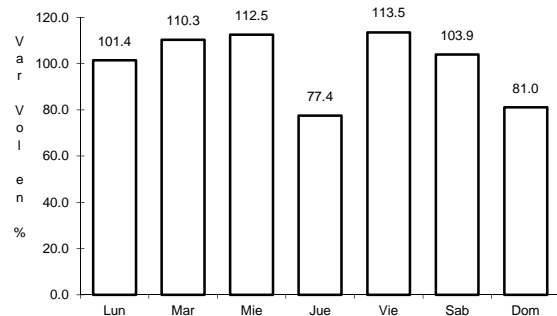
Tipo: 1

Sent: 2

17 CARR: CONSTITUYENTES - LA MARQUESA (CUOTA)

CLAVE: 00446

ruta: MEX-015D



Km: 0.00

Tipo: 3

Sent: 1

Km: 0.00

Tipo: 3

Sent: 2

Km: 19.20

Tipo: 1

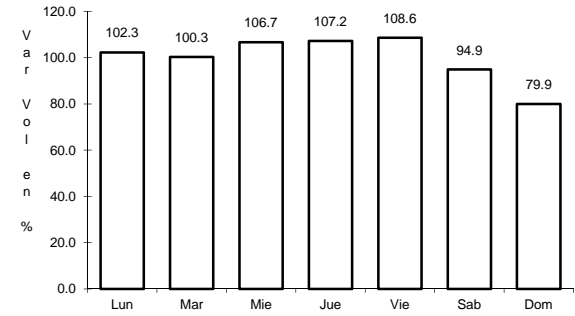
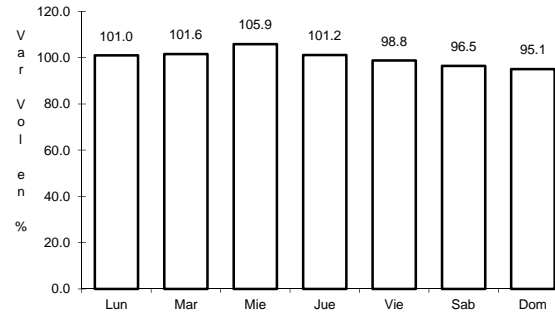
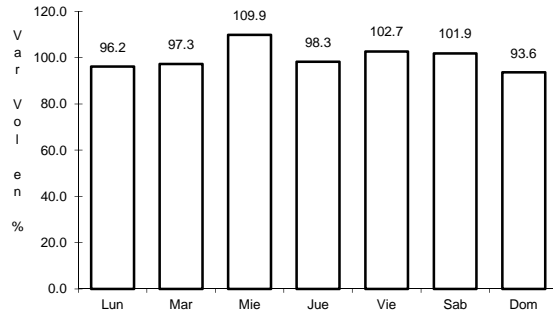
Sent: 1



21 CARR: MEXICO - QUERETARO (CUOTA)

CLAVE: 00411

ruta: MEX-057-MEX-057D



Km: 56.18

Tipo: 1

Sent: 1

Km: 56.18

Tipo: 1

Sent: 2

Km: 207.00

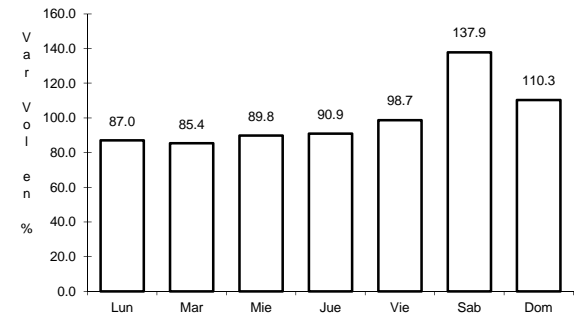
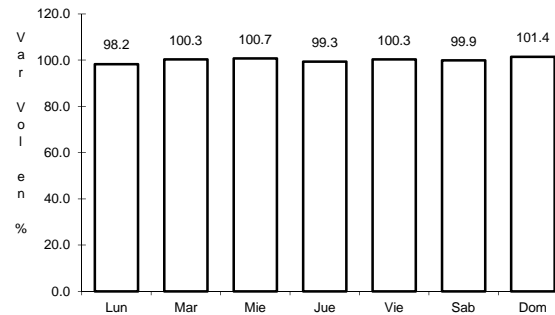
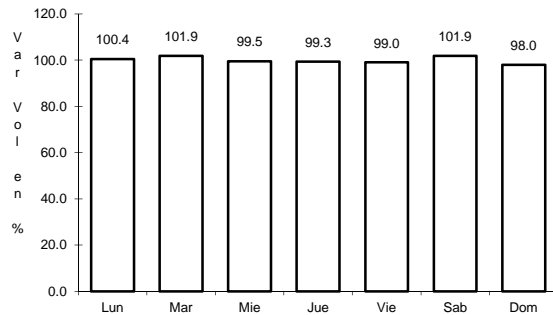
Tipo: 3

Sent: 1

22 CARR: MEXICO - TIZAYUCA (CUOTA)

CLAVE: 00432

ruta: MEX-085D



Km: 23.28

Tipo: 3

Sent: 1

Km: 23.28

Tipo: 3

Sent: 2

Km: 60.50

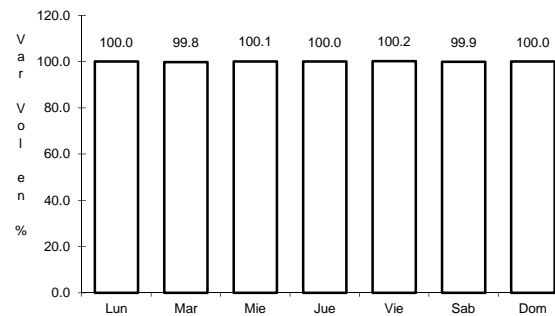
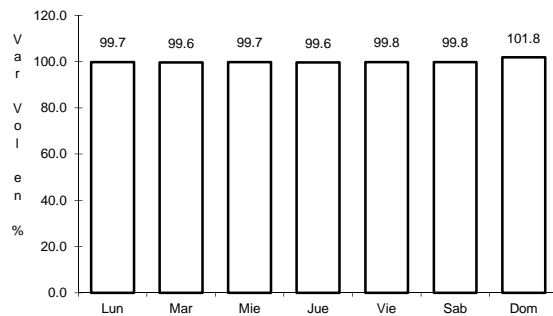
Tipo: 1

Sent: 1

23 CARR: PEÑON - TEXCOCO (CUOTA)

CLAVE: 15010

ruta: MEX-136D



Km: 16.50

Tipo: 1

Sent: 1

Km: 16.50

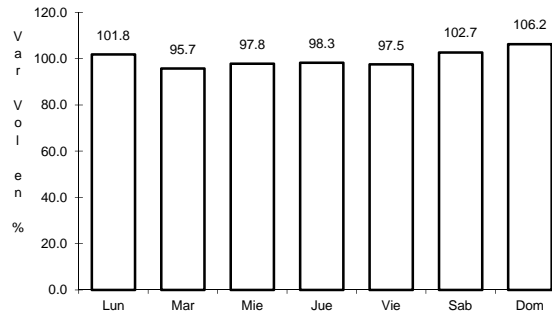
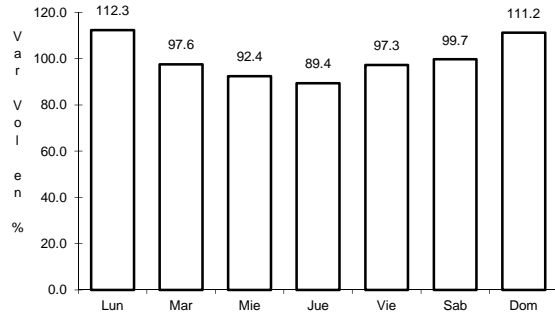
Tipo: 1

Sent: 2

24 CARR: ACAMBAY - SAN JOSE IXTAPA

CLAVE: 15037

RUTA: EM



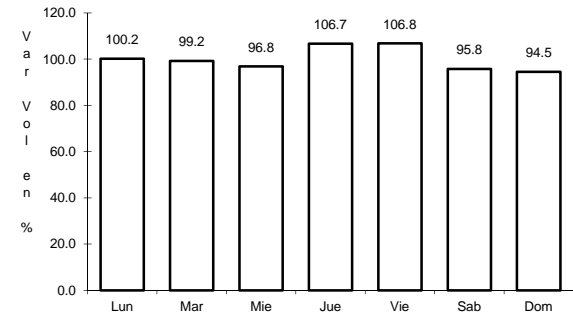
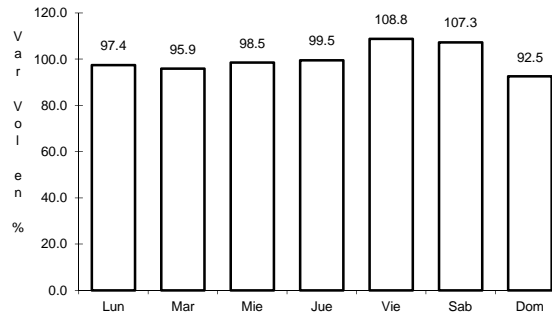
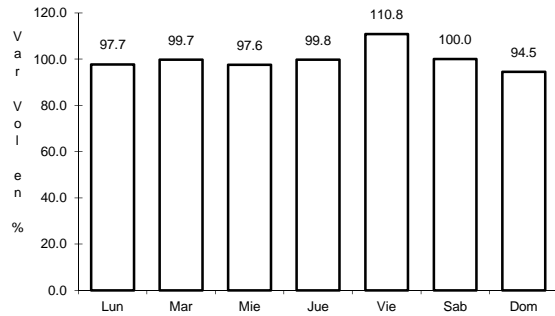
Km: 20.00      Tipo: 1      Sent: 0

Km: 37.00      Tipo: 1      Sent: 0

25 CARR: AMOMOLULCO - T. C. (TOLUCA - PALMILLAS)

CLAVE: 15022

RUTA: EM-036



Km: 0.30      Tipo: 3      Sent: 0

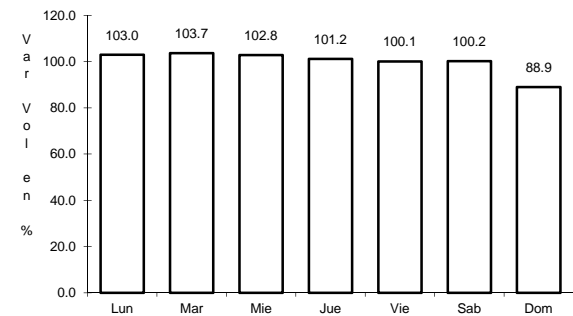
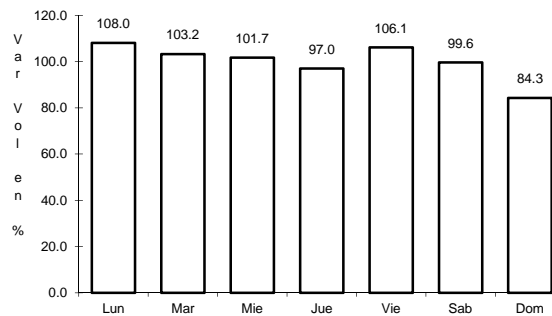
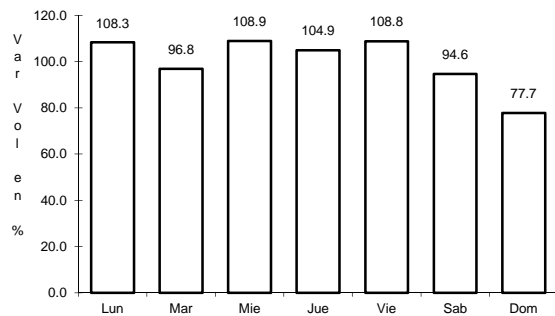
Km: 19.10      Tipo: 1      Sent: 0

Km: 46.60      Tipo: 1      Sent: 0

26 CARR: AMOMOLULCO - TEXCALYACAC

CLAVE: 15059

RUTA: EM



Km: 13.10      Tipo: 3      Sent: 0

Km: 17.00      Tipo: 1      Sent: 0

Km: 22.00      Tipo: 3      Sent: 0







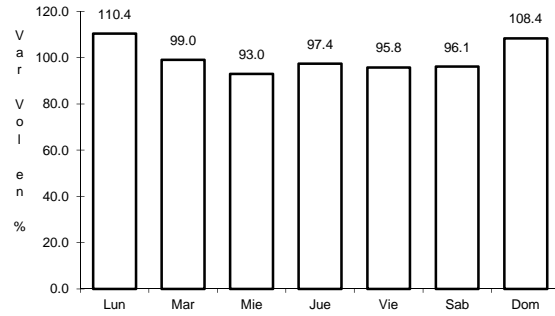




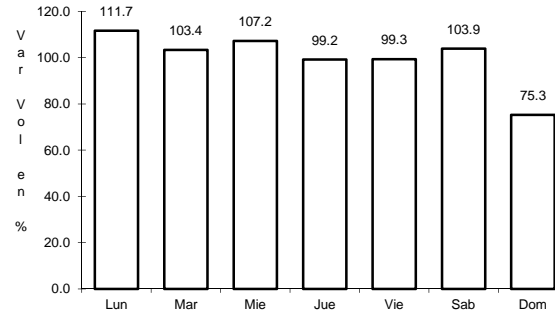
39 CARR: LA MARQUESA - TENANGO DE ARISTA

CLAVE: 15008

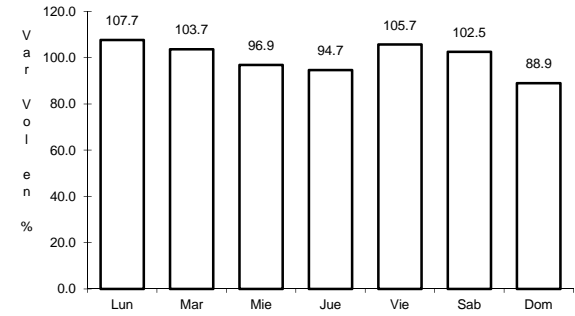
RUTA: EM-006



Km: 0.00      Tipo: 3      Sent: 0



Km: 20.80      Tipo: 1      Sent: 0

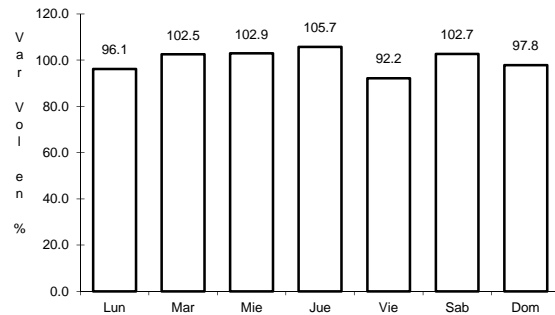


Km: 39.80      Tipo: 1      Sent: 0

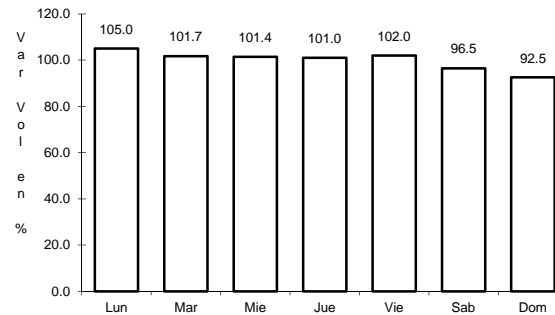
40 CARR: LA PUERTA - SAN MIGUEL TOTOLMALOYA

CLAVE: 15003

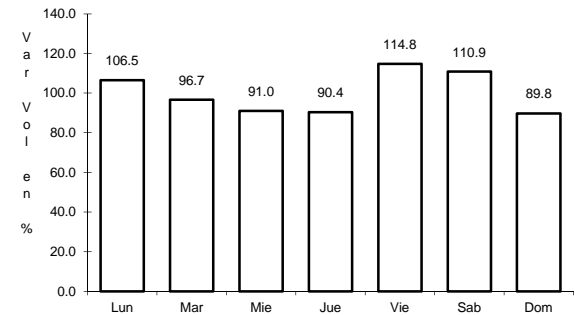
RUTA: EM-010



Km: 0.00      Tipo: 3      Sent: 0



Km: 31.80      Tipo: 3      Sent: 0

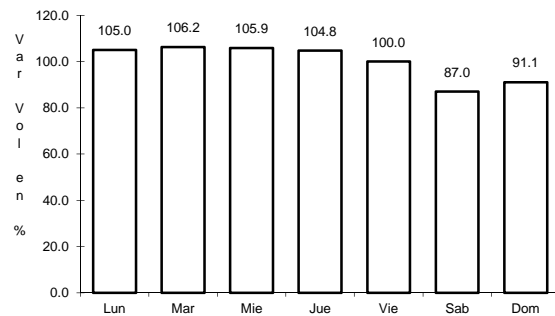


Km: 58.00      Tipo: 3      Sent: 0

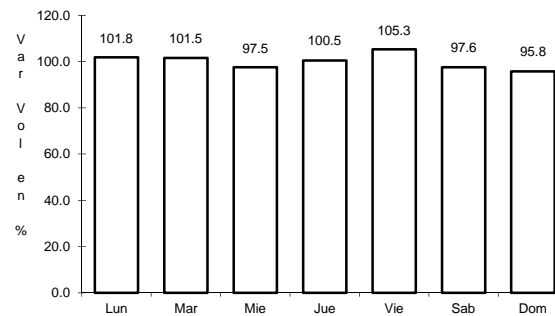
41 CARR: LAS JUNTAS - IXTAPAN DE LA SAL

CLAVE: 15023

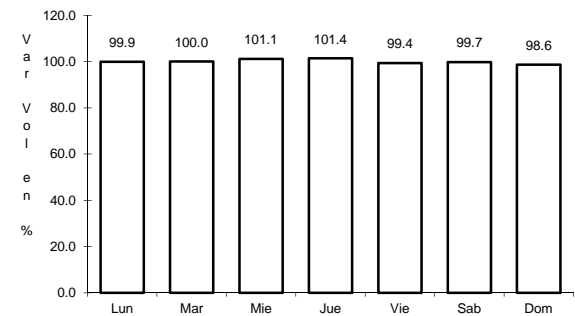
RUTA: EM-012



Km: 0.00      Tipo: 3      Sent: 0



Km: 35.16      Tipo: 1      Sent: 0

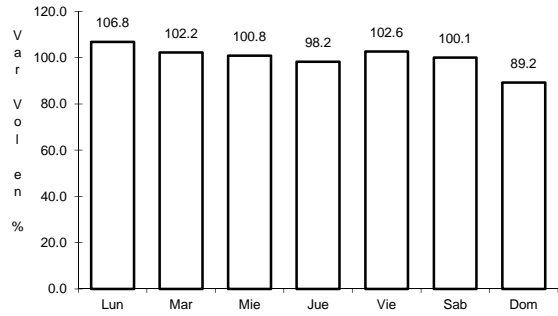


Km: 56.06      Tipo: 1      Sent: 0

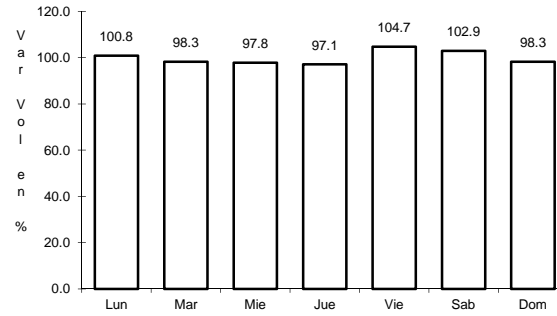


45 CARR: NICOLAS ROMERO - T. C. (IXTLAHUACA DE R. - NAUCALPA CLAVE: 15026

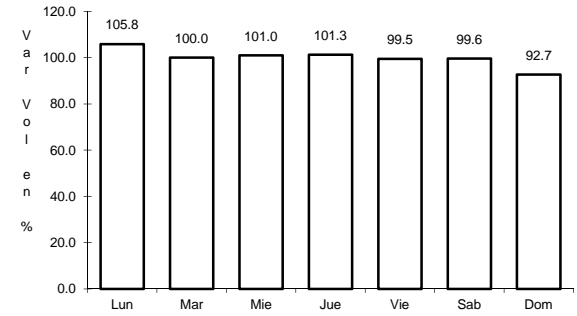
RUTA: EM-043



Km: 0.00 Tipo: 3 Sent: 0



Km: 15.50 Tipo: 1 Sent: 0

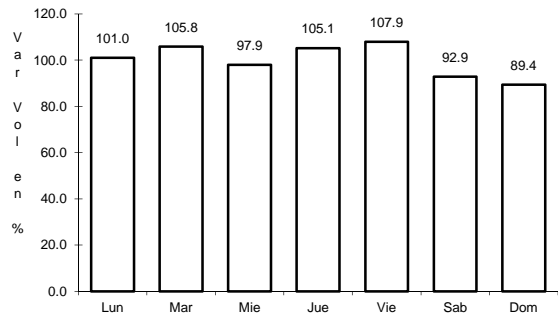


Km: 28.40 Tipo: 1 Sent: 0

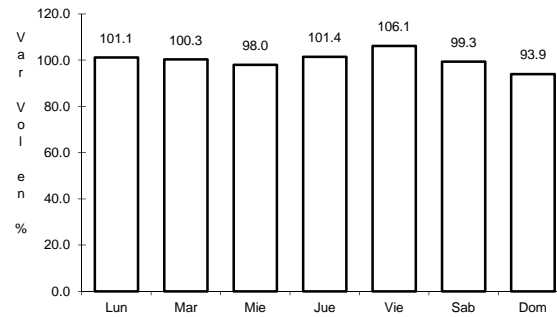
46 CARR: OCOYOACAC - SANTIAGO TIANGUISTENCO

CLAVE: 15021

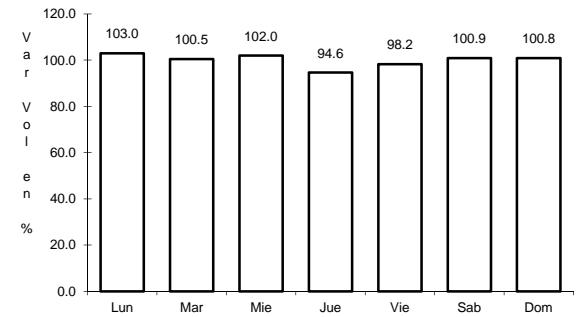
RUTA: EM



Km: 0.00 Tipo: 3 Sent: 0



Km: 4.00 Tipo: 3 Sent: 0

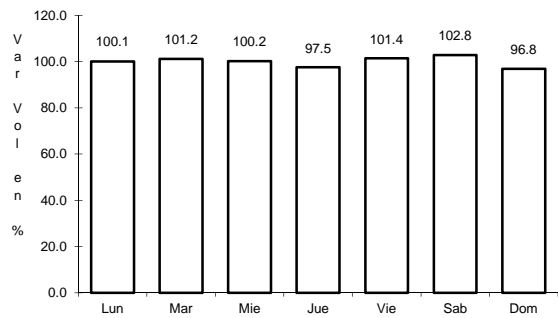


Km: 12.00 Tipo: 1 Sent: 0

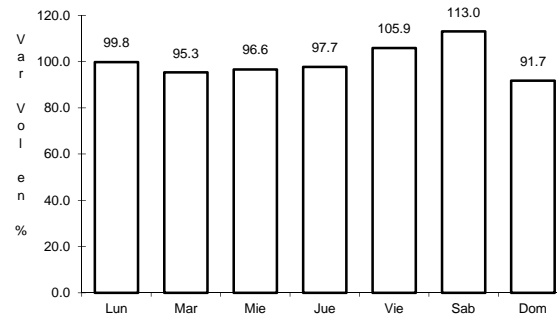
47 CARR: OTUMBA - TIZAYUCA

CLAVE: 00012

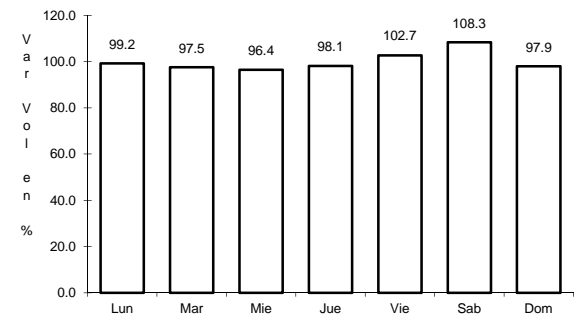
RUTA: EM-HGO



Km: 0.00 Tipo: 3 Sent: 0



Km: 37.10 Tipo: 1 Sent: 1



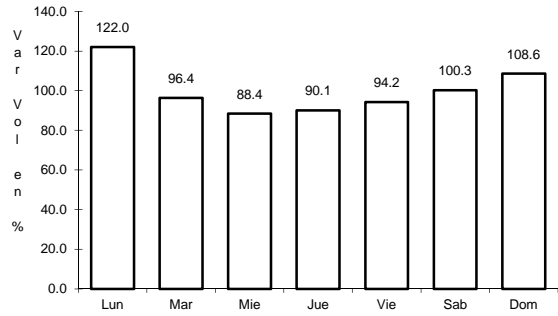
Km: 37.10 Tipo: 1 Sent: 2



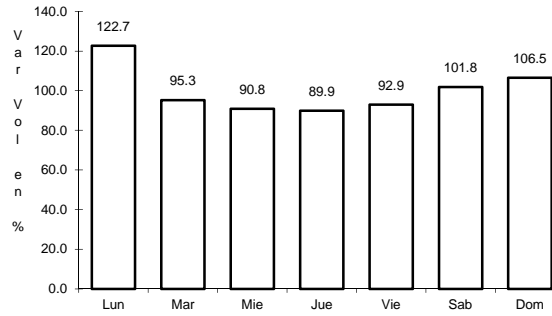
51 CARR: SAN FELIPE DEL PROGRESO - CARMONA

CLAVE: 15036

RUTA: EM-003



Km: 0.00      Tipo: 3      Sent: 0

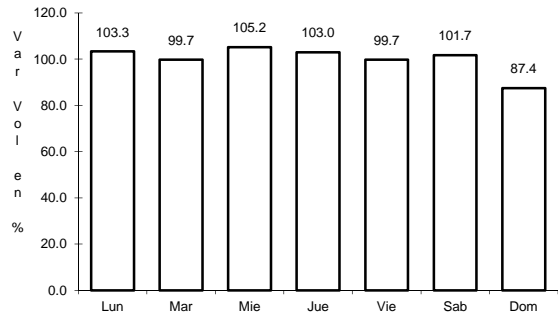


Km: 9.00      Tipo: 3      Sent: 0

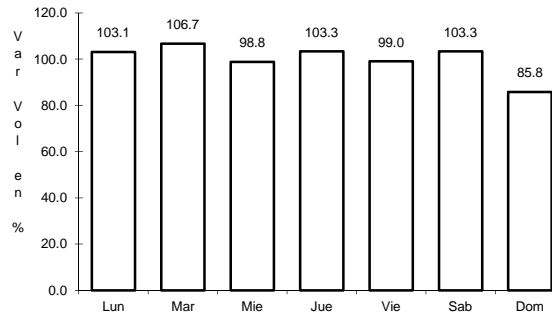
52 CARR: SAN LUIS MEXTEPEC - VALLE DE BRAVO

CLAVE: 15001

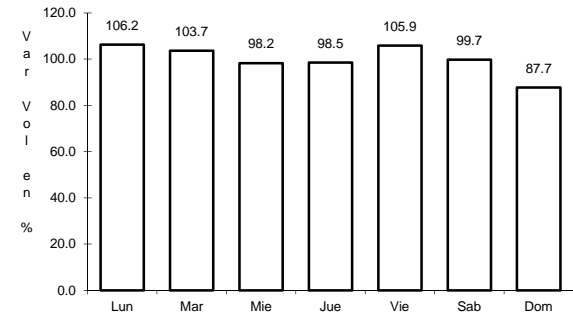
RUTA: EM-001



Km: 0.00      Tipo: 3      Sent: 1



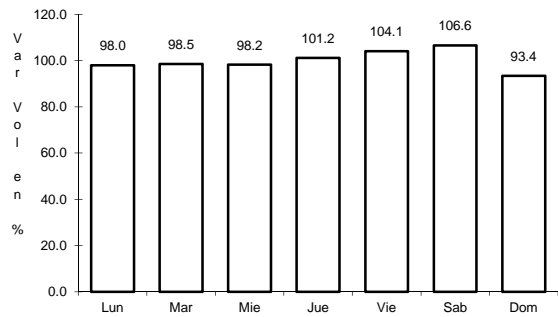
Km: 0.00      Tipo: 3      Sent: 2



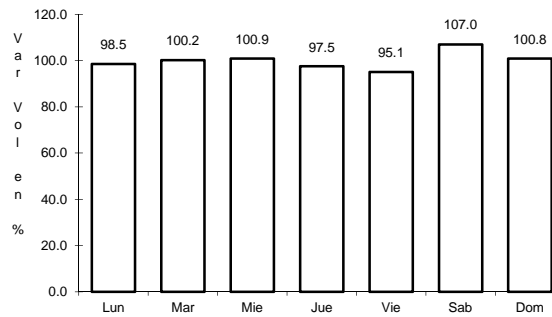
Km: 66.05      Tipo: 1      Sent: 0

53 CARR: SAN MARTIN DE LAS PIRAMIDES - SAN MIGUEL ATLAMAJUCIL CLAVE:

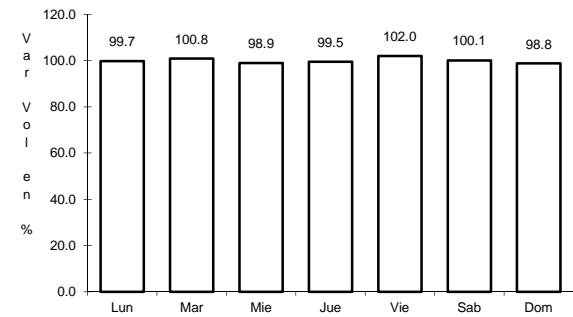
RUTA: EM



Km: 0.00      Tipo: 3      Sent: 0



Km: 12.50      Tipo: 1      Sent: 0

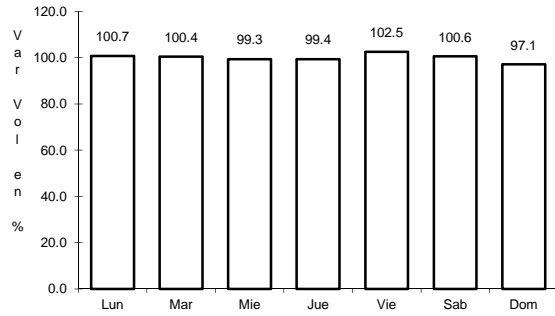


Km: 18.00      Tipo: 1      Sent: 0

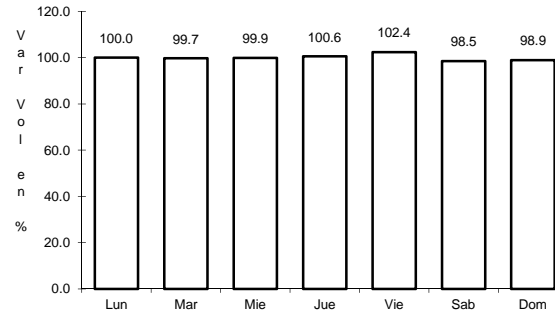
54 CARR: SAN PEDRO BARRIENTOS - ECATEPEC

CLAVE: 15015

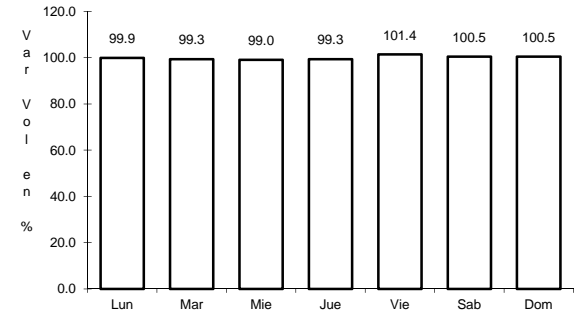
RUTA: EM



Km: 2.29      Tipo: 1      Sent: 1



Km: 2.29      Tipo: 1      Sent: 2

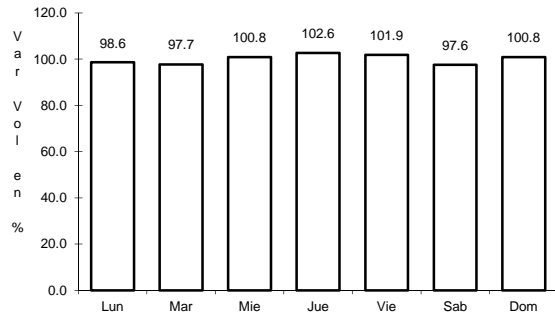


Km: 18.43      Tipo: 1      Sent: 1

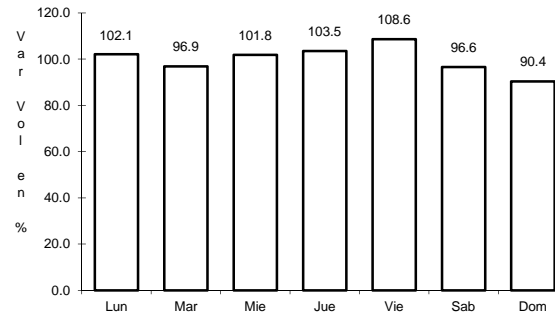
55 CARR: SANTA ELENA - COACALCO

CLAVE: 15057

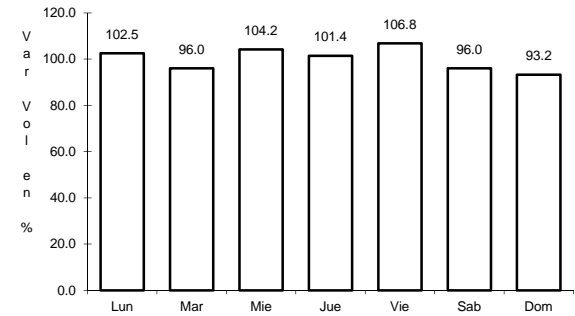
RUTA: EM



Km: 0.00      Tipo: 3      Sent: 0



Km: 9.30      Tipo: 1      Sent: 1

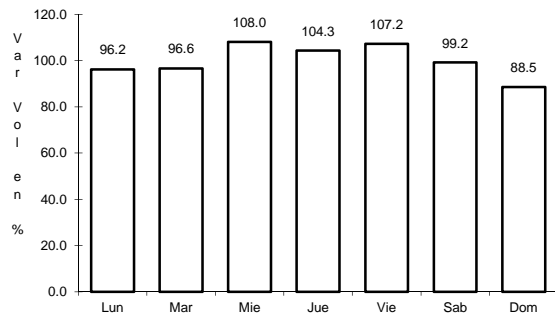


Km: 9.30      Tipo: 1      Sent: 2

56 CARR: SANTA MARIA AJOLOAPAN - TIANGUISTONGO

CLAVE:

RUTA: EM



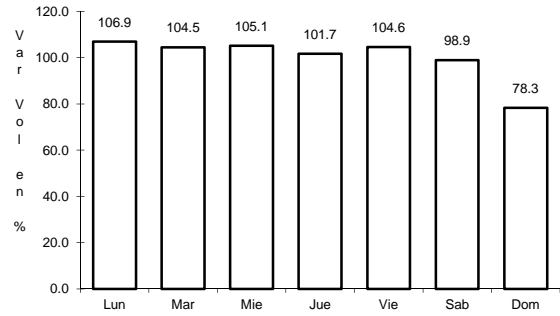
Km: 0.00      Tipo: 3      Sent: 0



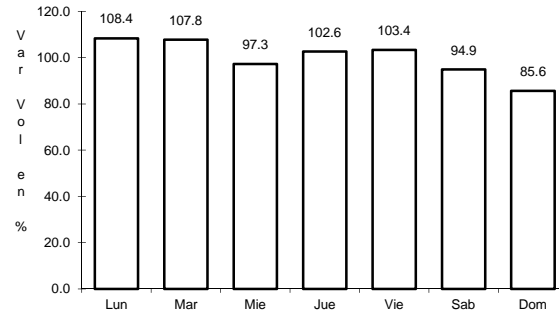
60 CARR: T. C. (ATLACOMULCO - MORELIA) - TEMASCALCINGO

CLAVE: 15019

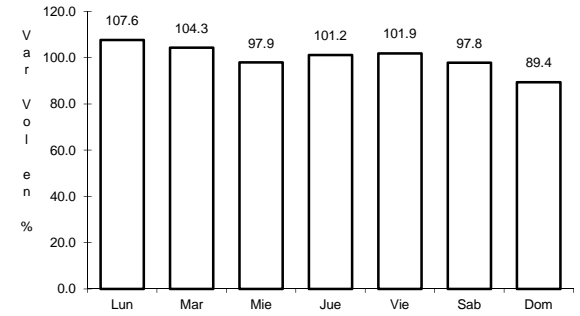
RUTA: EM-033



Km: 0.00      Tipo: 3      Sent: 0



Km: 10.00      Tipo: 1      Sent: 0

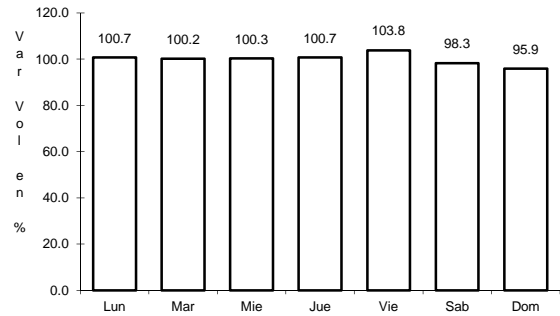


Km: 15.00      Tipo: 1      Sent: 0

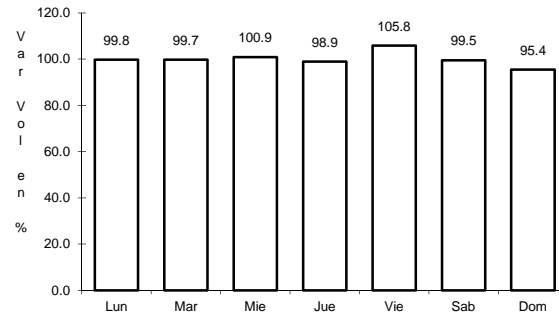
61 CARR: T. C. (CHALCO - MIXQUIC) - TEMAMATLA

CLAVE: 15075

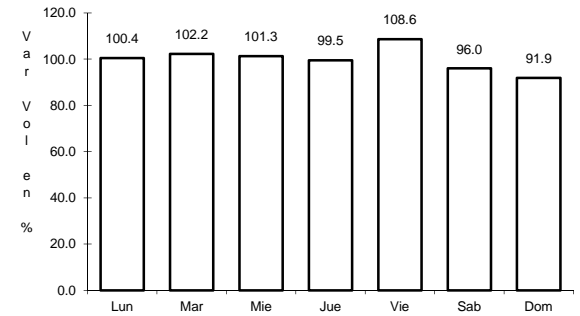
RUTA: EM



Km: 0.00      Tipo: 3      Sent: 0



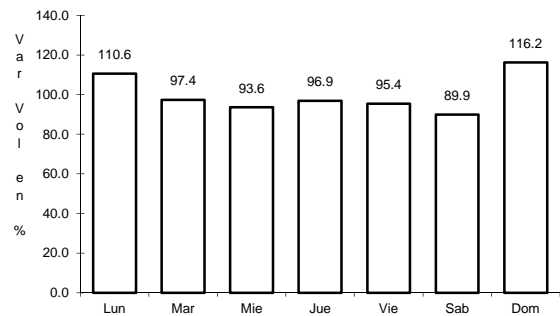
Km: 5.66      Tipo: 3      Sent: 0



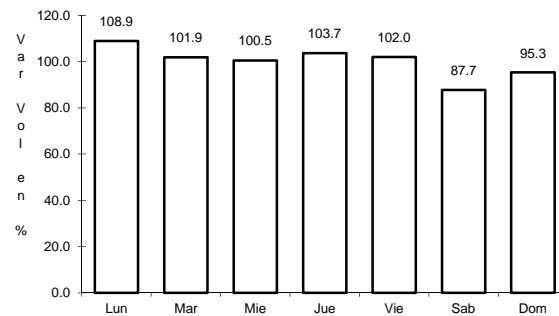
Km: 7.05      Tipo: 1      Sent: 0

62 CARR: T. C. (DOS CASAS - IXTAPAN DEL ORO) - DONATO GUERRA CLAVE: 15034

RUTA: EM-057



Km: 0.00      Tipo: 3      Sent: 0

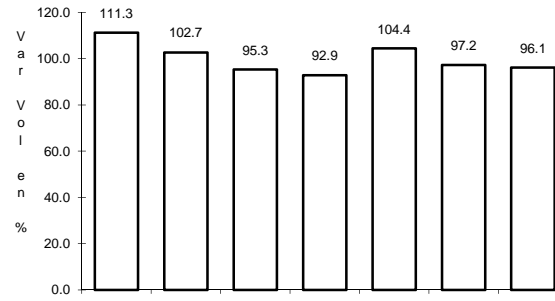
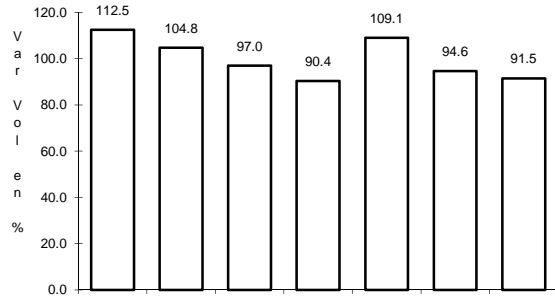


Km: 9.00      Tipo: 1      Sent: 0



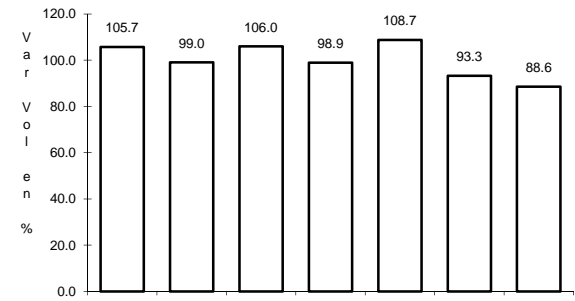
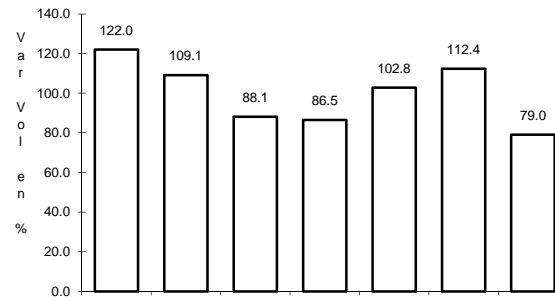
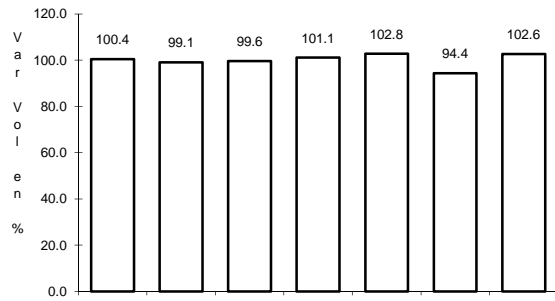
63 CARR: T. C. (EL MONUMENTO - TINGAMBATO) - DONATO GUERRA CLAVE: 15035

RUTA: EM



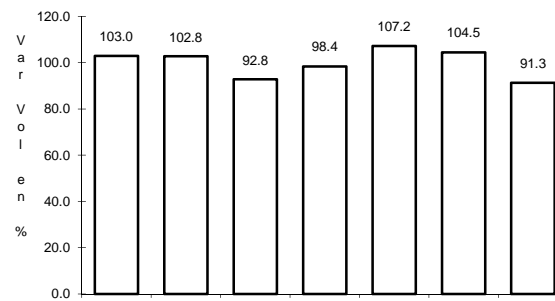
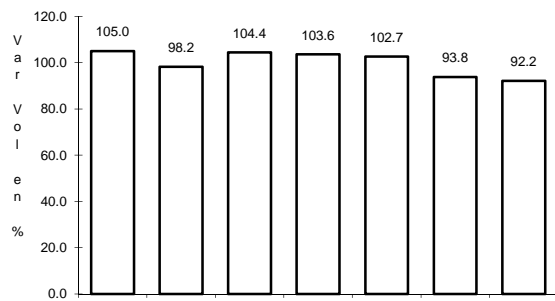
64 CARR: T. C. (IXTLAHUACA DE RAYON - NAUCALPAN) - MAYORAZO CLAVE: 15067

RUTA: EM-004



65 CARR: T. C. (IXTLAHUACA DE RAYON - NAUCALPAN) - TEMOAYA CLAVE: 15577

RUTA: EM



Km: 0.00 Tipo: 3 Sent: 0

Km: 12.00 Tipo: 1 Sent: 0

Km: 0.00 Tipo: 3 Sent: 0

Km: 10.00 Tipo: 3 Sent: 0

Km: 16.60 Tipo: 1 Sent: 0

Km: 0.00 Tipo: 3 Sent: 0

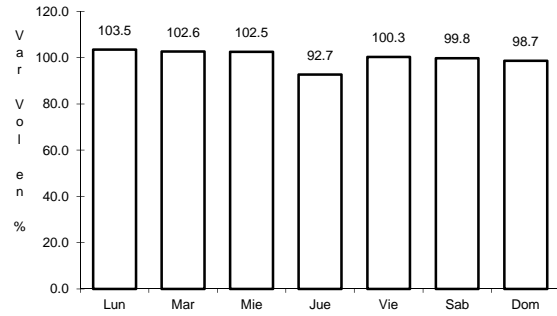
Km: 7.30 Tipo: 1 Sent: 0



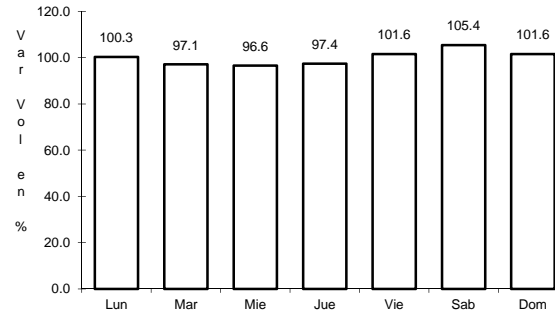
69 CARR: T. C. (MEXICO - PUEBLA (LIBRE)) - SAN VICENTE

CLAVE: 15041

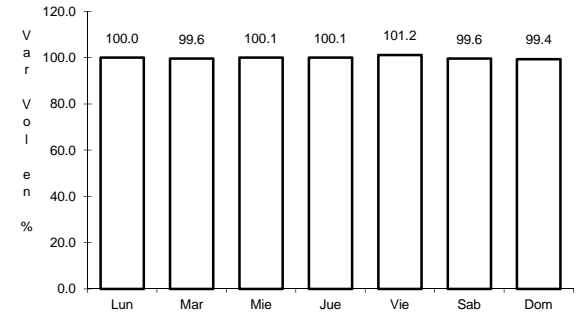
RUTA: EM



Km: 0.00      Tipo: 3      Sent: 1



Km: 0.00      Tipo: 3      Sent: 2

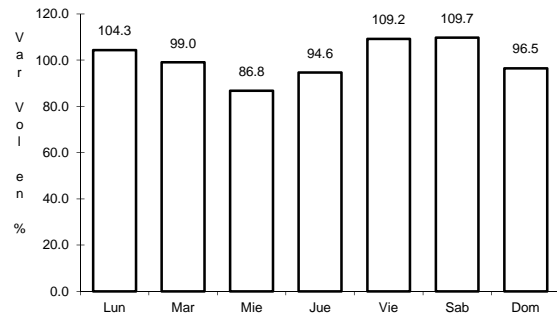


Km: 14.20      Tipo: 3      Sent: 0

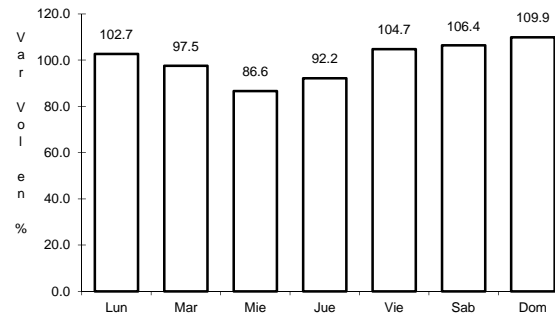
70 CARR: T. C. (SANTA BARBARA - HUAJUAPAN) - TEPETLIXPA

CLAVE: 15570

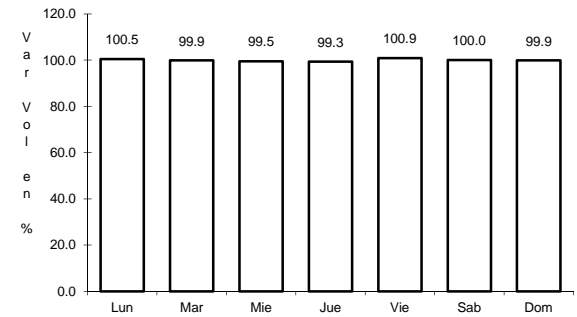
RUTA: EM



Km: 0.00      Tipo: 3      Sent: 1



Km: 0.00      Tipo: 3      Sent: 2

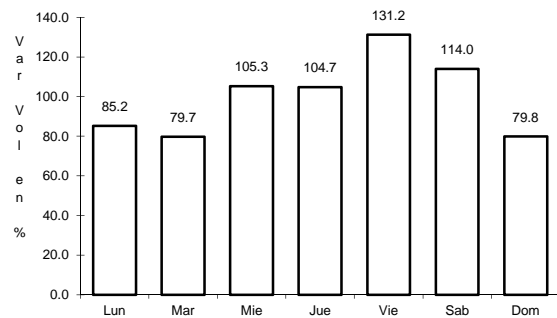


Km: 29.45      Tipo: 1      Sent: 0

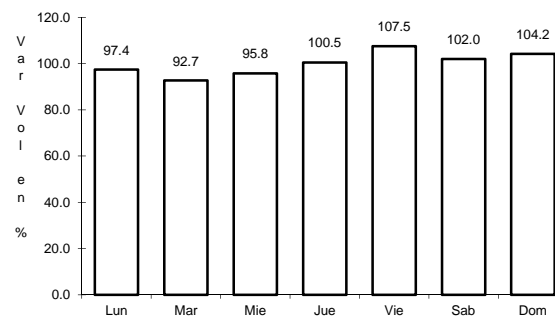
71 CARR: T. C. (TOLUCA - CD. ALTAMIRANO) - VALLE DE BRAVO

CLAVE: 15572

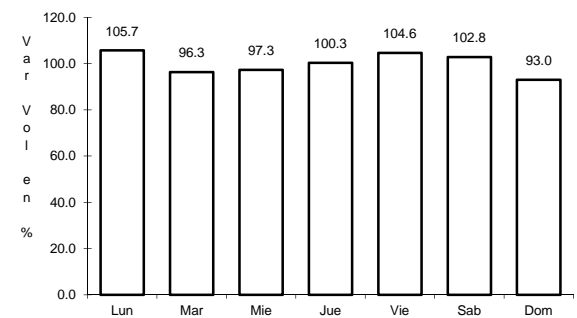
RUTA: EM



Km: 0.00      Tipo: 3      Sent: 0



Km: 17.00      Tipo: 1      Sent: 0



Km: 25.00      Tipo: 1      Sent: 0

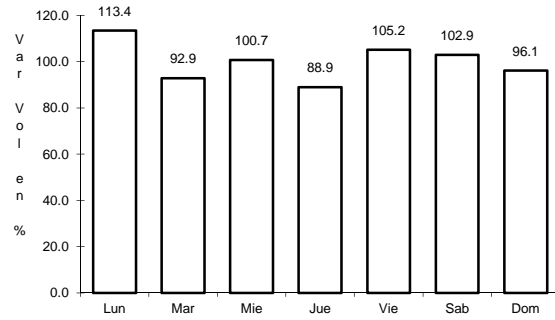




78 CARR: TEJUPILCO DE HIDALGO - TLATLAYA

CLAVE: 15060

ruta: EM-008



Km: 0.00

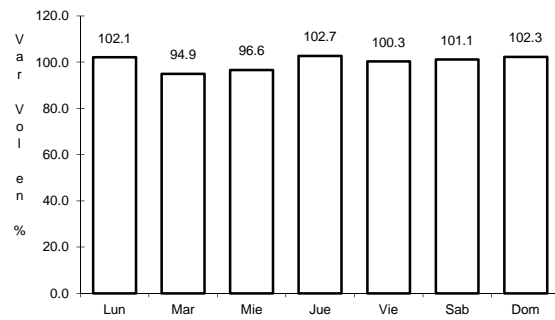
Tipo: 3

Sent: 0

79 CARR: TENANCINGO - CHALMA

CLAVE: 15024

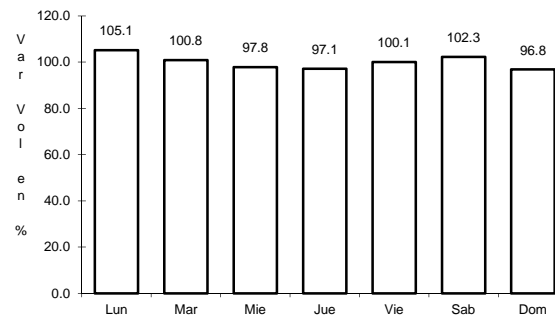
ruta: EM



Km: 0.00

Tipo: 3

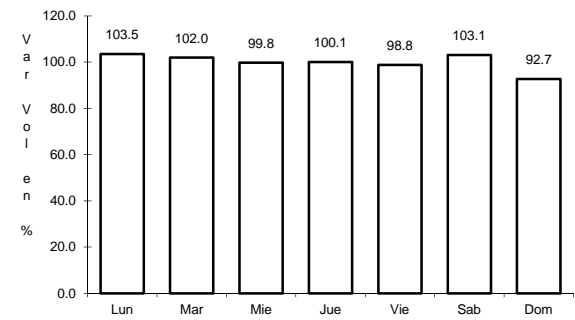
Sent: 0



Km: 28.65

Tipo: 1

Sent: 0



Km: 36.86

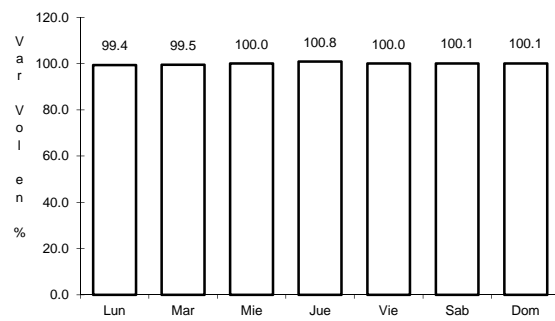
Tipo: 1

Sent: 0

80 CARR: TENANCINGO - SAN SIMON EL ALTO

CLAVE: 15042

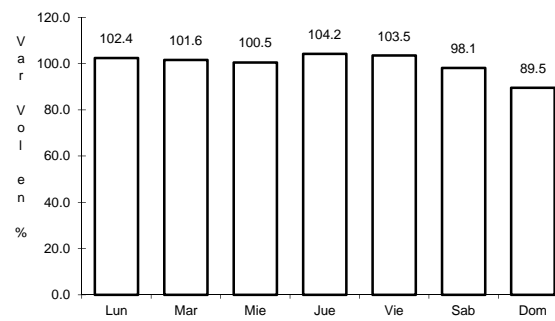
ruta: EM



Km: 0.00

Tipo: 3

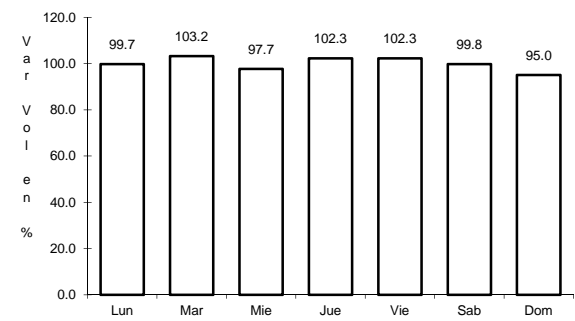
Sent: 0



Km: 8.80

Tipo: 1

Sent: 0



Km: 11.00

Tipo: 1

Sent: 0



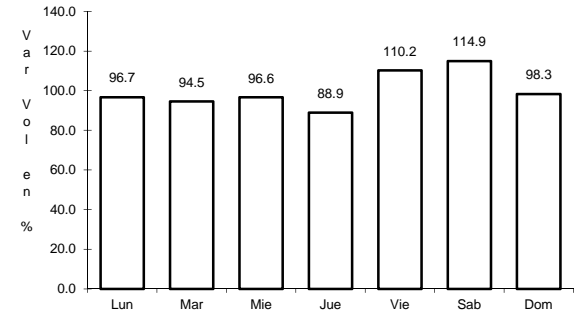
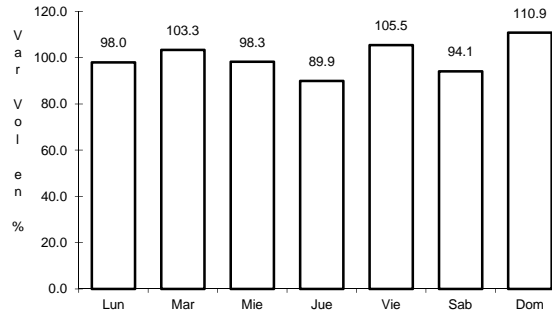
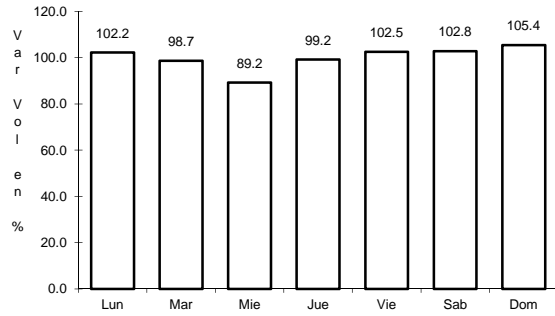




87 CARR: TLALNEPANTLA - SAN GABRIEL

CLAVE: 15002

RUTA: EM-005-004



Km: 2.97      Tipo: 3      Sent: 1

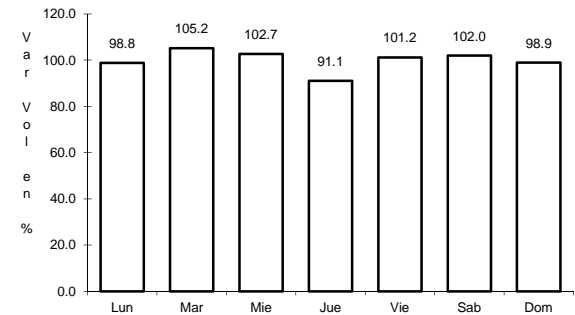
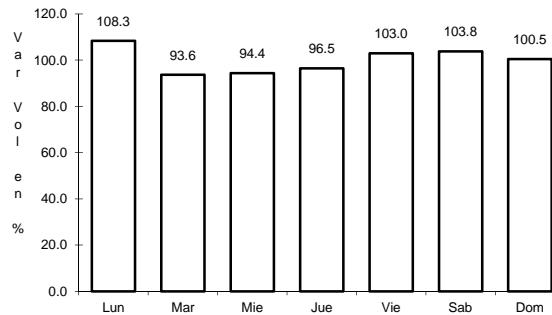
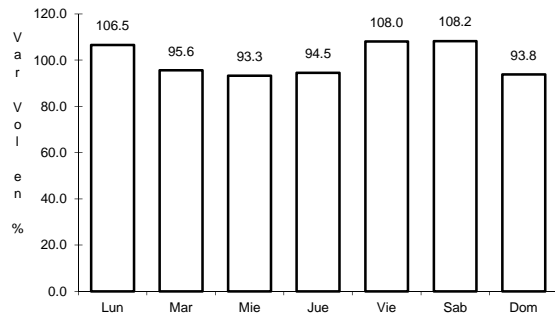
Km: 2.97      Tipo: 3      Sent: 2

Km: 67.60      Tipo: 1      Sent: 0

88 CARR: VILLA DEL CARBON - ATLACOMULCO

CLAVE: 15011

RUTA: EM-005



Km: 0.00      Tipo: 3      Sent: 0

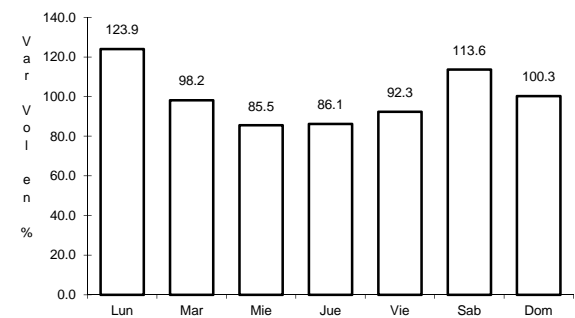
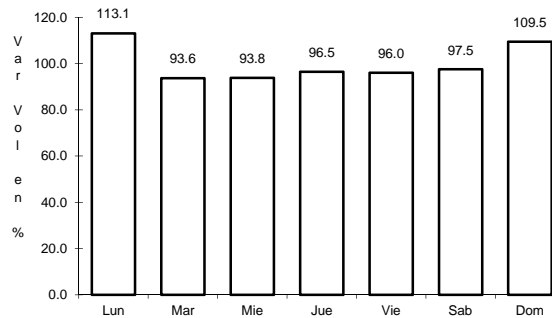
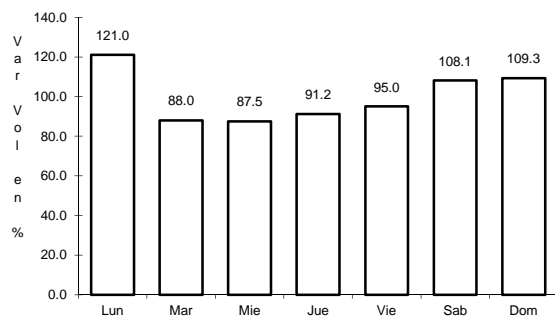
Km: 25.00      Tipo: 1      Sent: 0

Km: 50.00      Tipo: 1      Sent: 0

89 CARR: VILLA VICTORIA - EL ORO DE HIDALGO

CLAVE: 15025

RUTA: EM-014-004



Km: 0.00      Tipo: 3      Sent: 0

Km: 34.00      Tipo: 1      Sent: 0

Km: 57.00      Tipo: 1      Sent: 0

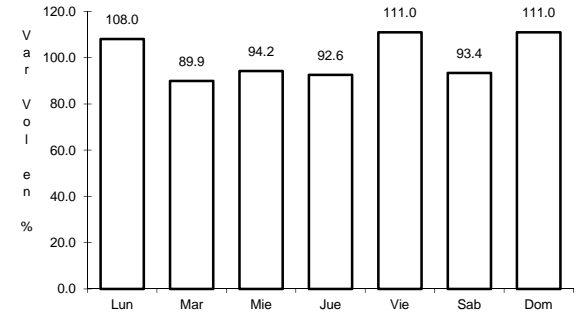
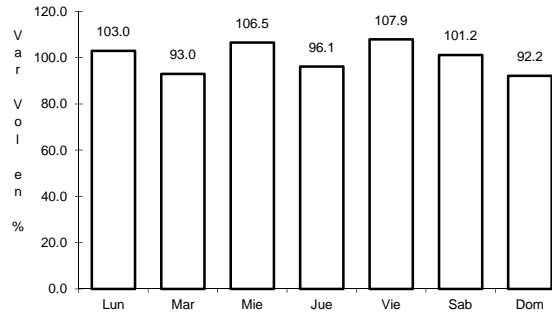
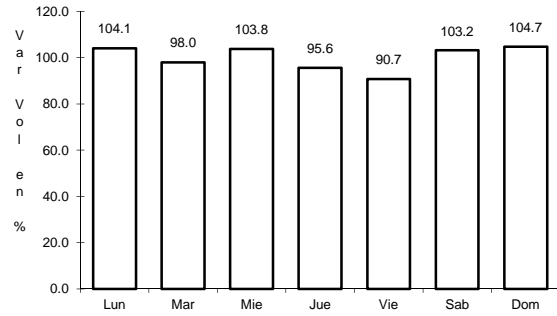




96 CARR: TOLUCA - AXIXINTLA

CLAVE: 00122

RUTA: EM-MEX-055



Km: 4.74

Tipo: 1

Sent: 1

Km: 4.74

Tipo: 1

Sent: 2

Km: 125.30

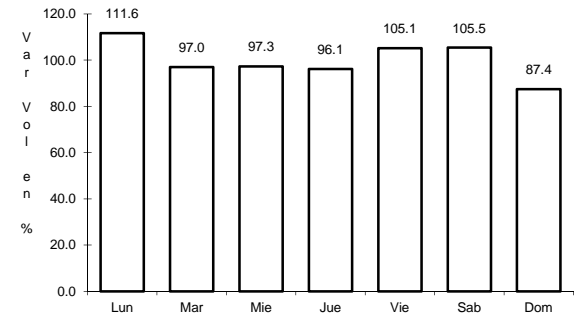
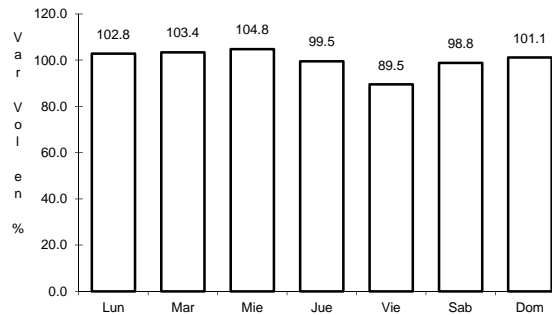
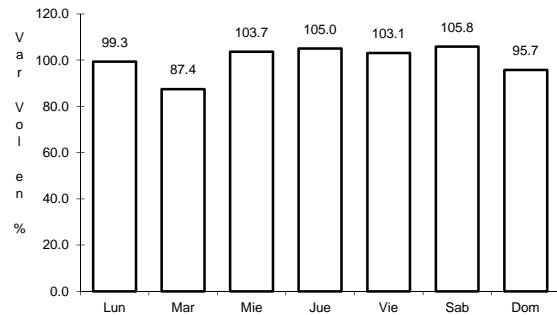
Tipo: 1

Sent: 0

97 CARR: TOLUCA - PALMILLAS

CLAVE: 00496

RUTA: EM(D)-MEX-055



Km: 7.21

Tipo: 3

Sent: 1

Km: 7.21

Tipo: 3

Sent: 2

Km: 131.52

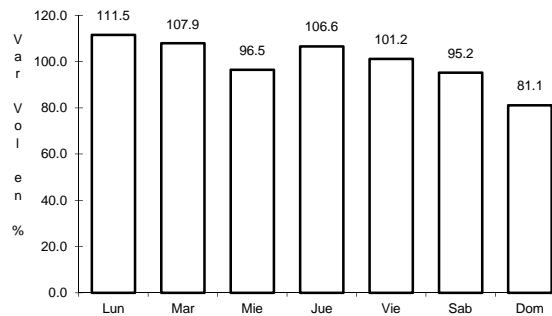
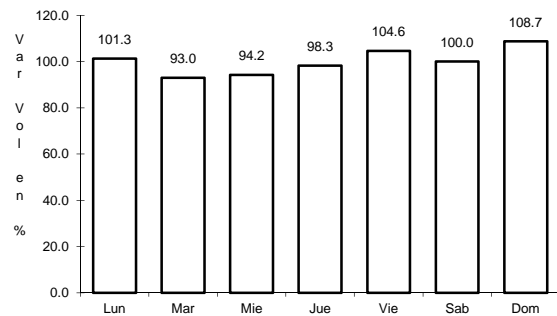
Tipo: 1

Sent: 0

98 CARR: TRES MARIAS - SANTA MARTHA

CLAVE: 00172

RUTA: MEX-106-EM



Km: 0.00

Tipo: 3

Sent: 0

Km: 28.35

Tipo: 1

Sent: 0