

CHIHUAHUA

NO. INDICE	CARRETERA	ruta
---RED FEDERAL LIBRE---		
1	Cd. Juárez - Janos	MEX-002
2	Chihuahua - El Sueco	MEX-045
3	Chihuahua - Ojinaga	MEX-016
4	Delicias - Chihuahua (Libre)	MEX-045
5	El Sueco - Janos	MEX-010
6	Ent. Ciudad Camargo - Saucillo	MEX-045
7	Ent. La Zarca - Hidalgo del Parral	MEX-045
8	Gómez Palacio - Jiménez	MEX-049
9	Hidalgo del Parral - Ent. Nuevo Palomas (Vía Corta)	MEX-024
10	Hidalgo del Parral - Guadalupe y Calvo	MEX-024
11	Hidalgo del Parral - Jiménez	MEX-045
12	Janos - Agua Prieta	MEX-002
13	Jerónimo - Sta. Teresa	MEX-002
14	La Junta - Yécora	MEX-016
15	Libramiento de Delicias - Mecoqui	MEX-045
16	Porvenir - Cd. Juárez	MEX-002
17	Ramal a Aeropuerto de Chihuahua	MEX-016
18	Ramal a Palomas	MEX-002
19	Villa Ahumada - Cd. Juárez (Libre)	MEX-045
---RED FEDERAL DE CUOTA---		
20	Camargo - Delicias (Cuota)	MEX-045D
21	Chihuahua - Sacramento (Cuota)	MEX-045D
22	El Sueco - Villa Ahumada (Cuota)	MEX-045D
23	Gómez Palacio - Corralitos (Cuota)	MEX-049D
24	Jiménez - Camargo (Cuota)	MEX-045D
---RED ESTATAL LIBRE---		
25	Ahumada - Ricardo Flores Magón	CHIH
26	Cuauhtémoc - Buenaventura	CHIH
27	Delicias - Saucillo	CHIH-007
28	Ent. Peña Blanca - Ent. La Concha	CHIH
29	Ent. Puerto Justo - Ent. Guachochic	CHIH
30	Jiménez - Camargo	CHIH-049
31	Lázaro Cárdenas - Ent. Colonia San José	CHIH-004
32	Libramiento de Hidalgo del Parral	CHIH
33	Libramiento de Jiménez	CHIH
34	Mecoqui - Julimes	CHIH-005
35	Ramal a Creel	CHIH
36	San Juanito - Ent. Basaseachi	CHIH
37	T. C. (Jiménez - Camargo) - Ojinaga	CHIH-018
38	T. Julimes - La Boquilla	CHIH-018
---RED ESTATAL DE CUOTA---		
39	Ent. El Álamo - Ent. Ricardo Flores Magón (Cuota)	CHIH-D
40	Ricardo Flores Magón - Galeana (Cuota)	CHIH-D
41	Samalayuca - San Jerónimo (Cuota)	CHIH-D
42	T. C. (Chihuahua - Ojinaga) - La Mula (Cuota)	CHIH-D
---CARRETERAS INTEGRADAS POR TRAMOS FEDERALES Y ESTATALES---		
43	Chihuahua - Madera	CHIH-D-MEX-001-CHIH
44	Ent. Agua Caliente - El Terrero	CHIH-MEX

CHIHUAHUA

1 CARR: Cd. Juárez - Janos

CLAVE: 08041

RUTA: MEX-002

AÑO: 2012

LUGAR	ESTACION				CLASIFICACION VEHICULAR EN PORCIENTO													COORDENADAS		
	KM	TE	SC	TDPA	M	A	B	C2	C3	T3S2	T3S3	T3S2R4	OTROS	A	B	C	K'	D	LATITUD	LONGITUD
T. C. El Sueco - Cd. Juárez	0.00	3	1	5656	0.8	80.8	4.3	5.7	2.6	3.1	1.0	0.8	0.9	81.6	4.3	14.1	0.076	0.520	31.606866	-106.456581
T. C. El Sueco - Cd. Juárez	0.00	3	2	5213	1.1	79.1	4.7	5.9	2.7	3.4	1.2	0.9	1.0	80.2	4.7	15.1	0.077	0.520	31.606866	-106.456581
T. Der. Palomas	112.00	1	0	1625	0.6	78.5	3.5	6.1	1.0	5.1	1.5	3.2	0.5	79.1	3.5	17.4	0.102	0.512	31.471527	-107.608397
Ascención	170.95	1	0	2648	0.3	77.5	2.6	6.8	3.1	4.5	1.4	3.0	0.8	77.8	2.6	19.6	0.089	0.505	31.103792	-107.988459
Janos	205.00	1	0	2726	0.7	77.6	3.9	6.5	1.8	4.5	1.3	3.2	0.5	78.3	3.9	17.8	0.089	0.501	30.899661	-108.180145

2 CARR: Chihuahua - El Sueco

CLAVE: 08419

RUTA: MEX-045

AÑO: 2012

LUGAR	ESTACION				CLASIFICACION VEHICULAR EN PORCIENTO													COORDENADAS		
	KM	TE	SC	TDPA	M	A	B	C2	C3	T3S2	T3S3	T3S2R4	OTROS	A	B	C	K'	D	LATITUD	LONGITUD
Chihuahua	0.00																			
San Cristóbal	24.00	1	0	3868	0.6	60.6	3.2	9.4	2.0	18.5	3.1	1.7	0.9	61.2	3.2	35.6	0.079	0.514	28.799359	-106.216554
T. C. Chihuahua - Sacramento (Cuota)	32.00	3	1	4943	0.6	62.6	6.0	10.7	1.4	13.5	2.0	2.4	0.8	63.2	6.0	30.8	0.085	0.507	28.869231	-106.228185
T. C. Chihuahua - Sacramento (Cuota)	32.00	3	2	5075	0.5	57.4	6.2	12.3	1.5	16.3	2.3	2.5	1.0	57.9	6.2	35.9	0.090	0.507	28.869226	-106.228184
T. Der. El Sauz	55.38	1	1	3794	0.4	58.9	5.2	10.8	1.7	17.3	2.1	2.9	0.7	59.3	5.2	35.5	0.098	0.515	29.049543	-106.328715
T. Der. El Sauz	55.38	1	2	4029	0.6	55.5	6.1	11.6	1.8	18.3	2.2	3.1	0.8	56.1	6.1	37.8	0.094	0.515	29.049506	-106.329053
Ent. El Sueco	155.87	1	1	2885	0.4	54.6	7.1	10.2	1.6	20.4	2.3	2.5	0.9	55.0	7.1	37.9	0.098	0.511	29.884270	-106.394834
Ent. El Sueco	155.87	1	2	3013	0.3	51.3	7.7	10.6	1.8	22.0	2.5	2.9	0.9	51.6	7.7	40.7	0.105	0.511	29.884235	-106.395603

3 CARR: Chihuahua - Ojinaga

CLAVE: 08042

RUTA: MEX-016

AÑO: 2012

LUGAR	ESTACION				CLASIFICACION VEHICULAR EN PORCIENTO													COORDENADAS		
	KM	TE	SC	TDPA	M	A	B	C2	C3	T3S2	T3S3	T3S2R4	OTROS	A	B	C	K'	D	LATITUD	LONGITUD
Chihuahua	0.00																			
T. Der. Aeropuerto	6.50	1	1	11388	0.9	83.4	0.5	5.2	1.0	4.2	3.1	0.8	0.9	84.3	0.5	15.2	0.111	0.503	28.686408	-106.015535
T. Der. Aeropuerto	6.50	1	2	11538	1.0	82.3	0.6	5.8	1.0	4.5	3.3	1.0	0.5	83.3	0.6	16.1	0.115	0.503	28.686413	-106.015533
T. Der. Aeropuerto	6.50	3	1	7591	0.5	86.8	1.0	8.5	0.6	1.3	1.0	0.1	0.2	87.3	1.0	11.7	0.124	0.511	28.696983	-106.009194
T. Der. Aeropuerto	6.50	3	2	7937	0.5	85.1	1.1	9.7	0.7	1.5	1.1	0.1	0.2	85.6	1.1	13.3	0.173	0.511	28.696983	-106.009194
Aldama	26.80	1	1	5028	0.4	86.9	1.0	9.0	0.4	1.2	0.8	0.1	0.2	87.3	1.0	11.7	0.106	0.514	28.817950	-105.926860
Aldama	26.80	1	2	4751	0.5	85.7	1.2	9.7	0.4	1.4	0.8	0.1	0.2	86.2	1.2	12.6	0.117	0.514	28.817949	-105.926860
Aldama	26.80	3	0	1034	0.2	80.4	4.0	12.8	0.5	1.3	0.7	0.0	0.1	80.6	4.0	15.4	0.105	0.502	28.838489	-105.898556
El Morrión	84.00	3	0	1410	0.0	71.8	6.6	15.6	1.4	3.4	0.8	0.0	0.4	71.8	6.6	21.6	0.095	0.514	29.064245	-105.604278
Coyame	141.00	1	0	388	0.0	75.0	2.5	17.0	3.7	1.5	0.3	0.0	0.0	75.0	2.5	22.5	0.119	0.510	29.453462	-105.094866
Ojinaga	224.00	1	0	2198	0.2	76.9	6.3	13.2	1.3	1.8	0.2	0.0	0.1	77.1	6.3	16.6	0.110	0.506	29.540193	-104.444971

CHIHUAHUA

4 CARR: Delicias - Chihuahua (Libre)

CLAVE: 08418

RUTA: MEX-045

AÑO: 2012

LUGAR	ESTACION				CLASIFICACION VEHICULAR EN PORCIENTO													COORDENADAS		
	KM	TE	SC	TDPA	M	A	B	C2	C3	T3S2	T3S3	T3S2R4	OTROS	A	B	C	K'	D	LATITUD	LONGITUD
Delicias	138.00																			
T. Der. Lazáro Cárdenas	166.87	1	1	7479	0.3	71.5	3.6	8.8	1.6	10.2	1.7	1.7	0.6	71.8	3.6	24.6	0.103	0.525	28.381870	-105.623345
T. Der. Lazáro Cárdenas	166.87	1	2	7443	0.4	69.3	4.1	9.9	1.7	10.1	1.9	1.9	0.7	69.7	4.1	26.2	0.101	0.525	28.381871	-105.623345
T. Der. Lazáro Cárdenas	166.87	3	1	6792	0.4	69.4	4.2	8.5	1.8	10.8	1.9	2.2	0.8	69.8	4.2	26.0	0.085	0.501	28.393662	-105.638884
T. Der. Lazáro Cárdenas	166.87	3	2	6766	0.4	66.6	5.0	9.2	2.1	11.2	2.1	2.5	0.9	67.0	5.0	28.0	0.106	0.501	28.393662	-105.638884
T. Der. Aquiles Serdán	210.00	1	1	8265	0.9	70.7	3.6	8.1	2.1	9.3	2.0	2.5	0.8	71.6	3.6	24.8	0.102	0.527	28.575883	-105.957357
T. Der. Aquiles Serdán	210.00	1	2	7992	0.8	70.4	3.7	8.3	2.3	9.1	2.1	2.4	0.9	71.2	3.7	25.1	0.083	0.527	28.575883	-105.957358
Chihuahua	222.56																			

5 CARR: El Sueco - Janos

CLAVE: 08037

RUTA: MEX-010

AÑO: 2012

LUGAR	ESTACION				CLASIFICACION VEHICULAR EN PORCIENTO													COORDENADAS		
	KM	TE	SC	TDPA	M	A	B	C2	C3	T3S2	T3S3	T3S2R4	OTROS	A	B	C	K'	D	LATITUD	LONGITUD
El Sueco	0.00	3	0	6245	0.7	60.5	4.2	11.7	2.5	11.0	4.6	4.0	0.8	61.2	4.2	34.6	0.091	0.502	29.894298	-106.403013
Ricardo Flores Magón	59.00	3	0	3462	0.6	53.5	4.8	13.8	1.4	17.3	3.6	4.1	0.9	54.1	4.8	41.1	0.074	0.503	29.944450	-106.969004
Buenaventura	114.00	1	0	1495	0.4	69.8	3.0	14.6	1.4	7.5	1.9	1.1	0.3	70.2	3.0	26.8	0.086	0.509	29.851135	-107.447702
Buenaventura	114.00	3	0	4285	0.4	75.3	3.3	15.2	0.8	3.6	0.7	0.3	0.4	75.7	3.3	21.0	0.082	0.502	29.858113	-107.474744
Nuevo Casas Grandes	195.00	3	0	1138	0.6	72.5	1.5	11.9	1.6	7.4	2.0	1.7	0.8	73.1	1.5	25.4	0.074	0.501	30.458632	-107.915590
Janos	257.00	1	0	3716	0.9	70.6	6.1	6.0	1.5	9.1	3.9	0.9	1.0	71.5	6.1	22.4	0.082	0.539	30.886302	-108.186162

6 CARR: Ent. Ciudad Camargo - Saucillo

CLAVE: 08417

RUTA: MEX-045

AÑO: 2012

LUGAR	ESTACION				CLASIFICACION VEHICULAR EN PORCIENTO													COORDENADAS		
	KM	TE	SC	TDPA	M	A	B	C2	C3	T3S2	T3S3	T3S2R4	OTROS	A	B	C	K'	D	LATITUD	LONGITUD
Camargo	0.00	3	0	4241	0.5	65.8	3.6	10.5	2.4	13.2	2.4	0.9	0.7	66.3	3.6	30.1	0.070	0.504	27.730537	-105.190400
T. Der. La Cruz	20.92	3	0	3464	0.9	66.8	4.6	10.1	1.4	12.4	2.2	0.8	0.8	67.7	4.6	27.7	0.089	0.505	27.866548	-105.208444
Saucillo	42.52	1	0	4726	0.5	77.5	3.4	8.4	1.1	7.1	1.3	0.3	0.4	78.0	3.4	18.6	0.089	0.523	28.017924	-105.290315

7 CARR: Ent. La Zarca - Hidalgo del Parral

CLAVE: 00488

RUTA: MEX-045

AÑO: 2012

LUGAR	ESTACION				CLASIFICACION VEHICULAR EN PORCIENTO													COORDENADAS		
	KM	TE	SC	TDPA	M	A	B	C2	C3	T3S2	T3S3	T3S2R4	OTROS	A	B	C	K'	D	LATITUD	LONGITUD
Ent. La Zarca	0.00	3	0	779	0.5	68.4	6.1	12.3	2.6	5.7	3.3	0.4	0.7	68.9	6.1	25.0	0.101	0.558	25.785118	-104.765161
T. Der. Ceballos	47.85	1	0	958	2.0	73.9	3.8	10.4	1.5	4.9	3.0	0.2	0.3	75.9	3.8	20.3	0.129	0.504	26.139860	-105.028628
T. Der. Ceballos	47.85	3	0	1192	0.5	73.6	3.4	12.6	2.1	4.5	2.4	0.2	0.7	74.1	3.4	22.5	0.101	0.543	26.142152	-105.030321

CHIHUAHUA

7 CARR: Ent. La Zarca - Hidalgo del Parral

CLAVE: 00488

RUTA: MEX-045

AÑO: 2012

LUGAR	ESTACION				CLASIFICACION VEHICULAR EN PORCIENTO										COORDENADAS					
	KM	TE	SC	TDPA	M	A	B	C2	C3	T3S2	T3S3	T3S2R4	OTROS	A	B	C	K'	D	LATITUD	LONGITUD
T. Izq. Canutillo	92.35	3	0	1069	0.4	71.5	4.0	12.4	3.1	5.0	2.6	0.3	0.7	71.9	4.0	24.1	0.100	0.545	26.389215	-105.352084
Las Nieves	97.60	3	0	2584	0.6	77.9	2.5	11.5	1.6	3.4	1.8	0.2	0.5	78.5	2.5	19.0	0.102	0.537	26.400324	-105.404422
T. Izq. Ocampo	109.22	3	0	1209	0.3	69.8	4.0	13.8	2.8	4.8	3.0	0.7	0.8	70.1	4.0	25.9	0.089	0.543	26.445662	-105.494650
Lim. Edos. Term. Dgo. Ppia. Chih.	122.89																			
Matamoros	148.00	1	0	1193	0.3	70.0	4.1	16.1	1.7	4.9	2.5	0.1	0.3	70.3	4.1	25.6	0.109	0.503	26.751416	-105.581032
Hidalgo del Parral	171.00	1	0	3050	1.0	78.2	2.5	13.3	1.2	2.6	0.9	0.0	0.3	79.2	2.5	18.3	0.091	0.501	26.917732	-105.640240

8 CARR: Gómez Palacio - Jiménez

CLAVE: 00006

RUTA: MEX-049

AÑO: 2012

LUGAR	ESTACION				CLASIFICACION VEHICULAR EN PORCIENTO										COORDENADAS					
	KM	TE	SC	TDPA	M	A	B	C2	C3	T3S2	T3S3	T3S2R4	OTROS	A	B	C	K'	D	LATITUD	LONGITUD
Gómez Palacio	0.00	3	1	13169	1.2	74.4	4.3	7.7	2.7	5.6	1.7	2.0	0.4	75.6	4.3	20.1	0.086	0.505	25.599184	-103.506753
Gómez Palacio	0.00	3	2	13436	1.4	71.7	4.7	8.1	3.0	6.5	2.1	2.1	0.4	73.1	4.7	22.2	0.080	0.505	25.599186	-103.506753
X. C. La Torreña - Brittingham	10.96	1	1	9139	1.9	71.6	3.4	5.5	3.2	9.1	2.6	2.0	0.7	73.5	3.4	23.1	0.097	0.509	25.640314	-103.523754
X. C. La Torreña - Brittingham	10.96	1	2	8826	1.7	68.7	4.0	6.2	3.4	10.3	2.9	2.0	0.8	70.4	4.0	25.6	0.084	0.509	25.640313	-103.523755
T. Izq. Dinamita	26.27	1	1	5374	1.2	59.6	4.3	8.2	4.0	14.4	3.5	4.0	0.8	60.8	4.3	34.9	0.093	0.505	25.756327	-103.569911
T. Izq. Dinamita	26.27	1	2	5266	1.3	56.9	4.9	9.0	4.0	15.1	3.7	4.2	0.9	58.2	4.9	36.9	0.079	0.505	25.756320	-103.569906
Bermejillo	39.30	1	0	7609	0.9	58.6	4.2	9.2	5.2	14.9	3.0	3.2	0.8	59.5	4.2	36.3	0.074	0.503	25.875338	-103.616821
T. Izq. Ent. La Zarca	40.89	3	0	3643	0.6	42.0	6.2	8.5	5.2	26.0	7.0	3.6	0.9	42.6	6.2	51.2	0.071	0.513	25.904869	-103.628946
Yermo	107.95	1	0	2659	0.9	36.9	8.0	5.7	4.3	29.5	8.6	4.9	1.2	37.8	8.0	54.2	0.061	0.503	26.384726	-103.999880
Yermo	107.95	3	0	2844	0.8	44.0	4.2	5.6	4.4	28.4	7.0	4.4	1.2	44.8	4.2	51.0	0.068	0.501	26.399510	-104.013780
Ceballos	127.20	1	0	2745	0.7	39.1	8.3	6.0	4.3	27.6	8.3	4.6	1.1	39.8	8.3	51.9	0.070	0.500	26.518602	-104.122195
Ceballos	127.20	3	0	2400	0.9	39.0	5.0	5.7	4.3	29.0	8.1	6.9	1.1	39.9	5.0	55.1	0.072	0.506	26.537462	-104.139652
Lim. Edos. Term. Dgo. Ppia. Chih.	146.15																			
Estación Escalón	160.89	3	0	2210	0.6	35.0	7.6	6.1	6.6	29.0	9.6	4.3	1.2	35.6	7.6	56.8	0.065	0.514	26.754475	-104.339718
Jiménez	223.00	1	1	1157	0.4	41.2	7.5	6.0	3.3	30.9	6.8	3.3	0.6	41.6	7.5	50.9	0.068	0.520	27.096539	-104.860667
Jiménez	223.00	1	2	1174	0.5	36.9	8.3	6.2	4.0	31.7	7.7	4.0	0.7	37.4	8.3	54.3	0.078	0.520	27.096326	-104.860349

9 CARR: Hidalgo del Parral - Ent. Nuevo Palomas (Vía Corta)

CLAVE: 08811

RUTA: MEX-024

AÑO: 2012

LUGAR	ESTACION				CLASIFICACION VEHICULAR EN PORCIENTO										COORDENADAS					
	KM	TE	SC	TDPA	M	A	B	C2	C3	T3S2	T3S3	T3S2R4	OTROS	A	B	C	K'	D	LATITUD	LONGITUD
Hidalgo del Parral	0.00	3	0	5396	0.5	75.3	1.5	9.2	2.5	6.2	2.9	1.3	0.6	75.8	1.5	22.7	0.079	0.504	26.971766	-105.663203
Valle Zaragoza	66.00	1	0	2752	0.2	66.3	3.0	14.2	2.0	8.7	4.0	1.2	0.4	66.5	3.0	30.5	0.092	0.515	27.440162	-105.806396
Satevo	126.00	3	0	3205	0.3	65.5	3.4	14.0	2.0	8.8	4.1	1.3	0.6	65.8	3.4	30.8	0.095	0.506	27.968870	-106.123990

CHIHUAHUA

9 CARR: Hidalgo del Parral - Ent. Nuevo Palomas (Vía Corta)

CLAVE: 08811

RUTA: MEX-024

AÑO: 2012

LUGAR	ESTACION				CLASIFICACION VEHICULAR EN PORCIENTO														COORDENADAS	
	KM	TE	SC	TDPA	M	A	B	C2	C3	T3S2	T3S3	T3S2R4	OTROS	A	B	C	K'	D	LATITUD	LONGITUD
T. C. Chihuahua - Madera	182.40	1	0	3397	0.2	64.5	3.3	15.2	1.8	8.8	4.4	1.3	0.5	64.7	3.3	32.0	0.106	0.508	28.354222	-106.261823

10 CARR: Hidalgo del Parral - Guadalupe y Calvo

CLAVE: 00802

RUTA: MEX-024

AÑO: 2012

LUGAR	ESTACION				CLASIFICACION VEHICULAR EN PORCIENTO														COORDENADAS	
	KM	TE	SC	TDPA	M	A	B	C2	C3	T3S2	T3S3	T3S2R4	OTROS	A	B	C	K'	D	LATITUD	LONGITUD
T. C. Hidalgo del Parral - Santa Bárbara	0.00	3	0	2820	0.3	74.8	2.1	13.2	3.1	3.1	2.2	0.1	1.1	75.1	2.1	22.8	0.087	0.510	26.915736	-105.765559
T. Der. Guacho chic	35.00	1	0	807	0.1	66.5	2.5	15.2	7.0	4.4	3.8	0.1	0.4	66.6	2.5	30.9	0.087	0.517	26.827193	-106.010669
T. Der. Guacho chic	35.00	3	0	815	0.3	71.0	2.6	11.2	6.0	4.8	3.9	0.1	0.1	71.3	2.6	26.1	0.097	0.513	26.811278	-106.015581
Lim. Edos. Term. Chih. Ppia. Dgo	38.00																			
Lim. Edos. Term. Dgo. Ppia. Chih.	57.00																			
El Vergel	110.00	1	0	1356	0.3	64.1	2.5	14.5	8.4	5.2	4.5	0.0	0.5	64.4	2.5	33.1	0.108	0.519	26.527138	-106.353389
Puerto Sabin al	212.00	1	0	739	0.5	68.4	2.4	13.3	8.5	4.0	2.0	0.1	0.8	68.9	2.4	28.7	0.112	0.542	26.068625	-106.778902
Guadalupe y Calvo	234.00																			

11 CARR: Hidalgo del Parral - Jiménez

CLAVE: 08444

RUTA: MEX-045

AÑO: 2012

LUGAR	ESTACION				CLASIFICACION VEHICULAR EN PORCIENTO														COORDENADAS	
	KM	TE	SC	TDPA	M	A	B	C2	C3	T3S2	T3S3	T3S2R4	OTROS	A	B	C	K'	D	LATITUD	LONGITUD
Hidalgo del Parral	0.00	3	1	3739	1.0	83.1	2.2	6.6	0.9	3.0	1.9	1.0	0.3	84.1	2.2	13.7	0.116	0.505	26.934512	-105.634292
Hidalgo del Parral	0.00	3	2	3670	0.8	81.9	2.4	7.5	1.1	3.0	2.0	0.9	0.4	82.7	2.4	14.9	0.111	0.505	26.934512	-105.634292
Jiménez	76.63	1	1	2596	1.5	77.1	3.3	8.1	1.5	4.1	2.8	1.3	0.3	78.6	3.3	18.1	0.113	0.503	27.139577	-104.946179
Jiménez	76.63	1	2	2563	1.4	74.7	3.6	8.9	1.7	4.8	3.0	1.6	0.3	76.1	3.6	20.3	0.091	0.503	27.139577	-104.946179

12 CARR: Janos - Agua Prieta

CLAVE: 00220

RUTA: MEX-002

AÑO: 2012

LUGAR	ESTACION				CLASIFICACION VEHICULAR EN PORCIENTO														COORDENADAS	
	KM	TE	SC	TDPA	M	A	B	C2	C3	T3S2	T3S3	T3S2R4	OTROS	A	B	C	K'	D	LATITUD	LONGITUD
T. C. Cd. Juárez - Janos	0.00	3	0	3355	0.9	56.0	3.6	7.1	1.3	20.7	3.8	5.6	1.0	56.9	3.6	39.5	0.085	0.501	30.889936	-108.214514
Los Mimbres	56.00	3	0	1631	0.8	53.1	2.7	8.1	2.8	20.3	3.7	7.4	1.1	53.9	2.7	43.4	0.116	0.511	31.272602	-108.616417
Lim. Edos. Term. Chih. Ppia. Son.	78.00																			
Agua Prieta	160.00	1	0	2515	1.1	50.3	3.4	7.7	2.3	21.9	4.7	7.6	1.0	51.4	3.4	45.2	0.075	0.505	31.323105	-109.506585

CHIHUAHUA

13 CARR: Jerónimo - Sta. Teresa

CLAVE: 08043

RUTA: MEX-002

AÑO: 2012

LUGAR	ESTACION				CLASIFICACION VEHICULAR EN PORCIENTO													COORDENADAS		
	KM	TE	SC	TDPA	M	A	B	C2	C3	T3S2	T3S3	T3S2R4	OTROS	A	B	C	K'	D	LATITUD	LONGITUD
X. C. Cd. Juárez - Janos	0.00	3	0	2117	0.9	62.5	3.2	17.7	2.9	11.2	0.5	0.2	0.9	63.4	3.2	33.4	0.106	0.516	31.617397	-106.684574
El Mirador	20.00																			

14 CARR: La Junta - Yécora

CLAVE: 00065

RUTA: MEX-016

AÑO: 2012

LUGAR	ESTACION				CLASIFICACION VEHICULAR EN PORCIENTO													COORDENADAS		
	KM	TE	SC	TDPA	M	A	B	C2	C3	T3S2	T3S3	T3S2R4	OTROS	A	B	C	K'	D	LATITUD	LONGITUD
T. C. Chihuahua - Madera	0.00	3	0	4128	0.4	75.1	1.6	16.4	1.4	3.5	1.1	0.1	0.4	75.5	1.6	22.9	0.084	0.503	28.473290	-107.308589
T. Izq. San Juanito	16.00	1	0	2270	0.2	68.7	2.9	17.3	2.8	5.1	2.0	0.4	0.6	68.9	2.9	28.2	0.092	0.506	28.388667	-107.439573
T. Izq. San Juanito	16.00	3	0	1119	0.2	63.7	2.2	20.4	3.2	6.6	2.7	0.4	0.6	63.9	2.2	33.9	0.088	0.514	28.390919	-107.441843
Tomochi	70.00	3	0	1040	0.3	61.2	2.9	21.9	3.5	6.4	2.7	0.7	0.4	61.5	2.9	35.6	0.088	0.501	28.392789	-107.460281
Lim. Edos. Term. Chih. Ppia. Son.	190.00																			
Yécora	253.00	1	0	868	1.1	58.5	11.2	10.1	3.6	9.5	4.9	0.0	1.1	59.6	11.2	29.2	0.106	0.510	28.366496	-108.923052

15 CARR: Libramiento de Delicias - Meoqui

CLAVE: 08813

RUTA: MEX-045

AÑO: 2012

LUGAR	ESTACION				CLASIFICACION VEHICULAR EN PORCIENTO													COORDENADAS		
	KM	TE	SC	TDPA	M	A	B	C2	C3	T3S2	T3S3	T3S2R4	OTROS	A	B	C	K'	D	LATITUD	LONGITUD
T. C. Jiménez - Chihuahua	0.00	3	1	9645	0.6	77.7	3.3	6.5	1.7	6.5	1.6	1.4	0.7	78.3	3.3	18.4	0.084	0.537	28.189666	-105.452444
T. C. Jiménez - Chihuahua	0.00	3	2	10152	0.6	76.0	3.7	7.0	1.9	6.7	1.7	1.6	0.8	76.6	3.7	19.7	0.088	0.537	28.189666	-105.452444
T. C. Jiménez - Chihuahua	13.60	1	1	7333	0.7	73.7	3.8	7.0	2.3	8.1	1.7	1.8	0.9	74.4	3.8	21.8	0.090	0.518	28.284475	-105.477909
T. C. Jiménez - Chihuahua	13.60	1	2	7498	0.4	71.0	4.5	7.4	2.5	9.4	1.9	2.0	0.9	71.4	4.5	24.1	0.096	0.518	28.284473	-105.477907

16 CARR: Porvenir - Cd. Juárez

CLAVE: 08169

RUTA: MEX-002

AÑO: 2012

LUGAR	ESTACION				CLASIFICACION VEHICULAR EN PORCIENTO													COORDENADAS		
	KM	TE	SC	TDPA	M	A	B	C2	C3	T3S2	T3S3	T3S2R4	OTROS	A	B	C	K'	D	LATITUD	LONGITUD
Porvenir	0.00																			
T. Der. Puente Porvenir	1.67	3	0	1187	0.4	78.8	5.8	13.6	0.2	0.8	0.2	0.0	0.2	79.2	5.8	15.0	0.089	0.511	31.259927	-105.880313
Guadalupe	30.54	1	0	2261	0.8	75.3	6.4	12.2	0.9	2.3	0.9	0.6	0.6	76.1	6.4	17.5	0.081	0.501	31.386207	-106.092394
San Isidro	55.93	1	0	3679	1.0	80.5	3.4	10.9	1.7	1.5	0.5	0.2	0.3	81.5	3.4	15.1	0.088	0.528	31.539665	-106.271923
Zaragoza	70.32	1	1	11455	1.3	88.3	3.5	3.2	1.5	1.1	0.8	0.1	0.2	89.6	3.5	6.9	0.092	0.501	31.621737	-106.324960
Zaragoza	70.32	1	2	11427	1.3	87.0	4.0	3.7	1.7	1.2	0.8	0.1	0.2	88.3	4.0	7.7	0.086	0.501	31.621735	-106.324961
Cd. Juárez	81.43																			

CHIHUAHUA

17 CARR: Ramal a Aeropuerto de Chihuahua

CLAVE: 08421

RUTA: MEX-016

AÑO: 2012

LUGAR	ESTACION				CLASIFICACION VEHICULAR EN PORCIENTO													COORDENADAS		
	KM	TE	SC	TDPA	M	A	B	C2	C3	T3S2	T3S3	T3S2R4	OTROS	A	B	C	K'	D	LATITUD	LONGITUD
T. C. Chihuahua - Ojinaga	0.00	3	1	3532	1.6	91.0	2.1	4.1	0.2	0.3	0.4	0.1	0.2	92.6	2.1	5.3	0.118	0.502	28.679720	-105.993807
T. C. Chihuahua - Ojinaga	0.00	3	2	3562	1.7	90.3	2.3	4.5	0.2	0.3	0.4	0.1	0.2	92.0	2.3	5.7	0.124	0.502	28.679716	-105.993809
Aeropuerto	5.00																			

18 CARR: Ramal a Palomas

CLAVE: 08019

RUTA: MEX-002

AÑO: 2012

LUGAR	ESTACION				CLASIFICACION VEHICULAR EN PORCIENTO													COORDENADAS		
	KM	TE	SC	TDPA	M	A	B	C2	C3	T3S2	T3S3	T3S2R4	OTROS	A	B	C	K'	D	LATITUD	LONGITUD
T. C. Cd. Juárez - Janos	0.00	3	0	1267	0.3	77.5	5.5	7.9	0.2	8.0	0.2	0.2	0.2	77.8	5.5	16.7	0.098	0.505	31.471836	-107.612951
T. Izq. Guadalupe Victoria	7.50	3	0	1049	0.1	78.1	4.8	8.1	1.5	7.2	0.1	0.1	0.0	78.2	4.8	17.0	0.123	0.515	31.541229	-107.612664
Palomas	34.10																			

19 CARR: Villa Ahumada - Cd. Juárez (Libre)

CLAVE: 08420

RUTA: MEX-045

AÑO: 2012

LUGAR	ESTACION				CLASIFICACION VEHICULAR EN PORCIENTO													COORDENADAS		
	KM	TE	SC	TDPA	M	A	B	C2	C3	T3S2	T3S3	T3S2R4	OTROS	A	B	C	K'	D	LATITUD	LONGITUD
Villa Ahumada	83.63	3	1	3119	0.4	61.0	6.5	10.9	1.5	16.0	1.3	1.6	0.8	61.4	6.5	32.1	0.098	0.518	30.641459	-106.514376
Villa Ahumada	83.63	3	2	3357	0.3	55.5	7.1	12.7	1.6	19.0	1.4	1.7	0.7	55.8	7.1	37.1	0.105	0.518	30.641456	-106.514372
Samalayuca	167.65	3	1	3446	0.3	64.1	5.3	10.3	1.7	13.8	1.7	1.9	0.9	64.4	5.3	30.3	0.077	0.530	31.372939	-106.466281
Samalayuca	167.65	3	2	3886	0.2	60.4	5.9	11.5	1.7	15.7	1.8	1.9	0.9	60.6	5.9	33.5	0.108	0.530	31.372922	-106.466289
T. Izq. Janos	197.92	1	1	5972	0.5	72.4	3.4	8.2	3.1	9.3	1.3	0.9	0.9	72.9	3.4	23.7	0.089	0.505	31.601380	-106.454555
T. Izq. Janos	197.92	1	2	6097	0.6	69.8	3.5	9.0	3.2	10.6	1.4	0.9	1.0	70.4	3.5	26.1	0.088	0.505	31.601380	-106.454556
T. Der. Antiquo Aeropuerto	201.35	1	1	16392	1.4	84.1	2.6	5.8	1.5	2.2	1.5	0.4	0.5	85.5	2.6	11.9	0.100	0.500	31.622133	-106.445216
T. Der. Antiquo Aeropuerto	201.35	1	2	16419	2.7	81.2	2.9	6.3	1.7	2.6	1.7	0.4	0.5	83.9	2.9	13.2	0.075	0.500	31.622134	-106.445217
Cd. Juárez	219.00																			

20 CARR: Camargo - Delicias (Cuota)

CLAVE: 08418

RUTA: MEX-045D

AÑO: 2012

LUGAR	ESTACION				CLASIFICACION VEHICULAR EN PORCIENTO													COORDENADAS		
	KM	TE	SC	TDPA	M	A	B	C2	C3	T3S2	T3S3	T3S2R4	OTROS	A	B	C	K'	D	LATITUD	LONGITUD
Camargo	68.98																			
Caseta de Cobro Altavista	73.00	2	1	2147	0.0	54.6	7.6	5.8	3.7	18.1	2.3	6.5	1.4	54.6	7.6	37.8	0.088	0.500	27.730836	-105.197889
Caseta de Cobro Altavista	73.00	2	2	2146	0.0	54.6	7.6	5.8	3.7	18.1	2.3	6.5	1.4	54.6	7.6	37.8	0.088	0.500	27.730836	-105.197889
Saucillo	111.50	3	1	3466	0.3	59.1	4.3	8.2	1.7	18.7	2.8	4.0	0.9	59.4	4.3	36.3	0.095	0.503	28.036094	-105.324993
Saucillo	111.50	3	2	3508	0.4	57.5	4.9	8.6	1.8	18.0	3.0	4.7	1.1	57.9	4.9	37.2	0.089	0.503	28.036092	-105.324992

CHIHUAHUA

20 CARR: Camargo - Delicias (Cuota)

CLAVE: 08418

RUTA: MEX-045D

AÑO: 2012

LUGAR	ESTACION				CLASIFICACION VEHICULAR EN PORCIENTO														COORDENADAS	
	KM	TE	SC	TDPA	M	A	B	C2	C3	T3S2	T3S3	T3S2R4	OTROS	A	B	C	K'	D	LATITUD	LONGITUD
Caseta de Cobro Saucillo	116.30	2	1	3160	0.0	58.4	6.0	5.5	3.3	18.3	2.5	4.8	1.2	58.4	6.0	35.6	0.088	0.500	28.046373	-105.329355
Caseta de Cobro Saucillo	116.30	2	2	3160	0.0	58.4	6.0	5.5	3.3	18.3	2.5	4.8	1.2	58.4	6.0	35.6	0.088	0.500	28.046373	-105.329355
Delicias	138.00	1	1	8075	0.9	69.4	3.1	10.2	2.0	10.4	1.5	1.9	0.6	70.3	3.1	26.6	0.086	0.503	28.173249	-105.442082
Delicias	138.00	1	2	8184	0.5	69.0	3.5	10.0	2.3	10.3	1.7	2.0	0.7	69.5	3.5	27.0	0.080	0.503	28.173248	-105.442083

21 CARR: Chihuahua - Sacramento (Cuota)

CLAVE: 08015

RUTA: MEX-045D

AÑO: 2012

LUGAR	ESTACION				CLASIFICACION VEHICULAR EN PORCIENTO														COORDENADAS	
	KM	TE	SC	TDPA	M	A	B	C2	C3	T3S2	T3S3	T3S2R4	OTROS	A	B	C	K'	D	LATITUD	LONGITUD
T. C. Chihuahua - El Sueco	0.00	3	1	5652	0.2	71.5	5.4	11.4	1.5	6.9	1.0	1.5	0.6	71.7	5.4	22.9	0.089	0.536	28.771657	-106.170949
T. C. Chihuahua - El Sueco	0.00	3	2	4894	0.1	69.6	6.0	12.0	1.7	7.2	1.0	1.8	0.6	69.7	6.0	24.3	0.094	0.536	28.771658	-106.170949
Francisco Villa	2.00	3	1	3522	0.3	66.1	6.3	12.5	2.5	8.5	0.9	2.3	0.6	66.4	6.3	27.3	0.103	0.505	28.818797	-106.181430
Francisco Villa	2.00	3	2	3600	0.2	61.9	7.3	13.8	2.7	9.7	1.1	2.7	0.6	62.1	7.3	30.6	0.122	0.505	28.818793	-106.181428
T. C. (Chihuahua - El Sueco)	13.00																			

22 CARR: El Sueco - Villa Ahumada (Cuota)

CLAVE: 08420

RUTA: MEX-045D

AÑO: 2012

LUGAR	ESTACION				CLASIFICACION VEHICULAR EN PORCIENTO														COORDENADAS	
	KM	TE	SC	TDPA	M	A	B	C2	C3	T3S2	T3S3	T3S2R4	OTROS	A	B	C	K'	D	LATITUD	LONGITUD
Ent. El Sueco	0.00	3	1	2406	0.3	62.0	6.9	9.5	1.5	16.0	1.2	1.9	0.7	62.3	6.9	30.8	0.099	0.509	29.894939	-106.395441
Ent. El Sueco	0.00	3	2	2491	0.5	56.4	7.9	10.5	1.6	18.8	1.4	2.1	0.8	56.9	7.9	35.2	0.107	0.509	29.895000	-106.395936
Caseta de Cobro Villa Ahumada	82.00	2	1	2351	0.0	65.3	7.3	3.7	2.2	17.6	0.7	2.1	1.1	65.3	7.3	27.4	0.103	0.500	30.437092	-106.521816
Caseta de Cobro Villa Ahumada	82.00	2	2	2350	0.0	65.3	7.3	3.7	2.2	17.6	0.7	2.1	1.1	65.3	7.3	27.4	0.103	0.500	30.437092	-106.521816
Villa Ahumada	83.63																			

23 CARR: Gómez Palacio - Corralitos (Cuota)

CLAVE: 00016

RUTA: MEX-049D

AÑO: 2012

LUGAR	ESTACION				CLASIFICACION VEHICULAR EN PORCIENTO														COORDENADAS	
	KM	TE	SC	TDPA	M	A	B	C2	C3	T3S2	T3S3	T3S2R4	OTROS	A	B	C	K'	D	LATITUD	LONGITUD
T. C. Gómez Palacio - Jiménez (Libre)	0.00																			
T. Izq. Bermejillo	2.21	1	1	1539	0.9	51.4	9.5	6.7	2.7	17.0	3.8	7.3	0.7	52.3	9.5	38.2	0.080	0.503	25.880679	-103.611775
T. Izq. Bermejillo	2.21	1	2	1562	0.6	46.7	10.9	7.6	3.0	18.2	4.1	8.0	0.9	47.3	10.9	41.8	0.074	0.503	25.880679	-103.611775
T. Izq. Bermejillo	2.21	3	1	1435	0.4	42.8	6.9	8.1	2.5	23.6	5.0	9.7	1.0	43.2	6.9	49.9	0.075	0.525	25.897719	-103.612165
T. Izq. Bermejillo	2.21	3	2	1589	0.4	37.6	7.9	9.4	2.6	25.4	5.5	10.0	1.2	38.0	7.9	54.1	0.084	0.525	25.897705	-103.612156
Caseta de Cobro Bermejillo	5.00	2	1	1297	0.0	38.2	16.1	2.5	1.6	24.2	5.1	10.5	1.8	38.2	16.1	45.7	0.079	0.500	25.923654	-103.622041

CHIHUAHUA

23 CARR: Gómez Palacio - Corralitos (Cuota)

CLAVE: 00016

RUTA: MEX-049D

AÑO: 2012

LUGAR	ESTACION				CLASIFICACION VEHICULAR EN PORCIENTO														COORDENADAS	
	KM	TE	SC	TDPA	M	A	B	C2	C3	T3S2	T3S3	T3S2R4	OTROS	A	B	C	K'	D	LATITUD	LONGITUD
Caseta de Cobro Bermejillo	5.00	2	2	1297	0.0	38.2	16.1	2.5	1.6	24.2	5.1	10.5	1.8	38.2	16.1	45.7	0.079	0.500	25.923654	-103.622041
Caseta de Cobro Ceballos	89.00	2	1	1284	0.1	37.6	16.3	2.4	1.5	24.4	5.2	10.6	1.9	37.7	16.3	46.0	0.079	0.500	26.586790	-104.057602
Caseta de Cobro Ceballos	89.00	2	2	1284	0.1	37.6	16.3	2.4	1.5	24.4	5.2	10.6	1.9	37.7	16.3	46.0	0.079	0.500	26.586790	-104.057602
Lim. Edos. Term. Dgo. Ppia. Chih.	112.00																			
T. C. Libramiento Jiménez	150.59																			
T. C. Gómez Palacio - Jiménez (Libre)	194.00	1	1	1461	0.5	37.5	11.0	9.8	2.6	23.7	5.7	8.1	1.1	38.0	11.0	51.0	0.078	0.520	27.090179	-104.853203
T. C. Gómez Palacio - Jiménez (Libre)	194.00	1	2	1487	0.6	32.2	11.7	9.7	2.7	27.5	5.9	8.6	1.1	32.8	11.7	55.5	0.082	0.520	27.090191	-104.853226

24 CARR: Jiménez - Camargo (Cuota)

CLAVE: 08418

RUTA: MEX-045D

AÑO: 2012

LUGAR	ESTACION				CLASIFICACION VEHICULAR EN PORCIENTO														COORDENADAS	
	KM	TE	SC	TDPA	M	A	B	C2	C3	T3S2	T3S3	T3S2R4	OTROS	A	B	C	K'	D	LATITUD	LONGITUD
Jiménez	0.00	3	1	2609	1.1	48.3	7.5	8.8	2.1	22.2	3.1	6.0	0.9	49.4	7.5	43.1	0.074	0.504	27.150702	-104.930062
Jiménez	0.00	3	2	2648	1.0	44.2	8.2	9.6	2.2	23.6	3.5	6.8	0.9	45.2	8.2	46.6	0.097	0.504	27.150712	-104.930066
Caseta de Cobro Camargo	11.00	2	1	1967	0.0	41.3	8.2	4.8	4.3	28.0	3.9	7.7	1.8	41.3	8.2	50.5	0.085	0.500	27.244998	-104.933231
Caseta de Cobro Camargo	11.00	2	2	1966	0.0	41.3	8.2	4.8	4.3	28.0	3.9	7.7	1.8	41.3	8.2	50.5	0.085	0.500	27.244998	-104.933231
Camargo	68.98	1	1	2916	0.8	50.6	6.2	10.8	2.1	19.8	3.3	5.5	0.9	51.4	6.2	42.4	0.088	0.501	27.654345	-105.148001
Camargo	68.98	1	2	2933	0.9	47.4	7.2	11.7	2.4	20.1	3.6	5.8	0.9	48.3	7.2	44.5	0.079	0.501	27.654343	-105.147998

25 CARR: Ahumada - Ricardo Flores Magón

CLAVE: 08804

RUTA: CHIH

AÑO: 2012

LUGAR	ESTACION				CLASIFICACION VEHICULAR EN PORCIENTO														COORDENADAS	
	KM	TE	SC	TDPA	M	A	B	C2	C3	T3S2	T3S3	T3S2R4	OTROS	A	B	C	K'	D	LATITUD	LONGITUD
Ahumada	0.00	3	0	1737	0.5	61.1	4.0	15.3	2.5	13.6	1.9	0.8	0.3	61.6	4.0	34.4	0.088	0.519	30.616161	-106.529875
Ricardo Flores Magón	96.00	1	0	1875	0.2	60.8	3.8	15.4	1.9	14.1	2.6	0.7	0.5	61.0	3.8	35.2	0.089	0.502	29.958346	-106.951876

26 CARR: Cuauhtémoc - Buenaventura

CLAVE: 08015

RUTA: CHIH

AÑO: 2012

LUGAR	ESTACION				CLASIFICACION VEHICULAR EN PORCIENTO														COORDENADAS	
	KM	TE	SC	TDPA	M	A	B	C2	C3	T3S2	T3S3	T3S2R4	OTROS	A	B	C	K'	D	LATITUD	LONGITUD
T. C. Chihuahua - Madera	0.00	3	1	8447	0.3	77.9	0.3	16.6	1.2	1.7	1.4	0.2	0.4	78.2	0.3	21.5	0.103	0.507	28.435208	-106.909062
T. C. Chihuahua - Madera	0.00	3	2	8226	0.4	76.8	0.3	17.1	1.3	2.0	1.5	0.2	0.4	77.2	0.3	22.5	0.111	0.507	28.435205	-106.909064
Álvaro Obregón	42.00	3	1	3239	0.2	73.2	4.8	14.2	2.2	3.3	1.6	0.3	0.2	73.4	4.8	21.8	0.096	0.507	28.759431	-106.928392
Álvaro Obregón	42.00	3	2	3156	0.2	70.8	5.4	15.2	2.5	3.6	1.7	0.3	0.3	71.0	5.4	23.6	0.090	0.507	28.759431	-106.928392
Bachiniva	77.50	1	0	3949	0.3	76.4	4.3	13.2	1.4	2.5	1.6	0.1	0.2	76.7	4.3	19.0	0.097	0.502	28.810624	-107.216689

CHIHUAHUA

26 CARR: Cuauhtémoc - Buenaventura

CLAVE: 08015

RUTA: CHIH

AÑO: 2012

LUGAR	ESTACION				CLASIFICACION VEHICULAR EN PORCIENTO													COORDENADAS		
	KM	TE	SC	TDPA	M	A	B	C2	C3	T3S2	T3S3	T3S2R4	OTROS	A	B	C	K'	D	LATITUD	LONGITUD
T. Der. Namiquipa	112.06	3	0	3539	0.4	75.2	5.3	12.9	0.9	3.8	0.9	0.4	0.2	75.6	5.3	19.1	0.087	0.503	29.027051	-107.451818
T. Izq. Madera	150.50	3	0	536	0.0	76.5	4.6	12.8	1.9	2.5	1.5	0.1	0.1	76.5	4.6	18.9	0.099	0.504	29.265802	-107.708092
Buenaventura	253.30	1	0	777	0.8	74.2	4.0	15.7	1.4	3.1	0.7	0.0	0.1	75.0	4.0	21.0	0.116	0.503	29.841667	-107.478802

27 CARR: Delicias - Saucillo

CLAVE: 08007

RUTA: CHIH-007

AÑO: 2012

LUGAR	ESTACION				CLASIFICACION VEHICULAR EN PORCIENTO													COORDENADAS		
	KM	TE	SC	TDPA	M	A	B	C2	C3	T3S2	T3S3	T3S2R4	OTROS	A	B	C	K'	D	LATITUD	LONGITUD
Delicias	0.00	3	0	6032	6.2	78.4	1.8	8.1	1.7	2.2	0.8	0.3	0.5	84.6	1.8	13.6	0.106	0.513	28.194943	-105.425718
Las Varas	17.00	1	0	2705	3.3	76.7	1.4	14.6	1.6	1.8	0.5	0.0	0.1	80.0	1.4	18.6	0.115	0.514	28.168630	-105.339425
Saucillo	33.00	1	0	5810	2.2	78.8	1.6	8.7	1.2	5.6	0.8	0.3	0.8	81.0	1.6	17.4	0.079	0.507	28.046593	-105.299988

28 CARR: Ent. Peña Blanca - Ent. La Concha

CLAVE: 08493

RUTA: CHIH

AÑO: 2012

LUGAR	ESTACION				CLASIFICACION VEHICULAR EN PORCIENTO													COORDENADAS		
	KM	TE	SC	TDPA	M	A	B	C2	C3	T3S2	T3S3	T3S2R4	OTROS	A	B	C	K'	D	LATITUD	LONGITUD
T. C. Cuauhtémoc - Buenaventura	0.00	3	0	907	0.2	82.5	2.0	11.3	1.2	2.0	0.5	0.0	0.3	82.7	2.0	15.3	0.115	0.503	29.263471	-107.708537
T. C. Chihuahua - Madera	17.00	1	0	842	0.2	79.8	1.2	13.7	1.4	3.1	0.4	0.0	0.2	80.0	1.2	18.8	0.119	0.506	29.121612	-107.906573

29 CARR: Ent. Puerto Justo - Ent. Guacho chic

CLAVE: 08044

RUTA: CHIH

AÑO: 2012

LUGAR	ESTACION				CLASIFICACION VEHICULAR EN PORCIENTO													COORDENADAS		
	KM	TE	SC	TDPA	M	A	B	C2	C3	T3S2	T3S3	T3S2R4	OTROS	A	B	C	K'	D	LATITUD	LONGITUD
T. C. Hidalgo del Parral - Pto. Sabinal	0.00	3	0	246	0.7	87.8	0.1	9.9	0.5	0.6	0.1	0.0	0.3	88.5	0.1	11.4	0.216	0.508	26.813903	-106.018064
Guacho chic	130.00																			

30 CARR: Jiménez - Camargo

CLAVE: 08021

RUTA: CHIH-049

AÑO: 2012

LUGAR	ESTACION				CLASIFICACION VEHICULAR EN PORCIENTO													COORDENADAS		
	KM	TE	SC	TDPA	M	A	B	C2	C3	T3S2	T3S3	T3S2R4	OTROS	A	B	C	K'	D	LATITUD	LONGITUD
Jiménez	0.00	3	0	3661	2.5	70.5	1.0	12.3	2.2	9.0	1.6	0.4	0.5	73.0	1.0	26.0	0.082	0.506	27.146290	-104.899041
T. Der. Ojinaga	65.80	3	0	2020	0.6	60.8	2.1	15.5	3.6	13.9	2.5	0.4	0.6	61.4	2.1	36.5	0.097	0.504	27.648386	-105.078378
T. C. Jiménez - Chihuahua (Cuota)	78.20	1	0	6188	1.2	57.6	3.0	10.4	2.1	17.8	2.9	4.1	0.9	58.8	3.0	38.2	0.077	0.512	27.677817	-105.142938

CHIHUAHUA

31 CARR: Lázaro Cárdenas - Ent. Colonia San José

CLAVE: 08004

RUTA: CHIH-004

AÑO: 2012

LUGAR	ESTACION				CLASIFICACION VEHICULAR EN PORCIENTO													COORDENADAS		
	KM	TE	SC	TDPA	M	A	B	C2	C3	T3S2	T3S3	T3S2R4	OTROS	A	B	C	K'	D	LATITUD	LONGITUD
T. C. Jiménez - Chihuahua	0.00	3	1	2467	2.4	85.5	3.3	6.5	0.8	0.9	0.5	0.0	0.1	87.9	3.3	8.8	0.085	0.508	28.388017	-105.628003
T. C. Jiménez - Chihuahua	0.00	3	2	2549	2.2	85.0	3.7	6.7	0.8	1.0	0.4	0.0	0.2	87.2	3.7	9.1	0.103	0.508	28.388017	-105.628003
T. C. Meoqui - Julimes	16.00	1	0	1596	1.9	78.5	3.9	10.2	2.7	1.9	0.6	0.1	0.2	80.4	3.9	15.7	0.108	0.503	28.387322	-105.446851

32 CARR: Libramiento de Hidalgo del Parral

CLAVE: 08221

RUTA: CHIH

AÑO: 2012

LUGAR	ESTACION				CLASIFICACION VEHICULAR EN PORCIENTO													COORDENADAS		
	KM	TE	SC	TDPA	M	A	B	C2	C3	T3S2	T3S3	T3S2R4	OTROS	A	B	C	K'	D	LATITUD	LONGITUD
T. C. Hidalgo del Parral - Santa Bárbara	0.00																			
T. C. Ent. La Zarca - Hidalgo del Parral	8.00	3	1	5218	1.3	88.9	2.8	3.6	0.6	1.5	0.9	0.1	0.3	90.2	2.8	7.0	0.090	0.501	26.923478	-105.643348
T. C. Ent. La Zarca - Hidalgo del Parral	8.00	3	2	5233	1.6	87.8	2.9	4.1	0.6	1.6	1.0	0.1	0.3	89.4	2.9	7.7	0.088	0.501	26.923480	-105.643347
T. C. Hidalgo del Parral - Jiménez	10.00																			

33 CARR: Libramiento de Jiménez

CLAVE: 08047

RUTA: CHIH

AÑO: 2012

LUGAR	ESTACION				CLASIFICACION VEHICULAR EN PORCIENTO													COORDENADAS		
	KM	TE	SC	TDPA	M	A	B	C2	C3	T3S2	T3S3	T3S2R4	OTROS	A	B	C	K'	D	LATITUD	LONGITUD
T. C. Gómez Palacio - Jiménez	0.00	3	1	4847	1.9	66.8	3.5	7.8	1.8	11.9	3.1	2.8	0.4	68.7	3.5	27.8	0.073	0.528	27.133590	-104.909349
T. C. Gómez Palacio - Jiménez	0.00	3	2	5415	1.7	64.4	3.3	8.7	2.1	12.8	3.4	3.1	0.5	66.1	3.3	30.6	0.075	0.528	27.133587	-104.909378
T. C. Jiménez - Chihuahua (Cuota)	3.40	1	1	3031	0.9	59.7	5.4	8.3	2.0	14.4	3.8	4.6	0.9	60.6	5.4	34.0	0.078	0.502	27.141411	-104.921965
T. C. Jiménez - Chihuahua (Cuota)	3.40	1	2	3012	0.7	55.9	5.6	9.1	2.2	16.7	3.9	5.0	0.9	56.6	5.6	37.8	0.080	0.502	27.141413	-104.921965

34 CARR: Meoqui - Julimes

CLAVE: 08005

RUTA: CHIH-005

AÑO: 2012

LUGAR	ESTACION				CLASIFICACION VEHICULAR EN PORCIENTO													COORDENADAS		
	KM	TE	SC	TDPA	M	A	B	C2	C3	T3S2	T3S3	T3S2R4	OTROS	A	B	C	K'	D	LATITUD	LONGITUD
Meoqui	0.00	3	0	5133	1.9	81.9	3.7	7.8	1.1	2.1	0.7	0.1	0.7	83.8	3.7	12.5	0.084	0.502	28.286067	-105.460750
Loreto	8.00	3	0	3475	1.7	81.1	1.1	11.6	1.2	2.5	0.3	0.1	0.4	82.8	1.1	16.1	0.093	0.500	28.320913	-105.433937
Regina	15.40	3	0	3173	1.2	85.1	3.2	8.5	1.1	0.5	0.3	0.0	0.1	86.3	3.2	10.5	0.094	0.508	28.421083	-105.454195
Julimes	23.00	1	0	2457	1.0	82.0	4.6	10.1	0.6	1.3	0.3	0.0	0.1	83.0	4.6	12.4	0.124	0.504	28.427521	-105.441669

CHIHUAHUA

35 CARR: Ramal a Creel

CLAVE: 08812

RUTA: CHIH

AÑO: 2012

LUGAR	ESTACION				CLASIFICACION VEHICULAR EN PORCIENTO														COORDENADAS	
	KM	TE	SC	TDPA	M	A	B	C2	C3	T3S2	T3S3	T3S2R4	OTROS	A	B	C	K'	D	LATITUD	LONGITUD
T. C. La Junta - Yepachi	0.00	3	0	1651	0.2	74.8	2.0	15.0	3.4	2.6	1.5	0.1	0.4	75.0	2.0	23.0	0.091	0.514	28.379659	-107.441171
San Juanito	58.00	3	0	1457	0.2	74.1	1.6	18.8	1.7	2.3	0.8	0.1	0.4	74.3	1.6	24.1	0.095	0.502	27.960861	-107.607571
Creel	85.00																			

36 CARR: San Juanito - Ent. Basaseachi

CLAVE: 08045

RUTA: CHIH

AÑO: 2012

LUGAR	ESTACION				CLASIFICACION VEHICULAR EN PORCIENTO														COORDENADAS	
	KM	TE	SC	TDPA	M	A	B	C2	C3	T3S2	T3S3	T3S2R4	OTROS	A	B	C	K'	D	LATITUD	LONGITUD
San Juanito	0.00	3	0	422	0.7	67.4	0.5	28.2	1.9	0.9	0.4	0.0	0.0	68.1	0.5	31.4	0.120	0.504	27.972396	-107.616549
T. C. La Junta - Yécora	84.00	1	0	371	0.5	61.0	0.9	32.0	3.0	1.2	1.3	0.0	0.1	61.5	0.9	37.6	0.125	0.509	28.189568	-108.172693

37 CARR: T. C. (Jiménez - Camargo) - Ojinaga

CLAVE: 08009

RUTA: CHIH-018

AÑO: 2012

LUGAR	ESTACION				CLASIFICACION VEHICULAR EN PORCIENTO														COORDENADAS	
	KM	TE	SC	TDPA	M	A	B	C2	C3	T3S2	T3S3	T3S2R4	OTROS	A	B	C	K'	D	LATITUD	LONGITUD
T. C. Jiménez - Camargo	0.00	3	0	797	0.5	65.0	2.9	15.1	2.3	10.0	2.3	1.5	0.4	65.5	2.9	31.6	0.120	0.506	27.648414	-105.072615
T. Der. La Perla	97.00	3	0	336	0.3	57.1	3.6	13.7	2.1	18.6	3.6	0.5	0.5	57.4	3.6	39.0	0.153	0.536	28.302197	-104.571215
T. Der. Majjoma	174.20	3	0	326	0.0	62.6	3.0	19.0	2.2	8.6	4.1	0.0	0.5	62.6	3.0	34.4	0.152	0.500	28.929197	-104.479255
T. Der. Manuel Benavides	218.00	3	0	1343	0.2	70.9	3.1	18.4	1.2	3.8	1.7	0.5	0.2	71.1	3.1	25.8	0.102	0.501	29.316673	-104.400264
Ojinaga	247.00	1	0	1677	0.2	75.5	4.1	13.3	1.2	4.0	1.0	0.2	0.5	75.7	4.1	20.2	0.100	0.510	29.516862	-104.422559

38 CARR: T. Julimes - La Boquilla

CLAVE: 08009

RUTA: CHIH-018

AÑO: 2012

LUGAR	ESTACION				CLASIFICACION VEHICULAR EN PORCIENTO														COORDENADAS	
	KM	TE	SC	TDPA	M	A	B	C2	C3	T3S2	T3S3	T3S2R4	OTROS	A	B	C	K'	D	LATITUD	LONGITUD
T. C. Meoquí - Julimes	0.00	3	0	1284	1.2	79.8	4.4	11.3	1.0	1.6	0.6	0.0	0.1	81.0	4.4	14.6	0.108	0.504	28.427324	-105.456190
La Boquilla	7.50																			

39 CARR: Ent. El Álamo - Ent. Ricardo Flores Magón (Cuota)

CLAVE: 08046

RUTA: CHIH-D

AÑO: 2012

LUGAR	ESTACION				CLASIFICACION VEHICULAR EN PORCIENTO														COORDENADAS	
	KM	TE	SC	TDPA	M	A	B	C2	C3	T3S2	T3S3	T3S2R4	OTROS	A	B	C	K'	D	LATITUD	LONGITUD
T. C. Chihuahua - El Sueco	0.00	3	0	1573	0.3	43.4	5.8	10.5	2.0	25.2	4.3	7.7	0.8	43.7	5.8	50.5	0.092	0.508	29.486249	-106.410694
T. C. El Sueco - Janos	75.00																			

CHIHUAHUA

40 CARR: Ricardo Flores Magón - Galeana (Cuota)

CLAVE: 08019

RUTA: CHIH-D

AÑO: 2012

LUGAR	ESTACION				CLASIFICACION VEHICULAR EN PORCIENTO													COORDENADAS		
	KM	TE	SC	TDPA	M	A	B	C2	C3	T3S2	T3S3	T3S2R4	OTROS	A	B	C	K'	D	LATITUD	LONGITUD
T. C. El Sueco - Janos	0.00	3	0	2105	0.3	39.8	4.1	14.9	2.0	25.2	5.5	7.3	0.9	40.1	4.1	55.8	0.087	0.515	29.968557	-107.068086
Galeana	58.00	1	0	2064	0.3	44.5	3.8	13.2	1.9	23.3	5.2	6.8	1.0	44.8	3.8	51.4	0.089	0.504	30.175409	-107.618411

41 CARR: Samalayuca - San Jerónimo (Cuota)

CLAVE: 08019

RUTA: CHIH-D

AÑO: 2012

LUGAR	ESTACION				CLASIFICACION VEHICULAR EN PORCIENTO													COORDENADAS		
	KM	TE	SC	TDPA	M	A	B	C2	C3	T3S2	T3S3	T3S2R4	OTROS	A	B	C	K'	D	LATITUD	LONGITUD
T. C. El Sueco - Cd. Juárez	0.00	3	0	888	0.1	76.0	0.2	15.0	1.3	6.7	0.5	0.1	0.1	76.1	0.2	23.7	0.138	0.510	31.453306	-106.477731
San Jerónimo	28.10																			

42 CARR: T. C. (Chihuahua - Ojinaga) - La Mula (Cuota)

CLAVE: 08170

RUTA: CHIH-D

AÑO: 2012

LUGAR	ESTACION				CLASIFICACION VEHICULAR EN PORCIENTO													COORDENADAS		
	KM	TE	SC	TDPA	M	A	B	C2	C3	T3S2	T3S3	T3S2R4	OTROS	A	B	C	K'	D	LATITUD	LONGITUD
T. C. Chihuahua - Ojinaga	0.00	3	0	1006	0.2	75.2	4.0	11.7	1.7	4.6	1.5	0.8	0.3	75.4	4.0	20.6	0.102	0.502	29.146025	-105.485130
La Mula	110.00	1	0	821	0.0	84.6	1.1	5.7	2.5	4.1	0.2	1.0	0.8	84.6	1.1	14.3	0.118	0.518	29.180568	-104.473353

43 CARR: Chihuahua - Madera

CLAVE: 08038

RUTA: CHIH-D-MEX-001-CHIH

AÑO: 2012

LUGAR	ESTACION				CLASIFICACION VEHICULAR EN PORCIENTO													COORDENADAS		
	KM	TE	SC	TDPA	M	A	B	C2	C3	T3S2	T3S3	T3S2R4	OTROS	A	B	C	K'	D	LATITUD	LONGITUD
Chihuahua	0.00																			
T. Der. Presa Chihuahua	10.50	1	1	8779	0.6	78.8	1.7	10.6	1.8	3.3	2.0	0.5	0.7	79.4	1.7	18.9	0.090	0.500	28.569312	-106.141403
T. Der. Presa Chihuahua	10.50	1	2	8789	0.7	77.1	1.7	11.4	2.0	3.7	2.1	0.5	0.8	77.8	1.7	20.5	0.100	0.500	28.569320	-106.141394
T. Der. Presa Chihuahua	10.50	3	1	6840	0.4	78.1	2.3	10.5	1.9	4.2	1.9	0.6	0.1	78.5	2.3	19.2	0.106	0.508	28.550343	-106.158733
T. Der. Presa Chihuahua	10.50	3	2	6636	0.7	76.6	2.5	11.0	2.0	4.3	2.1	0.7	0.1	77.3	2.5	20.2	0.099	0.508	28.550343	-106.158733
T. Izq. Hidalgo del Parral (Vía Corta)	36.20	1	1	5145	0.5	72.8	2.7	12.7	1.9	5.5	2.3	0.8	0.8	73.3	2.7	24.0	0.098	0.509	28.374618	-106.249171
T. Izq. Hidalgo del Parral (Vía Corta)	36.20	1	2	4969	0.6	70.5	2.9	13.9	2.0	5.6	2.6	0.9	1.0	71.1	2.9	26.0	0.109	0.509	28.374621	-106.249168
T. Izq. Hidalgo del Parral (Vía Corta)	36.20	3	1	4248	0.4	77.8	1.9	9.9	1.6	4.8	2.3	0.8	0.5	78.2	1.9	19.9	0.099	0.507	28.358829	-106.271057
T. Izq. Hidalgo del Parral (Vía Corta)	36.20	3	2	4125	0.7	75.9	2.0	10.7	1.7	5.3	2.4	0.8	0.5	76.6	2.0	21.4	0.114	0.507	28.358830	-106.271057
Cuahtémoc	103.50	1	1	4339	0.5	77.2	2.1	12.8	1.3	4.9	0.8	0.2	0.2	77.7	2.1	20.2	0.092	0.539	28.396567	-106.810799
Cuahtémoc	103.50	1	2	3718	0.5	78.0	2.2	12.2	1.3	4.6	0.8	0.2	0.2	78.5	2.2	19.3	0.094	0.539	28.396570	-106.810797
Cuahtémoc	103.50	3	1	9824	0.5	83.1	0.4	11.5	0.7	1.5	1.6	0.2	0.5	83.6	0.4	16.0	0.083	0.501	28.402210	-106.892342
Cuahtémoc	103.50	3	2	9861	0.6	82.0	0.4	12.3	0.7	1.6	1.7	0.2	0.5	82.6	0.4	17.0	0.084	0.501	28.402208	-106.892336
T. Der. Álvaro Obregón	107.10	3	1	6955	0.2	73.9	2.3	18.0	1.4	2.3	1.5	0.1	0.3	74.1	2.3	23.6	0.093	0.503	28.399178	-106.926045

CHIHUAHUA

43 CARR: Chihuahua - Madera

CLAVE: 08038

RUTA: CHIH-D-MEX-001-CHIH

AÑO: 2012

LUGAR	ESTACION				CLASIFICACION VEHICULAR EN PORCIENTO														COORDENADAS	
	KM	TE	SC	TDPA	M	A	B	C2	C3	T3S2	T3S3	T3S2R4	OTROS	A	B	C	K'	D	LATITUD	LONGITUD
T. Der. Álvaro Obregón	107.10	3	2	6885	0.3	69.6	2.7	21.3	1.5	2.6	1.6	0.1	0.3	69.9	2.7	27.4	0.096	0.503	28.399179	-106.926033
T. Izq. Yepachi	150.80	1	1	2563	0.2	76.1	1.7	17.0	1.6	2.0	0.9	0.3	0.2	76.3	1.7	22.0	0.102	0.506	28.465698	-107.282482
T. Izq. Yepachi	150.80	1	2	2503	0.3	73.5	1.9	18.8	1.8	2.2	1.2	0.2	0.1	73.8	1.9	24.3	0.099	0.506	28.465698	-107.282482
Guerrero	169.80	3	0	2809	0.4	75.5	1.8	17.0	1.8	2.1	1.0	0.2	0.2	75.9	1.8	22.3	0.093	0.505	28.552504	-107.494469
T. Der. Peña Blanca	261.30	1	0	1035	0.0	76.9	3.2	13.9	1.2	2.4	1.9	0.0	0.5	76.9	3.2	19.9	0.127	0.500	29.114556	-107.899275
T. Der. Peña Blanca	261.30	3	0	1113	0.1	77.6	2.6	13.9	1.1	3.0	1.6	0.0	0.1	77.7	2.6	19.7	0.116	0.501	29.120100	-107.908455
Madera	279.00																			

44 CARR: Ent. Agua Caliente - El Terrero

CLAVE: 08170

RUTA: CHIH-MEX

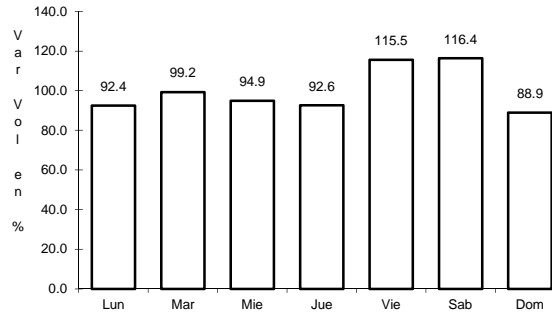
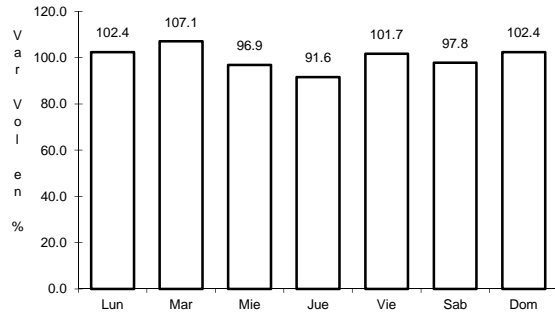
AÑO: 2012

LUGAR	ESTACION				CLASIFICACION VEHICULAR EN PORCIENTO														COORDENADAS	
	KM	TE	SC	TDPA	M	A	B	C2	C3	T3S2	T3S3	T3S2R4	OTROS	A	B	C	K'	D	LATITUD	LONGITUD
T. C. Chihuahua - El Sueco	0.00	3	0	585	0.3	62.5	5.1	22.6	2.2	5.7	1.5	0.0	0.1	62.8	5.1	32.1	0.113	0.500	29.096292	-106.343399
Nuevas Delicias	22.00	1	0	545	0.4	63.4	3.2	24.0	1.3	5.7	1.6	0.0	0.4	63.8	3.2	33.0	0.106	0.530	29.078540	-106.496285
El Terrero	120.00	1	0	393	0.4	81.1	4.9	11.1	0.7	1.3	0.3	0.0	0.2	81.5	4.9	13.6	0.088	0.501	29.178042	-107.375036

4 CARR: Delicias - Chihuahua (Libre)

CLAVE: 08418

RUTA: MEX-045



Km: 166.87

Tipo: 1

Sent: 1

Km: 166.87

Tipo: 1

Sent: 2

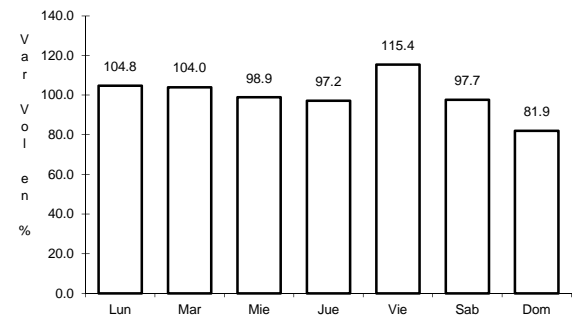
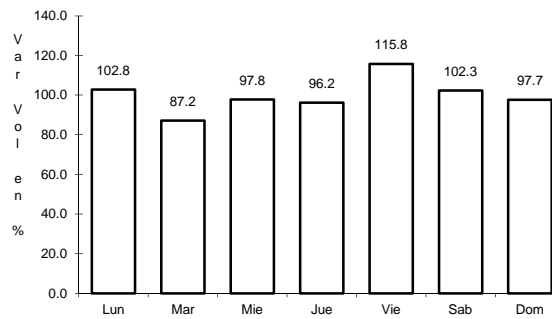
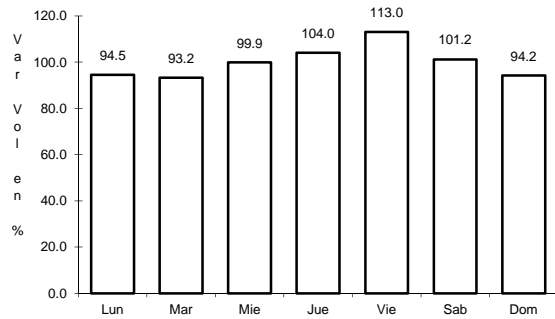
Tipo: 0

Sent: 0

5 CARR: El Sueco - Janos

CLAVE: 08037

RUTA: MEX-010



Km: 0.00

Tipo: 3

Sent: 0

Km: 114.00

Tipo: 1

Sent: 0

Km: 257.00

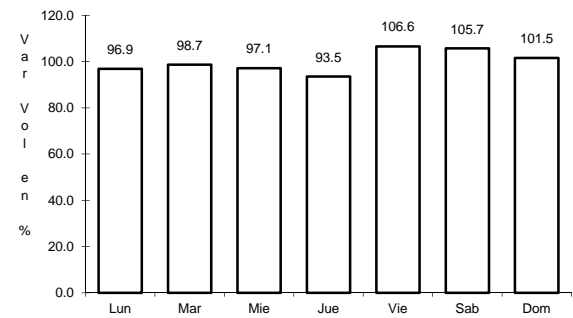
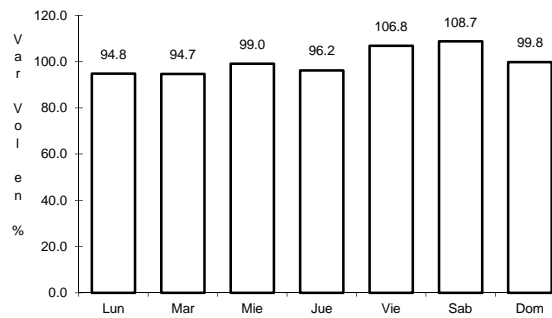
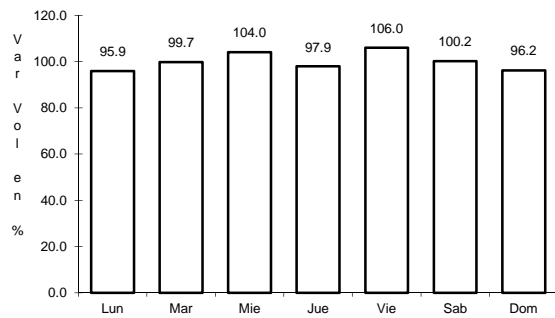
Tipo: 1

Sent: 0

6 CARR: Ent. Ciudad Camargo - Saucillo

CLAVE: 08417

RUTA: MEX-045



Km: 0.00

Tipo: 3

Sent: 0

Km: 20.92

Tipo: 3

Sent: 0

Km: 42.52

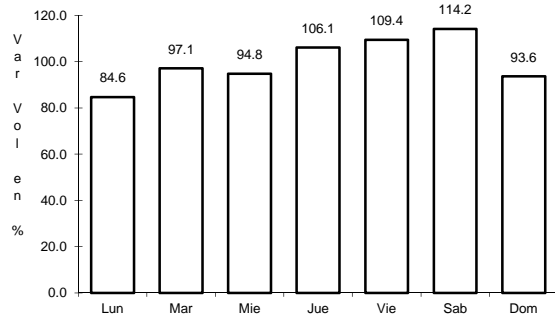
Tipo: 1

Sent: 0

7 CARR: Ent. La Zarca - Hidalgo del Parral

CLAVE: 00488

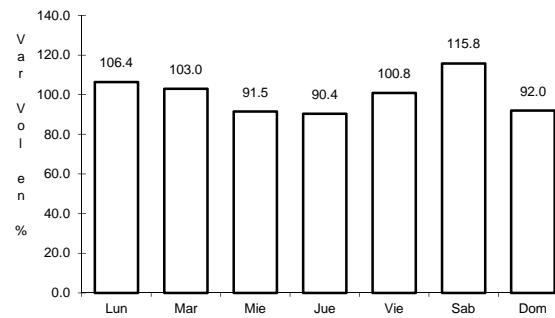
RUTA: MEX-045



Km: 0.00

Tipo: 3

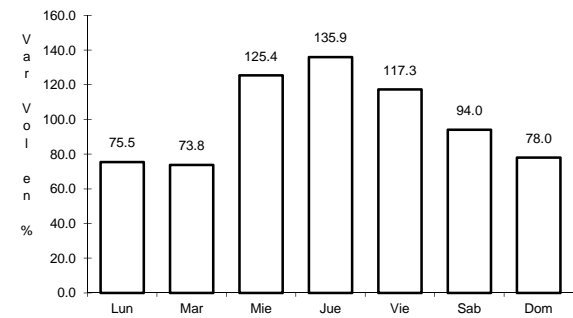
Sent: 0



Km: 92.35

Tipo: 3

Sent: 0



Km: 171.00

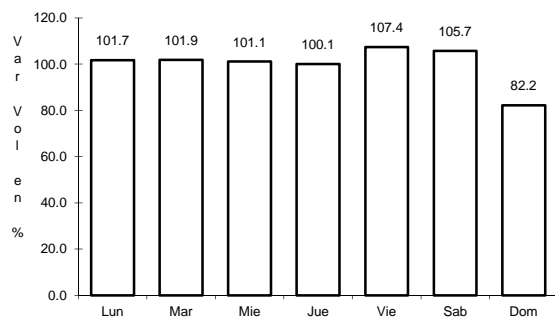
Tipo: 1

Sent: 0

8 CARR: Gómez Palacio - Jiménez

CLAVE: 00006

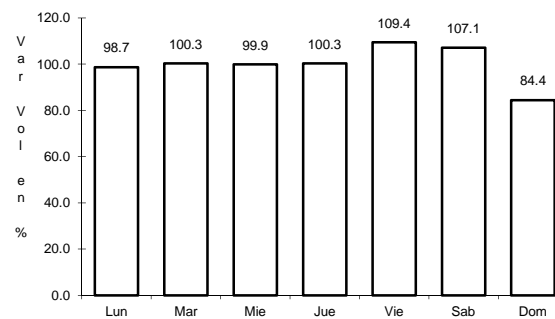
RUTA: MEX-049



Km: 0.00

Tipo: 3

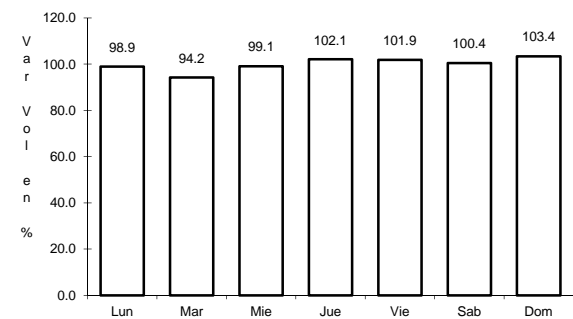
Sent: 1



Km: 0.00

Tipo: 3

Sent: 2



Km: 107.95

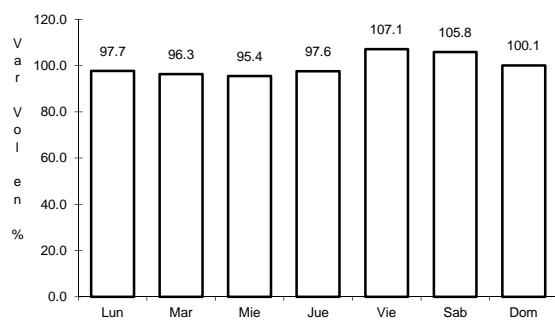
Tipo: 1

Sent: 0

9 CARR: Hidalgo del Parral - Ent. Nuevo Palomas (Vía Corta)

CLAVE: 08811

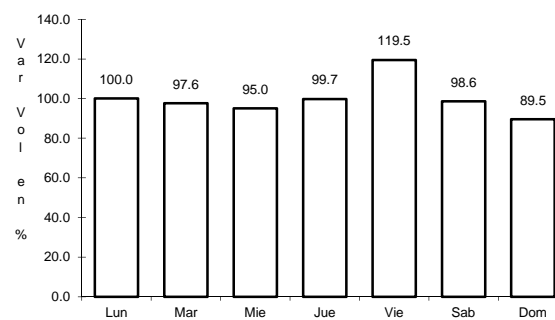
RUTA: MEX-024



Km: 0.00

Tipo: 3

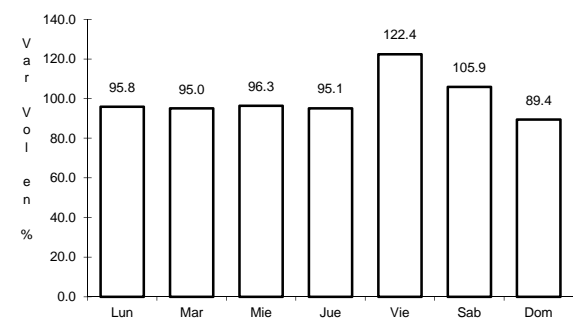
Sent: 0



Km: 66.00

Tipo: 1

Sent: 0



Km: 182.40

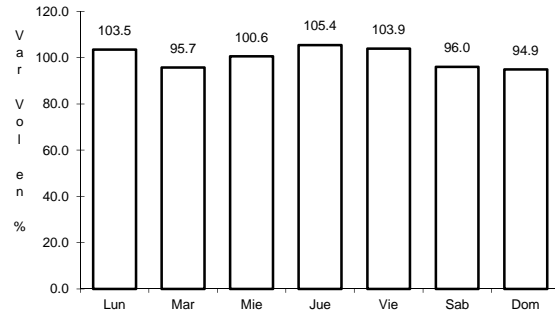
Tipo: 1

Sent: 0

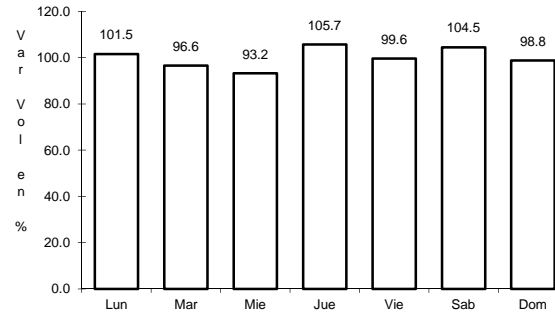
10 CARR: Hidalgo del Parral - Guadalupe y Calvo

CLAVE: 00802

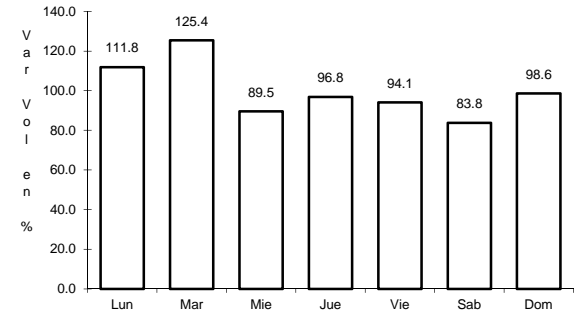
RUTA: MEX-024



Km: 0.00 Tipo: 3 Sent: 0



Km: 110.00 Tipo: 1 Sent: 0

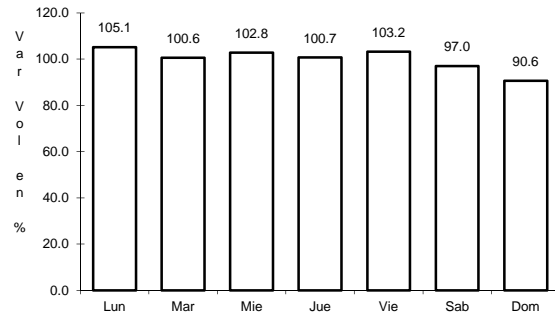


Km: 212.00 Tipo: 1 Sent: 0

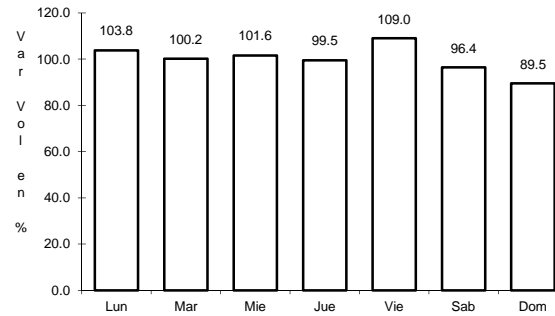
11 CARR: Hidalgo del Parral - Jiménez

CLAVE: 08444

RUTA: MEX-045



Km: 0.00 Tipo: 3 Sent: 1

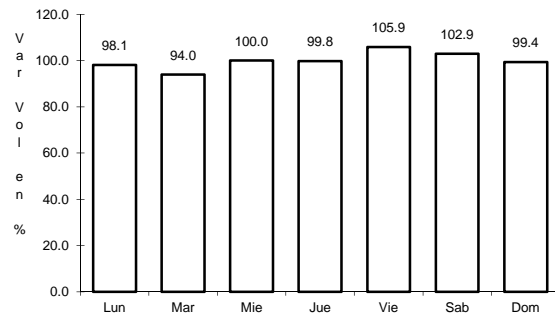


Km: 0.00 Tipo: 3 Sent: 2

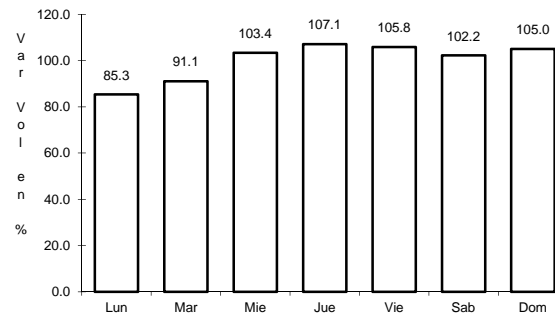
12 CARR: Janos - Agua Prieta

CLAVE: 00220

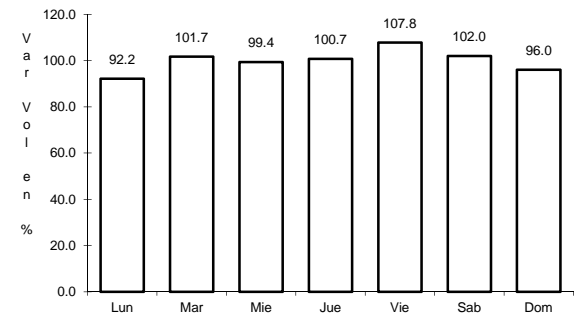
RUTA: MEX-002



Km: 0.00 Tipo: 3 Sent: 0



Km: 56.00 Tipo: 3 Sent: 0

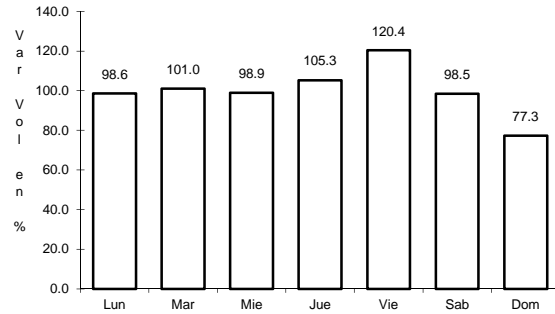


Km: 160.00 Tipo: 1 Sent: 0

13 CARR: Jerónimo - Sta. Teresa

CLAVE: 08043

RUTA: MEX-002



Km: 0.00

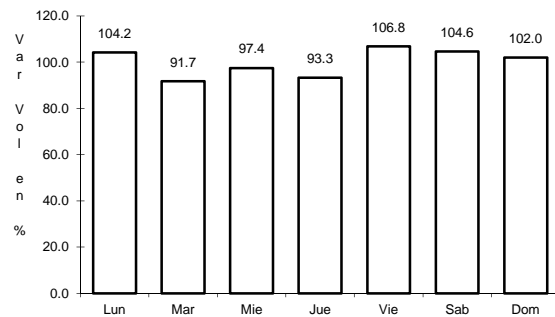
Tipo: 3

Sent: 0

14 CARR: La Junta - Yécora

CLAVE: 00065

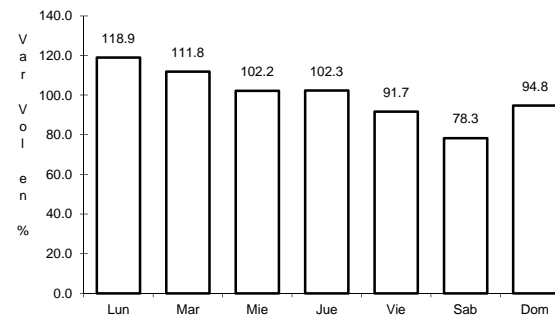
RUTA: MEX-016



Km: 0.00

Tipo: 3

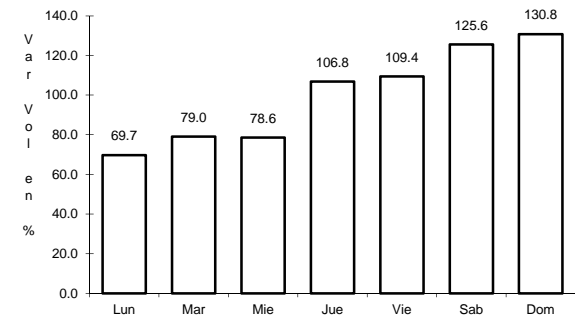
Sent: 0



Km: 70.00

Tipo: 3

Sent: 0



Km: 253.00

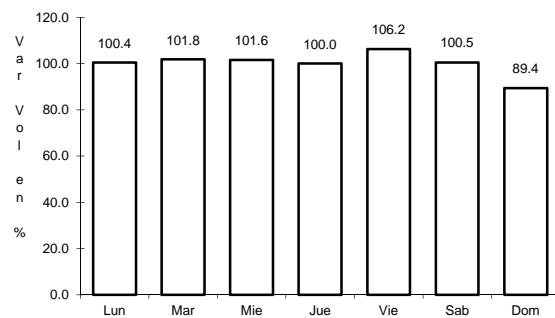
Tipo: 1

Sent: 0

15 CARR: Libramiento de Delicias - Meoqui

CLAVE: 08813

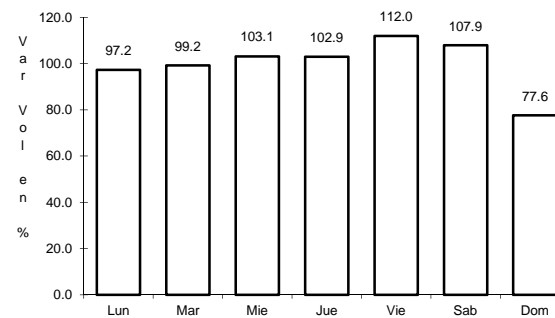
RUTA: MEX-045



Km: 0.00

Tipo: 3

Sent: 1



Km: 0.00

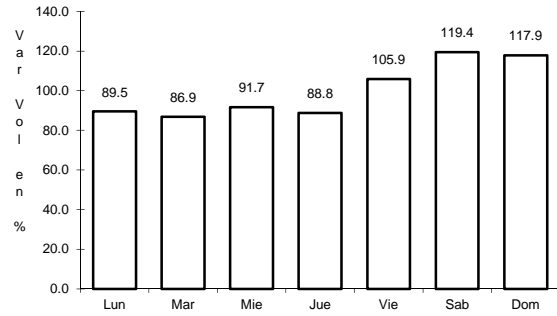
Tipo: 3

Sent: 2

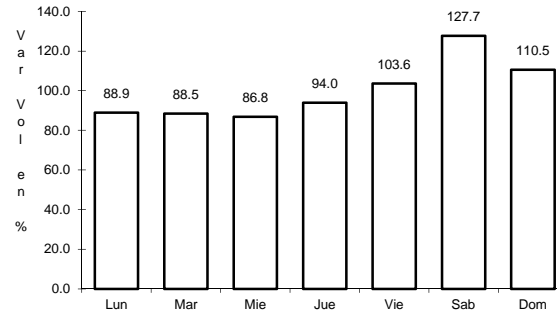
16 CARR: Porvenir - Cd. Juárez

CLAVE: 08169

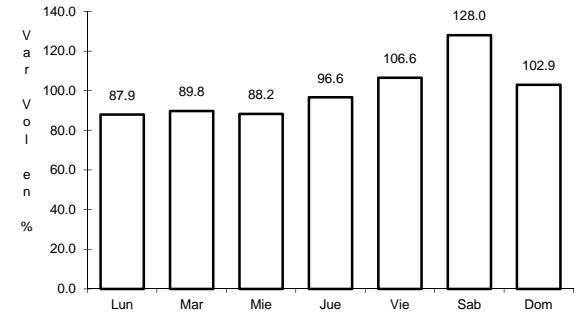
RUTA: MEX-002



Km: 1.67 Tipo: 3 Sent: 0



Km: 70.32 Tipo: 1 Sent: 1

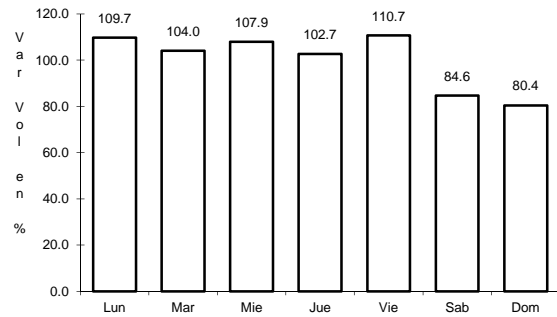


Km: 70.32 Tipo: 1 Sent: 2

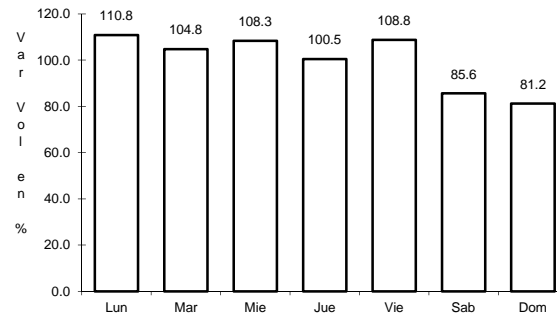
17 CARR: Ramal a Aeropuerto de Chihuahua

CLAVE: 08421

RUTA: MEX-016



Km: 0.00 Tipo: 3 Sent: 1

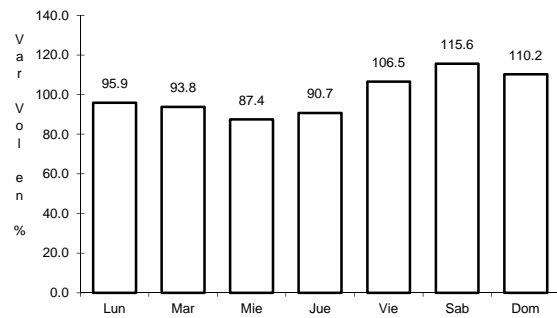


Km: 0.00 Tipo: 3 Sent: 2

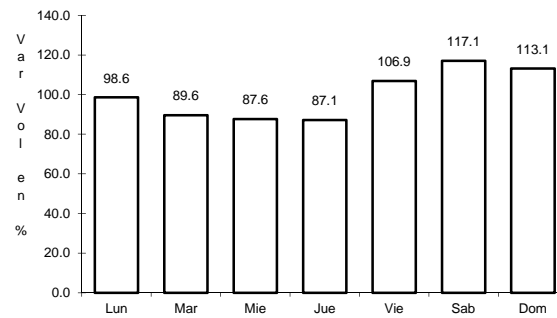
18 CARR: Ramal a Palomas

CLAVE: 08019

RUTA: MEX-002



Km: 0.00 Tipo: 3 Sent: 0

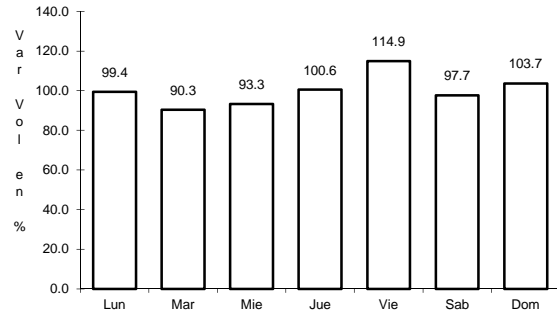


Km: 7.50 Tipo: 3 Sent: 0

19 CARR: Villa Ahumada - Cd. Juárez (Libre)

CLAVE: 08420

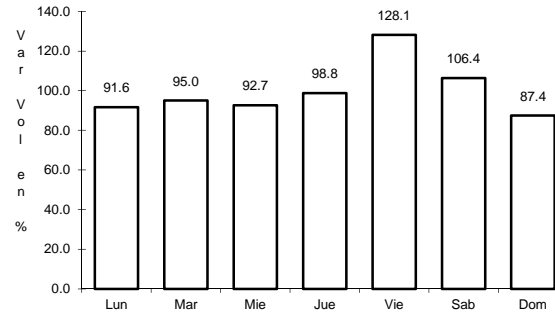
RUTA: MEX-045



Km: 83.63

Tipo: 3

Sent: 1



Km: 83.63

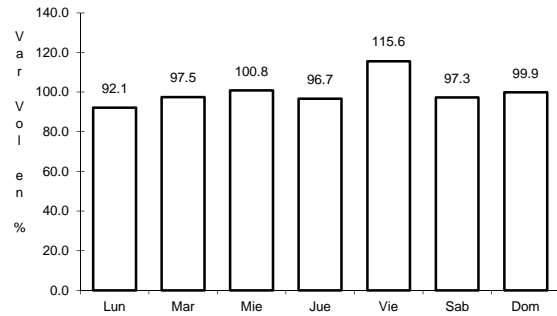
Tipo: 3

Sent: 2

20 CARR: Camargo - Delicias (Cuota)

CLAVE: 08418

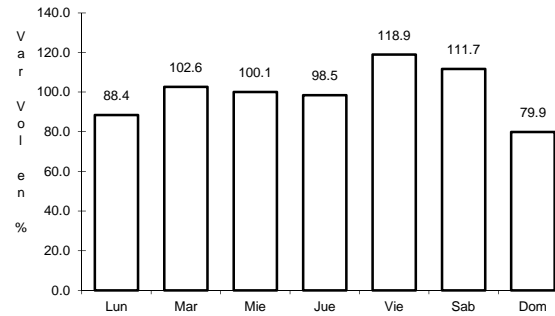
RUTA: MEX-045D



Km: 111.50

Tipo: 3

Sent: 1



Km: 111.50

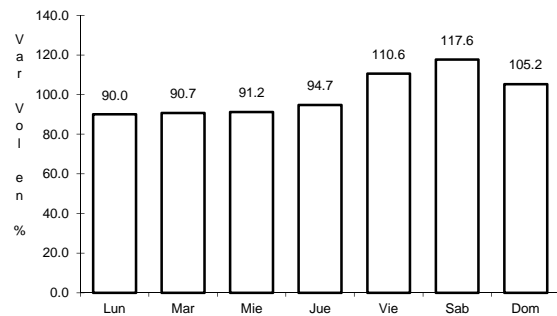
Tipo: 3

Sent: 2

21 CARR: Chihuahua - Sacramento (Cuota)

CLAVE: 08015

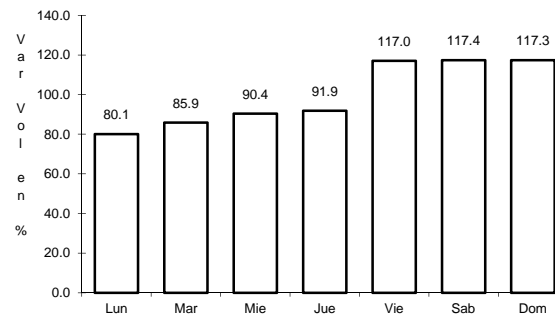
RUTA: MEX-045D



Km: 0.00

Tipo: 3

Sent: 1



Km: 0.00

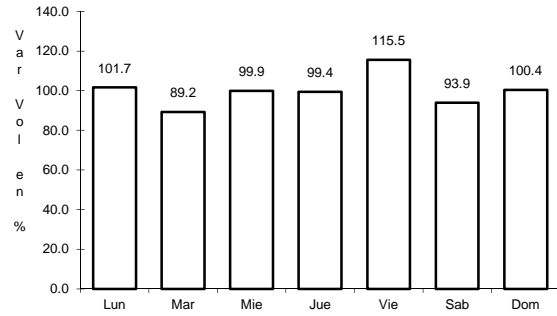
Tipo: 3

Sent: 2

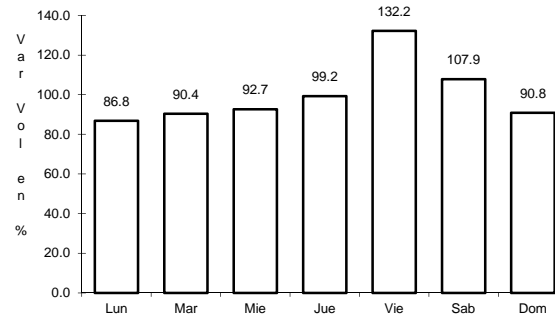
22 CARR: El Sueco - Villa Ahumada (Cuota)

CLAVE: 08420

RUTA: MEX-045D



Km: 0.00 Tipo: 3 Sent: 1

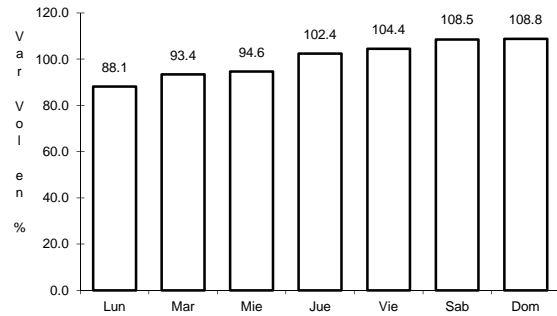


Km: 0.00 Tipo: 3 Sent: 2

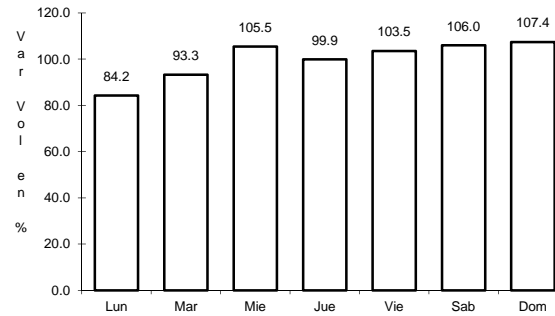
23 CARR: Gómez Palacio - Corralitos (Cuota)

CLAVE: 00016

RUTA: MEX-049D



Km: 2.21 Tipo: 1 Sent: 1

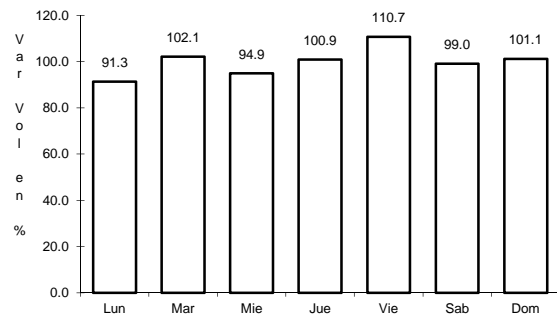


Km: 2.21 Tipo: 1 Sent: 2

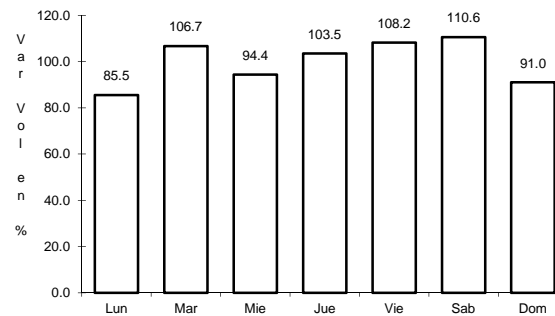
24 CARR: Jiménez - Camargo (Cuota)

CLAVE: 08418

RUTA: MEX-045D



Km: 0.00 Tipo: 3 Sent: 1

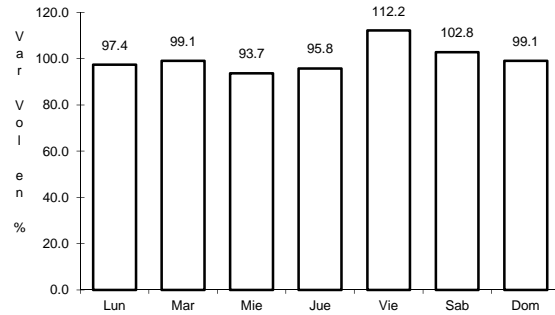


Km: 0.00 Tipo: 3 Sent: 2

25 CARR: Ahumada - Ricardo Flores Magón

CLAVE: 08804

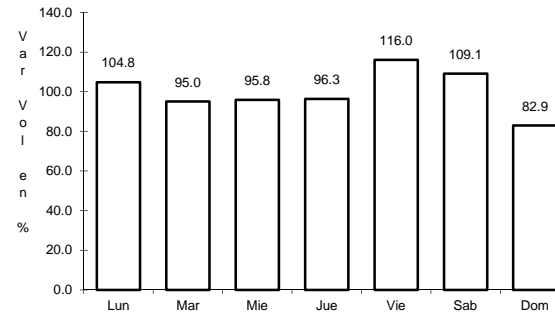
RUTA: CHIH



Km: 0.00

Tipo: 3

Sent: 0



Km: 96.00

Tipo: 1

Sent: 0

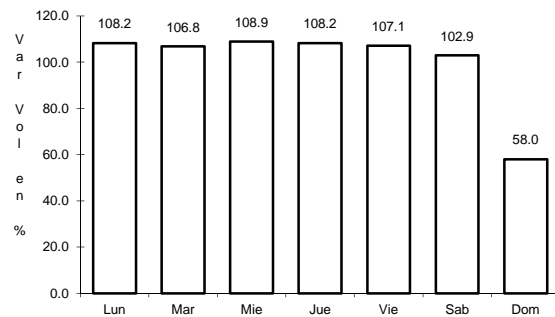
Tipo: 0

Sent: 0

26 CARR: Cuauhtémoc - Buenaventura

CLAVE: 08015

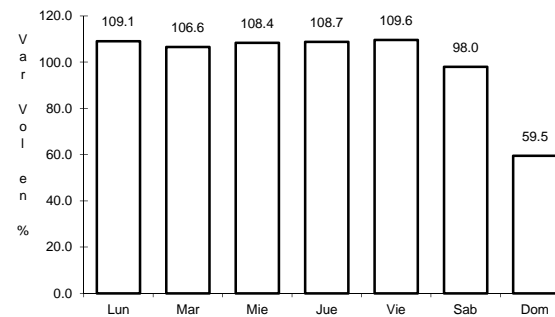
RUTA: CHIH



Km: 0.00

Tipo: 3

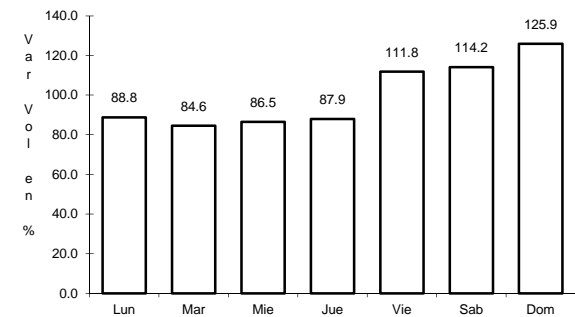
Sent: 1



Km: 0.00

Tipo: 3

Sent: 2



Km: 253.30

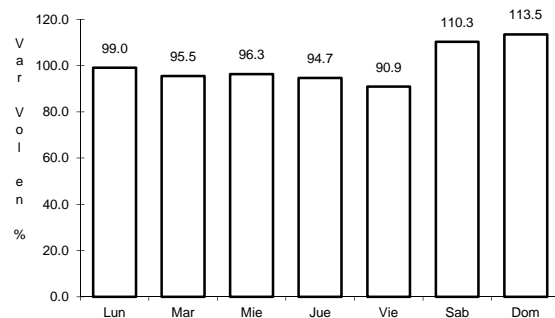
Tipo: 1

Sent: 0

27 CARR: Delicias - Saucillo

CLAVE: 08007

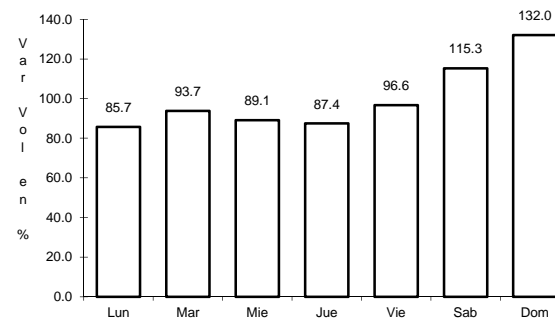
RUTA: CHIH-007



Km: 0.00

Tipo: 3

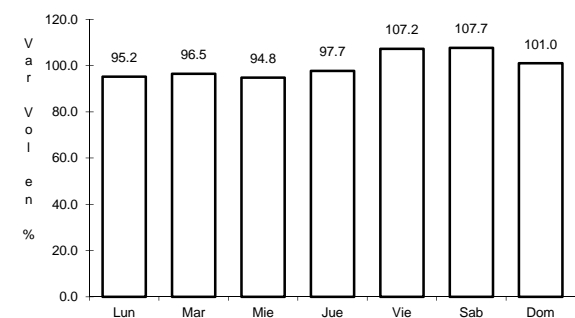
Sent: 0



Km: 17.00

Tipo: 1

Sent: 0



Km: 33.00

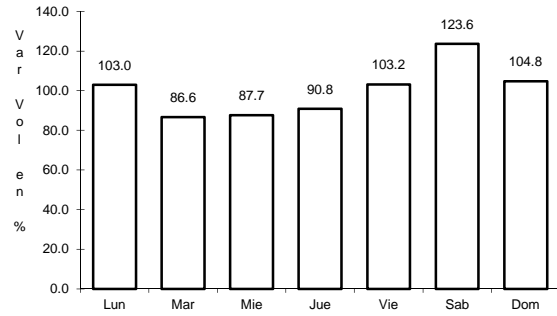
Tipo: 1

Sent: 0

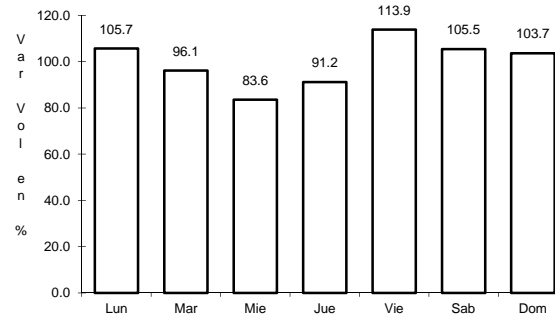
28 CARR: Ent. Peña Blanca - Ent. La Concha

CLAVE: 08493

RUTA: CHIH



Km: 0.00 Tipo: 3 Sent: 0

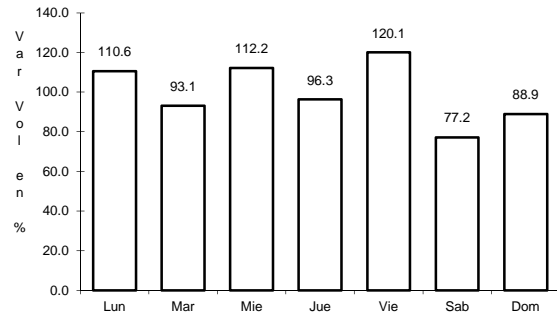


Km: 17.00 Tipo: 1 Sent: 0

29 CARR: Ent. Puerto Justo - Ent. Guachochic

CLAVE: 08044

RUTA: CHIH

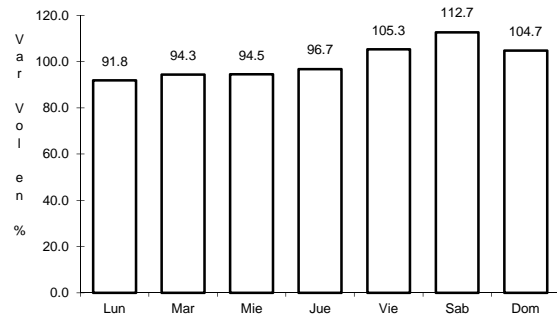


Km: 0.00 Tipo: 3 Sent: 0

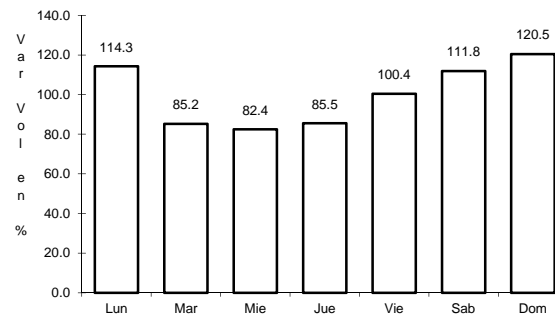
30 CARR: Jiménez - Camargo

CLAVE: 08021

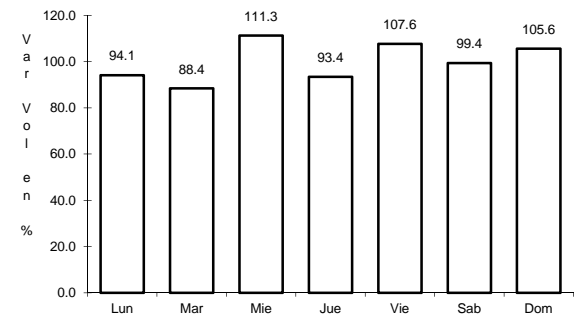
RUTA: CHIH-049



Km: 0.00 Tipo: 3 Sent: 0



Km: 65.80 Tipo: 3 Sent: 0

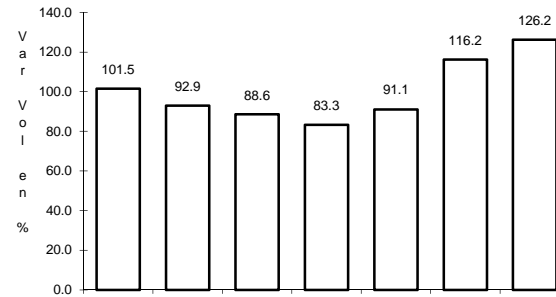
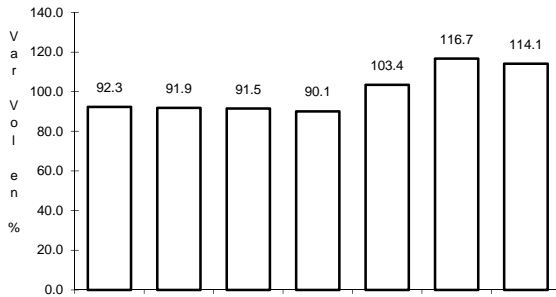
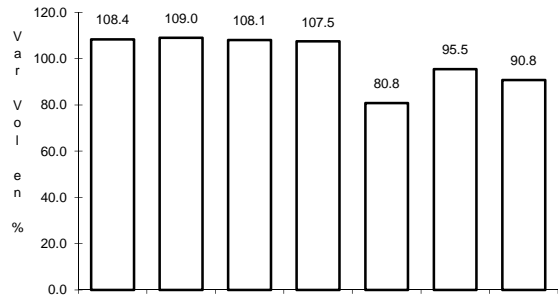


Km: 78.20 Tipo: 1 Sent: 0

31 CARR: Lázaro Cárdenas - Ent. Colonia San José

CLAVE: 08004

RUTA: CHIH-004



Km: 0.00

Tipo: 3

Sent: 1

Km: 0.00

Tipo: 3

Sent: 2

Km: 16.00

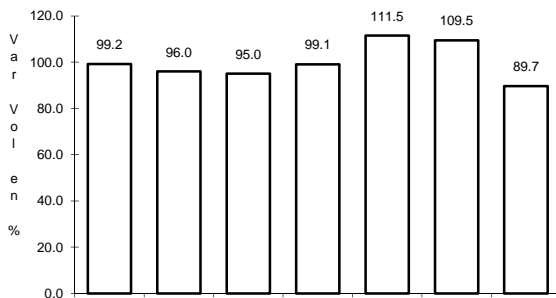
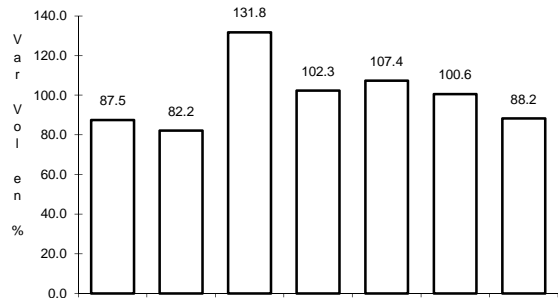
Tipo: 1

Sent: 0

32 CARR: Libramiento de Hidalgo del Parral

CLAVE: 08221

RUTA: CHIH



Km: 8.00

Tipo: 3

Sent: 1

Km: 8.00

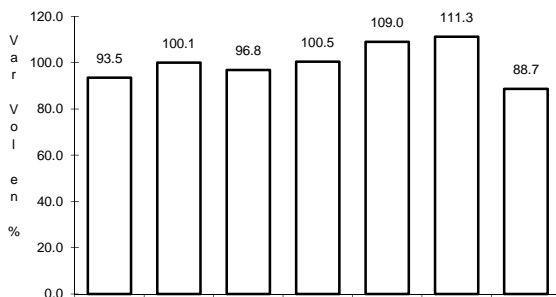
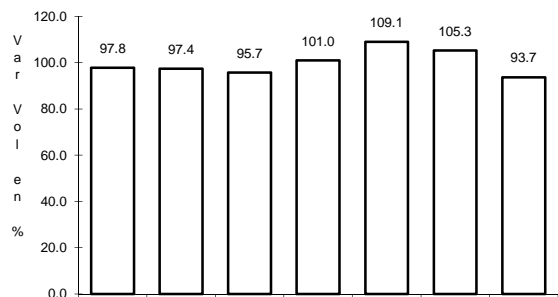
Tipo: 3

Sent: 2

33 CARR: Libramiento de Jiménez

CLAVE: 08047

RUTA: CHIH



Km: 0.00

Tipo: 3

Sent: 1

Km: 0.00

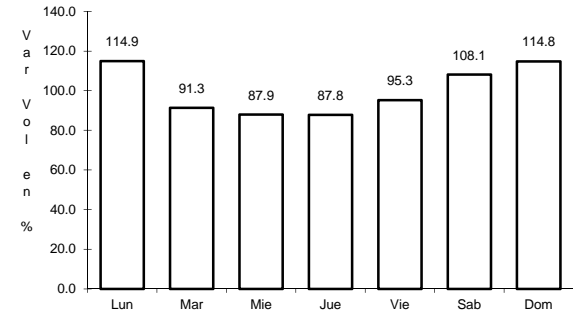
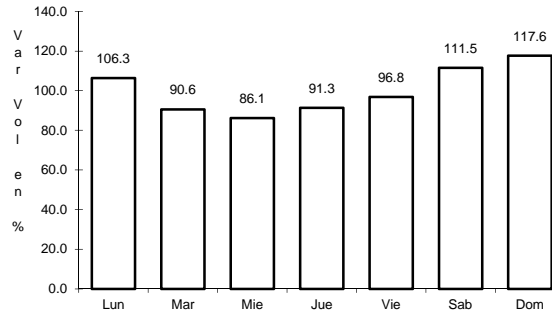
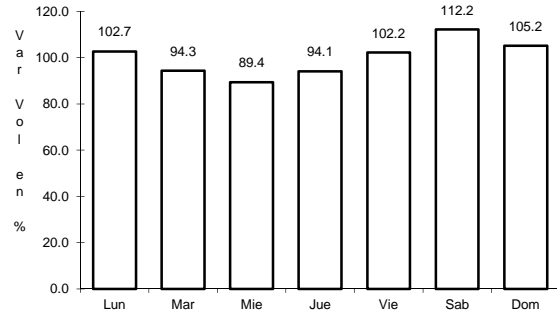
Tipo: 3

Sent: 2

34 CARR: Meoqui - Julimes

CLAVE: 08005

RUTA: CHIH-005



Km: 0.00 Tipo: 3 Sent: 0

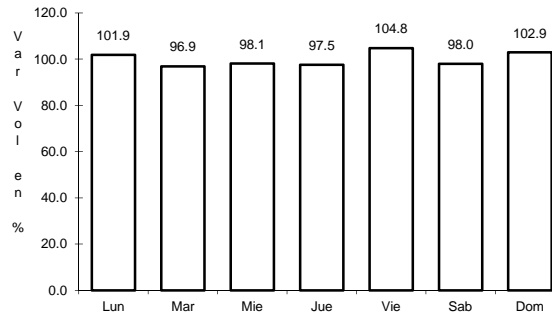
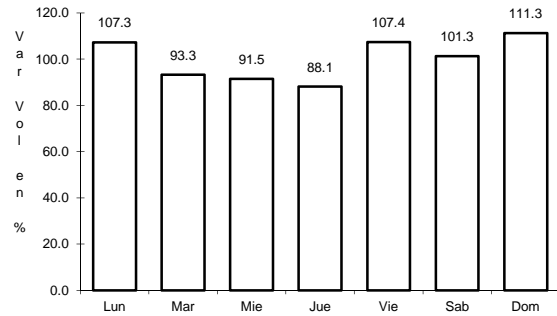
Km: 15.40 Tipo: 3 Sent: 0

Km: 23.00 Tipo: 1 Sent: 0

35 CARR: Ramal a Creel

CLAVE: 08812

RUTA: CHIH



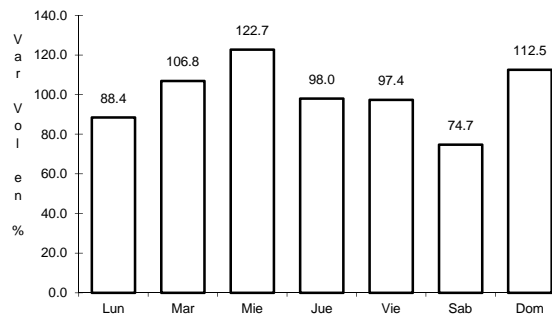
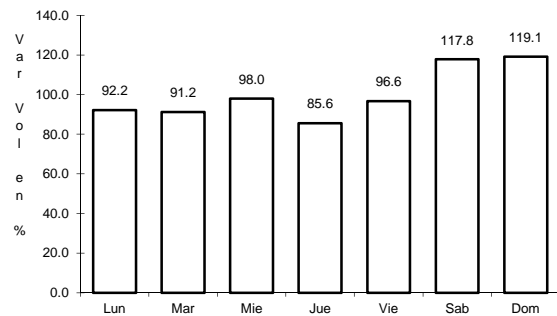
Km: 0.00 Tipo: 3 Sent: 0

Km: 58.00 Tipo: 3 Sent: 0

36 CARR: San Juanito - Ent. Basaseachi

CLAVE: 08045

RUTA: CHIH



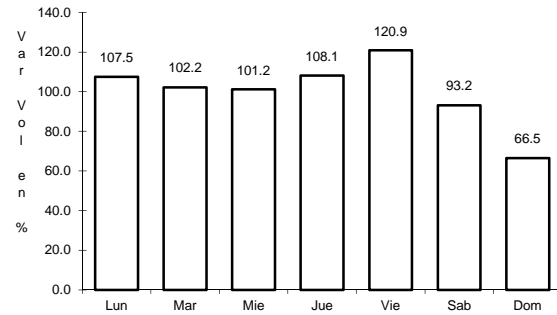
Km: 0.00 Tipo: 3 Sent: 0

Km: 84.00 Tipo: 1 Sent: 0

37 CARR: T. C. (Jiménez - Camargo) - Ojinaga

CLAVE: 08009

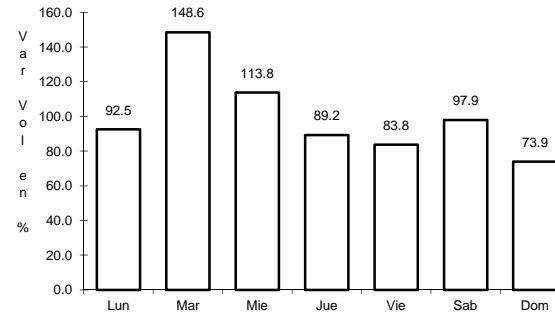
RUTA: CHIH-018



Km: 0.00

Tipo: 3

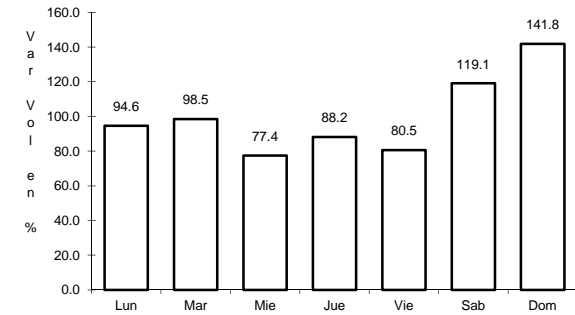
Sent: 0



Km: 97.00

Tipo: 3

Sent: 0



Km: 247.00

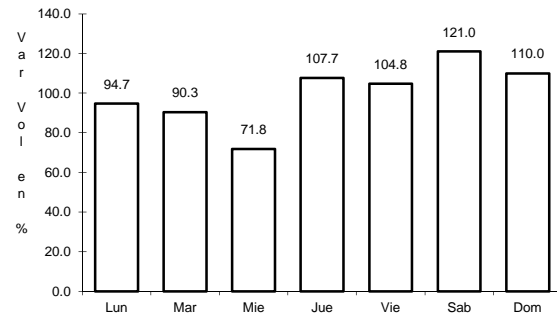
Tipo: 1

Sent: 0

38 CARR: T. Julimes - La Boquilla

CLAVE: 08009

RUTA: CHIH-018



Km: 0.00

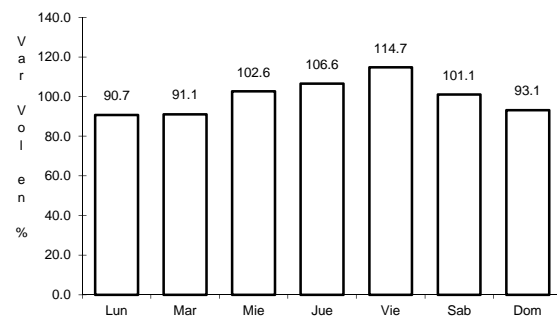
Tipo: 3

Sent: 0

39 CARR: Ent. El Álamo - Ent. Ricardo Flores Magón (Cuota)

CLAVE: 08046

RUTA: CHIH-D



Km: 0.00

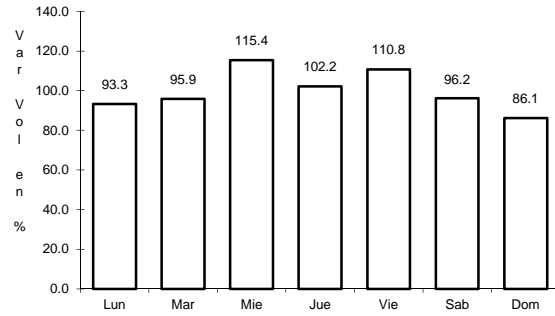
Tipo: 3

Sent: 0

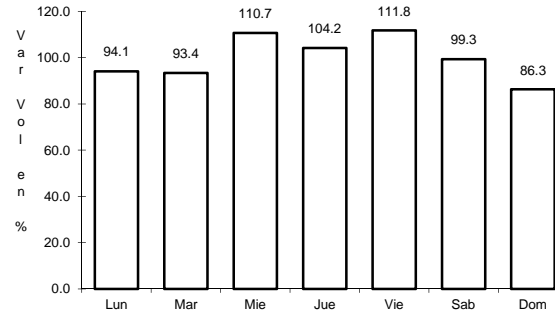
40 CARR: Ricardo Flores Magón - Galeana (Cuota)

CLAVE: 08019

RUTA: CHIH-D



Km: 0.00 Tipo: 3 Sent: 0

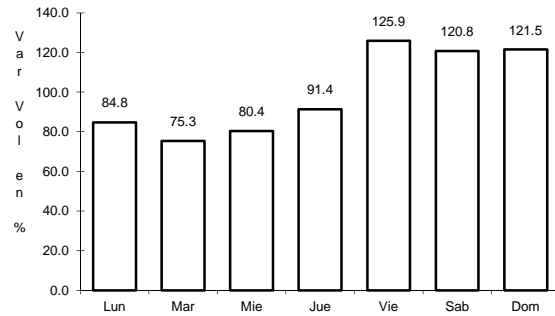


Km: 58.00 Tipo: 1 Sent: 0

41 CARR: Samalayuca - San Jerónimo (Cuota)

CLAVE: 08019

RUTA: CHIH-D

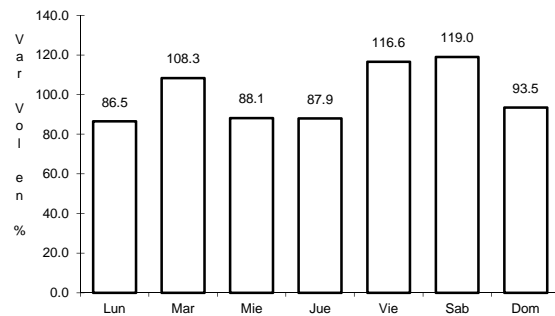


Km: 0.00 Tipo: 3 Sent: 0

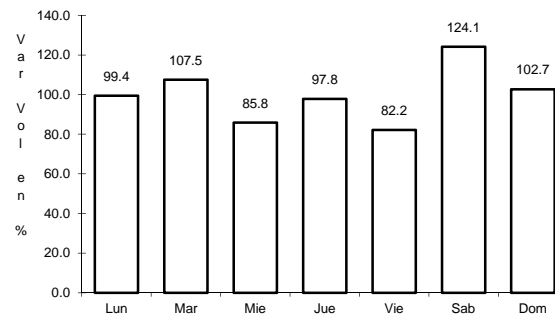
42 CARR: T. C. (Chihuahua - Ojinaga) - La Mula (Cuota)

CLAVE: 08170

RUTA: CHIH-D



Km: 0.00 Tipo: 3 Sent: 0

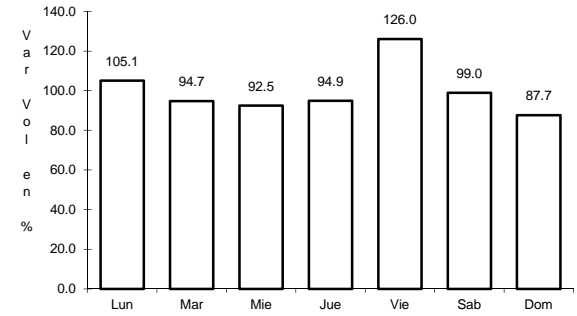
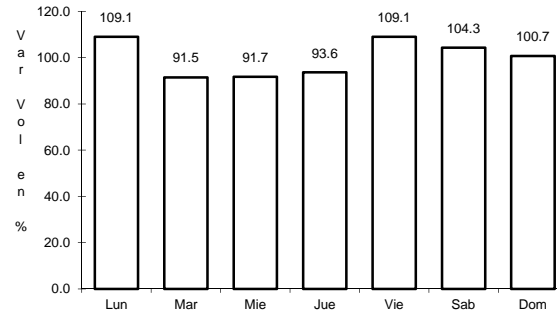
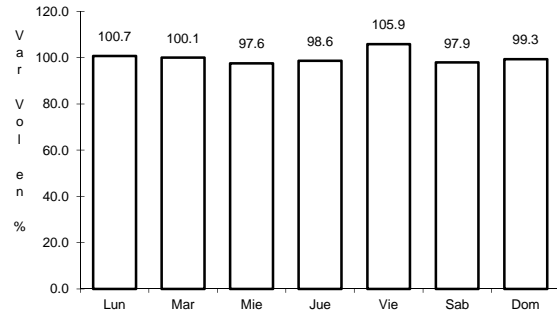


Km: 110.00 Tipo: 1 Sent: 0

43 CARR: Chihuahua - Madera

CLAVE: 08038

RUTA: CHIH-D-MEX-001-CHIH



Km: 10.50

Tipo: 1

Sent: 1

Km: 10.50

Tipo: 1

Sent: 2

Km: 261.30

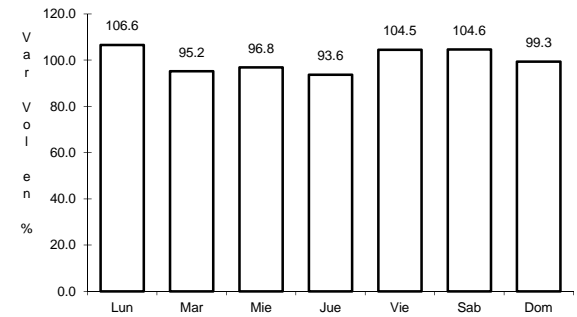
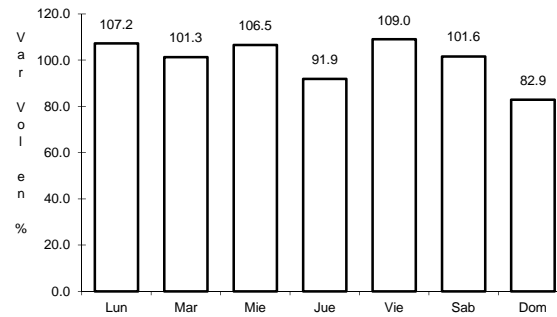
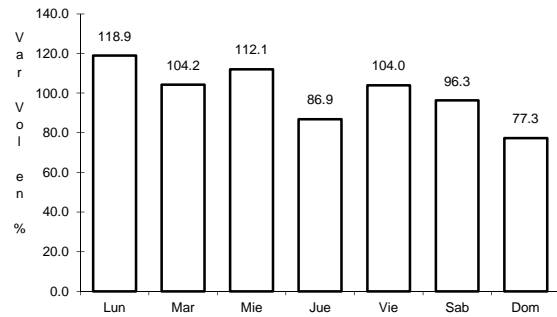
Tipo: 3

Sent: 0

44 CARR: Ent. Agua Caliente - El Terrero

CLAVE: 08170

RUTA: CHIH-MEX



Km: 0.00

Tipo: 3

Sent: 0

Km: 22.00

Tipo: 1

Sent: 0

Km: 120.00

Tipo: 1

Sent: 0