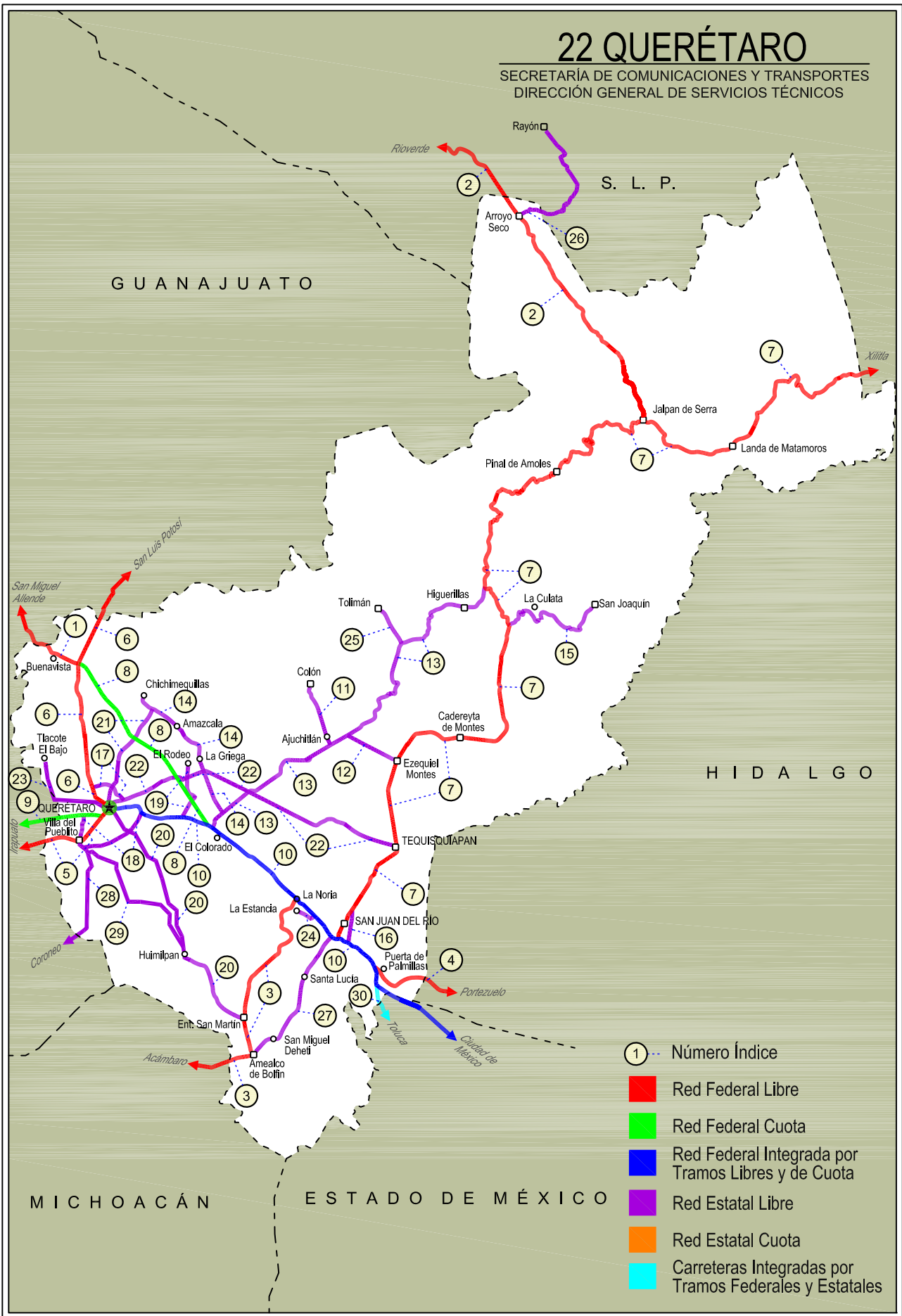


QUERETARO

NO. INDICE	CARRETERA	RUTA
---RED FEDERAL LIBRE---		
1	Ent. Buenavista - San Miguel de Allende	MEX-057
2	Jalpan de Serra - Rioverde	MEX-069
3	La Noria - Acámbaro	MEX-120
4	Portezuelo - Palmillas	MEX-045
5	Querétaro - Irapuato (Libre)	MEX-045
6	Querétaro - San Luis Potosí	MEX-057
7	San Juan del Río - Xilitla	MEX-120
---RED FEDERAL DE CUOTA---		
8	Libramiento Nororiente de Querétaro (Cuota)	MEX-057D
9	Querétaro - Irapuato (Cuota)	MEX-045D
---RED FEDERAL INTEGRADA POR TRAMOS LIBRES Y DE CUOTA---		
10	México - Querétaro (Cuota)	MEX-057-MEX-057D
---RED ESTATAL LIBRE---		
11	Ajuchitlán - Colón	QRO-005
12	Ajuchitlán - Ezequiel Montes	QRO-005
13	El Colorado - Higuierillas	QRO-004
14	Hacienda Paraíso - Chichimequillas	QRO-001
15	La Culata - San Joaquín	QRO-021
16	Libramiento de San Juan del Río	QRO
17	Libramiento Norte de Querétaro	QRO
18	Libramiento Surponiente de Querétaro	QRO
19	Peña Colorada - El Rodeo	QRO
20	Querétaro - Ent. San Martín	QRO
21	Querétaro - Estación Chichimequillas	QRO
22	Querétaro - Tequisquiapan	QRO
23	Querétaro - Tlacote El Bajo	QRO
24	Ramal a La Estancia	QRO
25	Ramal a Tolimán	QRO
26	Rayón - Arroyo Seco	SLP-011
27	San Juan del Río - Amealco	QRO
28	T. C. (Villa del Pueblito - Huimilpan) - Coroneo	QRO-GTO
29	Villa del Pueblito - Huimilpan	QRO
---CARRETERAS INTEGRADAS POR TRAMOS FEDERALES Y ESTATALES---		
30	Toluca - Palmillas	EM(D)-MEX-055

22 QUERÉTARO

SECRETARÍA DE COMUNICACIONES Y TRANSPORTES
DIRECCIÓN GENERAL DE SERVICIOS TÉCNICOS



- ① --- Número Índice
- Red Federal Libre
- Red Federal Cuota
- Red Federal Integrada por Tramos Libres y de Cuota
- Red Estatal Libre
- Red Estatal Cuota
- Carreteras Integradas por Tramos Federales y Estatales

QUERETARO

1 CARR: Ent. Buenavista - San Miguel de Allende

CLAVE: 00111

RUTA: MEX-057

AÑO: 2013

LUGAR	ESTACION				CLASIFICACION VEHICULAR EN PORCIENTO														COORDENADAS	
	KM	TE	SC	TDPA	M	A	B	C2	C3	T3S2	T3S3	T3S2R4	OTROS	A	B	C	K'	D	LATITUD	LONGITUD
T. C. Querétaro - San Luis Potosí	0.00	3	0	11214	0.8	79.3	3.7	5.9	2.7	4.4	1.5	0.6	1.1	80.1	3.7	16.2	0.085	0.509	20.822111	-100.456750
Lim. Edos. Term. Oro. Ppia. Gto.	7.91																			
T. Izq. Guadalupe	12.00	1	0	5900	1.0	82.4	3.7	3.7	1.8	3.5	1.4	1.3	1.2	83.4	3.7	12.9	0.080	0.507	20.882750	-100.572833
San Miguel de Allende	35.11	1	0	10255	1.8	80.4	5.1	6.6	1.2	3.2	1.0	0.2	0.5	82.2	5.1	12.7	0.076	0.506	20.902361	-100.709639

2 CARR: Jalpan de Serra - Rioverde

CLAVE: 00265

RUTA: MEX-069

AÑO: 2013

LUGAR	ESTACION				CLASIFICACION VEHICULAR EN PORCIENTO														COORDENADAS	
	KM	TE	SC	TDPA	M	A	B	C2	C3	T3S2	T3S3	T3S2R4	OTROS	A	B	C	K'	D	LATITUD	LONGITUD
Jalpan de Serra	0.00	3	0	5126	1.2	84.2	3.3	6.1	0.8	2.9	0.6	0.1	0.8	85.4	3.3	11.3	0.075	0.502	21.229917	-99.478517
T. Izq. Conca	35.01	1	0	1992	1.7	83.7	1.8	9.8	0.7	1.5	0.3	0.1	0.4	85.4	1.8	12.8	0.080	0.504	21.448889	-99.630389
Arroyo Seco	48.60	1	0	1543	2.1	82.3	2.8	10.4	0.9	1.2	0.2	0.0	0.1	84.4	2.8	12.8	0.094	0.507	21.542583	-99.688917
Lim. Edos. Term. Oro. Ppia. S. L. P.	52.27																			
San Ciro de Acosta	69.42	1	0	2029	3.8	73.7	3.8	15.9	0.7	1.5	0.4	0.0	0.2	77.5	3.8	18.7	0.067	0.507	21.649306	-99.810278
San Ciro de Acosta	69.42	3	0	3027	2.6	82.8	2.1	8.6	1.2	2.1	0.4	0.0	0.2	85.4	2.1	12.5	0.071	0.504	21.661167	-99.826972
Rioverde	105.43	1	0	6131	5.3	81.5	1.3	7.7	0.9	2.6	0.5	0.0	0.2	86.8	1.3	11.9	0.072	0.503	21.883278	-99.976250

3 CARR: La Noria - Acámbaro

CLAVE: 00131

RUTA: MEX-120

AÑO: 2013

LUGAR	ESTACION				CLASIFICACION VEHICULAR EN PORCIENTO														COORDENADAS	
	KM	TE	SC	TDPA	M	A	B	C2	C3	T3S2	T3S3	T3S2R4	OTROS	A	B	C	K'	D	LATITUD	LONGITUD
La Noria	0.00	3	0	5688	0.9	83.1	2.9	6.3	1.0	3.7	1.0	0.5	0.6	84.0	2.9	13.1	0.084	0.535	20.438776	-100.074063
Amealco	34.66	1	0	4282	0.5	82.3	2.1	8.0	1.7	3.2	1.1	0.7	0.4	82.8	2.1	15.1	0.093	0.539	20.198657	-100.149932
Amealco	34.66	3	0	4679	0.5	85.8	0.7	6.0	1.7	2.9	1.3	0.3	0.8	86.3	0.7	13.0	0.099	0.514	20.187394	-100.152376
Lim. Edos. Term. Oro. Ppia. Mich.	39.15																			
Lim. Edos. Term. Mich. Ppia. Gto.	55.90																			
Coroneo	59.35	3	0	1887	1.1	85.4	2.6	6.4	1.6	1.7	1.0	0.1	0.1	86.5	2.6	10.9	0.088	0.504	20.196257	-100.370631
Jerécuaro	79.70	3	0	4339	1.5	82.2	1.7	8.7	2.0	1.9	1.9	0.0	0.1	83.7	1.7	14.6	0.075	0.531	20.142885	-100.533816
Acámbaro	111.12	1	0	7337	3.6	79.7	0.3	10.6	0.5	3.7	0.8	0.2	0.6	83.3	0.3	16.4	0.076	0.535	20.046366	-100.707102

4 CARR: Portezuelo - Palmillas

CLAVE: 00194

RUTA: MEX-045

AÑO: 2013

LUGAR	ESTACION				CLASIFICACION VEHICULAR EN PORCIENTO														COORDENADAS	
	KM	TE	SC	TDPA	M	A	B	C2	C3	T3S2	T3S3	T3S2R4	OTROS	A	B	C	K'	D	LATITUD	LONGITUD
Portezuelo	0.00	3	1	4516	2.7	71.1	6.1	7.1	2.3	6.6	2.4	1.1	0.6	73.8	6.1	20.1	0.065	0.505	20.486543	-99.301990

QUERETARO

4 CARR: Portezuelo - Palmillas

CLAVE: 00194

RUTA: MEX-045

AÑO: 2013

LUGAR	ESTACION				CLASIFICACION VEHICULAR EN PORCIENTO														COORDENADAS	
	KM	TE	SC	TDPA	M	A	B	C2	C3	T3S2	T3S3	T3S2R4	OTROS	A	B	C	K'	D	LATITUD	LONGITUD
Portezuelo	0.00	3	2	4612	1.7	70.1	6.2	7.4	2.6	7.4	2.6	1.3	0.7	71.8	6.2	22.0	0.075	0.505	20.486436	-99.302854
Jonacapa	29.41	3	0	8362	2.9	61.6	6.3	7.4	4.0	9.8	4.2	2.8	1.0	64.5	6.3	29.2	0.066	0.503	20.435622	-99.536295
Huichapan	45.10	1	0	8789	0.4	69.2	4.9	5.8	3.3	8.8	3.1	3.8	0.7	69.6	4.9	25.5	0.062	0.506	20.391524	-99.639612
T. Izq. Nopala	56.15	1	0	4381	1.6	64.5	6.8	7.0	2.9	8.9	3.7	3.5	1.1	66.1	6.8	27.1	0.074	0.507	20.318748	-99.712678
Lim. Edos. Term. Hgo. Ppia. Oro.	71.40																			
Palmillas	80.00	1	0	8661	0.4	69.3	4.6	7.0	3.7	7.6	3.3	3.0	1.1	69.7	4.6	25.7	0.066	0.512	20.326773	-99.932310

5 CARR: Querétaro - Irapuato (Libre)

CLAVE: 00154

RUTA: MEX-045

AÑO: 2013

LUGAR	ESTACION				CLASIFICACION VEHICULAR EN PORCIENTO														COORDENADAS	
	KM	TE	SC	TDPA	M	A	B	C2	C3	T3S2	T3S3	T3S2R4	OTROS	A	B	C	K'	D	LATITUD	LONGITUD
Querétaro Poniente	0.00	3	1	52329	0.9	92.1	0.2	2.3	0.4	1.2	2.1	0.3	0.5	93.0	0.2	6.8	0.074	0.500	20.553806	-100.421528
Querétaro Poniente	0.00	3	2	52330	0.9	91.3	0.2	2.8	0.4	1.3	2.3	0.3	0.5	92.2	0.2	7.6	0.071	0.500	20.553806	-100.421528
T. Der. Villa del Pueblito	6.67	3	1	14414	1.2	75.0	3.9	7.7	3.2	5.5	2.3	1.1	0.1	76.2	3.9	19.9	0.073	0.508	20.533111	-100.447167
T. Der. Villa del Pueblito	6.67	3	2	14725	1.9	72.2	4.3	8.7	3.7	5.9	2.5	0.7	0.1	74.1	4.3	21.6	0.079	0.508	20.535778	-100.456667
Los Ángeles	12.60	3	1	17261	0.5	78.6	1.5	3.4	3.5	7.9	2.4	1.0	1.2	79.1	1.5	19.4	0.077	0.506	20.533556	-100.501528
Los Ángeles	12.60	3	2	16882	1.1	76.3	1.7	3.6	3.6	8.7	2.6	1.1	1.3	77.4	1.7	20.9	0.064	0.506	20.533556	-100.501528
Lim. Edos. Term. Oro. Ppia. Gto.	13.49																			
T. Izq. Apaseo El Alto	28.37	3	1	14811	0.7	74.1	2.5	6.8	3.4	7.8	2.4	1.1	1.2	74.8	2.5	22.7	0.076	0.501	20.470000	-100.638500
T. Izq. Apaseo El Alto	28.37	3	2	14888	0.6	72.3	2.6	7.1	3.8	8.4	2.6	1.2	1.4	72.9	2.6	24.5	0.077	0.501	20.470000	-100.638500
T. Der. Apaseo El Grande	40.11	3	1	16084	0.6	76.6	2.0	7.5	2.5	6.2	2.2	1.3	1.1	77.2	2.0	20.8	0.071	0.510	20.535472	-100.704944
T. Der. Apaseo El Grande	40.11	3	2	16724	0.7	74.4	2.0	8.1	3.1	6.6	2.4	1.4	1.3	75.1	2.0	22.9	0.080	0.510	20.535472	-100.704944
T. Izq. Libramiento de Celaya Ote.	49.90	1	1	18517	0.9	77.7	1.9	5.6	3.3	5.9	2.2	1.5	1.0	78.6	1.9	19.5	0.075	0.510	20.519889	-100.754139
T. Izq. Libramiento de Celaya Ote.	49.90	1	2	17762	1.0	75.4	2.0	6.0	3.8	6.7	2.4	1.6	1.1	76.4	2.0	21.6	0.075	0.510	20.519889	-100.754139
T. Izq. Libramiento de Celaya Pte.	55.61	3	1	23993	1.2	82.0	1.3	3.7	1.9	5.0	2.5	1.2	1.2	83.2	1.3	15.5	0.065	0.510	20.516639	-100.879694
T. Izq. Libramiento de Celaya Pte.	55.61	3	2	23026	1.4	79.9	1.4	4.0	2.2	5.8	2.6	1.4	1.3	81.3	1.4	17.3	0.076	0.510	20.516639	-100.879694
T. Izq. Cortazar	67.50	3	1	21919	1.1	77.0	1.2	7.9	3.4	5.4	1.9	1.2	0.9	78.1	1.2	20.7	0.086	0.502	20.510028	-100.968278
T. Izq. Cortazar	67.50	3	2	22074	1.5	75.2	1.4	7.9	3.7	5.7	2.2	1.4	1.0	76.7	1.4	21.9	0.065	0.502	20.510028	-100.968278
T. Izq. Libramiento de Salamanca	93.80	1	1	20621	1.7	70.1	7.9	9.5	1.7	4.9	2.2	1.5	0.5	71.8	7.9	20.3	0.068	0.517	20.556028	-101.159028
T. Izq. Libramiento de Salamanca	93.80	1	2	19264	2.2	66.9	8.5	10.5	1.9	5.4	2.4	1.7	0.5	69.1	8.5	22.4	0.063	0.517	20.556028	-101.159028
Irapuato	113.70	1	1	16062	3.2	85.1	1.6	7.3	1.1	0.9	0.4	0.3	0.1	88.3	1.6	10.1	0.072	0.521	20.661167	-101.308972
Irapuato	113.70	1	2	17461	2.9	84.6	1.7	7.8	1.1	1.1	0.4	0.3	0.1	87.5	1.7	10.8	0.080	0.521	20.661167	-101.308972

QUERETARO

6 C A R R : Querétaro - San Luis Potosí

CLAVE: 00165

RUTA: MEX-057

AÑO: 2013

L U G A R	E S T A C I O N				C L A S I F I C A C I O N V E H I C U L A R E N P O R C I E N T O										C O O R D E N A D A S					
	KM	TE	SC	TDPA	M	A	B	C2	C3	T3S2	T3S3	T3S2R4	OTROS	A	B	C	K'	D	LATITUD	LONGITUD
Querétaro	0.00																			
T. Der. Libramiento de Querétaro	6.28	3	1	39890	0.3	90.4	0.9	3.6	0.8	1.5	1.1	0.4	1.0	90.7	0.9	8.4	0.081	0.505	20.636684	-100.428957
T. Der. Libramiento de Querétaro	6.28	3	2	40667	0.3	89.6	1.0	4.0	0.8	1.7	1.2	0.4	1.0	89.9	1.0	9.1	0.080	0.505	20.636687	-100.428957
T. Izq. Juriquilla	15.63	3	1	28439	1.0	87.0	1.2	6.2	1.2	1.8	0.5	0.3	0.8	88.0	1.2	10.8	0.075	0.500	20.707316	-100.437823
T. Izq. Juriquilla	15.63	3	2	28494	1.5	84.9	1.3	7.3	1.3	1.9	0.5	0.3	1.0	86.4	1.3	12.3	0.073	0.500	20.707321	-100.437829
T. Izq. San Miguel de Allende	28.53	1	1	23327	1.2	83.0	1.5	7.4	1.5	3.6	0.9	0.8	0.1	84.2	1.5	14.3	0.144	0.502	20.811444	-100.449000
T. Izq. San Miguel de Allende	28.53	1	2	23126	0.4	81.8	1.7	8.3	1.8	4.0	0.9	1.0	0.1	82.2	1.7	16.1	0.117	0.502	20.811444	-100.449000
T. Izq. San Miguel de Allende	28.53	3	1	17115	0.5	63.8	2.9	11.5	2.8	12.1	2.7	2.6	1.1	64.3	2.9	32.8	0.068	0.501	20.823417	-100.446472
T. Izq. San Miguel de Allende	28.53	3	2	17080	0.4	61.1	3.3	12.1	3.1	12.9	3.0	2.9	1.2	61.5	3.3	35.2	0.058	0.501	20.823417	-100.446472
Lim. Edos. Term. Oro. Ppia. Gto.	36.70																			
X. C. San José Iturbide - El Arenal	46.83	1	1	16084	0.8	64.7	3.8	4.1	2.7	16.1	3.2	3.7	0.9	65.5	3.8	30.7	0.066	0.501	20.967778	-100.429083
X. C. San José Iturbide - El Arenal	46.83	1	2	16026	0.9	61.9	3.9	4.5	2.7	17.5	3.6	4.0	1.0	62.8	3.9	33.3	0.066	0.501	20.967778	-100.429083
X. C. Ent. San Miguel de Allende - Dr. Mora	61.93	1	1	14206	2.9	61.8	5.1	7.4	3.1	11.5	4.7	2.4	1.1	64.7	5.1	30.2	0.072	0.509	21.077139	-100.512944
X. C. Ent. San Miguel de Allende - Dr. Mora	61.93	1	2	13731	2.2	60.0	5.4	7.9	3.3	12.6	4.7	2.8	1.1	62.2	5.4	32.4	0.076	0.509	21.077139	-100.512944
X. C. San Luis de La Paz - Guanajuato	86.68	1	1	12106	2.7	66.7	4.2	5.2	2.6	13.1	2.8	2.2	0.5	69.4	4.2	26.4	0.071	0.506	21.282111	-100.591694
X. C. San Luis de La Paz - Guanajuato	86.68	1	2	11800	1.6	64.7	4.8	6.0	2.9	13.8	3.3	2.4	0.5	66.3	4.8	28.9	0.084	0.506	21.282111	-100.591694
T. Izq. San Diego de La Unión	119.07	3	1	9602	3.4	64.6	3.5	5.0	3.7	12.5	4.1	2.4	0.8	68.0	3.5	28.5	0.066	0.508	21.539222	-100.746528
T. Izq. San Diego de La Unión	119.07	3	2	9926	3.9	59.6	3.8	6.0	4.3	14.0	4.9	2.7	0.8	63.5	3.8	32.7	0.064	0.508	21.539222	-100.746528
Lim. Edos. Term. Gto. Ppia. S. L. P.	124.74																			
T. Izq. Santa María del Río	155.88	3	1	11136	1.4	56.1	6.5	6.2	3.6	17.4	3.8	4.1	0.9	57.5	6.5	36.0	0.069	0.511	21.814056	-100.727556
T. Izq. Santa María del Río	155.88	3	2	10640	1.7	51.4	6.7	6.6	3.9	19.9	4.0	4.9	0.9	53.1	6.7	40.2	0.063	0.511	21.815583	-100.730111
T. Izq. Villa de Reyes	176.35	1	1	15418	0.6	60.9	4.3	8.0	2.4	16.9	2.7	3.4	0.8	61.5	4.3	34.2	0.052	0.504	21.959028	-100.810750
T. Izq. Villa de Reyes	176.35	1	2	15174	3.8	53.4	4.9	9.1	2.6	18.1	3.3	3.9	0.9	57.2	4.9	37.9	0.065	0.504	21.957194	-100.809750
T. Izq. Villa de Reyes	176.35	3	1	15440	1.7	56.8	4.0	10.4	3.0	17.5	2.7	3.2	0.7	58.5	4.0	37.5	0.072	0.537	21.974111	-100.818917
T. Izq. Villa de Reyes	176.35	3	2	17905	0.5	52.1	4.5	11.1	3.3	20.9	2.9	3.8	0.9	52.6	4.5	42.9	0.089	0.537	21.974111	-100.818917
X. C. Libramiento de San Luis Potosí	184.80	1	1	21268	1.1	59.6	5.6	8.7	3.4	13.8	3.2	3.8	0.8	60.7	5.6	33.7	0.080	0.523	22.025250	-100.846722
X. C. Libramiento de San Luis Potosí	184.80	1	2	19407	1.7	54.8	6.4	10.4	3.5	14.3	3.6	4.4	0.9	56.5	6.4	37.1	0.073	0.523	22.025250	-100.846722
X. Periférico de San Luis Potosí	197.50	1	1	31643	2.3	85.7	1.2	4.6	0.9	1.8	1.9	0.8	0.8	88.0	1.2	10.8	0.086	0.503	22.122694	-100.913694
X. Periférico de San Luis Potosí	197.50	1	2	31257	3.2	83.8	1.2	4.9	0.9	2.1	2.2	0.8	0.9	87.0	1.2	11.8	0.083	0.503	22.122694	-100.913694
San Luis Potosí	201.66																			

QUERETARO

7 C A R R : San Juan del Río - Xilitla

CLAVE: 00183

RUTA: MEX-120

AÑO: 2013

L U G A R	E S T A C I O N				C L A S I F I C A C I O N V E H I C U L A R E N P O R C I E N T O										C O O R D E N A D A S					
	KM	TE	SC	TDPA	M	A	B	C2	C3	T3S2	T3S3	T3S2R4	OTROS	A	B	C	K'	D	LATITUD	LONGITUD
San Juan del Río	0.00																			
T. Der. Libramiento de San Juan del Río	5.20	3	1	10131	1.0	88.4	1.7	3.7	1.3	1.7	1.4	0.4	0.4	89.4	1.7	8.9	0.139	0.505	20.426233	-99.975083
T. Der. Libramiento de San Juan del Río	5.20	3	2	9927	1.0	87.0	1.9	4.3	1.5	1.9	1.6	0.4	0.4	88.0	1.9	10.1	0.101	0.505	20.426233	-99.975083
T. Der. Tequisquiapan	19.80	1	1	8238	0.8	87.0	2.3	6.0	1.1	1.4	0.8	0.2	0.4	87.8	2.3	9.9	0.085	0.508	20.515033	-99.902783
T. Der. Tequisquiapan	19.80	1	2	8505	0.7	86.0	2.4	6.6	1.2	1.5	1.0	0.2	0.4	86.7	2.4	10.9	0.088	0.508	20.515033	-99.902783
T. Der. Tequisquiapan	19.80	3	1	7821	1.1	83.9	2.3	7.5	2.0	1.6	0.9	0.4	0.3	85.0	2.3	12.7	0.077	0.502	20.540800	-99.901583
T. Der. Tequisquiapan	19.80	3	2	7759	0.9	82.4	2.4	8.7	2.1	1.7	1.0	0.5	0.3	83.3	2.4	14.3	0.081	0.502	20.540800	-99.901583
Ezequiel Montes	36.50	1	1	5762	1.2	83.9	1.6	6.7	2.8	2.1	0.9	0.4	0.4	85.1	1.6	13.3	0.090	0.502	20.644317	-99.905783
Ezequiel Montes	36.50	1	2	5725	1.4	82.1	2.0	7.2	3.1	2.3	1.1	0.4	0.4	83.5	2.0	14.5	0.101	0.502	20.644317	-99.905783
Ezequiel Montes	36.50	3	0	10427	1.1	78.5	2.2	9.4	1.9	4.5	1.2	0.3	0.9	79.6	2.2	18.2	0.083	0.506	20.677067	-99.891100
Cadereyta	47.90	3	0	8859	0.5	82.6	1.8	6.1	2.0	3.8	1.7	0.6	0.9	83.1	1.8	15.1	0.076	0.501	20.701800	-99.806333
Vizarrón de Montes	73.50	3	0	3279	0.6	74.3	2.5	11.2	5.0	3.2	2.1	0.5	0.6	74.9	2.5	22.6	0.077	0.512	20.839195	-99.716999
T. Der. San Joaquín	79.50	3	0	1273	0.3	77.8	2.2	15.3	2.4	1.6	0.3	0.0	0.1	78.1	2.2	19.7	0.079	0.524	20.884400	-99.706833
T. Izq. Higuerrillas	89.10	3	0	1258	0.3	77.6	2.4	14.8	2.7	1.7	0.5	0.0	0.0	77.9	2.4	19.7	0.079	0.520	20.947320	-99.749485
T. Izq. Peñamiller	103.00	3	0	1301	0.5	79.8	3.4	11.4	2.1	2.2	0.4	0.0	0.2	80.3	3.4	16.3	0.090	0.513	21.040533	-99.739717
Pinal de Amoles	140.00	3	0	1642	0.7	83.6	2.4	8.8	1.5	1.9	0.9	0.0	0.2	84.3	2.4	13.3	0.080	0.511	21.136850	-99.620700
Jalpan de Serra	179.30	3	0	5246	1.3	89.2	1.3	3.2	0.5	3.4	0.5	0.1	0.5	90.5	1.3	8.2	0.077	0.502	21.212533	-99.457350
Landa de Matamoros	201.60	3	0	2525	1.0	82.6	1.6	11.2	1.1	1.6	0.6	0.1	0.2	83.6	1.6	14.8	0.077	0.500	21.186733	-99.312817
El Lobo	236.40	3	0	884	2.0	82.7	2.4	6.6	2.4	2.2	0.8	0.0	0.9	84.7	2.4	12.9	0.087	0.515	21.291733	-99.115117
Lim. Edos. Term. Oro. Ppia. S. L. P.	238.33																			
Xilitla	266.40	1	0	1492	4.4	74.2	5.2	13.2	1.1	1.3	0.5	0.0	0.1	78.6	5.2	16.2	0.084	0.502	21.379249	-99.000865
T. C. Portezuelo - Cd. Valles	276.98	1	0	2748	3.8	74.7	4.9	10.0	2.1	2.1	0.9	0.8	0.7	78.5	4.9	16.6	0.091	0.512	21.442933	-98.929733

8 C A R R : Libramiento Nororiente de Querétaro (Cuota)

CLAVE: 22266

RUTA: MEX-057D

AÑO: 2013

L U G A R	E S T A C I O N				C L A S I F I C A C I O N V E H I C U L A R E N P O R C I E N T O										C O O R D E N A D A S					
	KM	TE	SC	TDPA	M	A	B	C2	C3	T3S2	T3S3	T3S2R4	OTROS	A	B	C	K'	D	LATITUD	LONGITUD
T. C. México - Querétaro	0.00	3	1	7064	1.3	45.9	2.3	4.7	4.8	31.2	5.5	3.7	0.6	48.3	2.2	49.5	0.064	0.504	20.566389	-100.232000
T. C. México - Querétaro	0.00	3	2	6954	1.3	40.9	2.5	5.4	5.0	34.0	5.9	4.4	0.6	60.5	1.7	37.8	0.066	0.504	20.566389	-100.232000
Caseta de Cobro Chichimequillas	20.32	2	1	6690	0.1	38.2	3.0	6.6	5.8	34.7	3.6	7.0	1.0	38.3	3.0	58.7	0.066	0.500	20.705575	-100.343908
Caseta de Cobro Chichimequillas	20.32	2	2	6690	0.1	38.2	3.0	6.6	5.8	34.7	3.6	7.0	1.0	38.3	3.0	58.7	0.066	0.500	20.705575	-100.343908
T. C. Querétaro - San Luis Potosí	37.50	1	1	7322	1.9	48.0	2.4	5.2	3.7	29.3	4.4	3.9	1.2	49.9	2.4	47.7	0.061	0.511	20.812944	-100.441806
T. C. Querétaro - San Luis Potosí	37.50	1	2	6997	1.3	45.9	2.6	5.6	3.9	30.1	4.9	4.4	1.3	47.2	2.6	50.2	0.057	0.511	20.812944	-100.441806

QUERETARO

9 CARR: Querétaro - Irapuato (Cuota)

CLAVE: 00423

RUTA: MEX-045D

AÑO: 2013

LUGAR	ESTACION				CLASIFICACION VEHICULAR EN PORCIENTO										COORDENADAS					
	KM	TE	SC	TDPA	M	A	B	C2	C3	T3S2	T3S3	T3S2R4	OTROS	A	B	C	K'	D	LATITUD	LONGITUD
Querétaro	0.00	3	1	18656	1.1	72.3	4.0	5.8	3.5	6.3	2.8	3.6	0.6	73.4	4.0	22.6	0.082	0.513	20.576667	-100.420667
Querétaro	0.00	3	2	17709	0.5	69.9	4.6	6.8	3.8	6.9	3.0	3.9	0.6	70.4	4.6	25.0	0.082	0.513	20.576667	-100.420667
Caseta de Cobro Querétaro	7.00	2	1	10260	0.1	67.3	4.0	6.6	5.3	10.5	1.2	4.3	0.7	67.4	4.0	28.6	0.079	0.500	20.572188	-100.472977
Caseta de Cobro Querétaro	7.00	2	2	10260	0.1	67.3	4.0	6.6	5.3	10.5	1.2	4.3	0.7	67.4	4.0	28.6	0.079	0.500	20.572188	-100.472977
Lim. Edos. Term. Oro. Ppia. Gto.	8.97																			
X. C. Celaya - Dolores Hidalgo	44.10	1	1	16529	1.3	70.1	5.3	5.8	4.1	5.9	3.0	3.5	1.0	71.4	5.3	23.3	0.069	0.503	20.557111	-100.815528
X. C. Celaya - Dolores Hidalgo	44.10	1	2	16346	1.2	67.3	6.0	6.7	4.2	6.2	3.3	4.1	1.0	68.5	6.0	25.5	0.069	0.503	20.557111	-100.815528
T. Izq. Salamanca	81.54	1	1	11728	1.9	63.2	6.1	6.3	4.8	9.6	3.0	4.2	0.9	65.1	6.1	28.8	0.066	0.509	20.596778	-101.173028
T. Izq. Salamanca	81.54	1	2	12168	2.2	59.9	6.5	7.2	5.0	10.1	3.5	4.7	0.9	62.1	6.5	31.4	0.068	0.509	20.596778	-101.173028
T. Izq. Salamanca	81.54	3	1	12047	1.5	63.9	6.4	7.2	4.4	9.4	2.1	4.4	0.7	65.4	6.4	28.2	0.067	0.511	20.600306	-101.190944
T. Izq. Salamanca	81.54	3	2	12603	1.8	60.4	6.9	7.8	5.0	10.3	2.3	4.7	0.8	62.2	6.9	30.9	0.068	0.511	20.600306	-101.190944
Caseta de Cobro Salamanca	83.25	2	1	9149	0.1	65.9	5.3	4.9	5.0	11.7	1.0	5.5	0.6	66.0	5.3	28.7	0.079	0.500	20.598618	-101.180922
Caseta de Cobro Salamanca	83.25	2	2	9149	0.1	65.9	5.3	4.9	5.0	11.7	1.0	5.5	0.6	66.0	5.3	28.7	0.079	0.500	20.598618	-101.180922
T. Der. Libramiento de Irapuato	96.30	1	1	11423	1.5	65.6	5.5	7.1	4.3	9.5	1.2	4.6	0.7	67.1	5.5	27.4	0.062	0.504	20.650083	-101.281722
T. Der. Libramiento de Irapuato	96.30	1	2	11573	1.4	62.3	6.3	7.8	4.8	10.2	1.3	5.1	0.8	63.7	6.3	30.0	0.058	0.504	20.650083	-101.281722
T. Der. Libramiento de Irapuato	96.30	3	1	16592	1.0	76.7	3.0	4.0	4.4	5.9	1.7	2.3	1.0	77.7	3.0	19.3	0.073	0.519	20.654306	-101.294972
T. Der. Libramiento de Irapuato	96.30	3	2	15407	1.2	74.6	3.3	4.6	4.6	6.4	1.8	2.5	1.0	75.8	3.3	20.9	0.083	0.519	20.654306	-101.294972
T. C. Irapuato - Zapotlanejo	104.70																			

10 CARR: México - Querétaro (Cuota)

CLAVE: 00411

RUTA: MEX-057-MEX-057D

AÑO: 2013

LUGAR	ESTACION				CLASIFICACION VEHICULAR EN PORCIENTO										COORDENADAS					
	KM	TE	SC	TDPA	M	A	B	C2	C3	T3S2	T3S3	T3S2R4	OTROS	A	B	C	K'	D	LATITUD	LONGITUD
México	0.00																			
Lim. Edos. Term. D. F. Ppia. Mex.	11.30																			
Caseta de Cobro Tepetzotlán	43.01	2	1	25513	0.2	68.5	6.4	6.3	4.3	10.8	0.8	2.3	0.4	68.7	6.4	24.9	0.077	0.500	19.715358	-99.207587
Caseta de Cobro Tepetzotlán	43.01	2	2	25513	0.2	68.5	6.4	6.3	4.3	10.8	0.8	2.3	0.4	68.7	6.4	24.9	0.077	0.500	19.715358	-99.207587
Ent. Jorobas	56.18	1	1	25483	1.4	70.2	4.8	8.2	2.8	7.9	1.6	2.2	0.9	71.6	4.8	23.6	0.070	0.505	19.811311	-99.238734
Ent. Jorobas	56.18	1	2	25977	1.9	66.4	5.4	8.9	3.1	8.9	2.0	2.4	1.0	68.3	5.4	26.3	0.084	0.505	19.811311	-99.238735
Ent. Jorobas	56.18	3	1	27468	0.7	82.7	3.9	4.3	1.4	5.4	0.5	0.6	0.5	83.4	3.9	12.7	0.102	0.525	19.827909	-99.254968
Ent. Jorobas	56.18	3	2	30304	0.7	81.0	4.0	4.9	1.5	6.2	0.6	0.6	0.5	81.7	4.0	14.3	0.100	0.525	19.828120	-99.254874
Lim. Edos. Term. Mex. Ppia. Hgo.	59.85																			
T. Der. Tepeji del Río	69.36	1	1	25679	0.9	68.9	5.2	7.8	2.7	9.2	2.3	2.3	0.7	69.8	5.2	25.0	0.064	0.504	19.874062	-99.335772
T. Der. Tepeji del Río	69.36	1	2	26050	0.7	65.9	6.0	8.5	2.8	10.1	2.5	2.7	0.8	66.6	6.0	27.4	0.063	0.504	19.871344	-99.338694
T. Der. Tepeji del Río	69.36	3	1	24360	0.6	64.8	6.9	7.0	3.7	11.1	2.8	2.6	0.5	65.4	6.9	27.7	0.070	0.504	19.908211	-99.352524

QUERETARO

10 CARR : México - Querétaro (Cuota)

CLAVE: 00411

RUTA: MEX-057-MEX-057D

AÑO : 2013

LUGAR	ESTACION				CLASIFICACION VEHICULAR EN PORCIENTO										COORDENADAS					
	KM	TE	SC	TDPA	M	A	B	C2	C3	T3S2	T3S3	T3S2R4	OTROS	A	B	C	K'	D	LATITUD	LONGITUD
T. Der. Tepeji del Río	69.36	3	2	24739	0.5	60.5	7.9	7.6	4.0	13.2	2.9	2.9	0.5	61.0	7.9	31.1	0.072	0.504	19.908192	-99.352532
T. Izq. Jilotepec	83.75	1	1	23258	1.6	65.7	6.5	6.7	3.6	10.7	1.7	2.9	0.6	67.3	6.5	26.2	0.084	0.505	19.975301	-99.435924
T. Izq. Jilotepec	83.75	1	2	22830	1.7	62.0	7.3	8.1	4.0	11.5	1.7	3.1	0.6	63.7	7.3	29.0	0.083	0.505	19.977507	-99.437989
T. Izq. Jilotepec	83.75	3	1	24886	1.8	70.5	3.6	6.8	2.7	9.3	2.1	2.2	1.0	72.3	3.6	24.1	0.054	0.501	19.985904	-99.444291
T. Izq. Jilotepec	83.75	3	2	24954	1.7	68.6	4.1	7.3	2.9	9.8	2.2	2.4	1.0	70.3	4.1	25.6	0.051	0.501	19.987398	-99.451138
Lim. Edos. Term. Hgo. Ppia. Mex.	86.00																			
X. C. Jilotepec - Maravillas	107.00	1	1	23989	2.3	66.5	4.4	6.7	2.9	10.3	2.9	3.1	0.9	68.8	4.4	26.8	0.062	0.505	20.082509	-99.625768
X. C. Jilotepec - Maravillas	107.00	1	2	23537	2.2	64.3	4.8	7.0	3.1	11.3	3.0	3.3	1.0	66.5	4.8	28.7	0.061	0.505	20.082517	-99.625744
X. C. Jilotepec - Maravillas	107.00	3	1	24244	0.7	66.1	5.1	7.3	3.3	11.0	2.8	2.8	0.9	66.8	5.1	28.1	0.074	0.515	20.082908	-99.633083
X. C. Jilotepec - Maravillas	107.00	3	2	22864	0.9	62.0	6.0	7.7	3.7	12.2	3.2	3.2	1.1	62.9	6.0	31.1	0.073	0.515	20.082825	-99.631218
T. Izq. Aculco	125.00	1	1	25665	2.7	71.5	5.4	8.9	1.5	3.1	3.0	3.1	0.8	74.2	5.4	20.4	0.056	0.500	20.098728	-99.693993
T. Izq. Aculco	125.00	1	2	25711	3.4	68.6	5.7	10.1	1.5	3.1	3.1	3.5	1.0	72.0	5.7	22.3	0.057	0.500	20.097337	-99.693075
T. Izq. Aculco	125.00	3	1	21871	0.6	59.4	7.1	8.0	4.8	11.4	3.4	4.6	0.7	60.0	7.1	32.9	0.056	0.500	20.109611	-99.706156
T. Izq. Aculco	125.00	3	2	21891	0.5	56.2	7.4	8.9	5.2	12.1	4.0	4.9	0.8	56.7	7.4	35.9	0.058	0.500	20.109395	-99.706501
Lim. Edos. Term. Mex. Ppia. Qro.	145.50																			
Caseta de Cobro Palmillas	145.80	2	1	22359	0.1	57.2	4.0	6.6	6.6	18.6	1.7	4.5	0.7	57.3	4.0	38.7	0.077	0.500	20.296103	-99.928994
Caseta de Cobro Palmillas	145.80	2	2	22359	0.1	57.2	4.0	6.6	6.6	18.6	1.7	4.5	0.7	57.3	4.0	38.7	0.077	0.500	20.296103	-99.928994
T. Izq. Toluca	148.50	1	1	20562	1.2	65.9	5.7	5.6	3.6	11.4	2.9	2.8	0.9	67.1	5.7	27.2	0.074	0.502	20.289435	-99.916829
T. Izq. Toluca	148.50	1	2	20433	1.2	62.3	6.3	5.9	4.1	13.0	3.0	3.2	1.0	63.5	6.3	30.2	0.078	0.502	20.290172	-99.919113
T. Izq. Toluca	148.50	3	1	28948	1.3	63.6	5.9	7.6	4.3	9.9	3.3	3.5	0.6	64.9	5.9	29.2	0.068	0.505	20.306426	-99.934520
T. Izq. Toluca	148.50	3	2	28376	1.3	61.6	6.2	7.8	4.9	10.4	3.5	3.7	0.6	62.9	6.2	30.9	0.063	0.505	20.306819	-99.935052
T. Der. Poniente San Juan del Río	164.10	3	1	20446	0.7	75.4	3.9	5.8	2.9	5.7	2.8	2.1	0.7	76.1	3.9	20.0	0.083	0.501	20.373384	-99.993161
T. Der. Poniente San Juan del Río	164.10	3	2	20540	0.5	73.7	3.9	6.6	3.1	6.1	3.2	2.3	0.6	74.2	3.9	21.9	0.066	0.501	20.373462	-99.994242
T. Izq. Acámbaro	170.45	3	1	35831	0.7	66.5	6.0	9.3	2.7	8.6	2.9	2.3	1.0	67.2	6.0	26.8	0.067	0.509	20.445904	-100.076864
T. Izq. Acámbaro	170.45	3	2	37088	0.6	62.9	6.8	10.6	3.0	9.1	3.3	2.6	1.1	63.5	6.8	29.7	0.068	0.509	20.449080	-100.081391
T. Der. Libramiento de Querétaro a San Luis Potosí	207.00	1	1	41835	1.3	76.3	2.7	9.7	1.4	3.6	2.6	1.4	1.0	77.6	2.7	19.7	0.073	0.500	20.584826	-100.343115
T. Der. Libramiento de Querétaro a San Luis Potosí	207.00	1	2	41837	2.2	73.4	3.1	10.4	1.5	4.0	2.8	1.6	1.0	75.6	3.1	21.3	0.071	0.500	20.583306	-100.343382
T. Der. Libramiento de Querétaro a San Luis Potosí	207.00	3	1	46984	0.5	69.9	6.0	14.2	1.8	4.6	1.9	1.0	0.1	70.4	6.0	23.6	0.072	0.518	20.578879	-100.378216
T. Der. Libramiento de Querétaro a San Luis Potosí Querétaro	207.00	3	2	43744	1.6	66.0	7.0	15.0	2.1	4.8	2.2	1.2	0.1	67.6	7.0	25.4	0.079	0.518	20.578084	-100.379722

QUERETARO

11 CARR: Ajuchitlán - Colón

CLAVE: 22010

RUTA: QRO-005

AÑO: 2013

LUGAR	ESTACION				CLASIFICACION VEHICULAR EN PORCIENTO										COORDENADAS					
	KM	TE	SC	TDPA	M	A	B	C2	C3	T3S2	T3S3	T3S2R4	OTROS	A	B	C	K'	D	LATITUD	LONGITUD
T. C. El Colorado - Higuierillas	0.00	3	0	7746	1.1	85.7	2.6	5.7	0.6	3.2	0.4	0.2	0.5	86.8	2.6	10.6	0.075	0.502	20.693783	-100.015900
Colón	14.00	1	0	7116	1.7	85.6	2.5	5.6	0.7	2.2	0.5	0.4	0.8	87.3	2.5	10.2	0.076	0.507	20.765367	-100.047183

12 CARR: Ajuchitlán - Ezequiel Montes

CLAVE: 22005

RUTA: QRO-005

AÑO: 2013

LUGAR	ESTACION				CLASIFICACION VEHICULAR EN PORCIENTO										COORDENADAS					
	KM	TE	SC	TDPA	M	A	B	C2	C3	T3S2	T3S3	T3S2R4	OTROS	A	B	C	K'	D	LATITUD	LONGITUD
T. C. El Colorado - Higuierillas	0.00	3	1	5850	0.9	74.0	3.2	16.1	1.8	1.9	1.3	0.5	0.3	74.9	3.2	21.9	0.096	0.500	20.703233	-99.977150
T. C. El Colorado - Higuierillas	0.00	3	2	5842	0.6	71.0	3.5	18.9	1.8	1.9	1.5	0.5	0.3	71.6	3.5	24.9	0.098	0.500	20.703233	-99.977150
Ezequiel Montes	10.60	1	0	9701	0.8	71.5	3.9	15.1	1.4	5.2	0.9	0.3	0.9	72.3	3.9	23.8	0.092	0.502	20.669483	-99.908000

13 CARR: El Colorado - Higuierillas

CLAVE: 22004

RUTA: QRO-004

AÑO: 2013

LUGAR	ESTACION				CLASIFICACION VEHICULAR EN PORCIENTO										COORDENADAS					
	KM	TE	SC	TDPA	M	A	B	C2	C3	T3S2	T3S3	T3S2R4	OTROS	A	B	C	K'	D	LATITUD	LONGITUD
T. C. México - Querétaro (Cuota)	0.00	3	1	14442	2.7	83.3	1.8	6.1	1.6	1.7	1.1	1.0	0.7	86.0	1.8	12.2	0.069	0.502	20.572278	-100.208889
T. C. México - Querétaro (Cuota)	0.00	3	2	14303	1.5	83.0	2.2	6.9	1.7	1.9	1.1	1.0	0.7	84.5	2.2	13.3	0.075	0.502	20.572278	-100.208889
T. Izq. Chichimequillas	3.80	3	1	10656	0.3	85.4	1.7	5.8	1.3	2.5	1.4	0.9	0.7	85.7	1.7	12.6	0.104	0.508	20.589611	-100.186667
T. Izq. Chichimequillas	3.80	3	2	10329	0.3	84.1	2.0	6.1	1.4	2.7	1.6	1.0	0.8	84.4	2.0	13.6	0.103	0.508	20.589611	-100.186667
X. C. Querétaro - Tequisquiapan	9.10	3	1	3593	1.8	82.7	1.6	7.6	1.9	1.8	1.3	0.7	0.6	84.5	1.6	13.9	0.094	0.502	20.615889	-100.153528
X. C. Querétaro - Tequisquiapan	9.10	3	2	3623	1.5	81.6	1.7	8.4	2.0	2.1	1.4	0.7	0.6	83.1	1.7	15.2	0.095	0.502	20.615889	-100.153528
T. Der. Ezequiel Montes	31.90	1	1	5763	1.0	84.8	1.8	6.7	1.4	1.8	1.6	0.5	0.4	85.8	1.8	12.4	0.086	0.514	20.702900	-99.991550
T. Der. Ezequiel Montes	31.90	1	2	5457	1.1	83.8	1.9	7.2	1.6	1.8	1.7	0.5	0.4	84.9	1.9	13.2	0.082	0.514	20.702900	-99.991550
T. Der. Ezequiel Montes	31.90	3	1	3016	0.9	85.2	2.2	5.8	2.0	1.4	1.4	0.5	0.6	86.1	2.2	11.7	0.101	0.507	20.710250	-99.978767
T. Der. Ezequiel Montes	31.90	3	2	3101	1.2	84.2	2.3	6.1	2.2	1.4	1.5	0.6	0.5	85.4	2.3	12.3	0.098	0.507	20.710250	-99.978767
T. Izq. San Pablo Tolimán	57.00	3	0	1073	2.5	82.7	2.4	9.6	1.1	1.2	0.4	0.0	0.1	85.2	2.4	12.4	0.084	0.500	20.855467	-99.891983
T. C. San Juan del Río - Xilitla	81.90	1	0	1121	1.1	79.7	3.1	12.6	1.7	1.3	0.4	0.0	0.1	80.8	3.1	16.1	0.077	0.513	20.943433	-99.749867

14 CARR: Hacienda Paraiso - Chichimequillas

CLAVE: 22001

RUTA: QRO-001

AÑO: 2013

LUGAR	ESTACION				CLASIFICACION VEHICULAR EN PORCIENTO										COORDENADAS					
	KM	TE	SC	TDPA	M	A	B	C2	C3	T3S2	T3S3	T3S2R4	OTROS	A	B	C	K'	D	LATITUD	LONGITUD
Hacienda Paraiso	0.00	3	1	3895	0.8	72.8	2.0	9.4	4.1	7.1	1.8	1.3	0.7	73.6	2.0	24.4	0.098	0.501	20.583833	-100.201889
Hacienda Paraiso	0.00	3	2	3912	0.9	70.2	2.2	9.5	4.5	8.5	2.0	1.4	0.8	71.1	2.2	26.7	0.103	0.501	20.583833	-100.201889
T. Der. Navajas	7.90	3	0	5762	1.8	80.0	1.7	8.0	1.3	4.6	1.1	0.5	1.0	81.8	1.7	16.5	0.092	0.519	20.645500	-100.232250

QUERETARO

14 CARR: Hacienda Paraiso - Chichimequillas

CLAVE: 22001

RUTA: QRO-001

AÑO: 2013

LUGAR	ESTACION				CLASIFICACION VEHICULAR EN PORCIENTO													COORDENADAS		
	KM	TE	SC	TDPA	M	A	B	C2	C3	T3S2	T3S3	T3S2R4	OTROS	A	B	C	K'	D	LATITUD	LONGITUD
La Griega	10.35	3	0	5523	1.5	76.5	2.0	11.9	1.4	3.8	1.5	0.6	0.8	78.0	2.0	20.0	0.085	0.506	20.676722	-100.239861
Amazcala	15.45	3	0	5793	0.9	74.4	4.2	11.5	2.6	4.0	1.4	0.4	0.6	75.3	4.2	20.5	0.081	0.505	20.711333	-100.269222
Chichimequillas	26.61																			

15 CARR: La Culata - San Joaquín

CLAVE: 22021

RUTA: QRO-021

AÑO: 2013

LUGAR	ESTACION				CLASIFICACION VEHICULAR EN PORCIENTO													COORDENADAS		
	KM	TE	SC	TDPA	M	A	B	C2	C3	T3S2	T3S3	T3S2R4	OTROS	A	B	C	K'	D	LATITUD	LONGITUD
La Culata	0.00	3	0	1234	0.4	80.8	2.2	7.5	2.2	2.7	3.7	0.2	0.3	81.2	2.2	16.6	0.085	0.502	20.885400	-99.705817
San Joaquín	31.80	1	0	2412	0.8	84.4	1.3	10.2	0.2	2.3	0.4	0.1	0.3	85.2	1.3	13.5	0.083	0.501	20.907467	-99.570650

16 CARR: Libramiento de San Juan del Río

CLAVE: 22266

RUTA: QRO

AÑO: 2013

LUGAR	ESTACION				CLASIFICACION VEHICULAR EN PORCIENTO													COORDENADAS		
	KM	TE	SC	TDPA	M	A	B	C2	C3	T3S2	T3S3	T3S2R4	OTROS	A	B	C	K'	D	LATITUD	LONGITUD
T. C. México - Querétaro (Después del F.F.C.C.)	0.00	3	1	11444	1.4	88.4	1.4	2.2	1.2	2.6	1.5	0.6	0.7	89.8	1.4	8.8	0.086	0.514	20.381067	-99.985450
T. C. México - Querétaro (Después del F.F.C.C.)	0.00	3	2	12080	0.8	88.3	1.6	2.3	1.3	2.8	1.6	0.6	0.7	89.1	1.6	9.3	0.083	0.514	20.381067	-99.985450
T. C. San Juan del Río - Xilitla	5.05	1	1	9312	1.0	87.5	1.7	5.6	1.3	1.1	0.8	0.6	0.4	88.5	1.7	9.8	0.068	0.507	20.413317	-99.981533
T. C. San Juan del Río - Xilitla	5.05	1	2	9037	1.9	85.1	2.0	6.5	1.3	1.3	0.9	0.6	0.4	87.0	2.0	11.0	0.073	0.507	20.413317	-99.981533

17 CARR: Libramiento Norte de Querétaro

CLAVE: 22500

RUTA: QRO

AÑO: 2013

LUGAR	ESTACION				CLASIFICACION VEHICULAR EN PORCIENTO													COORDENADAS		
	KM	TE	SC	TDPA	M	A	B	C2	C3	T3S2	T3S3	T3S2R4	OTROS	A	B	C	K'	D	LATITUD	LONGITUD
T. C. Querétaro - San Luis Potosí	0.00	3	1	40989	1.2	93.5	0.1	0.7	0.1	0.6	3.2	0.3	0.3	94.7	0.1	5.2	0.076	0.503	20.620596	-100.413840
T. C. Querétaro - San Luis Potosí	0.00	3	2	40444	0.9	93.5	0.1	0.8	0.1	0.6	3.4	0.3	0.3	94.4	0.1	5.5	0.069	0.503	20.620604	-100.413848
T. C. México - Querétaro	8.00	1	1	41181	1.0	88.5	1.1	3.6	1.1	1.7	1.8	0.7	0.5	89.5	1.1	9.4	0.081	0.500	20.584939	-100.362325
T. C. México - Querétaro	8.00	1	2	41192	1.0	87.3	1.3	4.0	1.2	2.0	2.0	0.7	0.5	88.3	1.3	10.4	0.081	0.500	20.584153	-100.362227

18 CARR: Libramiento Surponiente de Querétaro

CLAVE: 22501

RUTA: QRO

AÑO: 2013

LUGAR	ESTACION				CLASIFICACION VEHICULAR EN PORCIENTO													COORDENADAS		
	KM	TE	SC	TDPA	M	A	B	C2	C3	T3S2	T3S3	T3S2R4	OTROS	A	B	C	K'	D	LATITUD	LONGITUD
T. C. México - Querétaro	0.00	3	1	17514	0.7	91.6	1.9	3.5	0.6	0.5	0.9	0.2	0.1	92.3	1.9	5.8	0.080	0.502	20.567495	-100.357700
T. C. México - Querétaro	0.00	3	2	17646	0.7	90.9	2.1	3.9	0.6	0.5	1.0	0.2	0.1	91.6	2.1	6.3	0.075	0.502	20.567613	-100.357266

QUERETARO

18 C A R R : Libramiento Surponiente de Querétaro

CLAVE: 22501

RUTA: QRO

AÑO: 2013

L U G A R	E S T A C I O N				C L A S I F I C A C I O N V E H I C U L A R E N P O R C I E N T O													C O O R D E N A D A S		
	KM	TE	SC	TDPA	M	A	B	C2	C3	T3S2	T3S3	T3S2R4	OTROS	A	B	C	K'	D	LATITUD	LONGITUD
X. C. Querétaro - Ent. San Martín	4.00	3	1	17298	1.2	94.2	0.3	1.4	0.5	0.9	1.1	0.1	0.3	95.4	0.3	4.3	0.080	0.511	20.550578	-100.373190
X. C. Querétaro - Ent. San Martín	4.00	3	2	16585	1.3	93.6	0.3	1.6	0.5	1.1	1.2	0.1	0.3	94.9	0.3	4.8	0.078	0.511	20.550441	-100.372959
T. Der. a Candiles	7.40	1	1	15080	0.8	86.6	3.5	5.5	0.8	0.9	0.8	0.5	0.6	87.4	3.5	9.1	0.085	0.510	20.537537	-100.394013
T. Der. a Candiles	7.40	1	2	15694	0.8	85.9	3.7	5.6	0.9	1.0	0.8	0.6	0.7	86.7	3.7	9.6	0.077	0.510	20.537313	-100.394045
T. Izq. a Santa Barbara (1° acceso)	8.20	1	1	7872	0.8	87.9	3.2	4.8	1.3	0.9	0.5	0.3	0.3	88.7	3.2	8.1	0.094	0.502	20.532001	-100.403241
T. Izq. a Santa Barbara (1° acceso)	8.20	1	2	7803	0.9	86.6	3.5	5.4	1.4	1.1	0.5	0.3	0.3	87.5	3.5	9.0	0.091	0.502	20.531743	-100.403394
T. Izq. a Santa Barbara (2° acceso)	10.50	3	1	9546	0.8	88.4	3.5	4.1	1.5	0.8	0.6	0.1	0.2	89.2	3.5	7.3	0.110	0.541	20.525451	-100.424930
T. Izq. a Santa Barbara (2° acceso)	10.50	3	2	8106	0.9	87.4	3.9	4.3	1.7	0.9	0.6	0.1	0.2	88.3	3.9	7.8	0.127	0.541	20.525232	-100.424951
T. Izq. a La Negreta	13.40	3	1	9075	1.6	89.3	2.8	3.7	0.9	0.7	0.4	0.1	0.5	90.9	2.8	6.3	0.083	0.516	20.530521	-100.448406
T. Izq. a La Negreta	13.40	3	2	8495	1.6	88.4	3.3	4.1	0.8	0.8	0.4	0.1	0.5	90.0	3.3	6.7	0.101	0.516	20.530479	-100.448628
T. C. Villa del Pueblito - Huimilpan	14.39	3	1	4342	2.5	82.6	4.1	4.9	1.4	1.5	1.3	0.9	0.8	85.1	4.1	10.8	0.076	0.524	20.529884	-100.445861
T. C. Villa del Pueblito - Huimilpan	14.39	3	2	4783	2.7	80.1	4.9	5.5	1.6	1.7	1.5	1.0	1.0	82.8	4.9	12.3	0.078	0.524	20.529762	-100.445968
Querétaro - Irapuato	18.30	1	1	2500	1.9	77.2	3.7	5.0	3.1	4.9	1.5	2.2	0.5	79.1	3.7	17.2	0.092	0.517	20.534044	-100.479700
Querétaro - Irapuato	18.30	1	2	2672	0.9	76.4	4.2	5.2	3.3	5.6	1.7	2.3	0.4	77.3	4.2	18.5	0.088	0.517	20.533988	-100.479854
T. C. Querétaro - Irapuato (Cuota)	21.90	1	1	8248	1.2	82.2	2.8	3.6	2.2	3.5	2.1	1.5	0.9	83.4	2.8	13.8	0.074	0.503	20.558536	-100.482393
T. C. Querétaro - Irapuato (Cuota)	21.90	1	2	8359	0.6	80.9	3.2	4.0	2.4	3.9	2.3	1.8	0.9	81.5	3.2	15.3	0.070	0.503	20.558251	-100.482591
T. C- Querétaro - Irapuato (Cuota)	21.90	3	1	9161	1.2	76.8	3.9	5.2	3.2	4.9	1.4	2.7	0.7	78.0	3.9	18.1	0.087	0.515	20.577973	-100.483187
T. C- Querétaro - Irapuato (Cuota)	21.90	3	2	8637	1.3	74.7	4.3	5.6	3.5	5.4	1.6	2.9	0.7	76.0	4.3	19.7	0.093	0.515	20.577490	-100.483084
T. Der. a Las Adjuntas	24.30	3	1	7279	1.9	82.1	2.8	3.9	1.8	3.7	1.2	1.7	0.9	84.0	2.8	13.2	0.081	0.508	20.599538	-100.490461
T. Der. a Las Adjuntas	24.30	3	2	7508	1.4	80.9	3.1	4.1	2.1	4.1	1.4	1.9	1.0	82.3	3.1	14.6	0.084	0.508	20.599257	-100.490589
T. Der. a Tlacote el Bajo	31.00	1	1	4881	0.9	82.2	4.0	5.2	1.2	2.7	1.4	1.6	0.8	83.1	4.0	12.9	0.131	0.501	20.646948	-100.501446
T. Der. a Tlacote el Bajo	31.00	1	2	4901	1.1	80.1	4.6	5.7	1.3	3.1	1.5	1.7	0.9	81.2	4.6	14.2	0.134	0.501	20.645738	-100.501475
T. Der. a Tlacote el Bajo	31.00	3	1	4159	0.9	80.5	2.8	3.6	2.7	4.5	1.7	2.7	0.6	81.4	2.8	15.8	0.123	0.503	20.651166	-100.504469
T. Der. a Tlacote el Bajo	31.00	3	2	4210	1.3	77.6	3.1	4.1	3.1	5.1	1.9	3.1	0.7	78.9	3.1	18.0	0.137	0.503	20.651201	-100.505034
Obrajuelos (El Zapote)	33.00	3	1	4020	0.9	74.7	2.7	4.3	3.5	6.8	2.2	4.2	0.7	75.6	2.7	21.7	0.116	0.501	20.661635	-100.515778
Obrajuelos (El Zapote)	33.00	3	2	4012	0.5	72.4	3.2	4.5	3.8	7.9	2.5	4.6	0.6	72.9	3.2	23.9	0.128	0.501	20.662183	-100.515370
Santo Niño de Praga	34.50	3	1	4422	1.3	73.6	4.5	5.1	3.3	6.3	2.2	3.0	0.7	74.9	4.5	20.6	0.118	0.510	20.670771	-100.508297
Santo Niño de Praga	34.50	3	2	4600	1.9	69.8	5.1	5.5	3.7	7.5	2.5	3.2	0.8	71.7	5.1	23.2	0.130	0.510	20.670533	-100.508586
X. C. juriquilla - Mompani	37.30	3	1	3203	0.6	75.0	3.7	5.0	2.3	7.1	2.0	3.6	0.7	75.6	3.7	20.7	0.151	0.504	20.690367	-100.496862
X. C. juriquilla - Mompani	37.30	3	2	3151	0.4	73.5	4.1	5.4	2.7	7.3	2.1	3.9	0.6	73.9	4.1	22.0	0.132	0.504	20.690744	-100.496586
T. Der. a El Nabo	39.60	3	1	3408	0.8	77.0	3.0	4.1	3.0	5.9	1.7	3.9	0.6	77.8	3.0	19.2	0.155	0.530	20.702023	-100.479681
T. Der. a El Nabo	39.60	3	2	3026	0.8	74.3	3.5	4.8	3.2	6.7	1.9	4.1	0.7	75.1	3.5	21.4	0.128	0.530	20.702058	-100.479919
Pie de Gallo	47.40	1	1	4472	0.8	78.6	3.7	4.6	2.0	5.3	1.4	2.9	0.7	79.4	3.7	16.9	0.120	0.504	20.747664	-100.457958
Pie de Gallo	47.40	1	2	4538	0.8	76.3	3.7	5.2	2.3	6.1	1.6	3.3	0.7	77.1	3.7	19.2	0.117	0.504	20.747854	-100.458090
Pie de Gallo	47.40	3	1	3937	2.1	77.2	4.0	3.7	2.6	4.7	1.9	2.9	0.9	79.3	4.0	16.7	0.081	0.511	20.755557	-100.450902

QUERETARO

18 CARR: Libramiento Surponiente de Querétaro

CLAVE: 22501

RUTA: QRO

AÑO: 2013

LUGAR	ESTACION				CLASIFICACION VEHICULAR EN PORCIENTO														COORDENADAS	
	KM	TE	SC	TDPA	M	A	B	C2	C3	T3S2	T3S3	T3S2R4	OTROS	A	B	C	K'	D	LATITUD	LONGITUD
Pie de Gallo	47.40	3	2	3763	1.2	75.7	4.1	4.2	2.9	5.5	2.0	3.3	1.1	76.9	4.1	19.0	0.073	0.511	20.755565	-100.451550
T. C. Querétaro - San Luis Potosí	49.00																			

19 CARR: Peña Colorada - El Rodeo

CLAVE: 22002

RUTA: QRO

AÑO: 2013

LUGAR	ESTACION				CLASIFICACION VEHICULAR EN PORCIENTO														COORDENADAS	
	KM	TE	SC	TDPA	M	A	B	C2	C3	T3S2	T3S3	T3S2R4	OTROS	A	B	C	K'	D	LATITUD	LONGITUD
T. C. México - Querétaro	0.00	3	0	10186	1.4	80.2	2.3	6.2	2.2	4.9	1.5	0.7	0.6	81.6	2.3	16.1	0.078	0.505	20.599500	-100.246806
X. C. Querétaro - Tequisquiapan	9.00	1	0	8959	2.6	76.0	1.8	9.2	2.5	5.3	1.2	0.4	1.0	78.6	1.8	19.6	0.075	0.515	20.634500	-100.260278
El Rodeo	11.00	1	0	1327	4.2	78.5	3.0	11.2	0.9	1.7	0.4	0.0	0.1	82.7	3.0	14.3	0.085	0.503	20.659667	-100.258944

20 CARR: Querétaro - Ent. San Martín

CLAVE: 22067

RUTA: QRO

AÑO: 2013

LUGAR	ESTACION				CLASIFICACION VEHICULAR EN PORCIENTO														COORDENADAS	
	KM	TE	SC	TDPA	M	A	B	C2	C3	T3S2	T3S3	T3S2R4	OTROS	A	B	C	K'	D	LATITUD	LONGITUD
T. C. México - Querétaro	0.00	3	1	11425	1.2	91.3	1.1	2.8	0.6	1.0	1.3	0.2	0.5	92.5	1.1	6.4	0.084	0.506	20.558569	-100.366793
T. C. México - Querétaro	0.00	3	2	11710	1.7	90.4	1.1	3.0	0.6	1.0	1.4	0.2	0.6	92.1	1.1	6.8	0.082	0.506	20.558947	-100.366401
Lagunillas	18.70	1	0	3581	0.9	79.4	1.1	13.5	1.1	2.0	0.7	0.6	0.7	80.3	1.1	18.6	0.079	0.519	20.471123	-100.304973
T. Der. Huimilpan	32.70	1	0	3218	1.3	76.6	1.2	16.3	1.0	2.2	0.8	0.4	0.2	77.9	1.2	20.9	0.102	0.534	20.390519	-100.267762
Ent. San Martín	53.00	1	0	1382	0.3	88.1	0.2	10.1	0.3	0.8	0.1	0.0	0.1	88.4	0.2	11.4	0.096	0.500	20.278274	-100.157917

21 CARR: Querétaro - Estación Chichimequillas

CLAVE: 22270

RUTA: QRO

AÑO: 2013

LUGAR	ESTACION				CLASIFICACION VEHICULAR EN PORCIENTO														COORDENADAS	
	KM	TE	SC	TDPA	M	A	B	C2	C3	T3S2	T3S3	T3S2R4	OTROS	A	B	C	K'	D	LATITUD	LONGITUD
T. C. Libramiento de Querétaro	0.00	3	1	13112	2.6	88.6	1.2	5.5	0.5	0.5	0.7	0.2	0.2	91.2	1.2	7.6	0.074	0.505	20.625559	-100.387349
T. C. Libramiento de Querétaro	0.00	3	2	12870	1.8	88.6	1.4	6.1	0.5	0.5	0.7	0.2	0.2	90.4	1.4	8.2	0.071	0.505	20.625558	-100.387346
X. C. Hacienda Paraiso - Chichimequillas	18.00	1	0	5380	1.4	84.4	1.0	7.3	1.0	3.2	0.5	0.5	0.7	85.8	1.0	13.2	0.107	0.509	20.751167	-100.322167
Estación Chichimequillas	19.20																			

22 CARR: Querétaro - Tequisquiapan

CLAVE: 22502

RUTA: QRO

AÑO: 2013

LUGAR	ESTACION				CLASIFICACION VEHICULAR EN PORCIENTO														COORDENADAS	
	KM	TE	SC	TDPA	M	A	B	C2	C3	T3S2	T3S3	T3S2R4	OTROS	A	B	C	K'	D	LATITUD	LONGITUD
Querétaro	0.00	3	1	6259	2.7	81.7	1.0	6.7	0.9	4.3	0.8	0.9	1.0	84.4	1.0	14.6	0.069	0.502	20.600154	-100.350657

QUERETARO

22 CARR: Querétaro - Tequisquiapan

CLAVE: 22502

RUTA: QRO

AÑO: 2013

LUGAR	ESTACION				CLASIFICACION VEHICULAR EN PORCIENTO													COORDENADAS		
	KM	TE	SC	TDPA	M	A	B	C2	C3	T3S2	T3S3	T3S2R4	OTROS	A	B	C	K'	D	LATITUD	LONGITUD
Querétaro	0.00	3	2	6218	2.4	80.2	1.2	7.5	1.0	4.9	0.8	1.0	1.0	82.6	1.2	16.2	0.078	0.502	20.600154	-100.350657
X. C. Peña Colorada - El Rodeo	14.00	1	0	8237	2.2	79.7	1.0	8.4	1.7	4.8	1.0	0.2	1.0	81.9	1.0	17.1	0.066	0.508	20.635861	-100.262111
T. Izq. La Griega	16.60	3	0	4440	2.2	74.2	2.6	13.0	2.6	3.0	1.3	0.5	0.6	76.4	2.6	21.0	0.086	0.501	20.643333	-100.227611
X. C. El Colorado - Higuierillas	25.70	1	1	3747	1.4	80.1	0.9	11.3	1.9	1.7	1.5	0.5	0.7	81.5	0.9	17.6	0.115	0.510	20.616028	-100.161556
X. C. El Colorado - Higuierillas	25.70	1	2	3902	1.0	79.6	1.0	11.7	2.1	1.9	1.6	0.5	0.6	80.6	1.0	18.4	0.135	0.510	20.616028	-100.161556
X. C. San Juan del Río - Xilitla	56.90	1	0	7127	1.5	81.8	2.9	7.3	1.3	3.7	0.6	0.3	0.6	83.3	2.9	13.8	0.075	0.510	20.528850	-99.907950
Tequisquiapan	57.40	1	0	6889	2.3	82.4	2.5	5.0	0.9	4.8	1.0	0.2	0.9	84.7	2.5	12.8	0.079	0.506	20.541667	-99.897700

23 CARR: Querétaro - Tlacote El Bajo

CLAVE: 22069

RUTA: QRO

AÑO: 2013

LUGAR	ESTACION				CLASIFICACION VEHICULAR EN PORCIENTO													COORDENADAS		
	KM	TE	SC	TDPA	M	A	B	C2	C3	T3S2	T3S3	T3S2R4	OTROS	A	B	C	K'	D	LATITUD	LONGITUD
Querétaro	0.00	3	1	9522	1.6	80.7	3.0	5.7	1.1	5.6	1.4	0.3	0.6	82.3	3.0	14.7	0.092	0.501	20.589879	-100.434851
Querétaro	0.00	3	2	9471	1.5	79.2	3.2	6.6	1.1	5.9	1.6	0.3	0.6	80.7	3.2	16.1	0.076	0.501	20.589879	-100.434851
Tlacote El Bajo	18.00																			

24 CARR: Ramal a La Estancia

CLAVE: 22504

RUTA: QRO

AÑO: 2013

LUGAR	ESTACION				CLASIFICACION VEHICULAR EN PORCIENTO													COORDENADAS		
	KM	TE	SC	TDPA	M	A	B	C2	C3	T3S2	T3S3	T3S2R4	OTROS	A	B	C	K'	D	LATITUD	LONGITUD
T. C. México - Querétaro (Cuota)	0.00	3	0	4419	2.0	86.7	2.0	4.0	0.3	3.7	0.5	0.2	0.6	88.7	2.0	9.3	0.068	0.500	20.425741	-100.061356
La Estancia	3.00																			

25 CARR: Ramal a Tolimán

CLAVE: 22265

RUTA: QRO

AÑO: 2013

LUGAR	ESTACION				CLASIFICACION VEHICULAR EN PORCIENTO													COORDENADAS		
	KM	TE	SC	TDPA	M	A	B	C2	C3	T3S2	T3S3	T3S2R4	OTROS	A	B	C	K'	D	LATITUD	LONGITUD
T. C. El Colorado - Higuierillas	0.00	3	0	3256	3.4	80.6	2.7	9.9	0.5	2.0	0.4	0.1	0.4	84.0	2.7	13.3	0.083	0.514	20.855117	-99.893633
Tolimán	7.00	1	0	3030	2.4	85.0	1.7	8.5	0.4	1.4	0.3	0.1	0.2	87.4	1.7	10.9	0.084	0.504	20.888667	-99.914683

26 CARR: Rayón - Arroyo Seco

CLAVE: 24008

RUTA: SLP-011

AÑO: 2013

LUGAR	ESTACION				CLASIFICACION VEHICULAR EN PORCIENTO													COORDENADAS		
	KM	TE	SC	TDPA	M	A	B	C2	C3	T3S2	T3S3	T3S2R4	OTROS	A	B	C	K'	D	LATITUD	LONGITUD
Rayón	0.00	3	0	3311	2.4	80.4	2.6	10.0	1.8	1.7	0.7	0.1	0.3	82.8	2.6	14.6	0.092	0.503	21.843444	-99.624806

QUERETARO

26 CARR: Rayón - Arroyo Seco

CLAVE: 24008

RUTA: SLP-011

AÑO: 2013

LUGAR	ESTACION				CLASIFICACION VEHICULAR EN PORCIENTO										COORDENADAS					
	KM	TE	SC	TDPA	M	A	B	C2	C3	T3S2	T3S3	T3S2R4	OTROS	A	B	C	K'	D	LATITUD	LONGITUD
Lagunillas	36.00	1	0	304	3.2	74.3	8.9	12.4	1.1	0.1	0.0	0.0	0.0	77.5	8.9	13.6	0.125	0.500	21.599083	-99.562111
Arroyo Seco	57.00	1	0	598	7.2	71.8	5.9	12.1	1.3	1.4	0.0	0.0	0.3	79.0	5.9	15.1	0.105	0.546	21.553417	-99.681750

27 CARR: San Juan del Río - Amealco

CLAVE: 22011

RUTA: QRO

AÑO: 2013

LUGAR	ESTACION				CLASIFICACION VEHICULAR EN PORCIENTO										COORDENADAS					
	KM	TE	SC	TDPA	M	A	B	C2	C3	T3S2	T3S3	T3S2R4	OTROS	A	B	C	K'	D	LATITUD	LONGITUD
T. C. México - Querétaro	0.00	3	0	8447	1.4	81.9	4.2	6.5	0.5	3.9	0.5	0.3	0.8	83.3	4.2	12.5	0.094	0.501	20.377072	-100.016105
Amealco	28.00	1	0	4094	0.9	87.3	1.1	7.9	0.4	1.9	0.2	0.1	0.2	88.2	1.1	10.7	0.082	0.501	20.195020	-100.139236

28 CARR: T. C. (Villa del Pueblito - Huimilpan) - Coroneo

CLAVE: 00155

RUTA: QRO-GTO

AÑO: 2013

LUGAR	ESTACION				CLASIFICACION VEHICULAR EN PORCIENTO										COORDENADAS					
	KM	TE	SC	TDPA	M	A	B	C2	C3	T3S2	T3S3	T3S2R4	OTROS	A	B	C	K'	D	LATITUD	LONGITUD
T. C. Villa del Pueblito - Huimilpan	0.00	3	0	5462	1.0	69.8	4.2	10.4	3.4	5.7	3.3	1.7	0.5	70.8	4.2	25.0	0.089	0.511	20.517139	-100.430139
Lim. Edos. Term. Oro. Ppia. Gto.	20.00																			
Coroneo	45.20	1	0	3449	2.2	81.3	1.0	11.6	0.9	2.3	0.2	0.4	0.1	83.5	1.0	15.5	0.102	0.504	20.211112	-100.365888

29 CARR: Villa del Pueblito - Huimilpan

CLAVE: 22503

RUTA: QRO

AÑO: 2013

LUGAR	ESTACION				CLASIFICACION VEHICULAR EN PORCIENTO										COORDENADAS					
	KM	TE	SC	TDPA	M	A	B	C2	C3	T3S2	T3S3	T3S2R4	OTROS	A	B	C	K'	D	LATITUD	LONGITUD
T. C. Querétaro - Irapuato (Libre)	0.00	3	1	15168	1.4	90.4	0.8	2.2	1.0	1.6	1.6	0.4	0.6	91.8	0.8	7.4	0.097	0.508	20.530306	-100.441556
T. C. Querétaro - Irapuato (Libre)	0.00	3	2	15634	1.7	89.4	0.9	2.4	1.1	1.8	1.8	0.4	0.5	91.1	0.9	8.0	0.087	0.508	20.530306	-100.441556
Huimilpan	27.00	1	0	2330	2.8	84.0	0.3	10.2	0.4	1.3	0.4	0.2	0.4	86.8	0.3	12.9	0.122	0.501	20.378873	-100.278189

30 CARR: Toluca - Palmillas

CLAVE: 00496

RUTA: EM(D)-MEX-055

AÑO: 2013

LUGAR	ESTACION				CLASIFICACION VEHICULAR EN PORCIENTO										COORDENADAS					
	KM	TE	SC	TDPA	M	A	B	C2	C3	T3S2	T3S3	T3S2R4	OTROS	A	B	C	K'	D	LATITUD	LONGITUD
Toluca	0.00																			
T. Izq. Calixtlahuaca de Rayón (Baja)	7.21	3	1	8786	3.1	71.6	3.3	10.2	3.4	3.7	2.0	1.8	0.9	74.7	3.3	22.0	0.061	0.507	19.340593	-99.670075
T. Izq. Calixtlahuaca de Rayón (Alta)	7.21	3	1	24363	0.8	95.3	0.4	3.5	0.0	0.0	0.0	0.0	0.0	96.1	0.4	3.5	0.094	0.507	19.340092	-99.671222
T. Izq. Calixtlahuaca de Rayón (Baja)	7.21	3	2	9098	1.7	70.2	3.5	11.2	3.8	4.4	2.0	2.1	1.1	71.9	3.5	24.6	0.074	0.507	19.340075	-99.671230
T. Izq. Calixtlahuaca de Rayón (Alta)	7.21	3	2	25033	1.0	94.5	0.4	4.1	0.0	0.0	0.0	0.0	0.0	95.5	0.4	4.1	0.091	0.507	19.340082	-99.671196

QUERETARO

30 CARR: Toluca - Palmillas

CLAVE: 00496

RUTA: EM(D)-MEX-055

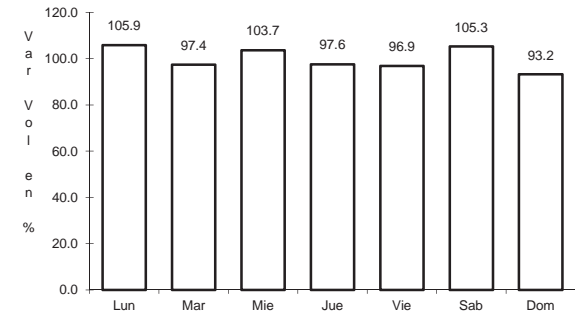
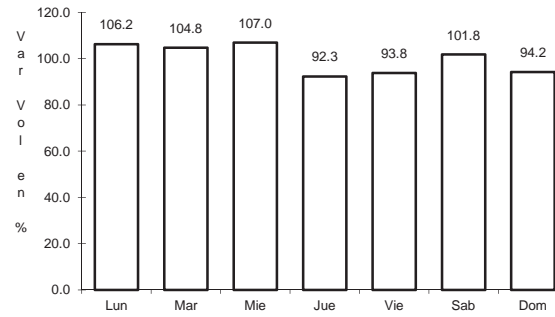
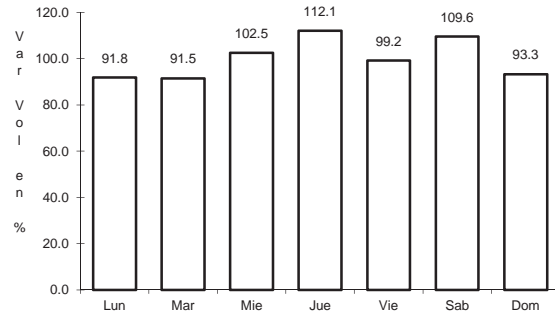
AÑO: 2013

LUGAR	ESTACION				CLASIFICACION VEHICULAR EN PORCIENTO													COORDENADAS		
	KM	TE	SC	TDPA	M	A	B	C2	C3	T3S2	T3S3	T3S2R4	OTROS	A	B	C	K'	D	LATITUD	LONGITUD
X. C. Lib. Nororient de Toluca (Cuota)	14.21	1	1	26531	0.4	80.1	3.5	7.7	1.1	3.6	1.8	0.9	0.9	80.5	3.5	16.0	0.064	0.500	19.383817	-99.705823
X. C. Lib. Nororient de Toluca (Cuota)	14.21	1	2	26581	0.5	78.4	3.7	8.4	1.1	3.7	2.1	1.0	1.1	78.9	3.7	17.4	0.072	0.500	19.383814	-99.706000
El Dorado	16.00	1	1	24689	0.6	82.1	4.7	5.1	2.1	3.5	1.0	0.7	0.2	82.7	4.7	12.6	0.080	0.503	19.395819	-99.710653
El Dorado	16.00	1	2	25038	0.4	80.4	5.2	5.8	2.3	3.9	1.1	0.7	0.2	80.8	5.2	14.0	0.082	0.503	19.395633	-99.711019
Ixtlahuaca de Rayón	35.58	1	1	21382	1.3	73.7	5.3	11.8	1.2	3.5	1.7	0.6	0.9	75.0	5.3	19.7	0.092	0.511	19.557845	-99.760225
Ixtlahuaca de Rayón	35.58	1	2	22356	0.2	70.7	5.8	14.2	1.3	4.2	1.9	0.7	1.0	70.9	5.8	23.3	0.075	0.511	19.557273	-99.759498
Ixtlahuaca de Rayón	35.58	3	1	19327	1.1	73.9	5.3	11.0	1.6	3.7	1.8	0.7	0.9	75.0	5.3	19.7	0.081	0.511	19.582452	-99.769000
Ixtlahuaca de Rayón	35.58	3	2	20181	0.3	71.9	6.0	12.6	1.6	3.8	2.0	0.7	1.1	72.2	6.0	21.8	0.084	0.511	19.582458	-99.769000
Pastejé	45.20	1	1	14574	0.4	79.8	4.3	5.7	1.8	4.4	1.6	1.0	1.0	80.2	4.3	15.5	0.088	0.502	19.647909	-99.786143
Pastejé	45.20	1	2	14470	0.8	77.7	4.7	6.1	2.0	4.8	1.7	1.1	1.1	78.5	4.7	16.8	0.080	0.502	19.648049	-99.786906
Atlacomulco	65.00	1	1	15818	1.2	79.4	2.6	5.8	2.7	5.0	1.4	1.2	0.7	80.6	2.6	16.8	0.082	0.511	19.783014	-99.864809
Atlacomulco	65.00	1	2	15108	0.9	77.7	3.0	6.8	2.8	5.2	1.6	1.3	0.7	78.6	3.0	18.4	0.078	0.511	19.782069	-99.864801
Atlacomulco	65.00	3	1	10102	0.8	75.4	5.1	5.8	2.7	6.0	2.2	1.4	0.6	76.2	5.1	18.7	0.090	0.507	19.822348	-99.870987
Atlacomulco	65.00	3	2	9836	0.9	73.0	5.2	6.5	3.1	6.5	2.5	1.6	0.7	73.9	5.2	20.9	0.082	0.507	19.822353	-99.870984
Acambay	85.64	3	0	9407	0.6	71.5	3.5	8.5	4.3	6.5	2.7	1.3	1.1	72.1	3.5	24.4	0.068	0.533	19.964567	-99.852668
T. Der. Aculco de Espinoza	104.43	3	0	7110	0.9	67.8	2.8	7.6	3.5	12.9	2.6	1.1	0.8	68.7	2.8	28.5	0.077	0.501	20.087553	-99.863373
T. Der. Polotitlán	122.73	1	1	3994	2.7	67.9	3.8	7.7	4.7	9.5	2.0	1.0	0.7	70.6	3.8	25.6	0.083	0.505	20.224699	-99.898356
T. Der. Polotitlán	122.73	1	2	4080	2.0	65.6	4.0	8.9	5.2	10.4	2.1	1.1	0.7	67.6	4.0	28.4	0.084	0.505	20.224708	-99.898356
Lim. Edos. Term. Mex. Ppia. Oro.	128.10																			
T. C. México - Querétaro	131.52	1	1	5836	1.6	69.4	3.5	8.6	3.3	10.9	1.5	0.5	0.7	71.0	3.5	25.5	0.084	0.506	20.289981	-99.932644
T. C. México - Querétaro	131.52	1	2	5698	2.0	65.8	3.9	9.2	3.6	12.5	1.6	0.7	0.7	67.8	3.9	28.3	0.098	0.506	20.289981	-99.932644

1 CARR: Ent. Buenavista - San Miguel de Allende

CLAVE: 00111

RUTA: MEX-057



Km: 0.00 Tipo: 3 Sent: 0

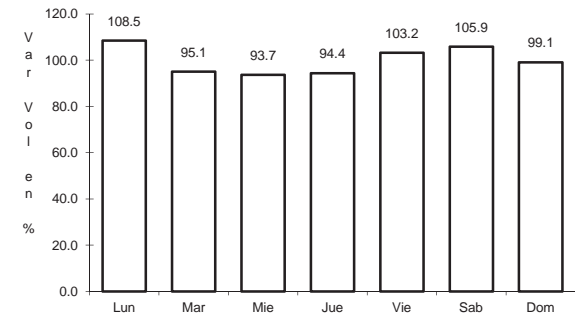
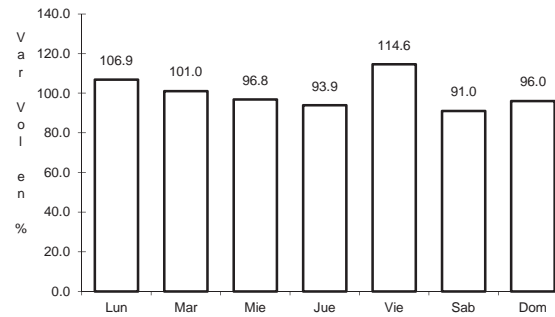
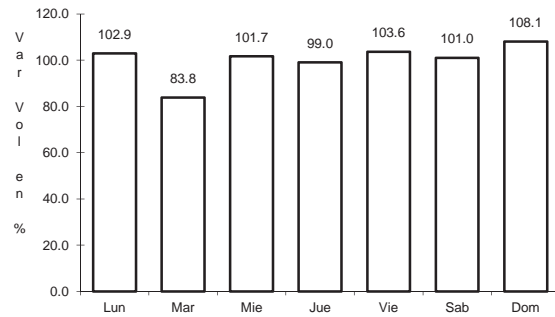
Km: 12.00 Tipo: 1 Sent: 0

Km: 35.11 Tipo: 1 Sent: 0

2 CARR: Jalpan de Serra - Rioverde

CLAVE: 00265

RUTA: MEX-069



Km: 0.00 Tipo: 3 Sent: 0

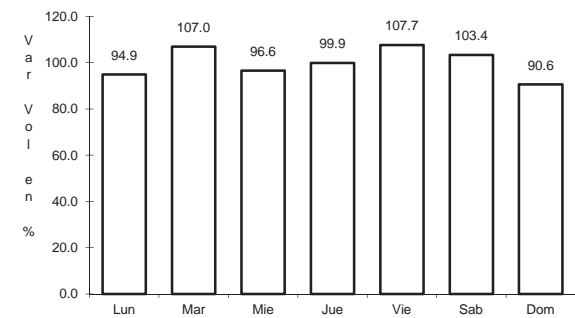
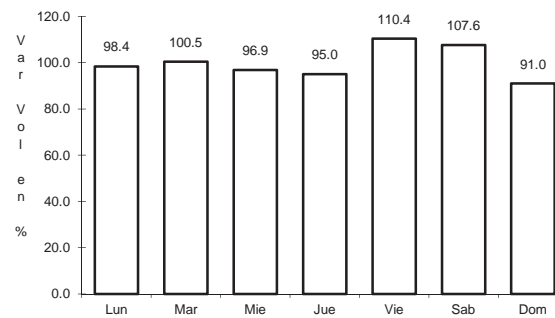
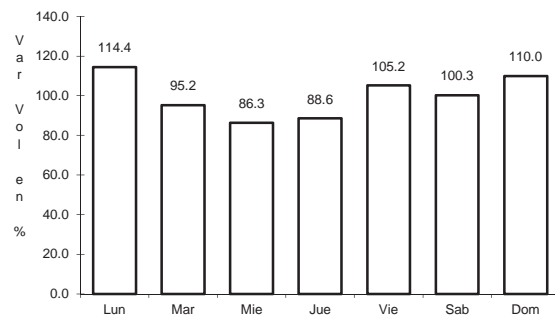
Km: 48.60 Tipo: 1 Sent: 0

Km: 105.43 Tipo: 1 Sent: 0

3 CARR: La Noria - Acámbaro

CLAVE: 00131

RUTA: MEX-120



Km: 0.00 Tipo: 3 Sent: 0

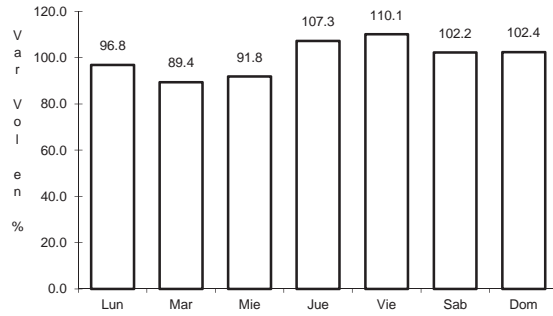
Km: 59.35 Tipo: 3 Sent: 0

Km: 111.12 Tipo: 1 Sent: 0

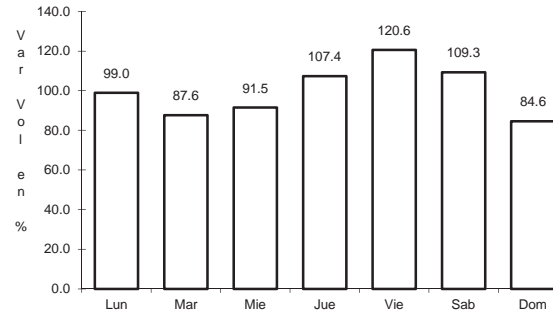
4 CARR: Portezuelo - Palmillas

CLAVE: 00194

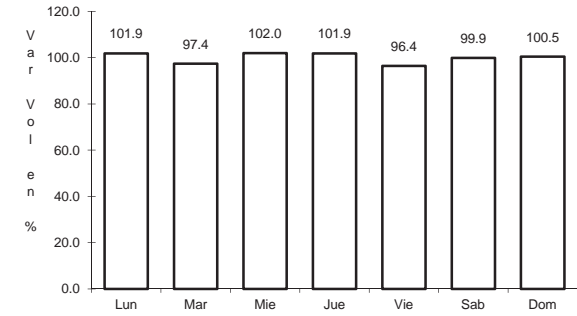
RUTA: MEX-045



Km: 0.00 Tipo: 3 Sent: 1



Km: 0.00 Tipo: 3 Sent: 2

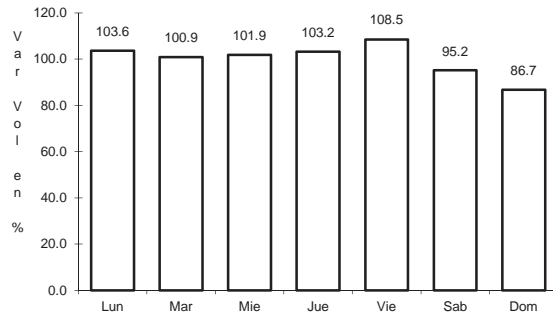


Km: 80.00 Tipo: 1 Sent: 0

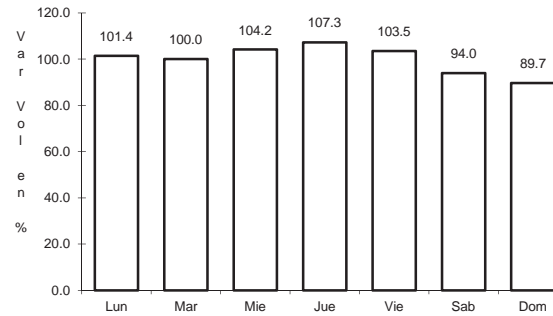
5 CARR: Querétaro - Irapuato (Libre)

CLAVE: 00154

RUTA: MEX-045



Km: 0.00 Tipo: 3 Sent: 1

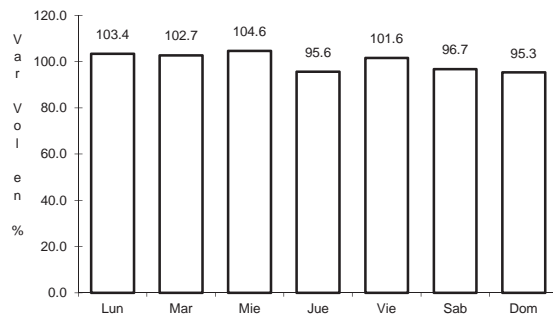


Km: 0.00 Tipo: 3 Sent: 2

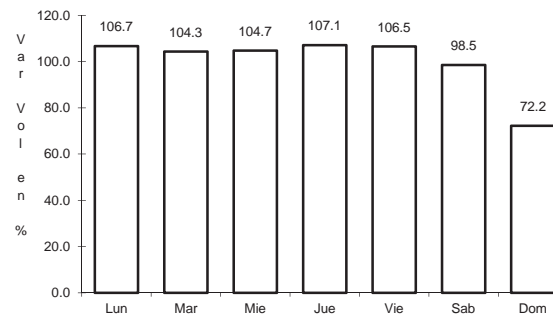
6 CARR: Querétaro - San Luis Potosí

CLAVE: 00165

RUTA: MEX-057



Km: 6.28 Tipo: 3 Sent: 1

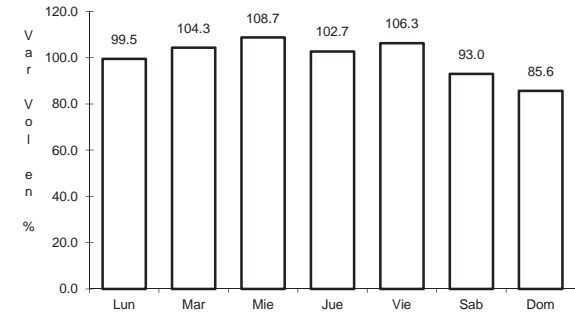
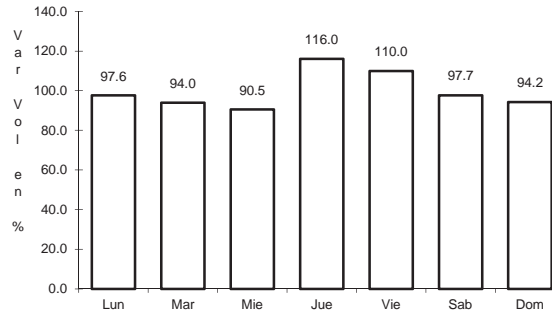
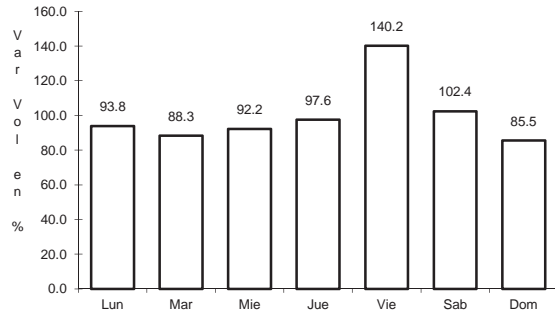


Km: 6.28 Tipo: 3 Sent: 2

7 CARR: San Juan del Río - Xilitla

CLAVE: 00183

RUTA: MEX-120



Km: 5.20 Tipo: 3 Sent: 1

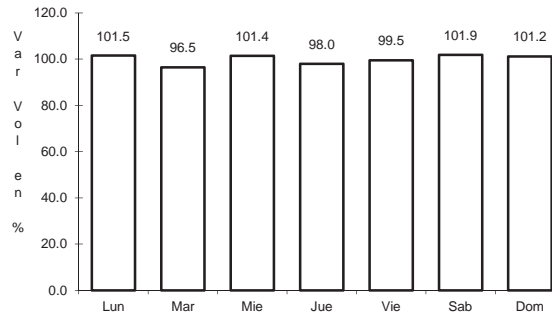
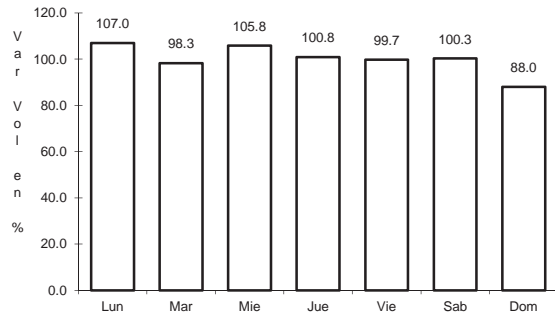
Km: 5.20 Tipo: 3 Sent: 2

Km: 276.98 Tipo: 1 Sent: 0

8 CARR: Libramiento Nororiente de Querétaro (Cuota)

CLAVE: 22266

RUTA: MEX-057D



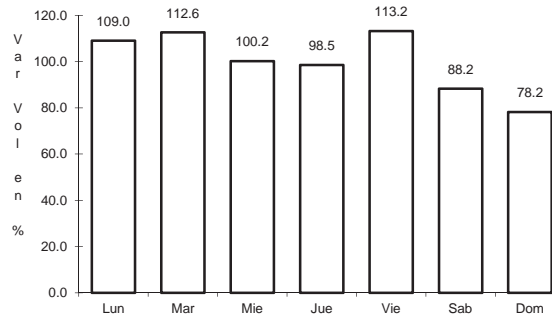
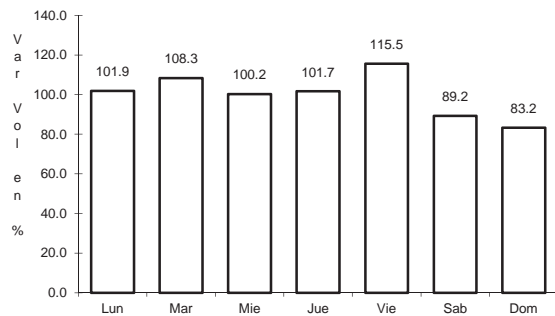
Km: 0.00 Tipo: 3 Sent: 1

Km: 0.00 Tipo: 3 Sent: 2

9 CARR: Querétaro - Irapuato (Cuota)

CLAVE: 00423

RUTA: MEX-045D



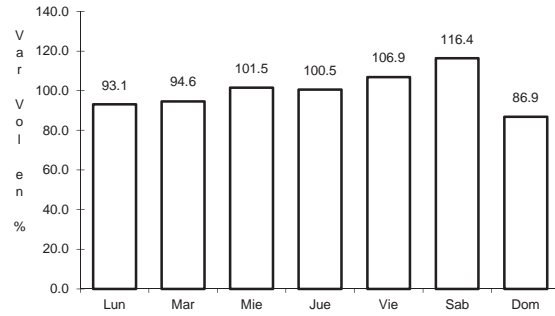
Km: 0.00 Tipo: 3 Sent: 1

Km: 0.00 Tipo: 3 Sent: 2

10 CARR: México - Querétaro (Cuota)

CLAVE: 00411

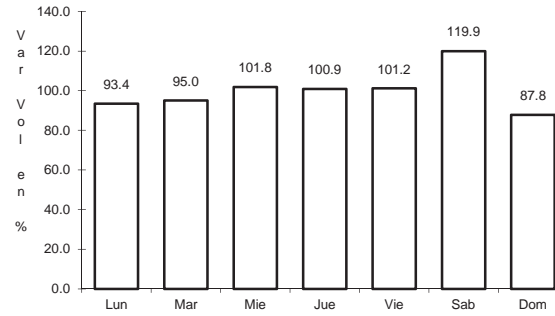
RUTA: MEX-057-MEX-057D



Km: 56.18

Tipo: 1

Sent: 1



Km: 56.18

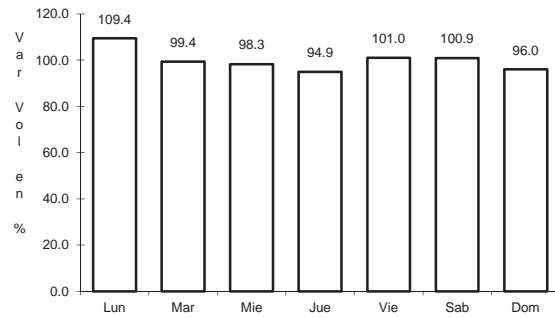
Tipo: 1

Sent: 2

11 CARR: Ajuchitlán - Colón

CLAVE: 22010

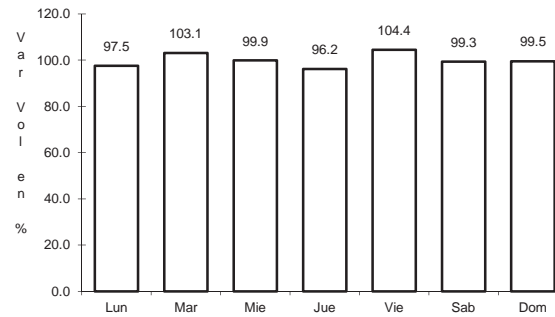
RUTA: QRO-005



Km: 0.00

Tipo: 3

Sent: 0



Km: 14.00

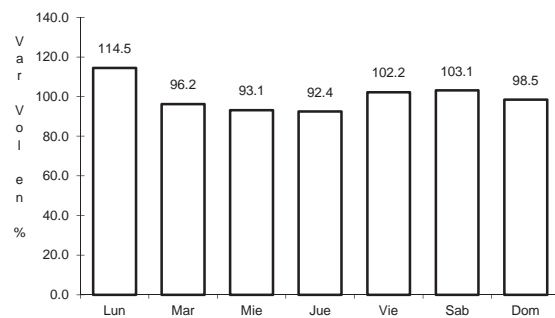
Tipo: 1

Sent: 0

12 CARR: Ajuchitlán - Ezequiel Montes

CLAVE: 22005

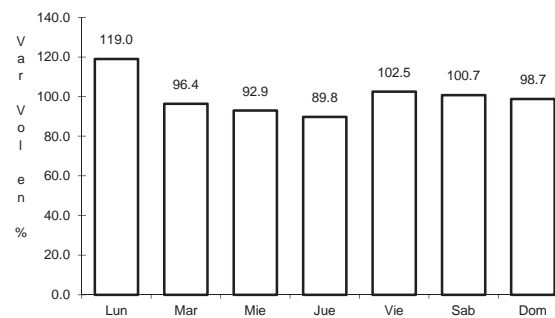
RUTA: QRO-005



Km: 0.00

Tipo: 3

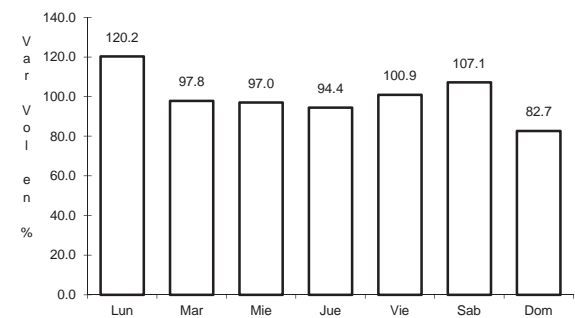
Sent: 1



Km: 0.00

Tipo: 3

Sent: 2



Km: 10.60

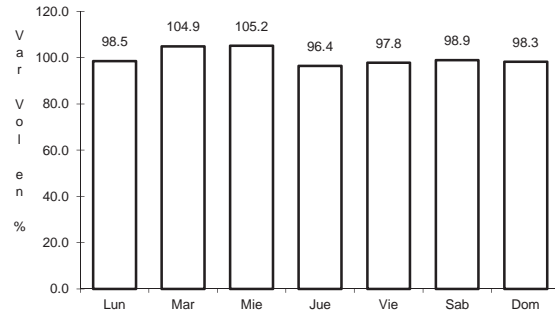
Tipo: 1

Sent: 0

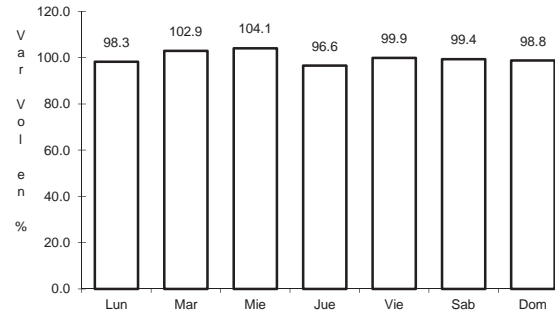
13 CARR: El Colorado - Higuierillas

CLAVE: 22004

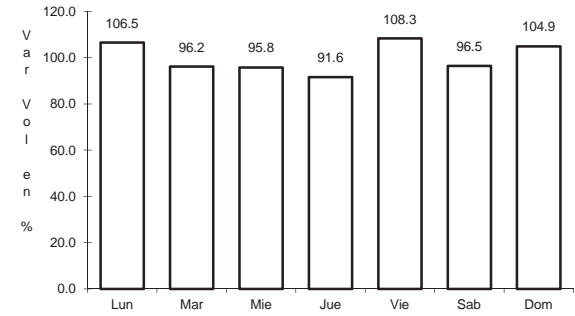
RUTA: QRO-004



Km: 0.00 Tipo: 3 Sent: 1



Km: 0.00 Tipo: 3 Sent: 2

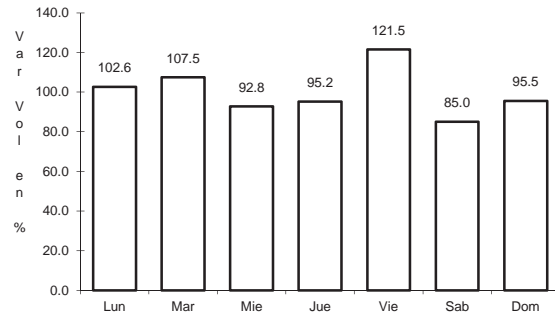


Km: 81.90 Tipo: 1 Sent: 0

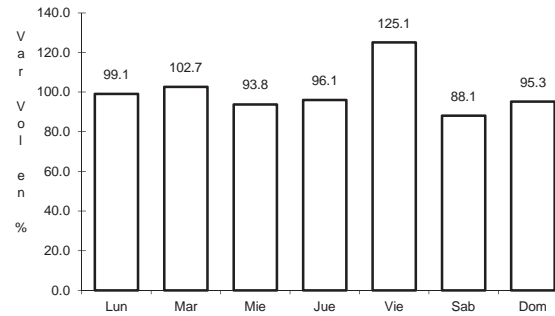
14 CARR: Hacienda Paraíso - Chichimequillas

CLAVE: 22001

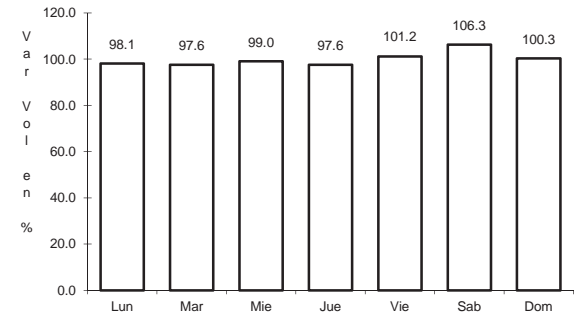
RUTA: QRO-001



Km: 0.00 Tipo: 3 Sent: 1



Km: 0.00 Tipo: 3 Sent: 2

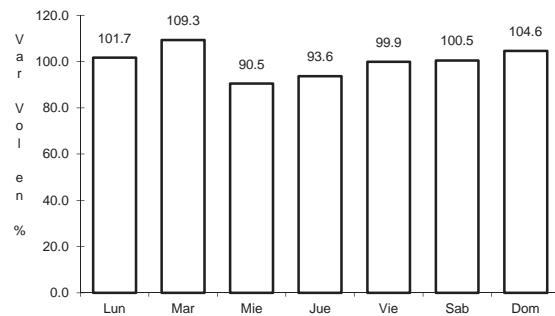


Km: 15.45 Tipo: 3 Sent: 0

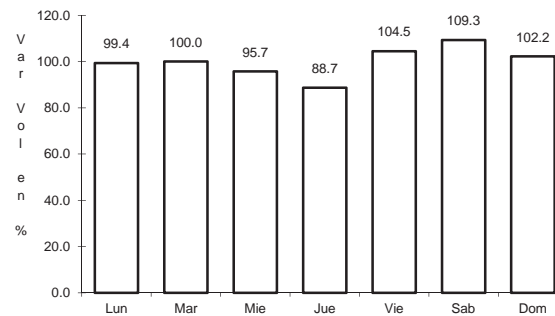
15 CARR: La Culata - San Joaquín

CLAVE: 22021

RUTA: QRO-021



Km: 0.00 Tipo: 3 Sent: 0

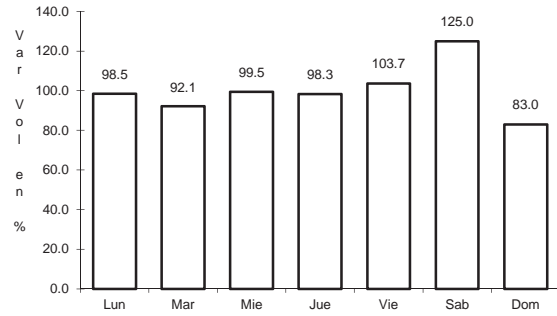


Km: 31.80 Tipo: 1 Sent: 0

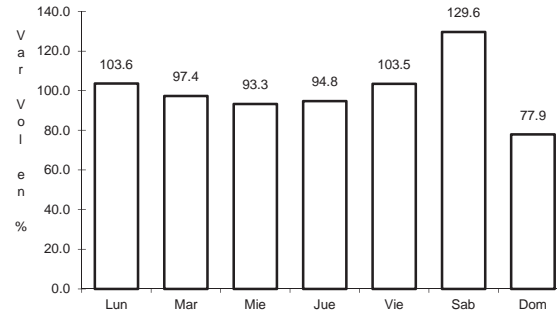
16 CARR: Libramiento de San Juan del Río

CLAVE: 22266

RUTA: QRO



Km: 0.00 Tipo: 3 Sent: 1

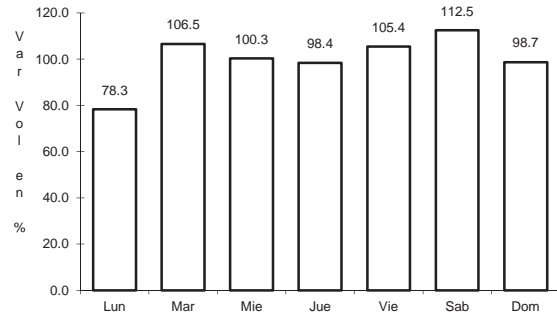


Km: 0.00 Tipo: 3 Sent: 2

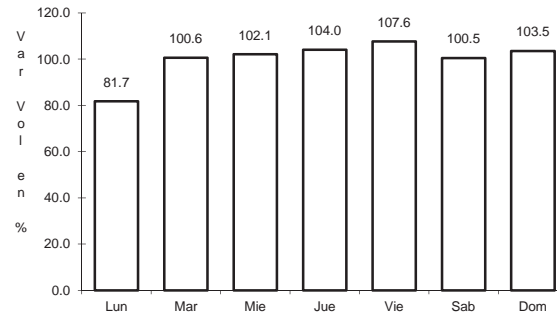
17 CARR: Libramiento Norte de Querétaro

CLAVE: 22500

RUTA: QRO



Km: 0.00 Tipo: 3 Sent: 1

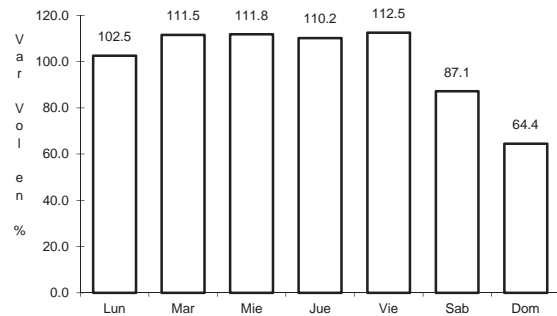


Km: 0.00 Tipo: 3 Sent: 2

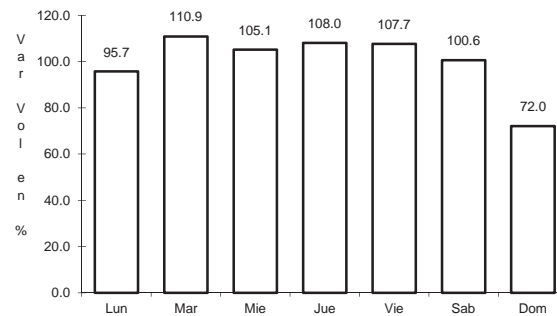
18 CARR: Libramiento Surponiente de Querétaro

CLAVE: 22501

RUTA: QRO



Km: 0.00 Tipo: 3 Sent: 1

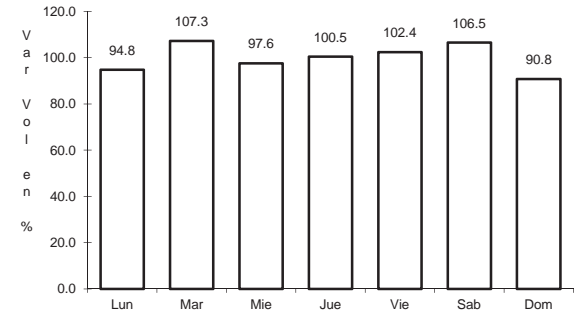
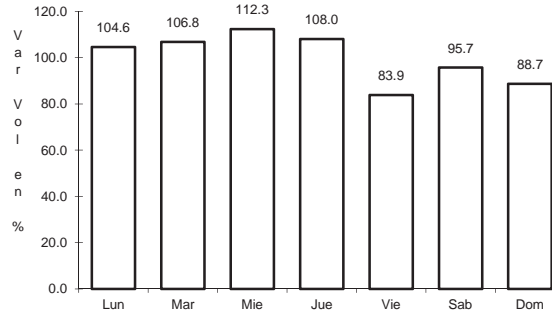
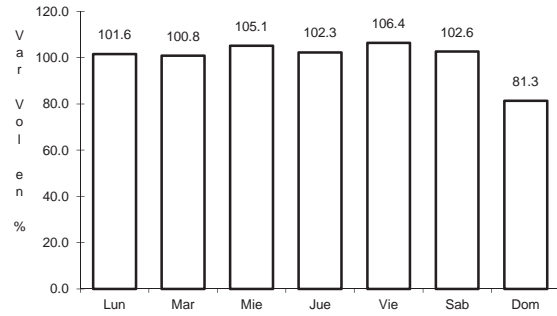


Km: 0.00 Tipo: 3 Sent: 2

19 CARR: Peña Colorada - El Rodeo

CLAVE: 22002

RUTA: QRO



Km: 0.00 Tipo: 3 Sent: 0

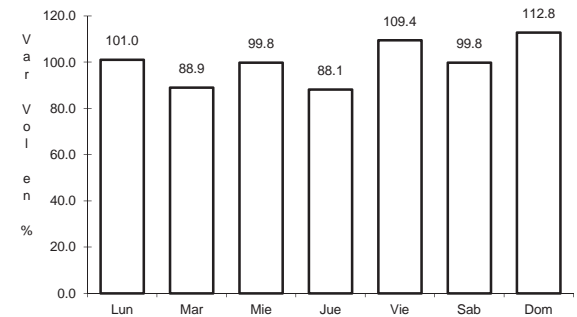
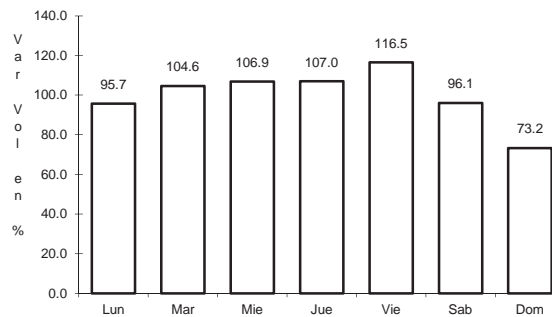
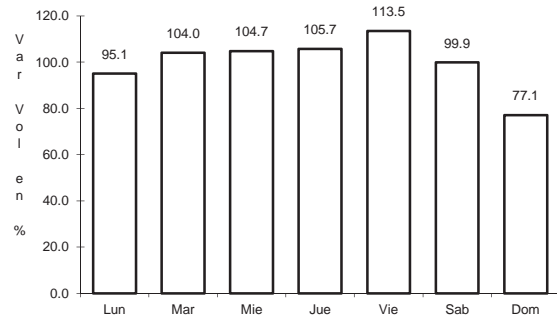
Km: 9.00 Tipo: 1 Sent: 0

Km: 11.00 Tipo: 1 Sent: 0

20 CARR: Querétaro - Ent. San Martín

CLAVE: 22067

RUTA: QRO



Km: 0.00 Tipo: 3 Sent: 1

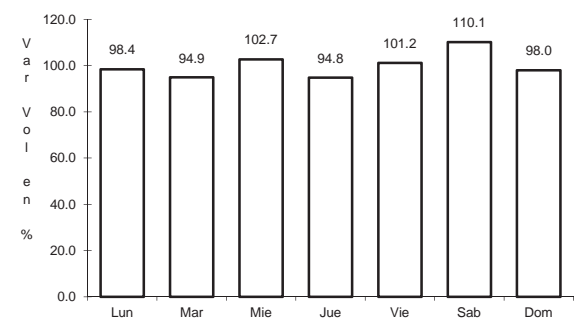
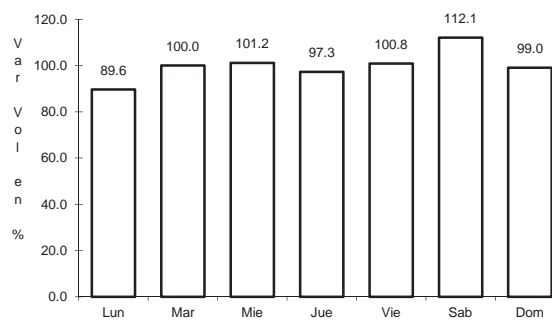
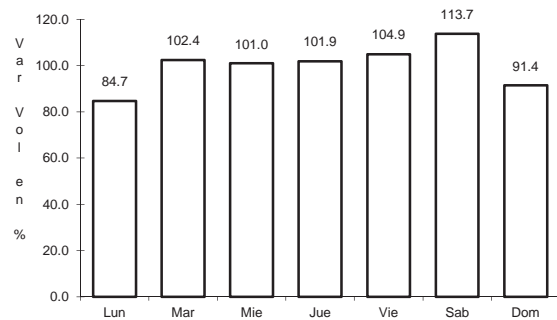
Km: 0.00 Tipo: 3 Sent: 2

Km: 53.00 Tipo: 1 Sent: 0

21 CARR: Querétaro - Estación Chichimequillas

CLAVE: 22270

RUTA: QRO



Km: 0.00 Tipo: 3 Sent: 1

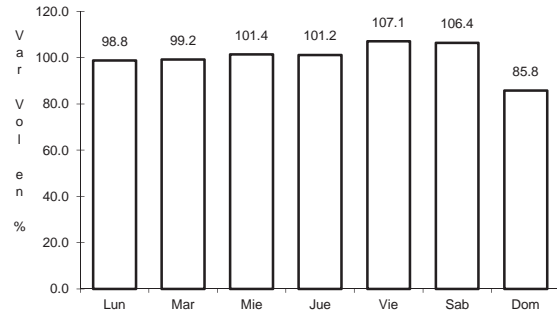
Km: 0.00 Tipo: 3 Sent: 2

Km: 18.00 Tipo: 1 Sent: 0

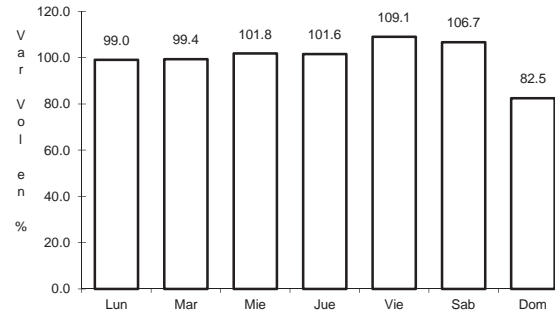
22 CARR: Querétaro - Tequisquiapan

CLAVE: 22502

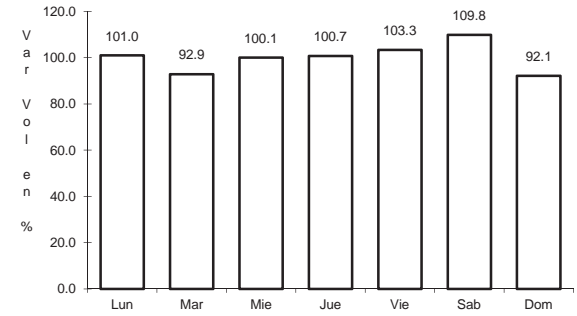
RUTA: QRO



Km: 0.00 Tipo: 3 Sent: 1



Km: 0.00 Tipo: 3 Sent: 2

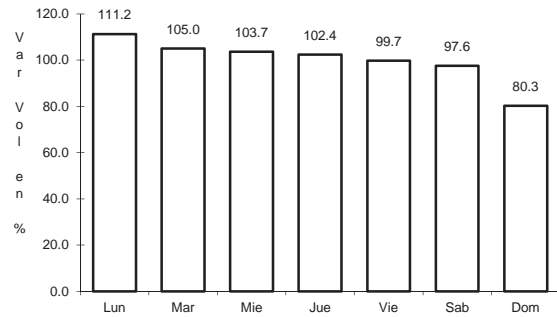


Km: 57.40 Tipo: 1 Sent: 0

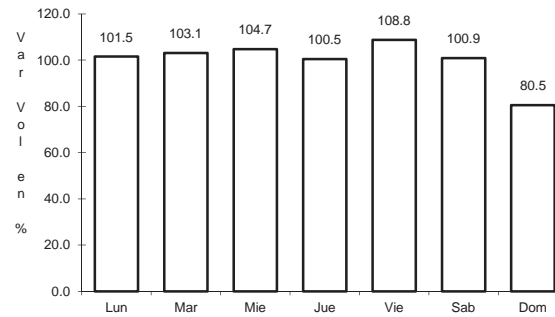
23 CARR: Querétaro - Tlacote El Bajo

CLAVE: 22069

RUTA: QRO



Km: 0.00 Tipo: 3 Sent: 1

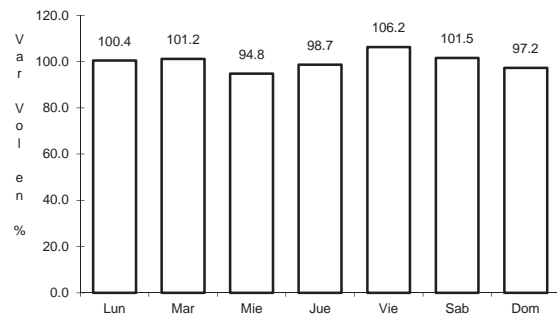


Km: 0.00 Tipo: 3 Sent: 2

24 CARR: Ramal a La Estancia

CLAVE: 22504

RUTA: QRO

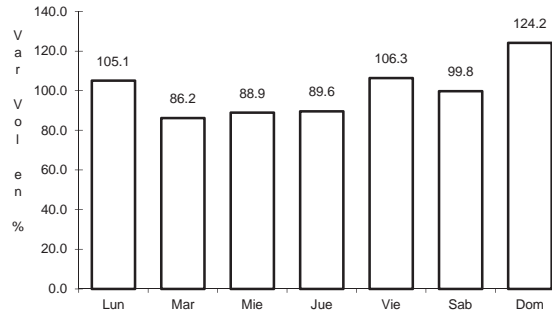
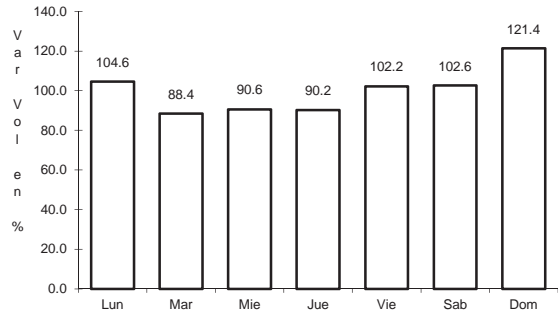


Km: 0.00 Tipo: 3 Sent: 0

25 CARR: Ramal a Tolimán

CLAVE: 22265

RUTA: QRO



Km: 0.00

Tipo: 3

Sent: 0

Km: 7.00

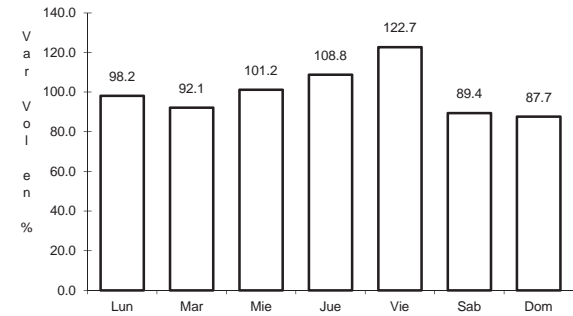
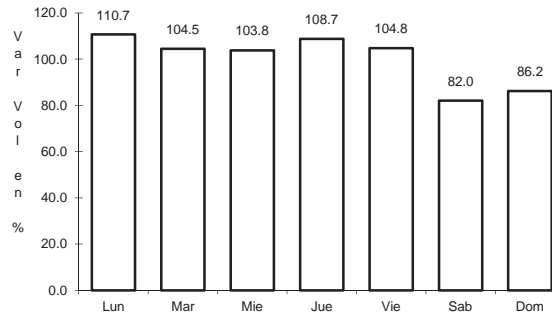
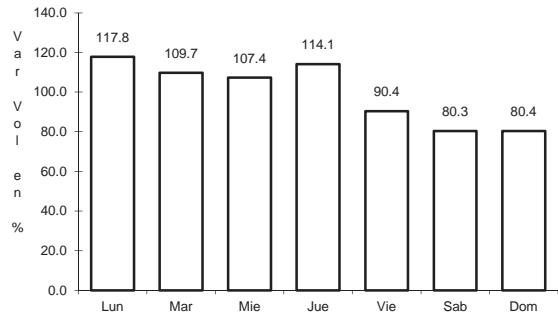
Tipo: 1

Sent: 0

26 CARR: Rayón - Arroyo Seco

CLAVE: 24008

RUTA: SLP-011



Km: 0.00

Tipo: 3

Sent: 0

Km: 36.00

Tipo: 1

Sent: 0

Km: 57.00

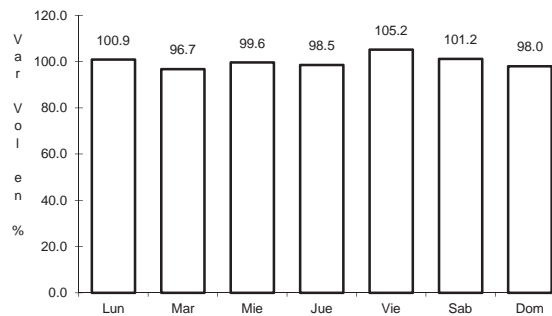
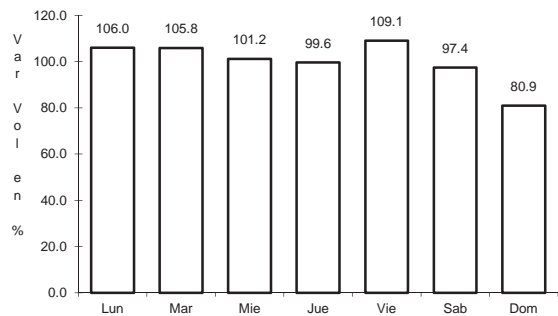
Tipo: 1

Sent: 0

27 CARR: San Juan del Río - Amealco

CLAVE: 22011

RUTA: QRO



Km: 0.00

Tipo: 3

Sent: 0

Km: 28.00

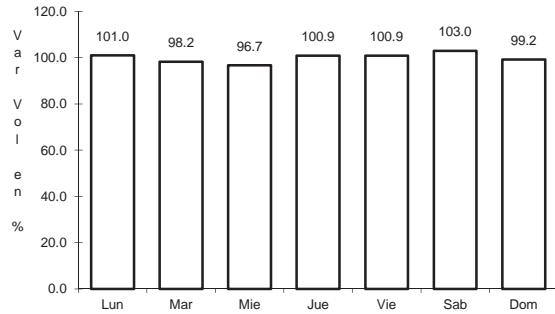
Tipo: 1

Sent: 0

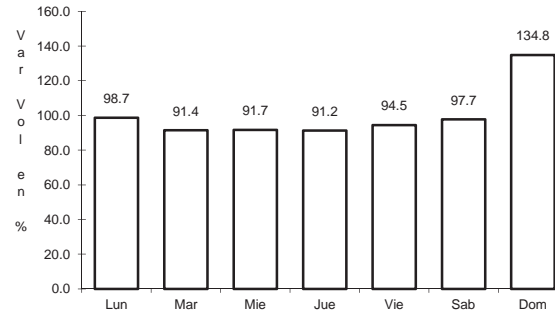
28 CARR: T. C. (Villa del Pueblito - Huimilpan) - Coroneo

CLAVE: 00155

RUTA: QRO-GTO



Km: 0.00 Tipo: 3 Sent: 0

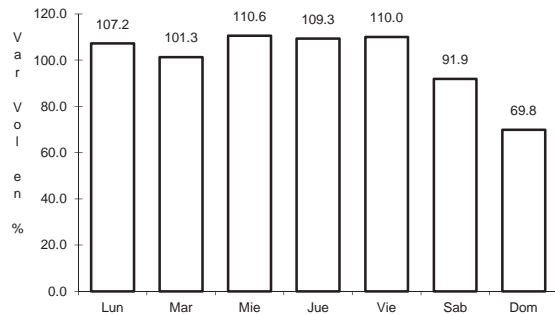


Km: 45.20 Tipo: 1 Sent: 0

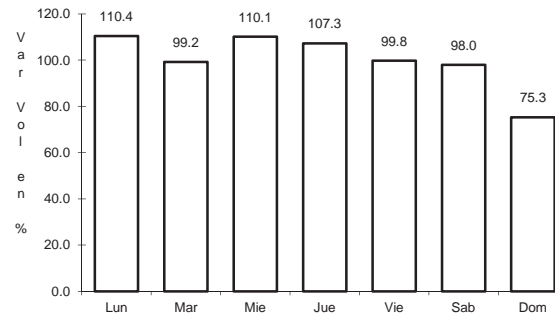
29 CARR: Villa del Pueblito - Huimilpan

CLAVE: 22503

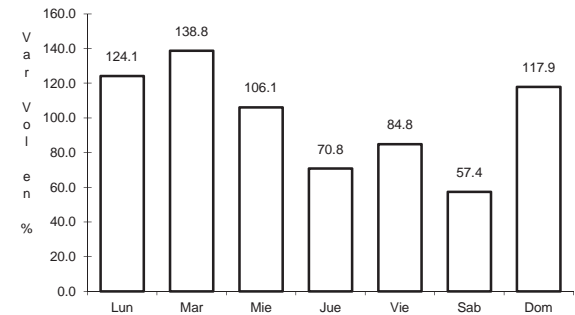
RUTA: QRO



Km: 0.00 Tipo: 3 Sent: 1



Km: 0.00 Tipo: 3 Sent: 2

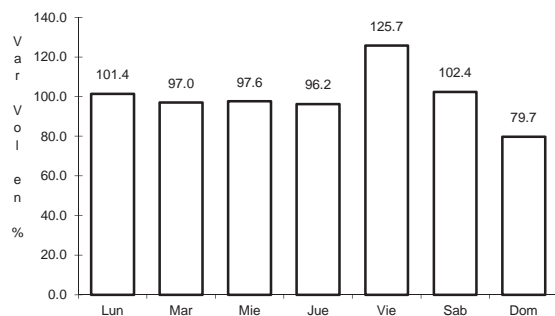


Km: 27.00 Tipo: 1 Sent: 0

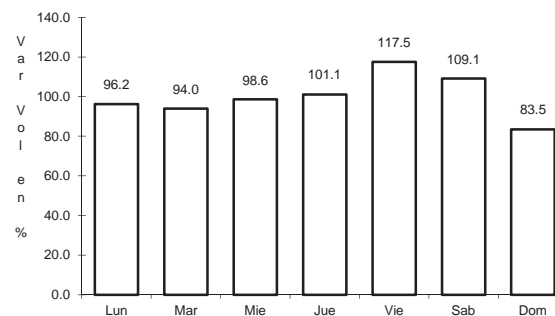
30 CARR: Toluca - Palmillas

CLAVE: 00496

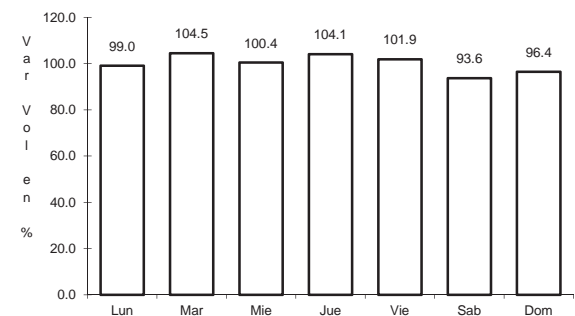
RUTA: EM(D)-MEX-055



Km: 14.21 Tipo: 1 Sent: 1



Km: 14.21 Tipo: 1 Sent: 2



Km: 85.64 Tipo: 3 Sent: 0