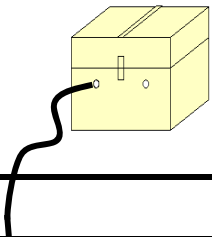


02 BAJA CALIFORNIA

SECRETARÍA DE COMUNICACIONES Y TRANSPORTES
DIRECCIÓN GENERAL DE SERVICIOS TÉCNICOS

ESTADOS UNIDOS DE NORTE AMÉRICA





BAJA CALIFORNIA

NO. INDICE	CARRETERA	RUTA
---RED FEDERAL LIBRE---		
1	Ensenada - El Chinero	MEX-003
2	Ensenada - Lázaro Cárdenas	MEX-001
3	Ent. Punta Prieta - Bahía de Los Ángeles	MEX-001
4	Ent. Punta Prieta - Guerrero Negro	MEX-001
5	Lázaro Cárdenas - Ent. Punta Prieta	MEX-001
6	Mexicali - San Felipe	MEX-005
7	Ramal a Aeropuerto de Mexicali	MEX-002
8	Ramal a Venustiano Carranza	MEX-001
9	San Felipe - Chapala	MEX-005
10	Sonoita - Mexicali	MEX-002
11	Tecate - El Sauzal	MEX-003
12	Tijuana - Ensenada (Libre)	MEX-001
---RED FEDERAL DE CUOTA---		
13	El Centinela - La Rumorosa (Cuota)	MEX-002D
14	La Rumorosa - Tecate (Cuota)	MEX-002D
15	Libramiento de Mexicali (Cuota)	MEX-002D
16	Libramiento de Tecate (Cuota)	MEX-002D
17	Tecate - Tijuana (Cuota)	MEX-002D
18	Tijuana - Ensenada (Cuota)	MEX-001D
---RED FEDERAL INTEGRADA POR TRAMOS LIBRES Y DE CUOTA---		
19	Mexicali - Tijuana	MEX-002D-MEX
---RED ESTATAL LIBRE---		
20	Algodones - Ent. Islas Agrarias Grupo B	BC-008
21	Corredor Tijuana 2000	BC
22	Ejido Benito Juárez - Ejido Chiapas	BC-061
23	Ejido Monterrey - Mazón	BC-003
24	El Faro - Estación Coahuila	BC-004
25	Ent. Santa Rosa - Ent. Pachuca	BC-006
26	La Puerta - T. C. (Mexicali - Estación Coahuila)	BC-010
27	Mexicali - Algodones	BC-002
28	Mexicali - Estación Coahuila	BC-001
29	Mexicali - Progreso	BC-005

BAJA CALIFORNIA

1 CARR: Ensenada - El Chinero

CLAVE: 02009

RUTA: MEX-003

AÑO: 2015

LUGAR	ESTACION				CLASIFICACION VEHICULAR EN PORCIENTO													COORDENADAS		
	KM	TE	SC	TDPA	M	A	B	C2	C3	T3S2	T3S3	T3S2R4	OTROS	A	B	C	K'	D	LATITUD	LONGITUD
Ensenada	0.00	3	0	7331	1.8	92.3	0.4	1.8	0.9	1.2	0.7	0.2	0.7	94.1	0.4	5.5	0.086	0.503	31.874470	-116.561894
El Tule	12.40	1	0	2825	0.9	88.1	0.8	2.3	0.7	3.3	2.1	0.5	1.3	89.0	0.8	10.2	0.117	0.509	31.888007	-116.504731
El Tule	12.40	3	0	2698	0.8	82.7	0.7	8.5	1.2	3.7	1.9	0.4	0.1	83.5	0.7	15.8	0.103	0.505	31.889217	-116.496629
Ojos Negros	38.50	1	0	1942	1.1	87.3	1.1	1.2	1.5	4.1	1.9	0.3	1.5	88.4	1.1	10.5	0.096	0.502	31.889035	-116.280194
San Salvador	60.50	1	0	997	0.7	82.1	1.3	1.2	0.4	7.8	4.4	0.8	1.3	82.8	1.3	15.9	0.197	0.522	31.864910	-116.119128
Héroes de La Independencia	93.00	3	0	972	1.0	82.9	1.0	1.6	0.4	6.7	3.8	0.8	1.8	83.9	1.0	15.1	0.167	0.519	31.601422	-115.874348
Leyes de Reforma	103.00	3	0	1012	0.9	83.0	1.5	0.9	0.4	7.2	4.5	0.7	0.9	83.9	1.5	14.6	0.096	0.523	31.532662	-115.819022
Lazáro Cárdenas	122.00	3	0	992	0.9	82.4	2.2	5.7	1.1	6.3	0.8	0.1	0.5	83.3	2.2	14.5	0.099	0.501	31.397858	-115.706700
Francisco R. Serrano	137.50	3	0	773	0.3	68.2	1.6	10.2	0.7	9.5	7.9	0.6	1.0	68.5	1.6	29.9	0.128	0.514	31.327576	-115.530693
El Chinero	196.00	1	0	626	1.9	71.4	3.5	11.0	1.4	8.4	1.4	0.1	0.9	73.3	3.5	23.2	0.120	0.527	31.429269	-115.056848

2 CARR: Ensenada - Lazáro Cárdenas

CLAVE: 02098

RUTA: MEX-001

AÑO: 2015

LUGAR	ESTACION				CLASIFICACION VEHICULAR EN PORCIENTO													COORDENADAS		
	KM	TE	SC	TDPA	M	A	B	C2	C3	T3S2	T3S3	T3S2R4	OTROS	A	B	C	K'	D	LATITUD	LONGITUD
Ensenada	0.00	3	1	30541	0.6	86.6	0.3	7.8	0.6	1.1	2.1	0.3	0.6	87.2	0.3	12.5	0.083	0.511	31.817404	-116.598268
Ensenada	0.00	3	2	31976	0.6	85.2	0.3	8.3	0.6	1.8	2.5	0.3	0.4	85.8	0.3	13.9	0.075	0.511	31.817404	-116.598268
T. Der. Aeropuerto	13.50	3	1	14333	1.6	79.8	1.2	9.8	1.4	2.8	1.1	0.9	1.4	81.4	1.2	17.4	0.075	0.509	31.793263	-116.593490
T. Der. Aeropuerto	13.50	3	2	14492	1.5	79.7	0.9	10.1	1.4	3.1	1.0	1.0	1.3	81.2	0.9	17.9	0.084	0.509	31.793263	-116.593490
T. Der. La Bufadora	21.16	1	1	16126	0.3	85.2	1.4	3.6	3.8	1.4	0.9	0.8	2.6	85.5	1.4	13.1	0.067	0.503	31.731375	-116.580051
T. Der. La Bufadora	21.16	1	2	15952	0.6	86.5	1.1	2.4	3.4	1.7	1.1	0.8	2.4	87.1	1.1	11.8	0.070	0.503	31.731375	-116.580051
T. Der. La Bufadora	21.16	3	0	15217	0.5	82.5	1.8	10.4	0.6	3.8	0.2	0.1	0.1	83.0	1.8	15.2	0.070	0.510	31.723373	-116.573606
Cañón Buenavista	30.40	1	0	24962	0.5	70.1	4.6	8.3	3.6	5.8	3.3	1.8	2.0	70.6	4.6	24.8	0.081	0.509	31.677283	-116.523759
Cañón Buenavista	30.40	3	0	5728	0.4	76.0	1.4	13.5	1.0	4.7	1.7	0.5	0.8	76.4	1.4	22.2	0.079	0.516	31.666296	-116.518731
Santo Tomás	52.00	1	0	5515	1.2	72.4	4.7	9.6	2.6	8.3	0.5	0.1	0.6	73.6	4.7	21.7	0.067	0.531	31.584527	-116.420576
Misión San Vicente	90.00	1	0	4742	0.2	81.8	1.8	1.4	2.2	9.7	1.3	0.8	0.8	82.0	1.8	16.2	0.075	0.501	31.334226	-116.253252
El Salado	104.50	1	0	4154	1.2	70.6	5.5	7.7	2.1	11.2	0.9	0.1	0.7	71.8	5.5	22.7	0.063	0.507	31.237375	-116.170467
Punta Colonet	128.00	1	0	6273	0.9	75.3	5.1	7.0	1.1	9.6	0.6	0.1	0.3	76.2	5.1	18.7	0.070	0.501	31.077505	-116.207397
Punta Colonet	128.00	3	0	5427	0.7	72.1	7.0	7.2	1.5	10.0	0.6	0.1	0.8	72.8	7.0	20.2	0.074	0.519	31.050096	-116.205914
Camalú	159.00	1	0	6030	0.4	74.0	6.4	3.3	1.4	5.2	0.7	0.3	8.3	74.4	6.4	19.2	0.087	0.514	30.848437	-116.068081
Colonia Vicente Guerrero (Lazáro Cárdenas)	172.40	3	0	12476	0.5	84.8	4.8	5.9	0.8	2.7	0.2	0.0	0.3	85.3	4.8	9.9	0.069	0.505	30.701487	-115.985202
San Quintín	193.00	1	0	13166	0.3	86.2	2.7	7.3	0.4	2.1	0.2	0.1	0.7	86.5	2.7	10.8	0.069	0.505	30.592051	-115.951761
San Quintín	193.00	3	1	10743	0.3	86.4	2.1	7.8	0.4	2.5	0.4	0.0	0.1	86.7	2.1	11.2	0.071	0.504	30.554137	-115.939988
San Quintín	193.00	3	2	10931	0.4	84.2	2.4	9.2	0.4	2.9	0.4	0.0	0.1	84.6	2.4	13.0	0.071	0.504	30.554137	-115.939988
Lazáro Cárdenas	196.00																			

BAJA CALIFORNIA

3 CARR: Ent. Punta Prieta - Bahía de Los Ángeles

CLAVE: 02322

RUTA: MEX-001

AÑO: 2015

LUGAR	ESTACION				CLASIFICACION VEHICULAR EN PORCIENTO										COORDENADAS					
	KM	TE	SC	TDPA	M	A	B	C2	C3	T3S2	T3S3	T3S2R4	OTROS	A	B	C	K'	D	LATITUD	LONGITUD
Parador Punta Prieta	0.00	3	0	142	1.1	75.5	2.1	10.8	1.7	2.7	5.1	0.0	1.0	76.6	2.1	21.3	0.162	0.509	29.045634	-114.148490
Bahía de Los Ángeles	68.00	1	0	188	1.7	81.7	0.8	11.8	0.2	0.8	0.2	0.0	2.8	83.4	0.8	15.8	0.105	0.514	28.964367	-113.568178

4 CARR: Ent. Punta Prieta - Guerrero Negro

CLAVE: 00321

RUTA: MEX-001

AÑO: 2015

LUGAR	ESTACION				CLASIFICACION VEHICULAR EN PORCIENTO										COORDENADAS					
	KM	TE	SC	TDPA	M	A	B	C2	C3	T3S2	T3S3	T3S2R4	OTROS	A	B	C	K'	D	LATITUD	LONGITUD
Parador Punta Prieta	0.00	3	0	611	1.9	63.7	6.0	7.0	2.5	16.8	1.6	0.2	0.3	65.6	6.0	28.4	0.098	0.528	29.041282	-114.152092
Rosarito	50.60	3	0	1020	0.3	68.5	2.8	8.1	0.3	17.4	1.5	0.3	0.8	68.8	2.8	28.4	0.066	0.509	28.629827	-114.023800
Tanatán	70.10	3	0	932	0.3	61.9	2.7	10.1	0.6	21.7	1.3	0.3	1.1	62.2	2.7	35.1	0.079	0.513	28.496486	-114.016339
Tampico	105.00	1	0	1178	0.4	61.9	2.5	11.7	1.7	18.2	1.8	0.8	1.0	62.3	2.5	35.2	0.071	0.508	28.217589	-113.999966
Lim. Edos. Term. B.C. Ppia. B.C.S. (Paralelo 28)	128.56																			
Ent. Guerrero Negro	130.00	1	0	1793	1.0	81.4	2.6	4.5	0.9	8.4	0.9	0.1	0.2	82.4	2.6	15.0	0.064	0.500	27.971550	-114.013737

5 CARR: Lázaro Cárdenas - Ent. Punta Prieta

CLAVE: 02319

RUTA: MEX-001

AÑO: 2015

LUGAR	ESTACION				CLASIFICACION VEHICULAR EN PORCIENTO										COORDENADAS					
	KM	TE	SC	TDPA	M	A	B	C2	C3	T3S2	T3S3	T3S2R4	OTROS	A	B	C	K'	D	LATITUD	LONGITUD
Lázaro Cárdenas	0.00	3	0	14576	0.4	81.5	2.8	11.2	0.5	2.5	0.8	0.1	0.2	81.9	2.8	15.3	0.074	0.508	30.506828	-115.925293
Rosario de Arriba	53.70	1	0	1628	2.2	71.9	8.2	9.2	1.9	5.3	0.6	0.1	0.6	74.1	8.2	17.7	0.071	0.511	30.063708	-115.729134
Rosario de Arriba	53.70	3	0	2481	0.3	68.2	3.0	9.7	1.0	13.5	3.8	0.2	0.3	68.5	3.0	28.5	0.063	0.504	30.070656	-115.710394
T. Der. Emiliano Zapata	80.00	3	0	938	5.5	60.4	10.9	13.0	3.8	3.9	1.1	0.0	1.4	65.9	10.9	23.2	0.085	0.547	30.029355	-115.529974
San Agustín	140.00	1	0	829	7.1	56.8	11.6	12.6	3.7	5.7	1.2	0.0	1.3	63.9	11.6	24.5	0.060	0.524	29.922042	-114.980681
San Agustín	140.00	3	0	642	2.1	53.9	7.8	10.4	3.9	17.2	4.1	0.2	0.4	56.0	7.8	36.2	0.056	0.507	29.921559	-114.973089
San Luis	173.00	1	0	962	0.7	57.1	2.7	12.5	0.8	22.9	1.4	0.3	1.6	57.8	2.7	39.5	0.111	0.510	29.739498	-114.732263
Rancho Chapala	222.80	1	0	754	1.5	53.2	3.3	9.7	0.7	28.3	1.4	0.3	1.6	54.7	3.3	42.0	0.096	0.512	29.386377	-114.383398
Parador Punta Prieta	275.66	1	0	730	1.5	59.8	4.6	11.4	3.0	14.9	2.4	0.2	2.2	61.3	4.6	34.1	0.074	0.516	29.050402	-114.153445

6 CARR: Mexicali - San Felipe

CLAVE: 02096

RUTA: MEX-005

AÑO: 2015

LUGAR	ESTACION				CLASIFICACION VEHICULAR EN PORCIENTO										COORDENADAS					
	KM	TE	SC	TDPA	M	A	B	C2	C3	T3S2	T3S3	T3S2R4	OTROS	A	B	C	K'	D	LATITUD	LONGITUD
Mexicali	0.00	3	1	10170	0.3	87.9	0.7	3.8	2.9	3.2	0.6	0.4	0.2	88.2	0.7	11.1	0.092	0.543	32.552971	-115.416922
Mexicali	0.00	3	2	8564	2.2	81.0	1.9	8.4	2.9	2.7	0.5	0.2	0.2	83.2	1.9	14.9	0.185	0.543	32.552971	-115.416922
La Puerta	32.00	1	1	3923	0.5	90.2	0.8	1.8	1.6	2.5	1.2	0.6	0.8	90.7	0.8	8.5	0.173	0.508	32.338673	-115.331482

BAJA CALIFORNIA

6 CARR: Mexicali - San Felipe

CLAVE: 02096

RUTA: MEX-005

AÑO: 2015

LUGAR	ESTACION				CLASIFICACION VEHICULAR EN PORCIENTO										COORDENADAS					
	KM	TE	SC	TDPA	M	A	B	C2	C3	T3S2	T3S3	T3S2R4	OTROS	A	B	C	K'	D	LATITUD	LONGITUD
La Puerta	32.00	1	2	4046	0.4	89.8	1.0	1.6	1.5	3.0	1.3	0.6	0.8	90.2	1.0	8.8	0.077	0.508	32.338673	-115.331482
T. Izq. Estación Coahuila	39.00	1	1	2511	0.1	90.3	0.7	3.8	1.5	2.2	0.9	0.2	0.3	90.4	0.7	8.9	0.087	0.506	32.276544	-115.321945
T. Izq. Estación Coahuila	39.00	1	2	2575	0.5	87.5	1.2	4.9	1.6	2.7	1.0	0.3	0.3	88.0	1.2	10.8	0.120	0.506	32.276544	-115.321945
T. Izq. Estación Coahuila	39.00	3	0	2441	0.6	81.7	1.6	7.3	2.7	4.1	1.3	0.4	0.3	82.3	1.6	16.1	0.091	0.537	32.267546	-115.321592
El Chinero	141.00	1	0	1889	0.8	85.7	1.7	3.2	0.1	4.5	2.2	0.7	1.1	86.5	1.7	11.8	0.074	0.513	31.440620	-115.053392
El Chinero	141.00	3	0	1588	0.3	83.7	1.8	11.0	0.6	1.6	0.7	0.2	0.1	84.0	1.8	14.2	0.103	0.517	31.426828	-115.046840
San Felipe	189.60	1	1	2690	0.1	94.3	0.5	4.2	0.3	0.4	0.1	0.0	0.1	94.4	0.5	5.1	0.090	0.544	31.031338	-114.860051
San Felipe	189.60	1	2	2703	0.2	92.2	1.0	5.5	0.4	0.5	0.1	0.0	0.1	92.4	1.0	6.6	0.067	0.544	31.031338	-114.860051

7 CARR: Ramal a Aeropuerto de Mexicali

CLAVE: 02321

RUTA: MEX-002

AÑO: 2015

LUGAR	ESTACION				CLASIFICACION VEHICULAR EN PORCIENTO										COORDENADAS					
	KM	TE	SC	TDPA	M	A	B	C2	C3	T3S2	T3S3	T3S2R4	OTROS	A	B	C	K'	D	LATITUD	LONGITUD
T. C. Mexicali - Estación Coahuila	0.00	3	0	12593	1.0	85.4	0.8	7.2	0.6	2.9	0.9	0.6	0.6	86.4	0.8	12.8	0.068	0.514	32.651863	-115.346385
Aeropuerto	10.00	1	0	4458	0.7	89.8	0.3	6.1	0.2	1.9	0.2	0.1	0.7	90.5	0.3	9.2	0.102	0.500	32.628814	-115.253759
T. C. Algodones - Islas Agrarias Grupo B	12.10																			

8 CARR: Ramal a Venustiano Carranza

CLAVE: 02506

RUTA: MEX-001

AÑO: 2015

LUGAR	ESTACION				CLASIFICACION VEHICULAR EN PORCIENTO										COORDENADAS					
	KM	TE	SC	TDPA	M	A	B	C2	C3	T3S2	T3S3	T3S2R4	OTROS	A	B	C	K'	D	LATITUD	LONGITUD
T. C. Lazáro Cárdenas - Punta Prieta	0.00	3	0	2629	3.3	74.3	12.8	2.7	1.0	0.1	0.0	0.0	5.8	77.6	12.8	9.6	0.130	0.517	30.399928	-115.872781

9 CARR: San Felipe - Chapala

CLAVE: 02503

RUTA: MEX-005

AÑO: 2015

LUGAR	ESTACION				CLASIFICACION VEHICULAR EN PORCIENTO										COORDENADAS					
	KM	TE	SC	TDPA	M	A	B	C2	C3	T3S2	T3S3	T3S2R4	OTROS	A	B	C	K'	D	LATITUD	LONGITUD
San Felipe	0.00	3	1	1508	0.2	93.1	0.4	5.1	0.7	0.3	0.1	0.0	0.1	93.3	0.4	6.3	0.084	0.536	31.008090	-114.841033
San Felipe	0.00	3	2	1438	0.4	84.4	0.4	13.2	0.8	0.5	0.2	0.0	0.1	84.8	0.4	14.8	0.081	0.536	31.008090	-114.841033
Playa Curbina	75.46	3	0	155	0.9	76.9	1.1	12.3	0.8	5.9	1.8	0.1	0.2	77.8	1.1	21.1	0.181	0.513	30.336967	-114.645990
T. C. Lazáro Cárdenas - Parador Punta Prieta	213.00																			

BAJA CALIFORNIA

10 CARR : Sonoita - Mexicali

CLAVE: 00081

RUTA: MEX-002

AÑO : 2015

LUGAR	ESTACION				CLASIFICACION VEHICULAR EN PORCIENTO														COORDENADAS	
	KM	TE	SC	TDPA	M	A	B	C2	C3	T3S2	T3S3	T3S2R4	OTROS	A	B	C	K'	D	LATITUD	LONGITUD
Sonoita	0.00	3	0	4080	2.3	51.9	11.5	6.4	2.8	17.8	1.7	5.0	0.6	54.2	11.5	34.3	0.056	0.556	31.884039	-112.856813
Los Vidrios	58.75	3	0	4093	1.7	48.9	7.9	7.9	4.0	18.9	3.8	5.5	1.4	50.6	7.9	41.5	0.066	0.507	32.027539	-113.423775
San Luis Río Colorado	191.80	1	0	4005	1.9	51.9	11.6	8.8	3.9	15.3	1.5	4.2	0.9	53.8	11.6	34.6	0.064	0.518	32.453356	-114.682816
San Luis Río Colorado	191.80	3	1	8375	0.7	83.6	3.6	3.3	0.8	5.5	0.6	1.7	0.2	84.3	3.6	12.1	0.061	0.527	32.488766	-114.798960
San Luis Río Colorado	191.80	3	2	9341	0.3	85.3	3.0	3.0	0.9	5.4	0.4	1.5	0.2	85.6	3.0	11.4	0.062	0.527	32.488766	-114.798960
Lim. Edos. Term. Son. Ppia. B.C.	203.69																			
X. C. Mexicali - Algodones	206.78	1	1	8352	0.4	84.6	3.1	3.3	1.0	5.4	0.6	1.4	0.2	85.0	3.1	11.9	0.067	0.532	32.498514	-114.831061
X. C. Mexicali - Algodones	206.78	1	2	9508	0.7	86.0	3.2	3.9	1.8	2.9	0.3	0.6	0.6	86.7	3.2	10.1	0.068	0.532	32.498514	-114.831061
X. C. Mexicali - Algodones	206.78	3	1	7728	0.2	85.8	2.7	1.0	0.8	5.5	0.8	1.8	1.4	86.0	2.7	11.3	0.079	0.509	32.506015	-114.853706
X. C. Mexicali - Algodones	206.78	3	2	7460	0.3	83.9	2.8	1.0	0.9	6.6	0.7	1.8	2.0	84.2	2.8	13.0	0.081	0.509	32.506015	-114.853706
T. Izq. Ejido Hermosillo	214.80	3	1	7474	0.2	85.9	2.7	1.0	0.8	5.5	0.7	1.8	1.4	86.1	2.7	11.2	0.072	0.507	32.527479	-114.928431
T. Izq. Ejido Hermosillo	214.80	3	2	7256	0.3	84.2	2.8	1.0	0.9	6.6	0.8	1.8	1.6	84.5	2.8	12.7	0.071	0.507	32.527479	-114.928431
Ejido Monterrey	228.63	3	1	10109	0.3	86.8	2.0	1.2	1.0	4.7	0.8	1.7	1.5	87.1	2.0	10.9	0.069	0.505	32.552077	-115.087516
Ejido Monterrey	228.63	3	2	9928	0.3	86.6	2.0	1.4	1.1	4.5	0.7	1.7	1.7	86.9	2.0	11.1	0.065	0.505	32.552077	-115.087516
X. C. Mexicali - Algodones	256.47	1	1	15861	0.8	83.3	1.9	7.3	1.1	3.2	0.4	0.6	1.4	84.1	1.9	14.0	0.079	0.505	32.565468	-115.326431
X. C. Mexicali - Algodones	256.47	1	2	16189	0.8	82.7	1.8	8.1	1.1	3.2	0.5	0.6	1.2	83.5	1.8	14.7	0.071	0.505	32.565468	-115.326431
T. C. Mexicali - San Felipe	265.12																			

11 CARR : Tecate - El Sauzal

CLAVE: 02097

RUTA: MEX-003

AÑO : 2015

LUGAR	ESTACION				CLASIFICACION VEHICULAR EN PORCIENTO														COORDENADAS	
	KM	TE	SC	TDPA	M	A	B	C2	C3	T3S2	T3S3	T3S2R4	OTROS	A	B	C	K'	D	LATITUD	LONGITUD
Tecate	0.00	3	0	8436	0.6	89.7	1.7	3.9	0.6	2.3	0.4	0.5	0.3	90.3	1.7	8.0	0.130	0.501	32.539071	-116.627338
T. Der. Valle de Las Palmas	27.80	1	0	4913	0.6	72.5	1.4	1.1	0.7	15.0	3.5	3.5	1.7	73.1	1.4	25.5	0.073	0.505	32.386995	-116.613801
El Tezterazo	48.80	3	0	2578	1.0	75.6	1.5	7.6	1.2	8.4	3.0	1.3	0.4	76.6	1.5	21.9	0.105	0.515	32.283896	-116.527205
T. Izq. San Marcos	63.50	1	0	3913	0.8	72.0	1.0	1.0	1.3	14.2	4.0	4.0	1.7	72.8	1.0	26.2	0.113	0.544	32.197367	-116.489282
El Porvenir Guadalupe	74.80	3	0	4400	0.6	78.3	1.8	9.2	0.8	6.3	2.0	0.6	0.4	78.9	1.8	19.3	0.060	0.519	32.096481	-116.561645
Las Palmas	85.00	1	0	4740	0.5	78.4	1.8	9.2	0.7	6.3	2.1	0.6	0.4	78.9	1.8	19.3	0.083	0.519	32.044925	-116.598242
San Antonio de Las Minas	93.90	1	1	3858	0.5	80.1	3.0	8.4	0.8	3.6	1.9	1.5	0.2	80.6	3.0	16.4	0.090	0.509	31.988414	-116.644255
San Antonio de Las Minas	93.90	1	2	3996	0.5	78.3	3.1	9.5	0.8	4.1	2.1	1.4	0.2	78.8	3.1	18.1	0.101	0.509	31.988414	-116.644255
El Sauzal	104.53	1	1	5152	0.8	91.4	0.7	3.6	0.7	1.9	0.3	0.4	0.2	92.2	0.7	7.1	0.109	0.504	31.913932	-116.690191
El Sauzal	104.53	1	2	5238	0.5	90.6	1.0	4.2	0.7	2.2	0.2	0.4	0.2	91.1	1.0	7.9	0.141	0.504	31.913932	-116.690191

BAJA CALIFORNIA

12 CARR: Tijuana - Ensenada (Libre)

CLAVE: 02099

RUTA: MEX-001

AÑO: 2015

LUGAR	ESTACION				CLASIFICACION VEHICULAR EN PORCIENTO										COORDENADAS					
	KM	TE	SC	TDPA	M	A	B	C2	C3	T3S2	T3S3	T3S2R4	OTROS	A	B	C	K'	D	LATITUD	LONGITUD
Tijuana	0.00																			
X. C. Tijuana - San Miguel (Cuota)	22.00	1	1	23734	0.8	92.4	1.3	3.6	0.9	0.8	0.1	0.0	0.1	93.2	1.3	5.5	0.068	0.538	32.380963	-117.057556
X. C. Tijuana - San Miguel (Cuota)	22.00	1	2	23424	0.3	94.2	1.0	2.6	0.8	0.8	0.2	0.0	0.1	94.5	1.0	4.5	0.075	0.538	32.380963	-117.057556
Rosarito	25.94	1	1	13667	0.8	88.7	0.3	4.0	0.2	1.3	3.3	0.7	0.7	89.5	0.3	10.2	0.071	0.516	32.370248	-117.060872
Rosarito	25.94	1	2	14579	0.8	87.6	0.3	4.7	0.2	1.4	3.5	0.7	0.8	88.4	0.3	11.3	0.104	0.516	32.370248	-117.060872
Rosarito	25.94	3	1	8886	1.1	93.2	0.4	2.3	0.4	0.7	0.3	0.2	1.4	94.3	0.4	5.3	0.102	0.505	32.331763	-117.051507
Rosarito	25.94	3	2	9052	1.2	93.2	0.4	2.5	0.4	0.7	0.2	0.2	1.2	94.4	0.4	5.2	0.084	0.505	32.331763	-117.051507
T. Izq. Autopista	46.12	1	1	4987	0.6	88.6	1.0	5.1	1.0	2.9	0.3	0.2	0.3	89.2	1.0	9.8	0.107	0.514	32.229792	-116.921636
T. Izq. Autopista	46.12	1	2	4710	0.4	92.7	0.5	5.1	0.5	0.6	0.0	0.0	0.2	93.1	0.5	6.4	0.073	0.514	32.229792	-116.921636
Población Plaza Santa María	56.98	1	0	1726	1.1	89.9	0.9	5.9	1.2	0.9	0.1	0.0	0.0	91.0	0.9	8.1	0.086	0.547	32.144053	-116.892035
La Misión	64.98	1	0	2778	1.2	83.5	2.9	7.3	0.7	4.0	0.3	0.0	0.1	84.7	2.9	12.4	0.103	0.506	32.095651	-116.862818
T. Izq. Colonia Guadalupe	82.90	1	0	2011	0.9	89.0	1.1	6.2	1.2	1.4	0.1	0.0	0.1	89.9	1.1	9.0	0.126	0.512	31.990550	-116.746884
Ent. San Miguel	95.80	1	0	1859	1.5	87.6	1.0	7.4	0.9	1.4	0.1	0.0	0.1	89.1	1.0	9.9	0.100	0.508	31.907500	-116.730325
El Sauzal	102.00	3	1	23991	1.6	83.8	1.9	7.2	0.8	3.6	0.5	0.4	0.2	85.4	1.9	12.7	0.082	0.501	31.878941	-116.682429
El Sauzal	102.00	3	2	24156	1.4	84.6	1.6	6.9	0.6	3.4	0.8	0.4	0.3	86.0	1.6	12.4	0.066	0.501	31.878941	-116.682429
Ensenada	110.00																			

13 CARR: El Centinela - La Rumorosa (Cuota)

CLAVE: 02011

RUTA: MEX-002D

AÑO: 2015

LUGAR	ESTACION				CLASIFICACION VEHICULAR EN PORCIENTO										COORDENADAS					
	KM	TE	SC	TDPA	M	A	B	C2	C3	T3S2	T3S3	T3S2R4	OTROS	A	B	C	K'	D	LATITUD	LONGITUD
Ent. El Centinela	20.30																			
Laguna Salada	25.00	1	1	5025	0.2	68.8	4.3	7.8	1.7	9.3	2.9	3.6	1.4	69.0	4.3	26.7	0.079	0.510	32.576928	-115.740080
Laguna Salada	25.00	1	2	4837	0.4	65.7	5.5	8.4	1.1	11.8	1.9	3.6	1.6	66.1	5.5	28.4	0.069	0.510	32.576928	-115.740080
La Rumorosa	67.60	1	1	2230	0.9	72.9	1.7	6.0	2.1	9.6	3.2	1.8	1.8	73.8	1.7	24.5	0.134	0.524	32.551092	-116.043335
La Rumorosa	67.60	1	2	2463	0.7	70.2	1.7	6.1	2.4	11.2	3.7	1.8	2.2	70.9	1.7	27.4	0.078	0.524	32.551092	-116.043335

14 CARR: La Rumorosa - Tecate (Cuota)

CLAVE: 02011

RUTA: MEX-002D

AÑO: 2015

LUGAR	ESTACION				CLASIFICACION VEHICULAR EN PORCIENTO										COORDENADAS					
	KM	TE	SC	TDPA	M	A	B	C2	C3	T3S2	T3S3	T3S2R4	OTROS	A	B	C	K'	D	LATITUD	LONGITUD
La Rumorosa	0.00	3	1	3666	0.2	73.3	6.8	4.7	1.8	6.0	1.4	3.6	2.2	73.5	6.8	19.7	0.089	0.525	32.559098	-116.051970
La Rumorosa	0.00	3	2	3376	0.1	74.9	4.4	5.1	2.3	7.6	0.8	3.8	1.0	75.0	4.4	20.6	0.085	0.525	32.559098	-116.051970
Caseta de Cobro El Hongo	30.56	1	1	3337	0.3	70.5	6.8	8.0	1.3	7.9	0.7	4.0	0.5	70.8	6.8	22.4	0.094	0.525	32.520427	-116.311418
Caseta de Cobro El Hongo	30.56	1	2	3703	0.5	70.2	7.1	9.9	1.3	7.4	0.2	3.1	0.3	70.7	7.1	22.2	0.085	0.525	32.520427	-116.311418

BAJA CALIFORNIA

14 CARR: La Rumorosa - Tecate (Cuota)

CLAVE: 02011

RUTA: MEX-002D

AÑO: 2015

LUGAR	ESTACION				CLASIFICACION VEHICULAR EN PORCIENTO													COORDENADAS		
	KM	TE	SC	TDPA	M	A	B	C2	C3	T3S2	T3S3	T3S2R4	OTROS	A	B	C	K'	D	LATITUD	LONGITUD
Caseta de Cobro El Hongo	30.56	2	1	3110	0.3	73.1	5.5	3.0	1.6	11.3	0.5	3.9	0.8	73.4	5.5	21.1	0.087	0.500	32.521903	-116.319783
Caseta de Cobro El Hongo	30.56	2	2	3110	0.3	73.1	5.5	3.0	1.6	11.3	0.5	3.9	0.8	73.4	5.5	21.1	0.087	0.500	32.521903	-116.319783
Caseta de Cobro El Hongo	30.56	3	1	3704	0.1	74.9	7.2	1.0	0.8	8.9	1.8	4.2	1.1	75.0	7.2	17.8	0.077	0.511	32.522786	-116.324786
Caseta de Cobro El Hongo	30.56	3	2	3995	0.2	75.1	7.2	1.3	0.7	8.9	0.6	3.8	2.2	75.3	7.2	17.5	0.088	0.511	32.522786	-116.324786
T. C. Mexicali -Tijuana (Libre)	55.50																			

15 CARR: Libramiento de Mexicali (Cuota)

CLAVE: 02319

RUTA: MEX-002D

AÑO: 2015

LUGAR	ESTACION				CLASIFICACION VEHICULAR EN PORCIENTO													COORDENADAS		
	KM	TE	SC	TDPA	M	A	B	C2	C3	T3S2	T3S3	T3S2R4	OTROS	A	B	C	K'	D	LATITUD	LONGITUD
T. C. Sonoyta - Mexicali	0.00	3	0	3053	1.4	62.4	4.3	6.2	3.8	15.4	1.3	4.8	0.4	63.8	4.3	31.9	0.075	0.505	32.550647	-115.308200
T. C. Mexicali - Tijuana	41.00	1	0	2597	1.7	59.3	5.6	4.9	4.9	13.8	3.7	4.8	1.3	61.0	5.6	33.4	0.070	0.542	32.591399	-115.676378

16 CARR: Libramiento de Tecate (Cuota)

CLAVE: 02082

RUTA: MEX-002D

AÑO: 2015

LUGAR	ESTACION				CLASIFICACION VEHICULAR EN PORCIENTO													COORDENADAS		
	KM	TE	SC	TDPA	M	A	B	C2	C3	T3S2	T3S3	T3S2R4	OTROS	A	B	C	K'	D	LATITUD	LONGITUD
T. C. Mexicali -Tijuana (Libre) Oriente	118.35																			
Caseta de Cobro Tecate	130.50	2	1	1917	0.3	78.1	1.2	3.4	1.2	11.8	1.2	1.9	0.9	78.4	1.2	20.4	0.091	0.500	32.545773	-116.852030
Caseta de Cobro Tecate	130.50	2	2	1917	0.3	78.1	1.2	3.4	1.2	11.8	1.2	1.9	0.9	78.4	1.2	20.4	0.091	0.500	32.545773	-116.852030
T. C. Mexicali -Tijuana (Libre) Poniente	130.60																			

17 CARR: Tecate - Tijuana (Cuota)

CLAVE: 02011

RUTA: MEX-002D

AÑO: 2015

LUGAR	ESTACION				CLASIFICACION VEHICULAR EN PORCIENTO													COORDENADAS		
	KM	TE	SC	TDPA	M	A	B	C2	C3	T3S2	T3S3	T3S2R4	OTROS	A	B	C	K'	D	LATITUD	LONGITUD
T. C. Mexicali -Tijuana (Libre)	130.60																			
Caseta de Cobro Tijuana	147.60	1	1	3423	0.7	71.5	7.5	6.6	1.8	9.3	0.3	1.7	0.6	72.2	7.5	20.3	0.096	0.513	32.548958	-116.848060
Caseta de Cobro Tijuana	147.60	1	2	3244	0.5	74.7	5.6	3.5	1.2	10.0	0.5	2.6	1.4	75.2	5.6	19.2	0.092	0.513	32.548958	-116.848060
Caseta de Cobro Tijuana	147.60	2	1	2804	0.3	73.5	3.2	5.6	2.1	11.4	0.4	3.0	0.5	73.8	3.2	23.0	0.091	0.500	32.545773	-116.852030
Caseta de Cobro Tijuana	147.60	2	2	2804	0.3	73.5	3.2	5.6	2.1	11.4	0.4	3.0	0.5	73.8	3.2	23.0	0.091	0.500	32.545773	-116.852030
Caseta de Cobro Tijuana	147.60	3	1	4573	0.9	70.7	4.2	6.5	1.6	10.8	1.3	3.2	0.8	71.6	4.2	24.2	0.078	0.534	32.542301	-116.858646
Caseta de Cobro Tijuana	147.60	3	2	4126	1.5	65.0	5.4	7.2	2.3	15.1	0.7	2.0	0.8	66.5	5.4	28.1	0.074	0.534	32.542301	-116.858646
Termina Autopista Principia Tijuana	148.15																			

BAJA CALIFORNIA

18 CARR: Tijuana - Ensenada (Cuota)

CLAVE: 02100

RUTA: MEX-001D

AÑO: 2015

LUGAR	ESTACION				CLASIFICACION VEHICULAR EN PORCIENTO										COORDENADAS					
	KM	TE	SC	TDPA	M	A	B	C2	C3	T3S2	T3S3	T3S2R4	OTROS	A	B	C	K'	D	LATITUD	LONGITUD
Tijuana	0.00																			
T. Der. Playas de Tijuana	7.50	3	1	7566	0.6	96.2	0.3	0.5	0.7	0.3	0.1	0.0	1.3	96.8	0.3	2.9	0.143	0.534	32.530201	-117.108587
T. Der. Playas de Tijuana	7.50	3	2	6663	0.8	96.6	0.2	0.6	0.6	0.3	0.0	0.0	0.9	97.4	0.2	2.4	0.081	0.534	32.530201	-117.108587
Caseta de Cobro Playas de Tijuana	9.70	2	1	6434	0.9	97.2	0.9	0.4	0.2	0.4	0.0	0.0	0.0	98.1	0.9	1.0	0.100	0.500	32.514031	-117.109509
Caseta de Cobro Playas de Tijuana	9.70	2	2	6434	0.9	97.2	0.9	0.4	0.2	0.4	0.0	0.0	0.0	98.1	0.9	1.0	0.100	0.500	32.514031	-117.109509
X. C. Tijuana - Ensenada	29.50	1	1	8228	0.8	96.6	0.2	0.4	0.6	0.2	0.0	0.0	1.2	97.4	0.2	2.4	0.093	0.515	32.380889	-117.057872
X. C. Tijuana - Ensenada	29.50	1	2	7646	1.0	96.7	0.2	0.5	0.5	0.1	0.0	0.0	1.0	97.7	0.2	2.1	0.155	0.515	32.380889	-117.057872
X. C. Tijuana - Ensenada	29.50	3	1	21306	0.7	91.5	0.5	0.4	2.3	0.6	0.5	0.3	3.2	92.2	0.5	7.3	0.081	0.556	32.369015	-117.057606
X. C. Tijuana - Ensenada	29.50	3	2	20377	0.6	95.1	0.9	0.6	0.9	0.7	0.1	0.1	1.0	95.7	0.9	3.4	0.087	0.556	32.369015	-117.057606
Caseta de Cobro Rosarito	35.43	2	1	4503	0.5	89.3	2.2	1.7	0.6	4.8	0.1	0.6	0.2	89.8	2.2	8.0	0.100	0.500	32.311054	-117.044308
Caseta de Cobro Rosarito	35.43	2	2	4503	0.5	89.3	2.2	1.7	0.6	4.8	0.1	0.6	0.2	89.8	2.2	8.0	0.100	0.500	32.311054	-117.044308
T. Der. La Misión	66.44	3	1	7106	0.2	89.1	1.6	6.1	0.5	1.3	0.5	0.5	0.2	89.3	1.6	9.1	0.117	0.507	32.116199	-116.884292
T. Der. La Misión	66.44	3	2	7145	0.3	88.0	1.8	6.8	0.5	1.4	0.5	0.5	0.2	88.3	1.8	9.9	0.121	0.507	32.116199	-116.884292
Caseta de Cobro Ensenada	98.60	2	1	6122	0.4	85.9	2.1	2.8	1.1	6.4	0.2	0.8	0.3	86.3	2.1	11.6	0.100	0.500	31.903093	-116.732720
Caseta de Cobro Ensenada	98.60	2	2	6122	0.4	85.9	2.1	2.8	1.1	6.4	0.2	0.8	0.3	86.3	2.1	11.6	0.100	0.500	31.903093	-116.732720
T. C. Tijuana - Ensenada (Libre)	99.00																			

19 CARR: Mexicali - Tijuana

CLAVE: 02082

RUTA: MEX-002D-MEX

AÑO: 2015

LUGAR	ESTACION				CLASIFICACION VEHICULAR EN PORCIENTO										COORDENADAS					
	KM	TE	SC	TDPA	M	A	B	C2	C3	T3S2	T3S3	T3S2R4	OTROS	A	B	C	K'	D	LATITUD	LONGITUD
Mexicali	0.00																			
Colonia Progreso	7.80	3	1	6406	0.9	80.1	3.4	1.1	3.6	5.7	1.2	1.8	2.2	81.0	3.4	15.6	0.103	0.510	32.584444	-115.593016
Colonia Progreso	7.80	3	2	6673	0.6	81.7	3.8	1.0	3.0	5.3	1.4	1.7	1.5	82.3	3.8	13.9	0.085	0.510	32.584444	-115.593016
T. Der. Estación de Microondas	69.62	3	0	3034	2.2	74.9	3.9	7.4	2.3	7.2	1.0	0.1	1.0	77.1	3.9	19.0	0.142	0.523	32.510057	-116.090665
Agua Hechicera	87.00	1	0	2967	1.4	67.2	4.5	6.1	2.8	12.0	3.2	1.4	1.4	68.6	4.5	26.9	0.105	0.539	32.494662	-116.219663
El Encinal	112.15	1	0	5171	0.7	70.9	4.6	8.5	1.1	8.9	2.8	1.1	1.4	71.6	4.6	23.8	0.073	0.510	32.556043	-116.437143
Tecate	132.00	1	1	7030	0.5	84.1	2.4	8.2	0.9	3.2	0.3	0.2	0.2	84.6	2.4	13.0	0.125	0.504	32.569360	-116.591877
Tecate	132.00	1	2	7155	0.6	89.9	1.9	4.1	0.7	2.3	0.1	0.2	0.2	90.5	1.9	7.6	0.099	0.504	32.569360	-116.591877
Tecate	132.00	3	1	10797	0.8	87.1	1.1	1.3	1.5	3.2	0.8	1.3	2.9	87.9	1.1	11.0	0.070	0.504	32.558824	-116.657608
Tecate	132.00	3	2	10635	0.9	88.9	1.3	1.5	1.0	2.7	0.4	1.3	2.0	89.8	1.3	8.9	0.076	0.504	32.558824	-116.657608
Presa Abelardo L. Rodríguez	165.00	3	0	4878	0.2	92.0	3.2	4.2	0.3	0.1	0.0	0.0	0.0	92.2	3.2	4.6	0.076	0.519	32.455214	-116.914358
Tijuana	182.60																			

BAJA CALIFORNIA

20 C A R R : Algodones - Ent. Islas Agrarias Grupo B

CLAVE: 02006

RUTA: BC-008

AÑO : 2015

L U G A R	E S T A C I O N				C L A S I F I C A C I O N V E H I C U L A R E N P O R C I E N T O										C O O R D E N A D A S					
	KM	TE	SC	TDPA	M	A	B	C2	C3	T3S2	T3S3	T3S2R4	OTROS	A	B	C	K'	D	LATITUD	LONGITUD
Algodones	0.00	3	0	3535	0.2	96.7	0.8	2.0	0.3	0.0	0.0	0.0	0.0	96.9	0.8	2.3	0.079	0.516	32.702151	-114.742940
T. Izq. Cd. Morelos	14.00	1	0	3838	0.4	98.1	0.0	0.3	0.5	0.3	0.1	0.0	0.3	98.5	0.0	1.5	0.072	0.510	32.666049	-114.848035
Mérida	20.30	3	0	2120	0.4	97.1	0.3	0.9	0.3	0.3	0.3	0.1	0.3	97.5	0.3	2.2	0.068	0.504	32.664806	-114.922463
T. Izq. Ejido Lazáro Cárdenas	31.50	1	0	3071	0.5	97.5	0.2	0.7	0.3	0.2	0.2	0.1	0.3	98.0	0.2	1.8	0.069	0.504	32.615876	-115.009771
Islas Agrarias Grupo B	55.50	1	0	4216	0.6	90.6	2.1	4.8	0.6	1.1	0.1	0.0	0.1	91.2	2.1	6.7	0.079	0.503	32.615475	-115.264740

21 C A R R : Corredor Tijuana 2000

CLAVE: 02006

RUTA: BC

AÑO : 2015

L U G A R	E S T A C I O N				C L A S I F I C A C I O N V E H I C U L A R E N P O R C I E N T O										C O O R D E N A D A S					
	KM	TE	SC	TDPA	M	A	B	C2	C3	T3S2	T3S3	T3S2R4	OTROS	A	B	C	K'	D	LATITUD	LONGITUD
T. C. Mexicali - Tijuana (Cuota)	0.00	3	1	14874	1.0	83.1	1.7	5.7	1.4	3.4	1.7	0.8	1.2	84.1	1.7	14.2	0.082	0.506	32.536741	-116.857547
T. C. Mexicali - Tijuana (Cuota)	0.00	3	2	15120	1.0	81.6	2.0	6.2	1.5	3.7	1.8	0.9	1.3	82.6	2.0	15.4	0.083	0.506	32.536741	-116.857547
T. C. Mexicali - Tijuana	11.00	1	1	20365	0.9	88.7	0.9	2.5	1.6	1.3	0.8	1.0	2.3	89.6	0.9	9.5	0.094	0.503	32.459191	-116.838494
T. C. Mexicali - Tijuana	11.00	1	2	20700	0.8	87.4	0.7	2.5	1.8	1.5	0.7	0.9	3.7	88.2	0.7	11.1	0.077	0.503	32.459191	-116.838494
T. C. Tijuana - San Miguel (Cuota)	40.00	1	1	3602	0.8	83.7	2.3	5.3	2.3	3.6	0.9	0.8	0.3	84.5	2.3	13.2	0.072	0.502	32.288818	-117.022197
T. C. Tijuana - San Miguel (Cuota)	40.00	1	2	3701	0.9	82.4	2.5	5.4	2.7	4.1	0.8	0.9	0.3	83.3	2.5	14.2	0.077	0.502	32.288818	-117.022197

22 C A R R : Ejido Benito Juárez - Ejido Chiapas

CLAVE: 02501

RUTA: BC-061

AÑO : 2015

L U G A R	E S T A C I O N				C L A S I F I C A C I O N V E H I C U L A R E N P O R C I E N T O										C O O R D E N A D A S					
	KM	TE	SC	TDPA	M	A	B	C2	C3	T3S2	T3S3	T3S2R4	OTROS	A	B	C	K'	D	LATITUD	LONGITUD
Ejido Benito Juárez	0.00	3	0	2904	1.0	96.6	0.3	1.3	0.3	0.0	0.0	0.0	0.5	97.6	0.3	2.1	0.109	0.501	32.558969	-114.992970
Ejido México	7.00	1	0	1032	0.5	94.5	1.2	3.5	0.2	0.1	0.0	0.0	0.0	95.0	1.2	3.8	0.094	0.520	32.519779	-114.980773
Ejido Chiapas	10.56	1	0	1075	1.5	93.7	0.8	1.1	0.9	0.0	0.0	0.0	2.0	95.2	0.8	4.0	0.103	0.503	32.499711	-114.965111

23 C A R R : Ejido Monterrey - Mazón

CLAVE: 02004

RUTA: BC-003

AÑO : 2015

L U G A R	E S T A C I O N				C L A S I F I C A C I O N V E H I C U L A R E N P O R C I E N T O										C O O R D E N A D A S					
	KM	TE	SC	TDPA	M	A	B	C2	C3	T3S2	T3S3	T3S2R4	OTROS	A	B	C	K'	D	LATITUD	LONGITUD
T. C. Sonoyta - Mexicali	0.00	3	0	5234	0.4	92.5	0.1	1.6	1.4	2.7	0.4	0.5	0.4	92.9	0.1	7.0	0.071	0.508	32.544080	-115.075793
X. C. Mexicali - Algodones	15.16	1	0	4208	0.9	87.2	1.4	7.1	0.8	2.1	0.3	0.1	0.1	88.1	1.4	10.5	0.072	0.512	32.420183	-115.067398
X. C. Mexicali - Algodones	15.16	3	0	6691	0.9	84.6	1.3	10.5	0.7	1.6	0.2	0.0	0.2	85.5	1.3	13.2	0.075	0.506	32.416816	-115.067107
Guadalupe Victoria	30.47	1	0	9788	0.4	92.1	0.7	5.5	0.4	0.7	0.1	0.0	0.1	92.5	0.7	6.8	0.089	0.501	32.295160	-115.088958
Mazón	35.00	1	0	7375	0.5	86.5	3.7	6.3	0.7	0.8	0.6	0.1	0.8	87.0	3.7	9.3	0.076	0.505	32.244014	-115.111056

BAJA CALIFORNIA

24 CARR: El Faro - Estación Coahuila

CLAVE: 02013

RUTA: BC-004

AÑO: 2015

LUGAR	ESTACION				CLASIFICACION VEHICULAR EN PORCIENTO													COORDENADAS		
	KM	TE	SC	TDPA	M	A	B	C2	C3	T3S2	T3S3	T3S2R4	OTROS	A	B	C	K'	D	LATITUD	LONGITUD
T. C. Mexicali - San Felipe	0.00	3	0	3473	0.3	86.6	1.8	6.4	1.8	2.2	0.6	0.2	0.1	86.9	1.8	11.3	0.071	0.509	32.273382	-115.316473
X. C. Mexicali - Estación Coahuila	16.30	1	0	4154	0.8	89.0	1.7	2.1	0.9	2.5	0.9	0.9	1.2	89.8	1.7	8.5	0.067	0.513	32.239588	-115.179625
X. C. Mexicali - Estación Coahuila	16.30	3	0	6796	1.0	93.0	0.9	1.0	0.8	1.6	0.7	0.3	0.7	94.0	0.9	5.1	0.074	0.514	32.239363	-115.157194
T. Izq. Carr. Ejido Monterrey - Mazón	26.70	3	0	5252	0.7	81.4	2.0	6.3	1.1	5.9	1.1	0.6	0.9	82.1	2.0	15.9	0.073	0.512	32.239437	-115.107691
Francisco Murguía	30.00	3	0	4008	1.0	89.1	1.9	2.0	1.0	2.7	0.9	0.5	0.9	90.1	1.9	8.0	0.060	0.510	32.239755	-115.061098
Estación Coahuila	34.50	1	0	6238	0.9	90.2	1.1	1.1	3.2	1.3	0.5	0.3	1.4	91.1	1.1	7.8	0.088	0.503	32.208825	-115.013732

25 CARR: Ent. Santa Rosa - Ent. Pachuca

CLAVE: 02015

RUTA: BC-006

AÑO: 2015

LUGAR	ESTACION				CLASIFICACION VEHICULAR EN PORCIENTO													COORDENADAS		
	KM	TE	SC	TDPA	M	A	B	C2	C3	T3S2	T3S3	T3S2R4	OTROS	A	B	C	K'	D	LATITUD	LONGITUD
T. C. Sonoyta - Mexicali	0.00	3	0	7748	0.5	83.8	0.5	8.0	0.6	3.8	1.5	0.8	0.5	84.3	0.5	15.2	0.066	0.517	32.558682	-115.019962
Paredones	10.90	3	0	6777	1.0	83.7	0.8	9.2	0.4	3.7	0.5	0.2	0.5	84.7	0.8	14.5	0.070	0.505	32.610511	-114.921705
Cd. Morelos	18.00	3	0	8081	0.5	87.9	0.3	7.5	0.4	3.1	0.1	0.1	0.1	88.4	0.3	11.3	0.055	0.514	32.638644	-114.836704
T. C. Mexicali - Algodones	23.22																			

26 CARR: La Puerta - T. C. (Mexicali - Estación Coahuila)

CLAVE: 02502

RUTA: BC-010

AÑO: 2015

LUGAR	ESTACION				CLASIFICACION VEHICULAR EN PORCIENTO													COORDENADAS		
	KM	TE	SC	TDPA	M	A	B	C2	C3	T3S2	T3S3	T3S2R4	OTROS	A	B	C	K'	D	LATITUD	LONGITUD
T. C. Mexicali - San Felipe	0.00																			
Zakamoto	4.60	1	0	2113	0.3	91.7	1.3	4.0	0.9	1.2	0.3	0.1	0.2	92.0	1.3	6.7	0.080	0.513	32.325661	-115.288309
Nayarit	9.00	3	0	1557	0.2	89.2	0.7	8.4	0.7	0.7	0.0	0.0	0.1	89.4	0.7	9.9	0.083	0.519	32.313235	-115.231595
T. C. Mexicali - Estación Coahuila	15.00																			

27 CARR: Mexicali - Algodones

CLAVE: 02012

RUTA: BC-002

AÑO: 2015

LUGAR	ESTACION				CLASIFICACION VEHICULAR EN PORCIENTO													COORDENADAS		
	KM	TE	SC	TDPA	M	A	B	C2	C3	T3S2	T3S3	T3S2R4	OTROS	A	B	C	K'	D	LATITUD	LONGITUD
T. C. Mexicali - San Felipe	0.00																			
Ejido Puebla	12.00	3	0	7238	1.5	81.7	2.3	8.7	2.3	2.3	0.5	0.4	0.3	83.2	2.3	14.5	0.074	0.504	32.553934	-115.361307
T. C. Geotérmica - Estación Delta	31.50	1	0	5075	0.4	91.2	1.0	5.5	0.8	0.6	0.3	0.0	0.2	91.6	1.0	7.4	0.087	0.512	32.424121	-115.261510
X. C. Mexicali - Estación Coahuila	37.70	1	0	4153	0.5	94.3	1.1	1.8	0.6	0.8	0.2	0.1	0.6	94.8	1.1	4.1	0.074	0.509	32.419095	-115.200117
X. C. Mexicali - Estación Coahuila	37.70	3	0	8789	1.3	79.3	1.4	9.8	1.0	4.2	1.0	0.8	1.2	80.6	1.4	18.0	0.081	0.502	32.418962	-115.172464
X. C. Ejido Monterrey - Mazón	49.65	1	0	4492	0.3	86.5	1.3	10.2	0.5	0.8	0.2	0.0	0.2	86.8	1.3	11.9	0.067	0.507	32.418576	-115.071479

BAJA CALIFORNIA

27 CARR: Mexicali - Algodones

CLAVE: 02012

RUTA: BC-002

AÑO: 2015

LUGAR	ESTACION				CLASIFICACION VEHICULAR EN PORCIENTO										COORDENADAS					
	KM	TE	SC	TDPA	M	A	B	C2	C3	T3S2	T3S3	T3S2R4	OTROS	A	B	C	K'	D	LATITUD	LONGITUD
X. C. Ejido Monterrey - Mazón	49.65	3	0	2632	0.8	80.3	3.0	9.0	1.1	3.9	0.9	0.3	0.7	81.1	3.0	15.9	0.111	0.501	32.418507	-115.065205
T. Izq. Tres de Marzo	60.50	1	0	1082	0.4	93.6	1.7	4.0	0.1	0.2	0.0	0.0	0.0	94.0	1.7	4.3	0.080	0.504	32.462932	-114.949228
X. C. Sonoita - Mexicali	72.00	1	0	1211	0.4	94.2	0.8	3.8	0.3	0.4	0.0	0.0	0.1	94.6	0.8	4.6	0.083	0.506	32.504030	-114.849065
X. C. Sonoita - Mexicali	72.00	3	0	3585	0.7	96.3	0.6	0.7	0.5	0.4	0.2	0.1	0.5	97.0	0.6	2.4	0.092	0.508	32.515187	-114.841266
Pachuca	83.00	1	0	3524	0.7	97.5	0.3	0.2	0.6	0.3	0.1	0.0	0.3	98.2	0.3	1.5	0.075	0.506	32.599225	-114.829929
Algodones	94.46	1	0	2685	1.2	97.1	0.1	0.2	0.3	0.0	0.0	0.0	1.1	98.3	0.1	1.6	0.114	0.502	32.697377	-114.734128

28 CARR: Mexicali - Estación Coahuila

CLAVE: 02016

RUTA: BC-001

AÑO: 2015

LUGAR	ESTACION				CLASIFICACION VEHICULAR EN PORCIENTO										COORDENADAS					
	KM	TE	SC	TDPA	M	A	B	C2	C3	T3S2	T3S3	T3S2R4	OTROS	A	B	C	K'	D	LATITUD	LONGITUD
Mexicali	0.00	3	1	15209	1.6	83.6	0.3	6.7	2.2	3.4	0.8	0.8	0.6	85.2	0.3	14.5	0.078	0.509	32.653195	-115.390347
Mexicali	0.00	3	2	14658	1.8	82.9	0.3	7.0	2.0	4.0	0.5	0.8	0.7	84.7	0.3	15.0	0.077	0.509	32.653195	-115.390347
T. Izq. Aeropuerto	11.30	1	1	10277	1.0	84.6	1.5	6.2	2.3	3.9	0.1	0.1	0.3	85.6	1.5	12.9	0.078	0.515	32.614143	-115.280222
T. Izq. Aeropuerto	11.30	1	2	10906	1.1	83.9	1.6	7.7	2.1	3.4	0.0	0.0	0.2	85.0	1.6	13.4	0.082	0.515	32.614143	-115.280222
Islas Agrarias Grupo a	14.10	1	0	11419	0.8	93.5	1.2	2.7	0.7	0.9	0.1	0.0	0.1	94.3	1.2	4.5	0.064	0.506	32.614127	-115.342540
X. C. Sonoita - Mexicali	30.79	1	0	3781	0.3	91.0	1.2	4.7	0.8	1.5	0.2	0.1	0.2	91.3	1.2	7.5	0.094	0.502	32.556453	-115.214931
X. C. Sonoita - Mexicali	30.79	3	0	5699	0.3	90.7	0.9	4.5	0.9	2.3	0.1	0.1	0.2	91.0	0.9	8.1	0.080	0.514	32.549748	-115.215166
Ejido Nuevo León	46.83	1	0	5549	0.2	91.5	1.1	5.1	0.8	1.0	0.1	0.0	0.2	91.7	1.1	7.2	0.055	0.540	32.423076	-115.192514
Ejido Nuevo León	46.83	3	0	7335	0.1	83.4	0.3	9.6	0.5	4.0	1.3	0.1	0.7	83.5	0.3	16.2	0.083	0.515	32.399323	-115.194443
T. Der. La Puerta	60.26	1	0	2150	0.6	90.1	1.1	5.8	1.0	0.8	0.3	0.1	0.2	90.7	1.1	8.2	0.084	0.513	32.315770	-115.189552
X. C. El Faro - Estación Coahuila	71.30	1	0	1965	0.2	87.7	1.1	10.3	0.3	0.2	0.1	0.0	0.1	87.9	1.1	11.0	0.078	0.526	32.240830	-115.167495
T. Der. Leona Vicario	80.50	1	0	642	1.4	85.0	0.9	6.9	2.0	0.4	0.3	0.4	2.7	86.4	0.9	12.7	0.152	0.509	32.174666	-115.167484
Estación Coahuila	96.65	1	0	1359	1.1	96.6	0.2	0.2	0.4	0.1	0.0	0.0	1.4	97.7	0.2	2.1	0.109	0.512	32.184840	-115.013774

29 CARR: Mexicali - Progreso

CLAVE: 02507

RUTA: BC-005

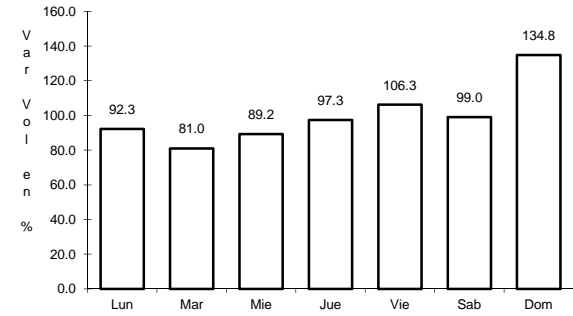
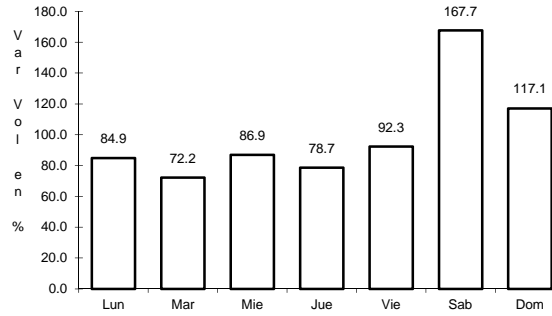
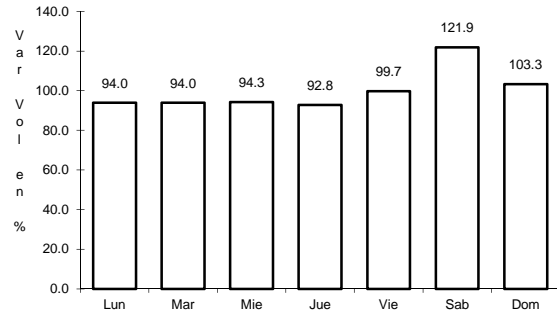
AÑO: 2015

LUGAR	ESTACION				CLASIFICACION VEHICULAR EN PORCIENTO										COORDENADAS					
	KM	TE	SC	TDPA	M	A	B	C2	C3	T3S2	T3S3	T3S2R4	OTROS	A	B	C	K'	D	LATITUD	LONGITUD
T. C. Mexicali - Tijuana	0.00																			
Progreso	15.30	1	0	4836	0.3	84.2	3.1	10.7	0.9	0.6	0.0	0.2	0.0	84.5	3.1	12.4	0.066	0.528	32.600761	-115.573671

1 CARR: Ensenada - El Chinero

CLAVE: 02009

RUTA: MEX-003



Km: 0.00 Tipo: 3 Sent: 0

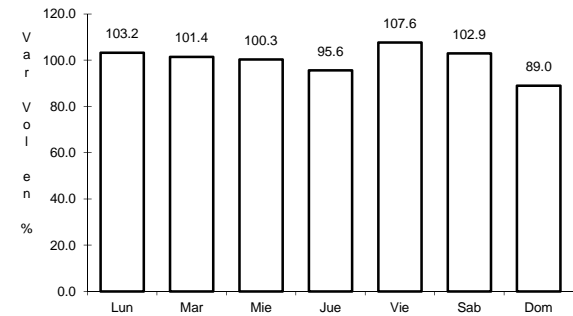
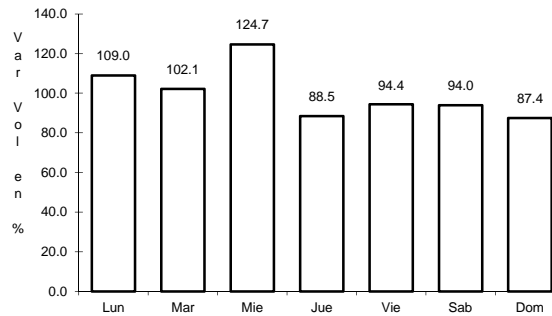
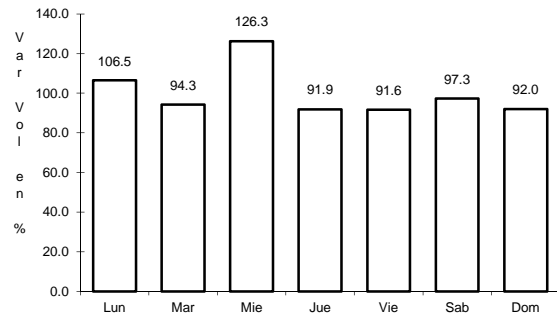
Km: 93.00 Tipo: 3 Sent: 0

Km: 196.00 Tipo: 1 Sent: 0

2 CARR: Ensenada - Lázaro Cárdenas

CLAVE: 02098

RUTA: MEX-001



Km: 0.00 Tipo: 3 Sent: 1

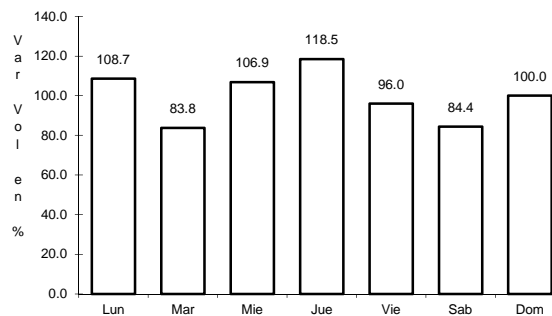
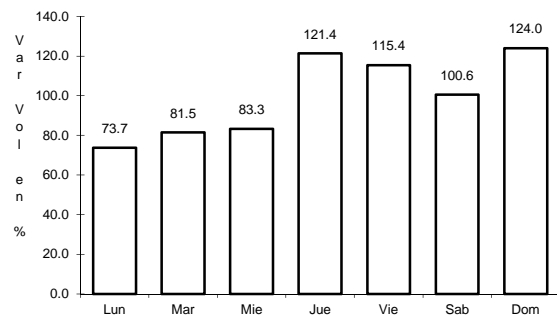
Km: 0.00 Tipo: 3 Sent: 2

Km: 193.00 Tipo: 1 Sent: 0

3 CARR: Ent. Punta Prieta - Bahía de Los Ángeles

CLAVE: 02322

RUTA: MEX-001



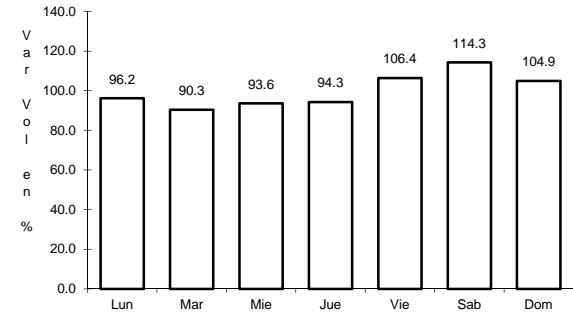
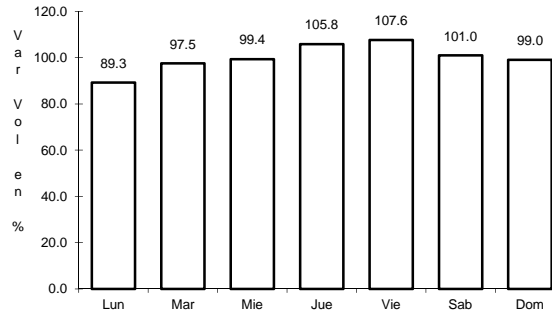
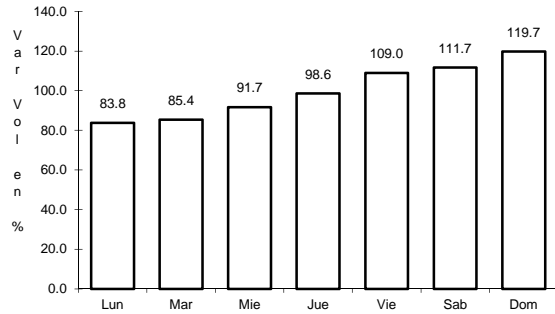
Km: 0.00 Tipo: 3 Sent: 0

Km: 68.00 Tipo: 1 Sent: 0

4 CARR: Ent. Punta Prieta - Guerrero Negro

CLAVE: 00321

RUTA: MEX-001



Km: 0.00 Tipo: 3 Sent: 0

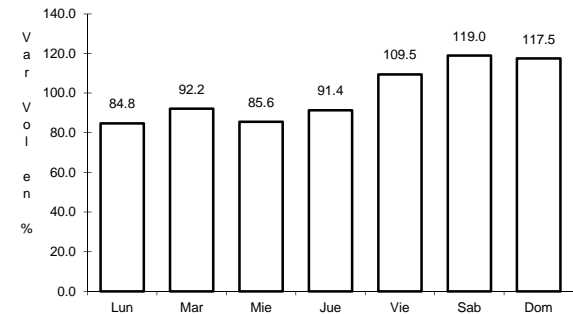
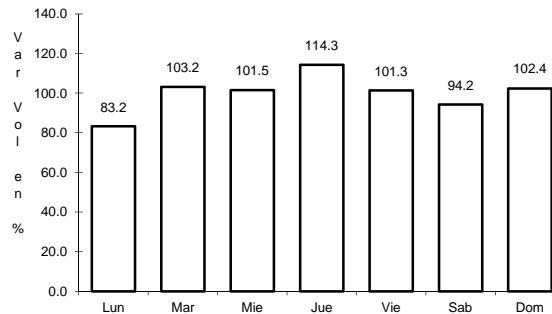
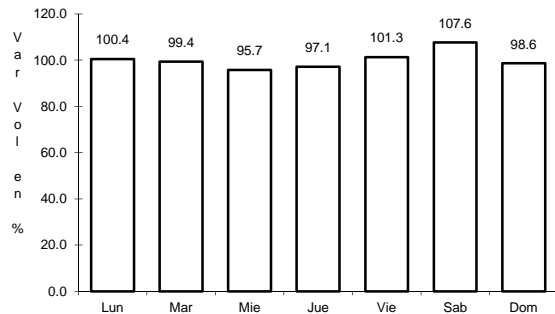
Km: 70.10 Tipo: 3 Sent: 0

Km: 130.00 Tipo: 1 Sent: 0

5 CARR: Lázaro Cárdenas - Ent. Punta Prieta

CLAVE: 02319

RUTA: MEX-001



Km: 0.00 Tipo: 3 Sent: 0

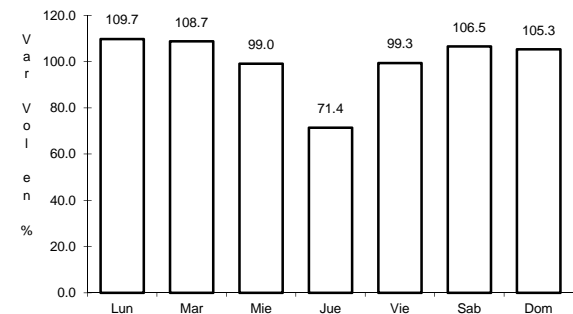
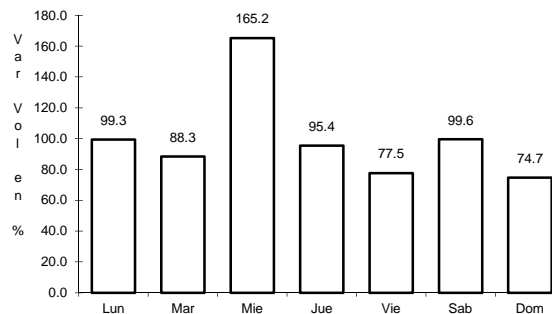
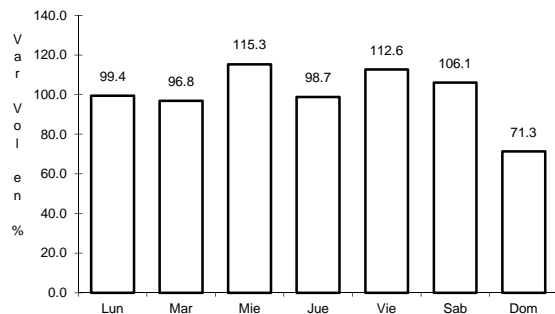
Km: 140.00 Tipo: 1 Sent: 0

Km: 275.66 Tipo: 1 Sent: 0

6 CARR: Mexicali - San Felipe

CLAVE: 02096

RUTA: MEX-005



Km: 0.00 Tipo: 3 Sent: 1

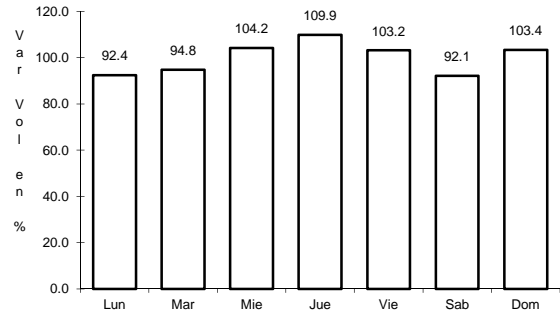
Km: 0.00 Tipo: 3 Sent: 2

Km: 141.00 Tipo: 1 Sent: 0

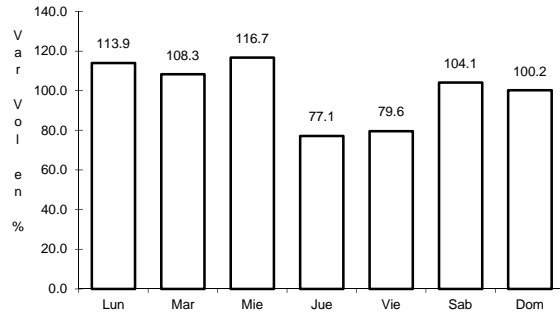
7 CARR: Ramal a Aeropuerto de Mexicali

CLAVE: 02321

RUTA: MEX-002



Km: 0.00 Tipo: 3 Sent: 0

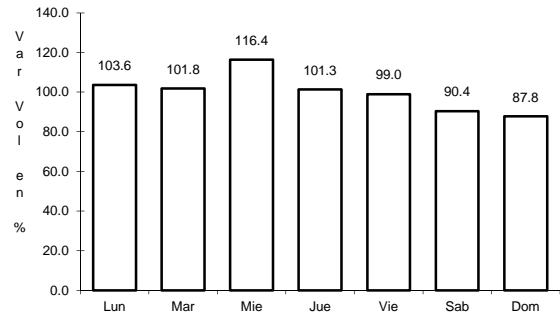


Km: 10.00 Tipo: 1 Sent: 0

8 CARR: Ramal a Venustiano Carranza

CLAVE: 02506

RUTA: MEX-001

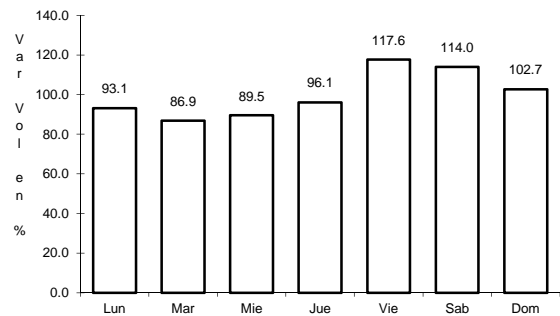


Km: 0.00 Tipo: 3 Sent: 0

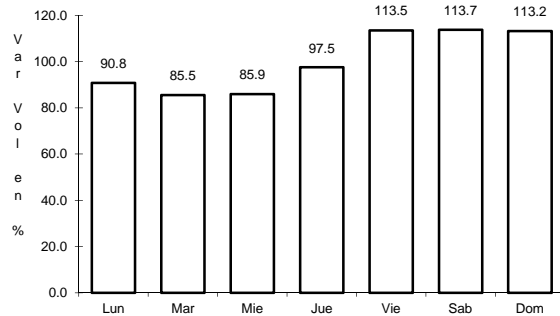
9 CARR: San Felipe - Chapala

CLAVE: 02503

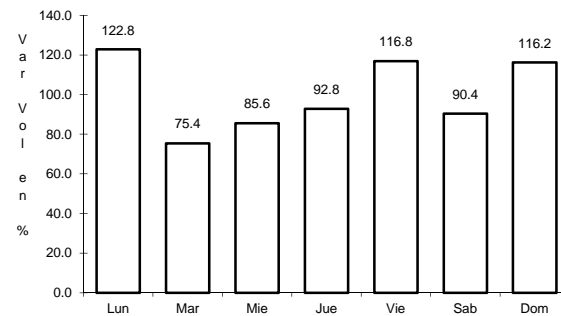
RUTA: MEX-005



Km: 0.00 Tipo: 3 Sent: 1



Km: 0.00 Tipo: 3 Sent: 2

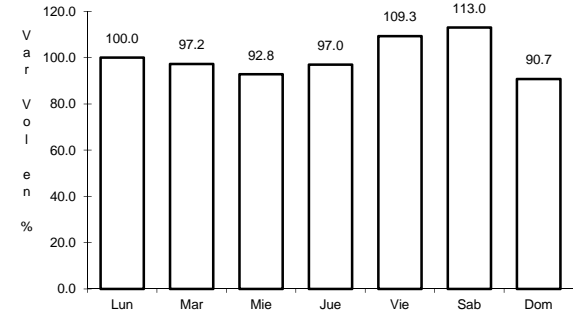
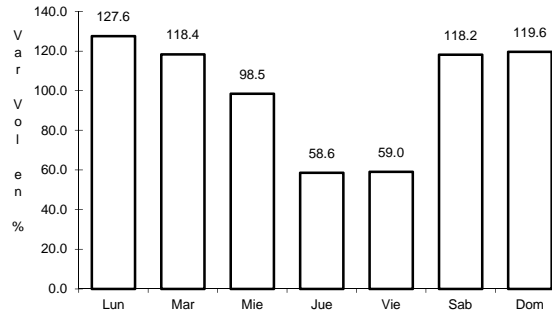
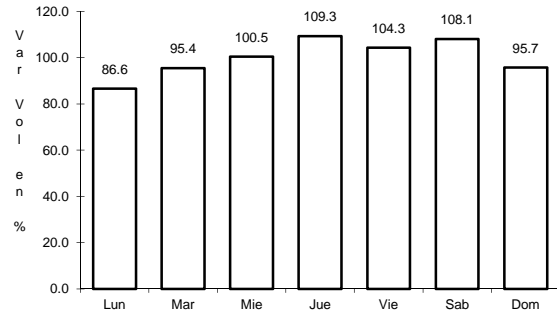


Km: 75.46 Tipo: 3 Sent: 0

10 CARR: Sonoita - Mexicali

CLAVE: 00081

RUTA: MEX-002



Km: 0.00 Tipo: 3 Sent: 0

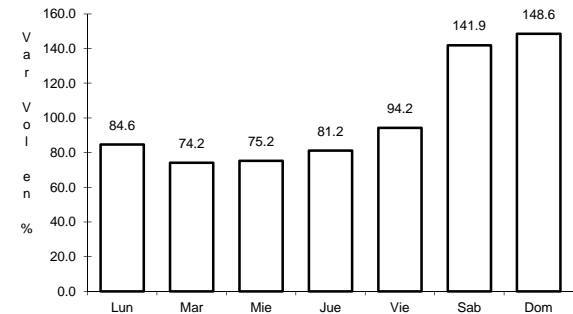
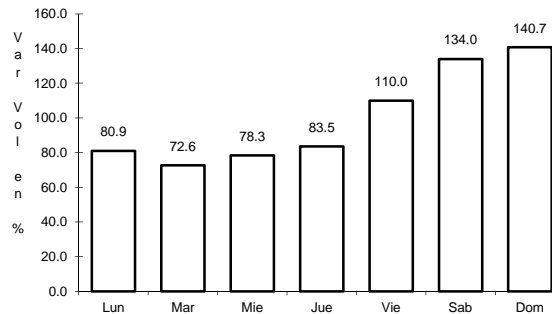
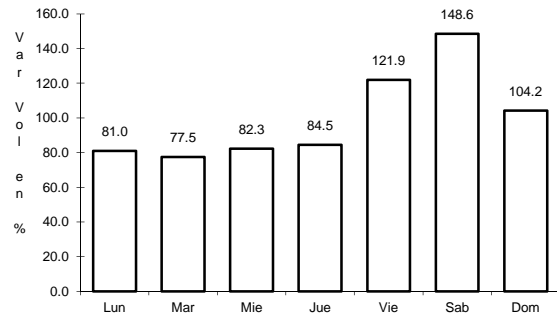
Km: 256.47 Tipo: 1 Sent: 1

Km: 256.47 Tipo: 1 Sent: 2

11 CARR: Tecate - El Sauzal

CLAVE: 02097

RUTA: MEX-003



Km: 0.00 Tipo: 3 Sent: 0

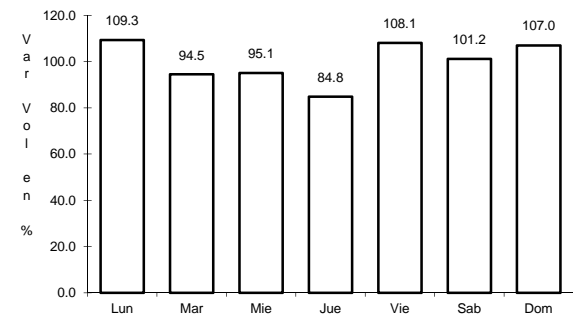
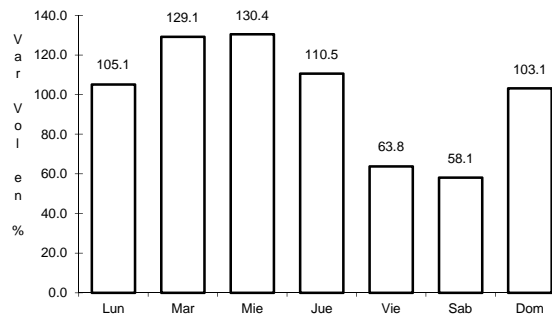
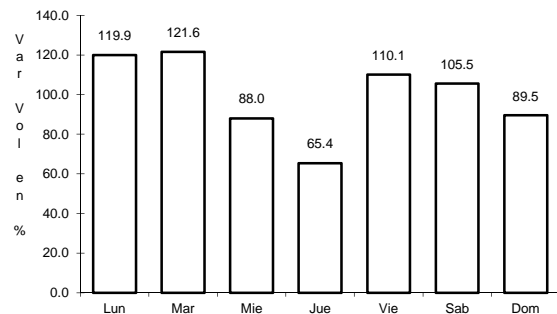
Km: 104.53 Tipo: 1 Sent: 1

Km: 104.53 Tipo: 1 Sent: 2

12 CARR: Tijuana - Ensenada (Libre)

CLAVE: 02099

RUTA: MEX-001



Km: 22.00 Tipo: 1 Sent: 1

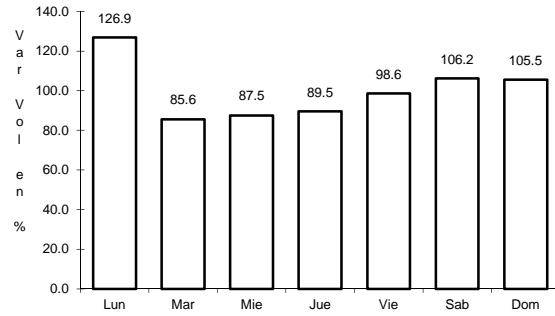
Km: 22.00 Tipo: 1 Sent: 2

Km: 56.98 Tipo: 1 Sent: 0

13 CARR: El Centinela - La Rumorosa (Cuota)

CLAVE: 02011

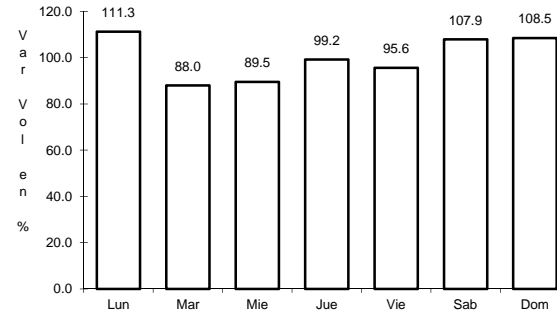
RUTA: MEX-002D



Km: 25.00

Tipo: 1

Sent: 1



Km: 25.00

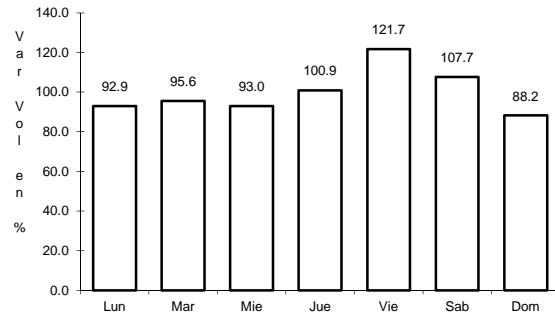
Tipo: 1

Sent: 2

14 CARR: La Rumorosa - Tecate (Cuota)

CLAVE: 02011

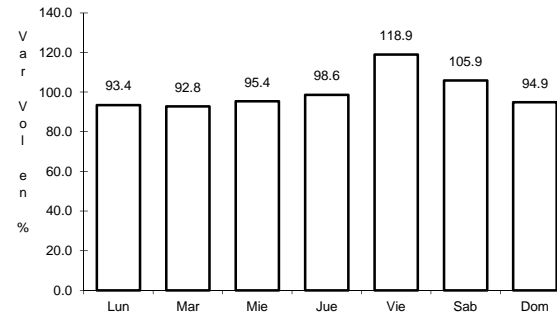
RUTA: MEX-002D



Km: 0.00

Tipo: 3

Sent: 1



Km: 0.00

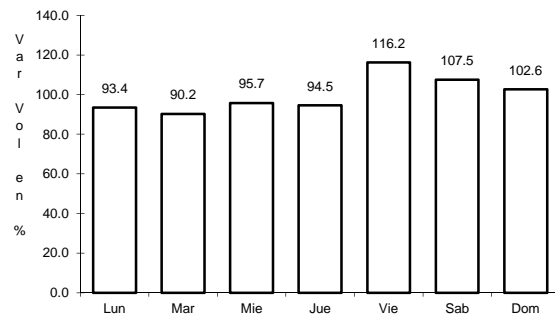
Tipo: 3

Sent: 2

15 CARR: Libramiento de Mexicali (Cuota)

CLAVE: 02319

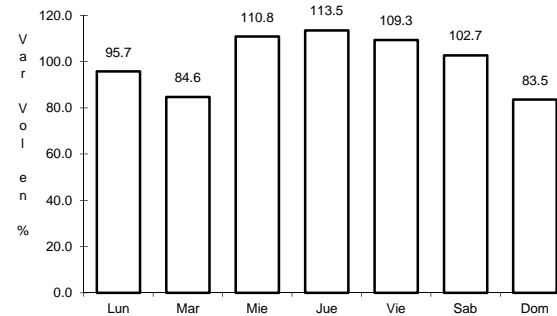
RUTA: MEX-002D



Km: 0.00

Tipo: 3

Sent: 0



Km: 41.00

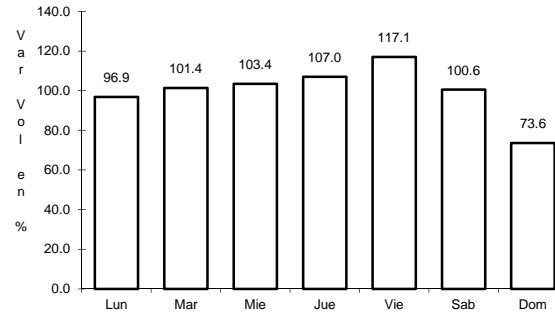
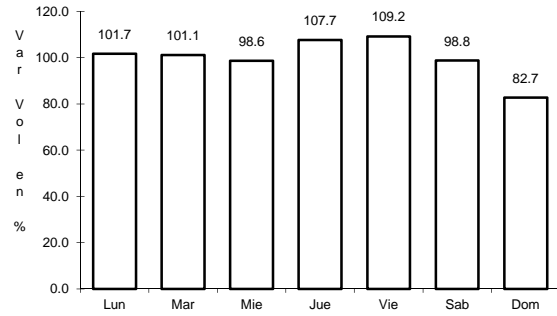
Tipo: 1

Sent: 0

17 CARR: Tecate - Tijuana (Cuota)

CLAVE: 02011

RUTA: MEX-002D



Km: 147.60

Tipo: 3

Sent: 1

Km: 147.60

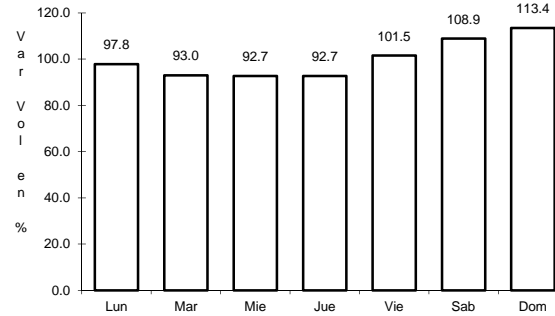
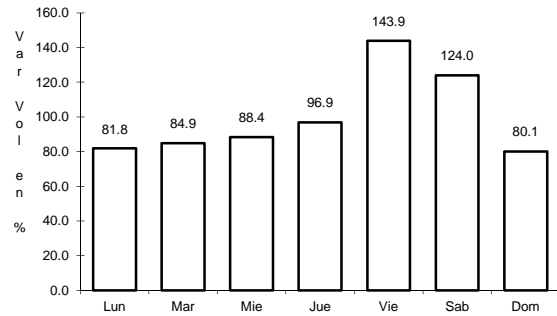
Tipo: 3

Sent: 2

18 CARR: Tijuana - Ensenada (Cuota)

CLAVE: 02100

RUTA: MEX-001D



Km: 7.50

Tipo: 3

Sent: 1

Km: 7.50

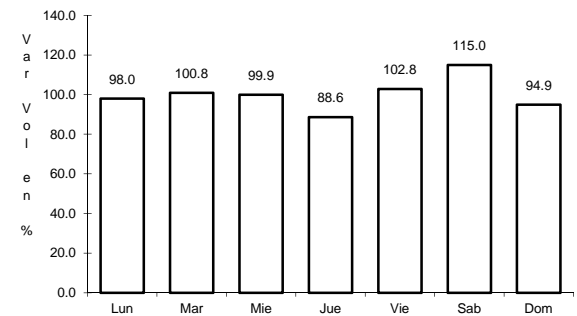
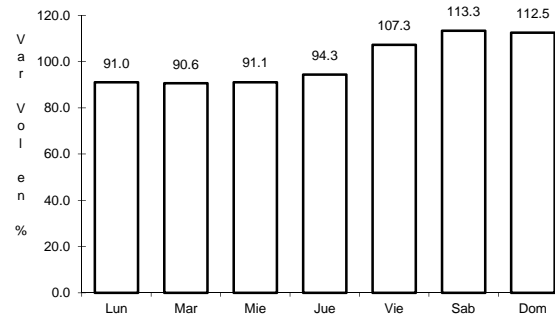
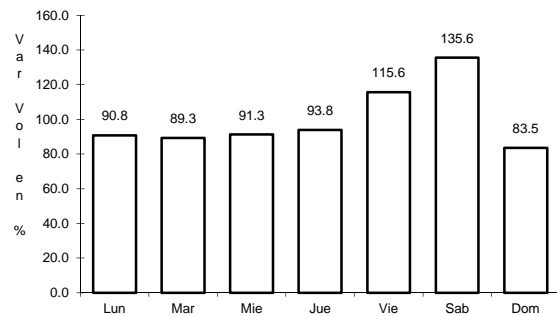
Tipo: 3

Sent: 2

19 CARR: Mexicali - Tijuana

CLAVE: 02082

RUTA: MEX-002D-MEX



Km: 7.80

Tipo: 3

Sent: 1

Km: 7.80

Tipo: 3

Sent: 2

Km: 165.00

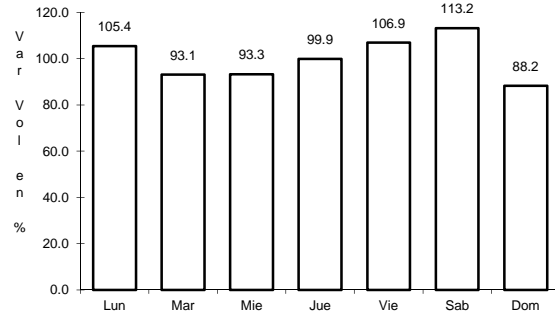
Tipo: 3

Sent: 0

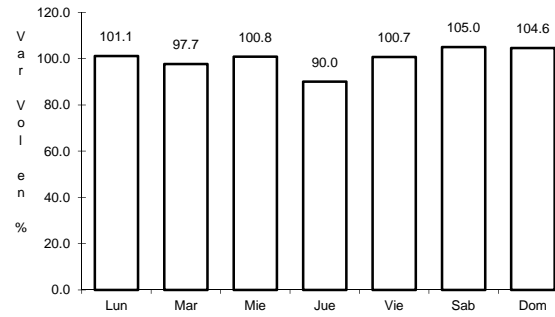
20 CARR: Algodones - Ent. Islas Agrarias Grupo B

CLAVE: 02006

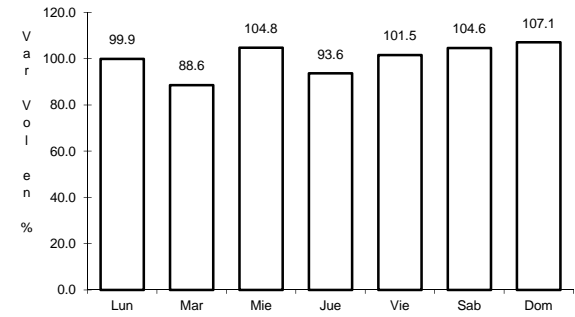
RUTA: BC-008



Km: 0.00 Tipo: 3 Sent: 0



Km: 31.50 Tipo: 1 Sent: 0

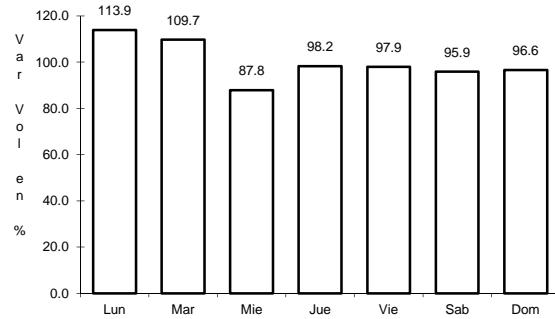


Km: 55.50 Tipo: 1 Sent: 0

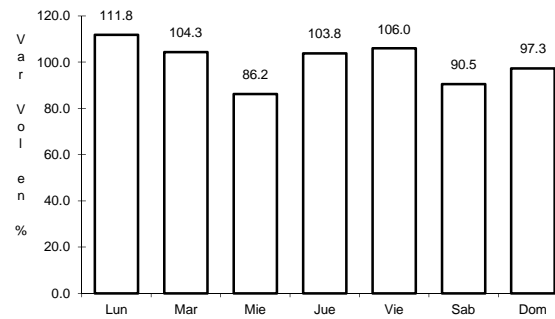
21 CARR: Corredor Tijuana 2000

CLAVE: 02006

RUTA: BC



Km: 0.00 Tipo: 3 Sent: 1

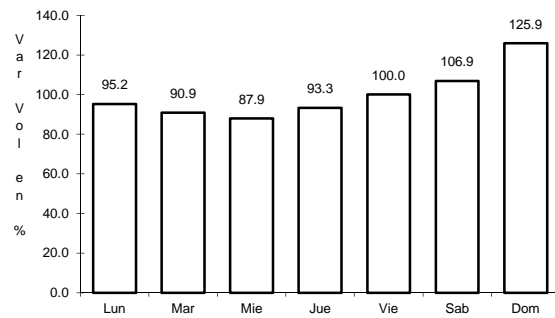


Km: 0.00 Tipo: 3 Sent: 2

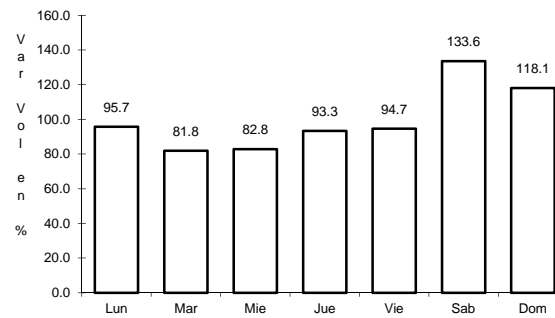
22 CARR: Ejido Benito Juárez - Ejido Chiapas

CLAVE: 02501

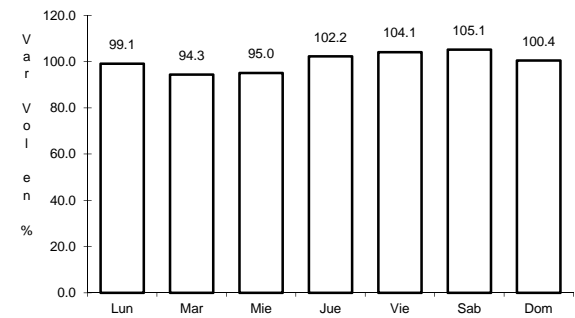
RUTA: BC-061



Km: 0.00 Tipo: 3 Sent: 0



Km: 7.00 Tipo: 1 Sent: 0

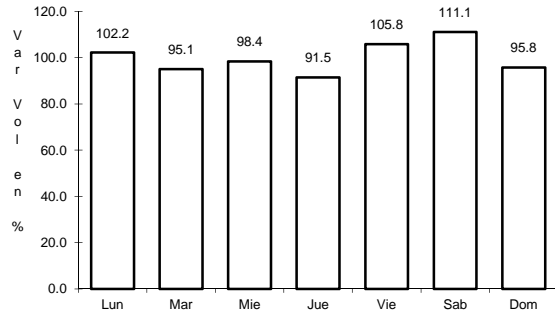


Km: 10.56 Tipo: 1 Sent: 0

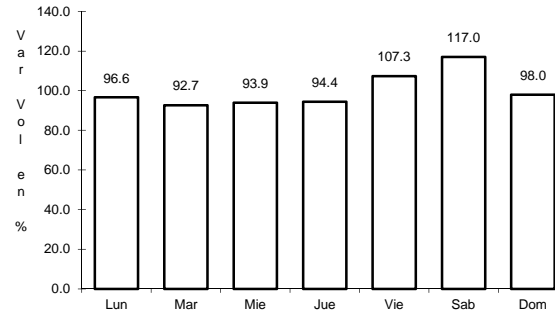
23 CARR: Ejido Monterrey - Mazón

CLAVE: 02004

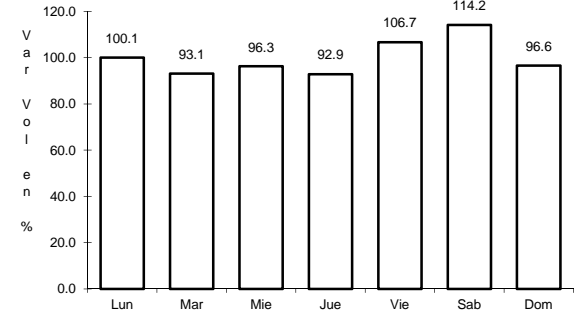
RUTA: BC-003



Km: 0.00 Tipo: 3 Sent: 0



Km: 15.16 Tipo: 3 Sent: 0

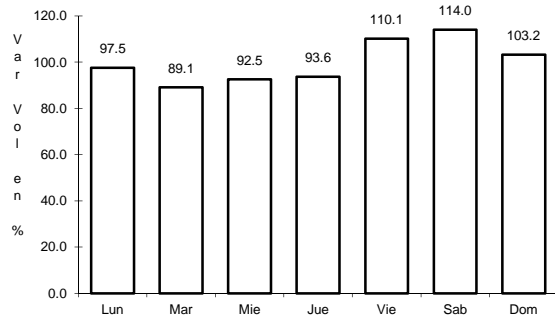


Km: 35.00 Tipo: 1 Sent: 0

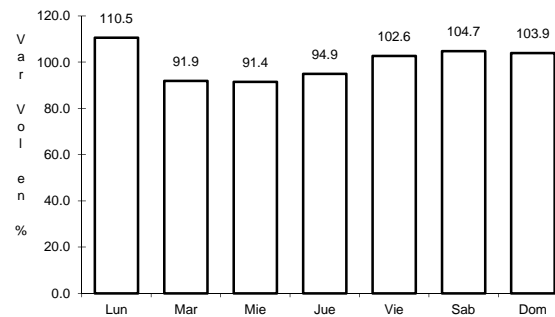
24 CARR: El Faro - Estación Coahuila

CLAVE: 02013

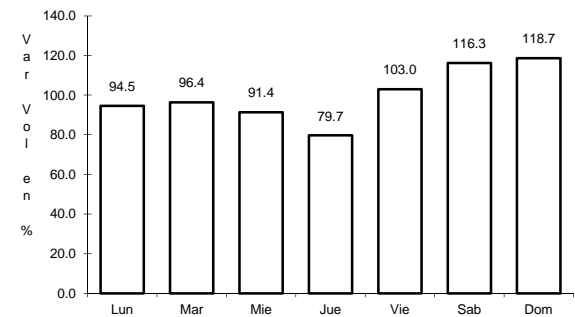
RUTA: BC-004



Km: 0.00 Tipo: 3 Sent: 0



Km: 16.30 Tipo: 1 Sent: 0

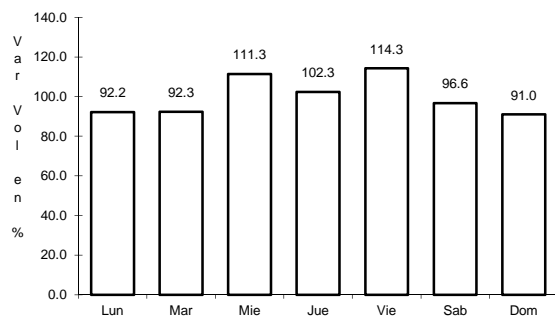


Km: 34.50 Tipo: 1 Sent: 0

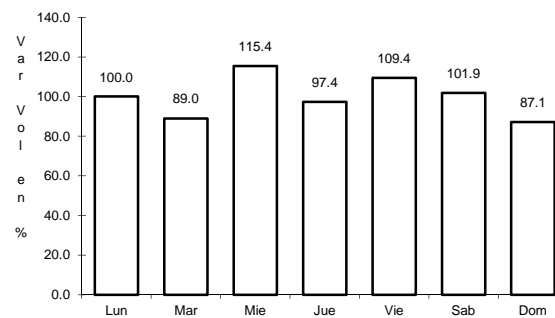
25 CARR: Ent. Santa Rosa - Ent. Pachuca

CLAVE: 02015

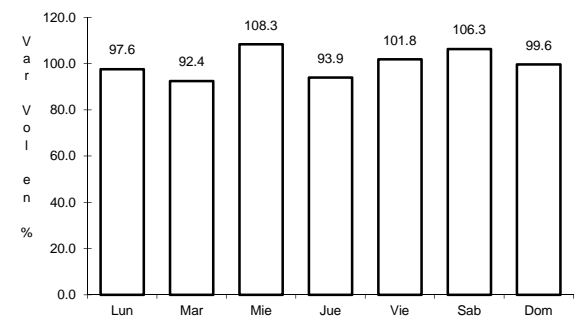
RUTA: BC-006



Km: 0.00 Tipo: 3 Sent: 0



Km: 10.90 Tipo: 3 Sent: 0

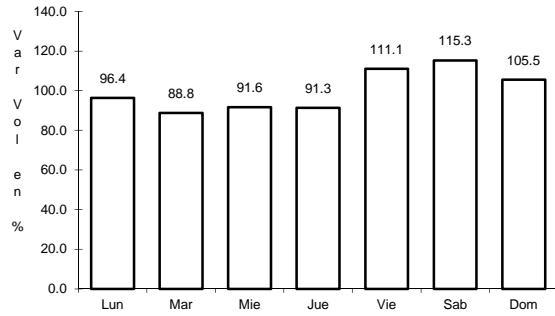


Km: 18.00 Tipo: 3 Sent: 0

26 CARR: La Puerta - T. C. (Mexicali - Estación Coahuila)

CLAVE: 02502

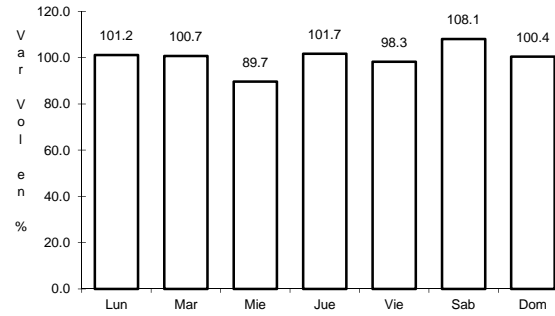
RUTA: BC-010



Km: 4.60

Tipo: 1

Sent: 0



Km: 9.00

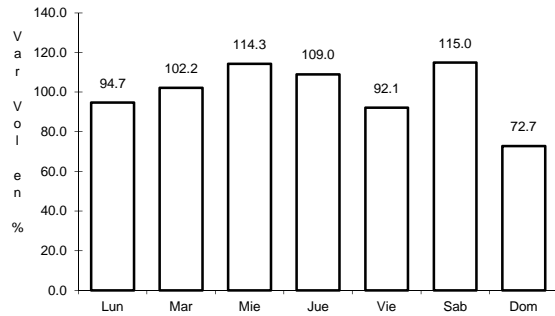
Tipo: 3

Sent: 0

27 CARR: Mexicali - Algodones

CLAVE: 02012

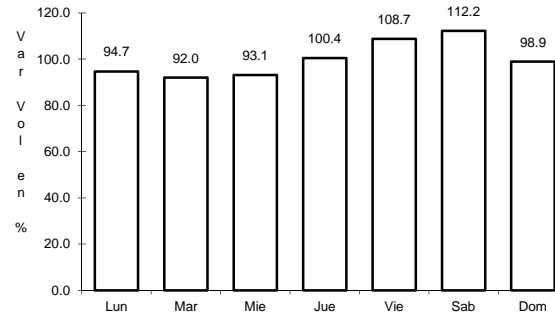
RUTA: BC-002



Km: 12.00

Tipo: 3

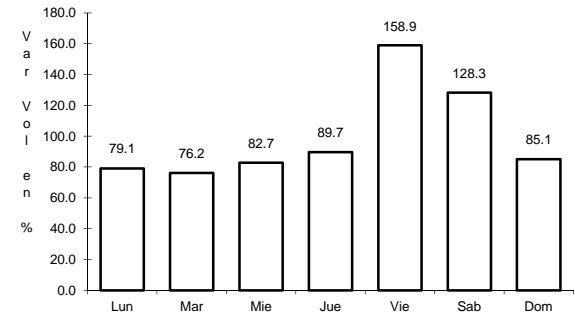
Sent: 0



Km: 49.65

Tipo: 1

Sent: 0



Km: 94.46

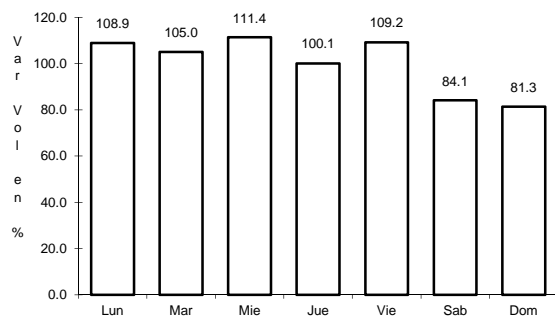
Tipo: 1

Sent: 0

28 CARR: Mexicali - Estación Coahuila

CLAVE: 02016

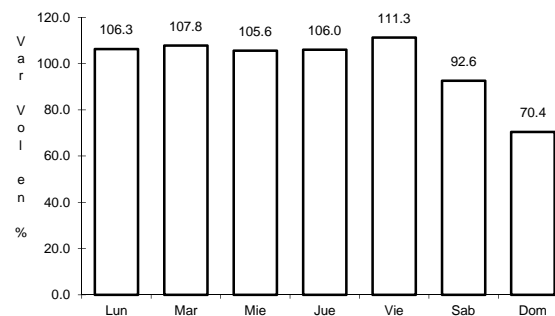
RUTA: BC-001



Km: 0.00

Tipo: 3

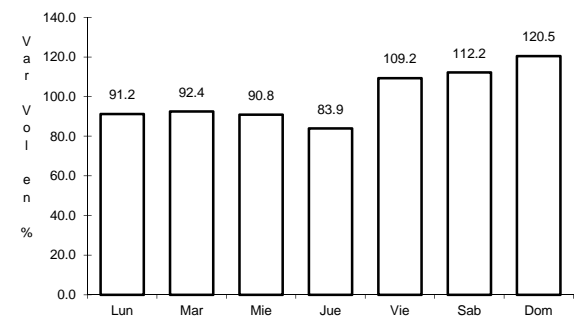
Sent: 1



Km: 0.00

Tipo: 3

Sent: 2



Km: 96.65

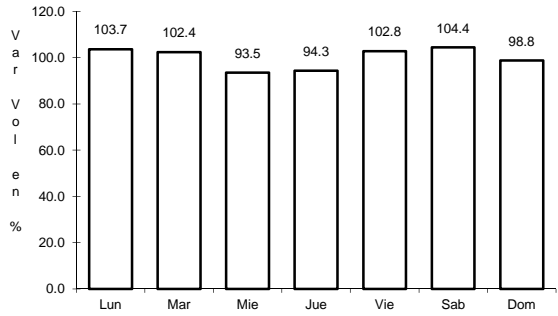
Tipo: 1

Sent: 0

29 CARR: Mexicali - Progreso

CLAVE: 02507

RUTA: BC-005



Km: 15.30

Tipo: 1

Sent: 0