



# BAJA CALIFORNIA SUR

## ---RED FEDERAL LIBRE---

1 Cabo San Lucas - La Paz	MEX-001
2 Cd. Constitución - Puerto San Carlos	MEX-001
3 Cd. Insurgentes - Loreto	MEX-001
4 Ent. Punta Prieta - Guerrero Negro	MEX-001
5 La Paz - Cd. Insurgentes	MEX-001
6 La Paz - Pichilingue	MEX-011
7 Libramiento de Cabo San Lucas	MEX-001
8 Libramiento de Todos Santos	MEX-019
9 Loreto - Santa Rosalía	MEX-001
10 Ramal a Aeropuerto de La Paz	MEX-001
11 Ramal a Aeropuerto de Los Cabos	MEX-001
12 Ramal a Los Paredones	MEX-001
13 Ramal a Miraflores	MEX-001
14 Ramal a Puerto Escondido	MEX-001
15 Ramal a San Ignacio	MEX-001
16 Ramal a Santiago	MEX-001
17 Ramal Aeropista San Ignacio	MEX-001
18 San Pedro - Cabo San Lucas	MEX-019
19 Santa Rosalía - Guerrero Negro	MEX-001

## ---RED FEDERAL DE CUOTA---

20 Libramiento San José del Cabo - Aeropuerto Los Cabos (Cuota)	MEX-001D
21 Ramal a El Mague (Cuota)	MEX-001D
22 San José del Cabo - Libramiento de Cabo San Lucas - (Cuota)	MEX-001D

## ---RED ESTATAL LIBRE---

23 Cd. Insurgentes - La Purísima	BCS-001
24 Cd. Insurgentes - Pto. Adolfo López Mateos	BCS
25 Ent. Campo Fisher - Punta Abreojos	BCS
26 La Paz - Ensenada de Muertos	BCS-246
27 Libramiento de La Paz	BCS
28 Libramiento Norte de La Paz	BCS
29 Ramal a Benito Juárez	BCS
30 Ramal a Ejido Ley Federal de Aguas Número Cuatro	BCS
31 Ramal a El Carrizal	BCS
32 Ramal a Guerrero Negro	BCS
33 Ramal a La Ribera	BCS
34 Ramal a Melitón Albáñez	BCS
35 Ramal a Santa Catarina	BCS

## ---CARRETERAS INTEGRADAS POR TRAMOS FEDERALES Y ESTATALES---

36 Ramal a Bahía de Tortugas	MEX-001-BCS
37 Ramal a Ejido Ley Federal de Aguas Número Dos	BCS-MEX-001
38 Ramal a Ley Federal de Aguas Número Cinco	BCS-MEX-001
39 Ramal a San Juan de La Costa	BCS-163-MEX-001

# 03 BAJA CALIFORNIA SUR

SECRETARÍA DE COMUNICACIONES Y TRANSPORTES  
DIRECCIÓN GENERAL DE SERVICIOS TÉCNICOS



- ① - Número Índice
- Red Federal Libre
- Red Federal Cuota
- Red Federal Integrada por Tramos Libres y de Cuota
- Red Estatal Libre
- Red Estatal Cuota
- Carreteras Integradas por Tramos Federales y Estatales



BAJA CALIFORNIA SUR

1 CARR: Cabo San Lucas - La Paz

CLAVE: 03102

RUTA: MEX-001

AÑO: 2019

LUGAR	ESTACION				CLASIFICACION VEHICULAR EN PORCIENTO										COORDENADAS					
	KM	TE	SC	TDPA	M	A	B	C2	C3	T3S2	T3S3	T3S2R4	OTROS	A	B	C	K'	D	LATITUD	LONGITUD
Cabo San Lucas	0.00	3	1	33252	0.9	84.4	0.8	12.3	1.1	0.3	0.1	0.1	0.0	85.3	0.8	13.9	0.088	0.509	22.901164	-109.896419
Cabo San Lucas	0.00	3	2	31008	0.9	82.7	0.9	13.8	1.2	0.3	0.1	0.1	0.0	83.6	0.9	15.5	0.088	0.509	22.901370	-109.896501
El Tule	13.00	3	1	15004	0.8	84.2	0.8	12.7	1.1	0.3	0.1	0.0	0.0	85.0	0.8	14.2	0.093	0.504	22.979123	-109.772371
El Tule	13.00	3	2	15230	0.9	83.5	1.1	12.8	1.3	0.3	0.1	0.0	0.0	84.4	1.1	14.5	0.088	0.504	22.979457	-109.772494
San José del Cabo	31.00	1	1	24112	0.9	90.7	0.6	6.8	0.6	0.2	0.1	0.0	0.1	91.6	0.6	7.8	0.086	0.502	23.029896	-109.715687
San José del Cabo	31.00	1	2	24341	0.8	90.0	0.7	7.5	0.6	0.2	0.1	0.0	0.1	90.8	0.7	8.5	0.088	0.502	23.029905	-109.715784
San José del Cabo	31.00	3	1	26242	0.9	88.9	1.0	8.0	0.8	0.2	0.2	0.0	0.0	89.8	1.0	9.2	0.061	0.530	23.066136	-109.703400
San José del Cabo	31.00	3	2	29629	1.7	87.2	1.1	8.6	1.0	0.2	0.2	0.0	0.0	88.9	1.1	10.0	0.065	0.530	23.066086	-109.703496
T. Der. Santa Catarina	41.00	1	1	15701	1.3	85.3	0.9	11.3	0.9	0.2	0.1	0.0	0.0	86.6	0.9	12.5	0.062	0.513	23.126261	-109.711095
T. Der. Santa Catarina	41.00	1	2	16550	1.3	84.8	0.8	11.9	0.9	0.2	0.1	0.0	0.0	86.1	0.8	13.1	0.063	0.513	23.126257	-109.711243
T. Izq. Aeropuerto	43.46	1	1	13118	1.2	86.0	0.9	10.3	0.9	0.3	0.2	0.1	0.1	87.2	0.9	11.9	0.059	0.506	23.151527	-109.708659
T. Izq. Aeropuerto	43.46	1	2	12813	1.2	85.3	1.0	10.8	1.0	0.3	0.2	0.1	0.1	86.5	1.0	12.5	0.064	0.506	23.151564	-109.708800
Santa Anita	46.00	1	0	9881	1.2	83.9	0.4	13.1	0.9	0.2	0.2	0.1	0.0	85.1	0.4	14.5	0.067	0.504	23.172050	-109.704223
Santa Anita	46.00	3	0	5199	0.9	90.2	0.6	7.2	0.7	0.1	0.1	0.1	0.1	91.1	0.6	8.3	0.086	0.513	23.187878	-109.707788
T. Izq. Miraflores	71.50	3	0	2413	0.5	85.6	0.6	12.5	0.6	0.1	0.1	0.0	0.0	86.1	0.6	13.3	0.116	0.518	23.371794	-109.751951
T. Izq. Santiago	84.00	3	0	2353	0.6	88.7	0.5	9.1	0.8	0.1	0.2	0.0	0.0	89.3	0.5	10.2	0.110	0.517	23.478918	-109.694484
La Cueva	95.20	3	0	2700	1.0	87.2	0.7	9.7	0.8	0.4	0.2	0.0	0.0	88.2	0.7	11.1	0.097	0.507	23.559862	-109.676672
T. Der. Bahía de Las Palmas	110.00	3	0	2027	1.0	88.8	0.7	8.3	0.7	0.3	0.2	0.0	0.0	89.8	0.7	9.5	0.086	0.515	23.685015	-109.726312
San Bartolo	128.50	1	0	1740	2.4	85.1	0.9	10.2	0.9	0.3	0.2	0.0	0.0	87.5	0.9	11.6	0.089	0.503	23.739347	-109.837208
San Antonio	156.00	3	0	1666	1.7	86.9	0.7	9.6	0.6	0.3	0.2	0.0	0.0	88.6	0.7	10.7	0.095	0.511	23.809939	-110.058893
El Triunfo	162.80	1	0	1614	1.5	87.5	0.6	9.1	0.7	0.4	0.2	0.0	0.0	89.0	0.6	10.4	0.095	0.507	23.806742	-110.101578
El Triunfo	162.80	3	0	1599	2.3	84.5	0.7	11.9	0.2	0.3	0.1	0.0	0.0	86.8	0.7	12.5	0.119	0.516	23.795818	-110.111507
T. Izq. Todos Santos	184.40	1	0	1793	1.4	88.3	0.5	8.9	0.5	0.3	0.1	0.0	0.0	89.7	0.5	9.8	0.122	0.501	23.881695	-110.243234
T. Izq. Todos Santos	184.40	3	1	4290	0.6	85.3	1.2	7.4	1.1	2.9	0.7	0.7	0.1	85.9	1.2	12.9	0.104	0.503	23.896195	-110.257932
T. Izq. Todos Santos	184.40	3	2	4243	0.7	85.0	1.6	8.1	0.7	2.3	0.7	0.8	0.1	85.7	1.6	12.7	0.099	0.503	23.896148	-110.258239
San Pedro	191.00	1	1	4187	0.6	84.9	1.2	7.9	1.1	2.7	0.7	0.8	0.1	85.5	1.2	13.3	0.110	0.520	23.914213	-110.260706
San Pedro	191.00	1	2	4538	0.6	85.7	1.2	7.6	1.0	2.3	0.7	0.8	0.1	86.3	1.2	12.5	0.087	0.520	23.914161	-110.261004
San Pedro	191.00	3	1	5166	0.5	85.3	1.2	8.2	1.1	2.5	0.5	0.6	0.1	85.8	1.2	13.0	0.096	0.528	23.945741	-110.278835
San Pedro	191.00	3	2	4616	0.7	84.5	1.6	8.4	1.0	2.3	0.6	0.8	0.1	85.2	1.6	13.2	0.087	0.528	23.945656	-110.278942
Limite Zona Urbana de La Paz	211.00	1	1	7553	0.4	86.2	1.3	7.7	0.9	2.2	0.6	0.6	0.1	86.6	1.3	12.1	0.092	0.528	24.031879	-110.297595
Limite Zona Urbana de La Paz	211.00	1	2	6753	0.5	84.4	1.6	8.8	1.1	2.3	0.6	0.6	0.1	84.9	1.6	13.5	0.075	0.528	24.031874	-110.297785
La Paz	213.00																			

BAJA CALIFORNIA SUR

2 CARR: Cd. Constitución - Puerto San Carlos

CLAVE: 03231

RUTA: MEX-001

AÑO: 2019

LUGAR	ESTACION				CLASIFICACION VEHICULAR EN PORCIENTO										COORDENADAS					
	KM	TE	SC	TDPA	M	A	B	C2	C3	T3S2	T3S3	T3S2R4	OTROS	A	B	C	K'	D	LATITUD	LONGITUD
Cd. Constitución	0.00	3	0	2713	1.0	83.7	1.2	11.9	1.1	0.9	0.1	0.0	0.1	84.7	1.2	14.1	0.092	0.505	25.039802	-111.692029
T. Der. Benito Juárez	10.00	1	0	2045	0.5	84.7	0.8	10.8	1.9	1.0	0.3	0.0	0.0	85.2	0.8	14.0	0.075	0.501	25.040603	-111.757905
T. Der. Benito Juárez	10.00	3	0	1429	0.8	80.2	1.0	14.4	2.0	1.2	0.3	0.0	0.1	81.0	1.0	18.0	0.089	0.510	25.031957	-111.777730
Puerto San Carlos	57.70																			

3 CARR: Cd. Insurgentes - Loreto

CLAVE: 03092

RUTA: MEX-001

AÑO: 2019

LUGAR	ESTACION				CLASIFICACION VEHICULAR EN PORCIENTO										COORDENADAS					
	KM	TE	SC	TDPA	M	A	B	C2	C3	T3S2	T3S3	T3S2R4	OTROS	A	B	C	K'	D	LATITUD	LONGITUD
Cd. Insurgentes	0.00	3	0	3157	2.4	79.8	2.1	10.5	1.2	3.2	0.4	0.4	0.0	82.2	2.1	15.7	0.079	0.502	25.259312	-111.766840
T. Der. Ley Federal de Aguas Número Dos	13.46	3	0	1753	1.1	72.8	2.7	11.8	2.0	7.4	1.1	0.9	0.2	73.9	2.7	23.4	0.071	0.505	25.317371	-111.658038
T. Izq. Ley Federal de Aguas Número Uno	16.50	3	0	1388	1.1	72.7	2.5	10.5	2.5	8.1	1.3	1.2	0.1	73.8	2.5	23.7	0.071	0.503	25.332751	-111.634511
T. Der. Puerto Agua Verde	65.00	1	0	1316	0.9	72.1	2.7	10.9	2.2	9.0	1.1	0.9	0.2	73.0	2.7	24.3	0.092	0.527	25.605514	-111.323982
T. Der. Puerto Agua Verde	65.00	3	0	1352	1.7	71.0	2.8	10.6	2.3	9.2	1.2	1.1	0.1	72.7	2.8	24.5	0.080	0.514	25.616544	-111.300252
El Ligüi	84.50	1	0	1721	0.9	69.2	2.7	12.4	1.7	10.7	1.0	1.3	0.1	70.1	2.7	27.2	0.103	0.521	25.723543	-111.264955
T. Der. Puerto Escondido	95.40	1	0	1772	3.1	72.1	2.7	11.7	1.8	6.8	0.9	0.8	0.1	75.2	2.7	22.1	0.085	0.538	25.799189	-111.326904
T. Der. Puerto Escondido	95.40	3	0	2482	2.5	74.9	2.2	12.7	1.5	5.0	0.6	0.5	0.1	77.4	2.2	20.4	0.068	0.510	25.803989	-111.328719
Nopoló	109.50	1	0	2516	2.1	72.1	2.5	14.8	2.0	4.9	0.8	0.7	0.1	74.2	2.5	23.3	0.091	0.517	25.934985	-111.368764
T. Der. Aeropuerto de Loreto	117.30	1	0	4123	0.7	78.9	1.6	12.4	1.4	3.9	0.6	0.4	0.1	79.6	1.6	18.8	0.089	0.517	25.958835	-111.368135
T. Der. Loreto	120.00	1	0	4586	1.0	80.6	1.2	11.9	1.7	2.9	0.4	0.3	0.0	81.6	1.2	17.2	0.083	0.529	26.001202	-111.366523

4 CARR: Ent. Punta Prieta - Guerrero Negro

CLAVE: 00321

RUTA: MEX-001

AÑO: 2019

LUGAR	ESTACION				CLASIFICACION VEHICULAR EN PORCIENTO										COORDENADAS					
	KM	TE	SC	TDPA	M	A	B	C2	C3	T3S2	T3S3	T3S2R4	OTROS	A	B	C	K'	D	LATITUD	LONGITUD
Parador Punta Prieta	0.00	3	0	800	2.3	57.3	2.6	14.3	2.7	17.9	2.0	0.9	0.0	59.6	2.6	37.8	0.091	0.537	28.928494	-114.156706
Rosarito	50.60	3	0	1062	1.7	58.1	2.6	13.2	2.6	18.7	2.6	0.5	0.0	59.8	2.6	37.6	0.072	0.542	28.630121	-114.023435
Tanatán	70.10	3	0	1033	0.7	61.9	2.7	12.2	2.6	16.7	2.5	0.7	0.0	62.6	2.7	34.7	0.069	0.543	28.496149	-114.016331
Tampico	105.00	1	0	1184	2.1	64.3	2.3	13.0	2.6	12.9	2.3	0.4	0.1	66.4	2.3	31.3	0.068	0.505	28.194337	-114.001512
Lim. Edos. Term. B.C. Ppia. B.C.S. (Paralelo 28)	128.56																			
Ent. Guerrero Negro	130.00	1	0	1857	1.3	74.7	1.5	9.3	1.5	10.4	1.0	0.3	0.0	76.0	1.5	22.5	0.069	0.516	27.971434	-114.013760

BAJA CALIFORNIA SUR

5 CARR: La Paz - Cd. Insurgentes

CLAVE: 03101

RUTA: MEX-001

AÑO: 2019

LUGAR	ESTACION				CLASIFICACION VEHICULAR EN PORCIENTO										COORDENADAS					
	KM	TE	SC	TDPA	M	A	B	C2	C3	T3S2	T3S3	T3S2R4	OTROS	A	B	C	K'	D	LATITUD	LONGITUD
La Paz	0.00	3	1	15684	1.0	91.9	0.4	4.1	0.4	0.9	1.0	0.1	0.2	92.9	0.4	6.7	0.095	0.504	24.121938	-110.336264
La Paz	0.00	3	2	15420	1.2	92.0	0.4	3.7	0.4	1.1	0.9	0.1	0.2	93.2	0.4	6.4	0.093	0.504	24.121496	-110.336542
T. Izq. Aeropuerto	8.90	1	1	12781	1.6	94.1	0.5	1.4	0.8	0.8	0.5	0.2	0.1	95.7	0.5	3.8	0.069	0.518	24.109117	-110.358666
T. Izq. Aeropuerto	8.90	1	2	11901	1.8	93.3	0.6	1.8	0.8	1.0	0.4	0.2	0.1	95.1	0.6	4.3	0.067	0.518	24.108966	-110.358593
T. Izq. Aeropuerto	8.90	3	1	10409	1.2	91.5	0.6	4.7	0.8	0.8	0.3	0.1	0.0	92.7	0.6	6.7	0.072	0.518	24.104712	-110.369158
T. Izq. Aeropuerto	8.90	3	2	9678	1.1	91.9	0.6	4.0	0.9	0.9	0.3	0.2	0.1	93.0	0.6	6.4	0.076	0.518	24.104481	-110.369010
El Centenario	13.50	3	1	4543	2.0	91.9	0.8	2.4	0.9	1.3	0.4	0.2	0.1	93.9	0.8	5.3	0.091	0.509	24.106461	-110.414858
El Centenario	13.50	3	2	4709	1.9	92.4	0.6	2.2	0.9	1.3	0.4	0.2	0.1	94.3	0.6	5.1	0.093	0.509	24.105465	-110.414250
T. Der. San Juan de La Costa	17.00	1	0	5842	1.8	90.6	1.1	2.9	0.7	1.9	0.6	0.3	0.1	92.4	1.1	6.5	0.087	0.509	24.116073	-110.428995
T. Der. San Juan de La Costa	17.00	3	0	3049	1.6	88.9	1.2	3.0	0.8	3.1	0.9	0.4	0.1	90.5	1.2	8.3	0.096	0.514	24.120302	-110.447401
T. Der. Alfredo V. Bonfil	24.00	3	0	2713	0.8	90.2	1.1	1.9	0.6	4.0	0.9	0.4	0.1	91.0	1.1	7.9	0.105	0.510	24.087956	-110.523634
T. Izq. El Conejo	79.60	1	0	2539	0.8	88.1	2.8	2.3	0.6	3.9	0.9	0.5	0.1	88.9	2.8	8.3	0.104	0.520	24.178196	-110.939062
T. Izq. El Conejo	79.60	3	0	2130	0.9	88.8	2.4	2.3	0.7	3.3	0.9	0.6	0.1	89.7	2.4	7.9	0.104	0.516	24.196433	-110.945833
El Ciento Veintiocho	118.20	1	0	2742	1.3	89.4	1.8	2.0	0.8	3.1	0.9	0.6	0.1	90.7	1.8	7.5	0.074	0.511	24.457805	-111.189952
Santa Rita	156.70	1	0	2379	1.6	89.7	1.5	1.9	0.7	3.0	0.9	0.6	0.1	91.3	1.5	7.2	0.103	0.513	24.586217	-111.460741
Santa Rita	156.70	3	0	2306	1.6	90.0	1.3	1.8	0.7	3.0	0.9	0.6	0.1	91.6	1.3	7.1	0.104	0.501	24.597154	-111.472956
Cd. Constitución	213.00	1	0	4538	0.8	79.0	1.2	11.4	1.7	4.3	0.9	0.6	0.1	79.8	1.2	19.0	0.088	0.511	25.006869	-111.661399
Cd. Constitución	213.00	3	1	5115	1.0	86.3	0.6	8.2	1.0	2.2	0.5	0.2	0.0	87.3	0.6	12.1	0.085	0.509	25.045651	-111.679247
Cd. Constitución	213.00	3	2	5296	1.0	85.7	0.7	8.7	1.1	2.3	0.4	0.1	0.0	86.7	0.7	12.6	0.079	0.509	25.045221	-111.679222
T. Der. Ley Federal de Aguas Número Cuatro	229.00	1	1	2818	0.5	84.4	1.0	8.7	1.1	3.2	0.7	0.3	0.1	84.9	1.0	14.1	0.073	0.515	25.195089	-111.748378
T. Der. Ley Federal de Aguas Número Cuatro	229.00	1	2	2657	0.5	83.7	1.0	8.8	1.2	3.6	0.7	0.4	0.1	84.2	1.0	14.8	0.068	0.515	25.195077	-111.748511
Cd. Insurgentes	236.50	1	1	2733	0.5	84.1	0.9	9.1	1.0	3.4	0.6	0.4	0.0	84.6	0.9	14.5	0.078	0.506	25.235924	-111.767254
Cd. Insurgentes	236.50	1	2	2802	0.5	82.2	1.0	10.6	1.2	3.7	0.5	0.3	0.0	82.7	1.0	16.3	0.074	0.506	25.235859	-111.767384

6 CARR: La Paz - Pichilingue

CLAVE: 03230

RUTA: MEX-011

AÑO: 2019

LUGAR	ESTACION				CLASIFICACION VEHICULAR EN PORCIENTO										COORDENADAS					
	KM	TE	SC	TDPA	M	A	B	C2	C3	T3S2	T3S3	T3S2R4	OTROS	A	B	C	K'	D	LATITUD	LONGITUD
La Paz	0.00	3	1	8089	2.6	91.0	0.1	5.0	0.6	0.3	0.3	0.0	0.1	93.6	0.1	6.3	0.078	0.502	24.175935	-110.304188
La Paz	0.00	3	2	8028	2.8	89.9	0.1	5.9	0.6	0.3	0.3	0.0	0.1	92.7	0.1	7.2	0.092	0.502	24.175908	-110.304231
Escuela Técnica Pesquera	9.30	3	0	1881	2.2	79.0	0.5	6.6	5.1	2.5	2.6	1.4	0.1	81.2	0.5	18.3	0.190	0.520	24.230140	-110.308548
Pichilingue	17.00	1	0	3499	1.9	80.5	0.8	4.3	3.2	6.7	1.2	1.2	0.2	82.4	0.8	16.8	0.179	0.504	24.270290	-110.319618

BAJA CALIFORNIA SUR

7 CARR: Libramiento de Cabo San Lucas

CLAVE: 03100

RUTA: MEX-001

AÑO: 2019

LUGAR	ESTACION				CLASIFICACION VEHICULAR EN PORCIENTO													COORDENADAS		
	KM	TE	SC	TDPA	M	A	B	C2	C3	T3S2	T3S3	T3S2R4	OTROS	A	B	C	K'	D	LATITUD	LONGITUD
T. C. San Pedro - Cabo San Lucas	0.00	3	1	22912	2.2	87.7	0.8	6.3	1.5	0.8	0.7	0.0	0.0	89.9	0.8	9.3	0.070	0.515	22.899584	-109.923007
T. C. San Pedro - Cabo San Lucas	0.00	3	2	24342	2.0	86.7	0.9	7.3	1.6	0.8	0.7	0.0	0.0	88.7	0.9	10.4	0.081	0.515	22.899675	-109.923098
T. C. Cabo San Lucas - La Paz	3.00	1	1	27032	1.8	87.1	0.8	7.4	1.7	0.4	0.5	0.1	0.2	88.9	0.8	10.3	0.074	0.517	22.899940	-109.909244
T. C. Cabo San Lucas - La Paz	3.00	1	2	28982	2.0	86.3	0.9	7.8	1.8	0.4	0.5	0.1	0.2	88.3	0.9	10.8	0.082	0.517	22.900038	-109.909208

8 CARR: Libramiento de Todos Santos

CLAVE:

RUTA: MEX-019

AÑO: 2019

LUGAR	ESTACION				CLASIFICACION VEHICULAR EN PORCIENTO													COORDENADAS		
	KM	TE	SC	TDPA	M	A	B	C2	C3	T3S2	T3S3	T3S2R4	OTROS	A	B	C	K'	D	LATITUD	LONGITUD
T. C. San Pedro - Cabo San Lucas Norte	0.00	3	0	3889	0.9	85.7	1.3	4.7	1.5	3.2	1.3	1.2	0.2	86.6	1.3	12.1	0.101	0.502	23.474378	-110.212072
T. C. San Pedro - Cabo San Lucas Sur	7.50																			

9 CARR: Loreto - Santa Rosalía

CLAVE: 03393

RUTA: MEX-001

AÑO: 2019

LUGAR	ESTACION				CLASIFICACION VEHICULAR EN PORCIENTO													COORDENADAS		
	KM	TE	SC	TDPA	M	A	B	C2	C3	T3S2	T3S3	T3S2R4	OTROS	A	B	C	K'	D	LATITUD	LONGITUD
Loreto	0.00	3	0	1558	1.5	69.9	1.9	13.2	2.4	9.2	1.1	0.8	0.0	71.4	1.9	26.7	0.073	0.532	26.038796	-111.364457
Rosarito	63.00	1	0	1111	2.8	68.6	5.1	10.7	2.5	8.5	0.9	0.9	0.0	71.4	5.1	23.5	0.092	0.533	26.425358	-111.631509
Rosarito	63.00	3	0	1088	4.0	69.4	4.9	10.8	1.6	7.8	0.7	0.7	0.1	73.4	4.9	21.7	0.108	0.515	26.461471	-111.656404
Mulegé	135.00	1	0	2810	1.1	78.1	2.0	11.2	1.4	5.1	0.6	0.5	0.0	79.2	2.0	18.8	0.061	0.551	26.889091	-111.979340
Mulegé	135.00	3	0	1709	2.1	71.2	2.6	12.1	3.5	7.0	0.8	0.7	0.0	73.3	2.6	24.1	0.066	0.509	26.890598	-111.995024
T. Izq. Santa Águeda	189.00	1	0	2501	1.8	77.5	2.0	12.9	1.0	4.4	0.3	0.1	0.0	79.3	2.0	18.7	0.069	0.559	27.269865	-112.243704
T. Izq. Santa Águeda	189.00	3	0	2422	1.3	77.9	1.8	11.3	1.5	4.9	0.8	0.5	0.0	79.2	1.8	19.0	0.081	0.524	27.278687	-112.244548
Santa Rosalía	197.00	1	0	4136	1.8	78.4	1.3	14.7	0.9	2.4	0.2	0.3	0.0	80.2	1.3	18.5	0.075	0.526	27.320005	-112.244506

10 CARR: Ramal a Aeropuerto de La Paz

CLAVE: 03396

RUTA: MEX-001

AÑO: 2019

LUGAR	ESTACION				CLASIFICACION VEHICULAR EN PORCIENTO													COORDENADAS		
	KM	TE	SC	TDPA	M	A	B	C2	C3	T3S2	T3S3	T3S2R4	OTROS	A	B	C	K'	D	LATITUD	LONGITUD
T. C. La Paz - Cd. Insurgentes	0.00	3	1	3147	1.9	90.3	0.4	6.7	0.4	0.2	0.1	0.0	0.0	92.2	0.4	7.4	0.112	0.504	24.090928	-110.368143
T. C. La Paz - Cd. Insurgentes	0.00	3	2	3102	2.1	88.9	0.4	7.9	0.4	0.2	0.1	0.0	0.0	91.0	0.4	8.6	0.081	0.504	24.090808	-110.368020
Aeropuerto	3.44																			



BAJA CALIFORNIA SUR

11 CARR: Ramal a Aeropuerto de Los Cabos

CLAVE: 03394

RUTA: MEX-001

AÑO: 2019

LUGAR	ESTACION				CLASIFICACION VEHICULAR EN PORCIENTO													COORDENADAS		
	KM	TE	SC	TDPA	M	A	B	C2	C3	T3S2	T3S3	T3S2R4	OTROS	A	B	C	K'	D	LATITUD	LONGITUD
T. C. Cabo San Lucas - La Paz	0.00	3	0	11553	0.8	85.9	0.5	12.5	0.1	0.1	0.0	0.1	0.0	86.7	0.5	12.8	0.108	0.514	23.161552	-109.713618
Aeropuerto Los Cabos	1.00																			

12 CARR: Ramal a Los Paredones

CLAVE: 03407

RUTA: MEX-001

AÑO: 2019

LUGAR	ESTACION				CLASIFICACION VEHICULAR EN PORCIENTO													COORDENADAS		
	KM	TE	SC	TDPA	M	A	B	C2	C3	T3S2	T3S3	T3S2R4	OTROS	A	B	C	K'	D	LATITUD	LONGITUD
T. C. Cd. Santa Rosalía - Guerrero Negro	0.00	3	0	948	1.8	88.0	0.8	8.5	0.3	0.6	0.0	0.0	0.0	89.8	0.8	9.4	0.076	0.515	27.301428	-112.898858
Paredones	1.40																			

13 CARR: Ramal a Miraflores

CLAVE: 03407

RUTA: MEX-001

AÑO: 2019

LUGAR	ESTACION				CLASIFICACION VEHICULAR EN PORCIENTO													COORDENADAS		
	KM	TE	SC	TDPA	M	A	B	C2	C3	T3S2	T3S3	T3S2R4	OTROS	A	B	C	K'	D	LATITUD	LONGITUD
T. C. Cabo San Lucas - La Paz	0.00	3	1	1253	0.8	91.8	0.3	6.9	0.2	0.0	0.0	0.0	0.0	92.6	0.3	7.1	0.106	0.512	23.371077	-109.754844
T. C. Cabo San Lucas - La Paz	0.00	3	2	1317	0.3	92.1	0.2	7.0	0.4	0.0	0.0	0.0	0.0	92.4	0.2	7.4	0.106	0.512	23.370992	-109.754856
Miraflores	2.20																			

14 CARR: Ramal a Puerto Escondido

CLAVE: 03407

RUTA: MEX-001

AÑO: 2019

LUGAR	ESTACION				CLASIFICACION VEHICULAR EN PORCIENTO													COORDENADAS		
	KM	TE	SC	TDPA	M	A	B	C2	C3	T3S2	T3S3	T3S2R4	OTROS	A	B	C	K'	D	LATITUD	LONGITUD
T. C. Cd. Insurgentes - Loreto	0.00	3	0	281	1.6	75.3	0.2	21.5	1.3	0.0	0.1	0.0	0.0	76.9	0.2	22.9	0.124	0.502	25.803102	-111.326253
Puerto Escondido	2.50																			

15 CARR: Ramal a San Ignacio

CLAVE: 03413

RUTA: MEX-001

AÑO: 2019

LUGAR	ESTACION				CLASIFICACION VEHICULAR EN PORCIENTO													COORDENADAS		
	KM	TE	SC	TDPA	M	A	B	C2	C3	T3S2	T3S3	T3S2R4	OTROS	A	B	C	K'	D	LATITUD	LONGITUD
T. C. Santa Rosalía - Guerrero Negro	0.00	3	0	1539	1.9	89.4	0.4	7.4	0.5	0.1	0.1	0.0	0.2	91.3	0.4	8.3	0.072	0.504	27.300278	-112.893946
San Ignacio	2.70																			

BAJA CALIFORNIA SUR

16 CARR: Ramal a Santiago

CLAVE: 03051

RUTA: MEX-001

AÑO: 2019

LUGAR	ESTACION				CLASIFICACION VEHICULAR EN PORCIENTO													COORDENADAS		
	KM	TE	SC	TDPA	M	A	B	C2	C3	T3S2	T3S3	T3S2R4	OTROS	A	B	C	K'	D	LATITUD	LONGITUD
T. C. Cabo San Lucas - La Paz	0.00	3	1	727	1.7	90.5	1.1	6.5	0.2	0.0	0.0	0.0	0.0	92.2	1.1	6.7	0.074	0.512	23.479380	-109.706636
T. C. Cabo San Lucas - La Paz	0.00	3	2	682	0.3	90.6	1.0	7.8	0.3	0.0	0.0	0.0	0.0	90.9	1.0	8.1	0.078	0.512	23.479380	-109.706634
Santiago	2.30																			

17 CARR: Ramal Aeropista San Ignacio

CLAVE: 03053

RUTA: MEX-001

AÑO: 2019

LUGAR	ESTACION				CLASIFICACION VEHICULAR EN PORCIENTO													COORDENADAS		
	KM	TE	SC	TDPA	M	A	B	C2	C3	T3S2	T3S3	T3S2R4	OTROS	A	B	C	K'	D	LATITUD	LONGITUD
T.C. Cd. Santa Rosalia - Guerrero Negro	0.00	3	0	2	0.0	100.0	0.0	0.0	0.0	0.0	0.0	0.0	0.0	100.0	0.0	0.0	1.000	0.500	27.290770	-112.938082
Aeropista San Ignacio	1.00																			

18 CARR: San Pedro - Cabo San Lucas

CLAVE: 03003

RUTA: MEX-019

AÑO: 2019

LUGAR	ESTACION				CLASIFICACION VEHICULAR EN PORCIENTO													COORDENADAS		
	KM	TE	SC	TDPA	M	A	B	C2	C3	T3S2	T3S3	T3S2R4	OTROS	A	B	C	K'	D	LATITUD	LONGITUD
T. C. Cabo San Lucas - La Paz	0.00	3	1	3628	2.0	82.6	1.3	8.5	1.0	2.5	0.9	1.0	0.2	84.6	1.3	14.1	0.101	0.522	23.879126	-110.254221
T. C. Cabo San Lucas - La Paz	0.00	3	2	3326	0.6	82.2	1.3	9.6	1.1	2.9	1.0	1.1	0.2	82.8	1.3	15.9	0.119	0.522	23.879171	-110.254100
T. Der. Melitón Albáñez	16.00	1	1	3134	2.0	82.1	1.2	7.5	1.7	3.3	0.8	1.3	0.1	84.1	1.2	14.7	0.087	0.510	23.660800	-110.223312
T. Der. Melitón Albáñez	16.00	1	2	3006	0.7	81.9	1.3	8.1	1.7	3.7	1.1	1.4	0.1	82.6	1.3	16.1	0.106	0.510	23.661014	-110.223108
T. Der. Melitón Albáñez	16.00	3	1	3365	2.0	80.1	1.8	9.5	1.5	2.9	0.9	1.1	0.2	82.1	1.8	16.1	0.097	0.507	23.643208	-110.226724
T. Der. Melitón Albáñez	16.00	3	2	3275	0.7	80.5	1.5	10.2	1.6	3.1	1.0	1.2	0.2	81.2	1.5	17.3	0.120	0.507	23.643207	-110.226709
Todos Santos	52.00	1	0	3687	1.8	87.0	0.8	8.8	1.0	0.4	0.2	0.0	0.0	88.8	0.8	10.4	0.090	0.542	23.468922	-110.216361
Todos Santos	52.00	3	0	5140	1.8	89.1	0.6	7.8	0.6	0.1	0.0	0.0	0.0	90.9	0.6	8.5	0.096	0.503	23.433621	-110.217119
El Pescadero	62.00	1	1	4225	2.1	84.3	0.7	8.3	1.0	1.8	0.7	0.8	0.3	86.4	0.7	12.9	0.108	0.510	23.383708	-110.184063
El Pescadero	62.00	1	2	4400	0.7	84.6	0.8	8.9	1.1	1.9	0.8	0.9	0.3	85.3	0.8	13.9	0.123	0.510	23.383745	-110.183922
El Pescadero	62.00	3	1	3859	2.0	81.7	1.2	8.9	1.4	2.6	1.0	1.0	0.2	83.7	1.2	15.1	0.092	0.514	23.349084	-110.162098
El Pescadero	62.00	3	2	3646	0.6	83.6	1.3	9.0	0.8	2.7	0.8	1.1	0.1	84.2	1.3	14.5	0.120	0.514	23.349115	-110.161886
Migriño	102.50	1	1	2745	2.0	79.9	1.7	9.7	1.6	2.9	1.0	1.0	0.2	81.9	1.7	16.4	0.129	0.505	23.055066	-110.094772
Migriño	102.50	1	2	2687	0.7	80.5	1.8	10.0	1.6	3.2	0.9	1.1	0.2	81.2	1.8	17.0	0.138	0.505	23.054903	-110.094819
Cabo San Lucas	131.00	1	1	9135	1.3	89.1	0.5	7.0	1.0	0.6	0.3	0.1	0.1	90.4	0.5	9.1	0.089	0.501	22.921086	-109.974241
Cabo San Lucas	131.00	1	2	9114	1.0	89.1	0.5	7.3	1.0	0.6	0.3	0.1	0.1	90.1	0.5	9.4	0.098	0.501	22.921184	-109.974168

BAJA CALIFORNIA SUR

19 CARR: Santa Rosalía - Guerrero Negro

CLAVE: 03095

RUTA: MEX-001

AÑO: 2019

LUGAR	ESTACION				CLASIFICACION VEHICULAR EN PORCIENTO										COORDENADAS					
	KM	TE	SC	TDPA	M	A	B	C2	C3	T3S2	T3S3	T3S2R4	OTROS	A	B	C	K'	D	LATITUD	LONGITUD
Santa Rosalía	0.00	3	0	3152	1.8	74.9	2.6	16.0	1.4	2.4	0.4	0.5	0.0	76.7	2.6	20.7	0.099	0.504	27.360920	-112.279640
Cuesta Infiernillo	12.00	1	0	1148	1.5	68.2	2.6	12.9	1.1	10.7	1.1	0.8	1.1	69.7	2.6	27.7	0.111	0.551	27.390672	-112.330278
Cuesta Infiernillo	12.00	3	0	1193	2.3	67.3	2.1	13.7	2.4	9.6	1.4	1.0	0.2	69.6	2.1	28.3	0.098	0.512	27.386649	-112.355667
T. Izq. San Ignacio	73.60	1	0	1382	3.0	76.5	2.7	4.5	1.8	7.3	1.0	1.1	2.1	79.5	2.7	17.8	0.104	0.525	27.300580	-112.875484
T. Izq. San Ignacio	73.60	3	0	2092	9.3	70.7	1.5	11.3	1.4	5.0	0.7	0.1	0.0	80.0	1.5	18.5	0.098	0.598	27.302035	-112.895336
T. Izq. Punta Abreojos	95.70	1	0	1123	1.3	75.5	2.3	9.7	2.7	6.0	1.5	0.8	0.2	76.8	2.3	20.9	0.069	0.525	27.320548	-113.100439
T. Izq. Punta Abreojos	95.70	3	0	1129	0.9	65.7	2.6	12.6	3.5	12.4	1.2	0.8	0.3	66.6	2.6	30.8	0.070	0.531	27.330372	-113.117116
Los Ángeles	117.90	1	0	1422	3.0	74.5	3.1	5.0	1.2	9.8	1.3	1.0	1.1	77.5	3.1	19.4	0.086	0.546	27.438675	-113.270066
Los Ángeles	117.90	3	0	1665	1.0	67.9	2.6	13.8	3.0	9.8	1.3	0.4	0.2	68.9	2.6	28.5	0.079	0.510	27.490925	-113.299359
T. Izq. Vizcaíno	144.00	1	0	3197	1.3	77.2	2.1	9.6	2.2	6.4	0.6	0.5	0.1	78.5	2.1	19.4	0.069	0.512	27.631655	-113.377257
T. Izq. Vizcaíno	144.00	3	0	1875	1.4	76.9	2.1	9.5	2.3	6.4	0.7	0.6	0.1	78.3	2.1	19.6	0.089	0.516	27.660642	-113.391317
T. Der. El Arco	189.00	1	0	1387	1.6	70.9	2.1	11.6	1.4	10.4	1.1	0.7	0.2	72.5	2.1	25.4	0.079	0.522	27.851424	-113.764025
T. Der. El Arco	189.00	3	0	1440	1.5	69.1	2.1	11.2	1.6	12.9	0.9	0.6	0.1	70.6	2.1	27.3	0.085	0.543	27.857342	-113.779393
Ent. Guerrero Negro	216.85	1	0	1739	3.0	68.2	1.6	12.9	1.8	11.0	0.9	0.5	0.1	71.2	1.6	27.2	0.083	0.501	27.965145	-114.010306

20 CARR: Libramiento San José del Cabo - Aeropuerto Los Cabos (Cuota)

CLAVE: 03392

RUTA: MEX-001D

AÑO: 2019

LUGAR	ESTACION				CLASIFICACION VEHICULAR EN PORCIENTO										COORDENADAS					
	KM	TE	SC	TDPA	M	A	B	C2	C3	T3S2	T3S3	T3S2R4	OTROS	A	B	C	K'	D	LATITUD	LONGITUD
Aeropuerto de Los Cabos	100.00																			
Plaza de Cobro Aeropuerto los Cabos	105.10	2	0	5827	0.1	97.3	1.3	0.4	0.2	0.2	0.2	0.3	0.0	97.4	1.3	1.3	0.102	0.500	23.150467	-109.740500
Plaza de Cobro Los Cabos	118.20	2	0	4928	0.2	97.8	1.4	0.4	0.1	0.1	0.0	0.0	0.0	98.0	1.4	0.6	0.102	0.500	23.049876	-109.719565
T. C. Cabo San Lucas - La Paz	120.20	3	0	14336	1.2	93.4	0.3	4.6	0.3	0.1	0.1	0.0	0.0	94.6	0.3	5.1	0.107	0.506	23.049095	-109.714462

21 CARR: Ramal a El Mague (Cuota)

CLAVE:

RUTA: MEX-001D

AÑO: 2019

LUGAR	ESTACION				CLASIFICACION VEHICULAR EN PORCIENTO										COORDENADAS					
	KM	TE	SC	TDPA	M	A	B	C2	C3	T3S2	T3S3	T3S2R4	OTROS	A	B	C	K'	D	LATITUD	LONGITUD
T. C. Libramiento Cabo San Lucas - San José del Cabo (Cuota)	0.00																			
T. C. San Pedro - Cabo San Lucas	11.20	1	0	1086	0.5	85.1	0.5	9.1	1.3	1.3	0.9	1.3	0.0	85.6	0.5	13.9	0.099	0.523	22.950103	-109.981260

BAJA CALIFORNIA SUR

22 CARR: San José del Cabo - Libramiento de Cabo San Lucas - (Cuota)

CLAVE:

RUTA: MEX-001D

AÑO: 2019

LUGAR	ESTACION				CLASIFICACION VEHICULAR EN PORCIENTO										COORDENADAS					
	KM	TE	SC	TDPA	M	A	B	C2	C3	T3S2	T3S3	T3S2R4	OTROS	A	B	C	K'	D	LATITUD	LONGITUD
T. C. Libramiento San José del Cabo	0.00	3	0	2777	0.6	86.9	0.3	9.8	0.4	0.7	0.5	0.7	0.1	87.5	0.3	12.2	0.125	0.508	23.061853	-109.753611
Cabo San Lucas	27.48	1	0	1628	0.9	87.7	0.3	10.2	0.3	0.3	0.0	0.2	0.1	88.6	0.3	11.1	0.131	0.511	22.913190	-109.915913

23 CARR: Cd. Insurgentes - La Purísima

CLAVE: 03005

RUTA: BCS-001

AÑO: 2019

LUGAR	ESTACION				CLASIFICACION VEHICULAR EN PORCIENTO										COORDENADAS					
	KM	TE	SC	TDPA	M	A	B	C2	C3	T3S2	T3S3	T3S2R4	OTROS	A	B	C	K'	D	LATITUD	LONGITUD
Cd. Insurgentes	0.00	3	0	2693	1.0	80.0	0.8	13.7	1.9	2.4	0.1	0.1	0.0	81.0	0.8	18.2	0.077	0.507	25.271297	-111.783725
Ignacio Zaragoza	18.00	1	0	1407	0.7	79.4	0.7	15.0	2.0	2.0	0.1	0.1	0.0	80.1	0.7	19.2	0.074	0.509	25.389999	-111.838720
Ignacio Zaragoza	18.00	3	1	1061	0.3	85.6	0.5	10.3	1.6	1.3	0.2	0.1	0.1	85.9	0.5	13.6	0.081	0.546	25.400645	-111.843531
Ignacio Zaragoza	18.00	3	2	842	0.6	83.5	0.5	12.4	1.6	1.1	0.2	0.1	0.0	84.1	0.5	15.4	0.081	0.546	25.400609	-111.843670
T. Izq. Santo Domingo	28.70	1	0	734	0.9	87.9	0.5	8.9	1.5	0.2	0.1	0.0	0.0	88.8	0.5	10.7	0.080	0.511	25.487166	-111.883748
Francisco Villa	64.00	3	0	305	3.5	81.5	0.6	12.5	1.4	0.3	0.2	0.0	0.0	85.0	0.6	14.4	0.150	0.516	25.803585	-112.030465
La Purísima	107.00	1	0	320	1.8	83.9	0.8	10.9	2.4	0.1	0.1	0.0	0.0	85.7	0.8	13.5	0.103	0.509	26.177231	-112.085314

24 CARR: Cd. Insurgentes - Pto. Adolfo López Mateos

CLAVE: 03404

RUTA: BCS

AÑO: 2019

LUGAR	ESTACION				CLASIFICACION VEHICULAR EN PORCIENTO										COORDENADAS					
	KM	TE	SC	TDPA	M	A	B	C2	C3	T3S2	T3S3	T3S2R4	OTROS	A	B	C	K'	D	LATITUD	LONGITUD
T. C. Cd. Insurgentes - La Purísima	0.00	3	0	704	1.2	80.4	1.6	13.1	2.0	1.6	0.1	0.0	0.0	81.6	1.6	16.8	0.093	0.501	25.275285	-111.805176
Puerto Adolfo López Mateos	35.50	1	0	568	1.2	82.9	1.1	11.2	2.3	1.2	0.1	0.0	0.0	84.1	1.1	14.8	0.104	0.508	25.193163	-112.098322

25 CARR: Ent. Campo Fisher - Punta Abreojos

CLAVE: 03411

RUTA: BCS

AÑO: 2019

LUGAR	ESTACION				CLASIFICACION VEHICULAR EN PORCIENTO										COORDENADAS					
	KM	TE	SC	TDPA	M	A	B	C2	C3	T3S2	T3S3	T3S2R4	OTROS	A	B	C	K'	D	LATITUD	LONGITUD
T. C. Santa Rosalía - Paralelo 28	0.00	3	0	246	2.1	85.2	0.8	7.3	2.2	1.8	0.1	0.4	0.1	87.3	0.8	11.9	0.095	0.542	27.325172	-113.118503
Punta Abreojos	88.00																			

26 CARR: La Paz - Ensenada de Muertos

CLAVE: 03103

RUTA: BCS-246

AÑO: 2019

LUGAR	ESTACION				CLASIFICACION VEHICULAR EN PORCIENTO										COORDENADAS					
	KM	TE	SC	TDPA	M	A	B	C2	C3	T3S2	T3S3	T3S2R4	OTROS	A	B	C	K'	D	LATITUD	LONGITUD
La Paz	0.00	3	0	3875	1.3	84.9	0.2	11.3	1.5	0.5	0.2	0.0	0.1	86.2	0.2	13.6	0.085	0.508	24.114254	-110.293290
T. Izq. El Sargento	45.00	1	0	1368	0.7	87.2	0.3	10.1	1.3	0.3	0.1	0.0	0.0	87.9	0.3	11.8	0.106	0.501	23.982802	-109.995140

BAJA CALIFORNIA SUR

26 CARR: La Paz - Ensenada de Muertos

CLAVE: 03103

RUTA: BCS-246

AÑO: 2019

LUGAR	ESTACION				CLASIFICACION VEHICULAR EN PORCIENTO										COORDENADAS					
	KM	TE	SC	TDPA	M	A	B	C2	C3	T3S2	T3S3	T3S2R4	OTROS	A	B	C	K'	D	LATITUD	LONGITUD
T. Izq. El Sargento	45.00	3	0	1398	0.9	87.2	0.4	9.1	1.6	0.6	0.1	0.0	0.1	88.1	0.4	11.5	0.097	0.535	23.981569	-109.991481
Ensenada de Muertos	57.50	1	0	450	3.4	84.6	0.4	10.2	0.9	0.1	0.4	0.0	0.0	88.0	0.4	11.6	0.152	0.504	24.007618	-109.854230

27 CARR: Libramiento de La Paz

CLAVE: 03004

RUTA: BCS

AÑO: 2019

LUGAR	ESTACION				CLASIFICACION VEHICULAR EN PORCIENTO										COORDENADAS					
	KM	TE	SC	TDPA	M	A	B	C2	C3	T3S2	T3S3	T3S2R4	OTROS	A	B	C	K'	D	LATITUD	LONGITUD
T. C. Cabo San Lucas - La Paz	0.00	3	0	12526	2.0	89.8	0.4	4.4	1.0	1.4	0.5	0.4	0.1	91.8	0.4	7.8	0.064	0.565	24.107340	-110.318505
T. C. La Paz - Cd. Insurgentes	10.00																			

28 CARR: Libramiento Norte de La Paz

CLAVE: 03006

RUTA: BCS

AÑO: 2019

LUGAR	ESTACION				CLASIFICACION VEHICULAR EN PORCIENTO										COORDENADAS					
	KM	TE	SC	TDPA	M	A	B	C2	C3	T3S2	T3S3	T3S2R4	OTROS	A	B	C	K'	D	LATITUD	LONGITUD
T. C. La Paz - Pichilingue	0.00	3	0	3657	2.5	68.8	1.1	8.3	6.4	8.0	2.2	2.0	0.7	71.3	1.1	27.6	0.129	0.549	24.230723	-110.297431
T. C. La Paz - Ensenada de Muertos	18.80	1	0	3903	2.3	67.6	1.0	9.8	8.0	6.9	2.2	2.0	0.2	69.9	1.0	29.1	0.083	0.507	24.124366	-110.289158
T. C. La Paz - Ensenada de Muertos	18.80	3	0	8185	2.0	84.2	0.8	6.3	2.5	2.4	0.8	0.8	0.2	86.2	0.8	13.0	0.089	0.539	24.120799	-110.296097
T. C. Cabo San Lucas - La Paz	20.70	1	0	9261	2.0	84.2	0.5	6.3	2.4	2.7	1.0	0.7	0.2	86.2	0.5	13.3	0.080	0.540	24.114716	-110.307570

29 CARR: Ramal a Benito Juárez

CLAVE: 03405

RUTA: BCS

AÑO: 2019

LUGAR	ESTACION				CLASIFICACION VEHICULAR EN PORCIENTO										COORDENADAS					
	KM	TE	SC	TDPA	M	A	B	C2	C3	T3S2	T3S3	T3S2R4	OTROS	A	B	C	K'	D	LATITUD	LONGITUD
T. C. Cd. Constitución - Puerto San Carlos	0.00	3	0	725	1.3	84.6	0.7	10.1	2.6	0.6	0.1	0.0	0.0	85.9	0.7	13.4	0.095	0.513	25.037649	-111.769992
Benito Juárez	11.50	1	0	762	1.5	83.5	0.8	11.7	2.0	0.4	0.1	0.0	0.0	85.0	0.8	14.2	0.097	0.505	25.109335	-111.821170

30 CARR: Ramal a Ejido Ley Federal de Aguas Número Cuatro

CLAVE: 03007

RUTA: BCS

AÑO: 2019

LUGAR	ESTACION				CLASIFICACION VEHICULAR EN PORCIENTO										COORDENADAS					
	KM	TE	SC	TDPA	M	A	B	C2	C3	T3S2	T3S3	T3S2R4	OTROS	A	B	C	K'	D	LATITUD	LONGITUD
T. C. La Paz - Cd. Insurgentes	0.00	3	0	663	1.6	74.4	2.6	13.6	4.1	3.4	0.3	0.0	0.0	76.0	2.6	21.4	0.096	0.506	25.198617	-111.748974
Ejido Ley Federal de Aguas Número Cuatro	19.20																			

BAJA CALIFORNIA SUR

31 CARR: Ramal a El Carrizal

CLAVE: 03050

RUTA: BCS

AÑO: 2019

LUGAR	ESTACION				CLASIFICACION VEHICULAR EN PORCIENTO														COORDENADAS	
	KM	TE	SC	TDPA	M	A	B	C2	C3	T3S2	T3S3	T3S2R4	OTROS	A	B	C	K'	D	LATITUD	LONGITUD
T. C. San Pedro - Cabo San Lucas Carrizal	0.00	3	0	461	1.0	86.1	2.8	8.2	1.3	0.6	0.0	0.0	0.0	87.1	2.8	10.1	0.081	0.508	23.829433	-110.257446
	10.00																			

32 CARR: Ramal a Guerrero Negro

CLAVE: 03395

RUTA: BCS

AÑO: 2019

LUGAR	ESTACION				CLASIFICACION VEHICULAR EN PORCIENTO														COORDENADAS	
	KM	TE	SC	TDPA	M	A	B	C2	C3	T3S2	T3S3	T3S2R4	OTROS	A	B	C	K'	D	LATITUD	LONGITUD
T. C. Santa Rosalía - Guerrero Negro Guerrero Negro	0.00	3	0	2790	1.0	84.9	1.7	10.0	0.9	1.1	0.3	0.1	0.0	85.9	1.7	12.4	0.069	0.515	27.967480	-114.019795
	4.50																			

33 CARR: Ramal a La Ribera

CLAVE: 03406

RUTA: BCS

AÑO: 2019

LUGAR	ESTACION				CLASIFICACION VEHICULAR EN PORCIENTO														COORDENADAS	
	KM	TE	SC	TDPA	M	A	B	C2	C3	T3S2	T3S3	T3S2R4	OTROS	A	B	C	K'	D	LATITUD	LONGITUD
T. C. Cabo San Lucas - La Paz La Ribera	0.00	3	0	1715	0.7	92.2	0.5	4.2	1.8	0.2	0.4	0.0	0.0	92.9	0.5	6.6	0.087	0.524	23.542650	-109.664700
	12.00																			

34 CARR: Ramal a Melitón Albáñez

CLAVE: 03407

RUTA: BCS

AÑO: 2019

LUGAR	ESTACION				CLASIFICACION VEHICULAR EN PORCIENTO														COORDENADAS	
	KM	TE	SC	TDPA	M	A	B	C2	C3	T3S2	T3S3	T3S2R4	OTROS	A	B	C	K'	D	LATITUD	LONGITUD
T. C. San Pedro - Cabo San Lucas Melitón Albáñez	0.00	3	0	572	1.4	84.2	2.0	9.2	1.4	1.8	0.0	0.0	0.0	85.6	2.0	12.4	0.088	0.511	23.653076	-110.226518
	23.50																			

35 CARR: Ramal a Santa Catarina

CLAVE: 03052

RUTA: BCS

AÑO: 2019

LUGAR	ESTACION				CLASIFICACION VEHICULAR EN PORCIENTO														COORDENADAS	
	KM	TE	SC	TDPA	M	A	B	C2	C3	T3S2	T3S3	T3S2R4	OTROS	A	B	C	K'	D	LATITUD	LONGITUD
T. C. Cabo San Lucas - La Paz Santa Catarina	0.00	3	0	1963	2.1	82.2	1.2	10.3	4.2	0.0	0.0	0.0	0.0	84.3	1.2	14.5	0.069	0.504	23.134750	-109.705634
	1.00																			

BAJA CALIFORNIA SUR

36 CARR: Ramal a Bahía de Tortugas

CLAVE: 03397

RUTA: MEX-001-BCS

AÑO: 2019

LUGAR	ESTACION				CLASIFICACION VEHICULAR EN PORCIENTO										COORDENADAS					
	KM	TE	SC	TDPA	M	A	B	C2	C3	T3S2	T3S3	T3S2R4	OTROS	A	B	C	K'	D	LATITUD	LONGITUD
T. C. Santa Rosalía - Guerrero Negro	0.00	3	0	6838	2.5	82.8	1.9	10.2	0.6	1.9	0.1	0.0	0.0	85.3	1.9	12.8	0.080	0.502	27.645320	-113.390312
Vizcaíno	6.00	3	0	1527	1.0	73.9	6.5	14.9	1.3	2.0	0.4	0.0	0.0	74.9	6.5	18.6	0.074	0.512	27.642470	-113.453763
Bahía de Tortugas	198.00																			

37 CARR: Ramal a Ejido Ley Federal de Aguas Número Dos

CLAVE: 03050

RUTA: BCS-MEX-001

AÑO: 2019

LUGAR	ESTACION				CLASIFICACION VEHICULAR EN PORCIENTO										COORDENADAS					
	KM	TE	SC	TDPA	M	A	B	C2	C3	T3S2	T3S3	T3S2R4	OTROS	A	B	C	K'	D	LATITUD	LONGITUD
T. C. Cd. Insurgentes - Loreto	0.00	3	0	133	2.1	87.2	0.8	8.3	0.8	0.8	0.0	0.0	0.0	89.3	0.8	9.9	0.119	0.516	25.295558	-111.649714
Ejido Ley Federal de Aguas Número Dos	10.00																			

38 CARR: Ramal a Ley Federal de Aguas Número Cinco

CLAVE: 03407

RUTA: BCS-MEX-001

AÑO: 2019

LUGAR	ESTACION				CLASIFICACION VEHICULAR EN PORCIENTO										COORDENADAS					
	KM	TE	SC	TDPA	M	A	B	C2	C3	T3S2	T3S3	T3S2R4	OTROS	A	B	C	K'	D	LATITUD	LONGITUD
Cd. Constitución	0.00	3	1	1401	2.2	83.7	0.2	10.9	2.0	0.7	0.2	0.0	0.1	85.9	0.2	13.9	0.091	0.511	25.034774	-111.631394
Cd. Constitución	0.00	3	2	1465	2.0	81.7	0.2	12.7	2.3	0.8	0.2	0.0	0.1	83.7	0.2	16.1	0.098	0.511	25.034900	-111.631462
Ley Federal de Aguas Número Cinco	17.50																			

39 CARR: Ramal a San Juan de La Costa

CLAVE: 03403

RUTA: BCS-163-MEX-001

AÑO: 2019

LUGAR	ESTACION				CLASIFICACION VEHICULAR EN PORCIENTO										COORDENADAS					
	KM	TE	SC	TDPA	M	A	B	C2	C3	T3S2	T3S3	T3S2R4	OTROS	A	B	C	K'	D	LATITUD	LONGITUD
T. C. La Paz - Cd. Insurgentes	0.00	3	0	851	1.1	77.2	1.2	18.2	1.6	0.6	0.1	0.0	0.0	78.3	1.2	20.5	0.124	0.511	24.124162	-110.443122
Puerto Cajete	23.00	3	0	517	1.1	67.1	1.9	26.6	2.3	0.9	0.1	0.0	0.0	68.2	1.9	29.9	0.108	0.505	24.254149	-110.611514
San Juan de La Costa	40.70	1	0	499	0.6	65.3	2.1	27.2	3.1	1.0	0.4	0.0	0.3	65.9	2.1	32.0	0.084	0.508	24.364933	-110.686336

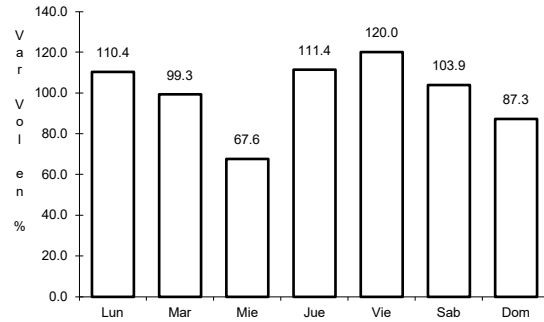




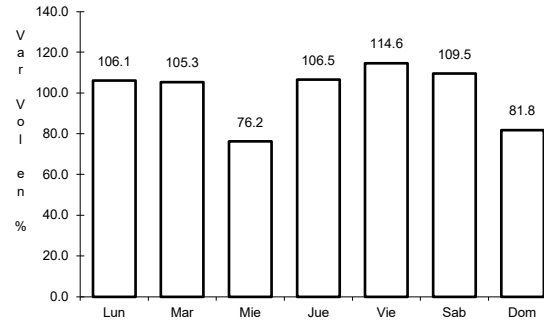
1 CARR: Cabo San Lucas - La Paz

CLAVE: 03102

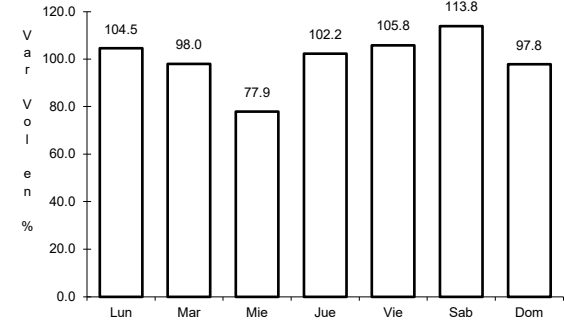
RUTA: MEX-001



Km: 0.00                      Tipo: 3                      Sent: 1



Km: 0.00                      Tipo: 3                      Sent: 2

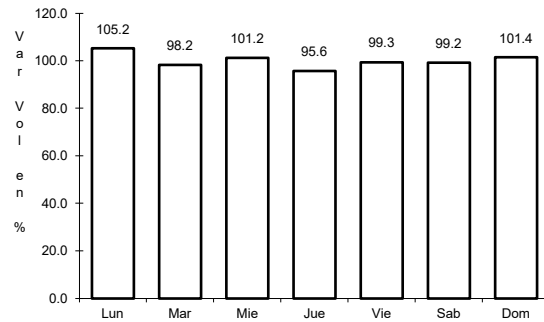


Km: 110.00                      Tipo: 3                      Sent: 0

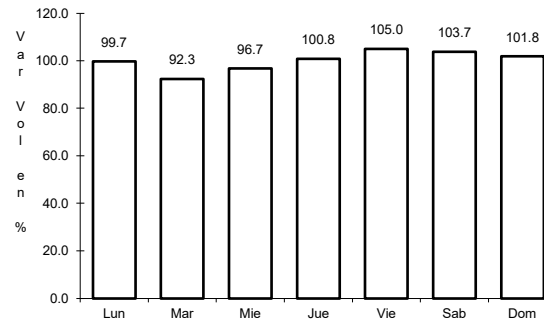
2 CARR: Cd. Constitución - Puerto San Carlos

CLAVE: 03231

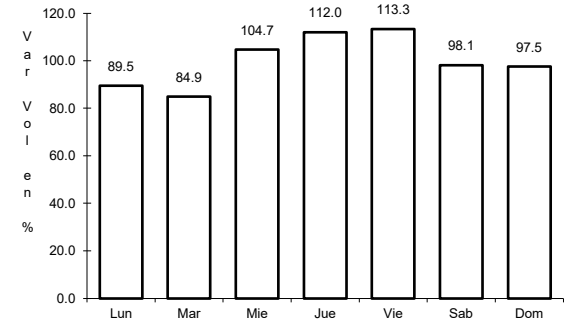
RUTA: MEX-001



Km: 0.00                      Tipo: 3                      Sent: 0



Km: 10.00                      Tipo: 1                      Sent: 0

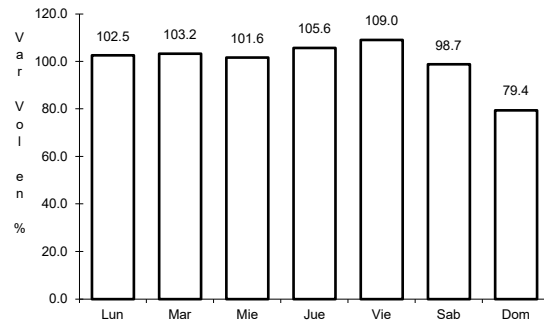


Km: 10.00                      Tipo: 3                      Sent: 0

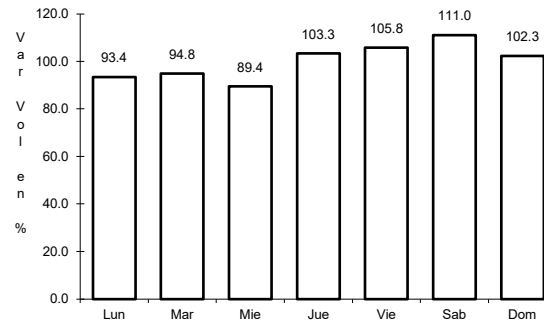
3 CARR: Cd. Insurgentes - Loreto

CLAVE: 03092

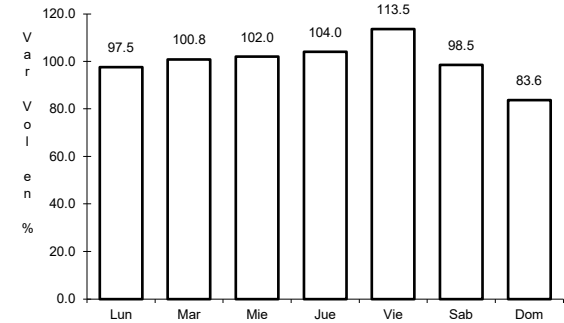
RUTA: MEX-001



Km: 0.00                      Tipo: 3                      Sent: 0



Km: 65.00                      Tipo: 1                      Sent: 0

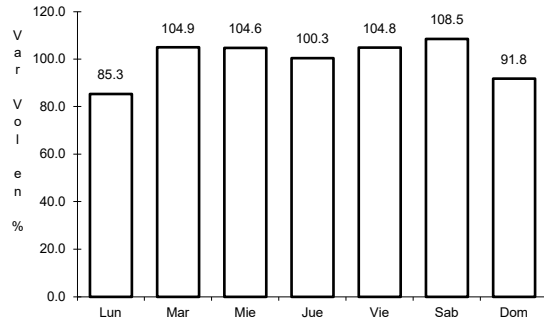


Km: 117.30                      Tipo: 1                      Sent: 0

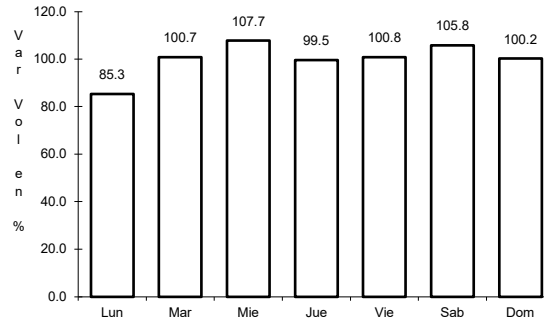
4 CARR: Ent. Punta Prieta - Guerrero Negro

CLAVE: 00321

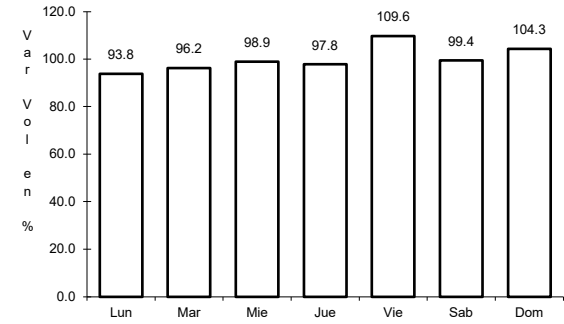
RUTA: MEX-001



Km: 0.00      Tipo: 3      Sent: 0



Km: 70.10      Tipo: 3      Sent: 0

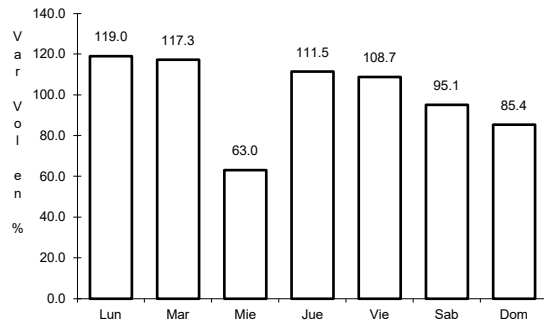


Km: 130.00      Tipo: 1      Sent: 0

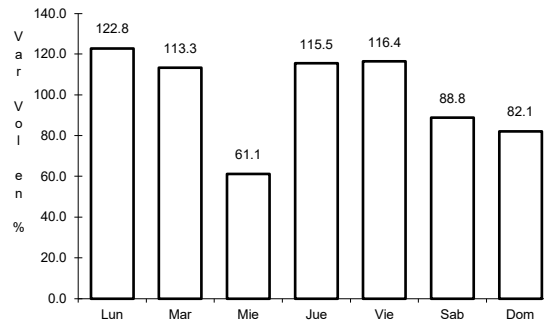
5 CARR: La Paz - Cd. Insurgentes

CLAVE: 03101

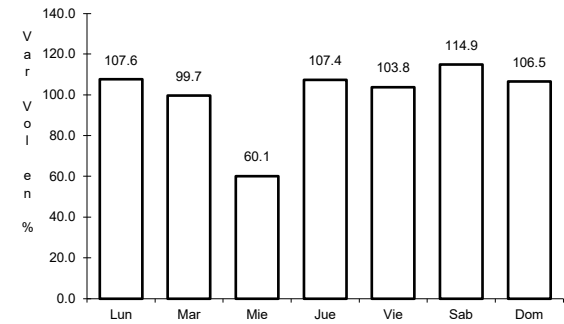
RUTA: MEX-001



Km: 0.00      Tipo: 3      Sent: 1



Km: 0.00      Tipo: 3      Sent: 2

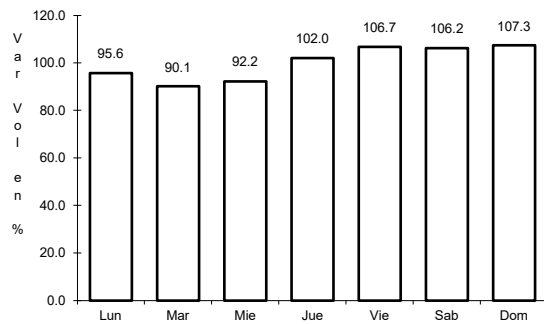


Km: 118.20      Tipo: 1      Sent: 0

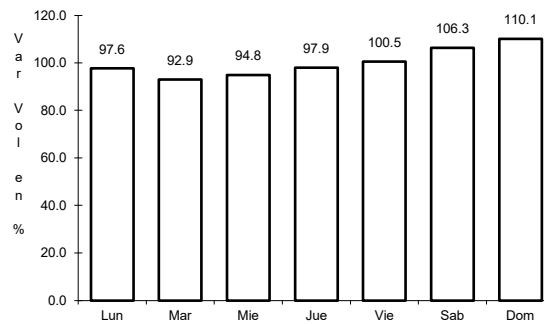
6 CARR: La Paz - Pichilingue

CLAVE: 03230

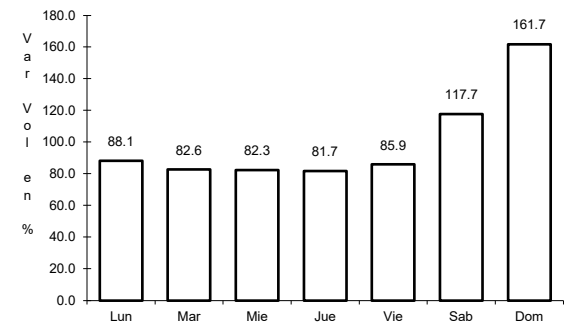
RUTA: MEX-011



Km: 0.00      Tipo: 3      Sent: 1



Km: 0.00      Tipo: 3      Sent: 2

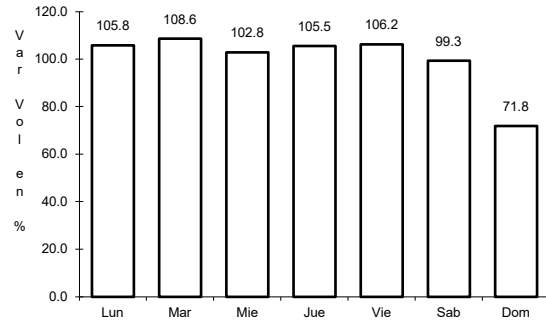


Km: 17.00      Tipo: 1      Sent: 0

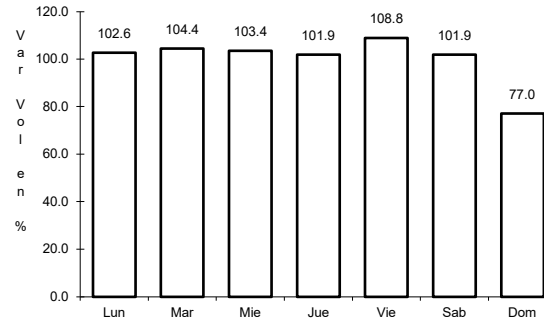
7 CARR: Libramiento de Cabo San Lucas

CLAVE: 03100

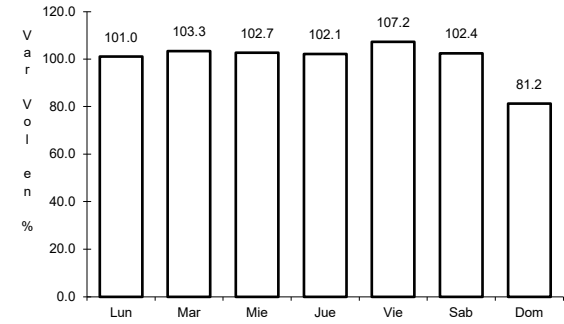
RUTA: MEX-001



Km: 0.00                      Tipo: 3                      Sent: 1



Km: 0.00                      Tipo: 3                      Sent: 2

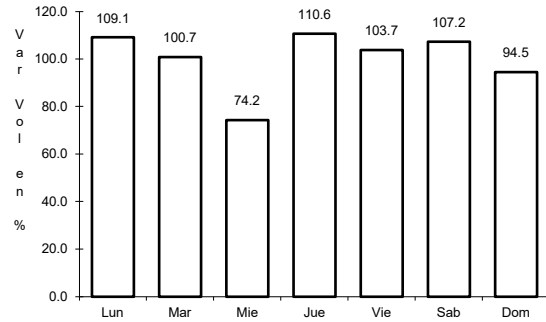


Km: 3.00                      Tipo: 1                      Sent: 1

8 CARR: Libramiento de Todos Santos

CLAVE:

RUTA: MEX-019

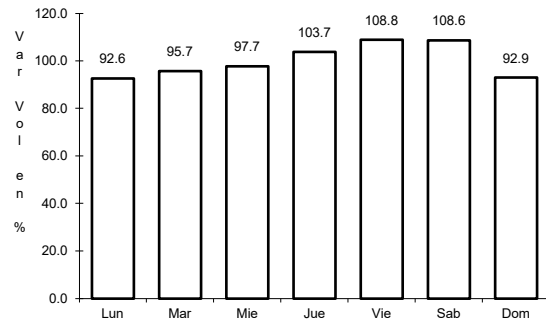


Km: 0.00                      Tipo: 3                      Sent: 0

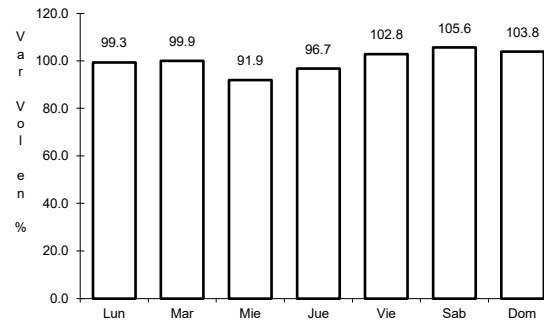
9 CARR: Loreto - Santa Rosalía

CLAVE: 03393

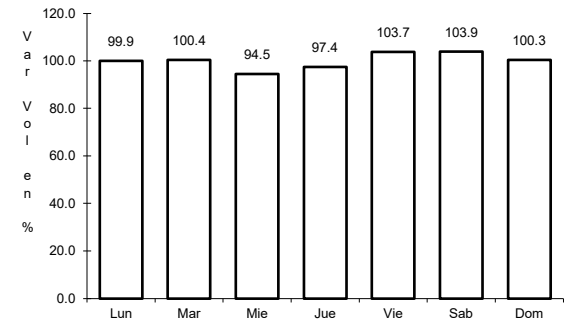
RUTA: MEX-001



Km: 0.00                      Tipo: 3                      Sent: 0



Km: 135.00                      Tipo: 1                      Sent: 0

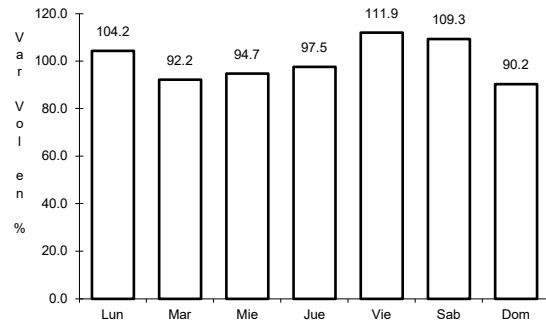


Km: 197.00                      Tipo: 1                      Sent: 0

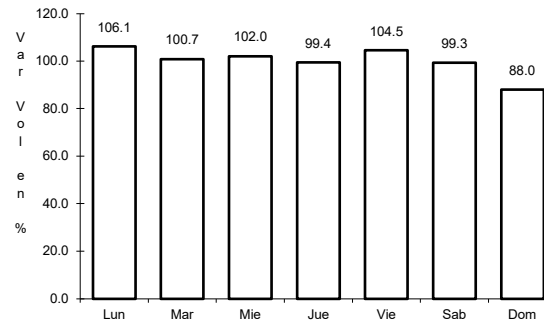
10 CARR: Ramal a Aeropuerto de La Paz

CLAVE: 03396

RUTA: MEX-001



Km: 0.00                      Tipo: 3                      Sent: 1

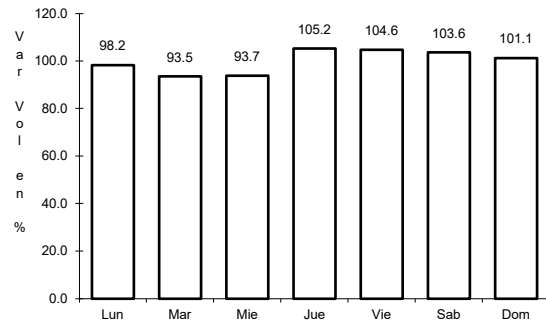


Km: 0.00                      Tipo: 3                      Sent: 2

11 CARR: Ramal a Aeropuerto de Los Cabos

CLAVE: 03394

RUTA: MEX-001

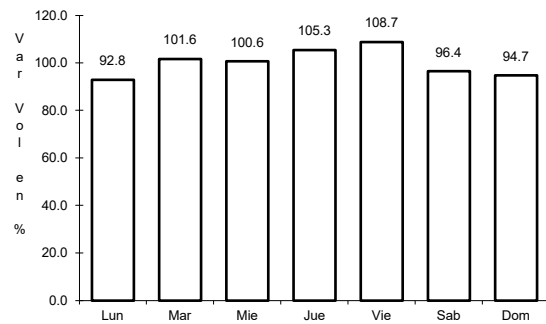


Km: 0.00                      Tipo: 3                      Sent: 0

12 CARR: Ramal a Los Paredones

CLAVE: 03407

RUTA: MEX-001

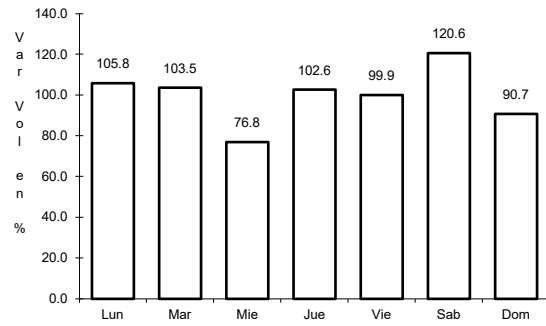


Km: 0.00                      Tipo: 3                      Sent: 0

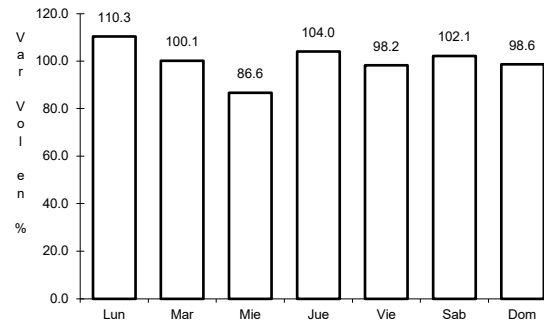
13 CARR: Ramal a Miraflores

CLAVE: 03407

ruta: MEX-001



Km: 0.00                      Tipo: 3                      Sent: 1

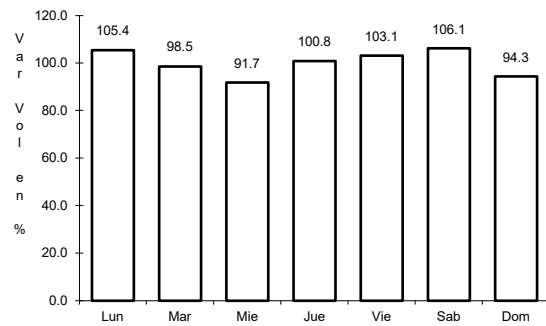


Km: 0.00                      Tipo: 3                      Sent: 2

14 CARR: Ramal a Puerto Escondido

CLAVE: 03407

ruta: MEX-001

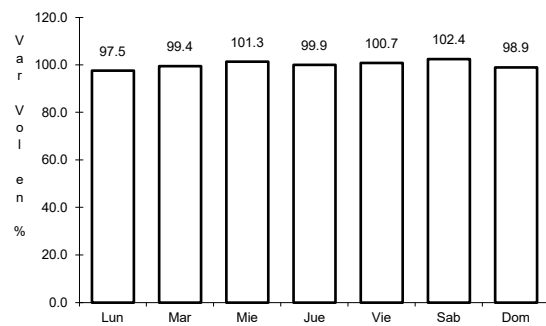


Km: 0.00                      Tipo: 3                      Sent: 0

15 CARR: Ramal a San Ignacio

CLAVE: 03413

ruta: MEX-001

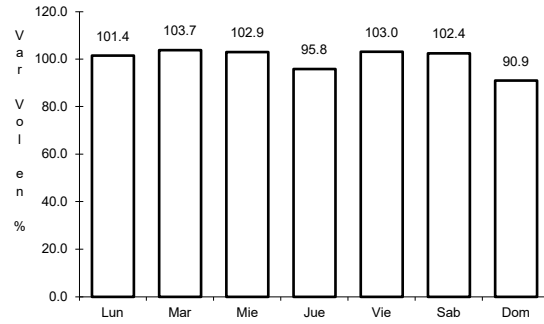


Km: 0.00                      Tipo: 3                      Sent: 0

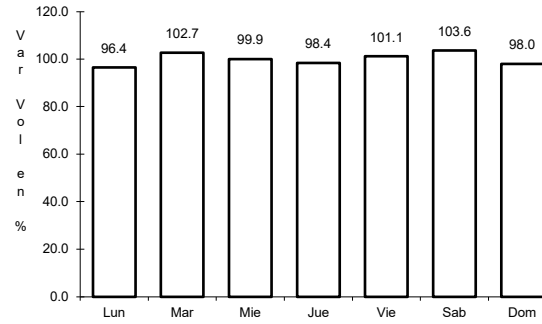
16 CARR: Ramal a Santiago

CLAVE: 03051

RUTA: MEX-001



Km: 0.00                      Tipo: 3                      Sent: 1

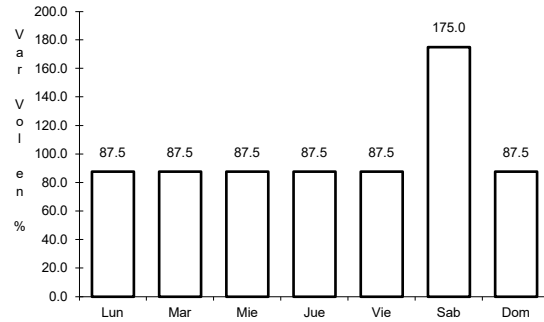


Km: 0.00                      Tipo: 3                      Sent: 2

17 CARR: Ramal Aeropista San Ignacio

CLAVE: 03053

RUTA: MEX-001

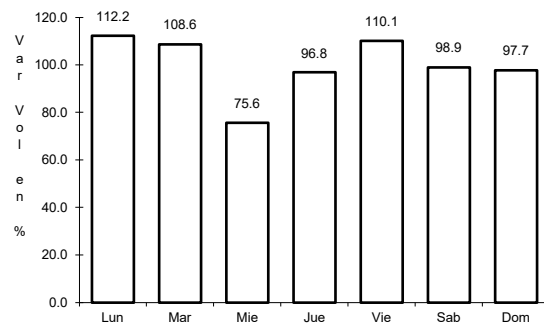


Km: 0.00                      Tipo: 3                      Sent: 0

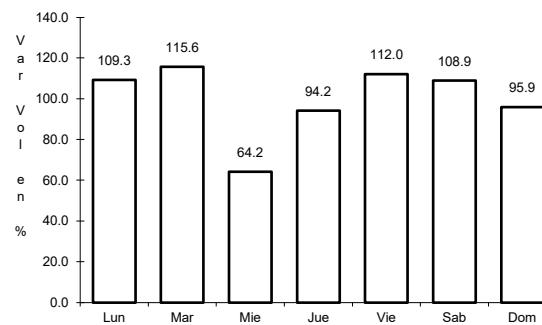
18 CARR: San Pedro - Cabo San Lucas

CLAVE: 03003

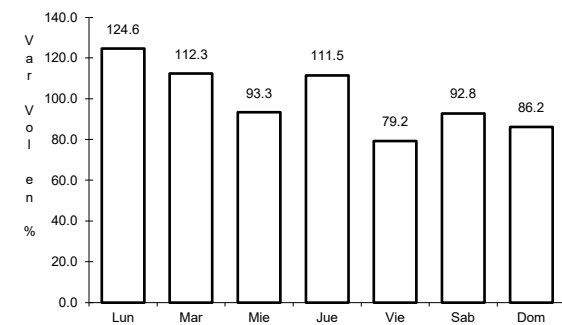
RUTA: MEX-019



Km: 0.00                      Tipo: 3                      Sent: 1



Km: 0.00                      Tipo: 3                      Sent: 2

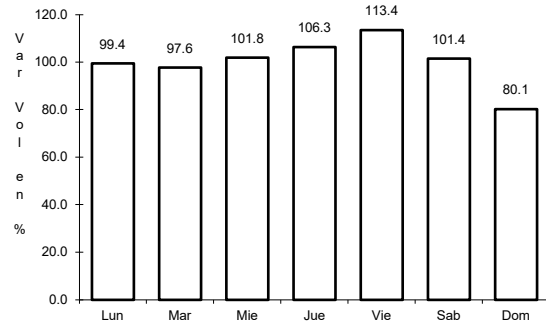


Km: 52.00                      Tipo: 1                      Sent: 0

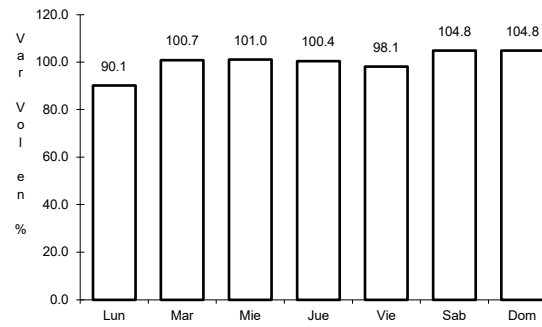
19 CARR: Santa Rosalía - Guerrero Negro

CLAVE: 03095

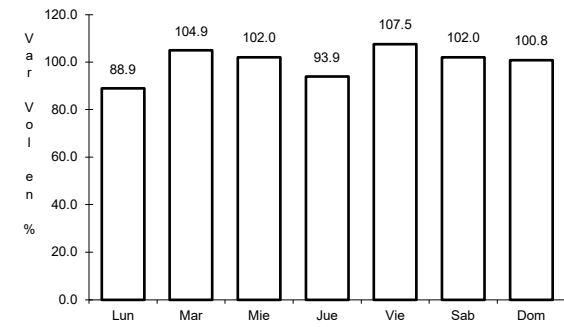
RUTA: MEX-001



Km: 0.00                      Tipo: 3                      Sent: 0



Km: 117.90                      Tipo: 1                      Sent: 0

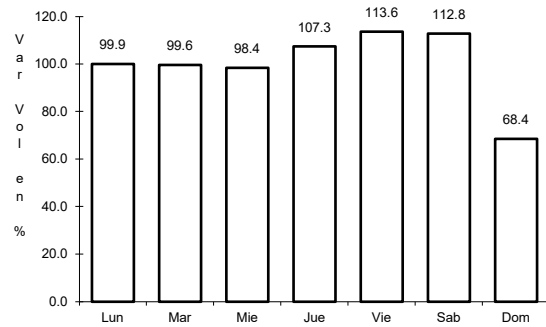


Km: 216.85                      Tipo: 1                      Sent: 0

20 CARR: Libramiento San José del Cabo - Aeropuerto Los Cabos (Cuota)

CLAVE: 03392

RUTA: MEX-001D

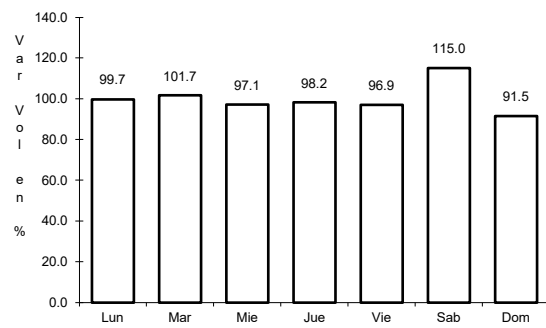


Km: 120.20                      Tipo: 3                      Sent: 0

21 CARR: Ramal a El Mangué (Cuota)

CLAVE:

RUTA: MEX-001D

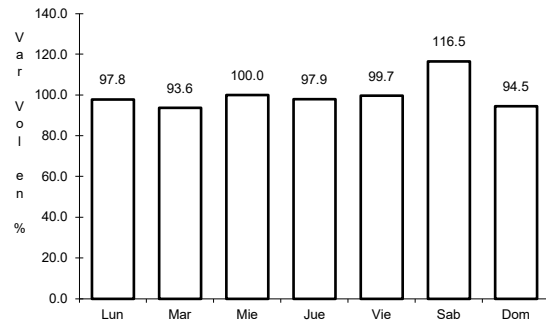


Km: 11.20                      Tipo: 1                      Sent: 0

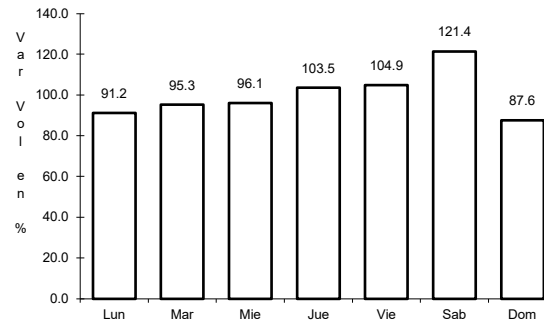
22 CARR: San José del Cabo - Libramiento de Cabo San Lucas - (Cuota)

CLAVE:

RUTA: MEX-001D



Km: 0.00                      Tipo: 3                      Sent: 0

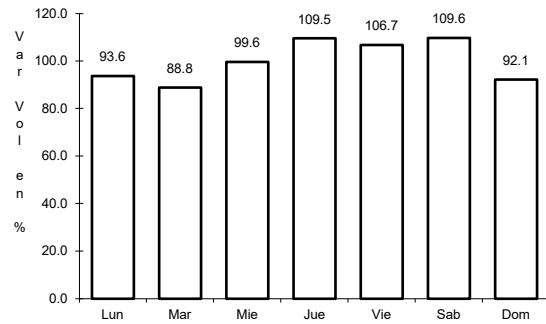


Km: 27.48                      Tipo: 1                      Sent: 0

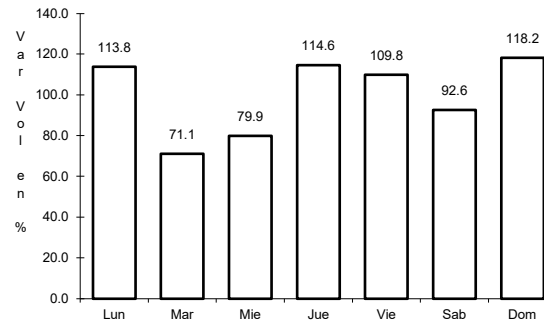
23 CARR: Cd. Insurgentes - La Purísima

CLAVE: 03005

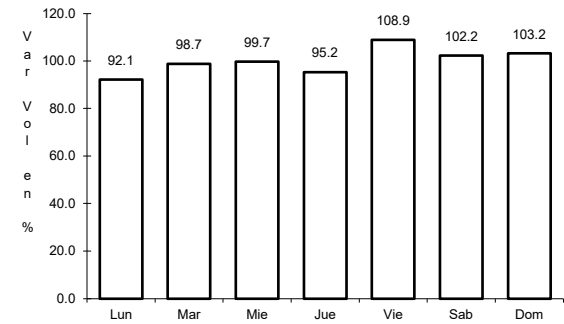
RUTA: BCS-001



Km: 0.00                      Tipo: 3                      Sent: 0



Km: 64.00                      Tipo: 3                      Sent: 0

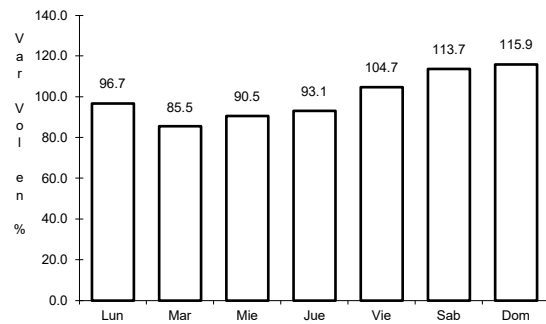


Km: 107.00                      Tipo: 1                      Sent: 0

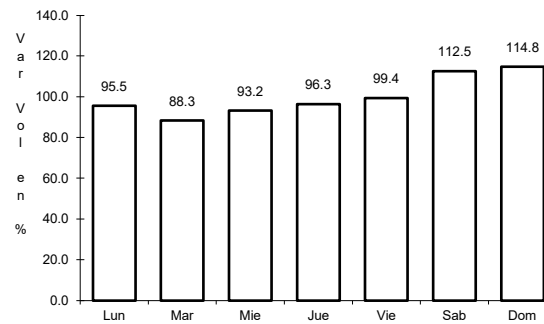
24 CARR: Cd. Insurgentes - Pto. Adolfo López Mateos

CLAVE: 03404

RUTA: BCS



Km: 0.00                      Tipo: 3                      Sent: 0



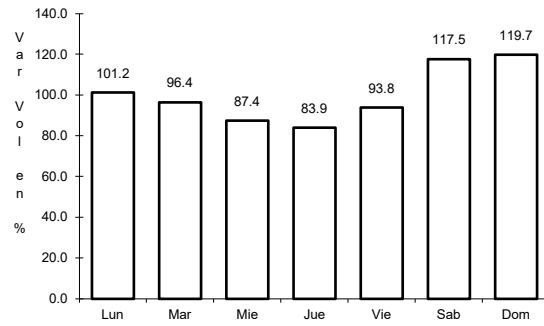
Km: 35.50                      Tipo: 1                      Sent: 0



25 CARR: Ent. Campo Fisher - Punta Abreojos

CLAVE: 03411

RUTA: BCS



Km: 0.00

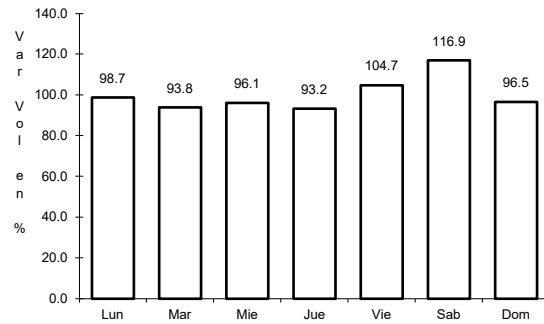
Tipo: 3

Sent: 0

26 CARR: La Paz - Ensenada de Muertos

CLAVE: 03103

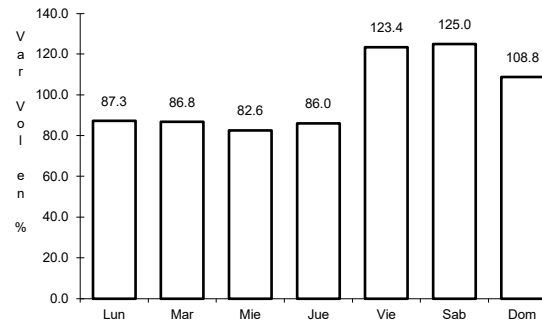
RUTA: BCS-246



Km: 0.00

Tipo: 3

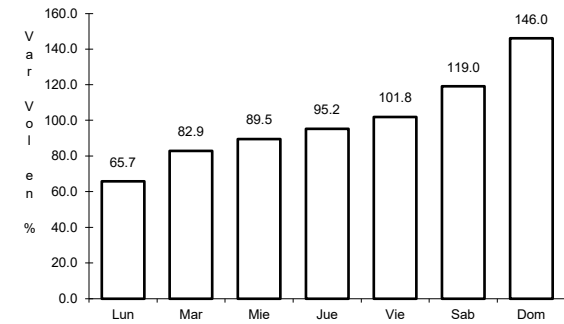
Sent: 0



Km: 45.00

Tipo: 1

Sent: 0



Km: 57.50

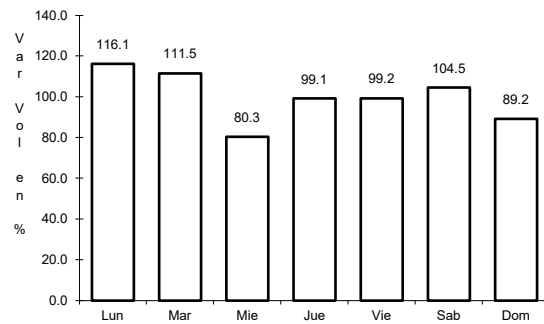
Tipo: 1

Sent: 0

27 CARR: Libramiento de La Paz

CLAVE: 03004

RUTA: BCS



Km: 0.00

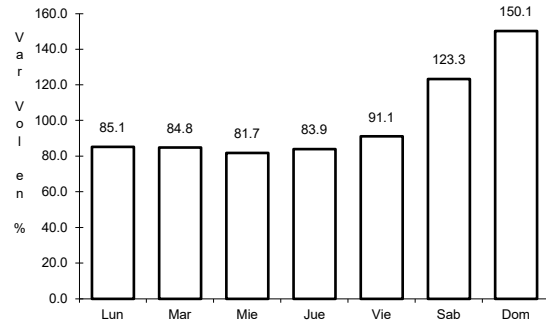
Tipo: 3

Sent: 0

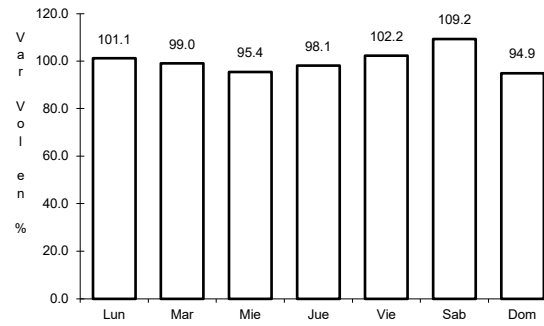
28 CARR: Libramiento Norte de La Paz

CLAVE: 03006

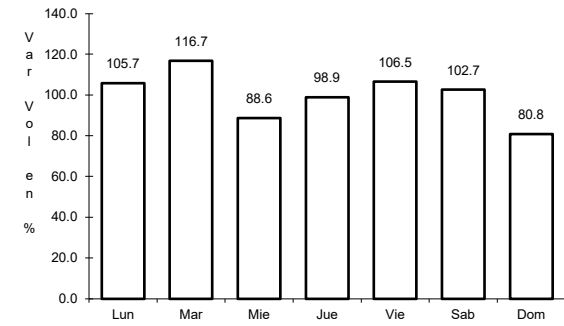
RUTA: BCS



Km: 0.00                      Tipo: 3                      Sent: 0



Km: 18.80                      Tipo: 1                      Sent: 0

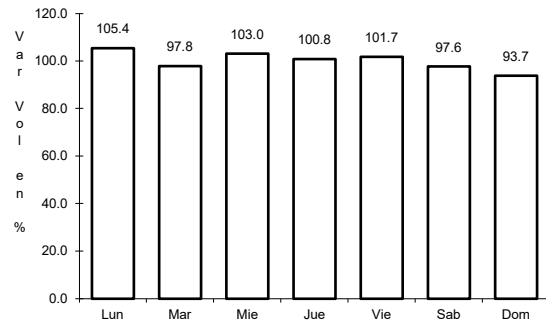


Km: 20.70                      Tipo: 1                      Sent: 0

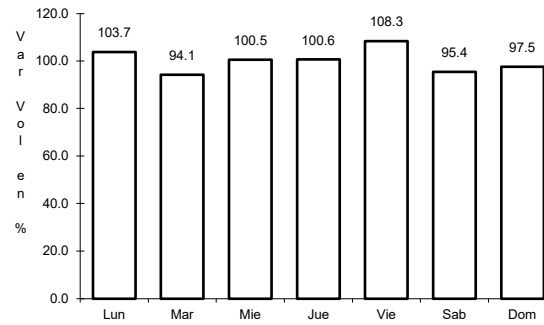
29 CARR: Ramal a Benito Juárez

CLAVE: 03405

RUTA: BCS



Km: 0.00                      Tipo: 3                      Sent: 0

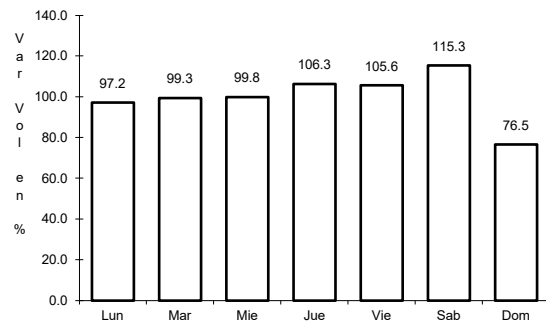


Km: 11.50                      Tipo: 1                      Sent: 0

30 CARR: Ramal a Ejido Ley Federal de Aguas Número Cuatro

CLAVE: 03007

RUTA: BCS

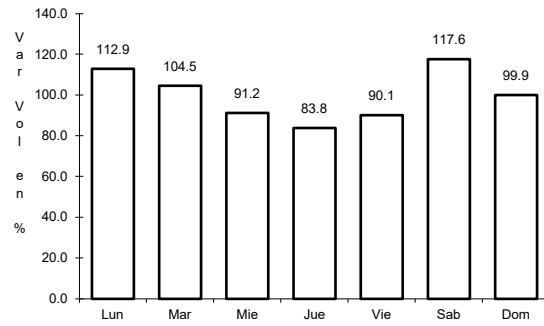


Km: 0.00                      Tipo: 3                      Sent: 0

31 CARR: Ramal a El Carrizal

CLAVE: 03050

RUTA: BCS



Km: 0.00

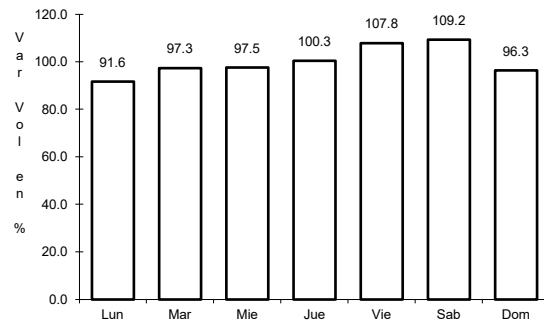
Tipo: 3

Sent: 0

32 CARR: Ramal a Guerrero Negro

CLAVE: 03395

RUTA: BCS



Km: 0.00

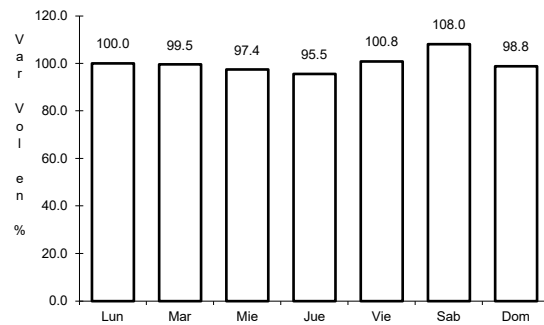
Tipo: 3

Sent: 0

33 CARR: Ramal a La Ribera

CLAVE: 03406

RUTA: BCS



Km: 0.00

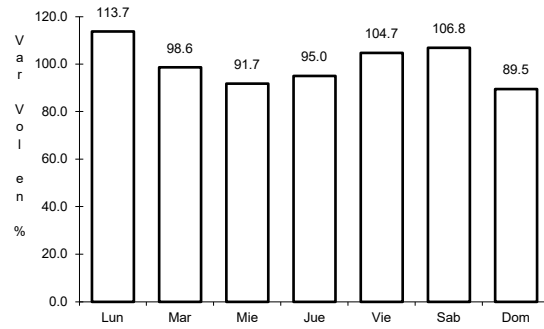
Tipo: 3

Sent: 0

34 CARR: Ramal a Melitón Albáñez

CLAVE: 03407

RUTA: BCS



Km: 0.00

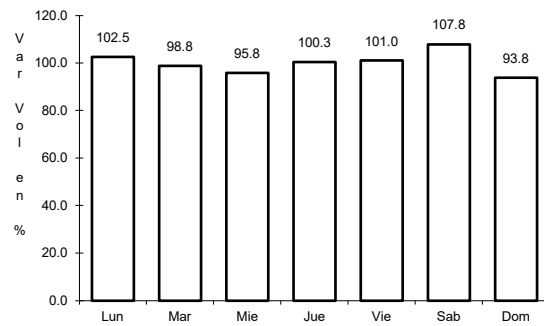
Tipo: 3

Sent: 0

35 CARR: Ramal a Santa Catarina

CLAVE: 03052

RUTA: BCS



Km: 0.00

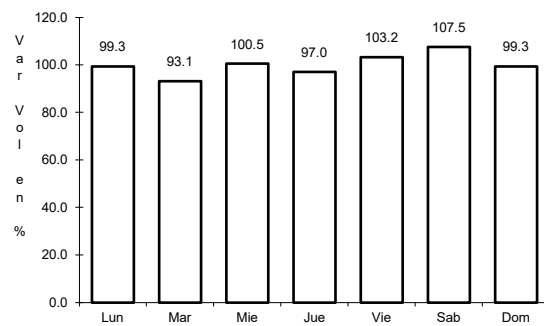
Tipo: 3

Sent: 0

36 CARR: Ramal a Bahía de Tortugas

CLAVE: 03397

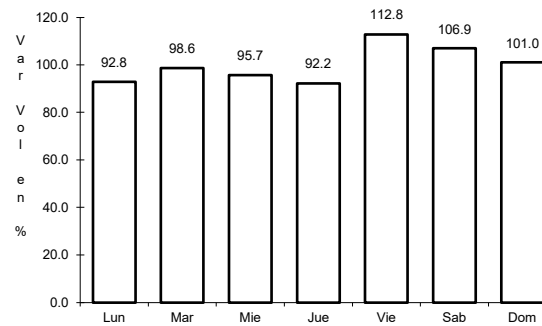
RUTA: MEX-001-BCS



Km: 0.00

Tipo: 3

Sent: 0



Km: 6.00

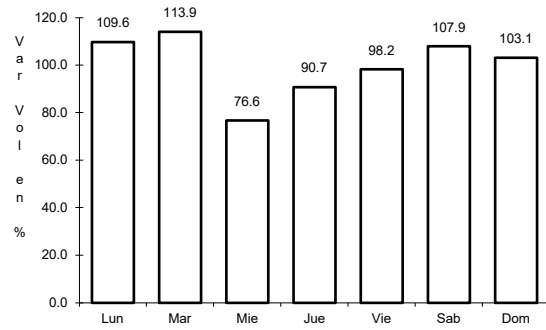
Tipo: 3

Sent: 0

37 CARR: Ramal a Ejido Ley Federal de Aguas Número Dos

CLAVE: 03050

RUTA: BCS-MEX-001



Km: 0.00

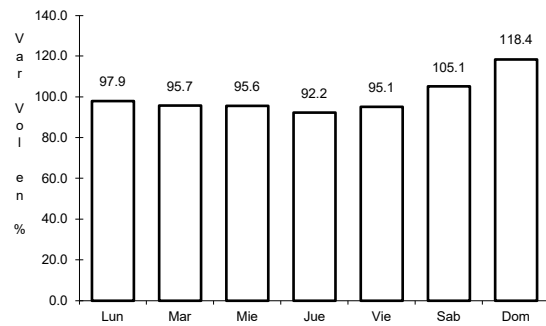
Tipo: 3

Sent: 0

38 CARR: Ramal a Ley Federal de Aguas Número Cinco

CLAVE: 03407

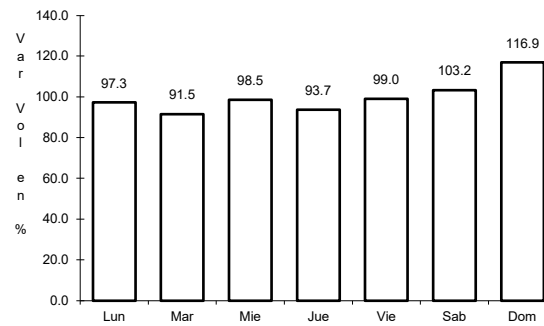
RUTA: BCS-MEX-001



Km: 0.00

Tipo: 3

Sent: 1



Km: 0.00

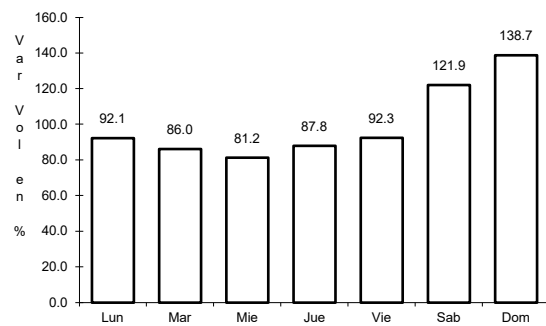
Tipo: 3

Sent: 2

39 CARR: Ramal a San Juan de La Costa

CLAVE: 03403

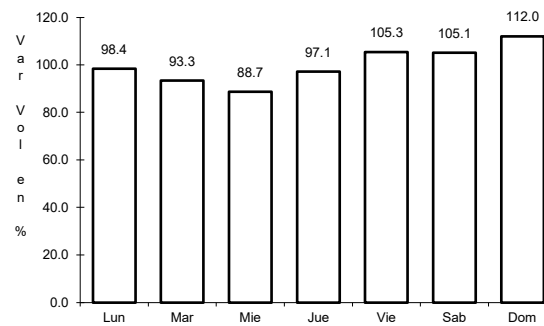
RUTA: BCS-163-MEX-001



Km: 0.00

Tipo: 3

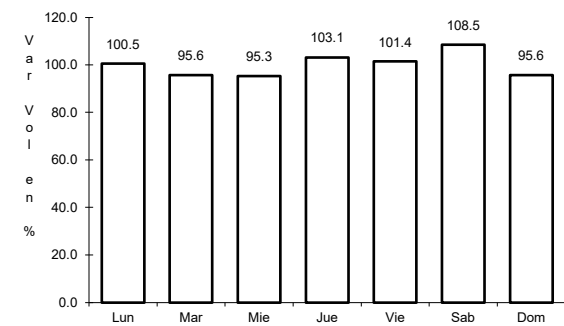
Sent: 0



Km: 23.00

Tipo: 3

Sent: 0



Km: 40.70

Tipo: 1

Sent: 0

