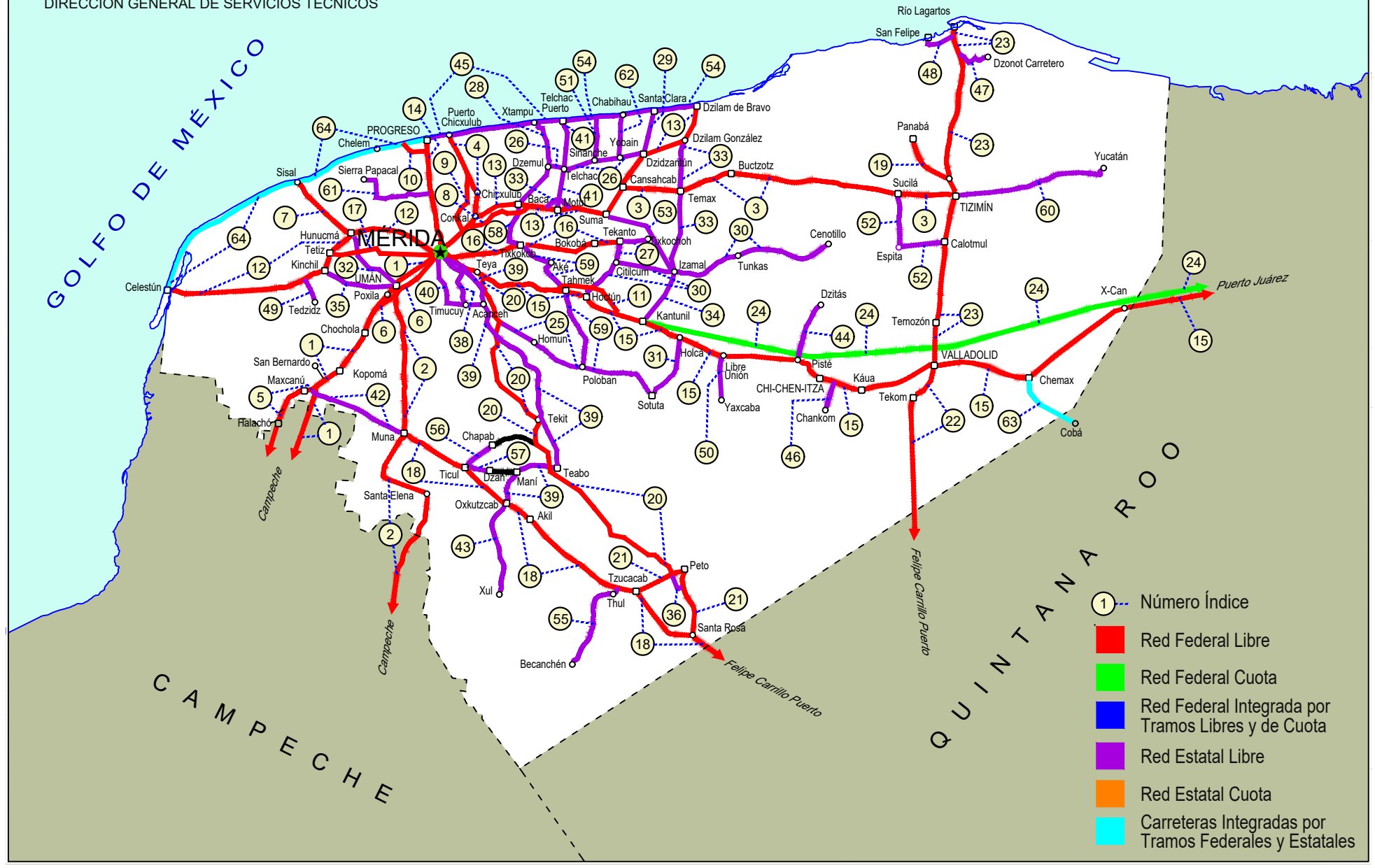


YUCATAN

NO. INDICE CARRETERA		RUTA
	---RED FEDERAL LIBRE---	
1	Campeche - Mérida	MEX-180
2	Campeche - Umán	MEX-261
3	Cansahcab - Tizimin	MEX-176
4	Conkal - Puerto Chicxulub	MEX-176
5	Dzitbalché - Ent. San Bernardo	MEX-180
6	Ent. Poxilá - Mérida	MEX-180
7	Hunucmá - Sisal	MEX-281
8	Libramiento Conkal - Mococho - Baca	MEX-176
9	Libramiento de Conkal	MEX
10	Libramiento de Progreso	MEX-261
11	Libramiento de Tahmek - Hoctun - Xocchel	MEX-180
12	Mérida - Celestún	MEX-281
13	Mérida - Dzilam de Bravo	MEX-176
14	Mérida - Progreso	MEX-261
15	Mérida - Puerto Juárez	MEX-180
16	Mérida - Tekanto	MEX-180
17	Mérida - Tetz	MEX-281
18	Muna - Felipe Carrillo Puerto	MEX-184
19	Ramal a Panabá	MEX-295
20	Teya -Peto	MEX-184
21	Tzucacab - Santa Rosa	MEX
22	Valladolid - Felipe Carrillo Puerto	MEX-295
23	Valladolid - Río Lagartos	MEX-295
	---RED FEDERAL DE CUOTA---	
24	Mérida - Cancún (Cuota)	MEX-180D
	---RED ESTATAL LIBRE---	
25	Acanceh - Estación Polabán	YUC
26	Baca - Dzidzantún	YUC
27	Citilcum - Tixkochoh	YUC
28	Dzemul - Xtampú	YUC
29	Dzidzantún - Santa Clara	YUC
30	Hoctún - Cenotillo	YUC-011
31	Holcá - Sotuta	YUC
32	Hunucmá - Umán	YUC
33	Izamal - Dzilam González	YUC
34	Kantunil - Izamal	YUC
35	Kinchil - Umán	YUC
36	Libramiento de Peto	YUC-018
37	Libramiento Norte de Motul	YUC
38	Mérida - Acanceh	YUC
39	Mérida - Oxkutzcab	YUC-018
40	Mérida - Timucuy	YUC
41	Motul - Puerto Telchac	YUC-172
42	Muna - Maxcanú	YUC
43	Oxkutzcab - Xul	YUC-031
44	Piste - Dzitás	YUC-013
45	Progreso - Telchac Puerto	YUC-027
46	Ramal a Chankom	YUC
47	Ramal a Dzonot Carretero	YUC
48	Ramal a San Felipe	YUC
49	Ramal a Tedzidz	YUC
50	Ramal a Yaxcabá	YUC-289
51	Sinanché - Xitibcanul	YUC
52	Sucilá - Calotmul	YUC
53	Suma - Izamal	YUC-081
54	Telchac Puerto - Dzilam de Bravo	YUC
55	Thul - Becanchén	YUC-281
56	Ticul - Chapab	YUC
57	Ticul - Dzan	YUC
58	Tixkokob - Baca	YUC
59	Tixkokob - Sotuta	YUC
60	Tizimin - Yucatán	YUC
61	Yaxché - Sierra Papacal	YUC
62	Yobain - Chabihau	YUC
	---CARRETERAS INTEGRADAS POR TRAMOS FEDERALES Y ESTATALES---	
63	Chemax - Cobá	YUC-MEX-180
64	Progreso - Celestún	MEX-YUC

31 YUCATÁN

SECRETARÍA DE COMUNICACIONES Y TRANSPORTES
DIRECCIÓN GENERAL DE SERVICIOS TÉCNICOS



- ① Número Índice
- Red Federal Libre
- Red Federal Cuota
- Red Federal Integrada por Tramos Libres y de Cuota
- Red Estatal Libre
- Red Estatal Cuota
- Carreteras Integradas por Tramos Federales y Estatales

YUCATAN

1 CARR: Campeche - Mérida

CLAVE: 00066

RUTA: MEX-180

AÑO: 2021

LUGAR	ESTACION				CLASIFICACION VEHICULAR EN PORCIENTO														COORDENADAS	
	KM	TE	SC	TDPA	M	A	B	C2	C3	T3S2	T3S3	T3S2R4	OTROS	A	B	C	K'	D	LATITUD	LONGITUD
Campeche	0.00	3	1	6179	11.8	79.0	0.7	6.6	0.7	0.5	0.2	0.3	0.2	90.8	0.7	8.5	0.068	0.533	19.890389	-90.467885
Campeche	0.00	3	2	5859	11.9	78.9	0.7	6.6	0.7	0.5	0.2	0.3	0.2	90.8	0.7	8.5	0.070	0.533	19.890457	-90.467961
T. Der. Periférico Pablo García y Montilla (Libramiento De Campeche)	7.00	3	1	5523	5.2	74.3	2.5	6.5	1.4	5.2	1.1	3.5	0.3	79.5	2.5	18.0	0.082	0.508	19.896933	-90.454579
T. Der. Periférico Pablo García y Montilla (Libramiento De Campeche)	7.00	3	2	5710	4.6	74.9	2.8	6.1	1.4	5.4	0.9	3.6	0.3	79.5	2.8	17.7	0.077	0.508	19.897121	-90.454698
Tenabo	40.00	1	1	5155	1.8	74.7	2.8	4.3	2.4	7.6	1.7	4.4	0.3	76.5	2.8	20.7	0.093	0.503	20.027452	-90.243047
Tenabo	40.00	1	2	5099	1.7	75.0	2.6	4.5	2.5	7.5	1.7	4.3	0.2	76.7	2.6	20.7	0.085	0.503	20.027529	-90.243111
Tenabo	40.00	3	1	4961	2.0	75.5	3.3	3.7	1.2	6.1	3.4	4.2	0.6	77.5	3.3	19.2	0.094	0.529	20.055770	-90.213674
Tenabo	40.00	3	2	4421	2.4	74.9	3.3	3.6	1.3	6.1	3.6	4.2	0.6	77.3	3.3	19.4	0.089	0.529	20.055762	-90.213805
T. Libramiento de Pomuch	46.30																			
T. Der. Libramiento de Pomuch (2º Acceso)	50.00	3	1	5171	5.1	73.2	2.4	5.0	1.2	7.0	1.8	3.6	0.7	78.3	2.4	19.3	0.096	0.502	20.150972	-90.161959
T. Der. Libramiento de Pomuch (2º Acceso)	50.00	3	2	5217	5.5	72.6	2.4	5.1	1.1	7.1	1.8	3.6	0.8	78.1	2.4	19.5	0.078	0.502	20.151042	-90.162068
Poc Boc	64.60	3	1	4901	4.4	66.8	2.8	8.5	2.1	8.5	1.4	5.0	0.5	71.2	2.8	26.0	0.088	0.523	20.261564	-90.085519
Poc Boc	64.60	3	2	4466	4.3	66.2	2.8	9.2	2.2	8.5	1.4	4.9	0.5	70.5	2.8	26.7	0.075	0.523	20.261620	-90.085624
Calkiní	79.76	3	1	4283	4.5	67.0	3.6	6.0	2.2	9.3	1.5	5.4	0.5	71.5	3.6	24.9	0.093	0.515	20.376350	-90.039148
Calkiní	79.76	3	2	4544	4.6	66.8	3.6	6.1	2.2	9.3	1.6	5.3	0.5	71.4	3.6	25.0	0.082	0.515	20.376357	-90.039236
Lim. Edos. Term. Camp. Ppia. Yuc.	96.96																			
T. Der. Maxcanú	104.61	1	1	3949	2.5	70.3	5.1	4.2	1.8	9.5	1.7	4.5	0.4	72.8	5.1	22.1	0.092	0.525	20.569847	-89.977181
T. Der. Maxcanú	104.61	1	2	3568	2.5	70.2	5.0	4.2	1.9	9.5	1.7	4.5	0.5	72.7	5.0	22.3	0.087	0.525	20.569879	-89.977318
T. Der. Maxcanú	104.61	3	1	3668	1.9	71.4	4.3	3.1	2.1	10.0	1.7	5.0	0.5	73.3	4.3	22.4	0.082	0.523	20.597463	-89.970250
T. Der. Maxcanú	104.61	3	2	3345	1.9	70.9	4.0	2.7	2.1	11.7	1.3	4.8	0.6	72.8	4.0	23.2	0.091	0.523	20.597494	-89.970442
Kopomá	124.29	3	1	6079	3.3	75.9	3.0	3.7	1.9	7.2	1.1	3.3	0.6	79.2	3.0	17.8	0.083	0.532	20.666616	-89.888000
Kopomá	124.29	3	2	5343	3.9	75.0	3.1	3.9	2.0	7.1	1.1	3.3	0.6	78.9	3.1	18.0	0.101	0.532	20.666664	-89.888112
T. Der. Libramiento de Chocholá (1º Acceso)	137.89	1	1	4632	4.2	73.4	3.6	4.0	2.5	7.0	1.3	3.5	0.5	77.6	3.6	18.8	0.089	0.539	20.733141	-89.839536
T. Der. Libramiento de Chocholá (1º Acceso)	137.89	1	2	5426	3.4	75.4	3.4	3.7	2.3	6.7	1.1	3.3	0.7	78.8	3.4	17.8	0.095	0.539	20.733221	-89.839651
T. Izq. Umán	146.99	3	1	6417	4.0	73.8	2.3	4.8	2.1	7.6	1.7	3.1	0.6	77.8	2.3	19.9	0.082	0.536	20.802148	-89.804985
T. Izq. Umán	146.99	3	2	5554	4.0	73.8	2.4	4.8	2.0	7.7	1.7	3.1	0.5	77.8	2.4	19.8	0.095	0.536	20.802266	-89.805122
X. C. Campeche - Umán	160.49	1	1	5597	2.5	73.7	2.6	6.5	2.7	6.4	1.5	3.6	0.5	76.2	2.6	21.2	0.109	0.524	20.836247	-89.754751
X. C. Campeche - Umán	160.49	1	2	5093	2.0	71.0	2.6	6.3	3.0	8.4	1.9	4.2	0.6	73.0	2.6	24.4	0.113	0.524	20.836433	-89.754789
T. C. Periférico de Mérida	171.21																			
T. C. Periférico de Mérida	171.21	1	1	6546	2.8	73.7	2.9	3.4	4.2	7.0	2.6	2.6	0.8	76.5	2.9	20.6	0.127	0.511	20.900084	-89.680220
T. C. Periférico de Mérida	171.21	1	2	6846	3.2	74.4	2.8	3.4	3.8	7.0	2.3	2.5	0.6	77.6	2.8	19.6	0.131	0.511	20.900238	-89.680324

YUCATAN

2 CARR : Campeche - Umán

CLAVE: 00164

RUTA: MEX-261

AÑO: 2021

LUGAR	ESTACION				CLASIFICACION VEHICULAR EN PORCIENTO										COORDENADAS					
	KM	TE	SC	TDPA	M	A	B	C2	C3	T3S2	T3S3	T3S2R4	OTROS	A	B	C	K'	D	LATITUD	LONGITUD
Campeche	0.00																			
T. Der. Periférico Pablo García y Montilla (Libramiento De Campeche)	7.00	1	0	4871	9.2	80.8	5.1	0.6	3.1	0.5	0.1	0.3	0.3	90.0	5.1	4.9	0.092	0.505	19.849788	-90.470670
T. Der. Periférico Pablo García y Montilla (Libramiento De Campeche)	7.00	3	0	2552	10.5	78.0	0.5	8.6	0.7	1.3	0.3	0.0	0.1	88.5	0.5	11.0	0.088	0.500	19.848260	-90.452929
T. Izq. Tenabo	30.88	1	0	1557	8.6	74.3	0.7	14.0	1.0	1.1	0.3	0.0	0.0	82.9	0.7	16.4	0.082	0.506	19.804851	-90.278678
T. Izq. Tenabo	30.88	3	0	1558	7.9	75.8	1.0	10.8	1.5	2.1	0.5	0.3	0.1	83.7	1.0	15.3	0.085	0.506	19.804540	-90.273120
T. Der. Edzna	44.51	1	0	1512	11.7	72.7	1.2	10.9	1.0	1.8	0.4	0.3	0.0	84.4	1.2	14.4	0.089	0.501	19.743581	-90.178529
T. Der. Edzna	44.51	3	0	1523	15.1	67.2	1.6	11.5	1.5	2.2	0.7	0.2	0.0	82.3	1.6	16.1	0.084	0.504	19.745363	-90.170622
Hopelchén	84.88	1	0	2038	11.4	75.1	0.4	11.0	0.5	1.3	0.2	0.0	0.1	86.5	0.4	13.1	0.088	0.504	19.754162	-89.854618
Bolonchén de Rejón	117.88	3	0	997	18.5	64.1	1.0	10.3	1.7	1.7	0.7	1.9	0.1	82.6	1.0	16.4	0.102	0.512	20.012876	-89.733975
Lim. Edos. Term. Camp. Ppia. Yuc.	126.88																			
T. Der. Sayil	140.88	1	0	516	6.3	70.2	1.8	12.0	2.8	3.0	1.3	2.6	0.0	76.5	1.8	21.7	0.110	0.515	20.208285	-89.670474
Santa Elena	158.88	1	0	992	29.6	54.9	1.4	7.3	1.6	2.6	0.9	1.6	0.1	84.5	1.4	14.1	0.128	0.516	20.319131	-89.643332
T. Izq. Ruinas de Uxmal	172.48	1	0	681	16.3	65.8	1.1	8.7	1.9	2.2	0.7	3.2	0.1	82.1	1.1	16.8	0.107	0.501	20.361859	-89.763592
Muna	187.43	1	0	1301	21.2	66.0	0.9	7.7	0.9	1.5	0.4	1.3	0.1	87.2	0.9	11.9	0.099	0.559	20.460464	-89.725412
Muna	187.43	3	0	3891	5.0	79.1	0.5	10.4	1.3	2.2	0.5	0.8	0.2	84.1	0.5	15.4	0.095	0.526	20.511426	-89.709203
Xtepén	225.38	1	0	4468	2.4	79.2	0.7	9.4	1.5	2.6	3.2	0.8	0.2	81.6	0.7	17.7	0.094	0.508	20.803088	-89.733863
Umán	230.83	1	0	3433	13.3	65.4	1.2	9.2	3.6	5.5	0.9	0.4	0.5	78.7	1.2	20.1	0.078	0.501	20.865777	-89.745956

3 CARR : Cansahcab - Tizimin

CLAVE: 31014

RUTA: MEX-176

AÑO: 2021

LUGAR	ESTACION				CLASIFICACION VEHICULAR EN PORCIENTO										COORDENADAS					
	KM	TE	SC	TDPA	M	A	B	C2	C3	T3S2	T3S3	T3S2R4	OTROS	A	B	C	K'	D	LATITUD	LONGITUD
Cansahcab	0.00	3	0	3710	7.0	75.3	0.9	6.9	2.7	3.6	1.2	2.2	0.2	82.3	0.9	16.8	0.073	0.517	21.156558	-89.066079
Temax	16.73	3	0	3217	5.9	75.1	1.8	7.3	3.3	2.9	1.3	2.2	0.2	81.0	1.8	17.2	0.071	0.501	21.156830	-88.913213
Buctzotz	32.92	3	0	2947	17.5	66.0	1.7	7.4	2.2	2.0	1.1	1.7	0.4	83.5	1.7	14.8	0.065	0.525	21.199051	-88.769290
Tizimin	99.14	1	0	3707	7.0	76.2	1.5	6.5	2.0	3.8	1.0	1.7	0.3	83.2	1.5	15.3	0.068	0.509	21.150063	-88.187863

4 CARR : Conkal - Puerto Chicxulub

CLAVE: 31004

RUTA: MEX-176

AÑO: 2021

LUGAR	ESTACION				CLASIFICACION VEHICULAR EN PORCIENTO										COORDENADAS					
	KM	TE	SC	TDPA	M	A	B	C2	C3	T3S2	T3S3	T3S2R4	OTROS	A	B	C	K'	D	LATITUD	LONGITUD
Conkal	0.00	3	0	2748	34.0	58.1	0.4	4.8	0.9	0.6	0.5	0.4	0.3	92.1	0.4	7.5	0.077	0.511	21.083219	-89.520066
Puerto Chicxulub	27.00	1	0	3185	33.4	58.9	0.4	4.7	0.8	0.5	0.5	0.5	0.3	92.3	0.4	7.3	0.068	0.502	21.286711	-89.601540

YUCATAN

5 CARR : Dzitbalché - Ent. San Bernardo

CLAVE: 00162

RUTA: MEX-180

AÑO: 2021

LUGAR	ESTACION				CLASIFICACION VEHICULAR EN PORCIENTO										COORDENADAS					
	KM	TE	SC	TDPA	M	A	B	C2	C3	T3S2	T3S3	T3S2R4	OTROS	A	B	C	K'	D	LATITUD	LONGITUD
T. C. Campeche - Mérida	0.00																			
T. Izq. Libramiento de Becal (1º Acceso)	12.33	1	0	3264	18.9	72.3	0.9	4.7	0.4	2.1	0.3	0.1	0.3	91.2	0.9	7.9	0.079	0.507	20.418770	-90.033980
T. Izq. Libramiento de Becal (2º Acceso)	15.41	3	0	1668	13.1	75.8	1.7	7.0	0.7	1.5	0.1	0.0	0.1	88.9	1.7	9.4	0.077	0.508	20.449620	-90.038830
Lim. Edos. Term. Camp. Ppia. Yuc.	15.80																			
Halachó	21.08	1	0	2056	19.6	69.0	1.3	7.6	0.7	1.6	0.1	0.0	0.1	88.6	1.3	10.1	0.073	0.507	20.469168	-90.066364
T. Izq. Libramiento de Maxcanú (1º Acceso)	35.60	1	0	2481	23.9	63.8	1.0	8.3	0.9	1.6	0.3	0.1	0.1	87.7	1.0	11.3	0.089	0.500	20.577412	-90.034878
T. Der. Muna	40.36	3	0	3436	7.3	71.5	1.2	16.8	0.8	1.9	0.3	0.1	0.1	78.8	1.2	20.0	0.094	0.502	20.601740	-89.975526
Ent. San Bernardo	41.53																			

6 CARR : Ent. Poxilá - Mérida

CLAVE: 31003

RUTA: MEX-180

AÑO: 2021

LUGAR	ESTACION				CLASIFICACION VEHICULAR EN PORCIENTO										COORDENADAS					
	KM	TE	SC	TDPA	M	A	B	C2	C3	T3S2	T3S3	T3S2R4	OTROS	A	B	C	K'	D	LATITUD	LONGITUD
T. C. Campeche - Mérida	0.00																			
Umán	9.46	1	0	3518	12.0	64.3	1.2	12.8	3.3	5.2	0.5	0.3	0.4	76.3	1.2	22.5	0.083	0.515	20.866641	-89.757718
X. Periférico de Mérida	16.37	1	1	20597	10.1	80.9	1.2	3.8	1.6	1.6	0.7	0.1	0.0	91.0	1.2	7.8	0.093	0.537	20.921491	-89.694780
X. Periférico de Mérida	16.37	1	2	17784	10.2	79.5	1.3	4.3	2.1	1.8	0.7	0.1	0.0	89.7	1.3	9.0	0.100	0.537	20.921557	-89.694803
Mérida	25.70	1	1	21711	12.9	76.2	1.3	4.4	1.6	1.6	0.8	0.9	0.3	89.1	1.3	9.6	0.091	0.503	20.926706	-89.684338
Mérida	25.70	1	2	21483	10.4	77.7	1.4	5.0	1.8	1.6	0.8	1.0	0.3	88.1	1.4	10.5	0.097	0.503	20.926917	-89.684486

7 CARR : Hunucmá - Sisal

CLAVE: 31021

RUTA: MEX-281

AÑO: 2021

LUGAR	ESTACION				CLASIFICACION VEHICULAR EN PORCIENTO										COORDENADAS					
	KM	TE	SC	TDPA	M	A	B	C2	C3	T3S2	T3S3	T3S2R4	OTROS	A	B	C	K'	D	LATITUD	LONGITUD
Hunucmá	0.00	3	0	1700	11.0	76.9	0.6	9.5	0.7	0.9	0.1	0.2	0.1	87.9	0.6	11.5	0.150	0.501	21.030411	-89.896670
Sisal	23.20	1	0	1404	10.3	78.3	0.4	9.0	0.9	1.0	0.1	0.0	0.0	88.6	0.4	11.0	0.119	0.501	21.162197	-90.030670

8 CARR : Libramiento Conkal - Mococho - Baca

CLAVE:

RUTA: MEX-176

AÑO: 2021

LUGAR	ESTACION				CLASIFICACION VEHICULAR EN PORCIENTO										COORDENADAS					
	KM	TE	SC	TDPA	M	A	B	C2	C3	T3S2	T3S3	T3S2R4	OTROS	A	B	C	K'	D	LATITUD	LONGITUD
T. C. Mérida - Dzilam de Bravo (Oeste)	4.40	3	1	6641	5.4	88.0	0.9	2.0	1.7	1.0	0.3	0.3	0.4	93.4	0.9	5.7	0.082	0.515	21.053006	-89.532349
T. C. Mérida - Dzilam de Bravo (Oeste)	4.40	3	2	6261	5.8	87.0	0.8	2.3	1.8	1.2	0.3	0.3	0.5	92.8	0.8	6.4	0.087	0.515	21.053078	-89.532369
X. C. Conkal - Yaxkukul	8.74	3	1	6245	6.3	83.0	0.9	4.6	1.5	1.9	0.9	0.8	0.1	89.3	0.9	9.8	0.087	0.511	21.066357	-89.497214
X. C. Conkal - Yaxkukul	8.74	3	2	6532	9.1	79.6	1.0	5.2	1.3	2.0	0.8	0.9	0.1	88.7	1.0	10.3	0.130	0.511	21.066427	-89.497331

YUCATAN

8 CARR: Libramiento Conkal - Mococho - Baca

CLAVE:

RUTA: MEX-176

AÑO: 2021

LUGAR	ESTACION				CLASIFICACION VEHICULAR EN PORCIENTO													COORDENADAS		
	KM	TE	SC	TDPA	M	A	B	C2	C3	T3S2	T3S3	T3S2R4	OTROS	A	B	C	K'	D	LATITUD	LONGITUD
X. C. Tixkokob - Baca	20.86	1	1	5676	3.7	82.5	1.0	5.2	1.5	1.3	0.8	0.3	3.7	86.2	1.0	12.8	0.107	0.505	21.099746	-89.404239
X. C. Tixkokob - Baca	20.86	1	2	5573	3.6	82.6	1.0	5.2	1.4	1.3	0.9	0.4	3.6	86.2	1.0	12.8	0.112	0.505	21.099872	-89.404203
T. C. Mérida - Dzilam de Bravo (Este)	24.41	1	1	4960	3.7	82.5	1.0	5.2	1.5	1.3	0.8	0.3	3.7	86.2	1.0	12.8	0.122	0.505	21.098267	-89.391322
T. C. Mérida - Dzilam de Bravo (Este)	24.41	1	2	4870	3.6	82.6	1.0	5.2	1.4	1.3	0.9	0.4	3.6	86.2	1.0	12.8	0.129	0.505	21.098348	-89.391304

9 CARR: Libramiento de Conkal

CLAVE:

RUTA: MEX

AÑO: 2021

LUGAR	ESTACION				CLASIFICACION VEHICULAR EN PORCIENTO													COORDENADAS		
	KM	TE	SC	TDPA	M	A	B	C2	C3	T3S2	T3S3	T3S2R4	OTROS	A	B	C	K'	D	LATITUD	LONGITUD
T. C. Mérida - Dzilam de Bravo	0.00	3	0	8796	6.8	83.1	1.0	5.0	1.3	0.9	0.7	0.7	0.5	89.9	1.0	9.1	0.079	0.521	21.054265	-89.546557
X. C. Conkal - Chablekal	4.80																			
T. C. Conkal - Puerto Chicxulub	14.00	1	0	1402	6.0	77.3	2.2	5.1	2.2	2.1	2.2	2.3	0.6	83.3	2.2	14.5	0.104	0.553	21.143826	-89.532466

10 CARR: Libramiento de Progreso

CLAVE: 31631

RUTA: MEX-261

AÑO: 2021

LUGAR	ESTACION				CLASIFICACION VEHICULAR EN PORCIENTO													COORDENADAS		
	KM	TE	SC	TDPA	M	A	B	C2	C3	T3S2	T3S3	T3S2R4	OTROS	A	B	C	K'	D	LATITUD	LONGITUD
T. C. Mérida - Progreso	0.00	3	0	2767	7.1	81.4	0.5	6.2	1.8	1.9	0.5	0.3	0.3	88.5	0.5	11.0	0.093	0.525	21.258153	-89.665103
Yucalpetén	6.50	1	0	2384	7.5	85.5	0.3	4.5	0.5	1.0	0.3	0.2	0.2	93.0	0.3	6.7	0.094	0.500	21.271212	-89.712370

11 CARR: Libramiento de Tahmek - Hoctun - Xocchel

CLAVE:

RUTA: MEX-180

AÑO: 2021

LUGAR	ESTACION				CLASIFICACION VEHICULAR EN PORCIENTO													COORDENADAS		
	KM	TE	SC	TDPA	M	A	B	C2	C3	T3S2	T3S3	T3S2R4	OTROS	A	B	C	K'	D	LATITUD	LONGITUD
Tahmek	0.00	3	1	4775	1.9	81.0	2.6	4.8	1.7	3.3	1.1	3.3	0.3	82.9	2.6	14.5	0.081	0.502	20.883095	-89.241027
Tahmek	0.00	3	2	4818	1.4	79.7	2.4	5.7	1.9	4.0	1.0	3.6	0.3	81.1	2.4	16.5	0.101	0.502	20.883245	-89.241009
X. C. Hoctún - Cenotillo	6.30	3	1	3864	1.3	78.0	2.2	6.4	1.9	4.1	1.2	4.5	0.4	79.3	2.2	18.5	0.074	0.504	20.869923	-89.188748
X. C. Hoctún - Cenotillo	6.30	3	2	3810	1.5	78.1	2.4	5.5	2.1	4.1	1.4	4.0	0.9	79.6	2.4	18.0	0.090	0.504	20.870002	-89.188649
T. C. Mérida - Puerto Juárez	14.00																			

12 CARR: Mérida - Celestún

CLAVE: 31025

RUTA: MEX-281

AÑO: 2021

LUGAR	ESTACION				CLASIFICACION VEHICULAR EN PORCIENTO													COORDENADAS		
	KM	TE	SC	TDPA	M	A	B	C2	C3	T3S2	T3S3	T3S2R4	OTROS	A	B	C	K'	D	LATITUD	LONGITUD
Mérida	0.00	3	1	19279	9.3	84.2	0.7	3.9	0.8	0.4	0.1	0.3	0.3	93.5	0.7	5.8	0.073	0.548	20.987072	-89.659460

YUCATAN

12 CARR: Mérida - Celestún

CLAVE: 31025

RUTA: MEX-281

AÑO: 2021

LUGAR	ESTACION				CLASIFICACION VEHICULAR EN PORCIENTO													COORDENADAS		
	KM	TE	SC	TDPA	M	A	B	C2	C3	T3S2	T3S3	T3S2R4	OTROS	A	B	C	K'	D	LATITUD	LONGITUD
Mérida	0.00	3	2	20009	8.1	85.7	0.6	4.1	0.6	0.3	0.1	0.2	0.3	93.8	0.6	5.6	0.072	0.548	20.986974	-89.659522
X. Periférico de Mérida	5.10	1	1	34471	9.6	85.1	0.6	3.0	0.4	0.4	0.0	0.7	0.2	94.7	0.6	4.7	0.063	0.505	20.993964	-89.670593
X. Periférico de Mérida	5.10	1	2	33748	9.7	86.4	0.4	1.9	0.5	0.3	0.0	0.6	0.2	96.1	0.4	3.5	0.067	0.505	20.993864	-89.670669
X. Periférico de Mérida	5.10	3	1	25287	5.4	90.1	0.6	2.4	0.2	0.5	0.7	0.0	0.1	95.5	0.6	3.9	0.083	0.514	20.998692	-89.678244
X. Periférico de Mérida	5.10	3	2	23891	5.1	89.8	0.6	2.9	0.2	0.6	0.7	0.0	0.1	94.9	0.6	4.5	0.081	0.514	20.998610	-89.678300
Ucú	14.80	1	0	4648	16.0	71.0	0.7	10.1	0.4	1.6	0.1	0.0	0.1	87.0	0.7	12.3	0.065	0.513	21.027202	-89.734059
Hunucmá	26.00	1	0	2426	15.9	66.8	1.0	13.4	0.5	1.8	0.3	0.1	0.2	82.7	1.0	16.3	0.089	0.508	21.027495	-89.850122
Hunucmá	26.00	3	0	2446	30.9	56.6	1.0	9.1	0.3	2.0	0.1	0.0	0.0	87.5	1.0	11.5	0.072	0.508	21.002494	-89.886226
Kinchil	40.00	3	0	2122	12.3	70.7	1.4	8.4	2.8	3.5	0.7	0.1	0.1	83.0	1.4	15.6	0.073	0.501	20.911420	-89.964394
T. Izq. San Mateo	67.00	1	0	1153	2.7	87.2	0.4	6.4	2.1	0.7	0.3	0.2	0.0	89.9	0.4	9.7	0.118	0.516	20.859899	-90.186621
Celestún	89.00	1	0	1159	13.4	73.5	2.2	8.1	1.2	1.2	0.4	0.0	0.0	86.9	2.2	10.9	0.102	0.509	20.857523	-90.381073

13 CARR: Mérida - Dzilam de Bravo

CLAVE: 31001

RUTA: MEX-176

AÑO: 2021

LUGAR	ESTACION				CLASIFICACION VEHICULAR EN PORCIENTO													COORDENADAS		
	KM	TE	SC	TDPA	M	A	B	C2	C3	T3S2	T3S3	T3S2R4	OTROS	A	B	C	K'	D	LATITUD	LONGITUD
Mérida	0.00																			
X. Periférico de Mérida	5.90	1	1	12764	5.3	92.4	0.4	0.9	0.3	0.2	0.1	0.3	0.1	97.7	0.4	1.9	0.078	0.500	21.019065	-89.568489
X. Periférico de Mérida	5.90	1	2	12769	6.7	90.1	0.5	1.1	0.5	0.4	0.1	0.4	0.2	96.8	0.5	2.7	0.079	0.500	21.019118	-89.568567
X. Periférico de Mérida	5.90	3	1	19906	5.9	90.7	0.3	1.3	1.0	0.5	0.1	0.2	0.0	96.6	0.3	3.1	0.086	0.504	21.034052	-89.554177
X. Periférico de Mérida	5.90	3	2	20258	5.7	90.6	0.4	1.5	0.9	0.5	0.1	0.2	0.1	96.3	0.4	3.3	0.093	0.504	21.034132	-89.554293
Conkal	18.00	1	1	12895	10.0	84.2	0.4	2.0	1.4	1.0	0.4	0.5	0.1	94.2	0.4	5.4	0.093	0.551	21.050620	-89.537935
Conkal	18.00	1	2	13033	11.0	82.4	0.5	2.2	1.7	1.1	0.4	0.5	0.2	93.4	0.5	6.1	0.102	0.551	21.050754	-89.538043
Baca	34.40	1	0	1915	36.4	53.2	0.5	6.6	0.6	1.5	0.6	0.3	0.3	89.6	0.5	9.9	0.096	0.501	21.108814	-89.412305
Motul	44.00	1	1	5189	9.9	78.9	0.5	6.9	1.3	1.1	0.6	0.6	0.2	88.8	0.5	10.7	0.085	0.504	21.097666	-89.313584
Motul	44.00	1	2	5103	11.5	77.3	0.6	6.8	1.3	1.2	0.5	0.6	0.2	88.8	0.6	10.6	0.094	0.504	21.097766	-89.313566
Motul	44.00	3	0	4971	4.9	80.7	1.0	7.4	1.7	2.5	0.8	0.9	0.1	85.6	1.0	13.4	0.081	0.529	21.115653	-89.271311
Cansahcab	68.00	3	0	1773	15.1	77.1	0.7	5.1	1.0	1.0	0.0	0.0	0.0	92.2	0.7	7.1	0.087	0.506	21.165956	-89.100656
Dzidzantún	80.00	1	0	2243	17.7	74.4	0.4	6.5	0.8	0.2	0.0	0.0	0.0	92.1	0.4	7.5	0.090	0.510	21.235486	-89.051619
Dzilam de Bravo	105.00	1	0	3283	44.3	47.4	0.2	5.2	0.3	2.0	0.3	0.1	0.2	91.7	0.2	8.1	0.077	0.503	21.389891	-88.891948

YUCATAN

14 CARR: Mérida - Progreso

CLAVE: 31091

RUTA: MEX-261

AÑO: 2021

LUGAR	ESTACION				CLASIFICACION VEHICULAR EN PORCIENTO													COORDENADAS		
	KM	TE	SC	TDPA	M	A	B	C2	C3	T3S2	T3S3	T3S2R4	OTROS	A	B	C	K'	D	LATITUD	LONGITUD
T. C. Mérida - Dzilam de Bravo	0.00																			
Periférico Mérida	5.40	1	1	26829	6.1	89.8	0.3	1.3	0.8	0.4	0.1	1.0	0.2	95.9	0.3	3.8	0.073	0.520	21.042842	-89.629063
Periférico Mérida	5.40	1	2	24783	6.3	89.4	0.5	1.0	0.6	0.5	0.1	1.4	0.2	95.7	0.5	3.8	0.073	0.520	21.042840	-89.629150
T. Izq. Dzityá	10.40	1	1	37818	6.1	89.4	0.4	1.2	0.8	0.8	0.2	0.9	0.2	95.5	0.4	4.1	0.071	0.523	21.051414	-89.630541
T. Izq. Dzityá	10.40	1	2	34146	6.0	88.2	0.5	1.5	1.0	1.1	0.3	1.2	0.2	94.2	0.5	5.3	0.073	0.523	21.051364	-89.630838
T. Izq. Dzityá	10.40	3	1	30203	5.5	89.1	0.5	1.3	1.0	1.2	0.4	0.8	0.2	94.6	0.5	4.9	0.073	0.515	21.064642	-89.632765
T. Izq. Dzityá	10.40	3	2	26703	5.3	89.2	0.4	1.4	1.0	1.0	0.5	1.0	0.2	94.5	0.4	5.1	0.081	0.515	21.064573	-89.633158
Progreso	35.04	1	1	12911	6.2	87.1	0.3	2.3	1.0	1.3	0.9	0.7	0.2	93.3	0.3	6.4	0.078	0.506	21.265018	-89.660334
Progreso	35.04	1	2	12596	6.7	86.0	0.2	2.8	0.8	1.4	1.0	0.9	0.2	92.7	0.2	7.1	0.079	0.506	21.265027	-89.660932

15 CARR: Mérida - Puerto Juárez

CLAVE: 00067

RUTA: MEX-180

AÑO: 2021

LUGAR	ESTACION				CLASIFICACION VEHICULAR EN PORCIENTO													COORDENADAS		
	KM	TE	SC	TDPA	M	A	B	C2	C3	T3S2	T3S3	T3S2R4	OTROS	A	B	C	K'	D	LATITUD	LONGITUD
Mérida	0.00																			
X. Periférico de Mérida	5.60	1	1	11053	11.2	81.1	0.4	3.7	0.3	1.9	0.9	0.1	0.4	92.3	0.4	7.3	0.081	0.528	20.958010	-89.573433
X. Periférico de Mérida	5.60	1	2	12361	13.4	78.8	0.5	3.6	0.3	1.9	1.0	0.1	0.4	92.2	0.5	7.3	0.075	0.528	20.958095	-89.573385
X. Periférico de Mérida	5.60	3	1	17367	8.5	81.4	1.2	3.0	1.9	2.1	0.4	1.2	0.3	89.9	1.2	8.9	0.095	0.522	20.951835	-89.561991
X. Periférico de Mérida	5.60	3	2	15927	8.8	80.6	1.6	2.6	2.0	2.3	0.4	1.4	0.3	89.4	1.6	9.0	0.085	0.522	20.951978	-89.561938
Teya	13.00	1	1	12303	7.7	79.2	1.7	4.3	2.0	2.8	0.5	1.4	0.4	86.9	1.7	11.4	0.116	0.509	20.938030	-89.537110
Teya	13.00	1	2	11887	7.8	79.8	1.7	3.2	2.3	3.0	0.4	1.5	0.3	87.6	1.7	10.7	0.105	0.509	20.938156	-89.537046
T. Der. Seyé	28.79	1	1	6272	3.0	82.0	1.8	5.4	1.3	3.0	1.0	2.2	0.3	85.0	1.8	13.2	0.104	0.500	20.895783	-89.391617
T. Der. Seyé	28.79	1	2	6271	3.5	80.4	2.0	6.0	1.5	3.1	0.7	2.5	0.3	83.9	2.0	14.1	0.100	0.500	20.895903	-89.391536
T. Der. Seyé	28.79	3	1	5861	2.2	82.8	1.6	5.0	1.4	3.1	1.0	2.6	0.3	85.0	1.6	13.4	0.090	0.510	20.891693	-89.374776
T. Der. Seyé	28.79	3	2	5636	2.3	81.1	2.0	5.6	1.7	3.3	0.8	2.9	0.3	83.4	2.0	14.6	0.101	0.510	20.891838	-89.374752
Tahmek	42.00	1	1	5775	2.1	79.8	2.2	6.2	1.8	3.5	1.3	2.8	0.3	81.9	2.2	15.9	0.089	0.501	20.876039	-89.279169
Tahmek	42.00	1	2	5745	2.4	80.0	2.2	6.2	1.7	3.4	0.8	2.9	0.4	82.4	2.2	15.4	0.097	0.501	20.876182	-89.279174
T. Izq. Hochtún (1º Acceso)	46.65	1	0	2412	26.0	63.7	1.2	7.6	0.6	0.4	0.3	0.2	0.0	89.7	1.2	9.1	0.092	0.501	20.868586	-89.219667
T. Izq. Hochtún (2º Acceso)	48.62	1	0	1243	22.9	68.0	0.7	5.2	1.3	1.0	0.4	0.5	0.0	90.9	0.7	8.4	0.101	0.502	20.858746	-89.202870
T. Izq. Hochtún (2º Acceso)	48.62	3	0	2314	27.8	61.5	1.1	7.0	0.5	1.4	0.4	0.2	0.1	89.3	1.1	9.6	0.089	0.501	20.854472	-89.195942
T. Libramiento de Xocchel	55.72																			
Kantunil	67.28	1	1	3755	1.3	75.6	3.1	6.7	2.4	4.3	1.3	5.0	0.3	76.9	3.1	20.0	0.092	0.519	20.803086	-89.058045
Kantunil	67.28	1	2	3475	1.3	78.2	2.6	6.1	2.0	4.1	0.9	4.4	0.4	79.5	2.6	17.9	0.109	0.519	20.803238	-89.058014
Kantunil	67.28	3	0	3156	4.6	80.3	1.7	6.0	2.5	2.7	1.1	0.7	0.4	84.9	1.7	13.4	0.096	0.507	20.791198	-89.019128
Libre Unión	92.91	1	0	2455	5.5	76.5	1.8	7.9	3.3	2.6	1.2	1.1	0.1	82.0	1.8	16.2	0.097	0.518	20.708408	-88.816078

YUCATAN

15 CARR: Mérida - Puerto Juárez

CLAVE: 00067

RUTA: MEX-180

AÑO: 2021

LUGAR	ESTACION				CLASIFICACION VEHICULAR EN PORCIENTO													COORDENADAS		
	KM	TE	SC	TDPA	M	A	B	C2	C3	T3S2	T3S3	T3S2R4	OTROS	A	B	C	K'	D	LATITUD	LONGITUD
Libre Unión	92.91	3	0	2362	5.4	77.1	1.7	8.0	3.2	2.5	1.0	1.0	0.1	82.5	1.7	15.8	0.104	0.518	20.706915	-88.799653
Piste	116.30	3	0	6903	18.4	74.2	1.6	2.2	2.0	0.5	0.5	0.5	0.1	92.6	1.6	5.8	0.090	0.520	20.691450	-88.580300
1er. Acceso a Zona Arqueológica de Chichen-Itzá	117.90	3	0	5274	14.3	71.3	1.8	6.6	1.5	3.0	0.7	0.5	0.3	85.6	1.8	12.6	0.087	0.517	20.688336	-88.572490
2do. Acceso a Zona Arqueológica de Chichen-Itzá	121.10	3	0	5548	15.1	74.8	2.4	3.8	1.9	1.1	0.4	0.5	0.0	89.9	2.4	7.7	0.081	0.517	20.669428	-88.557487
T. Der. Chankom	127.00	1	0	4109	8.4	79.1	3.1	4.4	2.1	1.3	0.8	0.7	0.1	87.5	3.1	9.4	0.096	0.503	20.644674	-88.496757
T. Der. Chankom	127.00	3	0	4123	7.4	79.3	1.6	6.7	1.4	2.4	0.6	0.4	0.2	86.7	1.6	11.7	0.099	0.514	20.641078	-88.485432
Kaua	137.47	3	0	4353	8.3	79.9	3.1	4.1	2.1	1.3	0.5	0.6	0.1	88.2	3.1	8.7	0.099	0.516	20.622726	-88.406504
X. C. Periférico de Valladolid	157.12	1	0	6150	15.2	75.1	2.2	4.0	1.5	0.9	0.5	0.5	0.1	90.3	2.2	7.5	0.079	0.512	20.673827	-88.247885
Valladolid	160.68	1	0	5930	18.7	75.8	1.7	2.7	0.7	0.2	0.1	0.1	0.0	94.5	1.7	3.8	0.080	0.516	20.680685	-88.236938
Valladolid	160.68	3	0	7181	21.2	72.4	0.7	2.2	2.5	0.5	0.1	0.4	0.0	93.6	0.7	5.7	0.090	0.544	20.695220	-88.162469
X. C. Periférico de Valladolid	165.60	3	0	9059	11.2	79.1	1.7	2.9	1.6	1.7	0.5	1.0	0.3	90.3	1.7	8.0	0.086	0.501	20.696441	-88.154019
T. Der. Coba	187.80	1	0	6540	6.4	83.9	1.8	3.1	1.5	1.7	0.5	0.9	0.2	90.3	1.8	7.9	0.099	0.513	20.659492	-87.960915
T. Der. Chemax	189.79	1	0	4509	9.5	81.2	1.0	2.9	1.5	2.1	0.6	0.7	0.5	90.7	1.0	8.3	0.086	0.502	20.657886	-87.951529
T. Der. Chemax	189.79	3	0	3761	10.0	81.2	1.4	3.0	1.5	1.6	0.4	0.5	0.4	91.2	1.4	7.4	0.103	0.508	20.664231	-87.925709
X-Can	225.00	3	0	2923	6.1	81.5	2.2	5.2	1.8	2.0	0.4	0.7	0.1	87.6	2.2	10.2	0.108	0.501	20.860095	-87.658737
Lim. Edos. Term. Yuc. Ppia. Q. R.	230.40																			
Nuevo X-Can	231.90	3	0	2887	4.7	83.1	2.0	5.1	1.8	1.8	0.5	0.9	0.1	87.8	2.0	10.2	0.086	0.513	20.871281	-87.592959
Zaragoza	239.00	1	0	4135	6.2	81.3	2.0	5.0	1.9	2.1	0.7	0.7	0.1	87.5	2.0	10.5	0.096	0.500	20.881289	-87.533472
Zaragoza	239.00	3	0	3714	4.3	83.3	2.0	5.0	1.9	2.2	0.6	0.6	0.1	87.6	2.0	10.4	0.095	0.502	20.884516	-87.514292
Vicente Guerrero	261.00	1	0	3260	7.2	81.6	2.7	4.1	2.0	1.2	0.4	0.7	0.1	88.8	2.7	8.5	0.094	0.503	20.940338	-87.333212
Leona Vicario	275.50	1	0	5016	7.0	84.0	2.0	3.5	1.2	1.1	0.3	0.8	0.1	91.0	2.0	7.0	0.093	0.503	20.982204	-87.219759
Leona Vicario	275.50	3	0	6346	5.9	84.8	2.1	4.5	0.9	0.9	0.2	0.6	0.1	90.7	2.1	7.2	0.091	0.506	20.993389	-87.188895
T. Der. Aeropuerto	302.50	1	0	7911	4.9	86.1	1.8	3.5	1.1	1.3	0.6	0.6	0.1	91.0	1.8	7.2	0.087	0.505	21.095834	-86.984135
T. Der. Aeropuerto	302.50	3	1	5260	3.2	78.0	2.1	7.7	4.5	1.6	1.0	1.5	0.4	81.2	2.1	16.7	0.114	0.515	21.102677	-86.970212
T. Der. Aeropuerto	302.50	3	2	4955	3.4	75.5	2.4	9.1	4.8	1.9	0.9	1.5	0.5	78.9	2.4	18.7	0.156	0.515	21.102803	-86.970304
T. Der. Alfredo V. Bonfil	310.00	1	1	25566	7.3	84.4	0.9	2.6	1.5	1.3	0.4	1.3	0.3	91.7	0.9	7.4	0.078	0.547	21.138891	-86.897574
T. Der. Alfredo V. Bonfil	310.00	1	2	26445	7.3	84.4	0.9	2.6	1.5	1.3	0.4	1.3	0.3	91.7	0.9	7.4	0.083	0.547	21.139035	-86.897649
Puerto Juárez	321.41																			

16 CARR: Mérida - Tekanto

CLAVE: 31587

RUTA: MEX-180

AÑO: 2021

LUGAR	ESTACION				CLASIFICACION VEHICULAR EN PORCIENTO													COORDENADAS		
	KM	TE	SC	TDPA	M	A	B	C2	C3	T3S2	T3S3	T3S2R4	OTROS	A	B	C	K'	D	LATITUD	LONGITUD
T. C. Mérida - Puerto Juárez	0.00																			
X. Periférico de Mérida	5.70	1	0	14155	10.6	81.2	0.5	5.1	0.5	0.6	1.0	0.3	0.2	91.8	0.5	7.7	0.075	0.516	20.961061	-89.571102

YUCATAN

16 CARR: Mérida - Tekanto

CLAVE: 31587

RUTA: MEX-180

AÑO: 2021

LUGAR	ESTACION				CLASIFICACION VEHICULAR EN PORCIENTO													COORDENADAS		
	KM	TE	SC	TDPA	M	A	B	C2	C3	T3S2	T3S3	T3S2R4	OTROS	A	B	C	K'	D	LATITUD	LONGITUD
T. Der. Tixpéhual	13.25	1	0	6913	9.6	81.0	0.5	4.8	2.0	1.1	0.6	0.2	0.2	90.6	0.5	8.9	0.085	0.509	20.976393	-89.463500
T. Der. Tixpéhual	13.25	3	0	4013	7.8	80.9	1.0	3.8	1.3	2.1	1.5	0.9	0.7	88.7	1.0	10.3	0.116	0.528	20.979442	-89.458080
Tixkokob	21.00	1	0	4639	10.1	78.6	1.0	4.9	1.2	2.6	0.9	0.3	0.4	88.7	1.0	10.3	0.090	0.538	21.001810	-89.422657
Tixkokob	21.00	3	0	3689	31.7	58.4	0.4	8.9	0.5	0.1	0.0	0.0	0.0	90.1	0.4	9.5	0.066	0.520	21.000369	-89.374726
Cacalchén	38.00	1	0	1922	23.8	57.3	1.8	15.9	1.0	0.2	0.0	0.0	0.0	81.1	1.8	17.1	0.093	0.514	20.985813	-89.247900
Tekanto	51.00	1	0	1033	42.8	45.1	0.3	11.2	0.4	0.1	0.0	0.0	0.1	87.9	0.3	11.8	0.121	0.501	21.010401	-89.118159

17 CARR: Mérida - Tetz

CLAVE: 31610

RUTA: MEX-281

AÑO: 2021

LUGAR	ESTACION				CLASIFICACION VEHICULAR EN PORCIENTO													COORDENADAS		
	KM	TE	SC	TDPA	M	A	B	C2	C3	T3S2	T3S3	T3S2R4	OTROS	A	B	C	K'	D	LATITUD	LONGITUD
Anillo Periferico Lic. Manuel Berzunza	0.00	3	0	22234	7.1	86.2	0.4	2.5	0.5	1.4	1.2	0.4	0.3	93.3	0.4	6.3	0.074	0.530	20.982503	-89.696104
X. C. Hunucmá - Umán	17.98	1	0	4855	13.1	70.8	1.2	10.5	1.9	1.5	0.4	0.5	0.1	83.9	1.2	14.9	0.082	0.516	20.982044	-89.842072
X. C. Hunucmá - Umán	17.98	3	0	2576	5.8	80.9	1.1	8.2	1.4	1.7	0.6	0.1	0.2	86.7	1.1	12.2	0.084	0.502	20.979272	-89.860883
X. C. Mérida - Celestún	24.40	1	0	3027	2.1	86.4	1.2	7.0	1.0	1.2	0.4	0.2	0.5	88.5	1.2	10.3	0.069	0.501	20.979289	-89.908181

18 CARR: Muna - Felipe Carrillo Puerto

CLAVE: 00148

RUTA: MEX-184

AÑO: 2021

LUGAR	ESTACION				CLASIFICACION VEHICULAR EN PORCIENTO													COORDENADAS		
	KM	TE	SC	TDPA	M	A	B	C2	C3	T3S2	T3S3	T3S2R4	OTROS	A	B	C	K'	D	LATITUD	LONGITUD
Muna	0.00	3	0	4051	10.4	73.5	1.1	9.5	1.5	2.5	0.8	0.4	0.3	83.9	1.1	15.0	0.068	0.512	20.474390	-89.694381
Ticul	19.10	1	0	3777	8.3	77.2	0.9	9.6	1.2	1.9	0.4	0.4	0.1	85.5	0.9	13.6	0.083	0.506	20.407145	-89.574449
Ticul	19.10	3	0	7065	40.4	50.4	0.7	3.3	0.3	3.8	0.6	0.1	0.4	90.8	0.7	8.5	0.076	0.503	20.373932	-89.517965
Oxkutzcab	40.50	3	0	6375	37.3	58.2	0.7	1.9	0.9	0.4	0.1	0.3	0.2	95.5	0.7	3.8	0.092	0.505	20.286312	-89.382988
Tekax	53.90	3	0	3841	27.6	63.9	0.3	5.2	0.5	2.1	0.3	0.0	0.1	91.5	0.3	8.2	0.072	0.511	20.188211	-89.267730
Tzucacab	86.60	1	0	2065	25.8	63.7	0.4	7.9	0.8	1.2	0.2	0.0	0.0	89.5	0.4	10.1	0.073	0.502	20.078415	-89.062187
Tzucacab	86.60	3	0	1526	29.1	62.3	0.3	6.5	0.6	0.9	0.2	0.1	0.0	91.4	0.3	8.3	0.080	0.505	20.062823	-89.036452
Santa Rosa	109.60	3	0	2253	5.8	74.4	1.9	8.5	2.7	2.5	1.4	2.7	0.1	80.2	1.9	17.9	0.064	0.510	19.947114	-88.879967
Lim. Edos. Term. Yuc. Ppia. Q. R.	117.00																			
Dziuche	118.00	1	0	2453	4.2	74.0	3.3	9.8	2.3	2.1	0.9	3.3	0.1	78.2	3.3	18.5	0.080	0.508	19.905529	-88.819735
Dziuche	118.00	3	0	3177	5.0	78.0	2.6	7.8	1.8	1.6	0.7	2.4	0.1	83.0	2.6	14.4	0.075	0.507	19.888987	-88.803894
José María Morelos	138.60	1	0	4035	8.8	79.8	1.5	6.0	1.4	0.9	0.5	1.0	0.1	88.6	1.5	9.9	0.081	0.519	19.764500	-88.725149
José María Morelos	138.60	3	0	3301	9.1	75.6	2.0	8.4	1.5	1.2	0.7	1.4	0.1	84.7	2.0	13.3	0.069	0.526	19.736785	-88.691979
Polyuc	161.94	1	0	2724	6.8	76.3	2.0	7.7	2.3	2.1	1.0	1.7	0.1	83.1	2.0	14.9	0.068	0.504	19.611548	-88.571651
Polyuc	161.94	3	0	1403	8.9	78.4	0.7	7.9	1.5	1.4	0.5	0.6	0.1	87.3	0.7	12.0	0.083	0.503	19.609514	-88.553468

YUCATAN

18 CARR : Muna - Felipe Carrillo Puerto

CLAVE: 00148

RUTA: MEX-184

AÑO: 2021

LUGAR	ESTACION				CLASIFICACION VEHICULAR EN PORCIENTO										COORDENADAS					
	KM	TE	SC	TDPA	M	A	B	C2	C3	T3S2	T3S3	T3S2R4	OTROS	A	B	C	K'	D	LATITUD	LONGITUD
T. Der. Dzulá	178.11	3	0	1358	6.3	80.6	1.3	8.0	1.6	0.9	0.3	1.0	0.0	86.9	1.3	11.8	0.080	0.552	19.643441	-88.404549
Felipe Carrillo Puerto	216.97	1	0	5782	28.1	67.8	1.0	1.7	0.7	0.3	0.2	0.2	0.0	95.9	1.0	3.1	0.067	0.516	19.584450	-88.057888

19 CARR : Ramal a Panabá

CLAVE: 31609

RUTA: MEX-295

AÑO: 2021

LUGAR	ESTACION				CLASIFICACION VEHICULAR EN PORCIENTO										COORDENADAS					
	KM	TE	SC	TDPA	M	A	B	C2	C3	T3S2	T3S3	T3S2R4	OTROS	A	B	C	K'	D	LATITUD	LONGITUD
T. C. Valladolid - Río Lagartos	0.00	3	0	1616	21.4	70.6	0.5	5.9	0.6	0.9	0.1	0.0	0.0	92.0	0.5	7.5	0.075	0.510	21.194305	-88.170577
Panabá	18.00	1	0	1618	23.5	67.4	0.6	6.4	0.5	1.3	0.1	0.0	0.2	90.9	0.6	8.5	0.072	0.510	21.284626	-88.268714

20 CARR : Teya -Peto

CLAVE: 31042

RUTA: MEX-184

AÑO: 2021

LUGAR	ESTACION				CLASIFICACION VEHICULAR EN PORCIENTO										COORDENADAS					
	KM	TE	SC	TDPA	M	A	B	C2	C3	T3S2	T3S3	T3S2R4	OTROS	A	B	C	K'	D	LATITUD	LONGITUD
T. C. Mérida - Puerto Juárez	0.00																			
San Antonio Tehuizt	3.80	3	1	4795	6.4	79.8	0.2	7.5	2.4	1.9	0.7	0.9	0.2	86.2	0.2	13.6	0.105	0.506	20.887947	-89.507813
San Antonio Tehuizt	3.80	3	2	4651	6.0	79.4	0.2	7.9	2.6	2.1	0.7	0.9	0.2	85.4	0.2	14.4	0.107	0.506	20.888022	-89.507705
T. Izq. Acanceh	13.70	1	1	3238	7.5	83.7	1.3	2.2	1.6	1.9	0.5	0.8	0.5	91.2	1.3	7.5	0.134	0.502	20.814851	-89.472280
T. Izq. Acanceh	13.70	1	2	3264	7.9	82.5	1.5	2.5	1.7	2.0	0.5	0.9	0.5	90.4	1.5	8.1	0.113	0.502	20.814798	-89.472090
Tecoh	22.00	3	1	3194	7.2	83.3	1.3	2.7	2.0	1.7	0.6	0.9	0.3	90.5	1.3	8.2	0.120	0.502	20.712755	-89.476259
Tecoh	22.00	3	2	3213	7.2	82.6	1.3	2.9	2.2	1.8	0.6	1.1	0.3	89.8	1.3	8.9	0.092	0.502	20.712764	-89.476119
T. Der. Zona Arq. de Mayapan	37.65	1	1	2411	2.9	87.6	1.2	2.4	2.0	2.3	0.4	1.0	0.2	90.5	1.2	8.3	0.134	0.500	20.631152	-89.457461
T. Der. Zona Arq. de Mayapan	37.65	1	2	2414	2.9	86.4	1.7	2.2	2.2	2.6	0.6	1.3	0.1	89.3	1.7	9.0	0.122	0.500	20.631070	-89.457585
T. Izq. Teabo	69.05	1	1	2086	3.9	85.2	1.4	2.0	2.5	2.7	0.6	1.4	0.3	89.1	1.4	9.5	0.117	0.502	20.409657	-89.307225
T. Izq. Teabo	69.05	1	2	2106	3.5	85.0	1.7	2.1	2.5	2.9	0.6	1.4	0.3	88.5	1.7	9.8	0.126	0.502	20.409672	-89.307091
T. Izq. Tixmehuac	97.10	1	0	2307	4.3	76.5	3.1	4.9	3.3	3.9	1.3	2.6	0.1	80.8	3.1	16.1	0.094	0.501	20.231298	-89.129488
T. Izq. Tixmehuac	97.10	3	0	2076	4.3	80.6	2.8	3.0	2.9	2.8	0.9	2.4	0.3	84.9	2.8	12.3	0.087	0.502	20.225115	-89.119926
Peto	120.70	1	0	2543	9.2	76.8	2.6	4.0	2.1	2.5	0.7	1.8	0.3	86.0	2.6	11.4	0.081	0.500	20.125670	-88.951363

21 CARR : Tzucacab - Santa Rosa

CLAVE: 31017

RUTA: MEX

AÑO: 2021

LUGAR	ESTACION				CLASIFICACION VEHICULAR EN PORCIENTO										COORDENADAS					
	KM	TE	SC	TDPA	M	A	B	C2	C3	T3S2	T3S3	T3S2R4	OTROS	A	B	C	K'	D	LATITUD	LONGITUD
Tzucacab	0.00	3	0	1707	29.4	63.5	1.0	4.3	0.8	0.6	0.2	0.1	0.1	92.9	1.0	6.1	0.081	0.502	20.073545	-89.035981
T. C. Teya -Peto	11.30																			

YUCATAN

21 CARR: Tzucacab - Santa Rosa

CLAVE: 31017

RUTA: MEX

AÑO: 2021

LUGAR	ESTACION				CLASIFICACION VEHICULAR EN PORCIENTO													COORDENADAS		
	KM	TE	SC	TDPA	M	A	B	C2	C3	T3S2	T3S3	T3S2R4	OTROS	A	B	C	K'	D	LATITUD	LONGITUD
Peto	16.00	3	0	2212	23.3	64.0	2.3	3.8	1.7	2.1	0.6	1.9	0.3	87.3	2.3	10.4	0.087	0.532	20.084109	-88.912036
Santa Rosa	34.50	1	0	1848	10.4	73.4	2.7	4.5	2.4	2.8	1.0	2.5	0.3	83.8	2.7	13.5	0.083	0.515	19.979137	-88.885966

22 CARR: Valladolid - Felipe Carrillo Puerto

CLAVE: 00010

RUTA: MEX-295

AÑO: 2021

LUGAR	ESTACION				CLASIFICACION VEHICULAR EN PORCIENTO													COORDENADAS		
	KM	TE	SC	TDPA	M	A	B	C2	C3	T3S2	T3S3	T3S2R4	OTROS	A	B	C	K'	D	LATITUD	LONGITUD
Valladolid	0.00	3	0	5807	31.7	65.0	0.3	2.5	0.3	0.1	0.0	0.1	0.0	96.7	0.3	3.0	0.103	0.508	20.673367	-88.204455
Chichmilá	6.90	3	0	2422	11.9	82.4	0.4	3.2	0.6	1.2	0.1	0.1	0.1	94.3	0.4	5.3	0.076	0.501	20.620527	-88.235879
Tekom	12.05	3	0	1591	11.1	79.8	3.1	5.1	0.5	0.4	0.0	0.0	0.0	90.9	3.1	6.0	0.077	0.510	20.590749	-88.265349
Tixcacalcupul	19.80	3	0	1000	12.7	78.8	0.5	6.2	0.8	0.7	0.2	0.1	0.0	91.5	0.5	8.0	0.087	0.502	20.520274	-88.270781
Lim. Edos. Term. Yuc. Ppia. Q. R.	46.00																			
Tepich	51.40	1	0	761	11.2	78.2	0.4	8.2	0.5	1.0	0.4	0.1	0.0	89.4	0.4	10.2	0.108	0.507	20.249281	-88.255102
Tihosuco	65.00	1	0	920	8.8	80.3	1.1	7.9	0.7	0.8	0.3	0.1	0.0	89.1	1.1	9.8	0.087	0.506	20.193191	-88.360276
Tihosuco	65.00	3	0	1130	10.0	79.2	1.3	7.9	0.6	0.6	0.2	0.1	0.1	89.2	1.3	9.5	0.077	0.522	20.190595	-88.386824
T. Izq. San Felipe Berriozábal	99.00	1	0	615	6.7	81.7	1.0	7.7	1.5	0.8	0.3	0.3	0.0	88.4	1.0	10.6	0.093	0.507	19.963452	-88.242608
T. Izq. San Felipe Berriozábal	99.00	3	0	689	5.7	83.0	1.4	7.5	1.3	0.4	0.4	0.3	0.0	88.7	1.4	9.9	0.094	0.507	19.961197	-88.240338
Señor	116.50	1	0	886	4.9	83.6	1.5	7.7	0.7	0.9	0.4	0.3	0.0	88.5	1.5	10.0	0.090	0.502	19.852520	-88.144681
Señor	116.50	3	0	1373	7.0	82.6	1.4	7.2	0.6	0.6	0.4	0.2	0.0	89.6	1.4	9.0	0.075	0.511	19.830985	-88.130834
Felipe Carrillo Puerto	147.70	1	0	1610	5.8	82.9	1.3	8.8	0.5	0.4	0.2	0.1	0.0	88.7	1.3	10.0	0.084	0.506	19.601844	-88.053425

23 CARR: Valladolid - Río Lagartos

CLAVE: 31035

RUTA: MEX-295

AÑO: 2021

LUGAR	ESTACION				CLASIFICACION VEHICULAR EN PORCIENTO													COORDENADAS		
	KM	TE	SC	TDPA	M	A	B	C2	C3	T3S2	T3S3	T3S2R4	OTROS	A	B	C	K'	D	LATITUD	LONGITUD
Valladolid	0.00	3	1	4896	10.8	78.7	1.7	4.9	0.9	1.4	0.4	1.0	0.2	89.5	1.7	8.8	0.073	0.507	20.729980	-88.202849
Valladolid	0.00	3	2	4746	9.6	79.2	1.9	5.1	1.0	1.5	0.4	1.1	0.2	88.8	1.9	9.3	0.069	0.507	20.729976	-88.202987
Temozón	12.70	3	0	3867	5.0	81.8	1.8	6.2	1.3	2.2	0.6	1.0	0.1	86.8	1.8	11.4	0.069	0.535	20.821063	-88.194401
Tizimín	51.80	1	0	3377	8.8	79.2	1.2	5.1	1.2	2.7	0.4	1.3	0.1	88.0	1.2	10.8	0.066	0.529	21.094391	-88.161343
Tizimín	51.80	3	0	3535	23.4	66.8	0.3	6.5	0.8	0.7	0.4	1.0	0.1	90.2	0.3	9.5	0.078	0.505	21.187916	-88.166405
T. Der. Dzonot Carretero	79.90	1	0	1439	12.8	74.5	1.2	6.5	0.9	2.0	0.6	1.2	0.3	87.3	1.2	11.5	0.092	0.523	21.365938	-88.143957
Río Lagartos	103.90																			

YUCATAN

24 CARR: Mérida - Cancún (Cuota)

CLAVE: 00071

RUTA: MEX-180D

AÑO: 2021

LUGAR	ESTACION				CLASIFICACION VEHICULAR EN PORCIENTO												COORDENADAS				
	KM	TE	SC	TDPA	M	A	B	C2	C3	T3S2	T3S3	T3S2R4	OTROS	A	B	C	K'	D	LATITUD	LONGITUD	
T. C. Mérida - Puerto Juárez	0.00																				
Plaza de Cobro Piste	51.00	1	1	2260	0.7	74.4	3.2	6.7	1.7	3.8	2.4	6.3	0.8	75.1	3.2	21.7	0.084	0.515	20.730353	-88.590303	
Plaza de Cobro Piste	51.00	1	2	2125	1.2	72.2	3.1	7.0	1.8	4.6	2.2	7.1	0.8	73.4	3.1	23.5	0.076	0.515	20.730631	-88.590224	
Plaza de Cobro X-Can	155.00	1	1	1859	0.9	79.9	4.3	4.8	0.9	3.0	1.3	4.6	0.3	80.8	4.3	14.9	0.087	0.530	20.875096	-87.652655	
Plaza de Cobro X-Can	155.00	1	2	1647	1.2	77.9	4.6	5.8	1.1	2.8	1.3	5.0	0.3	79.1	4.6	16.3	0.086	0.530	20.875367	-87.652656	
Lim. Edos. Term. Yuc. Ppia. Q. R.	160.00																				
T. C. Mérida - Puerto Juárez	292.00	1	1	1577	6.2	69.8	2.8	5.8	4.7	3.9	1.6	4.4	0.8	76.0	2.8	21.2	0.096	0.509	21.093350	-86.983630	
T. C. Mérida - Puerto Juárez	292.00	1	2	1635	6.7	68.6	2.7	6.3	4.8	4.2	1.3	4.7	0.7	75.3	2.7	22.0	0.083	0.509	21.093610	-86.983759	
T. C. Reforma Agraria - Puerto Juárez	308.10	1	0	16951	4.3	85.5	1.3	4.0	1.5	1.5	0.9	0.8	0.2	89.8	1.3	8.9	0.102	0.504	21.021822	-86.860642	

25 CARR: Acanceh - Estación Polabán

CLAVE: 31615

RUTA: YUC

AÑO: 2021

LUGAR	ESTACION				CLASIFICACION VEHICULAR EN PORCIENTO												COORDENADAS			
	KM	TE	SC	TDPA	M	A	B	C2	C3	T3S2	T3S3	T3S2R4	OTROS	A	B	C	K'	D	LATITUD	LONGITUD
Acanceh	0.00	3	0	2011	19.4	69.1	0.4	8.4	1.0	1.3	0.2	0.2	0.0	88.5	0.4	11.1	0.087	0.502	20.808814	-89.439866
Homún	20.00	3	0	1169	44.1	47.8	4.0	4.1	0.0	0.0	0.0	0.0	0.0	91.9	4.0	4.1	0.089	0.531	20.734886	-89.267722
Estación Polabán	24.40	1	0	791	27.5	58.4	5.6	7.0	1.5	0.0	0.0	0.0	0.0	85.9	5.6	8.5	0.098	0.505	20.726811	-89.224937

26 CARR: Baca - Dzidzantún

CLAVE: 31591

RUTA: YUC

AÑO: 2021

LUGAR	ESTACION				CLASIFICACION VEHICULAR EN PORCIENTO												COORDENADAS			
	KM	TE	SC	TDPA	M	A	B	C2	C3	T3S2	T3S3	T3S2R4	OTROS	A	B	C	K'	D	LATITUD	LONGITUD
Baca	0.00	3	0	1855	32.0	60.7	0.5	4.9	0.8	0.8	0.3	0.0	0.0	92.7	0.5	6.8	0.084	0.534	21.122472	-89.394009
Dzemul	15.00	1	0	332	13.1	79.9	0.6	4.8	1.4	0.1	0.1	0.0	0.0	93.0	0.6	6.4	0.096	0.537	21.204922	-89.319407
Dzemul	15.00	3	0	1554	51.9	42.0	0.2	3.8	0.5	1.4	0.1	0.0	0.1	93.9	0.2	5.9	0.109	0.501	21.208761	-89.296135
Pueblo Telchac	19.10	3	0	1877	40.7	54.7	0.1	4.1	0.2	0.1	0.0	0.1	0.0	95.4	0.1	4.5	0.074	0.530	21.203015	-89.255461
Sinanché	29.10	3	0	757	33.4	56.8	0.6	7.9	1.0	0.3	0.0	0.0	0.0	90.2	0.6	9.2	0.096	0.526	21.225937	-89.174562
Dzidzantún	43.00	1	0	996	45.4	48.6	0.1	4.6	0.4	0.8	0.1	0.0	0.0	94.0	0.1	5.9	0.092	0.502	21.244622	-89.055508

27 CARR: Citilcum - Tixkochoh

CLAVE: 31064

RUTA: YUC

AÑO: 2021

LUGAR	ESTACION				CLASIFICACION VEHICULAR EN PORCIENTO												COORDENADAS			
	KM	TE	SC	TDPA	M	A	B	C2	C3	T3S2	T3S3	T3S2R4	OTROS	A	B	C	K'	D	LATITUD	LONGITUD
Citilcum	0.00	3	0	1028	41.7	51.5	0.4	5.1	0.3	0.9	0.1	0.0	0.0	93.2	0.4	6.4	0.085	0.515	20.959055	-89.115363
Tekanto	7.00	1	0	657	42.7	53.4	0.6	1.7	0.3	1.2	0.1	0.0	0.0	96.1	0.6	3.3	0.097	0.502	20.999942	-89.105244

YUCATAN

27 CARR: Citilcum - Tixkochoh

CLAVE: 31064

RUTA: YUC

AÑO: 2021

LUGAR	ESTACION				CLASIFICACION VEHICULAR EN PORCIENTO														COORDENADAS	
	KM	TE	SC	TDPA	M	A	B	C2	C3	T3S2	T3S3	T3S2R4	OTROS	A	B	C	K'	D	LATITUD	LONGITUD
Tixkochoh	10.00	1	0	703	65.5	30.7	0.3	2.2	0.4	0.7	0.1	0.0	0.1	96.2	0.3	3.5	0.085	0.523	21.013829	-89.088623

28 CARR: Dzemul - Xtampú

CLAVE: 31608

RUTA: YUC

AÑO: 2021

LUGAR	ESTACION				CLASIFICACION VEHICULAR EN PORCIENTO														COORDENADAS	
	KM	TE	SC	TDPA	M	A	B	C2	C3	T3S2	T3S3	T3S2R4	OTROS	A	B	C	K'	D	LATITUD	LONGITUD
Dzemul	0.00	3	0	580	25.1	63.7	0.9	7.5	1.2	1.5	0.1	0.0	0.0	88.8	0.9	10.3	0.085	0.507	21.212620	-89.321330
Xtampú	10.00	1	0	688	27.5	64.8	0.1	6.4	0.9	0.3	0.0	0.0	0.0	92.3	0.1	7.6	0.096	0.511	21.331675	-89.348648

29 CARR: Dzidzantún - Santa Clara

CLAVE: 31592

RUTA: YUC

AÑO: 2021

LUGAR	ESTACION				CLASIFICACION VEHICULAR EN PORCIENTO														COORDENADAS	
	KM	TE	SC	TDPA	M	A	B	C2	C3	T3S2	T3S3	T3S2R4	OTROS	A	B	C	K'	D	LATITUD	LONGITUD
Dzidzantún	0.00	3	0	1085	46.9	46.3	0.1	5.6	0.3	0.3	0.3	0.2	0.0	93.2	0.1	6.7	0.098	0.508	21.258554	-89.041527
Santa Clara	14.00	1	0	810	35.1	58.9	0.2	5.0	0.0	0.7	0.1	0.0	0.0	94.0	0.2	5.8	0.100	0.500	21.371439	-89.014283

30 CARR: Hoctún - Cenotillo

CLAVE: 31011

RUTA: YUC-011

AÑO: 2021

LUGAR	ESTACION				CLASIFICACION VEHICULAR EN PORCIENTO														COORDENADAS	
	KM	TE	SC	TDPA	M	A	B	C2	C3	T3S2	T3S3	T3S2R4	OTROS	A	B	C	K'	D	LATITUD	LONGITUD
Hoctún	0.00	3	0	3369	2.8	87.5	1.6	6.0	0.5	1.3	0.1	0.2	0.0	90.3	1.6	8.1	0.078	0.546	20.880232	-89.188763
Citilcum	13.20	3	0	1966	34.9	58.4	0.3	4.7	0.5	1.1	0.1	0.0	0.0	93.3	0.3	6.4	0.093	0.516	20.950775	-89.110631
Izamal	24.00	3	0	2225	33.0	58.8	0.4	5.7	0.5	1.4	0.1	0.0	0.1	91.8	0.4	7.8	0.076	0.508	20.934059	-88.999716
Tunkás	55.20	3	0	599	38.4	52.1	1.6	5.8	1.7	0.3	0.1	0.0	0.0	90.5	1.6	7.9	0.072	0.534	20.915770	-88.735940
Cenotillo	70.90	1	0	502	41.8	48.4	1.3	7.2	1.0	0.3	0.0	0.0	0.0	90.2	1.3	8.5	0.099	0.504	20.963486	-88.624041

31 CARR: Holcá - Sotuta

CLAVE: 31626

RUTA: YUC

AÑO: 2021

LUGAR	ESTACION				CLASIFICACION VEHICULAR EN PORCIENTO														COORDENADAS	
	KM	TE	SC	TDPA	M	A	B	C2	C3	T3S2	T3S3	T3S2R4	OTROS	A	B	C	K'	D	LATITUD	LONGITUD
T. C. Mérida - Puerto Juárez	0.00	3	0	904	10.9	79.3	1.0	7.2	1.1	0.3	0.1	0.1	0.0	90.2	1.0	8.8	0.081	0.524	20.750143	-88.930533
Tibolón	10.00	3	0	852	10.1	75.9	0.9	9.7	2.3	0.9	0.0	0.2	0.0	86.0	0.9	13.1	0.088	0.546	20.659918	-88.949745
Sotuta	20.00	1	0	967	17.7	71.2	0.9	7.9	1.3	0.8	0.0	0.2	0.0	88.9	0.9	10.2	0.071	0.513	20.607153	-89.002327

YUCATAN

32 CARR: Hunucmá - Umán

CLAVE: 31610

RUTA: YUC

AÑO: 2021

LUGAR	ESTACION				CLASIFICACION VEHICULAR EN PORCIENTO													COORDENADAS		
	KM	TE	SC	TDPA	M	A	B	C2	C3	T3S2	T3S3	T3S2R4	OTROS	A	B	C	K'	D	LATITUD	LONGITUD
Hunucmá	0.00	3	0	4516	23.0	65.3	0.5	6.7	0.6	3.0	0.4	0.1	0.4	88.3	0.5	11.2	0.106	0.503	21.003663	-89.863056
X. C. Mérida - Tetiz	4.87	1	0	5032	11.1	75.6	0.9	8.4	1.0	2.2	0.4	0.1	0.3	86.7	0.9	12.4	0.077	0.517	20.983087	-89.854963
X. C. Mérida - Tetiz	4.87	3	0	1199	31.7	58.3	0.5	7.8	0.4	1.1	0.2	0.0	0.0	90.0	0.5	9.5	0.096	0.513	20.971482	-89.850631
Hacienda Dzibikak	16.16	1	0	1352	35.0	57.9	0.3	4.3	1.1	0.8	0.3	0.3	0.0	92.9	0.3	6.8	0.088	0.507	20.905461	-89.798047
Hacienda Dzibikak	16.16	3	0	2573	42.7	51.2	0.2	3.5	1.4	0.6	0.1	0.3	0.0	93.9	0.2	5.9	0.096	0.503	20.902142	-89.786700
Umán	22.00	1	0	3871	41.6	49.9	0.3	3.7	0.7	2.6	0.6	0.2	0.4	91.5	0.3	8.2	0.126	0.515	20.894477	-89.764247

33 CARR: Izamal - Dzilam González

CLAVE: 31605

RUTA: YUC

AÑO: 2021

LUGAR	ESTACION				CLASIFICACION VEHICULAR EN PORCIENTO													COORDENADAS		
	KM	TE	SC	TDPA	M	A	B	C2	C3	T3S2	T3S3	T3S2R4	OTROS	A	B	C	K'	D	LATITUD	LONGITUD
Izamal	0.00	3	0	1577	43.8	50.2	0.8	4.0	0.4	0.7	0.1	0.0	0.0	94.0	0.8	5.2	0.087	0.500	20.945266	-89.006058
Temax	30.00	1	0	802	28.2	62.1	1.3	7.3	0.6	0.5	0.0	0.0	0.0	90.3	1.3	8.4	0.070	0.526	21.132919	-88.938823
Dzilam González	43.00	1	0	1052	50.3	43.6	0.6	4.3	0.4	0.7	0.1	0.0	0.0	93.9	0.6	5.5	0.087	0.501	21.272259	-88.930948

34 CARR: Kantunil - Izamal

CLAVE: 31012

RUTA: YUC

AÑO: 2021

LUGAR	ESTACION				CLASIFICACION VEHICULAR EN PORCIENTO													COORDENADAS		
	KM	TE	SC	TDPA	M	A	B	C2	C3	T3S2	T3S3	T3S2R4	OTROS	A	B	C	K'	D	LATITUD	LONGITUD
Kantunil	0.00	3	0	1066	19.9	71.5	0.9	5.8	0.5	1.1	0.3	0.0	0.0	91.4	0.9	7.7	0.113	0.507	20.811433	-89.026069
Izamal	17.80	1	0	2135	31.5	64.3	0.4	2.4	0.2	1.1	0.0	0.0	0.1	95.8	0.4	3.8	0.091	0.507	20.920864	-89.013483

35 CARR: Kinchil - Umán

CLAVE: 31009

RUTA: YUC

AÑO: 2021

LUGAR	ESTACION				CLASIFICACION VEHICULAR EN PORCIENTO													COORDENADAS		
	KM	TE	SC	TDPA	M	A	B	C2	C3	T3S2	T3S3	T3S2R4	OTROS	A	B	C	K'	D	LATITUD	LONGITUD
Kinchil	0.00	3	0	1883	31.9	57.9	1.0	6.2	0.8	2.1	0.1	0.0	0.0	89.8	1.0	9.2	0.076	0.509	20.911500	-89.937955
Umán	26.00																			

36 CARR: Libramiento de Peto

CLAVE:

RUTA: YUC-018

AÑO: 2021

LUGAR	ESTACION				CLASIFICACION VEHICULAR EN PORCIENTO													COORDENADAS		
	KM	TE	SC	TDPA	M	A	B	C2	C3	T3S2	T3S3	T3S2R4	OTROS	A	B	C	K'	D	LATITUD	LONGITUD
T. C. Teya - Peto	0.00	3	0	1433	7.4	57.8	7.4	5.4	5.8	6.5	2.1	6.4	1.2	65.2	7.4	27.4	0.084	0.510	20.114648	-88.945012
T. C. Tzucacab - Santa Rosa	5.60																			

YUCATAN

37 CARR: Libramiento Norte de Motul

CLAVE: 31610

RUTA: YUC

AÑO: 2021

LUGAR	ESTACION				CLASIFICACION VEHICULAR EN PORCIENTO										COORDENADAS					
	KM	TE	SC	TDPA	M	A	B	C2	C3	T3S2	T3S3	T3S2R4	OTROS	A	B	C	K'	D	LATITUD	LONGITUD
T. C. Mérida - Dzilam de Bravo Poniente	0.00	3	0	6870	5.2	81.4	0.7	5.7	1.4	3.9	0.6	0.7	0.4	86.6	0.7	12.7	0.094	0.529	21.101646	-89.301184
X. C. Motul - Puerto Telchac	3.16	1	0	7012	9.3	78.0	0.6	5.0	1.5	4.0	0.5	0.7	0.4	87.3	0.6	12.1	0.091	0.506	21.114447	-89.284050
X. C. Motul - Puerto Telchac	3.16	3	0	6319	14.2	70.6	0.8	6.5	1.6	4.0	0.7	1.0	0.6	84.8	0.8	14.4	0.082	0.513	21.114499	-89.278844
X. C. Libramiento Suma de Hidalgo	3.70	3	0	1346	22.1	65.4	4.3	6.6	1.6	0.0	0.0	0.0	0.0	87.5	4.3	8.2	0.088	0.539	21.111995	-89.273617
T. C. Mérida - Dzilam de Bravo Oriente	6.53	1	0	787	33.2	60.4	0.4	5.1	0.2	0.6	0.0	0.0	0.1	93.6	0.4	6.0	0.140	0.507	21.096750	-89.260993

38 CARR: Mérida - Acanceh

CLAVE: 31023

RUTA: YUC

AÑO: 2021

LUGAR	ESTACION				CLASIFICACION VEHICULAR EN PORCIENTO										COORDENADAS					
	KM	TE	SC	TDPA	M	A	B	C2	C3	T3S2	T3S3	T3S2R4	OTROS	A	B	C	K'	D	LATITUD	LONGITUD
Mérida	0.00	3	0	10540	8.8	85.4	0.8	2.9	0.9	0.6	0.1	0.4	0.1	94.2	0.8	5.0	0.077	0.509	20.935224	-89.580115
T. Der. Uxec Tamán	11.00	1	0	450	33.6	61.6	0.4	3.7	0.5	0.1	0.1	0.0	0.0	95.2	0.4	4.4	0.082	0.520	20.876303	-89.528386
T. Der. Uxec Tamán	11.00	3	0	318	23.7	66.0	0.6	8.4	0.6	0.7	0.0	0.0	0.0	89.7	0.6	9.7	0.094	0.502	20.862329	-89.531749
Timucuy	20.00	3	0	1105	33.7	57.4	0.7	5.8	1.0	1.0	0.4	0.0	0.0	91.1	0.7	8.2	0.089	0.509	20.812404	-89.504057
Acanceh	26.00	1	0	1207	35.1	57.4	0.6	4.3	0.4	1.8	0.3	0.0	0.1	92.5	0.6	6.9	0.090	0.520	20.812515	-89.473610

39 CARR: Mérida - Oxkutzcab

CLAVE: 31018

RUTA: YUC-018

AÑO: 2021

LUGAR	ESTACION				CLASIFICACION VEHICULAR EN PORCIENTO										COORDENADAS					
	KM	TE	SC	TDPA	M	A	B	C2	C3	T3S2	T3S3	T3S2R4	OTROS	A	B	C	K'	D	LATITUD	LONGITUD
Mérida	0.00	3	1	10956	7.4	87.3	0.4	3.4	0.2	0.9	0.3	0.1	0.0	94.7	0.4	4.9	0.074	0.546	20.944589	-89.581770
Mérida	0.00	3	2	9099	7.2	87.1	0.5	3.5	0.3	0.9	0.4	0.1	0.0	94.3	0.5	5.2	0.083	0.546	20.944689	-89.581747
Kanasín	5.97	1	1	10900	10.3	84.4	0.4	3.5	0.3	0.8	0.3	0.0	0.0	94.7	0.4	4.9	0.088	0.537	20.940864	-89.571509
Kanasín	5.97	1	2	9401	12.1	82.7	0.4	3.4	0.3	0.8	0.3	0.0	0.0	94.8	0.4	4.8	0.081	0.537	20.940944	-89.571477
Acanceh	20.39	1	0	5326	27.2	64.3	0.4	4.5	0.4	1.5	0.9	0.2	0.6	91.5	0.4	8.1	0.109	0.515	20.823068	-89.466197
Acanceh	20.39	3	1	3321	7.7	75.5	1.4	8.3	2.8	1.9	0.9	1.1	0.4	83.2	1.4	15.4	0.073	0.506	20.789401	-89.460555
Acanceh	20.39	3	2	3410	8.1	75.8	1.3	7.9	2.6	1.9	0.9	1.1	0.4	83.9	1.3	14.8	0.079	0.506	20.789351	-89.460353
T. Der. Tecoh	26.64	3	1	2858	4.8	81.8	2.1	4.2	2.4	2.3	0.7	1.2	0.5	86.6	2.1	11.3	0.124	0.512	20.757756	-89.465876
T. Der. Tecoh	26.64	3	2	2728	5.2	81.3	2.0	4.5	2.2	2.4	0.6	1.2	0.6	86.5	2.0	11.5	0.080	0.512	20.757848	-89.465769
Tekit	61.70	1	0	211	25.1	69.0	0.7	4.4	0.6	0.2	0.0	0.0	0.0	94.1	0.7	5.2	0.084	0.515	20.544120	-89.338180
Tekit	61.70	3	1	2433	4.9	81.4	1.3	5.5	2.1	2.4	0.6	1.3	0.5	86.3	1.3	12.4	0.124	0.503	20.514698	-89.346648
Tekit	61.70	3	2	2465	5.0	81.3	1.2	5.4	2.0	2.6	0.6	1.3	0.6	86.3	1.2	12.5	0.088	0.503	20.514647	-89.346521
Maní	98.20	1	0	3246	12.3	74.7	1.0	7.3	1.9	1.8	0.3	0.6	0.1	87.0	1.0	12.0	0.078	0.500	20.399317	-89.361211
Maní	98.20	3	0	1737	34.3	57.0	0.5	6.7	0.2	1.1	0.1	0.0	0.1	91.3	0.5	8.2	0.087	0.508	20.371949	-89.398727
Oxkutzcab	109.30	1	0	1768	29.8	62.2	0.3	6.0	0.4	1.2	0.0	0.0	0.1	92.0	0.3	7.7	0.079	0.506	20.328040	-89.416614

YUCATAN

40 CARR: Mérida - Timucuy

CLAVE: 31024

RUTA: YUC

AÑO: 2021

LUGAR	ESTACION				CLASIFICACION VEHICULAR EN PORCIENTO													COORDENADAS		
	KM	TE	SC	TDPA	M	A	B	C2	C3	T3S2	T3S3	T3S2R4	OTROS	A	B	C	K'	D	LATITUD	LONGITUD
Mérida	0.00	3	0	6507	23.4	69.9	0.6	4.2	0.9	0.5	0.2	0.2	0.1	93.3	0.6	6.1	0.098	0.505	20.900438	-89.599768
Tekik de Regil	15.10	1	0	1854	17.1	70.6	0.4	10.4	0.6	0.8	0.1	0.0	0.0	87.7	0.4	11.9	0.078	0.537	20.822903	-89.559586
Tekik de Regil	15.10	3	0	1270	26.0	60.1	0.2	12.4	0.3	0.7	0.3	0.0	0.0	86.1	0.2	13.7	0.086	0.505	20.815859	-89.555563
Timucuy	18.65	1	0	1219	24.1	63.2	0.3	11.0	0.3	0.8	0.2	0.0	0.1	87.3	0.3	12.4	0.075	0.523	20.812733	-89.527165

41 CARR: Motul - Puerto Telchac

CLAVE: 31006

RUTA: YUC-172

AÑO: 2021

LUGAR	ESTACION				CLASIFICACION VEHICULAR EN PORCIENTO													COORDENADAS		
	KM	TE	SC	TDPA	M	A	B	C2	C3	T3S2	T3S3	T3S2R4	OTROS	A	B	C	K'	D	LATITUD	LONGITUD
Motul	0.00	3	0	3716	25.4	69.0	0.4	2.3	0.9	1.2	0.2	0.1	0.5	94.4	0.4	5.2	0.089	0.507	21.120785	-89.280729
Pueblo Telchac	12.00	3	0	2469	28.2	65.6	0.4	4.6	0.3	0.7	0.2	0.0	0.0	93.8	0.4	5.8	0.102	0.505	21.215384	-89.271412
Puerto Telchac	28.00																			

42 CARR: Muna - Maxcanú

CLAVE: 31053

RUTA: YUC

AÑO: 2021

LUGAR	ESTACION				CLASIFICACION VEHICULAR EN PORCIENTO													COORDENADAS		
	KM	TE	SC	TDPA	M	A	B	C2	C3	T3S2	T3S3	T3S2R4	OTROS	A	B	C	K'	D	LATITUD	LONGITUD
Muna	0.00	3	0	1198	23.5	65.1	1.3	6.3	0.7	2.3	0.2	0.5	0.1	88.6	1.3	10.1	0.090	0.516	20.491270	-89.736861
Opichén	17.00	3	0	1405	24.4	63.0	1.2	7.5	1.3	1.7	0.5	0.4	0.0	87.4	1.2	11.4	0.091	0.507	20.554980	-89.869703
T. C. Campeche - Mérida	31.00	1	0	1347	20.0	67.2	1.8	8.4	0.7	1.4	0.2	0.3	0.0	87.2	1.8	11.0	0.079	0.512	20.581834	-89.965113

43 CARR: Oxkutzcab - Xul

CLAVE: 31051

RUTA: YUC-031

AÑO: 2021

LUGAR	ESTACION				CLASIFICACION VEHICULAR EN PORCIENTO													COORDENADAS		
	KM	TE	SC	TDPA	M	A	B	C2	C3	T3S2	T3S3	T3S2R4	OTROS	A	B	C	K'	D	LATITUD	LONGITUD
Oxkutzcab	0.00	3	0	2959	36.0	57.5	0.1	4.4	0.1	1.4	0.5	0.0	0.0	93.5	0.1	6.4	0.129	0.500	20.283803	-89.426530
Emiliano Zapata	10.00	3	0	1373	50.5	43.0	0.2	5.1	0.1	0.9	0.2	0.0	0.0	93.5	0.2	6.3	0.097	0.508	20.216653	-89.463290
Xul	25.00	1	0	819	43.5	48.7	0.2	6.6	0.1	0.8	0.1	0.0	0.0	92.2	0.2	7.6	0.092	0.509	20.108673	-89.457468

44 CARR: Piste - Dzitás

CLAVE: 31013

RUTA: YUC-013

AÑO: 2021

LUGAR	ESTACION				CLASIFICACION VEHICULAR EN PORCIENTO													COORDENADAS		
	KM	TE	SC	TDPA	M	A	B	C2	C3	T3S2	T3S3	T3S2R4	OTROS	A	B	C	K'	D	LATITUD	LONGITUD
Piste	0.00	3	0	2476	17.5	74.1	1.1	5.1	0.4	1.2	0.4	0.1	0.1	91.6	1.1	7.3	0.084	0.534	20.708516	-88.586091
Dzitás	18.00	1	0	630	24.8	72.5	0.3	1.8	0.3	0.2	0.1	0.0	0.0	97.3	0.3	2.4	0.069	0.506	20.828835	-88.540925

YUCATAN

45 CARR: Progreso - Telchac Puerto

CLAVE: 31616

RUTA: YUC-027

AÑO: 2021

LUGAR	ESTACION				CLASIFICACION VEHICULAR EN PORCIENTO													COORDENADAS		
	KM	TE	SC	TDPA	M	A	B	C2	C3	T3S2	T3S3	T3S2R4	OTROS	A	B	C	K'	D	LATITUD	LONGITUD
Progreso	0.00	3	1	5273	14.8	79.1	0.3	3.8	1.0	0.6	0.2	0.2	0.0	93.9	0.3	5.8	0.086	0.573	21.276640	-89.654995
Progreso	0.00	3	2	7090	13.3	80.6	0.4	3.8	0.9	0.5	0.2	0.3	0.0	93.9	0.4	5.7	0.097	0.573	21.276721	-89.655026
Chicxulub Puerto	6.00	1	1	5229	3.1	92.5	0.2	3.0	0.7	0.3	0.2	0.0	0.0	95.6	0.2	4.2	0.125	0.503	21.288309	-89.608815
Chicxulub Puerto	6.00	1	2	5154	4.0	92.8	0.2	1.9	0.6	0.3	0.2	0.0	0.0	96.8	0.2	3.0	0.132	0.503	21.288433	-89.608762
Chicxulub Puerto	6.00	3	0	5251	11.2	83.7	0.8	3.2	0.8	0.1	0.1	0.1	0.0	94.9	0.8	4.3	0.103	0.502	21.296090	-89.579325
Xtampú	20.00	1	0	1869	13.6	76.7	0.6	6.2	1.5	1.0	0.2	0.2	0.0	90.3	0.6	9.1	0.118	0.504	21.332516	-89.353224
Xtampú	20.00	3	0	2144	8.9	82.9	0.5	5.8	1.2	0.5	0.1	0.1	0.0	91.8	0.5	7.7	0.109	0.501	21.333963	-89.343192
Telchac Puerto	33.00	1	0	2428	21.1	70.4	0.3	5.1	0.7	1.8	0.2	0.2	0.2	91.5	0.3	8.2	0.113	0.516	21.340151	-89.291611

46 CARR: Ramal a Chankom

CLAVE: 31049

RUTA: YUC

AÑO: 2021

LUGAR	ESTACION				CLASIFICACION VEHICULAR EN PORCIENTO													COORDENADAS		
	KM	TE	SC	TDPA	M	A	B	C2	C3	T3S2	T3S3	T3S2R4	OTROS	A	B	C	K'	D	LATITUD	LONGITUD
T. C. Mérida - Puerto Juárez	0.00	3	0	525	16.1	78.4	0.5	4.3	0.6	0.1	0.0	0.0	0.0	94.5	0.5	5.0	0.092	0.503	20.640142	-88.489191
Chankom	9.00	1	0	434	6.0	85.0	0.5	7.9	0.6	0.0	0.0	0.0	0.0	91.0	0.5	8.5	0.092	0.505	20.584028	-88.507485

47 CARR: Ramal a Dzonot Carretero

CLAVE: 31614

RUTA: YUC

AÑO: 2021

LUGAR	ESTACION				CLASIFICACION VEHICULAR EN PORCIENTO													COORDENADAS		
	KM	TE	SC	TDPA	M	A	B	C2	C3	T3S2	T3S3	T3S2R4	OTROS	A	B	C	K'	D	LATITUD	LONGITUD
T. C. Valladolid - Río Lagartos	0.00	3	0	628	40.8	55.0	0.0	1.5	1.6	0.3	0.1	0.1	0.6	95.8	0.0	4.2	0.091	0.500	21.378101	-88.136724
Dzonot Carretero	35.00																			

48 CARR: Ramal a San Felipe

CLAVE: 31628

RUTA: YUC

AÑO: 2021

LUGAR	ESTACION				CLASIFICACION VEHICULAR EN PORCIENTO													COORDENADAS		
	KM	TE	SC	TDPA	M	A	B	C2	C3	T3S2	T3S3	T3S2R4	OTROS	A	B	C	K'	D	LATITUD	LONGITUD
T. C. Valladolid - Río Lagartos	0.00	3	0	529	17.4	75.6	1.0	5.6	0.0	0.4	0.0	0.0	0.0	93.0	1.0	6.0	0.089	0.502	21.572260	-88.162809
San Felipe	7.20	1	0	664	13.8	78.5	0.3	6.8	0.1	0.5	0.0	0.0	0.0	92.3	0.3	7.4	0.082	0.508	21.552681	-88.230456

49 CARR: Ramal a Tedzidz

CLAVE: 31600

RUTA: YUC

AÑO: 2021

LUGAR	ESTACION				CLASIFICACION VEHICULAR EN PORCIENTO													COORDENADAS		
	KM	TE	SC	TDPA	M	A	B	C2	C3	T3S2	T3S3	T3S2R4	OTROS	A	B	C	K'	D	LATITUD	LONGITUD
T. C. Mérida - Celestún	0.00																			

YUCATAN

49 CARR: Ramal a Tedzidz

CLAVE: 31600

RUTA: YUC

AÑO: 2021

LUGAR	ESTACION				CLASIFICACION VEHICULAR EN PORCIENTO														COORDENADAS	
	KM	TE	SC	TDPA	M	A	B	C2	C3	T3S2	T3S3	T3S2R4	OTROS	A	B	C	K'	D	LATITUD	LONGITUD
Tedzidz	6.00	1	0	155	45.7	49.7	0.9	3.1	0.1	0.4	0.0	0.1	0.0	95.4	0.9	3.7	0.135	0.513	20.842885	-89.975038

50 CARR: Ramal a Yaxcabá

CLAVE: 31111

RUTA: YUC-289

AÑO: 2021

LUGAR	ESTACION				CLASIFICACION VEHICULAR EN PORCIENTO														COORDENADAS	
	KM	TE	SC	TDPA	M	A	B	C2	C3	T3S2	T3S3	T3S2R4	OTROS	A	B	C	K'	D	LATITUD	LONGITUD
T. C. Mérida - Puerto Juárez	0.00	3	0	721	20.3	70.4	0.6	3.5	1.9	2.2	0.0	1.1	0.0	90.7	0.6	8.7	0.091	0.529	20.696658	-88.811566
Yaxcabá	18.00	1	0	596	13.6	74.4	0.8	5.7	1.4	2.5	0.4	1.1	0.1	88.0	0.8	11.2	0.078	0.514	20.567485	-88.823194

51 CARR: Sinanché - Xitibcanul

CLAVE: 31619

RUTA: YUC

AÑO: 2021

LUGAR	ESTACION				CLASIFICACION VEHICULAR EN PORCIENTO														COORDENADAS	
	KM	TE	SC	TDPA	M	A	B	C2	C3	T3S2	T3S3	T3S2R4	OTROS	A	B	C	K'	D	LATITUD	LONGITUD
Sinanché	0.00	3	0	576	42.8	52.1	0.3	3.9	0.0	0.6	0.3	0.0	0.0	94.9	0.3	4.8	0.095	0.522	21.234198	-89.184419
Xitibcanul	7.00	1	0	457	46.7	47.1	0.2	4.6	1.0	0.4	0.0	0.0	0.0	93.8	0.2	6.0	0.143	0.518	21.351087	-89.172025

52 CARR: Sucilá - Calotmul

CLAVE: 31617

RUTA: YUC

AÑO: 2021

LUGAR	ESTACION				CLASIFICACION VEHICULAR EN PORCIENTO														COORDENADAS	
	KM	TE	SC	TDPA	M	A	B	C2	C3	T3S2	T3S3	T3S2R4	OTROS	A	B	C	K'	D	LATITUD	LONGITUD
Sucilá	0.00																			
X. C. Cansahcab - Tizimin	2.00	3	0	1123	20.0	72.6	1.0	5.6	0.6	0.2	0.0	0.0	0.0	92.6	1.0	6.4	0.076	0.509	21.137882	-88.313488
Calotmul	30.20	1	0	807	21.5	69.3	1.0	7.4	0.4	0.4	0.0	0.0	0.0	90.8	1.0	8.2	0.074	0.502	21.017740	-88.186227

53 CARR: Suma - Izamal

CLAVE: 31081

RUTA: YUC-081

AÑO: 2021

LUGAR	ESTACION				CLASIFICACION VEHICULAR EN PORCIENTO														COORDENADAS	
	KM	TE	SC	TDPA	M	A	B	C2	C3	T3S2	T3S3	T3S2R4	OTROS	A	B	C	K'	D	LATITUD	LONGITUD
Suma	0.00	3	0	836	27.8	63.6	1.0	7.1	0.2	0.3	0.0	0.0	0.0	91.4	1.0	7.6	0.084	0.530	21.082858	-89.139363
Izamal	22.00	1	0	948	32.3	59.1	1.2	7.1	0.2	0.1	0.0	0.0	0.0	91.4	1.2	7.4	0.094	0.506	20.949984	-89.020649

YUCATAN

54 CARR: Telchac Puerto - Dzilam de Bravo

CLAVE: 31042

RUTA: YUC

AÑO: 2021

LUGAR	ESTACION				CLASIFICACION VEHICULAR EN PORCIENTO										COORDENADAS					
	KM	TE	SC	TDPA	M	A	B	C2	C3	T3S2	T3S3	T3S2R4	OTROS	A	B	C	K'	D	LATITUD	LONGITUD
Telchac Puerto	0.00	3	0	1348	10.9	77.2	5.9	4.3	1.6	0.0	0.0	0.0	0.1	88.1	5.9	6.0	0.121	0.502	21.343516	-89.248128
T. Der. Sinanché	8.00	1	0	1074	16.1	70.1	5.7	6.1	1.5	0.5	0.0	0.0	0.0	86.2	5.7	8.1	0.131	0.507	21.352694	-89.177884
T. Der. Sinanché	8.00	3	0	987	17.9	62.8	9.4	7.6	2.3	0.0	0.0	0.0	0.0	80.7	9.4	9.9	0.097	0.509	21.352100	-89.164008
Chabihau	15.00	1	0	687	20.0	70.2	2.7	5.7	1.2	0.1	0.1	0.0	0.0	90.2	2.7	7.1	0.118	0.508	21.355094	-89.130499
Chabihau	15.00	3	0	479	8.3	80.4	5.4	5.9	0.0	0.0	0.0	0.0	0.0	88.7	5.4	5.9	0.136	0.542	21.358804	-89.102243
Santa Clara	26.00	1	0	537	13.0	73.4	7.2	5.4	0.9	0.0	0.0	0.0	0.1	86.4	7.2	6.4	0.101	0.516	21.371502	-89.025346
Santa Clara	26.00	3	0	328	14.0	70.0	8.2	7.8	0.0	0.0	0.0	0.0	0.0	84.0	8.2	7.8	0.167	0.510	21.374372	-89.002324
Dzilam de Bravo	39.00	1	0	447	17.8	72.9	1.1	7.3	0.8	0.0	0.1	0.0	0.0	90.7	1.1	8.2	0.108	0.523	21.387544	-88.912087

55 CARR: Thul - Becanchén

CLAVE: 31104

RUTA: YUC-281

AÑO: 2021

LUGAR	ESTACION				CLASIFICACION VEHICULAR EN PORCIENTO										COORDENADAS					
	KM	TE	SC	TDPA	M	A	B	C2	C3	T3S2	T3S3	T3S2R4	OTROS	A	B	C	K'	D	LATITUD	LONGITUD
T. C. Muna - Felipe Carrillo Puerto	0.00	3	0	239	36.9	48.8	3.1	8.1	1.6	1.1	0.4	0.0	0.0	85.7	3.1	11.2	0.109	0.501	20.085777	-89.099618
Becanchén	32.00																			

56 CARR: Ticul - Chapab

CLAVE: 31623

RUTA: YUC

AÑO: 2021

LUGAR	ESTACION				CLASIFICACION VEHICULAR EN PORCIENTO										COORDENADAS					
	KM	TE	SC	TDPA	M	A	B	C2	C3	T3S2	T3S3	T3S2R4	OTROS	A	B	C	K'	D	LATITUD	LONGITUD
Ticul	0.00	3	0	1592	33.4	61.4	0.6	3.4	0.5	0.6	0.0	0.0	0.1	94.8	0.6	4.6	0.087	0.552	20.412539	-89.520761
Chapab	8.00	1	0	1890	41.8	53.0	0.6	2.9	0.5	1.0	0.1	0.0	0.1	94.8	0.6	4.6	0.084	0.505	20.455270	-89.461673

57 CARR: Ticul - Dzan

CLAVE: 31621

RUTA: YUC

AÑO: 2021

LUGAR	ESTACION				CLASIFICACION VEHICULAR EN PORCIENTO										COORDENADAS					
	KM	TE	SC	TDPA	M	A	B	C2	C3	T3S2	T3S3	T3S2R4	OTROS	A	B	C	K'	D	LATITUD	LONGITUD
Ticul	0.00																			
T. Izq. Libramiento de Ticul	2.50	3	0	3383	43.6	52.8	0.9	1.4	0.2	0.9	0.2	0.0	0.0	96.4	0.9	2.7	0.087	0.509	20.394037	-89.507087
Dzan	7.00	1	0	3652	45.0	51.0	0.8	1.5	0.3	1.2	0.2	0.0	0.0	96.0	0.8	3.2	0.078	0.501	20.390503	-89.481652

YUCATAN

58 CARR: Tixkokob - Baca

CLAVE: 31010

RUTA: YUC

AÑO: 2021

LUGAR	ESTACION				CLASIFICACION VEHICULAR EN PORCIENTO										COORDENADAS					
	KM	TE	SC	TDPA	M	A	B	C2	C3	T3S2	T3S3	T3S2R4	OTROS	A	B	C	K'	D	LATITUD	LONGITUD
Tixkokob	0.00	3	0	3451	55.5	38.5	0.3	2.3	0.8	2.4	0.2	0.0	0.0	94.0	0.3	5.7	0.086	0.513	21.007405	-89.417356
Baca	15.00	1	0	2477	55.4	39.0	0.2	2.7	0.5	1.8	0.3	0.0	0.1	94.4	0.2	5.4	0.086	0.502	21.096494	-89.398016

59 CARR: Tixkokob - Sotuta

CLAVE: 31106

RUTA: YUC

AÑO: 2021

LUGAR	ESTACION				CLASIFICACION VEHICULAR EN PORCIENTO										COORDENADAS					
	KM	TE	SC	TDPA	M	A	B	C2	C3	T3S2	T3S3	T3S2R4	OTROS	A	B	C	K'	D	LATITUD	LONGITUD
Tixkokob	0.00	3	0	2106	52.7	43.9	0.6	2.4	0.1	0.2	0.1	0.0	0.0	96.6	0.6	2.8	0.137	0.511	20.998191	-89.380621
Tahmek	24.00	3	0	1591	28.4	63.9	0.4	4.9	0.9	1.2	0.2	0.0	0.1	92.3	0.4	7.3	0.081	0.501	20.863102	-89.255494
Hocabá	31.00	3	0	772	26.9	59.7	0.7	10.2	1.6	0.8	0.1	0.0	0.0	86.6	0.7	12.7	0.085	0.546	20.808930	-89.239268
Huhí	43.00	1	0	651	35.0	53.7	0.3	10.3	0.3	0.4	0.0	0.0	0.0	88.7	0.3	11.0	0.096	0.525	20.724304	-89.172206
Sotuta	65.00	1	0	119	47.3	45.6	0.0	7.0	0.0	0.0	0.1	0.0	0.0	92.9	0.0	7.1	0.107	0.534	20.603115	-89.020945

60 CARR: Tizimín - Yucatán

CLAVE: 31588

RUTA: YUC

AÑO: 2021

LUGAR	ESTACION				CLASIFICACION VEHICULAR EN PORCIENTO										COORDENADAS					
	KM	TE	SC	TDPA	M	A	B	C2	C3	T3S2	T3S3	T3S2R4	OTROS	A	B	C	K'	D	LATITUD	LONGITUD
Tizimín	0.00	3	0	3587	18.6	70.9	1.3	4.8	1.5	1.4	0.7	0.7	0.1	89.5	1.3	9.2	0.082	0.507	21.149533	-88.110589
T. Der. Buenaventura	30.00	3	0	1812	8.6	75.3	1.8	8.6	2.4	1.5	0.9	0.8	0.1	83.9	1.8	14.3	0.074	0.524	21.179683	-87.923511
Yucatán	46.50	1	0	2104	11.2	76.0	1.1	7.3	1.7	1.6	0.3	0.6	0.2	87.2	1.1	11.7	0.080	0.512	21.203489	-87.728121

61 CARR: Yaxché - Sierra Papacal

CLAVE: 31620

RUTA: YUC

AÑO: 2021

LUGAR	ESTACION				CLASIFICACION VEHICULAR EN PORCIENTO										COORDENADAS					
	KM	TE	SC	TDPA	M	A	B	C2	C3	T3S2	T3S3	T3S2R4	OTROS	A	B	C	K'	D	LATITUD	LONGITUD
T. C. Mérida - Progreso	0.00	3	0	3870	20.4	68.8	1.2	7.6	1.0	0.6	0.2	0.2	0.0	89.2	1.2	9.6	0.121	0.512	21.105247	-89.641920
Sierra Papacal	12.00	1	0	3531	4.1	90.5	0.2	4.7	0.5	0.0	0.0	0.0	0.0	94.6	0.2	5.2	0.125	0.543	21.122362	-89.722101

62 CARR: Yobain - Chabihau

CLAVE: 31610

RUTA: YUC

AÑO: 2021

LUGAR	ESTACION				CLASIFICACION VEHICULAR EN PORCIENTO										COORDENADAS					
	KM	TE	SC	TDPA	M	A	B	C2	C3	T3S2	T3S3	T3S2R4	OTROS	A	B	C	K'	D	LATITUD	LONGITUD
T. C. Baca - Dzidzantún	0.00	3	0	865	32.1	65.3	0.1	0.6	0.2	0.4	0.2	0.1	1.0	97.4	0.1	2.5	0.125	0.504	21.239464	-89.116821
Chabihau	12.00	1	0	437	51.0	46.6	0.1	1.2	0.2	0.7	0.2	0.0	0.0	97.6	0.1	2.3	0.092	0.502	21.354595	-89.117215

YUCATAN

63 CARR: Chemax - Cobá

CLAVE:

RUTA: YUC-MEX-180

AÑO: 2021

LUGAR	ESTACION				CLASIFICACION VEHICULAR EN PORCIENTO													COORDENADAS		
	KM	TE	SC	TDPA	M	A	B	C2	C3	T3S2	T3S3	T3S2R4	OTROS	A	B	C	K'	D	LATITUD	LONGITUD
Chemax	0.00	3	0	4672	1.6	88.1	1.6	3.2	2.3	1.5	0.5	1.0	0.2	89.7	1.6	8.7	0.101	0.516	20.656677	-87.954439
Lim. Edos. Term. Yucatán Ppia. Q Roo.	25.00																			
Cobá	30.90	1	0	4052	2.0	86.1	2.2	4.1	1.9	1.7	0.6	1.3	0.1	88.1	2.2	9.7	0.094	0.504	20.509693	-87.721788

64 CARR: Progreso - Celestún

CLAVE: 31040

RUTA: MEX-YUC

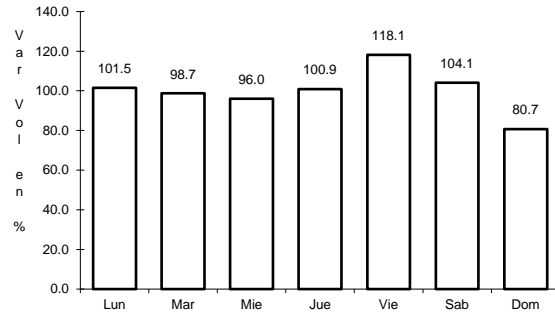
AÑO: 2021

LUGAR	ESTACION				CLASIFICACION VEHICULAR EN PORCIENTO													COORDENADAS		
	KM	TE	SC	TDPA	M	A	B	C2	C3	T3S2	T3S3	T3S2R4	OTROS	A	B	C	K'	D	LATITUD	LONGITUD
T. C. Mérida - Progreso	0.00	3	1	4922	17.6	76.1	0.2	5.6	0.4	0.1	0.0	0.0	0.0	93.7	0.2	6.1	0.090	0.506	21.274372	-89.692682
T. C. Mérida - Progreso	0.00	3	2	5102	18.9	73.7	0.2	6.7	0.4	0.1	0.0	0.0	0.0	92.6	0.2	7.2	0.092	0.506	21.274375	-89.692604
Yucalpetén	6.00	3	0	7778	8.8	89.2	0.2	1.2	0.2	0.3	0.1	0.0	0.0	98.0	0.2	1.8	0.082	0.500	21.275349	-89.721182
Celestún	80.00																			

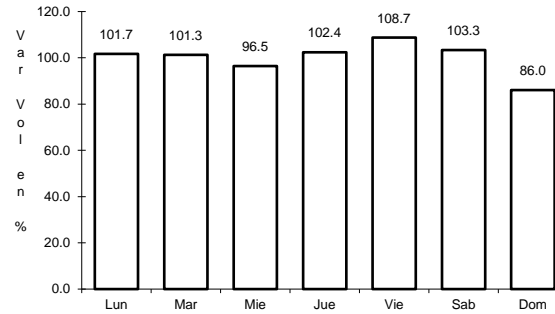
1 CARR: Campeche - Mérida

CLAVE: 00066

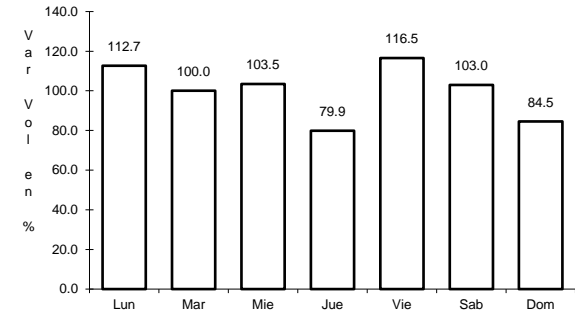
RUTA: MEX-180



Km: 0.00 Tipo: 3 Sent: 1



Km: 0.00 Tipo: 3 Sent: 2

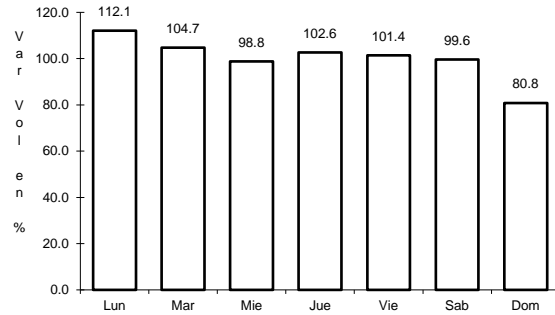


Km: 171.21 Tipo: 1 Sent: 1

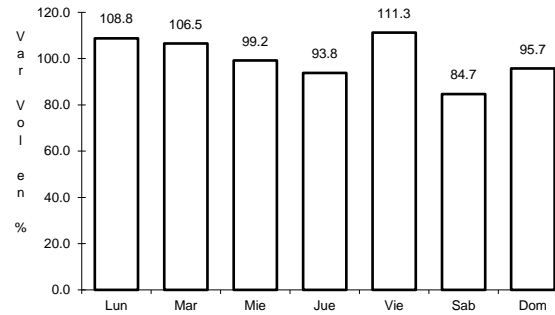
2 CARR: Campeche - Umán

CLAVE: 00164

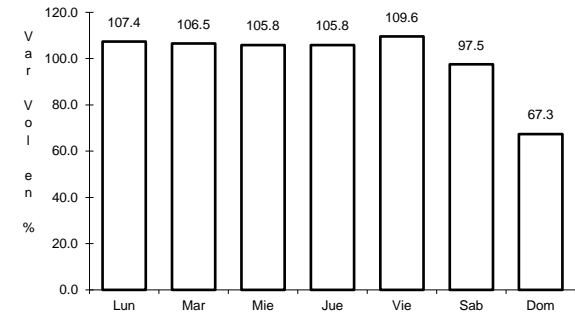
RUTA: MEX-261



Km: 7.00 Tipo: 1 Sent: 0



Km: 117.88 Tipo: 3 Sent: 0

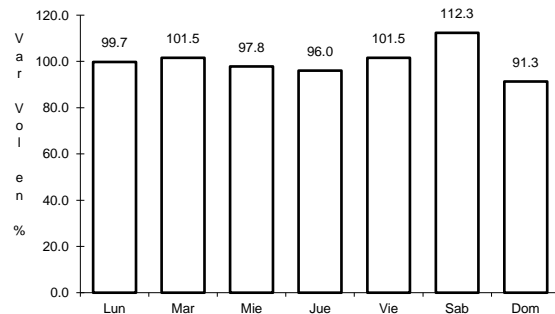


Km: 230.83 Tipo: 1 Sent: 0

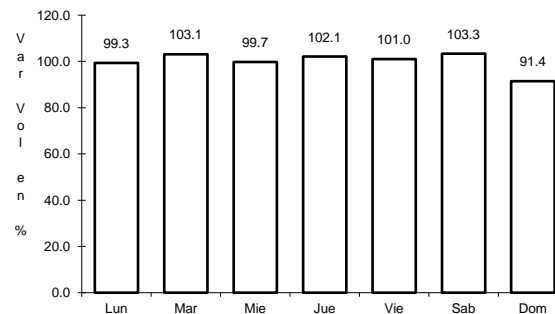
3 CARR: Cansahcab - Tizimín

CLAVE: 31014

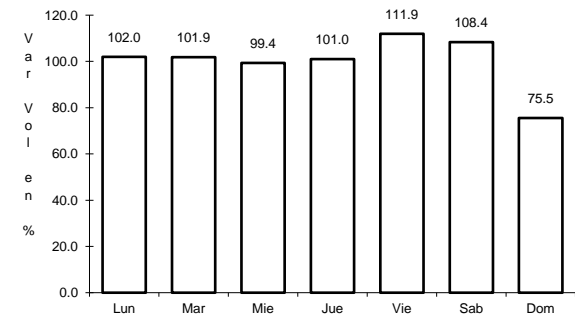
RUTA: MEX-176



Km: 0.00 Tipo: 3 Sent: 0



Km: 32.92 Tipo: 3 Sent: 0

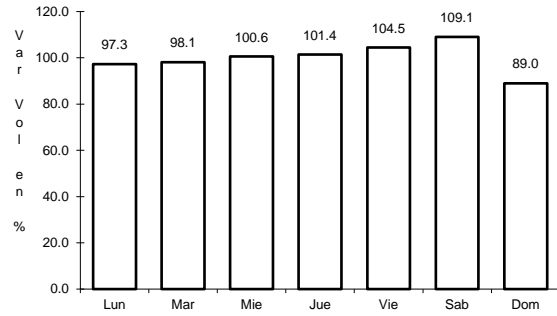


Km: 99.14 Tipo: 1 Sent: 0

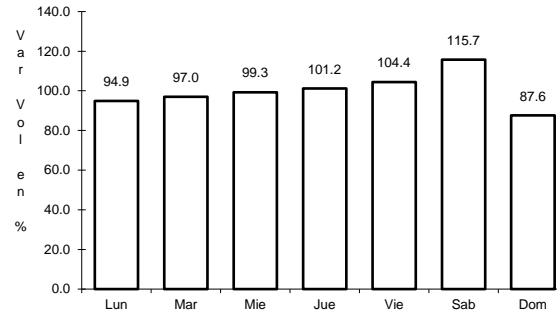
4 CARR: Conkal - Puerto Chicxulub

CLAVE: 31004

RUTA: MEX-176



Km: 0.00 Tipo: 3 Sent: 0

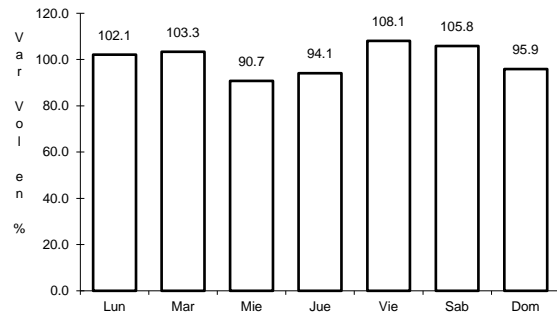


Km: 27.00 Tipo: 1 Sent: 0

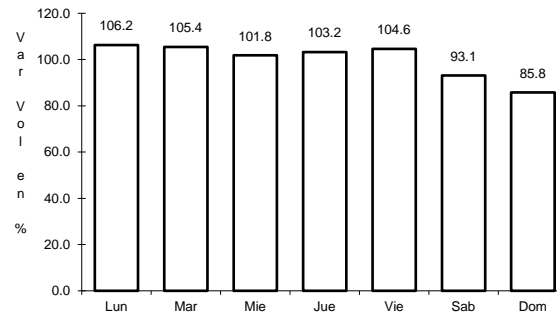
5 CARR: Dzitbalché - Ent. San Bernardo

CLAVE: 00162

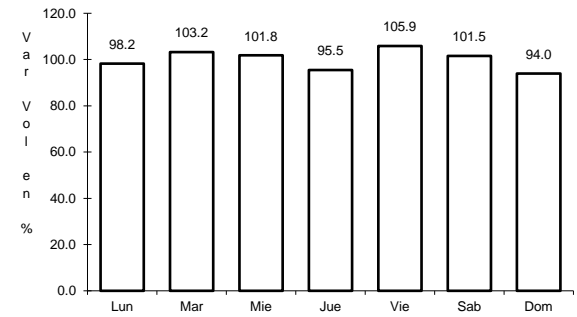
RUTA: MEX-180



Km: 12.33 Tipo: 1 Sent: 0



Km: 21.08 Tipo: 1 Sent: 0

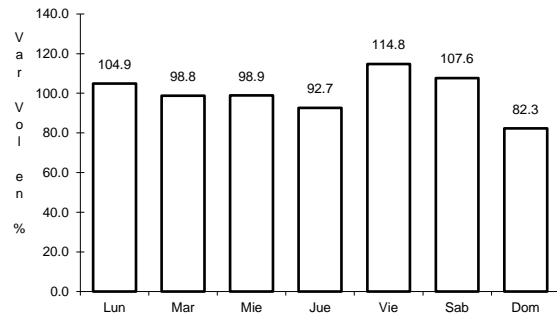


Km: 40.36 Tipo: 3 Sent: 0

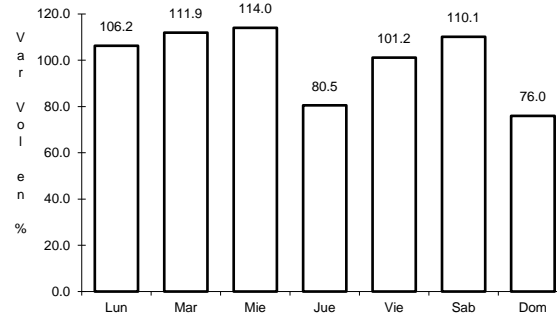
6 CARR: Ent. Poxilá - Mérida

CLAVE: 31003

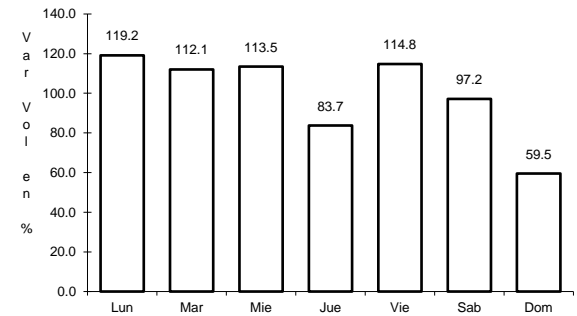
RUTA: MEX-180



Km: 9.46 Tipo: 1 Sent: 0



Km: 25.70 Tipo: 1 Sent: 1

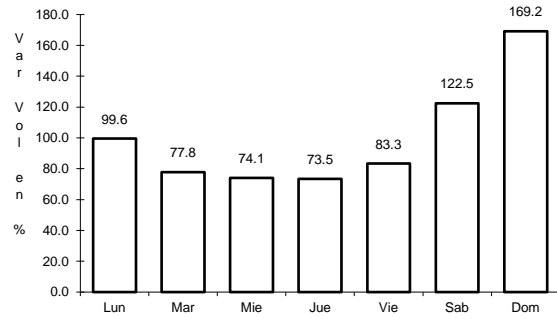


Km: 25.70 Tipo: 1 Sent: 2

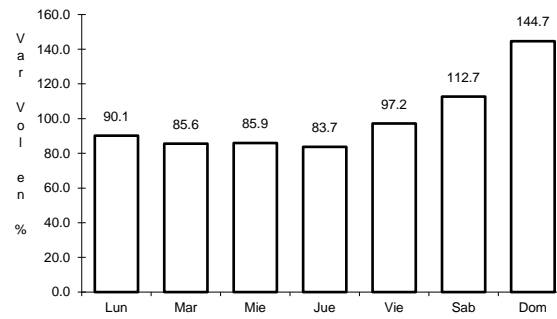
7 CARR: Hunucmá - Sisal

CLAVE: 31021

ruta: MEX-281



Km: 0.00 Tipo: 3 Sent: 0

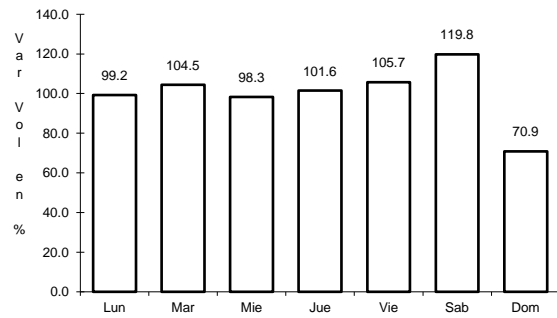


Km: 23.20 Tipo: 1 Sent: 0

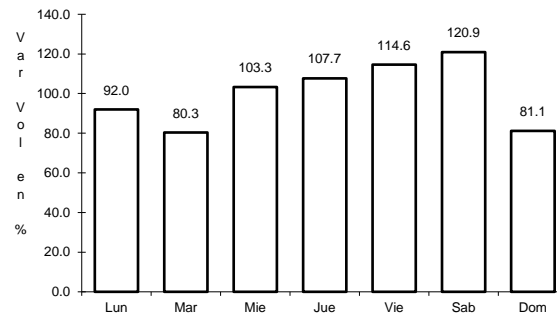
8 CARR: Libramiento Conkal - Mococho - Baca

CLAVE:

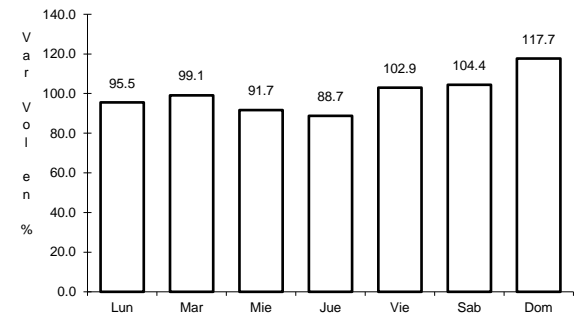
ruta: MEX-176



Km: 4.40 Tipo: 3 Sent: 1



Km: 4.40 Tipo: 3 Sent: 2

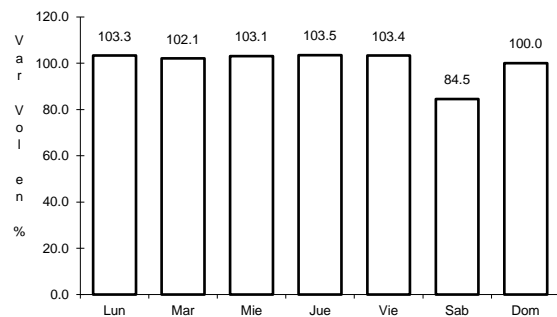


Km: 24.41 Tipo: 1 Sent: 1

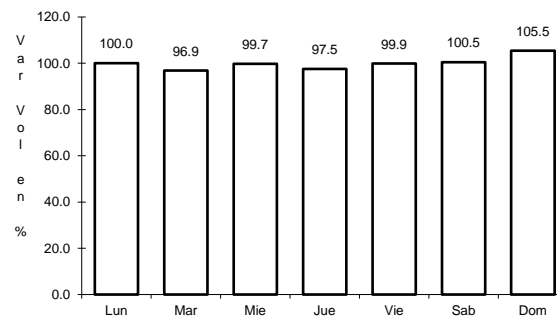
9 CARR: Libramiento de Conkal

CLAVE:

ruta: MEX



Km: 0.00 Tipo: 3 Sent: 0

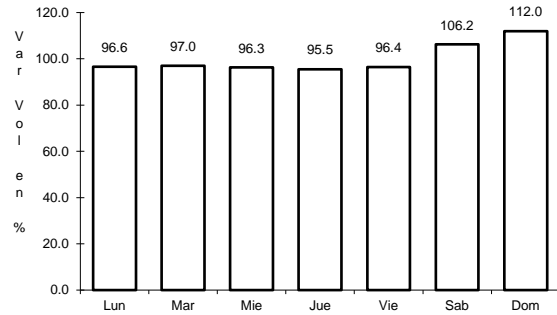


Km: 14.00 Tipo: 1 Sent: 0

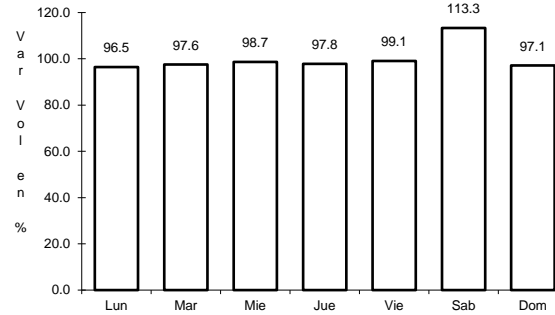
10 CARR: Libramiento de Progreso

CLAVE: 31631

RUTA: MEX-261



Km: 0.00 Tipo: 3 Sent: 0

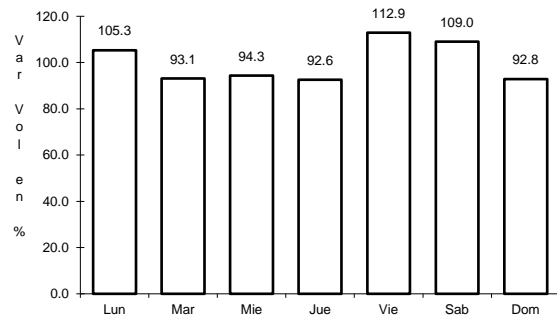


Km: 6.50 Tipo: 1 Sent: 0

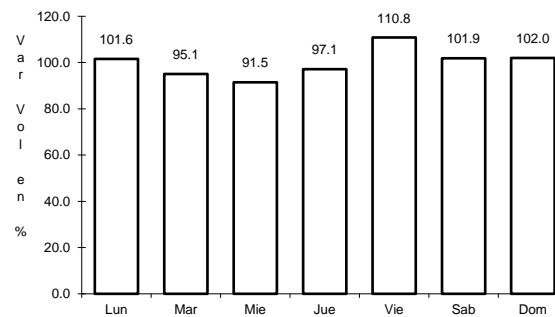
11 CARR: Libramiento de Tahmek - Hoctun - Xocchel

CLAVE:

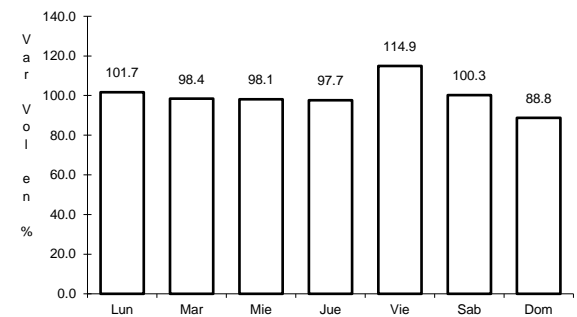
RUTA: MEX-180



Km: 0.00 Tipo: 3 Sent: 1



Km: 0.00 Tipo: 3 Sent: 2

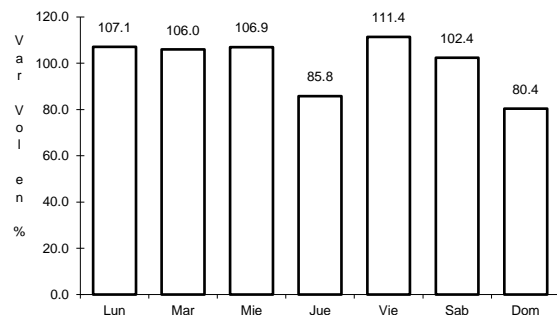


Km: 6.30 Tipo: 3 Sent: 1

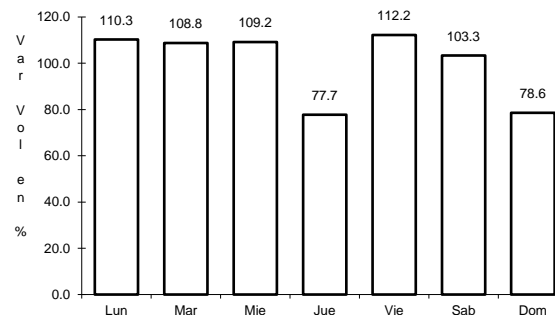
12 CARR: Mérida - Celestún

CLAVE: 31025

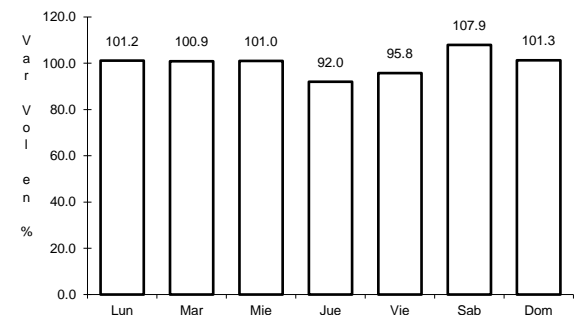
RUTA: MEX-281



Km: 0.00 Tipo: 3 Sent: 1



Km: 0.00 Tipo: 3 Sent: 2

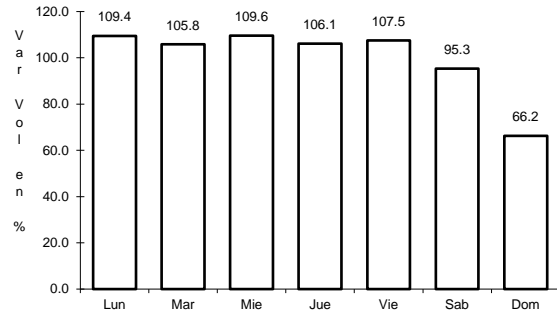


Km: 40.00 Tipo: 3 Sent: 0

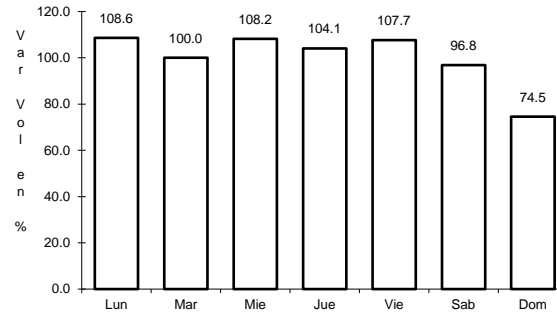
13 CARR: Mérida - Dzilam de Bravo

CLAVE: 31001

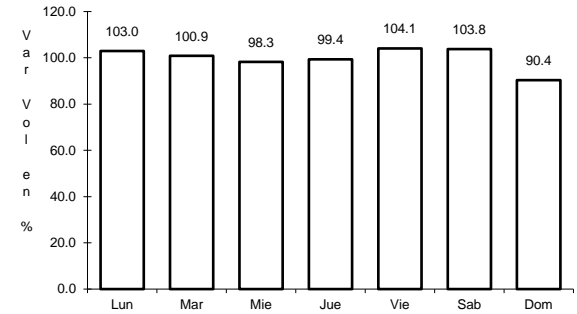
RUTA: MEX-176



Km: 5.90 Tipo: 1 Sent: 1



Km: 5.90 Tipo: 1 Sent: 2

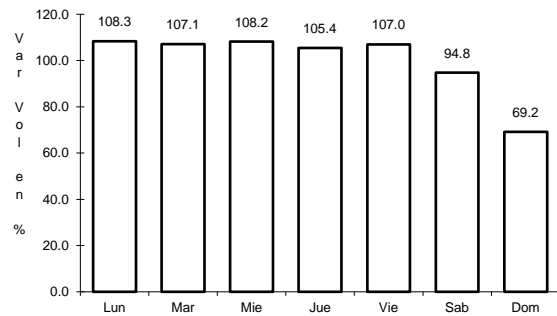


Km: 105.00 Tipo: 1 Sent: 0

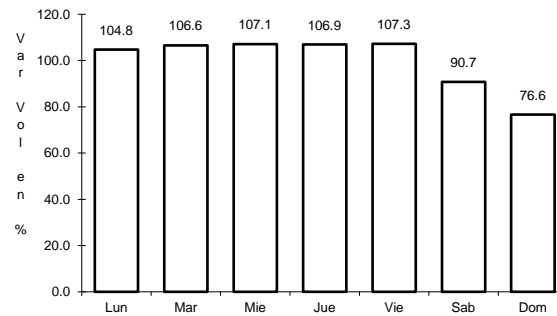
14 CARR: Mérida - Progreso

CLAVE: 31091

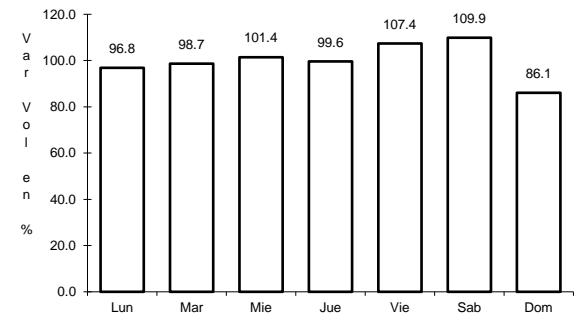
RUTA: MEX-261



Km: 5.40 Tipo: 1 Sent: 1



Km: 5.40 Tipo: 1 Sent: 2

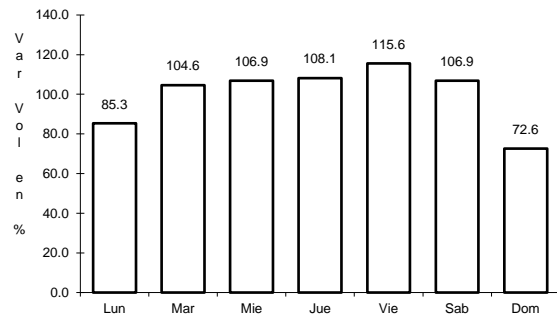


Km: 35.04 Tipo: 1 Sent: 1

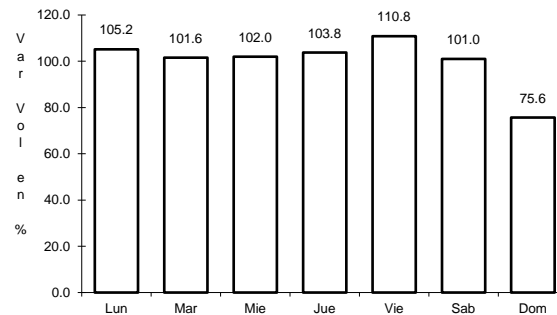
15 CARR: Mérida - Puerto Juárez

CLAVE: 00067

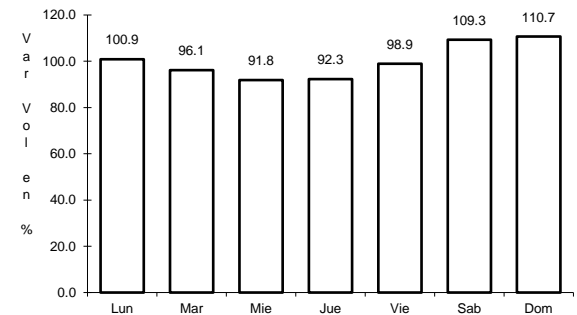
RUTA: MEX-180



Km: 5.60 Tipo: 1 Sent: 1



Km: 5.60 Tipo: 1 Sent: 2

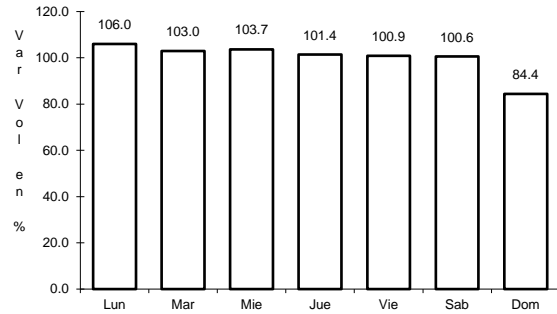


Km: 302.50 Tipo: 1 Sent: 0

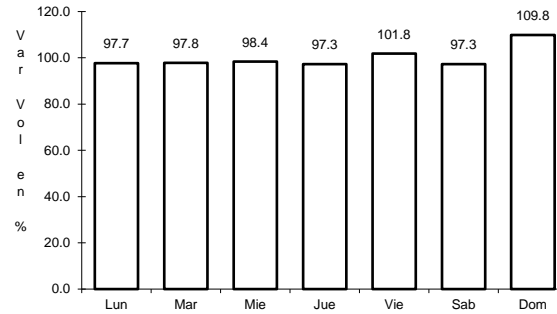
16 CARR: Mérida - Tekanto

CLAVE: 31587

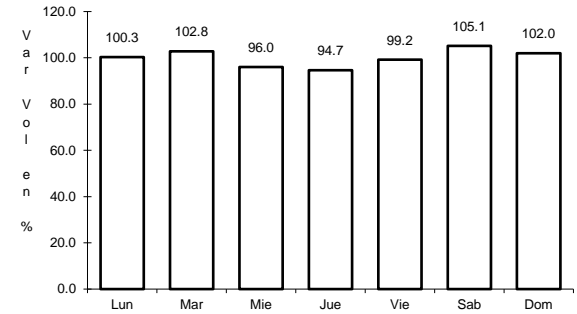
RUTA: MEX-180



Km: 5.70 Tipo: 1 Sent: 0



Km: 21.00 Tipo: 1 Sent: 0

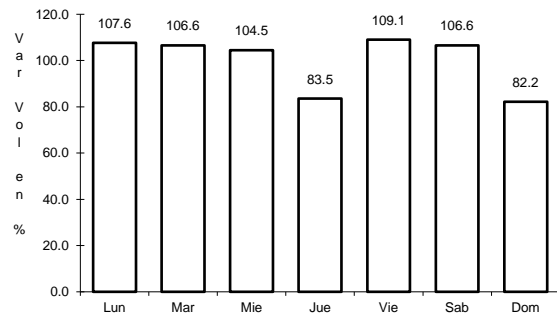


Km: 51.00 Tipo: 1 Sent: 0

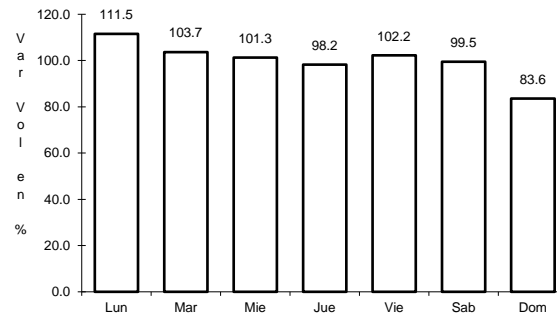
17 CARR: Mérida - Tetiz

CLAVE: 31610

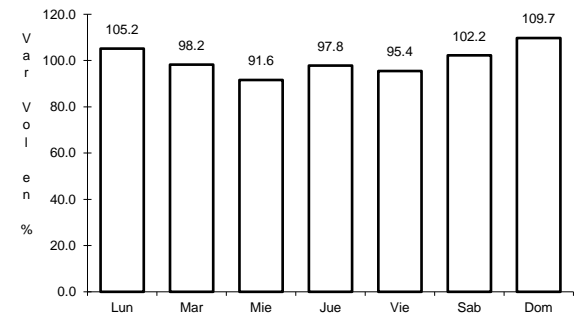
RUTA: MEX-281



Km: 0.00 Tipo: 3 Sent: 0



Km: 17.98 Tipo: 1 Sent: 0

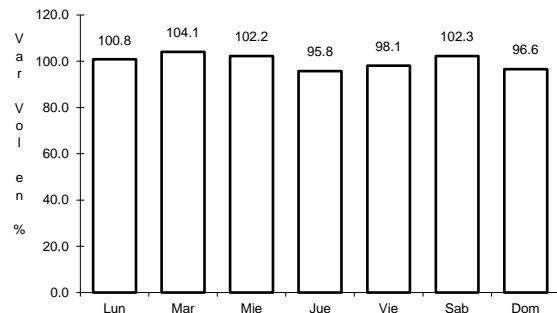


Km: 24.40 Tipo: 1 Sent: 0

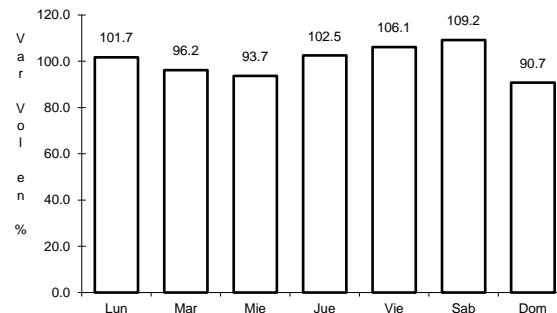
18 CARR: Muna - Felipe Carrillo Puerto

CLAVE: 00148

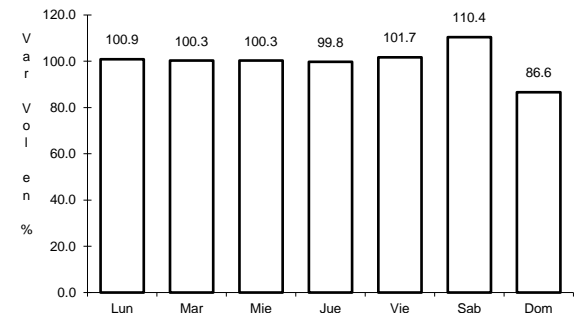
RUTA: MEX-184



Km: 0.00 Tipo: 3 Sent: 0



Km: 109.60 Tipo: 3 Sent: 0

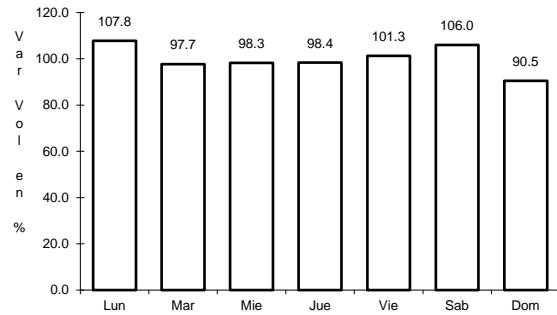


Km: 216.97 Tipo: 1 Sent: 0

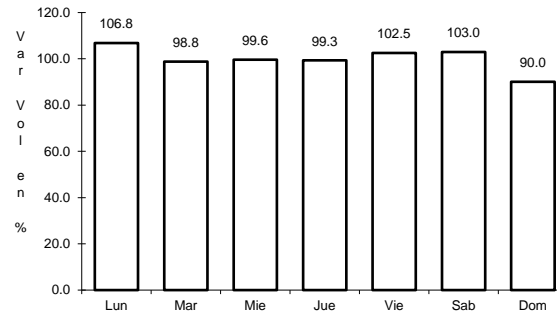
19 CARR: Ramal a Panabá

CLAVE: 31609

ruta: MEX-295



Km: 0.00 Tipo: 3 Sent: 0

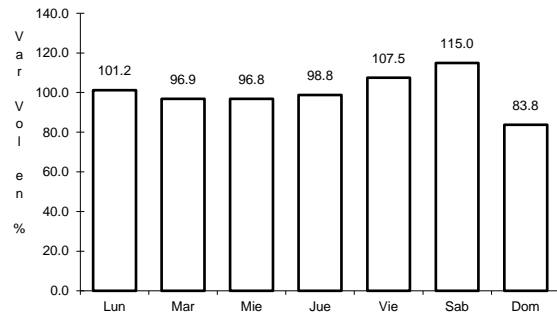


Km: 18.00 Tipo: 1 Sent: 0

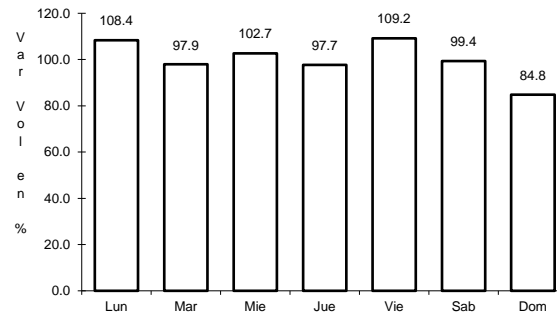
20 CARR: Teya -Peto

CLAVE: 31042

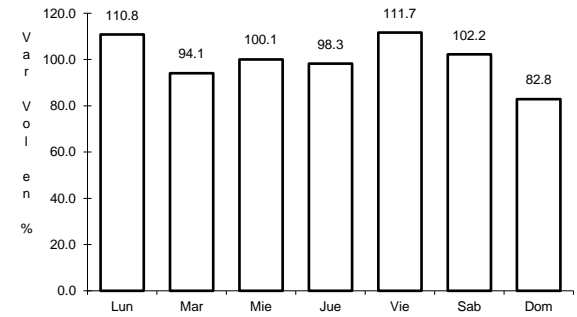
ruta: MEX-184



Km: 3.80 Tipo: 3 Sent: 1



Km: 3.80 Tipo: 3 Sent: 2

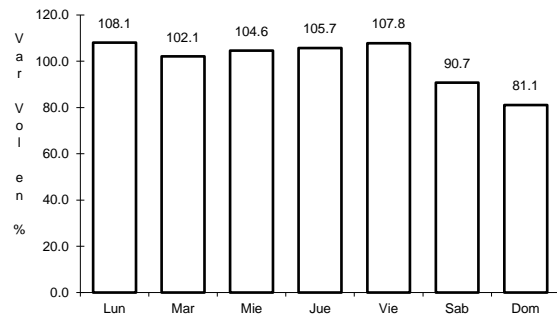


Km: 120.70 Tipo: 1 Sent: 0

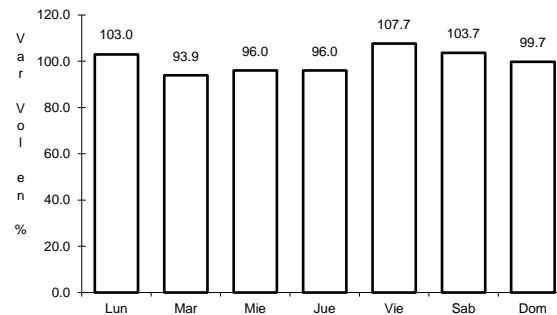
21 CARR: Tzacab - Santa Rosa

CLAVE: 31017

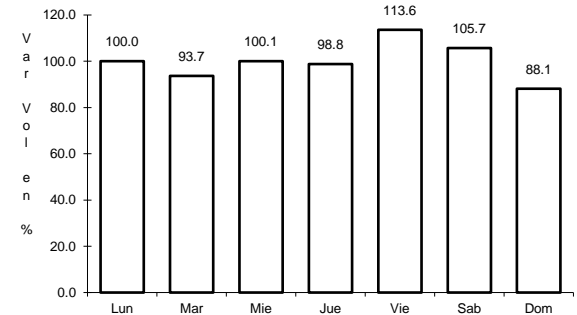
ruta: MEX



Km: 0.00 Tipo: 3 Sent: 0



Km: 16.00 Tipo: 3 Sent: 0

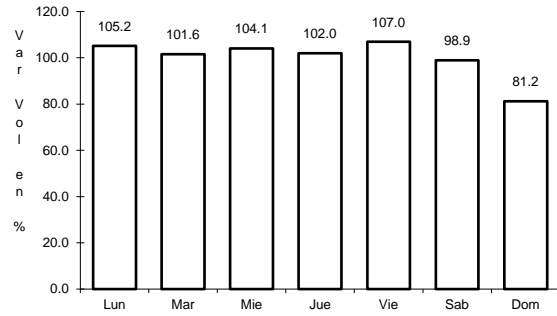


Km: 34.50 Tipo: 1 Sent: 0

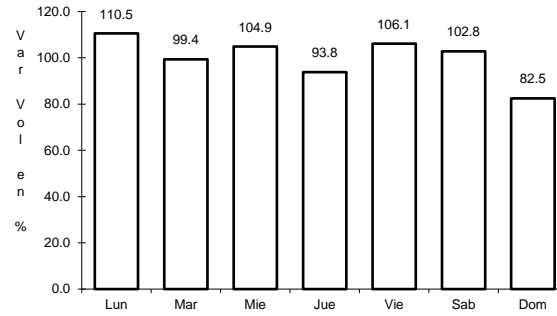
22 CARR: Valladolid - Felipe Carrillo Puerto

CLAVE: 00010

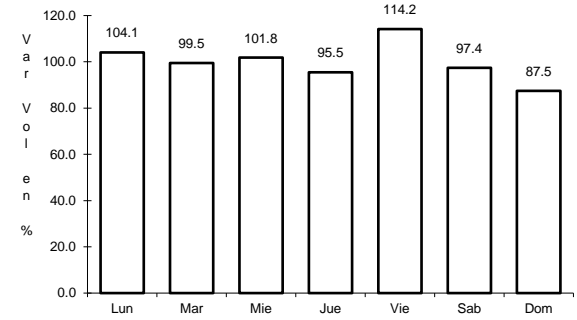
RUTA: MEX-295



Km: 0.00 Tipo: 3 Sent: 0



Km: 99.00 Tipo: 1 Sent: 0

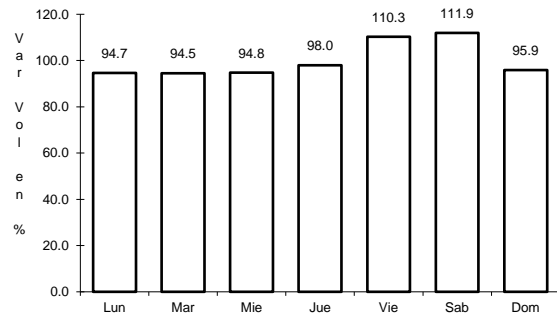


Km: 147.70 Tipo: 1 Sent: 0

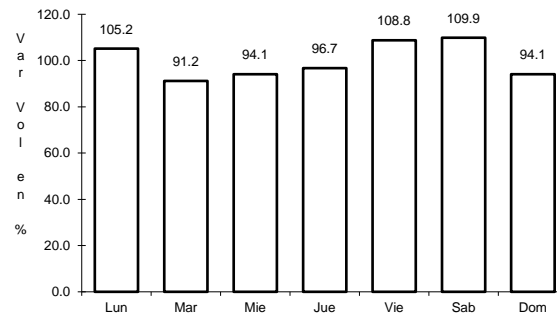
23 CARR: Valladolid - Río Lagartos

CLAVE: 31035

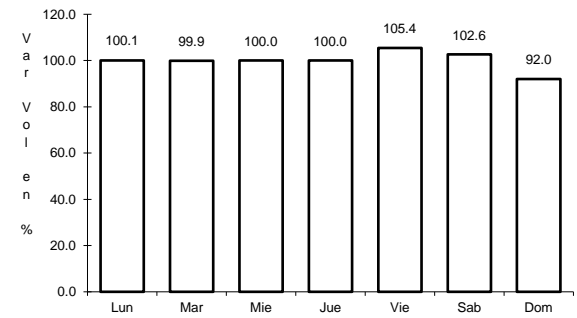
RUTA: MEX-295



Km: 0.00 Tipo: 3 Sent: 1



Km: 0.00 Tipo: 3 Sent: 2

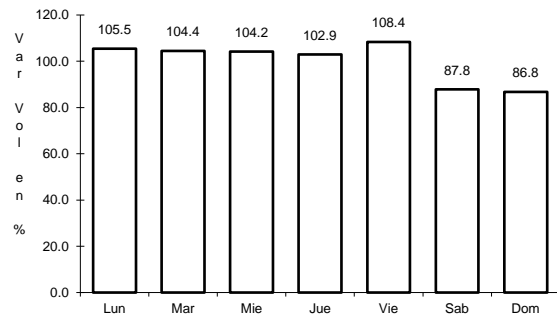


Km: 79.90 Tipo: 1 Sent: 0

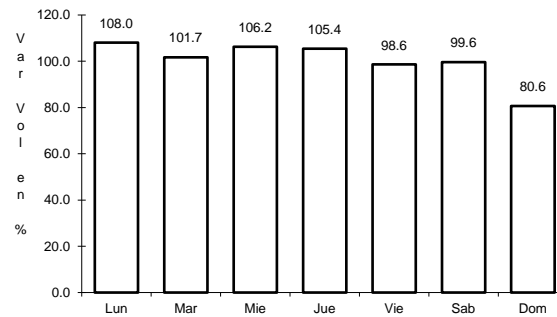
24 CARR: Mérida - Cancún (Cuota)

CLAVE: 00071

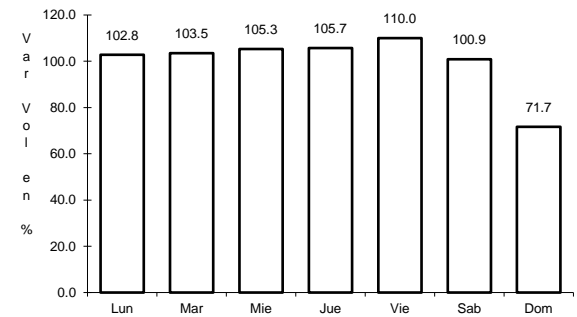
RUTA: MEX-180D



Km: 51.00 Tipo: 1 Sent: 1



Km: 51.00 Tipo: 1 Sent: 2

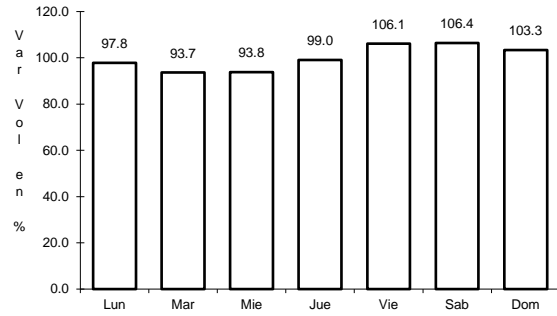


Km: 308.10 Tipo: 1 Sent: 0

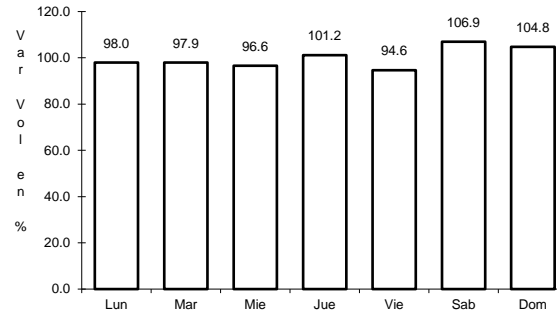
25 CARR: Acanceh - Estación Polabán

CLAVE: 31615

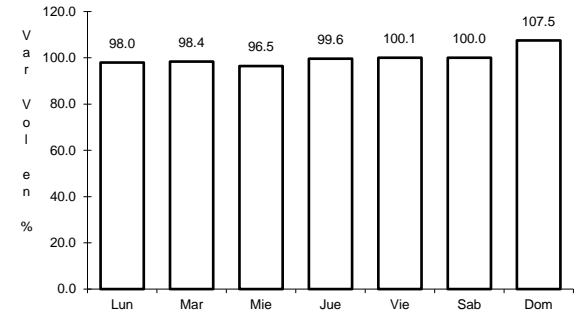
RUTA: YUC



Km: 0.00 Tipo: 3 Sent: 0



Km: 20.00 Tipo: 3 Sent: 0

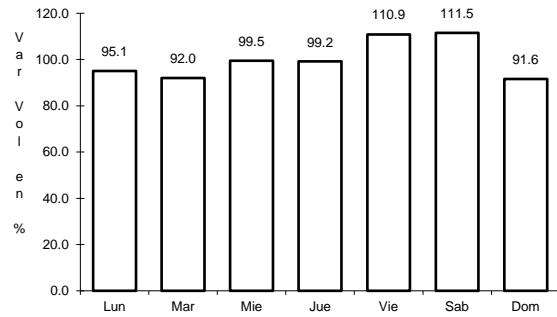


Km: 24.40 Tipo: 1 Sent: 0

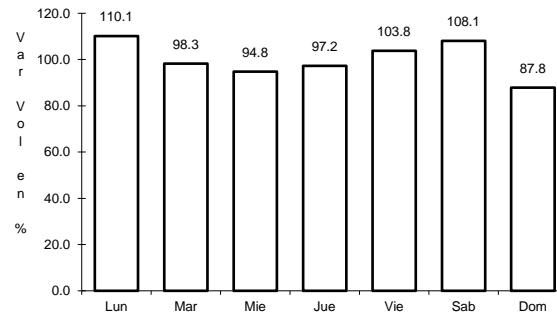
26 CARR: Baca - Dzidzantún

CLAVE: 31591

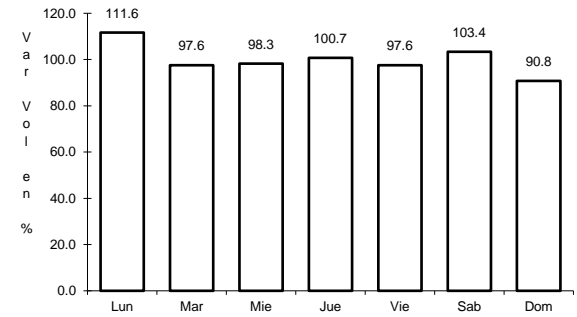
RUTA: YUC



Km: 0.00 Tipo: 3 Sent: 0



Km: 19.10 Tipo: 3 Sent: 0

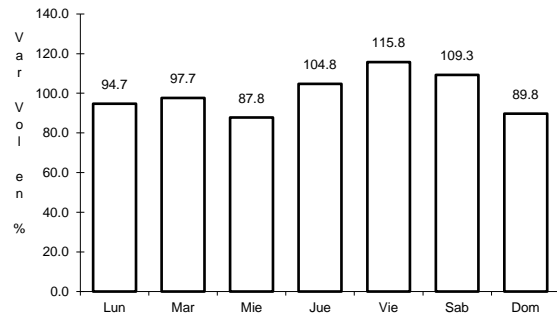


Km: 43.00 Tipo: 1 Sent: 0

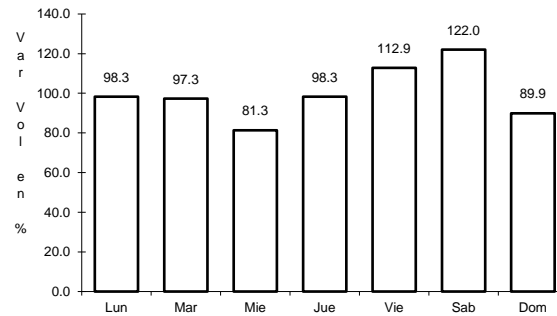
27 CARR: Citilcum - Tixkochoh

CLAVE: 31064

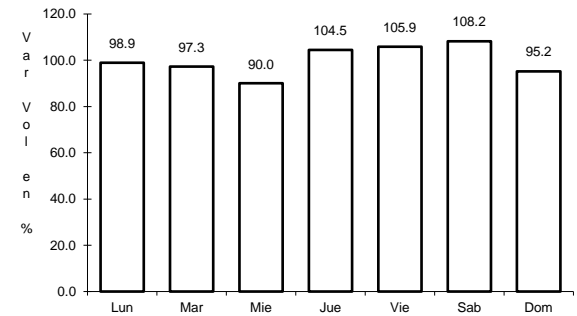
RUTA: YUC



Km: 0.00 Tipo: 3 Sent: 0



Km: 7.00 Tipo: 1 Sent: 0

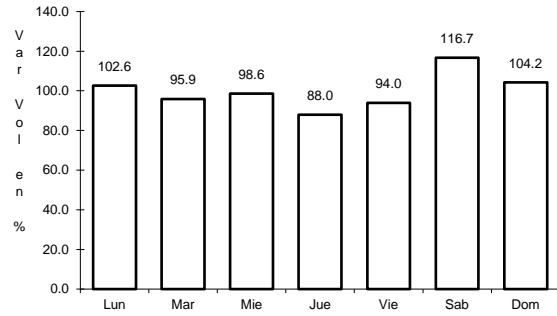


Km: 10.00 Tipo: 1 Sent: 0

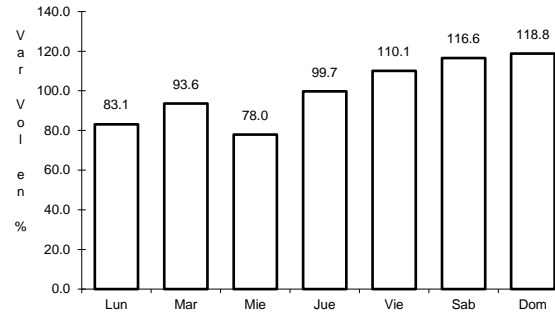
28 CARR: Dzemul - Xtampú

CLAVE: 31608

RUTA: YUC



Km: 0.00 Tipo: 3 Sent: 0

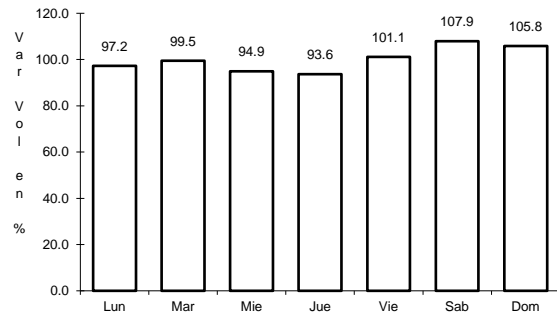


Km: 10.00 Tipo: 1 Sent: 0

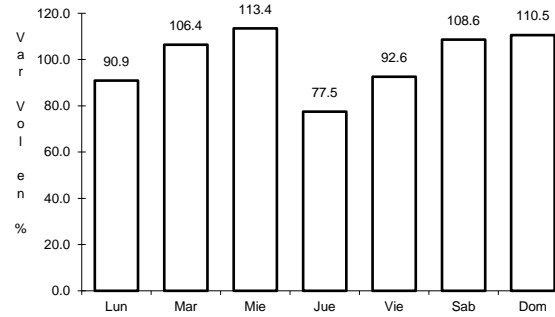
29 CARR: Dzidzantún - Santa Clara

CLAVE: 31592

RUTA: YUC



Km: 0.00 Tipo: 3 Sent: 0

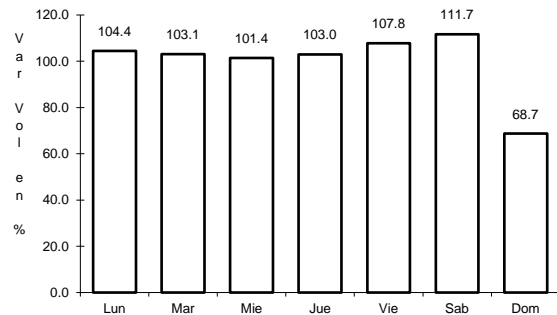


Km: 14.00 Tipo: 1 Sent: 0

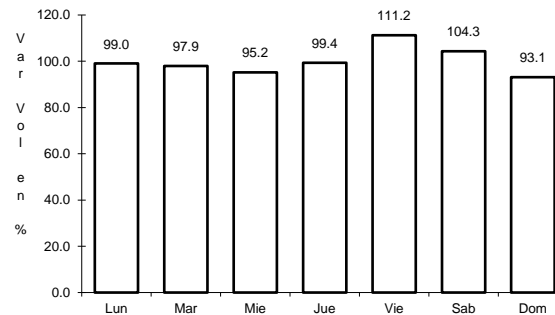
30 CARR: Hoctún - Cenotillo

CLAVE: 31011

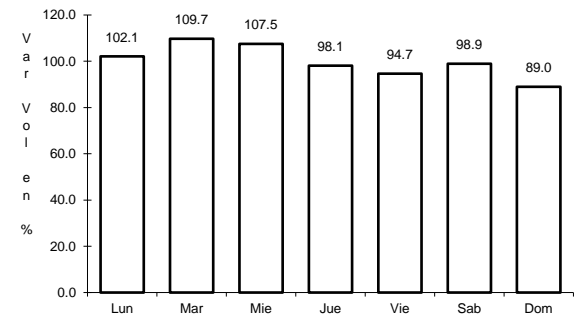
RUTA: YUC-011



Km: 0.00 Tipo: 3 Sent: 0



Km: 24.00 Tipo: 3 Sent: 0

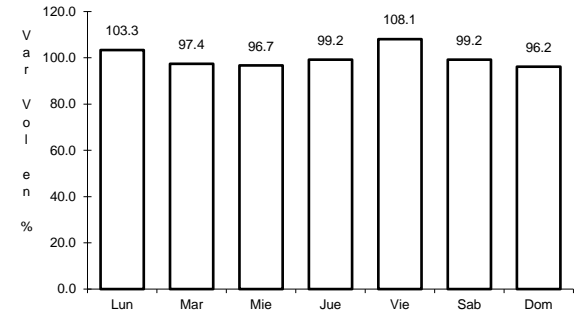
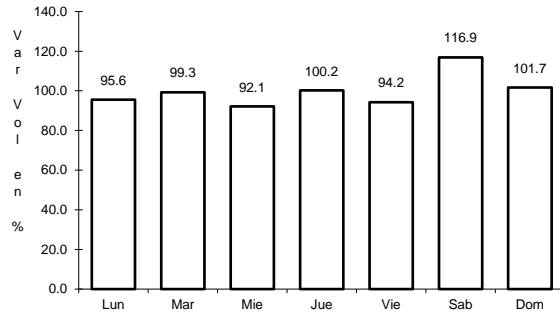
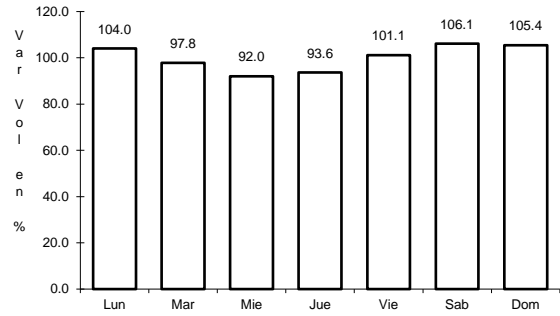


Km: 70.90 Tipo: 1 Sent: 0

31 CARR: Holcá - Sotuta

CLAVE: 31626

RUTA: YUC



Km: 0.00 Tipo: 3 Sent: 0

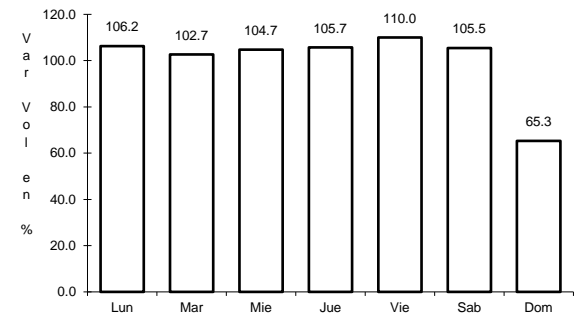
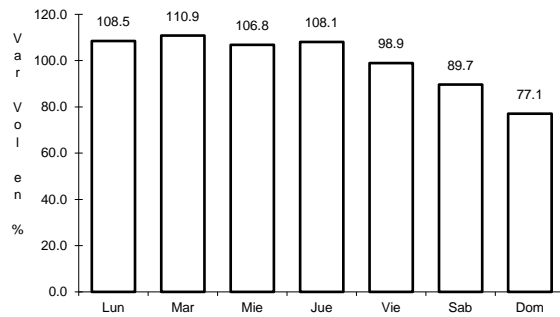
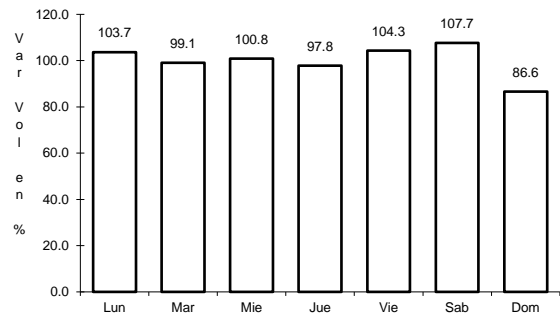
Km: 10.00 Tipo: 3 Sent: 0

Km: 20.00 Tipo: 1 Sent: 0

32 CARR: Hunucmá - Umán

CLAVE: 31610

RUTA: YUC



Km: 0.00 Tipo: 3 Sent: 0

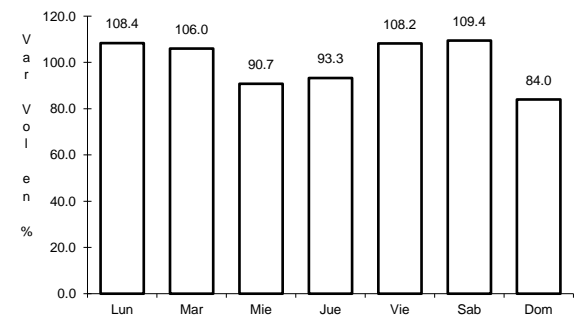
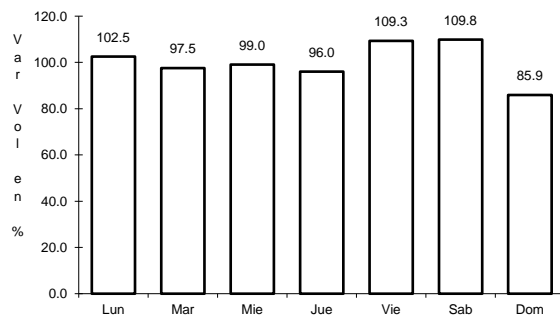
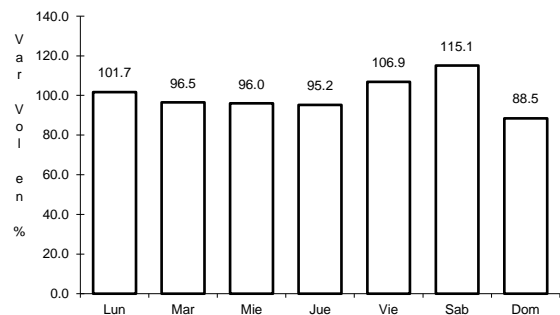
Km: 16.16 Tipo: 1 Sent: 0

Km: 22.00 Tipo: 1 Sent: 0

33 CARR: Izamal - Dzilam González

CLAVE: 31605

RUTA: YUC



Km: 0.00 Tipo: 3 Sent: 0

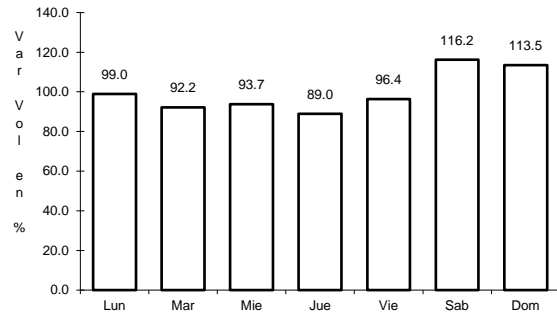
Km: 30.00 Tipo: 1 Sent: 0

Km: 43.00 Tipo: 1 Sent: 0

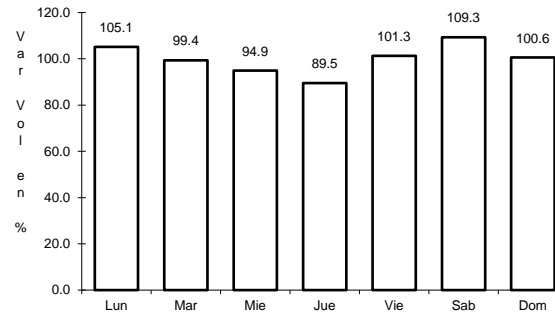
34 CARR: Kantunil - Izamal

CLAVE: 31012

RUTA: YUC



Km: 0.00 Tipo: 3 Sent: 0

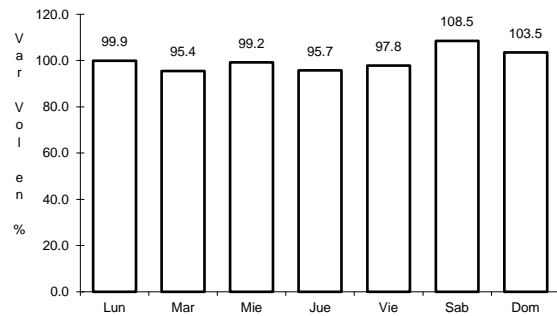


Km: 17.80 Tipo: 1 Sent: 0

35 CARR: Kinchil - Umán

CLAVE: 31009

RUTA: YUC

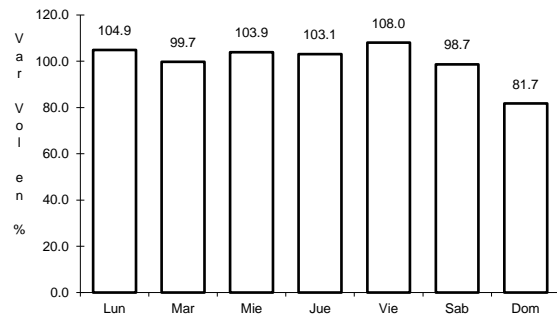


Km: 0.00 Tipo: 3 Sent: 0

36 CARR: Libramiento de Peto

CLAVE:

RUTA: YUC-018

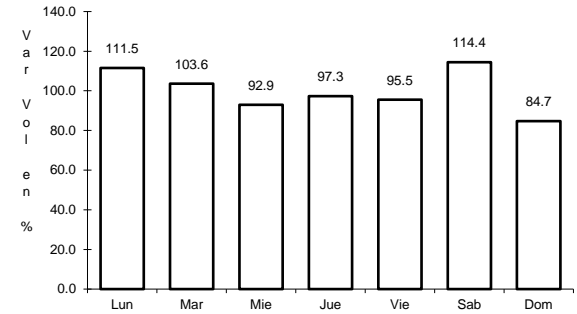
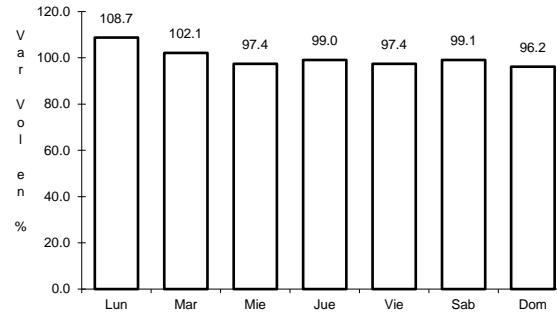
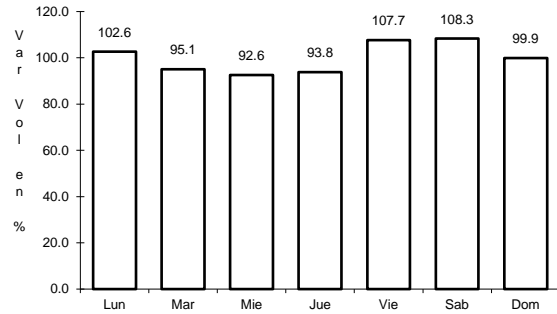


Km: 0.00 Tipo: 3 Sent: 0

37 CARR: Libramiento Norte de Motul

CLAVE: 31610

RUTA: YUC



Km: 0.00 Tipo: 3 Sent: 0

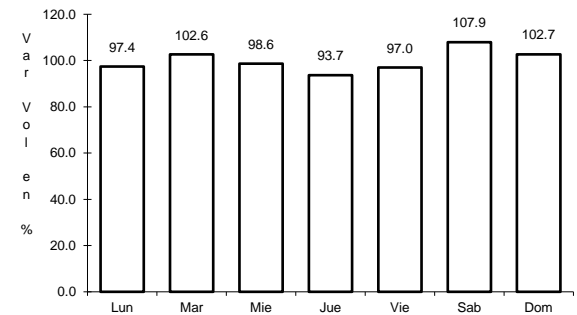
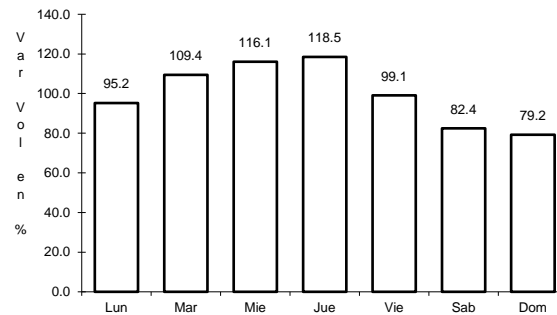
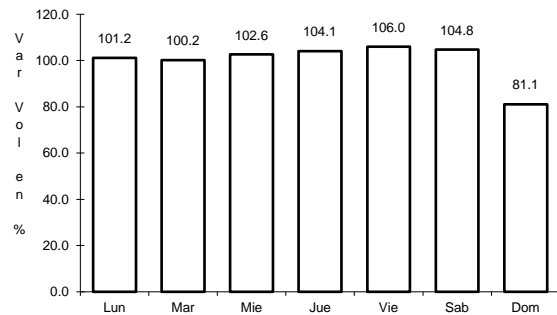
Km: 3.16 Tipo: 3 Sent: 0

Km: 6.53 Tipo: 1 Sent: 0

38 CARR: Mérida - Acanceh

CLAVE: 31023

RUTA: YUC



Km: 0.00 Tipo: 3 Sent: 0

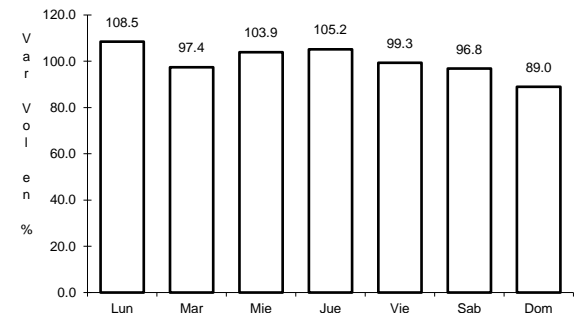
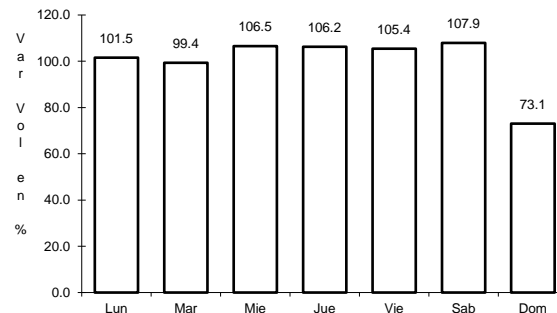
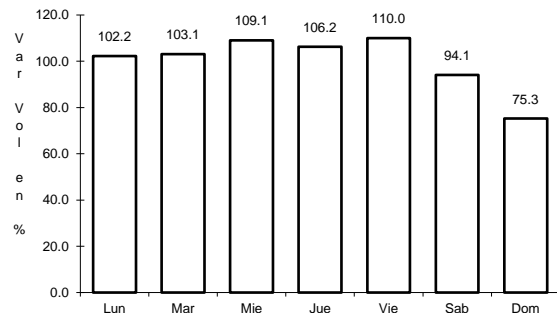
Km: 11.00 Tipo: 3 Sent: 0

Km: 26.00 Tipo: 1 Sent: 0

39 CARR: Mérida - Oxkutzcab

CLAVE: 31018

RUTA: YUC-018



Km: 0.00 Tipo: 3 Sent: 1

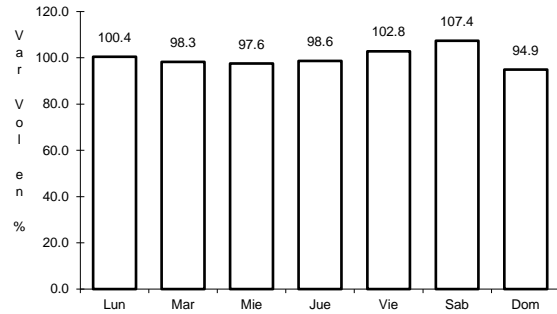
Km: 0.00 Tipo: 3 Sent: 2

Km: 109.30 Tipo: 1 Sent: 0

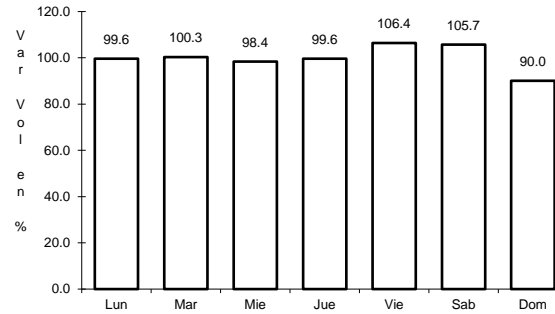
40 CARR: Mérida - Timucuy

CLAVE: 31024

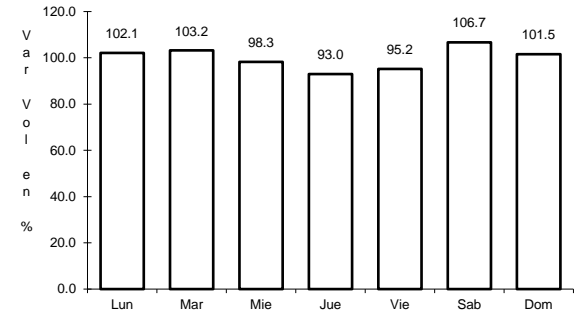
RUTA: YUC



Km: 0.00 Tipo: 3 Sent: 0



Km: 15.10 Tipo: 1 Sent: 0

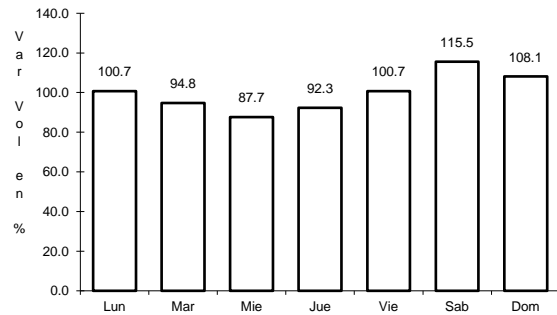


Km: 18.65 Tipo: 1 Sent: 0

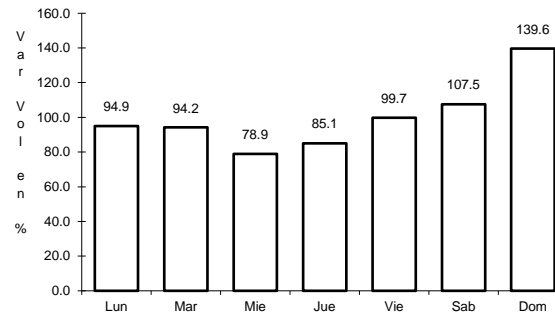
41 CARR: Motul - Puerto Telchac

CLAVE: 31006

RUTA: YUC-172



Km: 0.00 Tipo: 3 Sent: 0

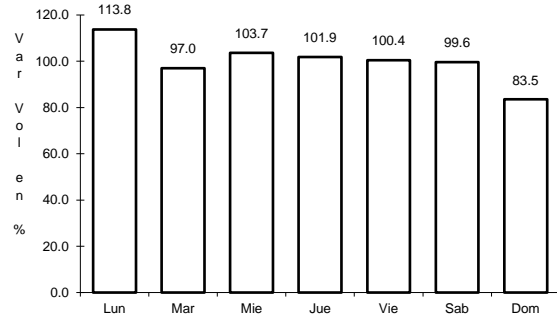


Km: 12.00 Tipo: 3 Sent: 0

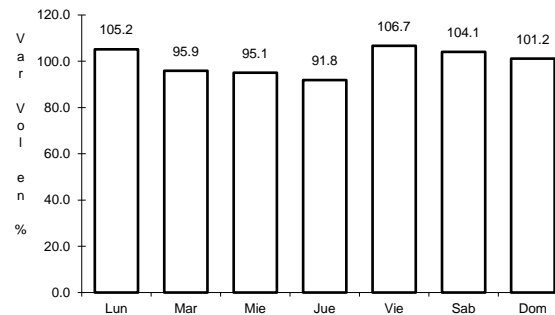
42 CARR: Muna - Maxcanú

CLAVE: 31053

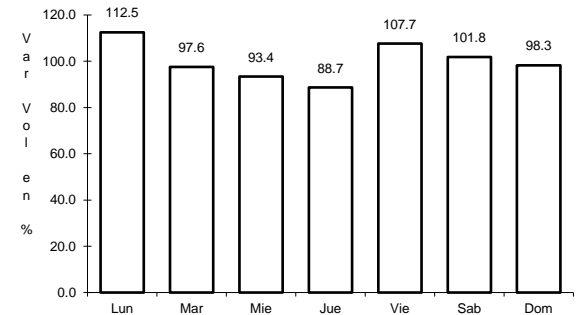
RUTA: YUC



Km: 0.00 Tipo: 3 Sent: 0



Km: 17.00 Tipo: 3 Sent: 0

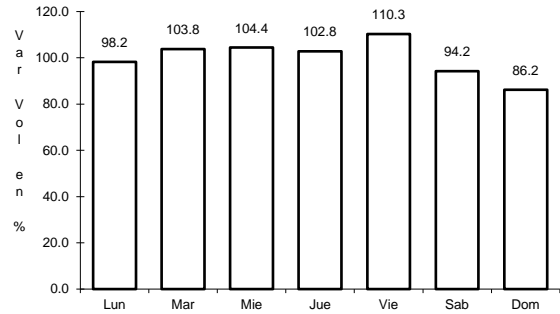


Km: 31.00 Tipo: 1 Sent: 0

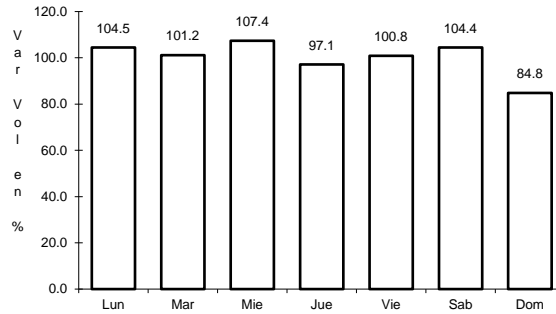
43 CARR: Oxtutzcab - Xul

CLAVE: 31051

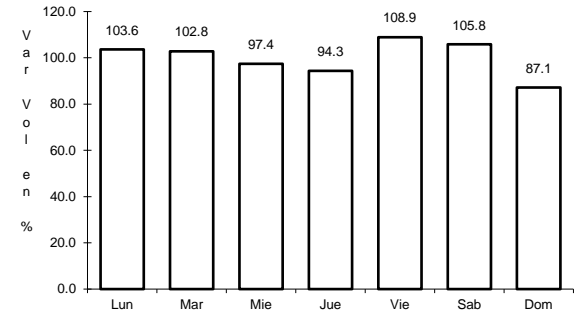
RUTA: YUC-031



Km: 0.00 Tipo: 3 Sent: 0



Km: 10.00 Tipo: 3 Sent: 0

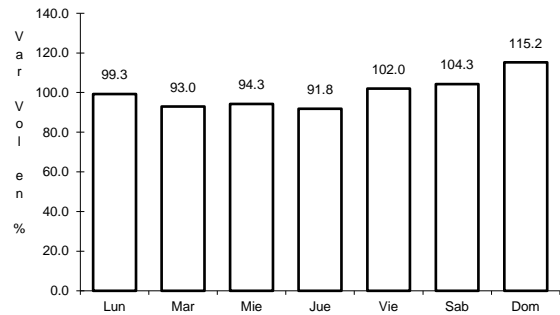


Km: 25.00 Tipo: 1 Sent: 0

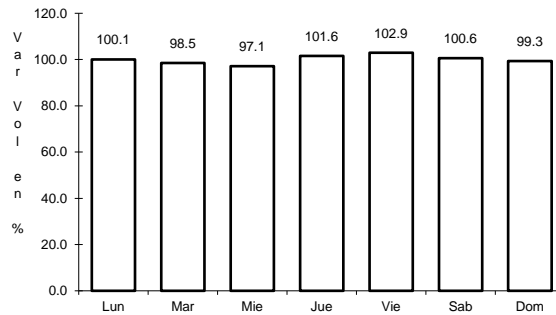
44 CARR: Piste - Dzitás

CLAVE: 31013

RUTA: YUC-013



Km: 0.00 Tipo: 3 Sent: 0

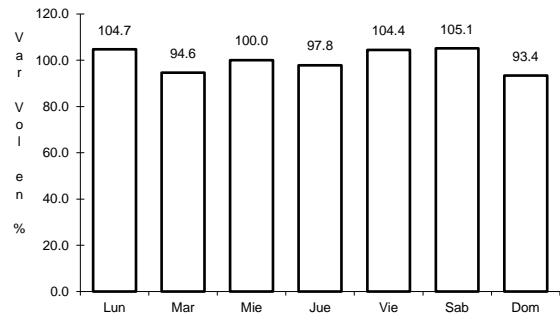


Km: 18.00 Tipo: 1 Sent: 0

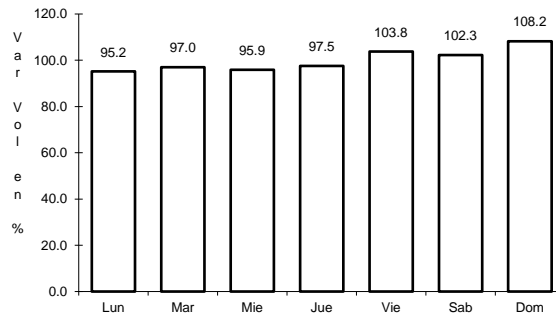
45 CARR: Progreso - Telchac Puerto

CLAVE: 31616

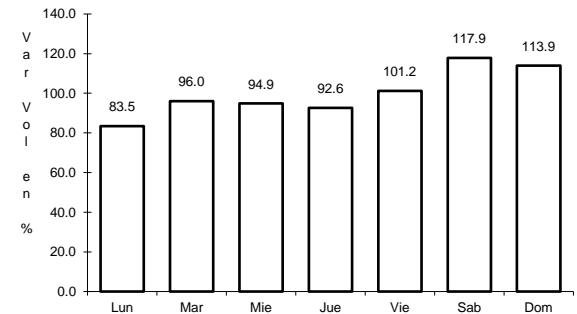
RUTA: YUC-027



Km: 0.00 Tipo: 3 Sent: 1



Km: 0.00 Tipo: 3 Sent: 2

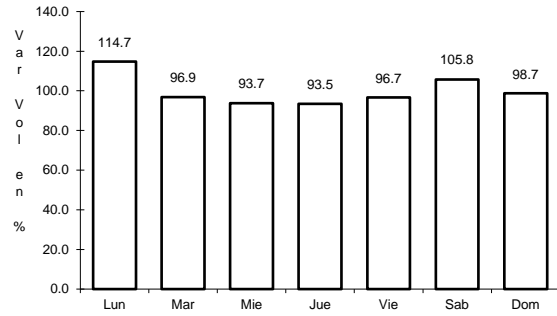


Km: 33.00 Tipo: 1 Sent: 0

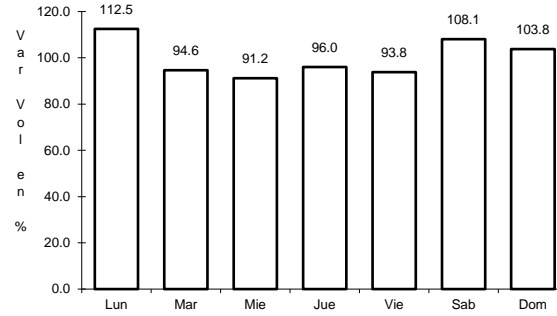
46 CARR: Ramal a Chankom

CLAVE: 31049

RUTA: YUC



Km: 0.00 Tipo: 3 Sent: 0

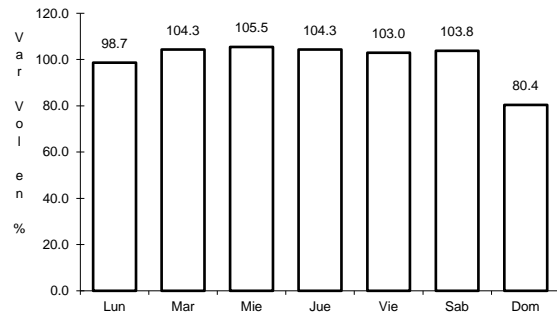


Km: 9.00 Tipo: 1 Sent: 0

47 CARR: Ramal a Dzonot Carretero

CLAVE: 31614

RUTA: YUC

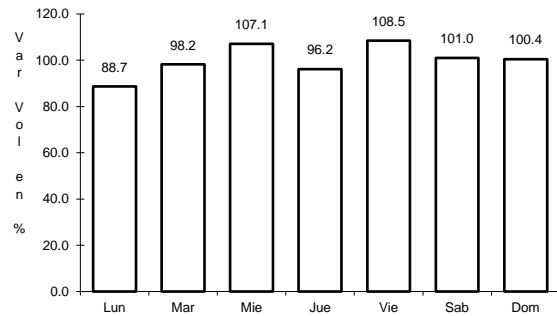


Km: 0.00 Tipo: 3 Sent: 0

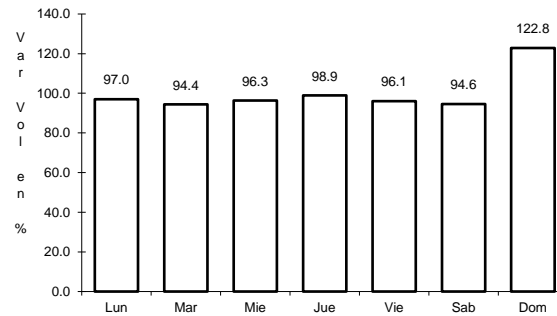
48 CARR: Ramal a San Felipe

CLAVE: 31628

RUTA: YUC



Km: 0.00 Tipo: 3 Sent: 0

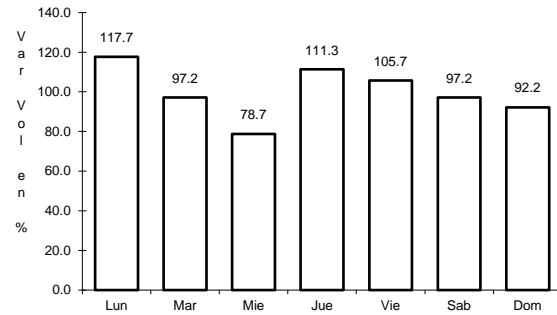


Km: 7.20 Tipo: 1 Sent: 0

49 CARR: Ramal a Tedzidz

CLAVE: 31600

RUTA: YUC



Km: 6.00

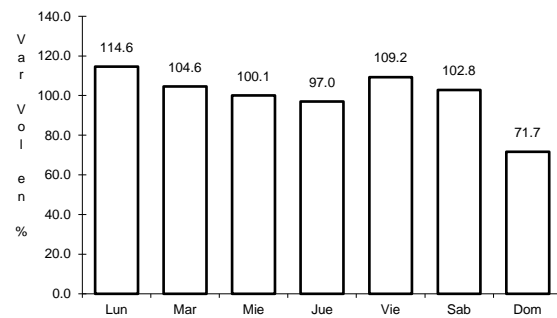
Tipo: 1

Sent: 0

50 CARR: Ramal a Yaxcabá

CLAVE: 31111

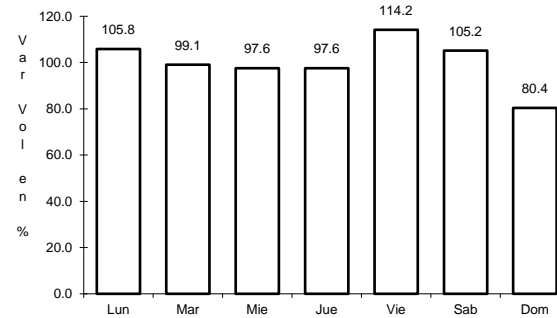
RUTA: YUC-289



Km: 0.00

Tipo: 3

Sent: 0



Km: 18.00

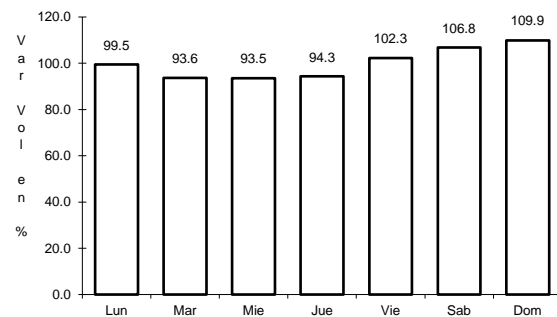
Tipo: 1

Sent: 0

51 CARR: Sinanché - Xitibcanul

CLAVE: 31619

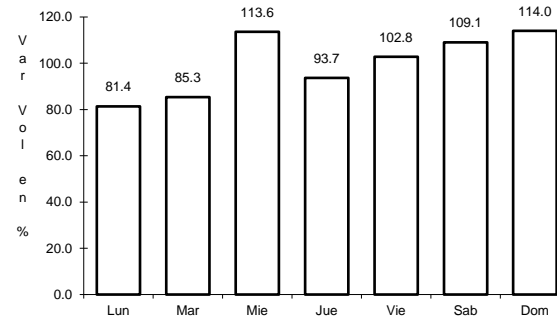
RUTA: YUC



Km: 0.00

Tipo: 3

Sent: 0



Km: 7.00

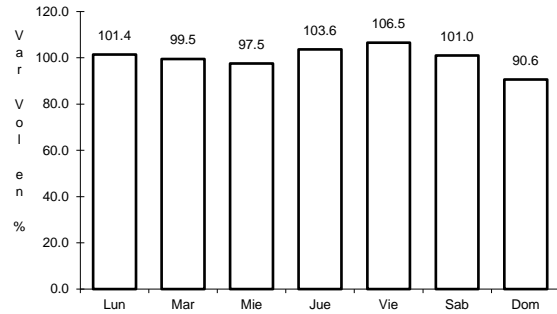
Tipo: 1

Sent: 0

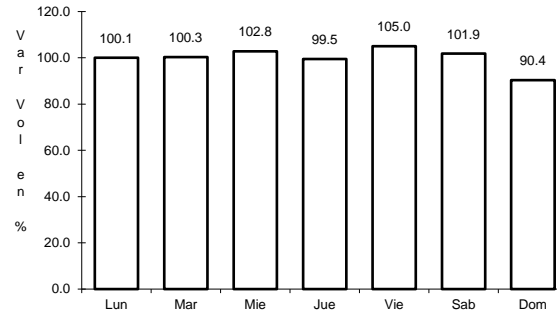
52 CARR: Sucilá - Calotmul

CLAVE: 31617

RUTA: YUC



Km: 2.00 Tipo: 3 Sent: 0

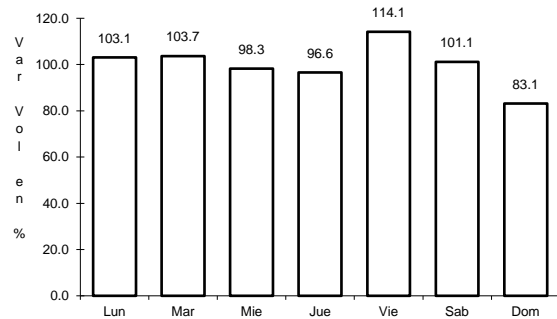


Km: 30.20 Tipo: 1 Sent: 0

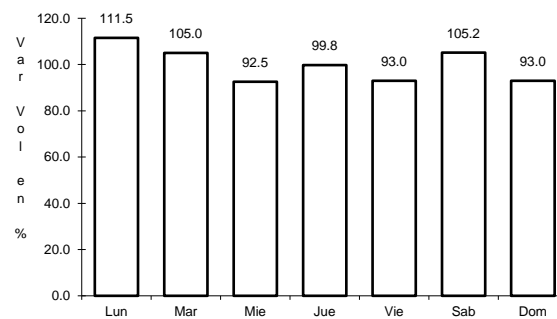
53 CARR: Suma - Izamal

CLAVE: 31081

RUTA: YUC-081



Km: 0.00 Tipo: 3 Sent: 0

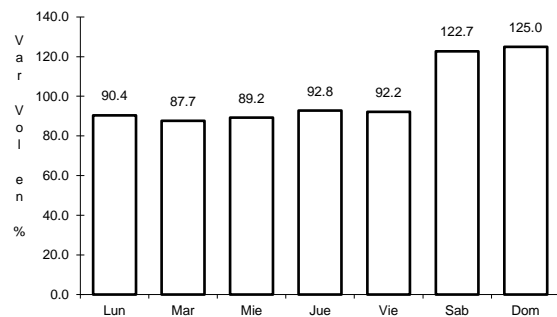


Km: 22.00 Tipo: 1 Sent: 0

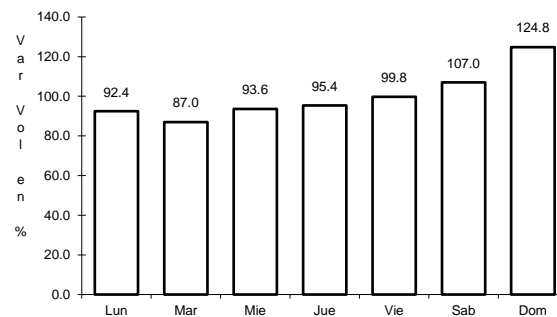
54 CARR: Telchac Puerto - Dzilam de Bravo

CLAVE: 31042

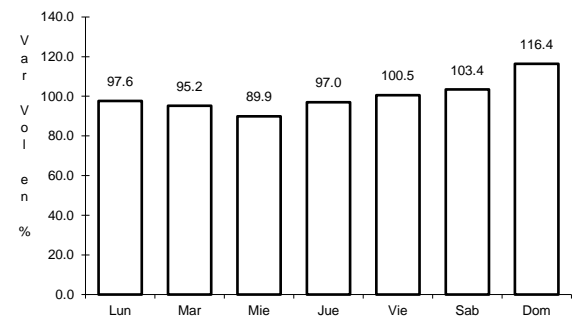
RUTA: YUC



Km: 0.00 Tipo: 3 Sent: 0



Km: 26.00 Tipo: 1 Sent: 0

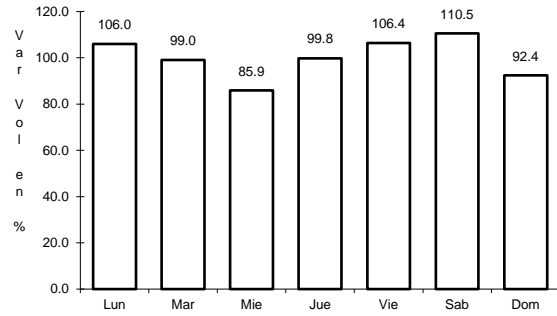


Km: 39.00 Tipo: 1 Sent: 0

55 CARR: Thul - Becanchén

CLAVE: 31104

RUTA: YUC-281



Km: 0.00

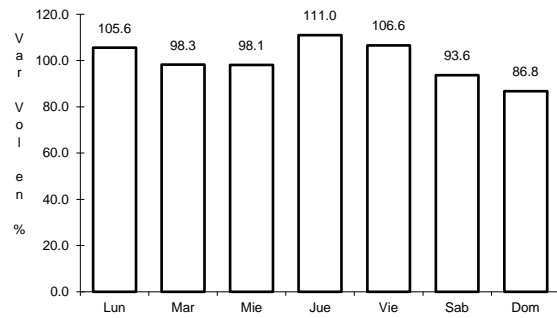
Tipo: 3

Sent: 0

56 CARR: Ticul - Chapab

CLAVE: 31623

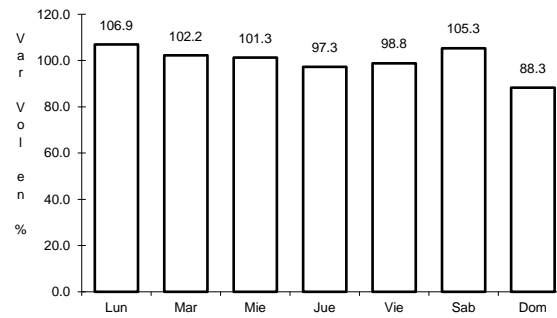
RUTA: YUC



Km: 0.00

Tipo: 3

Sent: 0



Km: 8.00

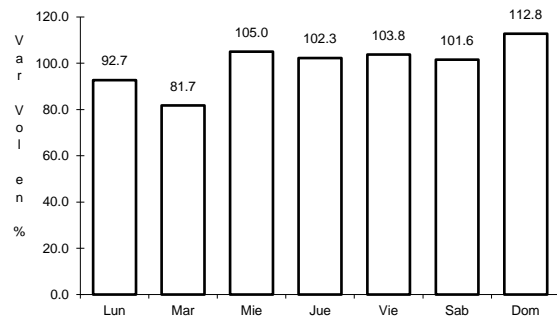
Tipo: 1

Sent: 0

57 CARR: Ticul - Dzan

CLAVE: 31621

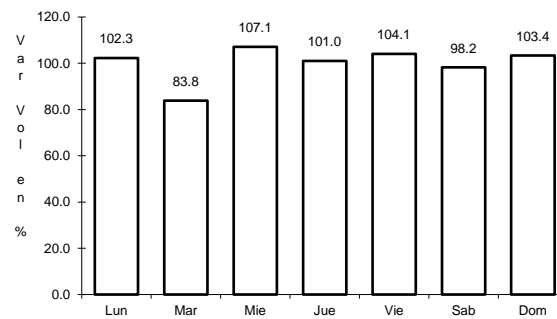
RUTA: YUC



Km: 2.50

Tipo: 3

Sent: 0



Km: 7.00

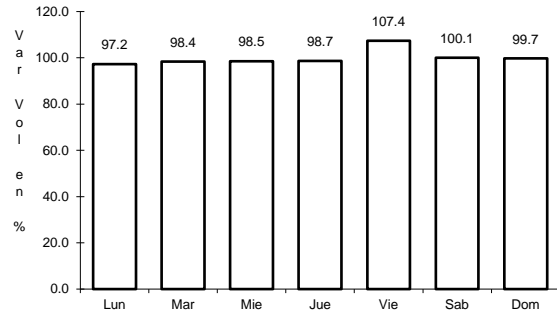
Tipo: 1

Sent: 0

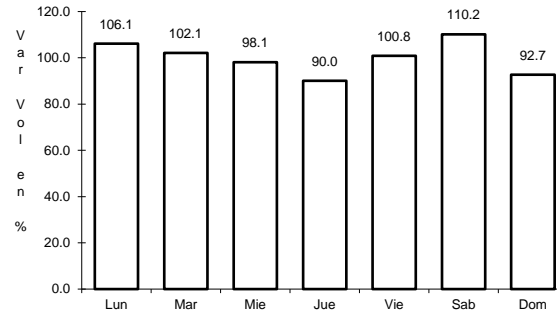
58 CARR: Tixkokob - Baca

CLAVE: 31010

RUTA: YUC



Km: 0.00 Tipo: 3 Sent: 0

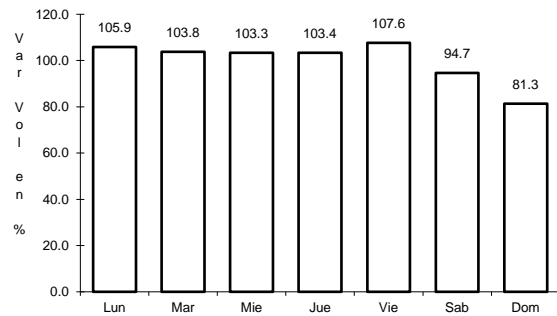


Km: 15.00 Tipo: 1 Sent: 0

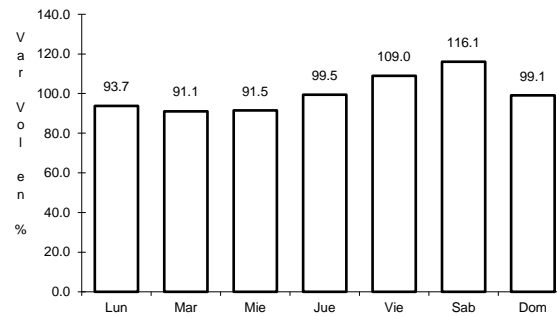
59 CARR: Tixkokob - Sotuta

CLAVE: 31106

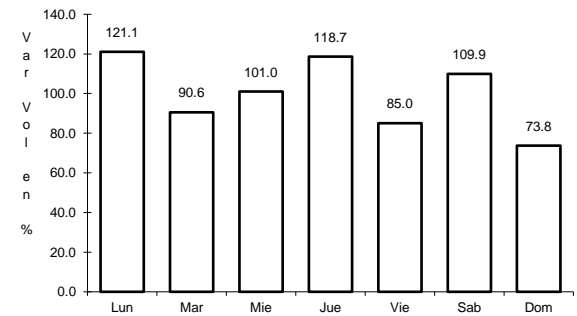
RUTA: YUC



Km: 0.00 Tipo: 3 Sent: 0



Km: 31.00 Tipo: 3 Sent: 0

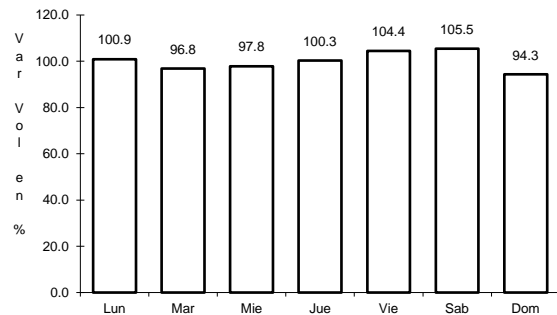


Km: 65.00 Tipo: 1 Sent: 0

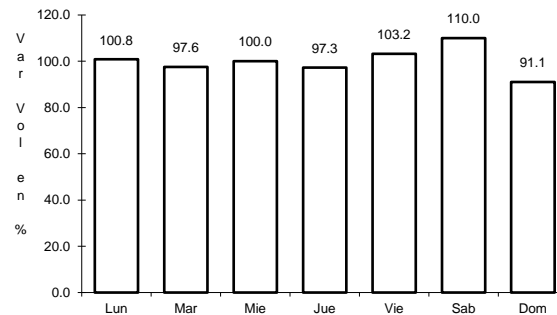
60 CARR: Tizimín - Yucatán

CLAVE: 31588

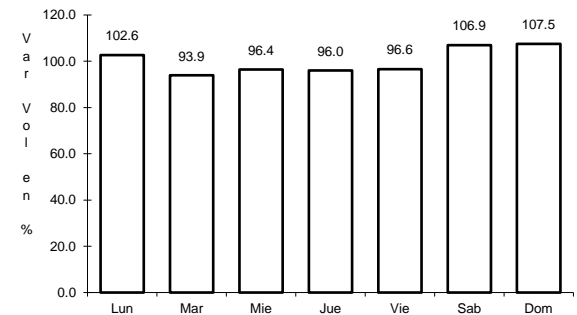
RUTA: YUC



Km: 0.00 Tipo: 3 Sent: 0



Km: 30.00 Tipo: 3 Sent: 0

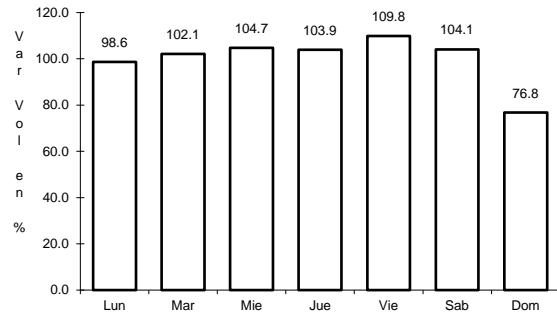


Km: 46.50 Tipo: 1 Sent: 0

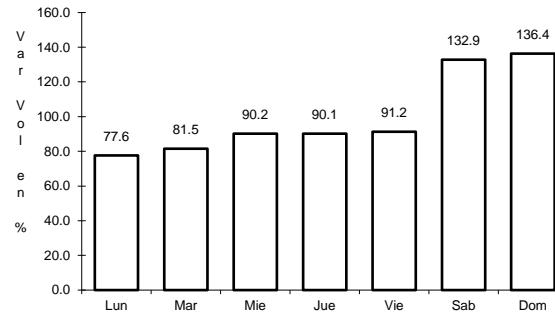
61 CARR: Yaxché - Sierra Papacal

CLAVE: 31620

RUTA: YUC



Km: 0.00 Tipo: 3 Sent: 0

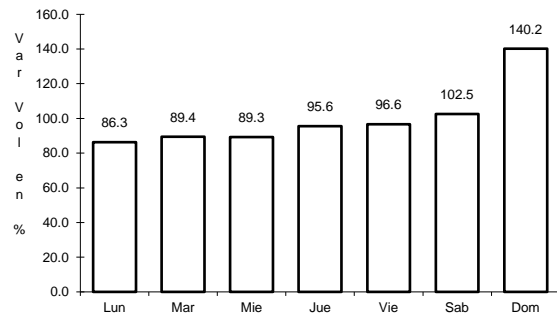


Km: 12.00 Tipo: 1 Sent: 0

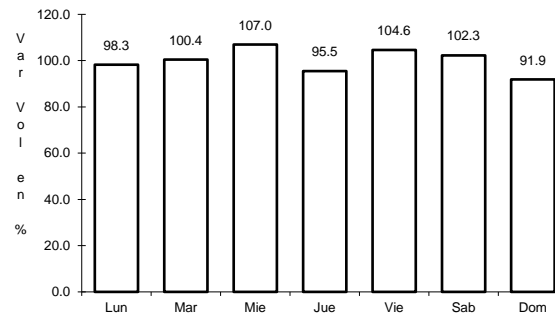
62 CARR: Yobain - Chabihau

CLAVE: 31610

RUTA: YUC



Km: 0.00 Tipo: 3 Sent: 0

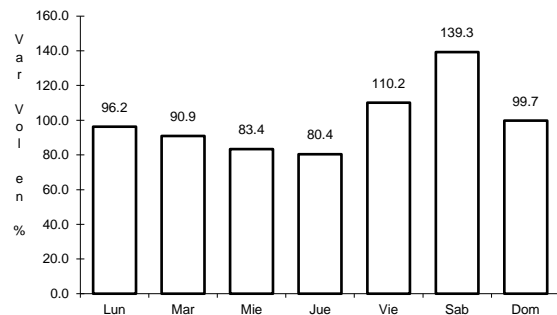


Km: 12.00 Tipo: 1 Sent: 0

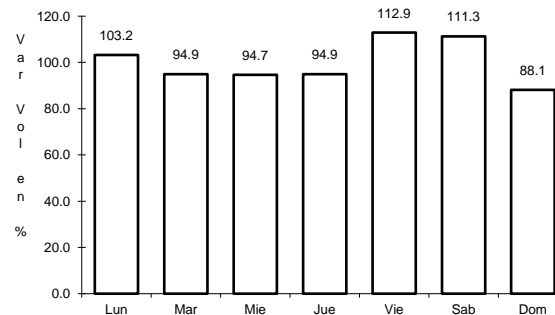
63 CARR: Chemax - Cobá

CLAVE:

RUTA: YUC-MEX-180

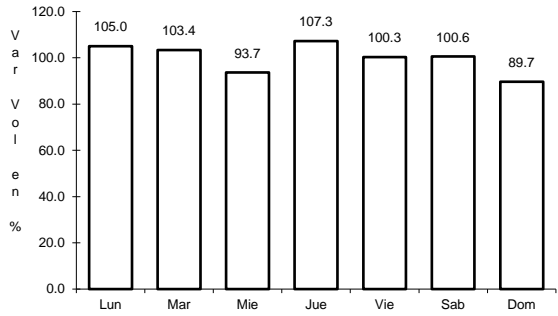


Km: 0.00 Tipo: 3 Sent: 0



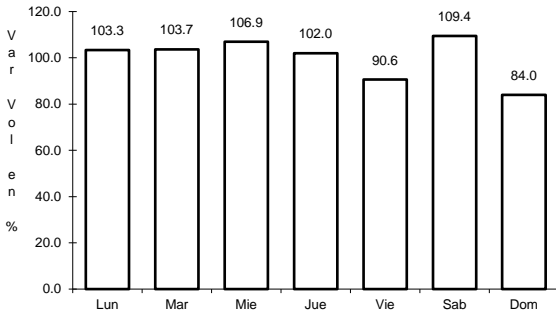
Km: 30.90 Tipo: 1 Sent: 0

64 CARR: Progreso - Celestún



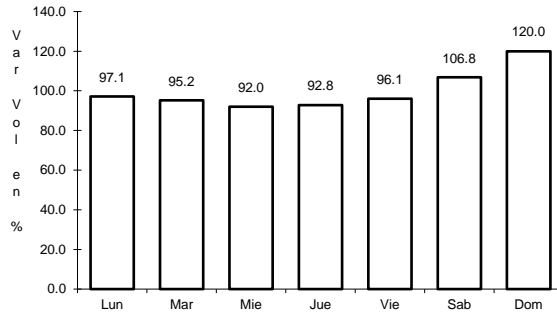
Km: 0.00 Tipo: 3 Sent: 1

CLAVE: 31040



Km: 0.00 Tipo: 3 Sent: 2

RUTA: MEX-YUC



Km: 6.00 Tipo: 3 Sent: 0