

ZACATECAS

## ---RED FEDERAL LIBRE---

1	Aguascalientes - Jalpa	MEX-070
2	Aguascalientes - Zacatecas	MEX-045
3	Blvd. Guadalupe - Zacatecas - La Escondida	MEX-045
4	Carbonera - T. C. (Ent. Morelos - Saltillo)	MEX-062
5	Ent. Cosío - Ent. Cuauhtémoc	MEX-045
6	Ent. La Chicharrona - Cuencamé	MEX-049
7	Ent. Morelos - Ent. Noria de Gringos	MEX-045
8	Ent. Morelos - Saltillo	MEX-054
9	Ent. Rivier - San Marcos	MEX-066
10	Ent. Tesislán - Ent. Malpaso	MEX-023
11	Fresnillo - Valparaíso	MEX-044
12	Guadalajara - Zacatecas	MEX-054
13	Jerez - Fresnillo	MEX-023
14	Libramiento de Guadalupe - Zacatecas	MEX-045
15	Libramiento de Río Grande	MEX-049
16	Libramiento de Sombrerete	MEX-045
17	Providencia - Luis Moya	MEX-071
18	Ramal a Aeropuerto Zacatecas	MEX-045
19	Ramal a Concepción del Oro	MEX-054
20	Ramal a Francisco Murguía (Nieves)	MEX-049
21	Ramal a Gral. Pánfilo Natera	MEX-049
22	Ramal a Ruinas de Chicomostoc	MEX-045
23	Ramal a San Martín	MEX-045
24	Ramal a Villa de Cos	MEX-054
25	San Luis Potosí - Ent. Arcinas	MEX-049
26	San Luis Potosí - Lagos de Moreno	MEX-070-080
27	Zacatecas - Durango	MEX-045

## ---RED FEDERAL DE CUOTA---

28	Ent. Cuauhtémoc - Ent. Osiris (Cuota)	MEX-045D
29	Libramiento de Fresnillo (Cuota)	MEX-045D
30	Libramiento de Víctor Rosales (Cuota)	MEX-045D

## ---RED ESTATAL LIBRE---

31	Calera de Víctor Rosales - Santiaguillo	ZAC-016
32	Cieneguillas - Zacatecas	ZAC
33	Corral de Piedras - Tlaltenango	ZAC
34	Ent. Ojo Caliente - Ent. Ojuelos de Jalisco	ZAC
35	Fresnillo - Ent. Bañón	ZAC
36	Fresnillo - Plateros	ZAC-022
37	Guadalupe - Ent. Cuauhtémoc	ZAC-118
38	Ramal a Loreto	ZAC
39	Ramal a Nochistlán	ZAC
40	Ramal a San Pedro Piedra Gorda	ZAC-AGS
41	San Gil - Jarillas	AGS-012-ZAC
42	San Rafael - Villa García	AGS-ZAC
43	Santa Mónica - Pozo de Gamboa	ZAC
44	Sombrerete - González Ortega	ZAC

## ---RED ESTATAL DE CUOTA---

45	Libramiento Noreste de Zacatecas (Cuota)	ZAC-D
----	--	-------

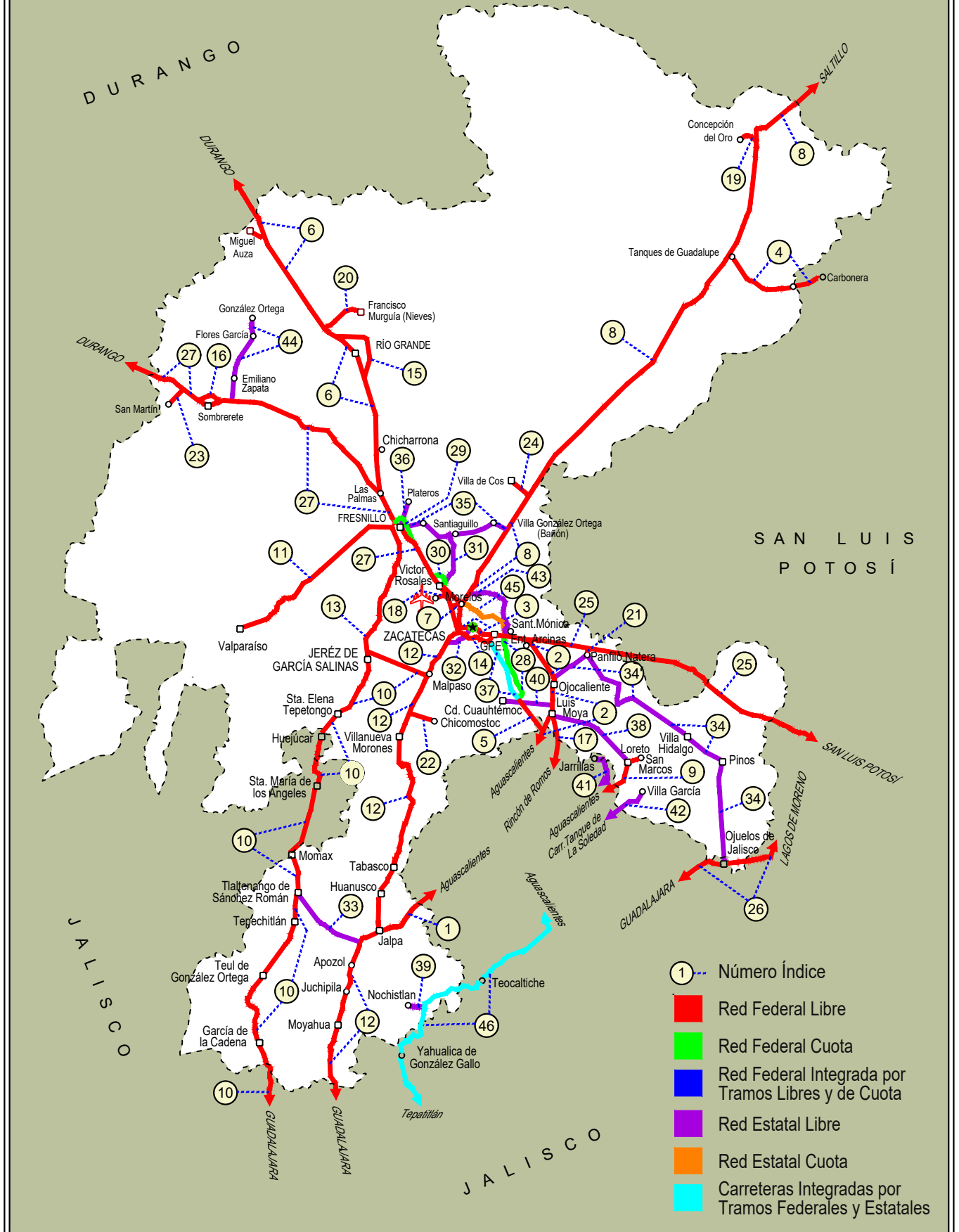
## ---CARRETERAS INTEGRADAS POR TRAMOS FEDERALES Y ESTATALES---

46	Tepatitlán - Jaralillo	MEX-JAL-ZAC
----	------------------------	-------------

# 32 ZACATECAS

SECRETARÍA DE COMUNICACIONES Y TRANSPORTES  
DIRECCIÓN GENERAL DE SERVICIOS TÉCNICOS

COAHUILA





ZACATECAS

1 CARR: Aguascalientes - Jalpa

CLAVE: 00095

RUTA: MEX-070

AÑO: 2021

LUGAR	ESTACION				CLASIFICACION VEHICULAR EN PORCIENTO										COORDENADAS					
	KM	TE	SC	TDPA	M	A	B	C2	C3	T3S2	T3S3	T3S2R4	OTROS	A	B	C	K'	D	LATITUD	LONGITUD
Aguascalientes	0.00	3	1	11191	2.8	91.9	0.9	3.2	0.6	0.3	0.1	0.1	0.1	94.7	0.9	4.4	0.107	0.514	21.874158	-102.335317
Aguascalientes	0.00	3	2	10588	2.8	90.8	0.8	4.1	0.9	0.3	0.1	0.1	0.1	93.6	0.8	5.6	0.094	0.514	21.874023	-102.335349
T. Der. Jesús María	7.30	1	1	8178	1.3	87.7	0.5	8.6	1.0	0.6	0.3	0.0	0.0	89.0	0.5	10.5	0.088	0.504	21.880154	-102.357791
T. Der. Jesús María	7.30	1	2	8311	1.3	87.2	0.5	8.9	1.2	0.6	0.3	0.0	0.0	88.5	0.5	11.0	0.086	0.504	21.880011	-102.357871
T. Izq. Villa Hidalgo	7.80	3	1	5663	2.0	92.3	0.8	2.3	1.1	0.9	0.4	0.2	0.0	94.3	0.8	4.9	0.144	0.518	21.884344	-102.373645
T. Izq. Villa Hidalgo	7.80	3	2	6094	1.7	93.3	0.6	2.1	1.0	0.8	0.3	0.2	0.0	95.0	0.6	4.4	0.114	0.518	21.884209	-102.373695
Libramiento Poniente de Aguascalientes	11.00	1	1	5982	1.8	92.8	0.9	2.4	0.8	0.8	0.3	0.1	0.1	94.6	0.9	4.5	0.148	0.510	21.889593	-102.393214
Libramiento Poniente de Aguascalientes	11.00	1	2	5748	1.4	93.6	0.6	2.4	0.9	0.7	0.3	0.1	0.0	95.0	0.6	4.4	0.111	0.510	21.889486	-102.393274
Libramiento Poniente de Aguascalientes	11.00	3	1	5913	2.3	91.0	0.7	4.3	0.5	0.6	0.4	0.1	0.1	93.3	0.7	6.0	0.158	0.515	21.892261	-102.403226
Libramiento Poniente de Aguascalientes	11.00	3	2	5562	2.3	90.8	0.8	4.4	0.5	0.6	0.4	0.1	0.1	93.1	0.8	6.1	0.115	0.515	21.892162	-102.403266
T. Der. Gracias a Dios	20.00	3	0	8705	1.5	92.3	1.0	2.9	0.8	1.0	0.4	0.1	0.0	93.8	1.0	5.2	0.093	0.500	21.886541	-102.475995
T. Izq. El Salitre	23.17	3	0	7516	2.1	91.6	1.5	2.5	0.9	0.9	0.3	0.1	0.1	93.7	1.5	4.8	0.095	0.507	21.889313	-102.497896
T. Izq. Malpaso	45.10	1	0	7199	2.2	91.7	0.7	2.4	1.2	1.0	0.4	0.3	0.1	93.9	0.7	5.4	0.094	0.509	21.879543	-102.646554
T. Der. Presa La Codorniz	49.30	3	1	10159	4.9	91.4	0.5	1.8	0.8	0.4	0.1	0.1	0.0	96.3	0.5	3.2	0.083	0.516	21.864321	-102.691977
T. Der. Presa La Codorniz	49.30	3	2	9547	4.1	92.2	0.5	1.9	0.7	0.5	0.1	0.0	0.0	96.3	0.5	3.2	0.088	0.516	21.864211	-102.691862
Calvillo	52.30	3	1	5143	4.0	92.0	0.6	2.0	0.7	0.4	0.2	0.1	0.0	96.0	0.6	3.4	0.094	0.502	21.835231	-102.746352
Calvillo	52.30	3	2	5192	3.9	92.4	0.4	1.9	0.8	0.4	0.1	0.1	0.0	96.3	0.4	3.3	0.081	0.502	21.835086	-102.746286
T. Der. Jaltiche de Abajo	63.80	3	0	2468	1.8	89.3	1.3	4.0	1.7	1.2	0.5	0.1	0.1	91.1	1.3	7.6	0.098	0.502	21.771303	-102.804234
Lim. Edos. Term. Ags. Ppia. Zac.	65.66																			
T. C. Guadalajara - Zacatecas	90.66	1	0	4295	3.1	70.0	0.7	18.7	4.4	1.4	0.8	0.8	0.1	73.1	0.7	26.2	0.079	0.504	21.653056	-102.963019

2 CARR: Aguascalientes - Zacatecas

CLAVE: 00524

RUTA: MEX-045

AÑO: 2021

LUGAR	ESTACION				CLASIFICACION VEHICULAR EN PORCIENTO										COORDENADAS					
	KM	TE	SC	TDPA	M	A	B	C2	C3	T3S2	T3S3	T3S2R4	OTROS	A	B	C	K'	D	LATITUD	LONGITUD
Aguascalientes	0.00																			
T. Izq. Pocitos	6.00	1	1	53787	4.8	87.3	1.0	4.1	0.5	0.9	0.4	0.3	0.7	92.1	1.0	6.9	0.068	0.518	21.919748	-102.291726
T. Izq. Pocitos	6.00	1	2	49539	5.5	86.3	1.4	3.9	0.8	0.9	0.4	0.3	0.5	91.8	1.4	6.8	0.068	0.518	21.919752	-102.291939
T. Der. Loreto	9.83	3	1	26562	3.5	85.2	1.7	2.9	1.3	2.9	0.6	1.5	0.4	88.7	1.7	9.6	0.090	0.512	21.972854	-102.289315
T. Der. Loreto	9.83	3	2	27913	3.3	86.2	1.7	3.2	1.3	2.7	0.7	0.7	0.2	89.5	1.7	8.8	0.082	0.512	21.972853	-102.289574
Santa Fé	16.00	1	1	30227	3.0	81.3	2.7	3.9	1.6	4.7	0.9	1.5	0.4	84.3	2.7	13.0	0.091	0.515	22.013192	-102.286747
Santa Fé	16.00	1	2	28370	3.3	80.9	2.2	2.9	1.6	5.0	1.4	2.3	0.4	84.2	2.2	13.6	0.077	0.515	22.013217	-102.286948
Santa Fé	16.00	3	1	23407	1.6	81.8	3.2	3.1	1.7	5.4	1.1	1.7	0.4	83.4	3.2	13.4	0.103	0.518	22.026385	-102.283478
Santa Fé	16.00	3	2	26654	1.9	79.8	2.5	4.2	2.1	5.4	1.9	1.8	0.4	81.7	2.5	15.8	0.083	0.518	22.026423	-102.283662
La Concepción	18.00	3	1	25648	3.0	77.3	2.8	4.8	3.3	5.1	1.2	1.9	0.6	80.3	2.8	16.9	0.088	0.503	22.039311	-102.280546

ZACATECAS

2 CARR: Aguascalientes - Zacatecas

CLAVE: 00524

RUTA: MEX-045

AÑO: 2021

LUGAR	ESTACION				CLASIFICACION VEHICULAR EN PORCIENTO													COORDENADAS		
	KM	TE	SC	TDPA	M	A	B	C2	C3	T3S2	T3S3	T3S2R4	OTROS	A	B	C	K'	D	LATITUD	LONGITUD
La Concepción	18.00	3	2	23868	2.4	77.9	2.6	5.1	2.4	5.2	1.7	2.1	0.6	80.3	2.6	17.1	0.099	0.503	22.039357	-102.280734
T. Libramiento de San Francisco de los Romo Sur	18.80																			
San Francisco de Los Romo	22.73	1	1	6627	2.8	91.3	0.8	2.8	1.2	0.5	0.3	0.2	0.1	94.1	0.8	5.1	0.093	0.500	22.065392	-102.275313
San Francisco de Los Romo	22.73	1	2	6628	2.8	91.3	0.7	2.9	1.2	0.6	0.2	0.2	0.1	94.1	0.7	5.2	0.083	0.500	22.065413	-102.275448
T. Izq. Libramiento San Francisco de Los Romo	24.80	3	1	16802	1.5	80.3	3.6	3.7	2.4	4.8	1.3	1.9	0.5	81.8	3.6	14.6	0.084	0.517	22.096190	-102.274092
T. Izq. Libramiento San Francisco de Los Romo	24.80	3	2	17979	1.8	80.7	3.1	3.5	2.6	4.6	1.2	2.0	0.5	82.5	3.1	14.4	0.074	0.517	22.096192	-102.274208
T. Der. Estación Pabellón	31.00	1	1	14664	1.4	79.2	3.2	3.7	1.9	7.1	1.2	2.0	0.3	80.6	3.2	16.2	0.080	0.520	22.131700	-102.286353
T. Der. Estación Pabellón	31.00	1	2	15877	1.5	79.3	2.8	3.4	1.6	7.3	1.4	2.3	0.4	80.8	2.8	16.4	0.070	0.520	22.131657	-102.286480
T. Der. Estación Pabellón	31.00	3	1	12667	1.9	77.8	3.2	3.8	1.6	7.4	1.2	2.4	0.7	79.7	3.2	17.1	0.091	0.502	22.152148	-102.295157
T. Der. Estación Pabellón	31.00	3	2	12591	2.0	77.2	3.4	3.7	1.4	7.3	1.9	2.5	0.6	79.2	3.4	17.4	0.074	0.502	22.152114	-102.295294
T. Der. Libramiento Rincón de Romos	35.50	1	1	12319	1.8	78.3	3.3	3.6	1.5	7.4	1.4	2.2	0.5	80.1	3.3	16.6	0.113	0.517	22.174559	-102.295485
T. Der. Libramiento Rincón de Romos	35.50	1	2	11522	2.1	78.0	3.4	3.8	1.6	7.2	1.5	2.0	0.4	80.1	3.4	16.5	0.089	0.517	22.174579	-102.295610
T. Der. Libramiento Rincón de Romos	35.50	3	1	5128	4.2	88.1	1.7	4.6	0.7	0.3	0.2	0.1	0.1	92.3	1.7	6.0	0.094	0.505	22.199183	-102.302991
T. Der. Libramiento Rincón de Romos	35.50	3	2	5227	3.9	88.5	1.2	5.1	0.6	0.4	0.1	0.1	0.1	92.4	1.2	6.4	0.089	0.505	22.199113	-102.303109
Rincón de Romos	40.90	3	0	5731	2.6	88.8	0.6	4.8	0.2	2.6	0.2	0.1	0.1	91.4	0.6	8.0	0.091	0.509	22.237413	-102.317696
T. Libramiento Rincón de Romos Norte	46.00																			
La Punta	51.00	1	1	8501	3.1	69.5	4.8	4.7	2.0	9.2	2.3	3.8	0.6	72.6	4.8	22.6	0.073	0.503	22.314379	-102.296571
La Punta	51.00	1	2	8398	2.1	71.4	4.1	4.5	1.7	9.4	2.7	3.6	0.5	73.5	4.1	22.4	0.085	0.503	22.314390	-102.296678
La Punta	51.00	3	1	8295	5.6	66.6	4.5	3.9	2.4	9.8	3.0	3.6	0.6	72.2	4.5	23.3	0.075	0.502	22.334687	-102.292580
La Punta	51.00	3	2	8233	6.0	66.0	4.8	3.8	2.3	10.1	2.9	3.4	0.7	72.0	4.8	23.2	0.080	0.502	22.334688	-102.292687
Cosío	56.00	3	1	8291	5.6	69.1	4.0	3.3	1.9	9.2	2.7	3.7	0.5	74.7	4.0	21.3	0.098	0.537	22.370695	-102.297979
Cosío	56.00	3	2	7158	5.0	67.1	4.5	3.6	2.2	9.9	3.0	4.2	0.5	72.1	4.5	23.4	0.095	0.537	22.370669	-102.298067
Ent. Cosío	57.30																			
Lim. Edos. Term. Ags. Ppia. Zac.	62.67																			
Luis Moya	65.80	1	0	3323	1.3	77.8	0.9	11.0	4.1	3.4	1.4	0.1	0.0	79.1	0.9	20.0	0.113	0.528	22.424440	-102.256131
Luis Moya	65.80	3	1	3195	1.5	81.2	3.1	8.1	1.9	1.7	1.8	0.7	0.0	82.7	3.1	14.2	0.090	0.529	22.449269	-102.254895
Luis Moya	65.80	3	2	3595	1.3	81.3	2.2	10.0	1.5	1.9	1.0	0.8	0.0	82.6	2.2	15.2	0.083	0.529	22.449235	-102.254992
T. Der. San Luis Potosí	100.00	1	0	6044	1.2	81.0	2.5	12.0	1.3	1.2	0.3	0.4	0.1	82.2	2.5	15.3	0.079	0.515	22.700791	-102.317452
T. Der. San Luis Potosí	100.00	3	1	5816	1.6	67.0	3.5	10.0	7.6	5.1	3.4	1.4	0.4	68.6	3.5	27.9	0.095	0.503	22.727360	-102.336110
T. Der. San Luis Potosí	100.00	3	2	5890	1.8	68.8	2.3	7.1	6.8	6.8	3.8	2.1	0.5	70.6	2.3	27.1	0.087	0.503	22.729700	-102.337890
T. Izq. Aguascalientes (Cuota)	113.50	1	1	10136	1.5	75.8	2.2	10.9	2.3	4.0	1.8	1.2	0.3	77.3	2.2	20.5	0.107	0.517	22.751344	-102.437951
T. Izq. Aguascalientes (Cuota)	113.50	1	2	10852	1.5	76.4	2.3	10.4	2.2	4.1	1.5	1.3	0.3	77.9	2.3	19.8	0.105	0.517	22.751156	-102.439785
T. Izq. Libramiento De Guadalupe Y Zacatecas	118.20	1	1	24637	2.1	82.7	1.7	8.3	2.0	2.3	0.4	0.4	0.1	84.8	1.7	13.5	0.079	0.522	22.750775	-102.488507
T. Izq. Libramiento De Guadalupe Y Zacatecas	118.20	1	2	22548	2.0	81.1	1.9	9.7	1.6	2.9	0.3	0.4	0.1	83.1	1.9	15.0	0.079	0.522	22.750667	-102.488509
Zacatecas	119.82																			

ZACATECAS

3 CARR: Blvd. Guadalupe - Zacatecas - La Escondida

CLAVE: 00544

RUTA: MEX-045

AÑO: 2021

LUGAR	ESTACION				CLASIFICACION VEHICULAR EN PORCIENTO										COORDENADAS					
	KM	TE	SC	TDPA	M	A	B	C2	C3	T3S2	T3S3	T3S2R4	OTROS	A	B	C	K'	D	LATITUD	LONGITUD
T. Izq. Lib. Guadalupe - Zacatecas (Alta)	0.00	3	1	27216	1.5	89.8	2.1	5.2	0.4	0.4	0.1	0.4	0.1	91.3	2.1	6.6	0.091	0.500	22.754161	-102.504691
T. Izq. Lib. Guadalupe - Zacatecas (Baja)	0.00	3	1	3781	8.2	82.7	1.6	5.9	0.5	0.5	0.3	0.2	0.1	90.9	1.6	7.5	0.102	0.507	22.754269	-102.504660
T. Izq. Lib. Guadalupe - Zacatecas (Alta)	0.00	3	2	27189	1.6	89.6	2.0	5.3	0.5	0.4	0.1	0.4	0.1	91.2	2.0	6.8	0.075	0.500	22.754009	-102.504772
T. Izq. Lib. Guadalupe - Zacatecas (Baja)	0.00	3	2	3671	8.3	82.6	1.6	5.9	0.5	0.5	0.3	0.2	0.1	90.9	1.6	7.5	0.110	0.507	22.753920	-102.504822
X. Av. Universidad	7.70	1	1	45869	1.8	92.4	0.2	4.6	0.4	0.4	0.2	0.0	0.0	94.2	0.2	5.6	0.076	0.522	22.765480	-102.559920
X. Av. Universidad	7.70	1	2	41526	1.6	92.2	0.2	4.9	0.4	0.4	0.3	0.0	0.0	93.8	0.2	6.0	0.076	0.522	22.764210	-102.556560
T. C. Zacatecas - Durango (Baja)	14.50	1	1	5390	0.9	87.2	5.0	5.8	0.3	0.5	0.1	0.2	0.0	88.1	5.0	6.9	0.158	0.846	22.775142	-102.611420
T. C. Zacatecas - Durango (Alta)	14.50	1	1	26748	2.6	88.5	3.0	4.6	0.3	0.4	0.1	0.4	0.1	91.1	3.0	5.9	0.092	0.588	22.775043	-102.611952
T. C. Zacatecas - Durango (Alta)	14.50	1	2	17587	2.3	88.9	3.0	4.5	0.4	0.3	0.1	0.4	0.1	91.2	3.0	5.8	0.106	0.588	22.774689	-102.609510
T. C. Zacatecas - Durango (Baja)	14.50	1	2	980	1.2	87.0	5.1	5.8	0.3	0.6	0.0	0.0	0.0	88.2	5.1	6.7	0.137	0.846	22.774620	-102.610942

4 CARR: Carbonera - T. C. (Ent. Morelos - Saltillo)

CLAVE: 00218

RUTA: MEX-062

AÑO: 2021

LUGAR	ESTACION				CLASIFICACION VEHICULAR EN PORCIENTO										COORDENADAS					
	KM	TE	SC	TDPA	M	A	B	C2	C3	T3S2	T3S3	T3S2R4	OTROS	A	B	C	K'	D	LATITUD	LONGITUD
Carbonera	0.00	3	0	3371	10.0	73.4	1.0	9.8	1.9	2.2	0.6	1.0	0.1	83.4	1.0	15.6	0.081	0.517	23.702602	-100.626215
Cedral	18.00	1	0	4009	7.0	75.4	0.7	12.4	1.1	2.4	0.3	0.5	0.2	82.4	0.7	16.9	0.101	0.512	23.794200	-100.698373
Cedral	18.00	3	0	3760	9.1	75.3	0.7	9.2	1.7	2.6	0.7	0.5	0.2	84.4	0.7	14.9	0.070	0.517	23.829250	-100.738542
Lim. Edos. Term. S. L. P. Ppia. Zac.	79.20																			
T. C. Ent. Morelos - Saltillo	112.00	1	0	1328	2.1	78.8	1.4	13.7	1.9	1.8	0.2	0.1	0.0	80.9	1.4	17.7	0.069	0.542	24.157078	-101.493236

5 CARR: Ent. Cosío - Ent. Cuauhtémoc

CLAVE: 00579

RUTA: MEX-045

AÑO: 2021

LUGAR	ESTACION				CLASIFICACION VEHICULAR EN PORCIENTO										COORDENADAS					
	KM	TE	SC	TDPA	M	A	B	C2	C3	T3S2	T3S3	T3S2R4	OTROS	A	B	C	K'	D	LATITUD	LONGITUD
T. C. Aguascalientes - Zacatecas	57.20	3	0	10516	0.9	62.3	5.7	5.2	2.6	14.2	2.8	5.4	0.9	63.2	5.7	31.1	0.097	0.500	22.392973	-102.306042
Lim. Edos. Term. Ags. Ppia. Zac.	64.00																			
T. C. Ent. Cuauhtémoc - Ent. Osiris Cuota	70.40	1	0	11270	1.0	64.4	5.4	7.1	3.3	12.8	1.2	4.0	0.8	65.4	5.4	29.2	0.077	0.509	22.479105	-102.352692

6 CARR: Ent. La Chicharrona - Cuencamé

CLAVE: 00152

RUTA: MEX-049

AÑO: 2021

LUGAR	ESTACION				CLASIFICACION VEHICULAR EN PORCIENTO										COORDENADAS					
	KM	TE	SC	TDPA	M	A	B	C2	C3	T3S2	T3S3	T3S2R4	OTROS	A	B	C	K'	D	LATITUD	LONGITUD
Ent. La Chicharrona	0.00	3	1	4917	1.9	55.0	5.0	10.9	4.1	13.7	3.2	5.2	1.0	56.9	5.0	38.1	0.085	0.525	23.307669	-102.958748
Ent. La Chicharrona	0.00	3	2	5442	1.8	53.6	4.1	11.6	3.0	17.0	4.5	3.5	0.9	55.4	4.1	40.5	0.082	0.525	23.308030	-102.958950

ZACATECAS

6 CARR: Ent. La Chicharrona - Cuencamé

CLAVE: 00152

RUTA: MEX-049

AÑO: 2021

LUGAR	ESTACION				CLASIFICACION VEHICULAR EN PORCIENTO										COORDENADAS					
	KM	TE	SC	TDPA	M	A	B	C2	C3	T3S2	T3S3	T3S2R4	OTROS	A	B	C	K'	D	LATITUD	LONGITUD
T. Der. Cañitas de Felipe Pescador	25.86	1	1	4193	1.7	55.7	4.8	10.9	4.2	14.1	4.3	3.4	0.9	57.4	4.8	37.8	0.079	0.531	23.506155	-102.959490
T. Der. Cañitas de Felipe Pescador	25.86	1	2	3697	2.2	53.6	4.9	12.8	3.2	14.6	3.4	4.3	1.0	55.8	4.9	39.3	0.082	0.531	23.506158	-102.959696
T. Libramiento de Río Grande Sur	57.00																			
Río Grande	60.00	1	0	8138	1.1	55.4	4.9	9.5	2.9	14.4	5.4	5.6	0.8	56.5	4.9	38.6	0.079	0.507	23.794212	-103.017126
Río Grande	60.00	3	0	7022	2.0	51.6	6.0	16.2	2.2	14.4	4.1	2.7	0.8	53.6	6.0	40.4	0.076	0.549	23.882680	-103.100390
T. Libramiento de Río Grande Norte	67.40																			
T. Der. Nieves	78.00	3	0	7294	1.2	46.7	6.7	12.0	4.4	17.4	5.6	5.1	0.9	47.9	6.7	45.4	0.075	0.504	23.924365	-103.160416
X. C. Juan Aldama - Miguel Auza	124.50	1	0	7249	1.2	47.1	6.4	18.0	3.0	14.9	3.6	4.8	1.0	48.3	6.4	45.3	0.082	0.545	24.265864	-103.397505
X. C. Juan Aldama - Miguel Auza	124.50	3	0	6649	1.1	49.5	6.0	10.9	3.2	15.9	6.4	6.0	1.0	50.6	6.0	43.4	0.089	0.524	24.286914	-103.406265
Lim. Edos. Term. Zac. Ppia. Dgo.	134.30																			
T. Der. Santa Clara	144.00	1	0	5676	2.6	40.1	7.3	8.1	3.7	22.2	5.8	8.7	1.5	42.7	7.3	50.0	0.063	0.502	24.426331	-103.480002
T. Der. Santa Clara	144.00	3	0	4897	4.3	41.5	6.8	7.2	3.7	21.6	5.3	8.3	1.3	45.8	6.8	47.4	0.067	0.505	24.443555	-103.491247
T. C. Libramiento Exterior Cuencamé	196.10	1	0	5534	11.5	54.7	4.3	17.1	3.2	5.7	1.7	0.9	0.9	66.2	4.3	29.5	0.070	0.542	24.832961	-103.686452
Cuencamé	199.10	1	0	1321	6.6	73.3	2.2	13.0	2.4	1.3	0.9	0.2	0.1	79.9	2.2	17.9	0.072	0.501	24.852403	-103.692788

7 CARR: Ent. Morelos - Ent. Noria de Gringos

CLAVE: 00544

RUTA: MEX-045

AÑO: 2021

LUGAR	ESTACION				CLASIFICACION VEHICULAR EN PORCIENTO										COORDENADAS					
	KM	TE	SC	TDPA	M	A	B	C2	C3	T3S2	T3S3	T3S2R4	OTROS	A	B	C	K'	D	LATITUD	LONGITUD
Ent. Morelos	0.00																			
T. Der. Lib. Noreste de Zacatecas	0.50	1	1	4395	1.8	74.2	4.0	6.4	2.8	5.9	2.2	2.1	0.6	76.0	4.0	20.0	0.078	0.651	22.862600	-102.626807
T. Der. Lib. Noreste de Zacatecas	0.50	1	2	2352	2.1	73.9	3.0	8.8	2.2	4.2	3.1	1.9	0.8	76.0	3.0	21.0	0.090	0.651	22.861974	-102.626069
T. Der. Lib. Noreste de Zacatecas	0.50	3	0	8909	2.0	72.3	2.6	7.2	2.8	5.5	2.6	4.2	0.8	74.3	2.6	23.1	0.089	0.567	22.858734	-102.635683
Ent. Noria de Gringos	2.20																			

8 CARR: Ent. Morelos - Saltillo

CLAVE: 00149

RUTA: MEX-054

AÑO: 2021

LUGAR	ESTACION				CLASIFICACION VEHICULAR EN PORCIENTO										COORDENADAS					
	KM	TE	SC	TDPA	M	A	B	C2	C3	T3S2	T3S3	T3S2R4	OTROS	A	B	C	K'	D	LATITUD	LONGITUD
T. C. Zacatecas - Durango	0.00	3	1	4366	1.6	72.5	3.8	9.7	2.9	5.5	1.6	1.7	0.7	74.1	3.8	22.1	0.074	0.506	22.869020	-102.619545
T. C. Zacatecas - Durango	0.00	3	2	4475	1.4	70.5	3.4	9.4	2.5	7.0	2.1	2.9	0.8	71.9	3.4	24.7	0.082	0.506	22.869062	-102.619630
T. Der. Sta. Mónica	11.00	1	1	4136	1.5	56.6	6.2	16.2	1.8	15.2	0.7	1.3	0.5	58.1	6.2	35.7	0.084	0.510	22.937476	-102.570165
T. Der. Sta. Mónica	11.00	1	2	4308	1.7	55.9	7.4	19.4	1.4	12.0	0.6	1.2	0.4	57.6	7.4	35.0	0.085	0.510	22.937523	-102.570233
T. Der. Sta. Mónica	11.00	3	1	3434	1.9	54.3	5.9	19.4	2.5	13.0	0.8	1.5	0.7	56.2	5.9	37.9	0.075	0.512	22.950459	-102.559183
T. Der. Sta. Mónica	11.00	3	2	3598	1.9	49.5	6.3	23.4	2.6	12.7	0.9	2.0	0.7	51.4	6.3	42.3	0.080	0.512	22.950521	-102.559248



ZACATECAS

8 CARR: Ent. Morelos - Saltillo

CLAVE: 00149

RUTA: MEX-054

AÑO: 2021

LUGAR	ESTACION				CLASIFICACION VEHICULAR EN PORCIENTO										COORDENADAS					
	KM	TE	SC	TDPA	M	A	B	C2	C3	T3S2	T3S3	T3S2R4	OTROS	A	B	C	K'	D	LATITUD	LONGITUD
T. Izq. Villa de Cos	53.90	1	1	3445	1.5	48.6	6.8	20.5	2.0	16.9	0.8	2.1	0.8	50.1	6.8	43.1	0.076	0.504	23.261382	-102.335855
T. Izq. Villa de Cos	53.90	1	2	3391	1.9	47.3	6.8	22.8	2.0	15.4	0.8	2.3	0.7	49.2	6.8	44.0	0.072	0.504	23.261433	-102.335927
T. Izq. Villa de Cos	53.90	3	1	2972	2.1	47.5	6.9	20.7	2.1	16.4	1.1	2.4	0.8	49.6	6.9	43.5	0.086	0.503	23.279309	-102.322878
T. Izq. Villa de Cos	53.90	3	2	2936	2.1	49.1	6.7	19.7	1.9	16.1	1.1	2.5	0.8	51.2	6.7	42.1	0.088	0.503	23.279409	-102.323016
T. Der. Illescas	58.41	3	1	2415	3.0	53.6	6.6	22.5	2.8	7.0	2.2	1.6	0.7	56.6	6.6	36.8	0.076	0.549	23.291441	-102.314087
T. Der. Illescas	58.41	3	2	2941	1.4	43.4	10.1	29.6	1.1	10.5	1.2	1.9	0.8	44.8	10.1	45.1	0.077	0.549	23.291543	-102.314225
Sierra Vieja	85.50	3	1	2015	2.6	46.2	10.5	20.2	2.9	11.3	1.8	3.7	0.8	48.8	10.5	40.7	0.078	0.524	23.505420	-102.121925
Sierra Vieja	85.50	3	2	2219	2.1	44.7	9.0	22.9	2.7	12.5	1.4	3.9	0.8	46.8	9.0	44.2	0.075	0.524	23.505503	-102.122002
T. Der. Majoma	144.50	3	1	2050	1.6	44.1	6.7	25.1	3.3	10.4	3.0	4.8	1.0	45.7	6.7	47.6	0.085	0.528	23.879996	-101.734358
T. Der. Majoma	144.50	3	2	2296	1.5	38.7	7.0	27.3	3.9	12.8	2.9	5.2	0.7	40.2	7.0	52.8	0.081	0.528	23.880055	-101.734475
T. Der. San Tiburcio	185.25	1	1	2215	2.4	51.4	5.4	16.7	1.9	11.4	2.3	7.8	0.7	53.8	5.4	40.8	0.075	0.501	24.155156	-101.497407
T. Der. San Tiburcio	185.25	1	2	2205	2.2	43.3	6.0	19.4	3.7	15.0	3.8	5.8	0.8	45.5	6.0	48.5	0.075	0.501	24.155234	-101.497552
T. Der. San Tiburcio	185.25	3	1	2545	2.5	51.5	5.5	18.6	3.2	11.2	2.5	4.3	0.7	54.0	5.5	40.5	0.085	0.519	24.162714	-101.491991
T. Der. San Tiburcio	185.25	3	2	2742	2.0	50.6	5.9	15.6	3.5	13.9	2.8	4.7	1.0	52.6	5.9	41.5	0.084	0.519	24.162792	-101.492129
T. Izq. Concepción del Oro	240.00	1	1	3015	2.1	44.8	5.2	27.0	2.8	12.0	1.8	3.4	0.9	46.9	5.2	47.9	0.068	0.551	24.611796	-101.369209
T. Izq. Concepción del Oro	240.00	1	2	3141	2.6	42.7	3.9	24.8	2.6	15.7	2.9	4.0	0.8	45.3	3.9	50.8	0.069	0.551	24.611678	-101.369286
T. Izq. Concepción del Oro	240.00	3	1	3092	1.9	57.6	5.6	13.3	3.5	12.1	1.7	3.7	0.6	59.5	5.6	34.9	0.087	0.530	24.647120	-101.343695
T. Izq. Concepción del Oro	240.00	3	2	2739	1.9	49.8	6.0	13.0	3.2	19.7	2.0	3.7	0.7	51.7	6.0	42.3	0.066	0.530	24.647549	-101.346624
Lim. Edos. Term. Zac. Ppia. Coah.	266.50																			
Agua Nueva	322.00	1	0	6585	2.4	63.9	5.5	7.3	1.5	12.8	2.2	4.3	0.1	66.3	5.5	28.2	0.079	0.502	25.179285	-101.094653
T. Der. La Trinidad	333.00	3	1	9432	0.7	80.2	7.5	7.2	1.5	2.4	0.3	0.1	0.1	80.9	7.5	11.6	0.115	0.500	25.282260	-101.087336
T. Der. La Trinidad	333.00	3	2	9450	0.8	80.7	7.4	7.0	1.4	2.1	0.4	0.1	0.1	81.5	7.4	11.1	0.135	0.500	25.282288	-101.087414
X. C. Libramiento de Saltillo	348.00	1	1	21989	3.6	85.4	2.0	5.3	1.4	1.2	0.1	0.8	0.2	89.0	2.0	9.0	0.084	0.506	25.365114	-101.016600
X. C. Libramiento de Saltillo	348.00	1	2	21465	3.9	84.2	2.3	5.8	1.1	1.4	0.2	0.9	0.2	88.1	2.3	9.6	0.070	0.506	25.367251	-101.015817
Saltillo	354.00	1	1	17203	3.1	88.4	1.7	5.2	0.5	0.5	0.3	0.2	0.1	91.5	1.7	6.8	0.079	0.500	25.387812	-101.006254
Saltillo	354.00	1	2	17195	3.5	88.7	1.6	4.6	0.5	0.5	0.3	0.2	0.1	92.2	1.6	6.2	0.068	0.500	25.386562	-101.007033

9 CARR: Ent. Rivier - San Marcos

CLAVE: 00285

RUTA: MEX-066

AÑO: 2021

LUGAR	ESTACION				CLASIFICACION VEHICULAR EN PORCIENTO										COORDENADAS					
	KM	TE	SC	TDPA	M	A	B	C2	C3	T3S2	T3S3	T3S2R4	OTROS	A	B	C	K'	D	LATITUD	LONGITUD
T. C. Aguascalientes - Zacatecas	0.00	3	1	8127	3.2	88.8	1.3	2.7	1.8	1.3	0.3	0.4	0.2	92.0	1.3	6.7	0.094	0.511	21.962404	-102.288024
T. C. Aguascalientes - Zacatecas	0.00	3	2	7787	3.1	88.3	1.4	2.9	1.9	1.5	0.3	0.4	0.2	91.4	1.4	7.2	0.082	0.511	21.962531	-102.288012
T. Izq. El Tepetate	10.50	3	0	10484	4.4	86.5	2.8	3.5	1.4	1.0	0.2	0.2	0.0	90.9	2.8	6.3	0.114	0.512	21.999682	-102.193373
T. Der. Jilotepec	23.60	3	0	9500	4.4	85.2	3.3	4.8	1.2	0.8	0.1	0.2	0.0	89.6	3.3	7.1	0.124	0.534	22.057966	-102.097134

ZACATECAS

9 CARR: Ent. Rivier - San Marcos

CLAVE: 00285

RUTA: MEX-066

AÑO: 2021

LUGAR	ESTACION				CLASIFICACION VEHICULAR EN PORCIENTO										COORDENADAS					
	KM	TE	SC	TDPA	M	A	B	C2	C3	T3S2	T3S3	T3S2R4	OTROS	A	B	C	K'	D	LATITUD	LONGITUD
Villa Juárez	30.00	3	0	10829	4.3	86.1	1.7	5.2	1.7	0.8	0.1	0.1	0.0	90.4	1.7	7.9	0.114	0.511	22.109061	-102.058215
Ciénega Grande	41.50	1	0	9147	5.2	85.0	1.7	5.1	1.9	0.7	0.2	0.2	0.0	90.2	1.7	8.1	0.090	0.505	22.186093	-102.020803
Ciénega Grande	41.50	3	0	7664	2.1	93.8	1.0	1.1	0.8	0.8	0.1	0.3	0.0	95.9	1.0	3.1	0.093	0.510	22.204973	-102.012331
Lim. Edos. Term. Ags. Ppia. Zac.	45.75																			
San Marcos	55.34	1	0	9157	11.5	80.3	1.3	2.8	1.4	1.0	0.7	0.8	0.2	91.8	1.3	6.9	0.089	0.503	22.276745	-101.956066

10 CARR: Ent. Tesistán - Ent. Malpaso

CLAVE: 00584

RUTA: MEX-023

AÑO: 2021

LUGAR	ESTACION				CLASIFICACION VEHICULAR EN PORCIENTO										COORDENADAS					
	KM	TE	SC	TDPA	M	A	B	C2	C3	T3S2	T3S3	T3S2R4	OTROS	A	B	C	K'	D	LATITUD	LONGITUD
T. C. Guadalajara - Tesistán	0.00	3	1	19087	2.5	83.7	0.6	5.3	0.7	3.4	2.9	0.4	0.5	86.2	0.6	13.2	0.107	0.510	20.796452	-103.459040
T. C. Guadalajara - Tesistán	0.00	3	2	19890	2.5	82.5	0.6	5.6	0.8	3.9	3.2	0.4	0.5	85.0	0.6	14.4	0.113	0.510	20.796479	-103.459122
Lim. Edos. Term. Jal. Ppia. Zac.	42.00																			
García de La Cadena	54.00	1	0	1658	1.9	82.3	1.9	8.8	1.5	1.7	1.6	0.1	0.2	84.2	1.9	13.9	0.081	0.521	21.193126	-103.464572
Tlaltenango de Sánchez Román	147.50	3	0	7009	3.3	82.2	1.2	8.4	1.5	2.1	1.0	0.2	0.1	85.5	1.2	13.3	0.085	0.505	21.803695	-103.298682
Momax	165.00	3	0	3357	2.9	84.3	1.7	6.3	1.2	1.3	1.2	1.0	0.1	87.2	1.7	11.1	0.085	0.510	21.935921	-103.307475
Lim. Edos. Term. Zac. Ppia. Jal.	171.80																			
Colotlán	175.00	1	0	5020	1.8	84.6	1.5	8.0	0.9	1.0	1.3	0.8	0.1	86.4	1.5	12.1	0.074	0.531	22.089307	-103.272064
Lim. Edos. Term. Jal. Ppia. Zac.	209.90																			
Lim. Edos. Term. Zac. Ppia. Jal.	214.80																			
Lim. Edos. Term. Jal. Ppia. Zac.	223.95																			
Tepetongo	235.00	3	0	5197	1.5	84.3	0.9	9.5	0.7	1.4	0.9	0.7	0.1	85.8	0.9	13.3	0.071	0.530	22.466181	-103.142309
Jerez de García Salinas	249.00	1	1	4076	1.7	88.6	0.4	6.3	0.7	0.5	0.6	0.9	0.3	90.3	0.4	9.3	0.072	0.511	22.600804	-103.017534
Jerez de García Salinas	249.00	1	2	3846	1.5	88.3	0.6	6.8	0.6	0.6	0.6	0.9	0.1	89.8	0.6	9.6	0.074	0.511	22.600727	-103.017449
T. C. Guadalajara - Zacatecas	275.00	1	1	4021	0.6	88.9	1.6	6.1	0.8	1.2	0.6	0.1	0.1	89.5	1.6	8.9	0.103	0.505	22.617371	-102.785357
T. C. Guadalajara - Zacatecas	275.00	1	2	4073	1.0	86.7	2.0	7.2	1.0	1.3	0.6	0.1	0.1	87.7	2.0	10.3	0.092	0.505	22.617236	-102.785361

11 CARR: Fresnillo - Valparaíso

CLAVE: 32547

RUTA: MEX-044

AÑO: 2021

LUGAR	ESTACION				CLASIFICACION VEHICULAR EN PORCIENTO										COORDENADAS					
	KM	TE	SC	TDPA	M	A	B	C2	C3	T3S2	T3S3	T3S2R4	OTROS	A	B	C	K'	D	LATITUD	LONGITUD
Fresnillo	0.00	3	0	8618	3.7	73.7	2.1	13.0	2.4	3.3	1.4	0.3	0.1	77.4	2.1	20.5	0.099	0.508	23.174022	-102.919763
T. Izq. Guanajuato	24.50	1	0	2554	1.4	83.2	1.0	11.2	1.3	1.2	0.7	0.0	0.0	84.6	1.0	14.4	0.078	0.500	23.106543	-103.080265
T. Izq. Sombrerillo	45.00	3	0	1734	1.2	80.2	2.8	13.3	1.4	0.9	0.2	0.0	0.0	81.4	2.8	15.8	0.105	0.513	22.996277	-103.214847
T. Izq. San José de Llanetes	55.00	3	0	1552	3.2	74.4	3.3	12.2	2.6	2.9	1.4	0.0	0.0	77.6	3.3	19.1	0.078	0.513	22.915484	-103.301922

ZACATECAS

11 CARR: Fresnillo - Valparaíso

CLAVE: 32547

RUTA: MEX-044

AÑO: 2021

LUGAR	ESTACION				CLASIFICACION VEHICULAR EN PORCIENTO										COORDENADAS					
	KM	TE	SC	TDPA	M	A	B	C2	C3	T3S2	T3S3	T3S2R4	OTROS	A	B	C	K'	D	LATITUD	LONGITUD
T. Izq. Lobatos	71.00	3	0	2325	1.0	84.0	1.4	10.8	1.5	1.0	0.3	0.0	0.0	85.0	1.4	13.6	0.086	0.503	22.831771	-103.423131
Valparaíso	90.00	1	0	2640	1.2	82.2	1.7	11.9	1.3	1.2	0.5	0.0	0.0	83.4	1.7	14.9	0.076	0.503	22.797444	-103.542492

12 CARR: Guadalajara - Zacatecas

CLAVE: 00150

RUTA: MEX-054

AÑO: 2021

LUGAR	ESTACION				CLASIFICACION VEHICULAR EN PORCIENTO										COORDENADAS					
	KM	TE	SC	TDPA	M	A	B	C2	C3	T3S2	T3S3	T3S2R4	OTROS	A	B	C	K'	D	LATITUD	LONGITUD
Guadalajara	0.00																			
X. Periférico de Guadalajara	6.19	3	1	3062	2.1	79.7	1.2	12.4	0.9	0.7	0.7	1.4	0.9	81.8	1.2	17.0	0.072	0.512	20.768341	-103.339820
X. Periférico de Guadalajara	6.19	3	2	3219	2.3	78.0	1.0	13.9	0.9	0.9	0.9	1.3	0.8	80.3	1.0	18.7	0.102	0.512	20.767938	-103.339817
T. Der. Ixtlahuacán del Río	49.46	3	0	5041	2.5	78.8	1.3	11.9	1.5	3.0	0.5	0.2	0.3	81.3	1.3	17.4	0.085	0.534	20.871093	-103.236851
Lim. Edos. Term. Jal. Ppia. Zac.	76.49																			
T. Izq. Moyahua	106.43	1	0	2379	3.6	75.6	4.0	6.6	4.3	2.4	3.5	0.0	0.0	79.2	4.0	16.8	0.073	0.510	21.251216	-103.161718
Apozol	129.28	1	0	4645	2.8	80.9	1.5	6.8	2.5	3.6	1.1	0.6	0.2	83.7	1.5	14.8	0.090	0.513	21.450832	-103.093617
Jalpa	159.39	1	0	4632	1.1	84.5	1.8	6.8	0.9	1.5	1.2	1.5	0.7	85.6	1.8	12.6	0.072	0.503	21.617406	-103.003170
Tabasco	189.40	1	0	3275	1.3	79.5	1.2	11.9	1.2	2.0	1.1	1.5	0.3	80.8	1.2	18.0	0.088	0.514	21.843618	-102.933638
Tabasco	189.40	3	0	3953	2.3	79.8	1.3	10.8	2.0	2.2	0.8	0.5	0.3	82.1	1.3	16.6	0.089	0.504	21.886401	-102.906331
Villanueva	255.70	3	0	4397	1.7	84.8	2.5	4.7	2.0	2.1	1.0	0.7	0.5	86.5	2.5	11.0	0.089	0.511	22.375754	-102.881666
T. Izq. Jerez de García Salinas	289.13	1	1	1992	1.2	85.5	1.9	5.4	1.5	2.0	1.2	0.8	0.5	86.7	1.9	11.4	0.091	0.531	22.600497	-102.764835
T. Izq. Jerez de García Salinas	289.13	1	2	2259	1.2	84.9	2.2	5.4	1.7	2.4	1.0	0.7	0.5	86.1	2.2	11.7	0.082	0.531	22.601421	-102.764431
T. Izq. Jerez de García Salinas	289.13	3	1	6364	1.7	88.8	2.0	2.8	1.7	1.6	0.7	0.4	0.3	90.5	2.0	7.5	0.090	0.562	22.625413	-102.750991
T. Izq. Jerez de García Salinas	289.13	3	2	6285	1.3	86.8	2.3	3.7	2.0	2.2	1.1	0.4	0.2	88.1	2.3	9.6	0.097	0.562	22.625432	-102.751069
T. C. Zacatecas - Durango	311.83	1	1	9644	2.5	84.9	2.4	6.0	1.5	1.2	1.4	0.1	0.0	87.4	2.4	10.2	0.070	0.522	22.771427	-102.631138
T. C. Zacatecas - Durango	311.83	1	2	10539	3.0	84.4	2.2	6.6	1.6	1.0	0.6	0.5	0.1	87.4	2.2	10.4	0.090	0.522	22.770905	-102.632499

13 CARR: Jerez - Fresnillo

CLAVE: 32542

RUTA: MEX-023

AÑO: 2021

LUGAR	ESTACION				CLASIFICACION VEHICULAR EN PORCIENTO										COORDENADAS					
	KM	TE	SC	TDPA	M	A	B	C2	C3	T3S2	T3S3	T3S2R4	OTROS	A	B	C	K'	D	LATITUD	LONGITUD
Jerez	0.00	3	0	2245	2.9	85.4	1.4	6.9	1.2	1.4	0.6	0.1	0.1	88.3	1.4	10.3	0.079	0.504	22.683600	-103.015760
T. C. Ent. Fresnillo - Valparaíso	60.00	1	0	4584	3.8	81.4	0.8	7.8	3.1	2.2	0.6	0.1	0.2	85.2	0.8	14.0	0.086	0.525	23.156453	-102.882049

ZACATECAS

14 CARR: Libramiento de Guadalupe - Zacatecas

CLAVE: 32582

RUTA: MEX-045

AÑO: 2021

LUGAR	ESTACION				CLASIFICACION VEHICULAR EN PORCIENTO														COORDENADAS	
	KM	TE	SC	TDPA	M	A	B	C2	C3	T3S2	T3S3	T3S2R4	OTROS	A	B	C	K'	D	LATITUD	LONGITUD
T. C. Aguascalientes - Zacatecas (Alta)	0.00	3	1	15184	1.4	76.9	3.6	9.4	2.5	3.2	1.8	1.0	0.2	78.3	3.6	18.1	0.072	0.531	22.740917	-102.504094
T. C. Aguascalientes - Zacatecas (Baja)	0.00	3	1	5250	4.6	82.4	0.8	8.6	1.5	1.0	0.6	0.4	0.1	87.0	0.8	12.2	0.078	0.514	22.741220	-102.503550
T. C. Aguascalientes - Zacatecas (Baja)	0.00	3	2	5561	4.6	82.7	0.8	8.6	1.3	1.1	0.5	0.3	0.1	87.3	0.8	11.9	0.089	0.514	22.740268	-102.504690
T. C. Aguascalientes - Zacatecas (Alta)	0.00	3	2	13435	1.5	76.8	3.6	9.4	2.5	3.2	1.8	1.0	0.2	78.3	3.6	18.1	0.067	0.531	22.740239	-102.505771
X. C. Cieneguillas - Zacatecas (Alta)	13.00	3	1	17074	9.7	71.4	2.7	4.4	2.5	4.6	1.6	2.5	0.6	81.1	2.7	16.2	0.087	0.520	22.756863	-102.596591
X. C. Cieneguillas - Zacatecas (Alta)	13.00	3	2	15755	9.7	71.3	2.7	4.4	2.5	4.6	1.6	2.6	0.6	81.0	2.7	16.3	0.097	0.520	22.756781	-102.596602
T. C. Zacatecas - Durango	17.50	1	1	11729	1.0	78.4	3.0	8.0	1.9	4.3	1.5	1.5	0.4	79.4	3.0	17.6	0.096	0.540	22.773740	-102.620180
T. C. Zacatecas - Durango	17.50	1	2	13767	0.9	78.5	3.0	8.0	1.9	4.3	1.5	1.5	0.4	79.4	3.0	17.6	0.078	0.540	22.773100	-102.618640

15 CARR: Libramiento de Río Grande

CLAVE:

RUTA: MEX-049

AÑO: 2021

LUGAR	ESTACION				CLASIFICACION VEHICULAR EN PORCIENTO														COORDENADAS	
	KM	TE	SC	TDPA	M	A	B	C2	C3	T3S2	T3S3	T3S2R4	OTROS	A	B	C	K'	D	LATITUD	LONGITUD
T. C. La Chicharrona - Cuernamé (Sur)	55.90	3	0	8285	0.9	48.4	4.9	11.1	3.0	18.2	4.5	8.0	1.0	49.3	4.9	45.8	0.074	0.517	23.806960	-103.013606
T. C. La Chicharrona - Cuernamé (Norte)	68.59	1	0	8114	2.1	58.8	4.0	10.7	2.6	13.0	3.6	4.2	1.0	60.9	4.0	35.1	0.086	0.535	23.862290	-103.067340

16 CARR: Libramiento de Sombrerete

CLAVE:

RUTA: MEX-045

AÑO: 2021

LUGAR	ESTACION				CLASIFICACION VEHICULAR EN PORCIENTO														COORDENADAS	
	KM	TE	SC	TDPA	M	A	B	C2	C3	T3S2	T3S3	T3S2R4	OTROS	A	B	C	K'	D	LATITUD	LONGITUD
T. C. Zacatecas - Durango Oriente	158.00																			
T. C. Zacatecas - Durango Poniente	163.50	1	0	3534	2.2	71.7	3.1	6.3	3.1	10.6	1.5	1.3	0.2	73.9	3.1	23.0	0.084	0.509	23.656410	-103.649076

17 CARR: Providencia - Luis Moya

CLAVE: 00112

RUTA: MEX-071

AÑO: 2021

LUGAR	ESTACION				CLASIFICACION VEHICULAR EN PORCIENTO														COORDENADAS	
	KM	TE	SC	TDPA	M	A	B	C2	C3	T3S2	T3S3	T3S2R4	OTROS	A	B	C	K'	D	LATITUD	LONGITUD
T. C. Aguascalientes - Zacatecas	0.00	3	0	5139	4.6	77.7	1.2	5.5	2.5	2.8	2.4	2.6	0.7	82.3	1.2	16.5	0.077	0.531	22.060777	-102.274103
T. Izq. Pabellón de Arteaga	12.10	1	0	6250	2.8	80.3	2.2	4.5	2.1	1.9	2.4	3.0	0.8	83.1	2.2	14.7	0.077	0.539	22.144710	-102.251472
T. Der. Villa Juárez	14.90	3	0	7031	3.8	85.0	1.7	3.1	1.3	1.3	1.1	2.2	0.5	88.8	1.7	9.5	0.078	0.507	22.175688	-102.245462
X. C. Rincón de Romos - Ciénega Grande	21.22	3	0	5988	4.3	85.2	2.0	3.1	1.9	1.0	1.1	1.2	0.2	89.5	2.0	8.5	0.076	0.511	22.230765	-102.241419
X. C. La Punta - Mesillas	30.35	3	0	3324	2.8	77.9	1.4	11.0	1.9	1.9	2.1	0.9	0.1	80.7	1.4	17.9	0.085	0.509	22.318089	-102.233706
San Jacinto	34.25	3	0	2303	5.9	73.3	0.4	11.0	2.2	3.2	1.8	1.9	0.3	79.2	0.4	20.4	0.073	0.520	22.353070	-102.232531
Lim. Edos. Term. Ags. Ppia. Zac.	37.50																			
Luis Moya	43.52	1	0	4700	2.6	74.3	0.5	16.1	1.1	2.9	1.4	0.8	0.3	76.9	0.5	22.6	0.078	0.522	22.423516	-102.246328

ZACATECAS

18 CARR: Ramal a Aeropuerto Zacatecas

CLAVE: 32546

RUTA: MEX-045

AÑO: 2021

LUGAR	ESTACION				CLASIFICACION VEHICULAR EN PORCIENTO														COORDENADAS	
	KM	TE	SC	TDPA	M	A	B	C2	C3	T3S2	T3S3	T3S2R4	OTROS	A	B	C	K'	D	LATITUD	LONGITUD
T. C. Zacatecas - Durango	0.00	3	1	2148	2.2	80.6	3.9	9.4	2.2	0.7	0.4	0.4	0.2	82.8	3.9	13.3	0.127	0.508	22.909155	-102.674431
T. C. Zacatecas - Durango Aeropuerto	0.00	3	2	2219	1.5	79.9	2.9	11.3	2.2	1.3	0.3	0.4	0.2	81.4	2.9	15.7	0.152	0.508	22.909116	-102.674346
	1.95																			

19 CARR: Ramal a Concepción del Oro

CLAVE: 32565

RUTA: MEX-054

AÑO: 2021

LUGAR	ESTACION				CLASIFICACION VEHICULAR EN PORCIENTO														COORDENADAS	
	KM	TE	SC	TDPA	M	A	B	C2	C3	T3S2	T3S3	T3S2R4	OTROS	A	B	C	K'	D	LATITUD	LONGITUD
T. C. Ent. Morelos - Saltillo	0.00	3	0	5548	7.4	57.9	3.4	7.8	10.6	7.7	2.3	2.4	0.5	65.3	3.4	31.3	0.078	0.501	24.620372	-101.403213
Concepción del Oro	3.20																			

20 CARR: Ramal a Francisco Murguía (Nieves)

CLAVE: 32541

RUTA: MEX-049

AÑO: 2021

LUGAR	ESTACION				CLASIFICACION VEHICULAR EN PORCIENTO														COORDENADAS	
	KM	TE	SC	TDPA	M	A	B	C2	C3	T3S2	T3S3	T3S2R4	OTROS	A	B	C	K'	D	LATITUD	LONGITUD
T. C. Ent. La Chicharrona - Cuencamé	0.00	3	0	1528	0.3	76.5	0.5	20.4	0.9	0.6	0.6	0.1	0.1	76.8	0.5	22.7	0.100	0.518	23.925054	-103.155628
Francisco Murguía (Nieves)	17.40																			

21 CARR: Ramal a Gral. Pánfilo Natera

CLAVE: 32559

RUTA: MEX-049

AÑO: 2021

LUGAR	ESTACION				CLASIFICACION VEHICULAR EN PORCIENTO														COORDENADAS	
	KM	TE	SC	TDPA	M	A	B	C2	C3	T3S2	T3S3	T3S2R4	OTROS	A	B	C	K'	D	LATITUD	LONGITUD
T. C. San Luis Potosí - Ent. Arcinas	0.00	3	1	2460	7.7	77.1	1.5	12.4	0.8	0.3	0.1	0.0	0.1	84.8	1.5	13.7	0.088	0.506	22.674514	-102.107646
T. C. San Luis Potosí - Ent. Arcinas	0.00	3	2	2390	7.4	77.0	1.4	13.0	1.0	0.1	0.1	0.0	0.0	84.4	1.4	14.2	0.080	0.506	22.674490	-102.107547
Gral. Pánfilo Natera	1.50																			

22 CARR: Ramal a Ruinas de Chicomostoc

CLAVE: 00544

RUTA: MEX-045

AÑO: 2021

LUGAR	ESTACION				CLASIFICACION VEHICULAR EN PORCIENTO														COORDENADAS	
	KM	TE	SC	TDPA	M	A	B	C2	C3	T3S2	T3S3	T3S2R4	OTROS	A	B	C	K'	D	LATITUD	LONGITUD
T. C. Guadalajara - Zacatecas	0.00	3	0	85	5.1	88.8	2.3	3.4	0.4	0.0	0.0	0.0	0.0	93.9	2.3	3.8	0.159	0.519	22.456362	-102.826310
Ruinas de Chicomostoc	2.20																			

ZACATECAS

23 CARR: Ramal a San Martín

CLAVE: 00544

RUTA: MEX-045

AÑO: 2021

LUGAR	ESTACION				CLASIFICACION VEHICULAR EN PORCIENTO														COORDENADAS	
	KM	TE	SC	TDPA	M	A	B	C2	C3	T3S2	T3S3	T3S2R4	OTROS	A	B	C	K'	D	LATITUD	LONGITUD
T. C. Zacatecas - Durango	0.00	3	0	1405	1.2	82.2	0.1	12.2	1.8	1.4	0.7	0.2	0.2	83.4	0.1	16.5	0.104	0.505	23.691687	-103.718548
San Martín	4.00																			

24 CARR: Ramal a Villa de Cos

CLAVE: 32564

RUTA: MEX-054

AÑO: 2021

LUGAR	ESTACION				CLASIFICACION VEHICULAR EN PORCIENTO														COORDENADAS	
	KM	TE	SC	TDPA	M	A	B	C2	C3	T3S2	T3S3	T3S2R4	OTROS	A	B	C	K'	D	LATITUD	LONGITUD
T. C. Ent. Morelos - Saltillo	0.00	3	1	2135	3.3	90.2	0.5	3.5	0.9	0.9	0.5	0.0	0.2	93.5	0.5	6.0	0.117	0.501	23.272819	-102.332264
T. C. Ent. Morelos - Saltillo	0.00	3	2	2171	3.1	91.0	0.5	3.4	0.8	0.7	0.3	0.0	0.2	94.1	0.5	5.4	0.118	0.501	23.272773	-102.332340
Villa de Cos	3.30	1	1	3025	5.4	79.0	0.6	13.4	0.4	0.8	0.3	0.0	0.1	84.4	0.6	15.0	0.116	0.514	23.288675	-102.342865
Villa de Cos	3.30	1	2	3221	4.9	82.1	0.4	11.2	0.3	0.7	0.3	0.0	0.1	87.0	0.4	12.6	0.129	0.514	23.288631	-102.343027

25 CARR: San Luis Potosí - Ent. Arcinas

CLAVE: 00134

RUTA: MEX-049

AÑO: 2021

LUGAR	ESTACION				CLASIFICACION VEHICULAR EN PORCIENTO														COORDENADAS	
	KM	TE	SC	TDPA	M	A	B	C2	C3	T3S2	T3S3	T3S2R4	OTROS	A	B	C	K'	D	LATITUD	LONGITUD
T. C. San Luis Potosí - Matehuala	0.00																			
T. Izq. Periférico de San Luis Potosí	9.35	3	1	11758	5.6	84.3	1.2	3.7	1.2	1.9	0.8	0.9	0.4	89.9	1.2	8.9	0.099	0.514	22.208576	-101.035605
T. Izq. Periférico de San Luis Potosí	9.35	3	2	11133	4.8	82.9	2.5	3.7	1.4	2.3	1.1	1.0	0.3	87.7	2.5	9.8	0.087	0.514	22.208466	-101.035672
Mexquitic	22.50	1	1	7698	5.0	73.4	4.1	3.6	2.5	6.2	1.9	2.7	0.6	78.4	4.1	17.5	0.112	0.503	22.247432	-101.101586
Mexquitic	22.50	1	2	7618	5.4	72.2	3.9	3.5	2.6	6.7	2.1	2.9	0.7	77.6	3.9	18.5	0.118	0.503	22.247332	-101.101633
Mexquitic	22.50	3	1	5884	6.7	62.4	5.7	4.3	2.3	10.9	2.5	4.2	1.0	69.1	5.7	25.2	0.113	0.520	22.256180	-101.125357
Mexquitic	22.50	3	2	6378	5.6	62.8	5.8	4.5	2.3	11.1	2.5	4.4	1.0	68.4	5.8	25.8	0.100	0.520	22.256116	-101.125405
T. Der. Charcas	30.90	1	1	6397	4.5	68.5	3.2	4.4	3.0	9.0	2.7	3.8	0.9	73.0	3.2	23.8	0.093	0.510	22.309607	-101.157704
T. Der. Charcas	30.90	1	2	6152	5.2	68.0	3.0	4.3	3.0	8.9	2.5	4.1	1.0	73.2	3.0	23.8	0.094	0.510	22.309515	-101.157771
T. Der. Charcas	30.90	3	1	4543	4.5	62.2	6.0	4.2	2.5	12.2	3.2	4.2	1.0	66.7	6.0	27.3	0.084	0.501	22.318340	-101.170425
T. Der. Charcas	30.90	3	2	4555	4.5	63.2	4.4	5.5	2.8	11.7	2.8	4.1	1.0	67.7	4.4	27.9	0.088	0.501	22.318249	-101.170473
Lim. Edos. Term. S. L. P. Ppia. Zac.	55.13																			
Lim. Edos. Term. Zac. Ppia. S. L. P.	89.30																			
T. Der. Salinas	99.00	1	1	3542	4.2	60.2	5.8	4.2	2.4	14.5	3.0	4.7	1.0	64.4	5.8	29.8	0.071	0.539	22.604242	-101.708788
T. Der. Salinas	99.00	1	2	4139	4.2	57.7	6.0	4.2	3.1	15.4	3.3	5.2	0.9	61.9	6.0	32.1	0.079	0.539	22.604133	-101.708834
T. Der. Salinas	99.00	3	1	3418	4.1	57.0	6.9	4.8	2.7	15.4	3.2	4.9	1.0	61.1	6.9	32.0	0.068	0.548	22.619315	-101.738116
T. Der. Salinas	99.00	3	2	4142	4.1	58.4	5.6	4.1	3.2	15.1	3.4	5.2	0.9	62.5	5.6	31.9	0.078	0.548	22.619151	-101.738162
Lim. Edos. Term. S. L. P. Ppia. Zac.	122.47																			
T. Izq. Pánfilo Natera	139.00	1	1	3224	1.9	50.5	4.9	14.1	3.5	13.1	3.8	6.6	1.6	52.4	4.9	42.7	0.075	0.501	22.679211	-102.098795

ZACATECAS

25 CARR: San Luis Potosí - Ent. Arcinas

CLAVE: 00134

RUTA: MEX-049

AÑO: 2021

LUGAR	ESTACION				CLASIFICACION VEHICULAR EN PORCIENTO														COORDENADAS	
	KM	TE	SC	TDPA	M	A	B	C2	C3	T3S2	T3S3	T3S2R4	OTROS	A	B	C	K'	D	LATITUD	LONGITUD
T. Izq. Pánfilo Natera	139.00	1	2	3239	1.9	50.1	5.0	14.4	3.6	13.2	3.6	6.7	1.5	52.0	5.0	43.0	0.089	0.501	22.678631	-102.096677
Ent. Arcinas	162.98	1	1	4261	1.5	58.8	5.0	12.1	3.2	10.8	2.9	4.9	0.8	60.3	5.0	34.7	0.083	0.530	22.719792	-102.324418
Ent. Arcinas	162.98	1	2	3777	1.6	59.0	4.9	12.0	3.1	10.7	3.0	5.0	0.7	60.6	4.9	34.5	0.072	0.530	22.719508	-102.324180

26 CARR: San Luis Potosí - Lagos de Moreno

CLAVE: 00133

RUTA: MEX-070-080

AÑO: 2021

LUGAR	ESTACION				CLASIFICACION VEHICULAR EN PORCIENTO														COORDENADAS	
	KM	TE	SC	TDPA	M	A	B	C2	C3	T3S2	T3S3	T3S2R4	OTROS	A	B	C	K'	D	LATITUD	LONGITUD
San Luis Potosí	0.00	3	1	19725	14.2	77.3	0.3	1.5	0.7	2.0	0.4	2.9	0.7	91.5	0.3	8.2	0.078	0.519	22.134249	-101.030416
San Luis Potosí	0.00	3	2	18304	14.2	83.4	0.3	0.5	0.3	0.4	0.1	0.5	0.3	97.6	0.3	2.1	0.076	0.519	22.134123	-101.030336
X. Periférico de San Luis Potosí	8.41	3	0	10808	8.7	75.7	2.2	6.9	1.7	1.8	0.7	1.6	0.7	84.4	2.2	13.4	0.073	0.595	22.127757	-101.045530
El Tepetate	41.90	1	0	7877	3.3	70.0	2.7	3.8	2.7	10.3	2.1	4.8	0.3	73.3	2.7	24.0	0.095	0.526	22.028539	-101.220369
El Tepetate	41.90	3	0	7569	3.2	68.3	3.5	3.8	2.4	11.0	2.4	4.9	0.5	71.5	3.5	25.0	0.080	0.518	22.006716	-101.250705
Villa de Arriaga	61.90	3	0	4416	4.0	66.5	3.3	8.6	2.6	9.3	3.1	2.0	0.6	70.5	3.3	26.2	0.079	0.519	21.896753	-101.409895
Lim. Edos. Term. S. L. P. Ppia. Zac.	70.23																			
Lim. Edos. Term. Zac. Ppia. Jal.	82.94																			
Ojuelos de Jalisco	83.20	1	0	6095	12.4	64.6	3.8	6.0	2.2	6.4	2.4	1.2	1.0	77.0	3.8	19.2	0.077	0.514	21.875779	-101.570754
Ojuelos de Jalisco	83.20	3	0	3151	5.6	56.3	4.6	7.2	3.2	12.3	5.3	5.1	0.4	61.9	4.6	33.5	0.071	0.503	21.854372	-101.593872
X. C. Lagos de Moreno - San Luis Potosí (Cuota)	140.00	1	0	3669	3.6	77.9	2.7	5.8	2.4	4.4	1.7	1.2	0.3	81.5	2.7	15.8	0.101	0.523	21.451439	-101.803415
X. C. León - Aguascalientes	146.90	1	1	5788	7.8	58.1	4.2	4.8	3.6	13.4	2.7	5.1	0.3	65.9	4.2	29.9	0.112	0.507	21.375864	-101.894213
X. C. León - Aguascalientes	146.90	1	2	5958	7.9	60.5	3.4	5.2	2.9	12.5	1.9	5.4	0.3	68.4	3.4	28.2	0.112	0.507	21.375775	-101.894153
Lagos de Moreno	150.00																			

27 CARR: Zacatecas - Durango

CLAVE: 00544

RUTA: MEX-045

AÑO: 2021

LUGAR	ESTACION				CLASIFICACION VEHICULAR EN PORCIENTO														COORDENADAS	
	KM	TE	SC	TDPA	M	A	B	C2	C3	T3S2	T3S3	T3S2R4	OTROS	A	B	C	K'	D	LATITUD	LONGITUD
Zacatecas	0.00																			
T. Izq. Guadalajara	6.40	3	1	13880	0.7	81.6	2.8	7.7	4.0	1.9	0.6	0.3	0.4	82.3	2.8	14.9	0.077	0.534	22.783800	-102.626960
T. Izq. Guadalajara	6.40	3	2	15929	0.7	80.3	3.3	8.0	4.1	2.7	0.3	0.3	0.3	81.0	3.3	15.7	0.086	0.534	22.787932	-102.627049
T. Der. Saltillo (T. Morelos)	15.00	3	1	12253	1.6	74.8	2.6	7.9	2.4	5.5	2.2	2.2	0.8	76.4	2.6	21.0	0.103	0.524	22.870644	-102.632823
T. Der. Saltillo (T. Morelos)	15.00	3	2	13502	1.6	74.7	2.7	7.9	2.4	5.5	2.2	2.2	0.8	76.3	2.7	21.0	0.084	0.524	22.870436	-102.651886
T. Libramiento de Víctor Rosales	26.20																			
Víctor Rosales	28.00	1	1	13785	0.6	77.4	2.3	6.4	2.8	5.3	2.2	2.4	0.6	78.0	2.3	19.7	0.080	0.558	22.919402	-102.676076
Víctor Rosales	28.00	1	2	13120	0.6	75.1	3.2	6.8	1.8	6.1	3.0	2.7	0.7	75.7	3.2	21.1	0.092	0.558	22.923293	-102.679896

ZACATECAS

27 CARR: Zacatecas - Durango

CLAVE: 00544

RUTA: MEX-045

AÑO: 2021

LUGAR	ESTACION				CLASIFICACION VEHICULAR EN PORCIENTO														COORDENADAS	
	KM	TE	SC	TDPA	M	A	B	C2	C3	T3S2	T3S3	T3S2R4	OTROS	A	B	C	K'	D	LATITUD	LONGITUD
T. Der. Facultad de Veterinaria	32.30	1	1	7796	1.2	66.3	4.2	9.7	2.9	10.1	2.0	2.9	0.7	67.5	4.2	28.3	0.112	0.503	22.971740	-102.719860
T. Der. Facultad de Veterinaria	32.30	1	2	7688	1.5	64.9	4.5	9.9	2.5	10.5	2.3	3.2	0.7	66.4	4.5	29.1	0.096	0.503	22.967376	-102.716763
Gral. Enrique Estrada	34.60	3	1	9929	1.0	73.4	3.3	7.9	1.6	7.3	1.6	3.2	0.7	74.4	3.3	22.3	0.074	0.502	23.012037	-102.751612
Gral. Enrique Estrada	34.60	3	2	9830	0.9	70.4	3.7	8.7	1.9	8.2	1.8	3.7	0.7	71.3	3.7	25.0	0.080	0.502	23.011910	-102.751855
T. Libramiento de Víctor Rosales	35.90																			
T. Libramiento de Fresnillo Sur	49.30																			
Fresnillo	58.50	1	1	7979	0.9	81.9	2.8	7.5	2.5	2.3	1.2	0.3	0.6	82.8	2.8	14.4	0.098	0.519	23.162313	-102.853432
Fresnillo	58.50	1	2	8616	1.0	81.3	2.8	7.7	2.6	2.4	1.3	0.3	0.6	82.3	2.8	14.9	0.089	0.519	23.162269	-102.853532
T. Libramiento de Fresnillo Norte	66.70																			
Ent. La Chicharrona	74.30	1	1	8352	1.4	61.2	4.9	10.8	3.4	11.0	4.0	2.5	0.8	62.6	4.9	32.5	0.104	0.544	23.291959	-102.953905
Ent. La Chicharrona	74.30	1	2	6989	1.4	61.2	4.8	10.8	3.4	11.0	4.0	2.5	0.9	62.6	4.8	32.6	0.095	0.544	23.291510	-102.953920
Ent. La Chicharrona	74.30	3	0	6180	1.4	65.3	4.1	19.4	2.8	3.2	2.1	1.2	0.5	66.7	4.1	29.2	0.083	0.508	23.307801	-102.964749
T. Der. Sain Alto	121.00	3	0	4069	1.8	66.4	4.3	14.1	2.9	5.1	2.9	1.6	0.9	68.2	4.3	27.5	0.087	0.505	23.581034	-103.273992
T. Izq. Sombrerete (2º Acceso)	161.50	3	0	6522	1.7	72.5	3.9	11.4	2.5	4.1	2.7	0.8	0.4	74.2	3.9	21.9	0.084	0.555	23.650690	-103.652370
T. C. Libramiento de Sombrerete	165.00	3	0	5687	2.3	71.2	5.1	12.9	1.9	3.3	1.3	1.3	0.7	73.5	5.1	21.4	0.081	0.534	23.682372	-103.698408
Lim. Edos. Term. Zac. Ppia. Dgo.	190.08																			
X. C. Súchil - Villa Unión	206.98	1	0	3205	2.6	68.3	6.0	7.8	2.2	6.9	3.1	2.6	0.5	70.9	6.0	23.1	0.093	0.502	23.750529	-103.961996
X. C. Súchil - Villa Unión	206.98	3	0	6427	5.6	74.4	3.3	8.9	1.4	3.2	1.6	1.4	0.2	80.0	3.3	16.7	0.093	0.537	23.744181	-104.000575
T. Izq. Graceros	210.00	1	0	5564	6.8	71.2	4.7	8.0	1.4	4.1	1.7	1.7	0.4	78.0	4.7	17.3	0.079	0.515	23.747641	-104.032005
Amado Nervo	231.51	1	0	5090	8.6	66.8	5.6	9.8	1.6	3.9	1.7	1.6	0.4	75.4	5.6	19.0	0.071	0.503	23.838410	-104.178309
Amado Nervo	231.51	3	0	5744	3.6	78.0	3.7	7.6	1.7	2.5	1.5	1.2	0.2	81.6	3.7	14.7	0.085	0.522	23.844575	-104.199981
Nombre de Dios	236.80	1	0	2593	6.0	77.3	1.9	14.1	0.5	0.1	0.1	0.0	0.0	83.3	1.9	14.8	0.120	0.536	23.843712	-104.225468
Nombre de Dios	236.80	3	0	4020	3.8	78.1	1.5	15.9	0.3	0.2	0.0	0.1	0.1	81.9	1.5	16.6	0.109	0.517	23.852913	-104.250483
T. Der. Constanacia	240.60	3	0	6469	1.6	83.5	2.5	8.5	1.2	1.4	0.7	0.4	0.2	85.1	2.5	12.4	0.121	0.500	23.872187	-104.269210
T. Der. Tuitán	250.80	3	0	5341	2.5	74.8	4.3	11.4	1.6	3.2	0.5	1.3	0.4	77.3	4.3	18.4	0.101	0.528	23.923137	-104.337211
T. Der. Independencia y Libertad	261.70	1	0	5740	2.4	74.8	3.4	12.0	2.0	2.9	1.4	0.9	0.2	77.2	3.4	19.4	0.097	0.504	23.994475	-104.374784
T. Der. Independencia y Libertad	261.70	3	1	3318	2.2	78.0	5.1	8.7	1.1	2.0	1.3	1.3	0.3	80.2	5.1	14.7	0.099	0.510	24.011993	-104.403055
T. Der. Independencia y Libertad	261.70	3	2	3457	2.3	77.2	3.9	9.5	1.8	1.8	1.5	1.6	0.4	79.5	3.9	16.6	0.110	0.510	24.011893	-104.403075
T. Izq. Parras de La Fuente	276.60	1	1	3813	0.6	82.2	2.6	7.6	1.8	2.5	1.4	1.1	0.2	82.8	2.6	14.6	0.100	0.512	24.019126	-104.506524
T. Izq. Parras de La Fuente	276.60	1	2	4004	0.6	83.4	2.0	7.5	1.2	2.7	1.5	1.0	0.1	84.0	2.0	14.0	0.109	0.512	24.019036	-104.506593
T. Izq. Parras de La Fuente	276.60	3	1	3930	2.8	86.0	3.0	3.6	1.5	1.8	0.6	0.6	0.1	88.8	3.0	8.2	0.115	0.512	24.021182	-104.525700
T. Izq. Parras de La Fuente	276.60	3	2	4116	2.8	86.1	3.0	3.6	1.5	1.8	0.6	0.5	0.1	88.9	3.0	8.1	0.109	0.512	24.021078	-104.525702
Durango	287.30	1	1	5638	5.1	82.1	3.4	3.9	1.8	1.5	1.0	0.8	0.4	87.2	3.4	9.4	0.087	0.507	24.026320	-104.574269
Durango	287.30	1	2	5477	5.2	83.1	2.4	3.9	1.9	1.5	0.7	0.8	0.5	88.3	2.4	9.3	0.107	0.507	24.026211	-104.574289



ZACATECAS

28 CARR: Ent. Cuauhtémoc - Ent. Osiris (Cuota)

CLAVE: 32558

RUTA: MEX-045D

AÑO: 2021

LUGAR	ESTACION				CLASIFICACION VEHICULAR EN PORCIENTO													COORDENADAS		
	KM	TE	SC	TDPA	M	A	B	C2	C3	T3S2	T3S3	T3S2R4	OTROS	A	B	C	K'	D	LATITUD	LONGITUD
T. C. Ent. Cosío - Ent. Cuauhtémoc	70.40	3	0	8621	1.8	54.5	5.7	10.6	3.6	13.9	3.3	5.1	1.5	56.3	5.7	38.0	0.064	0.511	22.489001	-102.358906
Plaza de Cobro Zacatecas	97.80	2	0	8261	0.3	55.1	3.9	5.0	4.3	18.2	3.6	8.1	1.5	55.4	3.9	40.7	0.067	0.500	22.710742	-102.448827
T. C. Aguascalientes - Zacatecas	103.40	1	0	8735	2.9	54.3	8.5	11.7	2.4	13.6	2.2	3.3	1.1	57.2	8.5	34.3	0.063	0.526	22.745096	-102.453154

29 CARR: Libramiento de Fresnillo (Cuota)

CLAVE: 32581

RUTA: MEX-045D

AÑO: 2021

LUGAR	ESTACION				CLASIFICACION VEHICULAR EN PORCIENTO													COORDENADAS		
	KM	TE	SC	TDPA	M	A	B	C2	C3	T3S2	T3S3	T3S2R4	OTROS	A	B	C	K'	D	LATITUD	LONGITUD
T. C. Zacatecas - Durango	49.80	3	1	3271	1.8	51.8	5.3	6.0	3.2	18.4	4.4	8.6	0.5	53.6	5.3	41.1	0.078	0.504	23.122141	-102.807909
T. C. Zacatecas - Durango	49.80	3	2	3327	1.7	49.9	5.4	8.6	3.0	19.0	3.5	8.6	0.3	51.6	5.4	43.0	0.083	0.504	23.121777	-102.808108
Plaza de Cobro Morfín Chávez	57.05	2	1	3601	0.3	54.2	2.6	4.1	3.8	20.8	4.0	0.0	10.2	54.5	2.6	42.9	0.088	0.500	23.177904	-102.828678
Plaza de Cobro Morfín Chávez	57.05	2	2	3601	0.3	54.2	2.6	4.1	3.8	20.8	4.0	0.0	10.2	54.5	2.6	42.9	0.088	0.500	23.177904	-102.828678
T. Der. Plateros	61.70	1	1	3601	1.6	58.1	2.9	8.4	4.1	16.0	2.7	5.5	0.7	59.7	2.9	37.4	0.077	0.505	23.193992	-102.835093
T. Der. Plateros	61.70	1	2	3667	1.7	57.7	3.0	8.4	4.1	15.9	2.8	5.5	0.9	59.4	3.0	37.6	0.092	0.505	23.193910	-102.835357
T. Der. Plateros	61.70	3	1	3388	1.1	48.0	4.2	8.2	3.8	21.3	4.8	8.3	0.3	49.1	4.2	46.7	0.077	0.532	23.211164	-102.855447
T. Der. Plateros	61.70	3	2	2981	1.3	48.6	4.2	8.8	3.5	18.7	5.6	8.8	0.5	49.9	4.2	45.9	0.084	0.532	23.209514	-102.852639
T. C. Zacatecas - Durango	69.85	1	1	3562	1.1	51.1	3.8	13.3	3.6	15.8	3.8	6.7	0.8	52.2	3.8	44.0	0.112	0.588	23.238046	-102.913487
T. C. Zacatecas - Durango	69.85	1	2	3559	1.2	48.3	4.5	14.3	2.2	17.1	4.6	7.0	0.8	49.5	4.5	46.0	0.095	0.588	23.237414	-102.912773

30 CARR: Libramiento de Víctor Rosales (Cuota)

CLAVE: 32015

RUTA: MEX-045D

AÑO: 2021

LUGAR	ESTACION				CLASIFICACION VEHICULAR EN PORCIENTO													COORDENADAS		
	KM	TE	SC	TDPA	M	A	B	C2	C3	T3S2	T3S3	T3S2R4	OTROS	A	B	C	K'	D	LATITUD	LONGITUD
T. C. Zacatecas - Durango	0.00	3	1	7365	0.9	68.0	4.0	8.4	2.9	9.7	2.2	3.1	0.8	68.9	4.0	27.1	0.099	0.500	22.936336	-102.688711
T. C. Zacatecas - Durango	0.00	3	2	7370	1.0	68.0	3.9	8.4	2.9	9.7	2.2	3.1	0.8	69.0	3.9	27.1	0.091	0.500	22.936305	-102.688909
Plaza de Cobro Calera Víctor Rosales	0.50	2	1	8471	0.3	72.2	2.5	3.2	3.3	10.7	2.3	0.0	5.5	72.5	2.5	25.0	0.085	0.500	22.941860	-102.689827
Plaza de Cobro Calera Víctor Rosales	0.50	2	2	8471	0.3	72.2	2.5	3.2	3.3	10.7	2.3	0.0	5.5	72.5	2.5	25.0	0.085	0.500	22.941860	-102.689827
T. C. Calera de Víctor Rosales - Santiagoullo	2.50	3	1	8631	1.2	67.9	4.3	8.1	4.0	8.1	2.4	3.2	0.8	69.1	4.3	26.6	0.078	0.522	22.955138	-102.692535
T. C. Calera de Víctor Rosales - Santiagoullo	2.50	3	2	7900	1.2	68.0	4.3	8.1	3.9	8.1	2.4	3.2	0.8	69.2	4.3	26.5	0.070	0.522	22.956492	-102.693028
T. C. Zacatecas - Durango	12.20	1	1	8457	0.7	68.9	4.2	8.7	2.0	9.5	2.0	3.2	0.8	69.6	4.2	26.2	0.068	0.537	23.005660	-102.744238
T. C. Zacatecas - Durango	12.20	1	2	8036	0.7	69.0	4.2	8.7	2.0	9.5	2.0	3.1	0.8	69.7	4.2	26.1	0.076	0.537	23.005511	-102.744291

ZACATECAS

31 CARR: Calera de Víctor Rosales - Santiagoullo

CLAVE: 32016

RUTA: ZAC-016

AÑO: 2021

LUGAR	ESTACION				CLASIFICACION VEHICULAR EN PORCIENTO														COORDENADAS	
	KM	TE	SC	TDPA	M	A	B	C2	C3	T3S2	T3S3	T3S2R4	OTROS	A	B	C	K'	D	LATITUD	LONGITUD
Calera de Víctor Rosales	0.00	3	0	3898	9.4	66.9	2.0	14.9	2.1	3.0	1.1	0.3	0.3	76.3	2.0	21.7	0.076	0.507	22.960352	-102.682133
T. C. Fresnillo - Ent. Bañón	23.60																			

32 CARR: Cieneguillas - Zacatecas

CLAVE: 32579

RUTA: ZAC

AÑO: 2021

LUGAR	ESTACION				CLASIFICACION VEHICULAR EN PORCIENTO														COORDENADAS	
	KM	TE	SC	TDPA	M	A	B	C2	C3	T3S2	T3S3	T3S2R4	OTROS	A	B	C	K'	D	LATITUD	LONGITUD
T. C. Guadalajara - Zacatecas	0.00	3	0	2658	1.7	78.6	0.2	15.9	1.3	1.6	0.5	0.1	0.1	80.3	0.2	19.5	0.088	0.532	22.759558	-102.653328
X. C. Libramiento de Guadalupe - Zacatecas	7.70	3	1	11900	3.0	78.3	2.5	9.0	3.1	3.1	0.7	0.3	0.0	81.3	2.5	16.2	0.089	0.552	22.757720	-102.588185
X. C. Libramiento de Guadalupe - Zacatecas	7.70	3	2	9652	3.0	78.4	2.5	9.0	3.0	3.0	0.7	0.3	0.1	81.4	2.5	16.1	0.094	0.552	22.757678	-102.588429
Zacatecas	9.33																			

33 CARR: Corral de Piedras - Tlaltenango

CLAVE: 32579

RUTA: ZAC

AÑO: 2021

LUGAR	ESTACION				CLASIFICACION VEHICULAR EN PORCIENTO														COORDENADAS	
	KM	TE	SC	TDPA	M	A	B	C2	C3	T3S2	T3S3	T3S2R4	OTROS	A	B	C	K'	D	LATITUD	LONGITUD
T. C. Guadalajara - Zacatecas	0.00	3	0	597	1.6	84.6	0.8	11.1	1.0	0.7	0.2	0.0	0.0	86.2	0.8	13.0	0.092	0.504	21.621004	-103.048664
Tlaltenango	57.10	1	0	1553	14.5	76.4	0.4	6.8	0.4	1.1	0.3	0.0	0.1	90.9	0.4	8.7	0.088	0.507	21.768385	-103.282110

34 CARR: Ent. Ojo Caliente - Ent. Ojuelos de Jalisco

CLAVE: 00126

RUTA: ZAC

AÑO: 2021

LUGAR	ESTACION				CLASIFICACION VEHICULAR EN PORCIENTO														COORDENADAS	
	KM	TE	SC	TDPA	M	A	B	C2	C3	T3S2	T3S3	T3S2R4	OTROS	A	B	C	K'	D	LATITUD	LONGITUD
T. C. Aguascalientes - Zacatecas	0.00	3	0	2881	3.3	75.6	0.9	17.7	1.0	1.1	0.3	0.0	0.1	78.9	0.9	20.2	0.100	0.517	22.601095	-102.246914
Gral. Pánfilo Natera	16.00	3	0	1919	4.2	83.2	0.4	10.3	0.5	1.2	0.2	0.0	0.0	87.4	0.4	12.2	0.091	0.504	22.652330	-102.103662
Lim. Edos. Term. Zac. Ppia. Jal.	134.00																			
T. C. San Luis Potosí - Lagos de Moreno	137.00																			

35 CARR: Fresnillo - Ent. Bañón

CLAVE: 32070

RUTA: ZAC

AÑO: 2021

LUGAR	ESTACION				CLASIFICACION VEHICULAR EN PORCIENTO														COORDENADAS	
	KM	TE	SC	TDPA	M	A	B	C2	C3	T3S2	T3S3	T3S2R4	OTROS	A	B	C	K'	D	LATITUD	LONGITUD
T. C. Zacatecas - Durango	0.00																			
X. Lib. Fresnillo (Cuota)	2.40	3	1	4596	4.3	82.2	1.0	10.3	0.9	0.7	0.4	0.1	0.1	86.5	1.0	12.5	0.089	0.506	23.177938	-102.822999
X. Lib. Fresnillo (Cuota)	2.40	3	2	4461	4.4	83.0	0.9	9.5	0.8	0.8	0.4	0.1	0.1	87.4	0.9	11.7	0.081	0.506	23.178042	-102.823040

ZACATECAS

35 CARR: Fresnillo - Ent. Bañón

CLAVE: 32070

RUTA: ZAC

AÑO: 2021

LUGAR	ESTACION				CLASIFICACION VEHICULAR EN PORCIENTO													COORDENADAS		
	KM	TE	SC	TDPA	M	A	B	C2	C3	T3S2	T3S3	T3S2R4	OTROS	A	B	C	K'	D	LATITUD	LONGITUD
T. Der. Víctor Rosales	23.80	1	0	2545	7.3	71.2	1.0	11.6	4.8	2.1	1.4	0.4	0.2	78.5	1.0	20.5	0.074	0.507	23.143896	-102.666197
T. Der. Víctor Rosales	23.80	3	0	1678	2.6	67.9	3.6	17.5	2.7	3.3	1.6	0.5	0.3	70.5	3.6	25.9	0.084	0.511	23.144378	-102.639389
González Ortega Bañón	45.80	1	0	1715	5.3	67.8	2.1	16.2	4.9	2.4	0.9	0.3	0.1	73.1	2.1	24.8	0.086	0.505	23.176564	-102.481290
T. C. Ent. Morelos - Saltillo	49.00	1	0	2602	6.9	67.0	2.7	15.4	2.7	2.9	1.5	0.5	0.4	73.9	2.7	23.4	0.091	0.512	23.153772	-102.417650

36 CARR: Fresnillo - Plateros

CLAVE: 32022

RUTA: ZAC-022

AÑO: 2021

LUGAR	ESTACION				CLASIFICACION VEHICULAR EN PORCIENTO													COORDENADAS		
	KM	TE	SC	TDPA	M	A	B	C2	C3	T3S2	T3S3	T3S2R4	OTROS	A	B	C	K'	D	LATITUD	LONGITUD
Fresnillo (Central)	0.00	3	1	4274	9.3	78.3	0.7	10.7	0.5	0.4	0.1	0.0	0.0	87.6	0.7	11.7	0.070	0.509	23.203748	-102.855259
Fresnillo (Lateral)	0.00	3	1	157	33.8	60.9	0.3	4.0	0.3	0.2	0.3	0.0	0.2	94.7	0.3	5.0	0.133	0.503	23.203688	-102.855105
Fresnillo (Central)	0.00	3	2	4515	6.6	81.3	0.7	10.3	0.5	0.5	0.1	0.0	0.0	87.9	0.7	11.4	0.084	0.509	23.203781	-102.855364
Fresnillo (Lateral)	0.00	3	2	158	35.7	59.2	0.3	3.8	0.3	0.2	0.3	0.0	0.2	94.9	0.3	4.8	0.192	0.503	23.203884	-102.855673
Plateros	4.90																			

37 CARR: Guadalupe - Ent. Cuauhtémoc

CLAVE: 00579

RUTA: ZAC-118

AÑO: 2021

LUGAR	ESTACION				CLASIFICACION VEHICULAR EN PORCIENTO													COORDENADAS		
	KM	TE	SC	TDPA	M	A	B	C2	C3	T3S2	T3S3	T3S2R4	OTROS	A	B	C	K'	D	LATITUD	LONGITUD
T. C. Libramiento de Guadalupe - Zacatecas (Alta)	0.00	3	1	7470	3.1	90.6	0.2	3.9	0.7	0.8	0.4	0.2	0.1	93.7	0.2	6.1	0.100	0.523	22.735928	-102.496175
T. C. Libramiento de Guadalupe - Zacatecas (Baja)	0.00	3	1	2547	2.4	85.4	0.2	9.7	1.5	0.4	0.2	0.1	0.1	87.8	0.2	12.0	0.115	0.521	22.735693	-102.496209
T. C. Libramiento de Guadalupe - Zacatecas (Alta)	0.00	3	2	8192	3.0	90.1	0.3	4.4	0.6	0.9	0.4	0.2	0.1	93.1	0.3	6.6	0.098	0.523	22.735627	-102.495976
T. C. Libramiento de Guadalupe - Zacatecas (Baja)	0.00	3	2	2346	2.8	84.8	0.4	10.1	1.0	0.4	0.3	0.1	0.1	87.6	0.4	12.0	0.102	0.521	22.735362	-102.495835
La Cieneguita	3.00																			
T. C. Ent. Cuauhtémoc - Ent. Osiris Cuota	39.31	3	0	1396	1.0	88.5	0.7	8.3	0.5	0.9	0.1	0.0	0.0	89.5	0.7	9.8	0.097	0.505	22.485261	-102.360455

38 CARR: Ramal a Loreto

CLAVE: 32067

RUTA: ZAC

AÑO: 2021

LUGAR	ESTACION				CLASIFICACION VEHICULAR EN PORCIENTO													COORDENADAS		
	KM	TE	SC	TDPA	M	A	B	C2	C3	T3S2	T3S3	T3S2R4	OTROS	A	B	C	K'	D	LATITUD	LONGITUD
T. C. Providencia - Luis Moya	0.00	3	0	1919	2.2	76.2	2.1	13.4	1.5	2.7	1.3	0.4	0.2	78.4	2.1	19.5	0.098	0.501	22.390757	-102.239135
Loreto	32.30																			

ZACATECAS

39 CARR: Ramal a Nochistlán

CLAVE: 32545

RUTA: ZAC

AÑO: 2021

LUGAR	ESTACION				CLASIFICACION VEHICULAR EN PORCIENTO										COORDENADAS					
	KM	TE	SC	TDPA	M	A	B	C2	C3	T3S2	T3S3	T3S2R4	OTROS	A	B	C	K'	D	LATITUD	LONGITUD
T. C. Tepatitlán - Jaralillo	0.00	3	1	2322	4.9	82.1	1.8	9.4	1.3	0.3	0.1	0.1	0.0	87.0	1.8	11.2	0.081	0.514	21.355474	-102.794292
T. C. Tepatitlán - Jaralillo	0.00	3	2	2466	6.0	83.6	1.7	7.0	1.2	0.3	0.1	0.0	0.1	89.6	1.7	8.7	0.080	0.514	21.355317	-102.794305
Nochistlán	5.70	1	1	3069	7.8	77.3	1.9	11.9	0.9	0.1	0.1	0.0	0.0	85.1	1.9	13.0	0.076	0.509	21.356225	-102.819867
Nochistlán	5.70	1	2	2952	6.2	82.0	1.5	8.8	1.1	0.2	0.1	0.0	0.1	88.2	1.5	10.3	0.080	0.509	21.356362	-102.819854

40 CARR: Ramal a San Pedro Piedra Gorda

CLAVE: 00553

RUTA: ZAC-AGS

AÑO: 2021

LUGAR	ESTACION				CLASIFICACION VEHICULAR EN PORCIENTO										COORDENADAS					
	KM	TE	SC	TDPA	M	A	B	C2	C3	T3S2	T3S3	T3S2R4	OTROS	A	B	C	K'	D	LATITUD	LONGITUD
T. C. Aguascalientes - Zacatecas	0.00	3	0	1463	3.7	81.6	1.4	11.4	1.0	0.8	0.1	0.0	0.0	85.3	1.4	13.3	0.089	0.503	22.465462	-102.262553
Lim. Edos. Term. Zac. Ppia. Ags.	5.00																			
Lim. Edos. Term. Ags. Ppia. Zac.	8.00																			
San Pedro Piedra Gorda	9.00	1	0	2291	9.2	77.4	0.6	10.2	0.6	1.7	0.2	0.0	0.1	86.6	0.6	12.8	0.081	0.507	22.452371	-102.338412

41 CARR: San Gil - Jarillas

CLAVE: 00527

RUTA: AGS-012-ZAC

AÑO: 2021

LUGAR	ESTACION				CLASIFICACION VEHICULAR EN PORCIENTO										COORDENADAS					
	KM	TE	SC	TDPA	M	A	B	C2	C3	T3S2	T3S3	T3S2R4	OTROS	A	B	C	K'	D	LATITUD	LONGITUD
T. C. Rincón de Romos - Ciénega Grande	0.00	3	0	2795	6.0	71.6	3.1	14.3	2.3	1.5	1.1	0.0	0.1	77.6	3.1	19.3	0.066	0.501	22.216006	-102.022253
Guadalupe de Atlas	5.40	1	0	2466	7.8	63.8	3.7	16.4	3.8	2.3	2.2	0.0	0.0	71.6	3.7	24.7	0.074	0.505	22.258278	-102.026524
Lim. Edos. Term. Ags. Ppia. Zac.	10.00																			
Lim. Edos. Term. Zac. Ppia. Ags.	11.30																			
Jarillas	12.00																			

42 CARR: San Rafael - Villa García

CLAVE: 00525

RUTA: AGS-ZAC

AÑO: 2021

LUGAR	ESTACION				CLASIFICACION VEHICULAR EN PORCIENTO										COORDENADAS					
	KM	TE	SC	TDPA	M	A	B	C2	C3	T3S2	T3S3	T3S2R4	OTROS	A	B	C	K'	D	LATITUD	LONGITUD
T. C. Ent. La Calavera - Ent. San Pedro	0.00	3	0	2270	8.1	80.8	0.5	8.1	0.7	1.3	0.2	0.1	0.2	88.9	0.5	10.6	0.079	0.500	22.116417	-102.011400
Lim. Edos. Term. Ags. Ppia. Zac.	3.00																			
Villa García	10.00	1	0	3328	9.9	79.4	0.5	7.0	0.3	2.4	0.3	0.0	0.2	89.3	0.5	10.2	0.075	0.515	22.135234	-101.970175

ZACATECAS

43 CARR: Santa Mónica - Pozo de Gamboa

CLAVE: 32568

RUTA: ZAC

AÑO: 2021

LUGAR	ESTACION				CLASIFICACION VEHICULAR EN PORCIENTO														COORDENADAS	
	KM	TE	SC	TDPA	M	A	B	C2	C3	T3S2	T3S3	T3S2R4	OTROS	A	B	C	K'	D	LATITUD	LONGITUD
T. C. Aguascalientes - Zacatecas	0.00	3	0	7014	3.1	77.1	2.4	9.9	2.9	2.7	1.1	0.6	0.2	80.2	2.4	17.4	0.083	0.501	22.764310	-102.422970
Tacoaleche	7.60	3	0	3251	5.5	74.9	1.1	13.0	2.3	1.4	1.5	0.1	0.2	80.4	1.1	18.5	0.079	0.514	22.831402	-102.398569
Pozo de Gamboa	34.50																			

44 CARR: Sombrerete - González Ortega

CLAVE: 32568

RUTA: ZAC

AÑO: 2021

LUGAR	ESTACION				CLASIFICACION VEHICULAR EN PORCIENTO														COORDENADAS	
	KM	TE	SC	TDPA	M	A	B	C2	C3	T3S2	T3S3	T3S2R4	OTROS	A	B	C	K'	D	LATITUD	LONGITUD
T. C. Zacatecas - Durango	0.00	3	0	1182	3.2	78.3	2.6	12.7	1.5	1.1	0.4	0.1	0.1	81.5	2.6	15.9	0.081	0.531	23.658521	-103.543658
González Ortega	38.70	1	0	866	4.0	76.2	2.2	13.7	2.4	0.8	0.4	0.2	0.1	80.2	2.2	17.6	0.100	0.549	23.943710	-103.461816

45 CARR: Libramiento Noreste de Zacatecas (Cuota)

CLAVE: 32582

RUTA: ZAC-D

AÑO: 2021

LUGAR	ESTACION				CLASIFICACION VEHICULAR EN PORCIENTO														COORDENADAS	
	KM	TE	SC	TDPA	M	A	B	C2	C3	T3S2	T3S3	T3S2R4	OTROS	A	B	C	K'	D	LATITUD	LONGITUD
T. C. Aguascalientes - Zacatecas	0.00	3	0	5785	2.4	44.2	6.4	7.5	4.6	20.8	4.7	8.5	0.9	46.6	6.4	47.0	0.055	0.505	22.761040	-102.461142
T. C. Ent. Morelos - Saltillo	21.00	1	0	5162	1.6	44.3	7.9	14.1	7.3	13.2	3.4	7.2	1.0	45.9	7.9	46.2	0.069	0.501	22.852832	-102.617967

46 CARR: Tepetitlán - Jaralillo

CLAVE: 00146

RUTA: MEX-JAL-ZAC

AÑO: 2021

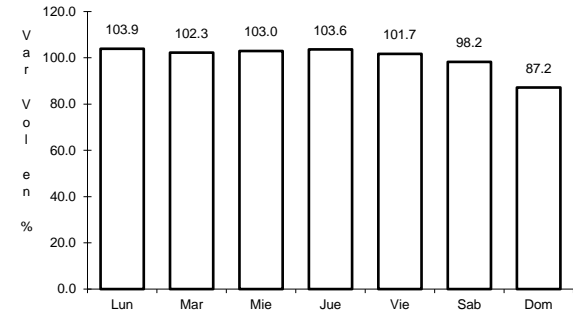
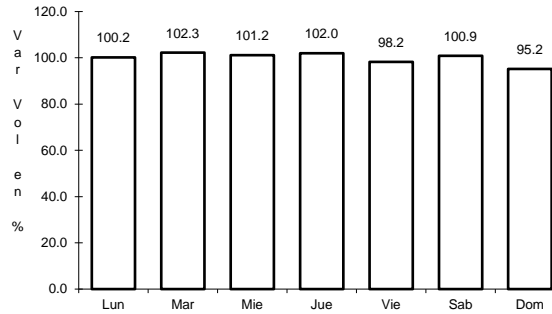
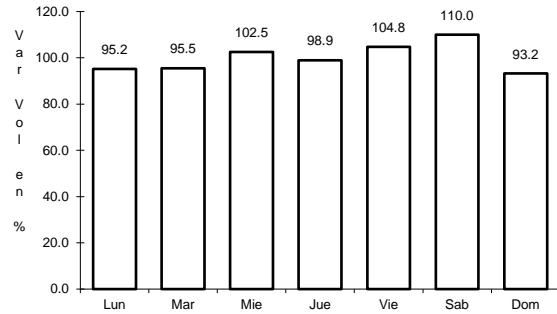
LUGAR	ESTACION				CLASIFICACION VEHICULAR EN PORCIENTO														COORDENADAS	
	KM	TE	SC	TDPA	M	A	B	C2	C3	T3S2	T3S3	T3S2R4	OTROS	A	B	C	K'	D	LATITUD	LONGITUD
T. C. Lagos de Moreno - Guadalajara	0.00	3	0	9897	4.5	78.7	2.1	5.8	3.5	3.2	1.5	0.6	0.1	83.2	2.1	14.7	0.073	0.511	20.800598	-102.791912
T. Izq. Mezcala	22.40	3	0	1549	0.9	82.3	2.2	11.5	2.3	0.4	0.3	0.0	0.1	83.2	2.2	14.6	0.083	0.508	20.962809	-102.816419
Yahualica de González Gallo	57.40	3	1	1677	2.3	91.2	1.1	3.5	0.8	0.5	0.2	0.2	0.2	93.5	1.1	5.4	0.081	0.516	21.198851	-102.885251
Yahualica de González Gallo	57.40	3	2	1562	2.5	89.7	0.9	4.8	0.9	0.4	0.6	0.1	0.1	92.2	0.9	6.9	0.080	0.516	21.198841	-102.885350
T. Der. Mexicacán	72.45	3	0	1070	1.3	83.1	0.7	12.2	1.7	0.8	0.2	0.0	0.0	84.4	0.7	14.9	0.078	0.517	21.255136	-102.802840
Lim. Edos. Term. Jal. Ppia. Zac.	83.50																			
Lim. Edos. Term. Zac. Ppia. Jal.	106.00																			
Teocaltiche	111.00	1	0	3803	3.3	86.6	1.9	5.5	0.8	1.4	0.4	0.0	0.1	89.9	1.9	8.2	0.075	0.515	21.425809	-102.589699
Teocaltiche	111.00	3	0	3503	2.3	82.6	2.0	9.6	1.1	1.4	1.0	0.0	0.0	84.9	2.0	13.1	0.071	0.525	21.455227	-102.555816
T. C. León - Aguascalientes	157.00	1	0	2865	2.4	82.0	1.7	7.3	1.6	2.6	1.8	0.2	0.4	84.4	1.7	13.9	0.077	0.504	21.639114	-102.283632



1 CARR: Aguascalientes - Jalpa

CLAVE: 00095

RUTA: MEX-070



Km: 0.00                      Tipo: 3                      Sent: 1

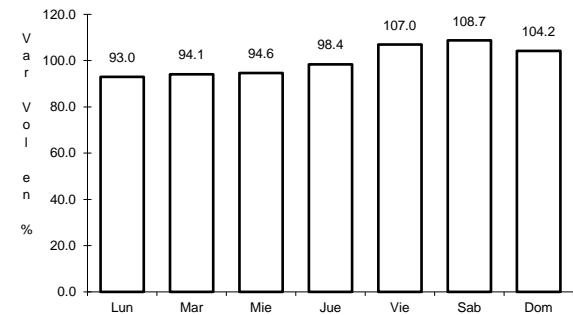
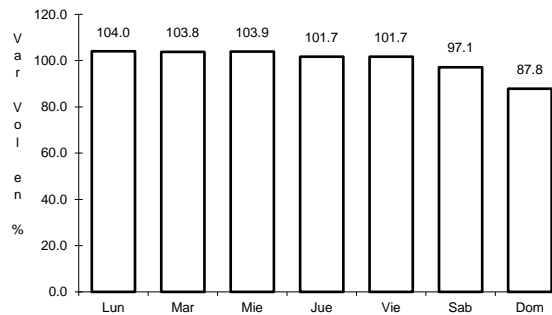
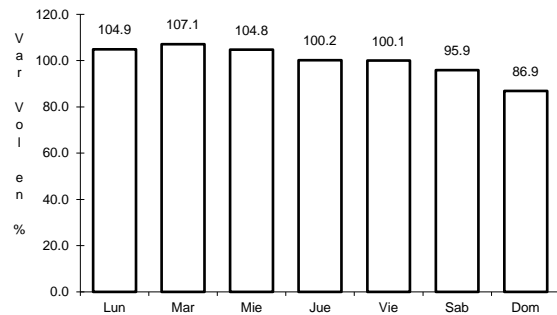
Km: 0.00                      Tipo: 3                      Sent: 2

Km: 90.66                      Tipo: 1                      Sent: 0

2 CARR: Aguascalientes - Zacatecas

CLAVE: 00524

RUTA: MEX-045



Km: 6.00                      Tipo: 1                      Sent: 1

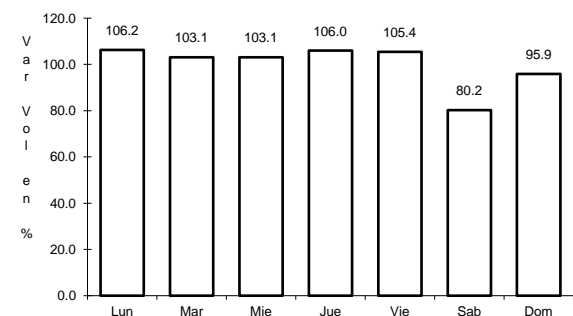
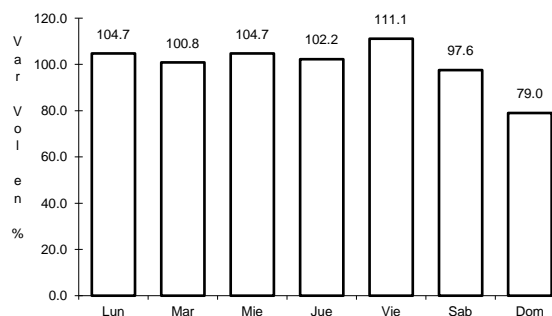
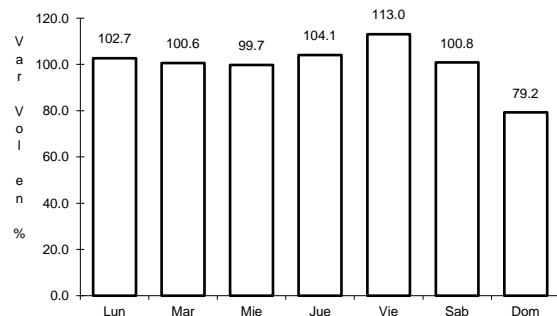
Km: 6.00                      Tipo: 1                      Sent: 2

Km: 40.90                      Tipo: 3                      Sent: 0

3 CARR: Blvd. Guadalupe - Zacatecas - La Escondida

CLAVE: 00544

RUTA: MEX-045



Km: 7.70                      Tipo: 1                      Sent: 1

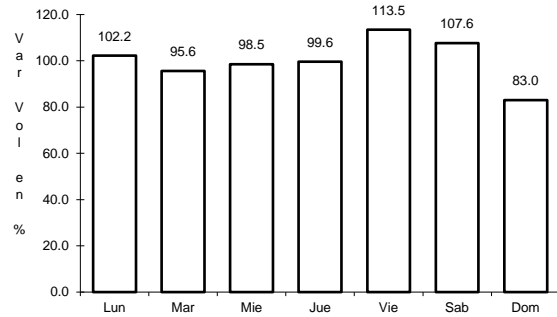
Km: 7.70                      Tipo: 1                      Sent: 2

Km: 14.50                      Tipo: 1                      Sent: 1

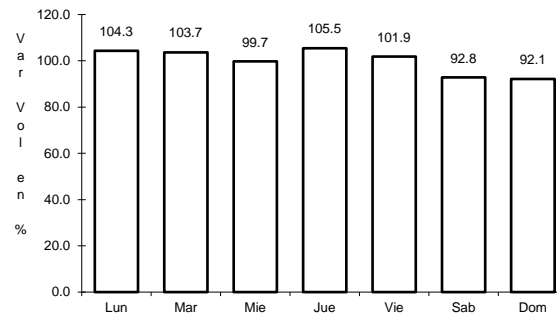
4 CARR: Carbonera - T. C. (Ent. Morelos - Saltillo)

CLAVE: 00218

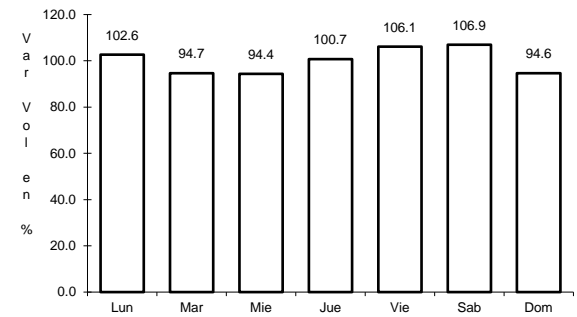
RUTA: MEX-062



Km: 0.00                      Tipo: 3                      Sent: 0



Km: 18.00                      Tipo: 1                      Sent: 0

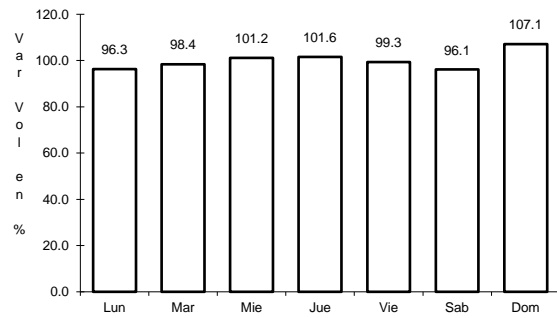


Km: 112.00                      Tipo: 1                      Sent: 0

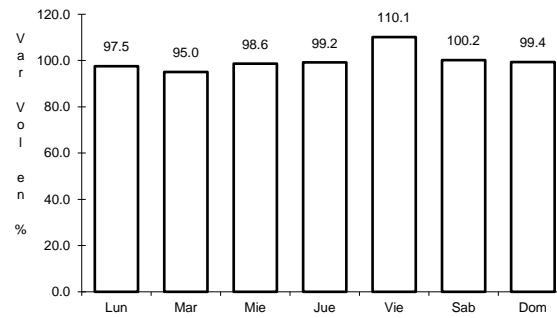
5 CARR: Ent. Cosío - Ent. Cuauhtémoc

CLAVE: 00579

RUTA: MEX-045



Km: 57.20                      Tipo: 3                      Sent: 0

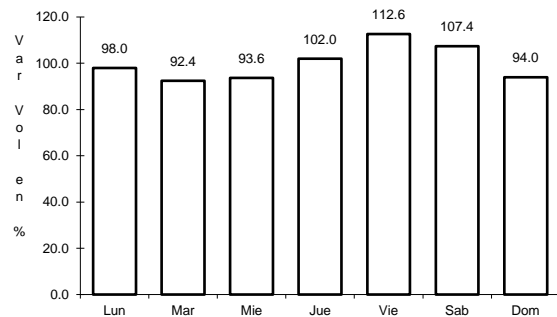


Km: 70.40                      Tipo: 1                      Sent: 0

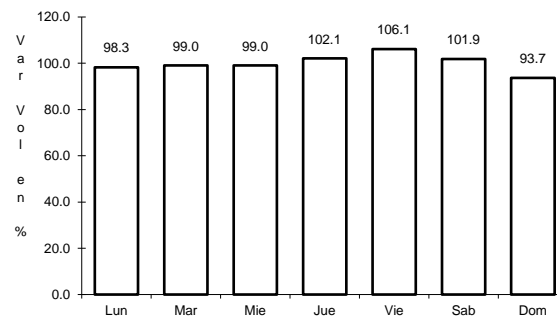
6 CARR: Ent. La Chicharrona - Cuencamé

CLAVE: 00152

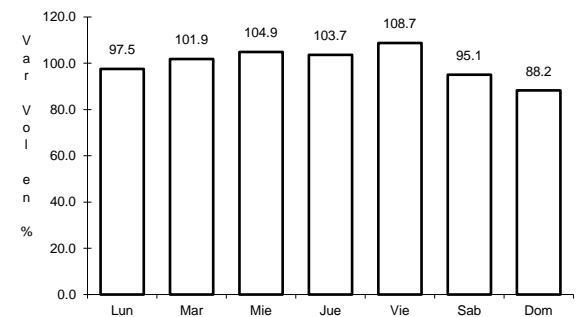
RUTA: MEX-049



Km: 0.00                      Tipo: 3                      Sent: 1



Km: 0.00                      Tipo: 3                      Sent: 2



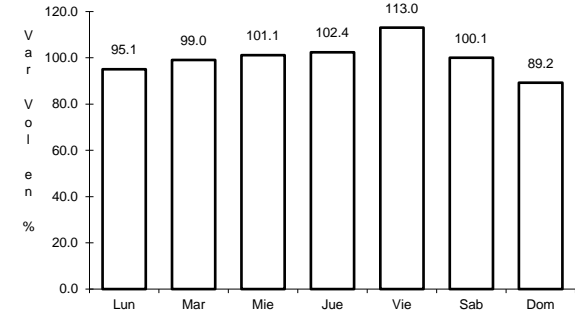
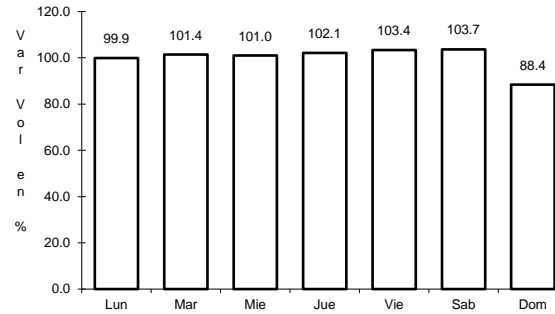
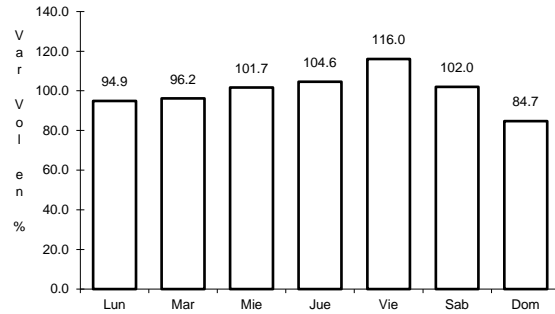
Km: 124.50                      Tipo: 1                      Sent: 0



7 CARR: Ent. Morelos - Ent. Noria de Gringos

CLAVE: 00544

RUTA: MEX-045



Km: 0.50

Tipo: 1

Sent: 1

Km: 0.50

Tipo: 1

Sent: 2

Km: 0.50

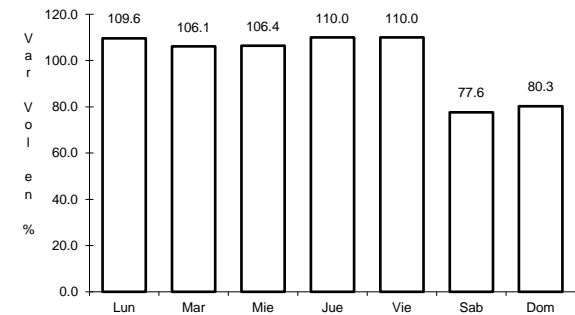
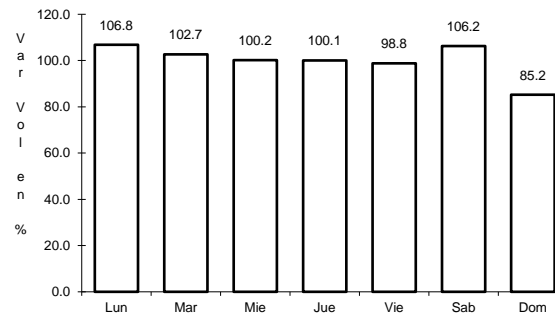
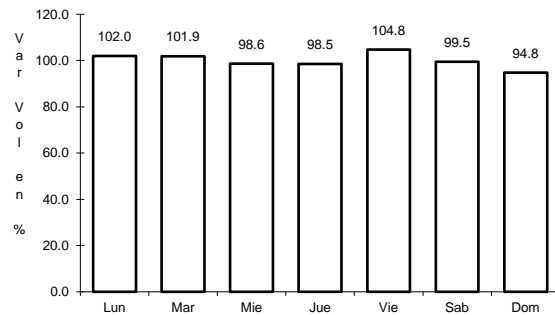
Tipo: 3

Sent: 0

8 CARR: Ent. Morelos - Saltillo

CLAVE: 00149

RUTA: MEX-054



Km: 0.00

Tipo: 3

Sent: 1

Km: 0.00

Tipo: 3

Sent: 2

Km: 333.00

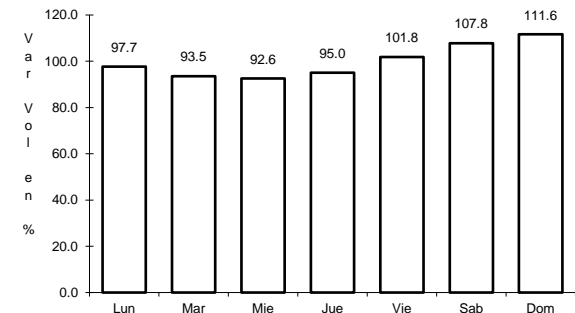
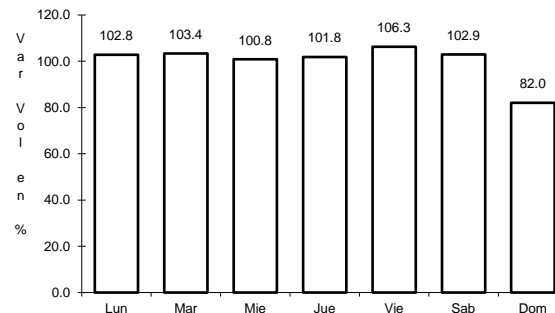
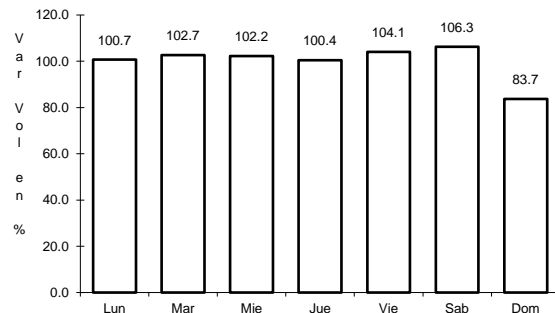
Tipo: 3

Sent: 1

9 CARR: Ent. Rivier - San Marcos

CLAVE: 00285

RUTA: MEX-066



Km: 0.00

Tipo: 3

Sent: 1

Km: 0.00

Tipo: 3

Sent: 2

Km: 55.34

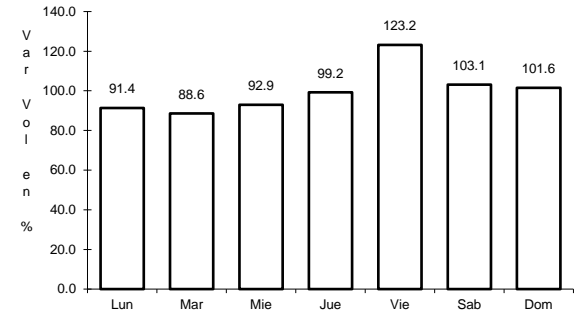
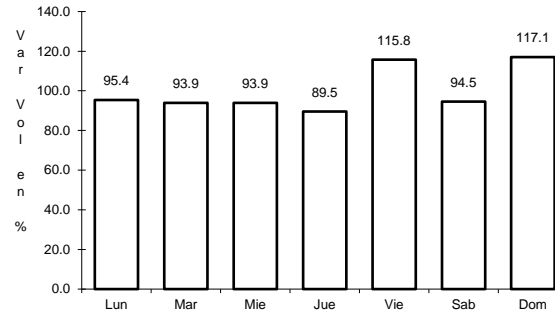
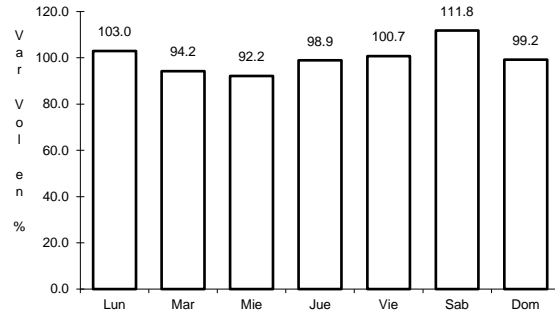
Tipo: 1

Sent: 0

10 CARR: Ent. Tesisán - Ent. Malpaso

CLAVE: 00584

RUTA: MEX-023



Km: 54.00      Tipo: 1      Sent: 0

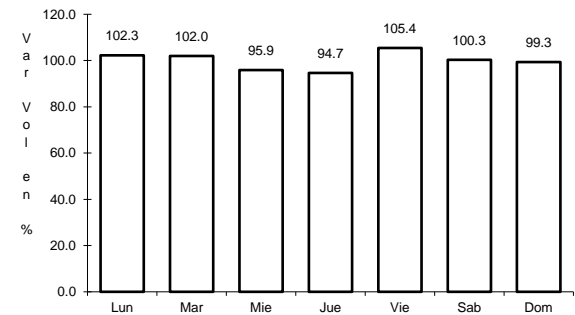
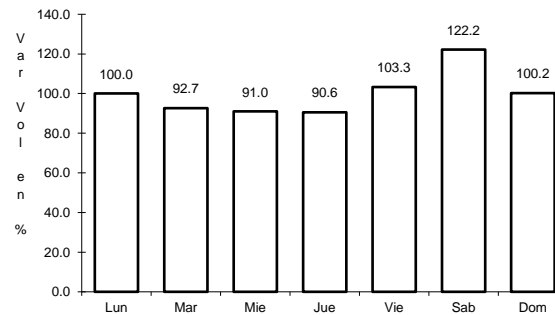
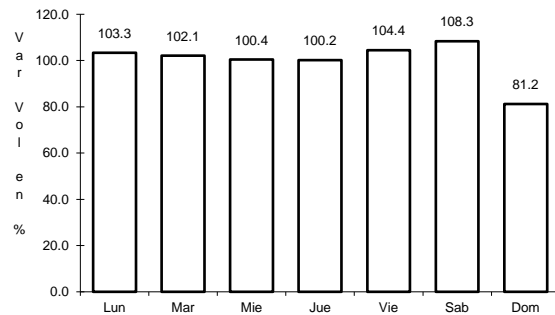
Km: 275.00      Tipo: 1      Sent: 1

Km: 275.00      Tipo: 1      Sent: 2

11 CARR: Fresnillo - Valparaíso

CLAVE: 32547

RUTA: MEX-044



Km: 0.00      Tipo: 3      Sent: 0

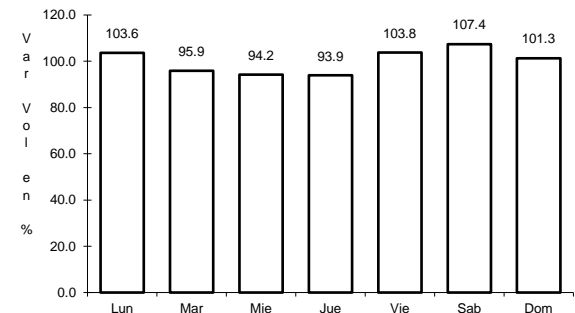
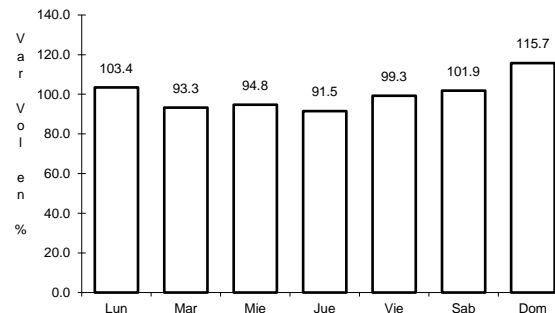
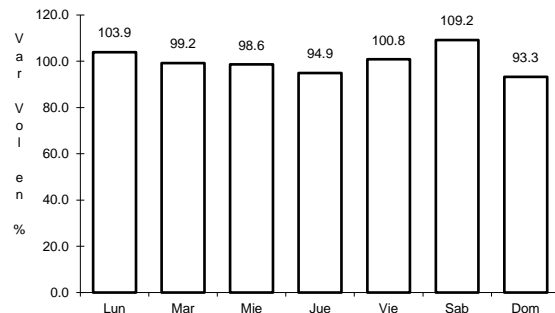
Km: 45.00      Tipo: 3      Sent: 0

Km: 90.00      Tipo: 1      Sent: 0

12 CARR: Guadalajara - Zacatecas

CLAVE: 00150

RUTA: MEX-054



Km: 6.19      Tipo: 3      Sent: 1

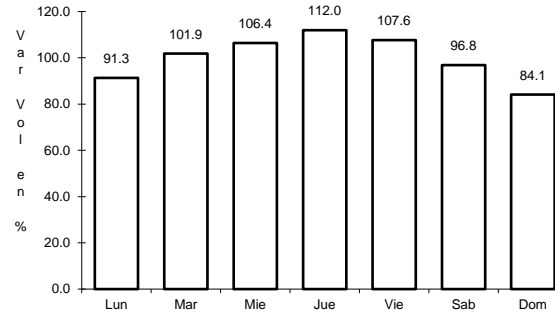
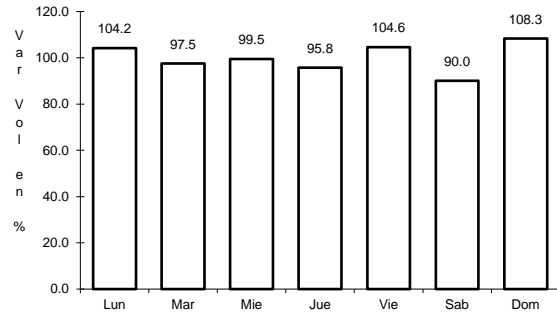
Km: 6.19      Tipo: 3      Sent: 2

Km: 159.39      Tipo: 1      Sent: 0

13 CARR: Jerez - Fresnillo

CLAVE: 32542

RUTA: MEX-023



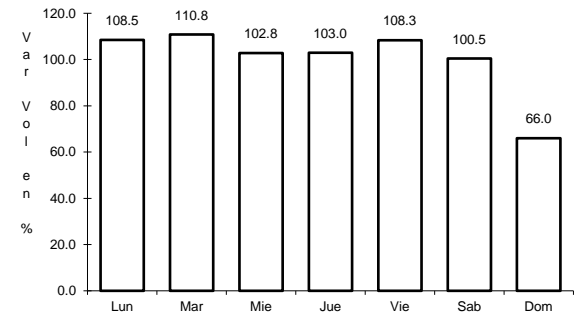
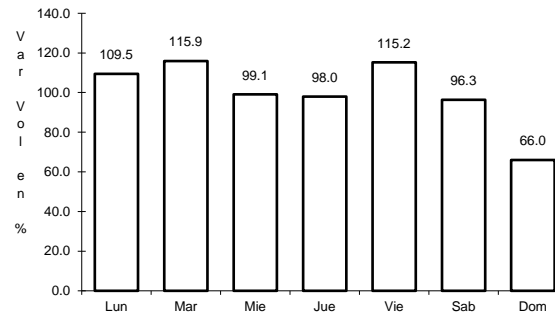
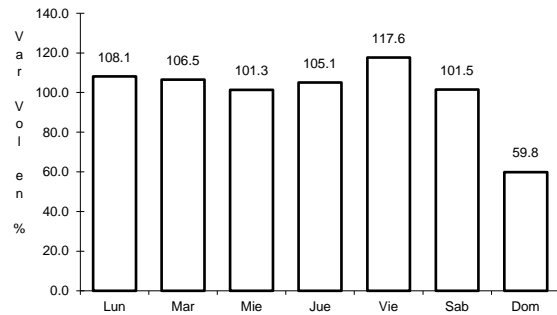
Km: 0.00                      Tipo: 3                      Sent: 0

Km: 60.00                      Tipo: 1                      Sent: 0

14 CARR: Libramiento de Guadalupe - Zacatecas

CLAVE: 32582

RUTA: MEX-045



Km: 13.00                      Tipo: 3                      Sent: 1

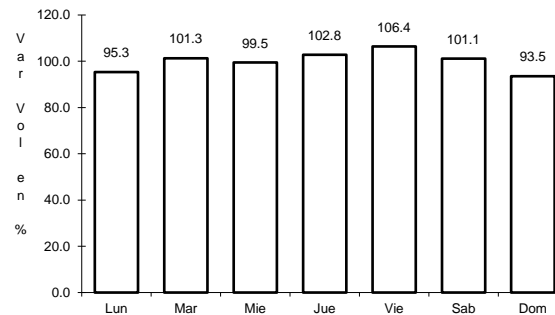
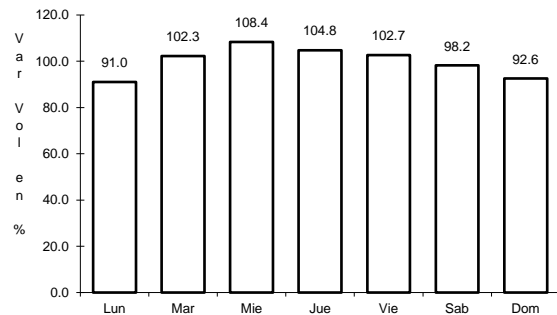
Km: 13.00                      Tipo: 3                      Sent: 2

Km: 17.50                      Tipo: 1                      Sent: 1

15 CARR: Libramiento de Río Grande

CLAVE:

RUTA: MEX-049



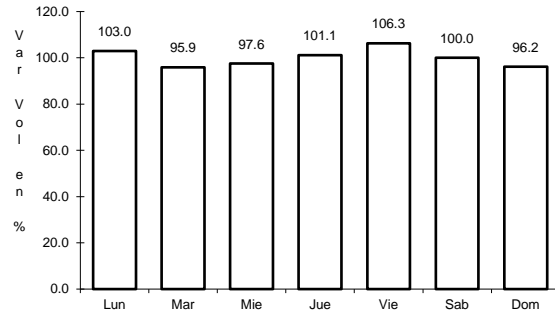
Km: 55.90                      Tipo: 3                      Sent: 0

Km: 68.59                      Tipo: 1                      Sent: 0

16 CARR: Libramiento de Sombrerete

CLAVE:

ruta: MEX-045



Km: 163.50

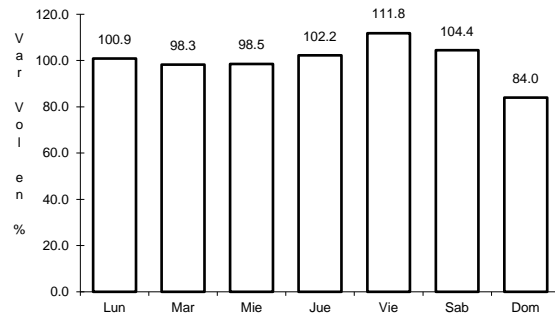
Tipo: 1

Sent: 0

17 CARR: Providencia - Luis Moya

CLAVE: 00112

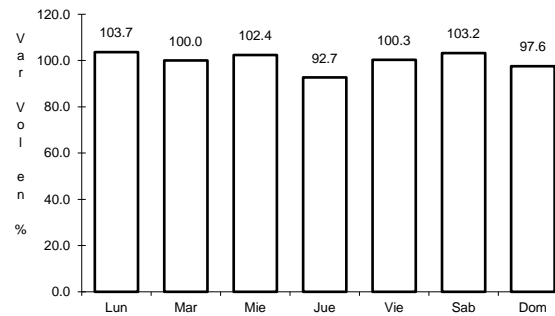
ruta: MEX-071



Km: 0.00

Tipo: 3

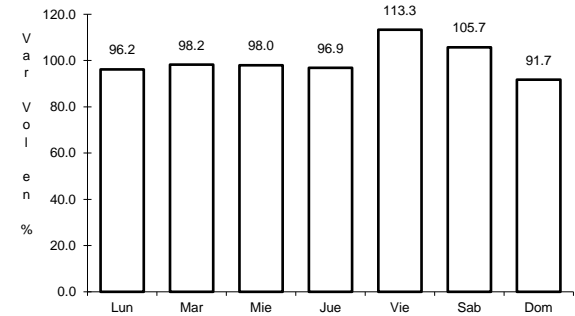
Sent: 0



Km: 21.22

Tipo: 3

Sent: 0



Km: 43.52

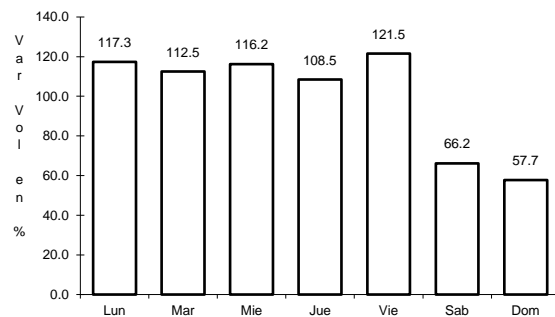
Tipo: 1

Sent: 0

18 CARR: Ramal a Aeropuerto Zacatecas

CLAVE: 32546

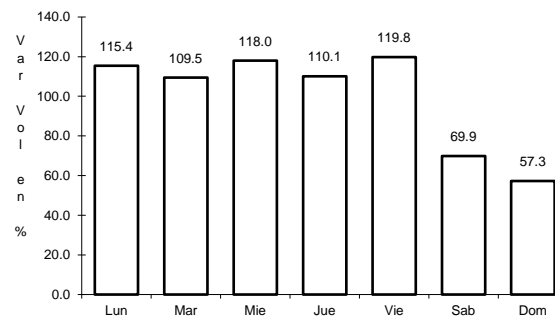
ruta: MEX-045



Km: 0.00

Tipo: 3

Sent: 1



Km: 0.00

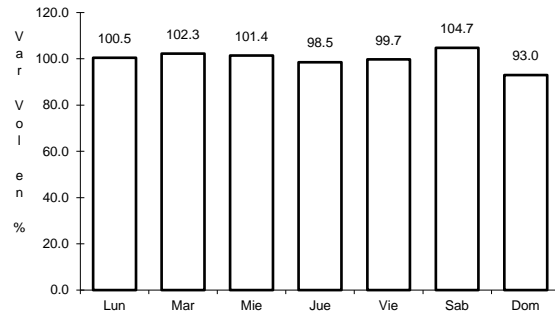
Tipo: 3

Sent: 2

19 CARR: Ramal a Concepción del Oro

CLAVE: 32565

RUTA: MEX-054



Km: 0.00

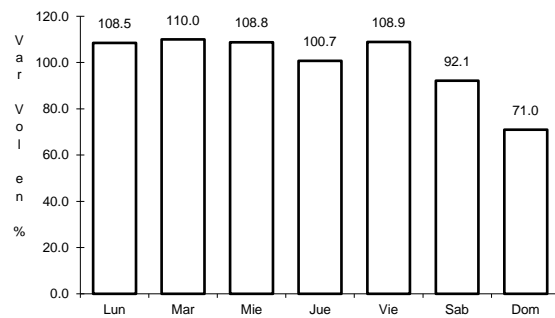
Tipo: 3

Sent: 0

20 CARR: Ramal a Francisco Murguía (Nieves)

CLAVE: 32541

RUTA: MEX-049



Km: 0.00

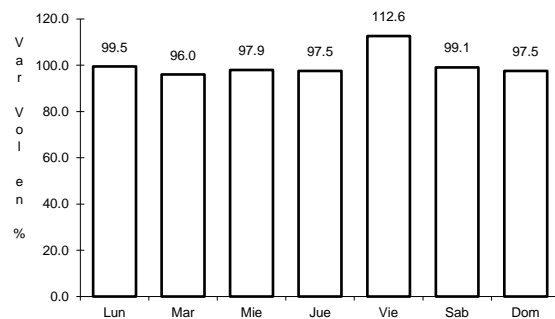
Tipo: 3

Sent: 0

21 CARR: Ramal a Gral. Pánfilo Natera

CLAVE: 32559

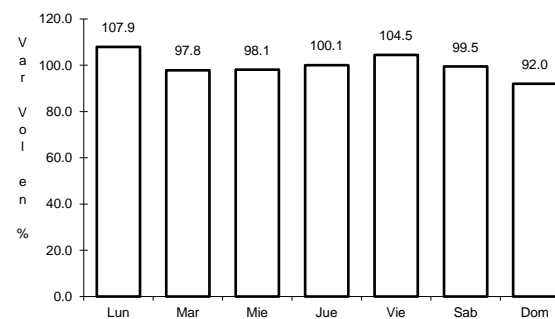
RUTA: MEX-049



Km: 0.00

Tipo: 3

Sent: 1



Km: 0.00

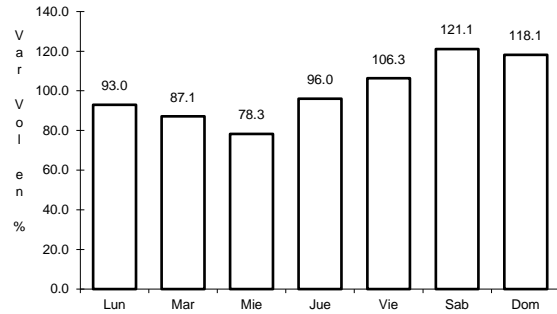
Tipo: 3

Sent: 2

22 CARR: Ramal a Ruinas de Chicomostoc

CLAVE: 00544

RUTA: MEX-045

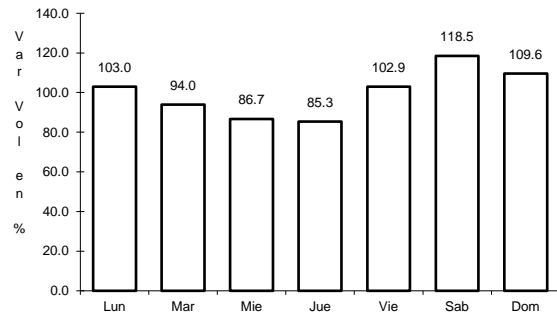


Km: 0.00      Tipo: 3      Sent: 0

23 CARR: Ramal a San Martín

CLAVE: 00544

RUTA: MEX-045

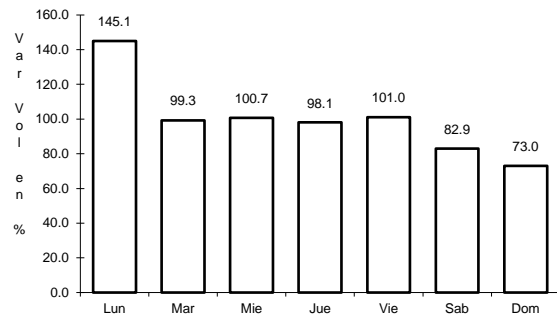


Km: 0.00      Tipo: 3      Sent: 0

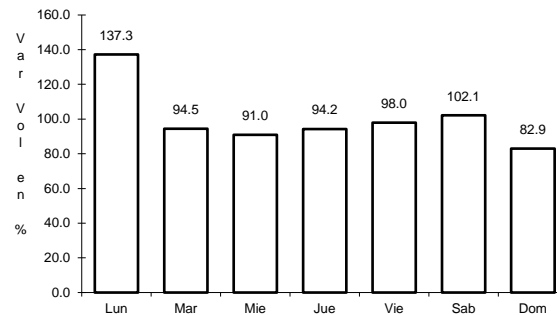
24 CARR: Ramal a Villa de Cos

CLAVE: 32564

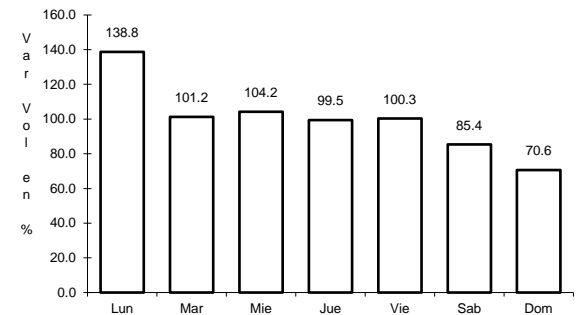
RUTA: MEX-054



Km: 0.00      Tipo: 3      Sent: 1



Km: 0.00      Tipo: 3      Sent: 2

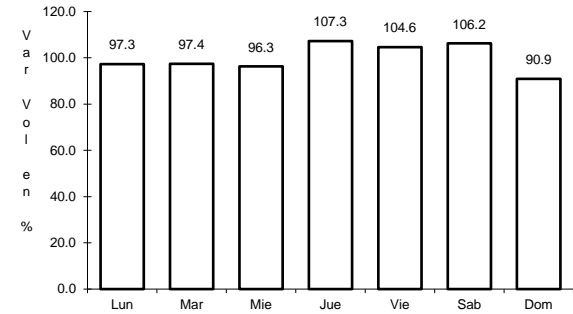
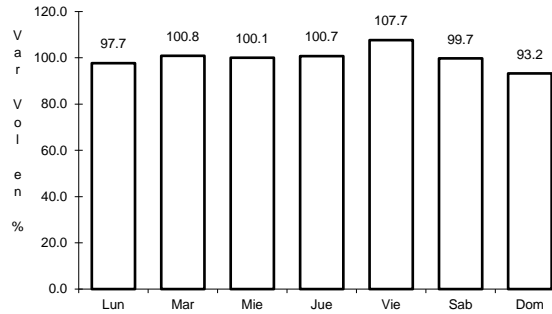
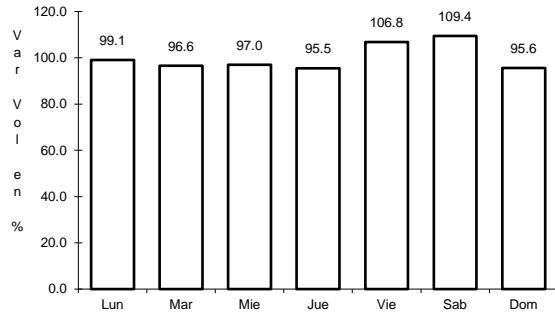


Km: 3.30      Tipo: 1      Sent: 1

25 CARR: San Luis Potosí - Ent. Arcinas

CLAVE: 00134

RUTA: MEX-049



Km: 9.35      Tipo: 3      Sent: 1

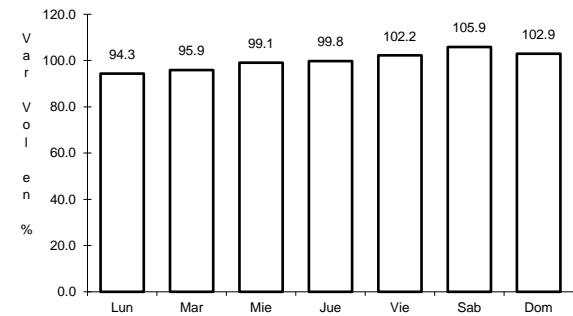
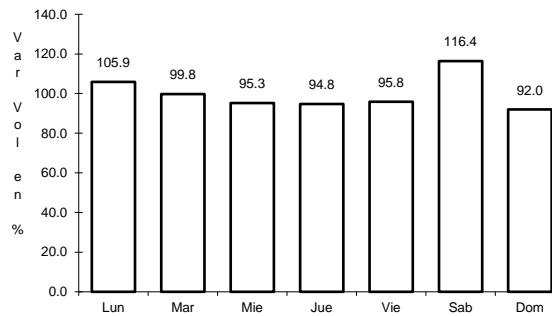
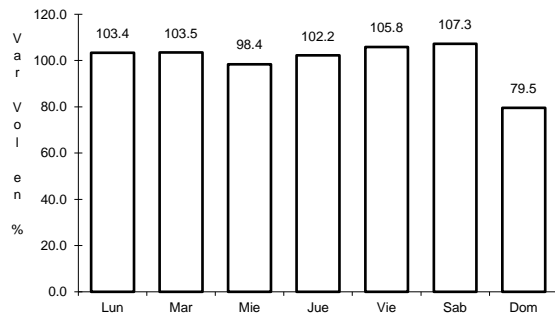
Km: 9.35      Tipo: 3      Sent: 2

Km: 162.98      Tipo: 1      Sent: 1

26 CARR: San Luis Potosí - Lagos de Moreno

CLAVE: 00133

RUTA: MEX-070-080



Km: 0.00      Tipo: 3      Sent: 1

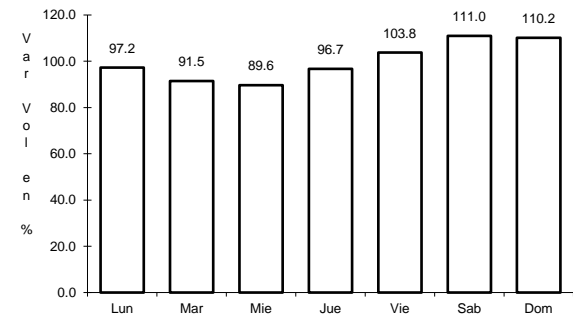
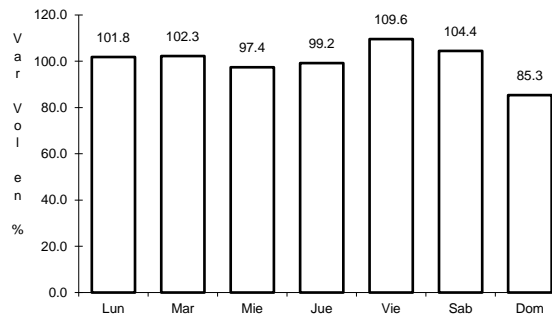
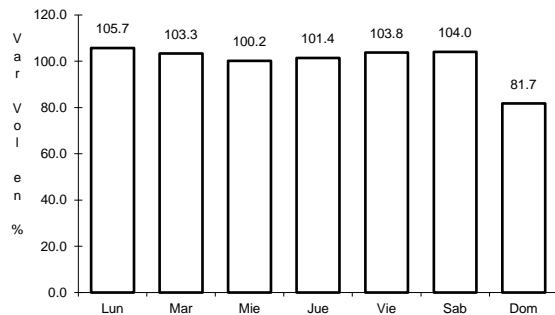
Km: 0.00      Tipo: 3      Sent: 2

Km: 61.90      Tipo: 3      Sent: 0

27 CARR: Zacatecas - Durango

CLAVE: 00544

RUTA: MEX-045



Km: 6.40      Tipo: 3      Sent: 1

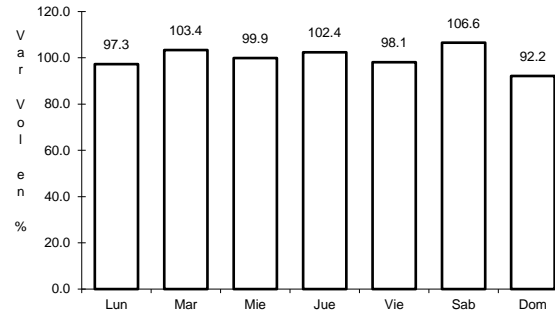
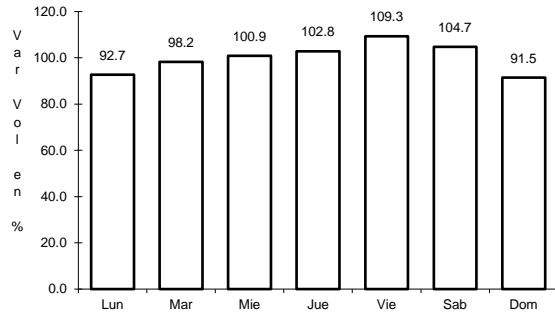
Km: 6.40      Tipo: 3      Sent: 2

Km: 261.70      Tipo: 1      Sent: 0

28 CARR: Ent. Cuauhtémoc - Ent. Osiris (Cuota)

CLAVE: 32558

RUTA: MEX-045D



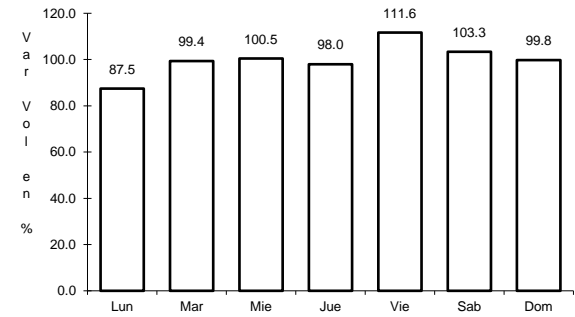
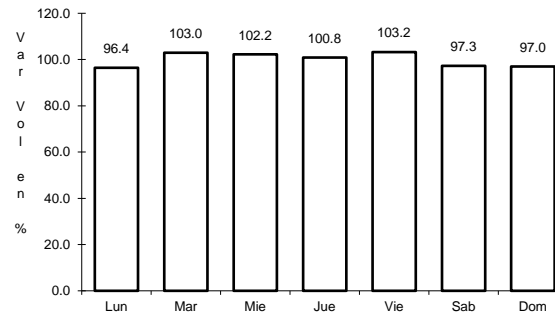
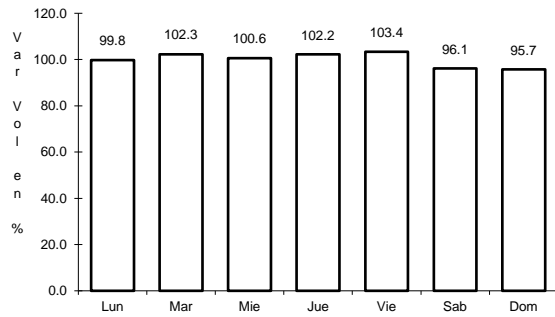
Km: 70.40      Tipo: 3      Sent: 0

Km: 103.40      Tipo: 1      Sent: 0

29 CARR: Libramiento de Fresnillo (Cuota)

CLAVE: 32581

RUTA: MEX-045D



Km: 49.80      Tipo: 3      Sent: 1

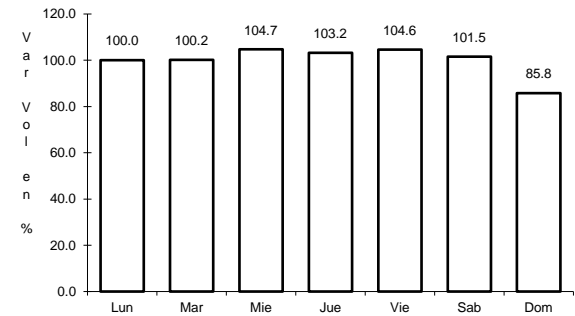
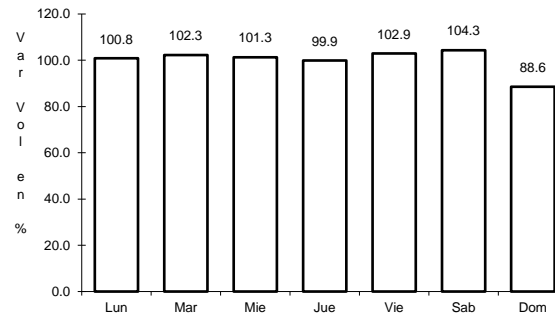
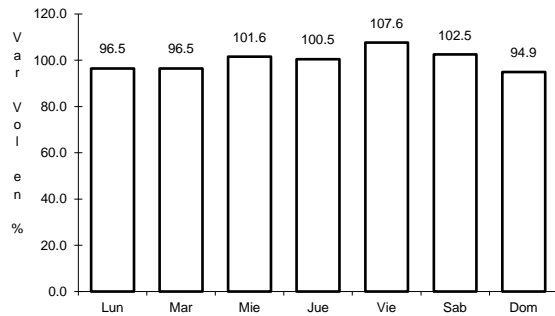
Km: 49.80      Tipo: 3      Sent: 2

Km: 69.85      Tipo: 1      Sent: 1

30 CARR: Libramiento de Víctor Rosales (Cuota)

CLAVE: 32015

RUTA: MEX-045D



Km: 0.00      Tipo: 3      Sent: 1

Km: 0.00      Tipo: 3      Sent: 2

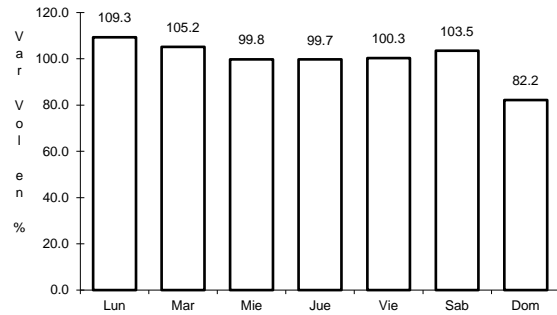
Km: 12.20      Tipo: 1      Sent: 1



31 CARR: Calera de Víctor Rosales - Santiaguillo

CLAVE: 32016

RUTA: ZAC-016



Km: 0.00

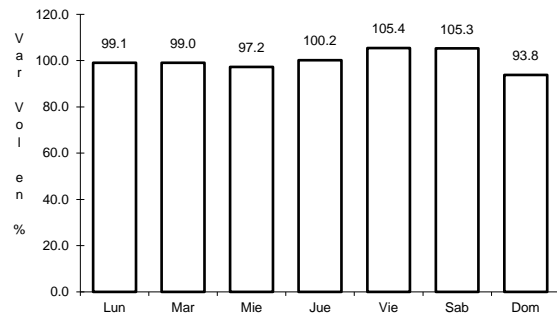
Tipo: 3

Sent: 0

32 CARR: Cieneguillas - Zacatecas

CLAVE: 32579

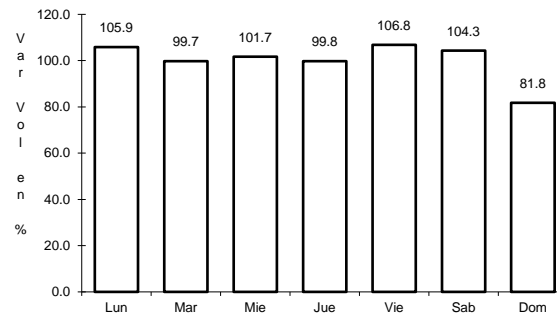
RUTA: ZAC



Km: 0.00

Tipo: 3

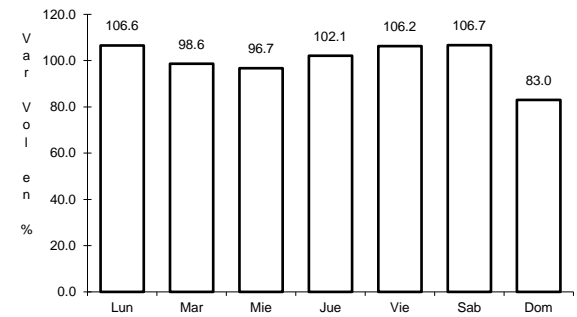
Sent: 0



Km: 7.70

Tipo: 3

Sent: 1



Km: 7.70

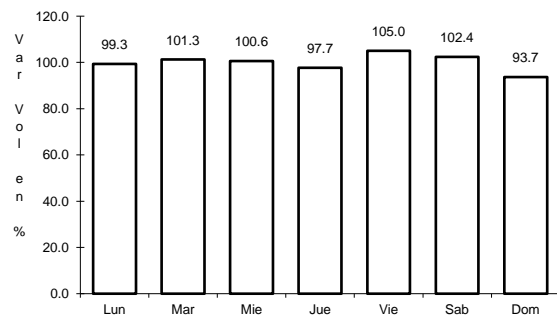
Tipo: 3

Sent: 2

33 CARR: Corral de Piedras - Tlaltenango

CLAVE: 32579

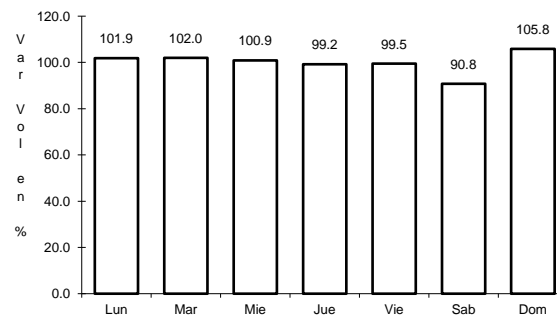
RUTA: ZAC



Km: 0.00

Tipo: 3

Sent: 0



Km: 57.10

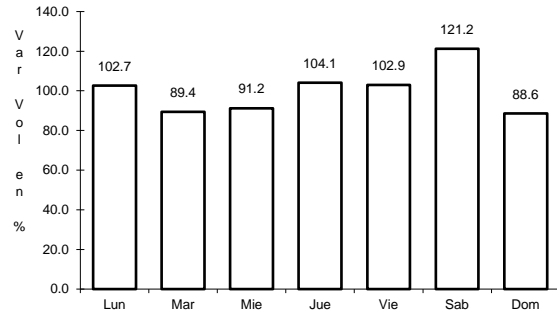
Tipo: 1

Sent: 0

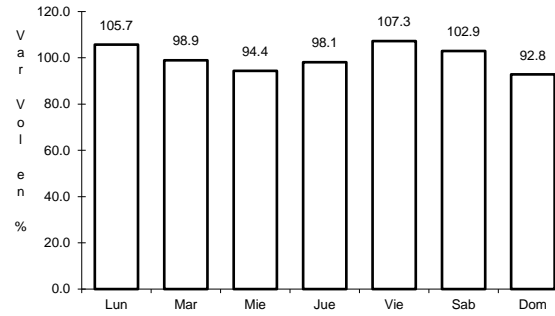
34 CARR: Ent. Ojo Caliente - Ent. Ojuelos de Jalisco

CLAVE: 00126

RUTA: ZAC



Km: 0.00                      Tipo: 3                      Sent: 0

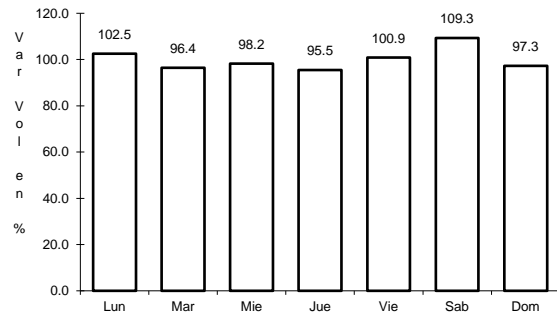


Km: 16.00                      Tipo: 3                      Sent: 0

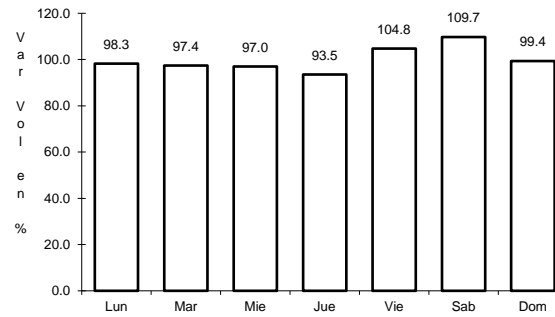
35 CARR: Fresnillo - Ent. Bañón

CLAVE: 32070

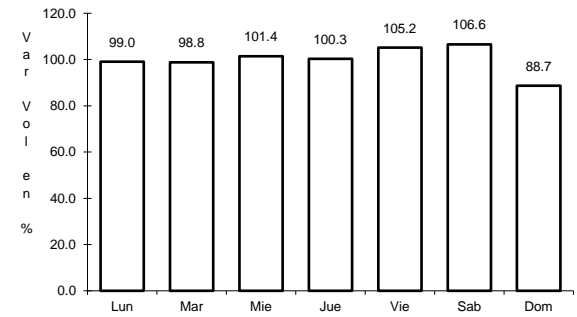
RUTA: ZAC



Km: 2.40                      Tipo: 3                      Sent: 1



Km: 2.40                      Tipo: 3                      Sent: 2

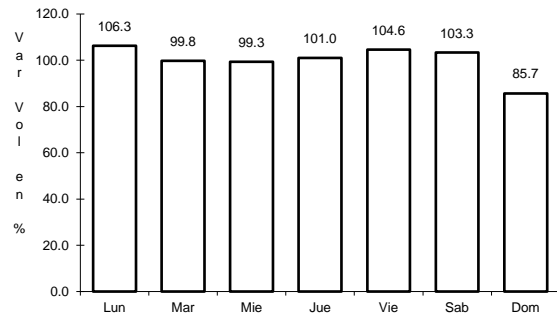


Km: 49.00                      Tipo: 1                      Sent: 0

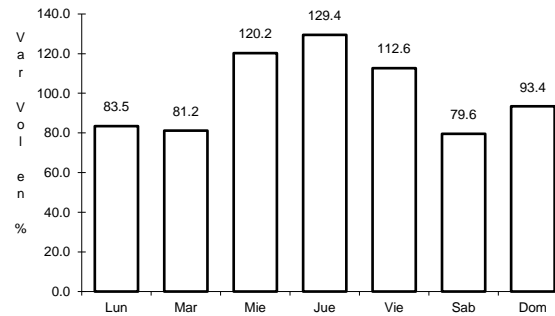
36 CARR: Fresnillo - Plateros

CLAVE: 32022

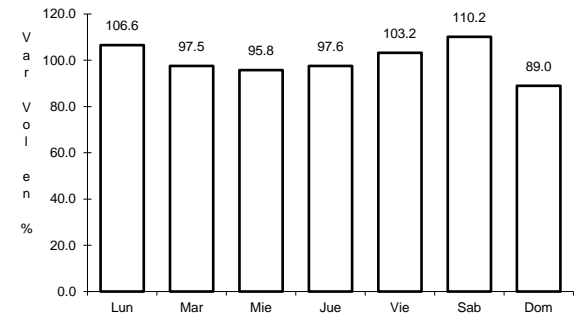
RUTA: ZAC-022



Km: 0.00                      Tipo: 3                      Sent: 1



Km: 0.00                      Tipo: 3                      Sent: 1

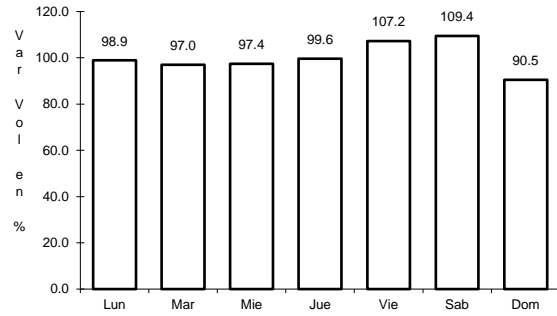


Km: 0.00                      Tipo: 3                      Sent: 2

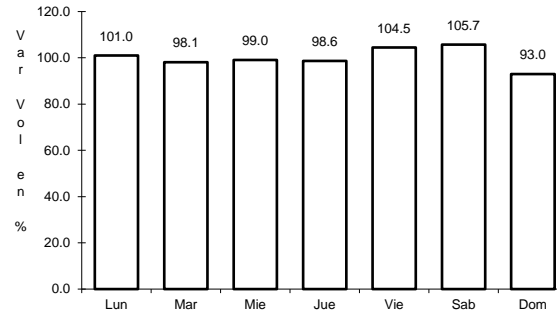
37 CARR: Guadalupe - Ent. Cuauhtémoc

CLAVE: 00579

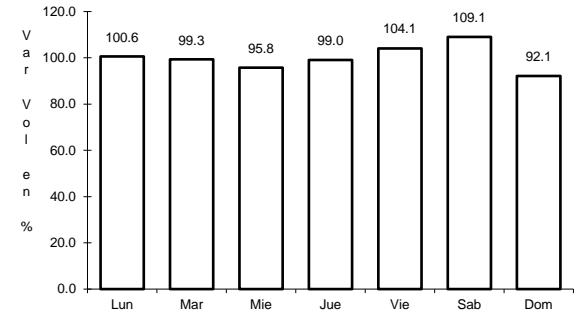
RUTA: ZAC-118



Km: 0.00                      Tipo: 3                      Sent: 1



Km: 0.00                      Tipo: 3                      Sent: 2

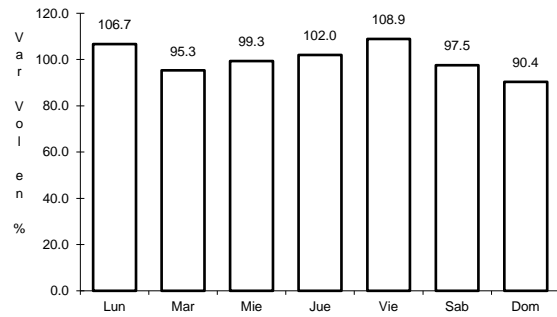


Km: 39.31                      Tipo: 3                      Sent: 0

38 CARR: Ramal a Loreto

CLAVE: 32067

RUTA: ZAC

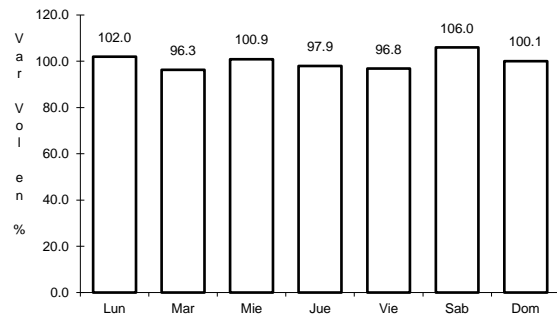


Km: 0.00                      Tipo: 3                      Sent: 0

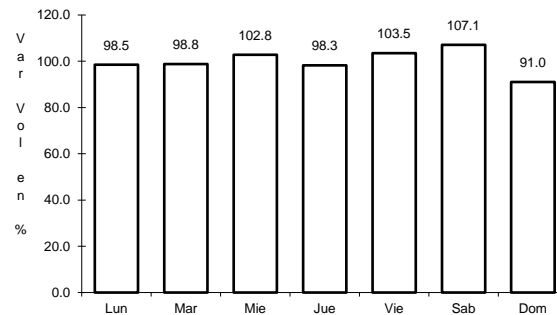
39 CARR: Ramal a Nochistlán

CLAVE: 32545

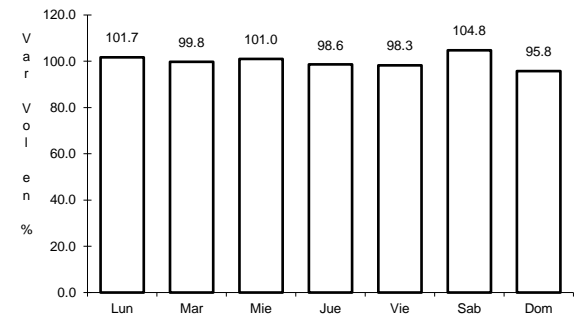
RUTA: ZAC



Km: 0.00                      Tipo: 3                      Sent: 1



Km: 0.00                      Tipo: 3                      Sent: 2

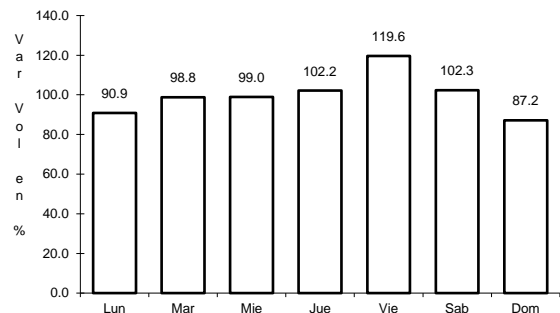


Km: 5.70                      Tipo: 1                      Sent: 1

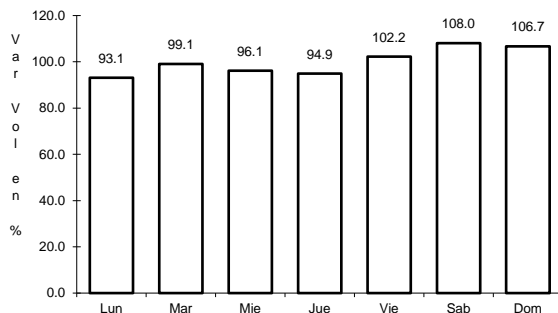
40 CARR: Ramal a San Pedro Piedra Gorda

CLAVE: 00553

RUTA: ZAC-AGS



Km: 0.00                      Tipo: 3                      Sent: 0

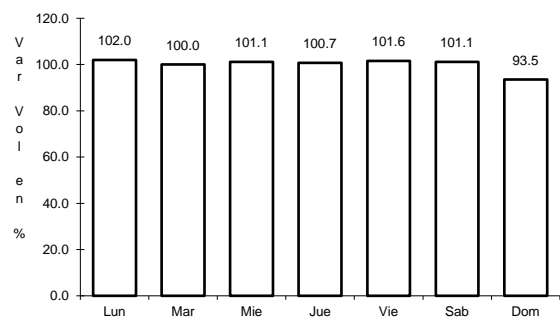


Km: 9.00                      Tipo: 1                      Sent: 0

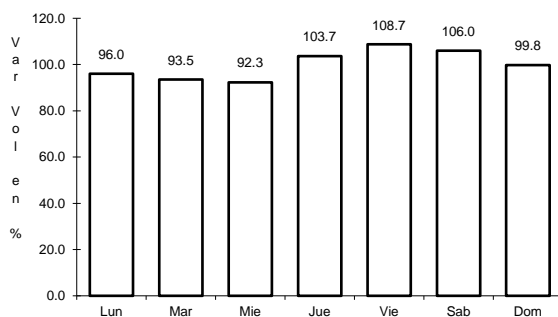
41 CARR: San Gil - Jarillas

CLAVE: 00527

RUTA: AGS-012-ZAC



Km: 0.00                      Tipo: 3                      Sent: 0

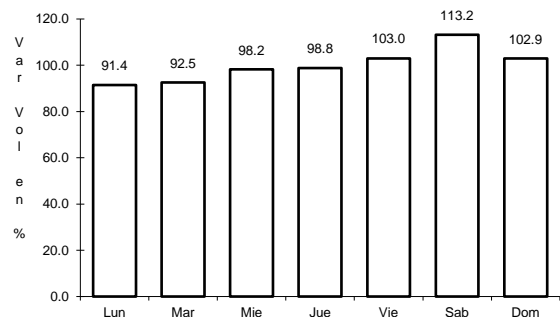


Km: 5.40                      Tipo: 1                      Sent: 0

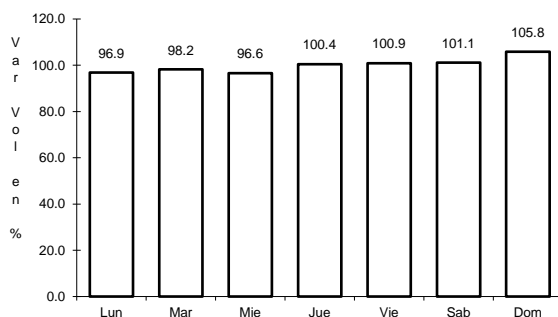
42 CARR: San Rafael - Villa García

CLAVE: 00525

RUTA: AGS-ZAC



Km: 0.00                      Tipo: 3                      Sent: 0

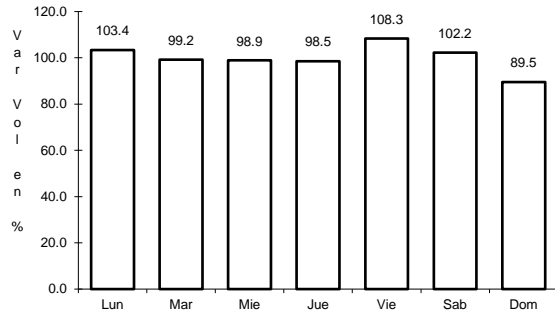


Km: 10.00                      Tipo: 1                      Sent: 0

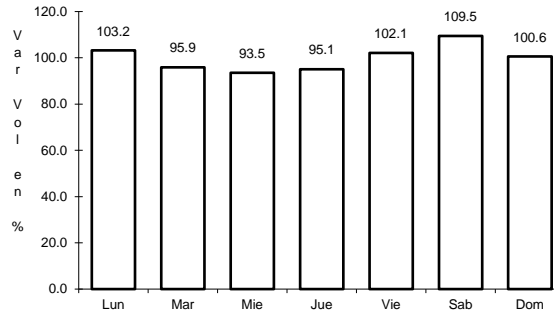
43 CARR: Santa Mónica - Pozo de Gamboa

CLAVE: 32568

RUTA: ZAC



Km: 0.00                      Tipo: 3                      Sent: 0

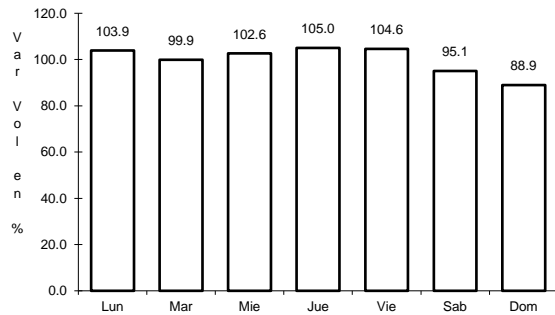


Km: 7.60                      Tipo: 3                      Sent: 0

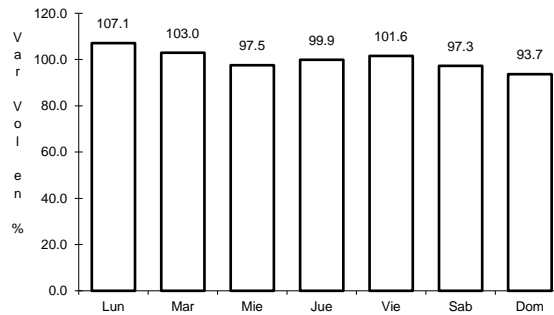
44 CARR: Sombrerete - González Ortega

CLAVE: 32568

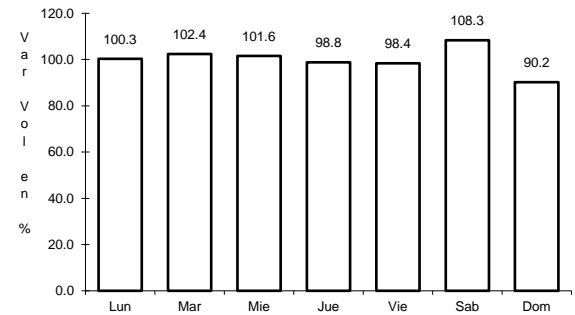
RUTA: ZAC



Km: 0.00                      Tipo: 3                      Sent: 0



Km: 38.70                      Tipo: 1                      Sent: 0

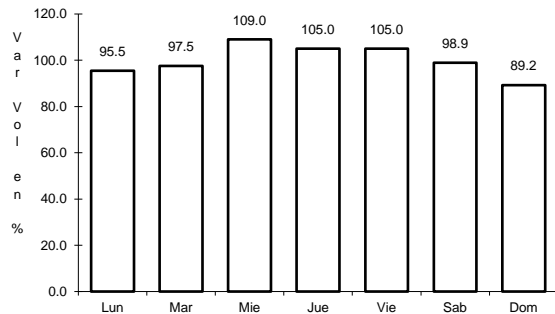


Km: 157.00                      Tipo: 1                      Sent: 0

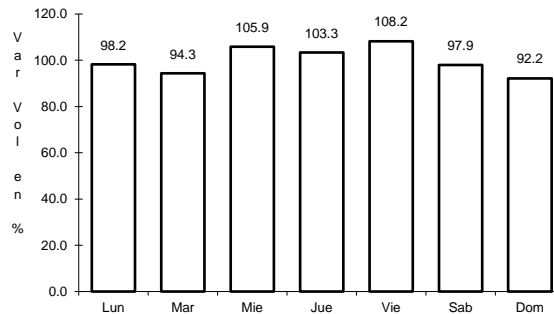
45 CARR: Libramiento Noreste de Zacatecas (Cuota)

CLAVE: 32582

RUTA: ZAC-D

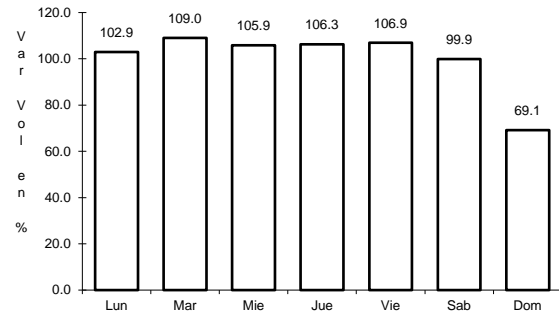


Km: 0.00                      Tipo: 3                      Sent: 0



Km: 21.00                      Tipo: 1                      Sent: 0

46 CARR: Tepatitlán - Jaralillo

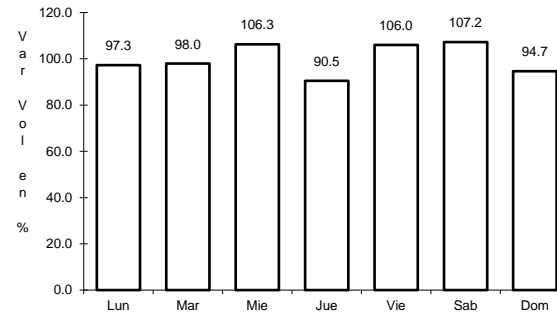


Km: 0.00

Tipo: 3

Sent: 0

CLAVE: 00146

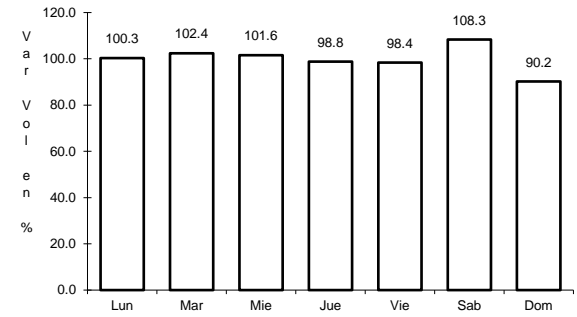


Km: 72.45

Tipo: 3

Sent: 0

RUTA: MEX-JAL-ZAC



Km: 157.00

Tipo: 1

Sent: 0