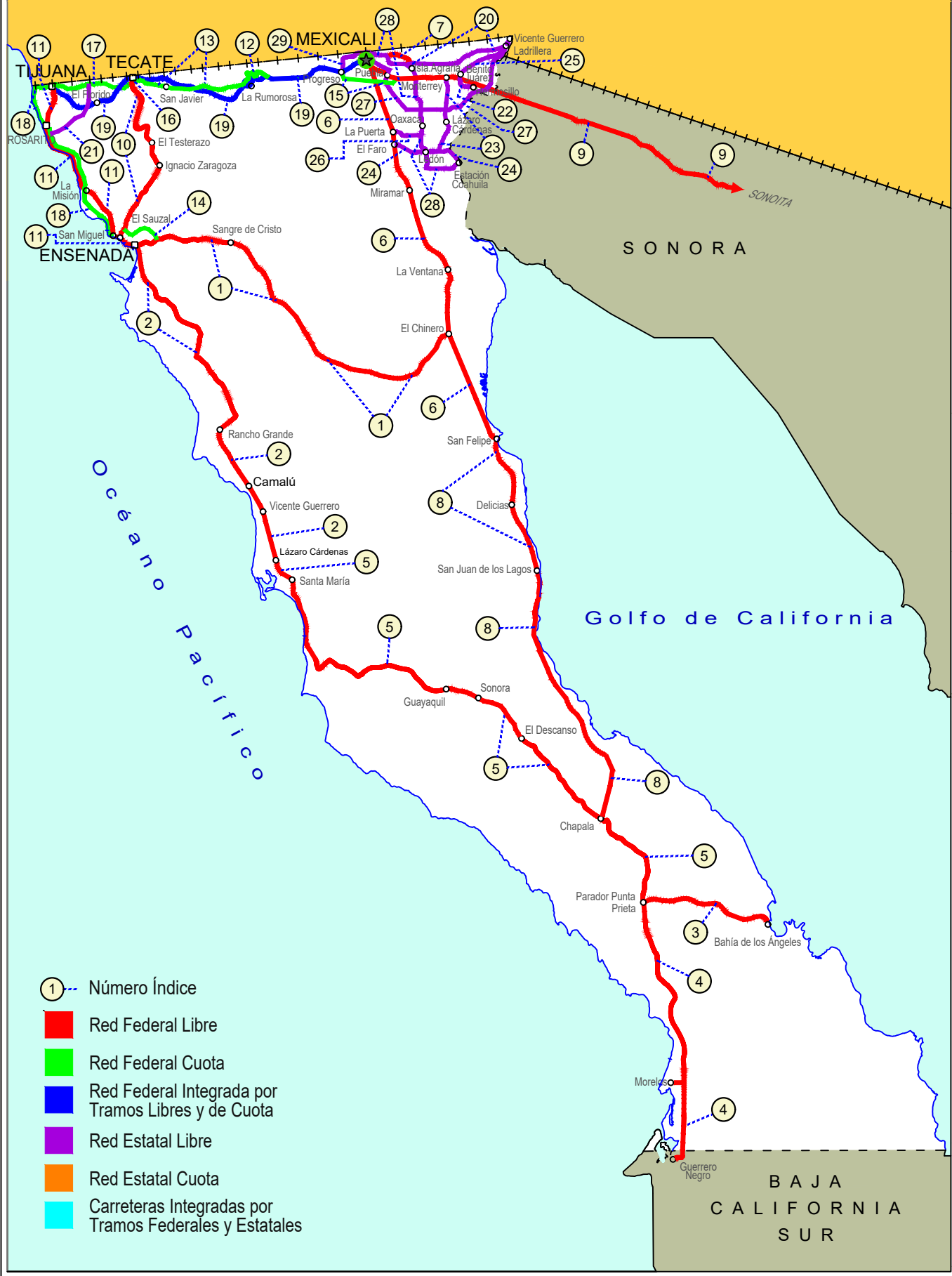


BAJA CALIFORNIA

NO. INDICE CARRETERA		RUTA
	---RED FEDERAL LIBRE---	
1	Ensenada - El Chinero	MEX-003
2	Ensenada - Lázaro Cárdenas	MEX-001
3	Ent. Punta Prieta - Bahía de Los Ángeles	MEX-001
4	Ent. Punta Prieta - Guerrero Negro	MEX-001
5	Lázaro Cárdenas - Ent. Punta Prieta	MEX-001
6	Mexicali - San Felipe	MEX-005
7	Ramal a Aeropuerto de Mexicali	MEX-002
8	San Felipe - Chapala	MEX-005
9	Sonoita - Mexicali	MEX-002
10	Tecate - El Sauzal	MEX-003
11	Tijuana - Ensenada (Libre)	MEX-001
	---RED FEDERAL DE CUOTA---	
12	El Centinela - La Rumorosa (Cuota)	MEX-002D
13	La Rumorosa - Tecate (Cuota)	MEX-002D
14	Libramiento de Ensenada (Cuota)	MEX-003D
15	Libramiento de Mexicali (Cuota)	MEX-002D
16	Libramiento de Tecate (Cuota)	MEX-002D
17	Tecate - Tijuana (Cuota)	MEX-002D
18	Tijuana - Ensenada (Cuota)	MEX-001D
	---RED FEDERAL INTEGRADA POR TRAMOS LIBRES Y DE CUOTA---	
19	Mexicali - Tijuana	MEX-002D-MEX
	---RED ESTATAL LIBRE---	
20	Algodones - Ent. Islas Agrarias Grupo B	BC-008
21	Corredor Tijuana 2000	BC
22	Ejido Benito Juárez - Ejido Chiapas	BC-061
23	Ejido Monterrey - Mazón	BC-003
24	El Faro - Estación Coahuila	BC-004
25	Ent. Santa Rosa - Ent. Pachuca	BC-006
26	La Puerta - T. C. (Mexicali - Estación Coahuila)	BC-010
27	Mexicali - Algodones	BC-002
28	Mexicali - Estación Coahuila	BC-001
29	Mexicali - Progreso	BC-005

02 BAJA CALIFORNIA

ESTADOS UNIDOS DE NORTE AMÉRICA



- ① --- Número Índice
- Red Federal Libre
- Red Federal Cuota
- Red Federal Integrada por Tramos Libres y de Cuota
- Red Estatal Libre
- Red Estatal Cuota
- Carreteras Integradas por Tramos Federales y Estatales

BAJA CALIFORNIA SUR

BAJA CALIFORNIA

1 CARR: Ensenada - El Chinero

CLAVE: 02009

RUTA: MEX-003

AÑO: 2022

LUGAR	ESTACION				CLASIFICACION VEHICULAR EN PORCIENTO													COORDENADAS		
	KM	TE	SC	TDPA	M	A	B	C2	C3	T3S2	T3S3	T3S2R4	OTROS	A	B	C	K'	D	LATITUD	LONGITUD
Ensenada	0.00	3	0	13271	4.1	83.5	0.7	8.9	1.0	1.0	0.2	0.4	0.2	87.6	0.7	11.7	0.078	0.509	31.874957	-116.565350
El Tule	12.40	1	0	3323	2.5	76.1	1.0	14.2	0.6	3.7	1.6	0.3	0.0	78.6	1.0	20.4	0.105	0.506	31.887848	-116.504794
El Tule	12.40	3	0	3139	2.4	75.5	1.0	15.5	1.0	3.0	1.5	0.1	0.0	77.9	1.0	21.1	0.088	0.507	31.887947	-116.492945
Ojos Negros	38.50	1	0	2320	4.7	69.9	1.4	15.6	1.6	3.5	2.0	1.2	0.1	74.6	1.4	24.0	0.103	0.504	31.888869	-116.280557
San Salvador	60.50	1	0	1177	1.9	75.5	2.2	10.8	1.4	6.8	0.9	0.4	0.1	77.4	2.2	20.4	0.104	0.508	31.848649	-116.075738
Héroes de La Independencia	93.00	3	0	1188	1.8	78.6	2.3	9.0	1.2	5.6	0.9	0.4	0.2	80.4	2.3	17.3	0.085	0.511	31.601503	-115.874349
Leyes de Reforma	103.00	3	0	1267	2.7	76.6	1.5	11.6	1.8	4.5	0.9	0.3	0.1	79.3	1.5	19.2	0.110	0.528	31.526456	-115.812125
Lázaro Cárdenas	122.00	3	0	1230	2.1	76.9	3.7	10.5	1.4	4.0	0.9	0.3	0.2	79.0	3.7	17.3	0.085	0.518	31.377896	-115.682717
Francisco R. Serrano	137.50	3	0	750	2.1	71.9	3.2	13.7	1.2	6.5	1.0	0.3	0.1	74.0	3.2	22.8	0.104	0.527	31.328658	-115.532696
El Chinero	196.00	1	0	703	2.8	72.1	2.1	11.6	1.4	7.6	1.5	0.8	0.1	74.9	2.1	23.0	0.114	0.546	31.428477	-115.057702

2 CARR: Ensenada - Lázaro Cárdenas

CLAVE: 02098

RUTA: MEX-001

AÑO: 2022

LUGAR	ESTACION				CLASIFICACION VEHICULAR EN PORCIENTO													COORDENADAS		
	KM	TE	SC	TDPA	M	A	B	C2	C3	T3S2	T3S3	T3S2R4	OTROS	A	B	C	K'	D	LATITUD	LONGITUD
Ensenada	0.00	3	1	27791	6.2	83.3	1.0	2.8	1.4	1.5	0.4	2.9	0.5	89.5	1.0	9.5	0.065	0.546	31.818166	-116.598340
Ensenada	0.00	3	2	25716	6.1	83.0	1.0	2.5	1.3	1.5	0.5	3.5	0.6	89.1	1.0	9.9	0.067	0.546	31.818007	-116.598137
T. Der. Aeropuerto	13.50	3	1	27109	6.0	84.0	0.9	3.7	1.9	1.5	0.3	1.4	0.3	90.0	0.9	9.1	0.073	0.506	31.793304	-116.593383
T. Der. Aeropuerto	13.50	3	2	26479	5.8	84.3	1.0	3.8	1.9	1.4	0.3	1.2	0.3	90.1	1.0	8.9	0.077	0.506	31.793237	-116.593208
T. Der. La Bufadora	21.16	1	1	16733	4.0	88.3	1.3	3.0	0.9	1.7	0.3	0.4	0.1	92.3	1.3	6.4	0.071	0.514	31.731099	-116.579875
T. Der. La Bufadora	21.16	1	2	17696	4.0	88.3	1.1	3.0	0.9	1.9	0.3	0.4	0.1	92.3	1.1	6.6	0.071	0.514	31.731192	-116.579736
T. Der. La Bufadora	21.16	3	0	16819	2.7	87.9	1.0	2.3	2.7	2.8	0.4	0.2	0.0	90.6	1.0	8.4	0.071	0.510	31.700725	-116.553947
Cañón Buenavista	30.40	1	0	11436	1.9	87.8	2.0	3.2	0.7	3.7	0.4	0.3	0.0	89.7	2.0	8.3	0.079	0.511	31.677334	-116.523920
Cañón Buenavista	30.40	3	0	6458	2.3	84.4	2.5	4.5	0.4	4.7	0.6	0.4	0.2	86.7	2.5	10.8	0.096	0.511	31.666223	-116.518681
Santo Tomás	52.00	1	0	6971	1.6	84.0	3.0	4.0	0.8	5.2	1.0	0.4	0.0	85.6	3.0	11.4	0.085	0.500	31.563797	-116.415781
Misión San Vicente	90.00	1	0	4571	2.8	80.0	2.7	4.2	1.0	7.9	0.8	0.6	0.0	82.8	2.7	14.5	0.077	0.506	31.330671	-116.251820
El Salado	104.50	1	0	3736	1.1	77.9	4.1	4.6	1.0	9.7	1.0	0.5	0.1	79.0	4.1	16.9	0.085	0.502	31.225283	-116.165948
Punta Colonet	128.00	1	0	5028	1.2	81.9	3.8	4.1	0.7	7.1	0.8	0.4	0.0	83.1	3.8	13.1	0.082	0.506	31.080433	-116.204278
Punta Colonet	128.00	3	0	5068	1.5	80.0	4.1	5.0	1.1	7.0	0.7	0.6	0.0	81.5	4.1	14.4	0.087	0.505	31.053621	-116.208794
Camalú	159.00	1	0	7805	1.6	82.1	5.2	4.0	1.0	5.3	0.5	0.3	0.0	83.7	5.2	11.1	0.090	0.504	30.849740	-116.069611
Colonia Vicente Guerrero (Lazáro Cárdenas)	172.40	3	0	18429	0.7	89.9	3.7	2.6	0.6	2.0	0.3	0.2	0.0	90.6	3.7	5.7	0.082	0.502	30.700431	-115.984941
San Quintín	193.00	1	0	13484	0.7	89.6	3.5	2.9	0.9	2.0	0.3	0.1	0.0	90.3	3.5	6.2	0.086	0.503	30.594127	-115.952341
San Quintín	193.00	3	1	14784	3.1	90.3	2.0	2.1	1.0	0.9	0.2	0.3	0.1	93.4	2.0	4.6	0.083	0.505	30.531909	-115.933078
San Quintín	193.00	3	2	14511	3.1	90.2	1.9	2.2	1.0	0.9	0.2	0.3	0.2	93.3	1.9	4.8	0.080	0.505	30.532054	-115.932962
Lázaro Cárdenas	196.00	0	0																	

BAJA CALIFORNIA

3 CARR: Ent. Punta Prieta - Bahía de Los Ángeles

CLAVE: 02322

RUTA: MEX-001

AÑO: 2022

LUGAR	ESTACION				CLASIFICACION VEHICULAR EN PORCIENTO												COORDENADAS			
	KM	TE	SC	TDPA	M	A	B	C2	C3	T3S2	T3S3	T3S2R4	OTROS	A	B	C	K'	D	LATITUD	LONGITUD
Parador Punta Prieta	0.00	3	0	175	0.1	61.7	3.6	30.4	3.2	1.0	0.0	0.0	0.0	61.8	3.6	34.6	0.149	0.517	29.045391	-114.150486
Bahía de Los Ángeles	68.00	1	0	252	4.1	75.4	1.0	16.0	2.6	0.9	0.0	0.0	0.0	79.5	1.0	19.5	0.194	0.506	28.963678	-113.567561

4 CARR: Ent. Punta Prieta - Guerrero Negro

CLAVE: 00321

RUTA: MEX-001

AÑO: 2022

LUGAR	ESTACION				CLASIFICACION VEHICULAR EN PORCIENTO												COORDENADAS			
	KM	TE	SC	TDPA	M	A	B	C2	C3	T3S2	T3S3	T3S2R4	OTROS	A	B	C	K'	D	LATITUD	LONGITUD
Parador Punta Prieta	0.00	3	0	1047	2.7	56.5	5.9	14.8	2.6	14.0	2.7	0.8	0.0	59.2	5.9	34.9	0.091	0.542	28.921363	-114.152860
Rosarito	50.60	3	0	1099	3.2	55.9	5.0	14.3	2.5	15.5	2.8	0.8	0.0	59.1	5.0	35.9	0.086	0.518	28.631592	-114.021870
Tanatán	70.10	3	0	1078	2.8	57.6	5.8	14.0	2.0	14.7	2.2	0.9	0.0	60.4	5.8	33.8	0.096	0.517	28.506610	-114.021304
Tampico	105.00	1	0	1130	1.9	67.7	3.6	5.3	3.0	15.7	2.0	0.8	0.0	69.6	3.6	26.8	0.088	0.541	28.208287	-114.000722
Lim. Edos. Term. B.C. Ppia. B.C.S. (Paralelo 28)	128.56	0	0																	
Ent. Guerrero Negro	130.00	1	0	2191	4.3	77.8	3.6	3.9	2.4	5.4	1.8	0.8	0.0	82.1	3.6	14.3	0.080	0.520	27.973792	-114.013581

5 CARR: Lázaro Cárdenas - Ent. Punta Prieta

CLAVE: 02319

RUTA: MEX-001

AÑO: 2022

LUGAR	ESTACION				CLASIFICACION VEHICULAR EN PORCIENTO												COORDENADAS			
	KM	TE	SC	TDPA	M	A	B	C2	C3	T3S2	T3S3	T3S2R4	OTROS	A	B	C	K'	D	LATITUD	LONGITUD
Lázaro Cárdenas	0.00	3	0	10647	1.7	85.4	2.9	7.3	0.8	1.1	0.4	0.4	0.0	87.1	2.9	10.0	0.077	0.506	30.506854	-115.925236
T. Der. Ramal a Venustiano Carranza	14.50	1	0	2758	1.2	84.2	4.1	3.8	0.3	5.7	0.4	0.3	0.0	85.4	4.1	10.5	0.088	0.513	30.394009	-115.870990
Rosario de Arriba	53.70	1	0	1267	2.0	73.7	4.3	5.7	1.0	10.9	1.9	0.5	0.0	75.7	4.3	20.0	0.077	0.519	30.065900	-115.731036
Rosario de Arriba	53.70	3	0	2396	1.6	84.5	1.8	3.8	0.9	6.7	0.4	0.3	0.0	86.1	1.8	12.1	0.078	0.515	30.075481	-115.702888
T. Der. Emiliano Zapata	80.00	3	0	548	1.1	54.3	6.2	12.5	0.9	21.0	2.5	1.5	0.0	55.4	6.2	38.4	0.078	0.536	30.027690	-115.532094
San Agustín	140.00	1	0	500	0.0	57.1	6.3	9.8	1.6	22.7	1.7	0.8	0.0	57.1	6.3	36.6	0.082	0.528	29.922032	-114.980942
San Agustín	140.00	3	0	518	2.4	58.2	4.3	5.5	0.9	25.3	2.1	1.3	0.0	60.6	4.3	35.1	0.075	0.538	29.921323	-114.970514
San Luis	173.00	1	0	521	2.9	59.3	5.1	5.7	1.4	20.0	3.8	1.8	0.0	62.2	5.1	32.7	0.086	0.528	29.738978	-114.731475
Rancho Chapala	222.80	1	0	436	4.0	54.5	4.6	5.6	1.1	26.5	2.3	1.4	0.0	58.5	4.6	36.9	0.101	0.554	29.387357	-114.384164
Parador Punta Prieta	275.66	1	0	621	5.2	65.5	7.0	6.6	0.9	11.8	1.8	1.2	0.0	70.7	7.0	22.3	0.092	0.520	29.049196	-114.153328

6 CARR: Mexicali - San Felipe

CLAVE: 02096

RUTA: MEX-005

AÑO: 2022

LUGAR	ESTACION				CLASIFICACION VEHICULAR EN PORCIENTO												COORDENADAS			
	KM	TE	SC	TDPA	M	A	B	C2	C3	T3S2	T3S3	T3S2R4	OTROS	A	B	C	K'	D	LATITUD	LONGITUD
Mexicali	0.00	3	1	13475	6.4	78.8	1.7	4.2	3.6	3.6	1.0	0.6	0.1	85.2	1.7	13.1	0.085	0.545	32.556139	-115.418024
Mexicali	0.00	3	2	11237	6.7	79.3	1.7	3.7	4.0	3.0	1.0	0.5	0.1	86.0	1.7	12.3	0.086	0.545	32.556180	-115.417861

BAJA CALIFORNIA

6 CARR: Mexicali - San Felipe

CLAVE: 02096

RUTA: MEX-005

AÑO: 2022

LUGAR	ESTACION				CLASIFICACION VEHICULAR EN PORCIENTO										COORDENADAS					
	KM	TE	SC	TDPA	M	A	B	C2	C3	T3S2	T3S3	T3S2R4	OTROS	A	B	C	K'	D	LATITUD	LONGITUD
La Puerta	32.00	1	1	4665	1.7	89.3	1.1	2.9	1.3	1.8	1.4	0.4	0.1	91.0	1.1	7.9	0.118	0.517	32.338951	-115.331550
La Puerta	32.00	1	2	4362	1.6	89.1	1.1	3.1	1.2	1.9	1.6	0.3	0.1	90.7	1.1	8.2	0.139	0.517	32.338965	-115.331415
T. Izq. Estación Coahuila	39.00	1	1	3225	1.1	89.4	1.4	3.2	1.1	2.3	1.1	0.3	0.1	90.5	1.4	8.1	0.113	0.513	32.280345	-115.322508
T. Izq. Estación Coahuila	39.00	1	2	3066	1.1	89.3	1.3	3.2	1.1	2.4	1.1	0.4	0.1	90.4	1.3	8.3	0.135	0.513	32.280352	-115.322412
T. Izq. Estación Coahuila	39.00	3	0	3365	2.7	86.0	1.2	3.6	1.4	2.7	1.4	0.4	0.6	88.7	1.2	10.1	0.136	0.534	32.267350	-115.321479
El Chinero	141.00	1	0	2112	1.3	87.8	1.4	3.9	0.6	3.7	0.7	0.4	0.2	89.1	1.4	9.5	0.111	0.501	31.441358	-115.053612
El Chinero	141.00	3	0	2310	1.4	88.3	1.1	3.9	0.5	3.6	0.9	0.3	0.0	89.7	1.1	9.2	0.119	0.525	31.425242	-115.045997
San Felipe	189.60	1	1	3862	1.5	92.1	0.6	3.0	1.4	1.0	0.3	0.1	0.0	93.6	0.6	5.8	0.105	0.510	31.039360	-114.866616
San Felipe	189.60	1	2	3709	1.6	91.7	0.7	3.0	1.5	1.1	0.3	0.1	0.0	93.3	0.7	6.0	0.090	0.510	31.039431	-114.866513

7 CARR: Ramal a Aeropuerto de Mexicali

CLAVE: 02321

RUTA: MEX-002

AÑO: 2022

LUGAR	ESTACION				CLASIFICACION VEHICULAR EN PORCIENTO										COORDENADAS					
	KM	TE	SC	TDPA	M	A	B	C2	C3	T3S2	T3S3	T3S2R4	OTROS	A	B	C	K'	D	LATITUD	LONGITUD
T. C. Mexicali - Estación Coahuila	0.00	3	0	12717	1.5	88.7	0.4	4.0	1.6	3.1	0.3	0.2	0.2	90.2	0.4	9.4	0.093	0.501	32.650459	-115.340565
Aeropuerto	10.00	1	0	7791	1.3	91.0	0.6	4.2	0.9	1.4	0.2	0.2	0.2	92.3	0.6	7.1	0.082	0.516	32.630353	-115.258514
T. C. Algodones - Islas Agrarias Grupo B	12.10	0	0																	

8 CARR: San Felipe - Chapala

CLAVE: 02503

RUTA: MEX-005

AÑO: 2022

LUGAR	ESTACION				CLASIFICACION VEHICULAR EN PORCIENTO										COORDENADAS					
	KM	TE	SC	TDPA	M	A	B	C2	C3	T3S2	T3S3	T3S2R4	OTROS	A	B	C	K'	D	LATITUD	LONGITUD
San Felipe	0.00	3	1	2312	2.1	91.9	0.4	3.1	0.7	1.5	0.2	0.1	0.0	94.0	0.4	5.6	0.109	0.527	30.997826	-114.836391
San Felipe	0.00	3	2	2071	1.9	92.0	0.4	3.1	0.6	1.7	0.2	0.1	0.0	93.9	0.4	5.7	0.107	0.527	30.997838	-114.836349
Playa Curbina	75.46	3	0	476	2.4	88.5	1.4	3.5	1.1	1.6	1.3	0.2	0.0	90.9	1.4	7.7	0.197	0.525	30.357440	-114.643885
T. C. Lazaro Cárdenas - Parador Punta Prieta	213.00	0	0																	

9 CARR: Sonoita - Mexicali

CLAVE: 00081

RUTA: MEX-002

AÑO: 2022

LUGAR	ESTACION				CLASIFICACION VEHICULAR EN PORCIENTO										COORDENADAS					
	KM	TE	SC	TDPA	M	A	B	C2	C3	T3S2	T3S3	T3S2R4	OTROS	A	B	C	K'	D	LATITUD	LONGITUD
Sonoita	0.00	3	0	4933	5.7	43.5	7.7	4.0	2.0	24.4	3.3	8.5	0.9	49.2	7.7	43.1	0.060	0.511	31.886430	-112.858288
Los Vidrios	58.75	3	0	4405	3.1	32.6	11.6	3.9	1.8	33.6	2.9	9.6	0.9	35.7	11.6	52.7	0.061	0.517	32.028728	-113.426803
San Luis Río Colorado	191.80	1	0	5391	3.4	47.2	7.6	3.6	2.0	25.5	2.5	7.3	0.9	50.6	7.6	41.8	0.061	0.508	32.453563	-114.683309
San Luis Río Colorado	191.80	3	1	11690	0.7	82.6	2.8	2.4	1.8	6.1	1.1	1.9	0.6	83.3	2.8	13.9	0.076	0.510	32.486978	-114.792675

BAJA CALIFORNIA

9 CARR: Sonoita - Mexicali

CLAVE: 00081

RUTA: MEX-002

AÑO: 2022

LUGAR	ESTACION				CLASIFICACION VEHICULAR EN PORCIENTO										COORDENADAS					
	KM	TE	SC	TDPA	M	A	B	C2	C3	T3S2	T3S3	T3S2R4	OTROS	A	B	C	K'	D	LATITUD	LONGITUD
San Luis Río Colorado	191.80	3	2	11223	0.8	82.8	2.5	2.7	1.5	5.9	1.3	2.0	0.5	83.6	2.5	13.9	0.072	0.510	32.486851	-114.792735
Lim. Edos. Term. Son. Ppia. B.C.	203.69	0	0																	
X. C. Mexicali - Algodones	206.78	1	1	12054	1.2	83.7	1.9	3.5	0.7	5.9	0.7	1.8	0.6	84.9	1.9	13.2	0.072	0.518	32.497849	-114.829164
X. C. Mexicali - Algodones	206.78	1	2	12943	1.1	84.3	1.7	4.0	0.5	5.6	0.6	1.7	0.5	85.4	1.7	12.9	0.068	0.518	32.497631	-114.828719
X. C. Mexicali - Algodones	206.78	3	1	10417	2.5	79.0	1.8	3.9	1.1	8.5	0.7	1.9	0.6	81.5	1.8	16.7	0.069	0.520	32.511006	-114.873105
X. C. Mexicali - Algodones	206.78	3	2	9611	2.6	79.0	1.7	3.8	1.2	8.1	0.9	2.0	0.7	81.6	1.7	16.7	0.064	0.520	32.510893	-114.873148
T. Izq. Ejido Hermosillo	214.80	3	1	8461	6.1	69.6	3.4	5.7	1.5	9.8	0.9	2.3	0.7	75.7	3.4	20.9	0.073	0.519	32.527548	-114.928776
T. Izq. Ejido Hermosillo	214.80	3	2	9117	6.0	70.1	3.5	5.6	1.3	9.7	0.9	2.2	0.7	76.1	3.5	20.4	0.074	0.519	32.527501	-114.929036
T. Izq. Ejido Tehuantepec	223.83	3	1	10913	1.0	82.4	3.1	2.8	0.9	6.7	0.8	1.7	0.6	83.4	3.1	13.5	0.079	0.513	32.554922	-115.034463
T. Izq. Ejido Tehuantepec	223.83	3	2	10378	1.1	82.4	3.1	2.8	0.9	6.8	0.7	1.7	0.5	83.5	3.1	13.4	0.077	0.513	32.554831	-115.034422
Ejido Monterrey	228.63	3	1	14222	2.2	77.9	2.9	5.1	1.2	7.3	1.0	1.9	0.5	80.1	2.9	17.0	0.083	0.514	32.552013	-115.087333
Ejido Monterrey	228.63	3	2	13422	2.1	77.7	2.7	5.2	1.4	7.5	0.9	2.0	0.5	79.8	2.7	17.5	0.075	0.514	32.551905	-115.087378
X. C. Mexicali - Estación Coahuila	242.17	1	1	11375	1.3	78.1	3.0	4.9	1.1	7.8	1.1	2.1	0.6	79.4	3.0	17.6	0.073	0.504	32.552847	-115.203145
X. C. Mexicali - Estación Coahuila	242.17	1	2	11180	1.5	78.9	2.8	4.7	1.0	7.7	1.1	1.9	0.4	80.4	2.8	16.8	0.076	0.504	32.552748	-115.203179
T. Izq. Libramiento de Mexicali (Cuota)	249.32	1	1	12374	1.1	81.3	2.7	4.0	1.2	6.3	0.9	1.9	0.6	82.4	2.7	14.9	0.079	0.503	32.554569	-115.284462
T. Izq. Libramiento de Mexicali (Cuota)	249.32	1	2	12226	1.3	80.9	2.6	4.2	1.0	6.2	1.1	2.0	0.7	82.2	2.6	15.2	0.075	0.503	32.554498	-115.284496
X. C. Mexicali - Algodones	256.47	1	1	14228	1.3	88.5	1.7	2.7	1.0	2.8	0.6	0.9	0.5	89.8	1.7	8.5	0.085	0.512	32.565155	-115.325714
X. C. Mexicali - Algodones	256.47	1	2	13573	1.4	88.0	1.6	2.8	1.1	3.0	0.6	1.1	0.4	89.4	1.6	9.0	0.081	0.512	32.565038	-115.325738
T. C. Mexicali - San Felipe	265.12	0	0																	

10 CARR: Tecate - El Sauzal

CLAVE: 02097

RUTA: MEX-003

AÑO: 2022

LUGAR	ESTACION				CLASIFICACION VEHICULAR EN PORCIENTO										COORDENADAS					
	KM	TE	SC	TDPA	M	A	B	C2	C3	T3S2	T3S3	T3S2R4	OTROS	A	B	C	K'	D	LATITUD	LONGITUD
Tecate	0.00	3	0	12180	1.3	90.8	1.0	2.2	0.8	2.5	0.4	0.8	0.2	92.1	1.0	6.9	0.095	0.505	32.539223	-116.627252
T. Der. Valle de Las Palmas	27.80	1	0	4792	1.7	86.2	1.6	3.2	0.6	4.5	0.7	1.3	0.2	87.9	1.6	10.5	0.098	0.512	32.382468	-116.613990
El Tezterazo	48.80	3	0	5156	1.7	89.1	1.9	1.4	0.8	3.0	0.7	1.1	0.3	90.8	1.9	7.3	0.129	0.507	32.288039	-116.530118
T. Izq. San Marcos	63.50	1	0	4422	2.9	84.5	1.9	2.7	1.3	3.6	0.9	1.8	0.4	87.4	1.9	10.7	0.109	0.507	32.195760	-116.488605
El Porvenir Guadalupe	74.80	3	0	6671	1.4	81.5	1.8	5.0	0.9	5.9	1.0	2.0	0.5	82.9	1.8	15.3	0.107	0.513	32.091349	-116.562908
Las Palmas	85.00	1	0	9218	1.8	86.9	1.3	3.6	1.0	3.3	0.7	1.0	0.4	88.7	1.3	10.0	0.108	0.575	32.044966	-116.598285
San Antonio de Las Minas	93.90	1	1	6189	1.6	90.3	0.9	3.1	1.3	1.5	0.4	0.7	0.2	91.9	0.9	7.2	0.111	0.509	31.985636	-116.646088
San Antonio de Las Minas	93.90	1	2	6423	1.5	91.3	0.9	2.8	0.9	1.2	0.5	0.7	0.2	92.8	0.9	6.3	0.131	0.509	31.985587	-116.645974
El Sauzal	104.53	1	1	6211	2.2	86.6	1.6	3.7	1.6	2.1	0.5	1.2	0.5	88.8	1.6	9.6	0.106	0.521	31.911094	-116.693420
El Sauzal	104.53	1	2	6767	2.2	86.4	1.3	3.8	1.7	2.4	0.6	1.1	0.5	88.6	1.3	10.1	0.120	0.521	31.910996	-116.693311

BAJA CALIFORNIA

11 CARR: Tijuana - Ensenada (Libre)

CLAVE: 02099

RUTA: MEX-001

AÑO: 2022

LUGAR	ESTACION				CLASIFICACION VEHICULAR EN PORCIENTO										COORDENADAS					
	KM	TE	SC	TDPA	M	A	B	C2	C3	T3S2	T3S3	T3S2R4	OTROS	A	B	C	K'	D	LATITUD	LONGITUD
Tijuana	0.00	0	0																	
X. C. Tijuana - San Miguel (Cuota)	22.00	1	1	35753	2.5	92.5	0.7	1.6	0.9	1.1	0.1	0.5	0.1	95.0	0.7	4.3	0.068	0.501	32.382314	-117.057377
X. C. Tijuana - San Miguel (Cuota)	22.00	1	2	35541	2.8	92.1	0.7	1.4	1.0	0.9	0.2	0.7	0.2	94.9	0.7	4.4	0.061	0.501	32.382314	-117.057229
Rosarito	25.94	1	1	15027	5.7	87.3	0.6	2.4	1.2	1.0	0.2	1.3	0.3	93.0	0.6	6.4	0.088	0.501	32.368464	-117.060568
Rosarito	25.94	1	2	15082	5.5	87.7	0.6	2.2	1.2	0.9	0.2	1.4	0.3	93.2	0.6	6.2	0.077	0.501	32.368483	-117.060441
Rosarito	25.94	3	1	10611	6.4	86.9	0.5	2.1	1.7	0.5	0.4	1.2	0.3	93.3	0.5	6.2	0.083	0.551	32.336929	-117.054703
Rosarito	25.94	3	2	12997	6.0	87.6	0.5	1.9	1.6	0.5	0.4	1.2	0.3	93.6	0.5	5.9	0.083	0.551	32.336974	-117.054565
Complejo la Paloma	28.64	0	0																	
T. Izq. Aut. Tijuana - San Miguel	46.12	1	1	6818	1.8	94.4	0.5	1.7	0.7	0.3	0.3	0.2	0.1	96.2	0.5	3.3	0.111	0.502	32.229552	-116.921492
T. Izq. Aut. Tijuana - San Miguel	46.12	1	2	6769	1.9	94.3	0.4	1.7	0.7	0.3	0.3	0.2	0.2	96.2	0.4	3.4	0.101	0.502	32.229588	-116.921375
Población Plaza Santa María	56.98	1	0	2357	3.5	93.4	0.3	1.9	0.6	0.2	0.1	0.0	0.0	96.9	0.3	2.8	0.132	0.526	32.144842	-116.892348
La Misión	64.98	1	0	5300	2.4	93.9	0.4	2.4	0.4	0.2	0.2	0.1	0.0	96.3	0.4	3.3	0.107	0.501	32.093060	-116.858698
T. Izq. Colonia Guadalupe	82.90	1	0	3178	2.2	93.9	1.1	1.9	0.4	0.2	0.1	0.2	0.0	96.1	1.1	2.8	0.142	0.548	31.988539	-116.745938
Ent. San Miguel	95.80	1	0	2298	4.2	90.9	1.3	2.2	1.0	0.1	0.1	0.1	0.1	95.1	1.3	3.6	0.098	0.537	31.913219	-116.730657
El Sauzal	102.00	1	1	11458	1.3	82.7	1.8	2.9	1.9	6.9	0.4	1.7	0.4	84.0	1.8	14.2	0.091	0.501	31.900003	-116.708198
El Sauzal	102.00	1	2	11501	1.7	82.7	1.6	2.8	1.8	6.9	0.4	1.7	0.4	84.4	1.6	14.0	0.103	0.501	31.900371	-116.709051
El Sauzal	102.00	3	1	29703	3.3	85.8	1.7	4.5	0.8	2.4	0.2	1.0	0.3	89.1	1.7	9.2	0.092	0.520	31.868553	-116.674113
El Sauzal	102.00	3	2	25687	3.3	84.2	1.9	5.4	0.8	2.7	0.2	1.2	0.3	87.5	1.9	10.6	0.087	0.520	31.868637	-116.674036
Ensenada	110.00	0	0																	

12 CARR: El Centinela - La Rumorosa (Cuota)

CLAVE: 02011

RUTA: MEX-002D

AÑO: 2022

LUGAR	ESTACION				CLASIFICACION VEHICULAR EN PORCIENTO										COORDENADAS					
	KM	TE	SC	TDPA	M	A	B	C2	C3	T3S2	T3S3	T3S2R4	OTROS	A	B	C	K'	D	LATITUD	LONGITUD
Ent. El Centinela	20.30	0	0																	
Laguna Salada	25.00	1	1	7686	2.1	76.0	4.3	3.1	1.0	8.0	1.5	3.0	1.0	78.1	4.3	17.6	0.069	0.549	32.576965	-115.739093
Laguna Salada	25.00	1	2	6323	2.3	73.2	4.7	3.3	1.4	8.6	1.7	3.8	1.0	75.5	4.7	19.8	0.068	0.549	32.576886	-115.739108
La Rumorosa	67.60	1	1	2976	3.1	77.8	1.7	2.6	1.4	10.3	1.8	1.0	0.3	80.9	1.7	17.4	0.103	0.518	32.551034	-116.043335
La Rumorosa	67.60	1	2	3194	3.1	78.4	1.1	2.1	1.4	10.2	1.8	1.5	0.4	81.5	1.1	17.4	0.199	0.518	32.550934	-116.043366

13 CARR: La Rumorosa - Tecate (Cuota)

CLAVE: 02011

RUTA: MEX-002D

AÑO: 2022

LUGAR	ESTACION				CLASIFICACION VEHICULAR EN PORCIENTO										COORDENADAS					
	KM	TE	SC	TDPA	M	A	B	C2	C3	T3S2	T3S3	T3S2R4	OTROS	A	B	C	K'	D	LATITUD	LONGITUD
La Rumorosa	62.00	3	1	5160	1.7	69.3	5.2	3.1	1.2	13.8	1.4	3.4	0.9	71.0	5.2	23.8	0.089	0.512	32.549291	-116.066144

BAJA CALIFORNIA

13 CARR: La Rumorosa - Tecate (Cuota)

CLAVE: 02011

RUTA: MEX-002D

AÑO: 2022

LUGAR	ESTACION				CLASIFICACION VEHICULAR EN PORCIENTO													COORDENADAS		
	KM	TE	SC	TDPA	M	A	B	C2	C3	T3S2	T3S3	T3S2R4	OTROS	A	B	C	K'	D	LATITUD	LONGITUD
La Rumorosa	62.00	3	2	4909	1.6	70.2	5.1	3.4	1.1	13.2	1.3	3.2	0.9	71.8	5.1	23.1	0.092	0.512	32.549221	-116.066063
Plaza de Cobro El Hongo	92.00	1	1	5312	2.4	65.4	4.8	3.3	6.3	11.2	1.2	4.5	0.9	67.8	4.8	27.4	0.076	0.505	32.520124	-116.310127
Plaza de Cobro El Hongo	92.00	1	2	5210	2.5	66.8	4.6	3.1	5.8	11.0	1.1	4.2	0.9	69.3	4.6	26.1	0.085	0.505	32.520034	-116.310139
Plaza de Cobro El Hongo	92.00	2	1	4638	0.3	72.5	3.4	3.1	1.4	13.0	0.8	4.7	0.8	72.8	3.4	23.8	0.087	0.500	32.521843	-116.320010
Plaza de Cobro El Hongo	92.00	2	2	4638	0.3	72.5	3.4	3.1	1.4	13.0	0.8	4.7	0.8	72.8	3.4	23.8	0.087	0.500	32.521843	-116.320010
Plaza de Cobro El Hongo	92.00	3	1	5711	1.5	77.1	3.9	2.9	0.8	8.5	1.2	3.2	0.9	78.6	3.9	17.5	0.092	0.511	32.523646	-116.330015
Plaza de Cobro El Hongo	92.00	3	2	5964	1.5	77.6	3.8	2.8	0.7	8.7	1.1	2.9	0.9	79.1	3.8	17.1	0.101	0.511	32.523567	-116.330045
T. C. Mexicali - Tijuana (Libre)	117.00	0	0																	

14 CARR: Libramiento de Ensenada (Cuota)

CLAVE:

RUTA: MEX-003D

AÑO: 2022

LUGAR	ESTACION				CLASIFICACION VEHICULAR EN PORCIENTO													COORDENADAS		
	KM	TE	SC	TDPA	M	A	B	C2	C3	T3S2	T3S3	T3S2R4	OTROS	A	B	C	K'	D	LATITUD	LONGITUD
T. C Tecate - El Sauzal	0.00	3	0	6527	2.0	90.0	0.6	2.6	1.7	2.1	0.6	0.3	0.1	92.0	0.6	7.4	0.112	0.508	31.904435	-116.672637
T. C. Ensenada - El Chinero	22.30	1	0	3169	2.9	84.9	1.0	3.0	2.8	4.3	0.7	0.3	0.1	87.8	1.0	11.2	0.090	0.511	31.882858	-116.527810

15 CARR: Libramiento de Mexicali (Cuota)

CLAVE: 02319

RUTA: MEX-002D

AÑO: 2022

LUGAR	ESTACION				CLASIFICACION VEHICULAR EN PORCIENTO													COORDENADAS		
	KM	TE	SC	TDPA	M	A	B	C2	C3	T3S2	T3S3	T3S2R4	OTROS	A	B	C	K'	D	LATITUD	LONGITUD
T. C. Sonoyta - Mexicali	0.00	3	0	5148	3.3	56.4	5.0	4.5	2.2	18.8	2.5	6.4	0.9	59.7	5.0	35.3	0.073	0.507	32.551097	-115.306434
T. C. Mexicali - Tijuana	40.60	1	0	3661	2.7	52.7	4.5	3.6	2.4	22.6	3.2	7.4	0.9	55.4	4.5	40.1	0.072	0.506	32.585981	-115.666312

16 CARR: Libramiento de Tecate (Cuota)

CLAVE: 02082

RUTA: MEX-002D

AÑO: 2022

LUGAR	ESTACION				CLASIFICACION VEHICULAR EN PORCIENTO													COORDENADAS		
	KM	TE	SC	TDPA	M	A	B	C2	C3	T3S2	T3S3	T3S2R4	OTROS	A	B	C	K'	D	LATITUD	LONGITUD
T. Der. Mexicali (1er. Acceso)	118.00	3	1	5564	2.8	73.8	3.9	2.7	1.1	10.2	1.4	3.2	0.9	76.6	3.9	19.5	0.086	0.532	32.556650	-116.584114
T. Der. Mexicali (1er. Acceso)	118.00	3	2	6319	2.7	75.7	3.6	2.8	1.0	9.2	1.3	3.0	0.7	78.4	3.6	18.0	0.091	0.532	32.556510	-116.584089
X. C. Tecate - El Sauzal	122.85	3	1	4941	3.5	75.8	3.9	2.7	2.4	5.6	1.6	3.6	0.9	79.3	3.9	16.8	0.085	0.535	32.551160	-116.625950
X. C. Tecate - El Sauzal	122.85	3	2	5695	3.3	76.0	3.7	2.7	2.2	5.9	1.5	3.9	0.8	79.3	3.7	17.0	0.088	0.535	32.551018	-116.626546
T. C. Mexicali - Tijuana (Libre) Poniente	130.60	0	0																	

BAJA CALIFORNIA

17 CARR: Tecate - Tijuana (Cuota)

CLAVE: 02011

RUTA: MEX-002D

AÑO: 2022

LUGAR	ESTACION				CLASIFICACION VEHICULAR EN PORCIENTO										COORDENADAS					
	KM	TE	SC	TDPA	M	A	B	C2	C3	T3S2	T3S3	T3S2R4	OTROS	A	B	C	K'	D	LATITUD	LONGITUD
T. C. Mexicali - Tijuana (Libre)	130.60	0	0																	
X. C. Mexicali - Tijuana	131.10	3	1	5596	3.1	71.5	2.9	2.8	1.0	14.1	1.0	2.8	0.8	74.6	2.9	22.5	0.085	0.538	32.526357	-116.699969
X. C. Mexicali - Tijuana	131.10	3	2	4803	3.0	72.0	2.8	2.7	0.8	14.0	0.9	2.9	0.9	75.0	2.8	22.2	0.085	0.538	32.526283	-116.699869
Plaza de Cobro Tijuana	147.60	1	1	5745	1.8	72.6	3.4	3.0	1.4	12.6	1.4	3.0	0.8	74.4	3.4	22.2	0.082	0.533	32.548138	-116.849322
Plaza de Cobro Tijuana	147.60	1	2	5040	2.0	72.0	3.4	3.2	1.5	12.2	1.4	3.4	0.9	74.0	3.4	22.6	0.095	0.533	32.548075	-116.849258
Plaza de Cobro Tijuana	147.60	2	1	5390	0.5	76.3	1.8	3.7	1.6	11.6	0.8	2.9	0.8	76.8	1.8	21.4	0.091	0.500	32.545717	-116.852059
Plaza de Cobro Tijuana	147.60	2	2	5390	0.5	76.3	1.8	3.7	1.6	11.6	0.8	2.9	0.8	76.8	1.8	21.4	0.091	0.500	32.545717	-116.852059
Plaza de Cobro Tijuana	147.60	3	1	26847	1.8	82.8	3.3	3.8	1.4	5.4	0.4	0.8	0.3	84.6	3.3	12.1	0.096	0.531	32.542376	-116.858275
Plaza de Cobro Tijuana	147.60	3	2	27372	1.9	83.4	2.9	3.4	1.5	5.4	0.4	0.8	0.3	85.3	2.9	11.8	0.106	0.531	32.542291	-116.858278
Termina Autopista Principia Tijuana	148.15	0	0																	

18 CARR: Tijuana - Ensenada (Cuota)

CLAVE: 02100

RUTA: MEX-001D

AÑO: 2022

LUGAR	ESTACION				CLASIFICACION VEHICULAR EN PORCIENTO										COORDENADAS					
	KM	TE	SC	TDPA	M	A	B	C2	C3	T3S2	T3S3	T3S2R4	OTROS	A	B	C	K'	D	LATITUD	LONGITUD
Tijuana	0.00	0	0																	
T. Der. Playas de Tijuana	7.50	3	1	12409	1.1	93.3	0.5	3.6	0.4	0.3	0.3	0.3	0.2	94.4	0.5	5.1	0.103	0.530	32.528928	-117.108296
T. Der. Playas de Tijuana	7.50	3	2	11018	1.2	93.0	0.5	3.6	0.5	0.4	0.3	0.3	0.2	94.2	0.5	5.3	0.103	0.530	32.528937	-117.108200
Plaza de Cobro Playas de Tijuana	9.70	2	1	10494	1.1	97.4	0.4	0.5	0.3	0.3	0.0	0.0	0.0	98.5	0.4	1.1	0.100	0.500	32.514051	-117.109566
Plaza de Cobro Playas de Tijuana	9.70	2	2	10494	1.1	97.4	0.4	0.5	0.3	0.3	0.0	0.0	0.0	98.5	0.4	1.1	0.100	0.500	32.514051	-117.109566
T. Izq. La Joya	14.50	3	1	11791	1.1	95.8	0.5	1.3	0.4	0.4	0.1	0.2	0.2	96.9	0.5	2.6	0.102	0.557	32.481399	-117.120720
T. Izq. La Joya	14.50	3	2	9388	1.3	95.1	0.6	1.2	0.6	0.5	0.3	0.2	0.2	96.4	0.6	3.0	0.101	0.557	32.481439	-117.120649
San Antonio Norte	17.80	1	1	12002	1.1	95.5	0.5	1.4	0.5	0.4	0.2	0.2	0.2	96.6	0.5	2.9	0.101	0.526	32.459001	-117.113724
San Antonio Norte	17.80	1	2	10802	1.3	95.4	0.5	1.1	0.7	0.4	0.2	0.2	0.2	96.7	0.5	2.8	0.107	0.526	32.458992	-117.113628
San Antonio del Mar	19.30	1	1	11969	1.5	94.4	0.4	1.3	1.4	0.4	0.2	0.2	0.2	95.9	0.4	3.7	0.103	0.548	32.448092	-117.105731
San Antonio del Mar	19.30	1	2	9856	1.7	94.2	0.6	1.3	1.2	0.4	0.2	0.2	0.2	95.9	0.6	3.5	0.102	0.548	32.448155	-117.105678
Brisas del Mar	22.00	1	1	12838	0.8	96.3	0.3	1.4	0.5	0.3	0.1	0.1	0.2	97.1	0.3	2.6	0.130	0.504	32.428063	-117.097124
Brisas del Mar	22.00	1	2	13026	0.9	95.7	0.3	1.5	0.7	0.3	0.2	0.1	0.3	96.6	0.3	3.1	0.096	0.504	32.428090	-117.097050
Baja Malibu	22.50	3	1	12630	0.9	96.7	0.3	1.2	0.3	0.3	0.2	0.1	0.0	97.6	0.3	2.1	0.095	0.501	32.416545	-117.094038
Baja Malibu	22.50	3	2	12595	0.7	97.2	0.3	1.1	0.2	0.2	0.2	0.1	0.0	97.9	0.3	1.8	0.093	0.501	32.416681	-117.093985
T. Izq. Rancho del Mar	24.60	1	1	14932	0.9	96.6	0.3	1.1	0.3	0.4	0.3	0.1	0.0	97.5	0.3	2.2	0.088	0.503	32.405154	-117.090900
T. Izq. Rancho del Mar	24.60	1	2	14735	0.8	96.6	0.3	1.1	0.4	0.4	0.3	0.1	0.0	97.4	0.3	2.3	0.077	0.503	32.405163	-117.090804
T. Izq. Rancho del Mar	24.60	3	1	12460	0.7	96.7	0.4	1.0	0.5	0.4	0.2	0.1	0.0	97.4	0.4	2.2	0.102	0.505	32.394367	-117.086519
T. Izq. Rancho del Mar	24.60	3	2	12724	0.8	96.4	0.4	1.2	0.6	0.3	0.2	0.1	0.0	97.2	0.4	2.4	0.089	0.505	32.394404	-117.086434
X. C. Tijuana - Ensenada	29.50	1	1	12657	0.8	95.4	0.3	2.4	0.6	0.3	0.1	0.1	0.0	96.2	0.3	3.5	0.104	0.507	32.380870	-117.057823

BAJA CALIFORNIA

18 CARR: Tijuana - Ensenada (Cuota)

CLAVE: 02100

RUTA: MEX-001D

AÑO: 2022

LUGAR	ESTACION				CLASIFICACION VEHICULAR EN PORCIENTO										COORDENADAS					
	KM	TE	SC	TDPA	M	A	B	C2	C3	T3S2	T3S3	T3S2R4	OTROS	A	B	C	K'	D	LATITUD	LONGITUD
X. C. Tijuana - Ensenada	29.50	1	2	12295	0.7	95.7	0.2	2.3	0.6	0.3	0.1	0.1	0.0	96.4	0.2	3.4	0.100	0.507	32.380870	-117.057738
X. C. Tijuana - Ensenada	29.50	3	1	21356	0.9	93.7	0.5	2.8	0.5	1.2	0.2	0.1	0.1	94.6	0.5	4.9	0.089	0.501	32.371749	-117.058019
X. C. Tijuana - Ensenada	29.50	3	2	21450	0.8	93.3	0.7	2.8	0.8	1.2	0.2	0.1	0.1	94.1	0.7	5.2	0.126	0.501	32.371749	-117.057924
T. Izq. Rosarito	30.60	3	1	29036	0.9	95.3	0.6	1.4	0.8	0.8	0.1	0.1	0.0	96.2	0.6	3.2	0.097	0.501	32.360997	-117.056025
T. Izq. Rosarito	30.60	3	2	28870	1.2	93.7	0.8	1.9	1.0	1.0	0.2	0.1	0.1	94.9	0.8	4.3	0.095	0.501	32.361015	-117.055929
Plaza de Cobro Rosarito	35.43	2	1	7436	0.7	92.8	1.2	1.7	0.5	2.3	0.2	0.5	0.1	93.5	1.2	5.3	0.100	0.500	32.311096	-117.044403
Plaza de Cobro Rosarito	35.43	2	2	7436	0.7	92.8	1.2	1.7	0.5	2.3	0.2	0.5	0.1	93.5	1.2	5.3	0.100	0.500	32.311096	-117.044403
T. Izq. Corredor Tijuana 2000	40.00	3	1	8647	2.2	83.5	2.8	2.0	0.8	6.9	0.5	0.9	0.4	85.7	2.8	11.5	0.141	0.528	32.280049	-117.028449
T. Izq. Corredor Tijuana 2000	40.00	3	2	9689	2.0	84.6	2.5	2.1	0.7	6.4	0.5	0.9	0.3	86.6	2.5	10.9	0.141	0.528	32.280112	-117.028364
T. Der. Puerto Nuevo	49.27	3	1	9096	2.6	82.9	1.8	2.4	1.1	7.2	0.4	1.3	0.3	85.5	1.8	12.7	0.080	0.513	32.250052	-116.943237
T. Der. Puerto Nuevo	49.27	3	2	9595	2.6	83.0	1.8	2.4	1.0	7.2	0.4	1.3	0.3	85.6	1.8	12.6	0.089	0.513	32.250395	-116.943661
T. Der. Cantamar	53.00	3	1	9749	1.4	80.9	2.8	3.9	1.0	7.6	0.6	1.5	0.3	82.3	2.8	14.9	0.128	0.511	32.224209	-116.916880
T. Der. Cantamar	53.00	3	2	10196	1.3	84.2	2.0	3.4	0.7	6.6	0.4	1.2	0.2	85.5	2.0	12.5	0.143	0.511	32.224308	-116.916742
T. Izq. El Descanso	55.40	3	1	9131	1.5	84.4	1.9	2.8	1.2	5.8	0.5	1.6	0.3	85.9	1.9	12.2	0.139	0.539	32.204006	-116.910155
T. Izq. El Descanso	55.40	3	2	10688	1.6	85.1	1.7	3.1	1.0	5.4	0.5	1.3	0.3	86.7	1.7	11.6	0.140	0.539	32.203958	-116.909997
T. Der. Campo López	58.30	3	1	10050	1.6	82.9	2.0	3.3	1.1	7.1	0.4	1.3	0.3	84.5	2.0	13.5	0.152	0.518	32.177610	-116.906613
T. Der. Campo López	58.30	3	2	10802	1.7	83.0	1.9	3.9	0.9	6.8	0.4	1.1	0.3	84.7	1.9	13.4	0.167	0.518	32.177665	-116.906443
T. Der. La Misión	66.44	3	1	9726	1.4	84.9	2.0	2.7	1.3	5.5	0.6	1.3	0.3	86.3	2.0	11.7	0.133	0.501	32.119062	-116.884145
T. Der. La Misión	66.44	3	2	9772	1.3	86.2	1.9	2.3	1.0	5.7	0.5	0.9	0.2	87.5	1.9	10.6	0.159	0.501	32.119820	-116.883942
T. Der. La Salina	72.85	1	1	9593	0.7	85.5	1.1	3.8	0.9	5.9	0.5	1.3	0.3	86.2	1.1	12.7	0.125	0.545	32.061303	-116.877484
T. Der. La Salina	72.85	1	2	8022	0.7	86.1	1.1	3.7	0.7	5.7	0.5	1.2	0.3	86.8	1.1	12.1	0.097	0.545	32.062504	-116.877344
T. Der. La Salina	72.85	3	1	8104	2.2	83.3	1.7	6.1	0.9	3.8	0.8	1.0	0.2	85.5	1.7	12.8	0.153	0.528	32.054341	-116.877275
T. Der. La Salina	72.85	3	2	7248	2.1	83.9	1.8	5.7	0.8	3.6	1.0	0.9	0.2	86.0	1.8	12.2	0.155	0.528	32.054349	-116.877108
T. Der. Baja Mar	77.60	3	1	7421	1.7	81.9	3.4	4.8	1.1	4.3	0.9	1.5	0.4	83.6	3.4	13.0	0.130	0.542	32.018088	-116.856881
T. Der. Baja Mar	77.60	3	2	6268	1.6	81.5	3.8	5.1	0.9	4.1	1.2	1.4	0.4	83.1	3.8	13.1	0.154	0.542	32.018138	-116.856703
Plaza de Cobro Ensenada	98.60	2	1	8168	0.4	85.9	1.5	2.6	1.0	6.5	0.4	1.5	0.2	86.3	1.5	12.2	0.100	0.500	31.903097	-116.732777
Plaza de Cobro Ensenada	98.60	2	2	8168	0.4	85.9	1.5	2.6	1.0	6.5	0.4	1.5	0.2	86.3	1.5	12.2	0.100	0.500	31.903097	-116.732777
T. C. Tijuana - Ensenada (Libre)	98.80	0	0																	

19 CARR: Mexicali - Tijuana

CLAVE: 02082

RUTA: MEX-002D-MEX

AÑO: 2022

LUGAR	ESTACION				CLASIFICACION VEHICULAR EN PORCIENTO										COORDENADAS					
	KM	TE	SC	TDPA	M	A	B	C2	C3	T3S2	T3S3	T3S2R4	OTROS	A	B	C	K'	D	LATITUD	LONGITUD
Mexicali	0.00	0	0																	
Colonia Progreso	7.80	3	1	6139	2.0	81.1	3.1	3.0	2.0	6.2	0.8	1.4	0.4	83.1	3.1	13.8	0.082	0.504	32.583826	-115.590758

BAJA CALIFORNIA

19 CARR: Mexicali - Tijuana

CLAVE: 02082

RUTA: MEX-002D-MEX

AÑO: 2022

LUGAR	ESTACION				CLASIFICACION VEHICULAR EN PORCIENTO													COORDENADAS		
	KM	TE	SC	TDPA	M	A	B	C2	C3	T3S2	T3S3	T3S2R4	OTROS	A	B	C	K'	D	LATITUD	LONGITUD
Colonia Progreso	7.80	3	2	6240	1.9	80.0	3.3	3.0	2.5	6.3	0.9	1.5	0.6	81.9	3.3	14.8	0.110	0.504	32.583695	-115.590806
La Rumorosa	66.80	0	0																	
T. Der. Estación de Microondas	69.62	3	0	3634	1.3	77.0	1.5	2.4	0.9	14.6	1.8	0.3	0.2	78.3	1.5	20.2	0.111	0.502	32.510079	-116.090702
Agua Hechicera	87.00	1	0	3197	1.6	74.5	1.9	2.7	1.0	15.8	2.0	0.3	0.2	76.1	1.9	22.0	0.101	0.506	32.494399	-116.219456
El Encinal	112.15	1	0	6029	1.7	84.2	1.2	2.7	0.7	7.7	1.2	0.5	0.1	85.9	1.2	12.9	0.091	0.515	32.555701	-116.436846
Tecate	132.00	1	1	7715	1.5	87.3	2.1	4.0	0.7	3.4	0.4	0.4	0.2	88.8	2.1	9.1	0.087	0.516	32.563966	-116.580308
Tecate	132.00	1	2	7227	1.2	87.4	2.0	4.0	0.8	3.3	0.4	0.5	0.4	88.6	2.0	9.4	0.092	0.516	32.563875	-116.580348
Tecate	132.00	3	1	12513	1.1	88.9	2.2	3.0	1.4	2.2	0.5	0.4	0.3	90.0	2.2	7.8	0.077	0.532	32.546867	-116.673897
Tecate	132.00	3	2	11004	1.2	88.4	2.7	3.2	1.3	2.1	0.4	0.4	0.3	89.6	2.7	7.7	0.097	0.532	32.546821	-116.673775
Presa Abelardo L. Rodríguez	165.00	3	0	9170	1.3	91.6	1.0	3.4	1.0	0.6	0.4	0.4	0.3	92.9	1.0	6.1	0.082	0.503	32.455198	-116.915030
Tijuana	182.60	0	0																	

20 CARR: Algodones - Ent. Islas Agrarias Grupo B

CLAVE: 02006

RUTA: BC-008

AÑO: 2022

LUGAR	ESTACION				CLASIFICACION VEHICULAR EN PORCIENTO													COORDENADAS		
	KM	TE	SC	TDPA	M	A	B	C2	C3	T3S2	T3S3	T3S2R4	OTROS	A	B	C	K'	D	LATITUD	LONGITUD
Algodones	0.00	3	0	4767	1.5	95.8	0.5	1.6	0.4	0.1	0.1	0.0	0.0	97.3	0.5	2.2	0.088	0.504	32.702947	-114.742255
T. Izq. Cd. Morelos	14.00	1	0	4164	1.1	94.3	0.5	3.1	0.4	0.3	0.2	0.1	0.0	95.4	0.5	4.1	0.085	0.523	32.665959	-114.837647
Mérida	20.30	3	0	2077	1.1	92.9	0.7	3.8	0.4	0.7	0.3	0.1	0.0	94.0	0.7	5.3	0.101	0.502	32.664699	-114.923716
T. Izq. Ejido Lazáro Cárdenas	31.50	1	0	3042	0.9	94.4	0.5	3.2	0.3	0.3	0.3	0.1	0.0	95.3	0.5	4.2	0.082	0.503	32.614516	-115.015440
Islas Agrarias Grupo B	55.50	1	0	5072	1.6	83.4	1.2	10.2	0.8	2.3	0.2	0.3	0.0	85.0	1.2	13.8	0.078	0.503	32.615500	-115.264524

21 CARR: Corredor Tijuana 2000

CLAVE: 02006

RUTA: BC

AÑO: 2022

LUGAR	ESTACION				CLASIFICACION VEHICULAR EN PORCIENTO													COORDENADAS		
	KM	TE	SC	TDPA	M	A	B	C2	C3	T3S2	T3S3	T3S2R4	OTROS	A	B	C	K'	D	LATITUD	LONGITUD
T. C. Mexicali - Tijuana (Cuota)	0.00	3	1	25182	2.9	86.2	2.4	2.9	1.2	3.3	0.2	0.7	0.2	89.1	2.4	8.5	0.106	0.504	32.538924	-116.856516
T. C. Mexicali - Tijuana (Cuota)	0.00	3	2	23414	2.9	85.7	2.6	2.9	1.3	3.4	0.2	0.8	0.2	88.6	2.6	8.8	0.133	0.504	32.538807	-116.856260
T. C. Mexicali - Tijuana	11.00	1	1	45114	5.3	78.5	3.4	4.2	2.4	3.0	0.7	2.0	0.5	83.8	3.4	12.8	0.080	0.533	32.465643	-116.846544
T. C. Mexicali - Tijuana	11.00	1	2	52375	5.2	80.5	3.0	4.0	2.0	2.7	0.6	1.6	0.4	85.7	3.0	11.3	0.078	0.533	32.465724	-116.846246
T. C. Tijuana - San Miguel (Cuota)	40.00	1	1	6332	2.5	81.2	2.3	3.3	1.9	5.8	1.0	1.5	0.5	83.7	2.3	14.0	0.099	0.541	32.288773	-117.022091
T. C. Tijuana - San Miguel (Cuota)	40.00	1	2	6777	2.6	82.0	2.2	3.1	1.7	5.6	0.9	1.4	0.5	84.6	2.2	13.2	0.141	0.541	32.288656	-117.022037

BAJA CALIFORNIA

22 CARR: Ejido Benito Juárez - Ejido Chiapas

CLAVE: 02501

RUTA: BC-061

AÑO: 2022

LUGAR	ESTACION				CLASIFICACION VEHICULAR EN PORCIENTO													COORDENADAS		
	KM	TE	SC	TDPA	M	A	B	C2	C3	T3S2	T3S3	T3S2R4	OTROS	A	B	C	K'	D	LATITUD	LONGITUD
Ejido Benito Juárez	0.00	3	0	3944	1.1	94.1	0.5	3.8	0.4	0.1	0.0	0.0	0.0	95.2	0.5	4.3	0.126	0.501	32.559390	-114.993045
Ejido México	7.00	1	0	1695	2.6	89.5	0.7	6.6	0.3	0.3	0.0	0.0	0.0	92.1	0.7	7.2	0.092	0.502	32.519710	-114.979696
Ejido Chiapas	10.56	1	0	1425	1.5	93.4	1.3	2.8	0.6	0.3	0.1	0.0	0.0	94.9	1.3	3.8	0.081	0.503	32.499475	-114.968091

23 CARR: Ejido Monterrey - Mazón

CLAVE: 02004

RUTA: BC-003

AÑO: 2022

LUGAR	ESTACION				CLASIFICACION VEHICULAR EN PORCIENTO													COORDENADAS		
	KM	TE	SC	TDPA	M	A	B	C2	C3	T3S2	T3S3	T3S2R4	OTROS	A	B	C	K'	D	LATITUD	LONGITUD
T. C. Sonoita - Mexicali	0.00	3	0	6229	1.2	84.1	2.4	8.6	1.1	2.1	0.2	0.3	0.0	85.3	2.4	12.3	0.081	0.508	32.543070	-115.076396
X. C. Mexicali - Algodones	15.16	1	0	5990	1.2	89.0	1.8	3.9	1.3	2.2	0.3	0.2	0.1	90.2	1.8	8.0	0.075	0.504	32.422512	-115.067437
X. C. Mexicali - Algodones	15.16	3	0	9798	3.8	79.7	6.6	5.5	0.8	1.7	0.4	1.1	0.4	83.5	6.6	9.9	0.072	0.520	32.416949	-115.067188
Guadalupe Victoria	30.47	1	0	12509	1.1	94.0	0.9	2.0	0.7	0.8	0.2	0.2	0.1	95.1	0.9	4.0	0.078	0.516	32.295045	-115.088974
Mazón	35.00	1	0	9398	1.1	93.2	1.5	2.6	0.4	0.7	0.2	0.2	0.1	94.3	1.5	4.2	0.071	0.529	32.242570	-115.111044

24 CARR: El Faro - Estación Coahuila

CLAVE: 02013

RUTA: BC-004

AÑO: 2022

LUGAR	ESTACION				CLASIFICACION VEHICULAR EN PORCIENTO													COORDENADAS		
	KM	TE	SC	TDPA	M	A	B	C2	C3	T3S2	T3S3	T3S2R4	OTROS	A	B	C	K'	D	LATITUD	LONGITUD
T. C. Mexicali - San Felipe	0.00	3	0	3758	0.9	88.0	1.6	3.9	1.4	2.7	1.3	0.2	0.0	88.9	1.6	9.5	0.102	0.505	32.273422	-115.317635
X. C. Mexicali - Estación Coahuila	16.30	1	0	3880	0.8	82.0	0.8	11.7	0.7	2.8	0.9	0.2	0.1	82.8	0.8	16.4	0.090	0.504	32.239536	-115.179586
X. C. Mexicali - Estación Coahuila	16.30	3	0	9246	1.6	92.2	1.4	2.5	0.5	1.1	0.3	0.2	0.2	93.8	1.4	4.8	0.073	0.501	32.239430	-115.158362
T. Izq. Carr. Ejido Monterrey - Mazón	26.70	3	0	6052	2.8	89.1	1.2	3.6	1.4	0.9	0.4	0.5	0.1	91.9	1.2	6.9	0.075	0.521	32.239468	-115.101356
Francisco Murguía	30.00	3	0	4743	1.6	84.9	2.5	8.3	0.7	1.4	0.4	0.1	0.1	86.5	2.5	11.0	0.078	0.503	32.239735	-115.063140
Estación Coahuila	34.50	1	0	8504	2.1	89.6	1.3	2.3	2.0	1.2	0.7	0.6	0.2	91.7	1.3	7.0	0.059	0.515	32.201403	-115.004396

25 CARR: Ent. Santa Rosa - Ent. Pachuca

CLAVE: 02015

RUTA: BC-006

AÑO: 2022

LUGAR	ESTACION				CLASIFICACION VEHICULAR EN PORCIENTO													COORDENADAS		
	KM	TE	SC	TDPA	M	A	B	C2	C3	T3S2	T3S3	T3S2R4	OTROS	A	B	C	K'	D	LATITUD	LONGITUD
T. C. Sonoita - Mexicali	0.00	3	0	7646	1.5	90.7	1.2	3.2	0.8	1.3	0.6	0.5	0.2	92.2	1.2	6.6	0.082	0.510	32.558841	-115.019883
Paredones	10.90	3	0	6884	1.4	92.7	1.1	3.0	0.6	0.5	0.3	0.2	0.2	94.1	1.1	4.8	0.086	0.506	32.609511	-114.923489
Cd. Morelos	18.00	3	0	2206	1.9	86.6	1.3	6.2	1.9	1.6	0.1	0.4	0.0	88.5	1.3	10.2	0.080	0.529	32.647811	-114.802673
T. C. Mexicali - Algodones	23.22	0	0																	

BAJA CALIFORNIA

26 CARR: La Puerta - T. C. (Mexicali - Estación Coahuila)

CLAVE: 02502

RUTA: BC-010

AÑO: 2022

LUGAR	ESTACION				CLASIFICACION VEHICULAR EN PORCIENTO													COORDENADAS		
	KM	TE	SC	TDPA	M	A	B	C2	C3	T3S2	T3S3	T3S2R4	OTROS	A	B	C	K'	D	LATITUD	LONGITUD
T. C. Mexicali - San Felipe	0.00	0	0																	
Zakamoto	4.60	1	0	3157	0.9	91.2	1.3	5.5	0.3	0.6	0.1	0.1	0.0	92.1	1.3	6.6	0.101	0.503	32.328022	-115.300785
Nayarit	9.00	3	0	3858	1.3	94.4	0.8	2.3	0.5	0.5	0.1	0.1	0.0	95.7	0.8	3.5	0.065	0.505	32.313188	-115.216983
T. C. Mexicali - Estación Coahuila	15.00	0	0																	

27 CARR: Mexicali - Algodones

CLAVE: 02012

RUTA: BC-002

AÑO: 2022

LUGAR	ESTACION				CLASIFICACION VEHICULAR EN PORCIENTO													COORDENADAS		
	KM	TE	SC	TDPA	M	A	B	C2	C3	T3S2	T3S3	T3S2R4	OTROS	A	B	C	K'	D	LATITUD	LONGITUD
T. C. Mexicali - San Felipe	0.00	0	0																	
Ejido Puebla	12.00	3	0	9295	1.8	86.2	2.1	3.2	2.1	2.1	1.3	0.9	0.3	88.0	2.1	9.9	0.076	0.517	32.557300	-115.359994
T. C. Geotérmica - Estación Delta	31.50	1	0	6232	1.3	89.5	1.9	5.4	0.7	0.8	0.3	0.1	0.0	90.8	1.9	7.3	0.070	0.503	32.426352	-115.263792
X. C. Mexicali - Estación Coahuila	37.70	1	0	4391	1.1	85.9	1.2	8.9	0.9	1.2	0.6	0.1	0.1	87.0	1.2	11.8	0.081	0.509	32.419139	-115.204509
X. C. Mexicali - Estación Coahuila	37.70	3	0	6108	2.2	86.4	1.5	7.9	0.4	0.8	0.4	0.3	0.1	88.6	1.5	9.9	0.099	0.503	32.419013	-115.174026
X. C. Ejido Monterrey - Mazón	49.65	1	0	6825	2.5	86.3	3.2	4.9	0.7	1.0	0.6	0.5	0.3	88.8	3.2	8.0	0.075	0.519	32.418488	-115.069700
X. C. Ejido Monterrey - Mazón	49.65	3	0	2461	1.7	88.9	1.8	4.5	1.4	1.1	0.3	0.2	0.1	90.6	1.8	7.6	0.094	0.510	32.418464	-115.065328
T. Izq. Tres de Marzo	60.50	1	0	1196	3.4	89.8	1.0	2.4	1.0	1.4	0.6	0.3	0.1	93.2	1.0	5.8	0.073	0.504	32.464722	-114.947845
X. C. Sonoita - Mexicali	72.00	1	0	1554	2.7	89.7	1.6	3.2	1.6	0.9	0.1	0.2	0.0	92.4	1.6	6.0	0.092	0.532	32.504059	-114.849084
X. C. Sonoita - Mexicali	72.00	3	0	4423	0.6	94.8	0.8	1.6	0.4	1.3	0.3	0.2	0.0	95.4	0.8	3.8	0.073	0.504	32.513205	-114.841740
Pachuca	83.00	1	0	4382	0.6	96.5	0.6	1.2	0.3	0.5	0.3	0.0	0.0	97.1	0.6	2.3	0.076	0.504	32.586175	-114.830863
Algodones	94.46	1	0	3651	1.5	95.4	0.7	1.2	0.4	0.3	0.2	0.2	0.1	96.9	0.7	2.4	0.083	0.502	32.701981	-114.731667

28 CARR: Mexicali - Estación Coahuila

CLAVE: 02016

RUTA: BC-001

AÑO: 2022

LUGAR	ESTACION				CLASIFICACION VEHICULAR EN PORCIENTO													COORDENADAS		
	KM	TE	SC	TDPA	M	A	B	C2	C3	T3S2	T3S3	T3S2R4	OTROS	A	B	C	K'	D	LATITUD	LONGITUD
Mexicali	0.00	3	1	23801	3.0	91.8	0.5	2.0	0.7	0.5	0.4	0.8	0.3	94.8	0.5	4.7	0.082	0.507	32.652975	-115.390393
Mexicali	0.00	3	2	23103	3.0	92.0	0.5	2.0	0.6	0.5	0.3	0.8	0.3	95.0	0.5	4.5	0.069	0.507	32.653107	-115.389474
T. Izq. Aeropuerto	11.30	1	1	13040	5.0	82.8	1.0	4.9	2.0	3.0	0.4	0.5	0.4	87.8	1.0	11.2	0.079	0.513	32.652889	-115.372601
T. Izq. Aeropuerto	11.30	1	2	13762	5.0	82.4	1.2	5.0	2.0	3.0	0.5	0.5	0.4	87.4	1.2	11.4	0.091	0.513	32.653043	-115.372587
Islas Agrarias Grupo a	14.10	1	0	14623	2.1	90.0	0.7	1.5	2.8	1.7	0.4	0.5	0.3	92.1	0.7	7.2	0.079	0.545	32.614121	-115.342025
X. C. Sonoita - Mexicali	30.79	1	0	3947	1.1	75.7	1.4	16.1	1.1	3.3	0.7	0.0	0.6	76.8	1.4	21.8	0.102	0.513	32.556768	-115.214995
X. C. Sonoita - Mexicali	30.79	3	0	7078	1.1	89.3	0.9	3.0	0.9	3.5	0.5	0.5	0.3	90.4	0.9	8.7	0.063	0.503	32.549969	-115.215097
Ejido Nuevo León	46.83	1	0	5878	1.8	90.2	1.2	3.2	1.0	1.1	0.5	0.8	0.2	92.0	1.2	6.8	0.071	0.525	32.421234	-115.192523
Ejido Nuevo León	46.83	3	0	6133	2.0	90.0	1.5	3.0	1.4	1.1	0.4	0.3	0.3	92.0	1.5	6.5	0.088	0.518	32.406411	-115.194782

BAJA CALIFORNIA

28 CARR: Mexicali - Estación Coahuila

CLAVE: 02016

RUTA: BC-001

AÑO: 2022

LUGAR	ESTACION				CLASIFICACION VEHICULAR EN PORCIENTO														COORDENADAS	
	KM	TE	SC	TDPA	M	A	B	C2	C3	T3S2	T3S3	T3S2R4	OTROS	A	B	C	K'	D	LATITUD	LONGITUD
T. Der. La Puerta	60.26	1	0	3261	0.9	93.3	0.8	3.5	0.4	0.7	0.2	0.1	0.1	94.2	0.8	5.0	0.075	0.503	32.315720	-115.189541
X. C. El Faro - Estación Coahuila	71.30	1	0	2312	1.3	91.1	1.2	4.8	0.6	0.7	0.1	0.1	0.1	92.4	1.2	6.4	0.063	0.500	32.243859	-115.167499
T. Der. Leona Vicario	80.50	1	0	485	5.9	85.4	1.7	3.5	1.4	0.7	0.7	0.6	0.1	91.3	1.7	7.0	0.128	0.508	32.215375	-115.167491
Estación Coahuila	96.65	1	0	1167	1.4	93.0	0.7	3.2	0.7	0.6	0.2	0.1	0.1	94.4	0.7	4.9	0.077	0.517	32.184844	-115.013685

29 CARR: Mexicali - Progreso

CLAVE: 02507

RUTA: BC-005

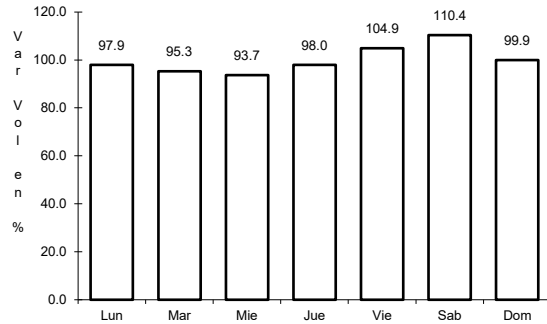
AÑO: 2022

LUGAR	ESTACION				CLASIFICACION VEHICULAR EN PORCIENTO														COORDENADAS	
	KM	TE	SC	TDPA	M	A	B	C2	C3	T3S2	T3S3	T3S2R4	OTROS	A	B	C	K'	D	LATITUD	LONGITUD
T. C. Mexicali - Tijuana	0.00	0	0																	
Progreso	15.30	1	0	9238	3.6	86.2	1.6	5.4	0.8	1.2	0.3	0.6	0.3	89.8	1.6	8.6	0.086	0.516	32.601941	-115.573754

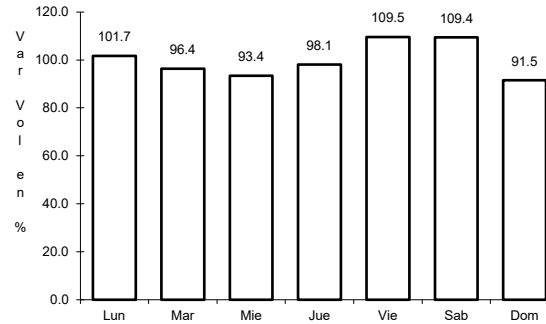
1 CARR: Ensenada - El Chirero

CLAVE: 02009

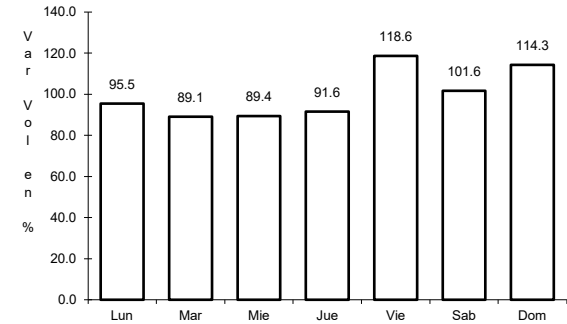
ruta: MEX-003



Km: 0.00 Tipo: 3 Sent: 0



Km: 93.00 Tipo: 3 Sent: 0

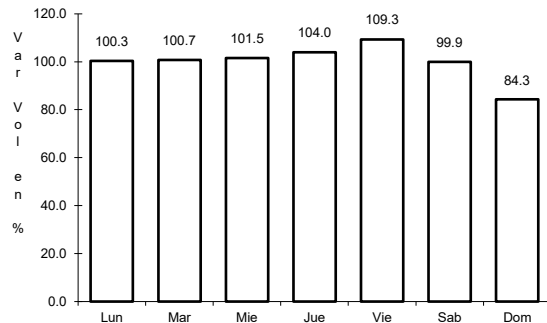


Km: 196.00 Tipo: 1 Sent: 0

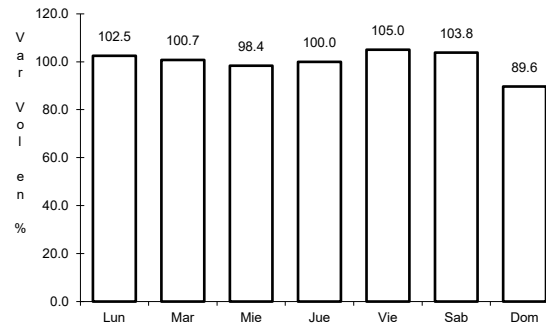
2 CARR: Ensenada - Lázaro Cárdenas

CLAVE: 02098

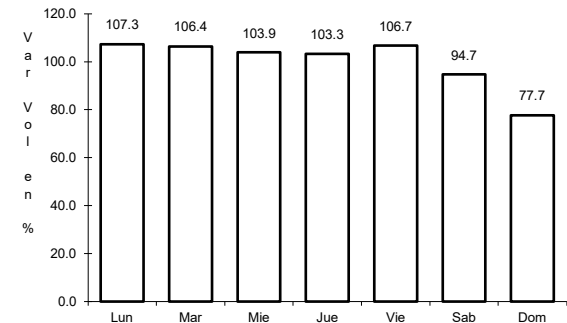
ruta: MEX-001



Km: 0.00 Tipo: 3 Sent: 1



Km: 0.00 Tipo: 3 Sent: 2

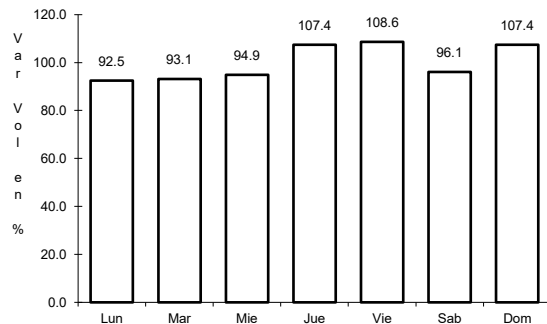


Km: 193.00 Tipo: 1 Sent: 0

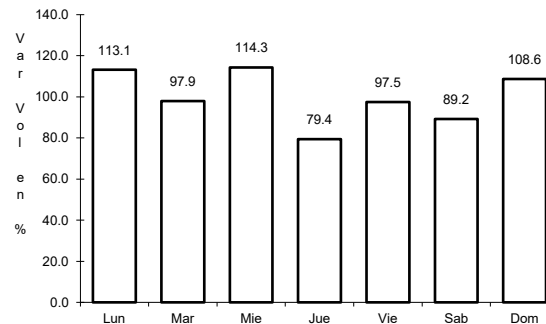
3 CARR: Ent. Punta Prieta - Bahía de Los Ángeles

CLAVE: 02322

ruta: MEX-001



Km: 0.00 Tipo: 3 Sent: 0

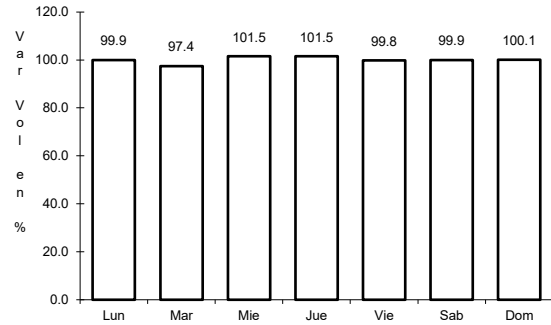


Km: 68.00 Tipo: 1 Sent: 0

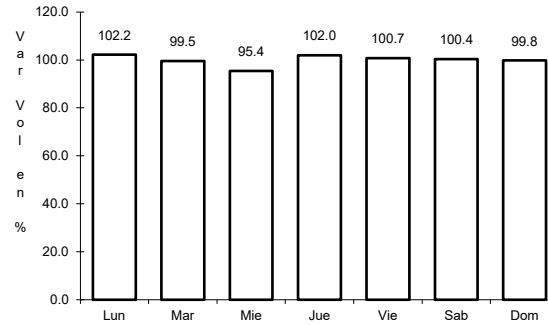
4 CARR: Ent. Punta Prieta - Guerrero Negro

CLAVE: 00321

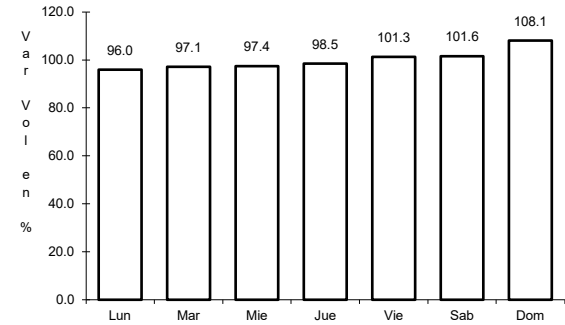
ruta: MEX-001



Km: 0.00 Tipo: 3 Sent: 0



Km: 70.10 Tipo: 3 Sent: 0

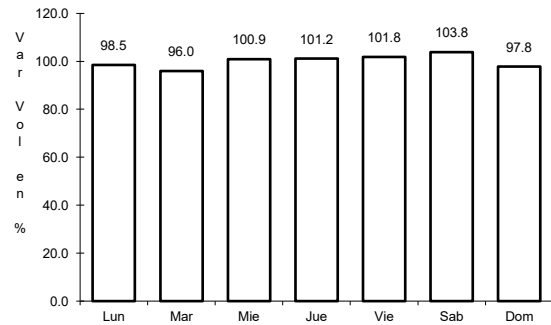


Km: 130.00 Tipo: 1 Sent: 0

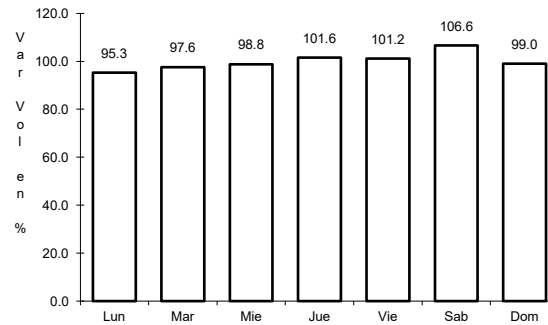
5 CARR: Lázaro Cárdenas - Ent. Punta Prieta

CLAVE: 02319

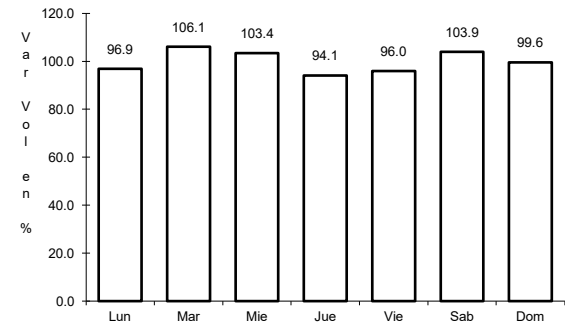
ruta: MEX-001



Km: 0.00 Tipo: 3 Sent: 0



Km: 140.00 Tipo: 1 Sent: 0

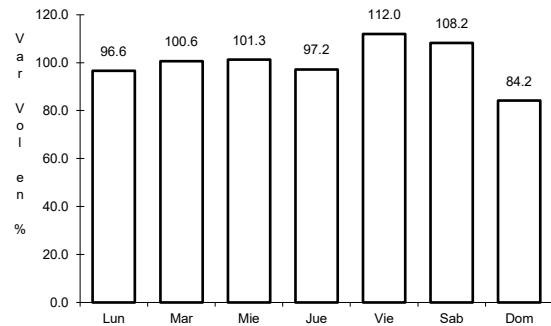


Km: 275.66 Tipo: 1 Sent: 0

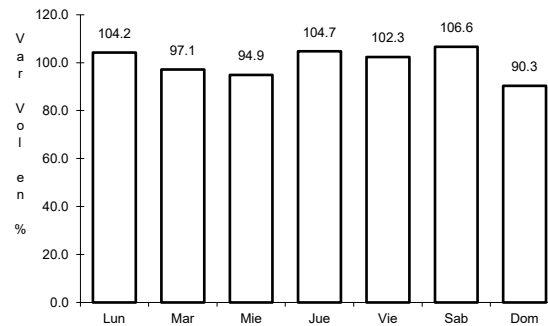
6 CARR: Mexicali - San Felipe

CLAVE: 02096

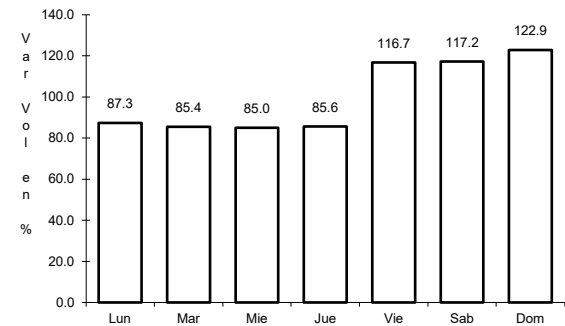
ruta: MEX-005



Km: 0.00 Tipo: 3 Sent: 1



Km: 0.00 Tipo: 3 Sent: 2

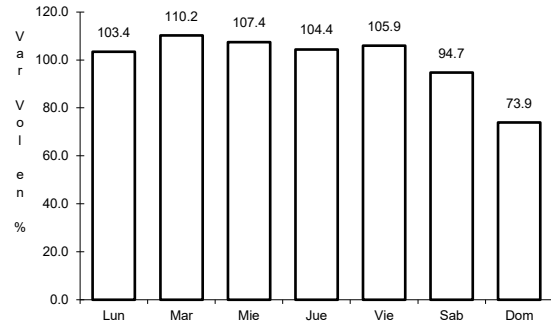


Km: 141.00 Tipo: 1 Sent: 0

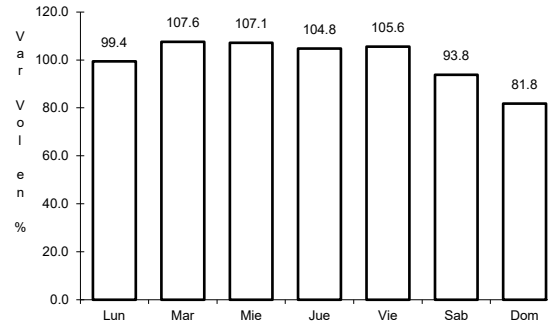
7 CARR: Ramal a Aeropuerto de Mexicali

CLAVE: 02321

ruta: MEX-002



Km: 0.00 Tipo: 3 Sent: 0

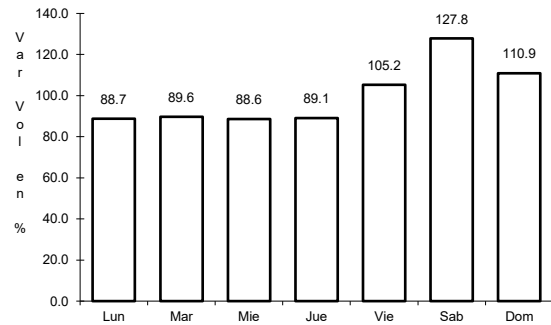


Km: 10.00 Tipo: 1 Sent: 0

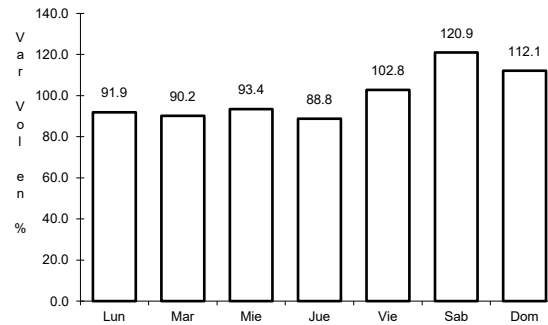
8 CARR: San Felipe - Chapala

CLAVE: 02503

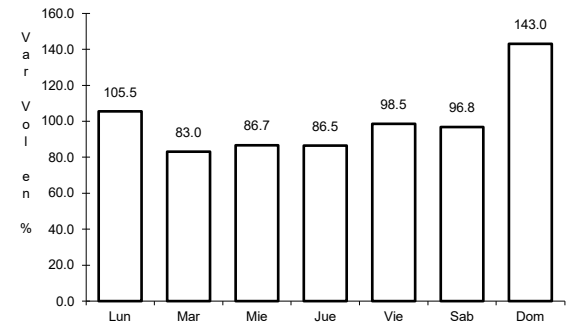
ruta: MEX-005



Km: 0.00 Tipo: 3 Sent: 1



Km: 0.00 Tipo: 3 Sent: 2

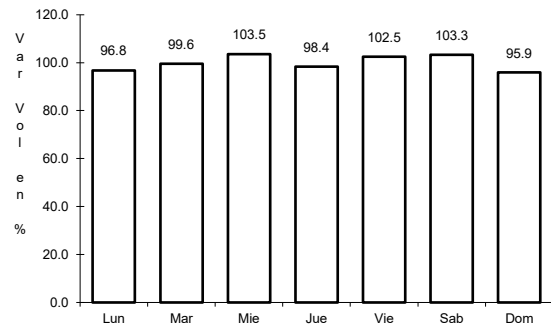


Km: 75.46 Tipo: 3 Sent: 0

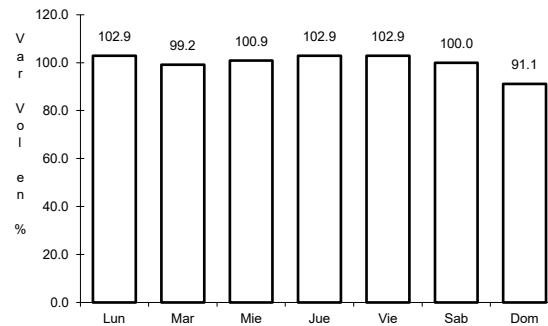
9 CARR: Sonoita - Mexicali

CLAVE: 00081

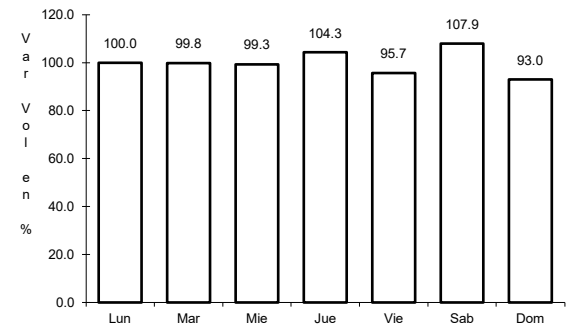
ruta: MEX-002



Km: 0.00 Tipo: 3 Sent: 0



Km: 256.47 Tipo: 1 Sent: 1

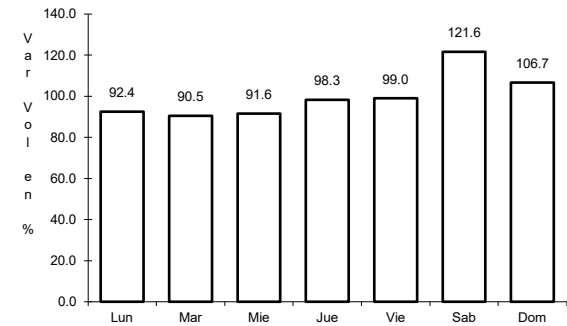
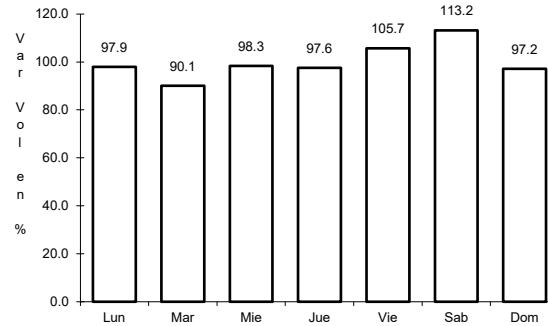
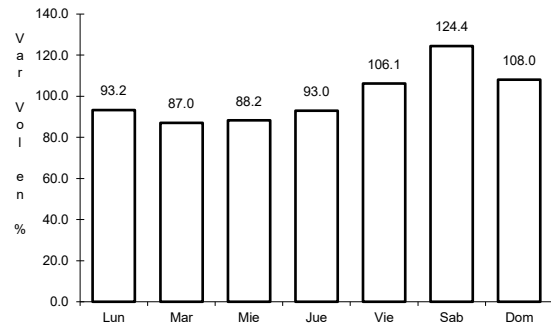


Km: 256.47 Tipo: 1 Sent: 2

10 CARR: Tecate - El Sauzal

CLAVE: 02097

ruta: MEX-003



Km: 0.00 Tipo: 3 Sent: 0

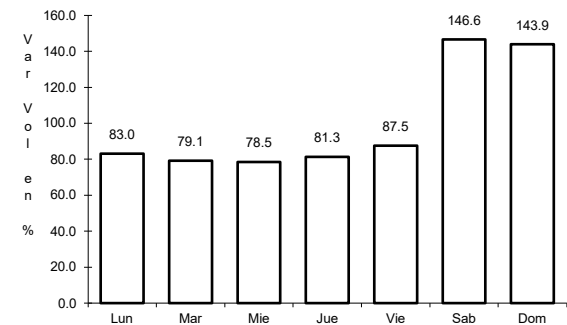
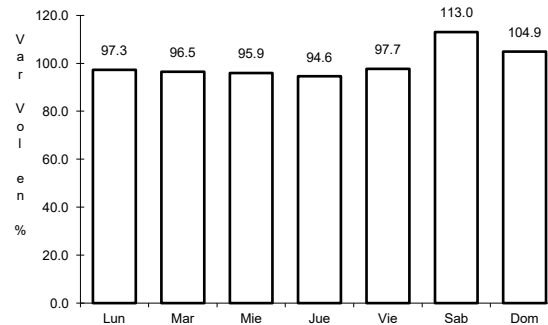
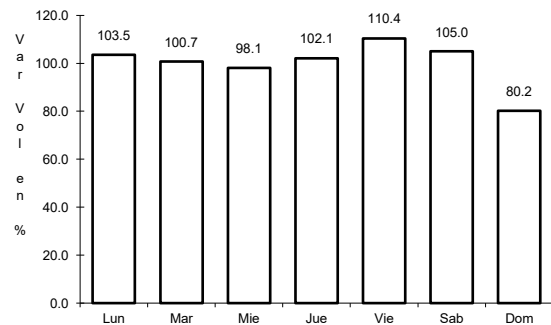
Km: 104.53 Tipo: 1 Sent: 1

Km: 104.53 Tipo: 1 Sent: 2

11 CARR: Tijuana - Ensenada (Libre)

CLAVE: 02099

ruta: MEX-001



Km: 22.00 Tipo: 1 Sent: 1

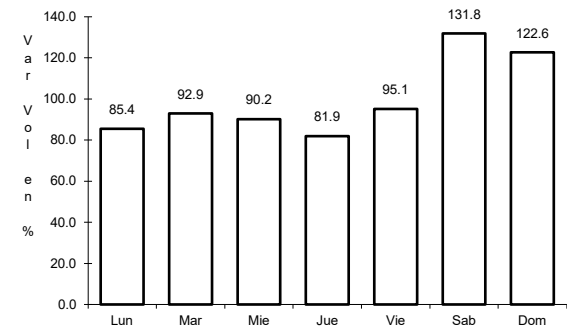
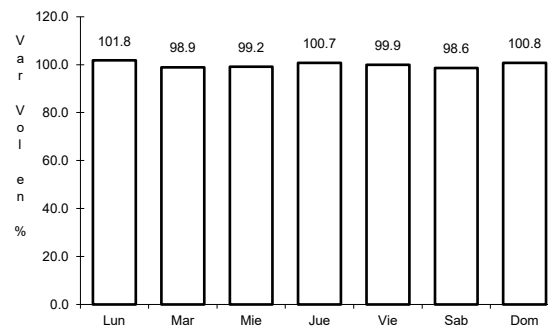
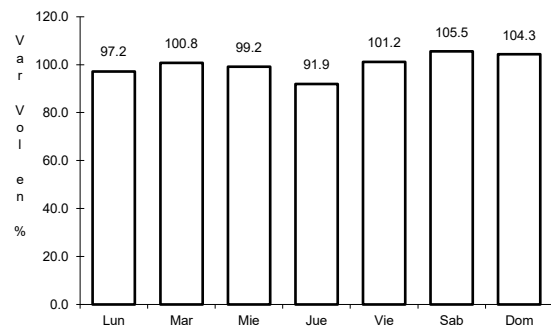
Km: 22.00 Tipo: 1 Sent: 2

Km: 56.98 Tipo: 1 Sent: 0

12 CARR: El Centinela - La Rumorosa (Cuota)

CLAVE: 02011

ruta: MEX-002D



Km: 25.00 Tipo: 1 Sent: 1

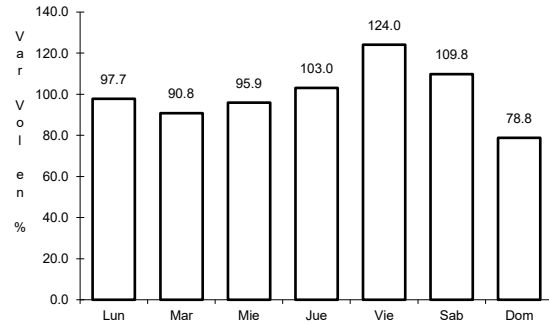
Km: 25.00 Tipo: 1 Sent: 2

Km: 67.60 Tipo: 1 Sent: 1

13 CARR: La Rumorosa - Tecate (Cuota)

CLAVE: 02011

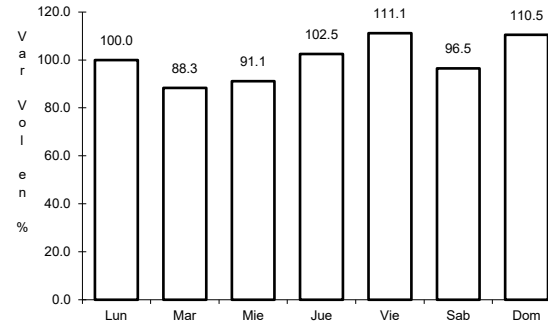
ruta: MEX-002D



Km: 62.00

Tipo: 3

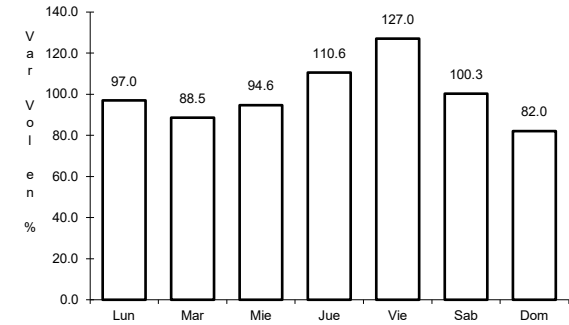
Sent: 1



Km: 62.00

Tipo: 3

Sent: 2



Km: 92.00

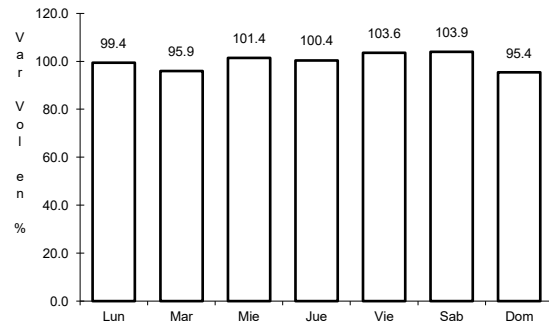
Tipo: 3

Sent: 1

14 CARR: Libramiento de Ensenada (Cuota)

CLAVE:

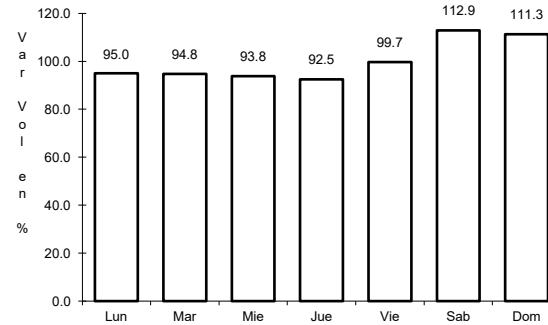
ruta: MEX-003D



Km: 0.00

Tipo: 3

Sent: 0



Km: 22.30

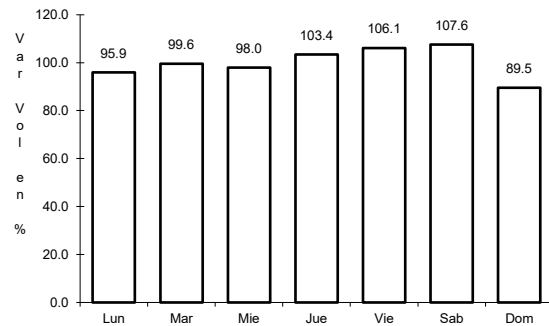
Tipo: 1

Sent: 0

15 CARR: Libramiento de Mexicali (Cuota)

CLAVE: 02319

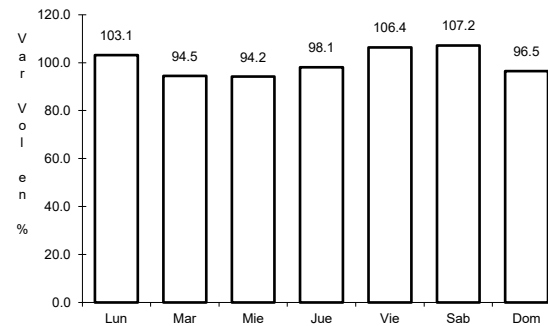
ruta: MEX-002D



Km: 0.00

Tipo: 3

Sent: 0



Km: 40.60

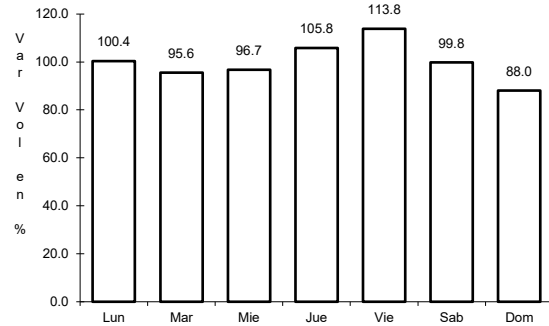
Tipo: 1

Sent: 0

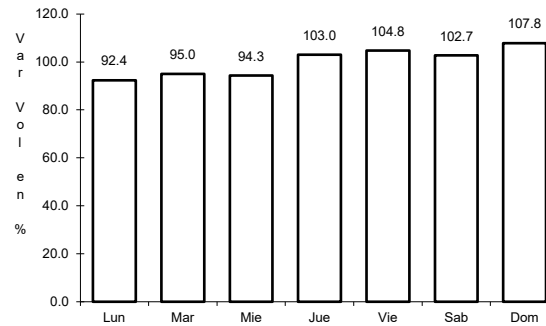
16 CARR: Libramiento de Tecate (Cuota)

CLAVE: 02082

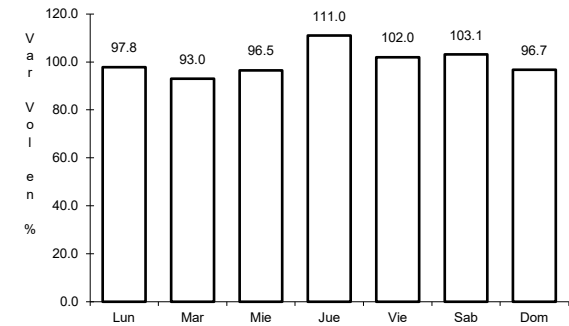
ruta: MEX-002D



Km: 118.00 Tipo: 3 Sent: 1



Km: 118.00 Tipo: 3 Sent: 2

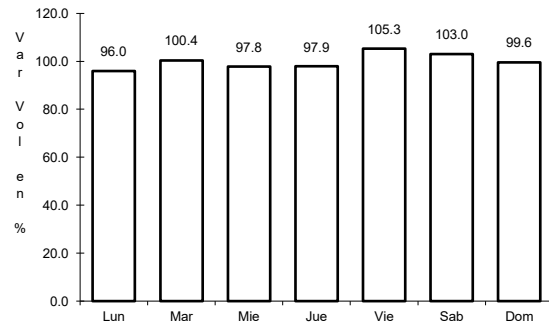


Km: 122.85 Tipo: 3 Sent: 1

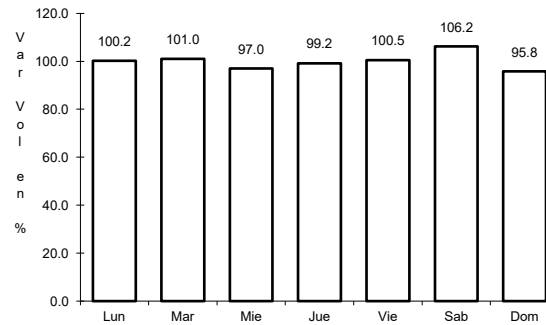
17 CARR: Tecate - Tijuana (Cuota)

CLAVE: 02011

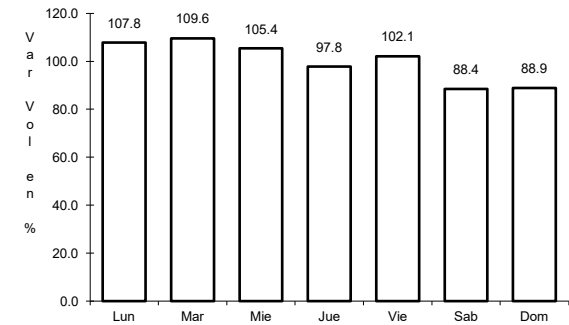
ruta: MEX-002D



Km: 147.60 Tipo: 1 Sent: 1



Km: 147.60 Tipo: 1 Sent: 2

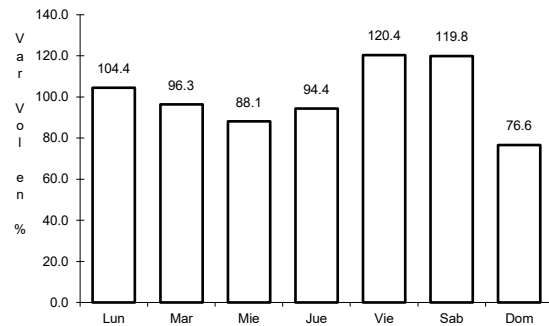


Km: 147.60 Tipo: 3 Sent: 1

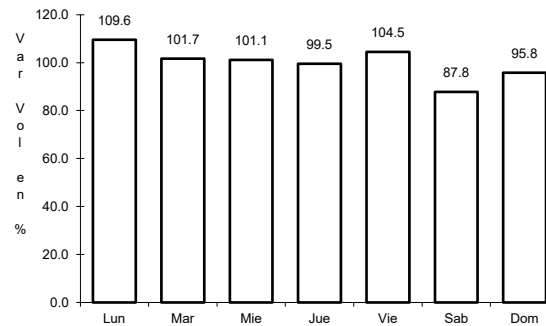
18 CARR: Tijuana - Ensenada (Cuota)

CLAVE: 02100

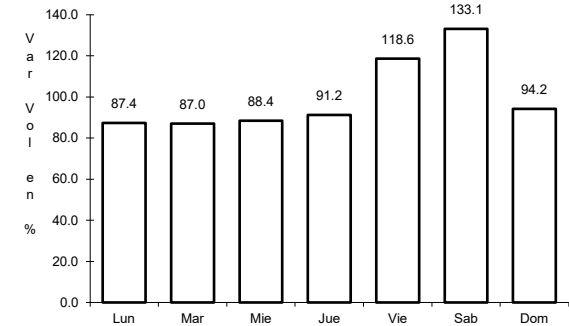
ruta: MEX-001D



Km: 7.50 Tipo: 3 Sent: 1



Km: 7.50 Tipo: 3 Sent: 2

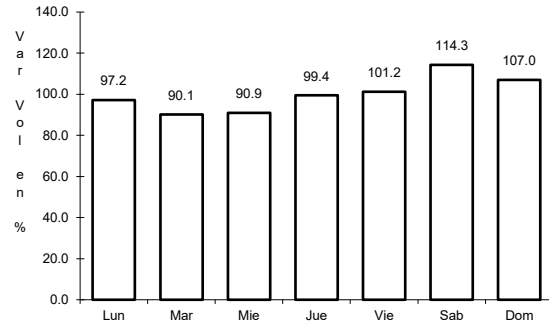


Km: 77.60 Tipo: 3 Sent: 1

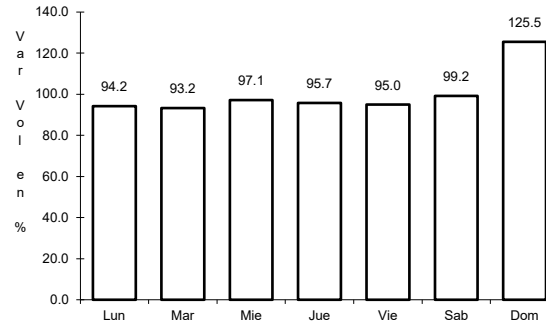
19 CARR: Mexicali - Tijuana

CLAVE: 02082

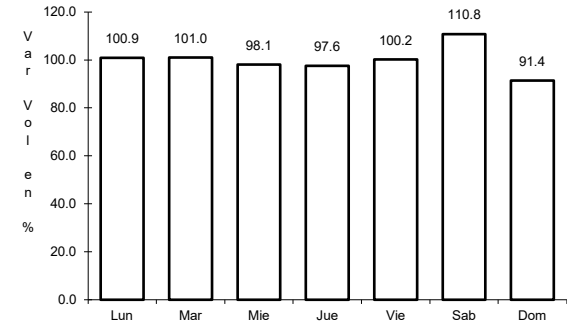
ruta: MEX-002D-MEX



Km: 7.80 Tipo: 3 Sent: 1



Km: 7.80 Tipo: 3 Sent: 2

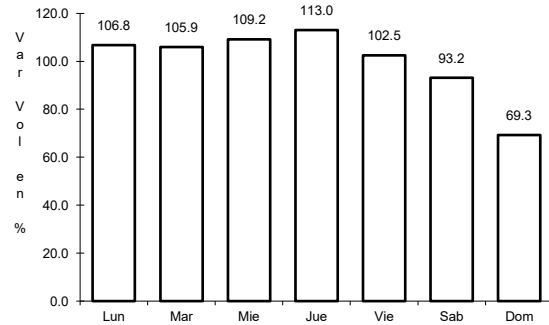


Km: 165.00 Tipo: 3 Sent: 0

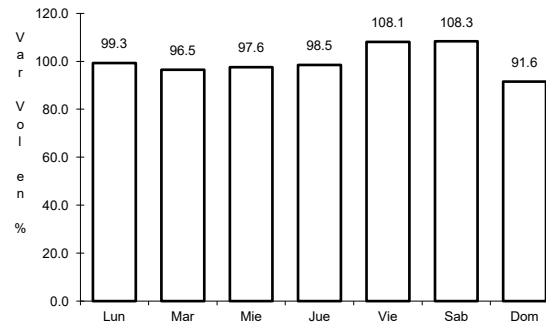
20 CARR: Algodones - Ent. Islas Agrarias Grupo B

CLAVE: 02006

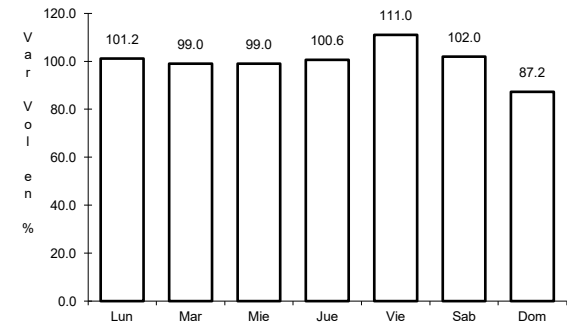
ruta: BC-008



Km: 0.00 Tipo: 3 Sent: 0



Km: 31.50 Tipo: 1 Sent: 0

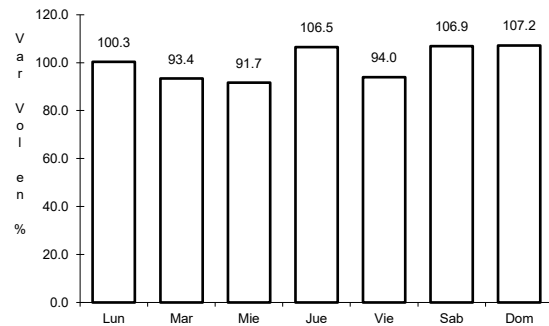


Km: 55.50 Tipo: 1 Sent: 0

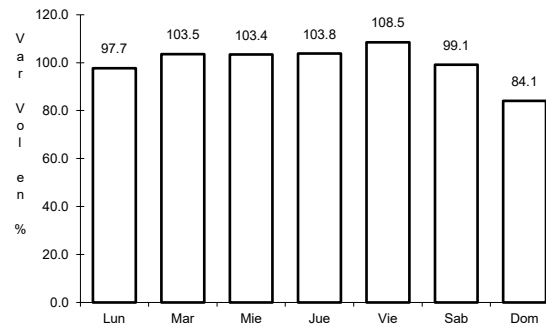
21 CARR: Corredor Tijuana 2000

CLAVE: 02006

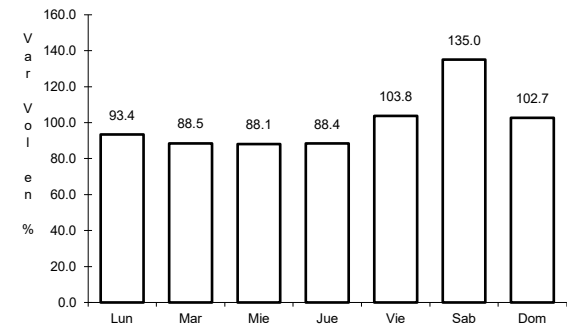
ruta: BC



Km: 0.00 Tipo: 3 Sent: 1



Km: 0.00 Tipo: 3 Sent: 2

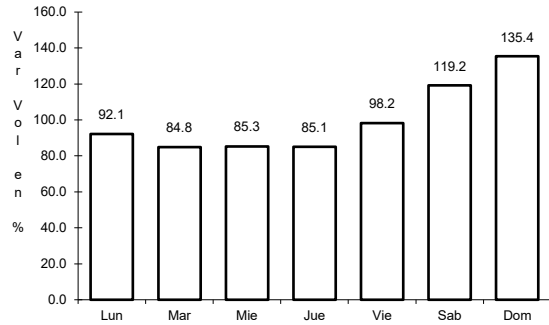


Km: 40.00 Tipo: 1 Sent: 1

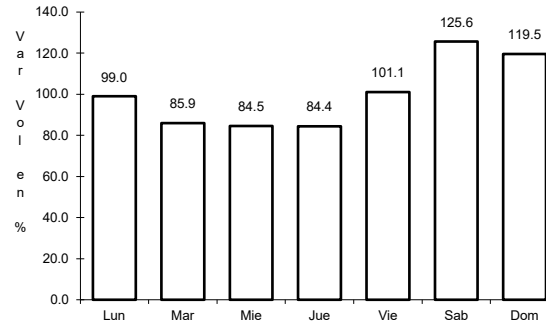
22 CARR: Ejido Benito Juárez - Ejido Chiapas

CLAVE: 02501

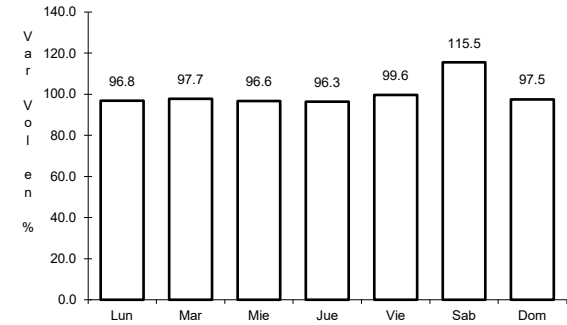
RUTA: BC-061



Km: 0.00 Tipo: 3 Sent: 0



Km: 7.00 Tipo: 1 Sent: 0

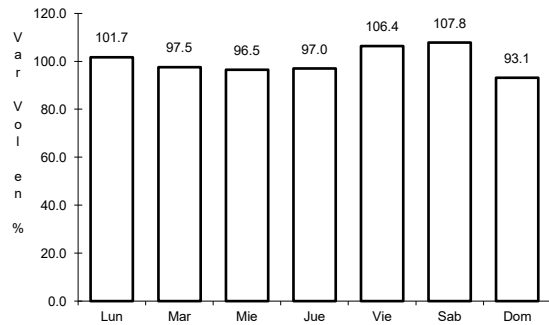


Km: 10.56 Tipo: 1 Sent: 0

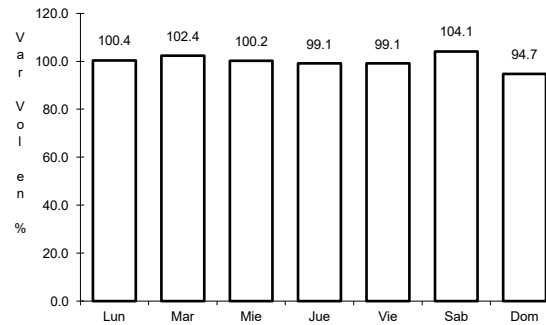
23 CARR: Ejido Monterrey - Mazón

CLAVE: 02004

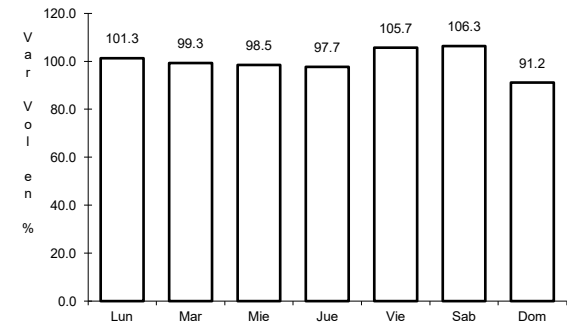
RUTA: BC-003



Km: 0.00 Tipo: 3 Sent: 0



Km: 15.16 Tipo: 3 Sent: 0

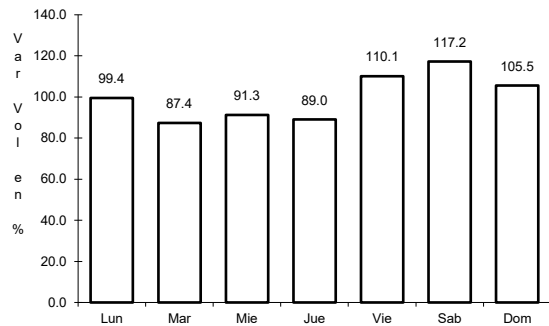


Km: 35.00 Tipo: 1 Sent: 0

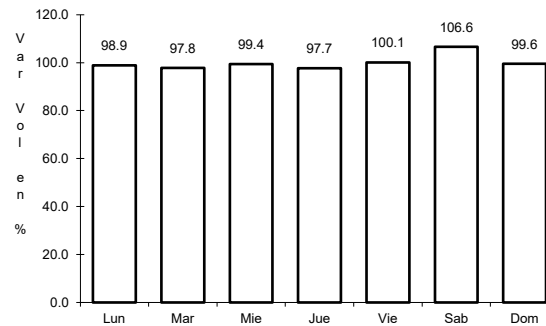
24 CARR: El Faro - Estación Coahuila

CLAVE: 02013

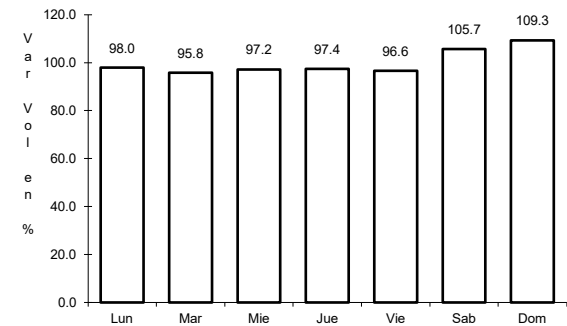
RUTA: BC-004



Km: 0.00 Tipo: 3 Sent: 0



Km: 16.30 Tipo: 1 Sent: 0

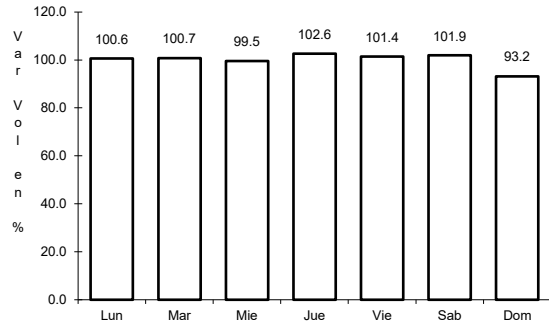


Km: 34.50 Tipo: 1 Sent: 0

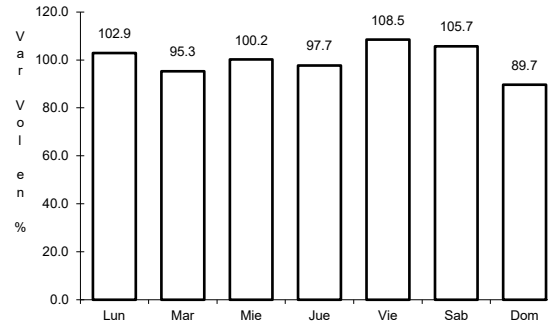
25 CARR: Ent. Santa Rosa - Ent. Pachuca

CLAVE: 02015

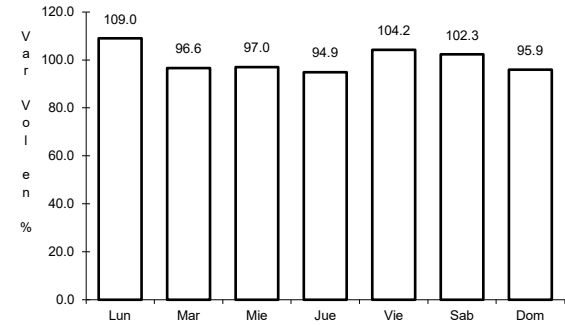
RUTA: BC-006



Km: 0.00 Tipo: 3 Sent: 0



Km: 10.90 Tipo: 3 Sent: 0

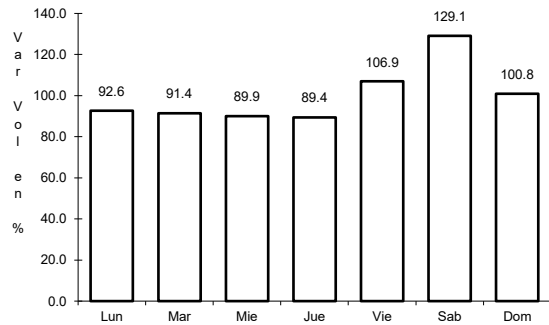


Km: 18.00 Tipo: 3 Sent: 0

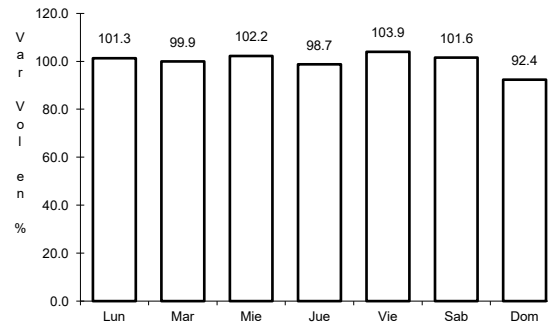
26 CARR: La Puerta - T. C. (Mexicali - Estación Coahuila)

CLAVE: 02502

RUTA: BC-010



Km: 4.60 Tipo: 1 Sent: 0

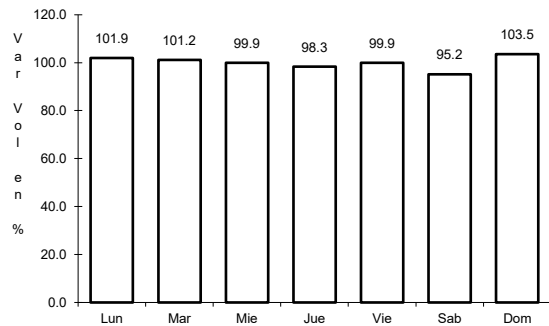


Km: 9.00 Tipo: 3 Sent: 0

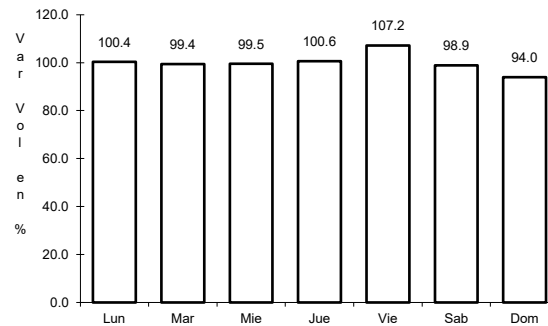
27 CARR: Mexicali - Algodones

CLAVE: 02012

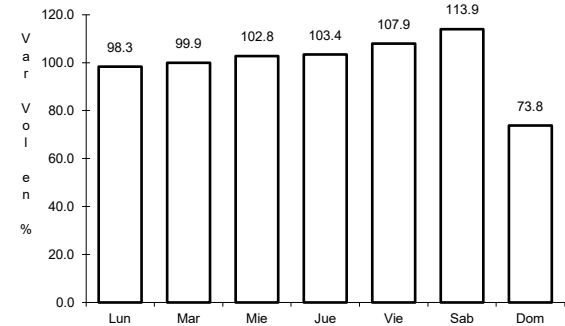
RUTA: BC-002



Km: 12.00 Tipo: 3 Sent: 0



Km: 49.65 Tipo: 1 Sent: 0

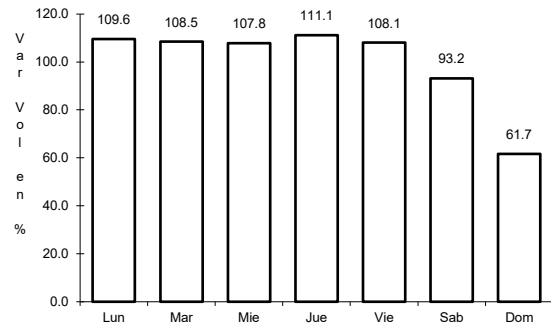


Km: 94.46 Tipo: 1 Sent: 0

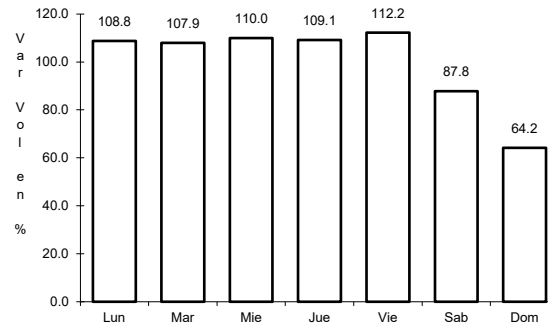
28 CARR: Mexicali - Estación Coahuila

CLAVE: 02016

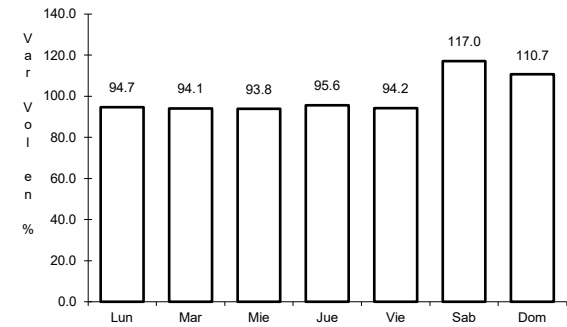
RUTA: BC-001



Km: 0.00 Tipo: 3 Sent: 1



Km: 0.00 Tipo: 3 Sent: 2

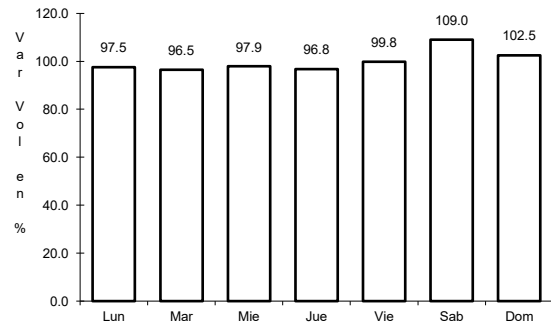


Km: 96.65 Tipo: 1 Sent: 0

29 CARR: Mexicali - Progreso

CLAVE: 02507

RUTA: BC-005



Km: 15.30 Tipo: 1 Sent: 0