

BAJA CALIFORNIA SUR

---RED FEDERAL LIBRE---

1	Cabo San Lucas - La Paz	MEX-001
2	Cd. Constitución - Puerto San Carlos	MEX-001
3	Cd. Insurgentes - Loreto	MEX-001
4	Ent. Punta Prieta - Guerrero Negro	MEX-001
5	La Paz - Cd. Insurgentes	MEX-001
6	La Paz - Pichilingue	MEX-011
7	Libramiento de Cabo San Lucas	MEX-001
8	Libramiento de Todos Santos	MEX-019
9	Loreto - Santa Rosalía	MEX-001
10	Ramal a Aeropuerto de La Paz	MEX-001
11	Ramal a Aeropuerto de Los Cabos	MEX-001
12	Ramal a Los Paredones	MEX-001
13	Ramal a Miraflores	MEX-001
14	Ramal a Puerto Escondido	MEX-001
15	Ramal a San Ignacio	MEX-001
16	Ramal a Santiago	MEX-001
17	Ramal Aeropista San Ignacio	MEX-001
18	San Pedro - Cabo San Lucas	MEX-019
19	Santa Rosalía - Guerrero Negro	MEX-001

---RED FEDERAL DE CUOTA---

20	Libramiento San José del Cabo - Aeropuerto Los Cabos (Cuota)	MEX-001D
21	Ramal a El Mangle (Cuota)	MEX-001D
22	San José del Cabo - Libramiento de Cabo San Lucas - (Cuota)	MEX-001D

---RED ESTATAL LIBRE---

23	Cd. Insurgentes - La Purísima	BCS-001
24	Cd. Insurgentes - Pto. Adolfo López Mateos	BCS
25	Ent. Campo Fisher - Punta Abreojos	BCS
26	La Paz - Ensenada de Muertos	BCS-246
27	Libramiento de La Paz	BCS
28	Libramiento Norte de La Paz	BCS
29	Ramal a Benito Juárez	BCS
30	Ramal a Ejido Ley Federal de Aguas Número Cuatro	BCS
31	Ramal a El Carrizal	BCS
32	Ramal a Guerrero Negro	BCS
33	Ramal a La Ribera	BCS
34	Ramal a Melitón Albáñez	BCS
35	Ramal a Santa Catarina	BCS

---CARRETERAS INTEGRADAS POR TRAMOS FEDERALES Y ESTATALES---

36	Ramal a Bahía de Tortugas	MEX-001-BCS
37	Ramal a Ejido Ley Federal de Aguas Número Dos	BCS-MEX-001
38	Ramal a Ley Federal de Aguas Número Cinco	BCS-MEX-001
39	Ramal a San Juan de La Costa	BCS-163-MEX-001

03 BAJA CALIFORNIA SUR



BAJA CALIFORNIA SUR

1 CARR: Cabo San Lucas - La Paz

CLAVE: 03102

RUTA: MEX-001

AÑO: 2022

LUGAR	ESTACION				CLASIFICACION VEHICULAR EN PORCIENTO										COORDENADAS					
	KM	TE	SC	TDPA	M	A	B	C2	C3	T3S2	T3S3	T3S2R4	OTROS	A	B	C	K'	D	LATITUD	LONGITUD
Cabo San Lucas	0.00	3	1	34708	1.9	92.0	0.8	3.3	1.3	0.2	0.2	0.2	0.1	93.9	0.8	5.3	0.099	0.518	22.901594	-109.895740
Cabo San Lucas	0.00	3	2	32097	1.8	92.4	0.8	3.2	1.2	0.2	0.1	0.2	0.1	94.2	0.8	5.0	0.103	0.518	22.901693	-109.895808
El Tule	13.00	3	1	18831	1.9	90.6	1.2	4.5	1.1	0.3	0.2	0.1	0.1	92.5	1.2	6.3	0.103	0.505	22.954260	-109.809475
El Tule	13.00	3	2	19223	1.6	91.0	1.2	4.5	1.0	0.3	0.2	0.1	0.1	92.6	1.2	6.2	0.116	0.505	22.954324	-109.809543
San José del Cabo	31.00	1	1	24105	3.1	89.7	0.8	3.8	1.4	0.3	0.3	0.4	0.2	92.8	0.8	6.4	0.089	0.502	23.037230	-109.709165
San José del Cabo	31.00	1	2	24309	3.1	89.7	0.8	3.8	1.4	0.3	0.3	0.4	0.2	92.8	0.8	6.4	0.124	0.502	23.036900	-109.709845
San José del Cabo	31.00	3	1	30000	4.6	88.5	1.1	3.7	1.1	0.4	0.2	0.3	0.1	93.1	1.1	5.8	0.080	0.505	23.066082	-109.703423
San José del Cabo	31.00	3	2	30726	4.6	88.5	1.1	3.7	1.1	0.4	0.2	0.3	0.1	93.1	1.1	5.8	0.091	0.505	23.066046	-109.703521
T. Der. Santa Catarina	41.00	1	1	14707	0.9	84.3	1.3	11.7	1.1	0.3	0.2	0.1	0.1	85.2	1.3	13.5	0.089	0.507	23.127966	-109.710976
T. Der. Santa Catarina	41.00	1	2	15136	0.9	84.3	1.3	11.7	1.1	0.3	0.2	0.1	0.1	85.2	1.3	13.5	0.099	0.507	23.127693	-109.711136
T. Izq. Aeropuerto	43.46	1	1	12177	0.2	88.0	1.6	8.3	0.9	0.4	0.2	0.3	0.1	88.2	1.6	10.2	0.087	0.505	23.153586	-109.708464
T. Izq. Aeropuerto	43.46	1	2	12434	0.2	88.2	1.5	8.3	0.9	0.3	0.2	0.3	0.1	88.4	1.5	10.1	0.083	0.505	23.153598	-109.708597
Santa Anita	46.00	1	0	9810	1.3	87.7	1.9	6.5	1.5	0.6	0.4	0.1	0.0	89.0	1.9	9.1	0.089	0.515	23.171963	-109.704302
Santa Anita	46.00	3	0	4849	0.4	90.0	1.0	5.8	1.4	0.8	0.4	0.2	0.0	90.4	1.0	8.6	0.111	0.521	23.187841	-109.707800
T. Izq. Miraflores	71.50	3	0	3200	1.3	91.3	1.2	3.9	1.6	0.4	0.2	0.1	0.0	92.6	1.2	6.2	0.088	0.502	23.371210	-109.752050
T. Izq. Santiago	84.00	3	0	3228	2.0	89.6	1.8	4.3	1.5	0.5	0.2	0.1	0.0	91.6	1.8	6.6	0.092	0.511	23.476823	-109.694414
La Cueva	95.20	3	0	3167	1.0	94.3	0.8	2.4	1.1	0.3	0.1	0.0	0.0	95.3	0.8	3.9	0.093	0.501	23.547932	-109.675165
T. Der. Bahía de Las Palmas	110.00	3	0	1784	1.8	91.6	0.7	4.0	1.3	0.4	0.2	0.0	0.0	93.4	0.7	5.9	0.113	0.504	23.682959	-109.720491
San Bartolo	128.50	1	0	1704	2.9	84.0	0.6	9.0	2.2	1.3	0.0	0.0	0.0	86.9	0.6	12.5	0.109	0.509	23.739385	-109.837052
San Antonio	156.00	3	0	1544	3.2	89.8	0.7	3.7	1.8	0.6	0.2	0.0	0.0	93.0	0.7	6.3	0.120	0.508	23.809636	-110.059372
El Triunfo	162.80	1	0	1506	2.1	85.5	1.1	8.9	1.2	0.5	0.3	0.2	0.2	87.6	1.1	11.3	0.117	0.503	23.806373	-110.102239
El Triunfo	162.80	3	0	1555	1.6	91.4	1.0	4.7	0.8	0.3	0.2	0.0	0.0	93.0	1.0	6.0	0.122	0.502	23.796428	-110.111320
T. Izq. Todos Santos	184.40	1	0	1766	1.5	92.0	1.0	3.6	0.9	0.5	0.3	0.1	0.1	93.5	1.0	5.5	0.125	0.513	23.882924	-110.248199
T. Izq. Todos Santos	184.40	3	1	4482	1.6	87.9	1.5	3.0	1.4	2.7	0.9	0.8	0.2	89.5	1.5	9.0	0.119	0.510	23.890392	-110.257114
T. Izq. Todos Santos	184.40	3	2	4658	1.5	87.5	1.5	3.2	1.5	2.9	0.9	0.8	0.2	89.0	1.5	9.5	0.103	0.510	23.890365	-110.257281
San Pedro	191.00	1	1	4622	1.7	87.6	1.6	3.0	1.4	2.8	0.8	0.9	0.2	89.3	1.6	9.1	0.120	0.502	23.917417	-110.261283
San Pedro	191.00	1	2	4660	1.6	87.4	1.5	2.9	1.5	3.0	0.8	1.1	0.2	89.0	1.5	9.5	0.105	0.502	23.917391	-110.261420
San Pedro	191.00	3	1	4846	1.2	86.9	1.7	3.7	1.6	2.8	1.1	0.8	0.2	88.1	1.7	10.2	0.119	0.502	23.938725	-110.274909
San Pedro	191.00	3	2	4803	1.3	86.9	1.5	3.5	1.6	2.8	1.3	0.9	0.2	88.2	1.5	10.3	0.091	0.502	23.938626	-110.274988
Limite Zona Urbana de La Paz	211.00	1	1	7883	1.9	88.2	1.1	3.9	1.1	2.3	0.7	0.6	0.2	90.1	1.1	8.8	0.104	0.514	24.031205	-110.297480
Limite Zona Urbana de La Paz	211.00	1	2	8336	2.0	87.9	1.0	3.7	1.3	2.4	0.8	0.7	0.2	89.9	1.0	9.1	0.098	0.514	24.031181	-110.297549
La Paz	213.00	0	0																	

BAJA CALIFORNIA SUR

2 CARR: Cd. Constitución - Puerto San Carlos

CLAVE: 03231

RUTA: MEX-001

AÑO: 2022

LUGAR	ESTACION				CLASIFICACION VEHICULAR EN PORCIENTO													COORDENADAS		
	KM	TE	SC	TDPA	M	A	B	C2	C3	T3S2	T3S3	T3S2R4	OTROS	A	B	C	K'	D	LATITUD	LONGITUD
Cd. Constitución	0.00	3	0	2741	0.9	89.6	1.9	2.9	3.0	0.9	0.5	0.2	0.1	90.5	1.9	7.6	0.082	0.502	25.039685	-111.690200
T. Der. Benito Juárez	10.00	1	0	1947	0.9	90.3	2.8	3.8	0.9	0.7	0.4	0.2	0.0	91.2	2.8	6.0	0.095	0.506	25.040455	-111.758236
T. Der. Benito Juárez	10.00	3	0	1379	0.8	92.2	1.7	2.9	0.5	1.1	0.7	0.1	0.0	93.0	1.7	5.3	0.099	0.506	25.031992	-111.777674
Puerto San Carlos	57.70	0	0																	

3 CARR: Cd. Insurgentes - Loreto

CLAVE: 03092

RUTA: MEX-001

AÑO: 2022

LUGAR	ESTACION				CLASIFICACION VEHICULAR EN PORCIENTO													COORDENADAS		
	KM	TE	SC	TDPA	M	A	B	C2	C3	T3S2	T3S3	T3S2R4	OTROS	A	B	C	K'	D	LATITUD	LONGITUD
Cd. Insurgentes	0.00	3	0	3236	3.3	81.8	2.5	3.8	0.9	5.4	1.1	1.1	0.1	85.1	2.5	12.4	0.073	0.525	25.259251	-111.766876
T. Der. Ley Federal de Aguas Número Dos	13.46	3	0	2019	5.6	75.3	2.8	3.6	3.0	7.0	1.4	1.0	0.3	80.9	2.8	16.3	0.087	0.570	25.318614	-111.655634
T. Izq. Ley Federal de Aguas Número Uno	16.50	3	0	1421	2.3	74.5	3.8	4.5	1.9	9.2	1.8	1.9	0.1	76.8	3.8	19.4	0.091	0.529	25.334139	-111.632482
T. Der. Puerto Agua Verde	65.00	1	0	1402	1.8	76.1	3.2	4.3	1.1	9.7	2.1	1.6	0.1	77.9	3.2	18.9	0.098	0.531	25.606402	-111.319366
T. Der. Puerto Agua Verde	65.00	3	0	1396	2.5	74.4	3.8	4.6	1.7	8.9	1.9	2.1	0.1	76.9	3.8	19.3	0.110	0.547	25.610795	-111.311571
El Ligüi	84.50	1	0	2117	1.4	80.6	3.1	3.6	1.1	7.4	1.4	1.3	0.1	82.0	3.1	14.9	0.089	0.537	25.731885	-111.268563
T. Der. Puerto Escondido	95.40	1	0	2211	2.2	73.7	3.1	11.1	1.8	5.2	1.5	1.3	0.1	75.9	3.1	21.0	0.090	0.528	25.801101	-111.327580
T. Der. Puerto Escondido	95.40	3	0	2308	1.1	82.4	2.5	4.2	1.6	5.6	1.5	1.0	0.1	83.5	2.5	14.0	0.087	0.526	25.806472	-111.329638
Nopoló	109.50	1	0	3082	2.5	83.7	2.2	3.4	2.0	4.6	1.0	0.5	0.1	86.2	2.2	11.6	0.091	0.533	25.924873	-111.362890
T. Der. Aeropuerto de Loreto	117.30	1	0	4323	2.1	84.3	2.3	6.2	0.8	3.2	0.6	0.4	0.1	86.4	2.3	11.3	0.087	0.513	25.976632	-111.367394
T. Der. Loreto	120.00	1	0	5407	2.9	88.3	1.3	2.9	1.1	2.5	0.5	0.4	0.1	91.2	1.3	7.5	0.087	0.511	26.002310	-111.366461

4 CARR: Ent. Punta Prieta - Guerrero Negro

CLAVE: 00321

RUTA: MEX-001

AÑO: 2022

LUGAR	ESTACION				CLASIFICACION VEHICULAR EN PORCIENTO													COORDENADAS		
	KM	TE	SC	TDPA	M	A	B	C2	C3	T3S2	T3S3	T3S2R4	OTROS	A	B	C	K'	D	LATITUD	LONGITUD
Parador Punta Prieta	0.00	3	0	1047	2.7	56.5	5.9	14.8	2.6	14.0	2.7	0.8	0.0	59.2	5.9	34.9	0.091	0.542	28.921363	-114.152860
Rosarito	50.60	3	0	1099	3.2	55.9	5.0	14.3	2.5	15.5	2.8	0.8	0.0	59.1	5.0	35.9	0.086	0.518	28.631592	-114.021870
Tanatán	70.10	3	0	1078	2.8	57.6	5.8	14.0	2.0	14.7	2.2	0.9	0.0	60.4	5.8	33.8	0.096	0.517	28.506610	-114.021304
Tampico	105.00	1	0	1130	1.9	67.7	3.6	5.3	3.0	15.7	2.0	0.8	0.0	69.6	3.6	26.8	0.088	0.541	28.208287	-114.000722
Lim. Edos. Term. B.C. Ppia. B.C.S. (Paralelo 28)	128.56	0	0																	
Ent. Guerrero Negro	130.00	1	0	2191	4.3	77.8	3.6	3.9	2.4	5.4	1.8	0.8	0.0	82.1	3.6	14.3	0.080	0.520	27.973792	-114.013581

BAJA CALIFORNIA SUR

5 CARR : La Paz - Cd. Insurgentes

CLAVE: 03101

RUTA: MEX-001

AÑO: 2022

LUGAR	ESTACION				CLASIFICACION VEHICULAR EN PORCIENTO										COORDENADAS					
	KM	TE	SC	TDPA	M	A	B	C2	C3	T3S2	T3S3	T3S2R4	OTROS	A	B	C	K'	D	LATITUD	LONGITUD
La Paz	0.00	3	1	15756	1.9	88.8	0.3	2.9	2.3	2.1	0.9	0.3	0.5	90.7	0.3	9.0	0.080	0.513	24.121960	-110.336289
La Paz	0.00	3	2	14956	1.8	88.7	0.4	2.8	2.6	1.9	1.0	0.3	0.5	90.5	0.4	9.1	0.082	0.513	24.121869	-110.336171
T. Izq. Aeropuerto	8.90	1	1	12950	2.7	93.4	0.6	1.4	0.8	0.6	0.2	0.2	0.1	96.1	0.6	3.3	0.081	0.524	24.107724	-110.361726
T. Izq. Aeropuerto	8.90	1	2	11776	3.0	92.5	0.5	1.6	1.0	0.8	0.2	0.2	0.2	95.5	0.5	4.0	0.083	0.524	24.107572	-110.361683
T. Izq. Aeropuerto	8.90	3	1	10252	4.3	90.1	0.4	2.5	1.5	0.7	0.3	0.2	0.0	94.4	0.4	5.2	0.080	0.506	24.104692	-110.368967
T. Izq. Aeropuerto	8.90	3	2	10484	4.2	90.1	0.5	2.5	1.5	0.8	0.2	0.2	0.0	94.3	0.5	5.2	0.094	0.506	24.104571	-110.368974
El Centenario	13.50	3	1	4987	6.8	85.2	0.9	2.4	1.5	1.5	0.6	0.8	0.3	92.0	0.9	7.1	0.087	0.514	24.104902	-110.413543
El Centenario	13.50	3	2	5273	6.7	85.2	0.9	2.3	1.5	1.5	0.8	0.8	0.3	91.9	0.9	7.2	0.098	0.514	24.105596	-110.414278
T. Der. San Juan de La Costa	17.00	1	1	3101	2.8	87.4	1.3	3.3	1.2	2.5	0.7	0.6	0.2	90.2	1.3	8.5	0.111	0.503	24.118019	-110.431948
T. Der. San Juan de La Costa	17.00	1	2	3067	3.5	86.6	1.2	3.5	1.1	2.6	0.8	0.6	0.1	90.1	1.2	8.7	0.123	0.503	24.117949	-110.432004
T. Der. San Juan de La Costa	17.00	3	0	3197	2.2	80.3	2.8	4.6	1.3	5.6	1.8	1.2	0.2	82.5	2.8	14.7	0.069	0.525	24.119851	-110.441522
T. Der. Alfredo V. Bonfil	24.00	3	0	2632	1.5	80.0	2.6	4.4	2.0	5.7	2.0	1.6	0.2	81.5	2.6	15.9	0.093	0.547	24.089662	-110.520935
T. Izq. El Conejo	79.60	1	0	2588	1.9	79.3	2.6	4.2	1.7	5.8	2.7	1.6	0.2	81.2	2.6	16.2	0.079	0.520	24.179655	-110.942008
T. Izq. El Conejo	79.60	3	0	2417	1.5	79.7	2.4	4.4	1.8	6.6	1.9	1.5	0.2	81.2	2.4	16.4	0.090	0.544	24.186102	-110.945555
El Ciento Veintiocho	118.20	1	0	2615	1.8	81.4	2.0	4.0	1.0	5.5	2.5	1.6	0.2	83.2	2.0	14.8	0.080	0.523	24.465519	-111.216498
Santa Rita	156.70	1	0	2359	1.2	80.9	2.1	3.2	2.0	6.7	2.0	1.8	0.1	82.1	2.1	15.8	0.088	0.540	24.585018	-111.458461
Santa Rita	156.70	3	0	2248	2.4	80.7	2.5	3.6	1.5	5.5	2.0	1.6	0.2	83.1	2.5	14.4	0.093	0.527	24.597314	-111.472978
Cd. Constitución	213.00	1	0	4772	6.6	76.0	2.0	7.5	2.0	3.2	1.2	1.1	0.4	82.6	2.0	15.4	0.079	0.514	25.006918	-111.661429
Cd. Constitución	213.00	3	1	4903	6.9	81.4	0.9	7.0	1.1	1.5	0.5	0.4	0.3	88.3	0.9	10.8	0.106	0.507	25.045364	-111.679185
Cd. Constitución	213.00	3	2	5043	6.9	81.4	1.0	7.0	0.9	1.6	0.6	0.3	0.3	88.3	1.0	10.7	0.103	0.507	25.045323	-111.679290
T. Der. Ley Federal de Aguas Número Cuatro	229.00	1	1	2462	0.9	88.7	1.4	2.9	1.0	3.6	0.7	0.6	0.2	89.6	1.4	9.0	0.088	0.506	25.195109	-111.748498
T. Der. Ley Federal de Aguas Número Cuatro	229.00	1	2	2519	1.3	88.7	1.6	2.6	1.2	3.0	0.8	0.6	0.2	90.0	1.6	8.4	0.095	0.506	25.195073	-111.748570
Cd. Insurgentes	236.50	1	1	2553	1.2	86.9	1.9	2.9	1.0	3.7	0.9	1.0	0.5	88.1	1.9	10.0	0.092	0.512	25.235948	-111.767345
Cd. Insurgentes	236.50	1	2	2682	1.1	88.7	1.5	2.9	0.8	3.2	0.8	0.7	0.3	89.8	1.5	8.7	0.086	0.512	25.235916	-111.767420

6 CARR : La Paz - Pichilingue

CLAVE: 03230

RUTA: MEX-011

AÑO: 2022

LUGAR	ESTACION				CLASIFICACION VEHICULAR EN PORCIENTO										COORDENADAS					
	KM	TE	SC	TDPA	M	A	B	C2	C3	T3S2	T3S3	T3S2R4	OTROS	A	B	C	K'	D	LATITUD	LONGITUD
La Paz	0.00	3	1	8576	5.1	91.3	0.4	1.4	1.0	0.3	0.3	0.2	0.0	96.4	0.4	3.2	0.099	0.517	24.178108	-110.303142
La Paz	0.00	3	2	9178	5.1	91.2	0.4	1.5	1.0	0.3	0.3	0.2	0.0	96.3	0.4	3.3	0.108	0.517	24.178075	-110.303336
Escuela Técnica Pesquera	9.30	3	0	2147	5.6	78.1	0.5	2.7	3.7	3.7	3.0	2.1	0.6	83.7	0.5	15.8	0.086	0.504	24.230320	-110.308481
Pichilingue	17.00	1	0	4369	4.2	74.2	2.1	4.0	4.3	7.5	1.6	1.7	0.4	78.4	2.1	19.5	0.086	0.507	24.269325	-110.318620

BAJA CALIFORNIA SUR

7 CARR : Libramiento de Cabo San Lucas

CLAVE: 03100

RUTA : MEX-001

AÑO : 2022

LUGAR	ESTACION				CLASIFICACION VEHICULAR EN PORCIENTO												COORDENADAS			
	KM	TE	SC	TDPA	M	A	B	C2	C3	T3S2	T3S3	T3S2R4	OTROS	A	B	C	K'	D	LATITUD	LONGITUD
T. C. San Pedro - Cabo San Lucas	0.00	3	1	22398	3.4	88.8	1.1	3.3	1.5	0.6	0.4	0.7	0.2	92.2	1.1	6.7	0.070	0.510	22.899443	-109.923222
T. C. San Pedro - Cabo San Lucas	0.00	3	2	21554	3.5	88.7	1.2	3.2	1.5	0.7	0.4	0.6	0.2	92.2	1.2	6.6	0.066	0.510	22.899462	-109.923387
T. C. Cabo San Lucas - La Paz	3.00	1	1	25915	3.2	88.4	1.0	3.6	1.5	0.7	0.2	1.1	0.3	91.6	1.0	7.4	0.070	0.527	22.900195	-109.910308
T. C. Cabo San Lucas - La Paz	3.00	1	2	28883	3.3	88.3	1.1	3.5	1.5	0.8	0.2	1.0	0.3	91.6	1.1	7.3	0.085	0.527	22.900312	-109.910316

8 CARR : Libramiento de Todos Santos

CLAVE:

RUTA : MEX-019

AÑO : 2022

LUGAR	ESTACION				CLASIFICACION VEHICULAR EN PORCIENTO												COORDENADAS			
	KM	TE	SC	TDPA	M	A	B	C2	C3	T3S2	T3S3	T3S2R4	OTROS	A	B	C	K'	D	LATITUD	LONGITUD
T. C. San Pedro - Cabo San Lucas Norte	0.00	3	0	4883	1.2	83.1	2.1	3.7	1.7	4.8	1.6	1.5	0.3	84.3	2.1	13.6	0.115	0.510	23.474511	-110.212021
T. C. San Pedro - Cabo San Lucas Sur	7.50	0	0																	

9 CARR : Loreto - Santa Rosalía

CLAVE: 03393

RUTA : MEX-001

AÑO : 2022

LUGAR	ESTACION				CLASIFICACION VEHICULAR EN PORCIENTO												COORDENADAS			
	KM	TE	SC	TDPA	M	A	B	C2	C3	T3S2	T3S3	T3S2R4	OTROS	A	B	C	K'	D	LATITUD	LONGITUD
Loreto	0.00	3	0	1795	10.4	71.8	2.2	4.4	2.9	6.6	1.2	0.5	0.0	82.2	2.2	15.6	0.060	0.514	26.036781	-111.363657
Rosarito	63.00	1	0	962	2.2	73.5	3.4	4.4	1.0	11.9	2.1	1.5	0.0	75.7	3.4	20.9	0.088	0.550	26.433944	-111.637171
Rosarito	63.00	3	0	963	0.9	73.1	3.5	5.1	1.2	12.6	1.9	1.7	0.0	74.0	3.5	22.5	0.103	0.556	26.462804	-111.658126
Mulegé	135.00	1	0	3077	2.6	87.0	1.5	3.1	0.5	4.0	0.7	0.6	0.0	89.6	1.5	8.9	0.080	0.522	26.889140	-111.979321
Mulegé	135.00	3	0	1391	1.7	77.4	3.0	4.8	0.9	9.5	1.5	1.1	0.1	79.1	3.0	17.9	0.088	0.553	26.893453	-112.000750
T. Izq. Santa Águeda	189.00	1	0	2360	1.9	83.5	2.2	4.7	0.7	5.2	1.1	0.7	0.0	85.4	2.2	12.4	0.089	0.566	27.274388	-112.244597
T. Izq. Santa Águeda	189.00	3	0	2502	1.1	85.8	1.7	3.5	0.8	5.4	1.2	0.5	0.0	86.9	1.7	11.4	0.096	0.532	27.283800	-112.244474
Santa Rosalía	197.00	1	0	3972	2.3	87.0	1.7	2.9	0.8	4.2	0.6	0.5	0.0	89.3	1.7	9.0	0.075	0.509	27.319996	-112.244520

10 CARR : Ramal a Aeropuerto de La Paz

CLAVE: 03396

RUTA : MEX-001

AÑO : 2022

LUGAR	ESTACION				CLASIFICACION VEHICULAR EN PORCIENTO												COORDENADAS			
	KM	TE	SC	TDPA	M	A	B	C2	C3	T3S2	T3S3	T3S2R4	OTROS	A	B	C	K'	D	LATITUD	LONGITUD
T. C. La Paz - Cd. Insurgentes	0.00	3	1	3228	3.9	92.6	0.5	1.4	0.5	0.5	0.2	0.2	0.2	96.5	0.5	3.0	0.138	0.506	24.099204	-110.367165
T. C. La Paz - Cd. Insurgentes	0.00	3	2	3307	4.2	92.3	0.5	1.0	0.7	0.5	0.3	0.3	0.2	96.5	0.5	3.0	0.132	0.506	24.099199	-110.367035
Aeropuerto	3.44	0	0																	

BAJA CALIFORNIA SUR

11 CARR: Ramal a Aeropuerto de Los Cabos

CLAVE: 03394

RUTA: MEX-001

AÑO: 2022

LUGAR	ESTACION				CLASIFICACION VEHICULAR EN PORCIENTO													COORDENADAS		
	KM	TE	SC	TDPA	M	A	B	C2	C3	T3S2	T3S3	T3S2R4	OTROS	A	B	C	K'	D	LATITUD	LONGITUD
T. C. Cabo San Lucas - La Paz	0.00	3	0	14719	2.0	86.4	0.5	9.1	0.6	0.5	0.3	0.4	0.2	88.4	0.5	11.1	0.105	0.507	23.160096	-109.712385
Aeropuerto Los Cabos	1.00	0	0																	

12 CARR: Ramal a Los Paredones

CLAVE: 03407

RUTA: MEX-001

AÑO: 2022

LUGAR	ESTACION				CLASIFICACION VEHICULAR EN PORCIENTO													COORDENADAS		
	KM	TE	SC	TDPA	M	A	B	C2	C3	T3S2	T3S3	T3S2R4	OTROS	A	B	C	K'	D	LATITUD	LONGITUD
T. C. Cd. Santa Rosalía - Guerrero Negro	0.00	3	0	1147	1.7	88.2	0.7	8.7	0.2	0.5	0.0	0.0	0.0	89.9	0.7	9.4	0.073	0.532	27.300354	-112.902031
Paredones	1.40	0	0																	

13 CARR: Ramal a Miraflores

CLAVE: 03407

RUTA: MEX-001

AÑO: 2022

LUGAR	ESTACION				CLASIFICACION VEHICULAR EN PORCIENTO													COORDENADAS		
	KM	TE	SC	TDPA	M	A	B	C2	C3	T3S2	T3S3	T3S2R4	OTROS	A	B	C	K'	D	LATITUD	LONGITUD
T. C. Cabo San Lucas - La Paz	0.00	3	1	1226	1.0	92.9	1.4	3.4	0.7	0.2	0.1	0.1	0.2	93.9	1.4	4.7	0.113	0.509	23.371049	-109.754847
T. C. Cabo San Lucas - La Paz	0.00	3	2	1183	1.6	92.0	1.3	3.9	0.6	0.2	0.1	0.1	0.2	93.6	1.3	5.1	0.086	0.509	23.370982	-109.754862
Miraflores	2.20	0	0																	

14 CARR: Ramal a Puerto Escondido

CLAVE: 03407

RUTA: MEX-001

AÑO: 2022

LUGAR	ESTACION				CLASIFICACION VEHICULAR EN PORCIENTO													COORDENADAS		
	KM	TE	SC	TDPA	M	A	B	C2	C3	T3S2	T3S3	T3S2R4	OTROS	A	B	C	K'	D	LATITUD	LONGITUD
T. C. Cd. Insurgentes - Loreto	0.00	3	0	375	1.5	92.9	0.9	3.9	0.7	0.0	0.1	0.0	0.0	94.4	0.9	4.7	0.128	0.503	25.803355	-111.325720
Puerto Escondido	2.50	0	0																	

15 CARR: Ramal a San Ignacio

CLAVE: 03413

RUTA: MEX-001

AÑO: 2022

LUGAR	ESTACION				CLASIFICACION VEHICULAR EN PORCIENTO													COORDENADAS		
	KM	TE	SC	TDPA	M	A	B	C2	C3	T3S2	T3S3	T3S2R4	OTROS	A	B	C	K'	D	LATITUD	LONGITUD
T. C. Santa Rosalía - Guerrero Negro	0.00	3	0	1506	1.5	94.8	0.8	1.6	0.6	0.4	0.1	0.2	0.0	96.3	0.8	2.9	0.084	0.502	27.300207	-112.893985
San Ignacio	2.70	0	0																	

BAJA CALIFORNIA SUR

16 CARR: Ramal a Santiago

CLAVE: 03051

RUTA: MEX-001

AÑO: 2022

LUGAR	ESTACION				CLASIFICACION VEHICULAR EN PORCIENTO													COORDENADAS		
	KM	TE	SC	TDPA	M	A	B	C2	C3	T3S2	T3S3	T3S2R4	OTROS	A	B	C	K'	D	LATITUD	LONGITUD
T. C. Cabo San Lucas - La Paz	0.00	3	1	781	2.0	89.6	1.9	5.6	0.9	0.0	0.0	0.0	0.0	91.6	1.9	6.5	0.122	0.501	23.479455	-109.706769
T. C. Cabo San Lucas - La Paz	0.00	3	2	777	1.8	89.1	1.9	6.4	0.8	0.0	0.0	0.0	0.0	90.9	1.9	7.2	0.125	0.501	23.479408	-109.706796
Santiago	2.30	0	0																	

17 CARR: Ramal Aeropista San Ignacio

CLAVE: 03053

RUTA: MEX-001

AÑO: 2022

LUGAR	ESTACION				CLASIFICACION VEHICULAR EN PORCIENTO													COORDENADAS		
	KM	TE	SC	TDPA	M	A	B	C2	C3	T3S2	T3S3	T3S2R4	OTROS	A	B	C	K'	D	LATITUD	LONGITUD
T.C. Cd. Santa Rosalia - Guerrero Negro	0.00	3	0	3	0.0	100.0	0.0	0.0	0.0	0.0	0.0	0.0	0.0	100.0	0.0	0.0	0.667	0.522	27.289544	-112.937790
Aeropista San Ignacio	1.00	0	0																	

18 CARR: San Pedro - Cabo San Lucas

CLAVE: 03003

RUTA: MEX-019

AÑO: 2022

LUGAR	ESTACION				CLASIFICACION VEHICULAR EN PORCIENTO													COORDENADAS		
	KM	TE	SC	TDPA	M	A	B	C2	C3	T3S2	T3S3	T3S2R4	OTROS	A	B	C	K'	D	LATITUD	LONGITUD
T. C. Cabo San Lucas - La Paz	0.00	3	1	3240	1.3	87.5	1.7	2.6	1.4	3.3	0.9	1.1	0.2	88.8	1.7	9.5	0.131	0.509	23.878582	-110.254304
T. C. Cabo San Lucas - La Paz	0.00	3	2	3360	1.3	87.6	1.6	2.7	1.5	3.2	0.9	1.0	0.2	88.9	1.6	9.5	0.154	0.509	23.878573	-110.254196
T. Der. Melitón Albáñez	16.00	1	1	3111	1.2	87.2	1.9	3.0	1.1	3.4	1.0	1.0	0.2	88.4	1.9	9.7	0.140	0.512	23.655840	-110.224195
T. Der. Melitón Albáñez	16.00	1	2	3260	1.2	87.4	1.8	3.0	1.0	3.4	0.9	1.0	0.3	88.6	1.8	9.6	0.152	0.512	23.655830	-110.224078
T. Der. Melitón Albáñez	16.00	3	1	3166	1.8	85.5	1.8	3.5	1.5	3.3	0.9	1.3	0.4	87.3	1.8	10.9	0.088	0.518	23.652195	-110.224933
T. Der. Melitón Albáñez	16.00	3	2	3399	1.7	85.4	1.8	3.7	1.5	3.4	0.9	1.2	0.4	87.1	1.8	11.1	0.104	0.518	23.650453	-110.225178
T. Izq. Libramiento de Todos Santos	47.30	1	1	2817	2.4	84.5	1.7	4.0	1.7	3.1	1.3	1.1	0.2	86.9	1.7	11.4	0.098	0.518	23.492958	-110.207309
T. Izq. Libramiento de Todos Santos	47.30	1	2	2626	2.3	84.6	1.8	4.0	1.5	3.4	1.1	1.1	0.2	86.9	1.8	11.3	0.110	0.518	23.492930	-110.207191
Todos Santos	52.00	1	0	3551	3.1	90.7	1.3	2.7	1.4	0.4	0.3	0.1	0.0	93.8	1.3	4.9	0.136	0.508	23.468924	-110.216402
Todos Santos	52.00	3	0	5710	1.5	95.4	0.8	1.3	0.6	0.2	0.1	0.1	0.0	96.9	0.8	2.3	0.102	0.505	23.438788	-110.219203
El Pescadero	62.00	1	1	5442	1.4	90.3	1.2	2.4	0.9	2.2	0.7	0.7	0.2	91.7	1.2	7.1	0.103	0.512	23.381354	-110.182651
El Pescadero	62.00	1	2	5704	1.2	90.2	1.3	2.5	1.0	2.3	0.6	0.7	0.2	91.4	1.3	7.3	0.120	0.512	23.381399	-110.182553
El Pescadero	62.00	3	1	5144	1.4	88.3	1.4	3.0	1.5	2.5	0.8	0.8	0.3	89.7	1.4	8.9	0.093	0.502	23.349117	-110.162041
El Pescadero	62.00	3	2	5180	1.5	87.8	1.4	3.3	1.5	2.5	0.8	0.9	0.3	89.3	1.4	9.3	0.087	0.502	23.349143	-110.161923
Migriño	102.50	1	1	3235	1.2	86.5	1.6	2.8	1.9	3.2	1.3	1.2	0.3	87.7	1.6	10.7	0.158	0.511	23.050280	-110.094191
Migriño	102.50	1	2	3375	1.2	86.9	1.3	2.7	2.1	3.3	1.1	1.1	0.3	88.1	1.3	10.6	0.144	0.511	23.050288	-110.094044
Cabo San Lucas	131.00	1	1	7974	1.9	83.1	1.5	4.7	5.3	2.2	0.5	0.6	0.2	85.0	1.5	13.5	0.086	0.504	22.923366	-109.977259
Cabo San Lucas	131.00	1	2	8099	1.6	83.1	1.5	4.9	5.4	2.3	0.6	0.4	0.2	84.7	1.5	13.8	0.090	0.504	22.923437	-109.977191

BAJA CALIFORNIA SUR

19 CARR: Santa Rosalía - Guerrero Negro

CLAVE: 03095

RUTA: MEX-001

AÑO: 2022

LUGAR	ESTACION				CLASIFICACION VEHICULAR EN PORCIENTO													COORDENADAS		
	KM	TE	SC	TDPA	M	A	B	C2	C3	T3S2	T3S3	T3S2R4	OTROS	A	B	C	K'	D	LATITUD	LONGITUD
Santa Rosalía	0.00	3	0	3760	4.2	80.3	2.6	4.0	1.9	4.9	0.7	1.2	0.2	84.5	2.6	12.9	0.090	0.561	27.356699	-112.272720
Cuesta Infiernillo	12.00	1	0	1243	1.7	78.8	3.3	5.6	1.8	6.2	1.3	1.1	0.2	80.5	3.3	16.2	0.086	0.541	27.388937	-112.347822
Cuesta Infiernillo	12.00	3	0	1254	1.6	79.8	3.1	5.6	1.5	5.6	1.7	1.1	0.0	81.4	3.1	15.5	0.081	0.560	27.386629	-112.355659
T. Izq. San Ignacio	73.60	1	0	1467	4.0	75.4	2.2	5.0	1.0	9.7	1.7	1.0	0.0	79.4	2.2	18.4	0.085	0.557	27.299971	-112.872573
T. Izq. San Ignacio	73.60	3	0	2173	2.7	77.5	2.5	8.8	0.9	5.7	1.2	0.7	0.0	80.2	2.5	17.3	0.089	0.539	27.302064	-112.895986
T. Izq. Punta Abreojos	95.70	1	0	1213	3.0	68.6	3.7	9.3	1.1	11.4	1.7	1.1	0.1	71.6	3.7	24.7	0.081	0.570	27.328004	-113.116055
T. Izq. Punta Abreojos	95.70	3	0	1191	2.5	66.9	3.5	11.6	1.3	11.2	1.9	1.1	0.0	69.4	3.5	27.1	0.086	0.563	27.330589	-113.117271
Los Ángeles	117.90	1	0	1600	2.4	76.7	3.7	4.4	1.1	9.4	1.4	0.8	0.1	79.1	3.7	17.2	0.073	0.540	27.463239	-113.283831
Los Ángeles	117.90	3	0	1584	3.0	74.0	3.7	7.4	1.1	9.0	1.2	0.6	0.0	77.0	3.7	19.3	0.085	0.549	27.490919	-113.299372
T. Izq. Vizcaíno	144.00	1	0	3247	1.7	80.5	4.7	4.3	1.9	5.4	0.9	0.6	0.0	82.2	4.7	13.1	0.075	0.522	27.631656	-113.377307
T. Izq. Vizcaíno	144.00	3	0	1827	2.5	72.0	4.6	5.1	0.8	12.4	1.6	1.0	0.0	74.5	4.6	20.9	0.079	0.532	27.660652	-113.391297
T. Der. El Arco	189.00	1	0	1376	2.0	76.3	3.5	6.0	1.0	9.0	1.5	0.7	0.0	78.3	3.5	18.2	0.083	0.558	27.857366	-113.779394
T. Der. El Arco	189.00	3	0	1398	1.3	73.6	3.9	4.8	2.0	12.2	1.4	0.8	0.0	74.9	3.9	21.2	0.081	0.527	27.850223	-113.760893
Ent. Guerrero Negro	216.85	1	0	1751	1.5	75.5	3.1	5.4	1.5	10.9	1.4	0.7	0.0	77.0	3.1	19.9	0.077	0.540	27.962264	-114.004500

20 CARR: Libramiento San José del Cabo - Aeropuerto Los Cabos (Cuota)

CLAVE: 03392

RUTA: MEX-001D

AÑO: 2022

LUGAR	ESTACION				CLASIFICACION VEHICULAR EN PORCIENTO													COORDENADAS		
	KM	TE	SC	TDPA	M	A	B	C2	C3	T3S2	T3S3	T3S2R4	OTROS	A	B	C	K'	D	LATITUD	LONGITUD
Aeropuerto de Los Cabos	100.00	0	0																	
Plaza de Cobro Aeropuerto los Cabos	105.10	2	0	8087	0.1	97.7	0.7	0.5	0.2	0.3	0.2	0.3	0.0	97.8	0.7	1.5	0.102	0.500	23.150467	-109.740500
Plaza de Cobro Los Cabos	118.20	2	0	6406	0.2	98.3	0.7	0.5	0.1	0.1	0.1	0.0	0.0	98.5	0.7	0.8	0.102	0.500	23.049876	-109.719565
T. Der. Cabo San Lucas	119.90	1	0	9411	1.1	86.0	0.8	10.5	0.4	0.5	0.4	0.3	0.0	87.1	0.8	12.1	0.097	0.507	23.079693	-109.746373
T. C. Cabo San Lucas - La Paz	120.20	1	0	24163	1.7	95.8	0.3	1.7	0.2	0.2	0.1	0.0	0.0	97.5	0.3	2.2	0.113	0.513	23.048997	-109.714153

21 CARR: Ramal a El Mangle (Cuota)

CLAVE:

RUTA: MEX-001D

AÑO: 2022

LUGAR	ESTACION				CLASIFICACION VEHICULAR EN PORCIENTO													COORDENADAS		
	KM	TE	SC	TDPA	M	A	B	C2	C3	T3S2	T3S3	T3S2R4	OTROS	A	B	C	K'	D	LATITUD	LONGITUD
T. C. Libramiento Cabo San Lucas - San José del Cabo (Cuota)	0.00	0	0																	
T. C. San Pedro - Cabo San Lucas	11.20	1	0	2084	0.9	91.0	1.1	3.0	0.7	1.4	0.8	1.0	0.1	91.9	1.1	7.0	0.138	0.525	22.949628	-109.982202

BAJA CALIFORNIA SUR

22 CARR : San José del Cabo - Libramiento de Cabo San Lucas - (Cuota)

CLAVE:

RUTA : MEX-001D

AÑO : 2022

LUGAR	ESTACION				CLASIFICACION VEHICULAR EN PORCIENTO													COORDENADAS		
	KM	TE	SC	TDPA	M	A	B	C2	C3	T3S2	T3S3	T3S2R4	OTROS	A	B	C	K'	D	LATITUD	LONGITUD
T. C. Libramiento San José del Cabo	0.00	3	0	3200	0.3	86.0	1.4	8.8	0.8	1.3	0.6	0.8	0.0	86.3	1.4	12.3	0.090	0.501	23.064776	-109.751418
Cabo San Lucas	27.48	1	0	2552	1.8	94.9	0.6	2.4	0.2	0.1	0.0	0.0	0.0	96.7	0.6	2.7	0.123	0.518	22.913222	-109.915976

23 CARR : Cd. Insurgentes - La Purísima

CLAVE: 03005

RUTA : BCS-001

AÑO : 2022

LUGAR	ESTACION				CLASIFICACION VEHICULAR EN PORCIENTO													COORDENADAS		
	KM	TE	SC	TDPA	M	A	B	C2	C3	T3S2	T3S3	T3S2R4	OTROS	A	B	C	K'	D	LATITUD	LONGITUD
Cd. Insurgentes	0.00	3	0	2453	3.0	89.4	1.3	1.8	1.9	1.6	0.5	0.5	0.0	92.4	1.3	6.3	0.092	0.519	25.271215	-111.783728
Ignacio Zaragoza	18.00	1	0	1338	1.8	92.3	1.8	2.1	0.9	0.8	0.2	0.1	0.0	94.1	1.8	4.1	0.090	0.509	25.388365	-111.837939
Ignacio Zaragoza	18.00	3	1	922	4.5	88.6	1.2	1.9	1.8	1.5	0.2	0.3	0.0	93.1	1.2	5.7	0.078	0.500	25.401586	-111.843981
Ignacio Zaragoza	18.00	3	2	921	3.8	89.9	0.9	1.5	1.7	1.7	0.2	0.3	0.0	93.7	0.9	5.4	0.091	0.500	25.401553	-111.844113
T. Izq. Santo Domingo	28.70	1	0	755	2.4	92.7	1.0	2.7	0.4	0.6	0.2	0.0	0.0	95.1	1.0	3.9	0.082	0.508	25.499814	-111.889684
Francisco Villa	64.00	3	0	328	7.6	84.7	1.2	3.7	1.6	0.5	0.3	0.3	0.1	92.3	1.2	6.5	0.125	0.503	25.799458	-112.028571
La Purísima	107.00	1	0	315	1.0	92.4	0.8	2.4	2.2	0.5	0.6	0.1	0.0	93.4	0.8	5.8	0.140	0.517	26.121803	-112.103314

24 CARR : Cd. Insurgentes - Pto. Adolfo López Mateos

CLAVE: 03404

RUTA : BCS

AÑO : 2022

LUGAR	ESTACION				CLASIFICACION VEHICULAR EN PORCIENTO													COORDENADAS		
	KM	TE	SC	TDPA	M	A	B	C2	C3	T3S2	T3S3	T3S2R4	OTROS	A	B	C	K'	D	LATITUD	LONGITUD
T. C. Cd. Insurgentes - La Purísima	0.00	3	0	721	3.4	89.6	1.8	2.7	0.7	0.8	0.4	0.6	0.0	93.0	1.8	5.2	0.104	0.523	25.275320	-111.805966
Puerto Adolfo López Mateos	35.50	1	0	535	1.3	93.4	1.3	2.9	0.4	0.5	0.2	0.0	0.0	94.7	1.3	4.0	0.136	0.503	25.193968	-112.093670

25 CARR : Ent. Campo Fisher - Punta Abreojos

CLAVE: 03411

RUTA : BCS

AÑO : 2022

LUGAR	ESTACION				CLASIFICACION VEHICULAR EN PORCIENTO													COORDENADAS		
	KM	TE	SC	TDPA	M	A	B	C2	C3	T3S2	T3S3	T3S2R4	OTROS	A	B	C	K'	D	LATITUD	LONGITUD
T. C. Santa Rosalía - Paralelo 28	0.00	3	0	257	1.8	81.5	2.4	9.9	2.5	1.5	0.2	0.2	0.0	83.3	2.4	14.3	0.109	0.506	27.326577	-113.117960
Punta Abreojos	88.00	0	0																	

26 CARR : La Paz - Ensenada de Muertos

CLAVE: 03103

RUTA : BCS-246

AÑO : 2022

LUGAR	ESTACION				CLASIFICACION VEHICULAR EN PORCIENTO													COORDENADAS		
	KM	TE	SC	TDPA	M	A	B	C2	C3	T3S2	T3S3	T3S2R4	OTROS	A	B	C	K'	D	LATITUD	LONGITUD
La Paz	0.00	3	0	6345	2.1	88.4	0.5	6.4	1.0	0.6	0.5	0.4	0.1	90.5	0.5	9.0	0.107	0.515	24.117577	-110.293612
T. Izq. El Sargento	45.00	1	0	2377	2.1	89.2	0.5	6.1	1.1	0.7	0.2	0.1	0.0	91.3	0.5	8.2	0.124	0.500	23.982788	-109.995117

BAJA CALIFORNIA SUR

26 CARR: La Paz - Ensenada de Muertos

CLAVE: 03103

RUTA: BCS-246

AÑO: 2022

LUGAR	ESTACION				CLASIFICACION VEHICULAR EN PORCIENTO										COORDENADAS					
	KM	TE	SC	TDPA	M	A	B	C2	C3	T3S2	T3S3	T3S2R4	OTROS	A	B	C	K'	D	LATITUD	LONGITUD
T. Izq. El Sargento	45.00	3	0	2217	2.0	89.7	1.1	5.9	0.8	0.4	0.1	0.0	0.0	91.7	1.1	7.2	0.115	0.506	23.981688	-109.991926
Ensenada de Muertos	57.50	1	0	427	2.6	90.7	0.4	4.6	0.8	0.6	0.1	0.2	0.0	93.3	0.4	6.3	0.131	0.501	24.007618	-109.854084

27 CARR: Libramiento de La Paz

CLAVE: 03004

RUTA: BCS

AÑO: 2022

LUGAR	ESTACION				CLASIFICACION VEHICULAR EN PORCIENTO										COORDENADAS					
	KM	TE	SC	TDPA	M	A	B	C2	C3	T3S2	T3S3	T3S2R4	OTROS	A	B	C	K'	D	LATITUD	LONGITUD
T. C. Cabo San Lucas - La Paz	0.00	3	0	13611	3.2	90.0	0.7	2.1	1.6	1.7	0.5	0.2	0.0	93.2	0.7	6.1	0.064	0.533	24.107635	-110.314313
T. C. La Paz - Cd. Insurgentes	10.00	0	0																	

28 CARR: Libramiento Norte de La Paz

CLAVE: 03006

RUTA: BCS

AÑO: 2022

LUGAR	ESTACION				CLASIFICACION VEHICULAR EN PORCIENTO										COORDENADAS					
	KM	TE	SC	TDPA	M	A	B	C2	C3	T3S2	T3S3	T3S2R4	OTROS	A	B	C	K'	D	LATITUD	LONGITUD
T. C. La Paz - Pichilingue	0.00	3	0	4186	6.1	70.6	3.1	7.3	2.4	4.1	1.6	3.8	1.0	76.7	3.1	20.2	0.112	0.528	24.230795	-110.297552
T. C. La Paz - Ensenada de Muertos	18.80	1	0	4904	3.6	65.8	1.8	8.6	7.6	7.1	2.5	2.5	0.5	69.4	1.8	28.8	0.070	0.506	24.122852	-110.292251
T. C. La Paz - Ensenada de Muertos	18.80	3	0	9268	3.2	75.2	1.9	5.6	3.6	5.5	1.3	3.1	0.6	78.4	1.9	19.7	0.086	0.504	24.119961	-110.297402
T. C. Cabo San Lucas - La Paz	20.70	1	0	11731	5.0	82.9	1.0	2.2	3.3	3.1	0.9	1.2	0.4	87.9	1.0	11.1	0.107	0.548	24.113544	-110.309244

29 CARR: Ramal a Benito Juárez

CLAVE: 03405

RUTA: BCS

AÑO: 2022

LUGAR	ESTACION				CLASIFICACION VEHICULAR EN PORCIENTO										COORDENADAS					
	KM	TE	SC	TDPA	M	A	B	C2	C3	T3S2	T3S3	T3S2R4	OTROS	A	B	C	K'	D	LATITUD	LONGITUD
T. C. Cd. Constitución - Puerto San Carlos	0.00	3	0	812	2.5	89.7	3.2	2.2	1.7	0.4	0.2	0.1	0.0	92.2	3.2	4.6	0.113	0.513	25.037923	-111.770252
Benito Juárez	11.50	1	0	765	0.8	90.6	3.9	2.5	1.7	0.3	0.1	0.1	0.0	91.4	3.9	4.7	0.120	0.501	25.108658	-111.821281

30 CARR: Ramal a Ejido Ley Federal de Aguas Número Cuatro

CLAVE: 03007

RUTA: BCS

AÑO: 2022

LUGAR	ESTACION				CLASIFICACION VEHICULAR EN PORCIENTO										COORDENADAS					
	KM	TE	SC	TDPA	M	A	B	C2	C3	T3S2	T3S3	T3S2R4	OTROS	A	B	C	K'	D	LATITUD	LONGITUD
T. C. La Paz - Cd. Insurgentes	0.00	3	0	769	1.5	86.9	1.2	4.2	4.4	1.5	0.3	0.0	0.0	88.4	1.2	10.4	0.105	0.535	25.198577	-111.748627
Ejido Ley Federal de Aguas Número Cuatro	19.20	0	0																	

BAJA CALIFORNIA SUR

31 CARR: Ramal a El Carrizal

CLAVE: 03050

RUTA: BCS

AÑO: 2022

LUGAR	ESTACION				CLASIFICACION VEHICULAR EN PORCIENTO														COORDENADAS	
	KM	TE	SC	TDPA	M	A	B	C2	C3	T3S2	T3S3	T3S2R4	OTROS	A	B	C	K'	D	LATITUD	LONGITUD
T. C. San Pedro - Cabo San Lucas Carrizal	0.00	3	0	547	3.1	89.7	3.3	2.4	0.4	1.0	0.0	0.1	0.0	92.8	3.3	3.9	0.110	0.505	23.829562	-110.257147
	10.00	0	0																	

32 CARR: Ramal a Guerrero Negro

CLAVE: 03395

RUTA: BCS

AÑO: 2022

LUGAR	ESTACION				CLASIFICACION VEHICULAR EN PORCIENTO														COORDENADAS	
	KM	TE	SC	TDPA	M	A	B	C2	C3	T3S2	T3S3	T3S2R4	OTROS	A	B	C	K'	D	LATITUD	LONGITUD
T. C. Santa Rosalía - Guerrero Negro	0.00	3	0	2805	3.0	83.5	2.0	9.1	0.8	1.1	0.3	0.2	0.0	86.5	2.0	11.5	0.089	0.510	27.967505	-114.020129
Guerrero Negro	4.50	0	0																	

33 CARR: Ramal a La Ribera

CLAVE: 03406

RUTA: BCS

AÑO: 2022

LUGAR	ESTACION				CLASIFICACION VEHICULAR EN PORCIENTO														COORDENADAS	
	KM	TE	SC	TDPA	M	A	B	C2	C3	T3S2	T3S3	T3S2R4	OTROS	A	B	C	K'	D	LATITUD	LONGITUD
T. C. Cabo San Lucas - La Paz	0.00	3	0	1828	4.2	81.4	2.3	6.5	2.7	1.6	1.3	0.0	0.0	85.6	2.3	12.1	0.084	0.502	23.543056	-109.664127
La Ribera	12.00	0	0																	

34 CARR: Ramal a Melitón Albáñez

CLAVE: 03407

RUTA: BCS

AÑO: 2022

LUGAR	ESTACION				CLASIFICACION VEHICULAR EN PORCIENTO														COORDENADAS	
	KM	TE	SC	TDPA	M	A	B	C2	C3	T3S2	T3S3	T3S2R4	OTROS	A	B	C	K'	D	LATITUD	LONGITUD
T. C. San Pedro - Cabo San Lucas	0.00	3	0	606	1.7	87.1	4.9	4.5	0.3	1.2	0.1	0.2	0.0	88.8	4.9	6.3	0.112	0.503	23.653239	-110.226034
Melitón Albáñez	23.50	0	0																	

35 CARR: Ramal a Santa Catarina

CLAVE: 03052

RUTA: BCS

AÑO: 2022

LUGAR	ESTACION				CLASIFICACION VEHICULAR EN PORCIENTO														COORDENADAS	
	KM	TE	SC	TDPA	M	A	B	C2	C3	T3S2	T3S3	T3S2R4	OTROS	A	B	C	K'	D	LATITUD	LONGITUD
T. C. Cabo San Lucas - La Paz	0.00	3	0	1778	6.4	84.1	0.6	3.6	4.3	0.6	0.2	0.2	0.0	90.5	0.6	8.9	0.106	0.509	23.134820	-109.706363
Santa Catarina	1.00	0	0																	

BAJA CALIFORNIA SUR

36 CARR: Ramal a Bahía de Tortugas

CLAVE: 03397

RUTA: MEX-001-BCS

AÑO: 2022

LUGAR	ESTACION				CLASIFICACION VEHICULAR EN PORCIENTO										COORDENADAS					
	KM	TE	SC	TDPA	M	A	B	C2	C3	T3S2	T3S3	T3S2R4	OTROS	A	B	C	K'	D	LATITUD	LONGITUD
T. C. Santa Rosalía - Guerrero Negro	0.00	3	0	5096	1.6	88.4	4.4	3.0	0.7	1.2	0.3	0.3	0.1	90.0	4.4	5.6	0.067	0.505	27.641745	-113.403518
Vizcaíno	6.00	3	0	1477	2.3	78.1	5.6	11.5	0.6	1.5	0.3	0.1	0.0	80.4	5.6	14.0	0.087	0.503	27.642439	-113.453762
Bahía de Tortugas	198.00	0	0																	

37 CARR: Ramal a Ejido Ley Federal de Aguas Número Dos

CLAVE: 03050

RUTA: BCS-MEX-001

AÑO: 2022

LUGAR	ESTACION				CLASIFICACION VEHICULAR EN PORCIENTO										COORDENADAS					
	KM	TE	SC	TDPA	M	A	B	C2	C3	T3S2	T3S3	T3S2R4	OTROS	A	B	C	K'	D	LATITUD	LONGITUD
T. C. Cd. Insurgentes - Loreto	0.00	3	0	193	5.9	85.1	3.0	3.0	1.1	0.5	0.9	0.5	0.0	91.0	3.0	6.0	0.145	0.514	25.294321	-111.649750
T. Ramal a Ley Federal de Aguas No 3	5.40	0	0																	
Ejido Ley Federal de Aguas Número Dos	10.00	0	0																	

38 CARR: Ramal a Ley Federal de Aguas Número Cinco

CLAVE: 03407

RUTA: BCS-MEX-001

AÑO: 2022

LUGAR	ESTACION				CLASIFICACION VEHICULAR EN PORCIENTO										COORDENADAS					
	KM	TE	SC	TDPA	M	A	B	C2	C3	T3S2	T3S3	T3S2R4	OTROS	A	B	C	K'	D	LATITUD	LONGITUD
Cd. Constitución	0.00	3	1	1458	2.4	85.8	0.9	4.7	4.4	0.9	0.6	0.2	0.1	88.2	0.9	10.9	0.084	0.527	25.034655	-111.631743
Cd. Constitución	0.00	3	2	1307	3.2	85.3	0.8	4.4	4.5	0.9	0.5	0.3	0.1	88.5	0.8	10.7	0.103	0.527	25.034746	-111.631789
Ramal a el Quemado	7.35	0	0																	
Ley Federal de Aguas Número Cinco	17.50	0	0																	

39 CARR: Ramal a San Juan de La Costa

CLAVE: 03403

RUTA: BCS-163-MEX-001

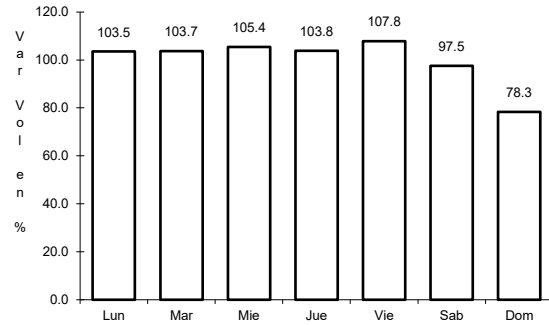
AÑO: 2022

LUGAR	ESTACION				CLASIFICACION VEHICULAR EN PORCIENTO										COORDENADAS					
	KM	TE	SC	TDPA	M	A	B	C2	C3	T3S2	T3S3	T3S2R4	OTROS	A	B	C	K'	D	LATITUD	LONGITUD
T. C. La Paz - Cd. Insurgentes	0.00	3	0	850	3.3	84.6	0.8	8.3	1.5	0.8	0.2	0.4	0.1	87.9	0.8	11.3	0.152	0.504	24.123710	-110.442234
Puerto Cajete	23.00	3	0	460	2.4	77.8	2.2	13.7	2.2	1.4	0.2	0.1	0.0	80.2	2.2	17.6	0.104	0.525	24.254297	-110.611564
San Juan de La Costa	40.70	1	0	524	1.8	77.9	1.7	14.5	2.0	1.8	0.2	0.0	0.1	79.7	1.7	18.6	0.107	0.503	24.365809	-110.687048

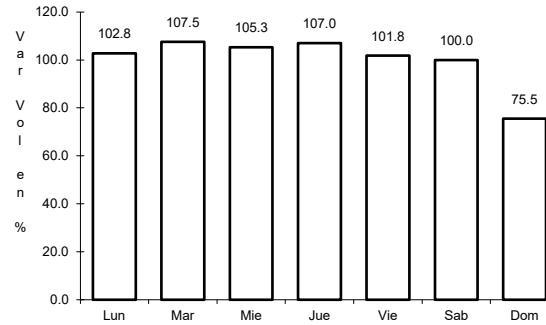
1 CARR: Cabo San Lucas - La Paz

CLAVE: 03102

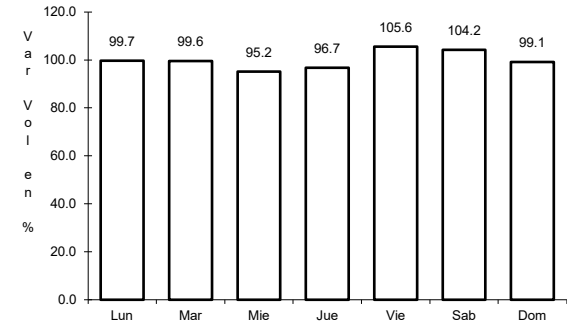
RUTA: MEX-001



Km: 0.00 Tipo: 3 Sent: 1



Km: 0.00 Tipo: 3 Sent: 2

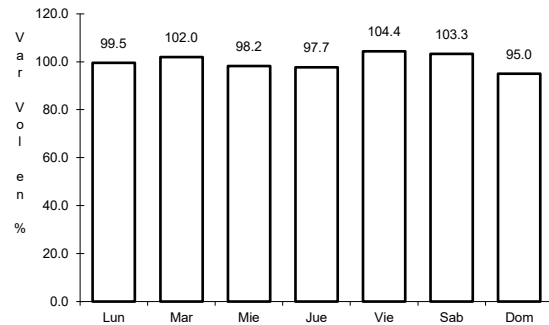


Km: 110.00 Tipo: 3 Sent: 0

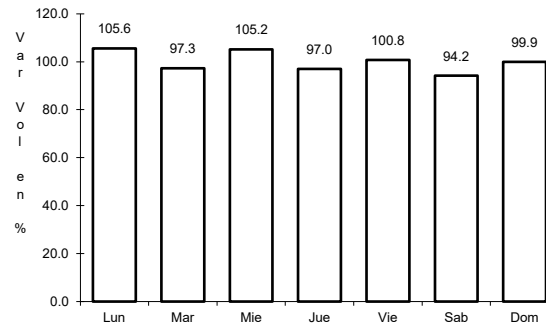
2 CARR: Cd. Constitución - Puerto San Carlos

CLAVE: 03231

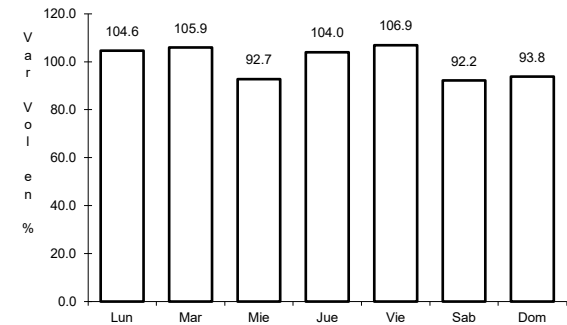
RUTA: MEX-001



Km: 0.00 Tipo: 3 Sent: 0



Km: 10.00 Tipo: 1 Sent: 0

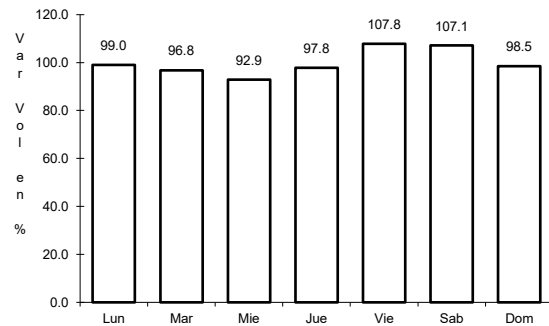


Km: 10.00 Tipo: 3 Sent: 0

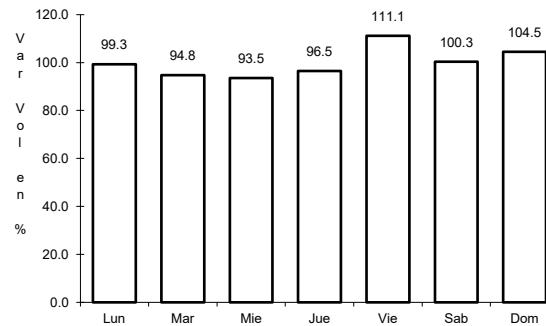
3 CARR: Cd. Insurgentes - Loreto

CLAVE: 03092

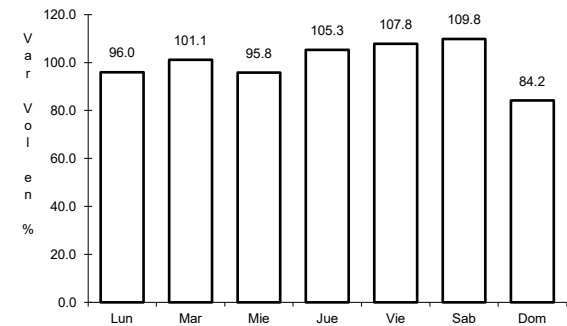
RUTA: MEX-001



Km: 0.00 Tipo: 3 Sent: 0



Km: 65.00 Tipo: 1 Sent: 0

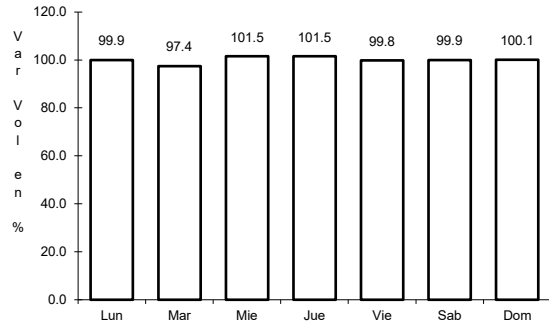


Km: 117.30 Tipo: 1 Sent: 0

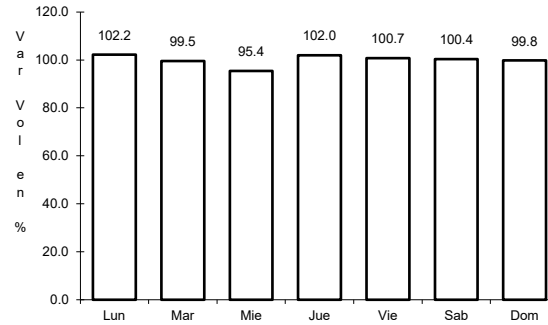
4 CARR: Ent. Punta Prieta - Guerrero Negro

CLAVE: 00321

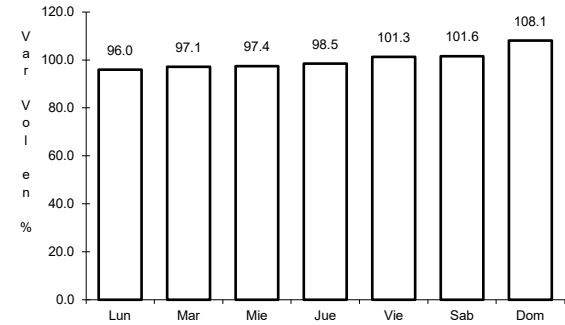
RUTA: MEX-001



Km: 0.00 Tipo: 3 Sent: 0



Km: 70.10 Tipo: 3 Sent: 0

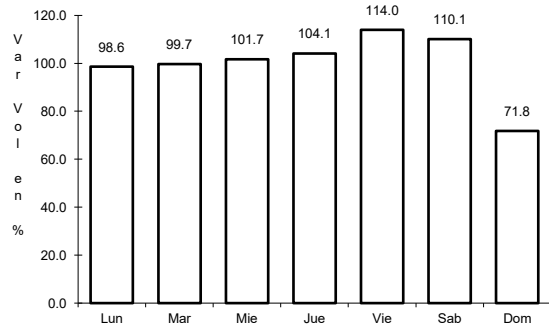


Km: 130.00 Tipo: 1 Sent: 0

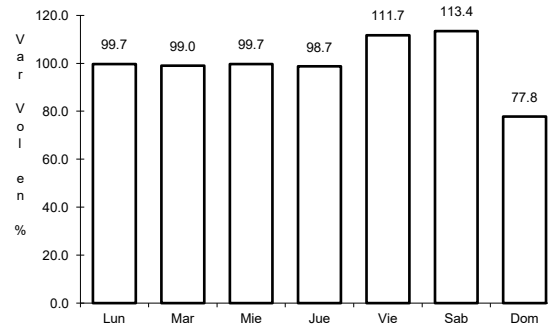
5 CARR: La Paz - Cd. Insurgentes

CLAVE: 03101

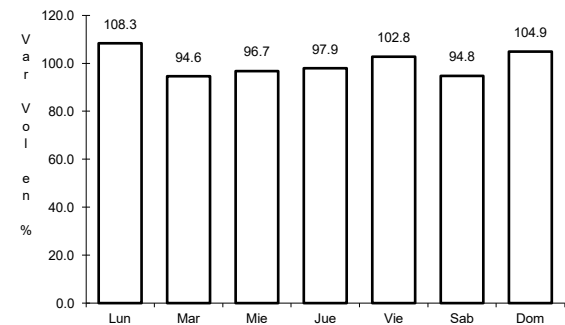
RUTA: MEX-001



Km: 0.00 Tipo: 3 Sent: 1



Km: 0.00 Tipo: 3 Sent: 2

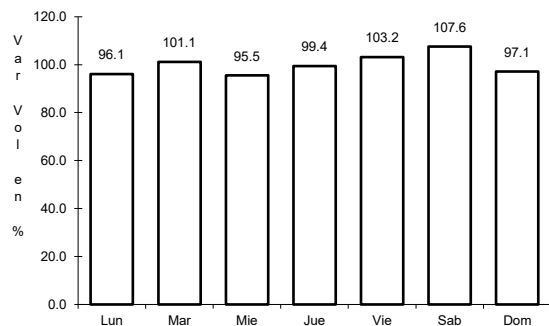


Km: 118.20 Tipo: 1 Sent: 0

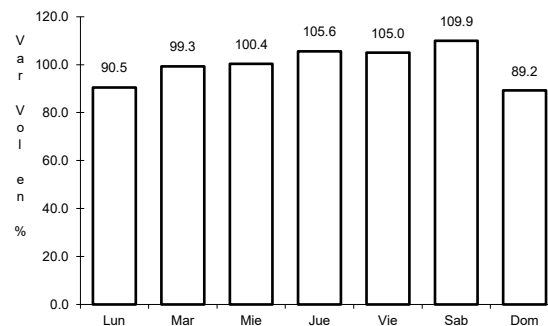
6 CARR: La Paz - Pichilingue

CLAVE: 03230

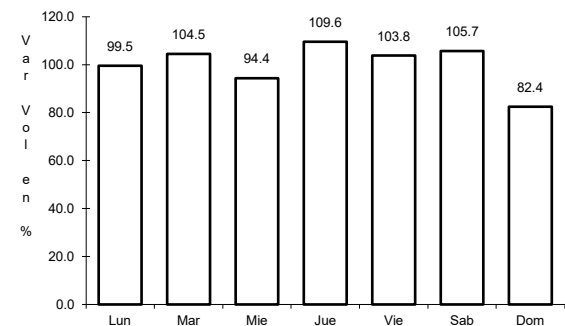
RUTA: MEX-011



Km: 0.00 Tipo: 3 Sent: 1



Km: 0.00 Tipo: 3 Sent: 2

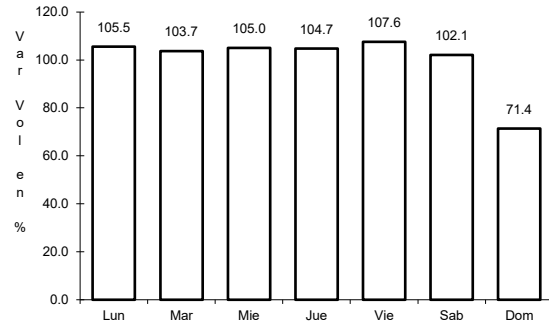


Km: 17.00 Tipo: 1 Sent: 0

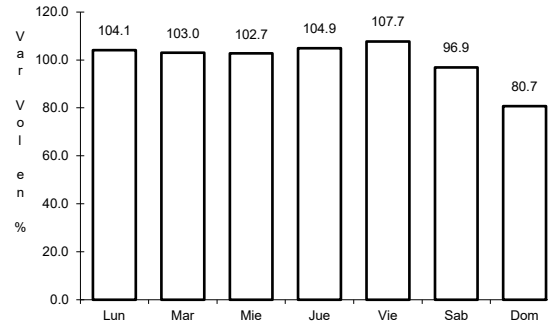
7 CARR: Libramiento de Cabo San Lucas

CLAVE: 03100

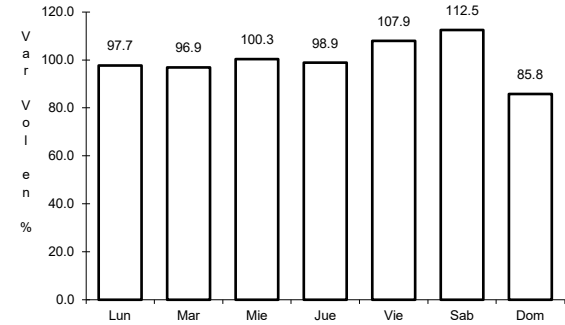
ruta: MEX-001



Km: 0.00 Tipo: 3 Sent: 1



Km: 0.00 Tipo: 3 Sent: 2

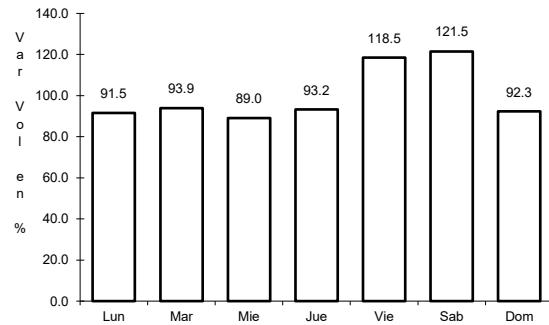


Km: 3.00 Tipo: 1 Sent: 1

8 CARR: Libramiento de Todos Santos

CLAVE:

ruta: MEX-019

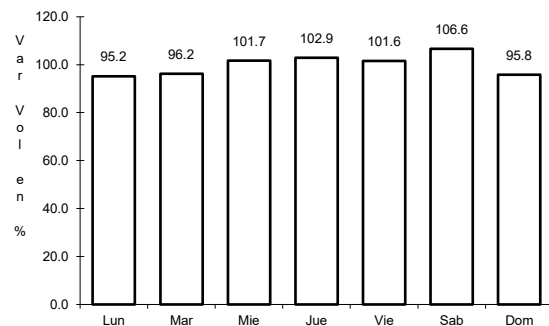


Km: 0.00 Tipo: 3 Sent: 0

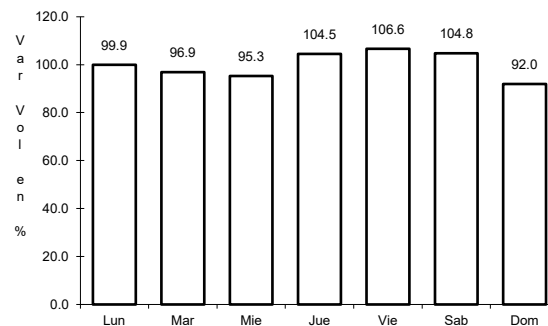
9 CARR: Loreto - Santa Rosalía

CLAVE: 03393

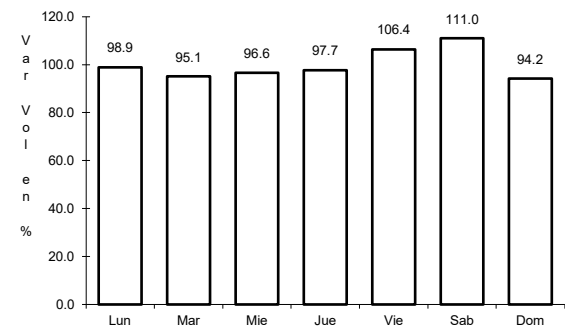
ruta: MEX-001



Km: 0.00 Tipo: 3 Sent: 0



Km: 135.00 Tipo: 1 Sent: 0

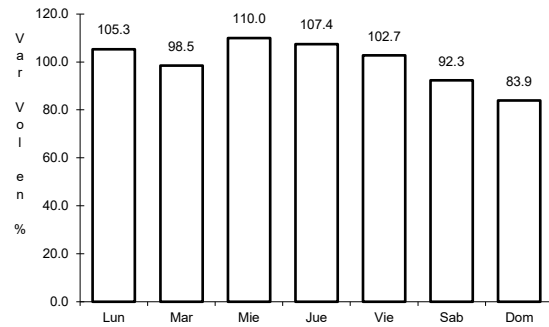


Km: 197.00 Tipo: 1 Sent: 0

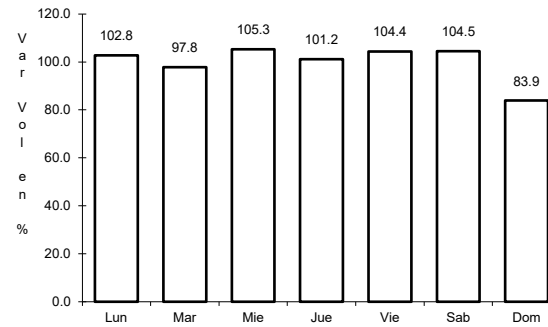
10 CARR: Ramal a Aeropuerto de La Paz

CLAVE: 03396

RUTA: MEX-001



Km: 0.00 Tipo: 3 Sent: 1

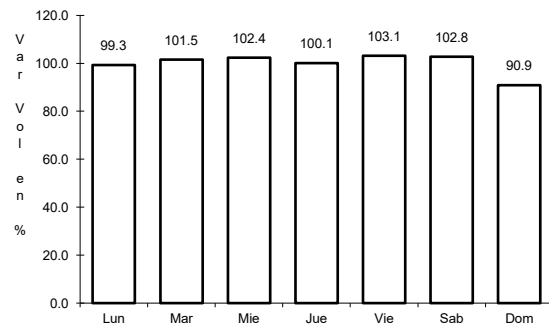


Km: 0.00 Tipo: 3 Sent: 2

11 CARR: Ramal a Aeropuerto de Los Cabos

CLAVE: 03394

RUTA: MEX-001

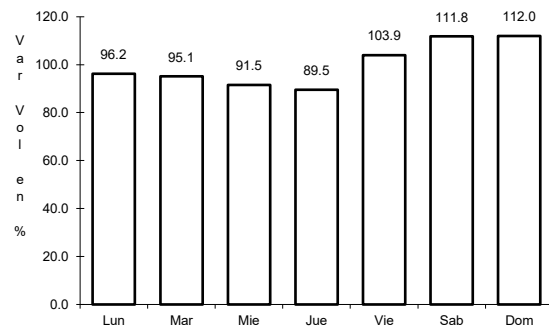


Km: 0.00 Tipo: 3 Sent: 0

12 CARR: Ramal a Los Paredones

CLAVE: 03407

RUTA: MEX-001

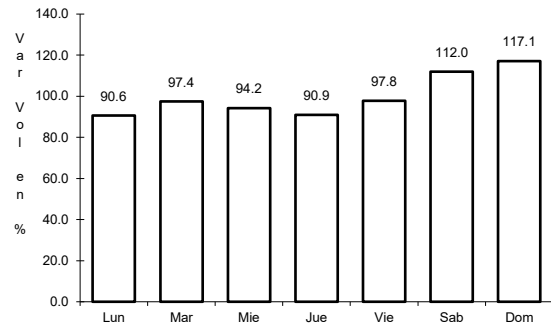


Km: 0.00 Tipo: 3 Sent: 0

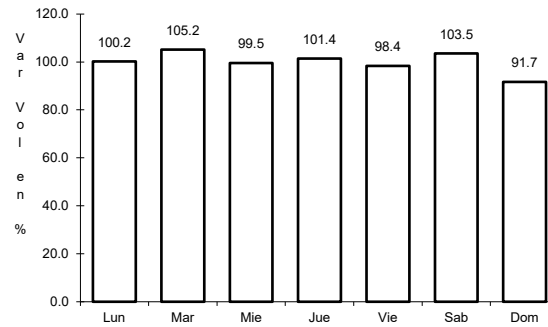
13 CARR: Ramal a Miraflores

CLAVE: 03407

RUTA: MEX-001



Km: 0.00 Tipo: 3 Sent: 1

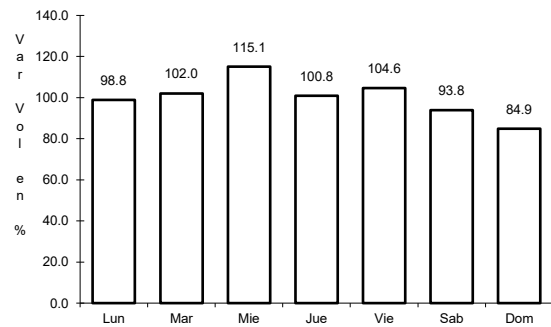


Km: 0.00 Tipo: 3 Sent: 2

14 CARR: Ramal a Puerto Escondido

CLAVE: 03407

RUTA: MEX-001

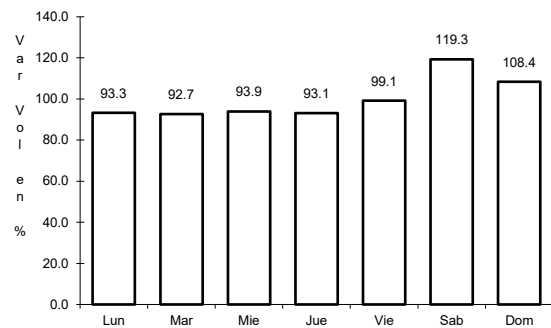


Km: 0.00 Tipo: 3 Sent: 0

15 CARR: Ramal a San Ignacio

CLAVE: 03413

RUTA: MEX-001

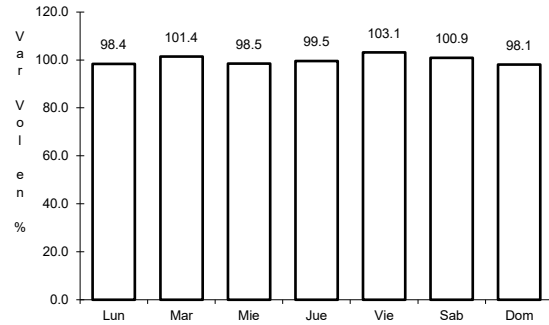


Km: 0.00 Tipo: 3 Sent: 0

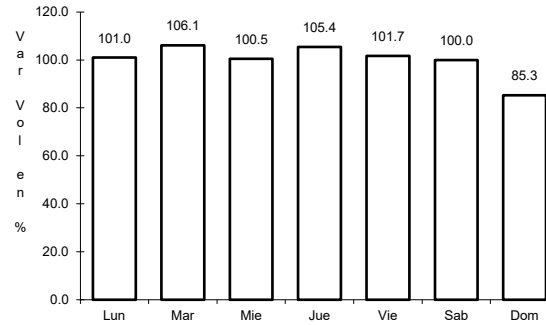
16 CARR: Ramal a Santiago

CLAVE: 03051

ruta: MEX-001



Km: 0.00 Tipo: 3 Sent: 1

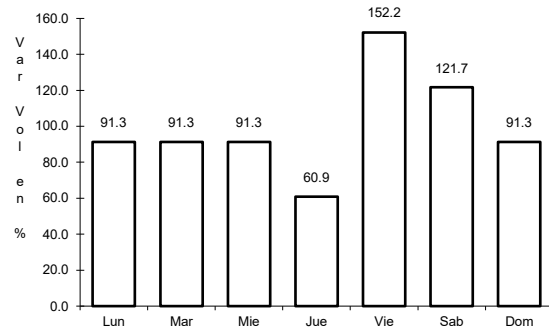


Km: 0.00 Tipo: 3 Sent: 2

17 CARR: Ramal Aeropista San Ignacio

CLAVE: 03053

ruta: MEX-001

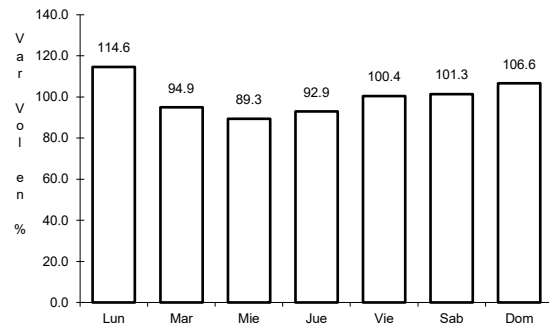


Km: 0.00 Tipo: 3 Sent: 0

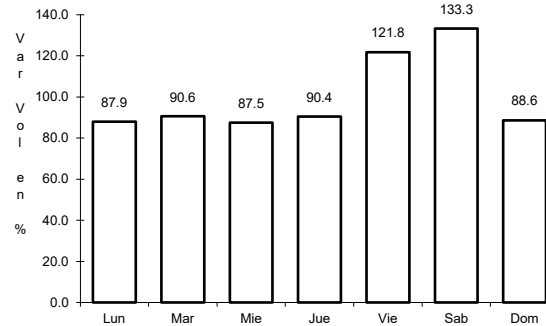
18 CARR: San Pedro - Cabo San Lucas

CLAVE: 03003

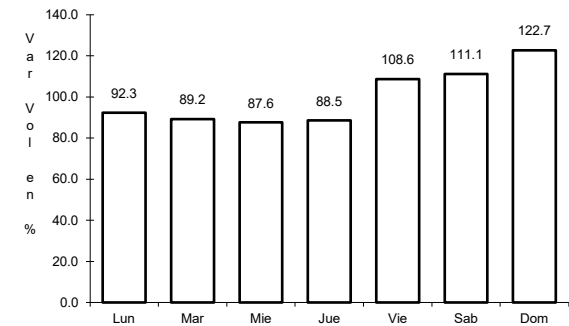
ruta: MEX-019



Km: 0.00 Tipo: 3 Sent: 1



Km: 0.00 Tipo: 3 Sent: 2

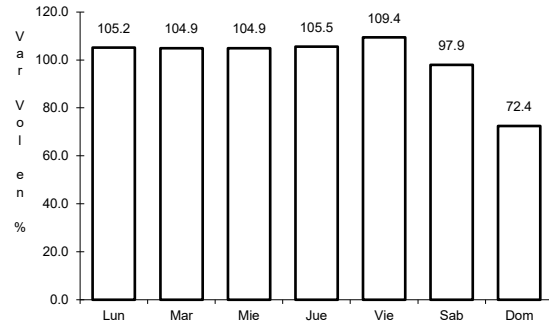


Km: 52.00 Tipo: 1 Sent: 0

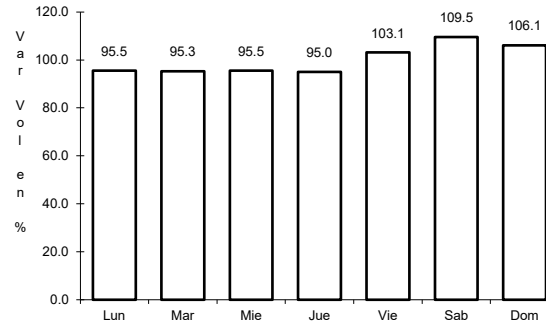
19 CARR: Santa Rosalía - Guerrero Negro

CLAVE: 03095

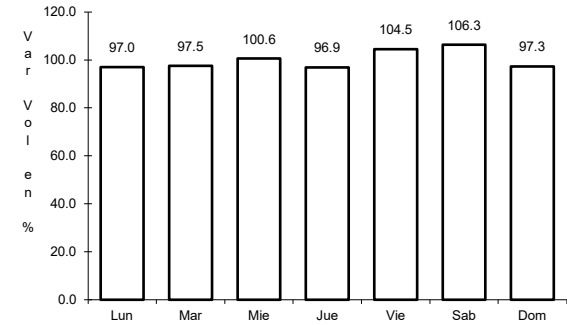
ruta: MEX-001



Km: 0.00 Tipo: 3 Sent: 0



Km: 117.90 Tipo: 1 Sent: 0

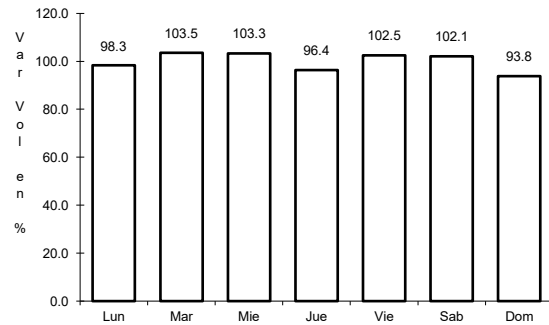


Km: 216.85 Tipo: 1 Sent: 0

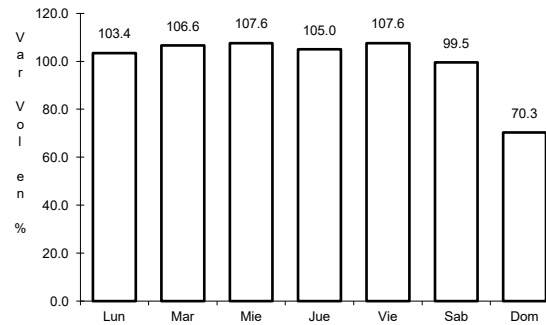
20 CARR: Libramiento San José del Cabo - Aeropuerto Los Cabos (Cuota)

CLAVE: 03392

ruta: MEX-001D



Km: 119.90 Tipo: 1 Sent: 0

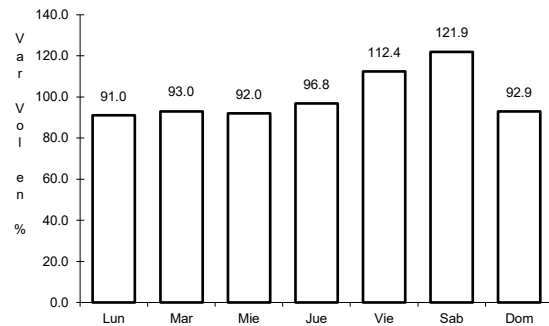


Km: 120.20 Tipo: 1 Sent: 0

21 CARR: Ramal a El Mangle (Cuota)

CLAVE:

ruta: MEX-001D

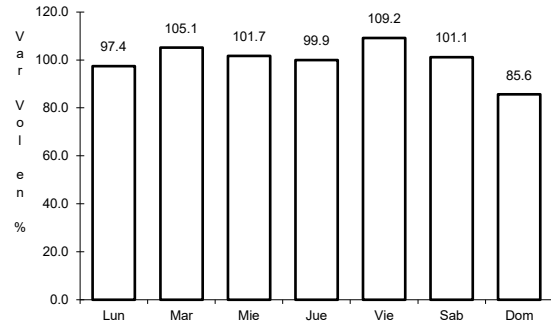


Km: 11.20 Tipo: 1 Sent: 0

22 CARR: San José del Cabo - Libramiento de Cabo San Lucas - (Cuota)

CLAVE:

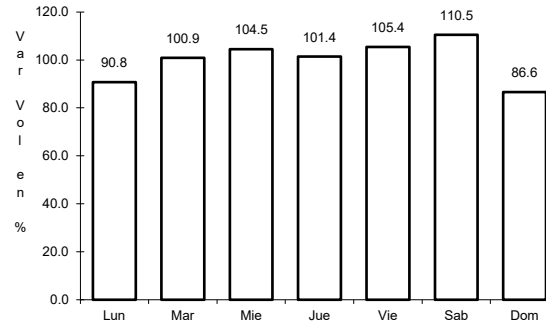
RUTA: MEX-001D



Km: 0.00

Tipo: 3

Sent: 0



Km: 27.48

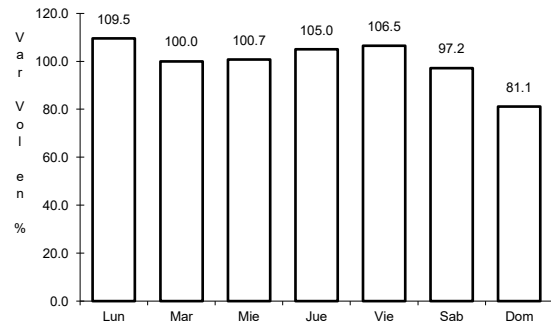
Tipo: 1

Sent: 0

23 CARR: Cd. Insurgentes - La Purísima

CLAVE: 03005

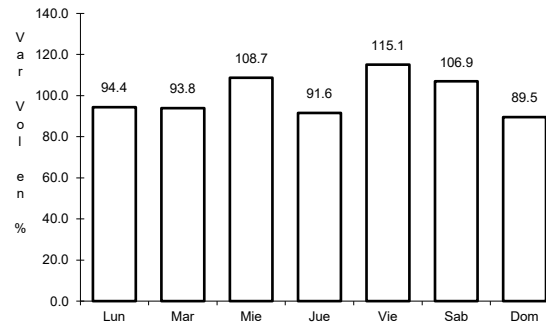
RUTA: BCS-001



Km: 0.00

Tipo: 3

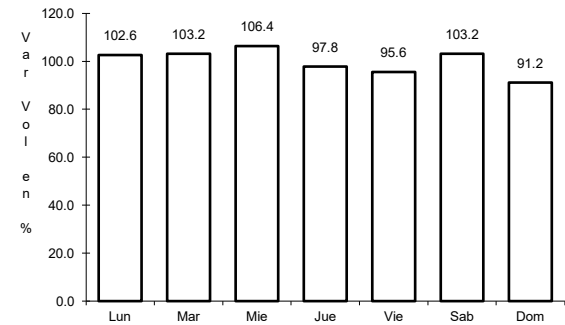
Sent: 0



Km: 64.00

Tipo: 3

Sent: 0



Km: 107.00

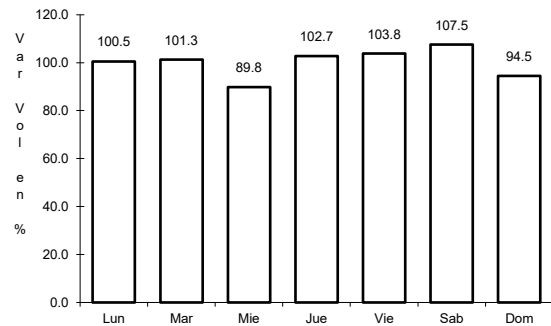
Tipo: 1

Sent: 0

24 CARR: Cd. Insurgentes - Pto. Adolfo López Mateos

CLAVE: 03404

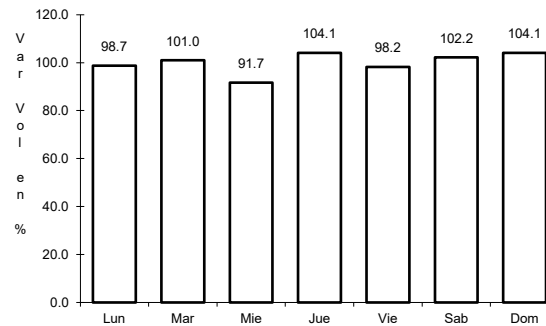
RUTA: BCS



Km: 0.00

Tipo: 3

Sent: 0



Km: 35.50

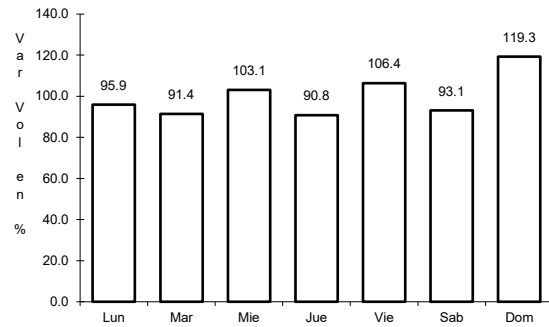
Tipo: 1

Sent: 0

25 CARR: Ent. Campo Fisher - Punta Abreojos

CLAVE: 03411

RUTA: BCS



Km: 0.00

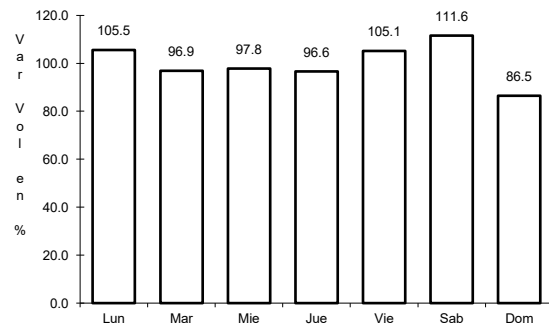
Tipo: 3

Sent: 0

26 CARR: La Paz - Ensenada de Muertos

CLAVE: 03103

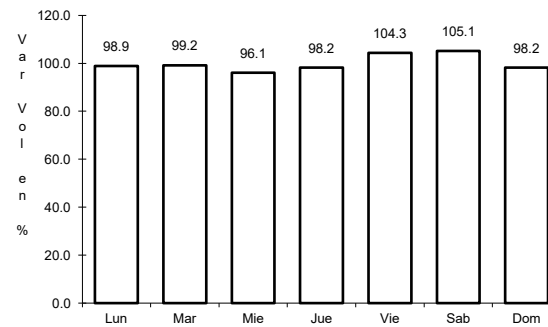
RUTA: BCS-246



Km: 0.00

Tipo: 3

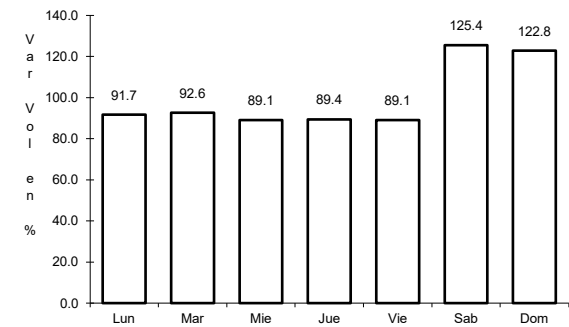
Sent: 0



Km: 45.00

Tipo: 1

Sent: 0



Km: 57.50

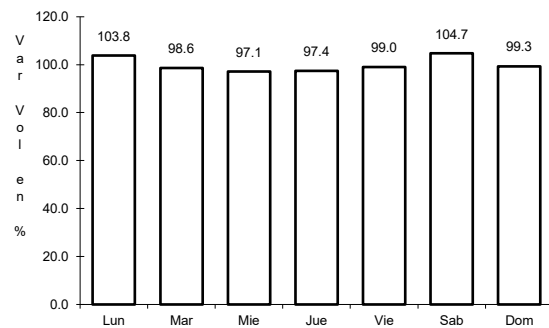
Tipo: 1

Sent: 0

27 CARR: Libramiento de La Paz

CLAVE: 03004

RUTA: BCS



Km: 0.00

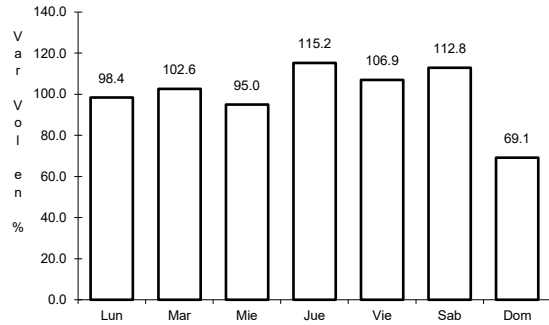
Tipo: 3

Sent: 0

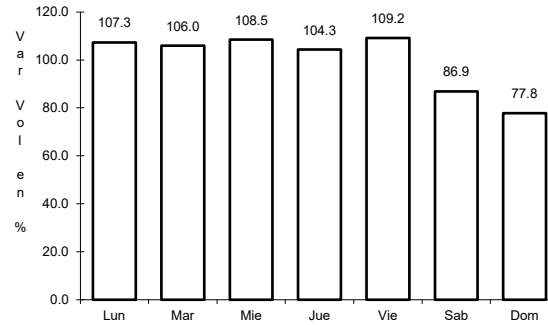
28 CARR: Libramiento Norte de La Paz

CLAVE: 03006

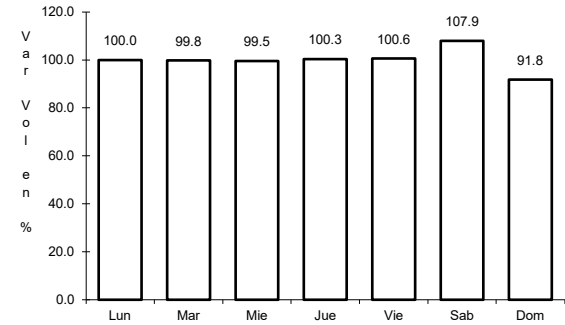
ruta: BCS



Km: 0.00 Tipo: 3 Sent: 0



Km: 18.80 Tipo: 1 Sent: 0

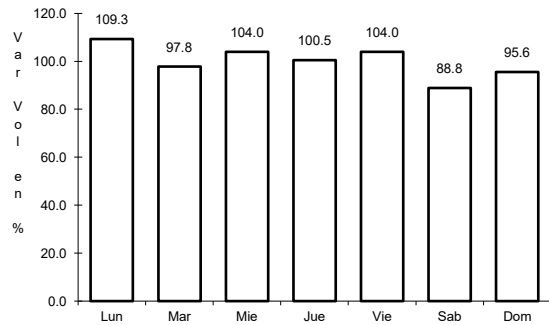


Km: 20.70 Tipo: 1 Sent: 0

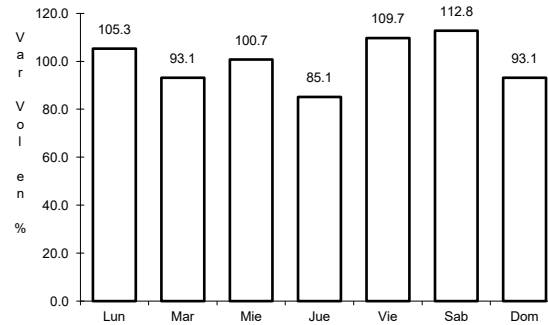
29 CARR: Ramal a Benito Juárez

CLAVE: 03405

ruta: BCS



Km: 0.00 Tipo: 3 Sent: 0

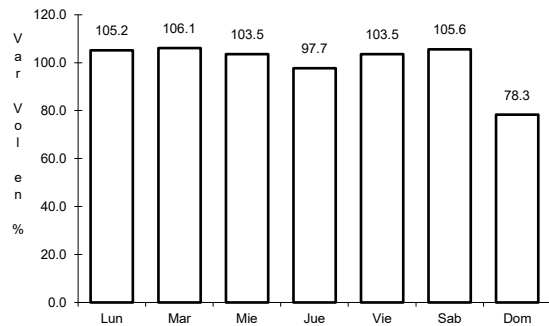


Km: 11.50 Tipo: 1 Sent: 0

30 CARR: Ramal a Ejido Ley Federal de Aguas Número Cuatro

CLAVE: 03007

ruta: BCS

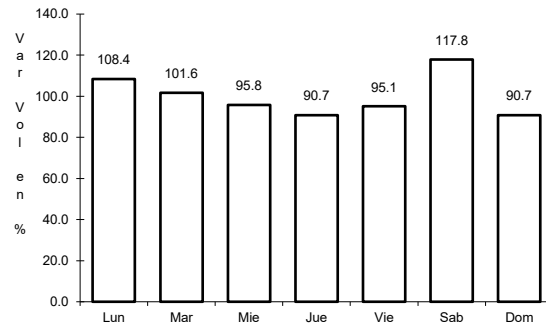


Km: 0.00 Tipo: 3 Sent: 0

31 CARR: Ramal a El Carrizal

CLAVE: 03050

RUTA: BCS



Km: 0.00

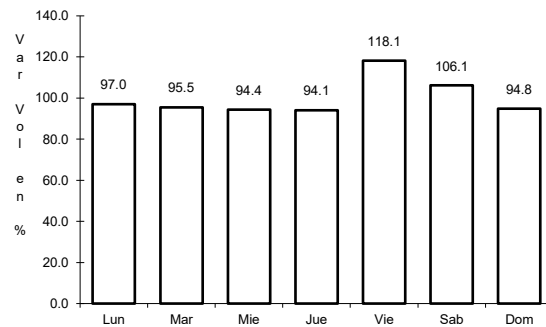
Tipo: 3

Sent: 0

32 CARR: Ramal a Guerrero Negro

CLAVE: 03395

RUTA: BCS



Km: 0.00

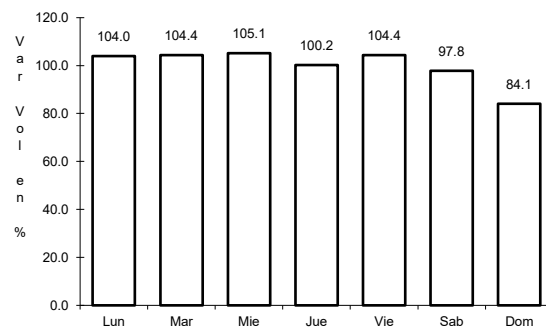
Tipo: 3

Sent: 0

33 CARR: Ramal a La Ribera

CLAVE: 03406

RUTA: BCS



Km: 0.00

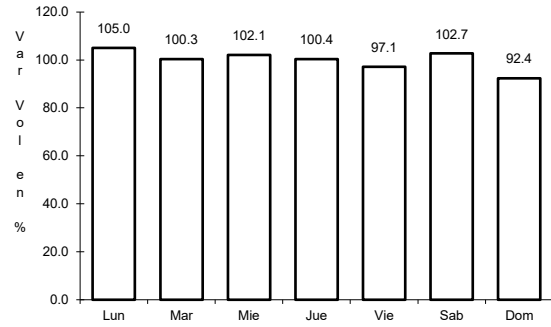
Tipo: 3

Sent: 0

34 CARR: Ramal a Melitón Albáñez

CLAVE: 03407

RUTA: BCS



Km: 0.00

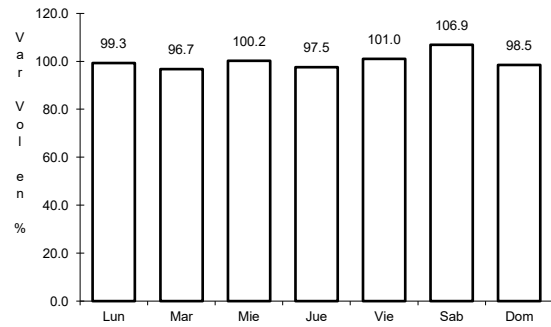
Tipo: 3

Sent: 0

35 CARR: Ramal a Santa Catarina

CLAVE: 03052

RUTA: BCS



Km: 0.00

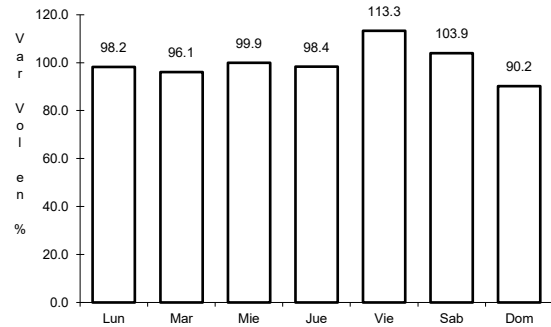
Tipo: 3

Sent: 0

36 CARR: Ramal a Bahía de Tortugas

CLAVE: 03397

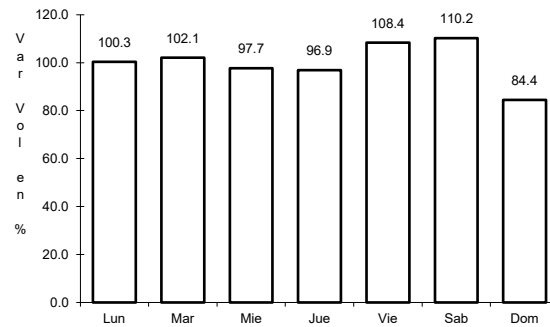
RUTA: MEX-001-BCS



Km: 0.00

Tipo: 3

Sent: 0



Km: 6.00

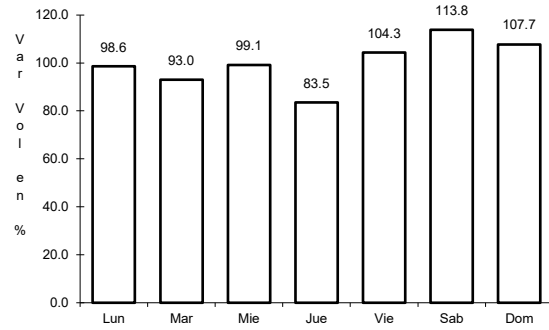
Tipo: 3

Sent: 0

37 CARR: Ramal a Ejido Ley Federal de Aguas Número Dos

CLAVE: 03050

ruta: BCS-MEX-001



Km: 0.00

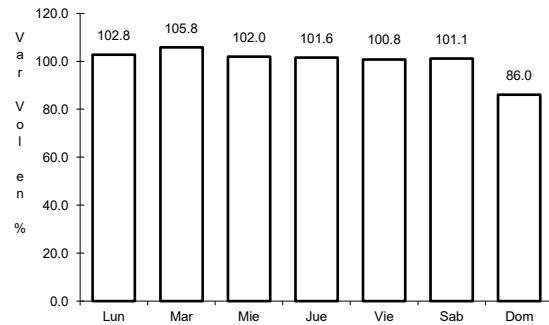
Tipo: 3

Sent: 0

38 CARR: Ramal a Ley Federal de Aguas Número Cinco

CLAVE: 03407

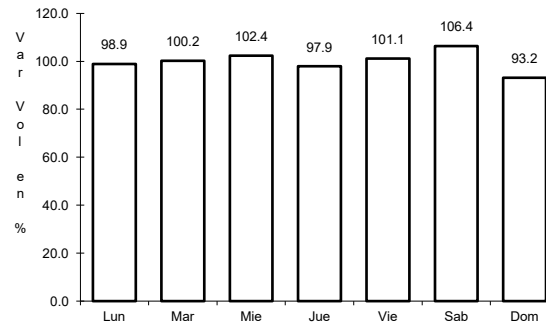
ruta: BCS-MEX-001



Km: 0.00

Tipo: 3

Sent: 1



Km: 0.00

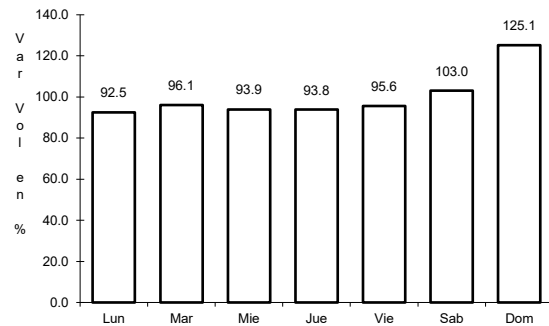
Tipo: 3

Sent: 2

39 CARR: Ramal a San Juan de La Costa

CLAVE: 03403

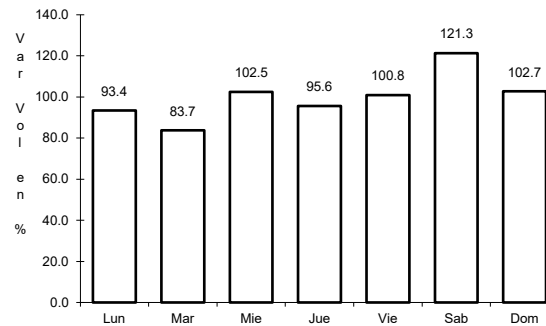
ruta: BCS-163-MEX-001



Km: 0.00

Tipo: 3

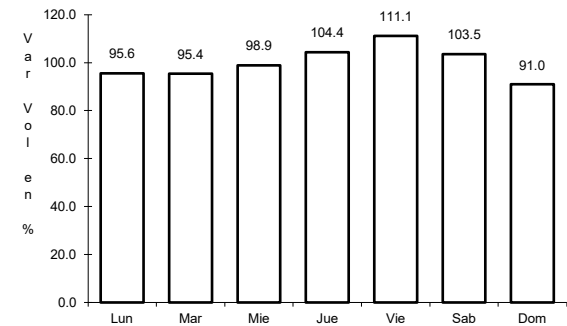
Sent: 0



Km: 23.00

Tipo: 3

Sent: 0



Km: 40.70

Tipo: 1

Sent: 0

