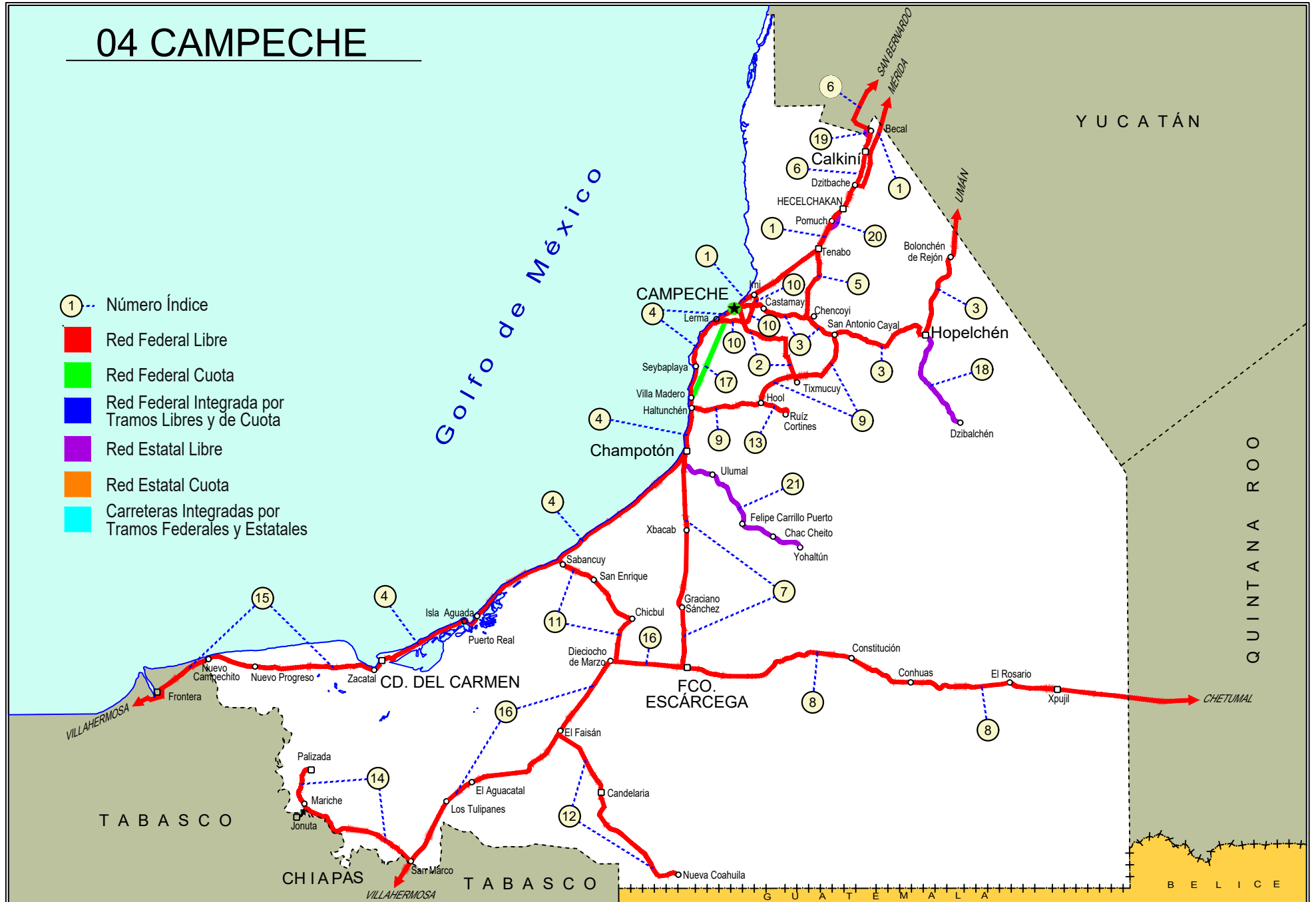


CAMPECHE

NO. INDICE CARRETERA		RUTA
	---RED FEDERAL LIBRE---	
1	Campeche - Mérida	MEX-180
2	Campeche - Tixmucuy	MEX-180
3	Campeche - Umán	MEX-261
4	Cd. del Carmen - Campeche	MEX-180
5	Chencoyi - Tenabo	MEX-180
6	Dzitbalché - Ent. San Bernardo	MEX-180
7	Francisco Escárcega - Champotón	MEX-201
8	Francisco Escárcega - Chetumal	MEX-186
9	Haltunchén - San Antonio Cayal	MEX-180
10	Periférico Pablo García y Montilla (Libramiento de Campeche)	MEX-202
11	Presidente Díaz Ordaz - Sabancuy	MEX-186
12	Ramal a Nuevo Coahuila	MEX-186
13	Ramal a Ruíz Cortines	MEX-180
14	San Marcos - Palizada	MEX-186
15	Villahermosa - Cd. del Carmen	MEX-180
16	Villahermosa - Francisco Escárcega	MEX-186
	---RED FEDERAL DE CUOTA---	
17	Chapotón - Campeche (Cuota)	MEX-180D
	---RED ESTATAL LIBRE---	
18	Hopelchén - Dzibalchén	CAM-261
19	Libramiento de Becal	CAM
20	Libramiento de Pomuch	CAM
21	T. C. (Francisco Escárcega - Champotón) - Yohaitún	CAM

04 CAMPECHE

- ① --- Número Índice
- Red Federal Libre
- Red Federal Cuota
- Red Federal Integrada por Tramos Libres y de Cuota
- Red Estatal Libre
- Red Estatal Cuota
- Carreteras Integradas por Tramos Federales y Estatales



CAMPECHE

1 CARR: Campeche - Mérida

CLAVE: 00066

RUTA: MEX-180

AÑO: 2022

LUGAR	ESTACION				CLASIFICACION VEHICULAR EN PORCIENTO													COORDENADAS		
	KM	TE	SC	TDPA	M	A	B	C2	C3	T3S2	T3S3	T3S2R4	OTROS	A	B	C	K'	D	LATITUD	LONGITUD
Campeche	0.00	3	1	4520	9.8	82.7	0.6	5.0	0.7	0.2	0.3	0.4	0.3	92.5	0.6	6.9	0.075	0.523	19.889947	-90.468364
Campeche	0.00	3	2	4118	9.8	82.8	0.6	4.9	0.8	0.2	0.2	0.4	0.3	92.6	0.6	6.8	0.072	0.523	19.890023	-90.468451
T. Der. Periferico Pablo Garcia y Montilla (Libramiento De Campeche)	7.00	3	1	6102	5.0	74.2	2.8	6.1	1.7	5.0	1.3	3.1	0.8	79.2	2.8	18.0	0.082	0.519	19.897388	-90.453684
T. Der. Periferico Pablo Garcia y Montilla (Libramiento De Campeche)	7.00	3	2	6579	4.8	75.1	2.8	6.1	1.3	5.4	1.0	2.7	0.8	79.9	2.8	17.3	0.075	0.519	19.897572	-90.453819
T. Der. Hampolol (2do Acceso)	20.00	1	1	6639	4.2	73.1	3.4	2.8	4.4	6.4	1.4	3.5	0.8	77.3	3.4	19.3	0.077	0.505	19.933483	-90.383421
T. Der. Hampolol (2do Acceso)	20.00	1	2	6510	4.1	73.2	3.2	2.8	4.0	7.4	1.4	3.0	0.9	77.3	3.2	19.5	0.082	0.505	19.933600	-90.383499
X. C. Chencoyi - Tenabo	39.50	1	1	5818	3.1	73.8	3.2	2.6	4.3	7.4	1.3	3.4	0.9	76.9	3.2	19.9	0.078	0.502	20.031070	-90.231314
X. C. Chencoyi - Tenabo	39.50	1	2	5775	3.1	73.9	3.2	2.6	4.2	7.4	1.3	3.4	0.9	77.0	3.2	19.8	0.079	0.502	20.031178	-90.231259
Tenabo	40.00	1	1	5423	4.3	72.5	3.5	3.0	3.1	7.5	1.5	3.7	0.9	76.8	3.5	19.7	0.078	0.505	20.027083	-90.243557
Tenabo	40.00	1	2	5531	4.3	72.4	3.5	3.1	3.1	7.5	1.5	3.7	0.9	76.7	3.5	19.8	0.077	0.505	20.027198	-90.243607
Tenabo	40.00	3	1	5048	3.1	73.4	3.6	3.0	3.2	6.4	2.4	4.1	0.8	76.5	3.6	19.9	0.079	0.502	20.055785	-90.213669
Tenabo	40.00	3	2	5094	3.6	73.4	3.5	2.9	3.1	6.0	2.5	4.1	0.9	77.0	3.5	19.5	0.077	0.502	20.055803	-90.213793
T. Libramiento de Pomuch	46.30	0	0																	
T. Der. Libramiento de Pomuch (2º Acceso)	50.00	3	1	6483	5.1	73.0	3.7	2.6	2.7	7.1	1.3	3.5	1.0	78.1	3.7	18.2	0.073	0.523	20.151096	-90.161841
T. Der. Libramiento de Pomuch (2º Acceso)	50.00	3	2	5915	4.8	74.0	3.5	2.7	2.3	7.2	1.5	3.2	0.8	78.8	3.5	17.7	0.078	0.523	20.151184	-90.161955
T. C. Libramiento de Pomuch	50.80	1	1	6262	4.1	70.7	4.3	4.0	4.1	6.8	1.5	3.6	0.9	74.8	4.3	20.9	0.076	0.513	20.114891	-90.187409
T. C. Libramiento de Pomuch	50.80	1	2	5955	4.3	69.7	4.4	4.5	4.2	6.7	1.4	3.9	0.9	74.0	4.4	21.6	0.100	0.513	20.114992	-90.187492
T. C. Acceso a Hecelchakan	57.60	3	1	5475	9.8	67.6	3.5	2.4	3.5	7.5	1.0	3.8	0.9	77.4	3.5	19.1	0.077	0.521	20.165896	-90.141643
T. C. Acceso a Hecelchakan	57.60	3	2	5032	10.4	64.5	3.5	3.0	3.8	8.9	1.3	3.7	0.9	74.9	3.5	21.6	0.077	0.521	20.165942	-90.141729
T. C. Hecelchakan - (T. C. Holpelchen - Bolonchen)	61.20	3	1	5344	4.5	71.1	2.9	4.7	2.6	8.1	1.5	3.7	0.9	75.6	2.9	21.5	0.077	0.504	20.190008	-90.118587
T. C. Hecelchakan - (T. C. Holpelchen - Bolonchen)	61.20	3	2	5261	3.8	74.2	2.5	3.0	2.5	8.1	1.4	3.6	0.9	78.0	2.5	19.5	0.071	0.504	20.190057	-90.118712
Poc Boc	64.60	3	1	5718	4.4	71.2	3.0	3.2	2.5	8.5	1.4	4.9	0.9	75.6	3.0	21.4	0.075	0.505	20.261496	-90.085549
Poc Boc	64.60	3	2	5613	4.5	71.2	3.0	3.2	2.4	8.5	1.3	5.0	0.9	75.7	3.0	21.3	0.076	0.505	20.261526	-90.085688
T. Izq. Dzitbalché	76.50	3	1	5084	4.9	69.4	3.9	3.2	2.1	9.2	2.1	4.3	0.9	74.3	3.9	21.8	0.099	0.501	20.309577	-90.053750
T. Izq. Dzitbalché	76.50	3	2	5064	4.2	71.1	3.9	2.9	1.9	9.0	1.9	4.2	0.9	75.3	3.9	20.8	0.073	0.501	20.309685	-90.053808
Calkiní	79.76	3	1	4823	5.2	68.7	3.9	3.0	3.8	8.4	1.9	4.2	0.9	73.9	3.9	22.2	0.080	0.506	20.376342	-90.039156
Calkiní	79.76	3	2	4946	6.2	67.9	4.1	3.0	3.5	8.5	1.8	4.2	0.8	74.1	4.1	21.8	0.076	0.506	20.376362	-90.039237
T. Der a Tepakán	86.60	3	1	4424	2.5	67.4	4.3	2.6	4.6	10.7	2.3	4.9	0.7	69.9	4.3	25.8	0.080	0.504	20.394395	-90.033577
T. Der a Tepakán	86.60	3	2	4500	2.4	67.7	4.4	2.6	4.5	10.6	2.5	4.7	0.6	70.1	4.4	25.5	0.077	0.504	20.394476	-90.033748
Lim. Edos. Term. Camp. Ppia. Yuc.	96.96	0	0																	
T. Der. Maxcanú	104.61	1	1	4381	3.0	70.5	4.5	2.7	2.3	9.6	2.1	4.7	0.6	73.5	4.5	22.0	0.071	0.508	20.560864	-89.980194
T. Der. Maxcanú	104.61	1	2	4530	3.1	68.6	4.4	3.1	2.6	10.4	2.1	5.1	0.6	71.7	4.4	23.9	0.098	0.508	20.560918	-89.980354
T. Der. Maxcanú	104.61	3	1	4736	2.1	72.2	4.0	3.0	1.6	10.1	1.4	5.0	0.6	74.3	4.0	21.7	0.072	0.513	20.596038	-89.970569
T. Der. Maxcanú	104.61	3	2	4490	2.0	71.9	4.0	3.1	2.0	10.0	1.5	4.9	0.6	73.9	4.0	22.1	0.075	0.513	20.596695	-89.970625
T. Der. Kopomá (1er Acceso)	119.50	1	1	6259	2.1	77.5	2.0	3.3	3.5	6.0	1.4	3.3	0.9	79.6	2.0	18.4	0.082	0.515	20.637483	-89.918222

CAMPECHE

1 CARR: Campeche - Mérida

CLAVE: 00066

RUTA: MEX-180

AÑO: 2022

LUGAR	ESTACION				CLASIFICACION VEHICULAR EN PORCIENTO														COORDENADAS	
	KM	TE	SC	TDPA	M	A	B	C2	C3	T3S2	T3S3	T3S2R4	OTROS	A	B	C	K'	D	LATITUD	LONGITUD
T. Der. Kopomá (1er Acceso)	119.50	1	2	5892	2.0	77.0	2.1	3.0	3.6	6.4	1.4	3.6	0.9	79.0	2.1	18.9	0.104	0.515	20.637772	-89.917964
T. Der. Kopomá (2do Acceso)	121.50	1	1	6235	2.1	76.3	3.5	4.5	2.4	5.4	1.5	3.5	0.8	78.4	3.5	18.1	0.073	0.502	20.653856	-89.900490
T. Der. Kopomá (2do Acceso)	121.50	1	2	6286	2.0	77.0	3.6	4.1	2.3	5.5	1.3	3.5	0.7	79.0	3.6	17.4	0.096	0.502	20.653930	-89.900634
T. Der. Kopomá (2do Acceso)	121.50	3	1	5978	2.1	76.9	3.5	4.3	2.5	5.6	1.4	3.0	0.7	79.0	3.5	17.5	0.088	0.504	20.663554	-89.889973
T. Der. Kopomá (2do Acceso)	121.50	3	2	5892	1.9	75.9	4.0	4.6	2.2	5.8	1.4	3.6	0.6	77.8	4.0	18.2	0.103	0.504	20.663616	-89.890087
T. Izq. Chocolá (1er Acceso)	133.00	3	1	5752	3.5	71.6	3.0	6.5	2.0	6.5	1.5	4.5	0.9	75.1	3.0	21.9	0.074	0.501	20.742920	-89.830234
T. Izq. Chocolá (1er Acceso)	133.00	3	2	5725	3.5	71.4	3.0	6.5	2.0	6.5	1.6	4.6	0.9	74.9	3.0	22.1	0.092	0.501	20.742929	-89.830468
T. Izq. Chocolá (2do Acceso)	135.60	3	1	7465	3.6	71.4	3.0	6.5	2.0	6.4	1.4	4.9	0.8	75.0	3.0	22.0	0.082	0.503	20.764904	-89.825036
T. Izq. Chocolá (2do Acceso)	135.60	3	2	7371	3.7	71.3	3.5	6.5	2.0	6.0	1.5	4.7	0.8	75.0	3.5	21.5	0.094	0.503	20.765128	-89.825088
T. Der. Libramiento de Chochohá (1º Acceso)	137.89	1	1	5529	1.4	74.3	3.0	6.3	2.4	6.3	1.6	4.1	0.6	75.7	3.0	21.3	0.082	0.509	20.726454	-89.842980
T. Der. Libramiento de Chochohá (1º Acceso)	137.89	1	2	5341	1.5	70.7	3.5	9.4	1.5	6.5	1.6	4.5	0.8	72.2	3.5	24.3	0.108	0.509	20.726502	-89.843102
T. Izq. Umán	146.99	3	1	5885	0.9	74.2	3.1	6.5	2.0	6.3	1.5	4.7	0.8	75.1	3.1	21.8	0.085	0.500	20.802193	-89.804937
T. Izq. Umán	146.99	3	2	5876	1.0	73.9	3.5	6.5	2.1	6.0	1.5	4.7	0.8	74.9	3.5	21.6	0.101	0.500	20.802227	-89.805164
X. C. Campeche - Umán	160.49	1	1	7004	2.2	74.5	2.5	5.5	2.7	6.0	2.3	3.5	0.8	76.7	2.5	20.8	0.089	0.512	20.836201	-89.754858
X. C. Campeche - Umán	160.49	1	2	6675	1.6	73.6	2.6	5.5	2.9	6.9	2.4	3.7	0.8	75.2	2.6	22.2	0.095	0.512	20.836414	-89.754818
T. C. Periférico de Mérida	171.21	0	0																	
T. C. Periférico de Mérida	171.21	1	1	8260	4.0	72.7	3.1	3.4	3.9	6.7	2.4	3.0	0.8	76.7	3.1	20.2	0.104	0.516	20.897567	-89.685093
T. C. Periférico de Mérida	171.21	1	2	8816	4.2	72.3	3.2	3.6	3.7	6.8	2.3	3.0	0.9	76.5	3.2	20.3	0.102	0.516	20.897746	-89.685210

2 CARR: Campeche - Tixmucuy

CLAVE: 04575

RUTA: MEX-180

AÑO: 2022

LUGAR	ESTACION				CLASIFICACION VEHICULAR EN PORCIENTO														COORDENADAS	
	KM	TE	SC	TDPA	M	A	B	C2	C3	T3S2	T3S3	T3S2R4	OTROS	A	B	C	K'	D	LATITUD	LONGITUD
Campeche	0.00	3	1	6960	13.8	80.3	0.7	2.8	1.2	0.5	0.4	0.3	0.0	94.1	0.7	5.2	0.070	0.516	19.810244	-90.506059
Campeche	0.00	3	2	6524	14.1	78.7	0.7	2.9	2.1	0.6	0.5	0.3	0.1	92.8	0.7	6.5	0.071	0.516	19.810251	-90.505886
T. Der. Periférico Pablo García y Montilla (Libramiento De Campeche)	4.00	3	1	3464	25.3	71.0	0.1	2.7	0.6	0.2	0.0	0.1	0.0	96.3	0.1	3.6	0.093	0.507	19.786562	-90.499970
T. Der. Periférico Pablo García y Montilla (Libramiento De Campeche)	4.00	3	2	3362	29.5	67.0	0.1	2.4	0.5	0.2	0.1	0.1	0.1	96.5	0.1	3.4	0.086	0.507	19.787344	-90.499900
X. C. Haltunchén - Cayal	39.00	1	0	1804	6.8	79.1	1.9	8.3	1.7	1.2	0.5	0.4	0.1	85.9	1.9	12.2	0.088	0.511	19.604812	-90.319457
Tixmucuy	42.00	1	0	570	17.8	70.7	1.4	7.8	0.9	0.6	0.4	0.3	0.1	88.5	1.4	10.1	0.102	0.507	19.586114	-90.317805

3 CARR: Campeche - Umán

CLAVE: 00164

RUTA: MEX-261

AÑO: 2022

LUGAR	ESTACION				CLASIFICACION VEHICULAR EN PORCIENTO														COORDENADAS	
	KM	TE	SC	TDPA	M	A	B	C2	C3	T3S2	T3S3	T3S2R4	OTROS	A	B	C	K'	D	LATITUD	LONGITUD
Campeche	0.00	0	0																	

CAMPECHE

3 CARR: Campeche - Umán

CLAVE: 00164

RUTA: MEX-261

AÑO: 2022

LUGAR	ESTACION				CLASIFICACION VEHICULAR EN PORCIENTO										COORDENADAS					
	KM	TE	SC	TDPA	M	A	B	C2	C3	T3S2	T3S3	T3S2R4	OTROS	A	B	C	K'	D	LATITUD	LONGITUD
T. Der. Periférico Pablo García y Montilla (Libramiento De Campeche)	7.00	1	0	4958	12.7	83.0	0.3	2.7	0.8	0.3	0.1	0.1	0.0	95.7	0.3	4.0	0.081	0.504	19.849217	-90.472774
T. Der. Periférico Pablo García y Montilla (Libramiento De Campeche)	7.00	3	0	2829	13.4	82.2	0.4	2.8	0.6	0.4	0.1	0.1	0.0	95.6	0.4	4.0	0.085	0.502	19.848319	-90.452638
T. Izq. Tenabo	30.88	1	0	1616	11.8	78.5	0.7	5.7	0.7	1.0	0.7	0.5	0.4	90.3	0.7	9.0	0.100	0.506	19.805106	-90.283146
T. Izq. Tenabo	30.88	3	0	1925	10.7	76.0	1.0	7.7	1.7	1.4	0.7	0.6	0.2	86.7	1.0	12.3	0.092	0.512	19.804507	-90.272821
T. Der. Edzna	44.51	1	0	1604	11.2	74.8	1.6	8.8	0.6	1.8	0.5	0.5	0.2	86.0	1.6	12.4	0.095	0.526	19.743505	-90.178946
T. Der. Edzna	44.51	3	0	1652	13.8	76.3	0.8	4.4	2.0	1.5	0.5	0.5	0.2	90.1	0.8	9.1	0.096	0.503	19.745162	-90.171029
Hopelchén	84.88	1	0	2375	11.9	76.0	0.9	7.5	1.1	1.5	0.4	0.3	0.4	87.9	0.9	11.2	0.086	0.509	19.754128	-89.854641
Bolonchén de Rejón	117.88	3	0	1108	20.7	66.1	2.4	5.2	1.6	2.1	0.9	0.9	0.1	86.8	2.4	10.8	0.108	0.508	20.012770	-89.733977
Lim. Edos. Term. Camp. Ppia. Yuc.	126.88	0	0																	
T. Der. Sayil	140.88	1	0	620	7.5	70.4	2.2	13.1	2.1	1.6	1.2	1.6	0.3	77.9	2.2	19.9	0.106	0.503	20.208263	-89.670568
Santa Elena	158.88	1	0	1091	26.3	59.8	1.5	6.5	2.9	1.3	0.7	0.9	0.1	86.1	1.5	12.4	0.142	0.508	20.319316	-89.643330
T. Izq. Ruinas de Uxmal	172.48	1	0	778	16.9	66.1	1.5	7.5	2.4	2.0	0.8	2.7	0.1	83.0	1.5	15.5	0.116	0.504	20.361886	-89.763684
Muna	187.43	1	0	1453	18.1	73.8	1.0	3.6	1.2	1.0	0.5	0.6	0.2	91.9	1.0	7.1	0.125	0.525	20.460364	-89.725498
Muna	187.43	3	0	4066	4.9	84.2	1.1	5.0	1.5	2.2	0.4	0.6	0.1	89.1	1.1	9.8	0.091	0.528	20.511430	-89.709227
Xtepén	225.38	1	0	5268	2.3	81.7	1.0	8.8	1.5	1.8	1.7	1.0	0.2	84.0	1.0	15.0	0.098	0.502	20.803101	-89.733868
Umán	230.83	1	0	4278	17.0	65.0	1.5	5.6	4.2	4.8	1.1	0.6	0.2	82.0	1.5	16.5	0.098	0.512	20.866605	-89.746069

4 CARR: Cd. del Carmen - Campeche

CLAVE: 04065

RUTA: MEX-180

AÑO: 2022

LUGAR	ESTACION				CLASIFICACION VEHICULAR EN PORCIENTO										COORDENADAS					
	KM	TE	SC	TDPA	M	A	B	C2	C3	T3S2	T3S3	T3S2R4	OTROS	A	B	C	K'	D	LATITUD	LONGITUD
Cd. del Carmen	0.00	3	1	12542	5.8	82.0	2.1	3.9	1.2	2.9	0.5	1.3	0.3	87.8	2.1	10.1	0.092	0.504	18.658981	-91.774998
Cd. del Carmen	0.00	3	2	12339	5.6	82.1	2.2	3.8	1.1	3.1	0.6	1.2	0.3	87.7	2.2	10.1	0.085	0.504	18.659027	-91.775210
La Palma	26.70	1	0	6587	3.4	75.2	3.6	2.7	1.7	7.8	1.2	3.4	1.0	78.6	3.6	17.8	0.091	0.511	18.730681	-91.641326
Isla Aguada	37.75	3	0	5794	4.8	66.6	4.2	3.6	2.4	10.2	1.9	5.4	0.9	71.4	4.2	24.4	0.080	0.501	18.796884	-91.483724
T. Der. Sabancuy	78.05	3	0	4684	4.7	61.8	5.9	4.3	2.4	12.2	2.4	5.5	0.8	66.5	5.9	27.6	0.087	0.520	18.991863	-91.187540
Chamotón	141.80	1	0	5443	9.6	59.6	5.9	3.6	1.8	10.9	2.2	5.5	0.9	69.2	5.9	24.9	0.077	0.518	19.321338	-90.746825
Chamotón	141.80	3	1	5395	6.5	69.8	3.8	4.9	1.8	7.0	1.6	3.7	0.9	76.3	3.8	19.9	0.102	0.506	19.371905	-90.721447
Chamotón	141.80	3	2	5257	7.0	68.3	4.0	5.4	1.9	7.4	1.4	3.8	0.8	75.3	4.0	20.7	0.076	0.506	19.371904	-90.721670
T. C. Haltunchén - San Antonio Cayal	159.60	1	1	5962	6.7	69.8	4.1	4.1	2.0	7.3	1.5	3.6	0.9	76.5	4.1	19.4	0.092	0.523	19.495112	-90.702726
T. C. Haltunchén - San Antonio Cayal	159.60	1	2	5434	6.5	69.3	4.4	4.2	2.0	7.8	1.4	3.5	0.9	75.8	4.4	19.8	0.075	0.523	19.494518	-90.702956
Haltunchén	161.81	0	0																	
T. Der. Libramiento de Seybaplaya (1º Acceso)	175.71	1	0	3235	17.1	78.2	1.0	2.6	0.7	0.2	0.0	0.0	0.2	95.3	1.0	3.7	0.085	0.509	19.622300	-90.685451
T. Der. Libramiento de Seybaplaya (1º Acceso)	175.71	3	1	569	22.7	71.0	0.5	4.6	0.6	0.3	0.1	0.1	0.1	93.7	0.5	5.8	0.135	0.506	19.626076	-90.685174
T. Der. Libramiento de Seybaplaya (1º Acceso)	175.71	3	2	555	22.7	70.8	0.6	4.8	0.5	0.2	0.2	0.1	0.1	93.5	0.6	5.9	0.101	0.506	19.626082	-90.685259

CAMPECHE

4 CARR: Cd. del Carmen - Campeche

CLAVE: 04065

RUTA: MEX-180

AÑO: 2022

LUGAR	ESTACION				CLASIFICACION VEHICULAR EN PORCIENTO													COORDENADAS		
	KM	TE	SC	TDPA	M	A	B	C2	C3	T3S2	T3S3	T3S2R4	OTROS	A	B	C	K'	D	LATITUD	LONGITUD
T. Der. Libramiento de Seybaplaya (2do. Acceso)	179.00	3	0	2325	13.5	77.1	1.2	4.6	1.7	0.6	0.5	0.3	0.5	90.6	1.2	8.2	0.087	0.516	19.655945	-90.687435
T. Der. Periferico Pablo García y Montilla (Libramiento De Campeche)	195.70	1	0	2675	14.1	80.5	0.9	3.2	0.5	0.3	0.2	0.2	0.1	94.6	0.9	4.5	0.107	0.512	19.786637	-90.625573
Lerma	199.51	1	1	1004	20.4	73.1	0.4	3.7	1.4	0.3	0.1	0.6	0.0	93.5	0.4	6.1	0.085	0.512	19.792148	-90.618835
Lerma	199.51	1	2	956	20.5	74.0	0.6	2.2	1.3	0.4	0.2	0.8	0.0	94.5	0.6	4.9	0.101	0.512	19.792246	-90.618952
Campeche	203.18	0	0																	

5 CARR: Chencoyi - Tenabo

CLAVE: 04576

RUTA: MEX-180

AÑO: 2022

LUGAR	ESTACION				CLASIFICACION VEHICULAR EN PORCIENTO													COORDENADAS		
	KM	TE	SC	TDPA	M	A	B	C2	C3	T3S2	T3S3	T3S2R4	OTROS	A	B	C	K'	D	LATITUD	LONGITUD
T. C. Campeche - Umán	0.00	0	0																	
Tenabo	28.00	1	0	1178	18.2	73.6	0.8	3.8	0.9	1.4	0.6	0.7	0.0	91.8	0.8	7.4	0.085	0.510	20.027061	-90.226650

6 CARR: Dzitbalché - Ent. San Bernardo

CLAVE: 00162

RUTA: MEX-180

AÑO: 2022

LUGAR	ESTACION				CLASIFICACION VEHICULAR EN PORCIENTO													COORDENADAS		
	KM	TE	SC	TDPA	M	A	B	C2	C3	T3S2	T3S3	T3S2R4	OTROS	A	B	C	K'	D	LATITUD	LONGITUD
T. C. Campeche - Mérida	0.00	0	0																	
T. Izq. Libramiento de Becal (1° Acceso)	12.33	1	0	3728	23.2	71.2	1.2	2.3	1.2	0.6	0.1	0.2	0.0	94.4	1.2	4.4	0.079	0.504	20.418448	-90.034101
T. Izq. Libramiento de Becal (2° Acceso)	15.41	3	0	1741	16.7	74.9	1.8	3.5	0.8	1.7	0.5	0.0	0.1	91.6	1.8	6.6	0.087	0.511	20.449624	-90.038827
Lim. Edos. Term. Camp. Ppia. Yuc.	15.80	0	0																	
Halachó	21.08	1	0	2246	23.1	62.1	4.1	8.2	1.0	1.4	0.1	0.0	0.0	85.2	4.1	10.7	0.081	0.506	20.469161	-90.066364
T. Izq. Libramiento de Maxcanú (1° Acceso)	35.60	1	0	2900	26.1	62.9	2.9	5.4	1.0	1.5	0.2	0.0	0.0	89.0	2.9	8.1	0.082	0.500	20.577258	-90.035478
T. Der. Muna	40.36	3	0	4269	9.1	79.9	2.2	6.0	1.3	1.3	0.2	0.0	0.0	89.0	2.2	8.8	0.083	0.503	20.601414	-89.975978
Ent. San Bernardo	41.53	0	0																	

7 CARR: Francisco Escárcega - Champotón

CLAVE: 04103

RUTA: MEX-201

AÑO: 2022

LUGAR	ESTACION				CLASIFICACION VEHICULAR EN PORCIENTO													COORDENADAS		
	KM	TE	SC	TDPA	M	A	B	C2	C3	T3S2	T3S3	T3S2R4	OTROS	A	B	C	K'	D	LATITUD	LONGITUD
Francisco Escárcega	0.00	3	0	5232	19.0	60.6	2.1	3.9	2.3	6.0	1.4	3.7	1.0	79.6	2.1	18.3	0.079	0.501	18.622171	-90.742135
T. Izq. Ley Federal de La Reforma Agraria	51.40	1	0	2976	4.7	72.6	2.9	3.6	2.2	6.7	2.3	4.1	0.9	77.3	2.9	19.8	0.106	0.514	19.051299	-90.725054
T. Der. Ulumal y Patzajol	77.00	1	0	3729	5.2	73.4	2.9	3.7	1.8	6.1	1.9	4.1	0.9	78.6	2.9	18.5	0.083	0.502	19.295623	-90.732120
Champotón	81.40	1	0	5797	7.0	76.2	2.6	3.1	2.0	3.9	1.6	2.7	0.9	83.2	2.6	14.2	0.089	0.511	19.317790	-90.729070

CAMPECHE

8 CARR: Francisco Escárcega - Chetumal

CLAVE: 00093

RUTA: MEX-186

AÑO: 2022

LUGAR	ESTACION				CLASIFICACION VEHICULAR EN PORCIENTO													COORDENADAS		
	KM	TE	SC	TDPA	M	A	B	C2	C3	T3S2	T3S3	T3S2R4	OTROS	A	B	C	K'	D	LATITUD	LONGITUD
Francisco Escárcega	0.00	3	0	4052	16.3	64.2	4.0	3.0	1.5	5.8	1.2	3.2	0.8	80.5	4.0	15.5	0.080	0.531	18.604116	-90.718267
Adolfo López Mateos	41.50	1	0	2925	8.2	69.0	4.7	3.3	1.8	5.6	1.7	5.0	0.7	77.2	4.7	18.1	0.079	0.521	18.642847	-90.316602
T. Der. Silvituc	55.70	1	0	3037	11.0	66.3	5.0	3.3	1.8	5.5	1.8	4.6	0.7	77.3	5.0	17.7	0.077	0.516	18.651315	-90.276628
T. Der. Silvituc	55.70	3	0	2515	10.2	66.6	5.1	3.6	1.9	6.1	1.6	4.2	0.7	76.8	5.1	18.1	0.075	0.527	18.649428	-90.261509
Conhuás	100.00	1	0	2142	11.4	59.3	5.8	4.6	2.0	7.2	2.6	6.1	1.0	70.7	5.8	23.5	0.074	0.527	18.540422	-89.918683
Xpujil	155.73	1	0	3054	8.6	67.2	4.7	3.7	2.0	5.7	1.3	5.9	0.9	75.8	4.7	19.5	0.088	0.507	18.509443	-89.411068
Lim. Edos. Term. Camp. Ppia. Qroo.	179.90	0	0																	
X. C. Caobas - Chacanbacab	186.00	3	0	2144	6.6	62.5	7.7	4.6	1.9	8.0	2.2	5.5	1.0	69.1	7.7	23.2	0.076	0.518	18.468471	-89.093592
Nicolás Bravo	206.01	1	0	3045	7.1	65.8	5.9	4.0	1.6	7.6	1.5	5.6	0.9	72.9	5.9	21.2	0.071	0.524	18.458538	-88.939145
Nicolás Bravo	206.01	3	0	3616	7.2	70.6	5.5	3.8	1.1	5.1	1.2	4.8	0.7	77.8	5.5	16.7	0.080	0.509	18.459134	-88.920092
T. Izq. Morocoy	214.90	1	0	3177	7.2	67.5	5.9	4.4	1.4	7.7	1.5	3.6	0.8	74.7	5.9	19.4	0.080	0.511	18.478785	-88.818211
T. Izq. Morocoy	214.90	3	0	3150	7.1	67.7	5.7	4.6	1.4	7.9	1.4	3.4	0.8	74.8	5.7	19.5	0.070	0.510	18.478909	-88.814880
T. Der. Unión	247.50	1	0	5344	7.8	67.4	5.6	4.3	1.8	7.5	1.6	3.2	0.8	75.2	5.6	19.2	0.071	0.503	18.503963	-88.534283
T. Der. Unión	247.50	3	0	8439	10.4	76.4	1.8	4.9	1.0	2.8	0.5	1.7	0.5	86.8	1.8	11.4	0.077	0.508	18.508721	-88.504571
T. Izq. Fpe. Carrillo Puerto	255.15	1	0	6811	9.7	76.2	2.2	4.3	2.1	2.9	0.6	1.6	0.4	85.9	2.2	11.9	0.104	0.508	18.524089	-88.473005
T. Der. Subteniente López	268.57	1	1	9126	7.4	88.2	1.1	1.7	0.6	0.5	0.1	0.3	0.1	95.6	1.1	3.3	0.094	0.511	18.516765	-88.378548
T. Der. Subteniente López	268.57	1	2	8746	6.9	87.7	1.2	1.9	0.9	0.8	0.1	0.4	0.1	94.6	1.2	4.2	0.107	0.511	18.516874	-88.378520
T. Izq. Av. Insurgentes	270.00	1	1	12491	8.3	86.4	1.0	3.0	0.5	0.4	0.1	0.2	0.1	94.7	1.0	4.3	0.085	0.507	18.513062	-88.361999
T. Izq. Av. Insurgentes	270.00	1	2	12845	10.8	83.4	1.2	3.2	0.5	0.4	0.1	0.3	0.1	94.2	1.2	4.6	0.089	0.507	18.513189	-88.362038
T. Izq. Av. Insurgentes	270.00	3	1	4645	5.2	91.7	0.6	1.3	0.5	0.3	0.1	0.2	0.1	96.9	0.6	2.5	0.085	0.519	18.510322	-88.353633
T. Izq. Av. Insurgentes	270.00	3	2	4310	5.2	91.7	0.5	1.3	0.6	0.3	0.1	0.2	0.1	96.9	0.5	2.6	0.094	0.519	18.510421	-88.353596
Chetumal	277.36	1	1	8347	10.7	87.2	0.2	0.8	0.5	0.2	0.0	0.1	0.3	97.9	0.2	1.9	0.089	0.537	18.501801	-88.321648
Chetumal	277.36	1	2	7190	11.0	86.3	0.3	1.3	0.6	0.2	0.0	0.1	0.2	97.3	0.3	2.4	0.094	0.537	18.501919	-88.321621

9 CARR: Haltunchén - San Antonio Cayal

CLAVE: 04009

RUTA: MEX-180

AÑO: 2022

LUGAR	ESTACION				CLASIFICACION VEHICULAR EN PORCIENTO													COORDENADAS		
	KM	TE	SC	TDPA	M	A	B	C2	C3	T3S2	T3S3	T3S2R4	OTROS	A	B	C	K'	D	LATITUD	LONGITUD
T. C. Cd. del Carmen - Campeche	0.00	3	0	1536	17.7	69.4	0.9	5.9	1.8	2.5	0.4	1.1	0.3	87.1	0.9	12.0	0.086	0.534	19.499091	-90.700068
Sihochac	14.00	3	0	1382	22.0	65.8	0.5	6.3	0.9	2.7	0.9	0.7	0.2	87.8	0.5	11.7	0.089	0.502	19.502164	-90.569454
X. C. China - Tixmucuy	47.10	1	0	645	9.1	74.9	1.2	7.4	2.1	2.2	1.2	1.4	0.5	84.0	1.2	14.8	0.098	0.510	19.603477	-90.321387
Edzna	59.00	1	0	1224	8.0	74.4	1.2	9.1	3.3	1.8	0.9	1.0	0.3	82.4	1.2	16.4	0.095	0.506	19.604236	-90.226977
T. Der. Pichucalco	60.00	3	0	689	20.1	66.5	0.6	7.8	1.9	1.1	0.4	1.3	0.3	86.6	0.6	12.8	0.109	0.502	19.608873	-90.220443
San Antonio Cayal	79.00	1	0	656	22.1	60.7	1.3	9.0	1.6	2.2	0.7	2.2	0.2	82.8	1.3	15.9	0.096	0.514	19.740341	-90.173994

CAMPECHE

10 CARR: Periférico Pablo García y Montilla (Libramiento de Campeche)

CLAVE: 04573

RUTA: MEX-202

AÑO: 2022

LUGAR	ESTACION				CLASIFICACION VEHICULAR EN PORCIENTO													COORDENADAS		
	KM	TE	SC	TDPA	M	A	B	C2	C3	T3S2	T3S3	T3S2R4	OTROS	A	B	C	K'	D	LATITUD	LONGITUD
Ent. Lerma	0.00	3	1	2686	9.6	85.2	0.6	2.5	1.0	0.7	0.1	0.2	0.1	94.8	0.6	4.6	0.103	0.512	19.797884	-90.586455
Ent. Lerma	0.00	3	2	2821	9.9	84.7	0.6	2.6	0.9	0.8	0.2	0.2	0.1	94.6	0.6	4.8	0.113	0.512	19.797995	-90.586460
T. Izq. Av. Escenica	5.00	3	1	2419	10.0	82.3	0.6	3.8	1.6	0.6	0.3	0.6	0.2	92.3	0.6	7.1	0.095	0.535	19.798906	-90.567099
T. Izq. Av. Escenica	5.00	3	2	2787	12.0	80.6	0.7	3.6	1.3	0.7	0.3	0.5	0.3	92.6	0.7	6.7	0.128	0.535	19.799018	-90.567057
X. C. Champotón - Campeche (Cuota)	10.00	3	1	6589	7.8	72.1	2.7	3.7	2.1	6.4	1.4	3.3	0.5	79.9	2.7	17.4	0.087	0.535	19.796197	-90.516628
X. C. Champotón - Campeche (Cuota)	10.00	3	2	7570	7.4	73.7	2.5	3.4	2.0	6.1	1.3	3.0	0.6	81.1	2.5	16.4	0.101	0.535	19.796312	-90.516586
X. C. Campeche - Umán	21.00	1	1	5324	4.8	70.4	3.5	5.2	2.6	7.1	1.5	4.1	0.8	75.2	3.5	21.3	0.070	0.512	19.843278	-90.471068
X. C. Campeche - Umán	21.00	1	2	5592	4.4	72.8	3.4	5.3	2.2	6.2	1.2	3.8	0.7	77.2	3.4	19.4	0.074	0.512	19.843344	-90.471176
T. C. Campeche - Mérida	26.00	1	1	5262	4.2	70.1	3.3	6.3	2.6	7.1	1.7	3.8	0.9	74.3	3.3	22.4	0.083	0.511	19.881527	-90.462177
T. C. Campeche - Mérida	26.00	1	2	5502	3.8	71.2	3.3	6.2	2.5	7.0	1.5	3.6	0.9	75.0	3.3	21.7	0.085	0.511	19.881459	-90.462299

11 CARR: Presidente Díaz Ordaz - Sabancuy

CLAVE: 04570

RUTA: MEX-186

AÑO: 2022

LUGAR	ESTACION				CLASIFICACION VEHICULAR EN PORCIENTO													COORDENADAS		
	KM	TE	SC	TDPA	M	A	B	C2	C3	T3S2	T3S3	T3S2R4	OTROS	A	B	C	K'	D	LATITUD	LONGITUD
T. C. Villahermosa - Francisco Escárcega	0.00	3	0	1428	15.8	76.1	1.2	3.5	1.2	0.8	0.4	1.0	0.0	91.9	1.2	6.9	0.078	0.506	18.630779	-90.982861
Chicbul	18.00	1	0	1642	19.2	71.0	1.5	4.0	1.1	1.3	0.7	1.2	0.0	90.2	1.5	8.3	0.076	0.503	18.767259	-90.934943
T. C. Cd. del Carmen - Campeche	57.00	1	0	1700	13.6	77.2	2.7	2.8	1.0	1.0	0.5	0.8	0.4	90.8	2.7	6.5	0.089	0.508	18.987672	-91.188632

12 CARR: Ramal a Nuevo Coahuila

CLAVE: 04015

RUTA: MEX-186

AÑO: 2022

LUGAR	ESTACION				CLASIFICACION VEHICULAR EN PORCIENTO													COORDENADAS		
	KM	TE	SC	TDPA	M	A	B	C2	C3	T3S2	T3S3	T3S2R4	OTROS	A	B	C	K'	D	LATITUD	LONGITUD
T. C. Villahermosa - Francisco Escárcega	0.00	3	0	997	8.0	78.6	1.7	4.8	1.7	2.2	1.0	1.9	0.1	86.6	1.7	11.7	0.092	0.510	18.377599	-91.196270
Candelaria	28.00	3	0	2628	5.9	89.2	0.7	1.8	0.9	0.7	0.4	0.3	0.1	95.1	0.7	4.2	0.091	0.501	18.176760	-91.053202
Reforma	44.50	3	0	1432	4.4	92.2	0.6	1.6	0.5	0.3	0.1	0.3	0.0	96.6	0.6	2.8	0.097	0.511	18.074178	-91.026175
T. Izq. Pedro Baranda	54.80	1	0	834	12.7	83.2	0.8	1.7	0.6	0.4	0.1	0.5	0.0	95.9	0.8	3.3	0.102	0.525	17.971927	-90.909548
T. Izq. Pedro Baranda	54.80	3	0	818	14.6	82.8	0.5	1.3	0.3	0.3	0.0	0.2	0.0	97.4	0.5	2.1	0.133	0.507	17.965337	-90.902503
Nuevo Coahuila	70.00	1	0	815	17.8	79.3	0.5	1.1	0.7	0.5	0.0	0.1	0.0	97.1	0.5	2.4	0.128	0.500	17.894332	-90.784508

13 CARR: Ramal a Ruíz Cortines

CLAVE: 04101

RUTA: MEX-180

AÑO: 2022

LUGAR	ESTACION				CLASIFICACION VEHICULAR EN PORCIENTO													COORDENADAS		
	KM	TE	SC	TDPA	M	A	B	C2	C3	T3S2	T3S3	T3S2R4	OTROS	A	B	C	K'	D	LATITUD	LONGITUD
Hool	0.00	0	0																	

CAMPECHE

13 CARR: Ramal a Ruíz Cortines

CLAVE: 04101

RUTA: MEX-180

AÑO: 2022

LUGAR	ESTACION				CLASIFICACION VEHICULAR EN PORCIENTO													COORDENADAS		
	KM	TE	SC	TDPA	M	A	B	C2	C3	T3S2	T3S3	T3S2R4	OTROS	A	B	C	K'	D	LATITUD	LONGITUD
T. Der. Hool	1.00	3	0	405	39.6	50.2	0.8	3.3	5.0	0.5	0.3	0.2	0.1	89.8	0.8	9.4	0.146	0.506	19.512232	-90.439875
Ruíz Cortines	12.00	0	0																	

14 CARR: San Marcos - Palizada

CLAVE: 00490

RUTA: MEX-186

AÑO: 2022

LUGAR	ESTACION				CLASIFICACION VEHICULAR EN PORCIENTO													COORDENADAS		
	KM	TE	SC	TDPA	M	A	B	C2	C3	T3S2	T3S3	T3S2R4	OTROS	A	B	C	K'	D	LATITUD	LONGITUD
T. C. Villahermosa - Francisco Escárcega	0.00	3	0	980	11.3	75.1	1.4	8.0	2.5	1.4	0.3	0.0	0.0	86.4	1.4	12.2	0.131	0.502	17.942919	-91.735728
Lim. Edos. Term. Tab. Ppia. Camp.	1.50	0	0																	
T. Izq. Jonuta	46.20	1	0	661	6.5	78.5	1.8	10.1	1.7	1.1	0.3	0.0	0.0	85.0	1.8	13.2	0.109	0.504	18.123779	-92.103119
T. Izq. Jonuta	46.20	3	0	834	11.4	79.7	0.5	7.1	1.0	0.3	0.0	0.0	0.0	91.1	0.5	8.4	0.100	0.500	18.131341	-92.113483
Palizada	68.00	0	0																	

15 CARR: Villahermosa - Cd. del Carmen

CLAVE: 00064

RUTA: MEX-180

AÑO: 2022

LUGAR	ESTACION				CLASIFICACION VEHICULAR EN PORCIENTO													COORDENADAS		
	KM	TE	SC	TDPA	M	A	B	C2	C3	T3S2	T3S3	T3S2R4	OTROS	A	B	C	K'	D	LATITUD	LONGITUD
Villahermosa	0.00	0	0																	
T. Izq. Cd. Industrial	4.30	3	1	33143	6.8	86.5	1.0	1.6	0.8	1.7	0.4	1.0	0.2	93.3	1.0	5.7	0.077	0.502	18.037229	-92.901482
T. Izq. Cd. Industrial	4.30	3	2	32840	6.6	86.6	1.1	1.6	0.8	1.8	0.4	0.9	0.2	93.2	1.1	5.7	0.108	0.502	18.037254	-92.901612
X. C. Libramiento de Villahermosa	8.10	3	1	22429	5.3	87.5	1.2	1.6	0.9	1.8	0.5	1.0	0.2	92.8	1.2	6.0	0.088	0.503	18.062956	-92.882168
X. C. Libramiento de Villahermosa	8.10	3	2	22125	5.1	88.0	1.4	1.5	0.7	1.8	0.5	0.8	0.2	93.1	1.4	5.5	0.117	0.503	18.063038	-92.882198
Macultepec	18.60	1	1	15412	8.0	82.1	1.3	2.3	1.2	3.3	0.6	1.0	0.2	90.1	1.3	8.6	0.079	0.536	18.140121	-92.865030
Macultepec	18.60	1	2	13325	7.6	81.8	1.7	2.2	1.2	3.7	0.5	1.1	0.2	89.4	1.7	8.9	0.075	0.536	18.140062	-92.865138
Macultepec	18.60	3	1	6507	3.5	74.6	5.3	5.7	1.2	5.7	1.4	2.3	0.3	78.1	5.3	16.6	0.075	0.502	18.166585	-92.858643
Macultepec	18.60	3	2	6460	3.2	75.6	4.9	6.2	1.2	5.2	1.4	2.0	0.3	78.8	4.9	16.3	0.085	0.502	18.166612	-92.858724
El Espino	33.20	1	0	9799	1.2	73.0	3.7	6.0	2.1	8.3	1.8	3.2	0.7	74.2	3.7	22.1	0.076	0.526	18.206545	-92.822703
El Espino	33.20	3	0	10119	3.2	73.0	3.9	5.1	1.7	7.7	1.5	3.2	0.7	76.2	3.9	19.9	0.074	0.503	18.256789	-92.831709
T. Izq. Simon Sarlat	45.00	3	0	9863	3.8	74.4	3.7	3.8	1.6	7.9	1.4	2.7	0.7	78.2	3.7	18.1	0.071	0.510	18.349710	-92.789801
T. Izq. El Bellote	49.67	3	0	9175	5.0	70.3	4.1	6.0	1.5	7.9	1.6	2.9	0.7	75.3	4.1	20.6	0.081	0.513	18.394133	-92.798048
T. Izq. Constanca y Venecia	56.10	3	0	10082	6.5	69.9	4.0	4.7	1.6	8.0	1.7	2.9	0.7	76.4	4.0	19.6	0.077	0.507	18.443909	-92.796034
Frontera	74.59	1	0	11380	8.3	72.4	2.5	2.7	2.7	7.0	1.5	2.7	0.2	80.7	2.5	16.8	0.082	0.501	18.512304	-92.648056
Frontera	74.59	3	0	7221	7.6	63.8	5.1	4.3	2.8	9.4	1.9	4.2	0.9	71.4	5.1	23.5	0.069	0.528	18.542381	-92.631673
T. Izq. Escolleras	78.00	3	0	5843	4.6	67.3	6.0	4.0	1.8	9.7	2.1	4.2	0.3	71.9	6.0	22.1	0.080	0.548	18.562467	-92.601291
Puente San Pedro	96.50	3	0	5619	3.9	64.6	5.1	6.6	2.0	10.6	2.3	4.6	0.3	68.5	5.1	26.4	0.076	0.509	18.641296	-92.463857

CAMPECHE

15 CARR: Villahermosa - Cd. del Carmen

CLAVE: 00064

RUTA: MEX-180

AÑO: 2022

LUGAR	ESTACION				CLASIFICACION VEHICULAR EN PORCIENTO													COORDENADAS			
	KM	TE	SC	TDPA	M	A	B	C2	C3	T3S2	T3S3	T3S2R4	OTROS	A	B	C	K'	D	LATITUD	LONGITUD	
Lim. Edos. Term. Tab. Ppia. Camp.	99.75	0	0																		
Nuevo Campechito	100.00	3	0	5439	3.4	64.7	4.9	6.6	2.2	10.8	2.3	4.8	0.3	68.1	4.9	27.0	0.075	0.517	18.643095	-92.454325	
Nuevo Progreso	113.60	1	0	5637	4.1	63.8	5.1	6.3	2.1	11.2	2.5	4.6	0.3	67.9	5.1	27.0	0.080	0.506	18.627046	-92.330233	
Nuevo Progreso (2do Acceso)	119.00	1	0	5961	4.1	62.6	4.2	6.4	2.9	12.0	2.5	5.0	0.3	66.7	4.2	29.1	0.073	0.507	18.616623	-92.287911	
T. Der. San Antonio Cárdenas (1er Acceso)	121.80	1	0	7237	8.8	61.3	6.3	4.2	2.2	10.6	1.8	3.9	0.9	70.1	6.3	23.6	0.078	0.541	18.618799	-92.248086	
T. Der. San Antonio Cárdenas (2do Acceso)	125.20	1	0	5616	4.1	63.6	6.7	4.8	1.9	12.3	2.2	4.1	0.3	67.7	6.7	25.6	0.078	0.505	18.622234	-92.226972	
T. Der. San Antonio Cárdenas (2do Acceso)	125.20	3	0	6446	7.1	63.5	5.8	3.9	2.3	11.2	1.9	3.9	0.4	70.6	5.8	23.6	0.079	0.524	18.617614	-92.208637	
Puente Zacatal	162.41	1	0	6652	4.5	65.3	5.8	4.5	1.8	11.4	2.0	4.3	0.4	69.8	5.8	24.4	0.070	0.503	18.615184	-91.869592	
Puente Zacatal	162.41	2	0	6425	1.8	67.0	3.8	4.7	3.6	11.2	1.8	5.4	0.7	68.8	3.8	27.4	0.077	0.500	18.641814	-92.460301	
Cd. del Carmen	167.50	0	0																		

16 CARR: Villahermosa - Francisco Escárcega

CLAVE: 00092

RUTA: MEX-186

AÑO: 2022

LUGAR	ESTACION				CLASIFICACION VEHICULAR EN PORCIENTO													COORDENADAS		
	KM	TE	SC	TDPA	M	A	B	C2	C3	T3S2	T3S3	T3S2R4	OTROS	A	B	C	K'	D	LATITUD	LONGITUD
Villahermosa	0.00	3	1	15260	3.5	83.0	0.9	6.0	1.0	3.0	1.0	1.4	0.2	86.5	0.9	12.6	0.079	0.513	18.000678	-92.887541
Villahermosa	0.00	3	2	16098	3.5	82.0	1.0	6.8	1.0	3.0	1.0	1.5	0.2	85.5	1.0	13.5	0.072	0.513	18.000777	-92.887383
T. Izq. Aeropuerto (Baja)	12.00	1	1	2122	19.1	68.0	2.0	3.6	3.4	1.2	0.6	1.6	0.5	87.1	2.0	10.9	0.071	0.533	17.984949	-92.829617
T. Izq. Aeropuerto (Alta)	12.00	1	1	14646	6.6	79.2	2.0	4.1	1.5	3.1	1.2	1.7	0.6	85.8	2.0	12.2	0.082	0.538	17.985017	-92.829565
T. Izq. Aeropuerto (Alta)	12.00	1	2	13631	6.7	79.0	2.1	4.1	1.5	3.1	1.2	1.7	0.6	85.7	2.1	12.2	0.077	0.538	17.985090	-92.829512
T. Izq. Aeropuerto (Baja)	12.00	1	2	2424	19.3	68.1	1.8	3.4	3.1	1.2	0.9	1.5	0.7	87.4	1.8	10.8	0.073	0.533	17.985167	-92.829449
Puente Grijalva	17.60	2	1	8107	3.5	79.0	3.0	3.2	1.9	4.3	1.8	2.9	0.4	82.5	3.0	14.5	0.079	0.500	17.947602	-92.785235
Puente Grijalva	17.60	2	2	8107	3.5	79.0	3.0	3.2	1.9	4.3	1.8	2.9	0.4	82.5	3.0	14.5	0.079	0.500	17.947602	-92.785235
X. C. Cacaos - La Granja	32.46	1	1	7347	3.9	72.3	3.7	8.9	1.8	4.3	2.1	2.4	0.6	76.2	3.7	20.1	0.078	0.505	17.832812	-92.719608
X. C. Cacaos - La Granja	32.46	1	2	7488	3.9	72.2	3.7	8.9	1.8	4.3	2.2	2.4	0.6	76.1	3.7	20.2	0.075	0.505	17.832855	-92.719515
X. C. Cacaos - La Granja	32.46	3	1	6235	3.3	76.3	2.9	4.0	2.0	5.4	2.3	3.1	0.7	79.6	2.9	17.5	0.077	0.510	17.817728	-92.711078
X. C. Cacaos - La Granja	32.46	3	2	5981	3.3	76.5	2.9	4.0	1.9	5.3	2.2	3.2	0.7	79.8	2.9	17.3	0.073	0.510	17.817768	-92.710992
X. C. Jalapa - Jonuta	40.00	3	1	6218	2.9	75.1	3.3	6.1	1.7	5.0	1.6	3.6	0.7	78.0	3.3	18.7	0.073	0.508	17.774452	-92.673086
X. C. Jalapa - Jonuta	40.00	3	2	6426	2.9	75.0	3.3	6.1	1.8	5.0	1.6	3.7	0.6	77.9	3.3	18.8	0.098	0.508	17.774530	-92.673035
T. Izq. Macuspana	46.20	1	1	6121	3.6	76.8	1.8	4.2	2.3	4.9	2.6	3.1	0.7	80.4	1.8	17.8	0.072	0.504	17.744418	-92.634511
T. Izq. Macuspana	46.20	1	2	6035	4.8	73.7	2.1	5.5	2.1	5.2	2.8	3.2	0.6	78.5	2.1	19.4	0.073	0.504	17.744477	-92.634450
T. Izq. Macuspana	46.20	3	1	6509	3.8	75.6	2.6	3.9	2.5	5.6	2.1	3.1	0.8	79.4	2.6	18.0	0.077	0.506	17.734555	-92.621908
T. Izq. Macuspana	46.20	3	2	6358	4.0	76.3	1.8	2.9	3.5	4.9	2.3	3.5	0.8	80.3	1.8	17.9	0.071	0.506	17.734630	-92.621831
X. C. Estación Macuspana - Vernet	54.30	1	0	10409	7.5	70.7	2.1	3.6	3.1	6.3	2.4	3.4	0.9	78.2	2.1	19.7	0.073	0.504	17.712919	-92.583882
T. Der. Chivalito (Est. Pino Suárez)	70.00	1	0	9543	8.5	66.8	3.5	4.3	2.6	6.8	2.0	4.7	0.8	75.3	3.5	21.2	0.084	0.523	17.669183	-92.442148

CAMPECHE

16 CARR: Villahermosa - Francisco Escárcega

CLAVE: 00092

RUTA: MEX-186

AÑO: 2022

LUGAR	ESTACION				CLASIFICACION VEHICULAR EN PORCIENTO														COORDENADAS	
	KM	TE	SC	TDPA	M	A	B	C2	C3	T3S2	T3S3	T3S2R4	OTROS	A	B	C	K'	D	LATITUD	LONGITUD
T. Der. Chivalito (Est. Pino Suárez)	70.00	3	1	3600	6.0	66.5	3.6	4.6	3.0	8.4	2.2	5.1	0.6	72.5	3.6	23.9	0.073	0.508	17.666177	-92.432440
T. Der. Chivalito (Est. Pino Suárez)	70.00	3	2	3482	5.9	66.8	3.6	4.7	3.0	8.3	2.2	4.9	0.6	72.7	3.6	23.7	0.088	0.508	17.666214	-92.432424
T. Der. Estación Zopo	71.00	1	0	7406	5.2	66.3	4.5	5.0	2.8	8.0	2.5	4.8	0.9	71.5	4.5	24.0	0.085	0.503	17.670128	-92.418606
T. Der. Estación Zopo	71.00	3	1	3660	5.9	65.1	5.0	5.7	2.7	8.2	2.3	4.5	0.6	71.0	5.0	24.0	0.077	0.500	17.678720	-92.405290
T. Der. Estación Zopo	71.00	3	2	3657	5.8	65.7	4.9	5.5	2.6	8.2	2.4	4.3	0.6	71.5	4.9	23.6	0.081	0.500	17.678750	-92.405304
Lim. Edos. Term. Tab. Ppia. Chis.	76.90	0	0																	
T. Izq. Bonanza	88.00	1	0	8028	6.9	65.2	2.9	6.7	2.7	7.0	2.9	5.0	0.7	72.1	2.9	25.0	0.074	0.511	17.698114	-92.268716
T. Izq. Jonuta	101.00	1	0	7388	1.7	70.8	2.8	7.6	2.5	6.5	2.9	4.2	1.0	72.5	2.8	24.7	0.090	0.550	17.697951	-92.137232
T. Izq. Jonuta	101.00	3	0	7879	4.9	66.9	2.6	7.9	2.9	6.7	2.7	4.7	0.7	71.8	2.6	25.6	0.071	0.517	17.697599	-92.123033
X. C. Catazajá - Palenque	114.00	1	0	8273	6.3	64.4	3.0	7.8	2.9	7.7	2.1	5.3	0.5	70.7	3.0	26.3	0.072	0.513	17.707067	-92.026256
X. C. Catazajá - Palenque	114.00	3	0	6850	4.4	65.1	3.2	6.9	3.1	8.5	2.7	5.2	0.9	69.5	3.2	27.3	0.074	0.517	17.714846	-92.002206
T. Der. Emiliano Zapata	134.70	1	0	6597	4.0	64.5	3.4	7.9	3.3	8.6	2.5	5.1	0.7	68.5	3.4	28.1	0.067	0.508	17.770577	-91.837494
T. Der. Emiliano Zapata	134.70	3	0	5602	4.8	66.0	3.6	5.7	4.7	6.8	2.2	5.3	0.9	70.8	3.6	25.6	0.068	0.503	17.784955	-91.822270
Lim. Edos. Term. Chis. Ppia. Tab.	140.70	0	0																	
Puente Usumacinta	145.20	2	0	4974	6.9	61.3	3.4	3.6	4.4	9.9	2.4	7.3	0.8	68.2	3.4	28.4	0.079	0.500	17.859905	-91.783654
T. Izq. Palizada	154.05	1	0	4426	9.8	56.8	5.4	4.0	3.4	9.8	2.8	7.3	0.7	66.6	5.4	28.0	0.074	0.525	17.937725	-91.737262
T. Izq. Palizada	154.05	3	0	3154	9.9	51.6	6.6	4.5	2.8	12.4	3.3	8.2	0.7	61.5	6.6	31.9	0.072	0.510	17.946189	-91.730009
Lim. Edos. Term. Tab. Ppia. Camp.	154.60	0	0																	
T. Der. Candelaria	233.40	1	0	3737	4.7	56.4	6.7	5.2	2.1	12.2	2.8	9.2	0.7	61.1	6.7	32.2	0.072	0.504	18.373264	-91.201738
T. Der. Felipe Ángeles	253.00	1	0	4210	3.4	62.7	5.7	4.8	1.9	11.6	2.6	6.7	0.6	66.1	5.7	28.2	0.071	0.515	18.503873	-91.106577
T. Izq. Sabancuy	274.10	1	0	4609	6.7	61.7	5.0	4.2	1.8	10.6	2.3	6.9	0.8	68.4	5.0	26.6	0.085	0.511	18.629628	-90.988320
Francisco Escárcega	297.04	1	0	8761	14.9	66.5	2.6	2.7	2.0	5.9	1.2	3.4	0.8	81.4	2.6	16.0	0.083	0.501	18.609994	-90.776022

17 CARR: Champotón - Campeche (Cuota)

CLAVE: 04014

RUTA: MEX-180D

AÑO: 2022

LUGAR	ESTACION				CLASIFICACION VEHICULAR EN PORCIENTO														COORDENADAS	
	KM	TE	SC	TDPA	M	A	B	C2	C3	T3S2	T3S3	T3S2R4	OTROS	A	B	C	K'	D	LATITUD	LONGITUD
T. C. Cd. del Carmen - Campeche	160.00	3	1	3484	4.8	65.9	4.1	5.5	1.5	10.7	2.2	4.4	0.9	70.7	4.1	25.2	0.084	0.501	19.511668	-90.700289
T. C. Cd. del Carmen - Campeche	160.00	3	2	3500	4.3	66.0	4.3	5.2	1.4	11.2	2.1	4.6	0.9	70.3	4.3	25.4	0.072	0.501	19.513080	-90.699348
Plaza de Cobro Seybaplaya	174.80	2	1	3652	1.0	66.2	2.2	4.2	4.1	12.3	1.8	7.3	0.9	67.2	2.2	30.6	0.088	0.500	19.636235	-90.671582
Plaza de Cobro Seybaplaya	174.80	2	2	3652	1.0	66.2	2.2	4.2	4.1	12.3	1.8	7.3	0.9	67.2	2.2	30.6	0.088	0.500	19.636235	-90.671582
Plaza de Cobro Seybaplaya	174.80	3	1	4610	7.7	62.3	3.5	4.3	2.8	10.8	1.8	6.3	0.5	70.0	3.5	26.5	0.079	0.517	19.641786	-90.667196
Plaza de Cobro Seybaplaya	174.80	3	2	4299	7.3	63.4	4.1	3.4	2.6	11.8	1.9	5.0	0.5	70.7	4.1	25.2	0.075	0.517	19.641935	-90.667176
T. Der. Periferico Pablo García y Montilla (Libramiento De Campeche)	199.80	1	1	4212	7.1	64.7	4.3	4.7	2.1	9.7	2.0	4.8	0.6	71.8	4.3	23.9	0.098	0.535	19.787569	-90.538452
T. Der. Periferico Pablo García y Montilla (Libramiento De Campeche)	199.80	1	2	3662	8.7	63.4	3.9	5.8	2.0	8.4	2.0	5.2	0.6	72.1	3.9	24.0	0.088	0.535	19.787563	-90.538583

CAMPECHE

18 CARR: Hopelchén - Dzibalchén

CLAVE: 04572

RUTA: CAM-261

AÑO: 2022

LUGAR	ESTACION				CLASIFICACION VEHICULAR EN PORCIENTO														COORDENADAS	
	KM	TE	SC	TDPA	M	A	B	C2	C3	T3S2	T3S3	T3S2R4	OTROS	A	B	C	K'	D	LATITUD	LONGITUD
Hopelchén	0.00	3	0	1466	8.8	73.8	0.5	14.0	0.5	0.9	0.5	0.8	0.2	82.6	0.5	16.9	0.092	0.511	19.729724	-89.835300
Dzibalchén	41.00	0	0																	

19 CARR: Libramiento de Becal

CLAVE: 04010

RUTA: CAM

AÑO: 2022

LUGAR	ESTACION				CLASIFICACION VEHICULAR EN PORCIENTO														COORDENADAS	
	KM	TE	SC	TDPA	M	A	B	C2	C3	T3S2	T3S3	T3S2R4	OTROS	A	B	C	K'	D	LATITUD	LONGITUD
T. C. Dzitbalché - Ent. San Bernardo (1° Acceso)	0.00	0	0																	
T. C. Campeche - Mérida (2° Acceso)	2.30	1	0	1833	23.1	71.1	1.4	1.6	1.8	0.6	0.4	0.0	0.0	94.2	1.4	4.4	0.085	0.505	20.441293	-90.034430

20 CARR: Libramiento de Pomuch

CLAVE: 04579

RUTA: CAM

AÑO: 2022

LUGAR	ESTACION				CLASIFICACION VEHICULAR EN PORCIENTO														COORDENADAS	
	KM	TE	SC	TDPA	M	A	B	C2	C3	T3S2	T3S3	T3S2R4	OTROS	A	B	C	K'	D	LATITUD	LONGITUD
T. C. Campeche - Mérida (1° Acceso)	0.00	3	1	4331	3.6	72.9	3.7	2.6	3.3	7.3	1.5	4.2	0.9	76.5	3.7	19.8	0.091	0.505	20.122196	-90.177479
T. C. Campeche - Mérida (1° Acceso)	0.00	3	2	4253	3.6	72.4	3.5	2.7	3.5	7.6	1.6	4.4	0.7	76.0	3.5	20.5	0.086	0.505	20.122311	-90.177518
T. C. Campeche - Mérida (2° Acceso)	4.10	0	0																	

21 CARR: T. C. (Francisco Escárcega - Champotón) - Yohaltún

CLAVE: 04581

RUTA: CAM

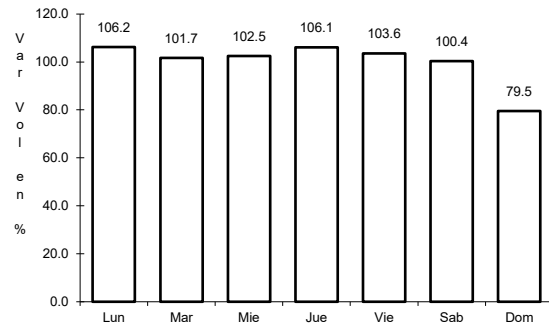
AÑO: 2022

LUGAR	ESTACION				CLASIFICACION VEHICULAR EN PORCIENTO														COORDENADAS	
	KM	TE	SC	TDPA	M	A	B	C2	C3	T3S2	T3S3	T3S2R4	OTROS	A	B	C	K'	D	LATITUD	LONGITUD
T. C. Francisco Escárcega - Champotón	0.00	3	0	1624	20.5	73.4	0.9	2.1	1.7	0.5	0.5	0.3	0.1	93.9	0.9	5.2	0.104	0.507	19.291265	-90.710650
Felipe Carrillo Puerto	36.50	1	0	802	28.6	60.5	1.1	4.0	3.9	0.5	0.6	0.5	0.3	89.1	1.1	9.8	0.087	0.502	19.104231	-90.516087
Felipe Carrillo Puerto	36.50	3	0	963	24.1	70.0	0.7	1.3	2.4	0.6	0.3	0.5	0.1	94.1	0.7	5.2	0.123	0.504	19.092118	-90.517978
Yohaltún	70.60	0	0																	

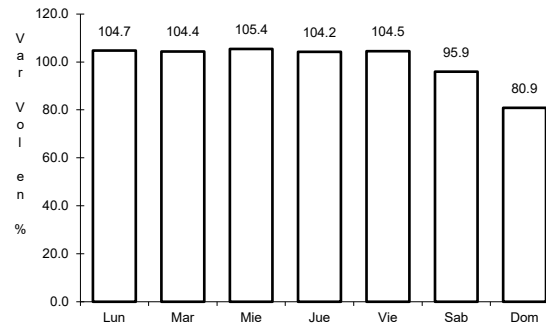
1 CARR: Campeche - Mérida

CLAVE: 00066

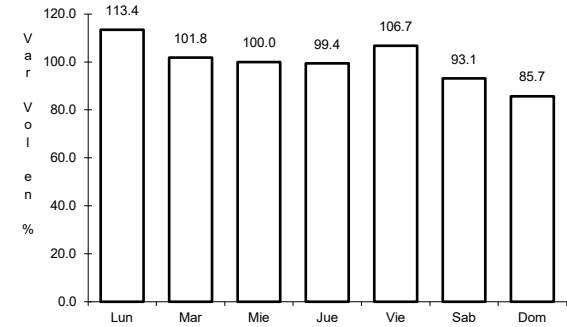
RUTA: MEX-180



Km: 0.00 Tipo: 3 Sent: 1



Km: 0.00 Tipo: 3 Sent: 2

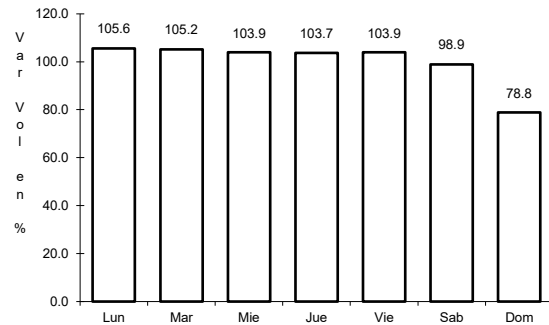


Km: 171.21 Tipo: 1 Sent: 1

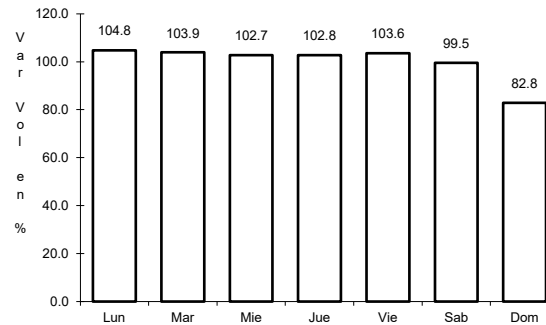
2 CARR: Campeche - Tixmucuy

CLAVE: 04575

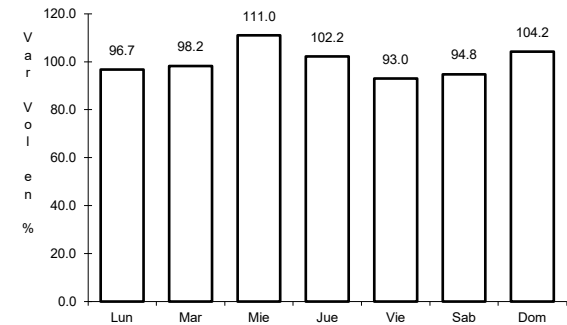
RUTA: MEX-180



Km: 0.00 Tipo: 3 Sent: 1



Km: 0.00 Tipo: 3 Sent: 2

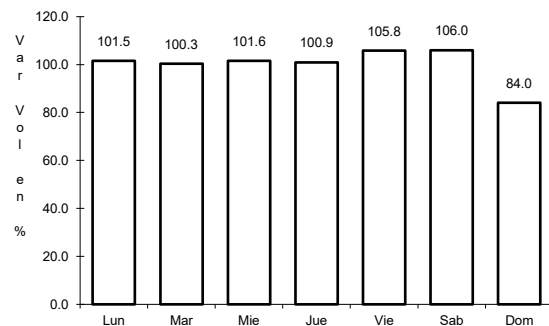


Km: 42.00 Tipo: 1 Sent: 0

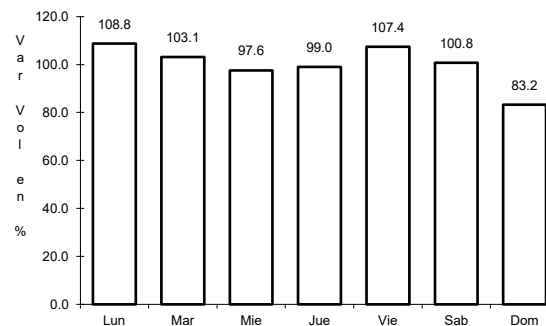
3 CARR: Campeche - Umán

CLAVE: 00164

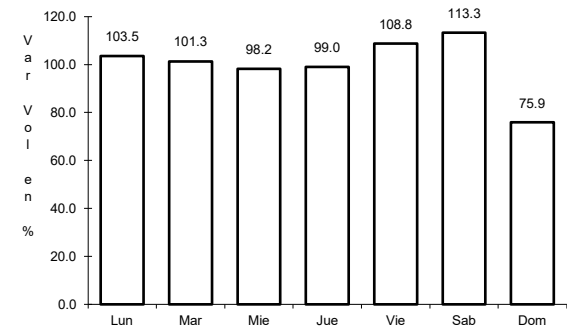
RUTA: MEX-261



Km: 7.00 Tipo: 1 Sent: 0



Km: 117.88 Tipo: 3 Sent: 0

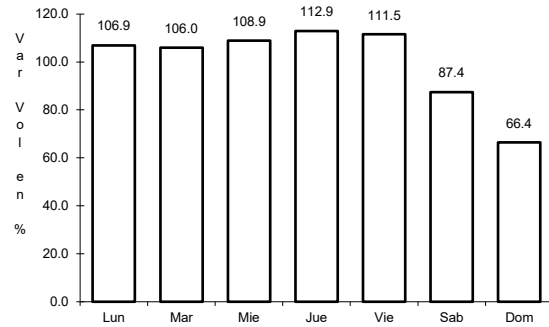


Km: 230.83 Tipo: 1 Sent: 0

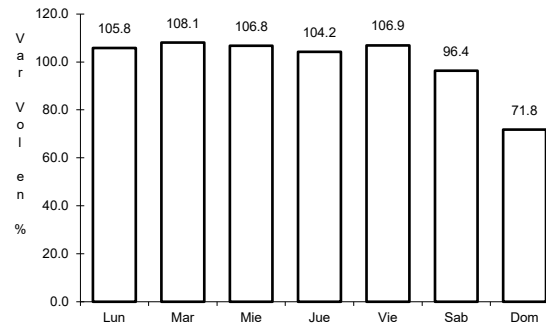
4 CARR: Cd. del Carmen - Campeche

CLAVE: 04065

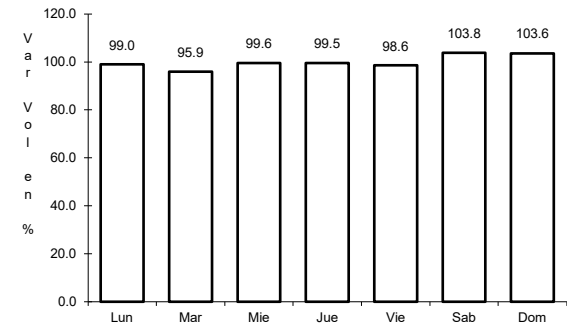
RUTA: MEX-180



Km: 0.00 Tipo: 3 Sent: 1



Km: 0.00 Tipo: 3 Sent: 2

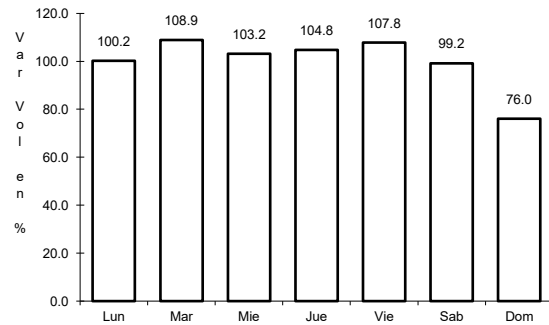


Km: 141.80 Tipo: 1 Sent: 0

5 CARR: Chencoyi - Tenabo

CLAVE: 04576

RUTA: MEX-180

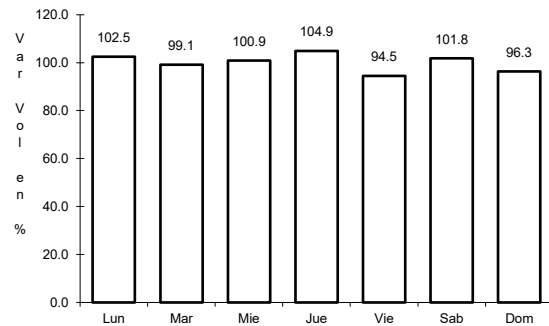


Km: 28.00 Tipo: 1 Sent: 0

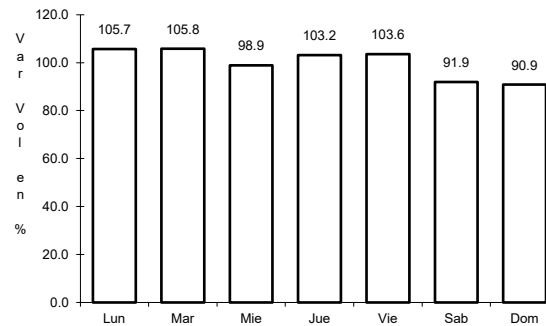
6 CARR: Dzitbalché - Ent. San Bernardo

CLAVE: 00162

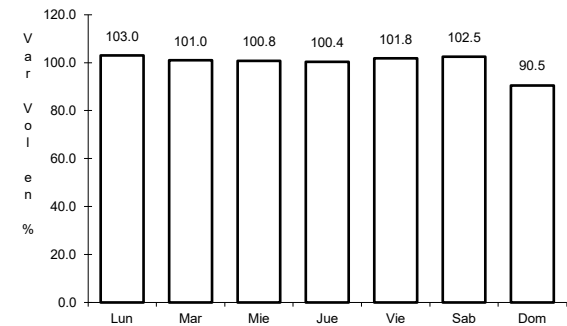
RUTA: MEX-180



Km: 12.33 Tipo: 1 Sent: 0



Km: 21.08 Tipo: 1 Sent: 0

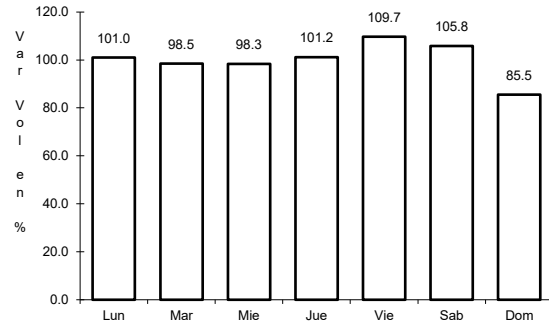


Km: 40.36 Tipo: 3 Sent: 0

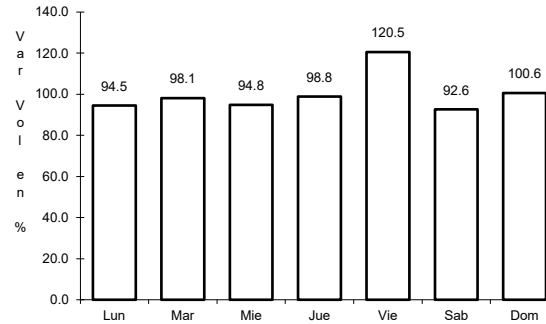
7 CARR: Francisco Escárcega - Champotón

CLAVE: 04103

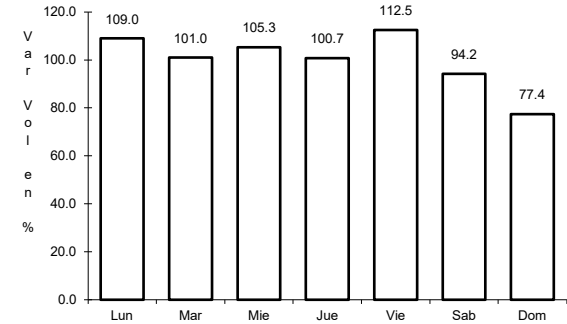
ruta: MEX-201



Km: 0.00 Tipo: 3 Sent: 0



Km: 51.40 Tipo: 1 Sent: 0

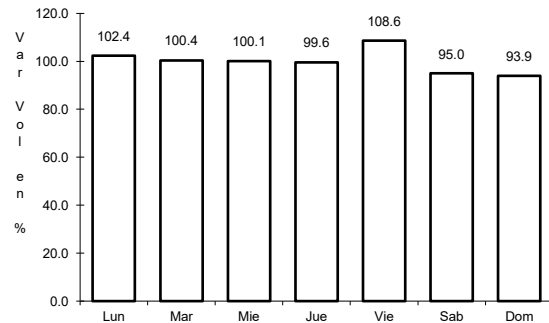


Km: 81.40 Tipo: 1 Sent: 0

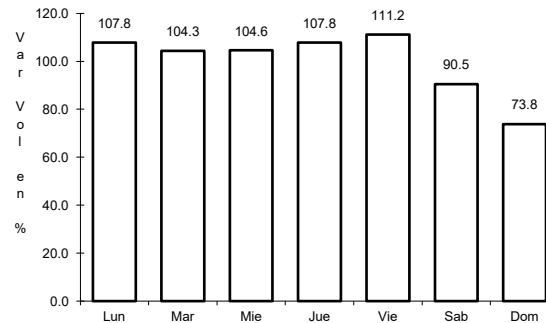
8 CARR: Francisco Escárcega - Chetumal

CLAVE: 00093

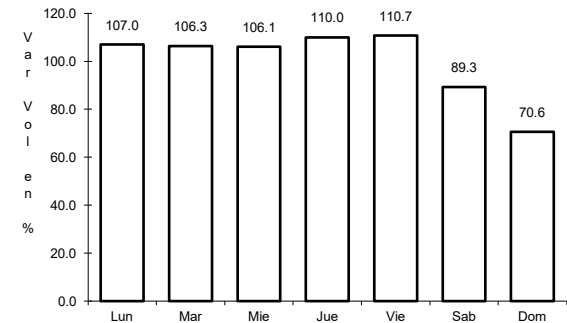
ruta: MEX-186



Km: 0.00 Tipo: 3 Sent: 0



Km: 277.36 Tipo: 1 Sent: 1

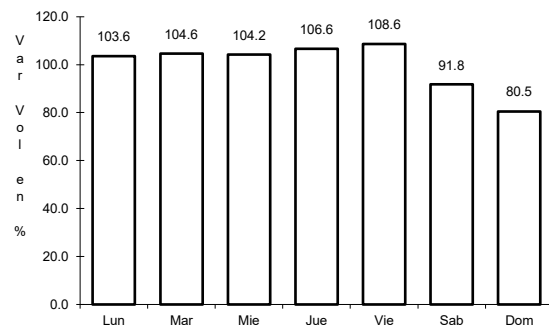


Km: 277.36 Tipo: 1 Sent: 2

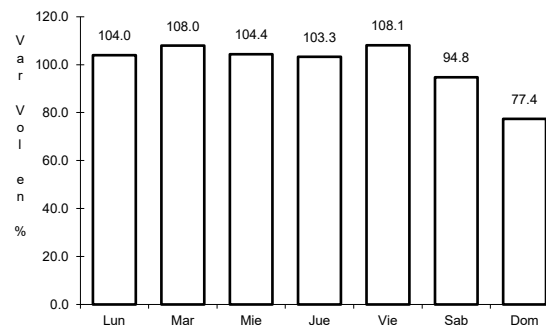
9 CARR: Hantunchén - San Antonio Cayal

CLAVE: 04009

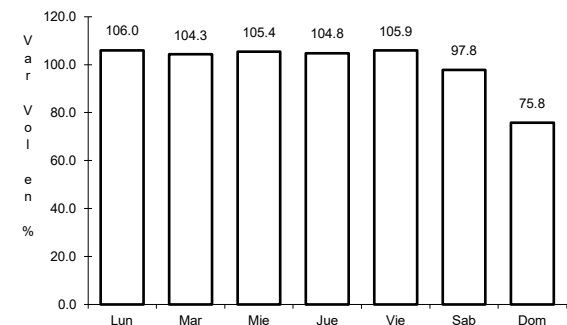
ruta: MEX-180



Km: 0.00 Tipo: 3 Sent: 0



Km: 47.10 Tipo: 1 Sent: 0

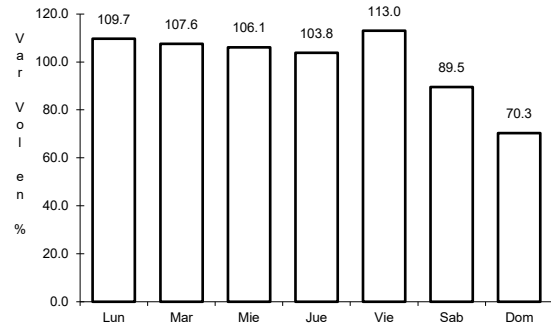


Km: 79.00 Tipo: 1 Sent: 0

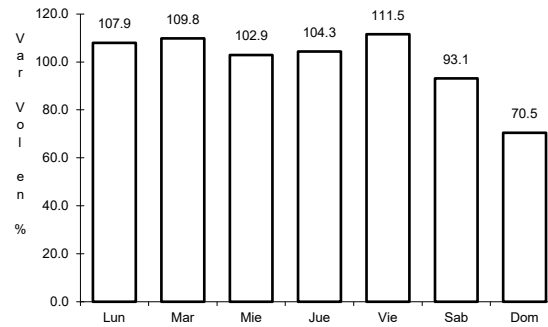
10 CARR: Periférico Pablo García y Montilla (Libramiento de Campeche)

CLAVE: 04573

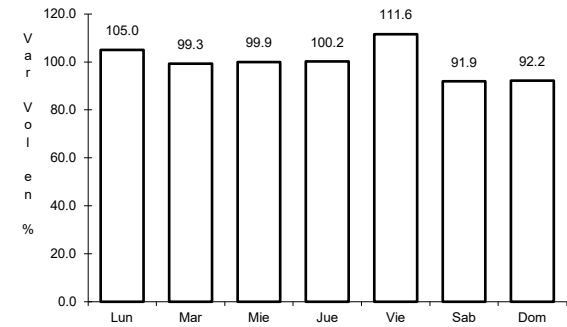
ruta: MEX-202



Km: 0.00 Tipo: 3 Sent: 1



Km: 0.00 Tipo: 3 Sent: 2

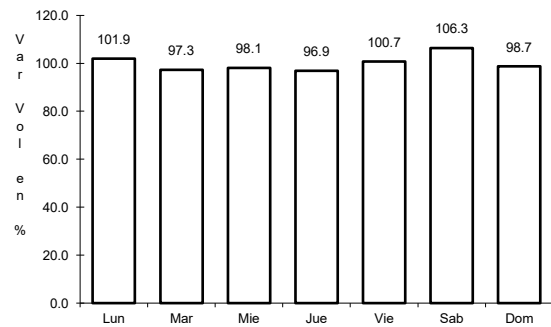


Km: 26.00 Tipo: 1 Sent: 1

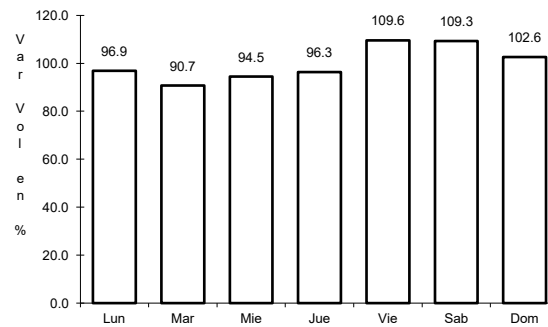
11 CARR: Presidente Díaz Ordaz - Sabancuy

CLAVE: 04570

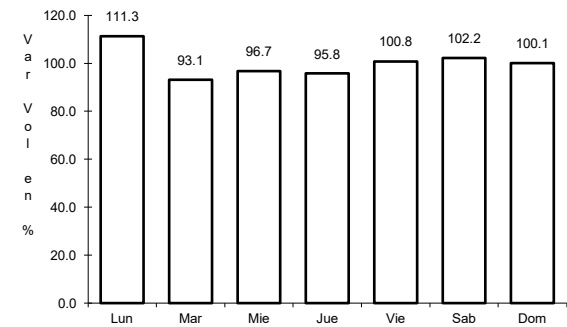
ruta: MEX-186



Km: 0.00 Tipo: 3 Sent: 0



Km: 18.00 Tipo: 1 Sent: 0

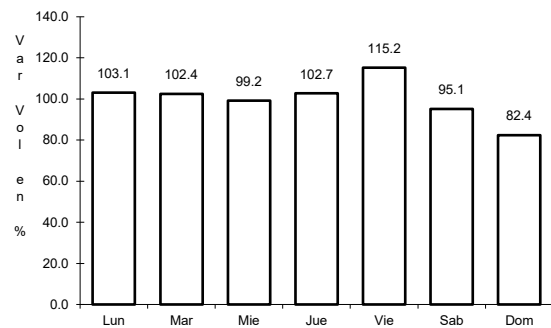


Km: 57.00 Tipo: 1 Sent: 0

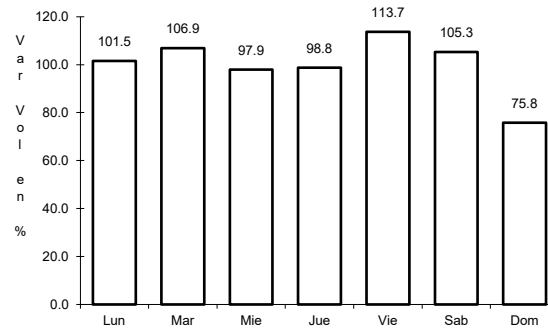
12 CARR: Ramal a Nuevo Coahuila

CLAVE: 04015

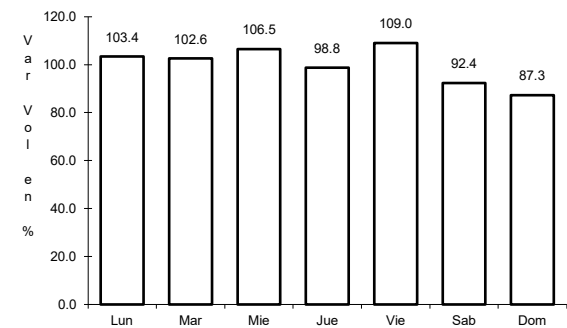
ruta: MEX-186



Km: 0.00 Tipo: 3 Sent: 0



Km: 44.50 Tipo: 3 Sent: 0

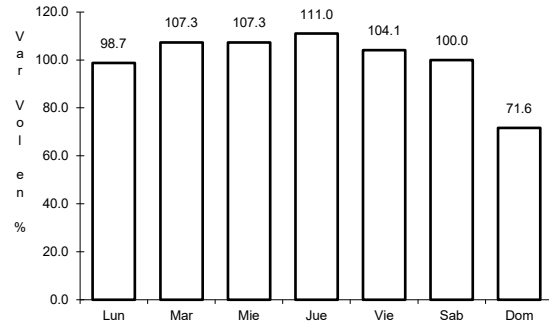


Km: 70.00 Tipo: 1 Sent: 0

13 CARR: Ramal a Ruíz Cortines

CLAVE: 04101

ruta: MEX-180

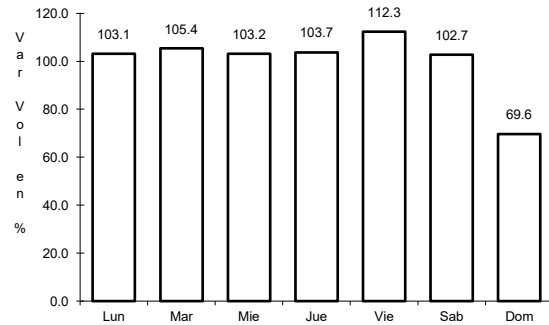


Km: 1.00 Tipo: 3 Sent: 0

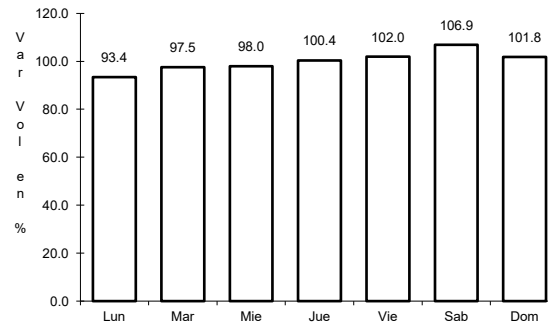
14 CARR: San Marcos - Palizada

CLAVE: 00490

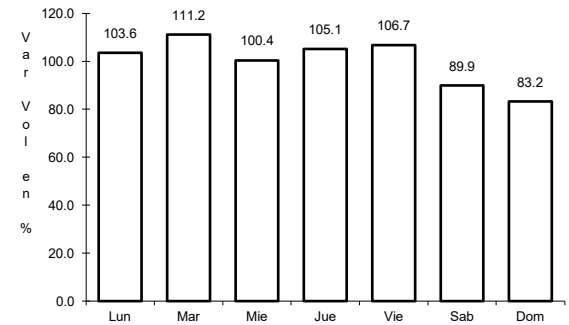
ruta: MEX-186



Km: 0.00 Tipo: 3 Sent: 0



Km: 46.20 Tipo: 1 Sent: 0

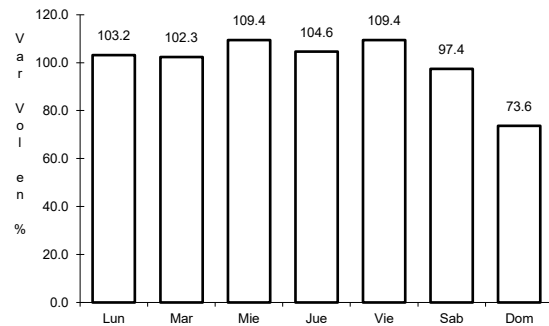


Km: 46.20 Tipo: 3 Sent: 0

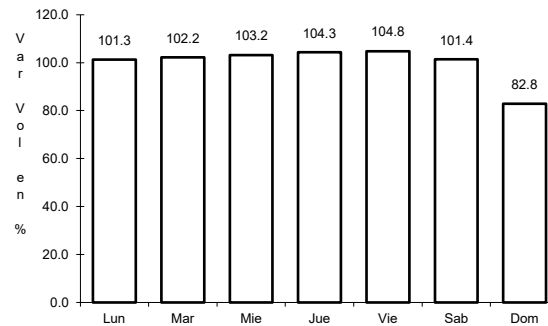
15 CARR: Villahermosa - Cd. del Carmen

CLAVE: 00064

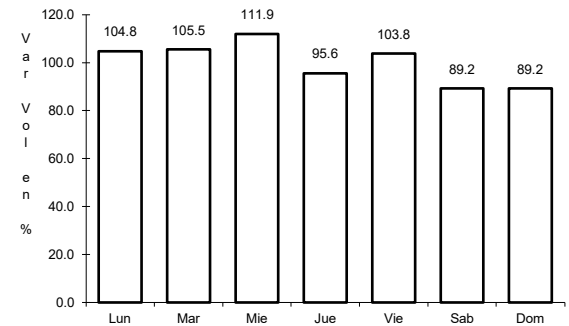
ruta: MEX-180



Km: 4.30 Tipo: 3 Sent: 1



Km: 4.30 Tipo: 3 Sent: 2

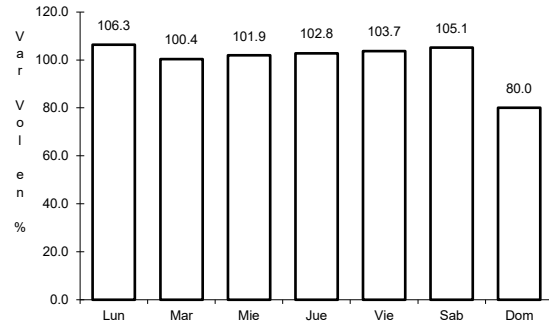


Km: 162.41 Tipo: 1 Sent: 0

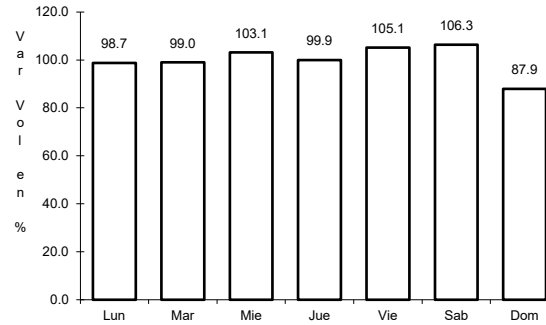
16 CARR: Villahermosa - Francisco Escárcega

CLAVE: 00092

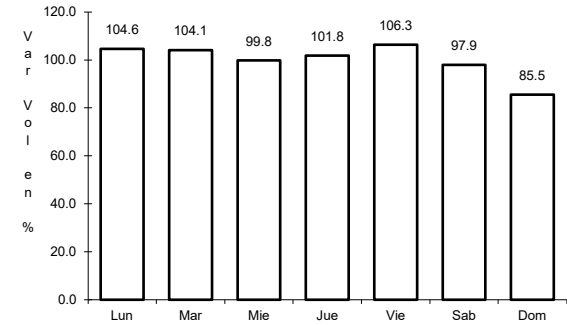
ruta: MEX-186



Km: 0.00 Tipo: 3 Sent: 1



Km: 0.00 Tipo: 3 Sent: 2

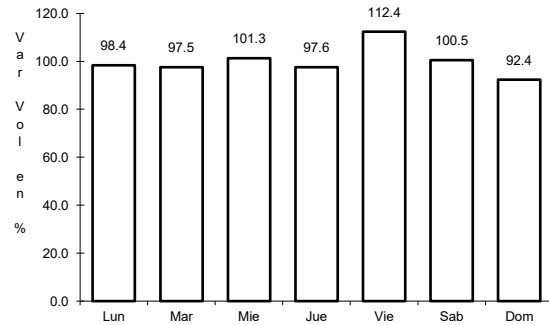


Km: 297.04 Tipo: 1 Sent: 0

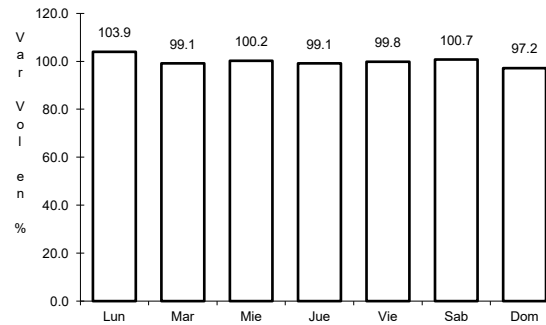
17 CARR: Champotón - Campeche (Cuota)

CLAVE: 04014

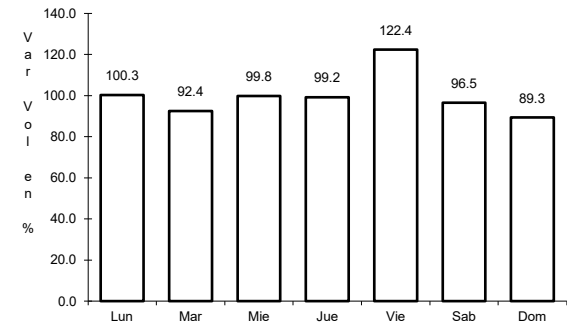
ruta: MEX-180D



Km: 160.00 Tipo: 3 Sent: 1



Km: 160.00 Tipo: 3 Sent: 2

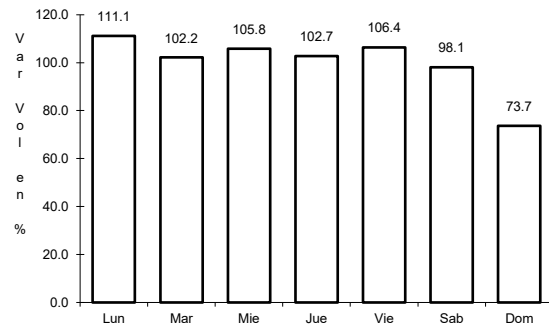


Km: 199.80 Tipo: 1 Sent: 1

18 CARR: Hopolchén - Dzibalchén

CLAVE: 04572

ruta: CAM-261

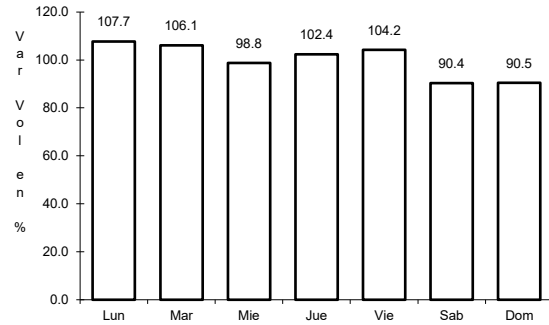


Km: 0.00 Tipo: 3 Sent: 0

19 CARR: Libramiento de Becal

CLAVE: 04010

ruta: CAM



Km: 2.30

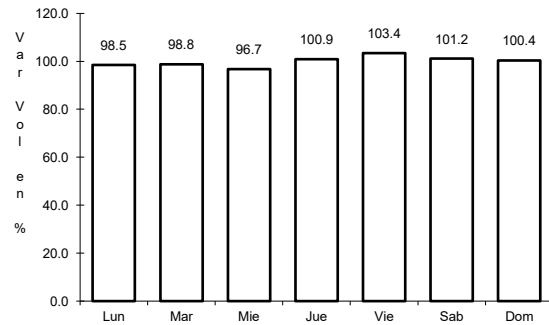
Tipo: 1

Sent: 0

20 CARR: Libramiento de Pomuch

CLAVE: 04579

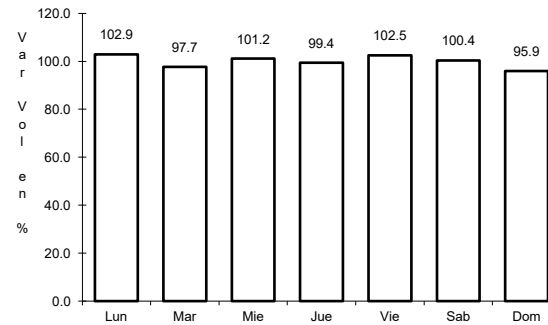
ruta: CAM



Km: 0.00

Tipo: 3

Sent: 1



Km: 0.00

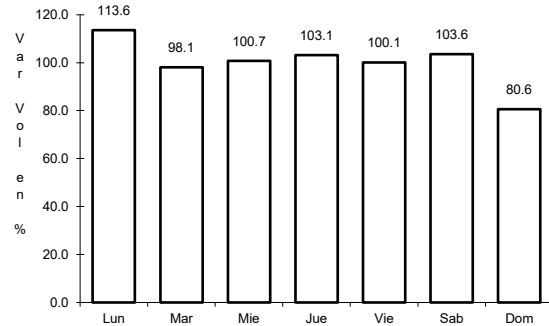
Tipo: 3

Sent: 2

21 CARR: T. C. (Francisco Escárcega - Champotón) - Yohaltún

CLAVE: 04581

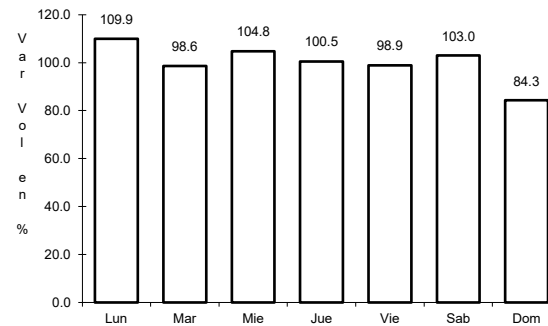
ruta: CAM



Km: 0.00

Tipo: 3

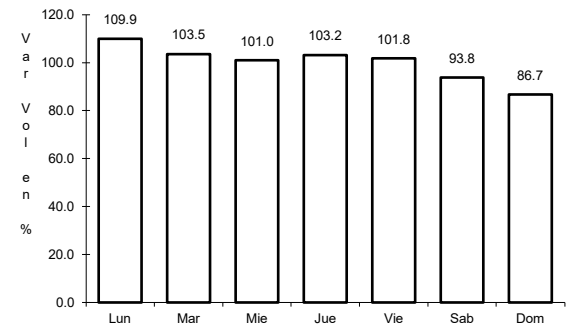
Sent: 0



Km: 36.50

Tipo: 1

Sent: 0



Km: 36.50

Tipo: 3

Sent: 0

