

COAHUILA

---RED FEDERAL LIBRE---

1 Cd. Acuña - Presa de La Amistad	MEX-002
2 Durango - Torreón	MEX-040
3 Ent. Bella Unión - Saltillo	MEX-057
4 Ent. La Cuchilla - San Pedro de las Colonias	MEX
5 Ent. Morelos - Saltillo	MEX-054
6 Gregorio García - Francisco I. Madero	MEX-040
7 Libramiento Allende - Nava	MEX-057
8 Monclova - Piedras Negras	MEX-057
9 Monclova - San Pedro de Las Colonias	MEX-030
10 Monterrey - Castaños	MEX-053
11 Morelos - Cd. Acuña	MEX-029
12 Nueva Rosita - Boquillas del Carmen	MEX-053
13 Ojo Caliente - Santa Cruz	MEX-057
14 Piedras Negras - Cd. Acuña	MEX-002
15 Piedras Negras - Nuevo Laredo	MEX-002
16 Puerto México - La Encantada	MEX-057
17 Saltillo - Monclova	MEX-057
18 Saltillo - Monterrey	MEX-040
19 Saltillo - Torreón	MEX-040
20 Torreón - San Pedro de las Colonias	MEX-030

---RED FEDERAL DE CUOTA---

21 Libramiento Norponiente de Saltillo (Cuota)	MEX-S30
22 Libramiento Norte de Torreón (Cuota)	MEX-040D
23 Libramiento Oriente de Saltillo (Cuota)	MEX-057D
24 Nueva Rosita - Ent. Allende (Cuota)	MEX-057D
25 Puerto México - La Carbonera (Cuota)	MEX-057D
26 Saltillo - Monterrey (Cuota)	MEX-040D
27 Saltillo - Torreón (Cuota) T1	MEX-040D
28 Saltillo - Torreón (Cuota) T2	MEX-040D

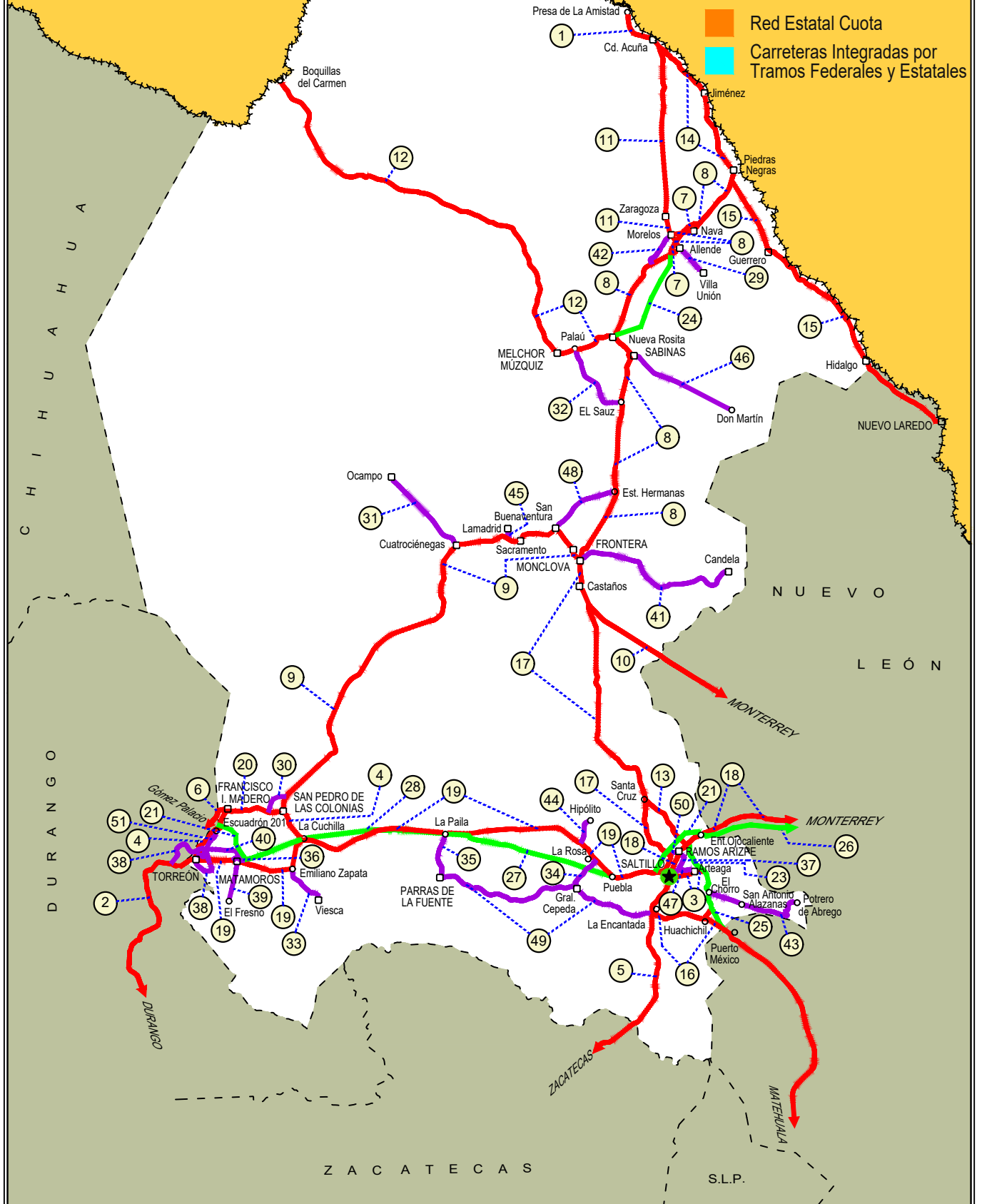
---RED ESTATAL LIBRE---

29 Allende - Villa Unión	COA-015
30 Corredor Libramiento de San Pedro	COA-087
31 Cuatro Ciénegas - Ocampo	COA-048
32 El Sauz - Palau	COA-022
33 Emiliano Zapata - Viesca	COA-082
34 Ent. La Rosa - General Cepeda	COA-034
35 Ent. Paila - Parras de La Fuente	COA-102
36 Libramiento de Matamoros	COA
37 Libramiento de Saltillo J.L.P.	COA
38 Libramiento de Torreón	COA
39 Matamoros - El Fresno	COA-078
40 Matamoros - La Unión	COA-070
41 Monclova - Estación Candela	COA-030-NL
42 Morelos - Ent. Las Corrientes	COA-010
43 Puerto de Flores - El Hondable	COA-112
44 Ramal a Hipólito	COA-114
45 Ramal a Lamadrid	COA-042
46 Sabinas - Don Martín	COA-025
47 Saltillo - Arteaga	COA-106
48 San Buenaventura - Estación Hermanas	COA-034
49 T. C. (Ent. Morelos - Saltillo) - Parras de La Fuente	COA-105
50 T. C. (Saltillo - Monclova) - Ramos Arizpe	COA
51 Torreón - Escuadrón 201	COA-011

05 COAHUILA

ESTADOS UNIDOS DE AMÉRICA

- ① --- Número Índice
- Red Federal Libre
- Red Federal Cuota
- Red Federal Integrada por Tramos Libres y de Cuota
- Red Estatal Libre
- Red Estatal Cuota
- Carreteras Integradas por Tramos Federales y Estatales



COAHUILA

1 CARR: Cd. Acuña - Presa de La Amistad

CLAVE: 05085

RUTA: MEX-002

AÑO: 2022

LUGAR	ESTACION				CLASIFICACION VEHICULAR EN PORCIENTO										COORDENADAS					
	KM	TE	SC	TDPA	M	A	B	C2	C3	T3S2	T3S3	T3S2R4	OTROS	A	B	C	K'	D	LATITUD	LONGITUD
Cd. Acuña	0.00	3	1	12066	1.5	87.6	2.4	6.4	0.5	0.8	0.1	0.4	0.3	89.1	2.4	8.5	0.082	0.529	29.333780	-100.963959
Cd. Acuña	0.00	3	2	13562	1.5	87.5	2.4	6.4	0.5	0.8	0.1	0.5	0.3	89.0	2.4	8.6	0.092	0.529	29.333688	-100.963980
T. Izq. Santa Eulalia	10.60	1	1	5083	2.3	79.6	5.1	9.3	1.3	1.1	1.2	0.1	0.0	81.9	5.1	13.0	0.143	0.506	29.342720	-101.001760
T. Izq. Santa Eulalia	10.60	1	2	4971	2.3	79.8	5.0	9.3	1.2	1.2	1.1	0.1	0.0	82.1	5.0	12.9	0.105	0.506	29.342622	-101.001788
Presa de La Amistad	23.00	1	0	526	2.7	72.8	5.1	15.2	3.9	0.1	0.2	0.0	0.0	75.5	5.1	19.4	0.255	0.505	29.442908	-101.074292

2 CARR: Durango - Torreón

CLAVE: 10085

RUTA: MEX-040

AÑO: 2022

LUGAR	ESTACION				CLASIFICACION VEHICULAR EN PORCIENTO										COORDENADAS					
	KM	TE	SC	TDPA	M	A	B	C2	C3	T3S2	T3S3	T3S2R4	OTROS	A	B	C	K'	D	LATITUD	LONGITUD
Durango	0.00	3	1	9931	5.4	86.4	2.1	3.3	0.9	1.3	0.4	0.2	0.0	91.8	2.1	6.1	0.076	0.517	24.077224	-104.590510
Durango	0.00	3	2	10650	4.5	86.9	2.4	3.6	0.8	1.1	0.3	0.3	0.1	91.4	2.4	6.2	0.073	0.517	24.077340	-104.590614
T. Der. Cd. de Los Niños	7.70	3	1	8128	4.2	84.6	2.2	6.0	1.9	0.3	0.4	0.3	0.1	88.8	2.2	9.0	0.072	0.502	24.082122	-104.586305
T. Der. Cd. de Los Niños	7.70	3	2	8206	4.0	85.5	1.8	6.0	1.7	0.2	0.3	0.3	0.2	89.5	1.8	8.7	0.070	0.502	24.082202	-104.586458
X. Periférico de Durango	9.00	1	1	9073	3.6	85.3	1.7	5.9	2.1	0.8	0.3	0.2	0.1	88.9	1.7	9.4	0.072	0.505	24.088346	-104.580997
X. Periférico de Durango	9.00	1	2	9265	3.6	85.0	1.6	6.1	2.3	0.9	0.2	0.2	0.1	88.6	1.6	9.8	0.074	0.505	24.088472	-104.581081
T. Der. Aeropuerto	9.42	1	1	7851	4.0	84.7	1.9	4.4	1.5	2.1	0.6	0.5	0.3	88.7	1.9	9.4	0.089	0.511	24.093029	-104.576983
T. Der. Aeropuerto	9.42	1	2	7512	3.8	85.0	2.1	4.4	1.3	2.0	0.6	0.5	0.3	88.8	2.1	9.1	0.086	0.511	24.092601	-104.577544
T. Der. Aeropuerto	9.42	3	1	4250	14.0	72.2	1.1	2.7	4.4	1.7	0.7	2.5	0.7	86.2	1.1	12.7	0.075	0.518	24.099513	-104.575702
T. Der. Aeropuerto	9.42	3	2	3956	13.4	73.8	1.0	2.4	4.3	1.8	0.9	1.8	0.6	87.2	1.0	11.8	0.079	0.518	24.099566	-104.575811
La Calera	10.85	3	0	4965	3.2	81.3	2.9	5.8	1.2	3.3	1.7	0.5	0.1	84.5	2.9	12.6	0.088	0.501	24.111768	-104.571839
Abraham González	27.10	3	0	3859	2.0	78.4	2.8	5.3	1.4	5.7	3.4	0.7	0.3	80.4	2.8	16.8	0.082	0.503	24.205838	-104.516310
Francisco I. Madero	56.30	1	0	3973	4.7	74.9	3.8	6.6	2.2	4.0	2.2	1.3	0.3	79.6	3.8	16.6	0.077	0.532	24.391993	-104.331671
Francisco I. Madero	56.30	3	0	4216	2.7	75.8	3.2	5.2	2.0	6.2	3.4	1.2	0.3	78.5	3.2	18.3	0.081	0.518	24.405131	-104.304894
Guadalupe Victoria	77.50	1	0	5286	4.4	79.0	2.9	3.5	2.0	4.4	2.7	0.8	0.3	83.4	2.9	13.7	0.084	0.503	24.446796	-104.138826
Guadalupe Victoria	77.50	3	0	6285	3.5	81.4	2.2	3.0	1.6	4.3	3.0	0.8	0.2	84.9	2.2	12.9	0.082	0.505	24.465737	-104.081095
T. Der. Ignacio Allende	90.13	1	0	4336	2.0	79.8	2.3	3.0	2.3	5.7	4.1	0.7	0.1	81.8	2.3	15.9	0.069	0.509	24.494786	-104.028598
T. Der. Ignacio Allende	90.13	3	0	3007	1.9	70.2	3.8	4.5	3.0	9.7	5.5	1.3	0.1	72.1	3.8	24.1	0.085	0.510	24.505538	-104.012655
T. Izq. Peñón Blanco	120.90	1	0	2543	3.5	62.2	3.5	7.5	3.6	10.5	7.8	1.3	0.1	65.7	3.5	30.8	0.082	0.506	24.732796	-103.843524
T. Izq. Peñón Blanco	120.90	3	0	2276	6.2	57.4	6.4	8.5	2.4	8.9	6.2	3.3	0.7	63.6	6.4	30.0	0.092	0.534	24.744636	-103.836700
Cuencamé	144.30	1	0	2043	3.9	77.9	4.1	3.0	3.8	1.6	5.1	0.5	0.1	81.8	4.1	14.1	0.079	0.521	24.861005	-103.701753
Cuencamé	144.30	3	1	5321	3.9	49.8	5.2	11.4	3.7	15.7	4.5	5.0	0.8	53.7	5.2	41.1	0.095	0.504	24.878409	-103.698978
Cuencamé	144.30	3	2	5409	4.1	49.8	5.1	11.6	3.5	15.6	4.6	4.9	0.8	53.9	5.1	41.0	0.092	0.504	24.878409	-103.699057
T. C. Libramiento Exterior Cuencamé	148.70	1	0	2527	3.5	75.0	2.5	10.5	2.6	2.3	2.3	1.0	0.3	78.5	2.5	19.0	0.072	0.528	24.895565	-103.702135
X. C. Yerbanis - Gómez Palicio (Cuota)	157.80	1	0	7578	1.9	46.5	2.2	7.4	3.4	25.3	6.3	6.1	0.9	48.4	2.2	49.4	0.060	0.547	24.971273	-103.731772

COAHUILA

2 CARR: Durango - Torreón

CLAVE: 10085

RUTA: MEX-040

AÑO: 2022

LUGAR	ESTACION				CLASIFICACION VEHICULAR EN PORCIENTO										COORDENADAS					
	KM	TE	SC	TDPA	M	A	B	C2	C3	T3S2	T3S3	T3S2R4	OTROS	A	B	C	K'	D	LATITUD	LONGITUD
T. Izq. Nazas	171.61	1	0	4166	3.2	58.5	5.5	5.0	3.3	15.4	6.4	2.2	0.5	61.7	5.5	32.8	0.065	0.501	25.086470	-103.771101
T. Izq. Nazas	171.61	3	0	5705	3.2	64.5	4.1	5.4	3.4	10.2	4.3	4.1	0.8	67.7	4.1	28.2	0.072	0.518	25.091876	-103.769758
T. Der. Villa Juárez	194.40	3	0	7134	2.7	60.7	2.7	4.9	2.6	18.3	6.4	1.5	0.2	63.4	2.7	33.9	0.077	0.501	25.225639	-103.629049
León Guzmán	229.58	3	0	9383	7.3	70.5	2.4	5.4	2.3	7.1	2.9	1.6	0.5	77.8	2.4	19.8	0.076	0.518	25.508734	-103.650475
Cd. Lerdo	244.80	1	1	7412	3.0	78.3	2.6	4.9	2.3	4.6	2.2	1.7	0.4	81.3	2.6	16.1	0.093	0.508	25.511893	-103.541940
Cd. Lerdo	244.80	1	2	7651	3.3	79.1	2.6	4.7	2.0	4.2	1.9	1.8	0.4	82.4	2.6	15.0	0.073	0.508	25.512029	-103.541958
T. Izq. Gómez Palacio	248.90	3	1	24159	9.4	85.9	0.6	1.9	0.8	0.3	0.1	0.8	0.2	95.3	0.6	4.1	0.089	0.502	25.550559	-103.480686
T. Izq. Gómez Palacio	248.90	3	2	24356	9.3	85.4	0.5	2.1	1.1	0.4	0.1	0.8	0.3	94.7	0.5	4.8	0.091	0.502	25.550826	-103.480828
Lim. Edos. Term. Dgo. Ppia. Coah.	251.00	0	0																	
Torreón	255.80	1	1	23417	6.8	84.8	1.9	4.2	0.3	0.8	0.1	0.7	0.4	91.6	1.9	6.5	0.060	0.512	25.545417	-103.469441
Torreón	255.80	1	2	24592	6.2	85.9	1.0	4.6	0.3	0.8	0.1	0.7	0.4	92.1	1.0	6.9	0.066	0.512	25.545679	-103.468672

3 CARR: Ent. Bella Unión - Saltillo

CLAVE: 05003

RUTA: MEX-057

AÑO: 2022

LUGAR	ESTACION				CLASIFICACION VEHICULAR EN PORCIENTO										COORDENADAS					
	KM	TE	SC	TDPA	M	A	B	C2	C3	T3S2	T3S3	T3S2R4	OTROS	A	B	C	K'	D	LATITUD	LONGITUD
T. C. Ent. Puerto México - Ent. Ojo Caliente (Cuota)	0.00	0	0																	
T. Der. Arteaga	4.61	1	1	5718	1.6	86.9	1.5	4.1	1.3	3.0	0.6	0.5	0.5	88.5	1.5	10.0	0.109	0.521	25.444301	-100.835130
T. Der. Arteaga	4.61	1	2	6210	1.3	87.8	1.5	3.7	1.4	2.5	0.7	0.6	0.5	89.1	1.5	9.4	0.092	0.521	25.444138	-100.835197
Saltillo	17.00	1	1	31481	1.0	90.7	1.4	3.2	1.4	1.6	0.3	0.1	0.3	91.7	1.4	6.9	0.107	0.508	25.436593	-100.907311
Saltillo	17.00	1	2	32564	0.8	89.8	1.6	3.7	1.7	1.7	0.3	0.1	0.3	90.6	1.6	7.8	0.095	0.508	25.436376	-100.907993

4 CARR: Ent. La Cuchilla - San Pedro de las Colonias

CLAVE: 05021

RUTA: MEX

AÑO: 2022

LUGAR	ESTACION				CLASIFICACION VEHICULAR EN PORCIENTO										COORDENADAS					
	KM	TE	SC	TDPA	M	A	B	C2	C3	T3S2	T3S3	T3S2R4	OTROS	A	B	C	K'	D	LATITUD	LONGITUD
La Cuchilla	0.00	3	0	1223	7.4	77.9	4.7	4.2	0.7	2.9	0.8	1.4	0.0	85.3	4.7	10.0	0.078	0.505	25.626700	-102.882734
T. Der. Mayran	3.30	3	0	1458	7.8	71.0	6.5	6.7	1.5	3.7	1.5	1.1	0.2	78.8	6.5	14.7	0.094	0.507	25.652368	-102.910296
T. Izq. San Patricio	9.07	3	0	2145	11.0	68.6	3.6	6.1	3.1	3.2	2.6	1.7	0.1	79.6	3.6	16.8	0.070	0.508	25.679526	-102.935185
San Pedro de Las Colonias	18.70	1	1	2493	16.5	70.5	4.3	5.8	1.0	1.0	0.5	0.3	0.1	87.0	4.3	8.7	0.095	0.509	25.745744	-102.968850
San Pedro de Las Colonias	18.70	1	2	2409	16.0	70.9	4.6	5.4	1.0	1.0	0.7	0.3	0.1	86.9	4.6	8.5	0.100	0.509	25.745688	-102.968937

COAHUILA

5 CARR: Ent. Morelos - Saltillo

CLAVE: 00149

RUTA: MEX-054

AÑO: 2022

LUGAR	ESTACION				CLASIFICACION VEHICULAR EN PORCIENTO														COORDENADAS	
	KM	TE	SC	TDPA	M	A	B	C2	C3	T3S2	T3S3	T3S2R4	OTROS	A	B	C	K'	D	LATITUD	LONGITUD
T. C. Zacatecas - Durango	0.00	3	1	4949	1.9	73.6	3.8	8.6	2.4	5.5	1.9	1.8	0.5	75.5	3.8	20.7	0.073	0.526	22.869270	-102.619344
T. C. Zacatecas - Durango	0.00	3	2	4456	1.9	73.7	3.8	8.6	2.4	5.5	1.9	1.6	0.6	75.6	3.8	20.6	0.076	0.526	22.869326	-102.619430
T. Der. Sta. Mónica	11.00	1	1	4408	1.1	53.6	3.7	19.6	2.0	17.0	1.0	1.6	0.4	54.7	3.7	41.6	0.077	0.515	22.937465	-102.570161
T. Der. Sta. Mónica	11.00	1	2	4679	1.1	54.5	3.4	18.4	2.2	17.5	0.9	1.6	0.4	55.6	3.4	41.0	0.071	0.515	22.937175	-102.570469
T. Der. Sta. Mónica	11.00	3	1	3673	1.4	49.8	4.5	20.1	2.6	15.8	1.8	3.1	0.9	51.2	4.5	44.3	0.076	0.527	22.950381	-102.559173
T. Der. Sta. Mónica	11.00	3	2	4085	1.3	50.5	4.3	19.9	2.5	16.0	1.8	3.0	0.7	51.8	4.3	43.9	0.077	0.527	22.949558	-102.560138
T. Izq. Villa de Cos	53.90	1	1	3739	1.5	50.4	4.6	19.7	2.7	15.3	1.8	3.2	0.8	51.9	4.6	43.5	0.076	0.517	23.264517	-102.333584
T. Izq. Villa de Cos	53.90	1	2	4000	1.4	49.3	4.4	20.1	2.5	16.4	1.9	3.2	0.8	50.7	4.4	44.9	0.076	0.517	23.265080	-102.333291
T. Izq. Villa de Cos	53.90	3	1	3158	2.1	52.0	6.9	18.6	2.3	13.5	1.7	2.3	0.6	54.1	6.9	39.0	0.087	0.535	23.276064	-102.325245
T. Izq. Villa de Cos	53.90	3	2	3630	2.1	51.5	7.1	18.7	2.3	13.5	1.8	2.5	0.5	53.6	7.1	39.3	0.074	0.535	23.279382	-102.323038
T. Der. Illescas	58.41	3	1	2924	2.2	49.0	7.1	19.3	2.4	15.3	1.6	2.5	0.6	51.2	7.1	41.7	0.080	0.500	23.291341	-102.314154
T. Der. Illescas	58.41	3	2	2929	2.2	50.3	6.7	18.9	2.6	14.6	1.7	2.4	0.6	52.5	6.7	40.8	0.070	0.500	23.291427	-102.314304
Sierra Vieja	85.50	3	1	2432	2.1	46.8	6.8	20.1	2.2	17.3	1.7	2.4	0.6	48.9	6.8	44.3	0.081	0.521	23.505372	-102.121886
Sierra Vieja	85.50	3	2	2240	1.9	47.3	6.5	20.4	2.1	17.3	1.6	2.3	0.6	49.2	6.5	44.3	0.072	0.521	23.505491	-102.122002
T. Der. Majoma	144.50	3	1	2287	1.7	46.7	5.2	19.2	3.3	15.9	2.9	4.1	1.0	48.4	5.2	46.4	0.094	0.517	23.886802	-101.730045
T. Der. Majoma	144.50	3	2	2444	1.7	47.1	5.2	19.3	3.1	16.1	2.7	3.8	1.0	48.8	5.2	46.0	0.070	0.517	23.886910	-101.730175
T. Der. San Tiburcio	185.25	1	1	2386	1.8	48.3	5.8	18.3	1.6	11.6	4.6	7.1	0.9	50.1	5.8	44.1	0.073	0.503	24.155302	-101.497515
T. Der. San Tiburcio	185.25	1	2	2357	1.9	48.3	5.5	17.9	1.6	12.1	4.4	7.4	0.9	50.2	5.5	44.3	0.074	0.503	24.155203	-101.497385
T. Der. San Tiburcio	185.25	3	1	2513	3.1	52.1	6.5	17.5	2.8	9.4	2.5	5.1	1.0	55.2	6.5	38.3	0.090	0.528	24.162483	-101.492168
T. Der. San Tiburcio	185.25	3	2	2812	3.0	51.1	6.9	18.0	3.1	10.1	2.0	4.8	1.0	54.1	6.9	39.0	0.072	0.528	24.162405	-101.492431
T. Izq. Concepción del Oro	240.00	1	1	3489	2.8	49.5	5.3	24.4	3.1	10.0	1.7	2.6	0.6	52.3	5.3	42.4	0.087	0.530	24.611992	-101.369597
T. Izq. Concepción del Oro	240.00	1	2	3099	2.7	50.0	4.9	24.1	2.9	10.4	1.9	2.5	0.6	52.7	4.9	42.4	0.081	0.530	24.611694	-101.369325
T. Izq. Concepción del Oro	240.00	3	1	3627	1.6	51.5	5.1	13.8	3.8	18.2	2.4	2.9	0.7	53.1	5.1	41.8	0.084	0.523	24.647841	-101.349716
T. Izq. Concepción del Oro	240.00	3	2	3311	1.8	51.6	5.4	13.6	3.5	17.9	2.3	3.2	0.7	53.4	5.4	41.2	0.064	0.523	24.647779	-101.348497
Lim. Edos. Term. Zac. Ppia. Coah.	266.50	0	0																	
Agua Nueva	322.00	1	0	6790	3.6	63.4	3.6	3.6	2.0	16.1	2.3	4.5	0.9	67.0	3.6	29.4	0.076	0.540	25.178270	-101.094881
T. Der. La Trinidad	333.00	3	1	9235	0.8	83.5	5.3	6.6	1.3	2.0	0.3	0.1	0.1	84.3	5.3	10.4	0.107	0.508	25.282240	-101.087371
T. Der. La Trinidad	333.00	3	2	9521	0.9	82.2	5.7	6.9	1.4	2.4	0.3	0.1	0.1	83.1	5.7	11.2	0.114	0.508	25.282266	-101.087451
X. C. Libramiento de Saltillo	348.00	1	1	20571	1.0	88.7	2.6	5.6	0.7	0.9	0.1	0.3	0.1	89.7	2.6	7.7	0.089	0.512	25.366636	-101.015932
X. C. Libramiento de Saltillo	348.00	1	2	21543	1.0	88.8	2.5	5.4	0.8	1.0	0.1	0.3	0.1	89.8	2.5	7.7	0.073	0.512	25.366688	-101.016092
Saltillo	354.00	1	1	17001	1.7	90.8	1.5	4.5	0.5	0.4	0.2	0.2	0.2	92.5	1.5	6.0	0.090	0.530	25.387847	-101.006228
Saltillo	354.00	1	2	15075	1.5	90.5	1.6	4.9	0.5	0.4	0.2	0.2	0.2	92.0	1.6	6.4	0.098	0.530	25.387908	-101.006318

COAHUILA

6 CARR: Gregorio García - Francisco I. Madero

CLAVE: 00110

RUTA: MEX-040

AÑO: 2022

LUGAR	ESTACION				CLASIFICACION VEHICULAR EN PORCIENTO													COORDENADAS			
	KM	TE	SC	TDPA	M	A	B	C2	C3	T3S2	T3S3	T3S2R4	OTROS	A	B	C	K'	D	LATITUD	LONGITUD	
T. C. Gómez Palacio - Tlahualillo	0.00	0	0																		
Lim. Edos. Term. Dgo. Ppia. Coah.	3.60	0	0																		
Francisco I. Madero	9.60	1	0	9396	7.5	83.5	2.3	3.7	1.1	1.1	0.5	0.3	0.0	91.0	2.3	6.7	0.083	0.544	25.772426	-103.293284	

7 CARR: Libramiento Allende - Nava

CLAVE: 05518

RUTA: MEX-057

AÑO: 2022

LUGAR	ESTACION				CLASIFICACION VEHICULAR EN PORCIENTO													COORDENADAS		
	KM	TE	SC	TDPA	M	A	B	C2	C3	T3S2	T3S3	T3S2R4	OTROS	A	B	C	K'	D	LATITUD	LONGITUD
T. C. Monclova - Piedras Negras	0.00	3	1	5336	1.4	75.8	2.6	4.5	1.3	9.2	1.7	2.8	0.7	77.2	2.6	20.2	0.075	0.511	28.328854	-100.885355
T. C. Monclova - Piedras Negras	0.00	3	2	5569	1.5	75.6	2.6	4.4	1.5	9.1	1.7	2.8	0.8	77.1	2.6	20.3	0.085	0.511	28.328896	-100.885423
X. Der. Allende - Izq. Morelos	6.06	3	1	5769	1.3	80.1	2.9	4.6	0.9	5.7	1.8	2.1	0.6	81.4	2.9	15.7	0.070	0.507	28.376760	-100.859413
X. Der. Allende - Izq. Morelos	6.06	3	2	5922	1.3	80.0	2.9	4.6	0.9	5.8	1.8	2.1	0.6	81.3	2.9	15.8	0.082	0.507	28.376780	-100.859496
T. C. Monclova - Piedras Negras	18.55	1	1	6146	1.8	80.2	2.4	4.3	1.2	6.2	1.2	2.1	0.6	82.0	2.4	15.6	0.069	0.517	28.431912	-100.778625
T. C. Monclova - Piedras Negras	18.55	1	2	5742	1.7	80.4	2.4	4.2	1.2	6.1	1.3	2.1	0.6	82.1	2.4	15.5	0.088	0.517	28.431974	-100.778651

8 CARR: Monclova - Piedras Negras

CLAVE: 05407

RUTA: MEX-057

AÑO: 2022

LUGAR	ESTACION				CLASIFICACION VEHICULAR EN PORCIENTO													COORDENADAS		
	KM	TE	SC	TDPA	M	A	B	C2	C3	T3S2	T3S3	T3S2R4	OTROS	A	B	C	K'	D	LATITUD	LONGITUD
Monclova	0.00	3	1	11850	3.2	92.6	1.2	1.8	0.6	0.3	0.1	0.2	0.0	95.8	1.2	3.0	0.081	0.510	26.955127	-101.411155
Monclova	0.00	3	2	11387	2.9	92.9	1.1	1.8	0.7	0.3	0.1	0.2	0.0	95.8	1.1	3.1	0.096	0.510	26.955151	-101.411317
T. Der. Libramiento de Monclova	10.80	1	1	5113	6.4	71.5	4.1	5.7	1.2	6.2	1.3	2.9	0.7	77.9	4.1	18.0	0.087	0.508	26.968930	-101.382172
T. Der. Libramiento de Monclova	10.80	1	2	5273	5.9	72.7	3.9	5.5	1.3	6.3	1.3	2.5	0.6	78.6	3.9	17.5	0.104	0.508	26.969018	-101.382305
T. Der. Libramiento de Monclova	10.80	3	1	5799	3.7	68.3	5.8	11.5	1.0	5.7	1.1	2.3	0.6	72.0	5.8	22.2	0.087	0.509	26.979048	-101.375093
T. Der. Libramiento de Monclova	10.80	3	2	5600	3.9	68.6	5.5	11.3	0.9	5.8	1.1	2.3	0.6	72.5	5.5	22.0	0.094	0.509	26.979118	-101.375216
X. C. San Buenaventura - Estación Hermanas	43.00	1	1	3551	1.6	68.2	4.7	4.8	1.9	12.5	1.3	4.0	1.0	69.8	4.7	25.5	0.086	0.519	27.213534	-101.228515
X. C. San Buenaventura - Estación Hermanas	43.00	1	2	3825	1.6	70.5	4.4	4.5	1.8	10.6	1.7	4.0	0.9	72.1	4.4	23.5	0.098	0.519	27.213585	-101.228678
T. Der. Progreso	61.50	1	1	4031	5.7	67.0	4.3	4.8	1.8	10.4	1.8	3.3	0.9	72.7	4.3	23.0	0.078	0.525	27.385993	-101.215188
T. Der. Progreso	61.50	1	2	4447	5.7	66.8	4.2	4.9	1.9	10.4	1.8	3.4	0.9	72.5	4.2	23.3	0.081	0.525	27.386017	-101.215344
T. Izq. Palau	88.50	1	1	3563	1.3	74.2	2.8	3.8	2.1	9.6	1.9	3.4	0.9	75.5	2.8	21.7	0.089	0.515	27.638399	-101.183018
T. Izq. Palau	88.50	1	2	3790	1.6	70.9	3.1	4.3	2.5	10.6	2.2	3.9	0.9	72.5	3.1	24.4	0.098	0.515	27.638384	-101.183180
T. Izq. Palau	88.50	3	1	4373	1.4	73.5	3.0	4.5	1.9	9.3	2.2	3.4	0.8	74.9	3.0	22.1	0.084	0.508	27.643510	-101.184488
T. Izq. Palau	88.50	3	2	4519	1.3	71.2	3.3	4.6	2.0	10.8	2.3	3.5	1.0	72.5	3.3	24.2	0.074	0.508	27.643491	-101.184579
T. Der. Sabinas (2º Acceso)	115.00	1	1	7641	2.4	81.1	1.4	4.1	1.6	5.1	0.9	2.9	0.5	83.5	1.4	15.1	0.076	0.513	27.867768	-101.135084
T. Der. Sabinas (2º Acceso)	115.00	1	2	8064	2.4	81.0	1.4	4.2	1.6	5.1	0.9	2.9	0.5	83.4	1.4	15.2	0.084	0.513	27.867785	-101.135214

COAHUILA

8 CARR: Monclova - Piedras Negras

CLAVE: 05407

RUTA: MEX-057

AÑO: 2022

LUGAR	ESTACION				CLASIFICACION VEHICULAR EN PORCIENTO														COORDENADAS	
	KM	TE	SC	TDPA	M	A	B	C2	C3	T3S2	T3S3	T3S2R4	OTROS	A	B	C	K'	D	LATITUD	LONGITUD
Agujita	118.85	1	1	12239	1.3	86.4	2.8	3.2	1.2	3.1	0.7	1.0	0.3	87.7	2.8	9.5	0.077	0.502	27.886462	-101.148078
Agujita	118.85	1	2	12153	1.3	86.5	2.9	3.1	1.2	3.1	0.6	1.0	0.3	87.8	2.9	9.3	0.069	0.502	27.886401	-101.148170
Agujita	118.85	3	0	24716	1.5	83.8	2.1	4.7	1.0	3.8	1.2	1.2	0.7	85.3	2.1	12.6	0.078	0.514	27.903740	-101.167912
T. Izq. Nueva Rosita (1º Acceso)	126.30	3	0	5862	2.3	66.4	2.4	5.2	2.3	14.7	3.5	2.5	0.7	68.7	2.4	28.9	0.073	0.512	27.953838	-101.202158
T. Izq. Libramiento de Allende	182.00	1	0	5143	2.1	69.2	3.5	5.0	1.6	12.8	2.9	2.3	0.6	71.3	3.5	25.2	0.080	0.514	28.313176	-100.908679
T. C. Libramiento Allende - Nava	183.45	1	1	6078	1.6	77.2	2.8	4.8	1.5	7.1	1.5	2.8	0.7	78.8	2.8	18.4	0.074	0.567	28.320002	-100.892137
T. C. Libramiento Allende - Nava	183.45	1	2	4646	1.5	77.0	2.9	4.7	1.6	7.2	1.5	2.8	0.8	78.5	2.9	18.6	0.078	0.567	28.320062	-100.892261
Allende	187.20	3	1	6072	1.1	92.9	1.6	3.4	0.5	0.4	0.1	0.0	0.0	94.0	1.6	4.4	0.067	0.523	28.365568	-100.861125
Allende	187.20	3	2	5540	1.1	92.3	1.5	4.1	0.4	0.4	0.1	0.1	0.0	93.4	1.5	5.1	0.078	0.523	28.365531	-100.861217
Nava	206.85	1	1	2943	1.6	89.5	2.8	4.9	0.9	0.2	0.1	0.0	0.0	91.1	2.8	6.1	0.083	0.541	28.421504	-100.783831
Nava	206.85	1	2	2495	1.2	90.4	2.5	4.8	0.8	0.2	0.1	0.0	0.0	91.6	2.5	5.9	0.085	0.541	28.421616	-100.783839
Nava	206.85	3	1	8449	1.0	85.0	2.3	3.6	1.3	3.9	1.0	1.5	0.4	86.0	2.3	11.7	0.079	0.511	28.437556	-100.761454
Nava	206.85	3	2	8845	1.0	85.2	2.2	3.6	1.2	3.9	1.0	1.5	0.4	86.2	2.2	11.6	0.093	0.511	28.437673	-100.761467
T. Der. Guerrero	240.28	1	1	9126	3.6	83.6	2.5	3.6	2.3	3.2	0.5	0.5	0.2	87.2	2.5	10.3	0.092	0.508	28.640004	-100.559507
T. Der. Guerrero	240.28	1	2	9415	3.6	83.7	2.5	3.6	2.2	3.2	0.5	0.5	0.2	87.3	2.5	10.2	0.091	0.508	28.640040	-100.559607
Piedras Negras	248.00	0	0																	

9 CARR: Monclova - San Pedro de Las Colonias

CLAVE: 05062

RUTA: MEX-030

AÑO: 2022

LUGAR	ESTACION				CLASIFICACION VEHICULAR EN PORCIENTO														COORDENADAS	
	KM	TE	SC	TDPA	M	A	B	C2	C3	T3S2	T3S3	T3S2R4	OTROS	A	B	C	K'	D	LATITUD	LONGITUD
Monclova	0.00	0	0																	
Frontera	2.00	3	1	9744	1.5	90.3	1.8	3.5	1.0	1.2	0.4	0.2	0.1	91.8	1.8	6.4	0.095	0.502	26.960266	-101.462562
Frontera	2.00	3	2	9661	1.8	89.3	1.9	3.9	1.1	1.3	0.4	0.2	0.1	91.1	1.9	7.0	0.093	0.502	26.960219	-101.462652
8 de Enero	11.00	3	1	9234	2.1	88.6	2.2	3.3	1.1	1.6	0.6	0.4	0.1	90.7	2.2	7.1	0.080	0.506	27.005394	-101.498371
8 de Enero	11.00	3	2	9003	2.1	87.9	2.3	3.5	1.3	1.7	0.7	0.4	0.1	90.0	2.3	7.7	0.077	0.506	27.005338	-101.498460
Nadadores	27.00	3	1	2566	2.2	88.2	1.7	3.0	1.0	2.2	0.6	1.0	0.1	90.4	1.7	7.9	0.121	0.502	27.033366	-101.612659
Nadadores	27.00	3	2	2583	2.0	87.3	1.8	3.3	1.2	2.4	0.8	1.1	0.1	89.3	1.8	8.9	0.113	0.502	27.033285	-101.612677
Sacramento	45.27	1	1	2069	2.1	86.5	1.9	3.6	1.2	2.5	0.8	1.3	0.1	88.6	1.9	9.5	0.118	0.515	27.010966	-101.719626
Sacramento	45.27	1	2	1944	2.2	85.4	2.1	3.8	1.3	2.8	0.9	1.4	0.1	87.6	2.1	10.3	0.127	0.515	27.010968	-101.719515
T. Der. La Madrid	51.00	3	1	1390	1.6	84.6	2.9	3.3	1.8	2.4	1.5	1.7	0.2	86.2	2.9	10.9	0.105	0.511	27.019359	-101.799997
T. Der. La Madrid	51.00	3	2	1329	1.7	83.6	3.1	3.7	1.9	2.7	1.4	1.8	0.1	85.3	3.1	11.6	0.096	0.511	27.019286	-101.800045
Cuatro Ciénegas	80.15	3	0	1392	1.6	69.2	5.1	5.4	2.1	9.5	3.5	3.2	0.4	70.8	5.1	24.1	0.121	0.516	26.975121	-102.073389
San Pedro de Las Colonias	267.00	1	1	1126	10.4	68.7	3.0	3.2	2.0	6.7	2.1	2.9	1.0	79.1	3.0	17.9	0.120	0.535	25.776665	-102.978977
San Pedro de Las Colonias	267.00	1	2	977	11.0	66.7	3.7	3.8	2.1	6.7	2.2	2.8	1.0	77.7	3.7	18.6	0.097	0.535	25.776731	-102.978852

COAHUILA

10 CARR: Monterrey - Castaños

CLAVE: 00128

RUTA: MEX-053

AÑO: 2022

LUGAR	ESTACION				CLASIFICACION VEHICULAR EN PORCIENTO													COORDENADAS		
	KM	TE	SC	TDPA	M	A	B	C2	C3	T3S2	T3S3	T3S2R4	OTROS	A	B	C	K'	D	LATITUD	LONGITUD
T. C. Monterrey - Nuevo Laredo	0.00	3	0	21933	6.3	75.5	1.5	8.6	2.6	3.0	1.0	1.1	0.4	81.8	1.5	16.7	0.079	0.523	25.811995	-100.286231
X. C. Libramiento Noroeste de Monterrey	3.46	3	1	17853	4.3	71.9	2.6	8.6	3.4	5.5	1.7	1.3	0.7	76.2	2.6	21.2	0.089	0.501	25.831463	-100.307302
X. C. Libramiento Noroeste de Monterrey	3.46	3	2	17902	4.3	71.9	2.6	8.6	3.4	5.5	1.7	1.3	0.7	76.2	2.6	21.2	0.098	0.501	25.831390	-100.307381
T. Der. Villa del Carmen	13.80	1	1	9402	2.5	78.0	1.4	7.1	2.9	2.4	3.4	1.8	0.5	80.5	1.4	18.1	0.074	0.516	25.897030	-100.352354
T. Der. Villa del Carmen	13.80	1	2	8832	2.5	77.9	1.5	7.1	2.9	2.4	3.4	1.8	0.5	80.4	1.5	18.1	0.076	0.516	25.896994	-100.352413
T. Izq. Hidalgo	24.78	1	0	15325	3.2	74.7	2.2	8.1	1.7	4.5	2.3	2.7	0.6	77.9	2.2	19.9	0.074	0.502	25.955721	-100.424219
T. Izq. Hidalgo	24.78	3	0	10129	3.9	71.1	2.2	7.2	2.1	5.7	4.0	3.0	0.8	75.0	2.2	22.8	0.085	0.514	25.982370	-100.451709
T. Izq. Mina	34.75	1	0	8459	2.8	69.9	2.1	8.8	2.2	5.8	4.2	3.3	0.9	72.7	2.1	25.2	0.074	0.530	26.000680	-100.515792
T. Izq. Espinazo	91.90	1	0	4437	2.3	60.3	2.8	7.5	2.5	11.6	6.8	5.4	0.8	62.6	2.8	34.6	0.089	0.501	26.360299	-100.874871
T. Izq. Espinazo	91.90	3	0	4585	2.5	55.2	2.7	9.2	3.3	13.1	7.4	5.7	0.9	57.7	2.7	39.6	0.078	0.514	26.365281	-100.883138
Lim. Edos. Term. N. L. Ppia. Coah.	115.90	0	0																	
T. C. Saltillo - Monclova	155.90	1	1	2254	1.8	62.1	3.9	5.0	2.5	11.5	7.4	4.8	1.0	63.9	3.9	32.2	0.085	0.500	26.691075	-101.381699
T. C. Saltillo - Monclova	155.90	1	2	2252	1.5	62.3	4.3	4.9	2.5	11.4	7.1	5.0	1.0	63.8	4.3	31.9	0.080	0.500	26.691003	-101.381677

11 CARR: Morelos - Cd. Acuña

CLAVE: 05029

RUTA: MEX-029

AÑO: 2022

LUGAR	ESTACION				CLASIFICACION VEHICULAR EN PORCIENTO													COORDENADAS		
	KM	TE	SC	TDPA	M	A	B	C2	C3	T3S2	T3S3	T3S2R4	OTROS	A	B	C	K'	D	LATITUD	LONGITUD
Morelos	0.00	3	1	2907	1.3	86.9	1.6	5.1	1.6	2.6	0.5	0.4	0.0	88.2	1.6	10.2	0.106	0.506	28.418574	-100.890796
Morelos	0.00	3	2	2974	1.3	86.5	1.7	5.2	1.7	2.8	0.4	0.4	0.0	87.8	1.7	10.5	0.095	0.506	28.418545	-100.890887
T. Izq. El Remolino	40.10	1	0	1930	0.9	79.7	2.6	7.2	1.5	6.4	0.8	0.9	0.0	80.6	2.6	16.8	0.115	0.525	28.718490	-100.912033
T. Izq. El Remolino	40.10	3	0	1760	0.7	80.0	2.7	6.3	1.5	6.7	1.1	1.0	0.0	80.7	2.7	16.6	0.116	0.520	28.725741	-100.912308
San Carlos	73.84	1	0	2070	0.8	81.1	2.3	7.2	1.3	5.3	0.9	1.0	0.1	81.9	2.3	15.8	0.103	0.518	29.017267	-100.904936
T. Der. Piedras Negras	104.50	3	1	7561	2.1	85.7	3.0	4.8	2.0	1.5	0.4	0.4	0.1	87.8	3.0	9.2	0.079	0.501	29.296782	-100.914839
T. Der. Piedras Negras	104.50	3	2	7526	2.1	85.5	3.0	4.8	2.0	1.6	0.5	0.4	0.1	87.6	3.0	9.4	0.087	0.501	29.296719	-100.914912
Cd. Acuña	109.10	1	1	8680	1.2	92.4	1.3	3.9	0.6	0.3	0.1	0.1	0.1	93.6	1.3	5.1	0.084	0.524	29.303851	-100.922535
Cd. Acuña	109.10	1	2	9569	1.2	92.5	1.3	3.9	0.5	0.2	0.1	0.2	0.1	93.7	1.3	5.0	0.093	0.524	29.303816	-100.922661

12 CARR: Nueva Rosita - Boquillas del Carmen

CLAVE: 05028

RUTA: MEX-053

AÑO: 2022

LUGAR	ESTACION				CLASIFICACION VEHICULAR EN PORCIENTO													COORDENADAS		
	KM	TE	SC	TDPA	M	A	B	C2	C3	T3S2	T3S3	T3S2R4	OTROS	A	B	C	K'	D	LATITUD	LONGITUD
Nueva Rosita	0.00	3	1	4690	4.1	86.7	0.6	4.9	1.4	1.2	0.4	0.6	0.1	90.8	0.6	8.6	0.084	0.502	27.947763	-101.244743
Nueva Rosita	0.00	3	2	4722	4.1	86.3	0.6	5.1	1.5	1.3	0.4	0.6	0.1	90.4	0.6	9.0	0.090	0.502	27.947636	-101.244750
T. Der. Santa María	14.00	3	1	2916	4.3	84.8	1.0	5.1	1.6	1.9	0.7	0.5	0.1	89.1	1.0	9.9	0.076	0.518	27.911060	-101.325489

COAHUILA

12 CARR: Nueva Rosita - Boquillas del Carmen

CLAVE: 05028

RUTA: MEX-053

AÑO: 2022

LUGAR	ESTACION				CLASIFICACION VEHICULAR EN PORCIENTO													COORDENADAS		
	KM	TE	SC	TDPA	M	A	B	C2	C3	T3S2	T3S3	T3S2R4	OTROS	A	B	C	K'	D	LATITUD	LONGITUD
T. Der. Santa María	14.00	3	2	3127	4.0	83.8	1.2	5.8	1.8	2.0	0.8	0.5	0.1	87.8	1.2	11.0	0.077	0.518	27.910970	-101.325437
Palau	25.00	1	1	3961	3.2	86.8	1.1	4.5	1.9	1.3	0.6	0.5	0.1	90.0	1.1	8.9	0.079	0.515	27.887515	-101.412249
Palau	25.00	1	2	3732	2.8	86.4	1.2	5.0	1.9	1.5	0.6	0.5	0.1	89.2	1.2	9.6	0.081	0.515	27.887433	-101.412298
Palau	25.00	3	1	4502	1.9	80.2	2.7	13.1	1.0	0.7	0.2	0.2	0.0	82.1	2.7	15.2	0.078	0.507	27.887108	-101.432337
Palau	25.00	3	2	4385	1.9	78.4	2.7	14.7	1.1	0.8	0.2	0.2	0.0	80.3	2.7	17.0	0.074	0.507	27.887019	-101.432284
Melchor Múzquiz	35.00	3	0	3430	1.7	79.3	2.0	14.6	1.0	0.8	0.5	0.1	0.0	81.0	2.0	17.0	0.076	0.501	27.895527	-101.531957
Boquillas del Carmen	250.00	0	0																	

13 CARR: Ojo Caliente - Santa Cruz

CLAVE: 05007

RUTA: MEX-057

AÑO: 2022

LUGAR	ESTACION				CLASIFICACION VEHICULAR EN PORCIENTO													COORDENADAS		
	KM	TE	SC	TDPA	M	A	B	C2	C3	T3S2	T3S3	T3S2R4	OTROS	A	B	C	K'	D	LATITUD	LONGITUD
T. C. Saltillo - Monterrey	0.00	3	0	7126	5.8	59.8	3.9	5.4	3.8	11.5	3.1	5.7	1.0	65.6	3.9	30.5	0.073	0.543	25.600389	-100.895119
T. C. Saltillo - Monclova	34.00	1	0	4912	3.6	69.9	3.8	6.0	1.0	8.3	2.5	4.1	0.8	73.5	3.8	22.7	0.096	0.548	25.782650	-101.102424

14 CARR: Piedras Negras - Cd. Acuña

CLAVE: 05061

RUTA: MEX-002

AÑO: 2022

LUGAR	ESTACION				CLASIFICACION VEHICULAR EN PORCIENTO													COORDENADAS		
	KM	TE	SC	TDPA	M	A	B	C2	C3	T3S2	T3S3	T3S2R4	OTROS	A	B	C	K'	D	LATITUD	LONGITUD
Piedras Negras	0.00	3	1	4133	2.3	71.1	3.8	16.2	3.5	1.7	1.0	0.3	0.1	73.4	3.8	22.8	0.085	0.530	28.729949	-100.574634
Piedras Negras	0.00	3	2	4657	2.3	71.1	3.8	16.3	3.3	1.7	1.0	0.4	0.1	73.4	3.8	22.8	0.090	0.530	28.729881	-100.574767
T. C. Morelos - Cd. Acuña	83.30	1	0	4715	1.9	84.6	3.8	4.0	2.2	2.1	0.9	0.4	0.1	86.5	3.8	9.7	0.092	0.503	29.291546	-100.910725

15 CARR: Piedras Negras - Nuevo Laredo

CLAVE: 00503

RUTA: MEX-002

AÑO: 2022

LUGAR	ESTACION				CLASIFICACION VEHICULAR EN PORCIENTO													COORDENADAS		
	KM	TE	SC	TDPA	M	A	B	C2	C3	T3S2	T3S3	T3S2R4	OTROS	A	B	C	K'	D	LATITUD	LONGITUD
T. C. Monclova - Piedras Negras	0.00	3	1	5114	0.0	88.8	1.0	3.4	3.1	2.7	0.4	0.5	0.1	88.8	1.0	10.2	0.075	0.521	28.639631	-100.552024
T. C. Monclova - Piedras Negras	0.00	3	2	5571	2.6	86.0	1.1	3.4	3.1	2.7	0.4	0.6	0.1	88.6	1.1	10.3	0.084	0.521	28.639682	-100.551907
El Saucito	16.90	3	0	1340	3.7	57.3	3.2	17.2	4.0	8.6	1.1	4.2	0.7	61.0	3.2	35.8	0.089	0.511	28.502014	-100.467375
T. Der. Villa Unión	37.00	1	0	1442	3.5	60.9	2.2	10.7	4.2	7.8	1.8	8.1	0.8	64.4	2.2	33.4	0.071	0.510	28.344419	-100.392029
T. Der. Villa Unión	37.00	3	0	1187	4.4	52.3	2.6	13.1	4.4	12.0	2.7	7.6	0.9	56.7	2.6	40.7	0.061	0.528	28.335524	-100.389315
Guerrero	42.00	3	0	1082	3.7	52.3	4.2	12.9	3.3	13.2	1.6	8.1	0.7	56.0	4.2	39.8	0.072	0.505	28.307214	-100.363712
Lim. Edos. Term. Coah. Ppia. N. L.	124.40	0	0																	
T. C. Monclova - Colombia	134.00	3	0	3158	3.8	62.6	2.5	8.3	3.4	13.4	2.7	2.6	0.7	66.4	2.5	31.1	0.091	0.515	27.688591	-99.778294

COAHUILA

15 CARR: Piedras Negras - Nuevo Laredo

CLAVE: 00503

RUTA: MEX-002

AÑO: 2022

LUGAR	ESTACION				CLASIFICACION VEHICULAR EN PORCIENTO													COORDENADAS			
	KM	TE	SC	TDPA	M	A	B	C2	C3	T3S2	T3S3	T3S2R4	OTROS	A	B	C	K'	D	LATITUD	LONGITUD	
Lim. Edos. Term. N. L. Ppia. Tamps.	138.20	0	0																		
T. Der. Libramiento de Nuevo Laredo	157.70	1	1	5480	8.0	47.9	1.3	5.3	12.1	22.1	1.2	1.3	0.8	55.9	1.3	42.8	0.100	0.507	27.571809	-99.601745	
T. Der. Libramiento de Nuevo Laredo	157.70	1	2	5630	8.0	47.8	1.2	5.4	12.1	22.1	1.2	1.3	0.9	55.8	1.2	43.0	0.096	0.507	27.571952	-99.601709	
Nuevo Laredo	175.00	1	1	10277	2.4	47.2	1.9	5.6	15.1	26.1	0.7	0.6	0.4	49.6	1.9	48.5	0.107	0.519	27.549756	-99.579636	
Nuevo Laredo	175.00	1	2	9534	2.7	41.3	1.9	6.1	18.0	28.2	0.8	0.6	0.4	44.0	1.9	54.1	0.108	0.519	27.549774	-99.579485	

16 CARR: Puerto México - La Encantada

CLAVE: 05002

RUTA: MEX-057

AÑO: 2022

LUGAR	ESTACION				CLASIFICACION VEHICULAR EN PORCIENTO													COORDENADAS			
	KM	TE	SC	TDPA	M	A	B	C2	C3	T3S2	T3S3	T3S2R4	OTROS	A	B	C	K'	D	LATITUD	LONGITUD	
T. C. Aut. Puerto México - Ojo Caliente	0.00	3	0	2022	0.5	66.3	7.7	5.8	2.0	15.3	0.9	1.4	0.1	66.8	7.7	25.5	0.098	0.501	25.230312	-100.825364	
Lim. Edos. Term. N. L. Ppia. Coah.	3.50	0	0																		
T. C. Ent. Morelos - Saltillo	41.00	1	0	2333	1.5	66.9	7.0	5.3	2.2	14.3	1.1	1.5	0.2	68.4	7.0	24.6	0.094	0.501	25.260610	-101.085591	

17 CARR: Saltillo - Monclova

CLAVE: 05406

RUTA: MEX-057

AÑO: 2022

LUGAR	ESTACION				CLASIFICACION VEHICULAR EN PORCIENTO													COORDENADAS			
	KM	TE	SC	TDPA	M	A	B	C2	C3	T3S2	T3S3	T3S2R4	OTROS	A	B	C	K'	D	LATITUD	LONGITUD	
Saltillo	0.00	0	0																		
T. Der. Ramos Arizpe	13.00	1	0	7021	6.7	69.2	3.6	7.3	3.1	6.3	1.0	2.2	0.6	75.9	3.6	20.5	0.095	0.511	25.527354	-101.002613	
T. Der. Ramos Arizpe	13.00	3	0	2660	5.0	79.3	1.5	6.1	4.4	2.1	1.1	0.4	0.1	84.3	1.5	14.2	0.088	0.525	25.529460	-101.006369	
T. C. Ojo Caliente - Santa Cruz	49.60	1	0	382	1.2	86.7	2.1	6.8	0.9	1.5	0.6	0.2	0.0	87.9	2.1	10.0	0.162	0.503	25.782205	-101.111967	
T. C. Ojo Caliente - Santa Cruz	49.60	3	0	5200	2.2	68.6	3.9	5.0	1.2	10.2	3.0	4.9	1.0	70.8	3.9	25.3	0.107	0.506	25.796816	-101.115866	
T. Der. Paredón	64.00	1	0	5009	1.9	73.3	3.4	6.2	1.0	7.3	2.6	3.5	0.8	75.2	3.4	21.4	0.105	0.501	25.899539	-101.146895	
T. Der. Paredón	64.00	3	0	4952	1.8	67.3	4.3	5.5	1.3	10.1	3.8	4.9	1.0	69.1	4.3	26.6	0.105	0.517	25.917913	-101.155582	
T. Izq. Hipólito	78.00	1	0	4642	1.7	72.5	3.7	3.8	1.0	8.3	3.5	4.5	1.0	74.2	3.7	22.1	0.117	0.510	25.966550	-101.255317	
T. Izq. Hipólito	78.00	3	0	4507	3.0	73.2	3.8	5.2	0.9	6.4	2.5	4.0	1.0	76.2	3.8	20.0	0.122	0.511	25.978471	-101.268696	
T. Der. Monterrey	165.50	1	0	4951	6.3	65.3	3.0	3.6	1.9	10.7	4.1	4.1	1.0	71.6	3.0	25.4	0.091	0.526	26.674966	-101.383333	
T. Der. Monterrey	165.50	3	1	4884	0.0	69.4	5.4	5.0	1.5	9.3	4.1	4.4	0.9	69.4	5.4	25.2	0.097	0.512	26.711163	-101.393512	
T. Der. Monterrey	165.50	3	2	5117	7.4	61.8	5.7	4.9	1.4	9.3	4.9	3.6	1.0	69.2	5.7	25.1	0.113	0.512	26.711097	-101.393671	
T. Izq. Libramiento de Castaños (1° Acceso)	175.20	1	1	8423	3.9	77.6	2.8	3.3	1.7	5.4	2.3	2.4	0.6	81.5	2.8	15.7	0.092	0.508	26.770924	-101.413564	
T. Izq. Libramiento de Castaños (1° Acceso)	175.20	1	2	8680	3.9	77.8	2.3	3.6	1.8	5.3	2.4	2.3	0.6	81.7	2.3	16.0	0.093	0.508	26.770895	-101.413654	
T. Izq. Libramiento de Castaños (2° Acceso)	177.10	3	1	11886	3.6	80.4	2.0	3.5	2.4	4.0	1.6	2.0	0.5	84.0	2.0	14.0	0.090	0.506	26.805672	-101.420625	
T. Izq. Libramiento de Castaños (2° Acceso)	177.10	3	2	11614	3.9	79.9	2.1	3.6	2.6	4.0	1.5	1.9	0.5	83.8	2.1	14.1	0.084	0.506	26.805669	-101.420816	
T. Izq. Libramiento Lic. Carlos Salinas De Gortari	184.10	1	1	11802	3.6	80.4	2.7	3.3	2.3	3.5	1.7	2.0	0.5	84.0	2.7	13.3	0.098	0.520	26.829860	-101.422025	

COAHUILA

17 CARR: Saltillo - Monclova

CLAVE: 05406

RUTA: MEX-057

AÑO: 2022

LUGAR	ESTACION				CLASIFICACION VEHICULAR EN PORCIENTO										COORDENADAS					
	KM	TE	SC	TDPA	M	A	B	C2	C3	T3S2	T3S3	T3S2R4	OTROS	A	B	C	K'	D	LATITUD	LONGITUD
T. Izq. Libramiento Lic. Carlos Salinas De Gortari	184.10	1	2	12801	3.6	81.2	2.5	3.2	2.2	3.5	1.5	1.9	0.4	84.8	2.5	12.7	0.087	0.520	26.829830	-101.422185
T. Izq. Libramiento Lic. Carlos Salinas De Gortari	184.10	3	1	24312	3.3	91.1	1.4	2.0	0.8	0.5	0.3	0.4	0.2	94.4	1.4	4.2	0.074	0.505	26.863520	-101.427219
T. Izq. Libramiento Lic. Carlos Salinas De Gortari	184.10	3	2	23818	3.3	91.1	1.4	2.0	0.8	0.5	0.3	0.4	0.2	94.4	1.4	4.2	0.073	0.505	26.863508	-101.427380
Monclova	192.00	1	1	29991	3.1	91.9	1.4	2.1	0.5	0.3	0.2	0.4	0.1	95.0	1.4	3.6	0.083	0.508	26.881624	-101.425543
Monclova	192.00	1	2	28969	3.1	92.0	1.3	2.1	0.5	0.3	0.2	0.4	0.1	95.1	1.3	3.6	0.093	0.508	26.881612	-101.425693

18 CARR: Saltillo - Monterrey

CLAVE: 00087

RUTA: MEX-040

AÑO: 2022

LUGAR	ESTACION				CLASIFICACION VEHICULAR EN PORCIENTO										COORDENADAS					
	KM	TE	SC	TDPA	M	A	B	C2	C3	T3S2	T3S3	T3S2R4	OTROS	A	B	C	K'	D	LATITUD	LONGITUD
T. C. Saltillo - Arteaga	0.00	0	0																	
T. Izq. Zinacamex	4.25	3	1	65677	3.5	88.6	0.7	3.9	1.0	0.9	0.3	0.8	0.3	92.1	0.7	7.2	0.082	0.536	25.482565	-100.972257
T. Izq. Zinacamex	4.25	3	2	55699	3.5	88.5	0.7	3.9	1.0	0.9	0.4	0.7	0.4	92.0	0.7	7.3	0.095	0.536	25.482633	-100.972418
Ramos Arizpe	11.30	1	1	44118	2.6	84.4	2.3	4.8	1.0	2.0	1.5	0.9	0.5	87.0	2.3	10.7	0.092	0.533	25.516078	-100.957419
Ramos Arizpe	11.30	1	2	51220	2.6	84.7	2.2	4.7	1.1	2.1	1.4	0.8	0.4	87.3	2.2	10.5	0.087	0.533	25.516165	-100.957593
T. Der. Aeropuerto	13.00	3	1	32755	4.5	76.1	3.6	7.3	1.5	4.3	1.5	0.7	0.5	80.6	3.6	15.8	0.118	0.529	25.555404	-100.926375
T. Der. Aeropuerto	13.00	3	2	28927	4.5	76.2	3.5	7.3	1.6	4.2	1.5	0.7	0.5	80.7	3.5	15.8	0.124	0.529	25.555988	-100.925916
T. Der. Libramiento J.L.P.	16.00	3	1	31655	2.8	72.9	3.1	8.8	2.4	7.3	1.1	1.1	0.5	75.7	3.1	21.2	0.118	0.517	25.568047	-100.912225
T. Der. Libramiento J.L.P.	16.00	3	2	34108	2.8	73.6	3.1	8.8	2.3	7.1	0.9	1.0	0.4	76.4	3.1	20.5	0.099	0.517	25.568163	-100.912366
Ojo Caliente	26.30	1	1	23479	3.8	55.8	3.4	5.0	2.4	23.8	2.3	2.8	0.7	59.6	3.4	37.0	0.060	0.527	25.610644	-100.844334
Ojo Caliente	26.30	1	2	21108	3.8	55.7	3.4	4.9	2.4	23.9	2.4	2.8	0.7	59.5	3.4	37.1	0.063	0.527	25.612883	-100.847126
Lim. Edos. Term. Coah. Ppia. N. L.	33.00	0	0																	
T. Izq. Libramiento Noroeste de Monterrey	54.00	1	1	25354	2.3	50.7	4.0	9.2	2.4	23.7	3.0	4.1	0.6	53.0	4.0	43.0	0.052	0.535	25.698305	-100.562641
T. Izq. Libramiento Noroeste de Monterrey	54.00	1	2	22074	2.2	50.9	4.0	9.2	2.4	23.6	3.0	4.1	0.6	53.1	4.0	42.9	0.072	0.535	25.698684	-100.562616
T. Der. Santa Catarina (1º Acceso)	62.46	1	1	40721	2.0	82.6	1.2	7.6	1.0	2.8	1.9	0.6	0.3	84.6	1.2	14.2	0.081	0.523	25.687715	-100.496353
T. Der. Santa Catarina (1º Acceso)	62.46	1	2	45242	2.0	82.6	1.2	7.6	1.0	2.8	1.9	0.6	0.3	84.6	1.2	14.2	0.080	0.523	25.687519	-100.495205
Ppia. Monterrey	79.20	1	1	80584	1.6	86.6	0.8	5.6	1.0	2.1	1.4	0.4	0.5	88.2	0.8	11.0	0.071	0.518	25.674382	-100.426755
Ppia. Monterrey	79.20	1	2	87694	1.6	86.6	0.8	5.6	1.0	2.1	1.4	0.4	0.5	88.2	0.8	11.0	0.066	0.518	25.674535	-100.426737

19 CARR: Saltillo - Torreón

CLAVE: 05086

RUTA: MEX-040

AÑO: 2022

LUGAR	ESTACION				CLASIFICACION VEHICULAR EN PORCIENTO										COORDENADAS					
	KM	TE	SC	TDPA	M	A	B	C2	C3	T3S2	T3S3	T3S2R4	OTROS	A	B	C	K'	D	LATITUD	LONGITUD
Saltillo	0.00	0	0																	
T. Der. Monclova	6.10	3	1	6114	4.5	60.5	6.3	6.0	2.3	12.3	3.6	3.8	0.7	65.0	6.3	28.7	0.068	0.514	25.452934	-101.081029

COAHUILA

19 CARR: Saltillo - Torreón

CLAVE: 05086

RUTA: MEX-040

AÑO: 2022

LUGAR	ESTACION				CLASIFICACION VEHICULAR EN PORCIENTO										COORDENADAS					
	KM	TE	SC	TDPA	M	A	B	C2	C3	T3S2	T3S3	T3S2R4	OTROS	A	B	C	K'	D	LATITUD	LONGITUD
T. Der. Monclova	6.10	3	2	5773	4.4	60.6	6.2	6.1	2.4	12.2	3.6	3.8	0.7	65.0	6.2	28.8	0.094	0.514	25.452837	-101.080997
X. C. Libramiento Norponiente de Saltillo (Cuota)	9.60	1	1	4265	3.3	81.0	2.3	4.6	3.4	3.9	0.6	0.8	0.1	84.3	2.3	13.4	0.086	0.504	25.453452	-101.059159
X. C. Libramiento Norponiente de Saltillo (Cuota)	9.60	1	2	4189	3.4	80.3	2.5	4.7	3.2	4.2	0.8	0.8	0.1	83.7	2.5	13.8	0.144	0.504	25.453348	-101.058893
T. C. Torreón - Saltillo (Cuota)	33.80	0	0																	
T. Izq. General Cepeda	44.14	1	0	4046	2.9	69.1	5.6	8.8	2.4	8.0	2.1	0.9	0.2	72.0	5.6	22.4	0.085	0.505	25.505124	-101.375267
T. Izq. General Cepeda	44.14	3	0	3222	2.5	68.1	6.1	7.3	3.0	9.1	2.4	1.3	0.2	70.6	6.1	23.3	0.101	0.514	25.512221	-101.382117
T. Der. Estación Marte	91.20	1	0	1947	2.0	61.7	6.3	8.1	3.5	13.4	3.7	1.2	0.1	63.7	6.3	30.0	0.107	0.502	25.658959	-101.760270
T. C. Torreón - Saltillo (Cuota)	118.10	0	0																	
Ent. Paila	127.90	1	1	5233	0.0	56.6	5.3	6.3	2.0	19.2	4.1	5.6	0.9	56.6	5.3	38.1	0.068	0.513	25.649379	-102.135532
Ent. Paila	127.90	1	2	4964	3.8	53.5	5.2	6.1	2.2	19.0	3.9	5.4	0.9	57.3	5.2	37.5	0.083	0.513	25.649195	-102.135549
T. Der. San Pedro de Las Colonias (La Cuchilla)	204.58	1	1	4450	4.3	45.6	6.2	5.4	2.1	23.3	4.7	7.4	1.0	49.9	6.2	43.9	0.084	0.509	25.631693	-102.868079
T. Der. San Pedro de Las Colonias (La Cuchilla)	204.58	1	2	4287	4.2	46.2	5.9	5.5	2.5	22.8	4.4	7.5	1.0	50.4	5.9	43.7	0.079	0.509	25.625297	-102.865456
Emiliano Zapata	221.68	1	0	977	1.9	57.5	6.1	11.5	4.7	14.7	2.9	0.6	0.1	59.4	6.1	34.5	0.072	0.524	25.517061	-102.941426
Emiliano Zapata	221.68	3	0	2114	3.7	72.5	3.6	8.6	3.6	5.3	1.5	1.1	0.1	76.2	3.6	20.2	0.068	0.503	25.488996	-102.952556
T. Der. Libramiento de Matamoros (1º Acceso)	246.80	1	0	7798	5.7	73.5	5.5	8.6	2.5	2.7	1.1	0.3	0.1	79.2	5.5	15.3	0.066	0.507	25.525747	-103.210057
T. Der. Libramiento de Matamoros (1º Acceso)	246.80	3	1	5400	12.7	81.2	1.0	3.6	0.7	0.4	0.1	0.2	0.1	93.9	1.0	5.1	0.089	0.517	25.527825	-103.218324
T. Der. Libramiento de Matamoros (1º Acceso)	246.80	3	2	5787	12.9	81.0	1.1	3.4	0.7	0.4	0.1	0.3	0.1	93.9	1.1	5.0	0.080	0.517	25.527735	-103.218345
Matamoros	252.80	3	1	10296	6.7	85.5	1.3	3.5	1.5	0.8	0.4	0.2	0.1	92.2	1.3	6.5	0.092	0.523	25.534637	-103.246393
Matamoros	252.80	3	2	11304	6.8	85.4	1.2	3.7	1.4	0.7	0.4	0.3	0.1	92.2	1.2	6.6	0.076	0.523	25.534556	-103.246434
T. Der. Libramiento de Matamoros (2º Acceso)	253.12	3	1	13125	4.5	79.6	2.4	5.8	1.8	4.0	0.8	0.9	0.2	84.1	2.4	13.5	0.078	0.515	25.535260	-103.266902
T. Der. Libramiento de Matamoros (2º Acceso)	253.12	3	2	13955	4.6	80.1	2.3	5.6	1.6	3.9	0.8	0.9	0.2	84.7	2.3	13.0	0.078	0.515	25.535116	-103.266914
T. Der. Libramiento de Torreón	264.50	3	1	41135	4.2	89.4	0.9	3.0	0.8	0.5	0.2	0.7	0.3	93.6	0.9	5.5	0.091	0.508	25.535251	-103.389485
T. Der. Libramiento de Torreón	264.50	3	2	39795	4.3	88.4	1.1	3.1	0.9	0.7	0.3	0.8	0.4	92.7	1.1	6.2	0.096	0.508	25.535065	-103.389473
Torreón	291.00	0	0																	

20 CARR: Torreón - San Pedro de las Colonias

CLAVE: 05021

RUTA: MEX-030

AÑO: 2022

LUGAR	ESTACION				CLASIFICACION VEHICULAR EN PORCIENTO										COORDENADAS					
	KM	TE	SC	TDPA	M	A	B	C2	C3	T3S2	T3S3	T3S2R4	OTROS	A	B	C	K'	D	LATITUD	LONGITUD
Torreón	0.00	3	1	34038	2.2	95.8	0.5	1.0	0.3	0.1	0.0	0.1	0.0	98.0	0.5	1.5	0.089	0.536	25.580629	-103.412878
Torreón	0.00	3	2	27648	2.1	95.9	0.3	1.2	0.3	0.1	0.0	0.1	0.0	98.0	0.3	1.7	0.086	0.536	25.580712	-103.413007
Libramiento de Torreón	1.50	0	0																	
Libramiento Norte de Torreón (Cuota)	10.00	0	0																	
Escuadrón 201	13.25	1	1	9369	4.1	85.1	3.4	3.3	1.3	1.4	0.5	0.7	0.2	89.2	3.4	7.4	0.088	0.506	25.670761	-103.351366
Escuadrón 201	13.25	1	2	9144	3.8	85.3	4.0	3.0	1.3	1.3	0.7	0.5	0.1	89.1	4.0	6.9	0.083	0.506	25.670870	-103.351374

COAHUILA

20 CARR : Torreón - San Pedro de las Colonias

CLAVE: 05021

RUTA : MEX-030

AÑO : 2022

LUGAR	ESTACION				CLASIFICACION VEHICULAR EN PORCIENTO													COORDENADAS		
	KM	TE	SC	TDPA	M	A	B	C2	C3	T3S2	T3S3	T3S2R4	OTROS	A	B	C	K'	D	LATITUD	LONGITUD
T. Der. Fco. I. Madero	25.30	1	1	9352	4.4	84.0	1.8	4.2	1.7	2.1	0.8	0.7	0.3	88.4	1.8	9.8	0.083	0.502	25.747264	-103.299886
T. Der. Fco. I. Madero	25.30	1	2	9280	4.9	83.8	1.9	4.3	1.7	2.0	0.7	0.5	0.2	88.7	1.9	9.4	0.083	0.502	25.746856	-103.300562
T. Der. Fco. I. Madero	25.30	3	1	6892	3.4	82.5	2.4	5.5	1.8	2.5	1.2	0.6	0.1	85.9	2.4	11.7	0.087	0.507	25.760863	-103.250735
T. Der. Fco. I. Madero	25.30	3	2	6690	3.5	82.8	2.3	5.9	1.5	2.3	1.1	0.5	0.1	86.3	2.3	11.4	0.098	0.507	25.760991	-103.250740
T. Der. Guadalupe Victoria	32.00	1	1	6787	7.2	78.1	4.1	6.4	1.0	1.6	0.8	0.7	0.1	85.3	4.1	10.6	0.083	0.500	25.762799	-103.230713
T. Der. Guadalupe Victoria	32.00	1	2	6776	7.2	77.4	4.5	6.8	1.0	1.5	0.9	0.6	0.1	84.6	4.5	10.9	0.086	0.500	25.762870	-103.230649
T. Der. Colón	35.00	1	1	6379	4.6	82.4	3.2	4.5	1.7	1.9	0.8	0.6	0.3	87.0	3.2	9.8	0.083	0.507	25.759660	-103.205847
T. Der. Colón	35.00	1	2	6212	4.2	83.5	2.3	4.5	1.8	1.9	1.0	0.6	0.2	87.7	2.3	10.0	0.082	0.507	25.759753	-103.205820
T. Izq. San Lorenzo	38.60	1	1	5168	3.3	77.4	2.9	10.6	1.1	2.1	1.5	0.9	0.2	80.7	2.9	16.4	0.093	0.508	25.761883	-103.166781
T. Izq. San Lorenzo	38.60	1	2	5332	3.3	77.8	2.8	10.6	1.0	2.1	1.5	0.7	0.2	81.1	2.8	16.1	0.084	0.508	25.762040	-103.166747
Urquizo	41.20	1	1	5613	3.4	79.9	3.3	8.5	1.7	2.0	0.6	0.5	0.1	83.3	3.3	13.4	0.078	0.503	25.766913	-103.147276
Urquizo	41.20	1	2	5544	3.7	80.1	3.2	8.3	1.6	1.9	0.6	0.5	0.1	83.8	3.2	13.0	0.091	0.503	25.766873	-103.147576
Urquizo	41.20	3	1	5842	4.2	85.3	1.9	4.7	1.2	1.6	0.5	0.5	0.1	89.5	1.9	8.6	0.072	0.521	25.768343	-103.090853
Urquizo	41.20	3	2	6362	4.1	86.0	1.8	4.3	1.3	1.4	0.5	0.5	0.1	90.1	1.8	8.1	0.077	0.521	25.768447	-103.090818
San Pedro de Las Colonias	55.00	1	1	7515	8.1	74.9	1.6	12.3	0.9	1.3	0.4	0.4	0.1	83.0	1.6	15.4	0.083	0.504	25.757594	-103.005858
San Pedro de Las Colonias	55.00	1	2	7396	8.6	74.7	1.3	12.5	0.8	1.3	0.2	0.5	0.1	83.3	1.3	15.4	0.078	0.504	25.757689	-103.005823

21 CARR : Libramiento Norponiente de Saltillo (Cuota)

CLAVE: 05022

RUTA : MEX-S30

AÑO : 2022

LUGAR	ESTACION				CLASIFICACION VEHICULAR EN PORCIENTO													COORDENADAS		
	KM	TE	SC	TDPA	M	A	B	C2	C3	T3S2	T3S3	T3S2R4	OTROS	A	B	C	K'	D	LATITUD	LONGITUD
T. C. Ent. Morelos - Saltillo	0.00	3	0	5821	3.8	35.1	5.5	7.0	3.3	34.6	2.7	7.1	0.9	38.9	5.5	55.6	0.103	0.506	25.289408	-101.091147
X. C. Saltillo - Torreón	22.44	1	0	5829	7.1	34.4	6.5	4.7	3.4	31.8	3.1	8.1	0.9	41.5	6.5	52.0	0.075	0.506	25.445352	-101.067777
X. C. Saltillo - Torreón	22.44	3	0	9888	5.3	34.3	6.4	4.4	3.0	33.1	3.6	8.9	1.0	39.6	6.4	54.0	0.094	0.502	25.460354	-101.057543
X. C. Saltillo - Monclova	32.44	1	0	10953	6.6	34.1	6.0	4.7	2.9	31.2	4.2	9.3	1.0	40.7	6.0	53.3	0.069	0.515	25.516386	-101.001307
X. C. Saltillo - Monclova	32.44	3	0	11263	6.5	37.2	5.5	4.8	2.8	29.1	3.8	9.3	1.0	43.7	5.5	50.8	0.069	0.512	25.529826	-100.984149
Ojo Caliente	46.21	1	0	10260	5.6	34.4	6.9	6.5	3.2	29.9	3.9	8.6	1.0	40.0	6.9	53.1	0.068	0.517	25.607722	-100.919795

22 CARR : Libramiento Norte de Torreón (Cuota)

CLAVE:

RUTA : MEX-040D

AÑO : 2022

LUGAR	ESTACION				CLASIFICACION VEHICULAR EN PORCIENTO													COORDENADAS		
	KM	TE	SC	TDPA	M	A	B	C2	C3	T3S2	T3S3	T3S2R4	OTROS	A	B	C	K'	D	LATITUD	LONGITUD
X. C. Gómez Palacio - Jiménez	0.00	3	0	3381	2.5	36.3	4.2	8.2	2.7	28.8	5.7	10.7	0.9	38.8	4.2	57.0	0.078	0.505	25.633134	-103.505901
Lim. Edos. Term. Dgo. Ppia. Coah.	15.60	0	0																	
X. C. La Cuchilla - Torreón	17.36	1	0	3834	2.2	37.0	3.9	6.0	4.3	29.6	5.4	10.6	1.0	39.2	3.9	56.9	0.061	0.518	25.658508	-103.385870

COAHUILA

22 CARR: Libramiento Norte de Torreón (Cuota)

CLAVE:

RUTA: MEX-040D

AÑO: 2022

LUGAR	ESTACION				CLASIFICACION VEHICULAR EN PORCIENTO														COORDENADAS	
	KM	TE	SC	TDPA	M	A	B	C2	C3	T3S2	T3S3	T3S2R4	OTROS	A	B	C	K'	D	LATITUD	LONGITUD
X. C. La Cuchilla - Torreón	17.36	3	0	3191	4.2	35.9	5.6	4.8	2.4	28.4	5.6	12.1	1.0	40.1	5.6	54.3	0.065	0.502	25.648269	-103.356616
X. C. Torreón - Saltillo	40.70	1	0	3321	5.7	27.9	8.9	6.8	4.4	30.2	4.8	10.3	1.0	33.6	8.9	57.5	0.072	0.508	25.547410	-103.226055

23 CARR: Libramiento Oriente de Saltillo (Cuota)

CLAVE: 00115

RUTA: MEX-057D

AÑO: 2022

LUGAR	ESTACION				CLASIFICACION VEHICULAR EN PORCIENTO														COORDENADAS		
	KM	TE	SC	TDPA	M	A	B	C2	C3	T3S2	T3S3	T3S2R4	OTROS	A	B	C	K'	D	LATITUD	LONGITUD	
Ent. La Carbonera	0.00	0	0																		
Plaza de Cobro Carbonera	12.30	2	1	8426	0.3	33.2	4.6	4.1	2.2	44.6	3.8	6.4	0.8	33.5	4.6	61.9	0.072	0.500	25.510948	-100.868249	
Plaza de Cobro Carbonera	12.30	2	2	8426	0.3	33.2	4.6	4.1	2.2	44.6	3.8	6.4	0.8	33.5	4.6	61.9	0.072	0.500	25.510948	-100.868249	
Plaza de Cobro Carbonera	12.30	3	1	9320	2.9	30.6	5.6	5.1	2.2	43.4	3.6	5.6	1.0	33.5	5.6	60.9	0.073	0.507	25.518271	-100.866020	
Plaza de Cobro Carbonera	12.30	3	2	9595	2.9	30.6	5.6	5.1	2.4	43.3	3.6	5.5	1.0	33.5	5.6	60.9	0.061	0.507	25.518539	-100.866243	
T. C. Saltillo - Monterrey	21.00	0	0																		

24 CARR: Nueva Rosita - Ent. Allende (Cuota)

CLAVE: 05502

RUTA: MEX-057D

AÑO: 2022

LUGAR	ESTACION				CLASIFICACION VEHICULAR EN PORCIENTO														COORDENADAS		
	KM	TE	SC	TDPA	M	A	B	C2	C3	T3S2	T3S3	T3S2R4	OTROS	A	B	C	K'	D	LATITUD	LONGITUD	
T. C. Monclova - Piedras Negras	0.00	3	1	1931	1.7	69.7	5.2	10.5	2.4	4.7	1.3	3.6	0.9	71.4	5.2	23.4	0.102	0.506	27.937731	-101.193718	
T. C. Monclova - Piedras Negras	0.00	3	2	1981	1.7	67.8	5.8	10.6	2.9	5.1	1.4	3.8	0.9	69.5	5.8	24.7	0.090	0.506	27.937775	-101.193792	
Allende	52.20	0	0																		
T. C. Monclova - Piedras Negras	54.00	1	1	1759	1.3	67.5	2.7	16.3	1.3	5.1	1.1	3.8	0.9	68.8	2.7	28.5	0.089	0.516	28.313396	-100.903901	
T. C. Monclova - Piedras Negras	54.00	1	2	1875	1.2	64.6	3.0	17.6	1.5	5.5	1.2	4.5	0.9	65.8	3.0	31.2	0.087	0.516	28.313448	-100.904075	

25 CARR: Puerto México - La Carbonera (Cuota)

CLAVE: 00115

RUTA: MEX-057D

AÑO: 2022

LUGAR	ESTACION				CLASIFICACION VEHICULAR EN PORCIENTO														COORDENADAS		
	KM	TE	SC	TDPA	M	A	B	C2	C3	T3S2	T3S3	T3S2R4	OTROS	A	B	C	K'	D	LATITUD	LONGITUD	
Ent. Puerto México	202.00	0	0																		
Plaza de Cobro Los Chorros	203.64	2	1	7912	0.1	34.1	4.6	3.0	1.7	45.7	3.2	6.4	1.2	34.2	4.6	61.2	0.076	0.500	25.186696	-100.731988	
Plaza de Cobro Los Chorros	203.64	2	2	7912	0.1	34.1	4.6	3.0	1.7	45.7	3.2	6.4	1.2	34.2	4.6	61.2	0.076	0.500	25.186696	-100.731988	
Lim. Edos. Term. N. L. Ppia. Coah.	204.07	0	0																		
Lim. Edos. Term. Coah. Ppia. N. L.	204.50	0	0																		
Lim. Edos. Term. N. L. Ppia. Coah.	205.76	0	0																		
T. Izq. Huachichil	213.39	1	1	7141	2.2	57.7	7.0	2.3	1.8	22.0	1.3	4.8	0.9	59.9	7.0	33.1	0.067	0.503	25.244981	-100.793749	

COAHUILA

25 CARR: Puerto México - La Carbonera (Cuota)

CLAVE: 00115

RUTA: MEX-057D

AÑO: 2022

LUGAR	ESTACION				CLASIFICACION VEHICULAR EN PORCIENTO										COORDENADAS					
	KM	TE	SC	TDPA	M	A	B	C2	C3	T3S2	T3S3	T3S2R4	OTROS	A	B	C	K'	D	LATITUD	LONGITUD
T. Izq. Huachichil	213.39	1	2	7050	2.2	54.2	7.2	2.5	1.8	24.2	1.5	5.4	1.0	56.4	7.2	36.4	0.071	0.503	25.244926	-100.793807
T. Der. San Antonio de Las Alazanas	224.94	1	1	8534	2.1	41.9	5.3	5.1	1.9	35.2	2.9	4.8	0.8	44.0	5.3	50.7	0.059	0.504	25.344567	-100.794549
T. Der. San Antonio de Las Alazanas	224.94	1	2	8386	2.0	37.3	5.8	5.7	2.2	37.4	3.5	5.2	0.9	39.3	5.8	54.9	0.062	0.504	25.344584	-100.794649
T. Der. San Antonio de Las Alazanas	224.94	3	1	12197	1.8	43.8	5.3	5.1	1.9	34.1	3.3	3.8	0.9	45.6	5.3	49.1	0.064	0.503	25.351313	-100.794351
T. Der. San Antonio de Las Alazanas	224.94	3	2	12065	1.8	39.5	6.1	5.6	2.0	36.5	3.5	4.1	0.9	41.3	6.1	52.6	0.065	0.503	25.351312	-100.794460
Los Lirios	228.30	3	1	12641	2.3	53.8	5.3	5.4	1.9	24.1	2.8	3.7	0.7	56.1	5.3	38.6	0.082	0.506	25.406938	-100.800680
Los Lirios	228.30	3	2	12968	1.8	49.6	6.2	5.7	2.2	26.3	3.2	4.2	0.8	51.4	6.2	42.4	0.091	0.506	25.407036	-100.800791
Ent. La Carbonera	235.60	0	0																	

26 CARR: Saltillo - Monterrey (Cuota)

CLAVE: 00087

RUTA: MEX-040D

AÑO: 2022

LUGAR	ESTACION				CLASIFICACION VEHICULAR EN PORCIENTO										COORDENADAS					
	KM	TE	SC	TDPA	M	A	B	C2	C3	T3S2	T3S3	T3S2R4	OTROS	A	B	C	K'	D	LATITUD	LONGITUD
Ojo Caliente	46.21	3	1	4708	13.4	36.2	3.9	5.4	2.9	24.4	3.3	9.5	1.0	49.6	3.9	46.5	0.069	0.520	25.616873	-100.906952
Ojo Caliente	46.21	3	2	5101	13.5	36.2	3.9	5.5	3.0	24.1	3.3	9.5	1.0	49.7	3.9	46.4	0.068	0.520	25.616961	-100.907039
Lim. Edos. Term. Coah. Ppia. N. L.	61.08	0	0																	
T. Izq. Anillo Periférico de Monterrey (Cuota)	82.00	1	1	10014	2.1	73.3	4.7	6.9	1.5	6.1	1.8	2.7	0.9	75.4	4.7	19.9	0.071	0.523	25.697500	-100.596938
T. Izq. Anillo Periférico de Monterrey (Cuota)	82.00	1	2	9122	1.7	71.1	5.2	7.5	1.6	7.0	2.1	2.8	1.0	72.8	5.2	22.0	0.078	0.523	25.697563	-100.596909
T. Izq. Anillo Periférico de Monterrey (Cuota)	82.00	3	1	5808	1.9	90.8	1.9	4.8	0.3	0.2	0.1	0.0	0.0	92.7	1.9	5.4	0.073	0.522	25.675474	-100.504968
T. Izq. Anillo Periférico de Monterrey (Cuota)	82.00	3	2	5326	2.2	90.1	2.0	5.1	0.3	0.2	0.1	0.0	0.0	92.3	2.0	5.7	0.083	0.522	25.675529	-100.504909
Morones Prieto	96.10	0	0																	

27 CARR: Saltillo - Torreón (Cuota) T1

CLAVE:

RUTA: MEX-040D

AÑO: 2022

LUGAR	ESTACION				CLASIFICACION VEHICULAR EN PORCIENTO										COORDENADAS					
	KM	TE	SC	TDPA	M	A	B	C2	C3	T3S2	T3S3	T3S2R4	OTROS	A	B	C	K'	D	LATITUD	LONGITUD
T. C. Saltillo - Torreón Este	0.00	0	0																	
Plaza de Cobro Plan de Ayala	0.50	2	1	3801	0.4	49.9	6.8	1.9	1.1	22.9	4.7	9.9	2.4	50.3	6.8	42.9	0.091	0.500	25.444203	-101.303908
Plaza de Cobro Plan de Ayala	0.50	2	2	3801	0.4	49.9	6.8	1.9	1.1	22.9	4.7	9.9	2.4	50.3	6.8	42.9	0.091	0.500	25.444203	-101.303908
T. C. Saltillo - Torreón Oeste	76.50	1	1	4457	4.9	50.9	6.3	5.0	1.9	20.0	3.9	6.2	0.9	55.8	6.3	37.9	0.068	0.524	25.638293	-102.018436
T. C. Saltillo - Torreón Oeste	76.50	1	2	4047	5.1	49.2	5.8	5.0	2.1	21.0	4.3	6.6	0.9	54.3	5.8	39.9	0.101	0.524	25.639175	-102.022435

COAHUILA

28 CARR: Saltillo - Torreón (Cuota) T2

CLAVE:

RUTA: MEX-040D

AÑO: 2022

LUGAR	ESTACION				CLASIFICACION VEHICULAR EN PORCIENTO														COORDENADAS		
	KM	TE	SC	TDPA	M	A	B	C2	C3	T3S2	T3S3	T3S2R4	OTROS	A	B	C	K'	D	LATITUD	LONGITUD	
T. C. Saltillo - Torreón Este	0.00	0	0																		
Plaza de Cobro La Cuchilla	1.00	2	1	3679	0.3	46.1	6.2	2.6	1.4	25.5	5.2	10.3	2.4	46.4	6.2	47.4	0.091	0.500	25.627052	-102.878352	
Plaza de Cobro La Cuchilla	1.00	2	2	3679	0.3	46.1	6.2	2.6	1.4	25.5	5.2	10.3	2.4	46.4	6.2	47.4	0.091	0.500	25.627052	-102.878352	
T. Der. San Pedro de Las Colonias (La Cuchilla)	1.10	3	1	3779	4.4	44.5	5.3	4.4	2.1	25.7	4.9	7.7	1.0	48.9	5.3	45.8	0.128	0.501	25.622813	-102.887684	
T. Der. San Pedro de Las Colonias (La Cuchilla)	1.10	3	2	3800	4.2	45.1	5.2	4.3	1.8	25.7	4.9	7.8	1.0	49.3	5.2	45.5	0.079	0.501	25.622694	-102.887628	
T. C. Saltillo - Torreón Oeste	37.80	0	0																		

29 CARR: Allende - Villa Unión

CLAVE: 05001

RUTA: COA-015

AÑO: 2022

LUGAR	ESTACION				CLASIFICACION VEHICULAR EN PORCIENTO														COORDENADAS		
	KM	TE	SC	TDPA	M	A	B	C2	C3	T3S2	T3S3	T3S2R4	OTROS	A	B	C	K'	D	LATITUD	LONGITUD	
Allende	0.00	3	0	2397	2.0	83.8	1.5	12.2	0.3	0.1	0.1	0.0	0.0	85.8	1.5	12.7	0.077	0.505	28.335656	-100.838277	
Villa Unión	19.00	0	0																		

30 CARR: Corredor Libramiento de San Pedro

CLAVE: 05023

RUTA: COA-087

AÑO: 2022

LUGAR	ESTACION				CLASIFICACION VEHICULAR EN PORCIENTO														COORDENADAS	
	KM	TE	SC	TDPA	M	A	B	C2	C3	T3S2	T3S3	T3S2R4	OTROS	A	B	C	K'	D	LATITUD	LONGITUD
T. C. Monclova - San Pedro de las Colonias	0.00	3	0	3596	14.6	69.9	2.6	5.8	1.3	3.1	1.2	1.3	0.2	84.5	2.6	12.9	0.110	0.514	25.774591	-102.982564
T. C. La Cuchilla - Torreón	3.60	1	0	6008	15.5	73.2	1.7	3.8	1.1	2.4	1.0	1.1	0.2	88.7	1.7	9.6	0.082	0.509	25.759388	-103.000025

31 CARR: Cuatro Ciénegas - Ocampo

CLAVE: 05026

RUTA: COA-048

AÑO: 2022

LUGAR	ESTACION				CLASIFICACION VEHICULAR EN PORCIENTO														COORDENADAS		
	KM	TE	SC	TDPA	M	A	B	C2	C3	T3S2	T3S3	T3S2R4	OTROS	A	B	C	K'	D	LATITUD	LONGITUD	
Cuatro Ciénegas	0.00	3	0	1445	4.9	89.6	0.6	3.9	0.9	0.1	0.0	0.0	0.0	94.5	0.6	4.9	0.069	0.502	27.000141	-102.072650	
Ocampo	50.00	0	0																		

32 CARR: El Sauz - Palau

CLAVE: 05060

RUTA: COA-022

AÑO: 2022

LUGAR	ESTACION				CLASIFICACION VEHICULAR EN PORCIENTO														COORDENADAS	
	KM	TE	SC	TDPA	M	A	B	C2	C3	T3S2	T3S3	T3S2R4	OTROS	A	B	C	K'	D	LATITUD	LONGITUD
El Sauz	0.00	3	1	1484	1.1	73.9	5.5	7.5	3.1	3.8	2.8	2.0	0.3	75.0	5.5	19.5	0.087	0.512	27.640490	-101.190062
El Sauz	0.00	3	2	1414	0.9	71.4	5.8	8.7	3.6	4.2	3.0	2.1	0.3	72.3	5.8	21.9	0.081	0.512	27.640381	-101.190678
Minas de Barroterán	31.00	3	1	1326	2.0	74.8	4.2	7.9	2.8	3.6	2.5	1.7	0.5	76.8	4.2	19.0	0.084	0.510	27.668574	-101.290951

COAHUILA

32 CARR: El Sauz - Palau

CLAVE: 05060

RUTA: COA-022

AÑO: 2022

LUGAR	ESTACION				CLASIFICACION VEHICULAR EN PORCIENTO														COORDENADAS	
	KM	TE	SC	TDPA	M	A	B	C2	C3	T3S2	T3S3	T3S2R4	OTROS	A	B	C	K'	D	LATITUD	LONGITUD
Minas de Barroterán	31.00	3	2	1274	2.2	72.1	4.7	9.0	2.9	3.9	2.6	2.1	0.5	74.3	4.7	21.0	0.082	0.510	27.668680	-101.291085
Palau	42.50	1	1	1347	2.9	72.7	4.8	7.3	2.7	3.8	3.3	2.1	0.4	75.6	4.8	19.6	0.072	0.506	27.875142	-101.415529
Palau	42.50	1	2	1382	2.8	70.7	5.4	7.9	2.8	4.4	3.4	2.2	0.4	73.5	5.4	21.1	0.072	0.506	27.875122	-101.415640

33 CARR: Emiliano Zapata - Viesca

CLAVE: 05521

RUTA: COA-082

AÑO: 2022

LUGAR	ESTACION				CLASIFICACION VEHICULAR EN PORCIENTO														COORDENADAS	
	KM	TE	SC	TDPA	M	A	B	C2	C3	T3S2	T3S3	T3S2R4	OTROS	A	B	C	K'	D	LATITUD	LONGITUD
Emiliano Zapata	0.00	3	0	979	4.9	85.2	1.2	6.2	1.1	0.4	0.9	0.0	0.1	90.1	1.2	8.7	0.092	0.510	25.479351	-102.943373
Viesca	24.00	0	0																	

34 CARR: Ent. La Rosa - General Cepeda

CLAVE: 05034

RUTA: COA-034

AÑO: 2022

LUGAR	ESTACION				CLASIFICACION VEHICULAR EN PORCIENTO														COORDENADAS	
	KM	TE	SC	TDPA	M	A	B	C2	C3	T3S2	T3S3	T3S2R4	OTROS	A	B	C	K'	D	LATITUD	LONGITUD
T. C. Saltillo - Torreón	0.00	3	0	1237	1.0	90.9	1.2	4.7	0.8	1.0	0.3	0.0	0.1	91.9	1.2	6.9	0.167	0.524	25.507369	-101.378774
Gral. Cepeda	21.00	1	0	1248	4.1	85.0	2.3	6.3	1.2	0.6	0.4	0.0	0.1	89.1	2.3	8.6	0.098	0.506	25.387814	-101.476891

35 CARR: Ent. Paila - Parras de La Fuente

CLAVE: 05014

RUTA: COA-102

AÑO: 2022

LUGAR	ESTACION				CLASIFICACION VEHICULAR EN PORCIENTO														COORDENADAS	
	KM	TE	SC	TDPA	M	A	B	C2	C3	T3S2	T3S3	T3S2R4	OTROS	A	B	C	K'	D	LATITUD	LONGITUD
Ent. Paila	0.00	3	0	2633	3.1	84.0	2.2	6.4	1.0	2.1	0.7	0.4	0.1	87.1	2.2	10.7	0.092	0.526	25.643751	-102.148862
Parras de La Fuente	20.05	1	1	2482	3.3	84.6	2.7	6.8	0.6	0.9	0.6	0.3	0.2	87.9	2.7	9.4	0.117	0.515	25.468841	-102.173794
Parras de La Fuente	20.05	1	2	2637	3.8	83.5	2.9	6.9	0.7	1.0	0.7	0.3	0.2	87.3	2.9	9.8	0.118	0.515	25.468828	-102.173711

36 CARR: Libramiento de Matamoros

CLAVE: 05032

RUTA: COA

AÑO: 2022

LUGAR	ESTACION				CLASIFICACION VEHICULAR EN PORCIENTO														COORDENADAS	
	KM	TE	SC	TDPA	M	A	B	C2	C3	T3S2	T3S3	T3S2R4	OTROS	A	B	C	K'	D	LATITUD	LONGITUD
T. C. Saltillo - Torreón	0.00	3	0	9911	5.6	78.6	1.5	7.9	2.8	2.2	0.9	0.4	0.1	84.2	1.5	14.3	0.075	0.505	25.532325	-103.219362
X. C. Matamoros - La Unión	3.70	3	1	8826	4.7	72.7	2.4	6.4	2.8	7.0	1.6	1.9	0.5	77.4	2.4	20.2	0.075	0.505	25.538642	-103.225916
X. C. Matamoros - La Unión	3.70	3	2	8646	5.1	71.7	2.7	6.5	2.9	6.9	1.4	2.2	0.6	76.8	2.7	20.5	0.082	0.505	25.538445	-103.225998
T. C. Saltillo - Torreón	5.32	1	1	8538	5.6	76.6	2.0	6.4	2.3	4.7	1.2	0.9	0.3	82.2	2.0	15.8	0.064	0.503	25.537297	-103.242414
T. C. Saltillo - Torreón	5.32	1	2	8656	5.5	77.2	1.8	5.8	2.2	5.0	1.2	1.0	0.3	82.7	1.8	15.5	0.078	0.503	25.537216	-103.242415

COAHUILA

37 CARR: Libramiento de Saltillo J.L.P.

CLAVE: 05031

RUTA: COA

AÑO: 2022

LUGAR	ESTACION				CLASIFICACION VEHICULAR EN PORCIENTO													COORDENADAS		
	KM	TE	SC	TDPA	M	A	B	C2	C3	T3S2	T3S3	T3S2R4	OTROS	A	B	C	K'	D	LATITUD	LONGITUD
T. C. Ent. Bella Unión - Saltillo	0.00	0	0																	
X. C. Saltillo - Arteaga	2.50	3	1	15992	1.9	79.3	3.3	5.4	3.2	5.1	0.9	0.7	0.2	81.2	3.3	15.5	0.140	0.548	25.449575	-100.892581
X. C. Saltillo - Arteaga	2.50	3	2	19377	1.7	77.2	3.8	6.0	3.7	5.7	1.0	0.7	0.2	78.9	3.8	17.3	0.131	0.548	25.449528	-100.892769
T. C. Saltillo - Monterrey	18.00	1	1	12834	2.3	69.1	2.7	8.3	3.5	11.2	1.4	1.1	0.4	71.4	2.7	25.9	0.115	0.514	25.552727	-100.921993
T. C. Saltillo - Monterrey	18.00	1	2	12142	2.5	68.0	2.8	8.3	3.7	11.5	1.5	1.2	0.5	70.5	2.8	26.7	0.120	0.514	25.552860	-100.922262

38 CARR: Libramiento de Torreón

CLAVE: 05516

RUTA: COA

AÑO: 2022

LUGAR	ESTACION				CLASIFICACION VEHICULAR EN PORCIENTO													COORDENADAS		
	KM	TE	SC	TDPA	M	A	B	C2	C3	T3S2	T3S3	T3S2R4	OTROS	A	B	C	K'	D	LATITUD	LONGITUD
X. C. Saltillo - Torreón	0.00	3	1	40757	4.5	85.9	1.4	3.8	1.0	1.4	0.4	1.3	0.3	90.4	1.4	8.2	0.087	0.526	25.539267	-103.370573
X. C. Saltillo - Torreón	0.00	3	2	45801	3.9	86.9	1.5	4.0	0.8	1.2	0.4	1.1	0.2	90.8	1.5	7.7	0.099	0.526	25.539831	-103.370974
T. C. La Cuchilla - Torreón (Baja)	7.30	1	1	38141	3.4	84.0	1.4	4.8	0.8	3.3	0.9	1.1	0.3	87.4	1.4	11.2	0.090	0.532	25.582181	-103.401987
T. C. La Cuchilla - Torreón (Alta)	7.30	1	1	16467	1.6	86.3	1.6	3.9	2.0	2.8	0.9	0.7	0.2	87.9	1.6	10.5	0.083	0.530	25.582028	-103.402039
T. C. La Cuchilla - Torreón (Baja)	7.30	1	2	39188	3.5	83.7	1.5	4.7	0.9	3.2	1.0	1.2	0.3	87.2	1.5	11.3	0.085	0.532	25.581712	-103.401984
T. C. La Cuchilla - Torreón (Alta)	7.30	1	2	18575	1.8	86.9	1.6	3.6	1.6	2.6	0.9	0.8	0.2	88.7	1.6	9.7	0.094	0.530	25.581956	-103.402070
Lim. Edos. Term. Coah. Ppia. Dgo.	11.80	0	0																	
T. C. Durango - Torreón	28.60	0	0																	

39 CARR: Matamoros - El Fresno

CLAVE: 05023

RUTA: COA-078

AÑO: 2022

LUGAR	ESTACION				CLASIFICACION VEHICULAR EN PORCIENTO													COORDENADAS		
	KM	TE	SC	TDPA	M	A	B	C2	C3	T3S2	T3S3	T3S2R4	OTROS	A	B	C	K'	D	LATITUD	LONGITUD
Matamoros	0.00	3	0	3429	18.4	71.6	1.3	4.3	2.4	1.0	0.5	0.5	0.0	90.0	1.3	8.7	0.081	0.512	25.499926	-103.224734
El Fresno	12.60	1	0	1568	23.8	66.7	0.7	7.3	1.0	0.4	0.1	0.0	0.0	90.5	0.7	8.8	0.114	0.508	25.426333	-103.227842

40 CARR: Matamoros - La Unión

CLAVE: 05023

RUTA: COA-070

AÑO: 2022

LUGAR	ESTACION				CLASIFICACION VEHICULAR EN PORCIENTO													COORDENADAS		
	KM	TE	SC	TDPA	M	A	B	C2	C3	T3S2	T3S3	T3S2R4	OTROS	A	B	C	K'	D	LATITUD	LONGITUD
X. C. Libramiento de Matamoros	1.00	3	1	2122	7.5	79.6	2.5	5.5	2.6	1.3	0.4	0.5	0.1	87.1	2.5	10.4	0.098	0.506	25.542817	-103.222511
X. C. Libramiento de Matamoros	1.00	3	2	2175	7.2	80.6	2.4	5.2	2.6	1.3	0.4	0.3	0.0	87.8	2.4	9.8	0.099	0.506	25.542837	-103.222660
La Partida	14.09	1	0	4266	7.9	70.1	1.3	15.6	2.5	1.6	0.4	0.5	0.1	78.0	1.3	20.7	0.102	0.519	25.586429	-103.297582
La Partida	14.09	3	0	6524	9.6	76.2	2.0	7.7	1.7	1.3	0.5	0.6	0.4	85.8	2.0	12.2	0.094	0.505	25.594490	-103.314661
X. C. Antigua Carretera a San Pedro	22.00	1	1	9193	7.8	77.7	0.6	2.6	3.1	4.2	2.4	1.2	0.4	85.5	0.6	13.9	0.095	0.519	25.598292	-103.374603

COAHUILA

40 CARR: Matamoros - La Unión

CLAVE: 05023

RUTA: COA-070

AÑO: 2022

LUGAR	ESTACION				CLASIFICACION VEHICULAR EN PORCIENTO													COORDENADAS		
	KM	TE	SC	TDPA	M	A	B	C2	C3	T3S2	T3S3	T3S2R4	OTROS	A	B	C	K'	D	LATITUD	LONGITUD
X. C. Antigua Carretera a San Pedro	22.00	1	2	8530	7.5	78.1	0.7	2.9	3.3	4.1	2.2	0.9	0.3	85.6	0.7	13.7	0.096	0.519	25.598175	-103.374614
La Unión	25.00	1	1	11376	5.8	89.6	0.4	2.4	0.8	0.4	0.3	0.2	0.1	95.4	0.4	4.2	0.113	0.518	25.597580	-103.392643
La Unión	25.00	1	2	12232	5.9	89.3	0.5	2.3	0.8	0.5	0.4	0.2	0.1	95.2	0.5	4.3	0.099	0.518	25.597490	-103.392654

41 CARR: Monclova - Estación Candela

CLAVE: 00501

RUTA: COA-030-NL

AÑO: 2022

LUGAR	ESTACION				CLASIFICACION VEHICULAR EN PORCIENTO													COORDENADAS		
	KM	TE	SC	TDPA	M	A	B	C2	C3	T3S2	T3S3	T3S2R4	OTROS	A	B	C	K'	D	LATITUD	LONGITUD
T. C. Monclova - Piedras Negras	0.00	0	0																	
T. Izq. Libramiento de Monclova	5.10	1	1	3053	6.5	60.1	6.8	24.1	1.5	0.7	0.1	0.1	0.1	66.6	6.8	26.6	0.090	0.501	26.928305	-101.389030
T. Izq. Libramiento de Monclova	5.10	1	2	3038	6.7	58.7	7.1	24.9	1.6	0.7	0.1	0.1	0.1	65.4	7.1	27.5	0.097	0.501	26.928375	-101.389142
Lim. Edos. Term. Coah. Ppia. N. L.	118.00	0	0																	
T. C. Monterrey - Colombia	125.50	1	0	576	0.1	73.4	1.5	15.7	1.1	7.2	0.4	0.5	0.1	73.5	1.5	25.0	0.196	0.503	26.837840	-100.493910

42 CARR: Morelos - Ent. Las Corrientes

CLAVE: 05500

RUTA: COA-010

AÑO: 2022

LUGAR	ESTACION				CLASIFICACION VEHICULAR EN PORCIENTO													COORDENADAS		
	KM	TE	SC	TDPA	M	A	B	C2	C3	T3S2	T3S3	T3S2R4	OTROS	A	B	C	K'	D	LATITUD	LONGITUD
T. C. Morelos - Cd. Acuña	0.00	3	0	1648	2.5	85.5	2.3	8.2	1.0	0.3	0.1	0.1	0.0	88.0	2.3	9.7	0.118	0.514	28.401827	-100.895172
Los Álamos	9.20	1	0	1027	3.6	89.5	1.5	5.3	0.1	0.0	0.0	0.0	0.0	93.1	1.5	5.4	0.098	0.518	28.355837	-100.941617
T. C. Monclova - Piedras Negras	20.00	0	0																	

43 CARR: Puerto de Flores - El Hondable

CLAVE: 05512

RUTA: COA-112

AÑO: 2022

LUGAR	ESTACION				CLASIFICACION VEHICULAR EN PORCIENTO													COORDENADAS		
	KM	TE	SC	TDPA	M	A	B	C2	C3	T3S2	T3S3	T3S2R4	OTROS	A	B	C	K'	D	LATITUD	LONGITUD
T. C. Aut. Puerto México - Ojo Caliente	0.00	3	0	2893	1.0	78.4	0.8	16.4	0.9	1.5	0.6	0.3	0.1	79.4	0.8	19.8	0.097	0.517	25.340647	-100.777633
San Antonio de Las Alazanas	24.00	1	0	2217	1.1	81.4	0.9	14.3	0.7	1.2	0.3	0.1	0.0	82.5	0.9	16.6	0.128	0.506	25.278562	-100.601003
El Hondable	50.50	0	0																	

44 CARR: Ramal a Hipólito

CLAVE: 05509

RUTA: COA-114

AÑO: 2022

LUGAR	ESTACION				CLASIFICACION VEHICULAR EN PORCIENTO													COORDENADAS		
	KM	TE	SC	TDPA	M	A	B	C2	C3	T3S2	T3S3	T3S2R4	OTROS	A	B	C	K'	D	LATITUD	LONGITUD
T. C. Saltillo - Torreón	0.00	3	0	619	2.9	76.3	3.3	7.8	4.9	2.1	2.1	0.6	0.0	79.2	3.3	17.5	0.103	0.506	25.595147	-101.452055

COAHUILA

44 CARR: Ramal a Hipólito

CLAVE: 05509

RUTA: COA-114

AÑO: 2022

LUGAR	ESTACION				CLASIFICACION VEHICULAR EN PORCIENTO													COORDENADAS			
	KM	TE	SC	TDPA	M	A	B	C2	C3	T3S2	T3S3	T3S2R4	OTROS	A	B	C	K'	D	LATITUD	LONGITUD	
Hipólito	13.00	0	0																		

45 CARR: Ramal a Lamadrid

CLAVE: 05522

RUTA: COA-042

AÑO: 2022

LUGAR	ESTACION				CLASIFICACION VEHICULAR EN PORCIENTO													COORDENADAS			
	KM	TE	SC	TDPA	M	A	B	C2	C3	T3S2	T3S3	T3S2R4	OTROS	A	B	C	K'	D	LATITUD	LONGITUD	
T. C. Monclova - San Pedro de las Colonias	0.00	3	0	1213	2.5	86.1	4.3	6.6	0.4	0.1	0.0	0.0	0.0	88.6	4.3	7.1	0.092	0.507	27.016687	-101.791892	
Lamadrid	4.00	0	0																		

46 CARR: Sabinas - Don Martín

CLAVE: 05501

RUTA: COA-025

AÑO: 2022

LUGAR	ESTACION				CLASIFICACION VEHICULAR EN PORCIENTO													COORDENADAS		
	KM	TE	SC	TDPA	M	A	B	C2	C3	T3S2	T3S3	T3S2R4	OTROS	A	B	C	K'	D	LATITUD	LONGITUD
Sabinas	0.00	3	0	2265	3.8	70.8	0.2	22.7	0.5	1.3	0.2	0.3	0.2	74.6	0.2	25.2	0.085	0.504	27.849804	-101.097055
T. Izq. La Mezquitosa	3.00	3	0	1161	1.4	70.0	0.5	24.7	0.7	1.3	0.7	0.4	0.3	71.4	0.5	28.1	0.099	0.505	27.828690	-101.068943
Juárez	53.00	3	0	396	1.3	68.6	1.3	23.4	0.7	2.9	0.7	0.4	0.7	69.9	1.3	28.8	0.114	0.503	27.619181	-100.704558
Don Martín	66.00	1	0	376	1.8	74.8	1.1	15.1	2.9	1.8	1.1	0.8	0.6	76.6	1.1	22.3	0.144	0.502	27.540005	-100.625297

47 CARR: Saltillo - Arteaga

CLAVE: 05008

RUTA: COA-106

AÑO: 2022

LUGAR	ESTACION				CLASIFICACION VEHICULAR EN PORCIENTO													COORDENADAS			
	KM	TE	SC	TDPA	M	A	B	C2	C3	T3S2	T3S3	T3S2R4	OTROS	A	B	C	K'	D	LATITUD	LONGITUD	
Saltillo	0.00	3	1	13632	2.0	92.6	0.4	2.9	0.9	0.4	0.2	0.4	0.2	94.6	0.4	5.0	0.089	0.506	25.442221	-100.952984	
Saltillo	0.00	3	2	13987	2.4	91.8	0.4	3.2	1.0	0.4	0.2	0.4	0.2	94.2	0.4	5.4	0.096	0.506	25.442308	-100.953244	
X. C. Libramiento de Matehuala - Monterrey	9.00	1	1	7428	2.0	88.0	1.1	3.9	2.4	1.6	0.7	0.2	0.1	90.0	1.1	8.9	0.133	0.531	25.444454	-100.897701	
X. C. Libramiento de Matehuala - Monterrey	9.00	1	2	8397	1.8	87.2	1.3	4.3	2.5	1.8	0.8	0.2	0.1	89.0	1.3	9.7	0.130	0.531	25.444553	-100.897712	
X. C. Libramiento de Matehuala - Monterrey	9.00	3	1	3832	1.7	89.8	1.0	4.6	1.3	0.7	0.6	0.2	0.1	91.5	1.0	7.5	0.097	0.520	25.449523	-100.885431	
X. C. Libramiento de Matehuala - Monterrey	9.00	3	2	3530	1.9	89.3	1.1	4.6	1.5	0.7	0.6	0.2	0.1	91.2	1.1	7.7	0.101	0.520	25.449813	-100.885287	
Arteaga	12.00	1	1	3442	2.0	91.0	0.9	3.9	1.2	0.5	0.4	0.1	0.0	93.0	0.9	6.1	0.090	0.508	25.448611	-100.870622	
Arteaga	12.00	1	2	3557	2.0	90.5	0.9	4.3	1.3	0.5	0.4	0.1	0.0	92.5	0.9	6.6	0.096	0.508	25.448692	-100.870663	
T. C. Ent. Bella Unión - Saltillo	18.00	0	0																		

COAHUILA

48 CARR: San Buenaventura - Estación Hermanas

CLAVE: 05004

RUTA: COA-034

AÑO: 2022

LUGAR	ESTACION				CLASIFICACION VEHICULAR EN PORCIENTO										COORDENADAS					
	KM	TE	SC	TDPA	M	A	B	C2	C3	T3S2	T3S3	T3S2R4	OTROS	A	B	C	K'	D	LATITUD	LONGITUD
San Buenaventura	0.00	3	0	2397	3.7	87.7	0.6	4.7	1.7	1.4	0.2	0.0	0.0	91.4	0.6	8.0	0.101	0.502	27.078884	-101.531471
T. Izq. Santa Gertrudis	2.48	1	0	1930	3.3	88.7	0.6	4.4	1.5	1.3	0.2	0.0	0.0	92.0	0.6	7.4	0.072	0.508	27.089196	-101.514000
Abasolo	15.71	1	0	1021	3.2	89.7	1.1	4.0	1.3	0.4	0.3	0.0	0.0	92.9	1.1	6.0	0.105	0.505	27.174738	-101.431064
Los Rodríguez	31.00	3	0	607	3.1	89.1	1.0	4.7	1.7	0.4	0.0	0.0	0.0	92.2	1.0	6.8	0.082	0.511	27.199767	-101.349742
Estación Hermanas	50.00	1	0	648	1.5	92.2	0.6	3.5	1.1	0.7	0.3	0.1	0.0	93.7	0.6	5.7	0.106	0.520	27.221294	-101.239864

49 CARR: T. C. (Ent. Morelos - Saltillo) - Parras de La Fuente

CLAVE: 05510

RUTA: COA-105

AÑO: 2022

LUGAR	ESTACION				CLASIFICACION VEHICULAR EN PORCIENTO										COORDENADAS					
	KM	TE	SC	TDPA	M	A	B	C2	C3	T3S2	T3S3	T3S2R4	OTROS	A	B	C	K'	D	LATITUD	LONGITUD
T. C. Morelos - Saltillo	0.00	3	1	7950	7.2	64.4	2.8	11.1	2.8	9.2	1.4	0.7	0.4	71.6	2.8	25.6	0.128	0.502	25.260915	-101.102253
T. C. Morelos - Saltillo	0.00	3	2	7878	7.2	62.0	2.9	12.1	3.1	9.9	1.5	0.9	0.4	69.2	2.9	27.9	0.112	0.502	25.260834	-101.102222
Gral. Cepeda	40.00	1	0	1714	4.2	78.8	2.8	13.1	0.5	0.4	0.1	0.1	0.0	83.0	2.8	14.2	0.093	0.502	25.365817	-101.480633
Gral. Cepeda	40.00	3	0	963	2.2	74.5	2.3	19.2	0.8	0.5	0.5	0.0	0.0	76.7	2.3	21.0	0.085	0.501	25.385048	-101.494091
Parras de La Fuente	102.00	1	0	3240	3.4	88.4	0.7	4.8	0.9	0.5	0.5	0.6	0.2	91.8	0.7	7.5	0.094	0.504	25.443692	-102.157195

50 CARR: T. C. (Saltillo - Monclova) - Ramos Arizpe

CLAVE: 05508

RUTA: COA

AÑO: 2022

LUGAR	ESTACION				CLASIFICACION VEHICULAR EN PORCIENTO										COORDENADAS					
	KM	TE	SC	TDPA	M	A	B	C2	C3	T3S2	T3S3	T3S2R4	OTROS	A	B	C	K'	D	LATITUD	LONGITUD
T. C. Saltillo - Monclova	0.00	3	0	6442	3.5	72.4	2.4	7.2	2.7	8.9	1.1	1.4	0.4	75.9	2.4	21.7	0.093	0.502	25.528783	-101.003125
Ramos Arizpe	12.00	0	0																	

51 CARR: Torreón - Escuadrón 201

CLAVE: 05022

RUTA: COA-011

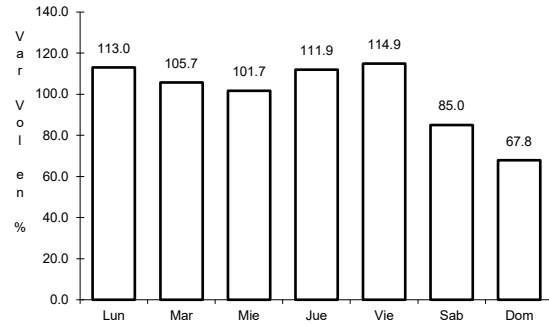
AÑO: 2022

LUGAR	ESTACION				CLASIFICACION VEHICULAR EN PORCIENTO										COORDENADAS					
	KM	TE	SC	TDPA	M	A	B	C2	C3	T3S2	T3S3	T3S2R4	OTROS	A	B	C	K'	D	LATITUD	LONGITUD
Torreón	0.00	3	1	19329	5.9	83.4	0.9	4.8	1.1	1.9	0.8	0.7	0.5	89.3	0.9	9.8	0.075	0.530	25.581472	-103.389205
Torreón	0.00	3	2	21826	5.7	84.4	0.8	4.4	1.0	1.8	0.9	0.6	0.4	90.1	0.8	9.1	0.078	0.530	25.581545	-103.389303
El Aguila	11.35	1	0	3437	11.3	79.8	0.7	6.0	1.2	0.4	0.3	0.3	0.0	91.1	0.7	8.2	0.093	0.504	25.625952	-103.367148
Escuadrón 201	17.06	1	0	1192	8.9	82.2	0.7	5.6	0.9	1.0	0.5	0.2	0.0	91.1	0.7	8.2	0.085	0.507	25.669161	-103.347951

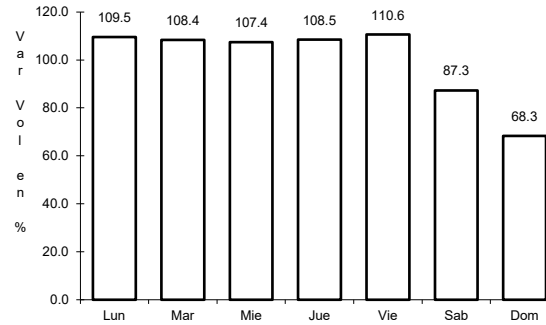
1 CARR: Cd. Acuña - Presa de La Amistad

CLAVE: 05085

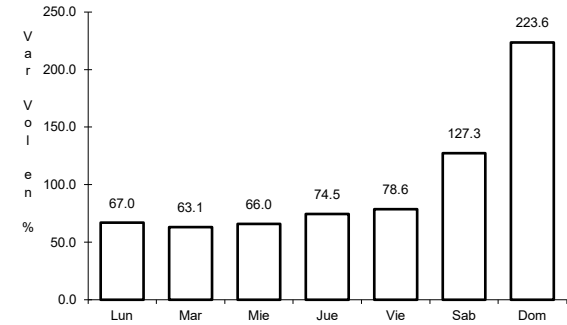
RUTA: MEX-002



Km: 0.00 Tipo: 3 Sent: 1



Km: 0.00 Tipo: 3 Sent: 2

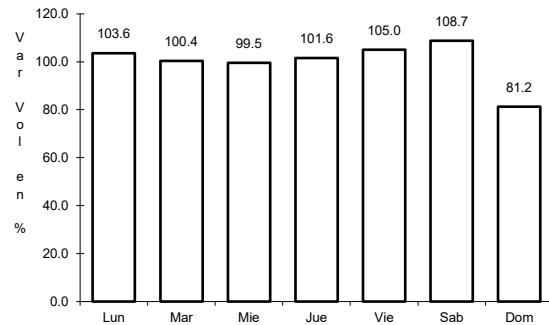


Km: 23.00 Tipo: 1 Sent: 0

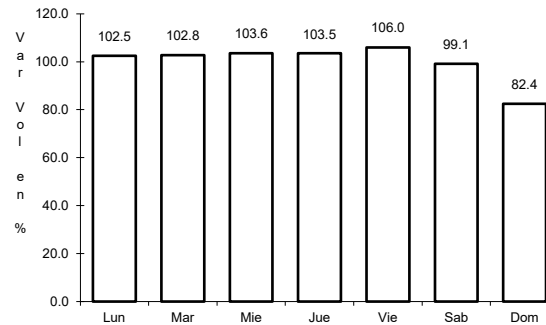
2 CARR: Durango - Torreón

CLAVE: 10085

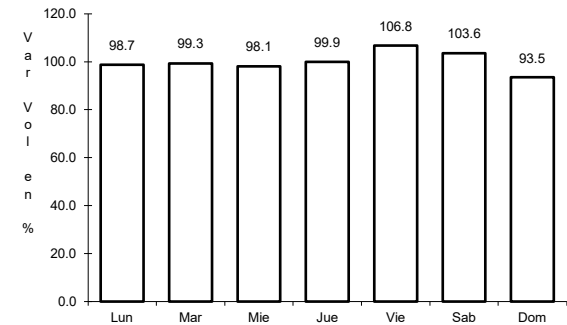
RUTA: MEX-040



Km: 0.00 Tipo: 3 Sent: 1



Km: 0.00 Tipo: 3 Sent: 2

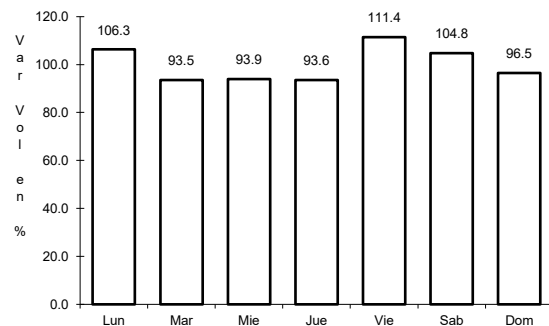


Km: 120.90 Tipo: 1 Sent: 0

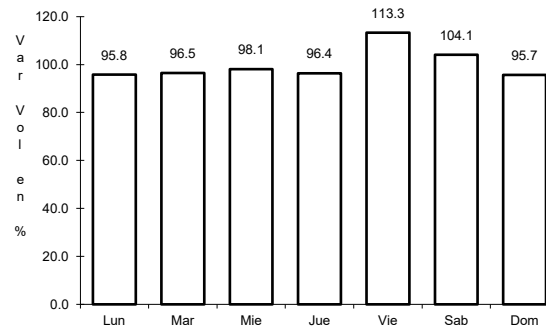
3 CARR: Ent. Bella Unión - Saltillo

CLAVE: 05003

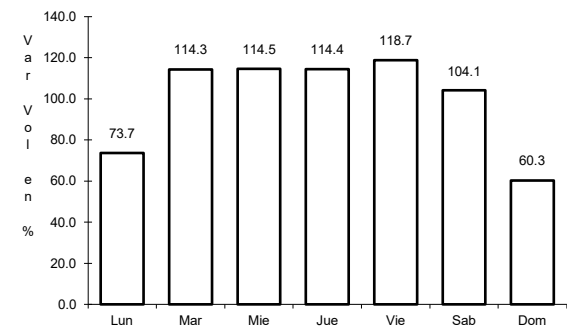
RUTA: MEX-057



Km: 4.61 Tipo: 1 Sent: 1



Km: 4.61 Tipo: 1 Sent: 2

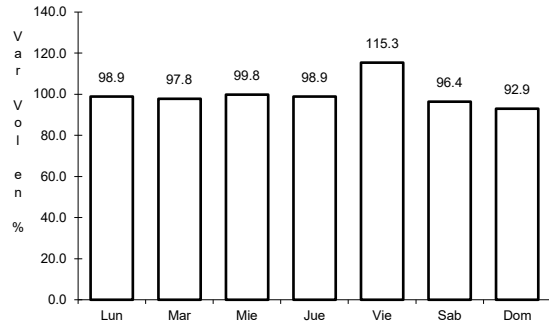


Km: 17.00 Tipo: 1 Sent: 1

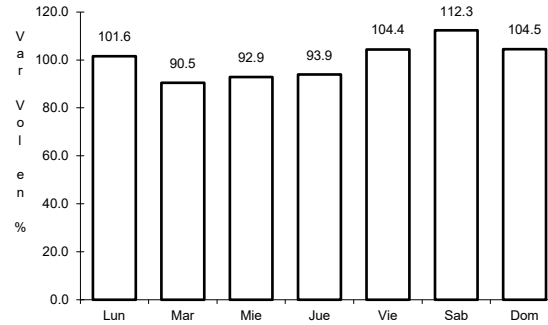
4 CARR: Ent. La Cuchilla - San Pedro de las Colonias

CLAVE: 05021

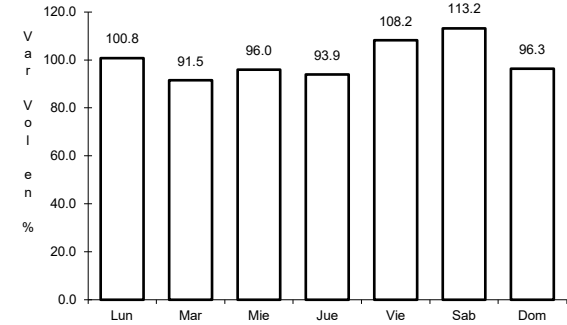
ruta: MEX



Km: 0.00 Tipo: 3 Sent: 0



Km: 18.70 Tipo: 1 Sent: 1

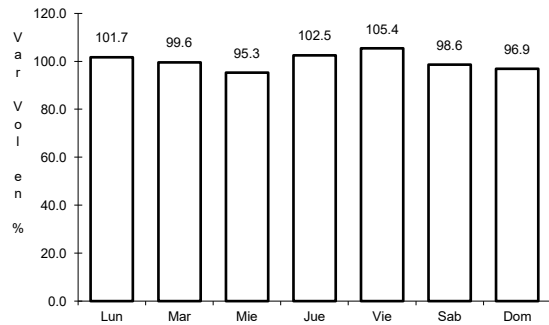


Km: 18.70 Tipo: 1 Sent: 2

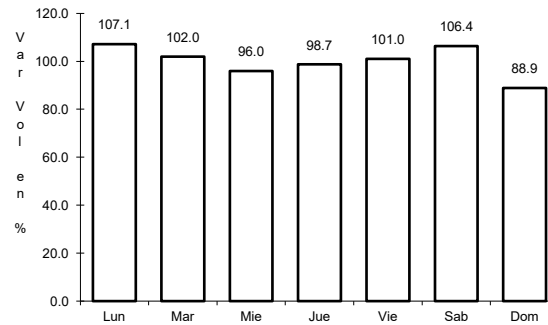
5 CARR: Ent. Morelos - Saltillo

CLAVE: 00149

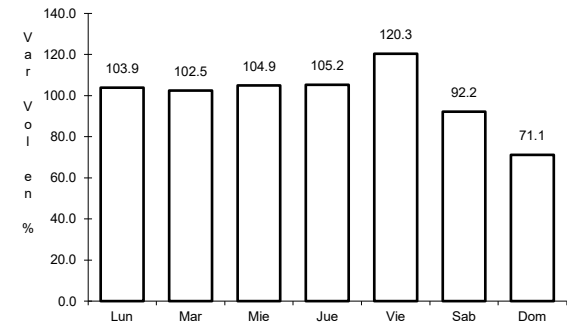
ruta: MEX-054



Km: 0.00 Tipo: 3 Sent: 1



Km: 0.00 Tipo: 3 Sent: 2

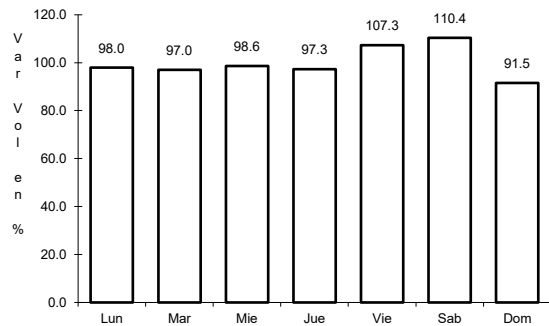


Km: 333.00 Tipo: 3 Sent: 1

6 CARR: Gregorio García - Francisco I. Madero

CLAVE: 00110

ruta: MEX-040

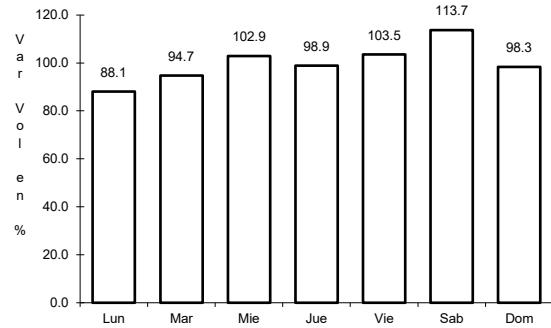


Km: 9.60 Tipo: 1 Sent: 0

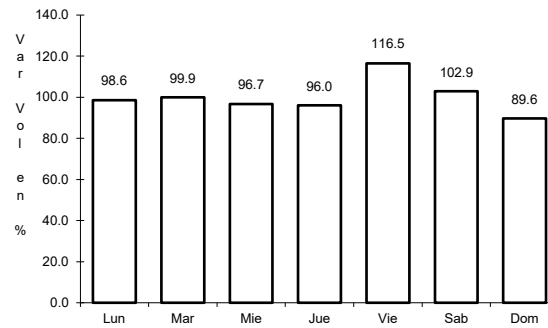
7 CARR: Libramiento Allende - Nava

CLAVE: 05518

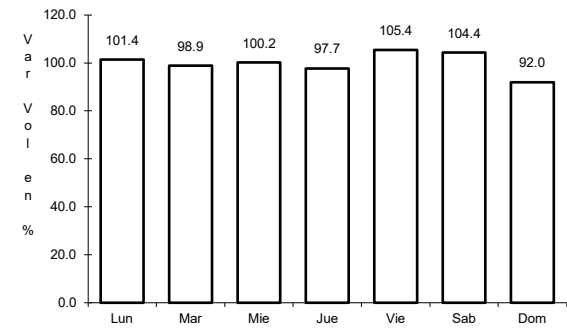
ruta: MEX-057



Km: 0.00 Tipo: 3 Sent: 1



Km: 0.00 Tipo: 3 Sent: 2

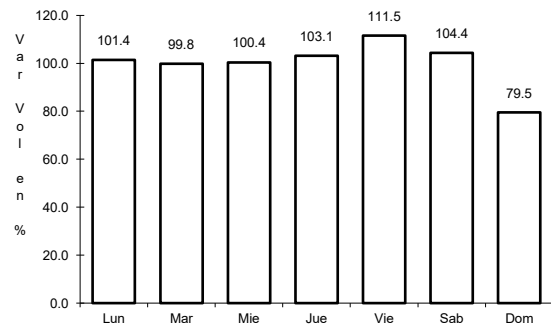


Km: 18.55 Tipo: 1 Sent: 1

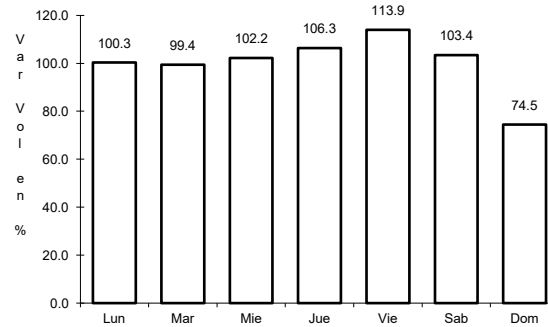
8 CARR: Monclova - Piedras Negras

CLAVE: 05407

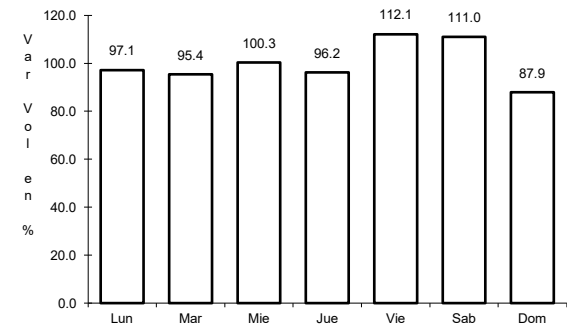
ruta: MEX-057



Km: 0.00 Tipo: 3 Sent: 1



Km: 0.00 Tipo: 3 Sent: 2

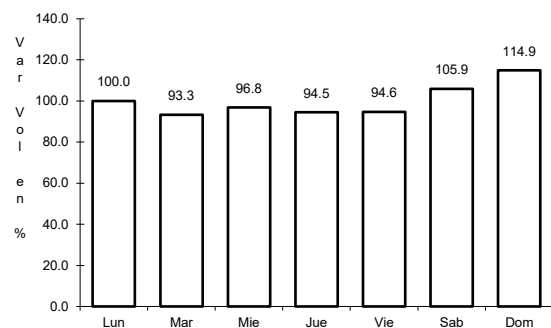


Km: 182.00 Tipo: 1 Sent: 0

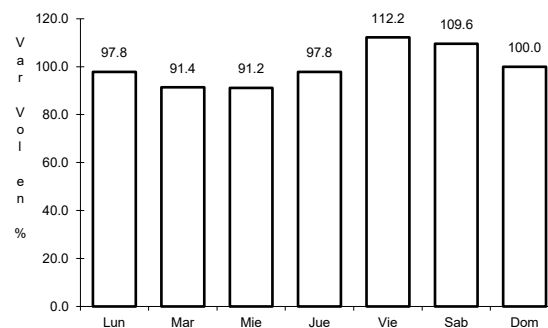
9 CARR: Monclova - San Pedro de Las Colonias

CLAVE: 05062

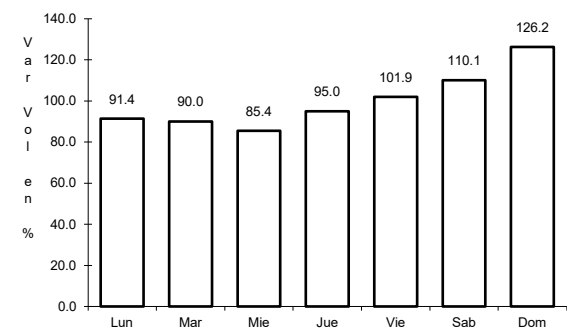
ruta: MEX-030



Km: 2.00 Tipo: 3 Sent: 1



Km: 2.00 Tipo: 3 Sent: 2

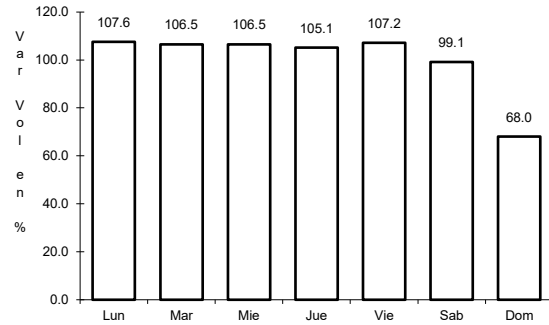


Km: 80.15 Tipo: 3 Sent: 0

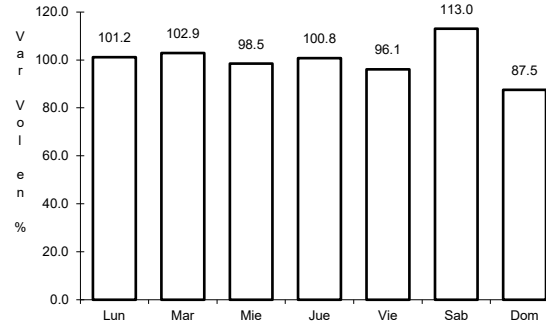
10 CARR: Monterrey - Castaños

CLAVE: 00128

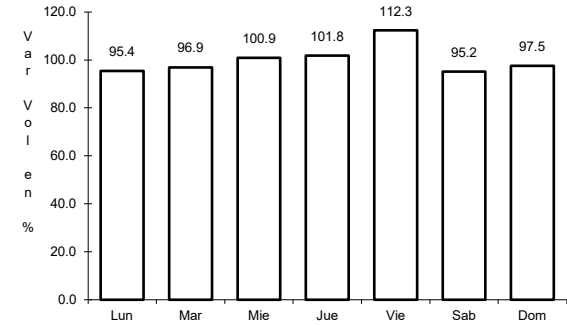
ruta: MEX-053



Km: 0.00 Tipo: 3 Sent: 0



Km: 155.90 Tipo: 1 Sent: 1

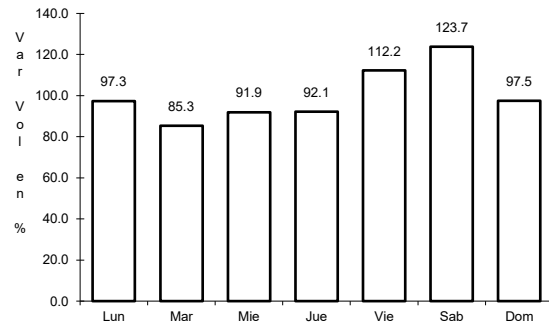


Km: 155.90 Tipo: 1 Sent: 2

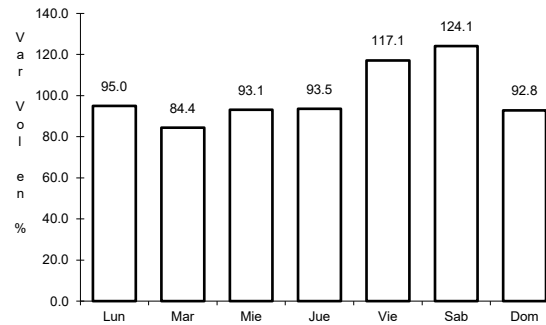
11 CARR: Morelos - Cd. Acuña

CLAVE: 05029

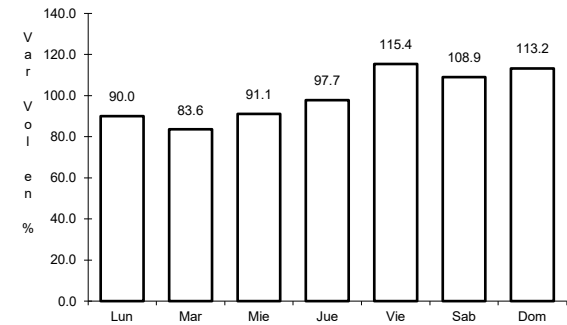
ruta: MEX-029



Km: 0.00 Tipo: 3 Sent: 1



Km: 0.00 Tipo: 3 Sent: 2

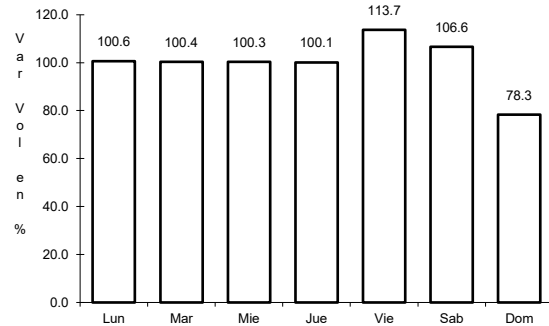


Km: 73.84 Tipo: 1 Sent: 0

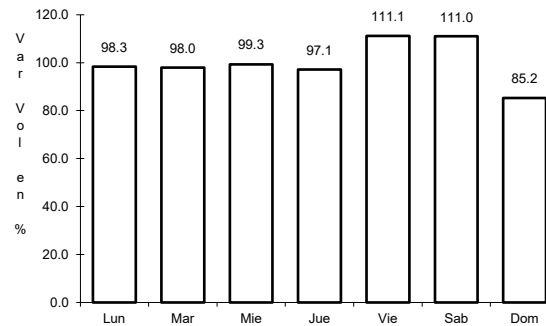
12 CARR: Nueva Rosita - Boquillas del Carmen

CLAVE: 05028

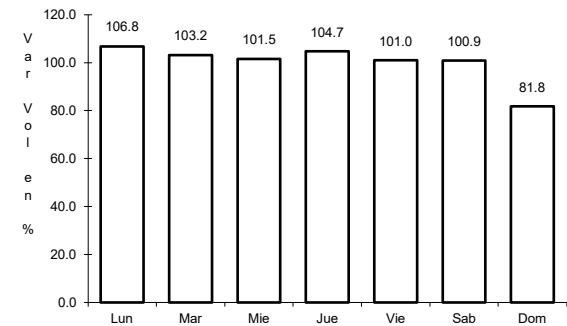
ruta: MEX-053



Km: 0.00 Tipo: 3 Sent: 1



Km: 0.00 Tipo: 3 Sent: 2

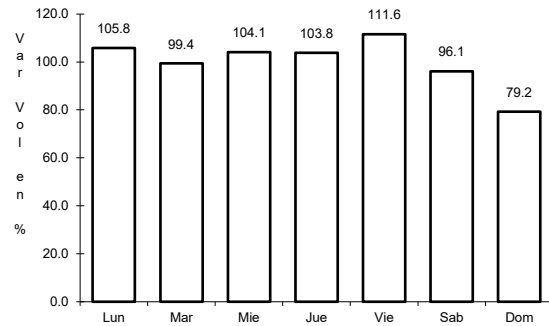


Km: 35.00 Tipo: 3 Sent: 0

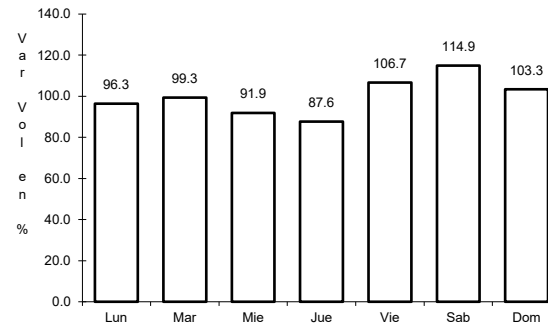
13 CARR: Ojo Caliente - Santa Cruz

CLAVE: 05007

ruta: MEX-057



Km: 0.00 Tipo: 3 Sent: 0

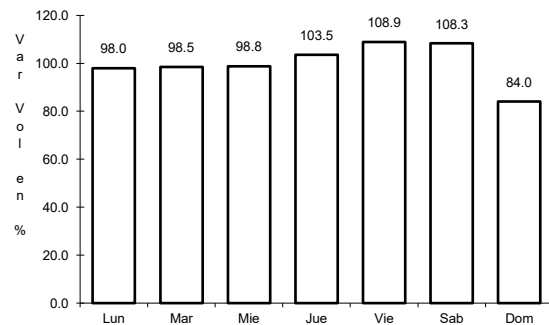


Km: 34.00 Tipo: 1 Sent: 0

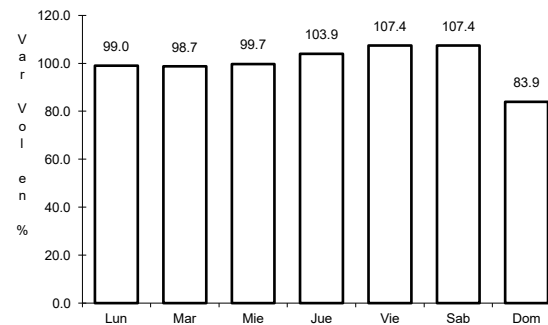
14 CARR: Piedras Negras - Cd. Acuña

CLAVE: 05061

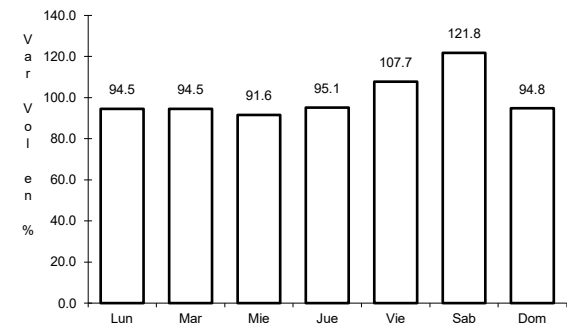
ruta: MEX-002



Km: 0.00 Tipo: 3 Sent: 1



Km: 0.00 Tipo: 3 Sent: 2

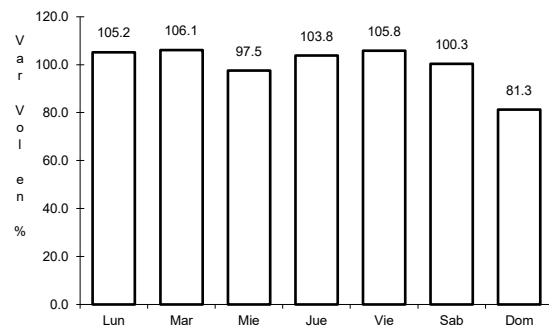


Km: 83.30 Tipo: 1 Sent: 0

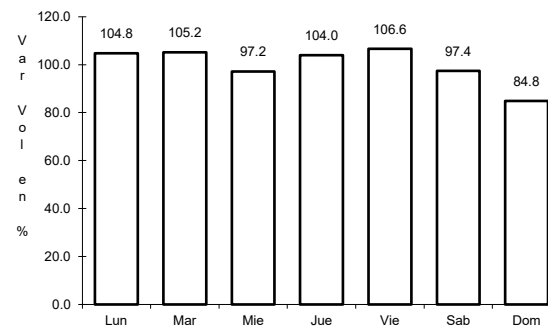
15 CARR: Piedras Negras - Nuevo Laredo

CLAVE: 00503

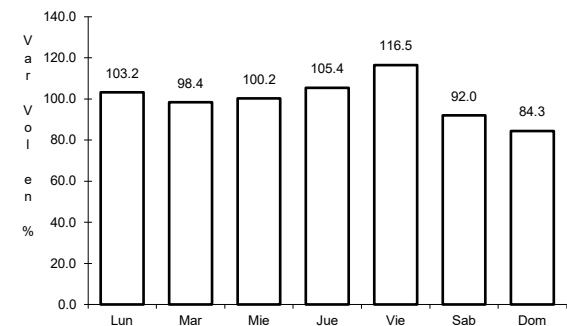
ruta: MEX-002



Km: 0.00 Tipo: 3 Sent: 1



Km: 0.00 Tipo: 3 Sent: 2

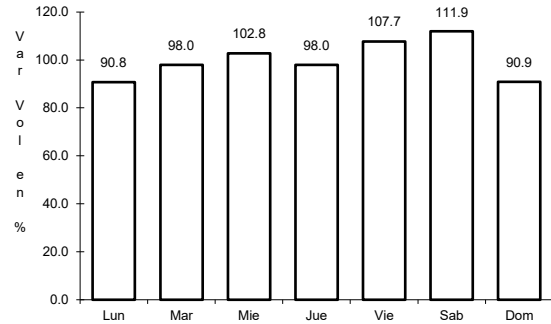


Km: 134.00 Tipo: 3 Sent: 0

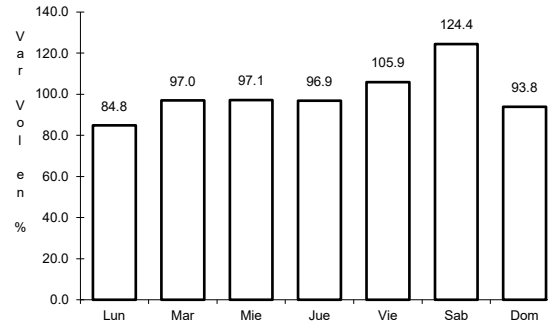
16 CARR: Puerto México - La Encantada

CLAVE: 05002

ruta: MEX-057



Km: 0.00 Tipo: 3 Sent: 0

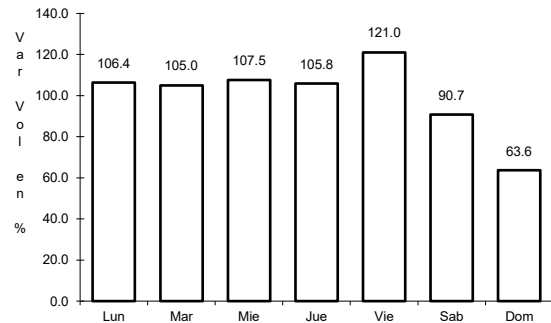


Km: 41.00 Tipo: 1 Sent: 0

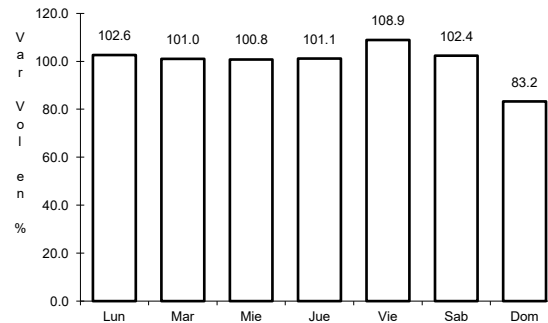
17 CARR: Saltillo - Monclova

CLAVE: 05406

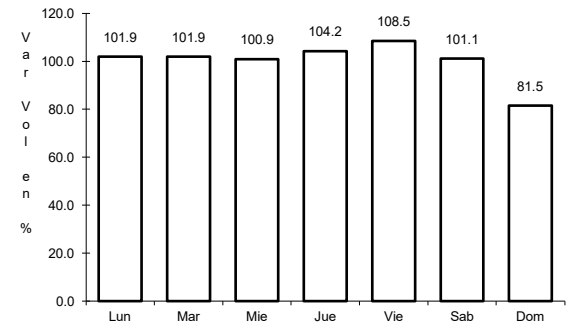
ruta: MEX-057



Km: 13.00 Tipo: 1 Sent: 0



Km: 192.00 Tipo: 1 Sent: 1

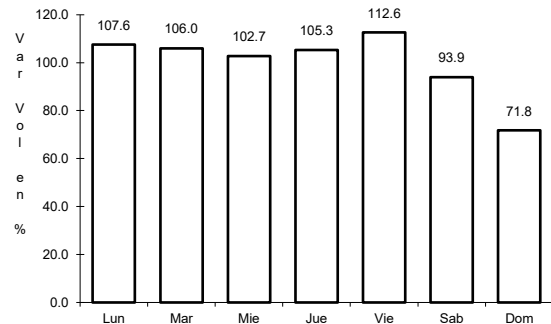


Km: 192.00 Tipo: 1 Sent: 2

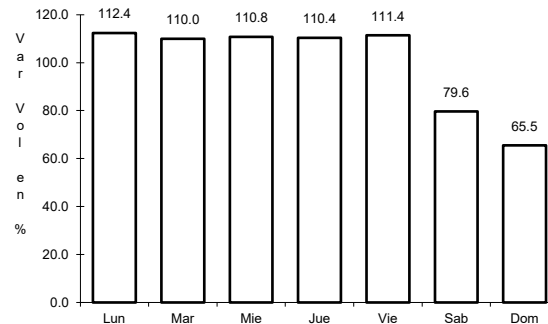
18 CARR: Saltillo - Monterrey

CLAVE: 00087

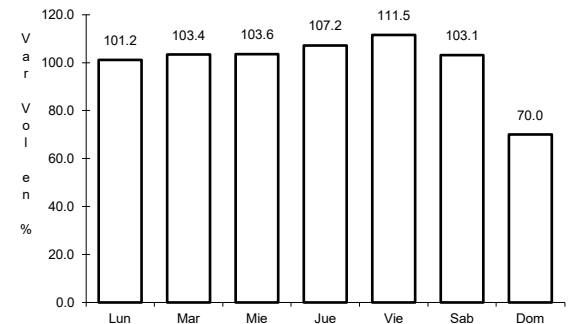
ruta: MEX-040



Km: 4.25 Tipo: 3 Sent: 1



Km: 4.25 Tipo: 3 Sent: 2

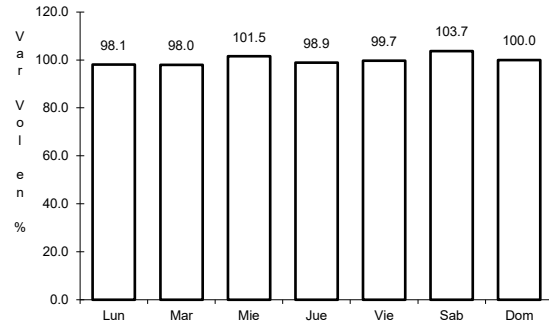


Km: 79.20 Tipo: 1 Sent: 1

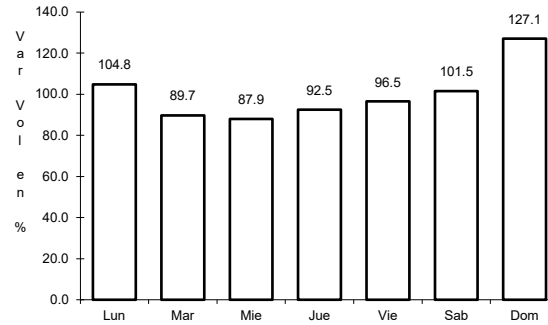
19 CARR: Saltillo - Torreón

CLAVE: 05086

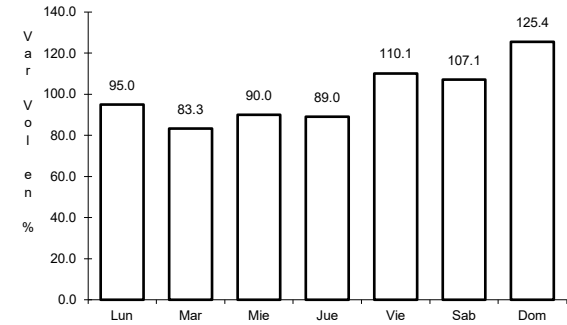
ruta: MEX-040



Km: 6.10 Tipo: 3 Sent: 1



Km: 6.10 Tipo: 3 Sent: 2

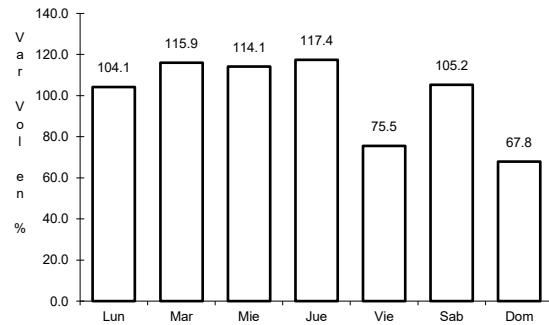


Km: 91.20 Tipo: 1 Sent: 0

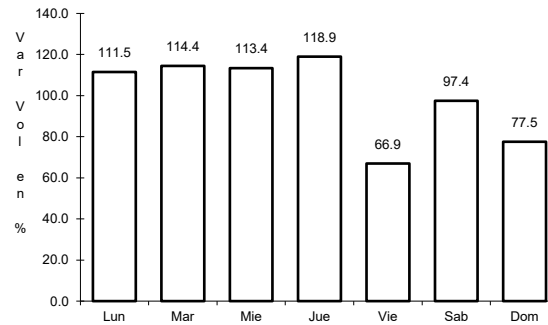
20 CARR: Torreón - San Pedro de las Colonias

CLAVE: 05021

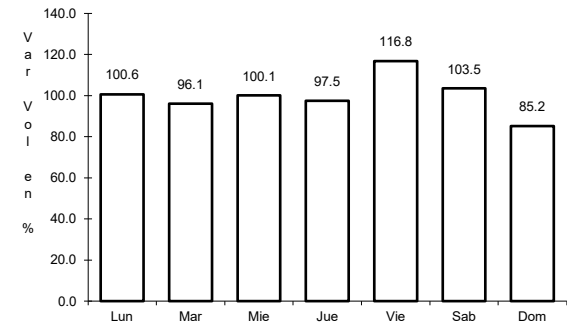
ruta: MEX-030



Km: 0.00 Tipo: 3 Sent: 1



Km: 0.00 Tipo: 3 Sent: 2

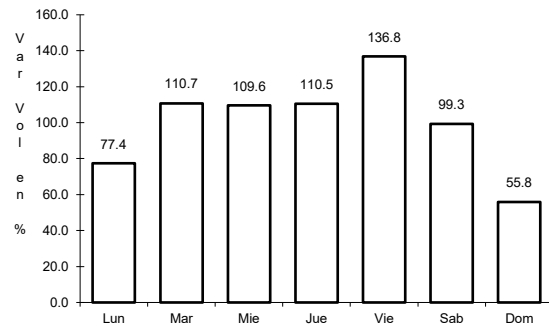


Km: 55.00 Tipo: 1 Sent: 1

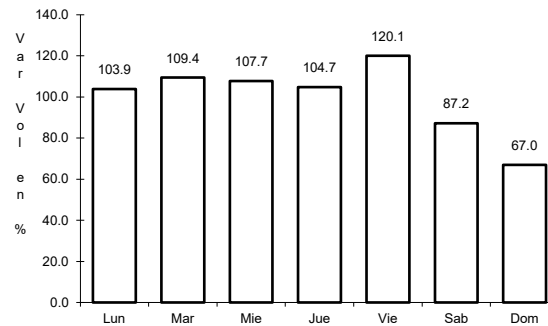
21 CARR: Libramiento Norponiente de Saltillo (Cuota)

CLAVE: 05022

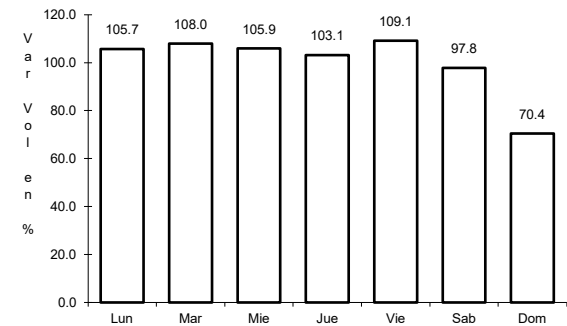
ruta: MEX-S30



Km: 0.00 Tipo: 3 Sent: 0



Km: 22.44 Tipo: 3 Sent: 0

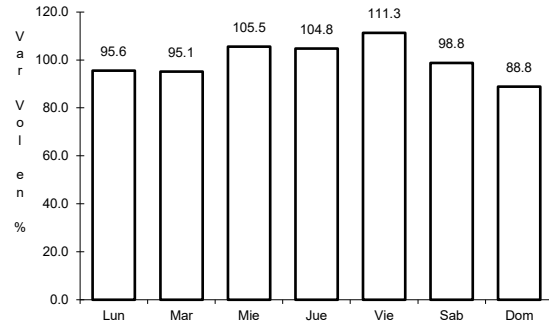


Km: 46.21 Tipo: 1 Sent: 0

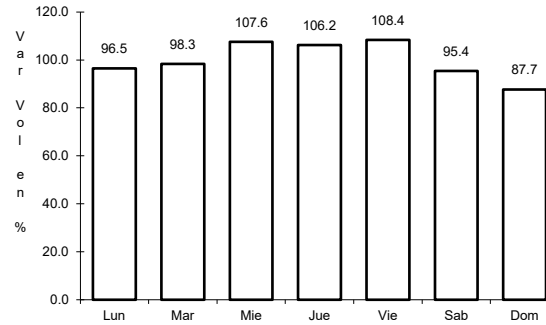
22 CARR: Libramiento Norte de Torreón (Cuota)

CLAVE:

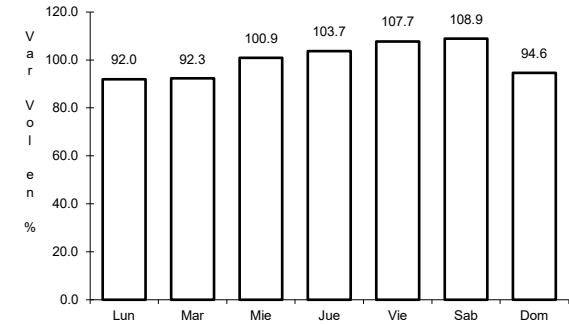
RUTA: MEX-040D



Km: 0.00 Tipo: 3 Sent: 0



Km: 17.36 Tipo: 1 Sent: 0

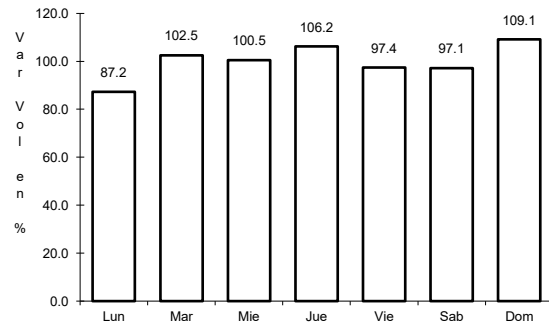


Km: 40.70 Tipo: 1 Sent: 0

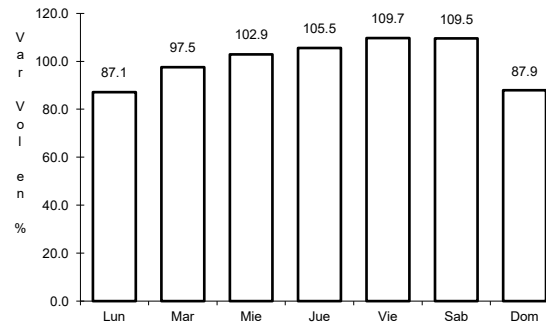
23 CARR: Libramiento Oriente de Saltillo (Cuota)

CLAVE: 00115

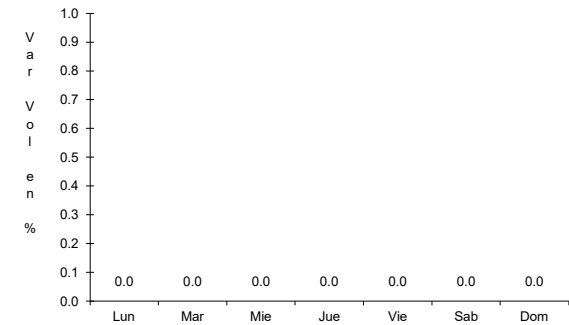
RUTA: MEX-057D



Km: 12.30 Tipo: 3 Sent: 1



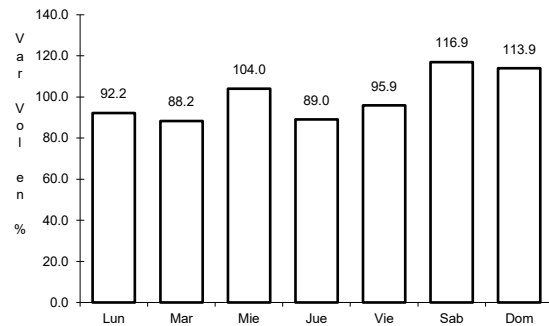
Km: 12.30 Tipo: 3 Sent: 2



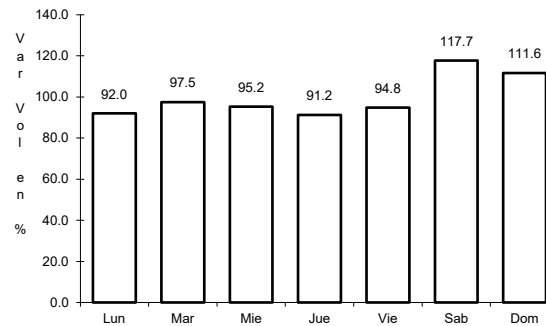
24 CARR: Nueva Rosita - Ent. Allende (Cuota)

CLAVE: 05502

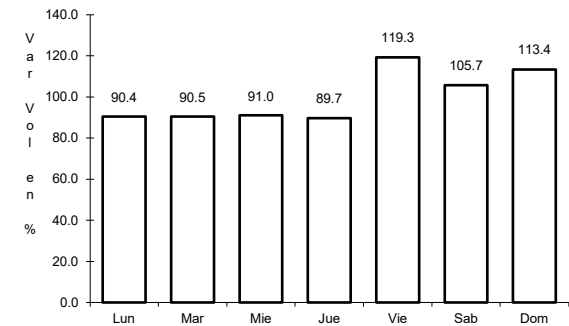
RUTA: MEX-057D



Km: 0.00 Tipo: 3 Sent: 1



Km: 0.00 Tipo: 3 Sent: 2

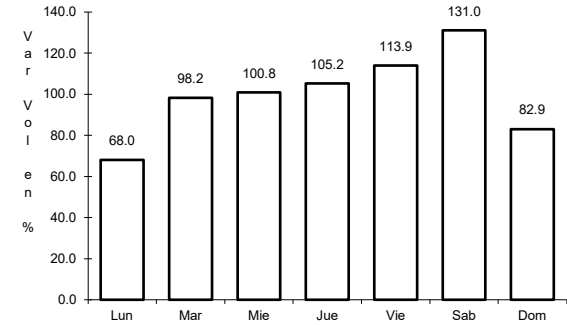
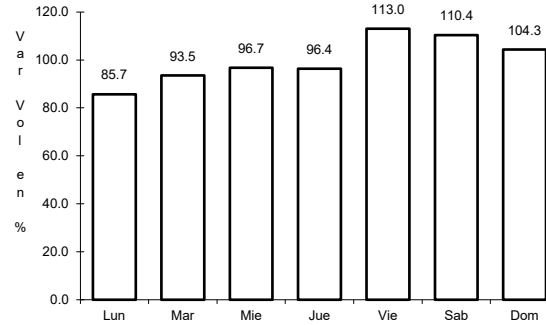
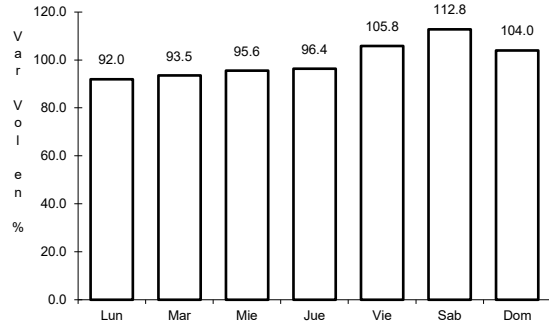


Km: 54.00 Tipo: 1 Sent: 1

25 CARR: Puerto México - La Carbonera (Cuota)

CLAVE: 00115

RUTA: MEX-057D



Km: 224.94 Tipo: 1 Sent: 1

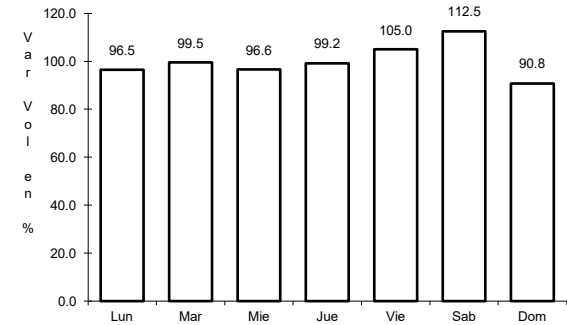
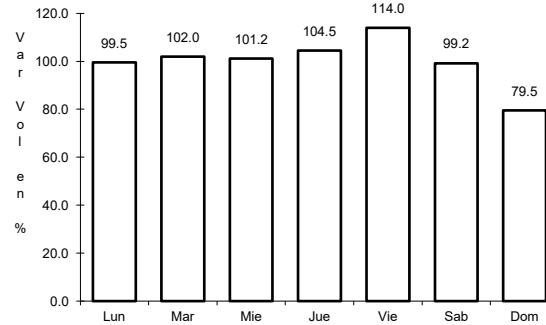
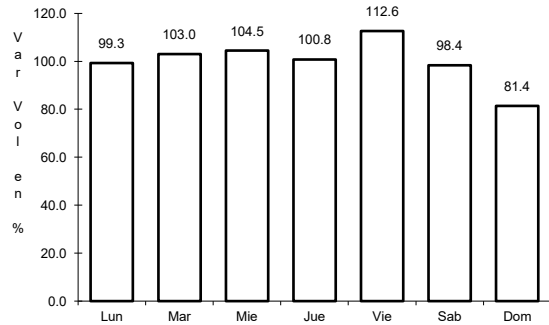
Km: 224.94 Tipo: 1 Sent: 2

Km: 228.30 Tipo: 3 Sent: 1

26 CARR: Saltillo - Monterrey (Cuota)

CLAVE: 00087

RUTA: MEX-040D



Km: 46.21 Tipo: 3 Sent: 1

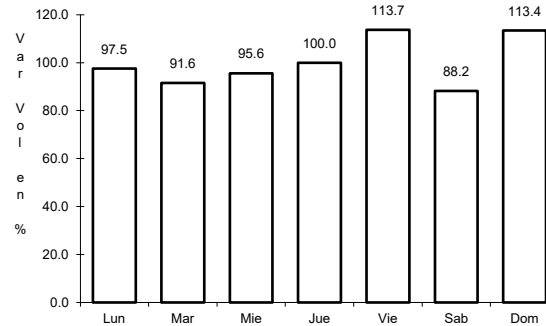
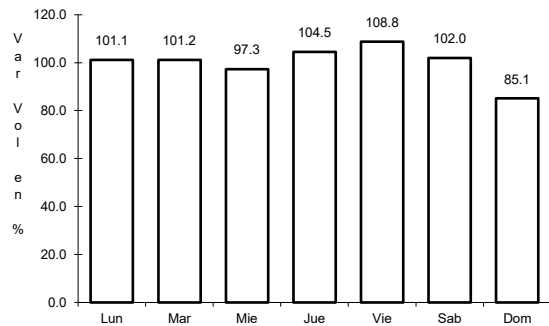
Km: 46.21 Tipo: 3 Sent: 2

Km: 82.00 Tipo: 3 Sent: 1

27 CARR: Saltillo - Torreón (Cuota) T1

CLAVE:

RUTA: MEX-040D



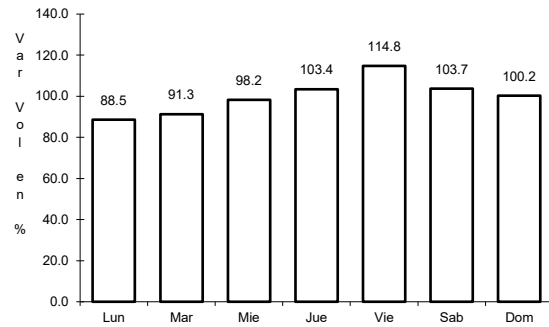
Km: 76.50 Tipo: 1 Sent: 1

Km: 76.50 Tipo: 1 Sent: 2

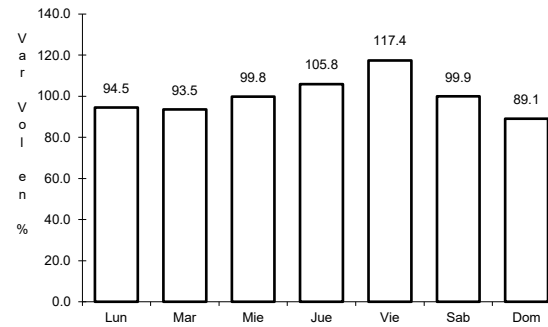
28 CARR: Saltillo - Torreón (Cuota) T2

CLAVE:

RUTA: MEX-040D



Km: 1.10 Tipo: 3 Sent: 1

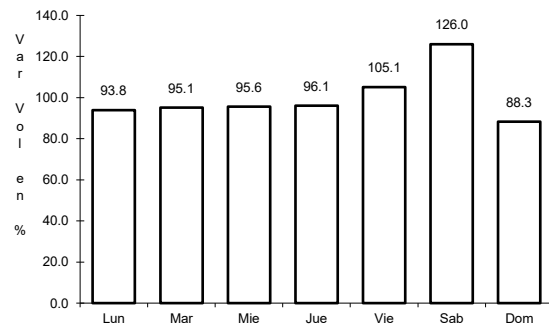


Km: 1.10 Tipo: 3 Sent: 2

29 CARR: Allende - Villa Unión

CLAVE: 05001

RUTA: COA-015

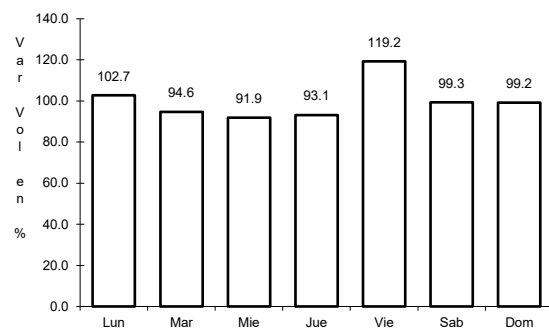


Km: 0.00 Tipo: 3 Sent: 0

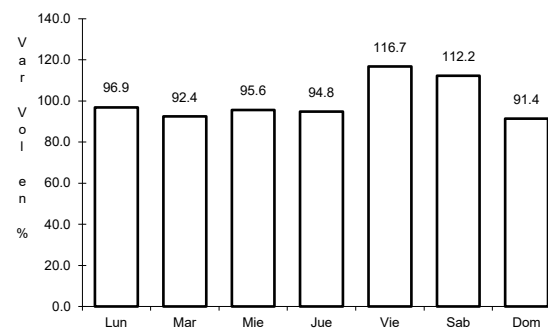
30 CARR: Corredor Libramiento de San Pedro

CLAVE: 05023

RUTA: COA-087



Km: 0.00 Tipo: 3 Sent: 0

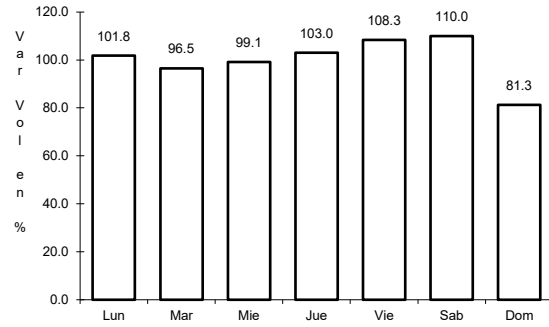


Km: 3.60 Tipo: 1 Sent: 0

31 CARR: Cuatro Ciéneas - Ocampo

CLAVE: 05026

ruta: COA-048



Km: 0.00

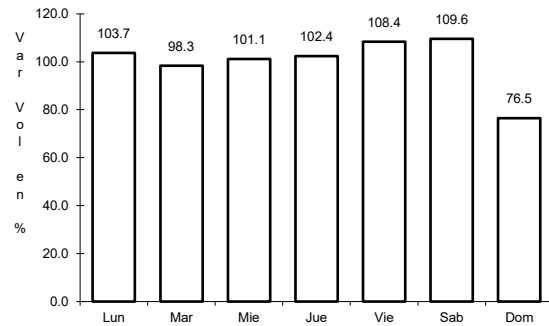
Tipo: 3

Sent: 0

32 CARR: El Sauz - Palau

CLAVE: 05060

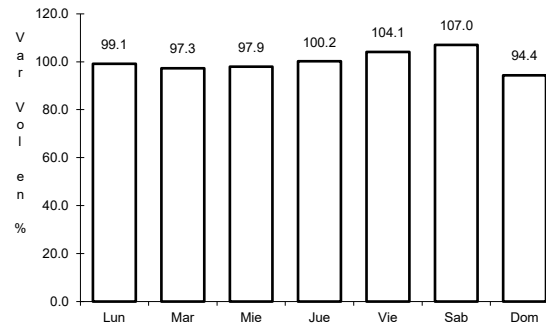
ruta: COA-022



Km: 0.00

Tipo: 3

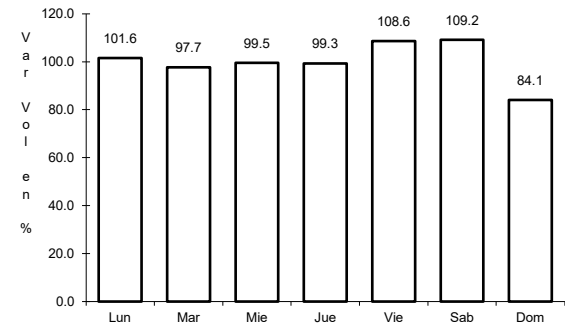
Sent: 1



Km: 0.00

Tipo: 3

Sent: 2



Km: 42.50

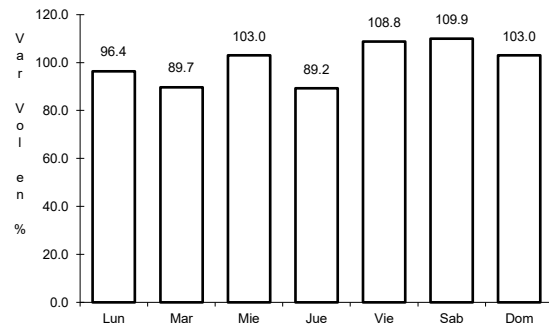
Tipo: 1

Sent: 1

33 CARR: Emiliano Zapata - Viesca

CLAVE: 05521

ruta: COA-082



Km: 0.00

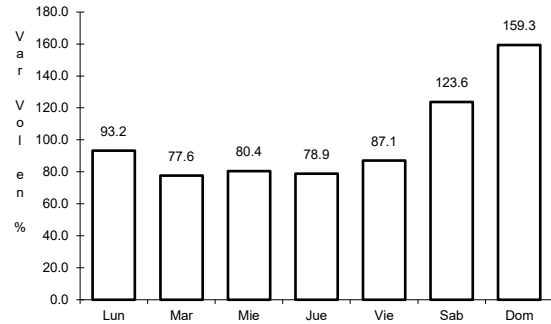
Tipo: 3

Sent: 0

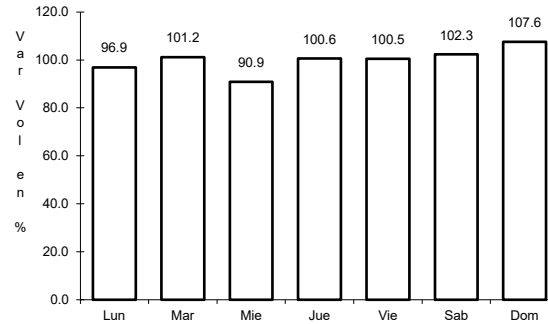
34 CARR: Ent. La Rosa - General Cepeda

CLAVE: 05034

ruta: COA-034



Km: 0.00 Tipo: 3 Sent: 0

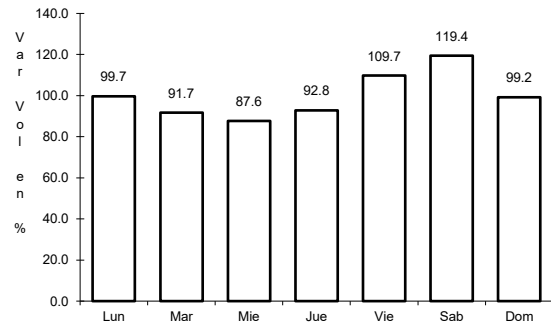


Km: 21.00 Tipo: 1 Sent: 0

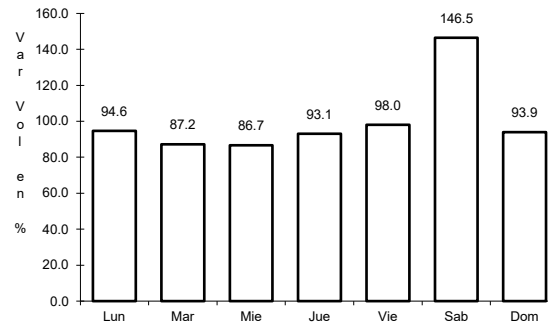
35 CARR: Ent. Paila - Parras de La Fuente

CLAVE: 05014

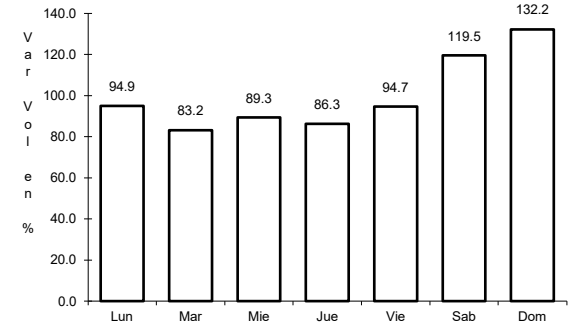
ruta: COA-102



Km: 0.00 Tipo: 3 Sent: 0



Km: 20.05 Tipo: 1 Sent: 1

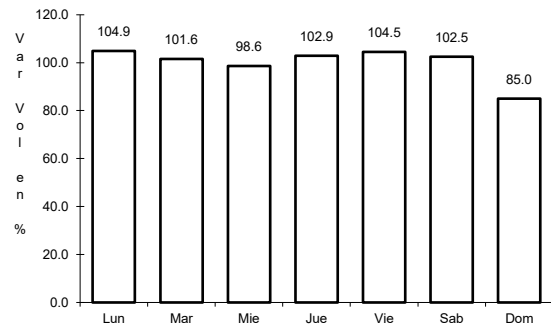


Km: 20.05 Tipo: 1 Sent: 2

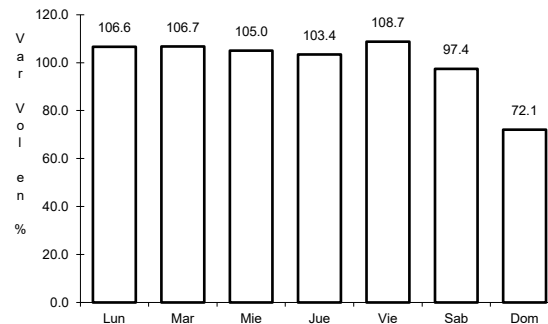
36 CARR: Libramiento de Matamoros

CLAVE: 05032

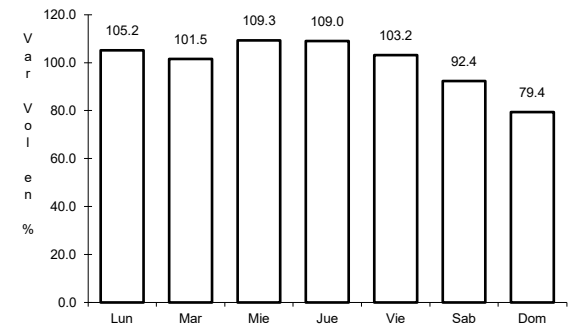
ruta: COA



Km: 0.00 Tipo: 3 Sent: 0



Km: 5.32 Tipo: 1 Sent: 1

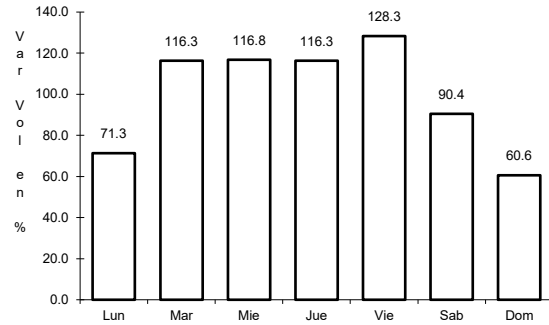


Km: 5.32 Tipo: 1 Sent: 2

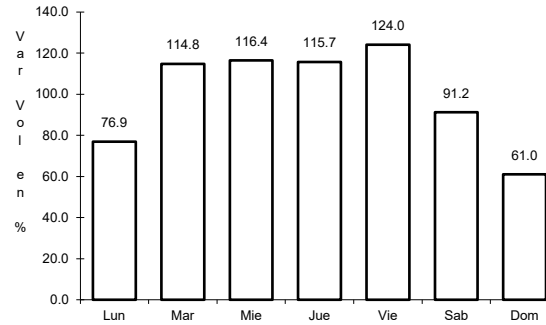
37 CARR: Libramiento de Saltillo J.L.P.

CLAVE: 05031

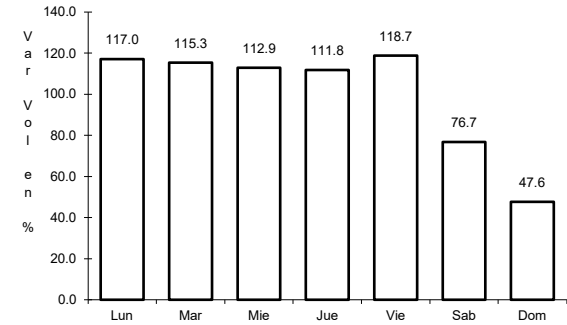
RUTA: COA



Km: 2.50 Tipo: 3 Sent: 1



Km: 2.50 Tipo: 3 Sent: 2

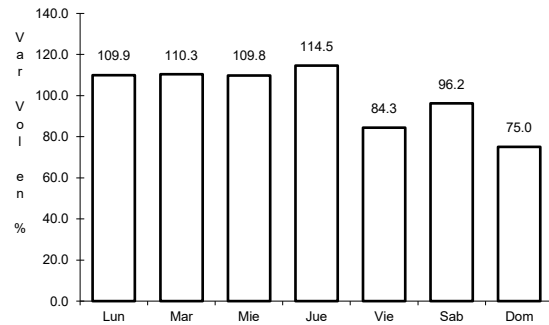


Km: 18.00 Tipo: 1 Sent: 1

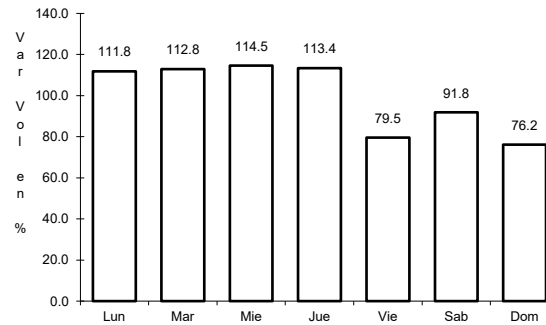
38 CARR: Libramiento de Torreón

CLAVE: 05516

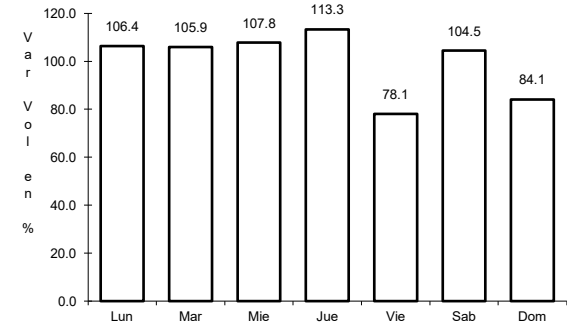
RUTA: COA



Km: 0.00 Tipo: 3 Sent: 1



Km: 0.00 Tipo: 3 Sent: 2

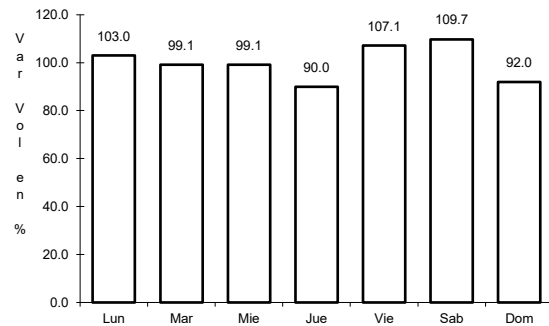


Km: 7.30 Tipo: 1 Sent: 1

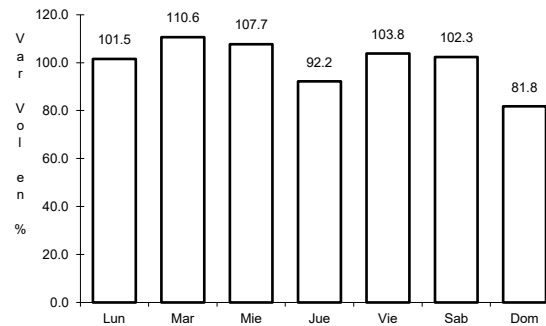
39 CARR: Matamoros - El Fresno

CLAVE: 05023

RUTA: COA-078



Km: 0.00 Tipo: 3 Sent: 0

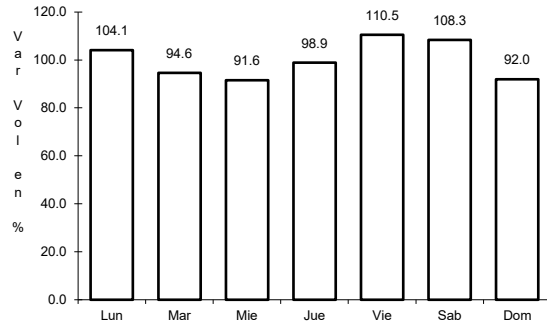


Km: 12.60 Tipo: 1 Sent: 0

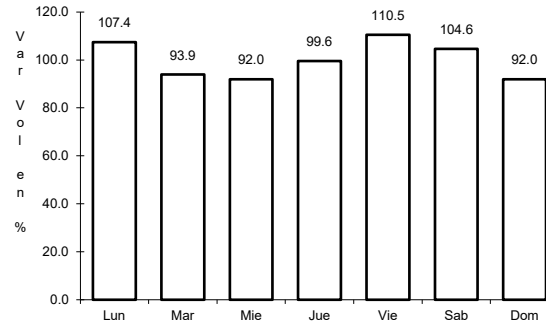
40 CARR: Matamoros - La Unión

CLAVE: 05023

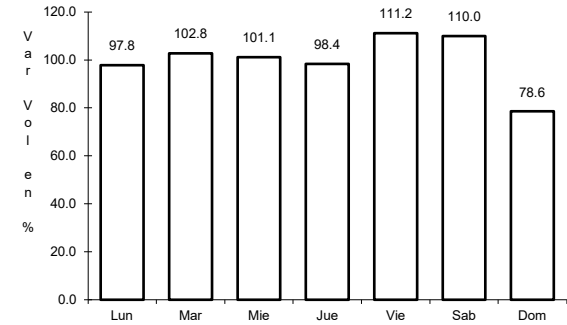
ruta: COA-070



Km: 1.00 Tipo: 3 Sent: 1



Km: 1.00 Tipo: 3 Sent: 2

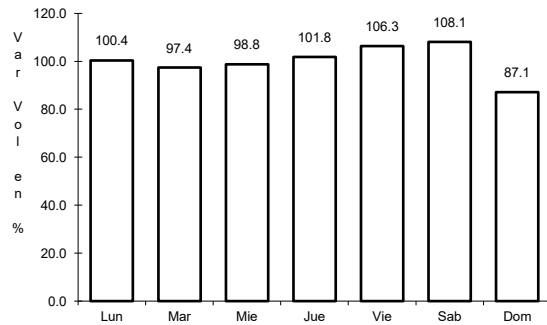


Km: 14.09 Tipo: 1 Sent: 0

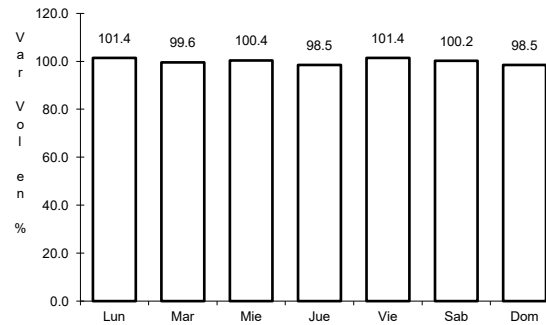
41 CARR: Monclova - Estación Candela

CLAVE: 00501

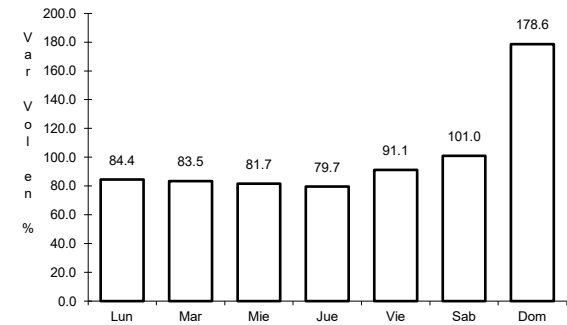
ruta: COA-030-NL



Km: 5.10 Tipo: 1 Sent: 1



Km: 5.10 Tipo: 1 Sent: 2

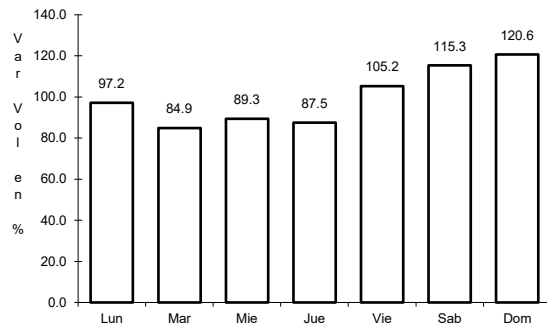


Km: 125.50 Tipo: 1 Sent: 0

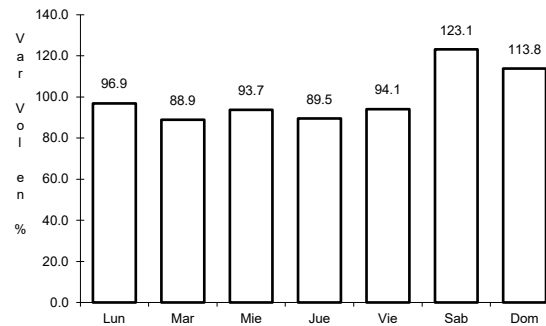
42 CARR: Morelos - Ent. Las Corrientes

CLAVE: 05500

ruta: COA-010



Km: 0.00 Tipo: 3 Sent: 0

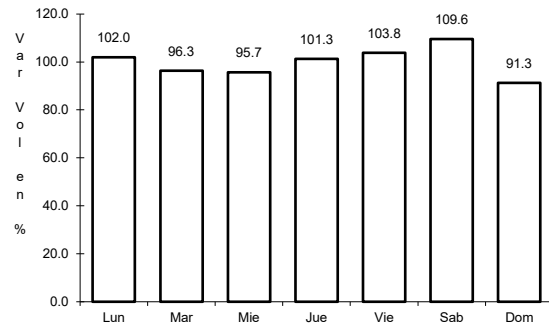


Km: 9.20 Tipo: 1 Sent: 0

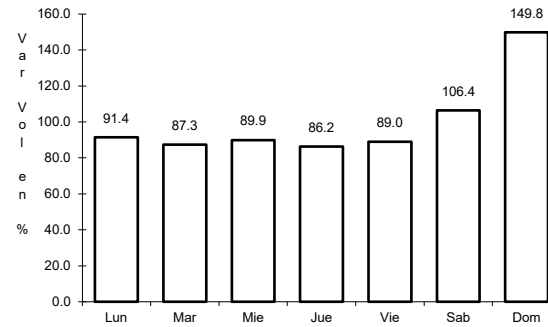
43 CARR: Puerto de Flores - El Hondable

CLAVE: 05512

RUTA: COA-112



Km: 0.00 Tipo: 3 Sent: 0

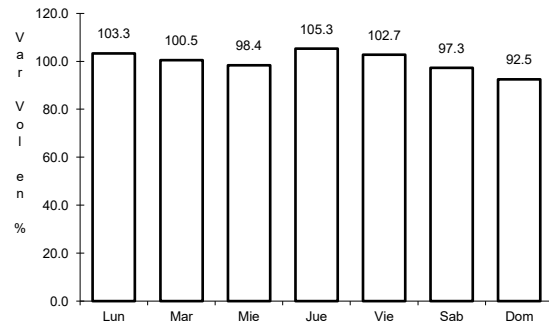


Km: 24.00 Tipo: 1 Sent: 0

44 CARR: Ramal a Hipólito

CLAVE: 05509

RUTA: COA-114

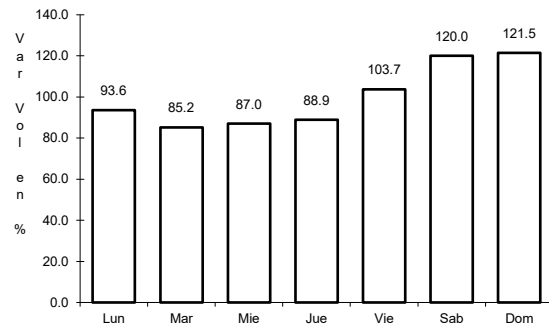


Km: 0.00 Tipo: 3 Sent: 0

45 CARR: Ramal a Lamadrid

CLAVE: 05522

RUTA: COA-042

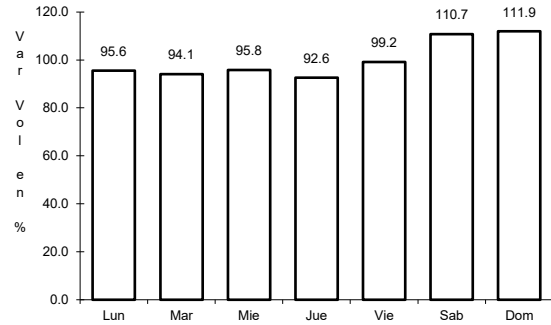


Km: 0.00 Tipo: 3 Sent: 0

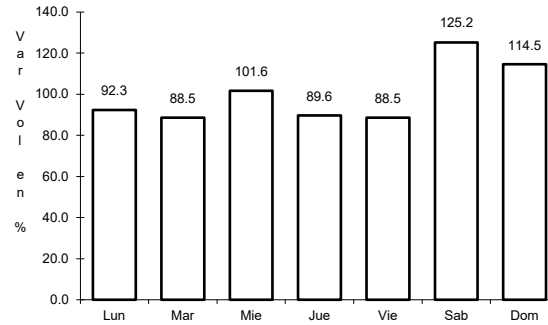
46 CARR: Sabinas - Don Martín

CLAVE: 05501

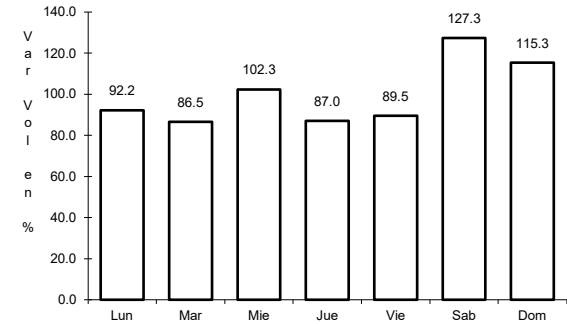
RUTA: COA-025



Km: 0.00 Tipo: 3 Sent: 0



Km: 53.00 Tipo: 3 Sent: 0

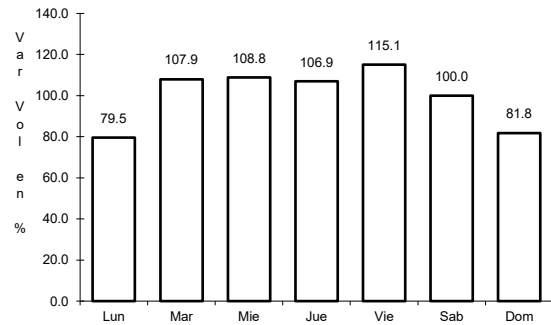


Km: 66.00 Tipo: 1 Sent: 0

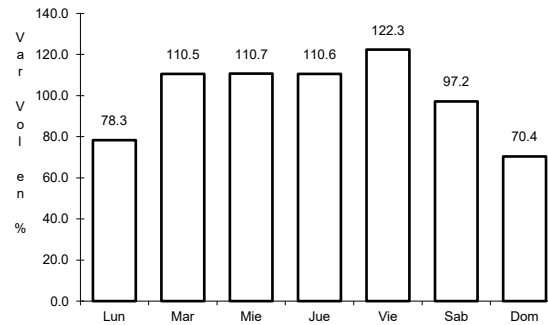
47 CARR: Saltillo - Arteaga

CLAVE: 05008

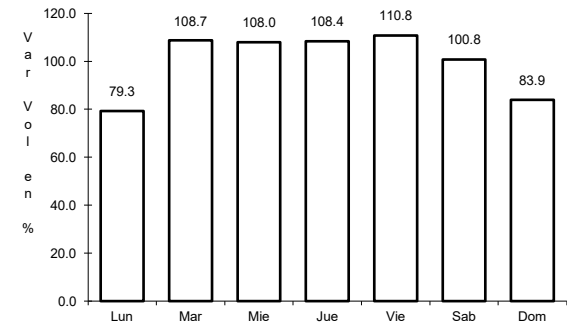
RUTA: COA-106



Km: 0.00 Tipo: 3 Sent: 1



Km: 0.00 Tipo: 3 Sent: 2

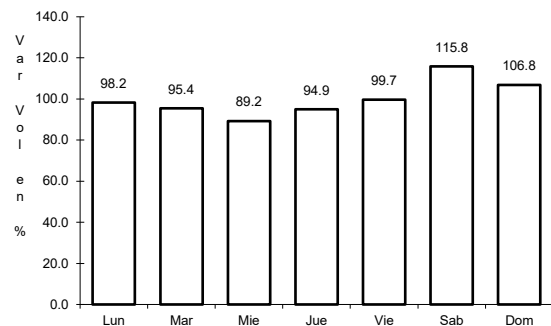


Km: 12.00 Tipo: 1 Sent: 1

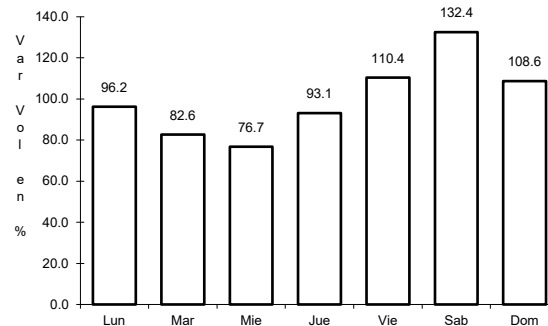
48 CARR: San Buenaventura - Estación Hermanas

CLAVE: 05004

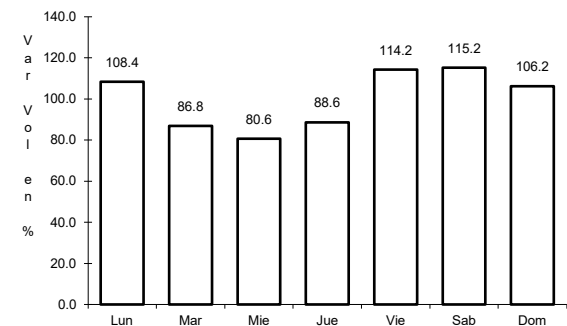
RUTA: COA-034



Km: 0.00 Tipo: 3 Sent: 0



Km: 15.71 Tipo: 1 Sent: 0

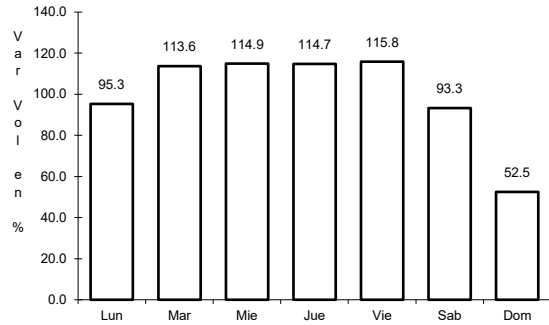


Km: 50.00 Tipo: 1 Sent: 0

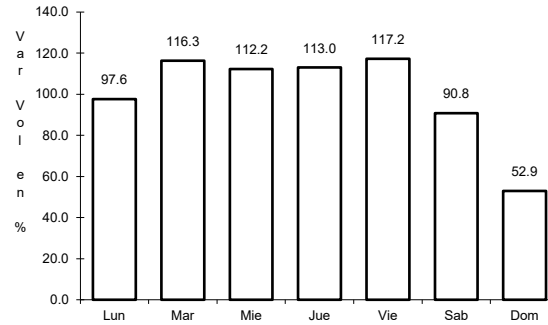
49 CARR: T. C. (Ent. Morelos - Saltillo) - Parras de La Fuente

CLAVE: 05510

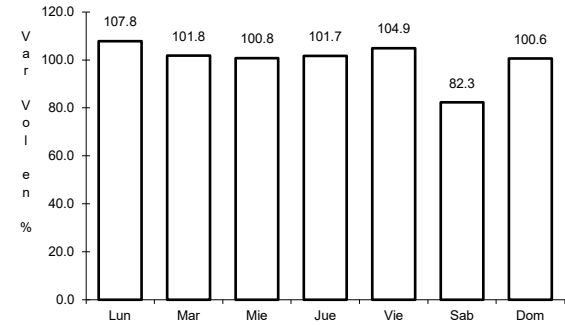
ruta: COA-105



Km: 0.00 Tipo: 3 Sent: 1



Km: 0.00 Tipo: 3 Sent: 2

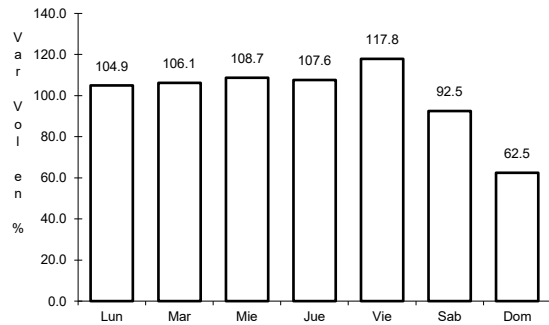


Km: 102.00 Tipo: 1 Sent: 0

50 CARR: T. C. (Saltillo - Monclova) - Ramos Arizpe

CLAVE: 05508

ruta: COA

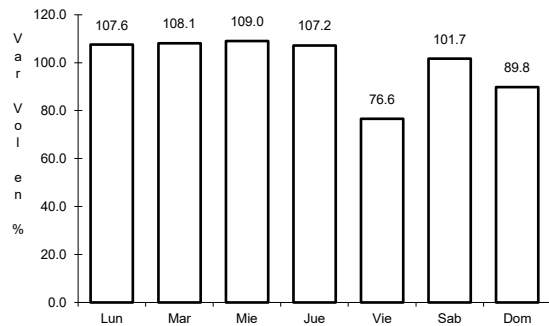


Km: 0.00 Tipo: 3 Sent: 0

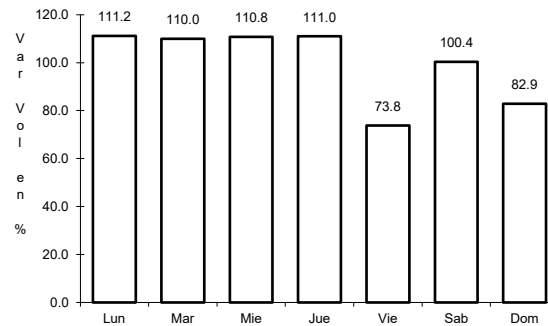
51 CARR: Torreón - Escuadrón 201

CLAVE: 05022

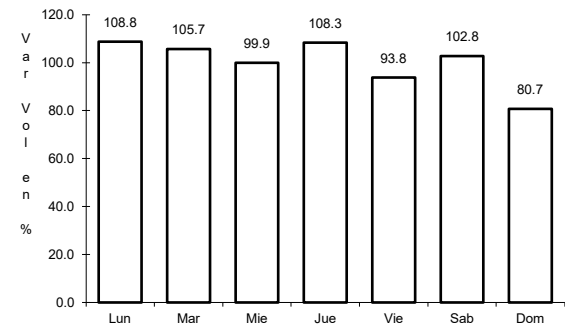
ruta: COA-011



Km: 0.00 Tipo: 3 Sent: 1



Km: 0.00 Tipo: 3 Sent: 2



Km: 17.06 Tipo: 1 Sent: 0

