



# COLIMA

## ---RED FEDERAL LIBRE---

1 Cd. Guzmán - Colima	MEX-054
2 Colima - Ent. Tecomán	MEX-110
3 Ent. Playa Azul - Manzanillo	MEX-200
4 Jiquilpan - Colima	MEX-110
5 Libramiento Campos - Alameda	MEX
6 Libramiento de Colima	MEX-054
7 Libramiento de Manzanillo (Libre)	MEX-200
8 Libramiento de Manzanillo Norte	MEX-200
9 Manzanillo - Puerto Vallarta	MEX-200
10 Minatitlán - Ent. Pez Vela	MEX-098
11 Paso por La Salada	MEX-110
12 Paso por Los Asmoles	MEX-110
13 Ramal a Cerro de Los Juanes	MEX-098
14 Ramal a Cerro de Ortega	MEX-200
15 Ramal a Cuyutlán	MEX-200
16 Tecomán - Boca de Pascuales	MEX-200

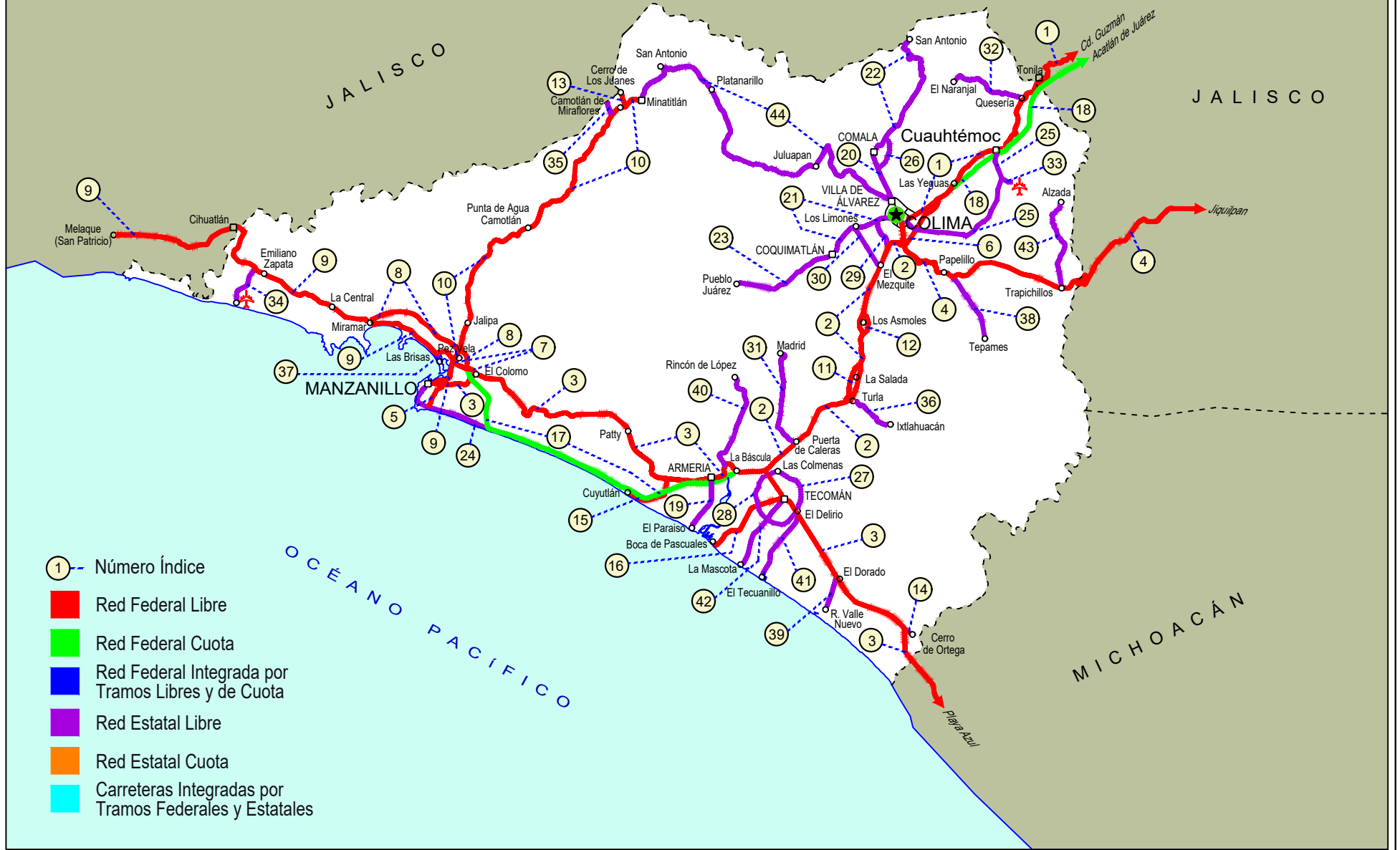
## ---RED FEDERAL DE CUOTA---

17 Armería - Manzanillo (Cuota)	MEX-200D
18 Guadalajara - Colima (Cuota)	MEX-054D

## ---RED ESTATAL LIBRE---

19 Armería - Playa El Paraíso	COL
20 Colima - Comala	COL-016
21 Colima - Coquimatlán	COL-034
22 Comala - San Antonio	COL-016
23 Coquimatlán - Pueblo Juárez	COL-034
24 Costera Laguna de Cuyutlán	COL
25 Cuauhtémoc - Colima	COL-019
26 Libramiento de Comala	COL-016
27 Libramiento de Tecomán	COL
28 Libramiento Poniente Arco Sur de Tecomán	COL
29 Libramiento Poniente de Colima	COL
30 Los Limones - Loma de Juárez	COL
31 Puerta de Caleras - Madrid	COL-014
32 Quesería - El Naranjal	COL-001
33 Ramal a Aeropuerto de Colima	COL
34 Ramal a Aeropuerto Manzanillo	COL
35 Ramal a Camotlán de Miraflores	COL
36 Ramal a Ixtlahuacán	COL-005
37 Ramal a Las Brisas	COL
38 Ramal a Los Tepames	COL-004
39 Ramal a Rancho Valle Nuevo	COL
40 Ramal a Rincón de López	COL
41 Ramal a Tecuanillo	COL-009
42 Tecomán - La Mascota	COL
43 Trapichillos - Estación Alzada	COL-003
44 Villa de Álvarez - Minatitlán	COL

# 06 COLIMA





COLIMA

1 CARR : Cd. Guzmán - Colima

CLAVE: 00117

RUTA: MEX-054

AÑO: 2022

LUGAR	ESTACION				CLASIFICACION VEHICULAR EN PORCIENTO										COORDENADAS					
	KM	TE	SC	TDPA	M	A	B	C2	C3	T3S2	T3S3	T3S2R4	OTROS	A	B	C	K'	D	LATITUD	LONGITUD
Cd. Guzmán	0.00	3	1	11190	5.5	85.8	1.0	3.5	1.7	0.9	0.5	0.4	0.7	91.3	1.0	7.7	0.087	0.512	19.676058	-103.476006
Cd. Guzmán	0.00	3	2	10669	5.5	87.6	1.0	3.1	1.1	0.6	0.4	0.3	0.4	93.1	1.0	5.9	0.096	0.512	19.676057	-103.475891
T. Izq. Zapotiltic	4.35	3	0	5029	2.9	85.3	1.6	4.1	2.7	1.1	0.8	0.5	1.0	88.2	1.6	10.2	0.094	0.500	19.645736	-103.471572
T. Der. Tepozal y Nevado de Colima	15.50	1	0	4453	2.6	86.8	1.5	4.3	2.0	1.4	0.9	0.3	0.2	89.4	1.5	9.1	0.100	0.503	19.570618	-103.444545
Atenquique	23.10	1	0	3135	5.1	75.5	2.8	5.3	4.4	4.4	1.9	0.3	0.3	80.6	2.8	16.6	0.078	0.523	19.530019	-103.434386
Atenquique	23.10	3	0	2356	6.1	76.5	2.0	4.7	4.6	4.2	1.0	0.5	0.4	82.6	2.0	15.4	0.079	0.523	19.525930	-103.440009
Lim. Edos. Term. Jal. Ppia. Col.	53.80	0	0																	
T. Der. Quesería	56.90	1	0	3271	8.0	79.8	0.9	8.3	0.8	1.2	0.6	0.2	0.2	87.8	0.9	11.3	0.075	0.510	19.392519	-103.564919
Cuahtémoc	65.40	1	0	4402	2.2	89.8	1.2	5.2	0.2	0.8	0.3	0.1	0.2	92.0	1.2	6.8	0.086	0.500	19.333215	-103.591450
Cuahtémoc	65.40	3	0	5083	5.3	82.2	1.2	6.6	2.1	1.5	1.0	0.1	0.0	87.5	1.2	11.3	0.082	0.510	19.324267	-103.609023
T. C. Guadalajara - Colima (Cuota)	72.40	3	1	14964	2.2	74.5	2.1	5.4	1.8	6.1	2.4	4.8	0.7	76.7	2.1	21.2	0.090	0.517	19.286535	-103.656217
T. C. Guadalajara - Colima (Cuota)	72.40	3	2	14004	2.1	74.6	2.1	5.4	1.8	6.1	2.4	4.8	0.7	76.7	2.1	21.2	0.093	0.517	19.286388	-103.656190
El Trapiche	73.60	3	1	16124	1.6	76.5	1.9	9.4	1.5	3.7	2.1	2.4	0.9	78.1	1.9	20.0	0.082	0.513	19.282515	-103.662273
El Trapiche	73.60	3	2	15318	1.5	77.2	1.7	9.3	1.3	3.7	2.1	2.3	0.9	78.7	1.7	19.6	0.067	0.513	19.282478	-103.662077
T. Izq. Libramiento de Colima	77.10	1	1	18214	3.0	76.3	1.4	4.8	1.7	5.4	2.7	3.8	0.9	79.3	1.4	19.3	0.070	0.503	19.267375	-103.678525
T. Izq. Libramiento de Colima	77.10	1	2	18419	2.9	76.4	1.5	4.8	1.9	5.3	2.6	3.7	0.9	79.3	1.5	19.2	0.076	0.503	19.267552	-103.677552
Colima	80.60	0	0																	

2 CARR : Colima - Ent. Tecomán

CLAVE: 06119

RUTA: MEX-110

AÑO: 2022

LUGAR	ESTACION				CLASIFICACION VEHICULAR EN PORCIENTO										COORDENADAS					
	KM	TE	SC	TDPA	M	A	B	C2	C3	T3S2	T3S3	T3S2R4	OTROS	A	B	C	K'	D	LATITUD	LONGITUD
T. C. Jiquilpan - Colima	0.00	3	1	17406	3.2	77.5	2.7	4.8	1.2	5.8	2.8	1.1	0.9	80.7	2.7	16.6	0.069	0.524	19.214930	-103.732967
T. C. Jiquilpan - Colima	0.00	3	2	15822	3.3	77.4	2.7	4.8	1.2	5.8	2.8	1.1	0.9	80.7	2.7	16.6	0.068	0.524	19.214729	-103.732654
T. Izq. Libramiento Poniente de Colima	2.00	3	1	13123	2.7	80.5	1.4	4.3	1.4	4.8	1.9	2.1	0.9	83.2	1.4	15.4	0.071	0.509	19.204513	-103.743649
T. Izq. Libramiento Poniente de Colima	2.00	3	2	12671	2.6	80.6	1.4	4.3	1.4	4.8	1.9	2.1	0.9	83.2	1.4	15.4	0.084	0.509	19.204424	-103.743476
T. Izq. Los Asmoles	13.00	3	1	11616	2.0	74.9	2.7	4.4	1.7	6.2	3.2	4.0	0.9	76.9	2.7	20.4	0.076	0.515	19.108804	-103.775956
T. Izq. Los Asmoles	13.00	3	2	10923	2.1	74.8	2.7	4.4	1.7	6.2	3.2	4.0	0.9	76.9	2.7	20.4	0.096	0.515	19.108416	-103.775877
Ramal a Ixtlahuacán	24.50	3	1	6900	5.0	73.6	2.0	5.1	1.7	5.3	2.7	3.8	0.8	78.6	2.0	19.4	0.085	0.508	19.023228	-103.805929
Ramal a Ixtlahuacán	24.50	3	2	6686	4.9	73.7	2.1	5.0	1.7	5.3	2.6	3.8	0.9	78.6	2.1	19.3	0.099	0.508	19.023397	-103.805559
T. Der. Caleras	34.55	1	1	10995	3.6	75.1	2.4	5.4	1.5	5.6	2.5	3.1	0.8	78.7	2.4	18.9	0.069	0.500	18.981415	-103.853537
T. Der. Caleras	34.55	1	2	11011	3.5	75.1	2.4	5.4	1.6	5.6	2.5	3.1	0.8	78.6	2.4	19.0	0.083	0.500	18.981527	-103.853261
T. C. Ent. Playa Azul - Manzanillo	40.10	1	1	13011	1.6	80.0	2.7	5.1	1.6	4.0	2.5	1.6	0.9	81.6	2.7	15.7	0.088	0.501	18.962964	-103.875809
T. C. Ent. Playa Azul - Manzanillo	40.10	1	2	13089	1.7	79.9	2.7	5.1	1.5	4.1	2.6	1.5	0.9	81.6	2.7	15.7	0.103	0.501	18.962706	-103.875979

COLIMA

3 CARR: Ent. Playa Azul - Manzanillo

CLAVE: 00495

RUTA: MEX-200

AÑO: 2022

LUGAR	ESTACION				CLASIFICACION VEHICULAR EN PORCIENTO														COORDENADAS	
	KM	TE	SC	TDPA	M	A	B	C2	C3	T3S2	T3S3	T3S2R4	OTROS	A	B	C	K'	D	LATITUD	LONGITUD
T. C. Carapan - Playa Azul	0.00	3	0	4820	6.1	85.4	1.2	6.3	0.3	0.3	0.2	0.1	0.1	91.5	1.2	7.3	0.078	0.510	18.019675	-102.340519
Caleta de Campos	50.24	1	0	3079	11.7	77.5	0.9	7.7	0.9	0.8	0.3	0.2	0.0	89.2	0.9	9.9	0.094	0.511	18.077025	-102.745470
Caleta de Campos	50.24	3	0	1742	20.7	72.1	0.6	5.2	0.6	0.7	0.1	0.0	0.0	92.8	0.6	6.6	0.095	0.502	18.080277	-102.767323
Tizupan	106.60	1	0	563	19.4	69.8	2.9	4.9	0.7	1.2	0.9	0.1	0.1	89.2	2.9	7.9	0.131	0.560	18.221767	-103.124925
Maruata	149.75	1	0	552	18.2	67.0	1.4	7.8	1.6	2.3	1.4	0.2	0.1	85.2	1.4	13.4	0.098	0.516	18.273378	-103.342276
Maruata	149.75	3	0	1297	18.9	66.5	1.2	7.7	1.6	2.7	1.2	0.1	0.1	85.4	1.2	13.4	0.099	0.501	18.280862	-103.356344
T. Der. Aquila	190.10	1	0	1298	11.0	76.9	1.7	7.3	1.3	1.2	0.5	0.1	0.0	87.9	1.7	10.4	0.099	0.504	18.565334	-103.621038
T. Der. Aquila	190.10	3	0	2429	9.1	79.5	1.6	7.2	1.0	0.9	0.7	0.0	0.0	88.6	1.6	9.8	0.099	0.509	18.566655	-103.629055
Lim. Edos. Term. Mich. Ppia. Col.	229.60	0	0																	
Cerro de Ortega	233.20	1	0	5998	15.7	69.3	0.9	12.3	0.7	0.7	0.3	0.0	0.1	85.0	0.9	14.1	0.080	0.500	18.737933	-103.723839
El Balcón	242.95	1	0	5632	14.4	60.8	1.8	14.5	2.6	3.2	2.4	0.1	0.2	75.2	1.8	23.0	0.073	0.504	18.783586	-103.772505
El Balcón	242.95	3	0	5369	14.7	61.5	1.6	13.3	2.7	3.4	2.5	0.2	0.1	76.2	1.6	22.2	0.082	0.510	18.787868	-103.784501
Cofradía de Morelos	252.45	1	0	8373	12.2	73.2	0.9	6.1	1.7	3.3	2.2	0.1	0.3	85.4	0.9	13.7	0.087	0.511	18.859115	-103.834356
Cofradía de Morelos	252.45	3	1	5535	13.7	73.3	1.2	5.6	1.6	2.2	2.0	0.2	0.2	87.0	1.2	11.8	0.109	0.501	18.876729	-103.845693
Cofradía de Morelos	252.45	3	2	5550	13.9	72.1	1.4	5.9	1.6	2.4	2.1	0.3	0.3	86.0	1.4	12.6	0.107	0.501	18.876710	-103.845775
Tecomán	258.15	0	0																	
T. C. Colima - Ent. Tecomán	263.75	1	1	6230	19.4	70.1	0.8	5.2	1.2	1.0	1.6	0.4	0.3	89.5	0.8	9.7	0.100	0.506	18.894392	-103.857167
T. C. Colima - Ent. Tecomán	263.75	1	2	6381	19.7	68.5	0.9	5.2	1.4	1.2	1.8	0.9	0.4	88.2	0.9	10.9	0.090	0.506	18.894227	-103.857162
T. C. Colima - Ent. Tecomán	263.75	3	1	12727	3.5	79.4	2.2	3.5	1.9	4.2	1.6	2.9	0.8	82.9	2.2	14.9	0.077	0.518	18.944662	-103.910378
T. C. Colima - Ent. Tecomán	263.75	3	2	11847	3.6	79.3	2.2	3.5	1.9	4.2	1.6	2.9	0.8	82.9	2.2	14.9	0.097	0.518	18.944577	-103.910340
T. Der. Rincón de López	269.70	1	0	5560	11.0	64.4	1.7	7.6	3.6	8.4	2.8	0.4	0.1	75.4	1.7	22.9	0.080	0.516	18.949249	-103.937660
Armería	272.80	1	0	5241	14.0	62.1	2.1	11.5	3.0	5.3	1.6	0.2	0.2	76.1	2.1	21.8	0.077	0.503	18.941991	-103.947407
T. Izq. Cuyutlán	278.70	1	0	4514	9.5	72.4	2.5	4.9	3.4	4.7	2.2	0.2	0.2	81.9	2.5	15.6	0.075	0.538	18.935505	-104.018273
Santa Rita	292.50	1	0	3740	19.6	64.0	3.6	6.2	2.3	2.9	1.3	0.0	0.1	83.6	3.6	12.8	0.073	0.515	18.990556	-104.067130
Santa Rita	292.50	3	0	4447	16.9	66.2	5.2	8.5	1.3	1.3	0.4	0.1	0.1	83.1	5.2	11.7	0.056	0.509	19.013362	-104.099280
Las Nuevas Juntas	309.60	1	0	5010	9.8	68.2	2.7	8.8	3.6	4.3	2.2	0.2	0.2	78.0	2.7	19.3	0.075	0.517	19.040647	-104.215522
T. Der. Libramiento de Manzanillo (Libre)	312.65	1	0	9407	11.8	62.8	2.8	5.8	2.4	8.5	4.2	1.2	0.5	74.6	2.8	22.6	0.068	0.503	19.055518	-104.235680
T. Der. Libramiento de Manzanillo (Libre)	312.65	3	0	4998	26.4	63.1	1.3	4.2	2.4	0.9	0.3	1.2	0.2	89.5	1.3	9.2	0.080	0.507	19.055650	-104.243047
Manzanillo	321.12	1	0	10151	12.7	78.2	0.7	5.4	0.7	0.9	0.7	0.4	0.3	90.9	0.7	8.4	0.079	0.515	19.049402	-104.292026

4 CARR: Jiquilpan - Colima

CLAVE: 00156

RUTA: MEX-110

AÑO: 2022

LUGAR	ESTACION				CLASIFICACION VEHICULAR EN PORCIENTO														COORDENADAS	
	KM	TE	SC	TDPA	M	A	B	C2	C3	T3S2	T3S3	T3S2R4	OTROS	A	B	C	K'	D	LATITUD	LONGITUD
Jiquilpan	0.00	3	0	6886	4.8	80.7	1.1	5.7	2.2	3.5	0.7	0.9	0.4	85.5	1.1	13.4	0.079	0.509	19.995495	-102.745024

COLIMA

4 CARR: Jiquilpan - Colima

CLAVE: 00156

RUTA: MEX-110

AÑO: 2022

LUGAR	ESTACION				CLASIFICACION VEHICULAR EN PORCIENTO													COORDENADAS		
	KM	TE	SC	TDPA	M	A	B	C2	C3	T3S2	T3S3	T3S2R4	OTROS	A	B	C	K'	D	LATITUD	LONGITUD
San José de Gracia	37.93	1	0	4549	6.6	87.7	0.4	2.2	1.5	1.4	0.1	0.1	0.0	94.3	0.4	5.3	0.078	0.500	20.001111	-103.013423
Lim. Edos. Term. Mich. Ppia. Jal.	41.00	0	0																	
Mazamitla	48.65	1	0	4850	4.4	89.3	1.0	1.9	1.2	1.4	0.3	0.3	0.2	93.7	1.0	5.3	0.082	0.507	19.940467	-103.008652
Mazamitla	48.65	3	0	4994	5.8	80.7	1.7	3.2	2.8	3.6	1.0	0.8	0.4	86.5	1.7	11.8	0.097	0.519	19.923800	-103.054122
Villa de Contla	84.25	3	0	5233	7.8	79.4	1.4	2.9	3.0	4.0	0.8	0.6	0.1	87.2	1.4	11.4	0.075	0.504	19.747879	-103.184987
T. Izq. Tamazula de Gordiano (2º Acceso)	96.70	3	0	8624	8.2	78.8	1.5	2.5	3.9	2.3	2.0	0.6	0.2	87.0	1.5	11.5	0.092	0.517	19.682818	-103.262448
T. Der. Cd. Guzmán	108.50	1	0	6857	5.8	77.0	2.5	4.3	3.8	3.1	1.9	1.3	0.3	82.8	2.5	14.7	0.083	0.515	19.647449	-103.335804
T. Der. Cd. Guzmán	108.50	3	0	4128	8.1	66.6	3.1	11.3	3.7	3.7	1.8	1.4	0.3	74.7	3.1	22.2	0.078	0.537	19.645034	-103.335457
T. Der. Cerca Lisa	110.00	1	0	1636	5.3	81.5	2.4	3.2	6.8	0.4	0.4	0.0	0.0	86.8	2.4	10.8	0.091	0.502	19.627951	-103.329636
Tecalitlán	132.00	3	0	3491	5.2	87.3	1.5	4.2	1.3	0.2	0.1	0.0	0.2	92.5	1.5	6.0	0.098	0.506	19.462345	-103.318767
T. Der. Atenquique	137.67	3	0	1725	5.2	81.7	1.1	6.1	2.7	1.0	1.5	0.1	0.6	86.9	1.1	12.0	0.084	0.509	19.455925	-103.349663
Pihuamo	168.19	3	0	2963	9.5	81.3	1.1	5.4	1.9	0.5	0.2	0.0	0.1	90.8	1.1	8.1	0.100	0.526	19.249062	-103.395100
Lim. Edos. Term. Jal. Ppia. Col.	189.60	0	0																	
T. Der. Estación Alzada	198.60	3	0	1516	4.8	79.5	1.6	7.5	2.7	2.2	1.5	0.1	0.1	84.3	1.6	14.1	0.081	0.514	19.163278	-103.534761
T. Izq. Los Tepames	214.20	1	0	2427	5.8	78.5	1.0	8.8	0.9	2.6	1.9	0.3	0.2	84.3	1.0	14.7	0.091	0.512	19.173907	-103.659843
T. Izq. Los Tepames	214.20	3	0	3157	6.5	80.3	1.1	9.1	0.4	0.9	1.2	0.3	0.2	86.8	1.1	12.1	0.070	0.513	19.175036	-103.663626
X. C. Libramiento de Colima	220.00	1	0	8249	8.7	83.8	0.5	2.6	1.0	1.0	1.8	0.5	0.1	92.5	0.5	7.0	0.075	0.502	19.210623	-103.721295
Colima	222.00	1	1	9611	4.1	83.0	0.9	3.7	0.7	3.9	1.9	1.4	0.4	87.1	0.9	12.0	0.076	0.525	19.217519	-103.721924
Colima	222.00	1	2	10603	4.3	82.0	1.0	4.5	0.6	3.4	2.2	1.6	0.4	86.3	1.0	12.7	0.070	0.525	19.217496	-103.722056

5 CARR: Libramiento Campos - Alameda

CLAVE:

RUTA: MEX

AÑO: 2022

LUGAR	ESTACION				CLASIFICACION VEHICULAR EN PORCIENTO													COORDENADAS		
	KM	TE	SC	TDPA	M	A	B	C2	C3	T3S2	T3S3	T3S2R4	OTROS	A	B	C	K'	D	LATITUD	LONGITUD
T. C. Costera Laguna de Cuyutlán	0.00	3	0	2034	11.4	77.0	0.8	8.0	1.3	0.7	0.4	0.3	0.1	88.4	0.8	10.8	0.097	0.529	19.026583	-104.315883
T. C. Playa Azul - Manzanillo	5.00	1	0	2278	14.0	76.0	0.9	7.1	0.8	0.5	0.4	0.2	0.1	90.0	0.9	9.1	0.108	0.514	19.047280	-104.301518

6 CARR: Libramiento de Colima

CLAVE: 06573

RUTA: MEX-054

AÑO: 2022

LUGAR	ESTACION				CLASIFICACION VEHICULAR EN PORCIENTO													COORDENADAS		
	KM	TE	SC	TDPA	M	A	B	C2	C3	T3S2	T3S3	T3S2R4	OTROS	A	B	C	K'	D	LATITUD	LONGITUD
T. C. Cd. Guzmán - Colima	0.00	3	1	9687	2.3	83.4	1.2	5.0	1.0	2.9	1.6	1.7	0.9	85.7	1.2	13.1	0.081	0.508	19.261483	-103.682788
T. C. Cd. Guzmán - Colima	0.00	3	2	9366	2.6	82.1	1.4	5.1	1.1	3.2	1.7	1.9	0.9	84.7	1.4	13.9	0.086	0.508	19.258327	-103.683907
T. C. Colima - Ent. Tecomán	9.00	1	1	18853	1.8	81.5	1.4	5.2	1.4	3.4	2.0	2.4	0.9	83.3	1.4	15.3	0.070	0.516	19.216349	-103.717147
T. C. Colima - Ent. Tecomán	9.00	1	2	20066	1.7	81.2	1.4	5.1	1.7	3.6	1.9	2.5	0.9	82.9	1.4	15.7	0.069	0.516	19.216200	-103.717061

COLIMA

7 CARR: Libramiento de Manzanillo (Libre)

CLAVE: 06574

RUTA: MEX-200

AÑO: 2022

LUGAR	ESTACION				CLASIFICACION VEHICULAR EN PORCIENTO												COORDENADAS			
	KM	TE	SC	TDPA	M	A	B	C2	C3	T3S2	T3S3	T3S2R4	OTROS	A	B	C	K'	D	LATITUD	LONGITUD
T. C. Ent. Playa Azul - Manzanillo	0.00	3	0	9895	11.1	64.0	1.5	5.1	3.4	7.2	3.7	3.4	0.6	75.1	1.5	23.4	0.071	0.513	19.058247	-104.246011
T. C. Manzanillo - Puerto Vallarta	6.30	1	1	6982	9.8	67.1	2.4	4.8	2.7	5.3	2.3	5.0	0.6	76.9	2.4	20.7	0.075	0.521	19.072331	-104.279482
T. C. Manzanillo - Puerto Vallarta	6.30	1	2	6411	9.7	65.7	2.9	5.1	3.0	5.4	2.5	5.0	0.7	75.4	2.9	21.7	0.095	0.521	19.071883	-104.278912

8 CARR: Libramiento de Manzanillo Norte

CLAVE: 06122

RUTA: MEX-200

AÑO: 2022

LUGAR	ESTACION				CLASIFICACION VEHICULAR EN PORCIENTO												COORDENADAS			
	KM	TE	SC	TDPA	M	A	B	C2	C3	T3S2	T3S3	T3S2R4	OTROS	A	B	C	K'	D	LATITUD	LONGITUD
T. C. Armería - Manzanillo (Cuota)	0.00	3	0	18987	10.6	67.6	1.3	4.7	2.4	6.2	2.5	3.8	0.9	78.2	1.3	20.5	0.090	0.503	19.083535	-104.268295
T. C. Minatitlán - Ent. Pez Vela	3.00	3	0	21462	11.0	78.2	1.0	4.1	1.5	1.9	1.2	0.8	0.3	89.2	1.0	9.8	0.115	0.523	19.096173	-104.277382
T. Izq. Manzanillo	6.60	3	0	24972	14.2	79.2	0.9	2.4	1.2	0.9	0.7	0.3	0.2	93.4	0.9	5.7	0.093	0.519	19.120210	-104.311753
T. Der. Chandíablo	12.00	1	1	6466	14.0	76.6	1.0	3.6	1.5	1.8	0.9	0.4	0.2	90.6	1.0	8.4	0.095	0.522	19.137007	-104.338443
T. Der. Chandíablo	12.00	1	2	7074	13.9	76.6	0.9	3.7	1.5	1.7	1.1	0.4	0.2	90.5	0.9	8.6	0.096	0.522	19.136833	-104.338243
T. C. Manzanillo - Puerto Vallarta	19.00	1	0	6043	5.6	81.9	2.4	4.7	1.9	1.6	1.1	0.5	0.3	87.5	2.4	10.1	0.084	0.508	19.127225	-104.396163

9 CARR: Manzanillo - Puerto Vallarta

CLAVE: 00070

RUTA: MEX-200

AÑO: 2022

LUGAR	ESTACION				CLASIFICACION VEHICULAR EN PORCIENTO												COORDENADAS			
	KM	TE	SC	TDPA	M	A	B	C2	C3	T3S2	T3S3	T3S2R4	OTROS	A	B	C	K'	D	LATITUD	LONGITUD
Manzanillo	0.00	3	1	16033	14.0	77.0	1.2	6.3	0.5	0.2	0.1	0.5	0.2	91.0	1.2	7.8	0.081	0.507	19.056117	-104.294658
Manzanillo	0.00	3	2	15583	14.1	76.8	1.0	6.5	0.6	0.2	0.1	0.5	0.2	90.9	1.0	8.1	0.077	0.507	19.056245	-104.294699
T. Der. Minatitlán	4.50	1	1	16920	8.4	86.2	0.4	3.6	0.2	0.7	0.2	0.2	0.1	94.6	0.4	5.0	0.072	0.503	19.066324	-104.287768
T. Der. Minatitlán	4.50	1	2	16690	9.0	85.7	0.5	3.5	0.2	0.6	0.2	0.2	0.1	94.7	0.5	4.8	0.083	0.503	19.066148	-104.288177
Santiago	13.80	1	1	12548	12.0	76.5	0.6	4.8	1.7	3.7	0.4	0.2	0.1	88.5	0.6	10.9	0.079	0.502	19.115576	-104.348887
Santiago	13.80	1	2	12469	11.9	76.9	0.7	4.5	1.6	3.6	0.4	0.2	0.2	88.8	0.7	10.5	0.078	0.502	19.115492	-104.348917
Santiago	13.80	3	1	6665	8.2	84.3	0.7	6.0	0.3	0.1	0.3	0.1	0.0	92.5	0.7	6.8	0.079	0.516	19.120507	-104.377418
Santiago	13.80	3	2	7105	8.1	84.9	0.6	5.7	0.3	0.1	0.2	0.1	0.0	93.0	0.6	6.4	0.095	0.516	19.120434	-104.377177
T. Der. Libramiento de Manzanillo Norte	19.00	3	0	8422	8.6	76.5	1.6	8.4	2.0	1.5	0.8	0.4	0.2	85.1	1.6	13.3	0.086	0.507	19.136707	-104.429347
San Juan de Cuatro Vientos	35.65	3	0	6939	1.4	82.3	2.1	6.7	2.3	2.7	1.4	0.4	0.7	83.7	2.1	14.2	0.113	0.531	19.195084	-104.546672
T. Izq. Aeropuerto Manzanillo	37.35	3	0	6379	10.6	75.6	2.3	7.8	1.4	1.0	0.7	0.5	0.1	86.2	2.3	11.5	0.092	0.513	19.195610	-104.552192
Lim. Edos. Term. Col. Ppia. Jal.	43.44	0	0																	
Cihuatlán	44.70	1	0	8845	12.9	79.4	1.3	2.2	1.7	1.4	0.8	0.2	0.1	92.3	1.3	6.4	0.079	0.515	19.234215	-104.550296
Cihuatlán	44.70	3	0	9434	12.3	73.7	3.1	9.5	0.5	0.4	0.3	0.2	0.0	86.0	3.1	10.9	0.079	0.502	19.228033	-104.585392
T. Izq. San Francisco	50.97	3	0	9233	12.6	74.9	3.7	7.1	0.7	0.6	0.3	0.1	0.0	87.5	3.7	8.8	0.072	0.515	19.216803	-104.624748
Melaque	61.00	1	0	17830	11.4	76.9	3.4	6.8	0.7	0.5	0.2	0.1	0.0	88.3	3.4	8.3	0.090	0.516	19.228572	-104.694460



COLIMA

9 CARR: Manzanillo - Puerto Vallarta

CLAVE: 00070

RUTA: MEX-200

AÑO: 2022

LUGAR	ESTACION				CLASIFICACION VEHICULAR EN PORCIENTO										COORDENADAS					
	KM	TE	SC	TDPA	M	A	B	C2	C3	T3S2	T3S3	T3S2R4	OTROS	A	B	C	K'	D	LATITUD	LONGITUD
Melaque	61.00	3	0	8073	12.9	75.5	3.6	6.4	0.7	0.5	0.3	0.1	0.0	88.4	3.6	8.0	0.075	0.515	19.240749	-104.713543
T. Izq. La Manzanilla	75.90	1	0	3283	12.0	74.5	3.8	6.7	1.0	0.9	0.7	0.4	0.0	86.5	3.8	9.7	0.084	0.516	19.291492	-104.776435
T. Izq. La Manzanilla	75.90	3	0	3032	10.2	79.5	2.0	4.7	1.0	1.2	0.8	0.6	0.0	89.7	2.0	8.3	0.076	0.512	19.298321	-104.781765
T. Izq. Boca de Iguanas	78.85	3	0	2586	9.3	78.4	2.8	4.5	1.4	1.9	1.1	0.6	0.0	87.7	2.8	9.5	0.070	0.516	19.321583	-104.813815
T. Izq. Tenacatita	89.60	3	0	2767	11.9	79.3	2.2	3.1	0.8	1.3	0.9	0.5	0.0	91.2	2.2	6.6	0.081	0.507	19.347485	-104.880567
T. Der. Villa Purificación	133.30	1	0	2815	15.3	71.4	2.2	7.2	1.2	1.5	0.8	0.4	0.0	86.7	2.2	11.1	0.080	0.509	19.585930	-105.091613
T. Der. Villa Purificación	133.30	3	0	3159	16.0	75.1	2.0	2.8	1.1	1.4	1.0	0.6	0.0	91.1	2.0	6.9	0.073	0.512	19.590555	-105.096564
T. Der. Tomatlán	177.50	1	0	2468	8.8	76.7	1.8	8.9	1.1	1.6	0.6	0.4	0.1	85.5	1.8	12.7	0.081	0.511	19.871224	-105.330756
T. Der. Tomatlán	177.50	3	0	2606	10.9	81.4	1.3	2.3	1.1	1.5	0.9	0.6	0.0	92.3	1.3	6.4	0.086	0.509	19.876735	-105.336241
T. Izq. El Tuito	231.71	3	0	3332	11.6	78.6	2.1	4.4	0.9	1.2	0.8	0.4	0.0	90.2	2.1	7.7	0.073	0.509	20.332239	-105.315382
Puerto Vallarta	275.84	1	0	11811	5.7	85.3	2.4	3.7	0.5	0.7	0.6	0.8	0.3	91.0	2.4	6.6	0.087	0.512	20.581669	-105.243838

10 CARR: Minatitlán - Ent. Pez Vela

CLAVE: 06015

RUTA: MEX-098

AÑO: 2022

LUGAR	ESTACION				CLASIFICACION VEHICULAR EN PORCIENTO										COORDENADAS					
	KM	TE	SC	TDPA	M	A	B	C2	C3	T3S2	T3S3	T3S2R4	OTROS	A	B	C	K'	D	LATITUD	LONGITUD
Minatitlán	0.00	0	0																	
T. Der. Jalipa	49.50	1	0	2247	17.0	76.1	0.6	5.4	0.4	0.3	0.2	0.0	0.0	93.1	0.6	6.3	0.092	0.509	19.139148	-104.265745
T. Der. Jalipa	49.50	3	1	5335	3.2	74.6	1.3	4.3	2.4	6.6	3.3	3.4	0.9	77.8	1.3	20.9	0.094	0.502	19.113198	-104.261028
T. Der. Jalipa	49.50	3	2	5380	3.2	74.9	1.3	4.5	2.3	6.5	3.2	3.4	0.7	78.1	1.3	20.6	0.074	0.502	19.106953	-104.332655
T. C. Manzanillo - Puerto Vallarta	58.50	1	1	10274	3.7	71.9	1.1	4.3	2.5	7.2	3.9	4.7	0.7	75.6	1.1	23.3	0.081	0.505	19.088899	-104.279594
T. C. Manzanillo - Puerto Vallarta	58.50	1	2	10075	3.8	71.8	1.2	4.3	2.5	7.2	3.9	4.6	0.7	75.6	1.2	23.2	0.064	0.505	19.088804	-104.279445

11 CARR: Paso por La Salada

CLAVE: 06121

RUTA: MEX-110

AÑO: 2022

LUGAR	ESTACION				CLASIFICACION VEHICULAR EN PORCIENTO										COORDENADAS					
	KM	TE	SC	TDPA	M	A	B	C2	C3	T3S2	T3S3	T3S2R4	OTROS	A	B	C	K'	D	LATITUD	LONGITUD
La Salada	4.80	3	0	64	0.8	83.1	3.0	12.5	0.6	0.0	0.0	0.0	0.0	83.9	3.0	13.1	0.188	0.518	19.053005	-103.786024
T. C. Ramal a Ixtlahuacán	8.00	0	0																	

12 CARR: Paso por Los Asmoles

CLAVE: 06120

RUTA: MEX-110

AÑO: 2022

LUGAR	ESTACION				CLASIFICACION VEHICULAR EN PORCIENTO										COORDENADAS					
	KM	TE	SC	TDPA	M	A	B	C2	C3	T3S2	T3S3	T3S2R4	OTROS	A	B	C	K'	D	LATITUD	LONGITUD
T. C. Colima - Ent. Tecomán	0.00	0	0																	

COLIMA

12 CARR: Paso por Los Asmoles

CLAVE: 06120

RUTA: MEX-110

AÑO: 2022

LUGAR	ESTACION				CLASIFICACION VEHICULAR EN PORCIENTO														COORDENADAS	
	KM	TE	SC	TDPA	M	A	B	C2	C3	T3S2	T3S3	T3S2R4	OTROS	A	B	C	K'	D	LATITUD	LONGITUD
Los Asmoles	1.80	3	0	1885	3.6	89.3	0.5	4.2	0.4	1.1	0.4	0.3	0.2	92.9	0.5	6.6	0.085	0.506	19.122153	-103.772070
T. C. Colima - Ent. Tecmán	2.90	0	0																	

13 CARR: Ramal a Cerro de Los Juanes

CLAVE: 06009

RUTA: MEX-098

AÑO: 2022

LUGAR	ESTACION				CLASIFICACION VEHICULAR EN PORCIENTO														COORDENADAS	
	KM	TE	SC	TDPA	M	A	B	C2	C3	T3S2	T3S3	T3S2R4	OTROS	A	B	C	K'	D	LATITUD	LONGITUD
T. C. Minatitlán - Ent. Pez Vela	0.00	3	0	887	1.5	83.1	1.5	12.6	0.3	0.5	0.3	0.1	0.1	84.6	1.5	13.9	0.135	0.533	19.377805	-104.092403
Cerro de Los Juanes	3.30	0	0																	

14 CARR: Ramal a Cerro de Ortega

CLAVE: 06009

RUTA: MEX-200

AÑO: 2022

LUGAR	ESTACION				CLASIFICACION VEHICULAR EN PORCIENTO														COORDENADAS	
	KM	TE	SC	TDPA	M	A	B	C2	C3	T3S2	T3S3	T3S2R4	OTROS	A	B	C	K'	D	LATITUD	LONGITUD
T. C. Ent. Playa Azul - Manzanillo	0.00	3	0	3400	35.2	53.2	1.6	7.5	1.0	0.5	0.1	0.6	0.3	88.4	1.6	10.0	0.101	0.504	18.754526	-103.722407
Cerro de Ortega	1.00	0	0																	

15 CARR: Ramal a Cuyutlán

CLAVE: 06225

RUTA: MEX-200

AÑO: 2022

LUGAR	ESTACION				CLASIFICACION VEHICULAR EN PORCIENTO														COORDENADAS	
	KM	TE	SC	TDPA	M	A	B	C2	C3	T3S2	T3S3	T3S2R4	OTROS	A	B	C	K'	D	LATITUD	LONGITUD
T. C. Ent. Playa Azul - Manzanillo	0.00	3	0	839	11.1	79.9	0.9	6.8	0.5	0.2	0.3	0.1	0.2	91.0	0.9	8.1	0.107	0.500	18.934448	-104.019618
Cuyutlán	7.00	1	0	764	5.5	88.6	0.2	5.3	0.2	0.1	0.1	0.0	0.0	94.1	0.2	5.7	0.115	0.503	18.911377	-104.054517

16 CARR: Tecmán - Boca de Pascuales

CLAVE: 06226

RUTA: MEX-200

AÑO: 2022

LUGAR	ESTACION				CLASIFICACION VEHICULAR EN PORCIENTO														COORDENADAS	
	KM	TE	SC	TDPA	M	A	B	C2	C3	T3S2	T3S3	T3S2R4	OTROS	A	B	C	K'	D	LATITUD	LONGITUD
Tecmán	0.00	3	0	2620	13.1	80.0	0.8	5.2	0.5	0.1	0.1	0.1	0.1	93.1	0.8	6.1	0.201	0.502	18.894267	-103.917472
Boca de Pascuales	12.00	0	0																	

COLIMA

17 CARR: Armeria - Manzanillo (Cuota)

CLAVE: 06585

RUTA: MEX-200D

AÑO: 2022

LUGAR	ESTACION				CLASIFICACION VEHICULAR EN PORCIENTO														COORDENADAS	
	KM	TE	SC	TDPA	M	A	B	C2	C3	T3S2	T3S3	T3S2R4	OTROS	A	B	C	K'	D	LATITUD	LONGITUD
T. C. Ent. Playa Azul - Manzanillo	0.00	3	1	7897	5.3	74.9	2.2	5.5	1.3	4.4	2.6	3.1	0.7	80.2	2.2	17.6	0.072	0.512	18.934076	-103.945778
T. C. Ent. Playa Azul - Manzanillo	0.00	3	2	8290	5.2	75.0	2.3	5.2	1.5	4.6	2.5	3.0	0.7	80.2	2.3	17.5	0.073	0.512	18.933942	-103.945743
T. Izq. Playa Paraíso	3.50	3	1	5729	3.5	71.1	2.4	2.8	1.6	4.9	3.9	8.9	0.9	74.6	2.4	23.0	0.094	0.511	18.928148	-103.969322
T. Izq. Playa Paraíso	3.50	3	2	5989	3.6	70.9	2.6	3.1	1.4	5.3	3.5	8.7	0.9	74.5	2.6	22.9	0.101	0.511	18.928078	-103.969255
T. Der. Cuyutlán	15.78	3	1	5894	4.2	72.2	2.1	3.4	1.6	8.2	3.0	4.9	0.4	76.4	2.1	21.5	0.085	0.523	18.926218	-104.071104
T. Der. Cuyutlán	15.78	3	2	6455	4.4	72.3	2.4	3.1	1.5	8.1	2.9	4.9	0.4	76.7	2.4	20.9	0.093	0.523	18.926450	-104.069659
T. Izq. Cuyutlán	17.58	3	1	5300	4.9	71.3	2.2	3.4	1.4	8.6	3.0	4.9	0.3	76.2	2.2	21.6	0.117	0.514	18.930819	-104.086973
T. Izq. Cuyutlán	17.58	3	2	5600	4.7	72.3	2.4	3.2	1.3	8.2	2.9	4.7	0.3	77.0	2.4	20.6	0.088	0.514	18.930753	-104.087029
Plaza de Cobro Cuyutlán	18.00	2	1	5310	0.0	66.0	2.0	2.1	2.4	7.1	3.5	14.2	2.7	66.0	2.0	32.0	0.096	0.500	18.927852	-104.081512
Plaza de Cobro Cuyutlán	18.00	2	2	5310	0.0	66.0	2.0	2.1	2.4	7.1	3.5	14.2	2.7	66.0	2.0	32.0	0.096	0.500	18.927852	-104.081512
T. C. Ent. Playa Azul - Manzanillo	44.00	1	1	6208	2.2	76.9	2.0	3.9	1.5	6.1	2.9	3.6	0.9	79.1	2.0	18.9	0.076	0.500	19.049588	-104.266146
T. C. Ent. Playa Azul - Manzanillo	44.00	1	2	6205	1.9	77.2	2.1	3.9	1.5	6.2	2.8	3.6	0.8	79.1	2.1	18.8	0.088	0.500	19.049500	-104.266197
T. C. Ent. Playa Azul - Manzanillo	44.00	3	1	6180	8.2	70.3	2.4	5.5	1.7	5.1	2.5	3.5	0.8	78.5	2.4	19.1	0.076	0.510	19.053497	-104.268575
T. C. Ent. Playa Azul - Manzanillo	44.00	3	2	5942	8.3	70.9	2.2	5.4	1.7	5.1	2.5	3.2	0.7	79.2	2.2	18.6	0.090	0.510	19.053226	-104.268679
T. C. Libramiento de Manzanillo (Libre)	46.00	0	0																	

18 CARR: Guadalajara - Colima (Cuota)

CLAVE: 00118

RUTA: MEX-054D

AÑO: 2022

LUGAR	ESTACION				CLASIFICACION VEHICULAR EN PORCIENTO														COORDENADAS	
	KM	TE	SC	TDPA	M	A	B	C2	C3	T3S2	T3S3	T3S2R4	OTROS	A	B	C	K'	D	LATITUD	LONGITUD
T. C. Ent. Santa Cruz - Melaque	0.00	0	0																	
Plaza de Cobro Acatlán	7.70	1	1	7632	3.0	71.2	5.0	3.6	2.3	6.4	1.8	6.1	0.6	74.2	5.0	20.8	0.086	0.508	20.418375	-103.556345
Plaza de Cobro Acatlán	7.70	1	2	7394	2.9	66.5	5.4	4.6	2.6	7.5	2.4	7.6	0.5	69.4	5.4	25.2	0.112	0.508	20.418363	-103.556421
Plaza de Cobro Acatlán	7.70	2	1	7640	0.4	64.7	2.2	4.1	3.7	8.3	4.1	10.4	2.1	65.1	2.2	32.7	0.084	0.500	20.373443	-103.576317
Plaza de Cobro Acatlán	7.70	2	2	7640	0.4	64.7	2.2	4.1	3.7	8.3	4.1	10.4	2.1	65.1	2.2	32.7	0.084	0.500	20.373443	-103.576317
T. Izq. San Marcos	10.80	1	1	7434	2.9	66.4	5.5	4.6	2.6	8.8	2.3	6.4	0.5	69.3	5.5	25.2	0.082	0.523	20.343540	-103.573087
T. Izq. San Marcos	10.80	1	2	6791	2.9	66.1	5.5	4.7	2.6	8.9	2.4	6.3	0.6	69.0	5.5	25.5	0.109	0.523	20.343572	-103.572883
T. Izq. Teocuitatlán de Corona	36.12	3	1	8038	3.0	66.6	4.9	3.9	2.5	8.8	2.8	7.0	0.5	69.6	4.9	25.5	0.086	0.510	20.121317	-103.509567
T. Izq. Teocuitatlán de Corona	36.12	3	2	8369	3.0	67.0	4.8	3.8	2.5	8.8	2.7	6.9	0.5	70.0	4.8	25.2	0.108	0.510	20.119526	-103.509575
T. Der. Usmajac	67.80	1	1	9199	1.7	62.5	6.9	6.8	2.3	9.3	2.8	7.0	0.7	64.2	6.9	28.9	0.085	0.513	19.894355	-103.522990
T. Der. Usmajac	67.80	1	2	9689	1.7	66.6	5.2	5.9	2.4	8.0	2.7	6.8	0.7	68.3	5.2	26.5	0.110	0.513	19.894544	-103.522903
T. Izq. Cd. Guzmán	86.70	1	1	8728	1.6	68.5	3.7	5.1	3.0	7.7	2.8	6.6	1.0	70.1	3.7	26.2	0.074	0.513	19.707924	-103.500841
T. Izq. Cd. Guzmán	86.70	1	2	9176	1.7	68.4	3.8	5.1	2.9	7.7	2.8	6.6	1.0	70.1	3.8	26.1	0.088	0.513	19.707905	-103.500746
T. Izq. Cd. Guzmán	86.70	3	1	10059	1.5	70.5	3.7	4.6	2.9	5.9	2.8	7.2	0.9	72.0	3.7	24.3	0.068	0.509	19.691673	-103.493939
T. Izq. Cd. Guzmán	86.70	3	2	10424	1.5	70.5	3.7	4.6	2.8	6.0	2.8	7.2	0.9	72.0	3.7	24.3	0.082	0.509	19.691730	-103.493857

COLIMA

18 CARR: Guadalajara - Colima (Cuota)

CLAVE: 00118

RUTA: MEX-054D

AÑO: 2022

LUGAR	ESTACION				CLASIFICACION VEHICULAR EN PORCIENTO														COORDENADAS	
	KM	TE	SC	TDPA	M	A	B	C2	C3	T3S2	T3S3	T3S2R4	OTROS	A	B	C	K'	D	LATITUD	LONGITUD
T. Izq. Cd. Tuxpan	107.27	1	0	12251	3.5	72.9	0.8	3.7	1.5	8.8	4.1	4.1	0.6	76.4	0.8	22.8	0.064	0.507	19.540467	-103.425499
Plaza de Cobro San Marcos	126.60	2	1	6284	0.4	54.6	2.1	4.8	4.6	12.2	5.6	13.4	2.3	55.0	2.1	42.9	0.084	0.500	19.433745	-103.494491
Plaza de Cobro San Marcos	126.60	2	2	6284	0.4	54.6	2.1	4.8	4.6	12.2	5.6	13.4	2.3	55.0	2.1	42.9	0.084	0.500	19.433745	-103.494491
Lim. Edos. Term. Jal. Ppia. Col.	129.50	0	0																	
X. C. Cuauhtémoc - Colima	140.70	1	1	9639	1.1	72.8	3.5	4.9	2.2	5.8	2.8	6.5	0.4	73.9	3.5	22.6	0.072	0.516	19.315077	-103.597696
X. C. Cuauhtémoc - Colima	140.70	1	2	9055	1.1	69.4	4.4	5.4	2.7	6.4	3.1	7.1	0.4	70.5	4.4	25.1	0.076	0.516	19.314912	-103.597649
X. C. Cuauhtémoc - Colima	140.70	3	1	9862	1.2	73.7	3.3	3.5	2.0	5.9	2.2	7.7	0.5	74.9	3.3	21.8	0.078	0.507	19.308159	-103.610459
X. C. Cuauhtémoc - Colima	140.70	3	2	10144	1.0	72.3	3.7	3.8	2.1	6.3	2.2	8.1	0.5	73.3	3.7	23.0	0.072	0.507	19.308021	-103.610368
T. C. Cd. Guzmán - Colima	146.10	0	0																	

19 CARR: Armería - Playa El Paraíso

CLAVE: 06580

RUTA: COL

AÑO: 2022

LUGAR	ESTACION				CLASIFICACION VEHICULAR EN PORCIENTO														COORDENADAS	
	KM	TE	SC	TDPA	M	A	B	C2	C3	T3S2	T3S3	T3S2R4	OTROS	A	B	C	K'	D	LATITUD	LONGITUD
T. C. Ent. Playa Azul - Manzanillo	0.00	3	0	2718	14.1	77.2	0.5	6.8	0.8	0.3	0.3	0.0	0.0	91.3	0.5	8.2	0.118	0.533	18.924766	-103.963923
Playa Paraíso	7.50	1	0	1555	13.6	80.1	0.6	5.3	0.4	0.0	0.0	0.0	0.0	93.7	0.6	5.7	0.183	0.504	18.877295	-103.990372

20 CARR: Colima - Comala

CLAVE: 06016

RUTA: COL-016

AÑO: 2022

LUGAR	ESTACION				CLASIFICACION VEHICULAR EN PORCIENTO														COORDENADAS	
	KM	TE	SC	TDPA	M	A	B	C2	C3	T3S2	T3S3	T3S2R4	OTROS	A	B	C	K'	D	LATITUD	LONGITUD
Colima	0.00	0	0																	
Villa Álvarez	3.00	3	1	15591	8.6	86.2	0.5	2.3	0.4	0.8	0.5	0.2	0.5	94.8	0.5	4.7	0.082	0.510	19.287283	-103.746145
Villa Álvarez	3.00	3	2	14984	8.7	85.3	0.6	2.4	0.5	0.9	0.7	0.3	0.6	94.0	0.6	5.4	0.076	0.510	19.287209	-103.746246
Comala	10.00	0	0																	

21 CARR: Colima - Coquimatlán

CLAVE: 06034

RUTA: COL-034

AÑO: 2022

LUGAR	ESTACION				CLASIFICACION VEHICULAR EN PORCIENTO														COORDENADAS	
	KM	TE	SC	TDPA	M	A	B	C2	C3	T3S2	T3S3	T3S2R4	OTROS	A	B	C	K'	D	LATITUD	LONGITUD
Colima	0.00	0	0																	
T. Der. Villa Álvarez	3.00	3	1	14934	6.1	85.8	0.8	5.6	0.5	0.3	0.3	0.3	0.3	91.9	0.8	7.3	0.078	0.502	19.241469	-103.754942
T. Der. Villa Álvarez	3.00	3	2	15064	6.0	85.8	0.8	5.7	0.5	0.3	0.3	0.3	0.3	91.8	0.8	7.4	0.071	0.502	19.241384	-103.754917
Coquimatlán	11.00	1	1	7210	5.8	86.7	1.2	4.7	0.4	0.3	0.3	0.3	0.3	92.5	1.2	6.3	0.075	0.502	19.217228	-103.802524
Coquimatlán	11.00	1	2	7157	5.7	86.7	1.1	4.8	0.4	0.4	0.3	0.3	0.3	92.4	1.1	6.5	0.072	0.502	19.217199	-103.802414

COLIMA

22 CARR: Comala - San Antonio

CLAVE: 06030

RUTA: COL-016

AÑO: 2022

LUGAR	ESTACION				CLASIFICACION VEHICULAR EN PORCIENTO										COORDENADAS					
	KM	TE	SC	TDPA	M	A	B	C2	C3	T3S2	T3S3	T3S2R4	OTROS	A	B	C	K'	D	LATITUD	LONGITUD
Comala	0.00	3	1	1715	0.3	92.7	0.4	6.4	0.0	0.0	0.0	0.0	0.2	93.0	0.4	6.6	0.086	0.526	19.335991	-103.746464
Comala	0.00	3	2	1548	0.3	92.3	0.3	6.9	0.0	0.0	0.0	0.0	0.2	92.6	0.3	7.1	0.092	0.526	19.335807	-103.746593
Suchitlán	10.00	1	0	5727	6.8	87.1	0.7	4.8	0.2	0.1	0.3	0.0	0.0	93.9	0.7	5.4	0.078	0.505	19.368949	-103.722321
San Antonio	20.50	0	0																	

23 CARR: Coquimatlán - Pueblo Juárez

CLAVE: 06029

RUTA: COL-034

AÑO: 2022

LUGAR	ESTACION				CLASIFICACION VEHICULAR EN PORCIENTO										COORDENADAS					
	KM	TE	SC	TDPA	M	A	B	C2	C3	T3S2	T3S3	T3S2R4	OTROS	A	B	C	K'	D	LATITUD	LONGITUD
Coquimatlán	0.00	3	0	3674	4.8	83.7	1.2	6.9	1.3	1.5	0.4	0.1	0.1	88.5	1.2	10.3	0.081	0.504	19.198587	-103.815805
Pueblo Juárez	16.00	0	0																	

24 CARR: Costera Laguna de Cuyutlán

CLAVE: 06010

RUTA: COL

AÑO: 2022

LUGAR	ESTACION				CLASIFICACION VEHICULAR EN PORCIENTO										COORDENADAS					
	KM	TE	SC	TDPA	M	A	B	C2	C3	T3S2	T3S3	T3S2R4	OTROS	A	B	C	K'	D	LATITUD	LONGITUD
T. C. Armería - Manzanillo (Cuota)	0.00	3	0	514	12.2	58.6	1.8	19.8	2.7	1.7	1.3	1.2	0.7	70.8	1.8	27.4	0.163	0.513	19.019534	-104.305429
Manzanillo	13.00	1	0	2625	16.3	71.6	1.0	10.7	0.2	0.1	0.1	0.0	0.0	87.9	1.0	11.1	0.090	0.506	19.034414	-104.330116

25 CARR: Cuauhtémoc - Colima

CLAVE: 06019

RUTA: COL-019

AÑO: 2022

LUGAR	ESTACION				CLASIFICACION VEHICULAR EN PORCIENTO										COORDENADAS					
	KM	TE	SC	TDPA	M	A	B	C2	C3	T3S2	T3S3	T3S2R4	OTROS	A	B	C	K'	D	LATITUD	LONGITUD
Cuauhtémoc	0.00	3	0	4888	3.9	91.3	0.7	2.0	0.8	0.7	0.2	0.3	0.1	95.2	0.7	4.1	0.088	0.503	19.316540	-103.603509
X. C. Libramiento de Colima	19.50	1	1	12273	7.3	85.4	0.4	5.4	0.3	0.4	0.3	0.3	0.2	92.7	0.4	6.9	0.082	0.516	19.236354	-103.700810
X. C. Libramiento de Colima	19.50	1	2	13107	7.3	85.3	0.4	5.5	0.3	0.5	0.3	0.2	0.2	92.6	0.4	7.0	0.090	0.516	19.236167	-103.700796
Colima	22.40	0	0																	

26 CARR: Libramiento de Comala

CLAVE:

RUTA: COL-016

AÑO: 2022

LUGAR	ESTACION				CLASIFICACION VEHICULAR EN PORCIENTO										COORDENADAS					
	KM	TE	SC	TDPA	M	A	B	C2	C3	T3S2	T3S3	T3S2R4	OTROS	A	B	C	K'	D	LATITUD	LONGITUD
T. C. Colima - Comala	0.00	3	0	5279	5.6	85.1	0.6	3.7	0.7	2.5	0.6	0.5	0.7	90.7	0.6	8.7	0.097	0.503	19.294361	-103.746909
T. C. Comala - San Antonio	7.10	1	0	3259	6.0	86.7	0.4	4.0	0.5	1.8	0.3	0.2	0.1	92.7	0.4	6.9	0.119	0.511	19.343227	-103.740730

COLIMA

27 CARR : Libramiento de Tecmán

CLAVE: 06122

RUTA: COL

AÑO : 2022

LUGAR	ESTACION				CLASIFICACION VEHICULAR EN PORCIENTO													COORDENADAS		
	KM	TE	SC	TDPA	M	A	B	C2	C3	T3S2	T3S3	T3S2R4	OTROS	A	B	C	K'	D	LATITUD	LONGITUD
T. C. Ent. Playa Azul - Manzanillo (Sur)	0.00	3	1	2369	7.9	66.6	2.7	15.9	1.9	2.6	1.8	0.4	0.2	74.5	2.7	22.8	0.106	0.528	18.900213	-103.858096
T. C. Ent. Playa Azul - Manzanillo (Sur)	0.00	3	2	2646	8.0	66.1	2.6	15.8	2.1	2.5	2.1	0.7	0.1	74.1	2.6	23.3	0.099	0.528	18.900216	-103.858235
T. C. Ent. Playa Azul - Manzanillo (Norte)	7.90	1	1	3617	8.3	75.1	0.8	5.0	3.3	3.4	3.7	0.2	0.2	83.4	0.8	15.8	0.079	0.545	18.942479	-103.890334
T. C. Ent. Playa Azul - Manzanillo (Norte)	7.90	1	2	3016	7.9	73.4	1.1	5.4	3.2	4.9	3.7	0.2	0.2	81.3	1.1	17.6	0.088	0.545	18.942386	-103.890240

28 CARR : Libramiento Poniente Arco Sur de Tecmán

CLAVE:

RUTA: COL

AÑO : 2022

LUGAR	ESTACION				CLASIFICACION VEHICULAR EN PORCIENTO													COORDENADAS		
	KM	TE	SC	TDPA	M	A	B	C2	C3	T3S2	T3S3	T3S2R4	OTROS	A	B	C	K'	D	LATITUD	LONGITUD
Ent. C. Playa Azul - Manzanillo	0.00	3	0	3566	8.4	78.2	1.2	6.9	1.6	2.3	1.0	0.2	0.2	86.6	1.2	12.2	0.099	0.511	18.939781	-103.896807
X. C. Tecmán - Boca de Pascuales	4.60	3	0	2724	8.3	70.2	2.3	8.1	3.3	5.0	1.8	0.5	0.5	78.5	2.3	19.2	0.079	0.501	18.900404	-103.905092
X. C. Tecmán - La Mascota	6.90	3	0	2930	9.0	68.4	2.4	10.2	2.8	4.6	1.7	0.6	0.3	77.4	2.4	20.2	0.094	0.521	18.889022	-103.888312
Ent. C. Playa Azul - Manzanillo	11.17	0	0																	

29 CARR : Libramiento Poniente de Colima

CLAVE: 06122

RUTA: COL

AÑO : 2022

LUGAR	ESTACION				CLASIFICACION VEHICULAR EN PORCIENTO													COORDENADAS		
	KM	TE	SC	TDPA	M	A	B	C2	C3	T3S2	T3S3	T3S2R4	OTROS	A	B	C	K'	D	LATITUD	LONGITUD
T. C. Colima - Ent. Tecmán	0.00	3	1	10163	6.1	78.5	1.3	5.6	1.9	3.7	1.4	0.7	0.8	84.6	1.3	14.1	0.069	0.517	19.219622	-103.749408
T. C. Colima - Ent. Tecmán	0.00	3	2	10882	5.9	79.3	1.1	5.3	1.9	3.6	1.4	0.7	0.8	85.2	1.1	13.7	0.097	0.517	19.219432	-103.749282
T. C. Colima - Coquimatlán	6.00	0	0																	

30 CARR : Los Limones - Loma de Juárez

CLAVE: 06122

RUTA: COL

AÑO : 2022

LUGAR	ESTACION				CLASIFICACION VEHICULAR EN PORCIENTO													COORDENADAS		
	KM	TE	SC	TDPA	M	A	B	C2	C3	T3S2	T3S3	T3S2R4	OTROS	A	B	C	K'	D	LATITUD	LONGITUD
Los Limones	0.00	0	0																	
T. C. Colima - Ent. Tecmán	5.77	1	0	2045	3.7	79.4	1.8	12.4	0.5	1.9	0.2	0.1	0.0	83.1	1.8	15.1	0.082	0.529	19.196349	-103.756499

31 CARR : Puerta de Caleras - Madrid

CLAVE: 06014

RUTA: COL-014

AÑO : 2022

LUGAR	ESTACION				CLASIFICACION VEHICULAR EN PORCIENTO													COORDENADAS		
	KM	TE	SC	TDPA	M	A	B	C2	C3	T3S2	T3S3	T3S2R4	OTROS	A	B	C	K'	D	LATITUD	LONGITUD
T. C. Colima - Ent. Tecmán	0.00	3	0	3117	12.7	70.0	1.6	7.4	2.8	2.5	2.4	0.4	0.2	82.7	1.6	15.7	0.083	0.512	18.979437	-103.862456
Madrid	14.00	0	0																	

COLIMA

32 CARR: Quesería - El Naranjal

CLAVE: 06001

RUTA: COL-001

AÑO: 2022

LUGAR	ESTACION				CLASIFICACION VEHICULAR EN PORCIENTO													COORDENADAS		
	KM	TE	SC	TDPA	M	A	B	C2	C3	T3S2	T3S3	T3S2R4	OTROS	A	B	C	K'	D	LATITUD	LONGITUD
Quesería	0.00	3	0	1617	5.4	66.3	1.6	11.8	13.6	0.7	0.5	0.0	0.1	71.7	1.6	26.7	0.083	0.515	19.392101	-103.590322
El Naranjal	10.00	1	0	869	14.6	73.2	1.5	5.2	3.7	1.7	0.0	0.1	0.0	87.8	1.5	10.7	0.121	0.514	19.412118	-103.651789

33 CARR: Ramal a Aeropuerto de Colima

CLAVE: 06224

RUTA: COL

AÑO: 2022

LUGAR	ESTACION				CLASIFICACION VEHICULAR EN PORCIENTO													COORDENADAS		
	KM	TE	SC	TDPA	M	A	B	C2	C3	T3S2	T3S3	T3S2R4	OTROS	A	B	C	K'	D	LATITUD	LONGITUD
T. C. Cuauhtémoc - Colima	0.00	3	0	1500	1.1	91.5	0.6	6.2	0.3	0.0	0.0	0.2	0.1	92.6	0.6	6.8	0.075	0.507	19.289163	-103.593286
Aeropuerto de Colima	1.00	0	0																	

34 CARR: Ramal a Aeropuerto Manzanillo

CLAVE: 06582

RUTA: COL

AÑO: 2022

LUGAR	ESTACION				CLASIFICACION VEHICULAR EN PORCIENTO													COORDENADAS		
	KM	TE	SC	TDPA	M	A	B	C2	C3	T3S2	T3S3	T3S2R4	OTROS	A	B	C	K'	D	LATITUD	LONGITUD
T. C. Manzanillo - Puerto Vallarta	0.00	3	0	1023	9.5	81.7	0.2	7.3	0.8	0.2	0.2	0.1	0.0	91.2	0.2	8.6	0.089	0.507	19.189586	-104.550689
Aeropuerto Manzanillo	5.50	1	0	1059	7.2	84.9	0.3	6.9	0.3	0.1	0.2	0.1	0.0	92.1	0.3	7.6	0.074	0.535	19.151760	-104.560186

35 CARR: Ramal a Camotlán de Miraflores

CLAVE: 06009

RUTA: COL

AÑO: 2022

LUGAR	ESTACION				CLASIFICACION VEHICULAR EN PORCIENTO													COORDENADAS		
	KM	TE	SC	TDPA	M	A	B	C2	C3	T3S2	T3S3	T3S2R4	OTROS	A	B	C	K'	D	LATITUD	LONGITUD
T. C. Minatitlán - Ent. Pez Vela	0.00	3	0	2157	18.3	69.9	0.3	11.1	0.2	0.1	0.1	0.0	0.0	88.2	0.3	11.5	0.090	0.511	19.220011	-104.234077
Camotlán de Miraflores	1.00	0	0																	

36 CARR: Ramal a Ixtlahuacán

CLAVE: 06577

RUTA: COL-005

AÑO: 2022

LUGAR	ESTACION				CLASIFICACION VEHICULAR EN PORCIENTO													COORDENADAS		
	KM	TE	SC	TDPA	M	A	B	C2	C3	T3S2	T3S3	T3S2R4	OTROS	A	B	C	K'	D	LATITUD	LONGITUD
T. C. Colima - Ent. Tecomán	0.00	3	0	796	4.0	80.8	1.1	8.1	2.7	1.0	2.2	0.1	0.0	84.8	1.1	14.1	0.093	0.517	19.025989	-103.790938
Ixtlahuacán	8.50	0	0																	

COLIMA

37 CARR: Ramal a Las Brisas

CLAVE: 06571

RUTA: COL

AÑO: 2022

LUGAR	ESTACION				CLASIFICACION VEHICULAR EN PORCIENTO													COORDENADAS		
	KM	TE	SC	TDPA	M	A	B	C2	C3	T3S2	T3S3	T3S2R4	OTROS	A	B	C	K'	D	LATITUD	LONGITUD
T. C. Manzanillo - Puerto Vallarta (Central)	0.00	3	0	5618	9.5	86.8	1.0	2.2	0.1	0.1	0.1	0.1	0.1	96.3	1.0	2.7	0.075	0.608	19.082484	-104.307234
T. C. Manzanillo - Puerto Vallarta (Lateral)	0.00	3	1	6477	8.7	85.5	0.1	5.2	0.1	0.3	0.1	0.0	0.0	94.2	0.1	5.7	0.086	0.507	19.082490	-104.307135
T. C. Manzanillo - Puerto Vallarta (Lateral)	0.00	3	2	6290	8.4	85.4	0.1	5.5	0.1	0.4	0.1	0.0	0.0	93.8	0.1	6.1	0.085	0.507	19.082423	-104.307290
Las Brisas	2.30	0	0																	

38 CARR: Ramal a Los Tepames

CLAVE: 06004

RUTA: COL-004

AÑO: 2022

LUGAR	ESTACION				CLASIFICACION VEHICULAR EN PORCIENTO													COORDENADAS		
	KM	TE	SC	TDPA	M	A	B	C2	C3	T3S2	T3S3	T3S2R4	OTROS	A	B	C	K'	D	LATITUD	LONGITUD
T. C. Jiquilpan - Colima	0.00	3	0	1559	3.7	84.6	0.7	10.7	0.1	0.1	0.0	0.1	0.0	88.3	0.7	11.0	0.080	0.512	19.172529	-103.660186
Los Tepames	9.50	0	0																	

39 CARR: Ramal a Rancho Valle Nuevo

CLAVE: 06583

RUTA: COL

AÑO: 2022

LUGAR	ESTACION				CLASIFICACION VEHICULAR EN PORCIENTO													COORDENADAS		
	KM	TE	SC	TDPA	M	A	B	C2	C3	T3S2	T3S3	T3S2R4	OTROS	A	B	C	K'	D	LATITUD	LONGITUD
T. C. Ent. Playa Azul - Manzanillo	0.00	3	0	719	8.3	75.6	0.8	12.9	1.5	0.7	0.1	0.1	0.0	83.9	0.8	15.3	0.113	0.532	18.817773	-103.808875
Rancho Valle Nuevo	4.00	0	0																	

40 CARR: Ramal a Rincón de López

CLAVE: 06578

RUTA: COL

AÑO: 2022

LUGAR	ESTACION				CLASIFICACION VEHICULAR EN PORCIENTO													COORDENADAS		
	KM	TE	SC	TDPA	M	A	B	C2	C3	T3S2	T3S3	T3S2R4	OTROS	A	B	C	K'	D	LATITUD	LONGITUD
T. C. Ent. Playa Azul - Manzanillo	0.00	3	0	5372	16.3	74.2	0.8	7.3	0.5	0.3	0.3	0.2	0.1	90.5	0.8	8.7	0.079	0.530	18.951922	-103.947417
Rincón de López	14.00	0	0																	

41 CARR: Ramal a Tecuanillo

CLAVE: 06009

RUTA: COL-009

AÑO: 2022

LUGAR	ESTACION				CLASIFICACION VEHICULAR EN PORCIENTO													COORDENADAS		
	KM	TE	SC	TDPA	M	A	B	C2	C3	T3S2	T3S3	T3S2R4	OTROS	A	B	C	K'	D	LATITUD	LONGITUD
T. C. Ent. Playa Azul - Manzanillo	0.00	3	0	1804	10.2	71.2	2.0	13.0	0.4	2.6	0.2	0.2	0.2	81.4	2.0	16.6	0.086	0.513	18.890313	-103.855393
Tecuanillo	10.00	0	0																	



COLIMA

42 CARR: Tecomán - La Mascota

CLAVE: 06572

RUTA: COL

AÑO: 2022

LUGAR	ESTACION				CLASIFICACION VEHICULAR EN PORCIENTO														COORDENADAS	
	KM	TE	SC	TDPA	M	A	B	C2	C3	T3S2	T3S3	T3S2R4	OTROS	A	B	C	K'	D	LATITUD	LONGITUD
Tecomán	0.00	3	0	3205	11.4	74.0	1.2	8.6	1.6	2.7	0.3	0.1	0.1	85.4	1.2	13.4	0.088	0.523	18.895049	-103.888312
X. Libramiento Poniente Arco Sur de Tecomán	2.70	3	0	1957	15.2	71.5	1.2	9.3	0.8	1.7	0.1	0.1	0.1	86.7	1.2	12.1	0.106	0.519	18.889065	-103.892120
La Mascota	11.00	0	0																	

43 CARR: Trapichillos - Estación Alzada

CLAVE: 06003

RUTA: COL-003

AÑO: 2022

LUGAR	ESTACION				CLASIFICACION VEHICULAR EN PORCIENTO														COORDENADAS	
	KM	TE	SC	TDPA	M	A	B	C2	C3	T3S2	T3S3	T3S2R4	OTROS	A	B	C	K'	D	LATITUD	LONGITUD
T. C. Jiquilpan - Colima	0.00	3	0	407	3.8	73.8	2.1	7.5	7.0	3.4	1.8	0.2	0.4	77.6	2.1	20.3	0.101	0.516	19.173796	-103.526741
Estación Alzada	12.50	1	0	573	12.0	63.9	2.0	14.9	2.3	2.6	1.6	0.2	0.5	75.9	2.0	22.1	0.096	0.517	19.251800	-103.531076

44 CARR: Villa de Álvarez - Minatitlán

CLAVE: 06040

RUTA: COL

AÑO: 2022

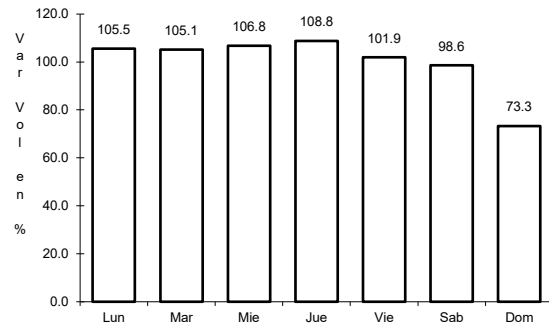
LUGAR	ESTACION				CLASIFICACION VEHICULAR EN PORCIENTO														COORDENADAS	
	KM	TE	SC	TDPA	M	A	B	C2	C3	T3S2	T3S3	T3S2R4	OTROS	A	B	C	K'	D	LATITUD	LONGITUD
T. C. Colima - Comala	0.00	3	0	11021	11.8	80.3	1.0	4.1	1.5	0.6	0.5	0.2	0.0	92.1	1.0	6.9	0.074	0.515	19.283037	-103.777877
T. C. Minatitlán - Ent. Pez Vela	55.00	0	0																	



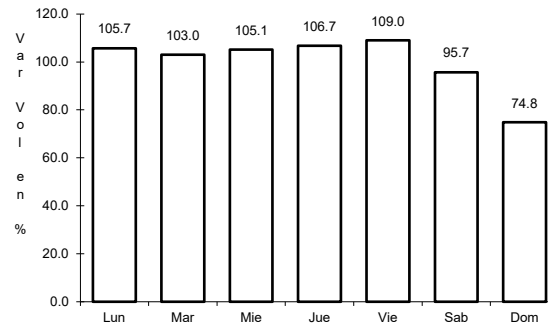
1 CARR: Cd. Guzmán - Colima

CLAVE: 00117

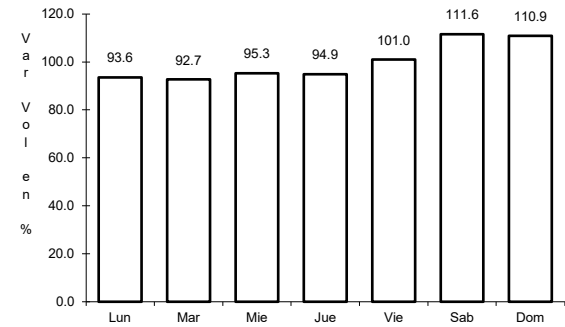
RUTA: MEX-054



Km: 0.00      Tipo: 3      Sent: 1



Km: 0.00      Tipo: 3      Sent: 2

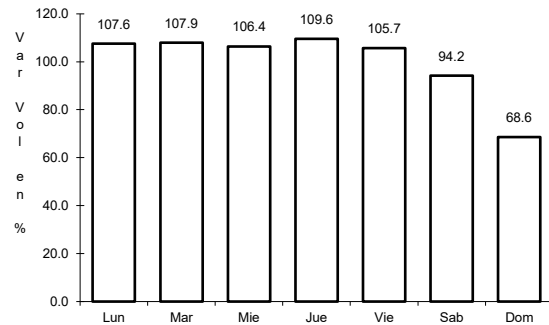


Km: 56.90      Tipo: 1      Sent: 0

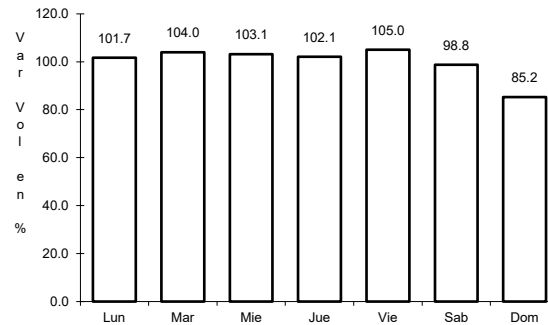
2 CARR: Colima - Ent. Tecomán

CLAVE: 06119

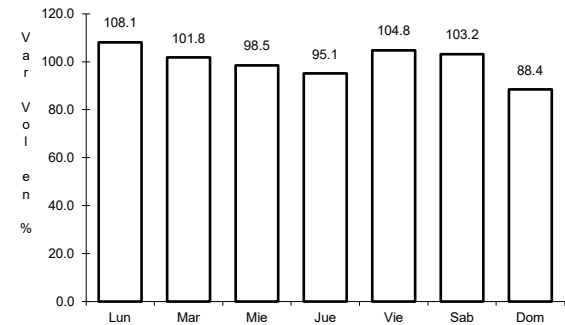
RUTA: MEX-110



Km: 0.00      Tipo: 3      Sent: 1



Km: 0.00      Tipo: 3      Sent: 2

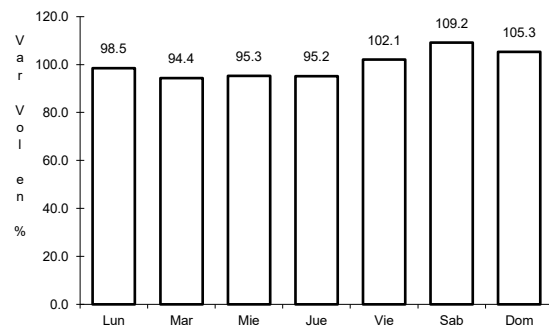


Km: 40.10      Tipo: 1      Sent: 1

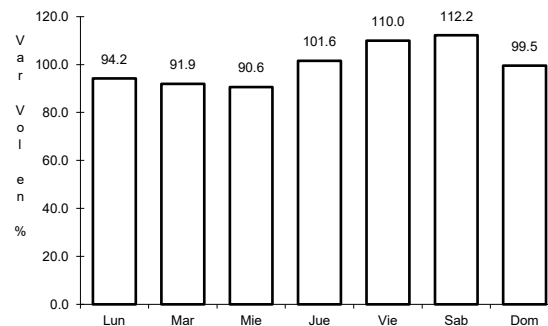
3 CARR: Ent. Playa Azul - Manzanillo

CLAVE: 00495

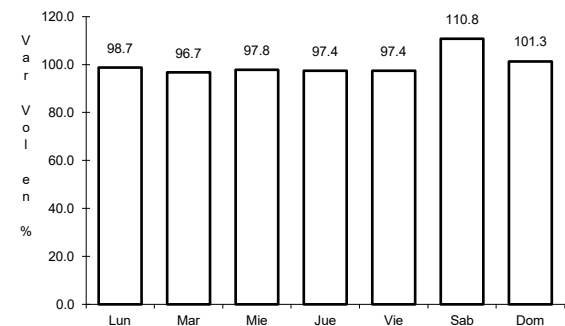
RUTA: MEX-200



Km: 0.00      Tipo: 3      Sent: 0



Km: 190.10      Tipo: 3      Sent: 0

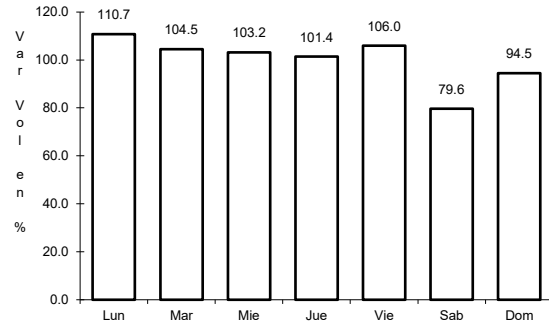


Km: 321.12      Tipo: 1      Sent: 0

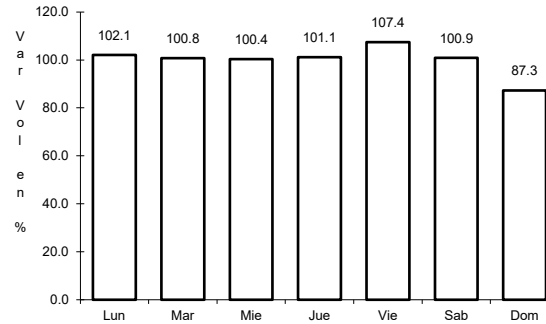
4 CARR: Jiquilpan - Colima

CLAVE: 00156

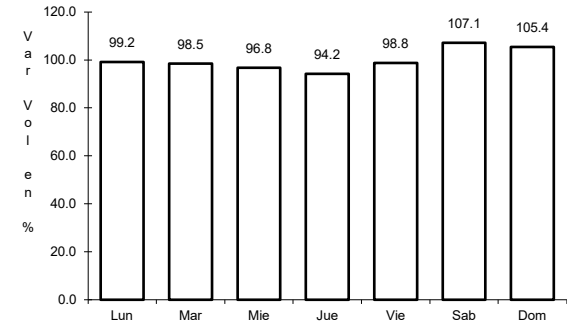
ruta: MEX-110



Km: 0.00      Tipo: 3      Sent: 0



Km: 108.50      Tipo: 1      Sent: 0

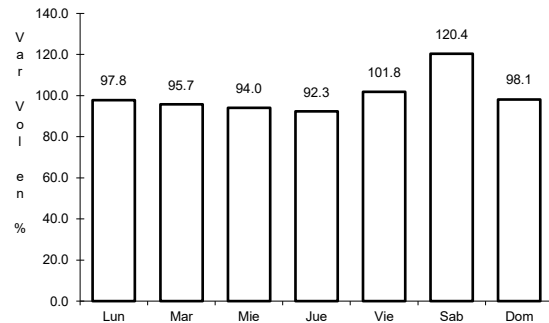


Km: 220.00      Tipo: 1      Sent: 0

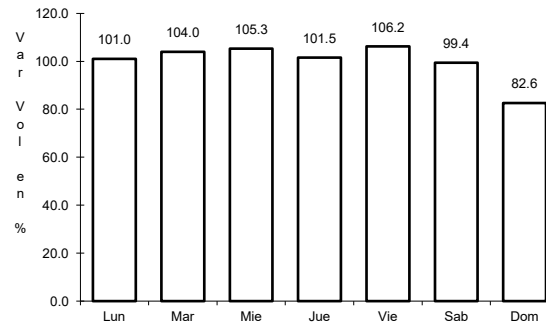
5 CARR: Libramiento Campos - Alameda

CLAVE:

ruta: MEX



Km: 0.00      Tipo: 3      Sent: 0

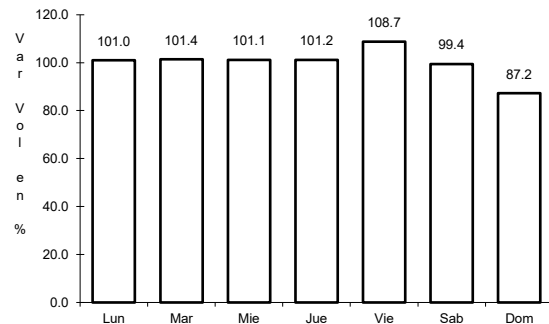


Km: 5.00      Tipo: 1      Sent: 0

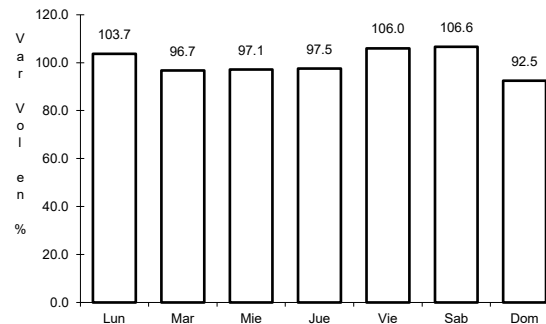
6 CARR: Libramiento de Colima

CLAVE: 06573

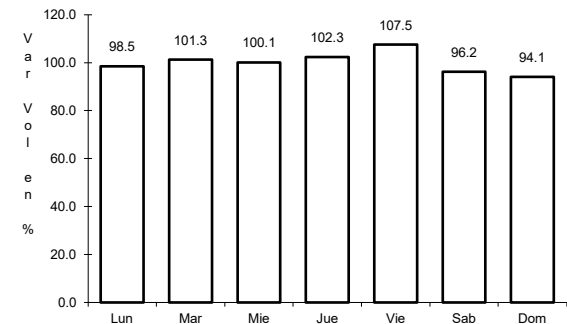
ruta: MEX-054



Km: 0.00      Tipo: 3      Sent: 1



Km: 0.00      Tipo: 3      Sent: 2

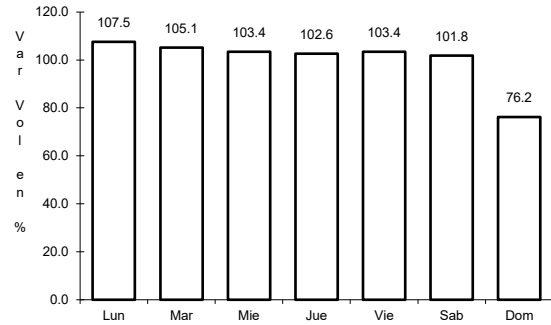


Km: 9.00      Tipo: 1      Sent: 1

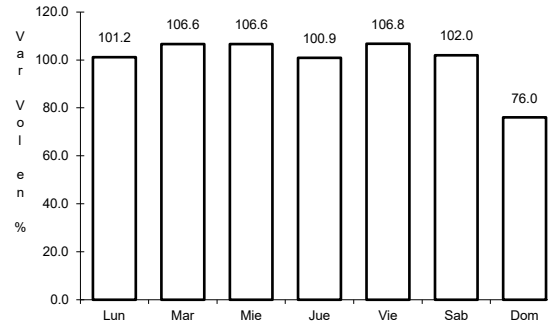
7 CARR: Libramiento de Manzanillo (Libre)

CLAVE: 06574

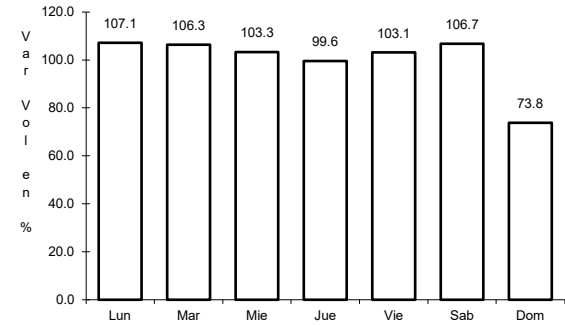
ruta: MEX-200



Km: 0.00      Tipo: 3      Sent: 0



Km: 6.30      Tipo: 1      Sent: 1

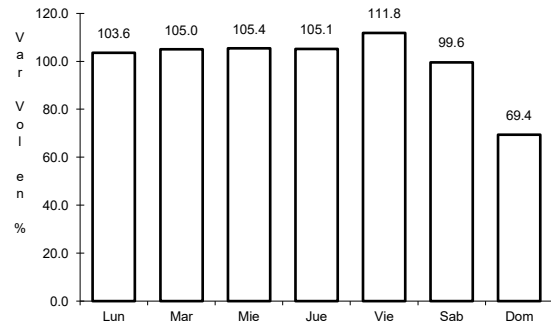


Km: 6.30      Tipo: 1      Sent: 2

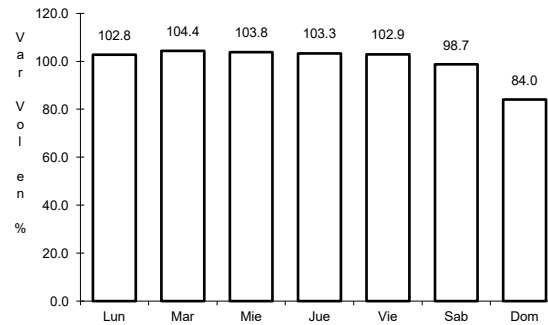
8 CARR: Libramiento de Manzanillo Norte

CLAVE: 06122

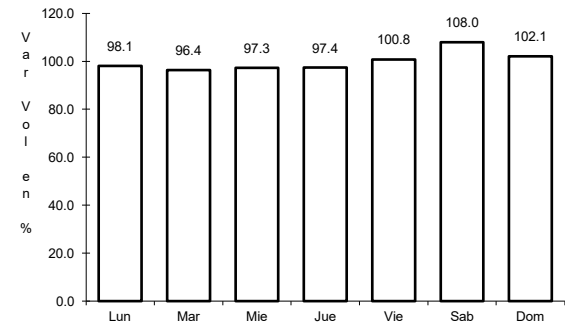
ruta: MEX-200



Km: 0.00      Tipo: 3      Sent: 0



Km: 6.60      Tipo: 3      Sent: 0

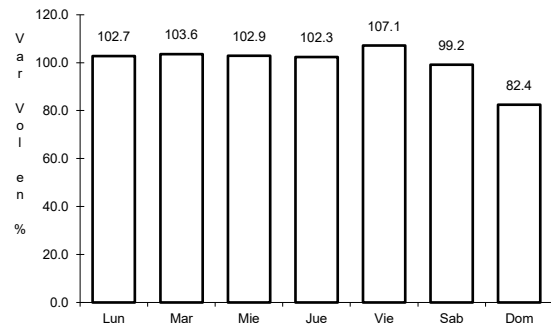


Km: 19.00      Tipo: 1      Sent: 0

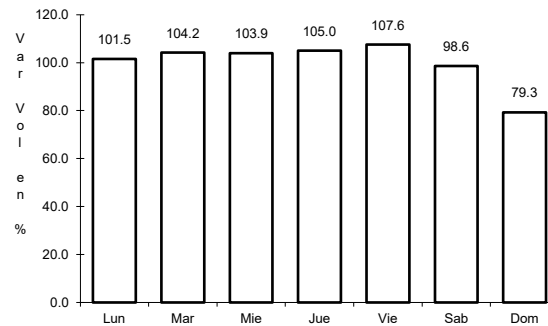
9 CARR: Manzanillo - Puerto Vallarta

CLAVE: 00070

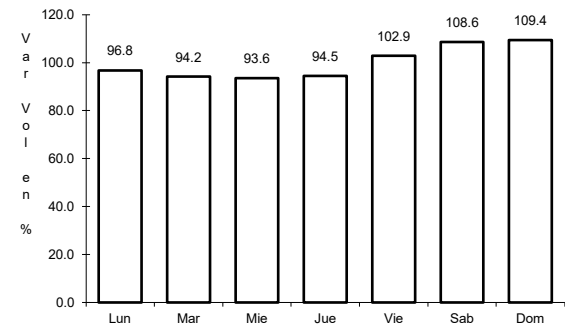
ruta: MEX-200



Km: 0.00      Tipo: 3      Sent: 1



Km: 0.00      Tipo: 3      Sent: 2

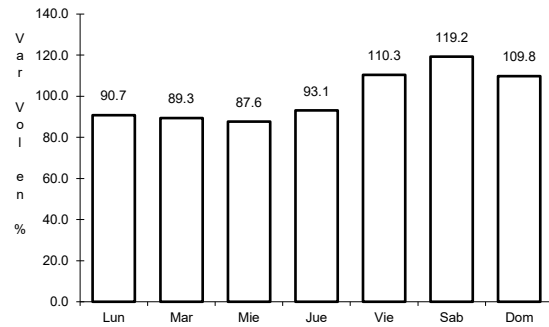


Km: 275.84      Tipo: 1      Sent: 0

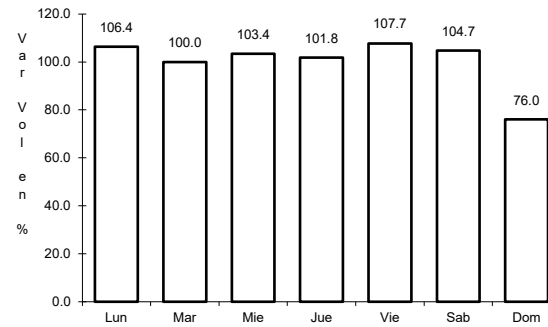
10 CARR: Minatitlán - Ent. Pez Vela

CLAVE: 06015

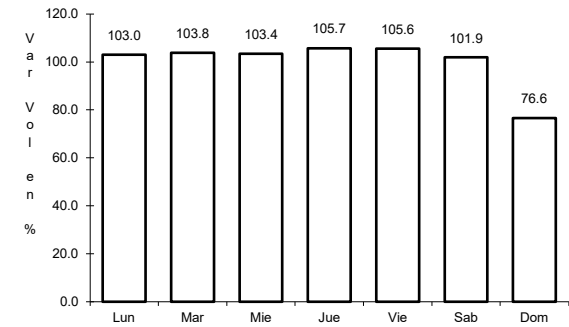
ruta: MEX-098



Km: 49.50      Tipo: 1      Sent: 0



Km: 58.50      Tipo: 1      Sent: 1

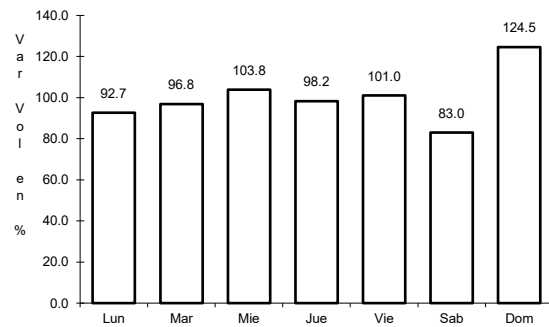


Km: 58.50      Tipo: 1      Sent: 2

11 CARR: Paso por La Salada

CLAVE: 06121

ruta: MEX-110

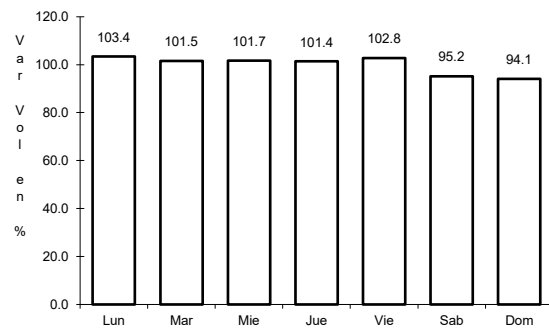


Km: 4.80      Tipo: 3      Sent: 0

12 CARR: Paso por Los Asmoles

CLAVE: 06120

ruta: MEX-110

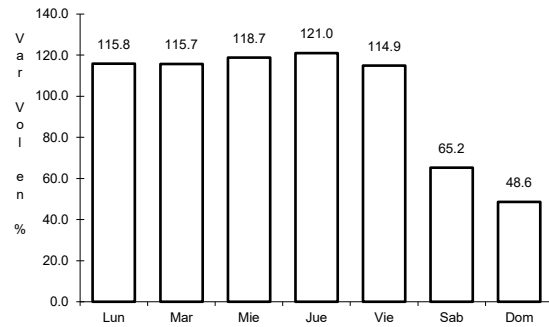


Km: 1.80      Tipo: 3      Sent: 0

13 CARR: Ramal a Cerro de Los Juanes

CLAVE: 06009

ruta: MEX-098



Km: 0.00

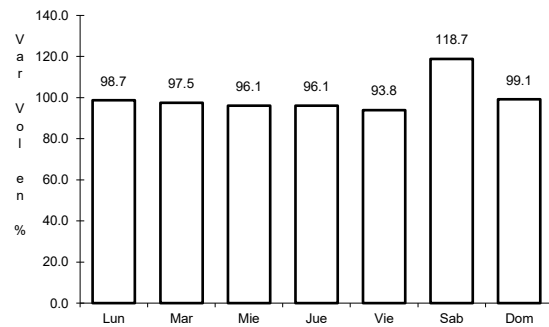
Tipo: 3

Sent: 0

14 CARR: Ramal a Cerro de Ortega

CLAVE: 06009

ruta: MEX-200



Km: 0.00

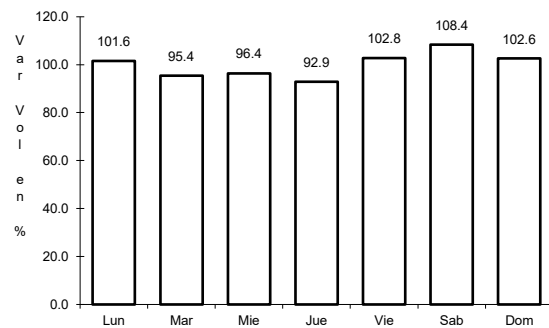
Tipo: 3

Sent: 0

15 CARR: Ramal a Cuyutlán

CLAVE: 06225

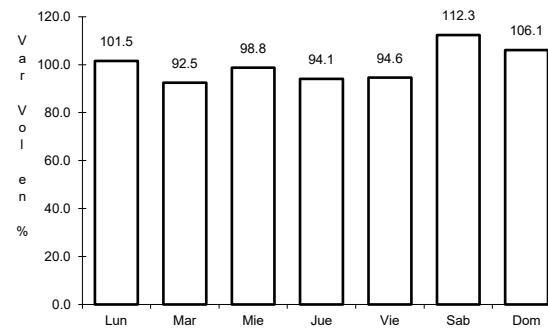
ruta: MEX-200



Km: 0.00

Tipo: 3

Sent: 0



Km: 7.00

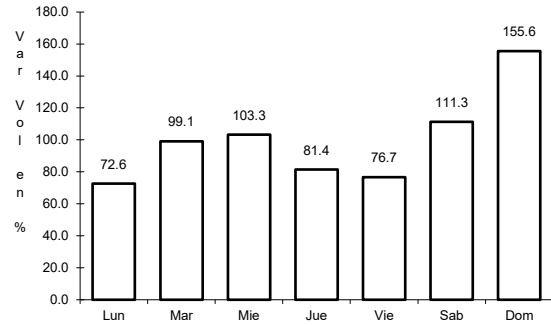
Tipo: 1

Sent: 0

16 CARR: Tecomán - Boca de Pascuales

CLAVE: 06226

ruta: MEX-200



Km: 0.00

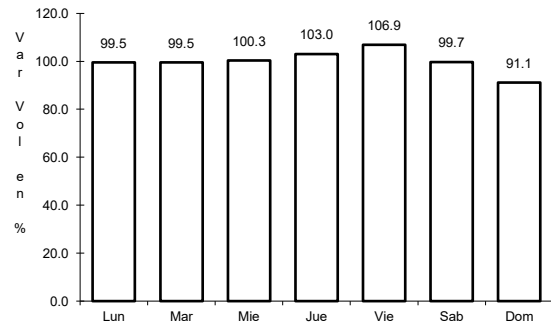
Tipo: 3

Sent: 0

17 CARR: Armería - Manzanillo (Cuota)

CLAVE: 06585

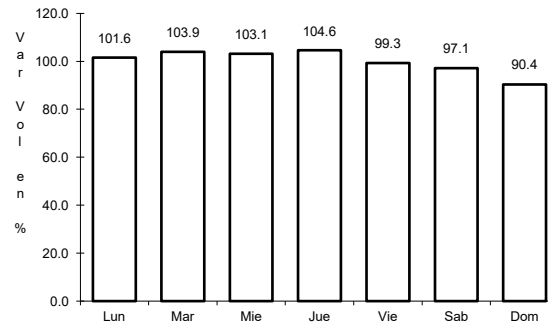
ruta: MEX-200D



Km: 0.00

Tipo: 3

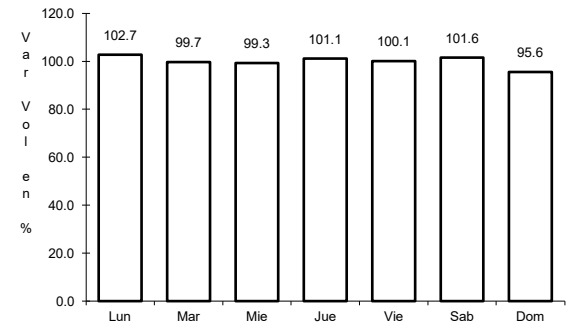
Sent: 1



Km: 0.00

Tipo: 3

Sent: 2



Km: 44.00

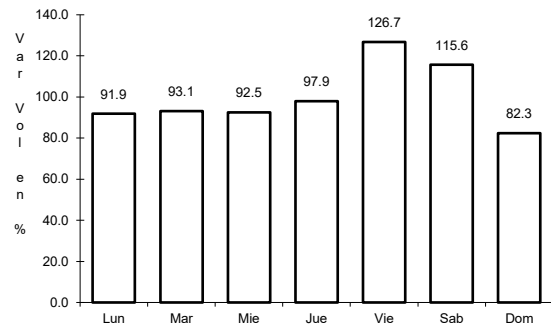
Tipo: 3

Sent: 1

18 CARR: Guadalajara - Colima (Cuota)

CLAVE: 00118

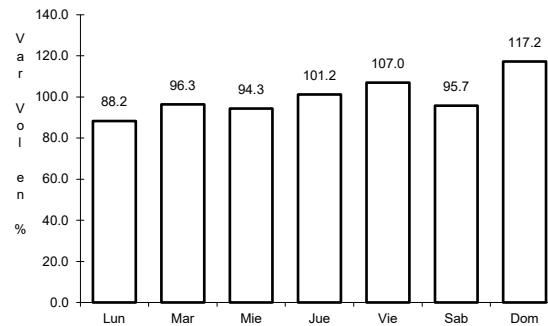
ruta: MEX-054D



Km: 7.70

Tipo: 1

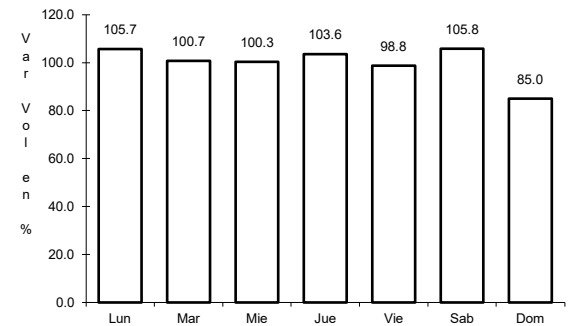
Sent: 1



Km: 7.70

Tipo: 1

Sent: 2



Km: 107.27

Tipo: 1

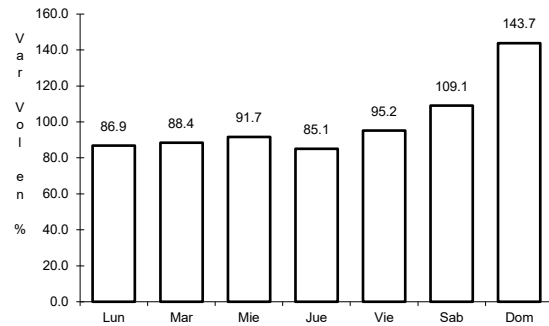
Sent: 0



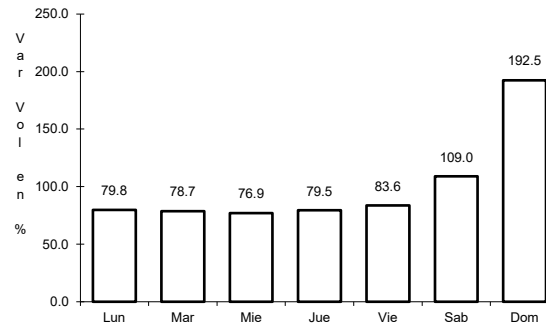
19 CARR: Armería - Playa El Paraíso

CLAVE: 06580

RUTA: COL



Km: 0.00      Tipo: 3      Sent: 0

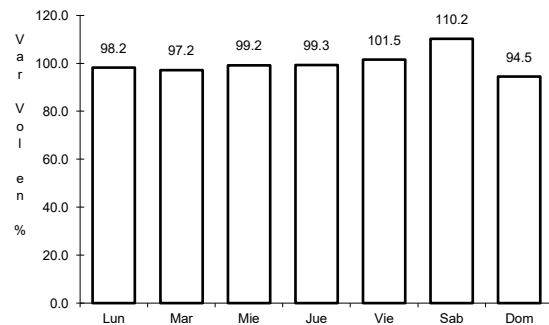


Km: 7.50      Tipo: 1      Sent: 0

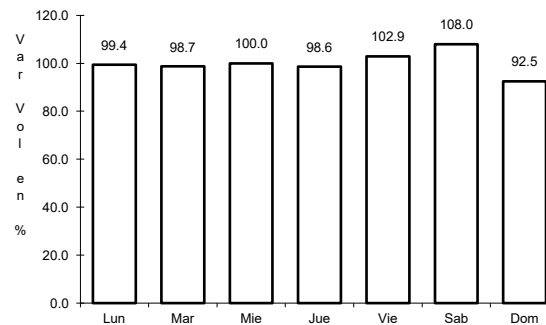
20 CARR: Colima - Comala

CLAVE: 06016

RUTA: COL-016



Km: 3.00      Tipo: 3      Sent: 1

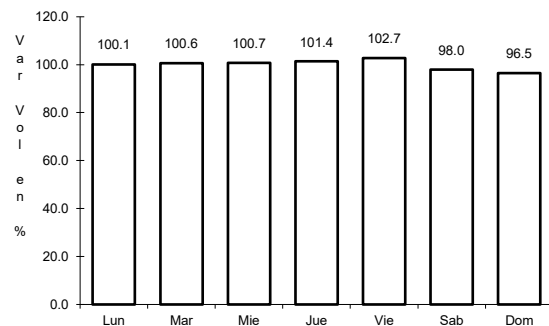


Km: 3.00      Tipo: 3      Sent: 2

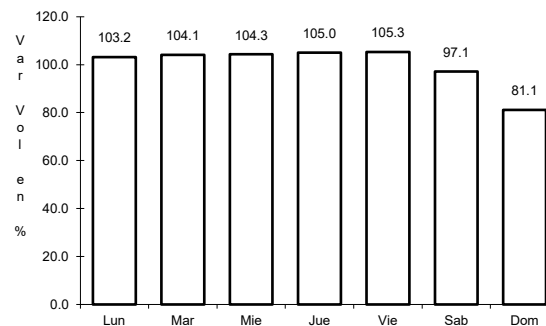
21 CARR: Colima - Coquimatlán

CLAVE: 06034

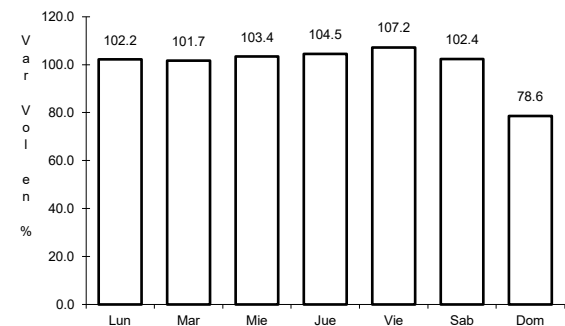
RUTA: COL-034



Km: 3.00      Tipo: 3      Sent: 1



Km: 3.00      Tipo: 3      Sent: 2

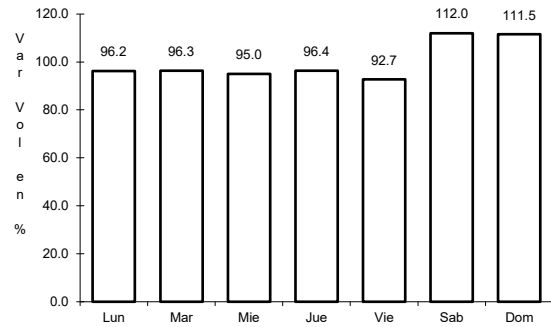


Km: 11.00      Tipo: 1      Sent: 1

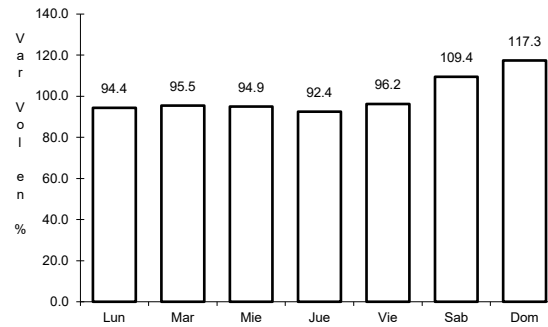
22 CARR: Comala - San Antonio

CLAVE: 06030

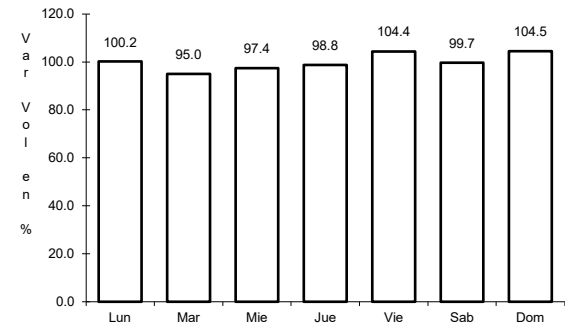
ruta: COL-016



Km: 0.00      Tipo: 3      Sent: 1



Km: 0.00      Tipo: 3      Sent: 2

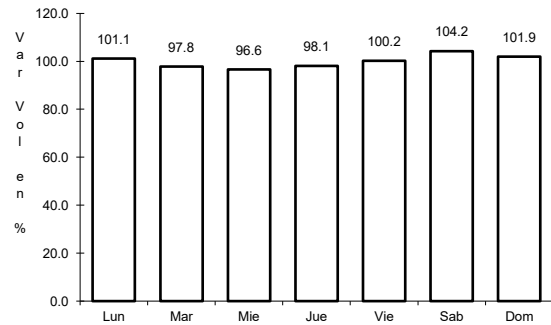


Km: 10.00      Tipo: 1      Sent: 0

23 CARR: Coquimatlán - Pueblo Juárez

CLAVE: 06029

ruta: COL-034

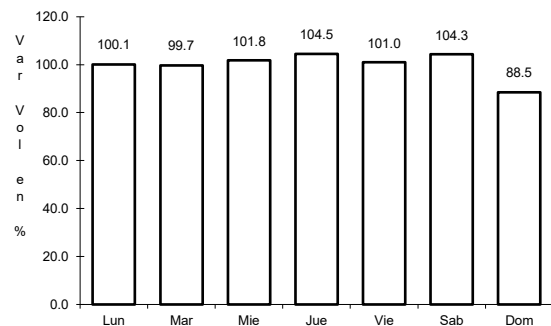


Km: 0.00      Tipo: 3      Sent: 0

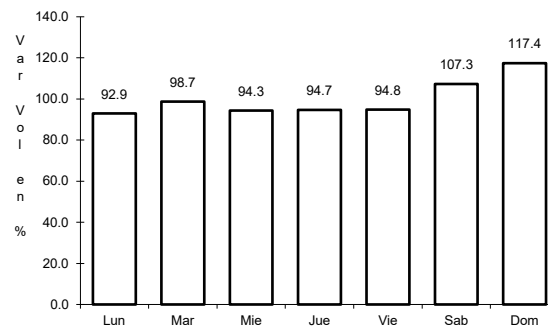
24 CARR: Costera Laguna de Cuyutlán

CLAVE: 06010

ruta: COL



Km: 0.00      Tipo: 3      Sent: 0

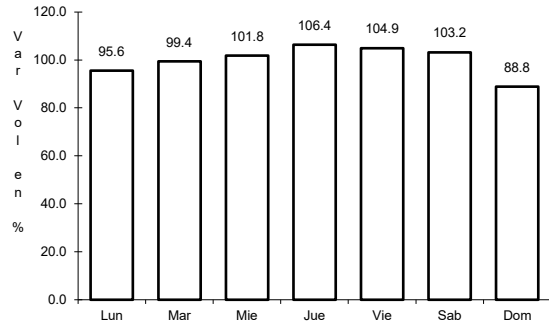


Km: 13.00      Tipo: 1      Sent: 0

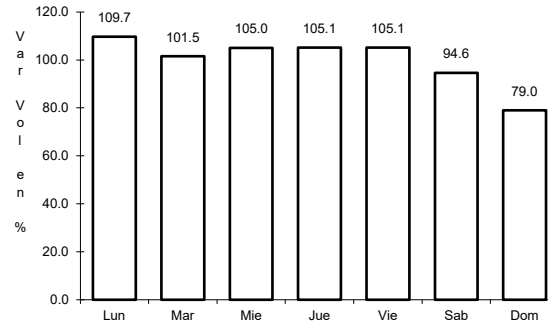
25 CARR: Cuauhtémoc - Colima

CLAVE: 06019

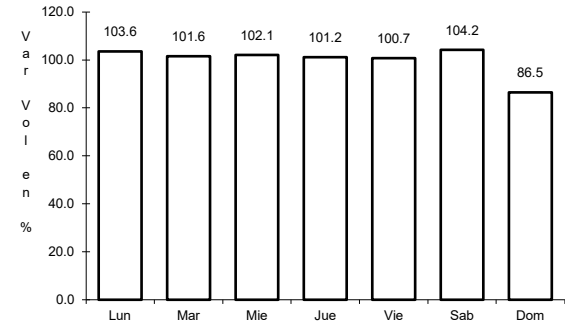
ruta: COL-019



Km: 0.00      Tipo: 3      Sent: 0



Km: 19.50      Tipo: 1      Sent: 1

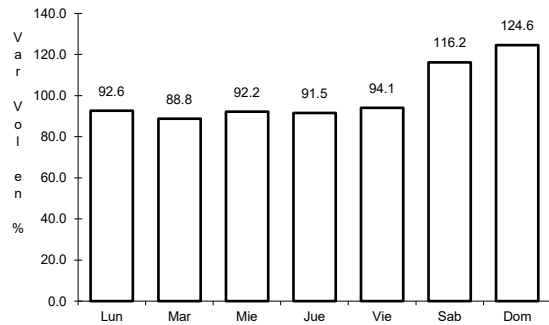


Km: 19.50      Tipo: 1      Sent: 2

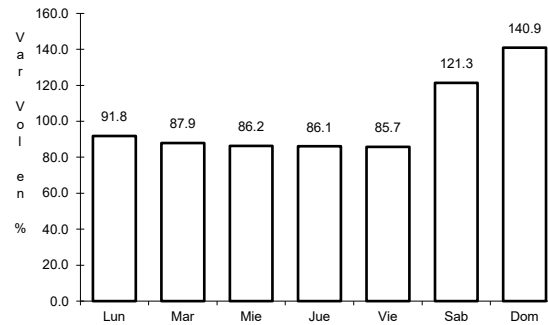
26 CARR: Libramiento de Comala

CLAVE:

ruta: COL-016



Km: 0.00      Tipo: 3      Sent: 0

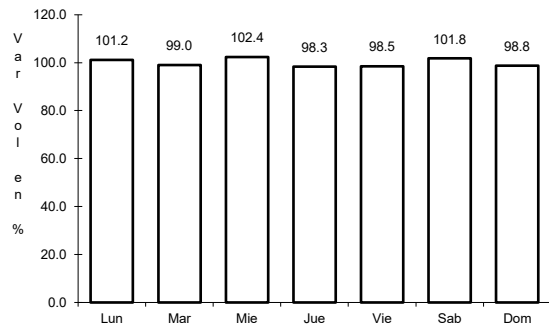


Km: 7.10      Tipo: 1      Sent: 0

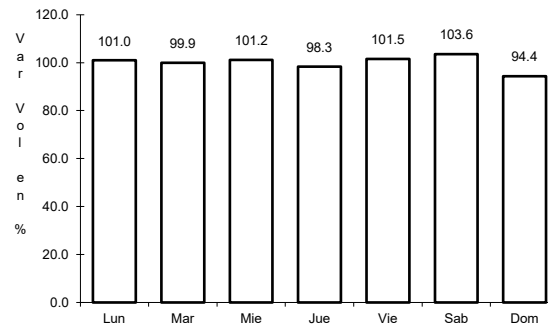
27 CARR: Libramiento de Tecomán

CLAVE: 06122

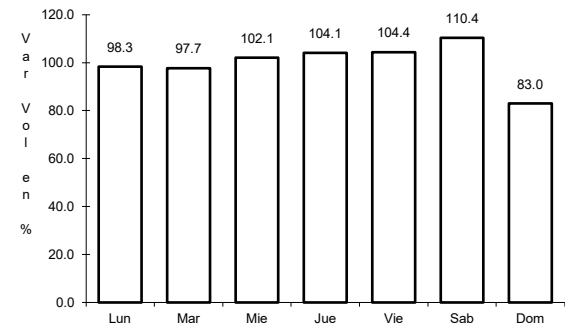
ruta: COL



Km: 0.00      Tipo: 3      Sent: 1



Km: 0.00      Tipo: 3      Sent: 2

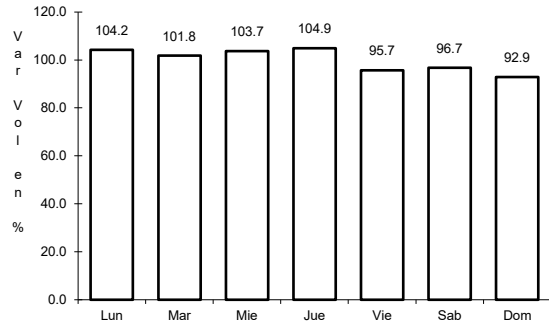


Km: 7.90      Tipo: 1      Sent: 1

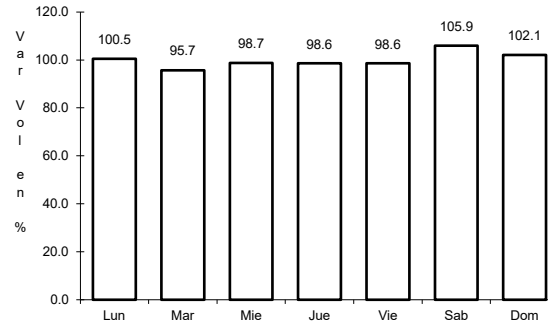
28 CARR: Libramiento Poniente Arco Sur de Tecomán

CLAVE:

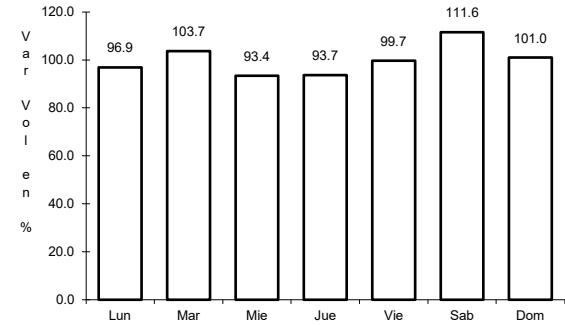
RUTA: COL



Km: 0.00                      Tipo: 3                      Sent: 0



Km: 4.60                      Tipo: 3                      Sent: 0

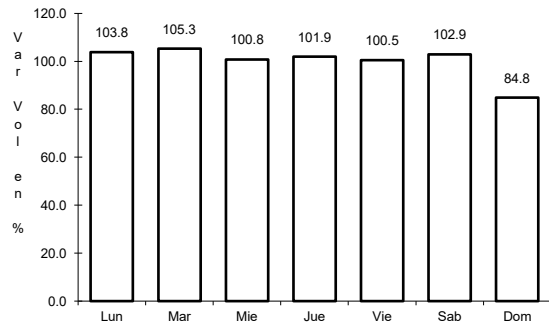


Km: 6.90                      Tipo: 3                      Sent: 0

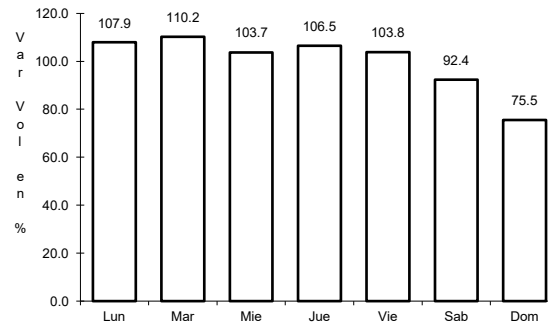
29 CARR: Libramiento Poniente de Colima

CLAVE: 06122

RUTA: COL



Km: 0.00                      Tipo: 3                      Sent: 1

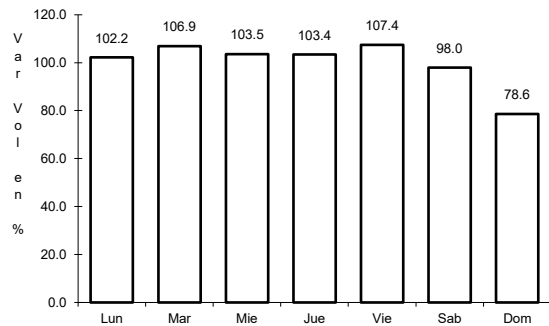


Km: 0.00                      Tipo: 3                      Sent: 2

30 CARR: Los Limones - Loma de Juárez

CLAVE: 06122

RUTA: COL

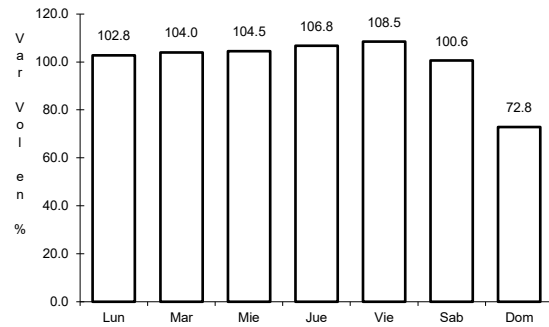


Km: 5.77                      Tipo: 1                      Sent: 0

31 CARR: Puerta de Caleras - Madrid

CLAVE: 06014

ruta: COL-014



Km: 0.00

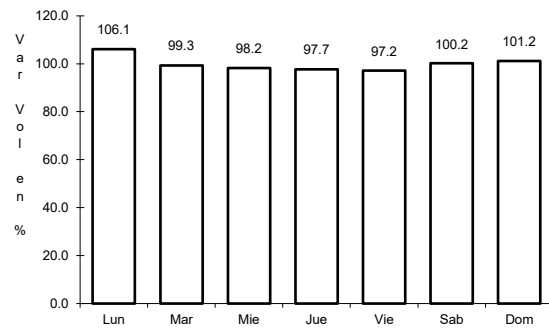
Tipo: 3

Sent: 0

32 CARR: Quesería - El Naranjal

CLAVE: 06001

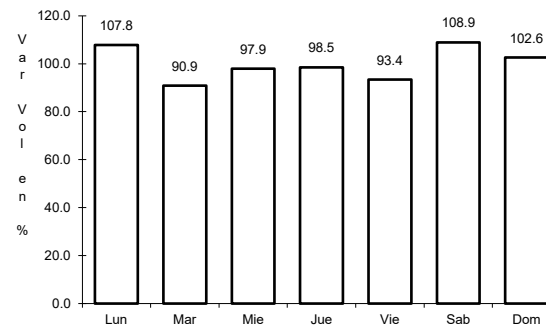
ruta: COL-001



Km: 0.00

Tipo: 3

Sent: 0



Km: 10.00

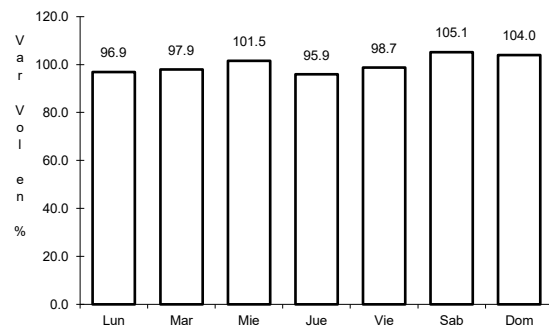
Tipo: 1

Sent: 0

33 CARR: Ramal a Aeropuerto de Colima

CLAVE: 06224

ruta: COL



Km: 0.00

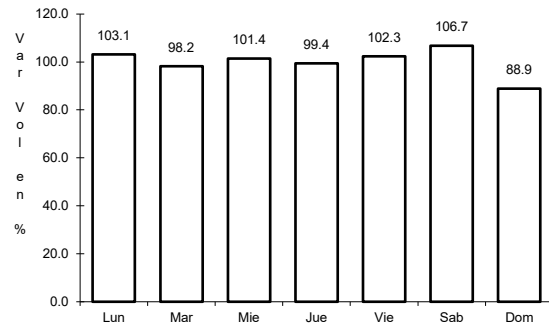
Tipo: 3

Sent: 0

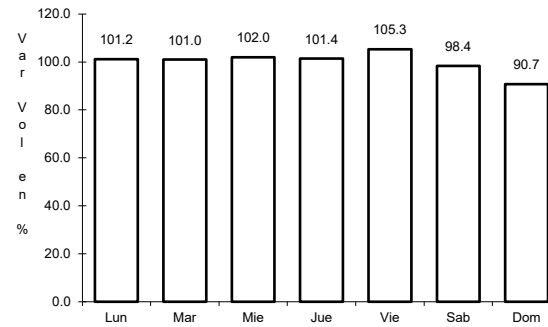
34 CARR: Ramal a Aeropuerto Manzanillo

CLAVE: 06582

RUTA: COL



Km: 0.00      Tipo: 3      Sent: 0

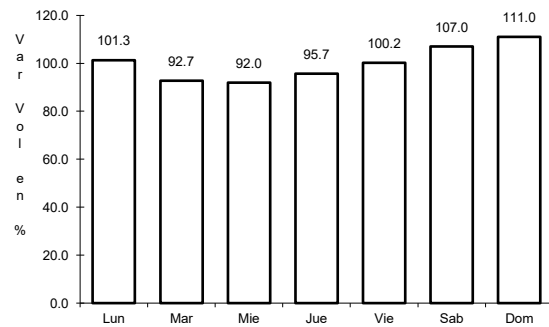


Km: 5.50      Tipo: 1      Sent: 0

35 CARR: Ramal a Camotlán de Miraflores

CLAVE: 06009

RUTA: COL

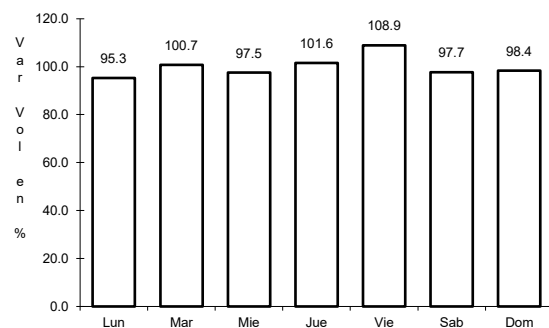


Km: 0.00      Tipo: 3      Sent: 0

36 CARR: Ramal a Ixtlahuacán

CLAVE: 06577

RUTA: COL-005

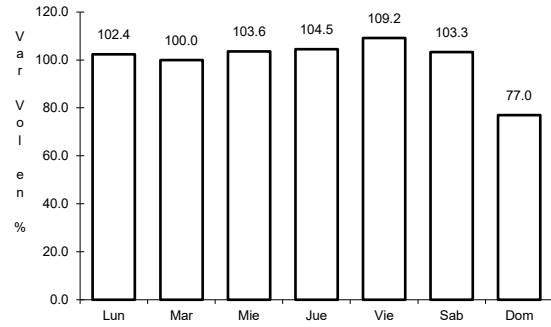


Km: 0.00      Tipo: 3      Sent: 0

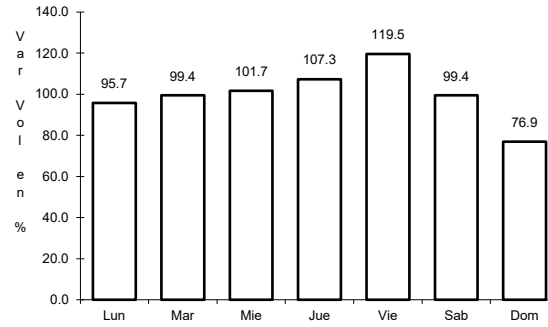
37 CARR: Ramal a Las Brisas

CLAVE: 06571

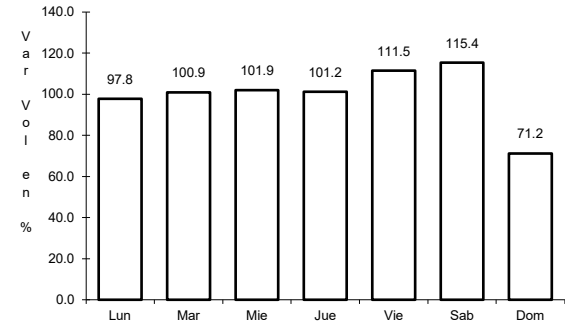
ruta: COL



Km: 0.00                      Tipo: 3                      Sent: 0



Km: 0.00                      Tipo: 3                      Sent: 1

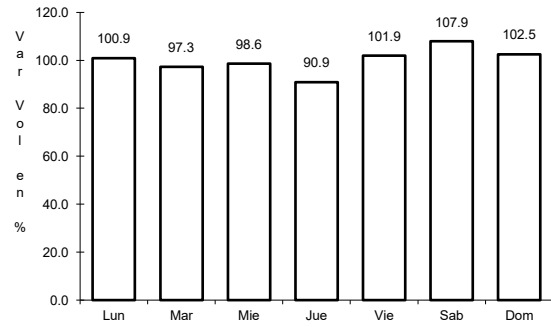


Km: 0.00                      Tipo: 3                      Sent: 2

38 CARR: Ramal a Los Tepames

CLAVE: 06004

ruta: COL-004

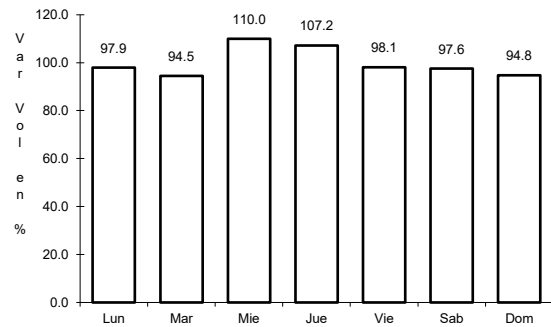


Km: 0.00                      Tipo: 3                      Sent: 0

39 CARR: Ramal a Rancho Valle Nuevo

CLAVE: 06583

ruta: COL

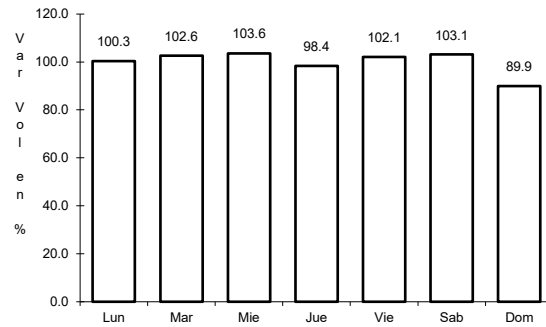


Km: 0.00                      Tipo: 3                      Sent: 0

40 CARR: Ramal a Rincón de López

CLAVE: 06578

RUTA: COL



Km: 0.00

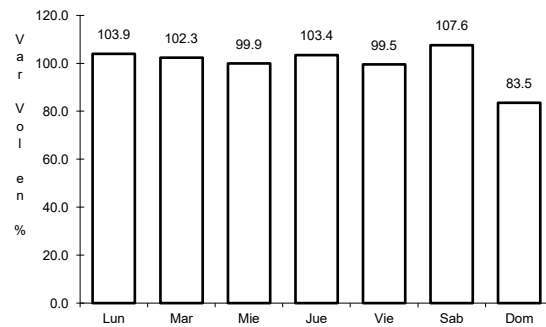
Tipo: 3

Sent: 0

41 CARR: Ramal a Tecuanillo

CLAVE: 06009

RUTA: COL-009



Km: 0.00

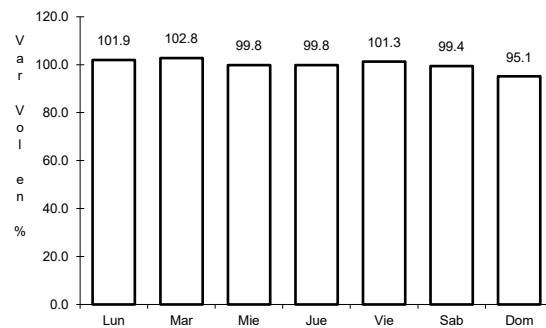
Tipo: 3

Sent: 0

42 CARR: Tecomán - La Mascota

CLAVE: 06572

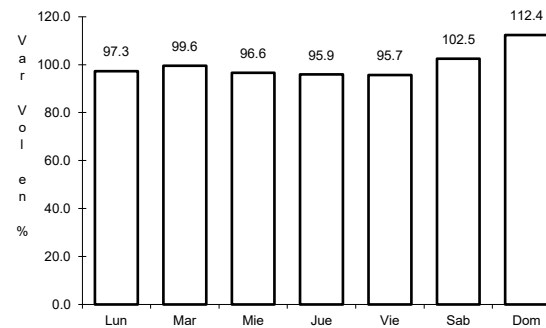
RUTA: COL



Km: 0.00

Tipo: 3

Sent: 0



Km: 2.70

Tipo: 3

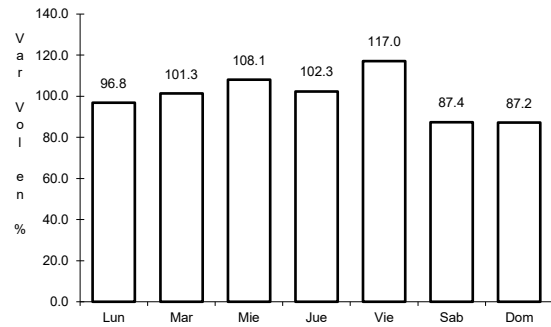
Sent: 0



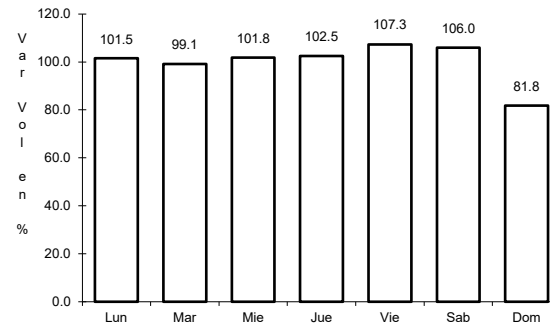
43 CARR: Trapichillos - Estación Alzada

CLAVE: 06003

RUTA: COL-003



Km: 0.00                      Tipo: 3                      Sent: 0

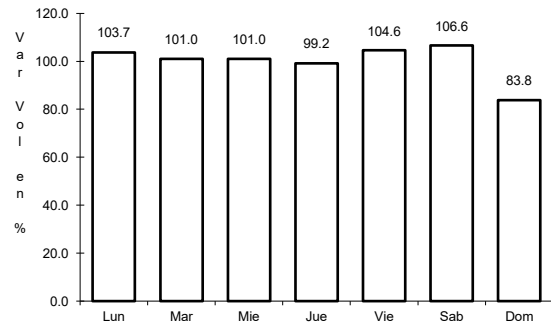


Km: 12.50                      Tipo: 1                      Sent: 0

44 CARR: Villa de Álvarez - Minatitlán

CLAVE: 06040

RUTA: COL



Km: 0.00                      Tipo: 3                      Sent: 0

