

CHIAPAS

---RED FEDERAL LIBRE---

1	Benemérito de Las Américas - Palenque	MEX-307
2	Catazajá - T. C. (Tuxtla Gtz. - Cd. Cuauhtémoc)	MEX-199
3	El Suspiro - Tenosique	MEX-203
4	Ent. Jaritas - Ciudad Hidalgo	MEX-225
5	Huixtla - El Jocote	MEX-211
6	La Trinitaria - Benemérito de Las Américas	MEX-307
7	Las Cruces - Arriaga	MEX-190
8	Libramiento de Arriaga	MEX-200
9	Libramiento de Ciudad Hidalgo Chis.	MEX-225
10	Libramiento de Huixtla	MEX-200
11	Libramiento de Ocozacoautla	MEX-190
12	Libramiento Sur de Tuxtla Gutiérrez (Dr. Manuel Velasco)	MEX
13	Malpaso - El Bellote	MEX-187
14	Ocozacoautla - Ent. El Sabino	MEX-190
15	Ramal a Cd. Hidalgo	MEX-200
16	Ramal a La Gloria	MEX-200
17	Ramal a Paredón	MEX-200
18	Ramal a Puerto Arista	MEX-200
19	Ramal a Unión Juárez	MEX-200
20	Tapachula - Puerto Madero	MEX-225
21	Tapanatepec - Talismán	MEX-200
22	Tapanatepec - Tuxtla Gutiérrez	MEX-190
23	Terán - Chicoasén	MEX-190
24	Tuxtla Gutiérrez - Angostura	MEX-190
25	Tuxtla Gutiérrez - Cd. Cuauhtémoc	MEX-190
26	Villahermosa - Escopetazo	MEX-195
27	Villahermosa - Francisco Escárcega	MEX-186

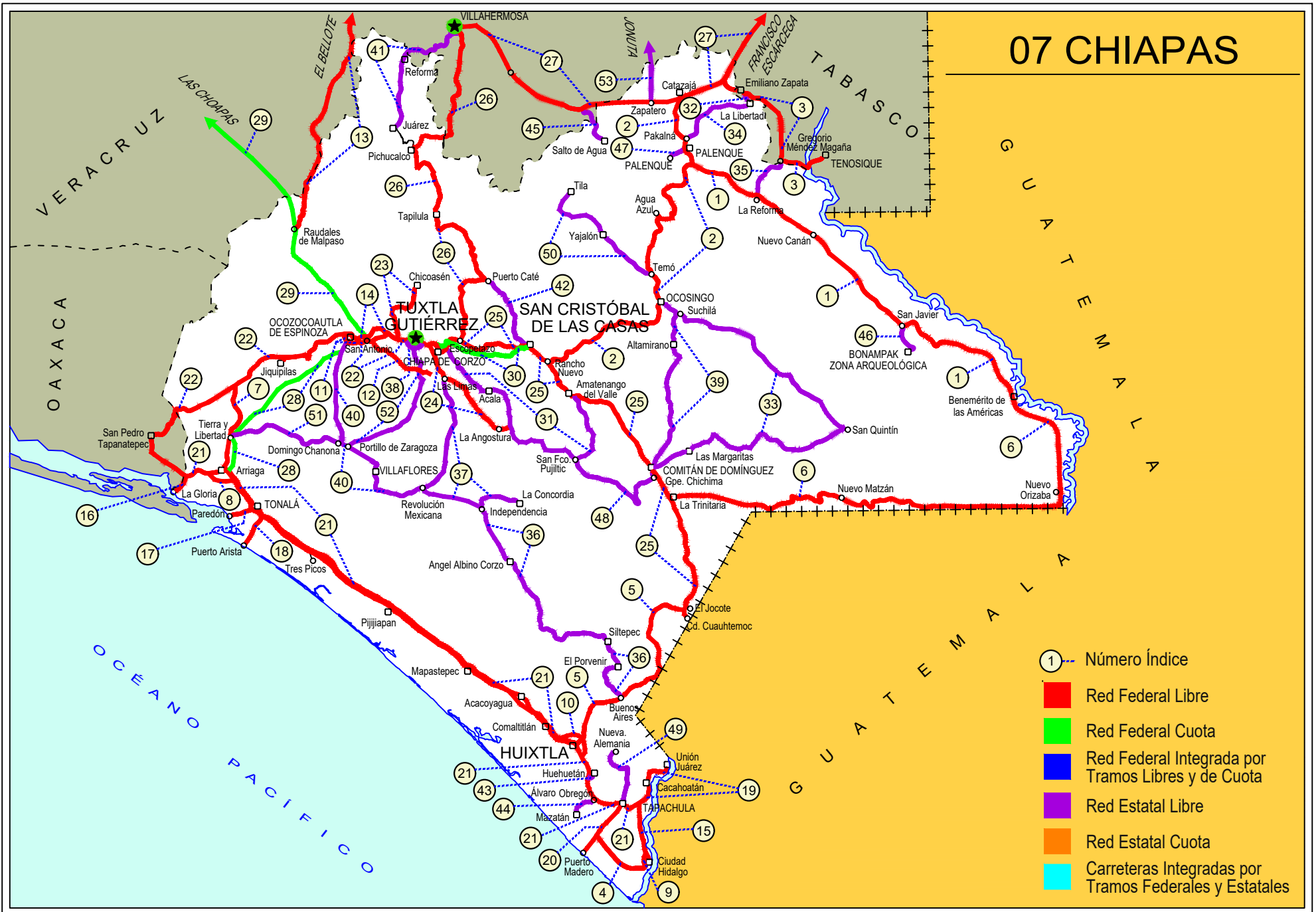
---RED FEDERAL DE CUOTA---

28	Arriaga - Ocozacoautla (Cuota)	MEX-200D
29	Las Choapas - Ocozacoautla (Cuota)	MEX-187D
30	Tuxtla Gutiérrez - San Cristóbal de Las Casas (Cuota)	MEX-190D

---RED ESTATAL LIBRE---

31	Chiapa de Corzo - Amatenango del Valle	CHIS
32	Ent. Emiliano Zapata - La Libertad	CHIS-TAB
33	Ent. Suschilá - Comitán	CHIS-TAB
34	Estación Palenque - La Libertad	CHIS-010
35	Gregorio Méndez Magaña - Reforma de Ocampo	CHIS
36	Independencia - Buenos Aires	CHIS
37	Las Limas - La Concordia	CHIS
38	Libramiento Sur de Tuxtla Gutiérrez	CHIS
39	Ocosingo - Comitán	CHIS
40	Ocozacoautla - Revolución Mexicana	CHIS-053-230
41	Paso de Cunduacán - Estación Juárez	TAB-CHIS
42	Puerto Caté - San Cristóbal de Las Casas	CHIS
43	Ramal a Huehuetán	CHIS
44	Ramal a Mazatán	CHIS-219
45	Ramal a Salto del Agua	TAB-CHIS
46	Ramal Zona Arqueológica " Bonampak "	CHIS
47	Ramal Zona Arqueológica " Palenque "	CHIS
48	San Francisco Pujilic - Ent. Comitán	CHIS
49	Tapachula - Nueva Alemania	CHIS-229
50	Temo - Tila	CHIS
51	Tierra y Libertad - Ent. Dr. Domingo Chanona	CHIS
52	Tuxtla Gutiérrez - Portillo Zaragoza	CHIS-133
53	Zapatero - T. C. (Jalapa - Jonuta)	CHIS-TAB

07 CHIAPAS



- ① Número Índice
- Red Federal Libre
- Red Federal Cuota
- Red Federal Integrada por Tramos Libres y de Cuota
- Red Estatal Libre
- Red Estatal Cuota
- Carreteras Integradas por Tramos Federales y Estatales

CHIAPAS

1 CARR: Benemérito de Las Américas - Palenque

CLAVE: 07095

RUTA: MEX-307

AÑO: 2022

LUGAR	ESTACION				CLASIFICACION VEHICULAR EN PORCIENTO										COORDENADAS					
	KM	TE	SC	TDPA	M	A	B	C2	C3	T3S2	T3S3	T3S2R4	OTROS	A	B	C	K'	D	LATITUD	LONGITUD
Benemérito de las Américas	0.00	0	0																	
Frontera Corozal	42.00	3	0	813	12.5	74.5	1.0	2.2	1.9	5.7	1.0	1.1	0.1	87.0	1.0	12.0	0.102	0.520	16.761709	-91.013842
San Javier	67.00	3	0	941	9.8	80.3	1.1	1.1	1.6	3.8	1.1	1.1	0.1	90.1	1.1	8.8	0.100	0.555	16.801884	-91.107266
Reforma de Ocampo	160.00	1	0	1688	16.4	74.7	0.5	2.7	1.1	3.3	0.7	0.5	0.1	91.1	0.5	8.4	0.099	0.503	17.317326	-91.685285
T. C. Catazajá - T. C. (Tuxtla Gtz. - Cd. Cuauhtémoc)	194.00	1	0	3886	5.3	71.3	0.4	10.5	6.6	3.7	1.2	0.4	0.6	76.6	0.4	23.0	0.100	0.508	17.442376	-91.960715

2 CARR: Catazajá - T. C. (Tuxtla Gtz. - Cd. Cuauhtémoc)

CLAVE: 07582

RUTA: MEX-199

AÑO: 2022

LUGAR	ESTACION				CLASIFICACION VEHICULAR EN PORCIENTO										COORDENADAS					
	KM	TE	SC	TDPA	M	A	B	C2	C3	T3S2	T3S3	T3S2R4	OTROS	A	B	C	K'	D	LATITUD	LONGITUD
Catazajá	0.00	0	0																	
X. C. Villahermosa - Francisco Escárcega	2.20	3	0	5224	2.8	73.8	2.1	9.0	3.6	5.7	1.7	0.7	0.6	76.6	2.1	21.3	0.085	0.527	17.705471	-92.016034
Pakalná	23.46	1	0	10314	10.3	77.3	1.0	6.4	2.1	1.5	1.0	0.3	0.1	87.6	1.0	11.4	0.070	0.509	17.549293	-91.984914
T. Izq. Palenque	27.50	1	1	11617	10.7	80.4	0.5	5.3	2.0	0.7	0.3	0.1	0.0	91.1	0.5	8.4	0.079	0.513	17.531262	-91.991929
T. Izq. Palenque	27.50	1	2	11040	10.6	80.1	0.5	5.6	2.0	0.7	0.4	0.1	0.0	90.7	0.5	8.8	0.072	0.513	17.531262	-91.991853
T. Izq. Palenque	27.50	3	0	8816	5.6	79.5	1.8	7.3	2.6	1.4	0.9	0.4	0.5	85.1	1.8	13.1	0.075	0.504	17.484898	-91.976183
T. Izq. Bonampak	33.20	3	0	3609	1.9	85.5	1.4	5.5	1.2	2.1	1.6	0.1	0.7	87.4	1.4	11.2	0.079	0.505	17.444083	-91.965451
T. Der. Salto del Agua	54.00	1	0	2717	8.1	81.8	1.0	4.6	0.9	2.4	0.9	0.1	0.2	89.9	1.0	9.1	0.089	0.501	17.361997	-92.050675
T. Der. Agua Azul	68.30	1	0	1638	6.0	81.4	1.4	6.0	1.1	2.5	1.4	0.1	0.1	87.4	1.4	11.2	0.114	0.509	17.235551	-92.091579
T. Der. Chilón	111.00	1	0	2462	5.9	85.8	0.2	3.4	1.5	2.2	0.8	0.1	0.1	91.7	0.2	8.1	0.088	0.501	17.019294	-92.134792
T. Der. Chilón	111.00	3	0	3379	7.7	80.8	1.1	5.3	0.4	2.9	1.2	0.2	0.4	88.5	1.1	10.4	0.088	0.514	17.014590	-92.133705
Ocosingo	136.00	3	0	3737	19.7	75.4	0.7	2.2	0.5	0.8	0.3	0.3	0.1	95.1	0.7	4.2	0.104	0.502	16.891915	-92.104102
T. Izq. Altamirano	152.00	1	0	3181	9.6	84.7	0.8	1.7	1.1	1.0	0.6	0.4	0.1	94.3	0.8	4.9	0.092	0.511	16.816503	-92.170479
Huixtán	190.60	1	0	3471	5.0	90.2	0.7	1.6	1.1	0.8	0.2	0.4	0.0	95.2	0.7	4.1	0.084	0.507	16.717946	-92.447405
Huixtán	190.60	3	0	3874	5.8	87.9	0.9	1.9	1.6	1.0	0.5	0.3	0.1	93.7	0.9	5.4	0.086	0.506	16.706463	-92.463375
T. C. Tuxtla Gutiérrez - Cd. Cuauhtémoc	210.00	1	0	5356	13.2	76.6	1.6	5.1	1.3	1.1	0.5	0.4	0.2	89.8	1.6	8.6	0.073	0.508	16.669438	-92.559482

3 CARR: El Suspiro - Tenosique

CLAVE: 00276

RUTA: MEX-203

AÑO: 2022

LUGAR	ESTACION				CLASIFICACION VEHICULAR EN PORCIENTO										COORDENADAS					
	KM	TE	SC	TDPA	M	A	B	C2	C3	T3S2	T3S3	T3S2R4	OTROS	A	B	C	K'	D	LATITUD	LONGITUD
Ent. El Suspiro	0.00	3	0	5879	10.1	73.7	1.3	4.8	6.5	1.5	0.7	1.2	0.2	83.8	1.3	14.9	0.093	0.542	17.749284	-91.813157
Lim. Edos. Term. Chis. Ppia. Tab.	8.00	0	0																	
Emiliano Zapata	8.61	3	0	6785	10.1	74.4	1.3	4.5	6.2	1.4	0.7	1.1	0.3	84.5	1.3	14.2	0.095	0.542	17.727416	-91.756542
T. Der. La Libertad	12.10	3	0	3997	10.8	71.8	2.0	4.9	5.9	1.8	1.3	1.2	0.3	82.6	2.0	15.4	0.073	0.515	17.723863	-91.739329

CHIAPAS

3 CARR: El Suspiro - Tenosique

CLAVE: 00276

RUTA: MEX-203

AÑO: 2022

LUGAR	ESTACION				CLASIFICACION VEHICULAR EN PORCIENTO												COORDENADAS			
	KM	TE	SC	TDPA	M	A	B	C2	C3	T3S2	T3S3	T3S2R4	OTROS	A	B	C	K'	D	LATITUD	LONGITUD
T. Izq. Balancán	32.60	1	0	3376	5.7	76.7	5.2	6.8	1.4	1.8	1.2	1.0	0.2	82.4	5.2	12.4	0.083	0.504	17.634938	-91.602580
T. Izq. Balancán	32.60	3	0	2504	6.6	76.3	3.0	5.7	2.6	2.7	2.1	0.9	0.1	82.9	3.0	14.1	0.086	0.531	17.628368	-91.599983
Estación Zapata	53.00	1	0	2961	7.8	82.5	1.3	3.7	2.5	1.1	0.6	0.4	0.1	90.3	1.3	8.4	0.074	0.541	17.463346	-91.598707
Estación Zapata	53.00	3	0	4201	7.2	76.2	1.6	3.5	5.1	2.6	2.2	1.3	0.3	83.4	1.6	15.0	0.083	0.511	17.456325	-91.593667
Tenosique	75.30	0	0																	

4 CARR: Ent. Jaritas - Ciudad Hidalgo

CLAVE: 07094

RUTA: MEX-225

AÑO: 2022

LUGAR	ESTACION				CLASIFICACION VEHICULAR EN PORCIENTO												COORDENADAS			
	KM	TE	SC	TDPA	M	A	B	C2	C3	T3S2	T3S3	T3S2R4	OTROS	A	B	C	K'	D	LATITUD	LONGITUD
T. C. Tapachula - Puerto Madero	0.00	3	0	2790	27.2	56.4	1.7	6.2	2.9	3.6	1.3	0.5	0.2	83.6	1.7	14.7	0.086	0.523	14.782713	-92.364575
T. Der. Ignacio López Rayón	33.35	1	0	3166	29.9	55.7	1.9	5.8	2.4	2.6	1.4	0.2	0.1	85.6	1.9	12.5	0.096	0.503	14.630465	-92.190621
Ciudad Hidalgo	49.00	1	0	7811	19.4	63.2	2.8	7.1	1.2	4.1	0.4	1.4	0.4	82.6	2.8	14.6	0.096	0.512	14.672924	-92.160821

5 CARR: Huixtla - El Jocote

CLAVE: 07577

RUTA: MEX-211

AÑO: 2022

LUGAR	ESTACION				CLASIFICACION VEHICULAR EN PORCIENTO												COORDENADAS			
	KM	TE	SC	TDPA	M	A	B	C2	C3	T3S2	T3S3	T3S2R4	OTROS	A	B	C	K'	D	LATITUD	LONGITUD
Huixtla	0.00	3	0	2792	18.5	69.9	0.6	5.1	1.5	2.9	1.2	0.1	0.2	88.4	0.6	11.0	0.092	0.509	15.148621	-92.444012
B. Domínguez (Loma Bonita)	27.00	3	0	2659	9.4	77.3	1.8	6.4	1.6	2.3	0.7	0.3	0.2	86.7	1.8	11.5	0.068	0.504	15.305031	-92.375402
Motozintla	57.00	1	0	2994	15.3	74.6	0.4	3.6	1.2	3.1	1.1	0.2	0.5	89.9	0.4	9.7	0.088	0.503	15.355714	-92.252242
Motozintla	57.00	3	0	6957	14.6	74.6	0.2	4.2	0.7	3.5	1.0	0.5	0.7	89.2	0.2	10.6	0.069	0.509	15.371908	-92.233592
Amatenango de La Frontera	77.00	1	0	1887	6.7	80.6	0.8	6.7	2.1	2.1	0.4	0.3	0.3	87.3	0.8	11.9	0.074	0.501	15.433645	-92.118918
Amatenango de La Frontera	77.00	3	0	1628	4.6	83.7	0.8	5.4	1.3	2.3	1.4	0.2	0.3	88.3	0.8	10.9	0.095	0.507	15.439059	-92.113739
Frontera Comalapa	108.00	1	0	6267	19.2	71.2	0.2	2.9	0.3	4.6	0.9	0.2	0.5	90.4	0.2	9.4	0.081	0.504	15.640566	-92.145288
El Jocote	126.00	1	0	5788	19.2	72.1	0.3	3.6	0.5	3.4	0.6	0.1	0.2	91.3	0.3	8.4	0.085	0.502	15.684216	-92.006666

6 CARR: La Trinitaria - Benemérito de Las Américas

CLAVE: 07267

RUTA: MEX-307

AÑO: 2022

LUGAR	ESTACION				CLASIFICACION VEHICULAR EN PORCIENTO												COORDENADAS			
	KM	TE	SC	TDPA	M	A	B	C2	C3	T3S2	T3S3	T3S2R4	OTROS	A	B	C	K'	D	LATITUD	LONGITUD
T. C. Tuxtla Gutiérrez - Cd. Cuauhtémoc	0.00	3	0	6022	5.3	82.4	0.5	5.6	0.5	4.6	0.5	0.1	0.5	87.7	0.5	11.8	0.086	0.509	16.130006	-92.062165
Santa Rita	10.00	1	0	4529	4.6	76.7	0.9	13.8	0.7	2.4	0.6	0.1	0.2	81.3	0.9	17.8	0.090	0.500	16.139852	-91.986428
Santa Rita	10.00	3	0	4600	7.1	83.5	0.4	5.3	0.6	2.4	0.4	0.1	0.2	90.6	0.4	9.0	0.094	0.506	16.140613	-91.967895
T. Izq. La Independencia	20.00	3	0	4331	8.8	86.8	0.6	1.9	1.1	0.4	0.2	0.2	0.0	95.6	0.6	3.8	0.095	0.501	16.127048	-91.850420

CHIAPAS

6 CARR: La Trinitaria - Benemérito de Las Américas

CLAVE: 07267

RUTA: MEX-307

AÑO: 2022

LUGAR	ESTACION				CLASIFICACION VEHICULAR EN PORCIENTO													COORDENADAS		
	KM	TE	SC	TDPA	M	A	B	C2	C3	T3S2	T3S3	T3S2R4	OTROS	A	B	C	K'	D	LATITUD	LONGITUD
Montebello	39.76	1	0	2543	13.1	82.3	0.8	2.0	0.9	0.5	0.3	0.1	0.0	95.4	0.8	3.8	0.093	0.500	16.101057	-91.742624
Montebello	39.76	3	0	1973	9.7	84.8	1.0	2.6	1.3	0.3	0.2	0.1	0.0	94.5	1.0	4.5	0.096	0.504	16.101322	-91.730945
Nuevo San Juan Chamula	72.00	3	0	1794	20.6	74.5	0.5	1.3	2.4	0.4	0.1	0.2	0.0	95.1	0.5	4.4	0.129	0.500	16.144782	-91.437547
Benemérito de las Américas	268.00	0	0																	
Benemérito de las Américas	268.00	1	0	2757	13.2	81.3	0.6	1.0	1.8	1.2	0.2	0.5	0.2	94.5	0.6	4.9	0.099	0.510	16.498972	-90.653831

7 CARR: Las Cruces - Arriaga

CLAVE: 07196

RUTA: MEX-190

AÑO: 2022

LUGAR	ESTACION				CLASIFICACION VEHICULAR EN PORCIENTO													COORDENADAS		
	KM	TE	SC	TDPA	M	A	B	C2	C3	T3S2	T3S3	T3S2R4	OTROS	A	B	C	K'	D	LATITUD	LONGITUD
Las Cruces	0.00	3	0	1709	7.2	80.6	0.9	7.8	2.0	1.0	0.3	0.1	0.1	87.8	0.9	11.3	0.081	0.505	16.569053	-93.844678
Santa Isabel	27.90	3	0	314	12.7	83.0	0.4	1.3	0.7	1.3	0.3	0.1	0.2	95.7	0.4	3.9	0.124	0.508	16.345818	-93.870020
Arriaga	49.00	1	0	1239	35.4	61.5	0.2	2.2	0.4	0.2	0.1	0.0	0.0	96.9	0.2	2.9	0.084	0.509	16.247865	-93.886169

8 CARR: Libramiento de Arriaga

CLAVE:

RUTA: MEX-200

AÑO: 2022

LUGAR	ESTACION				CLASIFICACION VEHICULAR EN PORCIENTO													COORDENADAS		
	KM	TE	SC	TDPA	M	A	B	C2	C3	T3S2	T3S3	T3S2R4	OTROS	A	B	C	K'	D	LATITUD	LONGITUD
T. C. Tapanatepec - Talismán	0.00	3	0	2412	6.3	53.6	3.7	7.3	3.1	13.0	3.9	8.4	0.7	59.9	3.7	36.4	0.069	0.515	16.220084	-93.924983
T. Der. Villa del Mar	2.60	1	0	2699	6.0	55.4	4.1	6.7	2.5	13.0	3.6	8.1	0.6	61.4	4.1	34.5	0.061	0.523	16.209303	-93.913894
T. Der. Villa del Mar	2.60	3	0	2449	5.5	56.1	3.7	7.5	3.9	10.2	4.7	7.5	0.9	61.6	3.7	34.7	0.064	0.526	16.207905	-93.900350
T. C. Tapanatepec - Talismán	7.50	1	0	2020	5.6	55.0	4.3	7.5	3.9	11.2	4.1	7.8	0.6	60.6	4.3	35.1	0.071	0.525	16.215643	-93.879357

9 CARR: Libramiento de Ciudad Hidalgo Chis.

CLAVE:

RUTA: MEX-225

AÑO: 2022

LUGAR	ESTACION				CLASIFICACION VEHICULAR EN PORCIENTO													COORDENADAS		
	KM	TE	SC	TDPA	M	A	B	C2	C3	T3S2	T3S3	T3S2R4	OTROS	A	B	C	K'	D	LATITUD	LONGITUD
T. C. Ramal a Ciudad Hidalgo	0.00	0	0																	
T. C. Ent. Jaritas - Ciudad Hidalgo	5.00	3	0	4269	22.6	53.0	1.7	2.5	3.7	11.8	2.1	2.0	0.6	75.6	1.7	22.7	0.078	0.526	14.675683	-92.168910

10 CARR: Libramiento de Huixtla

CLAVE:

RUTA: MEX-200

AÑO: 2022

LUGAR	ESTACION				CLASIFICACION VEHICULAR EN PORCIENTO													COORDENADAS		
	KM	TE	SC	TDPA	M	A	B	C2	C3	T3S2	T3S3	T3S2R4	OTROS	A	B	C	K'	D	LATITUD	LONGITUD
T. C. Tapanatepec - Talismán	0.00	3	1	3745	4.4	72.2	4.2	4.3	1.8	8.2	1.4	2.7	0.8	76.6	4.2	19.2	0.081	0.515	15.161437	-92.487106

CHIAPAS

10 CARR: Libramiento de Huixtla

CLAVE:

RUTA: MEX-200

AÑO: 2022

LUGAR	ESTACION				CLASIFICACION VEHICULAR EN PORCIENTO													COORDENADAS		
	KM	TE	SC	TDPA	M	A	B	C2	C3	T3S2	T3S3	T3S2R4	OTROS	A	B	C	K'	D	LATITUD	LONGITUD
T. C. Tapanatepec - Talismán	0.00	3	2	3523	4.3	70.1	4.5	5.1	2.0	8.9	1.5	2.9	0.7	74.4	4.5	21.1	0.089	0.515	15.161502	-92.487157
T. C. Huixtla - El Jocote	5.80	1	1	3784	4.4	71.8	4.3	4.5	1.9	8.0	1.5	2.9	0.7	76.2	4.3	19.5	0.068	0.519	15.154119	-92.454785
T. C. Huixtla - El Jocote	5.80	1	2	3512	4.6	70.4	4.4	4.8	1.9	8.8	1.5	2.8	0.8	75.0	4.4	20.6	0.067	0.519	15.154182	-92.454741
T. C. Huixtla - El Jocote	5.80	3	1	4456	4.5	75.1	2.4	5.0	1.3	6.5	1.7	2.8	0.7	79.6	2.4	18.0	0.082	0.545	15.141951	-92.447942
T. C. Huixtla - El Jocote	5.80	3	2	3723	4.5	74.4	2.5	5.1	1.4	6.8	1.8	2.8	0.7	78.9	2.5	18.6	0.089	0.545	15.141401	-92.447937
T. C. Tapanatepec - Talismán	7.07	0	0																	

11 CARR: Libramiento de Ocozocoautla

CLAVE: 07583

RUTA: MEX-190

AÑO: 2022

LUGAR	ESTACION				CLASIFICACION VEHICULAR EN PORCIENTO													COORDENADAS		
	KM	TE	SC	TDPA	M	A	B	C2	C3	T3S2	T3S3	T3S2R4	OTROS	A	B	C	K'	D	LATITUD	LONGITUD
T. C. Tapanatepec - Tuxtla Gutiérrez	0.00	3	0	7525	7.2	77.8	1.0	9.3	1.9	1.6	0.5	0.5	0.2	85.0	1.0	14.0	0.094	0.522	16.767509	-93.387371
T. C. Arriaga - Ocozocoautla (Cuota)	5.54	1	0	8759	7.3	80.3	0.9	6.2	2.0	1.7	0.7	0.7	0.2	87.6	0.9	11.5	0.099	0.510	16.748949	-93.377325
T. C. Arriaga - Ocozocoautla (Cuota)	5.54	3	1	5938	1.7	82.2	1.9	6.2	1.3	3.2	1.4	1.5	0.6	83.9	1.9	14.2	0.143	0.519	16.735285	-93.354811
T. C. Arriaga - Ocozocoautla (Cuota)	5.54	3	2	5500	1.8	81.0	2.2	6.8	1.3	3.4	1.5	1.4	0.6	82.8	2.2	15.0	0.086	0.519	16.735366	-93.354829
T. C. Tapanatepec - Tuxtla Gutiérrez	9.00	1	0	12954	2.2	79.8	2.4	7.0	1.5	3.8	1.3	1.7	0.3	82.0	2.4	15.6	0.083	0.514	16.745975	-93.340907

12 CARR: Libramiento Sur de Tuxtla Gutierrez (Dr. Manuel Velasco)

CLAVE:

RUTA: MEX

AÑO: 2022

LUGAR	ESTACION				CLASIFICACION VEHICULAR EN PORCIENTO													COORDENADAS		
	KM	TE	SC	TDPA	M	A	B	C2	C3	T3S2	T3S3	T3S2R4	OTROS	A	B	C	K'	D	LATITUD	LONGITUD
Ent C. (Ocozocoautla - Ent. el Sabino)	0.00	3	0	4313	4.1	73.0	3.1	3.0	2.9	6.8	2.8	3.4	0.9	77.1	3.1	19.8	0.081	0.521	16.758367	-93.301241
X. C. Terán - El Nuevo Triunfo	15.94	3	0	6016	4.4	78.3	2.0	3.3	2.4	4.5	1.9	2.6	0.6	82.7	2.0	15.3	0.080	0.503	16.693625	-93.175191
Tuxtla Gutiérrez - Portillo Zaragoza	22.10	3	0	5044	3.8	76.2	2.6	3.3	2.5	5.3	2.4	3.1	0.8	80.0	2.6	17.4	0.080	0.508	16.637300	-93.086192
T. C. Ramal a Aeropuerto Inter. Angel Albino Corzo	36.00	0	0																	

13 CARR: Malpaso - El Bellote

CLAVE: 00137

RUTA: MEX-187

AÑO: 2022

LUGAR	ESTACION				CLASIFICACION VEHICULAR EN PORCIENTO													COORDENADAS		
	KM	TE	SC	TDPA	M	A	B	C2	C3	T3S2	T3S3	T3S2R4	OTROS	A	B	C	K'	D	LATITUD	LONGITUD
Presa Malpaso	0.00	0	0																	
Lim. Edos. Term. Chis. Ppia. Tab.	43.99	0	0																	
Lim. Edos. Term. Tab. Ppia. Chis.	44.59	0	0																	
Lim. Edos. Term. Chis. Ppia. Tab.	45.26	0	0																	
Lim. Edos. Term. Tab. Ppia. Chis.	45.63	0	0																	

CHIAPAS

13 CARR: Malpaso - El Bellote

CLAVE: 00137

RUTA: MEX-187

AÑO: 2022

LUGAR	ESTACION				CLASIFICACION VEHICULAR EN PORCIENTO										COORDENADAS						
	KM	TE	SC	TDPA	M	A	B	C2	C3	T3S2	T3S3	T3S2R4	OTROS	A	B	C	K'	D	LATITUD	LONGITUD	
Lim. Edos. Term. Chis. Ppia. Tab.	55.04	0	0																		
Macabil (La Estrella)	70.12	1	0	4067	16.0	74.3	1.9	4.2	1.2	1.3	0.5	0.4	0.2	90.3	1.9	7.8	0.082	0.520	17.604190	-93.520071	
Estación Chontalpa	75.69	1	0	5133	15.7	74.9	2.1	4.4	1.3	0.7	0.4	0.3	0.2	90.6	2.1	7.3	0.071	0.504	17.650262	-93.487425	
Estación Chontalpa	75.69	3	0	7420	22.0	70.6	1.7	3.5	0.9	0.7	0.2	0.3	0.1	92.6	1.7	5.7	0.075	0.503	17.675926	-93.475972	
T. Izq. Francisco Rueda	90.49	1	0	6978	16.7	74.0	2.0	5.1	0.8	0.8	0.2	0.3	0.1	90.7	2.0	7.3	0.077	0.507	17.787021	-93.439555	
T. Izq. Francisco Rueda	90.49	3	0	10469	15.7	75.8	1.3	3.4	1.1	1.1	0.7	0.5	0.4	91.5	1.3	7.2	0.074	0.515	17.793186	-93.431973	
Huimanguillo	98.03	1	1	6745	28.2	61.9	1.4	4.7	0.9	1.3	0.4	0.8	0.4	90.1	1.4	8.5	0.087	0.507	17.818222	-93.402512	
Huimanguillo	98.03	1	2	6560	28.4	61.8	1.2	4.5	1.1	1.2	0.5	0.9	0.4	90.2	1.2	8.6	0.087	0.507	17.818294	-93.402597	
Huimanguillo	98.03	3	1	7074	14.0	72.3	2.0	8.5	1.0	0.9	0.7	0.5	0.1	86.3	2.0	11.7	0.070	0.500	17.853075	-93.397038	
Huimanguillo	98.03	3	2	7080	14.5	72.6	1.8	8.0	0.9	1.1	0.6	0.4	0.1	87.1	1.8	11.1	0.071	0.500	17.853078	-93.397130	
Cárdenas	117.56	1	0	14819	8.5	80.8	1.0	6.4	0.8	1.2	0.6	0.4	0.3	89.3	1.0	9.7	0.087	0.503	17.946073	-93.362167	
Cárdenas	117.56	3	0	17157	9.3	81.3	0.9	5.2	0.7	1.2	0.9	0.2	0.3	90.6	0.9	8.5	0.083	0.508	18.016536	-93.368656	
Tulipán	134.70	3	0	7982	6.8	79.6	1.3	7.9	0.8	2.1	1.3	0.1	0.1	86.4	1.3	12.3	0.078	0.524	18.127669	-93.290288	
T. Der. Conduacán	141.70	1	0	7021	6.4	80.1	1.5	7.9	0.9	2.0	0.9	0.2	0.1	86.5	1.5	12.0	0.089	0.503	18.140024	-93.271537	
T. Der. Conduacán	141.70	3	0	6611	6.4	78.6	1.8	8.3	1.1	2.0	1.5	0.2	0.1	85.0	1.8	13.2	0.092	0.524	18.144334	-93.268503	
T. Der. Jalpa	153.50	1	0	12856	11.4	75.0	1.4	8.1	1.2	1.0	1.2	0.4	0.3	86.4	1.4	12.2	0.086	0.506	18.241282	-93.210304	
T. Der. Jalpa	153.50	3	1	10125	10.9	80.6	0.6	5.5	0.7	0.4	1.0	0.2	0.1	91.5	0.6	7.9	0.081	0.534	18.248585	-93.213417	
T. Der. Jalpa	153.50	3	2	11597	11.0	80.4	0.6	5.5	0.7	0.3	1.0	0.3	0.2	91.4	0.6	8.0	0.088	0.534	18.248564	-93.213492	
Paraíso	176.85	1	1	11757	6.0	83.9	0.7	7.0	0.9	0.6	0.5	0.3	0.1	89.9	0.7	9.4	0.104	0.517	18.377415	-93.221903	
Paraíso	176.85	1	2	12595	6.0	83.5	0.8	7.0	1.0	0.7	0.6	0.2	0.2	89.5	0.8	9.7	0.096	0.517	18.377417	-93.221982	
Paraíso	176.85	3	1	11732	9.6	80.9	0.9	5.3	2.0	0.6	0.4	0.2	0.1	90.5	0.9	8.6	0.129	0.502	18.409500	-93.196031	
Paraíso	176.85	3	2	11659	9.8	79.9	1.0	5.4	2.2	0.7	0.5	0.3	0.2	89.7	1.0	9.3	0.111	0.502	18.409539	-93.196138	
Ceiba	182.00	3	0	9488	10.2	79.4	0.4	3.4	0.4	4.1	1.1	0.2	0.8	89.6	0.4	10.0	0.100	0.513	18.422744	-93.163017	
El Bellote	185.47	0	0																		

14 CARR: Ocozocoautla - Ent. El Sabino

CLAVE: 07579

RUTA: MEX-190

AÑO: 2022

LUGAR	ESTACION				CLASIFICACION VEHICULAR EN PORCIENTO										COORDENADAS						
	KM	TE	SC	TDPA	M	A	B	C2	C3	T3S2	T3S3	T3S2R4	OTROS	A	B	C	K'	D	LATITUD	LONGITUD	
T. C. Tapanatepec - Tuxtla Gutiérrez	0.00	0	0																		
X. C. Tapanatepec - Tuxtla Gutiérrez	7.85	3	0	6533	7.4	77.4	0.8	9.6	1.2	2.6	0.5	0.2	0.3	84.8	0.8	14.4	0.076	0.503	16.771335	-93.285000	
T. C. Tapanatepec - Tuxtla Gutiérrez	18.25	1	0	10408	3.5	86.9	0.3	7.5	0.2	0.5	0.6	0.1	0.4	90.4	0.3	9.3	0.092	0.503	16.775902	-93.207011	

CHIAPAS

15 CARR: Ramal a Cd. Hidalgo

CLAVE: 07274

RUTA: MEX-200

AÑO: 2022

LUGAR	ESTACION				CLASIFICACION VEHICULAR EN PORCIENTO													COORDENADAS		
	KM	TE	SC	TDPA	M	A	B	C2	C3	T3S2	T3S3	T3S2R4	OTROS	A	B	C	K'	D	LATITUD	LONGITUD
T. C. Tapanatepec - Talismán	0.00	3	0	10500	3.6	84.5	0.5	5.4	0.9	3.2	0.4	1.2	0.3	88.1	0.5	11.4	0.081	0.515	14.913271	-92.191926
T. Izq Paso por Metapa de Dominguez Norte	6.80	3	0	6295	9.6	78.2	0.4	2.3	1.3	5.9	0.5	1.3	0.5	87.8	0.4	11.8	0.086	0.515	14.852590	-92.193605
Metapa de Dominguez	9.00	3	0	7504	2.4	85.5	0.7	2.8	1.4	3.4	0.5	2.5	0.8	87.9	0.7	11.4	0.090	0.503	14.804547	-92.189255
Frontera Hidalgo	15.30	3	0	8312	4.8	83.5	1.3	2.5	1.4	4.6	0.6	1.0	0.3	88.3	1.3	10.4	0.081	0.501	14.762041	-92.175991
T. C. Libramiento de Ciudad de Hidalgo	23.80	1	0	8744	5.4	81.2	1.7	3.6	1.1	4.5	0.6	1.4	0.5	86.6	1.7	11.7	0.083	0.505	14.719028	-92.162199
Cd. Hidalgo	27.00	1	0	8880	5.6	86.9	1.3	2.0	1.3	1.6	0.6	0.4	0.3	92.5	1.3	6.2	0.091	0.520	14.694558	-92.154321

16 CARR: Ramal a La Gloria

CLAVE: 07091

RUTA: MEX-200

AÑO: 2022

LUGAR	ESTACION				CLASIFICACION VEHICULAR EN PORCIENTO													COORDENADAS		
	KM	TE	SC	TDPA	M	A	B	C2	C3	T3S2	T3S3	T3S2R4	OTROS	A	B	C	K'	D	LATITUD	LONGITUD
T. C. Tapanatepec - Talismán	0.00	3	0	1585	27.0	67.3	0.1	3.8	0.1	1.4	0.2	0.0	0.1	94.3	0.1	5.6	0.087	0.506	16.212272	-94.048081
La Gloria	6.00	0	0																	

17 CARR: Ramal a Paredón

CLAVE: 07269

RUTA: MEX-200

AÑO: 2022

LUGAR	ESTACION				CLASIFICACION VEHICULAR EN PORCIENTO													COORDENADAS		
	KM	TE	SC	TDPA	M	A	B	C2	C3	T3S2	T3S3	T3S2R4	OTROS	A	B	C	K'	D	LATITUD	LONGITUD
T. C. Tapanatepec - Talismán	0.00	3	0	5232	19.7	71.5	0.3	5.2	0.7	2.0	0.2	0.1	0.3	91.2	0.3	8.5	0.087	0.502	16.080072	-93.777986
Paredón	14.00	0	0																	

18 CARR: Ramal a Puerto Arista

CLAVE: 07270

RUTA: MEX-200

AÑO: 2022

LUGAR	ESTACION				CLASIFICACION VEHICULAR EN PORCIENTO													COORDENADAS		
	KM	TE	SC	TDPA	M	A	B	C2	C3	T3S2	T3S3	T3S2R4	OTROS	A	B	C	K'	D	LATITUD	LONGITUD
T. C. Tapanatepec - Talismán	0.00	3	0	4941	12.9	77.2	0.1	2.8	0.2	4.3	1.7	0.2	0.6	90.1	0.1	9.8	0.086	0.513	16.052240	-93.736793
T. Der. Paredón	11.00	3	0	4088	12.1	78.0	0.1	3.1	0.3	4.4	1.2	0.2	0.6	90.1	0.1	9.8	0.091	0.518	15.974789	-93.774990
Puerto Arista	17.00	1	0	2464	27.2	66.1	0.1	3.4	0.1	1.7	1.2	0.0	0.2	93.3	0.1	6.6	0.131	0.513	15.941900	-93.800315

19 CARR: Ramal a Unión Juárez

CLAVE: 07273

RUTA: MEX-200

AÑO: 2022

LUGAR	ESTACION				CLASIFICACION VEHICULAR EN PORCIENTO													COORDENADAS		
	KM	TE	SC	TDPA	M	A	B	C2	C3	T3S2	T3S3	T3S2R4	OTROS	A	B	C	K'	D	LATITUD	LONGITUD
T. C. Tapanatepec - Talismán	0.00	0	0																	
Cacahoatán	5.00	1	0	9796	6.4	87.7	0.3	4.4	0.3	0.3	0.4	0.1	0.1	94.1	0.3	5.6	0.083	0.513	14.982732	-92.157064

CHIAPAS

19 CARR: Ramal a Unión Juárez

CLAVE: 07273

RUTA: MEX-200

AÑO: 2022

LUGAR	ESTACION				CLASIFICACION VEHICULAR EN PORCIENTO														COORDENADAS	
	KM	TE	SC	TDPA	M	A	B	C2	C3	T3S2	T3S3	T3S2R4	OTROS	A	B	C	K'	D	LATITUD	LONGITUD
Unión Juárez	22.00	1	0	1252	6.1	86.2	0.5	3.2	3.0	0.5	0.1	0.4	0.0	92.3	0.5	7.2	0.105	0.513	15.055990	-92.080582

20 CARR: Tapachula - Puerto Madero

CLAVE: 07018

RUTA: MEX-225

AÑO: 2022

LUGAR	ESTACION				CLASIFICACION VEHICULAR EN PORCIENTO														COORDENADAS	
	KM	TE	SC	TDPA	M	A	B	C2	C3	T3S2	T3S3	T3S2R4	OTROS	A	B	C	K'	D	LATITUD	LONGITUD
Tapachula	0.00	3	1	11129	7.0	84.5	0.3	5.5	0.9	1.0	0.5	0.2	0.1	91.5	0.3	8.2	0.108	0.516	14.868579	-92.289906
Tapachula	0.00	3	2	11851	6.4	84.5	0.4	6.0	0.7	1.2	0.5	0.2	0.1	90.9	0.4	8.7	0.084	0.516	14.868277	-92.289999
T. Der. Aeropuerto	14.50	3	1	4494	11.5	82.2	0.5	2.0	1.4	1.5	0.2	0.6	0.1	93.7	0.5	5.8	0.113	0.506	14.786645	-92.366433
T. Der. Aeropuerto	14.50	3	2	4594	11.5	82.6	0.5	1.7	1.2	1.5	0.2	0.7	0.1	94.1	0.5	5.4	0.099	0.506	14.786649	-92.366322
Puerto Madero	27.00	1	0	9062	34.5	61.4	0.6	1.4	0.6	0.5	0.3	0.6	0.1	95.9	0.6	3.5	0.081	0.509	14.723158	-92.418715

21 CARR: Tapanatepec - Talismán

CLAVE: 00075

RUTA: MEX-200

AÑO: 2022

LUGAR	ESTACION				CLASIFICACION VEHICULAR EN PORCIENTO														COORDENADAS	
	KM	TE	SC	TDPA	M	A	B	C2	C3	T3S2	T3S3	T3S2R4	OTROS	A	B	C	K'	D	LATITUD	LONGITUD
Tapanatepec	0.00	3	0	6392	9.2	69.1	2.6	4.0	3.5	5.3	1.6	3.8	0.9	78.3	2.6	19.1	0.074	0.507	16.345074	-94.190619
Lim. Edos. Term. Oax. Ppia. Chis.	25.90	0	0																	
T. Der. Emiliano Zapata	26.20	1	0	3735	4.8	64.6	3.3	5.9	2.3	9.6	2.4	6.4	0.7	69.4	3.3	27.3	0.067	0.542	16.217242	-94.051906
T. Der. Emiliano Zapata	26.20	3	0	4096	6.8	63.4	3.3	6.8	2.6	8.2	2.3	5.8	0.8	70.2	3.3	26.5	0.069	0.504	16.214648	-94.039113
T. C. Libramiento de Arriaga	41.00	3	0	4506	7.6	69.1	2.4	3.4	4.9	6.1	2.0	3.7	0.8	76.7	2.4	20.9	0.084	0.502	16.224836	-93.925585
Arriaga	45.00	1	0	6750	7.6	68.5	2.5	3.1	4.8	6.1	2.2	4.3	0.9	76.1	2.5	21.4	0.070	0.539	16.221849	-93.936827
Arriaga	45.00	3	1	3999	13.5	75.1	2.3	6.9	0.6	0.8	0.5	0.2	0.1	88.6	2.3	9.1	0.076	0.532	16.236959	-93.882807
Arriaga	45.00	3	2	3523	13.6	75.1	2.3	6.7	0.7	0.8	0.5	0.2	0.1	88.7	2.3	9.0	0.068	0.532	16.236959	-93.882714
X. C. Arriaga- Ocozacoautla (Cuota)	47.00	3	1	4387	8.3	74.0	2.5	6.7	1.4	4.0	1.0	1.6	0.5	82.3	2.5	15.2	0.073	0.509	16.229082	-93.872733
X. C. Arriaga- Ocozacoautla (Cuota)	47.00	3	2	4548	8.3	73.7	2.5	6.7	1.5	4.0	1.0	1.7	0.6	82.0	2.5	15.5	0.067	0.509	16.232990	-93.876455
T. Der. Libramiento de Arriaga	49.50	1	1	4340	8.3	72.3	2.6	7.1	1.6	4.2	1.3	2.0	0.6	80.6	2.6	16.8	0.082	0.508	16.222614	-93.867381
T. Der. Libramiento de Arriaga	49.50	1	2	4207	8.3	72.3	2.7	7.1	1.6	4.3	1.2	2.0	0.5	80.6	2.7	16.7	0.106	0.508	16.222687	-93.867278
T. Der. Libramiento de Arriaga	49.50	3	1	4482	6.1	70.7	2.7	7.4	1.4	6.5	1.7	2.8	0.7	76.8	2.7	20.5	0.076	0.516	16.208974	-93.856048
T. Der. Libramiento de Arriaga	49.50	3	2	4197	6.2	70.6	2.8	7.3	1.4	6.4	1.7	2.9	0.7	76.8	2.8	20.4	0.079	0.516	16.209047	-93.855936
X. C. Ramal a Paredón	68.60	1	1	3890	6.0	74.0	2.3	6.1	1.8	5.9	1.0	2.4	0.5	80.0	2.3	17.7	0.080	0.523	16.082746	-93.771023
X. C. Ramal a Paredón	68.60	1	2	4258	6.0	74.2	2.3	6.1	1.5	5.9	1.0	2.4	0.6	80.2	2.3	17.5	0.078	0.523	16.082809	-93.770957
Tonalá	68.80	1	1	5059	6.8	70.7	2.8	7.2	1.6	6.3	1.4	2.7	0.5	77.5	2.8	19.7	0.079	0.512	16.117125	-93.790260
Tonalá	68.80	1	2	4812	6.6	70.9	2.8	7.2	1.5	6.3	1.4	2.8	0.5	77.5	2.8	19.7	0.078	0.512	16.117180	-93.790148
T. Der. Puerto Arista	73.00	1	1	3525	5.4	66.8	2.7	7.9	1.5	9.0	2.5	3.6	0.6	72.2	2.7	25.1	0.083	0.501	16.059843	-93.741692

CHIAPAS

21 CARR: Tapanatepec - Talismán

CLAVE: 00075

RUTA: MEX-200

AÑO: 2022

LUGAR	ESTACION				CLASIFICACION VEHICULAR EN PORCIENTO													COORDENADAS		
	KM	TE	SC	TDPA	M	A	B	C2	C3	T3S2	T3S3	T3S2R4	OTROS	A	B	C	K'	D	LATITUD	LONGITUD
T. Der. Puerto Arista	73.00	1	2	3537	5.2	66.7	2.8	7.8	1.7	9.1	2.6	3.6	0.5	71.9	2.8	25.3	0.090	0.501	16.059907	-93.741645
T. Der. Puerto Arista	73.00	3	1	3145	5.4	64.8	3.7	7.6	2.9	8.9	2.3	3.7	0.7	70.2	3.7	26.1	0.082	0.507	16.056124	-93.735041
T. Der. Puerto Arista	73.00	3	2	3237	5.4	65.0	3.7	7.7	2.8	8.8	2.3	3.7	0.6	70.4	3.7	25.9	0.081	0.507	16.056242	-93.734985
T. Der. Tres Picos	100.40	1	1	3359	2.9	68.8	4.0	5.4	2.3	8.9	2.5	4.4	0.8	71.7	4.0	24.3	0.063	0.516	15.922737	-93.555029
T. Der. Tres Picos	100.40	1	2	3587	2.7	68.6	4.1	5.4	2.2	9.1	2.7	4.5	0.7	71.3	4.1	24.6	0.081	0.516	15.922855	-93.554955
T. Der. Tres Picos	100.40	3	1	3526	5.6	61.2	4.0	8.7	2.8	9.5	2.8	4.6	0.8	66.8	4.0	29.2	0.064	0.521	15.906094	-93.522735
T. Der. Tres Picos	100.40	3	2	3244	5.6	61.6	3.9	8.8	2.5	9.7	2.6	4.4	0.9	67.2	3.9	28.9	0.079	0.521	15.906230	-93.522689
T. Der. Los Patos	114.75	1	1	2895	4.4	64.7	4.1	8.4	2.1	9.3	1.9	4.2	0.9	69.1	4.1	26.8	0.069	0.515	15.840669	-93.437462
T. Der. Los Patos	114.75	1	2	2727	4.4	65.0	4.0	8.4	2.1	9.2	1.8	4.2	0.9	69.4	4.0	26.6	0.085	0.515	15.840941	-93.437117
T. Der. Los Patos	114.75	3	1	3076	5.0	71.3	4.0	7.4	2.2	3.8	2.1	3.4	0.8	76.3	4.0	19.7	0.073	0.555	15.815480	-93.415986
T. Der. Los Patos	114.75	3	2	2465	4.8	71.5	3.9	7.5	2.2	3.8	2.1	3.4	0.8	76.3	3.9	19.8	0.079	0.555	15.815607	-93.415483
T. Der. San Isidro	125.00	1	1	3109	6.1	66.9	3.9	6.0	2.1	7.8	2.5	3.8	0.9	73.0	3.9	23.1	0.064	0.503	15.779726	-93.364845
T. Der. San Isidro	125.00	1	2	3066	6.0	66.9	3.9	5.9	2.2	7.7	2.5	4.0	0.9	72.9	3.9	23.2	0.082	0.503	15.781490	-93.364596
T. Der. San Isidro	125.00	3	1	3290	5.1	68.6	3.5	6.2	2.4	7.4	2.3	3.6	0.9	73.7	3.5	22.8	0.076	0.522	15.774547	-93.353081
T. Der. San Isidro	125.00	3	2	3019	5.3	67.9	3.6	6.3	2.6	7.4	2.4	3.6	0.9	73.2	3.6	23.2	0.087	0.522	15.775921	-93.353168
Pijijiapan	144.45	1	1	5727	9.8	66.3	2.3	7.9	2.3	4.9	2.1	3.9	0.5	76.1	2.3	21.6	0.087	0.519	15.697844	-93.210706
Pijijiapan	144.45	1	2	5310	9.4	64.6	2.5	8.6	2.5	5.3	2.2	4.4	0.5	74.0	2.5	23.5	0.097	0.519	15.699081	-93.211823
Valdivia	180.39	1	1	5037	21.7	55.4	2.4	7.5	1.7	6.1	1.4	3.0	0.8	77.1	2.4	20.5	0.073	0.504	15.510907	-92.955818
Valdivia	180.39	1	2	4966	19.9	54.5	2.7	8.8	2.1	6.5	1.4	3.3	0.8	74.4	2.7	22.9	0.076	0.504	15.511538	-92.956154
Valdivia	180.39	3	1	5753	14.3	62.4	2.3	7.6	2.7	4.8	1.5	3.5	0.9	76.7	2.3	21.0	0.077	0.520	15.499726	-92.940539
Valdivia	180.39	3	2	5309	13.9	61.1	2.5	8.6	2.8	5.2	1.4	3.7	0.8	75.0	2.5	22.5	0.090	0.520	15.499862	-92.940440
T. Der. Mapastepec	188.85	3	1	4341	13.7	64.9	3.5	3.8	1.6	6.9	1.8	2.9	0.9	78.6	3.5	17.9	0.069	0.504	15.453847	-92.879078
T. Der. Mapastepec	188.85	3	2	4412	13.9	64.9	4.2	3.5	1.6	6.4	1.6	2.9	1.0	78.8	4.2	17.0	0.085	0.504	15.454327	-92.878921
Sesecapa	197.20	3	1	3142	7.2	70.7	3.1	3.6	3.3	6.2	1.9	3.0	1.0	77.9	3.1	19.0	0.070	0.530	15.401362	-92.814198
Sesecapa	197.20	3	2	2790	8.9	68.2	4.3	3.0	2.1	7.7	1.5	3.5	0.8	77.1	4.3	18.6	0.089	0.530	15.401706	-92.814379
T. Der. Estación Soconusco	213.30	1	1	4042	9.8	68.6	3.1	3.5	2.8	6.5	1.6	3.1	1.0	78.4	3.1	18.5	0.076	0.518	15.350442	-92.693865
T. Der. Estación Soconusco	213.30	1	2	3758	9.8	69.1	3.0	3.2	2.5	6.3	1.8	3.5	0.8	78.9	3.0	18.1	0.088	0.518	15.338019	-92.711315
T. Der. Estación Soconusco	213.30	3	1	3822	10.3	63.5	5.0	3.5	2.0	9.1	2.1	3.7	0.8	73.8	5.0	21.2	0.068	0.519	15.331741	-92.703754
T. Der. Estación Soconusco	213.30	3	2	4132	10.2	63.4	4.9	3.9	1.7	8.8	2.2	4.0	0.9	73.6	4.9	21.5	0.068	0.519	15.346506	-92.684930
Villa Comaltitlán	233.00	1	1	4571	9.0	69.3	2.1	4.9	2.9	6.8	1.6	2.6	0.8	78.3	2.1	19.6	0.078	0.539	15.237312	-92.587411
Villa Comaltitlán	233.00	1	2	3909	9.4	68.5	2.5	4.9	2.6	6.6	1.5	3.1	0.9	77.9	2.5	19.6	0.078	0.539	15.237628	-92.587139
T. Der a Lázaro Cárdenas	238.20	1	1	5361	7.9	74.3	3.4	3.2	1.5	5.9	1.1	2.2	0.5	82.2	3.4	14.4	0.081	0.535	15.182914	-92.550238
T. Der a Lázaro Cárdenas	238.20	1	2	4658	7.8	73.4	3.6	3.4	1.8	5.9	0.8	2.6	0.7	81.2	3.6	15.2	0.091	0.535	15.184851	-92.550365
T. Libramiento de Huixtla Oeste	245.00	0	0																	
Huixtla	250.50	1	1	4197	8.9	73.6	2.6	2.4	2.2	5.1	2.0	2.3	0.9	82.5	2.6	14.9	0.063	0.554	15.158263	-92.506875

CHIAPAS

21 CARR: Tapanatepec - Talismán

CLAVE: 00075

RUTA: MEX-200

AÑO: 2022

LUGAR	ESTACION				CLASIFICACION VEHICULAR EN PORCIENTO													COORDENADAS		
	KM	TE	SC	TDPA	M	A	B	C2	C3	T3S2	T3S3	T3S2R4	OTROS	A	B	C	K'	D	LATITUD	LONGITUD
Huixtla	250.50	1	2	5212	8.9	73.0	2.9	2.2	2.1	5.5	1.9	2.7	0.8	81.9	2.9	15.2	0.073	0.554	15.158403	-92.506827
Huixtla	250.50	3	1	9618	10.5	76.6	1.5	4.6	0.9	3.6	0.7	1.4	0.2	87.1	1.5	11.4	0.082	0.525	15.129342	-92.443261
Huixtla	250.50	3	2	8685	10.2	76.3	1.2	4.9	1.1	3.7	0.9	1.5	0.2	86.5	1.2	12.3	0.083	0.525	15.129378	-92.443190
T. Libramiento de Huixtla Este	251.80	0	0																	
T. Izq. Hamburgo	262.70	3	1	8491	8.2	74.9	2.3	6.1	0.9	4.4	1.1	1.9	0.2	83.1	2.3	14.6	0.072	0.520	15.106409	-92.431445
T. Izq. Hamburgo	262.70	3	2	7835	10.2	73.0	1.9	6.3	1.1	4.4	0.9	1.9	0.3	83.2	1.9	14.9	0.079	0.520	15.105482	-92.431179
T. Izq. Huehuetán	273.70	1	1	7381	11.2	74.1	1.5	4.7	1.1	4.3	1.0	1.6	0.5	85.3	1.5	13.2	0.078	0.510	15.016264	-92.402834
T. Izq. Huehuetán	273.70	1	2	7089	10.9	75.0	1.5	4.2	1.0	4.2	1.0	1.6	0.6	85.9	1.5	12.6	0.083	0.510	15.016246	-92.402747
T. Izq. Huehuetán	273.70	3	1	9046	10.5	73.1	2.3	6.5	0.7	4.2	0.9	1.6	0.2	83.6	2.3	14.1	0.086	0.521	14.992487	-92.402439
T. Izq. Huehuetán	273.70	3	2	8306	11.6	70.8	2.1	7.5	0.7	4.4	0.9	1.8	0.2	82.4	2.1	15.5	0.098	0.521	14.992510	-92.402357
T. C. Libramiento Sur de Tapachula Oeste	283.61	3	1	6362	3.5	86.1	1.4	6.8	0.7	1.0	0.3	0.2	0.0	89.6	1.4	9.0	0.097	0.508	14.906103	-92.320224
T. C. Libramiento Sur de Tapachula Oeste	283.61	3	2	6167	3.1	86.8	1.2	7.1	0.5	1.0	0.2	0.1	0.0	89.9	1.2	8.9	0.100	0.508	14.906183	-92.320229
Tapachula	292.25	1	1	9341	3.3	82.8	1.1	6.3	1.0	2.7	1.1	0.9	0.8	86.1	1.1	12.8	0.074	0.510	14.911517	-92.336302
Tapachula	292.25	1	2	9727	3.5	82.7	1.1	6.7	0.7	2.5	1.1	0.9	0.8	86.2	1.1	12.7	0.076	0.510	14.911509	-92.336046
T. C. Libramiento Sur de Tapachula Este	298.00	1	1	11326	5.3	90.3	0.4	3.1	0.2	0.5	0.2	0.0	0.0	95.6	0.4	4.0	0.084	0.525	14.890635	-92.232376
T. C. Libramiento Sur de Tapachula Este	298.00	1	2	10228	5.3	89.7	0.4	3.5	0.3	0.6	0.2	0.0	0.0	95.0	0.4	4.6	0.082	0.525	14.890796	-92.232300
T. Der. Cd. Hidalgo	302.75	1	1	13879	7.0	85.3	0.9	3.7	0.5	2.0	0.2	0.3	0.1	92.3	0.9	6.8	0.070	0.504	14.908121	-92.203821
T. Der. Cd. Hidalgo	302.75	1	2	13658	6.8	84.8	0.9	3.7	0.7	2.2	0.3	0.5	0.1	91.6	0.9	7.5	0.098	0.504	14.908212	-92.203875
Tuxtla Chico	307.00	1	0	14899	8.9	86.0	0.4	3.6	0.3	0.3	0.4	0.0	0.1	94.9	0.4	4.7	0.075	0.517	14.930968	-92.164680
Talismán	310.77	1	0	2954	40.1	55.1	0.4	1.6	0.0	2.5	0.1	0.0	0.2	95.2	0.4	4.4	0.081	0.502	14.960688	-92.151058

22 CARR: Tapanatepec - Tuxtla Gutiérrez

CLAVE: 00060

RUTA: MEX-190

AÑO: 2022

LUGAR	ESTACION				CLASIFICACION VEHICULAR EN PORCIENTO													COORDENADAS		
	KM	TE	SC	TDPA	M	A	B	C2	C3	T3S2	T3S3	T3S2R4	OTROS	A	B	C	K'	D	LATITUD	LONGITUD
Tapanatepec	0.00	3	0	2425	15.5	71.9	2.6	6.9	0.7	1.7	0.5	0.1	0.1	87.4	2.6	10.0	0.088	0.537	16.371157	-94.184429
Libramiento de San Pedro Tapanatepec	0.75	3	0	1129	14.8	64.8	1.9	8.1	2.2	3.2	4.5	0.3	0.2	79.6	1.9	18.5	0.081	0.518	16.372416	-94.175945
Lim. Edos. Term. Oax. Ppia. Chis.	17.90	0	0																	
Rizo de Oro	26.60	1	0	1005	14.9	65.9	2.4	6.4	1.9	3.1	5.0	0.2	0.2	80.8	2.4	16.8	0.086	0.518	16.475495	-94.084698
T. Der. Arriaga	56.80	1	0	2632	12.2	75.0	0.9	6.8	0.9	1.9	2.0	0.1	0.2	87.2	0.9	11.9	0.093	0.508	16.567059	-93.852786
T. Der. Arriaga	56.80	3	0	3800	9.5	75.9	1.2	7.7	1.5	2.3	1.7	0.1	0.1	85.4	1.2	13.4	0.089	0.509	16.573991	-93.841813
Cintalapa	75.60	1	0	5560	9.8	80.7	1.1	3.0	1.0	2.1	1.3	0.7	0.3	90.5	1.1	8.4	0.078	0.544	16.655561	-93.752140
T. Der. Jiquipilas	82.00	1	0	7261	9.7	80.5	2.2	3.4	1.7	1.1	0.8	0.4	0.2	90.2	2.2	7.6	0.073	0.509	16.687896	-93.667305
T. Der. Jiquipilas	82.00	3	0	5523	5.8	80.6	2.5	4.8	2.4	2.3	1.3	0.2	0.1	86.4	2.5	11.1	0.070	0.515	16.688246	-93.662401
T. C. Arriaga - Ocozocoautla (Cuota)	96.20	1	0	4763	3.6	81.5	1.8	5.8	2.9	2.6	1.4	0.3	0.1	85.1	1.8	13.1	0.071	0.516	16.686019	-93.545863

CHIAPAS

22 CARR: Tapanatepec - Tuxtla Gutiérrez

CLAVE: 00060

RUTA: MEX-190

AÑO: 2022

LUGAR	ESTACION				CLASIFICACION VEHICULAR EN PORCIENTO														COORDENADAS	
	KM	TE	SC	TDPA	M	A	B	C2	C3	T3S2	T3S3	T3S2R4	OTROS	A	B	C	K'	D	LATITUD	LONGITUD
Ocozocoautla	123.29	1	0	5115	11.6	76.1	0.4	6.7	1.6	2.5	0.7	0.2	0.2	87.7	0.4	11.9	0.089	0.512	16.771885	-93.390638
Ocozocoautla	123.29	3	0	5320	10.9	81.6	0.8	4.1	0.7	0.5	0.6	0.3	0.5	92.5	0.8	6.7	0.078	0.513	16.757951	-93.362305
T. Izq. Aeropuerto	132.70	1	0	5155	11.0	76.8	0.3	8.7	0.4	1.6	0.6	0.2	0.4	87.8	0.3	11.9	0.070	0.529	16.752728	-93.340779
T. Izq. Aeropuerto	132.70	3	1	7277	2.3	81.9	1.9	7.9	0.9	2.5	1.0	1.3	0.3	84.2	1.9	13.9	0.124	0.502	16.758854	-93.325702
T. Izq. Aeropuerto	132.70	3	2	7323	2.5	81.0	2.2	7.8	1.1	2.7	1.1	1.3	0.3	83.5	2.2	14.3	0.077	0.502	16.758935	-93.325749
T. Izq. Berriozábal (1° Acceso)	136.40	1	1	9010	3.8	76.8	3.7	7.9	2.4	2.5	1.0	1.6	0.3	80.6	3.7	15.7	0.104	0.513	16.767477	-93.296254
T. Izq. Berriozábal (1° Acceso)	136.40	1	2	9491	3.8	76.7	3.5	7.9	2.5	2.7	0.9	1.7	0.3	80.5	3.5	16.0	0.078	0.513	16.767558	-93.296273
T. Izq. Berriozábal (1° Acceso)	136.40	3	1	10020	3.4	83.5	2.6	4.5	2.2	1.8	0.5	1.3	0.2	86.9	2.6	10.5	0.101	0.501	16.768945	-93.280296
T. Izq. Berriozábal (1° Acceso)	136.40	3	2	10062	3.3	83.5	2.9	4.4	2.2	1.6	0.5	1.4	0.2	86.8	2.9	10.3	0.087	0.501	16.769036	-93.280296
T. Izq. San Fernando	151.70	1	1	19290	3.0	86.5	1.2	5.1	1.4	1.2	0.6	0.8	0.2	89.5	1.2	9.3	0.084	0.541	16.770795	-93.197547
T. Izq. San Fernando	151.70	1	2	16352	3.0	86.8	1.3	5.0	1.3	1.1	0.6	0.7	0.2	89.8	1.3	8.9	0.085	0.541	16.770904	-93.197547
Tuxtla Gutiérrez	159.00	1	1	13972	3.9	84.7	1.4	6.1	1.0	1.4	0.8	0.5	0.2	88.6	1.4	10.0	0.107	0.509	16.767708	-93.193003
Tuxtla Gutiérrez	159.00	1	2	13491	3.7	85.1	1.2	6.0	1.0	1.5	0.8	0.5	0.2	88.8	1.2	10.0	0.091	0.509	16.767771	-93.192909

23 CARR: Terán - Chicoasén

CLAVE: 07072

RUTA: MEX-190

AÑO: 2022

LUGAR	ESTACION				CLASIFICACION VEHICULAR EN PORCIENTO														COORDENADAS	
	KM	TE	SC	TDPA	M	A	B	C2	C3	T3S2	T3S3	T3S2R4	OTROS	A	B	C	K'	D	LATITUD	LONGITUD
Terán	0.00	3	0	10279	6.3	89.3	0.3	2.6	0.5	0.3	0.4	0.2	0.1	95.6	0.3	4.1	0.087	0.505	16.790667	-93.179016
T. Izq. San Fernando (1° Acceso)	14.00	1	0	10057	8.0	86.0	0.5	2.6	0.7	0.5	0.8	0.4	0.5	94.0	0.5	5.5	0.078	0.508	16.853362	-93.199332
Chicoasén	34.00	0	0																	

24 CARR: Tuxtla Gutiérrez - Angostura

CLAVE: 07584

RUTA: MEX-190

AÑO: 2022

LUGAR	ESTACION				CLASIFICACION VEHICULAR EN PORCIENTO														COORDENADAS	
	KM	TE	SC	TDPA	M	A	B	C2	C3	T3S2	T3S3	T3S2R4	OTROS	A	B	C	K'	D	LATITUD	LONGITUD
T. C. Tuxtla Gutiérrez - Cd. Cuauhtémoc	0.00	3	1	14024	6.8	87.1	0.8	2.2	1.0	1.1	0.3	0.5	0.2	93.9	0.8	5.3	0.083	0.517	16.731578	-93.045515
T. C. Tuxtla Gutiérrez - Cd. Cuauhtémoc	0.00	3	2	15005	5.0	89.1	0.7	2.1	1.1	0.9	0.5	0.4	0.2	94.1	0.7	5.2	0.104	0.517	16.731598	-93.045425
T. Der. Revolución Mexicana	16.70	3	0	4610	6.5	84.6	1.2	3.7	1.6	0.8	0.7	0.8	0.1	91.1	1.2	7.7	0.077	0.512	16.609330	-92.992321
Angostura	52.00	1	0	2396	8.1	83.8	0.4	5.7	0.6	1.1	0.3	0.0	0.0	91.9	0.4	7.7	0.085	0.511	16.404065	-92.767415

CHIAPAS

25 CARR : Tuxtla Gutiérrez - Cd. Cuauhtémoc

CLAVE: 07061

RUTA : MEX-190

AÑO : 2022

LUGAR	ESTACION				CLASIFICACION VEHICULAR EN PORCIENTO										COORDENADAS					
	KM	TE	SC	TDPA	M	A	B	C2	C3	T3S2	T3S3	T3S2R4	OTROS	A	B	C	K'	D	LATITUD	LONGITUD
Tuxtla Gutiérrez	0.00	0	0																	
T. Der. Presa La Angostura	7.50	1	1	34165	3.4	89.2	0.6	3.8	0.7	0.7	0.9	0.4	0.3	92.6	0.6	6.8	0.079	0.548	16.735436	-93.058954
T. Der. Presa La Angostura	7.50	1	2	27679	3.5	88.2	0.6	4.2	0.6	0.9	1.0	0.6	0.4	91.7	0.6	7.7	0.073	0.548	16.735500	-93.058851
T. Der. Presa La Angostura	7.50	3	1	17379	4.4	88.1	1.2	2.9	1.0	1.0	0.6	0.5	0.3	92.5	1.2	6.3	0.073	0.520	16.742493	-93.031786
T. Der. Presa La Angostura	7.50	3	2	18852	4.6	88.3	1.0	2.6	1.0	1.1	0.5	0.5	0.4	92.9	1.0	6.1	0.078	0.520	16.742611	-93.031749
Chiapa de Corzo	15.33	3	0	12391	4.2	90.7	0.3	2.7	0.7	0.6	0.2	0.5	0.1	94.9	0.3	4.8	0.076	0.509	16.712194	-92.992270
T. Izq. Pichucalco	34.41	1	0	3837	2.3	89.5	0.1	2.0	1.0	2.1	1.8	0.3	0.9	91.8	0.1	8.1	0.089	0.519	16.760361	-92.947522
T. Izq. Pichucalco	34.41	3	0	1248	3.3	92.6	0.4	2.5	0.4	0.7	0.1	0.0	0.0	95.9	0.4	3.7	0.107	0.509	16.752744	-92.929697
San Cristóbal de Las Casas	85.19	1	0	6653	15.3	79.9	0.7	1.8	0.8	0.7	0.2	0.4	0.2	95.2	0.7	4.1	0.078	0.500	16.724368	-92.674309
San Cristóbal de Las Casas	85.19	3	0	15053	4.5	88.1	1.3	2.4	1.2	1.3	0.5	0.5	0.2	92.6	1.3	6.1	0.081	0.514	16.701163	-92.606974
T. Izq. Ocosingo	95.90	3	0	8525	7.3	86.6	0.1	4.0	0.3	0.5	0.7	0.3	0.2	93.9	0.1	6.0	0.086	0.518	16.660514	-92.558593
Teopisca	116.90	1	0	9191	8.2	80.2	1.4	7.3	0.8	1.2	0.7	0.1	0.1	88.4	1.4	10.2	0.088	0.507	16.556046	-92.481741
Teopisca	116.90	3	0	7943	4.6	84.6	2.0	3.2	1.2	2.0	1.2	0.7	0.5	89.2	2.0	8.8	0.078	0.522	16.533596	-92.461896
T. Der. Las Rosas	121.00	3	0	8091	5.1	82.9	2.2	4.1	1.4	2.4	0.9	0.5	0.5	88.0	2.2	9.8	0.089	0.504	16.300364	-92.183326
Amatenango del Valle	122.00	3	0	9568	3.3	82.1	1.9	7.8	1.3	2.1	1.2	0.2	0.1	85.4	1.9	12.7	0.075	0.502	16.522545	-92.419842
Comitán	171.60	1	0	8070	5.1	82.9	1.3	6.0	1.1	1.6	1.0	0.5	0.5	88.0	1.3	10.7	0.083	0.505	16.277565	-92.169219
Comitán	171.60	3	1	7889	5.4	85.8	0.6	5.8	0.6	1.2	0.4	0.0	0.2	91.2	0.6	8.2	0.079	0.503	16.205064	-92.109561
Comitán	171.60	3	2	7988	5.4	86.7	0.4	4.7	0.8	1.1	0.6	0.1	0.2	92.1	0.4	7.5	0.084	0.503	16.205118	-92.109476
T. Izq. Montebello	187.46	1	1	6573	5.3	85.9	0.4	4.8	0.5	2.1	0.6	0.1	0.3	91.2	0.4	8.4	0.082	0.501	16.132586	-92.065100
T. Izq. Montebello	187.46	1	2	6600	5.4	86.1	0.4	4.3	0.6	2.1	0.7	0.1	0.3	91.5	0.4	8.1	0.083	0.501	16.132613	-92.065043
La Trinitaria	189.00	3	0	4667	2.5	85.4	0.7	6.9	1.0	2.2	0.9	0.1	0.3	87.9	0.7	11.4	0.083	0.514	16.098161	-92.047384
T. Izq. Chihuahua	201.04	3	0	5146	3.5	84.0	0.8	7.8	1.2	1.9	0.5	0.1	0.2	87.5	0.8	11.7	0.081	0.517	16.015069	-92.019604
T. Der. Frontera Comalapa	251.26	1	0	3389	11.4	76.0	0.9	7.0	1.3	2.6	0.6	0.1	0.1	87.4	0.9	11.7	0.094	0.501	15.686353	-92.004684
Cd. Cuauhtémoc	256.00	1	0	5489	22.2	68.6	0.3	3.6	0.4	3.8	0.5	0.1	0.5	90.8	0.3	8.9	0.081	0.504	15.676239	-92.002572

26 CARR : Villahermosa - Escopetazo

CLAVE: 00104

RUTA : MEX-195

AÑO : 2022

LUGAR	ESTACION				CLASIFICACION VEHICULAR EN PORCIENTO										COORDENADAS					
	KM	TE	SC	TDPA	M	A	B	C2	C3	T3S2	T3S3	T3S2R4	OTROS	A	B	C	K'	D	LATITUD	LONGITUD
Villahermosa	0.00	3	1	19983	5.3	87.3	0.6	5.0	0.4	0.7	0.3	0.3	0.1	92.6	0.6	6.8	0.092	0.516	17.942242	-92.917852
Villahermosa	0.00	3	2	21324	5.3	87.6	0.5	5.0	0.4	0.7	0.2	0.2	0.1	92.9	0.5	6.6	0.131	0.516	17.942249	-92.917761
Parrilla	10.00	1	1	25319	5.9	86.3	0.7	4.4	0.8	0.9	0.5	0.3	0.2	92.2	0.7	7.1	0.091	0.543	17.913641	-92.923328
Parrilla	10.00	1	2	21302	5.9	86.3	0.7	4.4	0.8	0.9	0.5	0.3	0.2	92.2	0.7	7.1	0.139	0.543	17.913682	-92.923230
Parrilla	10.00	3	1	25397	4.5	87.3	0.5	4.4	1.1	1.0	0.4	0.6	0.2	91.8	0.5	7.7	0.074	0.501	17.887166	-92.922574
Parrilla	10.00	3	2	25527	4.5	87.3	0.5	4.4	1.1	1.0	0.4	0.6	0.2	91.8	0.5	7.7	0.089	0.501	17.887260	-92.922500

CHIAPAS

26 CARR: Villahermosa - Escopetazo

CLAVE: 00104

RUTA: MEX-195

AÑO: 2022

LUGAR	ESTACION				CLASIFICACION VEHICULAR EN PORCIENTO										COORDENADAS					
	KM	TE	SC	TDPA	M	A	B	C2	C3	T3S2	T3S3	T3S2R4	OTROS	A	B	C	K'	D	LATITUD	LONGITUD
T. Izq. Subte. García	20.00	3	1	7606	9.7	83.1	0.6	3.1	0.7	1.5	0.8	0.4	0.1	92.8	0.6	6.6	0.079	0.508	17.826936	-92.929070
T. Izq. Subte. García	20.00	3	2	7376	9.7	83.0	0.6	3.1	0.7	1.6	0.8	0.4	0.1	92.7	0.6	6.7	0.079	0.508	17.826918	-92.928977
La Arena	44.00	1	0	8018	7.5	77.6	1.9	4.9	1.8	4.3	1.2	0.7	0.1	85.1	1.9	13.0	0.075	0.509	17.653504	-92.958918
T. Izq. Teapa	54.80	1	0	11652	15.9	67.8	0.6	6.1	1.0	5.8	1.4	0.5	0.9	83.7	0.6	15.7	0.073	0.513	17.573294	-92.957631
T. Izq. Teapa	54.80	3	0	6633	15.5	72.5	0.7	6.4	0.7	2.4	1.1	0.2	0.5	88.0	0.7	11.3	0.074	0.520	17.568361	-92.962725
Lim. Edos. Term. Tab. Ppia. Chis.	61.42	0	0																	
Pichucalco	76.00	1	0	3150	8.2	78.6	1.1	7.9	0.8	2.3	0.7	0.1	0.3	86.8	1.1	12.1	0.090	0.503	17.519834	-93.102086
Pichucalco	76.00	3	0	4014	22.2	70.3	0.2	3.4	0.6	2.4	0.6	0.1	0.2	92.5	0.2	7.3	0.090	0.502	17.497552	-93.102667
Solusuchiapa	112.00	1	0	1919	8.8	82.6	0.4	4.2	1.5	1.4	0.7	0.1	0.3	91.4	0.4	8.2	0.083	0.510	17.428557	-93.037880
Solusuchiapa	112.00	3	0	1810	7.1	83.8	0.3	5.2	1.3	1.3	0.7	0.1	0.2	90.9	0.3	8.8	0.110	0.501	17.419117	-93.027297
Rayón	146.00	1	0	2492	8.4	84.7	0.1	3.6	0.7	1.7	0.5	0.1	0.2	93.1	0.1	6.8	0.088	0.503	17.205150	-93.012048
Jitotol	197.79	1	0	2042	4.2	88.5	0.3	4.4	0.6	1.4	0.3	0.1	0.2	92.7	0.3	7.0	0.098	0.503	17.078238	-92.867001
Jitotol	197.79	3	0	3084	4.4	87.6	0.2	3.9	0.8	2.4	0.4	0.1	0.2	92.0	0.2	7.8	0.109	0.501	17.053951	-92.856606
Bochil	211.00	1	0	5289	4.3	83.4	0.3	3.1	0.9	5.7	1.3	0.8	0.2	87.7	0.3	12.0	0.078	0.500	16.989216	-92.879981
Soyaló	229.00	3	0	2909	2.7	86.5	0.7	5.0	1.2	2.1	1.1	0.3	0.4	89.2	0.7	10.1	0.087	0.505	16.880390	-92.918994
Ixtapa	247.00	1	0	4288	3.1	86.8	0.3	5.0	0.9	2.5	0.7	0.2	0.5	89.9	0.3	9.8	0.085	0.502	16.812895	-92.909159
Escopetazo	259.00	1	0	3418	1.5	87.7	0.4	4.3	2.0	2.4	1.0	0.3	0.4	89.2	0.4	10.4	0.108	0.508	16.758026	-92.938046

27 CARR: Villahermosa - Francisco Escárcega

CLAVE: 00092

RUTA: MEX-186

AÑO: 2022

LUGAR	ESTACION				CLASIFICACION VEHICULAR EN PORCIENTO										COORDENADAS					
	KM	TE	SC	TDPA	M	A	B	C2	C3	T3S2	T3S3	T3S2R4	OTROS	A	B	C	K'	D	LATITUD	LONGITUD
Villahermosa	0.00	3	1	15260	3.5	83.0	0.9	6.0	1.0	3.0	1.0	1.4	0.2	86.5	0.9	12.6	0.079	0.513	18.000678	-92.887541
Villahermosa	0.00	3	2	16098	3.5	82.0	1.0	6.8	1.0	3.0	1.0	1.5	0.2	85.5	1.0	13.5	0.072	0.513	18.000777	-92.887383
T. Izq. Aeropuerto (Baja)	12.00	1	1	2122	19.1	68.0	2.0	3.6	3.4	1.2	0.6	1.6	0.5	87.1	2.0	10.9	0.071	0.533	17.984949	-92.829617
T. Izq. Aeropuerto (Alta)	12.00	1	1	14646	6.6	79.2	2.0	4.1	1.5	3.1	1.2	1.7	0.6	85.8	2.0	12.2	0.082	0.538	17.985017	-92.829565
T. Izq. Aeropuerto (Alta)	12.00	1	2	13631	6.7	79.0	2.1	4.1	1.5	3.1	1.2	1.7	0.6	85.7	2.1	12.2	0.077	0.538	17.985090	-92.829512
T. Izq. Aeropuerto (Baja)	12.00	1	2	2424	19.3	68.1	1.8	3.4	3.1	1.2	0.9	1.5	0.7	87.4	1.8	10.8	0.073	0.533	17.985167	-92.829449
Puente Grijalva	17.60	2	1	8107	3.5	79.0	3.0	3.2	1.9	4.3	1.8	2.9	0.4	82.5	3.0	14.5	0.079	0.500	17.947602	-92.785235
Puente Grijalva	17.60	2	2	8107	3.5	79.0	3.0	3.2	1.9	4.3	1.8	2.9	0.4	82.5	3.0	14.5	0.079	0.500	17.947602	-92.785235
X. C. Cacaos - La Granja	32.46	1	1	7347	3.9	72.3	3.7	8.9	1.8	4.3	2.1	2.4	0.6	76.2	3.7	20.1	0.078	0.505	17.832812	-92.719608
X. C. Cacaos - La Granja	32.46	1	2	7488	3.9	72.2	3.7	8.9	1.8	4.3	2.2	2.4	0.6	76.1	3.7	20.2	0.075	0.505	17.832855	-92.719515
X. C. Cacaos - La Granja	32.46	3	1	6235	3.3	76.3	2.9	4.0	2.0	5.4	2.3	3.1	0.7	79.6	2.9	17.5	0.077	0.510	17.817728	-92.711078
X. C. Cacaos - La Granja	32.46	3	2	5981	3.3	76.5	2.9	4.0	1.9	5.3	2.2	3.2	0.7	79.8	2.9	17.3	0.073	0.510	17.817768	-92.710992
X. C. Jalapa - Jonuta	40.00	3	1	6218	2.9	75.1	3.3	6.1	1.7	5.0	1.6	3.6	0.7	78.0	3.3	18.7	0.073	0.508	17.774452	-92.673086

CHIAPAS

27 CARR: Villahermosa - Francisco Escárcega

CLAVE: 00092

RUTA: MEX-186

AÑO: 2022

LUGAR	ESTACION				CLASIFICACION VEHICULAR EN PORCIENTO														COORDENADAS	
	KM	TE	SC	TDPA	M	A	B	C2	C3	T3S2	T3S3	T3S2R4	OTROS	A	B	C	K'	D	LATITUD	LONGITUD
X. C. Jalapa - Jonuta	40.00	3	2	6426	2.9	75.0	3.3	6.1	1.8	5.0	1.6	3.7	0.6	77.9	3.3	18.8	0.098	0.508	17.774530	-92.673035
T. Izq. Macuspana	46.20	1	1	6121	3.6	76.8	1.8	4.2	2.3	4.9	2.6	3.1	0.7	80.4	1.8	17.8	0.072	0.504	17.744418	-92.634511
T. Izq. Macuspana	46.20	1	2	6035	4.8	73.7	2.1	5.5	2.1	5.2	2.8	3.2	0.6	78.5	2.1	19.4	0.073	0.504	17.744477	-92.634450
T. Izq. Macuspana	46.20	3	1	6509	3.8	75.6	2.6	3.9	2.5	5.6	2.1	3.1	0.8	79.4	2.6	18.0	0.077	0.506	17.734555	-92.621908
T. Izq. Macuspana	46.20	3	2	6358	4.0	76.3	1.8	2.9	3.5	4.9	2.3	3.5	0.8	80.3	1.8	17.9	0.071	0.506	17.734630	-92.621831
X. C. Estación Macuspana - Vernet	54.30	1	0	10409	7.5	70.7	2.1	3.6	3.1	6.3	2.4	3.4	0.9	78.2	2.1	19.7	0.073	0.504	17.712919	-92.583882
T. Der. Chivalito (Est. Pino Suárez)	70.00	1	0	9543	8.5	66.8	3.5	4.3	2.6	6.8	2.0	4.7	0.8	75.3	3.5	21.2	0.084	0.523	17.669183	-92.442148
T. Der. Chivalito (Est. Pino Suárez)	70.00	3	1	3600	6.0	66.5	3.6	4.6	3.0	8.4	2.2	5.1	0.6	72.5	3.6	23.9	0.073	0.508	17.666177	-92.432440
T. Der. Chivalito (Est. Pino Suárez)	70.00	3	2	3482	5.9	66.8	3.6	4.7	3.0	8.3	2.2	4.9	0.6	72.7	3.6	23.7	0.088	0.508	17.666214	-92.432424
T. Der. Estación Zopo	71.00	1	0	7406	5.2	66.3	4.5	5.0	2.8	8.0	2.5	4.8	0.9	71.5	4.5	24.0	0.085	0.503	17.670128	-92.418606
T. Der. Estación Zopo	71.00	3	1	3660	5.9	65.1	5.0	5.7	2.7	8.2	2.3	4.5	0.6	71.0	5.0	24.0	0.077	0.500	17.678720	-92.405290
T. Der. Estación Zopo	71.00	3	2	3657	5.8	65.7	4.9	5.5	2.6	8.2	2.4	4.3	0.6	71.5	4.9	23.6	0.081	0.500	17.678750	-92.405304
Lim. Edos. Term. Tab. Ppia. Chis.	76.90	0	0																	
T. Izq. Bonanza	88.00	1	0	8028	6.9	65.2	2.9	6.7	2.7	7.0	2.9	5.0	0.7	72.1	2.9	25.0	0.074	0.511	17.698114	-92.268716
T. Izq. Jonuta	101.00	1	0	7388	1.7	70.8	2.8	7.6	2.5	6.5	2.9	4.2	1.0	72.5	2.8	24.7	0.090	0.550	17.697951	-92.137232
T. Izq. Jonuta	101.00	3	0	7879	4.9	66.9	2.6	7.9	2.9	6.7	2.7	4.7	0.7	71.8	2.6	25.6	0.071	0.517	17.697599	-92.123033
X. C. Catazajá - Palenque	114.00	1	0	8273	6.3	64.4	3.0	7.8	2.9	7.7	2.1	5.3	0.5	70.7	3.0	26.3	0.072	0.513	17.707067	-92.026256
X. C. Catazajá - Palenque	114.00	3	0	6850	4.4	65.1	3.2	6.9	3.1	8.5	2.7	5.2	0.9	69.5	3.2	27.3	0.074	0.517	17.714846	-92.002206
T. Der. Emiliano Zapata	134.70	1	0	6597	4.0	64.5	3.4	7.9	3.3	8.6	2.5	5.1	0.7	68.5	3.4	28.1	0.067	0.508	17.770577	-91.837494
T. Der. Emiliano Zapata	134.70	3	0	5602	4.8	66.0	3.6	5.7	4.7	6.8	2.2	5.3	0.9	70.8	3.6	25.6	0.068	0.503	17.784955	-91.822270
Lim. Edos. Term. Chis. Ppia. Tab.	140.70	0	0																	
Puente Usumacinta	145.20	2	0	4974	6.9	61.3	3.4	3.6	4.4	9.9	2.4	7.3	0.8	68.2	3.4	28.4	0.079	0.500	17.859905	-91.783654
T. Izq. Palizada	154.05	1	0	4426	9.8	56.8	5.4	4.0	3.4	9.8	2.8	7.3	0.7	66.6	5.4	28.0	0.074	0.525	17.937725	-91.737262
T. Izq. Palizada	154.05	3	0	3154	9.9	51.6	6.6	4.5	2.8	12.4	3.3	8.2	0.7	61.5	6.6	31.9	0.072	0.510	17.946189	-91.730009
Lim. Edos. Term. Tab. Ppia. Camp.	154.60	0	0																	
T. Der. Candelaria	233.40	1	0	3737	4.7	56.4	6.7	5.2	2.1	12.2	2.8	9.2	0.7	61.1	6.7	32.2	0.072	0.504	18.373264	-91.201738
T. Der. Felipe Ángeles	253.00	1	0	4210	3.4	62.7	5.7	4.8	1.9	11.6	2.6	6.7	0.6	66.1	5.7	28.2	0.071	0.515	18.503873	-91.106577
T. Izq. Sabancuy	274.10	1	0	4609	6.7	61.7	5.0	4.2	1.8	10.6	2.3	6.9	0.8	68.4	5.0	26.6	0.085	0.511	18.629628	-90.988320
Francisco Escárcega	297.04	1	0	8761	14.9	66.5	2.6	2.7	2.0	5.9	1.2	3.4	0.8	81.4	2.6	16.0	0.083	0.501	18.609994	-90.776022

28 CARR: Arriaga - Ocozocoautla (Cuota)

CLAVE: 00092

RUTA: MEX-200D

AÑO: 2022

LUGAR	ESTACION				CLASIFICACION VEHICULAR EN PORCIENTO														COORDENADAS	
	KM	TE	SC	TDPA	M	A	B	C2	C3	T3S2	T3S3	T3S2R4	OTROS	A	B	C	K'	D	LATITUD	LONGITUD
Arriaga	0.00	3	0	5139	1.0	70.3	3.2	10.7	2.3	6.4	1.8	3.5	0.8	71.3	3.2	25.5	0.071	0.501	16.244272	-93.880679

CHIAPAS

28 CARR: Arriaga - Ocozocoautla (Cuota)

CLAVE: 00092

RUTA: MEX-200D

AÑO: 2022

LUGAR	ESTACION				CLASIFICACION VEHICULAR EN PORCIENTO													COORDENADAS		
	KM	TE	SC	TDPA	M	A	B	C2	C3	T3S2	T3S3	T3S2R4	OTROS	A	B	C	K'	D	LATITUD	LONGITUD
Plaza de Cobro Arriaga	2.70	2	0	5350	1.0	75.0	3.2	5.3	3.3	6.7	1.3	3.6	0.6	76.0	3.2	20.8	0.087	0.500	16.257485	-93.875377
Plaza de Cobro Arriaga	2.70	3	0	5852	1.1	67.8	4.7	10.4	2.5	7.3	2.0	3.3	0.9	68.9	4.7	26.4	0.081	0.525	16.262978	-93.868774
T. Izq. Tierra y Libertad	20.30	1	0	5508	1.1	71.1	4.9	9.1	2.3	5.9	1.6	3.1	0.9	72.2	4.9	22.9	0.068	0.509	16.353221	-93.865271
T. Izq. Tierra y Libertad	20.30	3	0	4214	1.2	70.5	4.5	9.3	1.8	7.5	1.5	2.8	0.9	71.7	4.5	23.8	0.084	0.514	16.370025	-93.863395
Plaza de Cobro Jiquipilas	61.05	2	0	4494	0.7	72.9	2.9	5.5	3.5	7.9	1.5	4.3	0.8	73.6	2.9	23.5	0.087	0.500	16.620512	-93.602104
Plaza de Cobro Jiquipilas	61.05	3	0	4661	1.6	70.3	3.8	7.4	2.2	7.9	2.3	3.6	0.9	71.9	3.8	24.3	0.074	0.528	16.631043	-93.594360
Plaza de Cobro Montes Azules	70.60	2	0	4805	1.0	72.6	2.9	5.9	3.6	7.7	1.5	4.0	0.8	73.6	2.9	23.5	0.087	0.500	16.620609	-93.600526
Plaza de Cobro Ocozocoautla	92.00	1	0	7290	0.9	73.0	3.9	9.9	2.0	5.7	1.5	2.6	0.5	73.9	3.9	22.2	0.076	0.522	16.736576	-93.413851
Plaza de Cobro Ocozocoautla	92.00	2	0	7194	0.9	75.8	4.2	5.4	3.2	5.7	1.5	2.7	0.6	76.7	4.2	19.1	0.087	0.500	16.738487	-93.400346
Ocozocoautla	93.77	0	0																	

29 CARR: Las Choapas - Ocozocoautla (Cuota)

CLAVE: 00077

RUTA: MEX-187D

AÑO: 2022

LUGAR	ESTACION				CLASIFICACION VEHICULAR EN PORCIENTO													COORDENADAS		
	KM	TE	SC	TDPA	M	A	B	C2	C3	T3S2	T3S3	T3S2R4	OTROS	A	B	C	K'	D	LATITUD	LONGITUD
T. C. Coatzacoalcos - Villahermosa	0.00	3	0	5412	4.1	45.1	9.8	5.7	4.7	16.0	4.0	9.7	0.9	49.2	9.8	41.0	0.078	0.505	18.061478	-94.245549
Plaza de Cobro Las Choapas	16.80	1	0	5429	6.3	51.6	7.8	4.9	6.2	11.6	3.0	7.7	0.9	57.9	7.8	34.3	0.068	0.501	17.950623	-94.175290
Plaza de Cobro Las Choapas	16.80	3	0	3452	3.9	39.8	10.2	7.6	5.1	18.5	3.6	10.4	0.9	43.7	10.2	46.1	0.060	0.500	17.934416	-94.167133
Ent. Nuevo Progreso	62.40	1	0	3765	6.8	40.6	11.7	6.9	3.5	18.1	2.5	9.1	0.8	47.4	11.7	40.9	0.070	0.506	17.670218	-93.869373
Lim. Edos. Term. Ver. Ppia. Tab.	96.68	0	0																	
Plaza de Cobro Malpasito	112.70	1	0	2701	0.9	50.7	5.7	10.9	5.6	15.9	3.5	6.1	0.7	51.6	5.7	42.7	0.072	0.516	17.352495	-93.587893
Plaza de Cobro Malpasito	112.70	2	0	3570	0.5	43.8	4.9	6.4	8.8	18.7	3.2	11.9	1.8	44.3	4.9	50.8	0.072	0.500	17.349070	-93.586472
Lim. Edos. Term. Tab. Ppia. Chis.	113.70	0	0																	
T. Izq. Malpaso	123.79	1	0	4968	1.3	56.5	6.0	10.3	3.7	13.3	2.6	5.6	0.7	57.8	6.0	36.2	0.067	0.507	17.266823	-93.572653
X. C. Tepatán - Raudales Malpaso	134.00	1	0	4989	3.6	55.1	5.2	8.5	3.9	12.1	2.9	8.0	0.7	58.7	5.2	36.1	0.072	0.505	17.191633	-93.554752
T. Der a América Libre	163.40	1	0	5377	4.7	54.3	5.4	9.5	3.6	10.7	3.2	8.0	0.6	59.0	5.4	35.6	0.064	0.516	17.005032	-93.501411
Carrizal	173.60	1	0	5862	3.0	57.2	5.2	9.5	3.8	11.0	2.8	6.9	0.6	60.2	5.2	34.6	0.069	0.514	16.921506	-93.452359
Plaza de Cobro Ocozocoautla	182.50	1	0	5318	1.6	57.3	6.3	10.0	3.0	11.5	2.5	7.0	0.8	58.9	6.3	34.8	0.060	0.501	16.870721	-93.414339
Plaza de Cobro Ocozocoautla	182.50	2	0	5003	0.5	56.7	4.2	6.5	6.7	13.3	2.3	8.5	1.3	57.2	4.2	38.6	0.072	0.500	16.863183	-93.406856
T. C. Tapanatepec - Tuxtla Gutiérrez	197.50	1	0	6048	2.2	59.0	5.1	9.0	3.1	12.1	2.4	6.3	0.8	61.2	5.1	33.7	0.069	0.501	16.773517	-93.319459

CHIAPAS

30 CARR : Tuxtla Gutiérrez - San Cristóbal de Las Casas (Cuota)

CLAVE: 07580

RUTA: MEX-190D

AÑO: 2022

LUGAR	ESTACION				CLASIFICACION VEHICULAR EN PORCIENTO										COORDENADAS					
	KM	TE	SC	TDPA	M	A	B	C2	C3	T3S2	T3S3	T3S2R4	OTROS	A	B	C	K'	D	LATITUD	LONGITUD
T. C. Tuxtla Gutiérrez - Cd. Cuauhtémoc	0.00	0	0																	
Plaza de Cobro Chiapa de Corzo	1.30	2	0	10451	0.9	87.7	1.5	4.4	2.1	1.7	0.8	0.7	0.2	88.6	1.5	9.9	0.088	0.500	16.730567	-93.009544
Plaza de Cobro Chiapa de Corzo	1.30	3	0	10363	5.0	84.6	1.6	3.4	1.5	2.0	1.0	0.8	0.1	89.6	1.6	8.8	0.088	0.506	16.727788	-93.000188
T. C. Libramiento de San Cristóbal de Las Casas	46.00	1	0	11641	3.0	85.5	2.4	4.0	1.2	1.6	0.7	1.2	0.4	88.5	2.4	9.1	0.080	0.503	16.719501	-92.666635

31 CARR : Chiapa de Corzo - Amatenango del Valle

CLAVE: 07024

RUTA: CHIS

AÑO: 2022

LUGAR	ESTACION				CLASIFICACION VEHICULAR EN PORCIENTO										COORDENADAS					
	KM	TE	SC	TDPA	M	A	B	C2	C3	T3S2	T3S3	T3S2R4	OTROS	A	B	C	K'	D	LATITUD	LONGITUD
T. C. Tuxtla Gutiérrez - Cd. Cuauhtémoc	0.00	3	0	1985	9.3	81.0	0.2	5.7	0.7	1.9	0.6	0.4	0.2	90.3	0.2	9.5	0.085	0.522	16.721622	-92.980722
Flores Magón	74.00	1	0	3114	5.6	81.7	0.8	4.6	1.6	2.5	1.9	0.9	0.4	87.3	0.8	11.9	0.083	0.525	16.399414	-92.705498
Flores Magón	74.00	3	0	1948	5.6	80.6	0.6	5.6	1.4	3.0	1.9	1.1	0.2	86.2	0.6	13.2	0.114	0.513	16.385393	-92.699057
T. Izq. Venustiano Carranza (1º Acceso)	92.80	1	0	3993	5.8	82.4	0.5	5.2	1.1	2.8	1.4	0.7	0.1	88.2	0.5	11.3	0.078	0.523	16.344022	-92.584654
T. Izq. Venustiano Carranza (1º Acceso)	92.80	3	0	1943	11.5	70.9	0.6	9.4	1.7	3.0	1.6	1.1	0.2	82.4	0.6	17.0	0.113	0.508	16.341377	-92.577629
Soyatitán	111.20	1	0	3434	28.1	66.1	0.0	2.7	0.4	1.9	0.5	0.1	0.2	94.2	0.0	5.8	0.082	0.506	16.297097	-92.430085
T. Der. Las Rosas (1º Acceso)	120.22	1	0	3709	23.4	70.5	0.1	3.1	0.3	2.1	0.2	0.1	0.2	93.9	0.1	6.0	0.087	0.506	16.347917	-92.378304
T. Der. Las Rosas (1º Acceso)	120.22	3	0	4205	18.2	74.0	0.2	2.1	0.2	3.9	0.5	0.2	0.7	92.2	0.2	7.6	0.087	0.505	16.360177	-92.379286
T. C. Tuxtla Gutiérrez - Cd. Cuauhtémoc	146.50	1	0	1848	17.6	77.1	0.4	3.6	0.6	0.5	0.1	0.1	0.0	94.7	0.4	4.9	0.091	0.510	16.523717	-92.445243

32 CARR : Ent. Emiliano Zapata - La Libertad

CLAVE: 00062

RUTA: CHIS-TAB

AÑO: 2022

LUGAR	ESTACION				CLASIFICACION VEHICULAR EN PORCIENTO										COORDENADAS					
	KM	TE	SC	TDPA	M	A	B	C2	C3	T3S2	T3S3	T3S2R4	OTROS	A	B	C	K'	D	LATITUD	LONGITUD
T. C. El Suspiro - Tenosique	0.00	3	0	1851	16.1	82.0	0.2	1.0	0.4	0.3	0.0	0.0	0.0	98.1	0.2	1.7	0.092	0.501	17.721422	-91.744585
Lim. Edos. Term. Tab. Ppia. Chis.	8.00	0	0																	
La Libertad	10.00	1	0	1573	7.9	85.5	0.2	2.7	0.4	3.0	0.1	0.1	0.1	93.4	0.2	6.4	0.075	0.511	17.690542	-91.722327

33 CARR : Ent. Suschilá - Comitán

CLAVE: 00061

RUTA: CHIS-TAB

AÑO: 2022

LUGAR	ESTACION				CLASIFICACION VEHICULAR EN PORCIENTO										COORDENADAS					
	KM	TE	SC	TDPA	M	A	B	C2	C3	T3S2	T3S3	T3S2R4	OTROS	A	B	C	K'	D	LATITUD	LONGITUD
T. C. Ocosingo - Comitán	0.00	3	0	515	7.4	83.8	0.2	6.3	0.9	0.7	0.6	0.1	0.0	91.2	0.2	8.6	0.083	0.504	16.863266	-92.025529
Shuvi	23.40	1	0	514	7.3	83.9	0.1	6.9	1.1	0.5	0.0	0.2	0.0	91.2	0.1	8.7	0.097	0.507	16.805763	-91.893408
Shuvi	23.40	3	0	503	6.2	85.5	0.2	7.1	0.7	0.2	0.0	0.1	0.0	91.7	0.2	8.1	0.101	0.505	16.801195	-91.881161
Nuevo Momón	205.00	1	0	277	7.0	82.7	0.3	7.4	1.3	1.2	0.0	0.1	0.0	89.7	0.3	10.0	0.105	0.503	16.333454	-91.746082

CHIAPAS

33 CARR: Ent. Suschilá - Comitán

CLAVE: 00061

RUTA: CHIS-TAB

AÑO: 2022

LUGAR	ESTACION				CLASIFICACION VEHICULAR EN PORCIENTO													COORDENADAS		
	KM	TE	SC	TDPA	M	A	B	C2	C3	T3S2	T3S3	T3S2R4	OTROS	A	B	C	K'	D	LATITUD	LONGITUD
Nuevo Momón	205.00	3	0	454	8.6	81.6	0.2	8.3	1.2	0.1	0.0	0.0	0.0	90.2	0.2	9.6	0.106	0.502	16.335532	-91.753660
Las Margaritas	242.50	1	0	3358	6.9	86.1	0.3	5.5	0.8	0.2	0.1	0.1	0.0	93.0	0.3	6.7	0.093	0.505	16.323713	-91.976039
Las Margaritas	242.50	3	1	3456	13.3	84.7	0.1	1.4	0.4	0.1	0.0	0.0	0.0	98.0	0.1	1.9	0.092	0.513	16.312334	-91.995071
Las Margaritas	242.50	3	2	3278	13.1	84.6	0.1	1.7	0.3	0.1	0.1	0.0	0.0	97.7	0.1	2.2	0.092	0.513	16.312271	-91.995043
Caxh	257.50	1	0	5997	6.8	89.8	0.3	2.0	0.7	0.2	0.1	0.1	0.0	96.6	0.3	3.1	0.076	0.531	16.270810	-92.082912
Caxh	257.50	3	1	6492	13.6	81.9	0.2	3.2	0.7	0.2	0.1	0.1	0.0	95.5	0.2	4.3	0.082	0.509	16.259346	-92.107819
Caxh	257.50	3	2	6271	13.9	81.8	0.2	3.1	0.6	0.2	0.1	0.1	0.0	95.7	0.2	4.1	0.080	0.509	16.259292	-92.107791
Comitán	261.00	0	0																	

34 CARR: Estación Palenque - La Libertad

CLAVE: 07002

RUTA: CHIS-010

AÑO: 2022

LUGAR	ESTACION				CLASIFICACION VEHICULAR EN PORCIENTO													COORDENADAS		
	KM	TE	SC	TDPA	M	A	B	C2	C3	T3S2	T3S3	T3S2R4	OTROS	A	B	C	K'	D	LATITUD	LONGITUD
Estación Palenque	0.00	3	0	3038	20.2	61.0	0.3	7.8	5.7	3.3	1.0	0.3	0.4	81.2	0.3	18.5	0.111	0.511	17.549519	-91.983217
La Libertad	40.00	1	0	1085	13.0	78.3	0.4	6.0	0.5	1.3	0.5	0.0	0.0	91.3	0.4	8.3	0.084	0.501	17.681141	-91.727475

35 CARR: Gregorio Méndez Magaña - Reforma de Ocampo

CLAVE: 00103

RUTA: CHIS

AÑO: 2022

LUGAR	ESTACION				CLASIFICACION VEHICULAR EN PORCIENTO													COORDENADAS		
	KM	TE	SC	TDPA	M	A	B	C2	C3	T3S2	T3S3	T3S2R4	OTROS	A	B	C	K'	D	LATITUD	LONGITUD
Gregorio Méndez Magaña	0.00	3	0	955	27.3	62.7	1.4	4.1	2.1	0.8	1.3	0.3	0.0	90.0	1.4	8.6	0.092	0.514	17.446892	-91.596077
Lim. Edos. Term. Tab. Ppia. Chis.	3.00	0	0																	
T. C. Benemérito de Las Américas - Palenque	21.00	1	0	2571	8.9	82.9	1.4	5.1	1.0	0.3	0.2	0.1	0.1	91.8	1.4	6.8	0.074	0.505	17.322862	-91.692999
Reforma de Ocampo	22.00	0	0																	

36 CARR: Independencia - Buenos Aires

CLAVE: 07098

RUTA: CHIS

AÑO: 2022

LUGAR	ESTACION				CLASIFICACION VEHICULAR EN PORCIENTO													COORDENADAS		
	KM	TE	SC	TDPA	M	A	B	C2	C3	T3S2	T3S3	T3S2R4	OTROS	A	B	C	K'	D	LATITUD	LONGITUD
Independencia	0.00	0	0																	
El Porvenir	139.00	3	0	1277	7.2	85.0	0.4	6.0	0.7	0.5	0.2	0.0	0.0	92.2	0.4	7.4	0.106	0.515	15.448412	-92.290487
Buenos Aires	159.00	1	0	1373	6.9	85.6	0.4	5.8	0.6	0.5	0.2	0.0	0.0	92.5	0.4	7.1	0.109	0.515	15.334861	-92.277699

CHIAPAS

37 CARR: Las Limas - La Concordia

CLAVE: 07028

RUTA: CHIS

AÑO: 2022

LUGAR	ESTACION				CLASIFICACION VEHICULAR EN PORCIENTO													COORDENADAS		
	KM	TE	SC	TDPA	M	A	B	C2	C3	T3S2	T3S3	T3S2R4	OTROS	A	B	C	K'	D	LATITUD	LONGITUD
T. C. Tuxtla Gutiérrez - Angostura	0.00	3	0	4830	5.7	80.9	0.1	7.8	1.2	3.3	0.7	0.1	0.2	86.6	0.1	13.3	0.078	0.502	16.606283	-92.993044
Revolución Mexicana	83.00	1	0	3067	2.5	85.5	1.2	7.1	0.9	1.7	0.6	0.3	0.2	88.0	1.2	10.8	0.088	0.506	16.175950	-93.056475
La Concordia	135.00	0	0																	

38 CARR: Libramiento Sur de Tuxtla Gutiérrez

CLAVE: 07578

RUTA: CHIS

AÑO: 2022

LUGAR	ESTACION				CLASIFICACION VEHICULAR EN PORCIENTO													COORDENADAS		
	KM	TE	SC	TDPA	M	A	B	C2	C3	T3S2	T3S3	T3S2R4	OTROS	A	B	C	K'	D	LATITUD	LONGITUD
T. C. Tapanatepec - Tuxtla Gutiérrez	0.00	3	1	16195	3.9	83.8	0.6	7.8	1.5	1.0	0.3	0.7	0.4	87.7	0.6	11.7	0.078	0.517	16.752563	-93.141919
T. C. Tapanatepec - Tuxtla Gutiérrez	0.00	3	2	17368	3.7	83.4	0.8	7.8	1.3	1.2	0.4	0.9	0.5	87.1	0.8	12.1	0.077	0.517	16.752590	-93.141797
T. C. Tuxtla Gutiérrez - Cd. Cuauhtémoc	9.20	1	1	23004	5.5	79.9	0.5	4.9	2.3	3.8	2.2	0.3	0.6	85.4	0.5	14.1	0.068	0.537	16.740664	-93.079596
T. C. Tuxtla Gutiérrez - Cd. Cuauhtémoc	9.20	1	2	19874	5.9	79.6	0.7	5.1	2.4	3.5	2.1	0.2	0.5	85.5	0.7	13.8	0.089	0.537	16.740781	-93.079633

39 CARR: Ocosingo - Comitán

CLAVE: 07092

RUTA: CHIS

AÑO: 2022

LUGAR	ESTACION				CLASIFICACION VEHICULAR EN PORCIENTO													COORDENADAS		
	KM	TE	SC	TDPA	M	A	B	C2	C3	T3S2	T3S3	T3S2R4	OTROS	A	B	C	K'	D	LATITUD	LONGITUD
Ocosingo	0.00	3	0	9427	4.9	90.7	0.3	3.3	0.4	0.2	0.0	0.2	0.0	95.6	0.3	4.1	0.104	0.518	16.896400	-92.074010
Altamirano	24.00	1	0	1707	2.7	92.1	0.7	3.4	0.6	0.3	0.1	0.1	0.0	94.8	0.7	4.5	0.094	0.509	16.745538	-92.040961
Altamirano	24.00	3	0	2496	21.2	73.3	0.7	3.3	0.5	0.3	0.4	0.3	0.0	94.5	0.7	4.8	0.110	0.514	16.716878	-92.043477
La Mendoza	30.00	1	0	1391	22.3	69.8	1.0	5.6	0.3	0.4	0.3	0.3	0.0	92.1	1.0	6.9	0.122	0.515	16.685045	-92.022460
Comitán	100.00	1	0	6343	12.6	78.6	0.6	2.8	0.7	2.8	1.0	0.6	0.3	91.2	0.6	8.2	0.073	0.510	16.281849	-92.124002

40 CARR: Ocozacoautla - Revolución Mexicana

CLAVE: 07571

RUTA: CHIS-053-230

AÑO: 2022

LUGAR	ESTACION				CLASIFICACION VEHICULAR EN PORCIENTO													COORDENADAS		
	KM	TE	SC	TDPA	M	A	B	C2	C3	T3S2	T3S3	T3S2R4	OTROS	A	B	C	K'	D	LATITUD	LONGITUD
Ocozacoautla	0.00	3	0	6131	8.6	71.1	1.2	8.8	3.0	4.7	1.3	0.7	0.6	79.7	1.2	19.1	0.076	0.527	16.751124	-93.383972
Nuevo México	36.00	3	0	2920	6.3	80.5	1.0	7.1	1.3	2.4	0.7	0.4	0.3	86.8	1.0	12.2	0.104	0.530	16.453482	-93.434707
T. Der. Cristóbal Obregón	41.00	3	0	2450	4.9	80.0	1.0	8.3	1.6	2.5	0.7	0.8	0.2	84.9	1.0	14.1	0.091	0.520	16.415009	-93.416676
T. Izq. Tuxtla Gutiérrez	76.00	1	0	4269	6.1	76.6	2.5	8.3	2.1	2.9	0.8	0.5	0.2	82.7	2.5	14.8	0.084	0.512	16.318597	-93.336704
T. Izq. Tuxtla Gutiérrez	76.00	3	0	6740	6.1	81.5	0.3	5.7	1.5	3.5	0.6	0.5	0.3	87.6	0.3	12.1	0.082	0.501	16.315254	-93.329724
Villa Flores	84.00	1	0	8624	5.5	81.6	0.4	6.3	1.6	3.5	0.6	0.3	0.2	87.1	0.4	12.5	0.081	0.507	16.266877	-93.268211
Villa de Corzo	94.00	1	0	10147	13.8	75.9	0.4	4.5	0.8	3.3	0.6	0.4	0.3	89.7	0.4	9.9	0.077	0.519	16.207261	-93.265595
Revolución Mexicana	119.00	1	0	4062	22.0	71.2	0.2	3.5	0.3	2.2	0.3	0.1	0.2	93.2	0.2	6.6	0.077	0.501	16.167513	-93.089633

CHIAPAS

41 CARR: Paso de Cunduacán - Estación Juárez

CLAVE: 00588

RUTA: TAB-CHIS

AÑO: 2022

LUGAR	ESTACION				CLASIFICACION VEHICULAR EN PORCIENTO													COORDENADAS		
	KM	TE	SC	TDPA	M	A	B	C2	C3	T3S2	T3S3	T3S2R4	OTROS	A	B	C	K'	D	LATITUD	LONGITUD
Paso de Cunduacán	0.00	3	0	11278	5.1	82.9	0.4	7.3	0.9	1.7	0.9	0.6	0.2	88.0	0.4	11.6	0.097	0.504	17.960071	-93.138251
Lim. Edos. Term. Tab. Ppia. Chis.	9.00	0	0																	
Santa Teresa 2º Secc.	18.00	3	0	2330	11.0	77.8	0.4	6.8	1.6	1.9	0.4	0.0	0.1	88.8	0.4	10.8	0.080	0.505	17.766736	-93.169224
Estación Juárez	57.80	1	0	2875	14.9	76.1	0.2	5.2	1.0	1.8	0.5	0.1	0.2	91.0	0.2	8.8	0.070	0.501	17.621964	-93.166913

42 CARR: Puerto Caté - San Cristóbal de Las Casas

CLAVE: 07097

RUTA: CHIS

AÑO: 2022

LUGAR	ESTACION				CLASIFICACION VEHICULAR EN PORCIENTO													COORDENADAS		
	KM	TE	SC	TDPA	M	A	B	C2	C3	T3S2	T3S3	T3S2R4	OTROS	A	B	C	K'	D	LATITUD	LONGITUD
Puerto Caté	0.00	3	0	1397	2.3	83.7	4.6	5.0	1.0	1.9	0.7	0.6	0.2	86.0	4.6	9.4	0.083	0.528	16.995328	-92.820331
Larrazar	20.00	1	0	4171	4.8	87.8	0.3	2.1	0.3	2.9	0.8	0.3	0.7	92.6	0.3	7.1	0.078	0.506	16.885617	-92.724528
T. Izq. Chamula	32.00	1	0	5148	5.4	84.9	0.4	3.8	0.4	3.3	0.8	0.3	0.7	90.3	0.4	9.3	0.083	0.532	16.790601	-92.698286
San Cristóbal de Las Casas	40.00	1	0	11286	7.4	86.6	0.6	3.2	0.4	0.4	0.8	0.3	0.3	94.0	0.6	5.4	0.085	0.511	16.755991	-92.670606

43 CARR: Ramal a Huehuetán

CLAVE: 07360

RUTA: CHIS

AÑO: 2022

LUGAR	ESTACION				CLASIFICACION VEHICULAR EN PORCIENTO													COORDENADAS		
	KM	TE	SC	TDPA	M	A	B	C2	C3	T3S2	T3S3	T3S2R4	OTROS	A	B	C	K'	D	LATITUD	LONGITUD
T. C. Tapanatepec - Talismán	0.00	3	1	4269	1.2	93.9	0.1	3.7	0.1	0.6	0.3	0.0	0.1	95.1	0.1	4.8	0.075	0.500	15.010444	-92.398015
T. C. Tapanatepec - Talismán	0.00	3	2	4269	2.5	91.8	0.1	4.4	0.1	0.7	0.3	0.0	0.1	94.3	0.1	5.6	0.077	0.500	15.010510	-92.398010
Huehuetán	2.50	0	0																	

44 CARR: Ramal a Mazatán

CLAVE: 07560

RUTA: CHIS-219

AÑO: 2022

LUGAR	ESTACION				CLASIFICACION VEHICULAR EN PORCIENTO													COORDENADAS		
	KM	TE	SC	TDPA	M	A	B	C2	C3	T3S2	T3S3	T3S2R4	OTROS	A	B	C	K'	D	LATITUD	LONGITUD
T. C. Tapanatepec - Talismán	0.00	3	1	4077	14.5	72.7	0.4	8.8	0.4	2.0	0.7	0.2	0.3	87.2	0.4	12.4	0.075	0.500	14.926401	-92.375361
T. C. Tapanatepec - Talismán	0.00	3	2	4071	13.8	71.8	0.4	10.2	0.5	2.2	0.7	0.1	0.3	85.6	0.4	14.0	0.071	0.500	14.926372	-92.375296
Mazatán	12.00	0	0																	

45 CARR: Ramal a Salto del Agua

CLAVE: 00069

RUTA: TAB-CHIS

AÑO: 2022

LUGAR	ESTACION				CLASIFICACION VEHICULAR EN PORCIENTO													COORDENADAS		
	KM	TE	SC	TDPA	M	A	B	C2	C3	T3S2	T3S3	T3S2R4	OTROS	A	B	C	K'	D	LATITUD	LONGITUD
T. C. Villahermosa - Francisco Escárcega	0.00	3	0	1795	7.0	68.7	2.2	2.9	4.8	5.4	3.6	4.9	0.5	75.7	2.2	22.1	0.075	0.540	17.665253	-92.436006

CHIAPAS

45 CARR: Ramal a Salto del Agua

CLAVE: 00069

RUTA: TAB-CHIS

AÑO: 2022

LUGAR	ESTACION				CLASIFICACION VEHICULAR EN PORCIENTO													COORDENADAS			
	KM	TE	SC	TDPA	M	A	B	C2	C3	T3S2	T3S3	T3S2R4	OTROS	A	B	C	K'	D	LATITUD	LONGITUD	
Lim. Edos. Term. Tab. Ppia. Chis.	12.00	0	0																		
Salto del Agua	17.00	1	0	2400	7.4	85.2	0.6	4.1	0.6	1.5	0.5	0.0	0.1	92.6	0.6	6.8	0.089	0.501	17.559572	-92.354077	

46 CARR: Ramal Zona Arqueológica " Bonampak "

CLAVE: 07100

RUTA: CHIS

AÑO: 2022

LUGAR	ESTACION				CLASIFICACION VEHICULAR EN PORCIENTO													COORDENADAS			
	KM	TE	SC	TDPA	M	A	B	C2	C3	T3S2	T3S3	T3S2R4	OTROS	A	B	C	K'	D	LATITUD	LONGITUD	
T. C. Benemérito de Las Américas - Palenque	0.00	3	0	504	11.1	87.4	0.1	0.8	0.5	0.0	0.1	0.0	0.0	98.5	0.1	1.4	0.103	0.514	16.798401	-91.105828	
Zona Arqueológica Bonampak	13.00	0	0																		

47 CARR: Ramal Zona Arqueológica " Palenque "

CLAVE: 07099

RUTA: CHIS

AÑO: 2022

LUGAR	ESTACION				CLASIFICACION VEHICULAR EN PORCIENTO													COORDENADAS		
	KM	TE	SC	TDPA	M	A	B	C2	C3	T3S2	T3S3	T3S2R4	OTROS	A	B	C	K'	D	LATITUD	LONGITUD
T. C. (Catazajá - T. C. (Tuxtla Gtz. - Cd. Cuauhtémoc))	0.00	3	0	4451	0.2	88.2	0.2	11.4	0.0	0.0	0.0	0.0	0.0	88.4	0.2	11.4	0.082	0.533	17.503446	-91.995963
Zona Arqueológica Palenque	7.30	1	0	1153	4.0	88.9	1.2	4.7	0.2	0.9	0.1	0.0	0.0	92.9	1.2	5.9	0.104	0.510	17.487598	-92.042515

48 CARR: San Francisco Pujiltic - Ent. Comitán

CLAVE: 07093

RUTA: CHIS

AÑO: 2022

LUGAR	ESTACION				CLASIFICACION VEHICULAR EN PORCIENTO													COORDENADAS		
	KM	TE	SC	TDPA	M	A	B	C2	C3	T3S2	T3S3	T3S2R4	OTROS	A	B	C	K'	D	LATITUD	LONGITUD
T. C. Chiapa de Corzo - Amatenango del Valle	0.00	3	0	2453	6.7	79.0	0.6	6.2	1.7	2.9	1.7	1.0	0.2	85.7	0.6	13.7	0.086	0.519	16.272439	-92.444635
Comitán	54.00	1	0	5445	11.9	83.2	0.6	1.7	1.1	0.6	0.4	0.5	0.0	95.1	0.6	4.3	0.079	0.507	16.204434	-92.132165

49 CARR: Tapachula - Nueva Alemania

CLAVE: 07581

RUTA: CHIS-229

AÑO: 2022

LUGAR	ESTACION				CLASIFICACION VEHICULAR EN PORCIENTO													COORDENADAS			
	KM	TE	SC	TDPA	M	A	B	C2	C3	T3S2	T3S3	T3S2R4	OTROS	A	B	C	K'	D	LATITUD	LONGITUD	
Tapachula	0.00	3	0	5226	16.6	81.0	0.2	1.3	0.4	0.2	0.0	0.3	0.0	97.6	0.2	2.2	0.108	0.501	14.957568	-92.254428	
Nueva Alemania	27.20	0	0																		

CHIAPAS

50 CARR: Temo - Tila

CLAVE: 07090

RUTA: CHIS

AÑO: 2022

LUGAR	ESTACION				CLASIFICACION VEHICULAR EN PORCIENTO													COORDENADAS		
	KM	TE	SC	TDPA	M	A	B	C2	C3	T3S2	T3S3	T3S2R4	OTROS	A	B	C	K'	D	LATITUD	LONGITUD
Temo	0.00	3	0	2751	7.8	84.9	0.2	3.1	1.0	2.4	0.3	0.3	0.0	92.7	0.2	7.1	0.090	0.513	17.018157	-92.156725
Yajalón	28.00	1	0	2689	13.2	79.7	0.2	3.0	0.8	2.4	0.5	0.2	0.0	92.9	0.2	6.9	0.097	0.500	17.159011	-92.318265
Tila	50.00	1	0	1825	12.1	80.5	0.4	3.2	0.9	1.9	0.6	0.4	0.0	92.6	0.4	7.0	0.083	0.504	17.292101	-92.428830

51 CARR: Tierra y Libertad - Ent. Dr. Domingo Chanona

CLAVE: 07096

RUTA: CHIS

AÑO: 2022

LUGAR	ESTACION				CLASIFICACION VEHICULAR EN PORCIENTO													COORDENADAS		
	KM	TE	SC	TDPA	M	A	B	C2	C3	T3S2	T3S3	T3S2R4	OTROS	A	B	C	K'	D	LATITUD	LONGITUD
T. C. Las Cruces - Arriaga	0.00	3	0	302	7.4	81.1	1.7	3.5	4.9	0.8	0.2	0.3	0.1	88.5	1.7	9.8	0.109	0.522	16.375483	-93.857080
T. C. Ocozacoautla - Revolución Mexicana	60.00	1	0	4244	22.9	67.8	0.4	4.5	0.6	2.8	0.5	0.2	0.3	90.7	0.4	8.9	0.076	0.502	16.345517	-93.408636

52 CARR: Tuxtla Gutiérrez - Portillo Zaragoza

CLAVE: 07574

RUTA: CHIS-133

AÑO: 2022

LUGAR	ESTACION				CLASIFICACION VEHICULAR EN PORCIENTO													COORDENADAS		
	KM	TE	SC	TDPA	M	A	B	C2	C3	T3S2	T3S3	T3S2R4	OTROS	A	B	C	K'	D	LATITUD	LONGITUD
Ent. Periférico Tuxtla Gutiérrez	0.00	3	0	16977	5.6	89.8	0.2	2.5	0.2	0.1	1.1	0.2	0.3	95.4	0.2	4.4	0.090	0.507	16.730443	-93.110531
Suchiapa	19.00	1	0	5976	8.7	82.3	0.1	2.6	0.2	4.9	0.5	0.1	0.6	91.0	0.1	8.9	0.108	0.501	16.637777	-93.092514
Las Cruces	53.50	1	0	2663	8.1	83.8	0.4	5.4	0.7	1.1	0.3	0.0	0.2	91.9	0.4	7.7	0.089	0.507	16.415527	-93.168328
Las Cruces	53.50	3	0	2765	10.4	81.3	0.5	5.6	0.5	1.4	0.2	0.0	0.1	91.7	0.5	7.8	0.088	0.500	16.397558	-93.206410
Portillo de Tacubaya	79.00	1	0	4063	12.0	79.1	0.5	4.9	0.9	1.9	0.3	0.1	0.3	91.1	0.5	8.4	0.079	0.521	16.317332	-93.330570

53 CARR: Zapatero - T. C. (Jalapa - Jonuta)

CLAVE: 00061

RUTA: CHIS-TAB

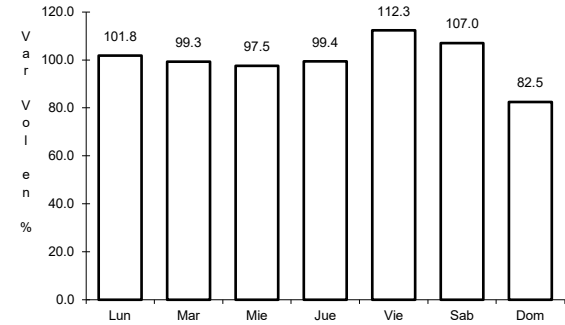
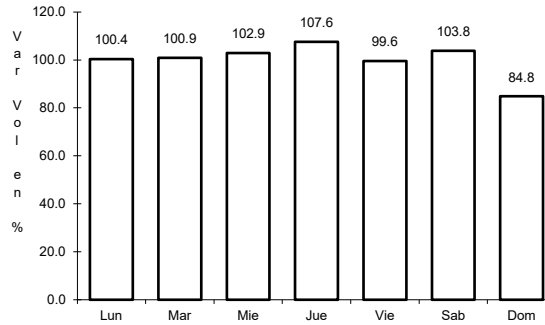
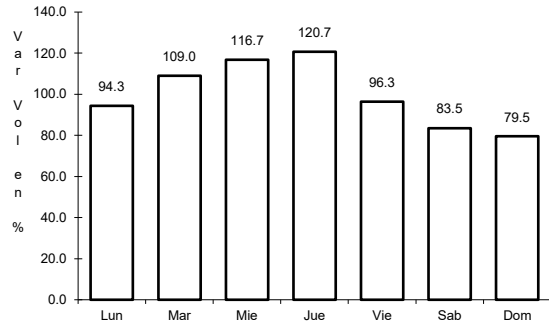
AÑO: 2022

LUGAR	ESTACION				CLASIFICACION VEHICULAR EN PORCIENTO													COORDENADAS		
	KM	TE	SC	TDPA	M	A	B	C2	C3	T3S2	T3S3	T3S2R4	OTROS	A	B	C	K'	D	LATITUD	LONGITUD
T. C. Villahermosa - Francisco Escárcega	0.00	3	0	1553	18.6	71.7	0.2	5.0	1.9	1.9	0.3	0.2	0.2	90.3	0.2	9.5	0.104	0.513	17.698994	-92.131890
Lim. Edos. Term. Chis. Ppia. Tab.	16.00	0	0																	
T. C. Jalapa - Jonuta	41.00	1	0	1508	15.4	77.9	0.2	4.6	1.4	0.2	0.2	0.1	0.0	93.3	0.2	6.5	0.086	0.503	18.029245	-92.157804

1 CARR: Benemérito de Las Américas - Palenque

CLAVE: 07095

RUTA: MEX-307



Km: 42.00 Tipo: 3 Sent: 0

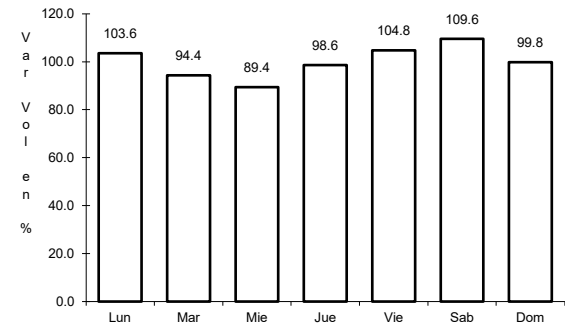
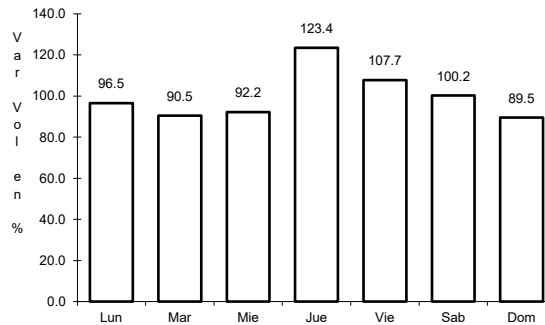
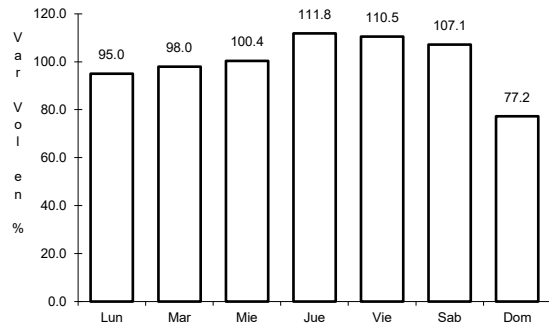
Km: 160.00 Tipo: 1 Sent: 0

Km: 194.00 Tipo: 1 Sent: 0

2 CARR: Catazajá - T. C. (Tuxtla Gtz. - Cd. Cuauhtémoc)

CLAVE: 07582

RUTA: MEX-199



Km: 2.20 Tipo: 3 Sent: 0

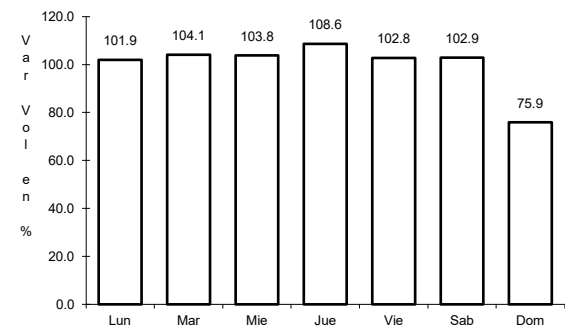
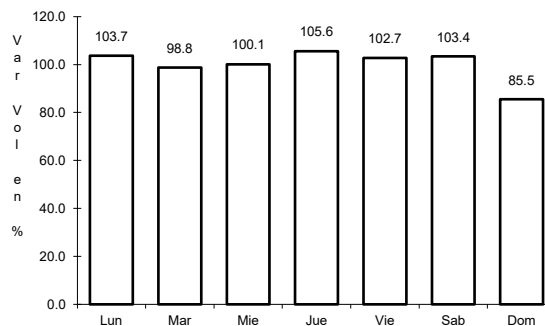
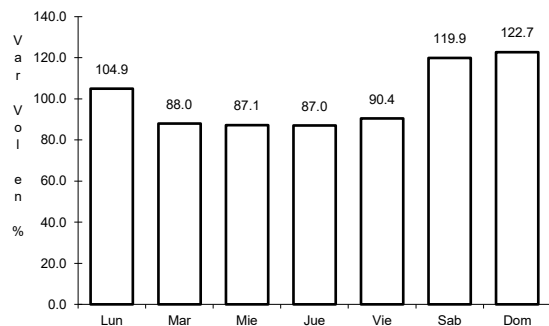
Km: 68.30 Tipo: 1 Sent: 0

Km: 210.00 Tipo: 1 Sent: 0

3 CARR: El Suspiro - Tenosique

CLAVE: 00276

RUTA: MEX-203



Km: 0.00 Tipo: 3 Sent: 0

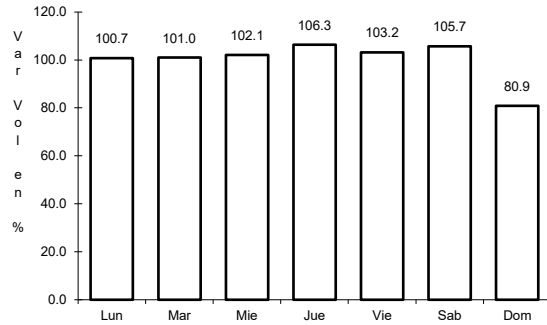
Km: 32.60 Tipo: 1 Sent: 0

Km: 53.00 Tipo: 3 Sent: 0

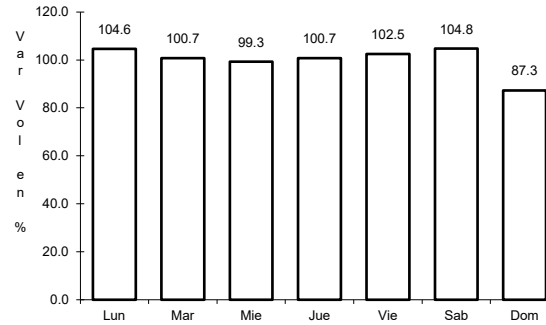
4 CARR: Ent. Jaritas - Ciudad Hidalgo

CLAVE: 07094

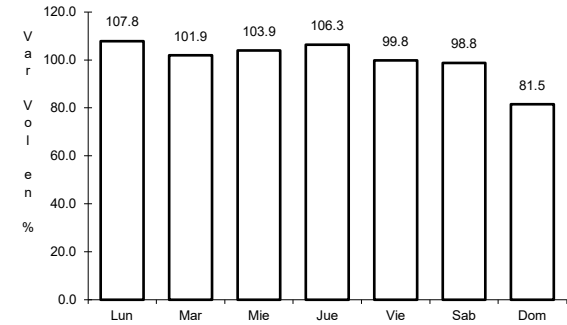
ruta: MEX-225



Km: 0.00 Tipo: 3 Sent: 0



Km: 33.35 Tipo: 1 Sent: 0

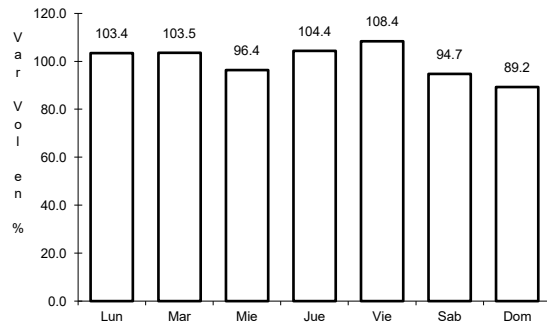


Km: 49.00 Tipo: 1 Sent: 0

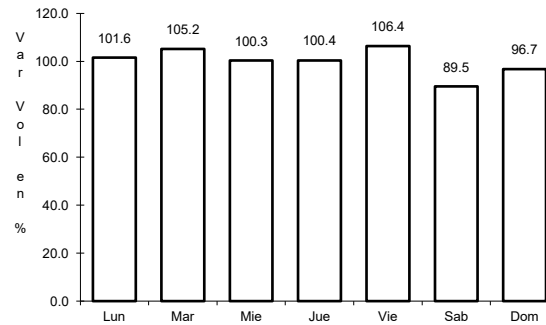
5 CARR: Huixtla - El Jocote

CLAVE: 07577

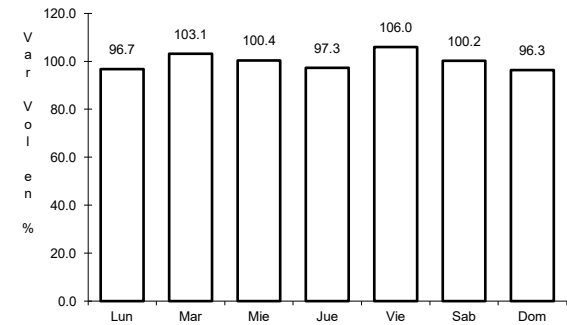
ruta: MEX-211



Km: 0.00 Tipo: 3 Sent: 0



Km: 57.00 Tipo: 1 Sent: 0

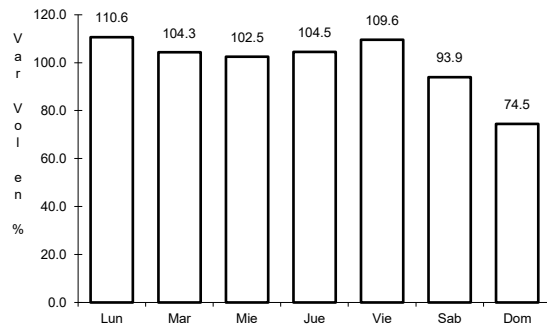


Km: 126.00 Tipo: 1 Sent: 0

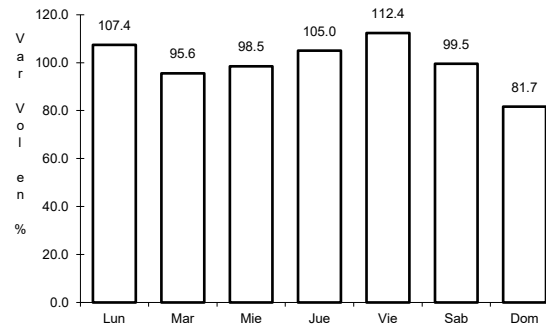
6 CARR: La Trinitaria - Benemérito de Las Américas

CLAVE: 07267

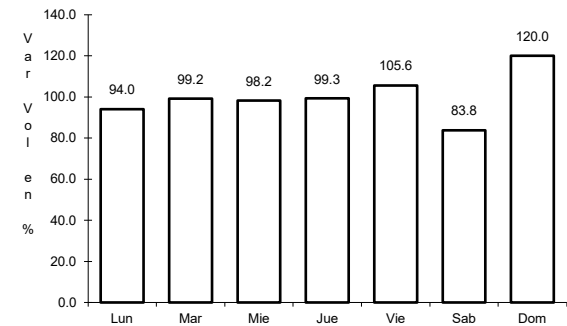
ruta: MEX-307



Km: 0.00 Tipo: 3 Sent: 0



Km: 39.76 Tipo: 3 Sent: 0

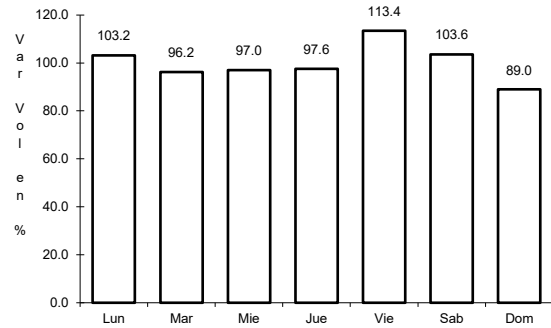


Km: 72.00 Tipo: 3 Sent: 0

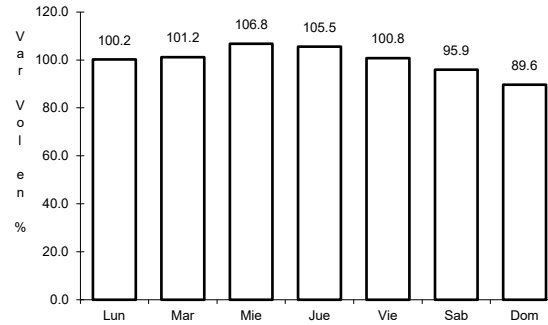
7 CARR: Las Cruces - Arriaga

CLAVE: 07196

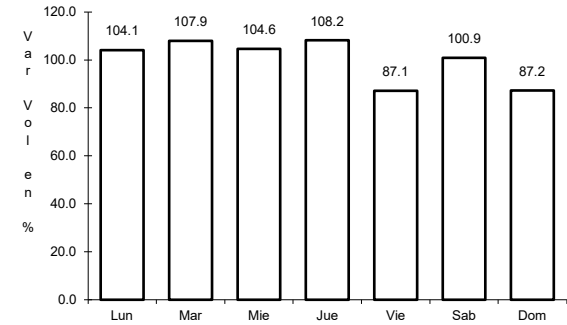
RUTA: MEX-190



Km: 0.00 Tipo: 3 Sent: 0



Km: 27.90 Tipo: 3 Sent: 0

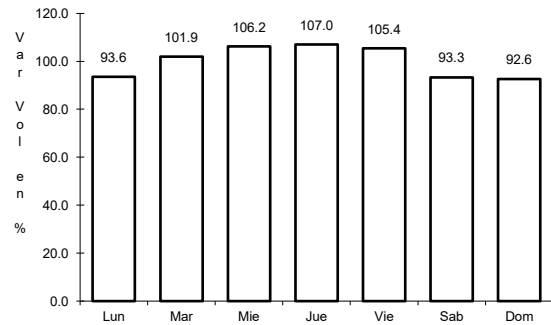


Km: 49.00 Tipo: 1 Sent: 0

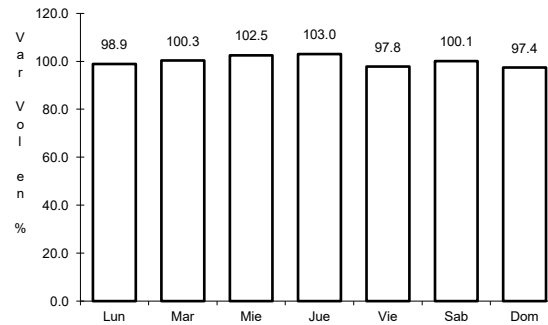
8 CARR: Libramiento de Arriaga

CLAVE:

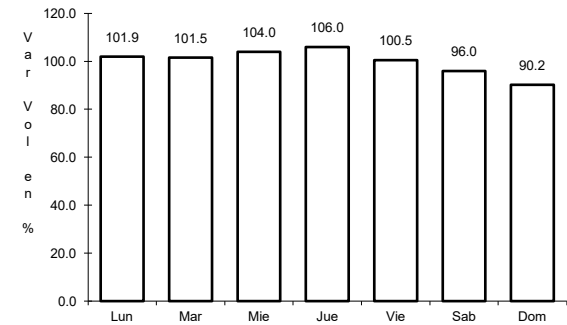
RUTA: MEX-200



Km: 0.00 Tipo: 3 Sent: 0



Km: 2.60 Tipo: 1 Sent: 0

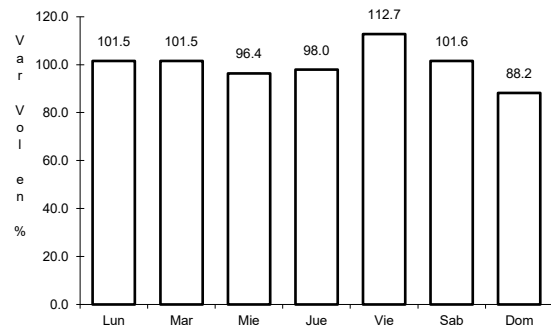


Km: 7.50 Tipo: 1 Sent: 0

9 CARR: Libramiento de Ciudad Hidalgo Chis.

CLAVE:

RUTA: MEX-225

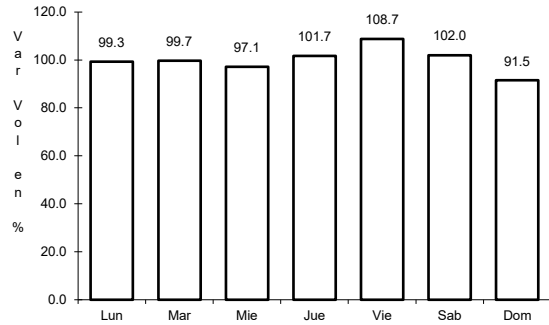


Km: 5.00 Tipo: 3 Sent: 0

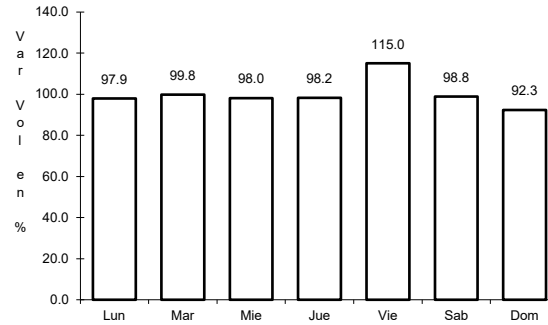
10 CARR: Libramiento de Huixtla

CLAVE:

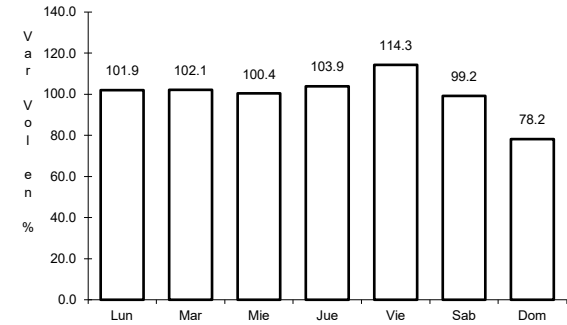
ruta: MEX-200



Km: 0.00 Tipo: 3 Sent: 1



Km: 0.00 Tipo: 3 Sent: 2

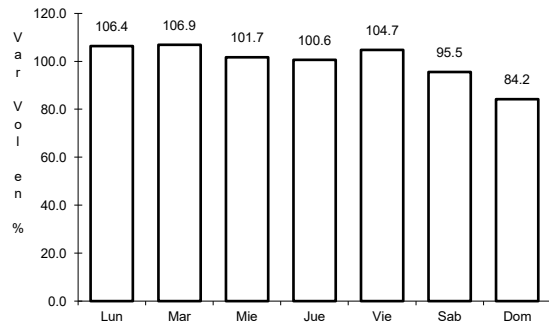


Km: 5.80 Tipo: 3 Sent: 1

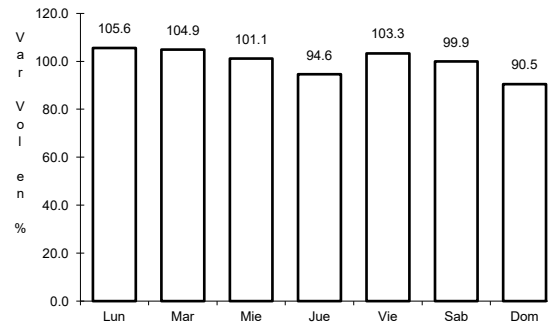
11 CARR: Libramiento de Ocozocoautla

CLAVE: 07583

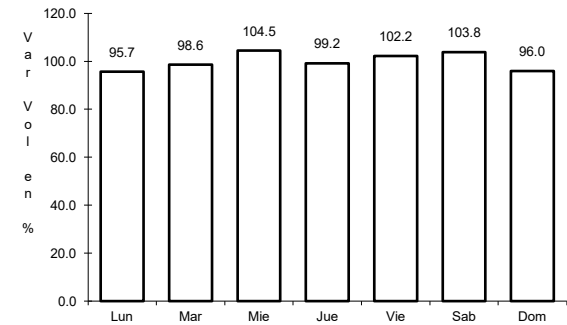
ruta: MEX-190



Km: 0.00 Tipo: 3 Sent: 0



Km: 5.54 Tipo: 1 Sent: 0

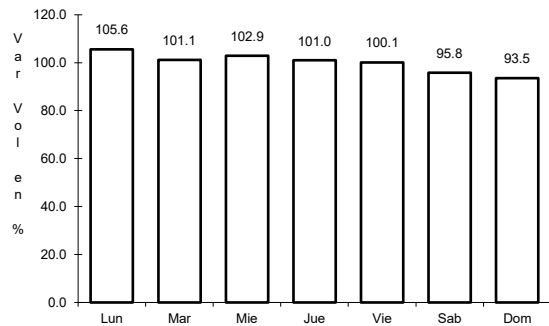


Km: 9.00 Tipo: 1 Sent: 0

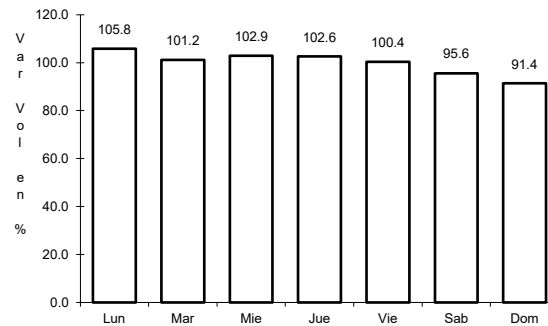
12 CARR: Libramiento Sur de Tuxtla Gutierrez (Dr. Manuel Velasco)

CLAVE:

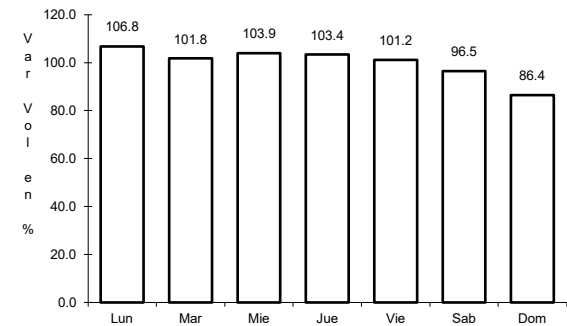
ruta: MEX



Km: 0.00 Tipo: 3 Sent: 0



Km: 15.94 Tipo: 3 Sent: 0

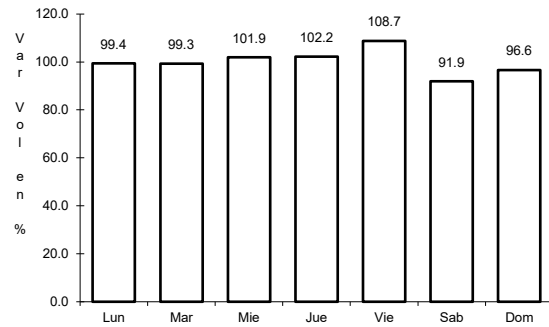


Km: 22.10 Tipo: 3 Sent: 0

13 CARR: Malpaso - El Bellote

CLAVE: 00137

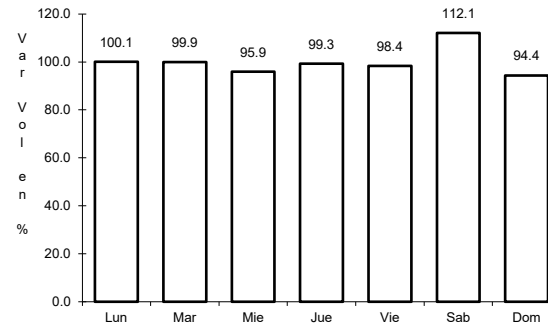
RUTA: MEX-187



Km: 70.12

Tipo: 1

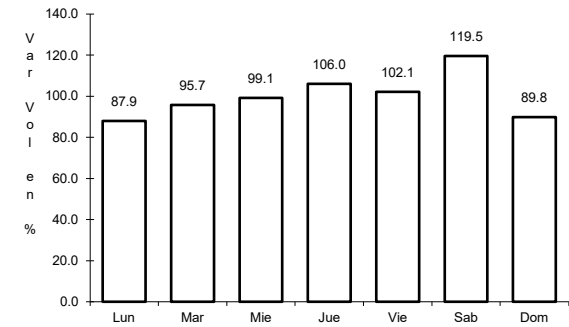
Sent: 0



Km: 134.70

Tipo: 3

Sent: 0



Km: 182.00

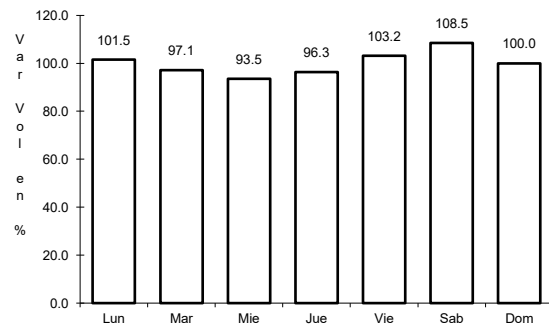
Tipo: 3

Sent: 0

14 CARR: Ocozocoautla - Ent. El Sabino

CLAVE: 07579

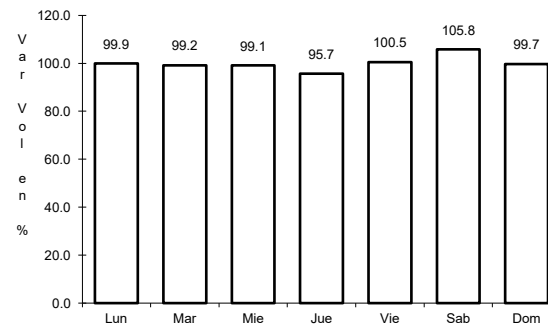
RUTA: MEX-190



Km: 7.85

Tipo: 3

Sent: 0



Km: 18.25

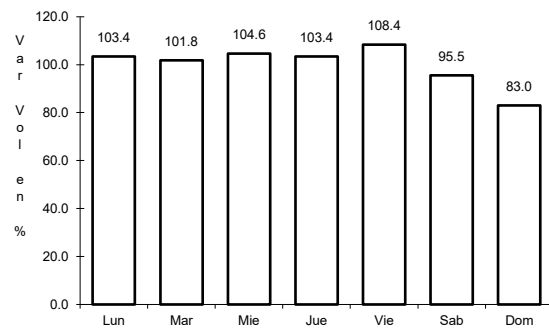
Tipo: 1

Sent: 0

15 CARR: Ramal a Cd. Hidalgo

CLAVE: 07274

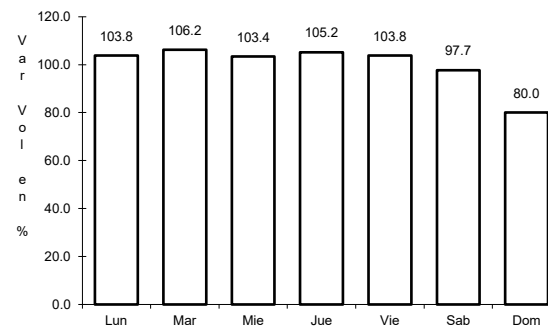
RUTA: MEX-200



Km: 0.00

Tipo: 3

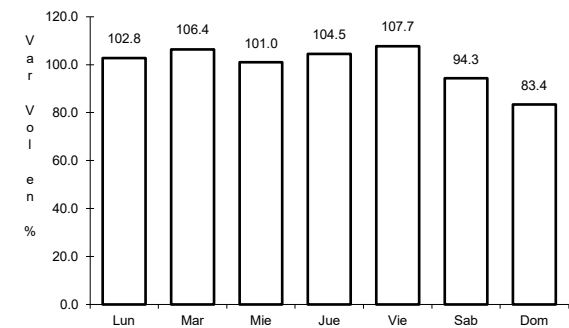
Sent: 0



Km: 15.30

Tipo: 3

Sent: 0



Km: 27.00

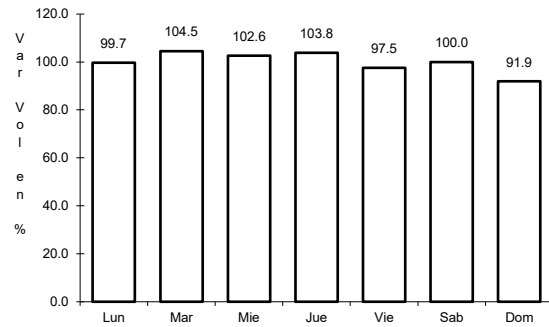
Tipo: 1

Sent: 0

16 CARR: Ramal a La Gloria

CLAVE: 07091

ruta: MEX-200



Km: 0.00

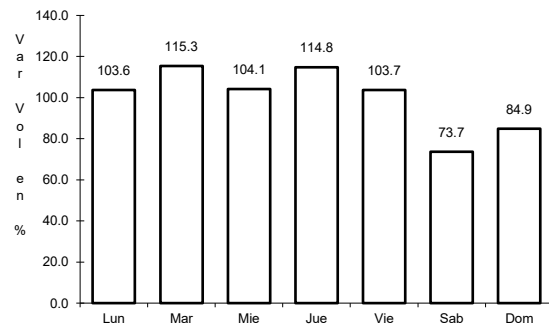
Tipo: 3

Sent: 0

17 CARR: Ramal a Paredón

CLAVE: 07269

ruta: MEX-200



Km: 0.00

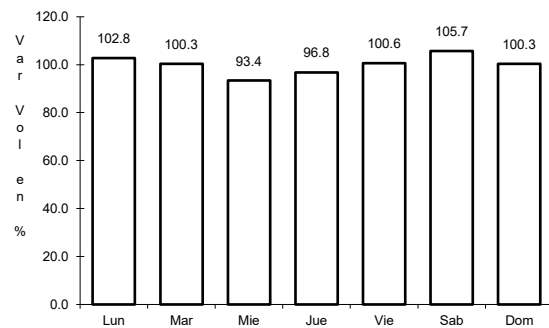
Tipo: 3

Sent: 0

18 CARR: Ramal a Puerto Arista

CLAVE: 07270

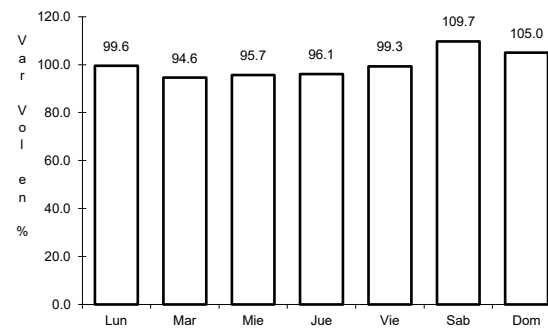
ruta: MEX-200



Km: 0.00

Tipo: 3

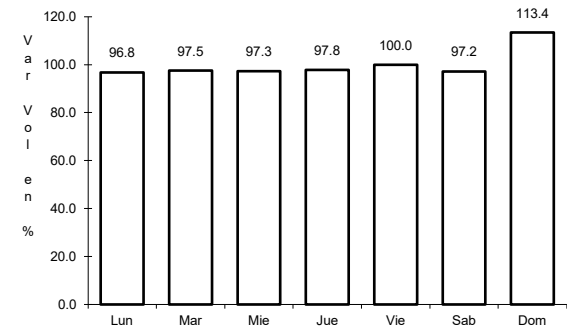
Sent: 0



Km: 11.00

Tipo: 3

Sent: 0



Km: 17.00

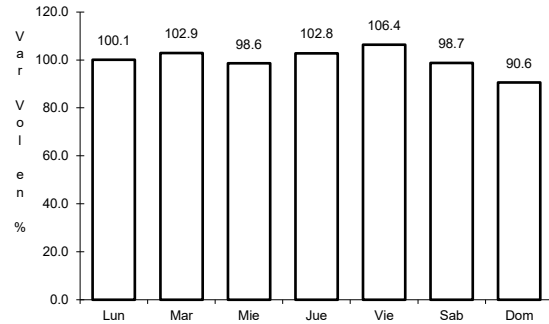
Tipo: 1

Sent: 0

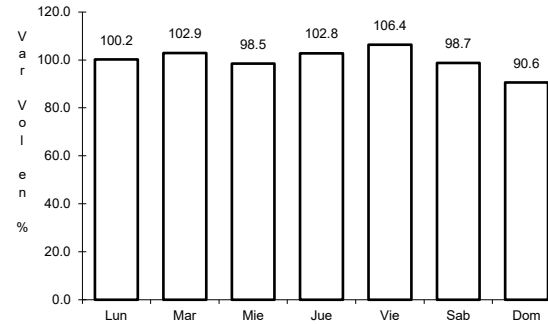
19 CARR: Ramal a Unión Juárez

CLAVE: 07273

ruta: MEX-200



Km: 5.00 Tipo: 1 Sent: 0

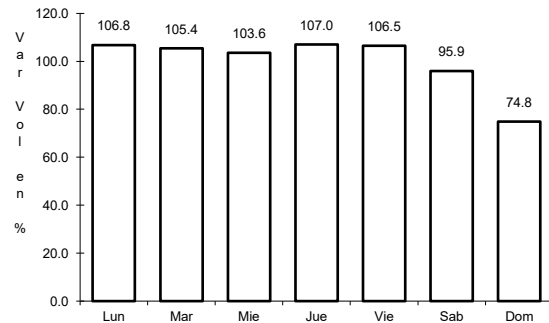


Km: 22.00 Tipo: 1 Sent: 0

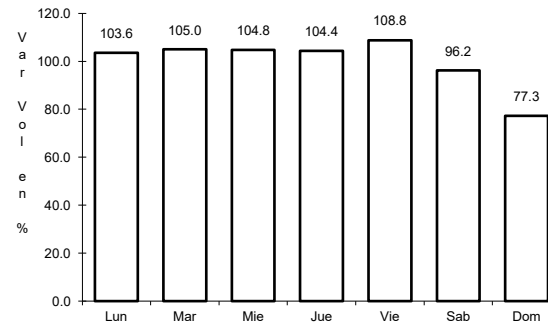
20 CARR: Tapachula - Puerto Madero

CLAVE: 07018

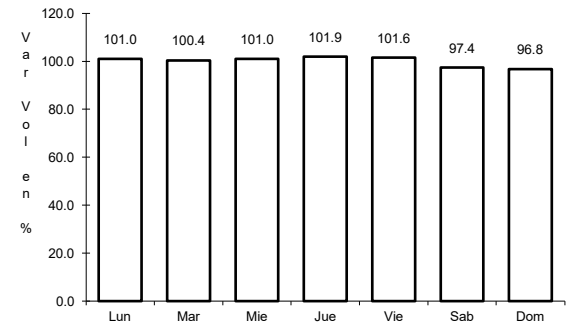
ruta: MEX-225



Km: 0.00 Tipo: 3 Sent: 1



Km: 0.00 Tipo: 3 Sent: 2

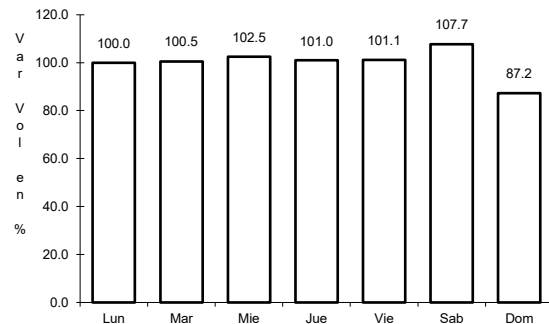


Km: 27.00 Tipo: 1 Sent: 0

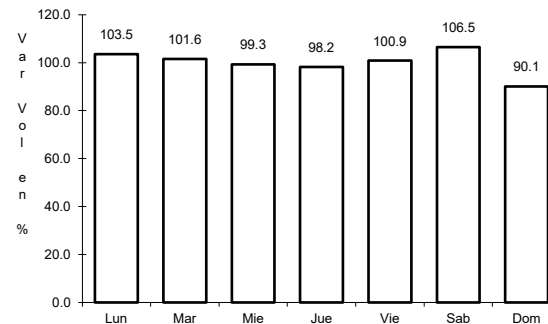
21 CARR: Tapanatepec - Talismán

CLAVE: 00075

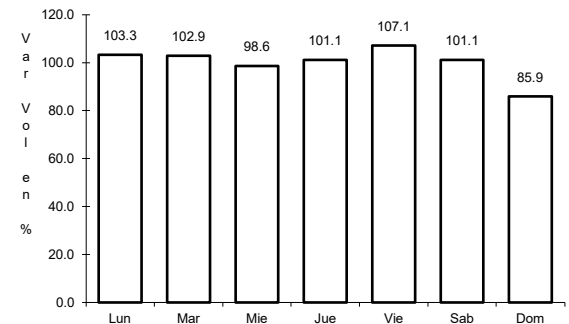
ruta: MEX-200



Km: 0.00 Tipo: 3 Sent: 0



Km: 45.00 Tipo: 1 Sent: 0

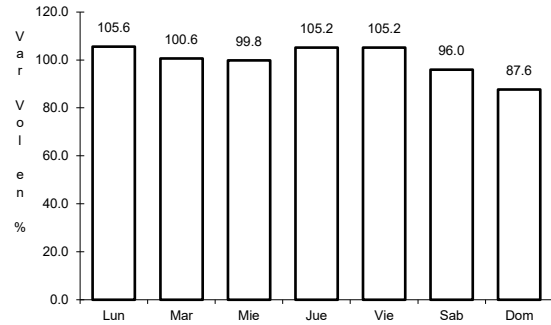


Km: 310.77 Tipo: 1 Sent: 0

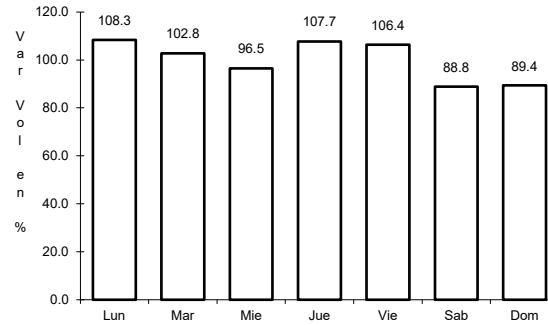
22 CARR: Tapanatepec - Tuxtla Gutiérrez

CLAVE: 00060

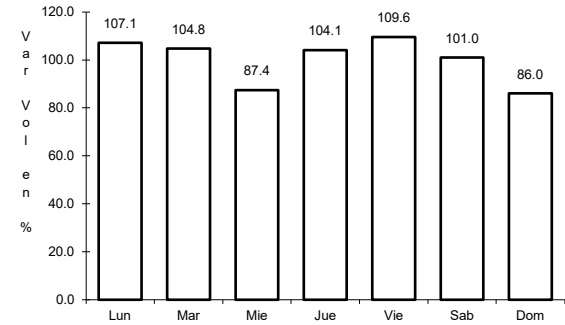
ruta: MEX-190



Km: 0.00 Tipo: 3 Sent: 0



Km: 159.00 Tipo: 1 Sent: 1

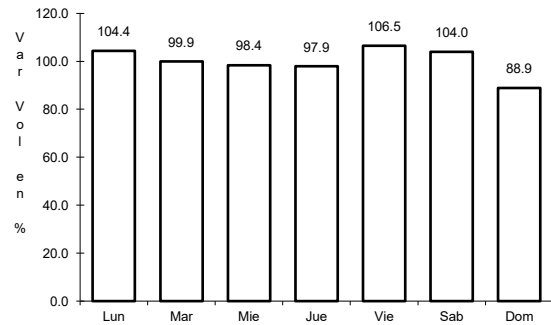


Km: 159.00 Tipo: 1 Sent: 2

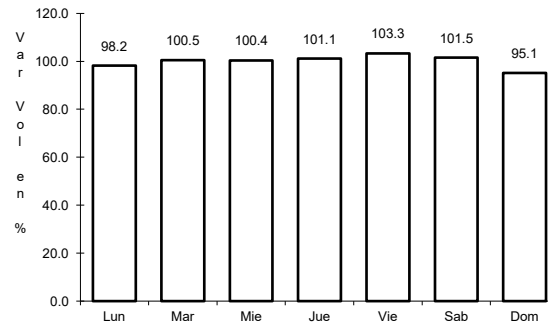
23 CARR: Terán - Chicoasén

CLAVE: 07072

ruta: MEX-190



Km: 0.00 Tipo: 3 Sent: 0

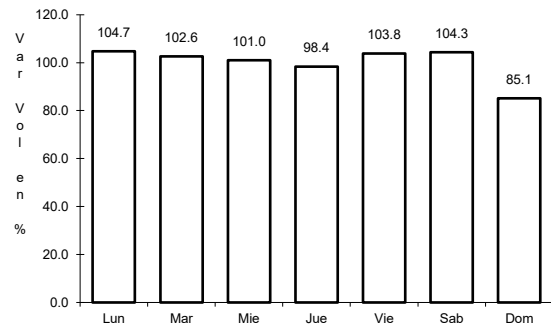


Km: 14.00 Tipo: 1 Sent: 0

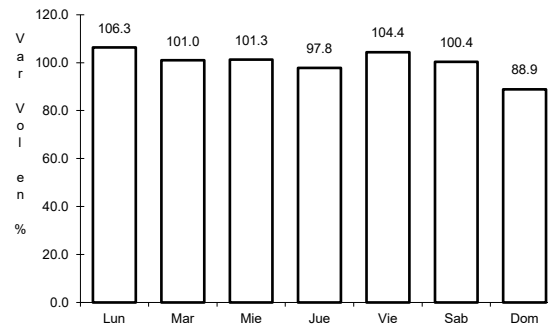
24 CARR: Tuxtla Gutiérrez - Angostura

CLAVE: 07584

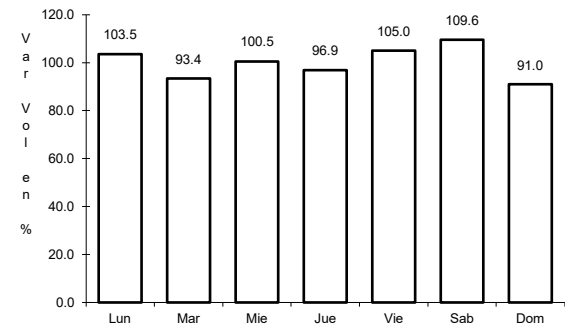
ruta: MEX-190



Km: 0.00 Tipo: 3 Sent: 1



Km: 0.00 Tipo: 3 Sent: 2

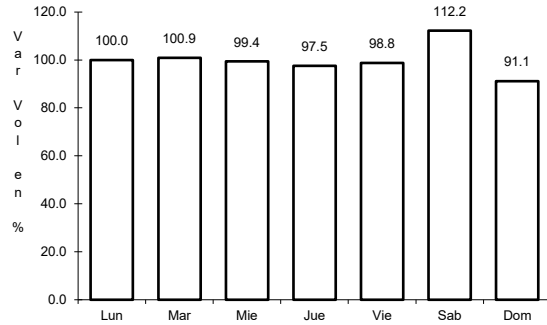


Km: 52.00 Tipo: 1 Sent: 0

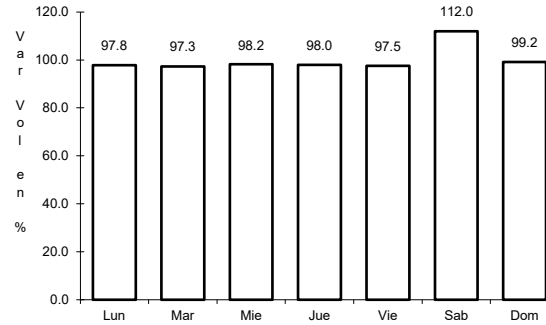
25 CARR: Tuxtla Gutiérrez - Cd. Cuauhtémoc

CLAVE: 07061

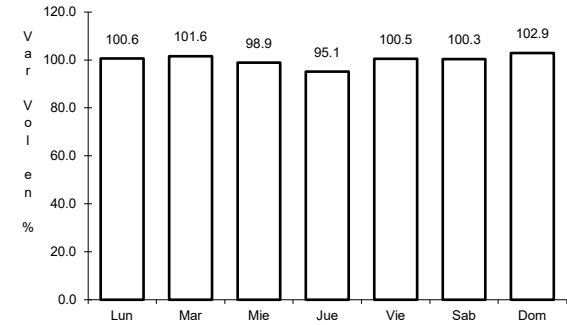
ruta: MEX-190



Km: 7.50 Tipo: 1 Sent: 1



Km: 7.50 Tipo: 1 Sent: 2

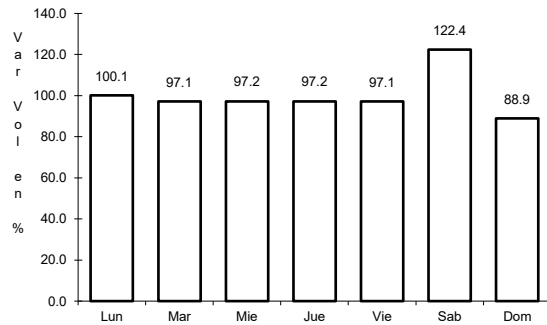


Km: 256.00 Tipo: 1 Sent: 0

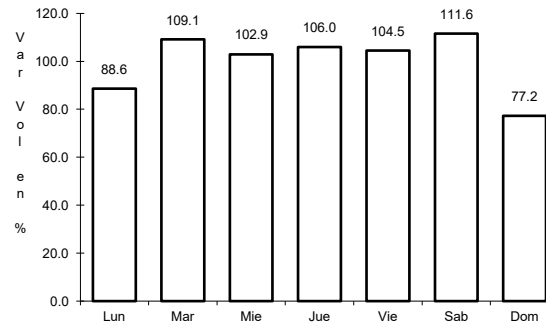
26 CARR: Villahermosa - Escopetazo

CLAVE: 00104

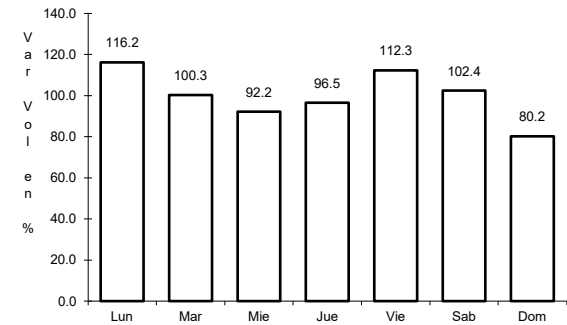
ruta: MEX-195



Km: 0.00 Tipo: 3 Sent: 1



Km: 0.00 Tipo: 3 Sent: 2

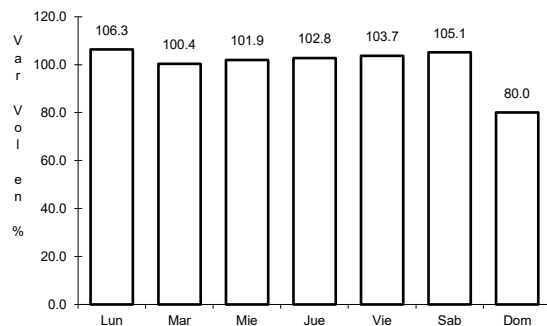


Km: 259.00 Tipo: 1 Sent: 0

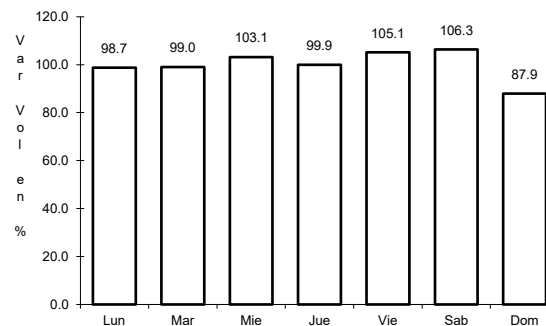
27 CARR: Villahermosa - Francisco Escárcega

CLAVE: 00092

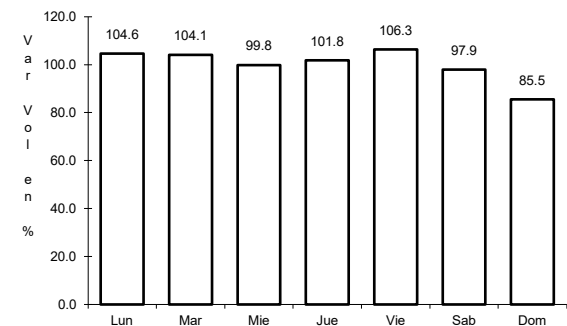
ruta: MEX-186



Km: 0.00 Tipo: 3 Sent: 1



Km: 0.00 Tipo: 3 Sent: 2

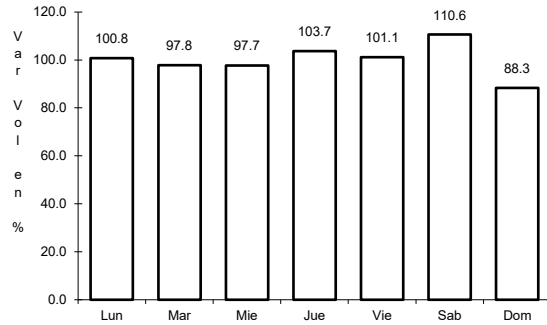


Km: 297.04 Tipo: 1 Sent: 0

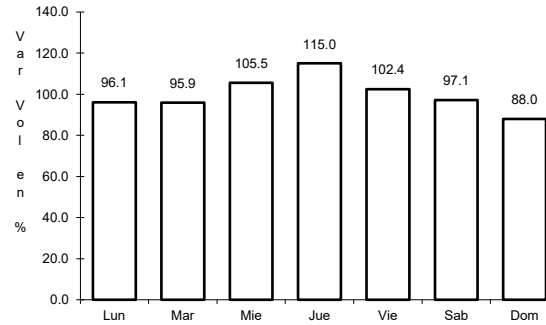
28 CARR: Arriaga - Ocozocoautla (Cuota)

CLAVE: 00092

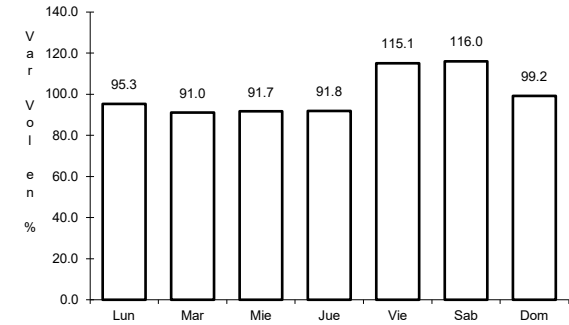
ruta: MEX-200D



Km: 0.00 Tipo: 3 Sent: 0



Km: 20.30 Tipo: 1 Sent: 0

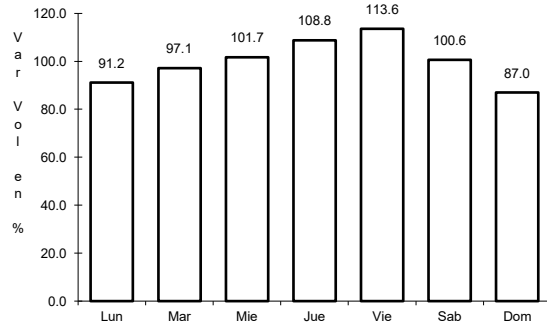


Km: 92.00 Tipo: 1 Sent: 0

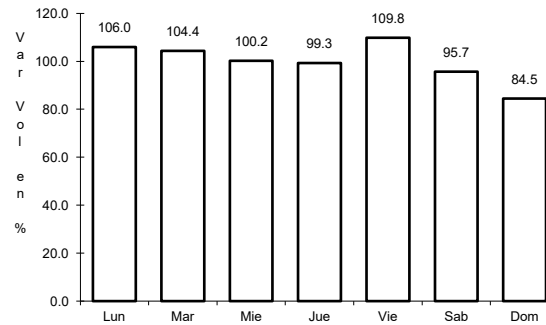
29 CARR: Las Choapas - Ocozocoautla (Cuota)

CLAVE: 00077

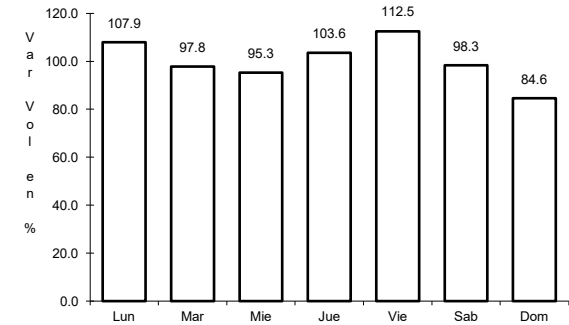
ruta: MEX-187D



Km: 0.00 Tipo: 3 Sent: 0



Km: 123.79 Tipo: 1 Sent: 0

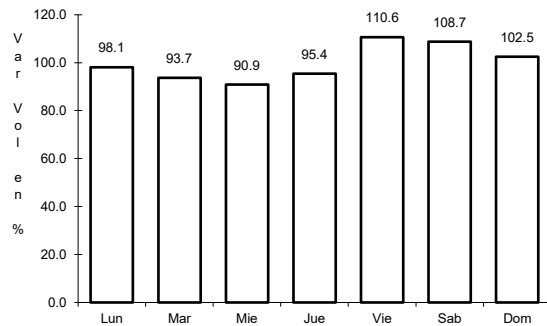


Km: 197.50 Tipo: 1 Sent: 0

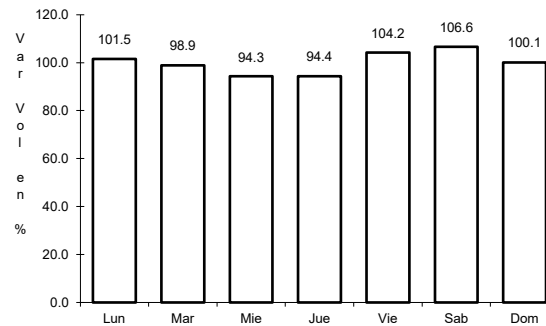
30 CARR: Tuxtla Gutiérrez - San Cristóbal de Las Casas (Cuota)

CLAVE: 07580

ruta: MEX-190D



Km: 1.30 Tipo: 3 Sent: 0

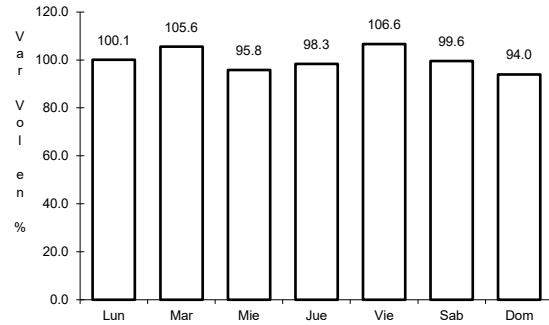


Km: 46.00 Tipo: 1 Sent: 0

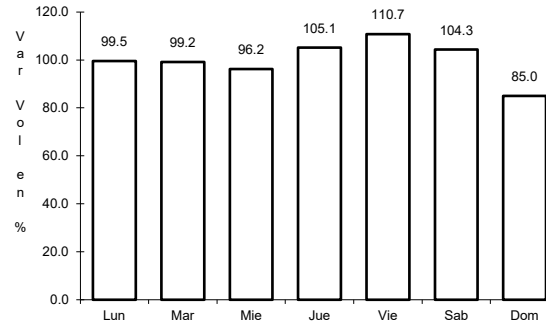
31 CARR: Chiapa de Corzo - Amatenango del Valle

CLAVE: 07024

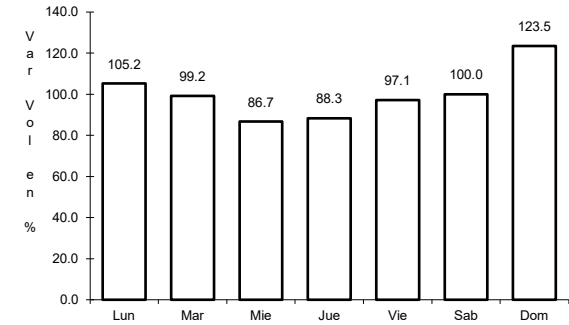
RUTA: CHIS



Km: 0.00 Tipo: 3 Sent: 0



Km: 74.00 Tipo: 1 Sent: 0

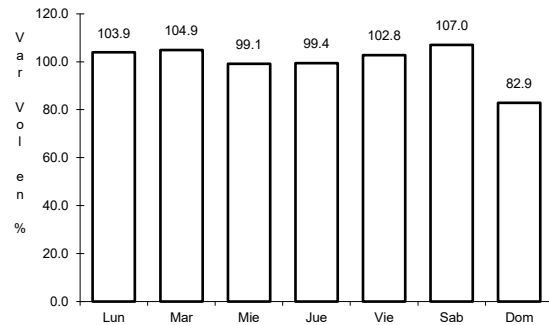


Km: 146.50 Tipo: 1 Sent: 0

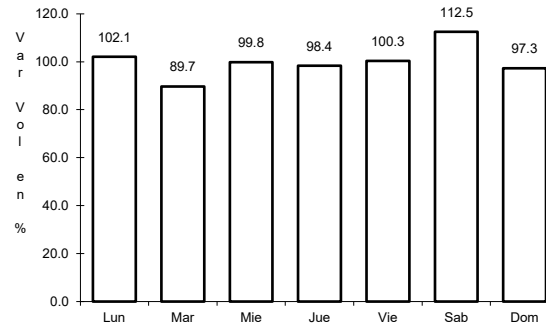
32 CARR: Ent. Emiliano Zapata - La Libertad

CLAVE: 00062

RUTA: CHIS-TAB



Km: 0.00 Tipo: 3 Sent: 0

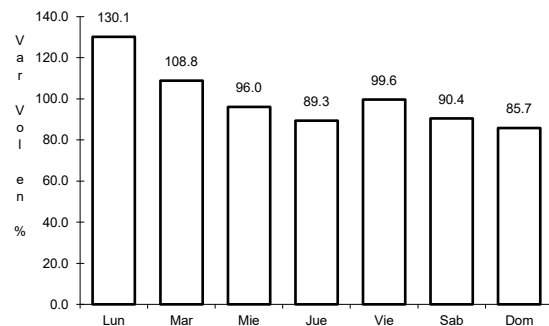


Km: 10.00 Tipo: 1 Sent: 0

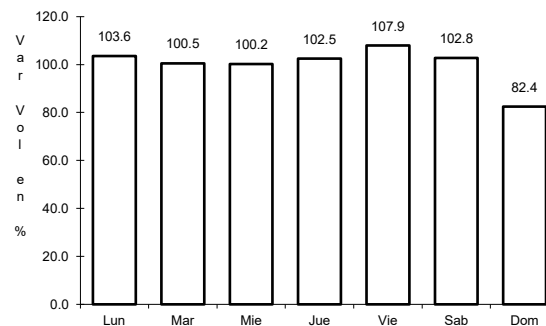
33 CARR: Ent. Suschilá - Comitán

CLAVE: 00061

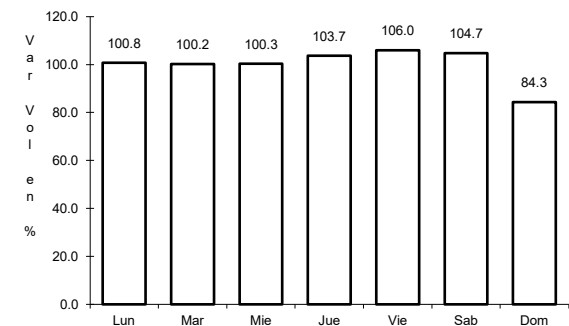
RUTA: CHIS-TAB



Km: 205.00 Tipo: 1 Sent: 0



Km: 257.50 Tipo: 3 Sent: 1

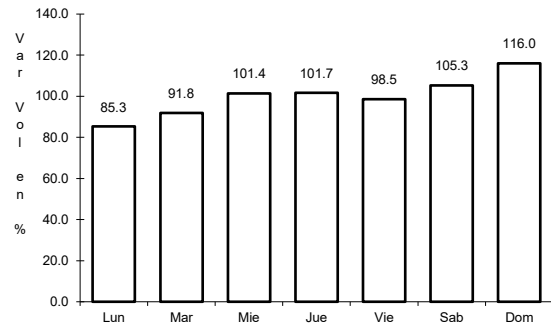


Km: 257.50 Tipo: 3 Sent: 2

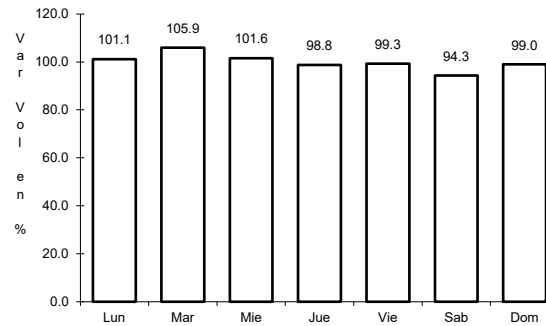
34 CARR: Estación Palenque - La Libertad

CLAVE: 07002

RUTA: CHIS-010



Km: 0.00 Tipo: 3 Sent: 0

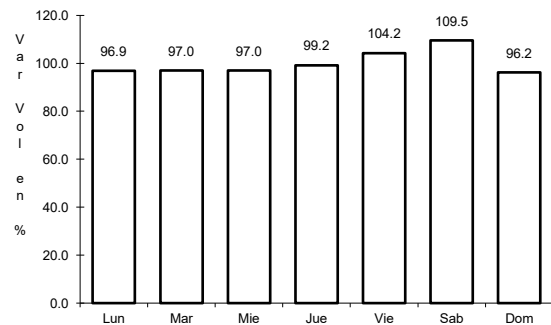


Km: 40.00 Tipo: 1 Sent: 0

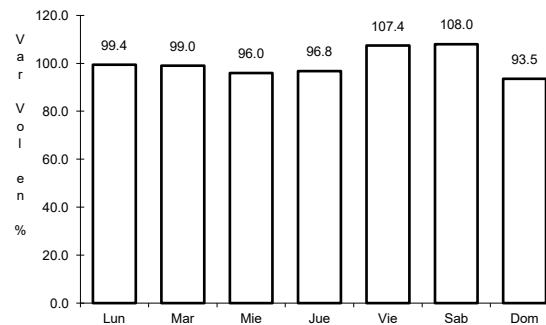
35 CARR: Gregorio Méndez Magaña - Reforma de Ocampo

CLAVE: 00103

RUTA: CHIS



Km: 0.00 Tipo: 3 Sent: 0

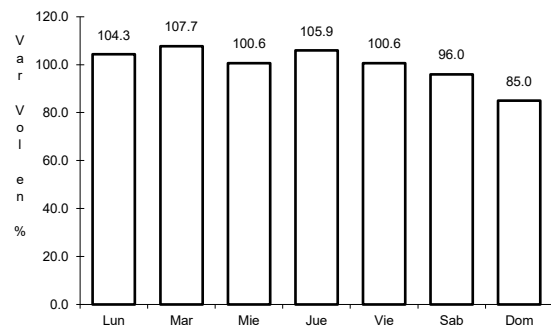


Km: 21.00 Tipo: 1 Sent: 0

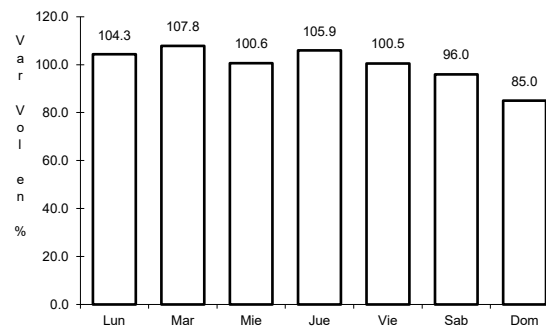
36 CARR: Independencia - Buenos Aires

CLAVE: 07098

RUTA: CHIS



Km: 139.00 Tipo: 3 Sent: 0

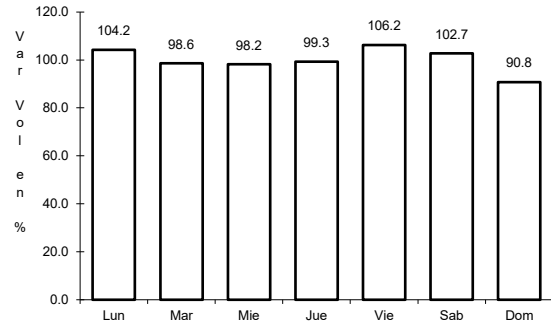


Km: 159.00 Tipo: 1 Sent: 0

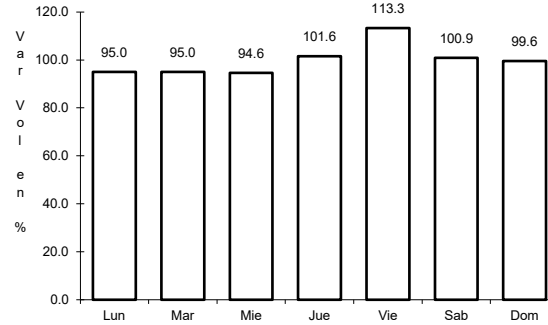
37 CARR: Las Limas - La Concordia

CLAVE: 07028

RUTA: CHIS



Km: 0.00 Tipo: 3 Sent: 0

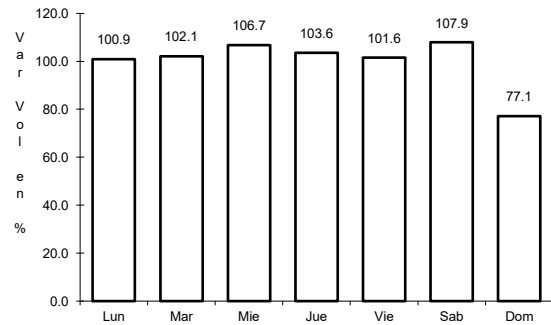


Km: 83.00 Tipo: 1 Sent: 0

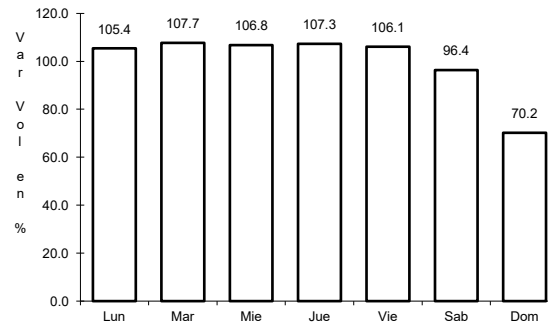
38 CARR: Libramiento Sur de Tuxtla Gutiérrez

CLAVE: 07578

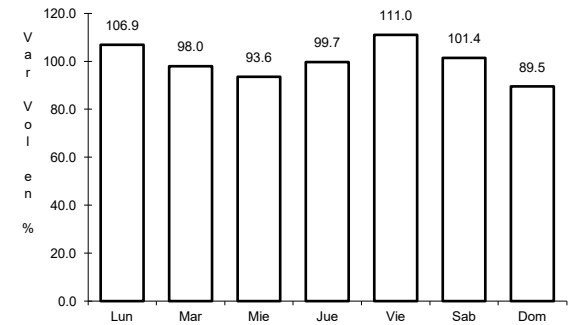
RUTA: CHIS



Km: 0.00 Tipo: 3 Sent: 1



Km: 0.00 Tipo: 3 Sent: 2

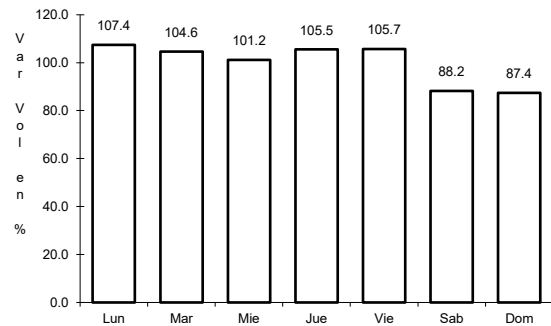


Km: 9.20 Tipo: 1 Sent: 1

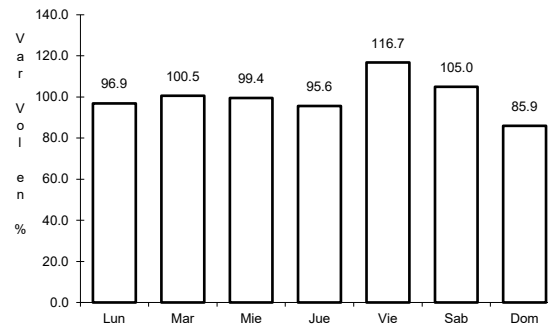
39 CARR: Ocosingo - Comitán

CLAVE: 07092

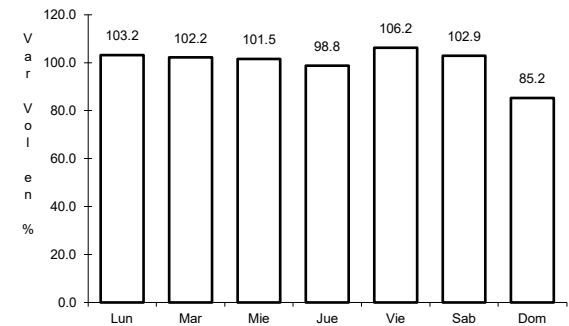
RUTA: CHIS



Km: 0.00 Tipo: 3 Sent: 0



Km: 30.00 Tipo: 1 Sent: 0

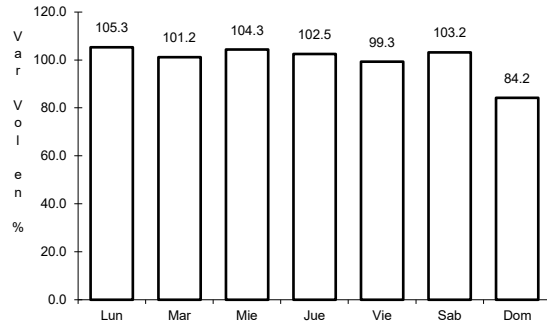


Km: 100.00 Tipo: 1 Sent: 0

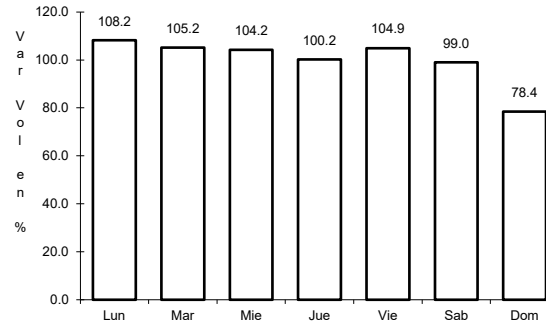
40 CARR: Ocozocoautla - Revolución Mexicana

CLAVE: 07571

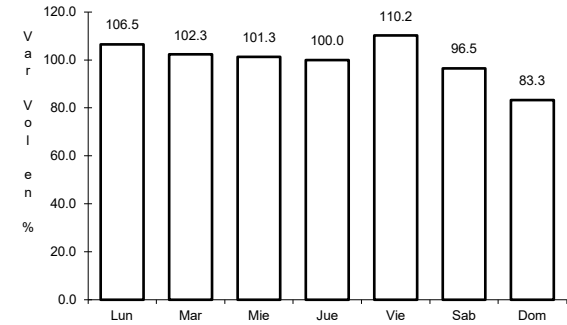
RUTA: CHIS-053-230



Km: 0.00 Tipo: 3 Sent: 0



Km: 76.00 Tipo: 1 Sent: 0

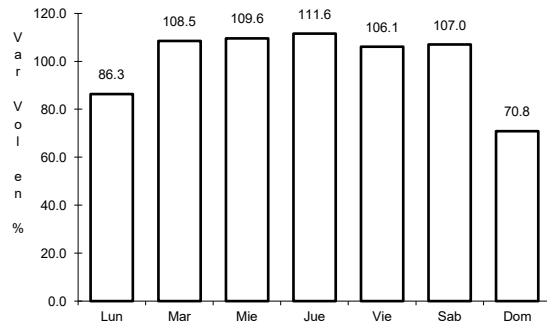


Km: 119.00 Tipo: 1 Sent: 0

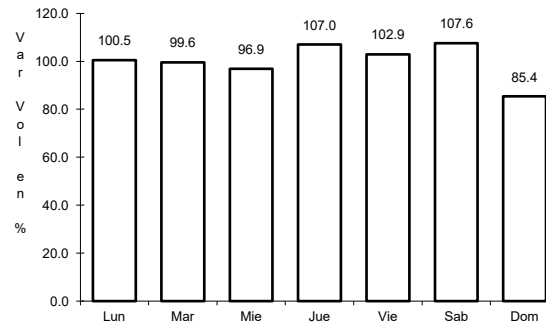
41 CARR: Paso de Cunduacán - Estación Juárez

CLAVE: 00588

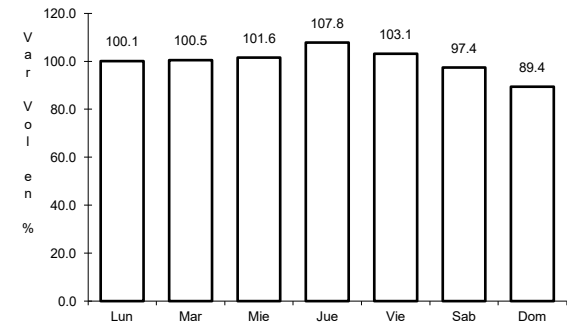
RUTA: TAB-CHIS



Km: 0.00 Tipo: 3 Sent: 0



Km: 18.00 Tipo: 3 Sent: 0

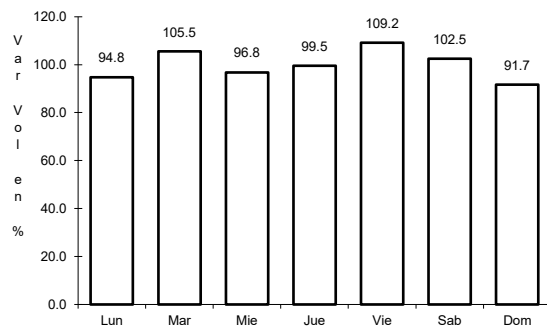


Km: 57.80 Tipo: 1 Sent: 0

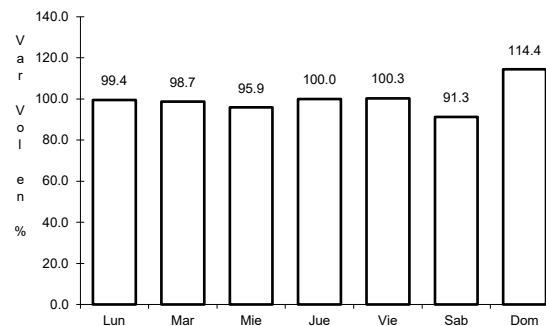
42 CARR: Puerto Caté - San Cristóbal de Las Casas

CLAVE: 07097

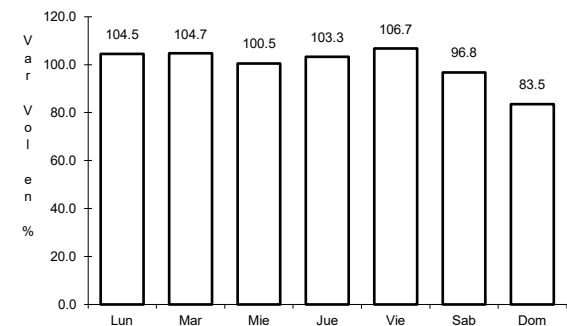
RUTA: CHIS



Km: 0.00 Tipo: 3 Sent: 0



Km: 20.00 Tipo: 1 Sent: 0

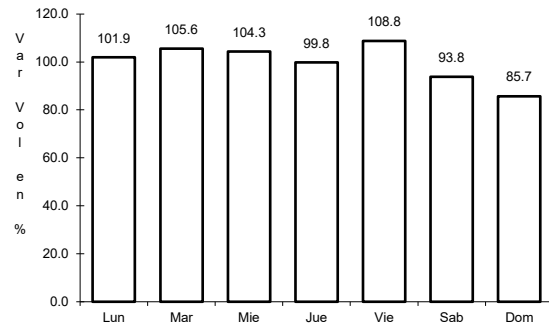


Km: 40.00 Tipo: 1 Sent: 0

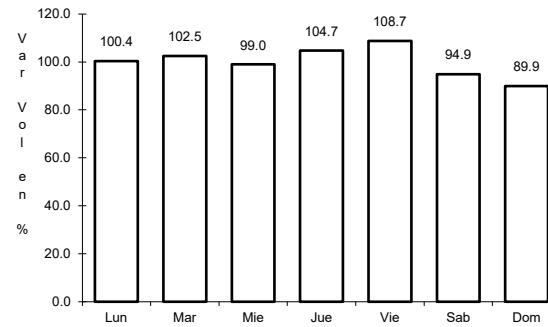
43 CARR: Ramal a Huehuetán

CLAVE: 07360

ruta: CHIS



Km: 0.00 Tipo: 3 Sent: 1

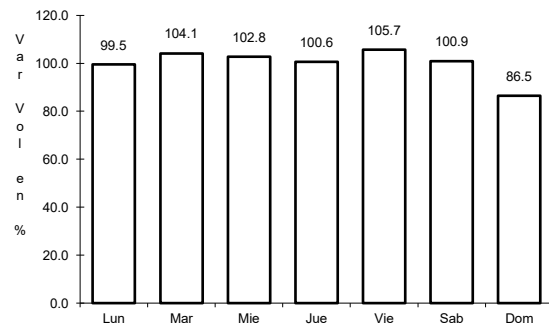


Km: 0.00 Tipo: 3 Sent: 2

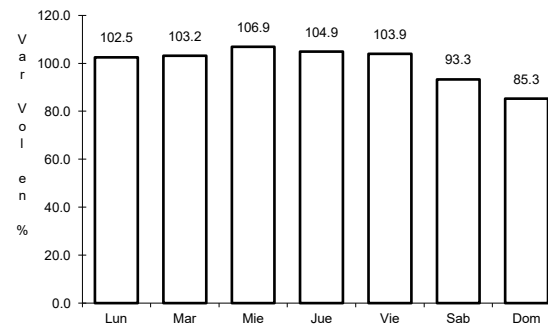
44 CARR: Ramal a Mazatán

CLAVE: 07560

ruta: CHIS-219



Km: 0.00 Tipo: 3 Sent: 1

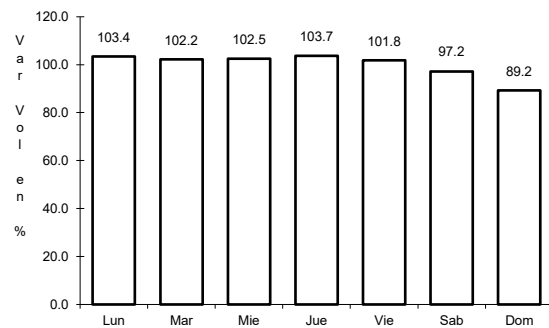


Km: 0.00 Tipo: 3 Sent: 2

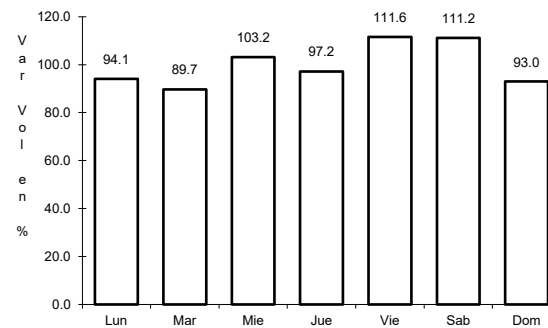
45 CARR: Ramal a Salto del Agua

CLAVE: 00069

ruta: TAB-CHIS



Km: 0.00 Tipo: 3 Sent: 0

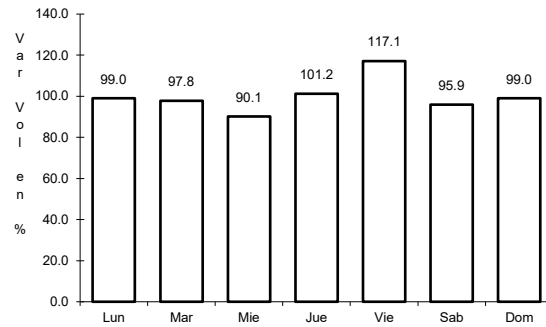


Km: 17.00 Tipo: 1 Sent: 0

46 CARR: Ramal Zona Arqueológica " Bonampak "

CLAVE: 07100

ruta: CHIS



Km: 0.00

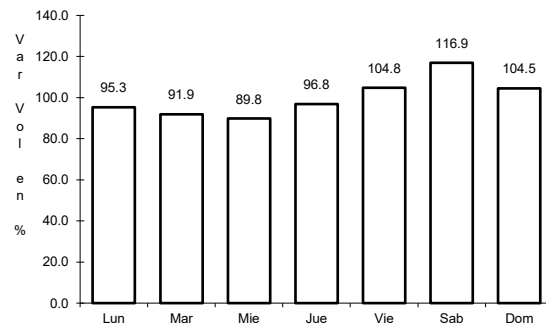
Tipo: 3

Sent: 0

47 CARR: Ramal Zona Arqueológica " Palenque "

CLAVE: 07099

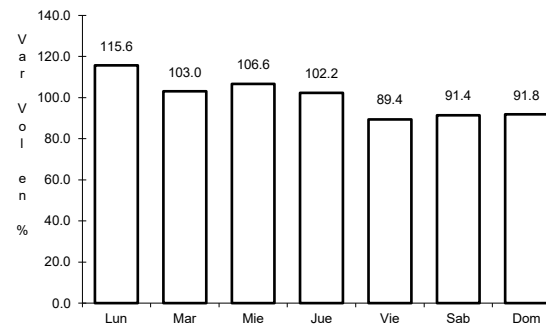
ruta: CHIS



Km: 0.00

Tipo: 3

Sent: 0



Km: 7.30

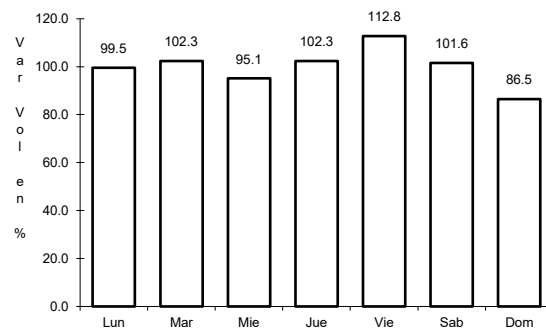
Tipo: 1

Sent: 0

48 CARR: San Francisco Pujilic - Ent. Comitán

CLAVE: 07093

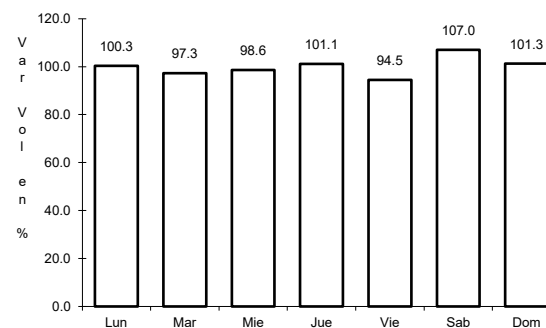
ruta: CHIS



Km: 0.00

Tipo: 3

Sent: 0



Km: 54.00

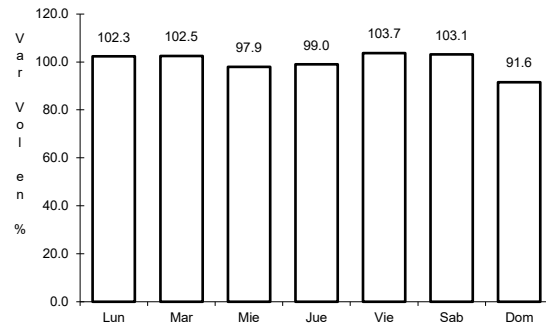
Tipo: 1

Sent: 0

49 CARR: Tapachula - Nueva Alemania

CLAVE: 07581

ruta: CHIS-229



Km: 0.00

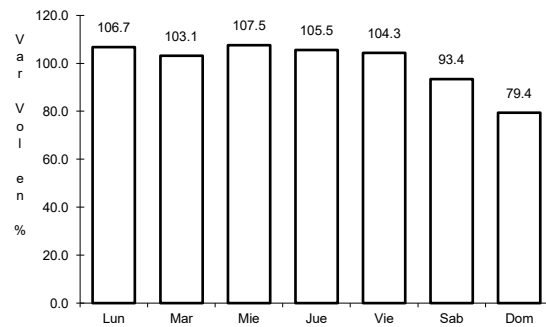
Tipo: 3

Sent: 0

50 CARR: Temo - Tila

CLAVE: 07090

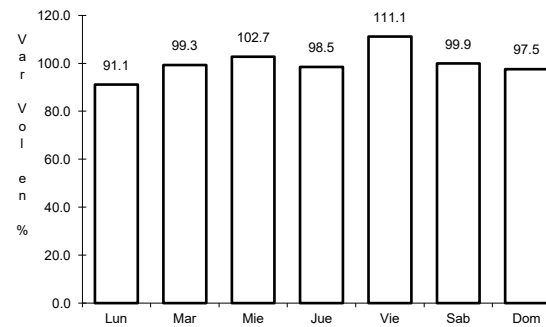
ruta: CHIS



Km: 0.00

Tipo: 3

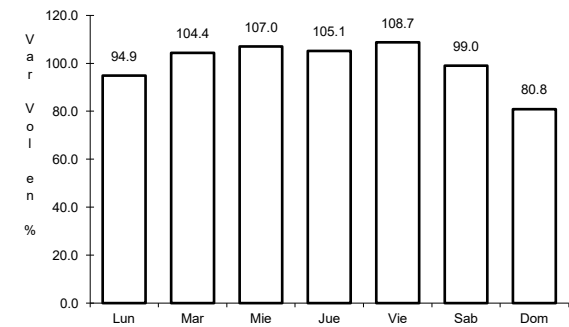
Sent: 0



Km: 28.00

Tipo: 1

Sent: 0



Km: 50.00

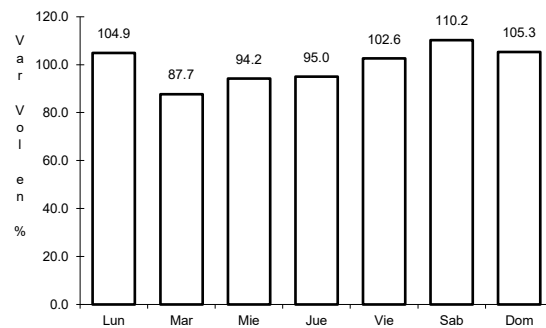
Tipo: 1

Sent: 0

51 CARR: Tierra y Libertad - Ent. Dr. Domingo Chanona

CLAVE: 07096

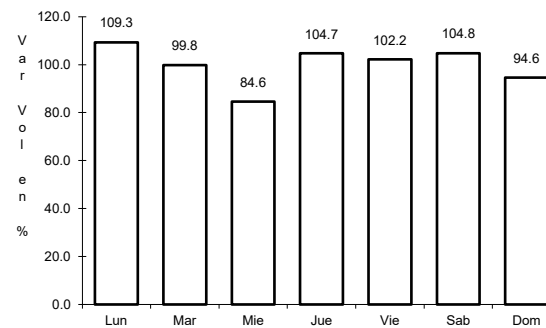
ruta: CHIS



Km: 0.00

Tipo: 3

Sent: 0



Km: 60.00

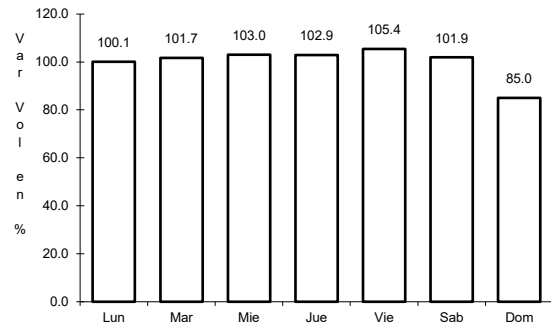
Tipo: 1

Sent: 0

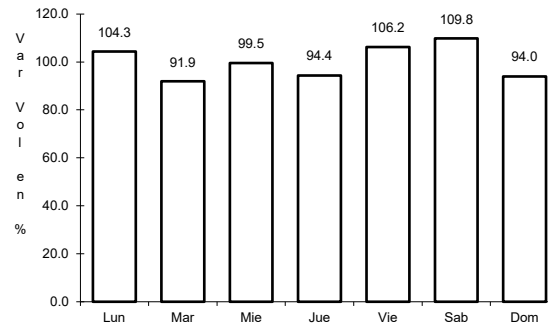
52 CARR: Tuxtla Gutiérrez - Portillo Zaragoza

CLAVE: 07574

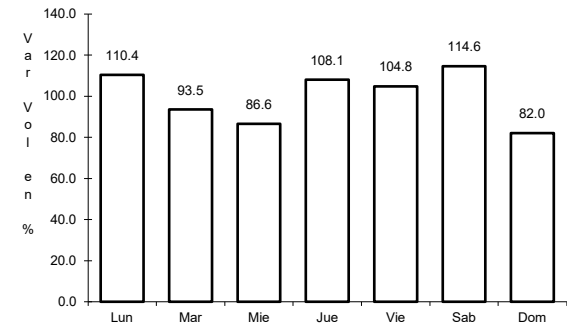
ruta: CHIS-133



Km: 0.00 Tipo: 3 Sent: 0



Km: 53.50 Tipo: 1 Sent: 0

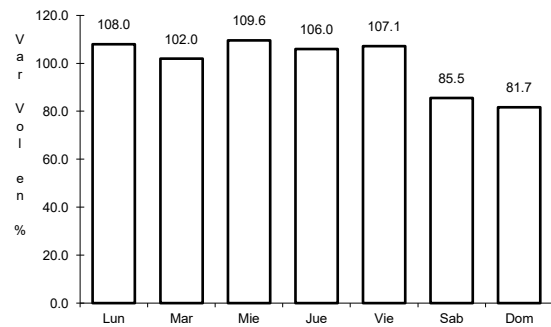


Km: 79.00 Tipo: 1 Sent: 0

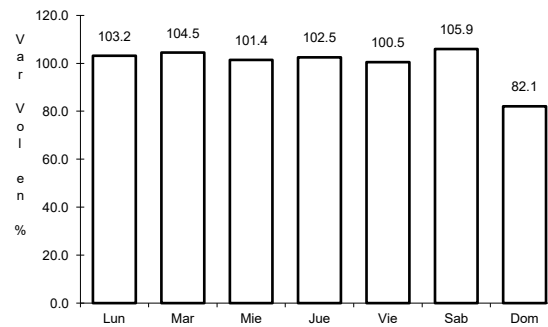
53 CARR: Zapatero - T. C. (Jalapa - Jonuta)

CLAVE: 00061

ruta: CHIS-TAB



Km: 0.00 Tipo: 3 Sent: 0



Km: 41.00 Tipo: 1 Sent: 0