

CHIHUAHUA

---RED FEDERAL LIBRE---

1 Cd. Juárez - Janos	MEX-002
2 Chihuahua - El Sueco	MEX-045
3 Chihuahua - Ojinaga	MEX-016
4 Delicias - Chihuahua (Libre)	MEX-045
5 El Sueco - Janos	MEX-010
6 Ent. Ciudad Camargo - Saucillo	MEX-045
7 Ent. La Zarca - Hidalgo del Parral	MEX-045
8 Gómez Palacio - Jiménez	MEX-049
9 Hidalgo del Parral - Ent. Nuevo Palomas (Vía Corta)	MEX-024
10 Hidalgo del Parral - Guadalupe y Calvo	MEX-024
11 Hidalgo del Parral - Jiménez	MEX-045
12 Janos - Agua Prieta	MEX-002
13 Jerónimo - Sta. Teresa	MEX-002
14 La Junta - Yécora	MEX-016
15 Libramiento de Delicias - Mecoqui	MEX-045
16 Porvenir - Cd. Juárez	MEX-002
17 Ramal a Aeropuerto de Chihuahua	MEX-016
18 Ramal a Palomas	MEX-002
19 Villa Ahumada - Cd. Juárez (Libre)	MEX-045

---RED FEDERAL DE CUOTA---

20 Camargo - Delicias (Cuota)	MEX-045D
21 Chihuahua - Sacramento (Cuota)	MEX-045D
22 El Sueco - Villa Ahumada (Cuota)	MEX-045D
23 Gómez Palacio - Corralitos (Cuota)	MEX-049D
24 Jiménez - Camargo (Cuota)	MEX-045D
25 Libramiento Oriente Chihuahua (Cuota)	MEX-045D

---RED ESTATAL LIBRE---

26 Ahumada - Ricardo Flores Magón	CHIH
27 Cuauhtémoc - Buenaventura	CHIH
28 Delicias - Saucillo	CHIH-007
29 Ent. Peña Blanca - Ent. La Concha	CHIH
30 Ent. Puerto Justo - Ent. Guachochic	CHIH
31 Jiménez - Camargo	CHIH-049
32 Lázaro Cárdenas - Ent. Colonia San José	CHIH-004
33 Libramiento de Hidalgo del Parral	CHIH
34 Libramiento de Jiménez	CHIH
35 Mecoqui - Julimes	CHIH-005
36 Ramal a San Pedro Creel	CHIH-025
37 Samachique - Batopilas	CHIH
38 San Juanito - Ent. Basaseachi	CHIH
39 San Pedro Creel - Guachochi	CHIH-025
40 T. C. (Jiménez - Camargo) - Ojinaga	CHIH-018
41 T. Julimes - La Boquilla	CHIH-018

---RED ESTATAL DE CUOTA---

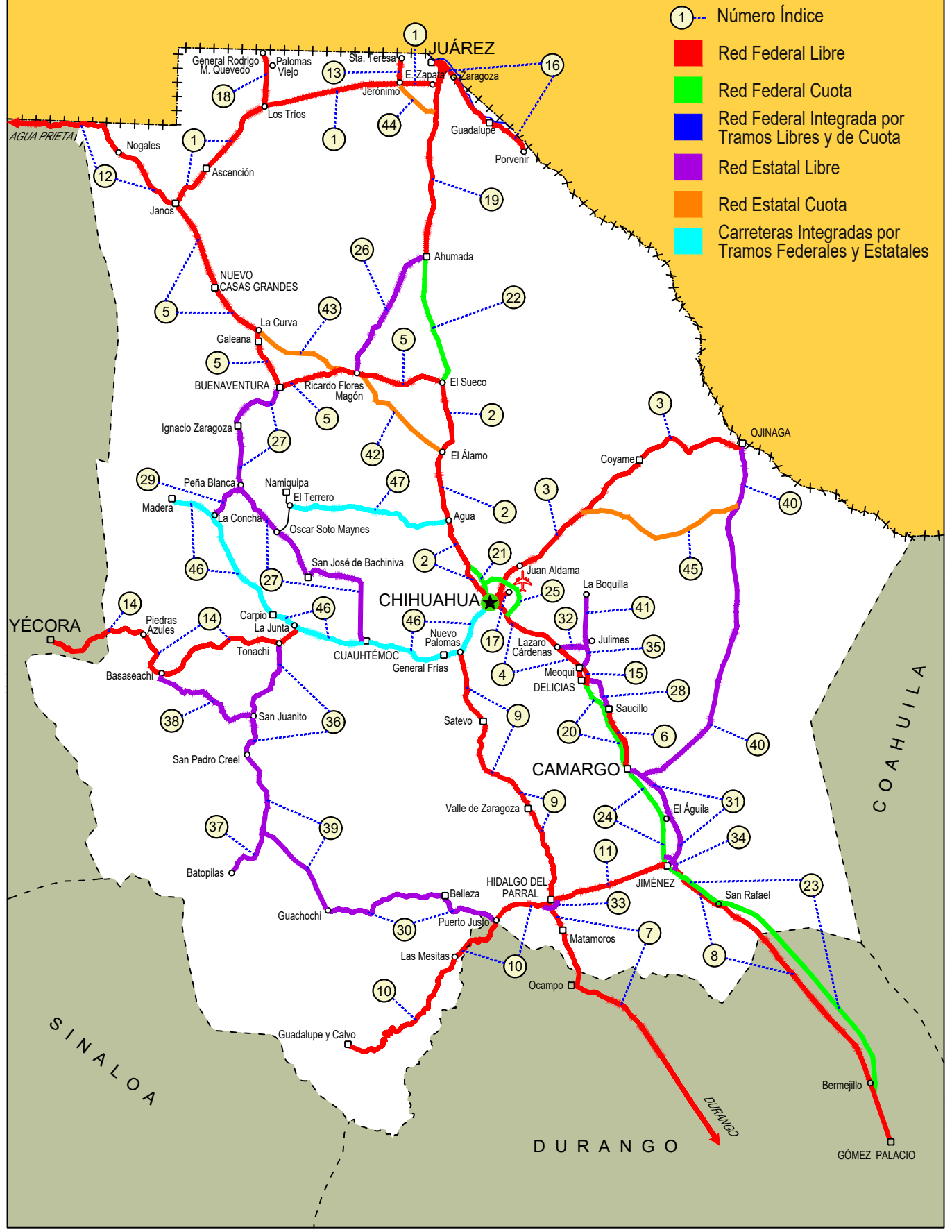
42 Ent. El Álamo - Ent. Ricardo Flores Magón (Cuota)	CHIH-D
43 Ricardo Flores Magón - Galeana (Cuota)	CHIH-D
44 Samalayuca - San Jerónimo (Cuota)	CHIH-D
45 T. C. (Chihuahua - Ojinaga) - La Mula (Cuota)	CHIH-D

---CARRETERAS INTEGRADAS POR TRAMOS FEDERALES Y ESTATALES---

46 Chihuahua - Madera	CHIH-D-MEX-001-CHIH
47 Ent. Agua Caliente - El Terrero	CHIH-MEX

08 CHIHUAHUA

ESTADOS UNIDOS DE AMERICA



CHIHUAHUA

1 CARR: Cd. Juárez - Janos

CLAVE: 08041

RUTA: MEX-002

AÑO: 2022

LUGAR	ESTACION				CLASIFICACION VEHICULAR EN PORCIENTO										COORDENADAS					
	KM	TE	SC	TDPA	M	A	B	C2	C3	T3S2	T3S3	T3S2R4	OTROS	A	B	C	K'	D	LATITUD	LONGITUD
T. C. El Sueco - Cd. Juárez	0.00	3	1	7949	2.8	75.4	4.1	10.4	2.4	3.4	0.5	0.8	0.2	78.2	4.1	17.7	0.090	0.504	31.605725	-106.486962
T. C. El Sueco - Cd. Juárez	0.00	3	2	8073	2.8	75.6	4.0	11.0	2.0	3.4	0.5	0.6	0.1	78.4	4.0	17.6	0.091	0.504	31.605587	-106.486916
T. C. Jerónimo - Sta. Teresa	22.40	0	0																	
T. Der. Palomas	112.00	1	0	2234	2.2	76.5	2.6	3.3	1.5	8.8	1.4	2.9	0.8	78.7	2.6	18.7	0.081	0.517	31.471302	-107.609013
Ascensión	170.95	1	0	3331	1.4	77.8	2.6	3.8	0.6	9.9	1.3	2.1	0.5	79.2	2.6	18.2	0.075	0.506	31.105084	-107.986865
Janos	205.00	1	0	3295	2.1	74.4	4.0	9.6	0.6	6.7	0.8	1.5	0.3	76.5	4.0	19.5	0.087	0.524	30.897028	-108.182052

2 CARR: Chihuahua - El Sueco

CLAVE: 08419

RUTA: MEX-045

AÑO: 2022

LUGAR	ESTACION				CLASIFICACION VEHICULAR EN PORCIENTO										COORDENADAS					
	KM	TE	SC	TDPA	M	A	B	C2	C3	T3S2	T3S3	T3S2R4	OTROS	A	B	C	K'	D	LATITUD	LONGITUD
Chihuahua	0.00	0	0																	
T. C. Chihuahua - Sacramento (Cuota)	16.70	0	0																	
San Cristóbal	24.00	1	0	3873	1.6	74.9	1.9	3.9	1.4	12.9	2.5	0.8	0.1	76.5	1.9	21.6	0.093	0.537	28.804753	-106.219075
T. C. Chihuahua - Sacramento (Cuota)	32.00	1	0	4399	2.2	75.8	1.8	3.9	1.3	11.7	2.3	0.9	0.1	78.0	1.8	20.2	0.104	0.540	28.858632	-106.219368
T. C. Chihuahua - Sacramento (Cuota)	32.00	3	1	6806	3.7	65.8	4.5	6.0	1.3	13.2	1.9	3.1	0.5	69.5	4.5	26.0	0.092	0.504	28.869064	-106.228205
T. C. Chihuahua - Sacramento (Cuota)	32.00	3	2	6708	3.2	63.6	5.4	9.7	1.3	12.1	1.9	2.3	0.5	66.8	5.4	27.8	0.099	0.504	28.869008	-106.228307
T. Der. El Sauz	55.38	3	1	5361	2.3	60.7	5.4	5.3	1.2	18.8	2.4	3.7	0.2	63.0	5.4	31.6	0.082	0.516	29.053057	-106.329746
T. Der. El Sauz	55.38	3	2	5026	2.0	62.7	3.2	5.3	1.8	18.4	2.4	3.9	0.3	64.7	3.2	32.1	0.090	0.516	29.052599	-106.329883
T. Izq. El Terrero	60.67	3	1	6140	1.4	65.4	5.1	2.8	0.9	18.2	2.1	3.3	0.8	66.8	5.1	28.1	0.092	0.513	29.098631	-106.342287
T. Izq. El Terrero	60.67	3	2	5830	1.4	66.4	4.9	3.2	0.9	18.0	1.7	2.7	0.8	67.8	4.9	27.3	0.095	0.513	29.098536	-106.342556
Ent. El Sueco	155.87	1	1	3935	1.5	68.0	5.4	3.4	0.8	16.4	1.5	2.4	0.6	69.5	5.4	25.1	0.106	0.501	29.880091	-106.394384
Ent. El Sueco	155.87	1	2	3916	1.7	66.0	5.7	3.6	1.0	16.4	2.0	2.9	0.7	67.7	5.7	26.6	0.113	0.501	29.879491	-106.394754

3 CARR: Chihuahua - Ojinaga

CLAVE: 08042

RUTA: MEX-016

AÑO: 2022

LUGAR	ESTACION				CLASIFICACION VEHICULAR EN PORCIENTO										COORDENADAS					
	KM	TE	SC	TDPA	M	A	B	C2	C3	T3S2	T3S3	T3S2R4	OTROS	A	B	C	K'	D	LATITUD	LONGITUD
Chihuahua	0.00	0	0																	
T. Der. Aeropuerto	6.50	1	1	20933	1.7	89.6	1.0	2.9	0.9	2.4	0.4	0.4	0.7	91.3	1.0	7.7	0.096	0.512	28.685988	-106.015647
T. Der. Aeropuerto	6.50	1	2	19943	1.3	89.3	0.9	3.0	1.0	2.8	0.5	0.4	0.8	90.6	0.9	8.5	0.097	0.512	28.686063	-106.015772
T. Der. Aeropuerto	6.50	3	1	9838	1.3	84.3	2.4	8.1	0.9	1.2	0.8	0.3	0.7	85.6	2.4	12.0	0.124	0.535	28.692284	-106.011808
T. Der. Aeropuerto	6.50	3	2	11332	1.2	84.3	2.4	8.2	0.9	1.2	0.8	0.4	0.6	85.5	2.4	12.1	0.121	0.535	28.692334	-106.011944
Aldama	26.80	1	1	5586	1.4	86.2	1.9	7.6	0.8	1.3	0.6	0.1	0.1	87.6	1.9	10.5	0.107	0.506	28.817817	-105.927127
Aldama	26.80	1	2	5463	1.2	85.9	1.7	8.1	0.9	1.0	0.7	0.2	0.3	87.1	1.7	11.2	0.099	0.506	28.817931	-105.927224

CHIHUAHUA

3 CARR: Chihuahua - Ojinaga

CLAVE: 08042

RUTA: MEX-016

AÑO: 2022

LUGAR	ESTACION				CLASIFICACION VEHICULAR EN PORCIENTO														COORDENADAS	
	KM	TE	SC	TDPA	M	A	B	C2	C3	T3S2	T3S3	T3S2R4	OTROS	A	B	C	K'	D	LATITUD	LONGITUD
Aldama	26.80	3	0	2278	1.2	87.2	1.6	4.8	1.0	2.7	1.0	0.3	0.2	88.4	1.6	10.0	0.172	0.519	28.851781	-105.871457
El Morrión	84.00	3	0	1722	0.6	87.8	1.9	4.5	1.2	2.2	1.0	0.5	0.3	88.4	1.9	9.7	0.098	0.541	29.064177	-105.604321
Coyame	141.00	1	0	293	1.5	79.3	0.5	14.2	2.0	1.0	0.9	0.1	0.5	80.8	0.5	18.7	0.099	0.521	29.446867	-105.097943
Ojinaga	224.00	1	0	2663	1.2	91.9	0.3	5.4	0.5	0.4	0.1	0.1	0.1	93.1	0.3	6.6	0.077	0.504	29.540026	-104.445051

4 CARR: Delicias - Chihuahua (Libre)

CLAVE: 08418

RUTA: MEX-045

AÑO: 2022

LUGAR	ESTACION				CLASIFICACION VEHICULAR EN PORCIENTO														COORDENADAS	
	KM	TE	SC	TDPA	M	A	B	C2	C3	T3S2	T3S3	T3S2R4	OTROS	A	B	C	K'	D	LATITUD	LONGITUD
Delicias	138.00	0	0																	
T. C. Libramiento de Delicias - Meoqui	150.10	3	1	9238	4.1	67.5	4.0	5.0	2.0	11.9	1.9	2.7	0.9	71.6	4.0	24.4	0.080	0.514	28.294667	-105.503862
T. C. Libramiento de Delicias - Meoqui	150.10	3	2	9786	4.4	69.6	4.0	5.0	1.8	10.2	1.6	2.5	0.9	74.0	4.0	22.0	0.073	0.514	28.294605	-105.503921
X. C. Santa Cruz Rosales - Las Nieves	156.50	1	1	8514	5.2	69.6	4.0	4.0	1.5	11.9	1.1	2.2	0.5	74.8	4.0	21.2	0.082	0.523	28.324353	-105.544390
X. C. Santa Cruz Rosales - Las Nieves	156.50	1	2	9331	5.0	70.0	4.2	3.9	1.7	11.5	1.2	2.0	0.5	75.0	4.2	20.8	0.074	0.523	28.324429	-105.544670
X. C. Orinda - Nuevo San Lucas	159.00	1	1	9356	4.8	67.9	5.0	3.7	1.5	12.2	1.8	2.3	0.8	72.7	5.0	22.3	0.089	0.505	28.338922	-105.564291
X. C. Orinda - Nuevo San Lucas	159.00	1	2	9556	4.4	68.4	4.9	3.5	1.6	12.5	1.6	2.4	0.7	72.8	4.9	22.3	0.068	0.505	28.339087	-105.564688
T. Der. Lazáro Cárdenas	166.87	1	1	9825	5.0	70.5	4.0	4.0	1.6	10.0	1.7	2.4	0.8	75.5	4.0	20.5	0.089	0.507	28.377862	-105.617473
T. Der. Lazáro Cárdenas	166.87	1	2	9550	5.0	70.4	4.0	4.1	1.9	10.0	1.5	2.3	0.8	75.4	4.0	20.6	0.085	0.507	28.376799	-105.616335
T. Der. Lazáro Cárdenas	166.87	3	1	9122	7.0	58.7	4.3	7.2	1.3	15.8	2.2	2.7	0.8	65.7	4.3	30.0	0.089	0.519	28.391098	-105.635538
T. Der. Lazáro Cárdenas	166.87	3	2	8464	6.9	58.9	4.4	6.9	1.3	15.8	2.2	2.8	0.8	65.8	4.4	29.8	0.091	0.519	28.391031	-105.635707
T. C. Libramiento Oriente Chihuahua (Cuota)	208.40	1	1	8567	1.4	68.0	4.9	3.5	1.7	14.6	2.4	2.8	0.7	69.4	4.9	25.7	0.078	0.513	28.569979	-105.955977
T. C. Libramiento Oriente Chihuahua (Cuota)	208.40	1	2	9033	1.3	68.5	5.0	3.4	1.8	14.5	2.3	2.4	0.8	69.8	5.0	25.2	0.081	0.513	28.569888	-105.956193
T. Der. Aquiles Serdán	210.00	1	1	8366	4.7	75.2	3.4	3.9	1.5	7.9	1.2	1.8	0.4	79.9	3.4	16.7	0.119	0.517	28.585645	-105.959916
T. Der. Aquiles Serdán	210.00	1	2	7831	4.5	75.2	3.5	4.0	1.4	8.0	1.1	1.9	0.4	79.7	3.5	16.8	0.102	0.517	28.585567	-105.960133
Chihuahua	222.56	0	0																	

5 CARR: El Sueco - Janos

CLAVE: 08037

RUTA: MEX-010

AÑO: 2022

LUGAR	ESTACION				CLASIFICACION VEHICULAR EN PORCIENTO														COORDENADAS	
	KM	TE	SC	TDPA	M	A	B	C2	C3	T3S2	T3S3	T3S2R4	OTROS	A	B	C	K'	D	LATITUD	LONGITUD
El Sueco	0.00	3	0	326	2.8	60.6	2.0	4.4	1.1	23.9	2.9	2.0	0.3	63.4	2.0	34.6	0.120	0.548	29.893599	-106.401537
Ricardo Flores Magón	59.00	3	0	4268	1.9	64.8	4.0	3.6	1.6	16.6	3.2	3.9	0.4	66.7	4.0	29.3	0.082	0.507	29.946174	-106.977869
T. C. Ricardo Flores Magón - Galeana (Cuota)	68.90	0	0																	
Buenaventura	114.00	1	0	1589	3.3	74.5	5.3	6.3	2.3	4.4	2.4	1.4	0.1	77.8	5.3	16.9	0.090	0.505	29.853512	-107.444543
Buenaventura	114.00	3	0	4359	1.7	83.8	1.1	11.0	0.7	1.0	0.5	0.2	0.0	85.5	1.1	13.4	0.086	0.507	29.867132	-107.478487

CHIHUAHUA

5 CARR: El Sueco - Janos

CLAVE: 08037

RUTA: MEX-010

AÑO: 2022

LUGAR	ESTACION				CLASIFICACION VEHICULAR EN PORCIENTO										COORDENADAS					
	KM	TE	SC	TDPA	M	A	B	C2	C3	T3S2	T3S3	T3S2R4	OTROS	A	B	C	K'	D	LATITUD	LONGITUD
T. C. Ricardo Flores Magón - Galeana (Cuota)	154.90	0	0																	
Nuevo Casas Grandes	195.00	3	0	8924	3.1	77.4	3.7	5.0	1.6	5.4	1.5	1.9	0.4	80.5	3.7	15.8	0.079	0.504	30.455474	-107.915618
Janos	257.00	1	0	5773	2.3	66.3	3.4	4.4	1.1	14.3	3.4	3.9	0.9	68.6	3.4	28.0	0.065	0.508	30.884661	-108.184798

6 CARR: Ent. Ciudad Camargo - Saucillo

CLAVE: 08417

RUTA: MEX-045

AÑO: 2022

LUGAR	ESTACION				CLASIFICACION VEHICULAR EN PORCIENTO										COORDENADAS					
	KM	TE	SC	TDPA	M	A	B	C2	C3	T3S2	T3S3	T3S2R4	OTROS	A	B	C	K'	D	LATITUD	LONGITUD
Camargo	0.00	3	0	4341	1.5	71.9	1.6	10.5	2.3	9.0	2.0	0.9	0.3	73.4	1.6	25.0	0.068	0.501	27.726537	-105.191323
T. Der. La Cruz	20.92	3	0	2803	6.7	68.5	2.4	6.1	2.1	9.0	3.0	1.4	0.8	75.2	2.4	22.4	0.068	0.526	27.871554	-105.215317
Saucillo	42.52	1	0	4629	3.0	87.1	1.9	4.8	1.0	1.4	0.5	0.3	0.0	90.1	1.9	8.0	0.074	0.507	28.018688	-105.290366

7 CARR: Ent. La Zarca - Hidalgo del Parral

CLAVE: 00488

RUTA: MEX-045

AÑO: 2022

LUGAR	ESTACION				CLASIFICACION VEHICULAR EN PORCIENTO										COORDENADAS					
	KM	TE	SC	TDPA	M	A	B	C2	C3	T3S2	T3S3	T3S2R4	OTROS	A	B	C	K'	D	LATITUD	LONGITUD
Ent. La Zarca	0.00	3	0	1268	3.3	79.1	2.5	4.6	3.2	3.5	2.7	0.7	0.4	82.4	2.5	15.1	0.079	0.548	25.786698	-104.766366
T. Der. Ceballos	47.85	1	0	1383	1.1	81.1	4.5	4.1	1.7	4.1	2.5	0.6	0.3	82.2	4.5	13.3	0.093	0.503	26.134632	-105.024780
T. Der. Ceballos	47.85	3	0	1493	1.2	85.5	3.3	3.5	0.7	3.3	2.2	0.2	0.1	86.7	3.3	10.0	0.081	0.534	26.143020	-105.031074
T. Izq. Canutillo	92.35	3	0	1466	2.0	82.8	3.7	4.1	1.6	3.1	2.3	0.3	0.1	84.8	3.7	11.5	0.085	0.506	26.389539	-105.354005
Las Nieves	97.60	3	0	1918	4.4	79.2	3.2	4.1	2.1	3.2	2.3	1.0	0.5	83.6	3.2	13.2	0.062	0.502	26.400118	-105.404907
T. Izq. Ocampo	109.22	3	0	1345	5.9	77.9	3.4	5.1	1.9	2.8	2.2	0.5	0.3	83.8	3.4	12.8	0.074	0.501	26.442332	-105.494137
Lim. Edos. Term. Dgo. Ppia. Chih.	122.89	0	0																	
Matamoros	148.00	1	0	1273	3.0	78.9	3.7	4.9	2.5	3.4	3.2	0.3	0.1	81.9	3.7	14.4	0.085	0.502	26.750891	-105.580959
Hidalgo del Parral	171.00	1	0	4414	2.8	86.1	2.0	4.0	1.2	1.6	1.5	0.6	0.2	88.9	2.0	9.1	0.065	0.503	26.917817	-105.640429

8 CARR: Gómez Palacio - Jiménez

CLAVE: 00006

RUTA: MEX-049

AÑO: 2022

LUGAR	ESTACION				CLASIFICACION VEHICULAR EN PORCIENTO										COORDENADAS					
	KM	TE	SC	TDPA	M	A	B	C2	C3	T3S2	T3S3	T3S2R4	OTROS	A	B	C	K'	D	LATITUD	LONGITUD
Gómez Palacio	0.00	3	1	15857	5.5	79.1	2.3	3.6	2.0	4.0	1.1	1.9	0.5	84.6	2.3	13.1	0.069	0.502	25.612129	-103.512496
Gómez Palacio	0.00	3	2	15986	7.0	75.7	2.7	4.0	2.1	4.7	1.2	2.1	0.5	82.7	2.7	14.6	0.079	0.502	25.612212	-103.512654
X. C. La Torreña - Brittingham	10.96	1	1	11158	8.2	65.4	3.7	4.9	2.9	7.4	2.2	4.3	1.0	73.6	3.7	22.7	0.072	0.508	25.639144	-103.523366
X. C. La Torreña - Brittingham	10.96	1	2	10816	8.3	64.9	4.1	4.5	2.2	9.1	2.3	3.7	0.9	73.2	4.1	22.7	0.071	0.508	25.639191	-103.523525
T. Izq. Dinamita	26.27	1	1	7311	4.5	60.2	6.0	4.4	1.7	15.4	3.6	3.3	0.9	64.7	6.0	29.3	0.064	0.506	25.751488	-103.568059

CHIHUAHUA

8 CARR: Gómez Palacio - Jiménez

CLAVE: 00006

RUTA: MEX-049

AÑO: 2022

LUGAR	ESTACION				CLASIFICACION VEHICULAR EN PORCIENTO													COORDENADAS		
	KM	TE	SC	TDPA	M	A	B	C2	C3	T3S2	T3S3	T3S2R4	OTROS	A	B	C	K'	D	LATITUD	LONGITUD
T. Izq. Dinamita	26.27	1	2	7503	4.7	59.5	5.9	4.8	1.6	16.2	3.1	3.4	0.8	64.2	5.9	29.9	0.067	0.506	25.751409	-103.568257
T. C. Gómez Palacio - Corralitos (Cuota)	37.92	1	1	5830	3.9	54.8	6.5	4.7	2.5	18.2	3.8	4.6	1.0	58.7	6.5	34.8	0.062	0.511	25.861738	-103.610388
T. C. Gómez Palacio - Corralitos (Cuota)	37.92	1	2	5580	3.9	54.8	6.8	4.6	2.2	18.5	3.8	4.6	0.8	58.7	6.8	34.5	0.063	0.511	25.861686	-103.610579
Bermejillo	39.30	1	1	3792	13.5	60.9	4.9	5.3	2.1	8.8	2.3	1.9	0.3	74.4	4.9	20.7	0.068	0.510	25.877456	-103.617879
Bermejillo	39.30	1	2	3639	13.4	61.3	4.8	5.2	2.0	8.8	2.3	1.9	0.3	74.7	4.8	20.5	0.072	0.510	25.877448	-103.617969
T. Izq. Ent. La Zarca	40.89	3	0	2911	4.4	43.2	5.8	11.2	4.2	24.7	4.8	1.6	0.1	47.6	5.8	46.6	0.065	0.507	25.901175	-103.627595
Yermo	107.95	1	0	2396	4.7	40.7	4.0	11.5	4.0	23.5	7.7	3.3	0.6	45.4	4.0	50.6	0.070	0.518	26.383446	-103.998803
Yermo	107.95	3	0	2032	3.8	42.3	8.2	9.8	4.2	23.4	6.4	1.8	0.1	46.1	8.2	45.7	0.060	0.503	26.396123	-104.010594
Ceballos	127.20	1	0	2224	2.8	45.3	4.3	5.4	3.0	29.9	7.4	1.7	0.2	48.1	4.3	47.6	0.068	0.500	26.516338	-104.120053
Ceballos	127.20	3	0	2337	6.2	42.4	4.5	5.6	3.2	25.7	7.9	3.9	0.6	48.6	4.5	46.9	0.069	0.520	26.536669	-104.139077
Lim. Edos. Term. Dgo. Ppia. Chih.	146.15	0	0																	
Estación Escalón	160.89	3	0	2086	5.1	29.3	5.6	7.2	2.8	38.7	7.2	3.6	0.5	34.4	5.6	60.0	0.064	0.521	26.762732	-104.348335
Jiménez	223.00	1	1	3956	5.5	45.7	7.9	4.6	2.5	23.2	4.7	5.1	0.8	51.2	7.9	40.9	0.086	0.524	27.117752	-104.890991
Jiménez	223.00	1	2	4351	5.5	45.4	7.8	4.8	2.3	23.1	4.9	5.3	0.9	50.9	7.8	41.3	0.081	0.524	27.117556	-104.890981

9 CARR: Hidalgo del Parral - Ent. Nuevo Palomas (Vía Corta)

CLAVE: 08811

RUTA: MEX-024

AÑO: 2022

LUGAR	ESTACION				CLASIFICACION VEHICULAR EN PORCIENTO													COORDENADAS		
	KM	TE	SC	TDPA	M	A	B	C2	C3	T3S2	T3S3	T3S2R4	OTROS	A	B	C	K'	D	LATITUD	LONGITUD
Hidalgo del Parral	0.00	3	0	4910	3.2	76.4	1.9	8.8	2.0	3.8	2.0	1.4	0.5	79.6	1.9	18.5	0.078	0.525	26.980804	-105.663794
Valle Zaragoza	66.00	1	0	4307	3.2	81.8	2.5	3.0	2.2	3.5	2.5	0.9	0.4	85.0	2.5	12.5	0.086	0.507	27.441358	-105.806980
Satevo	126.00	3	0	4896	1.8	83.6	2.7	3.2	1.4	3.8	2.2	1.1	0.2	85.4	2.7	11.9	0.085	0.513	27.975629	-106.124347
T. C. Chihuahua - Madera	182.40	1	0	5407	2.8	75.1	3.5	7.7	1.3	5.8	2.7	0.8	0.3	77.9	3.5	18.6	0.102	0.530	28.351794	-106.261377

10 CARR: Hidalgo del Parral - Guadalupe y Calvo

CLAVE: 00802

RUTA: MEX-024

AÑO: 2022

LUGAR	ESTACION				CLASIFICACION VEHICULAR EN PORCIENTO													COORDENADAS		
	KM	TE	SC	TDPA	M	A	B	C2	C3	T3S2	T3S3	T3S2R4	OTROS	A	B	C	K'	D	LATITUD	LONGITUD
T. C. Hidalgo del Parral - Santa Bárbara	0.00	3	0	2855	3.4	82.8	1.5	3.0	3.9	2.1	1.5	0.9	0.9	86.2	1.5	12.3	0.083	0.509	26.915489	-105.764753
T. Der. Guacho chic	35.00	1	0	899	3.4	65.6	5.8	8.6	7.0	4.1	2.8	1.7	1.0	69.0	5.8	25.2	0.088	0.509	26.815901	-106.014885
T. Der. Guacho chic	35.00	3	0	941	5.0	71.1	2.8	7.2	5.0	5.1	1.9	1.0	0.9	76.1	2.8	21.1	0.083	0.512	26.808369	-106.016710
Lim. Edos. Term. Chih. Ppia. Dgo	38.00	0	0																	
Lim. Edos. Term. Dgo. Ppia. Chih.	57.00	0	0																	
El Vergel	110.00	1	0	974	6.1	74.1	1.6	10.9	3.8	1.8	0.8	0.1	0.8	80.2	1.6	18.2	0.097	0.526	26.523014	-106.357289
Puerto Sabinal	212.00	1	0	854	3.8	74.3	2.0	8.0	6.0	4.0	1.5	0.2	0.2	78.1	2.0	19.9	0.083	0.506	26.451306	-106.386500

CHIHUAHUA

10 CARR : Hidalgo del Parral - Guadalupe y Calvo

CLAVE: 00802

RUTA: MEX-024

AÑO: 2022

LUGAR	ESTACION				CLASIFICACION VEHICULAR EN PORCIENTO														COORDENADAS		
	KM	TE	SC	TDPA	M	A	B	C2	C3	T3S2	T3S3	T3S2R4	OTROS	A	B	C	K'	D	LATITUD	LONGITUD	
Guadalupe y Calvo	234.00	0	0																		

11 CARR : Hidalgo del Parral - Jiménez

CLAVE: 08444

RUTA: MEX-045

AÑO: 2022

LUGAR	ESTACION				CLASIFICACION VEHICULAR EN PORCIENTO														COORDENADAS	
	KM	TE	SC	TDPA	M	A	B	C2	C3	T3S2	T3S3	T3S2R4	OTROS	A	B	C	K'	D	LATITUD	LONGITUD
Hidalgo del Parral	0.00	3	1	5009	1.7	71.9	1.9	13.3	3.1	2.7	4.0	0.8	0.6	73.6	1.9	24.5	0.083	0.511	26.934117	-105.635175
Hidalgo del Parral	0.00	3	2	4793	1.5	71.9	1.8	13.5	3.2	2.6	4.0	0.9	0.6	73.4	1.8	24.8	0.082	0.511	26.934192	-105.635329
Jiménez	76.63	1	1	2936	0.0	70.5	1.9	15.1	2.1	4.5	3.9	1.2	0.8	70.5	1.9	27.6	0.076	0.514	27.141883	-104.938527
Jiménez	76.63	1	2	2776	3.0	66.6	2.0	14.9	2.5	4.7	4.1	1.3	0.9	69.6	2.0	28.4	0.072	0.514	27.142022	-104.938599

12 CARR : Janos - Agua Prieta

CLAVE: 00220

RUTA: MEX-002

AÑO: 2022

LUGAR	ESTACION				CLASIFICACION VEHICULAR EN PORCIENTO														COORDENADAS	
	KM	TE	SC	TDPA	M	A	B	C2	C3	T3S2	T3S3	T3S2R4	OTROS	A	B	C	K'	D	LATITUD	LONGITUD
T. C. Cd. Juárez - Janos	0.00	3	0	4801	5.6	56.9	3.8	9.3	2.2	12.7	2.9	5.9	0.7	62.5	3.8	33.7	0.083	0.505	30.889816	-108.211930
Los Mimbres	56.00	3	0	3158	2.5	43.1	4.0	6.2	2.2	27.0	3.7	10.5	0.8	45.6	4.0	50.4	0.084	0.537	31.244913	-108.581402
Lim. Edos. Term. Chih. Ppia. Son.	78.00	0	0																	
Rancho Guadalupe	116.00	0	0																	
Agua Prieta	160.00	1	0	2721	4.7	47.0	5.3	7.2	2.0	21.9	4.3	7.2	0.4	51.7	5.3	43.0	0.084	0.507	31.322990	-109.506607

13 CARR : Jerónimo - Sta. Teresa

CLAVE: 08043

RUTA: MEX-002

AÑO: 2022

LUGAR	ESTACION				CLASIFICACION VEHICULAR EN PORCIENTO														COORDENADAS	
	KM	TE	SC	TDPA	M	A	B	C2	C3	T3S2	T3S3	T3S2R4	OTROS	A	B	C	K'	D	LATITUD	LONGITUD
X. C. Cd. Juárez - Janos	0.00	3	0	3212	1.5	60.8	6.2	14.5	3.0	11.9	1.7	0.3	0.1	62.3	6.2	31.5	0.124	0.541	31.614283	-106.684637
El Mirador	20.00	0	0																	

14 CARR : La Junta - Yécora

CLAVE: 00065

RUTA: MEX-016

AÑO: 2022

LUGAR	ESTACION				CLASIFICACION VEHICULAR EN PORCIENTO														COORDENADAS	
	KM	TE	SC	TDPA	M	A	B	C2	C3	T3S2	T3S3	T3S2R4	OTROS	A	B	C	K'	D	LATITUD	LONGITUD
T. C. Chihuahua - Madera	0.00	3	0	3348	1.0	87.2	2.2	4.8	0.8	2.7	1.2	0.1	0.0	88.2	2.2	9.6	0.092	0.501	28.467632	-107.325087
T. Izq. San Juanito	16.00	1	0	3047	2.5	84.7	2.6	5.1	0.9	2.6	1.1	0.5	0.0	87.2	2.6	10.2	0.095	0.511	28.389017	-107.439792
T. Izq. San Juanito	16.00	3	0	1346	6.9	71.0	6.2	11.9	0.4	2.2	0.5	0.9	0.0	77.9	6.2	15.9	0.085	0.529	28.390900	-107.442189

CHIHUAHUA

14 CARR: La Junta - Yécora

CLAVE: 00065

RUTA: MEX-016

AÑO: 2022

LUGAR	ESTACION				CLASIFICACION VEHICULAR EN PORCIENTO													COORDENADAS		
	KM	TE	SC	TDPA	M	A	B	C2	C3	T3S2	T3S3	T3S2R4	OTROS	A	B	C	K'	D	LATITUD	LONGITUD
Tomochi	70.00	3	0	1496	2.9	83.7	1.1	7.0	1.1	2.9	1.2	0.1	0.0	86.6	1.1	12.3	0.120	0.516	28.354791	-107.857040
Lim. Edos. Term. Chih. Ppia. Son.	190.00	0	0																	
Yécora	253.00	1	0	333	9.0	72.0	3.4	6.4	3.6	3.1	2.0	0.4	0.1	81.0	3.4	15.6	0.123	0.505	28.367335	-108.920947

15 CARR: Libramiento de Delicias - Meoqui

CLAVE: 08813

RUTA: MEX-045

AÑO: 2022

LUGAR	ESTACION				CLASIFICACION VEHICULAR EN PORCIENTO													COORDENADAS		
	KM	TE	SC	TDPA	M	A	B	C2	C3	T3S2	T3S3	T3S2R4	OTROS	A	B	C	K'	D	LATITUD	LONGITUD
T. C. Jiménez - Chihuahua (Sur)	0.00	3	1	13141	3.5	75.2	2.9	3.0	2.1	9.2	1.3	2.2	0.6	78.7	2.9	18.4	0.073	0.508	28.190120	-105.452245
T. C. Jiménez - Chihuahua (Sur)	0.00	3	2	12748	3.5	75.1	2.9	3.0	2.0	9.3	1.4	2.2	0.6	78.6	2.9	18.5	0.077	0.508	28.190129	-105.452414
T. Izq. Delicias	4.95	1	1	11626	3.0	71.1	4.0	4.0	2.2	11.0	1.8	2.3	0.6	74.1	4.0	21.9	0.082	0.532	28.225827	-105.458681
T. Izq. Delicias	4.95	1	2	11106	3.2	71.6	4.4	4.0	2.0	10.7	1.5	2.0	0.6	74.8	4.4	20.8	0.071	0.532	28.225796	-105.458851
T. Izq. Delicias	4.95	3	1	11733	2.4	76.7	3.2	2.6	1.8	9.3	1.4	1.9	0.7	79.1	3.2	17.7	0.085	0.510	28.234439	-105.461341
T. Izq. Delicias	4.95	3	2	11774	2.2	76.4	3.3	2.7	1.8	9.6	1.4	1.9	0.7	78.6	3.3	18.1	0.088	0.510	28.234481	-105.461528
T. C. Jiménez - Chihuahua (Norte)	13.60	1	1	10641	2.2	70.6	4.4	3.8	2.5	11.6	1.8	2.4	0.7	72.8	4.4	22.8	0.100	0.543	28.289737	-105.492180
T. C. Jiménez - Chihuahua (Norte)	13.60	1	2	10189	2.3	71.2	4.5	3.8	2.1	11.5	1.7	2.2	0.7	73.5	4.5	22.0	0.069	0.543	28.289933	-105.488940
T. C. Meoqui - Julimes	146.70	3	1	11276	4.0	69.5	4.7	3.2	2.2	11.5	1.9	2.3	0.7	73.5	4.7	21.8	0.094	0.513	28.284673	-105.477883
T. C. Meoqui - Julimes	146.70	3	2	10706	4.1	70.8	4.4	3.1	2.0	11.3	1.5	2.1	0.7	74.9	4.4	20.7	0.068	0.513	28.284557	-105.478006

16 CARR: Porvenir - Cd. Juárez

CLAVE: 08169

RUTA: MEX-002

AÑO: 2022

LUGAR	ESTACION				CLASIFICACION VEHICULAR EN PORCIENTO													COORDENADAS		
	KM	TE	SC	TDPA	M	A	B	C2	C3	T3S2	T3S3	T3S2R4	OTROS	A	B	C	K'	D	LATITUD	LONGITUD
Porvenir	0.00	0	0																	
T. Der. Puente Porvenir	1.67	3	0	1289	0.8	87.8	3.7	6.5	0.3	0.3	0.0	0.0	0.6	88.6	3.7	7.7	0.111	0.510	31.256278	-105.879561
Guadalupe	30.54	1	0	2543	1.4	88.5	4.4	4.6	0.3	0.5	0.1	0.1	0.1	89.9	4.4	5.7	0.118	0.503	31.387331	-106.093399
San Isidro	55.93	1	0	5419	2.5	79.8	4.8	8.2	1.7	1.6	0.7	0.5	0.2	82.3	4.8	12.9	0.091	0.547	31.541293	-106.272909
Zaragoza	70.32	1	1	20879	1.3	84.0	4.3	7.2	0.9	1.5	0.5	0.1	0.2	85.3	4.3	10.4	0.079	0.522	31.641842	-106.342977
Zaragoza	70.32	1	2	19136	1.3	83.8	4.3	7.2	1.0	1.5	0.5	0.2	0.2	85.1	4.3	10.6	0.087	0.522	31.641772	-106.343181
Cd. Juárez	81.43	0	0																	

CHIHUAHUA

17 CARR: Ramal a Aeropuerto de Chihuahua

CLAVE: 08421

RUTA: MEX-016

AÑO: 2022

LUGAR	ESTACION				CLASIFICACION VEHICULAR EN PORCIENTO										COORDENADAS					
	KM	TE	SC	TDPA	M	A	B	C2	C3	T3S2	T3S3	T3S2R4	OTROS	A	B	C	K'	D	LATITUD	LONGITUD
T. C. Chihuahua - Ojinaga	0.00	3	1	13110	3.1	90.5	1.2	1.5	1.0	1.3	0.5	0.6	0.3	93.6	1.2	5.2	0.081	0.518	28.679690	-105.993887
T. C. Chihuahua - Ojinaga	0.00	3	2	14069	3.0	90.4	1.4	1.5	1.3	1.1	0.5	0.5	0.3	93.4	1.4	5.2	0.090	0.518	28.679535	-105.994135
Aeropuerto	5.00	0	0																	

18 CARR: Ramal a Palomas

CLAVE: 08019

RUTA: MEX-002

AÑO: 2022

LUGAR	ESTACION				CLASIFICACION VEHICULAR EN PORCIENTO										COORDENADAS					
	KM	TE	SC	TDPA	M	A	B	C2	C3	T3S2	T3S3	T3S2R4	OTROS	A	B	C	K'	D	LATITUD	LONGITUD
T. C. Cd. Juárez - Janos	0.00	3	0	1881	0.4	75.0	1.4	20.1	1.6	1.1	0.2	0.1	0.1	75.4	1.4	23.2	0.108	0.506	31.477014	-107.614509
T. Izq. Guadalupe Victoria	4.50	3	0	1677	2.7	69.8	1.4	22.1	0.8	2.8	0.3	0.0	0.1	72.5	1.4	26.1	0.086	0.522	31.518890	-107.613276
Palomas	34.10	0	0																	

19 CARR: Villa Ahumada - Cd. Juárez (Libre)

CLAVE: 08420

RUTA: MEX-045

AÑO: 2022

LUGAR	ESTACION				CLASIFICACION VEHICULAR EN PORCIENTO										COORDENADAS					
	KM	TE	SC	TDPA	M	A	B	C2	C3	T3S2	T3S3	T3S2R4	OTROS	A	B	C	K'	D	LATITUD	LONGITUD
Villa Ahumada	83.63	3	1	4703	3.1	72.0	3.5	2.5	1.2	13.1	1.6	2.2	0.8	75.1	3.5	21.4	0.097	0.503	30.634501	-106.514210
Villa Ahumada	83.63	3	2	4750	3.0	71.3	3.6	2.5	1.5	13.0	1.8	2.5	0.8	74.3	3.6	22.1	0.077	0.503	30.634545	-106.514556
Samalayuca	167.65	3	1	6450	3.0	70.2	5.5	5.8	2.8	9.0	1.4	1.8	0.5	73.2	5.5	21.3	0.142	0.529	31.372846	-106.466351
Samalayuca	167.65	3	2	5751	3.0	70.0	5.6	5.8	2.8	9.0	1.4	1.8	0.6	73.0	5.6	21.4	0.108	0.529	31.372737	-106.466921
T. Izq. Janos	197.92	1	1	9791	4.0	72.0	3.0	6.0	3.3	8.6	1.2	1.3	0.6	76.0	3.0	21.0	0.127	0.521	31.600948	-106.454537
T. Izq. Janos	197.92	1	2	9008	4.0	70.7	3.5	6.1	3.4	9.0	1.2	1.5	0.6	74.7	3.5	21.8	0.100	0.521	31.601220	-106.454554
T. Der. Antiguo Aeropuerto	201.35	1	1	22761	4.0	82.9	2.7	5.0	1.1	2.0	1.0	0.8	0.5	86.9	2.7	10.4	0.077	0.520	31.634042	-106.439480
T. Der. Antiguo Aeropuerto	201.35	1	2	21028	4.2	82.3	2.8	5.0	1.2	2.0	1.0	0.9	0.6	86.5	2.8	10.7	0.077	0.520	31.634165	-106.439688
Cd. Juárez	219.00	0	0																	

20 CARR: Camargo - Delicias (Cuota)

CLAVE: 08418

RUTA: MEX-045D

AÑO: 2022

LUGAR	ESTACION				CLASIFICACION VEHICULAR EN PORCIENTO										COORDENADAS					
	KM	TE	SC	TDPA	M	A	B	C2	C3	T3S2	T3S3	T3S2R4	OTROS	A	B	C	K'	D	LATITUD	LONGITUD
Camargo	68.98	0	0																	
T. C. Ent. Ciudad Camargo - Saucillo	73.17	1	1	5536	4.7	61.6	5.6	4.0	1.7	15.1	2.5	4.4	0.4	66.3	5.6	28.1	0.102	0.502	27.716004	-105.190801
T. C. Ent. Ciudad Camargo - Saucillo	73.17	1	2	5481	3.8	62.8	5.9	4.1	1.5	15.5	2.1	3.8	0.5	66.6	5.9	27.5	0.076	0.502	27.715993	-105.190949
T. C. Ent. Ciudad Camargo - Saucillo	73.17	3	1	3841	3.2	54.9	7.2	4.1	1.6	19.5	3.4	5.7	0.4	58.1	7.2	34.7	0.106	0.507	27.724221	-105.196243
T. C. Ent. Ciudad Camargo - Saucillo	73.17	3	2	3948	3.2	54.2	7.2	4.4	1.6	19.6	3.4	5.9	0.5	57.4	7.2	35.4	0.074	0.507	27.723741	-105.195783

CHIHUAHUA

20 CARR: Camargo - Delicias (Cuota)

CLAVE: 08418

RUTA: MEX-045D

AÑO: 2022

LUGAR	ESTACION				CLASIFICACION VEHICULAR EN PORCIENTO														COORDENADAS	
	KM	TE	SC	TDPA	M	A	B	C2	C3	T3S2	T3S3	T3S2R4	OTROS	A	B	C	K'	D	LATITUD	LONGITUD
Plaza de Cobro Altavista	73.20	2	1	3479	0.2	51.4	3.1	5.7	3.3	24.2	2.8	7.1	2.2	51.6	3.1	45.3	0.088	0.500	27.730871	-105.197567
Plaza de Cobro Altavista	73.20	2	2	3479	0.2	51.4	3.1	5.7	3.3	24.2	2.8	7.1	2.2	51.6	3.1	45.3	0.088	0.500	27.730871	-105.197567
Estación Conchos	104.30	3	1	4459	2.5	58.0	5.9	4.3	1.5	19.5	2.9	4.8	0.6	60.5	5.9	33.6	0.117	0.503	27.980582	-105.293752
Estación Conchos	104.30	3	2	4411	3.8	55.9	5.7	4.4	1.5	20.7	2.7	4.8	0.5	59.7	5.7	34.6	0.078	0.503	27.980521	-105.293877
Saucillo	111.50	3	1	4629	3.9	51.5	6.5	9.1	1.8	19.0	2.8	4.5	0.9	55.4	6.5	38.1	0.093	0.504	28.035963	-105.325092
Saucillo	111.50	3	2	4552	4.1	51.3	7.0	9.0	2.0	19.0	2.6	4.0	1.0	55.4	7.0	37.6	0.078	0.504	28.035926	-105.325218
Plaza de Cobro Saucillo	116.30	2	1	4396	0.2	55.9	3.8	4.8	2.5	22.6	2.5	5.7	2.0	56.1	3.8	40.1	0.088	0.500	28.046417	-105.329309
Plaza de Cobro Saucillo	116.30	2	2	4396	0.2	55.9	3.8	4.8	2.5	22.6	2.5	5.7	2.0	56.1	3.8	40.1	0.088	0.500	28.046417	-105.329309
Delicias	138.00	1	1	9409	2.7	67.9	4.1	8.0	1.8	10.0	2.1	2.6	0.8	70.6	4.1	25.3	0.067	0.518	28.178748	-105.446284
Delicias	138.00	1	2	10120	2.5	68.9	4.0	8.0	1.8	10.0	2.0	2.2	0.6	71.4	4.0	24.6	0.074	0.518	28.178671	-105.446388

21 CARR: Chihuahua - Sacramento (Cuota)

CLAVE: 08015

RUTA: MEX-045D

AÑO: 2022

LUGAR	ESTACION				CLASIFICACION VEHICULAR EN PORCIENTO														COORDENADAS	
	KM	TE	SC	TDPA	M	A	B	C2	C3	T3S2	T3S3	T3S2R4	OTROS	A	B	C	K'	D	LATITUD	LONGITUD
T. C. Chihuahua - El Sueco	18.12	3	1	7443	1.2	83.5	3.4	3.8	2.3	4.3	0.5	0.8	0.2	84.7	3.4	11.9	0.088	0.543	28.769397	-106.170582
T. C. Chihuahua - El Sueco	18.12	3	2	8843	1.2	84.0	3.4	3.8	2.0	4.1	0.5	0.8	0.2	85.2	3.4	11.4	0.109	0.543	28.769361	-106.170798
Francisco Villa	20.00	3	1	7297	1.6	81.9	3.3	3.6	2.2	5.9	0.5	0.8	0.2	83.5	3.3	13.2	0.090	0.551	28.783280	-106.173278
Francisco Villa	20.00	3	2	8955	1.3	82.4	3.2	3.6	2.0	6.0	0.5	0.8	0.2	83.7	3.2	13.1	0.110	0.551	28.783374	-106.173490
T. C. Libramiento Oriente Chihuahua (Cuota)	21.17	3	1	7498	1.4	75.1	4.1	3.6	1.7	9.5	1.4	2.5	0.7	76.5	4.1	19.4	0.095	0.509	28.807442	-106.177992
T. C. Libramiento Oriente Chihuahua (Cuota)	21.17	3	2	7225	1.4	75.0	4.4	3.7	1.6	9.2	1.2	2.8	0.7	76.4	4.4	19.2	0.145	0.509	28.807393	-106.178172
T. C. (Chihuahua - El Sueco)	31.30	0	0																	

22 CARR: El Sueco - Villa Ahumada (Cuota)

CLAVE: 08420

RUTA: MEX-045D

AÑO: 2022

LUGAR	ESTACION				CLASIFICACION VEHICULAR EN PORCIENTO														COORDENADAS	
	KM	TE	SC	TDPA	M	A	B	C2	C3	T3S2	T3S3	T3S2R4	OTROS	A	B	C	K'	D	LATITUD	LONGITUD
Ent. El Sueco	0.00	3	1	4687	2.6	61.6	4.8	7.7	1.1	17.6	1.6	2.4	0.6	64.2	4.8	31.0	0.103	0.522	29.895410	-106.395444
Ent. El Sueco	0.00	3	2	4300	2.9	59.0	5.6	8.5	1.0	18.0	1.8	2.5	0.7	61.9	5.6	32.5	0.097	0.522	29.895611	-106.395899
Plaza de Cobro Villa Ahumada	82.00	2	1	3838	0.2	64.8	3.8	3.2	1.6	19.8	1.4	3.7	1.5	65.0	3.8	31.2	0.103	0.500	30.437059	-106.521897
Plaza de Cobro Villa Ahumada	82.00	2	2	3838	0.2	64.8	3.8	3.2	1.6	19.8	1.4	3.7	1.5	65.0	3.8	31.2	0.103	0.500	30.437059	-106.521897
Villa Ahumada	83.63	0	0																	

CHIHUAHUA

23 CARR: Gómez Palacio - Corralitos (Cuota)

CLAVE: 00016

RUTA: MEX-049D

AÑO: 2022

LUGAR	ESTACION				CLASIFICACION VEHICULAR EN PORCIENTO														COORDENADAS		
	KM	TE	SC	TDPA	M	A	B	C2	C3	T3S2	T3S3	T3S2R4	OTROS	A	B	C	K'	D	LATITUD	LONGITUD	
T. C. Gómez Palacio - Jiménez (Libre)	38.00	0	0																		
T. Izq. Bermejillo	40.10	1	1	2571	2.1	38.4	6.9	5.2	3.7	29.8	5.3	7.6	1.0	40.5	6.9	52.6	0.074	0.505	25.883545	-103.610760	
T. Izq. Bermejillo	40.10	1	2	2625	2.1	38.1	6.8	5.2	3.6	30.8	5.3	7.2	0.9	40.2	6.8	53.0	0.072	0.505	25.883565	-103.610930	
T. Izq. Bermejillo	40.10	3	1	2189	2.5	38.7	10.9	5.5	2.6	26.7	3.7	8.6	0.8	41.2	10.9	47.9	0.063	0.508	25.895368	-103.611315	
T. Izq. Bermejillo	40.10	3	2	2119	2.5	39.2	10.4	5.5	2.7	26.8	3.6	8.4	0.9	41.7	10.4	47.9	0.064	0.508	25.895358	-103.611588	
Plaza de Cobro Bermejillo	44.16	2	1	2459	0.2	36.8	8.8	2.5	1.7	29.5	6.4	10.1	4.0	37.0	8.8	54.2	0.079	0.500	25.923705	-103.622079	
Plaza de Cobro Bermejillo	44.16	2	2	2459	0.2	36.8	8.8	2.5	1.7	29.5	6.4	10.1	4.0	37.0	8.8	54.2	0.079	0.500	25.923705	-103.622079	
T. Izq. Ceballos	123.80	1	1	2715	4.7	31.4	10.0	4.9	1.9	33.9	5.7	6.6	0.9	36.1	10.0	53.9	0.064	0.505	26.560058	-104.036667	
T. Izq. Ceballos	123.80	1	2	2768	4.3	30.8	10.5	4.8	1.8	34.2	5.9	6.8	0.9	35.1	10.5	54.4	0.063	0.505	26.559883	-104.037037	
Plaza de Cobro Ceballos	128.80	2	1	2431	0.2	35.1	5.7	2.5	5.4	31.4	6.1	10.3	3.3	35.3	5.7	59.0	0.079	0.500	26.586801	-104.057535	
Plaza de Cobro Ceballos	128.80	2	2	2431	0.2	35.1	5.7	2.5	5.4	31.4	6.1	10.3	3.3	35.3	5.7	59.0	0.079	0.500	26.586801	-104.057535	
Lim. Edos. Term. Dgo. Ppia. Chih.	158.00	0	0																		
T. C. Gómez Palacio - Jiménez	188.46	1	1	1874	2.9	36.2	12.0	5.0	2.9	27.4	6.2	6.5	0.9	39.1	12.0	48.9	0.073	0.528	26.902434	-104.549603	
T. C. Gómez Palacio - Jiménez	188.46	1	2	1673	3.5	34.3	11.9	5.4	3.4	27.5	6.6	6.5	0.9	37.8	11.9	50.3	0.078	0.528	26.901782	-104.550483	
T. C. Gómez Palacio - Jiménez	188.46	3	1	2780	6.8	28.2	11.8	7.0	2.7	31.0	5.4	6.1	1.0	35.0	11.8	53.2	0.071	0.520	26.907687	-104.559265	
T. C. Gómez Palacio - Jiménez	188.46	3	2	3006	6.6	28.3	11.6	6.9	2.6	30.7	5.5	6.8	1.0	34.9	11.6	53.5	0.062	0.520	26.906828	-104.559704	
T. C. Gómez Palacio - Jiménez (Libre)	226.50	1	1	2836	3.1	37.4	10.9	4.8	2.0	27.4	6.0	7.5	0.9	40.5	10.9	48.6	0.079	0.508	27.097318	-104.862884	
T. C. Gómez Palacio - Jiménez (Libre)	226.50	1	2	2742	2.9	38.4	10.5	4.7	2.3	27.3	5.8	7.2	0.9	41.3	10.5	48.2	0.061	0.508	27.096184	-104.861732	

24 CARR: Jiménez - Camargo (Cuota)

CLAVE: 08418

RUTA: MEX-045D

AÑO: 2022

LUGAR	ESTACION				CLASIFICACION VEHICULAR EN PORCIENTO														COORDENADAS	
	KM	TE	SC	TDPA	M	A	B	C2	C3	T3S2	T3S3	T3S2R4	OTROS	A	B	C	K'	D	LATITUD	LONGITUD
Jiménez	0.00	3	1	4305	4.0	45.4	7.2	4.5	2.6	26.6	4.0	4.9	0.8	49.4	7.2	43.4	0.067	0.542	27.151922	-104.930216
Jiménez	0.00	3	2	3645	4.0	45.4	7.3	4.9	2.2	26.4	3.7	5.2	0.9	49.4	7.3	43.3	0.059	0.542	27.151905	-104.930338
T. Izq. Providencia	2.20	3	1	3867	4.1	42.9	8.6	7.8	3.3	23.9	2.9	5.6	0.9	47.0	8.6	44.4	0.065	0.519	27.159480	-104.930443
T. Izq. Providencia	2.20	3	2	3585	4.0	44.6	8.5	7.2	2.9	24.3	2.7	5.0	0.8	48.6	8.5	42.9	0.062	0.519	27.159573	-104.930596
Plaza de Cobro Camargo	11.00	2	1	3087	0.2	41.7	4.9	4.8	3.0	31.2	3.4	8.2	2.6	41.9	4.9	53.2	0.085	0.500	27.244960	-104.933154
Plaza de Cobro Camargo	11.00	2	2	3087	0.2	41.7	4.9	4.8	3.0	31.2	3.4	8.2	2.6	41.9	4.9	53.2	0.085	0.500	27.244960	-104.933154
Camargo	68.98	1	1	4178	2.7	54.2	6.2	3.9	2.1	21.7	3.2	5.2	0.8	56.9	6.2	36.9	0.069	0.501	27.654478	-105.148063
Camargo	68.98	1	2	4157	3.0	53.2	8.1	5.1	1.9	20.7	2.5	4.5	1.0	56.2	8.1	35.7	0.068	0.501	27.654436	-105.148174

CHIHUAHUA

25 CARR: Libramiento Oriente Chihuahua (Cuota)

CLAVE:

RUTA: MEX-045D

AÑO: 2022

LUGAR	ESTACION				CLASIFICACION VEHICULAR EN PORCIENTO													COORDENADAS		
	KM	TE	SC	TDPA	M	A	B	C2	C3	T3S2	T3S3	T3S2R4	OTROS	A	B	C	K'	D	LATITUD	LONGITUD
T. C. Delicias - Chihuahua	0.00	3	0	4358	8.2	40.1	5.1	3.7	2.4	27.3	3.5	8.9	0.8	48.3	5.1	46.6	0.067	0.516	28.586414	-105.951235
Plaza de Cobro Jiménez	3.00	2	0	3499	0.2	43.1	2.4	3.6	2.7	30.7	5.7	10.7	0.9	43.3	2.4	54.3	0.090	0.500	28.603444	-105.951440
T. C. Chihuahua - Ojinaga	22.00	1	0	6031	3.8	61.8	3.4	3.3	1.7	17.9	2.5	4.7	0.9	65.6	3.4	31.0	0.069	0.502	28.736554	-105.980245
T. C. Chihuahua - Ojinaga	22.00	3	0	4430	3.7	52.5	5.3	3.7	1.5	23.2	3.1	6.3	0.7	56.2	5.3	38.5	0.066	0.510	28.742170	-105.992347
Plaza de Cobro Sacramento	38.30	2	0	4243	0.3	49.6	2.0	3.5	2.5	26.5	5.3	9.5	0.8	49.9	2.0	48.1	0.090	0.500	28.790516	-106.139354
T. C. Chihuahua - Sacramento (Cuota)	42.20	0	0																	

26 CARR: Ahumada - Ricardo Flores Magón

CLAVE: 08804

RUTA: CHIH

AÑO: 2022

LUGAR	ESTACION				CLASIFICACION VEHICULAR EN PORCIENTO													COORDENADAS		
	KM	TE	SC	TDPA	M	A	B	C2	C3	T3S2	T3S3	T3S2R4	OTROS	A	B	C	K'	D	LATITUD	LONGITUD
Ahumada	0.00	3	0	1896	1.3	70.3	1.5	15.1	1.3	7.9	1.9	0.6	0.1	71.6	1.5	26.9	0.085	0.519	30.616014	-106.528698
Ricardo Flores Magón	96.00	1	0	2178	3.4	77.0	2.7	6.6	1.3	6.9	1.1	0.9	0.1	80.4	2.7	16.9	0.073	0.517	29.958303	-106.951968

27 CARR: Cuauhtémoc - Buenaventura

CLAVE: 08015

RUTA: CHIH

AÑO: 2022

LUGAR	ESTACION				CLASIFICACION VEHICULAR EN PORCIENTO													COORDENADAS		
	KM	TE	SC	TDPA	M	A	B	C2	C3	T3S2	T3S3	T3S2R4	OTROS	A	B	C	K'	D	LATITUD	LONGITUD
T. C. Chihuahua - Madera	0.00	3	1	11795	2.1	88.7	0.8	4.3	1.0	1.2	0.7	0.8	0.4	90.8	0.8	8.4	0.075	0.506	28.406503	-106.895744
T. C. Chihuahua - Madera	0.00	3	2	12100	2.3	88.8	0.8	4.5	0.9	1.1	0.6	0.7	0.3	91.1	0.8	8.1	0.102	0.506	28.406474	-106.895935
Álvaro Obregón	42.00	3	1	3674	1.5	86.3	1.3	3.7	1.5	3.5	1.4	0.6	0.2	87.8	1.3	10.9	0.088	0.501	28.752776	-106.918176
Álvaro Obregón	42.00	3	2	3695	1.5	84.7	1.7	4.0	1.7	3.7	1.7	0.7	0.3	86.2	1.7	12.1	0.082	0.501	28.752652	-106.918161
Bachiniva	77.50	1	0	3280	3.1	87.7	1.3	4.7	1.1	1.1	0.5	0.4	0.1	90.8	1.3	7.9	0.082	0.502	28.772023	-107.249168
T. Der. Namiqúipa	112.06	3	0	3417	2.7	84.5	1.0	8.1	1.2	1.1	0.9	0.4	0.1	87.2	1.0	11.8	0.094	0.512	29.026872	-107.451753
T. Izq. Madera	150.50	3	0	1442	1.5	88.6	2.1	5.2	1.0	0.8	0.7	0.1	0.0	90.1	2.1	7.8	0.099	0.505	29.268268	-107.709236
Buenaventura	253.30	1	0	740	5.6	86.7	1.5	2.5	0.8	1.4	1.0	0.5	0.0	92.3	1.5	6.2	0.114	0.506	29.841111	-107.480994

28 CARR: Delicias - Saucillo

CLAVE: 08007

RUTA: CHIH-007

AÑO: 2022

LUGAR	ESTACION				CLASIFICACION VEHICULAR EN PORCIENTO													COORDENADAS		
	KM	TE	SC	TDPA	M	A	B	C2	C3	T3S2	T3S3	T3S2R4	OTROS	A	B	C	K'	D	LATITUD	LONGITUD
Delicias	0.00	3	0	5088	14.3	75.1	1.6	5.1	1.3	1.1	0.7	0.7	0.1	89.4	1.6	9.0	0.076	0.501	28.194989	-105.426319
Las Varas	17.00	1	0	2034	8.5	77.4	1.6	11.1	1.0	0.2	0.1	0.1	0.0	85.9	1.6	12.5	0.083	0.504	28.165761	-105.341005
Saucillo	33.00	1	0	6474	6.6	84.1	1.3	4.9	1.1	0.8	0.7	0.4	0.1	90.7	1.3	8.0	0.069	0.500	28.046467	-105.300068

CHIHUAHUA

29 CARR: Ent. Peña Blanca - Ent. La Concha

CLAVE: 08493

RUTA: CHIH

AÑO: 2022

LUGAR	ESTACION				CLASIFICACION VEHICULAR EN PORCIENTO													COORDENADAS		
	KM	TE	SC	TDPA	M	A	B	C2	C3	T3S2	T3S3	T3S2R4	OTROS	A	B	C	K'	D	LATITUD	LONGITUD
T. C. Cuauhtémoc - Buenaventura	0.00	3	0	801	1.5	86.1	0.9	7.9	1.8	0.7	1.0	0.1	0.0	87.6	0.9	11.5	0.124	0.526	29.262759	-107.710874
T. C. Chihuahua - Madera	17.00	1	0	385	1.5	79.6	1.4	4.3	1.7	4.7	6.4	0.4	0.0	81.1	1.4	17.5	0.106	0.533	29.122066	-107.905932

30 CARR: Ent. Puerto Justo - Ent. Guachochic

CLAVE: 08044

RUTA: CHIH

AÑO: 2022

LUGAR	ESTACION				CLASIFICACION VEHICULAR EN PORCIENTO													COORDENADAS		
	KM	TE	SC	TDPA	M	A	B	C2	C3	T3S2	T3S3	T3S2R4	OTROS	A	B	C	K'	D	LATITUD	LONGITUD
T. C. Hidalgo del Parral - Pto. Sabinal	0.00	3	0	159	6.3	78.3	3.3	6.8	3.4	0.8	0.3	0.8	0.0	84.6	3.3	12.1	0.151	0.566	26.813683	-106.017227
Guachochic	130.00	0	0																	

31 CARR: Jiménez - Camargo

CLAVE: 08021

RUTA: CHIH-049

AÑO: 2022

LUGAR	ESTACION				CLASIFICACION VEHICULAR EN PORCIENTO													COORDENADAS		
	KM	TE	SC	TDPA	M	A	B	C2	C3	T3S2	T3S3	T3S2R4	OTROS	A	B	C	K'	D	LATITUD	LONGITUD
Jiménez	0.00	3	0	3179	3.5	75.4	4.7	8.8	1.7	3.8	1.5	0.5	0.1	78.9	4.7	16.4	0.074	0.509	27.156974	-104.888444
T. Der. Ojinaga	65.80	3	0	2151	1.7	77.4	3.9	5.9	2.0	6.2	2.2	0.6	0.1	79.1	3.9	17.0	0.062	0.519	27.650472	-105.081283
T. C. Jiménez - Chihuahua (Cuota)	78.20	1	0	2613	2.4	76.6	2.2	8.1	2.7	5.4	2.0	0.6	0.0	79.0	2.2	18.8	0.066	0.506	27.678753	-105.140223

32 CARR: Lázaro Cárdenas - Ent. Colonia San José

CLAVE: 08004

RUTA: CHIH-004

AÑO: 2022

LUGAR	ESTACION				CLASIFICACION VEHICULAR EN PORCIENTO													COORDENADAS		
	KM	TE	SC	TDPA	M	A	B	C2	C3	T3S2	T3S3	T3S2R4	OTROS	A	B	C	K'	D	LATITUD	LONGITUD
T. C. Jiménez - Chihuahua	0.00	3	1	3053	12.7	79.3	1.4	3.6	1.4	0.6	0.6	0.4	0.0	92.0	1.4	6.6	0.089	0.539	28.387464	-105.628654
T. C. Jiménez - Chihuahua	0.00	3	2	3573	12.2	78.6	1.4	4.5	1.3	0.7	0.7	0.5	0.1	90.8	1.4	7.8	0.078	0.539	28.387554	-105.628617
T. C. Meoqui - Julimes	16.00	1	0	1524	6.3	83.5	2.0	5.2	1.6	1.0	0.2	0.1	0.1	89.8	2.0	8.2	0.106	0.511	28.387687	-105.449700

33 CARR: Libramiento de Hidalgo del Parral

CLAVE: 08221

RUTA: CHIH

AÑO: 2022

LUGAR	ESTACION				CLASIFICACION VEHICULAR EN PORCIENTO													COORDENADAS		
	KM	TE	SC	TDPA	M	A	B	C2	C3	T3S2	T3S3	T3S2R4	OTROS	A	B	C	K'	D	LATITUD	LONGITUD
T. C. Hidalgo del Parral - Santa Bárbara	0.00	0	0																	
T. C. Ent. La Zarca - Hidalgo del Parral	8.00	3	1	4631	7.2	86.8	1.0	2.0	1.1	1.0	0.5	0.4	0.0	94.0	1.0	5.0	0.086	0.525	26.923304	-105.643514
T. C. Ent. La Zarca - Hidalgo del Parral	8.00	3	2	5111	7.1	87.1	0.9	1.7	1.1	0.9	0.6	0.5	0.1	94.2	0.9	4.9	0.096	0.525	26.923409	-105.643576
T. C. Hidalgo del Parral - Jiménez	10.00	0	0																	

CHIHUAHUA

34 CARR: Libramiento de Jiménez

CLAVE: 08047

RUTA: CHIH

AÑO: 2022

LUGAR	ESTACION				CLASIFICACION VEHICULAR EN PORCIENTO													COORDENADAS		
	KM	TE	SC	TDPA	M	A	B	C2	C3	T3S2	T3S3	T3S2R4	OTROS	A	B	C	K'	D	LATITUD	LONGITUD
T. C. Gómez Palacio - Jiménez	0.00	3	1	6599	8.9	52.2	7.3	8.8	2.1	12.3	3.2	4.3	0.9	61.1	7.3	31.6	0.071	0.524	27.134000	-104.909818
T. C. Gómez Palacio - Jiménez	0.00	3	2	5992	8.6	51.0	7.4	8.6	2.2	13.1	3.5	4.7	0.9	59.6	7.4	33.0	0.063	0.524	27.133928	-104.909920
T. C. Jiménez - Chihuahua (Cuota)	3.40	1	1	5314	3.6	54.3	6.1	4.1	1.6	21.4	3.8	4.2	0.9	57.9	6.1	36.0	0.064	0.522	27.141235	-104.921819
T. C. Jiménez - Chihuahua (Cuota)	3.40	1	2	4870	3.9	54.3	6.2	4.1	1.6	21.3	3.4	4.4	0.8	58.2	6.2	35.6	0.062	0.522	27.141165	-104.921850

35 CARR: Meoqui - Julimes

CLAVE: 08005

RUTA: CHIH-005

AÑO: 2022

LUGAR	ESTACION				CLASIFICACION VEHICULAR EN PORCIENTO													COORDENADAS		
	KM	TE	SC	TDPA	M	A	B	C2	C3	T3S2	T3S3	T3S2R4	OTROS	A	B	C	K'	D	LATITUD	LONGITUD
Meoqui	0.00	3	0	7032	5.1	85.7	1.1	5.2	1.2	0.5	0.3	0.6	0.3	90.8	1.1	8.1	0.070	0.517	28.283890	-105.462841
Loreto	8.00	3	0	4376	9.9	81.5	1.5	2.9	1.2	0.9	0.4	1.3	0.4	91.4	1.5	7.1	0.069	0.517	28.322882	-105.433231
Regina	15.40	3	0	3979	4.7	78.4	1.6	13.9	0.8	0.3	0.1	0.1	0.1	83.1	1.6	15.3	0.117	0.514	28.421248	-105.454413
Julimes	23.00	1	0	3624	4.3	85.3	3.3	3.9	1.4	1.2	0.2	0.2	0.2	89.6	3.3	7.1	0.072	0.519	28.427447	-105.441086

36 CARR: Ramal a San Pedro Creel

CLAVE: 08812

RUTA: CHIH-025

AÑO: 2022

LUGAR	ESTACION				CLASIFICACION VEHICULAR EN PORCIENTO													COORDENADAS		
	KM	TE	SC	TDPA	M	A	B	C2	C3	T3S2	T3S3	T3S2R4	OTROS	A	B	C	K'	D	LATITUD	LONGITUD
T. C. La Junta - Yepachi	0.00	3	0	2303	1.3	88.2	2.4	4.1	0.7	2.1	1.1	0.1	0.0	89.5	2.4	8.1	0.105	0.507	28.385197	-107.441759
San Juanito	58.00	3	0	2301	4.8	85.3	1.8	3.3	2.0	1.8	0.6	0.2	0.2	90.1	1.8	8.1	0.108	0.501	27.962119	-107.608619
San Pedro Creel	85.00	1	0	1626	4.2	83.3	2.4	6.8	1.3	1.5	0.5	0.0	0.0	87.5	2.4	10.1	0.127	0.525	27.768235	-107.638201

37 CARR: Samachique - Batopilas

CLAVE:

RUTA: CHIH

AÑO: 2022

LUGAR	ESTACION				CLASIFICACION VEHICULAR EN PORCIENTO													COORDENADAS		
	KM	TE	SC	TDPA	M	A	B	C2	C3	T3S2	T3S3	T3S2R4	OTROS	A	B	C	K'	D	LATITUD	LONGITUD
Samachique	0.00	3	0	97	7.0	78.8	1.1	10.5	1.6	0.3	0.6	0.1	0.0	85.8	1.1	13.1	0.144	0.507	27.286871	-107.530503
Batopilas	61.00	0	0																	

38 CARR: San Juanito - Ent. Basaseachi

CLAVE: 08045

RUTA: CHIH

AÑO: 2022

LUGAR	ESTACION				CLASIFICACION VEHICULAR EN PORCIENTO													COORDENADAS		
	KM	TE	SC	TDPA	M	A	B	C2	C3	T3S2	T3S3	T3S2R4	OTROS	A	B	C	K'	D	LATITUD	LONGITUD
San Juanito	0.00	3	0	701	2.8	83.5	0.5	7.1	5.2	0.8	0.1	0.0	0.0	86.3	0.5	13.2	0.107	0.502	27.972422	-107.616690
T. C. La Junta - Yécora	84.00	1	0	662	2.6	89.8	0.7	3.6	2.4	0.5	0.3	0.1	0.0	92.4	0.7	6.9	0.098	0.529	28.189667	-108.172748

CHIHUAHUA

39 CARR: San Pedro Creel - Guachochi

CLAVE:

RUTA: CHIH-025

AÑO: 2022

LUGAR	ESTACION				CLASIFICACION VEHICULAR EN PORCIENTO													COORDENADAS			
	KM	TE	SC	TDPA	M	A	B	C2	C3	T3S2	T3S3	T3S2R4	OTROS	A	B	C	K'	D	LATITUD	LONGITUD	
San Pedro Creel	90.30	0	0																		
Samachique	164.30	1	0	124	2.5	82.9	0.9	9.6	1.5	1.3	0.7	0.3	0.3	85.4	0.9	13.7	0.177	0.505	27.298823	-107.526819	
Samachique	164.30	3	0	176	4.0	70.6	0.9	21.1	1.7	1.7	0.0	0.0	0.0	74.6	0.9	24.5	0.216	0.506	27.295450	-107.523062	
Guachochi	246.00	0	0																		

40 CARR: T. C. (Jiménez - Camargo) - Ojinaga

CLAVE: 08009

RUTA: CHIH-018

AÑO: 2022

LUGAR	ESTACION				CLASIFICACION VEHICULAR EN PORCIENTO													COORDENADAS		
	KM	TE	SC	TDPA	M	A	B	C2	C3	T3S2	T3S3	T3S2R4	OTROS	A	B	C	K'	D	LATITUD	LONGITUD
T. C. Jimenez - Camargo	0.00	3	1	449	2.6	75.5	1.7	6.7	1.3	6.3	2.7	2.9	0.3	78.1	1.7	20.2	0.080	0.500	27.658168	-105.059108
T. C. Jimenez - Camargo	0.00	3	2	449	2.8	75.0	1.9	6.1	1.1	5.8	3.4	3.5	0.4	77.8	1.9	20.3	0.078	0.500	27.658191	-105.059138
T. Der. La Perla	97.00	3	0	552	0.7	62.2	2.6	14.7	1.6	9.1	5.6	3.2	0.3	62.9	2.6	34.5	0.078	0.511	28.307602	-104.573149
T. Der. Majjoma	174.20	3	0	469	1.1	75.2	1.7	16.5	0.8	3.4	1.0	0.3	0.0	76.3	1.7	22.0	0.098	0.505	28.957333	-104.487442
T. Der. Manuel Benavides	218.00	3	0	2104	0.4	83.4	1.8	10.3	0.6	2.6	0.5	0.3	0.1	83.8	1.8	14.4	0.087	0.522	29.325766	-104.396101
Ojinaga	247.00	1	0	2469	0.7	86.1	1.7	7.1	0.8	2.5	0.6	0.3	0.2	86.8	1.7	11.5	0.160	0.526	29.517225	-104.422581

41 CARR: T. Julimes - La Boquilla

CLAVE: 08009

RUTA: CHIH-018

AÑO: 2022

LUGAR	ESTACION				CLASIFICACION VEHICULAR EN PORCIENTO													COORDENADAS			
	KM	TE	SC	TDPA	M	A	B	C2	C3	T3S2	T3S3	T3S2R4	OTROS	A	B	C	K'	D	LATITUD	LONGITUD	
T. C. Meoqui - Julimes	0.00	3	0	1339	8.9	81.2	2.4	5.2	1.0	0.8	0.2	0.2	0.1	90.1	2.4	7.5	0.078	0.502	28.427588	-105.456317	
La Boquilla	7.50	0	0																		

42 CARR: Ent. El Álamo - Ent. Ricardo Flores Magón (Cuota)

CLAVE: 08046

RUTA: CHIH-D

AÑO: 2022

LUGAR	ESTACION				CLASIFICACION VEHICULAR EN PORCIENTO													COORDENADAS			
	KM	TE	SC	TDPA	M	A	B	C2	C3	T3S2	T3S3	T3S2R4	OTROS	A	B	C	K'	D	LATITUD	LONGITUD	
T. C. Chihuahua - El Sueco	0.00	3	0	2068	9.0	41.9	6.3	9.3	1.8	19.7	3.6	7.7	0.7	50.9	6.3	42.8	0.089	0.552	29.485236	-106.409752	
T. C. El Sueco - Janos	75.00	0	0																		

43 CARR: Ricardo Flores Magón - Galeana (Cuota)

CLAVE: 08019

RUTA: CHIH-D

AÑO: 2022

LUGAR	ESTACION				CLASIFICACION VEHICULAR EN PORCIENTO													COORDENADAS		
	KM	TE	SC	TDPA	M	A	B	C2	C3	T3S2	T3S3	T3S2R4	OTROS	A	B	C	K'	D	LATITUD	LONGITUD
T. C. El Sueco - Janos	0.00	3	0	2414	2.6	47.1	4.8	9.0	1.9	24.0	4.6	5.8	0.2	49.7	4.8	45.5	0.083	0.501	29.969420	-107.070315

CHIHUAHUA

43 CARR: Ricardo Flores Magón - Galeana (Cuota)

CLAVE: 08019

RUTA: CHIH-D

AÑO: 2022

LUGAR	ESTACION				CLASIFICACION VEHICULAR EN PORCIENTO														COORDENADAS	
	KM	TE	SC	TDPA	M	A	B	C2	C3	T3S2	T3S3	T3S2R4	OTROS	A	B	C	K'	D	LATITUD	LONGITUD
Galeana	58.00	1	0	2759	2.6	53.3	4.5	6.0	1.5	22.0	4.3	5.4	0.4	55.9	4.5	39.6	0.079	0.516	30.175958	-107.619128

44 CARR: Samalayuca - San Jerónimo (Cuota)

CLAVE: 08019

RUTA: CHIH-D

AÑO: 2022

LUGAR	ESTACION				CLASIFICACION VEHICULAR EN PORCIENTO														COORDENADAS	
	KM	TE	SC	TDPA	M	A	B	C2	C3	T3S2	T3S3	T3S2R4	OTROS	A	B	C	K'	D	LATITUD	LONGITUD
T. C. El Sueco - Cd. Juárez	0.00	3	0	1329	1.7	80.1	0.3	8.7	1.6	5.9	1.1	0.6	0.0	81.8	0.3	17.9	0.106	0.506	31.453173	-106.477502
San Jerónimo	28.10	0	0																	

45 CARR: T. C. (Chihuahua - Ojinaga) - La Mula (Cuota)

CLAVE: 08170

RUTA: CHIH-D

AÑO: 2022

LUGAR	ESTACION				CLASIFICACION VEHICULAR EN PORCIENTO														COORDENADAS	
	KM	TE	SC	TDPA	M	A	B	C2	C3	T3S2	T3S3	T3S2R4	OTROS	A	B	C	K'	D	LATITUD	LONGITUD
T. C. Chihuahua - Ojinaga	0.00	3	0	1316	1.7	67.5	2.8	18.7	1.8	5.5	1.0	0.9	0.1	69.2	2.8	28.0	0.081	0.514	29.146132	-105.486168
La Mula	110.00	1	0	1309	0.8	75.0	2.8	15.9	0.7	2.9	1.7	0.2	0.0	75.8	2.8	21.4	0.087	0.516	29.180871	-104.472216

46 CARR: Chihuahua - Madera

CLAVE: 08038

RUTA: CHIH-D-MEX-001-CHIH

AÑO: 2022

LUGAR	ESTACION				CLASIFICACION VEHICULAR EN PORCIENTO														COORDENADAS	
	KM	TE	SC	TDPA	M	A	B	C2	C3	T3S2	T3S3	T3S2R4	OTROS	A	B	C	K'	D	LATITUD	LONGITUD
Chihuahua	0.00	0	0																	
T. Der. Presa Chihuahua	10.50	1	1	12960	1.9	77.6	2.5	11.4	1.5	3.2	1.1	0.5	0.3	79.5	2.5	18.0	0.092	0.524	28.568488	-106.142945
T. Der. Presa Chihuahua	10.50	1	2	11775	1.8	77.0	2.6	11.7	1.4	3.5	1.2	0.5	0.3	78.8	2.6	18.6	0.082	0.524	28.568379	-106.142857
T. Der. Presa Chihuahua	10.50	3	1	8227	1.0	79.6	2.1	11.0	1.5	3.1	1.2	0.4	0.1	80.6	2.1	17.3	0.101	0.516	28.565435	-106.146662
T. Der. Presa Chihuahua	10.50	3	2	8770	1.0	79.8	2.1	10.5	1.6	3.4	1.2	0.3	0.1	80.8	2.1	17.1	0.101	0.516	28.565333	-106.146603
T. Izq. Hidalgo del Parral (Vía Corta)	36.20	1	1	6568	1.6	76.7	2.3	10.5	1.9	4.2	1.7	0.8	0.3	78.3	2.3	19.4	0.104	0.500	28.364768	-106.257981
T. Izq. Hidalgo del Parral (Vía Corta)	36.20	1	2	6559	1.5	76.4	2.5	10.6	1.8	4.6	1.6	0.8	0.2	77.9	2.5	19.6	0.181	0.500	28.364702	-106.257889
T. Izq. Hidalgo del Parral (Vía Corta)	36.20	3	1	6094	1.9	78.5	2.7	8.9	1.2	4.3	1.5	0.7	0.3	80.4	2.7	16.9	0.111	0.512	28.358820	-106.271213
T. Izq. Hidalgo del Parral (Vía Corta)	36.20	3	2	5798	1.9	80.0	2.6	7.5	1.3	4.3	1.4	0.7	0.3	81.9	2.6	15.5	0.165	0.512	28.358754	-106.271280
Cuahtémoc	103.50	1	1	5516	3.4	74.7	3.1	13.5	1.5	2.4	1.0	0.4	0.0	78.1	3.1	18.8	0.091	0.513	28.401158	-106.827273
Cuahtémoc	103.50	1	2	5240	3.3	74.9	3.2	13.5	1.6	2.2	0.9	0.4	0.0	78.2	3.2	18.6	0.098	0.513	28.401051	-106.827297
Cuahtémoc	103.50	3	1	10953	3.0	77.4	2.0	13.5	1.2	1.5	1.0	0.3	0.1	80.4	2.0	17.6	0.095	0.502	28.401518	-106.886935
Cuahtémoc	103.50	3	2	10887	3.1	77.5	1.9	13.4	1.2	1.4	1.0	0.3	0.2	80.6	1.9	17.5	0.109	0.502	28.401368	-106.886957
T. Der. Álvaro Obregón	107.10	3	1	6631	1.5	81.5	1.2	9.0	2.0	2.0	1.7	0.5	0.6	83.0	1.2	15.8	0.081	0.515	28.399141	-106.925810
T. Der. Álvaro Obregón	107.10	3	2	7030	1.6	80.6	1.3	9.2	2.2	2.0	2.0	0.5	0.6	82.2	1.3	16.5	0.102	0.515	28.399042	-106.925792

CHIHUAHUA

46 CARR: Chihuahua - Madera

CLAVE: 08038

RUTA: CHIH-D-MEX-001-CHIH

AÑO: 2022

LUGAR	ESTACION				CLASIFICACION VEHICULAR EN PORCIENTO										COORDENADAS					
	KM	TE	SC	TDPA	M	A	B	C2	C3	T3S2	T3S3	T3S2R4	OTROS	A	B	C	K'	D	LATITUD	LONGITUD
T. Izq. Yepachi	150.80	1	1	3231	1.5	78.9	2.7	10.9	1.5	2.5	1.8	0.1	0.1	80.4	2.7	16.9	0.109	0.511	28.467696	-107.289135
T. Izq. Yepachi	150.80	1	2	3089	1.4	78.7	2.9	10.9	1.6	2.6	1.5	0.1	0.3	80.1	2.9	17.0	0.128	0.511	28.467561	-107.289174
Guerrero	169.80	3	0	2647	2.9	86.9	1.4	4.3	1.5	1.5	1.5	0.0	0.0	89.8	1.4	8.8	0.087	0.524	28.554179	-107.498077
T. Der. Peña Blanca	261.30	1	0	1043	1.5	79.9	1.7	8.5	1.3	2.3	4.2	0.5	0.1	81.4	1.7	16.9	0.105	0.500	29.117580	-107.901863
T. Der. Peña Blanca	261.30	3	0	1192	1.1	81.7	1.7	6.9	3.7	1.8	2.7	0.2	0.2	82.8	1.7	15.5	0.107	0.503	29.120052	-107.908091
Madera	279.00	0	0																	

47 CARR: Ent. Agua Caliente - El Terrero

CLAVE: 08170

RUTA: CHIH-MEX

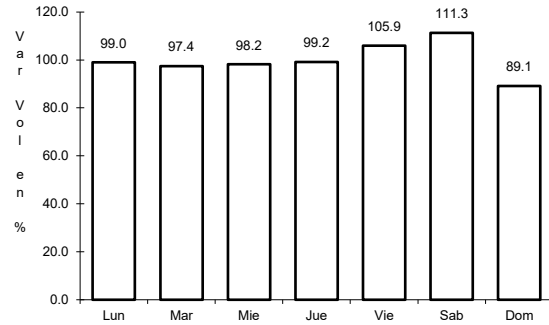
AÑO: 2022

LUGAR	ESTACION				CLASIFICACION VEHICULAR EN PORCIENTO										COORDENADAS					
	KM	TE	SC	TDPA	M	A	B	C2	C3	T3S2	T3S3	T3S2R4	OTROS	A	B	C	K'	D	LATITUD	LONGITUD
T. C. Chihuahua - El Sueco	0.00	3	0	739	3.5	59.0	0.9	23.2	5.4	5.7	1.7	0.4	0.2	62.5	0.9	36.6	0.097	0.508	29.095499	-106.345575
Nuevas Delicias	22.00	1	0	838	4.5	74.6	1.1	14.7	1.8	2.4	0.8	0.1	0.0	79.1	1.1	19.8	0.138	0.520	29.088657	-106.467914
El Terrero	120.00	1	0	1534	2.4	91.9	0.7	3.2	0.6	0.5	0.5	0.1	0.1	94.3	0.7	5.0	0.093	0.515	29.177293	-107.373631

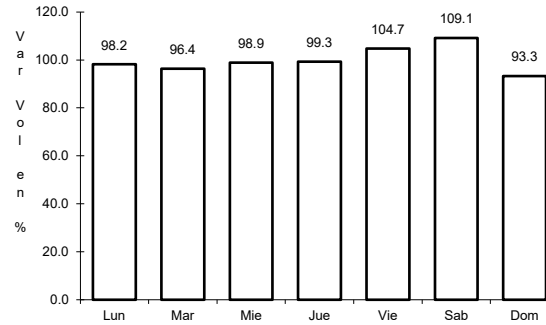
1 CARR: Cd. Juárez - Janos

CLAVE: 08041

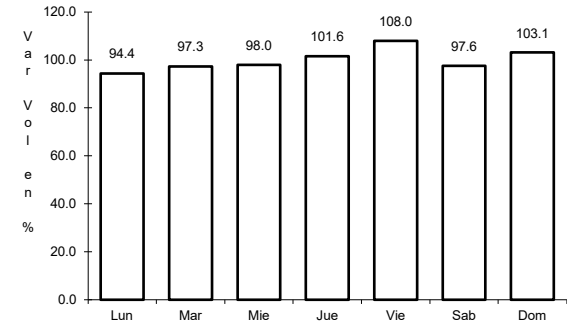
RUTA: MEX-002



Km: 0.00 Tipo: 3 Sent: 1



Km: 0.00 Tipo: 3 Sent: 2

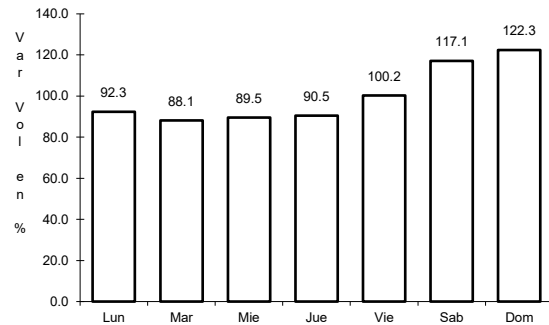


Km: 205.00 Tipo: 1 Sent: 0

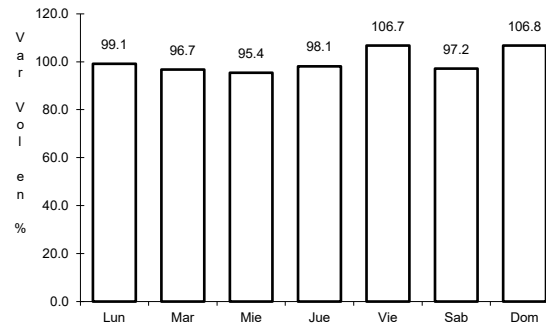
2 CARR: Chihuahua - El Succo

CLAVE: 08419

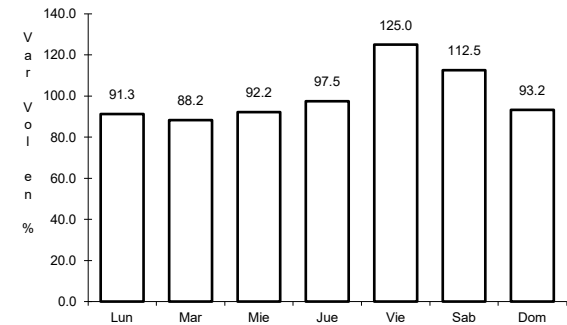
RUTA: MEX-045



Km: 24.00 Tipo: 1 Sent: 0



Km: 155.87 Tipo: 1 Sent: 1

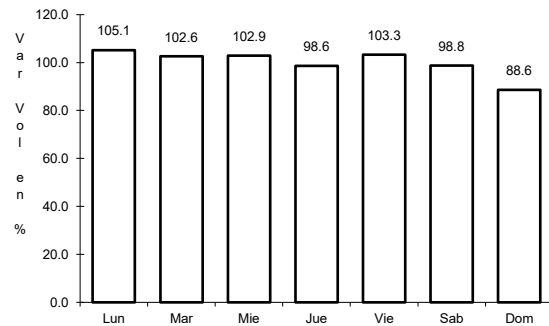


Km: 155.87 Tipo: 1 Sent: 2

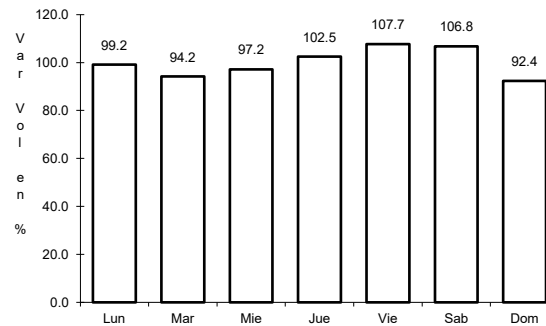
3 CARR: Chihuahua - Ojinaga

CLAVE: 08042

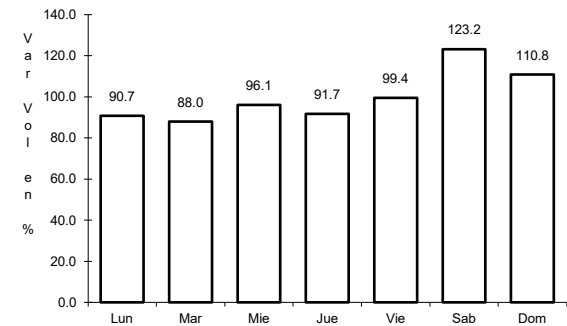
RUTA: MEX-016



Km: 6.50 Tipo: 1 Sent: 1



Km: 6.50 Tipo: 1 Sent: 2

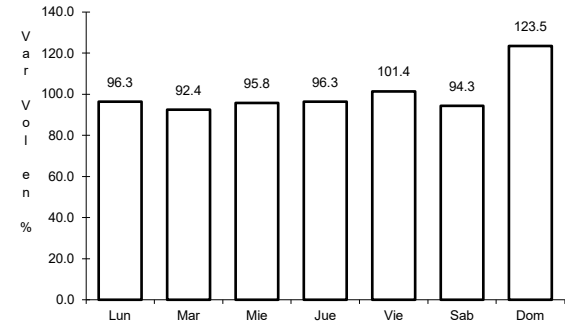
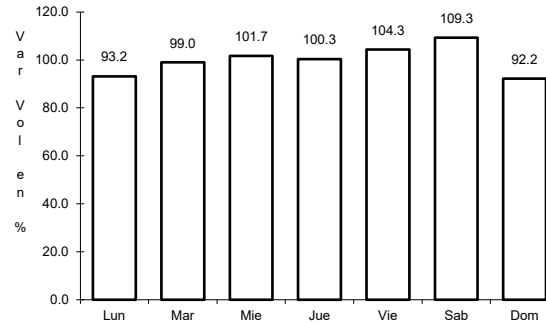
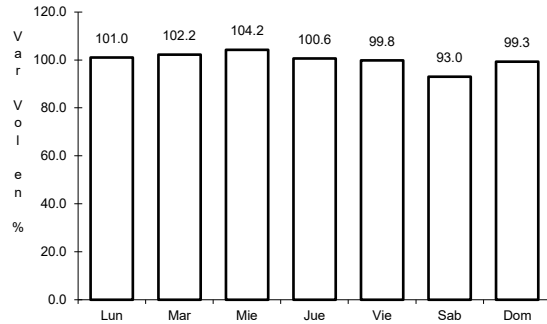


Km: 224.00 Tipo: 1 Sent: 0

4 CARR: Delicias - Chihuahua (Libre)

CLAVE: 08418

ruta: MEX-045



Km: 150.10 Tipo: 3 Sent: 1

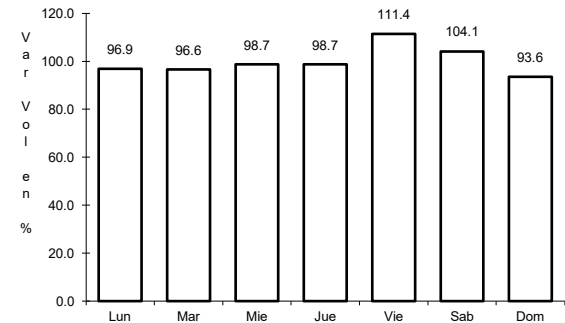
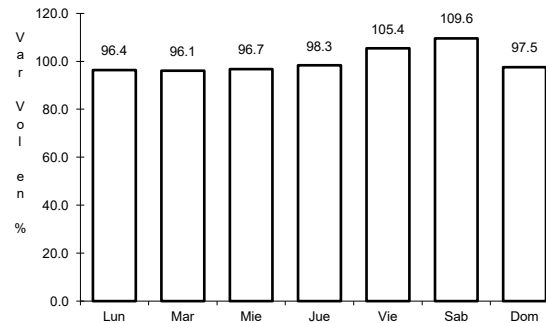
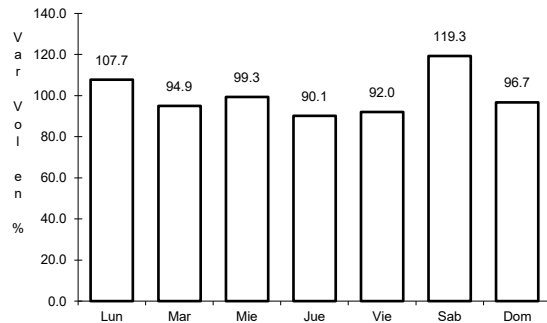
Km: 150.10 Tipo: 3 Sent: 2

Km: 210.00 Tipo: 1 Sent: 1

5 CARR: El Sueco - Janos

CLAVE: 08037

ruta: MEX-010



Km: 0.00 Tipo: 3 Sent: 0

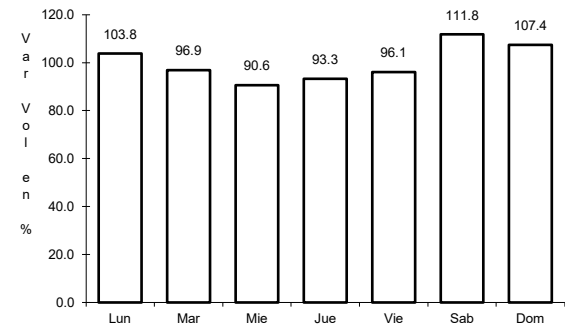
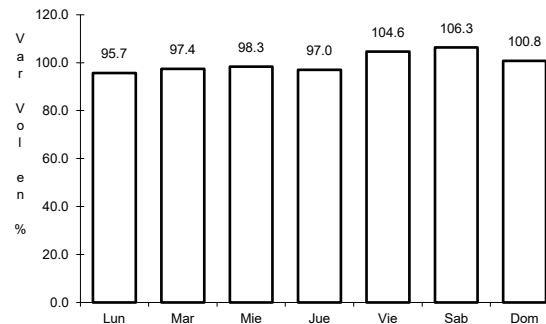
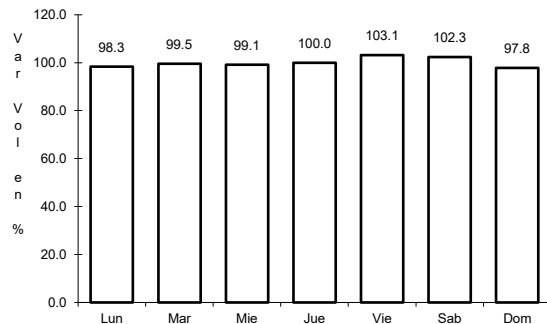
Km: 114.00 Tipo: 1 Sent: 0

Km: 257.00 Tipo: 1 Sent: 0

6 CARR: Ent. Ciudad Camargo - Saucillo

CLAVE: 08417

ruta: MEX-045



Km: 0.00 Tipo: 3 Sent: 0

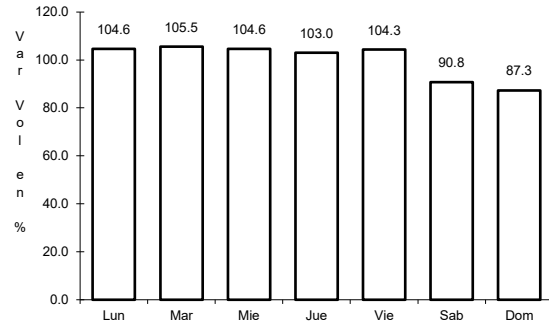
Km: 20.92 Tipo: 3 Sent: 0

Km: 42.52 Tipo: 1 Sent: 0

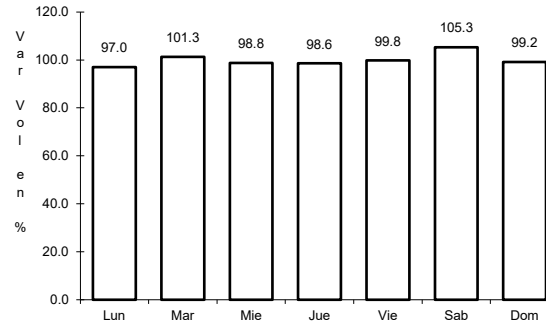
7 CARR: Ent. La Zarca - Hidalgo del Parral

CLAVE: 00488

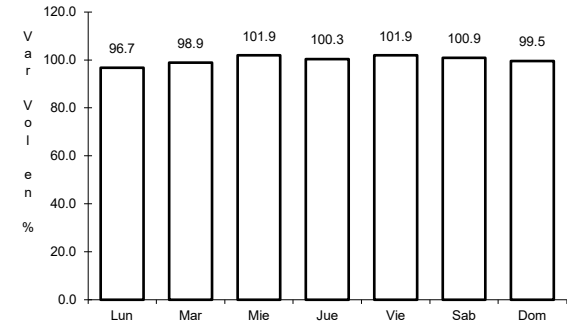
ruta: MEX-045



Km: 0.00 Tipo: 3 Sent: 0



Km: 92.35 Tipo: 3 Sent: 0

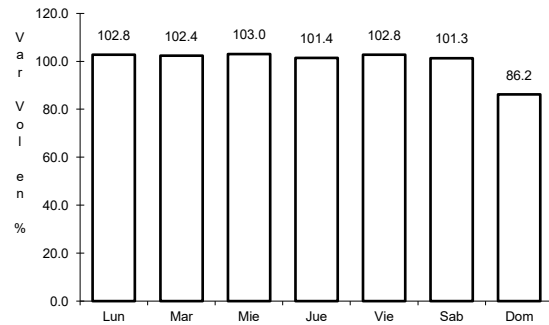


Km: 171.00 Tipo: 1 Sent: 0

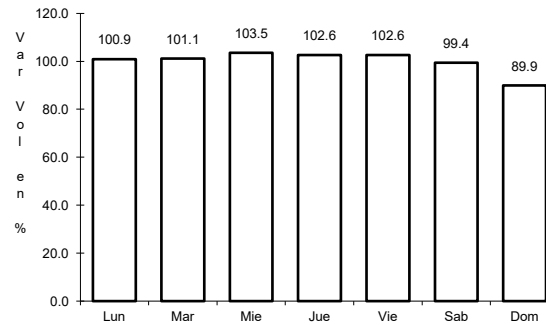
8 CARR: Gómez Palacio - Jiménez

CLAVE: 00006

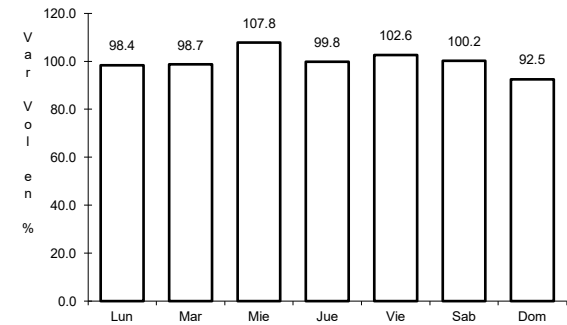
ruta: MEX-049



Km: 0.00 Tipo: 3 Sent: 1



Km: 0.00 Tipo: 3 Sent: 2

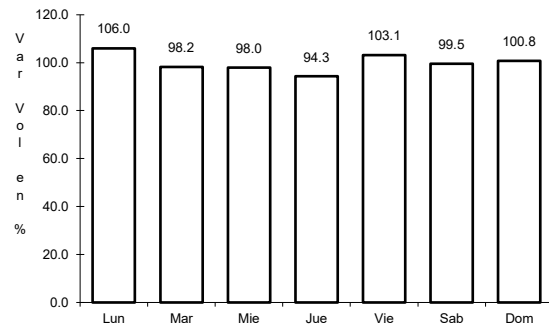


Km: 107.95 Tipo: 1 Sent: 0

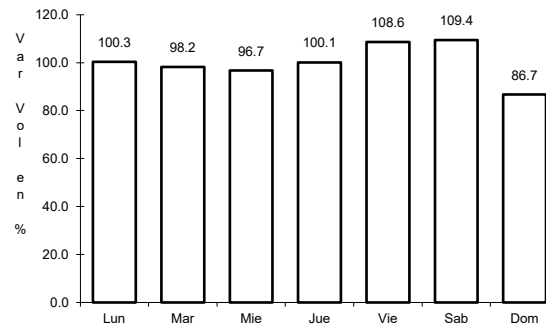
9 CARR: Hidalgo del Parral - Ent. Nuevo Palomas (Vía Corta)

CLAVE: 08811

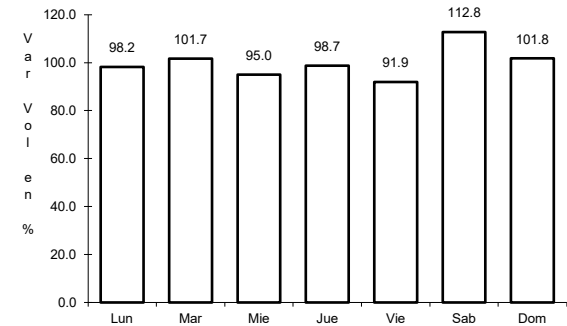
ruta: MEX-024



Km: 0.00 Tipo: 3 Sent: 0



Km: 66.00 Tipo: 1 Sent: 0

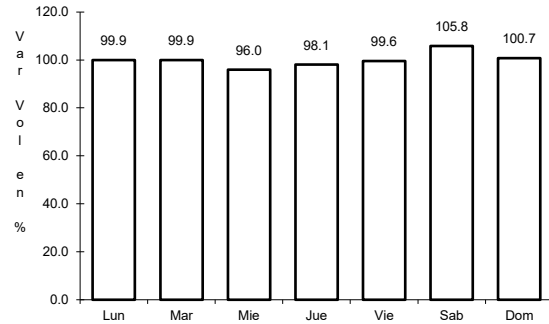


Km: 182.40 Tipo: 1 Sent: 0

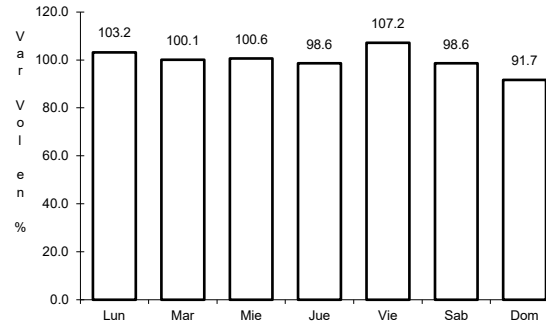
10 CARR: Hidalgo del Parral - Guadalupe y Calvo

CLAVE: 00802

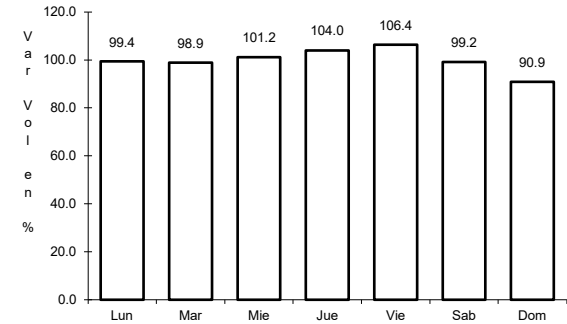
RUTA: MEX-024



Km: 0.00 Tipo: 3 Sent: 0



Km: 110.00 Tipo: 1 Sent: 0

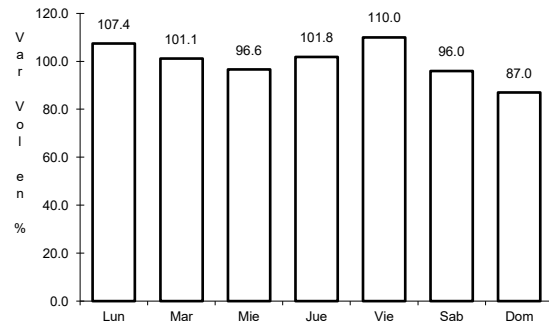


Km: 212.00 Tipo: 1 Sent: 0

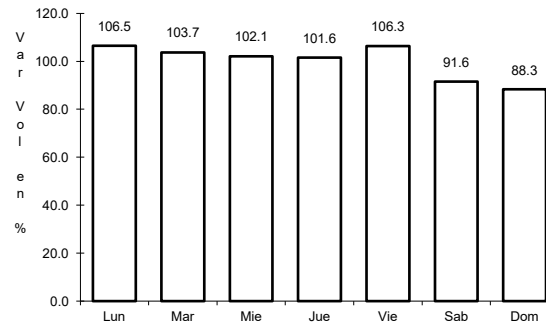
11 CARR: Hidalgo del Parral - Jiménez

CLAVE: 08444

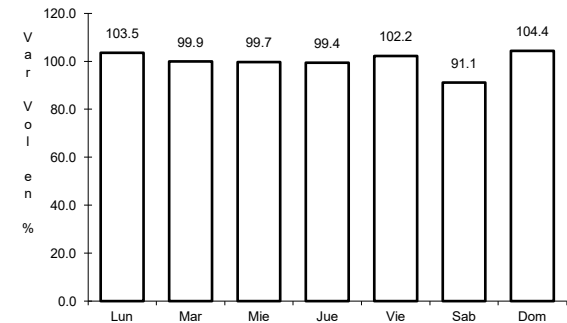
RUTA: MEX-045



Km: 0.00 Tipo: 3 Sent: 1



Km: 0.00 Tipo: 3 Sent: 2

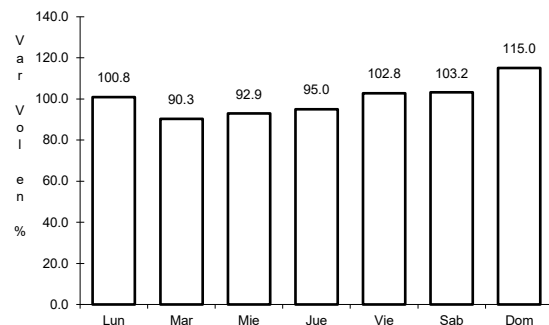


Km: 76.63 Tipo: 1 Sent: 1

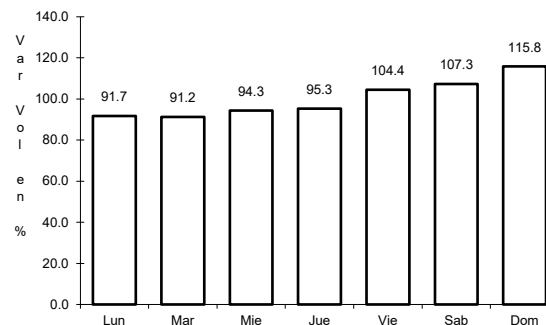
12 CARR: Janos - Agua Prieta

CLAVE: 00220

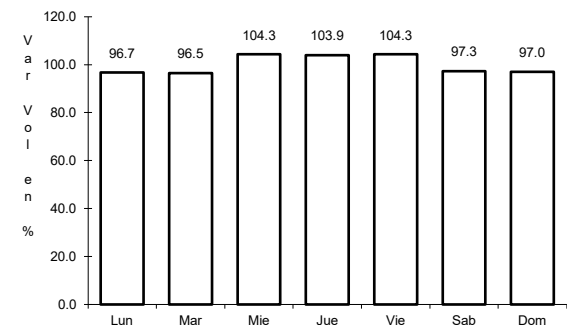
RUTA: MEX-002



Km: 0.00 Tipo: 3 Sent: 0



Km: 56.00 Tipo: 3 Sent: 0

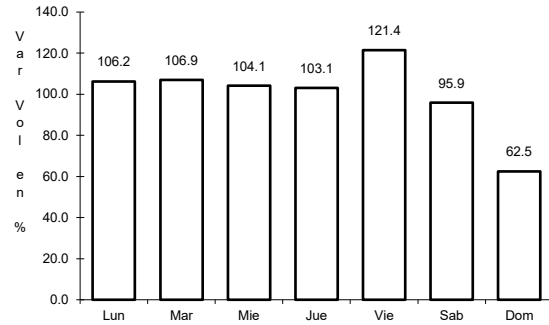


Km: 160.00 Tipo: 1 Sent: 0

13 CARR: Jerónimo - Sta. Teresa

CLAVE: 08043

ruta: MEX-002



Km: 0.00

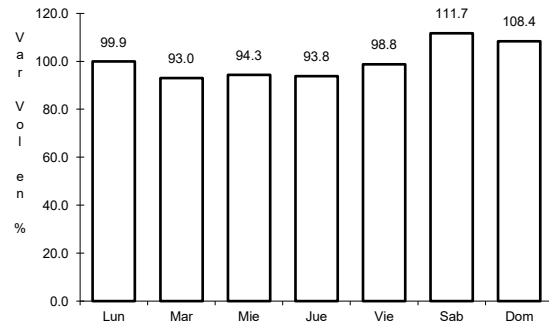
Tipo: 3

Sent: 0

14 CARR: La Junta - Yécora

CLAVE: 00065

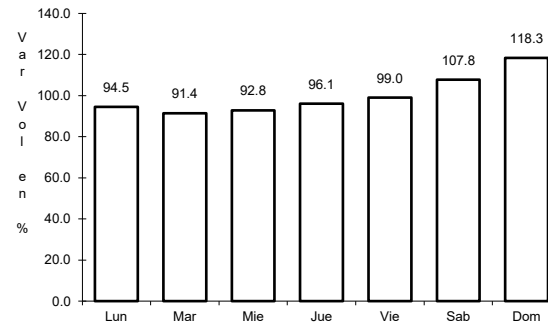
ruta: MEX-016



Km: 0.00

Tipo: 3

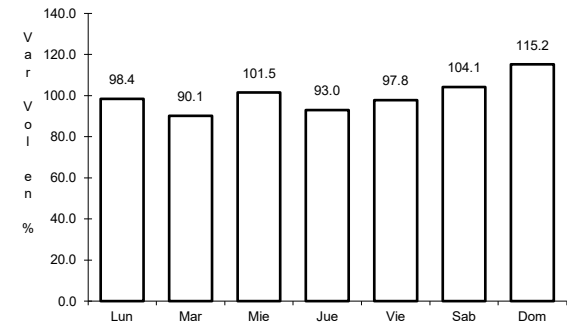
Sent: 0



Km: 70.00

Tipo: 3

Sent: 0



Km: 253.00

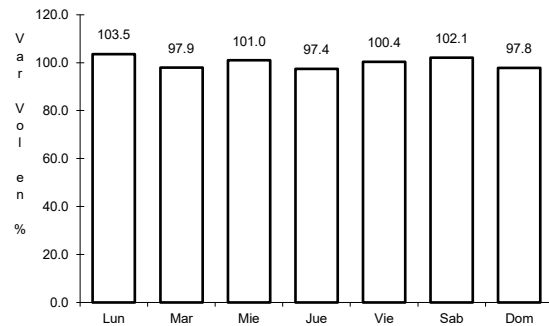
Tipo: 1

Sent: 0

15 CARR: Libramiento de Delicias - Meoqui

CLAVE: 08813

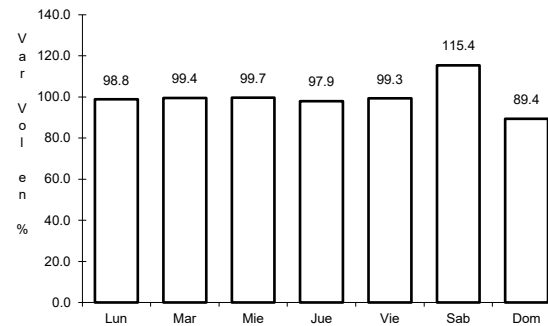
ruta: MEX-045



Km: 0.00

Tipo: 3

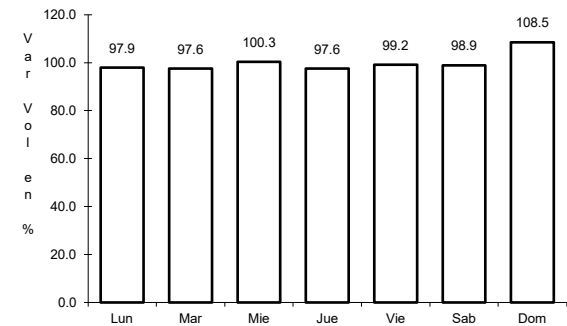
Sent: 1



Km: 0.00

Tipo: 3

Sent: 2



Km: 13.60

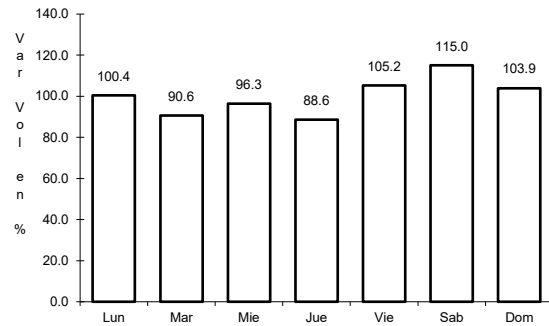
Tipo: 1

Sent: 1

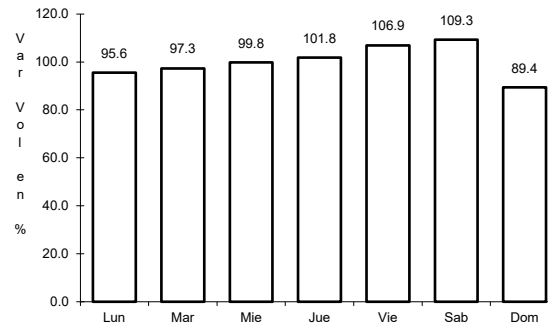
16 CARR: Porvenir - Cd. Juárez

CLAVE: 08169

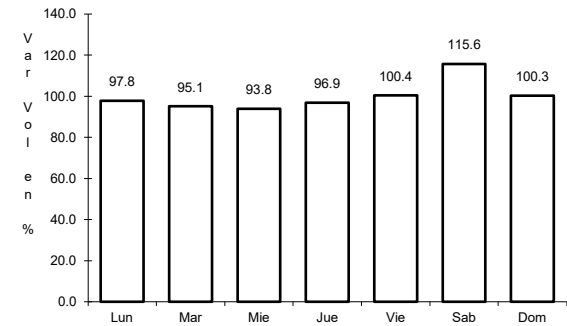
ruta: MEX-002



Km: 1.67 Tipo: 3 Sent: 0



Km: 70.32 Tipo: 1 Sent: 1

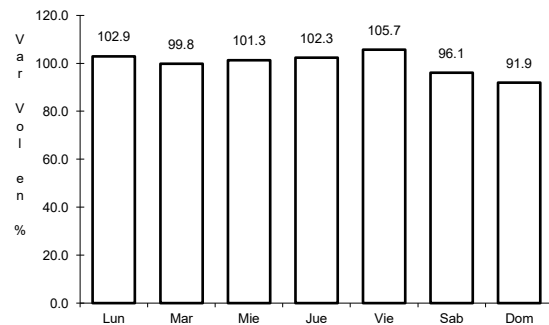


Km: 70.32 Tipo: 1 Sent: 2

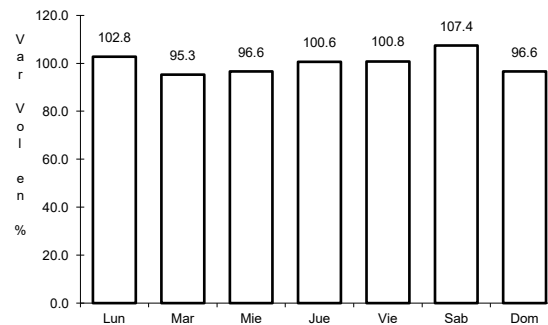
17 CARR: Ramal a Aeropuerto de Chihuahua

CLAVE: 08421

ruta: MEX-016



Km: 0.00 Tipo: 3 Sent: 1

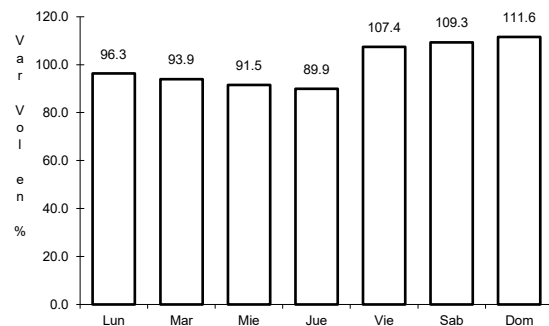


Km: 0.00 Tipo: 3 Sent: 2

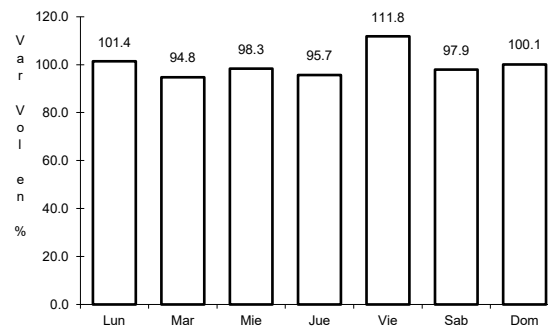
18 CARR: Ramal a Palomas

CLAVE: 08019

ruta: MEX-002



Km: 0.00 Tipo: 3 Sent: 0

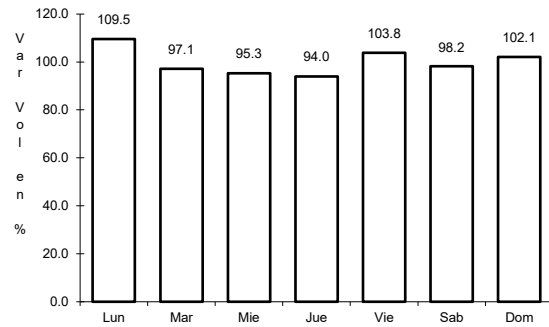


Km: 4.50 Tipo: 3 Sent: 0

19 CARR: Villa Ahumada - Cd. Juárez (Libre)

CLAVE: 08420

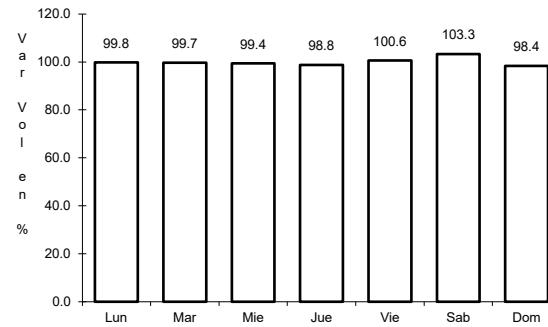
ruta: MEX-045



Km: 83.63

Tipo: 3

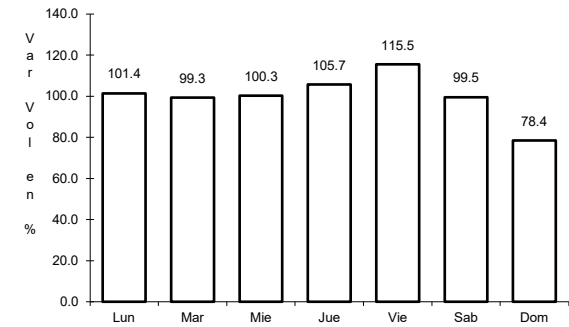
Sent: 1



Km: 83.63

Tipo: 3

Sent: 2



Km: 201.35

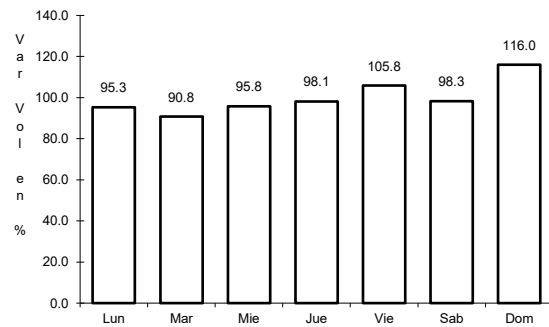
Tipo: 1

Sent: 1

20 CARR: Camargo - Delicias (Cuota)

CLAVE: 08418

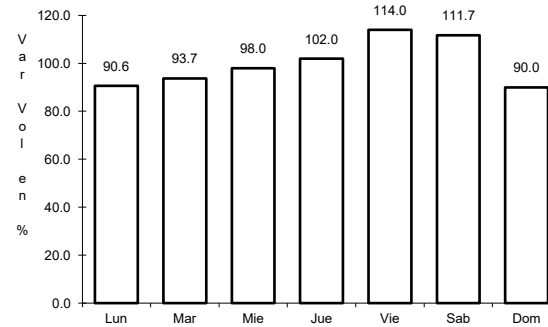
ruta: MEX-045D



Km: 73.17

Tipo: 1

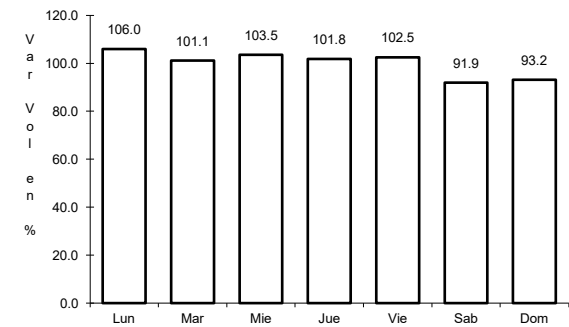
Sent: 1



Km: 73.17

Tipo: 1

Sent: 2



Km: 138.00

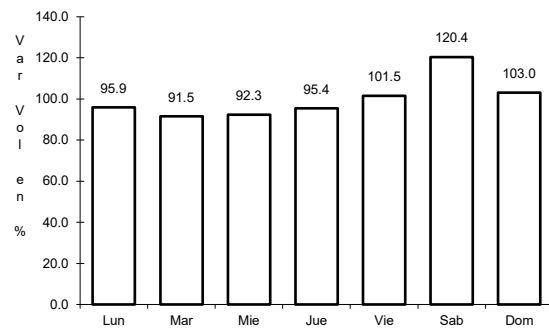
Tipo: 1

Sent: 1

21 CARR: Chihuahua - Sacramento (Cuota)

CLAVE: 08015

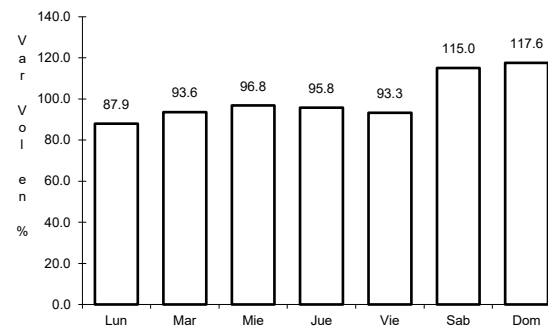
ruta: MEX-045D



Km: 18.12

Tipo: 3

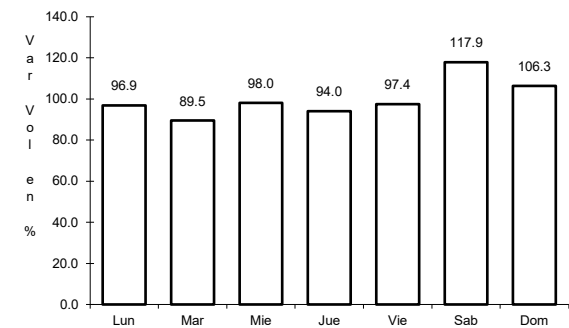
Sent: 1



Km: 18.12

Tipo: 3

Sent: 2



Km: 21.17

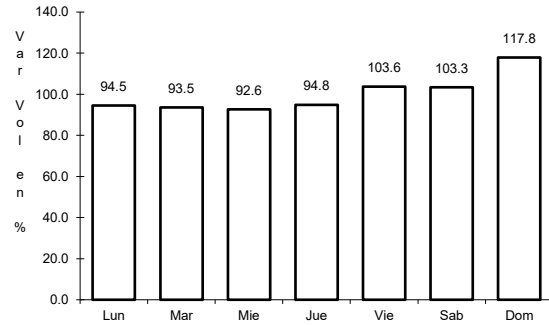
Tipo: 3

Sent: 1

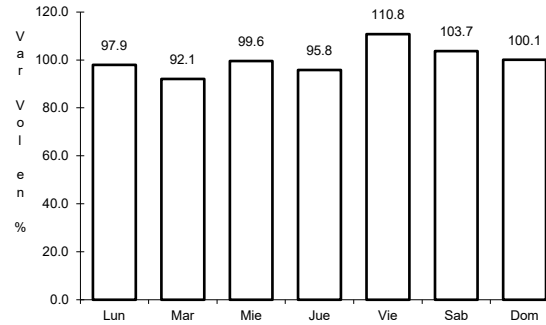
22 CARR: El Sueco - Villa Ahumada (Cuota)

CLAVE: 08420

ruta: MEX-045D



Km: 0.00 Tipo: 3 Sent: 1

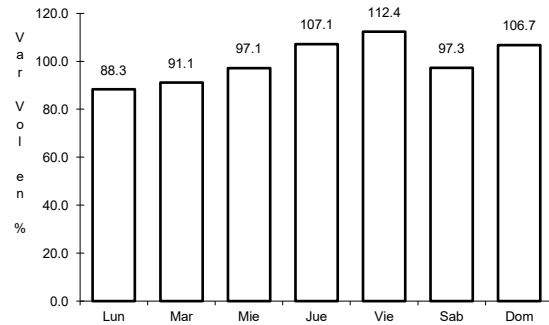


Km: 0.00 Tipo: 3 Sent: 2

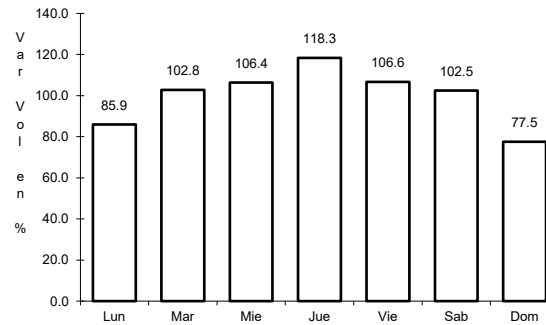
23 CARR: Gómez Palacio - Corralitos (Cuota)

CLAVE: 00016

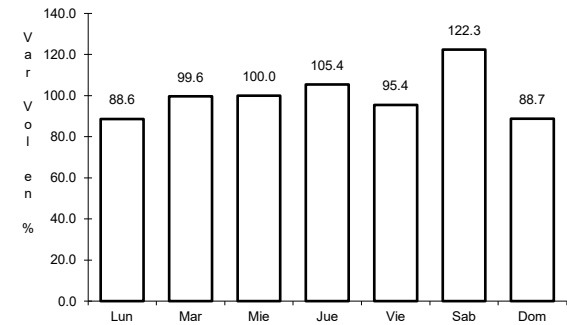
ruta: MEX-049D



Km: 40.10 Tipo: 1 Sent: 1



Km: 40.10 Tipo: 1 Sent: 2

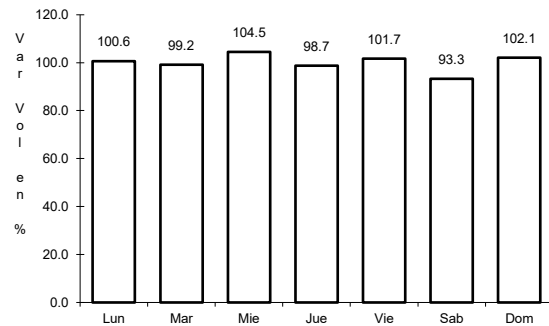


Km: 226.50 Tipo: 1 Sent: 1

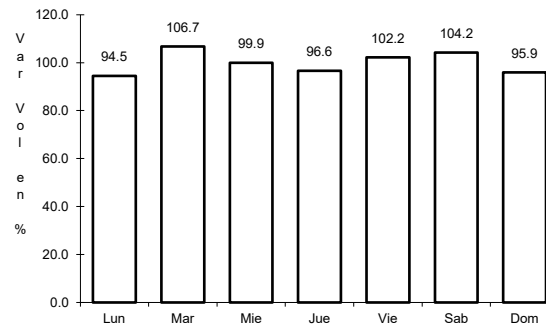
24 CARR: Jiménez - Camargo (Cuota)

CLAVE: 08418

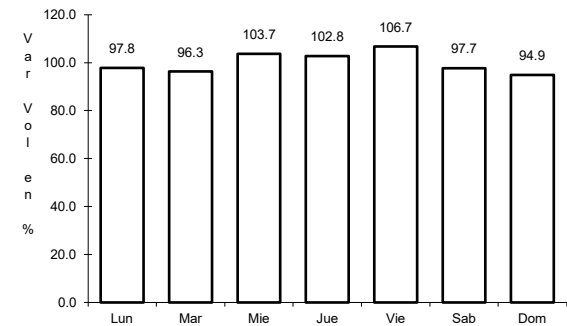
ruta: MEX-045D



Km: 0.00 Tipo: 3 Sent: 1



Km: 0.00 Tipo: 3 Sent: 2

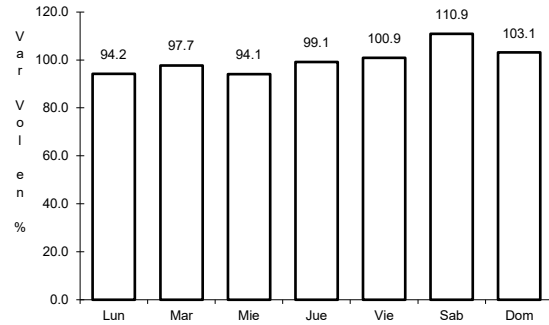


Km: 68.98 Tipo: 1 Sent: 1

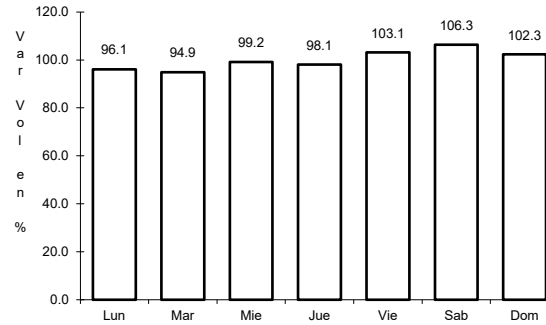
25 CARR: Libramiento Oriente Chihuahua (Cuota)

CLAVE:

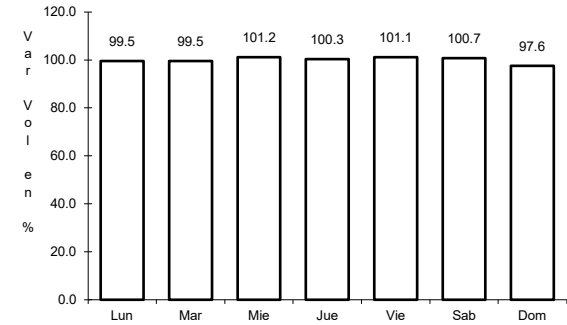
ruta: MEX-045D



Km: 0.00 Tipo: 3 Sent: 0



Km: 22.00 Tipo: 1 Sent: 0

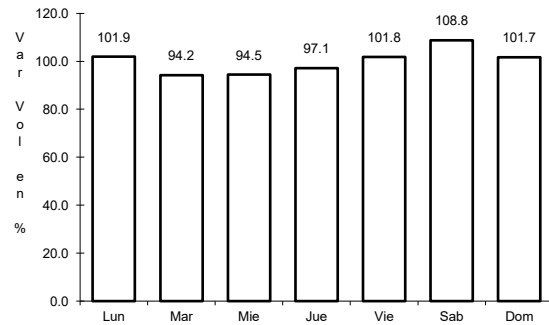


Km: 22.00 Tipo: 3 Sent: 0

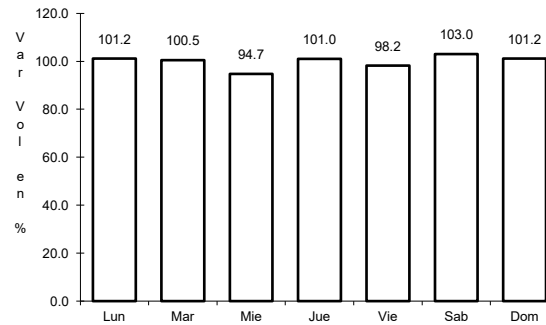
26 CARR: Ahumada - Ricardo Flores Magón

CLAVE: 08804

ruta: CHIH



Km: 0.00 Tipo: 3 Sent: 0

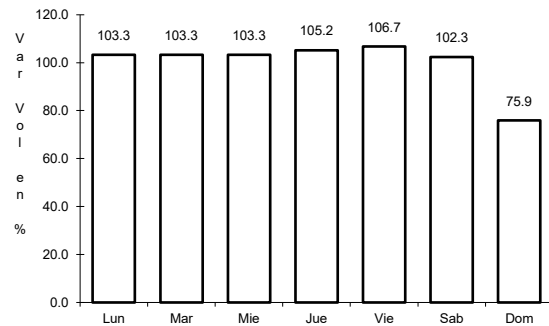


Km: 96.00 Tipo: 1 Sent: 0

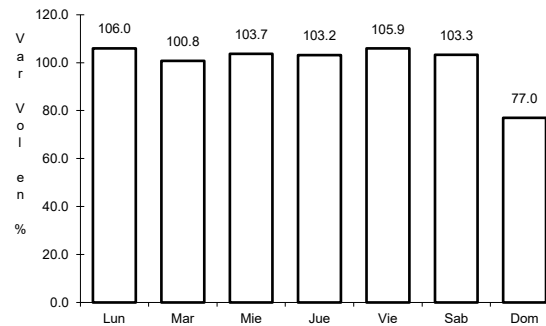
27 CARR: Cuauhtémoc - Buenaventura

CLAVE: 08015

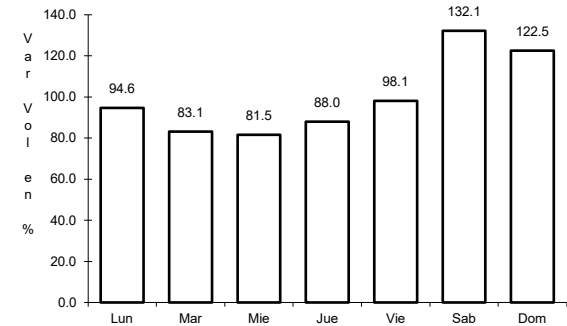
ruta: CHIH



Km: 0.00 Tipo: 3 Sent: 1



Km: 0.00 Tipo: 3 Sent: 2

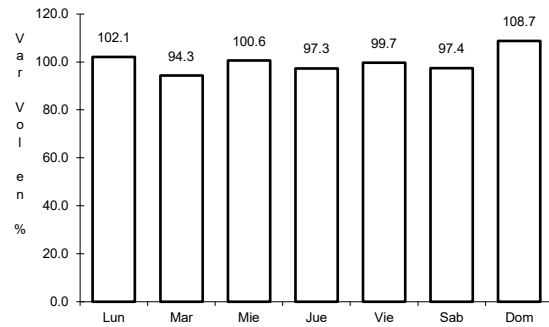


Km: 253.30 Tipo: 1 Sent: 0

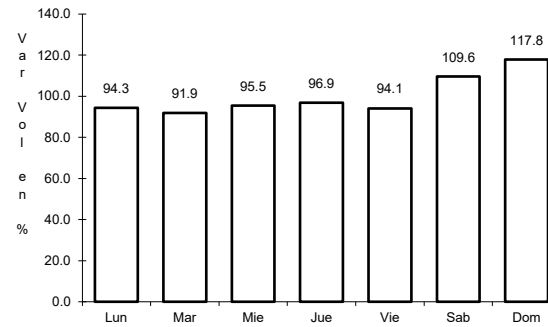
28 CARR: Delicias - Saucillo

CLAVE: 08007

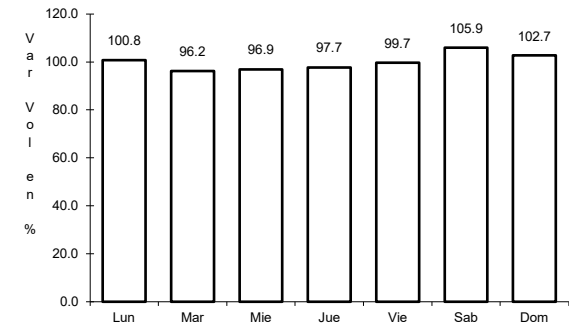
RUTA: CHIH-007



Km: 0.00 Tipo: 3 Sent: 0



Km: 17.00 Tipo: 1 Sent: 0

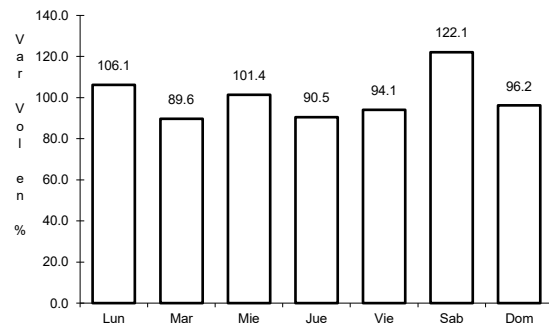


Km: 33.00 Tipo: 1 Sent: 0

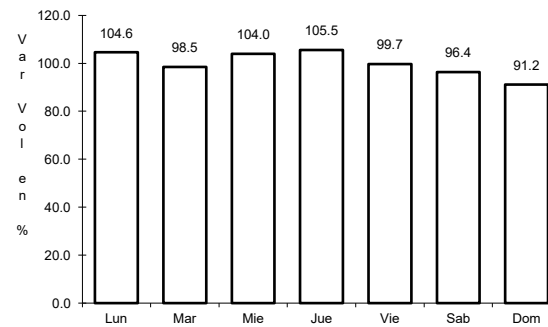
29 CARR: Ent. Peña Blanca - Ent. La Concha

CLAVE: 08493

RUTA: CHIH



Km: 0.00 Tipo: 3 Sent: 0

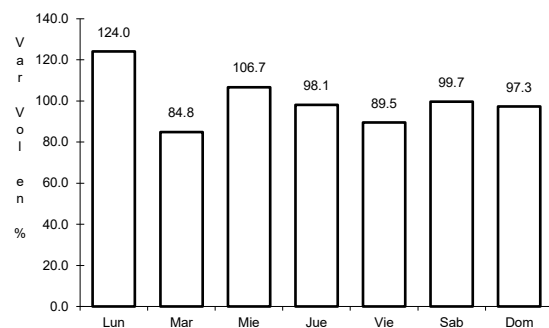


Km: 17.00 Tipo: 1 Sent: 0

30 CARR: Ent. Puerto Justo - Ent. Guachoicic

CLAVE: 08044

RUTA: CHIH

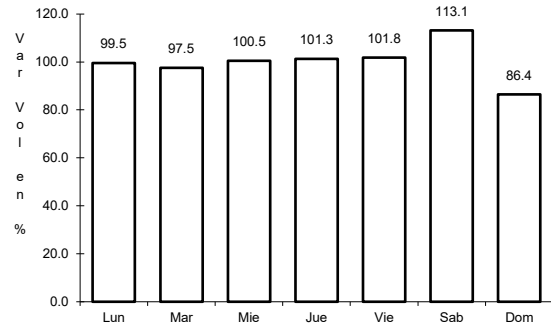


Km: 0.00 Tipo: 3 Sent: 0

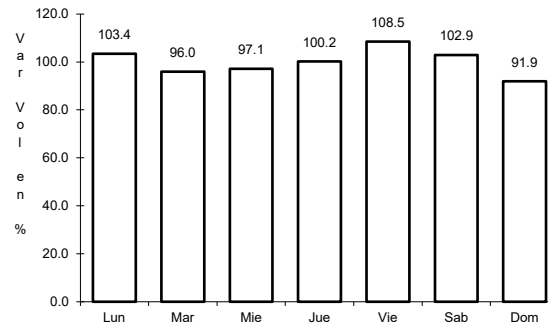
31 CARR: Jiménez - Camargo

CLAVE: 08021

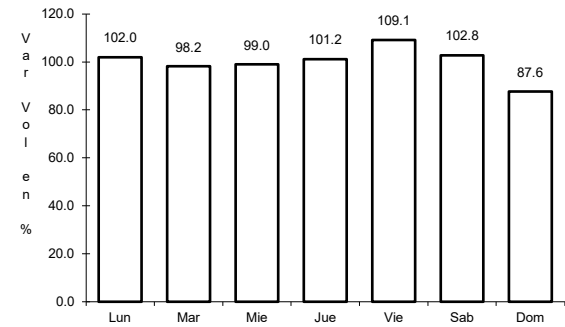
ruta: CHIH-049



Km: 0.00 Tipo: 3 Sent: 0



Km: 65.80 Tipo: 3 Sent: 0

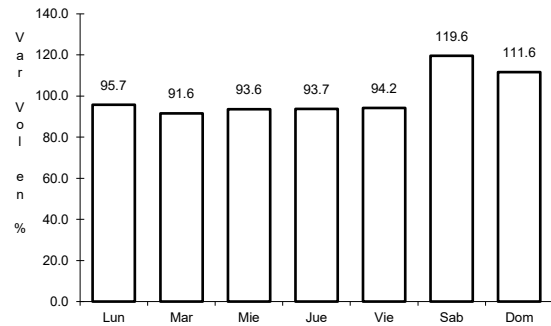


Km: 78.20 Tipo: 1 Sent: 0

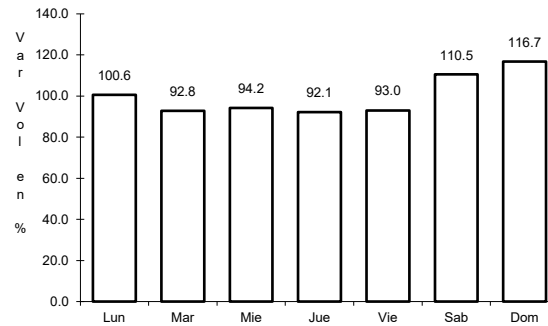
32 CARR: Lázaro Cárdenas - Ent. Colonia San José

CLAVE: 08004

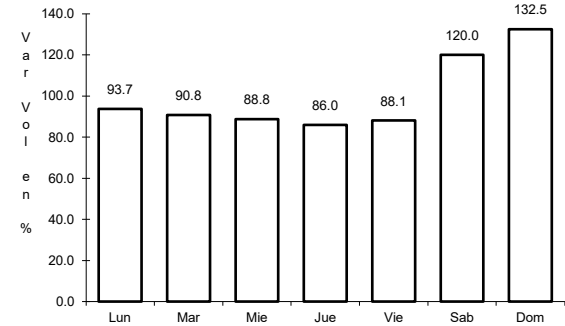
ruta: CHIH-004



Km: 0.00 Tipo: 3 Sent: 1



Km: 0.00 Tipo: 3 Sent: 2

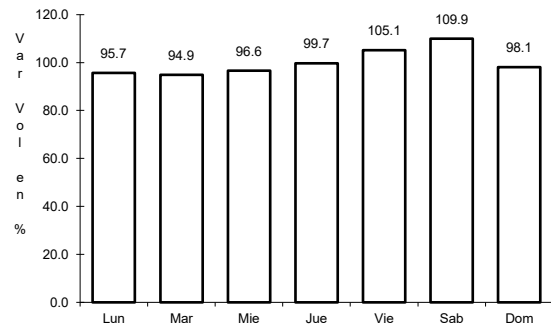


Km: 16.00 Tipo: 1 Sent: 0

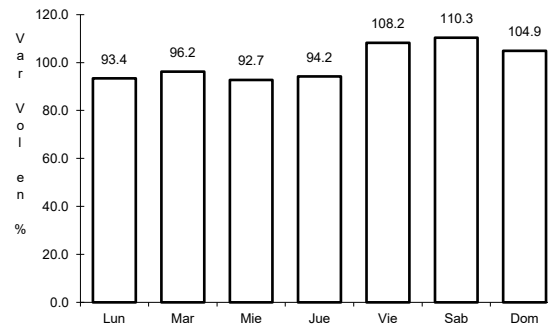
33 CARR: Libramiento de Hidalgo del Parral

CLAVE: 08221

ruta: CHIH



Km: 8.00 Tipo: 3 Sent: 1

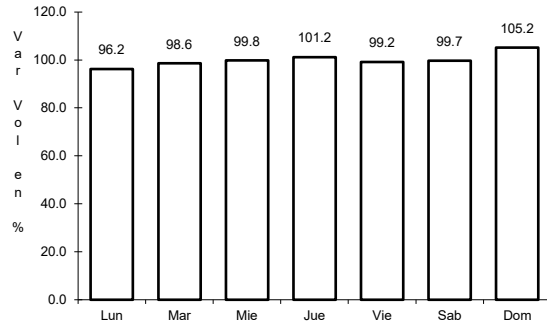


Km: 8.00 Tipo: 3 Sent: 2

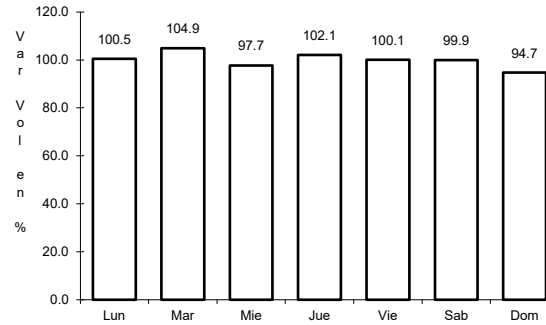
34 CARR: Libramiento de Jiménez

CLAVE: 08047

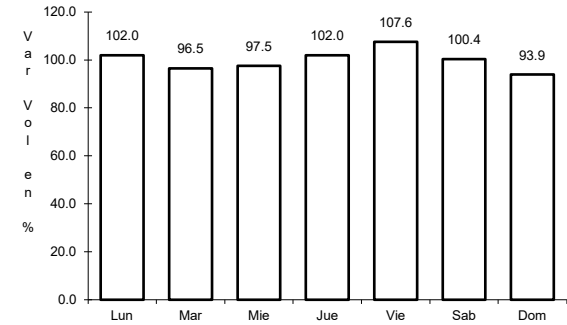
RUTA: CHIH



Km: 0.00 Tipo: 3 Sent: 1



Km: 0.00 Tipo: 3 Sent: 2

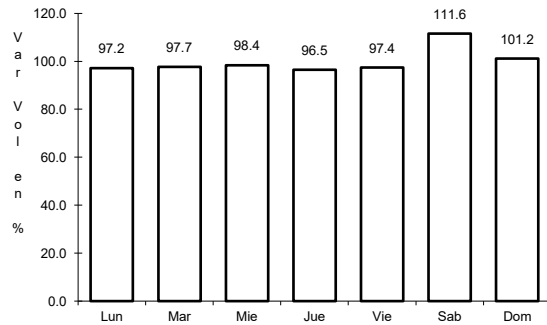


Km: 3.40 Tipo: 1 Sent: 1

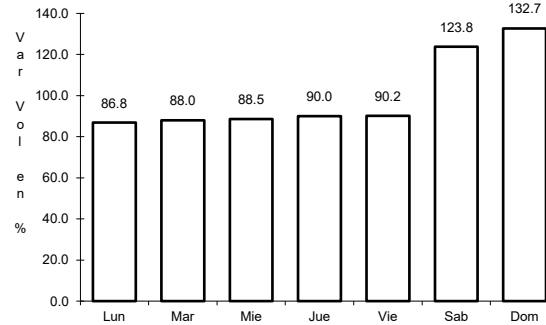
35 CARR: Meoqui - Julimes

CLAVE: 08005

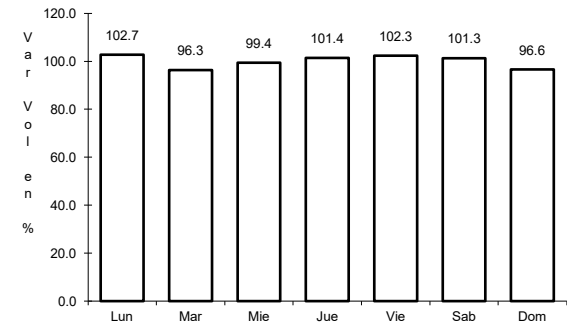
RUTA: CHIH-005



Km: 0.00 Tipo: 3 Sent: 0



Km: 15.40 Tipo: 3 Sent: 0

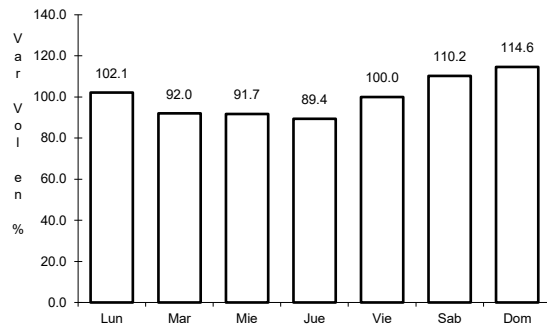


Km: 23.00 Tipo: 1 Sent: 0

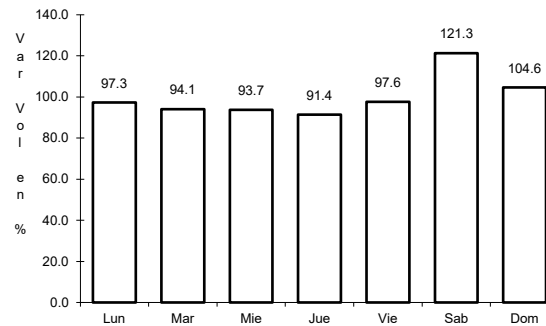
36 CARR: Ramal a San Pedro Creel

CLAVE: 08812

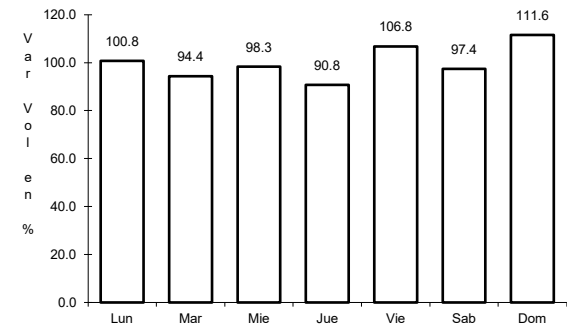
RUTA: CHIH-025



Km: 0.00 Tipo: 3 Sent: 0



Km: 58.00 Tipo: 3 Sent: 0

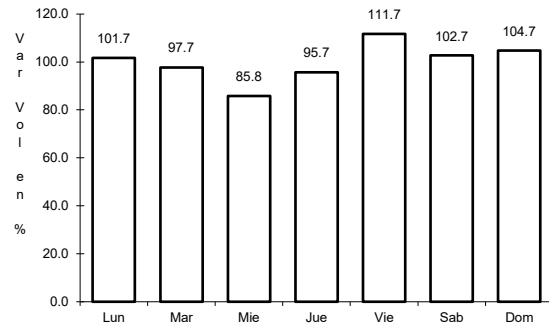


Km: 85.00 Tipo: 1 Sent: 0

37 CARR: Samachique - Batopilas

CLAVE:

RUTA: CHIH



Km: 0.00

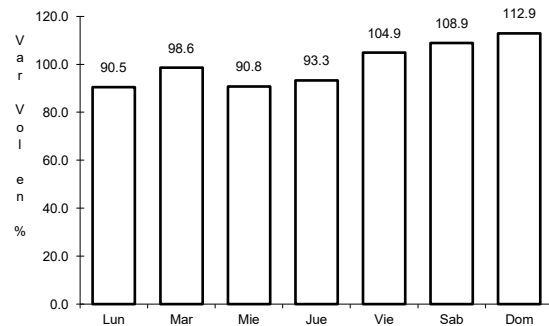
Tipo: 3

Sent: 0

38 CARR: San Juanito - Ent. Basaseachi

CLAVE: 08045

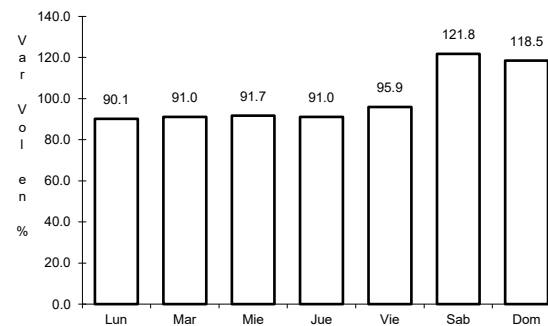
RUTA: CHIH



Km: 0.00

Tipo: 3

Sent: 0



Km: 84.00

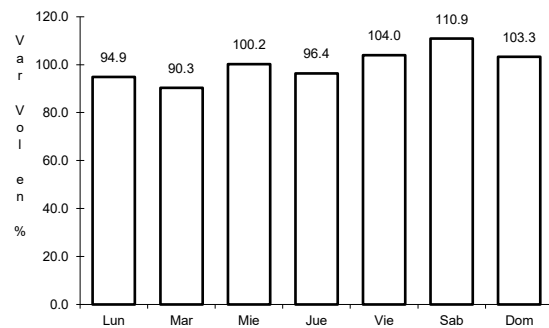
Tipo: 1

Sent: 0

39 CARR: San Pedro Creel - Guachochi

CLAVE:

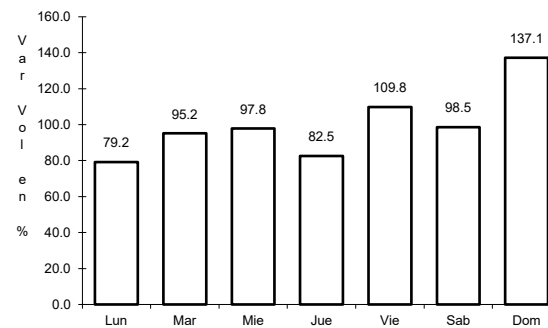
RUTA: CHIH-025



Km: 164.30

Tipo: 1

Sent: 0



Km: 164.30

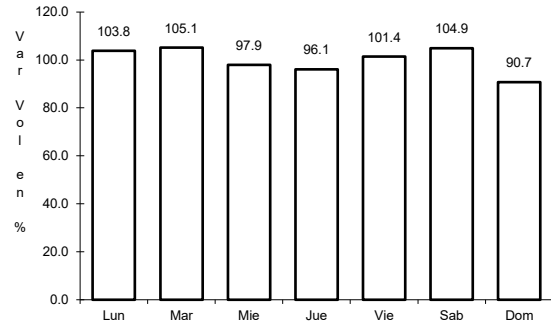
Tipo: 3

Sent: 0

40 CARR: T. C. (Jiménez - Camargo) - Ojinaga

CLAVE: 08009

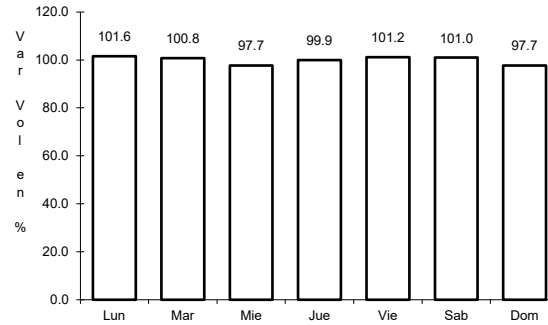
RUTA: CHIH-018



Km: 0.00

Tipo: 3

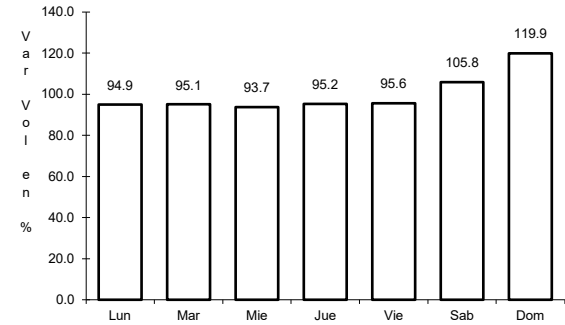
Sent: 1



Km: 97.00

Tipo: 3

Sent: 0



Km: 247.00

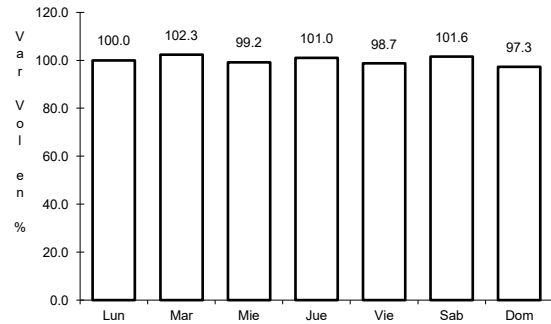
Tipo: 1

Sent: 0

41 CARR: T. Julimes - La Boquilla

CLAVE: 08009

RUTA: CHIH-018



Km: 0.00

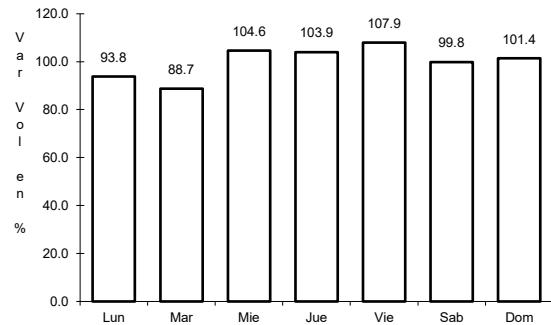
Tipo: 3

Sent: 0

42 CARR: Ent. El Álamo - Ent. Ricardo Flores Magón (Cuota)

CLAVE: 08046

RUTA: CHIH-D



Km: 0.00

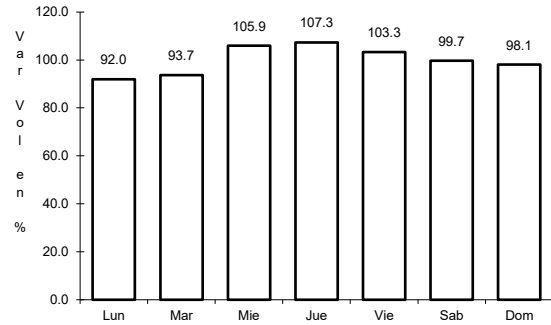
Tipo: 3

Sent: 0

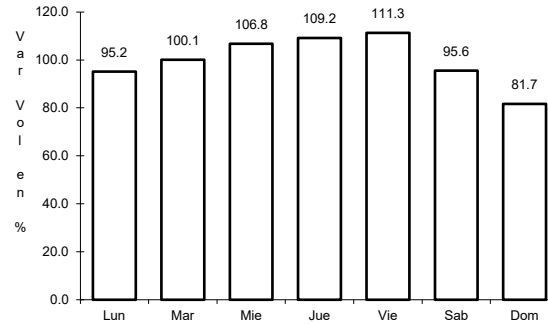
43 CARR: Ricardo Flores Magón - Galeana (Cuota)

CLAVE: 08019

RUTA: CHIH-D



Km: 0.00 Tipo: 3 Sent: 0

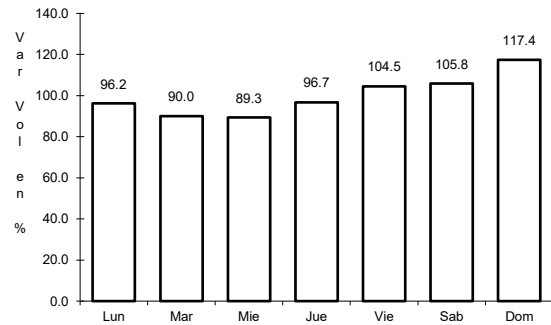


Km: 58.00 Tipo: 1 Sent: 0

44 CARR: Samalayuca - San Jerónimo (Cuota)

CLAVE: 08019

RUTA: CHIH-D

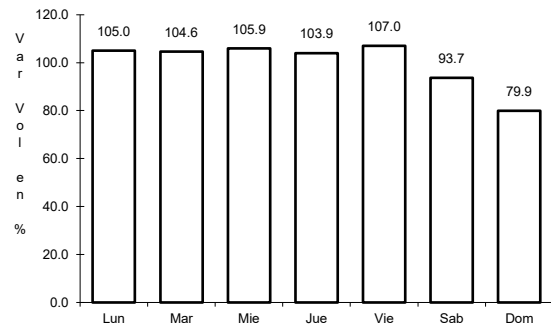


Km: 0.00 Tipo: 3 Sent: 0

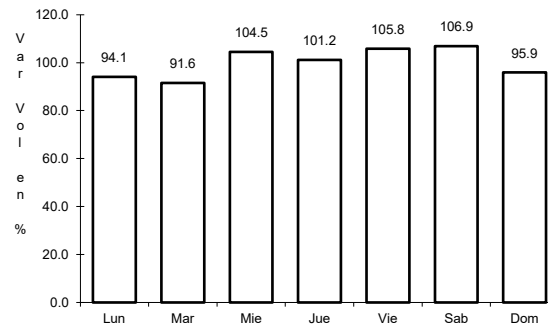
45 CARR: T. C. (Chihuahua - Ojinaga) - La Mula (Cuota)

CLAVE: 08170

RUTA: CHIH-D



Km: 0.00 Tipo: 3 Sent: 0

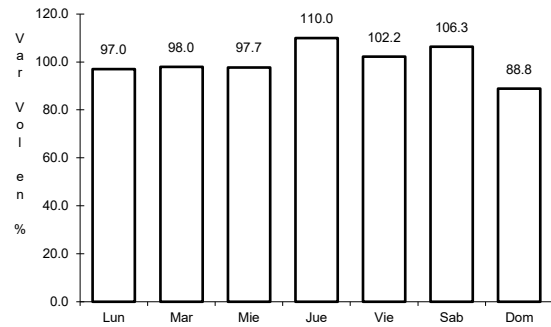


Km: 110.00 Tipo: 1 Sent: 0

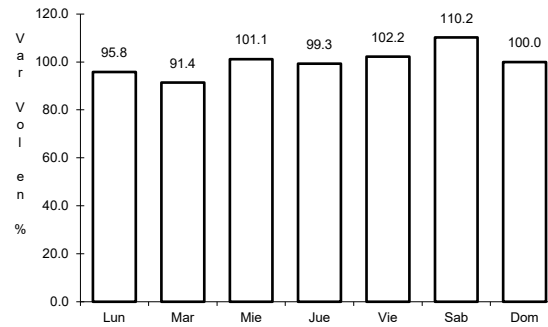
46 CARR: Chihuahua - Madera

CLAVE: 08038

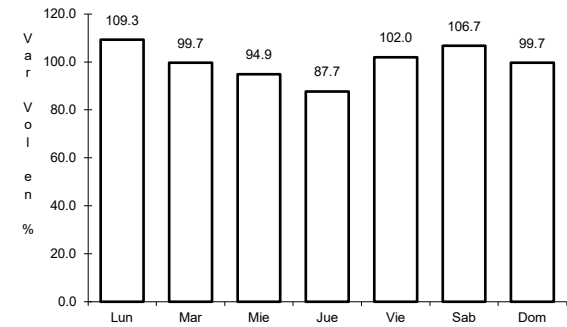
RUTA: CHIH-D-MEX-001-CHIH



Km: 10.50 Tipo: 1 Sent: 1



Km: 10.50 Tipo: 1 Sent: 2

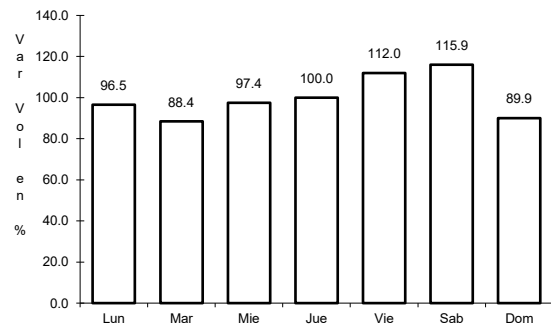


Km: 261.30 Tipo: 3 Sent: 0

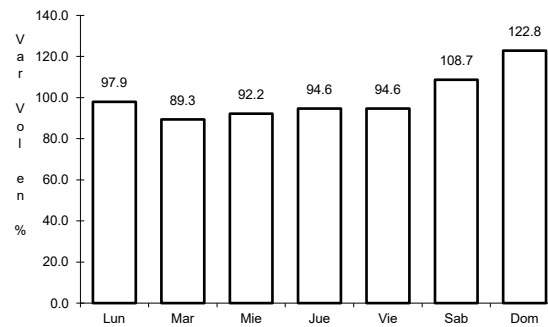
47 CARR: Ent. Agua Caliente - El Terrero

CLAVE: 08170

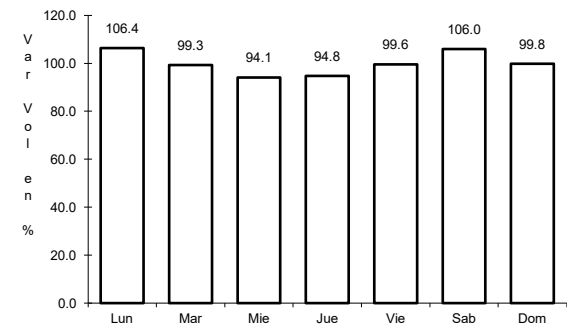
RUTA: CHIH-MEX



Km: 0.00 Tipo: 3 Sent: 0



Km: 22.00 Tipo: 1 Sent: 0



Km: 120.00 Tipo: 1 Sent: 0