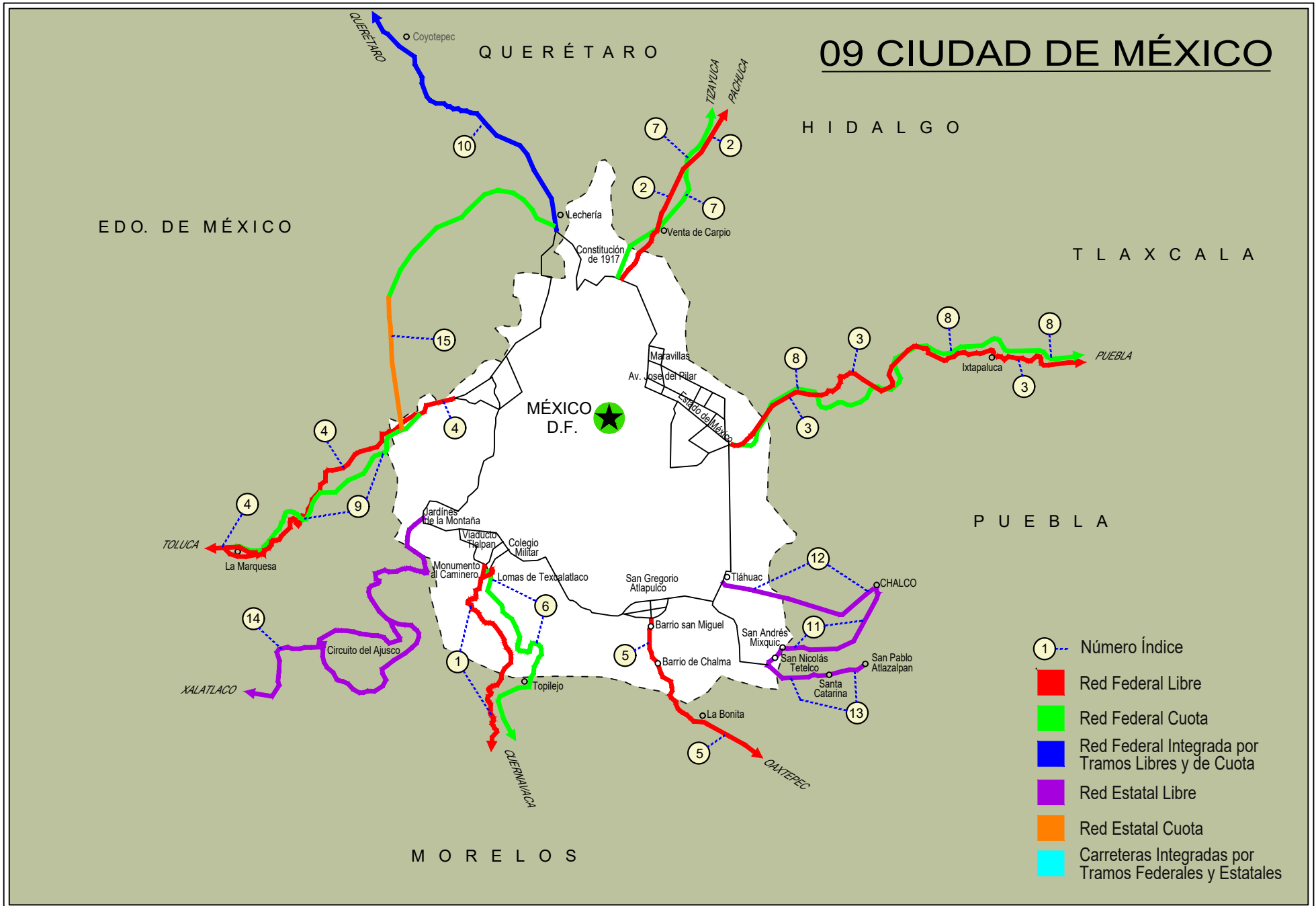


CIUDAD DE MEXICO

NO. INDICE CARRETERA		RUTA
	---RED FEDERAL LIBRE---	
1	México - Cuernavaca (Libre)	MEX-095
2	México - Pachuca (Libre)	MEX-085
3	México - Puebla (Libre)	MEX-150
4	México - Toluca	MEX-015
5	San Gregorio - Oaxtepec	MEX-113
	---RED FEDERAL DE CUOTA---	
6	México - Cuernavaca (Cuota)	MEX-095D
7	México - Pachuca (Cuota)	MEX-085D
8	México - Puebla (Cuota)	MEX-150D
9	México - Toluca (Cuota)	MEX-015D
	---RED FEDERAL INTEGRADA POR TRAMOS LIBRES Y DE CUOTA---	
10	México - Querétaro (Cuota)	MEX-057-MEX-057D
	---RED ESTATAL LIBRE---	
11	Chalco - Mixquic	EM-CDMX
12	Chalco - Tláhuac	EM-CDMX
13	T. C. (México - Mixquic) - San Pablo Atlazalpan	EM-106-CDMX
14	Xalatlaco - El Ajusco	EM-CDMX
	---RED ESTATAL DE CUOTA---	
15	La Venta - Chamapa (Cuota)	EM-D

09 CIUDAD DE MÉXICO



- ① Número Índice
- Red Federal Libre
- Red Federal Cuota
- Red Federal Integrada por Tramos Libres y de Cuota
- Red Estatal Libre
- Red Estatal Cuota
- Carreteras Integradas por Tramos Federales y Estatales

CIUDAD DE MEXICO

1 CARR: México - Cuernavaca (Libre)

CLAVE: 00040

RUTA: MEX-095

AÑO: 2022

LUGAR	ESTACION				CLASIFICACION VEHICULAR EN PORCIENTO										COORDENADAS					
	KM	TE	SC	TDPA	M	A	B	C2	C3	T3S2	T3S3	T3S2R4	OTROS	A	B	C	K'	D	LATITUD	LONGITUD
México	0.00	0	0																	
T. Der. San Miguel Xicalco	25.50	1	0	26668	3.8	85.1	0.4	7.8	1.5	0.5	0.5	0.2	0.2	88.9	0.4	10.7	0.058	0.502	19.235937	-99.158133
T. Der. San Miguel Xicalco	25.50	3	0	29075	8.5	82.2	0.2	7.4	1.0	0.3	0.3	0.1	0.0	90.7	0.2	9.1	0.059	0.512	19.233560	-99.156461
T. Izq. San Miguel Topilejo	28.78	1	1	12512	4.6	88.4	0.3	5.4	0.5	0.3	0.5	0.0	0.0	93.0	0.3	6.7	0.069	0.510	19.213854	-99.151649
T. Izq. San Miguel Topilejo	28.78	1	2	13002	4.6	88.4	0.3	5.4	0.5	0.3	0.5	0.0	0.0	93.0	0.3	6.7	0.090	0.510	19.213815	-99.151647
T. Izq. San Miguel Topilejo	28.78	3	0	10906	4.7	84.3	0.5	8.8	1.1	0.5	0.1	0.0	0.0	89.0	0.5	10.5	0.072	0.501	19.204944	-99.156656
Parres El Guarda	39.50	1	0	8784	3.3	86.7	0.9	7.2	0.9	0.7	0.1	0.1	0.1	90.0	0.9	9.1	0.082	0.505	19.139826	-99.170019
Parres El Guarda	39.50	3	0	7998	5.5	86.7	0.8	4.9	1.0	0.7	0.1	0.2	0.1	92.2	0.8	7.0	0.106	0.508	19.124965	-99.183018
Lim. Edos. Term. CDMX Ppia. Mor.	45.44	0	0																	
T. Der. Zempoala	51.40	1	0	10451	1.6	88.8	1.1	7.3	0.8	0.3	0.1	0.0	0.0	90.4	1.1	8.5	0.086	0.514	19.056934	-99.242622
T. Der. Zempoala	51.40	3	0	6623	7.8	82.6	0.6	7.4	0.6	0.5	0.3	0.1	0.1	90.4	0.6	9.0	0.101	0.517	19.042565	-99.233643
T. Izq. Coajomulco	57.12	3	0	6226	18.7	75.9	0.6	2.4	0.7	1.0	0.4	0.2	0.1	94.6	0.6	4.8	0.089	0.504	19.027149	-99.207053
T. Der. Huitzilac	64.20	1	0	8358	4.0	91.5	0.4	2.2	0.5	0.1	0.0	0.5	0.8	95.5	0.4	4.1	0.096	0.505	19.002807	-99.257488
T. Der. Huitzilac	64.20	3	0	15904	3.8	82.4	2.1	10.4	0.4	0.4	0.3	0.1	0.1	86.2	2.1	11.7	0.075	0.507	18.995624	-99.260740
T. Izq. Tepoztlán	71.36	1	0	27790	4.9	81.6	1.2	9.5	1.2	0.9	0.4	0.1	0.2	86.5	1.2	12.3	0.076	0.506	18.970849	-99.249735
T. Izq. Tepoztlán	71.36	3	1	15244	3.0	91.4	0.9	4.1	0.2	0.2	0.2	0.0	0.0	94.4	0.9	4.7	0.075	0.506	18.959891	-99.246139
T. Izq. Tepoztlán	71.36	3	2	15602	3.2	89.0	1.7	5.4	0.2	0.2	0.3	0.0	0.0	92.2	1.7	6.1	0.069	0.506	18.959794	-99.246047
Cuernavaca	75.42	0	0																	

2 CARR: México - Pachuca (Libre)

CLAVE: 00431

RUTA: MEX-085

AÑO: 2022

LUGAR	ESTACION				CLASIFICACION VEHICULAR EN PORCIENTO										COORDENADAS					
	KM	TE	SC	TDPA	M	A	B	C2	C3	T3S2	T3S3	T3S2R4	OTROS	A	B	C	K'	D	LATITUD	LONGITUD
México	0.00	0	0																	
Lim. Edos. Term. CDMX Ppia. Méx.	9.89	0	0																	
T. Der. Pirámides	26.93	1	1	16360	5.1	85.7	0.5	4.2	0.4	2.0	1.4	0.4	0.3	90.8	0.5	8.7	0.065	0.510	19.616779	-99.011612
T. Der. Pirámides	26.93	1	2	17028	4.9	85.6	0.5	4.7	0.3	2.2	1.3	0.3	0.2	90.5	0.5	9.0	0.056	0.510	19.616812	-99.011620
Venta de Carpio	27.00	3	1	32004	3.7	88.4	0.6	4.2	0.8	1.1	0.9	0.1	0.2	92.1	0.6	7.3	0.060	0.508	19.625826	-99.002974
Venta de Carpio	27.00	3	2	30998	3.7	87.0	0.7	5.0	0.9	1.2	1.1	0.2	0.2	90.7	0.7	8.6	0.055	0.508	19.625486	-99.003312
T. Der. Aut. México - Pachuca (Cuota)	37.52	1	1	30909	5.5	89.7	0.3	2.2	0.9	0.8	0.2	0.3	0.1	95.2	0.3	4.5	0.074	0.507	19.704457	-98.978304
T. Der. Aut. México - Pachuca (Cuota)	37.52	1	2	31881	4.9	90.0	0.3	2.2	1.1	0.9	0.2	0.3	0.1	94.9	0.3	4.8	0.073	0.507	19.703727	-98.978759
T. Izq. Zumpango	44.68	1	1	18144	4.7	82.1	0.9	8.5	1.0	1.2	0.9	0.3	0.4	86.8	0.9	12.3	0.076	0.510	19.760479	-98.973617
T. Izq. Zumpango	44.68	1	2	17459	5.0	81.1	1.1	8.7	1.0	1.3	1.1	0.3	0.4	86.1	1.1	12.8	0.071	0.510	19.760479	-98.973703
T. Izq. Zumpango	44.68	3	1	10972	8.9	75.6	2.2	6.5	3.0	1.4	0.8	0.9	0.7	84.5	2.2	13.3	0.074	0.505	19.773040	-98.973093
T. Izq. Zumpango	44.68	3	2	11187	9.6	74.2	2.1	6.8	3.2	1.7	0.9	0.8	0.7	83.8	2.1	14.1	0.077	0.505	19.773040	-98.973148

CIUDAD DE MEXICO

2 CARR: México - Pachuca (Libre)

CLAVE: 00431

RUTA: MEX-085

AÑO: 2022

LUGAR	ESTACION				CLASIFICACION VEHICULAR EN PORCIENTO										COORDENADAS					
	KM	TE	SC	TDPA	M	A	B	C2	C3	T3S2	T3S3	T3S2R4	OTROS	A	B	C	K'	D	LATITUD	LONGITUD
Lim. Edos. Term. Méx. Ppia. Hgo.	49.30	0	0																	
Tizayuca	52.50	1	1	10913	8.9	80.4	1.9	5.9	0.9	1.2	0.3	0.3	0.2	89.3	1.9	8.8	0.083	0.508	19.817647	-98.975942
Tizayuca	52.50	1	2	10581	8.8	80.5	2.0	5.9	0.9	1.3	0.3	0.2	0.1	89.3	2.0	8.7	0.076	0.508	19.818101	-98.976147
Tizayuca	52.50	3	1	16257	3.3	86.0	1.8	5.9	1.1	0.9	0.3	0.3	0.4	89.3	1.8	8.9	0.084	0.502	19.861798	-98.964673
Tizayuca	52.50	3	2	16110	3.3	86.7	1.6	5.5	1.2	0.8	0.3	0.3	0.3	90.0	1.6	8.4	0.075	0.502	19.861724	-98.964889
T. C. México - Tizayuca (Cuota)	61.00	1	1	7704	6.1	80.9	3.2	6.4	1.8	1.0	0.2	0.3	0.1	87.0	3.2	9.8	0.093	0.500	19.886316	-98.939721
T. C. México - Tizayuca (Cuota)	61.00	1	2	7708	6.5	81.2	3.2	6.3	1.4	0.7	0.4	0.2	0.1	87.7	3.2	9.1	0.078	0.500	19.886776	-98.939400
T. C. México - Tizayuca (Cuota)	61.00	3	1	29799	0.7	86.0	2.9	6.2	1.3	1.6	0.8	0.3	0.2	86.7	2.9	10.4	0.088	0.508	19.898272	-98.928410
T. C. México - Tizayuca (Cuota)	61.00	3	2	28862	0.6	86.0	3.0	6.2	1.3	1.7	0.7	0.3	0.2	86.6	3.0	10.4	0.071	0.508	19.900967	-98.926147
X. C. Arco Norte de La Ciudad de México	64.20	1	1	28426	0.5	88.7	2.4	4.7	1.1	1.8	0.4	0.3	0.1	89.2	2.4	8.4	0.090	0.501	19.923072	-98.900706
X. C. Arco Norte de La Ciudad de México	64.20	1	2	28316	0.5	87.3	2.8	5.4	1.3	1.9	0.4	0.3	0.1	87.8	2.8	9.4	0.110	0.501	19.923280	-98.900872
X. C. Arco Norte de La Ciudad de México	64.20	3	1	24489	0.7	85.8	3.9	5.8	0.9	1.4	0.7	0.4	0.4	86.5	3.9	9.6	0.088	0.514	19.930853	-98.890935
X. C. Arco Norte de La Ciudad de México	64.20	3	2	25911	0.7	84.4	4.4	6.8	0.9	1.5	0.6	0.3	0.4	85.1	4.4	10.5	0.077	0.514	19.931040	-98.891130
Ent. Colonia	83.97	1	1	50130	0.8	90.1	2.7	3.7	0.5	0.8	0.5	0.6	0.3	90.9	2.7	6.4	0.074	0.518	20.044768	-98.792198
Ent. Colonia	83.97	1	2	46331	0.8	89.4	2.9	4.0	0.5	0.9	0.5	0.7	0.3	90.2	2.9	6.9	0.071	0.518	20.044900	-98.792449
X. C. Libramiento de Pachuca	86.50	1	1	41142	3.9	88.6	3.3	1.6	0.8	0.4	0.6	0.6	0.2	92.5	3.3	4.2	0.074	0.502	20.097779	-98.765889
X. C. Libramiento de Pachuca	86.50	1	2	41444	3.8	87.7	4.2	1.7	0.8	0.4	0.6	0.6	0.2	91.5	4.2	4.3	0.081	0.502	20.097934	-98.766067
Pachuca	94.00	0	0																	

3 CARR: México - Puebla (Libre)

CLAVE: 00449

RUTA: MEX-150

AÑO: 2022

LUGAR	ESTACION				CLASIFICACION VEHICULAR EN PORCIENTO										COORDENADAS					
	KM	TE	SC	TDPA	M	A	B	C2	C3	T3S2	T3S3	T3S2R4	OTROS	A	B	C	K'	D	LATITUD	LONGITUD
México	0.00	0	0																	
Lim. Edos. Term. CDMX Ppia. Méx.	18.66	0	0																	
T. Der. Chalco	28.85	1	1	38042	4.8	84.1	0.8	7.7	1.0	0.6	0.3	0.6	0.1	88.9	0.8	10.3	0.064	0.506	19.310971	-98.904303
T. Der. Chalco	28.85	1	2	39090	4.0	85.9	0.7	6.6	1.1	0.7	0.3	0.6	0.1	89.9	0.7	9.4	0.069	0.506	19.311177	-98.903899
T. Der. Chalco (Lateral)	28.85	3	1	8180	5.7	85.3	0.1	7.3	0.5	0.4	0.3	0.3	0.1	91.0	0.1	8.9	0.064	0.501	19.312577	-98.894298
T. Der. Chalco (Central)	28.85	3	1	22387	3.9	90.3	0.5	3.6	0.5	0.3	0.6	0.1	0.2	94.2	0.5	5.3	0.072	0.507	19.312671	-98.894181
T. Der. Chalco (Central)	28.85	3	2	21786	3.6	90.3	0.5	3.8	0.6	0.3	0.6	0.1	0.2	93.9	0.5	5.6	0.076	0.507	19.312739	-98.894221
T. Der. Chalco (Lateral)	28.85	3	2	8161	6.0	85.0	0.2	7.4	0.3	0.4	0.3	0.3	0.1	91.0	0.2	8.8	0.067	0.501	19.312831	-98.894143
Ixtapaluca	31.06	3	1	27172	5.9	88.7	0.3	4.2	0.4	0.3	0.2	0.0	0.0	94.6	0.3	5.1	0.073	0.507	19.315794	-98.874677
Ixtapaluca	31.06	3	2	24885	4.9	85.5	0.3	8.4	0.4	0.3	0.2	0.0	0.0	90.4	0.3	9.3	0.079	0.507	19.315932	-98.874720
T. Der. C. México - Puebla (Cuota) (Río Frío)	62.06	1	0	3047	6.6	68.3	2.0	11.5	5.4	5.3	0.8	0.0	0.1	74.9	2.0	23.1	0.067	0.531	19.349694	-98.670735
T. Der. C. México - Puebla (Cuota) (Río Frío)	62.06	3	0	1095	2.6	78.8	1.3	7.9	3.0	5.0	0.8	0.5	0.1	81.4	1.3	17.3	0.064	0.510	19.352842	-98.662829

CIUDAD DE MEXICO

3 CARR : México - Puebla (Libre)

CLAVE: 00449

RUTA: MEX-150

AÑO: 2022

LUGAR	ESTACION				CLASIFICACION VEHICULAR EN PORCIENTO													COORDENADAS		
	KM	TE	SC	TDPA	M	A	B	C2	C3	T3S2	T3S3	T3S2R4	OTROS	A	B	C	K'	D	LATITUD	LONGITUD
Lim. Edos. Term. Méx. Ppia. Pue.	62.98	0	0																	
San Martín Texmelucan	70.00	1	0	15871	14.1	74.6	1.6	6.5	0.7	0.7	0.3	1.3	0.2	88.7	1.6	9.7	0.090	0.507	19.300575	-98.451822
X. C. México - Puebla (Cuota)	74.10	3	1	10425	6.1	81.1	1.2	5.9	1.3	2.2	1.4	0.5	0.3	87.2	1.2	11.6	0.090	0.513	19.254342	-98.428473
X. C. México - Puebla (Cuota)	74.10	3	2	9903	6.3	81.7	1.1	5.5	1.1	2.3	1.3	0.4	0.3	88.0	1.1	10.9	0.095	0.513	19.254369	-98.428368
Huejotzingo	88.00	1	1	7106	3.8	80.5	4.9	8.7	1.0	0.7	0.1	0.2	0.1	84.3	4.9	10.8	0.076	0.503	19.176644	-98.415026
Huejotzingo	88.00	1	2	7010	4.1	80.0	4.7	8.9	1.2	0.7	0.1	0.2	0.1	84.1	4.7	11.2	0.087	0.503	19.176661	-98.414931
Huejotzingo	88.00	3	1	6610	5.7	84.6	1.1	5.3	1.2	1.4	0.4	0.2	0.1	90.3	1.1	8.6	0.085	0.518	19.145801	-98.387720
Huejotzingo	88.00	3	2	7117	5.8	84.2	1.2	5.4	1.3	1.4	0.4	0.2	0.1	90.0	1.2	8.8	0.099	0.518	19.145891	-98.387682
T. Izq. Aeropuerto	92.80	1	1	6739	6.7	82.8	2.2	4.4	1.4	1.7	0.3	0.4	0.1	89.5	2.2	8.3	0.084	0.515	19.136884	-98.377750
T. Izq. Aeropuerto	92.80	1	2	7154	6.6	82.8	2.2	4.4	1.4	1.9	0.3	0.3	0.1	89.4	2.2	8.4	0.097	0.515	19.136956	-98.377683
T. Der. Cholula	101.00	1	1	14833	6.5	84.5	0.7	5.5	1.3	0.9	0.3	0.1	0.2	91.0	0.7	8.3	0.077	0.505	19.076592	-98.322400
T. Der. Cholula	101.00	1	2	15115	6.4	84.8	0.7	5.4	1.2	0.9	0.3	0.1	0.2	91.2	0.7	8.1	0.079	0.505	19.076664	-98.322352
T. Der. Cholula	101.00	3	1	20382	5.6	88.1	0.7	2.3	1.3	1.1	0.3	0.4	0.2	93.7	0.7	5.6	0.076	0.502	19.070167	-98.312617
T. Der. Cholula	101.00	3	2	20228	5.7	88.1	0.5	2.1	1.3	1.4	0.3	0.4	0.2	93.8	0.5	5.7	0.070	0.502	19.070284	-98.312578
Puebla	131.00	0	0																	

4 CARR : México - Toluca

CLAVE: 00447

RUTA: MEX-015

AÑO: 2022

LUGAR	ESTACION				CLASIFICACION VEHICULAR EN PORCIENTO													COORDENADAS		
	KM	TE	SC	TDPA	M	A	B	C2	C3	T3S2	T3S3	T3S2R4	OTROS	A	B	C	K'	D	LATITUD	LONGITUD
México	0.00	0	0																	
Ent. Constituyentes y Reforma	12.84	3	1	46016	3.3	89.0	1.8	2.4	0.4	2.0	0.7	0.3	0.1	92.3	1.8	5.9	0.065	0.500	19.386099	-99.247569
Ent. Constituyentes y Reforma	12.84	3	2	45858	3.2	88.6	1.8	2.7	0.4	2.1	0.8	0.3	0.1	91.8	1.8	6.4	0.062	0.500	19.385276	-99.248320
T. Der. Cuajimalpa (1° Acceso)	20.56	1	1	40883	3.2	89.0	1.5	2.6	0.7	2.0	0.6	0.3	0.1	92.2	1.5	6.3	0.065	0.508	19.367104	-99.271736
T. Der. Cuajimalpa (1° Acceso)	20.56	1	2	42495	3.1	88.7	1.7	2.7	0.7	2.1	0.6	0.3	0.1	91.8	1.7	6.5	0.074	0.508	19.364312	-99.277892
T. Izq. Desierto de Los Leones	23.96	1	1	44508	2.8	89.0	1.8	3.0	0.6	1.7	0.5	0.4	0.2	91.8	1.8	6.4	0.078	0.523	19.338845	-99.311285
T. Izq. Desierto de Los Leones	23.96	1	2	49268	2.7	88.7	2.0	3.1	0.7	1.8	0.5	0.4	0.1	91.4	2.0	6.6	0.074	0.523	19.338908	-99.311190
Lim. Edos. Term. CDMX Ppia. Méx.	33.44	0	0																	
T. Der. Huixquilucan	33.98	1	1	28307	0.7	86.0	1.9	8.7	1.1	1.1	0.3	0.1	0.1	86.7	1.9	11.4	0.073	0.521	19.295856	-99.359689
T. Der. Huixquilucan	33.98	1	2	32788	0.6	86.0	1.9	8.5	1.1	1.3	0.4	0.1	0.1	86.6	1.9	11.5	0.084	0.521	19.295743	-99.357680
T. C. Constituyentes - La Marquesa (Cuota)	35.28	0	0																	
T. C. La Marquesa - Lerma (Cuota)	36.98	0	0																	
X. C. Amomolulco - Stgo. Tianguistenco	47.26	1	1	57504	0.8	84.8	1.9	9.9	0.6	1.1	0.4	0.2	0.3	85.6	1.9	12.5	0.064	0.516	19.284303	-99.461737
X. C. Amomolulco - Stgo. Tianguistenco	47.26	1	2	53580	0.9	84.7	1.6	9.6	0.7	1.4	0.5	0.2	0.4	85.6	1.6	12.8	0.063	0.516	19.281848	-99.485075
T. Der. Lerma - Izq. San Pedro Tultepec	51.71	1	1	100328	1.9	85.4	2.4	5.8	2.0	1.6	0.5	0.2	0.2	87.3	2.4	10.3	0.078	0.535	19.283958	-99.503497

CIUDAD DE MEXICO

4 CARR: México - Toluca

CLAVE: 00447

RUTA: MEX-015

AÑO: 2022

LUGAR	ESTACION				CLASIFICACION VEHICULAR EN PORCIENTO										COORDENADAS					
	KM	TE	SC	TDPA	M	A	B	C2	C3	T3S2	T3S3	T3S2R4	OTROS	A	B	C	K'	D	LATITUD	LONGITUD
T. Der. Lerma - Izq. San Pedro Tultepec	51.71	1	2	86383	2.1	86.0	2.3	5.4	1.9	1.5	0.4	0.2	0.2	88.1	2.3	9.6	0.083	0.535	19.280327	-99.502839
T. Izq. San Mateo Atenco (Alta)	52.00	3	1	74171	11.2	83.5	0.6	2.8	0.4	0.8	0.4	0.2	0.1	94.7	0.6	4.7	0.065	0.503	19.285899	-99.535757
T. Izq. San Mateo Atenco (Baja)	52.00	3	1	20574	11.2	59.5	3.6	14.9	2.9	5.6	0.9	1.0	0.4	70.7	3.6	25.7	0.067	0.532	19.286326	-99.535168
T. Izq. San Mateo Atenco (Alta)	52.00	3	2	75412	11.8	82.5	0.7	2.9	0.4	0.9	0.5	0.2	0.1	94.3	0.7	5.0	0.074	0.503	19.285588	-99.537060
T. Izq. San Mateo Atenco (Baja)	52.00	3	2	18111	11.3	61.1	3.1	14.4	2.9	5.1	0.8	0.9	0.4	72.4	3.1	24.5	0.060	0.532	19.285186	-99.532547
X. C. Libramiento de Toluca (Alta)	62.20	1	1	82456	3.3	82.1	2.4	9.2	0.2	1.1	0.9	0.4	0.4	85.4	2.4	12.2	0.065	0.520	19.288018	-99.617632
X. C. Libramiento de Toluca (Baja)	62.20	1	1	12395	11.6	54.7	8.7	17.9	2.3	2.5	0.4	1.4	0.5	66.3	8.7	25.0	0.067	0.521	19.288428	-99.619080
X. C. Libramiento de Toluca (Alta)	62.20	1	2	90737	3.4	82.1	2.4	9.4	0.3	0.9	0.8	0.4	0.3	85.5	2.4	12.1	0.065	0.520	19.287778	-99.621676
X. C. Libramiento de Toluca (Baja)	62.20	1	2	13464	11.5	54.7	8.8	17.9	2.2	2.6	0.4	1.3	0.6	66.2	8.8	25.0	0.056	0.521	19.287547	-99.623169
Toluca	66.00	0	0																	

5 CARR: San Gregorio - Oaxtepec

CLAVE: 00901

RUTA: MEX-113

AÑO: 2022

LUGAR	ESTACION				CLASIFICACION VEHICULAR EN PORCIENTO										COORDENADAS					
	KM	TE	SC	TDPA	M	A	B	C2	C3	T3S2	T3S3	T3S2R4	OTROS	A	B	C	K'	D	LATITUD	LONGITUD
San Gregorio	0.00	3	0	21257	7.5	82.6	1.0	5.9	0.6	0.9	0.8	0.4	0.3	90.1	1.0	8.9	0.063	0.502	19.238019	-99.054720
X. C. Milpa Alta - San Lorenzo Tlacoyucan	9.00	3	0	8410	3.8	87.2	1.4	5.2	0.7	0.6	0.7	0.3	0.1	91.0	1.4	7.6	0.076	0.517	19.181037	-99.029854
Lim. Edos. Term. CDMX Ppia. Méx.	18.80	0	0																	
Lim. Edos. Term. Méx. Ppia. Mor.	28.50	0	0																	
T. Der. San Felipe Neri	33.80	1	0	3945	2.1	87.2	1.6	7.1	1.3	0.4	0.2	0.1	0.0	89.3	1.6	9.1	0.122	0.501	19.046276	-98.936248
T. Der. Tlalnepantla	40.50	3	0	4697	6.5	82.9	0.3	8.1	0.9	0.8	0.2	0.2	0.1	89.4	0.3	10.3	0.109	0.504	19.004343	-98.990299
Tlayacapan	48.50	3	0	11442	8.6	85.8	0.4	3.7	0.5	0.7	0.1	0.1	0.1	94.4	0.4	5.2	0.094	0.505	18.939342	-98.973938
T. Der. Yautepec	53.00	1	0	12036	7.6	86.5	0.4	3.7	0.1	0.7	0.1	0.6	0.3	94.1	0.4	5.5	0.089	0.510	18.925757	-98.968005
T. Der. Yautepec	53.00	3	1	7582	12.9	80.5	0.4	5.0	0.4	0.3	0.1	0.3	0.1	93.4	0.4	6.2	0.088	0.504	18.915798	-98.970219
T. Der. Yautepec	53.00	3	2	7450	12.9	80.5	0.4	5.0	0.4	0.3	0.1	0.3	0.1	93.4	0.4	6.2	0.086	0.504	18.915796	-98.970173
Oaxtepec	56.00	0	0																	

6 CARR: México - Cuernavaca (Cuota)

CLAVE: 00041

RUTA: MEX-095D

AÑO: 2022

LUGAR	ESTACION				CLASIFICACION VEHICULAR EN PORCIENTO										COORDENADAS					
	KM	TE	SC	TDPA	M	A	B	C2	C3	T3S2	T3S3	T3S2R4	OTROS	A	B	C	K'	D	LATITUD	LONGITUD
México	0.00	0	0																	
T. C. México - Cuernavaca (Libre)	18.65	3	1	29639	2.4	85.9	3.3	5.0	0.7	1.5	0.5	0.5	0.2	88.3	3.3	8.4	0.087	0.507	19.264149	-99.165786
T. C. México - Cuernavaca (Libre)	18.65	3	2	30639	2.3	85.2	3.2	5.7	0.7	1.5	0.7	0.5	0.2	87.5	3.2	9.3	0.090	0.507	19.267228	-99.164583
Plaza de Cobro Tlalpan	23.36	2	1	14868	1.9	85.1	4.3	2.4	1.9	2.7	0.6	0.8	0.3	87.0	4.3	8.7	0.145	0.500	19.242519	-99.148716

CIUDAD DE MEXICO

6 CARR: México - Cuernavaca (Cuota)

CLAVE: 00041

RUTA: MEX-095D

AÑO: 2022

LUGAR	ESTACION				CLASIFICACION VEHICULAR EN PORCIENTO										COORDENADAS					
	KM	TE	SC	TDPA	M	A	B	C2	C3	T3S2	T3S3	T3S2R4	OTROS	A	B	C	K'	D	LATITUD	LONGITUD
Plaza de Cobro Tlalpan	23.36	2	2	14868	1.9	85.1	4.3	2.4	1.9	2.7	0.6	0.8	0.3	87.0	4.3	8.7	0.145	0.500	19.242519	-99.148716
Lim. Edos. Term. CDMX Ppia. Mor.	47.09	0	0																	
Tres Mariás	53.00	1	1	23101	0.7	86.3	4.2	3.4	1.2	2.4	0.4	0.9	0.5	87.0	4.2	8.8	0.143	0.544	19.077619	-99.233477
Tres Mariás	53.00	1	2	19389	1.0	87.2	2.6	5.3	0.7	1.7	0.6	0.7	0.2	88.2	2.6	9.2	0.137	0.544	19.078163	-99.233151
Tres Mariás	53.00	3	1	21159	0.8	87.0	3.8	3.2	1.5	2.3	0.5	0.6	0.3	87.8	3.8	8.4	0.136	0.508	19.043050	-99.233276
Tres Mariás	53.00	3	2	21888	0.8	86.9	3.5	3.3	1.5	2.6	0.4	0.7	0.3	87.7	3.5	8.8	0.128	0.508	19.045422	-99.235373
T. Izq. Cuautla	70.50	1	1	20402	0.8	92.5	0.2	3.3	1.3	1.1	0.4	0.3	0.1	93.3	0.2	6.5	0.172	0.503	19.014460	-99.155765
T. Izq. Cuautla	70.50	1	2	20130	1.1	90.4	0.2	4.3	1.6	1.5	0.4	0.3	0.2	91.5	0.2	8.3	0.155	0.503	19.014448	-99.153826
T. Der. A Glorieta La Paloma	79.26	1	1	19326	1.7	85.9	0.5	4.4	1.5	4.3	1.1	0.5	0.1	87.6	0.5	11.9	0.092	0.514	18.982282	-99.219394
T. Der. A Glorieta La Paloma	79.26	1	2	20447	1.3	88.2	0.3	4.9	1.9	2.1	0.6	0.5	0.2	89.5	0.3	10.2	0.141	0.514	18.982171	-99.219493
Libramiento de Cuernavaca	80.50	1	1	19891	3.7	86.0	1.2	2.6	1.0	3.2	1.3	0.6	0.4	89.7	1.2	9.1	0.091	0.513	18.967283	-99.236730
Libramiento de Cuernavaca	80.50	1	2	20968	3.6	86.0	1.2	2.6	1.0	3.2	1.4	0.6	0.4	89.6	1.2	9.2	0.101	0.513	18.967264	-99.236563

7 CARR: México - Pachuca (Cuota)

CLAVE: 00432

RUTA: MEX-085D

AÑO: 2022

LUGAR	ESTACION				CLASIFICACION VEHICULAR EN PORCIENTO										COORDENADAS					
	KM	TE	SC	TDPA	M	A	B	C2	C3	T3S2	T3S3	T3S2R4	OTROS	A	B	C	K'	D	LATITUD	LONGITUD
T. C. México - Pachuca (Libre)	0.00	0	0																	
Lim. Edos. Term. CDMX Ppia. Méx.	9.86	0	0																	
Plaza de Cobro Ojo de Agua	25.00	2	1	31514	1.9	87.8	4.0	2.5	1.6	1.6	0.2	0.3	0.1	89.7	4.0	6.3	0.081	0.500	19.618737	-99.029315
Plaza de Cobro Ojo de Agua	25.00	2	2	31514	1.9	87.8	4.0	2.5	1.6	1.6	0.2	0.3	0.1	89.7	4.0	6.3	0.081	0.500	19.618737	-99.029315
Plaza de Cobro Ojo de Agua	25.00	3	1	38770	3.4	86.0	2.0	4.9	1.1	1.5	0.2	0.7	0.2	89.4	2.0	8.6	0.073	0.505	19.637712	-99.019357
Plaza de Cobro Ojo de Agua	25.00	3	2	37965	3.4	85.9	1.9	5.0	1.1	1.5	0.3	0.7	0.2	89.3	1.9	8.8	0.069	0.505	19.641104	-99.017857
X. C. México - Pachuca (Libre) Ent. Ojo de Agua	30.62	3	1	36668	3.4	85.7	2.0	5.0	1.1	1.5	0.3	0.7	0.3	89.1	2.0	8.9	0.074	0.508	19.671562	-98.994905
X. C. México - Pachuca (Libre) Ent. Ojo de Agua	30.62	3	2	35427	3.4	85.0	2.3	5.2	1.0	1.5	0.4	0.8	0.4	88.4	2.3	9.3	0.069	0.508	19.675510	-98.990889
T. Izq. Tecámac	35.62	3	1	36189	1.9	86.9	2.5	3.1	2.8	2.0	0.4	0.3	0.1	88.8	2.5	8.7	0.080	0.502	19.726213	-98.954469
T. Izq. Tecámac	35.62	3	2	35882	1.8	86.9	2.2	3.5	2.8	1.9	0.3	0.4	0.2	88.7	2.2	9.1	0.083	0.502	19.726756	-98.954295
T. Ramal de Liga Tecámac	36.20	3	1	34790	3.0	85.4	2.6	3.5	1.8	2.4	0.5	0.5	0.3	88.4	2.6	9.0	0.080	0.505	19.703409	-98.969526
T. Ramal de Liga Tecámac	36.20	3	2	35555	2.8	85.4	2.7	3.6	2.0	2.4	0.5	0.4	0.2	88.2	2.7	9.1	0.090	0.505	19.705470	-98.968484
T. Izq. AIFA	40.50	3	1	33595	2.4	87.0	2.4	3.0	1.6	2.2	0.5	0.5	0.4	89.4	2.4	8.2	0.079	0.507	19.743004	-98.946064
T. Izq. AIFA	40.50	3	2	32533	2.2	86.8	2.6	3.8	1.4	2.0	0.5	0.4	0.3	89.0	2.6	8.4	0.092	0.507	19.744273	-98.946098
Lim. Edos. Term. Méx. Ppia. Hgo.	49.60	0	0																	
X. C. Otumba - Tizayuca	53.45	1	1	32103	1.8	90.1	2.1	2.3	1.0	2.0	0.3	0.3	0.1	91.9	2.1	6.0	0.084	0.506	19.826769	-98.949388
X. C. Otumba - Tizayuca	53.45	1	2	31321	1.9	89.1	2.2	2.8	1.2	2.1	0.3	0.3	0.1	91.0	2.2	6.8	0.094	0.506	19.826866	-98.949498
T. C. México - Pachuca (Libre)	60.50	1	1	24217	2.9	88.7	2.4	2.0	1.2	1.6	0.5	0.4	0.3	91.6	2.4	6.0	0.079	0.516	19.883706	-98.937511

CIUDAD DE MEXICO

7 CARR : México - Pachuca (Cuota)

CLAVE: 00432

RUTA : MEX-085D

AÑO : 2022

LUGAR	ESTACION				CLASIFICACION VEHICULAR EN PORCIENTO													COORDENADAS		
	KM	TE	SC	TDPA	M	A	B	C2	C3	T3S2	T3S3	T3S2R4	OTROS	A	B	C	K'	D	LATITUD	LONGITUD
T. C. México - Pachuca (Libre)	60.50	1	2	22711	3.0	88.9	2.2	2.0	1.2	1.6	0.4	0.5	0.2	91.9	2.2	5.9	0.102	0.516	19.881564	-98.937798

8 CARR : México - Puebla (Cuota)

CLAVE: 00450

RUTA : MEX-150D

AÑO : 2022

LUGAR	ESTACION				CLASIFICACION VEHICULAR EN PORCIENTO													COORDENADAS		
	KM	TE	SC	TDPA	M	A	B	C2	C3	T3S2	T3S3	T3S2R4	OTROS	A	B	C	K'	D	LATITUD	LONGITUD
México	0.00	0	0																	
Ent Concordía (T. Izq. Los Reyes) Central	17.00	3	1	84451	1.8	89.7	1.5	3.8	0.7	1.4	0.6	0.2	0.3	91.5	1.5	7.0	0.064	0.502	19.351600	-98.987498
Ent Concordía (T. Izq. Los Reyes) Lateral	17.00	3	1	23568	2.9	83.4	2.3	8.1	0.8	1.3	0.5	0.3	0.4	86.3	2.3	11.4	0.073	0.548	19.351510	-98.987575
Ent Concordía (T. Izq. Los Reyes) Lateral	17.00	3	2	30435	2.9	83.8	2.2	8.0	0.8	1.3	0.5	0.2	0.3	86.7	2.2	11.1	0.069	0.548	19.354031	-98.989641
Ent Concordía (T. Izq. Los Reyes) Central	17.00	3	2	83549	2.0	89.4	1.5	3.8	0.7	1.4	0.6	0.3	0.3	91.4	1.5	7.1	0.063	0.502	19.353941	-98.989707
Lim. Edos. Term. CDMX Ppia. Méx.	17.51	0	0																	
Av. Las Torres (Eje 6) Lateral	19.27	1	1	27041	4.6	76.7	2.2	13.1	1.1	1.6	0.4	0.2	0.1	81.3	2.2	16.5	0.064	0.505	19.348003	-98.983928
Av. Las Torres (Eje 6) Central	19.27	1	1	74674	4.5	87.8	1.2	3.7	1.0	1.1	0.4	0.2	0.1	92.3	1.2	6.5	0.062	0.510	19.348084	-98.983852
Av. Las Torres (Eje 6) Lateral	19.27	1	2	26536	4.2	76.9	2.1	13.4	1.1	1.6	0.4	0.2	0.1	81.1	2.1	16.8	0.079	0.505	19.348491	-98.983833
Av. Las Torres (Eje 6) Central	19.27	1	2	71337	4.2	88.2	1.1	3.6	0.9	1.3	0.4	0.2	0.1	92.4	1.1	6.5	0.059	0.510	19.348400	-98.983928
Av. Las Torres (Eje 6) Lateral	19.27	3	1	32868	4.5	76.7	2.4	13.1	1.2	1.4	0.4	0.2	0.1	81.2	2.4	16.4	0.067	0.516	19.339832	-98.976627
Av. Las Torres (Eje 6) Central	19.27	3	1	75668	3.4	89.2	1.8	2.5	0.9	1.0	0.8	0.2	0.2	92.6	1.8	5.6	0.067	0.521	19.339886	-98.976474
Av. Las Torres (Eje 6) Central	19.27	3	2	83683	3.1	89.5	1.9	2.6	1.0	0.9	0.7	0.2	0.1	92.6	1.9	5.5	0.063	0.521	19.341107	-98.977055
Av. Las Torres (Eje 6) Lateral	19.27	3	2	30629	4.2	77.6	2.2	12.7	1.1	1.5	0.4	0.2	0.1	81.8	2.2	16.0	0.066	0.516	19.341197	-98.976969
Eje 10 Sur (Central)	22.80	1	1	75668	4.4	86.5	1.1	5.0	1.0	0.9	0.7	0.2	0.2	90.9	1.1	8.0	0.067	0.521	19.331996	-98.968393
Eje 10 Sur (Lateral)	22.80	1	1	31336	4.7	78.4	2.5	10.8	1.1	1.8	0.4	0.2	0.1	83.1	2.5	14.4	0.065	0.515	19.331896	-98.968498
Eje 10 Sur (Central)	22.80	1	2	83683	4.8	85.7	1.2	5.1	1.1	1.0	0.7	0.2	0.2	90.5	1.2	8.3	0.063	0.521	19.331932	-98.968098
Eje 10 Sur (Lateral)	22.80	1	2	29327	4.5	78.7	2.4	11.1	1.0	1.6	0.4	0.2	0.1	83.2	2.4	14.4	0.075	0.515	19.332014	-98.968002
Eje 10 Sur (Central)	22.80	3	1	50842	2.4	85.7	2.6	5.6	1.2	1.6	0.4	0.3	0.2	88.1	2.6	9.3	0.065	0.525	19.313835	-98.946988
Eje 10 Sur (Lateral)	22.80	3	1	37927	4.5	79.2	2.5	10.6	1.0	1.5	0.4	0.2	0.1	83.7	2.5	13.8	0.075	0.512	19.313726	-98.947102
Eje 10 Sur (Central)	22.80	3	2	45479	2.5	86.2	2.4	5.4	1.1	1.5	0.4	0.3	0.2	88.7	2.4	8.9	0.078	0.525	19.313889	-98.946674
Eje 10 Sur (Lateral)	22.80	3	2	36038	4.7	79.2	2.4	10.4	0.9	1.7	0.4	0.2	0.1	83.9	2.4	13.7	0.076	0.512	19.314079	-98.946712
X. C. Santa Bárbara - Izúcar de Matamoros (Central)	32.14	1	1	38713	3.2	82.4	3.5	7.0	1.0	1.5	0.6	0.4	0.4	85.6	3.5	10.9	0.058	0.507	19.292247	-98.892029
X. C. Santa Bárbara - Izúcar de Matamoros (Lateral)	32.14	1	1	16389	2.4	80.2	1.8	12.1	1.0	1.6	0.5	0.2	0.2	82.6	1.8	15.6	0.070	0.503	19.292103	-98.892095
X. C. Santa Bárbara - Izúcar de Matamoros (Lateral)	32.14	1	2	16612	2.6	80.7	1.7	11.8	0.9	1.5	0.4	0.2	0.2	83.3	1.7	15.0	0.075	0.503	19.292573	-98.892057
X. C. Santa Bárbara - Izúcar de Matamoros (Central)	32.14	1	2	39926	3.3	81.3	3.9	7.4	1.4	1.6	0.6	0.3	0.2	84.6	3.9	11.5	0.065	0.507	19.292428	-98.891943
X. C. Santa Bárbara - Izúcar de Matamoros (Lateral)	32.14	3	1	1432	2.0	70.1	5.2	7.2	2.3	6.0	2.0	4.7	0.5	72.1	5.2	22.7	0.077	0.520	19.294597	-98.876287
X. C. Santa Bárbara - Izúcar de Matamoros (Central)	32.14	3	1	13553	1.0	75.8	5.4	9.2	1.9	4.3	1.6	0.5	0.3	76.8	5.4	17.8	0.072	0.501	19.294733	-98.876366
X. C. Santa Bárbara - Izúcar de Matamoros (Lateral)	32.14	3	2	1554	4.0	69.4	3.4	7.6	2.5	6.4	1.7	4.5	0.5	73.4	3.4	23.2	0.079	0.520	19.294984	-98.876435

CIUDAD DE MEXICO

8 CARR: México - Puebla (Cuota)

CLAVE: 00450

RUTA: MEX-150D

AÑO: 2022

LUGAR	ESTACION				CLASIFICACION VEHICULAR EN PORCIENTO													COORDENADAS		
	KM	TE	SC	TDPA	M	A	B	C2	C3	T3S2	T3S3	T3S2R4	OTROS	A	B	C	K'	D	LATITUD	LONGITUD
X. C. Santa Bárbara - Izúcar de Matamoros (Central)	32.14	3	2	13514	1.3	74.5	5.3	9.9	2.1	4.3	1.8	0.5	0.3	75.8	5.3	18.9	0.092	0.501	19.294871	-98.876416
Plaza de Cobro San Marcos	33.30	2	1	16826	0.6	75.8	4.9	5.0	3.5	6.6	0.6	2.6	0.4	76.4	4.9	18.7	0.068	0.500	19.296272	-98.870712
Plaza de Cobro San Marcos	33.30	2	2	16826	0.6	75.8	4.9	5.0	3.5	6.6	0.6	2.6	0.4	76.4	4.9	18.7	0.068	0.500	19.296272	-98.870712
T. Izq. Río Frío	63.79	3	1	17718	1.0	73.0	6.3	9.1	1.9	5.7	0.8	1.9	0.3	74.0	6.3	19.7	0.103	0.508	19.350742	-98.658881
T. Izq. Río Frío	63.79	3	2	18279	1.2	71.9	6.7	8.9	2.1	6.0	0.9	1.9	0.4	73.1	6.7	20.2	0.098	0.508	19.351598	-98.660104
Lim. Edos. Term. Méx. Ppia. Pue.	65.46	0	0																	
T. Der. A San Rafael Ixtapalucan	76.80	3	1	25070	2.6	74.7	7.2	4.9	2.4	4.9	0.8	2.0	0.5	77.3	7.2	15.5	0.062	0.505	19.331664	-98.545479
T. Der. A San Rafael Ixtapalucan	76.80	3	2	25554	3.0	74.2	7.1	5.2	2.3	5.0	0.9	1.8	0.5	77.2	7.1	15.7	0.069	0.505	19.331780	-98.545430
T. Izq. Tlaxcala	90.61	1	1	24579	2.3	74.7	7.2	4.7	2.6	5.3	0.7	2.0	0.5	77.0	7.2	15.8	0.068	0.505	19.273913	-98.436067
T. Izq. Tlaxcala	90.61	1	2	26565	2.8	75.0	7.0	5.1	2.1	4.9	0.9	1.7	0.5	77.8	7.0	15.2	0.078	0.505	19.274031	-98.436008
T. Izq. Tlaxcala	90.61	3	1	26630	0.7	67.6	6.2	9.4	2.8	8.3	1.3	3.4	0.3	68.3	6.2	25.5	0.058	0.507	19.261883	-98.417579
T. Izq. Tlaxcala	90.61	3	2	27345	0.9	66.4	6.3	9.1	3.1	8.8	1.5	3.6	0.3	67.3	6.3	26.4	0.060	0.507	19.261982	-98.417485
Plaza de Cobro San Martín Texmelucan	91.17	2	1	25718	0.7	70.2	4.4	4.7	4.3	9.9	1.2	3.9	0.7	70.9	4.4	24.7	0.068	0.500	19.241190	-98.385786
Plaza de Cobro San Martín Texmelucan	91.17	2	2	25718	0.7	70.2	4.4	4.7	4.3	9.9	1.2	3.9	0.7	70.9	4.4	24.7	0.068	0.500	19.241190	-98.385786
Lim. Edos. Term. Pue. Ppia. Tlax.	99.11	0	0																	
T. Der. Aeropuerto Internacional De Puebla	101.10	3	1	32052	0.8	78.5	4.2	5.0	1.8	6.0	1.2	1.6	0.9	79.3	4.2	16.5	0.090	0.522	19.211527	-98.352343
T. Der. Aeropuerto Internacional De Puebla	101.10	3	2	35325	0.8	78.5	4.3	5.1	1.7	5.9	1.2	1.6	0.9	79.3	4.3	16.4	0.073	0.522	19.211620	-98.352251
X. C. Xoxtla - Huactzinco	107.98	1	1	37139	1.1	76.8	3.2	4.7	2.3	6.7	1.8	2.5	0.9	77.9	3.2	18.9	0.081	0.505	19.179909	-98.313885
X. C. Xoxtla - Huactzinco	107.98	1	2	38005	1.2	76.7	3.2	4.7	2.3	6.7	1.8	2.5	0.9	77.9	3.2	18.9	0.082	0.505	19.179991	-98.313785
X. C. Xoxtla - Huactzinco	107.98	3	1	46757	2.0	73.2	3.9	7.2	2.5	6.6	1.6	2.4	0.6	75.2	3.9	20.9	0.095	0.502	19.166407	-98.298902
X. C. Xoxtla - Huactzinco	107.98	3	2	47198	2.0	72.6	4.1	7.1	2.5	6.9	1.7	2.5	0.6	74.6	4.1	21.3	0.065	0.502	19.166486	-98.298784
Lim. Edos. Term. Tlax. Ppia. Pue.	108.00	0	0																	
Anillo Periferico Poniente de Puebla (Central)	114.00	3	1	36246	2.0	70.6	6.1	5.5	3.2	7.7	1.2	3.0	0.7	72.6	6.1	21.3	0.086	0.510	19.127040	-98.263773
Anillo Periferico Poniente de Puebla (Lateral)	114.00	3	1	33941	2.2	80.3	2.6	5.8	1.7	3.9	1.6	1.0	0.9	82.5	2.6	14.9	0.069	0.542	19.126943	-98.263822
Anillo Periferico Poniente de Puebla (Lateral)	114.00	3	2	28292	2.2	80.1	2.3	6.0	1.6	4.1	1.7	1.1	0.9	82.3	2.3	15.4	0.074	0.542	19.127163	-98.263588
Anillo Periferico Poniente de Puebla (Central)	114.00	3	2	37866	2.1	69.5	6.4	5.8	3.2	8.1	1.1	3.2	0.6	71.6	6.4	22.0	0.066	0.510	19.127093	-98.263737
Boulevard Hermanos Serdán	120.46	3	1	67921	1.5	81.5	3.4	5.6	2.4	2.8	1.4	1.0	0.4	83.0	3.4	13.6	0.066	0.504	19.089183	-98.216116
Boulevard Hermanos Serdán	120.46	3	2	69235	1.8	81.1	3.2	6.0	2.2	2.9	1.5	0.9	0.4	82.9	3.2	13.9	0.069	0.504	19.089321	-98.216105
X. C. Puebla - Tlaxcala (Central)	123.00	3	1	49796	1.9	84.7	1.9	4.2	1.7	3.6	1.0	0.7	0.3	86.6	1.9	11.5	0.073	0.521	19.085955	-98.199668
X. C. Puebla - Tlaxcala (Lateral)	123.00	3	1	36857	2.0	84.4	1.8	8.5	0.9	1.1	0.5	0.4	0.4	86.4	1.8	11.8	0.070	0.508	19.085921	-98.200076
X. C. Puebla - Tlaxcala (Central)	123.00	3	2	45237	1.9	86.1	1.9	5.0	1.5	2.5	0.5	0.4	0.2	88.0	1.9	10.1	0.111	0.521	19.086068	-98.199615
X. C. Puebla - Tlaxcala (Lateral)	123.00	3	2	38208	1.9	82.9	2.3	9.3	0.8	1.1	0.7	0.6	0.4	84.8	2.3	12.9	0.078	0.508	19.086158	-98.199488
T. C. Puebla - Tlaxcala	124.90	0	0																	

CIUDAD DE MEXICO

9 CARR : México - Toluca (Cuota)

CLAVE: 00446

RUTA : MEX-015D

AÑO : 2022

LUGAR	ESTACION				CLASIFICACION VEHICULAR EN PORCIENTO										COORDENADAS					
	KM	TE	SC	TDPA	M	A	B	C2	C3	T3S2	T3S3	T3S2R4	OTROS	A	B	C	K'	D	LATITUD	LONGITUD
T. C. México - Toluca (Libre) (Puente Conafrut)	0.00	3	1	35237	0.8	89.7	0.9	3.7	1.4	1.8	1.0	0.4	0.3	90.5	0.9	8.6	0.073	0.518	19.380129	-99.251826
T. C. México - Toluca (Libre) (Puente Conafrut)	0.00	3	2	32622	0.7	89.9	0.9	3.6	1.4	1.7	1.1	0.4	0.3	90.6	0.9	8.5	0.093	0.518	19.380980	-99.250409
Plaza de Cobro Santa Fe	3.50	1	1	28481	0.7	90.8	0.9	3.2	1.1	1.6	1.0	0.4	0.3	91.5	0.9	7.6	0.110	0.517	19.368477	-99.266597
Plaza de Cobro Santa Fe	3.50	1	2	32422	0.6	91.1	0.8	3.1	1.1	1.6	1.0	0.4	0.3	91.7	0.8	7.5	0.085	0.517	19.371823	-99.264821
Plaza de Cobro Santa Fe	3.50	3	1	25430	0.6	87.7	3.3	4.8	0.5	1.5	1.0	0.4	0.2	88.3	3.3	8.4	0.095	0.508	19.357744	-99.276329
Plaza de Cobro Santa Fe	3.50	3	2	26287	0.6	87.3	3.3	5.0	0.5	1.6	1.0	0.4	0.3	87.9	3.3	8.8	0.092	0.508	19.356242	-99.277546
Plaza de Cobro La Venta	10.00	1	1	31920	1.1	86.6	2.5	5.9	0.8	1.4	1.0	0.4	0.3	87.7	2.5	9.8	0.105	0.509	19.334669	-99.306289
Plaza de Cobro La Venta	10.00	1	2	33249	1.1	86.4	2.7	6.0	0.8	1.3	1.0	0.4	0.3	87.5	2.7	9.8	0.095	0.509	19.334507	-99.305946
Plaza de Cobro La Venta	10.00	2	1	22049	0.8	90.1	4.2	2.3	0.8	1.1	0.1	0.5	0.1	90.9	4.2	4.9	0.089	0.500	19.332816	-99.314301
Plaza de Cobro La Venta	10.00	2	2	22049	0.8	90.1	4.2	2.3	0.8	1.1	0.1	0.5	0.1	90.9	4.2	4.9	0.089	0.500	19.332816	-99.314301
Plaza de Cobro La Venta	10.00	3	1	37790	1.8	84.0	2.8	6.2	1.3	2.2	0.8	0.7	0.2	85.8	2.8	11.4	0.093	0.525	19.318057	-99.322726
Plaza de Cobro La Venta	10.00	3	2	33806	1.9	84.1	2.9	6.2	1.2	2.0	0.8	0.6	0.3	86.0	2.9	11.1	0.078	0.525	19.323279	-99.318891
Lim. Edos. Term. CDMX Ppia. Méx.	18.66	0	0																	
T. C. México - Toluca (Libre) (La Marquesa)	19.20	1	1	29080	5.4	80.1	5.0	3.1	1.1	3.6	0.4	1.1	0.2	85.5	5.0	9.5	0.065	0.523	19.300823	-99.366077
T. C. México - Toluca (Libre) (La Marquesa)	19.20	1	2	33985	5.5	80.6	5.0	3.2	1.1	3.1	0.3	1.0	0.2	86.1	5.0	8.9	0.083	0.523	19.299212	-99.362809

10 CARR : México - Querétaro (Cuota)

CLAVE: 00411

RUTA : MEX-057-MEX-057D

AÑO : 2022

LUGAR	ESTACION				CLASIFICACION VEHICULAR EN PORCIENTO										COORDENADAS					
	KM	TE	SC	TDPA	M	A	B	C2	C3	T3S2	T3S3	T3S2R4	OTROS	A	B	C	K'	D	LATITUD	LONGITUD
México	0.00	0	0																	
Lim. Edos. Term. CDMX Ppia. Méx.	11.30	0	0																	
Lechería	29.41	0	0																	
Plaza de Cobro Tepetzotlán	43.01	2	1	30600	0.6	72.4	4.0	5.2	3.6	10.8	0.6	2.0	0.8	73.0	4.0	23.0	0.077	0.500	19.715361	-99.207448
Plaza de Cobro Tepetzotlán	43.01	2	2	30600	0.6	72.4	4.0	5.2	3.6	10.8	0.6	2.0	0.8	73.0	4.0	23.0	0.077	0.500	19.715361	-99.207448
Ent. Jorobas	56.18	1	1	34331	1.1	68.7	4.2	7.7	2.8	10.6	1.7	2.3	0.9	69.8	4.2	26.0	0.080	0.506	19.811390	-99.238502
Ent. Jorobas	56.18	1	2	35253	1.2	66.0	4.9	8.3	2.9	11.3	2.0	2.5	0.9	67.2	4.9	27.9	0.073	0.506	19.803112	-99.234918
Ent. Jorobas	56.18	3	1	47969	3.0	60.7	4.7	8.4	3.2	14.1	2.0	3.0	0.9	63.7	4.7	31.6	0.065	0.501	19.829242	-99.257702
Ent. Jorobas	56.18	3	2	48214	3.0	57.8	5.0	8.9	3.4	15.7	2.0	3.3	0.9	60.8	5.0	34.2	0.068	0.501	19.837256	-99.274095
Lim. Edos. Term. Méx. Ppia. Hgo.	59.85	0	0																	
T. Der. Tepeji del Río	69.36	1	1	40936	4.4	69.5	4.5	7.6	2.6	7.0	1.1	2.4	0.9	73.9	4.5	21.6	0.078	0.506	19.863591	-99.316375
T. Der. Tepeji del Río	69.36	1	2	42087	4.4	68.9	4.7	7.0	2.6	7.6	1.3	2.9	0.6	73.3	4.7	22.0	0.075	0.506	19.871087	-99.338582
T. Der. Tepeji del Río	69.36	3	1	37299	4.5	67.7	4.8	5.7	2.5	10.0	1.2	3.0	0.6	72.2	4.8	23.0	0.082	0.511	19.920837	-99.370368
T. Der. Tepeji del Río	69.36	3	2	39178	4.7	68.2	4.5	5.7	2.6	9.5	1.2	3.0	0.6	72.9	4.5	22.6	0.069	0.511	19.920796	-99.370488
T. Izq. Jilotepec	83.75	1	1	34623	4.8	65.3	5.7	5.4	3.0	10.0	1.5	3.5	0.8	70.1	5.7	24.2	0.085	0.502	19.972284	-99.434200

CIUDAD DE MEXICO

10 CARR: México - Querétaro (Cuota)

CLAVE: 00411

RUTA: MEX-057-MEX-057D

AÑO: 2022

LUGAR	ESTACION				CLASIFICACION VEHICULAR EN PORCIENTO													COORDENADAS		
	KM	TE	SC	TDPA	M	A	B	C2	C3	T3S2	T3S3	T3S2R4	OTROS	A	B	C	K'	D	LATITUD	LONGITUD
T. Izq. Jilotepec	83.75	1	2	34912	4.7	65.3	5.6	5.2	2.8	10.5	1.4	3.7	0.8	70.0	5.6	24.4	0.079	0.502	19.977531	-99.437958
T. Izq. Jilotepec	83.75	3	1	34164	4.1	60.8	4.7	6.3	2.8	14.6	2.3	3.5	0.9	64.9	4.7	30.4	0.083	0.501	19.989613	-99.458499
T. Izq. Jilotepec	83.75	3	2	34046	3.9	61.1	4.7	6.3	2.7	14.6	2.3	3.5	0.9	65.0	4.7	30.3	0.085	0.501	19.990258	-99.461874
Lim. Edos. Term. Hgo. Ppia. Méx.	86.00	0	0																	
X. C. Libramiento Norte de La Ciudad de México (Cuota)	89.44	3	1	43142	4.4	64.1	5.6	5.3	2.5	12.0	1.7	3.5	0.9	68.5	5.6	25.9	0.067	0.528	20.005688	-99.501797
X. C. Libramiento Norte de La Ciudad de México (Cuota)	89.44	3	2	38052	4.9	61.4	5.9	5.4	2.5	13.2	2.1	3.6	1.0	66.3	5.9	27.8	0.072	0.528	20.003162	-99.498090
T. Der. Palos Altos	97.80	1	1	39583	5.0	60.4	5.5	5.0	3.0	14.2	1.9	4.1	0.9	65.4	5.5	29.1	0.066	0.500	20.031049	-99.547787
T. Der. Palos Altos	97.80	1	2	39632	5.2	60.0	5.4	5.0	2.8	14.3	2.1	4.3	0.9	65.2	5.4	29.4	0.078	0.500	20.031227	-99.548973
X. C. Jilotepec - Maravillas	107.00	1	1	34685	8.6	59.3	4.5	4.2	4.7	13.3	0.9	3.6	0.9	67.9	4.5	27.6	0.073	0.504	20.080857	-99.619575
X. C. Jilotepec - Maravillas	107.00	1	2	35244	8.6	59.4	4.5	4.2	4.7	13.2	0.9	3.6	0.9	68.0	4.5	27.5	0.087	0.504	20.075758	-99.613957
X. C. Jilotepec - Maravillas	107.00	3	1	33523	3.7	64.7	4.8	4.7	3.4	12.2	1.7	3.9	0.9	68.4	4.8	26.8	0.077	0.506	20.082406	-99.635739
X. C. Jilotepec - Maravillas	107.00	3	2	34423	3.7	60.9	5.2	5.2	3.5	14.6	1.8	4.3	0.8	64.6	5.2	30.2	0.083	0.506	20.082521	-99.633721
T. Izq. Aculco	114.80	1	1	35076	4.7	63.7	5.4	4.7	3.0	12.7	1.7	3.4	0.7	68.4	5.4	26.2	0.080	0.511	20.095887	-99.691156
T. Izq. Aculco	114.80	1	2	33346	4.5	60.3	5.8	5.2	3.3	14.3	1.8	4.0	0.8	64.8	5.8	29.4	0.082	0.511	20.091269	-99.686640
T. Izq. Aculco	114.80	3	1	33542	4.8	62.3	5.5	4.9	2.9	13.6	1.6	3.6	0.8	67.1	5.5	27.4	0.085	0.500	20.104893	-99.698781
T. Izq. Aculco	114.80	3	2	33588	4.8	58.5	6.3	5.5	3.0	15.0	2.0	4.0	0.9	63.3	6.3	30.4	0.090	0.500	20.108558	-99.704288
T. Izq. Encinillas	121.70	1	1	34763	5.2	66.8	4.1	3.5	2.6	11.6	2.1	3.3	0.8	72.0	4.1	23.9	0.085	0.508	20.142690	-99.732427
T. Izq. Encinillas	121.70	1	2	35991	5.3	63.8	4.3	3.9	2.9	13.3	2.2	3.4	0.9	69.1	4.3	26.6	0.091	0.508	20.145150	-99.734132
Polotitlán	133.00	1	1	36765	5.2	67.1	3.9	3.2	2.2	13.4	1.6	2.7	0.7	72.3	3.9	23.8	0.086	0.518	20.218633	-99.801703
Polotitlán	133.00	1	2	33874	5.3	63.6	4.4	3.4	2.4	15.1	1.9	3.1	0.8	68.9	4.4	26.7	0.091	0.518	20.219880	-99.803614
Lim. Edos. Term. Méx. Ppia. Qro.	145.50	0	0																	
Plaza de Cobro Palmillas	145.80	2	1	21333	0.4	60.7	3.0	6.1	4.7	18.5	1.6	4.0	1.0	61.1	3.0	35.9	0.077	0.500	20.296112	-99.929069
Plaza de Cobro Palmillas	145.80	2	2	21333	0.4	60.7	3.0	6.1	4.7	18.5	1.6	4.0	1.0	61.1	3.0	35.9	0.077	0.500	20.296112	-99.929069
T. Izq. Toluca	148.50	1	1	34055	5.0	64.4	4.1	3.0	2.6	14.8	1.7	3.6	0.8	69.4	4.1	26.5	0.085	0.501	20.287533	-99.913612
T. Izq. Toluca	148.50	1	2	34127	4.8	60.8	4.6	3.4	2.8	16.7	1.9	4.1	0.9	65.6	4.6	29.8	0.066	0.501	20.284664	-99.909382
T. Izq. Toluca	148.50	3	1	39668	1.3	66.8	5.4	6.3	3.7	11.3	2.0	2.3	0.9	68.1	5.4	26.5	0.068	0.512	20.311378	-99.932458
T. Izq. Toluca	148.50	3	2	41758	1.2	64.5	5.9	7.0	4.0	11.9	2.2	2.3	1.0	65.7	5.9	28.4	0.074	0.512	20.320106	-99.934138
T. Der. Portezuelo	151.53	3	1	42805	5.6	63.7	6.2	5.5	2.0	12.1	1.5	2.6	0.8	69.3	6.2	24.5	0.076	0.520	20.336783	-99.941298
T. Der. Portezuelo	151.53	3	2	42805	5.6	63.7	6.2	5.5	2.0	12.1	1.5	2.6	0.8	69.3	6.2	24.5	0.076	0.520	20.336699	-99.941796
T. Der. Poniente San Juan del Río	164.10	3	1	46968	5.6	63.6	6.2	5.5	2.0	12.1	1.6	2.6	0.8	69.2	6.2	24.6	0.076	0.520	20.373904	-99.994528
T. Der. Poniente San Juan del Río	164.10	3	2	46586	6.7	66.1	3.8	5.1	2.9	9.6	1.4	3.6	0.8	72.8	3.8	23.4	0.081	0.512	20.372610	-99.992109
La Estancia	169.40	1	1	51969	5.3	69.6	3.8	4.9	2.2	9.8	1.5	2.1	0.8	74.9	3.8	21.3	0.078	0.515	20.423243	-100.051777
La Estancia	169.40	1	2	48566	5.2	67.7	4.2	5.3	2.5	9.9	1.7	2.4	1.1	72.9	4.2	22.9	0.076	0.515	20.424677	-100.053723
T. Izq. Acámbaro	170.45	3	1	55916	4.0	68.9	3.5	6.6	2.2	10.3	1.3	2.3	0.9	72.9	3.5	23.6	0.081	0.532	20.447229	-100.078656
T. Izq. Acámbaro	170.45	3	2	48330	3.5	66.4	4.2	7.4	2.3	11.6	1.4	2.3	0.9	69.9	4.2	25.9	0.094	0.532	20.449899	-100.082365

CIUDAD DE MEXICO

10 CARR: México - Querétaro (Cuota)

CLAVE: 00411

RUTA: MEX-057-MEX-057D

AÑO: 2022

LUGAR	ESTACION				CLASIFICACION VEHICULAR EN PORCIENTO													COORDENADAS		
	KM	TE	SC	TDPA	M	A	B	C2	C3	T3S2	T3S3	T3S2R4	OTROS	A	B	C	K'	D	LATITUD	LONGITUD
T. Izq. El Sauz	176.50	3	1	44832	6.0	65.1	4.3	5.1	2.9	11.1	1.7	2.9	0.9	71.1	4.3	24.6	0.077	0.522	20.477772	-100.110882
T. Izq. El Sauz	176.50	3	2	40634	6.0	66.9	3.5	6.2	2.7	9.7	1.6	2.5	0.9	72.9	3.5	23.6	0.074	0.522	20.497771	-100.133982
T. Der. San Ildefonso	185.30	1	1	47176	4.2	72.0	4.2	6.9	1.1	7.5	1.8	1.5	0.8	76.2	4.2	19.6	0.074	0.536	20.520996	-100.168496
T. Der. San Ildefonso	185.30	1	2	40230	3.8	73.2	4.2	6.4	1.3	7.3	1.7	1.3	0.8	77.0	4.2	18.8	0.079	0.536	20.517314	-100.163865
T. Der. Libramiento Nororientado de Querétaro (Cuota)	192.50	1	1	51459	3.4	73.9	4.0	6.7	1.4	7.0	1.2	1.9	0.5	77.3	4.0	18.7	0.080	0.532	20.552610	-100.215603
T. Der. Libramiento Nororientado de Querétaro (Cuota)	192.50	1	2	44454	3.2	73.6	4.4	6.5	1.7	6.8	1.4	1.7	0.7	76.8	4.4	18.8	0.076	0.532	20.551704	-100.214684
T. Der. Libramiento Nororientado de Querétaro (Cuota)	192.50	3	1	74081	1.9	76.8	3.0	8.4	1.8	4.8	1.7	0.9	0.7	78.7	3.0	18.3	0.077	0.508	20.562621	-100.237131
T. Der. Libramiento Nororientado de Querétaro (Cuota)	192.50	3	2	71457	1.7	76.1	3.0	8.7	2.0	5.1	1.8	0.8	0.8	77.8	3.0	19.2	0.076	0.508	20.561654	-100.234754
T. Der. Libramiento de Querétaro a San Luis Potosí	207.00	1	1	84692	2.2	83.3	1.3	3.0	2.5	4.3	0.7	1.9	0.8	85.5	1.3	13.2	0.080	0.523	20.573107	-100.323084
T. Der. Libramiento de Querétaro a San Luis Potosí	207.00	1	2	75778	1.9	82.8	1.5	3.1	2.6	4.4	0.7	2.1	0.9	84.7	1.5	13.8	0.103	0.523	20.574456	-100.330943
T. Der. Libramiento de Querétaro a San Luis Potosí	207.00	3	1	96642	1.7	81.9	1.9	4.9	1.5	4.8	1.7	0.7	0.9	83.6	1.9	14.5	0.079	0.508	20.578251	-100.380496
T. Der. Libramiento de Querétaro a San Luis Potosí Querétaro	207.00	3	2	99658	1.5	82.3	1.8	4.7	1.6	5.0	1.6	0.8	0.7	83.8	1.8	14.4	0.076	0.508	20.578492	-100.378589

11 CARR: Chalco - Mixquic

CLAVE: 00171

RUTA: EM-CDMX

AÑO: 2022

LUGAR	ESTACION				CLASIFICACION VEHICULAR EN PORCIENTO													COORDENADAS		
	KM	TE	SC	TDPA	M	A	B	C2	C3	T3S2	T3S3	T3S2R4	OTROS	A	B	C	K'	D	LATITUD	LONGITUD
Chalco	0.00	3	1	15139	5.1	89.0	0.9	3.0	0.8	0.6	0.3	0.2	0.1	94.1	0.9	5.0	0.077	0.523	19.240443	-98.909102
Chalco	0.00	3	2	16629	5.0	89.2	0.9	2.9	0.8	0.6	0.3	0.2	0.1	94.2	0.9	4.9	0.078	0.523	19.240225	-98.909153
Lim. Edos. Term. Méx. Ppia. CDMX	8.00	0	0																	
Mixquic	10.00	1	0	7876	7.2	87.6	0.6	2.9	0.6	0.6	0.2	0.2	0.1	94.8	0.6	4.6	0.072	0.514	19.225231	-98.947211

12 CARR: Chalco - Tláhuac

CLAVE: 00170

RUTA: EM-CDMX

AÑO: 2022

LUGAR	ESTACION				CLASIFICACION VEHICULAR EN PORCIENTO													COORDENADAS		
	KM	TE	SC	TDPA	M	A	B	C2	C3	T3S2	T3S3	T3S2R4	OTROS	A	B	C	K'	D	LATITUD	LONGITUD
Chalco	0.00	3	1	9889	2.2	89.4	1.2	4.8	0.4	1.0	0.5	0.2	0.3	91.6	1.2	7.2	0.081	0.500	19.248064	-98.926244
Chalco	0.00	3	2	9884	3.0	88.8	1.3	4.6	0.4	1.1	0.3	0.2	0.3	91.8	1.3	6.9	0.068	0.500	19.247927	-98.926313
Lim. Edos. Term. Méx. Ppia. CDMX	7.50	0	0																	
Tláhuac	12.00	1	1	11084	10.6	76.4	1.4	7.8	1.2	1.3	0.6	0.3	0.4	87.0	1.4	11.6	0.080	0.503	19.264357	-98.992877
Tláhuac	12.00	1	2	11196	8.2	79.1	1.3	7.6	1.1	1.2	0.8	0.3	0.4	87.3	1.3	11.4	0.083	0.503	19.264329	-98.992889

CIUDAD DE MEXICO

13 CARR: T. C. (México - Mixquic) - San Pablo Atlazalpan

CLAVE: 00044

RUTA: EM-106-CDMX

AÑO: 2022

LUGAR	ESTACION				CLASIFICACION VEHICULAR EN PORCIENTO														COORDENADAS	
	KM	TE	SC	TDPA	M	A	B	C2	C3	T3S2	T3S3	T3S2R4	OTROS	A	B	C	K'	D	LATITUD	LONGITUD
T. C. México - Mixquic	0.00	3	0	9486	10.2	83.4	0.6	4.3	0.4	0.5	0.3	0.2	0.1	93.6	0.6	5.8	0.064	0.505	19.210829	-98.969049
Lim. Edos. Term. CDMX Ppia. Méx.	2.00	0	0																	
San Pablo Atlazalpan	7.00	0	0																	

14 CARR: Xatlalaco - El Ajusco

CLAVE: 00017

RUTA: EM-CDMX

AÑO: 2022

LUGAR	ESTACION				CLASIFICACION VEHICULAR EN PORCIENTO														COORDENADAS	
	KM	TE	SC	TDPA	M	A	B	C2	C3	T3S2	T3S3	T3S2R4	OTROS	A	B	C	K'	D	LATITUD	LONGITUD
T. C. Ent. Cruz de La Misión - San Nicolás Coatepec	0.00	3	0	2014	5.1	84.0	0.7	6.9	1.6	0.9	0.7	0.1	0.0	89.1	0.7	10.2	0.071	0.513	19.162746	-99.406139
Lim. Edos. Term. Méx. Ppia. CDMX	17.70	0	0																	
T. C. Circuito del Ajusco	27.60	1	0	826	5.9	81.5	0.8	9.3	1.0	0.9	0.4	0.2	0.0	87.4	0.8	11.8	0.085	0.512	19.201407	-99.280837

15 CARR: La Venta - Chamapa (Cuota)

CLAVE: 15014

RUTA: EM-D

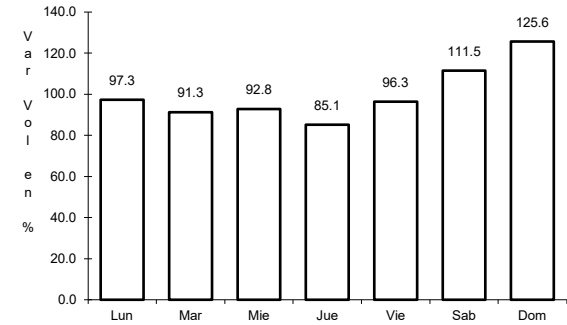
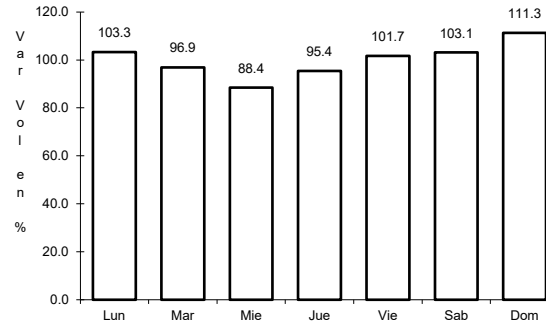
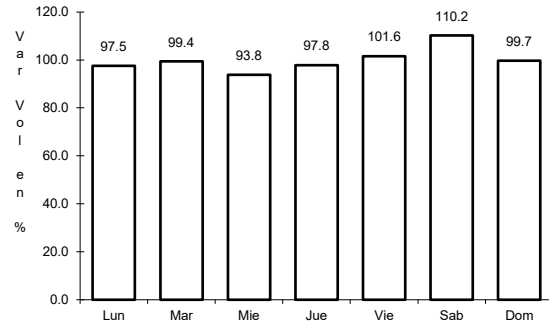
AÑO: 2022

LUGAR	ESTACION				CLASIFICACION VEHICULAR EN PORCIENTO														COORDENADAS	
	KM	TE	SC	TDPA	M	A	B	C2	C3	T3S2	T3S3	T3S2R4	OTROS	A	B	C	K'	D	LATITUD	LONGITUD
T. C. México - Toluca	0.00	0	0																	
Plaza de Cobro La Venta	0.10	2	1	15206	0.6	88.7	0.6	3.7	1.9	3.5	0.2	0.6	0.2	89.3	0.6	10.1	0.090	0.500	19.348946	-99.306623
Plaza de Cobro La Venta	0.10	2	2	15206	0.6	88.7	0.6	3.7	1.9	3.5	0.2	0.6	0.2	89.3	0.6	10.1	0.090	0.500	19.348946	-99.306623
Plaza de Cobro La Venta	0.10	3	1	12894	1.9	80.0	1.6	8.2	1.8	3.5	1.5	1.0	0.5	81.9	1.6	16.5	0.116	0.522	19.356353	-99.304120
Plaza de Cobro La Venta	0.10	3	2	11794	1.9	80.0	1.7	8.2	1.8	3.4	1.6	0.9	0.5	81.9	1.7	16.4	0.119	0.522	19.355204	-99.304699
Lim. Edos. Term. CDMX Tab. Ppia. Méx.	2.70	0	0																	
T. Der. Interlomas	5.60	3	1	17772	2.1	86.2	1.5	4.6	1.4	2.2	0.9	0.5	0.6	88.3	1.5	10.2	0.093	0.524	19.399319	-99.296829
T. Der. Interlomas	5.60	3	2	16117	2.0	86.2	1.4	4.8	1.3	2.3	0.9	0.5	0.6	88.2	1.4	10.4	0.141	0.524	19.399463	-99.296962
X. C. Naucalpan - Toluca	11.10	1	1	24371	2.0	86.7	1.2	3.9	1.4	2.9	0.9	0.6	0.4	88.7	1.2	10.1	0.105	0.528	19.423412	-99.296948
X. C. Naucalpan - Toluca	11.10	1	2	24252	2.1	86.8	1.2	3.7	1.3	3.0	0.9	0.6	0.4	88.9	1.2	9.9	0.121	0.528	19.429116	-99.295720

1 CARR: México - Cuernavaca (Libre)

CLAVE: 00040

RUTA: MEX-095



Km: 28.78

Tipo: 1

Sent: 1

Km: 28.78

Tipo: 1

Sent: 2

Km: 51.40

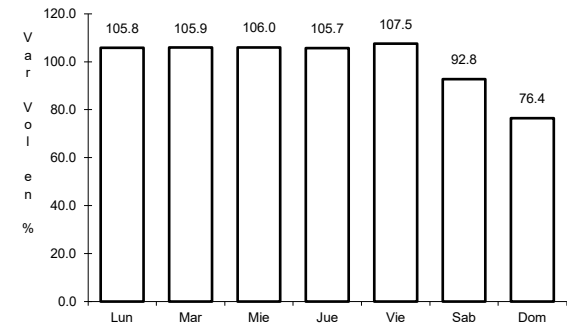
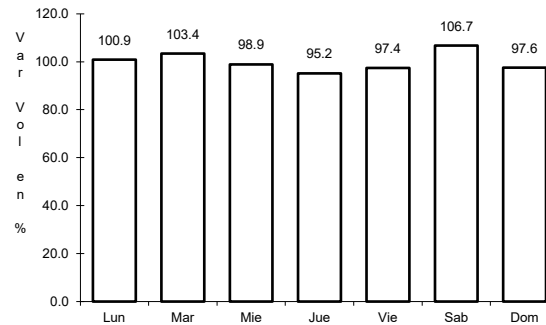
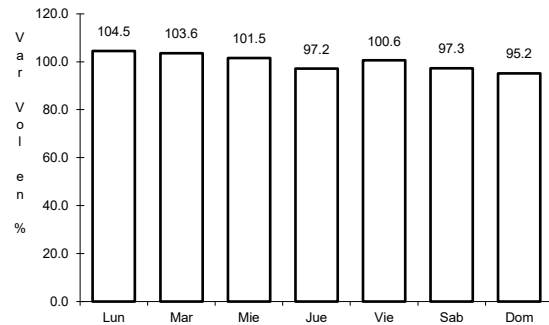
Tipo: 3

Sent: 0

2 CARR: México - Pachuca (Libre)

CLAVE: 00431

RUTA: MEX-085



Km: 26.93

Tipo: 1

Sent: 1

Km: 26.93

Tipo: 1

Sent: 2

Km: 86.50

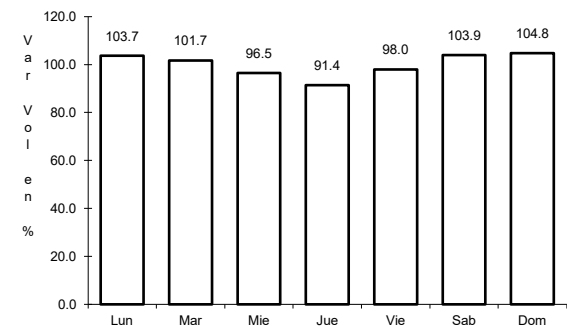
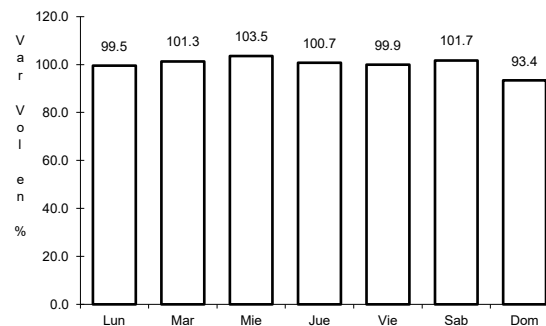
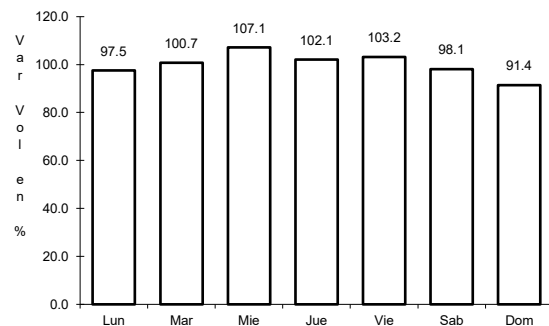
Tipo: 1

Sent: 1

3 CARR: México - Puebla (Libre)

CLAVE: 00449

RUTA: MEX-150



Km: 28.85

Tipo: 1

Sent: 1

Km: 28.85

Tipo: 1

Sent: 2

Km: 62.06

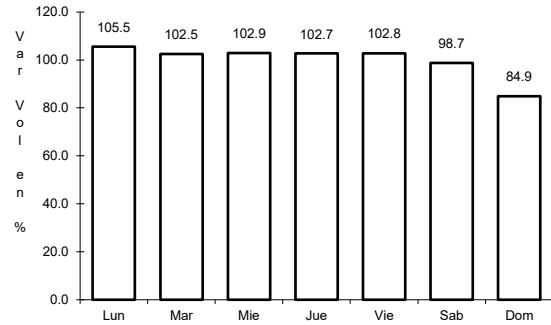
Tipo: 1

Sent: 0

4 CARR: México - Toluca

CLAVE: 00447

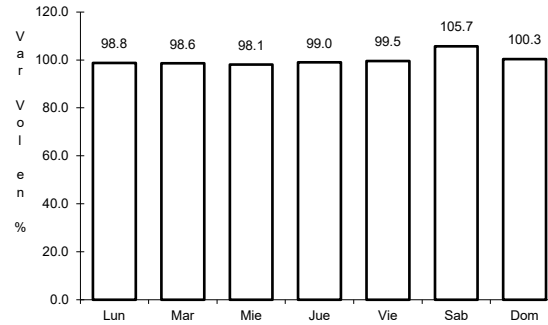
RUTA: MEX-015



Km: 12.84

Tipo: 3

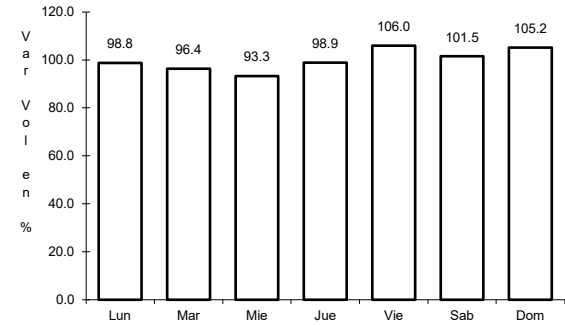
Sent: 1



Km: 12.84

Tipo: 3

Sent: 2



Km: 51.71

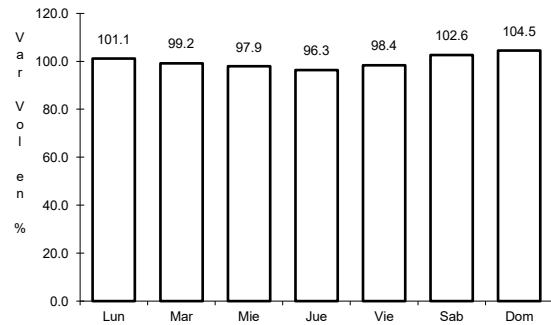
Tipo: 1

Sent: 1

5 CARR: San Gregorio - Oaxtepec

CLAVE: 00901

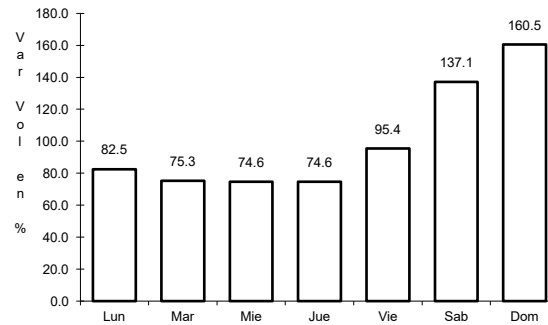
RUTA: MEX-113



Km: 0.00

Tipo: 3

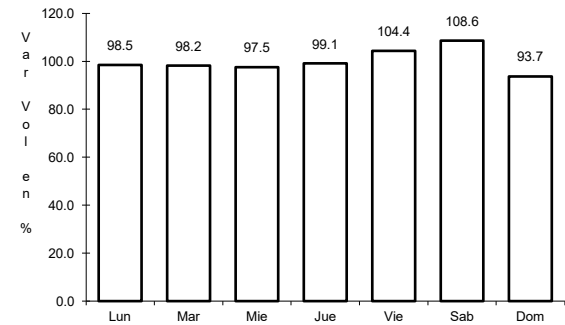
Sent: 0



Km: 33.80

Tipo: 1

Sent: 0



Km: 53.00

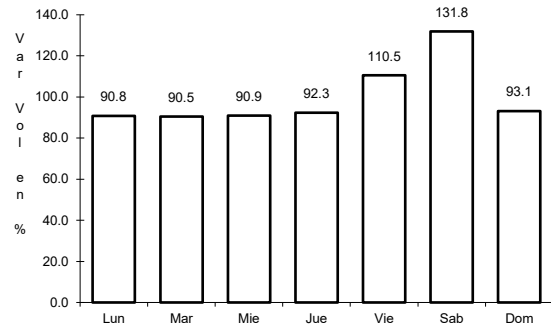
Tipo: 3

Sent: 1

6 CARR: México - Cuernavaca (Cuota)

CLAVE: 00041

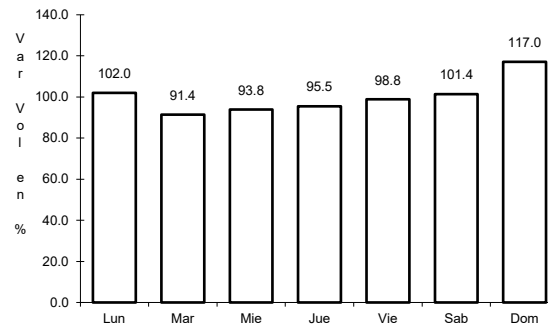
RUTA: MEX-095D



Km: 18.65

Tipo: 3

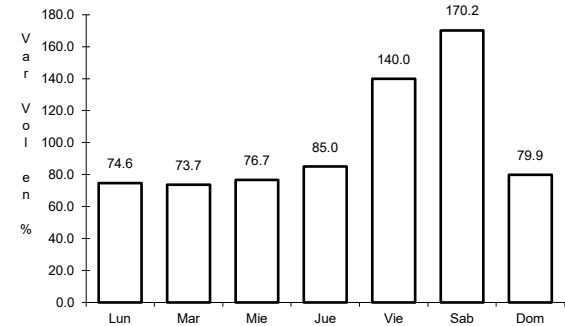
Sent: 1



Km: 18.65

Tipo: 3

Sent: 2



Km: 70.50

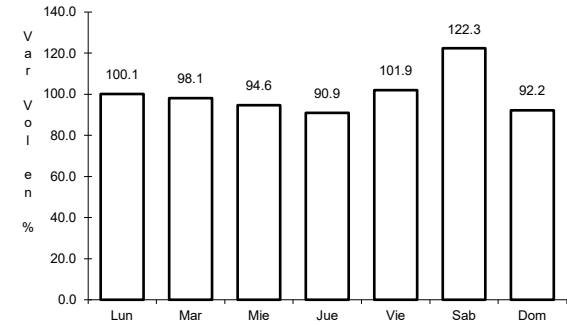
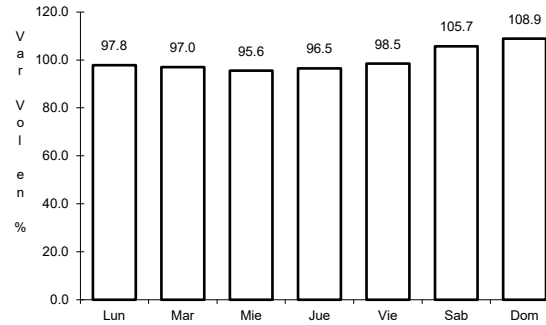
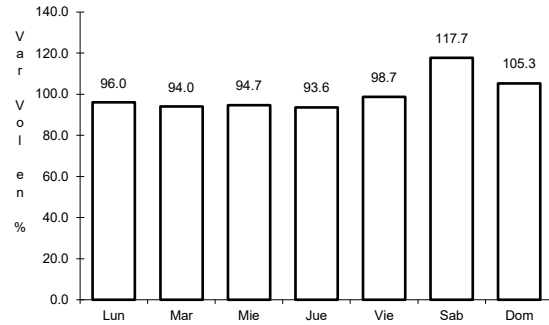
Tipo: 1

Sent: 1

7 CARR: México - Pachuca (Cuota)

CLAVE: 00432

RUTA: MEX-085D



Km: 25.00 Tipo: 3 Sent: 1

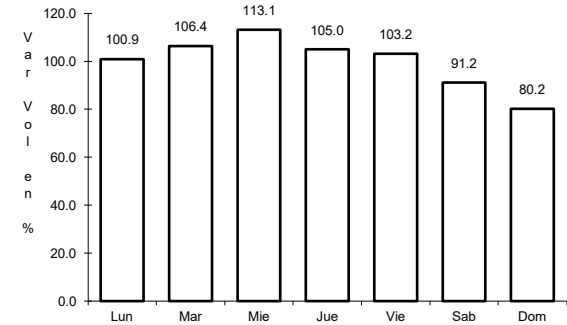
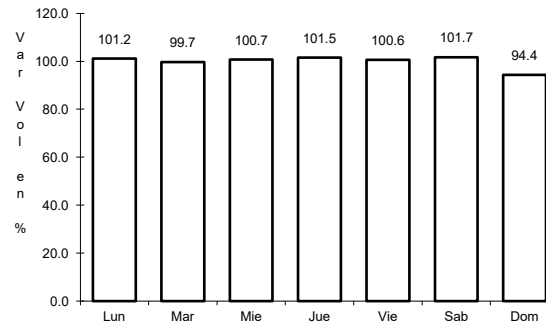
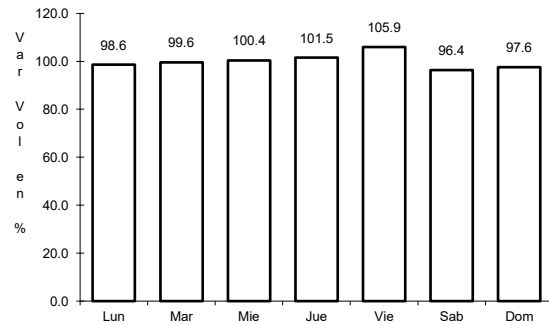
Km: 25.00 Tipo: 3 Sent: 2

Km: 60.50 Tipo: 1 Sent: 1

8 CARR: México - Puebla (Cuota)

CLAVE: 00450

RUTA: MEX-150D



Km: 17.00 Tipo: 3 Sent: 1

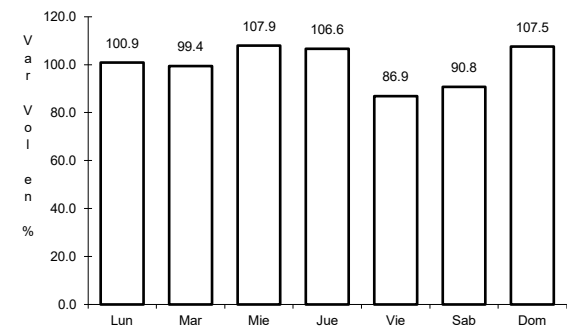
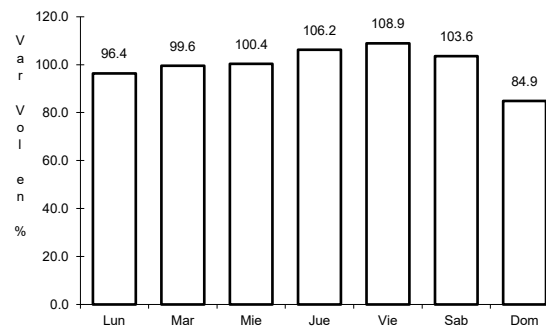
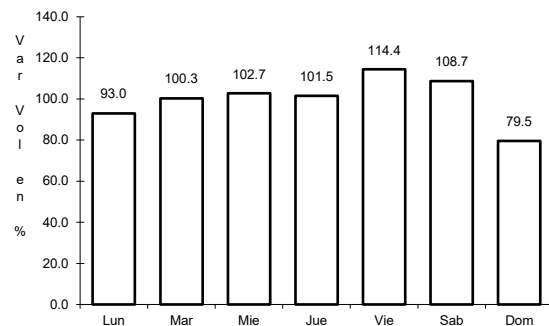
Km: 17.00 Tipo: 3 Sent: 2

Km: 120.46 Tipo: 3 Sent: 1

9 CARR: México - Toluca (Cuota)

CLAVE: 00446

RUTA: MEX-015D



Km: 0.00 Tipo: 3 Sent: 1

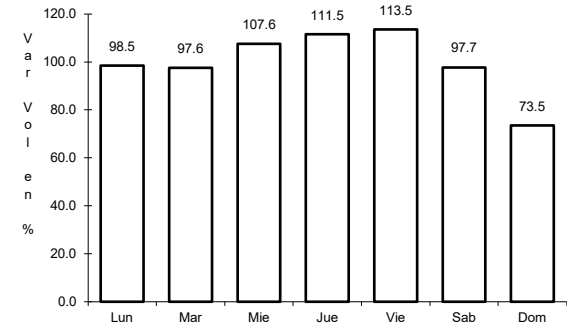
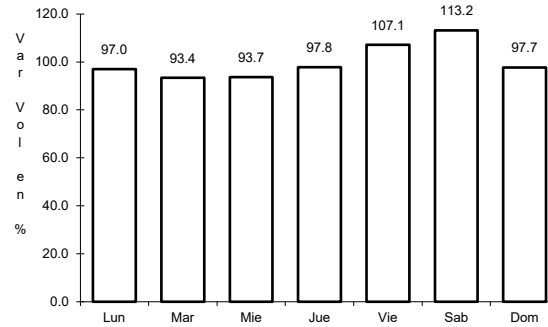
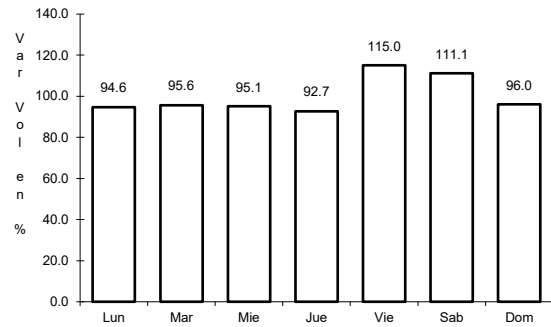
Km: 0.00 Tipo: 3 Sent: 2

Km: 19.20 Tipo: 1 Sent: 1

10 CARR: México - Querétaro (Cuota)

CLAVE: 00411

RUTA: MEX-057-MEX-057D



Km: 56.18

Tipo: 1

Sent: 1

Km: 56.18

Tipo: 1

Sent: 2

Km: 207.00

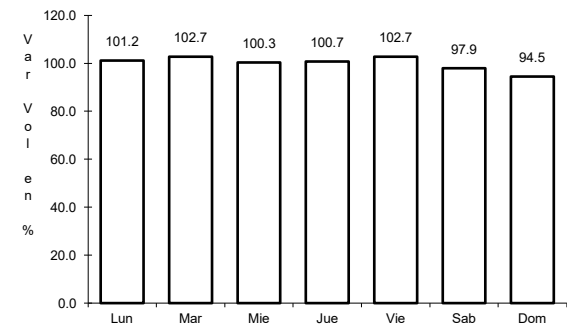
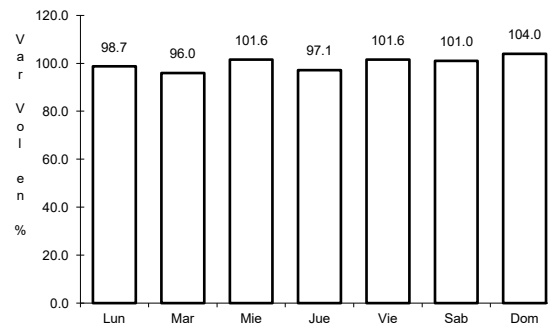
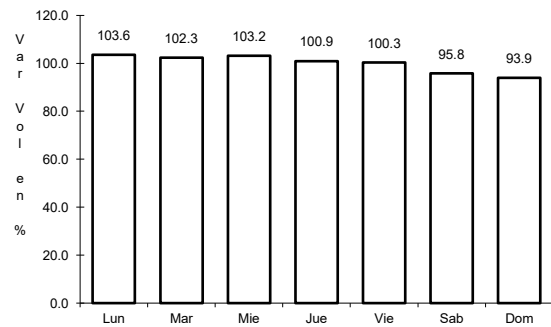
Tipo: 3

Sent: 1

11 CARR: Chalco - Mixquic

CLAVE: 00171

RUTA: EM-CDMX



Km: 0.00

Tipo: 3

Sent: 1

Km: 0.00

Tipo: 3

Sent: 2

Km: 10.00

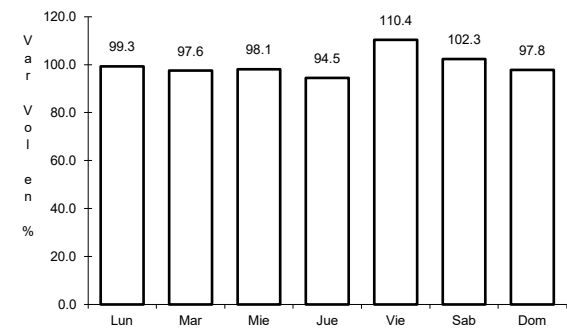
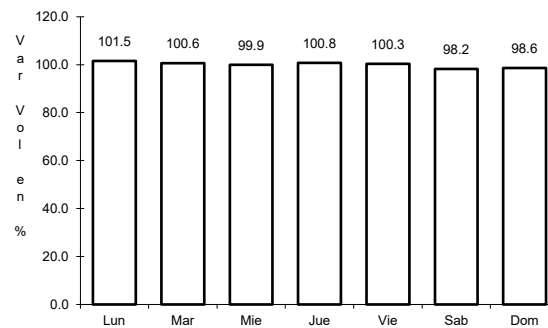
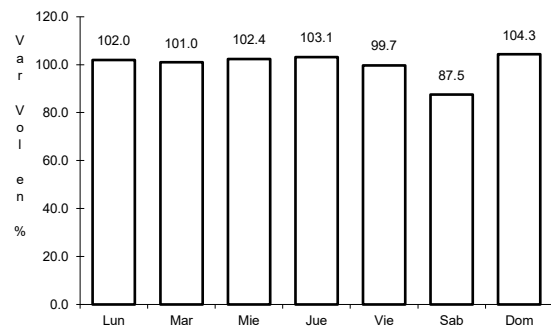
Tipo: 1

Sent: 0

12 CARR: Chalco - Tláhuac

CLAVE: 00170

RUTA: EM-CDMX



Km: 0.00

Tipo: 3

Sent: 1

Km: 0.00

Tipo: 3

Sent: 2

Km: 12.00

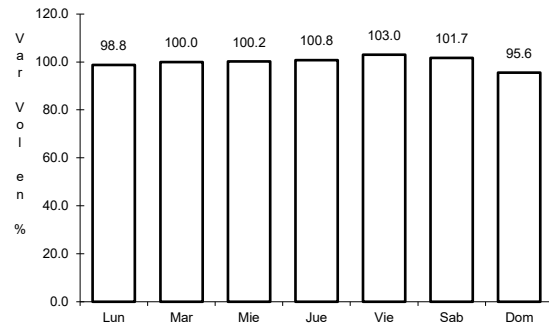
Tipo: 1

Sent: 1

13 CARR: T. C. (México - Mixquic) - San Pablo Atlazalpan

CLAVE: 00044

RUTA: EM-106-CDMX

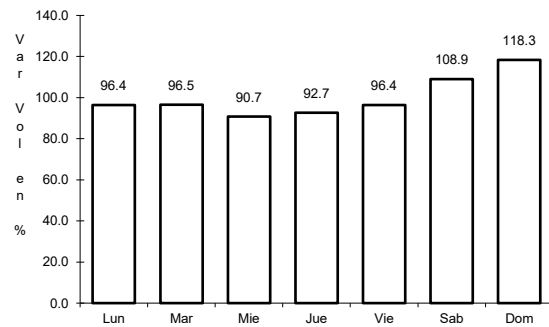


Km: 0.00 Tipo: 3 Sent: 0

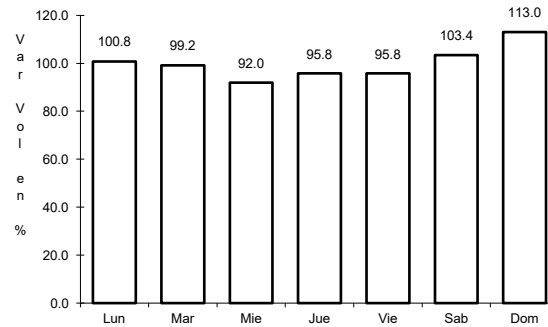
14 CARR: Xalatlaco - El Ajusco

CLAVE: 00017

RUTA: EM-CDMX



Km: 0.00 Tipo: 3 Sent: 0

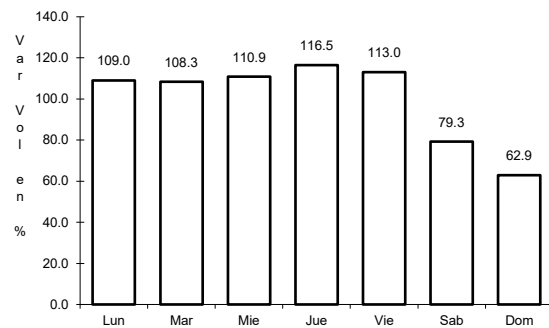


Km: 27.60 Tipo: 1 Sent: 0

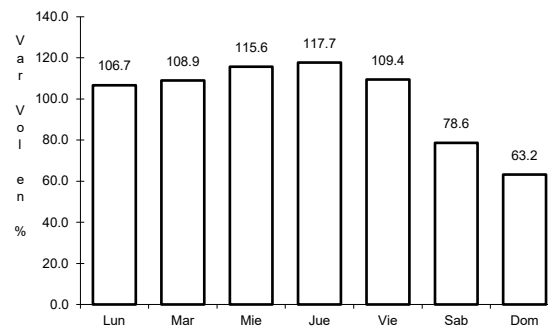
15 CARR: La Venta - Chamapa (Cuota)

CLAVE: 15014

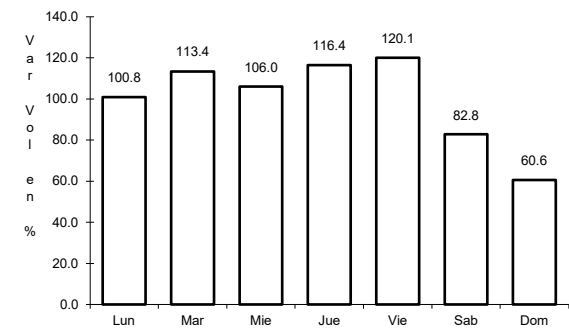
RUTA: EM-D



Km: 0.10 Tipo: 3 Sent: 1



Km: 0.10 Tipo: 3 Sent: 2



Km: 11.10 Tipo: 1 Sent: 1

