

DURANGO

---RED FEDERAL LIBRE---

1 Bermejillo - El Palmito	MEX-030
2 Durango - Ent. La Zarca	MEX-045
3 Durango - Mezquital	MEX-023
4 Durango - Torreón	MEX-040
5 Durango - Villa Unión	MEX-040
6 Ent. La Chicharrona - Cuencamé	MEX-049
7 Ent. La Zarca - Hidalgo del Parral	MEX-045
8 Ent. Los Herrera - Topia	MEX-036
9 Gómez Palacio - Jiménez	MEX-049
10 Gómez Palacio - La Unión	MEX-040
11 Gómez Palacio - Tlahualillo	MEX-040
12 Gregorio García - Francisco I. Madero	MEX-040
13 Guadalupe Aguilera - Tepehuanes	MEX-023
14 Hidalgo del Parral - Guadalupe y Calvo	MEX-024
15 Libramiento Cuencamé	MEX
16 Libramiento Oriente de Durango	MEX-045
17 Libramiento Sur de Durango	MEX-045
18 Pedriceña - Ent. Rodeo	MEX-034
19 Ramal a Otinapa	MEX
20 Ramal a Santa Clara	MEX-049
21 Ramal a Villa Juárez	MEX-040
22 Ramal Distribuidor Presa Peña del Águila	MEX-045
23 Zacatecas - Durango	MEX-045

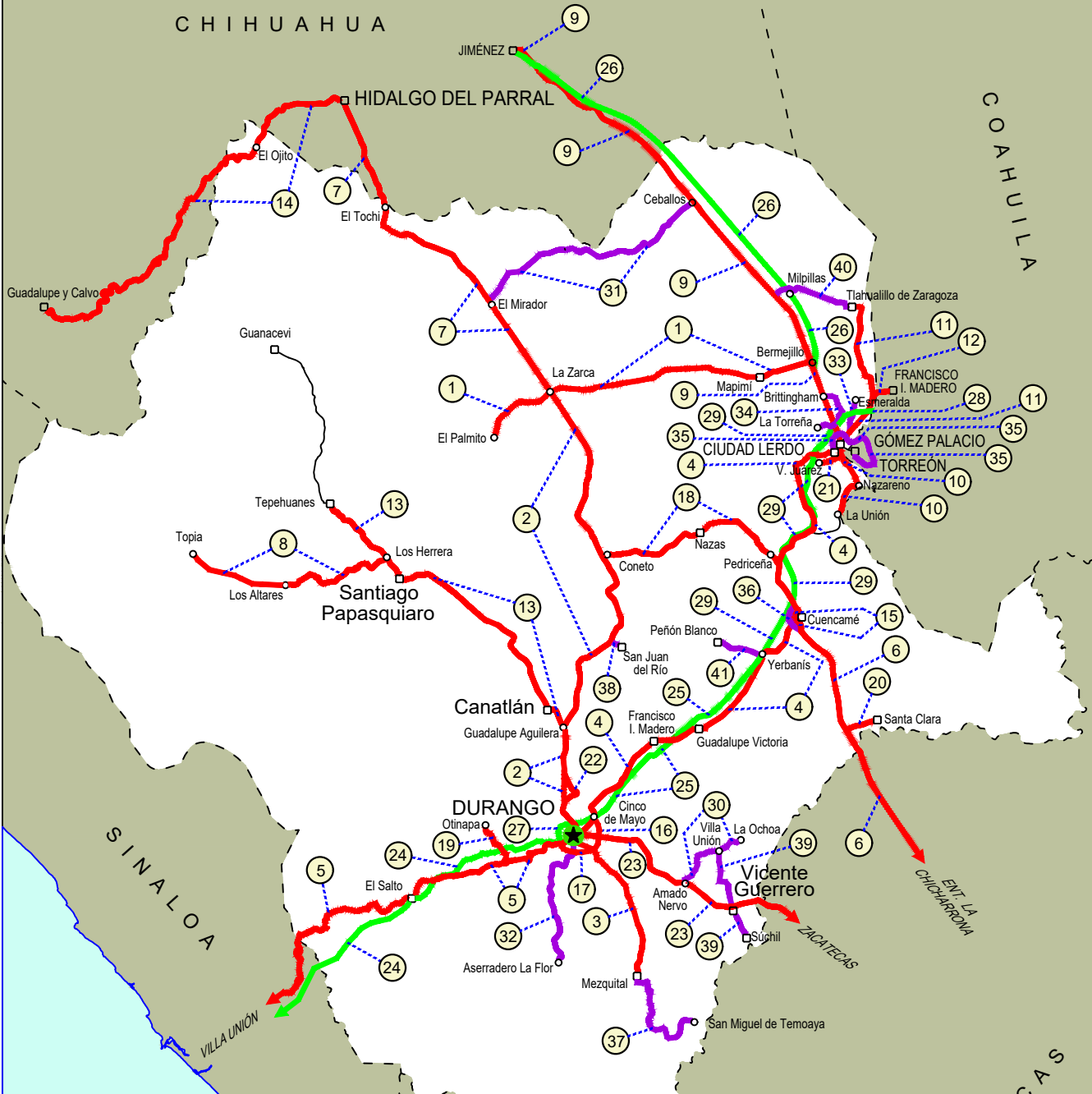
---RED FEDERAL DE CUOTA---

24 Durango - Mazatlán (Cuota)	MEX-040D
25 Durango - Yerbanís (Cuota)	MEX-040D
26 Gómez Palacio - Corralitos (Cuota)	MEX-049D
27 Libramiento de Durango (Cuota)	MEX-040D
28 Libramiento Norte de Torreón (Cuota)	MEX-040D
29 Yerbanís - Gómez Palicio (Cuota)	MEX-040D

---RED ESTATAL LIBRE---

30 Amado Nervo - La Ochoa	DGO-542
31 Ceballos - El Mirador	DGO-044
32 Durango - Aserradero La Flor	DGO-115
33 Jabonoso - Esmeralda	DGO-363
34 La Torreña - Brittingham	DGO-325
35 Libramiento de Torreón	COA
36 Libramiento Exterior Cuencamé	DGO
37 Mezquital - San Miguel de Temoaya	DGO
38 Ramal a San Juan del Río	DGO-290
39 Súchil - Villa Unión	DGO-241
40 Tlahualillo de Zaragoza - T.C. Gómez Palacio - Jiménez	DGO
41 Yerbanís - Peñón Blanco	DGO-316

10 DURANGO



- ① --- Número Índice
- Red Federal Libre
- Red Federal Cuota
- Red Federal Integrada por Tramos Libres y de Cuota
- Red Estatal Libre
- Red Estatal Cuota
- Carreteras Integradas por Tramos Federales y Estatales

DURANGO

1 CARR: Bermejillo - El Palmito

CLAVE: 10105

RUTA: MEX-030

AÑO: 2022

LUGAR	ESTACION				CLASIFICACION VEHICULAR EN PORCIENTO										COORDENADAS					
	KM	TE	SC	TDPA	M	A	B	C2	C3	T3S2	T3S3	T3S2R4	OTROS	A	B	C	K'	D	LATITUD	LONGITUD
Bermejillo	0.00	3	0	2351	2.7	82.1	1.8	5.4	2.3	4.4	0.7	0.4	0.2	84.8	1.8	13.4	0.074	0.508	25.892206	-103.631901
Santo Domingo	86.00	1	0	475	2.0	76.0	1.4	9.8	4.2	3.7	2.2	0.2	0.5	78.0	1.4	20.6	0.086	0.510	25.817106	-104.424517
Santo Domingo	86.00	3	0	318	1.5	83.7	1.5	4.3	2.3	4.3	2.0	0.4	0.0	85.2	1.5	13.3	0.126	0.500	25.813385	-104.448473
Ent. La Zarca	120.00	1	0	635	3.6	83.4	1.4	4.6	1.8	3.6	1.2	0.0	0.4	87.0	1.4	11.6	0.096	0.507	25.785907	-104.755528
Ent. La Zarca	120.00	3	0	193	0.9	93.0	0.3	4.0	1.0	0.6	0.0	0.2	0.0	93.9	0.3	5.8	0.130	0.515	25.779151	-104.770027
El Palmito	160.00	1	0	359	6.8	83.4	0.1	6.8	2.1	0.6	0.2	0.0	0.0	90.2	0.1	9.7	0.148	0.511	25.615604	-105.002899

2 CARR: Durango - Ent. La Zarca

CLAVE: 10016

RUTA: MEX-045

AÑO: 2022

LUGAR	ESTACION				CLASIFICACION VEHICULAR EN PORCIENTO										COORDENADAS					
	KM	TE	SC	TDPA	M	A	B	C2	C3	T3S2	T3S3	T3S2R4	OTROS	A	B	C	K'	D	LATITUD	LONGITUD
Durango	0.00	3	1	17255	0.0	94.8	0.8	1.6	0.7	0.5	0.2	1.1	0.3	94.8	0.8	4.4	0.080	0.535	24.041604	-104.658031
Durango	0.00	3	2	19860	7.2	87.6	0.8	1.6	0.7	0.5	0.2	1.1	0.3	94.8	0.8	4.4	0.066	0.535	24.041534	-104.658148
Caseta Fiscal Zona Industrial	5.30	1	1	11154	3.6	85.1	2.2	5.5	1.5	0.9	0.5	0.4	0.3	88.7	2.2	9.1	0.090	0.510	24.048087	-104.658192
Caseta Fiscal Zona Industrial	5.30	1	2	10725	3.6	85.1	2.2	5.5	1.5	0.9	0.5	0.4	0.3	88.7	2.2	9.1	0.083	0.510	24.048110	-104.658373
Caseta Fiscal Zona Industrial	5.30	3	1	8385	10.8	80.1	1.3	2.7	2.1	1.2	0.7	0.7	0.4	90.9	1.3	7.8	0.085	0.504	24.058740	-104.656284
Caseta Fiscal Zona Industrial	5.30	3	2	8260	10.8	80.1	1.3	2.7	2.2	1.2	0.7	0.7	0.3	90.9	1.3	7.8	0.097	0.504	24.058847	-104.656419
X. Periférico de Durango	6.20	3	1	5740	8.6	81.4	1.7	2.8	2.1	1.7	1.2	0.4	0.1	90.0	1.7	8.3	0.088	0.506	24.079634	-104.668403
X. Periférico de Durango	6.20	3	2	5599	8.1	81.6	1.7	2.9	2.1	1.7	1.2	0.5	0.2	89.7	1.7	8.6	0.074	0.506	24.079571	-104.668464
T. Der. San José del Molino	28.00	0	0																	
T. Izq. Canatlán	55.25	1	0	6221	3.2	86.0	2.4	3.2	1.3	1.9	1.3	0.6	0.1	89.2	2.4	8.4	0.088	0.502	24.431281	-104.698821
T. Izq. Canatlán	55.25	3	0	3039	2.4	89.3	2.0	2.7	0.9	1.6	1.0	0.1	0.0	91.7	2.0	6.3	0.092	0.505	24.446005	-104.699149
T. Der. San Juan del Río	105.81	1	0	2634	5.0	83.3	2.8	3.5	1.5	2.1	1.3	0.3	0.2	88.3	2.8	8.9	0.096	0.528	24.790814	-104.506097
T. Der. San Juan del Río	105.81	3	0	2347	3.2	83.5	2.5	2.5	4.8	1.9	1.1	0.4	0.1	86.7	2.5	10.8	0.095	0.503	24.801499	-104.498412
T. Der. Nazas	155.50	3	0	2795	6.9	79.4	2.1	6.5	1.5	1.6	1.1	0.6	0.3	86.3	2.1	11.6	0.092	0.511	25.131263	-104.540809
T. Der. Rodeo	160.70	1	0	4394	2.4	89.4	1.7	2.6	1.3	1.4	1.0	0.1	0.1	91.8	1.7	6.5	0.071	0.514	25.158229	-104.550732
T. Izq. Abasolo	178.00	3	0	1327	2.6	76.1	3.8	10.3	1.7	2.9	2.2	0.2	0.2	78.7	3.8	17.5	0.099	0.505	25.309934	-104.640117
Ent. La Zarca	239.50	1	0	949	1.4	83.3	3.8	3.3	0.9	4.1	2.3	0.1	0.8	84.7	3.8	11.5	0.098	0.522	25.772640	-104.756050

3 CARR: Durango - Mezquital

CLAVE: 10423

RUTA: MEX-023

AÑO: 2022

LUGAR	ESTACION				CLASIFICACION VEHICULAR EN PORCIENTO										COORDENADAS					
	KM	TE	SC	TDPA	M	A	B	C2	C3	T3S2	T3S3	T3S2R4	OTROS	A	B	C	K'	D	LATITUD	LONGITUD
Durango	0.00	3	1	8378	6.5	84.8	1.6	4.8	1.1	0.5	0.2	0.3	0.2	91.3	1.6	7.1	0.084	0.507	23.991924	-104.625550
Durango	0.00	3	2	8154	6.4	85.0	1.6	4.7	1.1	0.4	0.2	0.3	0.3	91.4	1.6	7.0	0.079	0.507	23.992037	-104.625504

DURANGO

3 CARR: Durango - Mezquital

CLAVE: 10423

RUTA: MEX-023

AÑO: 2022

LUGAR	ESTACION				CLASIFICACION VEHICULAR EN PORCIENTO													COORDENADAS		
	KM	TE	SC	TDPA	M	A	B	C2	C3	T3S2	T3S3	T3S2R4	OTROS	A	B	C	K'	D	LATITUD	LONGITUD
Gabino Santillán	8.00	3	1	4691	5.8	83.3	0.9	5.5	2.5	0.9	0.7	0.4	0.0	89.1	0.9	10.0	0.088	0.502	23.980671	-104.591850
Gabino Santillán	8.00	3	2	4660	5.8	83.5	0.8	5.4	2.6	0.9	0.6	0.3	0.1	89.3	0.8	9.9	0.103	0.502	23.980755	-104.591786
T. Izq. Monte Morelos	13.00	3	0	5526	6.9	81.6	0.9	5.4	3.7	0.9	0.2	0.1	0.3	88.5	0.9	10.6	0.082	0.501	23.948112	-104.562597
Pino Suarez	24.20	3	0	2575	5.2	84.8	1.3	6.7	1.2	0.4	0.2	0.1	0.1	90.0	1.3	8.7	0.103	0.505	23.872310	-104.481382
Mezquital	82.00	1	1	1690	9.5	84.0	0.5	3.9	1.6	0.1	0.3	0.1	0.0	93.5	0.5	6.0	0.080	0.537	23.485502	-104.385703
Mezquital	82.00	1	2	1456	7.5	83.9	0.5	5.2	1.7	0.2	0.4	0.4	0.2	91.4	0.5	8.1	0.091	0.537	23.485471	-104.385600

4 CARR: Durango - Torreón

CLAVE: 10085

RUTA: MEX-040

AÑO: 2022

LUGAR	ESTACION				CLASIFICACION VEHICULAR EN PORCIENTO													COORDENADAS		
	KM	TE	SC	TDPA	M	A	B	C2	C3	T3S2	T3S3	T3S2R4	OTROS	A	B	C	K'	D	LATITUD	LONGITUD
Durango	0.00	3	1	9931	5.4	86.4	2.1	3.3	0.9	1.3	0.4	0.2	0.0	91.8	2.1	6.1	0.076	0.517	24.077224	-104.590510
Durango	0.00	3	2	10650	4.5	86.9	2.4	3.6	0.8	1.1	0.3	0.3	0.1	91.4	2.4	6.2	0.073	0.517	24.077340	-104.590614
T. Der. Cd. de Los Niños	7.70	3	1	8128	4.2	84.6	2.2	6.0	1.9	0.3	0.4	0.3	0.1	88.8	2.2	9.0	0.072	0.502	24.082122	-104.586305
T. Der. Cd. de Los Niños	7.70	3	2	8206	4.0	85.5	1.8	6.0	1.7	0.2	0.3	0.3	0.2	89.5	1.8	8.7	0.070	0.502	24.082202	-104.586458
X. Periférico de Durango	9.00	1	1	9073	3.6	85.3	1.7	5.9	2.1	0.8	0.3	0.2	0.1	88.9	1.7	9.4	0.072	0.505	24.088346	-104.580997
X. Periférico de Durango	9.00	1	2	9265	3.6	85.0	1.6	6.1	2.3	0.9	0.2	0.2	0.1	88.6	1.6	9.8	0.074	0.505	24.088472	-104.581081
T. Der. Aeropuerto	9.42	1	1	7851	4.0	84.7	1.9	4.4	1.5	2.1	0.6	0.5	0.3	88.7	1.9	9.4	0.089	0.511	24.093029	-104.576983
T. Der. Aeropuerto	9.42	1	2	7512	3.8	85.0	2.1	4.4	1.3	2.0	0.6	0.5	0.3	88.8	2.1	9.1	0.086	0.511	24.092601	-104.577544
T. Der. Aeropuerto	9.42	3	1	4250	14.0	72.2	1.1	2.7	4.4	1.7	0.7	2.5	0.7	86.2	1.1	12.7	0.075	0.518	24.099513	-104.575702
T. Der. Aeropuerto	9.42	3	2	3956	13.4	73.8	1.0	2.4	4.3	1.8	0.9	1.8	0.6	87.2	1.0	11.8	0.079	0.518	24.099566	-104.575811
La Calera	10.85	3	0	4965	3.2	81.3	2.9	5.8	1.2	3.3	1.7	0.5	0.1	84.5	2.9	12.6	0.088	0.501	24.111768	-104.571839
Abraham González	27.10	3	0	3859	2.0	78.4	2.8	5.3	1.4	5.7	3.4	0.7	0.3	80.4	2.8	16.8	0.082	0.503	24.205838	-104.516310
Francisco I. Madero	56.30	1	0	3973	4.7	74.9	3.8	6.6	2.2	4.0	2.2	1.3	0.3	79.6	3.8	16.6	0.077	0.532	24.391993	-104.331671
Francisco I. Madero	56.30	3	0	4216	2.7	75.8	3.2	5.2	2.0	6.2	3.4	1.2	0.3	78.5	3.2	18.3	0.081	0.518	24.405131	-104.304894
Guadalupe Victoria	77.50	1	0	5286	4.4	79.0	2.9	3.5	2.0	4.4	2.7	0.8	0.3	83.4	2.9	13.7	0.084	0.503	24.446796	-104.138826
Guadalupe Victoria	77.50	3	0	6285	3.5	81.4	2.2	3.0	1.6	4.3	3.0	0.8	0.2	84.9	2.2	12.9	0.082	0.505	24.465737	-104.081095
T. Der. Ignacio Allende	90.13	1	0	4336	2.0	79.8	2.3	3.0	2.3	5.7	4.1	0.7	0.1	81.8	2.3	15.9	0.069	0.509	24.494786	-104.028598
T. Der. Ignacio Allende	90.13	3	0	3007	1.9	70.2	3.8	4.5	3.0	9.7	5.5	1.3	0.1	72.1	3.8	24.1	0.085	0.510	24.505538	-104.012655
T. Izq. Peñón Blanco	120.90	1	0	2543	3.5	62.2	3.5	7.5	3.6	10.5	7.8	1.3	0.1	65.7	3.5	30.8	0.082	0.506	24.732796	-103.843524
T. Izq. Peñón Blanco	120.90	3	0	2276	6.2	57.4	6.4	8.5	2.4	8.9	6.2	3.3	0.7	63.6	6.4	30.0	0.092	0.534	24.744636	-103.836700
Cuencamé	144.30	1	0	2043	3.9	77.9	4.1	3.0	3.8	1.6	5.1	0.5	0.1	81.8	4.1	14.1	0.079	0.521	24.861005	-103.701753
Cuencamé	144.30	3	1	5321	3.9	49.8	5.2	11.4	3.7	15.7	4.5	5.0	0.8	53.7	5.2	41.1	0.095	0.504	24.878409	-103.698978
Cuencamé	144.30	3	2	5409	4.1	49.8	5.1	11.6	3.5	15.6	4.6	4.9	0.8	53.9	5.1	41.0	0.092	0.504	24.878409	-103.699057
T. C. Libramiento Exterior Cuencamé	148.70	1	0	2527	3.5	75.0	2.5	10.5	2.6	2.3	2.3	1.0	0.3	78.5	2.5	19.0	0.072	0.528	24.895565	-103.702135

DURANGO

4 CARR: Durango - Torreón

CLAVE: 10085

RUTA: MEX-040

AÑO: 2022

LUGAR	ESTACION				CLASIFICACION VEHICULAR EN PORCIENTO										COORDENADAS					
	KM	TE	SC	TDPA	M	A	B	C2	C3	T3S2	T3S3	T3S2R4	OTROS	A	B	C	K'	D	LATITUD	LONGITUD
X. C. Yerbanís - Gómez Palicio (Cuota)	157.80	1	0	7578	1.9	46.5	2.2	7.4	3.4	25.3	6.3	6.1	0.9	48.4	2.2	49.4	0.060	0.547	24.971273	-103.731772
T. Izq. Nazas	171.61	1	0	4166	3.2	58.5	5.5	5.0	3.3	15.4	6.4	2.2	0.5	61.7	5.5	32.8	0.065	0.501	25.086470	-103.771101
T. Izq. Nazas	171.61	3	0	5705	3.2	64.5	4.1	5.4	3.4	10.2	4.3	4.1	0.8	67.7	4.1	28.2	0.072	0.518	25.091876	-103.769758
T. Der. Villa Juárez	194.40	3	0	7134	2.7	60.7	2.7	4.9	2.6	18.3	6.4	1.5	0.2	63.4	2.7	33.9	0.077	0.501	25.225639	-103.629049
León Guzmán	229.58	3	0	9383	7.3	70.5	2.4	5.4	2.3	7.1	2.9	1.6	0.5	77.8	2.4	19.8	0.076	0.518	25.508734	-103.650475
Cd. Lerdo	244.80	1	1	7412	3.0	78.3	2.6	4.9	2.3	4.6	2.2	1.7	0.4	81.3	2.6	16.1	0.093	0.508	25.511893	-103.541940
Cd. Lerdo	244.80	1	2	7651	3.3	79.1	2.6	4.7	2.0	4.2	1.9	1.8	0.4	82.4	2.6	15.0	0.073	0.508	25.512029	-103.541958
T. Izq. Gómez Palacio	248.90	3	1	24159	9.4	85.9	0.6	1.9	0.8	0.3	0.1	0.8	0.2	95.3	0.6	4.1	0.089	0.502	25.550559	-103.480686
T. Izq. Gómez Palacio	248.90	3	2	24356	9.3	85.4	0.5	2.1	1.1	0.4	0.1	0.8	0.3	94.7	0.5	4.8	0.091	0.502	25.550826	-103.480828
Lim. Edos. Term. Dgo. Ppia. Coah.	251.00	0	0																	
Torreón	255.80	1	1	23417	6.8	84.8	1.9	4.2	0.3	0.8	0.1	0.7	0.4	91.6	1.9	6.5	0.060	0.512	25.545417	-103.469441
Torreón	255.80	1	2	24592	6.2	85.9	1.0	4.6	0.3	0.8	0.1	0.7	0.4	92.1	1.0	6.9	0.066	0.512	25.545679	-103.468672

5 CARR: Durango - Villa Unión

CLAVE: 0083

RUTA: MEX-040

AÑO: 2022

LUGAR	ESTACION				CLASIFICACION VEHICULAR EN PORCIENTO										COORDENADAS					
	KM	TE	SC	TDPA	M	A	B	C2	C3	T3S2	T3S3	T3S2R4	OTROS	A	B	C	K'	D	LATITUD	LONGITUD
Durango	0.00	3	0	4139	3.8	78.9	2.0	6.8	2.3	3.6	2.2	0.4	0.0	82.7	2.0	15.3	0.104	0.506	23.995165	-104.732491
T. Der. Pino	22.86	3	0	2468	5.1	74.3	2.6	8.7	2.7	4.2	2.2	0.1	0.1	79.4	2.6	18.0	0.102	0.530	23.967102	-104.820640
T. Izq. Estación Navíos	58.42	3	0	2268	5.5	80.8	1.5	3.9	4.0	1.8	0.6	1.3	0.6	86.3	1.5	12.2	0.089	0.514	23.894932	-105.054488
Llano Grande	77.23	1	0	2271	9.5	70.3	2.5	4.3	4.0	5.3	3.1	0.6	0.4	79.8	2.5	17.7	0.080	0.509	23.866603	-105.199420
El Salto	99.76	1	0	2227	9.1	71.3	2.4	4.5	3.8	5.0	2.7	0.8	0.4	80.4	2.4	17.2	0.084	0.505	23.803862	-105.338894
El Salto	99.76	3	0	2064	7.4	83.7	1.2	4.3	1.4	0.8	0.6	0.4	0.2	91.1	1.2	7.7	0.118	0.503	23.784355	-105.376044
Las Adjuntas	119.00	1	0	1505	7.7	76.6	2.8	8.5	1.4	1.4	1.0	0.1	0.5	84.3	2.8	12.9	0.112	0.510	23.724484	-105.490554
La Ciudad	145.50	1	0	1341	10.2	79.7	1.2	6.0	1.2	1.0	0.3	0.2	0.2	89.9	1.2	8.9	0.109	0.504	23.731534	-105.676755
La Ciudad	145.50	3	0	521	33.3	58.1	1.1	3.1	1.8	0.9	0.7	0.9	0.1	91.4	1.1	7.5	0.123	0.506	23.727317	-105.691673
Lim. Edos. Term. Dgo. Ppia. Sin.	198.50	0	0																	
Concordia	273.50	1	0	1871	21.1	64.4	2.1	2.5	1.6	4.8	3.1	0.3	0.1	85.5	2.1	12.4	0.102	0.515	23.293146	-106.051553
T. C. Tepic - Mazatlán	294.40	1	0	4629	8.7	78.5	3.1	4.4	1.4	2.4	1.3	0.2	0.0	87.2	3.1	9.7	0.089	0.501	23.204583	-106.198248

6 CARR: Ent. La Chicharrona - Cuencamé

CLAVE: 00152

RUTA: MEX-049

AÑO: 2022

LUGAR	ESTACION				CLASIFICACION VEHICULAR EN PORCIENTO										COORDENADAS					
	KM	TE	SC	TDPA	M	A	B	C2	C3	T3S2	T3S3	T3S2R4	OTROS	A	B	C	K'	D	LATITUD	LONGITUD
Ent. La Chicharrona	0.00	3	1	5483	1.5	55.7	6.3	11.2	3.6	10.7	3.6	6.5	0.9	57.2	6.3	36.5	0.069	0.520	23.307136	-102.958717

DURANGO

6 CARR: Ent. La Chicharrona - Cuencamé

CLAVE: 00152

RUTA: MEX-049

AÑO: 2022

LUGAR	ESTACION				CLASIFICACION VEHICULAR EN PORCIENTO														COORDENADAS	
	KM	TE	SC	TDPA	M	A	B	C2	C3	T3S2	T3S3	T3S2R4	OTROS	A	B	C	K'	D	LATITUD	LONGITUD
Ent. La Chicharrona	0.00	3	2	5941	1.7	54.9	5.9	11.9	3.5	11.3	3.5	6.4	0.9	56.6	5.9	37.5	0.066	0.520	23.307130	-102.958913
T. Der. Cañitas de Felipe Pescador	25.86	1	1	4465	1.3	54.6	6.2	14.6	3.1	14.1	3.1	2.4	0.6	55.9	6.2	37.9	0.072	0.516	23.506200	-102.959479
T. Der. Cañitas de Felipe Pescador	25.86	1	2	4195	1.4	55.8	6.0	14.7	3.0	13.2	2.9	2.4	0.6	57.2	6.0	36.8	0.072	0.516	23.506185	-102.959695
T. Libramiento de Río Grande Sur	57.00	0	0																	
Río Grande	60.00	1	0	8821	1.6	58.9	5.1	11.9	2.4	12.5	4.8	2.2	0.6	60.5	5.1	34.4	0.071	0.507	23.788048	-103.015248
Río Grande	60.00	3	0	7169	2.2	49.7	6.6	16.5	3.8	14.0	3.8	2.7	0.7	51.9	6.6	41.5	0.074	0.552	23.881295	-103.097976
T. Libramiento de Río Grande Norte	67.40	0	0																	
T. Der. Nieves	78.00	3	0	8049	1.4	54.2	6.0	11.7	2.9	14.9	5.6	2.5	0.8	55.6	6.0	38.4	0.065	0.551	23.923509	-103.159809
X. C. Juan Aldama - Miguel Auza	124.50	1	0	7305	1.3	49.8	6.4	14.5	3.3	16.9	3.7	3.2	0.9	51.1	6.4	42.5	0.065	0.513	24.272331	-103.400202
X. C. Juan Aldama - Miguel Auza	124.50	3	0	7434	1.2	46.1	5.9	14.2	3.0	16.7	7.1	5.0	0.8	47.3	5.9	46.8	0.076	0.522	24.286905	-103.406265
T. Izq. Miguel Auza	131.20	3	0	5946	1.5	47.5	5.7	14.1	2.9	15.8	6.6	5.0	0.9	49.0	5.7	45.3	0.064	0.544	24.336643	-103.423628
Lim. Edos. Term. Zac. Ppia. Dgo.	134.30	0	0																	
T. Der. Santa Clara	144.00	1	0	5831	3.5	38.1	8.7	5.9	3.3	25.6	5.4	8.5	1.0	41.6	8.7	49.7	0.065	0.501	24.433420	-103.484632
T. Der. Santa Clara	144.00	3	0	5867	4.3	37.6	8.9	7.3	3.9	23.1	5.9	8.0	1.0	41.9	8.9	49.2	0.061	0.512	24.444964	-103.492178
T. C. Libramiento Exterior Cuencamé	196.10	1	0	5748	3.8	36.4	4.8	10.0	2.8	27.1	5.5	8.6	1.0	40.2	4.8	55.0	0.058	0.502	24.827876	-103.682201
Cuencamé	199.10	1	0	1324	8.8	76.2	2.7	5.2	2.7	2.2	1.2	1.0	0.0	85.0	2.7	12.3	0.091	0.515	24.853196	-103.693621

7 CARR: Ent. La Zarca - Hidalgo del Parral

CLAVE: 00488

RUTA: MEX-045

AÑO: 2022

LUGAR	ESTACION				CLASIFICACION VEHICULAR EN PORCIENTO														COORDENADAS	
	KM	TE	SC	TDPA	M	A	B	C2	C3	T3S2	T3S3	T3S2R4	OTROS	A	B	C	K'	D	LATITUD	LONGITUD
Ent. La Zarca	0.00	3	0	1268	3.3	79.1	2.5	4.6	3.2	3.5	2.7	0.7	0.4	82.4	2.5	15.1	0.079	0.548	25.786698	-104.766366
T. Der. Ceballos	47.85	1	0	1383	1.1	81.1	4.5	4.1	1.7	4.1	2.5	0.6	0.3	82.2	4.5	13.3	0.093	0.503	26.134632	-105.024780
T. Der. Ceballos	47.85	3	0	1493	1.2	85.5	3.3	3.5	0.7	3.3	2.2	0.2	0.1	86.7	3.3	10.0	0.081	0.534	26.143020	-105.031074
T. Izq. Canutillo	92.35	3	0	1466	2.0	82.8	3.7	4.1	1.6	3.1	2.3	0.3	0.1	84.8	3.7	11.5	0.085	0.506	26.389539	-105.354005
Las Nieves	97.60	3	0	1918	4.4	79.2	3.2	4.1	2.1	3.2	2.3	1.0	0.5	83.6	3.2	13.2	0.062	0.502	26.400118	-105.404907
T. Izq. Ocampo	109.22	3	0	1345	5.9	77.9	3.4	5.1	1.9	2.8	2.2	0.5	0.3	83.8	3.4	12.8	0.074	0.501	26.442332	-105.494137
Lim. Edos. Term. Dgo. Ppia. Chih.	122.89	0	0																	
Matamoros	148.00	1	0	1273	3.0	78.9	3.7	4.9	2.5	3.4	3.2	0.3	0.1	81.9	3.7	14.4	0.085	0.502	26.750891	-105.580959
Hidalgo del Parral	171.00	1	0	4414	2.8	86.1	2.0	4.0	1.2	1.6	1.5	0.6	0.2	88.9	2.0	9.1	0.065	0.503	26.917817	-105.640429

DURANGO

8 CARR: Ent. Los Herrera - Topia

CLAVE: 10090

RUTA: MEX-036

AÑO: 2022

LUGAR	ESTACION				CLASIFICACION VEHICULAR EN PORCIENTO												COORDENADAS			
	KM	TE	SC	TDPA	M	A	B	C2	C3	T3S2	T3S3	T3S2R4	OTROS	A	B	C	K'	D	LATITUD	LONGITUD
T. C. Guadalupe Aguilera - Tepehuanes	0.00	3	0	629	4.8	74.9	2.0	3.6	5.4	5.0	3.3	0.2	0.8	79.7	2.0	18.3	0.095	0.506	25.121805	-105.481333
Los Altares	80.00	1	0	714	15.9	64.6	1.2	4.8	6.5	3.1	2.4	0.6	0.9	80.5	1.2	18.3	0.112	0.509	25.016486	-105.901833
Topia	229.00	0	0																	

9 CARR: Gómez Palacio - Jiménez

CLAVE: 00006

RUTA: MEX-049

AÑO: 2022

LUGAR	ESTACION				CLASIFICACION VEHICULAR EN PORCIENTO												COORDENADAS			
	KM	TE	SC	TDPA	M	A	B	C2	C3	T3S2	T3S3	T3S2R4	OTROS	A	B	C	K'	D	LATITUD	LONGITUD
Gómez Palacio	0.00	3	1	15857	5.5	79.1	2.3	3.6	2.0	4.0	1.1	1.9	0.5	84.6	2.3	13.1	0.069	0.502	25.612129	-103.512496
Gómez Palacio	0.00	3	2	15986	7.0	75.7	2.7	4.0	2.1	4.7	1.2	2.1	0.5	82.7	2.7	14.6	0.079	0.502	25.612212	-103.512654
X. C. La Torreña - Brittingham	10.96	1	1	11158	8.2	65.4	3.7	4.9	2.9	7.4	2.2	4.3	1.0	73.6	3.7	22.7	0.072	0.508	25.639144	-103.523366
X. C. La Torreña - Brittingham	10.96	1	2	10816	8.3	64.9	4.1	4.5	2.2	9.1	2.3	3.7	0.9	73.2	4.1	22.7	0.071	0.508	25.639191	-103.523525
T. Izq. Dinamita	26.27	1	1	7311	4.5	60.2	6.0	4.4	1.7	15.4	3.6	3.3	0.9	64.7	6.0	29.3	0.064	0.506	25.751488	-103.568059
T. Izq. Dinamita	26.27	1	2	7503	4.7	59.5	5.9	4.8	1.6	16.2	3.1	3.4	0.8	64.2	5.9	29.9	0.067	0.506	25.751409	-103.568257
T. C. Gómez Palacio - Corralitos (Cuota)	37.92	1	1	5830	3.9	54.8	6.5	4.7	2.5	18.2	3.8	4.6	1.0	58.7	6.5	34.8	0.062	0.511	25.861738	-103.610388
T. C. Gómez Palacio - Corralitos (Cuota)	37.92	1	2	5580	3.9	54.8	6.8	4.6	2.2	18.5	3.8	4.6	0.8	58.7	6.8	34.5	0.063	0.511	25.861686	-103.610579
Bermejillo	39.30	1	1	3792	13.5	60.9	4.9	5.3	2.1	8.8	2.3	1.9	0.3	74.4	4.9	20.7	0.068	0.510	25.877456	-103.617879
Bermejillo	39.30	1	2	3639	13.4	61.3	4.8	5.2	2.0	8.8	2.3	1.9	0.3	74.7	4.8	20.5	0.072	0.510	25.877448	-103.617969
T. Izq. Ent. La Zarca	40.89	3	0	2911	4.4	43.2	5.8	11.2	4.2	24.7	4.8	1.6	0.1	47.6	5.8	46.6	0.065	0.507	25.901175	-103.627595
Yermo	107.95	1	0	2396	4.7	40.7	4.0	11.5	4.0	23.5	7.7	3.3	0.6	45.4	4.0	50.6	0.070	0.518	26.383446	-103.998803
Yermo	107.95	3	0	2032	3.8	42.3	8.2	9.8	4.2	23.4	6.4	1.8	0.1	46.1	8.2	45.7	0.060	0.503	26.396123	-104.010594
Ceballos	127.20	1	0	2224	2.8	45.3	4.3	5.4	3.0	29.9	7.4	1.7	0.2	48.1	4.3	47.6	0.068	0.500	26.516338	-104.120053
Ceballos	127.20	3	0	2337	6.2	42.4	4.5	5.6	3.2	25.7	7.9	3.9	0.6	48.6	4.5	46.9	0.069	0.520	26.536669	-104.139077
Lim. Edos. Term. Dgo. Ppia. Chih.	146.15	0	0																	
Estación Escalón	160.89	3	0	2086	5.1	29.3	5.6	7.2	2.8	38.7	7.2	3.6	0.5	34.4	5.6	60.0	0.064	0.521	26.762732	-104.348335
Jiménez	223.00	1	1	3956	5.5	45.7	7.9	4.6	2.5	23.2	4.7	5.1	0.8	51.2	7.9	40.9	0.086	0.524	27.117752	-104.890991
Jiménez	223.00	1	2	4351	5.5	45.4	7.8	4.8	2.3	23.1	4.9	5.3	0.9	50.9	7.8	41.3	0.081	0.524	27.117556	-104.890981

10 CARR: Gómez Palacio - La Unión

CLAVE: 10009

RUTA: MEX-040

AÑO: 2022

LUGAR	ESTACION				CLASIFICACION VEHICULAR EN PORCIENTO												COORDENADAS			
	KM	TE	SC	TDPA	M	A	B	C2	C3	T3S2	T3S3	T3S2R4	OTROS	A	B	C	K'	D	LATITUD	LONGITUD
Gómez Palacio	0.00	3	0	6891	9.6	84.1	1.2	3.5	1.0	0.3	0.2	0.1	0.0	93.7	1.2	5.1	0.076	0.515	25.530214	-103.494790
X. C. Torreón - Villa Juárez	4.30	3	0	6891	10.9	78.7	1.4	5.9	1.6	0.8	0.2	0.4	0.1	89.6	1.4	9.0	0.077	0.532	25.517287	-103.487121
Nazareno	20.90	1	0	3020	7.1	80.4	1.9	7.5	1.8	0.6	0.4	0.3	0.0	87.5	1.9	10.6	0.070	0.509	25.422030	-103.428860

DURANGO

10 CARR: Gómez Palacio - La Unión

CLAVE: 10009

RUTA: MEX-040

AÑO: 2022

LUGAR	ESTACION				CLASIFICACION VEHICULAR EN PORCIENTO													COORDENADAS		
	KM	TE	SC	TDPA	M	A	B	C2	C3	T3S2	T3S3	T3S2R4	OTROS	A	B	C	K'	D	LATITUD	LONGITUD
Nazareno	20.90	3	0	2091	5.1	81.5	1.8	5.6	2.4	2.2	0.8	0.5	0.1	86.6	1.8	11.6	0.093	0.525	25.398418	-103.440547
La Unión	42.20	1	0	715	6.5	80.7	1.0	5.8	3.1	1.2	1.0	0.7	0.0	87.2	1.0	11.8	0.117	0.503	25.292619	-103.511045

11 CARR: Gómez Palacio - Tlahualillo

CLAVE: 10005

RUTA: MEX-040

AÑO: 2022

LUGAR	ESTACION				CLASIFICACION VEHICULAR EN PORCIENTO													COORDENADAS		
	KM	TE	SC	TDPA	M	A	B	C2	C3	T3S2	T3S3	T3S2R4	OTROS	A	B	C	K'	D	LATITUD	LONGITUD
T. C. Gómez Palacio - Jiménez	0.00	0	0																	
T. Izq. Esmeralda	5.60	1	0	18456	7.8	82.6	2.5	2.3	1.7	1.4	0.5	0.7	0.5	90.4	2.5	7.1	0.104	0.512	25.601198	-103.470713
T. Izq. Esmeralda	5.60	3	1	5775	8.5	80.4	1.0	4.2	1.9	2.0	0.7	1.0	0.3	88.9	1.0	10.1	0.089	0.513	25.619461	-103.452536
T. Izq. Esmeralda	5.60	3	2	6087	8.3	80.2	1.1	4.0	2.2	2.2	0.6	1.1	0.3	88.5	1.1	10.4	0.082	0.513	25.619507	-103.452615
Gregorio García	26.00	3	0	6797	7.2	74.9	2.3	7.3	3.0	2.6	0.9	1.5	0.3	82.1	2.3	15.6	0.095	0.501	25.733531	-103.357263
T. Izq. Esmeralda	31.44	1	0	8149	9.2	69.0	2.0	11.4	2.5	2.7	1.0	1.6	0.6	78.2	2.0	19.8	0.085	0.507	25.757502	-103.352384
San Francisco	48.90	1	0	2829	10.1	78.3	1.2	8.3	0.9	0.9	0.1	0.2	0.0	88.4	1.2	10.4	0.078	0.505	25.929094	-103.416829
San Francisco	48.90	3	0	1845	10.2	73.6	1.8	8.5	3.1	1.5	0.8	0.4	0.1	83.8	1.8	14.4	0.065	0.514	25.951928	-103.423753
Tlahualillo	72.90	1	0	2650	8.3	81.7	1.7	6.6	0.6	0.3	0.1	0.2	0.5	90.0	1.7	8.3	0.085	0.503	26.109558	-103.423503

12 CARR: Gregorio García - Francisco I. Madero

CLAVE: 00110

RUTA: MEX-040

AÑO: 2022

LUGAR	ESTACION				CLASIFICACION VEHICULAR EN PORCIENTO													COORDENADAS		
	KM	TE	SC	TDPA	M	A	B	C2	C3	T3S2	T3S3	T3S2R4	OTROS	A	B	C	K'	D	LATITUD	LONGITUD
T. C. Gómez Palacio - Tlahualillo	0.00	0	0																	
Lim. Edos. Term. Dgo. Ppia. Coah.	3.60	0	0																	
Francisco I. Madero	9.60	1	0	9396	7.5	83.5	2.3	3.7	1.1	1.1	0.5	0.3	0.0	91.0	2.3	6.7	0.083	0.544	25.772426	-103.293284

13 CARR: Guadalupe Aguilera - Tepehuanes

CLAVE: 10220

RUTA: MEX-023

AÑO: 2022

LUGAR	ESTACION				CLASIFICACION VEHICULAR EN PORCIENTO													COORDENADAS		
	KM	TE	SC	TDPA	M	A	B	C2	C3	T3S2	T3S3	T3S2R4	OTROS	A	B	C	K'	D	LATITUD	LONGITUD
Guadalupe Aguilera	0.00	3	1	3434	5.6	86.2	1.4	1.8	1.2	1.2	1.1	0.8	0.7	91.8	1.4	6.8	0.079	0.503	24.467441	-104.714579
Guadalupe Aguilera	0.00	3	2	3399	5.5	86.9	1.2	1.7	1.1	1.1	1.3	0.7	0.5	92.4	1.2	6.4	0.087	0.503	24.467500	-104.714684
Canatlán	14.00	3	0	3363	1.9	86.3	1.9	2.6	1.2	2.3	1.7	1.2	0.9	88.2	1.9	9.9	0.091	0.501	24.540631	-104.776306
La Soledad	45.80	3	0	3173	1.2	85.8	2.5	3.0	1.2	2.5	1.9	1.1	0.8	87.0	2.5	10.5	0.092	0.510	24.773180	-104.933097
T. Der. Coneto de Comonfort	51.60	1	0	3069	1.9	83.4	2.5	3.2	1.7	2.8	2.2	1.4	0.9	85.3	2.5	12.2	0.070	0.503	24.802820	-104.924487
José María Morelos	90.20	1	0	2830	1.9	83.8	2.1	4.5	1.6	1.9	2.0	1.3	0.9	85.7	2.1	12.2	0.082	0.502	25.007638	-105.202225

DURANGO

13 CARR: Guadalupe Aguilera - Tepehuanes

CLAVE: 10220

RUTA: MEX-023

AÑO: 2022

LUGAR	ESTACION				CLASIFICACION VEHICULAR EN PORCIENTO													COORDENADAS		
	KM	TE	SC	TDPA	M	A	B	C2	C3	T3S2	T3S3	T3S2R4	OTROS	A	B	C	K'	D	LATITUD	LONGITUD
Santiago Papasquiaro	117.00	3	0	4654	4.0	85.5	1.0	3.4	2.5	1.5	1.0	0.9	0.2	89.5	1.0	9.5	0.103	0.501	25.078392	-105.431261
Las Herreras	133.00	3	0	1298	3.9	81.4	3.4	3.8	3.2	1.7	1.0	0.8	0.8	85.3	3.4	11.3	0.085	0.504	25.159179	-105.508457
Tepehuanes	169.00	1	0	1621	6.6	77.5	2.5	5.0	4.4	2.1	0.6	0.7	0.6	84.1	2.5	13.4	0.093	0.528	25.322336	-105.714492

14 CARR: Hidalgo del Parral - Guadalupe y Calvo

CLAVE: 00802

RUTA: MEX-024

AÑO: 2022

LUGAR	ESTACION				CLASIFICACION VEHICULAR EN PORCIENTO													COORDENADAS		
	KM	TE	SC	TDPA	M	A	B	C2	C3	T3S2	T3S3	T3S2R4	OTROS	A	B	C	K'	D	LATITUD	LONGITUD
T. C. Hidalgo del Parral - Santa Bárbara	0.00	3	0	2855	3.4	82.8	1.5	3.0	3.9	2.1	1.5	0.9	0.9	86.2	1.5	12.3	0.083	0.509	26.915489	-105.764753
T. Der. Guacho chic	35.00	1	0	899	3.4	65.6	5.8	8.6	7.0	4.1	2.8	1.7	1.0	69.0	5.8	25.2	0.088	0.509	26.815901	-106.014885
T. Der. Guacho chic	35.00	3	0	941	5.0	71.1	2.8	7.2	5.0	5.1	1.9	1.0	0.9	76.1	2.8	21.1	0.083	0.512	26.808369	-106.016710
Lim. Edos. Term. Chih. Ppia. Dgo	38.00	0	0																	
Lim. Edos. Term. Dgo. Ppia. Chih.	57.00	0	0																	
El Vergel	110.00	1	0	974	6.1	74.1	1.6	10.9	3.8	1.8	0.8	0.1	0.8	80.2	1.6	18.2	0.097	0.526	26.523014	-106.357289
Puerto Sabinal	212.00	1	0	854	3.8	74.3	2.0	8.0	6.0	4.0	1.5	0.2	0.2	78.1	2.0	19.9	0.083	0.506	26.451306	-106.386500
Guadalupe y Calvo	234.00	0	0																	

15 CARR: Libramiento Cuencamé

CLAVE: 10006

RUTA: MEX

AÑO: 2022

LUGAR	ESTACION				CLASIFICACION VEHICULAR EN PORCIENTO													COORDENADAS		
	KM	TE	SC	TDPA	M	A	B	C2	C3	T3S2	T3S3	T3S2R4	OTROS	A	B	C	K'	D	LATITUD	LONGITUD
T. C. La Chicharrona - Cuencamé	0.00	3	1	1169	6.4	71.3	2.7	12.7	1.7	3.0	1.7	0.4	0.1	77.7	2.7	19.6	0.084	0.524	24.864069	-103.699940
T. C. La Chicharrona - Cuencamé	0.00	3	2	1285	5.8	70.0	2.7	14.1	1.9	3.3	1.7	0.4	0.1	75.8	2.7	21.5	0.082	0.524	24.864033	-103.700000
T. C. Durango - Torreón	2.60	1	1	735	7.3	64.6	3.5	12.0	4.1	4.0	3.7	0.7	0.1	71.9	3.5	24.6	0.086	0.539	24.880276	-103.700839
T. C. Durango - Torreón	2.60	1	2	859	5.3	63.5	3.8	13.7	4.6	4.3	4.0	0.7	0.1	68.8	3.8	27.4	0.083	0.539	24.880322	-103.700918

16 CARR: Libramiento Oriente de Durango

CLAVE:

RUTA: MEX-045

AÑO: 2022

LUGAR	ESTACION				CLASIFICACION VEHICULAR EN PORCIENTO													COORDENADAS		
	KM	TE	SC	TDPA	M	A	B	C2	C3	T3S2	T3S3	T3S2R4	OTROS	A	B	C	K'	D	LATITUD	LONGITUD
T. C. Zacatecas - Durango	0.00	3	1	2785	3.3	72.8	4.0	5.2	3.0	6.1	2.5	2.5	0.6	76.1	4.0	19.9	0.085	0.518	24.023235	-104.519259
T. C. Zacatecas - Durango	0.00	3	2	2996	6.4	74.6	2.0	4.0	3.1	4.7	2.3	2.3	0.6	81.0	2.0	17.0	0.091	0.518	24.023234	-104.519365
T. C. Durango - Ent. La Zarca	10.50	1	1	3014	6.2	74.4	2.7	4.6	2.5	5.1	2.2	1.9	0.4	80.6	2.7	16.7	0.092	0.502	24.085981	-104.562377
T. C. Durango - Ent. La Zarca	10.50	1	2	2995	7.8	74.1	2.0	4.3	2.9	4.6	2.0	1.8	0.5	81.9	2.0	16.1	0.091	0.502	24.085861	-104.562806

DURANGO

17 CARR: Libramiento Sur de Durango

CLAVE:

RUTA: MEX-045

AÑO: 2022

LUGAR	ESTACION				CLASIFICACION VEHICULAR EN PORCIENTO													COORDENADAS		
	KM	TE	SC	TDPA	M	A	B	C2	C3	T3S2	T3S3	T3S2R4	OTROS	A	B	C	K'	D	LATITUD	LONGITUD
T. C. Zacatecas - Durango	0.00	3	0	3819	3.8	82.7	1.7	4.1	2.1	3.0	1.6	0.9	0.1	86.5	1.7	11.8	0.086	0.500	24.007640	-104.529238
T. C. Durango - Mezquital	8.45	1	0	3788	3.3	82.8	1.5	4.9	2.0	3.0	1.4	0.9	0.2	86.1	1.5	12.4	0.085	0.512	23.970813	-104.569210
T. C. Durango - Mezquital	8.45	3	0	1865	6.0	78.3	1.1	5.2	4.8	1.8	0.7	1.6	0.5	84.3	1.1	14.6	0.082	0.504	23.965903	-104.578590
T. C. Durango - Aserradero La Flor	19.50	1	0	1190	5.2	78.2	1.8	5.5	3.3	3.0	1.0	1.8	0.2	83.4	1.8	14.8	0.100	0.505	23.952541	-104.662263
T. C. Durango - Aserradero La Flor	19.50	3	0	1656	8.2	76.5	1.9	4.5	3.3	2.7	1.0	1.3	0.6	84.7	1.9	13.4	0.094	0.514	23.952738	-104.670527
T. C. Durango - Villa Unión	27.70	1	0	2378	5.6	83.8	1.4	2.7	2.4	2.5	0.7	0.9	0.0	89.4	1.4	9.2	0.095	0.505	23.989958	-104.718859
Libramiento de Durango	29.20	1	0	3536	4.2	80.3	1.7	2.4	4.0	4.6	1.6	1.1	0.1	84.5	1.7	13.8	0.088	0.526	24.000553	-104.725675

18 CARR: Pedriceña - Ent. Rodeo

CLAVE: 10002

RUTA: MEX-034

AÑO: 2022

LUGAR	ESTACION				CLASIFICACION VEHICULAR EN PORCIENTO													COORDENADAS		
	KM	TE	SC	TDPA	M	A	B	C2	C3	T3S2	T3S3	T3S2R4	OTROS	A	B	C	K'	D	LATITUD	LONGITUD
T. C. Cuencamé - Torreón	0.00	3	0	2881	2.7	75.2	1.4	14.8	2.4	1.8	0.8	0.3	0.6	77.9	1.4	20.7	0.075	0.504	25.092641	-103.774917
Nazas	45.00	1	0	2600	5.8	79.4	0.8	9.6	2.5	1.3	0.3	0.2	0.1	85.2	0.8	14.0	0.070	0.501	25.238944	-104.095152
Nazas	45.00	3	0	1190	8.6	74.8	1.0	9.1	4.4	1.2	0.7	0.1	0.1	83.4	1.0	15.6	0.087	0.508	25.217644	-104.125427
T. C. (Durango - Ent. La Zarca)-Ent. Rodeo	98.00	1	0	800	3.2	85.2	1.5	3.3	2.7	1.2	1.0	1.0	0.9	88.4	1.5	10.1	0.101	0.504	25.129526	-104.536666

19 CARR: Ramal a Otinapa

CLAVE: 10002

RUTA: MEX

AÑO: 2022

LUGAR	ESTACION				CLASIFICACION VEHICULAR EN PORCIENTO													COORDENADAS		
	KM	TE	SC	TDPA	M	A	B	C2	C3	T3S2	T3S3	T3S2R4	OTROS	A	B	C	K'	D	LATITUD	LONGITUD
T. C. Durango - Villa Unión	0.00	3	0	261	5.7	86.8	0.6	2.9	1.9	1.2	0.4	0.3	0.2	92.5	0.6	6.9	0.222	0.511	23.926859	-104.940673
Otinapa	19.65	0	0																	

20 CARR: Ramal a Santa Clara

CLAVE: 10287

RUTA: MEX-049

AÑO: 2022

LUGAR	ESTACION				CLASIFICACION VEHICULAR EN PORCIENTO													COORDENADAS		
	KM	TE	SC	TDPA	M	A	B	C2	C3	T3S2	T3S3	T3S2R4	OTROS	A	B	C	K'	D	LATITUD	LONGITUD
T. C. Ent. La Chicharrona - Cuencamé	0.00	3	0	850	2.6	90.6	2.1	3.8	0.2	0.2	0.5	0.0	0.0	93.2	2.1	4.7	0.091	0.508	24.442571	-103.482333
Santa Clara	14.00	0	0																	

DURANGO

21 CARR: Ramal a Villa Juárez

CLAVE: 10287

RUTA: MEX-040

AÑO: 2022

LUGAR	ESTACION				CLASIFICACION VEHICULAR EN PORCIENTO													COORDENADAS		
	KM	TE	SC	TDPA	M	A	B	C2	C3	T3S2	T3S3	T3S2R4	OTROS	A	B	C	K'	D	LATITUD	LONGITUD
T. C. Gómez Palacio - La Unión	0.00	3	1	3079	11.3	82.1	0.7	4.6	0.6	0.3	0.1	0.1	0.2	93.4	0.7	5.9	0.132	0.504	25.517953	-103.493898
T. C. Gómez Palacio - La Unión	0.00	3	2	3030	10.9	82.7	0.8	4.5	0.5	0.2	0.1	0.1	0.2	93.6	0.8	5.6	0.101	0.504	25.517861	-103.493862
Villa Juárez	13.00	0	0																	

22 CARR: Ramal Distribuidor Presa Peña del Águila

CLAVE: 10016

RUTA: MEX-045

AÑO: 2022

LUGAR	ESTACION				CLASIFICACION VEHICULAR EN PORCIENTO													COORDENADAS		
	KM	TE	SC	TDPA	M	A	B	C2	C3	T3S2	T3S3	T3S2R4	OTROS	A	B	C	K'	D	LATITUD	LONGITUD
T. C. Durango - Ent. La Zarca Sur	0.00	0	0																	
T. Der. San José del Molino	10.50	1	0	679	9.7	77.9	2.3	6.1	1.2	0.9	0.6	0.7	0.6	87.6	2.3	10.1	0.138	0.520	24.207096	-104.661810
T. C. Durango - Ent. La Zarca Norte	19.00	0	0																	

23 CARR: Zacatecas - Durango

CLAVE: 00544

RUTA: MEX-045

AÑO: 2022

LUGAR	ESTACION				CLASIFICACION VEHICULAR EN PORCIENTO													COORDENADAS		
	KM	TE	SC	TDPA	M	A	B	C2	C3	T3S2	T3S3	T3S2R4	OTROS	A	B	C	K'	D	LATITUD	LONGITUD
Zacatecas	0.00	0	0																	
T. Izq. Guadalajara	6.40	3	1	16291	1.4	79.8	2.9	8.1	3.8	3.1	0.4	0.4	0.1	81.2	2.9	15.9	0.074	0.507	22.782150	-102.627295
T. Izq. Guadalajara	6.40	3	2	16722	1.5	78.0	3.4	8.8	3.8	3.4	0.5	0.5	0.1	79.5	3.4	17.1	0.091	0.507	22.782583	-102.627278
T. Der. Saltillo (T. Morelos)	15.00	1	1	17918	1.4	66.2	3.6	8.6	2.8	12.1	2.2	2.5	0.6	67.6	3.6	28.8	0.078	0.510	22.850389	-102.623978
T. Der. Saltillo (T. Morelos)	15.00	1	2	17205	1.7	66.5	3.9	7.8	2.7	11.7	1.9	3.0	0.8	68.2	3.9	27.9	0.089	0.510	22.851292	-102.643971
T. Der. Saltillo (T. Morelos)	15.00	3	1	14835	1.9	69.6	4.6	8.4	2.8	6.7	2.1	3.1	0.8	71.5	4.6	23.9	0.084	0.501	22.873721	-102.635535
T. Der. Saltillo (T. Morelos)	15.00	3	2	14799	1.9	70.4	4.2	8.1	2.8	6.7	2.0	3.1	0.8	72.3	4.2	23.5	0.099	0.501	22.874301	-102.653503
T. Libramiento de Víctor Rosales	26.20	0	0																	
Víctor Rosales	28.00	1	1	16792	1.3	75.3	3.5	5.9	2.8	6.6	2.1	2.0	0.5	76.6	3.5	19.9	0.066	0.504	22.919412	-102.676082
Víctor Rosales	28.00	1	2	16549	1.2	76.4	3.1	5.5	2.8	6.5	2.1	1.9	0.5	77.6	3.1	19.3	0.084	0.504	22.919217	-102.676274
T. Der. Facultad de Veterinaria	32.30	1	1	10655	1.2	68.4	3.4	9.9	2.3	10.7	2.0	1.6	0.5	69.6	3.4	27.0	0.072	0.534	22.971219	-102.719449
T. Der. Facultad de Veterinaria	32.30	1	2	9287	1.2	68.3	3.2	9.6	2.5	11.2	2.0	1.6	0.4	69.5	3.2	27.3	0.073	0.534	22.971170	-102.719535
Gral. Enrique Estrada	34.60	3	1	10593	1.0	67.4	3.1	9.4	2.5	12.0	2.3	1.8	0.5	68.4	3.1	28.5	0.067	0.542	23.012030	-102.751660
Gral. Enrique Estrada	34.60	3	2	12527	1.1	71.3	3.1	8.1	2.0	9.6	2.3	2.0	0.5	72.4	3.1	24.5	0.072	0.542	23.009980	-102.750950
T. Libramiento de Víctor Rosales	35.90	0	0																	
T. Libramiento de Fresnillo Sur	49.30	0	0																	
Fresnillo	58.50	1	1	9109	1.1	81.2	2.7	8.3	2.1	2.5	1.8	0.2	0.1	82.3	2.7	15.0	0.079	0.509	23.163605	-102.854169
Fresnillo	58.50	1	2	9431	1.4	80.7	2.5	8.6	1.8	2.9	1.8	0.2	0.1	82.1	2.5	15.4	0.081	0.509	23.163554	-102.854263
T. C. Libramiento de Fresnillo (Cuota) Norte	66.40	1	1	6675	0.9	74.8	5.1	9.1	7.5	1.7	0.5	0.3	0.1	75.7	5.1	19.2	0.087	0.508	23.236552	-102.915717

DURANGO

23 CARR: Zacatecas - Durango

CLAVE: 00544

RUTA: MEX-045

AÑO: 2022

LUGAR	ESTACION				CLASIFICACION VEHICULAR EN PORCIENTO													COORDENADAS		
	KM	TE	SC	TDPA	M	A	B	C2	C3	T3S2	T3S3	T3S2R4	OTROS	A	B	C	K'	D	LATITUD	LONGITUD
T. C. Libramiento de Fresnillo (Cuota) Norte	66.40	1	2	6468	0.8	74.8	5.1	9.1	7.5	1.8	0.5	0.3	0.1	75.6	5.1	19.3	0.079	0.508	23.236513	-102.915822
T. Libramiento de Fresnillo Norte	66.70	0	0																	
Ent. La Chicharrona	74.30	1	1	8570	1.5	68.4	3.9	9.1	2.7	8.4	3.1	2.3	0.6	69.9	3.9	26.2	0.089	0.533	23.288277	-102.951352
Ent. La Chicharrona	74.30	1	2	7502	1.5	68.6	3.9	9.1	2.6	8.5	3.1	2.2	0.5	70.1	3.9	26.0	0.081	0.533	23.290732	-102.953357
Ent. La Chicharrona	74.30	3	0	6843	1.8	65.8	5.6	17.0	2.6	4.2	2.0	0.9	0.1	67.6	5.6	26.8	0.074	0.512	23.307838	-102.964724
T. Der. Sain Alto	121.00	3	0	5159	1.8	64.1	5.6	17.6	2.6	5.3	2.0	0.9	0.1	65.9	5.6	28.5	0.079	0.516	23.581706	-103.274305
T. Izq. Sombrerete (2º Acceso)	161.50	3	0	6064	2.0	71.8	3.9	10.6	2.1	6.0	2.2	1.2	0.2	73.8	3.9	22.3	0.087	0.538	23.646724	-103.651465
T. C. Libramiento de Sombrerete	165.00	3	0	6277	2.6	71.4	5.1	13.5	1.7	2.8	1.4	1.3	0.2	74.0	5.1	20.9	0.072	0.526	23.660451	-103.668565
Lim. Edos. Term. Zac. Ppia. Dgo.	190.08	0	0																	
X. C. Súchil - Villa Unión	206.98	1	0	3931	2.2	74.1	5.8	4.2	1.6	6.7	2.3	2.6	0.5	76.3	5.8	17.9	0.083	0.504	23.750110	-103.963323
X. C. Súchil - Villa Unión	206.98	3	0	6063	4.4	75.6	4.9	4.3	1.2	4.9	1.9	2.1	0.7	80.0	4.9	15.1	0.097	0.516	23.744099	-104.000975
T. Izq. Graceros	210.00	1	0	5800	13.7	67.1	3.9	4.7	1.7	4.6	1.7	1.9	0.7	80.8	3.9	15.3	0.089	0.501	23.747333	-104.026697
Amado Nervo	231.51	1	0	4791	2.2	72.4	5.7	5.2	2.1	6.3	2.6	2.7	0.8	74.6	5.7	19.7	0.076	0.507	23.839281	-104.180395
Amado Nervo	231.51	3	0	6079	2.6	77.4	5.1	4.6	1.4	4.5	1.8	2.0	0.6	80.0	5.1	14.9	0.085	0.505	23.844568	-104.199824
Nombre de Dios	236.80	1	0	2733	8.5	77.6	4.6	8.5	0.5	0.1	0.1	0.1	0.0	86.1	4.6	9.3	0.094	0.514	23.843713	-104.225571
Nombre de Dios	236.80	3	0	4353	7.4	84.0	1.8	5.6	0.6	0.3	0.1	0.1	0.1	91.4	1.8	6.8	0.094	0.518	23.852883	-104.250446
T. Der. Constanacia	240.60	3	0	6452	3.1	79.2	3.1	6.7	1.6	3.3	1.3	1.3	0.4	82.3	3.1	14.6	0.091	0.502	23.872094	-104.268785
T. Der. Tuitán	250.80	3	0	6347	1.9	77.7	3.9	6.9	1.3	4.4	1.7	1.8	0.4	79.6	3.9	16.5	0.082	0.500	23.923103	-104.337222
T. Der. Independencia y Libertad	261.70	1	0	5951	2.9	77.1	4.0	7.3	2.0	3.7	1.5	1.2	0.3	80.0	4.0	16.0	0.100	0.501	23.993475	-104.373932
T. Der. Independencia y Libertad	261.70	3	1	3649	1.2	81.5	4.5	3.7	1.5	4.1	1.6	1.5	0.4	82.7	4.5	12.8	0.150	0.500	24.011722	-104.405643
T. Der. Independencia y Libertad	261.70	3	2	3653	1.7	81.4	4.7	3.5	1.5	3.9	1.4	1.5	0.4	83.1	4.7	12.2	0.108	0.500	24.011624	-104.405662
T. Izq. Parras de La Fuente	276.60	1	1	4279	1.6	83.2	4.6	3.7	1.2	3.1	1.3	1.0	0.3	84.8	4.6	10.6	0.125	0.505	24.019154	-104.506531
T. Izq. Parras de La Fuente	276.60	1	2	4372	1.7	81.5	5.2	4.0	1.0	3.3	1.4	1.5	0.4	83.2	5.2	11.6	0.106	0.505	24.019059	-104.506551
T. Izq. Parras de La Fuente	276.60	3	1	4376	3.1	84.3	2.2	5.5	1.5	1.6	0.8	0.7	0.3	87.4	2.2	10.4	0.121	0.509	24.021200	-104.525672
T. Izq. Parras de La Fuente	276.60	3	2	4220	3.0	84.4	2.1	5.7	1.6	1.5	0.8	0.7	0.2	87.4	2.1	10.5	0.102	0.509	24.021093	-104.525695
Durango	287.30	1	1	6224	6.1	83.0	2.0	4.9	1.4	1.3	0.5	0.6	0.2	89.1	2.0	8.9	0.091	0.506	24.026371	-104.574577
Durango	287.30	1	2	6087	6.1	82.6	2.0	4.9	1.5	1.4	0.6	0.6	0.3	88.7	2.0	9.3	0.108	0.506	24.026263	-104.574588

24 CARR: Durango - Mazatlán (Cuota)

CLAVE: 00084

RUTA: MEX-040D

AÑO: 2022

LUGAR	ESTACION				CLASIFICACION VEHICULAR EN PORCIENTO													COORDENADAS		
	KM	TE	SC	TDPA	M	A	B	C2	C3	T3S2	T3S3	T3S2R4	OTROS	A	B	C	K'	D	LATITUD	LONGITUD
Libramiento de Durango	21.30	3	0	2990	4.8	68.5	5.7	3.8	2.0	7.7	2.0	4.8	0.7	73.3	5.7	21.0	0.108	0.528	24.005963	-104.731442
Plaza de Cobro Durango	22.20	2	0	4352	1.1	70.0	3.2	2.6	3.1	10.7	1.8	6.4	1.1	71.1	3.2	25.7	0.108	0.500	24.005080	-104.734540
Ent. Otinapa	44.50	1	0	3262	2.4	64.9	5.6	5.2	2.2	10.1	2.0	6.9	0.7	67.3	5.6	27.1	0.104	0.511	23.982301	-104.941939

DURANGO

24 CARR: Durango - Mazatlán (Cuota)

CLAVE: 00084

RUTA: MEX-040D

AÑO: 2022

LUGAR	ESTACION				CLASIFICACION VEHICULAR EN PORCIENTO										COORDENADAS					
	KM	TE	SC	TDPA	M	A	B	C2	C3	T3S2	T3S3	T3S2R4	OTROS	A	B	C	K'	D	LATITUD	LONGITUD
Plaza de Cobro Llano Grande	73.80	2	0	3936	1.1	67.7	3.4	2.8	3.0	11.8	1.9	7.2	1.1	68.8	3.4	27.8	0.108	0.500	23.864514	-105.233202
X. C. Durango - Villa Unión	80.14	1	0	3997	2.9	62.2	6.4	5.9	2.1	11.6	3.0	5.0	0.9	65.1	6.4	28.5	0.098	0.523	23.857287	-105.251553
T. Der. El Salto 1er Acceso	91.60	1	0	4481	3.0	67.1	4.9	4.5	2.2	10.3	2.8	4.6	0.6	70.1	4.9	25.0	0.087	0.540	23.801375	-105.328162
T. Der. El Salto 2do Acceso	104.20	1	0	2892	4.1	56.8	7.0	8.3	2.2	13.2	3.0	5.1	0.3	60.9	7.0	32.1	0.111	0.521	23.755405	-105.422781
T. Der. El Salto 2do Acceso	104.20	3	0	4206	3.6	61.9	5.5	9.8	2.1	9.6	2.5	4.8	0.2	65.5	5.5	29.0	0.112	0.531	23.759403	-105.433838
T. Der. La Campana	111.00	3	0	3421	4.1	57.6	6.2	8.2	2.4	11.8	3.4	6.2	0.1	61.7	6.2	32.1	0.101	0.504	23.721645	-105.488344
Lim. Edos. Term. Dgo. Ppia. Sin.	157.40	0	0																	
Entronque Santa Lucia	172.20	3	0	3246	5.2	63.0	6.1	4.2	2.2	10.3	2.9	5.7	0.4	68.2	6.1	25.7	0.092	0.500	23.451955	-105.842609
Concordia	213.70	1	0	2733	5.3	60.9	6.3	4.9	2.2	11.3	2.5	6.1	0.5	66.2	6.3	27.5	0.098	0.523	23.262566	-106.046526
Concordia	213.70	3	0	2580	2.5	64.7	6.4	3.8	1.2	12.5	1.9	6.2	0.8	67.2	6.4	26.4	0.136	0.513	23.251171	-106.059748
Villa Unión	229.70	1	0	2855	3.1	64.9	6.4	3.6	1.2	11.9	1.9	6.2	0.8	68.0	6.4	25.6	0.130	0.516	23.199084	-106.168826

25 CARR: Durango - Yerbanis (Cuota)

CLAVE: 10003

RUTA: MEX-040D

AÑO: 2022

LUGAR	ESTACION				CLASIFICACION VEHICULAR EN PORCIENTO										COORDENADAS					
	KM	TE	SC	TDPA	M	A	B	C2	C3	T3S2	T3S3	T3S2R4	OTROS	A	B	C	K'	D	LATITUD	LONGITUD
T. C. Durango - Torreón	0.00	0	0																	
T. Der. Aeropuerto	5.30	1	1	4576	2.4	81.1	3.9	3.1	0.9	4.8	1.5	1.8	0.5	83.5	3.9	12.6	0.079	0.510	24.124181	-104.540338
T. Der. Aeropuerto	5.30	1	2	4405	2.2	81.2	3.8	3.2	0.8	4.8	1.6	1.9	0.5	83.4	3.8	12.8	0.099	0.510	24.124131	-104.540613
Plaza de Cobro Durango	5.50	2	1	1881	0.6	69.7	4.3	3.4	2.2	10.0	2.2	6.5	1.1	70.3	4.3	25.4	0.117	0.500	24.131646	-104.534037
Plaza de Cobro Durango	5.50	2	2	1881	0.6	69.7	4.3	3.4	2.2	10.0	2.2	6.5	1.1	70.3	4.3	25.4	0.117	0.500	24.131646	-104.534037
X. C. Durango - Torreón	49.10	3	1	1875	3.4	65.6	5.9	6.8	1.7	9.3	2.2	4.3	0.8	69.0	5.9	25.1	0.089	0.501	24.407689	-104.245093
X. C. Durango - Torreón	49.10	3	2	1879	3.4	66.0	6.0	6.6	1.4	9.3	2.2	4.4	0.7	69.4	6.0	24.6	0.078	0.501	24.407816	-104.245083
Plaza de Cobro Yerbanis	112.19	2	1	1558	0.7	65.8	5.0	3.6	2.4	11.5	2.3	7.4	1.3	66.5	5.0	28.5	0.117	0.500	24.730819	-103.861843
Plaza de Cobro Yerbanis	112.19	2	2	1558	0.7	65.8	5.0	3.6	2.4	11.5	2.3	7.4	1.3	66.5	5.0	28.5	0.117	0.500	24.730819	-103.861843
Ent. Yerbanis	118.00	0	0																	

26 CARR: Gómez Palacio - Corralitos (Cuota)

CLAVE: 00016

RUTA: MEX-049D

AÑO: 2022

LUGAR	ESTACION				CLASIFICACION VEHICULAR EN PORCIENTO										COORDENADAS					
	KM	TE	SC	TDPA	M	A	B	C2	C3	T3S2	T3S3	T3S2R4	OTROS	A	B	C	K'	D	LATITUD	LONGITUD
T. C. Gómez Palacio - Jiménez (Libre)	38.00	0	0																	
T. Izq. Bermejillo	40.10	1	1	2571	2.1	38.4	6.9	5.2	3.7	29.8	5.3	7.6	1.0	40.5	6.9	52.6	0.074	0.505	25.883545	-103.610760
T. Izq. Bermejillo	40.10	1	2	2625	2.1	38.1	6.8	5.2	3.6	30.8	5.3	7.2	0.9	40.2	6.8	53.0	0.072	0.505	25.883565	-103.610930
T. Izq. Bermejillo	40.10	3	1	2189	2.5	38.7	10.9	5.5	2.6	26.7	3.7	8.6	0.8	41.2	10.9	47.9	0.063	0.508	25.895368	-103.611315

DURANGO

26 CARR: Gómez Palacio - Corralitos (Cuota)

CLAVE: 00016

RUTA: MEX-049D

AÑO: 2022

LUGAR	ESTACION				CLASIFICACION VEHICULAR EN PORCIENTO														COORDENADAS	
	KM	TE	SC	TDPA	M	A	B	C2	C3	T3S2	T3S3	T3S2R4	OTROS	A	B	C	K'	D	LATITUD	LONGITUD
T. Izq. Bermejillo	40.10	3	2	2119	2.5	39.2	10.4	5.5	2.7	26.8	3.6	8.4	0.9	41.7	10.4	47.9	0.064	0.508	25.895358	-103.611588
Plaza de Cobro Bermejillo	44.16	2	1	2459	0.2	36.8	8.8	2.5	1.7	29.5	6.4	10.1	4.0	37.0	8.8	54.2	0.079	0.500	25.923705	-103.622079
Plaza de Cobro Bermejillo	44.16	2	2	2459	0.2	36.8	8.8	2.5	1.7	29.5	6.4	10.1	4.0	37.0	8.8	54.2	0.079	0.500	25.923705	-103.622079
T. Izq. Ceballos	123.80	1	1	2715	4.7	31.4	10.0	4.9	1.9	33.9	5.7	6.6	0.9	36.1	10.0	53.9	0.064	0.505	26.560058	-104.036667
T. Izq. Ceballos	123.80	1	2	2768	4.3	30.8	10.5	4.8	1.8	34.2	5.9	6.8	0.9	35.1	10.5	54.4	0.063	0.505	26.559883	-104.037037
Plaza de Cobro Ceballos	128.80	2	1	2431	0.2	35.1	5.7	2.5	5.4	31.4	6.1	10.3	3.3	35.3	5.7	59.0	0.079	0.500	26.586801	-104.057535
Plaza de Cobro Ceballos	128.80	2	2	2431	0.2	35.1	5.7	2.5	5.4	31.4	6.1	10.3	3.3	35.3	5.7	59.0	0.079	0.500	26.586801	-104.057535
Lim. Edos. Term. Dgo. Ppia. Chih.	158.00	0	0																	
T. C. Gómez Palacio - Jiménez	188.46	1	1	1874	2.9	36.2	12.0	5.0	2.9	27.4	6.2	6.5	0.9	39.1	12.0	48.9	0.073	0.528	26.902434	-104.549603
T. C. Gómez Palacio - Jiménez	188.46	1	2	1673	3.5	34.3	11.9	5.4	3.4	27.5	6.6	6.5	0.9	37.8	11.9	50.3	0.078	0.528	26.901782	-104.550483
T. C. Gómez Palacio - Jiménez	188.46	3	1	2780	6.8	28.2	11.8	7.0	2.7	31.0	5.4	6.1	1.0	35.0	11.8	53.2	0.071	0.520	26.907687	-104.559265
T. C. Gómez Palacio - Jiménez	188.46	3	2	3006	6.6	28.3	11.6	6.9	2.6	30.7	5.5	6.8	1.0	34.9	11.6	53.5	0.062	0.520	26.906828	-104.559704
T. C. Gómez Palacio - Jiménez (Libre)	226.50	1	1	2836	3.1	37.4	10.9	4.8	2.0	27.4	6.0	7.5	0.9	40.5	10.9	48.6	0.079	0.508	27.097318	-104.862884
T. C. Gómez Palacio - Jiménez (Libre)	226.50	1	2	2742	2.9	38.4	10.5	4.7	2.3	27.3	5.8	7.2	0.9	41.3	10.5	48.2	0.061	0.508	27.096184	-104.861732

27 CARR: Libramiento de Durango (Cuota)

CLAVE: 10006

RUTA: MEX-040D

AÑO: 2022

LUGAR	ESTACION				CLASIFICACION VEHICULAR EN PORCIENTO														COORDENADAS	
	KM	TE	SC	TDPA	M	A	B	C2	C3	T3S2	T3S3	T3S2R4	OTROS	A	B	C	K'	D	LATITUD	LONGITUD
T. C. Durango - Torreón	0.00	3	0	5772	6.0	67.7	5.4	6.0	2.1	6.9	2.1	3.0	0.8	73.7	5.4	20.9	0.075	0.534	24.092797	-104.586582
T. C. Av. Estaño	5.90	3	0	9090	4.2	76.1	2.0	2.9	2.9	6.7	2.7	2.0	0.5	80.3	2.0	17.7	0.083	0.517	24.075327	-104.625849
X. C. Durango - Ent. La Zarca	10.40	3	0	5252	4.8	65.4	5.3	5.5	2.7	9.9	2.7	3.0	0.7	70.2	5.3	24.5	0.078	0.505	24.068807	-104.667874
T. C. Durango - Villa Unión (Cuota)	21.60	1	0	5260	3.2	69.7	4.6	3.8	2.7	9.2	2.5	3.4	0.9	72.9	4.6	22.5	0.090	0.528	24.018351	-104.727033

28 CARR: Libramiento Norte de Torreón (Cuota)

CLAVE:

RUTA: MEX-040D

AÑO: 2022

LUGAR	ESTACION				CLASIFICACION VEHICULAR EN PORCIENTO														COORDENADAS	
	KM	TE	SC	TDPA	M	A	B	C2	C3	T3S2	T3S3	T3S2R4	OTROS	A	B	C	K'	D	LATITUD	LONGITUD
X. C. Gómez Palacio - Jiménez	0.00	3	0	3381	2.5	36.3	4.2	8.2	2.7	28.8	5.7	10.7	0.9	38.8	4.2	57.0	0.078	0.505	25.633134	-103.505901
Lim. Edos. Term. Dgo. Ppia. Coah.	15.60	0	0																	
X. C. La Cuchilla - Torreón	17.36	1	0	3834	2.2	37.0	3.9	6.0	4.3	29.6	5.4	10.6	1.0	39.2	3.9	56.9	0.061	0.518	25.658508	-103.385870
X. C. La Cuchilla - Torreón	17.36	3	0	3191	4.2	35.9	5.6	4.8	2.4	28.4	5.6	12.1	1.0	40.1	5.6	54.3	0.065	0.502	25.648269	-103.356616
X. C. Torreón - Saltillo	40.70	1	0	3321	5.7	27.9	8.9	6.8	4.4	30.2	4.8	10.3	1.0	33.6	8.9	57.5	0.072	0.508	25.547410	-103.226055

DURANGO

29 CARR: Yerbanis - Gómez Palicio (Cuota)

CLAVE: 10003

RUTA: MEX-040D

AÑO: 2022

LUGAR	ESTACION				CLASIFICACION VEHICULAR EN PORCIENTO										COORDENADAS						
	KM	TE	SC	TDPA	M	A	B	C2	C3	T3S2	T3S3	T3S2R4	OTROS	A	B	C	K'	D	LATITUD	LONGITUD	
Ent. Yerbanis	118.00	0	0																		
Durango - Torreón	143.20	1	1	1510	1.5	65.6	8.3	3.7	1.9	10.8	2.0	5.2	1.0	67.1	8.3	24.6	0.119	0.540	24.976398	-103.736623	
Durango - Torreón	143.20	1	2	1284	2.5	60.9	10.0	4.5	2.1	11.7	2.2	5.1	1.0	63.4	10.0	26.6	0.057	0.540	24.976525	-103.736781	
Plaza de Cobro Cuencamé	143.22	2	1	1556	0.7	66.6	5.3	3.5	2.4	11.1	2.1	7.0	1.3	67.3	5.3	27.4	0.089	0.500	24.981714	-103.735206	
Plaza de Cobro Cuencamé	143.22	2	2	1556	0.7	66.6	5.3	3.5	2.4	11.1	2.1	7.0	1.3	67.3	5.3	27.4	0.089	0.500	24.981714	-103.735206	
X. C. Cuencamé - Torreón	180.00	1	1	3064	3.0	49.4	8.9	4.1	2.0	20.4	3.3	7.9	1.0	52.4	8.9	38.7	0.105	0.517	25.129037	-103.752981	
X. C. Cuencamé - Torreón	180.00	1	2	3286	3.5	44.9	9.8	4.4	2.2	22.5	3.5	8.2	1.0	48.4	9.8	41.8	0.072	0.517	25.129020	-103.753070	
X. C. Cuencamé - Torreón	180.00	3	1	3356	2.9	48.6	10.8	4.6	1.5	19.6	3.6	7.6	0.8	51.5	10.8	37.7	0.115	0.507	25.146176	-103.753005	
X. C. Cuencamé - Torreón	180.00	3	2	3452	2.7	46.8	11.1	4.9	1.7	19.6	3.9	8.3	1.0	49.5	11.1	39.4	0.078	0.507	25.146248	-103.753064	
Plaza de Cobro León Guzmán	212.71	1	1	3530	2.9	53.1	8.1	4.1	1.8	18.2	3.5	7.4	0.9	56.0	8.1	35.9	0.076	0.505	25.511057	-103.639962	
Plaza de Cobro León Guzmán	212.71	1	2	3602	2.7	47.9	8.9	4.6	2.2	20.1	4.0	8.6	1.0	50.6	8.9	40.5	0.075	0.505	25.511048	-103.640052	
Plaza de Cobro León Guzmán	212.71	2	1	2195	0.4	40.9	5.7	4.0	3.9	27.6	4.3	10.8	2.4	41.3	5.7	53.0	0.089	0.500	25.520645	-103.639471	
Plaza de Cobro León Guzmán	212.71	2	2	2195	0.4	40.9	5.7	4.0	3.9	27.6	4.3	10.8	2.4	41.3	5.7	53.0	0.089	0.500	25.520645	-103.639471	
Plaza de Cobro León Guzmán	212.71	3	1	2856	5.2	43.9	8.0	5.8	3.6	21.1	5.0	6.5	0.9	49.1	8.0	42.9	0.089	0.501	25.537993	-103.638355	
Plaza de Cobro León Guzmán	212.71	3	2	2849	5.2	38.8	9.0	6.3	3.7	23.7	5.1	7.2	1.0	44.0	9.0	47.0	0.060	0.501	25.538022	-103.638633	
T. C. Gómez Palicio - Jiménez	220.00	0	0																		

30 CARR: Amado Nervo - La Ochoa

CLAVE: 10012

RUTA: DGO-542

AÑO: 2022

LUGAR	ESTACION				CLASIFICACION VEHICULAR EN PORCIENTO										COORDENADAS					
	KM	TE	SC	TDPA	M	A	B	C2	C3	T3S2	T3S3	T3S2R4	OTROS	A	B	C	K'	D	LATITUD	LONGITUD
Amado Nervo	0.00	3	0	1833	8.0	83.7	1.2	4.5	1.5	0.4	0.4	0.1	0.2	91.7	1.2	7.1	0.089	0.509	23.853542	-104.172718
Villa Unión	25.00	1	0	4095	11.9	80.8	1.6	4.3	0.4	0.3	0.3	0.2	0.2	92.7	1.6	5.7	0.097	0.512	23.958890	-104.057353
La Ochoa	42.00	1	0	484	12.7	80.7	1.7	3.2	1.3	0.1	0.2	0.1	0.0	93.4	1.7	4.9	0.101	0.505	24.019805	-103.926716

31 CARR: Ceballos - El Mirador

CLAVE: 10417

RUTA: DGO-044

AÑO: 2022

LUGAR	ESTACION				CLASIFICACION VEHICULAR EN PORCIENTO										COORDENADAS					
	KM	TE	SC	TDPA	M	A	B	C2	C3	T3S2	T3S3	T3S2R4	OTROS	A	B	C	K'	D	LATITUD	LONGITUD
Ceballos	0.00	3	0	771	3.1	74.4	0.8	19.3	1.2	0.6	0.3	0.1	0.2	77.5	0.8	21.7	0.091	0.512	26.527144	-104.137966
T. C. Ent. La Zarca - Hidalgo del Parral	113.50	1	0	256	1.6	91.3	0.4	5.0	0.5	0.7	0.5	0.0	0.0	92.9	0.4	6.7	0.098	0.507	26.141959	-105.027994

DURANGO

32 CARR: Durango - Aserradero La Flor

CLAVE: 10422

RUTA: DGO-115

AÑO: 2022

LUGAR	ESTACION				CLASIFICACION VEHICULAR EN PORCIENTO													COORDENADAS		
	KM	TE	SC	TDPA	M	A	B	C2	C3	T3S2	T3S3	T3S2R4	OTROS	A	B	C	K'	D	LATITUD	LONGITUD
Durango	0.00	3	1	10603	11.6	83.1	0.5	3.5	0.8	0.2	0.0	0.2	0.1	94.7	0.5	4.8	0.095	0.503	23.984351	-104.664523
Durango	0.00	3	2	10497	11.0	81.7	0.8	5.6	0.5	0.2	0.0	0.1	0.1	92.7	0.8	6.5	0.085	0.503	23.984320	-104.664373
T. Der. Presa Guadalupe Victoria	4.00	3	1	6996	7.2	84.6	0.5	6.0	0.7	0.3	0.3	0.3	0.1	91.8	0.5	7.7	0.093	0.521	23.975845	-104.664631
T. Der. Presa Guadalupe Victoria	4.00	3	2	6432	7.6	83.9	0.6	6.1	0.7	0.4	0.3	0.3	0.1	91.5	0.6	7.9	0.082	0.521	23.975835	-104.664553
Periférico Sur de Durango	8.00	3	0	583	16.0	56.0	2.3	12.4	6.2	4.1	1.2	1.1	0.7	72.0	2.3	25.7	0.084	0.544	23.948693	-104.672494
La Casita	39.00	1	0	219	11.8	54.2	2.3	4.7	15.4	6.7	2.9	1.7	0.3	66.0	2.3	31.7	0.114	0.517	23.754122	-104.756962
Aserradero La Flor	72.00	0	0																	

33 CARR: Jabonoso - Esmeralda

CLAVE: 10004

RUTA: DGO-363

AÑO: 2022

LUGAR	ESTACION				CLASIFICACION VEHICULAR EN PORCIENTO													COORDENADAS		
	KM	TE	SC	TDPA	M	A	B	C2	C3	T3S2	T3S3	T3S2R4	OTROS	A	B	C	K'	D	LATITUD	LONGITUD
Jabonoso	0.00	3	0	4225	14.1	72.7	1.0	4.4	3.4	1.8	1.0	1.4	0.2	86.8	1.0	12.2	0.073	0.505	25.644463	-103.457134
T. Izq. Chimal	10.00	3	0	3932	20.1	70.5	1.4	4.6	1.5	0.6	0.3	0.9	0.1	90.6	1.4	8.0	0.078	0.503	25.699928	-103.442240
Esmeralda	16.30	1	0	2600	26.2	64.9	1.7	4.0	2.1	0.5	0.2	0.4	0.0	91.1	1.7	7.2	0.075	0.528	25.731291	-103.433502

34 CARR: La Torreña - Brittingham

CLAVE: 10010

RUTA: DGO-325

AÑO: 2022

LUGAR	ESTACION				CLASIFICACION VEHICULAR EN PORCIENTO													COORDENADAS		
	KM	TE	SC	TDPA	M	A	B	C2	C3	T3S2	T3S3	T3S2R4	OTROS	A	B	C	K'	D	LATITUD	LONGITUD
La Torreña	0.00	3	0	2959	26.9	58.6	1.2	4.2	2.2	3.5	1.6	1.5	0.3	85.5	1.2	13.3	0.085	0.517	25.639091	-103.579929
X. C. Gómez Palacio - Jiménez	7.00	1	0	4979	17.6	65.9	1.3	5.5	3.6	2.9	1.8	1.2	0.2	83.5	1.3	15.2	0.074	0.505	25.638436	-103.535486
X. C. Gómez Palacio - Jiménez	7.00	3	0	2488	13.4	79.4	1.2	2.4	1.5	1.0	0.5	0.6	0.0	92.8	1.2	6.0	0.088	0.515	25.641327	-103.520500
Chimal	16.00	1	0	3019	11.2	73.1	1.4	5.5	4.1	2.1	0.9	1.5	0.2	84.3	1.4	14.3	0.079	0.509	25.690575	-103.491206
Chimal	16.00	3	0	1350	15.0	64.3	2.0	3.2	9.9	3.3	1.3	1.0	0.0	79.3	2.0	18.7	0.095	0.507	25.697551	-103.490958
Brittingham	33.00	1	0	1280	5.7	79.4	1.9	4.2	3.5	4.0	0.7	0.5	0.1	85.1	1.9	13.0	0.104	0.513	25.774553	-103.572427

35 CARR: Libramiento de Torreón

CLAVE: 05516

RUTA: COA

AÑO: 2022

LUGAR	ESTACION				CLASIFICACION VEHICULAR EN PORCIENTO													COORDENADAS		
	KM	TE	SC	TDPA	M	A	B	C2	C3	T3S2	T3S3	T3S2R4	OTROS	A	B	C	K'	D	LATITUD	LONGITUD
X. C. Saltillo - Torreón	0.00	3	1	40757	4.5	85.9	1.4	3.8	1.0	1.4	0.4	1.3	0.3	90.4	1.4	8.2	0.087	0.526	25.539267	-103.370573
X. C. Saltillo - Torreón	0.00	3	2	45801	3.9	86.9	1.5	4.0	0.8	1.2	0.4	1.1	0.2	90.8	1.5	7.7	0.099	0.526	25.539831	-103.370974
T. C. La Cuchilla - Torreón (Baja)	7.30	1	1	38141	3.4	84.0	1.4	4.8	0.8	3.3	0.9	1.1	0.3	87.4	1.4	11.2	0.090	0.532	25.582181	-103.401987
T. C. La Cuchilla - Torreón (Alta)	7.30	1	1	16467	1.6	86.3	1.6	3.9	2.0	2.8	0.9	0.7	0.2	87.9	1.6	10.5	0.083	0.530	25.582028	-103.402039

DURANGO

35 CARR : Libramiento de Torreón

CLAVE: 05516

RUTA: COA

AÑO : 2022

LUGAR	ESTACION				CLASIFICACION VEHICULAR EN PORCIENTO										COORDENADAS					
	KM	TE	SC	TDPA	M	A	B	C2	C3	T3S2	T3S3	T3S2R4	OTROS	A	B	C	K'	D	LATITUD	LONGITUD
T. C. La Cuchilla - Torreón (Baja)	7.30	1	2	39188	3.5	83.7	1.5	4.7	0.9	3.2	1.0	1.2	0.3	87.2	1.5	11.3	0.085	0.532	25.581712	-103.401984
T. C. La Cuchilla - Torreón (Alta)	7.30	1	2	18575	1.8	86.9	1.6	3.6	1.6	2.6	0.9	0.8	0.2	88.7	1.6	9.7	0.094	0.530	25.581956	-103.402070
Lim. Edos. Term. Coah. Ppia. Dgo.	11.80	0	0																	
T. C. Durango - Torreón	28.60	0	0																	

36 CARR : Libramiento Exterior Cuencamé

CLAVE: 10006

RUTA: DGO

AÑO : 2022

LUGAR	ESTACION				CLASIFICACION VEHICULAR EN PORCIENTO										COORDENADAS					
	KM	TE	SC	TDPA	M	A	B	C2	C3	T3S2	T3S3	T3S2R4	OTROS	A	B	C	K'	D	LATITUD	LONGITUD
Ent. La Chicharrona - Cuencamé	0.00	3	0	5284	4.2	35.3	7.0	5.6	3.2	29.7	5.7	8.4	0.9	39.5	7.0	53.5	0.066	0.500	24.843529	-103.695058
T. C. Durango - Torreón	7.65	1	0	5928	5.0	36.9	8.3	5.3	3.5	25.9	7.1	7.9	0.1	41.9	8.3	49.8	0.063	0.519	24.894668	-103.706926

37 CARR : Mezquital - San Miguel de Temoaya

CLAVE: 10006

RUTA: DGO

AÑO : 2022

LUGAR	ESTACION				CLASIFICACION VEHICULAR EN PORCIENTO										COORDENADAS					
	KM	TE	SC	TDPA	M	A	B	C2	C3	T3S2	T3S3	T3S2R4	OTROS	A	B	C	K'	D	LATITUD	LONGITUD
T. C. Durango - Mezquital	0.00	3	0	323	5.9	75.7	1.2	12.3	3.8	0.6	0.3	0.2	0.0	81.6	1.2	17.2	0.096	0.541	23.497695	-104.391035
San Miguel de Temoaya	48.00	1	0	254	20.4	68.4	0.8	5.0	4.3	0.3	0.3	0.2	0.3	88.8	0.8	10.4	0.134	0.508	23.304290	-104.507196

38 CARR : Ramal a San Juan del Río

CLAVE: 10001

RUTA: DGO-290

AÑO : 2022

LUGAR	ESTACION				CLASIFICACION VEHICULAR EN PORCIENTO										COORDENADAS					
	KM	TE	SC	TDPA	M	A	B	C2	C3	T3S2	T3S3	T3S2R4	OTROS	A	B	C	K'	D	LATITUD	LONGITUD
T. C. Durango - Ent. La Zarca	0.00	3	0	4022	5.0	86.3	1.3	2.1	1.9	1.0	0.9	0.8	0.7	91.3	1.3	7.4	0.074	0.508	24.797382	-104.498612
San Juan del Río	5.00	1	1	2452	4.6	89.1	1.0	1.0	0.5	1.0	1.1	0.9	0.8	93.7	1.0	5.3	0.075	0.508	24.785913	-104.473983
San Juan del Río	5.00	1	2	2378	4.2	89.0	1.1	1.0	0.5	1.2	1.2	0.9	0.9	93.2	1.1	5.7	0.072	0.508	24.785996	-104.473920

39 CARR : Súchil - Villa Unión

CLAVE: 10419

RUTA: DGO-241

AÑO : 2022

LUGAR	ESTACION				CLASIFICACION VEHICULAR EN PORCIENTO										COORDENADAS					
	KM	TE	SC	TDPA	M	A	B	C2	C3	T3S2	T3S3	T3S2R4	OTROS	A	B	C	K'	D	LATITUD	LONGITUD
Súchil	0.00	3	1	1805	6.2	84.1	2.0	2.2	0.9	1.4	1.5	1.0	0.7	90.3	2.0	7.7	0.083	0.523	23.630073	-103.924351
Súchil	0.00	3	2	1650	7.8	80.6	2.4	3.0	1.3	1.4	1.4	1.2	0.9	88.4	2.4	9.2	0.090	0.523	23.630026	-103.924417
Vicente Guerrero	13.40	1	0	2728	4.6	89.3	1.9	2.9	0.7	0.2	0.2	0.1	0.1	93.9	1.9	4.2	0.088	0.500	23.711551	-103.970208
X. C. Zacatecas - Durango	14.50	1	1	5380	9.9	79.1	1.8	2.6	2.6	1.8	1.3	0.5	0.4	89.0	1.8	9.2	0.082	0.503	23.741276	-103.984675

DURANGO

39 CARR: SÚCHIL - VILLA UNIÓN

CLAVE: 10419

RUTA: DGO-241

AÑO: 2022

LUGAR	ESTACION				CLASIFICACION VEHICULAR EN PORCIENTO														COORDENADAS	
	KM	TE	SC	TDPA	M	A	B	C2	C3	T3S2	T3S3	T3S2R4	OTROS	A	B	C	K'	D	LATITUD	LONGITUD
X. C. Zacatecas - Durango	14.50	1	2	5456	10.0	79.2	1.8	2.6	2.6	1.7	1.3	0.4	0.4	89.2	1.8	9.0	0.076	0.503	23.741264	-103.984769
X. C. Zacatecas - Durango	14.50	3	0	2950	4.4	90.2	1.1	3.2	0.5	0.2	0.2	0.2	0.0	94.6	1.1	4.3	0.089	0.522	23.746836	-103.987705
Villa Unión	41.40	1	0	2624	10.3	85.0	1.0	2.6	0.6	0.2	0.2	0.1	0.0	95.3	1.0	3.7	0.104	0.518	23.959876	-104.049582

40 CARR: TLAHUALILLO DE ZARAGOZA - T.C. GÓMEZ PALACIO - JIMÉNEZ

CLAVE: 10419

RUTA: DGO

AÑO: 2022

LUGAR	ESTACION				CLASIFICACION VEHICULAR EN PORCIENTO														COORDENADAS	
	KM	TE	SC	TDPA	M	A	B	C2	C3	T3S2	T3S3	T3S2R4	OTROS	A	B	C	K'	D	LATITUD	LONGITUD
Tlahualillo	0.00	3	0	791	13.7	79.6	1.0	1.5	0.5	1.8	1.0	0.9	0.0	93.3	1.0	5.7	0.124	0.508	26.119803	-103.448943
T. C. Gómez Palacio - Jiménez	37.00	1	0	81	7.2	70.3	3.1	7.6	1.6	6.1	0.5	3.6	0.0	77.5	3.1	19.4	0.160	0.535	26.155775	-103.776359

41 CARR: YERBANIS - PEÑÓN BLANCO

CLAVE: 10032

RUTA: DGO-316

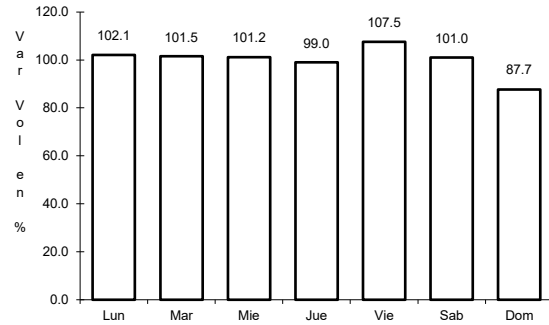
AÑO: 2022

LUGAR	ESTACION				CLASIFICACION VEHICULAR EN PORCIENTO														COORDENADAS	
	KM	TE	SC	TDPA	M	A	B	C2	C3	T3S2	T3S3	T3S2R4	OTROS	A	B	C	K'	D	LATITUD	LONGITUD
Yerbanis	0.00	3	0	1231	2.1	81.9	2.9	4.8	3.3	2.3	1.5	1.2	0.0	84.0	2.9	13.1	0.105	0.532	24.735754	-103.847797
Peñón Blanco	22.00	1	0	924	3.8	91.2	0.7	3.0	0.9	0.1	0.3	0.0	0.0	95.0	0.7	4.3	0.116	0.501	24.779153	-104.006495

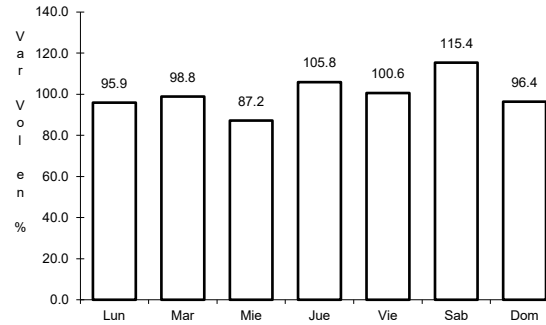
1 CARR: Bermejillo - El Palmito

CLAVE: 10105

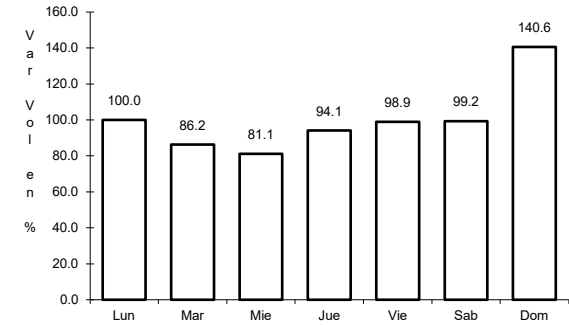
RUTA: MEX-030



Km: 0.00 Tipo: 3 Sent: 0



Km: 86.00 Tipo: 1 Sent: 0

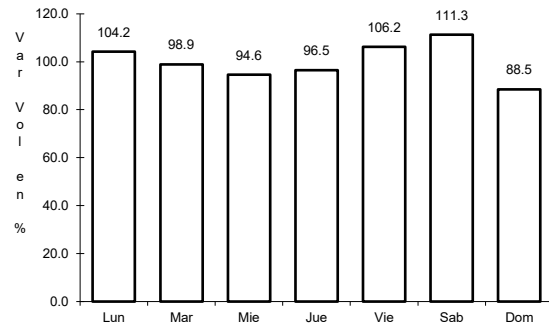


Km: 160.00 Tipo: 1 Sent: 0

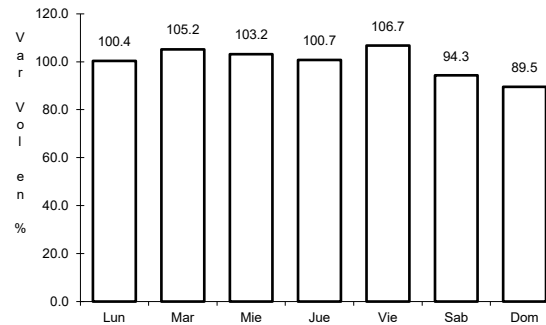
2 CARR: Durango - Ent. La Zarca

CLAVE: 10016

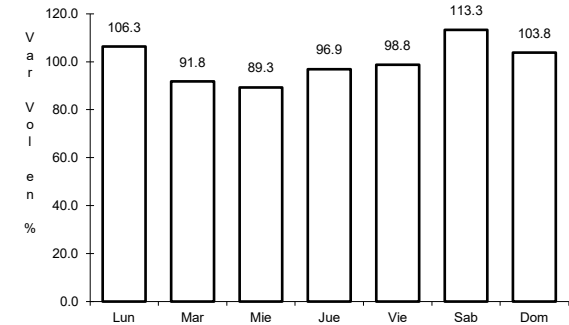
RUTA: MEX-045



Km: 0.00 Tipo: 3 Sent: 1



Km: 0.00 Tipo: 3 Sent: 2

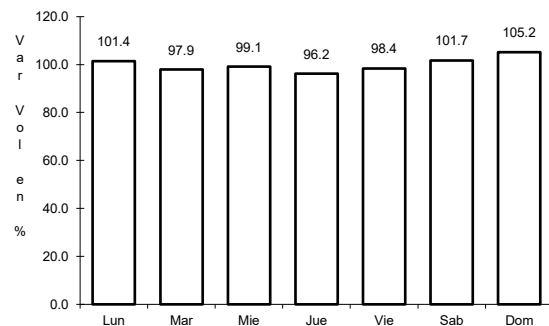


Km: 239.50 Tipo: 1 Sent: 0

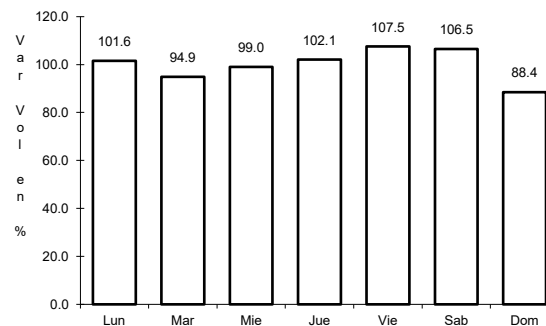
3 CARR: Durango - Mezquital

CLAVE: 10423

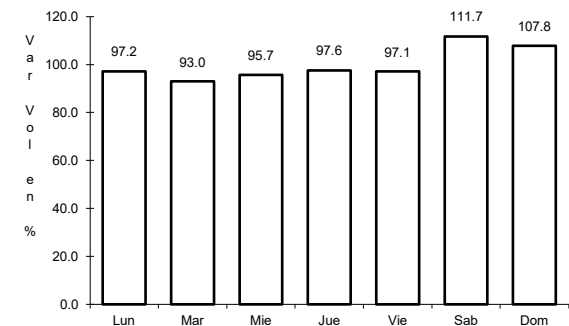
RUTA: MEX-023



Km: 0.00 Tipo: 3 Sent: 1



Km: 0.00 Tipo: 3 Sent: 2

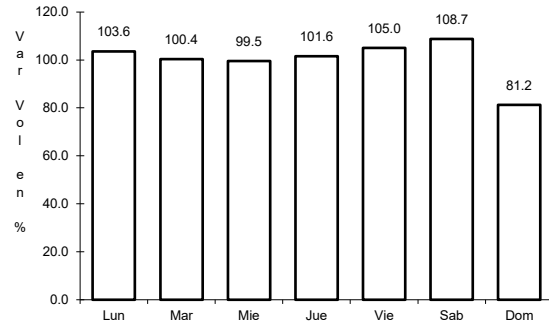


Km: 13.00 Tipo: 3 Sent: 0

4 CARR: Durango - Torreón

CLAVE: 10085

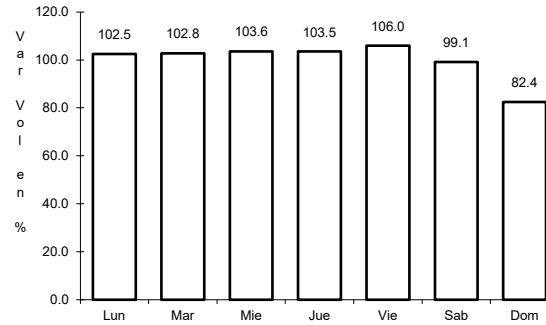
ruta: MEX-040



Km: 0.00

Tipo: 3

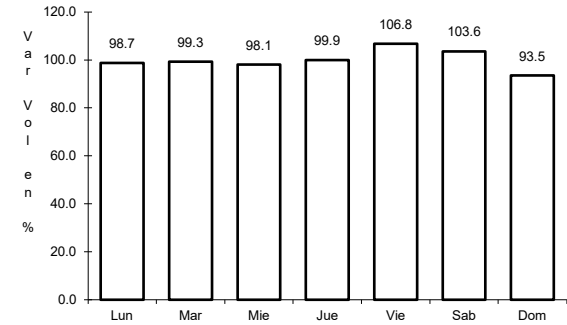
Sent: 1



Km: 0.00

Tipo: 3

Sent: 2



Km: 120.90

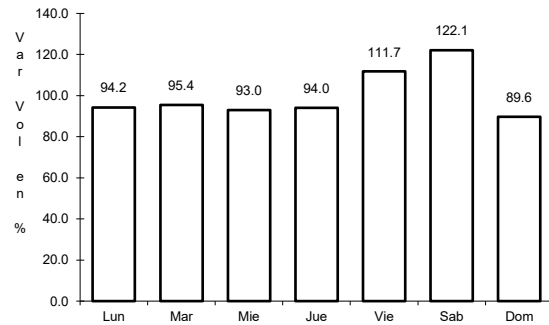
Tipo: 1

Sent: 0

5 CARR: Durango - Villa Unión

CLAVE: 0083

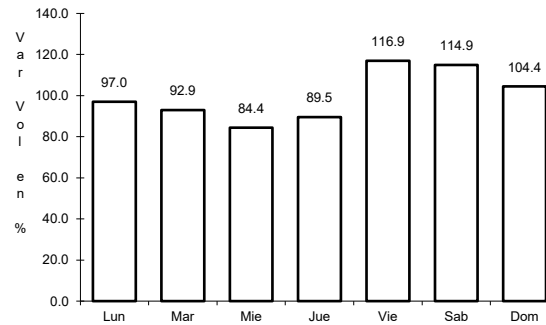
ruta: MEX-040



Km: 0.00

Tipo: 3

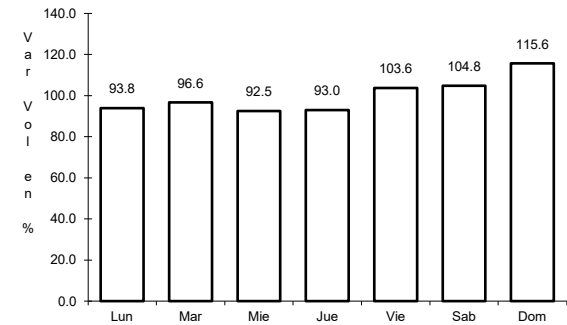
Sent: 0



Km: 145.50

Tipo: 1

Sent: 0



Km: 294.40

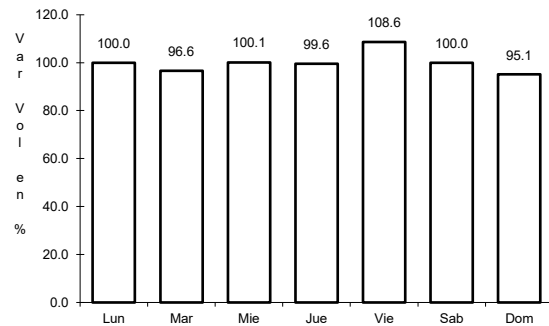
Tipo: 1

Sent: 0

6 CARR: Ent. La Chicharrona - Cuencamé

CLAVE: 00152

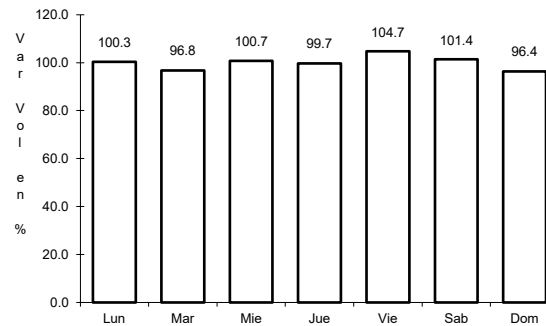
ruta: MEX-049



Km: 0.00

Tipo: 3

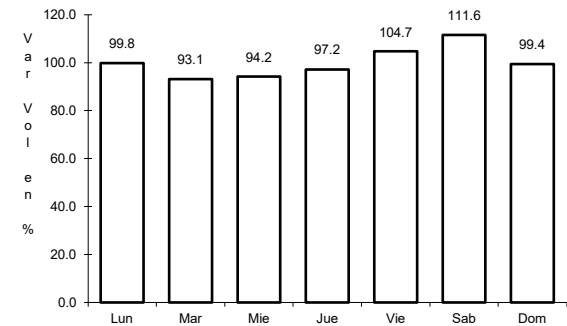
Sent: 1



Km: 0.00

Tipo: 3

Sent: 2



Km: 124.50

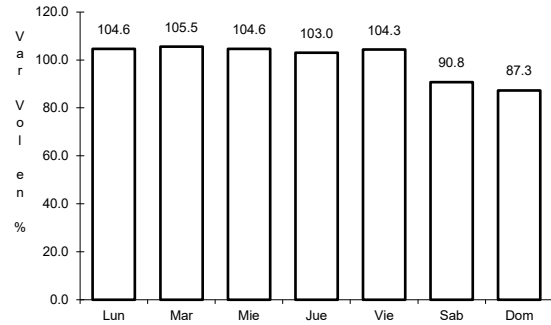
Tipo: 1

Sent: 0

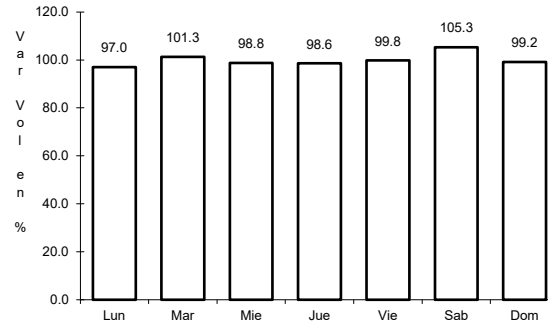
7 CARR: Ent. La Zarca - Hidalgo del Parral

CLAVE: 00488

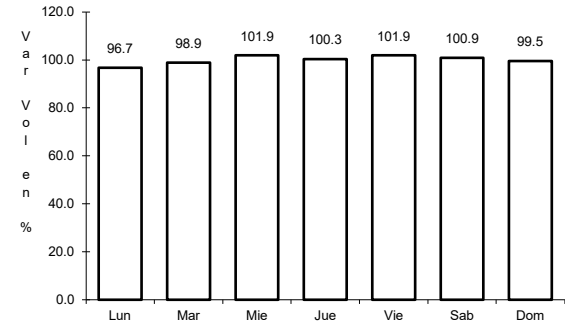
ruta: MEX-045



Km: 0.00 Tipo: 3 Sent: 0



Km: 92.35 Tipo: 3 Sent: 0

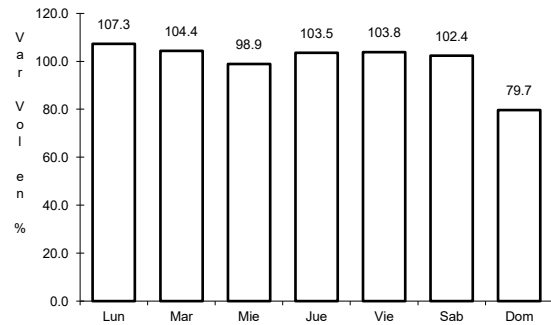


Km: 171.00 Tipo: 1 Sent: 0

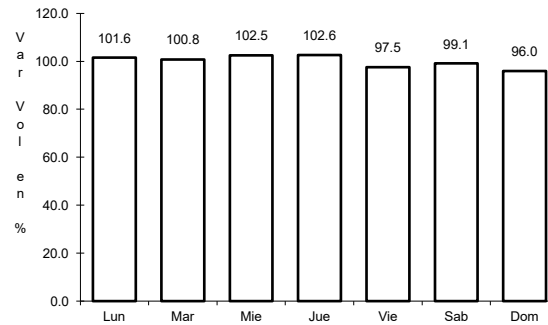
8 CARR: Ent. Los Herrera - Topia

CLAVE: 10090

ruta: MEX-036



Km: 0.00 Tipo: 3 Sent: 0

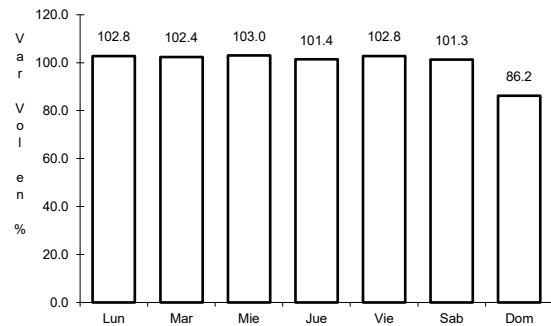


Km: 80.00 Tipo: 1 Sent: 0

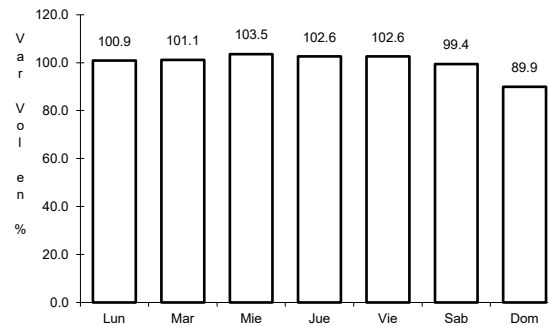
9 CARR: Gómez Palacio - Jiménez

CLAVE: 00006

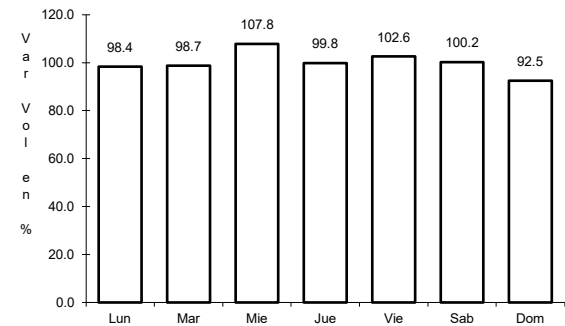
ruta: MEX-049



Km: 0.00 Tipo: 3 Sent: 1



Km: 0.00 Tipo: 3 Sent: 2

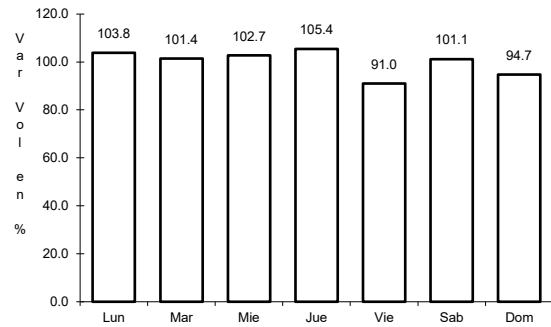


Km: 107.95 Tipo: 1 Sent: 0

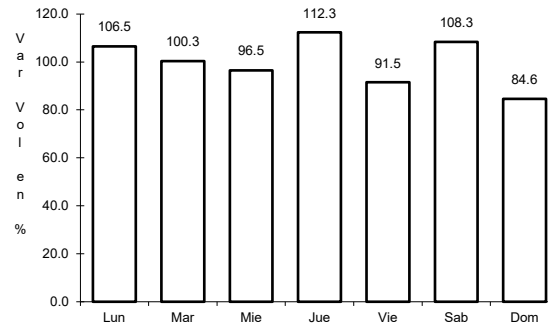
10 CARR: Gómez Palacio - La Unión

CLAVE: 10009

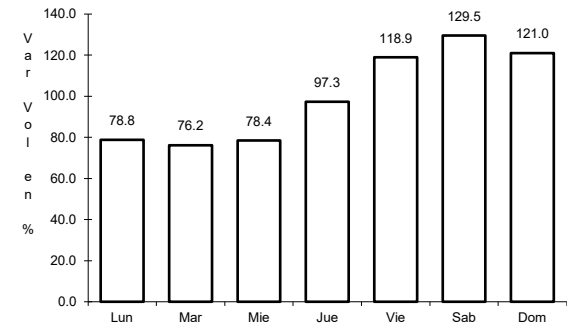
RUTA: MEX-040



Km: 0.00 Tipo: 3 Sent: 0



Km: 20.90 Tipo: 1 Sent: 0

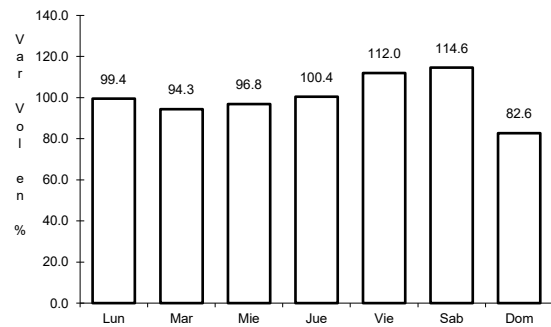


Km: 42.20 Tipo: 1 Sent: 0

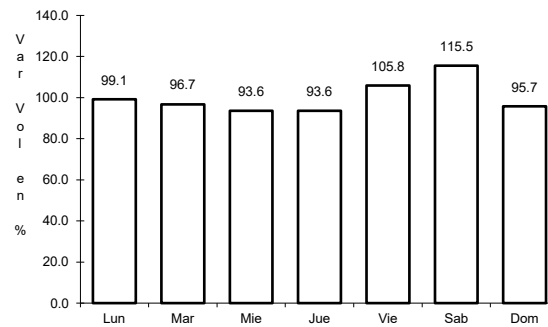
11 CARR: Gómez Palacio - Tlahualillo

CLAVE: 10005

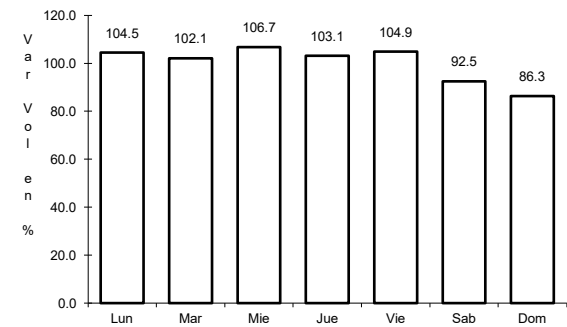
RUTA: MEX-040



Km: 5.60 Tipo: 1 Sent: 0



Km: 31.44 Tipo: 1 Sent: 0

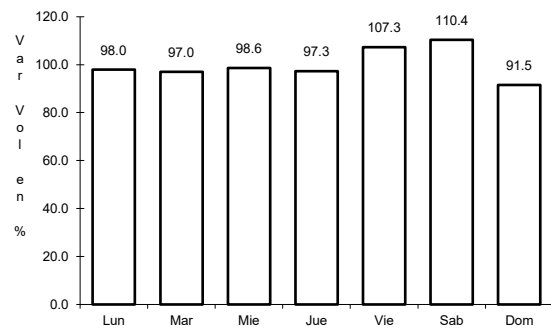


Km: 72.90 Tipo: 1 Sent: 0

12 CARR: Gregorio García - Francisco I. Madero

CLAVE: 00110

RUTA: MEX-040

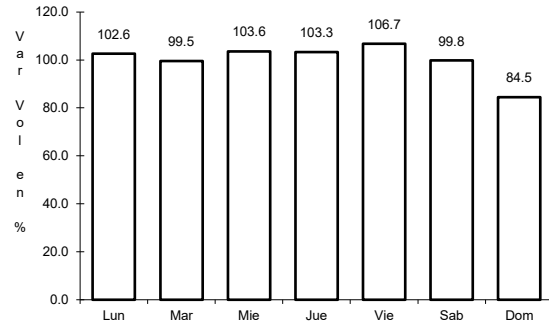


Km: 9.60 Tipo: 1 Sent: 0

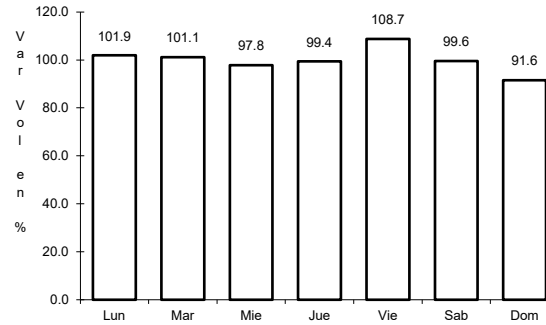
13 CARR: Guadalupe Aguilera - Tepehuans

CLAVE: 10220

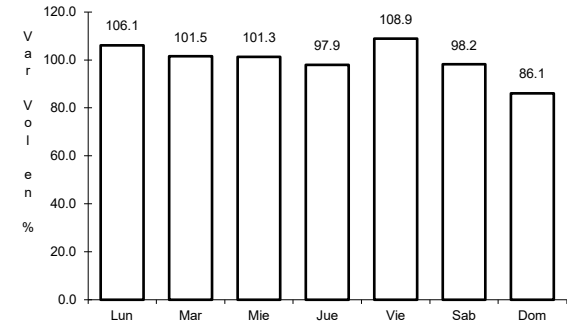
ruta: MEX-023



Km: 0.00 Tipo: 3 Sent: 1



Km: 0.00 Tipo: 3 Sent: 2

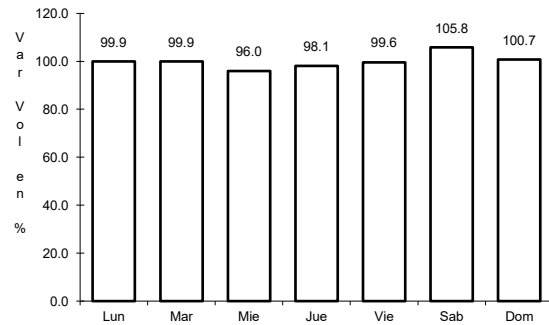


Km: 169.00 Tipo: 1 Sent: 0

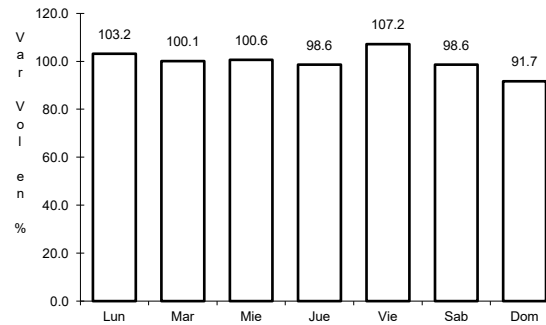
14 CARR: Hidalgo del Parral - Guadalupe y Calvo

CLAVE: 00802

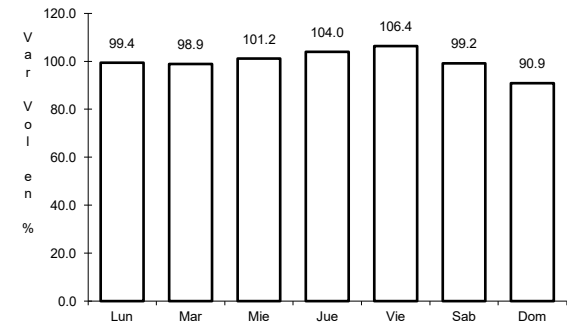
ruta: MEX-024



Km: 0.00 Tipo: 3 Sent: 0



Km: 110.00 Tipo: 1 Sent: 0

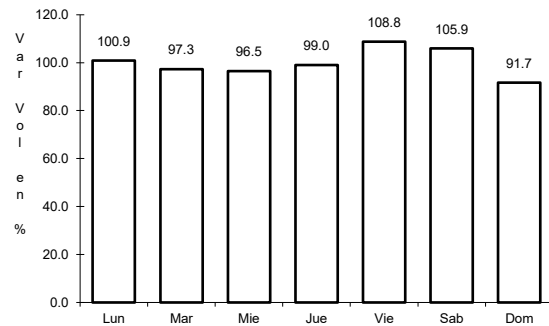


Km: 212.00 Tipo: 1 Sent: 0

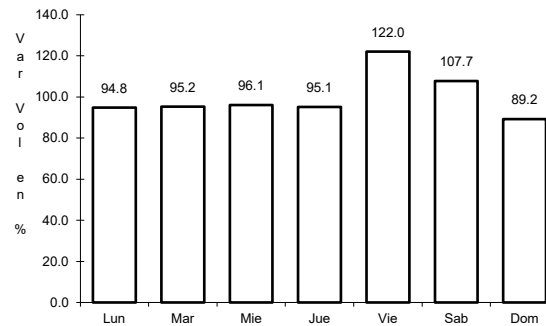
15 CARR: Libramiento Cuencamé

CLAVE: 10006

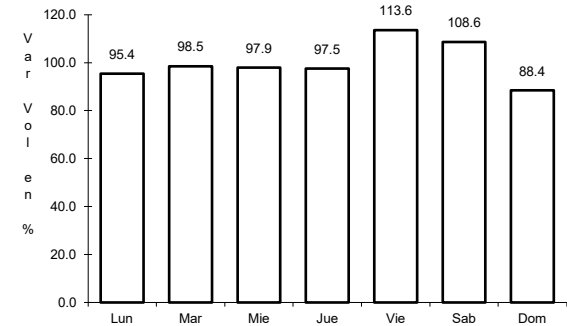
ruta: MEX



Km: 0.00 Tipo: 3 Sent: 1



Km: 0.00 Tipo: 3 Sent: 2

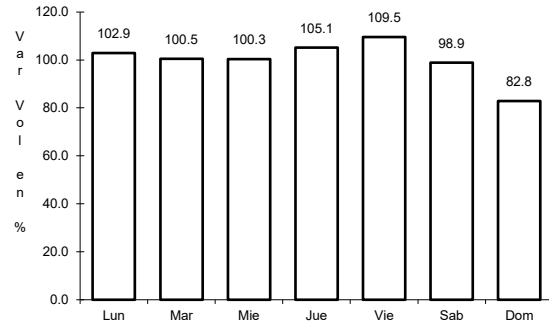


Km: 2.60 Tipo: 1 Sent: 1

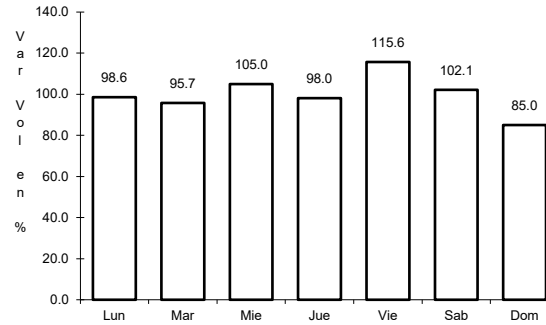
16 CARR: Libramiento Oriente de Durango

CLAVE:

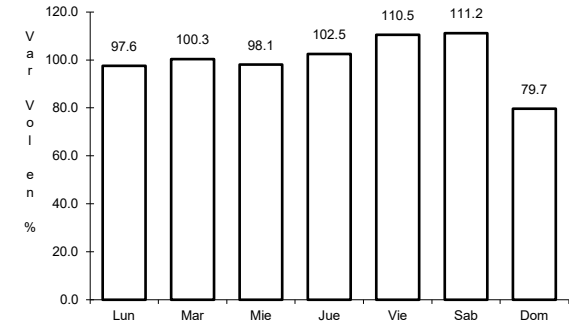
ruta: MEX-045



Km: 0.00 Tipo: 3 Sent: 1



Km: 0.00 Tipo: 3 Sent: 2

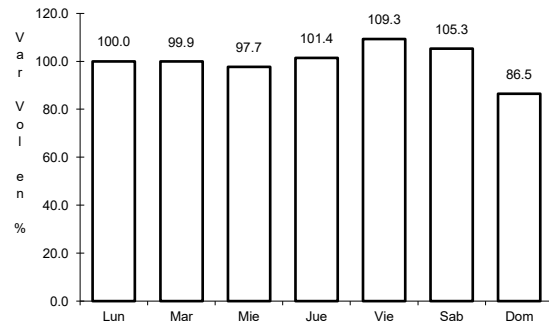


Km: 10.50 Tipo: 1 Sent: 1

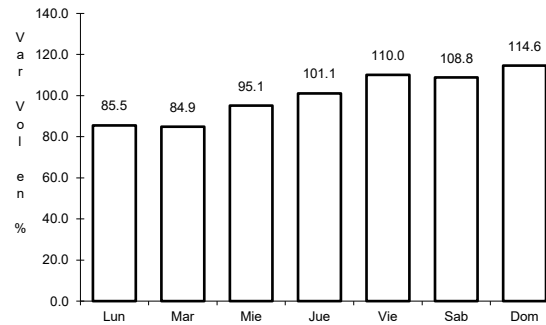
17 CARR: Libramiento Sur de Durango

CLAVE:

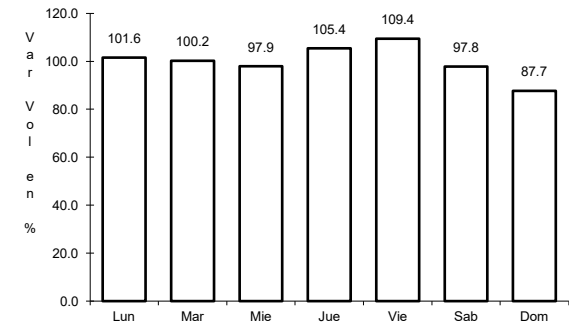
ruta: MEX-045



Km: 0.00 Tipo: 3 Sent: 0



Km: 19.50 Tipo: 1 Sent: 0

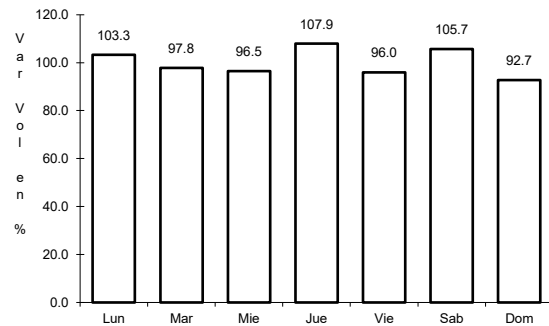


Km: 27.70 Tipo: 1 Sent: 0

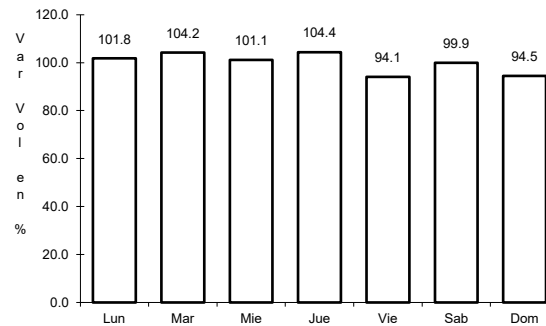
18 CARR: Pedriceña - Ent. Rodeo

CLAVE: 10002

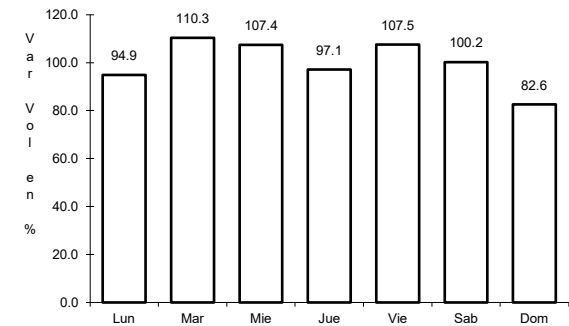
ruta: MEX-034



Km: 0.00 Tipo: 3 Sent: 0



Km: 45.00 Tipo: 1 Sent: 0

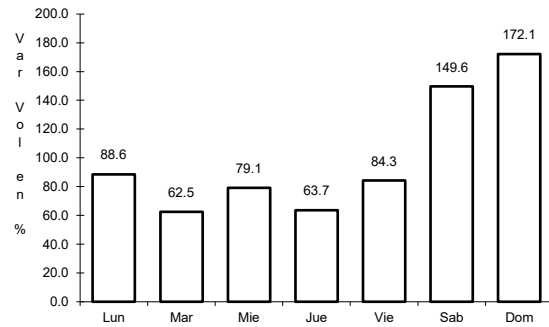


Km: 98.00 Tipo: 1 Sent: 0

19 CARR: Ramal a Otinapa

CLAVE: 10002

ruta: MEX



Km: 0.00

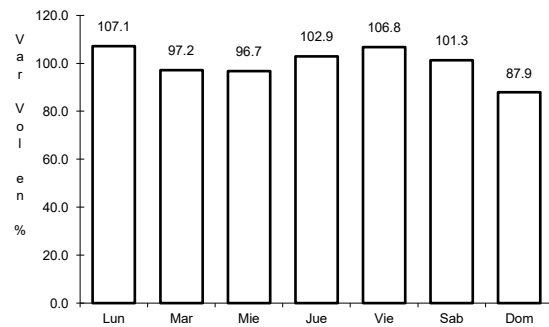
Tipo: 3

Sent: 0

20 CARR: Ramal a Santa Clara

CLAVE: 10287

ruta: MEX-049



Km: 0.00

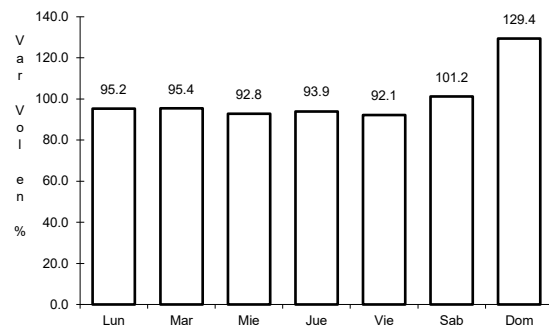
Tipo: 3

Sent: 0

21 CARR: Ramal a Villa Juárez

CLAVE: 10287

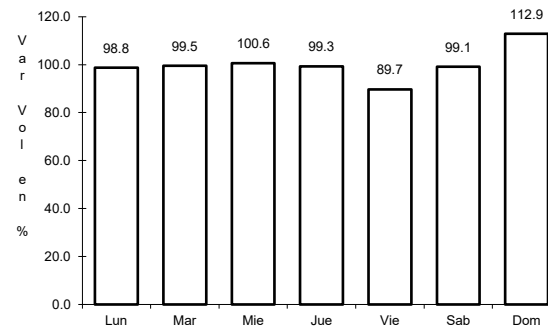
ruta: MEX-040



Km: 0.00

Tipo: 3

Sent: 1



Km: 0.00

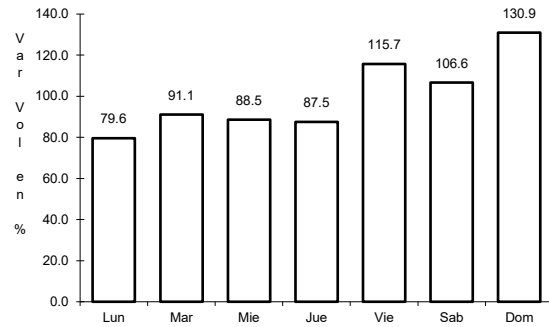
Tipo: 3

Sent: 2

22 CARR: Ramal Distribuidor Presa Peña del Águila

CLAVE: 10016

ruta: MEX-045



Km: 10.50

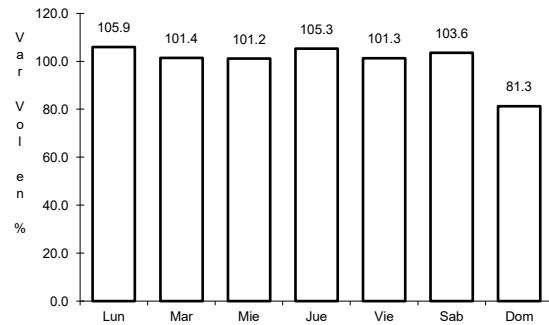
Tipo: 1

Sent: 0

23 CARR: Zacatecas - Durango

CLAVE: 00544

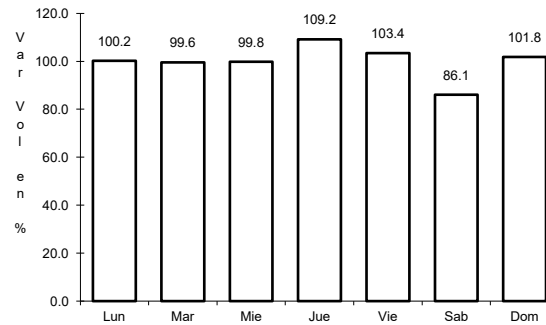
ruta: MEX-045



Km: 6.40

Tipo: 3

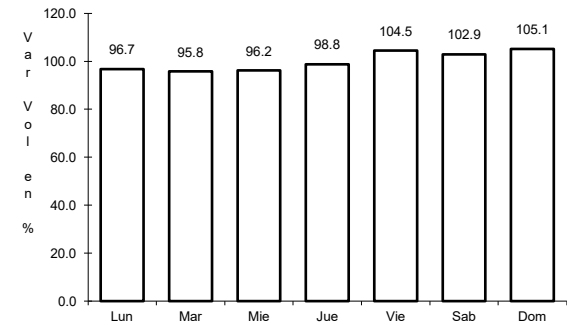
Sent: 1



Km: 6.40

Tipo: 3

Sent: 2



Km: 261.70

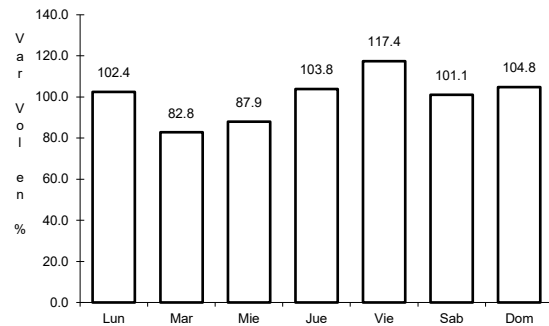
Tipo: 1

Sent: 0

24 CARR: Durango - Mazatlán (Cuota)

CLAVE: 00084

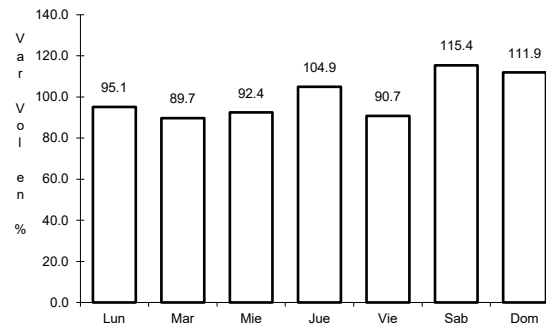
ruta: MEX-040D



Km: 21.30

Tipo: 3

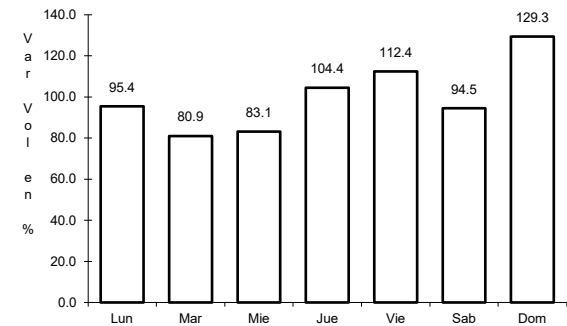
Sent: 0



Km: 111.00

Tipo: 3

Sent: 0



Km: 229.70

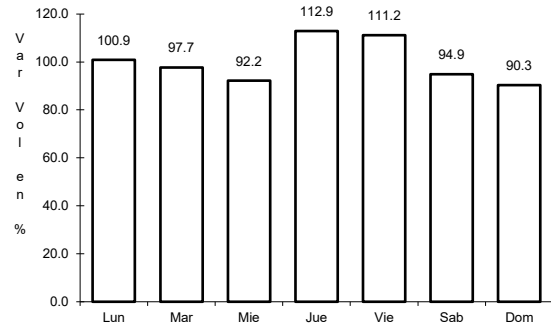
Tipo: 1

Sent: 0

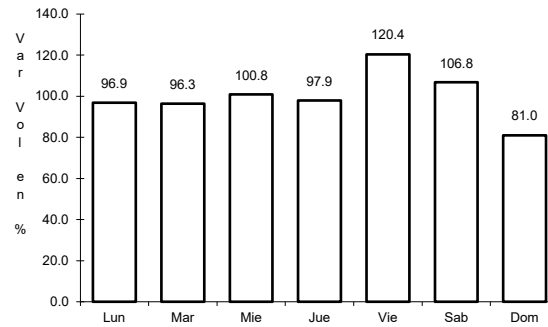
25 CARR: Durango - Yerbanís (Cuota)

CLAVE: 10003

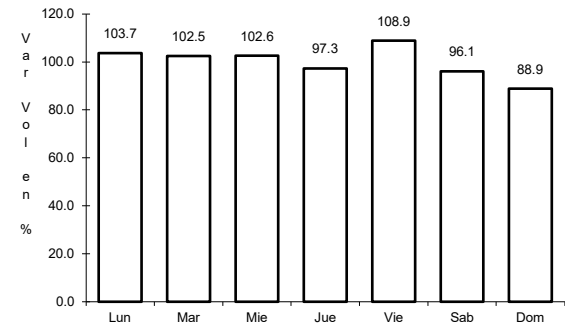
ruta: MEX-040D



Km: 5.30 Tipo: 1 Sent: 1



Km: 5.30 Tipo: 1 Sent: 2

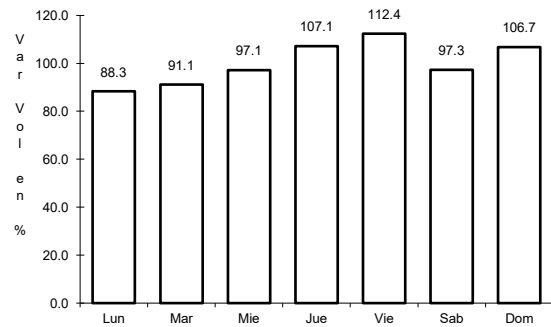


Km: 49.10 Tipo: 3 Sent: 1

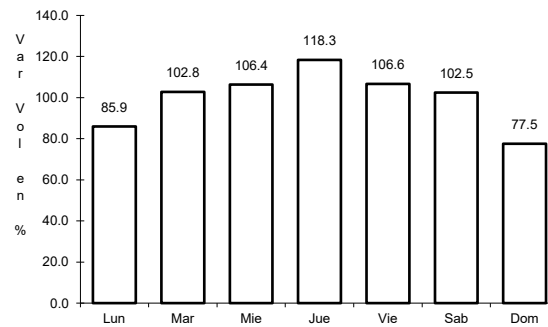
26 CARR: Gómez Palacio - Corralitos (Cuota)

CLAVE: 00016

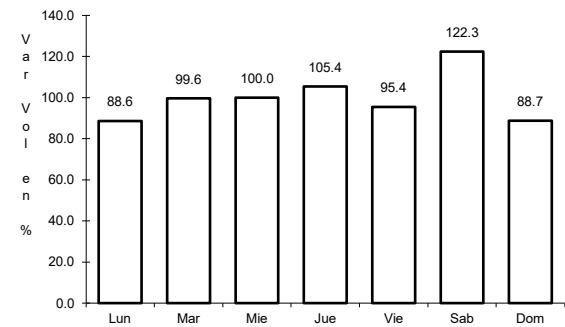
ruta: MEX-049D



Km: 40.10 Tipo: 1 Sent: 1



Km: 40.10 Tipo: 1 Sent: 2

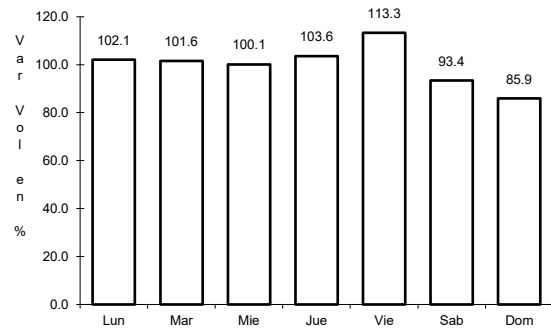


Km: 226.50 Tipo: 1 Sent: 1

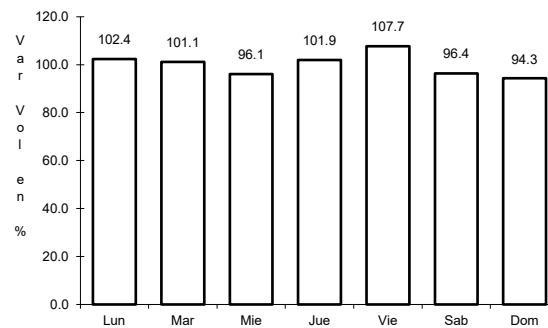
27 CARR: Libramiento de Durango (Cuota)

CLAVE: 10006

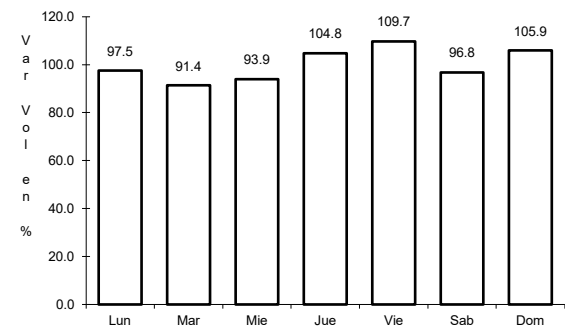
ruta: MEX-040D



Km: 0.00 Tipo: 3 Sent: 0



Km: 10.40 Tipo: 3 Sent: 0

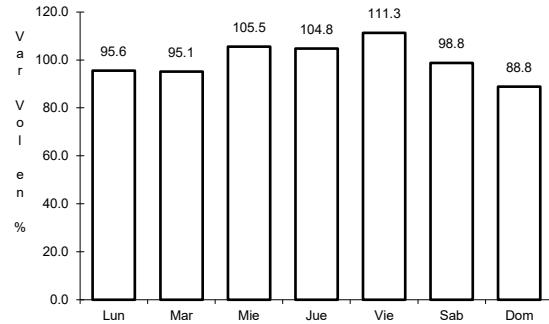


Km: 21.60 Tipo: 1 Sent: 0

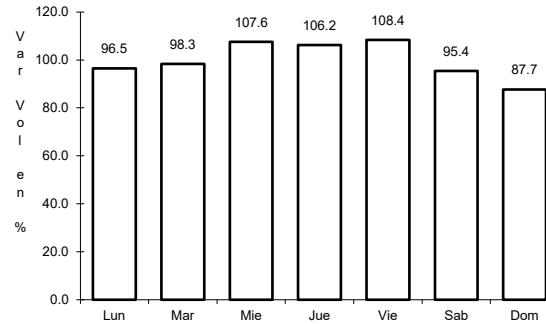
28 CARR: Libramiento Norte de Torreón (Cuota)

CLAVE:

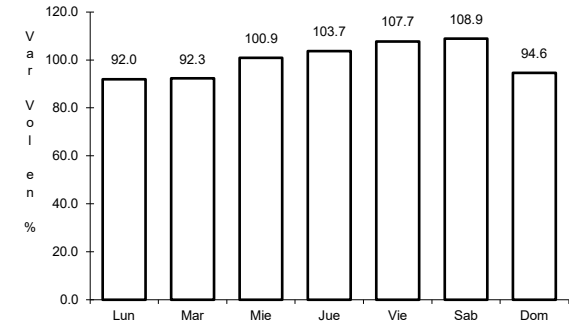
RUTA: MEX-040D



Km: 0.00 Tipo: 3 Sent: 0



Km: 17.36 Tipo: 1 Sent: 0

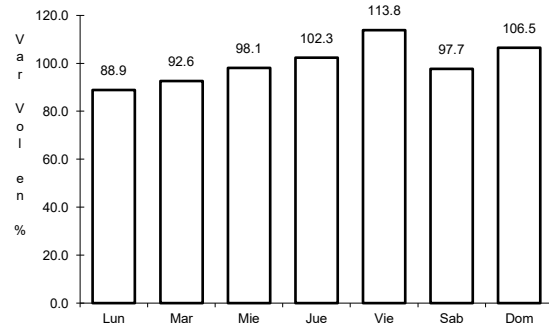


Km: 40.70 Tipo: 1 Sent: 0

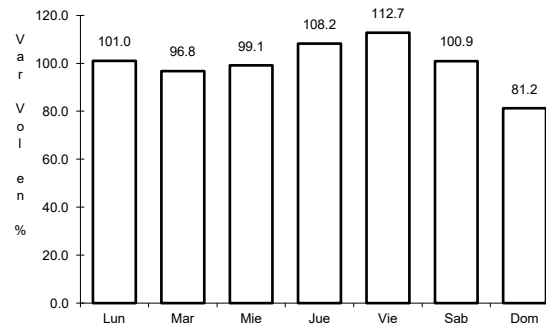
29 CARR: Yerbanís - Gómez Palicio (Cuota)

CLAVE: 10003

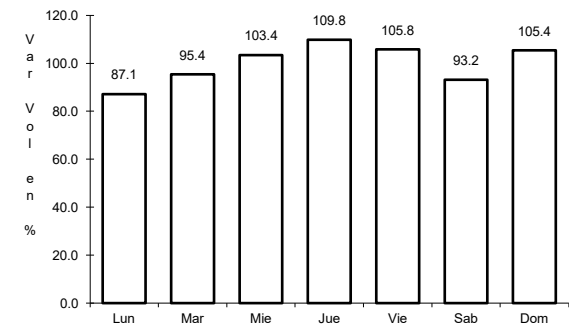
RUTA: MEX-040D



Km: 180.00 Tipo: 1 Sent: 1



Km: 180.00 Tipo: 1 Sent: 2

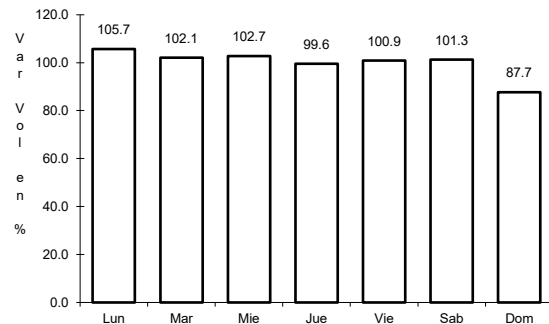


Km: 212.71 Tipo: 3 Sent: 1

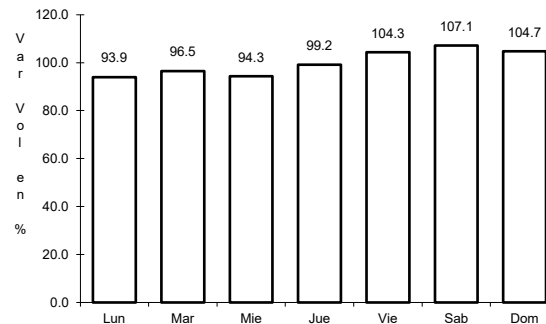
30 CARR: Amado Nervo - La Ochoa

CLAVE: 10012

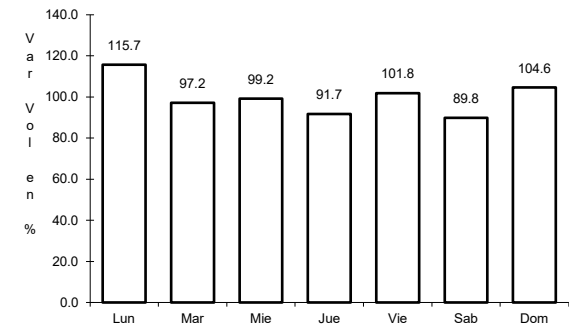
RUTA: DGO-542



Km: 0.00 Tipo: 3 Sent: 0



Km: 25.00 Tipo: 1 Sent: 0

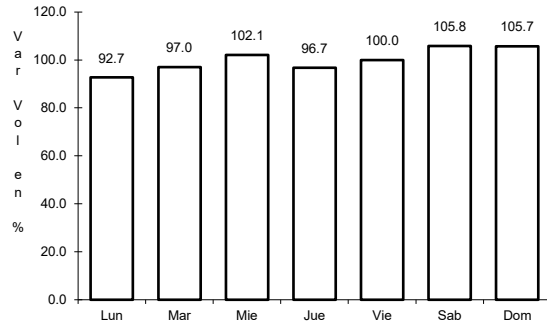


Km: 42.00 Tipo: 1 Sent: 0

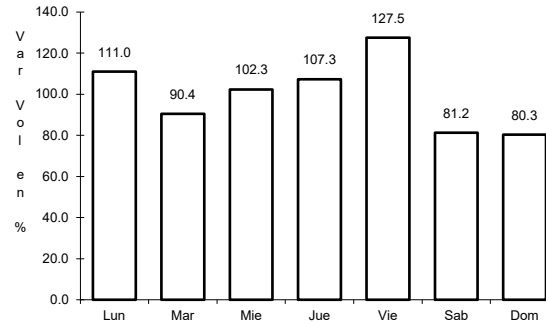
31 CARR: Ceballos - El Mirador

CLAVE: 10417

RUTA: DGO-044



Km: 0.00 Tipo: 3 Sent: 0

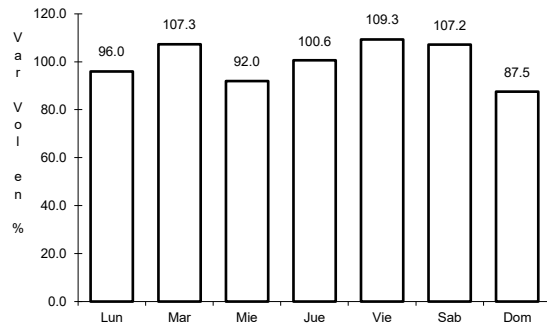


Km: 113.50 Tipo: 1 Sent: 0

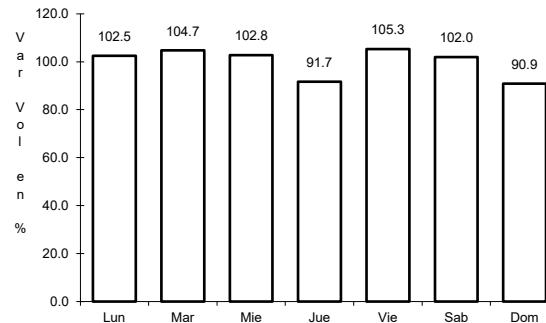
32 CARR: Durango - Aserradero La Flor

CLAVE: 10422

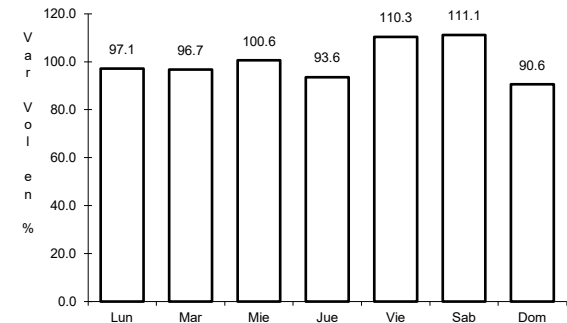
RUTA: DGO-115



Km: 0.00 Tipo: 3 Sent: 1



Km: 0.00 Tipo: 3 Sent: 2

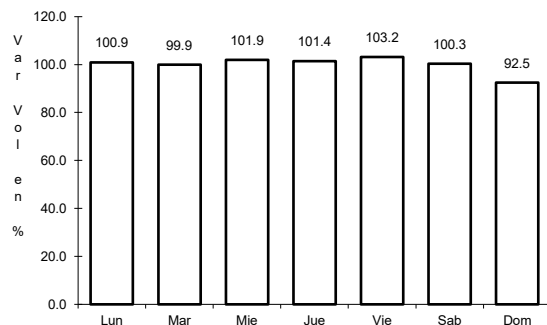


Km: 39.00 Tipo: 1 Sent: 0

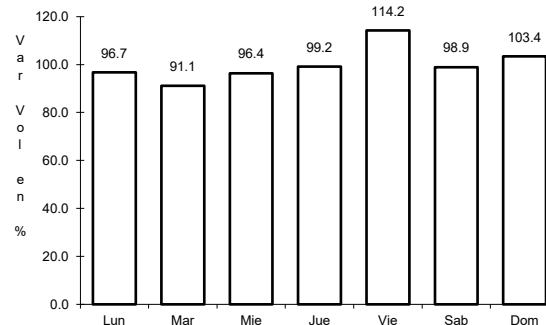
33 CARR: Jabonoso - Esmeralda

CLAVE: 10004

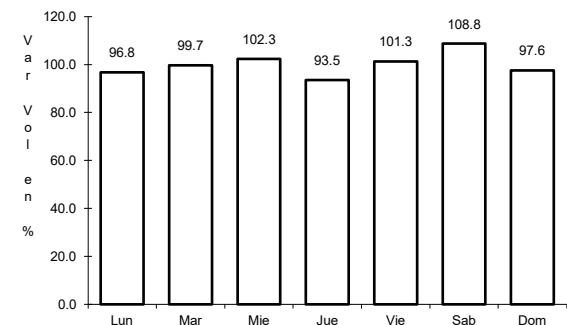
RUTA: DGO-363



Km: 0.00 Tipo: 3 Sent: 0



Km: 10.00 Tipo: 3 Sent: 0

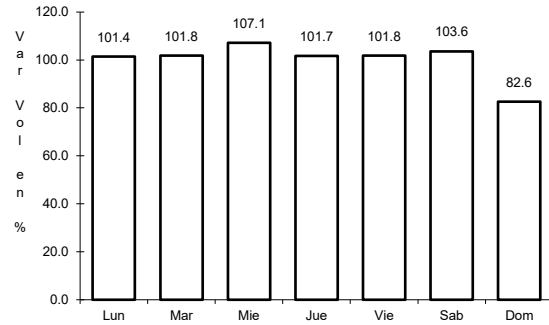


Km: 16.30 Tipo: 1 Sent: 0

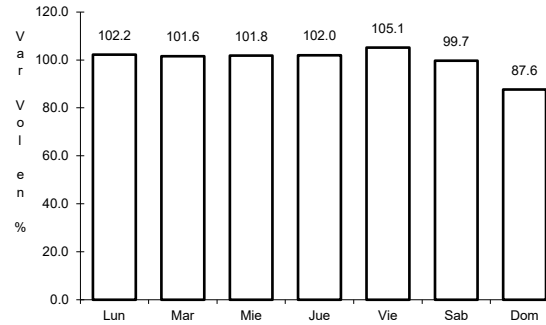
34 CARR: La Torreña - Brittingham

CLAVE: 10010

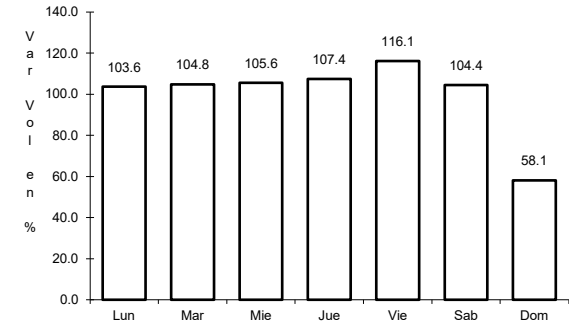
RUTA: DGO-325



Km: 0.00 Tipo: 3 Sent: 0



Km: 16.00 Tipo: 1 Sent: 0

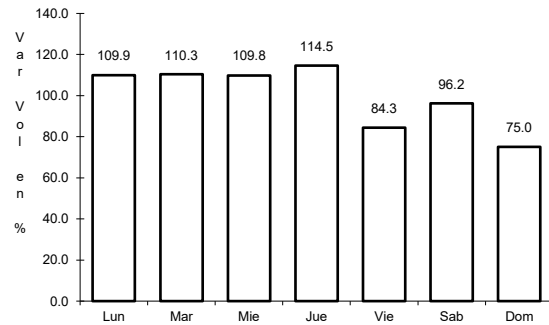


Km: 33.00 Tipo: 1 Sent: 0

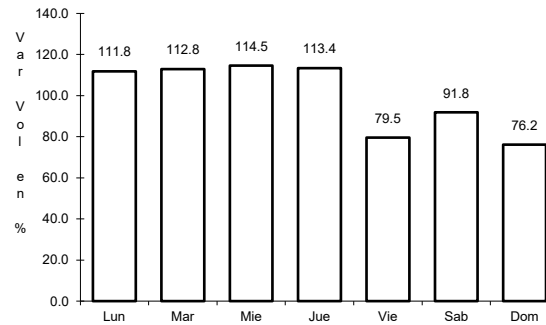
35 CARR: Libramiento de Torreón

CLAVE: 05516

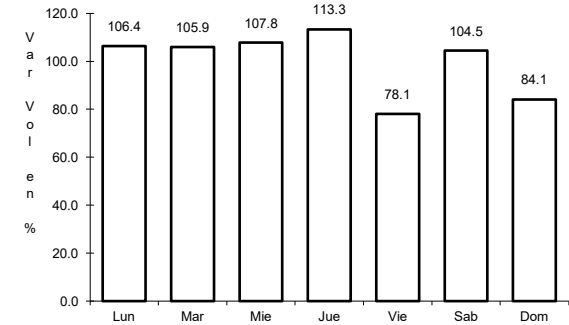
RUTA: COA



Km: 0.00 Tipo: 3 Sent: 1



Km: 0.00 Tipo: 3 Sent: 2

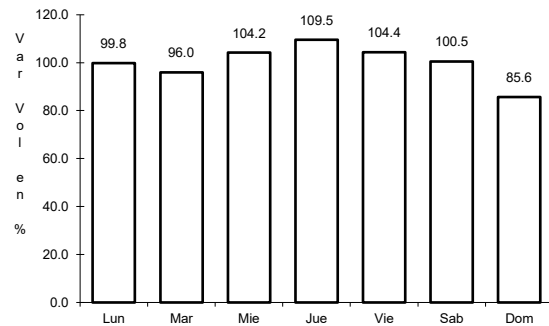


Km: 7.30 Tipo: 1 Sent: 1

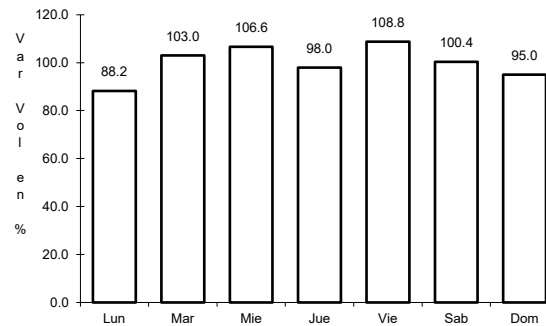
36 CARR: Libramiento Exterior Cuencamé

CLAVE: 10006

RUTA: DGO



Km: 0.00 Tipo: 3 Sent: 0

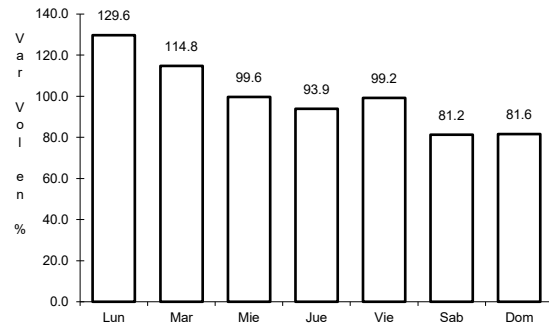


Km: 7.65 Tipo: 1 Sent: 0

37 CARR: Mezquital - San Miguel de Temoaya

CLAVE: 10006

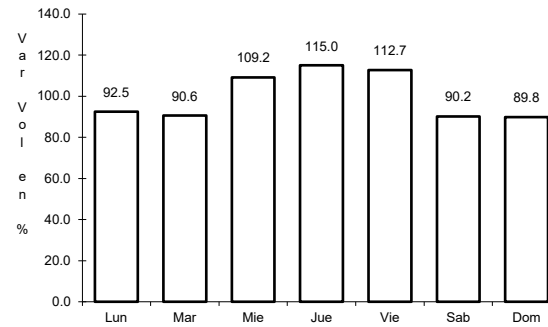
RUTA: DGO



Km: 0.00

Tipo: 3

Sent: 0



Km: 48.00

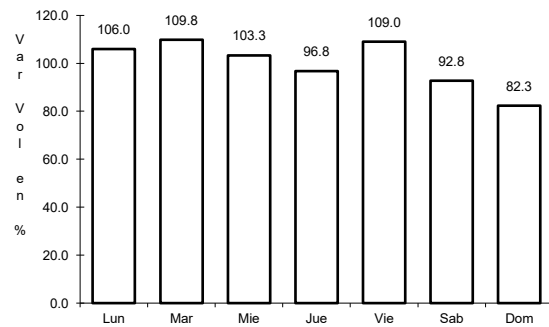
Tipo: 1

Sent: 0

38 CARR: Ramal a San Juan del Río

CLAVE: 10001

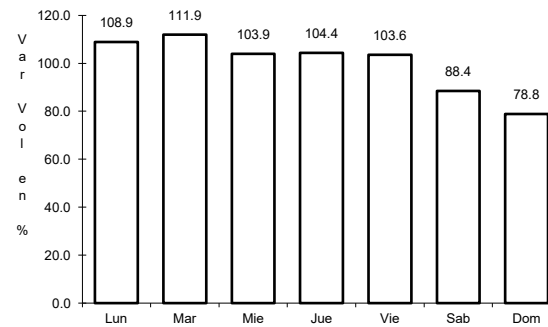
RUTA: DGO-290



Km: 0.00

Tipo: 3

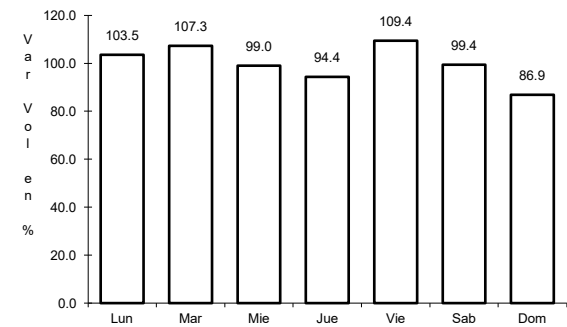
Sent: 0



Km: 5.00

Tipo: 1

Sent: 1



Km: 5.00

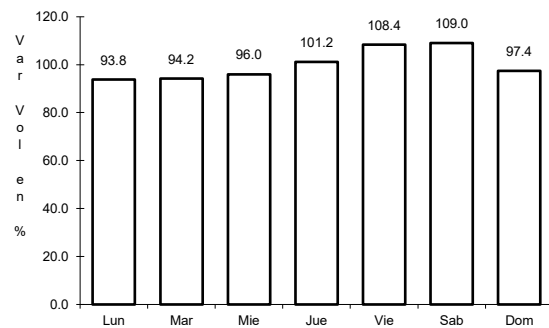
Tipo: 1

Sent: 2

39 CARR: Súchil - Villa Unión

CLAVE: 10419

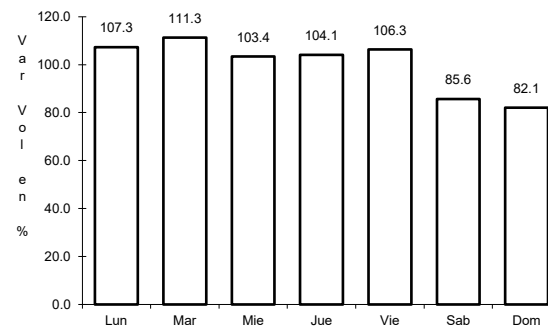
RUTA: DGO-241



Km: 0.00

Tipo: 3

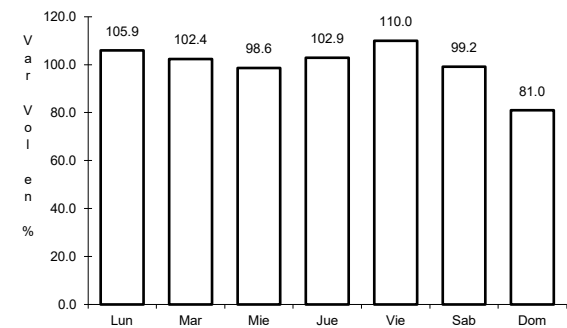
Sent: 1



Km: 0.00

Tipo: 3

Sent: 2



Km: 41.40

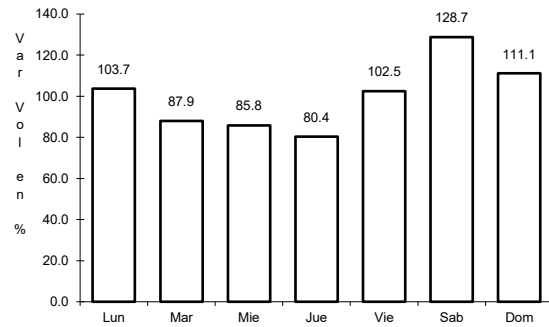
Tipo: 1

Sent: 0

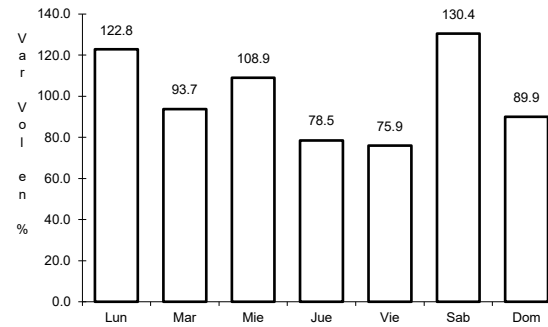
40 CARR: Tlahualillo de Zaragoza - T.C. Gómez Palacio - Jiménez

CLAVE: 10419

RUTA: DGO



Km: 0.00 Tipo: 3 Sent: 0

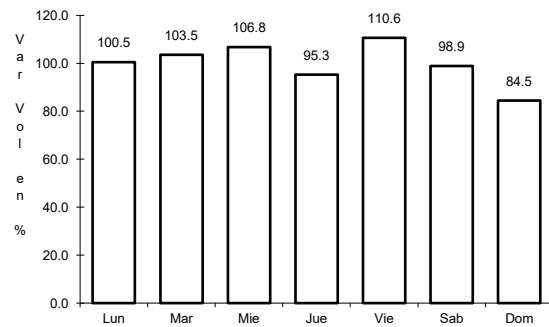


Km: 37.00 Tipo: 1 Sent: 0

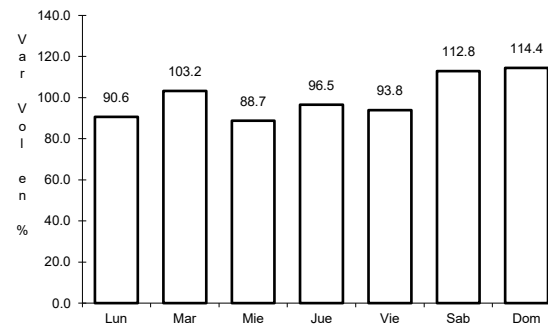
41 CARR: Yerbanís - Peñón Blanco

CLAVE: 10032

RUTA: DGO-316



Km: 0.00 Tipo: 3 Sent: 0



Km: 22.00 Tipo: 1 Sent: 0