

GUERRERO

NO. INDICE CARRETERA	RUTA
---RED FEDERAL LIBRE---	
1 Acapulco - Zihuatanejo	MEX-200
2 Cd. Altamirano - T. C. (Zihuatanejo - La Mira)	MEX-134
3 Chilpancingo - Acapulco	MEX-095
4 Chilpancingo - Chichihualco	MEX-095
5 Chilpancingo - Jilotepec	MEX-093
6 Cuernavaca - Chilpancingo	MEX-095
7 Ent. Alpuyeca - Grutas de Cacahuamilpa	MEX-166
8 Iguala - Cd. Altamirano	MEX-051
9 La Sabana - Puerto Marqués	MEX-200
10 Las Cruces - Pinotepa Nacional	MEX-200
11 Libramiento Norte de Acapulco	MEX-095
12 Milpillas - T. C. (Acapulco - Zihuatanejo)	MEX-196
13 Ramal a Aeropuerto Zihuatanejo	MEX-200
14 Ramal a La Unión	MEX-200
15 San Juan de Los Llanos - Ometepec	MEX-200
16 Tierra Colorada - Cruz Grande	MEX-198
17 Toluca - Cd. Altamirano	MEX-134
18 Zihuatanejo - La Mira	MEX-200
---RED FEDERAL DE CUOTA---	
19 Cuernavaca - Acapulco (Cuota)	MEX-095D
20 Libramiento de Técpan (Cuota)	MEX-200D
21 Nueva Italia - Lázaro Cárdenas (Cuota)	MEX-037D
22 Puente de Ixtla - Iguala (Cuota)	MEX-091D
23 Rancho Viejo - Taxco (Cuota)	MEX-092D
24 Zacapalco - Rancho Viejo (Cuota)	MEX-092D
---RED ESTATAL LIBRE---	
25 Acapulco - Aeropuerto Acapulco	GRO
26 Ent. Potrero - Lomas de Chapultepec	GRO
27 Las Petaquillas - Quechultenango	GRO
28 Pie de La Cuesta - Barra de Coyuca	GRO
29 Ramal a Cocula	GRO
30 T. C. (Iguala - Chilpancingo) - Atenango del Río	GRO-001
31 Taxco - Ixcateopan	GRO
32 Teloloapan - Apaxtla de Castrejón	GRO
33 Tlapa de Comonfort - Marquelia	GRO
---RED ESTATAL DE CUOTA---	
34 Puerto Marqués - La Venta (Cuota)	GRO-D
---CARRETERAS INTEGRADAS POR TRAMOS FEDERALES Y ESTATALES---	
35 Toluca - Axixintla	EM-MEX-055

12 GUERRERO



- ① - Número Índice
- Red Federal Libre
- Red Federal Cuota
- Red Federal Integrada por Tramos Libres y de Cuota
- Red Estatal Libre
- Red Estatal Cuota
- Carreteras Integradas por Tramos Federales y Estatales

GUERRERO

1 CARR: Acapulco - Zihuatanejo

CLAVE: 12072

RUTA: MEX-200

AÑO: 2022

LUGAR	ESTACION				CLASIFICACION VEHICULAR EN PORCIENTO										COORDENADAS						
	KM	TE	SC	TDPA	M	A	B	C2	C3	T3S2	T3S3	T3S2R4	OTROS	A	B	C	K'	D	LATITUD	LONGITUD	
Acapulco	0.00	0	0																		
T. Izq. Pie de La Cuesta	10.37	1	0	21479	8.5	86.8	0.6	2.9	0.4	0.3	0.3	0.1	0.1	95.3	0.6	4.1	0.081	0.504	16.894277	-99.958106	
T. Izq. Pie de La Cuesta	10.37	3	0	19369	15.0	78.7	1.1	2.1	0.6	0.9	0.6	0.7	0.3	93.7	1.1	5.2	0.091	0.511	16.901980	-99.962057	
T. Der. Libramiento de Acapulco	21.37	3	0	8191	4.1	85.3	1.9	5.5	1.0	1.0	0.7	0.3	0.2	89.4	1.9	8.7	0.079	0.511	16.961630	-99.977861	
Coyuca de Benítez	33.60	3	0	8555	9.4	81.7	1.7	4.4	1.0	0.8	0.8	0.1	0.1	91.1	1.7	7.2	0.077	0.504	17.010679	-100.100619	
Pénjamo	36.60	3	0	5227	2.5	85.3	2.6	5.5	1.6	1.5	0.9	0.1	0.0	87.8	2.6	9.6	0.079	0.510	17.011511	-100.118736	
Col La Laja	72.60	1	0	4368	5.3	82.9	1.4	6.7	1.3	1.5	0.8	0.0	0.1	88.2	1.4	10.4	0.084	0.526	17.138364	-100.392769	
T. Der. Atoyac de Álvarez	77.85	3	0	9111	8.7	84.6	0.9	3.4	0.7	0.9	0.5	0.1	0.2	93.3	0.9	5.8	0.075	0.520	17.154176	-100.444321	
San Jerónimo de Juárez	82.40	3	0	4778	13.8	75.7	1.3	7.5	0.8	0.7	0.2	0.0	0.0	89.5	1.3	9.2	0.077	0.519	17.147615	-100.478623	
T. C. Libramiento de Técpan (Cuota)	102.00	1	0	5490	5.3	82.8	1.6	8.3	0.9	0.8	0.3	0.0	0.0	88.1	1.6	10.3	0.067	0.527	17.190178	-100.615377	
Técpan de Galeana	103.60	1	0	5274	2.0	88.1	1.6	7.2	0.6	0.3	0.2	0.0	0.0	90.1	1.6	8.3	0.078	0.532	17.200983	-100.626633	
Técpan de Galeana	103.60	3	0	12319	4.0	90.5	0.6	3.6	0.4	0.5	0.3	0.0	0.1	94.5	0.6	4.9	0.063	0.502	17.233603	-100.633063	
T. C. Libramiento de Técpan (Cuota)	110.20	3	0	7809	4.4	85.1	1.8	6.0	0.7	0.9	0.6	0.1	0.4	89.5	1.8	8.7	0.078	0.537	17.205247	-100.657508	
T. Ixq. Nuxco	119.00	1	0	3775	5.5	80.7	2.3	8.7	1.1	0.9	0.7	0.0	0.1	86.2	2.3	11.5	0.070	0.530	17.216092	-100.767583	
San Luis San Pedro	131.50	1	0	5076	13.4	80.7	0.5	4.7	0.3	0.3	0.1	0.0	0.0	94.1	0.5	5.4	0.070	0.520	17.247906	-100.847475	
Buenavista de Juárez	138.45	3	0	4276	7.3	81.5	2.2	7.1	1.2	0.4	0.2	0.1	0.0	88.8	2.2	9.0	0.081	0.507	17.272322	-100.938662	
Papanao	162.25	1	0	4242	14.5	71.2	2.7	7.3	1.4	1.5	1.1	0.2	0.1	85.7	2.7	11.6	0.084	0.522	17.318602	-101.045076	
Petatán	206.30	1	0	4415	11.2	79.5	1.5	6.5	0.4	0.3	0.5	0.0	0.1	90.7	1.5	7.8	0.076	0.501	17.525512	-101.260557	
Petatán	206.30	3	0	6845	4.3	84.3	1.9	7.0	0.8	0.9	0.4	0.2	0.2	88.6	1.9	9.5	0.081	0.511	17.551545	-101.292268	
San Jerónimo	216.00	3	0	5272	10.2	76.9	2.0	6.2	1.6	1.5	1.4	0.1	0.1	87.1	2.0	10.9	0.069	0.510	17.574269	-101.358009	
T. Izq al Aeropuerto de Zihuatanejo	226.00	1	0	5617	5.2	72.0	2.2	14.6	1.6	2.3	1.1	0.4	0.6	77.2	2.2	20.6	0.075	0.525	17.619373	-101.451771	
T. Izq. Aeropuerto	234.75	1	0	13624	6.4	86.4	1.1	4.3	0.6	0.6	0.5	0.0	0.1	92.8	1.1	6.1	0.082	0.515	17.638426	-101.488156	
Zihuatanejo	242.90	1	1	10020	5.3	86.7	1.1	3.1	1.5	0.5	0.5	0.8	0.5	92.0	1.1	6.9	0.090	0.519	17.646746	-101.515837	
Zihuatanejo	242.90	1	2	10812	5.2	87.2	1.0	3.2	1.2	0.6	0.5	0.7	0.4	92.4	1.0	6.6	0.085	0.519	17.646606	-101.515839	

2 CARR: Cd. Altamirano - T. C. (Zihuatanejo - La Mira)

CLAVE: 12422

RUTA: MEX-134

AÑO: 2022

LUGAR	ESTACION				CLASIFICACION VEHICULAR EN PORCIENTO										COORDENADAS					
	KM	TE	SC	TDPA	M	A	B	C2	C3	T3S2	T3S3	T3S2R4	OTROS	A	B	C	K'	D	LATITUD	LONGITUD
Cd. Altamirano	0.00	3	1	8567	24.3	73.6	0.3	0.4	0.4	0.3	0.2	0.3	0.2	97.9	0.3	1.8	0.092	0.509	18.332545	-100.689741
Cd. Altamirano	0.00	3	2	8253	24.3	73.6	0.3	0.4	0.4	0.3	0.2	0.3	0.2	97.9	0.3	1.8	0.076	0.509	18.332473	-100.689683
T. Der. Zirándaro	15.00	3	0	2381	4.1	86.2	0.5	5.7	0.6	2.3	0.2	0.1	0.3	90.3	0.5	9.2	0.066	0.506	18.318693	-100.785141
T. C. Zihuatanejo - La Mira	187.36	1	0	907	13.3	77.5	0.5	4.5	3.6	0.2	0.2	0.1	0.1	90.8	0.5	8.7	0.074	0.523	17.735797	-101.596405

GUERRERO

3 CARR: Chilpancingo - Acapulco

CLAVE: 12045

RUTA: MEX-095

AÑO: 2022

LUGAR	ESTACION				CLASIFICACION VEHICULAR EN PORCIENTO										COORDENADAS					
	KM	TE	SC	TDPA	M	A	B	C2	C3	T3S2	T3S3	T3S2R4	OTROS	A	B	C	K'	D	LATITUD	LONGITUD
Chilpancingo	0.00	0	0																	
T. C. Cuernavaca - Acapulco (Cuota) Lateral	4.20	1	1	14843	6.1	88.6	0.3	1.6	0.2	1.3	1.3	0.2	0.4	94.7	0.3	5.0	0.066	0.504	17.523247	-99.486789
T. C. Cuernavaca - Acapulco (Cuota) Central	4.20	1	1	19149	4.9	85.5	1.0	4.9	1.4	1.1	0.6	0.4	0.2	90.4	1.0	8.6	0.073	0.544	17.523280	-99.486704
T. C. Cuernavaca - Acapulco (Cuota) Lateral	4.20	1	2	15077	6.1	84.1	0.2	1.1	0.4	4.9	1.9	0.3	1.0	90.2	0.2	9.6	0.076	0.504	17.523267	-99.486450
T. C. Cuernavaca - Acapulco (Cuota) Central	4.20	1	2	23446	4.8	85.6	1.1	4.9	1.4	1.1	0.5	0.4	0.2	90.4	1.1	8.5	0.078	0.544	17.523204	-99.486516
T. C. Cuernavaca - Acapulco (Cuota)	4.20	3	1	15843	0.9	91.5	0.4	4.2	1.0	1.0	0.5	0.2	0.3	92.4	0.4	7.2	0.086	0.501	17.511515	-99.478591
T. C. Cuernavaca - Acapulco (Cuota)	4.20	3	2	15934	6.4	86.4	0.4	4.4	0.4	0.9	0.8	0.2	0.1	92.8	0.4	6.8	0.086	0.501	17.511581	-99.478493
Petaquillas	12.01	1	1	12133	6.1	81.2	1.2	10.9	0.2	0.2	0.2	0.0	0.0	87.3	1.2	11.5	0.084	0.506	17.495073	-99.465709
Petaquillas	12.01	1	2	12427	6.9	84.1	0.6	7.2	0.7	0.3	0.2	0.0	0.0	91.0	0.6	8.4	0.083	0.506	17.495215	-99.465640
Petaquillas	12.01	3	0	8570	1.5	92.2	0.5	2.8	0.8	1.2	0.7	0.1	0.2	93.7	0.5	5.8	0.069	0.522	17.478370	-99.458272
El Ocotito	50.68	1	0	7695	10.5	80.8	1.2	4.1	1.0	1.5	0.7	0.1	0.1	91.3	1.2	7.5	0.063	0.503	17.253341	-99.507194
El Ocotito	50.68	3	0	5177	7.5	85.2	0.8	3.7	1.3	0.8	0.6	0.0	0.1	92.7	0.8	6.5	0.076	0.503	17.231867	-99.520300
T. Izq. Tierra Colorada Inicia	61.18	1	0	4466	7.1	87.0	1.0	1.8	1.0	1.2	0.7	0.0	0.2	94.1	1.0	4.9	0.084	0.501	17.175922	-99.519673
T. Izq. Tierra Colorada Termina	65.14	3	0	4751	7.5	83.8	1.1	4.0	1.4	1.0	0.9	0.2	0.1	91.3	1.1	7.6	0.074	0.512	17.171806	-99.543849
X. C. Cuernavaca - Acapulco (Cuota)	70.10	3	0	2938	7.7	81.4	0.9	6.9	1.3	0.9	0.7	0.1	0.1	89.1	0.9	10.0	0.085	0.531	17.177633	-99.562550
T. Der. Pablo Galeana	88.15	3	0	2781	5.7	85.9	1.3	2.1	1.8	1.5	1.6	0.0	0.1	91.6	1.3	7.1	0.086	0.519	17.118554	-99.697822
T. Der. Libramiento Norte de Acapulco	112.80	1	0	8851	3.8	89.8	0.4	3.5	0.5	0.5	1.1	0.2	0.2	93.6	0.4	6.0	0.075	0.510	16.984327	-99.810445
T. Der. Libramiento Norte de Acapulco	112.80	3	0	11548	6.5	83.9	0.5	3.7	1.7	1.3	1.5	0.4	0.5	90.4	0.5	9.1	0.081	0.509	16.970766	-99.810728
T. C. Cuernavaca - Acapulco (Cuota)	120.60	0	0																	
Acapulco	132.67	0	0																	

4 CARR: Chilpancingo - Chichihualco

CLAVE: 12426

RUTA: MEX-095

AÑO: 2022

LUGAR	ESTACION				CLASIFICACION VEHICULAR EN PORCIENTO										COORDENADAS					
	KM	TE	SC	TDPA	M	A	B	C2	C3	T3S2	T3S3	T3S2R4	OTROS	A	B	C	K'	D	LATITUD	LONGITUD
T. C. Cuernavaca - Chilpancingo	0.00	3	0	4354	7.9	72.1	0.4	16.3	2.2	0.5	0.3	0.2	0.1	80.0	0.4	19.6	0.081	0.504	17.590814	-99.518494
T. Der. El Palmar	15.10	1	0	1439	7.6	76.2	0.5	15.5	0.1	0.1	0.0	0.0	0.0	83.8	0.5	15.7	0.074	0.522	17.643875	-99.603066
Chichihualco	26.30	1	0	1886	7.8	76.5	0.3	14.4	0.5	0.3	0.2	0.0	0.0	84.3	0.3	15.4	0.080	0.501	17.646533	-99.667471

5 CARR: Chilpancingo - Jilotepec

CLAVE: 12002

RUTA: MEX-093

AÑO: 2022

LUGAR	ESTACION				CLASIFICACION VEHICULAR EN PORCIENTO										COORDENADAS					
	KM	TE	SC	TDPA	M	A	B	C2	C3	T3S2	T3S3	T3S2R4	OTROS	A	B	C	K'	D	LATITUD	LONGITUD
Chilpancingo	0.00	3	0	5767	8.5	87.5	0.2	3.4	0.1	0.1	0.2	0.0	0.0	96.0	0.2	3.8	0.067	0.513	17.543350	-99.478600
T. Der. Tixtla de Guerrero	16.30	3	0	7739	11.9	84.5	0.4	2.8	0.2	0.1	0.1	0.0	0.0	96.4	0.4	3.2	0.072	0.505	17.578522	-99.392965

GUERRERO

5 CARR: Chilpancingo - Jilotepec

CLAVE: 12002

RUTA: MEX-093

AÑO: 2022

LUGAR	ESTACION				CLASIFICACION VEHICULAR EN PORCIENTO										COORDENADAS					
	KM	TE	SC	TDPA	M	A	B	C2	C3	T3S2	T3S3	T3S2R4	OTROS	A	B	C	K'	D	LATITUD	LONGITUD
T. Izq. Almolonga	28.20	3	0	4302	4.8	81.1	1.8	9.8	1.0	0.7	0.7	0.1	0.0	85.9	1.8	12.3	0.066	0.507	17.603913	-99.309534
Chilapa de Álvarez	53.62	3	0	5868	25.6	59.2	1.0	14.1	0.1	0.0	0.0	0.0	0.0	84.8	1.0	14.2	0.068	0.528	17.597059	-99.146350
Tlapa de Comonfort	178.50	1	0	4493	5.9	76.2	0.7	16.7	0.1	0.3	0.1	0.0	0.0	82.1	0.7	17.2	0.078	0.505	17.541677	-98.628547
Huamuxtitlán	200.63	1	0	5030	14.1	76.9	1.2	6.9	0.3	0.3	0.3	0.0	0.0	91.0	1.2	7.8	0.075	0.513	17.791516	-98.562646
Xochihuehuetlán	216.80	1	0	2234	10.5	79.2	1.7	7.4	0.6	0.2	0.3	0.0	0.1	89.7	1.7	8.6	0.077	0.511	17.898034	-98.500353
Jilotepec	235.00	1	0	2371	3.5	78.9	2.5	11.3	0.8	2.1	0.8	0.1	0.0	82.4	2.5	15.1	0.065	0.516	17.961630	-98.478892

6 CARR: Cuernavaca - Chilpancingo

CLAVE: 00042

RUTA: MEX-095

AÑO: 2022

LUGAR	ESTACION				CLASIFICACION VEHICULAR EN PORCIENTO										COORDENADAS					
	KM	TE	SC	TDPA	M	A	B	C2	C3	T3S2	T3S3	T3S2R4	OTROS	A	B	C	K'	D	LATITUD	LONGITUD
Cuernavaca	0.00	0	0																	
T. Izq. Chipitlán	4.85	1	1	21700	3.1	80.3	4.6	5.5	0.5	2.7	2.0	0.5	0.8	83.4	4.6	12.0	0.061	0.517	18.893752	-99.228511
T. Izq. Chipitlán	4.85	1	2	20245	2.5	80.8	4.7	5.7	0.3	2.9	2.0	0.3	0.8	83.3	4.7	12.0	0.057	0.517	18.893771	-99.228444
T. Izq. Chipitlán	4.85	3	1	15739	4.4	81.2	3.7	6.8	0.5	1.4	0.6	0.9	0.5	85.6	3.7	10.7	0.071	0.502	18.882571	-99.229692
T. Izq. Chipitlán	4.85	3	2	15633	4.4	81.2	3.7	6.9	0.5	1.3	0.5	1.0	0.5	85.6	3.7	10.7	0.086	0.502	18.882580	-99.229597
Temixco	9.80	1	1	10782	4.6	84.2	0.4	9.2	0.7	0.3	0.2	0.2	0.2	88.8	0.4	10.8	0.085	0.536	18.866018	-99.226356
Temixco	9.80	1	2	12449	4.6	84.2	0.5	8.8	0.6	0.3	0.3	0.3	0.4	88.8	0.5	10.7	0.099	0.536	18.866154	-99.226366
Temixco	9.80	3	1	20231	6.8	81.5	1.0	6.4	1.0	0.8	0.3	1.6	0.6	88.3	1.0	10.7	0.075	0.515	18.843887	-99.224067
Temixco	9.80	3	2	21439	7.1	81.2	1.1	6.1	1.2	0.9	0.2	1.6	0.6	88.3	1.1	10.6	0.075	0.515	18.843833	-99.223991
Acatlpa	12.43	1	1	17032	7.0	82.7	1.8	5.9	1.2	0.5	0.3	0.4	0.2	89.7	1.8	8.5	0.086	0.511	18.829314	-99.227797
Acatlpa	12.43	1	2	16269	7.0	82.7	1.8	5.9	1.2	0.5	0.3	0.4	0.2	89.7	1.8	8.5	0.076	0.511	18.829278	-99.227731
Acatlpa	12.43	3	1	14123	6.9	83.5	1.7	5.5	0.7	0.4	0.3	0.6	0.4	90.4	1.7	7.9	0.077	0.541	18.823852	-99.230703
Acatlpa	12.43	3	2	16650	6.9	83.6	1.7	5.5	0.7	0.4	0.3	0.5	0.4	90.5	1.7	7.8	0.072	0.541	18.823816	-99.230599
T. Izq. Emiliano Zapata	13.50	1	1	13012	5.3	82.4	3.8	6.4	0.6	0.4	0.3	0.5	0.3	87.7	3.8	8.5	0.078	0.500	18.837966	-99.225407
T. Izq. Emiliano Zapata	13.50	1	2	13001	4.3	84.1	3.5	6.3	0.5	0.3	0.3	0.4	0.3	88.4	3.5	8.1	0.085	0.500	18.837948	-99.225303
T. Izq. Emiliano Zapata	13.50	3	1	13376	4.7	85.2	3.3	4.8	0.5	0.6	0.5	0.3	0.1	89.9	3.3	6.8	0.084	0.500	18.832687	-99.226530
T. Izq. Emiliano Zapata	13.50	3	2	13402	4.8	85.3	3.3	4.8	0.5	0.5	0.5	0.2	0.1	90.1	3.3	6.6	0.083	0.500	18.832678	-99.226435
T. Izq. Xochitepec	16.05	1	1	6931	5.3	85.7	1.5	5.1	0.7	0.6	0.3	0.5	0.3	91.0	1.5	7.5	0.084	0.503	18.801330	-99.237411
T. Izq. Xochitepec	16.05	1	2	7021	5.3	85.6	1.5	5.2	0.7	0.5	0.4	0.5	0.3	90.9	1.5	7.6	0.128	0.503	18.801330	-99.237306
T. Izq. Xochitepec	16.05	3	1	5242	13.0	78.5	0.6	6.9	0.6	0.2	0.1	0.1	0.0	91.5	0.6	7.9	0.085	0.512	18.797576	-99.240205
T. Izq. Xochitepec	16.05	3	2	4997	10.5	80.5	1.1	6.4	0.9	0.3	0.1	0.1	0.1	91.0	1.1	7.9	0.093	0.512	18.797504	-99.240157
X. C. Alpuyecá - Jojutla	24.15	1	1	9829	13.0	81.5	0.7	3.3	0.7	0.3	0.2	0.2	0.1	94.5	0.7	4.8	0.081	0.504	18.739442	-99.255310
X. C. Alpuyecá - Jojutla	24.15	1	2	9664	13.1	81.5	0.6	3.3	0.6	0.4	0.2	0.2	0.1	94.6	0.6	4.8	0.092	0.504	18.739415	-99.255225
X. C. Alpuyecá - Jojutla	24.15	3	0	10928	3.7	84.8	2.5	6.8	1.0	0.7	0.3	0.1	0.1	88.5	2.5	9.0	0.087	0.510	18.731224	-99.264243

GUERRERO

6 CARR: Cuernavaca - Chilpancingo

CLAVE: 00042

RUTA: MEX-095

AÑO: 2022

LUGAR	ESTACION				CLASIFICACION VEHICULAR EN PORCIENTO										COORDENADAS					
	KM	TE	SC	TDPA	M	A	B	C2	C3	T3S2	T3S3	T3S2R4	OTROS	A	B	C	K'	D	LATITUD	LONGITUD
T. Der. Coatetelco	28.00	3	0	5709	3.9	83.2	2.2	6.2	2.2	1.6	0.4	0.2	0.1	87.1	2.2	10.7	0.081	0.505	18.709202	-99.274178
T. Der. Michapa	44.36	1	0	9548	8.0	82.5	1.3	3.7	1.3	1.8	0.6	0.4	0.4	90.5	1.3	8.2	0.070	0.504	18.611954	-99.355316
T. Izq. Cuernavaca - Iguala (Cuota)	46.93	1	0	6504	11.2	77.7	1.2	6.0	1.0	0.8	0.8	0.7	0.6	88.9	1.2	9.9	0.089	0.511	18.604671	-99.377472
T. Izq. Cuernavaca - Iguala (Cuota)	46.93	3	0	5312	12.1	83.7	0.3	2.5	0.5	0.3	0.3	0.2	0.1	95.8	0.3	3.9	0.069	0.500	18.603199	-99.381658
Huajintla	52.00	3	0	3674	8.3	83.7	1.5	2.8	1.3	1.6	0.3	0.3	0.2	92.0	1.5	6.5	0.093	0.505	18.611977	-99.430667
Lim. Edos. Term. Mor. Ppia. Gro.	57.10	0	0																	
T. Der. Ixtapan de La Sal (Axixintla)	63.47	1	0	1837	9.8	84.9	0.2	4.0	0.6	0.1	0.4	0.0	0.0	94.7	0.2	5.1	0.115	0.510	18.611076	-99.506166
Taxco	89.90	3	0	5590	8.6	84.1	1.4	5.1	0.5	0.2	0.1	0.0	0.0	92.7	1.4	5.9	0.062	0.517	18.537438	-99.609320
Iguala	119.63	1	0	8161	9.1	84.4	0.6	4.8	0.5	0.3	0.2	0.1	0.0	93.5	0.6	5.9	0.062	0.503	18.379706	-99.529228
T. Izq. Puente de Ixtla	123.98	3	0	15196	6.9	84.7	1.2	4.7	1.0	0.6	0.6	0.2	0.1	91.6	1.2	7.2	0.084	0.504	18.321213	-99.498560
T. Izq. Sabana Grande	144.95	1	0	7043	2.3	87.3	1.5	2.7	1.7	2.8	1.3	0.4	0.0	89.6	1.5	8.9	0.073	0.529	18.176160	-99.551635
T. Der. Tecuescontitlán	146.78	1	0	6404	4.0	81.4	2.6	6.9	1.9	1.7	1.0	0.4	0.1	85.4	2.6	12.0	0.076	0.506	18.157014	-99.552709
T. Der. Mezcala	173.14	1	0	6242	6.7	77.6	3.0	7.5	2.0	1.9	1.0	0.2	0.1	84.3	3.0	12.7	0.082	0.509	17.934864	-99.589426
T. Der. Filo de Caballo	189.89	3	0	5808	2.3	81.9	3.2	7.7	2.0	1.7	0.9	0.2	0.1	84.2	3.2	12.6	0.072	0.504	17.794790	-99.566963
T. C. Cuernavaca - Acapulco (Cuota)	219.89	0	0																	
Chilpancingo	223.70	1	1	23448	5.0	82.9	2.5	5.2	1.4	1.9	0.8	0.2	0.1	87.9	2.5	9.6	0.064	0.502	17.582809	-99.515475
Chilpancingo	223.70	1	2	23594	5.1	83.2	2.3	5.3	1.3	1.7	0.8	0.2	0.1	88.3	2.3	9.4	0.090	0.502	17.582904	-99.515419

7 CARR: Ent. Alpuyecá - Grutas de Cacahuamilpa

CLAVE: 00421

RUTA: MEX-166

AÑO: 2022

LUGAR	ESTACION				CLASIFICACION VEHICULAR EN PORCIENTO										COORDENADAS					
	KM	TE	SC	TDPA	M	A	B	C2	C3	T3S2	T3S3	T3S2R4	OTROS	A	B	C	K'	D	LATITUD	LONGITUD
T. C. Cuernavaca - Chilpancingo	0.00	3	0	9430	8.8	83.0	0.9	6.3	0.6	0.2	0.1	0.1	0.0	91.8	0.9	7.3	0.063	0.512	18.749228	-99.257317
T. Der. Zona Arq. de Xochicalco	8.40	3	1	3387	10.5	84.4	1.0	3.0	0.8	0.2	0.1	0.0	0.0	94.9	1.0	4.1	0.074	0.508	18.777725	-99.304509
T. Der. Zona Arq. de Xochicalco	8.40	3	2	3492	8.4	86.7	0.9	2.5	1.0	0.3	0.2	0.0	0.0	95.1	0.9	4.0	0.090	0.508	18.777644	-99.304528
Miacatlán	14.95	3	1	6458	9.5	85.6	1.0	2.8	1.0	0.1	0.0	0.0	0.0	95.1	1.0	3.9	0.064	0.518	18.750837	-99.365510
Miacatlán	14.95	3	2	6009	9.5	85.7	1.0	2.8	0.8	0.1	0.1	0.0	0.0	95.2	1.0	3.8	0.068	0.518	18.750810	-99.365444
Mazatepec	18.28	3	0	9318	7.7	88.5	0.6	2.7	0.2	0.1	0.1	0.1	0.0	96.2	0.6	3.2	0.080	0.508	18.720769	-99.364952
Tetecala	25.05	3	0	7381	7.3	89.1	0.6	2.5	0.2	0.1	0.2	0.0	0.0	96.4	0.6	3.0	0.081	0.502	18.729360	-99.406348
Coatlán del Río	29.80	3	0	3965	9.5	86.1	1.1	2.5	0.3	0.2	0.3	0.0	0.0	95.6	1.1	3.3	0.075	0.504	18.748000	-99.444406
Michapa	41.26	1	0	3038	10.2	81.2	2.0	4.8	0.3	1.0	0.4	0.1	0.0	91.4	2.0	6.6	0.076	0.509	18.708443	-99.473667
Lim. Edos. Term. Mor. Ppia. Gro.	42.40	0	0																	
T. C. Toluca - Axixintla	48.65	0	0																	

GUERRERO

8 CARR: Iguala - Cd. Altamirano

CLAVE: 12195

RUTA: MEX-051

AÑO: 2022

LUGAR	ESTACION				CLASIFICACION VEHICULAR EN PORCIENTO										COORDENADAS					
	KM	TE	SC	TDPA	M	A	B	C2	C3	T3S2	T3S3	T3S2R4	OTROS	A	B	C	K'	D	LATITUD	LONGITUD
Iguala	0.00	0	0																	
T. Izq. Cocula	9.40	1	0	8235	15.2	79.0	1.1	2.3	0.7	0.4	0.5	0.5	0.3	94.2	1.1	4.7	0.062	0.520	18.326860	-99.597005
T. Izq. Cocula	9.40	3	0	4164	16.9	66.5	2.6	8.6	1.6	2.2	0.9	0.2	0.5	83.4	2.6	14.0	0.086	0.513	18.322354	-99.607172
T. Izq. Teloloapan	63.99	1	0	4087	6.8	87.0	0.5	2.2	1.5	1.0	0.8	0.2	0.0	93.8	0.5	5.7	0.084	0.502	18.348640	-99.839567
T. Izq. Almoloya	116.60	1	0	1266	9.2	77.6	2.4	5.5	3.0	1.2	1.1	0.0	0.0	86.8	2.4	10.8	0.076	0.509	18.375509	-100.172788
T. Izq. Arcelia	131.98	3	0	5564	26.9	69.0	0.9	1.5	0.8	0.7	0.2	0.0	0.0	95.9	0.9	3.2	0.075	0.519	18.318739	-100.298613
Cd. Altamirano	184.55	1	1	10010	21.7	74.3	1.3	1.2	0.6	0.4	0.3	0.2	0.0	96.0	1.3	2.7	0.078	0.505	18.347067	-100.657580
Cd. Altamirano	184.55	1	2	9821	21.7	74.3	1.3	1.2	0.6	0.4	0.3	0.2	0.0	96.0	1.3	2.7	0.081	0.505	18.347772	-100.658609

9 CARR: La Sabana - Puerto Marqués

CLAVE: 12291

RUTA: MEX-200

AÑO: 2022

LUGAR	ESTACION				CLASIFICACION VEHICULAR EN PORCIENTO										COORDENADAS					
	KM	TE	SC	TDPA	M	A	B	C2	C3	T3S2	T3S3	T3S2R4	OTROS	A	B	C	K'	D	LATITUD	LONGITUD
T. C. Las Cruces - Pinotepa Nacional	0.00	3	1	17664	3.1	88.9	0.7	3.8	0.5	1.8	0.8	0.1	0.3	92.0	0.7	7.3	0.066	0.522	16.849160	-99.811426
T. C. Las Cruces - Pinotepa Nacional	0.00	3	2	16177	3.2	88.9	0.7	3.8	0.5	1.8	0.7	0.1	0.3	92.1	0.7	7.2	0.069	0.522	16.849152	-99.811312
X. C. Acapulco - Aeropuerto Acapulco	7.20	1	1	19021	4.9	89.2	0.6	3.6	0.5	0.5	0.5	0.1	0.1	94.1	0.6	5.3	0.072	0.502	16.808060	-99.821731
X. C. Acapulco - Aeropuerto Acapulco	7.20	1	2	18856	4.9	89.2	0.6	3.6	0.5	0.5	0.5	0.1	0.1	94.1	0.6	5.3	0.072	0.502	16.807895	-99.821712
Puerto Marqués	8.70	0	0																	

10 CARR: Las Cruces - Pinotepa Nacional

CLAVE: 00073

RUTA: MEX-200

AÑO: 2022

LUGAR	ESTACION				CLASIFICACION VEHICULAR EN PORCIENTO										COORDENADAS					
	KM	TE	SC	TDPA	M	A	B	C2	C3	T3S2	T3S3	T3S2R4	OTROS	A	B	C	K'	D	LATITUD	LONGITUD
T. C. Chilpancingo - Acapulco	0.00	3	1	19175	4.3	87.6	0.6	2.0	1.2	3.1	0.4	0.2	0.6	91.9	0.6	7.5	0.064	0.508	16.885460	-99.831503
T. C. Chilpancingo - Acapulco	0.00	3	2	18582	4.5	87.3	0.6	2.0	1.3	3.2	0.4	0.2	0.5	91.8	0.6	7.6	0.060	0.508	16.885550	-99.831500
T. Der. Puerto Marqués	4.62	1	1	23399	6.2	88.9	0.3	2.2	0.6	0.9	0.6	0.1	0.2	95.1	0.3	4.6	0.083	0.511	16.865719	-99.810581
T. Der. Puerto Marqués	4.62	1	2	22375	6.2	88.3	0.5	2.2	0.7	1.1	0.6	0.1	0.3	94.5	0.5	5.0	0.074	0.511	16.865712	-99.810452
T. Der. Puerto Marqués	4.62	3	0	17087	6.5	84.5	0.6	2.7	0.7	2.8	1.2	0.3	0.7	91.0	0.6	8.4	0.081	0.504	16.852574	-99.801286
X. C. Puerto Marqués - La Venta (Cuota)	11.70	1	1	4266	5.2	86.7	1.1	3.6	1.0	1.1	0.7	0.3	0.3	91.9	1.1	7.0	0.079	0.507	16.830900	-99.764867
X. C. Puerto Marqués - La Venta (Cuota)	11.70	1	2	4151	5.1	86.8	1.0	3.6	1.0	1.3	0.8	0.2	0.2	91.9	1.0	7.1	0.087	0.507	16.830987	-99.764862
X. C. Puerto Marqués - La Venta (Cuota)	11.70	3	1	4743	6.6	84.8	0.7	3.5	1.5	1.4	0.9	0.3	0.3	91.4	0.7	7.9	0.082	0.524	16.830258	-99.753136
X. C. Puerto Marqués - La Venta (Cuota)	11.70	3	2	5225	6.6	84.5	1.0	3.5	1.5	1.3	1.0	0.3	0.3	91.1	1.0	7.9	0.084	0.524	16.830344	-99.753136
T. Der El Arenal	17.00	1	1	4150	5.4	82.8	1.3	6.0	1.2	1.7	1.0	0.2	0.4	88.2	1.3	10.5	0.077	0.503	16.824316	-99.716131
T. Der El Arenal	17.00	1	2	4193	5.5	82.7	1.4	6.0	1.4	1.7	0.9	0.1	0.3	88.2	1.4	10.4	0.081	0.503	16.824402	-99.716133
Sn Pedro Cacahuatpec	21.60	1	0	7205	6.5	81.3	1.3	5.3	1.8	2.2	1.2	0.1	0.3	87.8	1.3	10.9	0.076	0.504	16.815864	-99.672509

GUERRERO

10 CARR: Las Cruces - Pinotepa Nacional

CLAVE: 00073

RUTA: MEX-200

AÑO: 2022

LUGAR	ESTACION				CLASIFICACION VEHICULAR EN PORCIENTO													COORDENADAS		
	KM	TE	SC	TDPA	M	A	B	C2	C3	T3S2	T3S3	T3S2R4	OTROS	A	B	C	K'	D	LATITUD	LONGITUD
T. Der. a Barra Vieja	35.00	1	0	4171	3.9	81.3	2.4	6.1	1.5	2.7	1.7	0.1	0.3	85.2	2.4	12.4	0.070	0.502	16.756162	-99.580193
San Marcos	58.90	1	0	6572	4.0	83.7	1.4	5.7	1.8	2.1	1.0	0.1	0.2	87.7	1.4	10.9	0.090	0.522	16.779874	-99.410154
San Marcos	58.90	3	0	5402	7.9	82.5	1.2	5.7	1.5	0.8	0.1	0.2	0.1	90.4	1.2	8.4	0.076	0.509	16.791486	-99.365529
Nexpa	84.96	3	0	5022	8.7	81.2	1.6	5.9	1.3	0.7	0.3	0.2	0.1	89.9	1.6	8.5	0.077	0.500	16.782237	-99.205927
Cruz Grande	97.00	3	0	6389	4.8	82.8	1.6	6.4	1.7	2.0	0.4	0.1	0.2	87.6	1.6	10.8	0.083	0.501	16.708814	-99.111842
T. Izq. Copala (1º Acceso)	117.50	1	0	5870	6.6	84.2	0.7	5.5	1.4	0.6	0.5	0.2	0.3	90.8	0.7	8.5	0.073	0.502	16.611634	-98.995016
T. Izq. Copala (1º Acceso)	117.50	3	0	5935	4.1	82.4	1.2	9.8	0.7	0.9	0.7	0.1	0.1	86.5	1.2	12.3	0.085	0.527	16.603626	-98.967112
T. Der. Playa Ventura	124.00	1	0	4034	7.7	76.6	2.4	7.2	3.4	1.8	0.7	0.1	0.1	84.3	2.4	13.3	0.080	0.517	16.593772	-98.925599
T. Der. Playa Ventura	124.00	3	0	3504	5.2	71.7	4.2	10.0	3.8	2.7	1.2	0.9	0.3	76.9	4.2	18.9	0.070	0.517	16.589707	-98.908492
Marquelia	136.80	1	0	5585	6.3	82.3	1.4	8.3	0.5	0.6	0.2	0.2	0.2	88.6	1.4	10.0	0.066	0.507	16.582373	-98.829277
Marquelia	136.80	3	0	4697	4.7	80.7	2.6	6.7	2.0	2.0	1.0	0.2	0.1	85.4	2.6	12.0	0.096	0.502	16.581814	-98.801859
Juchitán	158.00	3	0	4963	6.8	84.2	0.9	5.8	1.2	0.9	0.2	0.0	0.0	91.0	0.9	8.1	0.091	0.547	16.633042	-98.624571
T. Izq. Ometepec	175.88	1	0	4757	7.1	83.2	1.0	6.1	1.3	1.0	0.3	0.0	0.0	90.3	1.0	8.7	0.092	0.524	16.655121	-98.503493
T. Izq. Ometepec	175.88	3	0	3912	6.9	82.9	1.1	6.0	1.6	1.3	0.1	0.1	0.0	89.8	1.1	9.1	0.084	0.519	16.653642	-98.498967
Cuajinicuilapa	200.60	1	0	4030	4.9	79.3	1.5	11.9	1.0	0.8	0.3	0.1	0.2	84.2	1.5	14.3	0.095	0.524	16.476827	-98.433936
Cuajinicuilapa	200.60	3	0	2284	6.7	75.8	2.9	6.9	2.8	3.0	1.5	0.1	0.3	82.5	2.9	14.6	0.080	0.511	16.462428	-98.393872
Lim. Edos. Term. Gro. Ppia. Oax.	207.80	0	0																	
T. Izq. San Pedro Orizaba	215.00	3	0	2117	4.7	79.1	4.0	3.5	2.7	3.4	2.2	0.2	0.2	83.8	4.0	12.2	0.079	0.506	16.441392	-98.339083
T. Izq. Tlaxiaco	245.47	1	0	3421	8.9	75.5	1.8	6.0	1.6	3.6	1.7	0.3	0.6	84.4	1.8	13.8	0.078	0.506	16.379230	-98.094015
T. Izq. Tlaxiaco	245.47	3	0	6763	6.7	82.9	1.5	3.0	1.3	1.6	1.5	0.6	0.9	89.6	1.5	8.9	0.078	0.507	16.376618	-98.092025
Pinotepa Nacional	252.50	0	0																	

11 CARR: Libramiento Norte de Acapulco

CLAVE: 12421

RUTA: MEX-095

AÑO: 2022

LUGAR	ESTACION				CLASIFICACION VEHICULAR EN PORCIENTO													COORDENADAS		
	KM	TE	SC	TDPA	M	A	B	C2	C3	T3S2	T3S3	T3S2R4	OTROS	A	B	C	K'	D	LATITUD	LONGITUD
T. C. Chilpancingo - Acapulco	0.00	3	0	4963	4.9	71.0	3.2	14.4	2.6	1.9	1.5	0.3	0.2	75.9	3.2	20.9	0.078	0.513	16.982143	-99.820299
T. Der. Pelillo	6.40	3	0	4781	3.9	82.5	1.7	8.8	0.9	1.0	1.0	0.2	0.0	86.4	1.7	11.9	0.074	0.510	16.979331	-99.867247
T. C. Acapulco - Zihuatanejo	21.10	1	0	5329	7.5	80.7	2.0	4.5	2.1	1.7	1.0	0.3	0.2	88.2	2.0	9.8	0.070	0.506	16.966716	-99.971154

12 CARR: Milpillas - T. C. (Acapulco - Zihuatanejo)

CLAVE: 12012

RUTA: MEX-196

AÑO: 2022

LUGAR	ESTACION				CLASIFICACION VEHICULAR EN PORCIENTO													COORDENADAS		
	KM	TE	SC	TDPA	M	A	B	C2	C3	T3S2	T3S3	T3S2R4	OTROS	A	B	C	K'	D	LATITUD	LONGITUD
T. C. Cuernavaca - Chilpancingo	0.00	3	0	1451	1.1	81.4	0.6	12.7	2.0	1.5	0.6	0.0	0.1	82.5	0.6	16.9	0.088	0.514	17.798564	-99.565069

GUERRERO

12 CARR: Milpillas - T. C. (Acapulco - Zihuatanejo)

CLAVE: 12012

RUTA: MEX-196

AÑO: 2022

LUGAR	ESTACION				CLASIFICACION VEHICULAR EN PORCIENTO													COORDENADAS		
	KM	TE	SC	TDPA	M	A	B	C2	C3	T3S2	T3S3	T3S2R4	OTROS	A	B	C	K'	D	LATITUD	LONGITUD
Los Morros	45.07	1	0	1103	2.3	78.9	0.9	13.5	2.0	1.5	0.6	0.1	0.2	81.2	0.9	17.9	0.085	0.517	17.697144	-99.801436
Atoyac de Álvarez	233.50	1	0	1599	26.1	68.5	0.4	4.0	0.4	0.2	0.2	0.1	0.1	94.6	0.4	5.0	0.085	0.570	17.217450	-100.425390
T. C. Acapulco - Zihuatanejo	237.00	1	1	5052	8.7	86.2	0.3	4.2	0.2	0.2	0.1	0.1	0.0	94.9	0.3	4.8	0.080	0.512	17.168502	-100.434646
T. C. Acapulco - Zihuatanejo	237.00	1	2	5292	9.0	85.5	0.5	4.2	0.5	0.1	0.1	0.1	0.0	94.5	0.5	5.0	0.071	0.512	17.168516	-100.434554

13 CARR: Ramal a Aeropuerto Zihuatanejo

CLAVE: 12423

RUTA: MEX-200

AÑO: 2022

LUGAR	ESTACION				CLASIFICACION VEHICULAR EN PORCIENTO													COORDENADAS		
	KM	TE	SC	TDPA	M	A	B	C2	C3	T3S2	T3S3	T3S2R4	OTROS	A	B	C	K'	D	LATITUD	LONGITUD
T. C. Acapulco - Zihuatanejo	0.00	3	0	4817	11.2	84.0	0.2	4.3	0.1	0.2	0.0	0.0	0.0	95.2	0.2	4.6	0.080	0.523	17.617829	-101.462994
Aeropuerto	2.00	0	0																	

14 CARR: Ramal a La Unión

CLAVE:

RUTA: MEX-200

AÑO: 2022

LUGAR	ESTACION				CLASIFICACION VEHICULAR EN PORCIENTO													COORDENADAS		
	KM	TE	SC	TDPA	M	A	B	C2	C3	T3S2	T3S3	T3S2R4	OTROS	A	B	C	K'	D	LATITUD	LONGITUD
T. C. Zihuatanejo - La Mira	0.00	3	0	1954	10.0	71.3	4.0	8.6	2.4	1.0	0.9	0.9	0.9	81.3	4.0	14.7	0.088	0.570	17.950146	-101.820294
La Unión	6.10	0	0																	

15 CARR: San Juan de Los Llanos - Ometepec

CLAVE: 12011

RUTA: MEX-200

AÑO: 2022

LUGAR	ESTACION				CLASIFICACION VEHICULAR EN PORCIENTO													COORDENADAS		
	KM	TE	SC	TDPA	M	A	B	C2	C3	T3S2	T3S3	T3S2R4	OTROS	A	B	C	K'	D	LATITUD	LONGITUD
T. C. Las Cruces - Pinotepa Nacional	0.00	3	0	6356	6.2	87.1	0.8	2.8	1.1	1.3	0.5	0.1	0.1	93.3	0.8	5.9	0.077	0.518	16.660537	-98.498176
Ometepec	15.94	1	1	4748	6.1	87.2	0.8	2.8	1.0	1.3	0.5	0.2	0.1	93.3	0.8	5.9	0.079	0.504	16.687550	-98.437483
Ometepec	15.94	1	2	4666	6.1	87.2	0.9	2.8	1.0	1.3	0.5	0.1	0.1	93.3	0.9	5.8	0.086	0.504	16.687602	-98.437546

16 CARR: Tierra Colorada - Cruz Grande

CLAVE: 12420

RUTA: MEX-198

AÑO: 2022

LUGAR	ESTACION				CLASIFICACION VEHICULAR EN PORCIENTO													COORDENADAS		
	KM	TE	SC	TDPA	M	A	B	C2	C3	T3S2	T3S3	T3S2R4	OTROS	A	B	C	K'	D	LATITUD	LONGITUD
Tierra Colorada	0.00	3	0	2378	7.8	85.2	1.4	4.3	0.6	0.4	0.3	0.0	0.0	93.0	1.4	5.6	0.080	0.504	17.143939	-99.529363
Tecoanapa	61.00	1	0	3261	6.2	84.2	1.3	5.0	2.0	0.5	0.6	0.1	0.1	90.4	1.3	8.3	0.078	0.503	16.985820	-99.265446
Ayutla de Los Libres	82.00	1	0	4981	5.5	85.0	1.4	5.9	1.8	0.3	0.1	0.0	0.0	90.5	1.4	8.1	0.082	0.504	16.978414	-99.112566
Ayutla de Los Libres	82.00	3	0	4366	5.4	85.7	1.3	5.5	1.8	0.2	0.1	0.0	0.0	91.1	1.3	7.6	0.071	0.504	16.948444	-99.103913

GUERRERO

16 CARR: Tierra Colorada - Cruz Grande

CLAVE: 12420

RUTA: MEX-198

AÑO: 2022

LUGAR	ESTACION				CLASIFICACION VEHICULAR EN PORCIENTO													COORDENADAS		
	KM	TE	SC	TDPA	M	A	B	C2	C3	T3S2	T3S3	T3S2R4	OTROS	A	B	C	K'	D	LATITUD	LONGITUD
Cruz Grande	113.80	1	0	2404	7.2	86.3	0.8	5.4	0.2	0.1	0.0	0.0	0.0	93.5	0.8	5.7	0.087	0.514	16.745668	-99.131848
T. C. Las Cruces - Pinotepa Nacional	114.80	0	0																	

17 CARR: Toluca - Cd. Altamirano

CLAVE: 00020

RUTA: MEX-134

AÑO: 2022

LUGAR	ESTACION				CLASIFICACION VEHICULAR EN PORCIENTO													COORDENADAS		
	KM	TE	SC	TDPA	M	A	B	C2	C3	T3S2	T3S3	T3S2R4	OTROS	A	B	C	K'	D	LATITUD	LONGITUD
T. C. Toluca - Axixintla	0.00	0	0																	
T. Izq. Capultitlán	1.78	3	1	19830	3.6	90.6	0.5	3.1	0.8	0.7	0.4	0.2	0.1	94.2	0.5	5.3	0.083	0.513	19.256641	-99.669145
T. Izq. Capultitlán	1.78	3	2	18794	4.1	89.8	0.5	3.3	0.9	0.7	0.4	0.2	0.1	93.9	0.5	5.6	0.088	0.513	19.256405	-99.669353
T. Der. Zinacatepec	10.21	3	1	13409	2.4	87.4	0.9	6.1	1.2	0.8	0.7	0.2	0.3	89.8	0.9	9.3	0.081	0.507	19.250619	-99.758661
T. Der. Zinacatepec	10.21	3	2	13044	2.4	86.9	1.2	6.2	1.2	0.9	0.7	0.2	0.3	89.3	1.2	9.5	0.080	0.507	19.250541	-99.758557
T. Izq. Sultepec	18.72	3	0	7095	1.2	85.1	2.2	6.5	1.3	2.1	0.9	0.4	0.3	86.3	2.2	11.5	0.099	0.502	19.202540	-99.827664
T. Der. Valle de Bravo	52.00	3	0	5481	2.4	85.4	2.0	5.4	1.5	1.6	1.1	0.4	0.2	87.8	2.0	10.2	0.091	0.514	19.140139	-99.924879
Temascaltepec	68.76	1	0	5125	1.1	85.9	2.3	5.5	1.9	1.5	1.3	0.4	0.1	87.0	2.3	10.7	0.091	0.500	19.048371	-100.043497
Temascaltepec	68.76	3	0	4322	2.3	84.6	2.3	6.4	1.3	1.6	1.2	0.2	0.1	86.9	2.3	10.8	0.086	0.516	19.041421	-100.045297
T. Izq. San Diego Cuentla	84.34	3	0	6780	2.7	85.5	2.0	5.8	1.8	1.1	0.8	0.1	0.2	88.2	2.0	9.8	0.101	0.507	18.969797	-100.073905
Tejupilco de Hidalgo	100.76	1	0	8399	2.6	85.9	1.7	6.2	2.0	0.8	0.5	0.1	0.2	88.5	1.7	9.8	0.089	0.508	18.921229	-100.145863
Tejupilco de Hidalgo	100.76	3	0	4775	4.6	84.2	1.5	5.9	1.7	1.1	0.7	0.1	0.2	88.8	1.5	9.7	0.074	0.509	18.900610	-100.168774
Cuadrilla de López	113.20	3	0	3353	4.8	84.4	1.1	4.8	1.4	1.8	1.2	0.4	0.1	89.2	1.1	9.7	0.071	0.507	18.868427	-100.228532
T. Izq. Bejucos	147.57	1	0	1754	11.5	75.9	2.3	5.1	1.4	2.3	1.4	0.1	0.0	87.4	2.3	10.3	0.088	0.509	18.784759	-100.421156
Lim. Edos. Term. Méx. Ppia. Gro.	148.00	0	0																	
Cutzamala	196.00	1	0	3731	11.7	75.5	1.2	6.3	1.5	1.9	1.5	0.2	0.2	87.2	1.2	11.6	0.099	0.502	18.479065	-100.582259
Lim. Edos. Term. Gro. Ppia. Mich.	201.00	0	0																	
Lim. Edos. Term. Mich. Ppia. Gro.	210.30	0	0																	
Cd. Altamirano	216.00	1	0	5245	13.5	77.4	1.0	4.1	1.1	1.7	1.0	0.1	0.1	90.9	1.0	8.1	0.096	0.500	18.383006	-100.650617

18 CARR: Zihuatanejo - La Mira

CLAVE: 00121

RUTA: MEX-200

AÑO: 2022

LUGAR	ESTACION				CLASIFICACION VEHICULAR EN PORCIENTO													COORDENADAS		
	KM	TE	SC	TDPA	M	A	B	C2	C3	T3S2	T3S3	T3S2R4	OTROS	A	B	C	K'	D	LATITUD	LONGITUD
Zihuatanejo	0.00	3	1	15795	6.5	87.4	0.5	4.7	0.4	0.3	0.2	0.0	0.0	93.9	0.5	5.6	0.081	0.500	17.659119	-101.560745
Zihuatanejo	0.00	3	2	15809	6.5	87.1	0.6	4.8	0.5	0.3	0.2	0.0	0.0	93.6	0.6	5.8	0.085	0.500	17.659027	-101.560785
T. Izq. Ixtapa (1er Acceso)	2.25	3	0	19521	8.6	84.5	1.1	2.8	0.6	1.2	0.7	0.3	0.2	93.1	1.1	5.8	0.082	0.528	17.660585	-101.574556
T. Izq 2do Acceso a Ixtapa Zihuatanejo	4.70	3	0	3130	2.8	71.8	1.7	19.6	1.0	1.3	1.1	0.3	0.4	74.6	1.7	23.7	0.075	0.501	17.671850	-101.572619

GUERRERO

18 CARR: Zihuatanejo - La Mira

CLAVE: 00121

RUTA: MEX-200

AÑO: 2022

LUGAR	ESTACION				CLASIFICACION VEHICULAR EN PORCIENTO													COORDENADAS		
	KM	TE	SC	TDPA	M	A	B	C2	C3	T3S2	T3S3	T3S2R4	OTROS	A	B	C	K'	D	LATITUD	LONGITUD
T. Izq. Ixtapa (2do Acceso)	8.00	3	0	7791	9.4	85.6	0.5	2.0	0.8	0.5	0.5	0.4	0.3	95.0	0.5	4.5	0.078	0.514	17.680405	-101.603921
T. Der. Cd. Altamirano	16.30	1	0	3110	15.1	78.9	0.9	2.6	2.1	0.2	0.1	0.1	0.0	94.0	0.9	5.1	0.076	0.525	17.726333	-101.602750
T. Der. Cd. Altamirano	16.30	3	0	3519	13.6	80.8	0.4	2.9	1.4	0.6	0.1	0.1	0.1	94.4	0.4	5.2	0.082	0.520	17.731986	-101.612772
T. Izq. Panitla (1er Acceso)	19.00	1	0	5549	2.8	89.1	2.2	2.9	0.9	1.0	0.5	0.3	0.3	91.9	2.2	5.9	0.097	0.518	17.735509	-101.613996
T. Izq. Panitla (2do Acceso)	22.50	1	0	4276	3.3	85.1	3.5	3.9	1.5	1.4	0.6	0.5	0.2	88.4	3.5	8.1	0.121	0.524	17.754371	-101.645470
T. Der. Buenavista	27.30	3	0	4992	4.1	83.8	2.8	4.1	1.3	1.7	1.2	0.8	0.2	87.9	2.8	9.3	0.091	0.501	17.783471	-101.680427
T. Der 1er Acceso a Lagunillas	28.00	3	0	4925	4.1	79.6	4.1	6.4	1.4	2.4	1.2	0.6	0.2	83.7	4.1	12.2	0.100	0.522	17.814579	-101.705235
T. Izq. Lagunillas	35.20	3	0	3961	5.4	80.7	4.3	4.4	1.9	1.7	1.1	0.2	0.3	86.1	4.3	9.6	0.093	0.502	17.839278	-101.717144
T. Der. La Unión	52.00	1	0	4033	4.6	84.2	2.9	3.8	1.8	1.4	0.9	0.2	0.2	88.8	2.9	8.3	0.101	0.524	17.934220	-101.827953
T. Der. La Unión	52.00	3	0	4273	3.9	83.7	3.1	4.0	2.0	1.5	1.1	0.4	0.3	87.6	3.1	9.3	0.097	0.506	17.941875	-101.835978
Joluta	60.70	3	0	3374	3.7	81.5	4.1	4.3	3.0	1.8	1.2	0.2	0.2	85.2	4.1	10.7	0.106	0.543	17.980757	-101.929472
X. C. Nueva Italia - Lázaro Cárdenas (Cuota) Este	69.00	3	0	1370	6.4	74.4	2.0	8.7	5.3	1.4	1.8	0.0	0.0	80.8	2.0	17.2	0.086	0.511	18.005760	-101.973386
X. C. Nueva Italia - Lázaro Cárdenas (Cuota) Oeste	95.80	1	0	6378	5.8	83.0	1.5	2.0	4.0	1.9	1.1	0.4	0.3	88.8	1.5	9.7	0.074	0.517	17.993499	-102.163209
Zacatula	97.00	1	0	3199	13.0	80.0	0.8	1.6	3.2	0.4	0.5	0.4	0.1	93.0	0.8	6.2	0.083	0.515	18.004855	-102.175132
Lim. Edos. Term. Gro. Ppia. Mich.	102.30	0	0																	
La Villita	103.80	3	0	2012	1.5	86.8	0.5	3.9	3.2	1.6	1.7	0.5	0.3	88.3	0.5	11.2	0.076	0.506	18.046083	-102.184233
Guacamayas	107.00	1	0	3150	14.0	80.2	0.4	4.1	0.5	0.2	0.3	0.2	0.1	94.2	0.4	5.4	0.070	0.504	18.029814	-102.200309
T. Izq. Lázaro Cárdenas	110.85	1	1	16235	11.8	83.9	0.5	1.8	1.0	0.4	0.2	0.2	0.2	95.7	0.5	3.8	0.066	0.502	18.004420	-102.220113
T. Izq. Lázaro Cárdenas	110.85	1	2	16130	11.7	84.2	0.5	1.5	1.0	0.4	0.2	0.2	0.3	95.9	0.5	3.6	0.075	0.502	18.004393	-102.219943
Buenos Aires	117.00	1	0	14017	5.5	85.6	1.9	3.6	1.5	0.8	0.4	0.3	0.4	91.1	1.9	7.0	0.074	0.506	18.010404	-102.265431
La Mira	123.60	1	0	12451	4.4	89.5	1.2	3.2	0.7	0.5	0.3	0.1	0.1	93.9	1.2	4.9	0.077	0.503	18.031485	-102.320651

19 CARR: Cuernavaca - Acapulco (Cuota)

CLAVE: 00045

RUTA: MEX-095D

AÑO: 2022

LUGAR	ESTACION				CLASIFICACION VEHICULAR EN PORCIENTO													COORDENADAS		
	KM	TE	SC	TDPA	M	A	B	C2	C3	T3S2	T3S3	T3S2R4	OTROS	A	B	C	K'	D	LATITUD	LONGITUD
Cuernavaca	0.00	3	1	58130	7.7	85.6	1.6	2.2	0.8	0.9	0.4	0.6	0.2	93.3	1.6	5.1	0.070	0.500	18.875425	-99.227271
Cuernavaca	0.00	3	2	58091	7.7	85.6	1.6	2.2	0.8	0.9	0.4	0.6	0.2	93.3	1.6	5.1	0.064	0.500	18.875389	-99.227157
T. Izq. Burgos	3.35	1	1	61661	6.1	88.9	1.1	1.9	0.3	0.8	0.4	0.3	0.2	95.0	1.1	3.9	0.072	0.514	18.862879	-99.221130
T. Izq. Burgos	3.35	1	2	65886	5.5	89.5	1.0	2.0	0.3	0.9	0.4	0.2	0.2	95.0	1.0	4.0	0.071	0.514	18.862997	-99.221045
T. Izq. Burgos	3.35	3	1	48479	4.6	87.6	1.8	3.2	0.9	1.0	0.4	0.4	0.1	92.2	1.8	6.0	0.085	0.512	18.857204	-99.220829
T. Izq. Burgos	3.35	3	2	45942	4.6	87.6	1.8	3.2	0.9	1.0	0.4	0.4	0.1	92.2	1.8	6.0	0.096	0.512	18.857177	-99.220743
T. Der. Acatlipa	4.70	1	1	39525	6.9	85.0	1.4	3.3	1.0	1.5	0.5	0.3	0.1	91.9	1.4	6.7	0.079	0.517	18.849767	-99.219908
T. Der. Acatlipa	4.70	1	2	36730	6.9	85.0	1.4	3.3	1.0	1.5	0.5	0.3	0.1	91.9	1.4	6.7	0.077	0.517	18.849894	-99.219860
T. Der. Acatlipa	4.70	3	1	42937	4.8	86.7	1.9	3.1	1.1	1.1	0.5	0.5	0.3	91.5	1.9	6.6	0.069	0.529	18.844807	-99.218430

GUERRERO

19 CARR: Cuernavaca - Acapulco (Cuota)

CLAVE: 00045

RUTA: MEX-095D

AÑO: 2022

LUGAR	ESTACION				CLASIFICACION VEHICULAR EN PORCIENTO													COORDENADAS		
	KM	TE	SC	TDPA	M	A	B	C2	C3	T3S2	T3S3	T3S2R4	OTROS	A	B	C	K'	D	LATITUD	LONGITUD
T. Der. Acatlipa	4.70	3	2	37828	4.3	87.9	1.9	2.8	0.8	1.0	0.5	0.5	0.3	92.2	1.9	5.9	0.072	0.529	18.844825	-99.218345
T. Izq. Miguel Hidalgo	5.85	3	1	35985	5.0	85.3	2.7	2.4	1.2	1.6	0.8	0.6	0.4	90.3	2.7	7.0	0.075	0.519	18.830754	-99.217871
T. Izq. Miguel Hidalgo	5.85	3	2	33202	5.5	85.4	2.7	2.2	1.1	1.3	0.9	0.6	0.3	90.9	2.7	6.4	0.088	0.519	18.830492	-99.217813
T. Der. Aeropuerto Cuernavaca	9.83	1	1	34579	4.9	85.8	2.6	2.3	1.2	1.4	0.7	0.8	0.3	90.7	2.6	6.7	0.067	0.527	18.811791	-99.219612
T. Der. Aeropuerto Cuernavaca	9.83	1	2	30817	5.3	85.5	2.7	2.3	1.2	1.3	0.6	0.8	0.3	90.8	2.7	6.5	0.073	0.527	18.811800	-99.219526
T. Der. Aeropuerto Cuernavaca	9.83	3	1	18975	3.7	77.8	5.6	7.2	2.0	1.7	1.0	0.8	0.2	81.5	5.6	12.9	0.069	0.507	18.789339	-99.221659
T. Der. Aeropuerto Cuernavaca	9.83	3	2	19538	3.7	77.7	5.6	7.2	2.0	1.7	1.0	0.9	0.2	81.4	5.6	13.0	0.074	0.507	18.789330	-99.221583
T. Izq. Club de Golf Santa Fe	17.48	1	1	17097	3.1	83.7	3.5	5.2	1.3	1.7	1.0	0.4	0.1	86.8	3.5	9.7	0.072	0.501	18.748819	-99.245164
T. Izq. Club de Golf Santa Fe	17.48	1	2	17159	3.2	84.1	3.5	5.4	0.9	1.5	0.9	0.4	0.1	87.3	3.5	9.2	0.075	0.501	18.748774	-99.245116
Plaza de Cobro Alpuyeca	19.80	1	1	13082	1.2	81.4	5.4	7.1	1.4	1.7	0.8	0.8	0.2	82.6	5.4	12.0	0.078	0.502	18.724498	-99.258627
Plaza de Cobro Alpuyeca	19.80	1	2	12976	1.1	80.3	6.0	6.7	1.7	2.1	0.8	0.9	0.4	81.4	6.0	12.6	0.083	0.502	18.724345	-99.258617
Plaza de Cobro Alpuyeca	19.80	3	1	9883	0.9	82.2	5.3	6.1	1.5	2.2	0.9	0.6	0.3	83.1	5.3	11.6	0.088	0.504	18.710636	-99.270225
Plaza de Cobro Alpuyeca	19.80	3	2	10052	1.6	81.4	5.0	6.2	1.5	2.4	0.7	0.9	0.3	83.0	5.0	12.0	0.113	0.504	18.710582	-99.270101
Plaza de Cobro Ing. Francisco Velasco Durán	23.10	2	1	8075	1.4	84.0	4.8	2.7	2.7	2.2	0.8	1.0	0.4	85.4	4.8	9.8	0.111	0.500	18.698498	-99.278028
Plaza de Cobro Ing. Francisco Velasco Durán	23.10	2	2	8075	1.4	84.0	4.8	2.7	2.7	2.2	0.8	1.0	0.4	85.4	4.8	9.8	0.111	0.500	18.698498	-99.278028
T. C. Puente de Ixtla - Iguala (Cuota)	28.58	3	1	7124	2.4	81.5	5.2	4.4	1.5	2.7	0.9	1.1	0.3	83.9	5.2	10.9	0.079	0.532	18.646158	-99.295381
T. C. Puente de Ixtla - Iguala (Cuota)	28.58	3	2	8087	2.1	82.5	4.7	4.3	1.4	2.7	1.1	0.8	0.4	84.6	4.7	10.7	0.146	0.532	18.646148	-99.295494
T. C. Xoxocotla - Tilzapotla	37.50	3	1	5360	0.9	82.6	4.5	5.2	1.4	2.5	1.1	1.1	0.7	83.5	4.5	12.0	0.094	0.508	18.586294	-99.255896
T. C. Xoxocotla - Tilzapotla	37.50	3	2	5529	1.4	81.6	4.5	5.2	1.4	3.4	0.8	1.1	0.6	83.0	4.5	12.5	0.098	0.508	18.586366	-99.255849
T. C. Autopista Siglo XXI (Jaltetelco - Xicatlacotla)	41.00	3	1	5397	1.5	84.2	3.5	4.5	1.4	2.5	1.0	1.0	0.4	85.7	3.5	10.8	0.098	0.510	18.567824	-99.224140
T. C. Autopista Siglo XXI (Jaltetelco - Xicatlacotla)	41.00	3	2	5622	1.7	82.8	4.0	4.8	1.2	2.7	1.2	1.1	0.5	84.5	4.0	11.5	0.100	0.510	18.567897	-99.224112
Lim. Edos. Term. Mor. Ppia. Gro.	53.30	0	0																	
Plaza de Cobro Paso Morelos	82.94	1	1	4815	1.2	80.1	6.6	5.4	1.3	3.0	1.0	1.1	0.3	81.3	6.6	12.1	0.092	0.527	18.238213	-99.213934
Plaza de Cobro Paso Morelos	82.94	1	2	4316	1.1	80.6	6.2	5.3	1.4	2.9	1.0	1.2	0.3	81.7	6.2	12.1	0.162	0.527	18.238104	-99.213867
Plaza de Cobro Paso Morelos	82.94	2	1	4720	0.9	83.3	5.3	2.5	2.2	3.0	0.6	1.5	0.7	84.2	5.3	10.5	0.111	0.500	18.231462	-99.215446
Plaza de Cobro Paso Morelos	82.94	2	2	4720	0.9	83.3	5.3	2.5	2.2	3.0	0.6	1.5	0.7	84.2	5.3	10.5	0.111	0.500	18.231462	-99.215446
T. C. Cuernavaca - Chilpancingo	171.90	1	1	4442	1.0	79.7	6.3	4.1	1.4	5.2	0.8	1.2	0.3	80.7	6.3	13.0	0.091	0.519	17.607024	-99.518107
T. C. Cuernavaca - Chilpancingo	171.90	1	2	4788	1.2	80.0	6.2	3.9	1.3	5.2	0.8	1.1	0.3	81.2	6.2	12.6	0.169	0.519	17.607040	-99.518022
Plaza de Cobro Palo Blanco	193.90	1	1	6407	1.4	85.9	2.8	3.2	0.6	3.1	1.9	0.6	0.5	87.3	2.8	9.9	0.146	0.502	17.426559	-99.470274
Plaza de Cobro Palo Blanco	193.90	1	2	6359	1.4	80.2	5.1	6.4	1.1	3.1	1.3	0.7	0.7	81.6	5.1	13.3	0.170	0.502	17.426553	-99.470095
Plaza de Cobro Palo Blanco	193.90	2	1	5670	0.9	86.7	2.7	2.1	2.6	2.7	0.8	1.1	0.4	87.6	2.7	9.7	0.097	0.500	17.423983	-99.466911
Plaza de Cobro Palo Blanco	193.90	2	2	5670	0.9	86.7	2.7	2.1	2.6	2.7	0.8	1.1	0.4	87.6	2.7	9.7	0.097	0.500	17.423983	-99.466911
X. C. Chilpancingo - Acapulco (Tierra Colorada)	226.20	1	1	5832	1.1	77.8	7.7	5.4	2.0	3.4	1.1	1.3	0.2	78.9	7.7	13.4	0.143	0.500	17.181072	-99.552068
X. C. Chilpancingo - Acapulco (Tierra Colorada)	226.20	1	2	5833	0.9	79.1	7.7	5.2	1.7	2.8	1.0	1.2	0.4	80.0	7.7	12.3	0.186	0.500	17.181082	-99.551956
Plaza de Cobro La Venta	269.95	1	1	5901	0.9	81.7	5.8	4.5	1.7	2.7	1.1	1.2	0.4	82.6	5.8	11.6	0.138	0.530	16.929396	-99.796637

GUERRERO

19 CARR: Cuernavaca - Acapulco (Cuota)

CLAVE: 00045

RUTA: MEX-095D

AÑO: 2022

LUGAR	ESTACION				CLASIFICACION VEHICULAR EN PORCIENTO														COORDENADAS	
	KM	TE	SC	TDPA	M	A	B	C2	C3	T3S2	T3S3	T3S2R4	OTROS	A	B	C	K'	D	LATITUD	LONGITUD
Plaza de Cobro La Venta	269.95	1	2	5235	1.2	77.3	6.5	6.2	2.3	3.2	1.3	1.4	0.6	78.5	6.5	15.0	0.151	0.530	16.929317	-99.796633
Plaza de Cobro La Venta	269.95	2	1	5541	0.9	83.2	5.5	2.3	2.7	2.9	0.9	1.2	0.4	84.1	5.5	10.4	0.097	0.500	16.928232	-99.801857
Plaza de Cobro La Venta	269.95	2	2	5541	0.9	83.2	5.5	2.3	2.7	2.9	0.9	1.2	0.4	84.1	5.5	10.4	0.097	0.500	16.928232	-99.801857
T. C. Chilpancingo - Acapulco (Ent. La Venta)	271.50	1	1	5242	1.5	78.8	6.1	5.3	2.0	3.5	1.3	1.1	0.4	80.3	6.1	13.6	0.085	0.523	16.923219	-99.811274
T. C. Chilpancingo - Acapulco (Ent. La Venta)	271.50	1	2	5743	1.7	78.1	6.4	5.6	1.9	3.5	1.1	1.3	0.4	79.8	6.4	13.8	0.088	0.523	16.923153	-99.811234

20 CARR: Libramiento de Técpan (Cuota)

CLAVE: 00073

RUTA: MEX-200D

AÑO: 2022

LUGAR	ESTACION				CLASIFICACION VEHICULAR EN PORCIENTO														COORDENADAS	
	KM	TE	SC	TDPA	M	A	B	C2	C3	T3S2	T3S3	T3S2R4	OTROS	A	B	C	K'	D	LATITUD	LONGITUD
T. C. Acapulco - Zihuatanejo (Oriente)	0.00	3	0	2154	11.5	72.1	2.7	6.3	2.5	2.7	2.0	0.2	0.0	83.6	2.7	13.7	0.084	0.520	17.203832	-100.646725
Plaza de Cobro Técpan	2.60	2	0	1894	3.0	82.4	0.6	4.0	4.7	2.5	1.9	0.1	0.8	85.4	0.6	14.0	0.102	0.500	17.197071	-100.626751
T. C. Acapulco - Zihuatanejo (Poniente)	4.40	0	0																	

21 CARR: Nueva Italia - Lázaro Cárdenas (Cuota)

CLAVE: 00032

RUTA: MEX-037D

AÑO: 2022

LUGAR	ESTACION				CLASIFICACION VEHICULAR EN PORCIENTO														COORDENADAS	
	KM	TE	SC	TDPA	M	A	B	C2	C3	T3S2	T3S3	T3S2R4	OTROS	A	B	C	K'	D	LATITUD	LONGITUD
T. Der. Apatzingán	153.90	3	0	7404	8.2	62.9	4.2	7.5	2.8	5.0	3.2	5.6	0.6	71.1	4.2	24.7	0.075	0.507	18.981692	-102.088441
Plaza de Cobro Las Cañas	211.40	2	0	5184	0.6	62.7	3.5	2.3	3.1	8.1	4.1	11.6	4.0	63.3	3.5	33.2	0.078	0.500	18.554183	-101.970404
Lim. Edos. Term. Mich. Ppia. Gro.	252.25	0	0																	
Plaza de Cobro Feliciano	282.00	2	0	5496	0.6	64.1	3.3	2.4	3.4	7.6	3.9	11.0	3.7	64.7	3.3	32.0	0.078	0.500	18.004090	-101.961847
X. C. Zihuatanejo - La Mira Este	282.37	1	0	5380	7.1	62.8	3.8	10.3	2.5	3.7	3.1	6.1	0.6	69.9	3.8	26.3	0.088	0.510	18.015037	-101.958090
X. C. Zihuatanejo - La Mira Este	282.37	3	0	4484	7.2	62.6	5.3	7.2	3.2	4.4	3.6	5.7	0.8	69.8	5.3	24.9	0.076	0.501	17.992024	-101.969606
X. C. Zihuatanejo - La Mira Oeste	306.47	3	1	7388	5.2	78.5	2.0	3.9	2.7	3.0	2.0	1.8	0.9	83.7	2.0	14.3	0.070	0.516	17.995559	-102.172248
X. C. Zihuatanejo - La Mira Oeste	306.47	3	2	6921	5.1	80.3	1.7	3.9	2.5	2.5	1.8	1.4	0.8	85.4	1.7	12.9	0.097	0.516	17.995447	-102.172122
Lim. Edos. Term. Gro. Ppia. Mich.	307.00	0	0																	
T. Der. Acceso 8 Puerto Lázaro Cárdenas	309.60	3	1	7777	5.7	80.0	2.1	2.3	2.2	2.7	2.7	1.4	0.9	85.7	2.1	12.2	0.084	0.527	17.976548	-102.188026
T. Der. Acceso 8 Puerto Lázaro Cárdenas	309.60	3	2	6976	5.6	81.3	1.8	2.0	1.9	2.7	2.4	1.4	0.9	86.9	1.8	11.3	0.078	0.527	17.976550	-102.187703
Lázaro Cárdenas	311.30	0	0																	

GUERRERO

22 CARR: Puente de Ixtla - Iguala (Cuota)

CLAVE: 00043

RUTA: MEX-091D

AÑO: 2022

LUGAR	ESTACION				CLASIFICACION VEHICULAR EN PORCIENTO													COORDENADAS		
	KM	TE	SC	TDPA	M	A	B	C2	C3	T3S2	T3S3	T3S2R4	OTROS	A	B	C	K'	D	LATITUD	LONGITUD
T. C. Cuernavaca - Acapulco (Cuota)	0.00	0	0																	
T. Izq. Puente de Ixtla	2.00	3	0	8104	3.3	82.5	3.2	5.4	1.9	1.5	0.7	1.1	0.4	85.8	3.2	11.0	0.080	0.515	18.625169	-99.329776
T. Der. Amacuzac	9.63	3	0	9196	3.1	81.0	4.7	3.3	2.4	1.9	2.1	1.0	0.5	84.1	4.7	11.2	0.076	0.504	18.591325	-99.376466
Lim. Edos. Term. Mor. Ppia. Gro.	18.20	0	0																	
T. Izq. Buenavista	33.58	3	0	5450	3.2	75.5	5.4	9.2	2.0	2.3	1.7	0.4	0.3	78.7	5.4	15.9	0.070	0.502	18.457583	-99.434599
Plaza de Cobro Iguala	59.14	2	0	4501	0.9	75.3	4.0	5.1	6.5	3.1	2.8	1.2	1.1	76.2	4.0	19.8	0.076	0.500	18.336191	-99.508296
T. Der. Iguala	59.50	1	0	5658	3.3	75.7	5.2	9.3	1.7	2.2	1.8	0.5	0.3	79.0	5.2	15.8	0.075	0.521	18.347963	-99.513468
T. C. Cuernavaca - Chilpancingo	62.80	0	0																	

23 CARR: Rancho Viejo - Taxco (Cuota)

CLAVE: 12010

RUTA: MEX-092D

AÑO: 2022

LUGAR	ESTACION				CLASIFICACION VEHICULAR EN PORCIENTO													COORDENADAS		
	KM	TE	SC	TDPA	M	A	B	C2	C3	T3S2	T3S3	T3S2R4	OTROS	A	B	C	K'	D	LATITUD	LONGITUD
X. C. Cuernavaca - Chilpancingo	0.00	0	0																	
Plaza de Cobro Taxco	0.62	2	0	3205	6.2	88.1	2.5	2.4	0.5	0.2	0.1	0.0	0.0	94.3	2.5	3.2	0.111	0.500	18.588609	-99.559993
T. C. Cuernavaca - Chilpancingo	8.10	1	0	3721	10.1	81.9	2.1	3.2	0.6	0.9	0.4	0.5	0.3	92.0	2.1	5.9	0.106	0.517	18.569439	-99.589969

24 CARR: Zacapalco - Rancho Viejo (Cuota)

CLAVE: 12010

RUTA: MEX-092D

AÑO: 2022

LUGAR	ESTACION				CLASIFICACION VEHICULAR EN PORCIENTO													COORDENADAS		
	KM	TE	SC	TDPA	M	A	B	C2	C3	T3S2	T3S3	T3S2R4	OTROS	A	B	C	K'	D	LATITUD	LONGITUD
T. C. Puente de Ixtla - Iguala (Cuota)	0.00	0	0																	
Plaza de Cobro Zacapalco	0.50	2	0	1894	3.8	88.9	3.1	2.7	0.9	0.2	0.2	0.0	0.2	92.7	3.1	4.2	0.131	0.500	18.537999	-99.447424
X. C. Cuernavaca - Chilpancingo	17.20	1	0	2322	2.7	85.8	3.5	7.4	0.3	0.1	0.1	0.0	0.1	88.5	3.5	8.0	0.113	0.547	18.585402	-99.547299

25 CARR: Acapulco - Aeropuerto Acapulco

CLAVE: 12292

RUTA: GRO

AÑO: 2022

LUGAR	ESTACION				CLASIFICACION VEHICULAR EN PORCIENTO													COORDENADAS		
	KM	TE	SC	TDPA	M	A	B	C2	C3	T3S2	T3S3	T3S2R4	OTROS	A	B	C	K'	D	LATITUD	LONGITUD
Acapulco	0.00	0	0																	
Puerto Marqués	8.70	1	1	18678	7.5	81.0	1.7	7.2	0.7	1.1	0.4	0.2	0.2	88.5	1.7	9.8	0.078	0.523	16.807125	-99.833543
Puerto Marqués	8.70	1	2	20493	6.1	84.2	1.4	6.0	0.5	1.2	0.3	0.1	0.2	90.3	1.4	8.3	0.077	0.523	16.807297	-99.833683
Puerto Marqués	8.70	3	1	28903	3.5	91.8	0.2	2.7	0.4	0.7	0.5	0.1	0.1	95.3	0.2	4.5	0.065	0.520	16.800755	-99.819983
Puerto Marqués	8.70	3	2	26693	3.5	91.7	0.2	2.7	0.4	0.7	0.6	0.1	0.1	95.2	0.2	4.6	0.062	0.520	16.800845	-99.819933
T. Der. Los Amates	14.90	3	1	3594	2.5	91.9	0.3	4.4	0.3	0.1	0.1	0.2	0.2	94.4	0.3	5.3	0.088	0.515	16.767347	-99.766774

GUERRERO

25 CARR: Acapulco - Aeropuerto Acapulco

CLAVE: 12292

RUTA: GRO

AÑO: 2022

LUGAR	ESTACION				CLASIFICACION VEHICULAR EN PORCIENTO														COORDENADAS	
	KM	TE	SC	TDPA	M	A	B	C2	C3	T3S2	T3S3	T3S2R4	OTROS	A	B	C	K'	D	LATITUD	LONGITUD
T. Der. Los Amates	14.90	3	2	3810	2.9	92.7	0.2	3.3	0.2	0.3	0.2	0.1	0.1	95.6	0.2	4.2	0.077	0.515	16.767443	-99.766699
Aeropuerto	16.20	0	0																	

26 CARR: Ent. Potrero - Lomas de Chapultepec

CLAVE: 12293

RUTA: GRO

AÑO: 2022

LUGAR	ESTACION				CLASIFICACION VEHICULAR EN PORCIENTO														COORDENADAS	
	KM	TE	SC	TDPA	M	A	B	C2	C3	T3S2	T3S3	T3S2R4	OTROS	A	B	C	K'	D	LATITUD	LONGITUD
T. C. Acapulco - Aeropuerto Acapulco	0.00	3	1	6709	3.4	90.3	0.7	3.8	1.1	0.5	0.2	0.0	0.0	93.7	0.7	5.6	0.102	0.529	16.766541	-99.776676
T. C. Acapulco - Aeropuerto Acapulco	0.00	3	2	7550	3.9	90.3	0.4	3.0	1.5	0.6	0.3	0.0	0.0	94.2	0.4	5.4	0.109	0.529	16.766486	-99.776589
T. C. Las Cruces - Pinotepa Nacional	29.00	0	0																	

27 CARR: Las Petaquillas - Quechultenango

CLAVE:

RUTA: GRO

AÑO: 2022

LUGAR	ESTACION				CLASIFICACION VEHICULAR EN PORCIENTO														COORDENADAS	
	KM	TE	SC	TDPA	M	A	B	C2	C3	T3S2	T3S3	T3S2R4	OTROS	A	B	C	K'	D	LATITUD	LONGITUD
Las Petaquillas	0.00	3	0	4407	8.4	84.4	0.6	5.1	0.9	0.3	0.2	0.1	0.0	92.8	0.6	6.6	0.071	0.505	17.482880	-99.426952
Quechultenango	26.60	0	0																	

28 CARR: Pie de La Cuesta - Barra de Coyuca

CLAVE: 12427

RUTA: GRO

AÑO: 2022

LUGAR	ESTACION				CLASIFICACION VEHICULAR EN PORCIENTO														COORDENADAS	
	KM	TE	SC	TDPA	M	A	B	C2	C3	T3S2	T3S3	T3S2R4	OTROS	A	B	C	K'	D	LATITUD	LONGITUD
T. C. Acapulco - Zihuatanejo	0.00	3	0	6792	12.8	83.1	0.3	2.8	0.3	0.3	0.3	0.1	0.0	95.9	0.3	3.8	0.087	0.531	16.903709	-99.975933
Barra de Coyuca	16.50	1	1	697	14.5	79.7	0.3	5.3	0.1	0.1	0.0	0.0	0.0	94.2	0.3	5.5	0.116	0.510	16.944854	-100.088031
Barra de Coyuca	16.50	1	2	725	11.3	83.5	0.5	4.5	0.1	0.1	0.0	0.0	0.0	94.8	0.5	4.7	0.083	0.510	16.944767	-100.088050

29 CARR: Ramal a Cocula

CLAVE: 12082

RUTA: GRO

AÑO: 2022

LUGAR	ESTACION				CLASIFICACION VEHICULAR EN PORCIENTO														COORDENADAS	
	KM	TE	SC	TDPA	M	A	B	C2	C3	T3S2	T3S3	T3S2R4	OTROS	A	B	C	K'	D	LATITUD	LONGITUD
T. C. Iguala - Ciudad Altamirano	0.00	3	0	4692	12.8	80.2	0.4	5.4	0.5	0.3	0.1	0.1	0.2	93.0	0.4	6.6	0.088	0.502	18.317625	-99.605149
Cocula	13.00	0	0																	

GUERRERO

30 CARR: T. C. (Iguala - Chilpancingo) - Atenango del Río

CLAVE: 12001

RUTA: GRO-001

AÑO: 2022

LUGAR	ESTACION				CLASIFICACION VEHICULAR EN PORCIENTO										COORDENADAS					
	KM	TE	SC	TDPA	M	A	B	C2	C3	T3S2	T3S3	T3S2R4	OTROS	A	B	C	K'	D	LATITUD	LONGITUD
T. C. Cuernavaca - Chilpancingo	0.00	3	0	7104	10.3	82.2	0.6	5.2	0.6	0.6	0.2	0.1	0.2	92.5	0.6	6.9	0.086	0.514	18.290377	-99.504745
T. Der. Pololcingo	11.20	1	0	3912	10.0	83.4	0.5	5.0	0.4	0.3	0.1	0.1	0.2	93.4	0.5	6.1	0.079	0.522	18.304597	-99.425567
T. Der. Pololcingo	11.20	3	0	3735	9.1	83.0	0.6	6.1	0.4	0.3	0.2	0.1	0.2	92.1	0.6	7.3	0.075	0.502	18.306570	-99.420604
Huitzucu	22.00	3	0	2738	9.1	80.8	0.8	8.1	0.5	0.3	0.2	0.1	0.1	89.9	0.8	9.3	0.075	0.508	18.295664	-99.315588
Atenango del Río	62.00	1	0	1644	9.3	80.8	0.4	8.0	0.4	0.7	0.1	0.0	0.3	90.1	0.4	9.5	0.060	0.501	18.121626	-99.119586

31 CARR: Taxco - Ixcateopan

CLAVE: 12083

RUTA: GRO

AÑO: 2022

LUGAR	ESTACION				CLASIFICACION VEHICULAR EN PORCIENTO										COORDENADAS					
	KM	TE	SC	TDPA	M	A	B	C2	C3	T3S2	T3S3	T3S2R4	OTROS	A	B	C	K'	D	LATITUD	LONGITUD
Taxco	0.00	3	0	3571	13.9	81.2	0.0	1.4	0.3	2.7	0.4	0.1	0.0	95.1	0.0	4.9	0.075	0.522	18.552366	-99.618527
Ixcateopan	36.00	1	0	406	15.4	79.7	0.2	3.2	1.0	0.5	0.0	0.0	0.0	95.1	0.2	4.7	0.086	0.515	18.504752	-99.783283

32 CARR: Teloloapan - Apaxtla de Castrejón

CLAVE: 12081

RUTA: GRO

AÑO: 2022

LUGAR	ESTACION				CLASIFICACION VEHICULAR EN PORCIENTO										COORDENADAS					
	KM	TE	SC	TDPA	M	A	B	C2	C3	T3S2	T3S3	T3S2R4	OTROS	A	B	C	K'	D	LATITUD	LONGITUD
T. C. Iguala - Ciudad Altamirano	0.00	3	0	6746	20.4	75.6	1.0	1.4	0.7	0.2	0.5	0.2	0.0	96.0	1.0	3.0	0.077	0.529	18.353514	-99.851775
Apaxtla de Castrejón	34.00	0	0																	

33 CARR: Tlapa de Comonfort - Marquelia

CLAVE:

RUTA: GRO

AÑO: 2022

LUGAR	ESTACION				CLASIFICACION VEHICULAR EN PORCIENTO										COORDENADAS					
	KM	TE	SC	TDPA	M	A	B	C2	C3	T3S2	T3S3	T3S2R4	OTROS	A	B	C	K'	D	LATITUD	LONGITUD
Tlapa de Comonfort	0.00	3	0	3617	5.1	87.9	0.3	5.7	0.4	0.2	0.2	0.1	0.1	93.0	0.3	6.7	0.087	0.500	17.525996	-98.598885
Marquelia	163.00	1	0	3582	21.6	74.0	0.4	3.9	0.1	0.0	0.0	0.0	0.0	95.6	0.4	4.0	0.087	0.505	16.589598	-98.817129

34 CARR: Puerto Marqués - La Venta (Cuota)

CLAVE: 00043

RUTA: GRO-D

AÑO: 2022

LUGAR	ESTACION				CLASIFICACION VEHICULAR EN PORCIENTO										COORDENADAS					
	KM	TE	SC	TDPA	M	A	B	C2	C3	T3S2	T3S3	T3S2R4	OTROS	A	B	C	K'	D	LATITUD	LONGITUD
Puerto Marqués	0.00	0	0																	
X. C. Las Cruces - Pinotepa Nacional	6.33	1	1	2572	7.1	81.1	1.2	6.1	1.9	1.1	0.6	0.8	0.1	88.2	1.2	10.6	0.105	0.515	16.821238	-99.766470
X. C. Las Cruces - Pinotepa Nacional	6.33	1	2	2726	6.8	81.6	1.3	5.7	1.6	1.3	0.6	0.9	0.2	88.4	1.3	10.3	0.099	0.515	16.821515	-99.766567
X. C. Las Cruces - Pinotepa Nacional	6.33	3	1	2462	1.5	87.0	0.8	3.3	2.2	3.1	1.1	0.5	0.5	88.5	0.8	10.7	0.110	0.536	16.834485	-99.758630

GUERRERO

34 CARR: Puerto Marqués - La Venta (Cuota)

CLAVE: 00043

RUTA: GRO-D

AÑO: 2022

LUGAR	ESTACION				CLASIFICACION VEHICULAR EN PORCIENTO													COORDENADAS		
	KM	TE	SC	TDPA	M	A	B	C2	C3	T3S2	T3S3	T3S2R4	OTROS	A	B	C	K'	D	LATITUD	LONGITUD
X. C. Las Cruces - Pinotepa Nacional	6.33	3	2	2846	1.2	88.3	0.6	3.2	2.1	2.8	0.9	0.5	0.4	89.5	0.6	9.9	0.101	0.536	16.836305	-99.758594
La Venta	20.80	0	0																	

35 CARR: Toluca - Axixintla

CLAVE: 00122

RUTA: EM-MEX-055

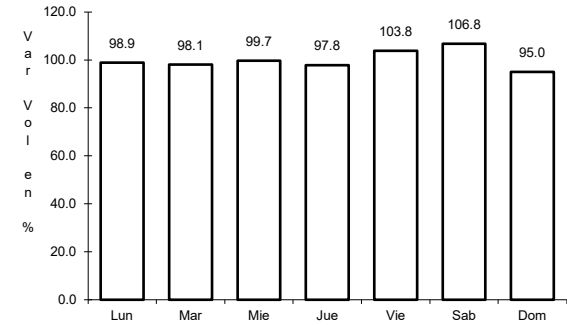
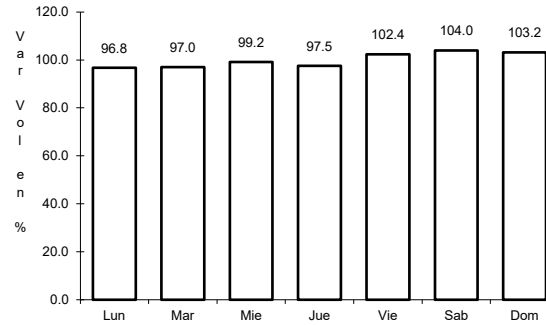
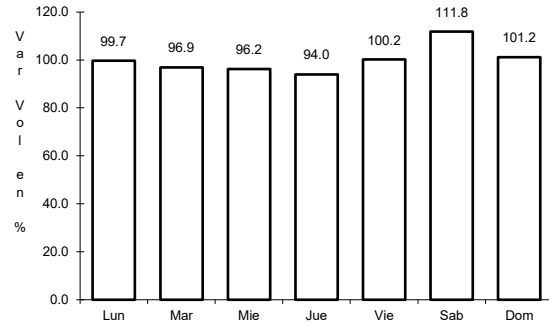
AÑO: 2022

LUGAR	ESTACION				CLASIFICACION VEHICULAR EN PORCIENTO													COORDENADAS		
	KM	TE	SC	TDPA	M	A	B	C2	C3	T3S2	T3S3	T3S2R4	OTROS	A	B	C	K'	D	LATITUD	LONGITUD
Toluca	0.00	0	0																	
T. Izq. Metepec	4.74	1	1	58329	0.6	91.2	0.3	3.7	1.1	1.5	1.3	0.2	0.1	91.8	0.3	7.9	0.075	0.514	19.242550	-99.601934
T. Izq. Metepec	4.74	1	2	54818	0.6	91.2	0.3	3.7	1.1	1.5	1.3	0.2	0.1	91.8	0.3	7.9	0.077	0.514	19.244161	-99.604052
Mexicalcingo	8.80	1	1	66643	0.6	90.7	0.3	4.1	1.1	1.6	1.3	0.2	0.1	91.3	0.3	8.4	0.073	0.508	19.223455	-99.593521
Mexicalcingo	8.80	1	2	64176	0.6	90.8	0.3	4.1	1.1	1.6	1.2	0.2	0.1	91.4	0.3	8.3	0.075	0.508	19.223492	-99.593359
Mexicalcingo	8.80	3	1	44123	1.2	90.4	0.4	4.2	1.1	1.4	1.0	0.2	0.1	91.6	0.4	8.0	0.077	0.517	19.199626	-99.584808
Mexicalcingo	8.80	3	2	47671	1.2	90.4	0.4	4.2	1.1	1.4	1.0	0.2	0.1	91.6	0.4	8.0	0.070	0.517	19.199671	-99.584579
T. Der. Calimaya	12.70	3	1	32286	1.2	88.4	0.5	6.4	1.2	1.1	0.9	0.2	0.1	89.6	0.5	9.9	0.088	0.501	19.180950	-99.577817
T. Der. Calimaya	12.70	3	2	32105	1.2	88.5	0.5	6.3	1.2	1.1	0.9	0.2	0.1	89.7	0.5	9.8	0.080	0.501	19.180950	-99.577665
Santa María Rayón	17.60	3	1	25509	1.3	88.5	0.5	6.2	1.2	1.0	1.0	0.2	0.1	89.8	0.5	9.7	0.076	0.505	19.147380	-99.585346
Santa María Rayón	17.60	3	2	25017	1.3	88.4	0.5	6.2	1.2	1.1	1.0	0.2	0.1	89.7	0.5	9.8	0.072	0.505	19.147254	-99.585269
Tenango de Arista	23.00	1	1	19415	3.3	83.6	0.9	6.9	1.3	1.9	1.6	0.3	0.2	86.9	0.9	12.2	0.078	0.505	19.117081	-99.590335
Tenango de Arista	23.00	1	2	19773	3.3	83.6	0.9	6.9	1.3	1.9	1.6	0.3	0.2	86.9	0.9	12.2	0.072	0.505	19.117262	-99.590174
San Bartolomé Atlatlahuaca	28.12	1	0	16950	1.0	87.6	0.8	4.2	0.7	3.8	1.2	0.2	0.5	88.6	0.8	10.6	0.064	0.517	19.077633	-99.598788
San Bartolomé Atlatlahuaca	28.12	3	0	12514	1.9	88.4	0.9	5.4	0.7	0.8	1.0	0.2	0.7	90.3	0.9	8.8	0.078	0.506	19.055765	-99.601038
T. Izq. Joquicingo de León Guzmán	35.70	1	0	16283	2.7	88.6	1.0	5.1	0.6	0.7	0.8	0.1	0.4	91.3	1.0	7.7	0.067	0.506	19.029517	-99.564910
T. Izq. Joquicingo de León Guzmán	35.70	3	0	15424	2.3	89.6	0.5	5.4	0.5	0.6	0.7	0.1	0.3	91.9	0.5	7.6	0.069	0.514	19.021903	-99.560456
Tenancingo	44.80	3	0	14437	7.4	86.5	0.5	3.5	0.5	0.5	0.5	0.3	0.3	93.9	0.5	5.6	0.089	0.505	18.965662	-99.604823
T. Izq. Villa Guerrero	56.84	3	0	7403	8.0	84.0	0.6	5.2	0.5	0.6	0.5	0.3	0.3	92.0	0.6	7.4	0.086	0.502	18.965203	-99.644710
Ixtapan de La Sal	80.00	1	1	3278	1.5	95.0	0.4	2.5	0.2	0.1	0.1	0.1	0.1	96.5	0.4	3.1	0.095	0.501	18.853812	-99.672447
Ixtapan de La Sal	80.00	1	2	3269	1.7	95.4	0.4	2.0	0.1	0.1	0.1	0.1	0.1	97.1	0.4	2.5	0.115	0.501	18.853807	-99.672426
Ixtapan de La Sal	80.00	3	1	9350	4.3	89.3	1.5	3.2	0.3	0.6	0.2	0.3	0.3	93.6	1.5	4.9	0.089	0.516	18.825535	-99.668420
Ixtapan de La Sal	80.00	3	2	9961	4.6	89.1	1.7	3.2	0.2	0.5	0.3	0.2	0.2	93.7	1.7	4.6	0.095	0.516	18.825525	-99.668299
Tonatico	86.20	3	0	5834	6.8	82.6	1.0	6.0	0.9	1.0	1.2	0.3	0.2	89.4	1.0	9.6	0.095	0.518	18.801231	-99.658817
Lim. Edos. Term. Méx. Ppia. Gro.	98.50	0	0																	
Cacahuamilpa	120.30	1	0	2483	6.0	80.6	1.6	7.9	1.3	0.6	0.7	0.6	0.7	86.6	1.6	11.8	0.122	0.516	18.609275	-99.317499
T. C. Cuernavaca - Chilpancingo	125.30	1	0	1299	7.6	81.5	1.5	7.0	1.0	0.4	0.3	0.2	0.5	89.1	1.5	9.4	0.147	0.542	18.621454	-99.508244

1 CARR: Acapulco - Zihuatanejo

CLAVE: 12072

RUTA: MEX-200



Km: 10.37 Tipo: 1 Sent: 0

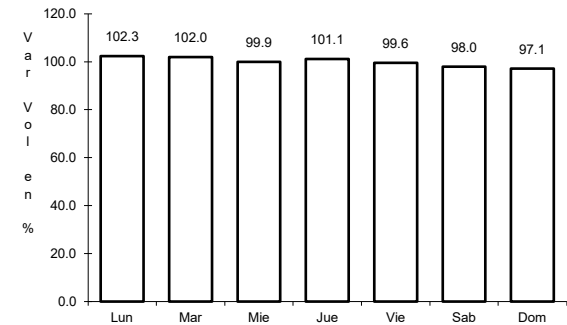
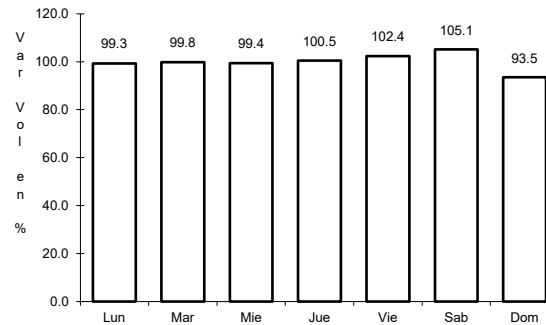
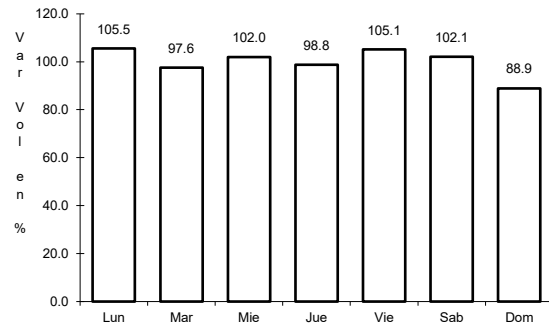
Km: 242.90 Tipo: 1 Sent: 1

Km: 242.90 Tipo: 1 Sent: 2

2 CARR: Cd. Altamirano - T. C. (Zihuatanejo - La Mira)

CLAVE: 12422

RUTA: MEX-134



Km: 0.00 Tipo: 3 Sent: 1

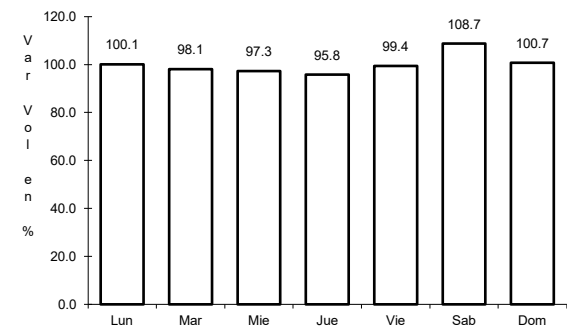
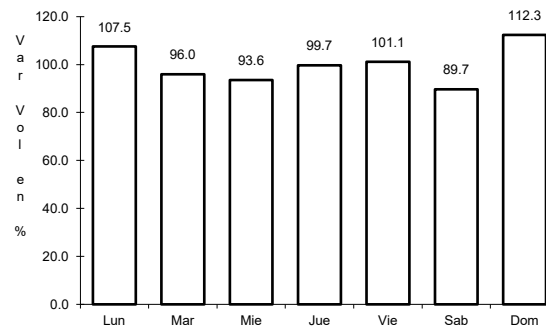
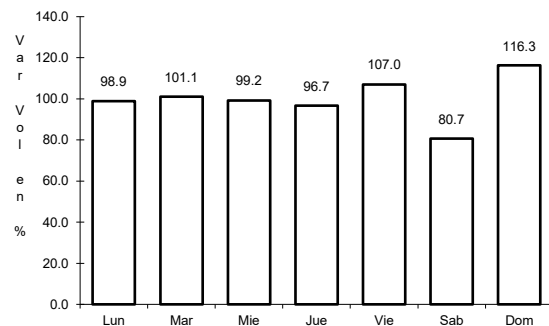
Km: 0.00 Tipo: 3 Sent: 2

Km: 187.36 Tipo: 1 Sent: 0

3 CARR: Chilpancingo - Acapulco

CLAVE: 12045

RUTA: MEX-095



Km: 4.20 Tipo: 1 Sent: 1

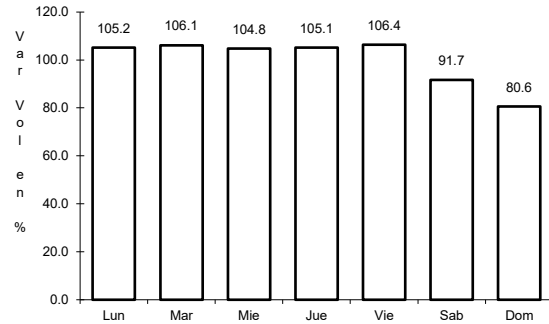
Km: 4.20 Tipo: 1 Sent: 2

Km: 112.80 Tipo: 3 Sent: 0

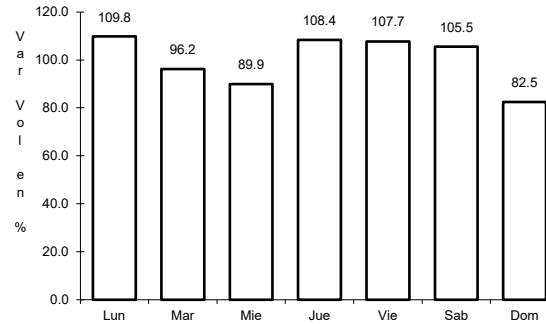
4 CARR: Chilpancingo - Chichihualco

CLAVE: 12426

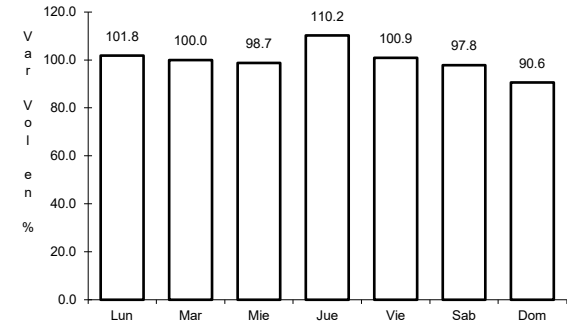
RUTA: MEX-095



Km: 0.00 Tipo: 3 Sent: 0



Km: 15.10 Tipo: 1 Sent: 0

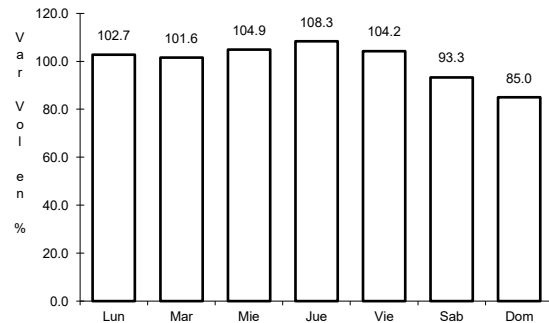


Km: 26.30 Tipo: 1 Sent: 0

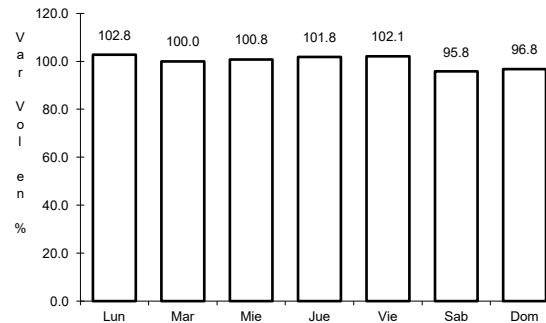
5 CARR: Chilpancingo - Jilotepec

CLAVE: 12002

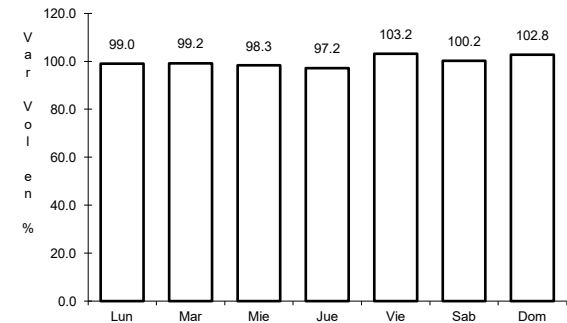
RUTA: MEX-093



Km: 0.00 Tipo: 3 Sent: 0



Km: 53.62 Tipo: 3 Sent: 0

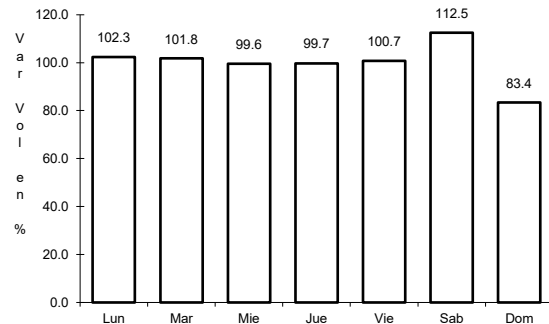


Km: 235.00 Tipo: 1 Sent: 0

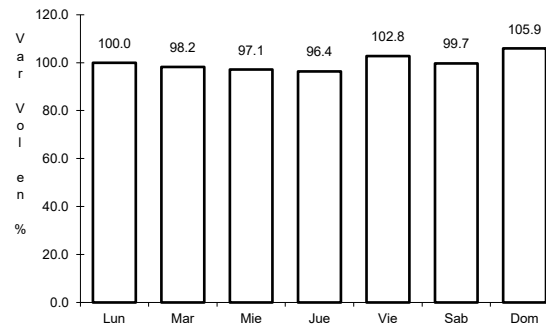
6 CARR: Cuernavaca - Chilpancingo

CLAVE: 00042

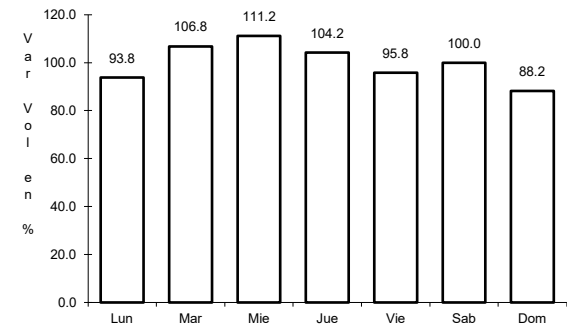
RUTA: MEX-095



Km: 9.80 Tipo: 1 Sent: 1



Km: 9.80 Tipo: 1 Sent: 2

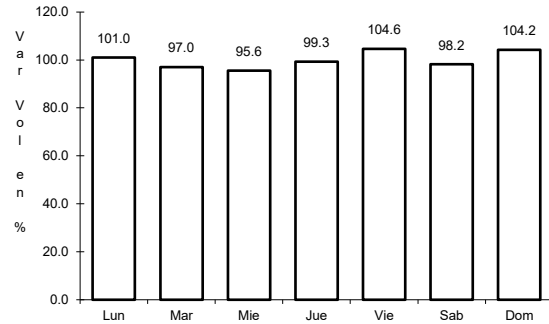


Km: 119.63 Tipo: 1 Sent: 0

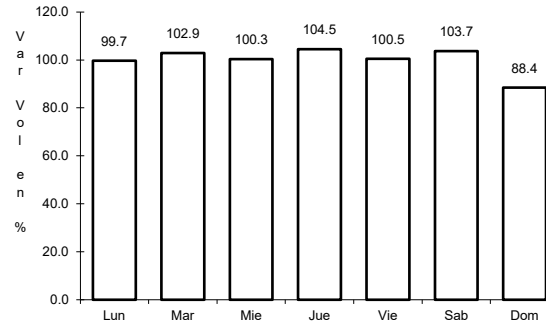
7 CARR: Ent. Alpuyecá - Grutas de Cacahuamilpa

CLAVE: 00421

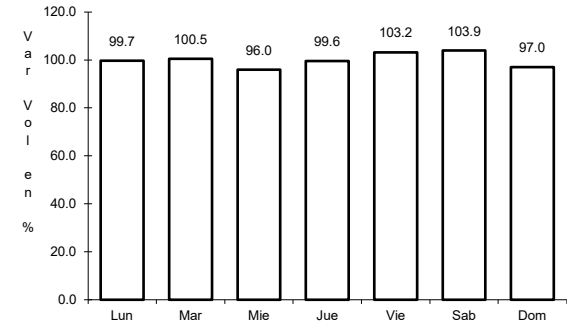
RUTA: MEX-166



Km: 0.00 Tipo: 3 Sent: 0



Km: 18.28 Tipo: 3 Sent: 0

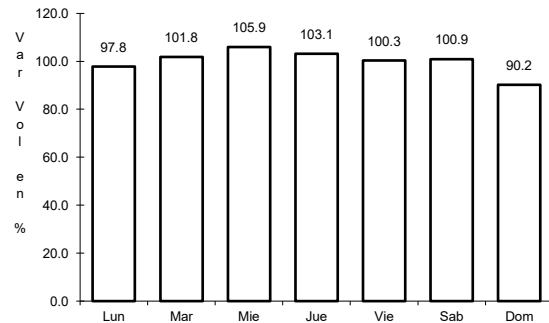


Km: 41.26 Tipo: 1 Sent: 0

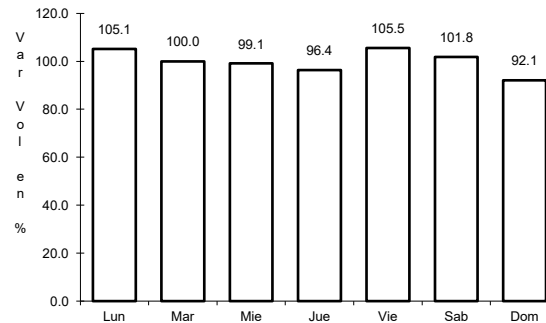
8 CARR: Iguala - Cd. Altamirano

CLAVE: 12195

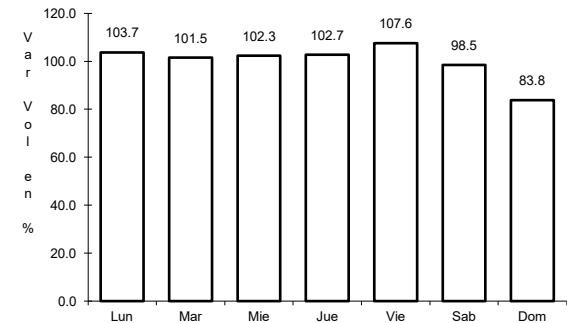
RUTA: MEX-051



Km: 9.40 Tipo: 1 Sent: 0



Km: 184.55 Tipo: 1 Sent: 1

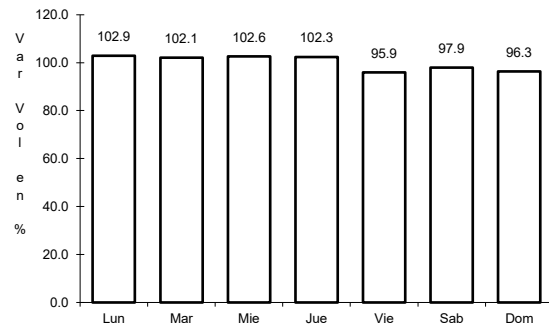


Km: 184.55 Tipo: 1 Sent: 2

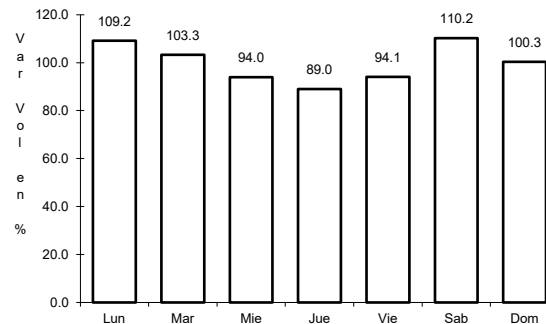
9 CARR: La Sabana - Puerto Marqués

CLAVE: 12291

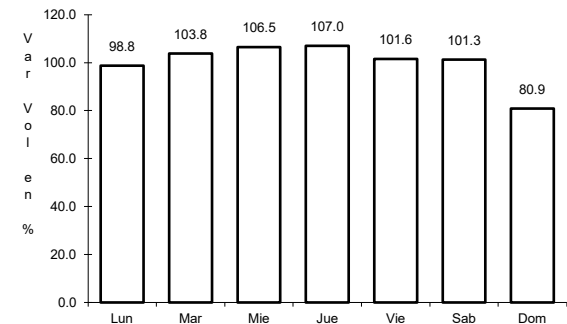
RUTA: MEX-200



Km: 0.00 Tipo: 3 Sent: 1



Km: 0.00 Tipo: 3 Sent: 2

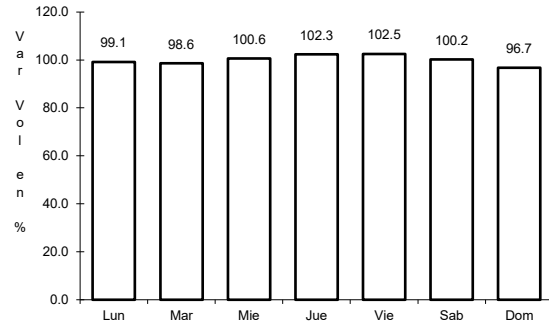


Km: 7.20 Tipo: 1 Sent: 1

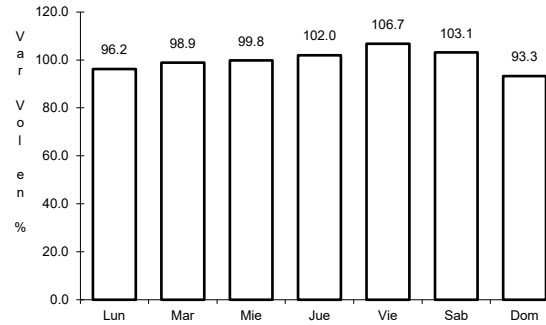
10 CARR: Las Cruces - Pinotepa Nacional

CLAVE: 00073

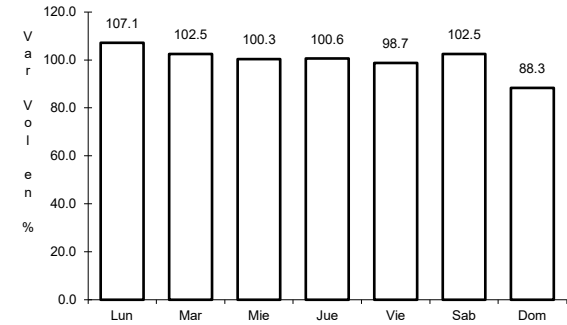
ruta: MEX-200



Km: 0.00 Tipo: 3 Sent: 1



Km: 0.00 Tipo: 3 Sent: 2

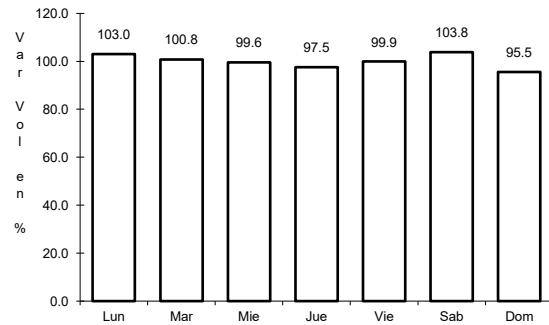


Km: 245.47 Tipo: 3 Sent: 0

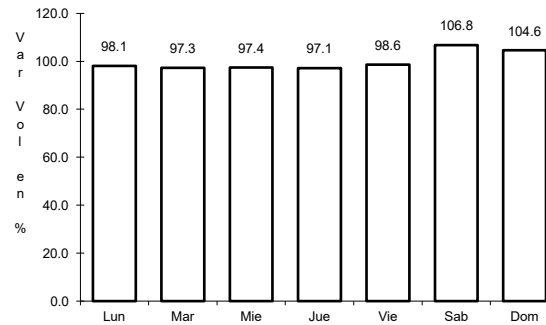
11 CARR: Libramiento Norte de Acapulco

CLAVE: 12421

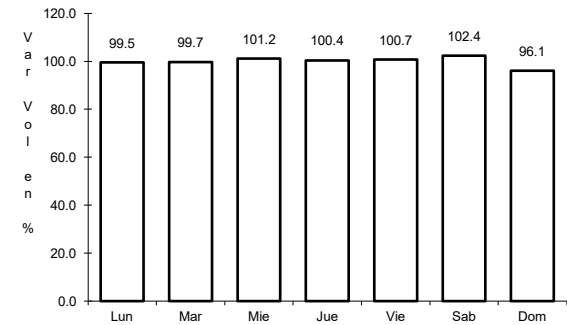
ruta: MEX-095



Km: 0.00 Tipo: 3 Sent: 0



Km: 6.40 Tipo: 3 Sent: 0

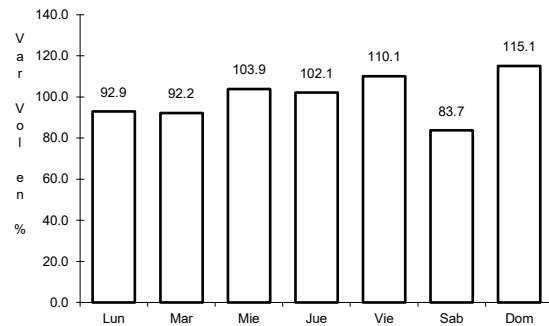


Km: 21.10 Tipo: 1 Sent: 0

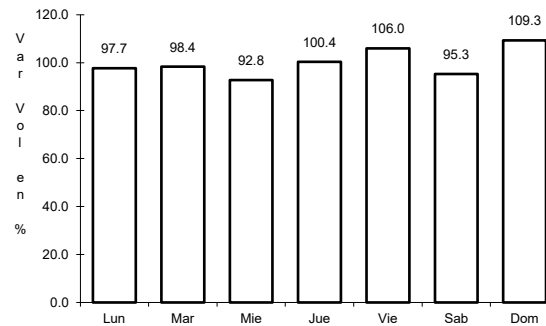
12 CARR: Milpillas - T. C. (Acapulco - Zihuatanejo)

CLAVE: 12012

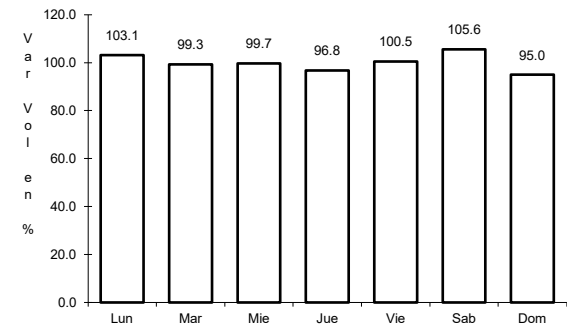
ruta: MEX-196



Km: 0.00 Tipo: 3 Sent: 0



Km: 237.00 Tipo: 1 Sent: 1

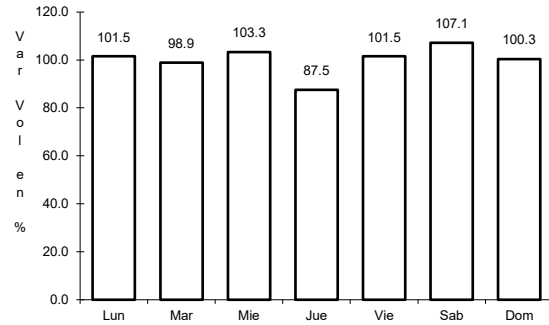


Km: 237.00 Tipo: 1 Sent: 2

13 CARR: Ramal a Aeropuerto Zihuatanejo

CLAVE: 12423

ruta: MEX-200



Km: 0.00

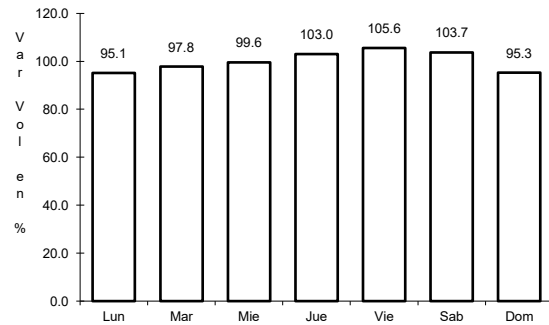
Tipo: 3

Sent: 0

14 CARR: Ramal a La Unión

CLAVE:

ruta: MEX-200



Km: 0.00

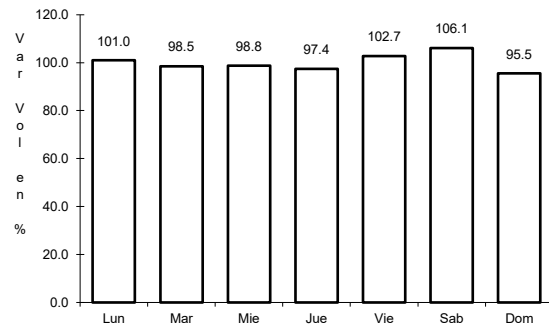
Tipo: 3

Sent: 0

15 CARR: San Juan de Los Llanos - Ometepec

CLAVE: 12011

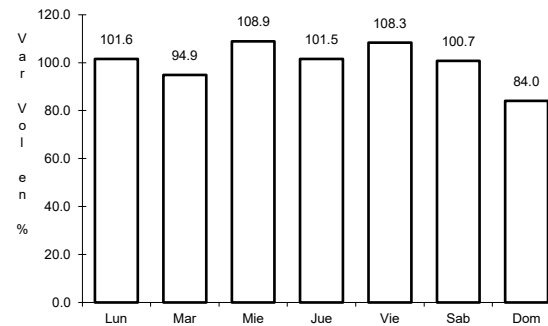
ruta: MEX-200



Km: 0.00

Tipo: 3

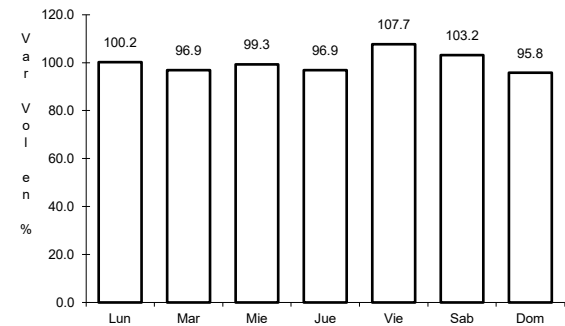
Sent: 0



Km: 15.94

Tipo: 1

Sent: 1



Km: 15.94

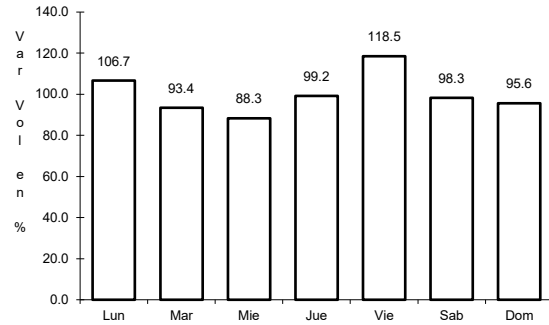
Tipo: 1

Sent: 2

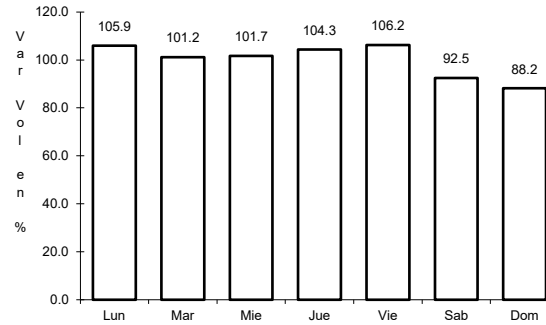
16 CARR: Tierra Colorada - Cruz Grande

CLAVE: 12420

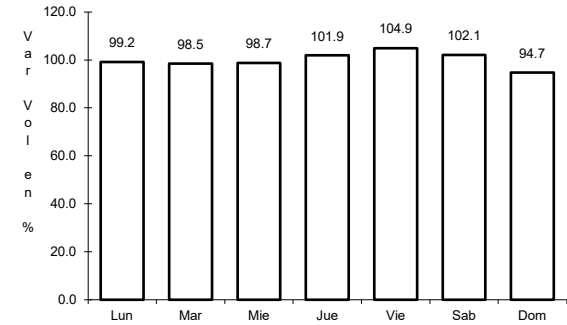
ruta: MEX-198



Km: 0.00 Tipo: 3 Sent: 0



Km: 61.00 Tipo: 1 Sent: 0

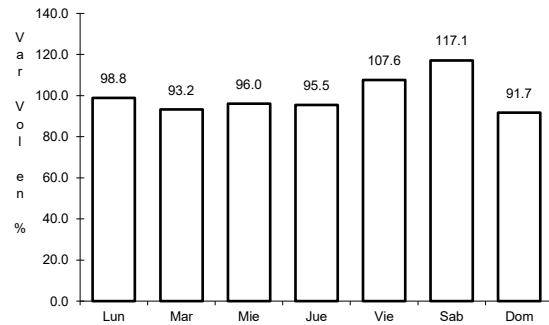


Km: 113.80 Tipo: 1 Sent: 0

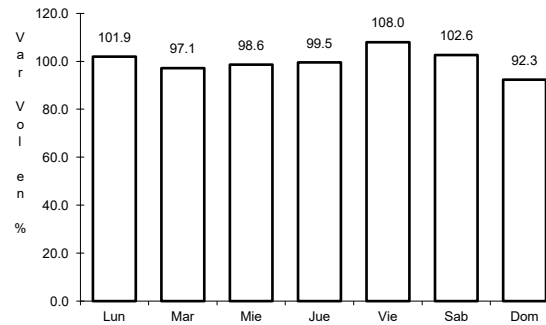
17 CARR: Toluca - Cd. Altamirano

CLAVE: 00020

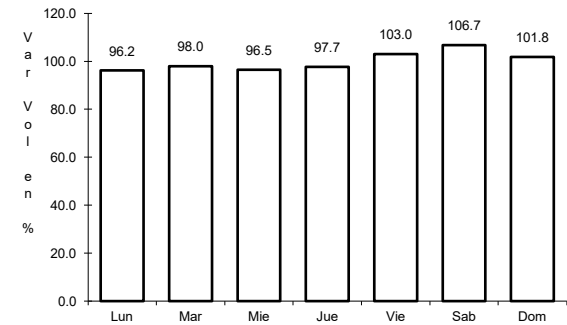
ruta: MEX-134



Km: 1.78 Tipo: 3 Sent: 1



Km: 1.78 Tipo: 3 Sent: 2

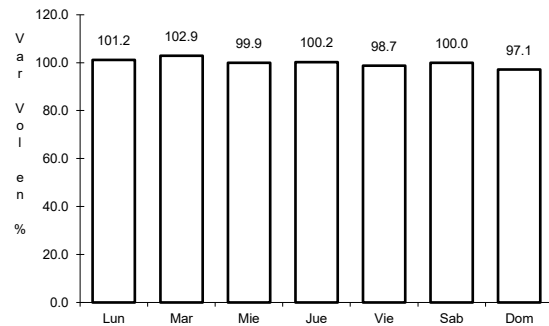


Km: 216.00 Tipo: 1 Sent: 0

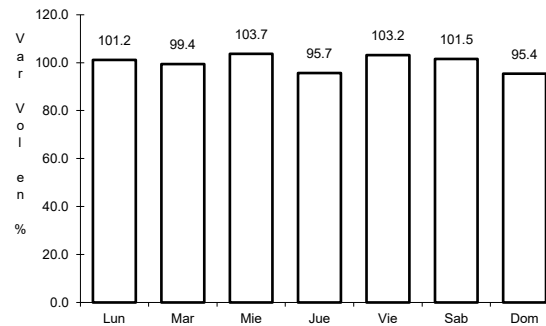
18 CARR: Zihuatanejo - La Mira

CLAVE: 00121

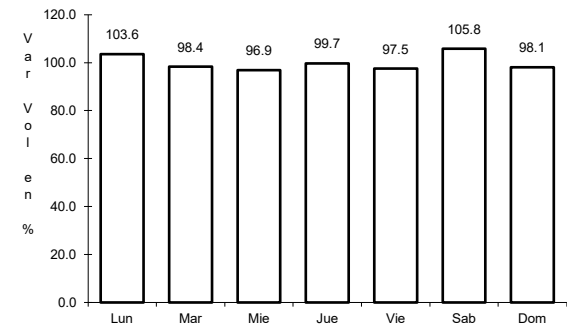
ruta: MEX-200



Km: 2.25 Tipo: 3 Sent: 0



Km: 69.00 Tipo: 3 Sent: 0

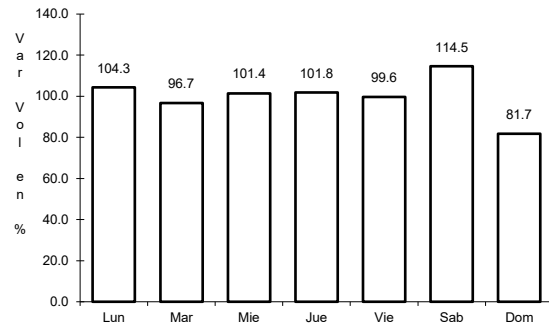


Km: 123.60 Tipo: 1 Sent: 0

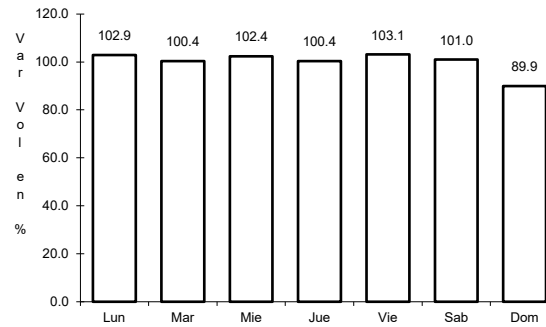
19 CARR: Cuernavaca - Acapulco (Cuota)

CLAVE: 00045

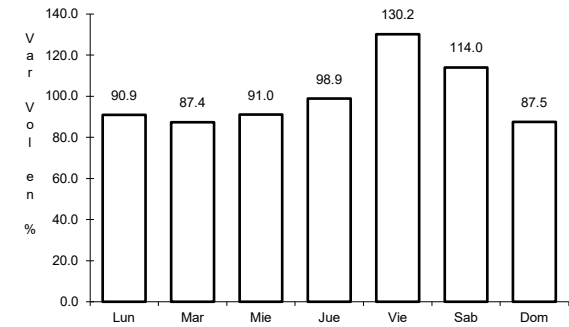
ruta: MEX-095D



Km: 0.00 Tipo: 3 Sent: 1



Km: 0.00 Tipo: 3 Sent: 2

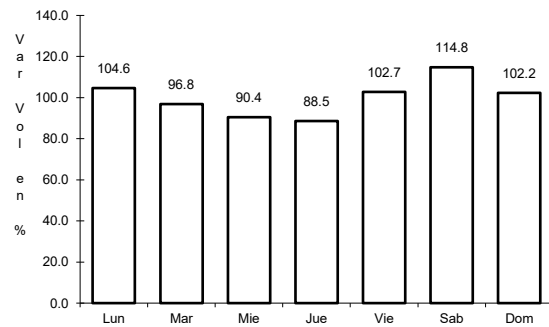


Km: 271.50 Tipo: 1 Sent: 1

20 CARR: Libramiento de Tépcan (Cuota)

CLAVE: 00073

ruta: MEX-200D

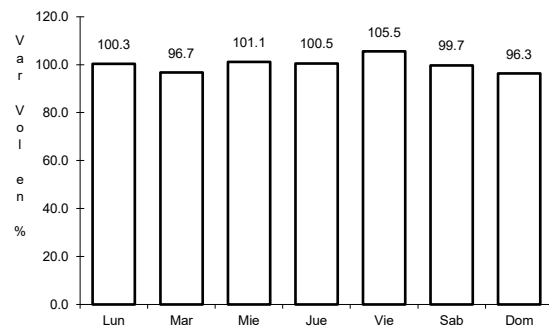


Km: 0.00 Tipo: 3 Sent: 0

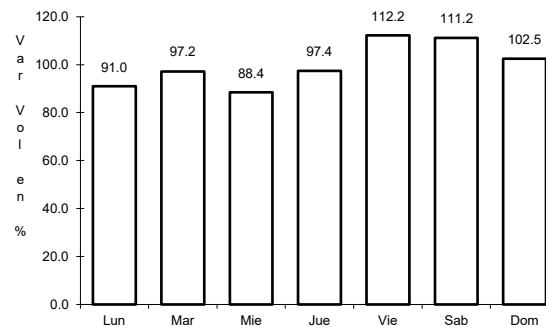
21 CARR: Nueva Italia - Lázaro Cárdenas (Cuota)

CLAVE: 00032

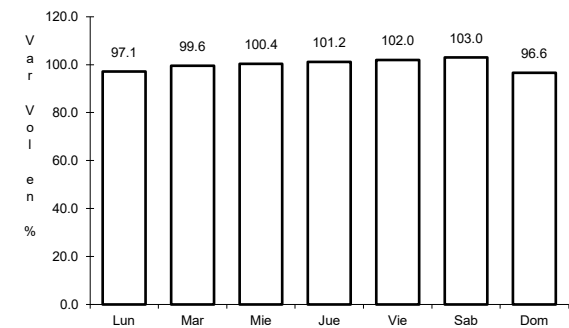
ruta: MEX-037D



Km: 153.90 Tipo: 3 Sent: 0



Km: 282.37 Tipo: 1 Sent: 0

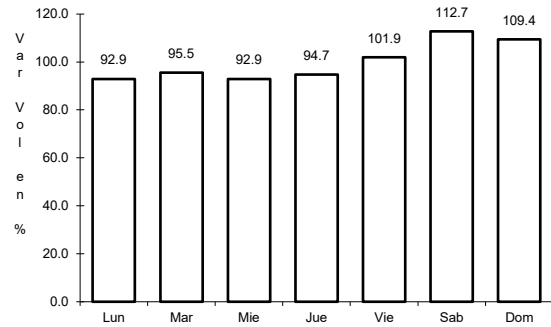


Km: 282.37 Tipo: 3 Sent: 0

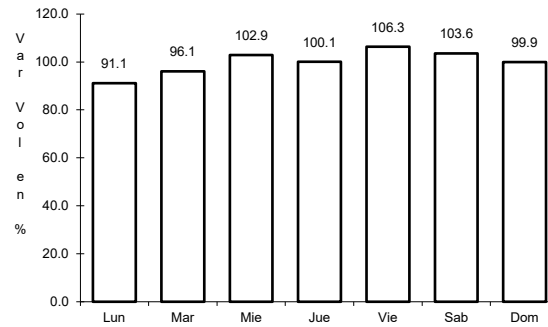
22 CARR: Puente de Ixtla - Iguala (Cuota)

CLAVE: 00043

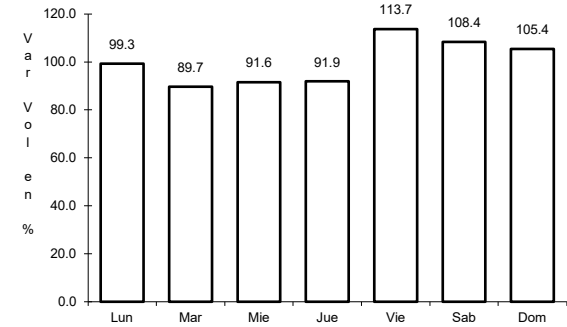
RUTA: MEX-091D



Km: 2.00 Tipo: 3 Sent: 0



Km: 33.58 Tipo: 3 Sent: 0

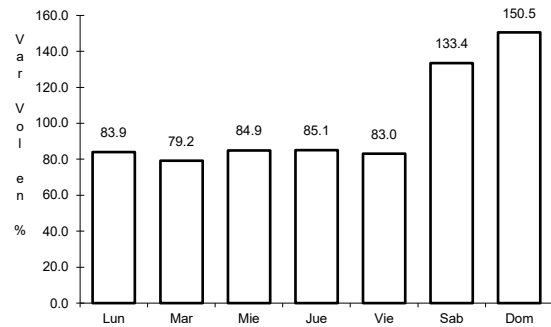


Km: 59.50 Tipo: 1 Sent: 0

23 CARR: Rancho Viejo - Taxco (Cuota)

CLAVE: 12010

RUTA: MEX-092D

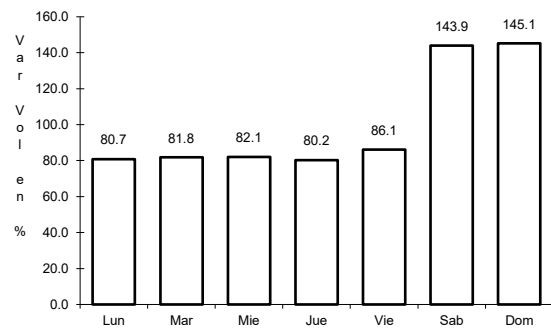


Km: 8.10 Tipo: 1 Sent: 0

24 CARR: Zacapalco - Rancho Viejo (Cuota)

CLAVE: 12010

RUTA: MEX-092D

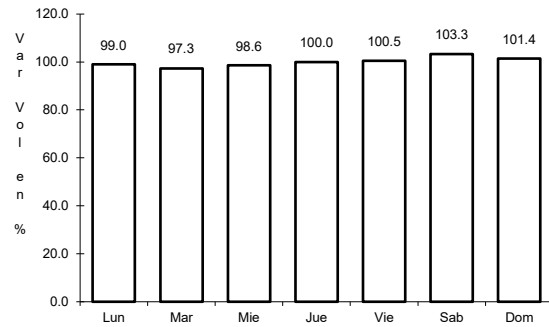


Km: 17.20 Tipo: 1 Sent: 0

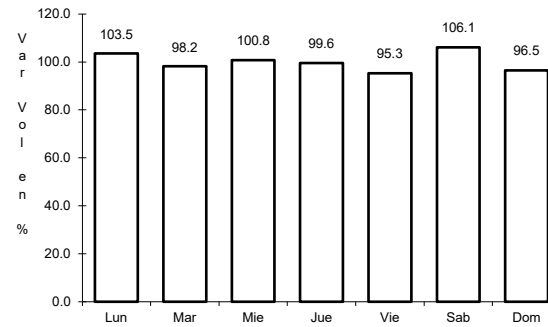
25 CARR: Acapulco - Aeropuerto Acapulco

CLAVE: 12292

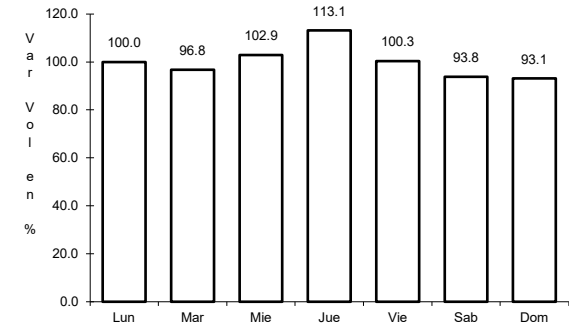
ruta: GRO



Km: 8.70 Tipo: 1 Sent: 1



Km: 8.70 Tipo: 1 Sent: 2

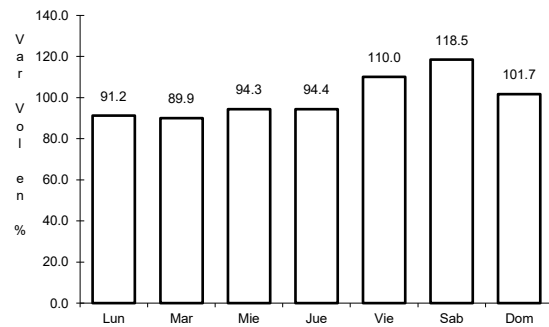


Km: 14.90 Tipo: 3 Sent: 1

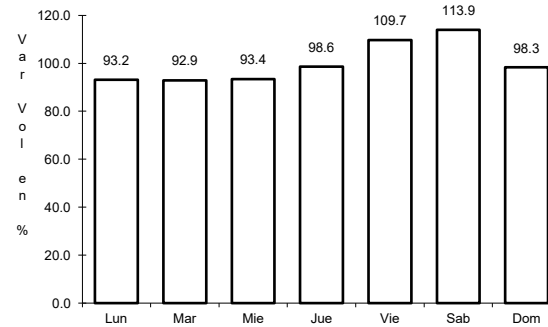
26 CARR: Ent. Potrero - Lomas de Chapultepec

CLAVE: 12293

ruta: GRO



Km: 0.00 Tipo: 3 Sent: 1

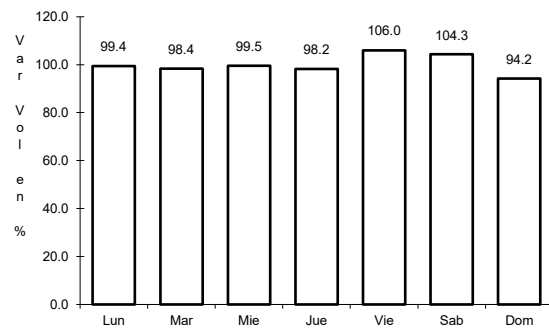


Km: 0.00 Tipo: 3 Sent: 2

27 CARR: Las Petaquillas - Quechultenango

CLAVE:

ruta: GRO

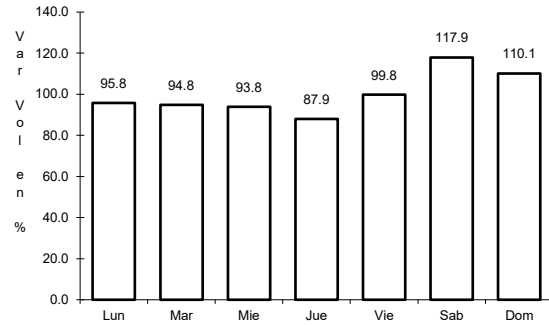


Km: 0.00 Tipo: 3 Sent: 0

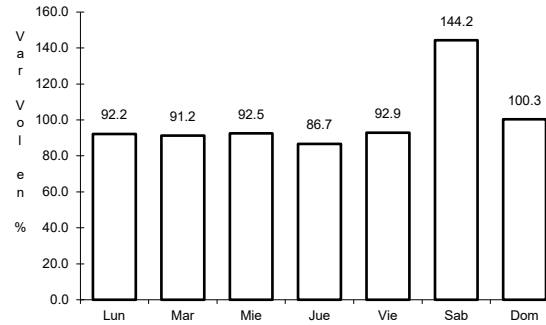
28 CARR: Pie de La Cuesta - Barra de Coyuca

CLAVE: 12427

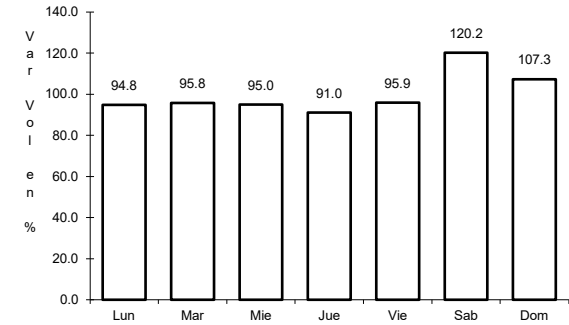
RUTA: GRO



Km: 0.00 Tipo: 3 Sent: 0



Km: 16.50 Tipo: 1 Sent: 1

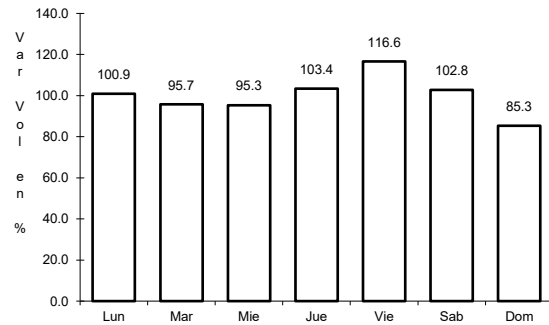


Km: 16.50 Tipo: 1 Sent: 2

29 CARR: Ramal a Cocula

CLAVE: 12082

RUTA: GRO

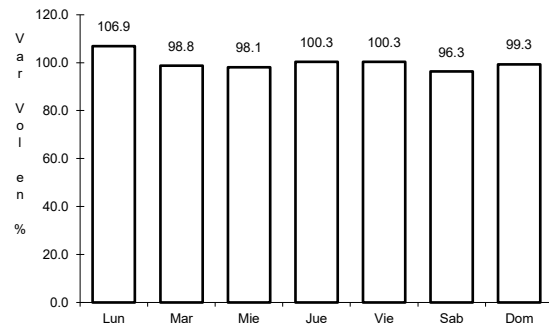


Km: 0.00 Tipo: 3 Sent: 0

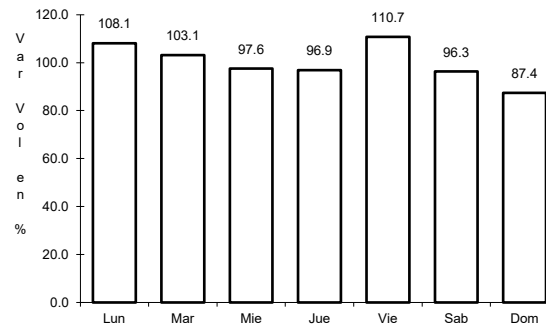
30 CARR: T. C. (Iguala - Chilpancingo) - Atenango del Río

CLAVE: 12001

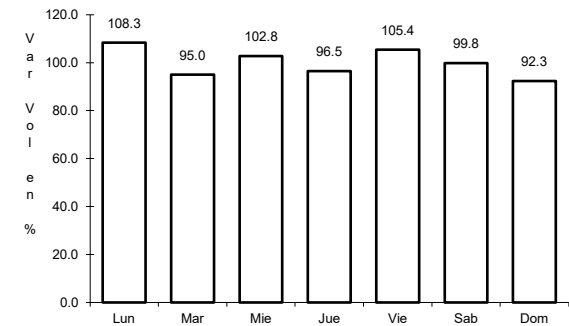
RUTA: GRO-001



Km: 0.00 Tipo: 3 Sent: 0



Km: 22.00 Tipo: 3 Sent: 0

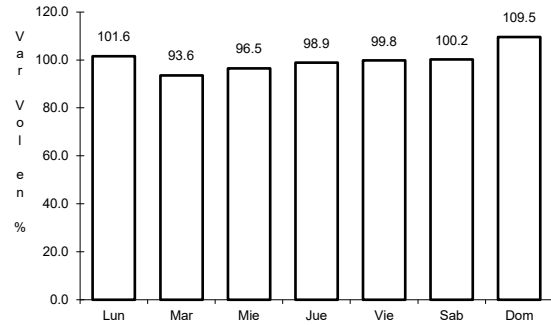


Km: 62.00 Tipo: 1 Sent: 0

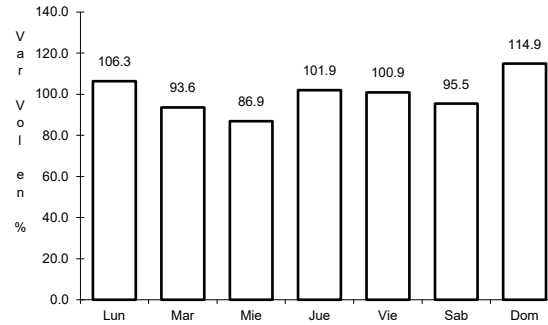
31 CARR: Taxco - Ixcateopan

CLAVE: 12083

ruta: GRO



Km: 0.00 Tipo: 3 Sent: 0

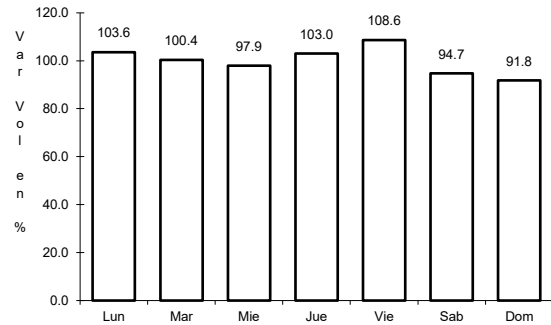


Km: 36.00 Tipo: 1 Sent: 0

32 CARR: Teloloapan - Apaxtla de Castrejón

CLAVE: 12081

ruta: GRO

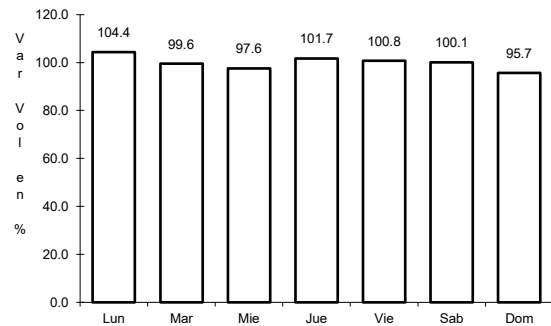


Km: 0.00 Tipo: 3 Sent: 0

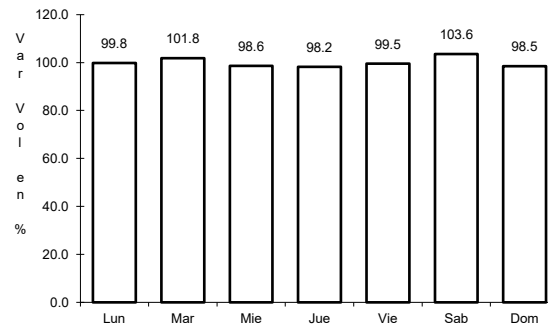
33 CARR: Tlapa de Comonfort - Marquelia

CLAVE:

ruta: GRO



Km: 0.00 Tipo: 3 Sent: 0

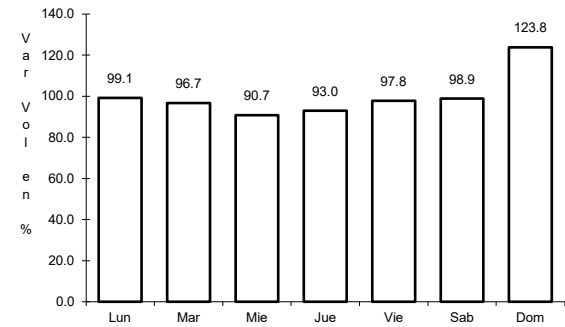
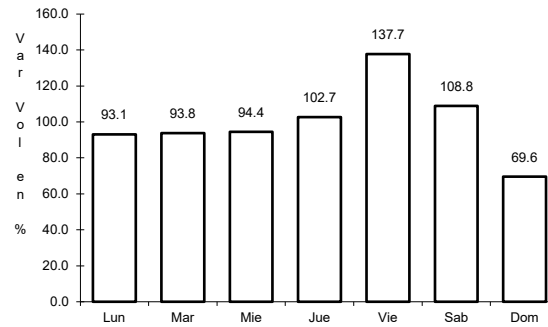
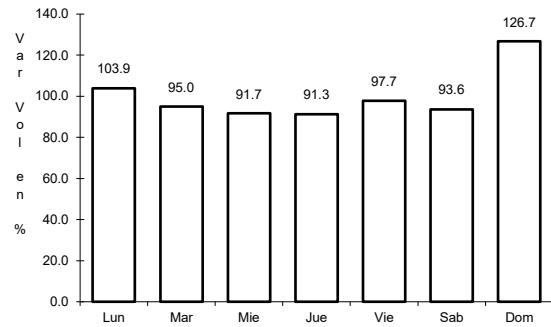


Km: 163.00 Tipo: 1 Sent: 0

34 CARR: Puerto Marqués - La Venta (Cuota)

CLAVE: 00043

ruta: GRO-D



Km: 6.33

Tipo: 1

Sent: 1

Km: 6.33

Tipo: 1

Sent: 2

Km: 6.33

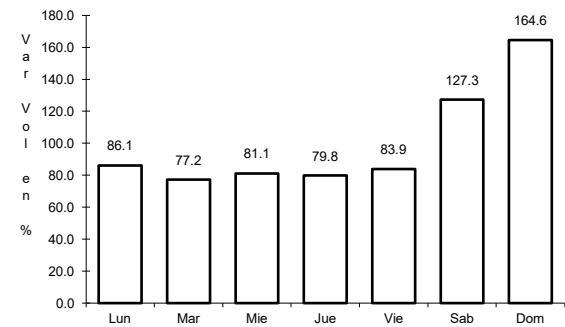
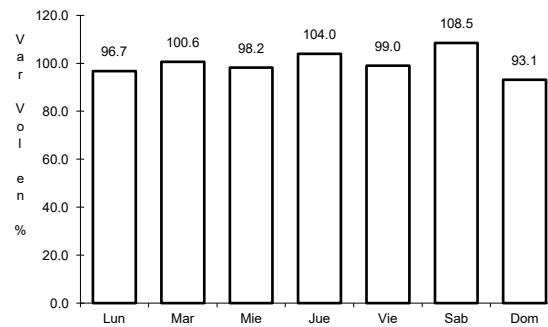
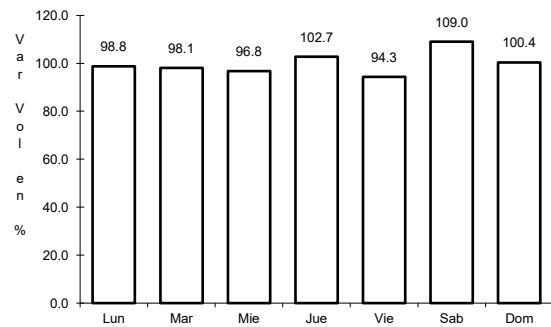
Tipo: 3

Sent: 1

35 CARR: Toluca - Axixintla

CLAVE: 00122

ruta: EM-MEX-055



Km: 4.74

Tipo: 1

Sent: 1

Km: 4.74

Tipo: 1

Sent: 2

Km: 125.30

Tipo: 1

Sent: 0