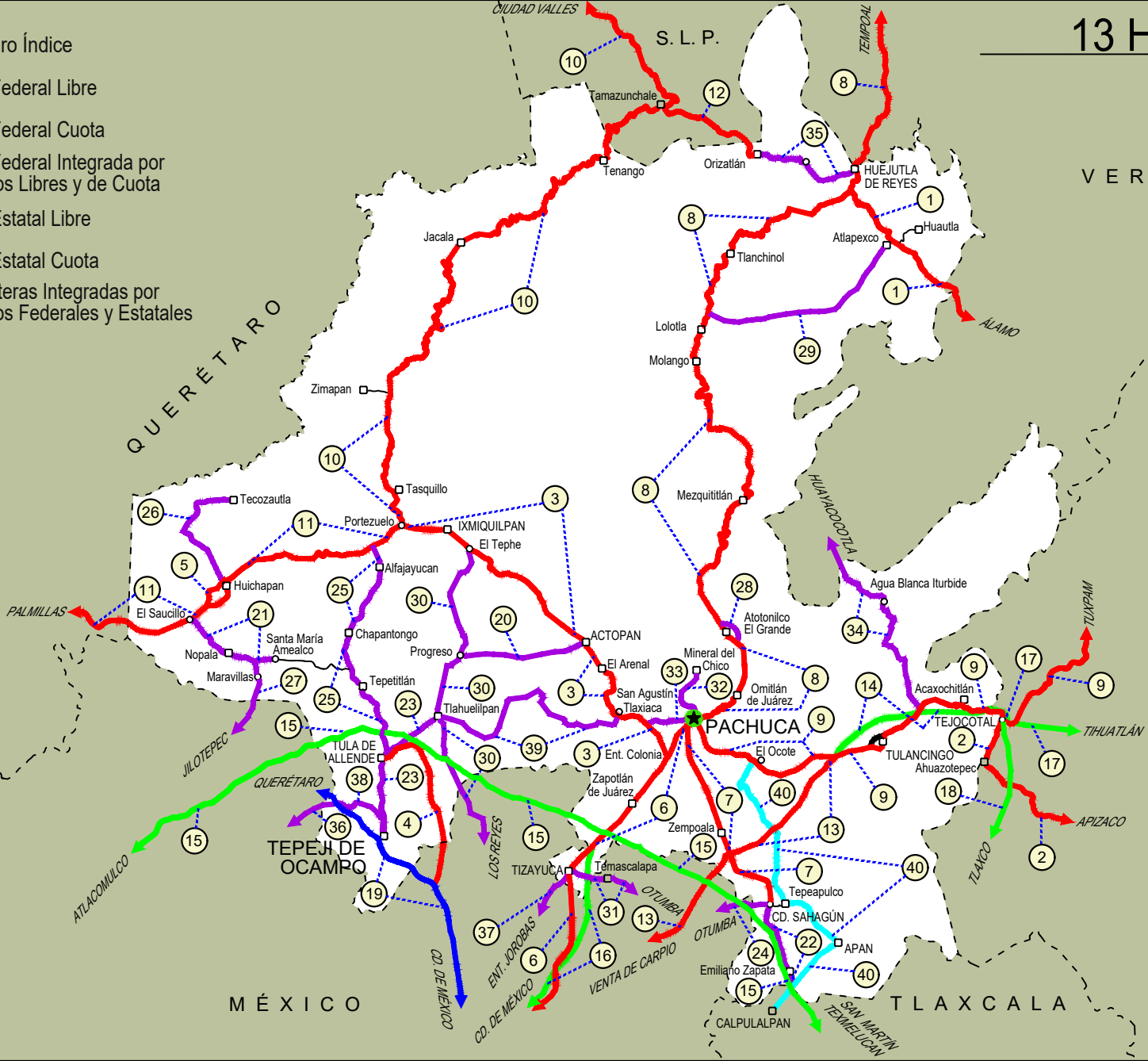


HIDALGO

NO. INDICE CARRETERA		RUTA
	---RED FEDERAL LIBRE---	
1	Álamo - Huejutla de Reyes	MEX-127
2	Apizaco - Tejocotal	MEX-119
3	Ent. Colonia - Portezuelo	MEX-085
4	Ent. Jorobas - Tula	MEX-087
5	Libramiento de Huichapan	MEX-045
6	México - Pachuca (Libre)	MEX-085
7	Pachuca - Cd. Sahagún	MEX
8	Pachuca - Tempoal	MEX-105
9	Pachuca - Tuxpam	MEX-130
10	Portezuelo - Cd. Valles	MEX-085
11	Portezuelo - Palmillas	MEX-045
12	Tamazunchale - San Felipe Orizatlán	MEX-085
13	Venta de Carpio - T. C. (Pachuca - Tuxpam)	MEX-132
	---RED FEDERAL DE CUOTA---	
14	Ent. Tulancingo - Venta Grande (Cuota)	MEX-132D
15	Libramiento Norte de la Ciudad de México (Cuota)	MEX-M40D
16	México - Pachuca (Cuota)	MEX-085D
17	Tejocotal - Nuevo Necaxa (Cuota)	MEX-132D
18	Tlaxco - Tejocotal (Cuota)	MEX-119D
	---RED FEDERAL INTEGRADA POR TRAMOS LIBRES Y DE CUOTA---	
19	México - Querétaro (Cuota)	MEX-057-MEX-057D
	---RED ESTATAL LIBRE---	
20	Actopan - Progreso	HGO
21	El Saucillo - Amealco	HGO-103
22	Ent. Emiliano Zapata - Cd. Sahagún	HGO
23	Ent. Tepeji del Río - Tlahuelilpan	HGO-017
24	Ent. Tolman - Cd. Sahagún	EM-009-HGO
25	Francisco I. Madero - Tula de Allende	HGO
26	Huichapan - Tecozautla	HGO-030
27	Jilotepec - Maravillas	EM-HGO
28	Libramiento de Atotonilco El Grande	HGO
29	Lolotla - Atlapexco	HGO
30	Los Reyes - El Tephé	EM-HGO
31	Otumba - Tizayuca	EM-HGO
32	Ramal a El Chico	HGO
33	Ramal a Pachuca	HGO
34	San Alejo - Huayacocotla	HGO-051-VER-113
35	San Felipe Orizatlán - Huejutla de Reyes	HGO
36	Santo Domingo - T. C. (México - Querétaro)	EM-011-HGO
37	T. C. (Los Reyes - El Tephé) - Tizayuca	EM-HGO
38	Tepeji del Río - T. C. (México - Querétaro)	HGO
39	Tlahuelilpan - San Agustín Tlaxiaca	HGO
	---CARRETERAS INTEGRADAS POR TRAMOS FEDERALES Y ESTATALES---	
40	Calpulalpan - El Ocote	MEX-HGO

# 13 HIDALGO

- ① - Número Índice
- Red Federal Libre
- Red Federal Cuota
- Red Federal Integrada por Tramos Libres y de Cuota
- Red Estatal Libre
- Red Estatal Cuota
- Carreteras Integradas por Tramos Federales y Estatales





HIDALGO

1 CARR: Álamo - Huejutla de Reyes

CLAVE: 00116

RUTA: MEX-127

AÑO: 2022

LUGAR	ESTACION				CLASIFICACION VEHICULAR EN PORCIENTO													COORDENADAS		
	KM	TE	SC	TDPA	M	A	B	C2	C3	T3S2	T3S3	T3S2R4	OTROS	A	B	C	K'	D	LATITUD	LONGITUD
T. C. Tihuatlán - Potrero del Llano	0.00	3	0	4139	18.4	74.9	0.7	2.3	1.7	0.8	0.7	0.3	0.2	93.3	0.7	6.0	0.083	0.503	20.941780	-97.705322
Benito Juárez	73.00	1	0	1851	4.6	87.2	0.9	4.8	1.1	0.8	0.3	0.2	0.1	91.8	0.9	7.3	0.099	0.503	20.882866	-98.198633
T. Der. Chicontepec de Tejada	78.00	3	0	1162	10.2	80.1	0.4	6.9	0.9	0.8	0.3	0.4	0.0	90.3	0.4	9.3	0.100	0.526	20.923820	-98.221677
Lim. Edos. Term. Ver. Ppia. Hgo.	78.70	0	0																	
T. C. Pachuca - Tempoal (Huejutla de Reyes)	110.00	0	0																	

2 CARR: Apizaco - Tejocotal

CLAVE: 00430

RUTA: MEX-119

AÑO: 2022

LUGAR	ESTACION				CLASIFICACION VEHICULAR EN PORCIENTO													COORDENADAS		
	KM	TE	SC	TDPA	M	A	B	C2	C3	T3S2	T3S3	T3S2R4	OTROS	A	B	C	K'	D	LATITUD	LONGITUD
Apizaco	0.00	3	1	11432	1.6	87.1	1.3	4.9	1.1	2.1	1.3	0.4	0.2	88.7	1.3	10.0	0.079	0.501	19.437682	-98.131243
Apizaco	0.00	3	2	11371	1.9	85.6	1.5	5.7	1.1	2.2	1.4	0.4	0.2	87.5	1.5	11.0	0.085	0.501	19.437558	-98.131369
T. Der. Tetla	6.60	3	0	22494	0.5	87.1	1.6	4.9	1.6	2.1	1.2	0.7	0.3	87.6	1.6	10.8	0.076	0.506	19.473536	-98.112537
T. Izq. Atlangatepec	12.15	1	0	14726	1.1	86.2	1.8	4.5	1.9	2.1	1.3	0.5	0.6	87.3	1.8	10.9	0.083	0.504	19.504963	-98.116887
Tlaxco	23.91	1	1	5101	3.6	83.8	1.9	5.1	1.8	2.3	1.0	0.2	0.3	87.4	1.9	10.7	0.088	0.519	19.598720	-98.125462
Tlaxco	23.91	1	2	5510	3.7	83.1	1.9	5.3	2.0	2.4	1.1	0.2	0.3	86.8	1.9	11.3	0.085	0.519	19.598741	-98.125562
Tlaxco	23.91	3	0	6643	3.5	83.5	1.8	5.2	1.6	2.4	1.2	0.4	0.4	87.0	1.8	11.2	0.096	0.504	19.626288	-98.124841
Lim. Edos. Term. Tlax. Ppia. Pue.	34.45	0	0																	
T. Der. Tetela de Ocampo	52.20	1	0	8891	6.8	83.6	1.0	5.4	1.1	0.9	1.0	0.1	0.1	90.4	1.0	8.6	0.094	0.515	19.800578	-98.026691
Zacatlán	71.25	1	0	11572	7.2	84.3	2.1	4.9	0.9	0.1	0.1	0.1	0.3	91.5	2.1	6.4	0.095	0.506	19.918588	-97.959284
Lim. Edos. Term. Pue. Ppia. Hgo.	110.45	0	0																	
T. C. Pachuca - Tuxpam	113.15	1	0	8507	3.3	81.9	1.9	8.3	1.4	1.2	0.8	1.0	0.2	85.2	1.9	12.9	0.091	0.506	20.123851	-98.128640

3 CARR: Ent. Colonia - Portezuelo

CLAVE: 13257

RUTA: MEX-085

AÑO: 2022

LUGAR	ESTACION				CLASIFICACION VEHICULAR EN PORCIENTO													COORDENADAS		
	KM	TE	SC	TDPA	M	A	B	C2	C3	T3S2	T3S3	T3S2R4	OTROS	A	B	C	K'	D	LATITUD	LONGITUD
Ent. Colonia	0.00	3	1	28593	1.4	91.3	1.1	1.9	1.6	0.9	0.7	0.9	0.2	92.7	1.1	6.2	0.064	0.506	20.061352	-98.787070
Ent. Colonia	0.00	3	2	29239	1.5	90.7	1.2	2.0	1.7	1.0	0.8	0.9	0.2	92.2	1.2	6.6	0.069	0.506	20.061288	-98.787223
T. Der. Pachuca	8.34	3	1	19047	2.6	90.8	1.9	2.0	1.7	0.4	0.2	0.3	0.1	93.4	1.9	4.7	0.088	0.507	20.125554	-98.834998
T. Der. Pachuca	8.34	3	2	18527	2.1	90.5	2.1	2.3	2.0	0.4	0.2	0.3	0.1	92.6	2.1	5.3	0.076	0.507	20.124342	-98.833842
T. Izq. San Agustín Tlaxiaca	15.36	3	1	11803	2.0	89.3	1.8	2.8	1.6	0.9	0.5	0.9	0.2	91.3	1.8	6.9	0.097	0.517	20.142101	-98.891928
T. Izq. San Agustín Tlaxiaca	15.36	3	2	11023	2.2	88.1	2.3	2.7	2.2	0.9	0.5	0.9	0.2	90.3	2.3	7.4	0.082	0.517	20.141703	-98.892083
Actopan	34.13	1	1	14719	5.1	85.1	1.6	4.5	1.3	1.4	0.6	0.3	0.1	90.2	1.6	8.2	0.091	0.502	20.249917	-98.932583
Actopan	34.13	1	2	14622	5.0	84.3	1.7	4.9	1.5	1.6	0.6	0.3	0.1	89.3	1.7	9.0	0.106	0.502	20.249990	-98.932784

HIDALGO

3 CARR: Ent. Colonia - Portezuelo

CLAVE: 13257

RUTA: MEX-085

AÑO: 2022

LUGAR	ESTACION				CLASIFICACION VEHICULAR EN PORCIENTO													COORDENADAS		
	KM	TE	SC	TDPA	M	A	B	C2	C3	T3S2	T3S3	T3S2R4	OTROS	A	B	C	K'	D	LATITUD	LONGITUD
Actopan	34.13	3	1	10225	3.5	87.1	1.6	3.9	1.2	1.5	0.7	0.4	0.1	90.6	1.6	7.8	0.078	0.506	20.287619	-98.971891
Actopan	34.13	3	2	9974	3.6	86.2	1.7	4.4	1.3	1.5	0.8	0.4	0.1	89.8	1.7	8.5	0.082	0.506	20.287312	-98.971690
T. Izq. Tula	68.20	1	1	8059	6.3	84.0	2.2	2.4	1.5	1.9	1.0	0.3	0.4	90.3	2.2	7.5	0.079	0.516	20.439192	-99.163135
T. Izq. Tula	68.20	1	2	7544	7.0	82.2	2.4	2.8	1.6	2.1	1.0	0.4	0.5	89.2	2.4	8.4	0.095	0.516	20.439120	-99.163260
Ixmiquilpan	75.20	1	1	13945	6.8	86.7	0.9	2.2	1.3	0.9	0.5	0.6	0.1	93.5	0.9	5.6	0.087	0.505	20.463630	-99.195328
Ixmiquilpan	75.20	1	2	13661	7.1	85.9	1.0	2.3	1.4	1.1	0.5	0.6	0.1	93.0	1.0	6.0	0.089	0.505	20.463548	-99.195415
Ixmiquilpan	75.20	3	1	9437	9.1	83.4	1.2	2.7	1.2	1.0	0.8	0.4	0.2	92.5	1.2	6.3	0.086	0.502	20.479555	-99.248741
Ixmiquilpan	75.20	3	2	9345	7.8	84.0	1.4	3.0	1.3	1.1	0.8	0.4	0.2	91.8	1.4	6.8	0.088	0.502	20.479474	-99.248770
Portezuelo	82.00	0	0																	

4 CARR: Ent. Jorobas - Tula

CLAVE: 00159

RUTA: MEX-087

AÑO: 2022

LUGAR	ESTACION				CLASIFICACION VEHICULAR EN PORCIENTO													COORDENADAS		
	KM	TE	SC	TDPA	M	A	B	C2	C3	T3S2	T3S3	T3S2R4	OTROS	A	B	C	K'	D	LATITUD	LONGITUD
T. C. México - Querétaro (Cuota)	0.00	3	1	16398	3.8	81.5	2.0	5.1	1.9	3.4	1.4	0.7	0.2	85.3	2.0	12.7	0.080	0.504	19.834467	-99.243524
T. C. México - Querétaro (Cuota)	0.00	3	2	16663	4.0	79.7	2.3	5.6	2.2	3.7	1.5	0.8	0.2	83.7	2.3	14.0	0.082	0.504	19.834334	-99.243731
Lim. Edos. Term. Méx. Ppia. Hgo.	5.90	0	0																	
T. Der. Atotonilco	21.50	1	1	8643	1.4	83.3	1.8	6.2	1.8	3.0	1.8	0.6	0.1	84.7	1.8	13.5	0.073	0.532	20.015300	-99.247388
T. Der. Atotonilco	21.50	1	2	7594	1.6	82.1	2.0	6.2	2.0	3.4	2.0	0.6	0.1	83.7	2.0	14.3	0.077	0.532	20.015612	-99.247546
Tula de Allende	37.70	1	1	14025	3.8	81.4	2.4	5.9	1.2	2.2	1.7	0.8	0.6	85.2	2.4	12.4	0.089	0.506	20.060617	-99.283921
Tula de Allende	37.70	1	2	13693	3.7	80.6	2.5	6.1	1.4	2.3	1.9	0.9	0.6	84.3	2.5	13.2	0.082	0.506	20.060508	-99.283895

5 CARR: Libramiento de Huichapan

CLAVE:

RUTA: MEX-045

AÑO: 2022

LUGAR	ESTACION				CLASIFICACION VEHICULAR EN PORCIENTO													COORDENADAS		
	KM	TE	SC	TDPA	M	A	B	C2	C3	T3S2	T3S3	T3S2R4	OTROS	A	B	C	K'	D	LATITUD	LONGITUD
T. C. Portezuelo - Palmillas Oeste	0.00	0	0																	
T. C. Huichapan - Tecozautla	2.00	1	1	4308	1.8	94.1	0.7	1.3	0.5	0.9	0.3	0.3	0.1	95.9	0.7	3.4	0.098	0.505	20.384406	-99.655741
T. C. Huichapan - Tecozautla	2.00	1	2	4393	1.9	94.2	0.7	1.1	0.5	0.9	0.3	0.3	0.1	96.1	0.7	3.2	0.166	0.505	20.384307	-99.655673
T. C. Portezuelo - Palmillas Oeste	9.00	1	1	4071	5.0	72.8	2.6	4.0	3.2	6.4	3.0	2.4	0.6	77.8	2.6	19.6	0.087	0.504	20.337960	-99.691383
T. C. Portezuelo - Palmillas Oeste	9.00	1	2	4132	5.0	72.9	2.6	3.9	3.2	6.4	3.1	2.3	0.6	77.9	2.6	19.5	0.109	0.504	20.338938	-99.690688

HIDALGO

6 CARR: México - Pachuca (Libre)

CLAVE: 00431

RUTA: MEX-085

AÑO: 2022

LUGAR	ESTACION				CLASIFICACION VEHICULAR EN PORCIENTO														COORDENADAS	
	KM	TE	SC	TDPA	M	A	B	C2	C3	T3S2	T3S3	T3S2R4	OTROS	A	B	C	K'	D	LATITUD	LONGITUD
México	0.00	0	0																	
Lim. Edos. Term. CDMX Ppia. Méx.	9.89	0	0																	
T. Der. Pirámides	26.93	1	1	16360	5.1	85.7	0.5	4.2	0.4	2.0	1.4	0.4	0.3	90.8	0.5	8.7	0.065	0.510	19.616779	-99.011612
T. Der. Pirámides	26.93	1	2	17028	4.9	85.6	0.5	4.7	0.3	2.2	1.3	0.3	0.2	90.5	0.5	9.0	0.056	0.510	19.616812	-99.011620
Venta de Carpio	27.00	3	1	32004	3.7	88.4	0.6	4.2	0.8	1.1	0.9	0.1	0.2	92.1	0.6	7.3	0.060	0.508	19.625826	-99.002974
Venta de Carpio	27.00	3	2	30998	3.7	87.0	0.7	5.0	0.9	1.2	1.1	0.2	0.2	90.7	0.7	8.6	0.055	0.508	19.625486	-99.003312
T. Der. Aut. México - Pachuca (Cuota)	37.52	1	1	30909	5.5	89.7	0.3	2.2	0.9	0.8	0.2	0.3	0.1	95.2	0.3	4.5	0.074	0.507	19.704457	-98.978304
T. Der. Aut. México - Pachuca (Cuota)	37.52	1	2	31881	4.9	90.0	0.3	2.2	1.1	0.9	0.2	0.3	0.1	94.9	0.3	4.8	0.073	0.507	19.703727	-98.978759
T. Izq. Zumpango	44.68	1	1	18144	4.7	82.1	0.9	8.5	1.0	1.2	0.9	0.3	0.4	86.8	0.9	12.3	0.076	0.510	19.760479	-98.973617
T. Izq. Zumpango	44.68	1	2	17459	5.0	81.1	1.1	8.7	1.0	1.3	1.1	0.3	0.4	86.1	1.1	12.8	0.071	0.510	19.760479	-98.973703
T. Izq. Zumpango	44.68	3	1	10972	8.9	75.6	2.2	6.5	3.0	1.4	0.8	0.9	0.7	84.5	2.2	13.3	0.074	0.505	19.773040	-98.973093
T. Izq. Zumpango	44.68	3	2	11187	9.6	74.2	2.1	6.8	3.2	1.7	0.9	0.8	0.7	83.8	2.1	14.1	0.077	0.505	19.773040	-98.973148
Lim. Edos. Term. Méx. Ppia. Hgo.	49.30	0	0																	
Tizayuca	52.50	1	1	10913	8.9	80.4	1.9	5.9	0.9	1.2	0.3	0.3	0.2	89.3	1.9	8.8	0.083	0.508	19.817647	-98.975942
Tizayuca	52.50	1	2	10581	8.8	80.5	2.0	5.9	0.9	1.3	0.3	0.2	0.1	89.3	2.0	8.7	0.076	0.508	19.818101	-98.976147
Tizayuca	52.50	3	1	16257	3.3	86.0	1.8	5.9	1.1	0.9	0.3	0.3	0.4	89.3	1.8	8.9	0.084	0.502	19.861798	-98.964673
Tizayuca	52.50	3	2	16110	3.3	86.7	1.6	5.5	1.2	0.8	0.3	0.3	0.3	90.0	1.6	8.4	0.075	0.502	19.861724	-98.964889
T. C. México - Tizayuca (Cuota)	61.00	1	1	7704	6.1	80.9	3.2	6.4	1.8	1.0	0.2	0.3	0.1	87.0	3.2	9.8	0.093	0.500	19.886316	-98.939721
T. C. México - Tizayuca (Cuota)	61.00	1	2	7708	6.5	81.2	3.2	6.3	1.4	0.7	0.4	0.2	0.1	87.7	3.2	9.1	0.078	0.500	19.886776	-98.939400
T. C. México - Tizayuca (Cuota)	61.00	3	1	29799	0.7	86.0	2.9	6.2	1.3	1.6	0.8	0.3	0.2	86.7	2.9	10.4	0.088	0.508	19.898272	-98.928410
T. C. México - Tizayuca (Cuota)	61.00	3	2	28862	0.6	86.0	3.0	6.2	1.3	1.7	0.7	0.3	0.2	86.6	3.0	10.4	0.071	0.508	19.900967	-98.926147
X. C. Arco Norte de La Ciudad de México	64.20	1	1	28426	0.5	88.7	2.4	4.7	1.1	1.8	0.4	0.3	0.1	89.2	2.4	8.4	0.090	0.501	19.923072	-98.900706
X. C. Arco Norte de La Ciudad de México	64.20	1	2	28316	0.5	87.3	2.8	5.4	1.3	1.9	0.4	0.3	0.1	87.8	2.8	9.4	0.110	0.501	19.923280	-98.900872
X. C. Arco Norte de La Ciudad de México	64.20	3	1	24489	0.7	85.8	3.9	5.8	0.9	1.4	0.7	0.4	0.4	86.5	3.9	9.6	0.088	0.514	19.930853	-98.890935
X. C. Arco Norte de La Ciudad de México	64.20	3	2	25911	0.7	84.4	4.4	6.8	0.9	1.5	0.6	0.3	0.4	85.1	4.4	10.5	0.077	0.514	19.931040	-98.891130
Ent. Colonia	83.97	1	1	50130	0.8	90.1	2.7	3.7	0.5	0.8	0.5	0.6	0.3	90.9	2.7	6.4	0.074	0.518	20.044768	-98.792198
Ent. Colonia	83.97	1	2	46331	0.8	89.4	2.9	4.0	0.5	0.9	0.5	0.7	0.3	90.2	2.9	6.9	0.071	0.518	20.044900	-98.792449
X. C. Libramiento de Pachuca	86.50	1	1	41142	3.9	88.6	3.3	1.6	0.8	0.4	0.6	0.6	0.2	92.5	3.3	4.2	0.074	0.502	20.097779	-98.765889
X. C. Libramiento de Pachuca	86.50	1	2	41444	3.8	87.7	4.2	1.7	0.8	0.4	0.6	0.6	0.2	91.5	4.2	4.3	0.081	0.502	20.097934	-98.766067
Pachuca	94.00	0	0																	

HIDALGO

7 CARR: Pachuca - Cd. Sahagún

CLAVE: 13088

RUTA: MEX

AÑO: 2022

LUGAR	ESTACION				CLASIFICACION VEHICULAR EN PORCIENTO										COORDENADAS					
	KM	TE	SC	TDPA	M	A	B	C2	C3	T3S2	T3S3	T3S2R4	OTROS	A	B	C	K'	D	LATITUD	LONGITUD
Pachuca	0.00	3	1	30039	5.2	85.4	2.2	4.1	1.3	1.0	0.3	0.4	0.1	90.6	2.2	7.2	0.074	0.506	20.067461	-98.744426
Pachuca	0.00	3	2	30766	4.8	85.0	2.5	4.5	1.4	1.0	0.3	0.4	0.1	89.8	2.5	7.7	0.078	0.506	20.067497	-98.744254
T. Der. Palma Gorda	11.00	1	1	35531	5.4	90.0	0.8	1.9	0.7	0.6	0.2	0.3	0.1	95.4	0.8	3.8	0.104	0.511	20.050350	-98.738766
T. Der. Palma Gorda	11.00	1	2	37275	5.7	89.2	0.8	2.2	0.9	0.6	0.2	0.3	0.1	94.9	0.8	4.3	0.098	0.511	20.050130	-98.738510
X. C. Venta de Carpio - Tulancingo	29.40	1	1	10315	1.7	90.1	1.1	2.5	1.5	1.8	0.9	0.3	0.1	91.8	1.1	7.1	0.091	0.501	19.889267	-98.668235
X. C. Venta de Carpio - Tulancingo	29.40	1	2	10354	1.4	90.6	1.2	2.2	1.3	1.9	1.0	0.3	0.1	92.0	1.2	6.8	0.092	0.501	19.889312	-98.668098
X. C. Venta de Carpio - Tulancingo	29.40	3	1	7023	2.8	89.9	1.1	1.9	1.4	1.8	0.8	0.3	0.0	92.7	1.1	6.2	0.094	0.511	19.870688	-98.661333
X. C. Venta de Carpio - Tulancingo	29.40	3	2	6719	2.7	89.0	1.2	2.8	1.2	1.9	0.8	0.3	0.1	91.7	1.2	7.1	0.105	0.511	19.870712	-98.661251
T. Izq. Tepeapulco	40.00	1	1	7099	1.6	90.0	1.1	2.8	1.5	1.8	0.7	0.4	0.1	91.6	1.1	7.3	0.099	0.509	19.828638	-98.600259
T. Izq. Tepeapulco	40.00	1	2	6836	1.5	90.1	1.1	2.5	1.6	2.0	0.9	0.3	0.0	91.6	1.1	7.3	0.104	0.509	19.828740	-98.600250
T. Izq. Tepeapulco	40.00	3	1	6407	1.5	89.9	1.0	2.7	1.9	1.8	0.9	0.3	0.0	91.4	1.0	7.6	0.104	0.506	19.816347	-98.585603
T. Izq. Tepeapulco	40.00	3	2	6265	1.5	90.1	1.1	2.5	1.6	2.0	0.9	0.3	0.0	91.6	1.1	7.3	0.104	0.506	19.816373	-98.585484
Cd. Sahagún	44.70	0	0																	

8 CARR: Pachuca - Tempoal

CLAVE: 00113

RUTA: MEX-105

AÑO: 2022

LUGAR	ESTACION				CLASIFICACION VEHICULAR EN PORCIENTO										COORDENADAS					
	KM	TE	SC	TDPA	M	A	B	C2	C3	T3S2	T3S3	T3S2R4	OTROS	A	B	C	K'	D	LATITUD	LONGITUD
Pachuca	0.00	3	0	4112	0.2	97.2	0.8	1.7	0.1	0.0	0.0	0.0	0.0	97.4	0.8	1.8	0.084	0.512	20.130654	-98.715573
T. Der. Omitlán de Juárez (1° Acceso)	18.20	1	0	14876	2.2	87.9	1.6	5.1	1.5	0.8	0.3	0.5	0.1	90.1	1.6	8.3	0.091	0.512	20.160609	-98.654361
T. Der a Huasca	22.20	0	0																	
T. Libramiento de Atotonilco El Grande	30.25	0	0																	
Atotonilco El Grande	33.85	3	1	5681	4.7	87.9	1.5	3.4	1.5	0.6	0.3	0.1	0.0	92.6	1.5	5.9	0.085	0.515	20.302259	-98.681431
Atotonilco El Grande	33.85	3	2	5340	4.5	87.6	1.6	3.6	1.6	0.7	0.3	0.1	0.0	92.1	1.6	6.3	0.092	0.515	20.302178	-98.681566
T. Libramiento de Atotonilco El Grande	35.45	0	0																	
Cerro Colorado	48.15	0	0																	
T. Izq. Metztlán	63.70	1	0	5259	1.6	85.1	2.1	7.4	1.3	1.1	1.1	0.3	0.0	86.7	2.1	11.2	0.077	0.509	20.467377	-98.676279
T. Izq. Metztlán	63.70	3	0	4171	1.7	83.6	2.3	6.9	1.6	2.4	0.9	0.5	0.1	85.3	2.3	12.4	0.079	0.511	20.474447	-98.668478
Metzquitlán	75.00	1	0	5422	1.8	84.5	2.1	6.3	1.6	2.2	1.1	0.3	0.1	86.3	2.1	11.6	0.076	0.505	20.527410	-98.646888
T. Izq. Zacualtipán	96.50	1	0	9151	2.5	91.3	1.4	2.1	0.9	0.8	0.7	0.2	0.1	93.8	1.4	4.8	0.076	0.502	20.641220	-98.635155
T. Izq. Zacualtipán	96.50	3	0	5454	3.7	84.8	1.9	5.7	1.8	1.0	0.5	0.4	0.2	88.5	1.9	9.6	0.084	0.508	20.664059	-98.673954
X. C. Molango - Xochicoatlán	129.80	1	0	3406	3.7	83.8	2.6	5.3	1.8	1.3	0.7	0.5	0.3	87.5	2.6	9.9	0.075	0.509	20.787130	-98.721453
X. C. Molango - Xochicoatlán	129.80	3	0	3683	2.5	85.1	2.0	4.8	1.7	1.9	1.4	0.4	0.2	87.6	2.0	10.4	0.090	0.518	20.795099	-98.726915
T. Izq. Tepehuacán de Guerrero	157.70	1	0	2578	2.8	81.2	3.4	5.5	2.4	3.0	0.9	0.5	0.3	84.0	3.4	12.6	0.086	0.507	20.964838	-98.686764
Tehuacán	199.20	1	0	2380	3.5	81.6	2.9	5.5	1.0	3.3	1.4	0.7	0.1	85.1	2.9	12.0	0.081	0.513	21.057323	-98.510011



HIDALGO

8 CARR: Pachuca - Tempoal

CLAVE: 00113

RUTA: MEX-105

AÑO: 2022

LUGAR	ESTACION				CLASIFICACION VEHICULAR EN PORCIENTO													COORDENADAS		
	KM	TE	SC	TDPA	M	A	B	C2	C3	T3S2	T3S3	T3S2R4	OTROS	A	B	C	K'	D	LATITUD	LONGITUD
T. Izq. Huejutla (1° Acceso)	214.60	1	1	5833	3.7	85.2	1.1	2.9	0.8	3.7	1.6	0.7	0.3	88.9	1.1	10.0	0.092	0.509	21.122045	-98.419185
T. Izq. Huejutla (1° Acceso)	214.60	1	2	6035	3.6	85.5	1.2	2.9	0.9	3.7	1.3	0.6	0.3	89.1	1.2	9.7	0.099	0.509	21.122064	-98.419271
T. Izq. Huejutla (1° Acceso)	214.60	3	1	7211	5.8	80.7	1.1	4.8	1.0	3.9	1.4	0.8	0.5	86.5	1.1	12.4	0.087	0.503	21.134697	-98.409399
T. Izq. Huejutla (1° Acceso)	214.60	3	2	7612	5.6	81.5	1.1	4.6	0.9	3.8	1.3	0.7	0.5	87.1	1.1	11.8	0.085	0.503	21.134697	-98.409486
Lim. Edos. Term. Hgo. Ppia. Ver.	217.20	0	0																	
T. C. Alazán - Canoas	260.68	1	0	2588	7.7	72.1	1.9	10.9	2.4	2.1	1.8	0.9	0.2	79.8	1.9	18.3	0.082	0.519	21.491927	-98.357221

9 CARR: Pachuca - Tuxpam

CLAVE: 00608

RUTA: MEX-130

AÑO: 2022

LUGAR	ESTACION				CLASIFICACION VEHICULAR EN PORCIENTO													COORDENADAS		
	KM	TE	SC	TDPA	M	A	B	C2	C3	T3S2	T3S3	T3S2R4	OTROS	A	B	C	K'	D	LATITUD	LONGITUD
Pachuca	0.00	0	0																	
X. C. Libramiento de Pachuca	2.60	3	1	30269	1.0	96.2	0.2	1.9	0.2	0.1	0.1	0.2	0.1	97.2	0.2	2.6	0.076	0.509	20.087348	-98.713509
X. C. Libramiento de Pachuca	2.60	3	2	31452	1.0	95.9	0.2	2.2	0.2	0.1	0.1	0.2	0.1	96.9	0.2	2.9	0.074	0.509	20.088659	-98.713736
T. Izq. Pachuquilla (1° Acceso)	7.00	1	1	21711	1.4	93.0	0.6	2.7	0.8	0.6	0.2	0.5	0.2	94.4	0.6	5.0	0.074	0.505	20.077808	-98.709729
T. Izq. Pachuquilla (1° Acceso)	7.00	1	2	21300	1.4	92.6	0.6	3.0	0.9	0.6	0.2	0.5	0.2	94.0	0.6	5.4	0.073	0.505	20.076930	-98.708650
T. Izq. Pachuquilla (2° Acceso)	10.50	1	1	11363	1.1	93.3	0.4	2.7	1.1	0.5	0.4	0.3	0.2	94.4	0.4	5.2	0.084	0.502	20.066959	-98.670366
T. Izq. Pachuquilla (2° Acceso)	10.50	1	2	11275	1.3	92.8	0.4	2.9	1.1	0.6	0.4	0.3	0.2	94.1	0.4	5.5	0.088	0.502	20.066850	-98.670356
T. Der. Cd. Sahagún	16.59	1	1	10573	2.4	91.2	0.9	3.0	1.0	0.6	0.4	0.3	0.2	93.6	0.9	5.5	0.082	0.511	20.060902	-98.635158
T. Der. Cd. Sahagún	16.59	1	2	10128	2.4	90.9	0.9	3.3	1.0	0.6	0.4	0.3	0.2	93.3	0.9	5.8	0.088	0.511	20.060990	-98.635941
T. Der. Cd. Sahagún	16.59	3	1	9015	2.0	91.6	0.8	2.8	1.1	0.7	0.5	0.3	0.2	93.6	0.8	5.6	0.087	0.507	20.044118	-98.609171
T. Der. Cd. Sahagún	16.59	3	2	8770	2.1	90.9	0.8	3.3	1.2	0.7	0.5	0.3	0.2	93.0	0.8	6.2	0.084	0.507	20.044224	-98.609014
T. C. Venta de Carpio - Tulancingo	36.45	1	1	10055	2.9	89.1	1.3	3.1	1.6	0.7	0.6	0.4	0.3	92.0	1.3	6.7	0.076	0.508	20.056682	-98.474978
T. C. Venta de Carpio - Tulancingo	36.45	1	2	10382	2.7	89.1	1.3	3.3	1.6	0.7	0.6	0.4	0.3	91.8	1.3	6.9	0.076	0.508	20.056529	-98.465297
T. C. Venta de Carpio - Tulancingo	36.45	3	1	15810	3.5	89.4	1.0	3.0	1.6	0.7	0.4	0.3	0.1	92.9	1.0	6.1	0.080	0.502	20.062773	-98.439985
T. C. Venta de Carpio - Tulancingo	36.45	3	2	15948	3.9	88.6	1.1	3.2	1.6	0.8	0.4	0.3	0.1	92.5	1.1	6.4	0.075	0.502	20.063402	-98.438844
T. Izq. Libramiento de Tulancingo	59.33	3	1	8749	4.7	82.6	0.8	7.6	1.8	0.9	0.7	0.5	0.4	87.3	0.8	11.9	0.093	0.528	20.151771	-98.285060
T. Izq. Libramiento de Tulancingo	59.33	3	2	7827	4.3	82.2	0.8	7.9	2.0	1.1	0.7	0.6	0.4	86.5	0.8	12.7	0.107	0.528	20.151807	-98.285127
T. Izq. Huayacocotla	60.16	3	0	17250	4.4	83.8	2.8	5.2	1.3	0.9	0.7	0.6	0.3	88.2	2.8	9.0	0.081	0.511	20.157609	-98.278699
T. Izq. Honey	63.00	3	0	10986	4.8	83.5	1.5	6.4	1.4	0.8	0.6	0.7	0.3	88.3	1.5	10.2	0.083	0.512	20.161515	-98.259620
Lim. Edos. Term. Hgo. Ppia. Pue.	83.18	0	0																	
T. Der. Huauchinango (1° Acceso)	94.00	1	0	5259	3.7	85.7	1.5	4.3	3.0	1.0	0.4	0.2	0.2	89.4	1.5	9.1	0.067	0.511	20.168975	-98.074297
T. Der. Huauchinango (2° Acceso)	100.00	3	0	8299	5.0	85.7	1.3	4.4	2.1	0.6	0.5	0.3	0.1	90.7	1.3	8.0	0.076	0.501	20.193074	-98.036057
Villa Ávila Camacho	141.75	1	0	2903	5.2	76.3	3.8	10.2	2.2	0.9	0.5	0.8	0.1	81.5	3.8	14.7	0.071	0.506	20.379994	-97.885309
Villa Ávila Camacho	141.75	3	0	5314	2.7	86.6	2.0	4.8	2.0	0.8	0.7	0.4	0.0	89.3	2.0	8.7	0.079	0.504	20.395433	-97.872083

HIDALGO

9 CARR: Pachuca - Tuxpam

CLAVE: 00608

RUTA: MEX-130

AÑO: 2022

LUGAR	ESTACION				CLASIFICACION VEHICULAR EN PORCIENTO										COORDENADAS					
	KM	TE	SC	TDPA	M	A	B	C2	C3	T3S2	T3S3	T3S2R4	OTROS	A	B	C	K'	D	LATITUD	LONGITUD
Piedras Negras	158.70	1	0	3898	4.1	75.4	4.1	7.5	3.7	2.6	0.8	1.7	0.1	79.5	4.1	16.4	0.060	0.516	20.440035	-97.761334
T. Izq. Venustiano Carranza	174.10	3	0	4377	3.4	78.4	3.4	7.3	2.3	2.6	1.6	0.9	0.1	81.8	3.4	14.8	0.066	0.509	20.481372	-97.638645
Lim. Edos. Term. Pue. Ppia. Ver.	180.00	0	0																	
T. Der. Poza Rica	197.00	1	0	14123	7.3	84.2	1.4	3.0	1.4	1.1	0.6	0.8	0.2	91.5	1.4	7.1	0.072	0.501	20.518857	-97.493191
T. Der. Poza Rica	197.00	3	0	22262	5.2	82.7	3.0	4.2	1.9	1.2	0.5	1.0	0.3	87.9	3.0	9.1	0.071	0.503	20.560385	-97.476641
Tihuatlán	217.00	1	0	12605	7.4	75.1	5.4	6.3	1.5	2.4	0.6	1.0	0.3	82.5	5.4	12.1	0.068	0.515	20.698801	-97.527825
Tihuatlán	217.00	3	0	3214	10.5	82.2	0.8	3.2	1.6	0.8	0.4	0.4	0.1	92.7	0.8	6.5	0.085	0.502	20.721087	-97.527773
T. C. Tihuatlán - Tuxpam (Cuota)	232.50	1	0	2105	10.0	75.1	1.2	7.4	1.3	2.7	1.6	0.4	0.3	85.1	1.2	13.7	0.082	0.505	20.806771	-97.477694

10 CARR: Portezuelo - Cd. Valles

CLAVE: 00023

RUTA: MEX-085

AÑO: 2022

LUGAR	ESTACION				CLASIFICACION VEHICULAR EN PORCIENTO										COORDENADAS					
	KM	TE	SC	TDPA	M	A	B	C2	C3	T3S2	T3S3	T3S2R4	OTROS	A	B	C	K'	D	LATITUD	LONGITUD
Portezuelo	0.00	3	0	5764	4.6	88.3	1.4	2.5	1.1	0.9	0.8	0.3	0.1	92.9	1.4	5.7	0.098	0.502	20.488422	-99.298708
T. Der. Tasquillo (2° Acceso)	10.50	1	0	4772	5.7	86.3	1.3	3.1	1.2	1.1	0.8	0.2	0.3	92.0	1.3	6.7	0.085	0.510	20.542206	-99.318295
T. Izq. Zimapán (1° Acceso)	32.00	1	0	6120	5.0	87.9	1.5	2.5	1.0	1.0	0.8	0.2	0.1	92.9	1.5	5.6	0.076	0.510	20.702717	-99.334320
T. Izq. Zimapán (1° Acceso)	32.00	3	0	2274	5.1	86.7	1.3	2.6	1.4	1.4	1.2	0.2	0.1	91.8	1.3	6.9	0.084	0.513	20.706057	-99.336200
La Estancia	41.00	3	0	2210	3.0	83.1	1.7	7.8	1.3	1.7	0.9	0.3	0.2	86.1	1.7	12.2	0.094	0.504	20.777742	-99.309861
Trancas	51.00	3	0	1815	3.6	81.2	1.9	8.4	1.5	1.2	1.5	0.4	0.3	84.8	1.9	13.3	0.088	0.513	20.801478	-99.261738
Jacala	98.60	3	0	2406	7.6	80.6	1.1	8.0	0.8	1.1	0.4	0.3	0.1	88.2	1.1	10.7	0.089	0.509	21.002261	-99.184735
Zacate Grande	143.10	1	0	1123	4.8	83.5	2.4	5.8	1.5	0.9	0.7	0.3	0.1	88.3	2.4	9.3	0.072	0.509	21.106569	-99.003043
T. Izq. Pisaflores	154.00	3	0	2244	6.2	83.9	1.5	5.5	1.4	0.6	0.5	0.3	0.1	90.1	1.5	8.4	0.088	0.501	21.153707	-98.945147
Lim. Edos. Term. Hgo. Ppia. S. L. P.	168.63	0	0																	
Tamazunchale	192.80	1	0	6708	24.8	64.0	2.2	3.7	2.8	1.3	0.2	0.7	0.3	88.8	2.2	9.0	0.071	0.512	21.263721	-98.799432
T. Izq. Xilitla	228.75	1	0	6513	12.8	76.3	1.9	4.0	2.5	1.0	0.7	0.7	0.1	89.1	1.9	9.0	0.078	0.500	21.442921	-98.925487
T. Izq. Xilitla	228.75	3	0	5484	13.0	74.6	2.3	4.4	2.8	1.3	0.7	0.4	0.5	87.6	2.3	10.1	0.084	0.506	21.448931	-98.930551
T. Izq. Aquismón	252.50	1	0	6131	9.1	73.7	2.6	5.4	4.4	1.5	1.8	0.7	0.8	82.8	2.6	14.6	0.080	0.516	21.615507	-98.987294
Agua Hedionda	265.00	1	0	5975	3.3	77.0	1.6	9.9	3.1	3.1	1.2	0.3	0.5	80.3	1.6	18.1	0.076	0.513	21.721655	-98.963015
X. C. Rayón - Ent. Tamuín (Cuota)	286.41	1	1	4157	6.9	80.3	1.7	4.7	3.3	1.7	0.7	0.3	0.4	87.2	1.7	11.1	0.091	0.511	21.884584	-98.947321
X. C. Rayón - Ent. Tamuín (Cuota)	286.41	1	2	4338	7.1	79.2	1.9	5.0	3.6	1.7	0.6	0.4	0.5	86.3	1.9	11.8	0.072	0.511	21.884566	-98.947388
Cd. Valles	300.00	1	1	5905	11.5	73.9	3.8	8.3	1.2	0.6	0.2	0.4	0.1	85.4	3.8	10.8	0.080	0.509	21.959245	-98.998615
Cd. Valles	300.00	1	2	6127	11.5	74.0	3.7	8.3	1.2	0.6	0.2	0.4	0.1	85.5	3.7	10.8	0.082	0.509	21.959300	-98.998780

HIDALGO

11 CARR: Portezuelo - Palmillas

CLAVE: 00194

RUTA: MEX-045

AÑO: 2022

LUGAR	ESTACION				CLASIFICACION VEHICULAR EN PORCIENTO													COORDENADAS		
	KM	TE	SC	TDPA	M	A	B	C2	C3	T3S2	T3S3	T3S2R4	OTROS	A	B	C	K'	D	LATITUD	LONGITUD
Portezuelo	0.00	3	1	4410	2.2	73.0	3.2	8.8	2.4	6.1	2.8	1.1	0.4	75.2	3.2	21.6	0.079	0.512	20.486605	-99.304276
Portezuelo	0.00	3	2	4196	2.3	73.0	3.0	8.6	2.3	6.2	2.9	1.2	0.5	75.3	3.0	21.7	0.076	0.512	20.486524	-99.304295
Jonacapa	29.41	3	0	5834	2.7	74.0	3.5	7.7	2.6	5.0	2.8	1.5	0.2	76.7	3.5	19.8	0.086	0.516	20.435424	-99.536410
Huichapan	45.10	1	1	4596	2.9	74.9	3.9	7.1	2.7	3.7	2.5	1.7	0.6	77.8	3.9	18.3	0.090	0.504	20.395460	-99.635288
Huichapan	45.10	1	2	4517	3.0	74.2	4.2	7.3	2.7	3.6	2.5	1.8	0.7	77.2	4.2	18.6	0.083	0.504	20.395397	-99.635221
T. Izq. Nopala	56.15	1	0	9342	2.8	77.4	3.2	5.2	2.8	3.6	2.8	1.7	0.5	80.2	3.2	16.6	0.085	0.505	20.318029	-99.713268
T. Izq. Nopala	56.15	3	0	6471	2.7	72.0	2.8	6.9	2.6	5.8	3.9	2.5	0.8	74.7	2.8	22.5	0.099	0.508	20.309992	-99.720932
Lim. Edos. Term. Hgo. Ppia. Qro.	71.40	0	0																	
Palmillas	80.00	1	1	4962	1.1	76.4	2.3	9.5	1.8	3.3	3.2	1.9	0.5	77.5	2.3	20.2	0.090	0.508	20.322330	-99.928826
Palmillas	80.00	1	2	4805	1.1	76.5	2.4	9.5	1.9	3.2	3.1	1.8	0.5	77.6	2.4	20.0	0.087	0.508	20.322294	-99.928883

12 CARR: Tamazunchale - San Felipe Orizatlán

CLAVE: 00609

RUTA: MEX-085

AÑO: 2022

LUGAR	ESTACION				CLASIFICACION VEHICULAR EN PORCIENTO													COORDENADAS		
	KM	TE	SC	TDPA	M	A	B	C2	C3	T3S2	T3S3	T3S2R4	OTROS	A	B	C	K'	D	LATITUD	LONGITUD
T. C. Portezuelo - Cd. Valles	0.00	3	0	13273	22.4	67.5	0.5	6.5	0.7	0.4	1.2	0.6	0.2	89.9	0.5	9.6	0.088	0.507	21.250405	-98.766131
Lim. Edos. Term. S. L. P. Ppia. Hgo.	18.50	0	0																	
San Felipe Orizatlán	27.10	1	0	3024	18.6	69.8	2.0	6.8	1.5	0.5	0.4	0.3	0.1	88.4	2.0	9.6	0.086	0.507	21.170705	-98.617920

13 CARR: Venta de Carpio - T. C. (Pachuca - Tuxpam)

CLAVE: 00455

RUTA: MEX-132

AÑO: 2022

LUGAR	ESTACION				CLASIFICACION VEHICULAR EN PORCIENTO													COORDENADAS		
	KM	TE	SC	TDPA	M	A	B	C2	C3	T3S2	T3S3	T3S2R4	OTROS	A	B	C	K'	D	LATITUD	LONGITUD
T. C. México - Pachuca (Libre)	0.00	0	0																	
T. Der. Texcoco	6.42	3	1	13122	5.7	87.5	0.7	2.5	1.3	1.6	0.4	0.2	0.1	93.2	0.7	6.1	0.074	0.501	19.610877	-98.947185
T. Der. Texcoco	6.42	3	2	13187	5.2	87.6	0.9	2.7	1.4	1.6	0.3	0.2	0.1	92.8	0.9	6.3	0.074	0.501	19.610978	-98.947174
Tepexpan	7.57	3	1	10699	4.9	86.4	0.3	4.7	0.6	1.5	1.0	0.2	0.4	91.3	0.3	8.4	0.085	0.501	19.620549	-98.934849
Tepexpan	7.57	3	2	10749	5.0	86.4	0.3	4.6	0.6	1.5	1.0	0.2	0.4	91.4	0.3	8.3	0.073	0.501	19.620502	-98.934963
Acolman	12.42	1	0	16323	6.2	85.1	0.4	4.9	1.0	1.1	0.7	0.3	0.3	91.3	0.4	8.3	0.071	0.511	19.632767	-98.917788
Teotihuacán	20.70	3	0	24461	8.4	83.6	0.7	4.6	0.7	0.9	0.3	0.5	0.3	92.0	0.7	7.3	0.076	0.513	19.681575	-98.863218
T. Der. Otumba	31.79	1	0	15737	4.5	88.6	0.7	2.8	1.1	0.7	0.5	0.4	0.7	93.1	0.7	6.2	0.069	0.507	19.717647	-98.803098
T. Der. Otumba	31.79	3	0	7982	12.4	72.7	2.4	8.0	1.8	1.1	0.5	0.7	0.4	85.1	2.4	12.5	0.081	0.529	19.722638	-98.788379
Ent. Santiago Tolman	34.09	0	0																	
X. C. Tizayuca - Otumba	37.85	1	1	14231	2.0	80.2	3.6	5.1	1.8	4.0	1.6	1.4	0.3	82.2	3.6	14.2	0.103	0.511	19.744554	-98.763510
X. C. Tizayuca - Otumba	37.85	1	2	13623	2.2	79.0	3.9	5.3	1.9	4.1	1.7	1.5	0.4	81.2	3.9	14.9	0.083	0.511	19.744705	-98.763531

HIDALGO

13 CARR: Venta de Carpio - T. C. (Pachuca - Tuxpam)

CLAVE: 00455

RUTA: MEX-132

AÑO: 2022

LUGAR	ESTACION				CLASIFICACION VEHICULAR EN PORCIENTO													COORDENADAS		
	KM	TE	SC	TDPA	M	A	B	C2	C3	T3S2	T3S3	T3S2R4	OTROS	A	B	C	K'	D	LATITUD	LONGITUD
X. C. Tizayuca - Otumba	37.85	3	1	12914	11.0	72.2	2.0	3.7	2.6	5.0	1.4	1.7	0.4	83.2	2.0	14.8	0.106	0.509	19.759145	-98.750809
X. C. Tizayuca - Otumba	37.85	3	2	13364	11.1	71.8	2.2	3.9	2.5	4.8	1.6	1.7	0.4	82.9	2.2	14.9	0.135	0.509	19.759203	-98.750920
X. C. Arco Norte de La Ciudad de México	48.00	1	1	12082	1.3	76.8	4.0	6.8	2.0	5.7	1.1	1.8	0.5	78.1	4.0	17.9	0.100	0.503	19.827897	-98.705498
X. C. Arco Norte de La Ciudad de México	48.00	1	2	11945	1.2	76.8	3.8	7.0	2.2	5.6	1.0	1.9	0.5	78.0	3.8	18.2	0.135	0.503	19.827889	-98.705649
X. C. Arco Norte de La Ciudad de México	48.00	3	1	11187	1.5	89.8	0.9	5.4	0.5	1.0	0.5	0.2	0.2	91.3	0.9	7.8	0.127	0.505	19.839796	-98.693107
X. C. Arco Norte de La Ciudad de México	48.00	3	2	10958	1.4	89.7	1.0	5.7	0.5	0.9	0.4	0.2	0.2	91.1	1.0	7.9	0.218	0.505	19.838317	-98.694955
Lim. Edos. Term. Méx. Ppia. Hgo.	51.00	0	0																	
X. C. Pachuca - Cd. Sahagún	54.00	3	1	10223	1.4	71.5	4.5	9.8	3.5	5.0	2.3	1.8	0.2	72.9	4.5	22.6	0.096	0.502	19.882130	-98.658017
X. C. Pachuca - Cd. Sahagún	54.00	3	2	10138	1.6	70.4	4.8	9.9	3.5	5.1	2.6	1.9	0.2	72.0	4.8	23.2	0.110	0.502	19.880094	-98.660730
X. C. Calpulalpan - El Ocote	64.17	1	1	9464	0.9	77.6	3.0	8.5	3.7	3.1	1.6	1.2	0.4	78.5	3.0	18.5	0.084	0.503	19.918206	-98.585497
X. C. Calpulalpan - El Ocote	64.17	1	2	9334	1.1	77.9	2.9	8.2	3.6	3.2	1.6	1.1	0.4	79.0	2.9	18.1	0.097	0.503	19.918206	-98.585497
X. C. Calpulalpan - El Ocote	64.17	3	1	9157	2.9	78.1	2.3	7.9	3.0	2.7	1.6	1.1	0.4	81.0	2.3	16.7	0.115	0.507	19.925806	-98.576029
X. C. Calpulalpan - El Ocote	64.17	3	2	8914	2.5	77.8	2.5	8.0	3.1	2.8	1.7	1.1	0.5	80.3	2.5	17.2	0.118	0.507	19.925904	-98.576103
T. C. Pachuca - Tuxpam	84.08	1	1	14022	2.5	74.9	2.6	13.5	1.6	2.2	1.3	0.6	0.8	77.4	2.6	20.0	0.084	0.539	20.048949	-98.463513
T. C. Pachuca - Tuxpam	84.08	1	2	11992	2.3	74.9	2.7	13.5	1.7	2.4	1.2	0.5	0.8	77.2	2.7	20.1	0.111	0.539	20.052177	-98.459846

14 CARR: Ent. Tulancingo - Venta Grande (Cuota)

CLAVE: 00026

RUTA: MEX-132D

AÑO: 2022

LUGAR	ESTACION				CLASIFICACION VEHICULAR EN PORCIENTO													COORDENADAS		
	KM	TE	SC	TDPA	M	A	B	C2	C3	T3S2	T3S3	T3S2R4	OTROS	A	B	C	K'	D	LATITUD	LONGITUD
T. C. Pachuca - Tuxpam	0.00	0	0																	
T. Izq. Acatlán	7.80	1	0	18183	0.7	81.5	1.7	7.2	1.7	3.1	1.8	1.5	0.8	82.2	1.7	16.1	0.095	0.520	20.105332	-98.406485
T. Izq. Acatlán	7.80	3	0	16496	2.2	74.0	3.8	7.1	2.5	4.5	3.1	2.3	0.5	76.2	3.8	20.0	0.084	0.532	20.110776	-98.393616
Plaza de Cobro San Alejo (Tejocotal)	21.80	1	0	17949	3.1	77.6	3.1	6.0	1.9	3.0	2.3	2.4	0.6	80.7	3.1	16.2	0.104	0.544	20.150281	-98.300237
Plaza de Cobro San Alejo (Tejocotal)	21.80	2	0	9553	1.0	72.0	4.7	3.2	4.2	5.5	2.2	5.9	1.3	73.0	4.7	22.3	0.115	0.500	20.147472	-98.285748
T. C. Tlaxco - Tejocotal (Cuota)	39.60	1	0	14208	5.1	72.7	3.7	6.9	2.0	4.2	1.8	2.7	0.9	77.8	3.7	18.5	0.126	0.509	20.141474	-98.136780

15 CARR: Libramiento Norte de la Ciudad de México (Cuota)

CLAVE: 0902

RUTA: MEX-M40D

AÑO: 2022

LUGAR	ESTACION				CLASIFICACION VEHICULAR EN PORCIENTO													COORDENADAS		
	KM	TE	SC	TDPA	M	A	B	C2	C3	T3S2	T3S3	T3S2R4	OTROS	A	B	C	K'	D	LATITUD	LONGITUD
T. C. Toluca - Palmillas	0.00	0	0																	
X. C. Toluca - Palmillas	12.90	1	1	5196	1.7	61.5	4.4	6.4	2.2	14.7	3.9	4.2	1.0	63.2	4.4	32.4	0.125	0.505	19.917880	-99.850396
X. C. Toluca - Palmillas	12.90	1	2	5094	1.8	60.7	4.9	6.4	2.3	14.9	3.9	4.1	1.0	62.5	4.9	32.6	0.099	0.505	19.917931	-99.850584
X. C. Toluca - Palmillas	12.90	3	1	4397	1.9	63.1	8.5	5.6	2.4	11.1	2.9	3.8	0.7	65.0	8.5	26.5	0.105	0.502	19.923191	-99.836847

HIDALGO

15 CARR: Libramiento Norte de la Ciudad de México (Cuota)

CLAVE: 0902

RUTA: MEX-M40D

AÑO: 2022

LUGAR	ESTACION				CLASIFICACION VEHICULAR EN PORCIENTO										COORDENADAS					
	KM	TE	SC	TDPA	M	A	B	C2	C3	T3S2	T3S3	T3S2R4	OTROS	A	B	C	K'	D	LATITUD	LONGITUD
X. C. Toluca - Palmillas	12.90	3	2	4430	1.9	63.2	8.5	5.5	2.3	11.2	3.0	3.8	0.6	65.1	8.5	26.4	0.102	0.502	19.923023	-99.836846
C. P. Jilotepec	48.70	1	1	4394	1.7	60.6	4.6	9.9	2.7	13.1	1.6	4.9	0.9	62.3	4.6	33.1	0.118	0.511	19.969042	-99.538245
C. P. Jilotepec	48.70	1	2	4585	1.6	60.8	4.6	9.8	2.7	13.1	1.6	4.9	0.9	62.4	4.6	33.0	0.075	0.511	19.968922	-99.538092
C. P. Jilotepec	48.70	3	1	5950	3.5	54.3	8.6	6.4	2.8	16.5	2.0	4.8	1.1	57.8	8.6	33.6	0.094	0.506	19.980248	-99.516013
C. P. Jilotepec	48.70	3	2	5804	3.5	54.3	8.6	6.3	2.8	16.5	2.0	4.9	1.1	57.8	8.6	33.6	0.074	0.506	19.980364	-99.516077
X. C. México - Querétaro	54.00	3	1	9689	1.3	53.7	7.1	5.4	4.2	17.4	3.9	6.1	0.9	55.0	7.1	37.9	0.083	0.518	20.003139	-99.483421
X. C. México - Querétaro	54.00	3	2	9011	1.3	53.7	7.1	5.4	4.2	17.4	3.9	6.1	0.9	55.0	7.1	37.9	0.078	0.518	20.003701	-99.482757
Plaza de Cobro Querétaro	55.00	3	1	9503	0.4	54.5	1.9	4.4	5.8	18.3	4.4	7.8	2.5	54.9	1.9	43.2	0.067	0.500	19.998714	-99.487788
Plaza de Cobro Querétaro	55.00	3	2	9503	0.4	54.5	1.9	4.4	5.8	18.3	4.4	7.8	2.5	54.9	1.9	43.2	0.067	0.500	19.998714	-99.487788
Lim. Edos. Term. Méx. Ppia. Hgo.	60.72	0	0																	
X. C. Ent. Tepeji del Río - Tlahuelilpan	79.00	1	1	8480	2.5	53.2	7.5	6.2	4.4	15.7	4.2	5.4	0.9	55.7	7.5	36.8	0.068	0.531	20.096309	-99.294026
X. C. Ent. Tepeji del Río - Tlahuelilpan	79.00	1	2	9610	2.5	53.2	7.5	6.2	4.4	15.7	4.2	5.4	0.9	55.7	7.5	36.8	0.066	0.531	20.097362	-99.290967
X. C. Ent. Tepeji del Río - Tlahuelilpan	79.00	3	1	10705	3.2	58.7	7.3	6.6	2.3	11.6	3.8	5.6	0.9	61.9	7.3	30.8	0.079	0.508	20.093176	-99.269475
X. C. Ent. Tepeji del Río - Tlahuelilpan	79.00	3	2	10375	3.2	58.7	7.3	6.6	2.4	11.6	3.8	5.5	0.9	61.9	7.3	30.8	0.093	0.508	20.095231	-99.272932
X. C. Los Reyes - El Tephé	86.40	1	1	10948	2.7	63.5	4.0	5.4	1.9	13.3	3.0	5.3	0.9	66.2	4.0	29.8	0.082	0.517	20.069524	-99.226991
X. C. Los Reyes - El Tephé	86.40	1	2	11731	2.7	63.5	4.0	5.4	1.9	13.3	3.0	5.3	0.9	66.2	4.0	29.8	0.075	0.517	20.070074	-99.227642
X. C. Los Reyes - El Tephé	86.40	3	1	10277	2.7	62.3	4.1	6.7	3.2	10.5	3.5	6.1	0.9	65.0	4.1	30.9	0.095	0.514	20.064365	-99.212093
X. C. Los Reyes - El Tephé	86.40	3	2	10851	2.7	62.3	4.1	6.7	3.2	10.5	3.5	6.1	0.9	65.0	4.1	30.9	0.091	0.514	20.065148	-99.214523
Lim. Edos. Term. Hgo. Ppia. Méx.	95.75	0	0																	
X. C. (Los Reyes - El Tephé) - Tianguistongo	108.60	1	1	10222	4.6	55.5	5.3	6.1	2.6	13.9	3.9	7.2	0.9	60.1	5.3	34.6	0.071	0.505	19.958560	-99.068162
X. C. (Los Reyes - El Tephé) - Tianguistongo	108.60	1	2	10020	4.6	55.5	5.3	6.1	2.6	13.9	3.9	7.2	0.9	60.1	5.3	34.6	0.090	0.505	19.958335	-99.066232
X. C. (Los Reyes - El Tephé) - Tianguistongo	108.60	3	1	11163	3.5	60.4	4.8	6.5	2.7	13.1	3.6	4.6	0.8	63.9	4.8	31.3	0.083	0.532	19.955186	-99.050652
X. C. (Los Reyes - El Tephé) - Tianguistongo	108.60	3	2	9812	3.5	60.4	4.8	6.5	2.7	13.1	3.6	4.6	0.8	63.9	4.8	31.3	0.084	0.532	19.955367	-99.050614
Lim. Edos. Term. Méx. Ppia. Hgo.	115.89	0	0																	
X. C. México - Pachuca	127.30	1	1	9835	2.3	66.3	4.5	5.5	2.4	9.9	3.7	4.5	0.9	68.6	4.5	26.9	0.074	0.505	19.932331	-98.902570
X. C. México - Pachuca	127.30	1	2	10018	2.3	66.3	4.5	5.5	2.4	9.9	3.7	4.5	0.9	68.6	4.5	26.9	0.073	0.505	19.932457	-98.902532
X. C. México - Pachuca	127.30	3	1	9009	2.9	51.5	5.9	7.2	3.2	15.6	4.3	8.5	0.9	54.4	5.9	39.7	0.070	0.518	19.926967	-98.879832
X. C. México - Pachuca	127.30	3	2	9670	2.9	51.6	5.9	7.1	3.2	15.6	4.3	8.5	0.9	54.5	5.9	39.6	0.078	0.518	19.926776	-98.878322
Lim. Edos. Term. Hgo. Ppia. Méx.	143.98	0	0																	
X. C. Venta de Carpio - T. C. (Pachuca - Tulancingo)	151.11	1	1	9836	3.5	59.7	5.5	4.5	2.8	13.0	2.9	7.2	0.9	63.2	5.5	31.3	0.070	0.539	19.840605	-98.708843
X. C. Venta de Carpio - T. C. (Pachuca - Tulancingo)	151.11	1	2	8428	3.4	59.2	5.6	4.2	3.2	13.1	3.1	7.3	0.9	62.6	5.6	31.8	0.074	0.539	19.839775	-98.707650
X. C. Venta de Carpio - T. C. (Pachuca - Tulancingo)	151.11	3	1	7419	4.2	59.7	5.2	3.5	4.1	12.9	2.6	6.9	0.9	63.9	5.2	30.9	0.069	0.512	19.826850	-98.691810
X. C. Venta de Carpio - T. C. (Pachuca - Tulancingo)	151.11	3	2	7773	3.2	60.3	5.5	3.4	4.3	12.6	2.6	7.3	0.8	63.5	5.5	31.0	0.076	0.512	19.828435	-98.693547
X. C. Ent. Tolman - Cd. Sahagún	162.55	1	1	8308	3.9	60.7	5.2	3.6	3.8	12.2	2.6	7.1	0.9	64.6	5.2	30.2	0.064	0.510	19.761640	-98.632550
X. C. Ent. Tolman - Cd. Sahagún	162.55	1	2	8646	3.6	60.3	5.5	3.7	3.9	12.0	2.6	7.5	0.9	63.9	5.5	30.6	0.081	0.510	19.770715	-98.637921

HIDALGO

15 CARR: Libramiento Norte de la Ciudad de México (Cuota)

CLAVE: 0902

RUTA: MEX-M40D

AÑO: 2022

LUGAR	ESTACION				CLASIFICACION VEHICULAR EN PORCIENTO										COORDENADAS					
	KM	TE	SC	TDPA	M	A	B	C2	C3	T3S2	T3S3	T3S2R4	OTROS	A	B	C	K'	D	LATITUD	LONGITUD
X. C. Ent. Tolman - Cd. Sahagún	162.55	3	1	9677	0.0	62.5	6.7	6.0	2.3	12.0	3.4	6.2	0.9	62.5	6.7	30.8	0.067	0.518	19.749246	-98.625633
X. C. Ent. Tolman - Cd. Sahagún	162.55	3	2	8998	4.5	57.8	7.6	5.1	2.3	12.3	3.3	6.3	0.8	62.3	7.6	30.1	0.066	0.518	19.747860	-98.624753
Lim. Edos. Term. Méx. Ppia. Hgo.	166.53	0	0																	
X. C. Calpulallpan - El Ocote	180.39	1	1	10279	7.6	56.3	7.0	4.6	2.7	13.8	2.8	4.2	1.0	63.9	7.0	29.1	0.081	0.508	19.624551	-98.552352
X. C. Calpulallpan - El Ocote	180.39	1	2	10627	8.4	55.3	6.5	4.7	2.7	14.2	2.9	4.3	1.0	63.7	6.5	29.8	0.080	0.508	19.625038	-98.552572
X. C. Calpulallpan - El Ocote	180.39	3	1	9741	3.4	50.0	8.6	5.5	2.6	17.9	4.0	7.0	1.0	53.4	8.6	38.0	0.103	0.525	19.615849	-98.544898
X. C. Calpulallpan - El Ocote	180.39	3	2	8813	3.1	49.7	8.4	5.7	2.8	18.0	4.2	7.1	1.0	52.8	8.4	38.8	0.093	0.525	19.606109	-98.536461
Lim. Edos. Term. Hgo. Ppia. Tlax.	180.98	0	0																	
X. C. Los Reyes - Zacatepec	196.70	1	1	9545	6.0	50.3	5.1	4.0	2.8	19.3	4.3	7.2	1.0	56.3	5.1	38.6	0.074	0.511	19.520236	-98.472940
X. C. Los Reyes - Zacatepec	196.70	1	2	9976	5.8	49.0	5.4	4.2	3.0	18.9	4.8	7.9	1.0	54.8	5.4	39.8	0.084	0.511	19.520281	-98.472854
X. C. Los Reyes - Zacatepec	196.70	3	1	8426	6.0	50.1	7.1	4.7	2.8	17.0	3.9	7.4	1.0	56.1	7.1	36.8	0.067	0.504	19.508688	-98.467211
X. C. Los Reyes - Zacatepec	196.70	3	2	8560	5.9	52.1	6.7	4.6	2.7	16.4	3.4	7.2	1.0	58.0	6.7	35.3	0.085	0.504	19.508769	-98.467125
X. C. San Martín Texmelucan - Tlaxcala - El Molinito	220.95	1	1	8209	9.4	43.2	7.3	5.6	4.3	18.9	3.9	6.4	1.0	52.6	7.3	40.1	0.075	0.510	19.314543	-98.407475
X. C. San Martín Texmelucan - Tlaxcala - El Molinito	220.95	1	2	7872	9.2	41.4	7.3	5.7	4.6	20.1	3.9	6.8	1.0	50.6	7.3	42.1	0.067	0.510	19.314823	-98.407331
X. C. San Martín Texmelucan - Tlaxcala - El Molinito	220.95	3	1	10444	3.4	66.9	5.3	5.0	2.2	10.3	2.2	3.8	0.9	70.3	5.3	24.4	0.067	0.515	19.292774	-98.410560
X. C. San Martín Texmelucan - Tlaxcala - El Molinito	220.95	3	2	9835	3.3	63.7	6.1	5.6	2.4	11.6	2.5	3.9	0.9	67.0	6.1	26.9	0.079	0.515	19.292792	-98.410446
Plaza de Cobro San Martín Texmelucan	222.00	1	1	8009	0.3	52.7	1.9	5.3	5.7	20.6	3.7	7.8	2.0	53.0	1.9	45.1	0.067	0.500	19.301809	-98.409588
Plaza de Cobro San Martín Texmelucan	222.00	1	2	8009	0.3	52.7	1.9	5.3	5.7	20.6	3.7	7.8	2.0	53.0	1.9	45.1	0.067	0.500	19.301809	-98.409588
T. C. San Martín Texmelucan - Ocotoxco (Cuota)	222.44	0	0																	
T. C. México - Puebla (Cuota)	226.73	1	1	9291	3.7	64.5	6.6	4.2	3.1	11.7	1.7	3.7	0.8	68.2	6.6	25.2	0.075	0.513	19.270112	-98.419948
T. C. México - Puebla (Cuota)	226.73	1	2	9774	3.5	61.6	7.3	4.6	3.4	13.0	1.9	3.8	0.9	65.1	7.3	27.6	0.066	0.513	19.270030	-98.419863

16 CARR: México - Pachuca (Cuota)

CLAVE: 00432

RUTA: MEX-085D

AÑO: 2022

LUGAR	ESTACION				CLASIFICACION VEHICULAR EN PORCIENTO										COORDENADAS					
	KM	TE	SC	TDPA	M	A	B	C2	C3	T3S2	T3S3	T3S2R4	OTROS	A	B	C	K'	D	LATITUD	LONGITUD
T. C. México - Pachuca (Libre)	0.00	0	0																	
Lim. Edos. Term. CDMX Ppia. Méx.	9.86	0	0																	
Plaza de Cobro Ojo de Agua	25.00	2	1	31514	1.9	87.8	4.0	2.5	1.6	1.6	0.2	0.3	0.1	89.7	4.0	6.3	0.081	0.500	19.618737	-99.029315
Plaza de Cobro Ojo de Agua	25.00	2	2	31514	1.9	87.8	4.0	2.5	1.6	1.6	0.2	0.3	0.1	89.7	4.0	6.3	0.081	0.500	19.618737	-99.029315
Plaza de Cobro Ojo de Agua	25.00	3	1	38770	3.4	86.0	2.0	4.9	1.1	1.5	0.2	0.7	0.2	89.4	2.0	8.6	0.073	0.505	19.637712	-99.019357
Plaza de Cobro Ojo de Agua	25.00	3	2	37965	3.4	85.9	1.9	5.0	1.1	1.5	0.3	0.7	0.2	89.3	1.9	8.8	0.069	0.505	19.641104	-99.017857
X. C. México - Pachuca (Libre) Ent. Ojo de Agua	30.62	3	1	36668	3.4	85.7	2.0	5.0	1.1	1.5	0.3	0.7	0.3	89.1	2.0	8.9	0.074	0.508	19.671562	-98.994905
X. C. México - Pachuca (Libre) Ent. Ojo de Agua	30.62	3	2	35427	3.4	85.0	2.3	5.2	1.0	1.5	0.4	0.8	0.4	88.4	2.3	9.3	0.069	0.508	19.675510	-98.990889
T. Izq. Tecámac	35.62	3	1	36189	1.9	86.9	2.5	3.1	2.8	2.0	0.4	0.3	0.1	88.8	2.5	8.7	0.080	0.502	19.726213	-98.954469

HIDALGO

16 CARR: México - Pachuca (Cuota)

CLAVE: 00432

RUTA: MEX-085D

AÑO: 2022

LUGAR	ESTACION				CLASIFICACION VEHICULAR EN PORCIENTO										COORDENADAS					
	KM	TE	SC	TDPA	M	A	B	C2	C3	T3S2	T3S3	T3S2R4	OTROS	A	B	C	K'	D	LATITUD	LONGITUD
T. Izq. Tecamac	35.62	3	2	35882	1.8	86.9	2.2	3.5	2.8	1.9	0.3	0.4	0.2	88.7	2.2	9.1	0.083	0.502	19.726756	-98.954295
T. Ramal de Liga Tecamac	36.20	3	1	34790	3.0	85.4	2.6	3.5	1.8	2.4	0.5	0.5	0.3	88.4	2.6	9.0	0.080	0.505	19.703409	-98.969526
T. Ramal de Liga Tecamac	36.20	3	2	35555	2.8	85.4	2.7	3.6	2.0	2.4	0.5	0.4	0.2	88.2	2.7	9.1	0.090	0.505	19.705470	-98.968484
T. Izq. AIFA	40.50	3	1	33595	2.4	87.0	2.4	3.0	1.6	2.2	0.5	0.5	0.4	89.4	2.4	8.2	0.079	0.507	19.743004	-98.946064
T. Izq. AIFA	40.50	3	2	32533	2.2	86.8	2.6	3.8	1.4	2.0	0.5	0.4	0.3	89.0	2.6	8.4	0.092	0.507	19.744273	-98.946098
Lim. Edos. Term. Méx. Ppia. Hgo.	49.60	0	0																	
X. C. Otumba - Tizayuca	53.45	1	1	32103	1.8	90.1	2.1	2.3	1.0	2.0	0.3	0.3	0.1	91.9	2.1	6.0	0.084	0.506	19.826769	-98.949388
X. C. Otumba - Tizayuca	53.45	1	2	31321	1.9	89.1	2.2	2.8	1.2	2.1	0.3	0.3	0.1	91.0	2.2	6.8	0.094	0.506	19.826866	-98.949498
T. C. México - Pachuca (Libre)	60.50	1	1	24217	2.9	88.7	2.4	2.0	1.2	1.6	0.5	0.4	0.3	91.6	2.4	6.0	0.079	0.516	19.883706	-98.937511
T. C. México - Pachuca (Libre)	60.50	1	2	22711	3.0	88.9	2.2	2.0	1.2	1.6	0.4	0.5	0.2	91.9	2.2	5.9	0.102	0.516	19.881564	-98.937798

17 CARR: Tejocotal - Nuevo Necaxa (Cuota)

CLAVE: 00211

RUTA: MEX-132D

AÑO: 2022

LUGAR	ESTACION				CLASIFICACION VEHICULAR EN PORCIENTO										COORDENADAS					
	KM	TE	SC	TDPA	M	A	B	C2	C3	T3S2	T3S3	T3S2R4	OTROS	A	B	C	K'	D	LATITUD	LONGITUD
T. C. Tlaxco - Tejocotal (Cuota)	0.00	3	0	10662	2.7	72.8	5.9	8.5	2.9	3.5	1.2	1.7	0.8	75.5	5.9	18.6	0.090	0.534	20.135884	-98.113649
Lim. Edos. Term. Hgo. Ppia. Pue.	2.10	0	0																	
Plaza de Cobro Nuevo Necaxa	17.00	1	1	3875	2.4	72.2	4.9	6.0	3.3	6.0	2.0	2.4	0.8	74.6	4.9	20.5	0.068	0.510	20.168543	-98.026552
Plaza de Cobro Nuevo Necaxa	17.00	1	2	4038	1.8	70.3	5.2	7.0	3.3	6.6	2.3	2.5	1.0	72.1	5.2	22.7	0.123	0.510	20.168518	-98.026608
Plaza de Cobro Nuevo Necaxa	17.00	2	0	1831	0.6	80.1	1.0	4.1	4.7	4.3	2.5	1.8	0.9	80.7	1.0	18.3	0.092	0.500	20.186559	-98.029829
T. C. Pachuca - Tuxpam	18.70	0	0																	

18 CARR: Tlaxco - Tejocotal (Cuota)

CLAVE: 00209

RUTA: MEX-119D

AÑO: 2022

LUGAR	ESTACION				CLASIFICACION VEHICULAR EN PORCIENTO										COORDENADAS					
	KM	TE	SC	TDPA	M	A	B	C2	C3	T3S2	T3S3	T3S2R4	OTROS	A	B	C	K'	D	LATITUD	LONGITUD
T.C. Apan - Tlaxco	23.00	3	0	4679	1.7	86.1	3.3	3.5	1.8	1.9	0.9	0.7	0.1	87.8	3.3	8.9	0.097	0.507	19.607780	-98.156707
Lim. Edos. Term. Tlax. Ppia. Pue.	30.70	0	0																	
Ent. Chignahuapan	56.20	3	0	3902	2.0	86.4	1.6	3.5	2.6	1.9	1.1	0.8	0.1	88.4	1.6	10.0	0.129	0.501	19.870664	-98.061050
Lim. Edos. Term. Pue. Ppia. Hgo.	84.80	0	0																	
T. C. Apizaco - Tejocotal	85.60	0	0																	

HIDALGO

19 CARR: México - Querétaro (Cuota)

CLAVE: 00411

RUTA: MEX-057-MEX-057D

AÑO: 2022

LUGAR	ESTACION				CLASIFICACION VEHICULAR EN PORCIENTO														COORDENADAS		
	KM	TE	SC	TDPA	M	A	B	C2	C3	T3S2	T3S3	T3S2R4	OTROS	A	B	C	K'	D	LATITUD	LONGITUD	
México	0.00	0	0																		
Lim. Edos. Term. CDMX Ppia. Méx.	11.30	0	0																		
Lechería	29.41	0	0																		
Plaza de Cobro Tepetzotlán	43.01	2	1	30600	0.6	72.4	4.0	5.2	3.6	10.8	0.6	2.0	0.8	73.0	4.0	23.0	0.077	0.500	19.715361	-99.207448	
Plaza de Cobro Tepetzotlán	43.01	2	2	30600	0.6	72.4	4.0	5.2	3.6	10.8	0.6	2.0	0.8	73.0	4.0	23.0	0.077	0.500	19.715361	-99.207448	
Ent. Jorobas	56.18	1	1	34331	1.1	68.7	4.2	7.7	2.8	10.6	1.7	2.3	0.9	69.8	4.2	26.0	0.080	0.506	19.811390	-99.238502	
Ent. Jorobas	56.18	1	2	35253	1.2	66.0	4.9	8.3	2.9	11.3	2.0	2.5	0.9	67.2	4.9	27.9	0.073	0.506	19.803112	-99.234918	
Ent. Jorobas	56.18	3	1	47969	3.0	60.7	4.7	8.4	3.2	14.1	2.0	3.0	0.9	63.7	4.7	31.6	0.065	0.501	19.829242	-99.257702	
Ent. Jorobas	56.18	3	2	48214	3.0	57.8	5.0	8.9	3.4	15.7	2.0	3.3	0.9	60.8	5.0	34.2	0.068	0.501	19.837256	-99.274095	
Lim. Edos. Term. Méx. Ppia. Hgo.	59.85	0	0																		
T. Der. Tepeji del Río	69.36	1	1	40936	4.4	69.5	4.5	7.6	2.6	7.0	1.1	2.4	0.9	73.9	4.5	21.6	0.078	0.506	19.863591	-99.316375	
T. Der. Tepeji del Río	69.36	1	2	42087	4.4	68.9	4.7	7.0	2.6	7.6	1.3	2.9	0.6	73.3	4.7	22.0	0.075	0.506	19.871087	-99.338582	
T. Der. Tepeji del Río	69.36	3	1	37299	4.5	67.7	4.8	5.7	2.5	10.0	1.2	3.0	0.6	72.2	4.8	23.0	0.082	0.511	19.920837	-99.370368	
T. Der. Tepeji del Río	69.36	3	2	39178	4.7	68.2	4.5	5.7	2.6	9.5	1.2	3.0	0.6	72.9	4.5	22.6	0.069	0.511	19.920796	-99.370488	
T. Izq. Jilotepec	83.75	1	1	34623	4.8	65.3	5.7	5.4	3.0	10.0	1.5	3.5	0.8	70.1	5.7	24.2	0.085	0.502	19.972284	-99.434200	
T. Izq. Jilotepec	83.75	1	2	34912	4.7	65.3	5.6	5.2	2.8	10.5	1.4	3.7	0.8	70.0	5.6	24.4	0.079	0.502	19.977531	-99.437958	
T. Izq. Jilotepec	83.75	3	1	34164	4.1	60.8	4.7	6.3	2.8	14.6	2.3	3.5	0.9	64.9	4.7	30.4	0.083	0.501	19.989613	-99.458499	
T. Izq. Jilotepec	83.75	3	2	34046	3.9	61.1	4.7	6.3	2.7	14.6	2.3	3.5	0.9	65.0	4.7	30.3	0.085	0.501	19.990258	-99.461874	
Lim. Edos. Term. Hgo. Ppia. Méx.	86.00	0	0																		
X. C. Libramiento Norte de La Ciudad de México (Cuota)	89.44	3	1	43142	4.4	64.1	5.6	5.3	2.5	12.0	1.7	3.5	0.9	68.5	5.6	25.9	0.067	0.528	20.005688	-99.501797	
X. C. Libramiento Norte de La Ciudad de México (Cuota)	89.44	3	2	38052	4.9	61.4	5.9	5.4	2.5	13.2	2.1	3.6	1.0	66.3	5.9	27.8	0.072	0.528	20.003162	-99.498090	
T. Der. Palos Altos	97.80	1	1	39583	5.0	60.4	5.5	5.0	3.0	14.2	1.9	4.1	0.9	65.4	5.5	29.1	0.066	0.500	20.031049	-99.547787	
T. Der. Palos Altos	97.80	1	2	39632	5.2	60.0	5.4	5.0	2.8	14.3	2.1	4.3	0.9	65.2	5.4	29.4	0.078	0.500	20.031227	-99.548973	
X. C. Jilotepec - Maravillas	107.00	1	1	34685	8.6	59.3	4.5	4.2	4.7	13.3	0.9	3.6	0.9	67.9	4.5	27.6	0.073	0.504	20.080857	-99.619575	
X. C. Jilotepec - Maravillas	107.00	1	2	35244	8.6	59.4	4.5	4.2	4.7	13.2	0.9	3.6	0.9	68.0	4.5	27.5	0.087	0.504	20.075758	-99.613957	
X. C. Jilotepec - Maravillas	107.00	3	1	33523	3.7	64.7	4.8	4.7	3.4	12.2	1.7	3.9	0.9	68.4	4.8	26.8	0.077	0.506	20.082406	-99.635739	
X. C. Jilotepec - Maravillas	107.00	3	2	34423	3.7	60.9	5.2	5.2	3.5	14.6	1.8	4.3	0.8	64.6	5.2	30.2	0.083	0.506	20.082521	-99.633721	
T. Izq. Aculco	114.80	1	1	35076	4.7	63.7	5.4	4.7	3.0	12.7	1.7	3.4	0.7	68.4	5.4	26.2	0.080	0.511	20.095887	-99.691156	
T. Izq. Aculco	114.80	1	2	33346	4.5	60.3	5.8	5.2	3.3	14.3	1.8	4.0	0.8	64.8	5.8	29.4	0.082	0.511	20.091269	-99.686640	
T. Izq. Aculco	114.80	3	1	33542	4.8	62.3	5.5	4.9	2.9	13.6	1.6	3.6	0.8	67.1	5.5	27.4	0.085	0.500	20.104893	-99.698781	
T. Izq. Aculco	114.80	3	2	33588	4.8	58.5	6.3	5.5	3.0	15.0	2.0	4.0	0.9	63.3	6.3	30.4	0.090	0.500	20.108558	-99.704288	
T. Izq. Encinillas	121.70	1	1	34763	5.2	66.8	4.1	3.5	2.6	11.6	2.1	3.3	0.8	72.0	4.1	23.9	0.085	0.508	20.142690	-99.732427	
T. Izq. Encinillas	121.70	1	2	35991	5.3	63.8	4.3	3.9	2.9	13.3	2.2	3.4	0.9	69.1	4.3	26.6	0.091	0.508	20.145150	-99.734132	
Polotitlán	133.00	1	1	36765	5.2	67.1	3.9	3.2	2.2	13.4	1.6	2.7	0.7	72.3	3.9	23.8	0.086	0.518	20.218633	-99.801703	
Polotitlán	133.00	1	2	33874	5.3	63.6	4.4	3.4	2.4	15.1	1.9	3.1	0.8	68.9	4.4	26.7	0.091	0.518	20.219880	-99.803614	



HIDALGO

19 CARR: México - Querétaro (Cuota)

CLAVE: 00411

RUTA: MEX-057-MEX-057D

AÑO: 2022

LUGAR	ESTACION				CLASIFICACION VEHICULAR EN PORCIENTO												COORDENADAS				
	KM	TE	SC	TDPA	M	A	B	C2	C3	T3S2	T3S3	T3S2R4	OTROS	A	B	C	K'	D	LATITUD	LONGITUD	
Lim. Edos. Term. Méx. Ppia. Qro.	145.50	0	0																		
Plaza de Cobro Palmillas	145.80	2	1	21333	0.4	60.7	3.0	6.1	4.7	18.5	1.6	4.0	1.0	61.1	3.0	35.9	0.077	0.500	20.296112	-99.929069	
Plaza de Cobro Palmillas	145.80	2	2	21333	0.4	60.7	3.0	6.1	4.7	18.5	1.6	4.0	1.0	61.1	3.0	35.9	0.077	0.500	20.296112	-99.929069	
T. Izq. Toluca	148.50	1	1	34055	5.0	64.4	4.1	3.0	2.6	14.8	1.7	3.6	0.8	69.4	4.1	26.5	0.085	0.501	20.287533	-99.913612	
T. Izq. Toluca	148.50	1	2	34127	4.8	60.8	4.6	3.4	2.8	16.7	1.9	4.1	0.9	65.6	4.6	29.8	0.066	0.501	20.284664	-99.909382	
T. Izq. Toluca	148.50	3	1	39668	1.3	66.8	5.4	6.3	3.7	11.3	2.0	2.3	0.9	68.1	5.4	26.5	0.068	0.512	20.311378	-99.932458	
T. Izq. Toluca	148.50	3	2	41758	1.2	64.5	5.9	7.0	4.0	11.9	2.2	2.3	1.0	65.7	5.9	28.4	0.074	0.512	20.320106	-99.934138	
T. Der. Portezuelo	151.53	3	1	42805	5.6	63.7	6.2	5.5	2.0	12.1	1.5	2.6	0.8	69.3	6.2	24.5	0.076	0.520	20.336783	-99.941298	
T. Der. Portezuelo	151.53	3	2	42805	5.6	63.7	6.2	5.5	2.0	12.1	1.5	2.6	0.8	69.3	6.2	24.5	0.076	0.520	20.336699	-99.941796	
T. Der. Poniente San Juan del Río	164.10	3	1	46968	5.6	63.6	6.2	5.5	2.0	12.1	1.6	2.6	0.8	69.2	6.2	24.6	0.076	0.520	20.373904	-99.994528	
T. Der. Poniente San Juan del Río	164.10	3	2	46586	6.7	66.1	3.8	5.1	2.9	9.6	1.4	3.6	0.8	72.8	3.8	23.4	0.081	0.512	20.372610	-99.992109	
La Estancia	169.40	1	1	51969	5.3	69.6	3.8	4.9	2.2	9.8	1.5	2.1	0.8	74.9	3.8	21.3	0.078	0.515	20.423243	-100.051777	
La Estancia	169.40	1	2	48566	5.2	67.7	4.2	5.3	2.5	9.9	1.7	2.4	1.1	72.9	4.2	22.9	0.076	0.515	20.424677	-100.053723	
T. Izq. Acámbaro	170.45	3	1	55916	4.0	68.9	3.5	6.6	2.2	10.3	1.3	2.3	0.9	72.9	3.5	23.6	0.081	0.532	20.447229	-100.078656	
T. Izq. Acámbaro	170.45	3	2	48330	3.5	66.4	4.2	7.4	2.3	11.6	1.4	2.3	0.9	69.9	4.2	25.9	0.094	0.532	20.449899	-100.082365	
T. Izq. El Sauz	176.50	3	1	44832	6.0	65.1	4.3	5.1	2.9	11.1	1.7	2.9	0.9	71.1	4.3	24.6	0.077	0.522	20.477772	-100.110882	
T. Izq. El Sauz	176.50	3	2	40634	6.0	66.9	3.5	6.2	2.7	9.7	1.6	2.5	0.9	72.9	3.5	23.6	0.074	0.522	20.497771	-100.133982	
T. Der. San Ildefonso	185.30	1	1	47176	4.2	72.0	4.2	6.9	1.1	7.5	1.8	1.5	0.8	76.2	4.2	19.6	0.074	0.536	20.520996	-100.168496	
T. Der. San Ildefonso	185.30	1	2	40230	3.8	73.2	4.2	6.4	1.3	7.3	1.7	1.3	0.8	77.0	4.2	18.8	0.079	0.536	20.517314	-100.163865	
T. Der. Libramiento Nororiente de Querétaro (Cuota)	192.50	1	1	51459	3.4	73.9	4.0	6.7	1.4	7.0	1.2	1.9	0.5	77.3	4.0	18.7	0.080	0.532	20.552610	-100.215603	
T. Der. Libramiento Nororiente de Querétaro (Cuota)	192.50	1	2	44454	3.2	73.6	4.4	6.5	1.7	6.8	1.4	1.7	0.7	76.8	4.4	18.8	0.076	0.532	20.551704	-100.214684	
T. Der. Libramiento Nororiente de Querétaro (Cuota)	192.50	3	1	74081	1.9	76.8	3.0	8.4	1.8	4.8	1.7	0.9	0.7	78.7	3.0	18.3	0.077	0.508	20.562621	-100.237131	
T. Der. Libramiento Nororiente de Querétaro (Cuota)	192.50	3	2	71457	1.7	76.1	3.0	8.7	2.0	5.1	1.8	0.8	0.8	77.8	3.0	19.2	0.076	0.508	20.561654	-100.234754	
T. Der. Libramiento de Querétaro a San Luis Potosí	207.00	1	1	84692	2.2	83.3	1.3	3.0	2.5	4.3	0.7	1.9	0.8	85.5	1.3	13.2	0.080	0.523	20.573107	-100.323084	
T. Der. Libramiento de Querétaro a San Luis Potosí	207.00	1	2	75778	1.9	82.8	1.5	3.1	2.6	4.4	0.7	2.1	0.9	84.7	1.5	13.8	0.103	0.523	20.574456	-100.330943	
T. Der. Libramiento de Querétaro a San Luis Potosí	207.00	3	1	96642	1.7	81.9	1.9	4.9	1.5	4.8	1.7	0.7	0.9	83.6	1.9	14.5	0.079	0.508	20.578251	-100.380496	
T. Der. Libramiento de Querétaro a San Luis Potosí	207.00	3	2	99658	1.5	82.3	1.8	4.7	1.6	5.0	1.6	0.8	0.7	83.8	1.8	14.4	0.076	0.508	20.578492	-100.378589	
Querétaro	211.60	0	0																		

20 CARR: Actopan - Progreso

CLAVE: 13038

RUTA: HGO

AÑO: 2022

LUGAR	ESTACION				CLASIFICACION VEHICULAR EN PORCIENTO												COORDENADAS			
	KM	TE	SC	TDPA	M	A	B	C2	C3	T3S2	T3S3	T3S2R4	OTROS	A	B	C	K'	D	LATITUD	LONGITUD
Actopan	0.00	3	1	9550	2.8	92.0	0.8	3.0	0.8	0.3	0.2	0.1	0.0	94.8	0.8	4.4	0.088	0.500	20.266516	-98.955003
Actopan	0.00	3	2	9567	2.7	91.7	0.9	3.1	1.0	0.3	0.2	0.1	0.0	94.4	0.9	4.7	0.078	0.500	20.266443	-98.954955

HIDALGO

20 CARR: Actopan - Progreso

CLAVE: 13038

RUTA: HGO

AÑO: 2022

LUGAR	ESTACION				CLASIFICACION VEHICULAR EN PORCIENTO													COORDENADAS		
	KM	TE	SC	TDPA	M	A	B	C2	C3	T3S2	T3S3	T3S2R4	OTROS	A	B	C	K'	D	LATITUD	LONGITUD
Progreso	23.90	1	1	7824	3.2	91.1	0.7	2.9	1.1	0.5	0.3	0.1	0.1	94.3	0.7	5.0	0.085	0.503	20.245297	-99.175800
Progreso	23.90	1	2	7728	3.1	90.6	0.8	3.4	1.1	0.5	0.3	0.1	0.1	93.7	0.8	5.5	0.085	0.503	20.245171	-99.175781

21 CARR: El Saucillo - Amealco

CLAVE: 13103

RUTA: HGO-103

AÑO: 2022

LUGAR	ESTACION				CLASIFICACION VEHICULAR EN PORCIENTO													COORDENADAS		
	KM	TE	SC	TDPA	M	A	B	C2	C3	T3S2	T3S3	T3S2R4	OTROS	A	B	C	K'	D	LATITUD	LONGITUD
T. C. Portezuelo - Palmillas	0.00	3	0	4122	2.7	87.1	1.8	2.7	2.9	1.3	0.7	0.7	0.1	89.8	1.8	8.4	0.084	0.515	20.313339	-99.715554
Nopala	11.00	1	1	2184	4.6	88.9	1.1	1.8	1.5	0.8	0.6	0.5	0.2	93.5	1.1	5.4	0.087	0.509	20.254128	-99.652942
Nopala	11.00	1	2	2107	3.4	89.7	1.4	2.2	1.0	1.3	0.6	0.3	0.1	93.1	1.4	5.5	0.094	0.509	20.254227	-99.653000
Nopala	11.00	3	0	4934	4.7	84.7	1.9	2.8	1.8	2.0	0.7	0.9	0.5	89.4	1.9	8.7	0.081	0.529	20.245920	-99.636689
Amealco	21.40	1	0	2342	4.3	86.6	2.1	3.8	0.9	1.0	0.9	0.4	0.0	90.9	2.1	7.0	0.087	0.503	20.239311	-99.557888

22 CARR: Ent. Emiliano Zapata - Cd. Sahagún

CLAVE: 13255

RUTA: HGO

AÑO: 2022

LUGAR	ESTACION				CLASIFICACION VEHICULAR EN PORCIENTO													COORDENADAS		
	KM	TE	SC	TDPA	M	A	B	C2	C3	T3S2	T3S3	T3S2R4	OTROS	A	B	C	K'	D	LATITUD	LONGITUD
T. C. Calpulalpan - El Ocote	0.00	0	0																	
Emiliano Zapata	2.70	1	1	4399	2.3	81.5	1.7	7.8	1.6	3.0	1.2	0.7	0.2	83.8	1.7	14.5	0.081	0.509	19.642648	-98.538045
Emiliano Zapata	2.70	1	2	4567	3.2	81.7	1.5	7.2	1.5	3.0	1.2	0.6	0.1	84.9	1.5	13.6	0.088	0.509	19.642564	-98.538156
T. Izq. Otumba	14.00	1	1	5757	3.0	82.2	1.3	5.3	2.0	3.6	1.4	0.9	0.3	85.2	1.3	13.5	0.083	0.508	19.742620	-98.582206
T. Izq. Otumba	14.00	1	2	5952	2.7	82.5	1.4	5.4	2.0	3.3	1.6	0.7	0.4	85.2	1.4	13.4	0.078	0.508	19.742560	-98.582242
Cd. Sahagún	17.98	1	1	9177	4.6	83.8	1.0	4.2	1.8	2.9	0.9	0.6	0.2	88.4	1.0	10.6	0.087	0.513	19.764345	-98.587311
Cd. Sahagún	17.98	1	2	9680	4.1	83.0	1.4	4.7	1.9	3.2	0.9	0.6	0.2	87.1	1.4	11.5	0.068	0.513	19.764355	-98.587377

23 CARR: Ent. Tepeji del Río - Tlahuelilpan

CLAVE: 13017

RUTA: HGO-017

AÑO: 2022

LUGAR	ESTACION				CLASIFICACION VEHICULAR EN PORCIENTO													COORDENADAS		
	KM	TE	SC	TDPA	M	A	B	C2	C3	T3S2	T3S3	T3S2R4	OTROS	A	B	C	K'	D	LATITUD	LONGITUD
T. C. México - Querétaro (Cuota)	0.00	0	0																	
T. Izq. Tepeji del Río	3.00	3	1	6613	6.2	81.6	1.8	5.9	1.3	0.8	1.3	0.6	0.5	87.8	1.8	10.4	0.076	0.503	19.941045	-99.339226
T. Izq. Tepeji del Río	3.00	3	2	6692	6.2	81.5	1.8	5.9	1.4	0.8	1.3	0.7	0.4	87.7	1.8	10.5	0.067	0.503	19.941034	-99.339305
Tula de Allende	18.00	1	0	20140	6.1	81.2	1.5	5.4	0.7	2.7	1.6	0.6	0.2	87.3	1.5	11.2	0.080	0.512	20.047645	-99.340313
X. C. Arco Norte de La Ciudad de México	19.40	1	1	12038	5.3	81.5	1.5	3.7	2.3	2.3	0.9	2.0	0.5	86.8	1.5	11.7	0.069	0.508	20.096763	-99.287273
X. C. Arco Norte de La Ciudad de México	19.40	1	2	11654	5.9	79.8	1.7	3.9	2.5	2.6	1.0	2.1	0.5	85.7	1.7	12.6	0.074	0.508	20.096871	-99.287350

HIDALGO

23 CARR: Ent. Tepeji del Río - Tlahuelilpan

CLAVE: 13017

RUTA: HGO-017

AÑO: 2022

LUGAR	ESTACION				CLASIFICACION VEHICULAR EN PORCIENTO													COORDENADAS		
	KM	TE	SC	TDPA	M	A	B	C2	C3	T3S2	T3S3	T3S2R4	OTROS	A	B	C	K'	D	LATITUD	LONGITUD
Tlahuelilpan	32.00	1	1	7987	4.1	87.6	0.9	4.1	1.2	0.7	0.6	0.3	0.5	91.7	0.9	7.4	0.091	0.504	20.125922	-99.246369
Tlahuelilpan	32.00	1	2	8105	4.1	86.9	1.0	4.4	1.4	0.8	0.6	0.3	0.5	91.0	1.0	8.0	0.104	0.504	20.126021	-99.246427

24 CARR: Ent. Tolman - Cd. Sahagún

CLAVE: 00119

RUTA: EM-009-HGO

AÑO: 2022

LUGAR	ESTACION				CLASIFICACION VEHICULAR EN PORCIENTO													COORDENADAS		
	KM	TE	SC	TDPA	M	A	B	C2	C3	T3S2	T3S3	T3S2R4	OTROS	A	B	C	K'	D	LATITUD	LONGITUD
T. C. Venta de Carpio - Tulancingo	0.00	3	0	18280	5.8	87.0	0.7	2.7	1.1	1.1	0.7	0.8	0.1	92.8	0.7	6.5	0.074	0.508	19.714521	-98.791138
Otumba	5.00	3	0	5832	3.5	88.7	0.6	3.5	0.9	1.6	1.0	0.2	0.0	92.2	0.6	7.2	0.084	0.501	19.710508	-98.743198
T. Der. Jaltepec	21.00	3	0	3800	2.9	78.9	3.1	12.3	0.9	1.0	0.5	0.3	0.1	81.8	3.1	15.1	0.071	0.507	19.749625	-98.653339
Lim. Edos. Term. Méx. Ppia. Hgo.	25.00	0	0																	
Cd. Sahagún	32.00	1	0	7535	7.6	76.8	1.4	8.4	1.7	1.7	1.6	0.2	0.6	84.4	1.4	14.2	0.075	0.539	19.752521	-98.602868

25 CARR: Francisco I. Madero - Tula de Allende

CLAVE: 13043

RUTA: HGO

AÑO: 2022

LUGAR	ESTACION				CLASIFICACION VEHICULAR EN PORCIENTO													COORDENADAS		
	KM	TE	SC	TDPA	M	A	B	C2	C3	T3S2	T3S3	T3S2R4	OTROS	A	B	C	K'	D	LATITUD	LONGITUD
T. C. Portezuelo - Palmillas	0.00	3	0	5177	11.7	83.3	0.4	2.6	1.0	0.5	0.1	0.4	0.0	95.0	0.4	4.6	0.101	0.510	20.443385	-99.361270
Gral. Pedro María Anaya	38.20	1	0	5023	9.6	79.3	0.7	7.2	0.9	1.1	0.9	0.2	0.1	88.9	0.7	10.4	0.095	0.515	20.161801	-99.364034
T. C. (México - Querétaro) - Tlahuelilpan de Ocampo	52.70	1	0	10405	4.8	87.8	0.4	3.7	0.9	1.1	0.6	0.5	0.2	92.6	0.4	7.0	0.122	0.504	20.068600	-99.331330

26 CARR: Huichapan - Tecozautla

CLAVE: 13030

RUTA: HGO-030

AÑO: 2022

LUGAR	ESTACION				CLASIFICACION VEHICULAR EN PORCIENTO													COORDENADAS		
	KM	TE	SC	TDPA	M	A	B	C2	C3	T3S2	T3S3	T3S2R4	OTROS	A	B	C	K'	D	LATITUD	LONGITUD
Huichapan	0.00	3	0	6665	4.0	87.4	1.3	3.4	1.5	1.1	1.0	0.2	0.1	91.4	1.3	7.3	0.081	0.508	20.383947	-99.659955
Tecozautla	30.85	0	0																	

27 CARR: Jilotepec - Maravillas

CLAVE: 00015

RUTA: EM-HGO

AÑO: 2022

LUGAR	ESTACION				CLASIFICACION VEHICULAR EN PORCIENTO													COORDENADAS		
	KM	TE	SC	TDPA	M	A	B	C2	C3	T3S2	T3S3	T3S2R4	OTROS	A	B	C	K'	D	LATITUD	LONGITUD
Jilotepec	0.00	3	0	8884	6.9	83.9	0.5	6.4	0.6	0.5	0.5	0.4	0.3	90.8	0.5	8.7	0.080	0.503	19.955819	-99.558894
X. C. México - Querétaro (Cuota)	21.30	1	0	2967	4.3	87.4	0.8	3.5	1.5	1.1	0.7	0.5	0.2	91.7	0.8	7.5	0.079	0.505	20.080159	-99.632191
X. C. México - Querétaro (Cuota)	21.30	3	0	4355	3.6	82.6	2.2	9.1	0.9	0.9	0.3	0.4	0.0	86.2	2.2	11.6	0.081	0.536	20.093797	-99.626564

HIDALGO

27 CARR: Jilotepec - Maravillas

CLAVE: 00015

RUTA: EM-HGO

AÑO: 2022

LUGAR	ESTACION				CLASIFICACION VEHICULAR EN PORCIENTO													COORDENADAS		
	KM	TE	SC	TDPA	M	A	B	C2	C3	T3S2	T3S3	T3S2R4	OTROS	A	B	C	K'	D	LATITUD	LONGITUD
Acazuchitlán	29.00	1	0	2707	3.6	87.2	1.8	3.3	1.7	1.1	0.8	0.4	0.1	90.8	1.8	7.4	0.090	0.518	20.138935	-99.602672
Lim. Edos. Term. Méx. Ppia. Hgo.	29.30	0	0																	
Maravillas	36.40	1	0	1736	2.3	90.1	2.1	2.1	1.0	1.5	0.7	0.2	0.0	92.4	2.1	5.5	0.149	0.529	20.198075	-99.584407
T. C. El Saucillo - Amealco	40.00	1	0	3122	3.1	87.9	1.2	4.9	0.8	1.0	0.6	0.4	0.1	91.0	1.2	7.8	0.093	0.513	20.231429	-99.594478

28 CARR: Libramiento de Atotonilco El Grande

CLAVE: 13238

RUTA: HGO

AÑO: 2022

LUGAR	ESTACION				CLASIFICACION VEHICULAR EN PORCIENTO													COORDENADAS		
	KM	TE	SC	TDPA	M	A	B	C2	C3	T3S2	T3S3	T3S2R4	OTROS	A	B	C	K'	D	LATITUD	LONGITUD
T. C. Pachuca - Tempoal (1er. Acceso)	0.00	3	1	4258	1.2	85.6	1.6	7.1	2.0	1.6	0.8	0.1	0.0	86.8	1.6	11.6	0.103	0.503	20.273105	-98.646825
T. C. Pachuca - Tempoal (1er. Acceso)	0.00	3	2	4312	1.2	85.2	1.8	7.2	2.0	1.7	0.8	0.1	0.0	86.4	1.8	11.8	0.104	0.503	20.273087	-98.646921
T. C. Pachuca - Tempoal (2do. Acceso)	6.30	1	1	4696	2.4	83.9	1.5	7.4	2.4	1.4	0.8	0.2	0.0	86.3	1.5	12.2	0.108	0.511	20.295380	-98.665288
T. C. Pachuca - Tempoal (2do. Acceso)	6.30	1	2	4502	2.7	82.4	1.6	8.0	2.8	1.5	0.8	0.2	0.0	85.1	1.6	13.3	0.115	0.511	20.295272	-98.665643

29 CARR: Lolotla - Atlapexco

CLAVE: 13238

RUTA: HGO

AÑO: 2022

LUGAR	ESTACION				CLASIFICACION VEHICULAR EN PORCIENTO													COORDENADAS		
	KM	TE	SC	TDPA	M	A	B	C2	C3	T3S2	T3S3	T3S2R4	OTROS	A	B	C	K'	D	LATITUD	LONGITUD
T. C. Pachuca - Tempoal	0.00	3	0	1412	5.6	88.0	0.9	3.1	0.7	1.2	0.3	0.2	0.0	93.6	0.9	5.5	0.101	0.515	20.875559	-98.703226
Atlapexco	68.00	1	0	3256	5.8	85.9	1.5	4.4	0.3	1.5	0.2	0.3	0.1	91.7	1.5	6.8	0.080	0.505	21.015349	-98.351827
T. C. Álamo - Huejutla de Reyes	69.80	0	0																	

30 CARR: Los Reyes - El Tephé

CLAVE: 00021

RUTA: EM-HGO

AÑO: 2022

LUGAR	ESTACION				CLASIFICACION VEHICULAR EN PORCIENTO													COORDENADAS		
	KM	TE	SC	TDPA	M	A	B	C2	C3	T3S2	T3S3	T3S2R4	OTROS	A	B	C	K'	D	LATITUD	LONGITUD
T. C. México - Pachuca (Libre)	0.00	0	0																	
Los Reyes	1.35	3	1	10606	4.2	87.0	0.3	6.2	0.9	0.8	0.3	0.2	0.1	91.2	0.3	8.5	0.072	0.504	19.769152	-98.995170
Los Reyes	1.35	3	2	10438	4.3	86.9	0.3	6.1	0.9	0.9	0.3	0.2	0.1	91.2	0.3	8.5	0.072	0.504	19.769098	-98.995208
Zumpango	15.35	1	1	13319	9.6	85.5	0.6	2.8	0.6	0.4	0.1	0.3	0.1	95.1	0.6	4.3	0.086	0.500	19.792623	-99.075090
Zumpango	15.35	1	2	13342	9.6	85.5	0.6	2.8	0.6	0.4	0.1	0.3	0.1	95.1	0.6	4.3	0.090	0.500	19.792533	-99.075128
Zumpango	15.35	3	0	19323	7.1	78.1	0.5	8.5	2.8	1.5	1.0	0.4	0.1	85.2	0.5	14.3	0.073	0.504	19.820580	-99.115161
Tequixquiác	29.00	1	0	11217	7.9	78.9	0.9	7.1	1.9	1.4	1.3	0.3	0.3	86.8	0.9	12.3	0.071	0.520	19.882476	-99.137167
Apaxco	39.00	3	1	5122	8.9	76.9	2.5	5.4	2.3	2.0	1.5	0.3	0.2	85.8	2.5	11.7	0.096	0.504	19.983559	-99.179227
Apaxco	39.00	3	2	5034	8.5	76.0	2.7	6.0	2.6	2.0	1.7	0.3	0.2	84.5	2.7	12.8	0.093	0.504	19.983514	-99.179293

HIDALGO

30 CARR: Los Reyes - El Tephé

CLAVE: 00021

RUTA: EM-HGO

AÑO: 2022

LUGAR	ESTACION				CLASIFICACION VEHICULAR EN PORCIENTO												COORDENADAS			
	KM	TE	SC	TDPA	M	A	B	C2	C3	T3S2	T3S3	T3S2R4	OTROS	A	B	C	K'	D	LATITUD	LONGITUD
Lim. Edos. Term. Méx. Ppia. Hgo.	40.00	0	0																	
T. Izq. Atotonilco (1° Acceso)	42.00	1	0	9142	8.6	73.6	1.3	4.5	3.9	2.8	4.0	1.0	0.3	82.2	1.3	16.5	0.096	0.503	19.989618	-99.184080
X. C. Arco Norte de La Ciudad de México	50.00	3	1	7005	8.5	81.7	0.5	5.3	1.0	1.3	1.0	0.2	0.5	90.2	0.5	9.3	0.083	0.502	20.069595	-99.220611
X. C. Arco Norte de La Ciudad de México	50.00	3	2	6939	8.4	80.9	0.5	5.9	1.1	1.4	1.1	0.2	0.5	89.3	0.5	10.2	0.073	0.502	20.069568	-99.220688
Tlaxcoapan	52.00	3	1	5105	14.9	79.3	0.5	3.9	0.6	0.5	0.2	0.0	0.1	94.2	0.5	5.3	0.101	0.511	20.103237	-99.221586
Tlaxcoapan	52.00	3	2	4886	14.9	78.8	0.5	4.3	0.7	0.5	0.2	0.0	0.1	93.7	0.5	5.8	0.083	0.511	20.103219	-99.221653
Tlahuelilpan	60.00	3	1	10274	7.9	84.0	0.7	5.1	1.0	0.5	0.5	0.2	0.1	91.9	0.7	7.4	0.086	0.502	20.149614	-99.234254
Tlahuelilpan	60.00	3	2	10369	8.3	82.1	0.9	6.0	1.2	0.7	0.5	0.2	0.1	90.4	0.9	8.7	0.085	0.502	20.149632	-99.234350
Progreso	72.00	1	1	10925	12.7	78.9	0.6	4.6	1.0	1.2	0.6	0.1	0.3	91.6	0.6	7.8	0.087	0.525	20.236682	-99.195887
Progreso	72.00	1	2	12070	12.7	78.5	0.6	4.8	1.1	1.3	0.6	0.1	0.3	91.2	0.6	8.2	0.091	0.525	20.236619	-99.195858
El Tephé	97.00	1	0	7543	7.1	83.1	0.7	4.1	2.1	1.7	0.9	0.2	0.1	90.2	0.7	9.1	0.108	0.523	20.434982	-99.172209

31 CARR: Otumba - Tizayuca

CLAVE: 00012

RUTA: EM-HGO

AÑO: 2022

LUGAR	ESTACION				CLASIFICACION VEHICULAR EN PORCIENTO												COORDENADAS			
	KM	TE	SC	TDPA	M	A	B	C2	C3	T3S2	T3S3	T3S2R4	OTROS	A	B	C	K'	D	LATITUD	LONGITUD
Otumba	0.00	3	0	4541	8.6	87.7	0.6	1.4	1.0	0.4	0.2	0.1	0.0	96.3	0.6	3.1	0.094	0.500	19.712901	-98.758026
X. C. Venta de Carpio - Tulancingo	6.00	3	1	2454	4.8	89.2	0.2	2.8	1.4	0.6	0.6	0.3	0.1	94.0	0.2	5.8	0.099	0.513	19.757831	-98.758089
X. C. Venta de Carpio - Tulancingo	6.00	3	2	2582	3.8	89.4	0.3	3.6	1.4	0.6	0.5	0.3	0.1	93.2	0.3	6.5	0.102	0.513	19.755512	-98.756761
Temascalapa	26.50	3	1	3460	7.7	85.2	0.6	4.0	1.1	0.7	0.5	0.1	0.1	92.9	0.6	6.5	0.087	0.501	19.830311	-98.914474
Temascalapa	26.50	3	2	3480	7.8	85.4	0.4	4.0	1.0	0.7	0.5	0.1	0.1	93.2	0.4	6.4	0.109	0.501	19.830230	-98.914465
Lim. Edos. Term. Méx. Ppia. Hgo.	29.00	0	0																	
Tizayuca	37.10	1	1	7697	3.7	90.0	0.7	3.5	0.5	0.9	0.4	0.2	0.1	93.7	0.7	5.6	0.080	0.516	19.839302	-98.967616
Tizayuca	37.10	1	2	7232	3.7	90.0	0.6	3.5	0.6	0.8	0.4	0.3	0.1	93.7	0.6	5.7	0.075	0.516	19.839203	-98.967635

32 CARR: Ramal a El Chico

CLAVE: 13256

RUTA: HGO

AÑO: 2022

LUGAR	ESTACION				CLASIFICACION VEHICULAR EN PORCIENTO												COORDENADAS			
	KM	TE	SC	TDPA	M	A	B	C2	C3	T3S2	T3S3	T3S2R4	OTROS	A	B	C	K'	D	LATITUD	LONGITUD
T. C. Pachuca - Tempoal	0.00	3	0	2852	3.8	87.1	0.9	2.9	0.8	1.8	1.0	0.8	0.9	90.9	0.9	8.2	0.097	0.502	20.139037	-98.724896
Mineral El Chico	21.00	1	0	1474	3.5	92.7	0.3	2.6	0.4	0.3	0.1	0.1	0.0	96.2	0.3	3.5	0.230	0.512	20.209851	-98.727979

HIDALGO

33 CARR: Ramal a Pachuca

CLAVE: 13254

RUTA: HGO

AÑO: 2022

LUGAR	ESTACION				CLASIFICACION VEHICULAR EN PORCIENTO														COORDENADAS	
	KM	TE	SC	TDPA	M	A	B	C2	C3	T3S2	T3S3	T3S2R4	OTROS	A	B	C	K'	D	LATITUD	LONGITUD
T. C. Colonia - Portezuelo	0.00	3	1	16739	1.0	93.5	0.7	3.4	0.5	0.4	0.3	0.1	0.1	94.5	0.7	4.8	0.083	0.508	20.123133	-98.815439
T. C. Colonia - Portezuelo	0.00	3	2	16217	1.1	93.5	0.6	3.3	0.6	0.4	0.3	0.1	0.1	94.6	0.6	4.8	0.107	0.508	20.123305	-98.815324
Pachuca	10.00	0	0																	

34 CARR: San Alejo - Huayacocotla

CLAVE: 00132

RUTA: HGO-051-VER-113

AÑO: 2022

LUGAR	ESTACION				CLASIFICACION VEHICULAR EN PORCIENTO														COORDENADAS	
	KM	TE	SC	TDPA	M	A	B	C2	C3	T3S2	T3S3	T3S2R4	OTROS	A	B	C	K'	D	LATITUD	LONGITUD
T. C. Pachuca - Tuxpam	0.00	3	0	6577	6.4	78.2	1.2	8.3	1.4	2.7	0.7	0.8	0.3	84.6	1.2	14.2	0.088	0.507	20.154252	-98.286465
Metepec	11.80	3	0	3173	7.1	76.5	3.0	7.7	1.6	2.6	0.4	0.8	0.3	83.6	3.0	13.4	0.074	0.504	20.243587	-98.331305
Agua Blanca	29.48	3	0	3914	4.0	82.1	1.3	7.9	2.0	0.9	0.3	1.3	0.2	86.1	1.3	12.6	0.090	0.501	20.354081	-98.361125
Lim. Edos. Term. Hgo. Ppia. Ver.	36.48	0	0																	
Huayacocotla	66.00	1	0	2263	7.7	87.0	0.3	1.6	1.6	0.6	0.2	0.8	0.2	94.7	0.3	5.0	0.086	0.515	20.527363	-98.493043

35 CARR: San Felipe Orizatlán - Huejutla de Reyes

CLAVE: 13258

RUTA: HGO

AÑO: 2022

LUGAR	ESTACION				CLASIFICACION VEHICULAR EN PORCIENTO														COORDENADAS	
	KM	TE	SC	TDPA	M	A	B	C2	C3	T3S2	T3S3	T3S2R4	OTROS	A	B	C	K'	D	LATITUD	LONGITUD
San Felipe Orizatlán	0.00	3	0	4013	17.7	75.2	1.0	3.6	1.3	0.5	0.2	0.3	0.2	92.9	1.0	6.1	0.094	0.510	21.171935	-98.591099
Huejutla de Reyes	25.00	1	0	3123	17.0	76.6	0.6	3.9	0.5	0.5	0.4	0.3	0.2	93.6	0.6	5.8	0.079	0.502	21.125648	-98.468090

36 CARR: Santo Domingo - T. C. (México - Querétaro)

CLAVE: 00433

RUTA: EM-011-HGO

AÑO: 2022

LUGAR	ESTACION				CLASIFICACION VEHICULAR EN PORCIENTO														COORDENADAS	
	KM	TE	SC	TDPA	M	A	B	C2	C3	T3S2	T3S3	T3S2R4	OTROS	A	B	C	K'	D	LATITUD	LONGITUD
T. C. Toluca - Palmillas	0.00	3	0	9700	1.4	88.1	0.5	7.7	0.7	0.9	0.6	0.1	0.0	89.5	0.5	10.0	0.091	0.512	19.622649	-99.774240
X. C. Los Reyes - Ixtlahuaca	6.11	3	0	9569	1.3	85.2	0.6	10.5	0.8	1.0	0.5	0.1	0.0	86.5	0.6	12.9	0.085	0.521	19.658791	-99.723980
X. C. Villa del Carbón - Atlacomulco	23.94	3	1	2950	1.8	85.1	1.3	7.2	2.3	1.1	0.9	0.1	0.2	86.9	1.3	11.8	0.120	0.506	19.786142	-99.702038
X. C. Villa del Carbón - Atlacomulco	23.94	3	2	2884	1.6	85.2	1.4	7.3	2.5	1.0	0.7	0.1	0.2	86.8	1.4	11.8	0.094	0.506	19.786332	-99.702194
T. Der. Chapa de Mota	42.70	1	1	6576	2.7	86.0	0.8	6.7	1.5	1.0	0.7	0.2	0.4	88.7	0.8	10.5	0.104	0.501	19.925767	-99.582830
T. Der. Chapa de Mota	42.70	1	2	6537	2.7	86.0	0.8	6.7	1.4	1.0	0.7	0.3	0.4	88.7	0.8	10.5	0.105	0.501	19.925833	-99.582890
Lim. Edos. Term. Méx. Ppia. Hgo.	63.34	0	0																	
T. C. México - Querétaro (Cuota)	65.84	1	1	4922	2.7	86.8	1.5	4.7	1.7	1.2	0.7	0.4	0.3	89.5	1.5	9.0	0.145	0.506	19.971213	-99.451058
T. C. México - Querétaro (Cuota)	65.84	1	2	4796	2.8	86.8	1.4	4.7	1.6	1.4	0.6	0.4	0.3	89.6	1.4	9.0	0.082	0.506	19.971266	-99.451095

HIDALGO

37 CARR: T. C. (Los Reyes - El Tephé) - Tizayuca

CLAVE: 00014

RUTA: EM-HGO

AÑO: 2022

LUGAR	ESTACION				CLASIFICACION VEHICULAR EN PORCIENTO													COORDENADAS		
	KM	TE	SC	TDPA	M	A	B	C2	C3	T3S2	T3S3	T3S2R4	OTROS	A	B	C	K'	D	LATITUD	LONGITUD
T. C. Los Reyes - El Tephé	0.00	3	0	7534	11.1	80.4	0.6	3.1	1.7	1.3	0.6	0.6	0.6	91.5	0.6	7.9	0.084	0.523	19.784513	-99.025614
Lim. Edos. Term. Méx. Ppia. Hgo.	6.50	0	0																	
Tizayuca	8.00	1	0	10733	10.1	78.1	0.4	4.3	0.6	4.9	1.1	0.1	0.4	88.2	0.4	11.4	0.108	0.524	19.826437	-98.989935

38 CARR: Tepeji del Río - T.C. (México - Querétaro)

CLAVE: 13104

RUTA: HGO

AÑO: 2022

LUGAR	ESTACION				CLASIFICACION VEHICULAR EN PORCIENTO													COORDENADAS		
	KM	TE	SC	TDPA	M	A	B	C2	C3	T3S2	T3S3	T3S2R4	OTROS	A	B	C	K'	D	LATITUD	LONGITUD
T. C. Ent. Tepeji del Río - Tlahuelilpan de Ocampo	0.00	3	0	6944	5.5	82.1	0.4	6.7	1.7	1.9	1.4	0.3	0.0	87.6	0.4	12.0	0.090	0.506	19.943298	-99.341360
T. C. México - Querétaro	12.40	1	0	4024	4.0	82.3	2.8	5.4	1.4	1.7	1.3	0.9	0.2	86.3	2.8	10.9	0.087	0.518	19.977420	-99.435636

39 CARR: Tlahuelilpan - San Agustín Tlaxiaca

CLAVE: 13435

RUTA: HGO

AÑO: 2022

LUGAR	ESTACION				CLASIFICACION VEHICULAR EN PORCIENTO													COORDENADAS		
	KM	TE	SC	TDPA	M	A	B	C2	C3	T3S2	T3S3	T3S2R4	OTROS	A	B	C	K'	D	LATITUD	LONGITUD
Tlahuelilpan	0.00	3	0	2996	11.3	81.2	0.3	6.5	0.7	0.0	0.0	0.0	0.0	92.5	0.3	7.2	0.067	0.501	20.136865	-99.226246
Ignacio Zaragoza	25.50	3	0	3355	2.6	85.0	1.2	9.5	1.1	0.3	0.2	0.1	0.0	87.6	1.2	11.2	0.089	0.517	20.130703	-98.995101
T. C. (La Colonia - Portezuelo)	48.00	1	0	6015	3.6	90.1	0.5	4.3	0.8	0.4	0.1	0.2	0.0	93.7	0.5	5.8	0.098	0.503	20.120566	-98.906482

40 CARR: Calpulalpan - El Ocote

CLAVE: 00054

RUTA: MEX-HGO

AÑO: 2022

LUGAR	ESTACION				CLASIFICACION VEHICULAR EN PORCIENTO													COORDENADAS		
	KM	TE	SC	TDPA	M	A	B	C2	C3	T3S2	T3S3	T3S2R4	OTROS	A	B	C	K'	D	LATITUD	LONGITUD
Calpulalpan	0.00	3	0	8647	3.6	79.3	3.1	7.1	1.3	3.6	0.9	0.9	0.2	82.9	3.1	14.0	0.083	0.507	19.606271	-98.562489
X. C. Arco Norte de La Ciudad de México	4.00	3	1	4151	3.8	78.7	2.1	6.8	1.9	4.2	1.3	0.9	0.3	82.5	2.1	15.4	0.087	0.500	19.627518	-98.541478
X. C. Arco Norte de La Ciudad de México	4.00	3	2	4145	4.1	78.6	2.4	6.6	1.7	4.1	1.3	0.9	0.3	82.7	2.4	14.9	0.085	0.500	19.627587	-98.541566
Lim. Edos. Term. Tlax. Ppia. Hgo.	5.00	0	0																	
Apan	19.58	3	1	4873	5.1	89.2	0.7	3.2	1.0	0.4	0.1	0.3	0.0	94.3	0.7	5.0	0.073	0.503	19.728455	-98.470790
Apan	19.58	3	2	4819	5.5	88.4	0.7	3.2	1.5	0.4	0.1	0.2	0.0	93.9	0.7	5.4	0.083	0.503	19.728361	-98.470868
Tepeapulco	34.92	3	0	4549	3.6	90.0	1.0	2.3	1.6	1.0	0.4	0.1	0.0	93.6	1.0	5.4	0.093	0.505	19.799298	-98.561098
X. C. Venta de Carpio - Tulancingo	51.18	1	1	1502	2.7	86.1	0.7	6.0	3.2	0.7	0.6	0.0	0.0	88.8	0.7	10.5	0.097	0.512	19.918339	-98.576270
X. C. Venta de Carpio - Tulancingo	51.18	1	2	1432	2.8	84.4	0.7	7.6	3.1	0.9	0.4	0.1	0.0	87.2	0.7	12.1	0.088	0.512	19.918260	-98.576322
X. C. Venta de Carpio - Tulancingo	51.18	3	0	1951	3.6	87.4	0.7	3.9	2.1	1.9	0.3	0.1	0.0	91.0	0.7	8.3	0.097	0.511	19.929714	-98.583951
El Ocote	70.44	1	1	1768	2.4	95.6	0.1	1.4	0.4	0.1	0.0	0.0	0.0	98.0	0.1	1.9	0.102	0.518	20.041233	-98.621347
El Ocote	70.44	1	2	1902	2.8	95.2	0.1	1.4	0.4	0.1	0.0	0.0	0.0	98.0	0.1	1.9	0.099	0.518	20.041378	-98.621375

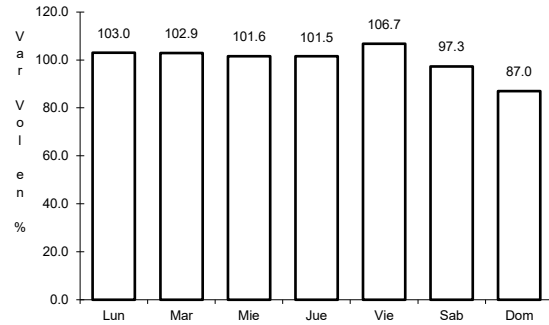




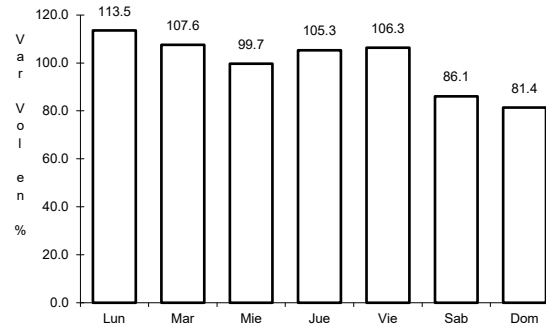
1 CARR: Álamo - Huejutla de Reyes

CLAVE: 00116

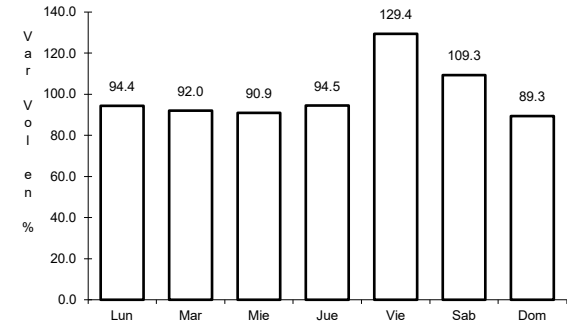
RUTA: MEX-127



Km: 0.00      Tipo: 3      Sent: 0



Km: 73.00      Tipo: 1      Sent: 0

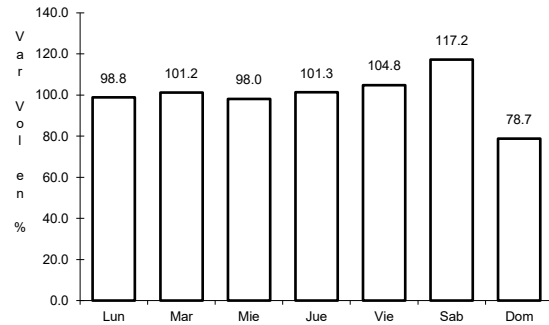


Km: 78.00      Tipo: 3      Sent: 0

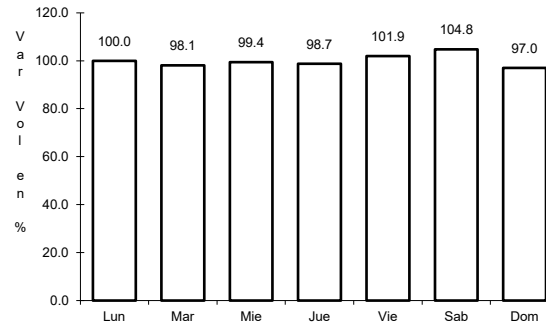
2 CARR: Apizaco - Tejocotal

CLAVE: 00430

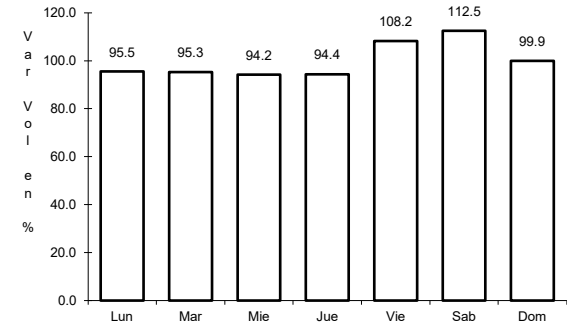
RUTA: MEX-119



Km: 0.00      Tipo: 3      Sent: 1



Km: 0.00      Tipo: 3      Sent: 2

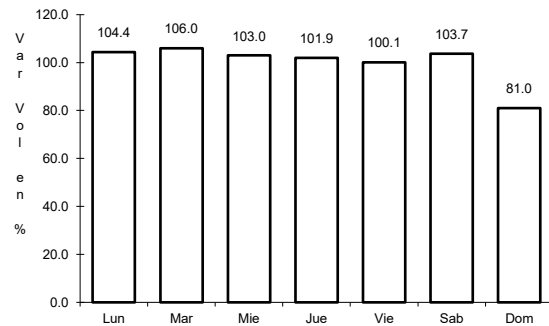


Km: 113.15      Tipo: 1      Sent: 0

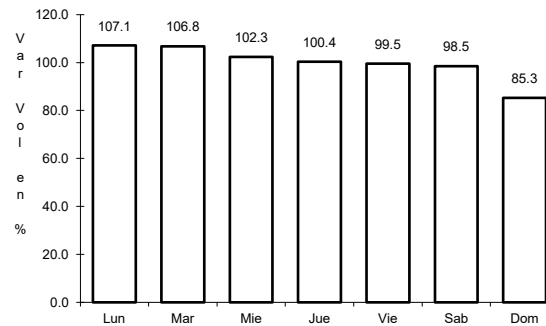
3 CARR: Ent. Colonia - Portezuelo

CLAVE: 13257

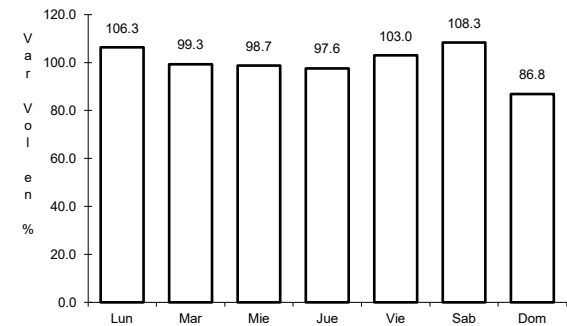
RUTA: MEX-085



Km: 0.00      Tipo: 3      Sent: 1



Km: 0.00      Tipo: 3      Sent: 2

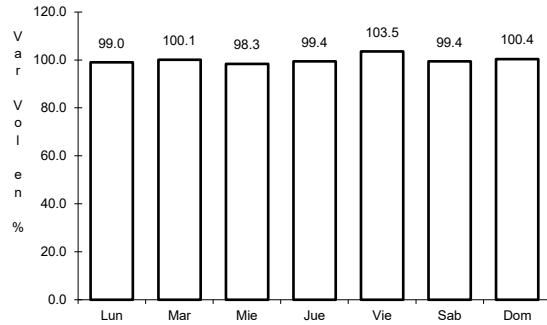


Km: 75.20      Tipo: 3      Sent: 1

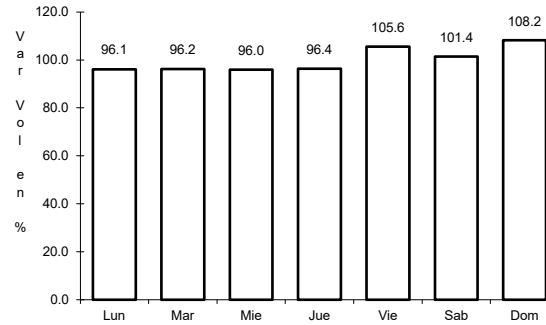
4 CARR: Ent. Jorobas - Tula

CLAVE: 00159

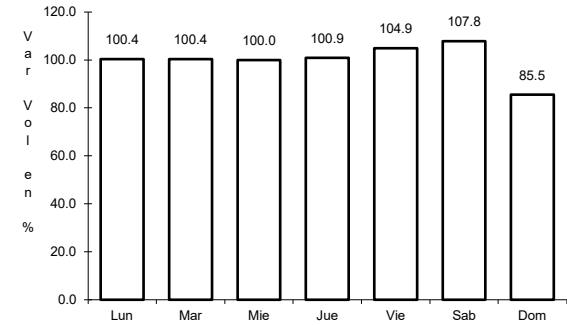
ruta: MEX-087



Km: 0.00      Tipo: 3      Sent: 1



Km: 0.00      Tipo: 3      Sent: 2

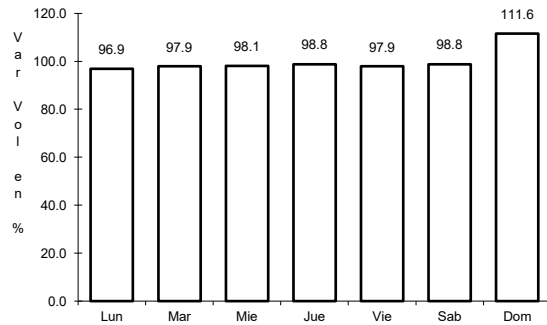


Km: 37.70      Tipo: 1      Sent: 1

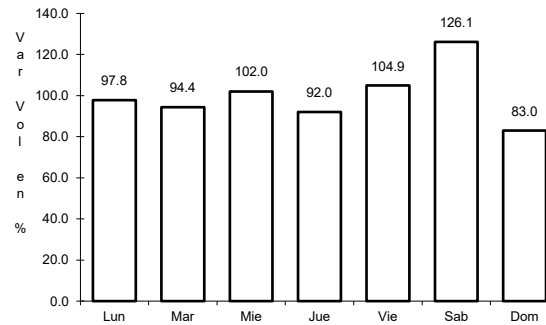
5 CARR: Libramiento de Huichapan

CLAVE:

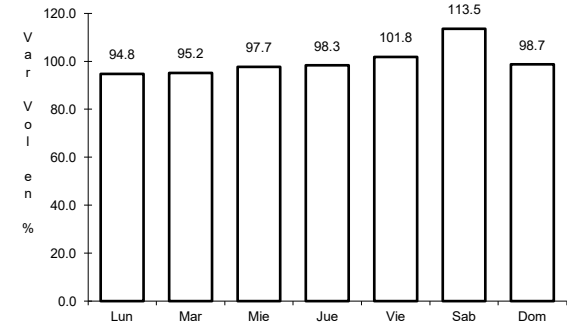
ruta: MEX-045



Km: 2.00      Tipo: 1      Sent: 1



Km: 2.00      Tipo: 1      Sent: 2

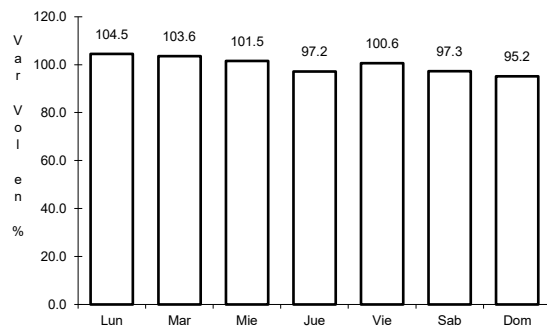


Km: 9.00      Tipo: 1      Sent: 1

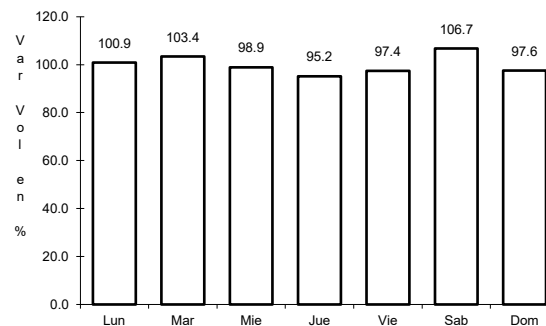
6 CARR: México - Pachuca (Libre)

CLAVE: 00431

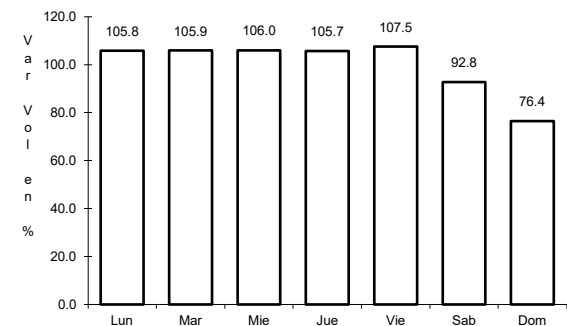
ruta: MEX-085



Km: 26.93      Tipo: 1      Sent: 1



Km: 26.93      Tipo: 1      Sent: 2

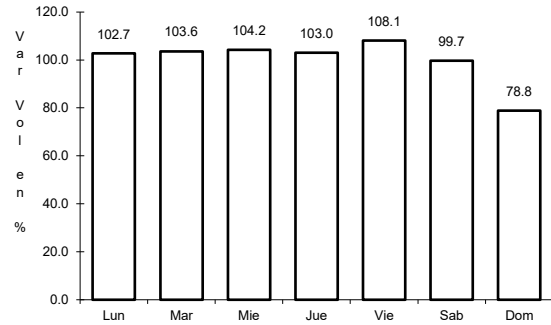


Km: 86.50      Tipo: 1      Sent: 1

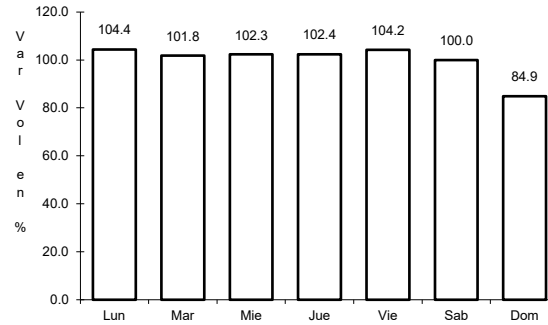
7 CARR: Pachuca - Cd. Sahagún

CLAVE: 13088

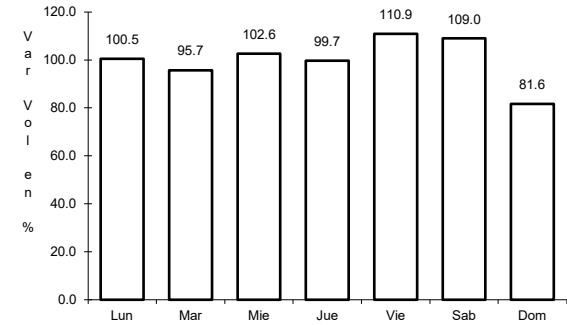
RUTA: MEX



Km: 0.00      Tipo: 3      Sent: 1



Km: 0.00      Tipo: 3      Sent: 2

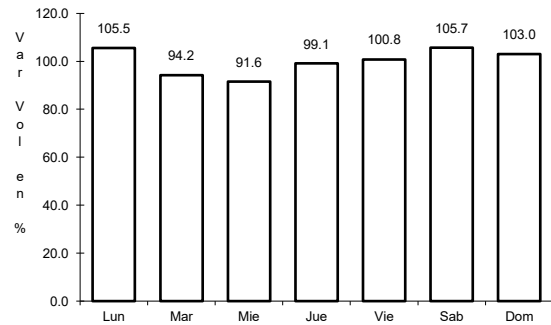


Km: 40.00      Tipo: 3      Sent: 1

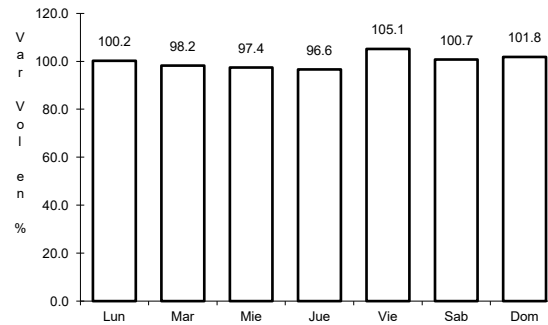
8 CARR: Pachuca - Tempoal

CLAVE: 00113

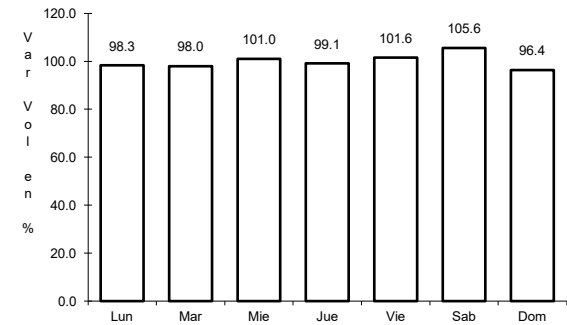
RUTA: MEX-105



Km: 0.00      Tipo: 3      Sent: 0



Km: 129.80      Tipo: 1      Sent: 0

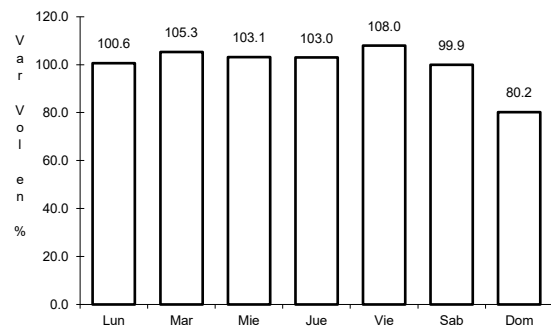


Km: 260.68      Tipo: 1      Sent: 0

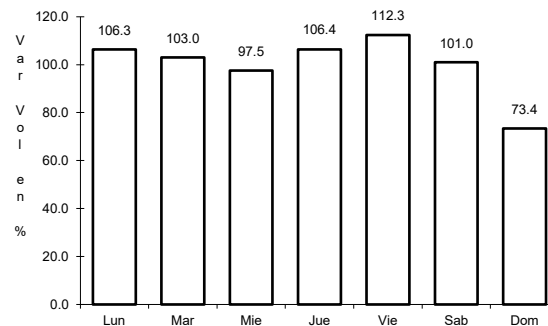
9 CARR: Pachuca - Túcpan

CLAVE: 00608

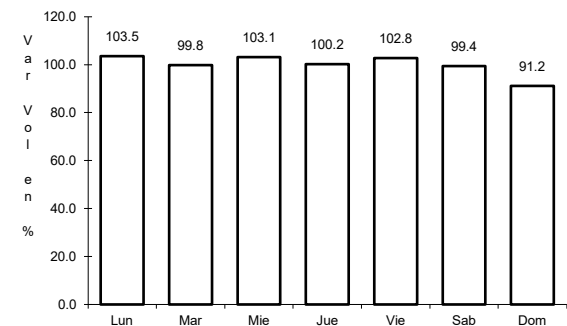
RUTA: MEX-130



Km: 2.60      Tipo: 3      Sent: 1



Km: 2.60      Tipo: 3      Sent: 2

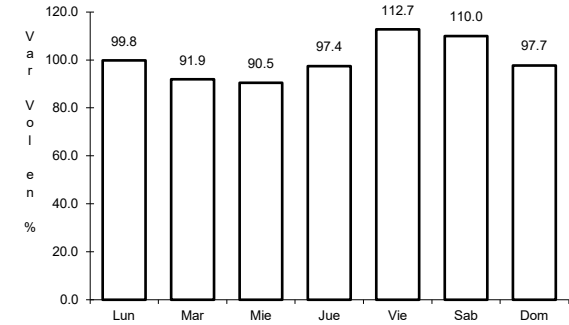
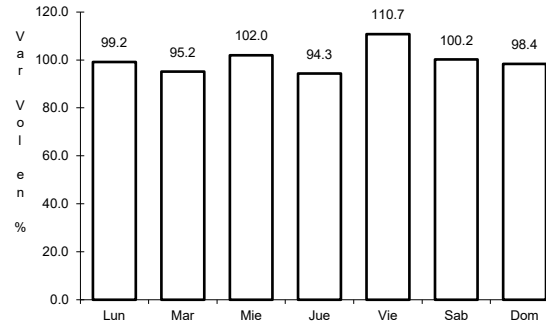
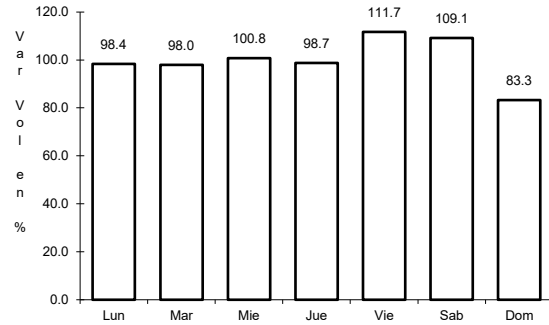


Km: 232.50      Tipo: 1      Sent: 0

10 CARR: Portezuelo - Cd. Valles

CLAVE: 00023

ruta: MEX-085



Km: 0.00 Tipo: 3 Sent: 0

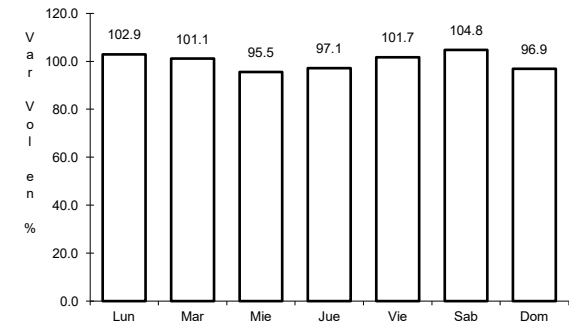
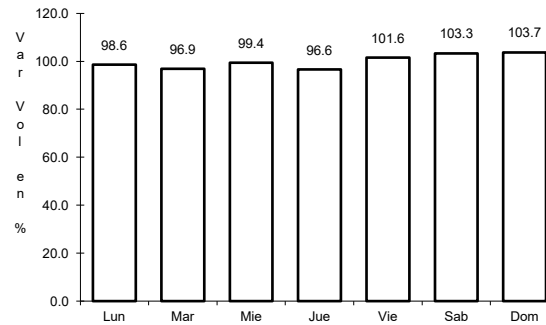
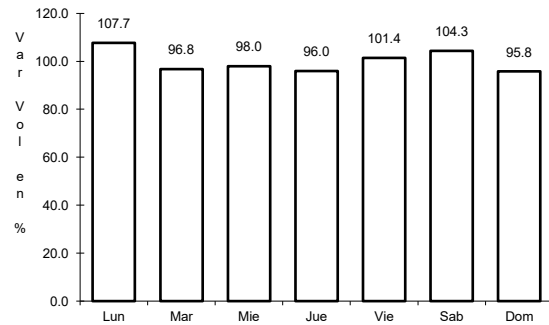
Km: 154.00 Tipo: 3 Sent: 0

Km: 286.41 Tipo: 1 Sent: 1

11 CARR: Portezuelo - Palmillas

CLAVE: 00194

ruta: MEX-045



Km: 0.00 Tipo: 3 Sent: 1

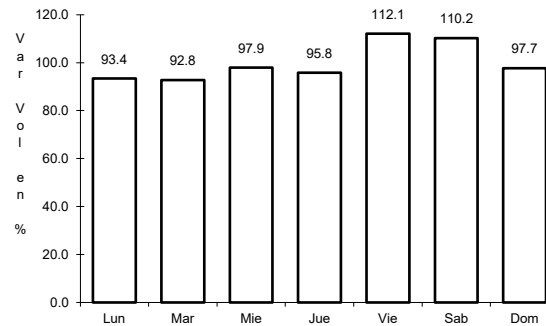
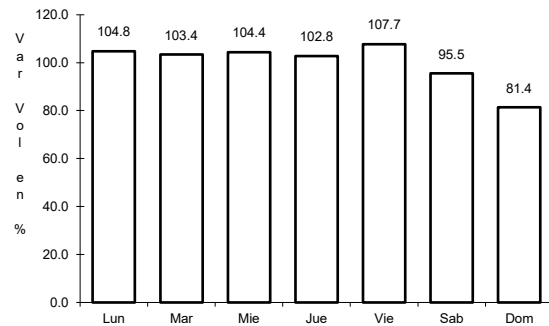
Km: 0.00 Tipo: 3 Sent: 2

Km: 80.00 Tipo: 1 Sent: 1

12 CARR: Tamazunchale - San Felipe Orizatlán

CLAVE: 00609

ruta: MEX-085



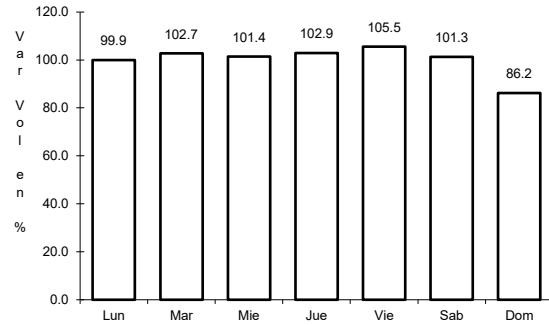
Km: 0.00 Tipo: 3 Sent: 0

Km: 27.10 Tipo: 1 Sent: 0

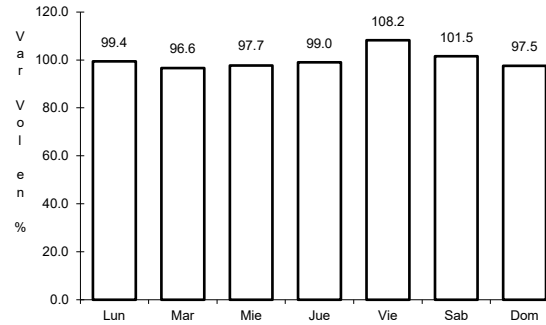
13 CARR: Venta de Carpio - T. C. (Pachuca - Tuxpam)

CLAVE: 00455

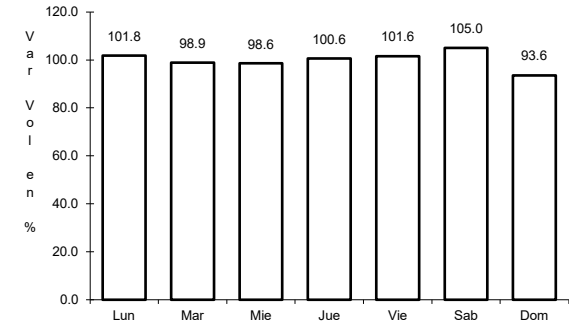
ruta: MEX-132



Km: 6.42 Tipo: 3 Sent: 1



Km: 6.42 Tipo: 3 Sent: 2

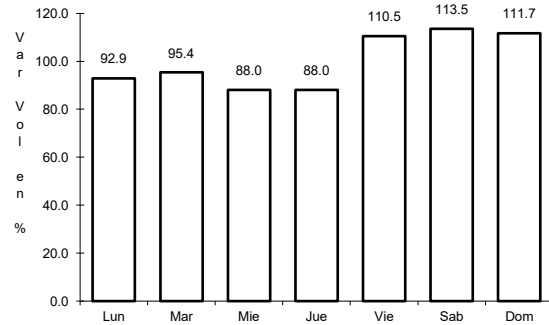


Km: 31.79 Tipo: 3 Sent: 0

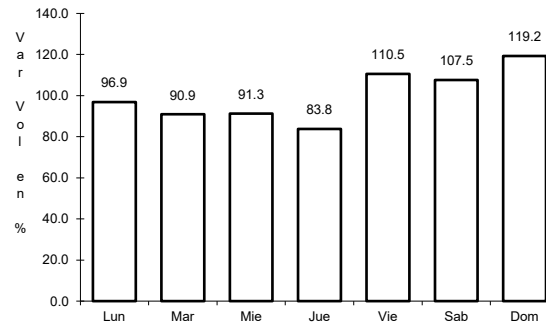
14 CARR: Ent. Tulancingo - Venta Grande (Cuota)

CLAVE: 00026

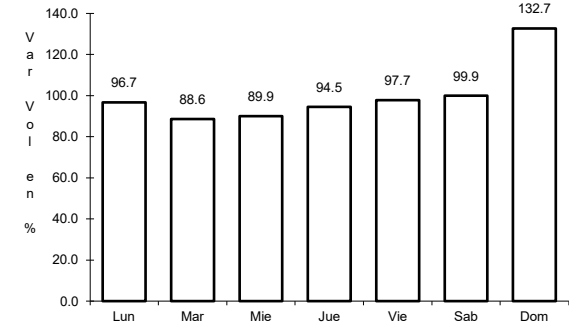
ruta: MEX-132D



Km: 7.80 Tipo: 1 Sent: 0



Km: 21.80 Tipo: 1 Sent: 0

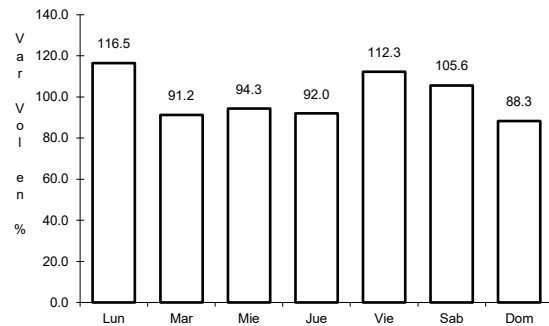


Km: 39.60 Tipo: 1 Sent: 0

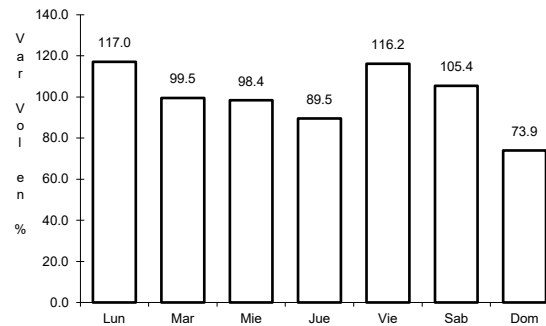
15 CARR: Libramiento Norte de la Ciudad de México (Cuota)

CLAVE: 0902

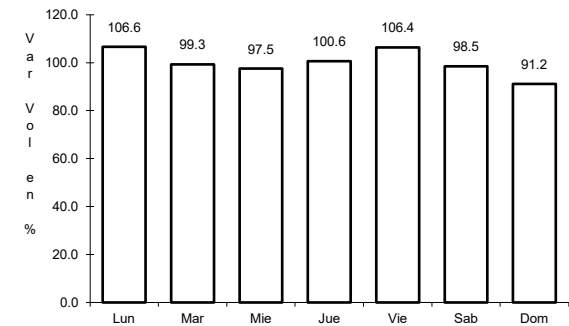
ruta: MEX-M40D



Km: 12.90 Tipo: 1 Sent: 1



Km: 12.90 Tipo: 1 Sent: 2

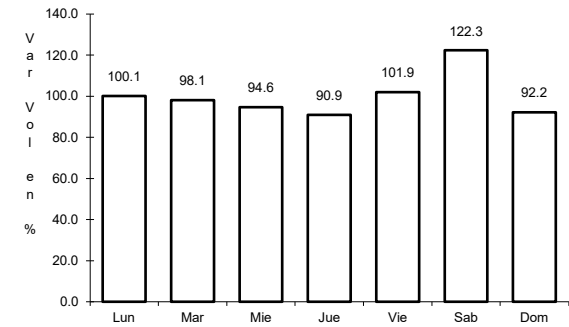
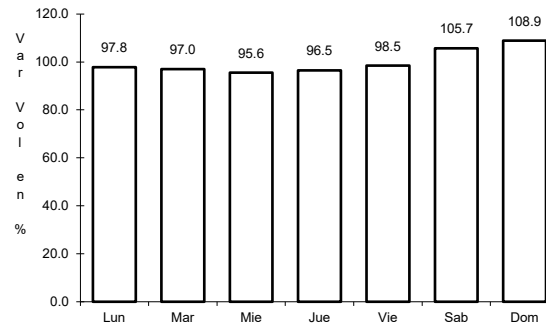
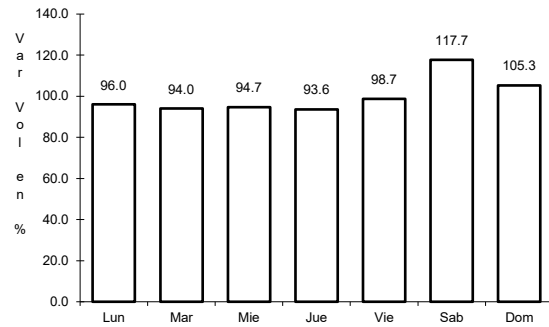


Km: 226.73 Tipo: 1 Sent: 1

16 CARR: México - Pachuca (Cuota)

CLAVE: 00432

ruta: MEX-085D



Km: 25.00 Tipo: 3 Sent: 1

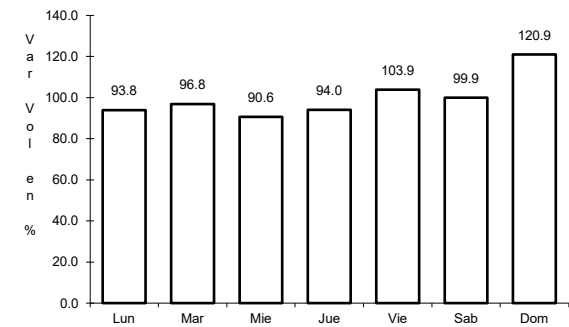
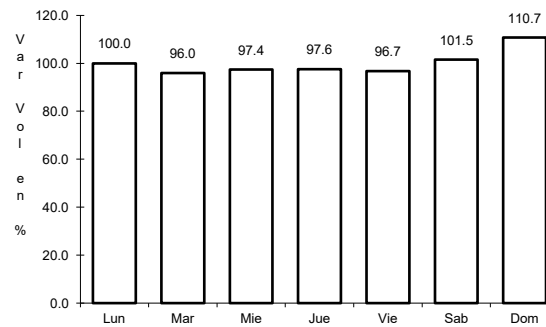
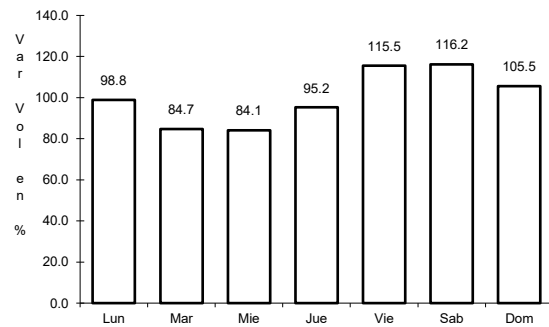
Km: 25.00 Tipo: 3 Sent: 2

Km: 60.50 Tipo: 1 Sent: 1

17 CARR: Tejocotal - Nuevo Necaxa (Cuota)

CLAVE: 00211

ruta: MEX-132D



Km: 0.00 Tipo: 3 Sent: 0

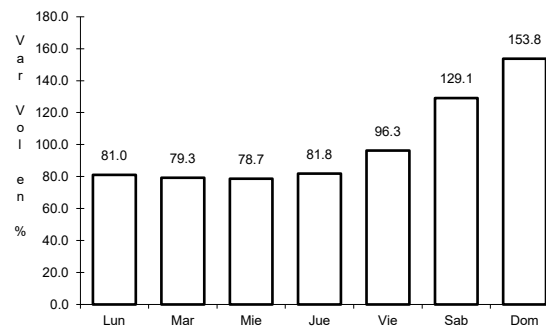
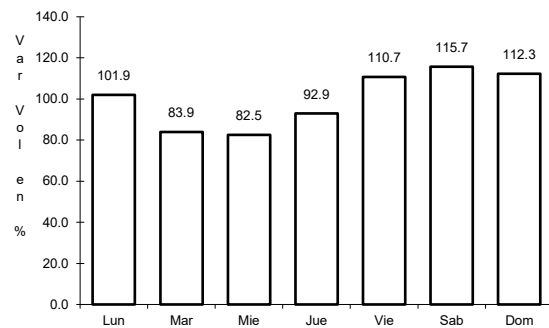
Km: 17.00 Tipo: 1 Sent: 1

Km: 17.00 Tipo: 1 Sent: 2

18 CARR: Tlaxco - Tejocotal (Cuota)

CLAVE: 00209

ruta: MEX-119D



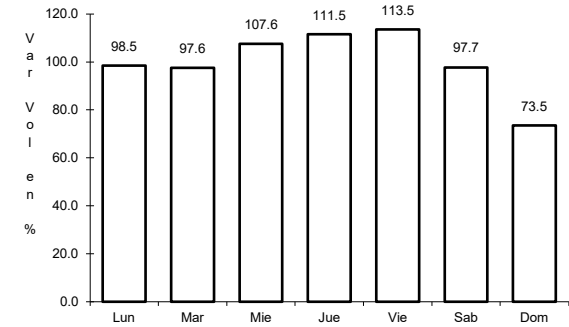
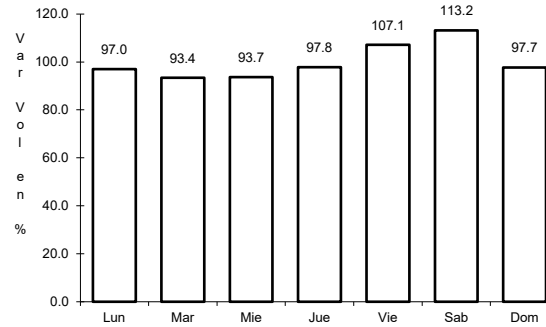
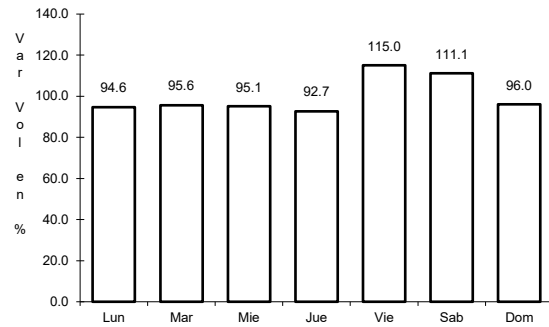
Km: 23.00 Tipo: 3 Sent: 0

Km: 56.20 Tipo: 3 Sent: 0

19 CARR: México - Querétaro (Cuota)

CLAVE: 00411

RUTA: MEX-057-MEX-057D



Km: 56.18

Tipo: 1

Sent: 1

Km: 56.18

Tipo: 1

Sent: 2

Km: 207.00

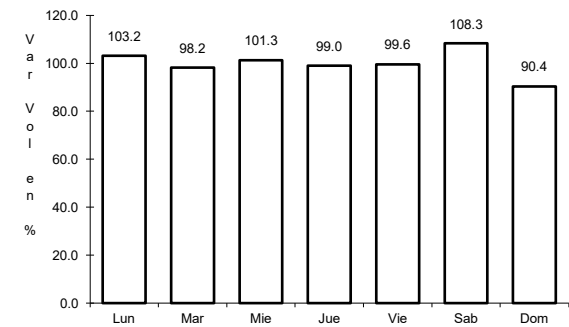
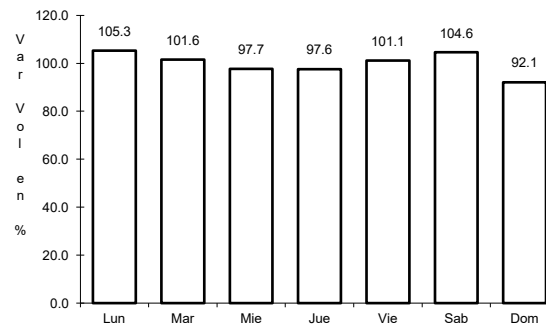
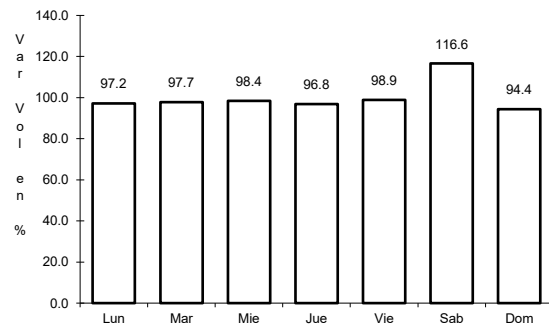
Tipo: 3

Sent: 1

20 CARR: Actopan - Progreso

CLAVE: 13038

RUTA: HGO



Km: 0.00

Tipo: 3

Sent: 1

Km: 0.00

Tipo: 3

Sent: 2

Km: 23.90

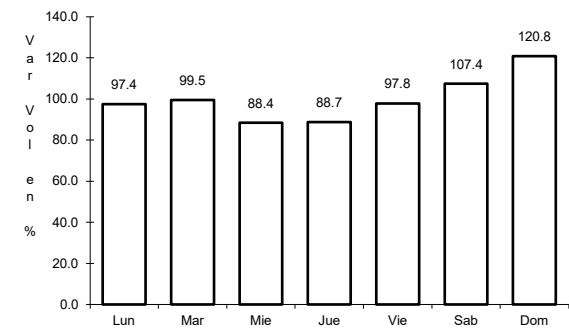
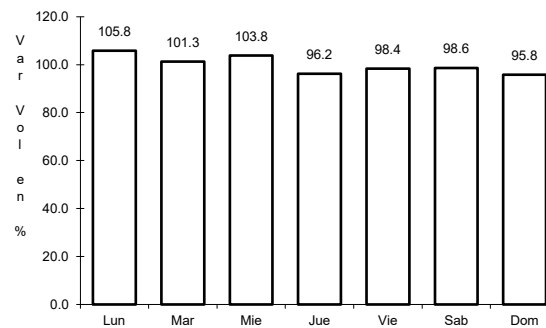
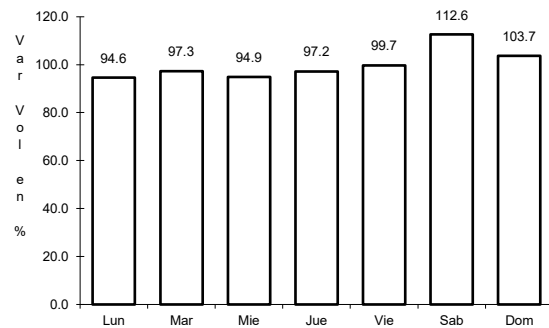
Tipo: 1

Sent: 1

21 CARR: El Saucillo - Amealco

CLAVE: 13103

RUTA: HGO-103



Km: 0.00

Tipo: 3

Sent: 0

Km: 11.00

Tipo: 3

Sent: 0

Km: 21.40

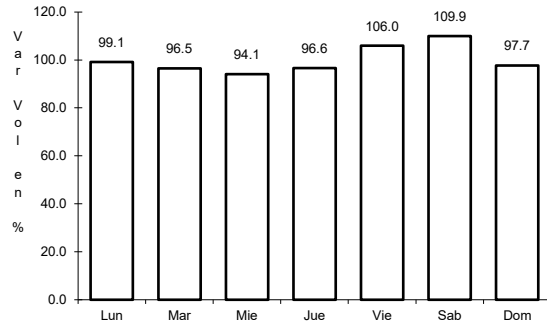
Tipo: 1

Sent: 0

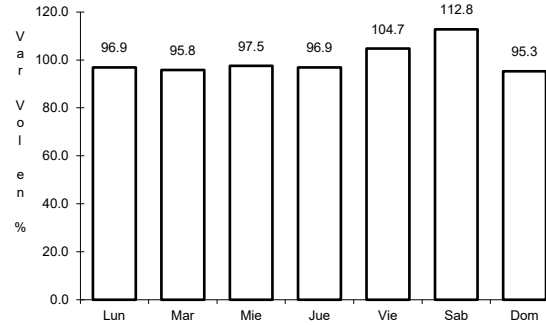
22 CARR: Ent. Emiliano Zapata - Cd. Sahagún

CLAVE: 13255

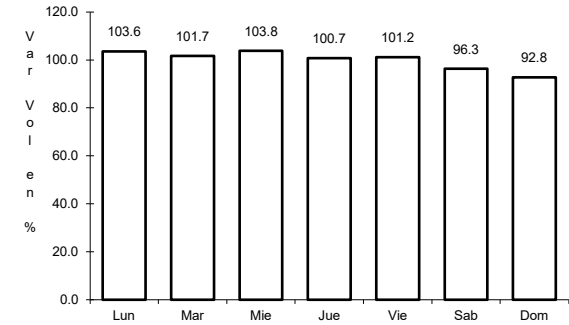
ruta: HGO



Km: 2.70      Tipo: 1      Sent: 1



Km: 2.70      Tipo: 1      Sent: 2

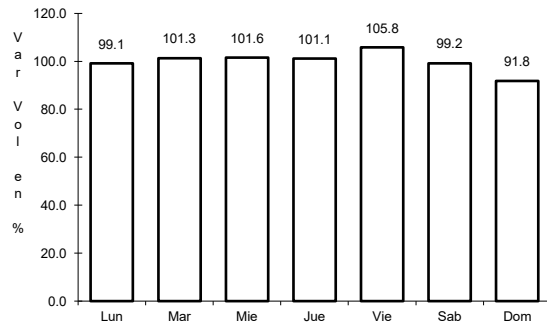


Km: 17.98      Tipo: 1      Sent: 1

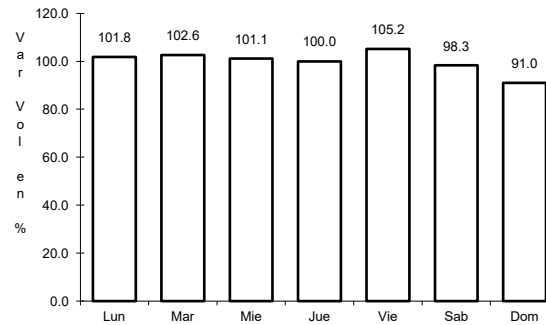
23 CARR: Ent. Tepeji del Río - Tlahuelilpan

CLAVE: 13017

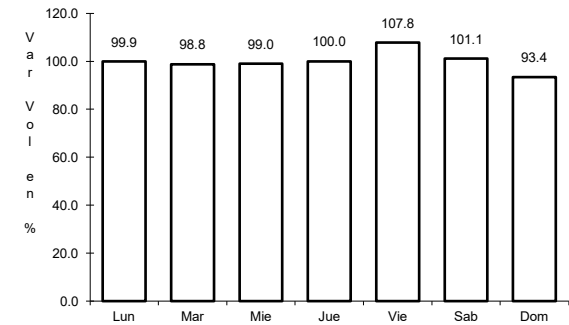
ruta: HGO-017



Km: 3.00      Tipo: 3      Sent: 1



Km: 3.00      Tipo: 3      Sent: 2

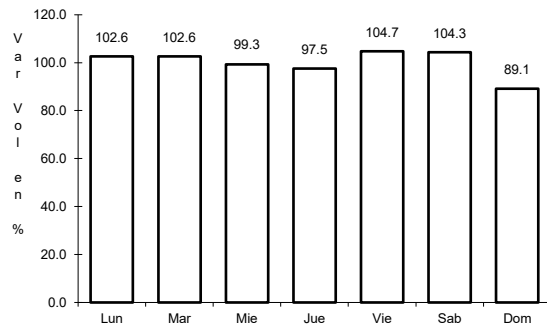


Km: 18.00      Tipo: 1      Sent: 0

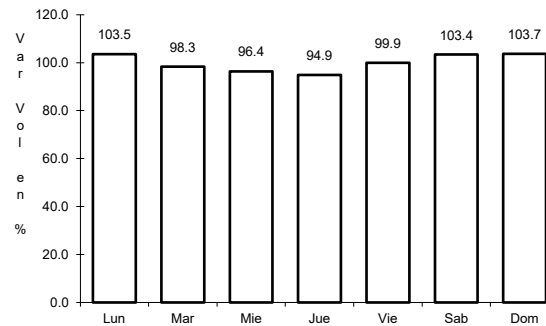
24 CARR: Ent. Tolman - Cd. Sahagún

CLAVE: 00119

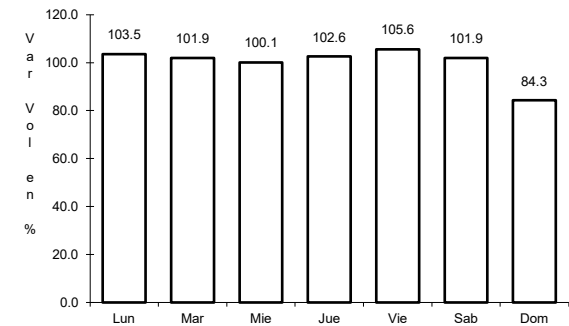
ruta: EM-009-HGO



Km: 0.00      Tipo: 3      Sent: 0



Km: 21.00      Tipo: 3      Sent: 0



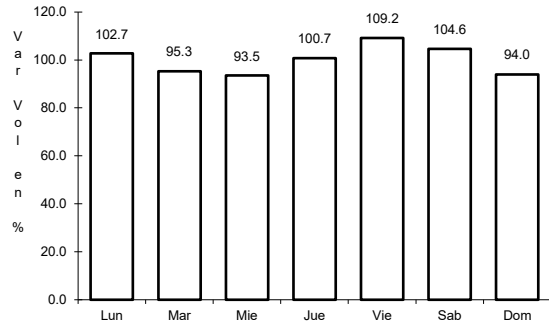
Km: 32.00      Tipo: 1      Sent: 0



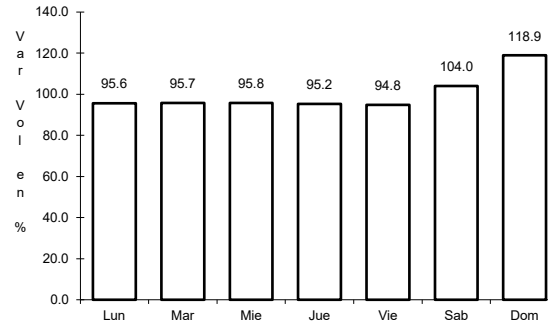
25 CARR: Francisco I. Madero - Tula de Allende

CLAVE: 13043

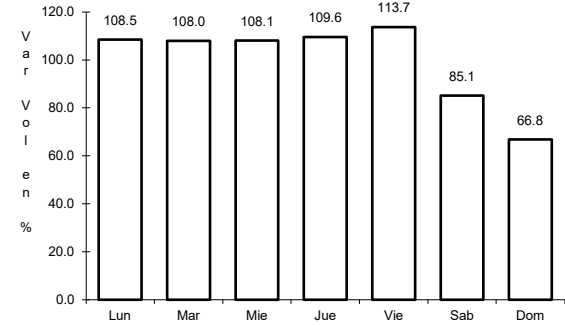
RUTA: HGO



Km: 0.00      Tipo: 3      Sent: 0



Km: 38.20      Tipo: 1      Sent: 0

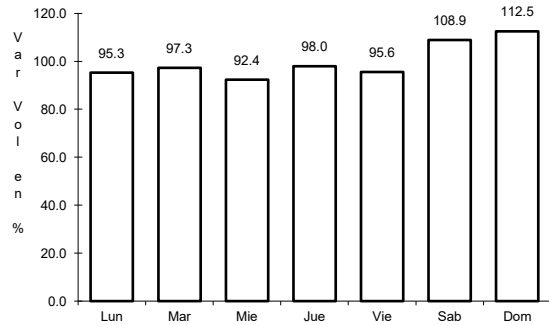


Km: 52.70      Tipo: 1      Sent: 0

26 CARR: Huichapan - Tecozautla

CLAVE: 13030

RUTA: HGO-030

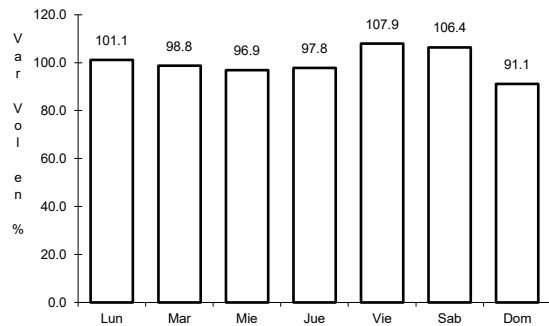


Km: 0.00      Tipo: 3      Sent: 0

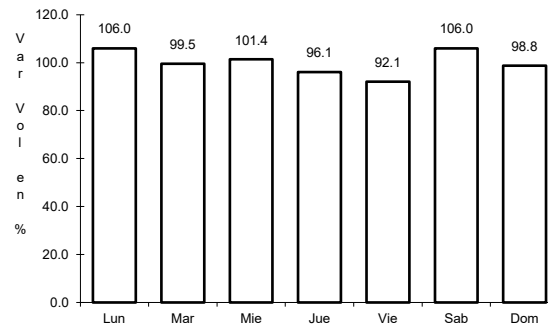
27 CARR: Jilotepec - Maravillas

CLAVE: 00015

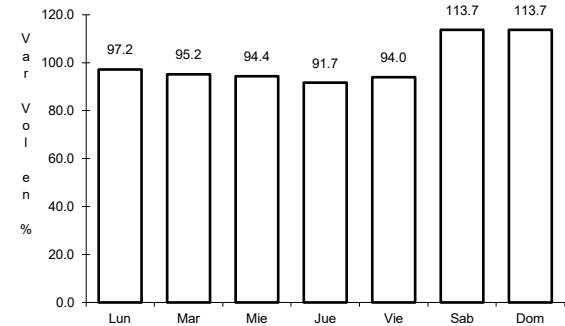
RUTA: EM-HGO



Km: 0.00      Tipo: 3      Sent: 0



Km: 21.30      Tipo: 1      Sent: 0

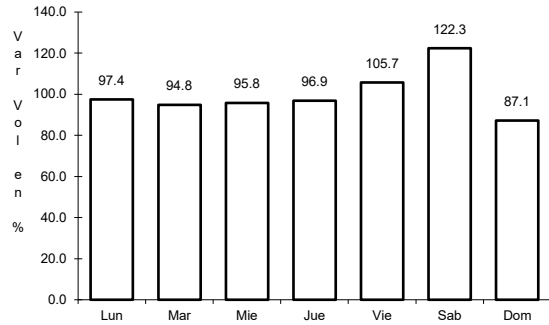


Km: 40.00      Tipo: 1      Sent: 0

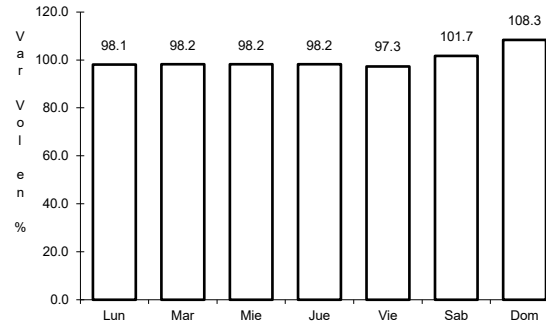
28 CARR: Libramiento de Atotonilco El Grande

CLAVE: 13238

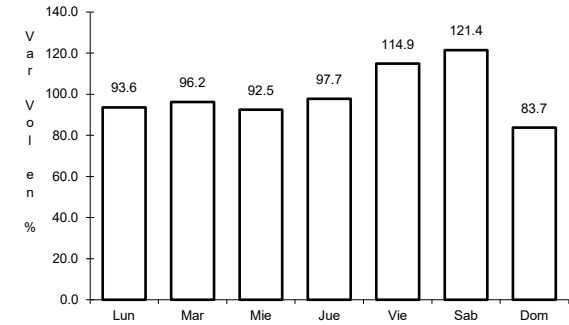
RUTA: HGO



Km: 0.00      Tipo: 3      Sent: 1



Km: 0.00      Tipo: 3      Sent: 2

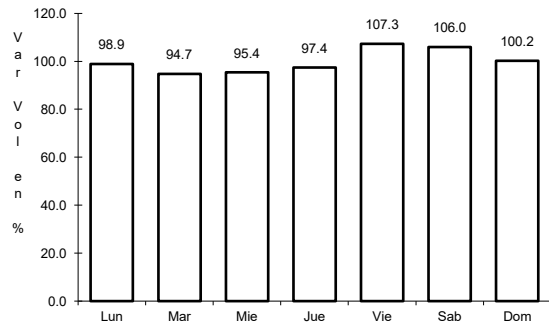


Km: 6.30      Tipo: 1      Sent: 1

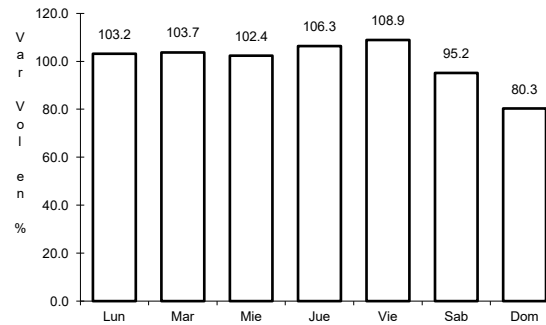
29 CARR: Lolotla - Atlapexco

CLAVE: 13238

RUTA: HGO



Km: 0.00      Tipo: 3      Sent: 0

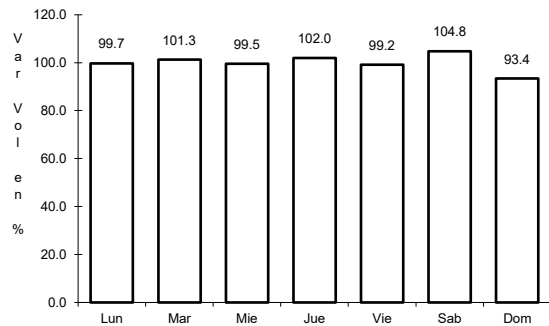


Km: 68.00      Tipo: 1      Sent: 0

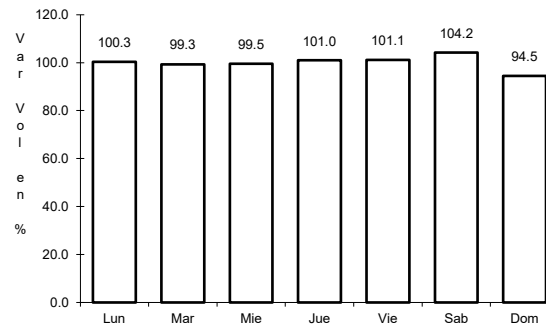
30 CARR: Los Reyes - El Tephé

CLAVE: 00021

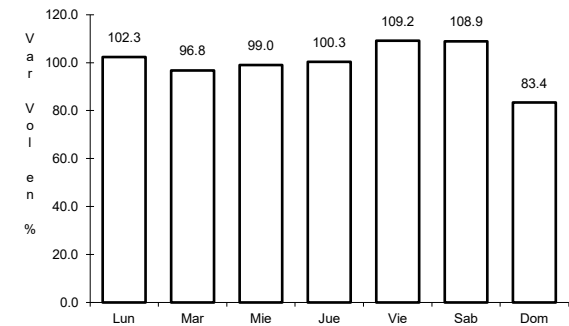
RUTA: EM-HGO



Km: 1.35      Tipo: 3      Sent: 1



Km: 1.35      Tipo: 3      Sent: 2

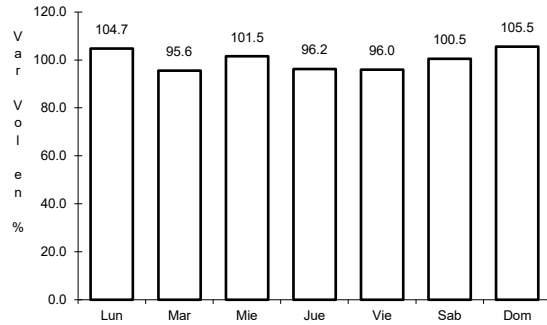


Km: 42.00      Tipo: 1      Sent: 0

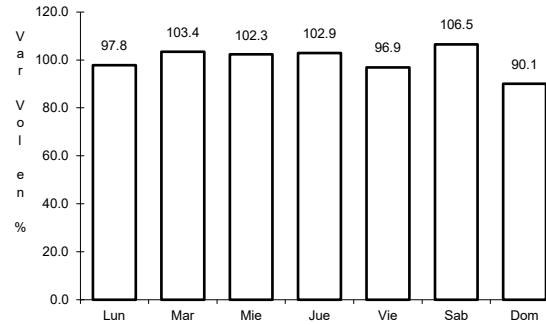
31 CARR: Otumba - Tizayuca

CLAVE: 00012

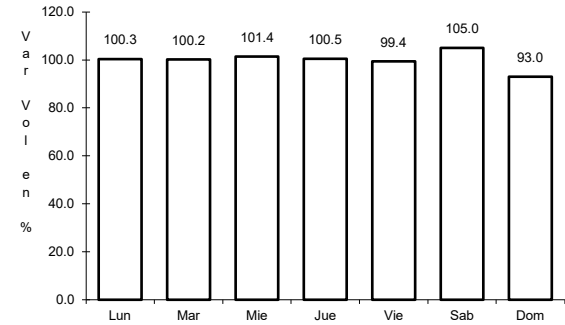
RUTA: EM-HGO



Km: 0.00                      Tipo: 3                      Sent: 0



Km: 37.10                      Tipo: 1                      Sent: 1

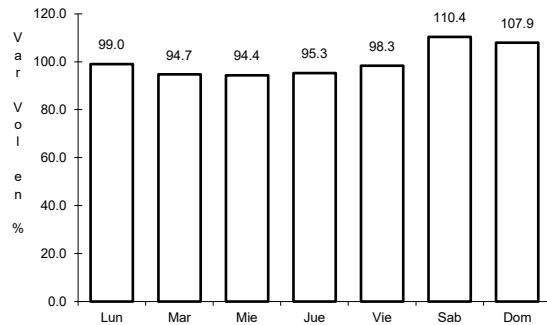


Km: 37.10                      Tipo: 1                      Sent: 2

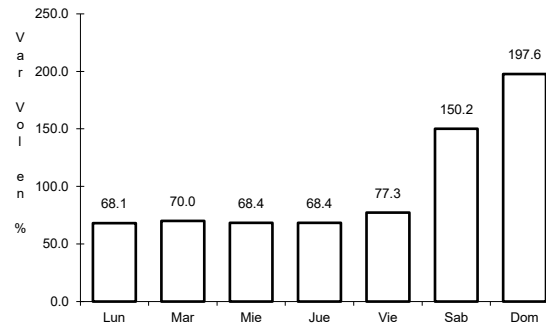
32 CARR: Ramal a El Chico

CLAVE: 13256

RUTA: HGO



Km: 0.00                      Tipo: 3                      Sent: 0

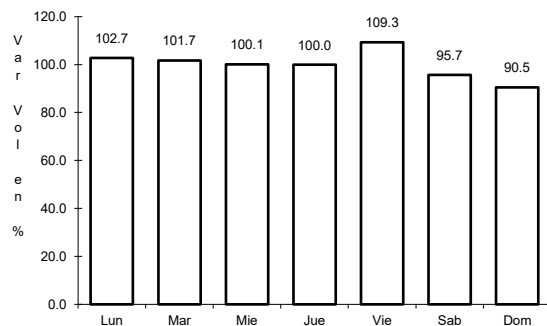


Km: 21.00                      Tipo: 1                      Sent: 0

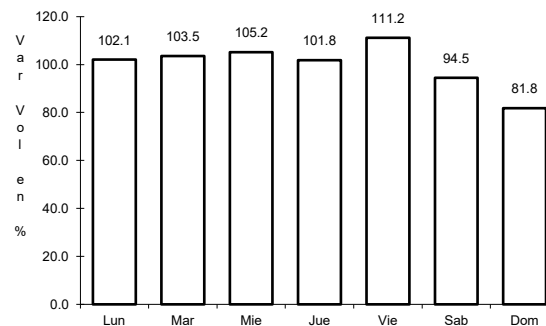
33 CARR: Ramal a Pachuca

CLAVE: 13254

RUTA: HGO



Km: 0.00                      Tipo: 3                      Sent: 1

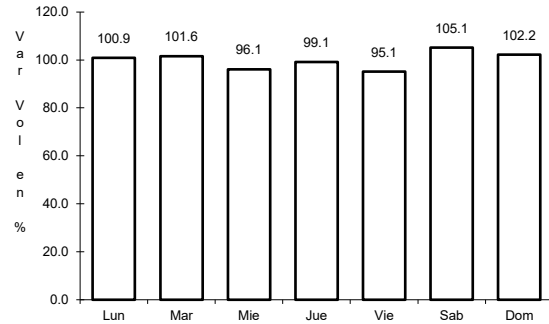


Km: 0.00                      Tipo: 3                      Sent: 2

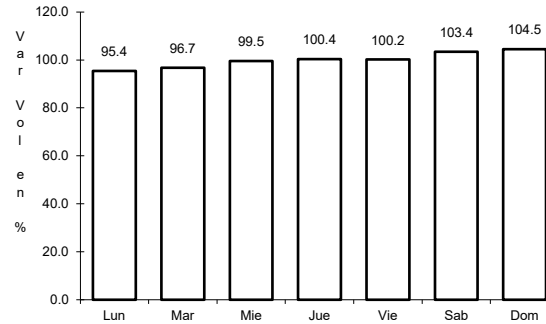
34 CARR: San Alejo - Huayacocotla

CLAVE: 00132

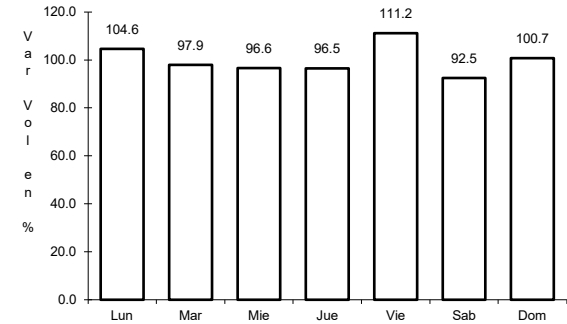
RUTA: HGO-051-VER-113



Km: 0.00      Tipo: 3      Sent: 0



Km: 29.48      Tipo: 3      Sent: 0

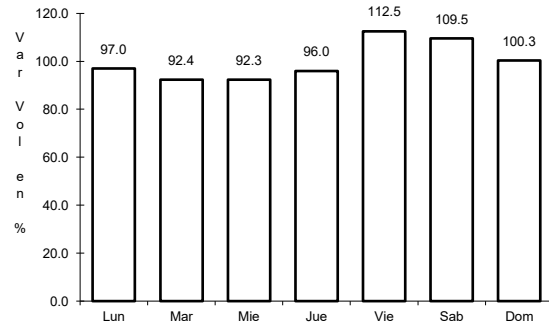


Km: 66.00      Tipo: 1      Sent: 0

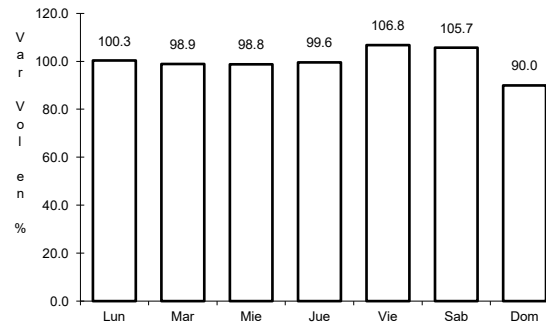
35 CARR: San Felipe Orizatlán - Huejutla de Reyes

CLAVE: 13258

RUTA: HGO



Km: 0.00      Tipo: 3      Sent: 0

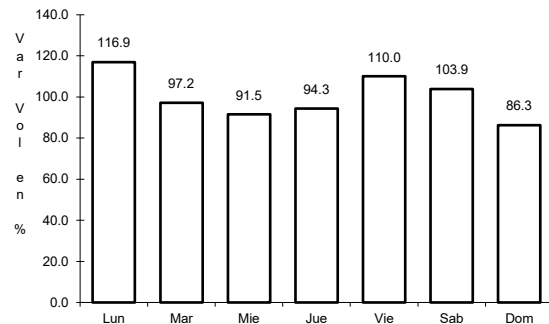


Km: 25.00      Tipo: 1      Sent: 0

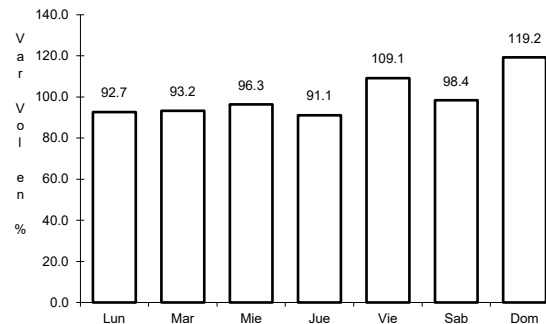
36 CARR: Santo Domingo - T. C. (México - Querétaro)

CLAVE: 00433

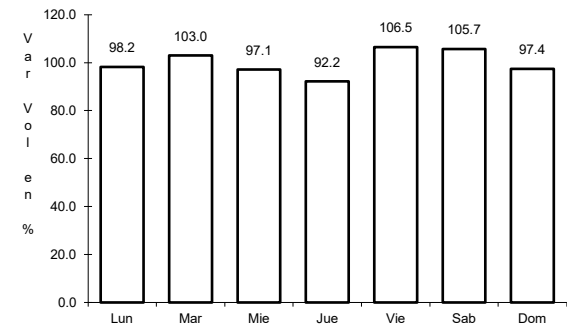
RUTA: EM-011-HGO



Km: 0.00      Tipo: 3      Sent: 0



Km: 65.84      Tipo: 1      Sent: 1

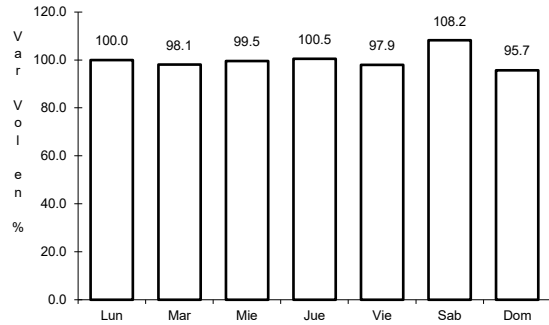


Km: 65.84      Tipo: 1      Sent: 2

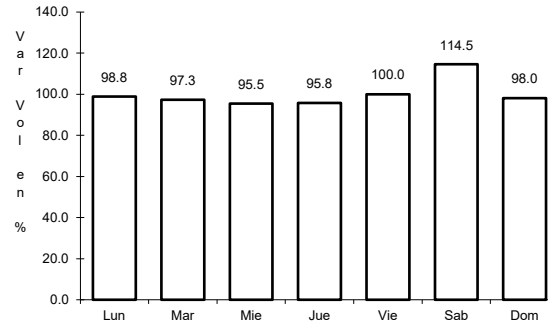
37 CARR: T. C. (Los Reyes - El Tephé) - Tizayuca

CLAVE: 00014

RUTA: EM-HGO



Km: 0.00                      Tipo: 3                      Sent: 0

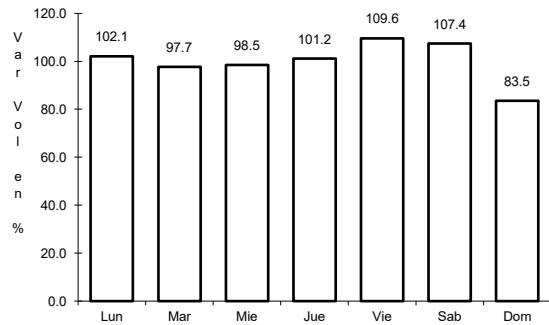


Km: 8.00                      Tipo: 1                      Sent: 0

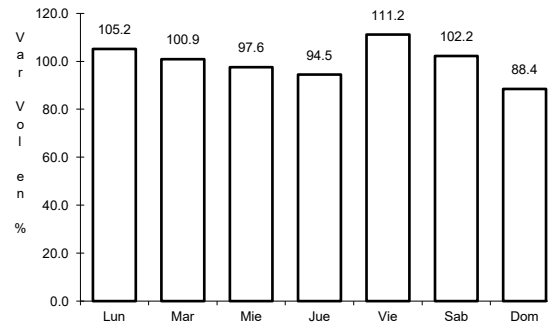
38 CARR: Tepeji del Río - T.C. (México - Querétaro)

CLAVE: 13104

RUTA: HGO



Km: 0.00                      Tipo: 3                      Sent: 0

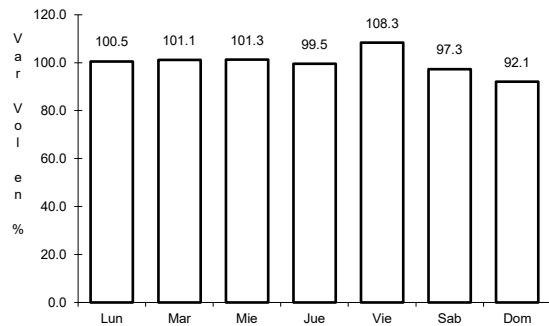


Km: 12.40                      Tipo: 1                      Sent: 0

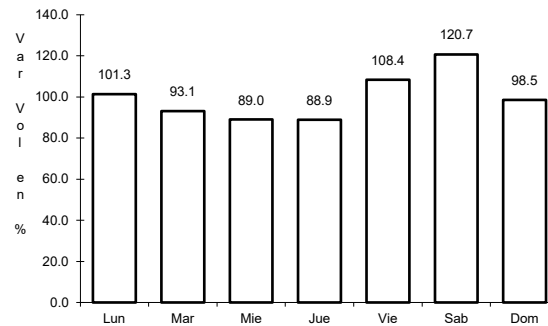
39 CARR: Tlahuelilpan - San Agustín Tlaxiaca

CLAVE: 13435

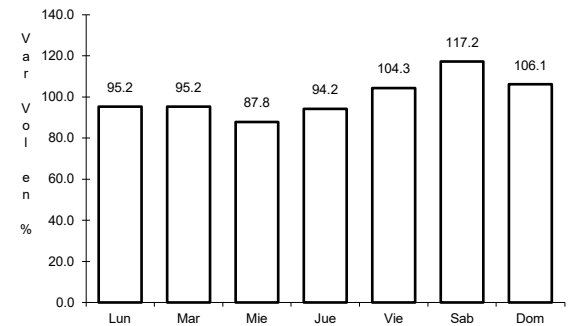
RUTA: HGO



Km: 0.00                      Tipo: 3                      Sent: 0

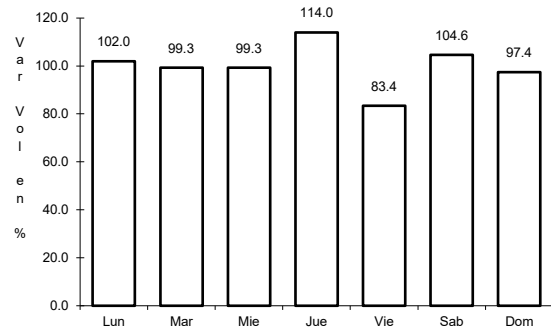


Km: 25.50                      Tipo: 3                      Sent: 0



Km: 48.00                      Tipo: 1                      Sent: 0

40 CARR: Calpulpan - El Ocote

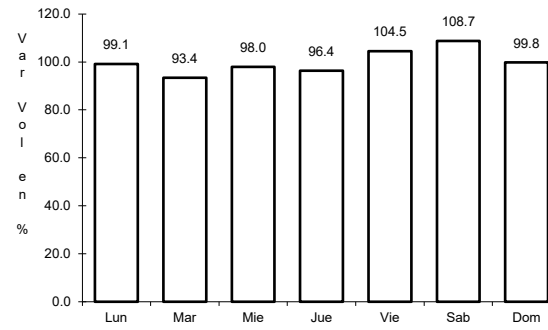


Km: 0.00

Tipo: 3

Sent: 0

CLAVE: 00054

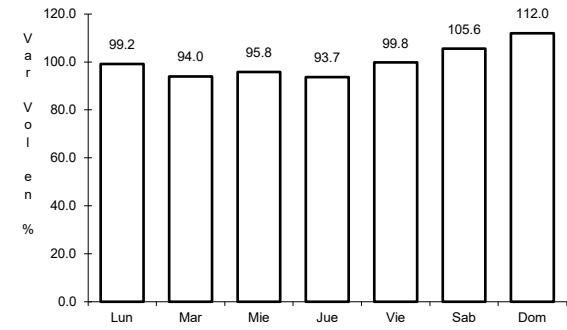


Km: 34.92

Tipo: 3

Sent: 0

RUTA: MEX-HGO



Km: 70.44

Tipo: 1

Sent: 1