

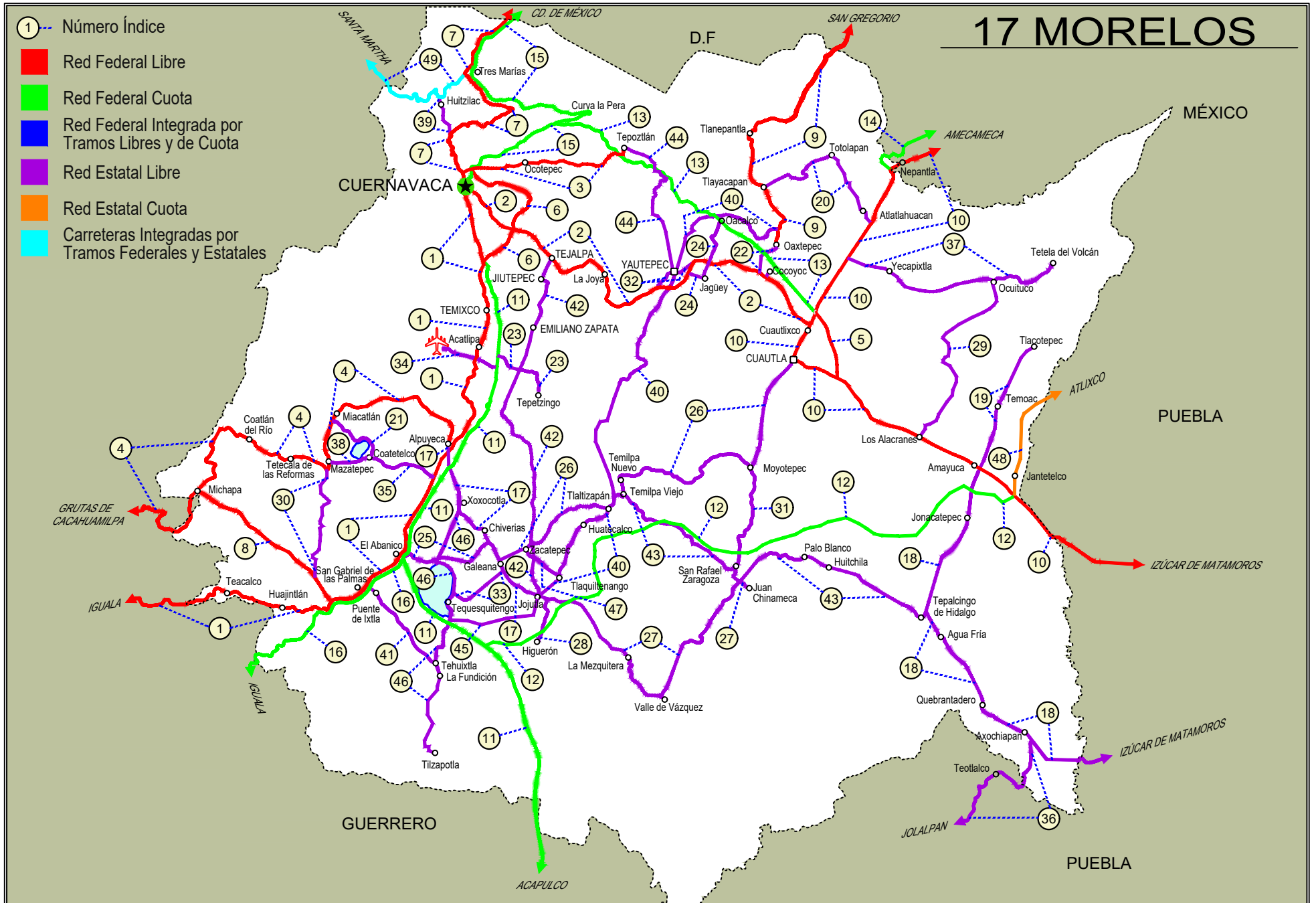


# MORELOS

NO. INDICE CARRETERA	RUTA
---RED FEDERAL LIBRE---	
1 Cuernavaca - Chilpancingo	MEX-095
2 Cuernavaca - Cuautlixco	MEX-138
3 Cuernavaca - Tepoztlán	MEX-162
4 Ent. Alpuyea - Grutas de Cacahuamilpa	MEX-166
5 Libramiento de Cuautla	MEX-160
6 Libramiento de Cuernavaca	MEX-095
7 México - Cuernavaca (Libre)	MEX-095
8 Ramal a Michapa	MEX-166
9 San Gregorio - Oaxtepec	MEX-113
10 Santa Bárbara - Izúcar de Matamoros	MEX-115-160
---RED FEDERAL DE CUOTA---	
11 Cuernavaca - Acapulco (Cuota)	MEX-095D
12 Jantetelco - El Higuérón (Cuota)	MEX-037-D
13 La Pera - Cuautla (Cuota)	MEX-160D
14 Libramiento Amecameca - Nepantla (Cuota)	MEX-115D
15 México - Cuernavaca (Cuota)	MEX-095D
16 Puente de Ixtla - Iguala (Cuota)	MEX-091D
---RED ESTATAL LIBRE---	
17 Alpuyea - Jojutla	MOR-021
18 Amayuca - Izúcar de Matamoros	MOR-031-PUE
19 Amayuca - Tlacotepec	MOR-017
20 Atlatlahucan - Tlayacapan	MOR-002
21 Coatetelco - Miacatlán	MOR
22 Cocoyoc - Oaxtepec	MOR
23 Ent. C. (Cuernavaca - Acapulco Cuota) - Tepetzingo	MOR
24 Ent. C. (Cuernavaca - Cuautlixco) - Oacalco	MOR
25 Ent. Chiverías - Ent. El Abanico	MOR
26 Galeana - Cuautla	MOR-004
27 Jojutla - Chinameca	MOR
28 Jojutla - El Higuérón	MOR-039
29 Los Alacranes - Ocuituco	MOR
30 Mazatepec - T. C. Ramal a Michapa	MOR
31 Moyotepec - San Rafael	MOR
32 Paso por Yautepec	MOR
33 Pilares - T. C. (Xoxocotla - Tilzapotla)	MOR-008
34 Ramal a Aeropuerto de Cuernavaca	MOR
35 Ramal a Coatetelco	MOR
36 Ramal a Jolalpan	MOR-PUE
37 Ramal a Tetela del Volcán	MOR-010
38 T. C. (Coatetelco - Miacatlán) - Mazatepec	MOR
39 T. C. (México - Cuernavaca (Libre)) - Huitzilac	MOR
40 T. C. (San Gregorio - Oaxtepec) - Jojutla	MOR-002
41 Tehuixtla - Puente de Ixtla	MOR
42 Tejalpa - Jojutla	MOR-014
43 Temilpa - Tepalcingo	MOR-009
44 Tepoztlán - Yautepec	MOR-013
45 Tequesquitengo - Jojutla	MOR
46 Xoxocotla - Tilzapotla	MOR-006
47 Zacatepec - Tlaquiltenango	MOR
---RED ESTATAL DE CUOTA---	
48 Atlixco - Jantetelco (Cuota)	PUE-D
---CARRETERAS INTEGRADAS POR TRAMOS FEDERALES Y ESTATALES---	
49 Tres Marias - Santa Martha	MEX-106-EM

# 17 MORELOS

- ① --- Número Índice
- Red Federal Libre
- Red Federal Cuota
- Red Federal Integrada por Tramos Libres y de Cuota
- Red Estatal Libre
- Red Estatal Cuota
- Carreteras Integradas por Tramos Federales y Estatales





MORELOS

1 CARR: Cuernavaca - Chilpancingo

CLAVE: 00042

RUTA: MEX-095

AÑO: 2022

LUGAR	ESTACION				CLASIFICACION VEHICULAR EN PORCIENTO													COORDENADAS			
	KM	TE	SC	TDPA	M	A	B	C2	C3	T3S2	T3S3	T3S2R4	OTROS	A	B	C	K'	D	LATITUD	LONGITUD	
Cuernavaca	0.00	0	0																		
T. Izq. Chipitlán	4.85	1	1	21700	3.1	80.3	4.6	5.5	0.5	2.7	2.0	0.5	0.8	83.4	4.6	12.0	0.061	0.517	18.893752	-99.228511	
T. Izq. Chipitlán	4.85	1	2	20245	2.5	80.8	4.7	5.7	0.3	2.9	2.0	0.3	0.8	83.3	4.7	12.0	0.057	0.517	18.893771	-99.228444	
T. Izq. Chipitlán	4.85	3	1	15739	4.4	81.2	3.7	6.8	0.5	1.4	0.6	0.9	0.5	85.6	3.7	10.7	0.071	0.502	18.882571	-99.229692	
T. Izq. Chipitlán	4.85	3	2	15633	4.4	81.2	3.7	6.9	0.5	1.3	0.5	1.0	0.5	85.6	3.7	10.7	0.086	0.502	18.882580	-99.229597	
Temixco	9.80	1	1	10782	4.6	84.2	0.4	9.2	0.7	0.3	0.2	0.2	0.2	88.8	0.4	10.8	0.085	0.536	18.866018	-99.226356	
Temixco	9.80	1	2	12449	4.6	84.2	0.5	8.8	0.6	0.3	0.3	0.3	0.4	88.8	0.5	10.7	0.099	0.536	18.866154	-99.226366	
Temixco	9.80	3	1	20231	6.8	81.5	1.0	6.4	1.0	0.8	0.3	1.6	0.6	88.3	1.0	10.7	0.075	0.515	18.843887	-99.224067	
Temixco	9.80	3	2	21439	7.1	81.2	1.1	6.1	1.2	0.9	0.2	1.6	0.6	88.3	1.1	10.6	0.075	0.515	18.843833	-99.223991	
Acatlpa	12.43	1	1	17032	7.0	82.7	1.8	5.9	1.2	0.5	0.3	0.4	0.2	89.7	1.8	8.5	0.086	0.511	18.829314	-99.227797	
Acatlpa	12.43	1	2	16269	7.0	82.7	1.8	5.9	1.2	0.5	0.3	0.4	0.2	89.7	1.8	8.5	0.076	0.511	18.829278	-99.227731	
Acatlpa	12.43	3	1	14123	6.9	83.5	1.7	5.5	0.7	0.4	0.3	0.6	0.4	90.4	1.7	7.9	0.077	0.541	18.823852	-99.230703	
Acatlpa	12.43	3	2	16650	6.9	83.6	1.7	5.5	0.7	0.4	0.3	0.5	0.4	90.5	1.7	7.8	0.072	0.541	18.823816	-99.230599	
T. Izq. Emiliano Zapata	13.50	1	1	13012	5.3	82.4	3.8	6.4	0.6	0.4	0.3	0.5	0.3	87.7	3.8	8.5	0.078	0.500	18.837966	-99.225407	
T. Izq. Emiliano Zapata	13.50	1	2	13001	4.3	84.1	3.5	6.3	0.5	0.3	0.3	0.4	0.3	88.4	3.5	8.1	0.085	0.500	18.837948	-99.225303	
T. Izq. Emiliano Zapata	13.50	3	1	13376	4.7	85.2	3.3	4.8	0.5	0.6	0.5	0.3	0.1	89.9	3.3	6.8	0.084	0.500	18.832687	-99.226530	
T. Izq. Emiliano Zapata	13.50	3	2	13402	4.8	85.3	3.3	4.8	0.5	0.5	0.5	0.2	0.1	90.1	3.3	6.6	0.083	0.500	18.832678	-99.226435	
T. Izq. Xochitepec	16.05	1	1	6931	5.3	85.7	1.5	5.1	0.7	0.6	0.3	0.5	0.3	91.0	1.5	7.5	0.084	0.503	18.801330	-99.237411	
T. Izq. Xochitepec	16.05	1	2	7021	5.3	85.6	1.5	5.2	0.7	0.5	0.4	0.5	0.3	90.9	1.5	7.6	0.128	0.503	18.801330	-99.237306	
T. Izq. Xochitepec	16.05	3	1	5242	13.0	78.5	0.6	6.9	0.6	0.2	0.1	0.1	0.0	91.5	0.6	7.9	0.085	0.512	18.797576	-99.240205	
T. Izq. Xochitepec	16.05	3	2	4997	10.5	80.5	1.1	6.4	0.9	0.3	0.1	0.1	0.1	91.0	1.1	7.9	0.093	0.512	18.797504	-99.240157	
X. C. Alpuyec - Jojutla	24.15	1	1	9829	13.0	81.5	0.7	3.3	0.7	0.3	0.2	0.2	0.1	94.5	0.7	4.8	0.081	0.504	18.739442	-99.255310	
X. C. Alpuyec - Jojutla	24.15	1	2	9664	13.1	81.5	0.6	3.3	0.6	0.4	0.2	0.2	0.1	94.6	0.6	4.8	0.092	0.504	18.739415	-99.255225	
X. C. Alpuyec - Jojutla	24.15	3	0	10928	3.7	84.8	2.5	6.8	1.0	0.7	0.3	0.1	0.1	88.5	2.5	9.0	0.087	0.510	18.731224	-99.264243	
T. Der. Coatetelco	28.00	3	0	5709	3.9	83.2	2.2	6.2	2.2	1.6	0.4	0.2	0.1	87.1	2.2	10.7	0.081	0.505	18.709202	-99.274178	
T. Der. Michapa	44.36	1	0	9548	8.0	82.5	1.3	3.7	1.3	1.8	0.6	0.4	0.4	90.5	1.3	8.2	0.070	0.504	18.611954	-99.355316	
T. Izq. Cuernavaca - Iguala (Cuota)	46.93	1	0	6504	11.2	77.7	1.2	6.0	1.0	0.8	0.8	0.7	0.6	88.9	1.2	9.9	0.089	0.511	18.604671	-99.377472	
T. Izq. Cuernavaca - Iguala (Cuota)	46.93	3	0	5312	12.1	83.7	0.3	2.5	0.5	0.3	0.3	0.2	0.1	95.8	0.3	3.9	0.069	0.500	18.603199	-99.381658	
Huajintla	52.00	3	0	3674	8.3	83.7	1.5	2.8	1.3	1.6	0.3	0.3	0.2	92.0	1.5	6.5	0.093	0.505	18.611977	-99.430667	
Lim. Edos. Term. Mor. Ppia. Gro.	57.10	0	0																		
T. Der. Ixtapan de La Sal (Axixintla)	63.47	1	0	1837	9.8	84.9	0.2	4.0	0.6	0.1	0.4	0.0	0.0	94.7	0.2	5.1	0.115	0.510	18.611076	-99.506166	
Taxco	89.90	3	0	5590	8.6	84.1	1.4	5.1	0.5	0.2	0.1	0.0	0.0	92.7	1.4	5.9	0.062	0.517	18.537438	-99.609320	
Iguala	119.63	1	0	8161	9.1	84.4	0.6	4.8	0.5	0.3	0.2	0.1	0.0	93.5	0.6	5.9	0.062	0.503	18.379706	-99.529228	
T. Izq. Puente de Ixtla	123.98	3	0	15196	6.9	84.7	1.2	4.7	1.0	0.6	0.6	0.2	0.1	91.6	1.2	7.2	0.084	0.504	18.321213	-99.498560	
T. Izq. Sabana Grande	144.95	1	0	7043	2.3	87.3	1.5	2.7	1.7	2.8	1.3	0.4	0.0	89.6	1.5	8.9	0.073	0.529	18.176160	-99.551635	

MORELOS

1 CARR: Cuernavaca - Chilpancingo

CLAVE: 00042

RUTA: MEX-095

AÑO: 2022

LUGAR	ESTACION				CLASIFICACION VEHICULAR EN PORCIENTO										COORDENADAS					
	KM	TE	SC	TDPA	M	A	B	C2	C3	T3S2	T3S3	T3S2R4	OTROS	A	B	C	K'	D	LATITUD	LONGITUD
T. Der. Tecucontitlán	146.78	1	0	6404	4.0	81.4	2.6	6.9	1.9	1.7	1.0	0.4	0.1	85.4	2.6	12.0	0.076	0.506	18.157014	-99.552709
T. Der. Mezcala	173.14	1	0	6242	6.7	77.6	3.0	7.5	2.0	1.9	1.0	0.2	0.1	84.3	3.0	12.7	0.082	0.509	17.934864	-99.589426
T. Der. Filo de Caballo	189.89	3	0	5808	2.3	81.9	3.2	7.7	2.0	1.7	0.9	0.2	0.1	84.2	3.2	12.6	0.072	0.504	17.794790	-99.566963
T. C. Cuernavaca - Acapulco (Cuota)	219.89	0	0																	
Chilpancingo	223.70	1	1	23448	5.0	82.9	2.5	5.2	1.4	1.9	0.8	0.2	0.1	87.9	2.5	9.6	0.064	0.502	17.582809	-99.515475
Chilpancingo	223.70	1	2	23594	5.1	83.2	2.3	5.3	1.3	1.7	0.8	0.2	0.1	88.3	2.3	9.4	0.090	0.502	17.582904	-99.515419

2 CARR: Cuernavaca - Cuautlixco

CLAVE: 17199

RUTA: MEX-138

AÑO: 2022

LUGAR	ESTACION				CLASIFICACION VEHICULAR EN PORCIENTO										COORDENADAS					
	KM	TE	SC	TDPA	M	A	B	C2	C3	T3S2	T3S3	T3S2R4	OTROS	A	B	C	K'	D	LATITUD	LONGITUD
Cuernavaca	0.00	0	0																	
T. Izq. Civac Poniente	7.78	1	1	49839	5.3	84.2	2.2	3.4	0.6	1.3	1.6	0.9	0.5	89.5	2.2	8.3	0.085	0.514	18.913015	-99.182957
T. Izq. Civac Poniente	7.78	1	2	46733	5.3	84.1	2.3	3.4	0.6	1.3	1.6	0.9	0.5	89.4	2.3	8.3	0.081	0.514	18.913137	-99.182835
T. Izq. Civac Poniente	7.78	3	1	39046	6.7	84.2	1.9	3.0	0.6	1.3	1.5	0.3	0.5	90.9	1.9	7.2	0.076	0.503	18.901474	-99.173350
T. Izq. Civac Poniente	7.78	3	2	38551	6.7	84.4	1.9	3.0	0.6	1.3	1.5	0.2	0.4	91.1	1.9	7.0	0.068	0.503	18.901462	-99.173035
X. C. Tejalpa - Jojutla	9.70	3	1	30304	6.4	86.3	1.1	3.9	0.8	0.6	0.5	0.3	0.1	92.7	1.1	6.2	0.065	0.504	18.885360	-99.157251
X. C. Tejalpa - Jojutla	9.70	3	2	29814	6.4	86.4	1.1	3.9	0.8	0.6	0.5	0.2	0.1	92.8	1.1	6.1	0.078	0.504	18.885532	-99.157281
La Joya	16.50	1	1	23115	5.6	87.5	1.5	3.5	0.8	0.4	0.3	0.2	0.2	93.1	1.5	5.4	0.058	0.504	18.893782	-99.131832
La Joya	16.50	1	2	22706	5.6	87.5	1.5	3.5	0.8	0.4	0.3	0.2	0.2	93.1	1.5	5.4	0.065	0.504	18.893878	-99.131766
La Joya	16.50	3	1	13227	4.2	87.4	0.9	5.6	0.9	0.6	0.2	0.1	0.1	91.6	0.9	7.5	0.082	0.503	18.881938	-99.121550
La Joya	16.50	3	2	13400	4.2	87.2	0.9	5.6	1.0	0.6	0.3	0.1	0.1	91.4	0.9	7.7	0.080	0.503	18.882049	-99.121474
T. Izq. Yautepec (1° Acceso)	24.75	1	1	13583	9.4	84.4	0.7	3.0	1.3	0.6	0.2	0.3	0.1	93.8	0.7	5.5	0.072	0.502	18.869755	-99.081193
T. Izq. Yautepec (1° Acceso)	24.75	1	2	13682	9.4	84.3	0.7	3.0	1.3	0.6	0.2	0.3	0.2	93.7	0.7	5.6	0.070	0.502	18.869910	-99.081123
X. C. (San Gregorio - Oaxtepec) - Jojutla	27.10	1	1	13873	5.7	86.6	0.8	4.9	1.1	0.4	0.2	0.1	0.2	92.3	0.8	6.9	0.070	0.502	18.871038	-99.071079
X. C. (San Gregorio - Oaxtepec) - Jojutla	27.10	1	2	14007	5.7	86.5	0.8	4.9	1.1	0.5	0.2	0.1	0.2	92.2	0.8	7.0	0.081	0.502	18.871194	-99.071071
X. C. (San Gregorio - Oaxtepec) - Jojutla	27.10	3	1	12983	8.7	86.5	0.7	2.1	0.5	0.5	0.6	0.2	0.2	95.2	0.7	4.1	0.084	0.505	18.872690	-99.059081
X. C. (San Gregorio - Oaxtepec) - Jojutla	27.10	3	2	12742	8.6	86.6	0.7	2.1	0.5	0.5	0.6	0.2	0.2	95.2	0.7	4.1	0.078	0.505	18.872798	-99.059195
Tabachines	31.50	1	1	12503	9.0	84.4	0.9	2.3	1.4	1.2	0.3	0.3	0.2	93.4	0.9	5.7	0.082	0.521	18.892966	-99.041285
Tabachines	31.50	1	2	11473	9.0	84.4	0.9	2.3	1.4	1.2	0.3	0.3	0.2	93.4	0.9	5.7	0.088	0.521	18.893120	-99.041399
Tabachines	31.50	3	1	14553	6.3	86.4	0.9	2.9	1.1	0.9	0.3	0.8	0.4	92.7	0.9	6.4	0.068	0.507	18.894938	-99.034192
Tabachines	31.50	3	2	14138	6.3	86.4	0.9	2.9	1.1	0.9	0.3	0.8	0.4	92.7	0.9	6.4	0.068	0.507	18.895019	-99.034145
T. Izq. Oaxtepec	36.11	3	1	9192	10.3	83.0	0.3	3.9	1.3	0.3	0.4	0.4	0.1	93.3	0.3	6.4	0.071	0.507	18.884864	-98.985492
T. Izq. Oaxtepec	36.11	3	2	9449	10.3	83.0	0.3	3.9	1.3	0.4	0.3	0.4	0.1	93.3	0.3	6.4	0.075	0.507	18.884909	-98.985473
T. C. Santa Bárbara - Izúcar de Matamoros	43.15	1	1	11097	10.8	84.4	0.3	2.5	1.3	0.3	0.2	0.1	0.1	95.2	0.3	4.5	0.081	0.517	18.841779	-98.943698

MORELOS

2 CARR : Cuernavaca - Cuautlixco

CLAVE: 17199

RUTA: MEX-138

AÑO: 2022

LUGAR	ESTACION				CLASIFICACION VEHICULAR EN PORCIENTO													COORDENADAS		
	KM	TE	SC	TDPA	M	A	B	C2	C3	T3S2	T3S3	T3S2R4	OTROS	A	B	C	K'	D	LATITUD	LONGITUD
T. C. Santa Bárbara - Izúcar de Matamoros	43.15	1	2	10385	10.7	84.8	0.2	2.4	1.2	0.3	0.2	0.1	0.1	95.5	0.2	4.3	0.082	0.517	18.841832	-98.943652

3 CARR : Cuernavaca - Tepoztlán

CLAVE: 17198

RUTA: MEX-162

AÑO: 2022

LUGAR	ESTACION				CLASIFICACION VEHICULAR EN PORCIENTO													COORDENADAS		
	KM	TE	SC	TDPA	M	A	B	C2	C3	T3S2	T3S3	T3S2R4	OTROS	A	B	C	K'	D	LATITUD	LONGITUD
T. C. México - Cuernavaca (Libre)	0.00	0	0																	
Ocotepc	2.83	1	1	10246	5.1	88.4	0.5	3.3	0.9	0.7	0.4	0.4	0.3	93.5	0.5	6.0	0.075	0.504	18.966934	-99.232847
Ocotepc	2.83	1	2	10096	5.1	88.6	0.5	3.4	0.8	0.5	0.4	0.3	0.4	93.7	0.5	5.8	0.089	0.504	18.967016	-99.232894
Ahuatepec	4.16	3	0	13256	7.9	87.8	0.3	3.4	0.5	0.1	0.0	0.0	0.0	95.7	0.3	4.0	0.086	0.501	18.975836	-99.169801
X. C. La Pera - Cuautla (Cuota)	16.34	1	0	9858	12.3	80.9	0.6	4.0	0.4	0.5	0.5	0.5	0.3	93.2	0.6	6.2	0.072	0.503	18.981179	-99.113349
Tepoztlán	18.20	1	0	13984	16.4	77.9	0.5	3.9	0.3	0.4	0.5	0.0	0.1	94.3	0.5	5.2	0.076	0.502	18.980928	-99.103587

4 CARR : Ent. Alpuyec a - Grutas de Cacahuamilpa

CLAVE: 00421

RUTA: MEX-166

AÑO: 2022

LUGAR	ESTACION				CLASIFICACION VEHICULAR EN PORCIENTO													COORDENADAS		
	KM	TE	SC	TDPA	M	A	B	C2	C3	T3S2	T3S3	T3S2R4	OTROS	A	B	C	K'	D	LATITUD	LONGITUD
T. C. Cuernavaca - Chilpancingo	0.00	3	0	9430	8.8	83.0	0.9	6.3	0.6	0.2	0.1	0.1	0.0	91.8	0.9	7.3	0.063	0.512	18.749228	-99.257317
T. Der. Zona Arq. de Xochicalco	8.40	3	1	3387	10.5	84.4	1.0	3.0	0.8	0.2	0.1	0.0	0.0	94.9	1.0	4.1	0.074	0.508	18.777725	-99.304509
T. Der. Zona Arq. de Xochicalco	8.40	3	2	3492	8.4	86.7	0.9	2.5	1.0	0.3	0.2	0.0	0.0	95.1	0.9	4.0	0.090	0.508	18.777644	-99.304528
Miacatlán	14.95	3	1	6458	9.5	85.6	1.0	2.8	1.0	0.1	0.0	0.0	0.0	95.1	1.0	3.9	0.064	0.518	18.750837	-99.365510
Miacatlán	14.95	3	2	6009	9.5	85.7	1.0	2.8	0.8	0.1	0.1	0.0	0.0	95.2	1.0	3.8	0.068	0.518	18.750810	-99.365444
Mazatepec	18.28	3	0	9318	7.7	88.5	0.6	2.7	0.2	0.1	0.1	0.1	0.0	96.2	0.6	3.2	0.080	0.508	18.720769	-99.364952
Tetecala	25.05	3	0	7381	7.3	89.1	0.6	2.5	0.2	0.1	0.2	0.0	0.0	96.4	0.6	3.0	0.081	0.502	18.729360	-99.406348
Coatlán del Río	29.80	3	0	3965	9.5	86.1	1.1	2.5	0.3	0.2	0.3	0.0	0.0	95.6	1.1	3.3	0.075	0.504	18.748000	-99.444406
Michapa	41.26	1	0	3038	10.2	81.2	2.0	4.8	0.3	1.0	0.4	0.1	0.0	91.4	2.0	6.6	0.076	0.509	18.708443	-99.473667
Lim. Edos. Term. Mor. Ppia. Gro.	42.40	0	0																	
T. C. Toluca - Axixintla	48.65	0	0																	

5 CARR : Libramiento de Cuautla

CLAVE: 17309

RUTA: MEX-160

AÑO: 2022

LUGAR	ESTACION				CLASIFICACION VEHICULAR EN PORCIENTO													COORDENADAS		
	KM	TE	SC	TDPA	M	A	B	C2	C3	T3S2	T3S3	T3S2R4	OTROS	A	B	C	K'	D	LATITUD	LONGITUD
T. C. Santa Bárbara - Izúcar de Matamoros (Norte)	0.00	3	1	21056	5.9	85.4	1.3	2.9	1.7	1.7	0.5	0.4	0.2	91.3	1.3	7.4	0.078	0.514	18.847842	-98.932786
T. C. Santa Bárbara - Izúcar de Matamoros (Norte)	0.00	3	2	22284	6.5	85.1	1.3	3.1	1.5	1.4	0.5	0.4	0.2	91.6	1.3	7.1	0.087	0.514	18.847919	-98.932718

MORELOS

5 CARR : Libramiento de Cuautla

CLAVE: 17309

RUTA : MEX-160

AÑO : 2022

LUGAR	ESTACION				CLASIFICACION VEHICULAR EN PORCIENTO													COORDENADAS		
	KM	TE	SC	TDPA	M	A	B	C2	C3	T3S2	T3S3	T3S2R4	OTROS	A	B	C	K'	D	LATITUD	LONGITUD
T. C. Santa Bárbara - Izúcar de Matamoros (Sur)	4.00	0	0																	

6 CARR : Libramiento de Cuernavaca

CLAVE: 17400

RUTA : MEX-095

AÑO : 2022

LUGAR	ESTACION				CLASIFICACION VEHICULAR EN PORCIENTO													COORDENADAS		
	KM	TE	SC	TDPA	M	A	B	C2	C3	T3S2	T3S3	T3S2R4	OTROS	A	B	C	K'	D	LATITUD	LONGITUD
T. C. México - Cuernavaca (Cuota)	0.00	0	0																	
T. Izq. Xicapan (Central)	1.30	1	1	55161	2.7	88.7	1.6	3.5	0.8	1.5	0.7	0.3	0.2	91.4	1.6	7.0	0.067	0.508	18.962486	-99.232535
T. Izq. Xicapan (Central)	1.30	1	2	57166	2.7	89.3	1.6	3.0	0.9	1.4	0.6	0.3	0.2	92.0	1.6	6.4	0.080	0.508	18.962538	-99.232457
T. Izq. Xicapan (Central)	1.30	3	1	43313	3.9	89.7	0.9	3.5	0.6	0.8	0.3	0.1	0.2	93.6	0.9	5.5	0.080	0.505	18.958465	-99.225415
T. Izq. Xicapan (Central)	1.30	3	2	42306	3.9	89.7	0.9	3.5	0.6	0.8	0.3	0.1	0.2	93.6	0.9	5.5	0.075	0.505	18.958516	-99.225368
T. Izq. Villas del Lago (Lateral)	8.40	1	1	54411	5.1	87.5	0.6	4.0	0.7	1.0	0.6	0.2	0.3	92.6	0.6	6.8	0.082	0.509	18.937438	-99.192501
T. Izq. Villas del Lago (Central)	8.40	1	1	18940	1.2	88.0	1.4	6.8	0.3	1.2	0.7	0.2	0.2	89.2	1.4	9.4	0.092	0.505	18.937387	-99.192454
T. Izq. Villas del Lago (Central)	8.40	1	2	18531	1.1	88.1	1.4	6.8	0.3	1.2	0.7	0.2	0.2	89.2	1.4	9.4	0.086	0.505	18.937108	-99.192796
T. Izq. Villas del Lago (Lateral)	8.40	1	2	52328	5.1	87.5	0.6	4.0	0.7	1.0	0.6	0.2	0.3	92.6	0.6	6.8	0.082	0.509	18.937011	-99.192737
T. Izq. Villas del Lago (Lateral)	8.40	3	1	52335	3.4	84.8	1.0	8.7	0.4	0.9	0.5	0.2	0.1	88.2	1.0	10.8	0.078	0.510	18.934726	-99.197552
T. Izq. Villas del Lago (Central)	8.40	3	1	21032	0.6	91.0	1.1	5.3	0.6	0.8	0.3	0.2	0.1	91.6	1.1	7.3	0.078	0.512	18.934638	-99.197463
T. Izq. Villas del Lago (Central)	8.40	3	2	20011	0.6	91.1	1.1	5.3	0.5	0.8	0.3	0.2	0.1	91.7	1.1	7.2	0.081	0.512	18.934910	-99.196984
T. Izq. Villas del Lago (Lateral)	8.40	3	2	49933	3.4	84.8	1.0	8.7	0.4	0.9	0.5	0.2	0.1	88.2	1.0	10.8	0.070	0.510	18.934818	-99.196960
X. C. Cuernavaca - Cuautlixco (Lateral)	10.54	1	1	49087	4.1	89.3	0.3	2.0	0.5	1.7	1.4	0.2	0.5	93.4	0.3	6.3	0.076	0.502	18.923901	-99.202741
X. C. Cuernavaca - Cuautlixco (Central)	10.54	1	1	21816	2.3	90.4	1.1	3.4	0.7	1.0	0.6	0.4	0.1	92.7	1.1	6.2	0.085	0.504	18.923884	-99.202652
X. C. Cuernavaca - Cuautlixco (Central)	10.54	1	2	21477	2.5	89.1	1.3	4.1	0.7	1.2	0.6	0.4	0.1	91.6	1.3	7.1	0.072	0.504	18.924125	-99.202600
X. C. Cuernavaca - Cuautlixco (Lateral)	10.54	1	2	49628	4.1	89.2	0.4	2.0	0.5	1.7	1.4	0.2	0.5	93.3	0.4	6.3	0.072	0.502	18.924137	-99.202499
X. C. Cuernavaca - Cuautlixco (Central)	10.54	3	1	56281	4.3	83.1	0.7	10.5	0.4	0.5	0.3	0.1	0.1	87.4	0.7	11.9	0.077	0.507	18.915230	-99.205740
X. C. Cuernavaca - Cuautlixco (Central)	10.54	3	2	54444	4.3	83.1	0.7	10.5	0.4	0.5	0.3	0.1	0.1	87.4	0.7	11.9	0.075	0.507	18.915048	-99.205711
T. Der. Av. Morelos	14.70	1	1	80385	6.7	79.4	1.4	11.2	0.4	0.5	0.3	0.0	0.1	86.1	1.4	12.5	0.083	0.508	18.897608	-99.225754
T. Der. Av. Morelos	14.70	1	2	77541	6.7	79.4	1.4	11.2	0.4	0.5	0.3	0.0	0.1	86.1	1.4	12.5	0.075	0.508	18.897213	-99.225906

7 CARR : México - Cuernavaca (Libre)

CLAVE: 00040

RUTA : MEX-095

AÑO : 2022

LUGAR	ESTACION				CLASIFICACION VEHICULAR EN PORCIENTO													COORDENADAS		
	KM	TE	SC	TDPA	M	A	B	C2	C3	T3S2	T3S3	T3S2R4	OTROS	A	B	C	K'	D	LATITUD	LONGITUD
México	0.00	0	0																	
T. Der. San Miguel Xicalco	25.50	1	0	26668	3.8	85.1	0.4	7.8	1.5	0.5	0.5	0.2	0.2	88.9	0.4	10.7	0.058	0.502	19.235937	-99.158133
T. Der. San Miguel Xicalco	25.50	3	0	29075	8.5	82.2	0.2	7.4	1.0	0.3	0.3	0.1	0.0	90.7	0.2	9.1	0.059	0.512	19.233560	-99.156461



MORELOS

7 CARR: México - Cuernavaca (Libre)

CLAVE: 00040

RUTA: MEX-095

AÑO: 2022

LUGAR	ESTACION				CLASIFICACION VEHICULAR EN PORCIENTO										COORDENADAS					
	KM	TE	SC	TDPA	M	A	B	C2	C3	T3S2	T3S3	T3S2R4	OTROS	A	B	C	K'	D	LATITUD	LONGITUD
T. Izq. San Miguel Topilejo	28.78	1	1	12512	4.6	88.4	0.3	5.4	0.5	0.3	0.5	0.0	0.0	93.0	0.3	6.7	0.069	0.510	19.213854	-99.151649
T. Izq. San Miguel Topilejo	28.78	1	2	13002	4.6	88.4	0.3	5.4	0.5	0.3	0.5	0.0	0.0	93.0	0.3	6.7	0.090	0.510	19.213815	-99.151647
T. Izq. San Miguel Topilejo	28.78	3	0	10906	4.7	84.3	0.5	8.8	1.1	0.5	0.1	0.0	0.0	89.0	0.5	10.5	0.072	0.501	19.204944	-99.156656
Parres El Guarda	39.50	1	0	8784	3.3	86.7	0.9	7.2	0.9	0.7	0.1	0.1	0.1	90.0	0.9	9.1	0.082	0.505	19.139826	-99.170019
Parres El Guarda	39.50	3	0	7998	5.5	86.7	0.8	4.9	1.0	0.7	0.1	0.2	0.1	92.2	0.8	7.0	0.106	0.508	19.124965	-99.183018
Lim. Edos. Term. CDMX Ppia. Mor.	45.44	0	0																	
T. Der. Zempoala	51.40	1	0	10451	1.6	88.8	1.1	7.3	0.8	0.3	0.1	0.0	0.0	90.4	1.1	8.5	0.086	0.514	19.056934	-99.242622
T. Der. Zempoala	51.40	3	0	6623	7.8	82.6	0.6	7.4	0.6	0.5	0.3	0.1	0.1	90.4	0.6	9.0	0.101	0.517	19.042565	-99.233643
T. Izq. Coajomulco	57.12	3	0	6226	18.7	75.9	0.6	2.4	0.7	1.0	0.4	0.2	0.1	94.6	0.6	4.8	0.089	0.504	19.027149	-99.207053
T. Der. Huitzilac	64.20	1	0	8358	4.0	91.5	0.4	2.2	0.5	0.1	0.0	0.5	0.8	95.5	0.4	4.1	0.096	0.505	19.002807	-99.257488
T. Der. Huitzilac	64.20	3	0	15904	3.8	82.4	2.1	10.4	0.4	0.4	0.3	0.1	0.1	86.2	2.1	11.7	0.075	0.507	18.995624	-99.260740
T. Izq. Tepoztlán	71.36	1	0	27790	4.9	81.6	1.2	9.5	1.2	0.9	0.4	0.1	0.2	86.5	1.2	12.3	0.076	0.506	18.970849	-99.249735
T. Izq. Tepoztlán	71.36	3	1	15244	3.0	91.4	0.9	4.1	0.2	0.2	0.2	0.0	0.0	94.4	0.9	4.7	0.075	0.506	18.959891	-99.246139
T. Izq. Tepoztlán	71.36	3	2	15602	3.2	89.0	1.7	5.4	0.2	0.2	0.3	0.0	0.0	92.2	1.7	6.1	0.069	0.506	18.959794	-99.246047
Cuernavaca	75.42	0	0																	

8 CARR: Ramal a Michapa

CLAVE: 17303

RUTA: MEX-166

AÑO: 2022

LUGAR	ESTACION				CLASIFICACION VEHICULAR EN PORCIENTO										COORDENADAS					
	KM	TE	SC	TDPA	M	A	B	C2	C3	T3S2	T3S3	T3S2R4	OTROS	A	B	C	K'	D	LATITUD	LONGITUD
T. C. Cuernavaca - Chilpancingo	0.00	3	0	4320	6.4	82.1	1.4	5.7	1.4	1.2	1.3	0.2	0.3	88.5	1.4	10.1	0.079	0.508	18.610197	-99.362071
Michapa	16.22	1	0	4271	5.9	82.0	2.6	4.5	1.5	1.3	1.7	0.3	0.2	87.9	2.6	9.5	0.085	0.500	18.701322	-99.476805

9 CARR: San Gregorio - Oaxtepec

CLAVE: 00901

RUTA: MEX-113

AÑO: 2022

LUGAR	ESTACION				CLASIFICACION VEHICULAR EN PORCIENTO										COORDENADAS					
	KM	TE	SC	TDPA	M	A	B	C2	C3	T3S2	T3S3	T3S2R4	OTROS	A	B	C	K'	D	LATITUD	LONGITUD
San Gregorio	0.00	3	0	21257	7.5	82.6	1.0	5.9	0.6	0.9	0.8	0.4	0.3	90.1	1.0	8.9	0.063	0.502	19.238019	-99.054720
X. C. Milpa Alta - San Lorenzo Tlacoyucan	9.00	3	0	8410	3.8	87.2	1.4	5.2	0.7	0.6	0.7	0.3	0.1	91.0	1.4	7.6	0.076	0.517	19.181037	-99.029854
Lim. Edos. Term. CDMX Ppia. Méx.	18.80	0	0																	
Lim. Edos. Term. Méx. Ppia. Mor.	28.50	0	0																	
T. Der. San Felipe Neri	33.80	1	0	3945	2.1	87.2	1.6	7.1	1.3	0.4	0.2	0.1	0.0	89.3	1.6	9.1	0.122	0.501	19.046276	-98.936248
T. Der. Tlalnepantla	40.50	3	0	4697	6.5	82.9	0.3	8.1	0.9	0.8	0.2	0.2	0.1	89.4	0.3	10.3	0.109	0.504	19.004343	-98.990299
Tlayacapan	48.50	3	0	11442	8.6	85.8	0.4	3.7	0.5	0.7	0.1	0.1	0.1	94.4	0.4	5.2	0.094	0.505	18.939342	-98.973938
T. Der. Yautepec	53.00	1	0	12036	7.6	86.5	0.4	3.7	0.1	0.7	0.1	0.6	0.3	94.1	0.4	5.5	0.089	0.510	18.925757	-98.968005

MORELOS

9 CARR: San Gregorio - Oaxtepec

CLAVE: 00901

RUTA: MEX-113

AÑO: 2022

LUGAR	ESTACION				CLASIFICACION VEHICULAR EN PORCIENTO										COORDENADAS					
	KM	TE	SC	TDPA	M	A	B	C2	C3	T3S2	T3S3	T3S2R4	OTROS	A	B	C	K'	D	LATITUD	LONGITUD
T. Der. Yautepec	53.00	3	1	7582	12.9	80.5	0.4	5.0	0.4	0.3	0.1	0.3	0.1	93.4	0.4	6.2	0.088	0.504	18.915798	-98.970219
T. Der. Yautepec	53.00	3	2	7450	12.9	80.5	0.4	5.0	0.4	0.3	0.1	0.3	0.1	93.4	0.4	6.2	0.086	0.504	18.915796	-98.970173
Oaxtepec	56.00	0	0																	

10 CARR: Santa Bárbara - Izúcar de Matamoros

CLAVE: 00451

RUTA: MEX-115-160

AÑO: 2022

LUGAR	ESTACION				CLASIFICACION VEHICULAR EN PORCIENTO										COORDENADAS					
	KM	TE	SC	TDPA	M	A	B	C2	C3	T3S2	T3S3	T3S2R4	OTROS	A	B	C	K'	D	LATITUD	LONGITUD
T. C. México - Puebla (Libre)	0.00	3	1	23127	4.3	88.7	0.7	4.0	0.9	0.7	0.2	0.3	0.2	93.0	0.7	6.3	0.072	0.519	19.310862	-98.896294
T. C. México - Puebla (Libre)	0.00	3	2	24996	4.0	89.3	0.7	4.0	0.8	0.6	0.2	0.2	0.2	93.3	0.7	6.0	0.067	0.519	19.311004	-98.896331
X. C. México - Puebla (Cuota)	3.61	1	1	25044	3.5	91.3	0.4	2.9	0.6	0.5	0.4	0.2	0.2	94.8	0.4	4.8	0.064	0.506	19.302493	-98.885674
X. C. México - Puebla (Cuota)	3.61	1	2	24413	4.2	90.7	0.4	2.8	0.6	0.5	0.4	0.2	0.2	94.9	0.4	4.7	0.066	0.506	19.302551	-98.885559
X. C. México - Puebla (Cuota)	3.61	3	1	48782	3.0	80.0	1.2	8.8	1.0	2.9	2.0	0.4	0.7	83.0	1.2	15.8	0.079	0.523	19.285339	-98.880453
X. C. México - Puebla (Cuota)	3.61	3	2	54156	3.4	79.5	1.7	8.2	1.1	2.8	2.1	0.5	0.7	82.9	1.7	15.4	0.071	0.523	19.285295	-98.880313
Chalco (Lateral)	8.00	3	1	15367	3.3	85.0	0.9	7.5	0.9	1.1	0.6	0.4	0.3	88.3	0.9	10.8	0.062	0.525	19.246027	-98.867137
Chalco (Central)	8.00	3	1	24066	3.8	87.9	0.8	3.8	1.0	1.3	0.8	0.4	0.2	91.7	0.8	7.5	0.078	0.568	19.246108	-98.867105
Chalco (Lateral)	8.00	3	2	13892	3.1	84.7	1.0	7.9	1.1	1.0	0.5	0.4	0.3	87.8	1.0	11.2	0.064	0.525	19.246211	-98.866938
Chalco (Central)	8.00	3	2	18297	4.0	87.3	0.9	4.0	1.3	1.1	0.7	0.5	0.2	91.3	0.9	7.8	0.071	0.568	19.246152	-98.866995
T. Der. Juchitepec	12.46	3	1	22357	2.7	85.2	1.1	6.8	1.4	1.6	0.6	0.4	0.2	87.9	1.1	11.0	0.071	0.504	19.231606	-98.844436
T. Der. Juchitepec	12.46	3	2	21971	2.5	85.9	1.0	6.6	1.5	1.5	0.5	0.4	0.1	88.4	1.0	10.6	0.088	0.504	19.232280	-98.845134
T. Der. Libramiento de Tlalmanalco de Velázquez	15.00	1	1	16411	3.3	85.7	1.1	6.6	1.0	1.3	0.5	0.3	0.2	89.0	1.1	9.9	0.069	0.502	19.216347	-98.830105
T. Der. Libramiento de Tlalmanalco de Velázquez	15.00	1	2	16265	3.4	86.1	1.0	6.1	0.9	1.4	0.5	0.3	0.3	89.5	1.0	9.5	0.085	0.502	19.218413	-98.830305
Tlalmanalco	20.51	1	0	13192	6.2	88.9	0.5	3.2	0.4	0.3	0.1	0.3	0.1	95.1	0.5	4.4	0.073	0.503	19.206369	-98.820150
Tlalmanalco	20.51	3	0	7328	3.8	89.7	0.4	5.2	0.6	0.2	0.1	0.0	0.0	93.5	0.4	6.1	0.085	0.517	19.198683	-98.799583
Amecameca de Juárez	28.00	1	1	6568	7.5	80.7	0.6	7.1	0.9	1.7	0.9	0.2	0.4	88.2	0.6	11.2	0.080	0.514	19.139267	-98.772767
Amecameca de Juárez	28.00	1	2	6948	7.4	80.8	0.5	7.1	0.9	1.8	0.9	0.2	0.4	88.2	0.5	11.3	0.088	0.514	19.139280	-98.772669
Amecameca de Juárez	28.00	3	1	10915	5.5	85.4	0.3	7.6	0.7	0.3	0.2	0.0	0.0	90.9	0.3	8.8	0.075	0.503	19.106134	-98.779099
Amecameca de Juárez	28.00	3	2	11054	5.2	84.6	0.6	8.1	0.8	0.5	0.2	0.0	0.0	89.8	0.6	9.6	0.078	0.503	19.106106	-98.779020
T. Izq a Tlamacas	32.21	0	0																	
T. Izq. Ozumba (Iº Acceso)	38.81	1	0	22668	5.1	82.8	0.9	10.4	0.3	0.3	0.2	0.0	0.0	87.9	0.9	11.2	0.072	0.515	19.058544	-98.786686
T. Izq. Ozumba (Iº Acceso)	38.81	3	0	18211	2.6	81.8	1.3	11.4	1.5	0.6	0.4	0.3	0.1	84.4	1.3	14.3	0.075	0.504	19.048696	-98.792602
Tepetlixpa	42.29	3	0	10840	3.1	83.9	2.0	7.9	1.7	0.7	0.4	0.3	0.0	87.0	2.0	11.0	0.073	0.526	19.020247	-98.824548
Lim. Edos. Term. Méx. Ppia. Mor.	51.70	0	0																	
T. Der. Atlatlahucan	58.95	1	1	10663	5.6	83.1	1.7	4.0	1.8	2.2	0.6	0.8	0.2	88.7	1.7	9.6	0.106	0.514	18.929522	-98.887107
T. Der. Atlatlahucan	58.95	1	2	10098	5.3	83.3	1.4	3.9	1.9	2.4	0.6	0.9	0.3	88.6	1.4	10.0	0.109	0.514	18.929485	-98.887031

MORELOS

10 CARR: Santa Bárbara - Izúcar de Matamoros

CLAVE: 00451

RUTA: MEX-115-160

AÑO: 2022

LUGAR	ESTACION				CLASIFICACION VEHICULAR EN PORCIENTO													COORDENADAS		
	KM	TE	SC	TDPA	M	A	B	C2	C3	T3S2	T3S3	T3S2R4	OTROS	A	B	C	K'	D	LATITUD	LONGITUD
T. Izq. Tetela del Volcán	62.99	1	1	12919	4.5	88.8	1.6	4.0	0.3	0.4	0.1	0.2	0.1	93.3	1.6	5.1	0.124	0.525	18.904533	-98.903903
T. Izq. Tetela del Volcán	62.99	1	2	11699	4.6	88.7	1.3	4.1	0.3	0.4	0.2	0.2	0.2	93.3	1.3	5.4	0.090	0.525	18.904478	-98.903798
T. Izq. Tetela del Volcán	62.99	3	1	15426	5.8	84.8	1.2	2.2	2.1	1.5	0.4	1.6	0.4	90.6	1.2	8.2	0.101	0.504	18.895109	-98.910213
T. Izq. Tetela del Volcán	62.99	3	2	15182	5.7	84.0	1.3	2.6	2.0	1.7	0.6	1.6	0.5	89.7	1.3	9.0	0.084	0.504	18.895082	-98.910118
T. Izq. Libramiento de Cuautla (1° Acceso)	67.00	1	1	17855	6.4	85.7	1.5	2.6	1.2	1.6	0.4	0.4	0.2	92.1	1.5	6.4	0.103	0.504	18.878575	-98.921320
T. Izq. Libramiento de Cuautla (1° Acceso)	67.00	1	2	18164	6.5	84.4	1.6	2.9	1.5	1.8	0.6	0.5	0.2	90.9	1.6	7.5	0.092	0.504	18.878521	-98.921245
T. Der. La Pera	68.90	1	1	26759	8.5	83.0	1.4	2.8	1.7	1.2	0.4	0.8	0.2	91.5	1.4	7.1	0.079	0.502	18.856827	-98.935447
T. Der. La Pera	68.90	1	2	26504	8.0	82.9	1.6	3.0	1.8	1.3	0.4	0.8	0.2	90.9	1.6	7.5	0.074	0.502	18.856772	-98.935371
T. Izq. Libramiento de Cuautla (2° Acceso)	77.05	3	1	18007	7.6	83.9	1.4	3.1	1.6	1.4	0.4	0.5	0.1	91.5	1.4	7.1	0.083	0.516	18.790848	-98.909234
T. Izq. Libramiento de Cuautla (2° Acceso)	77.05	3	2	19204	8.0	83.5	1.4	3.0	1.9	1.2	0.4	0.5	0.1	91.5	1.4	7.1	0.083	0.516	18.790731	-98.908968
T. Der. Tlayecac	85.06	1	1	12854	7.3	83.7	1.6	2.7	1.9	1.4	0.5	0.7	0.2	91.0	1.6	7.4	0.089	0.507	18.771129	-98.894177
T. Der. Tlayecac	85.06	1	2	13209	6.6	84.4	1.8	3.0	1.6	1.2	0.5	0.7	0.2	91.0	1.8	7.2	0.082	0.507	18.771210	-98.894139
T. Der. Tlayecac	85.06	3	1	11994	4.8	85.2	2.0	4.2	1.8	1.1	0.3	0.5	0.1	90.0	2.0	8.0	0.090	0.509	18.761506	-98.883585
T. Der. Tlayecac	85.06	3	2	12419	4.3	85.8	1.9	4.6	1.4	1.1	0.3	0.5	0.1	90.1	1.9	8.0	0.086	0.509	18.761588	-98.883547
T. Izq. Amayuca	91.36	1	1	10650	5.9	81.7	2.9	5.1	1.4	1.5	0.6	0.7	0.2	87.6	2.9	9.5	0.086	0.508	18.733653	-98.817391
T. Izq. Amayuca	91.36	1	2	11004	6.7	81.4	2.5	4.7	1.6	1.4	0.6	0.9	0.2	88.1	2.5	9.4	0.083	0.508	18.733716	-98.817353
T. Izq. Amayuca	91.36	3	1	7268	4.7	83.0	2.7	2.9	2.5	2.0	0.9	0.9	0.4	87.7	2.7	9.6	0.079	0.510	18.714961	-98.788492
T. Izq. Amayuca	91.36	3	2	7550	4.9	82.5	2.6	3.1	2.5	2.0	1.0	1.1	0.3	87.4	2.6	10.0	0.080	0.510	18.715042	-98.788452
T. C. Atlixco - Jantetelco (Cuota)	94.70	3	1	3031	3.8	78.5	3.7	5.0	2.7	3.2	1.9	1.0	0.2	82.3	3.7	14.0	0.091	0.516	18.698413	-98.762490
T. C. Atlixco - Jantetelco (Cuota)	94.70	3	2	2840	3.8	77.8	3.9	5.1	2.8	3.2	1.9	1.2	0.3	81.6	3.9	14.5	0.084	0.516	18.698435	-98.762474
T. Der. Tenango	102.96	1	1	3068	4.3	78.2	3.2	5.5	2.9	2.5	2.0	1.1	0.3	82.5	3.2	14.3	0.088	0.515	18.678530	-98.740825
T. Der. Tenango	102.96	1	2	2886	4.1	77.7	3.5	5.3	3.2	2.5	2.0	1.4	0.3	81.8	3.5	14.7	0.092	0.515	18.678555	-98.740808
T. Der. Tenango	102.96	3	0	5184	4.4	74.8	4.3	4.0	3.4	4.2	2.6	1.9	0.4	79.2	4.3	16.5	0.077	0.513	18.664290	-98.725600
Lim. Edos. Term. Mor. Ppia. Pue.	103.23	0	0																	
X. C. Amayuca - Izúcar de Matamoros	134.99	1	1	6036	19.0	71.7	1.6	2.6	1.6	1.4	1.0	0.9	0.2	90.7	1.6	7.7	0.088	0.517	18.605413	-98.485510
X. C. Amayuca - Izúcar de Matamoros	134.99	1	2	6466	18.6	72.4	1.7	2.6	1.5	1.5	0.8	0.7	0.2	91.0	1.7	7.3	0.097	0.517	18.605458	-98.485443
X. C. Amayuca - Izúcar de Matamoros	134.99	3	1	8396	26.6	64.9	1.6	2.3	2.7	0.9	0.6	0.3	0.1	91.5	1.6	6.9	0.084	0.531	18.594596	-98.475865
X. C. Amayuca - Izúcar de Matamoros	134.99	3	2	9518	25.3	67.8	1.4	2.1	1.5	1.1	0.4	0.3	0.1	93.1	1.4	5.5	0.093	0.531	18.594659	-98.475827
T. C. Puebla - Huajuapán de León	138.14	0	0																	

11 CARR: Cuernavaca - Acapulco (Cuota)

CLAVE: 00045

RUTA: MEX-095D

AÑO: 2022

LUGAR	ESTACION				CLASIFICACION VEHICULAR EN PORCIENTO													COORDENADAS		
	KM	TE	SC	TDPA	M	A	B	C2	C3	T3S2	T3S3	T3S2R4	OTROS	A	B	C	K'	D	LATITUD	LONGITUD
Cuernavaca	0.00	3	1	58130	7.7	85.6	1.6	2.2	0.8	0.9	0.4	0.6	0.2	93.3	1.6	5.1	0.070	0.500	18.875425	-99.227271

MORELOS

11 CARR: Cuernavaca - Acapulco (Cuota)

CLAVE: 00045

RUTA: MEX-095D

AÑO: 2022

LUGAR	ESTACION				CLASIFICACION VEHICULAR EN PORCIENTO														COORDENADAS	
	KM	TE	SC	TDPA	M	A	B	C2	C3	T3S2	T3S3	T3S2R4	OTROS	A	B	C	K'	D	LATITUD	LONGITUD
Cuernavaca	0.00	3	2	58091	7.7	85.6	1.6	2.2	0.8	0.9	0.4	0.6	0.2	93.3	1.6	5.1	0.064	0.500	18.875389	-99.227157
T. Izq. Burgos	3.35	1	1	61661	6.1	88.9	1.1	1.9	0.3	0.8	0.4	0.3	0.2	95.0	1.1	3.9	0.072	0.514	18.862879	-99.221130
T. Izq. Burgos	3.35	1	2	65886	5.5	89.5	1.0	2.0	0.3	0.9	0.4	0.2	0.2	95.0	1.0	4.0	0.071	0.514	18.862997	-99.221045
T. Izq. Burgos	3.35	3	1	48479	4.6	87.6	1.8	3.2	0.9	1.0	0.4	0.4	0.1	92.2	1.8	6.0	0.085	0.512	18.857204	-99.220829
T. Izq. Burgos	3.35	3	2	45942	4.6	87.6	1.8	3.2	0.9	1.0	0.4	0.4	0.1	92.2	1.8	6.0	0.096	0.512	18.857177	-99.220743
T. Der. Acatlipa	4.70	1	1	39525	6.9	85.0	1.4	3.3	1.0	1.5	0.5	0.3	0.1	91.9	1.4	6.7	0.079	0.517	18.849767	-99.219908
T. Der. Acatlipa	4.70	1	2	36730	6.9	85.0	1.4	3.3	1.0	1.5	0.5	0.3	0.1	91.9	1.4	6.7	0.077	0.517	18.849894	-99.219860
T. Der. Acatlipa	4.70	3	1	42937	4.8	86.7	1.9	3.1	1.1	1.1	0.5	0.5	0.3	91.5	1.9	6.6	0.069	0.529	18.844807	-99.218430
T. Der. Acatlipa	4.70	3	2	37828	4.3	87.9	1.9	2.8	0.8	1.0	0.5	0.5	0.3	92.2	1.9	5.9	0.072	0.529	18.844825	-99.218345
T. Izq. Miguel Hidalgo	5.85	3	1	35985	5.0	85.3	2.7	2.4	1.2	1.6	0.8	0.6	0.4	90.3	2.7	7.0	0.075	0.519	18.830754	-99.217871
T. Izq. Miguel Hidalgo	5.85	3	2	33202	5.5	85.4	2.7	2.2	1.1	1.3	0.9	0.6	0.3	90.9	2.7	6.4	0.088	0.519	18.830492	-99.217813
T. Der. Aeropuerto Cuernavaca	9.83	1	1	34579	4.9	85.8	2.6	2.3	1.2	1.4	0.7	0.8	0.3	90.7	2.6	6.7	0.067	0.527	18.811791	-99.219612
T. Der. Aeropuerto Cuernavaca	9.83	1	2	30817	5.3	85.5	2.7	2.3	1.2	1.3	0.6	0.8	0.3	90.8	2.7	6.5	0.073	0.527	18.811800	-99.219526
T. Der. Aeropuerto Cuernavaca	9.83	3	1	18975	3.7	77.8	5.6	7.2	2.0	1.7	1.0	0.8	0.2	81.5	5.6	12.9	0.069	0.507	18.789339	-99.221659
T. Der. Aeropuerto Cuernavaca	9.83	3	2	19538	3.7	77.7	5.6	7.2	2.0	1.7	1.0	0.9	0.2	81.4	5.6	13.0	0.074	0.507	18.789330	-99.221583
T. Izq. Club de Golf Santa Fe	17.48	1	1	17097	3.1	83.7	3.5	5.2	1.3	1.7	1.0	0.4	0.1	86.8	3.5	9.7	0.072	0.501	18.748819	-99.245164
T. Izq. Club de Golf Santa Fe	17.48	1	2	17159	3.2	84.1	3.5	5.4	0.9	1.5	0.9	0.4	0.1	87.3	3.5	9.2	0.075	0.501	18.748774	-99.245116
Plaza de Cobro Alpuyeca	19.80	1	1	13082	1.2	81.4	5.4	7.1	1.4	1.7	0.8	0.8	0.2	82.6	5.4	12.0	0.078	0.502	18.724498	-99.258627
Plaza de Cobro Alpuyeca	19.80	1	2	12976	1.1	80.3	6.0	6.7	1.7	2.1	0.8	0.9	0.4	81.4	6.0	12.6	0.083	0.502	18.724345	-99.258617
Plaza de Cobro Alpuyeca	19.80	3	1	9883	0.9	82.2	5.3	6.1	1.5	2.2	0.9	0.6	0.3	83.1	5.3	11.6	0.088	0.504	18.710636	-99.270225
Plaza de Cobro Alpuyeca	19.80	3	2	10052	1.6	81.4	5.0	6.2	1.5	2.4	0.7	0.9	0.3	83.0	5.0	12.0	0.113	0.504	18.710582	-99.270101
Plaza de Cobro Ing. Francisco Velasco Durán	23.10	2	1	8075	1.4	84.0	4.8	2.7	2.7	2.2	0.8	1.0	0.4	85.4	4.8	9.8	0.111	0.500	18.698498	-99.278028
Plaza de Cobro Ing. Francisco Velasco Durán	23.10	2	2	8075	1.4	84.0	4.8	2.7	2.7	2.2	0.8	1.0	0.4	85.4	4.8	9.8	0.111	0.500	18.698498	-99.278028
T. C. Puente de Ixtla - Iguala (Cuota)	28.58	3	1	7124	2.4	81.5	5.2	4.4	1.5	2.7	0.9	1.1	0.3	83.9	5.2	10.9	0.079	0.532	18.646158	-99.295381
T. C. Puente de Ixtla - Iguala (Cuota)	28.58	3	2	8087	2.1	82.5	4.7	4.3	1.4	2.7	1.1	0.8	0.4	84.6	4.7	10.7	0.146	0.532	18.646148	-99.295494
T. C. Xoxocotla - Tilzapotla	37.50	3	1	5360	0.9	82.6	4.5	5.2	1.4	2.5	1.1	1.1	0.7	83.5	4.5	12.0	0.094	0.508	18.586294	-99.255896
T. C. Xoxocotla - Tilzapotla	37.50	3	2	5529	1.4	81.6	4.5	5.2	1.4	3.4	0.8	1.1	0.6	83.0	4.5	12.5	0.098	0.508	18.586366	-99.255849
T. C. Autopista Siglo XXI (Jaltetelco - Xicatlacotla)	41.00	3	1	5397	1.5	84.2	3.5	4.5	1.4	2.5	1.0	1.0	0.4	85.7	3.5	10.8	0.098	0.510	18.567824	-99.224140
T. C. Autopista Siglo XXI (Jaltetelco - Xicatlacotla)	41.00	3	2	5622	1.7	82.8	4.0	4.8	1.2	2.7	1.2	1.1	0.5	84.5	4.0	11.5	0.100	0.510	18.567897	-99.224112
Lim. Edos. Term. Mor. Ppia. Gro.	53.30	0	0																	
Plaza de Cobro Paso Morelos	82.94	1	1	4815	1.2	80.1	6.6	5.4	1.3	3.0	1.0	1.1	0.3	81.3	6.6	12.1	0.092	0.527	18.238213	-99.213934
Plaza de Cobro Paso Morelos	82.94	1	2	4316	1.1	80.6	6.2	5.3	1.4	2.9	1.0	1.2	0.3	81.7	6.2	12.1	0.162	0.527	18.238104	-99.213867
Plaza de Cobro Paso Morelos	82.94	2	1	4720	0.9	83.3	5.3	2.5	2.2	3.0	0.6	1.5	0.7	84.2	5.3	10.5	0.111	0.500	18.231462	-99.215446
Plaza de Cobro Paso Morelos	82.94	2	2	4720	0.9	83.3	5.3	2.5	2.2	3.0	0.6	1.5	0.7	84.2	5.3	10.5	0.111	0.500	18.231462	-99.215446
T. C. Cuernavaca - Chilpancingo	171.90	1	1	4442	1.0	79.7	6.3	4.1	1.4	5.2	0.8	1.2	0.3	80.7	6.3	13.0	0.091	0.519	17.607024	-99.518107

MORELOS

11 CARR : Cuernavaca - Acapulco (Cuota)

CLAVE: 00045

RUTA : MEX-095D

AÑO : 2022

LUGAR	ESTACION				CLASIFICACION VEHICULAR EN PORCIENTO														COORDENADAS	
	KM	TE	SC	TDPA	M	A	B	C2	C3	T3S2	T3S3	T3S2R4	OTROS	A	B	C	K'	D	LATITUD	LONGITUD
T. C. Cuernavaca - Chilpancingo	171.90	1	2	4788	1.2	80.0	6.2	3.9	1.3	5.2	0.8	1.1	0.3	81.2	6.2	12.6	0.169	0.519	17.607040	-99.518022
Plaza de Cobro Palo Blanco	193.90	1	1	6407	1.4	85.9	2.8	3.2	0.6	3.1	1.9	0.6	0.5	87.3	2.8	9.9	0.146	0.502	17.426559	-99.470274
Plaza de Cobro Palo Blanco	193.90	1	2	6359	1.4	80.2	5.1	6.4	1.1	3.1	1.3	0.7	0.7	81.6	5.1	13.3	0.170	0.502	17.426553	-99.470095
Plaza de Cobro Palo Blanco	193.90	2	1	5670	0.9	86.7	2.7	2.1	2.6	2.7	0.8	1.1	0.4	87.6	2.7	9.7	0.097	0.500	17.423983	-99.466911
Plaza de Cobro Palo Blanco	193.90	2	2	5670	0.9	86.7	2.7	2.1	2.6	2.7	0.8	1.1	0.4	87.6	2.7	9.7	0.097	0.500	17.423983	-99.466911
X. C. Chilpancingo - Acapulco (Tierra Colorada)	226.20	1	1	5832	1.1	77.8	7.7	5.4	2.0	3.4	1.1	1.3	0.2	78.9	7.7	13.4	0.143	0.500	17.181072	-99.552068
X. C. Chilpancingo - Acapulco (Tierra Colorada)	226.20	1	2	5833	0.9	79.1	7.7	5.2	1.7	2.8	1.0	1.2	0.4	80.0	7.7	12.3	0.186	0.500	17.181082	-99.551956
Plaza de Cobro La Venta	269.95	1	1	5901	0.9	81.7	5.8	4.5	1.7	2.7	1.1	1.2	0.4	82.6	5.8	11.6	0.138	0.530	16.929396	-99.796637
Plaza de Cobro La Venta	269.95	1	2	5235	1.2	77.3	6.5	6.2	2.3	3.2	1.3	1.4	0.6	78.5	6.5	15.0	0.151	0.530	16.929317	-99.796633
Plaza de Cobro La Venta	269.95	2	1	5541	0.9	83.2	5.5	2.3	2.7	2.9	0.9	1.2	0.4	84.1	5.5	10.4	0.097	0.500	16.928232	-99.801857
Plaza de Cobro La Venta	269.95	2	2	5541	0.9	83.2	5.5	2.3	2.7	2.9	0.9	1.2	0.4	84.1	5.5	10.4	0.097	0.500	16.928232	-99.801857
T. C. Chilpancingo - Acapulco (Ent. La Venta)	271.50	1	1	5242	1.5	78.8	6.1	5.3	2.0	3.5	1.3	1.1	0.4	80.3	6.1	13.6	0.085	0.523	16.923219	-99.811274
T. C. Chilpancingo - Acapulco (Ent. La Venta)	271.50	1	2	5743	1.7	78.1	6.4	5.6	1.9	3.5	1.1	1.3	0.4	79.8	6.4	13.8	0.088	0.523	16.923153	-99.811234

12 CARR : Jantetelco - El Higuérón (Cuota)

CLAVE:

RUTA : MEX-037-D

AÑO : 2022

LUGAR	ESTACION				CLASIFICACION VEHICULAR EN PORCIENTO														COORDENADAS	
	KM	TE	SC	TDPA	M	A	B	C2	C3	T3S2	T3S3	T3S2R4	OTROS	A	B	C	K'	D	LATITUD	LONGITUD
T. C. Santa Bárbara - Izúcar de Matamoros	0.00	3	0	2643	3.5	70.6	4.9	4.3	4.0	5.0	3.0	3.7	1.0	74.1	4.9	21.0	0.113	0.523	18.700900	-98.777898
T. C. Moyotepec - San Rafael	30.00	1	0	2786	3.2	74.1	6.3	4.1	3.1	4.0	2.0	2.6	0.6	77.3	6.3	16.4	0.106	0.501	18.655476	-98.994893
Plaza de Cobro Tlaltizapán	30.00	3	0	2881	1.0	81.2	1.7	3.1	4.3	3.4	1.8	2.7	0.8	82.2	1.7	16.1	0.070	0.500	18.652761	-99.008771
T. C. Jojutla - Chinameca	54.00	1	0	3713	2.5	82.1	4.5	5.4	1.9	1.6	0.9	0.6	0.5	84.6	4.5	10.9	0.089	0.514	18.612409	-99.151434
T. C. Cuernavaca - Acapulco (Cuota)	62.00	1	0	3724	3.4	83.0	3.1	2.3	1.9	2.9	1.0	2.1	0.3	86.4	3.1	10.5	0.094	0.505	18.573087	-99.223778

13 CARR : La Pera - Cuautla (Cuota)

CLAVE: 17161

RUTA : MEX-160D

AÑO : 2022

LUGAR	ESTACION				CLASIFICACION VEHICULAR EN PORCIENTO														COORDENADAS	
	KM	TE	SC	TDPA	M	A	B	C2	C3	T3S2	T3S3	T3S2R4	OTROS	A	B	C	K'	D	LATITUD	LONGITUD
La Pera	0.00	3	0	14255	1.8	81.4	3.6	7.2	1.3	2.2	0.8	1.1	0.6	83.2	3.6	13.2	0.097	0.529	19.008948	-99.161467
Tepoztlán	7.96	1	0	14229	1.5	83.9	3.5	5.4	1.1	2.1	0.9	1.0	0.6	85.4	3.5	11.1	0.090	0.517	18.993255	-99.121084
Plaza de Cobro Tepoztlán	7.96	2	0	13297	2.0	88.1	2.7	2.3	1.4	2.0	0.4	0.9	0.2	90.1	2.7	7.2	0.085	0.500	18.986765	-99.112493
Tepoztlán	7.96	3	0	13019	2.0	82.9	3.5	5.8	1.2	1.3	1.4	1.2	0.7	84.9	3.5	11.6	0.095	0.513	18.979536	-99.103289
T. Der. Amatlán	13.40	1	0	12988	2.3	81.1	3.6	5.8	2.4	2.5	1.0	0.6	0.7	83.4	3.6	13.0	0.093	0.508	18.971789	-99.077853
T. Der. Amatlán	13.40	3	0	12355	2.2	86.3	2.0	3.8	1.2	2.3	1.1	0.5	0.6	88.5	2.0	9.5	0.125	0.500	18.959000	-99.064929
Plaza de Cobro Oacalco	21.21	1	1	6950	1.9	84.5	3.0	4.8	1.7	2.0	0.8	0.6	0.7	86.4	3.0	10.6	0.110	0.509	18.933137	-99.027894

MORELOS

13 CARR: La Pera - Cuautla (Cuota)

CLAVE: 17161

RUTA: MEX-160D

AÑO: 2022

LUGAR	ESTACION				CLASIFICACION VEHICULAR EN PORCIENTO												COORDENADAS			
	KM	TE	SC	TDPA	M	A	B	C2	C3	T3S2	T3S3	T3S2R4	OTROS	A	B	C	K'	D	LATITUD	LONGITUD
Plaza de Cobro Oacalco	21.21	1	2	6717	2.3	84.6	3.0	4.6	1.6	1.6	0.9	0.8	0.6	86.9	3.0	10.1	0.112	0.509	18.933201	-99.027780
Plaza de Cobro Oacalco	21.21	2	0	12496	2.1	87.0	2.2	3.0	2.0	2.1	0.5	0.9	0.2	89.1	2.2	8.7	0.085	0.500	18.931082	-99.025645
Plaza de Cobro Oacalco	21.21	3	1	6639	2.4	85.7	2.1	4.2	1.3	2.3	1.0	0.4	0.6	88.1	2.1	9.8	0.108	0.501	18.927055	-99.021370
Plaza de Cobro Oacalco	21.21	3	2	6660	2.3	86.0	2.2	3.8	1.2	2.4	1.1	0.4	0.6	88.3	2.2	9.5	0.137	0.501	18.927115	-99.021303
X. C. Cocoyoc - Oaxtepec (Central)	27.00	3	1	6334	3.3	89.0	0.6	3.2	1.0	1.5	0.5	0.5	0.4	92.3	0.6	7.1	0.077	0.518	18.898587	-98.979457
X. C. Cocoyoc - Oaxtepec (Lateral)	27.00	3	1	12527	10.2	80.3	1.2	5.3	1.0	1.1	0.5	0.3	0.1	90.5	1.2	8.3	0.071	0.502	18.898514	-98.979551
X. C. Cocoyoc - Oaxtepec (Lateral)	27.00	3	2	12436	10.7	76.6	1.2	9.4	0.6	0.7	0.4	0.2	0.2	87.3	1.2	11.5	0.071	0.502	18.898593	-98.979181
X. C. Cocoyoc - Oaxtepec (Central)	27.00	3	2	5475	3.8	87.2	0.6	3.5	1.3	2.0	0.5	0.7	0.4	91.0	0.6	8.4	0.086	0.518	18.898622	-98.979377
T. C. Santa Bárbara - Izúcar de Matamoros (Central)	34.16	1	1	19793	5.0	83.5	2.0	6.3	1.2	1.4	0.3	0.2	0.1	88.5	2.0	9.5	0.076	0.520	18.859367	-98.944647
T. C. Santa Bárbara - Izúcar de Matamoros (Lateral)	34.16	1	1	6948	2.0	90.2	1.6	4.1	0.9	0.6	0.4	0.1	0.1	92.2	1.6	6.2	0.083	0.520	18.859289	-98.944765
T. C. Santa Bárbara - Izúcar de Matamoros (Lateral)	34.16	1	2	7516	3.0	89.1	1.6	4.4	0.8	0.5	0.4	0.1	0.1	92.1	1.6	6.3	0.089	0.520	18.854533	-98.939783
T. C. Santa Bárbara - Izúcar de Matamoros (Central)	34.16	1	2	21463	4.7	84.3	2.2	5.7	1.1	1.3	0.4	0.2	0.1	89.0	2.2	8.8	0.086	0.520	18.854443	-98.939933

14 CARR: Libramiento Amecameca - Nepantla (Cuota)

CLAVE:

RUTA: MEX-115D

AÑO: 2022

LUGAR	ESTACION				CLASIFICACION VEHICULAR EN PORCIENTO												COORDENADAS			
	KM	TE	SC	TDPA	M	A	B	C2	C3	T3S2	T3S3	T3S2R4	OTROS	A	B	C	K'	D	LATITUD	LONGITUD
T. C. Santa Bárbara - Izúcar de Matamoros (Norte)	28.60	3	1	4765	4.1	79.9	3.7	3.8	1.1	4.9	0.9	1.3	0.3	84.0	3.7	12.3	0.115	0.537	19.104922	-98.789386
T. C. Santa Bárbara - Izúcar de Matamoros (Norte)	28.60	3	2	4103	4.5	79.1	3.5	4.0	1.6	4.8	0.9	1.3	0.3	83.6	3.5	12.9	0.166	0.537	19.104873	-98.789276
Plaza de Cobro Tepetltxpa	38.60	2	1	5047	1.6	82.5	0.8	3.9	3.3	4.8	1.1	1.3	0.7	84.1	0.8	15.1	0.101	0.500	19.046112	-98.828394
Plaza de Cobro Tepetltxpa	38.60	2	2	5047	1.6	82.5	0.8	3.9	3.3	4.8	1.1	1.3	0.7	84.1	0.8	15.1	0.101	0.500	19.046112	-98.828394
Lim. Edos. Term. Méx. Ppia. Mor.	48.10	0	0																	
T. C. Santa Bárbara - Izúcar de Matamoros (Sur)	51.80	3	1	4688	2.4	80.2	2.5	6.2	1.5	4.0	1.6	1.1	0.5	82.6	2.5	14.9	0.114	0.500	18.974219	-98.875333
T. C. Santa Bárbara - Izúcar de Matamoros (Sur)	51.80	3	2	4696	3.0	78.8	2.3	6.3	1.9	4.8	1.3	1.1	0.5	81.8	2.3	15.9	0.188	0.500	18.974152	-98.875398

15 CARR: México - Cuernavaca (Cuota)

CLAVE: 00041

RUTA: MEX-095D

AÑO: 2022

LUGAR	ESTACION				CLASIFICACION VEHICULAR EN PORCIENTO												COORDENADAS			
	KM	TE	SC	TDPA	M	A	B	C2	C3	T3S2	T3S3	T3S2R4	OTROS	A	B	C	K'	D	LATITUD	LONGITUD
México	0.00	0	0																	
T. C. México - Cuernavaca (Libre)	18.65	3	1	29639	2.4	85.9	3.3	5.0	0.7	1.5	0.5	0.5	0.2	88.3	3.3	8.4	0.087	0.507	19.264149	-99.165786
T. C. México - Cuernavaca (Libre)	18.65	3	2	30639	2.3	85.2	3.2	5.7	0.7	1.5	0.7	0.5	0.2	87.5	3.2	9.3	0.090	0.507	19.267228	-99.164583
Plaza de Cobro Tlalpan	23.36	2	1	14868	1.9	85.1	4.3	2.4	1.9	2.7	0.6	0.8	0.3	87.0	4.3	8.7	0.145	0.500	19.242519	-99.148716
Plaza de Cobro Tlalpan	23.36	2	2	14868	1.9	85.1	4.3	2.4	1.9	2.7	0.6	0.8	0.3	87.0	4.3	8.7	0.145	0.500	19.242519	-99.148716
Lim. Edos. Term. CDMX Ppia. Mor.	47.09	0	0																	

MORELOS

15 CARR: México - Cuernavaca (Cuota)

CLAVE: 00041

RUTA: MEX-095D

AÑO: 2022

LUGAR	ESTACION				CLASIFICACION VEHICULAR EN PORCIENTO										COORDENADAS					
	KM	TE	SC	TDPA	M	A	B	C2	C3	T3S2	T3S3	T3S2R4	OTROS	A	B	C	K'	D	LATITUD	LONGITUD
Tres Mariás	53.00	1	1	23101	0.7	86.3	4.2	3.4	1.2	2.4	0.4	0.9	0.5	87.0	4.2	8.8	0.143	0.544	19.077619	-99.233477
Tres Mariás	53.00	1	2	19389	1.0	87.2	2.6	5.3	0.7	1.7	0.6	0.7	0.2	88.2	2.6	9.2	0.137	0.544	19.078163	-99.233151
Tres Mariás	53.00	3	1	21159	0.8	87.0	3.8	3.2	1.5	2.3	0.5	0.6	0.3	87.8	3.8	8.4	0.136	0.508	19.043050	-99.233276
Tres Mariás	53.00	3	2	21888	0.8	86.9	3.5	3.3	1.5	2.6	0.4	0.7	0.3	87.7	3.5	8.8	0.128	0.508	19.045422	-99.235373
T. Izq. Cuautla	70.50	1	1	20402	0.8	92.5	0.2	3.3	1.3	1.1	0.4	0.3	0.1	93.3	0.2	6.5	0.172	0.503	19.014460	-99.155765
T. Izq. Cuautla	70.50	1	2	20130	1.1	90.4	0.2	4.3	1.6	1.5	0.4	0.3	0.2	91.5	0.2	8.3	0.155	0.503	19.014448	-99.153826
T. Der. A Glorieta La Paloma	79.26	1	1	19326	1.7	85.9	0.5	4.4	1.5	4.3	1.1	0.5	0.1	87.6	0.5	11.9	0.092	0.514	18.982282	-99.219394
T. Der. A Glorieta La Paloma	79.26	1	2	20447	1.3	88.2	0.3	4.9	1.9	2.1	0.6	0.5	0.2	89.5	0.3	10.2	0.141	0.514	18.982171	-99.219493
Libramiento de Cuernavaca	80.50	1	1	19891	3.7	86.0	1.2	2.6	1.0	3.2	1.3	0.6	0.4	89.7	1.2	9.1	0.091	0.513	18.967283	-99.236730
Libramiento de Cuernavaca	80.50	1	2	20968	3.6	86.0	1.2	2.6	1.0	3.2	1.4	0.6	0.4	89.6	1.2	9.2	0.101	0.513	18.967264	-99.236563

16 CARR: Puente de Ixtla - Iguala (Cuota)

CLAVE: 00043

RUTA: MEX-091D

AÑO: 2022

LUGAR	ESTACION				CLASIFICACION VEHICULAR EN PORCIENTO										COORDENADAS					
	KM	TE	SC	TDPA	M	A	B	C2	C3	T3S2	T3S3	T3S2R4	OTROS	A	B	C	K'	D	LATITUD	LONGITUD
T. C. Cuernavaca - Acapulco (Cuota)	0.00	0	0																	
T. Izq. Puente de Ixtla	2.00	3	0	8104	3.3	82.5	3.2	5.4	1.9	1.5	0.7	1.1	0.4	85.8	3.2	11.0	0.080	0.515	18.625169	-99.329776
T. Der. Amacuzac	9.63	3	0	9196	3.1	81.0	4.7	3.3	2.4	1.9	2.1	1.0	0.5	84.1	4.7	11.2	0.076	0.504	18.591325	-99.376466
Lim. Edos. Term. Mor. Ppia. Gro.	18.20	0	0																	
T. Izq. Buenavista	33.58	3	0	5450	3.2	75.5	5.4	9.2	2.0	2.3	1.7	0.4	0.3	78.7	5.4	15.9	0.070	0.502	18.457583	-99.434599
Plaza de Cobro Iguala	59.14	2	0	4501	0.9	75.3	4.0	5.1	6.5	3.1	2.8	1.2	1.1	76.2	4.0	19.8	0.076	0.500	18.336191	-99.508296
T. Der. Iguala	59.50	1	0	5658	3.3	75.7	5.2	9.3	1.7	2.2	1.8	0.5	0.3	79.0	5.2	15.8	0.075	0.521	18.347963	-99.513468
T. C. Cuernavaca - Chilpancingo	62.80	0	0																	

17 CARR: Alpuyec - Jojutla

CLAVE: 17021

RUTA: MOR-021

AÑO: 2022

LUGAR	ESTACION				CLASIFICACION VEHICULAR EN PORCIENTO										COORDENADAS					
	KM	TE	SC	TDPA	M	A	B	C2	C3	T3S2	T3S3	T3S2R4	OTROS	A	B	C	K'	D	LATITUD	LONGITUD
T. C. Cuernavaca - Chilpancingo	0.00	0	0																	
X. C. Cuernavaca - Iguala (Cuota)	2.20	1	0	13195	5.5	87.3	0.7	4.6	0.9	0.5	0.3	0.1	0.1	92.8	0.7	6.5	0.089	0.503	18.731904	-99.262300
Xoxocotla	7.70	1	1	6859	11.0	81.8	0.8	4.7	0.8	0.7	0.0	0.2	0.0	92.8	0.8	6.4	0.101	0.501	18.704589	-99.251037
Xoxocotla	7.70	1	2	6888	10.1	81.9	1.7	4.5	0.8	0.7	0.1	0.2	0.0	92.0	1.7	6.3	0.109	0.501	18.704643	-99.250990
T. Izq. Zacatepec	11.94	1	1	7384	7.1	87.6	1.0	3.5	0.4	0.3	0.1	0.0	0.0	94.7	1.0	4.3	0.092	0.503	18.654215	-99.219218
T. Izq. Zacatepec	11.94	1	2	7286	7.3	87.5	0.8	3.2	0.5	0.4	0.2	0.1	0.0	94.8	0.8	4.4	0.088	0.503	18.654234	-99.219143
Jojutla	17.15	1	1	10212	7.1	87.2	0.5	4.3	0.4	0.4	0.1	0.0	0.0	94.3	0.5	5.2	0.082	0.501	18.627659	-99.205836

MORELOS

17 CARR : Alpuyec a - Jojutla

CLAVE: 17021

RUTA : MOR-021

AÑO : 2022

LUGAR	ESTACION				CLASIFICACION VEHICULAR EN PORCIENTO														COORDENADAS	
	KM	TE	SC	TDPA	M	A	B	C2	C3	T3S2	T3S3	T3S2R4	OTROS	A	B	C	K'	D	LATITUD	LONGITUD
Jojutla	17.15	1	2	10189	6.9	88.0	0.5	3.9	0.3	0.3	0.1	0.0	0.0	94.9	0.5	4.6	0.090	0.501	18.628047	-99.205998

18 CARR : Amayuca - Izúcar de Matamoros

CLAVE: 00030

RUTA : MOR-031-PUE

AÑO : 2022

LUGAR	ESTACION				CLASIFICACION VEHICULAR EN PORCIENTO														COORDENADAS	
	KM	TE	SC	TDPA	M	A	B	C2	C3	T3S2	T3S3	T3S2R4	OTROS	A	B	C	K'	D	LATITUD	LONGITUD
Amayuca	0.00	0	0																	
X. C. Santa Bárbara - Izúcar de Matamoros	0.66	3	1	8118	17.1	76.3	0.5	1.9	3.0	0.5	0.2	0.4	0.1	93.4	0.5	6.1	0.091	0.500	18.714679	-98.796440
X. C. Santa Bárbara - Izúcar de Matamoros	0.66	3	2	8109	15.6	77.2	0.6	2.0	3.2	0.5	0.3	0.5	0.1	92.8	0.6	6.6	0.090	0.500	18.714661	-98.796383
Jonacatepec	3.84	3	1	4842	15.1	78.6	0.6	3.1	1.1	0.7	0.2	0.5	0.1	93.7	0.6	5.7	0.080	0.509	18.671966	-98.805404
Jonacatepec	3.84	3	2	4680	14.2	78.2	0.8	3.8	1.4	0.5	0.4	0.6	0.1	92.4	0.8	6.8	0.086	0.509	18.671941	-98.805332
T. Der. Tepalcingo	14.50	3	1	2989	14.0	76.5	1.1	4.0	2.4	0.7	0.5	0.7	0.1	90.5	1.1	8.4	0.081	0.507	18.589123	-98.833393
T. Der. Tepalcingo	14.50	3	2	2908	12.9	77.8	1.1	3.6	2.7	0.5	0.5	0.8	0.1	90.7	1.1	8.2	0.097	0.507	18.589476	-98.833506
Axochiapan	29.50	1	0	7588	14.5	76.1	0.7	5.8	1.6	0.5	0.2	0.5	0.1	90.6	0.7	8.7	0.078	0.500	18.511536	-98.776236
Axochiapan	29.50	3	1	3400	31.3	64.2	0.5	1.8	1.0	0.5	0.2	0.4	0.1	95.5	0.5	4.0	0.085	0.502	18.493957	-98.748248
Axochiapan	29.50	3	2	3422	26.6	68.5	0.5	2.0	1.0	0.5	0.2	0.6	0.1	95.1	0.5	4.4	0.092	0.502	18.493984	-98.748182
Lim. Edos. Term. Mor. Ppia. Pue.	36.85	0	0																	
Barranca Del Muerto	38.40	3	0	2880	17.6	65.3	1.0	5.1	5.5	1.8	1.4	2.0	0.3	82.9	1.0	16.1	0.077	0.502	18.476510	-98.690912
T. Der. Chietla	53.00	1	0	6770	26.9	69.1	0.3	2.1	1.4	0.1	0.0	0.1	0.0	96.0	0.3	3.7	0.085	0.514	18.524576	-98.591552
X. C. Santa Bárbara - Izúcar de Matamoros	67.50	1	0	9309	17.5	74.6	0.4	2.7	2.1	0.8	0.8	0.9	0.2	92.1	0.4	7.5	0.071	0.505	18.593511	-98.495763
X. C. Santa Bárbara - Izúcar de Matamoros	67.50	3	1	10952	27.4	67.0	0.8	1.5	1.1	0.7	0.3	1.0	0.2	94.4	0.8	4.8	0.081	0.524	18.601088	-98.473656
X. C. Santa Bárbara - Izúcar de Matamoros	67.50	3	2	9954	31.1	64.3	0.5	0.9	1.5	0.6	0.1	0.8	0.2	95.4	0.5	4.1	0.075	0.524	18.601160	-98.473693
Izúcar de Matamoros	69.00	0	0																	

19 CARR : Amayuca - Tlacotepec

CLAVE: 17020

RUTA : MOR-017

AÑO : 2022

LUGAR	ESTACION				CLASIFICACION VEHICULAR EN PORCIENTO														COORDENADAS	
	KM	TE	SC	TDPA	M	A	B	C2	C3	T3S2	T3S3	T3S2R4	OTROS	A	B	C	K'	D	LATITUD	LONGITUD
Amayuca	0.00	3	0	8859	6.1	90.4	0.3	1.0	0.8	0.3	0.4	0.4	0.3	96.5	0.3	3.2	0.090	0.501	18.729726	-98.789527
Temoac	5.50	3	0	7650	9.4	87.1	0.3	1.1	0.7	0.5	0.3	0.5	0.1	96.5	0.3	3.2	0.083	0.501	18.777714	-98.775074
Zacualpan de Amilpas	7.50	1	0	6486	9.9	87.4	0.2	0.9	0.6	0.4	0.3	0.2	0.1	97.3	0.2	2.5	0.082	0.508	18.787039	-98.770231
Tlacotepec	12.00	1	0	5100	10.9	85.2	2.2	0.9	0.3	0.3	0.1	0.1	0.0	96.1	2.2	1.7	0.074	0.508	18.808493	-98.759058



MORELOS

20 CARR: Atlatlahucan - Tlayacapan

CLAVE: 17301

RUTA: MOR-002

AÑO: 2022

LUGAR	ESTACION				CLASIFICACION VEHICULAR EN PORCIENTO										COORDENADAS					
	KM	TE	SC	TDPA	M	A	B	C2	C3	T3S2	T3S3	T3S2R4	OTROS	A	B	C	K'	D	LATITUD	LONGITUD
T. C. Santa Bárbara - Izúcar de Matamoros	0.00	0	0																	
Atlatlahucan	1.50	1	1	5377	11.1	84.7	0.4	2.2	1.0	0.2	0.1	0.2	0.1	95.8	0.4	3.8	0.084	0.507	18.930018	-98.889103
Atlatlahucan	1.50	1	2	5229	11.9	83.6	0.5	2.3	1.1	0.2	0.1	0.2	0.1	95.5	0.5	4.0	0.091	0.507	18.930002	-98.889177
Totolapan	7.00	1	0	4383	6.1	86.9	0.4	2.5	1.2	2.3	0.1	0.4	0.1	93.0	0.4	6.6	0.109	0.501	18.977689	-98.914567
Tlayacapan	15.50	1	0	4899	15.7	80.8	0.7	1.4	0.8	0.2	0.1	0.2	0.1	96.5	0.7	2.8	0.083	0.503	18.962858	-98.970686

21 CARR: Coatetelco - Miacatlán

CLAVE:

RUTA: MOR

AÑO: 2022

LUGAR	ESTACION				CLASIFICACION VEHICULAR EN PORCIENTO										COORDENADAS					
	KM	TE	SC	TDPA	M	A	B	C2	C3	T3S2	T3S3	T3S2R4	OTROS	A	B	C	K'	D	LATITUD	LONGITUD
Coatetelco	0.00	3	0	3721	10.3	85.1	0.2	3.3	0.4	0.3	0.1	0.2	0.1	95.4	0.2	4.4	0.094	0.501	18.737434	-99.326502
Miacatlán	6.00	0	0																	

22 CARR: Cocoyoc - Oaxtepec

CLAVE: 17001

RUTA: MOR

AÑO: 2022

LUGAR	ESTACION				CLASIFICACION VEHICULAR EN PORCIENTO										COORDENADAS					
	KM	TE	SC	TDPA	M	A	B	C2	C3	T3S2	T3S3	T3S2R4	OTROS	A	B	C	K'	D	LATITUD	LONGITUD
Cocoyoc	0.00	3	1	14621	9.0	85.6	1.2	1.9	0.8	0.6	0.4	0.2	0.3	94.6	1.2	4.2	0.093	0.514	18.887340	-98.985293
Cocoyoc	0.00	3	2	13815	9.0	85.6	1.2	1.9	0.8	0.6	0.4	0.2	0.3	94.6	1.2	4.2	0.101	0.514	18.887910	-98.989499
X. C. La Pera - Cuautla (Cuota)	2.50	1	1	11625	9.3	85.6	0.5	1.0	1.9	0.8	0.4	0.3	0.2	94.9	0.5	4.6	0.083	0.502	18.894462	-98.984086
X. C. La Pera - Cuautla (Cuota)	2.50	1	2	11739	9.3	85.6	0.5	1.0	1.9	0.8	0.4	0.3	0.2	94.9	0.5	4.6	0.091	0.502	18.897995	-98.985292
Oaxtepec	3.92	1	0	20766	8.6	87.5	0.4	1.1	0.9	0.5	0.4	0.4	0.2	96.1	0.4	3.5	0.087	0.516	18.902947	-98.976641

23 CARR: Ent. C. (Cuernavaca - Acapulco Cuota) - Tepetzingo

CLAVE: 00421

RUTA: MOR

AÑO: 2022

LUGAR	ESTACION				CLASIFICACION VEHICULAR EN PORCIENTO										COORDENADAS					
	KM	TE	SC	TDPA	M	A	B	C2	C3	T3S2	T3S3	T3S2R4	OTROS	A	B	C	K'	D	LATITUD	LONGITUD
T. C. (Cuernavaca - Acapulco Cuota)	0.00	3	0	4829	12.4	71.2	2.1	8.4	0.5	3.5	0.7	0.5	0.7	83.6	2.1	14.3	0.070	0.516	18.813663	-99.217934
Tepetzingo	5.50	1	0	3445	15.8	76.1	1.2	3.5	1.3	1.3	0.2	0.6	0.0	91.9	1.2	6.9	0.081	0.519	18.791206	-99.179894

24 CARR: Ent. C. (Cuernavaca - Cuautlixco) - Oacalco

CLAVE: 00421

RUTA: MOR

AÑO: 2022

LUGAR	ESTACION				CLASIFICACION VEHICULAR EN PORCIENTO										COORDENADAS					
	KM	TE	SC	TDPA	M	A	B	C2	C3	T3S2	T3S3	T3S2R4	OTROS	A	B	C	K'	D	LATITUD	LONGITUD
T. C. (Cuernavaca - Cuautlixco)	0.00	3	0	1211	26.5	65.3	0.4	4.3	1.9	0.6	0.5	0.2	0.3	91.8	0.4	7.8	0.092	0.536	18.875928	-99.051458

MORELOS

24 CARR: Ent. C. (Cuernavaca - Cuautlixco) - Oacalco

CLAVE: 00421

RUTA: MOR

AÑO: 2022

LUGAR	ESTACION				CLASIFICACION VEHICULAR EN PORCIENTO														COORDENADAS	
	KM	TE	SC	TDPA	M	A	B	C2	C3	T3S2	T3S3	T3S2R4	OTROS	A	B	C	K'	D	LATITUD	LONGITUD
Oacalco	10.00	1	0	4115	21.6	72.3	0.7	3.3	1.4	0.5	0.1	0.1	0.0	93.9	0.7	5.4	0.083	0.503	18.915160	-99.031135

25 CARR: Ent. Chiverías - Ent. El Abanico

CLAVE: 17302

RUTA: MOR

AÑO: 2022

LUGAR	ESTACION				CLASIFICACION VEHICULAR EN PORCIENTO														COORDENADAS	
	KM	TE	SC	TDPA	M	A	B	C2	C3	T3S2	T3S3	T3S2R4	OTROS	A	B	C	K'	D	LATITUD	LONGITUD
T. C. Alpuyecá - Jojutla	0.00	3	0	3814	2.7	90.9	1.2	3.3	1.0	0.4	0.3	0.2	0.0	93.6	1.2	5.2	0.071	0.502	18.659179	-99.225236
X. C. Xoxocotla - Tlzapotla	5.56	3	0	4618	2.9	88.4	1.1	4.5	1.3	0.7	0.3	0.6	0.2	91.3	1.1	7.6	0.105	0.503	18.644422	-99.271864
T. C. Cuernavaca - Acapulco (Cuota)	14.50	1	0	4045	2.7	89.1	0.9	4.4	1.8	0.4	0.3	0.2	0.2	91.8	0.9	7.3	0.073	0.501	18.649168	-99.294637

26 CARR: Galeana - Cuautla

CLAVE: 17004

RUTA: MOR-004

AÑO: 2022

LUGAR	ESTACION				CLASIFICACION VEHICULAR EN PORCIENTO														COORDENADAS	
	KM	TE	SC	TDPA	M	A	B	C2	C3	T3S2	T3S3	T3S2R4	OTROS	A	B	C	K'	D	LATITUD	LONGITUD
Galeana	0.00	3	1	9821	6.7	84.1	1.3	7.0	0.7	0.0	0.2	0.0	0.0	90.8	1.3	7.9	0.093	0.505	18.648894	-99.201605
Galeana	0.00	3	2	9609	6.5	83.9	1.5	7.3	0.5	0.0	0.3	0.0	0.0	90.4	1.5	8.1	0.087	0.505	18.648939	-99.201652
Zacatepec	4.00	3	0	5265	9.7	84.4	0.6	1.7	2.1	0.0	0.6	0.5	0.4	94.1	0.6	5.3	0.083	0.511	18.658664	-99.183297
Tlaltizapán	13.10	3	0	3289	9.4	78.2	1.2	7.2	1.4	1.1	1.2	0.2	0.1	87.6	1.2	11.2	0.115	0.508	18.698669	-99.111487
T. Der. Chinameca	16.06	3	0	1197	10.9	79.2	0.4	6.4	2.6	0.1	0.2	0.1	0.1	90.1	0.4	9.5	0.108	0.505	18.707556	-99.106988
Moyotepec	34.00	1	0	1350	14.3	74.9	0.7	2.6	6.6	0.4	0.4	0.0	0.1	89.2	0.7	10.1	0.096	0.510	18.727933	-99.002153
Villa de Ayala	38.62	1	0	10427	13.7	80.0	0.9	3.6	0.9	0.3	0.2	0.3	0.1	93.7	0.9	5.4	0.080	0.509	18.758635	-98.984507
T. Izq. Anenecuilco	40.50	1	1	7746	11.6	82.1	0.6	2.6	0.9	0.8	0.3	0.8	0.3	93.7	0.6	5.7	0.071	0.504	18.781677	-98.980169
T. Izq. Anenecuilco	40.50	1	2	7881	11.5	82.3	0.5	2.7	0.8	0.7	0.4	0.8	0.3	93.8	0.5	5.7	0.072	0.504	18.781685	-98.980201
Cuautla	46.00	1	1	9402	15.8	79.2	0.3	2.6	0.8	0.7	0.1	0.4	0.1	95.0	0.3	4.7	0.089	0.540	18.801682	-98.965512
Cuautla	46.00	1	2	8013	15.5	79.4	0.3	2.8	0.9	0.5	0.1	0.4	0.1	94.9	0.3	4.8	0.091	0.540	18.801751	-98.965563

27 CARR: Jojutla - Chinameca

CLAVE: 17310

RUTA: MOR

AÑO: 2022

LUGAR	ESTACION				CLASIFICACION VEHICULAR EN PORCIENTO														COORDENADAS	
	KM	TE	SC	TDPA	M	A	B	C2	C3	T3S2	T3S3	T3S2R4	OTROS	A	B	C	K'	D	LATITUD	LONGITUD
Jojutla	0.00	3	0	3016	13.0	76.3	1.0	4.4	3.7	0.4	0.3	0.8	0.1	89.3	1.0	9.7	0.084	0.513	18.610717	-99.164704
T. C. Temilpa - Tepalcingo	32.00	1	0	1334	8.7	83.9	0.3	5.3	1.3	0.3	0.2	0.0	0.0	92.6	0.3	7.1	0.070	0.516	18.622925	-99.007914
Chinameca	34.00	0	0																	

MORELOS

28 CARR: Jojutla - El Higuérón

CLAVE: 17039

RUTA: MOR-039

AÑO: 2022

LUGAR	ESTACION				CLASIFICACION VEHICULAR EN PORCIENTO														COORDENADAS	
	KM	TE	SC	TDPA	M	A	B	C2	C3	T3S2	T3S3	T3S2R4	OTROS	A	B	C	K'	D	LATITUD	LONGITUD
Jojutla	0.00	3	0	8812	15.2	83.1	0.2	0.7	0.5	0.2	0.0	0.1	0.0	98.3	0.2	1.5	0.066	0.506	18.606849	-99.174511
El Higuérón	4.50	1	0	5656	15.1	82.8	0.4	1.0	0.3	0.2	0.1	0.1	0.0	97.9	0.4	1.7	0.083	0.506	18.584513	-99.177597

29 CARR: Los Alacranes - Ocuiluco

CLAVE:

RUTA: MOR

AÑO: 2022

LUGAR	ESTACION				CLASIFICACION VEHICULAR EN PORCIENTO														COORDENADAS	
	KM	TE	SC	TDPA	M	A	B	C2	C3	T3S2	T3S3	T3S2R4	OTROS	A	B	C	K'	D	LATITUD	LONGITUD
Los Alacranes	0.00	3	0	1779	7.4	86.2	0.4	5.0	0.6	0.3	0.1	0.0	0.0	93.6	0.4	6.0	0.113	0.514	18.748603	-98.838769
Ocuiluco	19.00	1	0	1524	3.6	93.2	0.5	1.5	0.7	0.3	0.1	0.1	0.0	96.8	0.5	2.7	0.078	0.511	18.863292	-98.784090

30 CARR: Mazatepec - T. C. Ramal a Michapa

CLAVE:

RUTA: MOR

AÑO: 2022

LUGAR	ESTACION				CLASIFICACION VEHICULAR EN PORCIENTO														COORDENADAS	
	KM	TE	SC	TDPA	M	A	B	C2	C3	T3S2	T3S3	T3S2R4	OTROS	A	B	C	K'	D	LATITUD	LONGITUD
Mazatepec	0.00	3	0	782	9.2	85.8	0.1	4.5	0.4	0.0	0.0	0.0	0.0	95.0	0.1	4.9	0.090	0.504	18.722448	-99.370590
T. C. Ramal a Michapa	12.00	1	0	1429	9.6	84.6	0.1	4.6	0.8	0.2	0.1	0.0	0.0	94.2	0.1	5.7	0.076	0.504	18.634793	-99.378401

31 CARR: Moyotepec - San Rafael

CLAVE: 17306

RUTA: MOR

AÑO: 2022

LUGAR	ESTACION				CLASIFICACION VEHICULAR EN PORCIENTO														COORDENADAS	
	KM	TE	SC	TDPA	M	A	B	C2	C3	T3S2	T3S3	T3S2R4	OTROS	A	B	C	K'	D	LATITUD	LONGITUD
T. C. Galeana - Cuautla	0.00	3	0	3090	8.6	84.6	0.4	3.1	0.6	2.1	0.3	0.2	0.1	93.2	0.4	6.4	0.085	0.506	18.715168	-98.990442
T. C. Temilpa - Tepalcingo	7.50	1	0	2406	22.7	73.8	0.2	1.5	1.3	0.3	0.1	0.1	0.0	96.5	0.2	3.3	0.086	0.504	18.646585	-99.004388

32 CARR: Paso por Yauatepec

CLAVE: 17025

RUTA: MOR

AÑO: 2022

LUGAR	ESTACION				CLASIFICACION VEHICULAR EN PORCIENTO														COORDENADAS	
	KM	TE	SC	TDPA	M	A	B	C2	C3	T3S2	T3S3	T3S2R4	OTROS	A	B	C	K'	D	LATITUD	LONGITUD
T. C. Cuernavaca - Cuautlixco (Poniente)	0.00	3	1	9238	21.9	71.8	0.4	2.4	1.4	0.6	0.6	0.7	0.2	93.7	0.4	5.9	0.064	0.504	18.871824	-99.078221
T. C. Cuernavaca - Cuautlixco (Poniente)	0.00	3	2	9106	21.9	71.4	0.5	2.4	1.4	0.6	0.8	0.7	0.3	93.3	0.5	6.2	0.058	0.504	18.871908	-99.078312
T. C. Cuernavaca - Cuautlixco (Oriente)	5.50	1	1	6492	7.6	86.0	0.5	3.0	0.5	1.2	0.4	0.3	0.5	93.6	0.5	5.9	0.079	0.512	18.896591	-99.041390
T. C. Cuernavaca - Cuautlixco (Oriente)	5.50	1	2	6180	7.6	86.1	0.4	3.0	0.5	1.2	0.5	0.3	0.4	93.7	0.4	5.9	0.087	0.512	18.896627	-99.041428

MORELOS

33 CARR: Pilares - T. C. (Xoxocotla - Tilzapotla)

CLAVE: 17008

RUTA: MOR-008

AÑO: 2022

LUGAR	ESTACION				CLASIFICACION VEHICULAR EN PORCIENTO													COORDENADAS		
	KM	TE	SC	TDPA	M	A	B	C2	C3	T3S2	T3S3	T3S2R4	OTROS	A	B	C	K'	D	LATITUD	LONGITUD
Pilares	0.00	3	1	7055	16.1	82.3	0.1	0.7	0.4	0.2	0.1	0.1	0.0	98.4	0.1	1.5	0.067	0.507	18.629679	-99.218364
Pilares	0.00	3	2	7265	16.3	81.9	0.1	0.9	0.4	0.2	0.1	0.1	0.0	98.2	0.1	1.7	0.079	0.507	18.629624	-99.218305
T. C. Xoxocotla - Tilzapotla	6.50	1	0	3190	7.0	87.2	0.3	4.3	0.3	0.2	0.2	0.3	0.2	94.2	0.3	5.5	0.072	0.501	18.614545	-99.256820

34 CARR: Ramal a Aeropuerto de Cuernavaca

CLAVE: 17250

RUTA: MOR

AÑO: 2022

LUGAR	ESTACION				CLASIFICACION VEHICULAR EN PORCIENTO													COORDENADAS		
	KM	TE	SC	TDPA	M	A	B	C2	C3	T3S2	T3S3	T3S2R4	OTROS	A	B	C	K'	D	LATITUD	LONGITUD
T. C. Cuernavaca - Chilpancingo	0.00	3	0	6885	13.9	83.0	0.2	1.6	0.5	0.6	0.1	0.1	0.0	96.9	0.2	2.9	0.088	0.506	18.804416	-99.226682
Aeropuerto de Cuernavaca	5.64	0	0																	

35 CARR: Ramal a Coatetelco

CLAVE: 17304

RUTA: MOR

AÑO: 2022

LUGAR	ESTACION				CLASIFICACION VEHICULAR EN PORCIENTO													COORDENADAS		
	KM	TE	SC	TDPA	M	A	B	C2	C3	T3S2	T3S3	T3S2R4	OTROS	A	B	C	K'	D	LATITUD	LONGITUD
T. C. Cuernavaca - Chilpancingo	0.00	3	0	4398	8.8	88.1	0.1	2.3	0.6	0.1	0.0	0.0	0.0	96.9	0.1	3.0	0.083	0.504	18.714930	-99.275401
Coatetelco	7.00	0	0																	

36 CARR: Ramal a Jolalpan

CLAVE: 00143

RUTA: MOR-PUE

AÑO: 2022

LUGAR	ESTACION				CLASIFICACION VEHICULAR EN PORCIENTO													COORDENADAS		
	KM	TE	SC	TDPA	M	A	B	C2	C3	T3S2	T3S3	T3S2R4	OTROS	A	B	C	K'	D	LATITUD	LONGITUD
Axochiapan	0.00	3	0	2948	11.2	75.9	0.8	8.9	1.6	0.5	0.4	0.5	0.2	87.1	0.8	12.1	0.083	0.527	18.480934	-98.748248
Lim. Edos. Term. Mor. Ppia. Pue.	4.00	0	0																	
Jolalpan	24.00	0	0																	

37 CARR: Ramal a Tetela del Volcán

CLAVE: 17010

RUTA: MOR-010

AÑO: 2022

LUGAR	ESTACION				CLASIFICACION VEHICULAR EN PORCIENTO													COORDENADAS		
	KM	TE	SC	TDPA	M	A	B	C2	C3	T3S2	T3S3	T3S2R4	OTROS	A	B	C	K'	D	LATITUD	LONGITUD
T. C. Santa Bárbara - Izúcar de Matamoros	0.00	3	1	7314	10.4	82.7	1.2	2.9	0.8	0.9	0.4	0.4	0.3	93.1	1.2	5.7	0.097	0.501	18.896287	-98.906066
T. C. Santa Bárbara - Izúcar de Matamoros	0.00	3	2	7337	10.1	83.3	1.1	3.0	0.7	0.8	0.4	0.3	0.3	93.4	1.1	5.5	0.088	0.501	18.896360	-98.906036
Yecapixtla	5.50	3	0	7901	11.2	81.4	0.6	2.5	0.8	1.0	0.9	0.9	0.7	92.6	0.6	6.8	0.074	0.513	18.869452	-98.844057
Ocuituco	15.00	1	0	5085	9.7	81.9	2.0	4.4	0.6	0.3	0.9	0.1	0.1	91.6	2.0	6.4	0.081	0.514	18.879172	-98.778788
Tetela del Volcán	22.00	1	0	6204	17.2	80.1	0.7	1.6	0.2	0.1	0.1	0.0	0.0	97.3	0.7	2.0	0.078	0.543	18.880396	-98.742466

MORELOS

38 CARR: T. C. (Coatetelco - Miacatlán) - Mazatepec

CLAVE:

RUTA: MOR

AÑO: 2022

LUGAR	ESTACION				CLASIFICACION VEHICULAR EN PORCIENTO													COORDENADAS		
	KM	TE	SC	TDPA	M	A	B	C2	C3	T3S2	T3S3	T3S2R4	OTROS	A	B	C	K'	D	LATITUD	LONGITUD
T. C. Coatetelco - Miacatlán	0.00	0	0																	
Mazatepec	4.14	1	0	4755	13.6	82.4	0.2	2.0	0.7	0.2	0.2	0.6	0.1	96.0	0.2	3.8	0.075	0.502	18.725794	-99.356046

39 CARR: T. C. (México - Cuernavaca (Libre)) - Huitzilac

CLAVE: 00451

RUTA: MOR

AÑO: 2022

LUGAR	ESTACION				CLASIFICACION VEHICULAR EN PORCIENTO													COORDENADAS		
	KM	TE	SC	TDPA	M	A	B	C2	C3	T3S2	T3S3	T3S2R4	OTROS	A	B	C	K'	D	LATITUD	LONGITUD
T. C. México - Cuernavaca (Libre)	0.00	3	0	6258	4.5	92.2	0.6	1.7	0.4	0.2	0.0	0.4	0.0	96.7	0.6	2.7	0.094	0.505	19.003447	-99.258856
Huitzilac	4.00	1	0	6079	4.5	91.3	0.8	2.2	0.4	0.3	0.1	0.3	0.1	95.8	0.8	3.4	0.084	0.500	19.021919	-99.266467

40 CARR: T. C. (San Gregorio - Oaxtepec) - Jojutla

CLAVE: 17002

RUTA: MOR-002

AÑO: 2022

LUGAR	ESTACION				CLASIFICACION VEHICULAR EN PORCIENTO													COORDENADAS		
	KM	TE	SC	TDPA	M	A	B	C2	C3	T3S2	T3S3	T3S2R4	OTROS	A	B	C	K'	D	LATITUD	LONGITUD
T. C. San Gregorio - Oaxtepec	0.00	3	0	4761	20.4	74.1	0.5	3.2	0.8	0.2	0.1	0.5	0.2	94.5	0.5	5.0	0.112	0.500	18.921700	-98.973428
X. C. La Pera - Cuautla (Cuota)	7.50	3	0	8493	25.2	71.0	0.6	1.1	0.7	0.7	0.3	0.4	0.0	96.2	0.6	3.2	0.096	0.534	18.928265	-99.025841
Yautepec	14.00	1	1	3912	23.9	71.2	0.7	2.0	1.0	0.6	0.4	0.2	0.0	95.1	0.7	4.2	0.086	0.502	18.908124	-99.048902
Yautepec	14.00	1	2	3887	24.0	70.7	0.9	2.2	1.0	0.5	0.4	0.3	0.0	94.7	0.9	4.4	0.088	0.502	18.908075	-99.048829
Yautepec	14.00	3	0	9550	6.7	86.1	0.6	3.5	0.7	0.8	0.4	0.9	0.3	92.8	0.6	6.6	0.086	0.511	18.868809	-99.068991
Tucumán	32.30	1	0	2488	6.1	87.9	0.2	3.2	1.4	0.5	0.2	0.4	0.1	94.0	0.2	5.8	0.091	0.519	18.769722	-99.116553
X. C. Galeana - Cuautla	40.50	3	0	5865	13.0	80.8	0.7	3.9	0.6	0.4	0.3	0.2	0.1	93.8	0.7	5.5	0.068	0.502	18.678493	-99.130469
Tlaquiltenango	50.50	1	0	6502	12.5	81.5	0.5	3.6	0.7	0.4	0.1	0.6	0.1	94.0	0.5	5.5	0.090	0.504	18.648711	-99.155856
Jojutla	53.50	1	0	12733	9.9	81.4	0.5	3.6	0.6	3.3	0.1	0.5	0.1	91.3	0.5	8.2	0.080	0.516	18.621792	-99.170592

41 CARR: Tehuixtla - Puente de Ixtla

CLAVE: 17307

RUTA: MOR

AÑO: 2022

LUGAR	ESTACION				CLASIFICACION VEHICULAR EN PORCIENTO													COORDENADAS		
	KM	TE	SC	TDPA	M	A	B	C2	C3	T3S2	T3S3	T3S2R4	OTROS	A	B	C	K'	D	LATITUD	LONGITUD
Tehuixtla	0.00	3	0	2576	16.6	75.6	1.0	4.0	1.3	0.4	0.9	0.2	0.0	92.2	1.0	6.8	0.085	0.502	18.565907	-99.279368
Puente de Ixtla	9.60	1	0	2146	17.9	80.8	0.2	0.6	0.4	0.1	0.0	0.0	0.0	98.7	0.2	1.1	0.082	0.502	18.601739	-99.310233
T. C. Cuernavaca - Chilpancingo	10.60	0	0																	

MORELOS

42 CARR: Tejalpa - Jojutla

CLAVE: 17014

RUTA: MOR-014

AÑO: 2022

LUGAR	ESTACION				CLASIFICACION VEHICULAR EN PORCIENTO										COORDENADAS					
	KM	TE	SC	TDPA	M	A	B	C2	C3	T3S2	T3S3	T3S2R4	OTROS	A	B	C	K'	D	LATITUD	LONGITUD
T. C. Cuernavaca - Cuautlixco	0.00	0	0																	
Jiutepec	1.97	3	0	9633	12.7	76.5	0.7	8.3	0.9	0.5	0.1	0.2	0.1	89.2	0.7	10.1	0.077	0.503	18.872121	-99.172856
Emiliano Zapata	7.00	3	1	6979	13.6	81.5	0.7	2.5	0.7	0.3	0.4	0.3	0.0	95.1	0.7	4.2	0.081	0.504	18.818368	-99.191019
Emiliano Zapata	7.00	3	2	7098	13.6	81.5	0.7	2.5	0.8	0.3	0.3	0.3	0.0	95.1	0.7	4.2	0.086	0.504	18.818347	-99.190957
T. Izq. Chiconcuac	14.50	1	1	9598	10.0	84.8	0.5	2.4	1.4	0.3	0.3	0.2	0.1	94.8	0.5	4.7	0.086	0.503	18.784597	-99.205899
T. Izq. Chiconcuac	14.50	1	2	9490	9.9	84.6	0.6	2.4	1.4	0.3	0.4	0.3	0.1	94.5	0.6	4.9	0.075	0.503	18.784555	-99.205832
T. Izq. Chiconcuac	14.50	3	1	7256	17.3	75.2	0.3	3.2	1.8	0.7	0.7	0.5	0.3	92.5	0.3	7.2	0.088	0.503	18.779578	-99.208196
T. Izq. Chiconcuac	14.50	3	2	7179	17.4	75.1	0.3	3.2	1.8	0.7	0.7	0.5	0.3	92.5	0.3	7.2	0.084	0.503	18.779556	-99.208135
X. C. Zacatepec - Tlaquiltenango	32.90	1	0	10874	13.6	82.3	0.3	2.0	1.2	0.4	0.1	0.1	0.0	95.9	0.3	3.8	0.065	0.526	18.649345	-99.184245
Jojutla	35.00	1	0	10114	14.5	80.2	0.6	1.9	1.3	0.5	0.2	0.7	0.1	94.7	0.6	4.7	0.082	0.521	18.625874	-99.183774

43 CARR: Temilpa - Tepalcingo

CLAVE: 17009

RUTA: MOR-009

AÑO: 2022

LUGAR	ESTACION				CLASIFICACION VEHICULAR EN PORCIENTO										COORDENADAS					
	KM	TE	SC	TDPA	M	A	B	C2	C3	T3S2	T3S3	T3S2R4	OTROS	A	B	C	K'	D	LATITUD	LONGITUD
T. C. Galeana - Cuautla	0.00	3	0	1861	7.1	77.3	0.9	6.5	3.3	2.3	2.4	0.1	0.1	84.4	0.9	14.7	0.107	0.510	18.694524	-99.101115
Tepalcingo	40.50	1	0	3334	10.6	77.6	0.4	6.8	2.5	1.0	1.0	0.0	0.1	88.2	0.4	11.4	0.075	0.514	18.604641	-98.853947

44 CARR: Tepoztlán - Yauatepec

CLAVE: 17013

RUTA: MOR-013

AÑO: 2022

LUGAR	ESTACION				CLASIFICACION VEHICULAR EN PORCIENTO										COORDENADAS					
	KM	TE	SC	TDPA	M	A	B	C2	C3	T3S2	T3S3	T3S2R4	OTROS	A	B	C	K'	D	LATITUD	LONGITUD
Tepoztlán	0.00	3	0	12638	13.9	81.1	0.5	2.3	0.6	0.5	0.3	0.5	0.3	95.0	0.5	4.5	0.080	0.510	18.980066	-99.083963
Yauatepec	14.82	1	0	6328	30.6	64.3	0.4	2.4	1.2	0.5	0.1	0.4	0.1	94.9	0.4	4.7	0.088	0.503	18.901086	-99.063844

45 CARR: Tequesquitengo - Jojutla

CLAVE: 17013

RUTA: MOR

AÑO: 2022

LUGAR	ESTACION				CLASIFICACION VEHICULAR EN PORCIENTO										COORDENADAS					
	KM	TE	SC	TDPA	M	A	B	C2	C3	T3S2	T3S3	T3S2R4	OTROS	A	B	C	K'	D	LATITUD	LONGITUD
T. C. Xoxocotla - Tilzapotla	0.00	3	1	2913	7.0	86.8	0.5	4.2	0.7	0.4	0.2	0.2	0.0	93.8	0.5	5.7	0.085	0.504	18.595841	-99.253911
T. C. Xoxocotla - Tilzapotla	0.00	3	2	2962	6.8	86.5	0.5	4.3	0.9	0.6	0.2	0.2	0.0	93.3	0.5	6.2	0.092	0.504	18.595904	-99.253901
Jojutla	9.50	0	0																	

MORELOS

46 CARR : Xoxocotla - Tilzapotla

CLAVE: 17005

RUTA: MOR-006

AÑO: 2022

LUGAR	ESTACION				CLASIFICACION VEHICULAR EN PORCIENTO													COORDENADAS		
	KM	TE	SC	TDPA	M	A	B	C2	C3	T3S2	T3S3	T3S2R4	OTROS	A	B	C	K'	D	LATITUD	LONGITUD
Xoxocotla	0.00	3	1	4392	17.4	78.0	0.8	1.4	0.9	1.1	0.1	0.3	0.0	95.4	0.8	3.8	0.093	0.507	18.680013	-99.252253
Xoxocotla	0.00	3	2	4276	17.4	78.1	0.8	1.5	0.8	1.0	0.1	0.3	0.0	95.5	0.8	3.7	0.097	0.507	18.679995	-99.252187
Tehuixtla	19.50	1	0	6098	10.6	84.0	0.5	3.8	0.6	0.3	0.2	0.0	0.0	94.6	0.5	4.9	0.081	0.528	18.569022	-99.269044
Tehuixtla	19.50	3	0	4665	20.9	76.3	0.3	0.9	1.1	0.3	0.1	0.1	0.0	97.2	0.3	2.5	0.081	0.508	18.550686	-99.267385
Tilzapotla	29.50	1	0	3323	9.8	88.2	0.1	1.1	0.6	0.1	0.0	0.1	0.0	98.0	0.1	1.9	0.083	0.509	18.494047	-99.277992

47 CARR : Zacatepec - Tlaquiltenango

CLAVE: 17300

RUTA: MOR

AÑO: 2022

LUGAR	ESTACION				CLASIFICACION VEHICULAR EN PORCIENTO													COORDENADAS		
	KM	TE	SC	TDPA	M	A	B	C2	C3	T3S2	T3S3	T3S2R4	OTROS	A	B	C	K'	D	LATITUD	LONGITUD
Zacatepec	0.00	3	0	9616	14.4	83.6	0.3	1.4	0.1	0.1	0.0	0.1	0.0	98.0	0.3	1.7	0.075	0.513	18.647427	-99.186802
Tlaquiltenango	4.08	1	0	6336	23.9	72.2	0.5	1.3	0.8	0.5	0.1	0.6	0.1	96.1	0.5	3.4	0.081	0.512	18.639829	-99.174393

48 CARR : Atlixco - Jantetelco (Cuota)

CLAVE: 00430

RUTA: PUE-D

AÑO: 2022

LUGAR	ESTACION				CLASIFICACION VEHICULAR EN PORCIENTO													COORDENADAS		
	KM	TE	SC	TDPA	M	A	B	C2	C3	T3S2	T3S3	T3S2R4	OTROS	A	B	C	K'	D	LATITUD	LONGITUD
T. C. Puebla - Izúcar de Matamoros	0.00	3	0	7543	4.8	74.8	2.6	12.8	1.7	0.9	0.7	0.8	0.9	79.6	2.6	17.8	0.076	0.519	18.942817	-98.401952
Lim. Edos. Term. Pue. Ppia. Mor.	48.60	0	0																	
T. C. Santa Bárbara - Izúcar de Matamoros	54.90	1	0	8190	2.1	80.2	4.3	5.4	2.4	2.8	0.8	1.3	0.7	82.3	4.3	13.4	0.084	0.515	18.706844	-98.767691

49 CARR : Tres Marias - Santa Martha

CLAVE: 00172

RUTA: MEX-106-EM

AÑO: 2022

LUGAR	ESTACION				CLASIFICACION VEHICULAR EN PORCIENTO													COORDENADAS		
	KM	TE	SC	TDPA	M	A	B	C2	C3	T3S2	T3S3	T3S2R4	OTROS	A	B	C	K'	D	LATITUD	LONGITUD
Tres Marias	0.00	3	0	7573	4.9	90.9	0.5	2.4	0.7	0.3	0.1	0.2	0.0	95.8	0.5	3.7	0.085	0.503	19.048966	-99.248700
Laguna de Zempoala	14.00	0	0																	
Lim. Edos. Term. Mor. Ppia. Méx.	14.50	0	0																	
Santa Martha	28.35	1	0	4043	3.1	86.5	1.9	6.9	1.0	0.4	0.1	0.1	0.0	89.6	1.9	8.5	0.101	0.514	19.063220	-99.379565

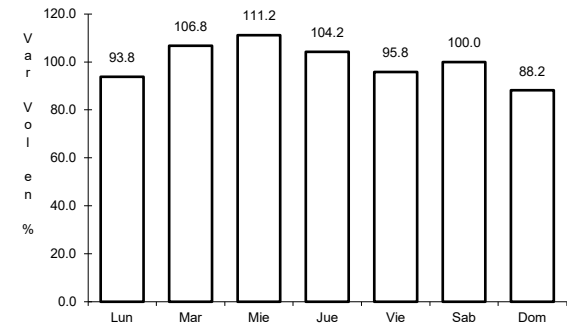
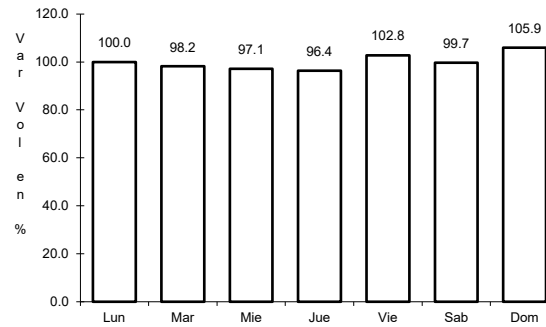
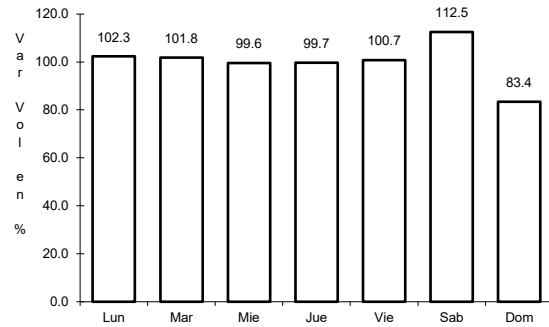




1 CARR: Cuernavaca - Chilpancingo

CLAVE: 00042

ruta: MEX-095



Km: 9.80 Tipo: 1 Sent: 1

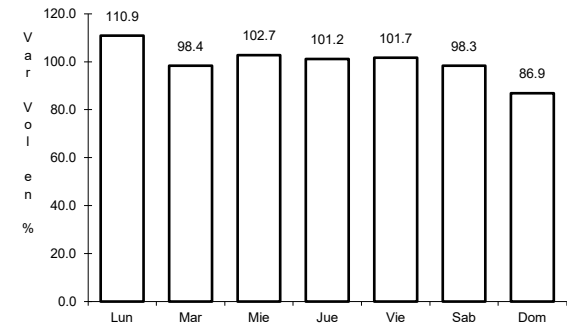
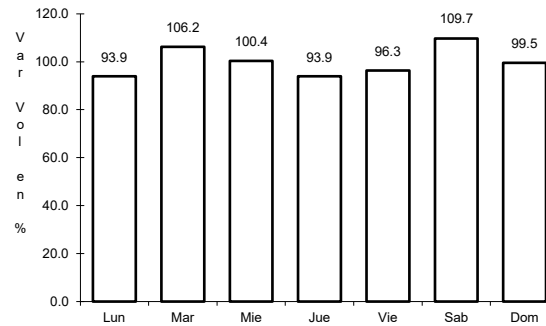
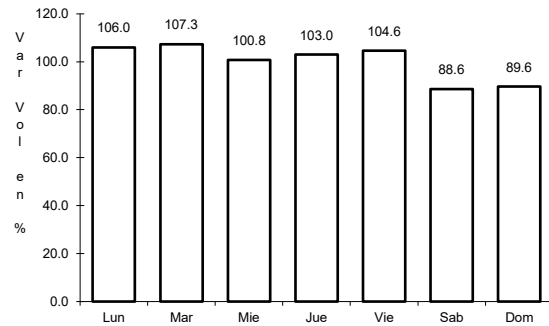
Km: 9.80 Tipo: 1 Sent: 2

Km: 119.63 Tipo: 1 Sent: 0

2 CARR: Cuernavaca - Cuautlixco

CLAVE: 17199

ruta: MEX-138



Km: 7.78 Tipo: 1 Sent: 1

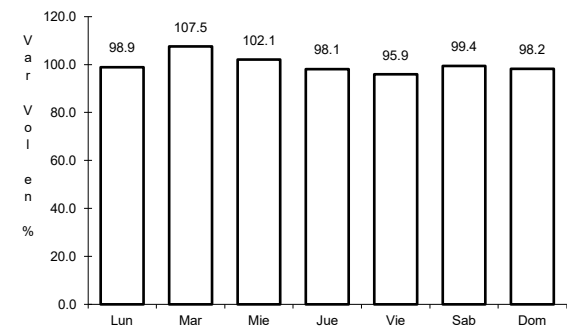
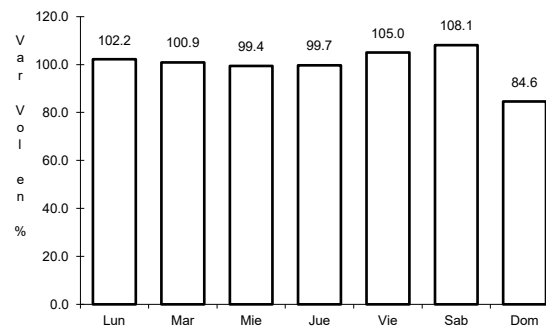
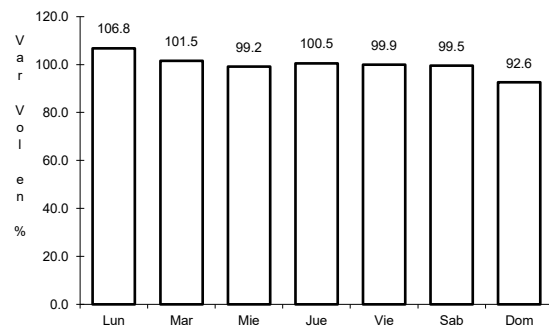
Km: 7.78 Tipo: 1 Sent: 2

Km: 43.15 Tipo: 1 Sent: 1

3 CARR: Cuernavaca - Tepoztlán

CLAVE: 17198

ruta: MEX-162



Km: 2.83 Tipo: 1 Sent: 1

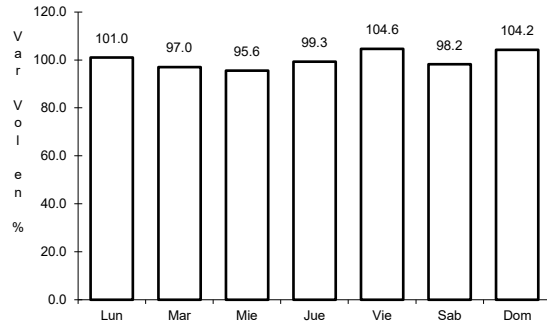
Km: 2.83 Tipo: 1 Sent: 2

Km: 18.20 Tipo: 1 Sent: 0

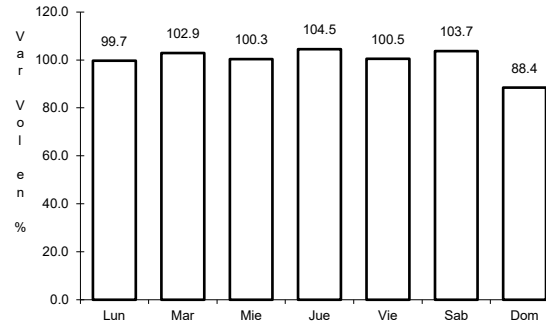
4 CARR: Ent. Alpuyecá - Grutas de Cacahuamilpa

CLAVE: 00421

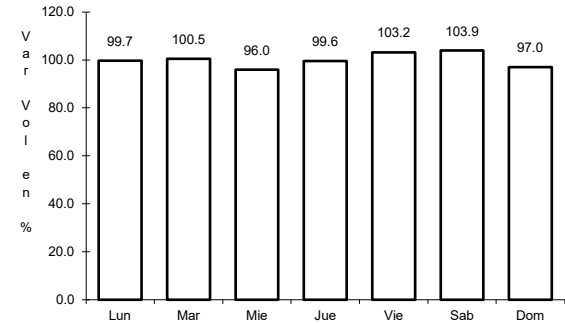
ruta: MEX-166



Km: 0.00      Tipo: 3      Sent: 0



Km: 18.28      Tipo: 3      Sent: 0

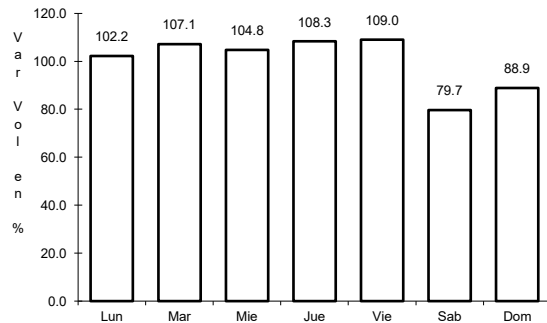


Km: 41.26      Tipo: 1      Sent: 0

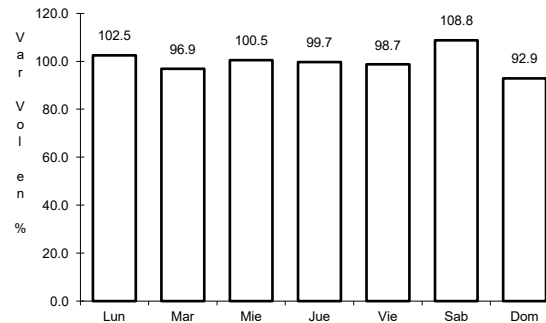
5 CARR: Libramiento de Cuautla

CLAVE: 17309

ruta: MEX-160



Km: 0.00      Tipo: 3      Sent: 1

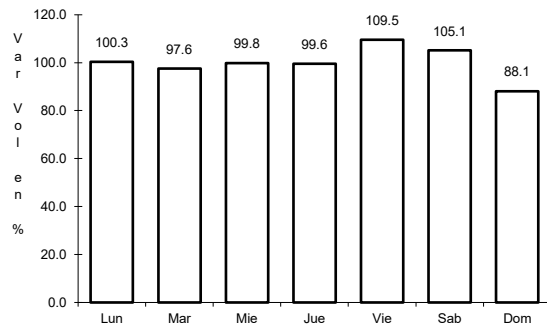


Km: 0.00      Tipo: 3      Sent: 2

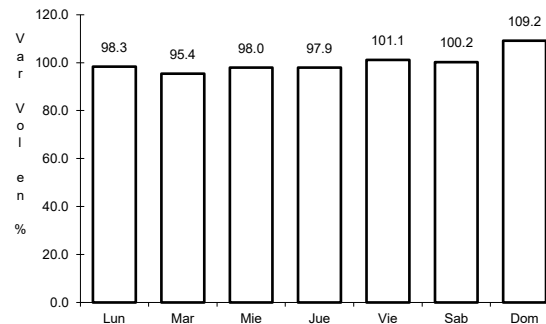
6 CARR: Libramiento de Cuernavaca

CLAVE: 17400

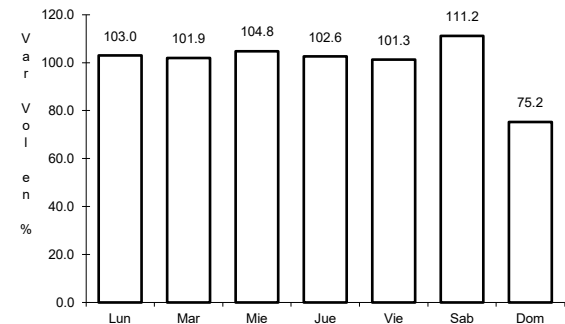
ruta: MEX-095



Km: 1.30      Tipo: 1      Sent: 1



Km: 1.30      Tipo: 1      Sent: 2

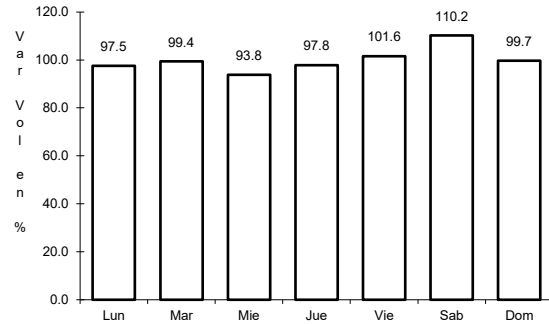


Km: 14.70      Tipo: 1      Sent: 1

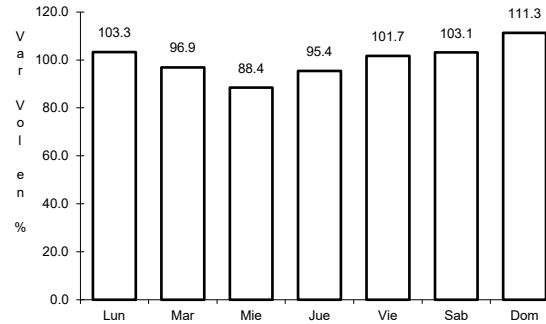
7 CARR: México - Cuernavaca (Libre)

CLAVE: 00040

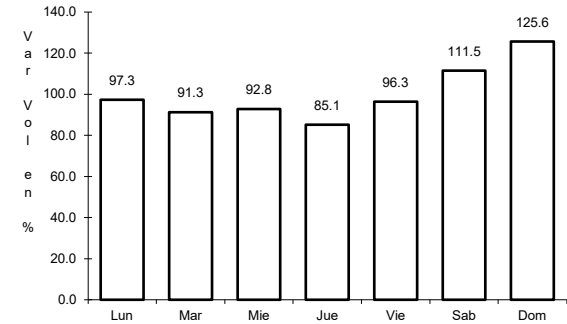
ruta: MEX-095



Km: 28.78      Tipo: 1      Sent: 1



Km: 28.78      Tipo: 1      Sent: 2

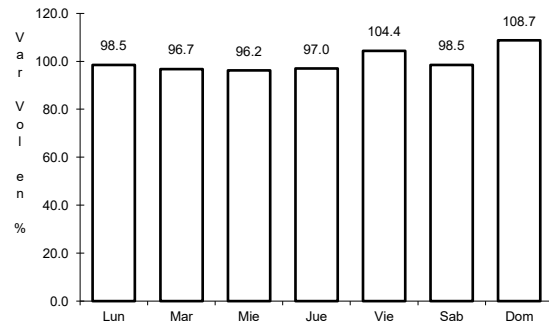


Km: 51.40      Tipo: 3      Sent: 0

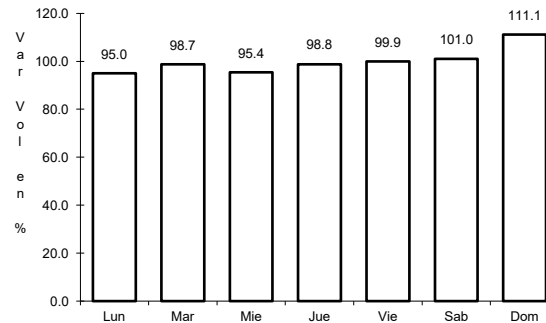
8 CARR: Ramal a Michapa

CLAVE: 17303

ruta: MEX-166



Km: 0.00      Tipo: 3      Sent: 0

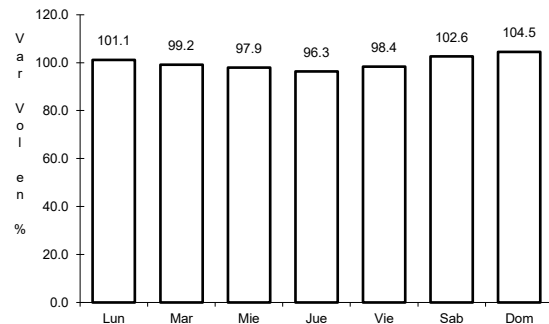


Km: 16.22      Tipo: 1      Sent: 0

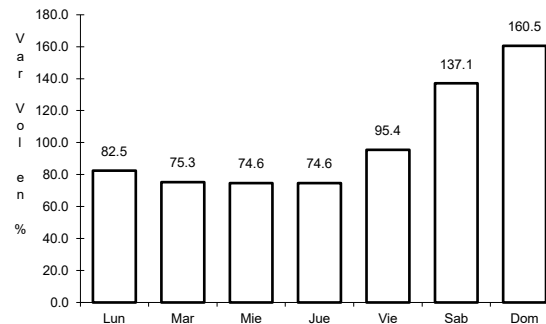
9 CARR: San Gregorio - Oaxtepec

CLAVE: 00901

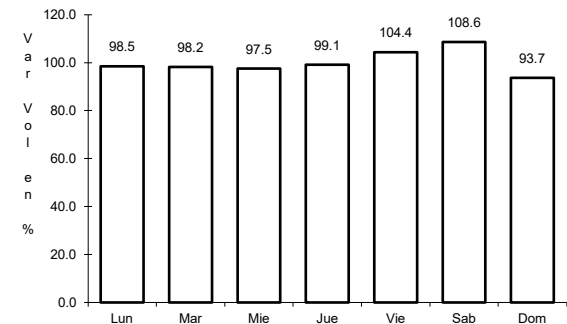
ruta: MEX-113



Km: 0.00      Tipo: 3      Sent: 0



Km: 33.80      Tipo: 1      Sent: 0

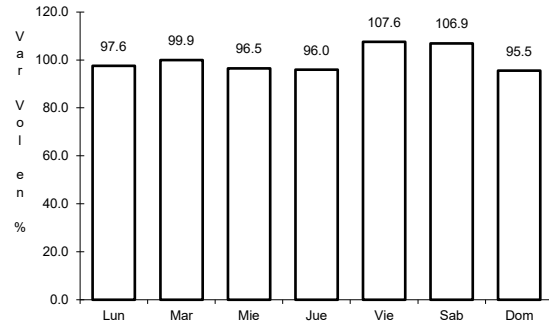


Km: 53.00      Tipo: 3      Sent: 1

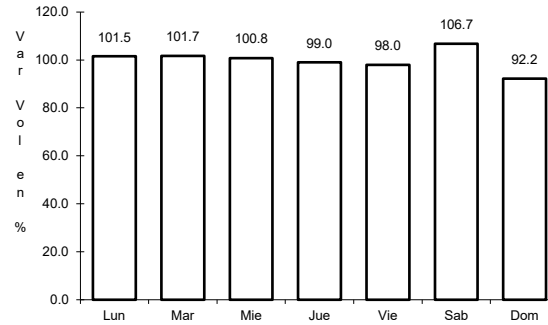
10 CARR: Santa Bárbara - Izúcar de Matamoros

CLAVE: 00451

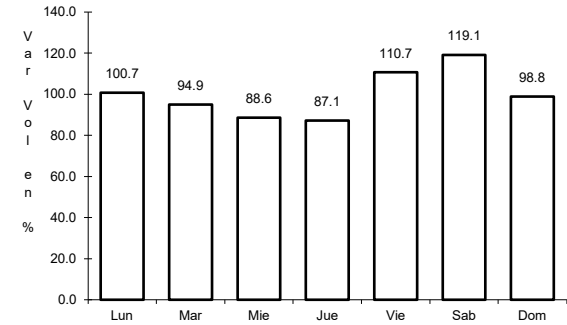
ruta: MEX-115-160



Km: 0.00      Tipo: 3      Sent: 1



Km: 0.00      Tipo: 3      Sent: 2

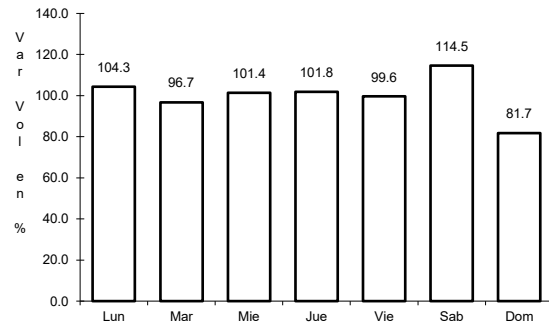


Km: 102.96      Tipo: 3      Sent: 0

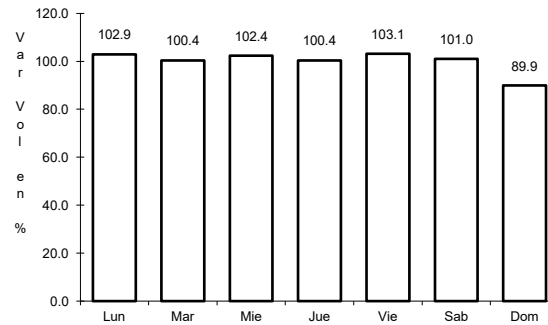
11 CARR: Cuernavaca - Acapulco (Cuota)

CLAVE: 00045

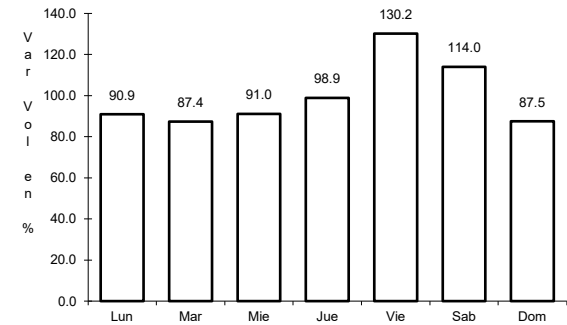
ruta: MEX-095D



Km: 0.00      Tipo: 3      Sent: 1



Km: 0.00      Tipo: 3      Sent: 2

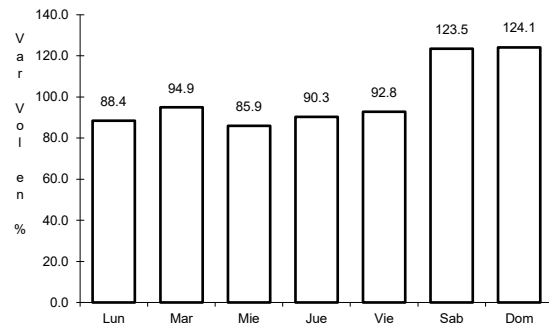


Km: 271.50      Tipo: 1      Sent: 1

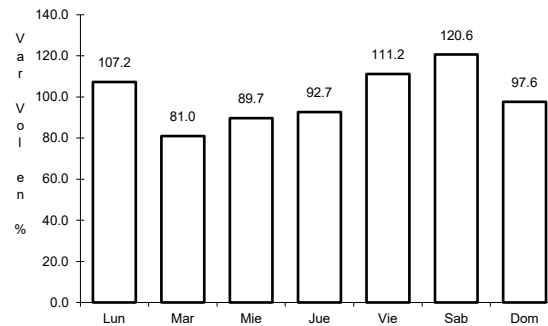
12 CARR: Jantetelco - El Higuero (Cuota)

CLAVE:

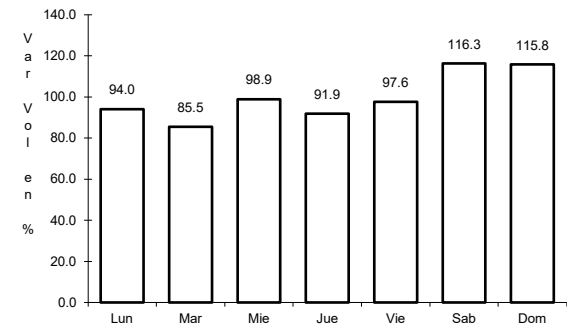
ruta: MEX-037-D



Km: 0.00      Tipo: 3      Sent: 0



Km: 30.00      Tipo: 1      Sent: 0

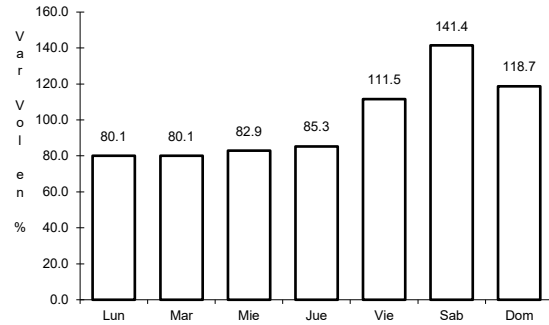


Km: 62.00      Tipo: 1      Sent: 0

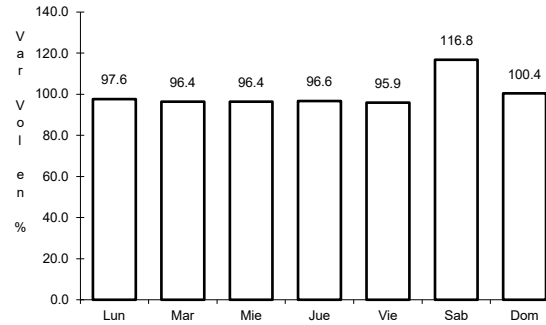
13 CARR: La Pera - Cuautla (Cuota)

CLAVE: 17161

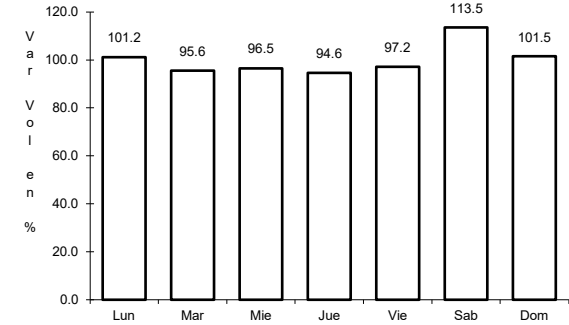
RUTA: MEX-160D



Km: 0.00      Tipo: 3      Sent: 0



Km: 34.16      Tipo: 1      Sent: 1

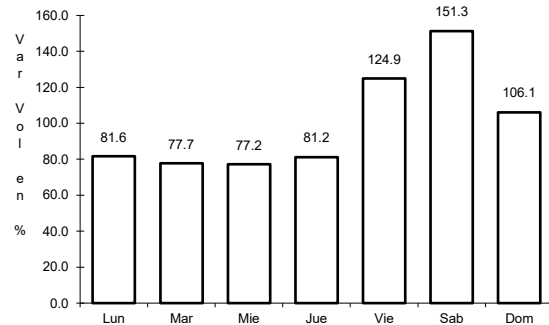


Km: 34.16      Tipo: 1      Sent: 2

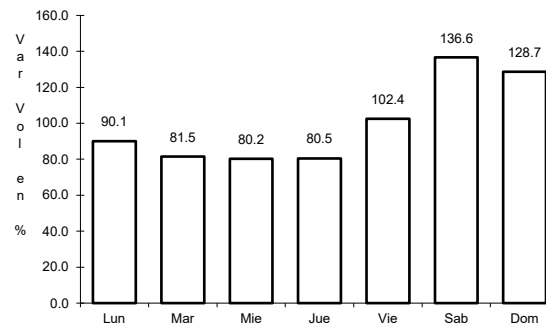
14 CARR: Libramiento Amecameca - Nepantla (Cuota)

CLAVE:

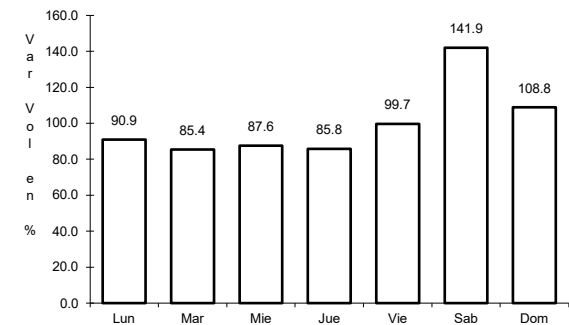
RUTA: MEX-115D



Km: 28.60      Tipo: 3      Sent: 1



Km: 28.60      Tipo: 3      Sent: 2

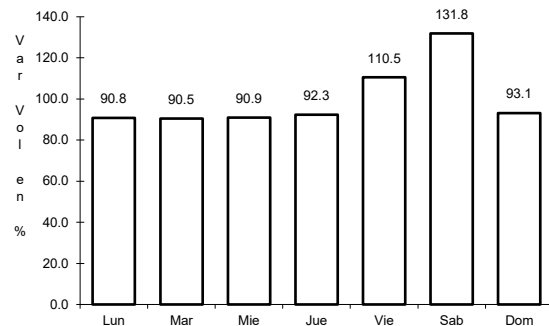


Km: 51.80      Tipo: 3      Sent: 1

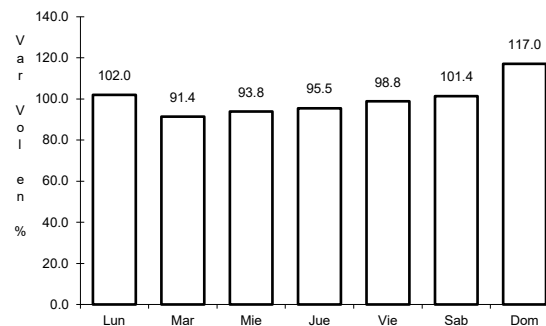
15 CARR: México - Cuernavaca (Cuota)

CLAVE: 00041

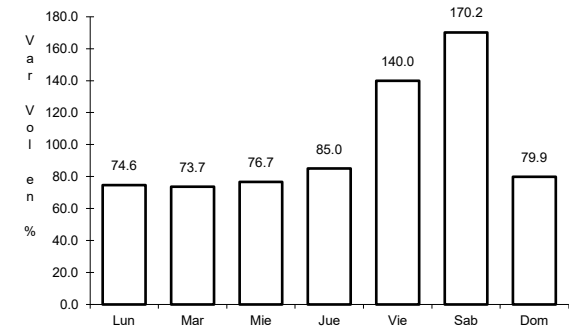
RUTA: MEX-095D



Km: 18.65      Tipo: 3      Sent: 1



Km: 18.65      Tipo: 3      Sent: 2

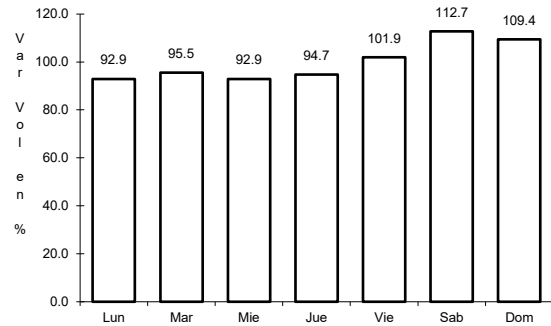


Km: 70.50      Tipo: 1      Sent: 1

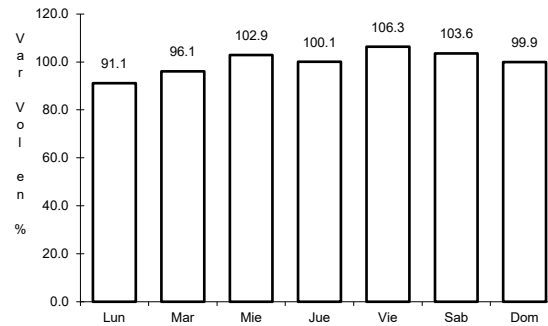
16 CARR: Puente de Ixtla - Iguala (Cuota)

CLAVE: 00043

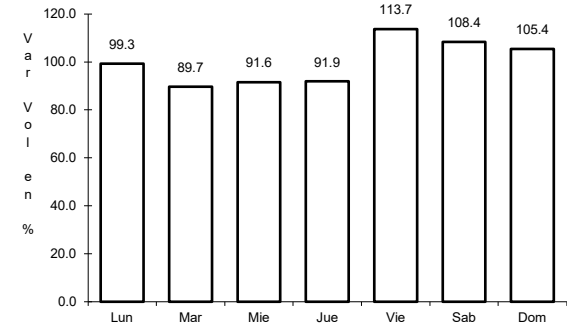
RUTA: MEX-091D



Km: 2.00      Tipo: 3      Sent: 0



Km: 33.58      Tipo: 3      Sent: 0

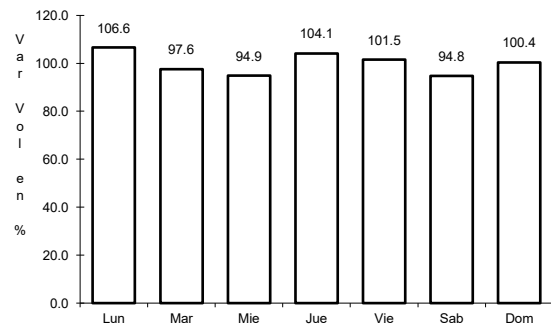


Km: 59.50      Tipo: 1      Sent: 0

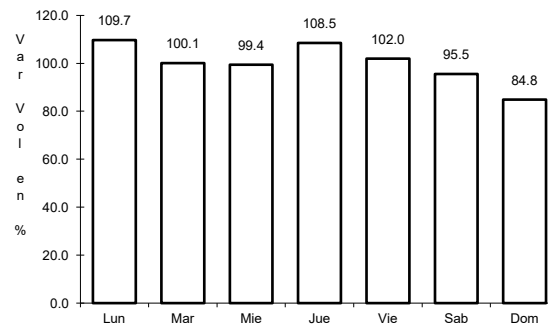
17 CARR: Alpuyecá - Jojutla

CLAVE: 17021

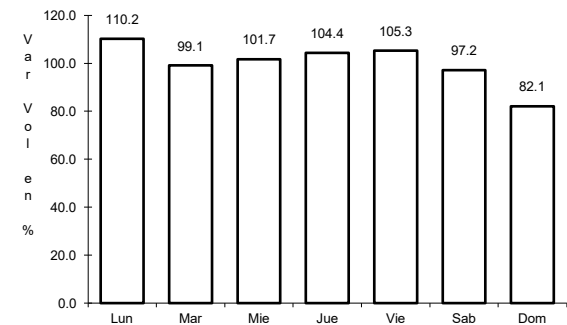
RUTA: MOR-021



Km: 2.20      Tipo: 1      Sent: 0



Km: 17.15      Tipo: 1      Sent: 1

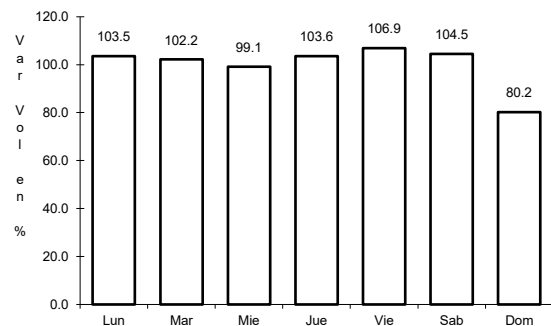


Km: 17.15      Tipo: 1      Sent: 2

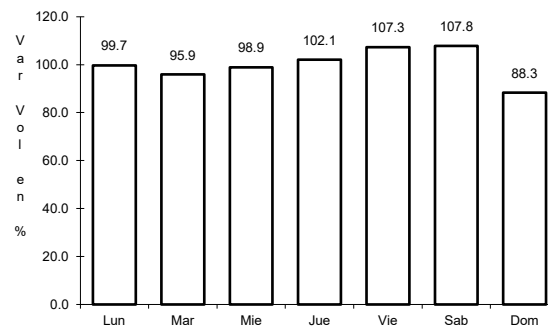
18 CARR: Amayuca - Izúcar de Matamoros

CLAVE: 00030

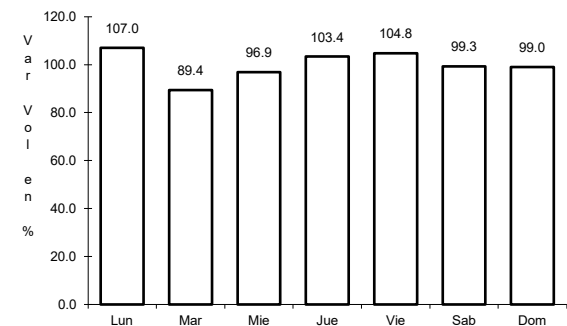
RUTA: MOR-031-PUE



Km: 0.66      Tipo: 3      Sent: 1



Km: 0.66      Tipo: 3      Sent: 2

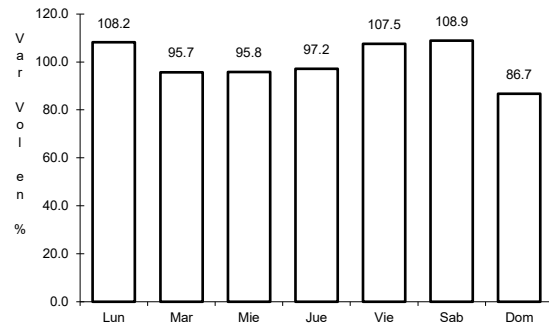


Km: 38.40      Tipo: 3      Sent: 0

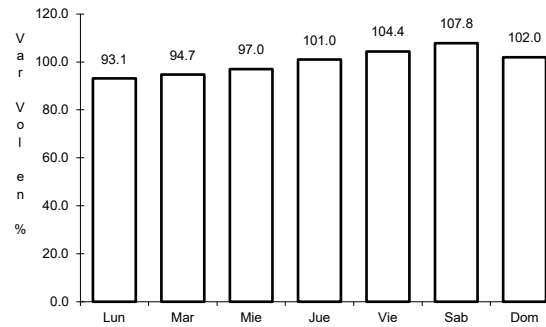
19 CARR: Amayuca - Tlacotepec

CLAVE: 17020

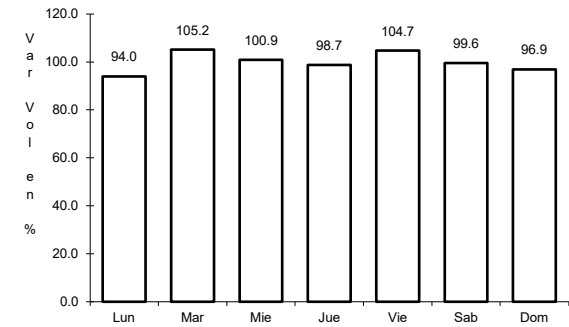
RUTA: MOR-017



Km: 0.00      Tipo: 3      Sent: 0



Km: 5.50      Tipo: 3      Sent: 0

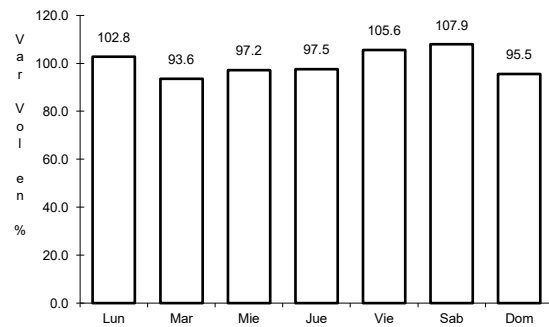


Km: 12.00      Tipo: 1      Sent: 0

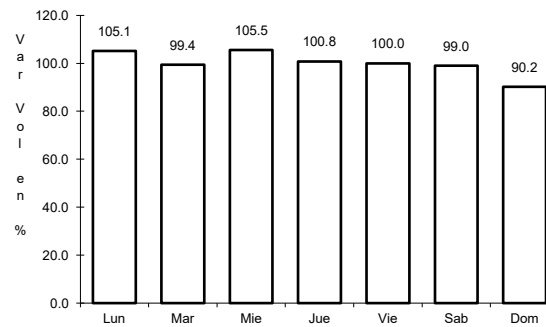
20 CARR: Atlatlahun - Tlayacapan

CLAVE: 17301

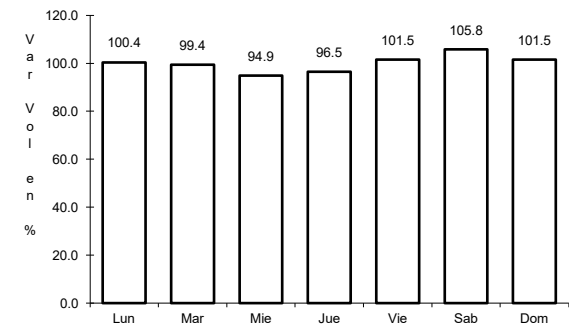
RUTA: MOR-002



Km: 1.50      Tipo: 1      Sent: 1



Km: 1.50      Tipo: 1      Sent: 2

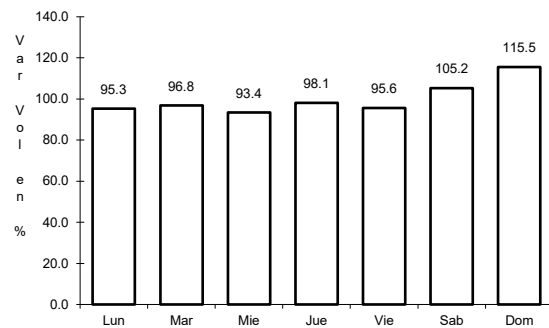


Km: 15.50      Tipo: 1      Sent: 0

21 CARR: Coatetelco - Miacatlán

CLAVE:

RUTA: MOR

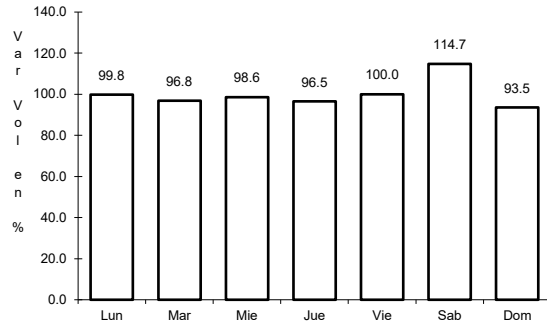


Km: 0.00      Tipo: 3      Sent: 0

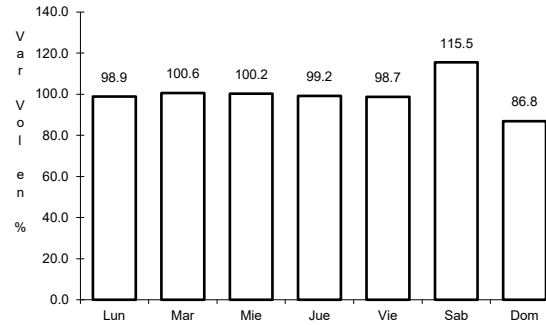
22 CARR: Cocoyoc - Oaxtepec

CLAVE: 17001

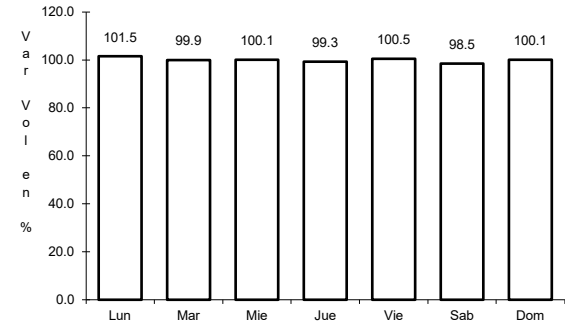
RUTA: MOR



Km: 0.00                      Tipo: 3                      Sent: 1



Km: 0.00                      Tipo: 3                      Sent: 2

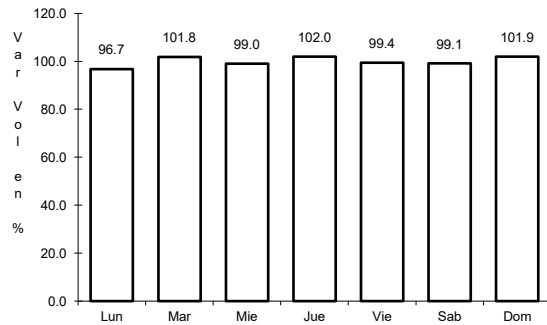


Km: 3.92                      Tipo: 1                      Sent: 0

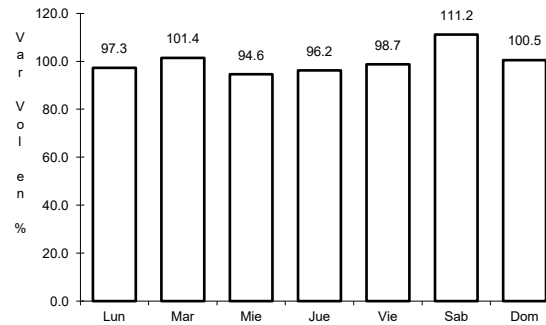
23 CARR: Ent. C. (Cuernavaca - Acapulco Cuota) - Tepetzingo

CLAVE: 00421

RUTA: MOR



Km: 0.00                      Tipo: 3                      Sent: 0

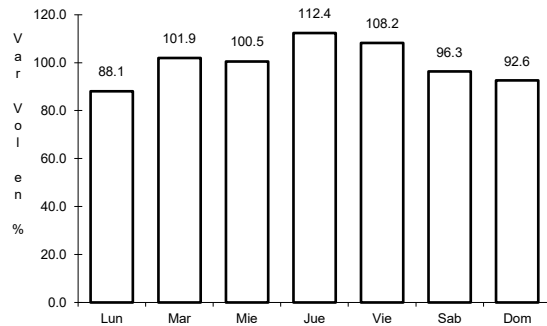


Km: 5.50                      Tipo: 1                      Sent: 0

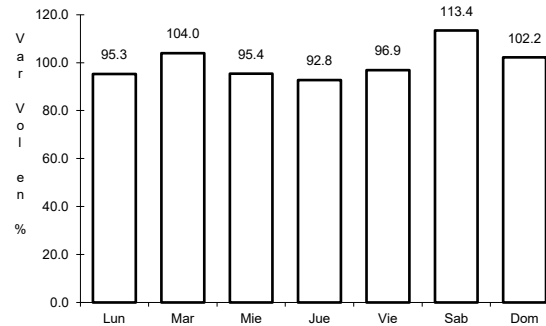
24 CARR: Ent. C. (Cuernavaca - Cuautlixco) - Oacalco

CLAVE: 00421

RUTA: MOR



Km: 0.00                      Tipo: 3                      Sent: 0



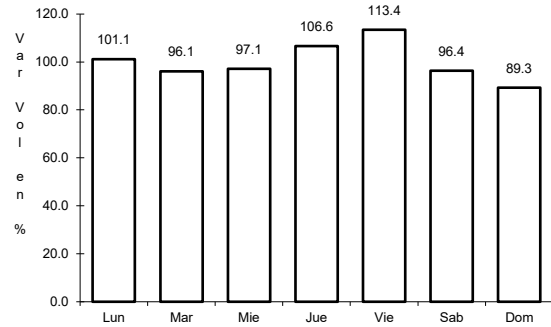
Km: 10.00                      Tipo: 1                      Sent: 0



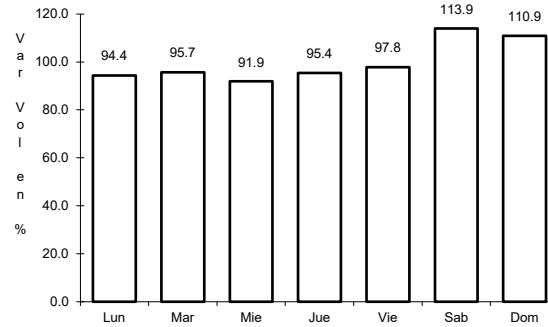
25 CARR: Ent. Chiverías - Ent. El Abanico

CLAVE: 17302

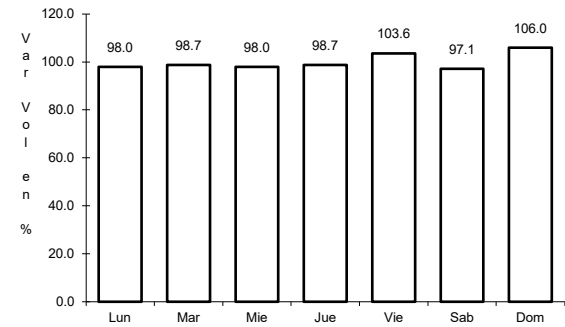
RUTA: MOR



Km: 0.00      Tipo: 3      Sent: 0



Km: 5.56      Tipo: 3      Sent: 0

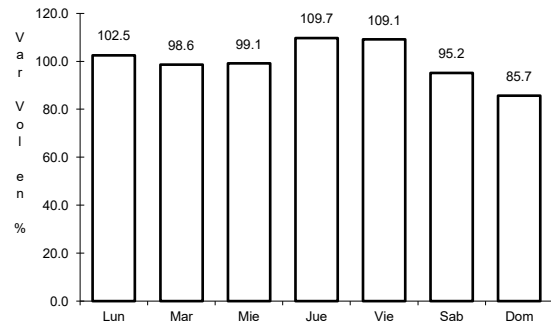


Km: 14.50      Tipo: 1      Sent: 0

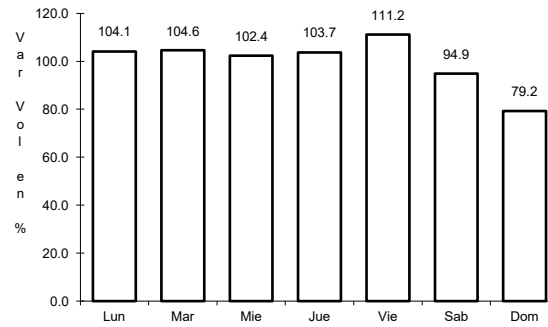
26 CARR: Galeana - Cuautla

CLAVE: 17004

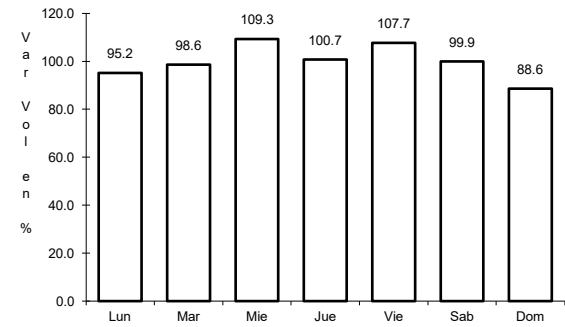
RUTA: MOR-004



Km: 0.00      Tipo: 3      Sent: 1



Km: 0.00      Tipo: 3      Sent: 2

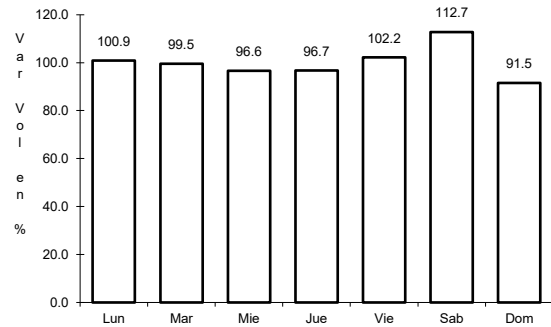


Km: 40.50      Tipo: 1      Sent: 1

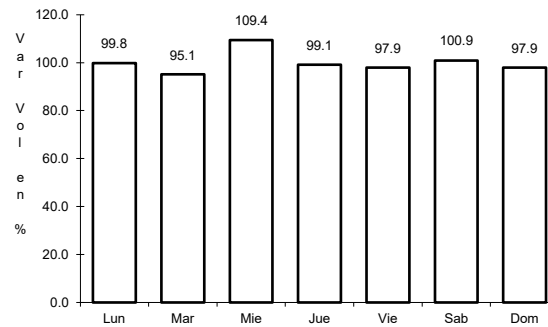
27 CARR: Jotutla - Chinameca

CLAVE: 17310

RUTA: MOR



Km: 0.00      Tipo: 3      Sent: 0

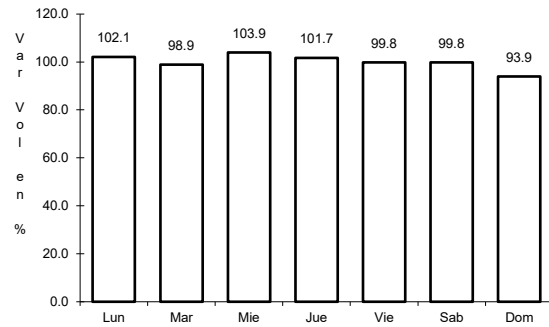


Km: 32.00      Tipo: 1      Sent: 0

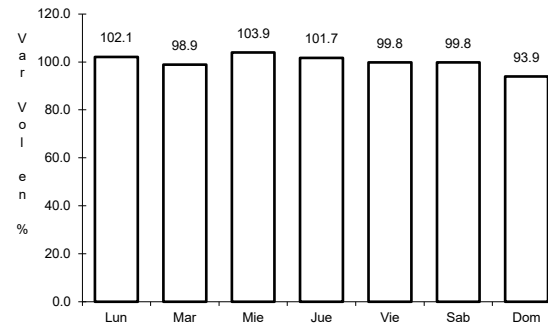
28 CARR: Jojutla - El Higuero

CLAVE: 17039

ruta: MOR-039



Km: 0.00      Tipo: 3      Sent: 0

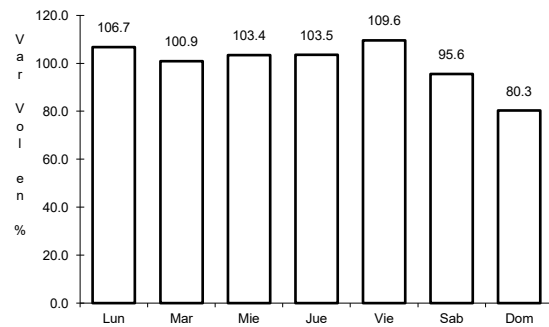


Km: 4.50      Tipo: 1      Sent: 0

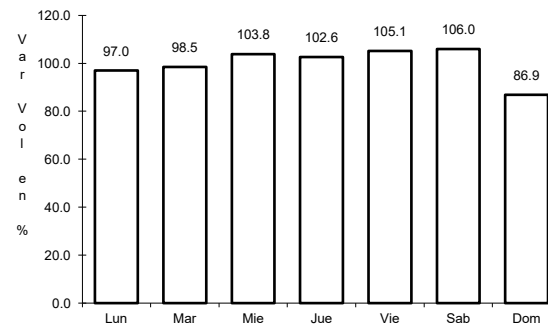
29 CARR: Los Alacranes - Ocuilco

CLAVE:

ruta: MOR



Km: 0.00      Tipo: 3      Sent: 0

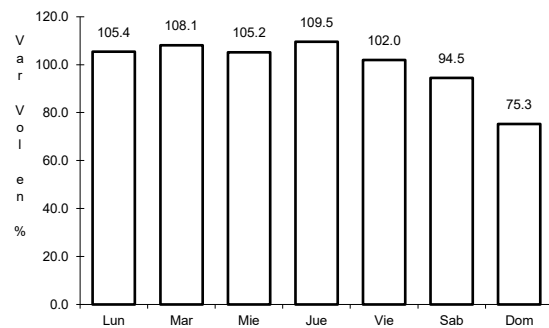


Km: 19.00      Tipo: 1      Sent: 0

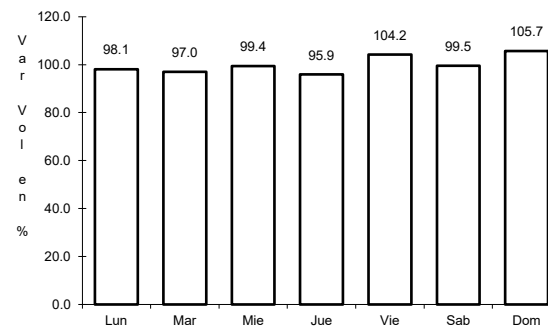
30 CARR: Mazatepec - T. C. Ramal a Michapa

CLAVE:

ruta: MOR



Km: 0.00      Tipo: 3      Sent: 0

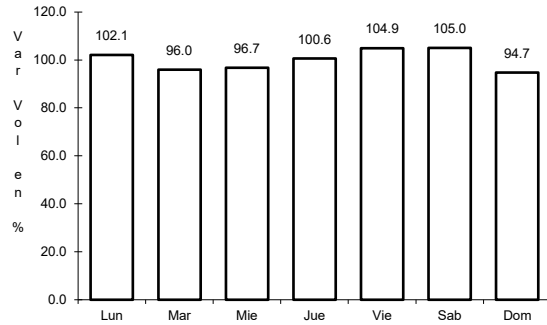


Km: 12.00      Tipo: 1      Sent: 0

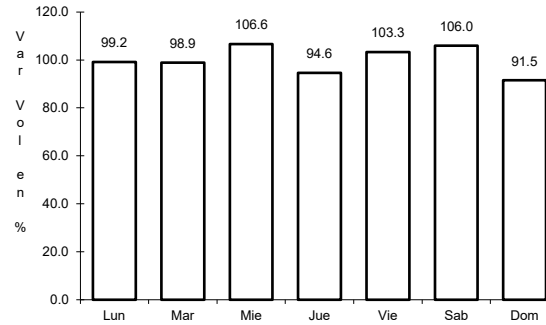
31 CARR: Moyotepec - San Rafael

CLAVE: 17306

RUTA: MOR



Km: 0.00      Tipo: 3      Sent: 0

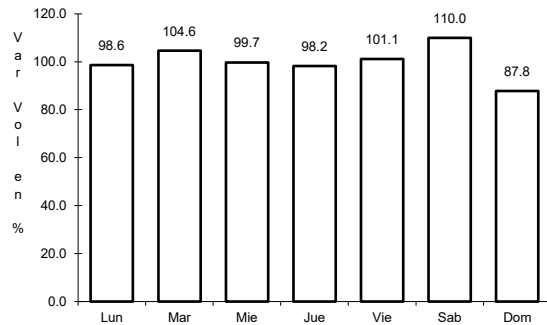


Km: 7.50      Tipo: 1      Sent: 0

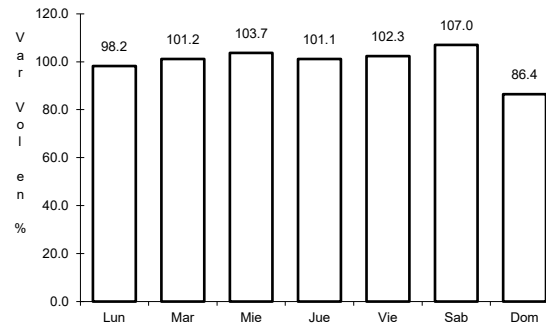
32 CARR: Paso por Yautepec

CLAVE: 17025

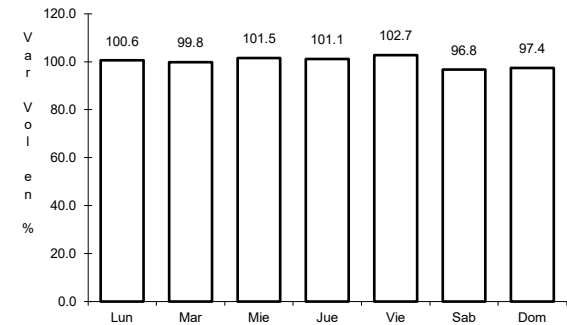
RUTA: MOR



Km: 0.00      Tipo: 3      Sent: 1



Km: 0.00      Tipo: 3      Sent: 2

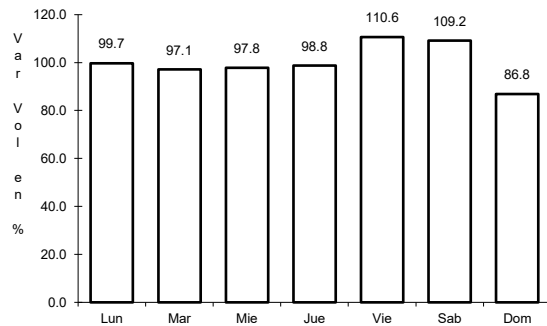


Km: 5.50      Tipo: 1      Sent: 1

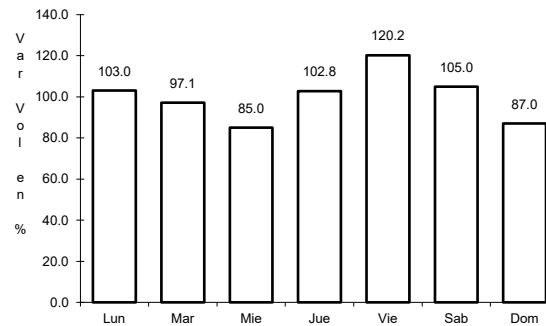
33 CARR: Pilares - T. C. (Xoxocotla - Tilzapotla)

CLAVE: 17008

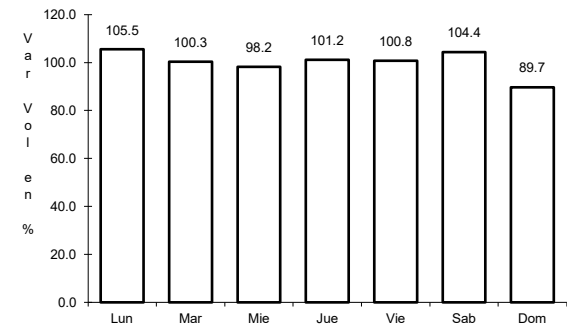
RUTA: MOR-008



Km: 0.00      Tipo: 3      Sent: 1



Km: 0.00      Tipo: 3      Sent: 2

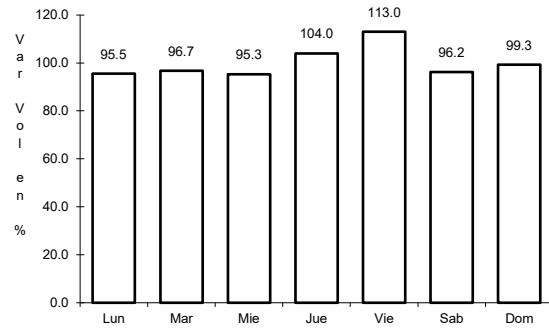


Km: 6.50      Tipo: 1      Sent: 0

34 CARR: Ramal a Aeropuerto de Cuernavaca

CLAVE: 17250

RUTA: MOR



Km: 0.00

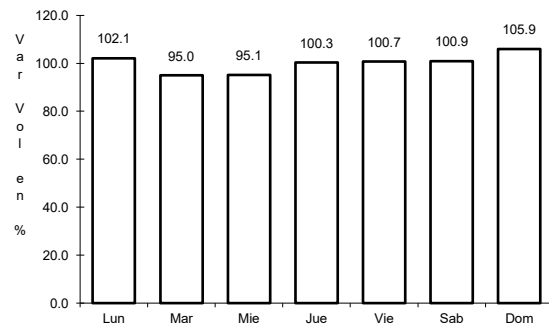
Tipo: 3

Sent: 0

35 CARR: Ramal a Coatetelco

CLAVE: 17304

RUTA: MOR



Km: 0.00

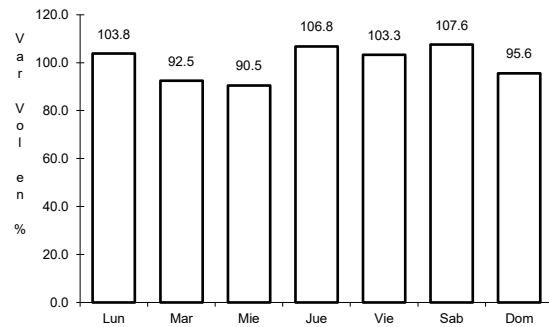
Tipo: 3

Sent: 0

36 CARR: Ramal a Jolalpan

CLAVE: 00143

RUTA: MOR-PUE



Km: 0.00

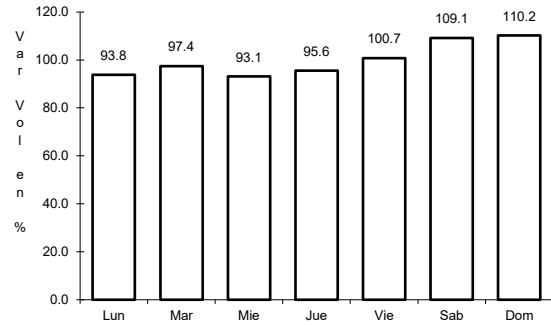
Tipo: 3

Sent: 0

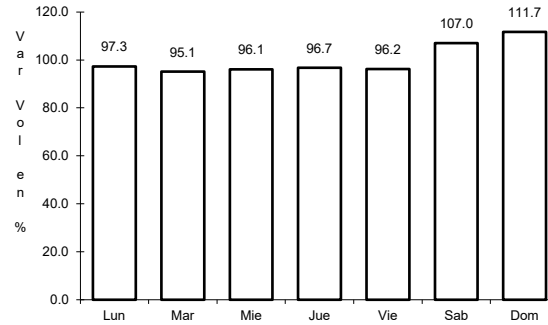
37 CARR: Ramal a Tetela del Volcán

CLAVE: 17010

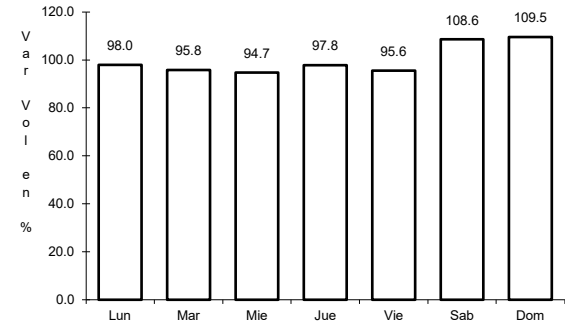
ruta: MOR-010



Km: 0.00 Tipo: 3 Sent: 1



Km: 0.00 Tipo: 3 Sent: 2

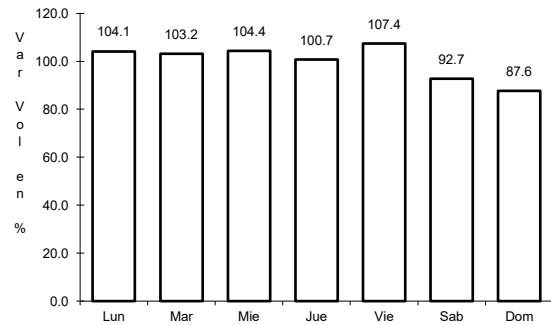


Km: 22.00 Tipo: 1 Sent: 0

38 CARR: T. C. (Coatetelco - Miacatlán) - Mazatepec

CLAVE:

ruta: MOR

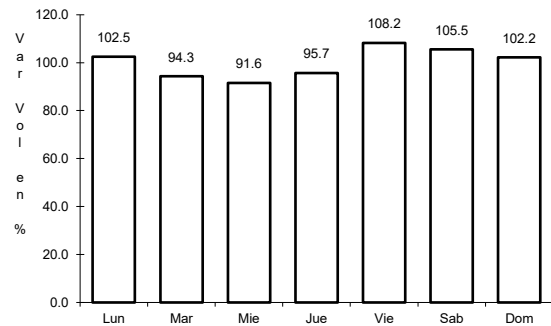


Km: 4.14 Tipo: 1 Sent: 0

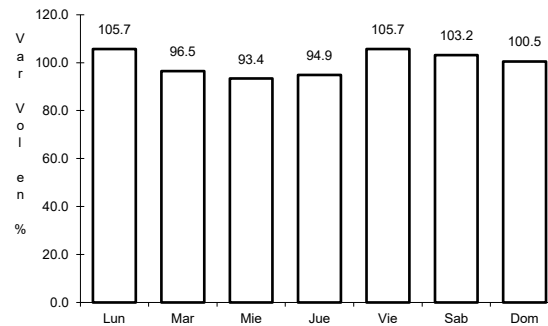
39 CARR: T. C. (México - Cuernavaca (Libre)) - Huitzilac

CLAVE: 00451

ruta: MOR



Km: 0.00 Tipo: 3 Sent: 0

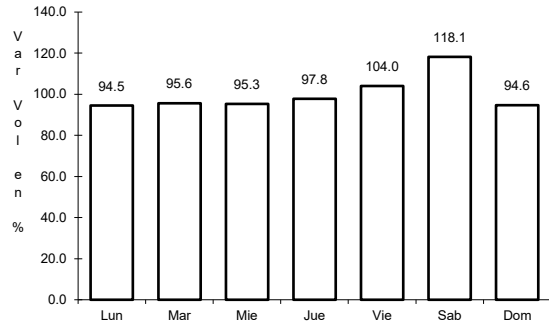


Km: 4.00 Tipo: 1 Sent: 0

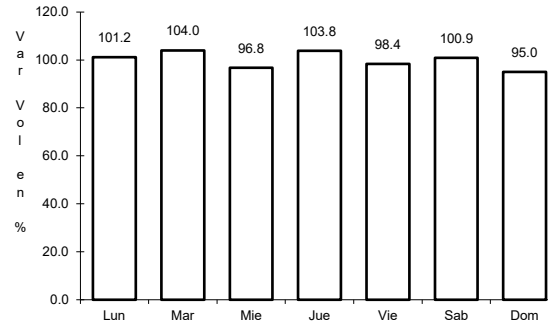
40 CARR: T. C. (San Gregorio - Oaxtepec) - Jojutla

CLAVE: 17002

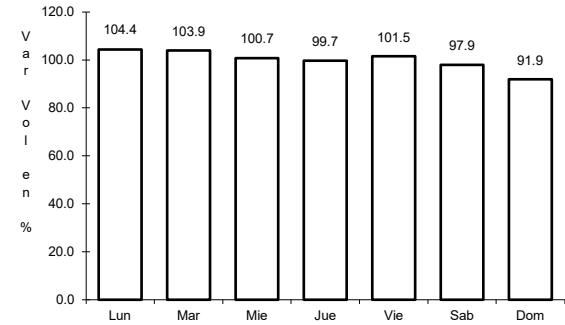
RUTA: MOR-002



Km: 0.00      Tipo: 3      Sent: 0



Km: 32.30      Tipo: 1      Sent: 0

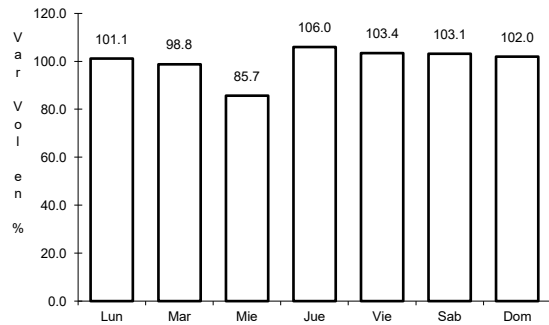


Km: 53.50      Tipo: 1      Sent: 0

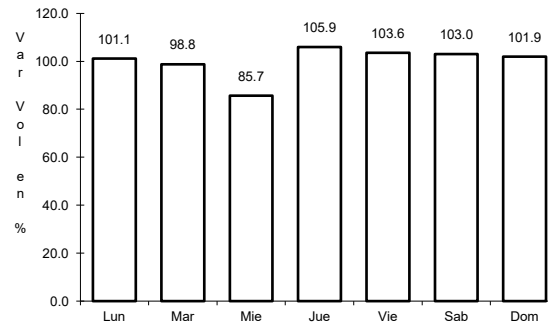
41 CARR: Tehuixtla - Puente de Ixtla

CLAVE: 17307

RUTA: MOR



Km: 0.00      Tipo: 3      Sent: 0

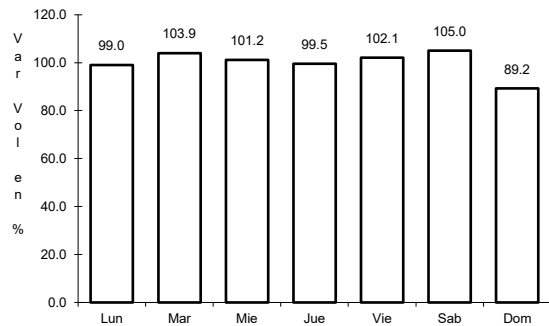


Km: 9.60      Tipo: 1      Sent: 0

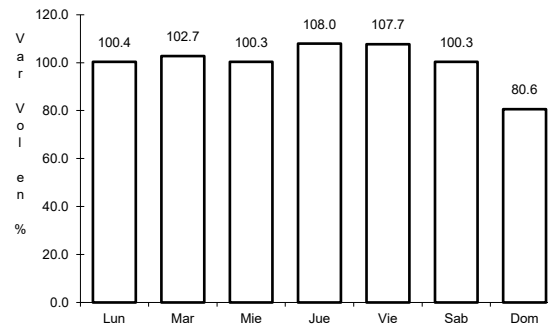
42 CARR: Tejalpa - Jojutla

CLAVE: 17014

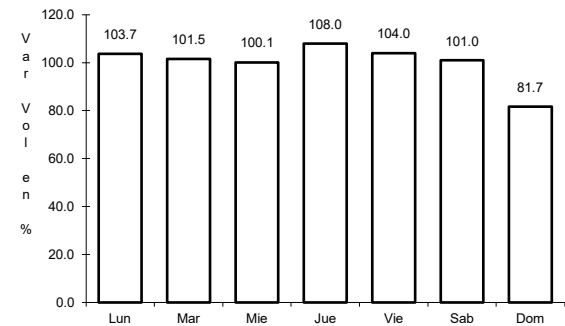
RUTA: MOR-014



Km: 1.97      Tipo: 3      Sent: 0



Km: 32.90      Tipo: 1      Sent: 0

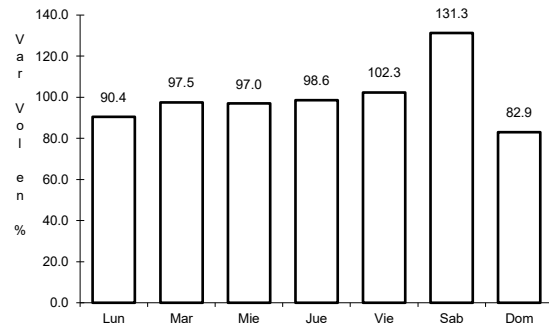


Km: 35.00      Tipo: 1      Sent: 0

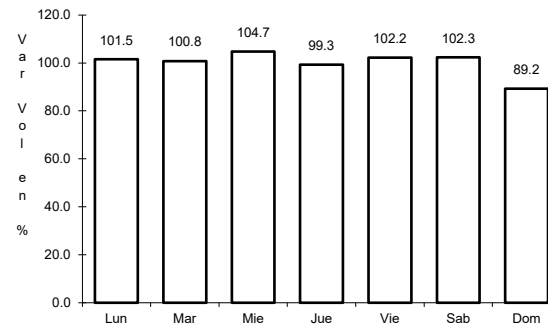
43 CARR: Temilpa - Tepalcingo

CLAVE: 17009

RUTA: MOR-009



Km: 0.00      Tipo: 3      Sent: 0

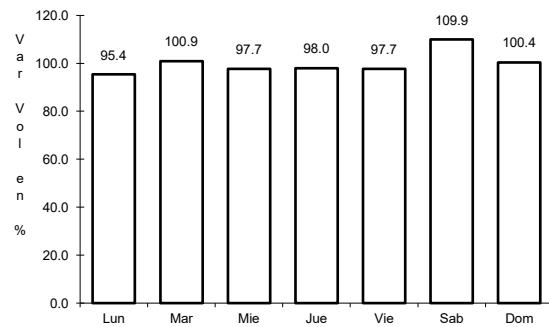


Km: 40.50      Tipo: 1      Sent: 0

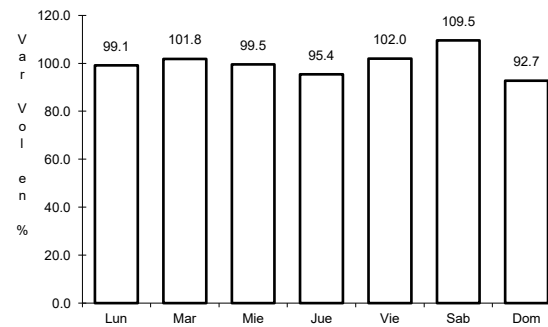
44 CARR: Tepoztlán - Yautepec

CLAVE: 17013

RUTA: MOR-013



Km: 0.00      Tipo: 3      Sent: 0

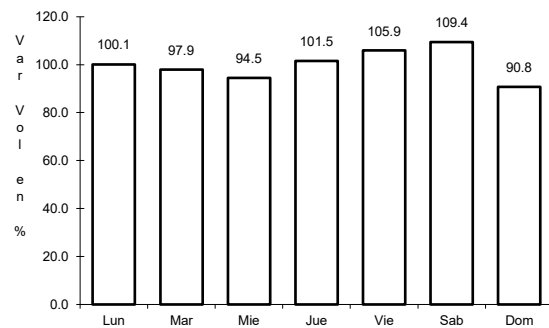


Km: 14.82      Tipo: 1      Sent: 0

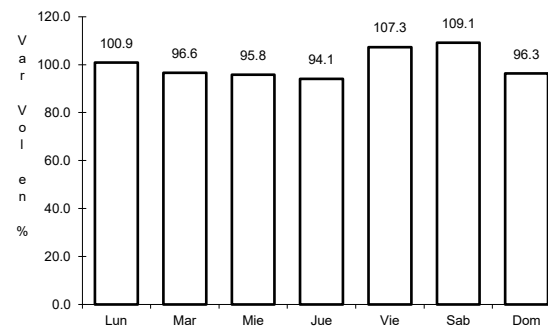
45 CARR: Tequesquitengo - Jojutla

CLAVE: 17013

RUTA: MOR



Km: 0.00      Tipo: 3      Sent: 1

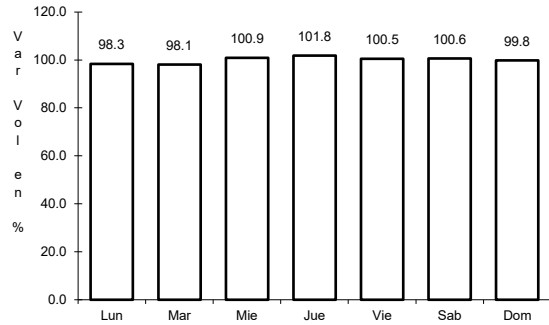


Km: 0.00      Tipo: 3      Sent: 2

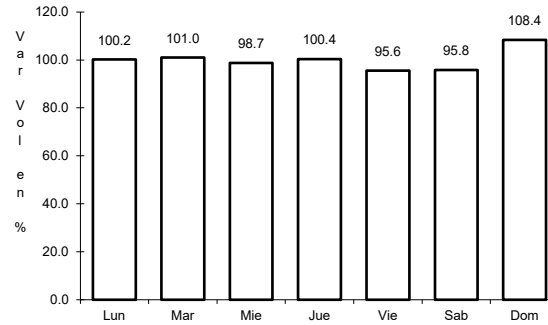
46 CARR: Xoxocotla - Tilzapotla

CLAVE: 17005

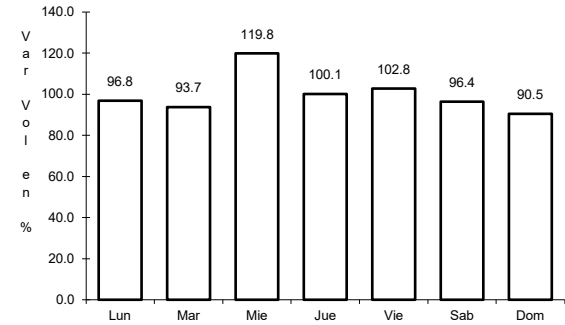
RUTA: MOR-006



Km: 0.00      Tipo: 3      Sent: 1



Km: 0.00      Tipo: 3      Sent: 2

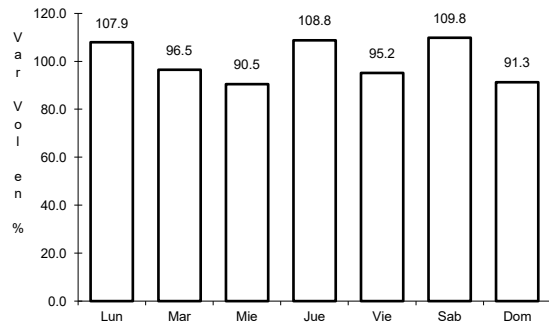


Km: 29.50      Tipo: 1      Sent: 0

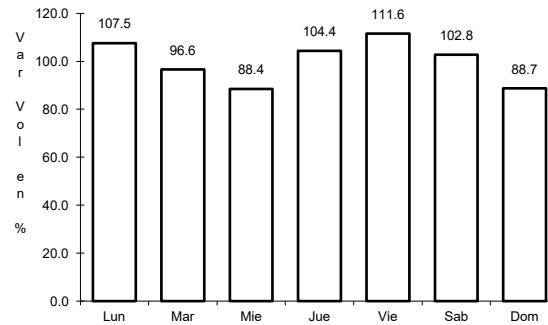
47 CARR: Zacatepec - Tlaquiltenango

CLAVE: 17300

RUTA: MOR



Km: 0.00      Tipo: 3      Sent: 0

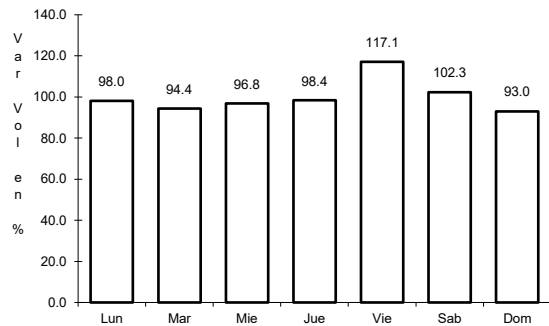


Km: 4.08      Tipo: 1      Sent: 0

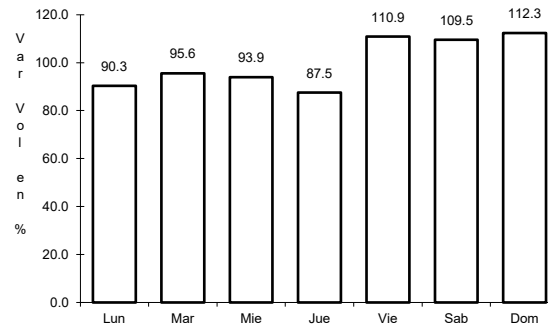
48 CARR: Atlixco - Jantetelco (Cuota)

CLAVE: 00430

RUTA: PUE-D



Km: 0.00      Tipo: 3      Sent: 0



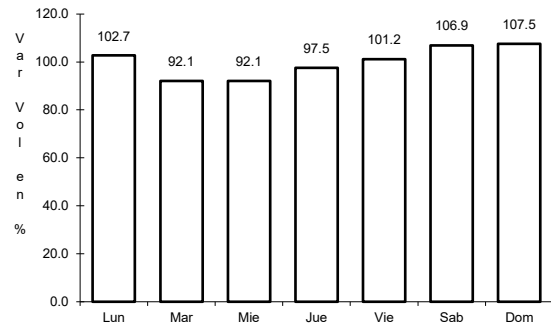
Km: 54.90      Tipo: 1      Sent: 0



49 CARR: Tres Marías - Santa Martha

CLAVE: 00172

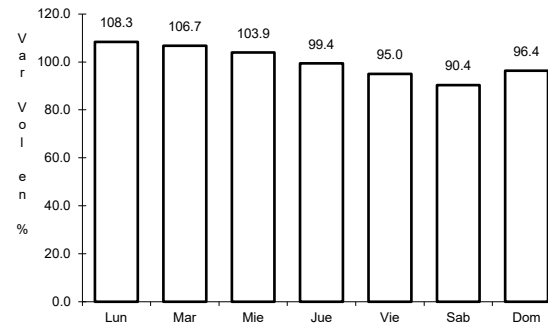
RUTA: MEX-106-EM



Km: 0.00

Tipo: 3

Sent: 0



Km: 28.35

Tipo: 1

Sent: 0

