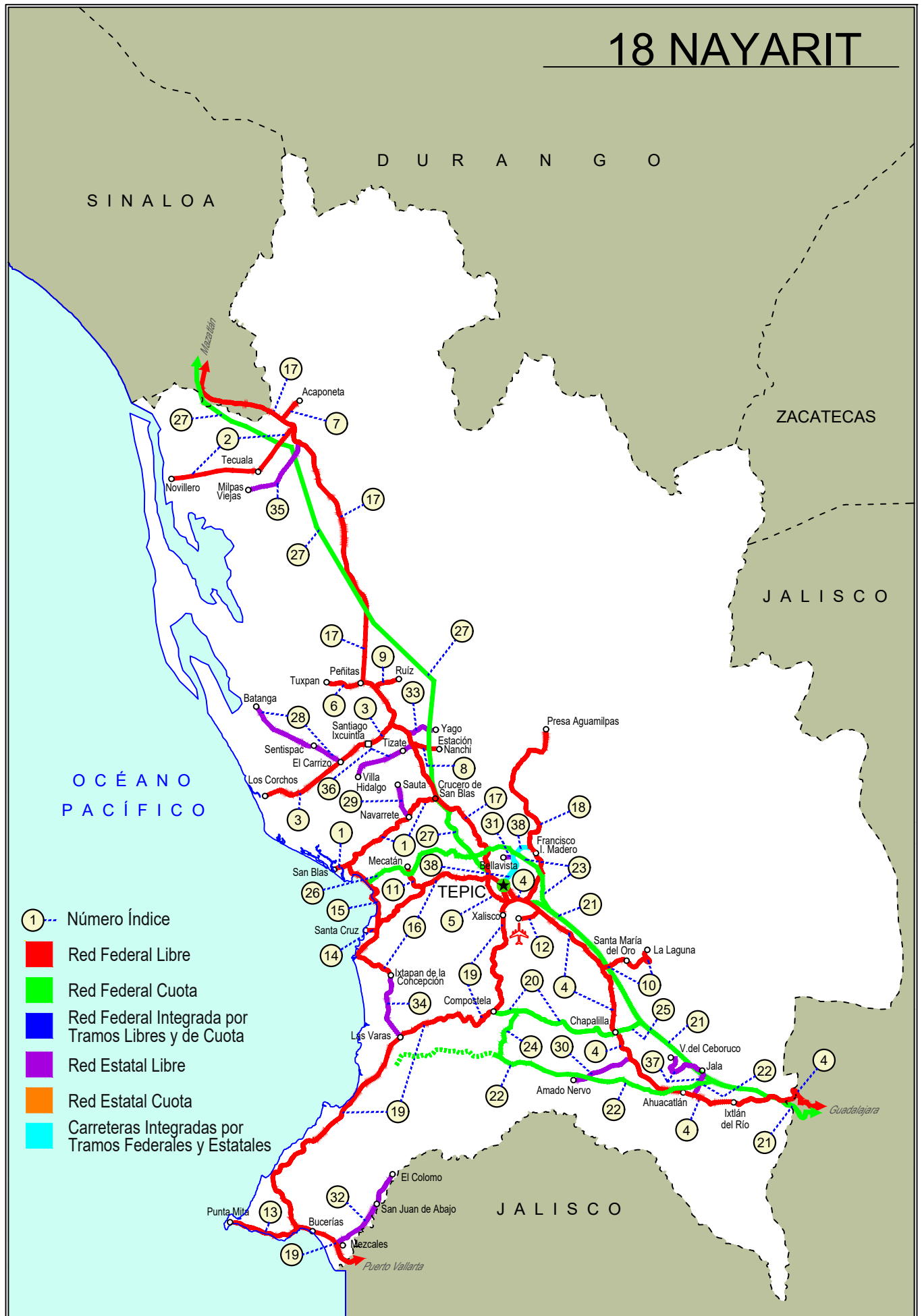


# NAYARIT

NO. INDICE CARRETERA		RUTA
	---RED FEDERAL LIBRE---	
1	Crucero de San Blas - San Blas	MEX-015
2	Ent. Acaponeta - El Novillero	MEX-015
3	Ent. Santiago Ixcuintla - Playa Los Corchos	MEX-015
4	Guadalajara - Tepic	MEX-015
5	Libramiento de Tepic	MEX-015
6	Peñitas - Tuxpan	MEX-015
7	Ramal a Acaponeta	MEX-015
8	Ramal a Estación Nanchi	MEX-015
9	Ramal a Estación Ruíz	MEX-015
10	Ramal a La Laguna de Santa María	MEX-015
11	Ramal a Mecatán	MEX-015
12	Ramal a Nuevo Aeropuerto de Tepic	MEX-015
13	Ramal a Punta Mita	MEX-200
14	Ramal a Santa Cruz	MEX-015
15	Santa Cruz - San Blas	MEX-015
16	Tepic - Ixtapan de La Concepción	MEX-015
17	Tepic - Mazatlán	MEX-015
18	Tepic - Presa Aguamilpa	MEX-015
19	Tepic - Puerto Vallarta	MEX-200
	---RED FEDERAL DE CUOTA---	
20	Chapalilla - Compostela (Cuota)	MEX-068D
21	Guadalajara - Tepic (Cuota)	MEX-015D
22	Jala - Puerto Vallarta (Cuota)	MEX-070D
23	Libramiento de Tepic (Cuota)	MEX-015D
24	Ramal a Compostela (Cuota)	MEX-200D
25	Ramal a Tequepexpan	MEX-015D
26	Tepic - San Blas (Cuota)	MEX-D
27	Tepic - Villa Unión (cuota)	MEX-015D
	---RED ESTATAL LIBRE---	
28	El Carrizo - La Batanga	NAY-078
29	Navarrete - Sauta	NAY-013
30	Ramal a Amado Nervo	NAY
31	Ramal a Bellavista	NAY-059
32	Ramal a El Colomo	NAY
33	Ramal a Estación Yago	NAY
34	Ramal a Ixtapan de La Concepción	NAY
35	Ramal a Milpas Viejas	NAY
36	Ramal a Villa Hidalgo	NAY
37	Ramal a Volcán del Ceboruco	NAY
	---CARRETERAS INTEGRADAS POR TRAMOS FEDERALES Y ESTATALES---	
38	Tepic - Francisco I. Madero	NAY-MEX

# 18 NAYARIT





NAYARIT

1 CARR: Crucero de San Blas - San Blas

CLAVE: 18229

RUTA: MEX-015

AÑO: 2022

LUGAR	ESTACION				CLASIFICACION VEHICULAR EN PORCIENTO										COORDENADAS					
	KM	TE	SC	TDPA	M	A	B	C2	C3	T3S2	T3S3	T3S2R4	OTROS	A	B	C	K'	D	LATITUD	LONGITUD
T. C. Tepic - Mazatlán	0.00	3	0	2225	12.1	77.0	1.9	3.3	3.2	1.8	0.3	0.4	0.0	89.1	1.9	9.0	0.082	0.523	21.691372	-105.055222
Navarrete	11.00	3	0	2558	20.3	70.5	1.5	2.8	2.5	1.6	0.4	0.4	0.0	90.8	1.5	7.7	0.084	0.510	21.646558	-105.124441
San Blas	36.00	1	0	5802	12.5	77.8	0.5	7.2	0.6	0.6	0.6	0.1	0.1	90.3	0.5	9.2	0.108	0.501	21.544688	-105.269462

2 CARR: Ent. Acaponeta - El Novillero

CLAVE: 18023

RUTA: MEX-015

AÑO: 2022

LUGAR	ESTACION				CLASIFICACION VEHICULAR EN PORCIENTO										COORDENADAS					
	KM	TE	SC	TDPA	M	A	B	C2	C3	T3S2	T3S3	T3S2R4	OTROS	A	B	C	K'	D	LATITUD	LONGITUD
T. C. Tepic - Mazatlán	0.00	3	0	5220	14.2	77.1	2.9	3.2	1.5	0.7	0.2	0.2	0.0	91.3	2.9	5.8	0.079	0.533	22.486311	-105.385375
Tecuala	13.00	1	0	5258	19.3	72.5	2.8	3.2	1.3	0.6	0.2	0.1	0.0	91.8	2.8	5.4	0.081	0.533	22.424053	-105.440507
Tecuala	13.00	3	0	6146	27.2	70.5	0.4	1.3	0.3	0.1	0.1	0.1	0.0	97.7	0.4	1.9	0.090	0.501	22.399485	-105.486893
El Novillero	36.00	1	0	2105	25.5	71.3	0.5	1.8	0.9	0.0	0.0	0.0	0.0	96.8	0.5	2.7	0.128	0.508	22.382504	-105.659312

3 CARR: Ent. Santiago Ixcuintla - Playa Los Corchos

CLAVE: 18016

RUTA: MEX-015

AÑO: 2022

LUGAR	ESTACION				CLASIFICACION VEHICULAR EN PORCIENTO										COORDENADAS					
	KM	TE	SC	TDPA	M	A	B	C2	C3	T3S2	T3S3	T3S2R4	OTROS	A	B	C	K'	D	LATITUD	LONGITUD
T. C. Tepic - Mazatlán	0.00	3	1	2983	8.9	81.1	2.6	3.4	1.7	1.2	0.5	0.4	0.2	90.0	2.6	7.4	0.082	0.505	21.845750	-105.161280
T. C. Tepic - Mazatlán	0.00	3	2	3046	8.6	82.0	2.3	3.2	1.8	1.0	0.5	0.4	0.2	90.6	2.3	7.1	0.087	0.505	21.845702	-105.161213
Santiago Ixcuintla	8.00	1	1	4454	18.0	74.3	1.9	2.1	1.8	0.9	0.5	0.3	0.2	92.3	1.9	5.8	0.066	0.502	21.823324	-105.183210
Santiago Ixcuintla	8.00	1	2	4420	17.8	74.4	2.0	2.2	1.5	1.0	0.5	0.4	0.2	92.2	2.0	5.8	0.076	0.502	21.823267	-105.183150
Santiago Ixcuintla	8.00	3	0	8156	23.2	71.0	1.0	1.7	1.3	0.8	0.4	0.4	0.2	94.2	1.0	4.8	0.088	0.521	21.809057	-105.223161
T. Der. Mexcaltitán	17.00	1	0	5609	21.1	74.7	0.6	1.4	1.2	0.5	0.2	0.2	0.1	95.8	0.6	3.6	0.092	0.503	21.773063	-105.271597
T. Der. Mexcaltitán	17.00	3	0	4681	21.0	72.3	1.1	4.5	0.8	0.2	0.1	0.0	0.0	93.3	1.1	5.6	0.074	0.502	21.770429	-105.275229
Playa Los Corchos	39.00	1	0	1485	25.9	71.9	0.3	1.6	0.2	0.0	0.1	0.0	0.0	97.8	0.3	1.9	0.152	0.504	21.697484	-105.449118

4 CARR: Guadalajara - Tepic

CLAVE: 00031

RUTA: MEX-015

AÑO: 2022

LUGAR	ESTACION				CLASIFICACION VEHICULAR EN PORCIENTO										COORDENADAS					
	KM	TE	SC	TDPA	M	A	B	C2	C3	T3S2	T3S3	T3S2R4	OTROS	A	B	C	K'	D	LATITUD	LONGITUD
Guadalajara	0.00	0	0																	
T. Der. Base Aérea No. 2	8.30	3	1	45426	2.3	85.4	2.0	4.4	1.9	2.7	0.5	0.6	0.2	87.7	2.0	10.3	0.074	0.515	20.712746	-103.469542
T. Der. Base Aérea No. 2	8.30	3	2	42545	2.3	85.6	2.0	4.3	1.9	2.6	0.5	0.6	0.2	87.9	2.0	10.1	0.071	0.515	20.712671	-103.469728
T. Izq. La Primavera	20.50	1	1	27490	2.6	84.1	2.7	4.6	1.6	2.9	0.7	0.6	0.2	86.7	2.7	10.6	0.078	0.502	20.728165	-103.552040
T. Izq. La Primavera	20.50	1	2	27658	2.6	84.1	2.9	4.5	1.6	2.8	0.7	0.6	0.2	86.7	2.9	10.4	0.082	0.502	20.728027	-103.552055

NAYARIT

4 CARR: Guadalajara - Tepic

CLAVE: 00031

RUTA: MEX-015

AÑO: 2022

LUGAR	ESTACION				CLASIFICACION VEHICULAR EN PORCIENTO										COORDENADAS					
	KM	TE	SC	TDPA	M	A	B	C2	C3	T3S2	T3S3	T3S2R4	OTROS	A	B	C	K'	D	LATITUD	LONGITUD
T. C. Guadalajara - Tepic (Cuota)	22.75	0	0																	
El Arenal	36.20	1	1	7927	2.5	87.3	1.3	4.5	1.5	2.0	0.5	0.3	0.1	89.8	1.3	8.9	0.096	0.518	20.772038	-103.684498
El Arenal	36.20	1	2	8510	2.5	87.3	1.4	4.5	1.5	2.0	0.4	0.3	0.1	89.8	1.4	8.8	0.077	0.518	20.771990	-103.684572
Tequila	57.50	3	0	7745	6.2	81.6	1.4	5.2	2.0	1.8	1.0	0.3	0.5	87.8	1.4	10.8	0.078	0.512	20.895662	-103.836428
Magdalena	76.80	3	0	6375	6.8	81.3	1.9	4.5	1.6	2.0	1.0	0.3	0.6	88.1	1.9	10.0	0.093	0.503	20.922684	-103.996593
Lim. Edos. Term. Jal. Ppia. Nay.	123.09	0	0																	
Ixtlán del Río	138.84	1	0	4346	7.5	79.9	1.7	4.8	1.9	2.7	1.1	0.3	0.1	87.4	1.7	10.9	0.080	0.534	21.032979	-104.349220
Ixtlán del Río	138.84	3	0	9533	10.9	79.8	1.9	5.1	0.8	0.9	0.4	0.2	0.0	90.7	1.9	7.4	0.090	0.512	21.037032	-104.395746
Ahuacatlán	152.00	1	1	3883	7.1	78.7	2.5	4.8	2.0	3.8	0.8	0.3	0.0	85.8	2.5	11.7	0.082	0.541	21.053730	-104.474994
Ahuacatlán	152.00	1	2	4583	5.8	77.9	3.2	5.2	2.2	4.2	1.3	0.2	0.0	83.7	3.2	13.1	0.074	0.541	21.053638	-104.475064
Ahuacatlán	152.00	3	1	3478	9.1	76.4	1.6	5.8	1.8	3.9	1.2	0.1	0.1	85.5	1.6	12.9	0.077	0.540	21.058798	-104.493493
Ahuacatlán	152.00	3	2	4078	12.9	69.8	2.7	6.2	2.2	4.3	1.2	0.2	0.5	82.7	2.7	14.6	0.067	0.540	21.058693	-104.493527
X. C. Jala - Puerto Vallarta (Cuota)	154.65	3	0	5480	7.0	75.0	3.0	5.1	2.8	4.8	1.9	0.3	0.1	82.0	3.0	15.0	0.082	0.510	21.061360	-104.517319
T. Izq. Amado Nervo	167.32	1	0	4830	5.0	72.1	4.6	5.5	3.8	5.7	2.4	0.8	0.1	77.1	4.6	18.3	0.080	0.530	21.128969	-104.601560
Tequepexpan	174.70	0	0																	
T. Izq. Compostela	175.50	1	0	6233	4.2	75.3	2.9	5.5	3.8	4.8	1.9	1.3	0.3	79.5	2.9	17.6	0.095	0.518	21.186975	-104.633187
T. Izq. Compostela	175.50	3	0	4606	5.8	74.3	2.9	4.6	4.0	4.7	1.8	1.6	0.3	80.1	2.9	17.0	0.071	0.528	21.197763	-104.645637
T. Der. Santa María del Oro	196.00	1	0	4601	3.2	76.2	3.2	4.9	3.2	6.5	2.1	0.5	0.2	79.4	3.2	17.4	0.075	0.525	21.324414	-104.669817
T. Der. Santa María del Oro	196.00	3	0	6446	3.7	78.7	2.8	4.1	3.1	5.2	1.8	0.5	0.1	82.4	2.8	14.8	0.076	0.514	21.331237	-104.674912
T. Izq. Aeropuerto de Tepic	215.68	1	0	11688	10.2	79.1	1.2	2.1	1.6	2.7	0.5	2.2	0.4	89.3	1.2	9.5	0.081	0.531	21.446590	-104.811295
San Cayetano	215.90	3	1	8526	5.5	86.6	1.2	1.5	2.1	1.2	0.8	0.9	0.2	92.1	1.2	6.7	0.080	0.511	21.455492	-104.822112
San Cayetano	215.90	3	2	8916	5.8	86.6	1.3	1.4	2.2	1.2	0.6	0.8	0.1	92.4	1.3	6.3	0.085	0.511	21.455483	-104.822257
T. Izq. Libramiento de Tepic (Lateral)	219.10	1	1	4309	17.9	69.0	1.6	3.2	5.5	1.5	0.5	0.6	0.2	86.9	1.6	11.5	0.097	0.507	21.467844	-104.840659
T. Izq. Libramiento de Tepic (Central)	219.10	1	1	15932	8.8	76.1	2.9	3.5	4.2	2.7	0.9	0.7	0.2	84.9	2.9	12.2	0.080	0.528	21.467762	-104.840688
T. Izq. Libramiento de Tepic (Lateral)	219.10	1	2	4428	17.9	68.2	1.8	3.4	5.7	1.7	0.6	0.5	0.2	86.1	1.8	12.1	0.105	0.507	21.467600	-104.840707
T. Izq. Libramiento de Tepic (Central)	219.10	1	2	14246	8.6	75.9	3.1	3.4	4.8	2.6	0.8	0.7	0.1	84.5	3.1	12.4	0.076	0.528	21.467690	-104.840698
T. Izq. Libramiento de Tepic	219.10	3	1	14321	6.2	85.5	1.0	4.1	1.4	1.1	0.2	0.4	0.1	91.7	1.0	7.3	0.078	0.521	21.470027	-104.847211
T. Izq. Libramiento de Tepic	219.10	3	2	15563	6.1	84.8	1.9	4.0	1.2	1.3	0.2	0.4	0.1	90.9	1.9	7.2	0.081	0.521	21.470000	-104.847365
Tepic (Lateral)	224.80	1	1	12117	12.1	75.9	1.6	4.9	1.6	1.3	1.9	0.5	0.2	88.0	1.6	10.4	0.071	0.525	21.472237	-104.853231
Tepic (Central)	224.80	1	1	23244	5.6	82.9	1.2	4.4	1.1	2.0	1.8	0.8	0.2	88.5	1.2	10.3	0.076	0.505	21.472156	-104.853280
Tepic (Central)	224.80	1	2	23689	5.6	82.9	1.2	4.4	1.1	2.0	1.8	0.8	0.2	88.5	1.2	10.3	0.069	0.505	21.472075	-104.853280
Tepic (Lateral)	224.80	1	2	10944	14.4	73.6	1.8	4.9	1.5	1.2	1.8	0.5	0.3	88.0	1.8	10.2	0.071	0.525	21.472002	-104.853299

NAYARIT

5 CARR: Libramiento de Tepic

CLAVE: 18232

RUTA: MEX-015

AÑO: 2022

LUGAR	ESTACION				CLASIFICACION VEHICULAR EN PORCIENTO										COORDENADAS					
	KM	TE	SC	TDPA	M	A	B	C2	C3	T3S2	T3S3	T3S2R4	OTROS	A	B	C	K'	D	LATITUD	LONGITUD
T. C. Guadalajara - Tepic	0.00	0	0																	
X. C. Tepic - Puerto Vallarta	5.00	1	1	33169	6.8	86.5	1.3	1.4	1.8	1.6	0.3	0.2	0.1	93.3	1.3	5.4	0.092	0.514	21.468422	-104.884876
X. C. Tepic - Puerto Vallarta	5.00	1	2	31155	6.2	87.0	1.2	1.9	1.5	1.7	0.2	0.2	0.1	93.2	1.2	5.6	0.075	0.514	21.468142	-104.884953
T. C. Tepic - Mazatlán	18.80	1	1	17326	6.5	83.1	3.0	2.8	1.3	2.2	0.2	0.8	0.1	89.6	3.0	7.4	0.078	0.507	21.518707	-104.925294
T. C. Tepic - Mazatlán	18.80	1	2	16833	6.6	83.3	2.5	2.8	1.3	2.3	0.2	0.9	0.1	89.9	2.5	7.6	0.102	0.507	21.518463	-104.925448

6 CARR: Peñitas - Tuxpan

CLAVE: 18019

RUTA: MEX-015

AÑO: 2022

LUGAR	ESTACION				CLASIFICACION VEHICULAR EN PORCIENTO										COORDENADAS					
	KM	TE	SC	TDPA	M	A	B	C2	C3	T3S2	T3S3	T3S2R4	OTROS	A	B	C	K'	D	LATITUD	LONGITUD
Peñitas	0.00	3	0	7662	23.0	71.4	0.5	1.5	2.5	0.7	0.1	0.3	0.0	94.4	0.5	5.1	0.072	0.504	21.942085	-105.227971
Tuxpan	9.00	1	0	7635	22.4	74.5	0.5	1.7	0.5	0.2	0.1	0.1	0.0	96.9	0.5	2.6	0.094	0.518	21.942156	-105.280433

7 CARR: Ramal a Acaponeta

CLAVE: 18038

RUTA: MEX-015

AÑO: 2022

LUGAR	ESTACION				CLASIFICACION VEHICULAR EN PORCIENTO										COORDENADAS					
	KM	TE	SC	TDPA	M	A	B	C2	C3	T3S2	T3S3	T3S2R4	OTROS	A	B	C	K'	D	LATITUD	LONGITUD
T. C. Tepic - Mazatlán	0.00	3	1	6968	19.5	69.4	2.3	6.5	0.8	0.5	0.4	0.3	0.3	88.9	2.3	8.8	0.074	0.501	22.489504	-105.380772
T. C. Tepic - Mazatlán	0.00	3	2	6998	19.7	69.6	2.2	6.4	0.8	0.4	0.3	0.3	0.3	89.3	2.2	8.5	0.080	0.501	22.489612	-105.380758
Acaponeta	3.00	0	0																	

8 CARR: Ramal a Estación Nanchi

CLAVE: 18068

RUTA: MEX-015

AÑO: 2022

LUGAR	ESTACION				CLASIFICACION VEHICULAR EN PORCIENTO										COORDENADAS					
	KM	TE	SC	TDPA	M	A	B	C2	C3	T3S2	T3S3	T3S2R4	OTROS	A	B	C	K'	D	LATITUD	LONGITUD
T. C. Tepic - Mazatlán	0.00	3	0	1067	30.1	64.4	0.6	1.9	1.2	0.6	0.2	0.2	0.8	94.5	0.6	4.9	0.086	0.506	21.810405	-105.098307
Estación Nanchi	5.00	0	0																	

9 CARR: Ramal a Estación Ruíz

CLAVE: 18026

RUTA: MEX-015

AÑO: 2022

LUGAR	ESTACION				CLASIFICACION VEHICULAR EN PORCIENTO										COORDENADAS					
	KM	TE	SC	TDPA	M	A	B	C2	C3	T3S2	T3S3	T3S2R4	OTROS	A	B	C	K'	D	LATITUD	LONGITUD
T. C. Tepic - Mazatlán	0.00	3	0	5250	14.0	76.9	0.8	2.7	2.7	0.7	0.7	0.8	0.7	90.9	0.8	8.3	0.088	0.504	21.935286	-105.190077
Estación Ruíz	5.50	1	0	5282	27.5	65.0	0.9	1.6	1.1	1.1	1.0	1.0	0.8	92.5	0.9	6.6	0.082	0.505	21.943148	-105.168106

NAYARIT

10 CARR: Ramal a La Laguna de Santa María

CLAVE: 18005

RUTA: MEX-015

AÑO: 2022

LUGAR	ESTACION				CLASIFICACION VEHICULAR EN PORCIENTO										COORDENADAS					
	KM	TE	SC	TDPA	M	A	B	C2	C3	T3S2	T3S3	T3S2R4	OTROS	A	B	C	K'	D	LATITUD	LONGITUD
T. C. Guadalajara - Tepic	0.00	3	0	4972	3.1	86.4	2.3	4.2	1.8	1.3	0.7	0.2	0.0	89.5	2.3	8.2	0.106	0.501	21.326924	-104.668644
Santa María del Oro	11.50	1	1	2394	13.9	80.6	0.9	2.4	1.3	0.4	0.1	0.2	0.2	94.5	0.9	4.6	0.099	0.503	21.326203	-104.595167
Santa María del Oro	11.50	1	2	2423	13.8	81.0	0.8	2.3	1.3	0.3	0.1	0.2	0.2	94.8	0.8	4.4	0.116	0.503	21.326275	-104.595215
Laguna de Santa María	20.00	1	0	944	18.5	74.8	0.6	5.0	0.9	0.1	0.0	0.1	0.0	93.3	0.6	6.1	0.224	0.517	21.359780	-104.570779

11 CARR: Ramal a Mecatán

CLAVE: 18010

RUTA: MEX-015

AÑO: 2022

LUGAR	ESTACION				CLASIFICACION VEHICULAR EN PORCIENTO										COORDENADAS					
	KM	TE	SC	TDPA	M	A	B	C2	C3	T3S2	T3S3	T3S2R4	OTROS	A	B	C	K'	D	LATITUD	LONGITUD
T. C. (Tepic - Mazatlán) - Ixtapan de La Concepción	0.00	3	0	1129	8.5	88.3	0.2	0.2	1.5	1.0	0.1	0.2	0.0	96.8	0.2	3.0	0.074	0.526	21.500236	-105.084787
Mecatán	9.00	0	0																	

12 CARR: Ramal a Nuevo Aeropuerto de Tepic

CLAVE: 18012

RUTA: MEX-015

AÑO: 2022

LUGAR	ESTACION				CLASIFICACION VEHICULAR EN PORCIENTO										COORDENADAS					
	KM	TE	SC	TDPA	M	A	B	C2	C3	T3S2	T3S3	T3S2R4	OTROS	A	B	C	K'	D	LATITUD	LONGITUD
T. C. Guadalajara - Tepic	0.00	3	0	5344	16.7	69.3	0.2	1.4	9.0	2.4	0.4	0.5	0.1	86.0	0.2	13.8	0.105	0.536	21.444648	-104.820051
Aeropuerto de Tepic	5.00	0	0																	

13 CARR: Ramal a Punta Mita

CLAVE: 18020

RUTA: MEX-200

AÑO: 2022

LUGAR	ESTACION				CLASIFICACION VEHICULAR EN PORCIENTO										COORDENADAS					
	KM	TE	SC	TDPA	M	A	B	C2	C3	T3S2	T3S3	T3S2R4	OTROS	A	B	C	K'	D	LATITUD	LONGITUD
T. C. Tepic - Puerto Vallarta	0.00	3	0	19533	9.5	83.5	0.7	3.9	1.5	0.4	0.3	0.2	0.0	93.0	0.7	6.3	0.090	0.506	20.759627	-105.374789
San Ignacio	9.00	3	0	8817	5.9	81.6	2.0	8.3	1.4	0.4	0.3	0.1	0.0	87.5	2.0	10.5	0.111	0.508	20.756773	-105.454713
Punta Mita	18.00	0	0																	

14 CARR: Ramal a Santa Cruz

CLAVE: 18030

RUTA: MEX-015

AÑO: 2022

LUGAR	ESTACION				CLASIFICACION VEHICULAR EN PORCIENTO										COORDENADAS					
	KM	TE	SC	TDPA	M	A	B	C2	C3	T3S2	T3S3	T3S2R4	OTROS	A	B	C	K'	D	LATITUD	LONGITUD
T. C. Tepic - Ixtapan de La Concepción	0.00	0	0																	
Santa Cruz	1.30	1	0	3328	33.1	65.3	0.2	0.8	0.5	0.0	0.0	0.0	0.1	98.4	0.2	1.4	0.087	0.501	21.433217	-105.190575



NAYARIT

15 CARR: Santa Cruz - San Blas

CLAVE: 18230

RUTA: MEX-015

AÑO: 2022

LUGAR	ESTACION				CLASIFICACION VEHICULAR EN PORCIENTO													COORDENADAS		
	KM	TE	SC	TDPA	M	A	B	C2	C3	T3S2	T3S3	T3S2R4	OTROS	A	B	C	K'	D	LATITUD	LONGITUD
Santa Cruz	0.00	3	0	3980	11.5	74.0	1.4	5.3	4.3	1.6	1.0	0.7	0.2	85.5	1.4	13.1	0.092	0.505	21.435958	-105.186731
Playa Los Cocos	3.90	1	0	4128	17.1	77.9	1.0	1.2	1.1	1.2	0.3	0.2	0.0	95.0	1.0	4.0	0.079	0.525	21.462057	-105.187752
Aticama	5.00	3	0	5231	32.1	62.8	0.8	1.3	1.2	0.9	0.2	0.6	0.1	94.9	0.8	4.3	0.117	0.511	21.487872	-105.191340
T. C. Crucero San Blas - San Blas	17.00	1	0	6248	19.6	76.0	0.8	1.4	1.0	0.8	0.2	0.2	0.0	95.6	0.8	3.6	0.111	0.504	21.537480	-105.249253

16 CARR: Tepic - Ixtapan de La Concepción

CLAVE: 18028

RUTA: MEX-015

AÑO: 2022

LUGAR	ESTACION				CLASIFICACION VEHICULAR EN PORCIENTO													COORDENADAS		
	KM	TE	SC	TDPA	M	A	B	C2	C3	T3S2	T3S3	T3S2R4	OTROS	A	B	C	K'	D	LATITUD	LONGITUD
T. C. Tepic - Mazatlán	0.00	3	0	15308	10.7	85.6	0.2	2.5	0.9	0.1	0.0	0.0	0.0	96.3	0.2	3.5	0.097	0.517	21.518315	-104.938763
T. Der. Mecatán	19.00	1	0	1327	10.4	85.6	0.8	1.8	1.0	0.4	0.0	0.0	0.0	96.0	0.8	3.2	0.118	0.501	21.501001	-105.081646
T. Der. Mecatán	19.00	3	0	2714	11.0	81.9	1.3	3.5	2.1	0.2	0.0	0.0	0.0	92.9	1.3	5.8	0.101	0.504	21.497742	-105.082863
Jalcocotán	27.00	1	0	2805	17.6	78.4	0.6	1.8	1.1	0.3	0.1	0.1	0.0	96.0	0.6	3.4	0.087	0.509	21.484172	-105.090270
T. Der. Santa Cruz	50.00	3	0	3952	27.5	67.2	1.2	1.6	1.0	1.3	0.1	0.1	0.0	94.7	1.2	4.1	0.079	0.513	21.423444	-105.183674
Ixtapan de La Concepción	77.42	1	0	2155	15.7	78.0	1.4	1.8	1.3	1.7	0.1	0.0	0.0	93.7	1.4	4.9	0.122	0.501	21.313007	-105.155147

17 CARR: Tepic - Mazatlán

CLAVE: 00499

RUTA: MEX-015

AÑO: 2022

LUGAR	ESTACION				CLASIFICACION VEHICULAR EN PORCIENTO													COORDENADAS		
	KM	TE	SC	TDPA	M	A	B	C2	C3	T3S2	T3S3	T3S2R4	OTROS	A	B	C	K'	D	LATITUD	LONGITUD
Tepic (Alta)	0.00	3	1	14525	6.0	91.2	0.3	0.4	1.1	0.7	0.1	0.1	0.1	97.2	0.3	2.5	0.072	0.502	21.511934	-104.905878
Tepic (Baja)	0.00	3	1	10285	7.9	87.1	0.4	2.3	1.8	0.2	0.2	0.1	0.0	95.0	0.4	4.6	0.072	0.506	21.511981	-104.905798
Tepic (Baja)	0.00	3	2	10028	7.9	87.1	0.4	2.3	1.8	0.2	0.2	0.1	0.0	95.0	0.4	4.6	0.066	0.506	21.511799	-104.905960
Tepic (Alta)	0.00	3	2	14650	6.0	91.3	0.3	0.3	1.1	0.7	0.1	0.1	0.1	97.3	0.3	2.4	0.060	0.502	21.511888	-104.905913
T. Izq. Libramiento de Tepic (Baja)	2.56	1	1	10895	7.8	86.6	0.4	3.0	1.7	0.2	0.2	0.1	0.0	94.4	0.4	5.2	0.085	0.506	21.521137	-104.921683
T. Izq. Libramiento de Tepic (Alta)	2.56	1	1	10604	2.3	96.8	0.1	0.3	0.2	0.1	0.1	0.1	0.0	99.1	0.1	0.8	0.084	0.529	21.521048	-104.921707
T. Izq. Libramiento de Tepic (Baja)	2.56	1	2	10621	7.8	86.4	0.4	3.1	1.8	0.2	0.2	0.1	0.0	94.2	0.4	5.4	0.077	0.506	21.520916	-104.921826
T. Izq. Libramiento de Tepic (Alta)	2.56	1	2	11235	2.6	96.4	0.1	0.3	0.3	0.1	0.1	0.1	0.0	99.0	0.1	0.9	0.082	0.529	21.520990	-104.921745
T. Izq. Aut. Tepic - Ent. San Blas (Cuota)	3.70	3	0	8168	6.2	77.6	3.1	3.5	3.4	4.0	1.3	0.8	0.1	83.8	3.1	13.1	0.077	0.516	21.538995	-104.934454
Los Otates	19.80	3	0	4480	2.2	75.8	5.0	4.7	3.1	5.6	1.8	1.6	0.2	78.0	5.0	17.0	0.082	0.516	21.640246	-104.972741
T. Izq. Jumatán	28.52	1	0	5151	3.3	76.0	4.0	3.5	3.8	6.1	2.3	0.9	0.1	79.3	4.0	16.7	0.073	0.512	21.669610	-105.021750
T. Izq. Jumatán	28.52	3	1	7941	5.4	67.5	5.7	4.4	2.8	8.7	1.4	3.5	0.6	72.9	5.7	21.4	0.073	0.513	21.668046	-105.029902
T. Izq. Jumatán	28.52	3	2	8380	6.2	66.7	5.7	4.4	2.8	8.7	1.4	3.5	0.6	72.9	5.7	21.4	0.086	0.513	21.667935	-105.029870
T. Izq. San Blas	33.54	1	1	8228	1.4	78.1	2.6	3.2	1.7	9.0	0.5	3.2	0.3	79.5	2.6	17.9	0.084	0.500	21.679320	-105.042453
T. Izq. San Blas	33.54	1	2	8226	1.4	78.2	2.6	3.2	1.6	9.0	0.6	3.1	0.3	79.6	2.6	17.8	0.092	0.500	21.679355	-105.042840

NAYARIT

17 CARR: Tepic - Mazatlán

CLAVE: 00499

RUTA: MEX-015

AÑO: 2022

LUGAR	ESTACION				CLASIFICACION VEHICULAR EN PORCIENTO													COORDENADAS		
	KM	TE	SC	TDPA	M	A	B	C2	C3	T3S2	T3S3	T3S2R4	OTROS	A	B	C	K'	D	LATITUD	LONGITUD
T. Izq. San Blas	33.54	3	1	7737	2.8	70.3	5.6	0.8	2.6	12.3	2.0	2.9	0.7	73.1	5.6	21.3	0.071	0.508	21.704630	-105.055305
T. Izq. San Blas	33.54	3	2	7981	2.4	71.1	5.5	0.9	2.5	12.1	2.0	2.8	0.7	73.5	5.5	21.0	0.080	0.508	21.704573	-105.055429
T. Izq. Villa Hidalgo	48.12	1	0	8600	2.2	74.8	2.2	7.6	3.3	5.9	2.6	0.8	0.6	77.0	2.2	20.8	0.066	0.520	21.806896	-105.102665
T. Izq. Villa Hidalgo	48.12	3	0	8262	7.7	73.3	4.8	3.1	2.6	6.2	2.1	0.1	0.1	81.0	4.8	14.2	0.070	0.501	21.811899	-105.107233
T. Izq. Santiago Ixcuintla	56.42	1	0	8751	2.4	72.1	5.6	8.1	2.4	6.1	2.3	0.4	0.6	74.5	5.6	19.9	0.071	0.516	21.852478	-105.150278
T. Izq. Santiago Ixcuintla	56.42	3	0	6904	3.5	70.8	3.2	7.7	4.3	7.0	2.6	0.4	0.5	74.3	3.2	22.5	0.078	0.521	21.859171	-105.156003
T. Izq. Tuxpan	70.60	1	0	8233	5.0	70.7	3.2	9.8	2.9	5.7	1.8	0.4	0.5	75.7	3.2	21.1	0.076	0.502	21.944193	-105.215836
T. Izq. Tuxpan	70.60	3	0	7776	9.4	60.6	4.3	12.1	4.2	7.4	1.7	0.1	0.2	70.0	4.3	25.7	0.069	0.519	21.962114	-105.221694
T. Der. Rosamorada	90.70	3	0	4977	7.4	56.2	6.5	8.9	4.3	12.7	3.3	0.4	0.3	63.6	6.5	29.9	0.066	0.508	22.124687	-105.219581
Tierra Generosa	110.40	1	0	3250	7.9	55.7	6.0	7.4	4.9	13.2	2.7	1.9	0.3	63.6	6.0	30.4	0.071	0.547	22.293559	-105.272928
T. Der. Acaponeta	136.52	1	0	8436	8.9	69.4	4.7	3.2	2.5	8.3	2.3	0.6	0.1	78.3	4.7	17.0	0.065	0.510	22.482853	-105.384508
T. Der. Acaponeta	136.52	3	0	6086	8.8	64.8	4.3	3.4	3.6	8.7	3.0	3.2	0.2	73.6	4.3	22.1	0.060	0.503	22.493966	-105.384266
Lim. Edos. Term. Nay. Ppia. Sin.	144.60	0	0																	
T. Der. Villa Unión (Cuota)	193.60	1	1	4441	5.8	52.8	9.0	6.3	1.9	17.0	2.8	3.6	0.8	58.6	9.0	32.4	0.070	0.519	22.802653	-105.718090
T. Der. Villa Unión (Cuota)	193.60	1	2	4109	6.1	48.8	10.2	6.6	2.1	18.6	2.8	4.0	0.8	54.9	10.2	34.9	0.072	0.519	22.802568	-105.718162
Escuinapa de Hidalgo	200.00	1	0	4966	13.4	62.2	4.4	4.4	3.5	8.6	2.3	1.0	0.2	75.6	4.4	20.0	0.079	0.510	22.832916	-105.761758
Escuinapa de Hidalgo	200.00	3	0	5435	6.9	69.5	6.7	3.8	2.5	8.1	2.1	0.2	0.2	76.4	6.7	16.9	0.101	0.510	22.847782	-105.792193
Rosario	221.71	1	0	9186	15.4	68.7	4.5	2.6	2.2	4.9	1.4	0.2	0.1	84.1	4.5	11.4	0.081	0.506	22.997103	-105.851388
Rosario	221.71	3	0	6251	7.5	75.5	3.0	3.0	2.2	6.5	1.9	0.3	0.1	83.0	3.0	14.0	0.083	0.506	23.003406	-105.869021
X. C. Durango - Mazatlán (Cuota)	265.20	1	0	5153	4.8	74.3	3.8	3.4	2.4	7.6	2.9	0.3	0.5	79.1	3.8	17.1	0.070	0.513	23.189958	-106.175627
T. Der. Durango	267.99	1	0	6486	9.7	71.1	3.6	4.0	3.1	5.7	1.8	0.9	0.1	80.8	3.6	15.6	0.102	0.505	23.189399	-106.204633
T. Der. Durango	267.99	3	1	9683	7.8	76.7	3.7	3.1	2.2	3.5	1.0	1.6	0.4	84.5	3.7	11.8	0.073	0.504	23.189307	-106.210334
T. Der. Durango	267.99	3	2	9854	8.0	76.8	3.7	3.0	2.2	3.5	1.0	1.5	0.3	84.8	3.7	11.5	0.085	0.504	23.189203	-106.210360
Villa Unión	269.52	3	1	11245	6.6	78.4	4.4	3.9	1.5	3.3	0.9	0.7	0.3	85.0	4.4	10.6	0.099	0.502	23.190444	-106.222390
Villa Unión	269.52	3	2	11328	6.6	78.4	4.4	3.9	1.5	3.3	0.9	0.7	0.3	85.0	4.4	10.6	0.103	0.502	23.190313	-106.222446
T. Der. Libramiento de Mazatlán	288.87	1	1	25263	4.1	86.5	1.7	3.4	1.5	1.5	0.6	0.4	0.3	90.6	1.7	7.7	0.081	0.512	23.225217	-106.383041
T. Der. Libramiento de Mazatlán	288.87	1	2	22682	4.1	86.5	1.7	3.4	1.5	1.5	0.6	0.4	0.3	90.6	1.7	7.7	0.080	0.512	23.225156	-106.383121
Mazatlán	292.00	0	0																	

18 CARR: Tepic - Presa Aguamilpa

CLAVE: 18029

RUTA: MEX-015

AÑO: 2022

LUGAR	ESTACION				CLASIFICACION VEHICULAR EN PORCIENTO													COORDENADAS		
	KM	TE	SC	TDPA	M	A	B	C2	C3	T3S2	T3S3	T3S2R4	OTROS	A	B	C	K'	D	LATITUD	LONGITUD
T. C. Guadalajara - Tepic	0.00	3	1	15414	12.4	75.4	0.6	8.2	1.9	0.7	0.4	0.3	0.1	87.8	0.6	11.6	0.083	0.516	21.474825	-104.847833
T. C. Guadalajara - Tepic	0.00	3	2	14445	12.9	75.2	0.6	7.9	1.7	0.7	0.5	0.4	0.1	88.1	0.6	11.3	0.091	0.516	21.474862	-104.847949

NAYARIT

18 CARR: Tepic - Presa Aguamilpa

CLAVE: 18029

RUTA: MEX-015

AÑO: 2022

LUGAR	ESTACION				CLASIFICACION VEHICULAR EN PORCIENTO										COORDENADAS					
	KM	TE	SC	TDPA	M	A	B	C2	C3	T3S2	T3S3	T3S2R4	OTROS	A	B	C	K'	D	LATITUD	LONGITUD
X. C. Tepic - Fco. I. Madero	17.50	3	0	1695	16.9	79.4	0.3	2.5	0.6	0.1	0.0	0.1	0.1	96.3	0.3	3.4	0.088	0.501	21.593965	-104.842202
Presa Aguamilpa	54.00	1	0	365	13.8	83.0	0.5	1.9	0.5	0.2	0.0	0.1	0.0	96.8	0.5	2.7	0.104	0.502	21.813371	-104.836080

19 CARR: Tepic - Puerto Vallarta

CLAVE: 00068

RUTA: MEX-200

AÑO: 2022

LUGAR	ESTACION				CLASIFICACION VEHICULAR EN PORCIENTO										COORDENADAS					
	KM	TE	SC	TDPA	M	A	B	C2	C3	T3S2	T3S3	T3S2R4	OTROS	A	B	C	K'	D	LATITUD	LONGITUD
Tepic	0.00	3	1	23465	9.4	87.0	0.3	1.7	0.7	0.3	0.1	0.4	0.1	96.4	0.3	3.3	0.077	0.501	21.491306	-104.895564
Tepic	0.00	3	2	23384	9.3	87.1	0.2	1.9	0.5	0.4	0.1	0.4	0.1	96.4	0.2	3.4	0.072	0.501	21.491351	-104.895438
Limite de Zona Urbana Tepic	1.80	3	1	19560	5.9	85.3	1.5	2.5	1.6	1.0	0.4	1.4	0.4	91.2	1.5	7.3	0.061	0.529	21.475021	-104.890170
Limite de Zona Urbana Tepic	1.80	3	2	21986	5.9	85.5	1.4	2.4	1.5	0.9	0.4	1.6	0.4	91.4	1.4	7.2	0.066	0.529	21.475157	-104.890344
X. C. Libramiento De Tepic (Baja)	3.90	3	1	10701	18.7	72.5	1.0	5.1	2.0	0.4	0.2	0.1	0.0	91.2	1.0	7.8	0.071	0.520	21.464757	-104.889666
X. C. Libramiento De Tepic (Alta)	3.90	3	1	17658	2.9	95.8	0.1	0.3	0.3	0.2	0.0	0.3	0.1	98.7	0.1	1.2	0.070	0.520	21.464748	-104.889550
X. C. Libramiento De Tepic (Baja)	3.90	3	2	9876	18.2	72.1	1.1	5.3	2.2	0.6	0.3	0.2	0.0	90.3	1.1	8.6	0.079	0.520	21.464693	-104.889367
X. C. Libramiento De Tepic (Alta)	3.90	3	2	19126	3.1	95.3	0.1	0.4	0.5	0.2	0.0	0.3	0.1	98.4	0.1	1.5	0.078	0.520	21.464766	-104.889444
Jalisco	7.15	3	0	15571	8.8	80.2	2.1	5.8	1.4	0.9	0.3	0.4	0.1	89.0	2.1	8.9	0.069	0.501	21.432824	-104.899562
T. Izq. Emiliano Zapata	18.40	3	0	6873	3.2	86.3	2.3	4.1	1.9	1.2	0.5	0.5	0.0	89.5	2.3	8.2	0.075	0.505	21.357409	-104.919714
T. Izq. Compostela (1° Acceso)	35.80	1	0	5770	8.1	80.4	1.7	3.4	3.3	1.8	0.9	0.4	0.0	88.5	1.7	9.8	0.077	0.513	21.256204	-104.901552
T. Izq. Compostela (1° Acceso)	35.80	3	0	5715	3.1	86.4	2.3	4.2	1.8	1.3	0.7	0.2	0.0	89.5	2.3	8.2	0.093	0.501	21.246682	-104.904729
Las Varas	71.30	1	0	14293	5.6	81.2	4.1	3.1	1.8	2.4	1.1	0.7	0.0	86.8	4.1	9.1	0.081	0.502	21.187643	-105.122813
Las Varas	71.30	3	0	21449	11.8	75.3	3.3	4.6	1.4	2.0	0.6	0.7	0.3	87.1	3.3	9.6	0.093	0.501	21.172040	-105.147776
T. Izq. Altavista	81.50	1	0	16623	5.3	73.2	5.2	11.9	1.1	1.8	0.6	0.6	0.3	78.5	5.2	16.3	0.085	0.515	21.110821	-105.178497
T. Der. Rincón de Guayabitos	94.50	1	1	11748	9.2	82.5	1.9	2.4	1.3	1.7	0.4	0.5	0.1	91.7	1.9	6.4	0.078	0.515	21.029155	-105.258159
T. Der. Rincón de Guayabitos	94.50	1	2	12479	9.5	81.8	2.1	3.0	1.1	1.4	0.4	0.6	0.1	91.3	2.1	6.6	0.087	0.515	21.029110	-105.258120
T. Der. Rincón de Guayabitos	94.50	3	0	12456	8.2	82.4	2.2	2.8	1.5	1.8	0.4	0.6	0.1	90.6	2.2	7.2	0.072	0.529	21.015871	-105.270790
T. Der. Lo de Marcos	107.61	1	1	6531	6.2	78.3	4.7	4.3	2.2	2.3	1.3	0.6	0.1	84.5	4.7	10.8	0.080	0.518	20.952237	-105.344317
T. Der. Lo de Marcos	107.61	1	2	7015	7.2	79.0	3.8	4.2	1.7	2.4	0.9	0.7	0.1	86.2	3.8	10.0	0.104	0.518	20.952200	-105.344307
T. Der. Lo de Marcos	107.61	3	0	12409	5.4	80.4	5.2	2.9	1.8	2.9	1.0	0.3	0.1	85.8	5.2	9.0	0.089	0.501	20.946079	-105.355451
T. Der. Sayulita	122.91	1	0	13825	4.5	76.2	4.0	4.7	5.5	3.1	1.4	0.5	0.1	80.7	4.0	15.3	0.082	0.526	20.868462	-105.426676
T. Der. Sayulita	122.91	3	0	16592	7.2	74.1	4.6	9.6	1.2	1.9	0.7	0.5	0.2	81.3	4.6	14.1	0.087	0.500	20.860435	-105.424852
T. Der. Cruz de Juanacastle	137.30	3	1	18100	5.6	84.4	2.4	4.2	1.7	0.9	0.5	0.2	0.1	90.0	2.4	7.6	0.103	0.501	20.763917	-105.363051
T. Der. Cruz de Juanacastle	137.30	3	2	18021	5.6	84.2	2.4	4.2	1.8	1.0	0.5	0.2	0.1	89.8	2.4	7.8	0.103	0.501	20.764039	-105.363121
Bucerías	140.81	3	1	25841	6.2	85.8	1.8	3.2	1.5	0.8	0.4	0.2	0.1	92.0	1.8	6.2	0.087	0.504	20.749209	-105.318774
Bucerías	140.81	3	2	26287	7.0	84.8	1.6	3.3	1.6	1.0	0.4	0.2	0.1	91.8	1.6	6.6	0.084	0.504	20.749308	-105.318746
Lim. Edos. Term. Nay. Ppia. Jal.	152.60	0	0																	

NAYARIT

19 CARR : Tepic - Puerto Vallarta

CLAVE: 00068

RUTA : MEX-200

AÑO : 2022

LUGAR	ESTACION				CLASIFICACION VEHICULAR EN PORCIENTO										COORDENADAS					
	KM	TE	SC	TDPA	M	A	B	C2	C3	T3S2	T3S3	T3S2R4	OTROS	A	B	C	K'	D	LATITUD	LONGITUD
T. Der. Aeropuerto Díaz Ordáz	158.37	1	1	33760	4.9	87.1	2.7	4.6	0.3	0.2	0.1	0.1	0.0	92.0	2.7	5.3	0.072	0.515	20.683581	-105.241093
T. Der. Aeropuerto Díaz Ordáz	158.37	1	2	31578	5.4	86.6	2.8	4.5	0.3	0.2	0.1	0.1	0.0	92.0	2.8	5.2	0.071	0.515	20.683491	-105.241026
T. Der. Aeropuerto Díaz Ordáz (Baja)	158.37	3	1	14140	6.3	81.4	3.3	6.8	1.2	0.5	0.2	0.2	0.1	87.7	3.3	9.0	0.088	0.529	20.670025	-105.249290
T. Der. Aeropuerto Díaz Ordáz (Alta)	158.37	3	1	20822	4.4	93.7	0.2	0.9	0.3	0.2	0.1	0.1	0.1	98.1	0.2	1.7	0.082	0.507	20.670106	-105.249223
T. Der. Aeropuerto Díaz Ordáz (Baja)	158.37	3	2	15866	6.9	81.2	3.3	6.3	1.3	0.5	0.2	0.2	0.1	88.1	3.3	8.6	0.090	0.529	20.670160	-105.248993
T. Der. Aeropuerto Díaz Ordáz (Alta)	158.37	3	2	21380	4.0	94.2	0.2	0.8	0.3	0.2	0.2	0.1	0.0	98.2	0.2	1.6	0.081	0.507	20.670133	-105.249137
Puerto Vallarta	166.88	0	0																	

20 CARR : Chapalilla - Compostela (Cuota)

CLAVE: 18004

RUTA : MEX-068D

AÑO : 2022

LUGAR	ESTACION				CLASIFICACION VEHICULAR EN PORCIENTO										COORDENADAS					
	KM	TE	SC	TDPA	M	A	B	C2	C3	T3S2	T3S3	T3S2R4	OTROS	A	B	C	K'	D	LATITUD	LONGITUD
T. C. Guadalajara - Tepic	0.00	3	0	4980	4.1	74.0	5.3	5.2	3.1	5.0	1.7	1.4	0.2	78.1	5.3	16.6	0.087	0.513	21.190349	-104.643111
T. C. Ramal a Compostela (Cuota)	30.00	1	0	2787	6.4	72.2	4.6	5.7	2.9	4.2	2.1	1.6	0.3	78.6	4.6	16.8	0.074	0.510	21.233244	-104.862509
Plaza de Cobro Compostela	31.50	2	0	6587	1.4	79.1	6.9	3.4	2.8	3.9	1.6	0.6	0.3	80.5	6.9	12.6	0.114	0.500	21.229532	-104.887408
T. Der. Compostela	33.00	1	0	6947	3.0	57.9	14.1	20.6	0.4	2.2	0.9	0.8	0.1	60.9	14.1	25.0	0.113	0.534	21.228093	-104.899277
T. C. Tepic - Puerto Vallarta	35.60	1	0	6945	3.0	75.7	7.4	4.6	2.4	3.7	1.7	1.2	0.3	78.7	7.4	13.9	0.114	0.552	21.230977	-104.918867

21 CARR : Guadalajara - Tepic (Cuota)

CLAVE: 00033

RUTA : MEX-015D

AÑO : 2022

LUGAR	ESTACION				CLASIFICACION VEHICULAR EN PORCIENTO										COORDENADAS					
	KM	TE	SC	TDPA	M	A	B	C2	C3	T3S2	T3S3	T3S2R4	OTROS	A	B	C	K'	D	LATITUD	LONGITUD
T. C. Guadalajara - Tepic (Libre)	0.00	3	1	5900	1.7	70.1	8.4	4.8	2.9	8.9	1.3	1.6	0.3	71.8	8.4	19.8	0.082	0.516	20.738660	-103.582549
T. C. Guadalajara - Tepic (Libre)	0.00	3	2	6296	1.6	70.5	8.4	4.7	2.8	9.0	1.3	1.5	0.2	72.1	8.4	19.5	0.092	0.516	20.738615	-103.582617
Plaza de Cobro Arenal	10.96	2	1	5352	0.8	70.8	7.6	3.0	4.0	9.5	1.7	1.7	0.9	71.6	7.6	20.8	0.092	0.500	20.778775	-103.662396
Plaza de Cobro Arenal	10.96	2	2	5352	0.8	70.8	7.6	3.0	4.0	9.5	1.7	1.7	0.9	71.6	7.6	20.8	0.092	0.500	20.778775	-103.662396
T. Izq. Libramiento Sur de Guadalajara (Cuota)	16.44	3	1	8251	1.7	67.0	9.5	4.8	2.8	9.9	1.8	2.0	0.5	68.7	9.5	21.8	0.080	0.526	20.796740	-103.721796
T. Izq. Libramiento Sur de Guadalajara (Cuota)	16.44	3	2	9169	1.6	67.5	9.4	4.7	2.8	9.8	1.8	2.0	0.4	69.1	9.4	21.5	0.099	0.526	20.796645	-103.721814
T. Der. Magdalena	45.00	1	1	7071	3.9	61.1	8.3	5.1	3.0	12.9	2.2	2.8	0.7	65.0	8.3	26.7	0.077	0.511	20.900757	-103.958700
T. Der. Magdalena	45.00	1	2	7376	3.6	56.4	9.6	5.7	3.4	14.8	2.4	3.3	0.8	60.0	9.6	30.4	0.091	0.511	20.900689	-103.958747
T. Der. Magdalena	45.00	3	1	6765	1.1	64.7	8.4	5.3	3.6	11.6	1.9	2.9	0.5	65.8	8.4	25.8	0.077	0.518	20.902151	-103.975713
T. Der. Magdalena	45.00	3	2	7261	0.9	62.6	8.5	6.1	3.4	12.8	2.1	3.1	0.5	63.5	8.5	28.0	0.085	0.518	20.901971	-103.975714
Plaza de Cobro Plan de Barrancas	69.34	2	1	6697	0.6	61.3	6.8	3.7	5.0	14.9	2.6	3.6	1.5	61.9	6.8	31.3	0.092	0.500	21.005434	-104.144062
Plaza de Cobro Plan de Barrancas	69.34	2	2	6697	0.6	61.3	6.8	3.7	5.0	14.9	2.6	3.6	1.5	61.9	6.8	31.3	0.092	0.500	21.005434	-104.144062
Lim. Edos. Term. Jal. Ppia. Nay.	84.60	0	0																	

NAYARIT

21 CARR : Guadalajara - Tepic (Cuota)

CLAVE: 00033

RUTA: MEX-015D

AÑO : 2022

LUGAR	ESTACION				CLASIFICACION VEHICULAR EN PORCIENTO													COORDENADAS		
	KM	TE	SC	TDPA	M	A	B	C2	C3	T3S2	T3S3	T3S2R4	OTROS	A	B	C	K'	D	LATITUD	LONGITUD
T. Izq. Ixtlán del Río	97.20	1	1	6094	1.9	59.1	9.8	4.9	3.2	15.4	2.1	2.8	0.8	61.0	9.8	29.2	0.079	0.547	21.046864	-104.351193
T. Izq. Ixtlán del Río	97.20	1	2	7364	2.0	64.5	8.6	3.8	2.3	12.9	2.3	2.8	0.8	66.5	8.6	24.9	0.090	0.547	21.046785	-104.351207
T. Izq. Compostela (Cuota)	106.00	1	1	6973	2.9	60.5	9.7	8.4	2.5	10.4	1.7	3.1	0.8	63.4	9.7	26.9	0.083	0.533	21.071811	-104.419713
T. Izq. Compostela (Cuota)	106.00	1	2	7955	2.9	59.0	9.2	7.3	2.8	13.9	1.7	2.5	0.7	61.9	9.2	28.9	0.094	0.533	21.071808	-104.419792
T. Izq. Compostela (Cuota)	106.00	3	1	6139	3.0	67.1	6.7	3.9	2.1	11.5	1.6	3.1	1.0	70.1	6.7	23.2	0.071	0.536	21.084500	-104.431384
T. Izq. Compostela (Cuota)	106.00	3	2	7084	3.0	68.4	6.1	4.0	2.0	11.3	1.4	2.9	0.9	71.4	6.1	22.5	0.073	0.536	21.084446	-104.431442
T. Der. Jala	107.00	3	1	6312	3.0	63.6	7.9	4.1	2.6	13.0	1.9	3.0	0.9	66.6	7.9	25.5	0.078	0.545	21.094949	-104.445893
T. Der. Jala	107.00	3	2	5269	4.5	58.1	9.1	4.5	2.8	15.1	1.8	3.2	0.9	62.6	9.1	28.3	0.075	0.545	21.094867	-104.445950
X. C. Ramal a Tequepexpan	130.42	3	1	5858	2.2	65.4	8.5	4.4	2.3	12.4	1.7	2.4	0.7	67.6	8.5	23.9	0.084	0.508	21.222075	-104.600192
X. C. Ramal a Tequepexpan	130.42	3	2	5672	2.5	62.5	8.4	4.5	2.5	15.2	1.2	2.5	0.7	65.0	8.4	26.6	0.081	0.508	21.222003	-104.600250
Plaza de Cobro Santa Ma. del Oro	145.32	3	1	5362	4.5	58.9	8.6	5.4	2.4	14.1	1.6	3.6	0.9	63.4	8.6	28.0	0.074	0.512	21.334288	-104.668879
Plaza de Cobro Santa Ma. del Oro	145.32	3	2	5102	3.3	60.9	8.3	4.4	2.7	14.4	1.4	3.7	0.9	64.2	8.3	27.5	0.102	0.512	21.334234	-104.668965
T. Der. Libramiento de Tepic (Cuota)	163.00	1	1	4951	3.5	56.9	9.0	5.2	3.2	15.7	1.9	3.7	0.9	60.4	9.0	30.6	0.081	0.519	21.431300	-104.787006
T. Der. Libramiento de Tepic (Cuota)	163.00	1	2	5346	3.8	62.8	8.6	4.5	2.4	13.6	1.6	1.8	0.9	66.6	8.6	24.8	0.085	0.519	21.431273	-104.787084
T. C. Guadalajara - Tepic (Libre)	168.62	0	0																	
T. C. Guadalajara - Tepic	168.80	1	1	2928	3.2	64.0	9.1	5.6	3.5	10.5	1.8	1.9	0.4	67.2	9.1	23.7	0.084	0.581	21.462915	-104.826785
T. C. Guadalajara - Tepic	168.80	1	2	4060	1.7	70.6	8.7	4.7	2.7	8.7	1.2	1.3	0.4	72.3	8.7	19.0	0.083	0.581	21.462842	-104.826814

22 CARR : Jala - Puerto Vallarta (Cuota)

CLAVE:

RUTA: MEX-070D

AÑO : 2022

LUGAR	ESTACION				CLASIFICACION VEHICULAR EN PORCIENTO													COORDENADAS		
	KM	TE	SC	TDPA	M	A	B	C2	C3	T3S2	T3S3	T3S2R4	OTROS	A	B	C	K'	D	LATITUD	LONGITUD
T. C. Guadalajara - Tepic (Cuota)	0.00	3	1	2070	1.5	71.3	10.1	5.1	2.6	4.9	3.0	1.4	0.1	72.8	10.1	17.1	0.108	0.575	21.079160	-104.431700
T. C. Guadalajara - Tepic (Cuota)	0.00	3	2	1531	1.0	72.8	10.1	3.9	3.2	5.8	1.3	1.7	0.2	73.8	10.1	16.1	0.159	0.575	21.079089	-104.431672
Plaza de Cobro Amado Nervo	32.00	2	1	2200	0.8	82.6	7.1	2.7	1.9	2.8	1.1	0.7	0.3	83.4	7.1	9.5	0.090	0.500	21.089054	-104.717268
Plaza de Cobro Amado Nervo	32.00	2	2	2200	0.8	82.6	7.1	2.7	1.9	2.8	1.1	0.7	0.3	83.4	7.1	9.5	0.090	0.500	21.089054	-104.717268
Ramal a Compostela	54.30	0	0																	

23 CARR : Libramiento de Tepic (Cuota)

CLAVE:

RUTA: MEX-015D

AÑO : 2022

LUGAR	ESTACION				CLASIFICACION VEHICULAR EN PORCIENTO													COORDENADAS		
	KM	TE	SC	TDPA	M	A	B	C2	C3	T3S2	T3S3	T3S2R4	OTROS	A	B	C	K'	D	LATITUD	LONGITUD
T. C. Guadalajara - Tepic	0.00	0	0																	
T. C. Guadalajara - Tepic (Cuota)	0.70	3	0	3762	4.7	44.7	8.0	4.0	2.5	27.3	2.0	5.9	0.9	49.4	8.0	42.6	0.082	0.521	21.453672	-104.802686
Plaza de Cobro La Cantera	7.70	2	0	3046	0.7	33.8	2.3	3.5	5.4	37.2	3.6	10.0	3.5	34.5	2.3	63.2	0.090	0.500	21.498477	-104.813387

NAYARIT

23 CARR: Libramiento de Tepic (Cuota)

CLAVE:

RUTA: MEX-015D

AÑO: 2022

LUGAR	ESTACION				CLASIFICACION VEHICULAR EN PORCIENTO														COORDENADAS	
	KM	TE	SC	TDPA	M	A	B	C2	C3	T3S2	T3S3	T3S2R4	OTROS	A	B	C	K'	D	LATITUD	LONGITUD
T. C. Tepic - Villa Unión (Cuota)	29.47	1	0	4279	4.2	49.0	6.6	4.1	2.9	24.5	2.3	5.5	0.9	53.2	6.6	40.2	0.090	0.523	21.565999	-104.958554

24 CARR: Ramal a Compostela (Cuota)

CLAVE:

RUTA: MEX-200D

AÑO: 2022

LUGAR	ESTACION				CLASIFICACION VEHICULAR EN PORCIENTO														COORDENADAS	
	KM	TE	SC	TDPA	M	A	B	C2	C3	T3S2	T3S3	T3S2R4	OTROS	A	B	C	K'	D	LATITUD	LONGITUD
T. C. Jala - Compostela (Cuota)	0.00	0	0																	
T. C. Chapalilla - Compostela (Cuota)	12.90	1	0	2939	1.0	78.1	9.5	4.1	1.3	3.4	1.3	1.1	0.2	79.1	9.5	11.4	0.200	0.548	21.227092	-104.874782

25 CARR: Ramal a Tequepexpan

CLAVE: 00068

RUTA: MEX-015D

AÑO: 2022

LUGAR	ESTACION				CLASIFICACION VEHICULAR EN PORCIENTO														COORDENADAS	
	KM	TE	SC	TDPA	M	A	B	C2	C3	T3S2	T3S3	T3S2R4	OTROS	A	B	C	K'	D	LATITUD	LONGITUD
Chapalilla	0.00	3	0	1532	5.0	76.8	3.5	4.4	1.8	5.7	0.9	1.7	0.2	81.8	3.5	14.7	0.099	0.501	21.180639	-104.627673
T. C. Guadalajara - Tepic (Cuota)	9.40	1	0	1386	3.7	73.1	5.5	4.5	2.6	7.3	1.3	1.8	0.2	76.8	5.5	17.7	0.094	0.513	21.209882	-104.594531

26 CARR: Tepic - San Blas (Cuota)

CLAVE:

RUTA: MEX-D

AÑO: 2022

LUGAR	ESTACION				CLASIFICACION VEHICULAR EN PORCIENTO														COORDENADAS	
	KM	TE	SC	TDPA	M	A	B	C2	C3	T3S2	T3S3	T3S2R4	OTROS	A	B	C	K'	D	LATITUD	LONGITUD
T. C. Tepic - Villa Unión (Cuota)	0.00	3	0	4726	3.2	92.3	0.6	1.7	1.2	0.8	0.2	0.0	0.0	95.5	0.6	3.9	0.165	0.503	21.558408	-104.980975
El Camalote (T. C. Sta. Cruz - San Blas)	31.00	1	0	4090	4.4	88.7	0.5	1.6	1.8	1.8	0.4	0.8	0.0	93.1	0.5	6.4	0.184	0.500	21.511763	-105.194649

27 CARR: Tepic - Villa Unión (cuota)

CLAVE: 00500

RUTA: MEX-015D

AÑO: 2022

LUGAR	ESTACION				CLASIFICACION VEHICULAR EN PORCIENTO														COORDENADAS	
	KM	TE	SC	TDPA	M	A	B	C2	C3	T3S2	T3S3	T3S2R4	OTROS	A	B	C	K'	D	LATITUD	LONGITUD
Tepic	0.00	0	0																	
Lib. de Tepic (Cuota)	6.60	0	0																	
Plaza de Cobro Trapichillo	8.65	1	1	8063	2.0	77.1	3.8	8.3	1.5	5.0	1.0	1.1	0.2	79.1	3.8	17.1	0.129	0.519	21.554088	-104.959415
Plaza de Cobro Trapichillo	8.65	1	2	8717	2.0	77.2	3.8	8.3	1.4	5.0	0.9	1.1	0.3	79.2	3.8	17.0	0.174	0.519	21.554128	-104.959537
Plaza de Cobro Trapichillo	8.65	2	1	5971	1.0	65.5	5.6	3.4	3.9	14.1	1.7	3.5	1.3	66.5	5.6	27.9	0.098	0.500	21.571789	-104.987394
Plaza de Cobro Trapichillo	8.65	2	2	5971	1.0	65.5	5.6	3.4	3.9	14.1	1.7	3.5	1.3	66.5	5.6	27.9	0.098	0.500	21.571789	-104.987394
T. C. Tepic - Mazatlán	21.00	1	1	5492	3.0	66.4	7.5	8.9	2.3	6.7	2.1	2.1	1.0	69.4	7.5	23.1	0.085	0.521	21.663743	-105.027473
T. C. Tepic - Mazatlán	21.00	1	2	5044	3.0	67.0	7.5	8.6	2.1	6.7	1.9	2.2	1.0	70.0	7.5	22.5	0.095	0.521	21.663752	-105.027591

NAYARIT

27 CARR: Tepic - Villa Unión (cuota)

CLAVE: 00500

RUTA: MEX-015D

AÑO: 2022

LUGAR	ESTACION				CLASIFICACION VEHICULAR EN PORCIENTO										COORDENADAS					
	KM	TE	SC	TDPA	M	A	B	C2	C3	T3S2	T3S3	T3S2R4	OTROS	A	B	C	K'	D	LATITUD	LONGITUD
T. C. Tepic - Mazatlán (Crucero de San Blas)	24.50	3	0	6352	5.4	50.3	10.4	5.9	1.9	17.8	2.2	5.2	0.9	55.7	10.4	33.9	0.062	0.516	21.714388	-105.060421
Est. Ruiz	54.90	1	0	6066	6.3	42.3	11.5	6.4	3.0	20.9	2.8	5.9	0.9	48.6	11.5	39.9	0.061	0.536	21.947106	-105.112030
Est. Ruiz	54.90	3	0	6082	5.6	42.3	9.9	4.6	2.3	24.6	2.8	6.9	1.0	47.9	9.9	42.2	0.060	0.506	21.962150	-105.123335
Rosamorada	73.50	1	0	5806	4.8	40.6	11.3	5.3	1.9	26.1	2.6	6.5	0.9	45.4	11.3	43.3	0.064	0.511	22.084174	-105.210244
Rosamorada	73.50	3	0	5596	5.1	45.8	9.6	5.9	2.3	22.2	2.1	6.1	0.9	50.9	9.6	39.5	0.070	0.509	22.093178	-105.221655
Acaponeta	120.20	1	0	5604	5.1	40.3	10.1	4.7	2.2	26.9	2.5	7.3	0.9	45.4	10.1	44.5	0.064	0.508	22.450572	-105.420940
Plaza de Cobro Acaponeta	120.20	2	0	4524	0.8	40.5	5.5	3.9	4.8	29.9	2.7	9.0	2.9	41.3	5.5	53.2	0.081	0.500	22.454065	-105.418726
Acaponeta	120.20	3	0	4522	4.9	38.6	9.6	5.0	3.3	27.2	2.5	8.0	0.9	43.5	9.6	46.9	0.074	0.507	22.458533	-105.430601
Lim. Edos. Term. Nay. Ppia. Sin.	132.80	0	0																	
T. C. Tepic - Mazatlán	164.00	1	0	5015	8.7	40.2	7.9	5.4	3.2	23.2	3.1	7.4	0.9	48.9	7.9	43.2	0.068	0.506	22.751120	-105.650413
Escuinapa de Hidalgo	208.60	1	1	2484	5.3	41.1	8.7	3.7	3.1	27.0	3.1	7.1	0.9	46.4	8.7	44.9	0.064	0.506	22.840488	-105.739190
Escuinapa de Hidalgo	208.60	1	2	2548	4.8	39.2	9.4	7.1	4.3	22.9	3.3	8.1	0.9	44.0	9.4	46.6	0.073	0.506	22.840476	-105.739232
Escuinapa de Hidalgo	208.60	3	0	5184	4.4	39.6	8.5	4.8	3.1	28.8	2.9	7.1	0.8	44.0	8.5	47.5	0.068	0.502	22.859173	-105.754638
Rosario	220.68	1	0	5459	6.4	40.2	11.0	4.4	2.3	25.4	2.8	6.6	0.9	46.6	11.0	42.4	0.064	0.522	22.979758	-105.872119
Plaza de Cobro Rosario	220.68	2	0	5233	0.7	42.2	6.5	3.3	4.3	29.2	2.8	8.3	2.7	42.9	6.5	50.6	0.081	0.500	22.984690	-105.878103
Rosario	220.68	3	1	3007	3.0	43.9	13.3	7.0	3.4	20.3	2.7	5.5	0.9	46.9	13.3	39.8	0.071	0.517	22.993093	-105.887617
Rosario	220.68	3	2	3222	4.5	44.2	14.0	7.7	1.4	20.5	2.6	4.2	0.9	48.7	14.0	37.3	0.070	0.517	22.993069	-105.887650
X. C. Durango - Villa Unión (Cuota)	240.90	1	0	6309	5.8	43.3	10.3	5.4	2.4	23.6	2.7	6.2	0.3	49.1	10.3	40.6	0.067	0.506	23.185837	-106.174103
X. C. Durango - Villa Unión (Cuota)	240.90	3	1	4694	5.8	47.3	11.0	6.4	1.9	18.4	2.4	5.9	0.9	53.1	11.0	35.9	0.087	0.521	23.195144	-106.192154
X. C. Durango - Villa Unión (Cuota)	240.90	3	2	5106	8.4	47.4	9.4	6.0	1.7	16.8	2.9	6.8	0.6	55.8	9.4	34.8	0.093	0.521	23.194927	-106.192335

28 CARR: El Carrizo - La Batanga

CLAVE: 18107

RUTA: NAY-078

AÑO: 2022

LUGAR	ESTACION				CLASIFICACION VEHICULAR EN PORCIENTO										COORDENADAS					
	KM	TE	SC	TDPA	M	A	B	C2	C3	T3S2	T3S3	T3S2R4	OTROS	A	B	C	K'	D	LATITUD	LONGITUD
T. C. Ent. Santiago Ixcuintla - Playa Los Corchos	0.00	3	0	6461	23.6	70.6	0.5	1.6	2.5	0.5	0.1	0.5	0.1	94.2	0.5	5.3	0.086	0.505	21.774797	-105.277436
Sentispac	9.00	1	0	2422	33.4	63.6	0.6	1.2	0.9	0.1	0.1	0.1	0.0	97.0	0.6	2.4	0.077	0.500	21.808973	-105.341244
La Batanga	25.00	1	0	153	9.3	86.7	1.4	2.0	0.2	0.2	0.2	0.0	0.0	96.0	1.4	2.6	0.163	0.512	21.883744	-105.459751

29 CARR: Navarrete - Sauta

CLAVE: 18013

RUTA: NAY-013

AÑO: 2022

LUGAR	ESTACION				CLASIFICACION VEHICULAR EN PORCIENTO										COORDENADAS					
	KM	TE	SC	TDPA	M	A	B	C2	C3	T3S2	T3S3	T3S2R4	OTROS	A	B	C	K'	D	LATITUD	LONGITUD
T. C. Crucero San Blas - San Blas	0.00	3	0	1764	27.6	64.4	1.5	1.6	2.7	1.5	0.5	0.2	0.0	92.0	1.5	6.5	0.092	0.501	21.655509	-105.119662
Sauta	7.00	1	0	2212	28.8	62.4	1.6	2.3	2.7	1.6	0.3	0.3	0.0	91.2	1.6	7.2	0.066	0.506	21.710275	-105.136897

NAYARIT

30 CARR: Ramal a Amado Nervo

CLAVE: 18011

RUTA: NAY

AÑO: 2022

LUGAR	ESTACION				CLASIFICACION VEHICULAR EN PORCIENTO														COORDENADAS	
	KM	TE	SC	TDPA	M	A	B	C2	C3	T3S2	T3S3	T3S2R4	OTROS	A	B	C	K'	D	LATITUD	LONGITUD
T. C. Guadalajara - Tepic	0.00	3	0	1433	9.5	88.9	0.1	0.0	1.1	0.3	0.0	0.1	0.0	98.4	0.1	1.5	0.084	0.517	21.128055	-104.609692
Amado Nervo	15.00	0	0																	

31 CARR: Ramal a Bellavista

CLAVE: 18059

RUTA: NAY-059

AÑO: 2022

LUGAR	ESTACION				CLASIFICACION VEHICULAR EN PORCIENTO														COORDENADAS	
	KM	TE	SC	TDPA	M	A	B	C2	C3	T3S2	T3S3	T3S2R4	OTROS	A	B	C	K'	D	LATITUD	LONGITUD
T. C. Tepic - Francisco I. Madero	0.00	3	0	2955	24.5	72.0	0.3	0.3	1.2	0.5	0.3	0.7	0.2	96.5	0.3	3.2	0.072	0.514	21.565008	-104.878791
Bellavista	1.30	0	0																	

32 CARR: Ramal a El Colomo

CLAVE: 18014

RUTA: NAY

AÑO: 2022

LUGAR	ESTACION				CLASIFICACION VEHICULAR EN PORCIENTO														COORDENADAS	
	KM	TE	SC	TDPA	M	A	B	C2	C3	T3S2	T3S3	T3S2R4	OTROS	A	B	C	K'	D	LATITUD	LONGITUD
T. C. Tepic - Puerto Vallarta	0.00	0	0																	
San Vicente	3.00	1	1	18272	12.2	81.9	1.5	3.0	0.6	0.4	0.1	0.2	0.1	94.1	1.5	4.4	0.084	0.500	20.742789	-105.256786
San Vicente	3.00	1	2	18255	12.5	81.9	1.1	3.4	0.4	0.3	0.1	0.2	0.1	94.4	1.1	4.5	0.104	0.500	20.742789	-105.256873
El Colomo	21.00	0	0																	

33 CARR: Ramal a Estación Yago

CLAVE: 18224

RUTA: NAY

AÑO: 2022

LUGAR	ESTACION				CLASIFICACION VEHICULAR EN PORCIENTO														COORDENADAS	
	KM	TE	SC	TDPA	M	A	B	C2	C3	T3S2	T3S3	T3S2R4	OTROS	A	B	C	K'	D	LATITUD	LONGITUD
T. C. Tepic - Mazatlán	0.00	3	0	2307	26.7	66.9	1.3	2.1	1.5	1.1	0.1	0.3	0.0	93.6	1.3	5.1	0.086	0.505	21.833426	-105.105406
Estacion Yago	7.00	0	0																	

34 CARR: Ramal a Ixtapan de La Concepción

CLAVE: 18233

RUTA: NAY

AÑO: 2022

LUGAR	ESTACION				CLASIFICACION VEHICULAR EN PORCIENTO														COORDENADAS	
	KM	TE	SC	TDPA	M	A	B	C2	C3	T3S2	T3S3	T3S2R4	OTROS	A	B	C	K'	D	LATITUD	LONGITUD
T. C. Tepic - Puerto Vallarta (Las Varas)	0.00	3	0	6009	6.8	82.1	0.7	7.2	1.0	1.6	0.3	0.2	0.1	88.9	0.7	10.4	0.075	0.503	21.188731	-105.145331
Ixtapan de La Concepción	20.00	1	0	2664	17.3	73.8	1.2	4.1	1.2	1.1	0.2	0.3	0.8	91.1	1.2	7.7	0.117	0.506	21.300313	-105.157353



NAYARIT

35 CARR: Ramal a Milpas Viejas

CLAVE: 18007

RUTA: NAY

AÑO: 2022

LUGAR	ESTACION				CLASIFICACION VEHICULAR EN PORCIENTO														COORDENADAS	
	KM	TE	SC	TDPA	M	A	B	C2	C3	T3S2	T3S3	T3S2R4	OTROS	A	B	C	K'	D	LATITUD	LONGITUD
T. C. Tepic - Mazatlán	0.00	3	0	2168	23.4	71.5	0.8	1.4	1.5	0.5	0.5	0.3	0.1	94.9	0.8	4.3	0.082	0.519	22.453457	-105.360878
Milpas Viejas	17.00	0	0																	

36 CARR: Ramal a Villa Hidalgo

CLAVE: 18031

RUTA: NAY

AÑO: 2022

LUGAR	ESTACION				CLASIFICACION VEHICULAR EN PORCIENTO														COORDENADAS	
	KM	TE	SC	TDPA	M	A	B	C2	C3	T3S2	T3S3	T3S2R4	OTROS	A	B	C	K'	D	LATITUD	LONGITUD
T. C. Tepic - Mazatlán	0.00	3	0	4190	7.2	82.7	0.2	0.2	4.7	2.7	1.1	1.0	0.2	89.9	0.2	9.9	0.079	0.518	21.804532	-105.112929
Villa Hidalgo	16.00	1	0	6223	6.7	88.9	0.2	0.2	1.5	1.2	0.2	0.9	0.2	95.6	0.2	4.2	0.079	0.501	21.754883	-105.227694

37 CARR: Ramal a Volcán del Ceboruco

CLAVE: 18003

RUTA: NAY

AÑO: 2022

LUGAR	ESTACION				CLASIFICACION VEHICULAR EN PORCIENTO														COORDENADAS	
	KM	TE	SC	TDPA	M	A	B	C2	C3	T3S2	T3S3	T3S2R4	OTROS	A	B	C	K'	D	LATITUD	LONGITUD
T. C. Guadalajara - Tepic	0.00	3	0	4347	7.3	74.7	3.5	5.6	2.4	4.5	1.5	0.5	0.0	82.0	3.5	14.5	0.078	0.547	21.052315	-104.459293
Volcán Ceboruco	25.00	0	0																	

38 CARR: Tepic - Francisco I. Madero

CLAVE: 18009

RUTA: NAY-MEX

AÑO: 2022

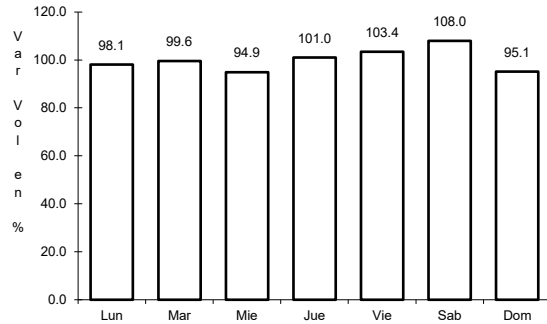
LUGAR	ESTACION				CLASIFICACION VEHICULAR EN PORCIENTO														COORDENADAS	
	KM	TE	SC	TDPA	M	A	B	C2	C3	T3S2	T3S3	T3S2R4	OTROS	A	B	C	K'	D	LATITUD	LONGITUD
Tepic	0.00	3	0	8087	11.0	85.2	0.4	1.3	1.5	0.2	0.1	0.3	0.0	96.2	0.4	3.4	0.078	0.501	21.544596	-104.864072
Bellavista	9.00	3	0	5553	10.6	85.6	0.4	1.2	1.5	0.2	0.1	0.4	0.0	96.2	0.4	3.4	0.080	0.503	21.569976	-104.870975
Francisco I. Madero	16.00	0	0																	



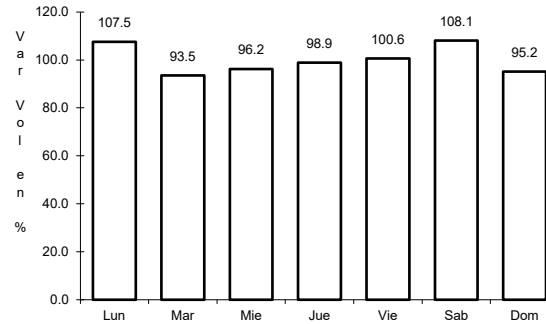
1 CARR: Crucero de San Blas - San Blas

CLAVE: 18229

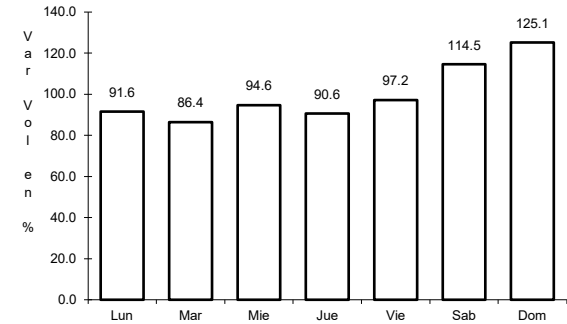
RUTA: MEX-015



Km: 0.00      Tipo: 3      Sent: 0



Km: 11.00      Tipo: 3      Sent: 0

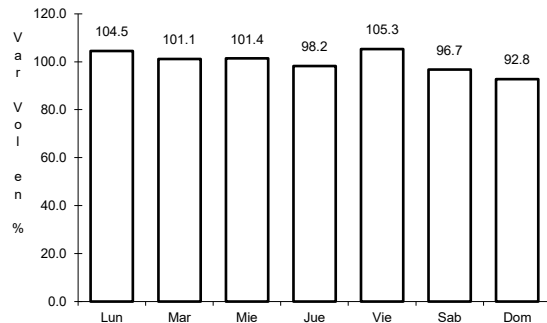


Km: 36.00      Tipo: 1      Sent: 0

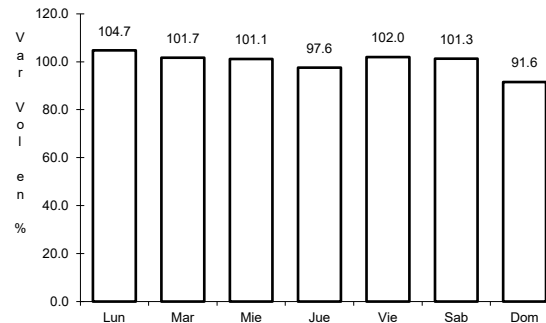
2 CARR: Ent. Acaponeta - El Novillero

CLAVE: 18023

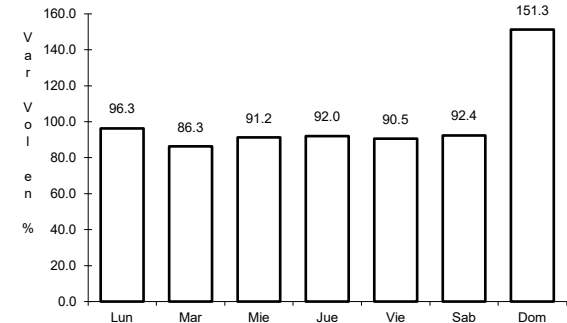
RUTA: MEX-015



Km: 0.00      Tipo: 3      Sent: 0



Km: 13.00      Tipo: 1      Sent: 0

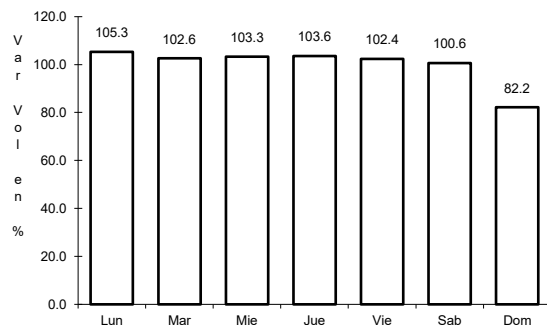


Km: 36.00      Tipo: 1      Sent: 0

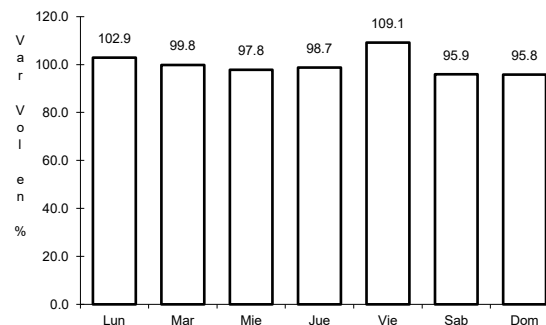
3 CARR: Ent. Santiago Ixcuintla - Playa Los Corchos

CLAVE: 18016

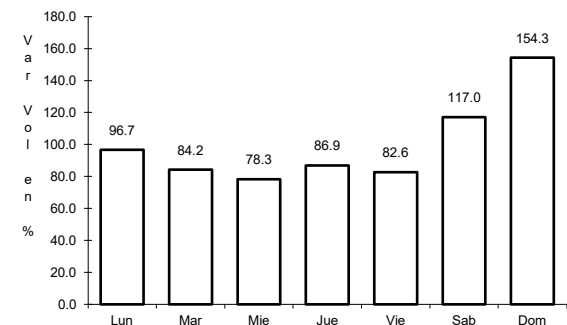
RUTA: MEX-015



Km: 0.00      Tipo: 3      Sent: 1



Km: 0.00      Tipo: 3      Sent: 2

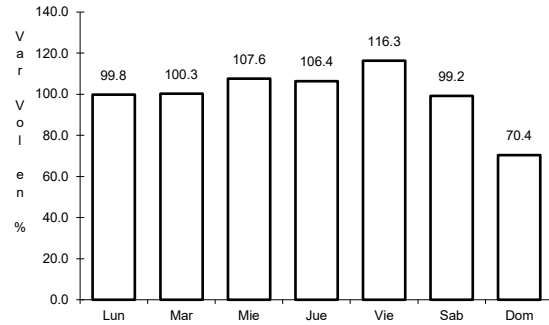


Km: 39.00      Tipo: 1      Sent: 0

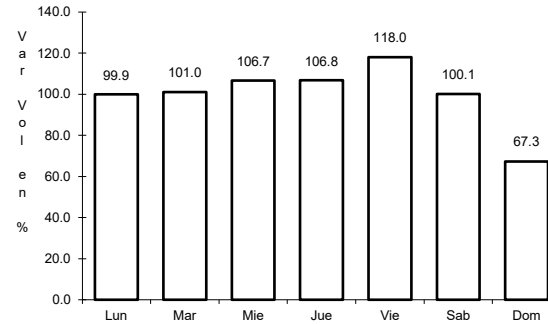
4 CARR: Guadalajara - Tepic

CLAVE: 00031

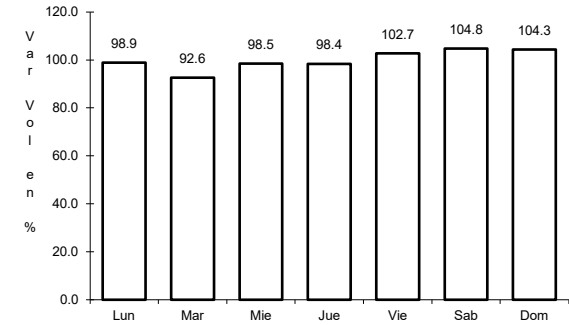
RUTA: MEX-015



Km: 8.30      Tipo: 3      Sent: 1



Km: 8.30      Tipo: 3      Sent: 2

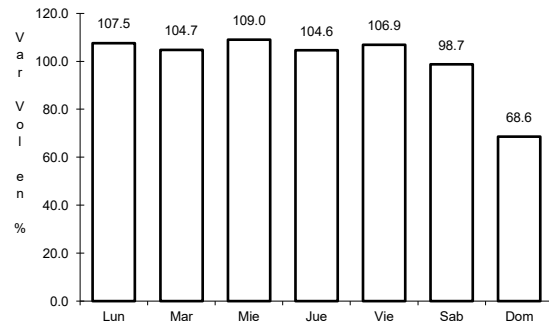


Km: 138.84      Tipo: 1      Sent: 0

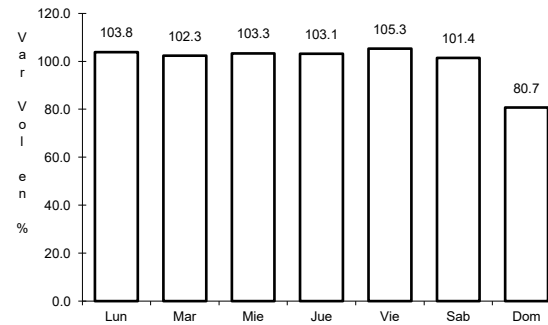
5 CARR: Libramiento de Tepic

CLAVE: 18232

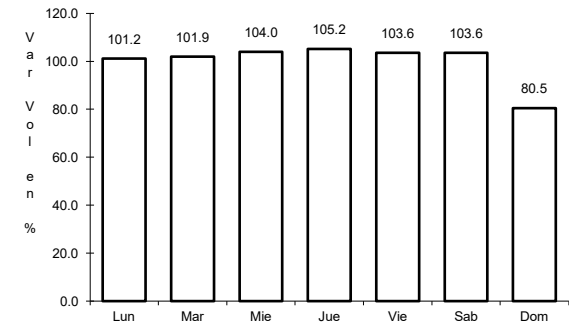
RUTA: MEX-015



Km: 5.00      Tipo: 1      Sent: 1



Km: 5.00      Tipo: 1      Sent: 2

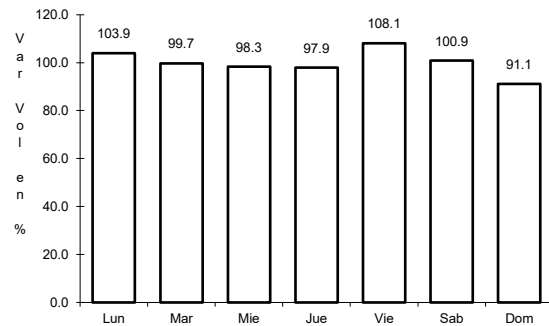


Km: 18.80      Tipo: 1      Sent: 1

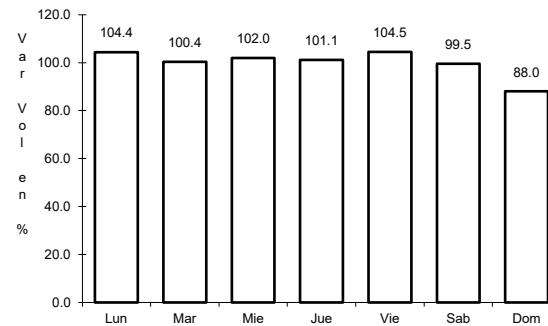
6 CARR: Peñitas - Tuxpan

CLAVE: 18019

RUTA: MEX-015



Km: 0.00      Tipo: 3      Sent: 0

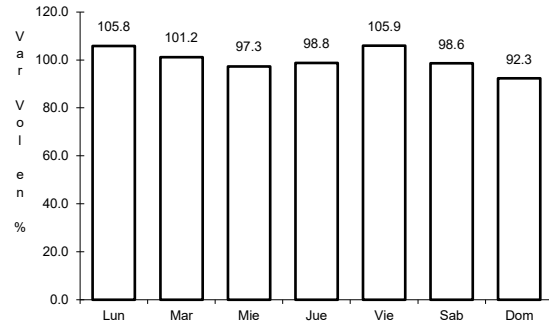


Km: 9.00      Tipo: 1      Sent: 0

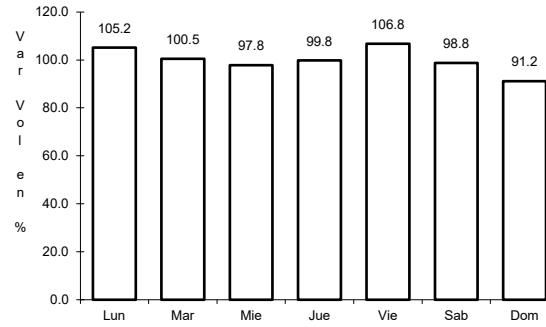
7 CARR: Ramal a Acaponeta

CLAVE: 18038

ruta: MEX-015



Km: 0.00      Tipo: 3      Sent: 1

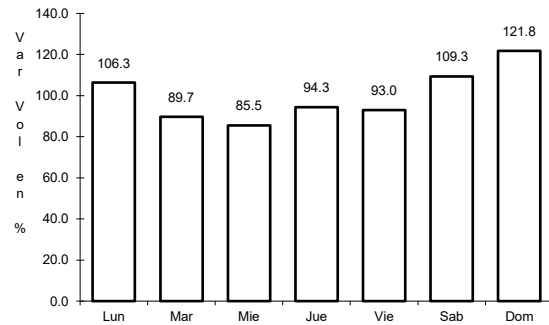


Km: 0.00      Tipo: 3      Sent: 2

8 CARR: Ramal a Estación Nanchi

CLAVE: 18068

ruta: MEX-015

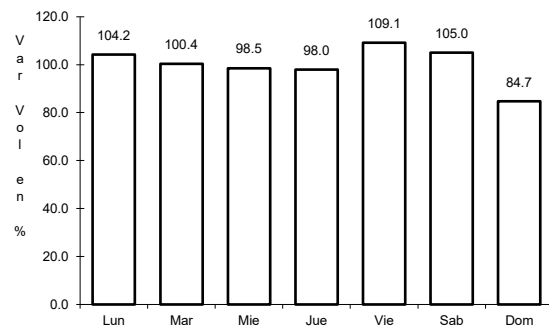


Km: 0.00      Tipo: 3      Sent: 0

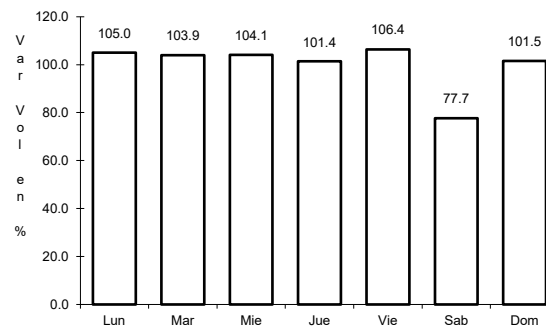
9 CARR: Ramal a Estación Ruíz

CLAVE: 18026

ruta: MEX-015



Km: 0.00      Tipo: 3      Sent: 0

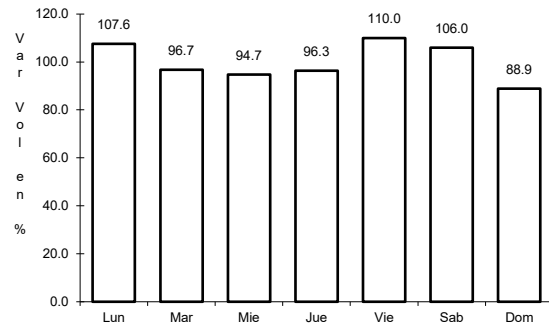


Km: 5.50      Tipo: 1      Sent: 0

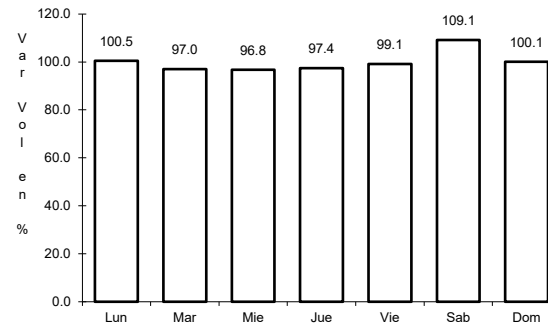
10 CARR: Ramal a La Laguna de Santa María

CLAVE: 18005

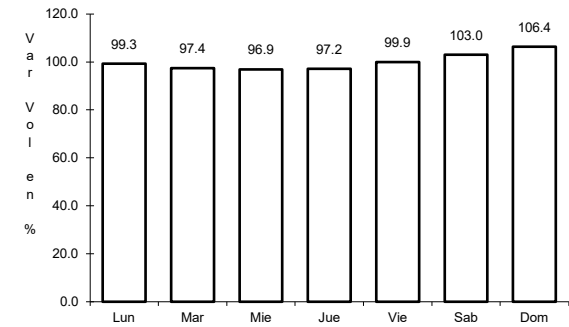
ruta: MEX-015



Km: 0.00                      Tipo: 3                      Sent: 0



Km: 11.50                      Tipo: 1                      Sent: 1

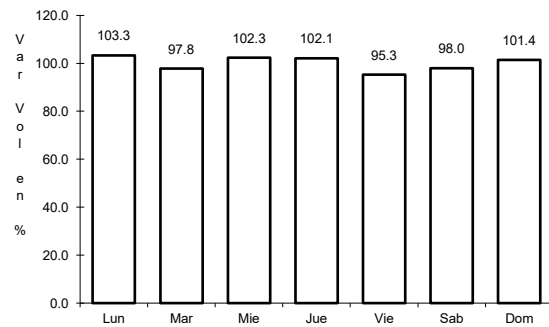


Km: 11.50                      Tipo: 1                      Sent: 2

11 CARR: Ramal a Mecatán

CLAVE: 18010

ruta: MEX-015

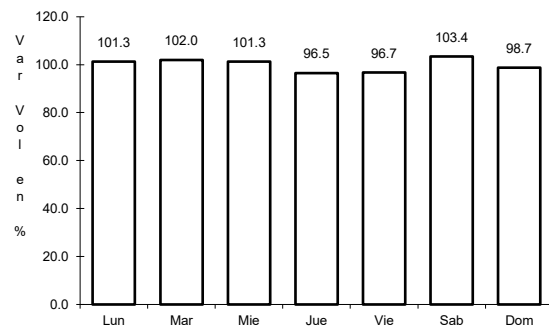


Km: 0.00                      Tipo: 3                      Sent: 0

12 CARR: Ramal a Nuevo Aeropuerto de Tepic

CLAVE: 18012

ruta: MEX-015

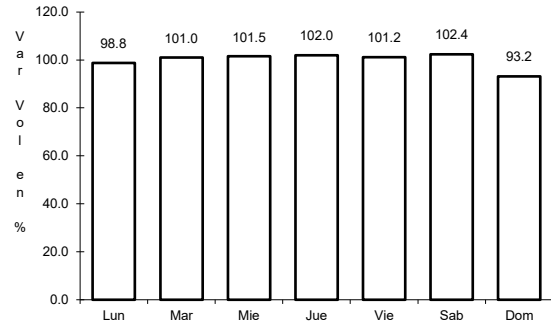


Km: 0.00                      Tipo: 3                      Sent: 0

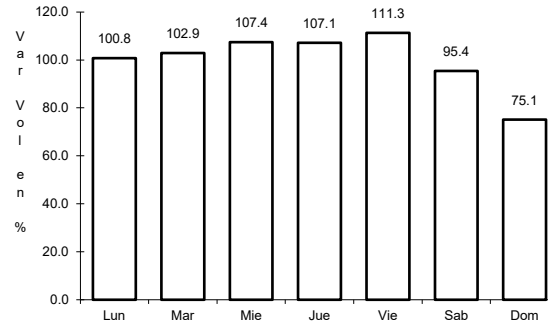
13 CARR: Ramal a Punta Mita

CLAVE: 18020

RUTA: MEX-200



Km: 0.00      Tipo: 3      Sent: 0

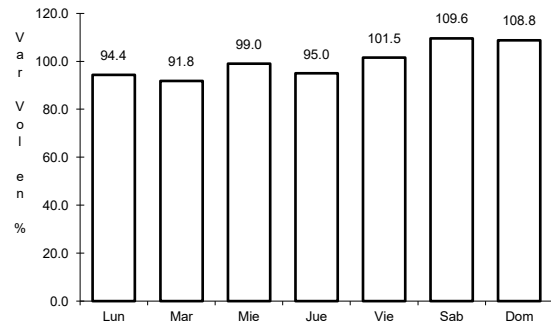


Km: 9.00      Tipo: 3      Sent: 0

14 CARR: Ramal a Santa Cruz

CLAVE: 18030

RUTA: MEX-015

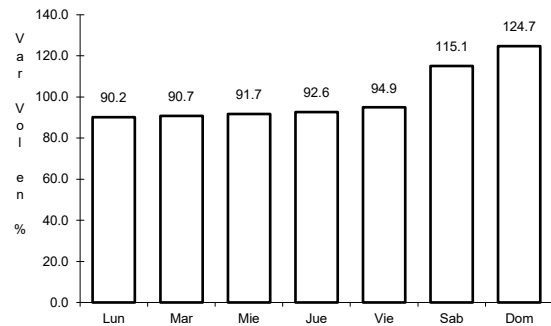


Km: 1.30      Tipo: 1      Sent: 0

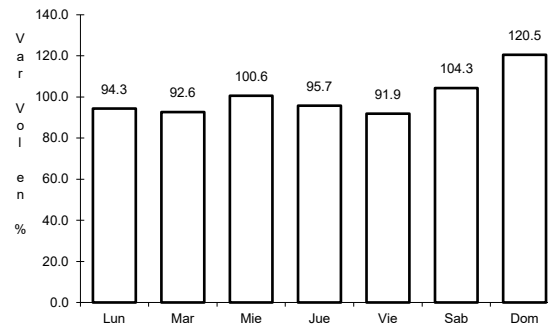
15 CARR: Santa Cruz - San Blas

CLAVE: 18230

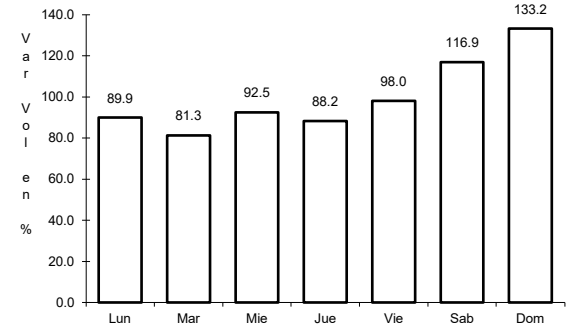
RUTA: MEX-015



Km: 0.00      Tipo: 3      Sent: 0



Km: 5.00      Tipo: 3      Sent: 0

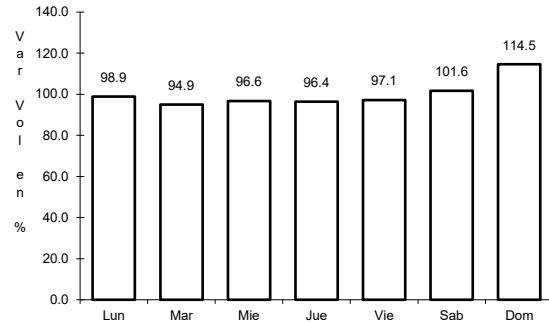


Km: 17.00      Tipo: 1      Sent: 0

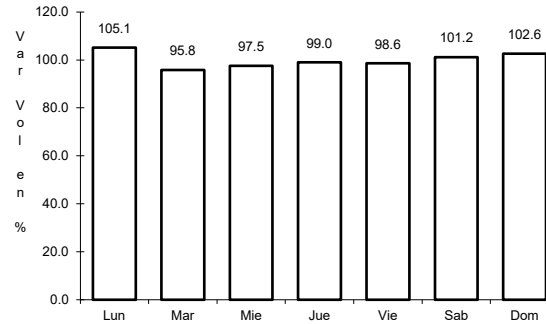
16 CARR: Tepic - Ixtapan de La Concepción

CLAVE: 18028

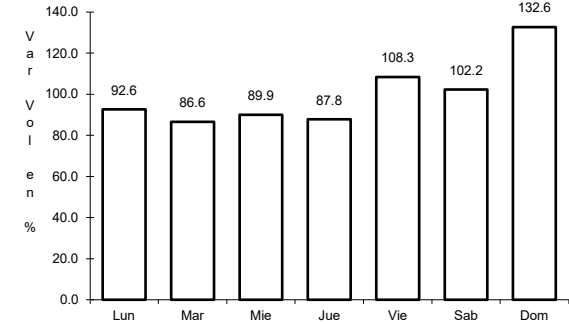
ruta: MEX-015



Km: 0.00      Tipo: 3      Sent: 0



Km: 27.00      Tipo: 1      Sent: 0

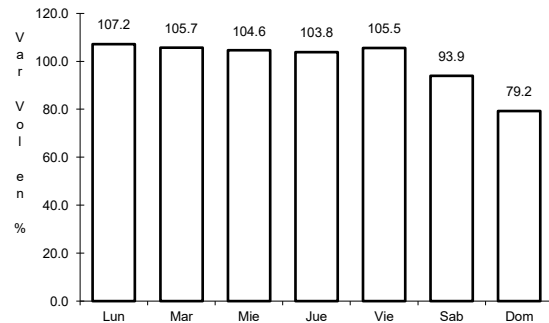


Km: 77.42      Tipo: 1      Sent: 0

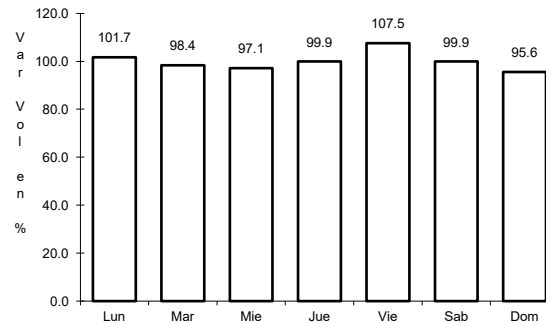
17 CARR: Tepic - Mazatlán

CLAVE: 00499

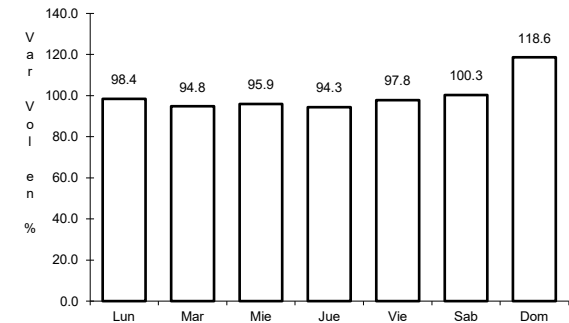
ruta: MEX-015



Km: 0.00      Tipo: 3      Sent: 1



Km: 136.52      Tipo: 1      Sent: 0

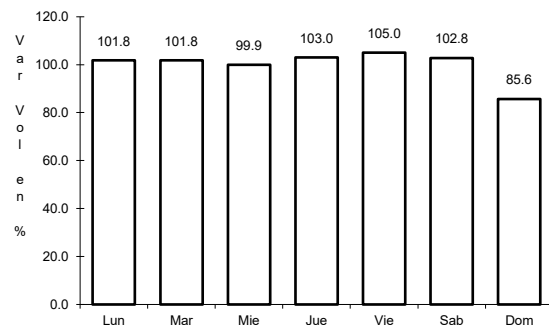


Km: 267.99      Tipo: 1      Sent: 0

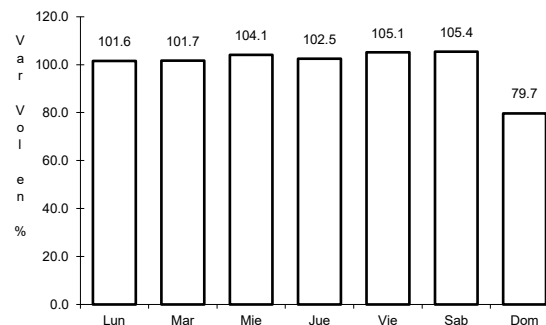
18 CARR: Tepic - Presa Aguamilpa

CLAVE: 18029

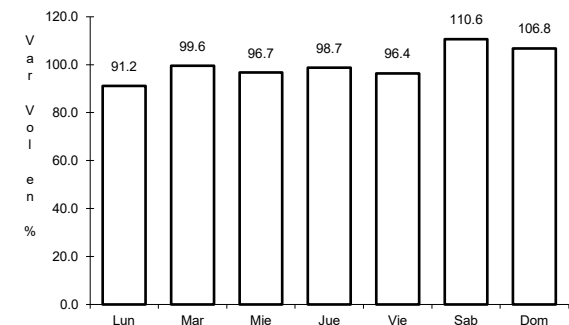
ruta: MEX-015



Km: 0.00      Tipo: 3      Sent: 1



Km: 0.00      Tipo: 3      Sent: 2



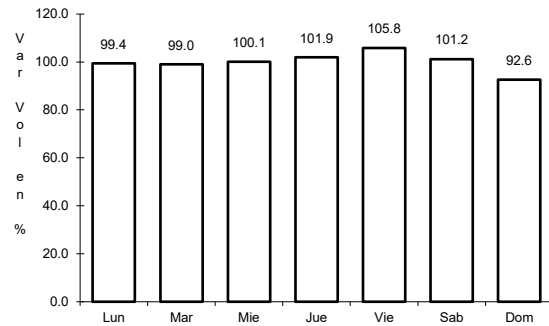
Km: 54.00      Tipo: 1      Sent: 0



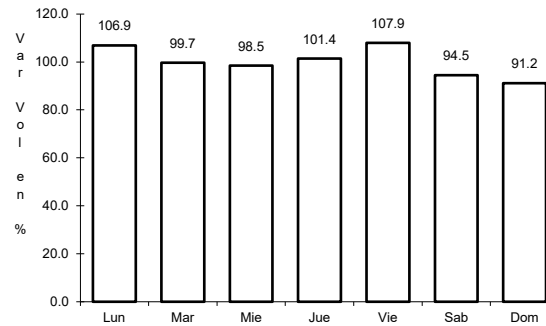
19 CARR: Tepic - Puerto Vallarta

CLAVE: 00068

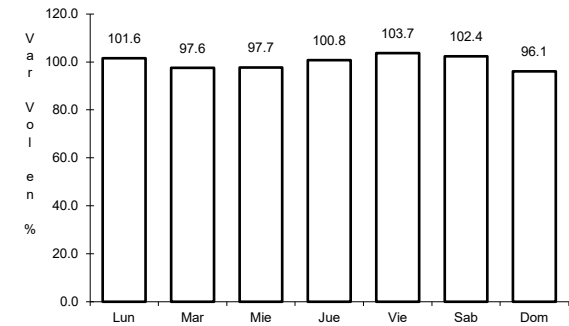
ruta: MEX-200



Km: 0.00      Tipo: 3      Sent: 1



Km: 71.30      Tipo: 1      Sent: 0

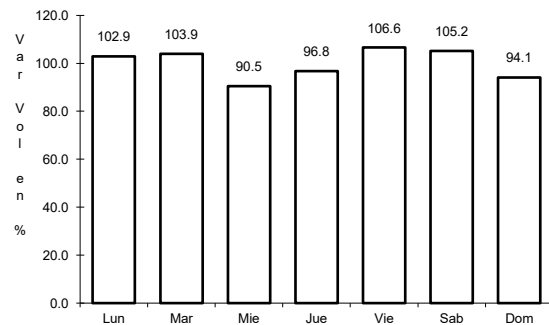


Km: 122.91      Tipo: 3      Sent: 0

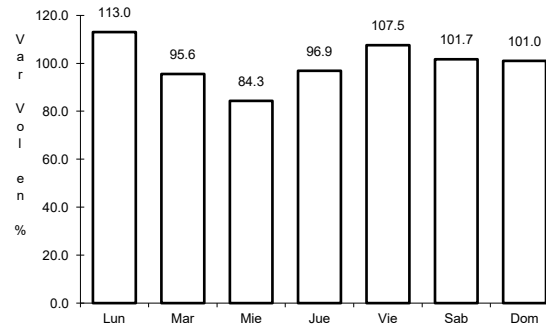
20 CARR: Chapalilla - Compostela (Cuota)

CLAVE: 18004

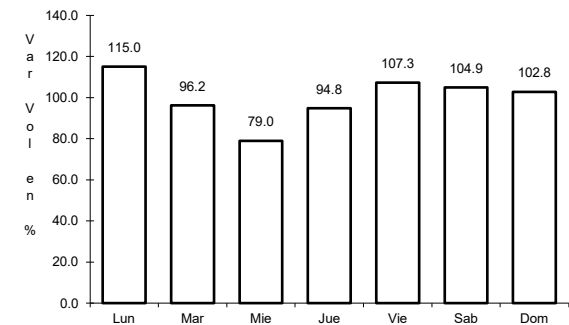
ruta: MEX-068D



Km: 0.00      Tipo: 3      Sent: 0



Km: 33.00      Tipo: 1      Sent: 0

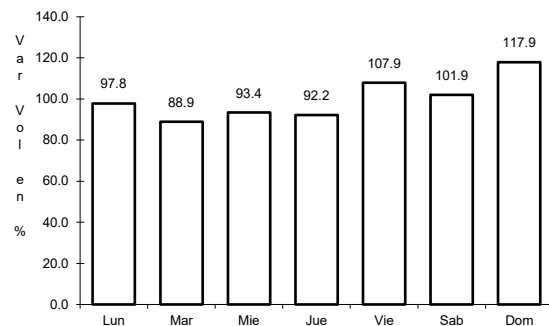


Km: 35.60      Tipo: 1      Sent: 0

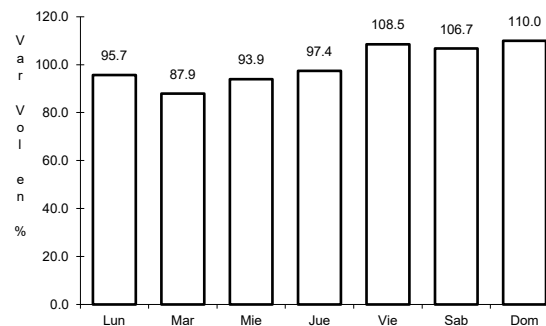
21 CARR: Guadalajara - Tepic (Cuota)

CLAVE: 00033

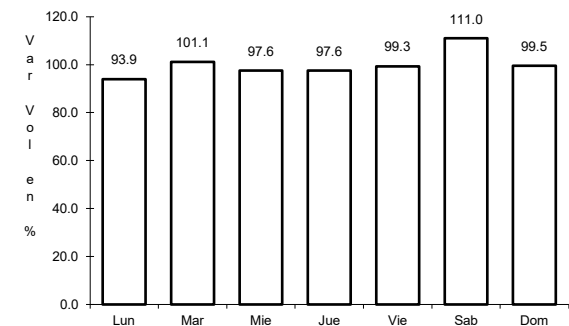
ruta: MEX-015D



Km: 0.00      Tipo: 3      Sent: 1



Km: 0.00      Tipo: 3      Sent: 2

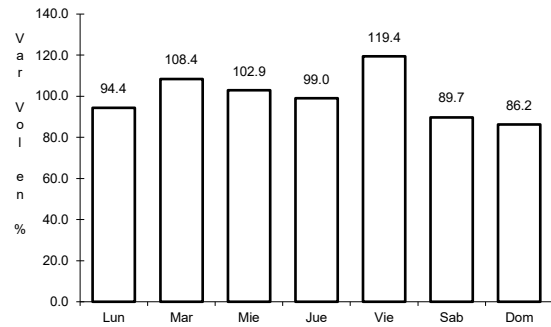


Km: 145.32      Tipo: 3      Sent: 1

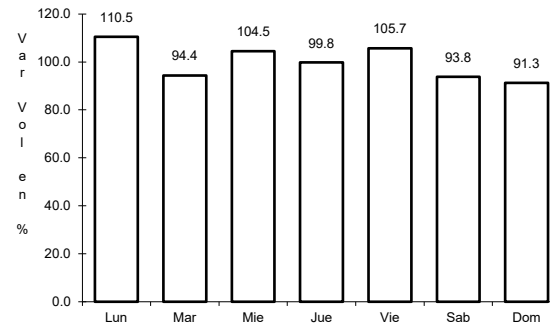
22 CARR: Jala - Puerto Vallarta (Cuota)

CLAVE:

RUTA: MEX-070D



Km: 0.00      Tipo: 3      Sent: 1

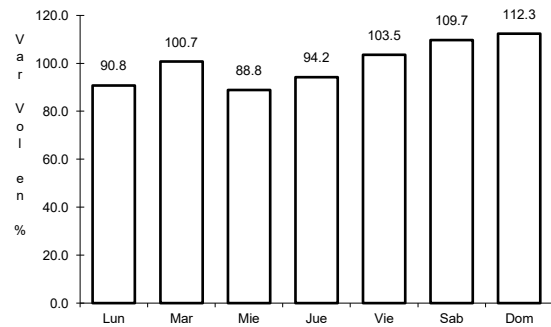


Km: 0.00      Tipo: 3      Sent: 2

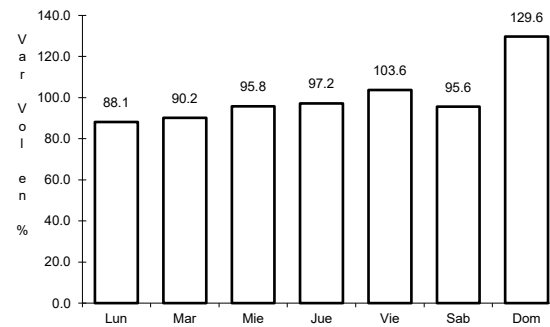
23 CARR: Libramiento de Tepic (Cuota)

CLAVE:

RUTA: MEX-015D



Km: 0.70      Tipo: 3      Sent: 0

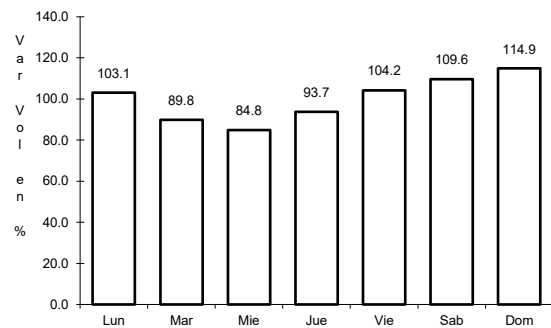


Km: 29.47      Tipo: 1      Sent: 0

24 CARR: Ramal a Compostela (Cuota)

CLAVE:

RUTA: MEX-200D

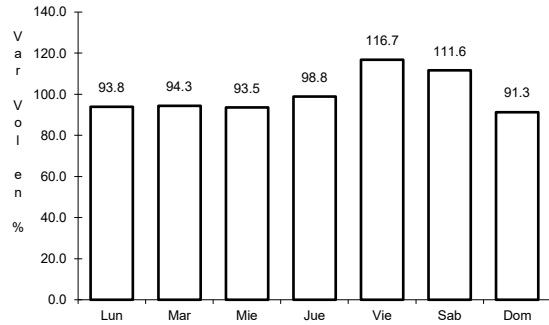


Km: 12.90      Tipo: 1      Sent: 0

25 CARR: Ramal a Tequexpan

CLAVE: 00068

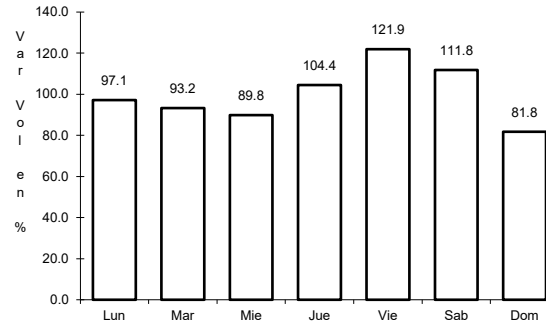
ruta: MEX-015D



Km: 0.00

Tipo: 3

Sent: 0



Km: 9.40

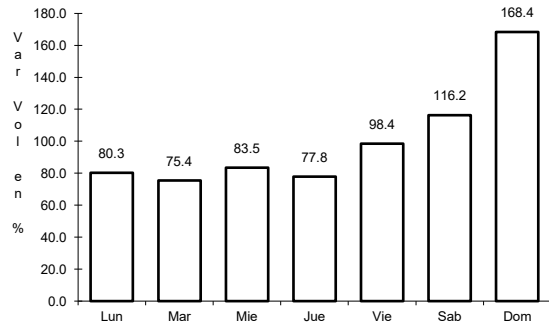
Tipo: 1

Sent: 0

26 CARR: Tepic - San Blas (Cuota)

CLAVE:

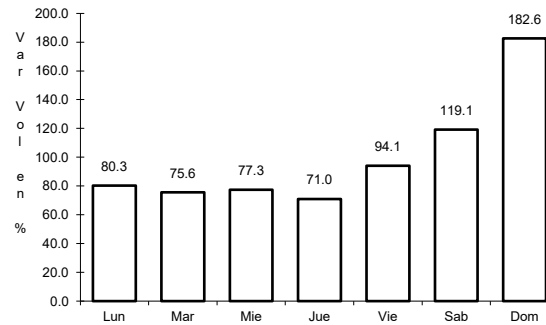
ruta: MEX-D



Km: 0.00

Tipo: 3

Sent: 0



Km: 31.00

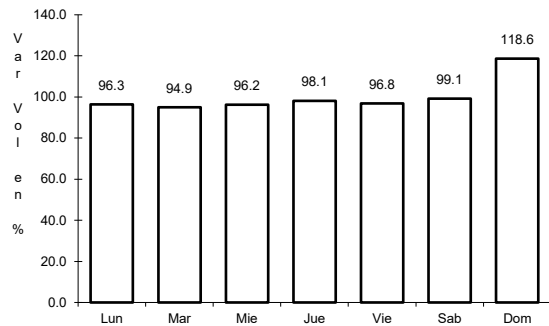
Tipo: 1

Sent: 0

27 CARR: Tepic - Villa Unión (cuota)

CLAVE: 00500

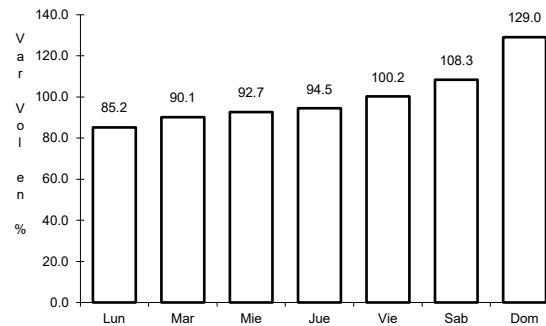
ruta: MEX-015D



Km: 8.65

Tipo: 1

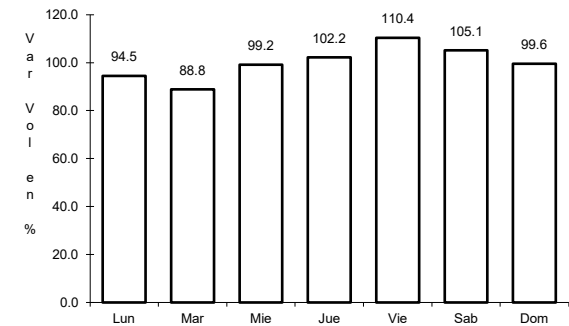
Sent: 1



Km: 8.65

Tipo: 1

Sent: 2



Km: 240.90

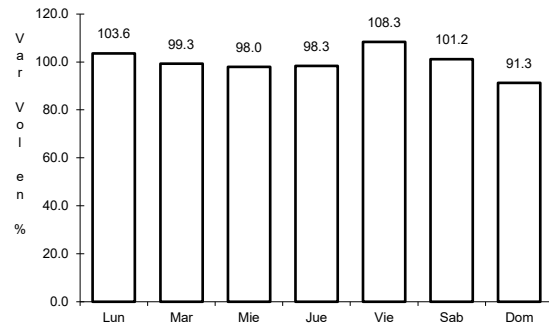
Tipo: 1

Sent: 0

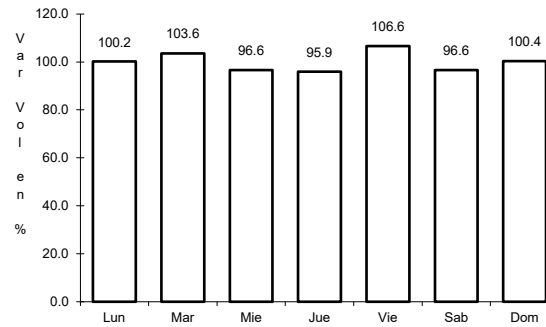
28 CARR: El Carrizo - La Batanga

CLAVE: 18107

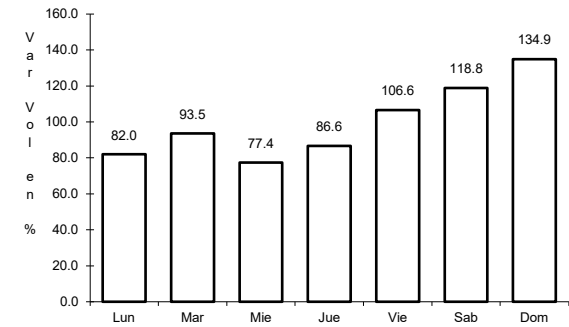
ruta: NAY-078



Km: 0.00      Tipo: 3      Sent: 0



Km: 9.00      Tipo: 1      Sent: 0

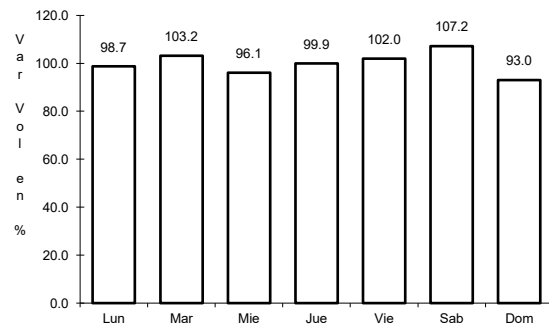


Km: 25.00      Tipo: 1      Sent: 0

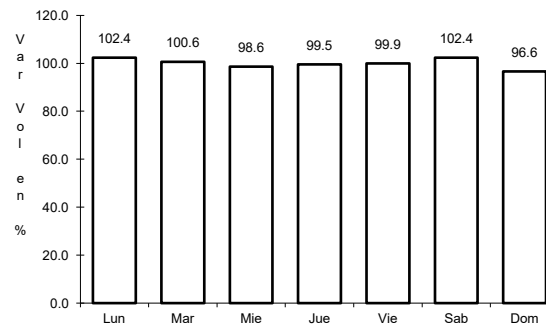
29 CARR: Navarrete - Sauta

CLAVE: 18013

ruta: NAY-013



Km: 0.00      Tipo: 3      Sent: 0

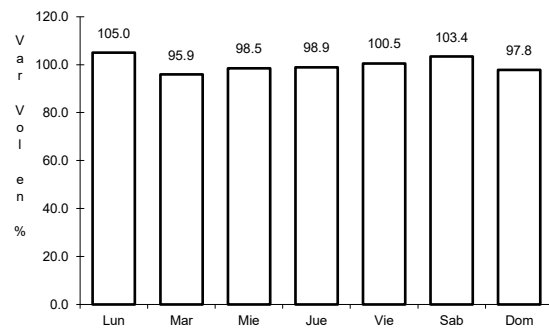


Km: 7.00      Tipo: 1      Sent: 0

30 CARR: Ramal a Amado Nervo

CLAVE: 18011

ruta: NAY

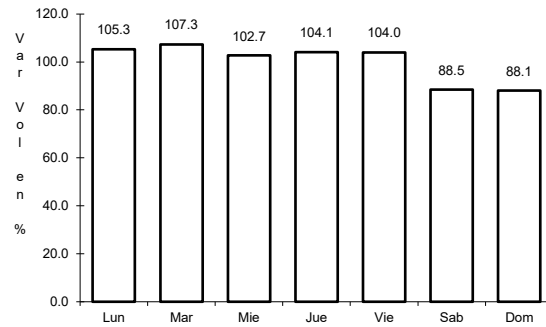


Km: 0.00      Tipo: 3      Sent: 0

31 CARR: Ramal a Bellavista

CLAVE: 18059

ruta: NAY-059



Km: 0.00

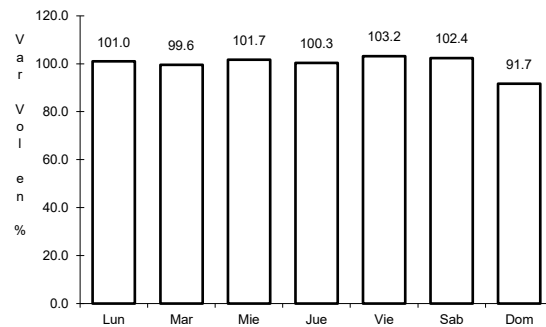
Tipo: 3

Sent: 0

32 CARR: Ramal a El Colomo

CLAVE: 18014

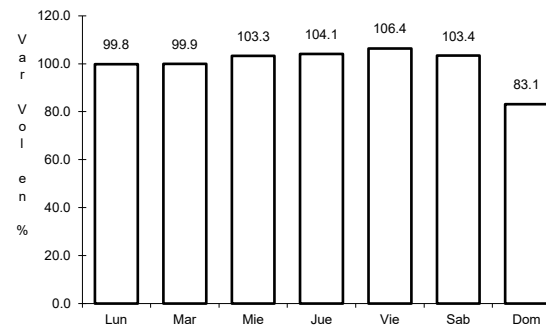
ruta: NAY



Km: 3.00

Tipo: 1

Sent: 1



Km: 3.00

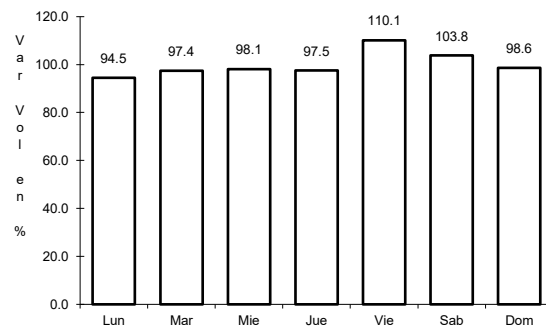
Tipo: 1

Sent: 2

33 CARR: Ramal a Estación Yago

CLAVE: 18224

ruta: NAY



Km: 0.00

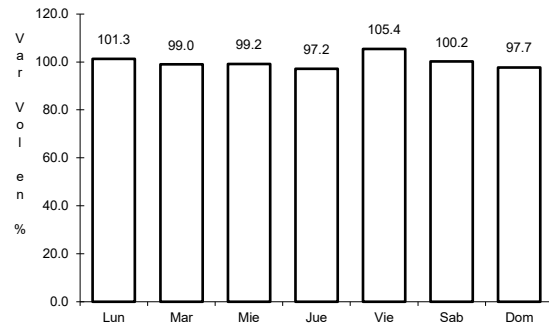
Tipo: 3

Sent: 0

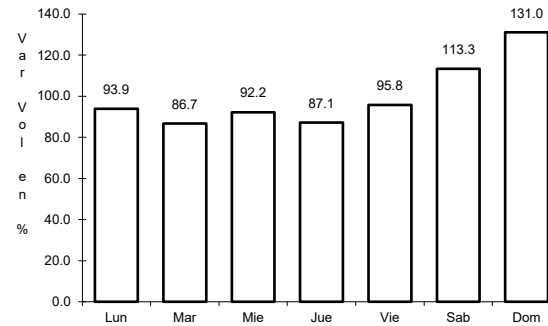
34 CARR: Ramal a Ixtapán de La Concepción

CLAVE: 18233

ruta: NAY



Km: 0.00                      Tipo: 3                      Sent: 0

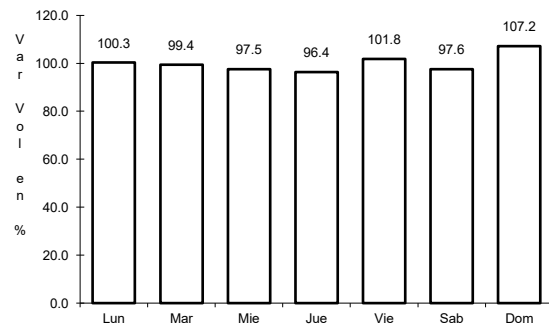


Km: 20.00                      Tipo: 1                      Sent: 0

35 CARR: Ramal a Milpas Viejas

CLAVE: 18007

ruta: NAY

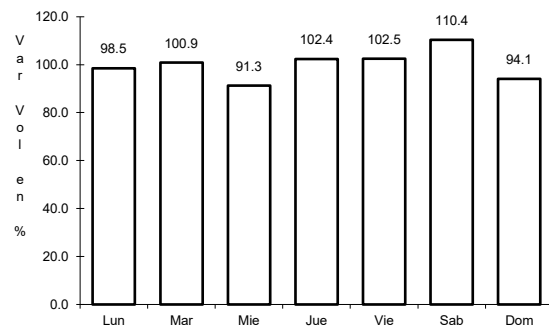


Km: 0.00                      Tipo: 3                      Sent: 0

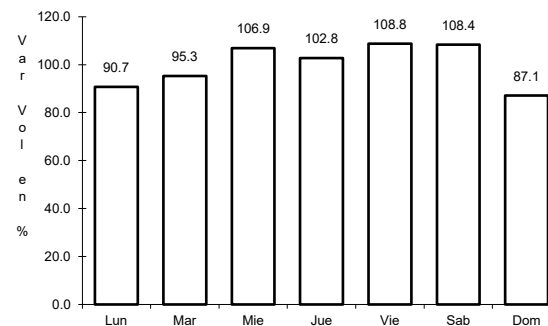
36 CARR: Ramal a Villa Hidalgo

CLAVE: 18031

ruta: NAY



Km: 0.00                      Tipo: 3                      Sent: 0

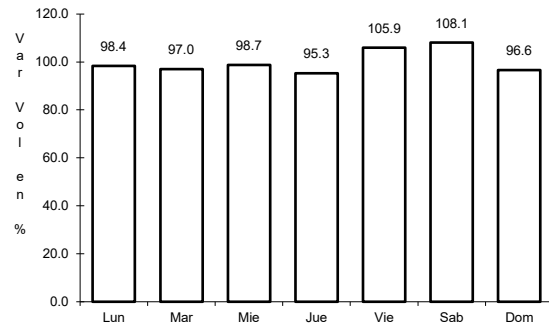


Km: 16.00                      Tipo: 1                      Sent: 0

37 CARR: Ramal a Volcán del Ceboruco

CLAVE: 18003

RUTA: NAY



Km: 0.00

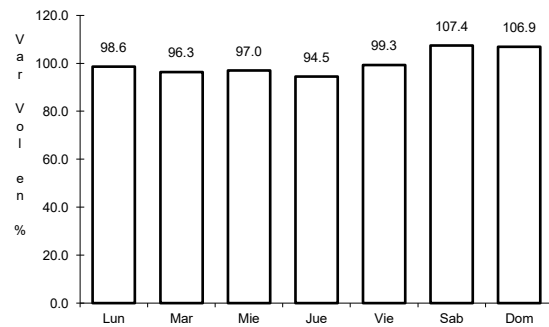
Tipo: 3

Sent: 0

38 CARR: Tepic - Francisco I. Madero

CLAVE: 18009

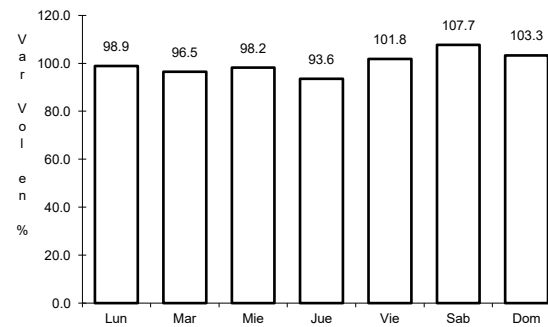
RUTA: NAY-MEX



Km: 0.00

Tipo: 3

Sent: 0



Km: 9.00

Tipo: 3

Sent: 0

