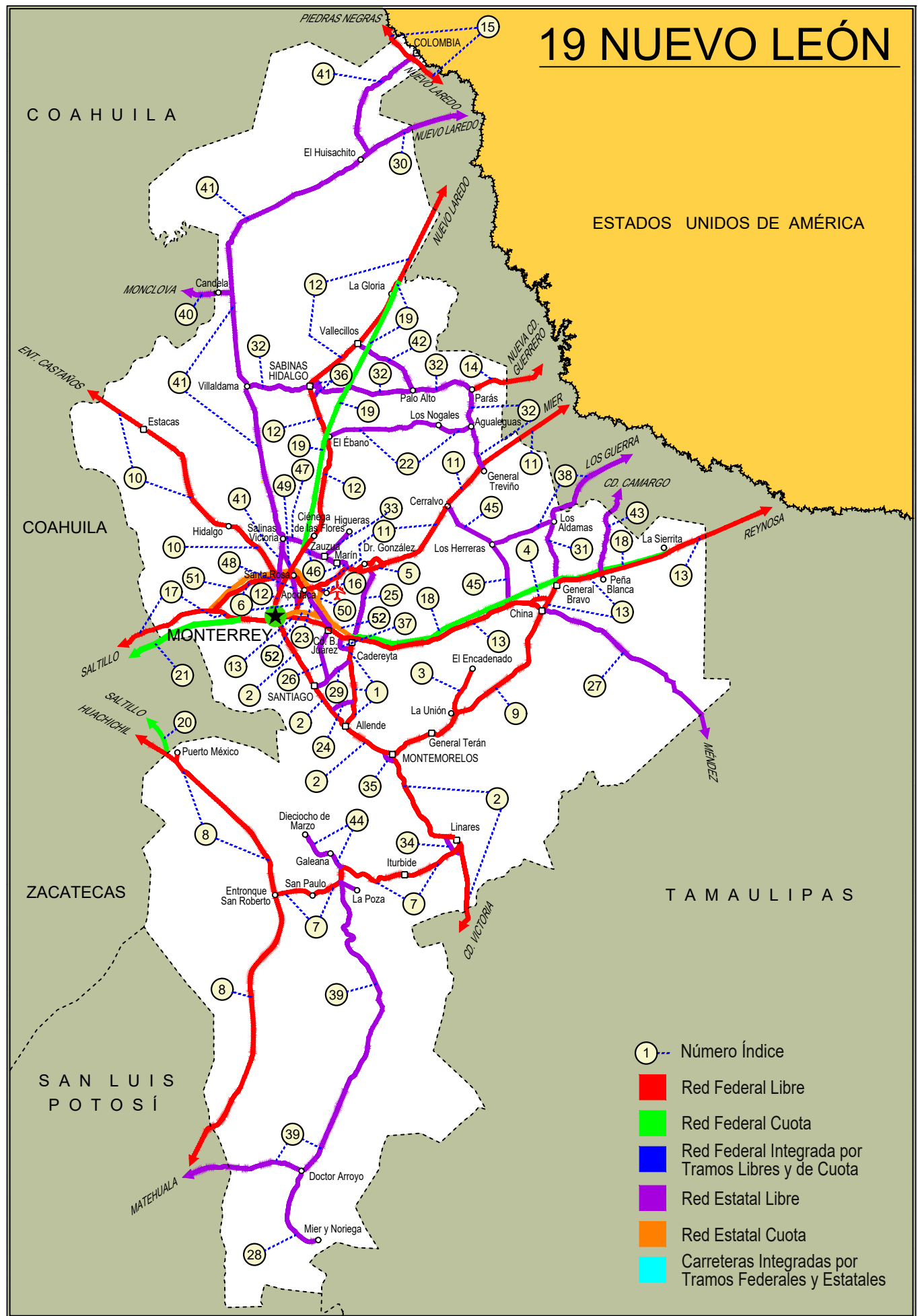


# NUEVO LEON

NO. INDICE CARRETERA		RUTA
	---RED FEDERAL LIBRE---	
1	Cadereyta de Jiménez - Allende	MEX-009
2	Ciudad Victoria - Monterrey	MEX-085
3	La Unión - El Encadenado	MEX
4	Libramiento de China	MEX-040
5	Libramiento de Dr. González	MEX-054
6	Libramiento Noroeste de Monterrey	MEX-040
7	Linares - Ent. San Roberto	MEX-058
8	Matehuala - Ent. Puerto México	MEX-057
9	Montemorelos - China	MEX-035
10	Monterrey - Castaños	MEX-053
11	Monterrey - Mier	MEX-054
12	Monterrey - Nuevo Laredo (Libre)	MEX-085
13	Monterrey - Reynosa (Libre)	MEX-040
14	Paras - Nueva Ciudad Guerrero	MEX-030
15	Piedras Negras - Nuevo Laredo	MEX-002
16	Ramal a Aeropuerto Mariano Escobedo	MEX-054
17	Saltillo - Monterrey	MEX-040
	---RED FEDERAL DE CUOTA---	
18	Cadereyta - Reynosa (Cuota)	MEX-040D
19	Monterrey - Nuevo Laredo (Cuota)	MEX-085D
20	Puerto México - La Carbonera (Cuota)	MEX-057D
21	Saltillo - Monterrey (Cuota)	MEX-040D
	---RED ESTATAL LIBRE---	
22	Agualeguas - El Ébano	NL-023
23	Apodaca - Villa Juárez	NL
24	Atongo - Lazarillos	NL
25	Cadereyta de Jiménez - Doctor González	NL
26	Cd. Benito Juárez - Villa de Santiago	NL
27	China - Méndez	NL-TAM
28	Doctor Arroyo - Mier y Noriega	NL-088
29	Ent. Hacienda del Cielo - T. Der. Cadereyta	NL
30	Ent. Huisachito - Nuevo Laredo	NL-001-TAM
31	Gral. Bravo - Los Aldamas	NL-030
32	Gral. Treviño - Villaldama	NL-003
33	Hacienda Guadalupe - Higuera	NL-006
34	Libramiento de Linares	NL
35	Libramiento de Montemorelos	NL
36	Libramiento de Sabinas Hidalgo	NL
37	Libramiento Poniente de Cadereyta	NL
38	Los Guerra - Los Herreras	TAM-NL
39	Matehuala - La Poza	SLP-029-NL-061
40	Monclova - Estación Candela	COA-030-NL
41	Monterrey - Colombia	NL-001
42	Palo Alto - Vallecillos	NL
43	Peña Blanca - Cd. Camargo	NL-TAM
44	Ramal a 18 de Marzo	NL
45	Ramal a Cerralvo	NL-013
46	Ramal a Marín	NL
47	Salinas Victoria - Ciénega de Flores	NL
48	Santa Rosa - Mezquital	NL
49	Santa Rosa - Salinas Victoria	NL
	---RED ESTATAL DE CUOTA---	
50	Aeropuerto de Monterrey (Cuota)	NL-D
51	Anillo Periférico de Monterrey (Cuota)	NL-D
52	Monterrey - Cadereyta (Cuota)	NL-D

# 19 NUEVO LEÓN



- ① --- Número Índice
- Red Federal Libre
- Red Federal Cuota
- Red Federal Integrada por Tramos Libres y de Cuota
- Red Estatal Libre
- Red Estatal Cuota
- Carreteras Integradas por Tramos Federales y Estatales



NUEVO LEON

1 CARR: Cadereyta de Jiménez - Allende

CLAVE: 19009

RUTA: MEX-009

AÑO: 2022

LUGAR	ESTACION				CLASIFICACION VEHICULAR EN PORCIENTO													COORDENADAS		
	KM	TE	SC	TDPA	M	A	B	C2	C3	T3S2	T3S3	T3S2R4	OTROS	A	B	C	K'	D	LATITUD	LONGITUD
Cadereyta de Jiménez	0.00	3	1	7345	5.3	79.6	1.1	3.0	1.5	4.2	1.4	3.0	0.9	84.9	1.1	14.0	0.134	0.502	25.557702	-100.005972
Cadereyta de Jiménez	0.00	3	2	7397	5.3	79.6	1.1	3.0	1.5	4.2	1.4	3.0	0.9	84.9	1.1	14.0	0.163	0.502	25.557699	-100.005936
T. der. Huajuquito	7.30	3	0	10564	4.4	76.0	0.8	4.7	2.7	5.8	1.2	3.5	0.9	80.4	0.8	18.8	0.106	0.508	25.518676	-100.007099
T. Izq. Atongo	26.80	1	0	9414	3.9	68.9	1.0	8.7	2.9	7.7	1.2	4.8	0.9	72.8	1.0	26.2	0.089	0.512	25.375716	-99.986736
Allende	37.00	1	1	8304	2.5	77.9	0.9	7.4	3.3	3.4	1.3	2.4	0.9	80.4	0.9	18.7	0.082	0.504	25.292409	-100.013144
Allende	37.00	1	2	8436	2.5	77.7	1.0	7.4	3.3	3.4	1.3	2.5	0.9	80.2	1.0	18.8	0.084	0.504	25.292369	-100.013079

2 CARR: Ciudad Victoria - Monterrey

CLAVE: 00462

RUTA: MEX-085

AÑO: 2022

LUGAR	ESTACION				CLASIFICACION VEHICULAR EN PORCIENTO													COORDENADAS		
	KM	TE	SC	TDPA	M	A	B	C2	C3	T3S2	T3S3	T3S2R4	OTROS	A	B	C	K'	D	LATITUD	LONGITUD
Cd. Victoria (Central)	0.00	3	1	7078	26.1	66.0	1.1	1.6	2.2	0.9	0.3	1.4	0.4	92.1	1.1	6.8	0.072	0.537	23.778106	-99.136623
Cd. Victoria (Lateral)	0.00	3	1	1027	10.3	81.3	1.5	4.1	1.3	0.7	0.5	0.3	0.0	91.6	1.5	6.9	0.082	0.514	23.778094	-99.136562
Cd. Victoria (Lateral)	0.00	3	2	972	10.4	80.9	1.3	4.5	1.3	0.6	0.5	0.5	0.0	91.3	1.3	7.4	0.082	0.514	23.778139	-99.136809
Cd. Victoria (Central)	0.00	3	2	8195	26.1	65.8	1.2	1.6	2.2	1.0	0.3	1.5	0.3	91.9	1.2	6.9	0.084	0.537	23.778123	-99.136733
T. Der. Güemez	19.60	3	0	6534	3.3	84.0	2.8	6.8	0.9	1.2	0.2	0.7	0.1	87.3	2.8	9.9	0.085	0.522	23.915740	-99.112344
T. Izq. Santa Engracia	27.35	3	0	10623	0.7	67.4	4.6	7.1	1.9	7.9	2.3	7.1	1.0	68.1	4.6	27.3	0.079	0.504	23.997235	-99.110420
Barretal	39.00	3	0	9829	5.7	66.1	5.6	4.7	1.8	5.3	2.1	7.8	0.9	71.8	5.6	22.6	0.081	0.509	24.093766	-99.145305
T. Izq. Hidalgo y La Mesa	77.50	1	0	7575	5.7	66.0	5.6	4.7	1.9	5.2	2.2	7.8	0.9	71.7	5.6	22.7	0.090	0.510	24.249346	-99.430354
Villagrán	106.00	1	0	7868	5.6	63.9	4.9	4.3	3.1	6.7	2.0	8.7	0.8	69.5	4.9	25.6	0.078	0.507	24.464058	-99.496357
Villagrán	106.00	3	0	5343	2.3	68.8	7.3	8.1	2.4	4.2	1.4	4.6	0.9	71.1	7.3	21.6	0.073	0.513	24.481772	-99.504306
T. Izq. Villa Mainero	118.00	3	1	4640	2.3	66.2	5.6	3.3	2.0	7.6	3.1	9.0	0.9	68.5	5.6	25.9	0.111	0.521	24.581246	-99.541923
T. Izq. Villa Mainero	118.00	3	2	5050	2.4	66.2	5.5	3.3	2.0	7.6	3.1	9.1	0.8	68.6	5.5	25.9	0.096	0.521	24.581331	-99.541954
Lim. Edos. Term. Tamps. Ppia. N. L.	126.20	0	0																	
T. Libramiento de Linares Sur	152.50	0	0																	
Linares	154.00	1	0	10891	2.6	71.8	4.6	3.0	1.4	7.4	1.6	6.7	0.9	74.4	4.6	21.0	0.083	0.512	24.837983	-99.560171
Linares	154.00	3	1	9264	3.6	77.1	3.7	3.5	1.3	4.2	1.0	4.7	0.9	80.7	3.7	15.6	0.099	0.517	24.882372	-99.587869
Linares	154.00	3	2	8641	3.7	77.2	3.6	3.5	1.3	4.2	1.0	4.7	0.8	80.9	3.6	15.5	0.084	0.517	24.882281	-99.587991
T. Libramiento de Linares Norte	157.30	0	0																	
La Laja	171.00	3	1	7781	1.8	71.3	3.7	6.3	2.0	6.5	1.6	6.1	0.7	73.1	3.7	23.2	0.100	0.522	24.923062	-99.688637
La Laja	171.00	3	2	7137	1.9	71.4	3.6	6.2	1.9	6.6	1.6	6.2	0.6	73.3	3.6	23.1	0.086	0.522	24.923044	-99.688751
T. C. Libramiento de Montemorelos Sur	197.50	3	0	3813	3.2	75.5	2.5	12.4	1.7	2.7	0.9	0.7	0.4	78.7	2.5	18.8	0.077	0.505	25.129113	-99.808484
Montemorelos	205.00	3	1	12091	3.6	76.3	3.4	5.8	1.7	5.1	1.1	2.4	0.6	79.9	3.4	16.7	0.106	0.513	25.200347	-99.902924
Montemorelos	205.00	3	2	12734	3.5	76.4	3.4	5.8	1.7	5.1	1.1	2.4	0.6	79.9	3.4	16.7	0.094	0.513	25.200237	-99.903057
T. C. Libramiento de Montemorelos Norte	208.50	1	1	10140	3.1	75.3	3.6	5.0	1.8	5.2	1.3	3.8	0.9	78.4	3.6	18.0	0.086	0.506	25.191307	-99.882462

NUEVO LEON

2 CARR: Ciudad Victoria - Monterrey

CLAVE: 00462

RUTA: MEX-085

AÑO: 2022

LUGAR	ESTACION				CLASIFICACION VEHICULAR EN PORCIENTO										COORDENADAS					
	KM	TE	SC	TDPA	M	A	B	C2	C3	T3S2	T3S3	T3S2R4	OTROS	A	B	C	K'	D	LATITUD	LONGITUD
T. C. Libramiento de Montemorelos Norte	208.50	1	2	9908	3.1	75.2	3.5	5.4	1.9	5.2	1.3	3.5	0.9	78.3	3.5	18.2	0.102	0.506	25.191152	-99.882487
Allende	227.45	1	1	13695	1.3	78.7	2.3	8.7	1.6	3.6	1.0	2.2	0.6	80.0	2.3	17.7	0.073	0.506	25.254816	-99.990742
Allende	227.45	1	2	14005	1.3	78.7	2.3	8.7	1.6	3.6	1.0	2.2	0.6	80.0	2.3	17.7	0.072	0.506	25.254709	-99.990853
Allende	227.45	3	1	14993	3.0	84.3	2.1	3.0	1.7	3.1	0.6	1.7	0.5	87.3	2.1	10.6	0.083	0.532	25.291041	-100.045153
Allende	227.45	3	2	17053	3.1	82.9	3.1	3.2	1.5	2.7	0.8	2.1	0.6	86.0	3.1	10.9	0.082	0.532	25.290790	-100.044922
El Cercado	249.00	1	1	23803	2.3	86.9	1.7	2.1	1.7	2.5	0.7	1.5	0.6	89.2	1.7	9.1	0.103	0.506	25.359883	-100.098614
El Cercado	249.00	1	2	24404	2.5	87.0	1.6	2.2	1.8	2.2	0.5	1.5	0.7	89.5	1.6	8.9	0.093	0.506	25.359747	-100.098751
T. Der. Las Huertas	257.00	3	1	30564	8.1	83.9	1.2	2.0	0.9	1.2	0.5	1.7	0.5	92.0	1.2	6.8	0.098	0.507	25.457691	-100.167698
T. Der. Las Huertas	257.00	3	2	31505	8.1	83.6	1.0	2.0	1.1	1.3	0.5	1.8	0.6	91.7	1.0	7.3	0.084	0.507	25.455949	-100.166458
T. Izq. el Barro	266.00	3	1	45362	1.9	91.7	0.8	1.6	1.0	1.4	0.5	0.8	0.3	93.6	0.8	5.6	0.096	0.515	25.532950	-100.215359
T. Izq. el Barro	266.00	3	2	42311	1.6	91.4	0.9	1.8	1.2	1.4	0.5	0.8	0.4	93.0	0.9	6.1	0.098	0.515	25.532805	-100.215467
La Estanzuela	274.82	3	1	73371	5.1	84.4	1.3	2.5	0.9	0.9	0.5	3.5	0.9	89.5	1.3	9.2	0.070	0.520	25.589570	-100.259311
La Estanzuela	274.82	3	2	80413	5.1	84.3	1.2	2.6	0.9	1.2	0.5	3.3	0.9	89.4	1.2	9.4	0.068	0.520	25.589497	-100.259469
Monterrey (Alta)	287.00	1	1	67536	3.2	88.9	1.3	1.6	1.0	1.4	0.3	2.0	0.3	92.1	1.3	6.6	0.084	0.512	25.603229	-100.266872
Monterrey (Baja)	287.00	1	1	21313	6.2	83.5	1.0	6.5	1.3	0.5	0.3	0.5	0.2	89.7	1.0	9.3	0.078	0.509	25.603294	-100.266713
Monterrey (Baja)	287.00	1	2	22100	6.2	83.2	1.0	6.4	1.4	0.6	0.3	0.6	0.3	89.4	1.0	9.6	0.071	0.509	25.602822	-100.266977
Monterrey (Alta)	287.00	1	2	71579	3.0	89.4	1.2	1.5	1.0	1.3	0.3	2.0	0.3	92.4	1.2	6.4	0.077	0.512	25.603183	-100.266991

3 CARR: La Unión - El Encadenado

CLAVE:

RUTA: MEX

AÑO: 2022

LUGAR	ESTACION				CLASIFICACION VEHICULAR EN PORCIENTO										COORDENADAS					
	KM	TE	SC	TDPA	M	A	B	C2	C3	T3S2	T3S3	T3S2R4	OTROS	A	B	C	K'	D	LATITUD	LONGITUD
La Unión	0.00	3	0	730	27.6	67.9	0.3	2.8	0.7	0.4	0.0	0.2	0.1	95.5	0.3	4.2	0.111	0.517	25.345188	-99.577297
El Encadenado	10.00	1	0	236	16.8	80.1	0.9	1.1	1.1	0.0	0.0	0.0	0.0	96.9	0.9	2.2	0.106	0.519	25.403933	-99.538846

4 CARR: Libramiento de China

CLAVE:

RUTA: MEX-040

AÑO: 2022

LUGAR	ESTACION				CLASIFICACION VEHICULAR EN PORCIENTO										COORDENADAS					
	KM	TE	SC	TDPA	M	A	B	C2	C3	T3S2	T3S3	T3S2R4	OTROS	A	B	C	K'	D	LATITUD	LONGITUD
T. C. Monterrey - Reynosa (Poniente)	0.00	3	0	3383	1.4	70.4	2.1	5.5	2.5	11.9	3.4	2.1	0.7	71.8	2.1	26.1	0.078	0.508	25.710606	-99.246037
T. C. Monterrey - Reynosa (Oriente)	2.41	1	0	3144	2.7	66.2	3.5	10.0	2.2	9.8	3.0	2.1	0.5	68.9	3.5	27.6	0.096	0.514	25.709759	-99.235154

NUEVO LEON

5 CARR: Libramiento de Dr. González

CLAVE: 00127

RUTA: MEX-054

AÑO: 2022

LUGAR	ESTACION				CLASIFICACION VEHICULAR EN PORCIENTO														COORDENADAS	
	KM	TE	SC	TDPA	M	A	B	C2	C3	T3S2	T3S3	T3S2R4	OTROS	A	B	C	K'	D	LATITUD	LONGITUD
T. C. Monterrey - Mier Oeste	0.00	3	0	3037	0.2	67.8	0.8	13.0	1.8	6.2	2.2	7.7	0.3	68.0	0.8	31.2	0.094	0.508	25.847214	-99.963734
T. C. Monterrey - Mier Este	10.90	1	0	3168	0.4	67.8	0.8	10.8	1.5	4.4	2.2	11.9	0.2	68.2	0.8	31.0	0.092	0.509	25.867812	-99.878824

6 CARR: Libramiento Noroeste de Monterrey

CLAVE: 19085

RUTA: MEX-040

AÑO: 2022

LUGAR	ESTACION				CLASIFICACION VEHICULAR EN PORCIENTO														COORDENADAS	
	KM	TE	SC	TDPA	M	A	B	C2	C3	T3S2	T3S3	T3S2R4	OTROS	A	B	C	K'	D	LATITUD	LONGITUD
T. C. Saltillo - Monterrey	0.00	3	1	13847	0.8	46.1	2.8	7.8	2.6	31.7	3.8	4.1	0.3	46.9	2.8	50.3	0.069	0.520	25.717827	-100.542804
T. C. Saltillo - Monterrey	0.00	3	2	12758	0.8	43.5	3.0	8.3	2.7	33.1	3.8	4.4	0.4	44.3	3.0	52.7	0.073	0.520	25.717871	-100.542875
T. Der. Monterrey	14.40	1	1	23253	2.9	54.0	3.6	8.0	3.3	22.9	2.4	2.3	0.6	56.9	3.6	39.5	0.105	0.515	25.776625	-100.459037
T. Der. Monterrey	14.40	1	2	21896	2.9	54.0	3.6	8.0	3.3	22.9	2.4	2.3	0.6	56.9	3.6	39.5	0.097	0.515	25.776706	-100.459068
T. Der. Monterrey	14.40	3	1	38034	1.5	66.4	3.0	5.2	3.2	16.1	2.2	1.9	0.5	67.9	3.0	29.1	0.084	0.531	25.783787	-100.438822
T. Der. Monterrey	14.40	3	2	33161	1.5	66.4	3.0	5.2	3.2	16.1	2.2	1.9	0.5	67.9	3.0	29.1	0.077	0.531	25.783877	-100.438853
X. C. Monterrey - Castaños	31.00	1	1	48241	3.6	64.1	3.1	7.3	3.7	12.4	2.3	2.8	0.7	67.7	3.1	29.2	0.070	0.506	25.823959	-100.306402
X. C. Monterrey - Castaños	31.00	1	2	49522	3.6	64.1	3.1	7.3	3.7	12.4	2.3	2.8	0.7	67.7	3.1	29.2	0.058	0.506	25.824058	-100.306423
X. C. Monterrey - Nuevo Laredo (Libre)	35.35	3	1	38290	5.7	75.3	3.0	3.8	3.2	5.1	2.0	1.4	0.5	81.0	3.0	16.0	0.073	0.515	25.830849	-100.248814
X. C. Monterrey - Nuevo Laredo (Libre)	35.35	3	2	40964	6.0	75.0	2.7	4.0	3.5	4.9	2.0	1.4	0.5	81.0	2.7	16.3	0.076	0.515	25.831074	-100.248806
Apodaca	41.50	1	1	25719	4.3	85.7	0.5	4.7	1.3	0.9	2.1	0.3	0.2	90.0	0.5	9.5	0.091	0.508	25.803312	-100.206962
Apodaca	41.50	1	2	26618	3.9	85.6	0.5	4.9	1.3	0.9	2.4	0.3	0.2	89.5	0.5	10.0	0.092	0.508	25.802867	-100.206280
T. C. Monterrey - Reynosa	48.00	1	1	35392	1.8	89.8	0.9	3.0	1.0	1.5	1.1	0.6	0.3	91.6	0.9	7.5	0.060	0.517	25.668604	-100.172246
T. C. Monterrey - Reynosa	48.00	1	2	38155	1.9	89.8	0.9	2.9	1.0	1.4	1.2	0.6	0.3	91.7	0.9	7.4	0.065	0.517	25.668523	-100.172116

7 CARR: Linares - Ent. San Roberto

CLAVE: 19031

RUTA: MEX-058

AÑO: 2022

LUGAR	ESTACION				CLASIFICACION VEHICULAR EN PORCIENTO														COORDENADAS	
	KM	TE	SC	TDPA	M	A	B	C2	C3	T3S2	T3S3	T3S2R4	OTROS	A	B	C	K'	D	LATITUD	LONGITUD
Linares	0.00	3	0	9463	6.1	78.4	0.4	8.8	0.7	4.2	1.0	0.3	0.1	84.5	0.4	15.1	0.085	0.507	24.835618	-99.576598
Iturbide	44.00	1	0	1892	2.2	72.9	4.2	10.3	3.8	3.4	2.9	0.2	0.1	75.1	4.2	20.7	0.080	0.500	24.723091	-99.897611
T. Izq. Doctor Arroyo	66.00	1	0	3721	1.6	80.0	1.9	11.3	1.8	2.1	1.3	0.0	0.0	81.6	1.9	16.5	0.076	0.511	24.728988	-100.038913
T. C. Matehuala - Ent. Huachichil	98.00	1	0	1741	2.2	67.7	3.3	16.5	3.0	4.5	2.2	0.5	0.1	69.9	3.3	26.8	0.074	0.503	24.675896	-100.294752

NUEVO LEON

8 CARR: Matehuala - Ent. Puerto México

CLAVE: 00405

RUTA: MEX-057

AÑO: 2022

LUGAR	ESTACION				CLASIFICACION VEHICULAR EN PORCIENTO										COORDENADAS					
	KM	TE	SC	TDPA	M	A	B	C2	C3	T3S2	T3S3	T3S2R4	OTROS	A	B	C	K'	D	LATITUD	LONGITUD
Matehuala	0.00	3	1	7977	12.9	70.9	3.2	4.3	1.9	4.9	0.9	0.8	0.2	83.8	3.2	13.0	0.089	0.520	23.668776	-100.632070
Matehuala	0.00	3	2	8651	15.2	68.8	2.9	3.9	1.4	5.8	1.0	0.8	0.2	84.0	2.9	13.1	0.081	0.520	23.668846	-100.632237
T. Izq. Cedral	8.47	1	1	4640	6.9	65.4	3.8	8.4	1.9	11.0	1.3	1.2	0.1	72.3	3.8	23.9	0.088	0.535	23.689472	-100.621844
T. Izq. Cedral	8.47	1	2	5345	6.4	66.6	3.5	8.8	1.9	10.6	1.2	0.8	0.2	73.0	3.5	23.5	0.070	0.535	23.691203	-100.621277
T. Izq. Cedral	8.47	3	1	2573	7.9	64.2	4.5	11.1	1.7	5.3	2.8	2.2	0.3	72.1	4.5	23.4	0.073	0.536	23.698813	-100.617194
T. Izq. Cedral	8.47	3	2	2968	7.3	65.8	4.4	10.1	2.1	5.3	2.7	1.9	0.4	73.1	4.4	22.5	0.073	0.536	23.698946	-100.617451
T. Izq. Libramiento de Matehuala (Cuota)	9.30	3	1	8387	1.5	36.8	4.3	8.6	2.2	36.2	4.3	5.1	1.0	38.3	4.3	57.4	0.067	0.519	23.713853	-100.609749
T. Izq. Libramiento de Matehuala (Cuota)	9.30	3	2	7783	1.5	34.5	4.7	8.9	2.3	36.6	4.8	5.7	1.0	36.0	4.7	59.3	0.071	0.519	23.714077	-100.609948
Lim. Edos. Term. S. L. P. Ppia. N. L.	24.64	0	0																	
Santa Ana	59.65	1	1	9091	2.3	27.3	3.3	5.4	4.6	46.5	4.3	5.4	0.9	29.6	3.3	67.1	0.065	0.506	24.084425	-100.384902
Santa Ana	59.65	1	2	8881	2.3	26.7	3.4	5.5	4.6	46.8	4.4	5.4	0.9	29.0	3.4	67.6	0.061	0.506	24.084504	-100.385188
T. Der. Linares	128.99	1	1	9810	3.4	39.7	6.6	4.5	2.3	33.3	2.7	6.6	0.9	43.1	6.6	50.3	0.073	0.520	24.612261	-100.274786
T. Der. Linares	128.99	1	2	9062	3.4	39.6	6.6	4.5	2.4	33.3	2.7	6.6	0.9	43.0	6.6	50.4	0.065	0.520	24.612168	-100.275061
T. Der. Linares	128.99	3	1	10538	1.7	33.8	6.4	5.4	2.5	40.8	3.2	5.1	1.1	35.5	6.4	58.1	0.061	0.507	24.680742	-100.300317
T. Der. Linares	128.99	3	2	10855	1.7	33.7	6.4	5.4	2.6	40.8	3.2	5.2	1.0	35.4	6.4	58.2	0.063	0.507	24.680722	-100.300613
San Rafael	177.18	1	1	10962	2.9	37.3	5.7	6.0	3.3	36.6	3.1	4.4	0.7	40.2	5.7	54.1	0.068	0.522	25.024090	-100.547266
San Rafael	177.18	1	2	10047	2.9	37.4	5.7	5.9	3.3	36.6	3.1	4.4	0.7	40.3	5.7	54.0	0.060	0.522	25.024183	-100.547911
T. C. Puerto México - La Carbonera (Cuota)	202.40	1	1	10640	6.2	33.7	6.0	6.0	2.5	36.0	3.3	5.5	0.8	39.9	6.0	54.1	0.060	0.503	25.166536	-100.717750
T. C. Puerto México - La Carbonera (Cuota)	202.40	1	2	10532	6.3	33.5	6.1	6.0	2.5	36.0	3.3	5.5	0.8	39.8	6.1	54.1	0.072	0.503	25.166679	-100.718596
Ent. Puerto México	205.97	0	0																	

9 CARR: Montemorelos - China

CLAVE: 19280

RUTA: MEX-035

AÑO: 2022

LUGAR	ESTACION				CLASIFICACION VEHICULAR EN PORCIENTO										COORDENADAS					
	KM	TE	SC	TDPA	M	A	B	C2	C3	T3S2	T3S3	T3S2R4	OTROS	A	B	C	K'	D	LATITUD	LONGITUD
Montemorelos	0.00	3	0	12481	5.1	78.9	0.8	9.4	1.4	3.1	0.7	0.4	0.2	84.0	0.8	15.2	0.076	0.505	25.194672	-99.812309
Gral. Terán	17.60	3	0	3183	2.3	77.7	1.2	13.2	1.4	2.0	1.2	0.8	0.2	80.0	1.2	18.8	0.081	0.503	25.249836	-99.661448
T. Der. La Barreta	23.10	3	0	2461	1.2	77.0	0.7	15.4	1.0	3.2	0.4	1.0	0.1	78.2	0.7	21.1	0.093	0.508	25.259180	-99.643328
China	93.00	1	0	1801	2.4	78.7	2.1	8.6	2.1	3.1	0.6	2.1	0.3	81.1	2.1	16.8	0.098	0.514	25.688825	-99.243697

10 CARR: Monterrey - Castaños

CLAVE: 00128

RUTA: MEX-053

AÑO: 2022

LUGAR	ESTACION				CLASIFICACION VEHICULAR EN PORCIENTO										COORDENADAS					
	KM	TE	SC	TDPA	M	A	B	C2	C3	T3S2	T3S3	T3S2R4	OTROS	A	B	C	K'	D	LATITUD	LONGITUD
T. C. Monterrey - Nuevo Laredo	0.00	3	0	21933	6.3	75.5	1.5	8.6	2.6	3.0	1.0	1.1	0.4	81.8	1.5	16.7	0.079	0.523	25.811995	-100.286231







NUEVO LEON

13 CARR: Monterrey - Reynosa (Libre)

CLAVE: 00088

RUTA: MEX-040

AÑO: 2022

LUGAR	ESTACION				CLASIFICACION VEHICULAR EN PORCIENTO										COORDENADAS					
	KM	TE	SC	TDPA	M	A	B	C2	C3	T3S2	T3S3	T3S2R4	OTROS	A	B	C	K'	D	LATITUD	LONGITUD
Villa Juárez	19.10	1	2	37220	4.1	86.0	1.1	5.7	0.7	0.9	0.5	0.7	0.3	90.1	1.1	8.8	0.057	0.543	25.652129	-100.108249
Villa Juárez	19.10	3	1	17793	7.1	83.6	1.0	4.0	1.3	1.1	0.4	1.0	0.5	90.7	1.0	8.3	0.095	0.512	25.636434	-100.083283
Villa Juárez	19.10	3	2	16942	7.1	82.2	1.3	4.8	1.5	1.0	0.5	1.0	0.6	89.3	1.3	9.4	0.085	0.512	25.636507	-100.083184
Puente Cadereyta	30.50	2	1	2742	1.7	76.2	0.2	5.1	3.0	6.8	2.5	3.4	1.1	77.9	0.2	21.9	0.091	0.500	25.601114	-100.005696
Puente Cadereyta	30.50	2	2	2742	1.7	76.2	0.2	5.1	3.0	6.8	2.5	3.4	1.1	77.9	0.2	21.9	0.091	0.500	25.601114	-100.005696
Refinería de Cadereyta	33.00	3	0	6690	2.6	81.0	1.4	3.8	2.5	4.7	1.9	1.4	0.7	83.6	1.4	15.0	0.101	0.502	25.595023	-99.923801
T. Izq. Los Ramones	68.78	3	0	3695	1.2	76.6	1.6	6.7	1.8	8.0	2.4	1.5	0.2	77.8	1.6	20.6	0.087	0.515	25.620359	-99.626315
China	114.10	0	0																	
Gral. Bravo	125.00	1	0	5949	1.3	79.7	1.8	5.6	1.0	6.8	2.4	1.3	0.1	81.0	1.8	17.2	0.096	0.519	25.774713	-99.190267
T. C. Cadereyta - Reynosa (Cuota)	178.00	0	0																	
Lim. Edos. Term. N. L. Ppia. Tamps.	192.00	0	0																	
T. Izq. Díaz Ordáz	192.55	1	1	5446	3.4	64.2	3.6	4.7	1.9	14.3	2.9	4.1	0.9	67.6	3.6	28.8	0.095	0.528	25.966449	-98.596763
T. Izq. Díaz Ordáz	192.55	1	2	6089	3.2	64.7	3.6	4.6	1.8	14.3	2.9	4.1	0.8	67.9	3.6	28.5	0.098	0.528	25.966692	-98.597487
T. Der. Libramiento de Reynosa Sur II	206.33	1	1	5440	2.1	70.6	3.5	3.4	2.2	11.8	2.3	3.2	0.9	72.7	3.5	23.8	0.099	0.534	26.016593	-98.467334
T. Der. Libramiento de Reynosa Sur II	206.33	1	2	6231	2.1	71.0	3.6	3.3	2.3	11.6	2.1	3.2	0.8	73.1	3.6	23.3	0.109	0.534	26.017034	-98.467517
Reynosa	225.00	1	1	23168	4.6	82.0	1.9	4.8	1.2	3.7	0.7	0.9	0.2	86.6	1.9	11.5	0.078	0.519	26.042150	-98.402104
Reynosa	225.00	1	2	21475	4.6	82.3	1.8	4.7	1.2	3.6	0.7	0.9	0.2	86.9	1.8	11.3	0.076	0.519	26.042579	-98.401973

14 CARR: Paras - Nueva Ciudad Guerrero

CLAVE: 00476

RUTA: MEX-030

AÑO: 2022

LUGAR	ESTACION				CLASIFICACION VEHICULAR EN PORCIENTO										COORDENADAS					
	KM	TE	SC	TDPA	M	A	B	C2	C3	T3S2	T3S3	T3S2R4	OTROS	A	B	C	K'	D	LATITUD	LONGITUD
Paras	0.00	3	0	448	0.7	65.9	1.3	23.2	1.4	2.4	1.9	3.2	0.0	66.6	1.3	32.1	0.118	0.514	26.502004	-99.516260
Lim. Edos. Term. N. L. Ppia. Tamps.	13.10	0	0																	
T. C. Reynosa - (T. C. Monterrey - Nuevo Laredo)	32.00	1	0	332	0.0	74.6	0.9	15.4	0.8	1.8	1.8	4.7	0.0	74.6	0.9	24.5	0.172	0.519	26.555008	-99.244291

15 CARR: Piedras Negras - Nuevo Laredo

CLAVE: 00503

RUTA: MEX-002

AÑO: 2022

LUGAR	ESTACION				CLASIFICACION VEHICULAR EN PORCIENTO										COORDENADAS					
	KM	TE	SC	TDPA	M	A	B	C2	C3	T3S2	T3S3	T3S2R4	OTROS	A	B	C	K'	D	LATITUD	LONGITUD
T. C. Monclova - Piedras Negras	0.00	3	1	5114	0.0	88.8	1.0	3.4	3.1	2.7	0.4	0.5	0.1	88.8	1.0	10.2	0.075	0.521	28.639631	-100.552024
T. C. Monclova - Piedras Negras	0.00	3	2	5571	2.6	86.0	1.1	3.4	3.1	2.7	0.4	0.6	0.1	88.6	1.1	10.3	0.084	0.521	28.639682	-100.551907
El Saucito	16.90	3	0	1340	3.7	57.3	3.2	17.2	4.0	8.6	1.1	4.2	0.7	61.0	3.2	35.8	0.089	0.511	28.502014	-100.467375
T. Der. Villa Unión	37.00	1	0	1442	3.5	60.9	2.2	10.7	4.2	7.8	1.8	8.1	0.8	64.4	2.2	33.4	0.071	0.510	28.344419	-100.392029
T. Der. Villa Unión	37.00	3	0	1187	4.4	52.3	2.6	13.1	4.4	12.0	2.7	7.6	0.9	56.7	2.6	40.7	0.061	0.528	28.335524	-100.389315

NUEVO LEON

15 CARR: Piedras Negras - Nuevo Laredo

CLAVE: 00503

RUTA: MEX-002

AÑO: 2022

LUGAR	ESTACION				CLASIFICACION VEHICULAR EN PORCIENTO														COORDENADAS	
	KM	TE	SC	TDPA	M	A	B	C2	C3	T3S2	T3S3	T3S2R4	OTROS	A	B	C	K'	D	LATITUD	LONGITUD
Guerrero	42.00	3	0	1082	3.7	52.3	4.2	12.9	3.3	13.2	1.6	8.1	0.7	56.0	4.2	39.8	0.072	0.505	28.307214	-100.363712
Lim. Edos. Term. Coah. Ppia. N. L.	124.40	0	0																	
T. C. Monclova - Colombia	134.00	3	0	3158	3.8	62.6	2.5	8.3	3.4	13.4	2.7	2.6	0.7	66.4	2.5	31.1	0.091	0.515	27.688591	-99.778294
Lim. Edos. Term. N. L. Ppia. Tamps.	138.20	0	0																	
T. Der. Libramiento de Nuevo Laredo	157.70	1	1	5480	8.0	47.9	1.3	5.3	12.1	22.1	1.2	1.3	0.8	55.9	1.3	42.8	0.100	0.507	27.571809	-99.601745
T. Der. Libramiento de Nuevo Laredo	157.70	1	2	5630	8.0	47.8	1.2	5.4	12.1	22.1	1.2	1.3	0.9	55.8	1.2	43.0	0.096	0.507	27.571952	-99.601709
Nuevo Laredo	175.00	1	1	10277	2.4	47.2	1.9	5.6	15.1	26.1	0.7	0.6	0.4	49.6	1.9	48.5	0.107	0.519	27.549756	-99.579636
Nuevo Laredo	175.00	1	2	9534	2.7	41.3	1.9	6.1	18.0	28.2	0.8	0.6	0.4	44.0	1.9	54.1	0.108	0.519	27.549774	-99.579485

16 CARR: Ramal a Aeropuerto Mariano Escobedo

CLAVE: 19510

RUTA: MEX-054

AÑO: 2022

LUGAR	ESTACION				CLASIFICACION VEHICULAR EN PORCIENTO														COORDENADAS	
	KM	TE	SC	TDPA	M	A	B	C2	C3	T3S2	T3S3	T3S2R4	OTROS	A	B	C	K'	D	LATITUD	LONGITUD
T. C. Monterrey - Cd. Mier	0.00	3	1	28806	1.9	85.1	1.3	4.1	1.6	3.9	0.6	1.2	0.3	87.0	1.3	11.7	0.072	0.505	25.788140	-100.138269
T. C. Monterrey - Cd. Mier	0.00	3	2	28203	1.9	85.1	1.3	4.1	1.6	3.9	0.6	1.2	0.3	87.0	1.3	11.7	0.083	0.505	25.788264	-100.138201
Aeropuerto	2.40	0	0																	

17 CARR: Saltillo - Monterrey

CLAVE: 00087

RUTA: MEX-040

AÑO: 2022

LUGAR	ESTACION				CLASIFICACION VEHICULAR EN PORCIENTO														COORDENADAS	
	KM	TE	SC	TDPA	M	A	B	C2	C3	T3S2	T3S3	T3S2R4	OTROS	A	B	C	K'	D	LATITUD	LONGITUD
T. C. Saltillo - Arteaga	0.00	0	0																	
T. Izq. Zinacamex	4.25	3	1	65677	3.5	88.6	0.7	3.9	1.0	0.9	0.3	0.8	0.3	92.1	0.7	7.2	0.082	0.536	25.482565	-100.972257
T. Izq. Zinacamex	4.25	3	2	55699	3.5	88.5	0.7	3.9	1.0	0.9	0.4	0.7	0.4	92.0	0.7	7.3	0.095	0.536	25.482633	-100.972418
Ramos Arizpe	11.30	1	1	44118	2.6	84.4	2.3	4.8	1.0	2.0	1.5	0.9	0.5	87.0	2.3	10.7	0.092	0.533	25.516078	-100.957419
Ramos Arizpe	11.30	1	2	51220	2.6	84.7	2.2	4.7	1.1	2.1	1.4	0.8	0.4	87.3	2.2	10.5	0.087	0.533	25.516165	-100.957593
T. Der. Aeropuerto	13.00	3	1	32755	4.5	76.1	3.6	7.3	1.5	4.3	1.5	0.7	0.5	80.6	3.6	15.8	0.118	0.529	25.555404	-100.926375
T. Der. Aeropuerto	13.00	3	2	28927	4.5	76.2	3.5	7.3	1.6	4.2	1.5	0.7	0.5	80.7	3.5	15.8	0.124	0.529	25.555988	-100.925916
T. Der. Libramiento J.L.P.	16.00	3	1	31655	2.8	72.9	3.1	8.8	2.4	7.3	1.1	1.1	0.5	75.7	3.1	21.2	0.118	0.517	25.568047	-100.912225
T. Der. Libramiento J.L.P.	16.00	3	2	34108	2.8	73.6	3.1	8.8	2.3	7.1	0.9	1.0	0.4	76.4	3.1	20.5	0.099	0.517	25.568163	-100.912366
Ojo Caliente	26.30	1	1	23479	3.8	55.8	3.4	5.0	2.4	23.8	2.3	2.8	0.7	59.6	3.4	37.0	0.060	0.527	25.610644	-100.844334
Ojo Caliente	26.30	1	2	21108	3.8	55.7	3.4	4.9	2.4	23.9	2.4	2.8	0.7	59.5	3.4	37.1	0.063	0.527	25.612883	-100.847126
Lim. Edos. Term. Coah. Ppia. N. L.	33.00	0	0																	
T. Izq. Libramiento Noroeste de Monterrey	54.00	1	1	25354	2.3	50.7	4.0	9.2	2.4	23.7	3.0	4.1	0.6	53.0	4.0	43.0	0.052	0.535	25.698305	-100.562641
T. Izq. Libramiento Noroeste de Monterrey	54.00	1	2	22074	2.2	50.9	4.0	9.2	2.4	23.6	3.0	4.1	0.6	53.1	4.0	42.9	0.072	0.535	25.698684	-100.562616



NUEVO LEON

19 CARR: Monterrey - Nuevo Laredo (Cuota)

CLAVE: 19086

RUTA: MEX-085D

AÑO: 2022

LUGAR	ESTACION				CLASIFICACION VEHICULAR EN PORCIENTO										COORDENADAS					
	KM	TE	SC	TDPA	M	A	B	C2	C3	T3S2	T3S3	T3S2R4	OTROS	A	B	C	K'	D	LATITUD	LONGITUD
X. C. Palo Alto - Vallecillos	115.50	3	1	9395	1.7	17.5	4.2	2.4	2.5	68.2	0.5	2.3	0.7	19.2	4.2	76.6	0.065	0.543	26.645628	-99.940730
X. C. Palo Alto - Vallecillos	115.50	3	2	7911	1.8	25.8	4.4	2.5	2.1	60.3	0.5	1.9	0.7	27.6	4.4	68.0	0.075	0.543	26.645753	-99.941012
Plaza de Cobro Ex-Garita	192.30	2	1	5402	0.1	37.9	2.8	2.8	2.5	49.3	1.0	2.7	0.9	38.0	2.8	59.2	0.000	0.500	27.270497	-99.613956
Plaza de Cobro Ex-Garita	192.30	2	2	5402	0.1	37.9	2.8	2.8	2.5	49.3	1.0	2.7	0.9	38.0	2.8	59.2	0.000	0.500	27.270497	-99.613956
T. C. Monterrey - Nuevo Laredo (Libre)	193.30	1	1	7162	7.8	26.2	4.4	5.0	2.2	51.5	1.2	1.2	0.5	34.0	4.4	61.6	0.067	0.539	26.877771	-99.823354
T. C. Monterrey - Nuevo Laredo (Libre)	193.30	1	2	8369	7.9	25.9	4.5	5.1	2.3	51.2	1.3	1.2	0.6	33.8	4.5	61.7	0.077	0.539	26.877886	-99.823646

20 CARR: Puerto México - La Carbonera (Cuota)

CLAVE: 00115

RUTA: MEX-057D

AÑO: 2022

LUGAR	ESTACION				CLASIFICACION VEHICULAR EN PORCIENTO										COORDENADAS					
	KM	TE	SC	TDPA	M	A	B	C2	C3	T3S2	T3S3	T3S2R4	OTROS	A	B	C	K'	D	LATITUD	LONGITUD
Ent. Puerto México	202.00	0	0																	
Plaza de Cobro Los Chorros	203.64	2	1	7912	0.1	34.1	4.6	3.0	1.7	45.7	3.2	6.4	1.2	34.2	4.6	61.2	0.076	0.500	25.186696	-100.731988
Plaza de Cobro Los Chorros	203.64	2	2	7912	0.1	34.1	4.6	3.0	1.7	45.7	3.2	6.4	1.2	34.2	4.6	61.2	0.076	0.500	25.186696	-100.731988
Lim. Edos. Term. N. L. Ppia. Coah.	204.07	0	0																	
Lim. Edos. Term. Coah. Ppia. N. L.	204.50	0	0																	
Lim. Edos. Term. N. L. Ppia. Coah.	205.76	0	0																	
T. Izq. Huachichil	213.39	1	1	7141	2.2	57.7	7.0	2.3	1.8	22.0	1.3	4.8	0.9	59.9	7.0	33.1	0.067	0.503	25.244981	-100.793749
T. Izq. Huachichil	213.39	1	2	7050	2.2	54.2	7.2	2.5	1.8	24.2	1.5	5.4	1.0	56.4	7.2	36.4	0.071	0.503	25.244926	-100.793807
T. Der. San Antonio de Las Alazanas	224.94	1	1	8534	2.1	41.9	5.3	5.1	1.9	35.2	2.9	4.8	0.8	44.0	5.3	50.7	0.059	0.504	25.344567	-100.794549
T. Der. San Antonio de Las Alazanas	224.94	1	2	8386	2.0	37.3	5.8	5.7	2.2	37.4	3.5	5.2	0.9	39.3	5.8	54.9	0.062	0.504	25.344584	-100.794649
T. Der. San Antonio de Las Alazanas	224.94	3	1	12197	1.8	43.8	5.3	5.1	1.9	34.1	3.3	3.8	0.9	45.6	5.3	49.1	0.064	0.503	25.351313	-100.794351
T. Der. San Antonio de Las Alazanas	224.94	3	2	12065	1.8	39.5	6.1	5.6	2.0	36.5	3.5	4.1	0.9	41.3	6.1	52.6	0.065	0.503	25.351312	-100.794460
Los Lirios	228.30	3	1	12641	2.3	53.8	5.3	5.4	1.9	24.1	2.8	3.7	0.7	56.1	5.3	38.6	0.082	0.506	25.406938	-100.800680
Los Lirios	228.30	3	2	12968	1.8	49.6	6.2	5.7	2.2	26.3	3.2	4.2	0.8	51.4	6.2	42.4	0.091	0.506	25.407036	-100.800791
Ent. La Carbonera	235.60	0	0																	

21 CARR: Saltillo - Monterrey (Cuota)

CLAVE: 00087

RUTA: MEX-040D

AÑO: 2022

LUGAR	ESTACION				CLASIFICACION VEHICULAR EN PORCIENTO										COORDENADAS					
	KM	TE	SC	TDPA	M	A	B	C2	C3	T3S2	T3S3	T3S2R4	OTROS	A	B	C	K'	D	LATITUD	LONGITUD
Ojo Caliente	46.21	3	1	4708	13.4	36.2	3.9	5.4	2.9	24.4	3.3	9.5	1.0	49.6	3.9	46.5	0.069	0.520	25.616873	-100.906952
Ojo Caliente	46.21	3	2	5101	13.5	36.2	3.9	5.5	3.0	24.1	3.3	9.5	1.0	49.7	3.9	46.4	0.068	0.520	25.616961	-100.907039
Lim. Edos. Term. Coah. Ppia. N. L.	61.08	0	0																	
T. Izq. Anillo Periférico de Monterrey (Cuota)	82.00	1	1	10014	2.1	73.3	4.7	6.9	1.5	6.1	1.8	2.7	0.9	75.4	4.7	19.9	0.071	0.523	25.697500	-100.596938

NUEVO LEON

21 CARR: Saltillo - Monterrey (Cuota)

CLAVE: 00087

RUTA: MEX-040D

AÑO: 2022

LUGAR	ESTACION				CLASIFICACION VEHICULAR EN PORCIENTO													COORDENADAS		
	KM	TE	SC	TDPA	M	A	B	C2	C3	T3S2	T3S3	T3S2R4	OTROS	A	B	C	K'	D	LATITUD	LONGITUD
T. Izq. Anillo Periférico de Monterrey (Cuota)	82.00	1	2	9122	1.7	71.1	5.2	7.5	1.6	7.0	2.1	2.8	1.0	72.8	5.2	22.0	0.078	0.523	25.697563	-100.596909
T. Izq. Anillo Periférico de Monterrey (Cuota)	82.00	3	1	5808	1.9	90.8	1.9	4.8	0.3	0.2	0.1	0.0	0.0	92.7	1.9	5.4	0.073	0.522	25.675474	-100.504968
T. Izq. Anillo Periférico de Monterrey (Cuota)	82.00	3	2	5326	2.2	90.1	2.0	5.1	0.3	0.2	0.1	0.0	0.0	92.3	2.0	5.7	0.083	0.522	25.675529	-100.504909
Morones Prieto	96.10	0	0																	

22 CARR: Agualeguas - El Ébano

CLAVE: 19004

RUTA: NL-023

AÑO: 2022

LUGAR	ESTACION				CLASIFICACION VEHICULAR EN PORCIENTO													COORDENADAS		
	KM	TE	SC	TDPA	M	A	B	C2	C3	T3S2	T3S3	T3S2R4	OTROS	A	B	C	K'	D	LATITUD	LONGITUD
Agualeguas	0.00	3	0	372	0.9	79.1	1.0	17.5	0.7	0.5	0.0	0.1	0.2	80.0	1.0	19.0	0.124	0.507	26.294856	-99.564784
T. C. Monterrey - Nuevo Laredo	54.00	1	0	981	3.0	71.6	2.0	6.7	2.5	11.1	0.7	1.9	0.5	74.6	2.0	23.4	0.114	0.510	26.330077	-100.108797

23 CARR: Apodaca - Villa Juárez

CLAVE: 00087

RUTA: NL

AÑO: 2022

LUGAR	ESTACION				CLASIFICACION VEHICULAR EN PORCIENTO													COORDENADAS		
	KM	TE	SC	TDPA	M	A	B	C2	C3	T3S2	T3S3	T3S2R4	OTROS	A	B	C	K'	D	LATITUD	LONGITUD
T. C. Monterrey - Cd. Mier	0.00	3	0	22116	2.6	78.8	2.1	12.2	1.2	1.1	0.3	0.8	0.9	81.4	2.1	16.5	0.064	0.500	25.771518	-100.178809
T. Der. Santa Mónica	5.00	1	1	20110	4.4	83.5	1.3	6.4	1.4	1.5	0.2	0.9	0.4	87.9	1.3	10.8	0.081	0.514	25.744154	-100.160465
T. Der. Santa Mónica	5.00	1	2	21281	4.7	82.8	1.6	6.6	1.6	1.1	0.4	0.8	0.4	87.5	1.6	10.9	0.076	0.514	25.744173	-100.160375
T. Der. Santa Mónica	5.00	3	1	17476	6.3	80.9	1.9	6.2	1.7	1.4	0.5	0.8	0.3	87.2	1.9	10.9	0.074	0.518	25.738911	-100.156645
T. Der. Santa Mónica	5.00	3	2	18795	6.3	81.3	1.5	6.5	1.5	1.4	0.3	0.8	0.4	87.6	1.5	10.9	0.068	0.518	25.738984	-100.156556
T. Izq. Aeropuerto	8.60	1	1	14178	3.1	81.9	2.1	8.3	1.8	1.7	0.5	0.4	0.2	85.0	2.1	12.9	0.101	0.513	25.725636	-100.143180
T. Izq. Aeropuerto	8.60	1	2	13486	3.8	80.8	2.3	8.4	1.8	1.6	0.5	0.5	0.3	84.6	2.3	13.1	0.087	0.513	25.725773	-100.143022
T. Izq. Aeropuerto	8.60	3	0	16440	9.9	68.2	3.6	12.2	1.8	2.1	0.4	1.4	0.4	78.1	3.6	18.3	0.077	0.508	25.712250	-100.135736
T. Der. Dulces Nombres	10.40	1	0	20213	3.5	78.4	1.9	12.2	1.6	1.2	0.3	0.6	0.3	81.9	1.9	16.2	0.076	0.501	25.703019	-100.132739
T. Der. Dulces Nombres	10.40	3	0	25309	3.5	73.1	6.1	12.0	1.0	2.9	0.5	0.6	0.3	76.6	6.1	17.3	0.080	0.504	25.687602	-100.120366
Villa Juárez	16.00	1	1	15301	8.0	77.1	2.2	6.5	2.1	1.9	0.7	1.2	0.3	85.1	2.2	12.7	0.084	0.526	25.657420	-100.079328
Villa Juárez	16.00	1	2	16968	8.1	76.7	2.2	6.5	2.3	2.0	0.6	1.3	0.3	84.8	2.2	13.0	0.076	0.526	25.657322	-100.079148

24 CARR: Atongo - Lazarillos

CLAVE:

RUTA: NL

AÑO: 2022

LUGAR	ESTACION				CLASIFICACION VEHICULAR EN PORCIENTO													COORDENADAS		
	KM	TE	SC	TDPA	M	A	B	C2	C3	T3S2	T3S3	T3S2R4	OTROS	A	B	C	K'	D	LATITUD	LONGITUD
Atongo	0.00	3	0	673	3.5	83.5	0.2	9.4	1.7	1.0	0.5	0.1	0.1	87.0	0.2	12.8	0.092	0.532	25.347588	-100.001356
Lazarillos	7.78	1	0	2644	4.9	81.2	0.3	9.3	1.5	1.9	0.4	0.3	0.2	86.1	0.3	13.6	0.098	0.511	25.312789	-100.040809

NUEVO LEON

25 CARR: Cadereyta de Jiménez - Doctor González

CLAVE: 19473

RUTA: NL

AÑO: 2022

LUGAR	ESTACION				CLASIFICACION VEHICULAR EN PORCIENTO														COORDENADAS	
	KM	TE	SC	TDPA	M	A	B	C2	C3	T3S2	T3S3	T3S2R4	OTROS	A	B	C	K'	D	LATITUD	LONGITUD
T. C. Monterrey - Reynosa	0.00	3	0	954	3.3	47.4	4.1	14.6	4.8	11.1	5.1	9.4	0.2	50.7	4.1	45.2	0.107	0.506	25.598306	-99.940796
X. C. Pesquería - Santa María Floreña	18.00	3	0	584	4.1	55.1	0.7	9.7	8.2	9.2	1.0	11.8	0.2	59.2	0.7	40.1	0.122	0.504	25.753629	-99.913824
Doctor González	30.00	1	0	440	7.7	75.5	0.5	12.1	1.4	1.2	1.0	0.4	0.2	83.2	0.5	16.3	0.098	0.503	25.856159	-99.936024

26 CARR: Cd. Benito Juárez - Villa de Santiago

CLAVE: 00087

RUTA: NL

AÑO: 2022

LUGAR	ESTACION				CLASIFICACION VEHICULAR EN PORCIENTO														COORDENADAS	
	KM	TE	SC	TDPA	M	A	B	C2	C3	T3S2	T3S3	T3S2R4	OTROS	A	B	C	K'	D	LATITUD	LONGITUD
Cd. Benito Juárez	0.00	3	0	29852	4.1	88.5	1.0	4.5	0.9	0.4	0.2	0.2	0.2	92.6	1.0	6.4	0.069	0.518	25.623059	-100.104057
Arboledas de San Roque	4.70	3	0	7380	1.1	84.8	0.4	8.9	1.2	2.4	0.8	0.2	0.2	85.9	0.4	13.7	0.094	0.506	25.601032	-100.116600
T. Izq. Cadereyta de Jiménez	23.00	3	0	4164	3.6	80.3	0.3	9.8	1.2	3.5	0.5	0.3	0.5	83.9	0.3	15.8	0.163	0.505	25.466003	-100.095577
T. C. Cd. Victoria - Monterrey	39.00	1	0	6668	3.3	85.2	0.4	7.1	1.1	1.5	0.7	0.3	0.4	88.5	0.4	11.1	0.135	0.506	25.454485	-100.159771

27 CARR: China - Méndez

CLAVE: 00191

RUTA: NL-TAM

AÑO: 2022

LUGAR	ESTACION				CLASIFICACION VEHICULAR EN PORCIENTO														COORDENADAS	
	KM	TE	SC	TDPA	M	A	B	C2	C3	T3S2	T3S3	T3S2R4	OTROS	A	B	C	K'	D	LATITUD	LONGITUD
China	0.00	3	0	1670	3.0	70.8	1.7	18.4	1.7	2.2	1.2	1.0	0.0	73.8	1.7	24.5	0.089	0.522	25.697385	-99.221127
Lim. Edos. Term. N. L. Ppia. Tamps.	75.00	0	0																	
Méndez	100.00	0	0																	

28 CARR: Doctor Arroyo - Mier y Noriega

CLAVE: 19088

RUTA: NL-088

AÑO: 2022

LUGAR	ESTACION				CLASIFICACION VEHICULAR EN PORCIENTO														COORDENADAS	
	KM	TE	SC	TDPA	M	A	B	C2	C3	T3S2	T3S3	T3S2R4	OTROS	A	B	C	K'	D	LATITUD	LONGITUD
Doctor Arroyo	0.00	3	0	2234	10.6	76.9	0.5	10.1	0.5	1.3	0.1	0.0	0.0	87.5	0.5	12.0	0.096	0.505	23.653804	-100.188424
Mier y Noriega	31.00	0	0																	

29 CARR: Ent. Hacienda del Cielo - T. Der. Cadereyta

CLAVE:

RUTA: NL

AÑO: 2022

LUGAR	ESTACION				CLASIFICACION VEHICULAR EN PORCIENTO														COORDENADAS	
	KM	TE	SC	TDPA	M	A	B	C2	C3	T3S2	T3S3	T3S2R4	OTROS	A	B	C	K'	D	LATITUD	LONGITUD
Hacienda del Cielo	0.00	3	0	2157	3.9	80.9	0.4	9.1	2.3	2.2	0.9	0.2	0.1	84.8	0.4	14.8	0.106	0.501	25.522500	-100.012517
T. Der. Benito Juárez	11.50	1	0	1991	5.1	87.1	0.2	3.2	1.2	2.3	0.5	0.1	0.3	92.2	0.2	7.6	0.145	0.526	25.467177	-100.095468



NUEVO LEON

30 CARR: Ent. Huisachito - Nuevo Laredo

CLAVE: 00074

RUTA: NL-001-TAM

AÑO: 2022

LUGAR	ESTACION				CLASIFICACION VEHICULAR EN PORCIENTO													COORDENADAS		
	KM	TE	SC	TDPA	M	A	B	C2	C3	T3S2	T3S3	T3S2R4	OTROS	A	B	C	K'	D	LATITUD	LONGITUD
T. C. Monterrey - Colombia	0.00	3	0	1773	0.2	75.2	4.1	9.0	3.8	3.8	3.0	0.6	0.3	75.4	4.1	20.5	0.081	0.507	27.354518	-99.949175
Lim. Edos. Term. N. L. Ppia. Tamps.	19.00	0	0																	
X. C. Libramiento de Nuevo Laredo	47.00	1	0	2439	0.3	74.8	1.8	13.1	2.9	4.1	1.9	1.0	0.1	75.1	1.8	23.1	0.077	0.501	27.473850	-99.650217
Nuevo Laredo	51.00	1	0	15185	0.4	34.9	0.4	18.8	5.6	38.0	1.2	0.4	0.3	35.3	0.4	64.3	0.090	0.527	27.486117	-99.584587

31 CARR: Gral. Bravo - Los Aldamas

CLAVE: 19030

RUTA: NL-030

AÑO: 2022

LUGAR	ESTACION				CLASIFICACION VEHICULAR EN PORCIENTO													COORDENADAS		
	KM	TE	SC	TDPA	M	A	B	C2	C3	T3S2	T3S3	T3S2R4	OTROS	A	B	C	K'	D	LATITUD	LONGITUD
Gral. Bravo	0.00	3	0	1361	0.9	92.8	1.2	3.8	0.7	0.2	0.4	0.0	0.0	93.7	1.2	5.1	0.078	0.503	25.823668	-99.169852
Los Aldamas	31.00	0	0																	

32 CARR: Gral. Treviño - Villaldama

CLAVE: 19003

RUTA: NL-003

AÑO: 2022

LUGAR	ESTACION				CLASIFICACION VEHICULAR EN PORCIENTO													COORDENADAS		
	KM	TE	SC	TDPA	M	A	B	C2	C3	T3S2	T3S3	T3S2R4	OTROS	A	B	C	K'	D	LATITUD	LONGITUD
Gral. Treviño	0.00	3	0	892	1.6	77.4	0.4	16.0	0.9	1.2	0.1	2.3	0.1	79.0	0.4	20.6	0.095	0.506	26.237729	-99.490498
Agualeguas	13.00	3	0	747	2.7	85.0	0.4	9.4	0.7	1.0	0.1	0.7	0.0	87.7	0.4	11.9	0.106	0.519	26.321416	-99.537390
Paras	34.00	3	0	313	0.8	72.3	1.0	21.5	0.9	0.6	0.4	2.5	0.0	73.1	1.0	25.9	0.157	0.524	26.505063	-99.531618
El Álamo	62.00	1	0	602	2.4	74.6	1.6	18.5	0.9	0.9	0.2	0.8	0.1	77.0	1.6	21.4	0.116	0.512	26.490499	-99.771150
Villaldama	134.00	1	0	1917	2.4	84.9	0.6	9.4	0.8	1.7	0.1	0.0	0.1	87.3	0.6	12.1	0.102	0.505	26.504862	-100.412629

33 CARR: Hacienda Guadalupe - Higueras

CLAVE: 19006

RUTA: NL-006

AÑO: 2022

LUGAR	ESTACION				CLASIFICACION VEHICULAR EN PORCIENTO													COORDENADAS		
	KM	TE	SC	TDPA	M	A	B	C2	C3	T3S2	T3S3	T3S2R4	OTROS	A	B	C	K'	D	LATITUD	LONGITUD
Hacienda Guadalupe	0.00	0	0																	
Marin	3.00	1	1	3779	3.7	78.8	1.5	7.2	2.6	4.3	0.8	0.9	0.2	82.5	1.5	16.0	0.100	0.502	25.861530	-100.024306
Marin	3.00	1	2	3751	3.8	78.7	1.6	7.2	2.6	4.3	0.6	0.9	0.3	82.5	1.6	15.9	0.083	0.502	25.861502	-100.024482
Higueras	15.00	0	0																	

NUEVO LEON

34 CARR : Libramiento de Linares

CLAVE: 19506

RUTA: NL

AÑO: 2022

LUGAR	ESTACION				CLASIFICACION VEHICULAR EN PORCIENTO													COORDENADAS		
	KM	TE	SC	TDPA	M	A	B	C2	C3	T3S2	T3S3	T3S2R4	OTROS	A	B	C	K'	D	LATITUD	LONGITUD
T. C. Cd. Victoria - Monterrey (1° Acceso)	0.00	3	0	15137	5.5	69.3	3.1	5.3	1.4	6.6	1.8	6.3	0.7	74.8	3.1	22.1	0.076	0.512	24.843558	-99.564156
T. C. Linares - Ent. San Roberto	2.00	3	0	12778	4.0	67.1	2.8	8.6	1.6	7.1	1.7	6.6	0.5	71.1	2.8	26.1	0.093	0.502	24.854448	-99.578007
T. C. Cd. Victoria - Monterrey (2° Acceso)	6.50	0	0																	

35 CARR : Libramiento de Montemorelos

CLAVE: 19492

RUTA: NL

AÑO: 2022

LUGAR	ESTACION				CLASIFICACION VEHICULAR EN PORCIENTO													COORDENADAS		
	KM	TE	SC	TDPA	M	A	B	C2	C3	T3S2	T3S3	T3S2R4	OTROS	A	B	C	K'	D	LATITUD	LONGITUD
T. C. Cd. Victoria - Monterrey (1° Acceso)	0.00	3	1	5499	2.5	70.0	3.8	6.2	1.7	6.7	1.8	6.5	0.8	72.5	3.8	23.7	0.125	0.520	25.130119	-99.813619
T. C. Cd. Victoria - Monterrey (1° Acceso)	0.00	3	2	5085	2.6	70.1	3.8	6.1	1.6	6.7	1.8	6.5	0.8	72.7	3.8	23.5	0.081	0.520	25.130643	-99.814284
T. C. Cd. Victoria - Monterrey (2° Acceso)	3.70	0	0																	

36 CARR : Libramiento de Sabinas Hidalgo

CLAVE: 19492

RUTA: NL

AÑO: 2022

LUGAR	ESTACION				CLASIFICACION VEHICULAR EN PORCIENTO													COORDENADAS		
	KM	TE	SC	TDPA	M	A	B	C2	C3	T3S2	T3S3	T3S2R4	OTROS	A	B	C	K'	D	LATITUD	LONGITUD
T. C. Monterrey - Nuevo Laredo (Sur)	0.00	3	0	4269	1.8	38.6	2.6	13.4	4.0	32.2	5.4	1.8	0.2	40.4	2.6	57.0	0.053	0.502	26.464577	-100.162143
T. C. Monterrey - Nuevo Laredo (Norte)	9.20	1	0	3085	1.9	47.6	2.1	11.1	2.5	30.9	2.1	1.6	0.2	49.5	2.1	48.4	0.071	0.504	26.525059	-100.151744

37 CARR : Libramiento Poniente de Cadereyta

CLAVE: 19085

RUTA: NL

AÑO: 2022

LUGAR	ESTACION				CLASIFICACION VEHICULAR EN PORCIENTO													COORDENADAS		
	KM	TE	SC	TDPA	M	A	B	C2	C3	T3S2	T3S3	T3S2R4	OTROS	A	B	C	K'	D	LATITUD	LONGITUD
T. C. Monterrey - Reynosa ( Libre)	0.00	3	0	21327	3.0	85.1	0.8	3.3	2.8	3.2	0.4	1.2	0.2	88.1	0.8	11.1	0.070	0.528	25.591306	-100.028033
T. C. Cadereyta - Allende	6.00	0	0																	

38 CARR : Los Guerra - Los Herreras

CLAVE: 19031

RUTA: TAM-NL

AÑO: 2022

LUGAR	ESTACION				CLASIFICACION VEHICULAR EN PORCIENTO													COORDENADAS		
	KM	TE	SC	TDPA	M	A	B	C2	C3	T3S2	T3S3	T3S2R4	OTROS	A	B	C	K'	D	LATITUD	LONGITUD
Los Guerra	0.00	0	0																	
Lim. Edos. Term. Tamps. Ppia. N. L.	46.00	0	0																	
Los Herreras	73.00	1	0	708	1.2	81.0	1.0	14.0	1.0	1.1	0.7	0.0	0.0	82.2	1.0	16.8	0.107	0.518	25.902622	-99.393499

NUEVO LEON

39 CARR: Matehuala - La Poza

CLAVE: 00086

RUTA: SLP-029-NL-061

AÑO: 2022

LUGAR	ESTACION				CLASIFICACION VEHICULAR EN PORCIENTO													COORDENADAS		
	KM	TE	SC	TDPA	M	A	B	C2	C3	T3S2	T3S3	T3S2R4	OTROS	A	B	C	K'	D	LATITUD	LONGITUD
Matehuala	0.00	3	0	4367	14.2	77.9	1.4	3.2	2.6	0.3	0.3	0.1	0.0	92.1	1.4	6.5	0.084	0.519	23.665208	-100.603663
Lim. Edos. Term. S. L. P. Ppia. N. L.	19.70	0	0																	
Lim. Edos. Term. N. L. Ppia. S. L. P.	19.90	0	0																	
Lim. Edos. Term. S. L. P. Ppia. N. L.	21.53	0	0																	
Doctor Arroyo	49.00	1	0	3924	7.0	83.6	1.3	5.4	1.6	0.5	0.3	0.2	0.1	90.6	1.3	8.1	0.079	0.507	23.688424	-100.215942
La Ascención	131.00	1	0	933	9.6	78.7	2.7	5.8	1.2	1.8	0.2	0.0	0.0	88.3	2.7	9.0	0.089	0.536	24.321671	-99.905830

40 CARR: Monclova - Estación Candela

CLAVE: 00501

RUTA: COA-030-NL

AÑO: 2022

LUGAR	ESTACION				CLASIFICACION VEHICULAR EN PORCIENTO													COORDENADAS		
	KM	TE	SC	TDPA	M	A	B	C2	C3	T3S2	T3S3	T3S2R4	OTROS	A	B	C	K'	D	LATITUD	LONGITUD
T. C. Monclova - Piedras Negras	0.00	0	0																	
T. Izq. Libramiento de Monclova	5.10	1	1	3053	6.5	60.1	6.8	24.1	1.5	0.7	0.1	0.1	0.1	66.6	6.8	26.6	0.090	0.501	26.928305	-101.389030
T. Izq. Libramiento de Monclova	5.10	1	2	3038	6.7	58.7	7.1	24.9	1.6	0.7	0.1	0.1	0.1	65.4	7.1	27.5	0.097	0.501	26.928375	-101.389142
Lim. Edos. Term. Coah. Ppia. N. L.	118.00	0	0																	
T. C. Monterrey - Colombia	125.50	1	0	576	0.1	73.4	1.5	15.7	1.1	7.2	0.4	0.5	0.1	73.5	1.5	25.0	0.196	0.503	26.837840	-100.493910

41 CARR: Monterrey - Colombia

CLAVE: 19001

RUTA: NL-001

AÑO: 2022

LUGAR	ESTACION				CLASIFICACION VEHICULAR EN PORCIENTO													COORDENADAS		
	KM	TE	SC	TDPA	M	A	B	C2	C3	T3S2	T3S3	T3S2R4	OTROS	A	B	C	K'	D	LATITUD	LONGITUD
T. C. Monterrey - Nuevo Laredo	0.00	3	1	28510	2.6	81.9	1.7	6.4	2.3	2.5	1.3	0.6	0.7	84.5	1.7	13.8	0.055	0.541	25.779784	-100.292036
T. C. Monterrey - Nuevo Laredo	0.00	3	2	24169	2.6	82.0	1.7	6.4	2.3	2.5	1.3	0.6	0.6	84.6	1.7	13.7	0.065	0.541	25.779791	-100.292186
X. C. Libramiento Noroeste de Monterrey	7.30	3	1	13251	2.4	67.9	1.4	9.4	7.1	8.1	1.8	1.3	0.6	70.3	1.4	28.3	0.118	0.506	25.836438	-100.295125
X. C. Libramiento Noroeste de Monterrey	7.30	3	2	12929	2.4	68.6	1.4	8.7	7.1	8.1	1.8	1.3	0.6	71.0	1.4	27.6	0.099	0.506	25.836464	-100.295265
T. Izq. Salinas Victoria (1º Acceso)	20.50	3	0	10056	0.9	70.4	2.2	14.6	2.1	3.5	3.6	2.4	0.3	71.3	2.2	26.5	0.087	0.529	25.966034	-100.276876
Villa Aldama	86.50	3	0	2397	1.3	68.7	1.8	16.6	1.9	3.1	3.3	2.7	0.6	70.0	1.8	28.2	0.081	0.510	26.511112	-100.432153
T. Izq. Bustamante	92.25	3	0	1522	0.8	69.4	1.2	15.5	2.0	3.6	3.5	3.5	0.5	70.2	1.2	28.6	0.092	0.515	26.547184	-100.459153
T. Izq. Candela	124.04	1	0	1322	0.6	66.9	1.4	15.2	2.2	4.0	4.7	4.5	0.5	67.5	1.4	31.1	0.108	0.502	26.836803	-100.492936
Lampazos de Naranja	164.00	1	0	2005	0.9	66.6	1.2	15.4	2.2	4.5	5.4	3.2	0.6	67.5	1.2	31.3	0.087	0.513	27.004244	-100.509855
Anáhuac	195.00	1	0	2090	0.4	67.3	2.6	19.4	1.0	4.6	2.3	2.0	0.4	67.7	2.6	29.7	0.116	0.513	27.222237	-100.157743
Huizache	212.70	3	0	2315	0.5	63.8	2.0	18.8	2.5	5.3	3.6	3.0	0.5	64.3	2.0	33.7	0.097	0.506	27.349831	-99.955384
Colombia	263.00	1	1	505	0.7	45.7	0.5	14.3	6.4	28.1	2.9	1.1	0.3	46.4	0.5	53.1	0.109	0.528	27.688493	-99.781334
Colombia	263.00	1	2	566	0.6	41.5	0.5	15.9	6.9	30.6	2.4	1.2	0.4	42.1	0.5	57.4	0.113	0.528	27.688529	-99.781360

NUEVO LEON

42 CARR: Palo Alto - Vallecillos

CLAVE: 19036

RUTA: NL

AÑO: 2022

LUGAR	ESTACION				CLASIFICACION VEHICULAR EN PORCIENTO														COORDENADAS	
	KM	TE	SC	TDPA	M	A	B	C2	C3	T3S2	T3S3	T3S2R4	OTROS	A	B	C	K'	D	LATITUD	LONGITUD
T. C. Gral. Treviño - Villa Aldama	0.00	3	0	210	2.2	79.9	0.5	13.4	2.1	0.6	0.0	1.3	0.0	82.1	0.5	17.4	0.095	0.521	26.497207	-99.761030
Vallecillos	43.00	1	0	168	8.6	64.5	1.4	21.8	1.1	2.6	0.0	0.0	0.0	73.1	1.4	25.5	0.119	0.505	26.658656	-99.982054

43 CARR: Peña Blanca - Cd. Camargo

CLAVE: 00102

RUTA: NL-TAM

AÑO: 2022

LUGAR	ESTACION				CLASIFICACION VEHICULAR EN PORCIENTO														COORDENADAS	
	KM	TE	SC	TDPA	M	A	B	C2	C3	T3S2	T3S3	T3S2R4	OTROS	A	B	C	K'	D	LATITUD	LONGITUD
T. C. Monterrey - Reynosa	0.00	3	0	406	0.8	77.9	1.1	12.8	1.3	2.3	3.3	0.3	0.2	78.7	1.1	20.2	0.103	0.506	25.836304	-99.008481
Lim. Edos. Term. N. L. Ppia. Tamps.	30.00	0	0																	
Cd. Camargo	65.00	1	0	2822	3.3	83.3	0.8	1.9	3.4	4.7	1.6	0.8	0.2	86.6	0.8	12.6	0.076	0.502	26.304258	-98.834754

44 CARR: Ramal a 18 de Marzo

CLAVE: 19475

RUTA: NL

AÑO: 2022

LUGAR	ESTACION				CLASIFICACION VEHICULAR EN PORCIENTO														COORDENADAS	
	KM	TE	SC	TDPA	M	A	B	C2	C3	T3S2	T3S3	T3S2R4	OTROS	A	B	C	K'	D	LATITUD	LONGITUD
T. C. Linares - Ent. San Roberto	0.00	3	0	3270	3.4	79.7	1.2	11.5	1.4	2.0	0.7	0.0	0.1	83.1	1.2	15.7	0.075	0.509	24.777316	-100.041818
18 de Marzo	14.00	0	0																	

45 CARR: Ramal a Cerralvo

CLAVE: 19013

RUTA: NL-013

AÑO: 2022

LUGAR	ESTACION				CLASIFICACION VEHICULAR EN PORCIENTO														COORDENADAS	
	KM	TE	SC	TDPA	M	A	B	C2	C3	T3S2	T3S3	T3S2R4	OTROS	A	B	C	K'	D	LATITUD	LONGITUD
T. C. Monterrey - Reynosa	0.00	3	0	664	0.5	76.3	1.6	10.0	1.8	2.1	1.5	5.2	1.0	76.8	1.6	21.6	0.101	0.511	25.735527	-99.371920
Los Herrera	21.00	3	0	729	1.3	67.0	1.1	14.2	2.0	3.6	3.0	7.2	0.6	68.3	1.1	30.6	0.093	0.517	25.920679	-99.420906
Cerralvo	58.00	1	0	2808	2.4	79.4	0.4	11.9	2.0	1.6	0.2	1.9	0.2	81.8	0.4	17.8	0.088	0.501	26.081131	-99.605016

46 CARR: Ramal a Marín

CLAVE: 19007

RUTA: NL

AÑO: 2022

LUGAR	ESTACION				CLASIFICACION VEHICULAR EN PORCIENTO														COORDENADAS	
	KM	TE	SC	TDPA	M	A	B	C2	C3	T3S2	T3S3	T3S2R4	OTROS	A	B	C	K'	D	LATITUD	LONGITUD
T. C. Monterrey - Nuevo Laredo	0.00	3	0	33477	3.8	75.6	5.1	11.0	1.1	1.4	0.4	1.2	0.4	79.4	5.1	15.5	0.075	0.504	25.916339	-100.194637
Marín	10.00	0	0																	

NUEVO LEON

47 CARR: Salinas Victoria - Ciénega de Flores

CLAVE: 19007

RUTA: NL

AÑO: 2022

LUGAR	ESTACION				CLASIFICACION VEHICULAR EN PORCIENTO														COORDENADAS	
	KM	TE	SC	TDPA	M	A	B	C2	C3	T3S2	T3S3	T3S2R4	OTROS	A	B	C	K'	D	LATITUD	LONGITUD
Salinas Victoria	0.00	3	0	9154	3.7	55.7	3.9	9.4	6.0	17.2	1.9	1.6	0.6	59.4	3.9	36.7	0.089	0.517	25.951089	-100.268756
T. C. Monterrey - Nuevo Laredo (Cuota)	6.00	1	0	9270	6.7	57.8	2.8	7.7	6.8	12.5	1.6	3.1	1.0	64.5	2.8	32.7	0.096	0.511	25.945122	-100.234351
Ciénega de Flores	10.00	0	0																	

48 CARR: Santa Rosa - Mezquital

CLAVE: 00087

RUTA: NL

AÑO: 2022

LUGAR	ESTACION				CLASIFICACION VEHICULAR EN PORCIENTO														COORDENADAS	
	KM	TE	SC	TDPA	M	A	B	C2	C3	T3S2	T3S3	T3S2R4	OTROS	A	B	C	K'	D	LATITUD	LONGITUD
X. C. Libramiento Noroeste de Monterrey	0.00	3	1	12319	2.4	73.8	0.9	5.7	2.7	9.6	3.1	1.1	0.7	76.2	0.9	22.9	0.092	0.502	25.814251	-100.222545
X. C. Libramiento Noroeste de Monterrey	0.00	3	2	12235	2.4	73.8	0.9	5.7	2.7	9.6	3.1	1.1	0.7	76.2	0.9	22.9	0.088	0.502	25.814035	-100.222453
Mezquital	9.00	0	0																	

49 CARR: Santa Rosa - Salinas Victoria

CLAVE: 19037

RUTA: NL

AÑO: 2022

LUGAR	ESTACION				CLASIFICACION VEHICULAR EN PORCIENTO														COORDENADAS	
	KM	TE	SC	TDPA	M	A	B	C2	C3	T3S2	T3S3	T3S2R4	OTROS	A	B	C	K'	D	LATITUD	LONGITUD
Ent. Salinas Victoria	0.00	3	1	12115	5.9	76.4	1.4	6.2	2.2	4.4	0.7	2.3	0.5	82.3	1.4	16.3	0.071	0.544	25.853960	-100.243480
Ent. Salinas Victoria	0.00	3	2	14461	5.9	76.1	1.4	6.2	2.3	4.4	0.7	2.4	0.6	82.0	1.4	16.6	0.090	0.544	25.853913	-100.243608
Salinas Victoria	13.85	1	1	5697	4.4	81.8	1.7	9.6	1.0	0.4	0.4	0.4	0.3	86.2	1.7	12.1	0.094	0.536	25.950272	-100.288035
Salinas Victoria	13.85	1	2	6594	4.3	82.3	1.6	9.6	0.8	0.4	0.3	0.4	0.3	86.6	1.6	11.8	0.090	0.536	25.950242	-100.288098

50 CARR: Aeropuerto de Monterrey (Cuota)

CLAVE:

RUTA: NL-D

AÑO: 2022

LUGAR	ESTACION				CLASIFICACION VEHICULAR EN PORCIENTO														COORDENADAS	
	KM	TE	SC	TDPA	M	A	B	C2	C3	T3S2	T3S3	T3S2R4	OTROS	A	B	C	K'	D	LATITUD	LONGITUD
T. C. Monterrey - Cadereyta (Cuota)	0.00	0	0																	
T. C. Apodaca - Villa Juarez	3.10	3	1	14724	4.7	69.5	4.6	14.6	1.3	2.6	1.3	1.1	0.3	74.2	4.6	21.2	0.095	0.518	25.720779	-100.135080
T. C. Apodaca - Villa Juarez	3.10	3	2	15836	4.3	71.0	4.8	13.9	1.1	2.5	1.2	1.0	0.2	75.3	4.8	19.9	0.119	0.518	25.720805	-100.135239
Aeropuerto Mariano Escobedo	10.50	0	0																	

51 CARR: Anillo Periférico de Monterrey (Cuota)

CLAVE: 19004

RUTA: NL-D

AÑO: 2022

LUGAR	ESTACION				CLASIFICACION VEHICULAR EN PORCIENTO														COORDENADAS	
	KM	TE	SC	TDPA	M	A	B	C2	C3	T3S2	T3S3	T3S2R4	OTROS	A	B	C	K'	D	LATITUD	LONGITUD
T. C. Saltillo - Monterrey	0.00	3	1	5896	1.4	52.8	2.7	7.3	3.5	23.3	2.0	6.2	0.8	54.2	2.7	43.1	0.087	0.508	25.710088	-100.558281

NUEVO LEON

51 CARR: Anillo Periférico de Monterrey (Cuota)

CLAVE: 19004

RUTA: NL-D

AÑO: 2022

LUGAR	ESTACION				CLASIFICACION VEHICULAR EN PORCIENTO														COORDENADAS	
	KM	TE	SC	TDPA	M	A	B	C2	C3	T3S2	T3S3	T3S2R4	OTROS	A	B	C	K'	D	LATITUD	LONGITUD
T. C. Saltillo - Monterrey	0.00	3	2	6088	1.5	52.8	2.6	7.3	3.5	23.2	2.1	6.3	0.7	54.3	2.6	43.1	0.078	0.508	25.710257	-100.558492
X. C. Monterrey - Nuevo Laredo (Libre)	37.70	1	1	6933	1.8	52.8	4.8	5.0	5.2	21.9	2.6	5.0	0.9	54.6	4.8	40.6	0.103	0.502	25.840534	-100.258281
X. C. Monterrey - Nuevo Laredo (Libre)	37.70	1	2	6987	1.8	52.9	4.8	5.0	5.2	21.8	2.6	5.0	0.9	54.7	4.8	40.5	0.093	0.502	25.840858	-100.257902
X. C. Monterrey - Mier	49.30	1	1	8867	2.7	52.3	3.9	5.9	4.6	20.5	3.4	5.8	0.9	55.0	3.9	41.1	0.073	0.503	25.800563	-100.178389
X. C. Monterrey - Mier	49.30	1	2	8976	2.7	52.6	3.3	6.0	4.7	20.5	3.5	5.8	0.9	55.3	3.3	41.4	0.080	0.503	25.800780	-100.178229
T. C. Monterrey - Cadereyta	66.80	0	0																	

52 CARR: Monterrey - Cadereyta (Cuota)

CLAVE: 19281

RUTA: NL-D

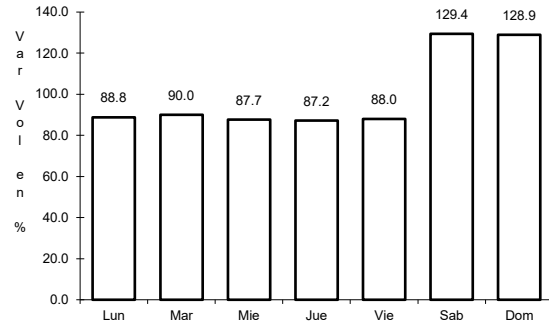
AÑO: 2022

LUGAR	ESTACION				CLASIFICACION VEHICULAR EN PORCIENTO														COORDENADAS	
	KM	TE	SC	TDPA	M	A	B	C2	C3	T3S2	T3S3	T3S2R4	OTROS	A	B	C	K'	D	LATITUD	LONGITUD
T. Av. Bonifacio Salinas	3.05	0	0																	
T. Izq. Apodaca (Aeropuerto)	12.50	1	1	14767	1.0	86.7	1.1	7.0	1.0	1.7	0.7	0.5	0.3	87.7	1.1	11.2	0.081	0.509	25.692237	-100.161555
T. Izq. Apodaca (Aeropuerto)	12.50	1	2	14239	1.0	86.9	1.1	7.1	1.0	1.6	0.5	0.5	0.3	87.9	1.1	11.0	0.091	0.509	25.692377	-100.160989
T. C. Anillo Periférico de Monterrey (Cuota)	21.80	3	1	7369	1.1	72.5	2.5	5.3	2.4	9.4	2.0	3.9	0.9	73.6	2.5	23.9	0.080	0.526	25.639208	-100.043245
T. C. Anillo Periférico de Monterrey (Cuota)	21.80	3	2	6627	1.1	72.1	2.5	5.4	2.3	9.5	2.1	4.0	1.0	73.2	2.5	24.3	0.118	0.526	25.639399	-100.043047
T. Der. Cadereyta	33.10	0	0																	

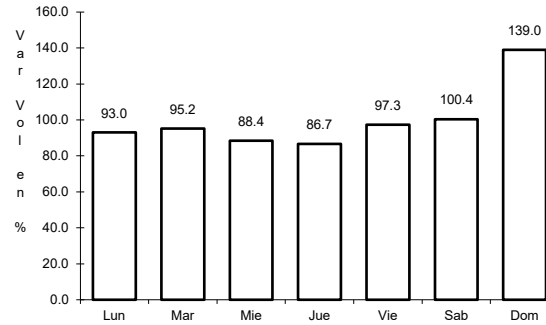
1 CARR: Cadereyta de Jiménez - Allende

CLAVE: 19009

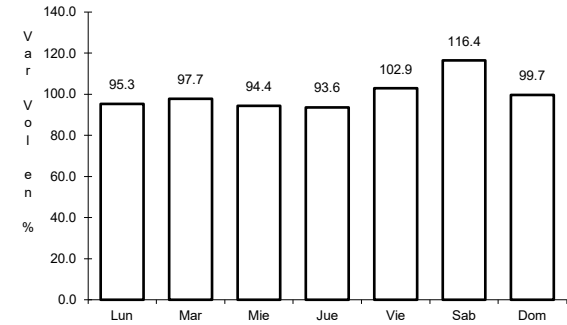
RUTA: MEX-009



Km: 0.00      Tipo: 3      Sent: 1



Km: 0.00      Tipo: 3      Sent: 2

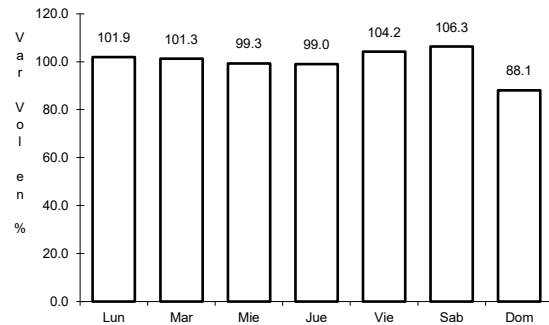


Km: 26.80      Tipo: 1      Sent: 0

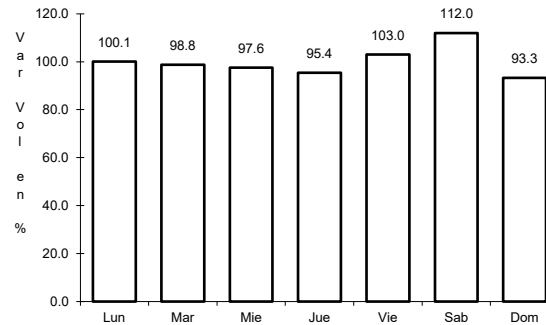
2 CARR: Ciudad Victoria - Monterrey

CLAVE: 00462

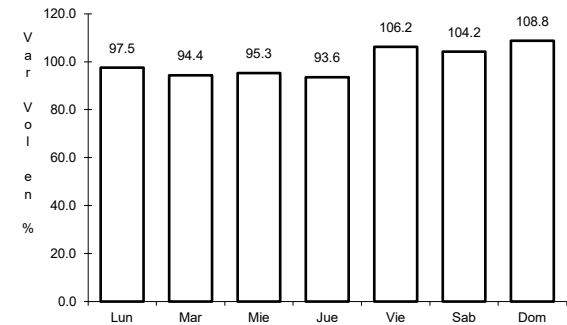
RUTA: MEX-085



Km: 0.00      Tipo: 3      Sent: 1



Km: 0.00      Tipo: 3      Sent: 2

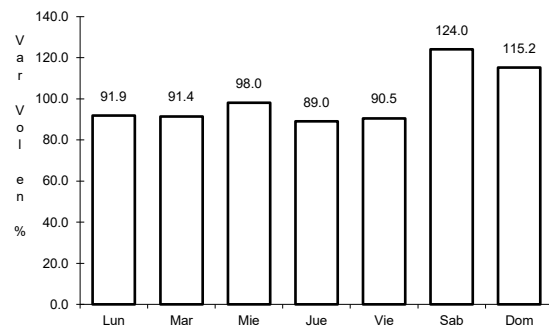


Km: 154.00      Tipo: 1      Sent: 0

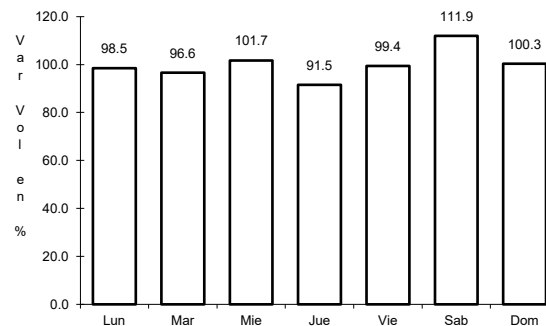
3 CARR: La Unión - El Encadenado

CLAVE:

RUTA: MEX



Km: 0.00      Tipo: 3      Sent: 0

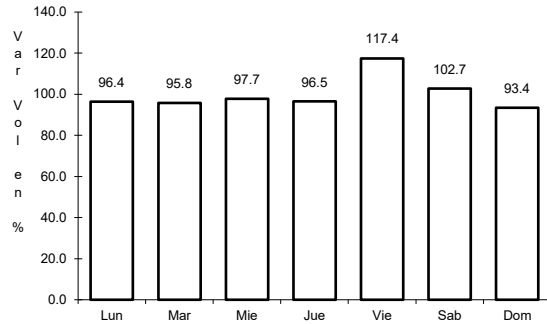


Km: 10.00      Tipo: 1      Sent: 0

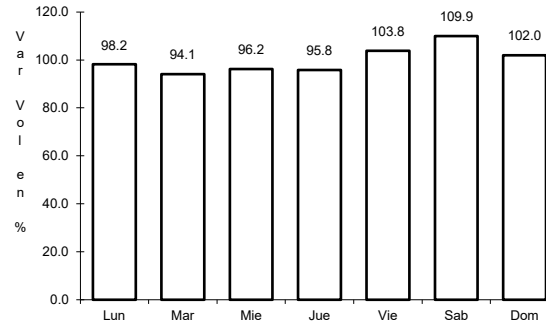
4 CARR: Libramiento de China

CLAVE:

ruta: MEX-040



Km: 0.00      Tipo: 3      Sent: 0

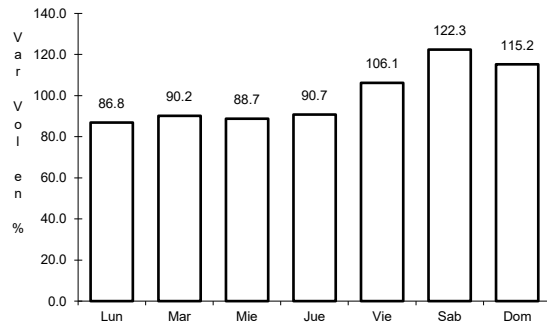


Km: 2.41      Tipo: 1      Sent: 0

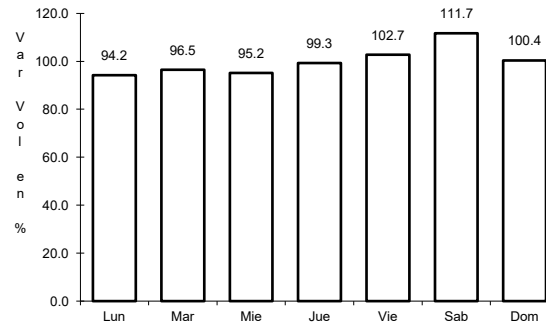
5 CARR: Libramiento de Dr. González

CLAVE: 00127

ruta: MEX-054



Km: 0.00      Tipo: 3      Sent: 0

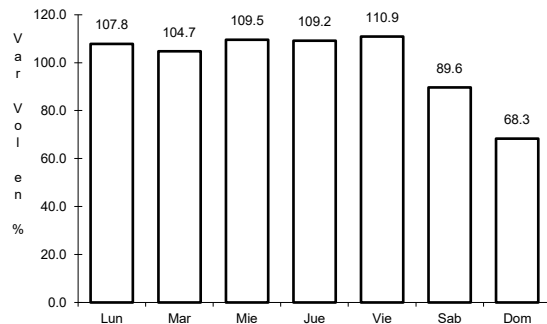


Km: 10.90      Tipo: 1      Sent: 0

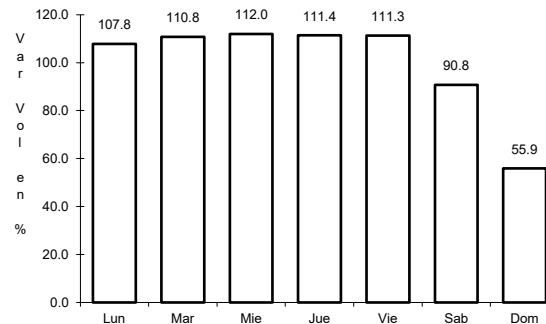
6 CARR: Libramiento Noroeste de Monterrey

CLAVE: 19085

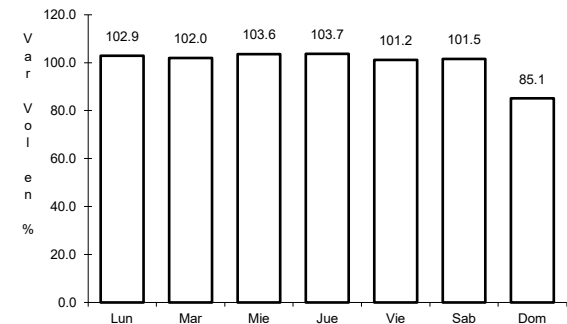
ruta: MEX-040



Km: 0.00      Tipo: 3      Sent: 1



Km: 0.00      Tipo: 3      Sent: 2



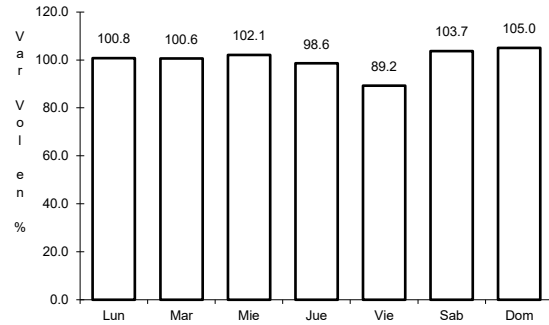
Km: 48.00      Tipo: 1      Sent: 1



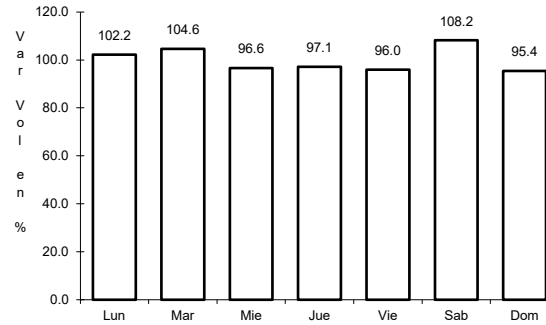
7 CARR: Linares - Ent. San Roberto

CLAVE: 19031

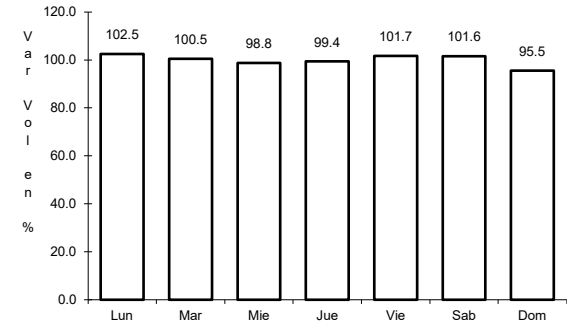
ruta: MEX-058



Km: 0.00      Tipo: 3      Sent: 0



Km: 66.00      Tipo: 1      Sent: 0

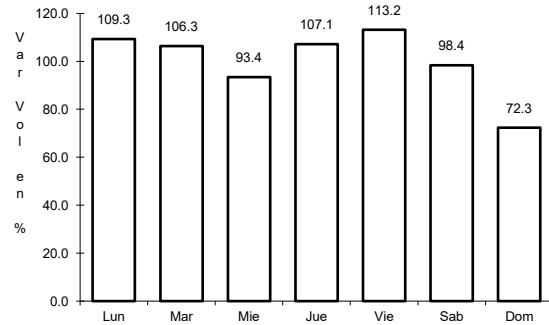


Km: 98.00      Tipo: 1      Sent: 0

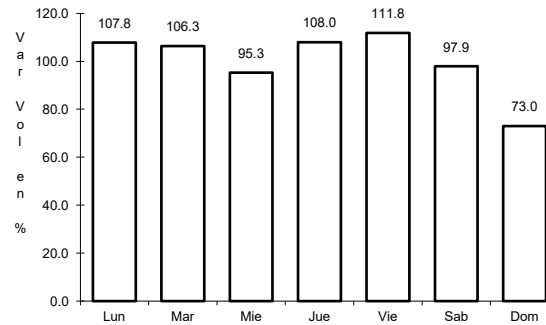
8 CARR: Matehuala - Ent. Puerto México

CLAVE: 00405

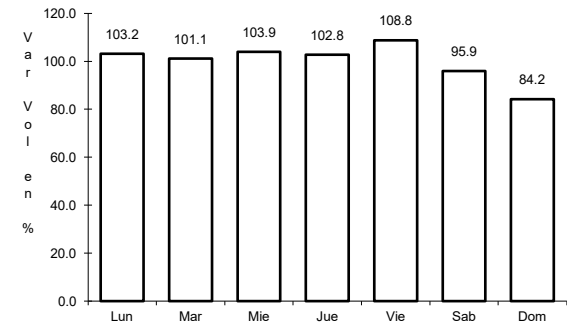
ruta: MEX-057



Km: 0.00      Tipo: 3      Sent: 1



Km: 0.00      Tipo: 3      Sent: 2

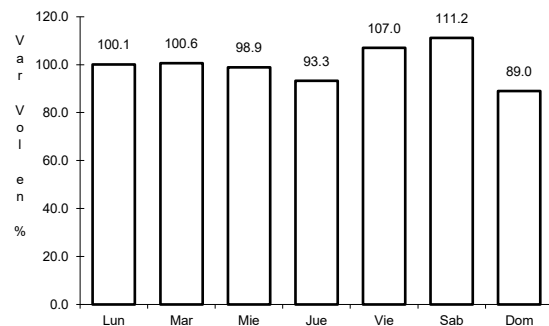


Km: 177.18      Tipo: 1      Sent: 1

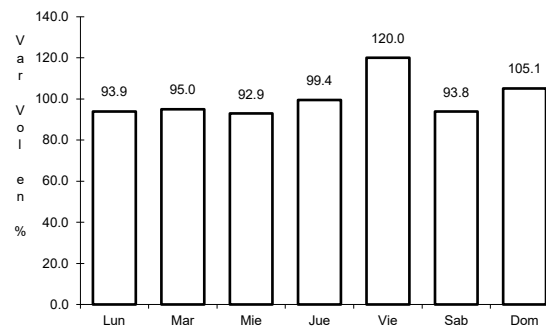
9 CARR: Montemorelos - China

CLAVE: 19280

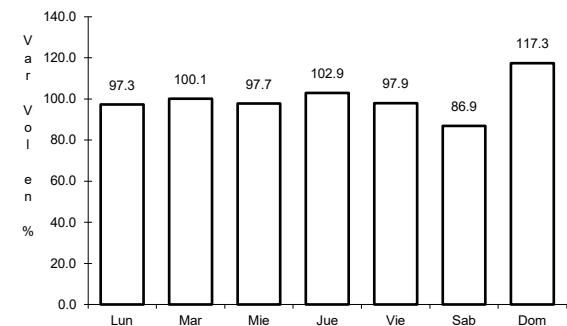
ruta: MEX-035



Km: 0.00      Tipo: 3      Sent: 0



Km: 23.10      Tipo: 3      Sent: 0

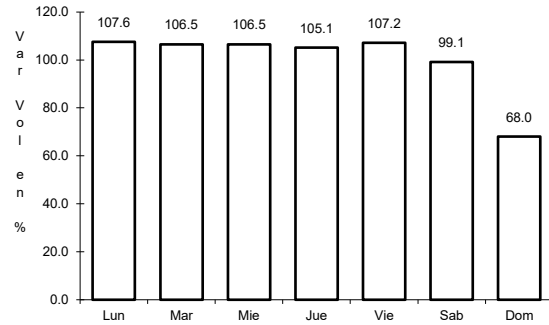


Km: 93.00      Tipo: 1      Sent: 0

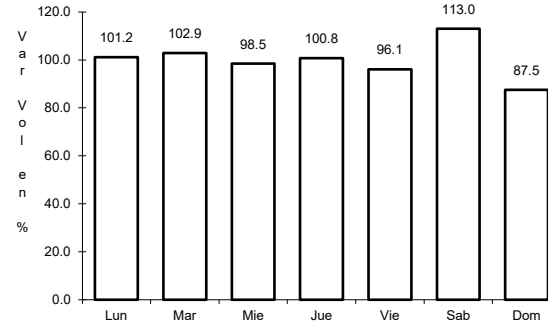
10 CARR: Monterrey - Castaños

CLAVE: 00128

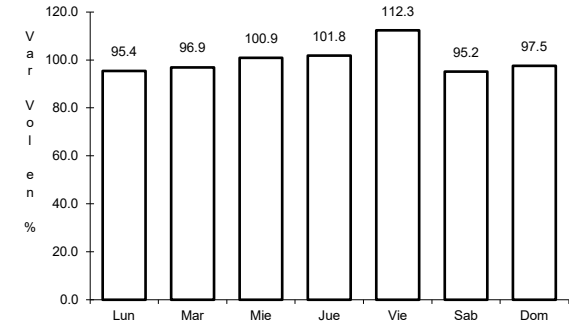
ruta: MEX-053



Km: 0.00      Tipo: 3      Sent: 0



Km: 155.90      Tipo: 1      Sent: 1

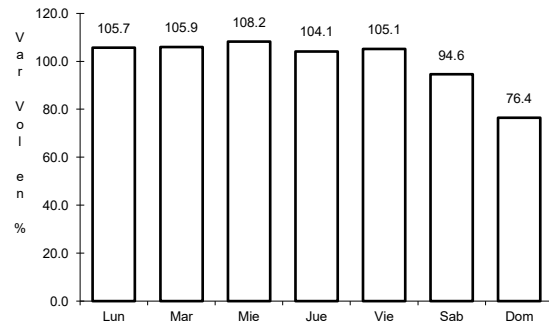


Km: 155.90      Tipo: 1      Sent: 2

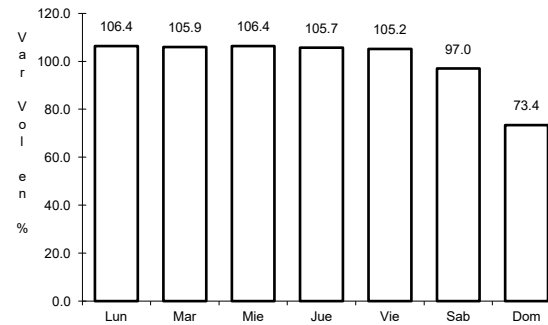
11 CARR: Monterrey - Mier

CLAVE: 00127

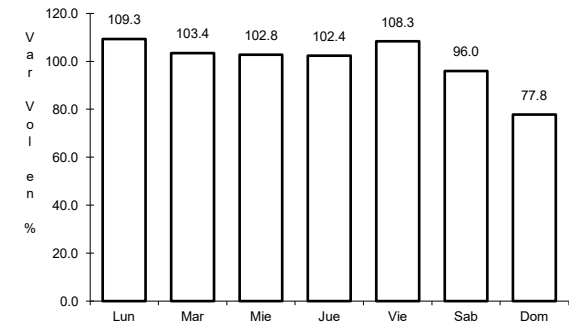
ruta: MEX-054



Km: 19.12      Tipo: 1      Sent: 1



Km: 19.12      Tipo: 1      Sent: 2

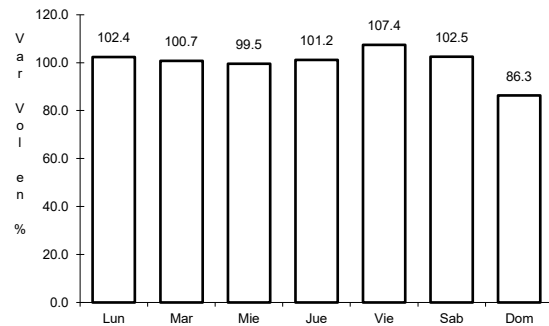


Km: 156.21      Tipo: 1      Sent: 0

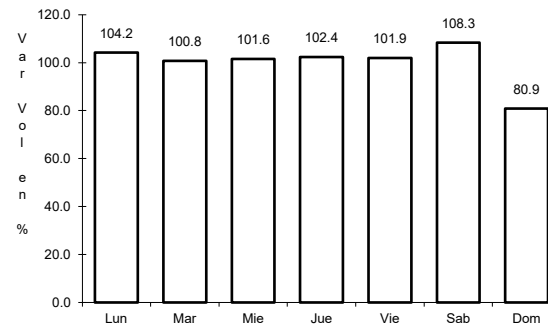
12 CARR: Monterrey - Nuevo Laredo (Libre)

CLAVE: 00463

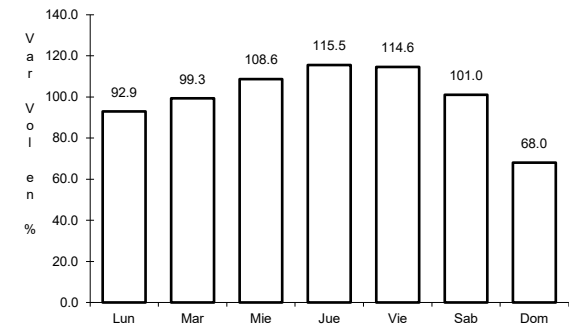
ruta: MEX-085



Km: 12.10      Tipo: 3      Sent: 1



Km: 12.10      Tipo: 3      Sent: 2

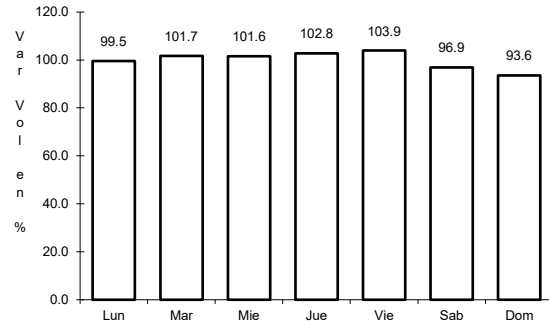


Km: 124.40      Tipo: 3      Sent: 0

13 CARR: Monterrey - Reynosa (Libre)

CLAVE: 00088

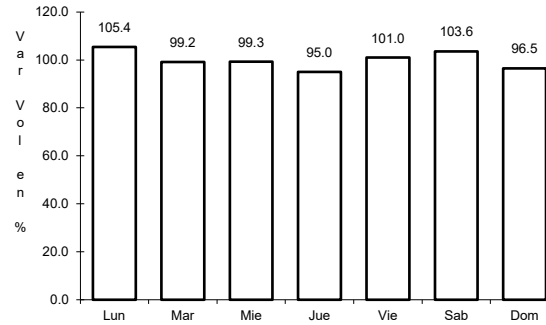
ruta: MEX-040



Km: 19.10

Tipo: 1

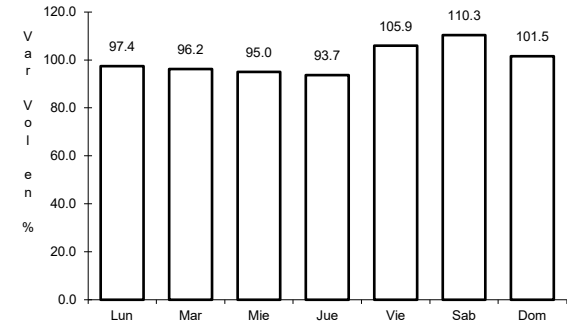
Sent: 1



Km: 19.10

Tipo: 1

Sent: 2



Km: 125.00

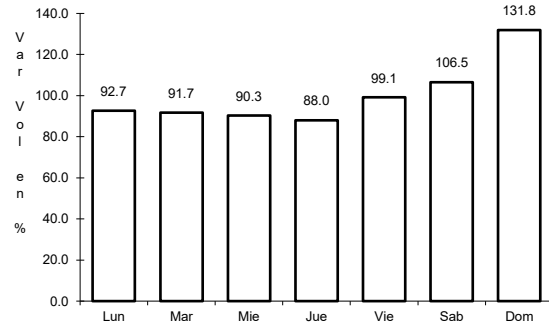
Tipo: 1

Sent: 0

14 CARR: Paras - Nueva Ciudad Guerrero

CLAVE: 00476

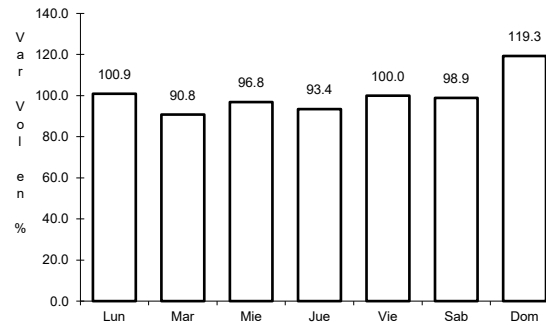
ruta: MEX-030



Km: 0.00

Tipo: 3

Sent: 0



Km: 32.00

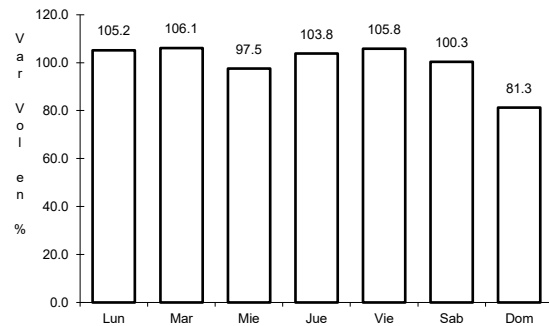
Tipo: 1

Sent: 0

15 CARR: Piedras Negras - Nuevo Laredo

CLAVE: 00503

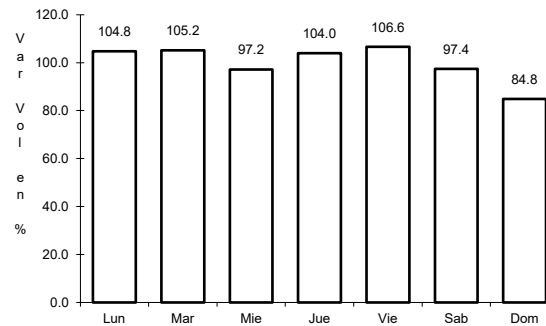
ruta: MEX-002



Km: 0.00

Tipo: 3

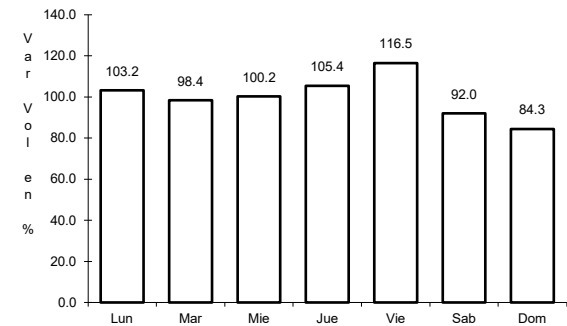
Sent: 1



Km: 0.00

Tipo: 3

Sent: 2



Km: 134.00

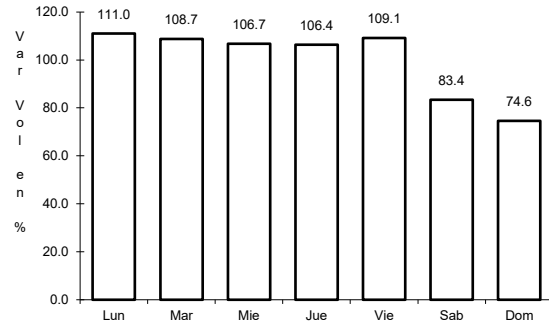
Tipo: 3

Sent: 0

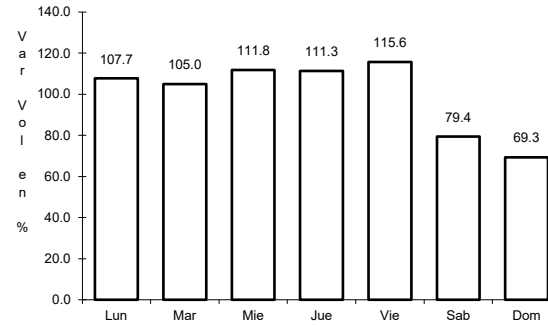
16 CARR: Ramal a Aeropuerto Mariano Escobedo

CLAVE: 19510

ruta: MEX-054



Km: 0.00 Tipo: 3 Sent: 1

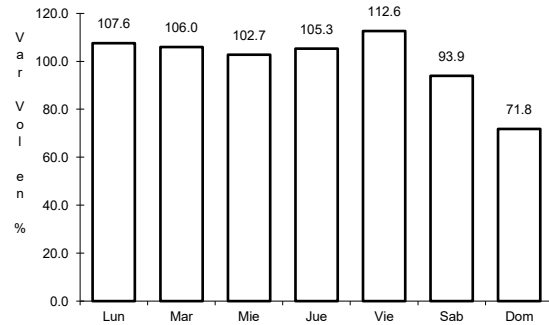


Km: 0.00 Tipo: 3 Sent: 2

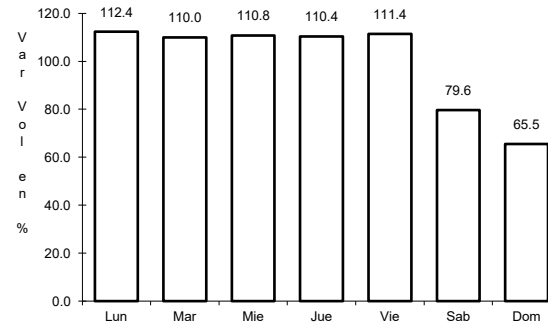
17 CARR: Saltillo - Monterrey

CLAVE: 00087

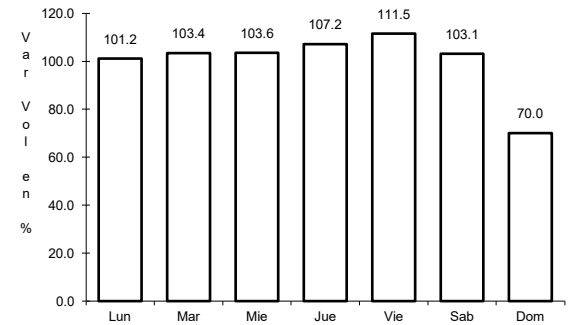
ruta: MEX-040



Km: 4.25 Tipo: 3 Sent: 1



Km: 4.25 Tipo: 3 Sent: 2

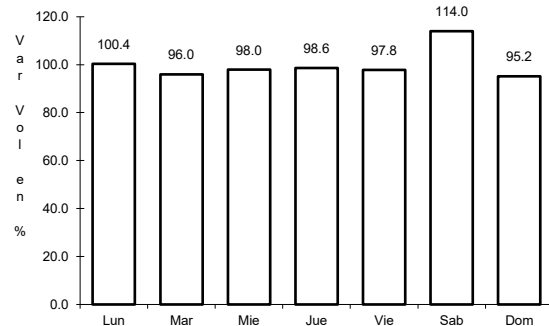


Km: 79.20 Tipo: 1 Sent: 1

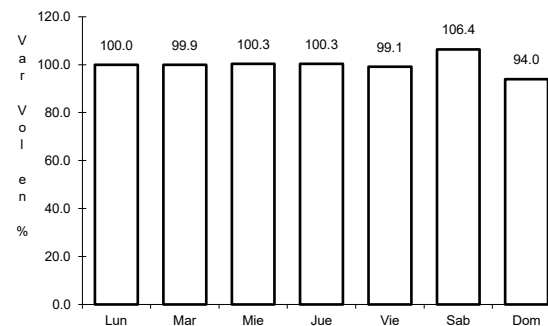
18 CARR: Cadereyta - Reynosa (Cuota)

CLAVE: 19002

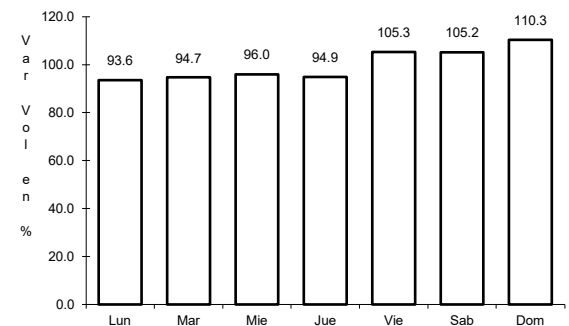
ruta: MEX-040D



Km: 37.00 Tipo: 3 Sent: 1



Km: 37.00 Tipo: 3 Sent: 2

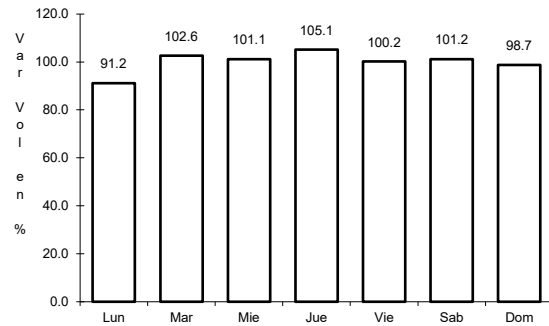


Km: 166.90 Tipo: 1 Sent: 1

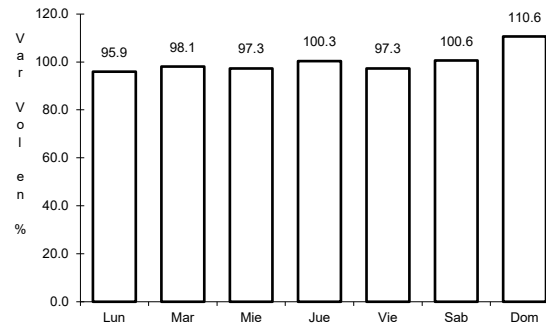
19 CARR: Monterrey - Nuevo Laredo (Cuota)

CLAVE: 19086

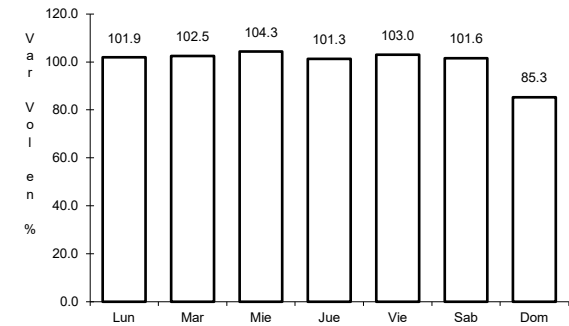
RUTA: MEX-085D



Km: 24.00 Tipo: 3 Sent: 1



Km: 24.00 Tipo: 3 Sent: 2

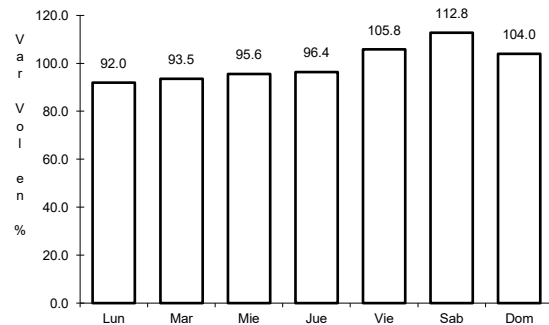


Km: 193.30 Tipo: 1 Sent: 1

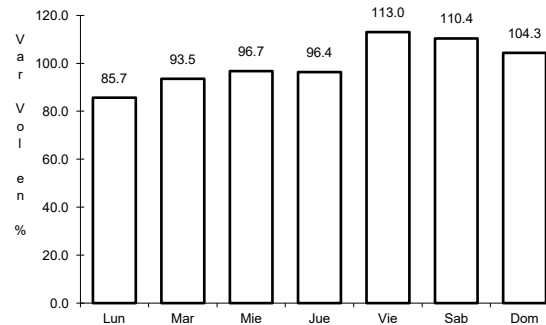
20 CARR: Puerto México - La Carbonera (Cuota)

CLAVE: 00115

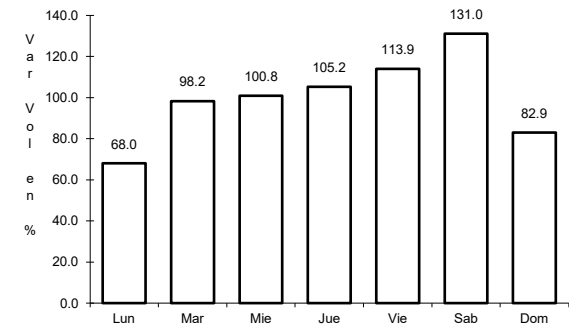
RUTA: MEX-057D



Km: 224.94 Tipo: 1 Sent: 1



Km: 224.94 Tipo: 1 Sent: 2

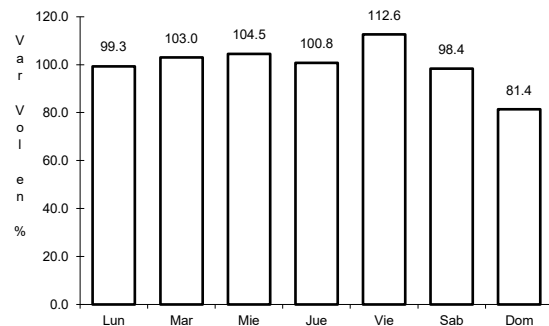


Km: 228.30 Tipo: 3 Sent: 1

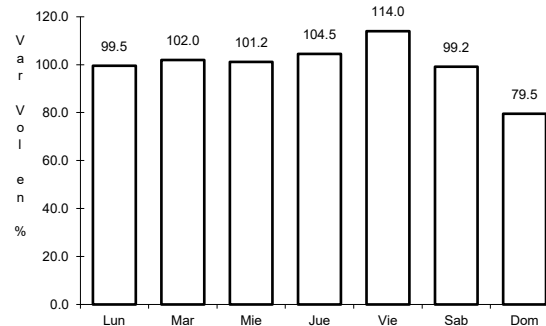
21 CARR: Saltillo - Monterrey (Cuota)

CLAVE: 00087

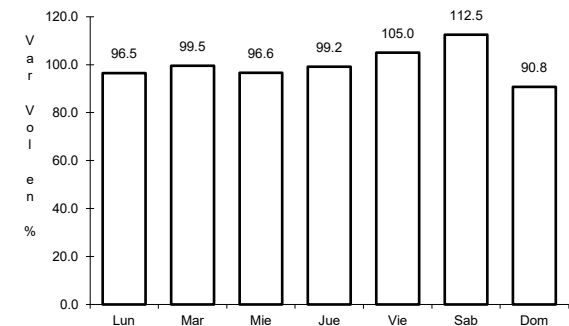
RUTA: MEX-040D



Km: 46.21 Tipo: 3 Sent: 1



Km: 46.21 Tipo: 3 Sent: 2

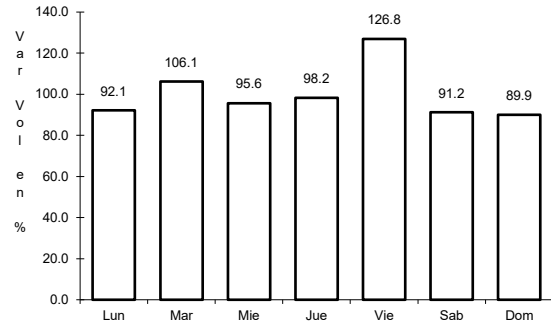


Km: 82.00 Tipo: 3 Sent: 1

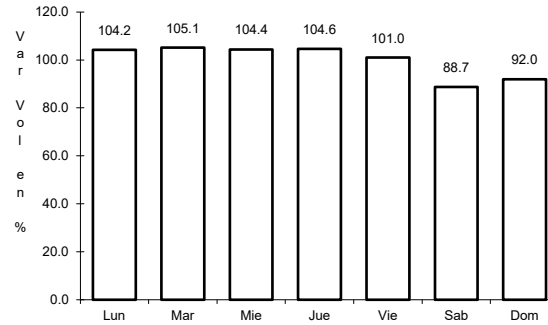
22 CARR: Agualeguas - El Ébano

CLAVE: 19004

RUTA: NL-023



Km: 0.00      Tipo: 3      Sent: 0

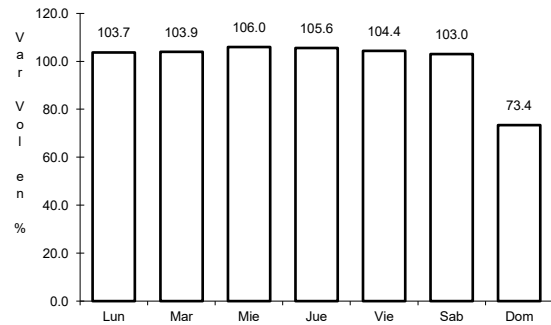


Km: 54.00      Tipo: 1      Sent: 0

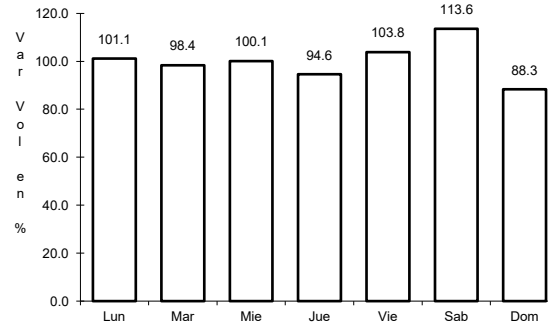
23 CARR: Apodaca - Villa Juárez

CLAVE: 00087

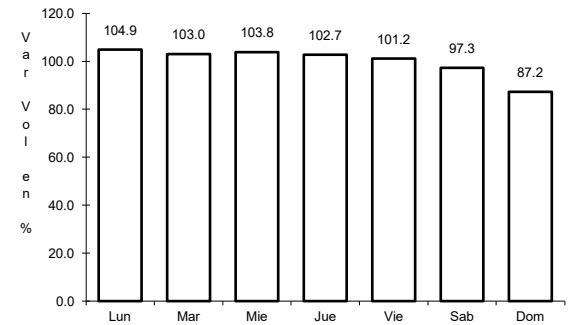
RUTA: NL



Km: 0.00      Tipo: 3      Sent: 0



Km: 16.00      Tipo: 1      Sent: 1

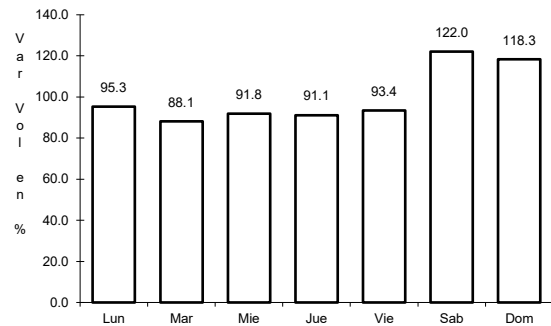


Km: 16.00      Tipo: 1      Sent: 2

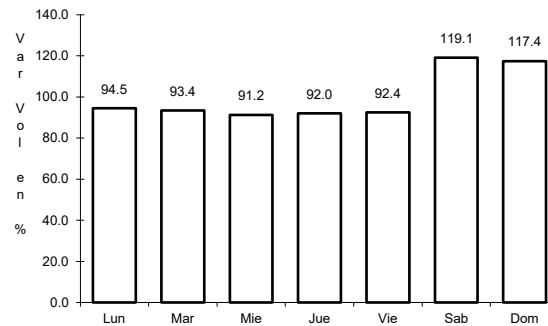
24 CARR: Atongo - Lazarillos

CLAVE:

RUTA: NL



Km: 0.00      Tipo: 3      Sent: 0

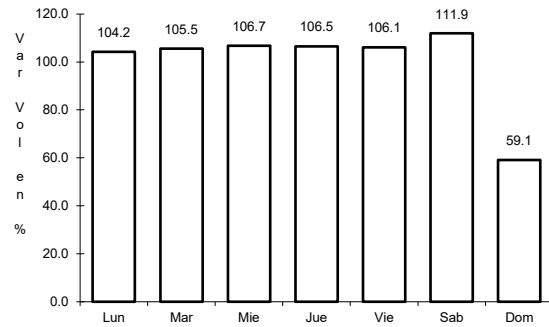


Km: 7.78      Tipo: 1      Sent: 0

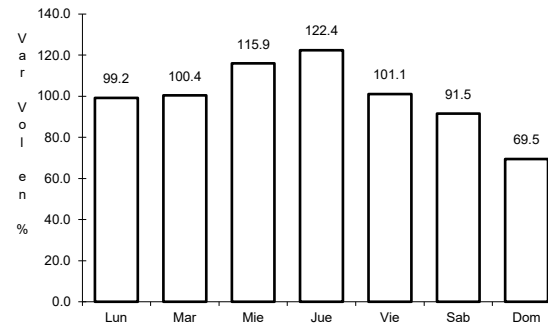
25 CARR: Cadereyta de Jiménez - Doctor González

CLAVE: 19473

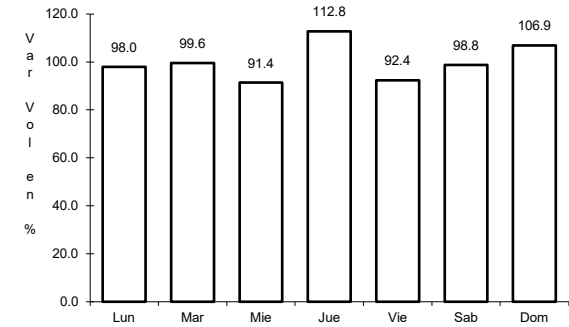
RUTA: NL



Km: 0.00      Tipo: 3      Sent: 0



Km: 18.00      Tipo: 3      Sent: 0

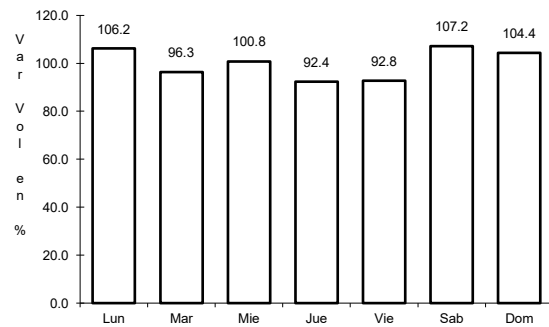


Km: 30.00      Tipo: 1      Sent: 0

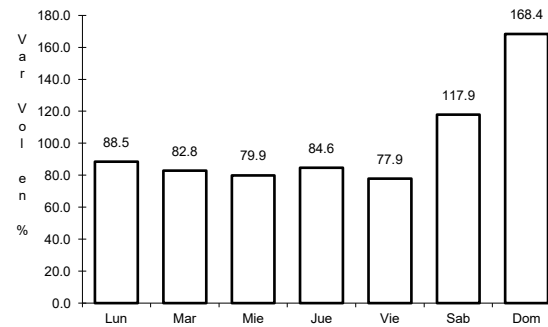
26 CARR: Cd. Benito Juárez - Villa de Santiago

CLAVE: 00087

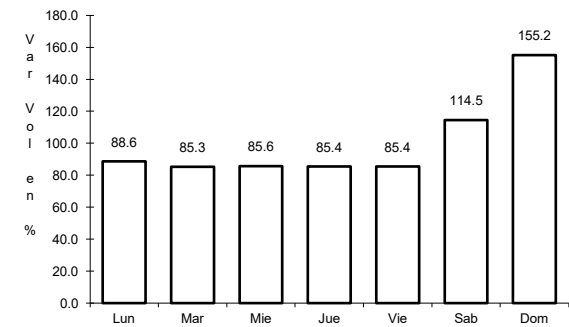
RUTA: NL



Km: 0.00      Tipo: 3      Sent: 0



Km: 23.00      Tipo: 3      Sent: 0

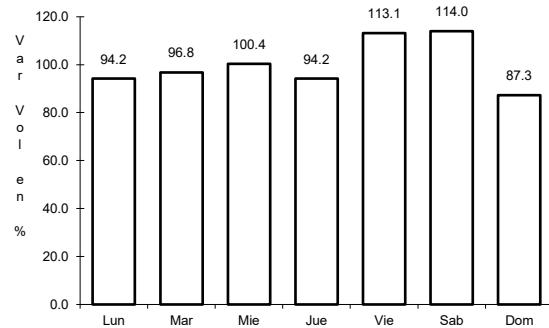


Km: 39.00      Tipo: 1      Sent: 0

27 CARR: China - Méndez

CLAVE: 00191

RUTA: NL-TAM

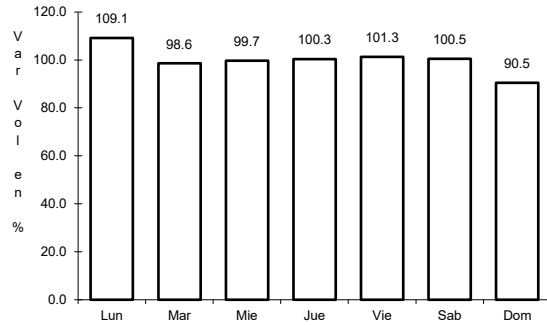


Km: 0.00      Tipo: 3      Sent: 0

28 CARR: Doctor Arroyo - Mier y Noriega

CLAVE: 19088

ruta: NL-088

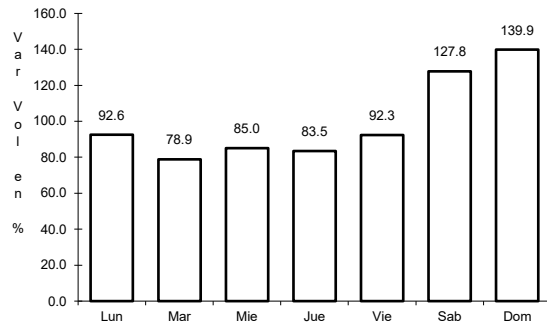


Km: 0.00      Tipo: 3      Sent: 0

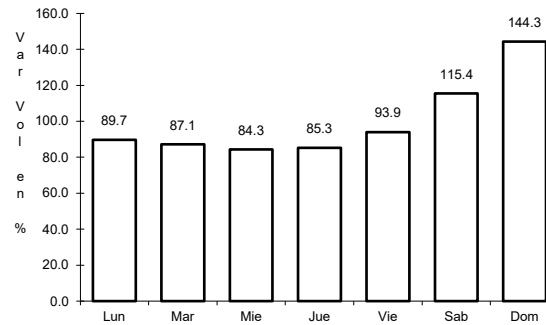
29 CARR: Ent. Hacienda del Cielo - T. Der. Cadereyta

CLAVE:

ruta: NL



Km: 0.00      Tipo: 3      Sent: 0

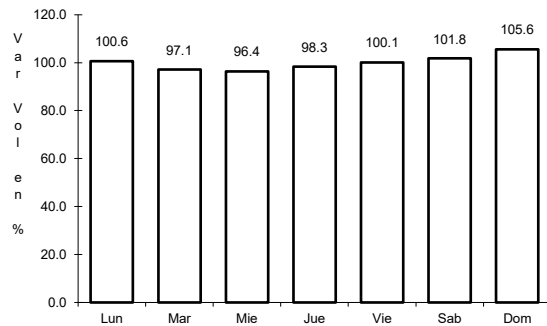


Km: 11.50      Tipo: 1      Sent: 0

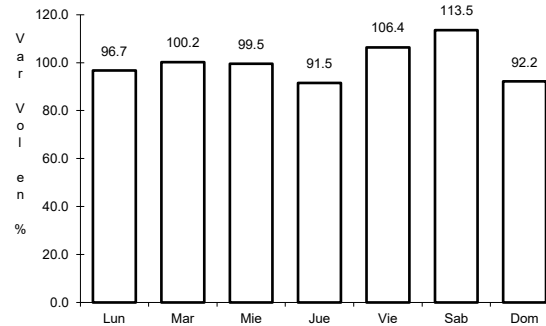
30 CARR: Ent. Huisachito - Nuevo Laredo

CLAVE: 00074

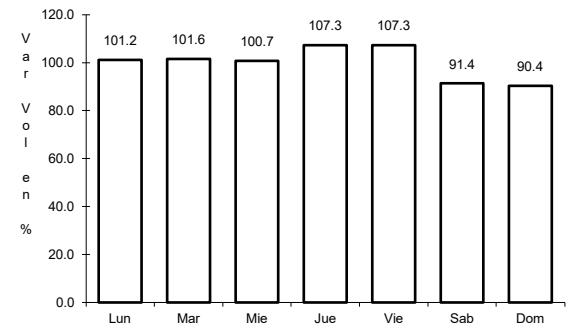
ruta: NL-001-TAM



Km: 0.00      Tipo: 3      Sent: 0



Km: 47.00      Tipo: 1      Sent: 0



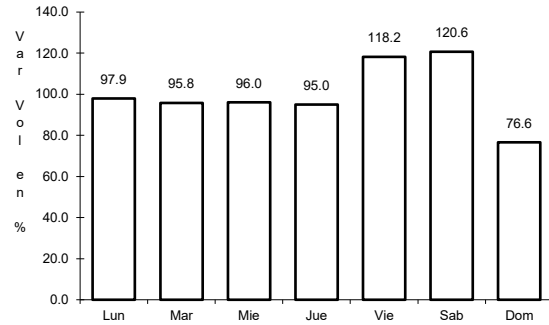
Km: 51.00      Tipo: 1      Sent: 0



31 CARR: Gral. Bravo - Los Aldamas

CLAVE: 19030

ruta: NL-030



Km: 0.00

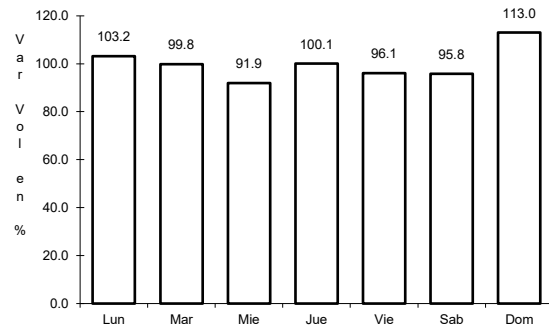
Tipo: 3

Sent: 0

32 CARR: Gral. Treviño - Villaldama

CLAVE: 19003

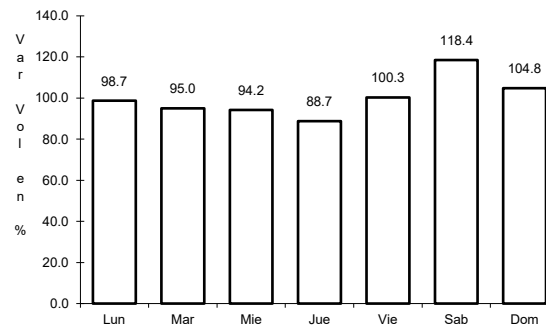
ruta: NL-003



Km: 0.00

Tipo: 3

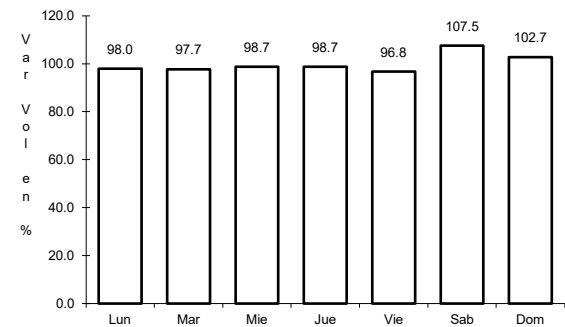
Sent: 0



Km: 62.00

Tipo: 1

Sent: 0



Km: 134.00

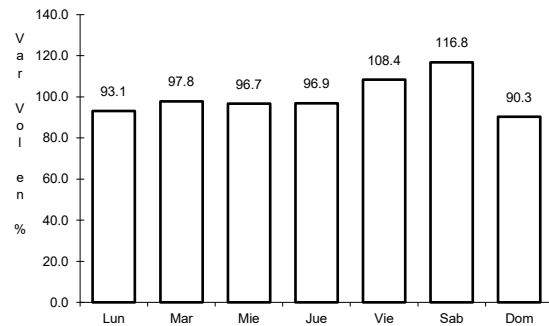
Tipo: 1

Sent: 0

33 CARR: Hacienda Guadalupe - Higuera

CLAVE: 19006

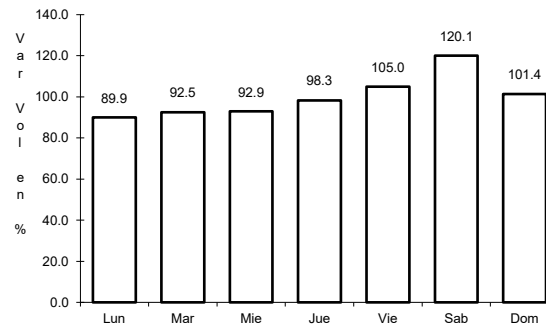
ruta: NL-006



Km: 3.00

Tipo: 1

Sent: 1



Km: 3.00

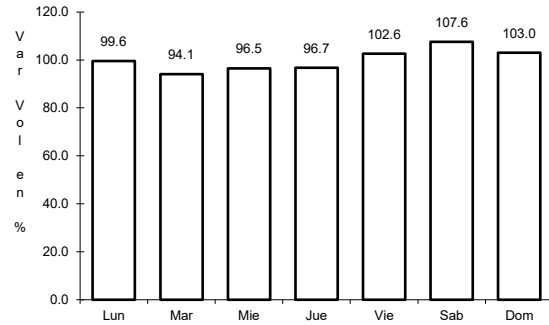
Tipo: 1

Sent: 2

34 CARR: Libramiento de Linares

CLAVE: 19506

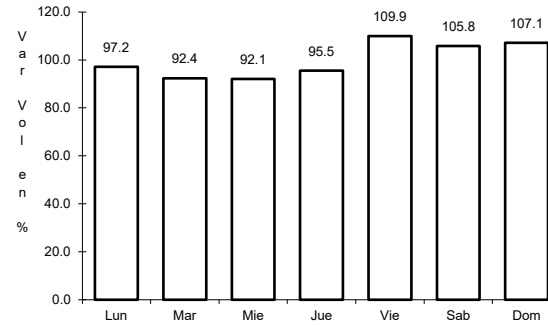
RUTA: NL



Km: 0.00

Tipo: 3

Sent: 0



Km: 2.00

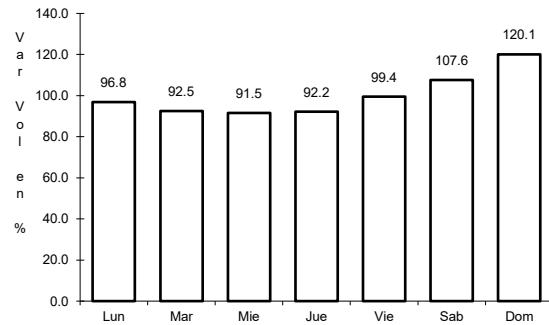
Tipo: 3

Sent: 0

35 CARR: Libramiento de Montemorelos

CLAVE: 19492

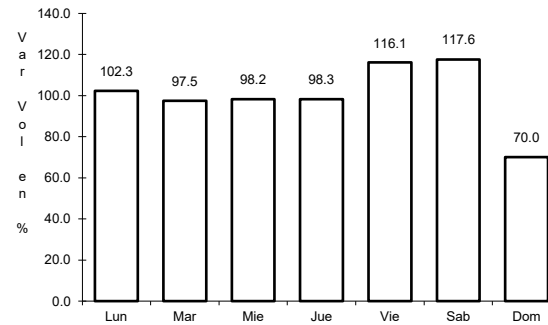
RUTA: NL



Km: 0.00

Tipo: 3

Sent: 1



Km: 0.00

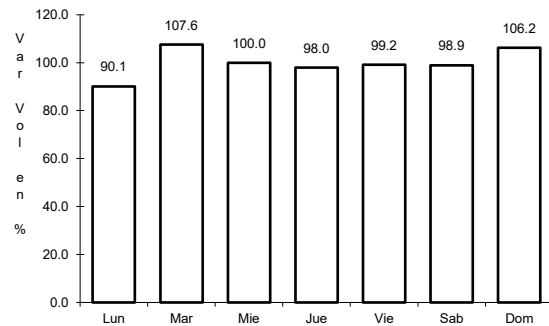
Tipo: 3

Sent: 2

36 CARR: Libramiento de Sabinas Hidalgo

CLAVE: 19492

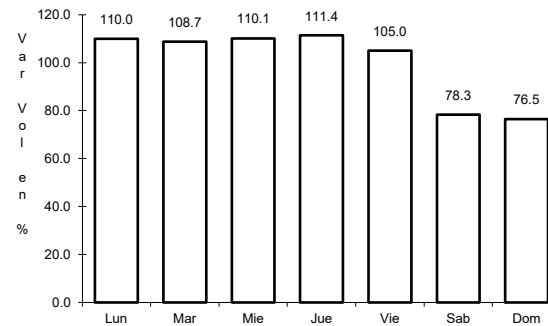
RUTA: NL



Km: 0.00

Tipo: 3

Sent: 0



Km: 9.20

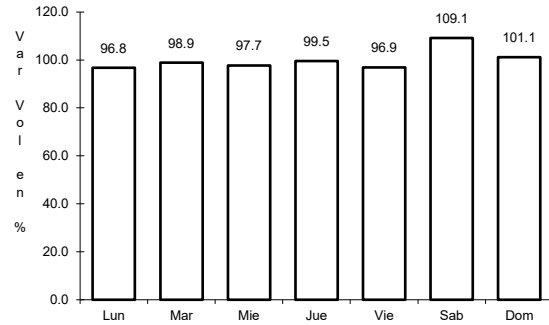
Tipo: 1

Sent: 0

37 CARR: Libramiento Poniente de Cadereyta

CLAVE: 19085

RUTA: NL



Km: 0.00

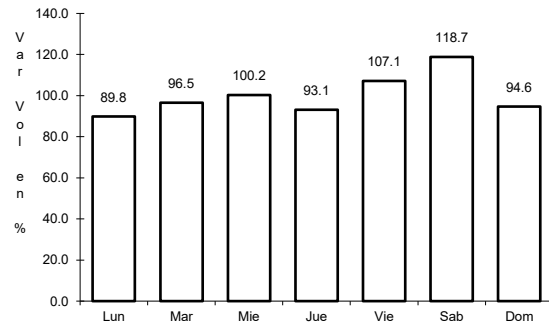
Tipo: 3

Sent: 0

38 CARR: Los Guerra - Los Herreras

CLAVE: 19031

RUTA: TAM-NL



Km: 73.00

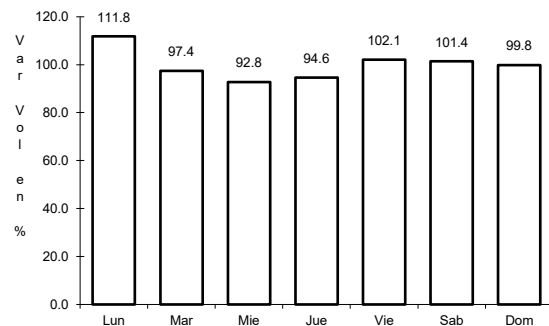
Tipo: 1

Sent: 0

39 CARR: Matchuala - La Poza

CLAVE: 00086

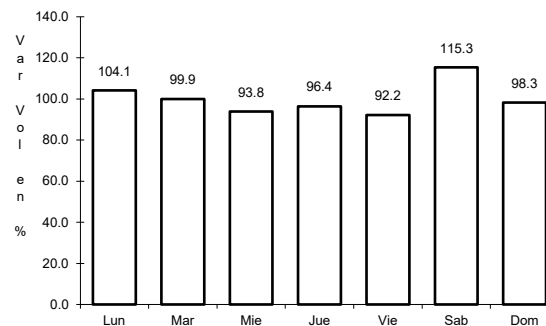
RUTA: SLP-029-NL-061



Km: 0.00

Tipo: 3

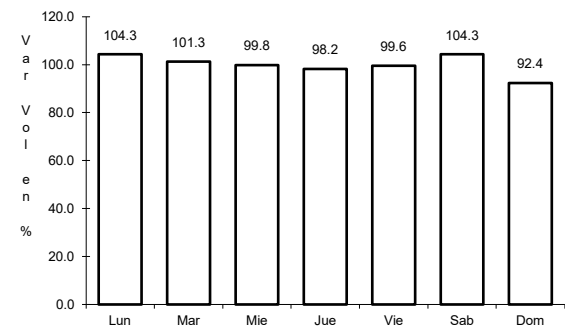
Sent: 0



Km: 49.00

Tipo: 1

Sent: 0



Km: 131.00

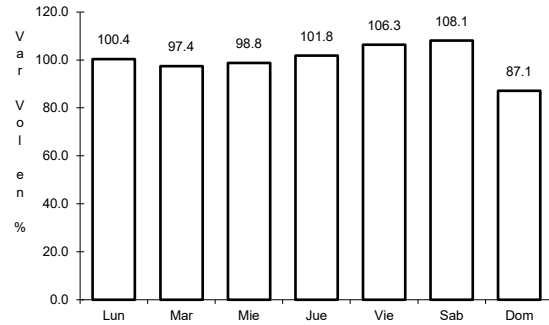
Tipo: 1

Sent: 0

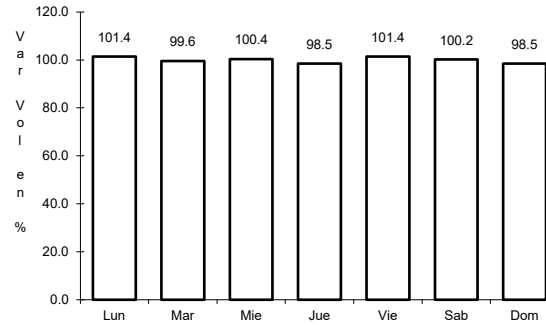
40 CARR: Monclova - Estación Candela

CLAVE: 00501

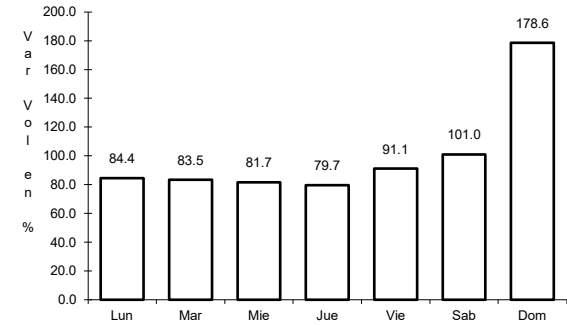
ruta: COA-030-NL



Km: 5.10 Tipo: 1 Sent: 1



Km: 5.10 Tipo: 1 Sent: 2

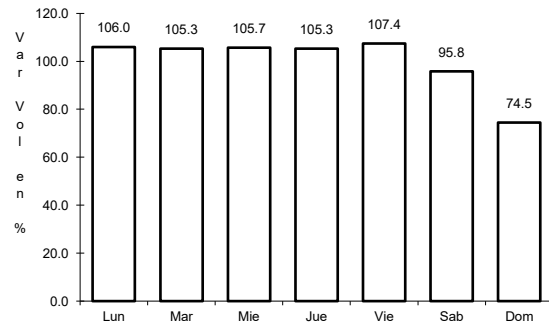


Km: 125.50 Tipo: 1 Sent: 0

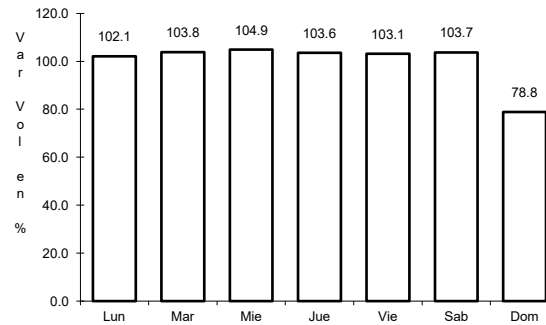
41 CARR: Monterrey - Colombia

CLAVE: 19001

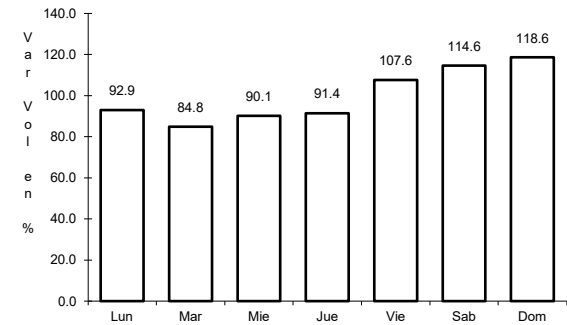
ruta: NL-001



Km: 0.00 Tipo: 3 Sent: 1



Km: 0.00 Tipo: 3 Sent: 2

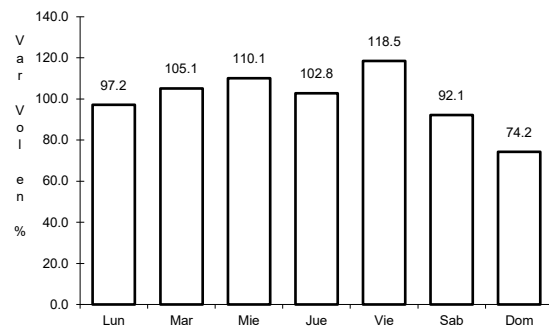


Km: 124.04 Tipo: 1 Sent: 0

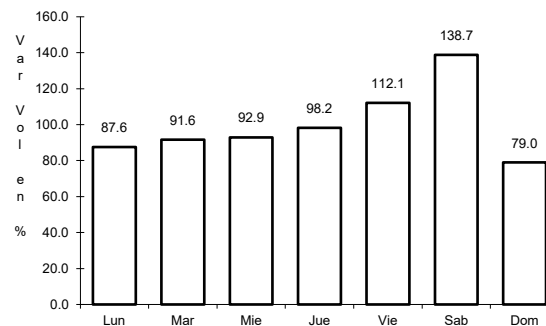
42 CARR: Palo Alto - Vallecillos

CLAVE: 19036

ruta: NL



Km: 0.00 Tipo: 3 Sent: 0

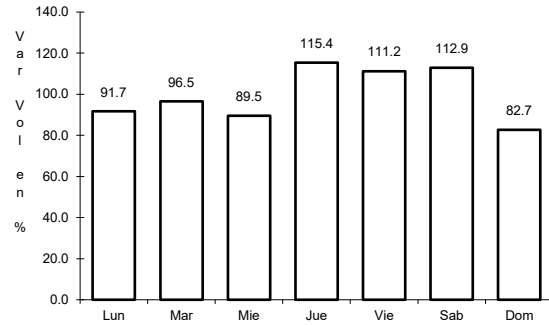


Km: 43.00 Tipo: 1 Sent: 0

43 CARR: Peña Blanca - Cd. Camargo

CLAVE: 00102

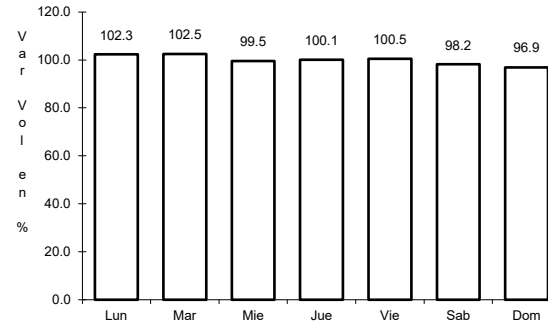
ruta: NL-TAM



Km: 0.00

Tipo: 3

Sent: 0



Km: 65.00

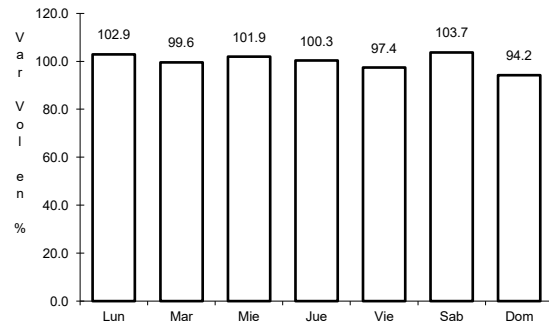
Tipo: 1

Sent: 0

44 CARR: Ramal a 18 de Marzo

CLAVE: 19475

ruta: NL



Km: 0.00

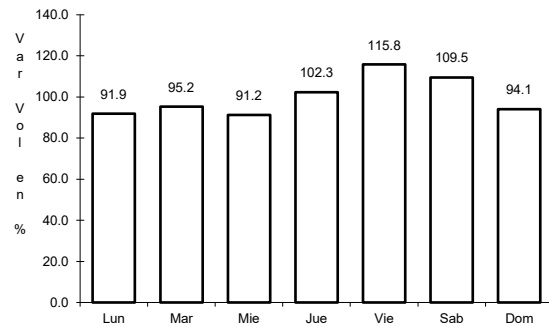
Tipo: 3

Sent: 0

45 CARR: Ramal a Cerralvo

CLAVE: 19013

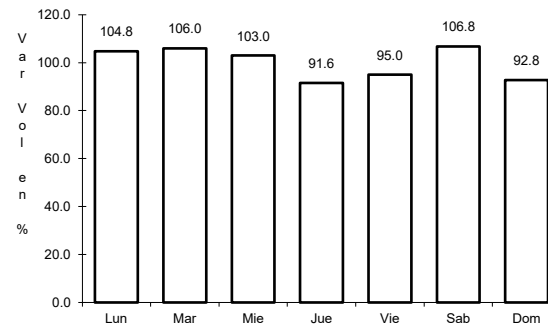
ruta: NL-013



Km: 0.00

Tipo: 3

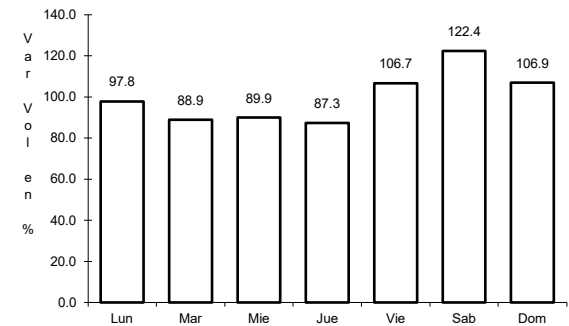
Sent: 0



Km: 21.00

Tipo: 3

Sent: 0



Km: 58.00

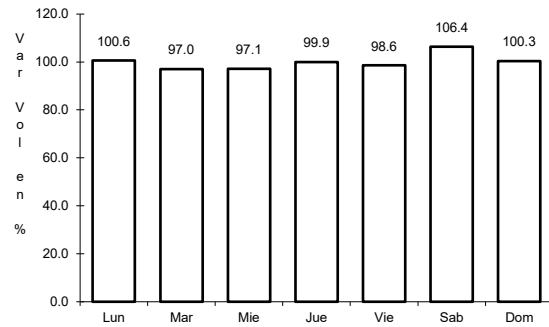
Tipo: 1

Sent: 0

46 CARR: Ramal a Marín

CLAVE: 19007

RUTA: NL

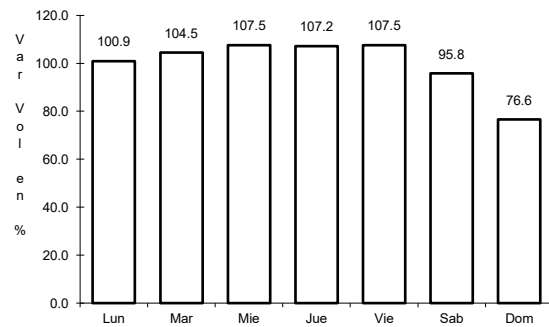


Km: 0.00      Tipo: 3      Sent: 0

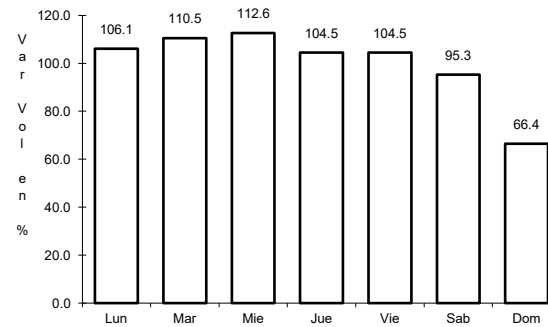
47 CARR: Salinas Victoria - Ciénega de Flores

CLAVE: 19007

RUTA: NL



Km: 0.00      Tipo: 3      Sent: 0

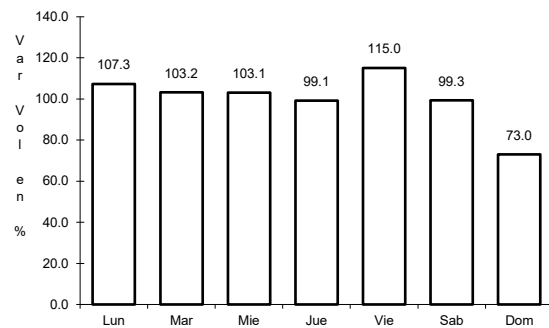


Km: 6.00      Tipo: 1      Sent: 0

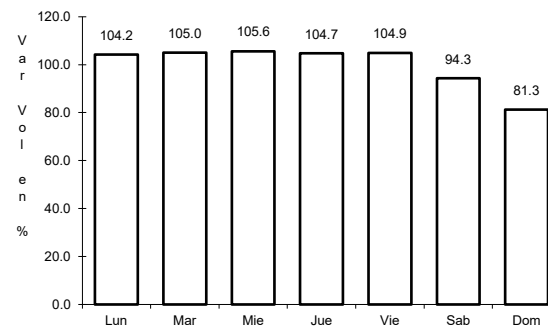
48 CARR: Santa Rosa - Mezquital

CLAVE: 00087

RUTA: NL



Km: 0.00      Tipo: 3      Sent: 1

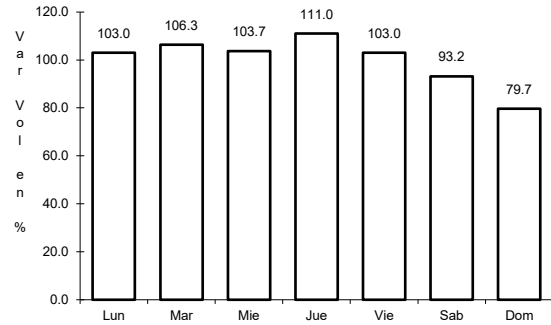


Km: 0.00      Tipo: 3      Sent: 2

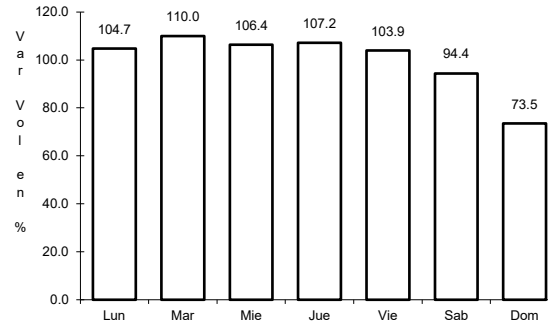
49 CARR: Santa Rosa - Salinas Victoria

CLAVE: 19037

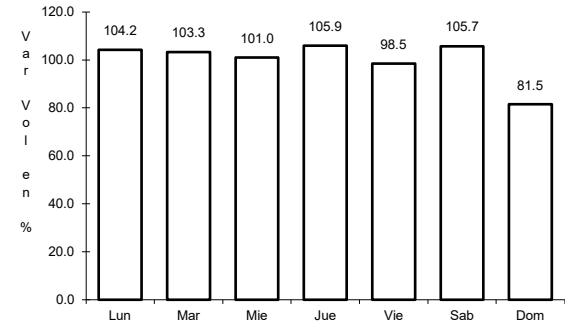
ruta: NL



Km: 0.00      Tipo: 3      Sent: 1



Km: 0.00      Tipo: 3      Sent: 2

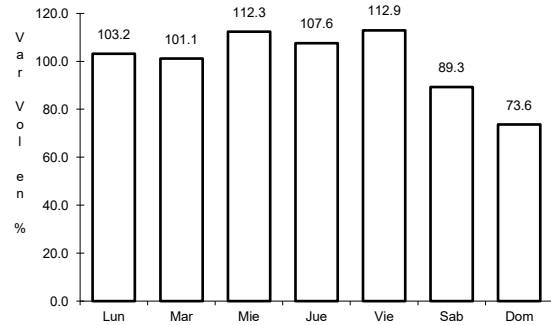


Km: 13.85      Tipo: 1      Sent: 1

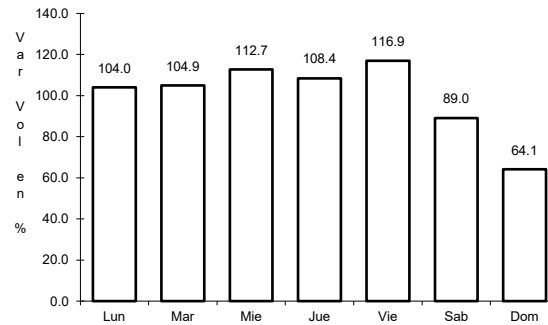
50 CARR: Aeropuerto de Monterrey (Cuota)

CLAVE:

ruta: NL-D



Km: 3.10      Tipo: 3      Sent: 1

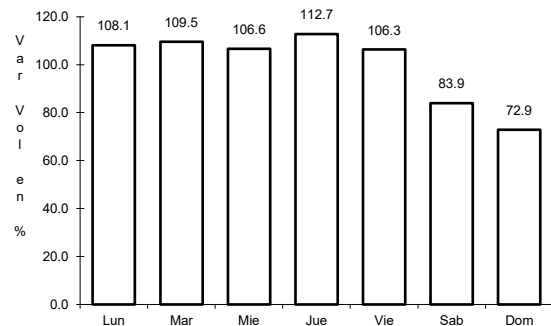


Km: 3.10      Tipo: 3      Sent: 2

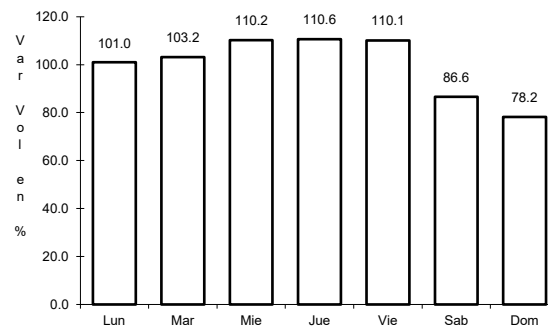
51 CARR: Anillo Periférico de Monterrey (Cuota)

CLAVE: 19004

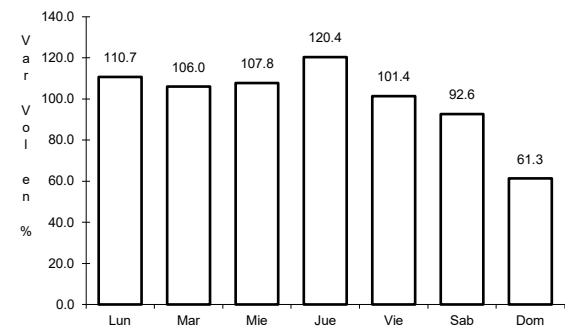
ruta: NL-D



Km: 0.00      Tipo: 3      Sent: 1

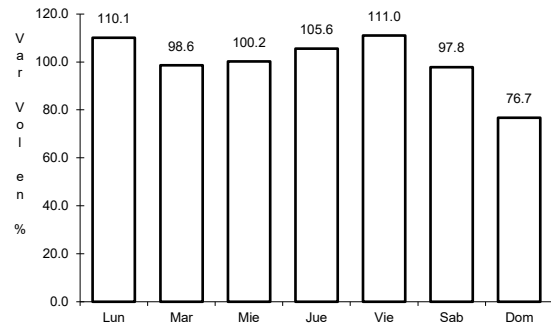


Km: 0.00      Tipo: 3      Sent: 2



Km: 49.30      Tipo: 1      Sent: 1

52 CARR: Monterrey - Cadereyta (Cuota)

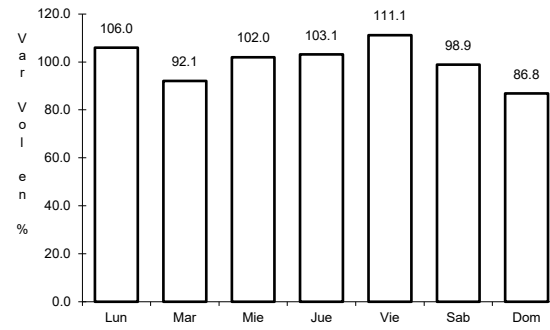


Km: 12.50

Tipo: 1

Sent: 1

CLAVE: 19281

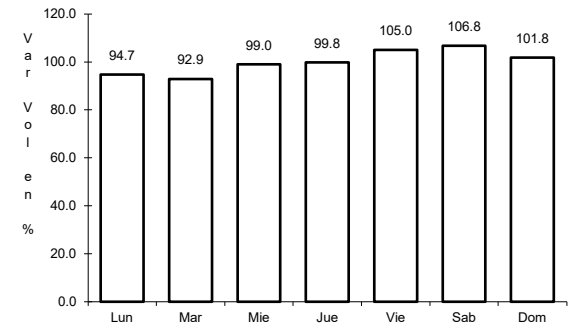


Km: 12.50

Tipo: 1

Sent: 2

RUTA: NL-D



Km: 21.80

Tipo: 3

Sent: 1