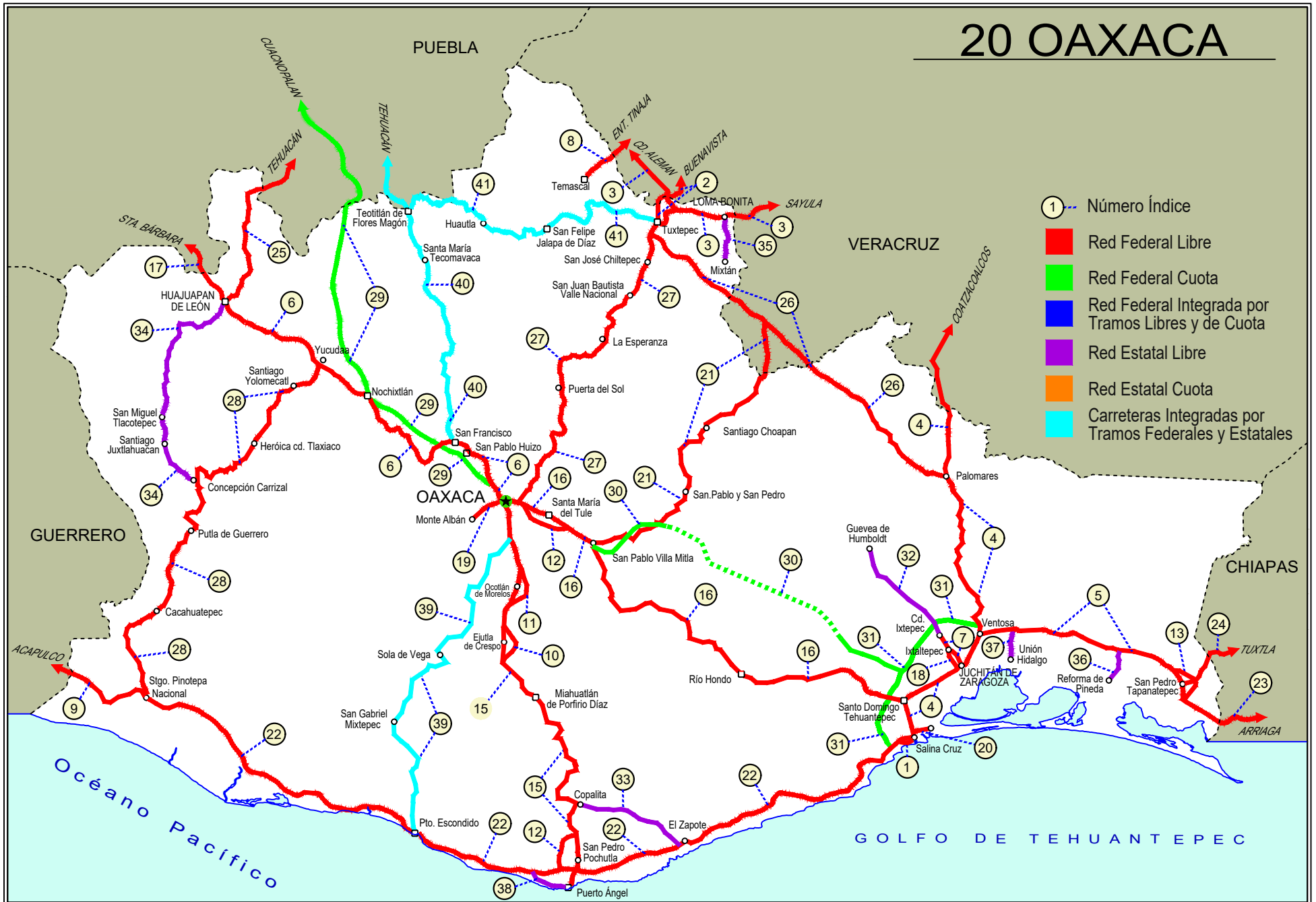


OAXACA

NO. INDICE CARRETERA		RUTA
	---RED FEDERAL LIBRE---	
1	Acceso al Puerto Salina Cruz	MEX-090
2	Buenavista - Tuxtepec	MEX-175
3	Cd. Alemán - Sayula	MEX-145
4	Coatzacoalcos - Salina Cruz	MEX-185
5	Ent. La Ventosa - San Pedro Tapanatepec	MEX-190
6	Huajuapán de León - Oaxaca	MEX-190
7	Juchitán - Ixtepec	MEX-185
8	La Granja - Temascal	MEX-145
9	Las Cruces - Pinotepa Nacional	MEX-200
10	Libramiento de Ejutla	MEX-175
11	Libramiento de Ocotlán Oax.	MEX-175
12	Libramiento de Pochutla	MEX-200
13	Libramiento de San Pedro Tapanatepec	MEX-200
14	Libramiento de Santa María del Tule	MEX-190
15	Oaxaca - Puerto Ángel	MEX-175
16	Oaxaca - Tehuantepec	MEX-190
17	Puebla - Huajuapán de León	MEX-190
18	Ramal a Asunción Ixtaltepec	MEX-185
19	Ramal a Monte Albán	MEX
20	Ramal a Refinería Pemex (Refinería del Pacífico)	MEX
21	San Pablo Villa de Mitla - T. C. (Tuxtepec - Palomares)	MEX-179
22	Santiago Pinotepa Nacional - Salina Cruz	MEX-200
23	Tapanatepec - Talismán	MEX-200
24	Tapanatepec - Tuxtla Gutiérrez	MEX-190
25	Tehuacán - Huajuapán de León	MEX-125
26	Tuxtepec - Ent. Palomares	MEX-147
27	Tuxtepec - T. C. (Oaxaca - Tehuantepec)	MEX-175
28	Yucudaa - Santiago Pinotepa Nacional	MEX-125
	---RED FEDERAL DE CUOTA---	
29	Cuacnopalan - Oaxaca (Cuota)	MEX-135D
30	Mitla - Tehuantepec (Cuota)	MEX-190D
31	Salina Cruz - La Ventosa (Cuota)	MEX-185D
	---RED ESTATAL LIBRE---	
32	Cd. Ixtepec - Guevea de Humboldt	OAX
33	El Zapote - Copalita	OAX
34	Huajuapán de León - El Carrizal	OAX
35	Loma Bonita - Mixtán	OAX
36	Ramal a Reforma de Pineda	OAX
37	Ramal a Unión Hidalgo	OAX
38	San Antonio - Puerto Ángel	OAX
	---CARRETERAS INTEGRADAS POR TRAMOS FEDERALES Y ESTATALES---	
39	T. C. (Oaxaca - Puerto Ángel) - Puerto Escondido	MEX-OAX-161
40	Tehuacán - Huitzo	PUE-MEX-135
41	Teotitlán de Flores Magón - Tuxtepec	OAX-PUE-MEX-182

20 OAXACA



OAXACA

1 CARR: Acceso al Puerto Salina Cruz

CLAVE:

RUTA: MEX-090

AÑO: 2022

LUGAR	ESTACION				CLASIFICACION VEHICULAR EN PORCIENTO														COORDENADAS	
	KM	TE	SC	TDPA	M	A	B	C2	C3	T3S2	T3S3	T3S2R4	OTROS	A	B	C	K'	D	LATITUD	LONGITUD
T. C. Santiago Pinotepa Nacional - Salina Cruz	0.00	3	0	2823	6.7	85.0	1.2	3.7	0.6	1.7	0.2	0.8	0.1	91.7	1.2	7.1	0.084	0.521	16.177032	-95.216811
Salina Cruz	3.80	0	0																	

2 CARR: Buenavista - Tuxtepec

CLAVE: 00624

RUTA: MEX-175

AÑO: 2022

LUGAR	ESTACION				CLASIFICACION VEHICULAR EN PORCIENTO														COORDENADAS	
	KM	TE	SC	TDPA	M	A	B	C2	C3	T3S2	T3S3	T3S2R4	OTROS	A	B	C	K'	D	LATITUD	LONGITUD
T. C. Paso del Toro - Acayucan	0.00	3	0	1410	9.7	84.7	0.5	3.4	0.9	0.4	0.1	0.3	0.0	94.4	0.5	5.1	0.089	0.518	18.713321	-95.637994
Puente Tlacotalpan	1.55	2	0	1544	10.0	82.1	2.9	2.5	1.5	0.7	0.1	0.1	0.1	92.1	2.9	5.0	0.085	0.500	18.704579	-95.641360
Tlacotalpan	18.00	1	0	1763	16.5	79.2	0.4	2.6	0.7	0.2	0.1	0.3	0.0	95.7	0.4	3.9	0.096	0.522	18.614722	-95.645138
Tlacotalpan	18.00	3	0	2200	12.7	81.1	0.7	3.8	0.8	0.5	0.2	0.1	0.1	93.8	0.7	5.5	0.084	0.501	18.616423	-95.680529
Carlos A. Carrillo	56.00	1	0	4738	14.1	78.7	0.7	4.0	0.7	0.5	0.4	0.4	0.5	92.8	0.7	6.5	0.076	0.529	18.380304	-95.743037
Cosamaloapan	60.00	1	0	16647	15.8	78.3	0.5	3.6	0.4	0.4	0.1	0.5	0.4	94.1	0.5	5.4	0.089	0.503	18.366274	-95.774148
Cosamaloapan	60.00	3	0	8476	23.6	69.0	1.8	3.3	0.8	0.6	0.2	0.6	0.1	92.6	1.8	5.6	0.078	0.504	18.353307	-95.805759
T. C. La Tinaja - Santa Cruz	107.00	1	0	4024	18.6	68.4	1.4	4.3	1.3	1.7	0.5	3.1	0.7	87.0	1.4	11.6	0.078	0.502	18.168756	-96.087962
T. C. Cd. Alemán - Sayula	108.92	1	0	3794	16.8	63.9	3.5	8.9	1.8	1.6	0.3	2.6	0.6	80.7	3.5	15.8	0.085	0.503	18.168428	-96.096176
T. C. Cd. Alemán - Sayula	108.92	3	0	6937	15.8	64.1	3.6	7.3	1.7	2.3	0.5	3.8	0.9	79.9	3.6	16.5	0.079	0.512	18.169026	-96.104034
Lim. Edos. Term. Ver. Ppia. Oax.	115.00	0	0																	
Puente Caracol	117.20	2	0	6921	10.1	69.1	5.7	3.7	2.4	2.7	0.5	5.6	0.2	79.2	5.7	15.1	0.085	0.500	18.133084	-96.136714
Tuxtepec	121.25	1	1	6448	8.2	75.1	1.6	7.4	1.4	2.1	0.8	2.9	0.5	83.3	1.6	15.1	0.078	0.505	18.119315	-96.135023
Tuxtepec	121.25	1	2	6322	8.7	74.7	1.7	6.8	1.6	2.4	0.9	2.7	0.5	83.4	1.7	14.9	0.081	0.505	18.119290	-96.134951

3 CARR: Cd. Alemán - Sayula

CLAVE: 00301

RUTA: MEX-145

AÑO: 2022

LUGAR	ESTACION				CLASIFICACION VEHICULAR EN PORCIENTO														COORDENADAS	
	KM	TE	SC	TDPA	M	A	B	C2	C3	T3S2	T3S3	T3S2R4	OTROS	A	B	C	K'	D	LATITUD	LONGITUD
Cd. Alemán	0.00	3	0	7435	15.2	67.0	3.9	4.4	2.0	2.8	0.6	3.4	0.7	82.2	3.9	13.9	0.079	0.528	18.181733	-96.094066
Lim. Edos. Term. Ver. Ppia. Oax.	2.80	0	0																	
Puente Papaloapan	3.50	2	0	2399	13.7	64.6	4.5	6.2	5.5	3.5	0.6	1.2	0.2	78.3	4.5	17.2	0.076	0.500	18.159601	-96.096694
T. Der. Tuxtepec	9.36	3	0	4293	15.9	68.6	1.5	7.9	1.5	3.2	0.6	0.5	0.3	84.5	1.5	14.0	0.080	0.510	18.118362	-96.061729
T. Izq. Loma Bonita	30.00	1	0	4202	13.5	67.3	1.7	9.0	2.4	4.0	1.2	0.5	0.4	80.8	1.7	17.5	0.080	0.512	18.095731	-95.879368
T. Izq. Loma Bonita	30.00	3	0	4527	12.7	71.5	1.3	7.9	1.4	3.7	0.9	0.4	0.2	84.2	1.3	14.5	0.088	0.501	18.096060	-95.862824
Lim. Edos. Term. Oax. Ppia. Ver.	34.40	0	0																	
T. Der. Villa Azueta	41.50	1	0	4176	15.3	73.4	2.0	4.5	1.7	1.9	0.4	0.7	0.1	88.7	2.0	9.3	0.078	0.525	18.089757	-95.784733
T. Izq. Tesechoacán	56.70	1	0	3719	10.5	72.1	3.3	5.1	3.2	3.1	1.0	1.2	0.5	82.6	3.3	14.1	0.081	0.527	18.127745	-95.655388

OAXACA

3 CARR: Cd. Alemán - Sayula

CLAVE: 00301

RUTA: MEX-145

AÑO: 2022

LUGAR	ESTACION				CLASIFICACION VEHICULAR EN PORCIENTO										COORDENADAS					
	KM	TE	SC	TDPA	M	A	B	C2	C3	T3S2	T3S3	T3S2R4	OTROS	A	B	C	K'	D	LATITUD	LONGITUD
X. C. Santiago Tuxtla - Playa Vicente	71.40	1	0	3528	16.0	70.2	3.1	6.5	1.7	1.6	0.3	0.5	0.1	86.2	3.1	10.7	0.087	0.503	18.068315	-95.533357
X. C. Santiago Tuxtla - Playa Vicente	71.40	3	0	4479	10.0	75.6	2.1	3.3	2.8	3.2	0.9	1.8	0.3	85.6	2.1	12.3	0.080	0.517	18.066191	-95.527662
San Juan Evangelista	118.35	1	0	3348	14.2	64.5	3.8	8.0	2.7	2.5	1.4	2.4	0.5	78.7	3.8	17.5	0.087	0.502	17.915053	-95.145606
Sayula de Alemán	136.40	1	0	4816	7.2	70.8	5.8	8.2	1.1	3.2	0.8	2.0	0.9	78.0	5.8	16.2	0.091	0.543	17.888730	-94.970611

4 CARR: Coatzacoalcos - Salina Cruz

CLAVE: 00147

RUTA: MEX-185

AÑO: 2022

LUGAR	ESTACION				CLASIFICACION VEHICULAR EN PORCIENTO										COORDENADAS					
	KM	TE	SC	TDPA	M	A	B	C2	C3	T3S2	T3S3	T3S2R4	OTROS	A	B	C	K'	D	LATITUD	LONGITUD
Coatzacoalcos	0.00	3	1	9593	3.6	81.1	3.9	5.2	1.9	1.3	1.0	1.6	0.4	84.7	3.9	11.4	0.076	0.502	18.084438	-94.468944
Coatzacoalcos	0.00	3	2	9673	3.8	82.0	3.4	5.3	1.7	1.1	0.9	1.4	0.4	85.8	3.4	10.8	0.084	0.502	18.087540	-94.466080
T. C. Nuevo Teapa - Cosoleacaque	21.00	1	1	11018	8.5	78.5	2.4	6.4	1.2	0.9	0.6	1.2	0.3	87.0	2.4	10.6	0.082	0.510	18.024307	-94.537525
T. C. Nuevo Teapa - Cosoleacaque	21.00	1	2	11478	8.3	77.7	2.5	6.7	1.3	1.1	0.7	1.3	0.4	86.0	2.5	11.5	0.095	0.510	18.025555	-94.535445
Minatitlán	21.60	3	1	15620	6.2	85.7	1.6	3.3	0.9	0.7	0.6	0.7	0.3	91.9	1.6	6.5	0.071	0.504	17.997633	-94.587269
Minatitlán	21.60	3	2	15359	5.9	85.2	1.7	3.4	1.0	0.8	0.7	0.9	0.4	91.1	1.7	7.2	0.063	0.504	17.997570	-94.587396
Cosoleacaque	31.50	1	0	21808	6.6	82.2	1.8	7.1	0.6	0.7	0.3	0.5	0.2	88.8	1.8	9.4	0.080	0.519	18.007215	-94.623192
T. Der. Soteapan	34.00	1	0	13774	6.4	81.1	2.6	6.6	1.2	1.0	0.4	0.6	0.1	87.5	2.6	9.9	0.070	0.510	17.987183	-94.657818
T. Der. Soteapan	34.00	3	0	12737	8.3	78.8	2.6	5.6	2.3	1.1	0.4	0.8	0.1	87.1	2.6	10.3	0.069	0.516	17.986622	-94.659123
Jáltipan de Morelos	38.60	3	1	4146	6.3	80.0	2.4	4.6	1.8	1.8	1.1	1.7	0.3	86.3	2.4	11.3	0.071	0.515	17.961893	-94.732411
Jáltipan de Morelos	38.60	3	2	3912	6.8	79.3	2.5	5.0	1.6	1.7	1.1	1.7	0.3	86.1	2.5	11.4	0.069	0.515	17.961815	-94.732436
Acayucan	59.60	1	1	4655	7.3	80.4	2.0	4.5	2.1	1.5	0.7	1.2	0.3	87.7	2.0	10.3	0.074	0.509	17.956465	-94.840598
Acayucan	59.60	1	2	4488	8.0	79.3	2.2	4.6	2.1	1.5	0.7	1.3	0.3	87.3	2.2	10.5	0.072	0.509	17.956427	-94.840499
Acayucan	59.60	3	1	7362	5.9	82.5	2.9	2.5	1.4	1.9	0.8	1.6	0.5	88.4	2.9	8.7	0.079	0.510	17.929671	-94.923819
Acayucan	59.60	3	2	7085	6.0	80.8	3.6	2.8	1.4	1.8	1.2	1.9	0.5	86.8	3.6	9.6	0.075	0.510	17.929248	-94.923997
Sayula de Alemán	71.00	1	1	9134	7.6	79.1	2.3	2.0	1.5	3.7	1.0	1.9	0.9	86.7	2.3	11.0	0.072	0.511	17.895939	-94.950391
Sayula de Alemán	71.00	1	2	8750	7.2	78.6	2.6	2.0	1.6	3.9	1.2	2.1	0.8	85.8	2.6	11.6	0.081	0.511	17.895851	-94.950299
Sayula de Alemán	71.00	3	0	7717	8.5	70.3	3.9	2.6	1.6	5.9	1.8	4.5	0.9	78.8	3.9	17.3	0.064	0.507	17.871027	-94.969909
Aguilera	82.40	3	0	6301	8.5	69.8	4.0	2.7	1.8	6.0	1.9	4.5	0.8	78.3	4.0	17.7	0.063	0.509	17.804781	-95.024686
Campo Nuevo	94.50	3	0	6347	8.8	67.1	3.0	3.3	2.3	6.6	2.6	5.5	0.8	75.9	3.0	21.1	0.064	0.503	17.695060	-95.075157
T. Der a El Paraiso	117.20	3	0	6605	8.9	66.1	4.8	3.2	2.3	6.5	2.0	5.3	0.9	75.0	4.8	20.2	0.065	0.535	17.534891	-95.102848
Nuevo Morelos	119.00	3	0	5560	8.8	63.2	4.8	3.2	2.1	8.5	2.5	6.1	0.8	72.0	4.8	23.2	0.065	0.535	17.519030	-95.086704
T. Izq. Jesús Carranza	126.80	1	0	5511	6.5	65.1	4.3	5.1	2.7	7.1	2.8	5.6	0.8	71.6	4.3	24.1	0.065	0.502	17.439457	-95.078202
T. Izq. Jesús Carranza	126.80	3	0	5764	6.0	64.9	4.8	5.4	2.8	7.4	2.7	5.0	1.0	70.9	4.8	24.3	0.067	0.514	17.433039	-95.076763
T. C. Ramal a Suchilapan	138.21	3	0	4191	9.9	53.1	4.7	7.6	1.7	9.9	3.7	8.5	0.9	63.0	4.7	32.3	0.066	0.509	17.359135	-95.047527
Lim. Edos. Term. Ver. Ppia. Oax.	139.90	0	0																	

OAXACA

4 CARR: Coatzacoalcos - Salina Cruz

CLAVE: 00147

RUTA: MEX-185

AÑO: 2022

LUGAR	ESTACION				CLASIFICACION VEHICULAR EN PORCIENTO												COORDENADAS			
	KM	TE	SC	TDPA	M	A	B	C2	C3	T3S2	T3S3	T3S2R4	OTROS	A	B	C	K'	D	LATITUD	LONGITUD
Donaji	153.60	3	0	5511	10.1	54.7	4.6	6.3	2.2	10.0	2.5	8.7	0.9	64.8	4.6	30.6	0.060	0.518	17.216084	-95.053572
Tolosita	156.78	3	0	5315	9.9	56.6	4.6	6.1	2.1	9.1	2.7	8.0	0.9	66.5	4.6	28.9	0.062	0.510	17.197254	-95.053462
T. Der. Tuxtepec	166.20	1	0	5338	8.0	58.4	4.5	5.5	2.0	9.8	2.8	8.1	0.9	66.4	4.5	29.1	0.066	0.510	17.147138	-95.064339
T. Der. Tuxtepec	166.20	3	0	6162	7.5	58.4	4.9	6.1	2.8	8.4	2.8	8.2	0.9	65.9	4.9	29.2	0.064	0.508	17.131891	-95.059949
T. Der. Santa Ana	171.50	1	0	5867	5.4	62.6	3.4	5.1	2.2	9.8	2.5	8.0	1.0	68.0	3.4	28.6	0.065	0.518	17.080083	-95.040400
Boca del Monte	174.50	1	0	5189	6.8	61.6	4.6	5.6	2.1	8.8	2.8	6.8	0.9	68.4	4.6	27.0	0.060	0.503	17.070003	-95.028174
Boca del Monte	174.50	3	0	6139	7.7	62.3	4.4	5.0	1.7	8.3	2.4	7.3	0.9	70.0	4.4	25.6	0.065	0.511	17.054554	-95.017844
T. Der. Estación Mogoñe	182.15	1	0	6054	9.1	64.5	5.7	2.9	2.0	7.6	2.0	5.2	1.0	73.6	5.7	20.7	0.070	0.502	17.018817	-95.008674
Piedra Blanca	183.30	1	0	7616	7.6	66.4	5.0	3.1	2.1	7.6	2.4	5.0	0.8	74.0	5.0	21.0	0.069	0.520	16.992262	-95.016156
T. Der. Matías Romero	196.00	1	0	10839	7.2	73.9	3.0	4.5	1.7	4.4	1.2	3.3	0.8	81.1	3.0	15.9	0.069	0.531	16.883311	-95.020551
T. Der. Barrio de La Soledad	203.05	1	0	9119	7.5	69.1	3.4	4.4	2.5	6.0	1.9	4.4	0.8	76.6	3.4	20.0	0.066	0.527	16.817869	-95.033546
T. Der. Barrio de La Soledad	203.05	3	0	5728	7.2	66.4	2.4	3.5	3.2	6.6	2.7	7.2	0.8	73.6	2.4	24.0	0.066	0.527	16.812418	-95.032526
El Ajal	211.60	1	0	5807	6.4	62.0	4.6	6.2	2.4	7.6	4.3	5.5	1.0	68.4	4.6	27.0	0.067	0.503	16.774562	-95.019126
El Mezquite	222.64	1	0	5689	6.7	64.4	5.0	7.4	2.2	6.1	4.3	3.0	0.9	71.1	5.0	23.9	0.067	0.503	16.705008	-94.963988
T. C. La Ventosa - Salina Cruz (Cuota)	236.00	1	0	5654	2.3	63.7	4.8	6.4	2.1	9.7	4.5	5.7	0.8	66.0	4.8	29.2	0.061	0.514	16.599197	-94.946418
T. C. La Ventosa - Salina Cruz (Cuota)	236.00	3	0	3206	2.3	81.2	3.9	6.5	2.4	2.0	1.3	0.4	0.0	83.5	3.9	12.6	0.073	0.514	16.576387	-94.945017
T. Izq. San Pedro Tapanatepec (2º Acceso)	241.70	1	0	3487	2.5	78.7	3.5	8.2	1.6	2.8	1.9	0.6	0.2	81.2	3.5	15.3	0.068	0.502	16.558691	-94.948315
T. Izq. San Pedro Tapanatepec (2º Acceso)	241.70	3	0	7599	3.1	84.9	3.0	6.1	1.0	0.9	0.8	0.2	0.0	88.0	3.0	9.0	0.076	0.507	16.543013	-94.953338
Juchitán de Zaragoza	255.55	1	0	9804	6.3	86.0	2.4	3.1	0.8	0.7	0.5	0.2	0.0	92.3	2.4	5.3	0.082	0.506	16.456120	-95.001043
Juchitán de Zaragoza	255.55	3	1	9598	7.6	86.2	1.8	2.8	0.6	0.5	0.4	0.1	0.0	93.8	1.8	4.4	0.078	0.516	16.437459	-95.032337
Juchitán de Zaragoza	255.55	3	2	9004	7.0	86.7	1.8	2.8	0.8	0.4	0.4	0.1	0.0	93.7	1.8	4.5	0.087	0.516	16.437423	-95.032271
Santo Domingo Tehuantepec	283.95	1	1	4034	4.9	84.8	2.0	5.9	0.7	1.0	0.5	0.2	0.0	89.7	2.0	8.3	0.074	0.501	16.347311	-95.209530
Santo Domingo Tehuantepec	283.95	1	2	4017	4.7	84.4	2.2	6.2	0.7	1.1	0.5	0.2	0.0	89.1	2.2	8.7	0.073	0.501	16.347284	-95.209513
Santo Domingo Tehuantepec	283.95	3	1	11710	6.3	87.3	1.3	2.7	0.7	0.5	0.3	0.7	0.2	93.6	1.3	5.1	0.071	0.503	16.311422	-95.236496
Santo Domingo Tehuantepec	283.95	3	2	11570	6.0	87.5	1.3	2.9	0.8	0.4	0.3	0.6	0.2	93.5	1.3	5.2	0.071	0.503	16.311462	-95.236396
Salina Cruz	302.35	1	1	11473	5.2	87.3	1.6	3.5	0.9	0.5	0.3	0.6	0.1	92.5	1.6	5.9	0.076	0.505	16.236612	-95.213168
Salina Cruz	302.35	1	2	11238	5.1	87.7	1.4	3.4	0.8	0.5	0.3	0.7	0.1	92.8	1.4	5.8	0.075	0.505	16.236638	-95.213096

5 CARR: Ent. La Ventosa - San Pedro Tapanatepec

CLAVE: 20059

RUTA: MEX-190

AÑO: 2022

LUGAR	ESTACION				CLASIFICACION VEHICULAR EN PORCIENTO												COORDENADAS			
	KM	TE	SC	TDPA	M	A	B	C2	C3	T3S2	T3S3	T3S2R4	OTROS	A	B	C	K'	D	LATITUD	LONGITUD
La Ventosa	0.00	3	0	3608	4.5	84.6	2.7	5.5	0.5	1.6	0.4	0.1	0.1	89.1	2.7	8.2	0.075	0.501	16.552078	-94.939583
T. C. La Ventosa - Salina Cruz (Cuota)	7.20	3	0	5907	2.5	71.1	3.5	6.3	1.5	7.4	3.2	3.7	0.8	73.6	3.5	22.9	0.075	0.506	16.571629	-94.883667
T. Der. Unión Hidalgo	14.55	3	0	5765	3.2	72.2	3.0	5.1	1.5	7.6	3.1	3.5	0.8	75.4	3.0	21.6	0.075	0.507	16.573820	-94.805601

OAXACA

5 CARR: Ent. La Ventosa - San Pedro Tapanatepec

CLAVE: 20059

RUTA: MEX-190

AÑO: 2022

LUGAR	ESTACION				CLASIFICACION VEHICULAR EN PORCIENTO													COORDENADAS		
	KM	TE	SC	TDPA	M	A	B	C2	C3	T3S2	T3S3	T3S2R4	OTROS	A	B	C	K'	D	LATITUD	LONGITUD
T. Izq. Santo Domingo Ingenio	20.50	3	0	4526	3.5	64.6	4.3	5.8	2.0	9.5	4.0	5.9	0.4	68.1	4.3	27.6	0.076	0.522	16.570641	-94.766406
T. Izq. Nilttepec	38.01	3	0	4521	2.3	63.4	3.9	6.2	2.4	10.6	4.9	5.7	0.6	65.7	3.9	30.4	0.064	0.513	16.554829	-94.591269
T. Der. Reforma de Pineda	59.80	1	0	4117	3.3	60.2	4.7	6.6	2.6	10.1	5.0	6.8	0.7	63.5	4.7	31.8	0.059	0.521	16.500174	-94.448230
T. Der. Reforma de Pineda	59.80	3	0	4312	4.2	64.2	4.1	6.2	1.9	9.4	4.2	5.0	0.8	68.4	4.1	27.5	0.065	0.500	16.493293	-94.420939
Santo Domingo Zanatepec	68.25	3	0	4649	4.5	60.9	4.4	6.7	2.9	10.5	4.2	5.1	0.8	65.4	4.4	30.2	0.062	0.502	16.476567	-94.340798
San Pedro Tapanatepec	91.80	1	0	1846	15.2	70.0	5.3	7.0	0.5	1.3	0.6	0.1	0.0	85.2	5.3	9.5	0.071	0.505	16.384420	-94.201082

6 CARR: Huajuapán de León - Oaxaca

CLAVE: 20056

RUTA: MEX-190

AÑO: 2022

LUGAR	ESTACION				CLASIFICACION VEHICULAR EN PORCIENTO													COORDENADAS		
	KM	TE	SC	TDPA	M	A	B	C2	C3	T3S2	T3S3	T3S2R4	OTROS	A	B	C	K'	D	LATITUD	LONGITUD
Huajuapán de León	0.00	0	0																	
T. Izq. Tehuacán	1.35	1	0	16512	15.9	78.1	0.5	3.2	0.7	0.7	0.2	0.5	0.2	94.0	0.5	5.5	0.081	0.517	17.812841	-97.767110
T. Izq. Tehuacán	1.35	3	0	11517	8.4	83.2	0.3	6.8	0.5	0.3	0.3	0.1	0.1	91.6	0.3	8.1	0.073	0.500	17.810529	-97.760086
Tamazulapán	38.61	1	0	3256	6.3	79.7	0.7	9.9	0.7	1.5	0.7	0.2	0.3	86.0	0.7	13.3	0.073	0.502	17.686590	-97.585622
Tamazulapán	38.61	3	0	3292	5.3	80.8	0.6	10.3	0.7	1.3	0.6	0.1	0.3	86.1	0.6	13.3	0.080	0.505	17.671490	-97.561805
T. Izq. Santiago Tejupan	49.62	3	0	3130	3.1	79.6	1.4	11.6	1.2	2.0	0.9	0.1	0.1	82.7	1.4	15.9	0.068	0.502	17.655948	-97.471827
T. Der. Tlaxiaco	61.43	3	0	3292	2.3	77.5	1.2	13.9	1.2	2.3	1.1	0.2	0.3	79.8	1.2	19.0	0.071	0.500	17.575956	-97.420806
Asunción Nochixtlán	90.40	1	0	7144	5.5	83.2	1.1	6.4	1.0	1.3	0.8	0.4	0.3	88.7	1.1	10.2	0.065	0.516	17.464805	-97.258742
T. Izq. Tehuacán	161.73	1	0	961	11.5	84.9	0.1	2.7	0.7	0.1	0.0	0.0	0.0	96.4	0.1	3.5	0.074	0.507	17.285044	-96.913158
T. Izq. Tehuacán	161.73	3	0	7341	12.1	85.2	0.4	1.0	0.4	0.4	0.3	0.1	0.1	97.3	0.4	2.3	0.078	0.509	17.284819	-96.900097
T. Der. Tlaltinango	170.29	1	0	8551	9.2	86.7	0.1	1.4	0.7	1.5	0.1	0.2	0.1	95.9	0.1	4.0	0.071	0.526	17.247910	-96.851576
T. Der. Tlaltinango	170.29	3	0	9067	9.2	86.0	0.5	2.0	0.8	0.6	0.2	0.5	0.2	95.2	0.5	4.3	0.072	0.507	17.243505	-96.840709
T. Der. Nazareno Etla	179.23	3	1	16611	10.0	85.6	0.7	2.3	0.6	0.4	0.1	0.1	0.2	95.6	0.7	3.7	0.076	0.501	17.167126	-96.787888
T. Der. Nazareno Etla	179.23	3	2	16564	10.1	85.3	0.7	2.3	0.6	0.4	0.2	0.2	0.2	95.4	0.7	3.9	0.072	0.501	17.167155	-96.787782
T. Aut. Cuacnopalan - Oaxaca	181.80	3	1	26410	11.3	80.7	1.8	2.9	1.1	1.0	0.3	0.7	0.2	92.0	1.8	6.2	0.069	0.507	17.140247	-96.776735
T. Aut. Cuacnopalan - Oaxaca	181.80	3	2	25659	11.3	80.9	1.5	2.8	1.4	1.0	0.2	0.7	0.2	92.2	1.5	6.3	0.064	0.507	17.140288	-96.776645
Oaxaca	190.60	1	1	39152	10.2	82.4	1.3	3.2	1.1	0.6	0.2	0.8	0.2	92.6	1.3	6.1	0.075	0.519	17.099900	-96.751117
Oaxaca	190.60	1	2	35961	10.7	80.8	1.6	3.5	1.3	0.7	0.3	0.9	0.2	91.5	1.6	6.9	0.072	0.519	17.099776	-96.750937

7 CARR: Juchitán - Ixtepec

CLAVE: 20359

RUTA: MEX-185

AÑO: 2022

LUGAR	ESTACION				CLASIFICACION VEHICULAR EN PORCIENTO													COORDENADAS		
	KM	TE	SC	TDPA	M	A	B	C2	C3	T3S2	T3S3	T3S2R4	OTROS	A	B	C	K'	D	LATITUD	LONGITUD
Juchitán de Zaragoza	0.00	0	0																	

OAXACA

7 CARR: Juchitán - Ixtepec

CLAVE: 20359

RUTA: MEX-185

AÑO: 2022

LUGAR	ESTACION				CLASIFICACION VEHICULAR EN PORCIENTO													COORDENADAS		
	KM	TE	SC	TDPA	M	A	B	C2	C3	T3S2	T3S3	T3S2R4	OTROS	A	B	C	K'	D	LATITUD	LONGITUD
X. C. Coatzacoalcos - Salina Cruz	0.15	3	1	8456	13.0	83.4	0.6	1.6	0.6	0.3	0.2	0.3	0.0	96.4	0.6	3.0	0.062	0.501	16.454624	-95.027844
X. C. Coatzacoalcos - Salina Cruz	0.15	3	2	8491	13.5	82.3	0.6	1.8	0.8	0.5	0.2	0.3	0.0	95.8	0.6	3.6	0.062	0.501	16.454479	-95.027898
Asunción Ixtaltepec	7.40	1	1	4477	12.0	79.1	2.6	4.7	0.9	0.4	0.2	0.1	0.0	91.1	2.6	6.3	0.087	0.501	16.503742	-95.053473
Asunción Ixtaltepec	7.40	1	2	4501	12.4	78.4	2.6	5.2	1.0	0.2	0.1	0.1	0.0	90.8	2.6	6.6	0.098	0.501	16.501529	-95.055248
Asunción Ixtaltepec	7.40	3	1	4812	14.7	77.8	2.7	3.5	0.7	0.3	0.2	0.1	0.0	92.5	2.7	4.8	0.073	0.500	16.510864	-95.066135
Asunción Ixtaltepec	7.40	3	2	4813	14.6	77.9	2.1	4.2	0.6	0.3	0.2	0.1	0.0	92.5	2.1	5.4	0.076	0.500	16.510701	-95.066143
Ixtepec	16.00	1	1	4057	14.0	80.7	1.5	3.0	0.4	0.2	0.1	0.1	0.0	94.7	1.5	3.8	0.077	0.501	16.535939	-95.079487
Ixtepec	16.00	1	2	4074	14.6	79.9	1.5	3.2	0.4	0.2	0.1	0.1	0.0	94.5	1.5	4.0	0.081	0.501	16.535883	-95.079581

8 CARR: La Granja - Temascal

CLAVE: 00275

RUTA: MEX-145

AÑO: 2022

LUGAR	ESTACION				CLASIFICACION VEHICULAR EN PORCIENTO													COORDENADAS		
	KM	TE	SC	TDPA	M	A	B	C2	C3	T3S2	T3S3	T3S2R4	OTROS	A	B	C	K'	D	LATITUD	LONGITUD
T. C. La Tinaja - Santa Cruz	0.00	3	0	3686	24.7	65.8	1.0	5.6	1.7	0.4	0.3	0.4	0.1	90.5	1.0	8.5	0.076	0.512	18.353066	-96.261560
Lim. Edos. Term. Ver. Ppia. Oax.	5.00	0	0																	
Temascal	23.00	1	0	4612	26.6	59.9	1.0	6.2	1.0	2.5	0.9	1.0	0.9	86.5	1.0	12.5	0.079	0.500	18.255057	-96.393144

9 CARR: Las Cruces - Pinotepa Nacional

CLAVE: 00073

RUTA: MEX-200

AÑO: 2022

LUGAR	ESTACION				CLASIFICACION VEHICULAR EN PORCIENTO													COORDENADAS		
	KM	TE	SC	TDPA	M	A	B	C2	C3	T3S2	T3S3	T3S2R4	OTROS	A	B	C	K'	D	LATITUD	LONGITUD
T. C. Chilpancingo - Acapulco	0.00	3	1	19175	4.3	87.6	0.6	2.0	1.2	3.1	0.4	0.2	0.6	91.9	0.6	7.5	0.064	0.508	16.885460	-99.831503
T. C. Chilpancingo - Acapulco	0.00	3	2	18582	4.5	87.3	0.6	2.0	1.3	3.2	0.4	0.2	0.5	91.8	0.6	7.6	0.060	0.508	16.885550	-99.831500
T. Der. Puerto Marqués	4.62	1	1	23399	6.2	88.9	0.3	2.2	0.6	0.9	0.6	0.1	0.2	95.1	0.3	4.6	0.083	0.511	16.865719	-99.810581
T. Der. Puerto Marqués	4.62	1	2	22375	6.2	88.3	0.5	2.2	0.7	1.1	0.6	0.1	0.3	94.5	0.5	5.0	0.074	0.511	16.865712	-99.810452
T. Der. Puerto Marqués	4.62	3	0	17087	6.5	84.5	0.6	2.7	0.7	2.8	1.2	0.3	0.7	91.0	0.6	8.4	0.081	0.504	16.852574	-99.801286
X. C. Puerto Marqués - La Venta (Cuota)	11.70	1	1	4266	5.2	86.7	1.1	3.6	1.0	1.1	0.7	0.3	0.3	91.9	1.1	7.0	0.079	0.507	16.830900	-99.764867
X. C. Puerto Marqués - La Venta (Cuota)	11.70	1	2	4151	5.1	86.8	1.0	3.6	1.0	1.3	0.8	0.2	0.2	91.9	1.0	7.1	0.087	0.507	16.830987	-99.764862
X. C. Puerto Marqués - La Venta (Cuota)	11.70	3	1	4743	6.6	84.8	0.7	3.5	1.5	1.4	0.9	0.3	0.3	91.4	0.7	7.9	0.082	0.524	16.830258	-99.753136
X. C. Puerto Marqués - La Venta (Cuota)	11.70	3	2	5225	6.6	84.5	1.0	3.5	1.5	1.3	1.0	0.3	0.3	91.1	1.0	7.9	0.084	0.524	16.830344	-99.753136
T. Der El Arenal	17.00	1	1	4150	5.4	82.8	1.3	6.0	1.2	1.7	1.0	0.2	0.4	88.2	1.3	10.5	0.077	0.503	16.824316	-99.716131
T. Der El Arenal	17.00	1	2	4193	5.5	82.7	1.4	6.0	1.4	1.7	0.9	0.1	0.3	88.2	1.4	10.4	0.081	0.503	16.824402	-99.716133
Sn Pedro Cacahuatpec	21.60	1	0	7205	6.5	81.3	1.3	5.3	1.8	2.2	1.2	0.1	0.3	87.8	1.3	10.9	0.076	0.504	16.815864	-99.672509
T. Der. a Barra Vieja	35.00	1	0	4171	3.9	81.3	2.4	6.1	1.5	2.7	1.7	0.1	0.3	85.2	2.4	12.4	0.070	0.502	16.756162	-99.580193
San Marcos	58.90	1	0	6572	4.0	83.7	1.4	5.7	1.8	2.1	1.0	0.1	0.2	87.7	1.4	10.9	0.090	0.522	16.779874	-99.410154

OAXACA

9 CARR: Las Cruces - Pinotepa Nacional

CLAVE: 00073

RUTA: MEX-200

AÑO: 2022

LUGAR	ESTACION				CLASIFICACION VEHICULAR EN PORCIENTO										COORDENADAS					
	KM	TE	SC	TDPA	M	A	B	C2	C3	T3S2	T3S3	T3S2R4	OTROS	A	B	C	K'	D	LATITUD	LONGITUD
San Marcos	58.90	3	0	5402	7.9	82.5	1.2	5.7	1.5	0.8	0.1	0.2	0.1	90.4	1.2	8.4	0.076	0.509	16.791486	-99.365529
Nexpa	84.96	3	0	5022	8.7	81.2	1.6	5.9	1.3	0.7	0.3	0.2	0.1	89.9	1.6	8.5	0.077	0.500	16.782237	-99.205927
Cruz Grande	97.00	3	0	6389	4.8	82.8	1.6	6.4	1.7	2.0	0.4	0.1	0.2	87.6	1.6	10.8	0.083	0.501	16.708814	-99.111842
T. Izq. Copala (1º Acceso)	117.50	1	0	5870	6.6	84.2	0.7	5.5	1.4	0.6	0.5	0.2	0.3	90.8	0.7	8.5	0.073	0.502	16.611634	-98.995016
T. Izq. Copala (1º Acceso)	117.50	3	0	5935	4.1	82.4	1.2	9.8	0.7	0.9	0.7	0.1	0.1	86.5	1.2	12.3	0.085	0.527	16.603626	-98.967112
T. Der. Playa Ventura	124.00	1	0	4034	7.7	76.6	2.4	7.2	3.4	1.8	0.7	0.1	0.1	84.3	2.4	13.3	0.080	0.517	16.593772	-98.925599
T. Der. Playa Ventura	124.00	3	0	3504	5.2	71.7	4.2	10.0	3.8	2.7	1.2	0.9	0.3	76.9	4.2	18.9	0.070	0.517	16.589707	-98.908492
Marquelia	136.80	1	0	5585	6.3	82.3	1.4	8.3	0.5	0.6	0.2	0.2	0.2	88.6	1.4	10.0	0.066	0.507	16.582373	-98.829277
Marquelia	136.80	3	0	4697	4.7	80.7	2.6	6.7	2.0	2.0	1.0	0.2	0.1	85.4	2.6	12.0	0.096	0.502	16.581814	-98.801859
Juchitán	158.00	3	0	4963	6.8	84.2	0.9	5.8	1.2	0.9	0.2	0.0	0.0	91.0	0.9	8.1	0.091	0.547	16.633042	-98.624571
T. Izq. Ometepec	175.88	1	0	4757	7.1	83.2	1.0	6.1	1.3	1.0	0.3	0.0	0.0	90.3	1.0	8.7	0.092	0.524	16.655121	-98.503493
T. Izq. Ometepec	175.88	3	0	3912	6.9	82.9	1.1	6.0	1.6	1.3	0.1	0.1	0.0	89.8	1.1	9.1	0.084	0.519	16.653642	-98.498967
Cuajinicuilapa	200.60	1	0	4030	4.9	79.3	1.5	11.9	1.0	0.8	0.3	0.1	0.2	84.2	1.5	14.3	0.095	0.524	16.476827	-98.433936
Cuajinicuilapa	200.60	3	0	2284	6.7	75.8	2.9	6.9	2.8	3.0	1.5	0.1	0.3	82.5	2.9	14.6	0.080	0.511	16.462428	-98.393872
Lim. Edos. Term. Gro. Ppia. Oax.	207.80	0	0																	
T. Izq. San Pedro Orizaba	215.00	3	0	2117	4.7	79.1	4.0	3.5	2.7	3.4	2.2	0.2	0.2	83.8	4.0	12.2	0.079	0.506	16.441392	-98.339083
T. Izq. Tlaxiaco	245.47	1	0	3421	8.9	75.5	1.8	6.0	1.6	3.6	1.7	0.3	0.6	84.4	1.8	13.8	0.078	0.506	16.379230	-98.094015
T. Izq. Tlaxiaco	245.47	3	0	6763	6.7	82.9	1.5	3.0	1.3	1.6	1.5	0.6	0.9	89.6	1.5	8.9	0.078	0.507	16.376618	-98.092025
Pinotepa Nacional	252.50	0	0																	

10 CARR: Libramiento de Ejutla

CLAVE:

RUTA: MEX-175

AÑO: 2022

LUGAR	ESTACION				CLASIFICACION VEHICULAR EN PORCIENTO										COORDENADAS					
	KM	TE	SC	TDPA	M	A	B	C2	C3	T3S2	T3S3	T3S2R4	OTROS	A	B	C	K'	D	LATITUD	LONGITUD
T. C. Oaxaca - Puerto Ángel Norte	0.00	3	0	4258	4.2	82.7	0.8	9.8	1.6	0.5	0.2	0.1	0.1	86.9	0.8	12.3	0.082	0.501	16.594999	-96.735032
X. C. Ejutla - Coatecas	5.70	3	0	3993	15.5	67.2	2.6	11.4	1.4	1.0	0.3	0.3	0.3	82.7	2.6	14.7	0.084	0.529	16.551413	-96.716074
T. C. Oaxaca - Puerto Ángel Sur	10.00	0	0																	

11 CARR: Libramiento de Ocotlán Oax.

CLAVE:

RUTA: MEX-175

AÑO: 2022

LUGAR	ESTACION				CLASIFICACION VEHICULAR EN PORCIENTO										COORDENADAS					
	KM	TE	SC	TDPA	M	A	B	C2	C3	T3S2	T3S3	T3S2R4	OTROS	A	B	C	K'	D	LATITUD	LONGITUD
T. C. Oaxaca - Puerto Ángel Norte	0.00	3	0	5622	2.7	81.0	0.9	10.5	1.2	2.4	0.8	0.1	0.4	83.7	0.9	15.4	0.084	0.508	16.858762	-96.678070
X. C. Ocotlán - Santa Catarina Minas	9.60	3	0	5827	3.0	80.6	0.9	10.4	1.3	2.3	1.0	0.1	0.4	83.6	0.9	15.5	0.088	0.505	16.784169	-96.647016
T. C. Oaxaca - Puerto Ángel Norte	15.60	0	0																	

OAXACA

12 CARR: Libramiento de Pochutla

CLAVE:

RUTA: MEX-200

AÑO: 2022

LUGAR	ESTACION				CLASIFICACION VEHICULAR EN PORCIENTO													COORDENADAS		
	KM	TE	SC	TDPA	M	A	B	C2	C3	T3S2	T3S3	T3S2R4	OTROS	A	B	C	K'	D	LATITUD	LONGITUD
T. C. Santiago Pinotepa Nacional - Salina Cruz	0.00	3	0	1549	24.1	60.7	1.5	10.5	1.5	1.3	0.3	0.0	0.1	84.8	1.5	13.7	0.092	0.506	15.735361	-96.480884
Pio Macaya	2.40	1	0	1523	28.7	59.4	0.9	7.1	1.5	1.5	0.6	0.1	0.2	88.1	0.9	11.0	0.105	0.500	15.748093	-96.477389
Pio Macaya	2.40	3	0	1189	23.8	63.8	0.8	7.9	1.8	1.4	0.4	0.0	0.1	87.6	0.8	11.6	0.109	0.501	15.756855	-96.474194
T. C. Oaxaca - Puerto Ángel	5.20	1	0	1254	23.3	63.8	0.9	8.4	1.5	1.4	0.6	0.0	0.1	87.1	0.9	12.0	0.091	0.512	15.762397	-96.466116

13 CARR: Libramiento de San Pedro Tapanatepec

CLAVE:

RUTA: MEX-200

AÑO: 2022

LUGAR	ESTACION				CLASIFICACION VEHICULAR EN PORCIENTO													COORDENADAS		
	KM	TE	SC	TDPA	M	A	B	C2	C3	T3S2	T3S3	T3S2R4	OTROS	A	B	C	K'	D	LATITUD	LONGITUD
T. C. Ent. La Ventosa - San Pedro Tapanatepec	0.00	0	0																	
T. C. Tapanatepec - Tuxtla Gutiérrez	3.35	1	0	2980	2.4	57.4	3.7	6.8	2.6	12.9	6.0	7.4	0.8	59.8	3.7	36.5	0.069	0.521	16.374940	-94.182027
X. C. Tapanatepec - Talismán Este	5.80	1	0	4432	5.9	67.5	2.7	4.2	3.6	7.9	2.6	4.7	0.9	73.4	2.7	23.9	0.072	0.505	16.355586	-94.188857

14 CARR: Libramiento de Santa María del Tule

CLAVE:

RUTA: MEX-190

AÑO: 2022

LUGAR	ESTACION				CLASIFICACION VEHICULAR EN PORCIENTO													COORDENADAS		
	KM	TE	SC	TDPA	M	A	B	C2	C3	T3S2	T3S3	T3S2R4	OTROS	A	B	C	K'	D	LATITUD	LONGITUD
T. C. Oaxaca - Tehuantepec (Poniente)	0.00	3	0	21787	5.4	85.6	1.0	5.3	0.9	0.8	0.3	0.5	0.2	91.0	1.0	8.0	0.078	0.502	17.046839	-96.652820
T. C. Oaxaca - Tehuantepec (Oriente)	5.80	1	0	22170	5.5	85.4	1.0	5.4	1.0	0.8	0.3	0.4	0.2	90.9	1.0	8.1	0.078	0.509	17.036764	-96.624760

15 CARR: Oaxaca - Puerto Ángel

CLAVE: 20091

RUTA: MEX-175

AÑO: 2022

LUGAR	ESTACION				CLASIFICACION VEHICULAR EN PORCIENTO													COORDENADAS		
	KM	TE	SC	TDPA	M	A	B	C2	C3	T3S2	T3S3	T3S2R4	OTROS	A	B	C	K'	D	LATITUD	LONGITUD
Oaxaca	0.00	3	1	32143	8.0	85.0	0.4	4.3	0.5	0.5	1.0	0.1	0.2	93.0	0.4	6.6	0.070	0.520	17.032215	-96.713006
Oaxaca	0.00	3	2	35034	7.8	84.4	0.4	4.9	0.5	0.6	1.1	0.1	0.2	92.2	0.4	7.4	0.067	0.520	17.032239	-96.712900
T. Der. Aeropuerto	10.46	1	1	27309	8.3	87.1	0.5	2.8	0.6	0.2	0.1	0.3	0.1	95.4	0.5	4.1	0.072	0.506	17.007513	-96.712905
T. Der. Aeropuerto	10.46	1	2	26598	8.2	87.2	0.4	2.6	0.7	0.4	0.1	0.3	0.1	95.4	0.4	4.2	0.075	0.506	17.007507	-96.712806
T. Der. Puerto Escondido	19.07	1	1	16875	6.7	85.1	0.6	5.9	0.5	0.5	0.4	0.1	0.2	91.8	0.6	7.6	0.068	0.511	16.933722	-96.704375
T. Der. Puerto Escondido	19.07	1	2	17637	7.0	85.2	0.5	5.6	0.6	0.5	0.3	0.1	0.2	92.2	0.5	7.3	0.073	0.511	16.933619	-96.704221
T. Der. Puerto Escondido	19.07	3	0	20029	11.0	82.9	0.5	3.6	0.8	0.6	0.2	0.3	0.1	93.9	0.5	5.6	0.085	0.506	16.926901	-96.702341
T. C. Libramiento de Ocotlán Oax. Norte	22.80	3	0	6056	6.5	81.0	0.3	5.6	0.2	4.8	0.6	0.2	0.8	87.5	0.3	12.2	0.098	0.519	16.855352	-96.683330
T. C. Libramiento de Ocotlán Oax. Sur	35.30	3	0	10580	12.9	79.5	0.7	4.4	1.6	0.5	0.1	0.2	0.1	92.4	0.7	6.9	0.093	0.516	16.750141	-96.682865
Ocotlán	35.67	3	0	7673	9.6	82.8	0.1	6.0	0.2	0.5	0.5	0.1	0.2	92.4	0.1	7.5	0.099	0.519	16.767596	-96.676221
T. C. Libramiento de Ejutla Norte	55.50	1	0	6126	10.0	80.4	0.8	6.6	1.2	0.5	0.2	0.2	0.1	90.4	0.8	8.8	0.094	0.501	16.609983	-96.737910

OAXACA

15 CARR : Oaxaca - Puerto Ángel

CLAVE: 20091

RUTA: MEX-175

AÑO: 2022

LUGAR	ESTACION				CLASIFICACION VEHICULAR EN PORCIENTO													COORDENADAS		
	KM	TE	SC	TDPA	M	A	B	C2	C3	T3S2	T3S3	T3S2R4	OTROS	A	B	C	K'	D	LATITUD	LONGITUD
T. C. Libramiento de Ejutla Norte	55.50	3	0	3139	11.0	79.7	0.3	6.6	0.4	1.7	0.2	0.0	0.1	90.7	0.3	9.0	0.091	0.502	16.590281	-96.739023
T. C. Libramiento de Ejutla Sur	64.70	1	0	3116	12.0	81.0	0.4	4.6	0.4	1.3	0.2	0.0	0.1	93.0	0.4	6.6	0.094	0.504	16.528658	-96.736042
T. C. Libramiento de Ejutla Sur	64.70	3	0	4975	4.6	76.6	0.9	13.4	1.2	2.5	0.5	0.1	0.2	81.2	0.9	17.9	0.087	0.509	16.515710	-96.736392
T. Der. A San Vicente Coatlán	69.50	3	0	4819	5.2	82.2	1.1	9.0	1.2	0.6	0.5	0.1	0.1	87.4	1.1	11.5	0.077	0.503	16.479268	-96.736728
Miahuatlán	100.64	1	0	5447	8.3	81.8	1.0	6.7	1.0	0.6	0.2	0.3	0.1	90.1	1.0	8.9	0.106	0.500	16.359240	-96.619747
Miahuatlán	100.64	3	0	5048	12.6	76.5	0.8	6.1	0.9	2.4	0.3	0.0	0.4	89.1	0.8	10.1	0.074	0.504	16.285415	-96.583997
San Miguel Suchixtepec	144.00	1	0	2188	4.6	90.3	0.1	1.9	1.6	0.4	0.3	0.7	0.1	94.9	0.1	5.0	0.084	0.500	16.100078	-96.469883
Candelaria Loxicha	205.00	1	0	2150	19.2	72.2	0.8	5.8	1.2	0.3	0.4	0.1	0.0	91.4	0.8	7.8	0.084	0.507	15.930856	-96.481362
Candelaria Loxicha	205.00	3	0	2140	13.8	74.1	0.7	7.9	1.2	1.5	0.6	0.1	0.1	87.9	0.7	11.4	0.085	0.504	15.919779	-96.492816
San José Chacalapa	224.00	3	0	3564	22.8	71.1	0.7	4.4	0.4	0.4	0.1	0.1	0.0	93.9	0.7	5.4	0.082	0.502	15.819951	-96.463815
T. Izq. Santa María Huatulco	233.80	1	0	5760	21.7	68.9	0.2	3.3	0.2	2.7	1.9	0.7	0.4	90.6	0.2	9.2	0.077	0.535	15.757926	-96.464028
T. Der. De San Pedro Pochutla	236.00	1	0	5571	21.3	70.3	0.3	3.8	0.3	2.6	0.8	0.1	0.5	91.6	0.3	8.1	0.076	0.505	15.763417	-96.463824
X. C. Santiago Pinotepa Nacional - Salina Cruz	237.70	1	1	7503	30.3	63.6	0.4	2.3	0.8	1.4	0.3	0.6	0.3	93.9	0.4	5.7	0.072	0.510	15.731692	-96.474749
X. C. Santiago Pinotepa Nacional - Salina Cruz	237.70	1	2	7197	29.9	64.3	0.5	2.1	0.7	1.3	0.3	0.6	0.3	94.2	0.5	5.3	0.072	0.510	15.731647	-96.474687
X. C. Santiago Pinotepa Nacional - Salina Cruz	237.70	3	0	6624	29.0	63.4	0.1	2.9	0.1	3.1	0.7	0.2	0.5	92.4	0.1	7.5	0.074	0.503	15.729017	-96.474608
Puerto Ángel	245.40	1	0	4054	21.3	73.2	0.5	2.9	0.2	0.3	0.7	0.7	0.2	94.5	0.5	5.0	0.088	0.509	15.676148	-96.482112

16 CARR : Oaxaca - Tehuantepec

CLAVE: 20057

RUTA: MEX-190

AÑO: 2022

LUGAR	ESTACION				CLASIFICACION VEHICULAR EN PORCIENTO													COORDENADAS		
	KM	TE	SC	TDPA	M	A	B	C2	C3	T3S2	T3S3	T3S2R4	OTROS	A	B	C	K'	D	LATITUD	LONGITUD
Oaxaca	0.00	3	1	29035	9.2	87.3	0.4	1.9	0.5	0.2	0.1	0.3	0.1	96.5	0.4	3.1	0.079	0.500	17.067256	-96.686085
Oaxaca	0.00	3	2	29041	9.4	86.6	0.4	2.1	0.6	0.3	0.1	0.4	0.1	96.0	0.4	3.6	0.076	0.500	17.067423	-96.685968
T. Izq. Guelatao	8.69	3	1	19776	9.0	85.7	0.6	3.3	0.6	0.4	0.2	0.1	0.1	94.7	0.6	4.7	0.082	0.505	17.064019	-96.675198
T. Izq. Guelatao	8.69	3	2	19348	8.9	85.8	0.6	3.3	0.6	0.4	0.2	0.1	0.1	94.7	0.6	4.7	0.077	0.505	17.064135	-96.675080
Libramiento Santa María el Tule	12.00	1	1	17915	5.3	90.6	0.3	2.8	0.3	0.2	0.4	0.0	0.1	95.9	0.3	3.8	0.075	0.511	17.062078	-96.668686
Libramiento Santa María el Tule	12.00	1	2	18699	5.1	90.8	0.3	2.7	0.3	0.2	0.5	0.0	0.1	95.9	0.3	3.8	0.070	0.511	17.062203	-96.668504
Santa María El Tule	13.90	1	1	8581	7.5	88.9	0.2	3.1	0.1	0.1	0.1	0.0	0.0	96.4	0.2	3.4	0.091	0.500	17.048842	-96.641974
Santa María El Tule	13.90	1	2	8569	7.4	89.0	0.2	3.2	0.1	0.1	0.0	0.0	0.0	96.4	0.2	3.4	0.080	0.500	17.048929	-96.641905
Santa María El Tule	13.90	3	0	5873	9.3	83.4	0.2	2.2	0.1	4.2	0.2	0.1	0.3	92.7	0.2	7.1	0.075	0.517	17.043325	-96.629357
T. Izq. Teotitlán del Valle	26.50	1	0	17295	4.7	87.4	0.7	5.1	0.6	0.7	0.5	0.2	0.1	92.1	0.7	7.2	0.080	0.502	16.997090	-96.529060
T. Izq. Teotitlán del Valle	26.50	3	0	16795	4.3	86.8	0.7	5.6	0.6	0.7	0.9	0.2	0.2	91.1	0.7	8.2	0.084	0.507	16.993625	-96.523807
T. Der. Tlacolula	33.64	1	0	18753	5.4	85.3	0.7	5.8	0.6	1.1	0.6	0.3	0.2	90.7	0.7	8.6	0.077	0.505	16.970404	-96.489008
T. Der. Tlacolula	33.64	3	1	5406	2.9	88.0	1.0	5.1	1.0	1.1	0.5	0.3	0.1	90.9	1.0	8.1	0.092	0.507	16.946946	-96.457492
T. Der. Tlacolula	33.64	3	2	5260	3.0	87.8	1.1	5.1	1.0	1.0	0.6	0.3	0.1	90.8	1.1	8.1	0.087	0.507	16.947025	-96.457449

OAXACA

16 CARR: Oaxaca - Tehuantepec

CLAVE: 20057

RUTA: MEX-190

AÑO: 2022

LUGAR	ESTACION				CLASIFICACION VEHICULAR EN PORCIENTO										COORDENADAS					
	KM	TE	SC	TDPA	M	A	B	C2	C3	T3S2	T3S3	T3S2R4	OTROS	A	B	C	K'	D	LATITUD	LONGITUD
T. Izq. Villa de Mitla	42.66	1	0	10146	4.6	85.1	1.1	5.7	0.7	1.3	0.8	0.4	0.3	89.7	1.1	9.2	0.081	0.512	16.921625	-96.407041
T. Izq. Villa de Mitla	42.66	3	0	5765	2.9	81.5	2.1	7.2	1.3	3.1	1.0	0.5	0.4	84.4	2.1	13.5	0.073	0.502	16.912413	-96.397785
San Pedro Totolapan	81.00	1	0	3579	5.5	75.1	3.3	7.4	2.3	3.1	1.8	0.9	0.6	80.6	3.3	16.1	0.068	0.511	16.672518	-96.306994
T. Izq. Nejapa de Madero	127.00	1	0	2929	4.2	76.2	4.4	8.0	1.3	3.2	1.4	0.7	0.6	80.4	4.4	15.2	0.071	0.511	16.621417	-96.037527
La Reforma	184.62	1	0	2323	2.3	78.0	4.8	8.0	1.2	3.5	1.3	0.8	0.1	80.3	4.8	14.9	0.076	0.503	16.399475	-95.767399
La Reforma	184.62	3	0	2324	2.3	77.6	4.6	7.9	1.4	3.6	1.5	1.0	0.1	79.9	4.6	15.5	0.077	0.510	16.398470	-95.760928
T. Der. Magdalena Tequisistlán	206.66	1	0	3438	7.5	79.3	1.5	3.6	1.4	2.7	2.6	0.4	1.0	86.8	1.5	11.7	0.075	0.520	16.415036	-95.597443
T. Izq. Jalapa de Márquez	224.60	3	0	3907	3.2	78.5	4.1	7.2	1.3	3.0	1.6	0.8	0.3	81.7	4.1	14.2	0.070	0.501	16.420279	-95.421964
X. C. La Ventosa - Salina Cruz (Cuota)	246.18	1	0	4077	4.1	80.3	4.4	5.8	1.5	1.7	1.3	0.8	0.1	84.4	4.4	11.2	0.068	0.518	16.334214	-95.284136
X. C. La Ventosa - Salina Cruz (Cuota)	246.18	3	0	6347	3.5	79.3	1.8	7.0	1.2	2.7	0.7	3.6	0.2	82.8	1.8	15.4	0.073	0.503	16.331289	-95.272193
Tehuantepec	250.60	1	0	8777	5.5	83.4	1.2	5.1	0.8	1.3	0.9	1.7	0.1	88.9	1.2	9.9	0.078	0.509	16.326083	-95.250782

17 CARR: Puebla - Huajuapán de León

CLAVE: 00049

RUTA: MEX-190

AÑO: 2022

LUGAR	ESTACION				CLASIFICACION VEHICULAR EN PORCIENTO										COORDENADAS					
	KM	TE	SC	TDPA	M	A	B	C2	C3	T3S2	T3S3	T3S2R4	OTROS	A	B	C	K'	D	LATITUD	LONGITUD
Puebla	0.00	3	1	31880	5.0	86.9	2.9	3.3	0.9	0.3	0.4	0.2	0.1	91.9	2.9	5.2	0.070	0.511	19.034231	-98.260695
Puebla	0.00	3	2	33425	5.2	86.8	2.8	3.3	1.0	0.2	0.4	0.2	0.1	92.0	2.8	5.2	0.071	0.511	19.034107	-98.260568
T. Izq. Santa María Acuyah	8.68	1	1	18596	3.6	88.4	2.0	3.2	1.2	0.9	0.3	0.3	0.1	92.0	2.0	6.0	0.085	0.515	19.025285	-98.291072
T. Izq. Santa María Acuyah	8.68	1	2	19760	3.8	88.3	1.9	3.2	1.3	0.8	0.3	0.3	0.1	92.1	1.9	6.0	0.080	0.515	19.025193	-98.291056
T. Izq. Santa María Acuyah	8.68	3	1	17332	4.6	87.5	1.3	3.5	1.5	0.9	0.3	0.3	0.1	92.1	1.3	6.6	0.086	0.531	19.023315	-98.301535
T. Izq. Santa María Acuyah	8.68	3	2	15285	3.9	87.7	1.1	3.8	1.7	1.0	0.3	0.4	0.1	91.6	1.1	7.3	0.080	0.531	19.023219	-98.301537
Chipilo	13.00	1	1	13405	11.1	80.2	1.1	3.7	1.9	1.2	0.4	0.3	0.1	91.3	1.1	7.6	0.091	0.510	19.011945	-98.321128
Chipilo	13.00	1	2	13965	10.8	81.0	1.0	3.5	2.0	1.0	0.3	0.3	0.1	91.8	1.0	7.2	0.098	0.510	19.011922	-98.321082
T. Der. Santa Isabel Cholula	17.28	1	0	18548	8.5	86.2	0.4	1.6	1.4	0.7	0.3	0.7	0.2	94.7	0.4	4.9	0.084	0.506	18.986431	-98.361802
T. Der. Santa Isabel Cholula	17.28	3	0	18303	8.2	84.5	0.9	2.8	1.3	1.1	0.5	0.6	0.1	92.7	0.9	6.4	0.091	0.515	18.978423	-98.370800
Atlixco	29.88	1	0	25776	8.4	87.2	0.3	1.9	0.8	0.6	0.3	0.3	0.2	95.6	0.3	4.1	0.072	0.507	18.930902	-98.406918
Atlixco	29.88	3	1	8952	5.4	81.5	1.2	8.0	1.3	1.0	0.7	0.8	0.1	86.9	1.2	11.9	0.085	0.506	18.867029	-98.440191
Atlixco	29.88	3	2	9154	5.3	81.5	1.1	8.2	1.2	1.1	0.8	0.7	0.1	86.8	1.1	12.1	0.087	0.506	18.867211	-98.440047
Tepeojuma	51.90	1	1	5627	4.7	79.5	1.5	7.9	2.0	1.6	1.3	1.2	0.3	84.2	1.5	14.3	0.084	0.505	18.735184	-98.448841
Tepeojuma	51.90	1	2	5523	4.6	79.9	1.3	8.2	1.9	1.4	1.2	1.2	0.3	84.5	1.3	14.2	0.083	0.505	18.735462	-98.448715
Izúcar de Matamoros	67.00	1	0	10486	17.8	74.0	0.9	2.7	1.9	0.9	0.8	0.6	0.4	91.8	0.9	7.3	0.066	0.501	18.634579	-98.468904
T. Der. Cuautla	70.00	3	0	11497	21.7	70.0	1.9	2.4	1.4	1.0	0.8	0.5	0.3	91.7	1.9	6.4	0.068	0.504	18.582725	-98.452037
Tehuizingo	113.30	1	0	6580	13.2	76.4	2.3	3.1	1.6	1.3	0.8	1.0	0.3	89.6	2.3	8.1	0.075	0.501	18.337386	-98.282123
Acatlán de Osorio	154.20	1	0	8408	11.8	81.6	1.2	2.7	0.8	0.7	0.4	0.5	0.3	93.4	1.2	5.4	0.079	0.505	18.182180	-98.058693

OAXACA

17 CARR: Puebla - Huajuapán de León

CLAVE: 00049

RUTA: MEX-190

AÑO: 2022

LUGAR	ESTACION				CLASIFICACION VEHICULAR EN PORCIENTO													COORDENADAS		
	KM	TE	SC	TDPA	M	A	B	C2	C3	T3S2	T3S3	T3S2R4	OTROS	A	B	C	K'	D	LATITUD	LONGITUD
Chila	192.30	3	0	2269	6.1	80.6	3.5	5.0	2.1	1.3	0.7	0.6	0.1	86.7	3.5	9.8	0.087	0.510	17.966461	-97.864121
Lim. Edos. Term. Pue. Ppia. Oax.	200.30	0	0																	
T. Izq. Las Palmas	202.10	1	0	2471	4.4	82.6	2.5	4.8	2.6	1.8	0.5	0.6	0.2	87.0	2.5	10.5	0.089	0.512	17.883331	-97.837857
Huajuapán de León	219.30	1	0	4267	8.2	78.3	1.3	5.0	1.1	3.8	1.1	0.3	0.9	86.5	1.3	12.2	0.077	0.529	17.837871	-97.791912

18 CARR: Ramal a Asunción Ixtaltepec

CLAVE: 20624

RUTA: MEX-185

AÑO: 2022

LUGAR	ESTACION				CLASIFICACION VEHICULAR EN PORCIENTO													COORDENADAS		
	KM	TE	SC	TDPA	M	A	B	C2	C3	T3S2	T3S3	T3S2R4	OTROS	A	B	C	K'	D	LATITUD	LONGITUD
T. C. Coatzacoalcos - Salina Cruz	0.00	3	0	2992	20.8	75.3	0.5	1.8	0.9	0.4	0.2	0.1	0.0	96.1	0.5	3.4	0.079	0.502	16.443131	-95.034390
Asunción Ixtaltepec	9.70	1	0	4100	12.2	84.4	0.5	1.3	0.9	0.4	0.1	0.2	0.0	96.6	0.5	2.9	0.080	0.500	16.493292	-95.064151

19 CARR: Ramal a Monte Albán

CLAVE:

RUTA: MEX

AÑO: 2022

LUGAR	ESTACION				CLASIFICACION VEHICULAR EN PORCIENTO													COORDENADAS		
	KM	TE	SC	TDPA	M	A	B	C2	C3	T3S2	T3S3	T3S2R4	OTROS	A	B	C	K'	D	LATITUD	LONGITUD
T. C. Oaxaca - Tehuantepec	0.00	0	0																	
Chimalpopoca	1.80	3	0	19500	13.0	83.2	0.2	3.1	0.3	0.1	0.0	0.1	0.0	96.2	0.2	3.6	0.069	0.501	17.073287	-96.760127
T. Der. San Pedro Ixtlahuaca	2.75	3	0	2221	14.3	79.6	0.5	4.3	0.2	0.9	0.1	0.0	0.1	93.9	0.5	5.6	0.090	0.522	17.070783	-96.765493
Monte Albán	8.00	0	0																	

20 CARR: Ramal a Refinería Pemex (Refinería del Pacifico)

CLAVE:

RUTA: MEX

AÑO: 2022

LUGAR	ESTACION				CLASIFICACION VEHICULAR EN PORCIENTO													COORDENADAS		
	KM	TE	SC	TDPA	M	A	B	C2	C3	T3S2	T3S3	T3S2R4	OTROS	A	B	C	K'	D	LATITUD	LONGITUD
T. C. Coatzacoalcos - Salina Cruz	0.00	3	1	5221	6.8	83.3	1.8	3.8	1.3	1.1	0.5	1.1	0.3	90.1	1.8	8.1	0.096	0.508	16.220948	-95.202214
T. C. Coatzacoalcos - Salina Cruz	0.00	3	2	5383	6.9	83.3	1.6	3.9	1.3	0.9	0.5	1.3	0.3	90.2	1.6	8.2	0.099	0.508	16.221079	-95.202300
Refinería de Pemex	3.00	0	0																	

21 CARR: San Pablo Villa de Mitla - T. C. (Tuxtepec - Palomares)

CLAVE: 00106

RUTA: MEX-179

AÑO: 2022

LUGAR	ESTACION				CLASIFICACION VEHICULAR EN PORCIENTO													COORDENADAS		
	KM	TE	SC	TDPA	M	A	B	C2	C3	T3S2	T3S3	T3S2R4	OTROS	A	B	C	K'	D	LATITUD	LONGITUD
T. C. Oaxaca - Tehuantepec	0.00	3	0	4461	3.0	90.6	0.9	3.1	1.1	0.5	0.3	0.3	0.2	93.6	0.9	5.5	0.081	0.529	16.918145	-96.392182
San Pedro y San Pablo Ayutla	55.00	1	0	1771	7.0	88.4	0.4	2.1	1.4	0.3	0.2	0.2	0.0	95.4	0.4	4.2	0.078	0.502	17.016355	-96.082457

OAXACA

21 CARR: San Pablo Villa de Mitla - T. C. (Tuxtepec - Palomares)

CLAVE: 00106

RUTA: MEX-179

AÑO: 2022

LUGAR	ESTACION				CLASIFICACION VEHICULAR EN PORCIENTO													COORDENADAS		
	KM	TE	SC	TDPA	M	A	B	C2	C3	T3S2	T3S3	T3S2R4	OTROS	A	B	C	K'	D	LATITUD	LONGITUD
T. Der. Zacatepec	90.00	1	0	579	1.6	87.7	0.4	8.4	0.8	0.7	0.0	0.3	0.1	89.3	0.4	10.3	0.093	0.509	17.148229	-96.034645
Lim. Edos. Term. Oax. Ppia. Ver.	217.70	0	0																	
T. C. Tuxtepec - Ent. Palomares	238.70	1	0	1253	15.5	80.1	0.7	0.8	0.4	1.0	0.8	0.2	0.5	95.6	0.7	3.7	0.105	0.505	17.691448	-95.735291

22 CARR: Santiago Pinotepa Nacional - Salina Cruz

CLAVE: 20074

RUTA: MEX-200

AÑO: 2022

LUGAR	ESTACION				CLASIFICACION VEHICULAR EN PORCIENTO													COORDENADAS		
	KM	TE	SC	TDPA	M	A	B	C2	C3	T3S2	T3S3	T3S2R4	OTROS	A	B	C	K'	D	LATITUD	LONGITUD
Santiago Pinotepa Nacional	0.00	3	0	4431	10.3	77.5	1.2	4.9	1.1	3.2	1.1	0.2	0.5	87.8	1.2	11.0	0.080	0.503	16.329105	-98.022773
San Andrés Huaxpaltepec	18.07	3	0	3639	12.5	74.9	1.4	5.2	1.3	3.2	1.1	0.1	0.3	87.4	1.4	11.2	0.079	0.502	16.324435	-97.905483
San José del Progreso	59.51	1	0	3451	8.7	78.0	1.1	6.3	1.1	2.6	1.3	0.3	0.6	86.7	1.1	12.2	0.101	0.518	16.107499	-97.707593
T. Izq. Tututepec	65.85	1	0	4422	9.9	80.9	1.4	3.2	1.4	1.9	1.0	0.2	0.1	90.8	1.4	7.8	0.104	0.511	16.083033	-97.648081
T. Izq. Tututepec	65.85	3	0	5863	10.8	78.1	0.7	4.5	0.6	3.8	0.8	0.2	0.5	88.9	0.7	10.4	0.078	0.501	16.075841	-97.627713
Río Grande	91.00	1	0	4205	16.1	77.3	1.5	1.7	0.9	1.2	0.7	0.1	0.5	93.4	1.5	5.1	0.094	0.501	16.013542	-97.465693
Río Grande	91.00	3	0	3294	17.7	75.3	1.8	2.0	1.0	1.3	0.7	0.2	0.0	93.0	1.8	5.2	0.114	0.501	15.987822	-97.414452
San Isidro Llano Grande	110.50	1	0	2616	8.3	78.7	1.4	6.4	1.1	2.8	1.1	0.1	0.1	87.0	1.4	11.6	0.097	0.503	15.949343	-97.288692
T. Izq. Bajos de Chila	131.94	1	0	5005	15.0	78.5	1.3	2.8	0.8	1.0	0.5	0.1	0.0	93.5	1.3	5.2	0.076	0.504	15.914131	-97.123239
T. Izq. Bajos de Chila	131.94	3	0	7174	16.9	76.7	1.2	2.3	0.9	1.0	0.5	0.4	0.1	93.6	1.2	5.2	0.083	0.500	15.908033	-97.118026
T. Izq. Aeropuerto	137.40	1	0	7188	15.5	72.6	1.1	5.4	0.4	3.4	0.9	0.2	0.5	88.1	1.1	10.8	0.072	0.504	15.873143	-97.095053
Puerto Escondido	141.54	1	1	6915	16.7	74.5	0.4	2.0	0.5	3.1	2.1	0.4	0.3	91.2	0.4	8.4	0.080	0.514	15.868722	-97.083313
Puerto Escondido	141.54	1	2	7322	16.9	75.3	0.3	1.8	0.5	2.8	1.7	0.4	0.3	92.2	0.3	7.5	0.079	0.514	15.868814	-97.083277
Puerto Escondido	141.54	3	1	8589	20.2	70.5	0.9	4.2	1.0	1.5	0.9	0.5	0.3	90.7	0.9	8.4	0.085	0.505	15.853632	-97.053551
Puerto Escondido	141.54	3	1	7256	17.9	77.2	0.8	2.5	0.6	0.5	0.3	0.1	0.1	95.1	0.8	4.1	0.084	0.500	15.834060	-97.036374
Puerto Escondido	141.54	3	2	9637	20.5	70.0	0.9	4.5	0.9	1.5	0.9	0.4	0.4	90.5	0.9	8.6	0.075	0.505	15.853676	-97.053477
Puerto Escondido	141.54	3	2	7250	17.4	77.4	1.0	2.7	0.5	0.4	0.4	0.1	0.1	94.8	1.0	4.2	0.083	0.500	15.834106	-97.036311
T. Izq. Oaxaca (Cuota)	151.76	1	1	3146	17.2	76.2	1.0	2.9	1.0	0.9	0.5	0.2	0.1	93.4	1.0	5.6	0.096	0.502	15.810904	-96.992927
T. Izq. Oaxaca (Cuota)	151.76	1	2	3127	16.9	77.1	0.9	2.5	1.1	0.8	0.5	0.1	0.1	94.0	0.9	5.1	0.092	0.502	15.811113	-96.993312
T. Izq. Oaxaca (Cuota)	151.76	3	1	3079	15.6	74.5	0.9	5.8	0.9	1.2	0.9	0.1	0.1	90.1	0.9	9.0	0.098	0.528	15.805577	-96.974362
T. Izq. Oaxaca (Cuota)	151.76	3	2	3445	15.4	74.8	0.9	5.7	0.8	1.1	1.0	0.2	0.1	90.2	0.9	8.9	0.091	0.528	15.805676	-96.974335
T. Izq. Valdeflores Colotepec	167.00	1	1	2182	14.9	77.2	1.2	3.1	1.2	1.4	0.9	0.1	0.0	92.1	1.2	6.7	0.102	0.500	15.768348	-96.861281
T. Izq. Valdeflores Colotepec	167.00	1	2	2183	14.9	76.5	1.6	3.4	1.2	1.3	1.0	0.1	0.0	91.4	1.6	7.0	0.092	0.500	15.768450	-96.861325
T. Izq. Valdeflores Colotepec	167.00	3	1	1984	13.6	75.5	1.2	6.5	0.8	1.4	0.8	0.1	0.1	89.1	1.2	9.7	0.105	0.501	15.766652	-96.846375
T. Izq. Valdeflores Colotepec	167.00	3	2	1975	13.9	75.9	1.0	6.1	0.9	1.0	1.0	0.1	0.1	89.8	1.0	9.2	0.092	0.501	15.766737	-96.846358
T. Izq. Oaxaca	170.70	1	1	2114	16.2	72.0	1.6	6.6	1.1	1.1	1.1	0.2	0.1	88.2	1.6	10.2	0.104	0.501	15.759574	-96.825717
T. Izq. Oaxaca	170.70	1	2	2120	16.5	71.7	1.5	6.5	1.2	1.3	1.0	0.2	0.1	88.2	1.5	10.3	0.093	0.501	15.759670	-96.825659

OAXACA

22 CARR: Santiago Pinotepa Nacional - Salina Cruz

CLAVE: 20074

RUTA: MEX-200

AÑO: 2022

LUGAR	ESTACION				CLASIFICACION VEHICULAR EN PORCIENTO													COORDENADAS		
	KM	TE	SC	TDPA	M	A	B	C2	C3	T3S2	T3S3	T3S2R4	OTROS	A	B	C	K'	D	LATITUD	LONGITUD
T. Izq. Oaxaca	170.70	3	1	2037	15.4	72.5	1.5	7.0	0.8	1.4	1.2	0.1	0.1	87.9	1.5	10.6	0.108	0.503	15.747849	-96.812759
T. Izq. Oaxaca	170.70	3	2	2060	15.0	72.9	1.3	7.0	1.0	1.3	1.3	0.1	0.1	87.9	1.3	10.8	0.097	0.503	15.747920	-96.812686
San Isidro del Palmar	195.00	1	1	2052	10.9	76.7	1.6	7.3	0.8	1.5	0.9	0.1	0.2	87.6	1.6	10.8	0.100	0.505	15.722961	-96.617909
San Isidro del Palmar	195.00	1	2	2008	10.5	76.7	1.9	7.3	0.9	1.4	1.0	0.1	0.2	87.2	1.9	10.9	0.108	0.505	15.723062	-96.617907
T. Der. Mazunte	198.87	1	1	2618	12.8	75.3	1.4	7.6	0.6	1.3	0.7	0.1	0.2	88.1	1.4	10.5	0.117	0.506	15.716111	-96.586874
T. Der. Mazunte	198.87	1	2	2561	13.0	75.1	1.1	7.8	0.8	1.1	0.9	0.1	0.1	88.1	1.1	10.8	0.113	0.506	15.716207	-96.586882
T. Der. Mazunte	198.87	3	1	4227	20.6	69.4	0.9	6.4	0.5	1.2	0.7	0.1	0.2	90.0	0.9	9.1	0.098	0.502	15.716580	-96.581302
T. Der. Mazunte	198.87	3	2	4194	20.0	70.3	0.8	6.2	0.4	1.0	0.9	0.1	0.3	90.3	0.8	8.9	0.084	0.502	15.716672	-96.581359
T. Izq. Sta. María Tonameca	202.93	3	1	3563	15.1	75.0	1.0	5.2	0.5	1.9	0.8	0.1	0.4	90.1	1.0	8.9	0.095	0.511	15.729895	-96.537402
T. Izq. Sta. María Tonameca	202.93	3	2	3403	14.4	75.3	1.1	5.3	0.7	1.7	0.8	0.2	0.5	89.7	1.1	9.2	0.091	0.511	15.730017	-96.537370
T. Libramiento de Pochutla	209.15	1	1	3908	16.0	74.3	1.1	5.0	0.6	1.5	1.0	0.2	0.3	90.3	1.1	8.6	0.087	0.504	15.731870	-96.483884
T. Libramiento de Pochutla	209.15	1	2	3968	15.4	75.3	1.1	5.0	0.6	1.5	0.8	0.1	0.2	90.7	1.1	8.2	0.083	0.504	15.731918	-96.483871
X. C. Oaxaca - Puerto Ángel	209.95	1	0	8264	10.8	80.0	1.4	4.9	0.6	0.9	0.5	0.5	0.4	90.8	1.4	7.8	0.079	0.512	15.730615	-96.475797
X. C. Oaxaca - Puerto Ángel	209.95	3	0	5609	15.9	72.2	1.2	5.7	0.8	2.6	1.1	0.2	0.3	88.1	1.2	10.7	0.079	0.513	15.729041	-96.471073
T. Der. Cuatunanco	226.00	1	0	3716	7.0	78.7	1.6	5.8	1.2	2.3	1.5	1.0	0.9	85.7	1.6	12.7	0.073	0.505	15.733057	-96.351164
T. Der. Cuatunanco	226.00	3	0	3246	6.1	76.1	2.8	8.0	1.2	3.4	1.7	0.3	0.4	82.2	2.8	15.0	0.076	0.504	15.734899	-96.339266
T. C. El Zapote - Copalita	236.00	1	0	5355	11.5	75.8	1.3	5.9	1.2	1.6	1.0	0.8	0.9	87.3	1.3	11.4	0.069	0.507	15.762345	-96.273493
T. C. El Zapote - Copalita	236.00	3	0	8774	11.2	77.5	0.9	6.5	0.9	1.1	0.8	0.6	0.5	88.7	0.9	10.4	0.073	0.503	15.763678	-96.269960
T. Izq. Aeropuerto	237.68	3	0	9234	9.8	80.7	0.9	6.8	0.5	0.6	0.5	0.1	0.1	90.5	0.9	8.6	0.072	0.506	15.770394	-96.252078
T. Der. Santa Cruz Huatulco	250.00	1	0	7636	6.3	80.7	1.4	7.8	1.0	0.9	0.8	0.5	0.6	87.0	1.4	11.6	0.075	0.507	15.780199	-96.165173
T. Der. Santa Cruz Huatulco	250.00	3	0	3395	5.4	78.1	1.5	7.9	1.7	2.5	1.3	0.9	0.7	83.5	1.5	15.0	0.082	0.512	15.783886	-96.152548
T. Der. Tangolunda	254.50	1	0	3188	12.3	71.5	2.1	7.4	1.6	3.2	1.5	0.3	0.1	83.8	2.1	14.1	0.077	0.513	15.790104	-96.129383
T. Der. Tangolunda 2do Acceso	263.00	1	0	2360	11.0	72.5	2.1	9.0	1.4	2.0	1.5	0.1	0.4	83.5	2.1	14.4	0.075	0.516	15.818566	-96.068569
Barra de Copalita	264.00	1	0	3001	14.7	67.9	4.4	4.8	1.6	3.3	2.2	0.5	0.6	82.6	4.4	13.0	0.080	0.506	15.820675	-96.064477
Barra de Copalita	264.00	3	0	3308	12.1	67.3	3.2	12.1	1.2	2.1	1.6	0.2	0.2	79.4	3.2	17.4	0.077	0.516	15.819721	-96.054384
El Coyul	300.30	3	0	2205	5.3	79.0	2.5	7.4	1.7	2.6	1.3	0.1	0.1	84.3	2.5	13.2	0.093	0.509	15.918745	-95.800490
T. Der. Río Seco	307.00	3	0	2300	5.1	76.9	2.9	6.5	1.3	4.4	2.2	0.3	0.4	82.0	2.9	15.1	0.083	0.509	15.944410	-95.751918
Sta. Ma. Huamelula	316.00	1	0	2373	5.8	73.5	3.2	8.1	2.1	4.3	2.5	0.2	0.3	79.3	3.2	17.5	0.095	0.528	15.988205	-95.711376
Santiago Astata	320.00	1	0	2513	4.8	79.8	3.0	6.2	1.7	2.8	1.4	0.1	0.2	84.6	3.0	12.4	0.083	0.505	15.990064	-95.677810
T. Der. Concepción Bamba	352.10	1	0	2042	4.1	70.0	4.7	8.8	2.8	4.7	3.1	0.9	0.9	74.1	4.7	21.2	0.091	0.506	16.013746	-95.439614
Morro de Mazatán	365.50	1	0	3243	5.8	70.4	2.6	5.6	7.7	4.6	2.7	0.2	0.4	76.2	2.6	21.2	0.079	0.510	16.099399	-95.383898
T. C. La Ventosa - Salina Cruz (Cuota)	380.00	1	0	3364	2.6	79.7	2.3	8.7	1.5	2.1	1.6	0.8	0.7	82.3	2.3	15.4	0.081	0.508	16.141822	-95.295171
T. C. La Ventosa - Salina Cruz (Cuota)	380.00	3	0	3346	3.7	83.0	1.5	6.3	1.5	1.7	1.3	0.6	0.4	86.7	1.5	11.8	0.082	0.502	16.156488	-95.277341
Salina Cruz	394.00	0	0																	

OAXACA

23 CARR: Tapanatepec - Talismán

CLAVE: 00075

RUTA: MEX-200

AÑO: 2022

LUGAR	ESTACION				CLASIFICACION VEHICULAR EN PORCIENTO														COORDENADAS	
	KM	TE	SC	TDPA	M	A	B	C2	C3	T3S2	T3S3	T3S2R4	OTROS	A	B	C	K'	D	LATITUD	LONGITUD
Tapanatepec	0.00	3	0	6392	9.2	69.1	2.6	4.0	3.5	5.3	1.6	3.8	0.9	78.3	2.6	19.1	0.074	0.507	16.345074	-94.190619
Lim. Edos. Term. Oax. Ppia. Chis.	25.90	0	0																	
T. Der. Emiliano Zapata	26.20	1	0	3735	4.8	64.6	3.3	5.9	2.3	9.6	2.4	6.4	0.7	69.4	3.3	27.3	0.067	0.542	16.217242	-94.051906
T. Der. Emiliano Zapata	26.20	3	0	4096	6.8	63.4	3.3	6.8	2.6	8.2	2.3	5.8	0.8	70.2	3.3	26.5	0.069	0.504	16.214648	-94.039113
T. C. Libramiento de Arriaga	41.00	3	0	4506	7.6	69.1	2.4	3.4	4.9	6.1	2.0	3.7	0.8	76.7	2.4	20.9	0.084	0.502	16.224836	-93.925585
Arriaga	45.00	1	0	6750	7.6	68.5	2.5	3.1	4.8	6.1	2.2	4.3	0.9	76.1	2.5	21.4	0.070	0.539	16.221849	-93.936827
Arriaga	45.00	3	1	3999	13.5	75.1	2.3	6.9	0.6	0.8	0.5	0.2	0.1	88.6	2.3	9.1	0.076	0.532	16.236959	-93.882807
Arriaga	45.00	3	2	3523	13.6	75.1	2.3	6.7	0.7	0.8	0.5	0.2	0.1	88.7	2.3	9.0	0.068	0.532	16.236959	-93.882714
X. C. Arriaga- Ocozocoautla (Cuota)	47.00	3	1	4387	8.3	74.0	2.5	6.7	1.4	4.0	1.0	1.6	0.5	82.3	2.5	15.2	0.073	0.509	16.229082	-93.872733
X. C. Arriaga- Ocozocoautla (Cuota)	47.00	3	2	4548	8.3	73.7	2.5	6.7	1.5	4.0	1.0	1.7	0.6	82.0	2.5	15.5	0.067	0.509	16.232990	-93.876455
T. Der. Libramiento de Arriaga	49.50	1	1	4340	8.3	72.3	2.6	7.1	1.6	4.2	1.3	2.0	0.6	80.6	2.6	16.8	0.082	0.508	16.222614	-93.867381
T. Der. Libramiento de Arriaga	49.50	1	2	4207	8.3	72.3	2.7	7.1	1.6	4.3	1.2	2.0	0.5	80.6	2.7	16.7	0.106	0.508	16.222687	-93.867278
T. Der. Libramiento de Arriaga	49.50	3	1	4482	6.1	70.7	2.7	7.4	1.4	6.5	1.7	2.8	0.7	76.8	2.7	20.5	0.076	0.516	16.208974	-93.856048
T. Der. Libramiento de Arriaga	49.50	3	2	4197	6.2	70.6	2.8	7.3	1.4	6.4	1.7	2.9	0.7	76.8	2.8	20.4	0.079	0.516	16.209047	-93.855936
X. C. Ramal a Paredón	68.60	1	1	3890	6.0	74.0	2.3	6.1	1.8	5.9	1.0	2.4	0.5	80.0	2.3	17.7	0.080	0.523	16.082746	-93.771023
X. C. Ramal a Paredón	68.60	1	2	4258	6.0	74.2	2.3	6.1	1.5	5.9	1.0	2.4	0.6	80.2	2.3	17.5	0.078	0.523	16.082809	-93.770957
Tonalá	68.80	1	1	5059	6.8	70.7	2.8	7.2	1.6	6.3	1.4	2.7	0.5	77.5	2.8	19.7	0.079	0.512	16.117125	-93.790260
Tonalá	68.80	1	2	4812	6.6	70.9	2.8	7.2	1.5	6.3	1.4	2.8	0.5	77.5	2.8	19.7	0.078	0.512	16.117180	-93.790148
T. Der. Puerto Arista	73.00	1	1	3525	5.4	66.8	2.7	7.9	1.5	9.0	2.5	3.6	0.6	72.2	2.7	25.1	0.083	0.501	16.059843	-93.741692
T. Der. Puerto Arista	73.00	1	2	3537	5.2	66.7	2.8	7.8	1.7	9.1	2.6	3.6	0.5	71.9	2.8	25.3	0.090	0.501	16.059907	-93.741645
T. Der. Puerto Arista	73.00	3	1	3145	5.4	64.8	3.7	7.6	2.9	8.9	2.3	3.7	0.7	70.2	3.7	26.1	0.082	0.507	16.056124	-93.735041
T. Der. Puerto Arista	73.00	3	2	3237	5.4	65.0	3.7	7.7	2.8	8.8	2.3	3.7	0.6	70.4	3.7	25.9	0.081	0.507	16.056242	-93.734985
T. Der. Tres Picos	100.40	1	1	3359	2.9	68.8	4.0	5.4	2.3	8.9	2.5	4.4	0.8	71.7	4.0	24.3	0.063	0.516	15.922737	-93.555029
T. Der. Tres Picos	100.40	1	2	3587	2.7	68.6	4.1	5.4	2.2	9.1	2.7	4.5	0.7	71.3	4.1	24.6	0.081	0.516	15.922855	-93.554955
T. Der. Tres Picos	100.40	3	1	3526	5.6	61.2	4.0	8.7	2.8	9.5	2.8	4.6	0.8	66.8	4.0	29.2	0.064	0.521	15.906094	-93.522735
T. Der. Tres Picos	100.40	3	2	3244	5.6	61.6	3.9	8.8	2.5	9.7	2.6	4.4	0.9	67.2	3.9	28.9	0.079	0.521	15.906230	-93.522689
T. Der. Los Patos	114.75	1	1	2895	4.4	64.7	4.1	8.4	2.1	9.3	1.9	4.2	0.9	69.1	4.1	26.8	0.069	0.515	15.840669	-93.437462
T. Der. Los Patos	114.75	1	2	2727	4.4	65.0	4.0	8.4	2.1	9.2	1.8	4.2	0.9	69.4	4.0	26.6	0.085	0.515	15.840941	-93.437117
T. Der. Los Patos	114.75	3	1	3076	5.0	71.3	4.0	7.4	2.2	3.8	2.1	3.4	0.8	76.3	4.0	19.7	0.073	0.555	15.815480	-93.415986
T. Der. Los Patos	114.75	3	2	2465	4.8	71.5	3.9	7.5	2.2	3.8	2.1	3.4	0.8	76.3	3.9	19.8	0.079	0.555	15.815607	-93.415483
T. Der. San Isidro	125.00	1	1	3109	6.1	66.9	3.9	6.0	2.1	7.8	2.5	3.8	0.9	73.0	3.9	23.1	0.064	0.503	15.779726	-93.364845
T. Der. San Isidro	125.00	1	2	3066	6.0	66.9	3.9	5.9	2.2	7.7	2.5	4.0	0.9	72.9	3.9	23.2	0.082	0.503	15.781490	-93.364596
T. Der. San Isidro	125.00	3	1	3290	5.1	68.6	3.5	6.2	2.4	7.4	2.3	3.6	0.9	73.7	3.5	22.8	0.076	0.522	15.774547	-93.353081
T. Der. San Isidro	125.00	3	2	3019	5.3	67.9	3.6	6.3	2.6	7.4	2.4	3.6	0.9	73.2	3.6	23.2	0.087	0.522	15.775921	-93.353168
Pijijapan	144.45	1	1	5727	9.8	66.3	2.3	7.9	2.3	4.9	2.1	3.9	0.5	76.1	2.3	21.6	0.087	0.519	15.697844	-93.210706

OAXACA

23 CARR: Tapanatepec - Talismán

CLAVE: 00075

RUTA: MEX-200

AÑO: 2022

LUGAR	ESTACION				CLASIFICACION VEHICULAR EN PORCIENTO														COORDENADAS	
	KM	TE	SC	TDPA	M	A	B	C2	C3	T3S2	T3S3	T3S2R4	OTROS	A	B	C	K'	D	LATITUD	LONGITUD
Pijijiapan	144.45	1	2	5310	9.4	64.6	2.5	8.6	2.5	5.3	2.2	4.4	0.5	74.0	2.5	23.5	0.097	0.519	15.699081	-93.211823
Valdivia	180.39	1	1	5037	21.7	55.4	2.4	7.5	1.7	6.1	1.4	3.0	0.8	77.1	2.4	20.5	0.073	0.504	15.510907	-92.955818
Valdivia	180.39	1	2	4966	19.9	54.5	2.7	8.8	2.1	6.5	1.4	3.3	0.8	74.4	2.7	22.9	0.076	0.504	15.511538	-92.956154
Valdivia	180.39	3	1	5753	14.3	62.4	2.3	7.6	2.7	4.8	1.5	3.5	0.9	76.7	2.3	21.0	0.077	0.520	15.499726	-92.940539
Valdivia	180.39	3	2	5309	13.9	61.1	2.5	8.6	2.8	5.2	1.4	3.7	0.8	75.0	2.5	22.5	0.090	0.520	15.499862	-92.940440
T. Der. Mapastepec	188.85	3	1	4341	13.7	64.9	3.5	3.8	1.6	6.9	1.8	2.9	0.9	78.6	3.5	17.9	0.069	0.504	15.453847	-92.879078
T. Der. Mapastepec	188.85	3	2	4412	13.9	64.9	4.2	3.5	1.6	6.4	1.6	2.9	1.0	78.8	4.2	17.0	0.085	0.504	15.454327	-92.878921
Sesecapa	197.20	3	1	3142	7.2	70.7	3.1	3.6	3.3	6.2	1.9	3.0	1.0	77.9	3.1	19.0	0.070	0.530	15.401362	-92.814198
Sesecapa	197.20	3	2	2790	8.9	68.2	4.3	3.0	2.1	7.7	1.5	3.5	0.8	77.1	4.3	18.6	0.089	0.530	15.401706	-92.814379
T. Der. Estación Soconusco	213.30	1	1	4042	9.8	68.6	3.1	3.5	2.8	6.5	1.6	3.1	1.0	78.4	3.1	18.5	0.076	0.518	15.350442	-92.693865
T. Der. Estación Soconusco	213.30	1	2	3758	9.8	69.1	3.0	3.2	2.5	6.3	1.8	3.5	0.8	78.9	3.0	18.1	0.088	0.518	15.338019	-92.711315
T. Der. Estación Soconusco	213.30	3	1	3822	10.3	63.5	5.0	3.5	2.0	9.1	2.1	3.7	0.8	73.8	5.0	21.2	0.068	0.519	15.331741	-92.703754
T. Der. Estación Soconusco	213.30	3	2	4132	10.2	63.4	4.9	3.9	1.7	8.8	2.2	4.0	0.9	73.6	4.9	21.5	0.068	0.519	15.346506	-92.684930
Villa Comaltitán	233.00	1	1	4571	9.0	69.3	2.1	4.9	2.9	6.8	1.6	2.6	0.8	78.3	2.1	19.6	0.078	0.539	15.237312	-92.587411
Villa Comaltitán	233.00	1	2	3909	9.4	68.5	2.5	4.9	2.6	6.6	1.5	3.1	0.9	77.9	2.5	19.6	0.078	0.539	15.237628	-92.587139
T. Der a Lázaro Cárdenas	238.20	1	1	5361	7.9	74.3	3.4	3.2	1.5	5.9	1.1	2.2	0.5	82.2	3.4	14.4	0.081	0.535	15.182914	-92.550238
T. Der a Lázaro Cárdenas	238.20	1	2	4658	7.8	73.4	3.6	3.4	1.8	5.9	0.8	2.6	0.7	81.2	3.6	15.2	0.091	0.535	15.184851	-92.550365
T. Libramiento de Huixtla Oeste	245.00	0	0																	
Huixtla	250.50	1	1	4197	8.9	73.6	2.6	2.4	2.2	5.1	2.0	2.3	0.9	82.5	2.6	14.9	0.063	0.554	15.158263	-92.506875
Huixtla	250.50	1	2	5212	8.9	73.0	2.9	2.2	2.1	5.5	1.9	2.7	0.8	81.9	2.9	15.2	0.073	0.554	15.158403	-92.506827
Huixtla	250.50	3	1	9618	10.5	76.6	1.5	4.6	0.9	3.6	0.7	1.4	0.2	87.1	1.5	11.4	0.082	0.525	15.129342	-92.443261
Huixtla	250.50	3	2	8685	10.2	76.3	1.2	4.9	1.1	3.7	0.9	1.5	0.2	86.5	1.2	12.3	0.083	0.525	15.129378	-92.443190
T. Libramiento de Huixtla Este	251.80	0	0																	
T. Izq. Hamburgo	262.70	3	1	8491	8.2	74.9	2.3	6.1	0.9	4.4	1.1	1.9	0.2	83.1	2.3	14.6	0.072	0.520	15.106409	-92.431445
T. Izq. Hamburgo	262.70	3	2	7835	10.2	73.0	1.9	6.3	1.1	4.4	0.9	1.9	0.3	83.2	1.9	14.9	0.079	0.520	15.105482	-92.431179
T. Izq. Huehuetán	273.70	1	1	7381	11.2	74.1	1.5	4.7	1.1	4.3	1.0	1.6	0.5	85.3	1.5	13.2	0.078	0.510	15.016264	-92.402834
T. Izq. Huehuetán	273.70	1	2	7089	10.9	75.0	1.5	4.2	1.0	4.2	1.0	1.6	0.6	85.9	1.5	12.6	0.083	0.510	15.016246	-92.402747
T. Izq. Huehuetán	273.70	3	1	9046	10.5	73.1	2.3	6.5	0.7	4.2	0.9	1.6	0.2	83.6	2.3	14.1	0.086	0.521	14.992487	-92.402439
T. Izq. Huehuetán	273.70	3	2	8306	11.6	70.8	2.1	7.5	0.7	4.4	0.9	1.8	0.2	82.4	2.1	15.5	0.098	0.521	14.992510	-92.402357
T. C. Libramiento Sur de Tapachula Oeste	283.61	3	1	6362	3.5	86.1	1.4	6.8	0.7	1.0	0.3	0.2	0.0	89.6	1.4	9.0	0.097	0.508	14.906103	-92.320224
T. C. Libramiento Sur de Tapachula Oeste	283.61	3	2	6167	3.1	86.8	1.2	7.1	0.5	1.0	0.2	0.1	0.0	89.9	1.2	8.9	0.100	0.508	14.906183	-92.320229
Tapachula	292.25	1	1	9341	3.3	82.8	1.1	6.3	1.0	2.7	1.1	0.9	0.8	86.1	1.1	12.8	0.074	0.510	14.911517	-92.336302
Tapachula	292.25	1	2	9727	3.5	82.7	1.1	6.7	0.7	2.5	1.1	0.9	0.8	86.2	1.1	12.7	0.076	0.510	14.911509	-92.336046
T. C. Libramiento Sur de Tapachula Este	298.00	1	1	11326	5.3	90.3	0.4	3.1	0.2	0.5	0.2	0.0	0.0	95.6	0.4	4.0	0.084	0.525	14.890635	-92.232376
T. C. Libramiento Sur de Tapachula Este	298.00	1	2	10228	5.3	89.7	0.4	3.5	0.3	0.6	0.2	0.0	0.0	95.0	0.4	4.6	0.082	0.525	14.890796	-92.232300

OAXACA

23 CARR: Tapanatepec - Talismán

CLAVE: 00075

RUTA: MEX-200

AÑO: 2022

LUGAR	ESTACION				CLASIFICACION VEHICULAR EN PORCIENTO										COORDENADAS					
	KM	TE	SC	TDPA	M	A	B	C2	C3	T3S2	T3S3	T3S2R4	OTROS	A	B	C	K'	D	LATITUD	LONGITUD
T. Der. Cd. Hidalgo	302.75	1	1	13879	7.0	85.3	0.9	3.7	0.5	2.0	0.2	0.3	0.1	92.3	0.9	6.8	0.070	0.504	14.908121	-92.203821
T. Der. Cd. Hidalgo	302.75	1	2	13658	6.8	84.8	0.9	3.7	0.7	2.2	0.3	0.5	0.1	91.6	0.9	7.5	0.098	0.504	14.908212	-92.203875
Tuxtla Chico	307.00	1	0	14899	8.9	86.0	0.4	3.6	0.3	0.3	0.4	0.0	0.1	94.9	0.4	4.7	0.075	0.517	14.930968	-92.164680
Talismán	310.77	1	0	2954	40.1	55.1	0.4	1.6	0.0	2.5	0.1	0.0	0.2	95.2	0.4	4.4	0.081	0.502	14.960688	-92.151058

24 CARR: Tapanatepec - Tuxtla Gutiérrez

CLAVE: 00060

RUTA: MEX-190

AÑO: 2022

LUGAR	ESTACION				CLASIFICACION VEHICULAR EN PORCIENTO										COORDENADAS					
	KM	TE	SC	TDPA	M	A	B	C2	C3	T3S2	T3S3	T3S2R4	OTROS	A	B	C	K'	D	LATITUD	LONGITUD
Tapanatepec	0.00	3	0	2425	15.5	71.9	2.6	6.9	0.7	1.7	0.5	0.1	0.1	87.4	2.6	10.0	0.088	0.537	16.371157	-94.184429
Libramiento de San Pedro Tapanatepec	0.75	3	0	1129	14.8	64.8	1.9	8.1	2.2	3.2	4.5	0.3	0.2	79.6	1.9	18.5	0.081	0.518	16.372416	-94.175945
Lim. Edos. Term. Oax. Ppia. Chis.	17.90	0	0																	
Rizo de Oro	26.60	1	0	1005	14.9	65.9	2.4	6.4	1.9	3.1	5.0	0.2	0.2	80.8	2.4	16.8	0.086	0.518	16.475495	-94.084698
T. Der. Arriaga	56.80	1	0	2632	12.2	75.0	0.9	6.8	0.9	1.9	2.0	0.1	0.2	87.2	0.9	11.9	0.093	0.508	16.567059	-93.852786
T. Der. Arriaga	56.80	3	0	3800	9.5	75.9	1.2	7.7	1.5	2.3	1.7	0.1	0.1	85.4	1.2	13.4	0.089	0.509	16.573991	-93.841813
Cintalapa	75.60	1	0	5560	9.8	80.7	1.1	3.0	1.0	2.1	1.3	0.7	0.3	90.5	1.1	8.4	0.078	0.544	16.655561	-93.752140
T. Der. Jiquipilas	82.00	1	0	7261	9.7	80.5	2.2	3.4	1.7	1.1	0.8	0.4	0.2	90.2	2.2	7.6	0.073	0.509	16.687896	-93.667305
T. Der. Jiquipilas	82.00	3	0	5523	5.8	80.6	2.5	4.8	2.4	2.3	1.3	0.2	0.1	86.4	2.5	11.1	0.070	0.515	16.688246	-93.662401
T. C. Arriaga - Ocozocoautla (Cuota)	96.20	1	0	4763	3.6	81.5	1.8	5.8	2.9	2.6	1.4	0.3	0.1	85.1	1.8	13.1	0.071	0.516	16.686019	-93.545863
Ocozocoautla	123.29	1	0	5115	11.6	76.1	0.4	6.7	1.6	2.5	0.7	0.2	0.2	87.7	0.4	11.9	0.089	0.512	16.771885	-93.390638
Ocozocoautla	123.29	3	0	5320	10.9	81.6	0.8	4.1	0.7	0.5	0.6	0.3	0.5	92.5	0.8	6.7	0.078	0.513	16.757951	-93.362305
T. Izq. Aeropuerto	132.70	1	0	5155	11.0	76.8	0.3	8.7	0.4	1.6	0.6	0.2	0.4	87.8	0.3	11.9	0.070	0.529	16.752728	-93.340779
T. Izq. Aeropuerto	132.70	3	1	7277	2.3	81.9	1.9	7.9	0.9	2.5	1.0	1.3	0.3	84.2	1.9	13.9	0.124	0.502	16.758854	-93.325702
T. Izq. Aeropuerto	132.70	3	2	7323	2.5	81.0	2.2	7.8	1.1	2.7	1.1	1.3	0.3	83.5	2.2	14.3	0.077	0.502	16.758935	-93.325749
T. Izq. Berriozábal (1º Acceso)	136.40	1	1	9010	3.8	76.8	3.7	7.9	2.4	2.5	1.0	1.6	0.3	80.6	3.7	15.7	0.104	0.513	16.767477	-93.296254
T. Izq. Berriozábal (1º Acceso)	136.40	1	2	9491	3.8	76.7	3.5	7.9	2.5	2.7	0.9	1.7	0.3	80.5	3.5	16.0	0.078	0.513	16.767558	-93.296273
T. Izq. Berriozábal (1º Acceso)	136.40	3	1	10020	3.4	83.5	2.6	4.5	2.2	1.8	0.5	1.3	0.2	86.9	2.6	10.5	0.101	0.501	16.768945	-93.280296
T. Izq. Berriozábal (1º Acceso)	136.40	3	2	10062	3.3	83.5	2.9	4.4	2.2	1.6	0.5	1.4	0.2	86.8	2.9	10.3	0.087	0.501	16.769036	-93.280296
T. Izq. San Fernando	151.70	1	1	19290	3.0	86.5	1.2	5.1	1.4	1.2	0.6	0.8	0.2	89.5	1.2	9.3	0.084	0.541	16.770795	-93.197547
T. Izq. San Fernando	151.70	1	2	16352	3.0	86.8	1.3	5.0	1.3	1.1	0.6	0.7	0.2	89.8	1.3	8.9	0.085	0.541	16.770904	-93.197547
Tuxtla Gutiérrez	159.00	1	1	13972	3.9	84.7	1.4	6.1	1.0	1.4	0.8	0.5	0.2	88.6	1.4	10.0	0.107	0.509	16.767708	-93.193003
Tuxtla Gutiérrez	159.00	1	2	13491	3.7	85.1	1.2	6.0	1.0	1.5	0.8	0.5	0.2	88.8	1.2	10.0	0.091	0.509	16.767771	-93.192909

OAXACA

25 CARR: Tehuacán - Huajuapán de León

CLAVE: 00211

RUTA: MEX-125

AÑO: 2022

LUGAR	ESTACION				CLASIFICACION VEHICULAR EN PORCIENTO										COORDENADAS					
	KM	TE	SC	TDPA	M	A	B	C2	C3	T3S2	T3S3	T3S2R4	OTROS	A	B	C	K'	D	LATITUD	LONGITUD
Tehuacán	0.00	3	1	9363	8.1	83.6	0.5	4.5	1.4	1.0	0.6	0.2	0.1	91.7	0.5	7.8	0.080	0.531	18.436810	-97.401452
Tehuacán	0.00	3	2	8276	7.0	84.6	0.6	4.4	1.4	1.2	0.5	0.2	0.1	91.6	0.6	7.8	0.080	0.531	18.436701	-97.401403
Zapotitlán Salinas	28.00	1	0	2771	9.1	74.3	1.5	8.2	2.5	2.1	1.5	0.4	0.4	83.4	1.5	15.1	0.086	0.501	18.334052	-97.461124
Lim. Edos. Term. Pue. Ppia. Oax.	55.80	0	0																	
Santiago Chazumba	63.02	1	0	1303	6.1	74.4	1.2	6.6	2.9	3.7	3.7	0.8	0.6	80.5	1.2	18.3	0.085	0.502	18.201024	-97.674222
Santiago Chazumba	63.02	3	0	1862	9.4	75.7	0.7	5.8	1.6	2.8	2.8	0.7	0.5	85.1	0.7	14.2	0.096	0.503	18.181350	-97.681194
T. Izq. Santa María Camotlán	103.13	1	0	1711	3.1	74.9	1.6	9.3	2.5	4.4	3.0	0.7	0.5	78.0	1.6	20.4	0.088	0.526	17.906551	-97.688011
T. C. Huajuapán de León - Oaxaca	119.40	1	0	10573	13.5	80.8	0.8	3.0	0.6	0.7	0.2	0.3	0.1	94.3	0.8	4.9	0.074	0.501	17.821155	-97.756247

26 CARR: Tuxtepec - Ent. Palomares

CLAVE: 00180

RUTA: MEX-147

AÑO: 2022

LUGAR	ESTACION				CLASIFICACION VEHICULAR EN PORCIENTO										COORDENADAS					
	KM	TE	SC	TDPA	M	A	B	C2	C3	T3S2	T3S3	T3S2R4	OTROS	A	B	C	K'	D	LATITUD	LONGITUD
T. C. Tuxtepec - Oaxaca	0.00	3	0	4922	9.7	71.7	1.6	9.4	2.7	2.8	1.1	0.5	0.5	81.4	1.6	17.0	0.073	0.510	18.038276	-96.161438
X. C. El Rodeo - Reforma	15.20	3	0	2953	8.1	74.0	2.3	7.8	2.7	2.8	1.7	0.2	0.4	82.1	2.3	15.6	0.076	0.509	17.950289	-96.069695
Lim. Edos. Term. Oax. Ppia. Ver.	40.00	0	0																	
X. C. Playa Vicente - El Tomate	48.16	1	0	2228	13.6	76.5	2.2	3.1	2.2	1.0	0.5	0.4	0.5	90.1	2.2	7.7	0.087	0.504	17.783699	-95.833343
X. C. Playa Vicente - El Tomate	48.16	3	0	2806	13.6	78.0	0.9	3.9	1.3	0.8	0.5	0.2	0.8	91.6	0.9	7.5	0.091	0.501	17.781437	-95.827453
T. Der. Xochiapa	65.00	3	0	1748	14.7	75.0	1.9	2.5	1.7	2.2	0.8	0.6	0.6	89.7	1.9	8.4	0.093	0.501	17.694120	-95.721077
T. Izq. San Juan Evangelista	81.20	1	0	1606	20.5	69.7	1.1	2.7	3.5	0.9	0.8	0.6	0.2	90.2	1.1	8.7	0.095	0.506	17.617479	-95.639197
Lim. Edos. Term. Ver. Ppia. Oax.	87.00	0	0																	
María Lombardo de Caso	110.50	1	0	4181	12.6	77.0	0.6	7.6	1.0	0.7	0.2	0.2	0.1	89.6	0.6	9.8	0.078	0.501	17.453875	-95.435906
T. C. Coatzacoalcos - Salina Cruz	175.00	1	0	2306	14.4	78.6	1.0	4.3	0.6	0.5	0.4	0.1	0.1	93.0	1.0	6.0	0.077	0.504	17.138367	-95.070428

27 CARR: Tuxtepec - T. C. (Oaxaca - Tehuantepec)

CLAVE: 20090

RUTA: MEX-175

AÑO: 2022

LUGAR	ESTACION				CLASIFICACION VEHICULAR EN PORCIENTO										COORDENADAS					
	KM	TE	SC	TDPA	M	A	B	C2	C3	T3S2	T3S3	T3S2R4	OTROS	A	B	C	K'	D	LATITUD	LONGITUD
Tuxtepec	0.00	3	1	8115	10.3	82.9	0.6	4.3	0.7	0.5	0.1	0.5	0.1	93.2	0.6	6.2	0.072	0.503	18.053460	-96.153642
Tuxtepec	0.00	3	2	8028	9.7	82.6	0.7	4.4	0.8	0.6	0.3	0.7	0.2	92.3	0.7	7.0	0.066	0.503	18.053432	-96.153598
T. Izq. Palomares	5.75	3	0	6169	21.8	72.2	0.7	3.0	0.9	0.7	0.5	0.1	0.1	94.0	0.7	5.3	0.079	0.505	18.034517	-96.164694
San José Chiltepec	17.93	3	0	4259	14.3	69.5	0.7	7.4	5.9	1.0	0.1	1.0	0.1	83.8	0.7	15.5	0.069	0.502	17.943476	-96.173142
Valle Nacional	47.07	1	0	4175	7.5	81.6	0.9	7.1	1.0	1.5	0.1	0.1	0.2	89.1	0.9	10.0	0.071	0.503	17.779183	-96.293047
Valle Nacional	47.07	3	0	3141	8.2	84.8	0.9	3.6	0.4	1.7	0.2	0.1	0.1	93.0	0.9	6.1	0.074	0.502	17.767252	-96.311677
La Esperanza	79.85	3	0	601	2.4	89.1	1.3	5.0	1.3	0.6	0.1	0.1	0.1	91.5	1.3	7.2	0.092	0.517	17.624766	-96.366593

OAXACA

27 CARR: Tuxtepec - T. C. (Oaxaca - Tehuantepec)

CLAVE: 20090

RUTA: MEX-175

AÑO: 2022

LUGAR	ESTACION				CLASIFICACION VEHICULAR EN PORCIENTO										COORDENADAS					
	KM	TE	SC	TDPA	M	A	B	C2	C3	T3S2	T3S3	T3S2R4	OTROS	A	B	C	K'	D	LATITUD	LONGITUD
Puerta del Sol	125.00	3	0	773	0.4	90.9	1.2	5.0	1.5	0.5	0.2	0.2	0.1	91.3	1.2	7.5	0.085	0.504	17.529576	-96.511747
T. Der. Ixtepeji	181.39	3	0	2374	3.0	84.1	1.7	8.0	1.6	1.2	0.2	0.1	0.1	87.1	1.7	11.2	0.084	0.513	17.238679	-96.562725
T. Izq. Yuvila	193.67	1	0	2510	1.8	94.0	0.2	2.0	1.5	0.2	0.1	0.1	0.1	95.8	0.2	4.0	0.104	0.504	17.175928	-96.605501
T. C. Oaxaca - Tehuantepec	212.70	1	1	6898	9.6	86.8	0.3	1.9	0.7	0.3	0.2	0.1	0.1	96.4	0.3	3.3	0.085	0.510	17.067396	-96.677250
T. C. Oaxaca - Tehuantepec	212.70	1	2	6637	9.6	86.6	0.4	1.9	0.8	0.3	0.2	0.1	0.1	96.2	0.4	3.4	0.092	0.510	17.067359	-96.677108

28 CARR: Yucudaa - Santiago Pinotepa Nacional

CLAVE: 20030

RUTA: MEX-125

AÑO: 2022

LUGAR	ESTACION				CLASIFICACION VEHICULAR EN PORCIENTO										COORDENADAS					
	KM	TE	SC	TDPA	M	A	B	C2	C3	T3S2	T3S3	T3S2R4	OTROS	A	B	C	K'	D	LATITUD	LONGITUD
T. C. Huajuapán de León - Oaxaca	0.00	3	0	2888	2.9	76.0	2.5	11.3	1.9	3.2	1.7	0.3	0.2	78.9	2.5	18.6	0.069	0.507	17.564695	-97.426435
Yolomécatl	24.40	3	0	2710	4.3	75.6	2.3	11.1	1.8	3.0	1.4	0.2	0.3	79.9	2.3	17.8	0.064	0.511	17.459537	-97.574893
Tlaxiaco	57.00	3	0	4131	4.2	85.1	0.7	5.6	0.9	2.5	0.5	0.2	0.3	89.3	0.7	10.0	0.088	0.501	17.237056	-97.699020
T. Der. Santiago Juxcatlán	104.00	1	0	776	4.5	75.9	2.6	9.4	3.9	1.7	0.8	0.9	0.3	80.4	2.6	17.0	0.073	0.504	17.152051	-97.889872
Putla de Guerrero	145.00	1	0	2874	12.6	72.5	1.4	8.3	2.2	2.0	0.3	0.3	0.4	85.1	1.4	13.5	0.072	0.503	17.038421	-97.915104
Cacahuatpec	229.00	1	0	1394	8.6	80.7	3.0	4.9	0.9	0.9	0.4	0.5	0.1	89.3	3.0	7.7	0.085	0.502	16.625773	-98.141493
T. C. Las Cruces - Pinotepa Nacional	268.00	1	0	3926	10.7	81.4	0.4	3.1	0.5	2.5	0.9	0.1	0.4	92.1	0.4	7.5	0.078	0.506	16.381229	-98.091176

29 CARR: Cuacnopalan - Oaxaca (Cuota)

CLAVE: 00109

RUTA: MEX-135D

AÑO: 2022

LUGAR	ESTACION				CLASIFICACION VEHICULAR EN PORCIENTO										COORDENADAS					
	KM	TE	SC	TDPA	M	A	B	C2	C3	T3S2	T3S3	T3S2R4	OTROS	A	B	C	K'	D	LATITUD	LONGITUD
T. C. Puebla - Córdoba (Cuota)	0.00	3	0	12404	0.8	69.8	3.6	10.6	2.8	6.5	2.1	3.0	0.8	70.6	3.6	25.8	0.069	0.524	18.817077	-97.491121
T. Der. Cuacnopalan	1.80	3	0	12041	0.7	68.0	5.2	9.9	3.9	6.0	2.6	3.0	0.7	68.7	5.2	26.1	0.064	0.513	18.811320	-97.490654
Plaza de Cobro Tehuacán	40.00	2	0	11485	0.6	73.9	4.0	5.6	5.2	5.9	1.3	2.8	0.7	74.5	4.0	21.5	0.083	0.500	18.487088	-97.456196
Plaza de Cobro Tehuacán	40.00	3	0	6662	3.6	65.0	8.8	6.9	3.3	5.4	2.1	4.0	0.9	68.6	8.8	22.6	0.071	0.523	18.483873	-97.456524
X. C. Tehuacán - Huajuapán de León	48.00	3	0	6300	3.3	73.6	4.7	14.1	1.4	2.2	0.4	0.1	0.2	76.9	4.7	18.4	0.069	0.503	18.422462	-97.412524
T. Izq. San Gabriel Chilac	61.00	3	0	5660	2.9	70.4	7.2	6.1	3.5	4.3	1.3	3.5	0.8	73.3	7.2	19.5	0.072	0.524	18.324359	-97.368220
Plaza de Cobro Miahuatlán	70.70	2	0	5753	0.8	70.6	5.7	4.8	6.5	5.7	1.6	3.6	0.7	71.4	5.7	22.9	0.083	0.500	18.264632	-97.315617
Plaza de Cobro Miahuatlán	70.70	3	0	5352	2.5	67.1	8.4	6.6	3.4	6.1	1.4	4.3	0.2	69.6	8.4	22.0	0.069	0.532	18.261232	-97.311996
Lim. Edos. Term. Pue. Ppia. Oax.	83.50	0	0																	
T. Izq. Tepelmeme	123.60	3	0	5241	1.5	62.8	7.6	11.6	3.8	5.0	3.5	3.9	0.3	64.3	7.6	28.1	0.066	0.517	17.860652	-97.377600
X. C. Tlacotepec - Tepelmeme	125.78	3	0	5459	3.0	61.7	7.9	9.3	4.6	5.2	3.6	4.4	0.3	64.7	7.9	27.4	0.070	0.516	17.884615	-97.373337
Plaza de Cobro Coixtlahuaca	141.30	2	0	4826	0.8	68.2	6.1	4.9	7.1	6.3	1.5	4.2	0.9	69.0	6.1	24.9	0.083	0.500	17.726021	-97.353781
T. Izq. Asunción Nochistlán	175.50	1	0	4904	1.3	66.4	7.7	8.5	3.7	5.4	2.8	3.8	0.4	67.7	7.7	24.6	0.063	0.514	17.465901	-97.249046

OAXACA

29 CARR: Cuacnopalan - Oaxaca (Cuota)

CLAVE: 00109

RUTA: MEX-135D

AÑO: 2022

LUGAR	ESTACION				CLASIFICACION VEHICULAR EN PORCIENTO													COORDENADAS		
	KM	TE	SC	TDPA	M	A	B	C2	C3	T3S2	T3S3	T3S2R4	OTROS	A	B	C	K'	D	LATITUD	LONGITUD
T. Izq. Asunción Nochistlán	175.50	3	0	6015	1.1	67.8	4.6	12.3	3.3	5.2	2.4	3.0	0.3	68.9	4.6	26.5	0.066	0.503	17.457339	-97.242778
Plaza de Cobro Huitzo	220.00	2	0	6951	1.1	77.8	3.9	4.2	4.6	4.2	0.9	2.8	0.5	78.9	3.9	17.2	0.083	0.500	17.275031	-96.915296
Plaza de Cobro Huitzo	220.00	3	1	3800	2.1	75.3	5.1	8.0	2.6	3.1	1.1	2.1	0.6	77.4	5.1	17.5	0.071	0.514	17.269074	-96.907918
Plaza de Cobro Huitzo	220.00	3	2	3587	1.8	75.6	5.2	7.8	2.6	3.0	1.0	2.3	0.7	77.4	5.2	17.4	0.072	0.514	17.269143	-96.907869
T. C. Huajuapán de León - Oaxaca	242.70	1	1	4531	1.9	69.7	4.2	11.4	3.5	5.1	1.2	2.5	0.5	71.6	4.2	24.2	0.070	0.522	17.147280	-96.784988
T. C. Huajuapán de León - Oaxaca	242.70	1	2	4153	2.0	68.5	4.5	12.4	3.5	4.8	1.2	2.6	0.5	70.5	4.5	25.0	0.072	0.522	17.147352	-96.785084

30 CARR: Mitla - Tehuantepec (Cuota)

CLAVE:

RUTA: MEX-190D

AÑO: 2022

LUGAR	ESTACION				CLASIFICACION VEHICULAR EN PORCIENTO													COORDENADAS		
	KM	TE	SC	TDPA	M	A	B	C2	C3	T3S2	T3S3	T3S2R4	OTROS	A	B	C	K'	D	LATITUD	LONGITUD
Ent. C. Oaxaca - Tehuantepec	43.00	3	0	1658	2.5	83.6	0.7	9.7	1.8	0.8	0.9	0.0	0.0	86.1	0.7	13.2	0.089	0.514	16.913545	-96.394142
Ent. Mitla	50.90	1	0	1659	2.4	87.6	0.6	7.4	0.8	0.6	0.6	0.0	0.0	90.0	0.6	9.4	0.093	0.520	16.919136	-96.332612
Ent. Mitla	50.90	3	0	1762	3.6	83.1	0.9	9.3	1.8	0.4	0.7	0.2	0.0	86.7	0.9	12.4	0.102	0.517	16.927715	-96.322407
Ent. Hierve el Agua	62.10	1	0	1957	3.0	82.7	1.1	9.9	1.6	1.0	0.6	0.0	0.1	85.7	1.1	13.2	0.100	0.502	16.927253	-96.259910
Ent. Hierve el Agua	62.10	3	0	1997	2.5	82.9	0.9	9.9	1.8	1.1	0.8	0.0	0.1	85.4	0.9	13.7	0.085	0.506	16.921875	-96.250948
Ent. Sta. María Albarradas	71.00	1	0	1678	2.8	85.0	0.5	8.6	1.7	1.1	0.3	0.0	0.0	87.8	0.5	11.7	0.095	0.523	16.954622	-96.201447

31 CARR: Salina Cruz - La Ventosa (Cuota)

CLAVE: 00275

RUTA: MEX-185D

AÑO: 2022

LUGAR	ESTACION				CLASIFICACION VEHICULAR EN PORCIENTO													COORDENADAS		
	KM	TE	SC	TDPA	M	A	B	C2	C3	T3S2	T3S3	T3S2R4	OTROS	A	B	C	K'	D	LATITUD	LONGITUD
T. C. Santiago Pinotepa Nacional - Salina Cruz	0.00	0	0																	
Plaza de Cobro Tehuantepec	1.89	2	0	1359	2.4	68.3	1.9	4.0	14.3	4.0	2.5	2.2	0.4	70.7	1.9	27.4	0.082	0.500	16.162185	-95.289280
X. C. Oaxaca - Tehuantepec	23.19	1	0	1453	4.2	73.9	4.7	6.0	2.0	4.3	2.1	2.6	0.2	78.1	4.7	17.2	0.085	0.502	16.327264	-95.279574
X. C. Oaxaca - Tehuantepec	23.19	3	0	2977	2.0	75.6	0.8	2.8	3.3	4.2	2.6	7.8	0.9	77.6	0.8	21.6	0.071	0.513	16.339610	-95.275855
T. Izq. Oaxaca (Cuota)	34.00	3	0	2664	1.9	75.0	0.7	2.1	3.4	4.9	3.5	7.6	0.9	76.9	0.7	22.4	0.080	0.510	16.428909	-95.220355
Plaza de Cobro Ixtepec	47.49	2	0	1728	0.7	53.9	1.3	4.6	14.3	7.7	4.4	12.1	1.0	54.6	1.3	44.1	0.082	0.500	16.561479	-95.134267
T. C. Coatzacoalcos - Salina Cruz	75.39	1	0	2193	1.1	65.4	2.9	8.9	3.1	6.4	4.4	7.2	0.6	66.5	2.9	30.6	0.064	0.509	16.586703	-94.954903
T. C. Coatzacoalcos - Salina Cruz	75.39	3	0	2571	1.2	48.6	5.6	5.2	3.2	17.9	6.7	10.9	0.7	49.8	5.6	44.6	0.063	0.527	16.582870	-94.932892
Entronque La Ventosa	82.00	0	0																	

OAXACA

32 CARR: Cd. Ixtepec - Guevea de Humboldt

CLAVE: 00301

RUTA: OAX

AÑO: 2022

LUGAR	ESTACION				CLASIFICACION VEHICULAR EN PORCIENTO													COORDENADAS		
	KM	TE	SC	TDPA	M	A	B	C2	C3	T3S2	T3S3	T3S2R4	OTROS	A	B	C	K'	D	LATITUD	LONGITUD
Ciudad Ixtepec	0.00	0	0																	
T. C. La Ventosa - Salina Cruz (Cuota)	4.00	1	1	2395	10.8	82.8	1.1	4.0	0.4	0.5	0.2	0.0	0.2	93.6	1.1	5.3	0.090	0.505	16.560870	-95.127357
T. C. La Ventosa - Salina Cruz (Cuota)	4.00	1	2	2347	11.1	82.7	1.1	3.8	0.3	0.5	0.3	0.0	0.2	93.8	1.1	5.1	0.086	0.505	16.560775	-95.127393
T. C. La Ventosa - Salina Cruz (Cuota)	4.00	3	0	2433	12.2	82.2	0.2	3.6	0.3	1.4	0.1	0.0	0.0	94.4	0.2	5.4	0.088	0.506	16.564082	-95.141339
Guevea de Humboldt	57.05	0	0																	

33 CARR: El Zapote - Copalita

CLAVE: 00109

RUTA: OAX

AÑO: 2022

LUGAR	ESTACION				CLASIFICACION VEHICULAR EN PORCIENTO													COORDENADAS		
	KM	TE	SC	TDPA	M	A	B	C2	C3	T3S2	T3S3	T3S2R4	OTROS	A	B	C	K'	D	LATITUD	LONGITUD
T. C. Santiago Pinotepa Nacional - Salina Cruz	0.00	3	1	2685	15.5	77.6	1.0	4.9	0.3	0.3	0.1	0.2	0.1	93.1	1.0	5.9	0.097	0.503	15.767693	-96.272304
T. C. Santiago Pinotepa Nacional - Salina Cruz	0.00	3	2	2649	16.1	77.1	1.1	4.7	0.3	0.3	0.1	0.2	0.1	93.2	1.1	5.7	0.091	0.503	15.767778	-96.272402
Copalita	43.04	0	0																	

34 CARR: Huajuapán de León - El Carrizal

CLAVE: 00109

RUTA: OAX

AÑO: 2022

LUGAR	ESTACION				CLASIFICACION VEHICULAR EN PORCIENTO													COORDENADAS		
	KM	TE	SC	TDPA	M	A	B	C2	C3	T3S2	T3S3	T3S2R4	OTROS	A	B	C	K'	D	LATITUD	LONGITUD
Huajuapán de León	0.00	3	0	2334	9.7	82.2	1.6	2.4	2.1	0.9	0.5	0.6	0.0	91.9	1.6	6.5	0.081	0.522	17.777274	-97.789853
San Miguel Tlacotepec	83.60	1	0	1544	5.0	79.7	1.7	6.0	2.7	2.1	1.6	0.6	0.6	84.7	1.7	13.6	0.078	0.512	17.461262	-98.004715
Santiago Juxtlahuaca	100.00	1	0	6627	5.6	85.6	0.2	3.7	0.6	2.9	0.6	0.1	0.7	91.2	0.2	8.6	0.096	0.501	17.352643	-98.014640
Putla	130.00	1	0	683	3.3	85.9	0.9	7.1	1.3	0.8	0.5	0.1	0.1	89.2	0.9	9.9	0.089	0.515	17.154755	-97.893819
El Carrizal	131.30	0	0																	

35 CARR: Loma Bonita - Mixtán

CLAVE: 20043

RUTA: OAX

AÑO: 2022

LUGAR	ESTACION				CLASIFICACION VEHICULAR EN PORCIENTO													COORDENADAS		
	KM	TE	SC	TDPA	M	A	B	C2	C3	T3S2	T3S3	T3S2R4	OTROS	A	B	C	K'	D	LATITUD	LONGITUD
Loma Bonita	0.00	0	0																	
X. C. Cd. Alemán - Sayula	1.00	1	1	5416	17.5	68.2	1.4	8.5	0.9	1.5	1.0	0.5	0.5	85.7	1.4	12.9	0.069	0.515	18.098300	-95.877552
X. C. Cd. Alemán - Sayula	1.00	1	2	5758	17.6	68.3	1.3	8.5	0.9	1.3	1.1	0.4	0.6	85.9	1.3	12.8	0.073	0.515	18.098318	-95.877485
X. C. Cd. Alemán - Sayula	1.00	3	0	2661	23.4	62.3	1.1	10.9	1.4	0.2	0.4	0.1	0.2	85.7	1.1	13.2	0.079	0.522	18.094859	-95.876404
T. Izq. Aeropuerto	12.00	3	0	873	22.5	62.0	0.9	12.1	1.3	0.5	0.4	0.2	0.1	84.5	0.9	14.6	0.100	0.506	18.014838	-95.869131
Mixtán	27.00	0	0																	

OAXACA

36 CARR: Ramal a Reforma de Pineda

CLAVE: 20010

RUTA: OAX

AÑO: 2022

LUGAR	ESTACION				CLASIFICACION VEHICULAR EN PORCIENTO													COORDENADAS		
	KM	TE	SC	TDPA	M	A	B	C2	C3	T3S2	T3S3	T3S2R4	OTROS	A	B	C	K'	D	LATITUD	LONGITUD
T. C. La Ventosa - San Pedro Tapanatepec	0.00	3	0	1591	14.7	77.8	0.8	5.0	0.4	0.8	0.3	0.1	0.1	92.5	0.8	6.7	0.085	0.519	16.492664	-94.427612
Reforma de Pineda	12.00	0	0																	

37 CARR: Ramal a Unión Hidalgo

CLAVE: 20044

RUTA: OAX

AÑO: 2022

LUGAR	ESTACION				CLASIFICACION VEHICULAR EN PORCIENTO													COORDENADAS		
	KM	TE	SC	TDPA	M	A	B	C2	C3	T3S2	T3S3	T3S2R4	OTROS	A	B	C	K'	D	LATITUD	LONGITUD
T. C. La Ventosa - San Pedro Tapanatepec	0.00	3	1	1677	13.2	83.9	0.1	2.0	0.1	0.5	0.2	0.0	0.0	97.1	0.1	2.8	0.092	0.522	16.574043	-94.816407
T. C. La Ventosa - San Pedro Tapanatepec	0.00	3	2	1537	14.0	83.1	0.1	1.7	0.1	0.6	0.3	0.0	0.1	97.1	0.1	2.8	0.110	0.522	16.574052	-94.816341
Unión Hidalgo	12.00	1	0	1507	20.2	75.1	0.2	2.0	0.5	1.7	0.2	0.0	0.1	95.3	0.2	4.5	0.104	0.510	16.489352	-94.832445

38 CARR: San Antonio - Puerto Angel

CLAVE:

RUTA: OAX

AÑO: 2022

LUGAR	ESTACION				CLASIFICACION VEHICULAR EN PORCIENTO													COORDENADAS		
	KM	TE	SC	TDPA	M	A	B	C2	C3	T3S2	T3S3	T3S2R4	OTROS	A	B	C	K'	D	LATITUD	LONGITUD
T. C. Santiago Pinotepe Nacional - Salina Cruz	0.00	3	0	2471	19.0	74.3	0.1	3.5	0.2	2.5	0.3	0.0	0.1	93.3	0.1	6.6	0.096	0.500	15.713345	-96.582074
Mazunte	7.30	1	0	2165	28.6	64.3	0.1	3.1	0.1	2.8	0.5	0.1	0.4	92.9	0.1	7.0	0.094	0.502	15.669866	-96.557830
Mazunte	7.30	3	0	2055	28.8	63.3	0.1	3.9	0.1	2.5	0.9	0.1	0.3	92.1	0.1	7.8	0.102	0.507	15.666651	-96.540686
Puerto Ángel	15.90	0	0																	

39 CARR: T. C. (Oaxaca - Puerto Ángel) - Puerto Escondido

CLAVE: 20009

RUTA: MEX-OAX-161

AÑO: 2022

LUGAR	ESTACION				CLASIFICACION VEHICULAR EN PORCIENTO													COORDENADAS		
	KM	TE	SC	TDPA	M	A	B	C2	C3	T3S2	T3S3	T3S2R4	OTROS	A	B	C	K'	D	LATITUD	LONGITUD
T. C. Oaxaca - Puerto Ángel	0.00	3	1	7978	5.1	89.6	0.4	3.2	0.8	0.3	0.3	0.0	0.3	94.7	0.4	4.9	0.106	0.509	16.920359	-96.712532
T. C. Oaxaca - Puerto Ángel	0.00	3	2	7695	4.8	89.6	0.5	3.2	0.9	0.4	0.2	0.1	0.3	94.4	0.5	5.1	0.083	0.509	16.920174	-96.712553
T. Izq. San Pablo Huixtepec	16.80	1	0	8543	11.8	80.8	0.7	4.2	1.1	0.5	0.4	0.1	0.4	92.6	0.7	6.7	0.091	0.505	16.841007	-96.788213
T. Izq. San Pablo Huixtepec	16.80	3	0	8145	12.2	82.2	1.1	2.7	0.8	0.4	0.2	0.1	0.3	94.4	1.1	4.5	0.088	0.501	16.827444	-96.788884
T. Der. El Trapiche	30.00	1	0	3995	5.1	78.5	1.1	9.2	2.9	2.4	0.2	0.3	0.3	83.6	1.1	15.3	0.079	0.508	16.761235	-96.855978
T. Der. El Trapiche	30.00	3	0	4427	7.8	81.4	1.2	4.4	2.7	1.3	0.7	0.3	0.2	89.2	1.2	9.6	0.076	0.512	16.760709	-96.858761
T. Der. Cofradía San Pedro	53.00	3	0	1824	4.5	85.5	2.1	4.3	2.2	0.6	0.3	0.2	0.3	90.0	2.1	7.9	0.070	0.530	16.598647	-96.889911
Sola de Vega	78.40	3	0	1820	14.8	74.7	1.5	3.5	3.8	0.7	0.2	0.3	0.5	89.5	1.5	9.0	0.087	0.546	16.509220	-96.984097
T. Der. Yalotepec	134.50	1	0	1577	22.2	67.1	1.7	4.0	3.1	0.8	0.4	0.3	0.4	89.3	1.7	9.0	0.098	0.500	16.347270	-97.094517
San Gabriel Mixtepec	208.00	1	0	1682	21.7	70.1	0.6	4.5	0.6	1.5	0.6	0.2	0.2	91.8	0.6	7.6	0.086	0.503	16.093579	-97.075232
Puerto Escondido	248.00	1	0	5362	16.0	79.1	0.7	2.3	0.8	0.6	0.2	0.2	0.1	95.1	0.7	4.2	0.094	0.503	15.894074	-97.076869

OAXACA

40 CARR: Tehuacán - Huitzo

CLAVE: 00211

RUTA: PUE-MEX-135

AÑO: 2022

LUGAR	ESTACION				CLASIFICACION VEHICULAR EN PORCIENTO										COORDENADAS					
	KM	TE	SC	TDPA	M	A	B	C2	C3	T3S2	T3S3	T3S2R4	OTROS	A	B	C	K'	D	LATITUD	LONGITUD
Tehuacán	0.00	3	0	9828	8.3	86.4	0.2	4.4	0.4	0.1	0.2	0.0	0.0	94.7	0.2	5.1	0.073	0.532	18.453791	-97.370819
T. Der. San Gabriel Chilac	14.40	1	0	9165	17.5	77.8	0.3	1.3	1.3	0.8	0.5	0.4	0.1	95.3	0.3	4.4	0.081	0.518	18.407096	-97.330437
San Sebastián Zinacatepec	23.00	3	0	7455	6.6	82.3	1.2	5.1	1.1	1.5	1.2	0.5	0.5	88.9	1.2	9.9	0.083	0.593	18.325369	-97.229734
Lim. Edos. Term. Pue. Ppia. Oax.	60.90	0	0																	
Teotitlán del Camino	63.15	3	0	2608	10.8	80.0	0.7	5.6	0.8	1.5	0.2	0.2	0.2	90.8	0.7	8.5	0.070	0.504	18.118775	-97.073708
Santa María Tecomavaca	88.34	1	0	1146	18.5	74.3	0.2	4.3	1.0	1.3	0.3	0.0	0.1	92.8	0.2	7.0	0.103	0.516	17.955380	-97.025328
Santa María Tecomavaca	88.34	3	0	954	7.9	84.3	0.4	5.2	0.7	0.9	0.4	0.1	0.1	92.2	0.4	7.4	0.092	0.520	17.949509	-97.022258
T. Izq. Cuicatlán	118.80	1	0	1368	27.7	62.9	0.7	6.6	0.8	0.7	0.2	0.4	0.0	90.6	0.7	8.7	0.083	0.516	17.793846	-96.959708
T. Izq. Nacaltepec	169.84	1	0	708	8.8	79.7	0.6	7.3	1.1	1.6	0.4	0.5	0.0	88.5	0.6	10.9	0.092	0.542	17.505708	-96.933068
T. C. Huajuapán de León - Oaxaca	202.70	1	0	6971	15.4	79.5	0.5	2.9	0.7	0.5	0.1	0.3	0.1	94.9	0.5	4.6	0.075	0.502	17.288133	-96.903917

41 CARR: Teotitlán de Flores Magón - Tuxtepec

CLAVE: 00108

RUTA: OAX-PUE-MEX-182

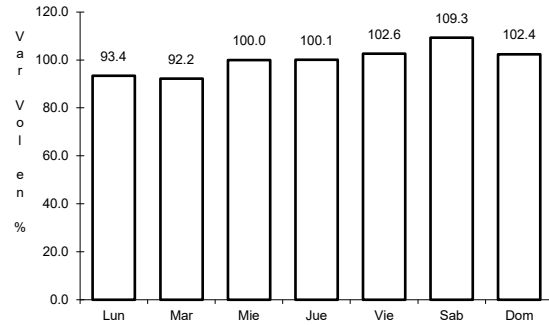
AÑO: 2022

LUGAR	ESTACION				CLASIFICACION VEHICULAR EN PORCIENTO										COORDENADAS					
	KM	TE	SC	TDPA	M	A	B	C2	C3	T3S2	T3S3	T3S2R4	OTROS	A	B	C	K'	D	LATITUD	LONGITUD
Teotitlán del Camino	0.00	3	0	1234	22.6	67.6	1.8	3.0	3.0	1.0	0.3	0.6	0.1	90.2	1.8	8.0	0.101	0.501	18.131531	-97.063925
Lim. Edos. Term. Oax. Ppia. Pue.	2.00	0	0																	
Lim. Edos. Term. Pue. Ppia. Oax.	10.00	0	0																	
Huautla	65.00	1	0	1468	3.7	85.2	1.3	8.5	0.4	0.3	0.4	0.1	0.1	88.9	1.3	9.8	0.081	0.538	18.125162	-96.846628
San Felipe Jalapa de Díaz	140.00	3	0	4269	3.9	83.4	1.1	6.6	1.5	1.6	0.9	0.9	0.1	87.3	1.1	11.6	0.077	0.502	18.081837	-96.522573
Tuxtepec	185.00	1	0	6129	2.7	82.4	1.6	8.1	1.5	1.7	1.0	0.8	0.2	85.1	1.6	13.3	0.078	0.505	18.089826	-96.171750

1 CARR: Acceso al Puerto Salina Cruz

CLAVE:

ruta: MEX-090



Km: 0.00

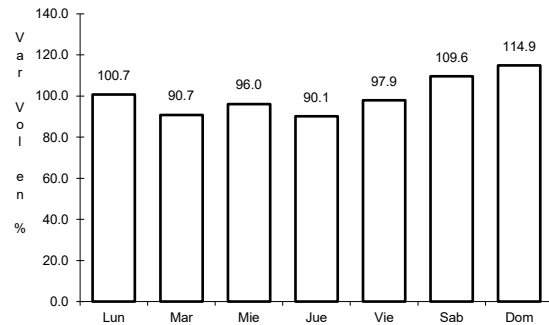
Tipo: 3

Sent: 0

2 CARR: Buenavista - Tuxtepec

CLAVE: 00624

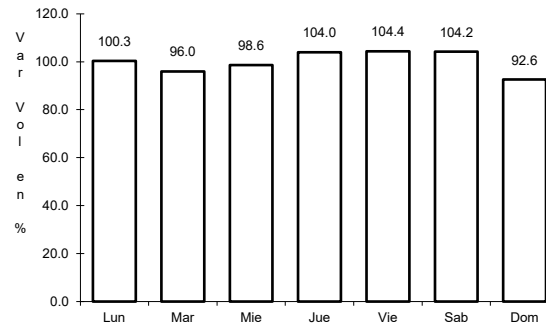
ruta: MEX-175



Km: 0.00

Tipo: 3

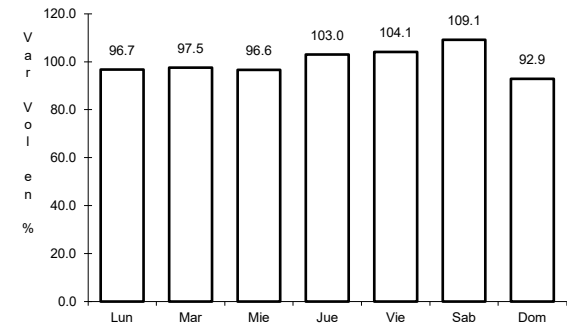
Sent: 0



Km: 121.25

Tipo: 1

Sent: 1



Km: 121.25

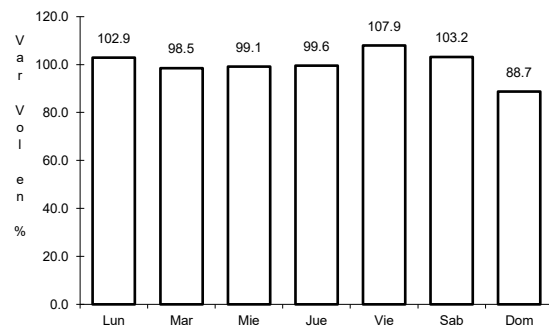
Tipo: 1

Sent: 2

3 CARR: Cd. Alemán - Sayula

CLAVE: 00301

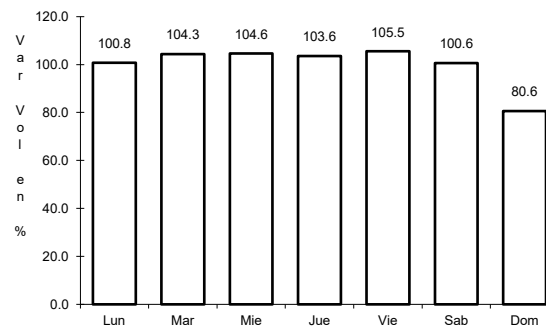
ruta: MEX-145



Km: 0.00

Tipo: 3

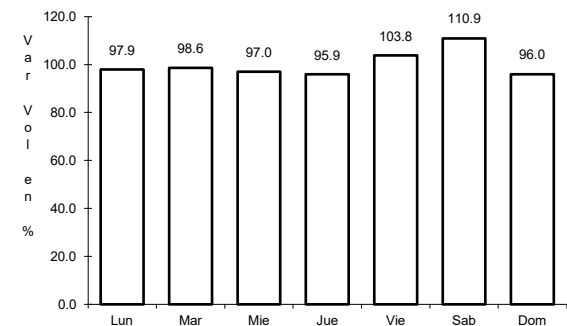
Sent: 0



Km: 71.40

Tipo: 1

Sent: 0



Km: 136.40

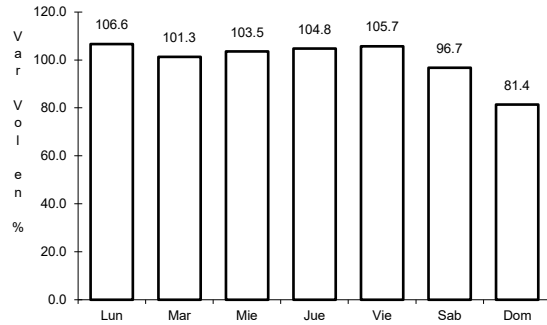
Tipo: 1

Sent: 0

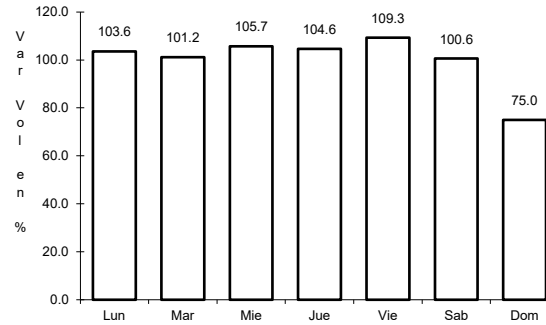
4 CARR: Coatzacoalcos - Salina Cruz

CLAVE: 00147

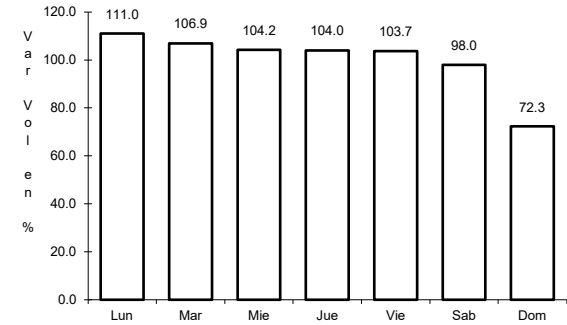
RUTA: MEX-185



Km: 0.00 Tipo: 3 Sent: 1



Km: 0.00 Tipo: 3 Sent: 2

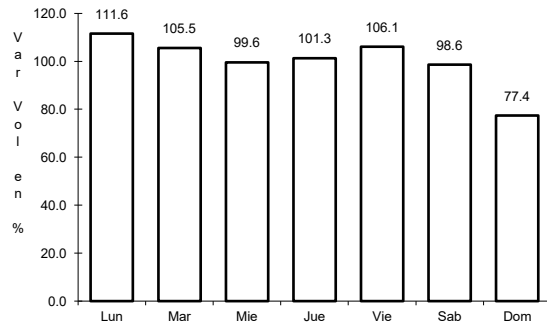


Km: 255.55 Tipo: 1 Sent: 0

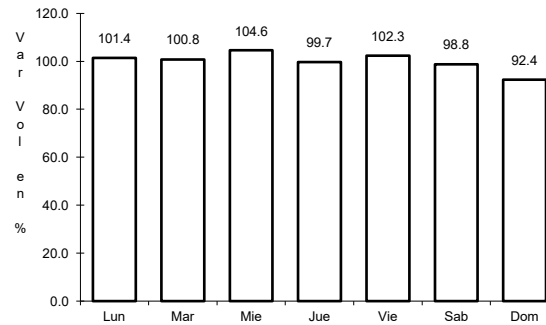
5 CARR: Ent. La Ventosa - San Pedro Tapanatepec

CLAVE: 20059

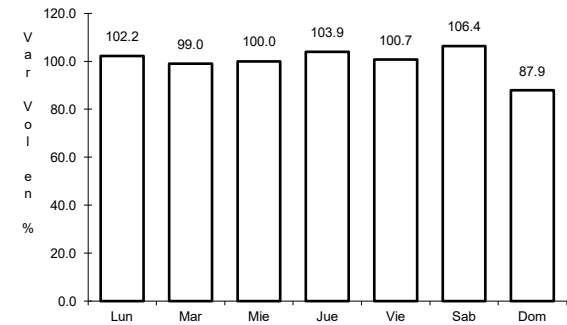
RUTA: MEX-190



Km: 0.00 Tipo: 3 Sent: 0



Km: 38.01 Tipo: 3 Sent: 0

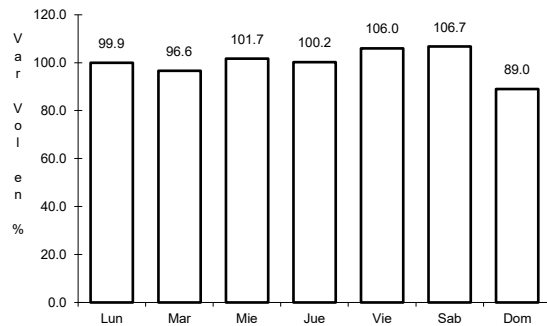


Km: 91.80 Tipo: 1 Sent: 0

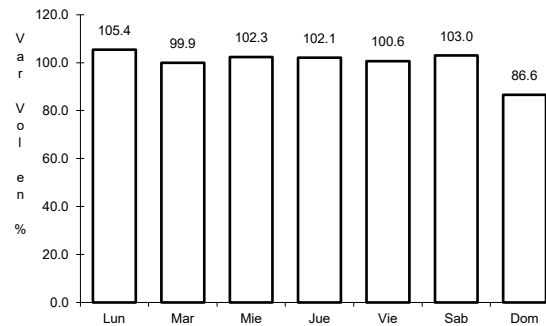
6 CARR: Huajuapán de León - Oaxaca

CLAVE: 20056

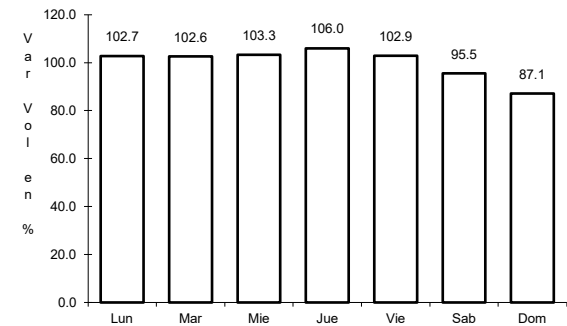
RUTA: MEX-190



Km: 1.35 Tipo: 1 Sent: 0



Km: 190.60 Tipo: 1 Sent: 1

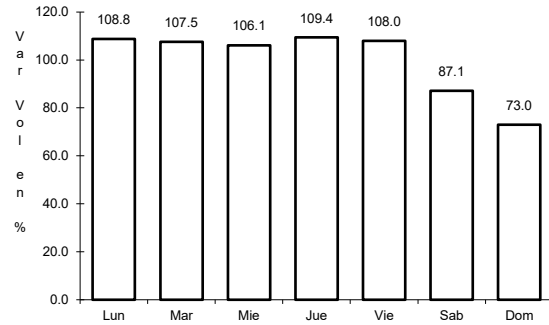


Km: 190.60 Tipo: 1 Sent: 2

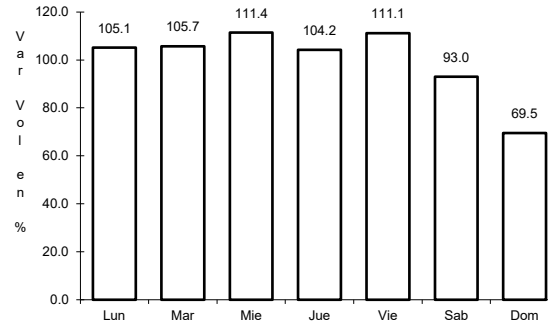
7 CARR: Juchitán - Ixtepec

CLAVE: 20359

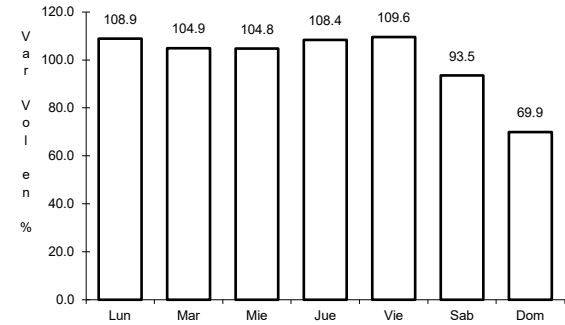
ruta: MEX-185



Km: 0.15 Tipo: 3 Sent: 1



Km: 0.15 Tipo: 3 Sent: 2

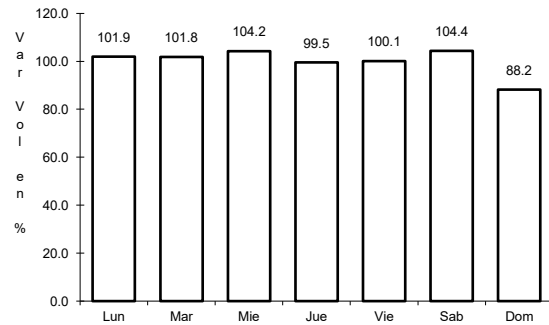


Km: 16.00 Tipo: 1 Sent: 1

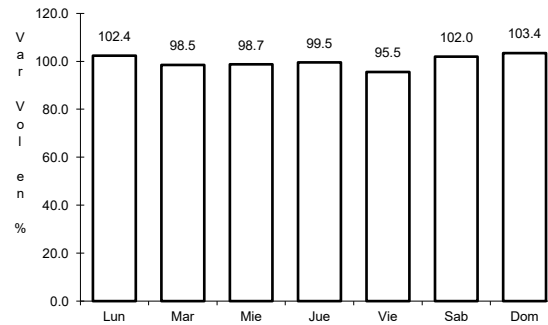
8 CARR: La Granja - Temascal

CLAVE: 00275

ruta: MEX-145



Km: 0.00 Tipo: 3 Sent: 0

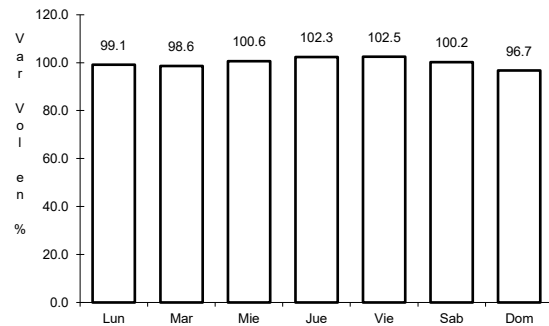


Km: 23.00 Tipo: 1 Sent: 0

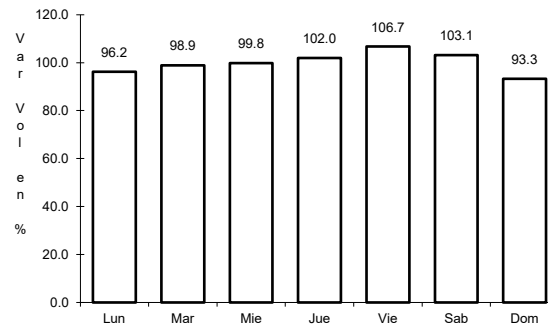
9 CARR: Las Cruces - Pinotepa Nacional

CLAVE: 00073

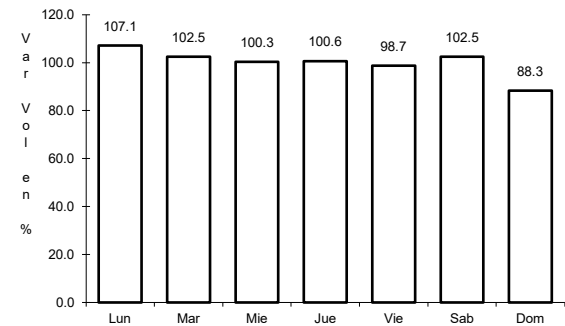
ruta: MEX-200



Km: 0.00 Tipo: 3 Sent: 1



Km: 0.00 Tipo: 3 Sent: 2

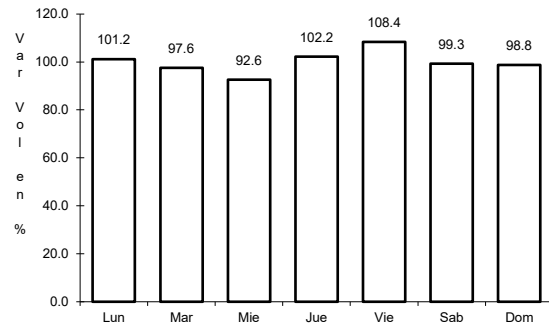


Km: 245.47 Tipo: 3 Sent: 0

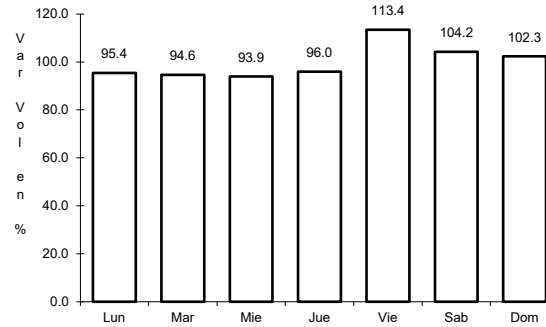
10 CARR: Libramiento de Ejutla

CLAVE:

ruta: MEX-175



Km: 0.00 Tipo: 3 Sent: 0

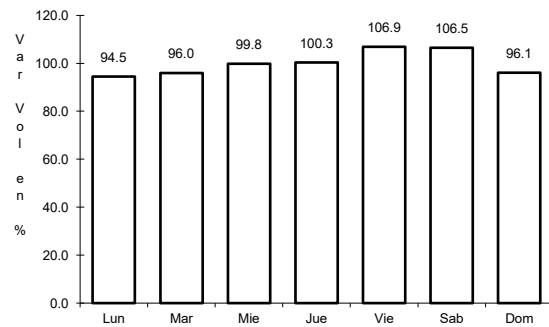


Km: 5.70 Tipo: 3 Sent: 0

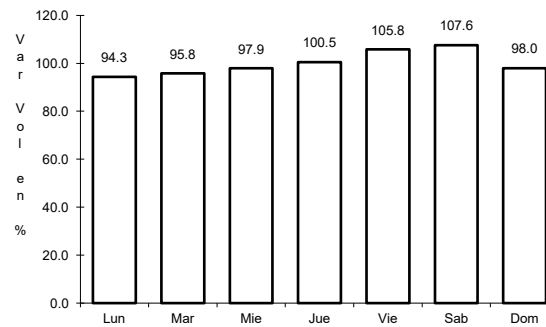
11 CARR: Libramiento de Ocotlán Oax.

CLAVE:

ruta: MEX-175



Km: 0.00 Tipo: 3 Sent: 0

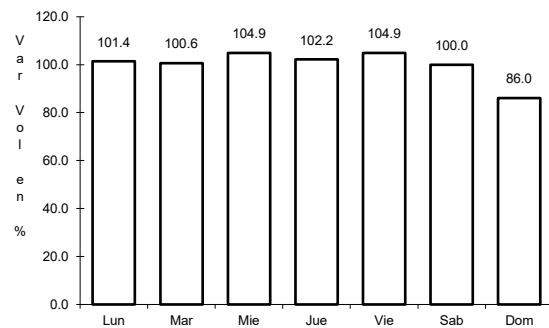


Km: 9.60 Tipo: 3 Sent: 0

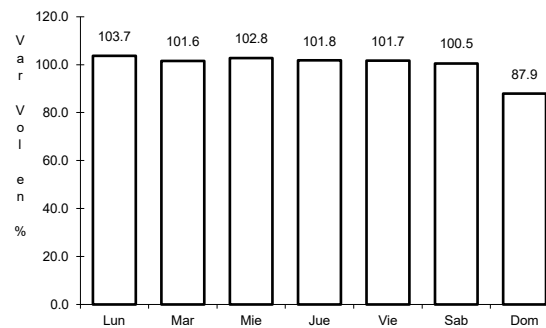
12 CARR: Libramiento de Pochutla

CLAVE:

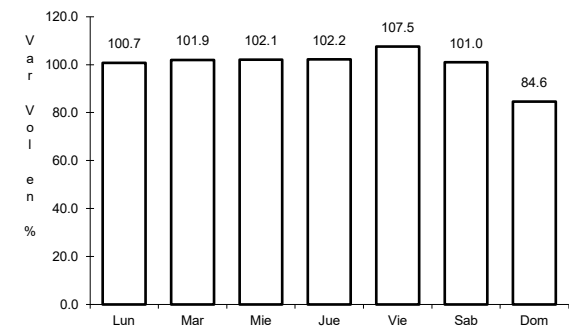
ruta: MEX-200



Km: 0.00 Tipo: 3 Sent: 0



Km: 2.40 Tipo: 1 Sent: 0

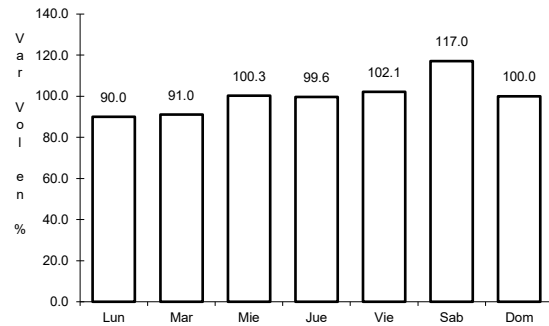


Km: 5.20 Tipo: 1 Sent: 0

13 CARR: Libramiento de San Pedro Tapanatepec

CLAVE:

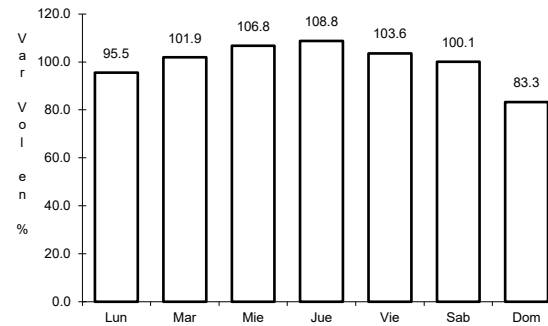
ruta: MEX-200



Km: 3.35

Tipo: 1

Sent: 0



Km: 5.80

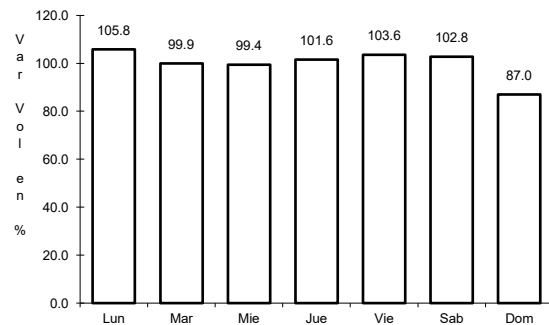
Tipo: 1

Sent: 0

14 CARR: Libramiento de Santa María del Tule

CLAVE:

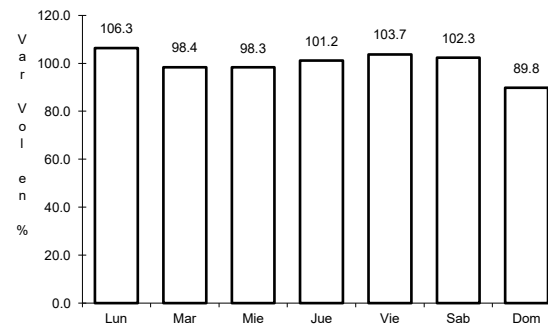
ruta: MEX-190



Km: 0.00

Tipo: 3

Sent: 0



Km: 5.80

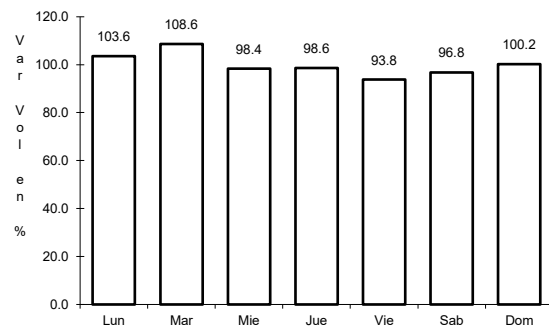
Tipo: 1

Sent: 0

15 CARR: Oaxaca - Puerto Ángel

CLAVE: 20091

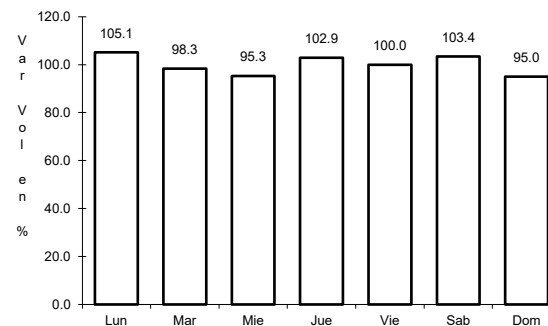
ruta: MEX-175



Km: 0.00

Tipo: 3

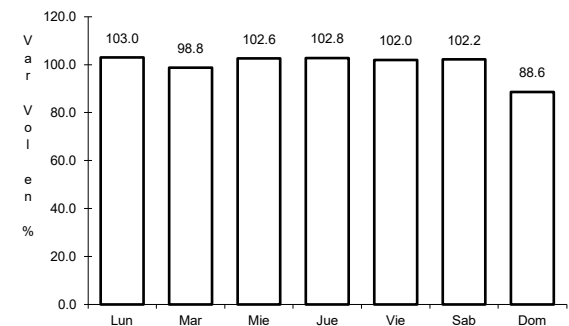
Sent: 1



Km: 0.00

Tipo: 3

Sent: 2



Km: 245.40

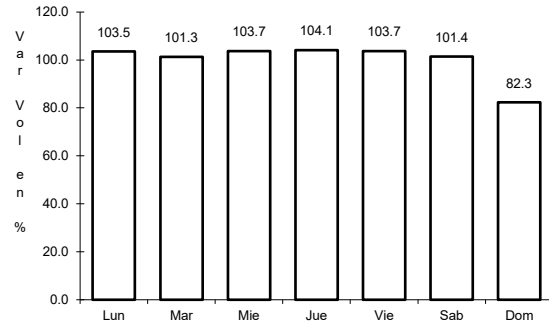
Tipo: 1

Sent: 0

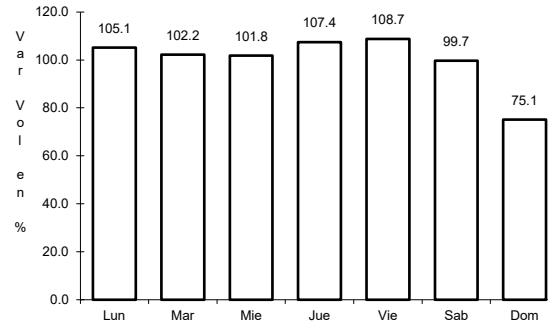
16 CARR: Oaxaca - Tehuantepec

CLAVE: 20057

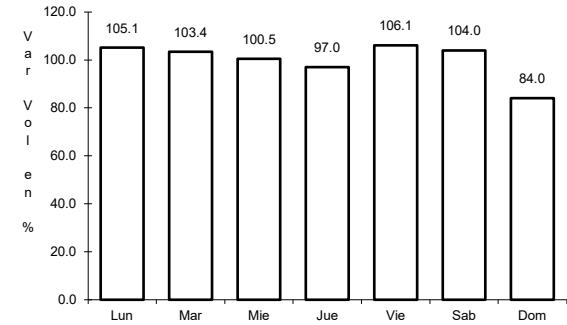
ruta: MEX-190



Km: 0.00 Tipo: 3 Sent: 1



Km: 0.00 Tipo: 3 Sent: 2

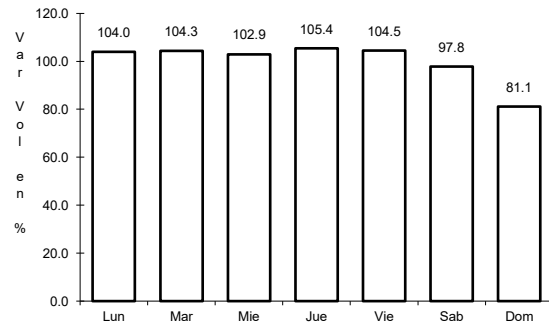


Km: 250.60 Tipo: 1 Sent: 0

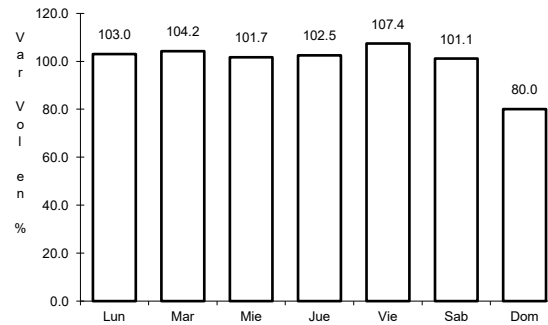
17 CARR: Puebla - Huajuapán de León

CLAVE: 00049

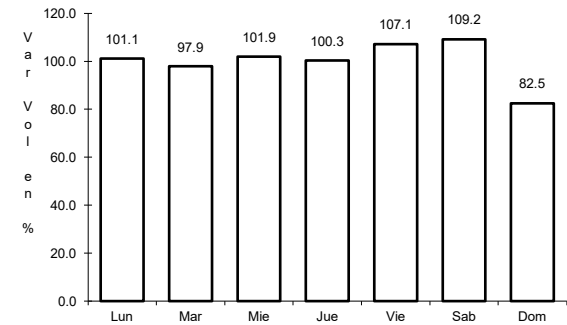
ruta: MEX-190



Km: 0.00 Tipo: 3 Sent: 1



Km: 0.00 Tipo: 3 Sent: 2

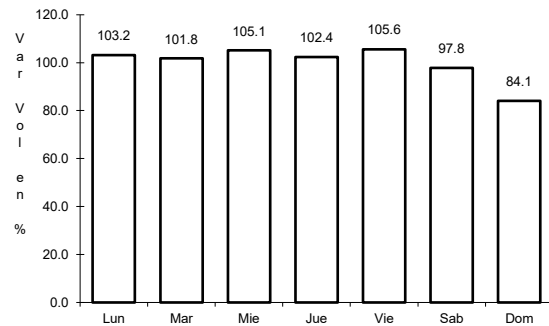


Km: 219.30 Tipo: 1 Sent: 0

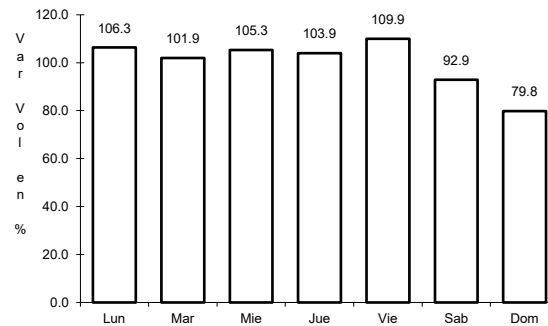
18 CARR: Ramal a Asunción Ixtaltepec

CLAVE: 20624

ruta: MEX-185



Km: 0.00 Tipo: 3 Sent: 0

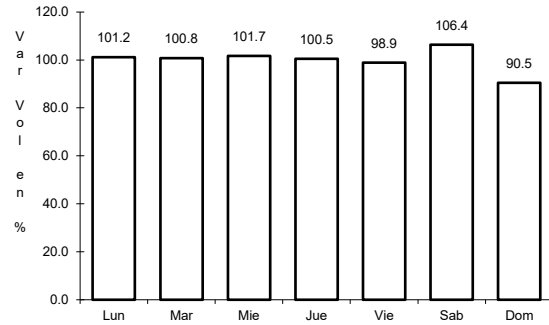


Km: 9.70 Tipo: 1 Sent: 0

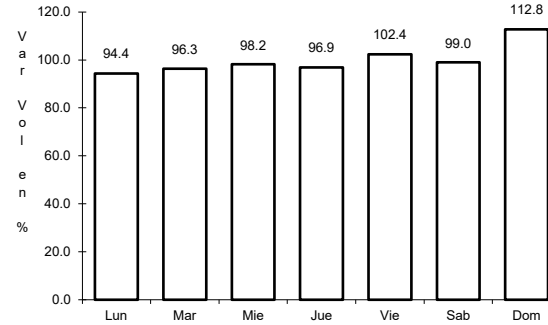
19 CARR: Ramal a Monte Albán

CLAVE:

RUTA: MEX



Km: 1.80 Tipo: 3 Sent: 0

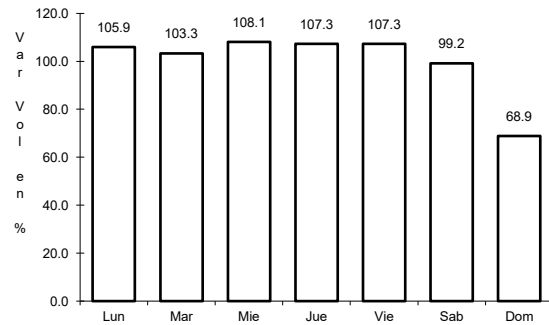


Km: 2.75 Tipo: 3 Sent: 0

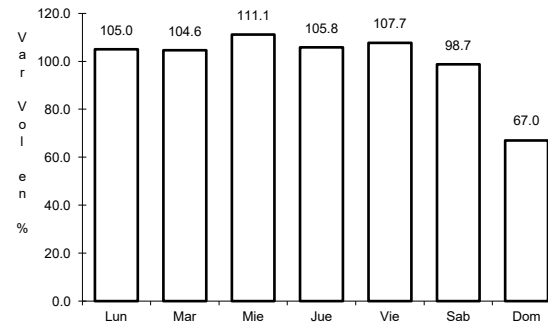
20 CARR: Ramal a Refinería Pemex (Refinería del Pacifico)

CLAVE:

RUTA: MEX



Km: 0.00 Tipo: 3 Sent: 1

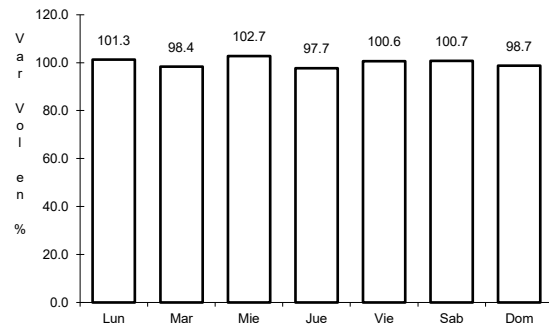


Km: 0.00 Tipo: 3 Sent: 2

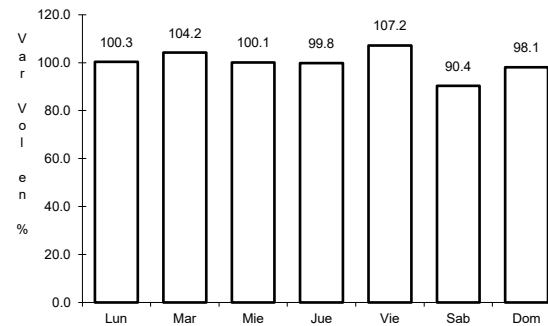
21 CARR: San Pablo Villa de Mitla - T. C. (Tuxtepec - Palomares)

CLAVE: 00106

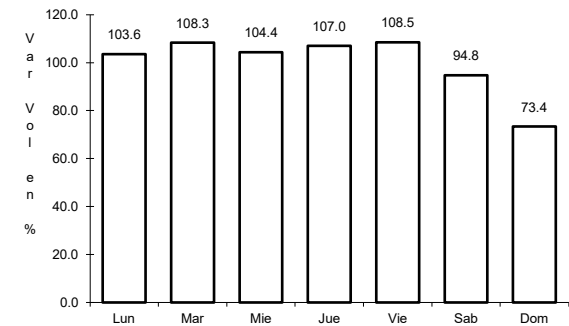
RUTA: MEX-179



Km: 0.00 Tipo: 3 Sent: 0



Km: 90.00 Tipo: 1 Sent: 0

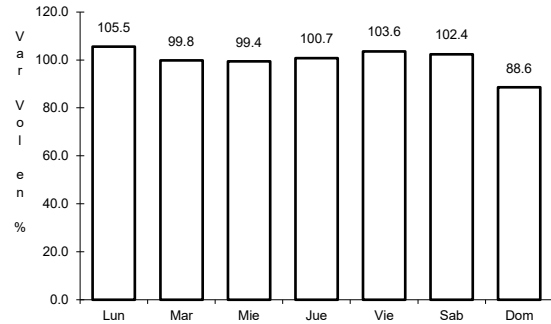


Km: 238.70 Tipo: 1 Sent: 0

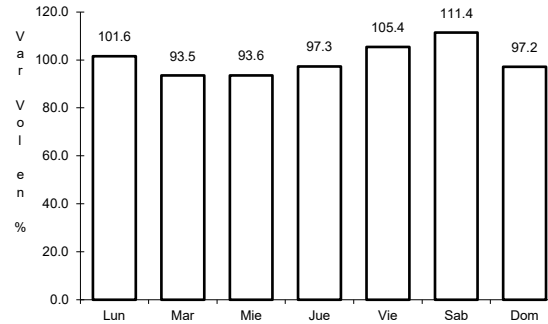
22 CARR: Santiago Pinotepa Nacional - Salina Cruz

CLAVE: 20074

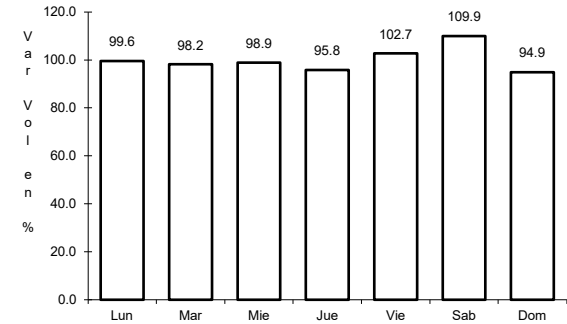
ruta: MEX-200



Km: 0.00 Tipo: 3 Sent: 0



Km: 209.15 Tipo: 1 Sent: 1

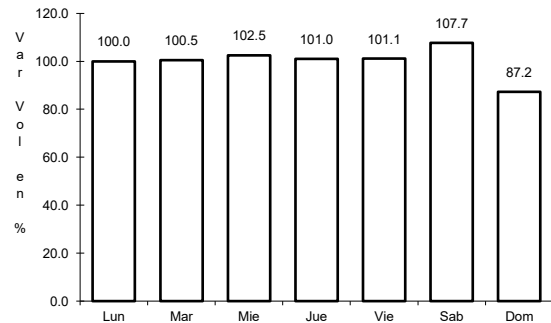


Km: 380.00 Tipo: 3 Sent: 0

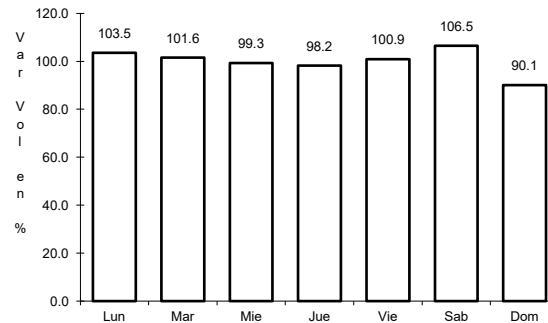
23 CARR: Tapanatepec - Talismán

CLAVE: 00075

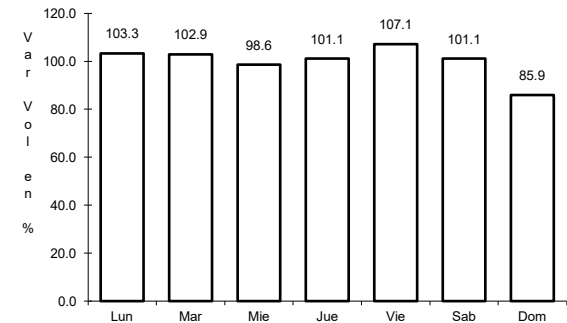
ruta: MEX-200



Km: 0.00 Tipo: 3 Sent: 0



Km: 45.00 Tipo: 1 Sent: 0

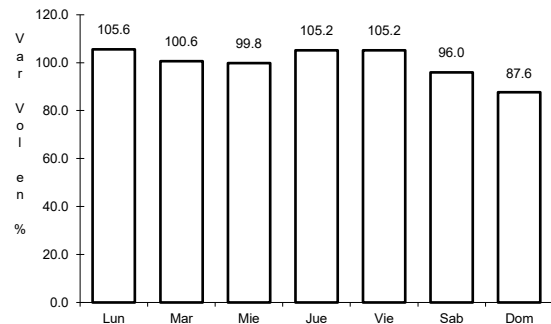


Km: 310.77 Tipo: 1 Sent: 0

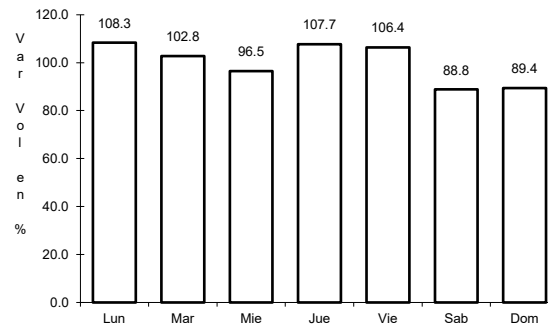
24 CARR: Tapanatepec - Tuxtla Gutiérrez

CLAVE: 00060

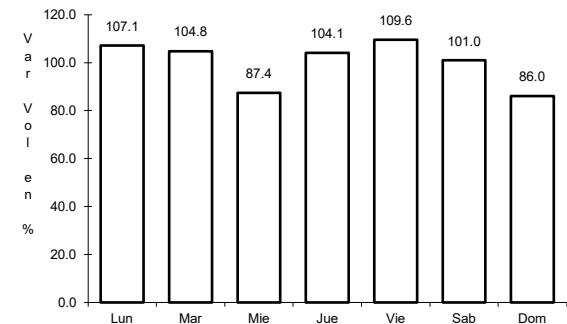
ruta: MEX-190



Km: 0.00 Tipo: 3 Sent: 0



Km: 159.00 Tipo: 1 Sent: 1

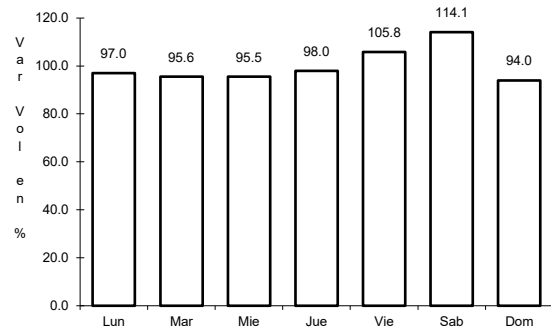


Km: 159.00 Tipo: 1 Sent: 2

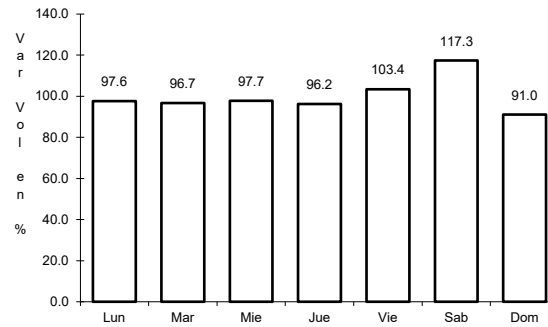
25 CARR: Tehuacán - Huajuapán de León

CLAVE: 00211

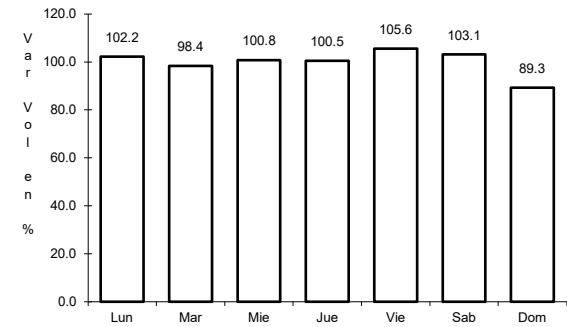
ruta: MEX-125



Km: 0.00 Tipo: 3 Sent: 1



Km: 0.00 Tipo: 3 Sent: 2

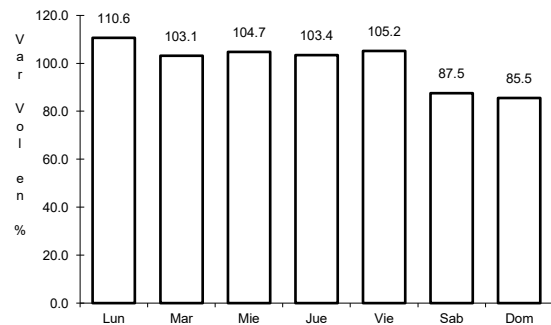


Km: 119.40 Tipo: 1 Sent: 0

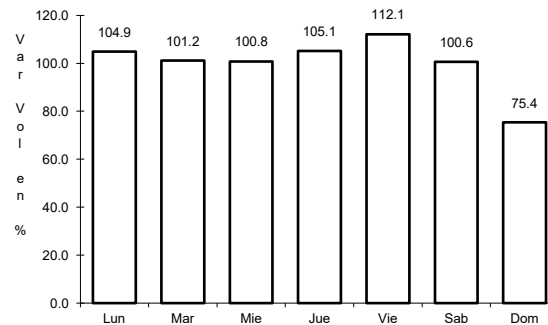
26 CARR: Tuxtepec - Ent. Palomares

CLAVE: 00180

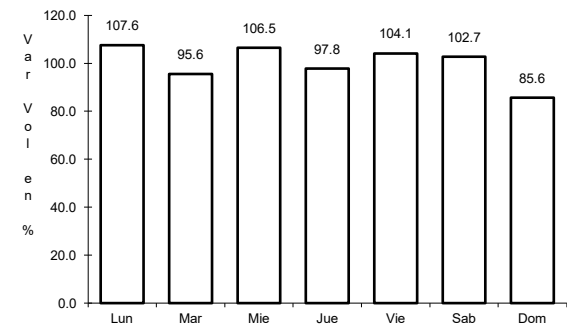
ruta: MEX-147



Km: 0.00 Tipo: 3 Sent: 0



Km: 81.20 Tipo: 1 Sent: 0

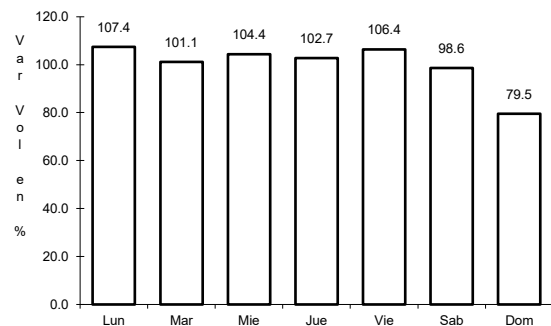


Km: 175.00 Tipo: 1 Sent: 0

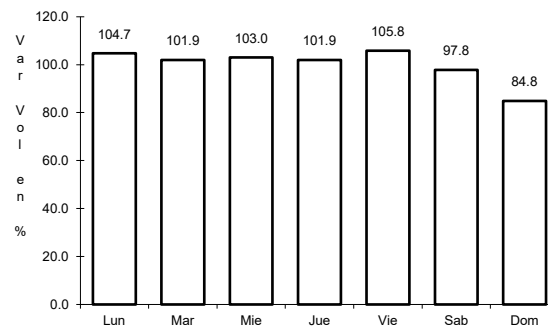
27 CARR: Tuxtepec - T. C. (Oaxaca - Tehuantepec)

CLAVE: 20090

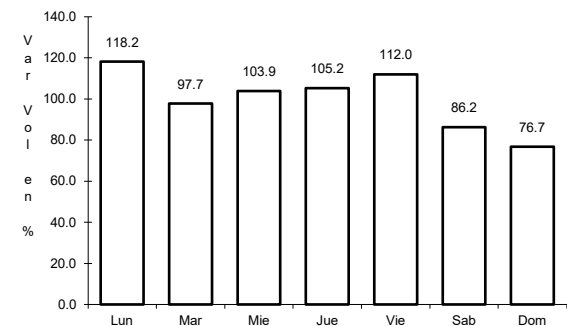
ruta: MEX-175



Km: 0.00 Tipo: 3 Sent: 1



Km: 0.00 Tipo: 3 Sent: 2

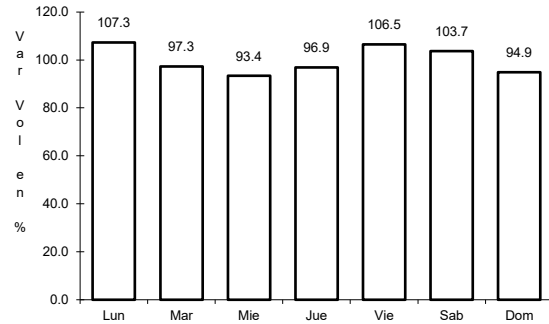


Km: 125.00 Tipo: 3 Sent: 0

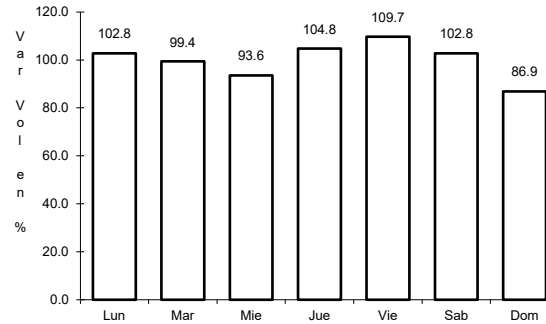
28 CARR: Yucudaa - Santiago Pinotepa Nacional

CLAVE: 20030

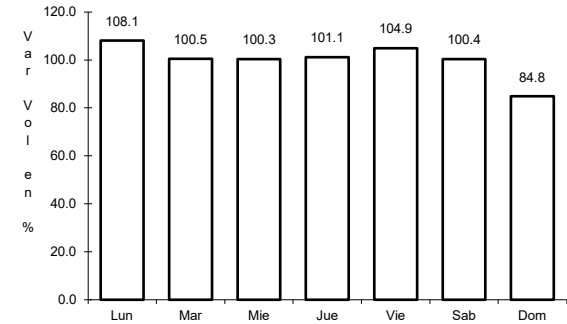
RUTA: MEX-125



Km: 0.00 Tipo: 3 Sent: 0



Km: 104.00 Tipo: 1 Sent: 0

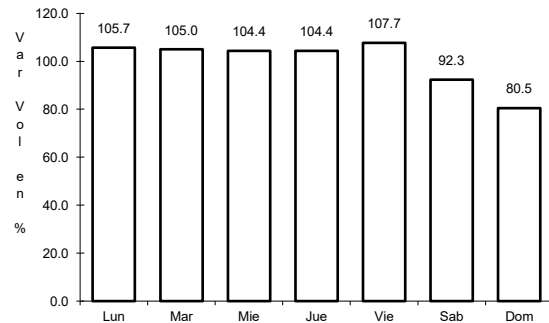


Km: 268.00 Tipo: 1 Sent: 0

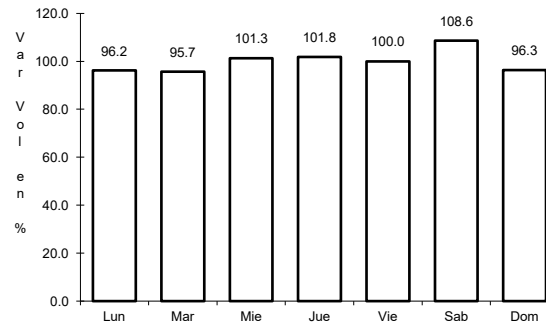
29 CARR: Cuacnopalan - Oaxaca (Cuota)

CLAVE: 00109

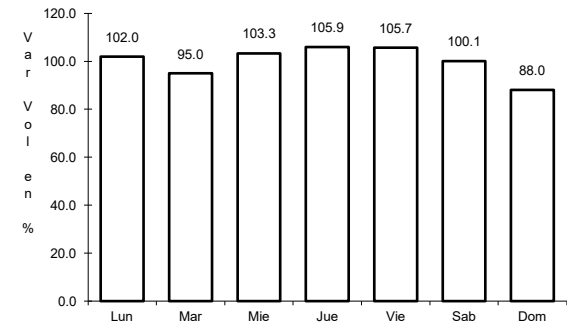
RUTA: MEX-135D



Km: 0.00 Tipo: 3 Sent: 0



Km: 242.70 Tipo: 1 Sent: 1

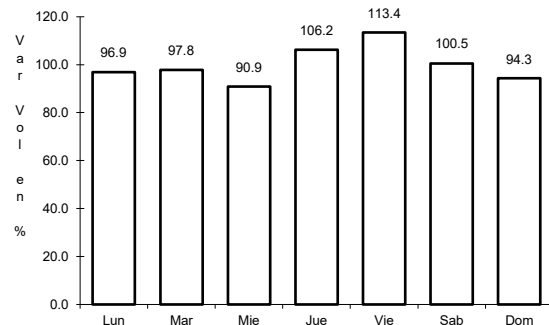


Km: 242.70 Tipo: 1 Sent: 2

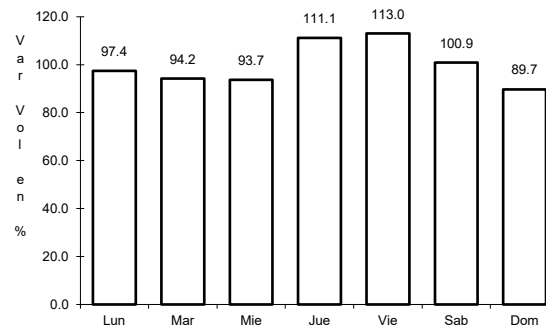
30 CARR: Mitla - Tehuantepec (Cuota)

CLAVE:

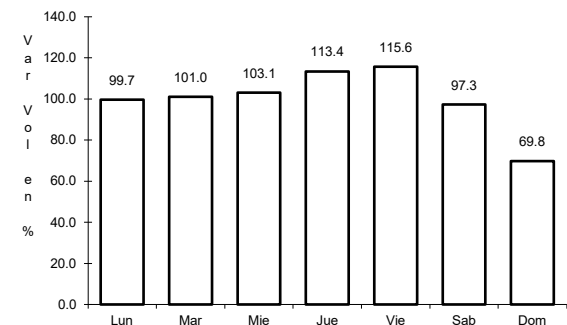
RUTA: MEX-190D



Km: 43.00 Tipo: 3 Sent: 0



Km: 50.90 Tipo: 3 Sent: 0

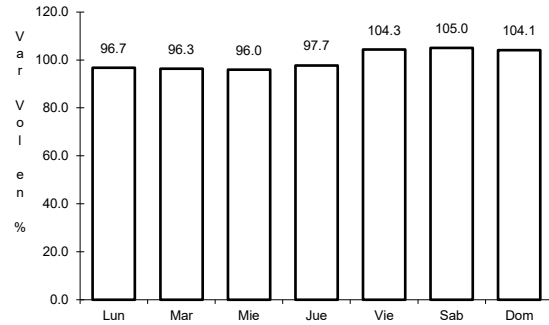


Km: 71.00 Tipo: 1 Sent: 0

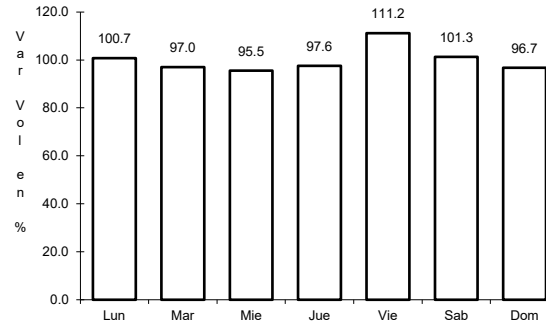
31 CARR: Salina Cruz - La Ventosa (Cuota)

CLAVE: 00275

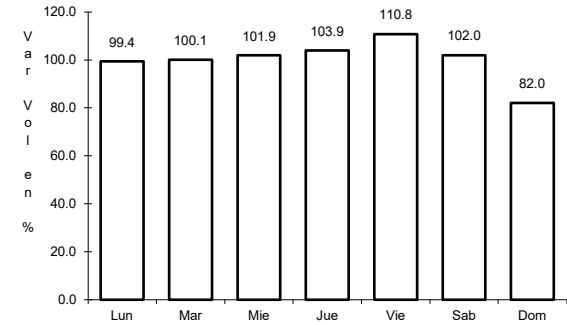
ruta: MEX-185D



Km: 23.19 Tipo: 1 Sent: 0



Km: 34.00 Tipo: 3 Sent: 0

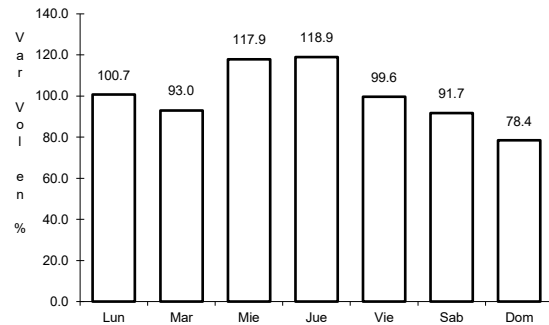


Km: 75.39 Tipo: 1 Sent: 0

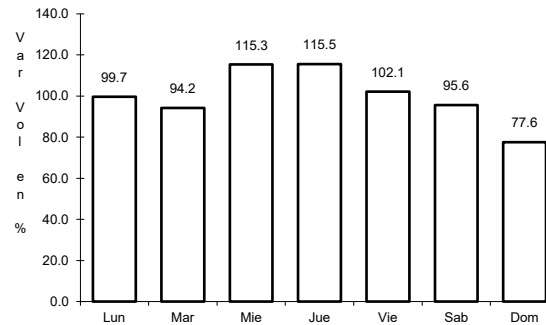
32 CARR: Cd. Ixtepec - Guevea de Humboldt

CLAVE: 00301

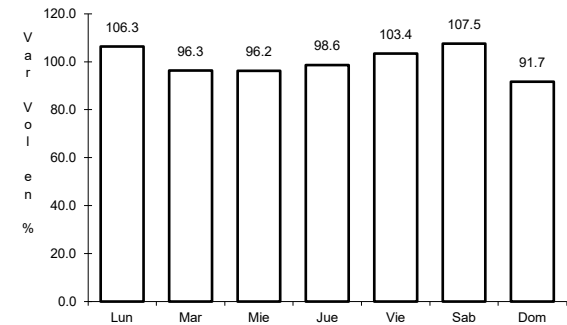
ruta: OAX



Km: 4.00 Tipo: 1 Sent: 1



Km: 4.00 Tipo: 1 Sent: 2

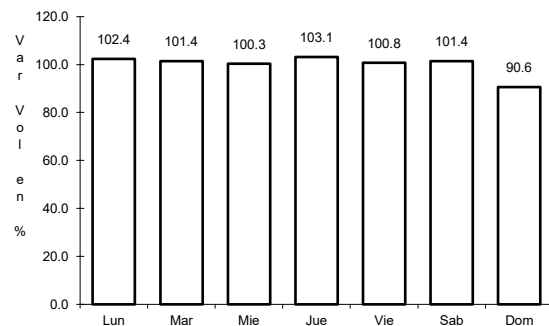


Km: 4.00 Tipo: 3 Sent: 0

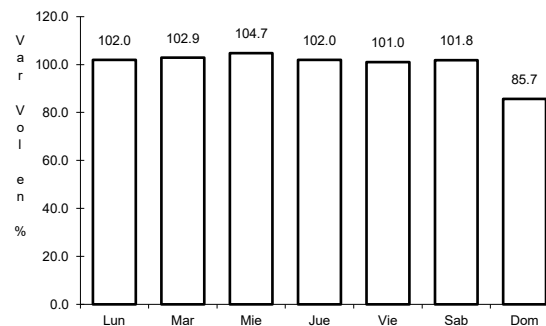
33 CARR: El Zapote - Copalita

CLAVE: 00109

ruta: OAX



Km: 0.00 Tipo: 3 Sent: 1

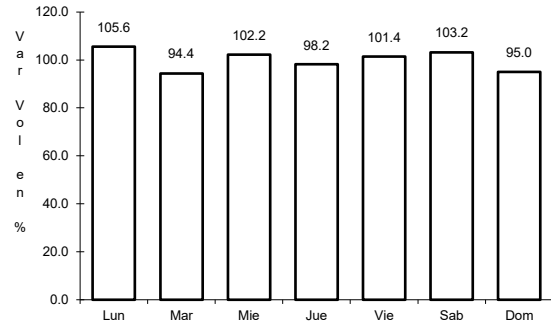


Km: 0.00 Tipo: 3 Sent: 2

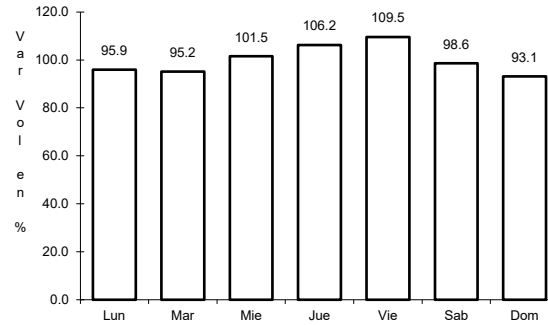
34 CARR: Huajuapán de León - El Carrizal

CLAVE: 00109

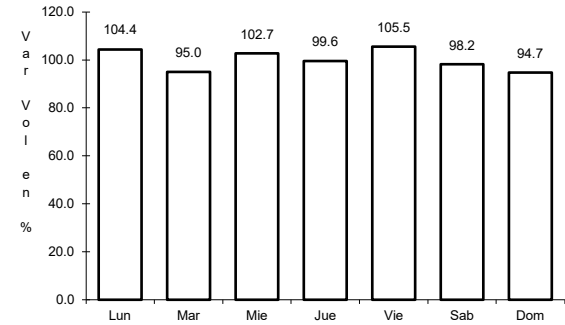
ruta: OAX



Km: 0.00 Tipo: 3 Sent: 0



Km: 83.60 Tipo: 1 Sent: 0

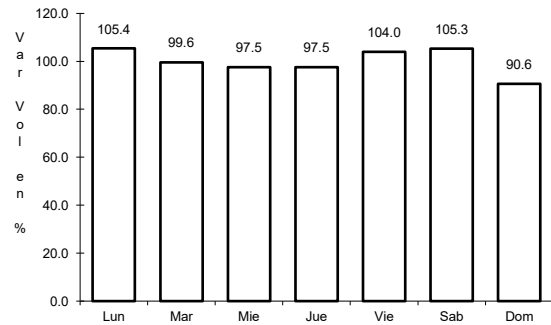


Km: 130.00 Tipo: 1 Sent: 0

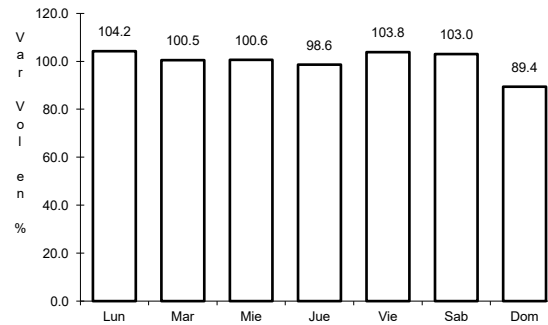
35 CARR: Loma Bonita - Mixtán

CLAVE: 20043

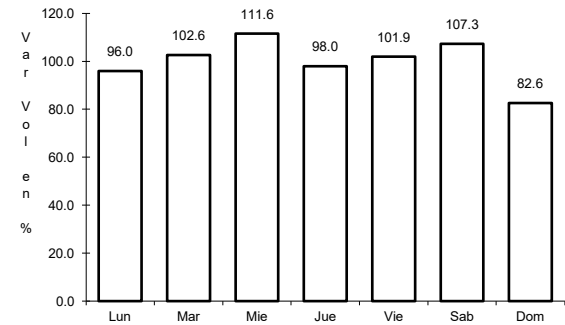
ruta: OAX



Km: 1.00 Tipo: 1 Sent: 1



Km: 1.00 Tipo: 1 Sent: 2

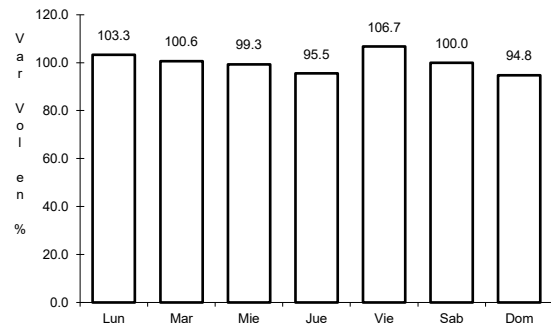


Km: 12.00 Tipo: 3 Sent: 0

36 CARR: Ramal a Reforma de Pineda

CLAVE: 20010

ruta: OAX

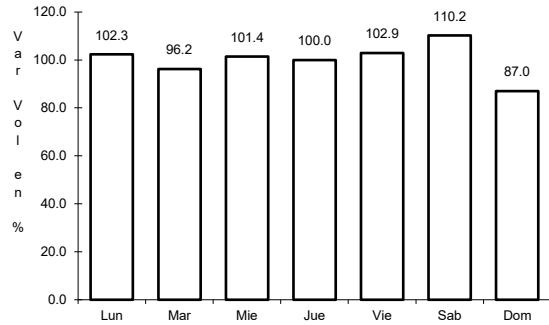


Km: 0.00 Tipo: 3 Sent: 0

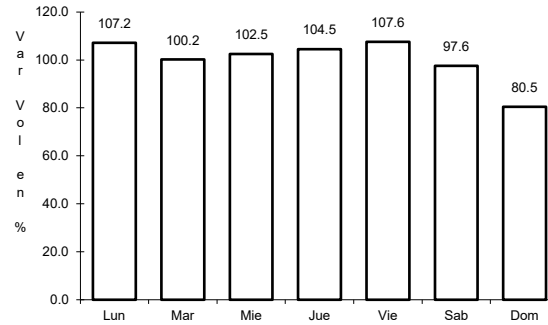
37 CARR: Ramal a Unión Hidalgo

CLAVE: 20044

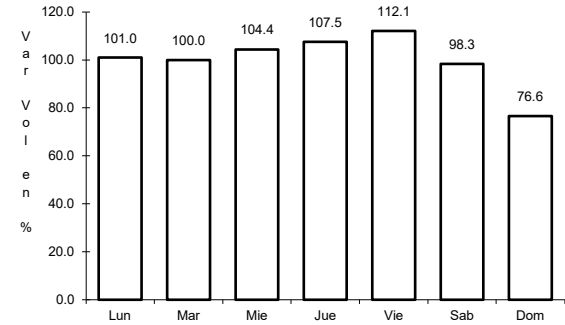
RUTA: OAX



Km: 0.00 Tipo: 3 Sent: 1



Km: 0.00 Tipo: 3 Sent: 2

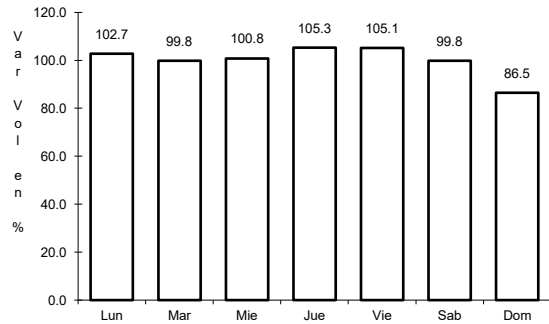


Km: 12.00 Tipo: 1 Sent: 0

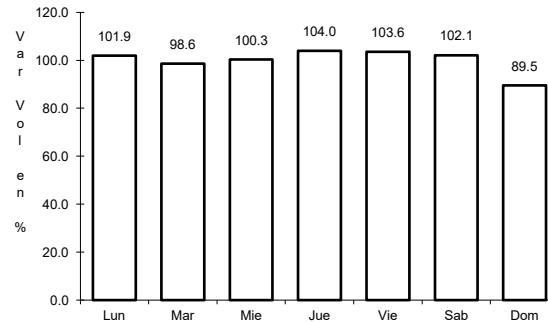
38 CARR: San Antonio - Puerto Angel

CLAVE:

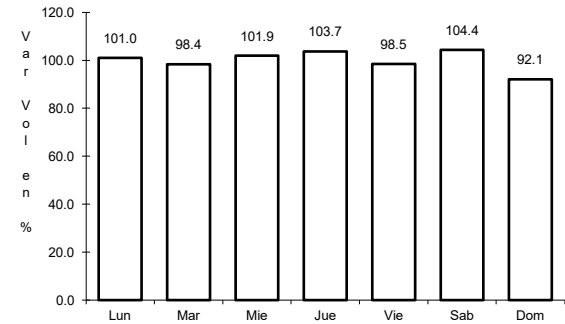
RUTA: OAX



Km: 0.00 Tipo: 3 Sent: 0



Km: 7.30 Tipo: 1 Sent: 0

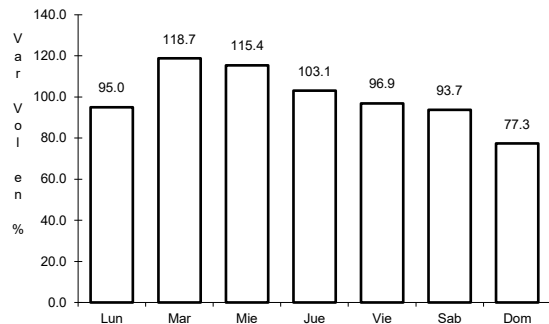


Km: 7.30 Tipo: 3 Sent: 0

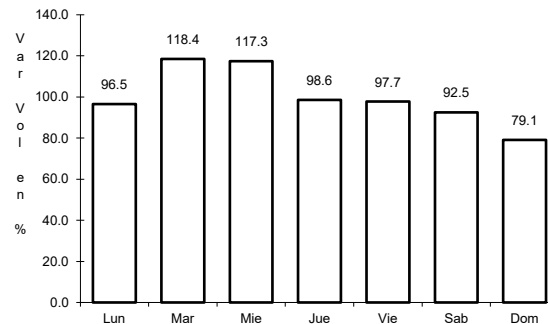
39 CARR: T. C. (Oaxaca - Puerto Ángel) - Puerto Escondido

CLAVE: 20009

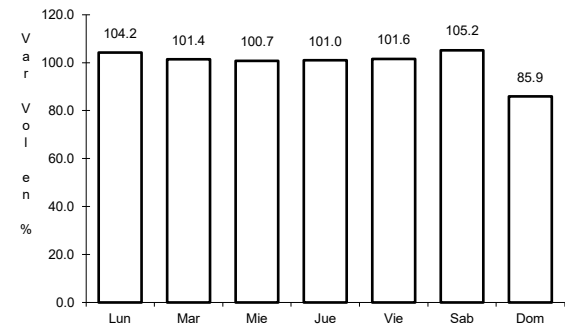
RUTA: MEX-OAX-161



Km: 0.00 Tipo: 3 Sent: 1



Km: 0.00 Tipo: 3 Sent: 2

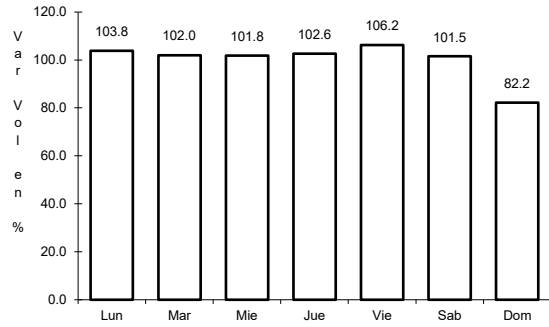


Km: 248.00 Tipo: 1 Sent: 0

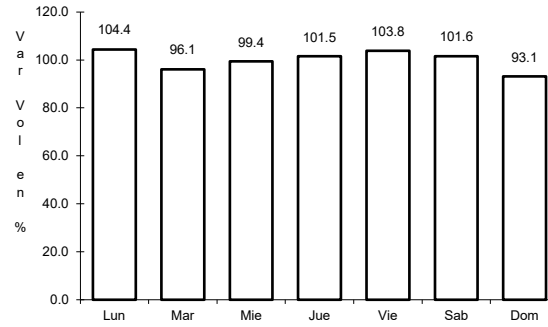
40 CARR: Tehuacán - Huitzo

CLAVE: 00211

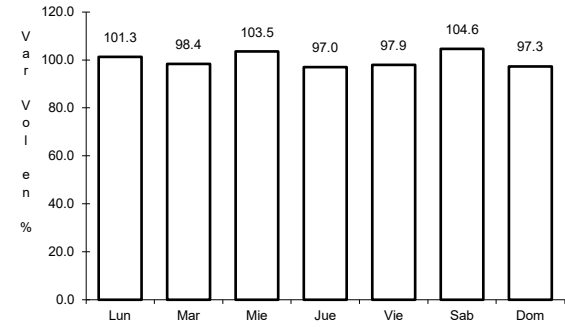
RUTA: PUE-MEX-135



Km: 0.00 Tipo: 3 Sent: 0



Km: 118.80 Tipo: 1 Sent: 0

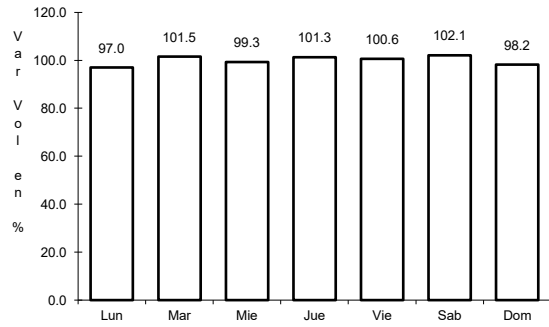


Km: 202.70 Tipo: 1 Sent: 0

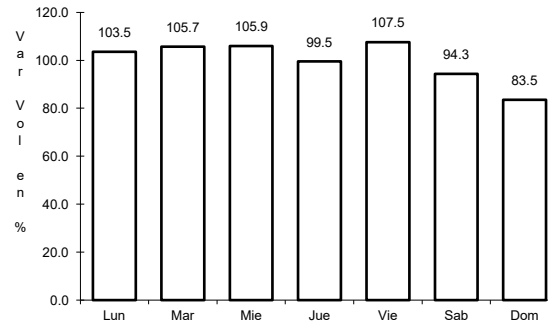
41 CARR: Teotitlán de Flores Magón - Tuxtepec

CLAVE: 00108

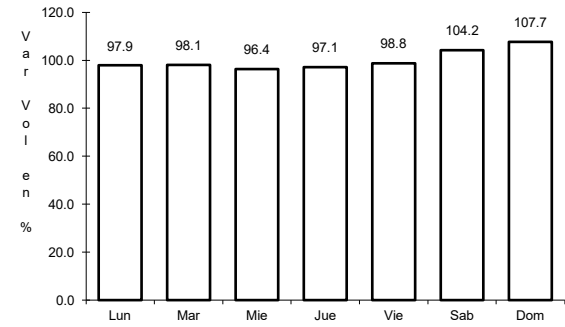
RUTA: OAX-PUE-MEX-182



Km: 0.00 Tipo: 3 Sent: 0



Km: 65.00 Tipo: 1 Sent: 0



Km: 185.00 Tipo: 1 Sent: 0