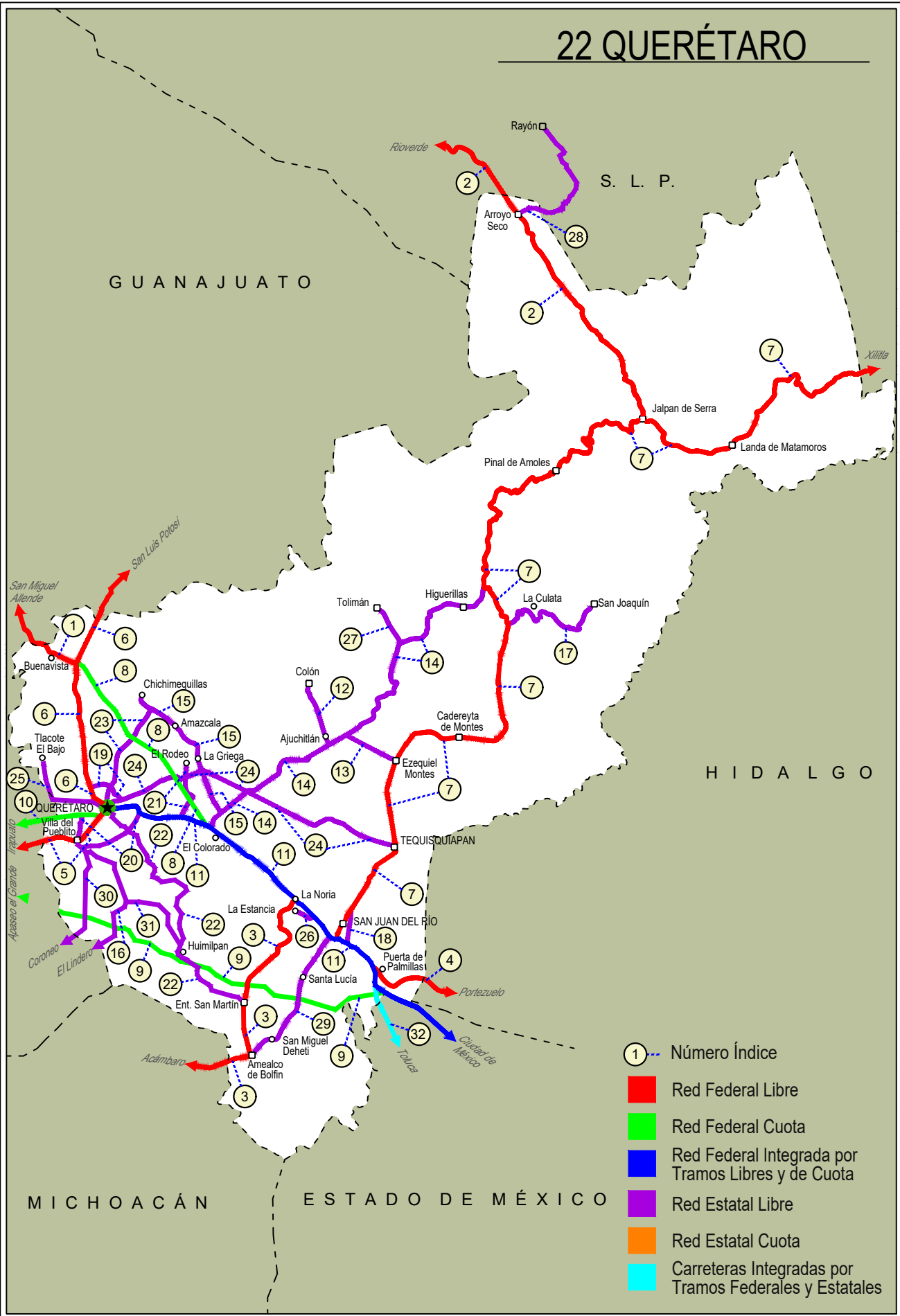


QUERETARO

NO. INDICE CARRETERA	RUTA
---RED FEDERAL LIBRE---	
1 Ent. Buenavista - San Miguel de Allende	MEX-057
2 Jalpan de Serra - Rioverde	MEX-069
3 La Noria - Acámbaro	MEX-120
4 Portezuelo - Palmillas	MEX-045
5 Querétaro - Irapuato (Libre)	MEX-045
6 Querétaro - San Luis Potosí	MEX-057
7 San Juan del Río - Xilitla	MEX-120
---RED FEDERAL DE CUOTA---	
8 Libramiento Nororiente de Querétaro (Cuota)	MEX-057D
9 Palmillas - Apaseo el Grande (Cuota)	MEX-045D
10 Querétaro - Irapuato (Cuota)	MEX-045D
---RED FEDERAL INTEGRADA POR TRAMOS LIBRES Y DE CUOTA---	
11 México - Querétaro (Cuota)	MEX-057-MEX-057D
---RED ESTATAL LIBRE---	
12 Ajuchitlán - Colón	QRO-005
13 Ajuchitlán - Ezequiel Montes	QRO-005
14 El Colorado - Higuierillas	QRO-004
15 Hacienda Paraíso - Chichimequillas	QRO-001
16 Huimilpan - El Lindero	QRO-GTO
17 La Culata - San Joaquín	QRO-021
18 Libramiento de San Juan del Río	QRO
19 Libramiento Norte de Querétaro	QRO
20 Libramiento Surponiente de Querétaro	QRO
21 Peña Colorada - El Rodeo	QRO
22 Querétaro - Ent. San Martín	QRO
23 Querétaro - Estación Chichimequillas	QRO
24 Querétaro - Tequisquiapan	QRO
25 Querétaro - Tlacote El Bajo	QRO
26 Ramal a La Estancia	QRO
27 Ramal a Tolimán	QRO
28 Rayón - Arroyo Seco	SLP-011
29 San Juan del Río - Amealco	QRO
30 T. C. (Villa del Pueblito - Huimilpan) - Coroneo	QRO-GTO
31 Villa del Pueblito - Huimilpan	QRO
---CARRETERAS INTEGRADAS POR TRAMOS FEDERALES Y ESTATALES---	
32 Toluca - Palmillas	EM(D)-MEX-055

22 QUERÉTARO



GUANAJUATO

S. L. P.

HIDALGO

MICHOACÁN

ESTADO DE MÉXICO

QUERETARO

1 CARR: Ent. Buenavista - San Miguel de Allende

CLAVE: 00111

RUTA: MEX-057

AÑO: 2022

LUGAR	ESTACION				CLASIFICACION VEHICULAR EN PORCIENTO													COORDENADAS		
	KM	TE	SC	TDPA	M	A	B	C2	C3	T3S2	T3S3	T3S2R4	OTROS	A	B	C	K'	D	LATITUD	LONGITUD
T. C. Querétaro - San Luis Potosí	0.00	3	0	22554	2.5	86.6	1.7	5.5	1.2	1.5	0.6	0.1	0.3	89.1	1.7	9.2	0.096	0.502	20.824396	-100.462602
Lim. Edos. Term. Qro. Ppia. Gto.	7.91	0	0																	
T. Izq. Guadalupe	12.00	1	0	12519	0.9	86.6	1.8	6.5	1.1	2.3	0.5	0.2	0.1	87.5	1.8	10.7	0.100	0.508	20.882728	-100.572702
San Miguel de Allende	35.11	1	0	16238	3.3	89.1	1.6	3.3	1.3	0.8	0.3	0.3	0.0	92.4	1.6	6.0	0.099	0.509	20.902439	-100.710016

2 CARR: Jalpan de Serra - Rioverde

CLAVE: 00265

RUTA: MEX-069

AÑO: 2022

LUGAR	ESTACION				CLASIFICACION VEHICULAR EN PORCIENTO													COORDENADAS		
	KM	TE	SC	TDPA	M	A	B	C2	C3	T3S2	T3S3	T3S2R4	OTROS	A	B	C	K'	D	LATITUD	LONGITUD
Jalpan de Serra	0.00	3	0	6467	3.3	92.5	0.8	2.5	0.5	0.2	0.1	0.1	0.0	95.8	0.8	3.4	0.089	0.509	21.239586	-99.482494
T. Izq. Conca	35.01	1	0	3033	5.3	90.2	0.3	2.4	1.1	0.4	0.2	0.0	0.1	95.5	0.3	4.2	0.096	0.504	21.449680	-99.631148
Arroyo Seco	48.60	1	0	2083	4.1	88.3	0.5	5.2	1.1	0.4	0.3	0.0	0.1	92.4	0.5	7.1	0.082	0.525	21.541394	-99.687669
Lim. Edos. Term. Qro. Ppia. S. L. P.	52.27	0	0																	
San Ciro de Acosta	69.42	1	0	2275	6.5	76.3	0.5	12.6	1.4	1.9	0.6	0.1	0.1	82.8	0.5	16.7	0.080	0.501	21.647981	-99.808437
San Ciro de Acosta	69.42	3	0	3181	4.6	80.2	0.9	11.1	1.3	1.3	0.3	0.2	0.1	84.8	0.9	14.3	0.083	0.504	21.661917	-99.827612
Rioverde	105.43	1	0	7705	2.9	76.5	0.5	15.7	0.7	2.3	0.7	0.5	0.2	79.4	0.5	20.1	0.082	0.507	21.871558	-99.972423

3 CARR: La Noria - Acámbaro

CLAVE: 00131

RUTA: MEX-120

AÑO: 2022

LUGAR	ESTACION				CLASIFICACION VEHICULAR EN PORCIENTO													COORDENADAS		
	KM	TE	SC	TDPA	M	A	B	C2	C3	T3S2	T3S3	T3S2R4	OTROS	A	B	C	K'	D	LATITUD	LONGITUD
La Noria	0.00	3	0	9876	1.9	86.4	1.5	5.6	2.0	1.2	0.7	0.4	0.3	88.3	1.5	10.2	0.094	0.501	20.438022	-100.074431
Amealco	34.66	1	0	5360	2.4	87.4	2.1	6.1	1.0	0.4	0.4	0.1	0.1	89.8	2.1	8.1	0.089	0.520	20.199756	-100.150098
Amealco	34.66	3	0	5406	2.4	88.3	0.7	6.2	0.9	0.7	0.6	0.1	0.1	90.7	0.7	8.6	0.086	0.513	20.186532	-100.158665
Lim. Edos. Term. Qro. Ppia. Mich.	39.15	0	0																	
Lim. Edos. Term. Mich. Ppia. Gto.	55.90	0	0																	
Coroneo	59.35	3	0	2222	1.6	86.8	3.6	4.4	1.3	2.1	0.2	0.0	0.0	88.4	3.6	8.0	0.081	0.502	20.194952	-100.376061
Jerécuaro	79.70	3	0	3080	3.9	84.8	2.8	6.9	0.9	0.5	0.2	0.0	0.0	88.7	2.8	8.5	0.093	0.510	20.144156	-100.539012
Acámbaro	111.12	1	0	8090	4.2	86.3	1.0	7.1	0.7	0.4	0.3	0.0	0.0	90.5	1.0	8.5	0.083	0.504	20.051619	-100.697791

4 CARR: Portezuelo - Palmillas

CLAVE: 00194

RUTA: MEX-045

AÑO: 2022

LUGAR	ESTACION				CLASIFICACION VEHICULAR EN PORCIENTO													COORDENADAS		
	KM	TE	SC	TDPA	M	A	B	C2	C3	T3S2	T3S3	T3S2R4	OTROS	A	B	C	K'	D	LATITUD	LONGITUD
Portezuelo	0.00	3	1	4410	2.2	73.0	3.2	8.8	2.4	6.1	2.8	1.1	0.4	75.2	3.2	21.6	0.079	0.512	20.486605	-99.304276

QUERETARO

4 CARR: Portezuelo - Palmillas

CLAVE: 00194

RUTA: MEX-045

AÑO: 2022

LUGAR	ESTACION				CLASIFICACION VEHICULAR EN PORCIENTO													COORDENADAS		
	KM	TE	SC	TDPA	M	A	B	C2	C3	T3S2	T3S3	T3S2R4	OTROS	A	B	C	K'	D	LATITUD	LONGITUD
Portezuelo	0.00	3	2	4196	2.3	73.0	3.0	8.6	2.3	6.2	2.9	1.2	0.5	75.3	3.0	21.7	0.076	0.512	20.486524	-99.304295
Jonacapa	29.41	3	0	5834	2.7	74.0	3.5	7.7	2.6	5.0	2.8	1.5	0.2	76.7	3.5	19.8	0.086	0.516	20.435424	-99.536410
Huichapan	45.10	1	1	4596	2.9	74.9	3.9	7.1	2.7	3.7	2.5	1.7	0.6	77.8	3.9	18.3	0.090	0.504	20.395460	-99.635288
Huichapan	45.10	1	2	4517	3.0	74.2	4.2	7.3	2.7	3.6	2.5	1.8	0.7	77.2	4.2	18.6	0.083	0.504	20.395397	-99.635221
T. Izq. Nopala	56.15	1	0	9342	2.8	77.4	3.2	5.2	2.8	3.6	2.8	1.7	0.5	80.2	3.2	16.6	0.085	0.505	20.318029	-99.713268
T. Izq. Nopala	56.15	3	0	6471	2.7	72.0	2.8	6.9	2.6	5.8	3.9	2.5	0.8	74.7	2.8	22.5	0.099	0.508	20.309992	-99.720932
Lim. Edos. Term. Hgo. Ppia. Qro.	71.40	0	0																	
Palmillas	80.00	1	1	4962	1.1	76.4	2.3	9.5	1.8	3.3	3.2	1.9	0.5	77.5	2.3	20.2	0.090	0.508	20.322330	-99.928826
Palmillas	80.00	1	2	4805	1.1	76.5	2.4	9.5	1.9	3.2	3.1	1.8	0.5	77.6	2.4	20.0	0.087	0.508	20.322294	-99.928883

5 CARR: Querétaro - Irapuato (Libre)

CLAVE: 00154

RUTA: MEX-045

AÑO: 2022

LUGAR	ESTACION				CLASIFICACION VEHICULAR EN PORCIENTO													COORDENADAS		
	KM	TE	SC	TDPA	M	A	B	C2	C3	T3S2	T3S3	T3S2R4	OTROS	A	B	C	K'	D	LATITUD	LONGITUD
Querétaro Poniente	0.00	3	1	76982	2.4	84.0	0.5	5.5	0.3	3.6	2.5	0.4	0.8	86.4	0.5	13.1	0.091	0.522	20.553762	-100.421472
Querétaro Poniente	0.00	3	2	85414	2.6	83.9	0.5	5.4	0.3	3.6	2.5	0.4	0.8	86.5	0.5	13.0	0.074	0.522	20.553682	-100.421375
T. Der. Villa del Pueblito	6.67	3	1	25687	2.3	86.2	0.2	4.3	0.4	3.4	2.2	0.3	0.7	88.5	0.2	11.3	0.061	0.512	20.533780	-100.449683
T. Der. Villa del Pueblito	6.67	3	2	26971	2.3	86.0	0.2	4.4	0.4	3.5	2.2	0.3	0.7	88.3	0.2	11.5	0.075	0.512	20.533708	-100.449702
Los Ángeles	12.60	3	1	23917	1.9	82.2	1.4	6.7	1.7	3.6	1.6	0.4	0.5	84.1	1.4	14.5	0.086	0.512	20.534155	-100.499057
Los Ángeles	12.60	3	2	22837	1.9	81.6	1.4	6.8	1.7	3.8	1.8	0.4	0.6	83.5	1.4	15.1	0.088	0.512	20.534066	-100.498970
Lim. Edos. Term. Qro. Ppia. Gto.	13.49	0	0																	
T. C. Palmillas - Apaseo el Grande (Cuota)	23.50	1	1	12040	1.0	75.9	1.7	7.6	3.0	8.1	1.7	0.8	0.2	76.9	1.7	21.4	0.086	0.510	20.504971	-100.581087
T. C. Palmillas - Apaseo el Grande (Cuota)	23.50	1	2	11576	1.0	74.5	2.0	8.0	3.0	8.6	1.8	0.9	0.2	75.5	2.0	22.5	0.078	0.510	20.504506	-100.581616
T. C. Palmillas - Apaseo el Grande (Cuota)	23.50	3	1	13636	0.6	72.4	2.6	9.8	3.9	8.1	1.5	0.9	0.2	73.0	2.6	24.4	0.086	0.544	20.488988	-100.600703
T. C. Palmillas - Apaseo el Grande (Cuota)	23.50	3	2	11431	0.7	72.2	2.4	10.1	3.7	7.9	1.7	1.0	0.3	72.9	2.4	24.7	0.074	0.544	20.488930	-100.600590
T. Izq. Apaseo El Alto	28.37	3	1	14813	2.7	73.4	2.8	5.9	3.2	9.5	1.5	0.8	0.2	76.1	2.8	21.1	0.067	0.503	20.471411	-100.639584
T. Izq. Apaseo El Alto	28.37	3	2	14627	2.6	73.4	2.6	6.1	3.1	9.6	1.6	0.8	0.2	76.0	2.6	21.4	0.076	0.503	20.471359	-100.639652
T. Der. Apaseo El Grande	40.11	3	1	19104	1.6	74.5	3.0	6.8	2.5	7.5	2.7	1.1	0.3	76.1	3.0	20.9	0.075	0.501	20.532055	-100.716158
T. Der. Apaseo El Grande	40.11	3	2	19179	1.9	74.7	3.1	6.5	2.3	7.4	2.7	1.1	0.3	76.6	3.1	20.3	0.063	0.501	20.532020	-100.715989
T. Izq. Libramiento de Celaya Ote.	49.90	1	1	19425	1.0	74.5	4.9	8.4	2.5	5.4	2.7	0.5	0.1	75.5	4.9	19.6	0.084	0.504	20.520692	-100.751917
T. Izq. Libramiento de Celaya Ote.	49.90	1	2	19748	0.9	74.8	4.7	8.3	2.5	5.5	2.7	0.5	0.1	75.7	4.7	19.6	0.087	0.504	20.520562	-100.752051
T. Izq. Libramiento de Celaya Pte.	55.61	3	1	26852	1.4	78.0	3.1	8.3	2.9	4.5	1.2	0.5	0.1	79.4	3.1	17.5	0.074	0.511	20.515971	-100.886811
T. Izq. Libramiento de Celaya Pte.	55.61	3	2	29766	1.1	76.7	4.6	8.2	3.1	4.8	1.0	0.4	0.1	77.8	4.6	17.6	0.079	0.511	20.515887	-100.886814
T. Izq. Cortazar	67.50	3	1	25238	3.2	72.6	5.0	10.7	2.3	4.1	1.1	0.8	0.2	75.8	5.0	19.2	0.075	0.506	20.510054	-100.969752
T. Izq. Cortazar	67.50	3	2	24612	3.6	72.7	4.6	10.7	2.4	4.1	0.9	0.8	0.2	76.3	4.6	19.1	0.078	0.506	20.509976	-100.969754

QUERETARO

5 CARR: Querétaro - Irapuato (Libre)

CLAVE: 00154

RUTA: MEX-045

AÑO: 2022

LUGAR	ESTACION				CLASIFICACION VEHICULAR EN PORCIENTO										COORDENADAS					
	KM	TE	SC	TDPA	M	A	B	C2	C3	T3S2	T3S3	T3S2R4	OTROS	A	B	C	K'	D	LATITUD	LONGITUD
T. Izq. Libramiento de Salamanca Este	93.80	1	1	22765	4.3	65.7	7.1	12.3	2.6	5.3	1.4	1.0	0.3	70.0	7.1	22.9	0.080	0.511	20.552981	-101.150260
T. Izq. Libramiento de Salamanca Este	93.80	1	2	23765	4.1	65.3	7.0	12.8	2.5	5.9	1.3	0.9	0.2	69.4	7.0	23.6	0.081	0.511	20.553281	-101.151334
T. Izq. Libramiento de Salamanca Oeste	102.10	0	0																	
Irapuato	113.70	1	1	14156	4.0	78.1	3.8	7.2	2.0	2.6	1.2	0.9	0.2	82.1	3.8	14.1	0.077	0.510	20.655812	-101.300639
Irapuato	113.70	1	2	13602	4.0	77.5	3.8	7.6	2.0	2.9	1.2	0.8	0.2	81.5	3.8	14.7	0.079	0.510	20.655729	-101.300717

6 CARR: Querétaro - San Luis Potosí

CLAVE: 00165

RUTA: MEX-057

AÑO: 2022

LUGAR	ESTACION				CLASIFICACION VEHICULAR EN PORCIENTO										COORDENADAS					
	KM	TE	SC	TDPA	M	A	B	C2	C3	T3S2	T3S3	T3S2R4	OTROS	A	B	C	K'	D	LATITUD	LONGITUD
Querétaro	0.00	0	0																	
T. Der. Libramiento de Querétaro	6.28	3	1	62904	1.1	88.1	1.0	6.4	0.8	1.7	0.6	0.1	0.2	89.2	1.0	9.8	0.062	0.510	20.636823	-100.428844
T. Der. Libramiento de Querétaro	6.28	3	2	60026	1.1	88.2	1.0	6.4	0.8	1.6	0.6	0.1	0.2	89.3	1.0	9.7	0.085	0.510	20.636588	-100.428861
T. C. Anillo Vial Fray Junípero Serra (Laterales)	14.00	1	1	31118	1.7	92.2	0.3	3.9	0.5	1.0	0.3	0.0	0.1	93.9	0.3	5.8	0.083	0.504	20.688180	-100.435382
T. C. Anillo Vial Fray Junípero Serra (Centrales)	14.00	1	1	29750	1.5	79.1	2.7	13.7	0.6	1.4	0.6	0.2	0.2	80.6	2.7	16.7	0.074	0.545	20.688314	-100.435575
T. C. Anillo Vial Fray Junípero Serra (Laterales)	14.00	1	2	31714	1.7	92.0	0.3	3.9	0.5	1.1	0.3	0.1	0.1	93.7	0.3	6.0	0.093	0.504	20.687409	-100.435788
T. C. Anillo Vial Fray Junípero Serra (Centrales)	14.00	1	2	23349	1.5	79.2	2.7	13.7	0.6	1.4	0.5	0.2	0.2	80.7	2.7	16.6	0.082	0.545	20.687410	-100.435644
T. Izq. Juriquilla	15.63	3	1	41251	0.8	87.9	1.0	6.4	1.4	1.8	0.4	0.2	0.1	88.7	1.0	10.3	0.103	0.513	20.719372	-100.438931
T. Izq. Juriquilla	15.63	3	2	38976	0.8	88.1	0.9	6.4	1.4	1.7	0.4	0.2	0.1	88.9	0.9	10.2	0.125	0.513	20.719380	-100.439056
T. Izq. San Miguel de Allende	28.53	1	1	34943	0.9	80.5	1.4	9.9	1.5	4.0	0.9	0.7	0.2	81.4	1.4	17.2	0.138	0.505	20.802716	-100.448712
T. Izq. San Miguel de Allende	28.53	1	2	34210	0.9	80.5	1.4	9.9	1.5	4.0	0.9	0.7	0.2	81.4	1.4	17.2	0.135	0.505	20.802751	-100.448905
T. Izq. San Miguel de Allende	28.53	3	1	26973	1.1	51.7	3.5	9.8	3.1	23.4	2.7	4.0	0.7	52.8	3.5	43.7	0.086	0.502	20.836026	-100.439777
T. Izq. San Miguel de Allende	28.53	3	2	25246	1.1	51.7	3.5	9.8	3.1	23.4	2.7	4.0	0.7	52.8	3.5	43.7	0.063	0.502	20.835798	-100.440092
Lim. Edos. Term. Qro. Ppia. Gto.	36.70	0	0																	
X. C. San José Iturbide - El Arenal	46.83	1	1	25784	16.2	50.5	2.5	4.2	3.3	18.1	1.9	2.6	0.7	66.7	2.5	30.8	0.061	0.510	20.969449	-100.429462
X. C. San José Iturbide - El Arenal	46.83	1	2	24814	14.7	48.8	4.5	7.3	2.8	15.6	1.3	4.1	0.9	63.5	4.5	32.0	0.065	0.510	20.969385	-100.429624
X. C. San José Iturbide - El Arenal	46.83	3	1	19175	5.7	50.0	6.9	5.3	3.1	21.8	2.6	3.7	0.9	55.7	6.9	37.4	0.063	0.512	20.983048	-100.434630
X. C. San José Iturbide - El Arenal	46.83	3	2	18260	6.5	48.8	6.5	5.7	3.1	22.9	2.7	3.0	0.8	55.3	6.5	38.2	0.067	0.512	20.982989	-100.434802
X. C. Ent. San Miguel de Allende - Dr. Mora	61.93	1	1	16804	2.2	55.3	4.8	5.6	2.6	23.0	2.4	3.3	0.8	57.5	4.8	37.7	0.057	0.515	21.076885	-100.512296
X. C. Ent. San Miguel de Allende - Dr. Mora	61.93	1	2	15818	2.2	47.1	5.6	6.2	4.1	25.8	4.2	3.8	1.0	49.3	5.6	45.1	0.067	0.515	21.076759	-100.512422
X. C. San Luis de La Paz - Guanajuato	86.68	1	1	16732	2.2	47.1	4.9	5.3	2.8	29.9	3.9	3.1	0.8	49.3	4.9	45.8	0.058	0.535	21.256417	-100.586637
X. C. San Luis de La Paz - Guanajuato	86.68	1	2	14523	1.6	42.4	6.8	6.1	3.3	30.5	4.2	4.1	1.0	44.0	6.8	49.2	0.067	0.535	21.256413	-100.586838
T. Izq. San Diego de La Unión	119.07	1	1	12435	6.3	36.1	6.5	5.1	4.0	33.2	3.0	4.8	1.0	42.4	6.5	51.1	0.058	0.507	21.528258	-100.740170
T. Izq. San Diego de La Unión	119.07	1	2	12090	3.3	37.3	8.5	6.4	2.9	31.8	4.3	4.5	1.0	40.6	8.5	50.9	0.066	0.507	21.528184	-100.740341
T. Izq. San Diego de La Unión	119.07	3	1	12275	2.4	38.7	7.2	5.8	3.1	34.2	3.1	4.5	1.0	41.1	7.2	51.7	0.062	0.508	21.540902	-100.747197

QUERETARO

6 CARR: Querétaro - San Luis Potosí

CLAVE: 00165

RUTA: MEX-057

AÑO: 2022

LUGAR	ESTACION				CLASIFICACION VEHICULAR EN PORCIENTO										COORDENADAS					
	KM	TE	SC	TDPA	M	A	B	C2	C3	T3S2	T3S3	T3S2R4	OTROS	A	B	C	K'	D	LATITUD	LONGITUD
T. Izq. San Diego de La Unión	119.07	3	2	11911	1.7	45.2	6.2	4.8	2.9	30.1	3.5	4.6	1.0	46.9	6.2	46.9	0.066	0.508	21.540830	-100.747367
Lim. Edos. Term. Gto. Ppia. S. L. P.	124.74	0	0																	
T. Der. Tierra Nueva	140.65	1	1	12506	7.9	42.2	7.5	5.5	2.3	26.4	2.1	5.1	1.0	50.1	7.5	42.4	0.065	0.510	21.685649	-100.693731
T. Der. Tierra Nueva	140.65	1	2	12039	4.9	42.8	6.9	5.8	3.1	26.4	2.5	6.6	1.0	47.7	6.9	45.4	0.066	0.510	21.685755	-100.693863
T. Der. Tierra Nueva	140.65	3	1	16331	8.9	55.1	4.9	4.2	2.0	20.3	1.9	2.0	0.7	64.0	4.9	31.1	0.075	0.517	21.704133	-100.684335
T. Der. Tierra Nueva	140.65	3	2	15278	8.9	52.9	4.9	4.0	1.8	22.1	2.3	2.5	0.6	61.8	4.9	33.3	0.071	0.517	21.707063	-100.685631
T. Izq. Santa María del Río	155.88	3	1	16743	9.1	55.1	5.1	4.4	2.0	19.4	2.1	2.0	0.8	64.2	5.1	30.7	0.079	0.523	21.845724	-100.741254
T. Izq. Santa María del Río	155.88	3	2	15280	5.6	54.7	5.3	5.0	2.1	22.0	2.2	2.3	0.8	60.3	5.3	34.4	0.076	0.523	21.845620	-100.741400
T. Izq. Villa de Reyes	176.35	1	1	15514	10.6	46.3	1.9	4.8	4.5	24.7	2.7	3.9	0.6	56.9	1.9	41.2	0.066	0.512	21.961201	-100.811671
T. Izq. Villa de Reyes	176.35	1	2	14758	9.9	42.1	2.1	5.1	4.7	27.9	3.2	4.4	0.6	52.0	2.1	45.9	0.073	0.512	21.961150	-100.811833
T. Izq. Villa de Reyes	176.35	3	1	24531	2.9	59.7	3.4	7.2	2.5	18.0	2.4	3.2	0.7	62.6	3.4	34.0	0.072	0.507	21.986105	-100.825189
T. Izq. Villa de Reyes	176.35	3	2	23878	2.8	57.1	4.0	7.5	2.7	19.4	2.5	3.3	0.7	59.9	4.0	36.1	0.068	0.507	21.986046	-100.825351
T. Izq. Villa de Arriaga (Cuota)	182.60	1	1	32745	3.1	61.0	4.3	6.4	2.6	17.7	2.1	2.1	0.7	64.1	4.3	31.6	0.067	0.516	22.011674	-100.839080
T. Izq. Villa de Arriaga (Cuota)	182.60	1	2	30576	2.7	56.7	4.9	6.8	2.8	20.6	2.4	2.4	0.7	59.4	4.9	35.7	0.093	0.516	22.011637	-100.839248
X. C. Libramiento de San Luis Potosí	184.80	1	1	35775	2.1	60.9	3.0	8.1	3.4	16.4	2.3	3.0	0.8	63.0	3.0	34.0	0.089	0.509	22.030999	-100.849556
X. C. Libramiento de San Luis Potosí	184.80	1	2	34458	1.7	60.4	3.0	8.0	3.1	17.9	2.4	2.9	0.6	62.1	3.0	34.9	0.093	0.509	22.031841	-100.850219
X. Periférico de San Luis Potosí (Lateral)	197.50	1	1	17656	4.3	79.1	1.1	7.2	2.6	2.0	1.3	1.6	0.8	83.4	1.1	15.5	0.135	0.516	22.122015	-100.912810
X. Periférico de San Luis Potosí (Central)	197.50	1	1	63611	4.3	90.7	0.6	2.2	0.5	0.5	0.1	0.9	0.2	95.0	0.6	4.4	0.077	0.512	22.122119	-100.913195
X. Periférico de San Luis Potosí (Central)	197.50	1	2	60281	4.1	90.6	0.5	2.1	0.4	0.8	0.4	0.7	0.4	94.7	0.5	4.8	0.063	0.512	22.122039	-100.913434
X. Periférico de San Luis Potosí (Lateral)	197.50	1	2	16554	4.5	76.4	1.7	7.5	2.7	3.1	2.0	1.3	0.8	80.9	1.7	17.4	0.101	0.516	22.121390	-100.913094
San Luis Potosí	201.66	0	0																	

7 CARR: San Juan del Río - Xilitla

CLAVE: 00183

RUTA: MEX-120

AÑO: 2022

LUGAR	ESTACION				CLASIFICACION VEHICULAR EN PORCIENTO										COORDENADAS					
	KM	TE	SC	TDPA	M	A	B	C2	C3	T3S2	T3S3	T3S2R4	OTROS	A	B	C	K'	D	LATITUD	LONGITUD
San Juan del Río	0.00	0	0																	
T. Der. Libramiento de San Juan del Río	5.20	3	1	14658	2.6	89.0	1.1	3.6	1.3	1.4	0.5	0.3	0.2	91.6	1.1	7.3	0.106	0.510	20.426901	-99.974415
T. Der. Libramiento de San Juan del Río	5.20	3	2	15229	2.6	88.7	1.2	3.6	1.4	1.5	0.5	0.3	0.2	91.3	1.2	7.5	0.095	0.510	20.426991	-99.974501
T. Der. Tequisquiapan	19.80	1	1	11462	3.5	89.0	1.3	2.7	1.4	1.0	0.6	0.3	0.2	92.5	1.3	6.2	0.097	0.506	20.513152	-99.905785
T. Der. Tequisquiapan	19.80	1	2	11194	3.8	89.1	1.3	2.5	1.4	0.9	0.5	0.3	0.2	92.9	1.3	5.8	0.088	0.506	20.513278	-99.905834
T. Der. Tequisquiapan	19.80	3	1	9875	3.6	88.8	1.3	2.9	1.4	1.0	0.6	0.3	0.1	92.4	1.3	6.3	0.095	0.506	20.544235	-99.902102
T. Der. Tequisquiapan	19.80	3	2	9637	3.5	88.6	1.3	2.9	1.5	1.1	0.7	0.3	0.1	92.1	1.3	6.6	0.093	0.506	20.544216	-99.902227
Ezequiel Montes	36.50	1	1	7937	3.4	81.7	2.0	6.7	2.6	2.1	0.9	0.5	0.1	85.1	2.0	12.9	0.096	0.515	20.640733	-99.906979
Ezequiel Montes	36.50	1	2	8420	3.5	81.9	1.9	6.6	2.5	2.2	0.9	0.4	0.1	85.4	1.9	12.7	0.091	0.515	20.640759	-99.907104

QUERETARO

7 CARR : San Juan del Río - Xilitla

CLAVE: 00183

RUTA: MEX-120

AÑO: 2022

LUGAR	ESTACION				CLASIFICACION VEHICULAR EN PORCIENTO										COORDENADAS					
	KM	TE	SC	TDPA	M	A	B	C2	C3	T3S2	T3S3	T3S2R4	OTROS	A	B	C	K'	D	LATITUD	LONGITUD
Ezequiel Montes	36.50	3	1	6526	2.3	87.4	1.1	7.7	0.9	0.3	0.2	0.1	0.0	89.7	1.1	9.2	0.080	0.508	20.680955	-99.888324
Ezequiel Montes	36.50	3	2	6738	2.1	87.7	0.9	7.7	1.0	0.3	0.2	0.1	0.0	89.8	0.9	9.3	0.074	0.508	20.681017	-99.888430
Cadereyta	47.90	3	1	5501	3.3	82.3	0.4	7.8	2.8	1.8	1.0	0.5	0.1	85.6	0.4	14.0	0.124	0.514	20.702356	-99.802326
Cadereyta	47.90	3	2	5195	2.9	82.9	0.5	7.7	2.5	1.9	0.9	0.6	0.1	85.8	0.5	13.7	0.095	0.514	20.702438	-99.802336
Vizarrón de Montes	73.50	3	0	3559	2.6	83.2	0.7	7.5	2.7	1.4	1.0	0.4	0.5	85.8	0.7	13.5	0.079	0.508	20.847504	-99.713263
T. Der. San Joaquín	79.50	3	0	1598	1.4	81.4	1.8	12.2	1.5	1.2	0.5	0.0	0.0	82.8	1.8	15.4	0.105	0.546	20.885367	-99.707509
T. Izq. Higuierillas	89.10	3	0	2382	1.8	84.2	2.0	9.4	1.8	0.5	0.3	0.0	0.0	86.0	2.0	12.0	0.100	0.505	20.949475	-99.749178
T. Izq. Peñamiller	103.00	3	0	1957	3.7	85.8	1.1	8.5	0.5	0.2	0.2	0.0	0.0	89.5	1.1	9.4	0.111	0.521	21.039181	-99.739540
Pinal de Amoles	140.00	3	0	2379	2.4	85.9	1.8	8.3	0.9	0.4	0.3	0.0	0.0	88.3	1.8	9.9	0.086	0.502	21.137553	-99.620601
Jalpan de Serra	179.30	3	0	8781	2.9	89.1	0.4	6.2	0.6	0.5	0.2	0.1	0.0	92.0	0.4	7.6	0.083	0.501	21.209415	-99.454184
Landa de Matamoros	201.60	3	0	3263	1.8	92.9	1.2	3.0	0.4	0.2	0.2	0.2	0.1	94.7	1.2	4.1	0.089	0.509	21.186114	-99.314461
El Lobo	236.40	3	0	1483	4.3	85.4	0.6	7.6	1.3	0.3	0.5	0.0	0.0	89.7	0.6	9.7	0.110	0.511	21.292306	-99.116327
Lim. Edos. Term. Qro. Ppia. S. L. P.	238.33	0	0																	
Xilitla	266.40	1	0	2865	7.4	77.4	1.3	9.6	1.3	2.0	0.5	0.1	0.4	84.8	1.3	13.9	0.097	0.508	21.379004	-98.998505
T. C. Portezuelo - Cd. Valles	276.98	1	0	3750	5.7	81.3	1.3	7.4	1.8	1.3	0.7	0.4	0.1	87.0	1.3	11.7	0.079	0.502	21.442597	-98.929830

8 CARR : Libramiento Nororiental de Querétaro (Cuota)

CLAVE: 22266

RUTA: MEX-057D

AÑO: 2022

LUGAR	ESTACION				CLASIFICACION VEHICULAR EN PORCIENTO										COORDENADAS					
	KM	TE	SC	TDPA	M	A	B	C2	C3	T3S2	T3S3	T3S2R4	OTROS	A	B	C	K'	D	LATITUD	LONGITUD
T. C. México - Querétaro	0.00	3	1	10053	4.4	40.2	6.6	6.5	3.2	29.5	3.8	5.1	0.7	44.6	6.6	48.8	0.042	0.504	20.567631	-100.232740
T. C. México - Querétaro	0.00	3	2	9891	3.8	35.0	7.3	7.4	3.3	32.7	3.9	5.9	0.7	38.8	7.3	53.9	0.044	0.504	20.569978	-100.234188
Plaza de Cobro Chichimequillas	20.32	2	1	9558	0.3	40.4	1.5	6.5	5.4	34.9	3.6	6.3	1.1	40.7	1.5	57.8	0.066	0.500	20.705589	-100.343736
Plaza de Cobro Chichimequillas	20.32	2	2	9558	0.3	40.4	1.5	6.5	5.4	34.9	3.6	6.3	1.1	40.7	1.5	57.8	0.066	0.500	20.705589	-100.343736
T. C. Querétaro - San Luis Potosí	37.50	1	1	9384	2.1	50.1	6.7	5.8	2.8	21.1	3.5	7.3	0.6	52.2	6.7	41.1	0.075	0.509	20.812928	-100.441796
T. C. Querétaro - San Luis Potosí	37.50	1	2	9727	1.6	44.5	7.1	6.7	3.0	24.4	3.7	8.3	0.7	46.1	7.1	46.8	0.086	0.509	20.815462	-100.445615

9 CARR : Palmillas - Apaseo el Grande (Cuota)

CLAVE:

RUTA: MEX-045D

AÑO: 2022

LUGAR	ESTACION				CLASIFICACION VEHICULAR EN PORCIENTO										COORDENADAS					
	KM	TE	SC	TDPA	M	A	B	C2	C3	T3S2	T3S3	T3S2R4	OTROS	A	B	C	K'	D	LATITUD	LONGITUD
T. C. México - Querétaro (Cuota)	0.00	0	0																	
Ent. Palmillas	1.60	1	1	6195	3.6	61.9	8.5	4.2	2.6	11.7	2.2	4.4	0.9	65.5	8.5	26.0	0.097	0.545	20.292666	-99.929051
Ent. Palmillas	1.60	1	2	5163	3.4	58.1	9.4	4.5	3.2	13.3	2.4	4.7	1.0	61.5	9.4	29.1	0.109	0.545	20.292566	-99.929070
Ent. Palmillas	1.60	3	1	6299	1.3	60.7	8.5	4.4	3.1	13.5	2.2	5.4	0.9	62.0	8.5	29.5	0.083	0.508	20.292188	-99.937275

QUERETARO

9 CARR : Palmillas - Apaseo el Grande (Cuota)

CLAVE:

RUTA : MEX-045D

AÑO : 2022

LUGAR	ESTACION				CLASIFICACION VEHICULAR EN PORCIENTO													COORDENADAS		
	KM	TE	SC	TDPA	M	A	B	C2	C3	T3S2	T3S3	T3S2R4	OTROS	A	B	C	K'	D	LATITUD	LONGITUD
Ent. Palmillas	1.60	3	2	6090	0.8	57.1	9.7	5.1	3.6	14.7	2.6	5.5	0.9	57.9	9.7	32.4	0.092	0.508	20.291802	-99.940174
T. Izq. Amealco	15.40	3	1	6146	2.2	57.3	8.6	4.8	3.8	14.8	2.7	5.0	0.8	59.5	8.6	31.9	0.065	0.510	20.281060	-100.060314
T. Izq. Amealco	15.40	3	2	5909	2.4	52.7	9.4	5.5	4.1	16.2	3.2	5.6	0.9	55.1	9.4	35.5	0.074	0.510	20.281994	-100.067147
T. C. (Villa del Pueblito - Huimilpan) - Coroneo	40.60	3	1	6811	2.2	56.6	8.7	6.0	3.8	14.1	3.1	4.7	0.8	58.8	8.7	32.5	0.105	0.500	20.350250	-100.277830
T. C. (Villa del Pueblito - Huimilpan) - Coroneo	40.60	3	2	6810	1.9	53.3	9.6	6.2	4.2	15.7	3.3	5.0	0.8	55.2	9.6	35.2	0.095	0.500	20.350186	-100.277868
Lim. Edos. Term. Qro. Ppia. Gto.	65.40	0	0																	
T. C. Querétaro - Irapuato (Libre)	78.80	0	0																	
T. C. Querétaro - Irapuato (Cuota)	85.20	1	1	5783	2.6	55.3	10.4	5.2	3.9	16.3	2.5	3.0	0.8	57.9	10.4	31.7	0.092	0.503	20.525089	-100.615060
T. C. Querétaro - Irapuato (Cuota)	85.20	1	2	5704	2.6	54.7	10.5	6.5	3.9	14.5	2.8	3.6	0.9	57.3	10.5	32.2	0.083	0.503	20.525147	-100.615261

10 CARR : Querétaro - Irapuato (Cuota)

CLAVE: 00423

RUTA : MEX-045D

AÑO : 2022

LUGAR	ESTACION				CLASIFICACION VEHICULAR EN PORCIENTO													COORDENADAS		
	KM	TE	SC	TDPA	M	A	B	C2	C3	T3S2	T3S3	T3S2R4	OTROS	A	B	C	K'	D	LATITUD	LONGITUD
Querétaro	0.00	3	1	18241	2.9	77.9	1.6	5.5	0.9	7.8	1.8	1.1	0.5	80.8	1.6	17.6	0.095	0.505	20.576616	-100.420618
Querétaro	0.00	3	2	17877	2.9	78.2	1.6	5.6	0.9	7.6	1.7	1.0	0.5	81.1	1.6	17.3	0.063	0.505	20.576518	-100.420521
Plaza de Cobro Querétaro	7.00	2	1	8286	0.4	66.7	3.9	6.1	4.6	12.5	1.3	3.0	1.5	67.1	3.9	29.0	0.079	0.500	20.572203	-100.472827
Plaza de Cobro Querétaro	7.00	2	2	8286	0.4	66.7	3.9	6.1	4.6	12.5	1.3	3.0	1.5	67.1	3.9	29.0	0.079	0.500	20.572203	-100.472827
Lim. Edos. Term. Qro. Ppia. Gto.	8.97	0	0																	
T. C. Palmillas - Apaseo el Grande (Cuota)	24.50	1	1	14241	2.2	67.2	1.8	7.3	5.8	11.0	1.2	2.8	0.7	69.4	1.8	28.8	0.119	0.519	20.536956	-100.607256
T. C. Palmillas - Apaseo el Grande (Cuota)	24.50	1	2	13208	2.5	66.2	1.8	7.4	5.9	11.4	1.4	2.7	0.7	68.7	1.8	29.5	0.087	0.519	20.536622	-100.607724
T. C. Palmillas - Apaseo el Grande (Cuota)	24.50	3	1	15917	0.8	67.4	1.9	6.8	6.8	11.4	1.4	2.8	0.7	68.2	1.9	29.9	0.092	0.531	20.532334	-100.635559
T. C. Palmillas - Apaseo el Grande (Cuota)	24.50	3	2	14034	0.8	67.5	1.8	7.4	6.1	11.6	1.4	2.7	0.7	68.3	1.8	29.9	0.084	0.531	20.532250	-100.632285
T. C. Libramiento de Celaya (Cuota)	37.20	3	1	20562	0.8	67.4	4.8	6.3	5.8	10.7	1.6	2.0	0.6	68.2	4.8	27.0	0.079	0.502	20.538191	-100.725588
T. C. Libramiento de Celaya (Cuota)	37.20	3	2	20363	0.7	68.3	4.6	6.3	5.6	10.4	1.5	2.0	0.6	69.0	4.6	26.4	0.093	0.502	20.544140	-100.738096
X. C. Celaya - Dolores Hidalgo	44.10	1	1	15899	0.7	65.5	5.0	8.6	3.9	10.4	1.6	3.5	0.8	66.2	5.0	28.8	0.084	0.530	20.557011	-100.812252
X. C. Celaya - Dolores Hidalgo	44.10	1	2	17952	0.7	64.9	5.2	8.5	3.9	10.7	1.6	3.6	0.9	65.6	5.2	29.2	0.079	0.530	20.556889	-100.812709
T. Der. Juventino Rosas	63.00	1	1	15399	0.7	67.5	5.3	8.0	4.0	10.1	1.6	2.0	0.8	68.2	5.3	26.5	0.109	0.501	20.580699	-100.990666
T. Der. Juventino Rosas	63.00	1	2	15316	0.7	66.9	5.1	8.4	4.0	10.4	1.6	2.0	0.9	67.6	5.1	27.3	0.074	0.501	20.580346	-100.989287
T. Der. Juventino Rosas	63.00	3	1	14777	0.8	65.0	5.1	8.6	4.1	10.6	1.6	3.4	0.8	65.8	5.1	29.1	0.070	0.538	20.581341	-100.995294
T. Der. Juventino Rosas	63.00	3	2	12705	0.8	64.3	5.4	8.4	4.1	10.8	1.7	3.6	0.9	65.1	5.4	29.5	0.083	0.538	20.581740	-100.999367
T. C. Salamanca - León (Cuota)	78.00	1	1	15542	1.0	68.0	5.0	7.2	4.3	8.8	1.5	3.4	0.8	69.0	5.0	26.0	0.075	0.524	20.589779	-101.112079
T. C. Salamanca - León (Cuota)	78.00	1	2	14113	0.9	67.9	4.9	7.7	4.0	9.1	1.5	3.2	0.8	68.8	4.9	26.3	0.078	0.524	20.589599	-101.111873
T. Izq. Salamanca	81.54	1	1	8064	1.6	65.8	6.6	8.7	3.6	8.9	1.3	2.8	0.7	67.4	6.6	26.0	0.065	0.507	20.592659	-101.151350
T. Izq. Salamanca	81.54	1	2	8296	1.5	65.4	6.1	9.2	3.6	9.4	1.3	2.8	0.7	66.9	6.1	27.0	0.066	0.507	20.592495	-101.151380

QUERETARO

10 CARR: Querétaro - Irapuato (Cuota)

CLAVE: 00423

RUTA: MEX-045D

AÑO: 2022

LUGAR	ESTACION				CLASIFICACION VEHICULAR EN PORCIENTO										COORDENADAS					
	KM	TE	SC	TDPA	M	A	B	C2	C3	T3S2	T3S3	T3S2R4	OTROS	A	B	C	K'	D	LATITUD	LONGITUD
T. Izq. Salamanca	81.54	3	1	7693	1.3	65.4	5.6	10.4	3.2	10.0	1.2	2.3	0.6	66.7	5.6	27.7	0.068	0.510	20.599570	-101.186236
T. Izq. Salamanca	81.54	3	2	8014	1.2	65.4	5.8	10.6	3.1	9.6	1.3	2.3	0.7	66.6	5.8	27.6	0.066	0.510	20.602391	-101.201215
Plaza de Cobro Salamanca	83.25	2	1	6204	0.3	57.8	3.3	6.7	7.2	16.3	2.0	5.5	0.9	58.1	3.3	38.6	0.079	0.500	20.598482	-101.180975
Plaza de Cobro Salamanca	83.25	2	2	6204	0.3	57.8	3.3	6.7	7.2	16.3	2.0	5.5	0.9	58.1	3.3	38.6	0.079	0.500	20.598482	-101.180975
T. Der. Libramiento de Irapuato	96.30	1	1	8771	0.8	63.9	5.4	9.7	3.9	10.5	1.7	3.2	0.9	64.7	5.4	29.9	0.065	0.530	20.649983	-101.281667
T. Der. Libramiento de Irapuato	96.30	1	2	7791	1.5	63.1	5.1	9.9	3.8	10.6	1.6	3.4	1.0	64.6	5.1	30.3	0.063	0.530	20.649443	-101.281100
T. Der. Libramiento de Irapuato	96.30	3	1	18106	1.0	64.3	4.0	10.8	3.4	11.2	2.5	2.2	0.6	65.3	4.0	30.7	0.076	0.518	20.654576	-101.294934
T. Der. Libramiento de Irapuato	96.30	3	2	19492	1.1	64.7	4.5	9.9	3.8	10.4	2.1	2.8	0.7	65.8	4.5	29.7	0.071	0.518	20.654552	-101.293729
X. C. Querétaro - Irapuato (Libre)	97.00	3	1	14762	1.1	69.4	3.4	9.0	3.2	9.3	1.9	2.2	0.5	70.5	3.4	26.1	0.074	0.509	20.653217	-101.309553
X. C. Querétaro - Irapuato (Libre)	97.00	3	2	15300	1.0	69.3	3.2	9.1	3.5	9.1	2.1	2.1	0.6	70.3	3.2	26.5	0.086	0.509	20.653102	-101.308969
T. C. Irapuato - Zapotlanejo	104.70	0	0																	

11 CARR: México - Querétaro (Cuota)

CLAVE: 00411

RUTA: MEX-057-MEX-057D

AÑO: 2022

LUGAR	ESTACION				CLASIFICACION VEHICULAR EN PORCIENTO										COORDENADAS					
	KM	TE	SC	TDPA	M	A	B	C2	C3	T3S2	T3S3	T3S2R4	OTROS	A	B	C	K'	D	LATITUD	LONGITUD
México	0.00	0	0																	
Lim. Edos. Term. CDMX Ppia. Méx.	11.30	0	0																	
Lechería	29.41	0	0																	
Plaza de Cobro Tepetzotlán	43.01	2	1	30600	0.6	72.4	4.0	5.2	3.6	10.8	0.6	2.0	0.8	73.0	4.0	23.0	0.077	0.500	19.715361	-99.207448
Plaza de Cobro Tepetzotlán	43.01	2	2	30600	0.6	72.4	4.0	5.2	3.6	10.8	0.6	2.0	0.8	73.0	4.0	23.0	0.077	0.500	19.715361	-99.207448
Ent. Jorobas	56.18	1	1	34331	1.1	68.7	4.2	7.7	2.8	10.6	1.7	2.3	0.9	69.8	4.2	26.0	0.080	0.506	19.811390	-99.238502
Ent. Jorobas	56.18	1	2	35253	1.2	66.0	4.9	8.3	2.9	11.3	2.0	2.5	0.9	67.2	4.9	27.9	0.073	0.506	19.803112	-99.234918
Ent. Jorobas	56.18	3	1	47969	3.0	60.7	4.7	8.4	3.2	14.1	2.0	3.0	0.9	63.7	4.7	31.6	0.065	0.501	19.829242	-99.257702
Ent. Jorobas	56.18	3	2	48214	3.0	57.8	5.0	8.9	3.4	15.7	2.0	3.3	0.9	60.8	5.0	34.2	0.068	0.501	19.837256	-99.274095
Lim. Edos. Term. Méx. Ppia. Hgo.	59.85	0	0																	
T. Der. Tepeji del Río	69.36	1	1	40936	4.4	69.5	4.5	7.6	2.6	7.0	1.1	2.4	0.9	73.9	4.5	21.6	0.078	0.506	19.863591	-99.316375
T. Der. Tepeji del Río	69.36	1	2	42087	4.4	68.9	4.7	7.0	2.6	7.6	1.3	2.9	0.6	73.3	4.7	22.0	0.075	0.506	19.871087	-99.338582
T. Der. Tepeji del Río	69.36	3	1	37299	4.5	67.7	4.8	5.7	2.5	10.0	1.2	3.0	0.6	72.2	4.8	23.0	0.082	0.511	19.920837	-99.370368
T. Der. Tepeji del Río	69.36	3	2	39178	4.7	68.2	4.5	5.7	2.6	9.5	1.2	3.0	0.6	72.9	4.5	22.6	0.069	0.511	19.920796	-99.370488
T. Izq. Jilotepec	83.75	1	1	34623	4.8	65.3	5.7	5.4	3.0	10.0	1.5	3.5	0.8	70.1	5.7	24.2	0.085	0.502	19.972284	-99.434200
T. Izq. Jilotepec	83.75	1	2	34912	4.7	65.3	5.6	5.2	2.8	10.5	1.4	3.7	0.8	70.0	5.6	24.4	0.079	0.502	19.977531	-99.437958
T. Izq. Jilotepec	83.75	3	1	34164	4.1	60.8	4.7	6.3	2.8	14.6	2.3	3.5	0.9	64.9	4.7	30.4	0.083	0.501	19.989613	-99.458499
T. Izq. Jilotepec	83.75	3	2	34046	3.9	61.1	4.7	6.3	2.7	14.6	2.3	3.5	0.9	65.0	4.7	30.3	0.085	0.501	19.990258	-99.461874
Lim. Edos. Term. Hgo. Ppia. Méx.	86.00	0	0																	

QUERETARO

11 CARR: México - Querétaro (Cuota)

CLAVE: 00411

RUTA: MEX-057-MEX-057D

AÑO: 2022

LUGAR	ESTACION				CLASIFICACION VEHICULAR EN PORCIENTO										COORDENADAS					
	KM	TE	SC	TDPA	M	A	B	C2	C3	T3S2	T3S3	T3S2R4	OTROS	A	B	C	K'	D	LATITUD	LONGITUD
X. C. Libramiento Norte de La Ciudad de México (Cuota)	89.44	3	1	43142	4.4	64.1	5.6	5.3	2.5	12.0	1.7	3.5	0.9	68.5	5.6	25.9	0.067	0.528	20.005688	-99.501797
X. C. Libramiento Norte de La Ciudad de México (Cuota)	89.44	3	2	38052	4.9	61.4	5.9	5.4	2.5	13.2	2.1	3.6	1.0	66.3	5.9	27.8	0.072	0.528	20.003162	-99.498090
T. Der. Palos Altos	97.80	1	1	39583	5.0	60.4	5.5	5.0	3.0	14.2	1.9	4.1	0.9	65.4	5.5	29.1	0.066	0.500	20.031049	-99.547787
T. Der. Palos Altos	97.80	1	2	39632	5.2	60.0	5.4	5.0	2.8	14.3	2.1	4.3	0.9	65.2	5.4	29.4	0.078	0.500	20.031227	-99.548973
X. C. Jilotepec - Maravillas	107.00	1	1	34685	8.6	59.3	4.5	4.2	4.7	13.3	0.9	3.6	0.9	67.9	4.5	27.6	0.073	0.504	20.080857	-99.619575
X. C. Jilotepec - Maravillas	107.00	1	2	35244	8.6	59.4	4.5	4.2	4.7	13.2	0.9	3.6	0.9	68.0	4.5	27.5	0.087	0.504	20.075758	-99.613957
X. C. Jilotepec - Maravillas	107.00	3	1	33523	3.7	64.7	4.8	4.7	3.4	12.2	1.7	3.9	0.9	68.4	4.8	26.8	0.077	0.506	20.082406	-99.635739
X. C. Jilotepec - Maravillas	107.00	3	2	34423	3.7	60.9	5.2	5.2	3.5	14.6	1.8	4.3	0.8	64.6	5.2	30.2	0.083	0.506	20.082521	-99.633721
T. Izq. Aculco	114.80	1	1	35076	4.7	63.7	5.4	4.7	3.0	12.7	1.7	3.4	0.7	68.4	5.4	26.2	0.080	0.511	20.095887	-99.691156
T. Izq. Aculco	114.80	1	2	33346	4.5	60.3	5.8	5.2	3.3	14.3	1.8	4.0	0.8	64.8	5.8	29.4	0.082	0.511	20.091269	-99.686640
T. Izq. Aculco	114.80	3	1	33542	4.8	62.3	5.5	4.9	2.9	13.6	1.6	3.6	0.8	67.1	5.5	27.4	0.085	0.500	20.104893	-99.698781
T. Izq. Aculco	114.80	3	2	33588	4.8	58.5	6.3	5.5	3.0	15.0	2.0	4.0	0.9	63.3	6.3	30.4	0.090	0.500	20.108558	-99.704288
T. Izq. Encinillas	121.70	1	1	34763	5.2	66.8	4.1	3.5	2.6	11.6	2.1	3.3	0.8	72.0	4.1	23.9	0.085	0.508	20.142690	-99.732427
T. Izq. Encinillas	121.70	1	2	35991	5.3	63.8	4.3	3.9	2.9	13.3	2.2	3.4	0.9	69.1	4.3	26.6	0.091	0.508	20.145150	-99.734132
Polotitlán	133.00	1	1	36765	5.2	67.1	3.9	3.2	2.2	13.4	1.6	2.7	0.7	72.3	3.9	23.8	0.086	0.518	20.218633	-99.801703
Polotitlán	133.00	1	2	33874	5.3	63.6	4.4	3.4	2.4	15.1	1.9	3.1	0.8	68.9	4.4	26.7	0.091	0.518	20.219880	-99.803614
Lim. Edos. Term. Méx. Ppia. Qro.	145.50	0	0																	
Plaza de Cobro Palmillas	145.80	2	1	21333	0.4	60.7	3.0	6.1	4.7	18.5	1.6	4.0	1.0	61.1	3.0	35.9	0.077	0.500	20.296112	-99.929069
Plaza de Cobro Palmillas	145.80	2	2	21333	0.4	60.7	3.0	6.1	4.7	18.5	1.6	4.0	1.0	61.1	3.0	35.9	0.077	0.500	20.296112	-99.929069
T. Izq. Toluca	148.50	1	1	34055	5.0	64.4	4.1	3.0	2.6	14.8	1.7	3.6	0.8	69.4	4.1	26.5	0.085	0.501	20.287533	-99.913612
T. Izq. Toluca	148.50	1	2	34127	4.8	60.8	4.6	3.4	2.8	16.7	1.9	4.1	0.9	65.6	4.6	29.8	0.066	0.501	20.284664	-99.909382
T. Izq. Toluca	148.50	3	1	39668	1.3	66.8	5.4	6.3	3.7	11.3	2.0	2.3	0.9	68.1	5.4	26.5	0.068	0.512	20.311378	-99.932458
T. Izq. Toluca	148.50	3	2	41758	1.2	64.5	5.9	7.0	4.0	11.9	2.2	2.3	1.0	65.7	5.9	28.4	0.074	0.512	20.320106	-99.934138
T. Der. Portezuelo	151.53	3	1	42805	5.6	63.7	6.2	5.5	2.0	12.1	1.5	2.6	0.8	69.3	6.2	24.5	0.076	0.520	20.336783	-99.941298
T. Der. Portezuelo	151.53	3	2	42805	5.6	63.7	6.2	5.5	2.0	12.1	1.5	2.6	0.8	69.3	6.2	24.5	0.076	0.520	20.336699	-99.941796
T. Der. Poniente San Juan del Río	164.10	3	1	46968	5.6	63.6	6.2	5.5	2.0	12.1	1.6	2.6	0.8	69.2	6.2	24.6	0.076	0.520	20.373904	-99.994528
T. Der. Poniente San Juan del Río	164.10	3	2	46586	6.7	66.1	3.8	5.1	2.9	9.6	1.4	3.6	0.8	72.8	3.8	23.4	0.081	0.512	20.372610	-99.992109
La Estancia	169.40	1	1	51969	5.3	69.6	3.8	4.9	2.2	9.8	1.5	2.1	0.8	74.9	3.8	21.3	0.078	0.515	20.423243	-100.051777
La Estancia	169.40	1	2	48566	5.2	67.7	4.2	5.3	2.5	9.9	1.7	2.4	1.1	72.9	4.2	22.9	0.076	0.515	20.424677	-100.053723
T. Izq. Acámbaro	170.45	3	1	55916	4.0	68.9	3.5	6.6	2.2	10.3	1.3	2.3	0.9	72.9	3.5	23.6	0.081	0.532	20.447229	-100.078656
T. Izq. Acámbaro	170.45	3	2	48330	3.5	66.4	4.2	7.4	2.3	11.6	1.4	2.3	0.9	69.9	4.2	25.9	0.094	0.532	20.449899	-100.082365
T. Izq. El Sauz	176.50	3	1	44832	6.0	65.1	4.3	5.1	2.9	11.1	1.7	2.9	0.9	71.1	4.3	24.6	0.077	0.522	20.477772	-100.110882
T. Izq. El Sauz	176.50	3	2	40634	6.0	66.9	3.5	6.2	2.7	9.7	1.6	2.5	0.9	72.9	3.5	23.6	0.074	0.522	20.497771	-100.133982
T. Der. San Ildefonso	185.30	1	1	47176	4.2	72.0	4.2	6.9	1.1	7.5	1.8	1.5	0.8	76.2	4.2	19.6	0.074	0.536	20.520996	-100.168496
T. Der. San Ildefonso	185.30	1	2	40230	3.8	73.2	4.2	6.4	1.3	7.3	1.7	1.3	0.8	77.0	4.2	18.8	0.079	0.536	20.517314	-100.163865

QUERETARO

11 CARR : México - Querétaro (Cuota)

CLAVE: 00411

RUTA: MEX-057-MEX-057D

AÑO: 2022

LUGAR	ESTACION				CLASIFICACION VEHICULAR EN PORCIENTO													COORDENADAS		
	KM	TE	SC	TDPA	M	A	B	C2	C3	T3S2	T3S3	T3S2R4	OTROS	A	B	C	K'	D	LATITUD	LONGITUD
T. Der. Libramiento Nororiente de Querétaro (Cuota)	192.50	1	1	51459	3.4	73.9	4.0	6.7	1.4	7.0	1.2	1.9	0.5	77.3	4.0	18.7	0.080	0.532	20.552610	-100.215603
T. Der. Libramiento Nororiente de Querétaro (Cuota)	192.50	1	2	44454	3.2	73.6	4.4	6.5	1.7	6.8	1.4	1.7	0.7	76.8	4.4	18.8	0.076	0.532	20.551704	-100.214684
T. Der. Libramiento Nororiente de Querétaro (Cuota)	192.50	3	1	74081	1.9	76.8	3.0	8.4	1.8	4.8	1.7	0.9	0.7	78.7	3.0	18.3	0.077	0.508	20.562621	-100.237131
T. Der. Libramiento Nororiente de Querétaro (Cuota)	192.50	3	2	71457	1.7	76.1	3.0	8.7	2.0	5.1	1.8	0.8	0.8	77.8	3.0	19.2	0.076	0.508	20.561654	-100.234754
T. Der. Libramiento de Querétaro a San Luis Potosí	207.00	1	1	84692	2.2	83.3	1.3	3.0	2.5	4.3	0.7	1.9	0.8	85.5	1.3	13.2	0.080	0.523	20.573107	-100.323084
T. Der. Libramiento de Querétaro a San Luis Potosí	207.00	1	2	75778	1.9	82.8	1.5	3.1	2.6	4.4	0.7	2.1	0.9	84.7	1.5	13.8	0.103	0.523	20.574456	-100.330943
T. Der. Libramiento de Querétaro a San Luis Potosí	207.00	3	1	96642	1.7	81.9	1.9	4.9	1.5	4.8	1.7	0.7	0.9	83.6	1.9	14.5	0.079	0.508	20.578251	-100.380496
T. Der. Libramiento de Querétaro a San Luis Potosí Querétaro	207.00	3	2	99658	1.5	82.3	1.8	4.7	1.6	5.0	1.6	0.8	0.7	83.8	1.8	14.4	0.076	0.508	20.578492	-100.378589
Querétaro	211.60	0	0																	

12 CARR : Ajuchitlán - Colón

CLAVE: 22010

RUTA: QRO-005

AÑO: 2022

LUGAR	ESTACION				CLASIFICACION VEHICULAR EN PORCIENTO													COORDENADAS		
	KM	TE	SC	TDPA	M	A	B	C2	C3	T3S2	T3S3	T3S2R4	OTROS	A	B	C	K'	D	LATITUD	LONGITUD
T. C. El Colorado - Higuierillas	0.00	3	1	4893	1.2	90.8	0.9	3.7	1.4	0.7	0.5	0.5	0.3	92.0	0.9	7.1	0.102	0.503	20.695298	-100.016637
T. C. El Colorado - Higuierillas	0.00	3	2	4838	1.2	90.7	0.9	3.7	1.3	0.7	0.6	0.5	0.4	91.9	0.9	7.2	0.113	0.503	20.695288	-100.016742
Colón	14.00	1	1	4450	2.2	89.9	1.2	4.0	1.1	0.5	0.4	0.4	0.3	92.1	1.2	6.7	0.107	0.504	20.763598	-100.045872
Colón	14.00	1	2	4524	2.1	89.9	1.2	4.0	1.0	0.6	0.5	0.4	0.3	92.0	1.2	6.8	0.115	0.504	20.763543	-100.045948

13 CARR : Ajuchitlán - Ezequiel Montes

CLAVE: 22005

RUTA: QRO-005

AÑO: 2022

LUGAR	ESTACION				CLASIFICACION VEHICULAR EN PORCIENTO													COORDENADAS		
	KM	TE	SC	TDPA	M	A	B	C2	C3	T3S2	T3S3	T3S2R4	OTROS	A	B	C	K'	D	LATITUD	LONGITUD
T. C. El Colorado - Higuierillas	0.00	3	1	7925	1.8	87.1	0.8	3.6	2.3	1.8	1.5	0.7	0.4	88.9	0.8	10.3	0.112	0.503	20.703499	-99.978072
T. C. El Colorado - Higuierillas	0.00	3	2	8014	1.7	87.4	0.8	3.5	2.3	1.8	1.5	0.7	0.3	89.1	0.8	10.1	0.116	0.503	20.703590	-99.978044
Ezequiel Montes	10.60	1	0	12325	1.6	91.2	0.7	4.6	0.9	0.4	0.3	0.1	0.2	92.8	0.7	6.5	0.101	0.532	20.670028	-99.909726

14 CARR : El Colorado - Higuierillas

CLAVE: 22004

RUTA: QRO-004

AÑO: 2022

LUGAR	ESTACION				CLASIFICACION VEHICULAR EN PORCIENTO													COORDENADAS		
	KM	TE	SC	TDPA	M	A	B	C2	C3	T3S2	T3S3	T3S2R4	OTROS	A	B	C	K'	D	LATITUD	LONGITUD
T. C. México - Querétaro (Cuota)	0.00	3	1	23489	1.5	75.7	1.7	10.5	3.8	3.6	1.2	1.5	0.5	77.2	1.7	21.1	0.091	0.508	20.573163	-100.207880
T. C. México - Querétaro (Cuota)	0.00	3	2	22788	1.5	75.7	1.7	10.5	3.8	3.6	1.2	1.5	0.5	77.2	1.7	21.1	0.085	0.508	20.573253	-100.207996
T. Izq. Chichimequillas	3.80	3	1	16434	1.4	82.6	1.2	7.0	2.3	2.6	1.6	1.0	0.3	84.0	1.2	14.8	0.092	0.501	20.605785	-100.166147
T. Izq. Chichimequillas	3.80	3	2	16391	1.4	82.6	1.2	7.0	2.3	2.6	1.6	1.0	0.3	84.0	1.2	14.8	0.081	0.501	20.605874	-100.166253

QUERETARO

14 CARR: El Colorado - Higuerrillas

CLAVE: 22004

RUTA: QRO-004

AÑO: 2022

LUGAR	ESTACION				CLASIFICACION VEHICULAR EN PORCIENTO												COORDENADAS			
	KM	TE	SC	TDPA	M	A	B	C2	C3	T3S2	T3S3	T3S2R4	OTROS	A	B	C	K'	D	LATITUD	LONGITUD
X. C. Querétaro - Tequisquiapan	9.10	3	1	9425	1.8	79.7	0.9	7.5	3.1	3.5	1.9	1.0	0.6	81.5	0.9	17.6	0.087	0.507	20.617506	-100.139885
X. C. Querétaro - Tequisquiapan	9.10	3	2	9685	1.8	79.7	0.9	7.5	3.0	3.5	1.9	1.0	0.7	81.5	0.9	17.6	0.081	0.507	20.617596	-100.139962
T. Der. Ezequiel Montes	31.90	1	1	11959	2.6	77.8	1.3	7.6	4.2	2.6	1.9	1.7	0.3	80.4	1.3	18.3	0.103	0.510	20.699427	-99.997999
T. Der. Ezequiel Montes	31.90	1	2	11467	2.6	76.9	1.3	7.6	5.0	2.6	1.9	1.7	0.4	79.5	1.3	19.2	0.131	0.510	20.699563	-99.997971
T. Der. Ezequiel Montes	31.90	3	1	5075	1.6	85.2	1.1	6.4	2.0	1.3	1.5	0.5	0.4	86.8	1.1	12.1	0.098	0.509	20.710146	-99.978528
T. Der. Ezequiel Montes	31.90	3	2	4899	1.5	85.5	1.1	6.4	2.1	1.1	1.4	0.5	0.4	87.0	1.1	11.9	0.109	0.509	20.710263	-99.978596
T. Izq. San Pablo Tolimán	57.00	3	0	1635	2.2	86.2	1.5	6.2	1.7	1.3	0.7	0.0	0.2	88.4	1.5	10.1	0.135	0.502	20.856159	-99.885581
T. C. San Juan del Río - Xilitla	81.90	1	0	1650	4.0	85.7	1.5	6.0	1.5	0.5	0.5	0.0	0.3	89.7	1.5	8.8	0.101	0.529	20.937579	-99.750552

15 CARR: Hacienda Paraiso - Chichimequillas

CLAVE: 22001

RUTA: QRO-001

AÑO: 2022

LUGAR	ESTACION				CLASIFICACION VEHICULAR EN PORCIENTO												COORDENADAS			
	KM	TE	SC	TDPA	M	A	B	C2	C3	T3S2	T3S3	T3S2R4	OTROS	A	B	C	K'	D	LATITUD	LONGITUD
Hacienda Paraiso	0.00	3	1	6075	4.5	79.7	1.9	6.9	2.6	2.4	0.7	0.8	0.5	84.2	1.9	13.9	0.098	0.503	20.587148	-100.204085
Hacienda Paraiso	0.00	3	2	6010	4.6	79.7	1.9	6.9	2.6	2.3	0.6	0.9	0.5	84.3	1.9	13.8	0.096	0.503	20.587183	-100.204220
T. Der. Navajas	7.90	3	0	13484	1.8	79.9	1.2	11.2	2.6	1.9	0.8	0.3	0.3	81.7	1.2	17.1	0.085	0.502	20.646358	-100.232624
La Griega	10.35	3	0	10110	2.2	77.3	1.2	12.6	2.9	2.2	0.9	0.3	0.4	79.5	1.2	19.3	0.092	0.517	20.675559	-100.239887
Amazcala	15.45	3	0	8367	1.8	73.3	1.3	15.7	2.9	2.3	1.5	0.5	0.7	75.1	1.3	23.6	0.110	0.506	20.710603	-100.268478
Chichimequillas	26.61	0	0																	

16 CARR: Huimilpan - El Lindero

CLAVE: 00155

RUTA: QRO-GTO

AÑO: 2022

LUGAR	ESTACION				CLASIFICACION VEHICULAR EN PORCIENTO												COORDENADAS			
	KM	TE	SC	TDPA	M	A	B	C2	C3	T3S2	T3S3	T3S2R4	OTROS	A	B	C	K'	D	LATITUD	LONGITUD
Huimilpan	0.00	0	0																	
T. C. Palmillas - Apaseo el Grande (Cuota)	2.60	1	0	4258	2.0	91.8	0.8	1.8	1.4	1.1	0.3	0.2	0.6	93.8	0.8	5.4	0.123	0.508	20.353119	-100.278294
T. C. Palmillas - Apaseo el Grande (Cuota)	2.60	3	0	2041	2.3	92.6	0.5	1.5	1.6	0.7	0.2	0.2	0.4	94.9	0.5	4.6	0.103	0.503	20.346331	-100.280030
Lim. Edos. Term. Qro. Ppia. Gto.	17.50	0	0																	
El Lindero	20.50	0	0																	

17 CARR: La Culata - San Joaquín

CLAVE: 22021

RUTA: QRO-021

AÑO: 2022

LUGAR	ESTACION				CLASIFICACION VEHICULAR EN PORCIENTO												COORDENADAS			
	KM	TE	SC	TDPA	M	A	B	C2	C3	T3S2	T3S3	T3S2R4	OTROS	A	B	C	K'	D	LATITUD	LONGITUD
La Culata	0.00	3	0	1591	2.0	82.2	0.6	3.6	2.6	4.4	3.7	0.6	0.3	84.2	0.6	15.2	0.124	0.500	20.886853	-99.702219

QUERETARO

17 CARR : La Culata - San Joaquín

CLAVE: 22021

RUTA: QRO-021

AÑO: 2022

LUGAR	ESTACION				CLASIFICACION VEHICULAR EN PORCIENTO														COORDENADAS	
	KM	TE	SC	TDPA	M	A	B	C2	C3	T3S2	T3S3	T3S2R4	OTROS	A	B	C	K'	D	LATITUD	LONGITUD
San Joaquín	31.80	1	0	2058	6.0	80.2	0.5	8.5	2.0	1.7	0.4	0.6	0.1	86.2	0.5	13.3	0.084	0.518	20.895471	-99.577103

18 CARR : Libramiento de San Juan del Río

CLAVE: 22266

RUTA: QRO

AÑO: 2022

LUGAR	ESTACION				CLASIFICACION VEHICULAR EN PORCIENTO														COORDENADAS	
	KM	TE	SC	TDPA	M	A	B	C2	C3	T3S2	T3S3	T3S2R4	OTROS	A	B	C	K'	D	LATITUD	LONGITUD
T. C. México - Querétaro (Después del F.F.C.C.)	0.00	3	1	19671	6.5	80.7	1.8	3.9	1.4	2.1	0.6	2.4	0.6	87.2	1.8	11.0	0.070	0.517	20.379149	-99.985680
T. C. México - Querétaro (Después del F.F.C.C.)	0.00	3	2	21094	6.4	80.2	1.8	4.0	1.6	2.3	0.6	2.5	0.6	86.6	1.8	11.6	0.064	0.517	20.379121	-99.985833
T. C. San Juan del Río - Xilitla	5.05	1	1	18934	5.3	83.3	1.7	3.6	1.3	1.9	0.7	1.8	0.4	88.6	1.7	9.7	0.094	0.533	20.413147	-99.981248
T. C. San Juan del Río - Xilitla	5.05	1	2	16595	5.1	83.4	1.6	3.7	1.2	2.0	0.7	1.9	0.4	88.5	1.6	9.9	0.090	0.533	20.413001	-99.981429

19 CARR : Libramiento Norte de Querétaro

CLAVE: 22500

RUTA: QRO

AÑO: 2022

LUGAR	ESTACION				CLASIFICACION VEHICULAR EN PORCIENTO														COORDENADAS	
	KM	TE	SC	TDPA	M	A	B	C2	C3	T3S2	T3S3	T3S2R4	OTROS	A	B	C	K'	D	LATITUD	LONGITUD
T. C. Querétaro - San Luis Potosí	0.00	3	1	78900	0.6	94.5	0.2	2.3	0.2	0.9	1.0	0.1	0.2	95.1	0.2	4.7	0.056	0.506	20.619516	-100.410988
T. C. Querétaro - San Luis Potosí	0.00	3	2	76707	0.6	94.7	0.2	2.3	0.2	0.9	0.9	0.0	0.2	95.3	0.2	4.5	0.052	0.506	20.619634	-100.410951
T. C. México - Querétaro	8.00	1	1	59814	0.7	94.6	0.1	2.2	0.1	0.9	0.8	0.1	0.5	95.3	0.1	4.6	0.076	0.502	20.583863	-100.362069
T. C. México - Querétaro	8.00	1	2	59159	0.7	94.6	0.1	2.2	0.1	0.9	0.8	0.1	0.5	95.3	0.1	4.6	0.074	0.502	20.583882	-100.361954
T. C. México - Querétaro	8.00	3	1	28140	0.5	96.9	0.0	2.3	0.1	0.1	0.1	0.0	0.0	97.4	0.0	2.6	0.104	0.511	20.566753	-100.357332
T. C. México - Querétaro	8.00	3	2	29566	0.5	96.8	0.1	2.3	0.1	0.1	0.1	0.0	0.0	97.3	0.1	2.6	0.083	0.511	20.566765	-100.356977
T.C. Libramiento Surponiente de Querétaro	12.00	0	0																	

20 CARR : Libramiento Surponiente de Querétaro

CLAVE: 22501

RUTA: QRO

AÑO: 2022

LUGAR	ESTACION				CLASIFICACION VEHICULAR EN PORCIENTO														COORDENADAS	
	KM	TE	SC	TDPA	M	A	B	C2	C3	T3S2	T3S3	T3S2R4	OTROS	A	B	C	K'	D	LATITUD	LONGITUD
X. C. Querétaro - Ent. San Martín	0.00	3	1	34869	0.7	93.8	0.2	3.4	0.3	0.5	0.7	0.2	0.2	94.5	0.2	5.3	0.087	0.505	20.551890	-100.371262
X. C. Querétaro - Ent. San Martín	0.00	3	2	35665	0.7	93.8	0.2	3.5	0.3	0.5	0.7	0.1	0.2	94.5	0.2	5.3	0.148	0.505	20.551801	-100.371175
T. Der. a Candiles	4.20	1	1	26027	1.1	93.2	0.1	2.5	0.5	1.2	1.1	0.1	0.2	94.3	0.1	5.6	0.091	0.503	20.537613	-100.393174
T. Der. a Candiles	4.20	1	2	26316	1.1	93.2	0.1	2.5	0.5	1.2	1.1	0.1	0.2	94.3	0.1	5.6	0.100	0.503	20.537487	-100.393163
T. Izq. a Santa Bárbara (1º acceso)	5.00	1	1	20885	1.0	93.1	0.2	2.9	0.6	0.9	1.1	0.1	0.1	94.1	0.2	5.7	0.093	0.535	20.534583	-100.398124
T. Izq. a Santa Bárbara (1º acceso)	5.00	1	2	25495	1.0	93.2	0.2	2.9	0.6	0.9	1.0	0.1	0.1	94.2	0.2	5.6	0.092	0.535	20.534530	-100.398008
T. Izq. a Santa Bárbara (2º acceso)	7.30	3	1	17145	1.7	91.8	0.5	4.0	0.9	0.8	0.2	0.0	0.1	93.5	0.5	6.0	0.089	0.506	20.526115	-100.422961
T. Izq. a Santa Bárbara (2º acceso)	7.30	3	2	17556	1.6	91.5	0.5	4.3	0.9	0.8	0.3	0.0	0.1	93.1	0.5	6.4	0.102	0.506	20.526007	-100.422922

QUERETARO

20 CARR: Libramiento Surponiente de Querétaro

CLAVE: 22501

RUTA: QRO

AÑO: 2022

LUGAR	ESTACION				CLASIFICACION VEHICULAR EN PORCIENTO													COORDENADAS		
	KM	TE	SC	TDPA	M	A	B	C2	C3	T3S2	T3S3	T3S2R4	OTROS	A	B	C	K'	D	LATITUD	LONGITUD
T. C. Villa del Pueblito - Huimilpan	9.40	3	1	12577	1.8	90.7	0.4	4.2	1.3	0.8	0.6	0.1	0.1	92.5	0.4	7.1	0.098	0.508	20.529794	-100.445647
T. C. Villa del Pueblito - Huimilpan	9.40	3	2	12190	1.8	90.7	0.5	4.3	1.3	0.7	0.5	0.1	0.1	92.5	0.5	7.0	0.089	0.508	20.529685	-100.445675
T. Izq. a La Negreta	10.10	3	1	12296	1.8	88.7	0.4	6.6	1.4	0.6	0.3	0.1	0.1	90.5	0.4	9.1	0.097	0.507	20.525767	-100.462583
T. Izq. a La Negreta	10.10	3	2	11951	1.8	89.0	0.4	6.3	1.4	0.6	0.3	0.1	0.1	90.8	0.4	8.8	0.092	0.507	20.525613	-100.462648
Querétaro - Irapuato	15.00	1	1	8713	1.3	87.8	0.6	7.3	1.7	0.7	0.4	0.1	0.1	89.1	0.6	10.3	0.114	0.519	20.529455	-100.479400
Querétaro - Irapuato	15.00	1	2	8073	1.5	87.6	0.5	7.3	1.7	0.8	0.4	0.1	0.1	89.1	0.5	10.4	0.100	0.519	20.529175	-100.479416
T. C. Querétaro - Irapuato (Cuota)	18.60	1	1	21971	1.8	82.8	1.4	6.3	1.6	4.3	1.2	0.4	0.2	84.6	1.4	14.0	0.095	0.512	20.555703	-100.482031
T. C. Querétaro - Irapuato (Cuota)	18.60	1	2	23096	1.9	82.3	1.4	6.5	1.6	4.4	1.2	0.4	0.3	84.2	1.4	14.4	0.084	0.512	20.556018	-100.482207
T. C. Querétaro - Irapuato (Cuota)	18.60	3	1	24186	1.7	84.0	1.5	6.8	1.3	2.7	1.2	0.5	0.3	85.7	1.5	12.8	0.084	0.508	20.577871	-100.483185
T. C. Querétaro - Irapuato (Cuota)	18.60	3	2	25069	1.7	84.4	1.5	6.5	1.4	2.6	1.2	0.4	0.3	86.1	1.5	12.4	0.090	0.508	20.577592	-100.483115
T. Der. a Las Adjuntas	21.00	3	1	28278	2.3	83.4	1.6	6.0	1.5	2.4	1.9	0.5	0.4	85.7	1.6	12.7	0.101	0.507	20.595221	-100.489915
T. Der. a Las Adjuntas	21.00	3	2	29179	2.3	83.5	1.6	6.0	1.5	2.4	1.8	0.5	0.4	85.8	1.6	12.6	0.096	0.507	20.595473	-100.490100
T. Der. a Tlacote el Bajo	27.70	1	1	22127	1.7	85.9	1.0	5.3	1.4	2.7	1.2	0.6	0.2	87.6	1.0	11.4	0.104	0.539	20.632063	-100.499121
T. Der. a Tlacote el Bajo	27.70	1	2	27650	1.7	85.9	1.0	5.3	1.4	2.7	1.2	0.6	0.2	87.6	1.0	11.4	0.096	0.539	20.632053	-100.499236
T. Der. a Tlacote el Bajo	27.70	3	1	11825	3.3	78.9	1.8	4.0	2.3	5.7	2.6	0.8	0.6	82.2	1.8	16.0	0.153	0.523	20.653836	-100.512339
T. Der. a Tlacote el Bajo	27.70	3	2	10773	3.3	78.7	1.9	4.0	2.3	5.7	2.6	0.9	0.6	82.0	1.9	16.1	0.162	0.523	20.653674	-100.512203
Obrajuelos (El Zapote)	29.70	3	1	10873	2.6	79.1	1.8	6.4	2.2	5.3	1.0	0.8	0.8	81.7	1.8	16.5	0.174	0.504	20.661875	-100.515538
Obrajuelos (El Zapote)	29.70	3	2	10691	2.6	79.1	1.8	6.4	2.2	5.3	1.0	0.8	0.8	81.7	1.8	16.5	0.116	0.504	20.662203	-100.515254
Santo Niño de Praga	31.20	3	1	9776	1.9	78.0	1.9	6.2	2.1	6.6	1.4	1.0	0.9	79.9	1.9	18.2	0.137	0.535	20.671099	-100.508239
Santo Niño de Praga	31.20	3	2	11251	1.9	78.0	1.9	6.2	2.1	6.6	1.4	1.0	0.9	79.9	1.9	18.2	0.128	0.535	20.671116	-100.508364
X. C. juriquilla - Mompani	34.00	3	1	8900	1.9	72.4	2.5	11.2	2.9	5.3	1.4	1.6	0.8	74.3	2.5	23.2	0.157	0.504	20.692432	-100.493215
X. C. juriquilla - Mompani	34.00	3	2	8750	2.0	72.2	2.5	11.2	2.9	5.3	1.4	1.6	0.9	74.2	2.5	23.3	0.156	0.504	20.692558	-100.493225
T. Der. a El Nabo	36.30	3	1	9893	1.7	78.5	3.1	6.6	1.5	5.2	1.3	1.5	0.6	80.2	3.1	16.7	0.131	0.513	20.702106	-100.479696
T. Der. a El Nabo	36.30	3	2	10404	1.7	78.5	3.1	6.6	1.5	5.2	1.3	1.5	0.6	80.2	3.1	16.7	0.174	0.513	20.701225	-100.480292
Pie de Gallo	44.10	1	1	14518	1.9	80.6	2.2	6.4	1.8	4.5	1.1	0.9	0.6	82.5	2.2	15.3	0.152	0.518	20.744996	-100.459782
Pie de Gallo	44.10	1	2	15574	1.9	80.7	2.2	6.4	1.7	4.5	1.1	0.9	0.6	82.6	2.2	15.2	0.128	0.518	20.745513	-100.459528
Pie de Gallo	44.10	3	1	13627	1.3	82.5	1.6	4.7	1.8	4.4	1.5	1.3	0.9	83.8	1.6	14.6	0.157	0.500	20.755943	-100.449371
Pie de Gallo	44.10	3	2	13631	1.3	82.5	1.6	4.7	1.8	4.4	1.5	1.3	0.9	83.8	1.6	14.6	0.140	0.500	20.756033	-100.449400
T. C. Querétaro - San Luis Potosi	45.70	0	0																	

21 CARR: Peña Colorada - El Rodeo

CLAVE: 22002

RUTA: QRO

AÑO: 2022

LUGAR	ESTACION				CLASIFICACION VEHICULAR EN PORCIENTO													COORDENADAS		
	KM	TE	SC	TDPA	M	A	B	C2	C3	T3S2	T3S3	T3S2R4	OTROS	A	B	C	K'	D	LATITUD	LONGITUD
T. C. México - Querétaro	0.00	3	1	13581	3.1	85.6	0.4	8.0	1.7	0.6	0.4	0.1	0.1	88.7	0.4	10.9	0.084	0.515	20.583044	-100.251600

QUERETARO

21 CARR: Peña Colorada - El Rodeo

CLAVE: 22002

RUTA: QRO

AÑO: 2022

LUGAR	ESTACION				CLASIFICACION VEHICULAR EN PORCIENTO											COORDENADAS				
	KM	TE	SC	TDPA	M	A	B	C2	C3	T3S2	T3S3	T3S2R4	OTROS	A	B	C	K'	D	LATITUD	LONGITUD
T. C. México - Querétaro	0.00	3	2	14426	3.1	85.6	0.4	8.0	1.7	0.6	0.4	0.1	0.1	88.7	0.4	10.9	0.085	0.515	20.583115	-100.251687
X. C. Querétaro - Tequisquiapan	9.00	1	1	10055	4.4	85.8	0.8	5.4	1.4	1.1	0.4	0.4	0.3	90.2	0.8	9.0	0.084	0.519	20.633909	-100.260154
X. C. Querétaro - Tequisquiapan	9.00	1	2	9333	4.4	85.9	0.7	5.4	1.5	1.0	0.4	0.3	0.4	90.3	0.7	9.0	0.085	0.519	20.633907	-100.260298
El Rodeo	11.00	1	0	2972	5.9	79.7	1.2	11.9	0.5	0.6	0.1	0.0	0.1	85.6	1.2	13.2	0.067	0.520	20.658743	-100.258986

22 CARR: Querétaro - Ent. San Martín

CLAVE: 22067

RUTA: QRO

AÑO: 2022

LUGAR	ESTACION				CLASIFICACION VEHICULAR EN PORCIENTO											COORDENADAS				
	KM	TE	SC	TDPA	M	A	B	C2	C3	T3S2	T3S3	T3S2R4	OTROS	A	B	C	K'	D	LATITUD	LONGITUD
T. C. México - Querétaro	0.00	3	1	16051	1.1	92.9	0.5	3.1	1.0	0.5	0.4	0.3	0.2	94.0	0.5	5.5	0.110	0.524	20.558548	-100.366708
T. C. México - Querétaro	0.00	3	2	17700	0.9	93.3	0.5	3.0	0.9	0.5	0.4	0.3	0.2	94.2	0.5	5.3	0.126	0.524	20.558919	-100.366663
Lagunillas	18.70	1	0	7310	1.4	87.3	0.8	8.9	0.9	0.1	0.2	0.2	0.2	88.7	0.8	10.5	0.069	0.521	20.464194	-100.266615
T. Der. Huimilpan	32.70	1	0	7353	2.0	86.8	0.8	9.7	0.5	0.1	0.1	0.0	0.0	88.8	0.8	10.4	0.060	0.503	20.394087	-100.269011
Ent. San Martín	53.00	1	0	2377	3.4	83.3	1.1	9.8	0.9	1.0	0.5	0.0	0.0	86.7	1.1	12.2	0.083	0.508	20.278217	-100.158135

23 CARR: Querétaro - Estación Chichimequillas

CLAVE: 22270

RUTA: QRO

AÑO: 2022

LUGAR	ESTACION				CLASIFICACION VEHICULAR EN PORCIENTO											COORDENADAS				
	KM	TE	SC	TDPA	M	A	B	C2	C3	T3S2	T3S3	T3S2R4	OTROS	A	B	C	K'	D	LATITUD	LONGITUD
T. C. Libramiento de Querétaro	0.00	3	1	15221	3.2	91.7	0.6	3.4	0.4	0.4	0.2	0.0	0.1	94.9	0.6	4.5	0.098	0.503	20.625792	-100.386806
T. C. Libramiento de Querétaro	0.00	3	2	15381	4.7	89.2	0.6	4.4	0.4	0.3	0.2	0.1	0.1	93.9	0.6	5.5	0.071	0.503	20.625864	-100.386874
X. C. Hacienda Paraíso - Chichimequillas	18.00	1	0	8338	1.5	87.6	2.8	5.6	1.1	0.6	0.4	0.1	0.3	89.1	2.8	8.1	0.092	0.510	20.751133	-100.322148
Estación Chichimequillas	19.20	0	0																	

24 CARR: Querétaro - Tequisquiapan

CLAVE: 22502

RUTA: QRO

AÑO: 2022

LUGAR	ESTACION				CLASIFICACION VEHICULAR EN PORCIENTO											COORDENADAS				
	KM	TE	SC	TDPA	M	A	B	C2	C3	T3S2	T3S3	T3S2R4	OTROS	A	B	C	K'	D	LATITUD	LONGITUD
Querétaro	0.00	3	1	8303	4.6	85.2	2.8	6.0	0.8	0.3	0.1	0.1	0.1	89.8	2.8	7.4	0.085	0.502	20.600199	-100.361706
Querétaro	0.00	3	2	8358	4.5	86.0	2.7	5.9	0.6	0.2	0.1	0.0	0.0	90.5	2.7	6.8	0.082	0.502	20.600263	-100.361678
X. C. Peña Colorada - El Rodeo	14.00	1	1	9079	2.0	85.7	0.6	8.4	1.8	0.4	0.5	0.2	0.4	87.7	0.6	11.7	0.080	0.512	20.633827	-100.266401
X. C. Peña Colorada - El Rodeo	14.00	1	2	8650	2.1	85.6	0.6	8.4	1.8	0.5	0.5	0.2	0.3	87.7	0.6	11.7	0.100	0.512	20.633898	-100.266517
T. Izq. La Griega	16.60	3	1	7262	2.3	88.7	2.1	2.9	1.7	1.0	0.7	0.3	0.3	91.0	2.1	6.9	0.119	0.502	20.642511	-100.224781
T. Izq. La Griega	16.60	3	2	7330	2.3	88.5	2.1	2.9	1.8	1.1	0.7	0.4	0.2	90.8	2.1	7.1	0.110	0.502	20.642592	-100.224743
X. C. El Colorado - Higuerrillas	25.70	1	1	8783	2.2	83.7	1.0	8.9	1.8	1.3	0.5	0.4	0.2	85.9	1.0	13.1	0.110	0.505	20.615897	-100.161752

QUERETARO

24 CARR: Querétaro - Tequisquiapan

CLAVE: 22502

RUTA: QRO

AÑO: 2022

LUGAR	ESTACION				CLASIFICACION VEHICULAR EN PORCIENTO													COORDENADAS		
	KM	TE	SC	TDPA	M	A	B	C2	C3	T3S2	T3S3	T3S2R4	OTROS	A	B	C	K'	D	LATITUD	LONGITUD
X. C. El Colorado - Higuierillas	25.70	1	2	8605	2.2	83.7	1.0	8.9	1.8	1.2	0.5	0.4	0.3	85.9	1.0	13.1	0.160	0.505	20.616006	-100.161695
X. C. San Juan del Río - Xilitla	56.90	1	1	4233	7.8	81.0	2.4	6.4	1.0	0.5	0.5	0.3	0.1	88.8	2.4	8.8	0.099	0.511	20.528421	-99.911217
X. C. San Juan del Río - Xilitla	56.90	1	2	4429	7.4	81.0	2.5	6.6	0.9	0.6	0.5	0.4	0.1	88.4	2.5	9.1	0.096	0.511	20.528466	-99.911227
Tequisquiapan	57.40	1	0	10564	7.3	84.2	0.9	5.4	0.8	0.6	0.1	0.4	0.3	91.5	0.9	7.6	0.091	0.521	20.533840	-99.897629

25 CARR: Querétaro - Tlacote El Bajo

CLAVE: 22069

RUTA: QRO

AÑO: 2022

LUGAR	ESTACION				CLASIFICACION VEHICULAR EN PORCIENTO													COORDENADAS		
	KM	TE	SC	TDPA	M	A	B	C2	C3	T3S2	T3S3	T3S2R4	OTROS	A	B	C	K'	D	LATITUD	LONGITUD
Querétaro	0.00	3	1	12723	3.1	86.5	0.8	6.4	0.9	1.2	0.6	0.2	0.3	89.6	0.8	9.6	0.087	0.503	20.591219	-100.453890
Querétaro	0.00	3	2	12550	3.1	86.5	0.8	6.4	0.9	1.2	0.6	0.2	0.3	89.6	0.8	9.6	0.106	0.503	20.591146	-100.453899
Tlacote El Bajo	18.00	0	0																	

26 CARR: Ramal a La Estancia

CLAVE: 22504

RUTA: QRO

AÑO: 2022

LUGAR	ESTACION				CLASIFICACION VEHICULAR EN PORCIENTO													COORDENADAS		
	KM	TE	SC	TDPA	M	A	B	C2	C3	T3S2	T3S3	T3S2R4	OTROS	A	B	C	K'	D	LATITUD	LONGITUD
T. C. México - Querétaro (Cuota)	0.00	3	0	5757	7.2	85.4	0.9	4.3	1.2	0.6	0.1	0.2	0.1	92.6	0.9	6.5	0.092	0.503	20.424709	-100.063336
La Estancia	3.00	0	0																	

27 CARR: Ramal a Tolimán

CLAVE: 22265

RUTA: QRO

AÑO: 2022

LUGAR	ESTACION				CLASIFICACION VEHICULAR EN PORCIENTO													COORDENADAS		
	KM	TE	SC	TDPA	M	A	B	C2	C3	T3S2	T3S3	T3S2R4	OTROS	A	B	C	K'	D	LATITUD	LONGITUD
T. C. El Colorado - Higuierillas	0.00	3	0	3850	4.1	81.7	1.2	8.3	1.0	2.3	0.9	0.2	0.3	85.8	1.2	13.0	0.075	0.529	20.859146	-99.895047
Tolimán	7.00	1	0	4287	4.8	88.0	0.2	5.3	0.5	1.0	0.1	0.0	0.1	92.8	0.2	7.0	0.084	0.507	20.896235	-99.918755

28 CARR: Rayón - Arroyo Seco

CLAVE: 24008

RUTA: SLP-011

AÑO: 2022

LUGAR	ESTACION				CLASIFICACION VEHICULAR EN PORCIENTO													COORDENADAS		
	KM	TE	SC	TDPA	M	A	B	C2	C3	T3S2	T3S3	T3S2R4	OTROS	A	B	C	K'	D	LATITUD	LONGITUD
Rayón	0.00	3	0	1472	6.4	69.6	0.5	21.5	1.5	0.2	0.1	0.2	0.0	76.0	0.5	23.5	0.092	0.516	21.848724	-99.627137
Lagunillas	36.00	1	0	349	4.4	74.7	0.7	17.7	1.8	0.4	0.1	0.2	0.0	79.1	0.7	20.2	0.109	0.508	21.595034	-99.564772
Lim. De Edos. Term. S.L.P. Ppia Qro.	51.00	0	0																	
Arroyo Seco	57.00	1	0	736	6.6	92.2	0.1	0.4	0.4	0.0	0.3	0.0	0.0	98.8	0.1	1.1	0.090	0.525	21.553924	-99.681287

QUERETARO

29 CARR: San Juan del Río - Amealco

CLAVE: 22011

RUTA: QRO

AÑO: 2022

LUGAR	ESTACION				CLASIFICACION VEHICULAR EN PORCIENTO													COORDENADAS		
	KM	TE	SC	TDPA	M	A	B	C2	C3	T3S2	T3S3	T3S2R4	OTROS	A	B	C	K'	D	LATITUD	LONGITUD
T. C. México - Querétaro	0.00	3	0	11522	3.5	91.1	0.9	3.8	0.4	0.2	0.1	0.0	0.0	94.6	0.9	4.5	0.096	0.508	20.373103	-100.017452
Amealco	28.00	1	0	5529	1.0	84.2	1.1	9.8	0.7	1.4	0.7	0.5	0.6	85.2	1.1	13.7	0.094	0.515	20.199029	-100.135489

30 CARR: T. C. (Villa del Pueblito - Huimilpan) - Coroneo

CLAVE: 00155

RUTA: QRO-GTO

AÑO: 2022

LUGAR	ESTACION				CLASIFICACION VEHICULAR EN PORCIENTO													COORDENADAS		
	KM	TE	SC	TDPA	M	A	B	C2	C3	T3S2	T3S3	T3S2R4	OTROS	A	B	C	K'	D	LATITUD	LONGITUD
T. C. Villa del Pueblito - Huimilpan	0.00	3	1	4104	1.9	84.1	0.5	9.7	2.3	0.6	0.6	0.1	0.2	86.0	0.5	13.5	0.108	0.508	20.499591	-100.424030
T. C. Villa del Pueblito - Huimilpan	0.00	3	2	4240	1.7	84.9	0.5	9.6	2.0	0.6	0.5	0.1	0.1	86.6	0.5	12.9	0.145	0.508	20.499637	-100.423973
T. der a Joaquín Herrera	5.00	3	1	4464	1.9	83.5	0.4	10.6	2.2	0.6	0.5	0.1	0.2	85.4	0.4	14.2	0.109	0.500	20.474354	-100.429108
T. der a Joaquín Herrera	5.00	3	2	4465	1.9	83.6	0.4	10.6	2.1	0.6	0.5	0.1	0.2	85.5	0.4	14.1	0.110	0.500	20.474345	-100.429021
Lim. Edos. Term. Qro. Ppia. Gto.	20.00	0	0																	
Coroneo	45.20	1	0	3943	5.6	86.0	4.2	3.3	0.7	0.2	0.0	0.0	0.0	91.6	4.2	4.2	0.118	0.501	20.213814	-100.366604

31 CARR: Villa del Pueblito - Huimilpan

CLAVE: 22503

RUTA: QRO

AÑO: 2022

LUGAR	ESTACION				CLASIFICACION VEHICULAR EN PORCIENTO													COORDENADAS		
	KM	TE	SC	TDPA	M	A	B	C2	C3	T3S2	T3S3	T3S2R4	OTROS	A	B	C	K'	D	LATITUD	LONGITUD
T. C. Querétaro - Irapuato (Libre)	0.00	3	1	19748	3.1	89.2	0.4	5.4	0.5	0.7	0.4	0.1	0.2	92.3	0.4	7.3	0.080	0.523	20.529865	-100.441418
T. C. Querétaro - Irapuato (Libre)	0.00	3	2	18041	3.1	89.2	0.4	5.4	0.5	0.7	0.4	0.1	0.2	92.3	0.4	7.3	0.082	0.523	20.529867	-100.441255
Huimilpan	27.00	1	0	2213	3.2	89.5	0.4	6.1	0.4	0.3	0.1	0.0	0.0	92.7	0.4	6.9	0.110	0.510	20.379686	-100.278896

32 CARR: Toluca - Palmillas

CLAVE: 00496

RUTA: EM(D)-MEX-055

AÑO: 2022

LUGAR	ESTACION				CLASIFICACION VEHICULAR EN PORCIENTO													COORDENADAS		
	KM	TE	SC	TDPA	M	A	B	C2	C3	T3S2	T3S3	T3S2R4	OTROS	A	B	C	K'	D	LATITUD	LONGITUD
Toluca	0.00	0	0																	
T. Izq. Calixtlahuaca de Rayón (Alta)	7.21	3	1	31866	3.6	90.1	0.7	3.8	0.5	0.6	0.4	0.1	0.2	93.7	0.7	5.6	0.085	0.506	19.341001	-99.671401
T. Izq. Calixtlahuaca de Rayón (Baja)	7.21	3	1	10268	7.5	66.5	6.6	8.4	2.7	6.2	0.9	1.0	0.2	74.0	6.6	19.4	0.090	0.501	19.341005	-99.670326
T. Izq. Calixtlahuaca de Rayón (Alta)	7.21	3	2	29311	3.7	89.8	0.6	3.5	0.6	0.8	0.5	0.2	0.3	93.5	0.6	5.9	0.090	0.506	19.340225	-99.671113
T. Izq. Calixtlahuaca de Rayón (Baja)	7.21	3	2	10232	7.8	64.9	6.3	9.3	2.9	6.1	1.1	1.2	0.4	72.7	6.3	21.0	0.096	0.501	19.340134	-99.671207
X. C. Lib. Nororiente de Toluca (Cuota)	14.21	1	1	37999	6.4	81.6	2.1	4.0	1.3	2.6	0.5	1.2	0.3	88.0	2.1	9.9	0.081	0.516	19.382453	-99.704957
X. C. Lib. Nororiente de Toluca (Cuota)	14.21	1	2	35414	6.4	80.7	2.3	4.0	1.5	2.7	0.6	1.4	0.4	87.1	2.3	10.6	0.086	0.516	19.379053	-99.703038
El Dorado	16.00	1	1	37810	3.2	80.4	3.0	6.9	1.8	2.7	0.9	0.8	0.3	83.6	3.0	13.4	0.073	0.501	19.401191	-99.712962
El Dorado	16.00	1	2	37550	3.7	81.1	2.8	6.5	1.7	2.5	0.8	0.6	0.3	84.8	2.8	12.4	0.083	0.501	19.401487	-99.713430

QUERETARO

32 CARR: Toluca - Palmillas

CLAVE: 00496

RUTA: EM(D)-MEX-055

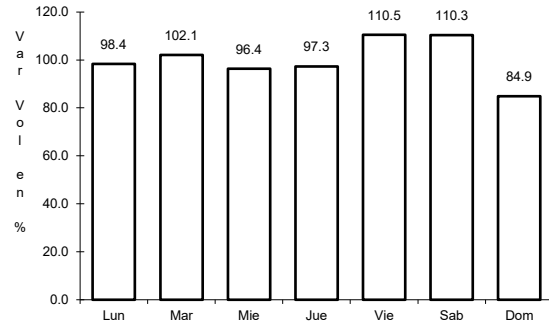
AÑO: 2022

LUGAR	ESTACION				CLASIFICACION VEHICULAR EN PORCIENTO														COORDENADAS	
	KM	TE	SC	TDPA	M	A	B	C2	C3	T3S2	T3S3	T3S2R4	OTROS	A	B	C	K'	D	LATITUD	LONGITUD
T. C. Amomolulco - T. C. (Toluca - Palmillas)	19.76	1	1	20183	2.3	77.6	3.6	6.6	3.8	3.9	1.0	0.9	0.3	79.9	3.6	16.5	0.070	0.519	19.429095	-99.724628
T. C. Amomolulco - T. C. (Toluca - Palmillas)	19.76	1	2	21808	2.7	77.7	3.4	6.2	4.1	3.8	0.9	1.0	0.2	80.4	3.4	16.2	0.068	0.519	19.428543	-99.724750
Ixtlahuaca de Rayón	31.20	1	1	22855	2.5	78.3	3.2	7.3	2.3	3.8	1.3	0.9	0.4	80.8	3.2	16.0	0.072	0.531	19.557163	-99.759535
Ixtlahuaca de Rayón	31.20	1	2	27440	2.5	79.1	3.0	7.2	2.1	3.8	1.0	0.9	0.4	81.6	3.0	15.4	0.088	0.531	19.556190	-99.759352
Ixtlahuaca de Rayón	31.20	3	1	23547	2.3	80.5	2.5	6.9	3.0	2.9	0.9	0.8	0.2	82.8	2.5	14.7	0.079	0.524	19.581815	-99.763884
Ixtlahuaca de Rayón	31.20	3	2	21425	2.1	78.7	2.6	7.9	3.4	3.1	0.9	1.0	0.3	80.8	2.6	16.6	0.094	0.524	19.584367	-99.769416
T. C. Ixtlahuaca de Rayón - Naucalpan	32.20	1	1	21403	2.3	77.3	2.6	7.9	3.3	4.1	1.1	1.1	0.3	79.6	2.6	17.8	0.070	0.530	19.567371	-99.760441
T. C. Ixtlahuaca de Rayón - Naucalpan	32.20	1	2	24152	2.3	78.1	2.6	7.8	3.2	3.9	0.9	1.0	0.2	80.4	2.6	17.0	0.073	0.530	19.562975	-99.761348
Pastejé	45.20	1	1	19237	0.9	79.6	2.8	6.8	1.6	5.9	1.1	1.0	0.3	80.5	2.8	16.7	0.085	0.503	19.631887	-99.780496
Pastejé	45.20	1	2	19472	1.1	77.9	3.0	7.4	1.8	6.1	1.3	1.1	0.3	79.0	3.0	18.0	0.091	0.503	19.631948	-99.780925
Pastejé	45.20	3	1	20348	0.9	80.0	2.7	6.7	1.6	5.7	1.3	0.9	0.2	80.9	2.7	16.4	0.083	0.506	19.658081	-99.793461
Pastejé	45.20	3	2	20801	0.9	77.9	2.9	7.0	1.8	6.7	1.5	1.1	0.2	78.8	2.9	18.3	0.098	0.506	19.656124	-99.792469
Atlaacmulco	65.00	1	1	21250	1.3	79.9	2.7	5.8	1.6	6.5	0.9	1.1	0.2	81.2	2.7	16.1	0.084	0.527	19.779557	-99.863468
Atlaacmulco	65.00	1	2	19088	1.2	78.1	3.0	6.4	1.9	7.0	1.1	1.1	0.2	79.3	3.0	17.7	0.095	0.527	19.785290	-99.866248
Atlaacmulco	65.00	3	1	19799	1.8	79.6	2.0	6.3	1.5	5.6	1.7	1.0	0.5	81.4	2.0	16.6	0.081	0.511	19.811251	-99.871793
Atlaacmulco	65.00	3	2	18941	1.7	78.1	2.2	6.8	1.6	6.2	1.9	1.0	0.5	79.8	2.2	18.0	0.082	0.511	19.811259	-99.871898
X. C. Libramiento Norte de la Ciudad de México (Cuota)	81.52	1	1	9117	1.1	83.0	2.3	4.8	1.5	5.1	1.1	0.5	0.6	84.1	2.3	13.6	0.088	0.507	19.910887	-99.848377
X. C. Libramiento Norte de la Ciudad de México (Cuota)	81.52	1	2	8881	1.1	80.7	2.6	5.5	1.7	5.9	1.3	0.6	0.6	81.8	2.6	15.6	0.124	0.507	19.910896	-99.848463
X. C. Libramiento Norte de la Ciudad de México (Cuota)	81.52	3	1	9035	1.0	81.6	2.1	4.7	2.0	6.3	1.4	0.6	0.3	82.6	2.1	15.3	0.096	0.502	19.930245	-99.842021
X. C. Libramiento Norte de la Ciudad de México (Cuota)	81.52	3	2	8977	1.3	79.5	2.3	5.5	2.2	6.8	1.5	0.6	0.3	80.8	2.3	16.9	0.138	0.502	19.928076	-99.842086
Acambay	85.64	3	0	12818	1.4	93.4	0.5	1.8	1.2	0.6	0.4	0.4	0.3	94.8	0.5	4.7	0.083	0.511	19.964406	-99.852371
T. Der. Aculco de Espinoza	104.43	1	1	6679	2.3	72.1	3.0	9.6	2.1	8.4	1.4	0.8	0.3	74.4	3.0	22.6	0.094	0.506	20.080473	-99.863287
T. Der. Aculco de Espinoza	104.43	1	2	6839	2.3	70.8	3.2	10.1	2.3	8.8	1.4	0.8	0.3	73.1	3.2	23.7	0.106	0.506	20.078374	-99.862013
T. Der. Aculco de Espinoza	104.43	3	1	6017	1.5	69.4	3.2	9.7	2.4	10.1	2.3	0.9	0.5	70.9	3.2	25.9	0.085	0.506	20.092216	-99.862290
T. Der. Aculco de Espinoza	104.43	3	2	6161	1.4	67.1	3.3	10.7	2.6	11.1	2.4	0.9	0.5	68.5	3.3	28.2	0.101	0.506	20.092233	-99.862376
T. Der. Polotitlán	122.73	1	1	5589	2.2	72.5	4.2	8.0	2.2	8.8	1.3	0.6	0.2	74.7	4.2	21.1	0.095	0.501	20.225840	-99.899419
T. Der. Polotitlán	122.73	1	2	5575	2.2	68.8	4.5	9.5	2.5	10.2	1.4	0.7	0.2	71.0	4.5	24.5	0.108	0.501	20.225776	-99.899476
Lim. Edos. Term. Méx. Ppia. Qro.	128.10	0	0																	
T. C. Palmillas - Apaseo el Grande (Cuota)	130.60	1	1	8595	1.2	76.2	2.4	7.4	2.7	8.1	1.0	0.7	0.3	77.4	2.4	20.2	0.090	0.512	20.280719	-99.931106
T. C. Palmillas - Apaseo el Grande (Cuota)	130.60	1	2	9022	1.5	74.6	2.7	7.6	2.9	8.5	1.1	0.8	0.3	76.1	2.7	21.2	0.126	0.512	20.280953	-99.931232
T. C. México - Querétaro	131.52	1	1	6916	1.4	75.0	2.9	7.3	3.0	7.5	1.6	0.8	0.5	76.4	2.9	20.7	0.088	0.520	20.294713	-99.933143
T. C. México - Querétaro	131.52	1	2	7507	1.6	71.7	3.2	8.3	3.2	8.9	1.7	0.9	0.5	73.3	3.2	23.5	0.106	0.520	20.294712	-99.933229

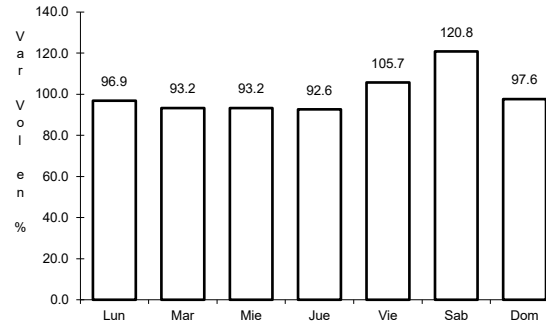
1 CARR: Ent. Buenavista - San Miguel de Allende

CLAVE: 00111

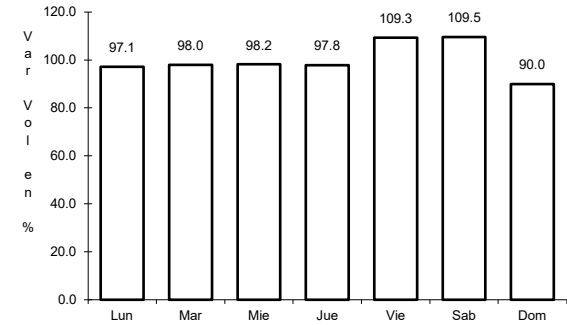
RUTA: MEX-057



Km: 0.00 Tipo: 3 Sent: 0



Km: 12.00 Tipo: 1 Sent: 0

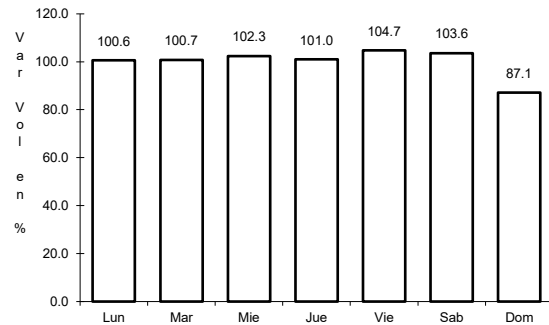


Km: 35.11 Tipo: 1 Sent: 0

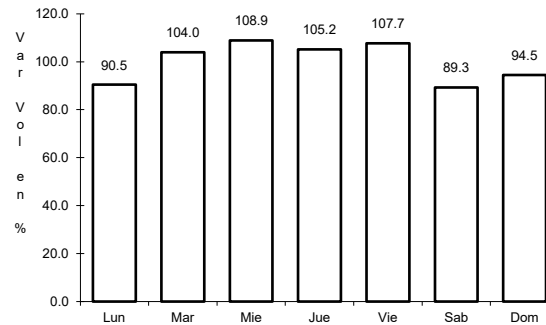
2 CARR: Jalpan de Serra - Rioverde

CLAVE: 00265

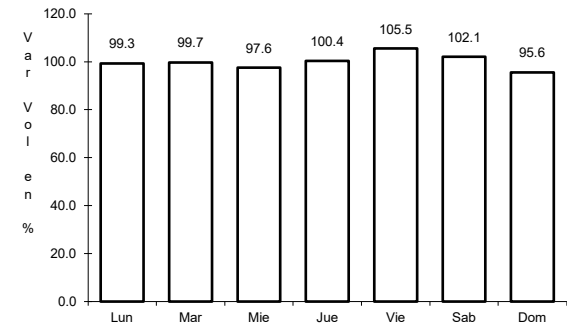
RUTA: MEX-069



Km: 0.00 Tipo: 3 Sent: 0



Km: 48.60 Tipo: 1 Sent: 0

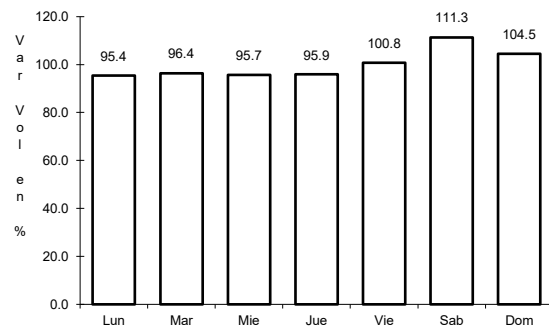


Km: 105.43 Tipo: 1 Sent: 0

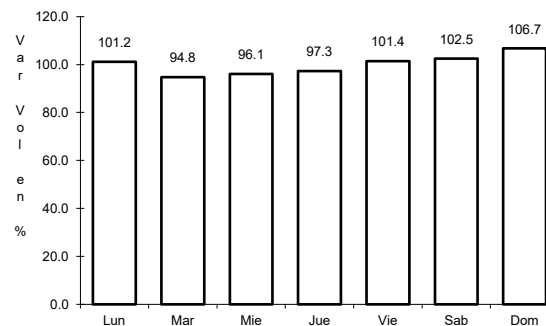
3 CARR: La Noria - Acámbaro

CLAVE: 00131

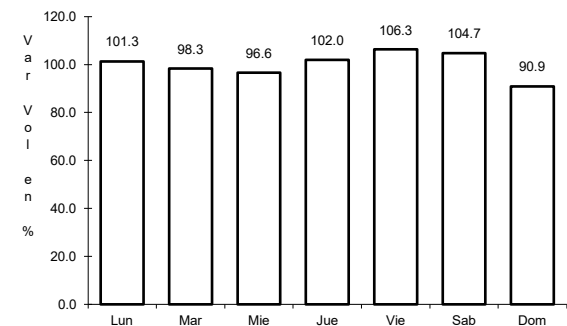
RUTA: MEX-120



Km: 0.00 Tipo: 3 Sent: 0



Km: 59.35 Tipo: 3 Sent: 0

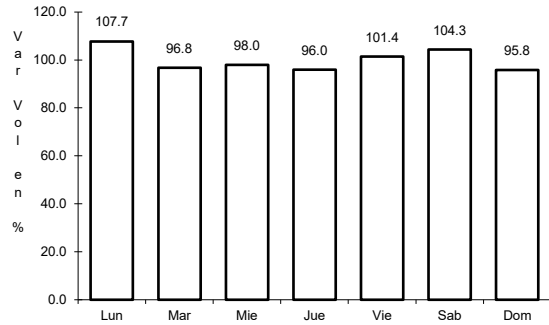


Km: 111.12 Tipo: 1 Sent: 0

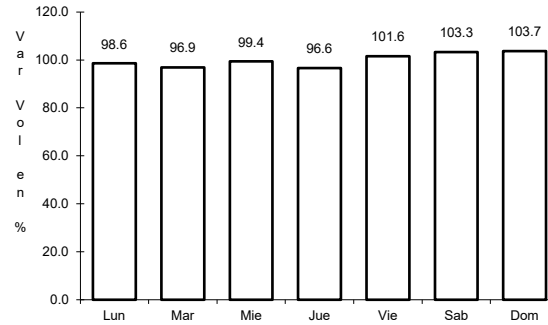
4 CARR: Portezuelo - Palmillas

CLAVE: 00194

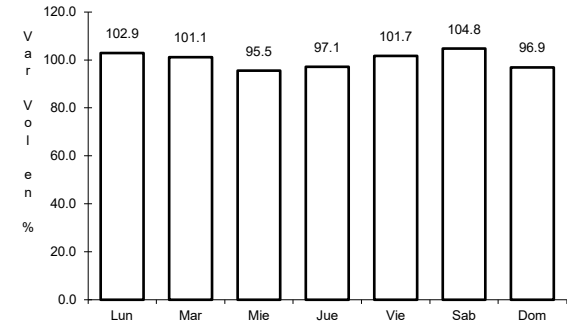
ruta: MEX-045



Km: 0.00 Tipo: 3 Sent: 1



Km: 0.00 Tipo: 3 Sent: 2

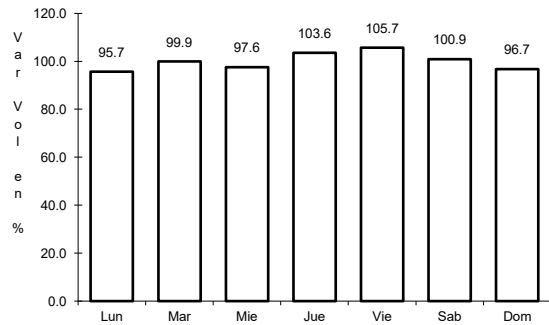


Km: 80.00 Tipo: 1 Sent: 1

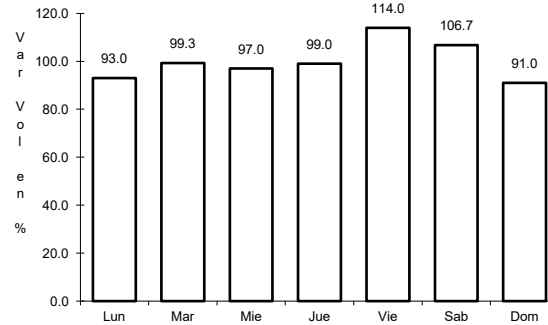
5 CARR: Querétaro - Irapuato (Libre)

CLAVE: 00154

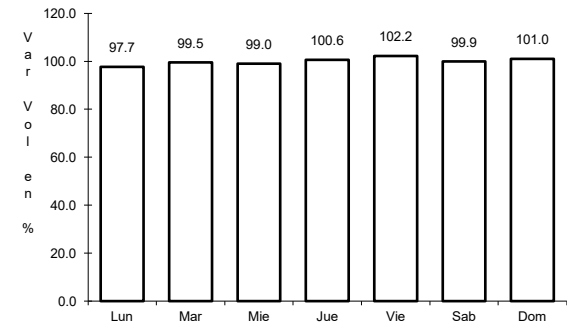
ruta: MEX-045



Km: 0.00 Tipo: 3 Sent: 1



Km: 0.00 Tipo: 3 Sent: 2

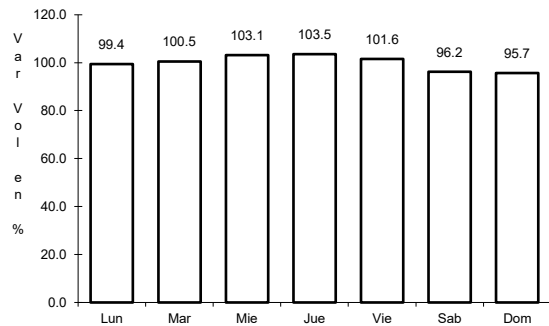


Km: 113.70 Tipo: 1 Sent: 1

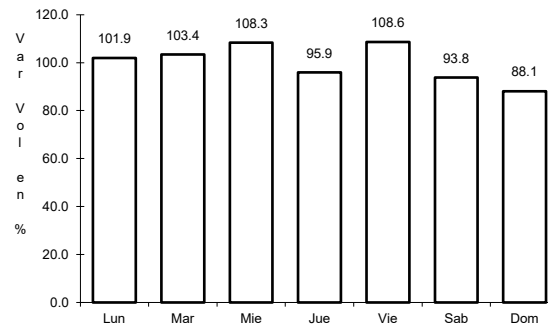
6 CARR: Querétaro - San Luis Potosí

CLAVE: 00165

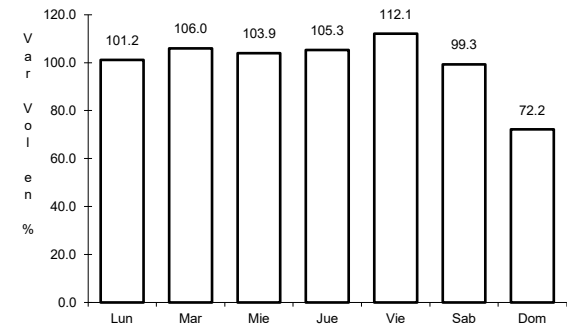
ruta: MEX-057



Km: 6.28 Tipo: 3 Sent: 1



Km: 6.28 Tipo: 3 Sent: 2

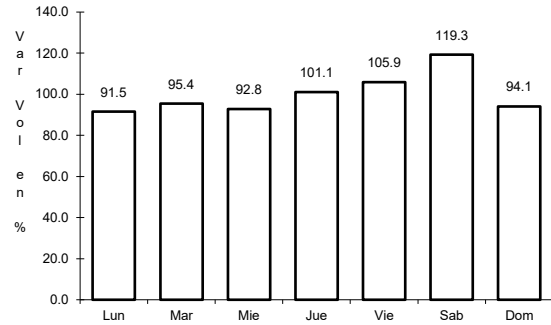


Km: 184.80 Tipo: 1 Sent: 1

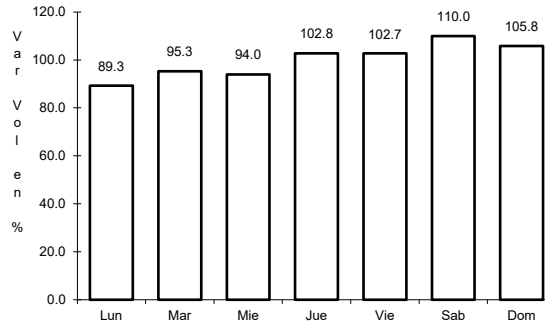
7 CARR: San Juan del Río - Xilitla

CLAVE: 00183

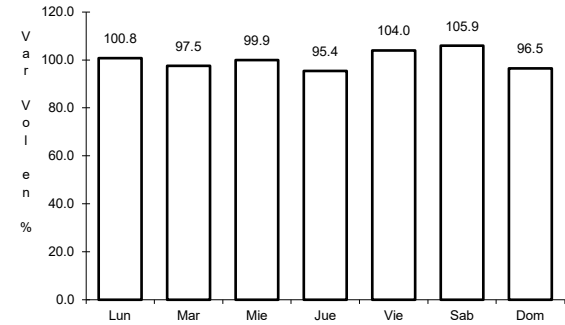
ruta: MEX-120



Km: 5.20 Tipo: 3 Sent: 1



Km: 5.20 Tipo: 3 Sent: 2

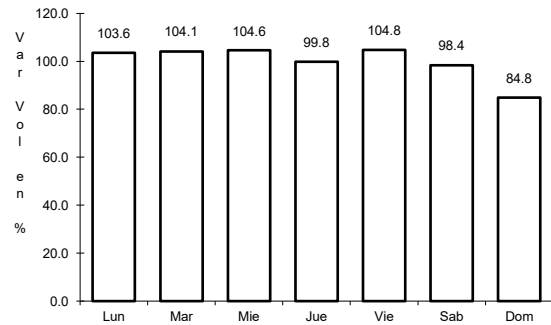


Km: 276.98 Tipo: 1 Sent: 0

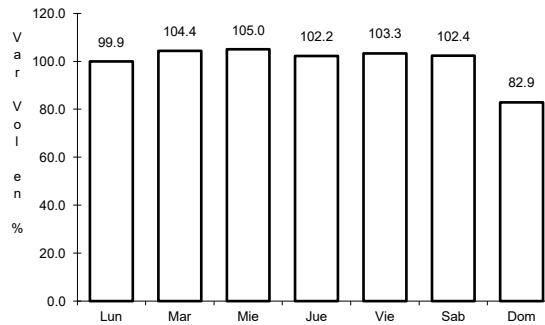
8 CARR: Libramiento Nororiente de Querétaro (Cuota)

CLAVE: 22266

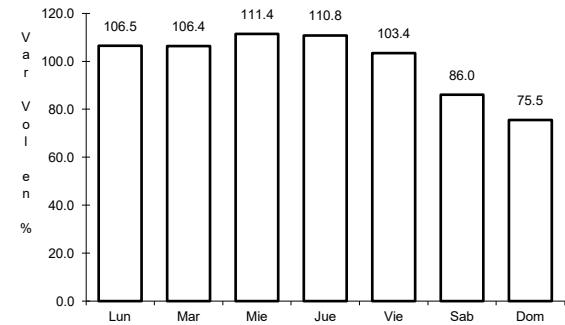
ruta: MEX-057D



Km: 0.00 Tipo: 3 Sent: 1



Km: 0.00 Tipo: 3 Sent: 2

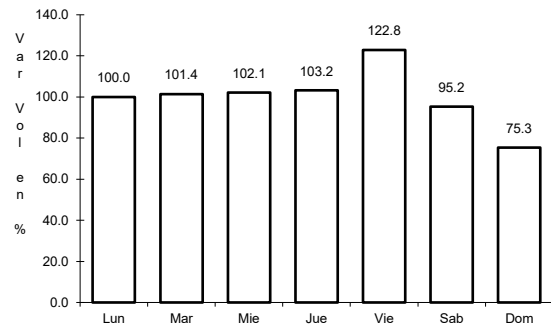


Km: 37.50 Tipo: 1 Sent: 1

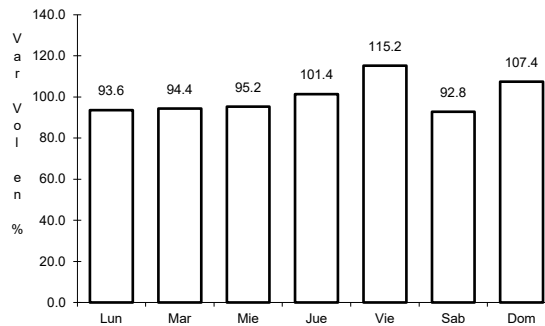
9 CARR: Palmillas - Apaseo el Grande (Cuota)

CLAVE:

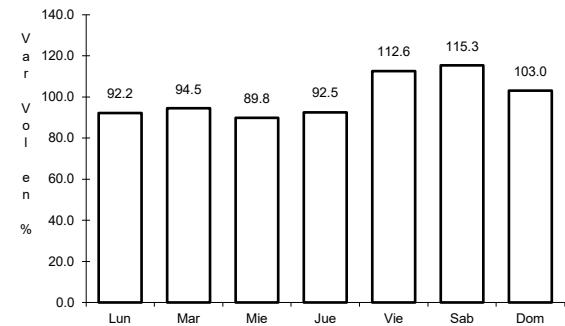
ruta: MEX-045D



Km: 1.60 Tipo: 1 Sent: 1



Km: 1.60 Tipo: 1 Sent: 2

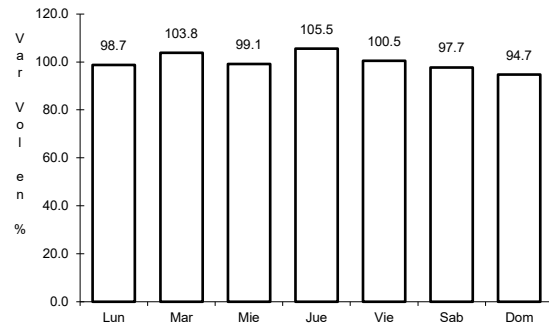


Km: 85.20 Tipo: 1 Sent: 1

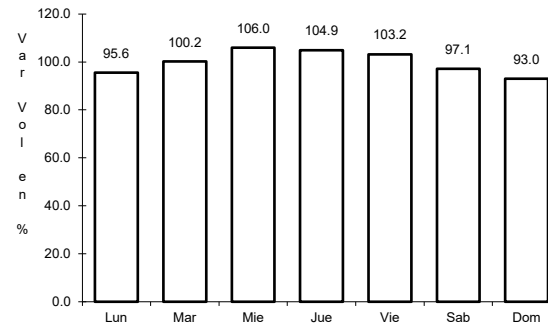
10 CARR: Querétaro - Irapuato (Cuota)

CLAVE: 00423

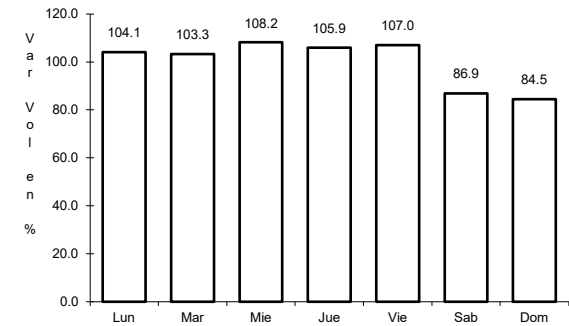
ruta: MEX-045D



Km: 0.00 Tipo: 3 Sent: 1



Km: 0.00 Tipo: 3 Sent: 2

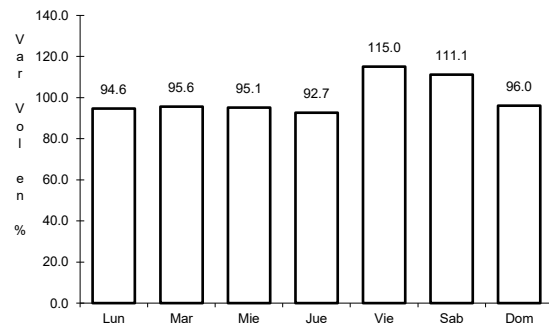


Km: 96.30 Tipo: 3 Sent: 1

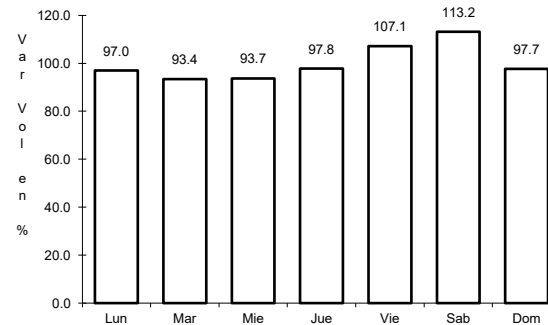
11 CARR: México - Querétaro (Cuota)

CLAVE: 00411

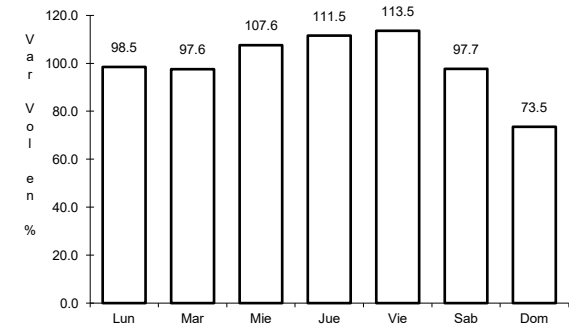
ruta: MEX-057-MEX-057D



Km: 56.18 Tipo: 1 Sent: 1



Km: 56.18 Tipo: 1 Sent: 2

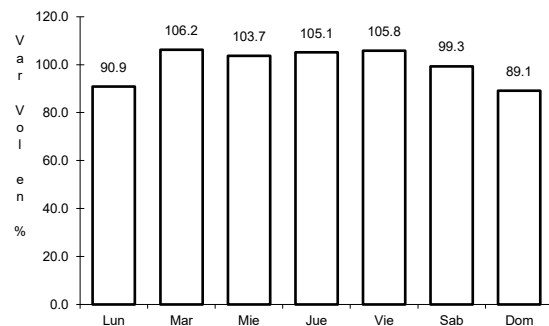


Km: 207.00 Tipo: 3 Sent: 1

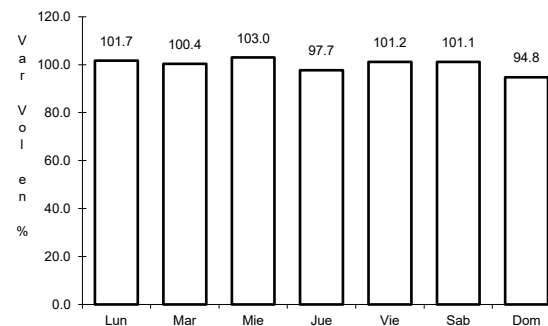
12 CARR: Ajuchitlán - Colón

CLAVE: 22010

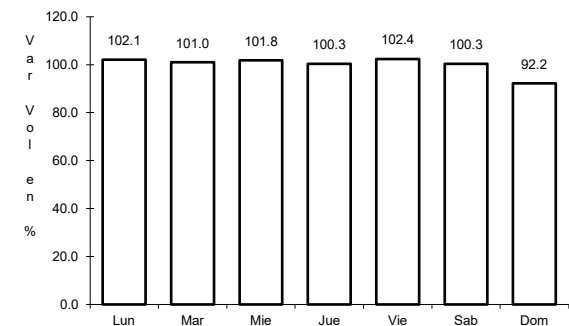
ruta: QRO-005



Km: 0.00 Tipo: 3 Sent: 1



Km: 14.00 Tipo: 1 Sent: 1

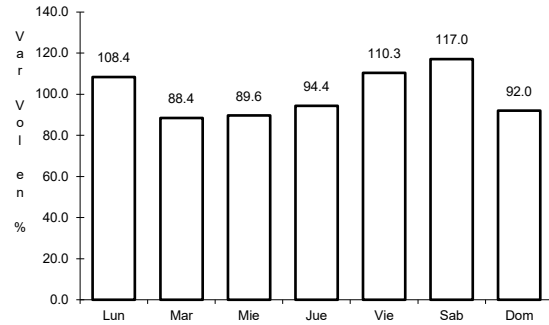


Km: 14.00 Tipo: 1 Sent: 2

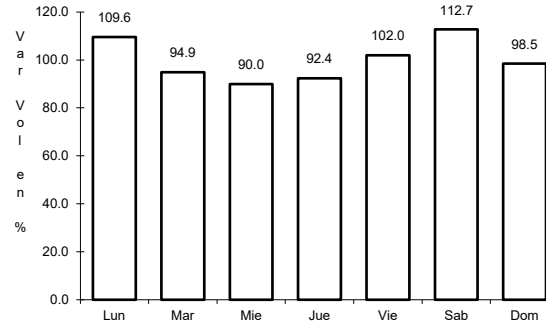
13 CARR: Ajuchitlán - Ezequiel Montes

CLAVE: 22005

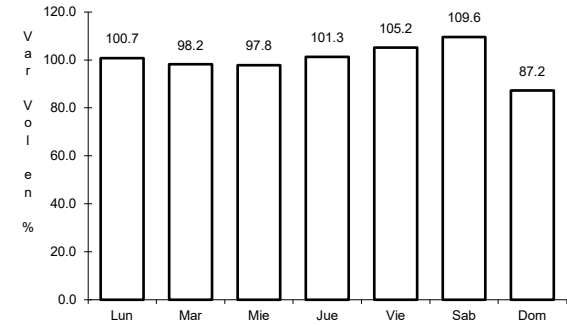
ruta: QRO-005



Km: 0.00 Tipo: 3 Sent: 1



Km: 0.00 Tipo: 3 Sent: 2

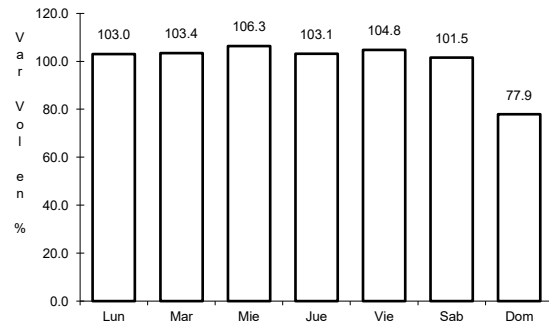


Km: 10.60 Tipo: 1 Sent: 0

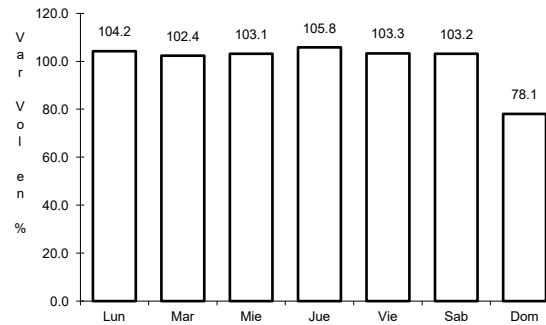
14 CARR: El Colorado - Higuerrillas

CLAVE: 22004

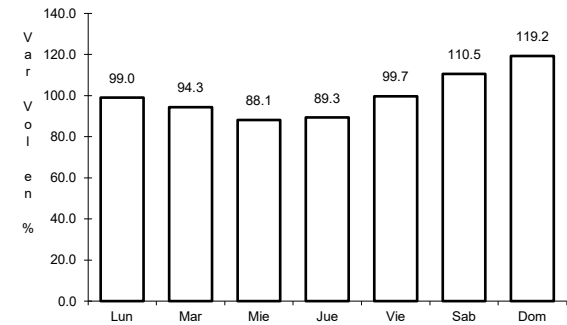
ruta: QRO-004



Km: 0.00 Tipo: 3 Sent: 1



Km: 0.00 Tipo: 3 Sent: 2

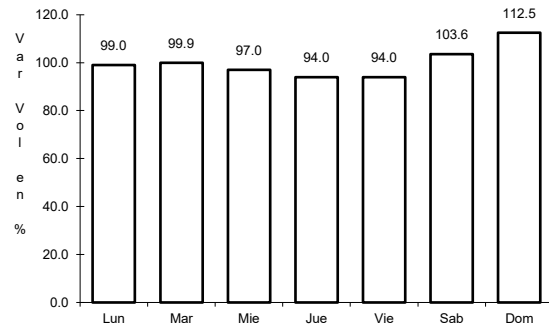


Km: 81.90 Tipo: 1 Sent: 0

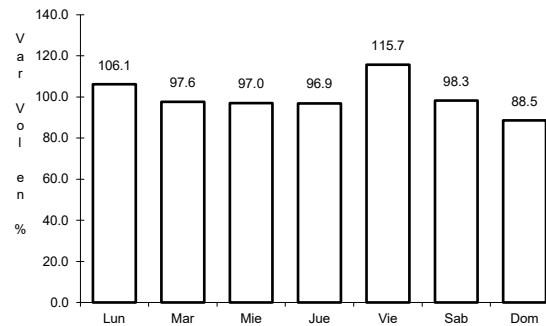
15 CARR: Hacienda Paraíso - Chichimequillas

CLAVE: 22001

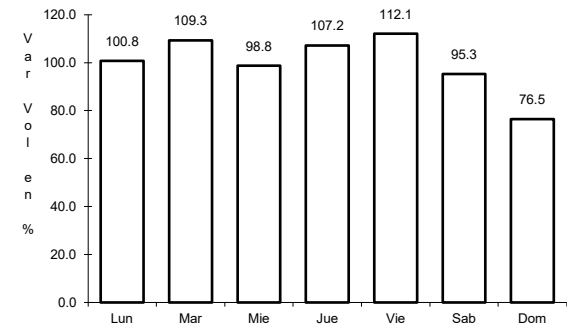
ruta: QRO-001



Km: 0.00 Tipo: 3 Sent: 1



Km: 0.00 Tipo: 3 Sent: 2

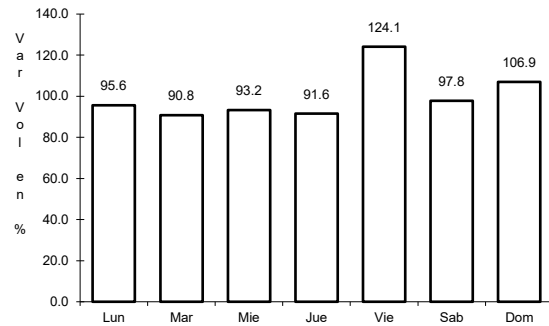


Km: 15.45 Tipo: 3 Sent: 0

16 CARR: Huimilpan - El Lindero

CLAVE: 00155

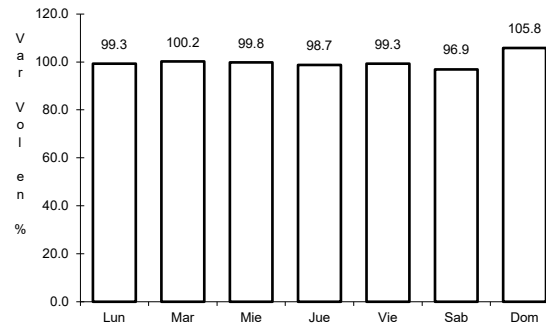
RUTA: QRO-GTO



Km: 2.60

Tipo: 1

Sent: 0



Km: 2.60

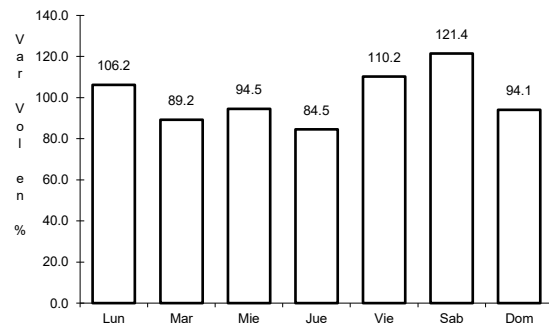
Tipo: 3

Sent: 0

17 CARR: La Culata - San Joaquín

CLAVE: 22021

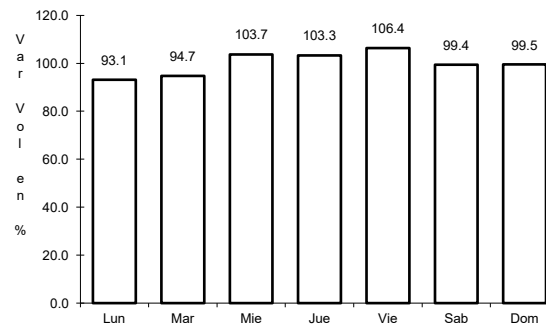
RUTA: QRO-021



Km: 0.00

Tipo: 3

Sent: 0



Km: 31.80

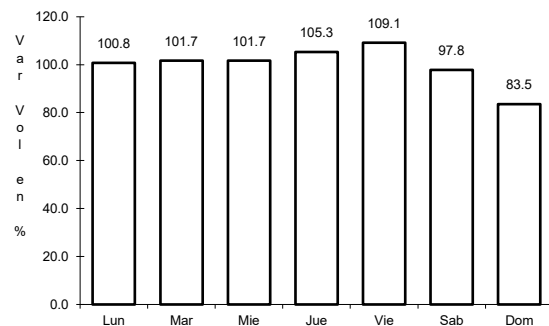
Tipo: 1

Sent: 0

18 CARR: Libramiento de San Juan del Río

CLAVE: 22266

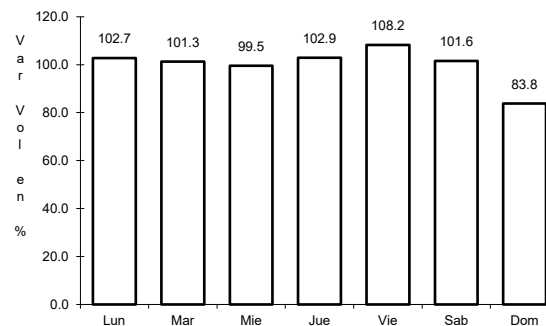
RUTA: QRO



Km: 0.00

Tipo: 3

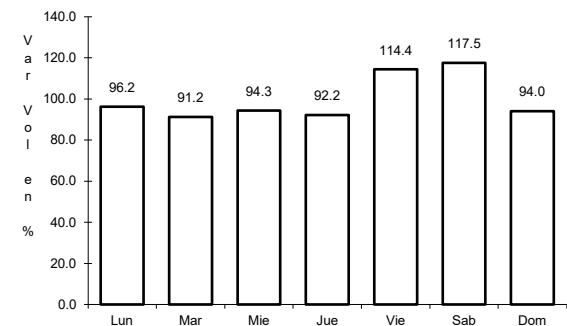
Sent: 1



Km: 0.00

Tipo: 3

Sent: 2



Km: 5.05

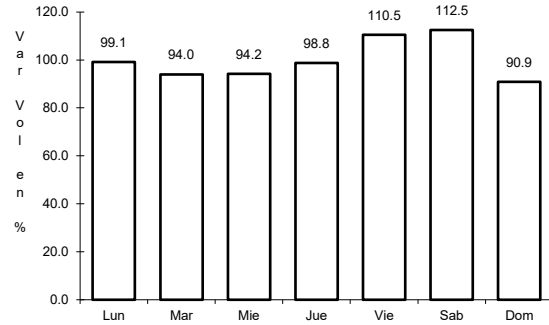
Tipo: 1

Sent: 1

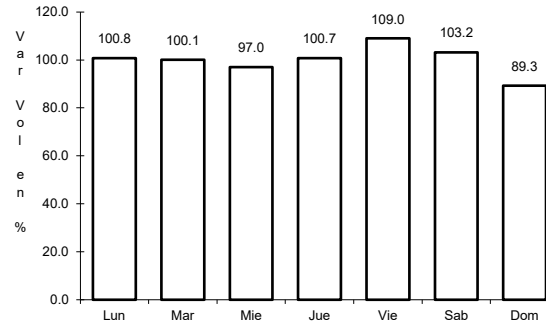
19 CARR: Libramiento Norte de Querétaro

CLAVE: 22500

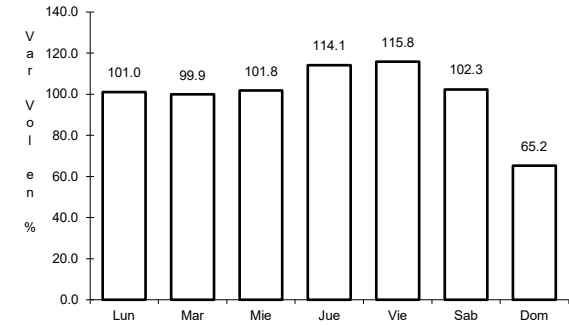
RUTA: QRO



Km: 0.00 Tipo: 3 Sent: 1



Km: 0.00 Tipo: 3 Sent: 2

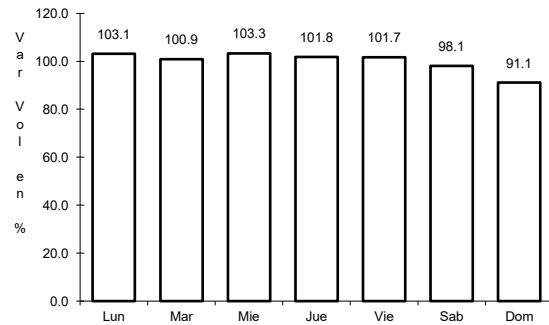


Km: 8.00 Tipo: 3 Sent: 1

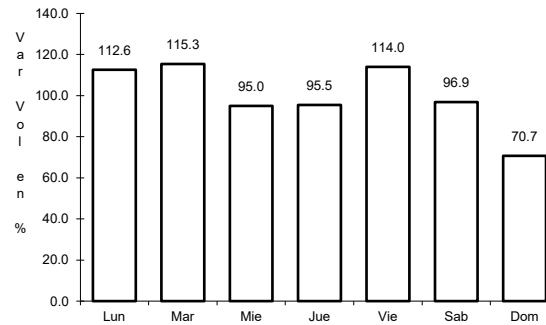
20 CARR: Libramiento Surponiente de Querétaro

CLAVE: 22501

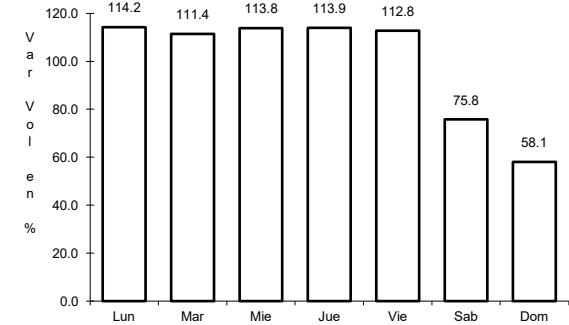
RUTA: QRO



Km: 0.00 Tipo: 3 Sent: 1



Km: 0.00 Tipo: 3 Sent: 2

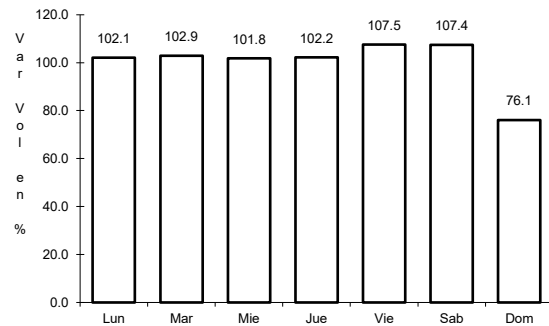


Km: 44.10 Tipo: 3 Sent: 1

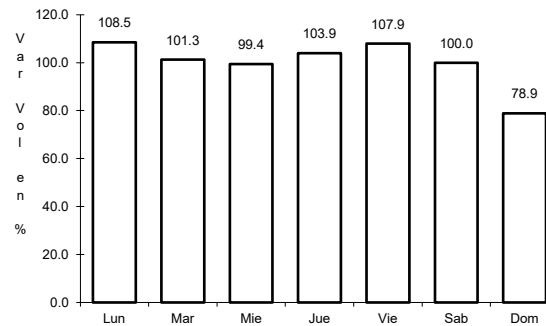
21 CARR: Peña Colorada - El Rodeo

CLAVE: 22002

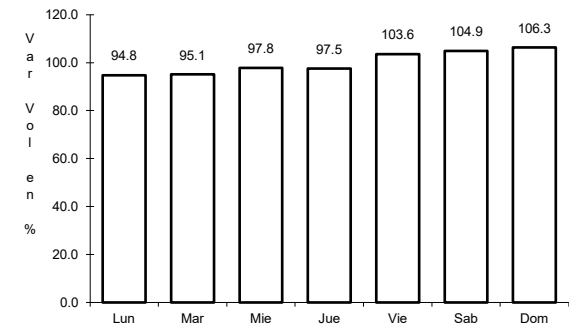
RUTA: QRO



Km: 0.00 Tipo: 3 Sent: 1



Km: 0.00 Tipo: 3 Sent: 2

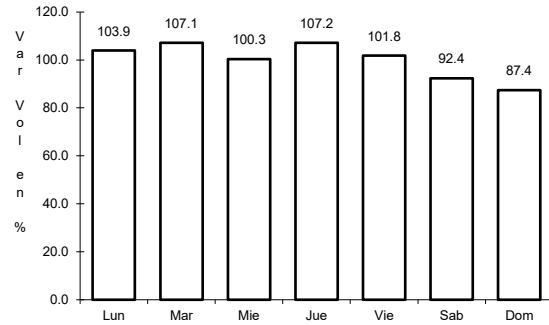


Km: 11.00 Tipo: 1 Sent: 0

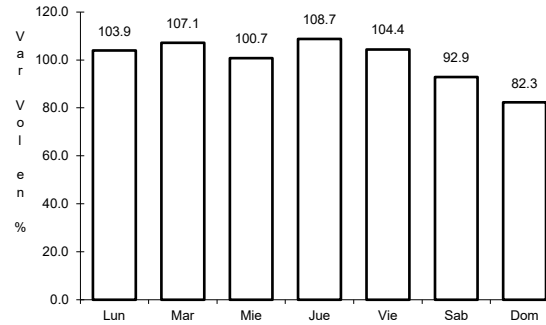
22 CARR: Querétaro - Ent. San Martín

CLAVE: 22067

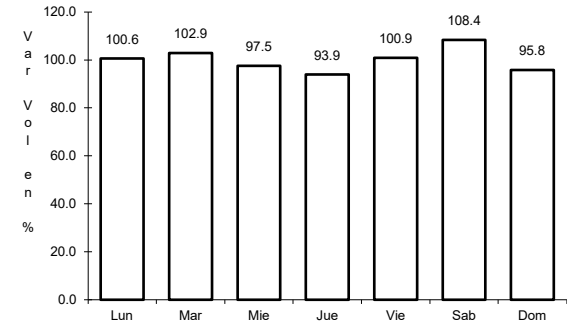
RUTA: QRO



Km: 0.00 Tipo: 3 Sent: 1



Km: 0.00 Tipo: 3 Sent: 2

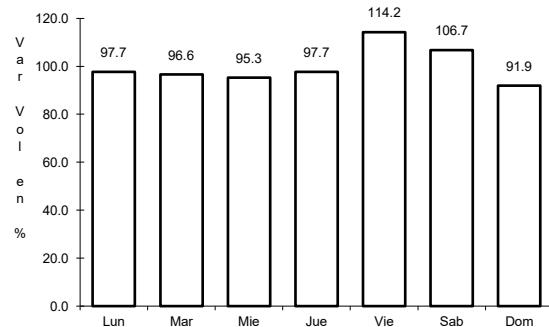


Km: 53.00 Tipo: 1 Sent: 0

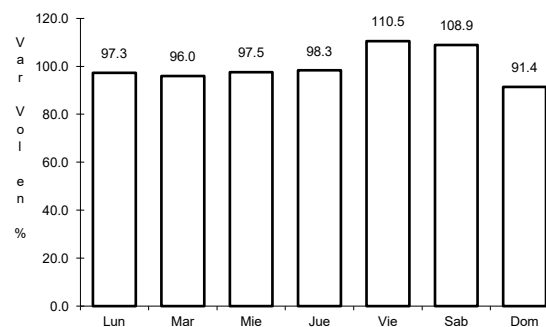
23 CARR: Querétaro - Estación Chichimequillas

CLAVE: 22270

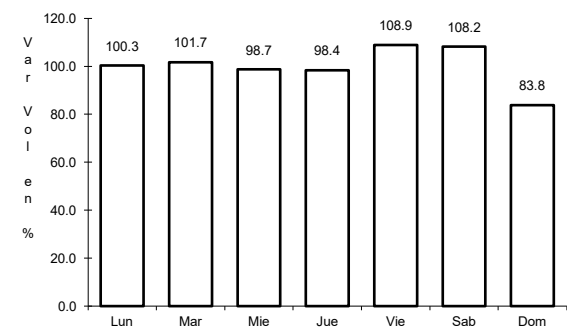
RUTA: QRO



Km: 0.00 Tipo: 3 Sent: 1



Km: 0.00 Tipo: 3 Sent: 2

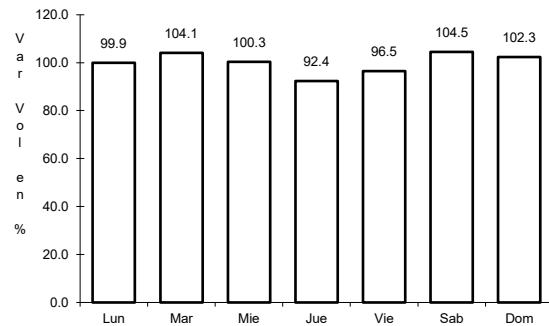


Km: 18.00 Tipo: 1 Sent: 0

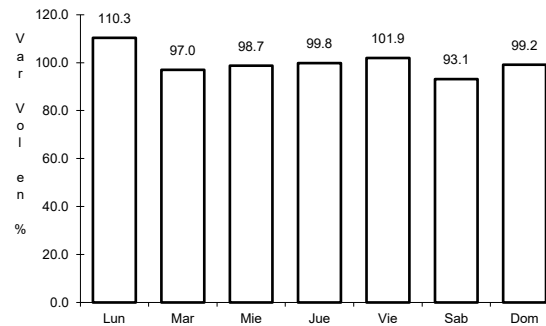
24 CARR: Querétaro - Tequisquiapan

CLAVE: 22502

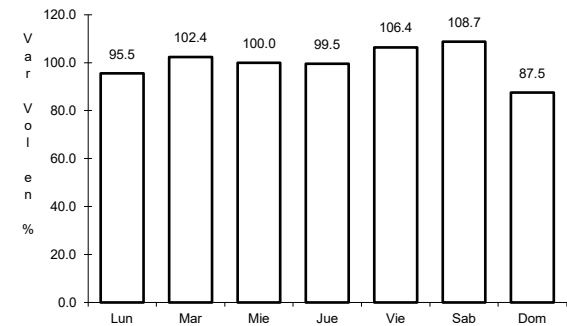
RUTA: QRO



Km: 0.00 Tipo: 3 Sent: 1



Km: 0.00 Tipo: 3 Sent: 2

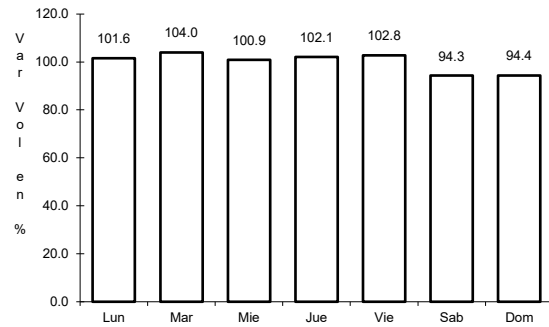


Km: 57.40 Tipo: 1 Sent: 0

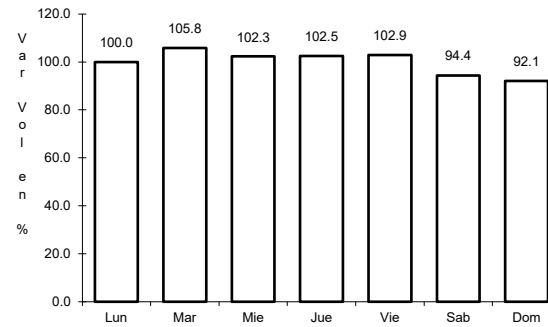
25 CARR: Querétaro - Tlacote El Bajo

CLAVE: 22069

RUTA: QRO



Km: 0.00 Tipo: 3 Sent: 1

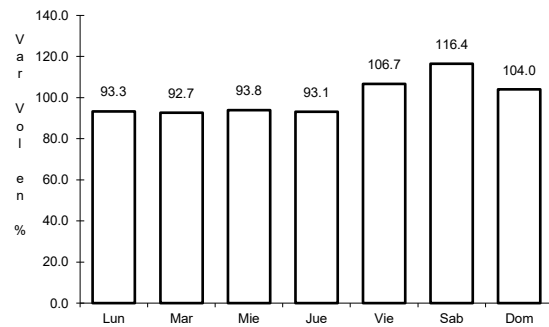


Km: 0.00 Tipo: 3 Sent: 2

26 CARR: Ramal a La Estancia

CLAVE: 22504

RUTA: QRO

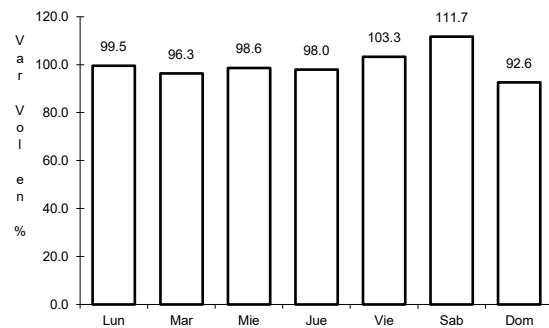


Km: 0.00 Tipo: 3 Sent: 0

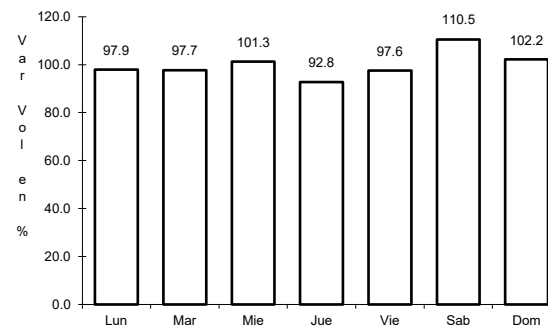
27 CARR: Ramal a Tolimán

CLAVE: 22265

RUTA: QRO



Km: 0.00 Tipo: 3 Sent: 0

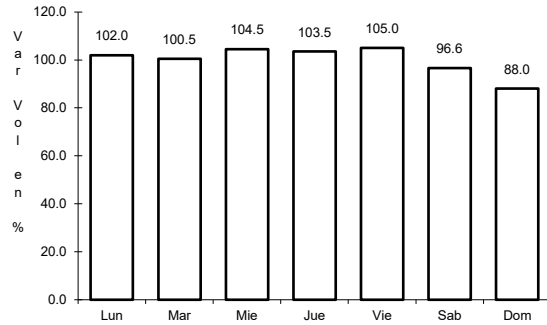


Km: 7.00 Tipo: 1 Sent: 0

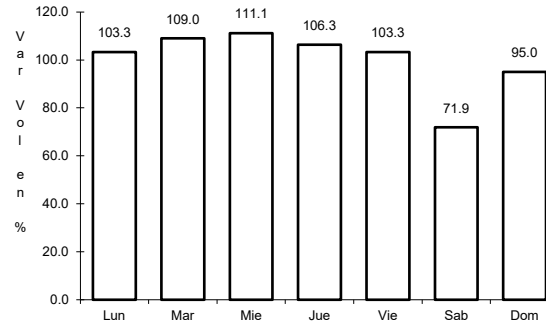
28 CARR: Rayón - Arroyo Seco

CLAVE: 24008

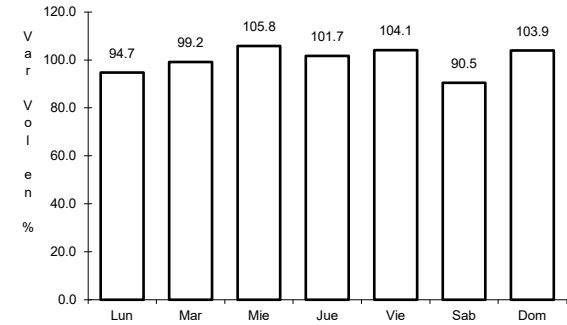
RUTA: SLP-011



Km: 0.00 Tipo: 3 Sent: 0



Km: 36.00 Tipo: 1 Sent: 0

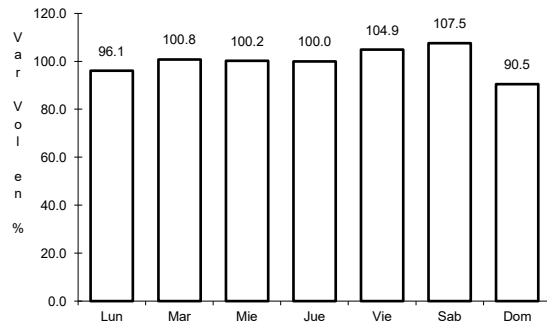


Km: 57.00 Tipo: 1 Sent: 0

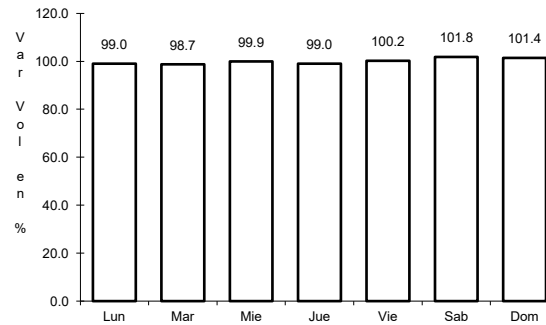
29 CARR: San Juan del Río - Amealco

CLAVE: 22011

RUTA: QRO



Km: 0.00 Tipo: 3 Sent: 0

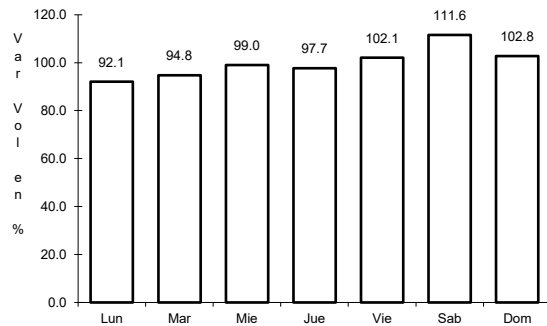


Km: 28.00 Tipo: 1 Sent: 0

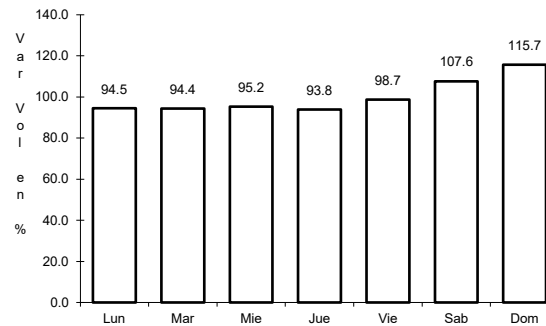
30 CARR: T. C. (Villa del Pueblito - Huimilpan) - Coroneo

CLAVE: 00155

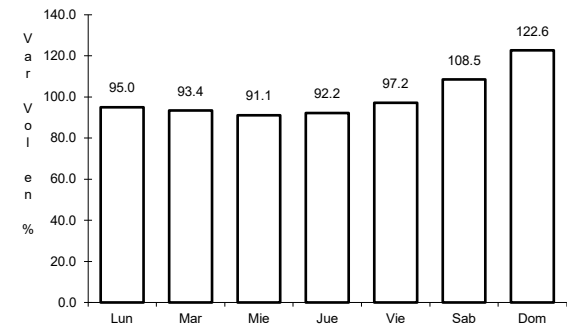
RUTA: QRO-GTO



Km: 0.00 Tipo: 3 Sent: 1



Km: 0.00 Tipo: 3 Sent: 2

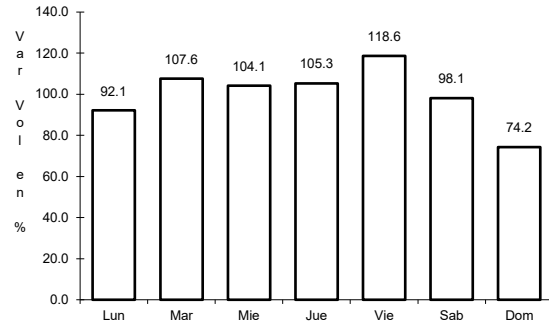


Km: 45.20 Tipo: 1 Sent: 0

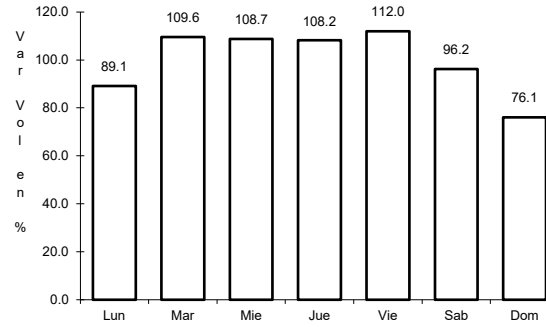
31 CARR: Villa del Pueblito - Huimilpan

CLAVE: 22503

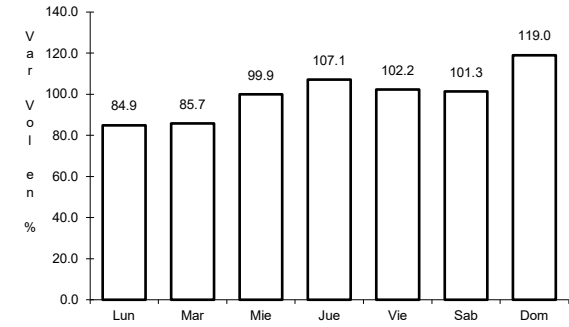
ruta: QRO



Km: 0.00 Tipo: 3 Sent: 1



Km: 0.00 Tipo: 3 Sent: 2

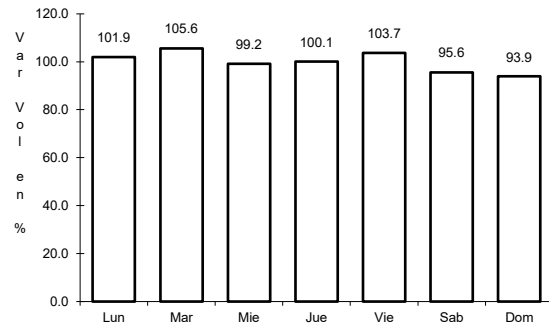


Km: 27.00 Tipo: 1 Sent: 0

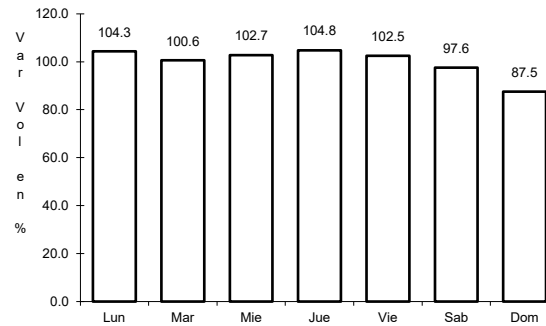
32 CARR: Toluca - Palmillas

CLAVE: 00496

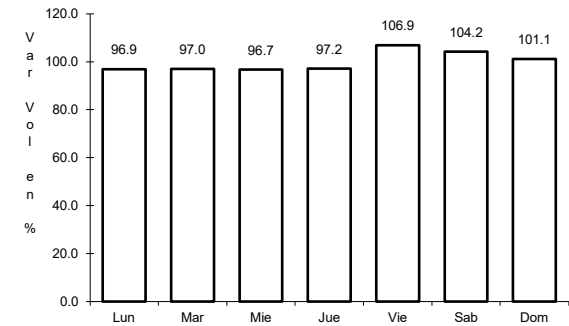
ruta: EM(D)-MEX-055



Km: 14.21 Tipo: 1 Sent: 1



Km: 14.21 Tipo: 1 Sent: 2



Km: 85.64 Tipo: 3 Sent: 0

