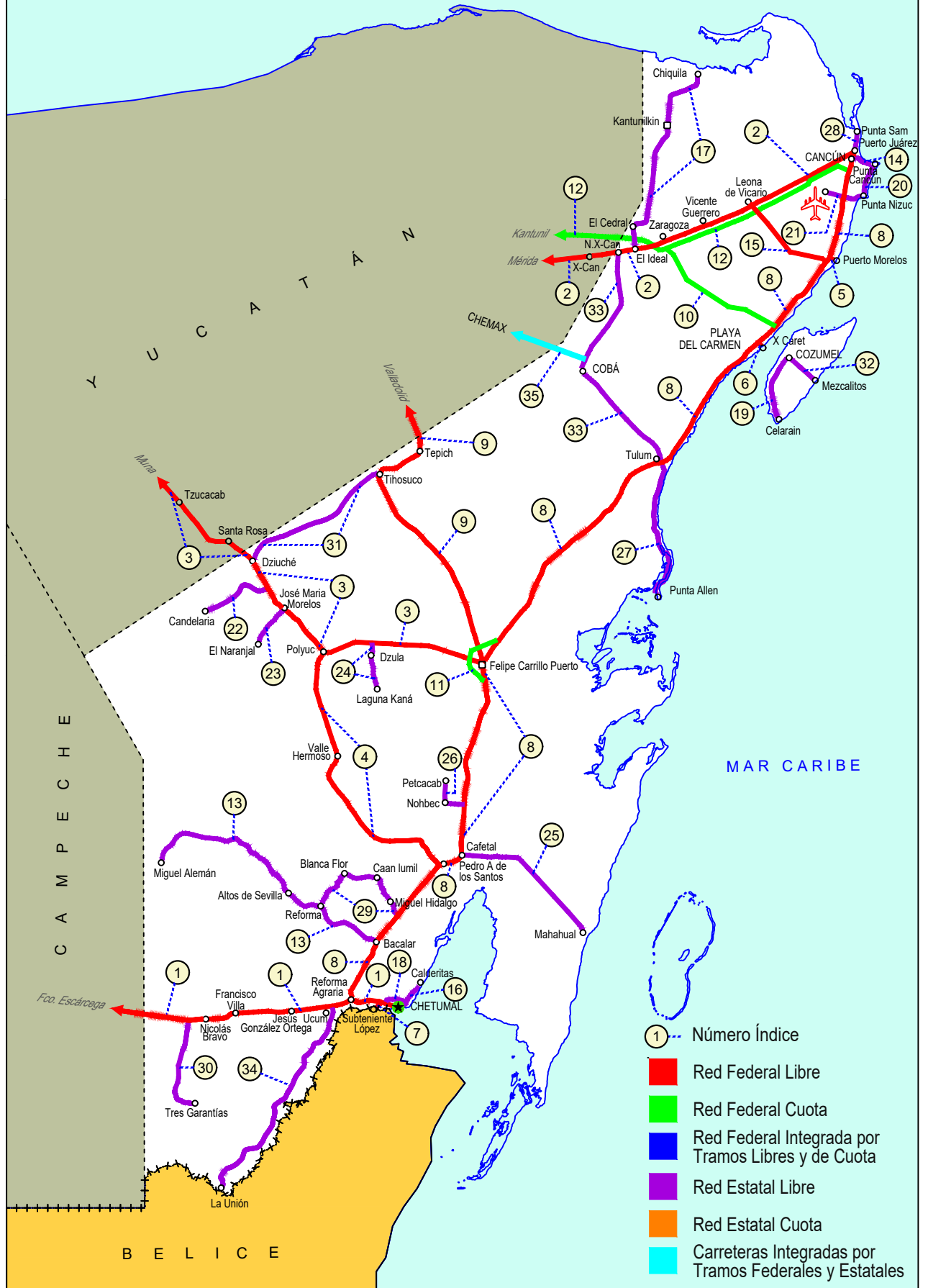


# QUINTANA ROO

NO. INDICE CARRETERA		RUTA
	---RED FEDERAL LIBRE---	
1	Francisco Escárcega - Chetumal	MEX-186
2	Mérida - Puerto Juárez	MEX-180
3	Muna - Felipe Carrillo Puerto	MEX-184
4	Polyuc - T. C. (Reforma Agraria - Puerto Juárez)	MEX-293
5	Ramal a Puerto Morelos	MEX
6	Ramal a Punta Piedra	MEX
7	Ramal a Subteniente López	MEX-186
8	Reforma Agraria - Puerto Juárez	MEX-307
9	Valladolid - Felipe Carrillo Puerto	MEX-295
	---RED FEDERAL DE CUOTA---	
10	El Cedral - Playa del Carmen (Cuota)	MEX-180D
11	Libramiento de Felipe Carrillo Puerto (Cuota)	MEX-307D
12	Mérida - Cancún (Cuota)	MEX-180D
	---RED ESTATAL LIBRE---	
13	Bacalar - Miguel Alemán	QR
14	Cancún - Punta Cancún	QR
15	Central Vallarta - Leona Vicario	QR
16	Chetumal - Calderitas	QR-004
17	El Ideal - Chiquila	QR-005
18	Libramiento de Chetumal	QR
19	Perimetral Cozumel	QR
20	Punta Nizuc - Cancún	QR
21	Ramal a Aeropuerto Cancún	QR
22	Ramal a Candelaria	QR
23	Ramal a El Naranja	QR
24	Ramal a Laguna de Kaná	QR
25	Ramal a Mahahual	QR
26	Ramal a Petcacab	QR-018
27	Ramal a Punta Allen	QR-015
28	Ramal a Punta Sam	QR
29	Ramal a Reforma	QR-016
30	Ramal a Tres Garantías	QR
31	Tihosuco - Dziuche	QR
32	Transversal de Cozumel	QR
33	Tulum - Nuevo X-Can	QR
34	Ucum - Unión	QR
	---CARRETERAS INTEGRADAS POR TRAMOS FEDERALES Y ESTATALES---	
35	Chemax - Cobá	YUC-MEX-180

# 23 QUINTANA ROO





QUINTANA ROO

1 CARR: Francisco Escárcega - Chetumal

CLAVE: 00093

RUTA: MEX-186

AÑO: 2022

LUGAR	ESTACION				CLASIFICACION VEHICULAR EN PORCIENTO													COORDENADAS		
	KM	TE	SC	TDPA	M	A	B	C2	C3	T3S2	T3S3	T3S2R4	OTROS	A	B	C	K'	D	LATITUD	LONGITUD
Francisco Escárcega	0.00	3	0	4052	16.3	64.2	4.0	3.0	1.5	5.8	1.2	3.2	0.8	80.5	4.0	15.5	0.080	0.531	18.604116	-90.718267
Adolfo López Mateos	41.50	1	0	2925	8.2	69.0	4.7	3.3	1.8	5.6	1.7	5.0	0.7	77.2	4.7	18.1	0.079	0.521	18.642847	-90.316602
T. Der. Silvituc	55.70	1	0	3037	11.0	66.3	5.0	3.3	1.8	5.5	1.8	4.6	0.7	77.3	5.0	17.7	0.077	0.516	18.651315	-90.276628
T. Der. Silvituc	55.70	3	0	2515	10.2	66.6	5.1	3.6	1.9	6.1	1.6	4.2	0.7	76.8	5.1	18.1	0.075	0.527	18.649428	-90.261509
Conhuás	100.00	1	0	2142	11.4	59.3	5.8	4.6	2.0	7.2	2.6	6.1	1.0	70.7	5.8	23.5	0.074	0.527	18.540422	-89.918683
Xpujil	155.73	1	0	3054	8.6	67.2	4.7	3.7	2.0	5.7	1.3	5.9	0.9	75.8	4.7	19.5	0.088	0.507	18.509443	-89.411068
Lim. Edos. Term. Camp. Ppia. Qroo.	179.90	0	0																	
X. C. Caobas - Chacanbacab	186.00	3	0	2144	6.6	62.5	7.7	4.6	1.9	8.0	2.2	5.5	1.0	69.1	7.7	23.2	0.076	0.518	18.468471	-89.093592
Nicolás Bravo	206.01	1	0	3045	7.1	65.8	5.9	4.0	1.6	7.6	1.5	5.6	0.9	72.9	5.9	21.2	0.071	0.524	18.458538	-88.939145
Nicolás Bravo	206.01	3	0	3616	7.2	70.6	5.5	3.8	1.1	5.1	1.2	4.8	0.7	77.8	5.5	16.7	0.080	0.509	18.459134	-88.920092
T. Izq. Morocoy	214.90	1	0	3177	7.2	67.5	5.9	4.4	1.4	7.7	1.5	3.6	0.8	74.7	5.9	19.4	0.080	0.511	18.478785	-88.818211
T. Izq. Morocoy	214.90	3	0	3150	7.1	67.7	5.7	4.6	1.4	7.9	1.4	3.4	0.8	74.8	5.7	19.5	0.070	0.510	18.478909	-88.814880
T. Der. Unión	247.50	1	0	5344	7.8	67.4	5.6	4.3	1.8	7.5	1.6	3.2	0.8	75.2	5.6	19.2	0.071	0.503	18.503963	-88.534283
T. Der. Unión	247.50	3	0	8439	10.4	76.4	1.8	4.9	1.0	2.8	0.5	1.7	0.5	86.8	1.8	11.4	0.077	0.508	18.508721	-88.504571
T. Izq. Fpe. Carrillo Puerto	255.15	1	0	6811	9.7	76.2	2.2	4.3	2.1	2.9	0.6	1.6	0.4	85.9	2.2	11.9	0.104	0.508	18.524089	-88.473005
T. Der. Subteniente López	268.57	1	1	9126	7.4	88.2	1.1	1.7	0.6	0.5	0.1	0.3	0.1	95.6	1.1	3.3	0.094	0.511	18.516765	-88.378548
T. Der. Subteniente López	268.57	1	2	8746	6.9	87.7	1.2	1.9	0.9	0.8	0.1	0.4	0.1	94.6	1.2	4.2	0.107	0.511	18.516874	-88.378520
T. Izq. Av. Insurgentes	270.00	1	1	12491	8.3	86.4	1.0	3.0	0.5	0.4	0.1	0.2	0.1	94.7	1.0	4.3	0.085	0.507	18.513062	-88.361999
T. Izq. Av. Insurgentes	270.00	1	2	12845	10.8	83.4	1.2	3.2	0.5	0.4	0.1	0.3	0.1	94.2	1.2	4.6	0.089	0.507	18.513189	-88.362038
T. Izq. Av. Insurgentes	270.00	3	1	4645	5.2	91.7	0.6	1.3	0.5	0.3	0.1	0.2	0.1	96.9	0.6	2.5	0.085	0.519	18.510322	-88.353633
T. Izq. Av. Insurgentes	270.00	3	2	4310	5.2	91.7	0.5	1.3	0.6	0.3	0.1	0.2	0.1	96.9	0.5	2.6	0.094	0.519	18.510421	-88.353596
Chetumal	277.36	1	1	8347	10.7	87.2	0.2	0.8	0.5	0.2	0.0	0.1	0.3	97.9	0.2	1.9	0.089	0.537	18.501801	-88.321648
Chetumal	277.36	1	2	7190	11.0	86.3	0.3	1.3	0.6	0.2	0.0	0.1	0.2	97.3	0.3	2.4	0.094	0.537	18.501919	-88.321621

2 CARR: Mérida - Puerto Juárez

CLAVE: 00067

RUTA: MEX-180

AÑO: 2022

LUGAR	ESTACION				CLASIFICACION VEHICULAR EN PORCIENTO													COORDENADAS		
	KM	TE	SC	TDPA	M	A	B	C2	C3	T3S2	T3S3	T3S2R4	OTROS	A	B	C	K'	D	LATITUD	LONGITUD
Mérida	0.00	0	0																	
X. Periférico de Mérida	5.60	1	1	11575	12.5	81.8	1.1	3.5	0.5	0.3	0.1	0.1	0.1	94.3	1.1	4.6	0.080	0.534	20.957498	-89.572251
X. Periférico de Mérida	5.60	1	2	13251	12.4	82.8	0.8	2.8	0.6	0.3	0.1	0.1	0.1	95.2	0.8	4.0	0.081	0.534	20.957551	-89.572150
X. Periférico de Mérida	5.60	3	1	18032	11.3	76.1	1.3	4.3	1.7	2.6	0.7	1.6	0.4	87.4	1.3	11.3	0.071	0.506	20.953633	-89.564408
X. Periférico de Mérida	5.60	3	2	18492	11.7	75.8	1.3	3.7	1.9	2.8	0.6	1.8	0.4	87.5	1.3	11.2	0.066	0.506	20.953719	-89.564330
Teya	13.00	1	1	14461	10.6	74.8	2.0	4.2	2.2	2.9	0.7	2.1	0.5	85.4	2.0	12.6	0.078	0.500	20.935104	-89.527459
Teya	13.00	1	2	14437	11.3	73.2	2.2	4.3	2.7	3.1	0.7	2.0	0.5	84.5	2.2	13.3	0.072	0.500	20.935229	-89.527436

QUINTANA ROO

2 CARR: Mérida - Puerto Juárez

CLAVE: 00067

RUTA: MEX-180

AÑO: 2022

LUGAR	ESTACION				CLASIFICACION VEHICULAR EN PORCIENTO													COORDENADAS		
	KM	TE	SC	TDPA	M	A	B	C2	C3	T3S2	T3S3	T3S2R4	OTROS	A	B	C	K'	D	LATITUD	LONGITUD
T. C. Teya - Peto	14.20	3	1	8709	9.9	74.1	2.0	4.4	2.7	3.2	1.0	2.2	0.5	84.0	2.0	14.0	0.085	0.504	20.920560	-89.492983
T. C. Teya - Peto	14.20	3	2	8843	10.1	74.6	1.9	4.2	2.7	3.3	0.7	2.0	0.5	84.7	1.9	13.4	0.093	0.504	20.920679	-89.492874
T. Der. Ticopó	21.40	3	1	8205	9.2	74.3	2.2	4.7	2.2	3.5	0.8	2.4	0.7	83.5	2.2	14.3	0.090	0.517	20.893163	-89.435373
T. Der. Ticopó	21.40	3	2	7669	8.8	74.8	2.1	4.9	1.8	3.5	0.7	2.8	0.6	83.6	2.1	14.3	0.107	0.517	20.893258	-89.435270
T. Der. Seyé	28.79	1	1	7159	5.6	77.2	3.0	4.7	2.0	3.3	1.0	2.6	0.6	82.8	3.0	14.2	0.090	0.503	20.895831	-89.391665
T. Der. Seyé	28.79	1	2	7232	5.4	78.7	2.8	4.3	1.4	3.5	0.9	2.4	0.6	84.1	2.8	13.1	0.093	0.503	20.895906	-89.391540
T. Der. Seyé	28.79	3	1	7203	5.8	76.2	3.6	5.0	1.5	3.0	1.3	2.8	0.8	82.0	3.6	14.4	0.085	0.516	20.891724	-89.374656
T. Der. Seyé	28.79	3	2	6766	5.9	75.9	3.2	4.6	2.1	3.5	1.1	3.0	0.7	81.8	3.2	15.0	0.094	0.516	20.891844	-89.374582
Tahmek (1er Acceso)	40.00	1	1	6703	4.2	77.0	3.4	4.9	2.2	3.1	1.2	3.1	0.9	81.2	3.4	15.4	0.085	0.501	20.876039	-89.279046
Tahmek (1er Acceso)	40.00	1	2	6721	4.3	78.2	2.8	4.2	1.7	4.8	0.8	2.5	0.7	82.5	2.8	14.7	0.092	0.501	20.876162	-89.278962
T. C. Libramiento de Tahmek - Hoctun - Xocchel Oeste	42.00	1	1	6625	2.8	79.4	3.1	3.5	2.4	3.9	0.8	3.4	0.7	82.2	3.1	14.7	0.091	0.516	20.881834	-89.258871
T. C. Libramiento de Tahmek - Hoctun - Xocchel Oeste	42.00	1	1	6530	2.7	80.9	3.3	3.8	2.0	2.6	0.9	3.0	0.8	83.6	3.3	13.1	0.085	0.516	20.881697	-89.258841
T. Izq. Hoctún (1º Acceso)	46.65	1	0	2802	26.8	62.8	1.1	7.6	0.9	0.4	0.3	0.1	0.0	89.6	1.1	9.3	0.084	0.501	20.867615	-89.214576
T. Izq. Hoctún (2º Acceso)	48.62	1	0	1439	22.3	65.2	1.2	9.2	0.9	0.7	0.2	0.3	0.0	87.5	1.2	11.3	0.082	0.501	20.858709	-89.202919
T. Izq. Hoctún (2º Acceso)	48.62	3	0	2636	31.3	59.3	1.0	6.2	1.1	0.4	0.2	0.4	0.1	90.6	1.0	8.4	0.082	0.508	20.855057	-89.196397
T. Libramiento de Xocchel	55.72	0	0																	
T. C. Libramiento de Tahmek - Hoctun - Xocchel	56.00	1	0	520	24.5	56.4	1.5	12.1	2.7	1.7	0.5	0.6	0.0	80.9	1.5	17.6	0.098	0.512	20.830692	-89.165801
Kantunil	67.28	1	1	4582	2.9	77.4	3.1	3.7	2.1	4.4	1.3	4.2	0.9	80.3	3.1	16.6	0.083	0.521	20.801925	-89.053530
Kantunil	67.28	1	2	4211	2.9	76.1	3.0	4.2	2.4	4.8	1.2	4.5	0.9	79.0	3.0	18.0	0.102	0.521	20.802032	-89.053425
Kantunil	67.28	3	0	4041	6.0	81.5	2.0	4.3	2.7	2.0	0.8	0.6	0.1	87.5	2.0	10.5	0.093	0.501	20.790340	-89.017039
Libre Unión	92.91	1	0	3166	5.8	78.9	2.3	5.9	3.0	2.2	0.8	1.0	0.1	84.7	2.3	13.0	0.100	0.514	20.708758	-88.817955
Libre Unión	92.91	3	0	3005	5.3	79.8	2.6	5.5	2.9	2.1	0.9	0.8	0.1	85.1	2.6	12.3	0.113	0.523	20.707004	-88.796594
Piste	116.30	3	0	8602	14.5	77.7	1.6	2.5	2.0	0.6	0.5	0.5	0.1	92.2	1.6	6.2	0.100	0.524	20.690884	-88.579607
1er. Acceso a Zona Arqueológica de Chichen-Itzá	117.90	3	0	6407	14.1	72.4	2.7	5.9	1.8	1.9	0.6	0.5	0.1	86.5	2.7	10.8	0.082	0.517	20.688689	-88.570685
2do. Acceso a Zona Arqueológica de Chichen-Itzá	121.10	3	0	5920	13.1	75.9	2.4	4.6	1.9	1.2	0.4	0.5	0.0	89.0	2.4	8.6	0.088	0.521	20.668773	-88.556534
T. Der. Chankom	127.00	1	0	4993	8.7	77.3	3.4	5.2	2.4	1.4	0.7	0.8	0.1	86.0	3.4	10.6	0.093	0.512	20.644017	-88.494603
T. Der. Chankom	127.00	3	0	5307	7.7	78.4	2.8	5.8	2.1	1.9	0.6	0.6	0.1	86.1	2.8	11.1	0.093	0.502	20.637939	-88.475533
Kaua	137.47	3	0	5529	8.3	80.1	3.1	4.1	2.0	1.2	0.5	0.6	0.1	88.4	3.1	8.5	0.084	0.516	20.623622	-88.401632
X. C. Periférico de Valladolid	157.12	1	0	7282	11.5	77.3	2.4	4.4	1.9	1.2	0.5	0.7	0.1	88.8	2.4	8.8	0.075	0.503	20.673492	-88.248471
Valladolid	160.68	1	0	7771	20.1	73.9	1.4	3.4	0.6	0.2	0.1	0.2	0.1	94.0	1.4	4.6	0.085	0.522	20.682824	-88.233495
Valladolid	160.68	3	0	9667	22.0	73.5	0.6	2.2	0.9	0.4	0.1	0.3	0.0	95.5	0.6	3.9	0.078	0.530	20.694913	-88.164475
X. C. Periférico de Valladolid	165.60	3	0	10449	11.7	76.9	1.6	2.7	3.4	2.0	0.4	1.1	0.2	88.6	1.6	9.8	0.082	0.512	20.696249	-88.155306
T. Der. Coba	187.80	1	0	7534	5.7	83.0	1.8	3.1	2.2	2.3	0.7	1.0	0.2	88.7	1.8	9.5	0.093	0.500	20.659662	-87.961885
T. Der. Chemax	189.79	1	0	5102	10.0	82.7	1.2	3.1	1.2	1.2	0.3	0.3	0.0	92.7	1.2	6.1	0.086	0.501	20.657946	-87.951968
T. Der. Chemax	189.79	3	0	3879	8.9	81.2	1.5	3.7	1.8	2.0	0.3	0.5	0.1	90.1	1.5	8.4	0.088	0.510	20.665124	-87.924634

QUINTANA ROO

2 CARR: Mérida - Puerto Juárez

CLAVE: 00067

RUTA: MEX-180

AÑO: 2022

LUGAR	ESTACION				CLASIFICACION VEHICULAR EN PORCIENTO													COORDENADAS		
	KM	TE	SC	TDPA	M	A	B	C2	C3	T3S2	T3S3	T3S2R4	OTROS	A	B	C	K'	D	LATITUD	LONGITUD
X-Can	225.00	3	0	2996	4.2	81.2	2.3	6.8	1.8	2.4	0.5	0.7	0.1	85.4	2.3	12.3	0.093	0.517	20.860461	-87.656706
Lim. Edos. Term. Yuc. Ppia. Q. R.	230.40	0	0																	
Nuevo X-Can	231.90	3	0	3415	4.3	81.8	1.5	7.1	2.1	2.1	0.4	0.7	0.0	86.1	1.5	12.4	0.092	0.508	20.871579	-87.591095
Zaragoza	239.00	1	0	5054	8.0	78.0	1.1	5.4	5.1	1.7	0.3	0.4	0.0	86.0	1.1	12.9	0.087	0.504	20.880555	-87.537811
Zaragoza	239.00	3	0	3894	5.0	80.1	1.7	5.4	4.8	2.1	0.4	0.5	0.0	85.1	1.7	13.2	0.085	0.510	20.883924	-87.517748
Vicente Guerrero	261.00	1	0	3394	8.6	77.5	1.8	4.7	3.9	2.4	0.4	0.6	0.1	86.1	1.8	12.1	0.079	0.513	20.940795	-87.332047
Leona Vicario	275.50	1	0	4964	4.5	79.4	1.6	3.3	7.4	2.2	0.6	0.9	0.1	83.9	1.6	14.5	0.084	0.504	20.979766	-87.226480
Leona Vicario	275.50	3	0	7456	11.3	79.9	1.4	3.6	1.6	1.3	0.2	0.6	0.1	91.2	1.4	7.4	0.082	0.519	20.993357	-87.188977
T. Der. Aeropuerto	302.50	1	0	9155	6.2	83.2	1.1	3.9	2.6	1.6	0.8	0.5	0.1	89.4	1.1	9.5	0.088	0.520	21.096173	-86.983554
T. Der. Aeropuerto	302.50	3	1	5578	5.2	76.1	1.9	8.1	3.6	2.1	0.8	1.6	0.6	81.3	1.9	16.8	0.096	0.521	21.102500	-86.970572
T. Der. Aeropuerto	302.50	3	2	6061	5.2	76.2	2.0	8.1	3.6	2.2	0.7	1.6	0.4	81.4	2.0	16.6	0.095	0.521	21.102632	-86.970605
T. Der. Alfredo V. Bonfil	310.00	1	1	28121	7.8	81.8	1.1	2.4	1.6	1.7	0.3	2.6	0.7	89.6	1.1	9.3	0.075	0.523	21.138271	-86.898812
T. Der. Alfredo V. Bonfil	310.00	1	2	31042	7.8	81.8	1.1	2.4	1.6	1.7	0.3	2.6	0.7	89.6	1.1	9.3	0.080	0.523	21.138382	-86.898938
Puerto Juárez	321.41	0	0																	

3 CARR: Muna - Felipe Carrillo Puerto

CLAVE: 00148

RUTA: MEX-184

AÑO: 2022

LUGAR	ESTACION				CLASIFICACION VEHICULAR EN PORCIENTO													COORDENADAS		
	KM	TE	SC	TDPA	M	A	B	C2	C3	T3S2	T3S3	T3S2R4	OTROS	A	B	C	K'	D	LATITUD	LONGITUD
Muna	0.00	3	0	4061	8.7	73.2	1.3	10.1	1.5	2.1	1.1	1.1	0.9	81.9	1.3	16.8	0.077	0.503	20.474317	-89.694347
Ticul	19.10	1	0	2768	8.9	72.4	1.4	10.3	1.5	2.6	1.3	1.3	0.3	81.3	1.4	17.3	0.081	0.503	20.407164	-89.574519
Ticul	19.10	3	0	7005	35.7	52.4	1.0	4.9	0.6	3.7	0.8	0.3	0.6	88.1	1.0	10.9	0.077	0.502	20.371848	-89.516134
Oxkutzcab	40.50	3	0	6503	34.4	53.4	0.9	5.1	1.0	2.7	1.0	0.6	0.9	87.8	0.9	11.3	0.084	0.504	20.281762	-89.374742
Tekax	53.90	3	0	4357	43.1	50.8	0.7	2.3	1.0	0.9	0.2	0.7	0.3	93.9	0.7	5.4	0.098	0.524	20.188984	-89.268682
Tzucacab	86.60	1	0	1876	33.5	59.2	0.9	4.7	0.9	0.3	0.2	0.2	0.1	92.7	0.9	6.4	0.078	0.516	20.078544	-89.062377
Tzucacab	86.60	3	0	1445	39.7	57.3	0.6	1.5	0.6	0.1	0.1	0.1	0.0	97.0	0.6	2.4	0.071	0.506	20.062231	-89.036001
Santa Rosa	109.60	3	0	2284	7.9	76.3	3.1	4.8	1.5	2.0	0.8	3.0	0.6	84.2	3.1	12.7	0.088	0.506	19.947306	-88.880263
Lim. Edos. Term. Yuc. Ppia. Q. R.	117.00	0	0																	
Dziuche	118.00	1	0	2562	8.0	76.5	3.0	4.7	1.7	1.8	0.8	2.9	0.6	84.5	3.0	12.5	0.079	0.516	19.905508	-88.819717
Dziuche	118.00	3	0	3290	9.9	77.0	2.5	4.2	1.4	1.6	0.6	2.4	0.4	86.9	2.5	10.6	0.079	0.502	19.888948	-88.803876
José María Morelos	138.60	1	0	4721	15.5	75.2	1.7	3.2	1.2	1.0	0.4	1.5	0.3	90.7	1.7	7.6	0.071	0.540	19.764441	-88.725104
José María Morelos	138.60	3	0	3241	12.4	75.2	2.2	3.9	1.7	1.6	0.7	2.0	0.3	87.6	2.2	10.2	0.084	0.511	19.736567	-88.691536
Polyuc	161.94	1	0	2860	12.4	71.6	2.4	5.4	2.3	2.1	1.0	2.6	0.2	84.0	2.4	13.6	0.073	0.502	19.611629	-88.571723
Polyuc	161.94	3	0	1451	9.2	81.9	0.8	4.4	1.7	1.1	0.5	0.4	0.0	91.1	0.8	8.1	0.092	0.505	19.609489	-88.553433
T. Der. Dzúlá	178.11	3	0	1458	6.1	84.4	1.3	4.5	1.9	1.0	0.4	0.4	0.0	90.5	1.3	8.2	0.095	0.501	19.643495	-88.405602

QUINTANA ROO

3 CARR : Muna - Felipe Carrillo Puerto

CLAVE: 00148

RUTA: MEX-184

AÑO: 2022

LUGAR	ESTACION				CLASIFICACION VEHICULAR EN PORCIENTO													COORDENADAS		
	KM	TE	SC	TDPA	M	A	B	C2	C3	T3S2	T3S3	T3S2R4	OTROS	A	B	C	K'	D	LATITUD	LONGITUD
Felipe Carrillo Puerto	216.97	1	0	7396	28.1	67.3	1.2	1.7	0.8	0.6	0.1	0.2	0.0	95.4	1.2	3.4	0.070	0.515	19.584459	-88.057869

4 CARR : Polyuc - T. C. (Reforma Agraria - Puerto Juárez)

CLAVE: 23014

RUTA: MEX-293

AÑO: 2022

LUGAR	ESTACION				CLASIFICACION VEHICULAR EN PORCIENTO													COORDENADAS		
	KM	TE	SC	TDPA	M	A	B	C2	C3	T3S2	T3S3	T3S2R4	OTROS	A	B	C	K'	D	LATITUD	LONGITUD
Polyuc	0.00	3	0	2986	10.9	81.6	1.5	1.9	0.9	1.1	0.5	1.3	0.3	92.5	1.5	6.0	0.086	0.511	19.607570	-88.571998
T. Der. Ramonal	24.00	1	0	1678	4.4	80.6	2.7	4.0	1.7	2.3	0.8	3.0	0.5	85.0	2.7	12.3	0.082	0.506	19.400693	-88.565125
T. Der. Ramonal	24.00	3	0	1447	3.9	78.7	3.4	4.2	2.5	2.9	0.7	3.1	0.6	82.6	3.4	14.0	0.085	0.517	19.398017	-88.564319
T. Izq. Santa María Poniente	35.00	1	0	1644	4.2	80.4	2.8	4.0	2.1	2.3	0.9	2.9	0.4	84.6	2.8	12.6	0.086	0.510	19.344849	-88.548287
T. Izq. Santa María Poniente	35.00	3	0	1592	8.1	75.1	2.1	4.2	3.6	2.6	1.5	2.7	0.1	83.2	2.1	14.7	0.079	0.508	19.339497	-88.546647
Valle Hermoso	50.00	3	0	1629	13.9	70.4	2.9	4.5	2.2	2.0	0.7	3.0	0.4	84.3	2.9	12.8	0.087	0.509	19.180814	-88.523309
T. Izq. Chacchoben	93.50	1	0	1811	7.9	77.2	3.0	3.8	1.8	2.3	0.7	2.9	0.4	85.1	3.0	11.9	0.086	0.516	18.982547	-88.218443
T. Izq. Chacchoben	93.50	3	0	1853	7.9	78.0	2.8	3.6	1.7	2.3	0.6	2.8	0.3	85.9	2.8	11.3	0.094	0.517	18.967098	-88.204207
T. C. Reforma Agraria - Puerto Juárez	99.00	1	0	1816	5.8	79.9	2.8	3.5	1.7	2.3	0.8	2.8	0.4	85.7	2.8	11.5	0.099	0.508	18.950705	-88.188990

5 CARR : Ramal a Puerto Morelos

CLAVE: 23569

RUTA: MEX

AÑO: 2022

LUGAR	ESTACION				CLASIFICACION VEHICULAR EN PORCIENTO													COORDENADAS		
	KM	TE	SC	TDPA	M	A	B	C2	C3	T3S2	T3S3	T3S2R4	OTROS	A	B	C	K'	D	LATITUD	LONGITUD
T. C. Reforma Agraria - Puerto Juárez	0.00	3	0	15381	10.3	85.2	1.4	2.5	0.3	0.2	0.0	0.1	0.0	95.5	1.4	3.1	0.072	0.517	20.854038	-86.892501
Puerto Morelos	2.20	0	0																	

6 CARR : Ramal a Punta Piedra

CLAVE: 23575

RUTA: MEX

AÑO: 2022

LUGAR	ESTACION				CLASIFICACION VEHICULAR EN PORCIENTO													COORDENADAS		
	KM	TE	SC	TDPA	M	A	B	C2	C3	T3S2	T3S3	T3S2R4	OTROS	A	B	C	K'	D	LATITUD	LONGITUD
T. C. Reforma Agraria - Puerto Juárez	0.00	3	1	10788	19.5	73.4	1.6	2.5	1.0	0.5	0.1	1.1	0.3	92.9	1.6	5.5	0.069	0.504	20.625885	-87.080800
T. C. Reforma Agraria - Puerto Juárez	0.00	3	2	10607	19.5	73.4	1.5	2.6	1.0	0.5	0.1	1.1	0.3	92.9	1.5	5.6	0.066	0.504	20.625947	-87.080738
Punta Piedra (Playa del Carmen)	1.50	0	0																	



QUINTANA ROO

7 CARR: Ramal a Subteniente López

CLAVE: 23567

RUTA: MEX-186

AÑO: 2022

LUGAR	ESTACION				CLASIFICACION VEHICULAR EN PORCIENTO													COORDENADAS		
	KM	TE	SC	TDPA	M	A	B	C2	C3	T3S2	T3S3	T3S2R4	OTROS	A	B	C	K'	D	LATITUD	LONGITUD
T. C. Francisco Escárcega - Chetumal	0.00	3	1	4025	8.5	84.3	0.8	2.9	0.9	0.9	0.5	0.8	0.4	92.8	0.8	6.4	0.102	0.517	18.512244	-88.376485
T. C. Francisco Escárcega - Chetumal	0.00	3	2	3766	8.5	84.0	0.8	3.0	0.8	1.0	0.5	0.9	0.5	92.5	0.8	6.7	0.100	0.517	18.512163	-88.376418
T Der. Aduana Santa Elena	1.80	3	1	2900	13.9	82.4	0.8	1.1	0.7	0.7	0.1	0.2	0.1	96.3	0.8	2.9	0.110	0.513	18.500760	-88.385537
T Der. Aduana Santa Elena	1.80	3	2	3052	15.2	82.0	0.5	0.9	0.5	0.6	0.1	0.1	0.1	97.2	0.5	2.3	0.098	0.513	18.500598	-88.385448
Subteniente López	3.00	0	0																	

8 CARR: Reforma Agraria - Puerto Juárez

CLAVE: 23132

RUTA: MEX-307

AÑO: 2022

LUGAR	ESTACION				CLASIFICACION VEHICULAR EN PORCIENTO													COORDENADAS		
	KM	TE	SC	TDPA	M	A	B	C2	C3	T3S2	T3S3	T3S2R4	OTROS	A	B	C	K'	D	LATITUD	LONGITUD
T. C. Francisco Escárcega - Chetumal	0.00	3	1	6564	5.0	81.9	2.3	5.0	1.0	2.0	0.7	1.7	0.4	86.9	2.3	10.8	0.083	0.518	18.540241	-88.467272
T. C. Francisco Escárcega - Chetumal	0.00	3	2	6119	5.0	82.0	2.2	4.9	1.1	2.0	0.6	1.7	0.5	87.0	2.2	10.8	0.072	0.518	18.540240	-88.467386
Bacalar	19.15	1	1	6290	4.2	82.5	2.2	5.1	1.0	2.1	0.6	1.8	0.5	86.7	2.2	11.1	0.091	0.511	18.661372	-88.403696
Bacalar	19.15	1	2	6031	4.3	82.5	2.1	5.0	1.1	2.2	0.5	1.9	0.4	86.8	2.1	11.1	0.082	0.511	18.661434	-88.403782
Bacalar	19.15	3	0	8354	2.6	84.0	2.3	4.7	1.0	2.3	0.6	2.0	0.5	86.6	2.3	11.1	0.092	0.503	18.695949	-88.388288
T. Izq. Reforma	22.24	3	0	8738	2.6	83.9	2.7	3.9	1.1	2.8	0.7	1.8	0.5	86.5	2.7	10.8	0.083	0.515	18.706946	-88.384500
Buenavista	46.90	1	0	5276	2.8	78.3	4.3	4.7	1.6	3.6	1.0	2.8	0.9	81.1	4.3	14.6	0.090	0.506	18.878387	-88.247162
Buenavista	46.90	3	0	5570	3.9	77.8	3.5	5.8	1.8	3.1	1.0	2.4	0.7	81.7	3.5	14.8	0.080	0.503	18.889475	-88.237552
T. Izq. Lazáro Cárdenas	56.30	1	0	5422	2.6	79.2	3.5	5.7	1.3	3.6	0.8	2.5	0.8	81.8	3.5	14.7	0.090	0.507	18.941856	-88.189506
T. Izq. Lazáro Cárdenas	56.30	3	0	4958	2.5	79.0	3.7	5.8	1.2	3.6	0.8	2.7	0.7	81.5	3.7	14.8	0.095	0.509	18.949539	-88.182011
T. Izq. Chacchoben	70.80	1	0	4738	4.9	74.9	4.3	6.1	1.4	3.9	0.9	2.9	0.7	79.8	4.3	15.9	0.085	0.510	19.010990	-88.111240
T. Izq. Chacchoben	70.80	3	0	4790	3.5	76.1	4.2	5.8	1.2	4.2	1.0	3.3	0.7	79.6	4.2	16.2	0.078	0.512	19.034754	-88.110106
T. Izq. Noh-Bec	81.94	1	0	3985	2.8	76.6	5.0	5.0	1.1	4.6	1.0	3.4	0.5	79.4	5.0	15.6	0.074	0.505	19.131705	-88.105380
T. Izq. Noh-Bec	81.94	3	0	4040	3.4	77.5	4.3	4.9	1.3	4.2	1.0	2.7	0.7	80.9	4.3	14.8	0.088	0.530	19.140925	-88.104957
Libramiento Felipe Carrillo Puerto (Cuota)	128.00	1	0	4882	5.2	76.5	4.1	5.2	1.4	3.4	1.1	2.3	0.8	81.7	4.1	14.2	0.084	0.516	19.537484	-88.040349
Felipe Carrillo Puerto	132.00	1	0	4466	3.7	84.7	3.0	3.7	1.0	2.0	0.4	1.3	0.2	88.4	3.0	8.6	0.083	0.537	19.554736	-88.043119
Felipe Carrillo Puerto	132.00	3	0	4062	3.2	83.6	4.1	4.3	1.1	1.8	0.4	1.3	0.2	86.8	4.1	9.1	0.092	0.509	19.597240	-88.033811
Libramiento Felipe Carrillo Puerto (Cuota)	138.25	1	0	3236	2.8	80.8	4.9	6.1	1.2	2.3	0.4	1.3	0.2	83.6	4.9	11.5	0.106	0.525	19.620287	-88.015459
T. Izq. Chumpón	184.40	1	0	3801	2.4	79.5	5.0	5.6	1.1	3.7	0.6	1.8	0.3	81.9	5.0	13.1	0.108	0.515	19.954023	-87.763174
Tulum Pueblo	227.00	1	0	10669	9.8	79.0	2.4	3.5	1.8	1.6	0.4	0.9	0.6	88.8	2.4	8.8	0.084	0.509	20.201700	-87.492159
Tulum Pueblo	227.00	3	1	13096	4.1	91.2	0.3	2.6	0.3	0.5	0.6	0.2	0.2	95.3	0.3	4.4	0.079	0.511	20.209639	-87.467344
Tulum Pueblo	227.00	3	2	12546	4.1	90.8	0.3	2.7	0.3	0.6	0.6	0.3	0.3	94.9	0.3	4.8	0.080	0.511	20.209738	-87.467287
T. Izq. Cobá	229.19	1	1	12271	2.9	92.3	0.6	1.0	1.1	0.8	0.3	0.5	0.5	95.2	0.6	4.2	0.071	0.508	20.213830	-87.454242
T. Izq. Cobá	229.19	1	2	12652	2.9	92.4	0.6	1.0	1.1	0.8	0.3	0.4	0.5	95.3	0.6	4.1	0.067	0.508	20.213920	-87.454281
T. Izq. Cobá	229.19	3	1	12302	6.1	84.5	1.8	4.1	1.3	1.0	0.2	0.7	0.3	90.6	1.8	7.6	0.093	0.505	20.215351	-87.449432

QUINTANA ROO

8 CARR: Reforma Agraria - Puerto Juárez

CLAVE: 23132

RUTA: MEX-307

AÑO: 2022

LUGAR	ESTACION				CLASIFICACION VEHICULAR EN PORCIENTO													COORDENADAS		
	KM	TE	SC	TDPA	M	A	B	C2	C3	T3S2	T3S3	T3S2R4	OTROS	A	B	C	K'	D	LATITUD	LONGITUD
T. Izq. Cobá	229.19	3	2	12055	6.1	84.4	1.8	4.1	1.3	1.0	0.3	0.7	0.3	90.5	1.8	7.7	0.097	0.505	20.215451	-87.449470
X. C. Tulum - Aeropuerto	231.19	1	1	11348	11.6	78.3	1.8	3.8	1.7	1.2	0.5	0.9	0.2	89.9	1.8	8.3	0.081	0.511	20.219120	-87.437797
X. C. Tulum - Aeropuerto	231.19	1	2	11839	11.6	77.7	2.1	3.8	1.9	1.3	0.5	0.9	0.2	89.3	2.1	8.6	0.087	0.511	20.219246	-87.437839
X. C. Tulum - Aeropuerto	231.19	3	1	11043	13.3	77.8	1.5	3.3	1.7	1.1	0.3	0.8	0.2	91.1	1.5	7.4	0.093	0.506	20.220056	-87.434882
X. C. Tulum - Aeropuerto	231.19	3	2	11294	12.9	77.7	1.6	3.4	1.9	1.1	0.3	0.9	0.2	90.6	1.6	7.8	0.097	0.506	20.220160	-87.434949
T. Der. Xel-Ha	244.80	1	1	11170	2.1	88.4	2.3	3.6	1.3	1.1	0.4	0.6	0.2	90.5	2.3	7.2	0.090	0.505	20.314553	-87.367817
T. Der. Xel-Ha	244.80	1	2	11389	2.3	88.2	2.2	3.5	1.3	1.2	0.4	0.7	0.2	90.5	2.2	7.3	0.092	0.505	20.314580	-87.367960
T. Der. Xel-Ha	244.80	3	1	9305	2.0	87.5	2.8	3.8	1.3	1.4	0.3	0.7	0.2	89.5	2.8	7.7	0.109	0.507	20.330531	-87.358573
T. Der. Xel-Ha	244.80	3	2	9570	2.0	87.0	2.9	4.0	1.3	1.4	0.4	0.8	0.2	89.0	2.9	8.1	0.099	0.507	20.330722	-87.358626
T. Der. Akumal	254.44	1	1	11523	2.6	87.8	2.9	3.8	1.1	0.9	0.3	0.5	0.1	90.4	2.9	6.7	0.109	0.500	20.395114	-87.321691
T. Der. Akumal	254.44	1	2	11516	2.6	87.1	3.2	4.0	1.1	1.0	0.3	0.6	0.1	89.7	3.2	7.1	0.106	0.500	20.395178	-87.321805
Puerto Aventuras	269.34	3	1	18927	2.5	88.5	2.6	3.9	1.1	0.8	0.2	0.3	0.1	91.0	2.6	6.4	0.093	0.501	20.517200	-87.210880
Puerto Aventuras	269.34	3	2	18984	2.5	88.5	2.5	3.9	1.1	0.8	0.2	0.4	0.1	91.0	2.5	6.5	0.096	0.501	20.517307	-87.210949
Playa del Carmen	289.70	1	1	31912	7.7	83.3	3.0	3.8	0.9	0.6	0.2	0.4	0.1	91.0	3.0	6.0	0.082	0.517	20.608947	-87.105823
Playa del Carmen	289.70	1	2	29682	7.4	83.7	3.0	3.8	0.9	0.5	0.2	0.4	0.1	91.1	3.0	5.9	0.100	0.517	20.609148	-87.105865
Playa del Carmen	289.70	3	1	36167	7.0	85.0	2.2	4.0	1.1	0.3	0.1	0.2	0.1	92.0	2.2	5.8	0.075	0.513	20.662035	-87.057197
Playa del Carmen	289.70	3	2	34178	7.0	85.1	2.0	4.1	1.1	0.3	0.1	0.2	0.1	92.1	2.0	5.9	0.070	0.513	20.662161	-87.057352
T. Der. Puerto Morelos	321.48	1	1	23897	3.8	87.7	2.1	4.9	0.5	0.4	0.2	0.3	0.1	91.5	2.1	6.4	0.077	0.504	20.838219	-86.909823
T. Der. Puerto Morelos	321.48	1	2	23491	3.8	87.7	2.1	4.9	0.5	0.4	0.2	0.3	0.1	91.5	2.1	6.4	0.078	0.504	20.838352	-86.909992
T. Der. Puerto Morelos	321.48	3	1	30356	6.9	84.6	2.4	4.4	0.6	0.5	0.3	0.2	0.1	91.5	2.4	6.1	0.076	0.500	20.871751	-86.891028
T. Der. Puerto Morelos	321.48	3	2	30417	6.9	84.5	2.5	4.4	0.6	0.5	0.3	0.2	0.1	91.4	2.5	6.1	0.075	0.500	20.871922	-86.891166
T. Izq. Aeropuerto Cancún	341.50	1	1	35360	2.3	82.5	2.8	10.8	0.6	0.4	0.1	0.4	0.1	84.8	2.8	12.4	0.072	0.545	21.027108	-86.853099
T. Izq. Aeropuerto Cancún	341.50	1	2	36919	2.3	82.5	2.8	10.8	0.6	0.4	0.1	0.4	0.1	84.8	2.8	12.4	0.071	0.545	21.026964	-86.852968
T. Izq. Aeropuerto Cancún	341.50	3	1	44271	1.0	88.6	1.3	6.7	0.2	0.8	1.1	0.1	0.2	89.6	1.3	9.1	0.081	0.530	21.041173	-86.849813
T. Izq. Aeropuerto Cancún	341.50	3	2	38710	1.7	86.8	1.5	6.8	0.2	1.1	1.5	0.2	0.2	88.5	1.5	10.0	0.080	0.530	21.041174	-86.849960
T. Izq. Alfredo V. Bonfil	348.22	1	1	42215	2.2	83.5	2.3	9.4	0.5	0.4	0.9	0.5	0.3	85.7	2.3	12.0	0.077	0.528	21.083457	-86.843220
T. Izq. Alfredo V. Bonfil	348.22	1	2	43022	2.1	82.3	2.6	10.3	0.5	0.4	1.0	0.5	0.3	84.4	2.6	13.0	0.094	0.528	21.083498	-86.843344
Cancún	355.48	1	1	45147	1.5	84.7	2.2	9.3	0.6	0.3	0.9	0.4	0.1	86.2	2.2	11.6	0.075	0.535	21.107277	-86.839485
Cancún	355.48	1	2	46060	1.7	83.3	2.2	10.4	0.7	0.3	0.9	0.4	0.1	85.0	2.2	12.8	0.075	0.535	21.107333	-86.839611
T. C. Mérida - Puerto Juárez	357.48	0	0																	

QUINTANA ROO

9 CARR: Valladolid - Felipe Carrillo Puerto

CLAVE: 00010

RUTA: MEX-295

AÑO: 2022

LUGAR	ESTACION				CLASIFICACION VEHICULAR EN PORCIENTO												COORDENADAS			
	KM	TE	SC	TDPA	M	A	B	C2	C3	T3S2	T3S3	T3S2R4	OTROS	A	B	C	K'	D	LATITUD	LONGITUD
Valladolid	0.00	3	0	7131	35.0	59.7	0.4	4.3	0.3	0.1	0.0	0.2	0.0	94.7	0.4	4.9	0.105	0.505	20.673398	-88.204524
Chichimilá	6.90	3	0	3035	19.6	77.5	0.3	1.3	0.6	0.3	0.0	0.2	0.2	97.1	0.3	2.6	0.094	0.507	20.620021	-88.236644
Tekom	12.05	3	0	2435	19.5	77.3	0.3	1.4	0.7	0.4	0.0	0.2	0.2	96.8	0.3	2.9	0.092	0.506	20.590225	-88.265398
Tixcacalcupul	19.80	3	0	944	14.7	76.2	1.0	5.8	1.0	0.3	0.1	0.4	0.5	90.9	1.0	8.1	0.089	0.502	20.520268	-88.270787
Lim. Edos. Term. Yuc. Ppia. Q. R.	46.00	0	0																	
Tepich	51.40	1	0	961	21.6	72.9	0.4	1.5	1.9	0.6	0.1	0.4	0.6	94.5	0.4	5.1	0.087	0.505	20.248746	-88.255248
Tihosuco	65.00	1	0	1096	16.8	76.9	2.5	1.3	1.0	0.3	0.2	0.6	0.4	93.7	2.5	3.8	0.092	0.505	20.193221	-88.360422
Tihosuco	65.00	3	0	1235	16.0	75.7	1.0	5.4	0.7	0.2	0.1	0.4	0.5	91.7	1.0	7.3	0.082	0.514	20.189795	-88.387358
T. Izq. San Felipe Berriozábal	99.00	1	0	703	12.4	83.2	2.0	0.6	1.0	0.3	0.1	0.4	0.0	95.6	2.0	2.4	0.108	0.514	19.962444	-88.241567
T. Izq. San Felipe Berriozábal	99.00	3	0	823	12.4	79.6	1.2	1.8	2.6	1.1	0.3	0.7	0.3	92.0	1.2	6.8	0.090	0.527	19.961718	-88.240816
Señor	116.50	1	0	1109	15.5	78.5	1.8	2.5	0.5	0.2	0.2	0.3	0.5	94.0	1.8	4.2	0.087	0.513	19.851090	-88.143659
Señor	116.50	3	0	1523	12.4	76.6	2.6	4.4	0.8	1.0	0.9	0.9	0.4	89.0	2.6	8.4	0.085	0.511	19.833059	-88.131834
Felipe Carrillo Puerto	147.70	1	0	1931	17.5	77.2	1.0	3.0	0.4	0.5	0.1	0.3	0.0	94.7	1.0	4.3	0.087	0.504	19.602385	-88.053562

10 CARR: El Cedral - Playa del Carmen (Cuota)

CLAVE:

RUTA: MEX-180D

AÑO: 2022

LUGAR	ESTACION				CLASIFICACION VEHICULAR EN PORCIENTO												COORDENADAS			
	KM	TE	SC	TDPA	M	A	B	C2	C3	T3S2	T3S3	T3S2R4	OTROS	A	B	C	K'	D	LATITUD	LONGITUD
El Cedral	0.00	0	0																	
X. C. Mérida - Cancún (Cuota)	10.05	1	0	1417	3.5	82.5	3.8	3.1	3.6	2.0	1.1	0.3	0.1	86.0	3.8	10.2	0.096	0.536	20.909278	-87.447120
X. C. Mérida - Cancún (Cuota)	10.05	3	0	2111	1.7	83.9	5.1	3.4	0.9	1.3	0.4	3.1	0.2	85.6	5.1	9.3	0.089	0.549	20.884401	-87.426894
Plaza de Cobro Tintal	50.00	2	0	2176	1.4	85.7	4.2	1.7	0.7	0.9	1.5	1.8	2.1	87.1	4.2	8.7	0.090	0.500	20.698987	-87.144285
Playa del Carmen	56.30	0	0																	

11 CARR: Libramiento de Felipe Carrillo Puerto (Cuota)

CLAVE:

RUTA: MEX-307D

AÑO: 2022

LUGAR	ESTACION				CLASIFICACION VEHICULAR EN PORCIENTO												COORDENADAS			
	KM	TE	SC	TDPA	M	A	B	C2	C3	T3S2	T3S3	T3S2R4	OTROS	A	B	C	K'	D	LATITUD	LONGITUD
T. C. Reforma Agraria - Puerto Juárez (Sur)	0.00	3	0	1648	2.5	77.5	5.5	4.6	1.8	5.2	1.0	1.8	0.1	80.0	5.5	14.5	0.100	0.505	19.549218	-88.048698
Plaza de Cobro Felipe Carrillo Puerto	6.10	2	0	953	0.6	67.8	6.8	2.9	2.9	9.7	2.2	6.5	0.6	68.4	6.8	24.8	0.090	0.500	19.590397	-88.071289
X. C. Valladolid - Felipe Carrillo Puerto	9.00	1	0	1894	4.3	74.1	6.3	4.3	1.9	4.9	0.4	3.4	0.4	78.4	6.3	15.3	0.078	0.527	19.606149	-88.060375
T. C. Reforma Agraria - Puerto Juárez (Norte)	13.92	1	0	1306	3.9	75.1	5.4	4.2	1.6	4.4	1.2	3.5	0.7	79.0	5.4	15.6	0.077	0.528	19.623400	-88.016155

QUINTANA ROO

12 CARR: Mérida - Cancún (Cuota)

CLAVE: 00071

RUTA: MEX-180D

AÑO: 2022

LUGAR	ESTACION				CLASIFICACION VEHICULAR EN PORCIENTO										COORDENADAS					
	KM	TE	SC	TDPA	M	A	B	C2	C3	T3S2	T3S3	T3S2R4	OTROS	A	B	C	K'	D	LATITUD	LONGITUD
T. C. Mérida - Puerto Juárez	66.00	3	1	4310	2.6	73.7	6.6	5.2	1.7	3.8	1.3	4.2	0.9	76.3	6.6	17.1	0.082	0.509	20.802804	-89.044774
T. C. Mérida - Puerto Juárez	66.00	3	2	4154	2.5	73.6	5.1	4.4	2.6	5.0	1.2	4.7	0.9	76.1	5.1	18.8	0.098	0.509	20.803066	-89.044875
X. C. Kantunil - Izamal	68.00	3	1	3345	3.0	65.4	5.5	4.6	7.8	6.2	1.6	4.9	1.0	68.4	5.5	26.1	0.081	0.543	20.804695	-89.020622
X. C. Kantunil - Izamal	68.00	3	2	2820	3.4	69.5	4.8	5.2	3.5	5.8	1.7	5.2	0.9	72.9	4.8	22.3	0.099	0.543	20.804929	-89.020360
Plaza de Cobro Piste	115.34	1	1	2334	1.4	71.6	5.0	3.6	2.0	5.8	1.3	8.5	0.8	73.0	5.0	22.0	0.090	0.516	20.733484	-88.604207
Plaza de Cobro Piste	115.34	1	2	2192	1.6	73.5	5.0	3.2	1.4	6.0	0.8	7.5	1.0	75.1	5.0	19.9	0.107	0.516	20.732688	-88.599456
X. C. Valladolid - Río Lagartos	155.65	1	1	2741	2.4	68.2	4.7	4.1	5.7	5.4	1.5	7.0	1.0	70.6	4.7	24.7	0.084	0.502	20.745387	-88.251000
X. C. Valladolid - Río Lagartos	155.65	1	2	2715	2.7	68.9	4.5	4.2	5.5	5.2	1.3	6.8	0.9	71.6	4.5	23.9	0.087	0.502	20.745505	-88.250925
Lim. Edos. Term. Yuc. Ppia. Q. R.	160.00	0	0																	
Estación Fitosanitaria X-Can	216.70	3	1	1908	2.3	67.3	5.6	5.9	5.7	4.9	1.4	6.0	0.9	69.6	5.6	24.8	0.091	0.505	20.878752	-87.609466
Estación Fitosanitaria X-Can	216.70	3	2	1873	2.7	65.9	6.4	6.4	5.2	4.9	1.5	6.1	0.9	68.6	6.4	25.0	0.112	0.505	20.879032	-87.609448
X. C. El Cedral - Playa del Carmen	237.20	3	1	1946	6.8	64.7	5.4	4.9	6.9	4.3	0.4	5.7	0.9	71.5	5.4	23.1	0.111	0.516	20.923750	-87.368939
X. C. El Cedral - Playa del Carmen	237.20	3	2	1823	6.3	63.8	5.5	4.5	8.0	4.2	0.6	6.1	1.0	70.1	5.5	24.4	0.105	0.516	20.923849	-87.368977
T. C. Mérida - Puerto Juárez	292.00	1	1	1941	6.4	69.0	4.4	3.4	5.5	4.2	1.7	4.5	0.9	75.4	4.4	20.2	0.114	0.522	21.096135	-86.978348
T. C. Mérida - Puerto Juárez	292.00	1	2	1778	6.4	68.7	4.8	3.4	5.6	4.2	1.3	4.7	0.9	75.1	4.8	20.1	0.102	0.522	21.096435	-86.978377
T. Av. Huayacán	300.80	2	0	17802	6.8	78.0	3.6	4.0	3.0	2.1	0.6	1.5	0.4	84.8	3.6	11.6	0.090	0.528	21.053823	-86.910595
T. C. Reforma Agraria - Puerto Juárez	307.80	1	0	24137	4.8	85.9	1.8	3.6	1.4	1.2	0.2	0.9	0.2	90.7	1.8	7.5	0.099	0.543	21.021680	-86.860569

13 CARR: Bacalar - Miguel Alemán

CLAVE: 20030

RUTA: QR

AÑO: 2022

LUGAR	ESTACION				CLASIFICACION VEHICULAR EN PORCIENTO										COORDENADAS					
	KM	TE	SC	TDPA	M	A	B	C2	C3	T3S2	T3S3	T3S2R4	OTROS	A	B	C	K'	D	LATITUD	LONGITUD
T. C. (Reforma Agraria - Puerto Juárez)	0.00	0	0																	
Reforma	21.00	3	0	1114	29.9	66.8	0.3	1.3	0.5	0.5	0.4	0.3	0.0	96.7	0.3	3.0	0.085	0.506	18.813220	-88.580680
Altos de Sevilla	31.00	1	0	774	20.0	75.9	0.2	1.7	1.0	0.7	0.4	0.1	0.0	95.9	0.2	3.9	0.099	0.513	18.848042	-88.673738
Altos de Sevilla	31.00	3	0	547	28.2	68.3	0.6	1.1	0.4	0.9	0.4	0.1	0.0	96.5	0.6	2.9	0.101	0.504	18.854980	-88.677535
Miguel Alemán	110.00	0	0																	

14 CARR: Cancún - Punta Cancún

CLAVE: 23581

RUTA: QR

AÑO: 2022

LUGAR	ESTACION				CLASIFICACION VEHICULAR EN PORCIENTO										COORDENADAS					
	KM	TE	SC	TDPA	M	A	B	C2	C3	T3S2	T3S3	T3S2R4	OTROS	A	B	C	K'	D	LATITUD	LONGITUD
Cancún	0.00	3	1	29277	7.6	84.5	0.9	6.4	0.2	0.1	0.0	0.2	0.1	92.1	0.9	7.0	0.083	0.518	21.158126	-86.810452
Cancún	0.00	3	2	25564	7.6	84.5	0.9	6.4	0.2	0.1	0.0	0.2	0.1	92.1	0.9	7.0	0.081	0.518	21.158239	-86.810350
T. Der. Colibrí	7.00	1	1	25106	2.9	88.8	0.8	7.3	0.2	0.0	0.0	0.0	0.0	91.7	0.8	7.5	0.090	0.507	21.136946	-86.766721

QUINTANA ROO

14 CARR: Cancún - Punta Cancún

CLAVE: 23581

RUTA: QR

AÑO: 2022

LUGAR	ESTACION				CLASIFICACION VEHICULAR EN PORCIENTO													COORDENADAS		
	KM	TE	SC	TDPA	M	A	B	C2	C3	T3S2	T3S3	T3S2R4	OTROS	A	B	C	K'	D	LATITUD	LONGITUD
T. Der. Colibrí	7.00	1	2	24449	2.9	88.8	0.8	7.3	0.2	0.0	0.0	0.0	0.0	91.7	0.8	7.5	0.081	0.507	21.137015	-86.766633
Punta Cancún	8.00	1	1	24862	3.6	82.5	0.9	12.4	0.3	0.1	0.1	0.1	0.0	86.1	0.9	13.0	0.089	0.536	21.134718	-86.756374
Punta Cancún	8.00	1	2	21561	3.6	82.6	0.9	12.4	0.2	0.1	0.1	0.1	0.0	86.2	0.9	12.9	0.089	0.536	21.134817	-86.756297

15 CARR: Central Vallarta - Leona Vicario

CLAVE:

RUTA: QR

AÑO: 2022

LUGAR	ESTACION				CLASIFICACION VEHICULAR EN PORCIENTO													COORDENADAS		
	KM	TE	SC	TDPA	M	A	B	C2	C3	T3S2	T3S3	T3S2R4	OTROS	A	B	C	K'	D	LATITUD	LONGITUD
Puerto Morelos	0.00	3	0	4039	10.0	80.4	1.9	4.3	1.9	0.8	0.4	0.2	0.1	90.4	1.9	7.7	0.078	0.503	20.847954	-86.904698
T Izq. Kin - Ha	19.17	3	0	1649	12.1	77.9	2.8	4.6	1.4	0.6	0.3	0.2	0.1	90.0	2.8	7.2	0.113	0.522	20.877910	-87.081360
Leona Vicario	37.60	0	0																	

16 CARR: Chetumal - Calderitas

CLAVE: 23004

RUTA: QR-004

AÑO: 2022

LUGAR	ESTACION				CLASIFICACION VEHICULAR EN PORCIENTO													COORDENADAS		
	KM	TE	SC	TDPA	M	A	B	C2	C3	T3S2	T3S3	T3S2R4	OTROS	A	B	C	K'	D	LATITUD	LONGITUD
Chetumal	0.00	3	1	14080	18.3	79.2	0.2	1.6	0.2	0.1	0.1	0.2	0.1	97.5	0.2	2.3	0.073	0.517	18.533495	-88.277756
Chetumal	0.00	3	2	13175	18.3	79.2	0.2	1.6	0.2	0.1	0.1	0.2	0.1	97.5	0.2	2.3	0.070	0.517	18.533557	-88.277823
Calderitas	9.00	1	1	2622	8.5	89.1	0.0	2.3	0.1	0.0	0.0	0.0	0.0	97.6	0.0	2.4	0.107	0.504	18.553679	-88.257944
Calderitas	9.00	1	2	2583	8.9	87.9	0.0	3.1	0.1	0.0	0.0	0.0	0.0	96.8	0.0	3.2	0.090	0.504	18.553779	-88.257916

17 CARR: El Ideal - Chiquila

CLAVE: 23005

RUTA: QR-005

AÑO: 2022

LUGAR	ESTACION				CLASIFICACION VEHICULAR EN PORCIENTO													COORDENADAS		
	KM	TE	SC	TDPA	M	A	B	C2	C3	T3S2	T3S3	T3S2R4	OTROS	A	B	C	K'	D	LATITUD	LONGITUD
T. C. Mérida - Puerto Juárez	0.00	3	0	1229	7.4	84.8	1.5	3.9	1.4	0.5	0.1	0.3	0.1	92.2	1.5	6.3	0.090	0.529	20.891045	-87.546405
Kantunilkin	31.20	1	0	3594	7.9	85.8	1.5	2.4	1.4	0.5	0.2	0.3	0.0	93.7	1.5	4.8	0.083	0.506	21.077411	-87.489362
Kantunilkin	31.20	3	0	3466	20.0	75.0	1.3	1.9	1.2	0.3	0.1	0.2	0.0	95.0	1.3	3.7	0.119	0.504	21.117144	-87.484610
Chiquila	75.60	1	0	2320	16.9	76.4	1.7	2.7	1.3	0.4	0.1	0.5	0.0	93.3	1.7	5.0	0.098	0.534	21.418997	-87.337555

18 CARR: Libramiento de Chetumal

CLAVE: 23130

RUTA: QR

AÑO: 2022

LUGAR	ESTACION				CLASIFICACION VEHICULAR EN PORCIENTO													COORDENADAS		
	KM	TE	SC	TDPA	M	A	B	C2	C3	T3S2	T3S3	T3S2R4	OTROS	A	B	C	K'	D	LATITUD	LONGITUD
T. C. Francisco Escárcega - Chetumal	0.00	3	1	9906	10.5	86.0	0.9	1.3	0.6	0.5	0.1	0.1	0.0	96.5	0.9	2.6	0.086	0.508	18.517459	-88.344232

QUINTANA ROO

18 CARR: Libramiento de Chetumal

CLAVE: 23130

RUTA: QR

AÑO: 2022

LUGAR	ESTACION				CLASIFICACION VEHICULAR EN PORCIENTO													COORDENADAS		
	KM	TE	SC	TDPA	M	A	B	C2	C3	T3S2	T3S3	T3S2R4	OTROS	A	B	C	K'	D	LATITUD	LONGITUD
T. C. Francisco Escárcega - Chetumal	0.00	3	2	9589	12.3	84.0	1.0	1.4	0.6	0.5	0.1	0.1	0.0	96.3	1.0	2.7	0.098	0.508	18.517620	-88.344228
T. C. Chetumal - Calderitas	5.00	0	0																	

19 CARR: Perimetral Cozumel

CLAVE: 00148

RUTA: QR

AÑO: 2022

LUGAR	ESTACION				CLASIFICACION VEHICULAR EN PORCIENTO													COORDENADAS		
	KM	TE	SC	TDPA	M	A	B	C2	C3	T3S2	T3S3	T3S2R4	OTROS	A	B	C	K'	D	LATITUD	LONGITUD
Cozumel	0.00	3	0	14127	31.2	65.9	0.2	1.8	0.6	0.1	0.0	0.2	0.0	97.1	0.2	2.7	0.124	0.502	20.465691	-86.976924
El Cedral	13.40	1	1	1891	37.2	57.3	0.4	2.7	1.0	0.3	0.2	0.6	0.3	94.5	0.4	5.1	0.124	0.514	20.385290	-87.018410
El Cedral	13.40	1	2	2003	32.6	62.3	0.3	2.7	1.0	0.2	0.1	0.6	0.2	94.9	0.3	4.8	0.150	0.514	20.385298	-87.018374
El Cedral	13.40	3	1	566	29.5	65.9	0.6	2.2	0.5	0.3	0.2	0.6	0.2	95.4	0.6	4.0	0.186	0.505	20.363037	-87.018056
El Cedral	13.40	3	2	556	29.7	65.7	0.7	2.2	0.6	0.2	0.2	0.6	0.1	95.4	0.7	3.9	0.182	0.505	20.362983	-87.018009
Celarain	25.00	1	0	954	23.0	71.8	0.5	2.4	0.8	0.3	0.1	0.8	0.3	94.8	0.5	4.7	0.180	0.518	20.294410	-86.965996

20 CARR: Punta Nizuc - Cancún

CLAVE: 23014

RUTA: QR

AÑO: 2022

LUGAR	ESTACION				CLASIFICACION VEHICULAR EN PORCIENTO													COORDENADAS		
	KM	TE	SC	TDPA	M	A	B	C2	C3	T3S2	T3S3	T3S2R4	OTROS	A	B	C	K'	D	LATITUD	LONGITUD
Punta Nizuc	0.00	3	1	12989	4.9	82.0	1.8	10.0	0.6	0.3	0.2	0.1	0.1	86.9	1.8	11.3	0.084	0.501	21.042851	-86.782867
Punta Nizuc	0.00	3	2	12955	4.9	82.0	1.8	10.0	0.6	0.3	0.2	0.1	0.1	86.9	1.8	11.3	0.083	0.501	21.042874	-86.783010
Punta Cancún	12.40	0	0																	

21 CARR: Ramal a Aeropuerto Cancún

CLAVE: 23574

RUTA: QR

AÑO: 2022

LUGAR	ESTACION				CLASIFICACION VEHICULAR EN PORCIENTO													COORDENADAS		
	KM	TE	SC	TDPA	M	A	B	C2	C3	T3S2	T3S3	T3S2R4	OTROS	A	B	C	K'	D	LATITUD	LONGITUD
T. C. Reforma Agraria - Puerto Juárez	0.00	3	1	23310	1.7	90.9	0.5	6.1	0.1	0.2	0.2	0.1	0.2	92.6	0.5	6.9	0.098	0.514	21.038802	-86.862455
T. C. Reforma Agraria - Puerto Juárez	0.00	3	2	24657	1.7	90.9	0.5	6.1	0.1	0.2	0.2	0.1	0.2	92.6	0.5	6.9	0.079	0.514	21.038836	-86.862664
Aeropuerto Cancún	2.00	1	1	21504	1.7	91.2	1.3	4.9	0.1	0.2	0.2	0.3	0.1	92.9	1.3	5.8	0.109	0.504	21.040627	-86.865386
Aeropuerto Cancún	2.00	1	2	21192	1.7	91.2	1.3	4.9	0.1	0.2	0.2	0.3	0.1	92.9	1.3	5.8	0.092	0.504	21.040558	-86.865436

QUINTANA ROO

22 CARR: Ramal a Candelaria

CLAVE: 23027

RUTA: QR

AÑO: 2022

LUGAR	ESTACION				CLASIFICACION VEHICULAR EN PORCIENTO														COORDENADAS	
	KM	TE	SC	TDPA	M	A	B	C2	C3	T3S2	T3S3	T3S2R4	OTROS	A	B	C	K'	D	LATITUD	LONGITUD
T. C. Muna - Felipe Carrillo Puerto	0.00	3	0	1632	32.6	63.9	0.8	1.2	0.9	0.3	0.1	0.2	0.0	96.5	0.8	2.7	0.086	0.504	19.806763	-88.757630
Candelaria	15.30	0	0																	

23 CARR: Ramal a El Naranjal

CLAVE: 23579

RUTA: QR

AÑO: 2022

LUGAR	ESTACION				CLASIFICACION VEHICULAR EN PORCIENTO														COORDENADAS	
	KM	TE	SC	TDPA	M	A	B	C2	C3	T3S2	T3S3	T3S2R4	OTROS	A	B	C	K'	D	LATITUD	LONGITUD
José María Morelos	0.00	3	0	1089	44.9	50.2	0.4	0.8	1.8	0.8	0.3	0.8	0.0	95.1	0.4	4.5	0.106	0.500	19.734909	-88.716706
El Naranjal	16.00	0	0																	

24 CARR: Ramal a Laguna de Kaná

CLAVE: 23213

RUTA: QR

AÑO: 2022

LUGAR	ESTACION				CLASIFICACION VEHICULAR EN PORCIENTO														COORDENADAS	
	KM	TE	SC	TDPA	M	A	B	C2	C3	T3S2	T3S3	T3S2R4	OTROS	A	B	C	K'	D	LATITUD	LONGITUD
T. C. Muna - Felipe Carrillo Puerto	0.00	3	0	554	21.3	74.7	1.1	1.8	0.9	0.1	0.1	0.0	0.0	96.0	1.1	2.9	0.096	0.501	19.642941	-88.411672
Laguna de Kaná	12.20	0	0																	

25 CARR: Ramal a Mahahual

CLAVE: 23583

RUTA: QR

AÑO: 2022

LUGAR	ESTACION				CLASIFICACION VEHICULAR EN PORCIENTO														COORDENADAS	
	KM	TE	SC	TDPA	M	A	B	C2	C3	T3S2	T3S3	T3S2R4	OTROS	A	B	C	K'	D	LATITUD	LONGITUD
T. C. Reforma Agraria - Puerto Juárez	0.00	3	0	1415	6.5	85.7	1.5	5.5	0.0	0.4	0.2	0.2	0.0	92.2	1.5	6.3	0.096	0.506	18.980108	-88.110626
Mahahual	60.09	0	0																	

26 CARR: Ramal a Petcacab

CLAVE: 23018

RUTA: QR-018

AÑO: 2022

LUGAR	ESTACION				CLASIFICACION VEHICULAR EN PORCIENTO														COORDENADAS	
	KM	TE	SC	TDPA	M	A	B	C2	C3	T3S2	T3S3	T3S2R4	OTROS	A	B	C	K'	D	LATITUD	LONGITUD
T. C. Reforma Agraria - Puerto Juárez	0.00	3	0	825	16.1	61.3	0.6	5.1	5.8	8.5	0.6	1.5	0.5	77.4	0.6	22.0	0.099	0.510	19.135326	-88.105889
Petcacab	37.00	0	0																	

QUINTANA ROO

27 CARR: Ramal a Punta Allen

CLAVE: 23015

RUTA: QR-015

AÑO: 2022

LUGAR	ESTACION				CLASIFICACION VEHICULAR EN PORCIENTO													COORDENADAS		
	KM	TE	SC	TDPA	M	A	B	C2	C3	T3S2	T3S3	T3S2R4	OTROS	A	B	C	K'	D	LATITUD	LONGITUD
T. C. Reforma Agraria - Puerto Juárez	0.00	3	0	16186	12.0	82.0	0.4	3.8	0.7	0.3	0.3	0.4	0.1	94.0	0.4	5.6	0.087	0.507	20.205888	-87.450304
Beh-Ha	10.20	1	0	1181	10.9	83.9	0.5	0.8	2.2	1.0	0.1	0.6	0.0	94.8	0.5	4.7	0.096	0.517	20.128841	-87.465410
Punta Allen	57.00	0	0																	

28 CARR: Ramal a Punta Sam

CLAVE: 23582

RUTA: QR

AÑO: 2022

LUGAR	ESTACION				CLASIFICACION VEHICULAR EN PORCIENTO													COORDENADAS		
	KM	TE	SC	TDPA	M	A	B	C2	C3	T3S2	T3S3	T3S2R4	OTROS	A	B	C	K'	D	LATITUD	LONGITUD
Puerto Juárez	0.00	3	0	8437	9.1	85.3	0.6	2.8	0.8	0.6	0.1	0.6	0.1	94.4	0.6	5.0	0.077	0.500	21.191307	-86.806688
Punta Sam	5.00	1	0	2449	9.1	85.8	0.5	2.5	0.4	0.2	1.3	0.1	0.1	94.9	0.5	4.6	0.077	0.545	21.217179	-86.802316

29 CARR: Ramal a Reforma

CLAVE: 23016

RUTA: QR-016

AÑO: 2022

LUGAR	ESTACION				CLASIFICACION VEHICULAR EN PORCIENTO													COORDENADAS		
	KM	TE	SC	TDPA	M	A	B	C2	C3	T3S2	T3S3	T3S2R4	OTROS	A	B	C	K'	D	LATITUD	LONGITUD
T. C. Reforma Agraria - Puerto Juárez	0.00	3	0	2258	21.4	71.4	0.5	5.5	0.5	0.2	0.3	0.2	0.0	92.8	0.5	6.7	0.084	0.510	18.705255	-88.388374
Reforma	44.00	0	0																	

30 CARR: Ramal a Tres Garantías

CLAVE: 23585

RUTA: QR

AÑO: 2022

LUGAR	ESTACION				CLASIFICACION VEHICULAR EN PORCIENTO													COORDENADAS		
	KM	TE	SC	TDPA	M	A	B	C2	C3	T3S2	T3S3	T3S2R4	OTROS	A	B	C	K'	D	LATITUD	LONGITUD
T. C. Francisco Escárcega - Chetumal	0.00	3	0	183	19.0	78.3	0.6	0.6	0.6	0.6	0.2	0.1	0.0	97.3	0.6	2.1	0.137	0.516	18.456352	-89.000886
Tres Garantías	30.00	0	0																	

31 CARR: Tihosuco - Dziuche

CLAVE: 23576

RUTA: QR

AÑO: 2022

LUGAR	ESTACION				CLASIFICACION VEHICULAR EN PORCIENTO													COORDENADAS		
	KM	TE	SC	TDPA	M	A	B	C2	C3	T3S2	T3S3	T3S2R4	OTROS	A	B	C	K'	D	LATITUD	LONGITUD
T. C. Valladolid - Felipe Carrillo Puerto	0.00	3	0	563	18.3	78.2	0.7	1.3	0.9	0.1	0.0	0.1	0.4	96.5	0.7	2.8	0.110	0.501	20.176812	-88.397644
Dziuche	60.50	1	0	1057	36.7	60.8	0.7	0.7	0.7	0.1	0.1	0.2	0.0	97.5	0.7	1.8	0.113	0.509	19.912807	-88.808168



QUINTANA ROO

32 CARR: Transversal de Cozumel

CLAVE: 23577

RUTA: QR

AÑO: 2022

LUGAR	ESTACION				CLASIFICACION VEHICULAR EN PORCIENTO													COORDENADAS		
	KM	TE	SC	TDPA	M	A	B	C2	C3	T3S2	T3S3	T3S2R4	OTROS	A	B	C	K'	D	LATITUD	LONGITUD
Cozumel	0.00	3	1	3110	47.1	50.3	0.4	1.2	0.5	0.2	0.1	0.1	0.1	97.4	0.4	2.2	0.087	0.504	20.480567	-86.912192
Cozumel	0.00	3	2	3160	48.3	48.7	0.5	1.6	0.5	0.1	0.1	0.1	0.1	97.0	0.5	2.5	0.070	0.504	20.480606	-86.912162
Mezcalitos	14.00	0	0																	

33 CARR: Tulum - Nuevo X-Can

CLAVE: 23570

RUTA: QR

AÑO: 2022

LUGAR	ESTACION				CLASIFICACION VEHICULAR EN PORCIENTO													COORDENADAS		
	KM	TE	SC	TDPA	M	A	B	C2	C3	T3S2	T3S3	T3S2R4	OTROS	A	B	C	K'	D	LATITUD	LONGITUD
T. C. Reforma Agraria - Puerto Juárez	0.00	3	1	7375	8.3	75.8	1.9	5.6	3.8	2.0	0.6	1.5	0.5	84.1	1.9	14.0	0.091	0.504	20.218365	-87.454801
T. C. Reforma Agraria - Puerto Juárez	0.00	3	2	7253	8.4	75.3	2.0	5.6	3.8	2.1	0.7	1.5	0.6	83.7	2.0	14.3	0.088	0.504	20.218346	-87.454858
T. Izq. Ruinas Cobá	42.95	1	0	6538	3.8	87.9	2.2	2.7	0.9	1.1	0.3	1.0	0.1	91.7	2.2	6.1	0.122	0.501	20.502736	-87.713754
T. Izq. Ruinas Cobá	42.95	3	0	644	14.0	83.2	0.8	1.1	0.6	0.3	0.0	0.0	0.0	97.2	0.8	2.0	0.101	0.503	20.509887	-87.717115
Lim. Edos. Term. Q. Roo. Ppia. Yuc.	49.42	0	0																	
Lim. Edos. Term. Yuc. Ppia. Q. Roo.	64.97	0	0																	
Nuevo X-Can	87.40	1	0	616	10.1	86.7	0.9	1.2	0.9	0.1	0.1	0.0	0.0	96.8	0.9	2.3	0.086	0.501	20.858671	-87.600859

34 CARR: Ucum - Unión

CLAVE: 23571

RUTA: QR

AÑO: 2022

LUGAR	ESTACION				CLASIFICACION VEHICULAR EN PORCIENTO													COORDENADAS		
	KM	TE	SC	TDPA	M	A	B	C2	C3	T3S2	T3S3	T3S2R4	OTROS	A	B	C	K'	D	LATITUD	LONGITUD
Ucum	0.00	3	0	4522	16.1	78.2	0.6	2.2	1.6	0.5	0.1	0.6	0.1	94.3	0.6	5.1	0.080	0.502	18.475739	-88.518197
T. Der. Ingenio Álvaro Obregón	31.00	1	0	1771	14.0	80.6	0.8	1.9	1.7	0.4	0.1	0.4	0.1	94.6	0.8	4.6	0.090	0.503	18.253494	-88.648344
T. Der. Ingenio Álvaro Obregón	31.00	3	0	2511	16.0	79.2	0.8	1.3	2.3	0.3	0.1	0.0	0.0	95.2	0.8	4.0	0.103	0.501	18.245462	-88.652325
T. Der. U. A. Galeras	75.00	1	0	220	36.0	59.0	0.8	2.2	1.1	0.2	0.5	0.2	0.0	95.0	0.8	4.2	0.145	0.506	17.989926	-88.847757
T. Der. U. A. Galeras	75.00	3	0	208	33.7	62.7	0.8	1.8	0.5	0.0	0.3	0.2	0.0	96.4	0.8	2.8	0.130	0.502	17.987661	-88.856974
Unión	88.00	1	0	564	67.1	30.5	0.4	1.5	0.3	0.1	0.1	0.0	0.0	97.6	0.4	2.0	0.154	0.520	17.907446	-88.881730

35 CARR: Chemax - Cobá

CLAVE:

RUTA: YUC-MEX-180

AÑO: 2022

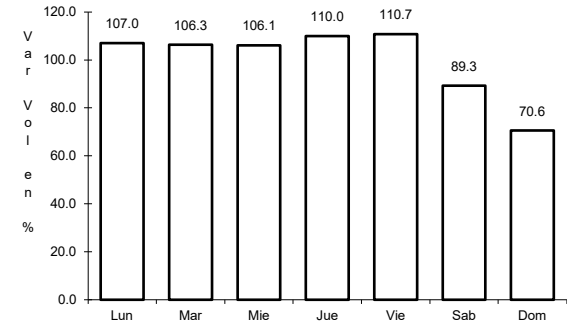
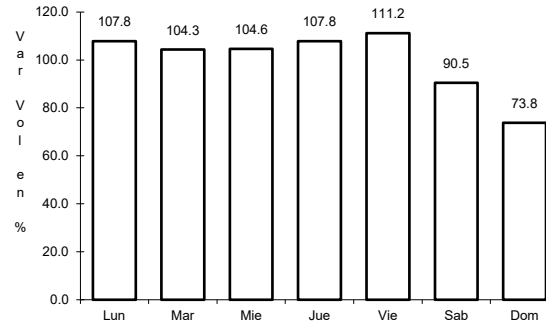
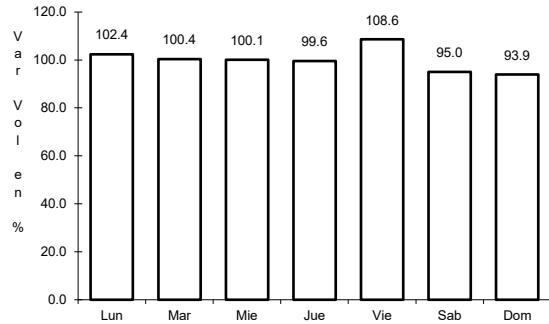
LUGAR	ESTACION				CLASIFICACION VEHICULAR EN PORCIENTO													COORDENADAS		
	KM	TE	SC	TDPA	M	A	B	C2	C3	T3S2	T3S3	T3S2R4	OTROS	A	B	C	K'	D	LATITUD	LONGITUD
Chemax	0.00	3	0	4860	3.7	86.5	2.4	2.8	1.1	1.5	0.5	1.3	0.2	90.2	2.4	7.4	0.123	0.501	20.656523	-87.954369
Lim. Edos. Term. Yucatán Ppia. Q Roo.	25.00	0	0																	
Cobá	30.90	1	0	4161	4.3	86.5	2.3	2.6	0.9	1.5	0.5	1.2	0.2	90.8	2.3	6.9	0.147	0.504	20.509804	-87.721977



1 CARR: Francisco Escárcega - Chetumal

CLAVE: 00093

RUTA: MEX-186



Km: 0.00      Tipo: 3      Sent: 0

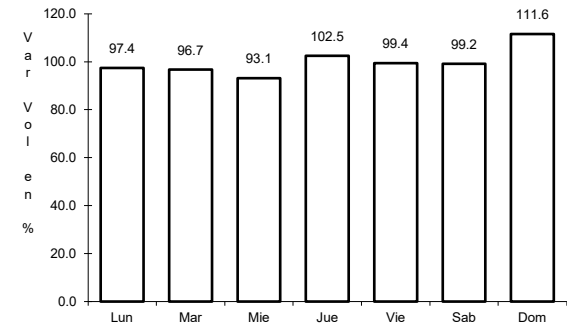
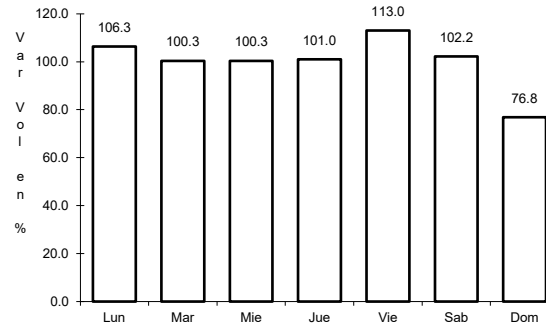
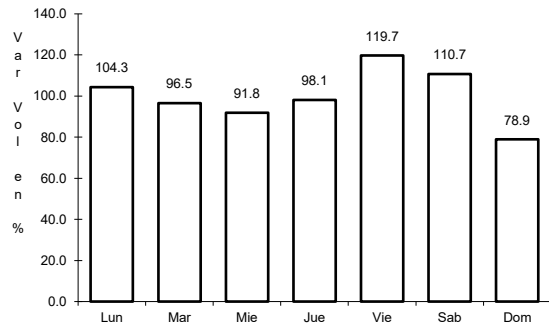
Km: 277.36      Tipo: 1      Sent: 1

Km: 277.36      Tipo: 1      Sent: 2

2 CARR: Mérida - Puerto Juárez

CLAVE: 00067

RUTA: MEX-180



Km: 5.60      Tipo: 1      Sent: 1

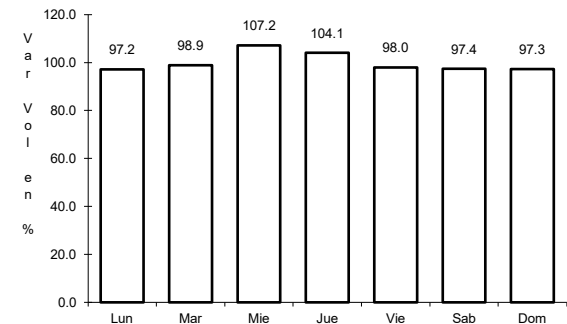
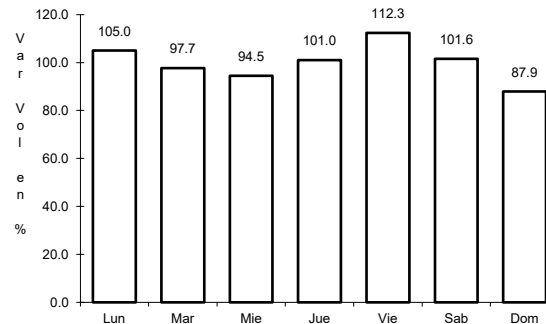
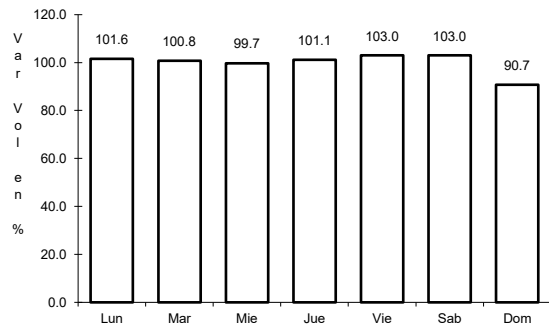
Km: 5.60      Tipo: 1      Sent: 2

Km: 302.50      Tipo: 1      Sent: 0

3 CARR: Muna - Felipe Carrillo Puerto

CLAVE: 00148

RUTA: MEX-184



Km: 0.00      Tipo: 3      Sent: 0

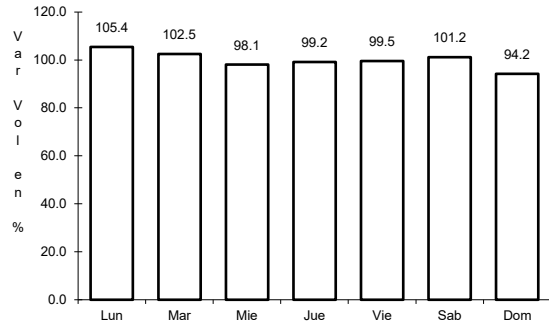
Km: 109.60      Tipo: 3      Sent: 0

Km: 216.97      Tipo: 1      Sent: 0

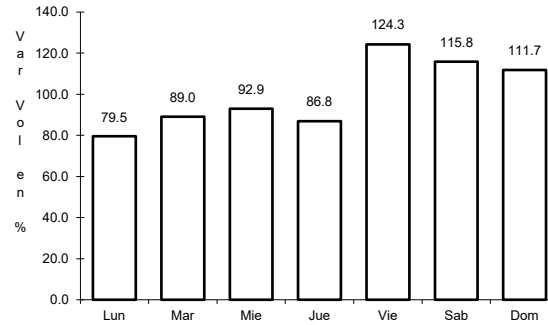
4 CARR: Polyuc - T. C. (Reforma Agraria - Puerto Juárez)

CLAVE: 23014

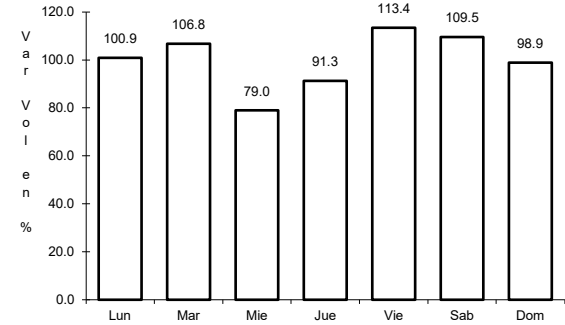
ruta: MEX-293



Km: 0.00                      Tipo: 3                      Sent: 0



Km: 50.00                      Tipo: 3                      Sent: 0

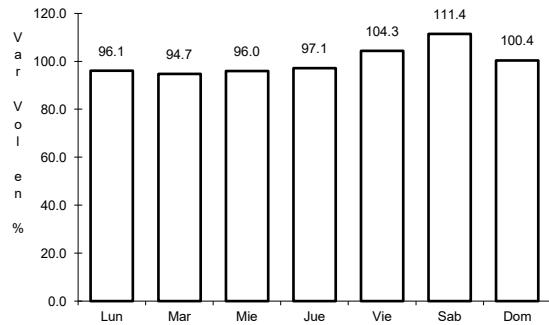


Km: 99.00                      Tipo: 1                      Sent: 0

5 CARR: Ramal a Puerto Morelos

CLAVE: 23569

ruta: MEX

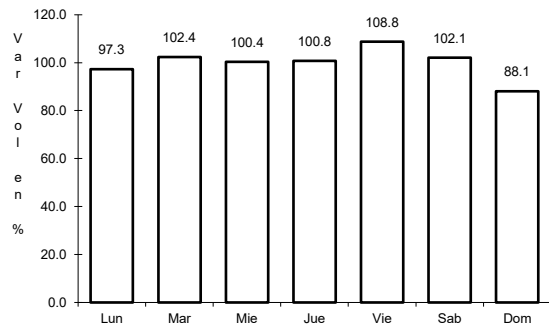


Km: 0.00                      Tipo: 3                      Sent: 0

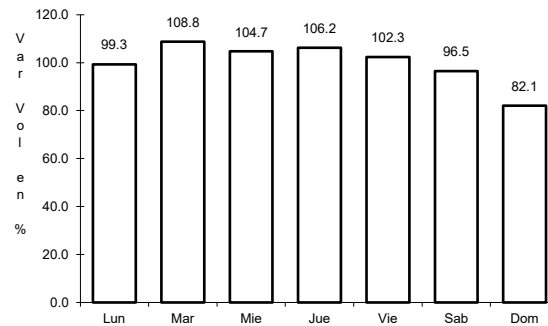
6 CARR: Ramal a Punta Piedra

CLAVE: 23575

ruta: MEX



Km: 0.00                      Tipo: 3                      Sent: 1

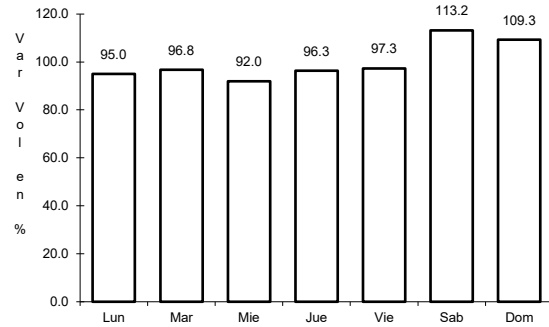


Km: 0.00                      Tipo: 3                      Sent: 2

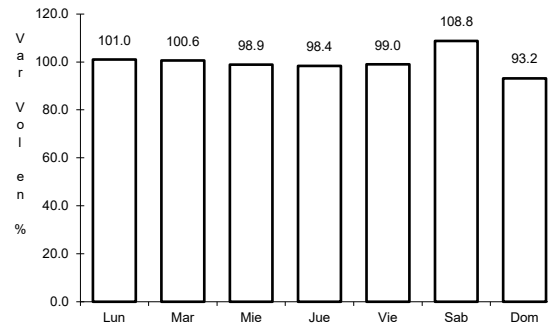
7 CARR: Ramal a Subteniente López

CLAVE: 23567

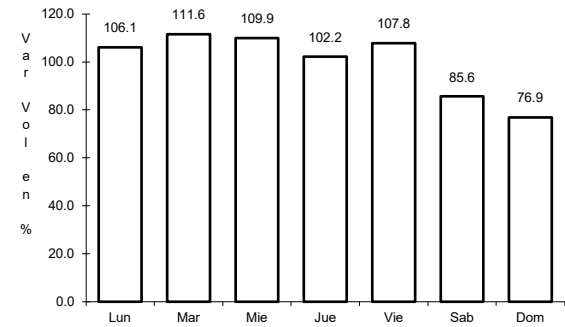
ruta: MEX-186



Km: 0.00      Tipo: 3      Sent: 1



Km: 0.00      Tipo: 3      Sent: 2

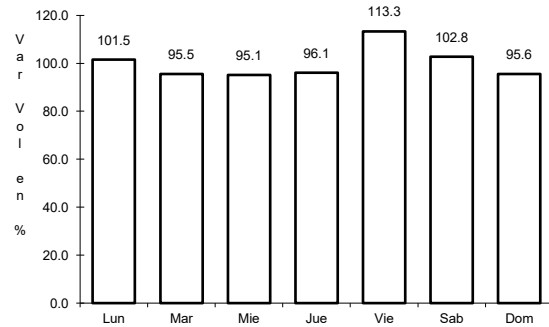


Km: 1.80      Tipo: 3      Sent: 1

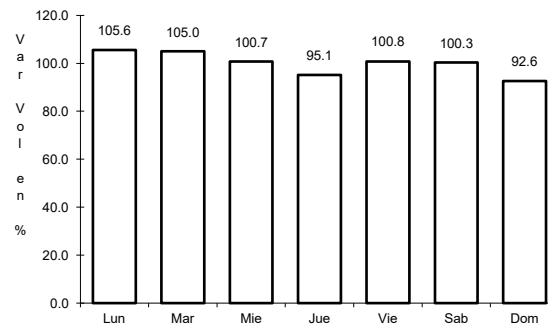
8 CARR: Reforma Agraria - Puerto Juárez

CLAVE: 23132

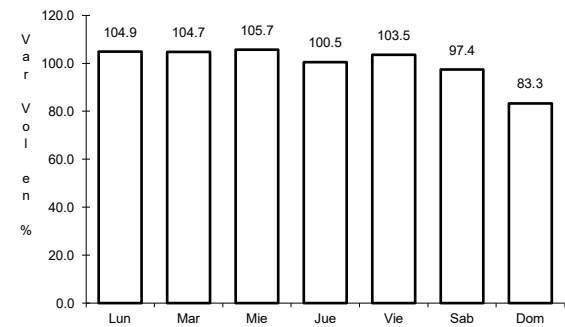
ruta: MEX-307



Km: 0.00      Tipo: 3      Sent: 1



Km: 0.00      Tipo: 3      Sent: 2

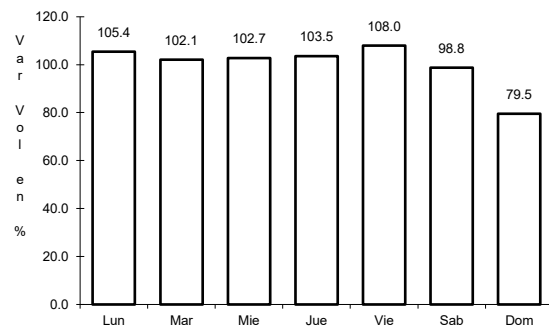


Km: 227.00      Tipo: 1      Sent: 0

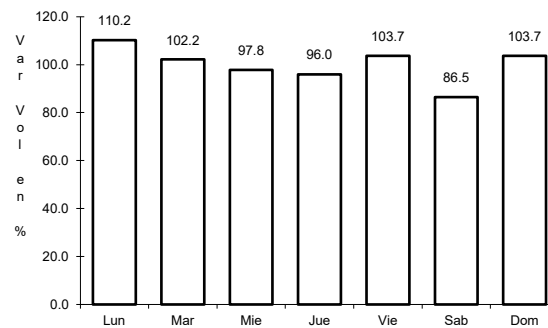
9 CARR: Valladolid - Felipe Carrillo Puerto

CLAVE: 00010

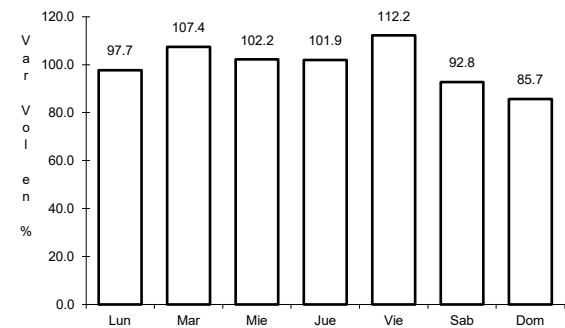
ruta: MEX-295



Km: 0.00      Tipo: 3      Sent: 0



Km: 99.00      Tipo: 1      Sent: 0

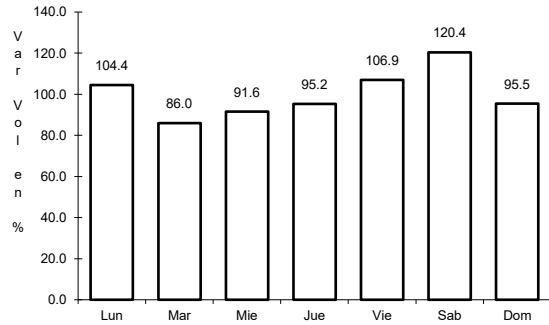


Km: 147.70      Tipo: 1      Sent: 0

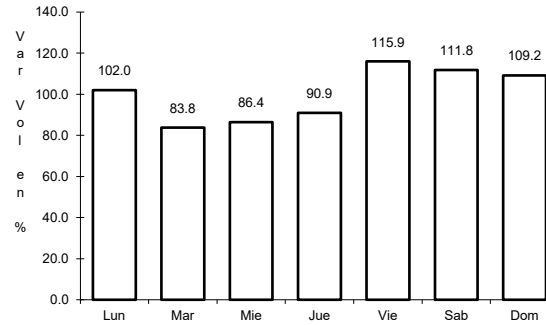
10 CARR: El Cedral - Playa del Carmen (Cuota)

CLAVE:

ruta: MEX-180D



Km: 10.05      Tipo: 1      Sent: 0

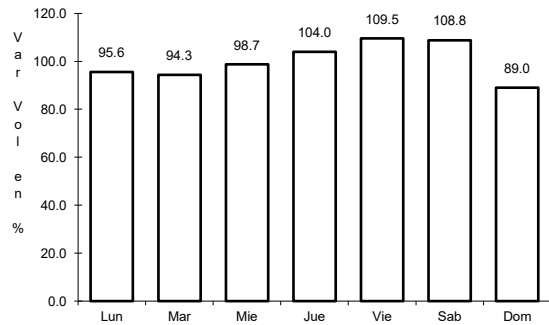


Km: 10.05      Tipo: 3      Sent: 0

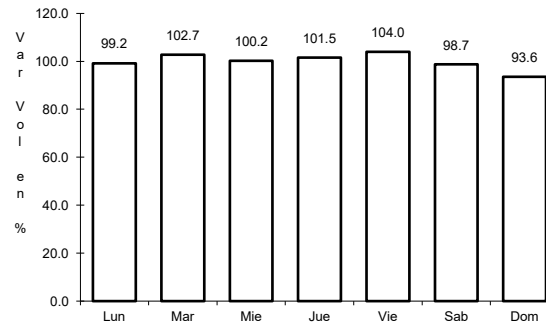
11 CARR: Libramiento de Felipe Carrillo Puerto (Cuota)

CLAVE:

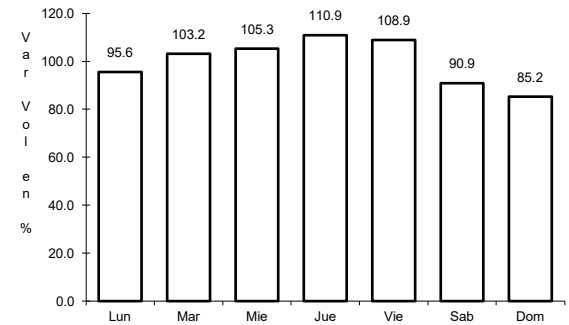
ruta: MEX-307D



Km: 0.00      Tipo: 3      Sent: 0



Km: 9.00      Tipo: 1      Sent: 0

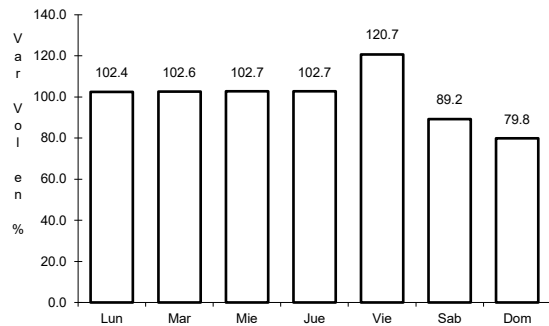


Km: 13.92      Tipo: 1      Sent: 0

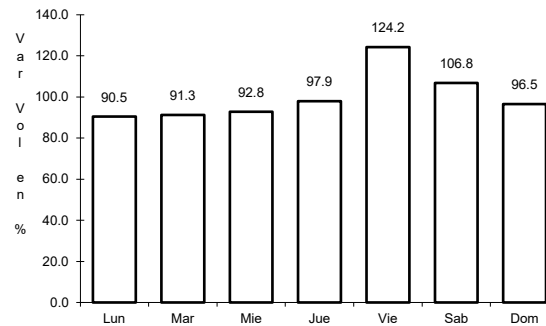
12 CARR: Mérida - Cancún (Cuota)

CLAVE: 00071

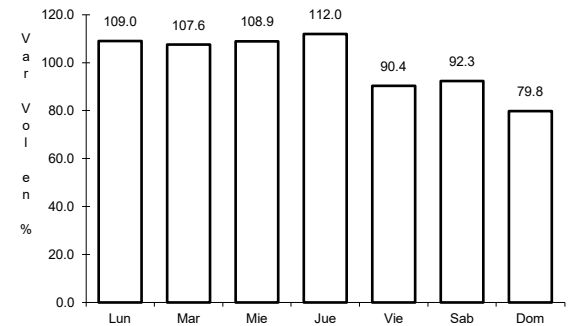
ruta: MEX-180D



Km: 115.34      Tipo: 1      Sent: 1



Km: 115.34      Tipo: 1      Sent: 2

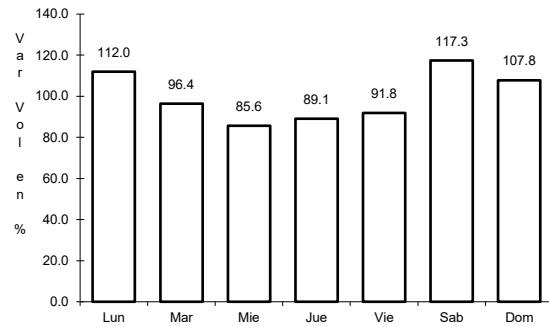


Km: 307.80      Tipo: 1      Sent: 0

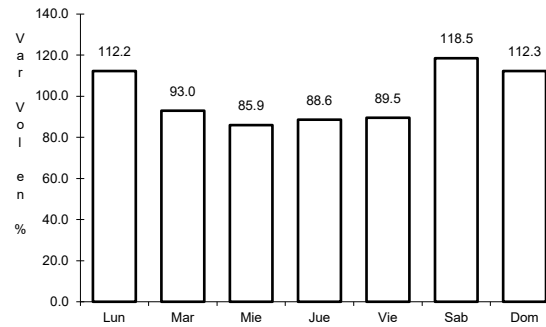
13 CARR: Bacalar - Miguel Alemán

CLAVE: 20030

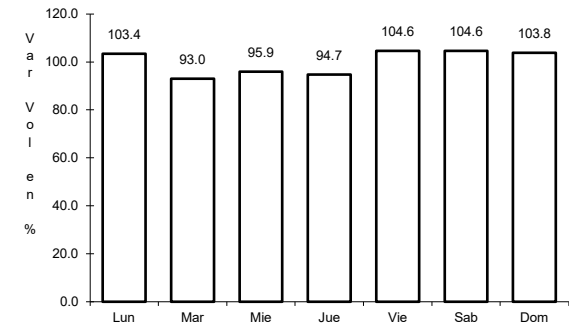
RUTA: QR



Km: 21.00      Tipo: 3      Sent: 0



Km: 31.00      Tipo: 1      Sent: 0

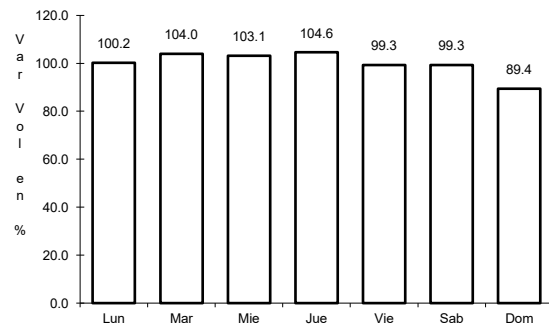


Km: 31.00      Tipo: 3      Sent: 0

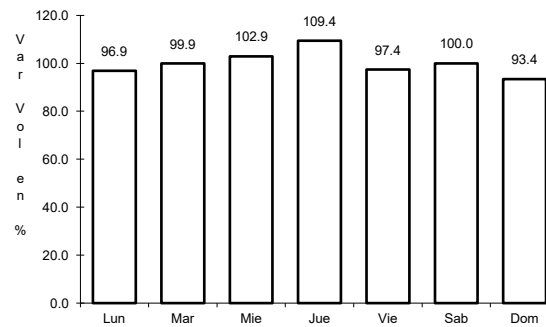
14 CARR: Cancún - Punta Cancún

CLAVE: 23581

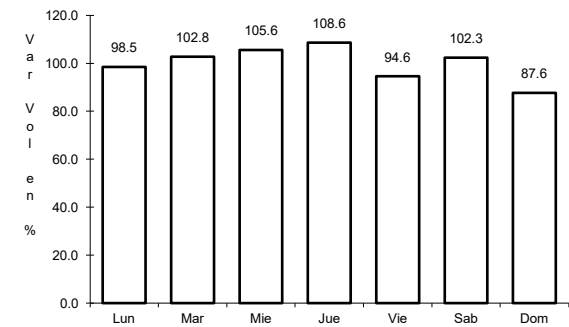
RUTA: QR



Km: 0.00      Tipo: 3      Sent: 1



Km: 0.00      Tipo: 3      Sent: 2

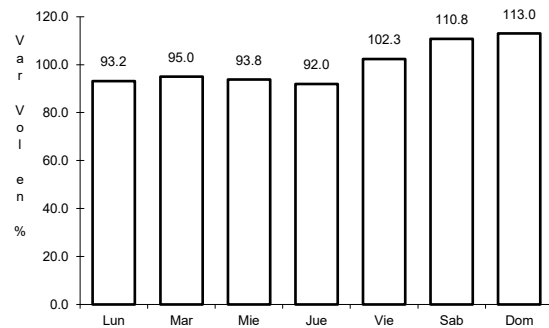


Km: 8.00      Tipo: 1      Sent: 1

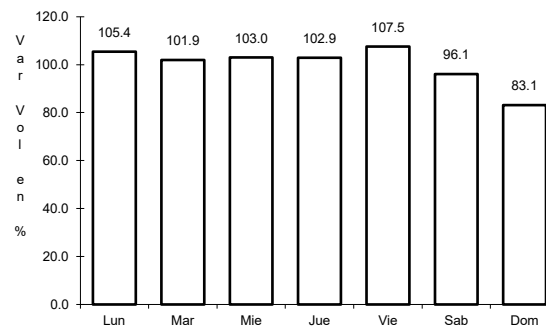
15 CARR: Central Vallarta - Leona Vicario

CLAVE:

RUTA: QR



Km: 0.00      Tipo: 3      Sent: 0

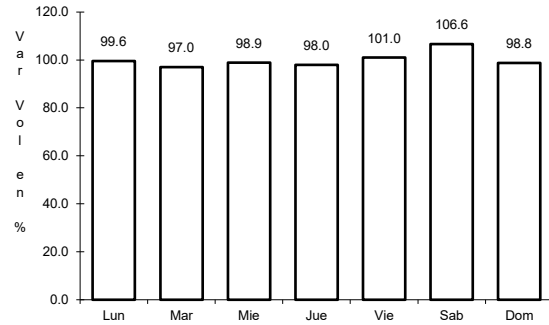


Km: 19.17      Tipo: 3      Sent: 0

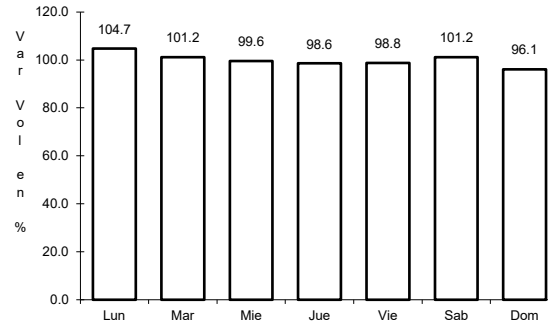
16 CARR: Chetumal - Calderitas

CLAVE: 23004

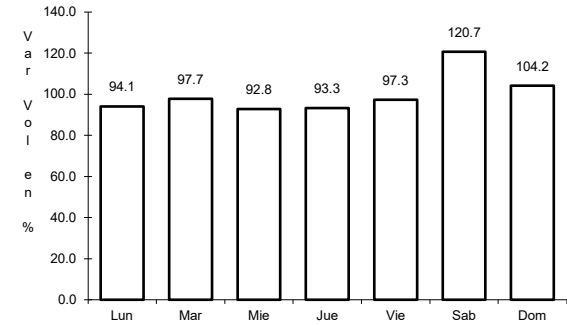
RUTA: QR-004



Km: 0.00      Tipo: 3      Sent: 1



Km: 0.00      Tipo: 3      Sent: 2

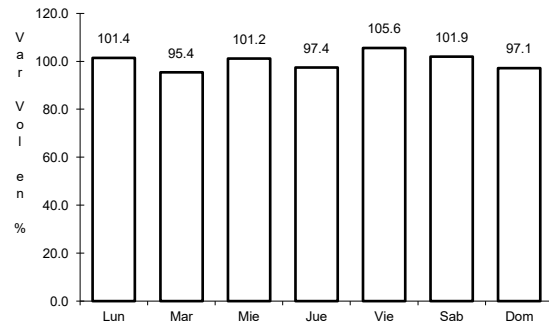


Km: 9.00      Tipo: 1      Sent: 1

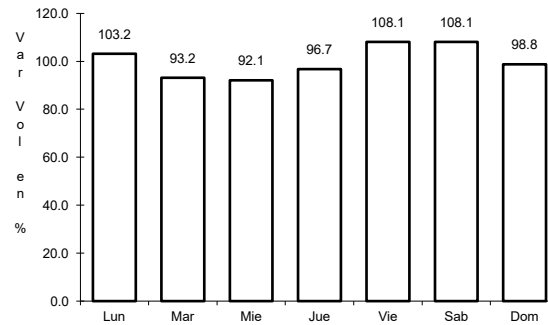
17 CARR: El Ideal - Chiquila

CLAVE: 23005

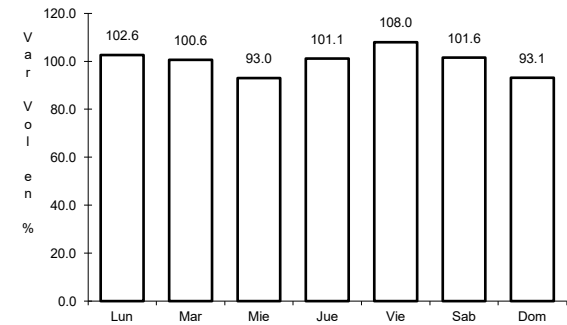
RUTA: QR-005



Km: 0.00      Tipo: 3      Sent: 0



Km: 31.20      Tipo: 1      Sent: 0

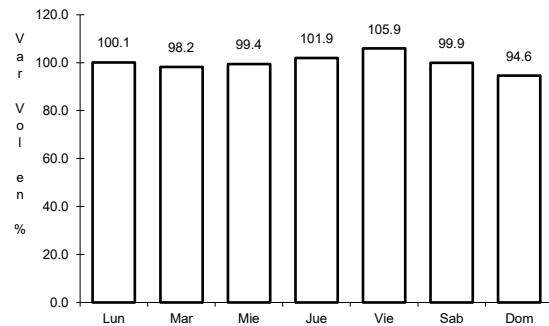


Km: 75.60      Tipo: 1      Sent: 0

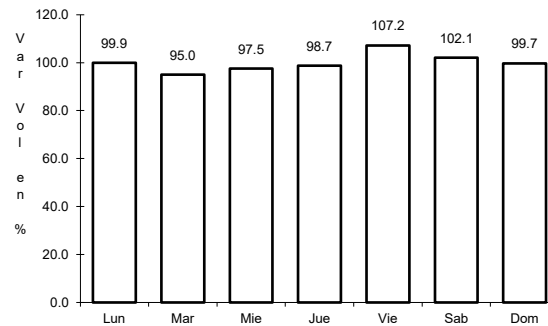
18 CARR: Libramiento de Chetumal

CLAVE: 23130

RUTA: QR



Km: 0.00      Tipo: 3      Sent: 1



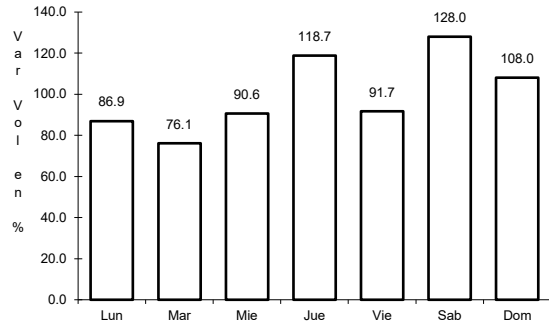
Km: 0.00      Tipo: 3      Sent: 2



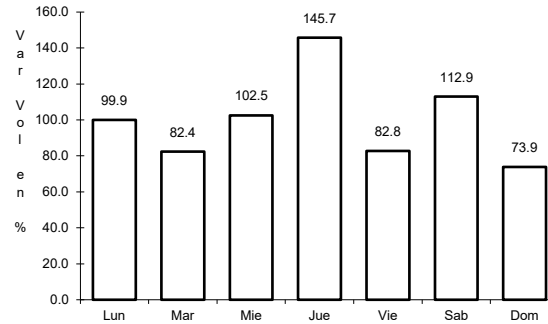
19 CARR: Perimetral Cozumel

CLAVE: 00148

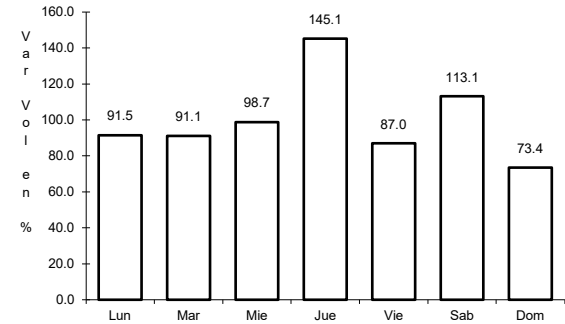
ruta: QR



Km: 0.00      Tipo: 3      Sent: 0



Km: 13.40      Tipo: 3      Sent: 1

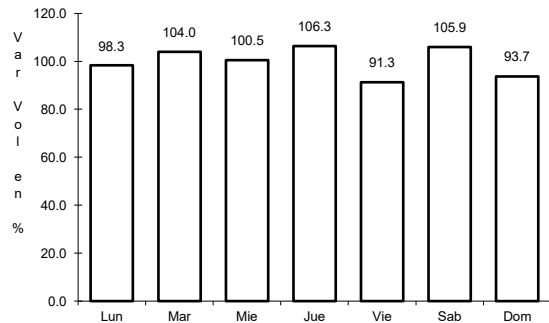


Km: 13.40      Tipo: 3      Sent: 2

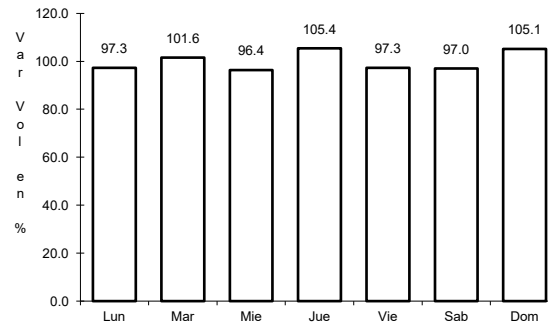
20 CARR: Punta Nizuc - Cancún

CLAVE: 23014

ruta: QR



Km: 0.00      Tipo: 3      Sent: 1

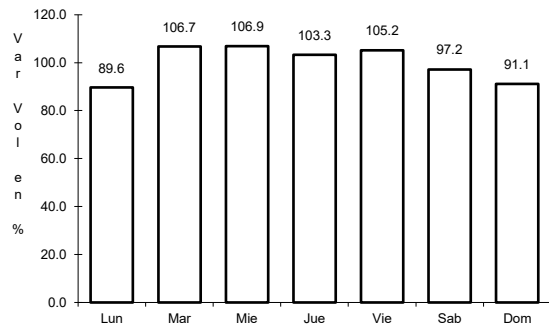


Km: 0.00      Tipo: 3      Sent: 2

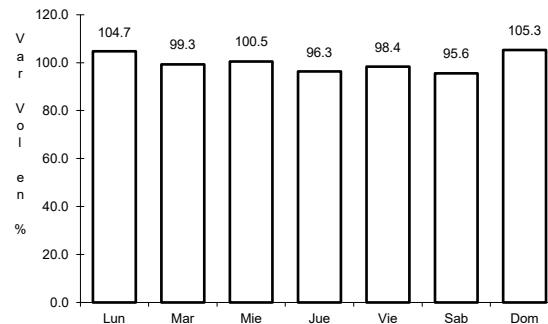
21 CARR: Ramal a Aeropuerto Cancún

CLAVE: 23574

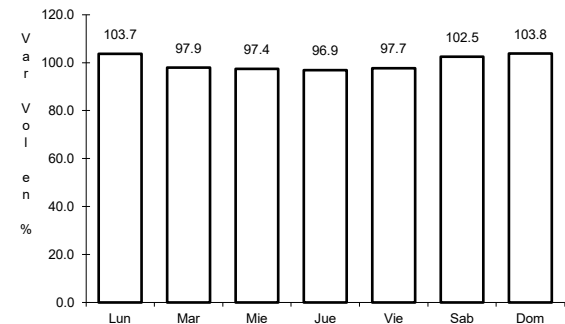
ruta: QR



Km: 0.00      Tipo: 3      Sent: 1



Km: 0.00      Tipo: 3      Sent: 2

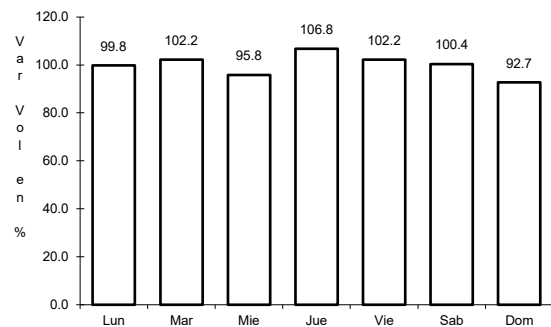


Km: 2.00      Tipo: 1      Sent: 1

22 CARR: Ramal a Candelaria

CLAVE: 23027

RUTA: QR



Km: 0.00

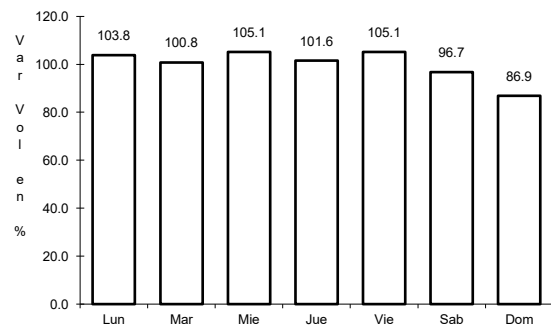
Tipo: 3

Sent: 0

23 CARR: Ramal a El Naranjal

CLAVE: 23579

RUTA: QR



Km: 0.00

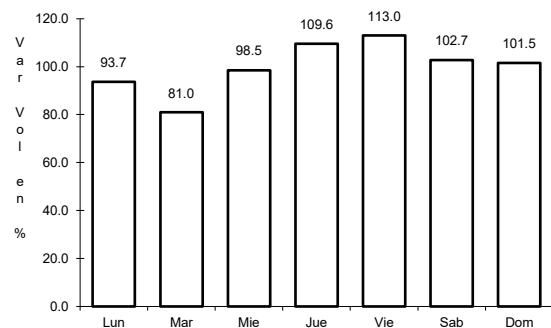
Tipo: 3

Sent: 0

24 CARR: Ramal a Laguna de Kaná

CLAVE: 23213

RUTA: QR



Km: 0.00

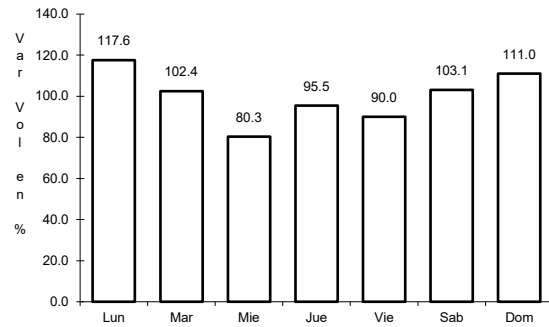
Tipo: 3

Sent: 0

25 CARR: Ramal a Mahahual

CLAVE: 23583

RUTA: QR



Km: 0.00

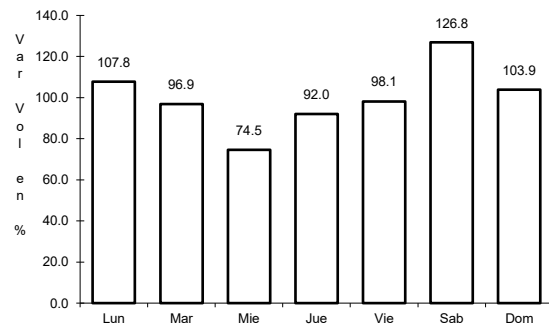
Tipo: 3

Sent: 0

26 CARR: Ramal a Petcacab

CLAVE: 23018

RUTA: QR-018



Km: 0.00

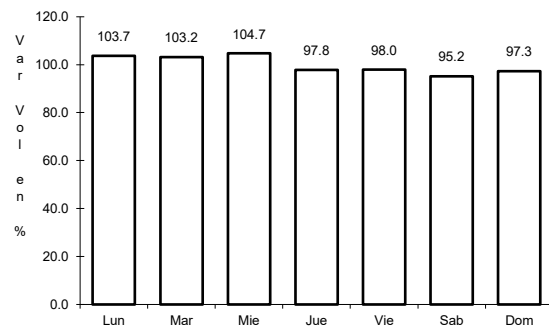
Tipo: 3

Sent: 0

27 CARR: Ramal a Punta Allen

CLAVE: 23015

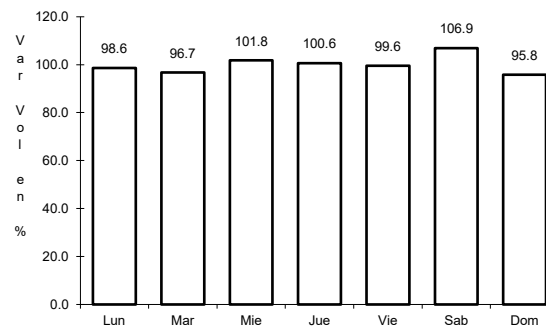
RUTA: QR-015



Km: 0.00

Tipo: 3

Sent: 0



Km: 10.20

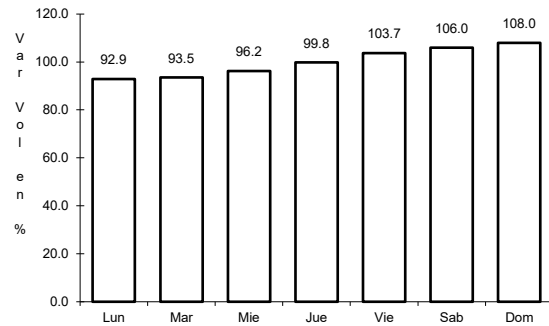
Tipo: 1

Sent: 0

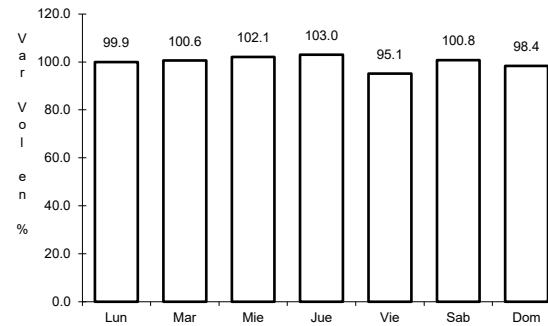
28 CARR: Ramal a Punta Sam

CLAVE: 23582

RUTA: QR



Km: 0.00      Tipo: 3      Sent: 0

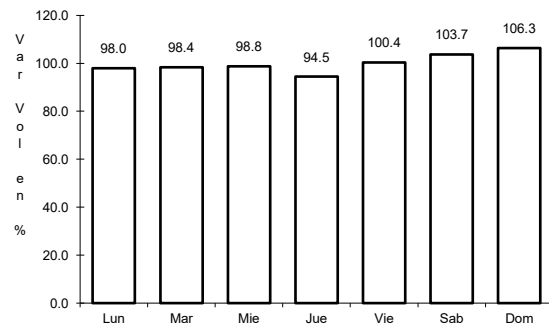


Km: 5.00      Tipo: 1      Sent: 0

29 CARR: Ramal a Reforma

CLAVE: 23016

RUTA: QR-016

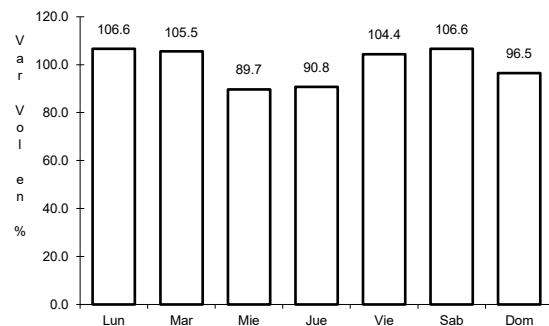


Km: 0.00      Tipo: 3      Sent: 0

30 CARR: Ramal a Tres Garantías

CLAVE: 23585

RUTA: QR

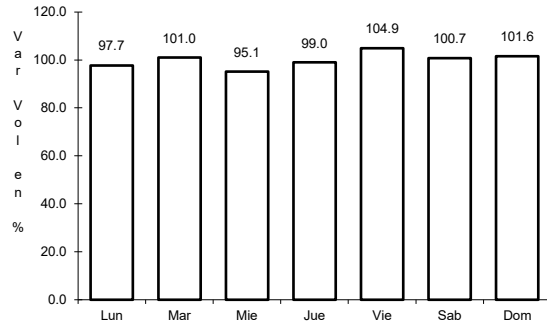


Km: 0.00      Tipo: 3      Sent: 0

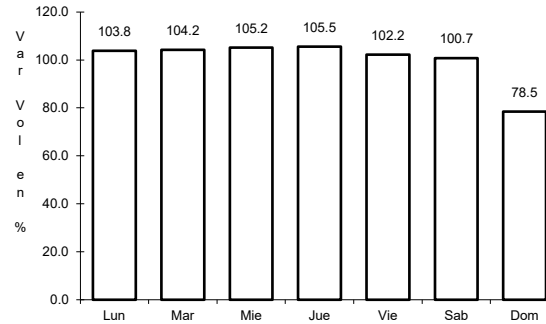
31 CARR: Tihosuco - Dziuche

CLAVE: 23576

RUTA: QR



Km: 0.00      Tipo: 3      Sent: 0

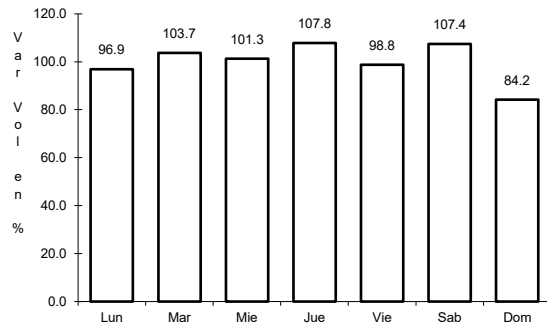


Km: 60.50      Tipo: 1      Sent: 0

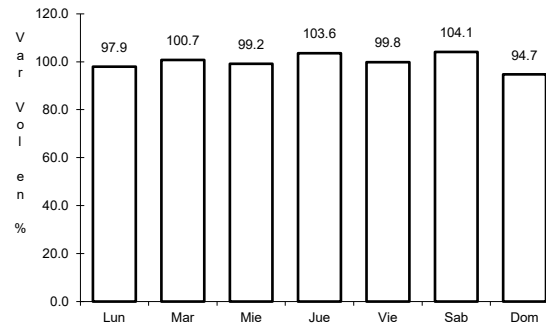
32 CARR: Transversal de Cozumel

CLAVE: 23577

RUTA: QR



Km: 0.00      Tipo: 3      Sent: 1

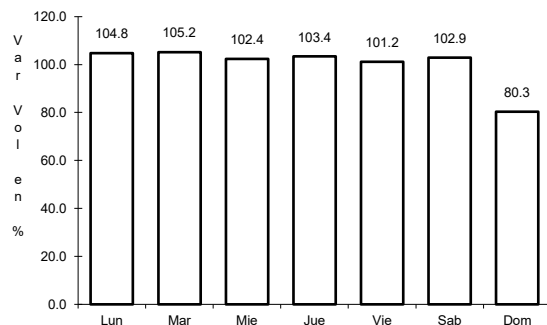


Km: 0.00      Tipo: 3      Sent: 2

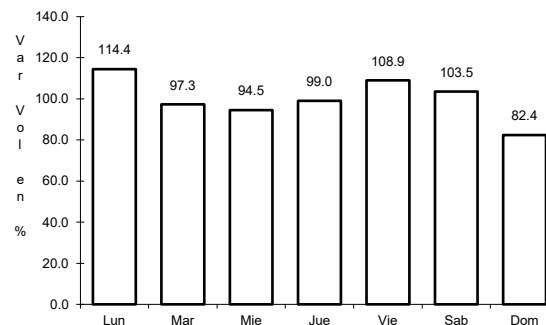
33 CARR: Tulum - Nuevo X-Can

CLAVE: 23570

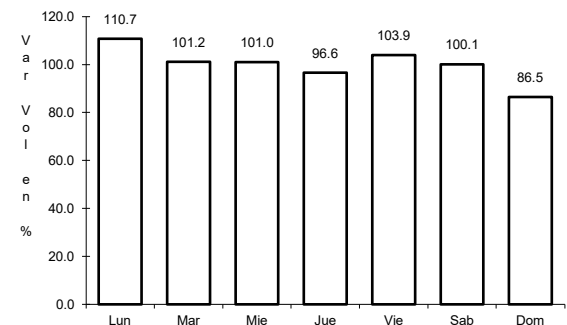
RUTA: QR



Km: 0.00      Tipo: 3      Sent: 1



Km: 42.95      Tipo: 1      Sent: 0

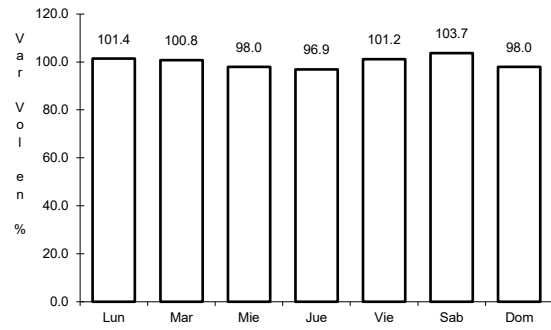


Km: 87.40      Tipo: 1      Sent: 0

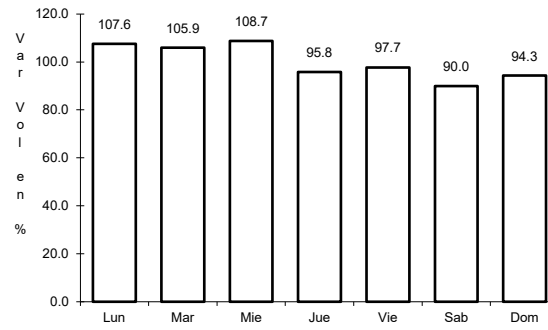
34 CARR: Ucum - Unión

CLAVE: 23571

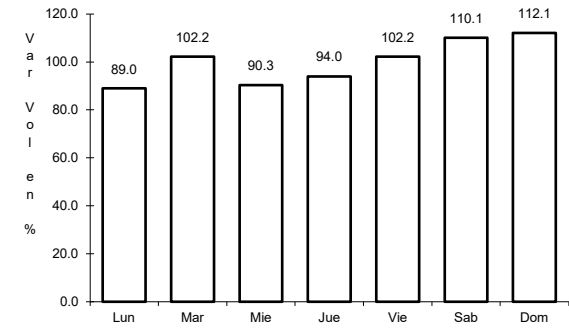
RUTA: QR



Km: 0.00                      Tipo: 3                      Sent: 0



Km: 31.00                      Tipo: 3                      Sent: 0

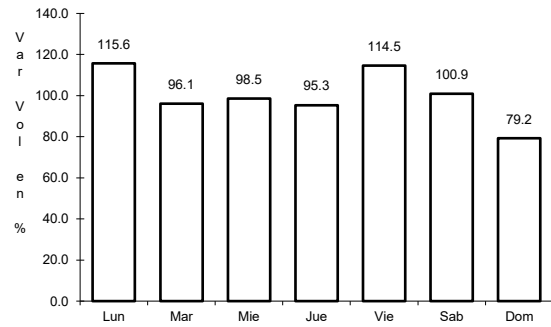


Km: 88.00                      Tipo: 1                      Sent: 0

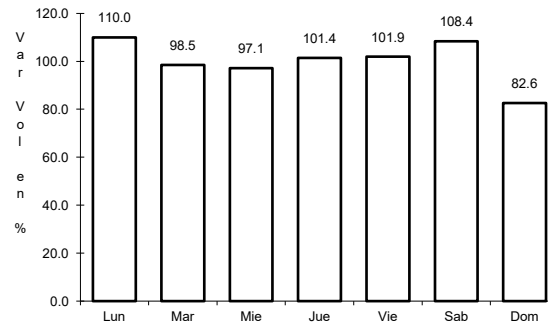
35 CARR: Chemax - Cobá

CLAVE:

RUTA: YUC-MEX-180



Km: 0.00                      Tipo: 3                      Sent: 0



Km: 30.90                      Tipo: 1                      Sent: 0