

SAN LUIS POTOSI

---RED FEDERAL LIBRE---

1	Antiguo Morelos - Ent. El Huizache	MEX-080
2	Carbonera - T. C. (Ent. Morelos - Saltillo)	MEX-062
3	Cd. Valles - Cd. Victoria	MEX-085
4	Cd. Valles - San Luis Potosí	MEX-070
5	Cd. Valles - Tampico	MEX-070
6	El Clarín - Agua Buena	MEX-070
7	Ent. Ahualulco - Ent. La Bonita	MEX-063
8	Ent. de Zaragoza - San Felipe	MEX-037
9	Ent. Tula - Cd. Victoria	MEX-101
10	Jalpan de Serra - Rioverde	MEX-069
11	Libramiento de Cd. Valles	MEX-070
12	Libramiento de Villa de Reyes	MEX-037
13	Libramiento de Villa de Reyes (Poniente)	MEX-037
14	Libramiento Villa de Arriaga	MEX-080
15	Matehuala - Ent. Puerto México	MEX-057
16	Portezuelo - Cd. Valles	MEX-085
17	Querétaro - San Luis Potosí	MEX-057
18	Ramal a Aeropuerto de S. L. P.	MEX-057
19	Ramal a Ojo de Agua	MEX-062
20	Ramal a Rayón	MEX-070
21	San Juan del Río - Xilitla	MEX-120
22	San Luis Potosí - Ent. Arcinas	MEX-049
23	San Luis Potosí - Lagos de Moreno	MEX-070-080
24	San Luis Potosí - Matehuala	MEX-057
25	T. C. (Ent. El Huizache- Ant. Morelos)-El Salto	MEX-080
26	T. C. (Qro - S.L.P.) - Tierra Nueva	MEX-057
27	T. C. (S.L.P. - Matehuala) - Villa Hidalgo	MEX-057
28	Tamazunchale - San Felipe Orizatlán	MEX-085

---RED FEDERAL DE CUOTA---

29	Lagos de Moreno - Villa de Arriaga (Cuota)	MEX-080D
30	Libramiento de Matehuala (Cuota)	MEX-057D
31	Libramiento Norponiente de San Luis Potosí (Cuota)	MEX-057D
32	Libramiento Oriente de San Luis Potosí (Cuota)	MEX-057D
33	Rayón - Ent. Tamuín (Cuota)	MEX-070D

---RED ESTATAL LIBRE---

34	Charcas - Villa Santo Domingo	SLP-017
35	Ébano - Estación Manuel	SLP-TAM
36	Matehuala - La Paz	SLP-020
37	Matehuala - La Poza	SLP-029-NL-061
38	Periférico de San Luis Potosí	SLP-032
39	Ramal a Cerritos	SLP-007
40	Ramal a Pozo de Acuña	SLP-009
41	Rayón - Arroyo Seco	SLP-011
42	Santo Domingo - Cerro Gordo	SLP-022
43	Tamuín - Estación F.F.C.C. Tamuín	SLP-040
44	Tamuín - Xolol	SLP-014

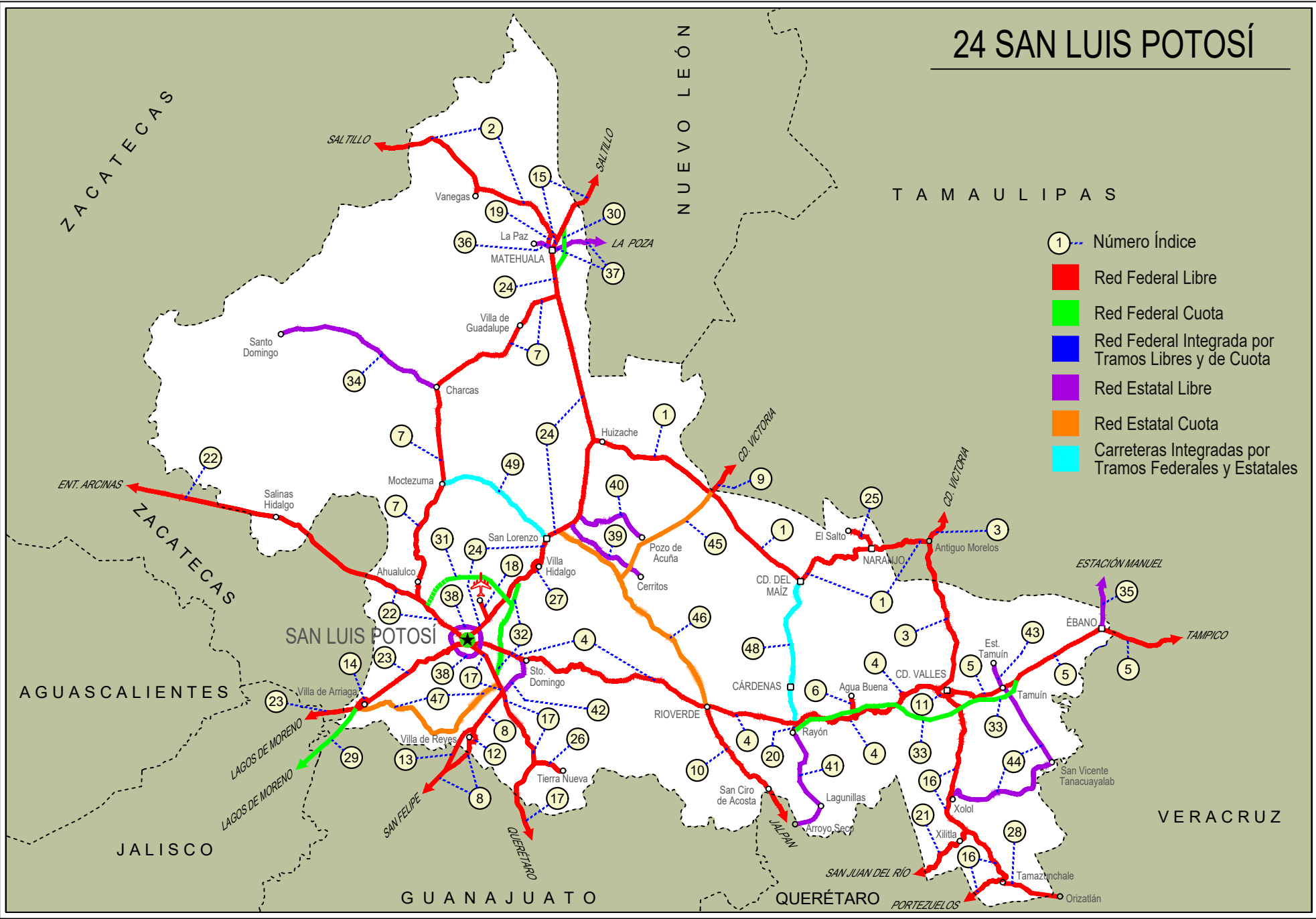
---RED ESTATAL DE CUOTA---

45	Cerritos - Ent. Tula (Cuota)	SLP-075D
46	Cerritos - Rioverde (Cuota)	SLP-D
47	San Luis Potosí - Villa de Arriaga (Cuota)	SLP-D

---CARRETERAS INTEGRADAS POR TRAMOS FEDERALES Y ESTATALES---

48	Rayón - Cd. del Maíz	MEX-070-SLP-005
49	San Lorenzo - Moctezuma	MEX-063-SLP-012

24 SAN LUIS POTOSÍ



SAN LUIS POTOSI

1 CARR : Antiguo Morelos - Ent. El Huizache

CLAVE: 00136

RUTA : MEX-080

AÑO : 2022

LUGAR	ESTACION				CLASIFICACION VEHICULAR EN PORCIENTO										COORDENADAS					
	KM	TE	SC	TDPA	M	A	B	C2	C3	T3S2	T3S3	T3S2R4	OTROS	A	B	C	K'	D	LATITUD	LONGITUD
Antiguo Morelos	0.00	3	0	2803	15.3	78.3	1.1	1.8	1.1	1.0	0.5	0.7	0.2	93.6	1.1	5.3	0.097	0.501	22.553918	-99.090692
Nuevo Morelos	19.28	1	0	1305	7.1	80.7	2.6	3.4	2.5	2.0	0.6	0.7	0.4	87.8	2.6	9.6	0.112	0.508	22.540712	-99.212718
Lim. Edos. Term. Tamps. Ppia. S. L. P.	25.00	0	0																	
El Naranjo	32.00	1	0	4692	5.9	81.0	1.6	6.0	2.8	1.6	0.3	0.6	0.2	86.9	1.6	11.5	0.093	0.504	22.532479	-99.307324
El Naranjo	32.00	3	0	2381	7.5	82.7	1.4	4.8	1.2	1.6	0.4	0.3	0.1	90.2	1.4	8.4	0.093	0.504	22.517970	-99.335455
Cd. del Maíz	86.00	3	0	1535	2.9	87.2	1.9	4.2	1.5	1.8	0.2	0.2	0.1	90.1	1.9	8.0	0.115	0.502	22.418733	-99.627314
T. Der. Tula	141.21	3	0	2698	1.1	40.5	2.9	4.6	3.0	23.8	6.4	16.8	0.9	41.6	2.9	55.5	0.062	0.512	22.736996	-99.978292
T. C. San Luis Potosí - Matehuala (Ent. El Huizache)	198.83	1	0	2974	3.5	47.3	3.2	5.4	3.4	19.2	4.5	12.8	0.7	50.8	3.2	46.0	0.065	0.504	22.930012	-100.450302

2 CARR : Carbonera - T. C. (Ent. Morelos - Saltillo)

CLAVE: 00218

RUTA : MEX-062

AÑO : 2022

LUGAR	ESTACION				CLASIFICACION VEHICULAR EN PORCIENTO										COORDENADAS					
	KM	TE	SC	TDPA	M	A	B	C2	C3	T3S2	T3S3	T3S2R4	OTROS	A	B	C	K'	D	LATITUD	LONGITUD
Carbonera	0.00	3	0	3441	7.4	74.7	1.5	11.6	1.8	1.2	0.8	0.9	0.1	82.1	1.5	16.4	0.089	0.503	23.702566	-100.626115
Cedral	18.00	1	0	5204	8.9	83.6	1.1	3.6	0.8	1.0	0.3	0.6	0.1	92.5	1.1	6.4	0.090	0.502	23.794130	-100.698322
Cedral	18.00	3	0	3817	11.6	70.2	2.5	11.0	1.7	1.5	0.5	0.8	0.2	81.8	2.5	15.7	0.111	0.510	23.827880	-100.735138
Lim. Edos. Term. S. L. P. Ppia. Zac.	79.20	0	0																	
T. C. Ent. Morelos - Saltillo	112.00	1	0	1403	2.7	73.1	1.8	17.1	2.7	2.0	0.1	0.4	0.1	75.8	1.8	22.4	0.095	0.532	24.157488	-101.493902

3 CARR : Cd. Valles - Cd. Victoria

CLAVE: 00509

RUTA : MEX-085

AÑO : 2022

LUGAR	ESTACION				CLASIFICACION VEHICULAR EN PORCIENTO										COORDENADAS					
	KM	TE	SC	TDPA	M	A	B	C2	C3	T3S2	T3S3	T3S2R4	OTROS	A	B	C	K'	D	LATITUD	LONGITUD
Cd. Valles	0.00	3	0	10574	4.6	83.7	2.8	5.2	0.8	1.5	0.4	0.7	0.3	88.3	2.8	8.9	0.075	0.546	22.006288	-99.005590
Lim. Edos. Term. S. L. P. Ppia. Tamps.	50.40	0	0																	
Antiguo Morelos	66.90	1	0	2664	9.4	80.5	3.3	1.7	1.3	1.7	0.3	1.6	0.2	89.9	3.3	6.8	0.088	0.505	22.548421	-99.078350
Antiguo Morelos	66.90	3	0	3800	6.9	78.9	4.7	2.3	1.9	2.5	0.8	1.6	0.4	85.8	4.7	9.5	0.086	0.547	22.560752	-99.077947
Cd. Mante	98.00	1	0	9001	10.1	82.5	1.5	1.2	1.9	1.2	0.6	0.8	0.2	92.6	1.5	5.9	0.091	0.520	22.711612	-98.989338
T. Izq. Ocampo	110.00	3	0	4316	11.7	79.7	2.8	2.8	1.5	0.6	0.3	0.4	0.2	91.4	2.8	5.8	0.095	0.500	22.838679	-99.024339
T. Izq. Gómez Farías	132.84	3	0	2040	11.0	77.5	3.2	6.1	0.6	1.3	0.1	0.2	0.0	88.5	3.2	8.3	0.086	0.503	23.030359	-99.093799
T. Izq. Llera de Canales	170.00	3	0	4189	1.3	91.7	1.3	4.3	0.7	0.3	0.3	0.1	0.0	93.0	1.3	5.7	0.093	0.506	23.310469	-99.017224
T. Der. González	172.50	3	0	2837	2.1	83.9	3.9	5.6	1.1	1.6	0.9	0.9	0.0	86.0	3.9	10.1	0.116	0.529	23.318160	-98.998111
Cd. Victoria	232.00	1	0	3170	1.4	83.0	4.3	6.6	2.1	1.5	0.9	0.1	0.1	84.4	4.3	11.3	0.089	0.501	23.659913	-99.096587

SAN LUIS POTOSI

4 CARR: Cd. Valles - San Luis Potosi

CLAVE: 24135

RUTA: MEX-070

AÑO: 2022

LUGAR	ESTACION				CLASIFICACION VEHICULAR EN PORCIENTO														COORDENADAS	
	KM	TE	SC	TDPA	M	A	B	C2	C3	T3S2	T3S3	T3S2R4	OTROS	A	B	C	K'	D	LATITUD	LONGITUD
Cd. Valles	0.00	3	1	4873	5.8	80.1	2.0	6.8	1.3	1.7	0.9	0.8	0.6	85.9	2.0	12.1	0.088	0.518	21.990228	-99.045443
Cd. Valles	0.00	3	2	5238	5.9	79.9	2.0	6.9	1.3	1.7	0.9	0.8	0.6	85.8	2.0	12.2	0.083	0.518	21.990128	-99.045472
X. C. Rayón - Ent. Tamuín (Cuota)	11.59	1	1	2841	4.6	81.6	2.0	6.1	1.5	1.5	1.1	0.8	0.8	86.2	2.0	11.8	0.091	0.519	22.002725	-99.100825
X. C. Rayón - Ent. Tamuín (Cuota)	11.59	1	2	3065	4.5	81.9	1.8	6.1	1.7	1.6	1.0	0.7	0.7	86.4	1.8	11.8	0.077	0.519	22.002635	-99.100834
T. Der. Damián Carmona	31.25	3	0	2287	5.0	76.6	2.6	9.8	2.5	2.0	0.9	0.4	0.2	81.6	2.6	15.8	0.090	0.503	21.925379	-99.228148
T. Der. Canoas	75.40	1	0	1752	4.4	82.5	1.6	5.6	1.7	1.9	1.4	0.3	0.6	86.9	1.6	11.5	0.076	0.514	21.873115	-99.495125
X. C. Cárdenas - Rayón	93.00	1	0	3111	3.7	73.6	1.1	15.0	1.7	2.8	1.2	0.3	0.6	77.3	1.1	21.6	0.093	0.504	21.852914	-99.625433
X. C. Cárdenas - Rayón	93.00	3	0	6790	3.0	76.6	3.6	4.6	2.3	5.0	1.6	2.6	0.7	79.6	3.6	16.8	0.072	0.518	21.859439	-99.652686
T. Der. Cerrito de la Cruz	104.30	3	0	7070	2.9	76.7	3.7	4.9	2.3	5.1	1.7	2.1	0.6	79.6	3.7	16.7	0.072	0.518	21.880704	-99.722338
T. Der. Santa Rita	118.00	3	0	7312	3.9	78.0	3.0	3.7	1.8	4.6	1.7	2.6	0.7	81.9	3.0	15.1	0.081	0.520	21.897874	-99.853516
Río Verde	133.76	1	1	11659	8.6	82.9	0.8	5.6	0.6	0.7	0.3	0.3	0.2	91.5	0.8	7.7	0.106	0.525	21.922642	-99.983944
Río Verde	133.76	1	2	10562	8.6	83.1	0.8	5.6	0.6	0.7	0.3	0.2	0.1	91.7	0.8	7.5	0.114	0.525	21.922553	-99.983944
Río Verde	133.76	3	1	10121	7.7	84.4	0.5	5.8	0.8	0.2	0.2	0.2	0.2	92.1	0.5	7.4	0.094	0.502	21.936181	-100.027788
Río Verde	133.76	3	2	10054	7.7	84.3	0.5	5.8	0.8	0.2	0.3	0.2	0.2	92.0	0.5	7.5	0.091	0.502	21.936062	-100.027834
T. Der. La Reformita	145.90	1	0	5270	8.5	79.1	1.5	5.7	1.4	1.4	1.9	0.3	0.2	87.6	1.5	10.9	0.084	0.506	21.963852	-100.090326
T. Der. La Reformita	145.90	3	0	4776	8.0	79.9	1.6	5.5	1.4	1.0	1.8	0.5	0.3	87.9	1.6	10.5	0.097	0.512	21.972384	-100.101327
T. Izq. La Tapona	157.76	1	0	3763	7.5	80.0	1.4	5.6	1.9	0.7	2.1	0.5	0.3	87.5	1.4	11.1	0.088	0.506	22.020799	-100.185849
T. Izq. La Tapona	157.76	3	0	4183	7.7	80.3	1.7	5.5	1.8	0.7	1.6	0.4	0.3	88.0	1.7	10.3	0.106	0.508	22.021746	-100.192844
T. Der. Guaxcama	161.04	3	0	3143	7.8	80.5	1.7	5.1	1.7	1.0	1.5	0.4	0.3	88.3	1.7	10.0	0.098	0.507	22.037006	-100.279346
San Antonio	180.70	1	0	3659	5.3	83.6	1.7	3.9	2.1	1.1	1.6	0.4	0.3	88.9	1.7	9.4	0.105	0.521	22.017874	-100.368524
T. Izq. Puente Prieto	181.93	3	0	3371	6.2	82.4	1.7	3.8	2.2	1.1	1.7	0.5	0.4	88.6	1.7	9.7	0.116	0.504	22.018538	-100.394860
San Nicolás Tolentino	191.00	1	0	4032	5.2	82.3	1.8	5.3	2.0	1.4	1.4	0.3	0.3	87.5	1.8	10.7	0.114	0.501	22.049811	-100.446007
T. Der. San Martín de Abajo	199.60	1	0	2838	3.5	83.4	1.5	5.6	2.2	1.1	2.0	0.4	0.3	86.9	1.5	11.6	0.103	0.506	22.070335	-100.495296
T. Der. San Martín de Abajo	199.60	3	0	3302	3.3	83.9	1.1	6.5	1.9	1.3	1.0	0.7	0.3	87.2	1.1	11.7	0.112	0.514	22.079649	-100.506266
T. Izq. Zaragoza	239.50	1	0	5559	5.0	80.8	1.4	7.9	1.5	1.9	0.8	0.4	0.3	85.8	1.4	12.8	0.097	0.502	22.097423	-100.739431
T. Izq. Zaragoza	239.50	3	0	9518	5.0	81.6	1.3	7.9	1.3	1.7	0.7	0.3	0.2	86.6	1.3	12.1	0.098	0.507	22.102175	-100.752696
X. Lib. Ote. de San Luis Potosí	255.00	1	0	9028	6.1	81.3	1.2	6.7	1.4	1.7	1.1	0.3	0.2	87.4	1.2	11.4	0.110	0.501	22.123767	-100.813194
X. Periférico de San Luis Potosí	257.44	1	1	30360	4.3	88.8	1.0	3.2	1.2	0.8	0.3	0.3	0.1	93.1	1.0	5.9	0.080	0.508	22.155237	-100.902241
X. Periférico de San Luis Potosí	257.44	1	2	31389	4.0	88.6	1.0	3.4	1.4	0.9	0.3	0.3	0.1	92.6	1.0	6.4	0.083	0.508	22.155025	-100.902271
San Luis Potosí	261.94	0	0																	

SAN LUIS POTOSI

5 CARR: Cd. Valles - Tampico

CLAVE: 00138

RUTA: MEX-070

AÑO: 2022

LUGAR	ESTACION				CLASIFICACION VEHICULAR EN PORCIENTO														COORDENADAS	
	KM	TE	SC	TDPA	M	A	B	C2	C3	T3S2	T3S3	T3S2R4	OTROS	A	B	C	K'	D	LATITUD	LONGITUD
Cd. Valles	0.00	3	0	8936	3.8	78.0	1.5	8.8	3.5	2.3	0.9	0.7	0.5	81.8	1.5	16.7	0.077	0.505	21.976054	-98.958601
T. Der. Santa Elena	15.25	3	0	6154	4.1	77.3	2.5	8.5	2.5	2.2	1.5	1.2	0.2	81.4	2.5	16.1	0.065	0.533	21.961602	-98.876880
Tamuín	29.60	1	0	5926	3.3	75.7	2.1	9.7	2.2	3.8	1.5	1.3	0.4	79.0	2.1	18.9	0.070	0.503	21.997298	-98.781386
T. C. Rayón - Ent. Tamuín (Cuota)	34.40	1	0	4085	6.6	69.0	2.8	10.7	3.8	3.0	1.7	1.7	0.7	75.6	2.8	21.6	0.093	0.502	22.003332	-98.743312
T. C. Rayón - Ent. Tamuín (Cuota)	34.40	3	1	3018	6.9	66.3	5.5	5.0	3.6	5.4	2.3	4.1	0.9	73.2	5.5	21.3	0.078	0.509	22.010782	-98.729705
T. C. Rayón - Ent. Tamuín (Cuota)	34.40	3	2	2913	6.9	66.6	5.8	4.7	3.4	5.4	2.3	4.0	0.9	73.5	5.8	20.7	0.080	0.509	22.010836	-98.729812
Ébano	79.00	1	0	8922	8.7	71.8	1.6	3.7	1.9	4.3	2.4	4.7	0.9	80.5	1.6	17.9	0.069	0.500	22.214234	-98.391238
Ébano	79.00	3	0	5339	6.8	66.3	4.1	6.7	3.0	4.9	2.3	5.0	0.9	73.1	4.1	22.8	0.085	0.502	22.211887	-98.360977
Lim. Edos. Term. S. L. P. Ppia. Ver.	83.57	0	0																	
T. Der. Pánuco	103.00	1	0	8150	4.3	75.7	2.6	5.7	2.7	3.4	2.1	2.5	1.0	80.0	2.6	17.4	0.069	0.510	22.155681	-98.155178
T. Der. Pánuco	103.00	3	0	9634	7.1	72.6	2.9	5.3	2.0	4.0	1.6	3.6	0.9	79.7	2.9	17.4	0.080	0.520	22.158758	-98.149283
T. C. Anáhuac - El Prieto	128.40	1	1	5372	4.5	76.7	3.0	4.7	1.9	3.4	1.9	3.1	0.8	81.2	3.0	15.8	0.085	0.508	22.214603	-97.948238
T. C. Anáhuac - El Prieto	128.40	1	2	5539	4.5	76.7	3.0	4.8	1.8	3.5	1.8	3.1	0.8	81.2	3.0	15.8	0.096	0.508	22.214720	-97.948267
T. C. Anáhuac - El Prieto	128.40	3	1	8754	4.0	72.0	3.6	6.4	2.0	5.5	2.5	3.2	0.8	76.0	3.6	20.4	0.081	0.504	22.216415	-97.940716
T. C. Anáhuac - El Prieto	128.40	3	2	8622	4.1	70.1	3.7	7.3	2.3	5.8	2.5	3.3	0.9	74.2	3.7	22.1	0.084	0.504	22.216560	-97.940783
Lim. Edos. Term. Ver. Ppia. Tamps.	133.81	0	0																	
Tampico	138.00	1	1	10304	11.5	67.1	2.4	7.0	1.8	4.5	1.7	3.2	0.8	78.6	2.4	19.0	0.072	0.502	22.226851	-97.894280
Tampico	138.00	1	2	10233	11.5	66.8	2.6	7.2	1.9	4.3	1.5	3.3	0.9	78.3	2.6	19.1	0.087	0.502	22.226958	-97.894305

6 CARR: El Clarín - Agua Buena

CLAVE: 24283

RUTA: MEX-070

AÑO: 2022

LUGAR	ESTACION				CLASIFICACION VEHICULAR EN PORCIENTO														COORDENADAS	
	KM	TE	SC	TDPA	M	A	B	C2	C3	T3S2	T3S3	T3S2R4	OTROS	A	B	C	K'	D	LATITUD	LONGITUD
T. C. Cd. Valles - San Luis Potosí	0.00	3	0	1431	4.7	76.6	1.8	15.2	0.5	0.7	0.2	0.1	0.2	81.3	1.8	16.9	0.093	0.543	21.892035	-99.382519
Agua Buena	11.23	1	0	4436	10.4	76.1	2.0	8.7	0.3	2.1	0.2	0.1	0.1	86.5	2.0	11.5	0.079	0.529	21.951923	-99.390960

7 CARR: Ent. Aqualulco - Ent. La Bonita

CLAVE: 24258

RUTA: MEX-063

AÑO: 2022

LUGAR	ESTACION				CLASIFICACION VEHICULAR EN PORCIENTO														COORDENADAS	
	KM	TE	SC	TDPA	M	A	B	C2	C3	T3S2	T3S3	T3S2R4	OTROS	A	B	C	K'	D	LATITUD	LONGITUD
T. C. San Luis Potosí - Ent. Arcinas	0.00	3	0	5396	5.9	86.5	1.7	4.1	0.9	0.2	0.4	0.3	0.0	92.4	1.7	5.9	0.118	0.502	22.326320	-101.165493
Aqualulco	11.00	3	0	4988	8.4	86.1	0.8	2.8	0.7	0.7	0.2	0.2	0.1	94.5	0.8	4.7	0.106	0.501	22.415671	-101.158036
Moctezuma	59.00	1	0	2653	4.8	87.8	1.6	3.8	0.7	0.7	0.2	0.4	0.0	92.6	1.6	5.8	0.102	0.500	22.733709	-101.085805
Charcas	100.00	1	0	2434	15.6	74.4	2.7	4.7	1.3	0.5	0.4	0.4	0.0	90.0	2.7	7.3	0.101	0.502	23.113070	-101.104017
Charcas	100.00	3	0	1418	22.9	67.8	1.9	5.0	0.9	0.8	0.3	0.4	0.0	90.7	1.9	7.4	0.126	0.501	23.133725	-101.098203

SAN LUIS POTOSI

7 CARR : Ent. Ahualulco - Ent. La Bonita

CLAVE: 24258

RUTA: MEX-063

AÑO: 2022

LUGAR	ESTACION				CLASIFICACION VEHICULAR EN PORCIENTO														COORDENADAS	
	KM	TE	SC	TDPA	M	A	B	C2	C3	T3S2	T3S3	T3S2R4	OTROS	A	B	C	K'	D	LATITUD	LONGITUD
T. C. San Luis Potosí - Matehuala	169.90	1	0	1382	5.3	84.0	1.9	5.9	1.5	0.8	0.2	0.4	0.0	89.3	1.9	8.8	0.109	0.507	23.481037	-100.624409

8 CARR : Ent. de Zaragoza - San Felipe

CLAVE: 00240

RUTA: MEX-037

AÑO: 2022

LUGAR	ESTACION				CLASIFICACION VEHICULAR EN PORCIENTO														COORDENADAS	
	KM	TE	SC	TDPA	M	A	B	C2	C3	T3S2	T3S3	T3S2R4	OTROS	A	B	C	K'	D	LATITUD	LONGITUD
T. C. Querétaro - San Luis Potosí	0.00	3	0	13255	1.8	64.5	4.9	10.7	2.2	11.9	2.1	1.2	0.7	66.3	4.9	28.8	0.073	0.513	21.959844	-100.823815
Lim. Edos. Term. S. L. P. Ppia. Gto.	32.00	0	0																	
San Felipe	72.00	1	0	9102	3.8	51.8	2.5	12.5	2.2	22.5	2.4	1.9	0.4	55.6	2.5	41.9	0.080	0.503	21.481478	-101.153217

9 CARR : Ent. Tula - Cd. Victoria

CLAVE: 00179

RUTA: MEX-101

AÑO: 2022

LUGAR	ESTACION				CLASIFICACION VEHICULAR EN PORCIENTO														COORDENADAS	
	KM	TE	SC	TDPA	M	A	B	C2	C3	T3S2	T3S3	T3S2R4	OTROS	A	B	C	K'	D	LATITUD	LONGITUD
T. C. Antiguo Morelos - El Huizache	0.00	3	0	3834	3.9	47.0	4.4	3.4	1.8	22.3	3.2	13.2	0.8	50.9	4.4	44.7	0.065	0.522	22.737428	-99.968478
Lim. Edos. Term. S. L. P. Ppia. Tamps.	2.40	0	0																	
T. Der. Tula (1º Acceso)	38.00	1	0	6048	1.9	49.3	4.0	4.9	2.6	19.8	3.1	13.5	0.9	51.2	4.0	44.8	0.062	0.503	22.979247	-99.737850
T. Der. Tula (2º Acceso)	41.95	3	0	5002	3.5	49.9	5.6	4.3	1.6	19.5	3.3	11.6	0.7	53.4	5.6	41.0	0.072	0.518	23.021326	-99.713854
Jaumave	112.68	1	0	5954	4.4	60.3	3.3	4.5	1.5	14.2	2.8	8.2	0.8	64.7	3.3	32.0	0.067	0.509	23.392294	-99.418727
Jaumave	112.68	3	0	6631	5.0	53.8	4.3	4.3	1.7	17.1	3.3	9.6	0.9	58.8	4.3	36.9	0.065	0.500	23.420530	-99.373255
T. Libramiento de Cd. Victoria	134.68	0	0																	
Cd. Victoria	180.00	1	1	3752	12.9	45.7	4.1	4.4	1.8	17.3	3.4	9.5	0.9	58.6	4.1	37.3	0.090	0.526	23.711021	-99.175843
Cd. Victoria	180.00	1	2	3384	12.7	46.1	4.3	4.6	1.6	17.2	3.2	9.4	0.9	58.8	4.3	36.9	0.069	0.526	23.711134	-99.175960

10 CARR : Jalpan de Serra - Rioverde

CLAVE: 00265

RUTA: MEX-069

AÑO: 2022

LUGAR	ESTACION				CLASIFICACION VEHICULAR EN PORCIENTO														COORDENADAS	
	KM	TE	SC	TDPA	M	A	B	C2	C3	T3S2	T3S3	T3S2R4	OTROS	A	B	C	K'	D	LATITUD	LONGITUD
Jalpan de Serra	0.00	3	0	6467	3.3	92.5	0.8	2.5	0.5	0.2	0.1	0.1	0.0	95.8	0.8	3.4	0.089	0.509	21.239586	-99.482494
T. Izq. Conca	35.01	1	0	3033	5.3	90.2	0.3	2.4	1.1	0.4	0.2	0.0	0.1	95.5	0.3	4.2	0.096	0.504	21.449680	-99.631148
Arroyo Seco	48.60	1	0	2083	4.1	88.3	0.5	5.2	1.1	0.4	0.3	0.0	0.1	92.4	0.5	7.1	0.082	0.525	21.541394	-99.687669
Lim. Edos. Term. Qro. Ppia. S. L. P.	52.27	0	0																	
San Ciro de Acosta	69.42	1	0	2275	6.5	76.3	0.5	12.6	1.4	1.9	0.6	0.1	0.1	82.8	0.5	16.7	0.080	0.501	21.647981	-99.808437
San Ciro de Acosta	69.42	3	0	3181	4.6	80.2	0.9	11.1	1.3	1.3	0.3	0.2	0.1	84.8	0.9	14.3	0.083	0.504	21.661917	-99.827612
Rioverde	105.43	1	0	7705	2.9	76.5	0.5	15.7	0.7	2.3	0.7	0.5	0.2	79.4	0.5	20.1	0.082	0.507	21.871558	-99.972423

SAN LUIS POTOSI

11 CARR : Libramiento de Cd. Valles

CLAVE: 24205

RUTA: MEX-070

AÑO: 2022

LUGAR	ESTACION				CLASIFICACION VEHICULAR EN PORCIENTO														COORDENADAS	
	KM	TE	SC	TDPA	M	A	B	C2	C3	T3S2	T3S3	T3S2R4	OTROS	A	B	C	K'	D	LATITUD	LONGITUD
T. C. Cd. Valles - San Luis Potosí	0.00	3	0	8434	9.4	74.0	3.2	6.2	3.0	1.8	1.0	1.1	0.3	83.4	3.2	13.4	0.088	0.531	21.984051	-99.034301
T. C. Cd. Valles - Tampico	11.54	1	0	2960	3.4	68.2	5.0	4.4	7.9	4.8	3.7	2.2	0.4	71.6	5.0	23.4	0.081	0.525	21.973661	-98.966428

12 CARR : Libramiento de Villa de Reyes

CLAVE: 24010

RUTA: MEX-037

AÑO: 2022

LUGAR	ESTACION				CLASIFICACION VEHICULAR EN PORCIENTO														COORDENADAS	
	KM	TE	SC	TDPA	M	A	B	C2	C3	T3S2	T3S3	T3S2R4	OTROS	A	B	C	K'	D	LATITUD	LONGITUD
T. C. Ent. Zaragoza - San Felipe	0.00	3	0	6667	2.8	84.2	1.7	7.8	1.3	1.5	0.3	0.4	0.0	87.0	1.7	11.3	0.095	0.511	21.802250	-100.931295
T. C. Villa de Reyes - Bledos	3.10	0	0																	

13 CARR : Libramiento de Villa de Reyes (Poniente)

CLAVE:

RUTA: MEX-037

AÑO: 2022

LUGAR	ESTACION				CLASIFICACION VEHICULAR EN PORCIENTO														COORDENADAS	
	KM	TE	SC	TDPA	M	A	B	C2	C3	T3S2	T3S3	T3S2R4	OTROS	A	B	C	K'	D	LATITUD	LONGITUD
T. C. Ent. Zaragoza - San Felipe Sur	125.60	0	0																	
Lim. Edos. Term. Gto. Ppia. S. L. P.	132.90	0	0																	
T. C. Ent. Zaragoza - San Felipe Norte	143.64	1	0	6669	4.6	55.8	1.9	9.5	2.9	20.3	2.3	1.9	0.8	60.4	1.9	37.7	0.068	0.513	21.819101	-100.943614

14 CARR : Libramiento Villa de Arriaga

CLAVE: 24009

RUTA: MEX-080

AÑO: 2022

LUGAR	ESTACION				CLASIFICACION VEHICULAR EN PORCIENTO														COORDENADAS	
	KM	TE	SC	TDPA	M	A	B	C2	C3	T3S2	T3S3	T3S2R4	OTROS	A	B	C	K'	D	LATITUD	LONGITUD
T. C. San Luis Potosí - Lagos de Moreno (Poniente)	0.00	3	0	7476	4.5	53.9	6.1	3.7	2.9	19.0	2.2	6.7	1.0	58.4	6.1	35.5	0.060	0.521	21.924218	-101.372701
T. C. San Luis Potosí - Lagos de Moreno (Oriente)	5.00	0	0																	

15 CARR : Matehuala - Ent. Puerto México

CLAVE: 00405

RUTA: MEX-057

AÑO: 2022

LUGAR	ESTACION				CLASIFICACION VEHICULAR EN PORCIENTO														COORDENADAS	
	KM	TE	SC	TDPA	M	A	B	C2	C3	T3S2	T3S3	T3S2R4	OTROS	A	B	C	K'	D	LATITUD	LONGITUD
Matehuala	0.00	3	1	7977	12.9	70.9	3.2	4.3	1.9	4.9	0.9	0.8	0.2	83.8	3.2	13.0	0.089	0.520	23.668776	-100.632070
Matehuala	0.00	3	2	8651	15.2	68.8	2.9	3.9	1.4	5.8	1.0	0.8	0.2	84.0	2.9	13.1	0.081	0.520	23.668846	-100.632237
T. Izq. Cedral	8.47	1	1	4640	6.9	65.4	3.8	8.4	1.9	11.0	1.3	1.2	0.1	72.3	3.8	23.9	0.088	0.535	23.689472	-100.621844
T. Izq. Cedral	8.47	1	2	5345	6.4	66.6	3.5	8.8	1.9	10.6	1.2	0.8	0.2	73.0	3.5	23.5	0.070	0.535	23.691203	-100.621277
T. Izq. Cedral	8.47	3	1	2573	7.9	64.2	4.5	11.1	1.7	5.3	2.8	2.2	0.3	72.1	4.5	23.4	0.073	0.536	23.698813	-100.617194
T. Izq. Cedral	8.47	3	2	2968	7.3	65.8	4.4	10.1	2.1	5.3	2.7	1.9	0.4	73.1	4.4	22.5	0.073	0.536	23.698946	-100.617451

SAN LUIS POTOSI

15 CARR: Matehuala - Ent. Puerto México

CLAVE: 00405

RUTA: MEX-057

AÑO: 2022

LUGAR	ESTACION				CLASIFICACION VEHICULAR EN PORCIENTO													COORDENADAS		
	KM	TE	SC	TDPA	M	A	B	C2	C3	T3S2	T3S3	T3S2R4	OTROS	A	B	C	K'	D	LATITUD	LONGITUD
T. Izq. Libramiento de Matehuala (Cuota)	9.30	3	1	8387	1.5	36.8	4.3	8.6	2.2	36.2	4.3	5.1	1.0	38.3	4.3	57.4	0.067	0.519	23.713853	-100.609749
T. Izq. Libramiento de Matehuala (Cuota)	9.30	3	2	7783	1.5	34.5	4.7	8.9	2.3	36.6	4.8	5.7	1.0	36.0	4.7	59.3	0.071	0.519	23.714077	-100.609948
Lim. Edos. Term. S. L. P. Ppia. N. L.	24.64	0	0																	
Santa Ana	59.65	1	1	9091	2.3	27.3	3.3	5.4	4.6	46.5	4.3	5.4	0.9	29.6	3.3	67.1	0.065	0.506	24.084425	-100.384902
Santa Ana	59.65	1	2	8881	2.3	26.7	3.4	5.5	4.6	46.8	4.4	5.4	0.9	29.0	3.4	67.6	0.061	0.506	24.084504	-100.385188
T. Der. Linares	128.99	1	1	9810	3.4	39.7	6.6	4.5	2.3	33.3	2.7	6.6	0.9	43.1	6.6	50.3	0.073	0.520	24.612261	-100.274786
T. Der. Linares	128.99	1	2	9062	3.4	39.6	6.6	4.5	2.4	33.3	2.7	6.6	0.9	43.0	6.6	50.4	0.065	0.520	24.612168	-100.275061
T. Der. Linares	128.99	3	1	10538	1.7	33.8	6.4	5.4	2.5	40.8	3.2	5.1	1.1	35.5	6.4	58.1	0.061	0.507	24.680742	-100.300317
T. Der. Linares	128.99	3	2	10855	1.7	33.7	6.4	5.4	2.6	40.8	3.2	5.2	1.0	35.4	6.4	58.2	0.063	0.507	24.680722	-100.300613
San Rafael	177.18	1	1	10962	2.9	37.3	5.7	6.0	3.3	36.6	3.1	4.4	0.7	40.2	5.7	54.1	0.068	0.522	25.024090	-100.547266
San Rafael	177.18	1	2	10047	2.9	37.4	5.7	5.9	3.3	36.6	3.1	4.4	0.7	40.3	5.7	54.0	0.060	0.522	25.024183	-100.547911
T. C. Puerto México - La Carbonera (Cuota)	202.40	1	1	10640	6.2	33.7	6.0	6.0	2.5	36.0	3.3	5.5	0.8	39.9	6.0	54.1	0.060	0.503	25.166536	-100.717750
T. C. Puerto México - La Carbonera (Cuota)	202.40	1	2	10532	6.3	33.5	6.1	6.0	2.5	36.0	3.3	5.5	0.8	39.8	6.1	54.1	0.072	0.503	25.166679	-100.718596
Ent. Puerto México	205.97	0	0																	

16 CARR: Portezuelo - Cd. Valles

CLAVE: 00023

RUTA: MEX-085

AÑO: 2022

LUGAR	ESTACION				CLASIFICACION VEHICULAR EN PORCIENTO													COORDENADAS		
	KM	TE	SC	TDPA	M	A	B	C2	C3	T3S2	T3S3	T3S2R4	OTROS	A	B	C	K'	D	LATITUD	LONGITUD
Portezuelo	0.00	3	0	5764	4.6	88.3	1.4	2.5	1.1	0.9	0.8	0.3	0.1	92.9	1.4	5.7	0.098	0.502	20.488422	-99.298708
T. Der. Tasquillo (2° Acceso)	10.50	1	0	4772	5.7	86.3	1.3	3.1	1.2	1.1	0.8	0.2	0.3	92.0	1.3	6.7	0.085	0.510	20.542206	-99.318295
T. Izq. Zimapán (1° Acceso)	32.00	1	0	6120	5.0	87.9	1.5	2.5	1.0	1.0	0.8	0.2	0.1	92.9	1.5	5.6	0.076	0.510	20.702717	-99.334320
T. Izq. Zimapán (1° Acceso)	32.00	3	0	2274	5.1	86.7	1.3	2.6	1.4	1.4	1.2	0.2	0.1	91.8	1.3	6.9	0.084	0.513	20.706057	-99.336200
La Estancia	41.00	3	0	2210	3.0	83.1	1.7	7.8	1.3	1.7	0.9	0.3	0.2	86.1	1.7	12.2	0.094	0.504	20.777742	-99.309861
Trancas	51.00	3	0	1815	3.6	81.2	1.9	8.4	1.5	1.2	1.5	0.4	0.3	84.8	1.9	13.3	0.088	0.513	20.801478	-99.261738
Jacala	98.60	3	0	2406	7.6	80.6	1.1	8.0	0.8	1.1	0.4	0.3	0.1	88.2	1.1	10.7	0.089	0.509	21.002261	-99.184735
Zacate Grande	143.10	1	0	1123	4.8	83.5	2.4	5.8	1.5	0.9	0.7	0.3	0.1	88.3	2.4	9.3	0.072	0.509	21.106569	-99.003043
T. Izq. Pisaflares	154.00	3	0	2244	6.2	83.9	1.5	5.5	1.4	0.6	0.5	0.3	0.1	90.1	1.5	8.4	0.088	0.501	21.153707	-98.945147
Lim. Edos. Term. Hgo. Ppia. S. L. P.	168.63	0	0																	
Tamazunchale	192.80	1	0	6708	24.8	64.0	2.2	3.7	2.8	1.3	0.2	0.7	0.3	88.8	2.2	9.0	0.071	0.512	21.263721	-98.799432
T. Izq. Xilitla	228.75	1	0	6513	12.8	76.3	1.9	4.0	2.5	1.0	0.7	0.7	0.1	89.1	1.9	9.0	0.078	0.500	21.442921	-98.925487
T. Izq. Xilitla	228.75	3	0	5484	13.0	74.6	2.3	4.4	2.8	1.3	0.7	0.4	0.5	87.6	2.3	10.1	0.084	0.506	21.448931	-98.930551
T. Izq. Aquismón	252.50	1	0	6131	9.1	73.7	2.6	5.4	4.4	1.5	1.8	0.7	0.8	82.8	2.6	14.6	0.080	0.516	21.615507	-98.987294
Agua Hedionda	265.00	1	0	5975	3.3	77.0	1.6	9.9	3.1	3.1	1.2	0.3	0.5	80.3	1.6	18.1	0.076	0.513	21.721655	-98.963015
X. C. Rayón - Ent. Tamuín (Cuota)	286.41	1	1	4157	6.9	80.3	1.7	4.7	3.3	1.7	0.7	0.3	0.4	87.2	1.7	11.1	0.091	0.511	21.884584	-98.947321

SAN LUIS POTOSI

16 CARR: Portezuelo - Cd. Valles

CLAVE: 00023

RUTA: MEX-085

AÑO: 2022

LUGAR	ESTACION				CLASIFICACION VEHICULAR EN PORCIENTO										COORDENADAS					
	KM	TE	SC	TDPA	M	A	B	C2	C3	T3S2	T3S3	T3S2R4	OTROS	A	B	C	K'	D	LATITUD	LONGITUD
X. C. Rayón - Ent. Tamuín (Cuota)	286.41	1	2	4338	7.1	79.2	1.9	5.0	3.6	1.7	0.6	0.4	0.5	86.3	1.9	11.8	0.072	0.511	21.884566	-98.947388
Cd. Valles	300.00	1	1	5905	11.5	73.9	3.8	8.3	1.2	0.6	0.2	0.4	0.1	85.4	3.8	10.8	0.080	0.509	21.959245	-98.998615
Cd. Valles	300.00	1	2	6127	11.5	74.0	3.7	8.3	1.2	0.6	0.2	0.4	0.1	85.5	3.7	10.8	0.082	0.509	21.959300	-98.998780

17 CARR: Querétaro - San Luis Potosi

CLAVE: 00165

RUTA: MEX-057

AÑO: 2022

LUGAR	ESTACION				CLASIFICACION VEHICULAR EN PORCIENTO										COORDENADAS					
	KM	TE	SC	TDPA	M	A	B	C2	C3	T3S2	T3S3	T3S2R4	OTROS	A	B	C	K'	D	LATITUD	LONGITUD
Querétaro	0.00	0	0																	
T. Der. Libramiento de Querétaro	6.28	3	1	62904	1.1	88.1	1.0	6.4	0.8	1.7	0.6	0.1	0.2	89.2	1.0	9.8	0.062	0.510	20.636823	-100.428844
T. Der. Libramiento de Querétaro	6.28	3	2	60026	1.1	88.2	1.0	6.4	0.8	1.6	0.6	0.1	0.2	89.3	1.0	9.7	0.085	0.510	20.636588	-100.428861
T. C. Anillo Vial Fray Junípero Serra (Centrales)	14.00	1	1	29750	1.5	79.1	2.7	13.7	0.6	1.4	0.6	0.2	0.2	80.6	2.7	16.7	0.074	0.545	20.688314	-100.435575
T. C. Anillo Vial Fray Junípero Serra (Laterales)	14.00	1	1	31118	1.7	92.2	0.3	3.9	0.5	1.0	0.3	0.0	0.1	93.9	0.3	5.8	0.083	0.504	20.688180	-100.435382
T. C. Anillo Vial Fray Junípero Serra (Centrales)	14.00	1	2	23349	1.5	79.2	2.7	13.7	0.6	1.4	0.5	0.2	0.2	80.7	2.7	16.6	0.082	0.545	20.687410	-100.435644
T. C. Anillo Vial Fray Junípero Serra (Laterales)	14.00	1	2	31714	1.7	92.0	0.3	3.9	0.5	1.1	0.3	0.1	0.1	93.7	0.3	6.0	0.093	0.504	20.687409	-100.435788
T. Izq. Juriquilla	15.63	3	1	41251	0.8	87.9	1.0	6.4	1.4	1.8	0.4	0.2	0.1	88.7	1.0	10.3	0.103	0.513	20.719372	-100.438931
T. Izq. Juriquilla	15.63	3	2	38976	0.8	88.1	0.9	6.4	1.4	1.7	0.4	0.2	0.1	88.9	0.9	10.2	0.125	0.513	20.719380	-100.439056
T. Izq. San Miguel de Allende	28.53	1	1	34943	0.9	80.5	1.4	9.9	1.5	4.0	0.9	0.7	0.2	81.4	1.4	17.2	0.138	0.505	20.802716	-100.448712
T. Izq. San Miguel de Allende	28.53	1	2	34210	0.9	80.5	1.4	9.9	1.5	4.0	0.9	0.7	0.2	81.4	1.4	17.2	0.135	0.505	20.802751	-100.448905
T. Izq. San Miguel de Allende	28.53	3	1	26973	1.1	51.7	3.5	9.8	3.1	23.4	2.7	4.0	0.7	52.8	3.5	43.7	0.086	0.502	20.836026	-100.439777
T. Izq. San Miguel de Allende	28.53	3	2	25246	1.1	51.7	3.5	9.8	3.1	23.4	2.7	4.0	0.7	52.8	3.5	43.7	0.063	0.502	20.835798	-100.440092
Lim. Edos. Term. Qro. Ppia. Gto.	36.70	0	0																	
X. C. San José Iturbide - El Arenal	46.83	1	1	25784	16.2	50.5	2.5	4.2	3.3	18.1	1.9	2.6	0.7	66.7	2.5	30.8	0.061	0.510	20.969449	-100.429462
X. C. San José Iturbide - El Arenal	46.83	1	2	24814	14.7	48.8	4.5	7.3	2.8	15.6	1.3	4.1	0.9	63.5	4.5	32.0	0.065	0.510	20.969385	-100.429624
X. C. San José Iturbide - El Arenal	46.83	3	1	19175	5.7	50.0	6.9	5.3	3.1	21.8	2.6	3.7	0.9	55.7	6.9	37.4	0.063	0.512	20.983048	-100.434630
X. C. San José Iturbide - El Arenal	46.83	3	2	18260	6.5	48.8	6.5	5.7	3.1	22.9	2.7	3.0	0.8	55.3	6.5	38.2	0.067	0.512	20.982989	-100.434802
X. C. Ent. San Miguel de Allende - Dr. Mora	61.93	1	1	16804	2.2	55.3	4.8	5.6	2.6	23.0	2.4	3.3	0.8	57.5	4.8	37.7	0.057	0.515	21.076885	-100.512296
X. C. Ent. San Miguel de Allende - Dr. Mora	61.93	1	2	15818	2.2	47.1	5.6	6.2	4.1	25.8	4.2	3.8	1.0	49.3	5.6	45.1	0.067	0.515	21.076759	-100.512422
X. C. San Luis de La Paz - Guanajuato	86.68	1	1	16732	2.2	47.1	4.9	5.3	2.8	29.9	3.9	3.1	0.8	49.3	4.9	45.8	0.058	0.535	21.256417	-100.586637
X. C. San Luis de La Paz - Guanajuato	86.68	1	2	14523	1.6	42.4	6.8	6.1	3.3	30.5	4.2	4.1	1.0	44.0	6.8	49.2	0.067	0.535	21.256413	-100.586838
T. Izq. San Diego de La Unión	119.07	1	1	12435	6.3	36.1	6.5	5.1	4.0	33.2	3.0	4.8	1.0	42.4	6.5	51.1	0.058	0.507	21.528258	-100.740170
T. Izq. San Diego de La Unión	119.07	1	2	12090	3.3	37.3	8.5	6.4	2.9	31.8	4.3	4.5	1.0	40.6	8.5	50.9	0.066	0.507	21.528184	-100.740341
T. Izq. San Diego de La Unión	119.07	3	1	12275	2.4	38.7	7.2	5.8	3.1	34.2	3.1	4.5	1.0	41.1	7.2	51.7	0.062	0.508	21.540902	-100.747197
T. Izq. San Diego de La Unión	119.07	3	2	11911	1.7	45.2	6.2	4.8	2.9	30.1	3.5	4.6	1.0	46.9	6.2	46.9	0.066	0.508	21.540830	-100.747367
Lim. Edos. Term. Gto. Ppia. S. L. P.	124.74	0	0																	

SAN LUIS POTOSI

17 CARR: Querétaro - San Luis Potosí

CLAVE: 00165

RUTA: MEX-057

AÑO: 2022

LUGAR	ESTACION				CLASIFICACION VEHICULAR EN PORCIENTO										COORDENADAS					
	KM	TE	SC	TDPA	M	A	B	C2	C3	T3S2	T3S3	T3S2R4	OTROS	A	B	C	K'	D	LATITUD	LONGITUD
T. Der. Tierra Nueva	140.65	1	1	12506	7.9	42.2	7.5	5.5	2.3	26.4	2.1	5.1	1.0	50.1	7.5	42.4	0.065	0.510	21.685649	-100.693731
T. Der. Tierra Nueva	140.65	1	2	12039	4.9	42.8	6.9	5.8	3.1	26.4	2.5	6.6	1.0	47.7	6.9	45.4	0.066	0.510	21.685755	-100.693863
T. Der. Tierra Nueva	140.65	3	1	16331	8.9	55.1	4.9	4.2	2.0	20.3	1.9	2.0	0.7	64.0	4.9	31.1	0.075	0.517	21.704133	-100.684335
T. Der. Tierra Nueva	140.65	3	2	15278	8.9	52.9	4.9	4.0	1.8	22.1	2.3	2.5	0.6	61.8	4.9	33.3	0.071	0.517	21.707063	-100.685631
T. Izq. Santa María del Río	155.88	3	1	16743	9.1	55.1	5.1	4.4	2.0	19.4	2.1	2.0	0.8	64.2	5.1	30.7	0.079	0.523	21.845724	-100.741254
T. Izq. Santa María del Río	155.88	3	2	15280	5.6	54.7	5.3	5.0	2.1	22.0	2.2	2.3	0.8	60.3	5.3	34.4	0.076	0.523	21.845620	-100.741400
T. Izq. Villa de Reyes	176.35	1	1	15514	10.6	46.3	1.9	4.8	4.5	24.7	2.7	3.9	0.6	56.9	1.9	41.2	0.066	0.512	21.961201	-100.811671
T. Izq. Villa de Reyes	176.35	1	2	14758	9.9	42.1	2.1	5.1	4.7	27.9	3.2	4.4	0.6	52.0	2.1	45.9	0.073	0.512	21.961150	-100.811833
T. Izq. Villa de Reyes	176.35	3	1	24531	2.9	59.7	3.4	7.2	2.5	18.0	2.4	3.2	0.7	62.6	3.4	34.0	0.072	0.507	21.986105	-100.825189
T. Izq. Villa de Reyes	176.35	3	2	23878	2.8	57.1	4.0	7.5	2.7	19.4	2.5	3.3	0.7	59.9	4.0	36.1	0.068	0.507	21.986046	-100.825351
T. Izq. Villa de Arriaga (Cuota)	182.60	1	1	32745	3.1	61.0	4.3	6.4	2.6	17.7	2.1	2.1	0.7	64.1	4.3	31.6	0.067	0.516	22.011674	-100.839080
T. Izq. Villa de Arriaga (Cuota)	182.60	1	2	30576	2.7	56.7	4.9	6.8	2.8	20.6	2.4	2.4	0.7	59.4	4.9	35.7	0.093	0.516	22.011637	-100.839248
X. C. Libramiento de San Luis Potosí	184.80	1	1	35775	2.1	60.9	3.0	8.1	3.4	16.4	2.3	3.0	0.8	63.0	3.0	34.0	0.089	0.509	22.030999	-100.849556
X. C. Libramiento de San Luis Potosí	184.80	1	2	34458	1.7	60.4	3.0	8.0	3.1	17.9	2.4	2.9	0.6	62.1	3.0	34.9	0.093	0.509	22.031841	-100.850219
X. Periférico de San Luis Potosí (Lateral)	197.50	1	1	17656	4.3	79.1	1.1	7.2	2.6	2.0	1.3	1.6	0.8	83.4	1.1	15.5	0.135	0.516	22.122015	-100.912810
X. Periférico de San Luis Potosí (Central)	197.50	1	1	63611	4.3	90.7	0.6	2.2	0.5	0.5	0.1	0.9	0.2	95.0	0.6	4.4	0.077	0.512	22.122119	-100.913195
X. Periférico de San Luis Potosí (Lateral)	197.50	1	2	16554	4.5	76.4	1.7	7.5	2.7	3.1	2.0	1.3	0.8	80.9	1.7	17.4	0.101	0.516	22.121390	-100.913094
X. Periférico de San Luis Potosí (Central)	197.50	1	2	60281	4.1	90.6	0.5	2.1	0.4	0.8	0.4	0.7	0.4	94.7	0.5	4.8	0.063	0.512	22.122039	-100.913434
San Luis Potosí	201.66	0	0																	

18 CARR: Ramal a Aeropuerto de S. L. P.

CLAVE: 24206

RUTA: MEX-057

AÑO: 2022

LUGAR	ESTACION				CLASIFICACION VEHICULAR EN PORCIENTO										COORDENADAS					
	KM	TE	SC	TDPA	M	A	B	C2	C3	T3S2	T3S3	T3S2R4	OTROS	A	B	C	K'	D	LATITUD	LONGITUD
T. C. San Luis Potosí - Matehuala	0.00	3	0	6420	10.0	78.6	1.2	5.9	1.5	1.2	0.1	1.2	0.3	88.6	1.2	10.2	0.081	0.502	22.226508	-100.917927
Aeropuerto de S. L. P.	6.00	0	0																	

19 CARR: Ramal a Ojo de Agua

CLAVE: 24023

RUTA: MEX-062

AÑO: 2022

LUGAR	ESTACION				CLASIFICACION VEHICULAR EN PORCIENTO										COORDENADAS					
	KM	TE	SC	TDPA	M	A	B	C2	C3	T3S2	T3S3	T3S2R4	OTROS	A	B	C	K'	D	LATITUD	LONGITUD
T. C. Ent. Carbonera - Ent. San Tiburcio	0.00	3	0	3039	9.4	76.1	0.4	10.8	0.2	2.5	0.3	0.1	0.2	85.5	0.4	14.1	0.085	0.535	23.719893	-100.650183
Ojo de Agua	6.23	0	0																	

SAN LUIS POTOSI

20 CARR: Ramal a Rayón

CLAVE: 24626

RUTA: MEX-070

AÑO: 2022

LUGAR	ESTACION				CLASIFICACION VEHICULAR EN PORCIENTO													COORDENADAS			
	KM	TE	SC	TDPA	M	A	B	C2	C3	T3S2	T3S3	T3S2R4	OTROS	A	B	C	K'	D	LATITUD	LONGITUD	
T. C. (Cd. Valles - San Luis Potosí)	0.00	0	0																		
Rayón	1.50	1	0	4611	9.5	86.7	0.2	1.9	0.9	0.4	0.1	0.2	0.1	96.2	0.2	3.6	0.091	0.512	21.847774	-99.629920	

21 CARR: San Juan del Río - Xilitla

CLAVE: 00183

RUTA: MEX-120

AÑO: 2022

LUGAR	ESTACION				CLASIFICACION VEHICULAR EN PORCIENTO													COORDENADAS			
	KM	TE	SC	TDPA	M	A	B	C2	C3	T3S2	T3S3	T3S2R4	OTROS	A	B	C	K'	D	LATITUD	LONGITUD	
San Juan del Río	0.00	0	0																		
T. Der. Libramiento de San Juan del Río	5.20	3	1	14658	2.6	89.0	1.1	3.6	1.3	1.4	0.5	0.3	0.2	91.6	1.1	7.3	0.106	0.510	20.426901	-99.974415	
T. Der. Libramiento de San Juan del Río	5.20	3	2	15229	2.6	88.7	1.2	3.6	1.4	1.5	0.5	0.3	0.2	91.3	1.2	7.5	0.095	0.510	20.426991	-99.974501	
T. Der. Tequisquiapan	19.80	1	1	11462	3.5	89.0	1.3	2.7	1.4	1.0	0.6	0.3	0.2	92.5	1.3	6.2	0.097	0.506	20.513152	-99.905785	
T. Der. Tequisquiapan	19.80	1	2	11194	3.8	89.1	1.3	2.5	1.4	0.9	0.5	0.3	0.2	92.9	1.3	5.8	0.088	0.506	20.513278	-99.905834	
T. Der. Tequisquiapan	19.80	3	1	9875	3.6	88.8	1.3	2.9	1.4	1.0	0.6	0.3	0.1	92.4	1.3	6.3	0.095	0.506	20.544235	-99.902102	
T. Der. Tequisquiapan	19.80	3	2	9637	3.5	88.6	1.3	2.9	1.5	1.1	0.7	0.3	0.1	92.1	1.3	6.6	0.093	0.506	20.544216	-99.902227	
Ezequiel Montes	36.50	1	1	7937	3.4	81.7	2.0	6.7	2.6	2.1	0.9	0.5	0.1	85.1	2.0	12.9	0.096	0.515	20.640733	-99.906979	
Ezequiel Montes	36.50	1	2	8420	3.5	81.9	1.9	6.6	2.5	2.2	0.9	0.4	0.1	85.4	1.9	12.7	0.091	0.515	20.640759	-99.907104	
Ezequiel Montes	36.50	3	1	6526	2.3	87.4	1.1	7.7	0.9	0.3	0.2	0.1	0.0	89.7	1.1	9.2	0.080	0.508	20.680955	-99.888324	
Ezequiel Montes	36.50	3	2	6738	2.1	87.7	0.9	7.7	1.0	0.3	0.2	0.1	0.0	89.8	0.9	9.3	0.074	0.508	20.681017	-99.888430	
Cadereyta	47.90	3	1	5501	3.3	82.3	0.4	7.8	2.8	1.8	1.0	0.5	0.1	85.6	0.4	14.0	0.124	0.514	20.702356	-99.802326	
Cadereyta	47.90	3	2	5195	2.9	82.9	0.5	7.7	2.5	1.9	0.9	0.6	0.1	85.8	0.5	13.7	0.095	0.514	20.702438	-99.802336	
Vizarrón de Montes	73.50	3	0	3559	2.6	83.2	0.7	7.5	2.7	1.4	1.0	0.4	0.5	85.8	0.7	13.5	0.079	0.508	20.847504	-99.713263	
T. Der. San Joaquín	79.50	3	0	1598	1.4	81.4	1.8	12.2	1.5	1.2	0.5	0.0	0.0	82.8	1.8	15.4	0.105	0.546	20.885367	-99.707509	
T. Izq. Higuerrillas	89.10	3	0	2382	1.8	84.2	2.0	9.4	1.8	0.5	0.3	0.0	0.0	86.0	2.0	12.0	0.100	0.505	20.949475	-99.749178	
T. Izq. Peñamiller	103.00	3	0	1957	3.7	85.8	1.1	8.5	0.5	0.2	0.2	0.0	0.0	89.5	1.1	9.4	0.111	0.521	21.039181	-99.739540	
Pinal de Amoles	140.00	3	0	2379	2.4	85.9	1.8	8.3	0.9	0.4	0.3	0.0	0.0	88.3	1.8	9.9	0.086	0.502	21.137553	-99.620601	
Jalpan de Serra	179.30	3	0	8781	2.9	89.1	0.4	6.2	0.6	0.5	0.2	0.1	0.0	92.0	0.4	7.6	0.083	0.501	21.209415	-99.454184	
Landa de Matamoros	201.60	3	0	3263	1.8	92.9	1.2	3.0	0.4	0.2	0.2	0.2	0.1	94.7	1.2	4.1	0.089	0.509	21.186114	-99.314461	
El Lobo	236.40	3	0	1483	4.3	85.4	0.6	7.6	1.3	0.3	0.5	0.0	0.0	89.7	0.6	9.7	0.110	0.511	21.292306	-99.116327	
Lim. Edos. Term. Qro. Ppia. S. L. P.	238.33	0	0																		
Xilitla	266.40	1	0	2865	7.4	77.4	1.3	9.6	1.3	2.0	0.5	0.1	0.4	84.8	1.3	13.9	0.097	0.508	21.379004	-98.998505	
T. C. Portezuelo - Cd. Valles	276.98	1	0	3750	5.7	81.3	1.3	7.4	1.8	1.3	0.7	0.4	0.1	87.0	1.3	11.7	0.079	0.502	21.442597	-98.929830	

SAN LUIS POTOSI

22 CARR : San Luis Potosí - Ent. Arcinas

CLAVE: 00134

RUTA: MEX-049

AÑO: 2022

LUGAR	ESTACION				CLASIFICACION VEHICULAR EN PORCIENTO													COORDENADAS			
	KM	TE	SC	TDPA	M	A	B	C2	C3	T3S2	T3S3	T3S2R4	OTROS	A	B	C	K'	D	LATITUD	LONGITUD	
T. C. San Luis Potosí - Matehuala	0.00	0	0																		
T. Izq. Periférico de San Luis Potosí	9.35	3	1	10861	5.5	80.6	2.2	4.8	1.5	2.3	1.5	1.2	0.4	86.1	2.2	11.7	0.091	0.504	22.210141	-101.038569	
T. Izq. Periférico de San Luis Potosí	9.35	3	2	11021	4.7	81.3	2.4	4.5	1.5	2.6	1.3	1.2	0.5	86.0	2.4	11.6	0.085	0.504	22.210036	-101.038649	
Mexquitic	22.50	1	1	7815	8.5	69.8	2.8	4.2	1.7	7.5	1.7	3.0	0.8	78.3	2.8	18.9	0.102	0.502	22.249086	-101.104884	
Mexquitic	22.50	1	2	7750	8.6	69.4	2.5	4.3	1.7	7.8	1.9	3.0	0.8	78.0	2.5	19.5	0.116	0.502	22.249364	-101.105571	
Mexquitic	22.50	3	1	6200	5.5	69.0	3.6	4.5	2.0	9.0	2.1	3.4	0.9	74.5	3.6	21.9	0.094	0.508	22.256614	-101.126006	
Mexquitic	22.50	3	2	6404	5.6	67.9	3.5	4.8	2.1	9.5	2.3	3.4	0.9	73.5	3.5	23.0	0.101	0.508	22.256538	-101.126057	
T. Der. Charcas	30.90	1	1	6526	4.6	68.4	3.9	5.0	1.9	9.5	2.2	3.6	0.9	73.0	3.9	23.1	0.092	0.505	22.309489	-101.157522	
T. Der. Charcas	30.90	1	2	6401	4.5	67.7	4.0	5.2	1.9	9.8	2.3	3.7	0.9	72.2	4.0	23.8	0.094	0.505	22.309390	-101.157609	
T. Der. Charcas	30.90	3	1	5115	5.0	69.0	4.1	3.8	2.9	8.4	1.9	4.0	0.9	74.0	4.1	21.9	0.098	0.519	22.318642	-101.170984	
T. Der. Charcas	30.90	3	2	4746	5.0	67.9	4.5	4.0	3.0	8.5	2.2	4.0	0.9	72.9	4.5	22.6	0.089	0.519	22.318542	-101.171046	
Lim. Edos. Term. S. L. P. Ppia. Zac.	55.13	0	0																		
Lim. Edos. Term. Zac. Ppia. S. L. P.	89.30	0	0																		
T. Der. Salinas	99.00	1	1	3667	5.5	59.7	5.5	4.5	2.4	12.1	3.9	5.6	0.8	65.2	5.5	29.3	0.068	0.517	22.602857	-101.705629	
T. Der. Salinas	99.00	1	2	3420	5.6	59.6	5.1	4.9	2.7	11.9	3.5	5.9	0.8	65.2	5.1	29.7	0.079	0.517	22.602744	-101.705683	
T. Der. Salinas	99.00	3	1	3891	5.4	57.8	5.3	4.4	1.6	15.3	3.4	5.9	0.9	63.2	5.3	31.5	0.088	0.507	22.619157	-101.736813	
T. Der. Salinas	99.00	3	2	4006	5.9	56.4	5.0	4.4	2.1	16.5	3.2	5.7	0.8	62.3	5.0	32.7	0.089	0.507	22.619049	-101.736825	
Lim. Edos. Term. S. L. P. Ppia. Zac.	122.47	0	0																		
T. Izq. Pánfilo Natera	139.00	1	1	3492	1.8	57.5	4.6	11.1	3.6	11.8	3.5	5.1	1.0	59.3	4.6	36.1	0.076	0.513	22.678805	-102.096573	
T. Izq. Pánfilo Natera	139.00	1	2	3318	1.7	57.9	4.3	10.7	3.6	12.1	3.7	5.0	1.0	59.6	4.3	36.1	0.077	0.513	22.678616	-102.096597	
Ent. Arcinas	162.98	1	1	4652	1.8	57.8	4.6	10.8	3.3	12.0	3.6	5.2	0.9	59.6	4.6	35.8	0.080	0.545	22.719962	-102.325328	
Ent. Arcinas	162.98	1	2	3889	1.6	58.0	4.1	10.1	3.8	12.5	3.5	5.4	1.0	59.6	4.1	36.3	0.071	0.545	22.719735	-102.325377	

23 CARR : San Luis Potosí - Lagos de Moreno

CLAVE: 00133

RUTA: MEX-070-080

AÑO: 2022

LUGAR	ESTACION				CLASIFICACION VEHICULAR EN PORCIENTO													COORDENADAS			
	KM	TE	SC	TDPA	M	A	B	C2	C3	T3S2	T3S3	T3S2R4	OTROS	A	B	C	K'	D	LATITUD	LONGITUD	
San Luis Potosí	0.00	3	1	19921	1.9	94.6	0.3	1.4	0.3	0.4	0.4	0.4	0.3	96.5	0.3	3.2	0.089	0.513	22.133841	-101.031014	
San Luis Potosí	0.00	3	2	21016	1.8	94.5	0.4	1.6	0.3	0.4	0.8	0.1	0.1	96.3	0.4	3.3	0.078	0.513	22.133540	-101.031269	
X. Periférico de San Luis Potosí	8.41	3	0	10786	3.7	81.1	1.3	5.0	2.6	4.1	1.3	0.5	0.4	84.8	1.3	13.9	0.078	0.522	22.127600	-101.045553	
El Tepetate	41.90	1	0	9085	2.7	66.9	3.0	6.5	3.1	9.4	3.4	4.1	0.9	69.6	3.0	27.4	0.070	0.501	22.025523	-101.224496	
El Tepetate	41.90	3	0	8279	3.4	64.5	3.5	6.4	2.9	10.4	3.0	5.0	0.9	67.9	3.5	28.6	0.078	0.506	22.007160	-101.250094	
Villa de Arriaga	61.90	3	0	4758	3.0	65.4	3.9	6.6	3.4	10.4	4.0	2.8	0.5	68.4	3.9	27.7	0.069	0.504	21.896712	-101.410213	
Lim. Edos. Term. S. L. P. Ppia. Zac.	70.23	0	0																		
Lim. Edos. Term. Zac. Ppia. Jal.	82.94	0	0																		

SAN LUIS POTOSI

23 CARR : San Luis Potosi - Lagos de Moreno

CLAVE: 00133

RUTA : MEX-070-080

AÑO : 2022

LUGAR	ESTACION				CLASIFICACION VEHICULAR EN PORCIENTO										COORDENADAS					
	KM	TE	SC	TDPA	M	A	B	C2	C3	T3S2	T3S3	T3S2R4	OTROS	A	B	C	K'	D	LATITUD	LONGITUD
Ojuelos de Jalisco	83.20	1	0	5947	4.1	73.8	3.4	6.1	2.0	6.5	2.6	1.3	0.2	77.9	3.4	18.7	0.088	0.516	21.875443	-101.573256
Ojuelos de Jalisco	83.20	3	0	3195	5.5	75.3	3.3	4.8	1.4	5.3	2.5	1.7	0.2	80.8	3.3	15.9	0.069	0.507	21.854465	-101.593857
X. C. Lagos de Moreno - San Luis Potosi (Cuota)	140.00	1	0	4332	5.4	70.2	3.8	6.5	3.0	7.0	2.0	1.7	0.4	75.6	3.8	20.6	0.107	0.519	21.447531	-101.805888
X. C. León - Aguascalientes	146.90	1	1	6906	5.2	64.8	3.9	4.5	2.6	12.0	2.2	4.6	0.2	70.0	3.9	26.1	0.108	0.503	21.375770	-101.894355
X. C. León - Aguascalientes	146.90	1	2	6820	5.3	64.6	4.0	4.5	2.4	12.0	2.1	4.9	0.2	69.9	4.0	26.1	0.098	0.503	21.375672	-101.894289
Lagos de Moreno	150.00	0	0																	

24 CARR : San Luis Potosi - Matehuala

CLAVE: 24508

RUTA : MEX-057

AÑO : 2022

LUGAR	ESTACION				CLASIFICACION VEHICULAR EN PORCIENTO										COORDENADAS					
	KM	TE	SC	TDPA	M	A	B	C2	C3	T3S2	T3S3	T3S2R4	OTROS	A	B	C	K'	D	LATITUD	LONGITUD
San Luis Potosi	0.00	0	0																	
X. Periférico de San Luis Potosi	7.36	3	1	16664	3.1	80.4	1.8	8.1	2.1	2.5	0.9	0.8	0.3	83.5	1.8	14.7	0.093	0.505	22.207192	-100.919934
X. Periférico de San Luis Potosi	7.36	3	2	16967	3.0	80.8	1.9	8.4	1.9	2.2	1.0	0.6	0.2	83.8	1.9	14.3	0.083	0.505	22.207497	-100.919783
X. C . Libramiento Norponiente de San Luis Potosi (Cuota)	16.16	3	1	7778	2.2	63.9	3.4	8.0	3.4	10.8	3.7	4.3	0.3	66.1	3.4	30.5	0.079	0.501	22.267564	-100.864714
X. C . Libramiento Norponiente de San Luis Potosi (Cuota)	16.16	3	2	7758	2.0	64.6	3.0	8.0	3.0	10.6	3.6	4.9	0.3	66.6	3.0	30.4	0.100	0.501	22.267310	-100.865099
Ventura (X. Nuevo Libramiento de SLP)	33.20	3	1	15787	2.0	40.0	5.2	4.5	3.3	33.8	3.9	6.4	0.9	42.0	5.2	52.8	0.085	0.504	22.342554	-100.796903
Ventura (X. Nuevo Libramiento de SLP)	33.20	3	2	16029	1.9	40.5	5.2	4.7	3.3	32.9	4.0	6.6	0.9	42.4	5.2	52.4	0.076	0.504	22.342126	-100.797591
T. Der. Villa Hidalgo Sur	45.94	1	1	15164	2.8	41.4	6.4	6.4	2.8	29.1	3.9	6.3	0.9	44.2	6.4	49.4	0.067	0.510	22.421587	-100.715790
T. Der. Villa Hidalgo Sur	45.94	1	2	15776	2.7	41.5	6.1	6.3	2.6	30.3	3.8	5.8	0.9	44.2	6.1	49.7	0.065	0.510	22.421705	-100.715924
T. Der. Villa Hidalgo Sur	45.94	3	1	14650	2.4	43.0	4.7	7.5	3.2	29.2	3.6	5.7	0.7	45.4	4.7	49.9	0.072	0.505	22.434553	-100.709905
T. Der. Villa Hidalgo Sur	45.94	3	2	14386	2.4	42.4	4.7	7.4	3.3	29.5	3.8	5.7	0.8	44.8	4.7	50.5	0.075	0.505	22.434700	-100.710171
T. Der. Villa Hidalgo Norte	52.00	3	1	15490	1.6	47.8	4.0	5.8	3.0	27.5	3.5	6.0	0.8	49.4	4.0	46.6	0.055	0.526	22.512396	-100.665256
T. Der. Villa Hidalgo Norte	52.00	3	2	17193	1.6	49.1	4.0	5.9	3.0	25.8	3.7	6.1	0.8	50.7	4.0	45.3	0.066	0.526	22.509924	-100.665519
T. Izq. Villa Arista	61.35	1	1	15010	1.4	47.8	4.6	5.2	2.3	28.4	3.7	5.8	0.8	49.2	4.6	46.2	0.059	0.509	22.566754	-100.639585
T. Izq. Villa Arista	61.35	1	2	15550	1.3	47.4	4.8	5.3	2.2	29.0	3.7	5.5	0.8	48.7	4.8	46.5	0.069	0.509	22.565883	-100.641721
T. Der. Ríoverde (Cuota)	65.22	1	1	16553	0.9	51.7	4.6	6.5	3.3	23.9	3.1	5.2	0.8	52.6	4.6	42.8	0.059	0.504	22.584298	-100.605305
T. Der. Ríoverde (Cuota)	65.22	1	2	16280	1.1	50.6	4.1	6.6	3.5	24.9	3.0	5.4	0.8	51.7	4.1	44.2	0.063	0.504	22.585621	-100.603104
T. Der. Guadalcázar	75.70	1	1	11889	5.3	34.9	5.0	4.8	3.3	37.6	3.0	5.3	0.8	40.2	5.0	54.8	0.057	0.525	22.634399	-100.522750
T. Der. Guadalcázar	75.70	1	2	10743	4.8	34.4	4.6	4.3	3.0	38.5	3.8	5.7	0.9	39.2	4.6	56.2	0.055	0.525	22.633315	-100.523489
T. Der. Guadalcázar	75.70	3	1	11805	7.6	33.0	5.3	4.8	2.9	36.1	3.7	5.7	0.9	40.6	5.3	54.1	0.057	0.505	22.644069	-100.516213
T. Der. Guadalcázar	75.70	3	2	12061	5.9	35.1	6.0	4.3	2.1	36.7	3.6	5.4	0.9	41.0	6.0	53.0	0.060	0.505	22.644784	-100.516020
T. Der. Cd. del Maiz	109.62	3	1	11394	7.4	33.1	5.4	4.7	3.0	36.1	3.7	5.6	1.0	40.5	5.4	54.1	0.060	0.508	22.941159	-100.461552
T. Der. Cd. del Maiz	109.62	3	2	11766	6.1	35.0	5.9	4.4	2.2	36.5	3.6	5.4	0.9	41.1	5.9	53.0	0.058	0.508	22.941867	-100.461939
La Bonita	171.40	1	1	9530	3.6	44.6	4.3	7.7	2.3	30.0	3.2	3.4	0.9	48.2	4.3	47.5	0.070	0.524	23.473086	-100.611604

SAN LUIS POTOSI

24 CARR: San Luis Potosi - Matehuala

CLAVE: 24508

RUTA: MEX-057

AÑO: 2022

LUGAR	ESTACION				CLASIFICACION VEHICULAR EN PORCIENTO														COORDENADAS	
	KM	TE	SC	TDPA	M	A	B	C2	C3	T3S2	T3S3	T3S2R4	OTROS	A	B	C	K'	D	LATITUD	LONGITUD
La Bonita	171.40	1	2	10508	3.3	43.6	4.6	7.1	2.6	30.9	3.4	3.6	0.9	46.9	4.6	48.5	0.063	0.524	23.473035	-100.611784
Matehuala	187.39	1	1	10537	3.1	43.6	5.4	7.2	2.0	30.0	3.9	4.0	0.8	46.7	5.4	47.9	0.063	0.526	23.574435	-100.631154
Matehuala	187.39	1	2	11685	3.0	44.1	5.6	7.3	2.1	29.5	3.6	3.9	0.9	47.1	5.6	47.3	0.064	0.526	23.574368	-100.631476

25 CARR: T. C. (Ent. El Huizache- Ant. Morelos)-El Salto

CLAVE: 24204

RUTA: MEX-080

AÑO: 2022

LUGAR	ESTACION				CLASIFICACION VEHICULAR EN PORCIENTO														COORDENADAS	
	KM	TE	SC	TDPA	M	A	B	C2	C3	T3S2	T3S3	T3S2R4	OTROS	A	B	C	K'	D	LATITUD	LONGITUD
T. C. El Huizache - Ant. Morelos	0.00	3	0	3033	3.1	84.8	0.1	7.4	1.5	2.0	0.3	0.5	0.3	87.9	0.1	12.0	0.081	0.514	22.535271	-99.307498
Salto del Agua	12.00	0	0																	

26 CARR: T. C. (Qro - S.L.P.) - Tierra Nueva

CLAVE: 24203

RUTA: MEX-057

AÑO: 2022

LUGAR	ESTACION				CLASIFICACION VEHICULAR EN PORCIENTO														COORDENADAS	
	KM	TE	SC	TDPA	M	A	B	C2	C3	T3S2	T3S3	T3S2R4	OTROS	A	B	C	K'	D	LATITUD	LONGITUD
T. C. Querétaro - San Luis Potosi	0.00	3	0	1971	5.6	74.1	0.4	12.7	3.1	1.8	1.9	0.2	0.2	79.7	0.4	19.9	0.090	0.521	21.693762	-100.684643
Tierra Nueva	13.10	0	0																	

27 CARR: T. C. (S.L.P. - Matehuala) - Villa Hidalgo

CLAVE: 24619

RUTA: MEX-057

AÑO: 2022

LUGAR	ESTACION				CLASIFICACION VEHICULAR EN PORCIENTO														COORDENADAS	
	KM	TE	SC	TDPA	M	A	B	C2	C3	T3S2	T3S3	T3S2R4	OTROS	A	B	C	K'	D	LATITUD	LONGITUD
Paso por Villa Hidalgo (Sur)	0.00	3	0	2843	4.7	75.8	3.5	7.1	1.7	2.6	2.1	2.1	0.4	80.5	3.5	16.0	0.078	0.507	22.431605	-100.703018
Paso por Villa Hidalgo (Norte)	10.20	1	0	3064	3.5	80.4	3.5	6.3	1.1	2.4	2.1	0.4	0.3	83.9	3.5	12.6	0.070	0.522	22.495364	-100.665786

28 CARR: Tamazunchale - San Felipe Orizatlán

CLAVE: 00609

RUTA: MEX-085

AÑO: 2022

LUGAR	ESTACION				CLASIFICACION VEHICULAR EN PORCIENTO														COORDENADAS	
	KM	TE	SC	TDPA	M	A	B	C2	C3	T3S2	T3S3	T3S2R4	OTROS	A	B	C	K'	D	LATITUD	LONGITUD
T. C. Portezuelo - Cd. Valles	0.00	3	0	13273	22.4	67.5	0.5	6.5	0.7	0.4	1.2	0.6	0.2	89.9	0.5	9.6	0.088	0.507	21.250405	-98.766131
Lim. Edos. Term. S. L. P. Ppia. Hgo.	18.50	0	0																	
San Felipe Orizatlán	27.10	1	0	3024	18.6	69.8	2.0	6.8	1.5	0.5	0.4	0.3	0.1	88.4	2.0	9.6	0.086	0.507	21.170705	-98.617920

SAN LUIS POTOSI

29 CARR : Lagos de Moreno - Villa de Arriaga (Cuota)

CLAVE:

RUTA : MEX-080D

AÑO : 2022

LUGAR	ESTACION				CLASIFICACION VEHICULAR EN PORCIENTO													COORDENADAS		
	KM	TE	SC	TDPA	M	A	B	C2	C3	T3S2	T3S3	T3S2R4	OTROS	A	B	C	K'	D	LATITUD	LONGITUD
X. C. San Luis Potosí - Lagos de Moreno	12.10	3	0	6230	14.5	38.6	9.1	5.0	5.0	15.7	3.5	7.6	1.0	53.1	9.1	37.8	0.077	0.515	21.452073	-101.810302
T. Der. El Cuarenta	22.20	3	0	7348	13.9	37.0	4.6	4.6	3.0	20.9	3.9	11.1	1.0	50.9	4.6	44.5	0.063	0.519	21.508363	-101.738830
Lim. Edos. Term. Jal. Ppia. Gto.	46.30	0	0																	
X. C. Dolores Hidalgo - Ojuelos de Jalisco	58.18	1	0	10453	1.5	69.9	6.7	16.1	1.7	0.9	1.6	1.3	0.3	71.4	6.7	21.9	0.061	0.505	21.739115	-101.524462
Lim. Edos. Term. Gto. Ppia. SLP.	68.63	0	0																	
X. C. San Luis Potosí - Villa de Arriaga (Cuota)	78.00	1	0	7198	3.6	46.6	7.4	9.3	2.9	17.4	2.9	9.0	0.9	50.2	7.4	42.4	0.061	0.528	21.891380	-101.406173

30 CARR : Libramiento de Matehuala (Cuota)

CLAVE: 24205

RUTA : MEX-057D

AÑO : 2022

LUGAR	ESTACION				CLASIFICACION VEHICULAR EN PORCIENTO													COORDENADAS		
	KM	TE	SC	TDPA	M	A	B	C2	C3	T3S2	T3S3	T3S2R4	OTROS	A	B	C	K'	D	LATITUD	LONGITUD
T. C. San Luis Potosí - Matehuala	0.00	3	1	7459	1.2	28.3	4.1	7.7	2.4	44.8	4.9	5.9	0.7	29.5	4.1	66.4	0.069	0.507	23.602461	-100.622447
T. C. San Luis Potosí - Matehuala	0.00	3	2	7263	1.7	29.7	4.2	7.9	3.0	41.9	5.1	5.7	0.8	31.4	4.2	64.4	0.068	0.507	23.602611	-100.622681
Plaza de Cobro Matehuala	7.00	2	1	7556	0.1	26.7	1.7	5.7	3.5	49.9	3.9	7.2	1.3	26.8	1.7	71.5	0.073	0.500	23.664125	-100.607230
Plaza de Cobro Matehuala	7.00	2	2	7556	0.1	26.7	1.7	5.7	3.5	49.9	3.9	7.2	1.3	26.8	1.7	71.5	0.073	0.500	23.664125	-100.607230
T. C. Matehuala - Ent. Puerto México	14.20	1	1	7617	1.6	32.5	3.8	7.3	2.4	40.1	5.8	5.7	0.8	34.1	3.8	62.1	0.070	0.506	23.694145	-100.611550
T. C. Matehuala - Ent. Puerto México	14.20	1	2	7448	1.3	30.2	3.7	8.0	2.5	43.9	4.1	5.5	0.8	31.5	3.7	64.8	0.076	0.506	23.694107	-100.611839

31 CARR : Libramiento Norponiente de San Luis Potosí (Cuota)

CLAVE:

RUTA : MEX-057D

AÑO : 2022

LUGAR	ESTACION				CLASIFICACION VEHICULAR EN PORCIENTO													COORDENADAS		
	KM	TE	SC	TDPA	M	A	B	C2	C3	T3S2	T3S3	T3S2R4	OTROS	A	B	C	K'	D	LATITUD	LONGITUD
T. Libramiento Oriente de San Luis Potosí (Cuota)	0.00	0	0																	
X. C. San Luis Potosí - Matehuala	5.60	1	0	3434	8.1	31.6	9.0	5.6	4.7	25.5	4.2	10.4	0.9	39.7	9.0	51.3	0.054	0.516	22.254798	-100.856318
X. C. San Luis Potosí - Matehuala	5.60	3	0	5940	5.9	38.0	4.3	7.0	3.9	26.2	4.3	9.9	0.5	43.9	4.3	51.8	0.065	0.551	22.281933	-100.892680
Plaza de Cobro Vicente Rangel Lozano	17.40	2	0	5341	0.2	23.1	2.1	4.3	5.1	38.1	5.9	18.2	3.0	23.3	2.1	74.6	0.067	0.500	22.299904	-100.971154
T. C. San Luis Potosí - Ent. Arcinas	31.20	1	0	5770	5.0	34.9	4.5	7.1	4.6	27.3	5.2	10.7	0.7	39.9	4.5	55.6	0.062	0.526	22.229251	-101.048078
T. C. San Luis Potosí - Ent. Arcinas	31.20	3	0	4188	6.7	37.9	3.9	8.2	4.6	24.1	4.9	9.2	0.5	44.6	3.9	51.5	0.055	0.527	22.211169	-101.057411
T. C. San Luis Potosí Lagos de Moreno	54.50	0	0																	

32 CARR : Libramiento Oriente de San Luis Potosí (Cuota)

CLAVE: 24009

RUTA : MEX-057D

AÑO : 2022

LUGAR	ESTACION				CLASIFICACION VEHICULAR EN PORCIENTO													COORDENADAS		
	KM	TE	SC	TDPA	M	A	B	C2	C3	T3S2	T3S3	T3S2R4	OTROS	A	B	C	K'	D	LATITUD	LONGITUD
T. C. Querétaro - San Luis Potosí	0.00	0	0																	

SAN LUIS POTOSI

32 CARR: Libramiento Oriente de San Luis Potosí (Cuota)

CLAVE: 24009

RUTA: MEX-057D

AÑO: 2022

LUGAR	ESTACION				CLASIFICACION VEHICULAR EN PORCIENTO										COORDENADAS					
	KM	TE	SC	TDPA	M	A	B	C2	C3	T3S2	T3S3	T3S2R4	OTROS	A	B	C	K'	D	LATITUD	LONGITUD
X. C. Cd. Valles - San Luis Potosí	11.00	1	1	10773	4.4	28.6	7.5	5.3	4.1	38.0	4.7	6.4	1.0	33.0	7.5	59.5	0.061	0.517	22.118758	-100.826010
X. C. Cd. Valles - San Luis Potosí	11.00	1	2	11533	4.7	29.4	7.8	5.0	4.1	37.3	4.4	6.4	0.9	34.1	7.8	58.1	0.053	0.517	22.118785	-100.826197
Plaza de Cobro San Nicolás de Los Jassos	11.22	2	1	9979	0.2	25.9	1.9	5.7	4.7	47.5	4.6	7.9	1.6	26.1	1.9	72.0	0.067	0.500	22.129780	-100.825002
Plaza de Cobro San Nicolás de Los Jassos	11.22	2	2	9979	0.2	25.9	1.9	5.7	4.7	47.5	4.6	7.9	1.6	26.1	1.9	72.0	0.067	0.500	22.129780	-100.825002
T. C. San Luis Potosí - Matehuala	33.76	1	1	8549	1.5	32.0	4.9	5.3	3.5	41.4	4.9	5.8	0.7	33.5	4.9	61.6	0.058	0.524	22.320836	-100.802590
T. C. San Luis Potosí - Matehuala	33.76	1	2	9425	1.9	32.7	5.3	5.7	3.3	39.5	4.8	5.9	0.9	34.6	5.3	60.1	0.076	0.524	22.320889	-100.802744

33 CARR: Rayón - Ent. Tamuín (Cuota)

CLAVE:

RUTA: MEX-070D

AÑO: 2022

LUGAR	ESTACION				CLASIFICACION VEHICULAR EN PORCIENTO										COORDENADAS					
	KM	TE	SC	TDPA	M	A	B	C2	C3	T3S2	T3S3	T3S2R4	OTROS	A	B	C	K'	D	LATITUD	LONGITUD
Rayón	0.00	0	0																	
T. C. Rayón - Arroyo Seco	1.50	1	0	5889	2.9	75.0	5.8	3.7	1.6	5.5	1.7	3.0	0.8	77.9	5.8	16.3	0.081	0.507	21.862145	-99.630583
Plaza de Cobro Rayón	2.05	2	0	3415	0.6	66.0	3.9	4.3	3.3	9.2	4.3	7.8	0.6	66.6	3.9	29.5	0.090	0.500	21.863597	-99.623291
Vicente Guerrero	19.70	1	0	3609	4.7	67.9	6.5	2.9	2.2	7.6	2.3	4.9	1.0	72.6	6.5	20.9	0.091	0.507	21.866059	-99.498140
Vicente Guerrero	19.70	3	0	3848	4.3	62.1	6.6	5.5	4.0	7.4	4.4	4.7	1.0	66.4	6.6	27.0	0.076	0.501	21.864585	-99.477142
T. Izq. Tamasopo	34.50	3	0	4196	4.9	67.2	6.1	7.1	1.0	6.6	2.3	4.0	0.8	72.1	6.1	21.8	0.079	0.501	21.905927	-99.380136
Plaza de Cobro La Pitahaya	62.00	2	0	3794	0.8	67.9	3.6	3.8	3.7	7.9	4.7	7.0	0.6	68.7	3.6	27.7	0.090	0.500	21.967581	-99.174618
Ent. La Pitahaya	68.58	1	0	4188	4.0	70.2	5.9	3.9	2.9	6.8	2.4	3.2	0.7	74.2	5.9	19.9	0.083	0.503	22.004555	-99.131324
Ent. La Pitahaya	68.58	3	0	2440	5.9	60.9	7.5	4.0	1.6	8.8	3.7	6.6	1.0	66.8	7.5	25.7	0.086	0.506	21.995790	-99.108773
Plaza de Cobro La Calera	89.60	2	0	1446	0.3	47.1	1.3	3.5	3.6	19.4	6.6	15.4	2.8	47.4	1.3	51.3	0.090	0.500	21.904164	-98.955523
X. C. Cd. Valles - Tampico	107.33	1	0	2438	9.8	58.8	8.8	5.4	1.4	7.4	3.6	3.8	1.0	68.6	8.8	22.6	0.080	0.502	21.962131	-98.814883
X. C. Tamuín - Xolol	112.53	1	0	2728	7.4	58.8	8.1	10.0	1.2	6.9	2.4	4.2	1.0	66.2	8.1	25.7	0.086	0.516	21.981236	-98.768953
X. C. Cd. Valles - Tampico	117.30	1	0	2009	6.4	56.6	7.9	3.9	2.9	9.9	4.4	7.1	0.9	63.0	7.9	29.1	0.084	0.504	21.994248	-98.735046

34 CARR: Charcas - Villa Santo Domingo

CLAVE: 24624

RUTA: SLP-017

AÑO: 2022

LUGAR	ESTACION				CLASIFICACION VEHICULAR EN PORCIENTO										COORDENADAS					
	KM	TE	SC	TDPA	M	A	B	C2	C3	T3S2	T3S3	T3S2R4	OTROS	A	B	C	K'	D	LATITUD	LONGITUD
Charcas	0.00	3	0	1855	30.3	55.9	3.8	4.7	3.8	0.6	0.5	0.4	0.0	86.2	3.8	10.0	0.117	0.521	23.138085	-101.131462
Villa Santo Domingo	75.00	0	0																	

SAN LUIS POTOSI

35 CARR: Ébano - Estación Manuel

CLAVE: 24624

RUTA: SLP-TAM

AÑO: 2022

LUGAR	ESTACION				CLASIFICACION VEHICULAR EN PORCIENTO														COORDENADAS	
	KM	TE	SC	TDPA	M	A	B	C2	C3	T3S2	T3S3	T3S2R4	OTROS	A	B	C	K'	D	LATITUD	LONGITUD
Ébano	0.00	3	0	2829	18.2	66.2	0.4	9.7	1.4	2.1	0.3	1.4	0.3	84.4	0.4	15.2	0.086	0.503	22.233381	-98.366188
Lím. de Edos. Term. S. L. P. Ppia. Ver.	2.71	0	0																	
Lím. de Edos. Term. Ver. Ppia. S. L. P.	3.95	0	0																	
Lím. de Edos. Term. S. L. P. Ppia. Ver.	5.00	0	0																	
Lím. de Edos. Term. Ver. Ppia. Tamps.	25.00	0	0																	
Estación Manuel	65.60	0	0																	

36 CARR: Matehuala - La Paz

CLAVE: 24621

RUTA: SLP-020

AÑO: 2022

LUGAR	ESTACION				CLASIFICACION VEHICULAR EN PORCIENTO														COORDENADAS	
	KM	TE	SC	TDPA	M	A	B	C2	C3	T3S2	T3S3	T3S2R4	OTROS	A	B	C	K'	D	LATITUD	LONGITUD
Matehuala	0.00	3	1	3292	26.6	67.7	0.1	4.8	0.4	0.3	0.1	0.0	0.0	94.3	0.1	5.6	0.094	0.502	23.669870	-100.654054
Matehuala	0.00	3	2	3319	25.6	69.3	0.1	4.2	0.4	0.3	0.1	0.0	0.0	94.9	0.1	5.0	0.103	0.502	23.669842	-100.654132
La Paz	8.00	1	1	2523	30.3	63.6	0.1	5.4	0.3	0.2	0.1	0.0	0.0	93.9	0.1	6.0	0.126	0.505	23.680266	-100.700572
La Paz	8.00	1	2	2569	30.3	63.7	0.1	5.1	0.4	0.3	0.1	0.0	0.0	94.0	0.1	5.9	0.101	0.505	23.680212	-100.700542

37 CARR: Matehuala - La Poza

CLAVE: 00086

RUTA: SLP-029-NL-061

AÑO: 2022

LUGAR	ESTACION				CLASIFICACION VEHICULAR EN PORCIENTO														COORDENADAS	
	KM	TE	SC	TDPA	M	A	B	C2	C3	T3S2	T3S3	T3S2R4	OTROS	A	B	C	K'	D	LATITUD	LONGITUD
Matehuala	0.00	3	0	4367	14.2	77.9	1.4	3.2	2.6	0.3	0.3	0.1	0.0	92.1	1.4	6.5	0.084	0.519	23.665208	-100.603663
Lim. Edos. Term. S. L. P. Ppia. N. L.	19.70	0	0																	
Lim. Edos. Term. N. L. Ppia. S. L. P.	19.90	0	0																	
Lim. Edos. Term. S. L. P. Ppia. N. L.	21.53	0	0																	
Doctor Arroyo	49.00	1	0	3924	7.0	83.6	1.3	5.4	1.6	0.5	0.3	0.2	0.1	90.6	1.3	8.1	0.079	0.507	23.688424	-100.215942
La Ascención	131.00	1	0	933	9.6	78.7	2.7	5.8	1.2	1.8	0.2	0.0	0.0	88.3	2.7	9.0	0.089	0.536	24.321671	-99.905830

38 CARR: Periférico de San Luis Potosí

CLAVE: 24618

RUTA: SLP-032

AÑO: 2022

LUGAR	ESTACION				CLASIFICACION VEHICULAR EN PORCIENTO														COORDENADAS	
	KM	TE	SC	TDPA	M	A	B	C2	C3	T3S2	T3S3	T3S2R4	OTROS	A	B	C	K'	D	LATITUD	LONGITUD
T. C. San Luis Potosí - Ent. Arcinas	0.00	0	0																	
X. C. Querétaro - San Luis Potosí (Lateral)	22.00	3	1	7649	6.9	71.6	2.7	7.2	2.9	4.5	1.7	1.9	0.6	78.5	2.7	18.8	0.080	0.529	22.134859	-100.916943
X. C. Querétaro - San Luis Potosí (Central)	22.00	3	1	17989	7.5	76.3	2.0	6.3	2.4	3.2	1.1	0.5	0.7	83.8	2.0	14.2	0.084	0.506	22.135019	-100.917028
X. C. Querétaro - San Luis Potosí (Central)	22.00	3	2	17573	8.2	73.2	1.7	7.9	2.6	3.8	1.5	0.6	0.5	81.4	1.7	16.9	0.085	0.506	22.134914	-100.917146

SAN LUIS POTOSI

38 CARR: Periférico de San Luis Potosí

CLAVE: 24618

RUTA: SLP-032

AÑO: 2022

LUGAR	ESTACION				CLASIFICACION VEHICULAR EN PORCIENTO													COORDENADAS		
	KM	TE	SC	TDPA	M	A	B	C2	C3	T3S2	T3S3	T3S2R4	OTROS	A	B	C	K'	D	LATITUD	LONGITUD
X. C. Querétaro - San Luis Potosí (Lateral)	22.00	3	2	8590	6.9	71.5	2.6	7.1	3.0	4.5	1.8	2.0	0.6	78.4	2.6	19.0	0.091	0.529	22.134909	-100.917231
X. C. San Luis Potosí - Cd. Valles	25.00	3	1	23625	8.5	78.9	1.5	6.0	1.5	1.9	0.6	0.9	0.2	87.4	1.5	11.1	0.082	0.518	22.166242	-100.915134
X. C. San Luis Potosí - Cd. Valles	25.00	3	2	26911	7.5	81.1	1.1	4.6	1.5	2.1	0.6	1.2	0.3	88.6	1.1	10.3	0.075	0.518	22.166217	-100.915259
X. C. San Luis Potosí - Matehuala	30.70	1	1	17580	5.5	76.8	1.5	7.2	2.7	3.6	1.3	0.9	0.5	82.3	1.5	16.2	0.082	0.500	22.196827	-100.920215
X. C. San Luis Potosí - Matehuala	30.70	1	2	17548	5.5	76.8	1.4	7.2	2.7	3.6	1.4	0.9	0.5	82.3	1.4	16.3	0.073	0.500	22.196432	-100.920290
T. C. San Luis Potosí - Ent. Arcinas	44.80	0	0																	

39 CARR: Ramal a Cerritos

CLAVE: 24615

RUTA: SLP-007

AÑO: 2022

LUGAR	ESTACION				CLASIFICACION VEHICULAR EN PORCIENTO													COORDENADAS		
	KM	TE	SC	TDPA	M	A	B	C2	C3	T3S2	T3S3	T3S2R4	OTROS	A	B	C	K'	D	LATITUD	LONGITUD
T. C. San Luis Potosí - Matehuala	0.00	3	0	367	2.8	63.3	3.8	23.8	2.3	4.0	0.0	0.0	0.0	66.1	3.8	30.1	0.112	0.539	22.612196	-100.546980
Cerritos	37.00	0	0																	

40 CARR: Ramal a Pozo de Acuña

CLAVE: 24626

RUTA: SLP-009

AÑO: 2022

LUGAR	ESTACION				CLASIFICACION VEHICULAR EN PORCIENTO													COORDENADAS		
	KM	TE	SC	TDPA	M	A	B	C2	C3	T3S2	T3S3	T3S2R4	OTROS	A	B	C	K'	D	LATITUD	LONGITUD
T. C. San Luis Potosí - Matehuala	0.00	3	0	516	1.7	80.7	0.6	16.0	1.0	0.0	0.0	0.0	0.0	82.4	0.6	17.0	0.114	0.519	22.641869	-100.515487
Pozo de Acuña	37.90	0	0																	

41 CARR: Rayón - Arroyo Seco

CLAVE: 24008

RUTA: SLP-011

AÑO: 2022

LUGAR	ESTACION				CLASIFICACION VEHICULAR EN PORCIENTO													COORDENADAS		
	KM	TE	SC	TDPA	M	A	B	C2	C3	T3S2	T3S3	T3S2R4	OTROS	A	B	C	K'	D	LATITUD	LONGITUD
Rayón	0.00	3	0	1472	6.4	69.6	0.5	21.5	1.5	0.2	0.1	0.2	0.0	76.0	0.5	23.5	0.092	0.516	21.848724	-99.627137
Lagunillas	36.00	1	0	349	4.4	74.7	0.7	17.7	1.8	0.4	0.1	0.2	0.0	79.1	0.7	20.2	0.109	0.508	21.595034	-99.564772
Lim. De Edos. Term. S.L.P. Ppia Qro.	51.00	0	0																	
Arroyo Seco	57.00	1	0	736	6.6	92.2	0.1	0.4	0.4	0.0	0.3	0.0	0.0	98.8	0.1	1.1	0.090	0.525	21.553924	-99.681287

42 CARR: Santo Domingo - Cerro Gordo

CLAVE: 24614

RUTA: SLP-022

AÑO: 2022

LUGAR	ESTACION				CLASIFICACION VEHICULAR EN PORCIENTO													COORDENADAS		
	KM	TE	SC	TDPA	M	A	B	C2	C3	T3S2	T3S3	T3S2R4	OTROS	A	B	C	K'	D	LATITUD	LONGITUD
T. C. Cd. Valles - San Luis Potosí	0.00	3	0	5142	4.3	72.4	1.8	14.8	1.7	3.0	1.5	0.3	0.2	76.7	1.8	21.5	0.081	0.503	22.095501	-100.745932

SAN LUIS POTOSI

42 CARR : Santo Domingo - Cerro Gordo

CLAVE: 24614

RUTA: SLP-022

AÑO: 2022

LUGAR	ESTACION				CLASIFICACION VEHICULAR EN PORCIENTO														COORDENADAS	
	KM	TE	SC	TDPA	M	A	B	C2	C3	T3S2	T3S3	T3S2R4	OTROS	A	B	C	K'	D	LATITUD	LONGITUD
T. C. Querétaro - San Luis Potosí	19.00	1	0	4367	8.8	72.6	1.2	11.5	2.2	1.5	0.8	1.2	0.2	81.4	1.2	17.4	0.089	0.517	21.976351	-100.818519

43 CARR : Tamuín - Estación F.F.C.C. Tamuín

CLAVE: 24022

RUTA: SLP-040

AÑO: 2022

LUGAR	ESTACION				CLASIFICACION VEHICULAR EN PORCIENTO														COORDENADAS	
	KM	TE	SC	TDPA	M	A	B	C2	C3	T3S2	T3S3	T3S2R4	OTROS	A	B	C	K'	D	LATITUD	LONGITUD
Tamuín	0.00	3	0	6462	13.3	71.8	2.9	6.1	2.5	1.3	0.7	1.1	0.3	85.1	2.9	12.0	0.082	0.505	22.009921	-98.782607
Estación F.F.C.C. Tamuín	10.00	1	0	1530	43.0	49.6	0.9	1.0	2.8	1.4	0.3	1.0	0.0	92.6	0.9	6.5	0.101	0.521	22.078167	-98.811233

44 CARR : Tamuín - Xolol

CLAVE: 24027

RUTA: SLP-014

AÑO: 2022

LUGAR	ESTACION				CLASIFICACION VEHICULAR EN PORCIENTO														COORDENADAS	
	KM	TE	SC	TDPA	M	A	B	C2	C3	T3S2	T3S3	T3S2R4	OTROS	A	B	C	K'	D	LATITUD	LONGITUD
Tamuín	0.00	3	0	4232	15.0	67.6	0.6	7.3	3.0	3.3	1.2	1.6	0.4	82.6	0.6	16.8	0.091	0.506	21.999178	-98.762802
X. C. Rayón - Ent. Tamuín (Cuota)	2.56	3	0	3023	15.1	69.2	1.9	5.7	2.7	3.2	1.3	0.8	0.1	84.3	1.9	13.8	0.091	0.506	21.978444	-98.756656
San Vicente Tancuayalab	37.62	0	0																	
Xolol	97.00	0	0																	

45 CARR : Cerritos - Ent. Tula (Cuota)

CLAVE:

RUTA: SLP-075D

AÑO: 2022

LUGAR	ESTACION				CLASIFICACION VEHICULAR EN PORCIENTO														COORDENADAS	
	KM	TE	SC	TDPA	M	A	B	C2	C3	T3S2	T3S3	T3S2R4	OTROS	A	B	C	K'	D	LATITUD	LONGITUD
T. C. Cerritos - Rioverde (Cuota)	0.00	3	0	2973	15.0	65.9	3.6	3.6	2.4	3.4	2.0	3.3	0.8	80.9	3.6	15.5	0.076	0.512	22.454783	-100.314125
T. Der. Cerritos	2.69	3	0	2239	3.2	74.3	4.0	3.6	1.6	7.7	1.5	3.3	0.8	77.5	4.0	18.5	0.081	0.521	22.461811	-100.312991
T. Der. San José	18.70	3	0	2489	1.6	75.9	3.2	3.0	0.9	9.6	1.2	3.9	0.7	77.5	3.2	19.3	0.090	0.507	22.579189	-100.218309
T. Der. Buenavista	32.15	3	0	2212	1.8	69.8	2.8	7.7	1.4	10.9	1.7	3.0	0.9	71.6	2.8	25.6	0.086	0.510	22.636081	-100.100890
T. C. Antigua Morelos-Ent. El Huizache	51.20	0	0																	

46 CARR : Cerritos - Rioverde (Cuota)

CLAVE: 00138

RUTA: SLP-D

AÑO: 2022

LUGAR	ESTACION				CLASIFICACION VEHICULAR EN PORCIENTO														COORDENADAS	
	KM	TE	SC	TDPA	M	A	B	C2	C3	T3S2	T3S3	T3S2R4	OTROS	A	B	C	K'	D	LATITUD	LONGITUD
Cerritos	0.00	3	0	5525	2.1	68.5	4.9	6.3	2.3	5.7	1.6	7.7	0.9	70.6	4.9	24.5	0.077	0.517	22.586789	-100.582715
Villa Juárez	58.00	3	0	3997	1.5	75.1	5.5	4.9	2.3	5.2	2.3	3.0	0.2	76.6	5.5	17.9	0.079	0.535	22.315126	-100.282501
Río Verde	103.00	1	0	5859	2.3	73.8	5.5	4.4	2.3	4.8	1.9	4.1	0.9	76.1	5.5	18.4	0.087	0.507	21.924400	-99.959140

SAN LUIS POTOSI

47 CARR: San Luis Potosi - Villa de Arriaga (Cuota)

CLAVE: 24209

RUTA: SLP-D

AÑO: 2022

LUGAR	ESTACION				CLASIFICACION VEHICULAR EN PORCIENTO										COORDENADAS					
	KM	TE	SC	TDPA	M	A	B	C2	C3	T3S2	T3S3	T3S2R4	OTROS	A	B	C	K'	D	LATITUD	LONGITUD
T. C. Querétaro - San Luis Potosi	0.00	3	0	10745	2.2	63.8	2.3	4.5	2.8	18.5	1.7	3.4	0.8	66.0	2.3	31.7	0.119	0.525	22.005979	-100.849119
Villa de Arriaga	77.00	1	0	3636	2.5	40.5	5.6	7.2	3.1	25.9	3.6	11.0	0.6	43.0	5.6	51.4	0.068	0.530	21.892738	-101.387178

48 CARR: Rayón - Cd. del Maíz

CLAVE: 24206

RUTA: MEX-070-SLP-005

AÑO: 2022

LUGAR	ESTACION				CLASIFICACION VEHICULAR EN PORCIENTO										COORDENADAS					
	KM	TE	SC	TDPA	M	A	B	C2	C3	T3S2	T3S3	T3S2R4	OTROS	A	B	C	K'	D	LATITUD	LONGITUD
T. C. (Cd. Valles - San Luis Potosi)	0.00	0	0																	
Cárdenas	15.80	1	0	3108	4.1	89.2	0.9	3.9	1.1	0.3	0.2	0.2	0.1	93.3	0.9	5.8	0.104	0.504	21.983535	-99.647662
Cd. del Maíz	55.70	1	0	944	4.6	89.4	1.2	2.7	1.4	0.4	0.2	0.1	0.0	94.0	1.2	4.8	0.091	0.515	22.393879	-99.611824

49 CARR: San Lorenzo - Moctezuma

CLAVE: 24016

RUTA: MEX-063-SLP-012

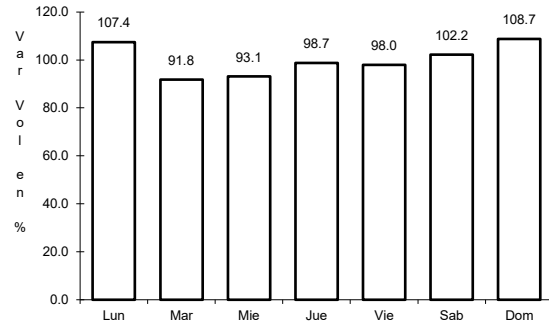
AÑO: 2022

LUGAR	ESTACION				CLASIFICACION VEHICULAR EN PORCIENTO										COORDENADAS					
	KM	TE	SC	TDPA	M	A	B	C2	C3	T3S2	T3S3	T3S2R4	OTROS	A	B	C	K'	D	LATITUD	LONGITUD
T. C. San Luis Potosi - Matehuala	0.00	3	0	1726	4.9	70.1	3.8	10.7	2.8	3.7	1.8	1.7	0.5	75.0	3.8	21.2	0.079	0.538	22.568106	-100.639360
Estación Moctezuma	49.00	0	0																	
Moctezuma	54.00	1	0	1916	9.7	81.9	1.2	5.4	0.7	0.5	0.3	0.3	0.0	91.6	1.2	7.2	0.111	0.504	22.757938	-101.066772

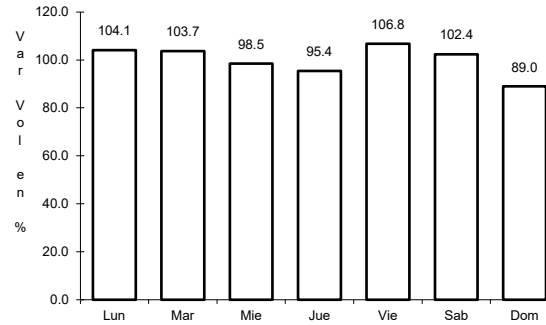
1 CARR: Antiguo Morelos - Ent. El Huizache

CLAVE: 00136

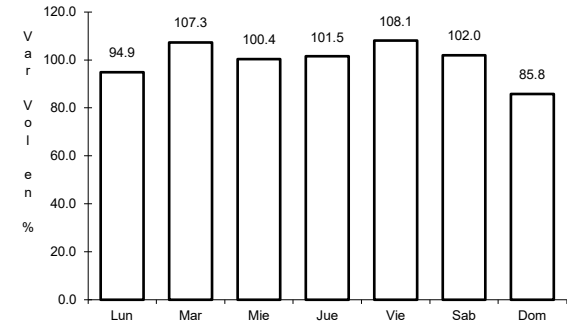
RUTA: MEX-080



Km: 0.00 Tipo: 3 Sent: 0



Km: 86.00 Tipo: 3 Sent: 0

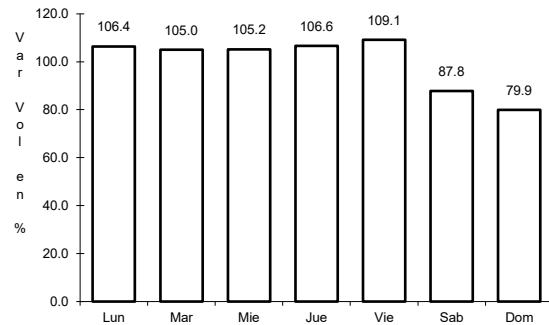


Km: 198.83 Tipo: 1 Sent: 0

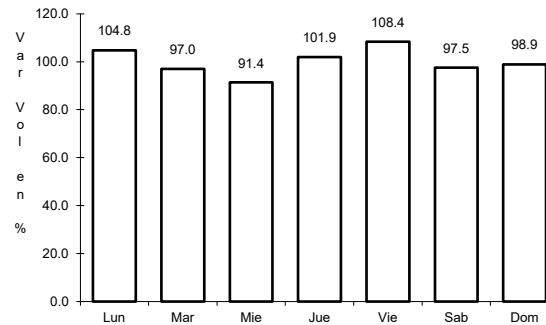
2 CARR: Carbonera - T. C. (Ent. Morelos - Saltillo)

CLAVE: 00218

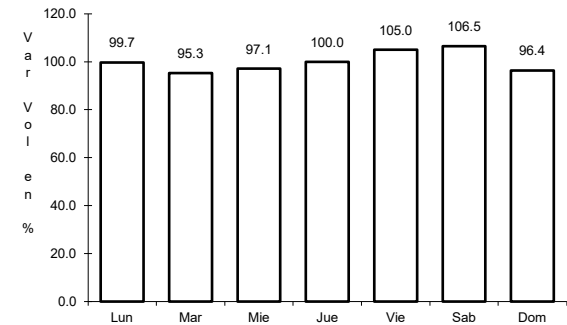
RUTA: MEX-062



Km: 0.00 Tipo: 3 Sent: 0



Km: 18.00 Tipo: 1 Sent: 0

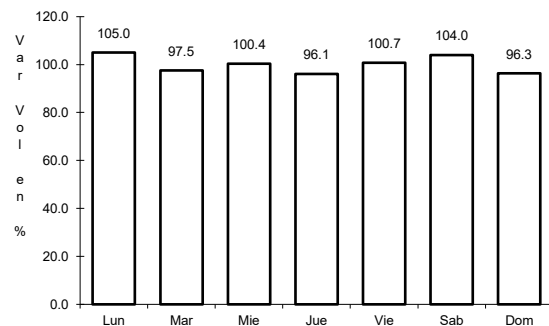


Km: 112.00 Tipo: 1 Sent: 0

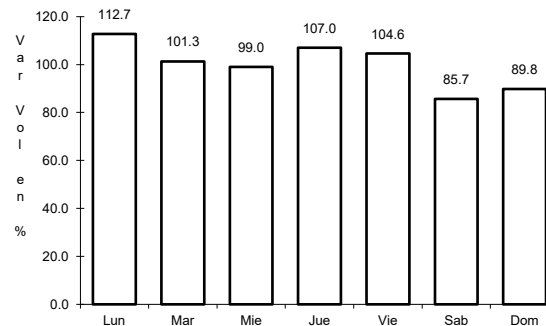
3 CARR: Cd. Valles - Cd. Victoria

CLAVE: 00509

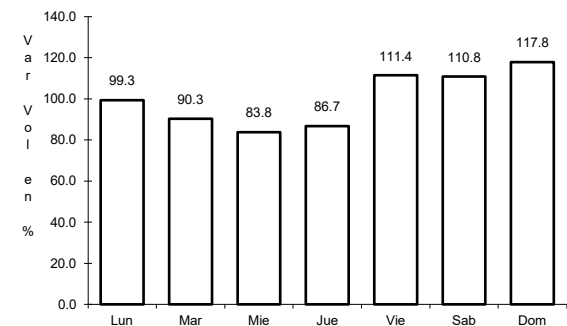
RUTA: MEX-085



Km: 0.00 Tipo: 3 Sent: 0



Km: 110.00 Tipo: 3 Sent: 0

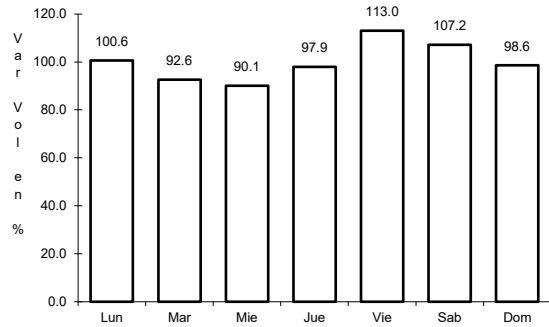


Km: 232.00 Tipo: 1 Sent: 0

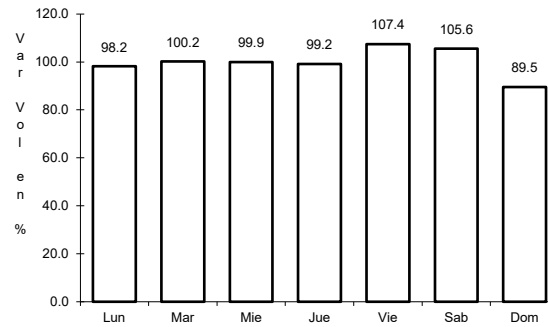
4 CARR: Cd. Valles - San Luis Potosí

CLAVE: 24135

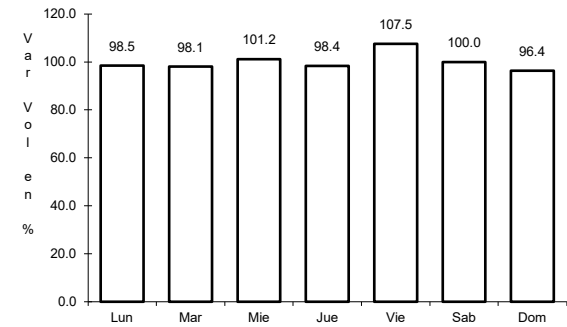
RUTA: MEX-070



Km: 0.00 Tipo: 3 Sent: 1



Km: 0.00 Tipo: 3 Sent: 2

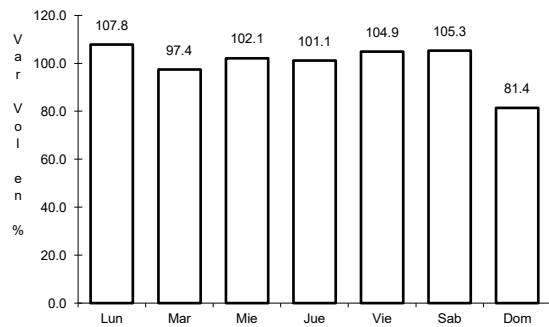


Km: 145.90 Tipo: 1 Sent: 0

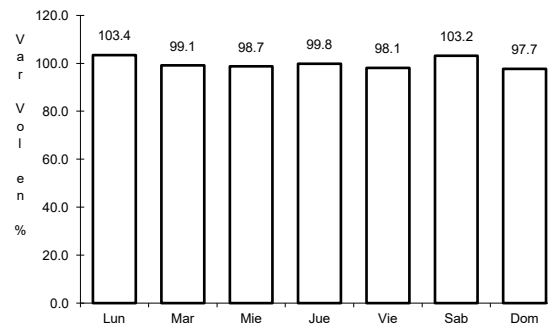
5 CARR: Cd. Valles - Tampico

CLAVE: 00138

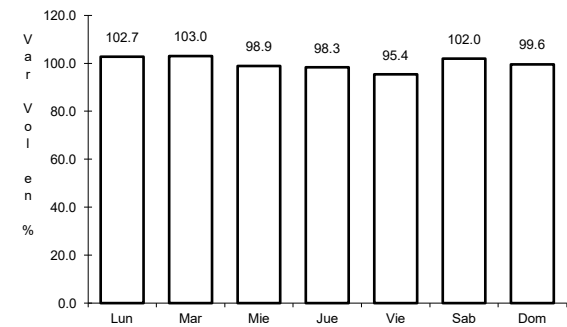
RUTA: MEX-070



Km: 0.00 Tipo: 3 Sent: 0



Km: 138.00 Tipo: 1 Sent: 1

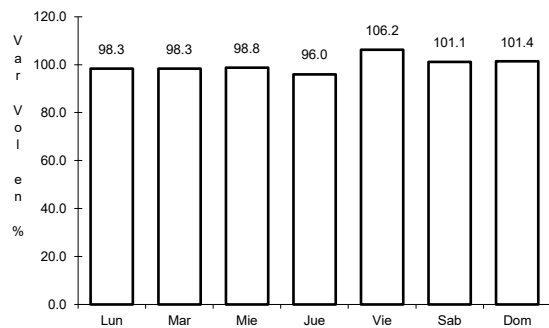


Km: 138.00 Tipo: 1 Sent: 2

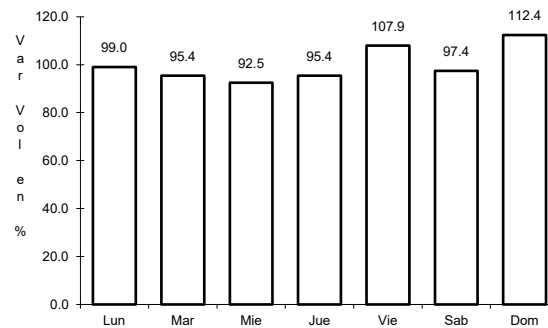
6 CARR: El Clarín - Agua Buena

CLAVE: 24283

RUTA: MEX-070



Km: 0.00 Tipo: 3 Sent: 0

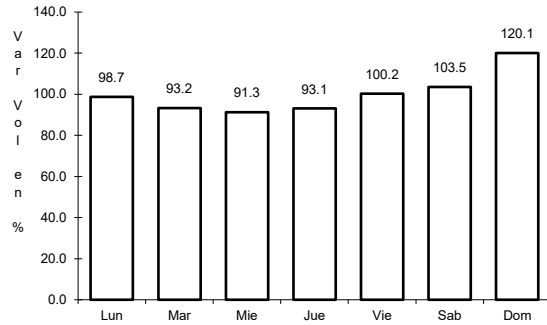


Km: 11.23 Tipo: 1 Sent: 0

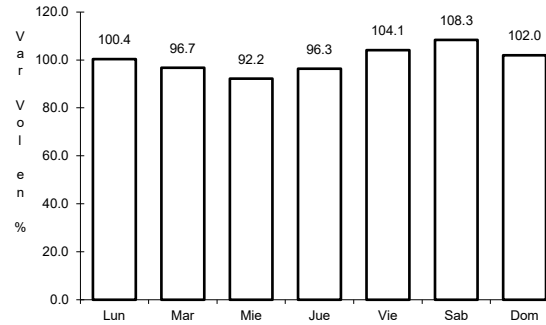
7 CARR: Ent. Ahualulco - Ent. La Bonita

CLAVE: 24258

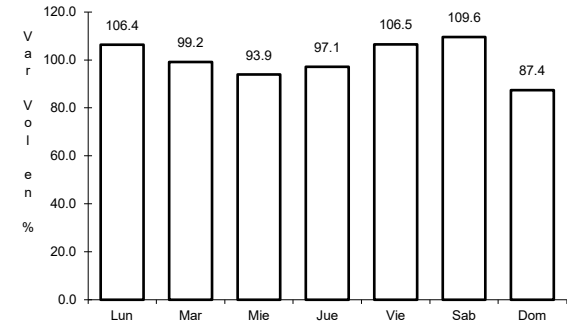
ruta: MEX-063



Km: 0.00 Tipo: 3 Sent: 0



Km: 59.00 Tipo: 1 Sent: 0

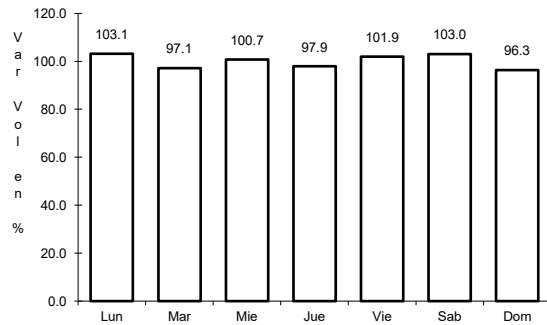


Km: 169.90 Tipo: 1 Sent: 0

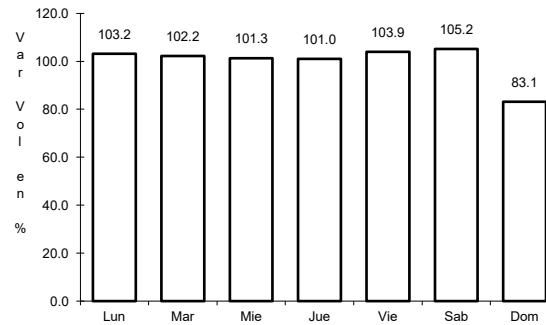
8 CARR: Ent. de Zaragoza - San Felipe

CLAVE: 00240

ruta: MEX-037



Km: 0.00 Tipo: 3 Sent: 0

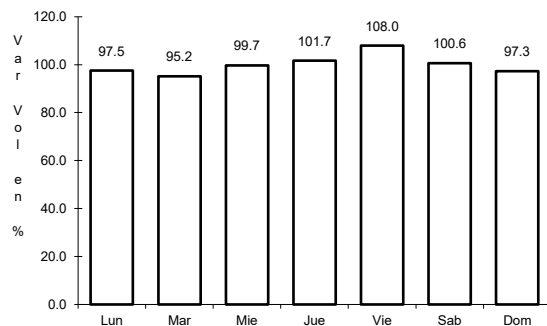


Km: 72.00 Tipo: 1 Sent: 0

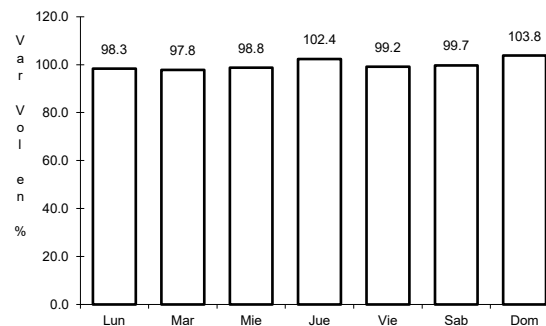
9 CARR: Ent. Tula - Cd. Victoria

CLAVE: 00179

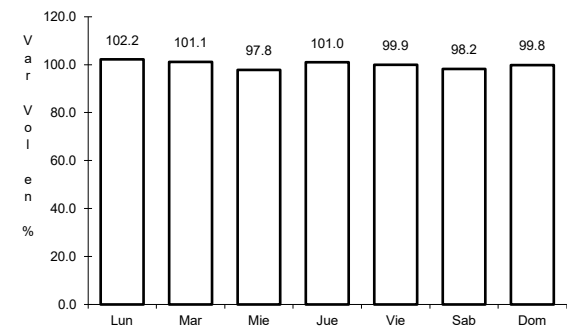
ruta: MEX-101



Km: 0.00 Tipo: 3 Sent: 0



Km: 180.00 Tipo: 1 Sent: 1

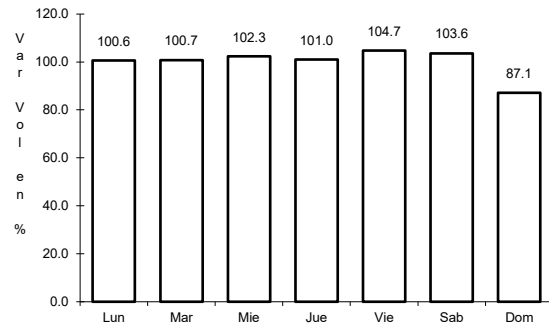


Km: 180.00 Tipo: 1 Sent: 2

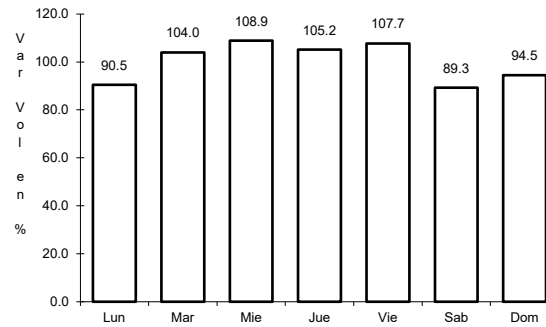
10 CARR: Jalpan de Serra - Rioverde

CLAVE: 00265

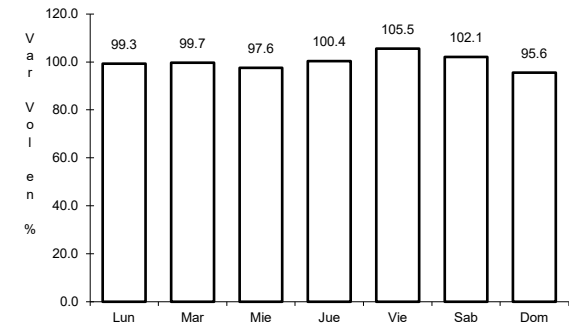
RUTA: MEX-069



Km: 0.00 Tipo: 3 Sent: 0



Km: 48.60 Tipo: 1 Sent: 0

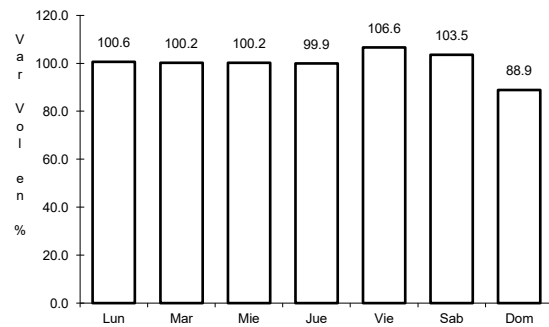


Km: 105.43 Tipo: 1 Sent: 0

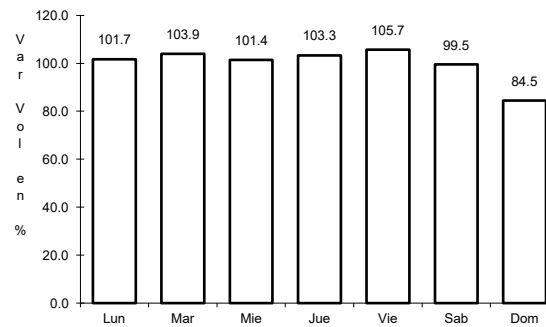
11 CARR: Libramiento de Cd. Valles

CLAVE: 24205

RUTA: MEX-070



Km: 0.00 Tipo: 3 Sent: 0

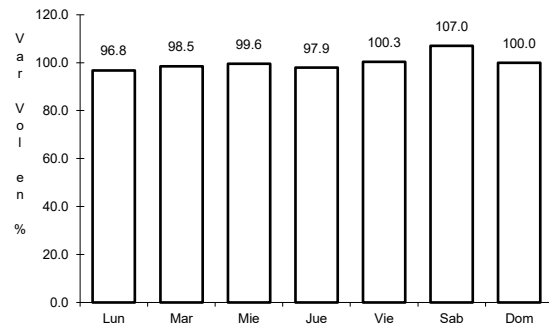


Km: 11.54 Tipo: 1 Sent: 0

12 CARR: Libramiento de Villa de Reyes

CLAVE: 24010

RUTA: MEX-037

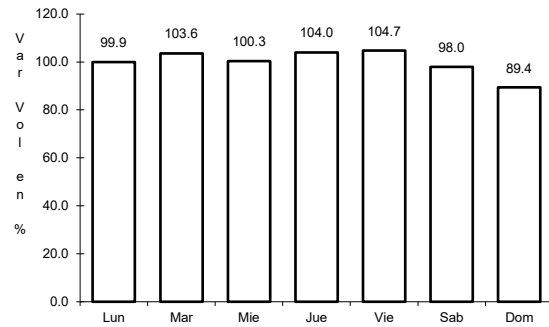


Km: 0.00 Tipo: 3 Sent: 0

13 CARR: Libramiento de Villa de Reyes (Poniente)

CLAVE:

ruta: MEX-037



Km: 143.64

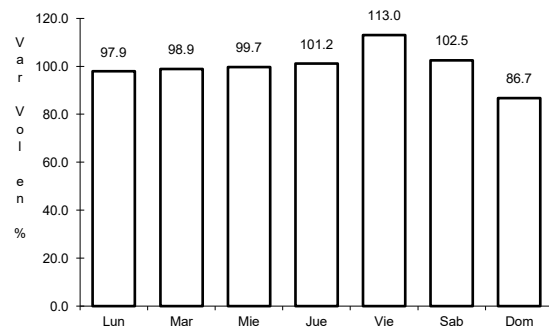
Tipo: 1

Sent: 0

14 CARR: Libramiento Villa de Arriaga

CLAVE: 24009

ruta: MEX-080



Km: 0.00

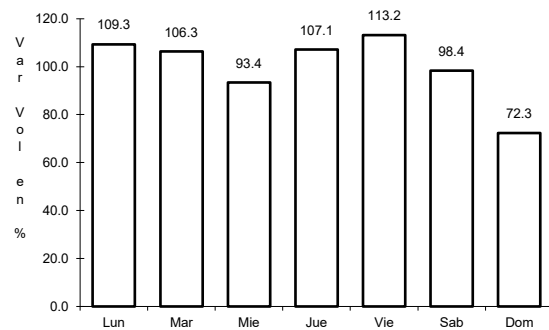
Tipo: 3

Sent: 0

15 CARR: Matchuala - Ent. Puerto México

CLAVE: 00405

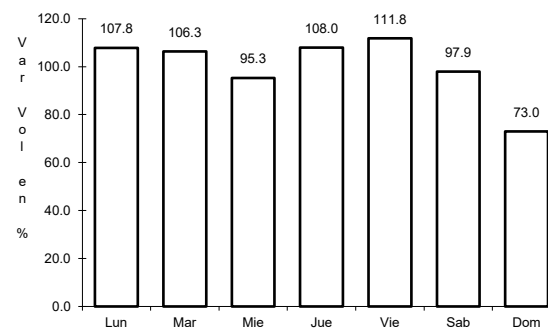
ruta: MEX-057



Km: 0.00

Tipo: 3

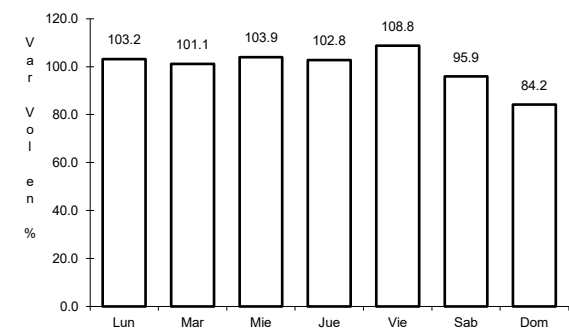
Sent: 1



Km: 0.00

Tipo: 3

Sent: 2



Km: 177.18

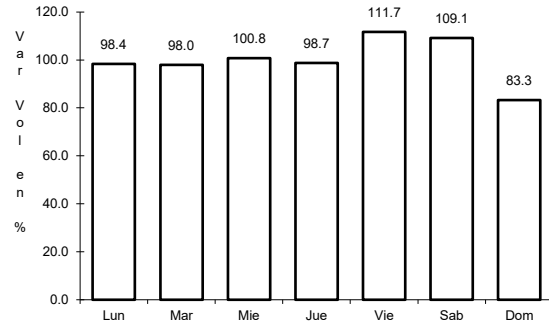
Tipo: 1

Sent: 1

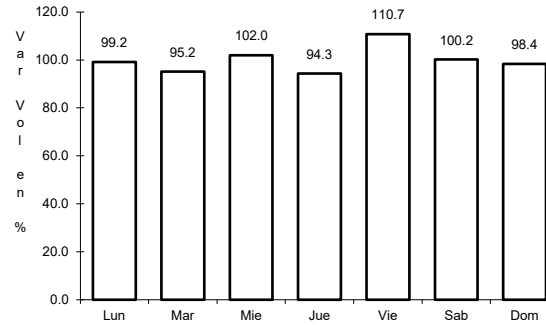
16 CARR: Portezuelo - Cd. Valles

CLAVE: 00023

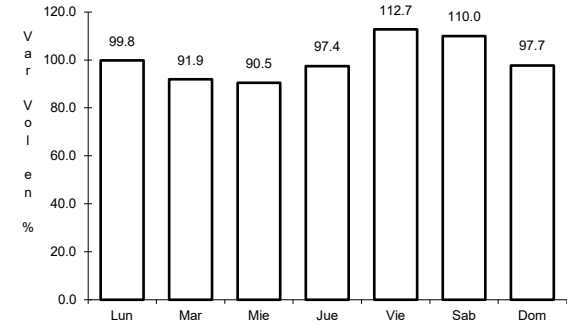
RUTA: MEX-085



Km: 0.00 Tipo: 3 Sent: 0



Km: 154.00 Tipo: 3 Sent: 0

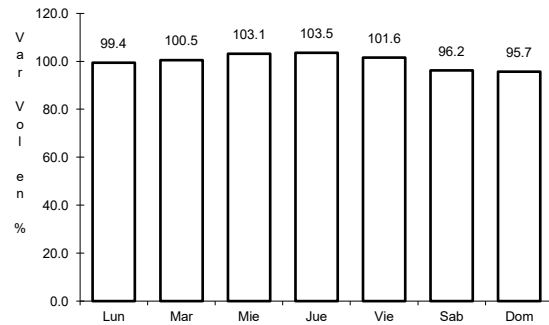


Km: 286.41 Tipo: 1 Sent: 1

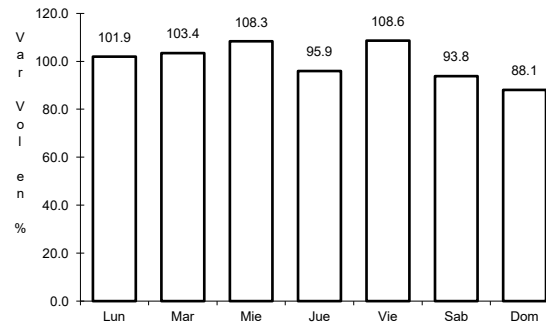
17 CARR: Querétaro - San Luis Potosí

CLAVE: 00165

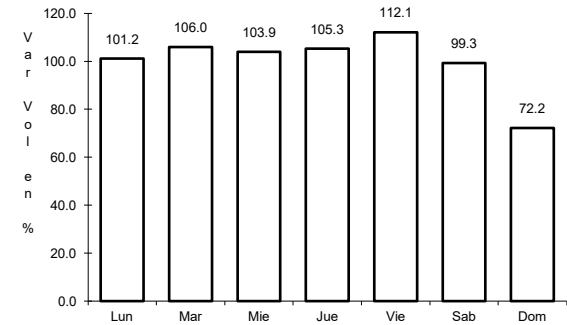
RUTA: MEX-057



Km: 6.28 Tipo: 3 Sent: 1



Km: 6.28 Tipo: 3 Sent: 2

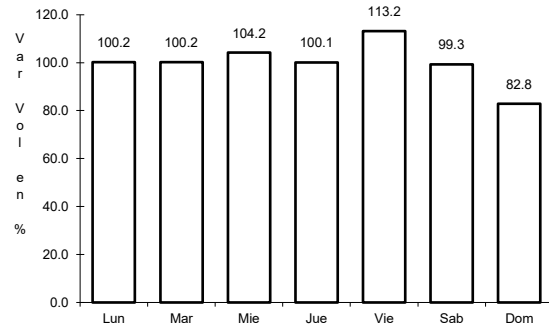


Km: 184.80 Tipo: 1 Sent: 1

18 CARR: Ramal a Aeropuerto de S. L. P.

CLAVE: 24206

RUTA: MEX-057

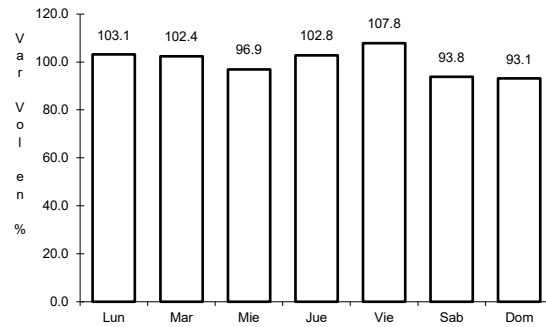


Km: 0.00 Tipo: 3 Sent: 0

19 CARR: Ramal a Ojo de Agua

CLAVE: 24023

ruta: MEX-062



Km: 0.00

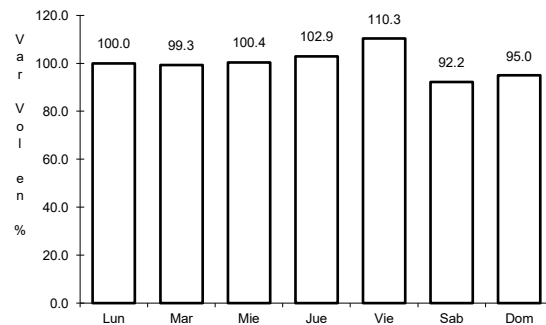
Tipo: 3

Sent: 0

20 CARR: Ramal a Rayón

CLAVE: 24626

ruta: MEX-070



Km: 1.50

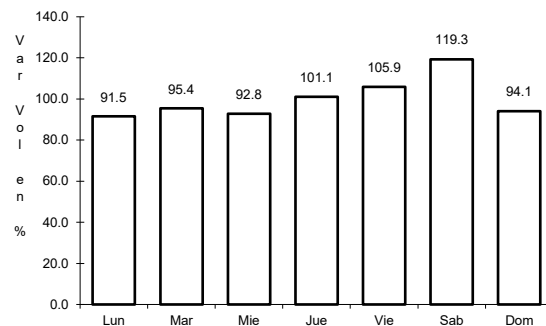
Tipo: 1

Sent: 0

21 CARR: San Juan del Río - Xilitla

CLAVE: 00183

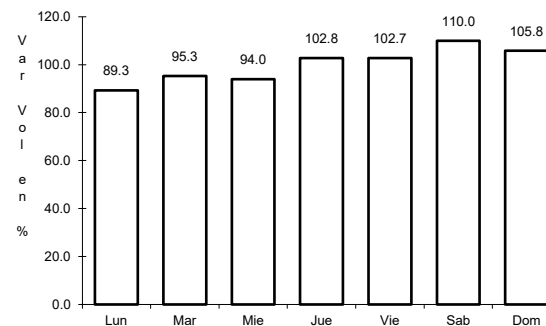
ruta: MEX-120



Km: 5.20

Tipo: 3

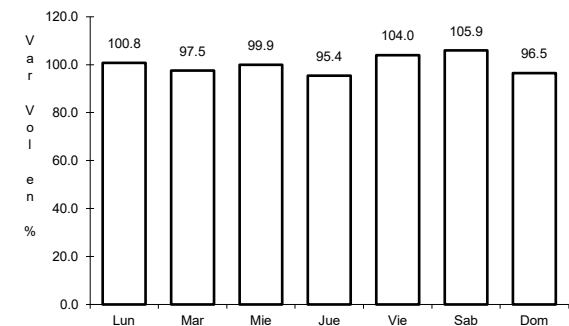
Sent: 1



Km: 5.20

Tipo: 3

Sent: 2



Km: 276.98

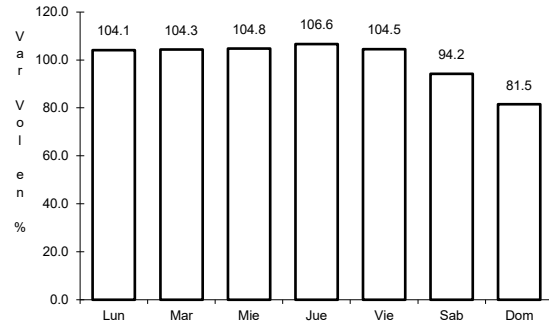
Tipo: 1

Sent: 0

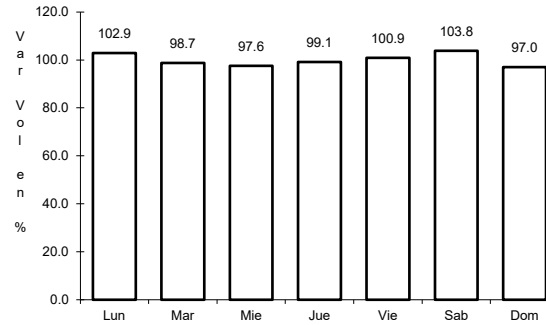
22 CARR: San Luis Potosí - Ent. Arcinas

CLAVE: 00134

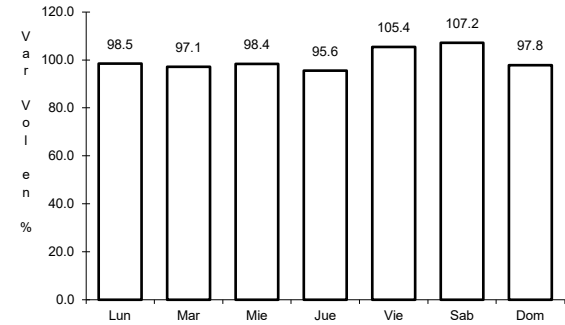
ruta: MEX-049



Km: 9.35 Tipo: 3 Sent: 1



Km: 9.35 Tipo: 3 Sent: 2

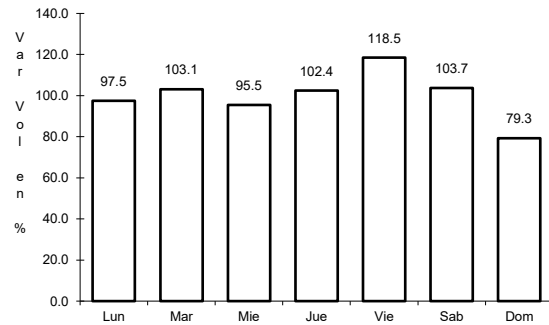


Km: 162.98 Tipo: 1 Sent: 1

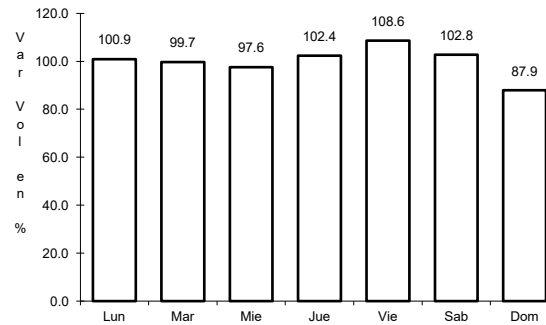
23 CARR: San Luis Potosí - Lagos de Moreno

CLAVE: 00133

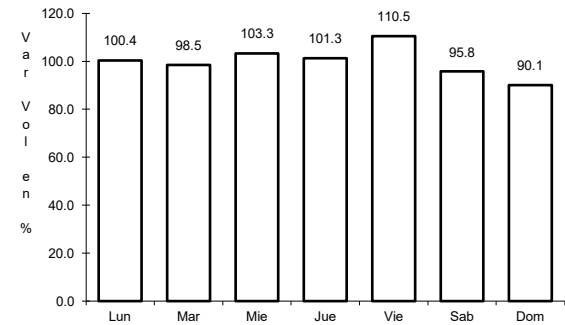
ruta: MEX-070-080



Km: 0.00 Tipo: 3 Sent: 1



Km: 0.00 Tipo: 3 Sent: 2

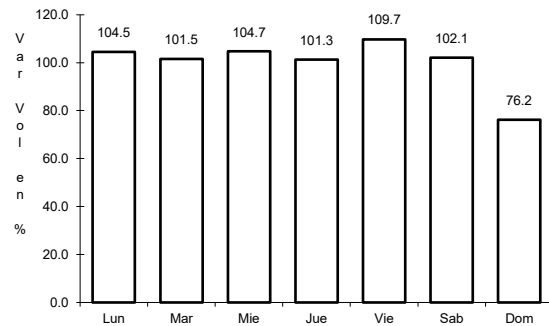


Km: 61.90 Tipo: 3 Sent: 0

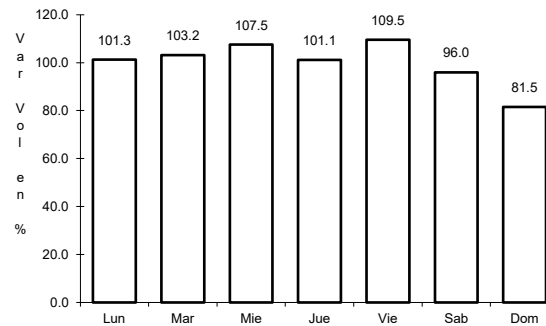
24 CARR: San Luis Potosí - Matchuala

CLAVE: 24508

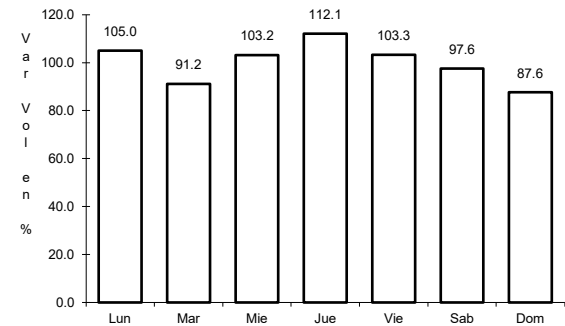
ruta: MEX-057



Km: 7.36 Tipo: 3 Sent: 1



Km: 7.36 Tipo: 3 Sent: 2

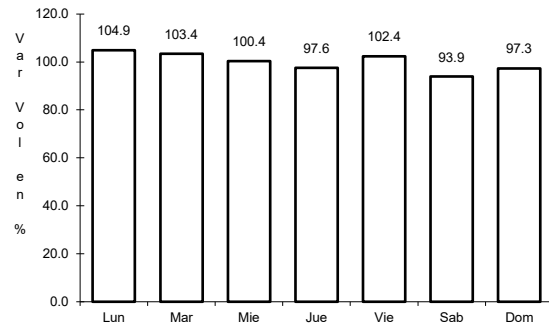


Km: 187.39 Tipo: 1 Sent: 1

25 CARR: T. C. (Ent. El Huizache- Ant. Morelos)-El Salto

CLAVE: 24204

ruta: MEX-080



Km: 0.00

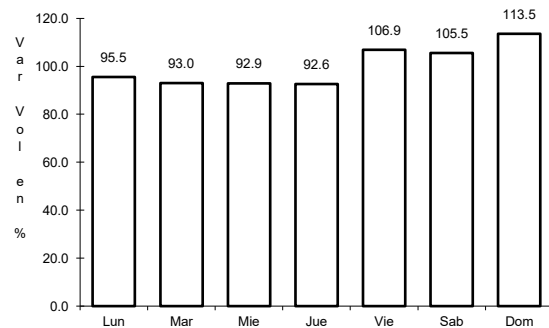
Tipo: 3

Sent: 0

26 CARR: T. C. (Qro - S.L.P.) - Tierra Nueva

CLAVE: 24203

ruta: MEX-057



Km: 0.00

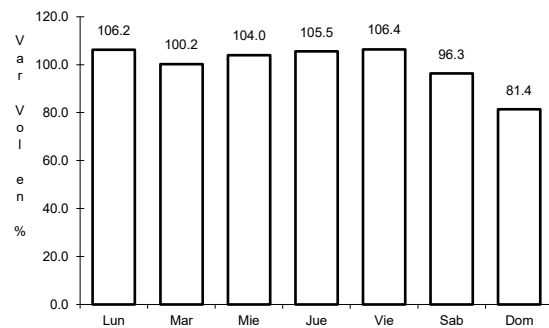
Tipo: 3

Sent: 0

27 CARR: T. C. (S.L.P. - Matchuala) - Villa Hidalgo

CLAVE: 24619

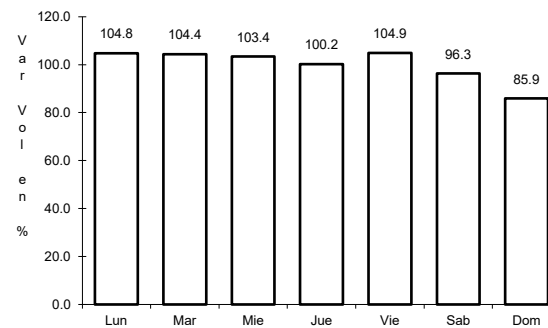
ruta: MEX-057



Km: 0.00

Tipo: 3

Sent: 0



Km: 10.20

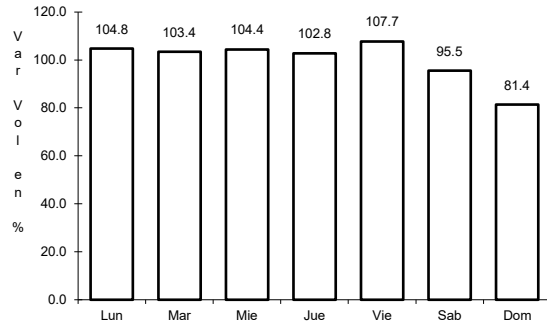
Tipo: 1

Sent: 0

28 CARR: Tamazunchale - San Felipe Orizatlán

CLAVE: 00609

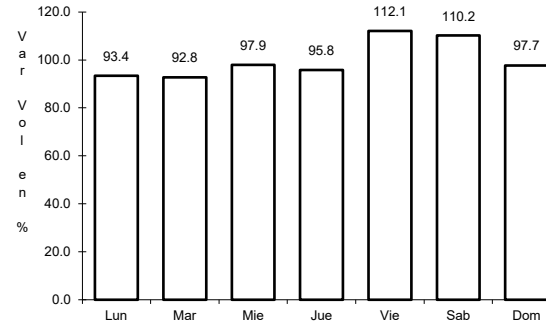
ruta: MEX-085



Km: 0.00

Tipo: 3

Sent: 0



Km: 27.10

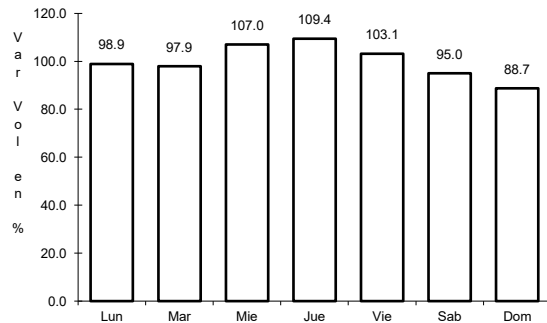
Tipo: 1

Sent: 0

29 CARR: Lagos de Moreno - Villa de Arriaga (Cuota)

CLAVE:

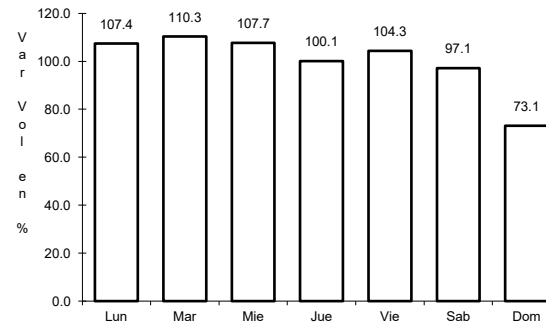
ruta: MEX-080D



Km: 12.10

Tipo: 3

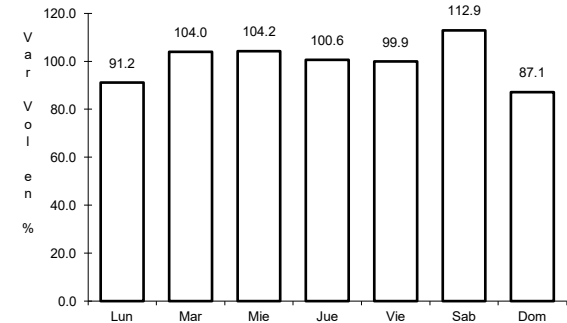
Sent: 0



Km: 58.18

Tipo: 1

Sent: 0



Km: 78.00

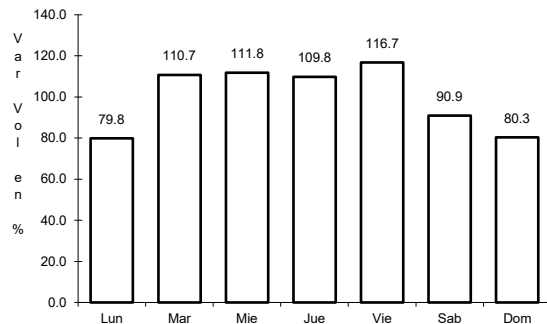
Tipo: 1

Sent: 0

30 CARR: Libramiento de Matchuala (Cuota)

CLAVE: 24205

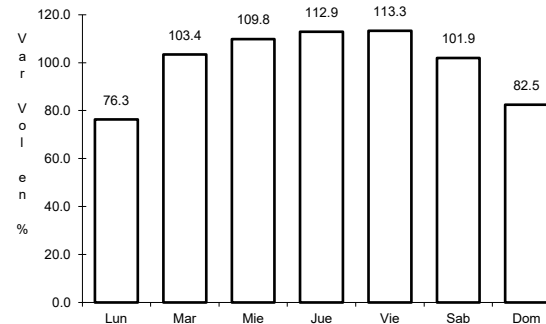
ruta: MEX-057D



Km: 0.00

Tipo: 3

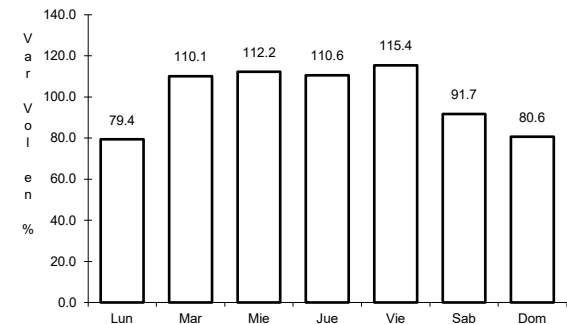
Sent: 1



Km: 0.00

Tipo: 3

Sent: 2



Km: 14.20

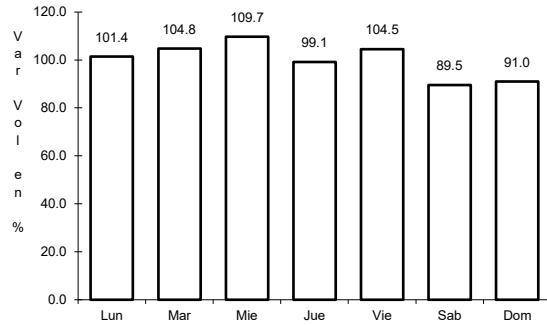
Tipo: 1

Sent: 1

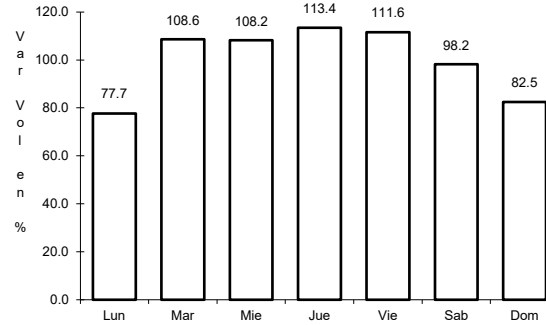
31 CARR: Libramiento Norponiente de San Luis Potosí (Cuota)

CLAVE:

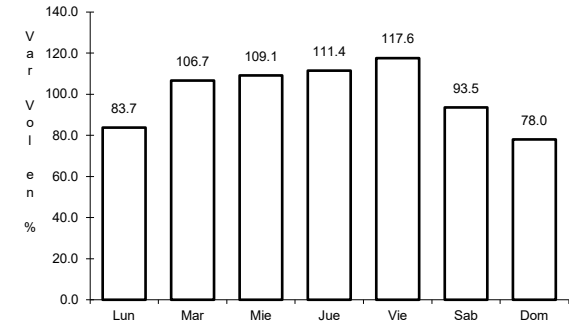
ruta: MEX-057D



Km: 5.60 Tipo: 1 Sent: 0



Km: 5.60 Tipo: 3 Sent: 0

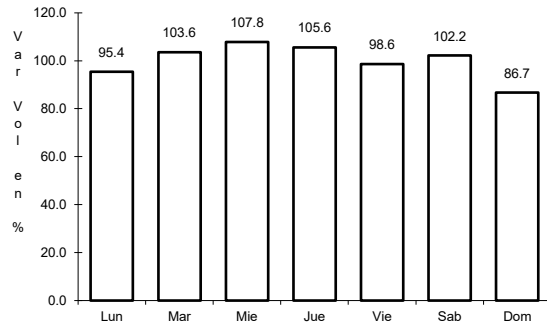


Km: 31.20 Tipo: 3 Sent: 0

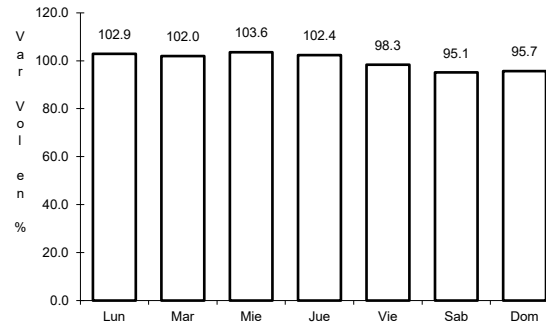
32 CARR: Libramiento Oriente de San Luis Potosí (Cuota)

CLAVE: 24009

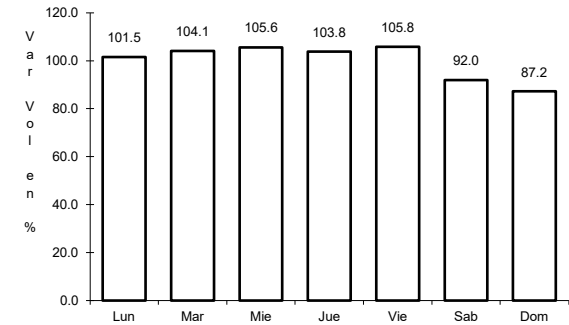
ruta: MEX-057D



Km: 11.00 Tipo: 1 Sent: 1



Km: 11.00 Tipo: 1 Sent: 2

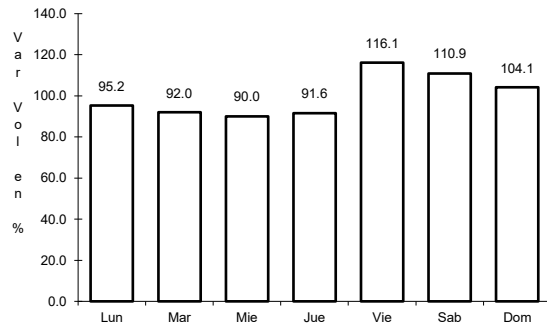


Km: 33.76 Tipo: 1 Sent: 1

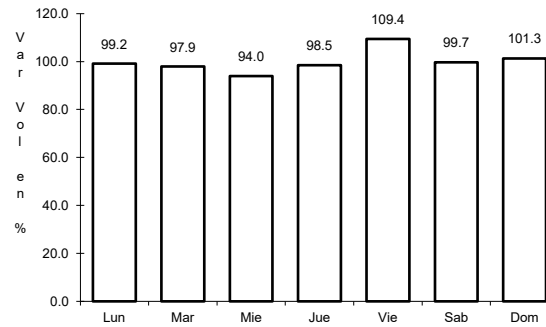
33 CARR: Rayón - Ent. Tamuín (Cuota)

CLAVE:

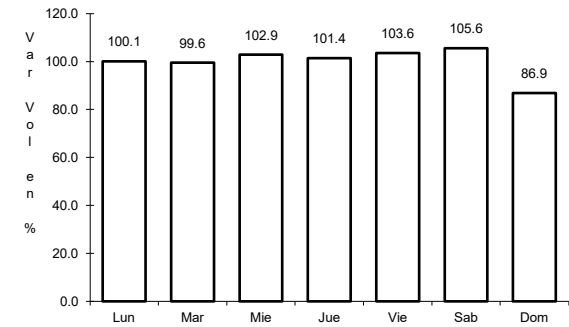
ruta: MEX-070D



Km: 19.70 Tipo: 1 Sent: 0



Km: 68.58 Tipo: 3 Sent: 0

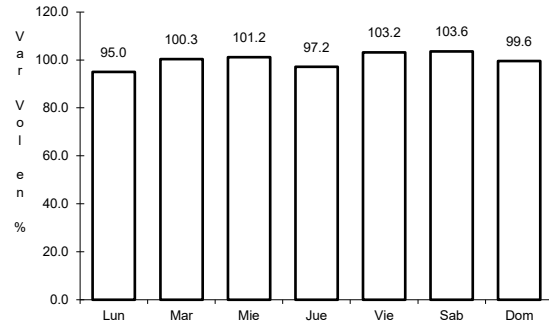


Km: 117.30 Tipo: 1 Sent: 0

34 CARR: Charcas - Villa Santo Domingo

CLAVE: 24624

ruta: SLP-017



Km: 0.00

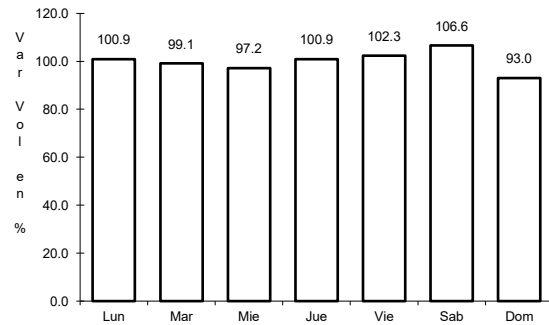
Tipo: 3

Sent: 0

35 CARR: Ébano - Estación Manuel

CLAVE: 24624

ruta: SLP-TAM



Km: 0.00

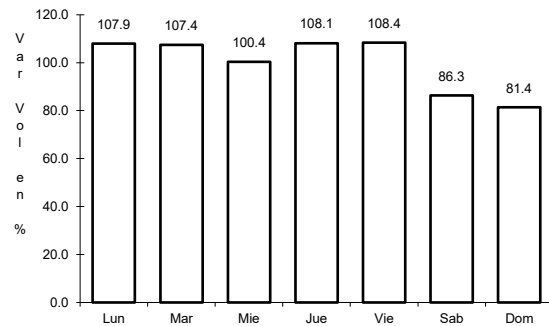
Tipo: 3

Sent: 0

36 CARR: Matchuala - La Paz

CLAVE: 24621

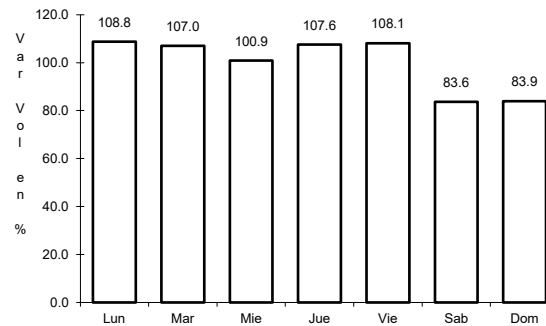
ruta: SLP-020



Km: 0.00

Tipo: 3

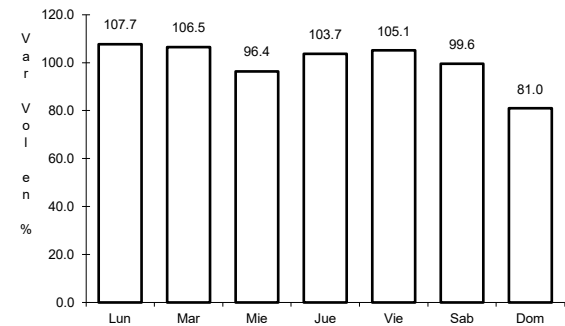
Sent: 1



Km: 0.00

Tipo: 3

Sent: 2



Km: 8.00

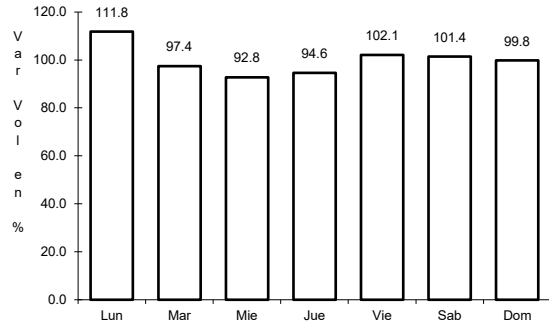
Tipo: 1

Sent: 1

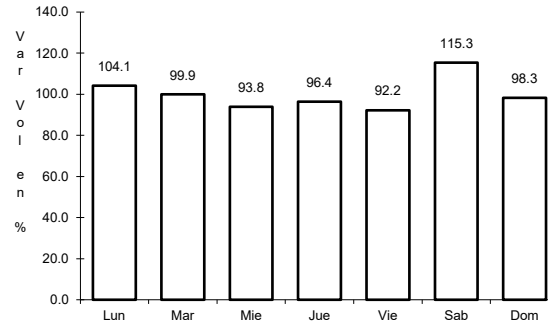
37 CARR: Matchuala - La Poza

CLAVE: 00086

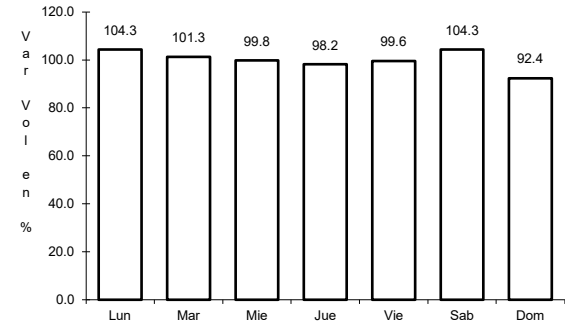
RUTA: SLP-029-NL-061



Km: 0.00 Tipo: 3 Sent: 0



Km: 49.00 Tipo: 1 Sent: 0

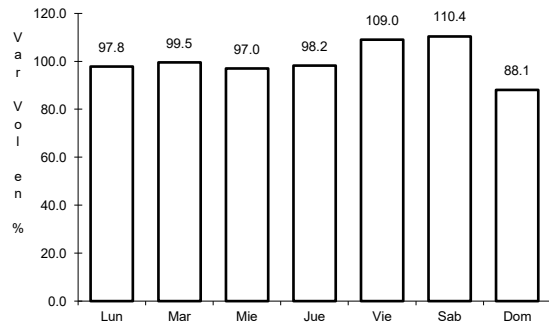


Km: 131.00 Tipo: 1 Sent: 0

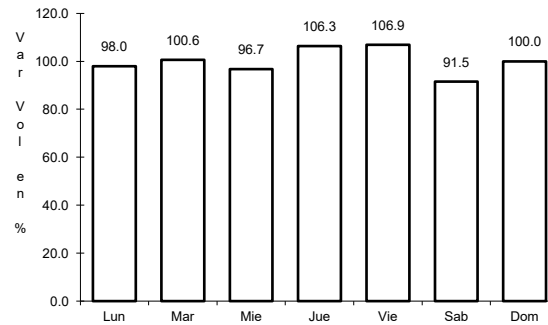
38 CARR: Periférico de San Luis Potosí

CLAVE: 24618

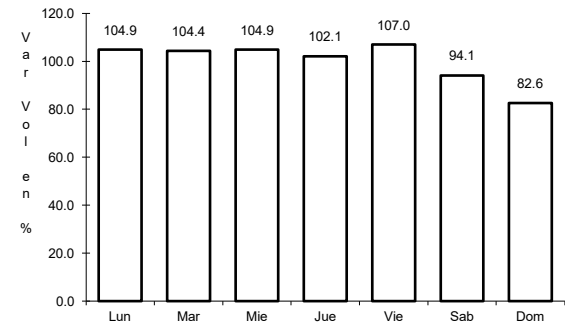
RUTA: SLP-032



Km: 22.00 Tipo: 3 Sent: 1



Km: 22.00 Tipo: 3 Sent: 2

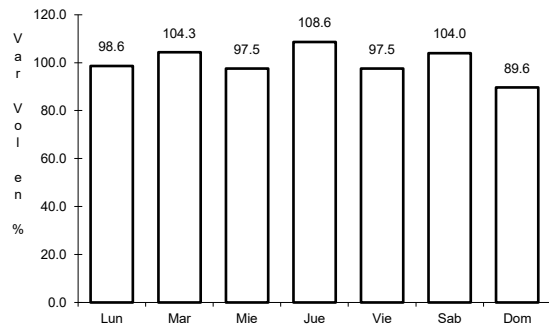


Km: 30.70 Tipo: 1 Sent: 1

39 CARR: Ramal a Cerritos

CLAVE: 24615

RUTA: SLP-007

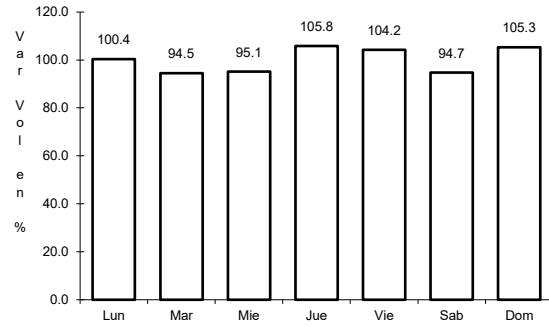


Km: 0.00 Tipo: 3 Sent: 0

40 CARR: Ramal a Pozo de Acuña

CLAVE: 24626

ruta: SLP-009



Km: 0.00

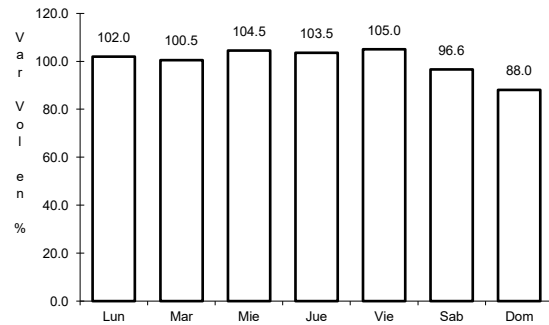
Tipo: 3

Sent: 0

41 CARR: Rayón - Arroyo Seco

CLAVE: 24008

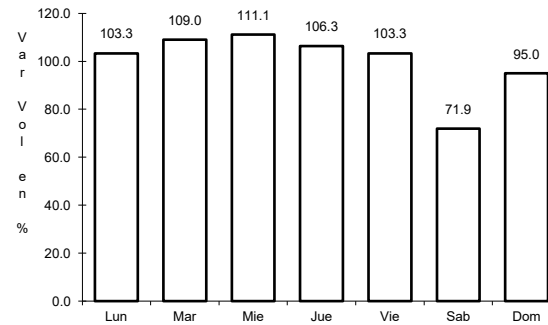
ruta: SLP-011



Km: 0.00

Tipo: 3

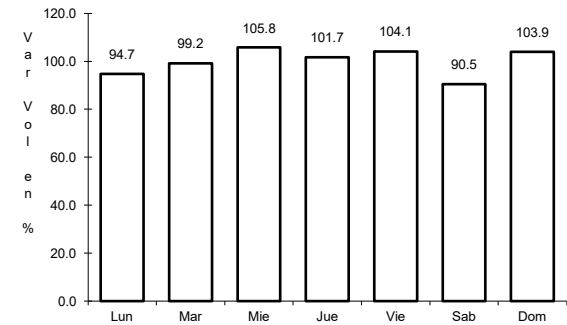
Sent: 0



Km: 36.00

Tipo: 1

Sent: 0



Km: 57.00

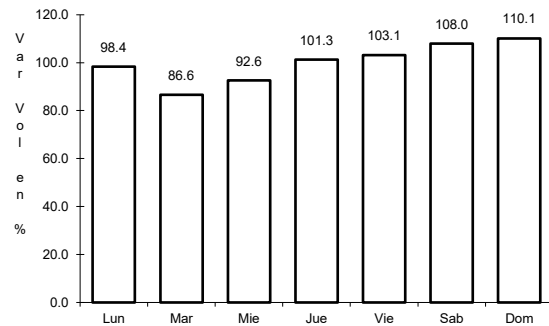
Tipo: 1

Sent: 0

42 CARR: Santo Domingo - Cerro Gordo

CLAVE: 24614

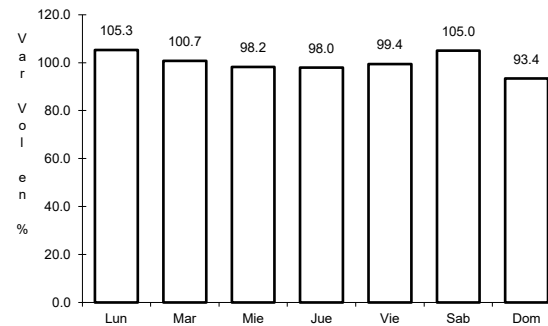
ruta: SLP-022



Km: 0.00

Tipo: 3

Sent: 0



Km: 19.00

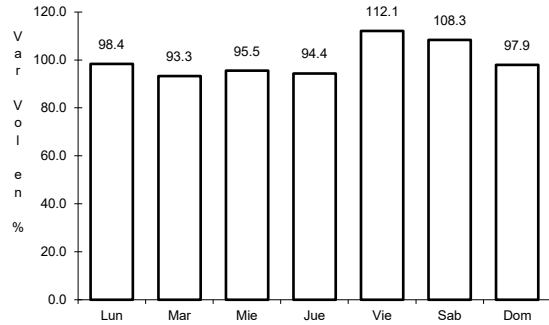
Tipo: 1

Sent: 0

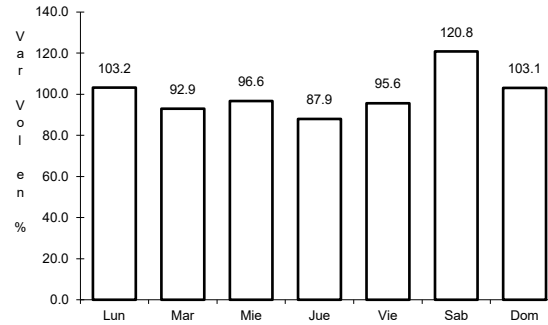
43 CARR: Tamuín - Estación F.F.C.C. Tamuín

CLAVE: 24022

RUTA: SLP-040



Km: 0.00 Tipo: 3 Sent: 0

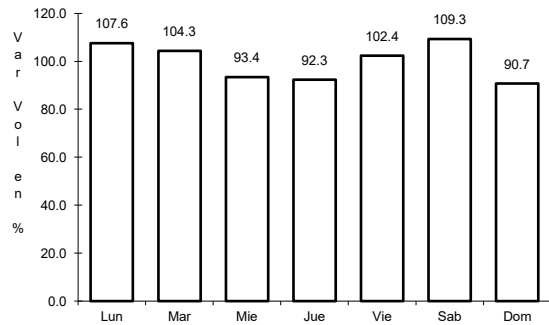


Km: 10.00 Tipo: 1 Sent: 0

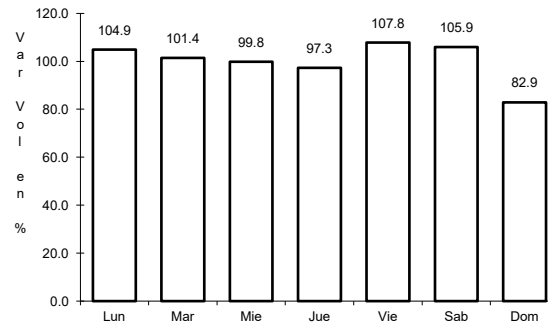
44 CARR: Tamuín - Xolol

CLAVE: 24027

RUTA: SLP-014



Km: 0.00 Tipo: 3 Sent: 0

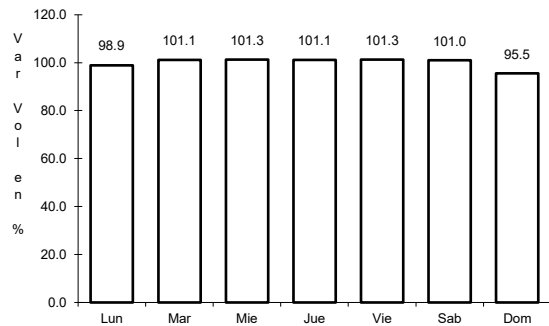


Km: 2.56 Tipo: 3 Sent: 0

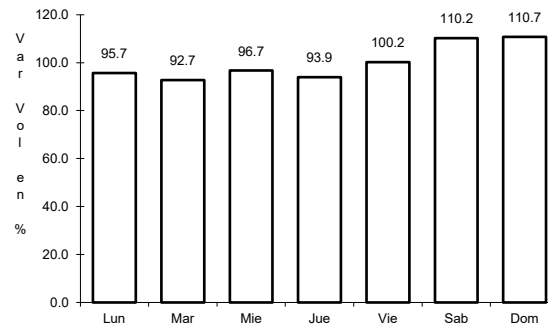
45 CARR: Cerritos - Ent. Tula (Cuota)

CLAVE:

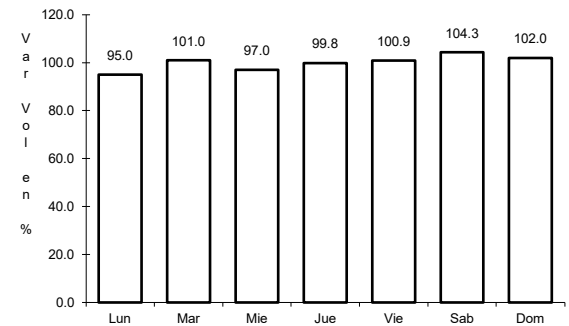
RUTA: SLP-075D



Km: 0.00 Tipo: 3 Sent: 0



Km: 18.70 Tipo: 3 Sent: 0

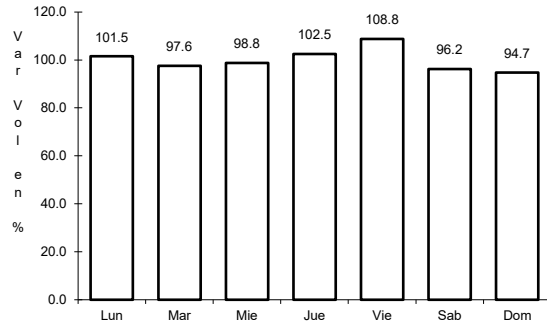


Km: 32.15 Tipo: 3 Sent: 0

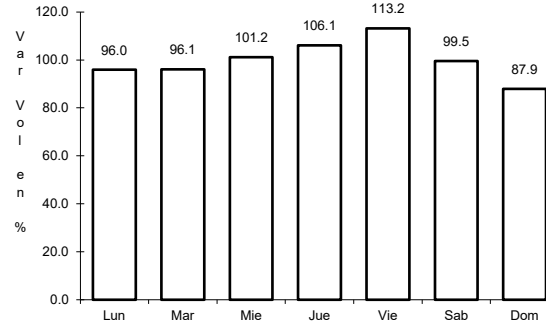
46 CARR: Cerritos - Rioverde (Cuota)

CLAVE: 00138

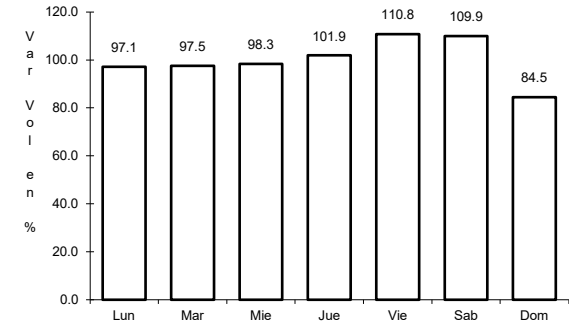
RUTA: SLP-D



Km: 0.00 Tipo: 3 Sent: 0



Km: 58.00 Tipo: 3 Sent: 0

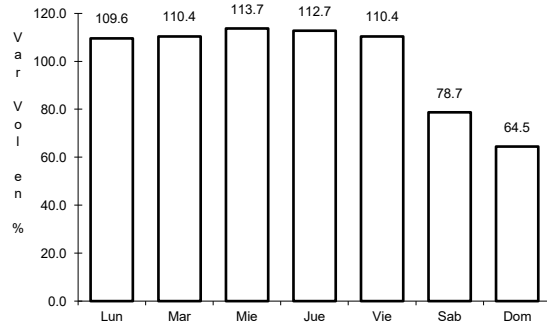


Km: 103.00 Tipo: 1 Sent: 0

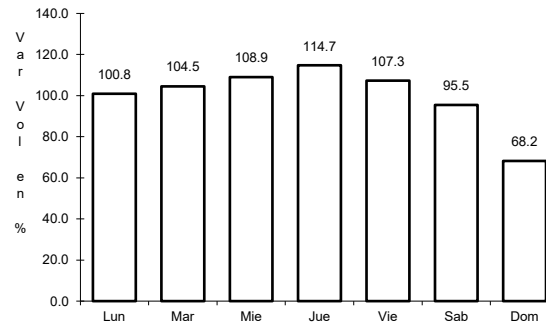
47 CARR: San Luis Potosí - Villa de Arriaga (Cuota)

CLAVE: 24209

RUTA: SLP-D



Km: 0.00 Tipo: 3 Sent: 0

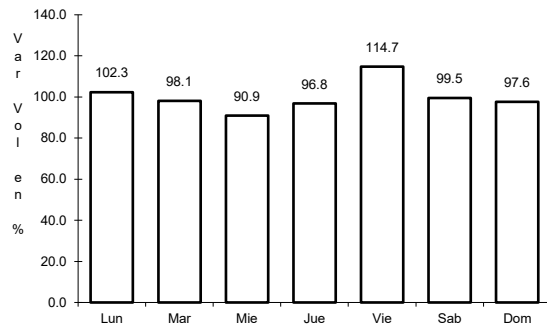


Km: 77.00 Tipo: 1 Sent: 0

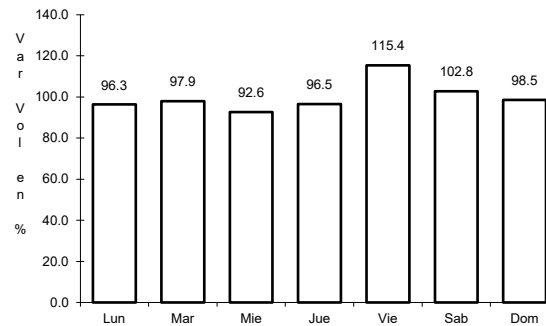
48 CARR: Rayón - Cd. del Maíz

CLAVE: 24206

RUTA: MEX-070-SLP-005



Km: 15.80 Tipo: 1 Sent: 0

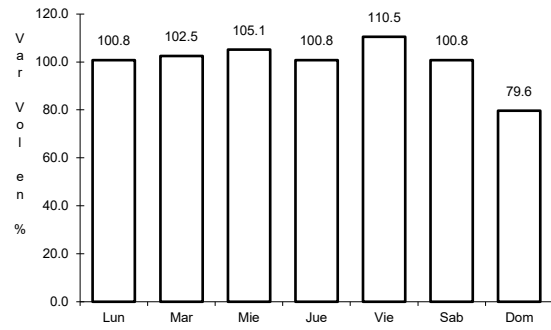


Km: 55.70 Tipo: 1 Sent: 0

49 CARR: San Lorenzo - Moctezuma

CLAVE: 24016

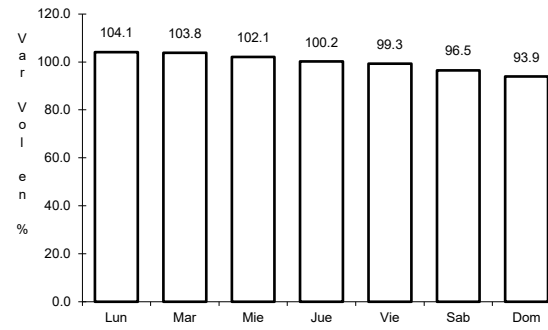
RUTA: MEX-063-SLP-012



Km: 0.00

Tipo: 3

Sent: 0



Km: 54.00

Tipo: 1

Sent: 0

