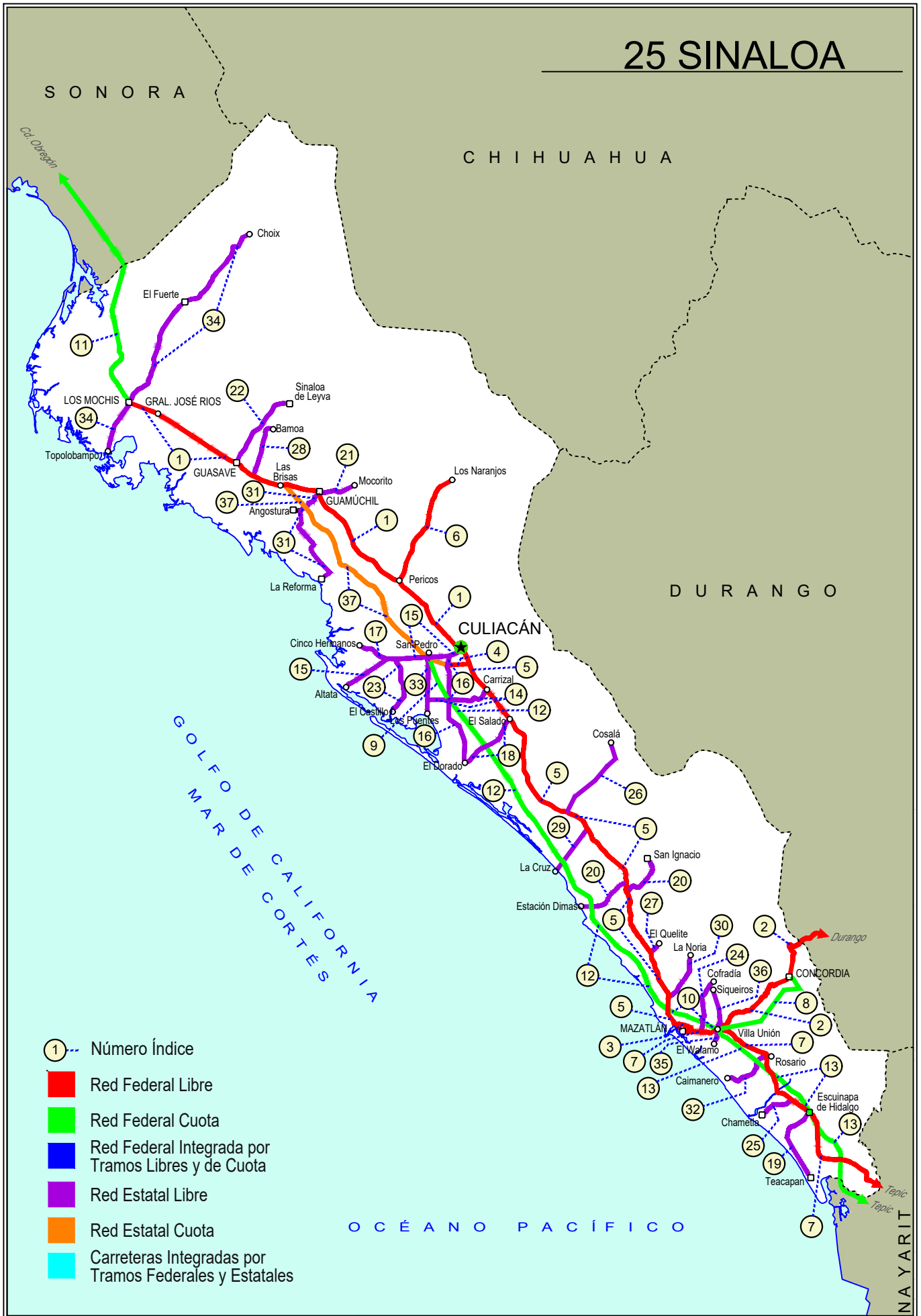




SINALOA

NO. INDICE CARRETERA		RUTA
	---RED FEDERAL LIBRE---	
1	Culiacán - Los Mochis	MEX-015
2	Durango - Villa Unión	MEX-040
3	Libramiento de Mazatlán	MEX
4	Libramiento Sur de Culiacán	MEX-015
5	Mazatlán - Culiacán	MEX-015
6	Pericos - Los Naranjos	MEX-024
7	Tepic - Mazatlán	MEX-015
	---RED FEDERAL DE CUOTA---	
8	Durango - Mazatlán (Cuota)	MEX-040D
9	Libramiento de Culiacán (Cuota)	MEX-015D
10	Libramiento de Mazatlán (Cuota)	MEX-015D
11	Los Mochis - Cd. Obregón (Cuota)	MEX-015D
12	Mazatlán - Culiacán (Cuota)	MEX-015D
13	Tepic - Villa Unión (cuota)	MEX-015D
	---RED ESTATAL LIBRE---	
14	Carrizal - Campo Anibal	SIN-019
15	Culiacán - Altata	SIN-030
16	Culiacán - El Dorado	SIN-005
17	El Limoncito - Cinco Hermanos	SIN-016
18	El Salado - El Dorado	SIN-010
19	Escuinapa de Hidalgo - Teacapan	SIN-001
20	Estación Dimas - San Ignacio	SIN-006
21	Guamuchil - Mocorito	SIN-021
22	Guasave - Sinaloa de Leyva	SIN-023
23	Navolato - El Castillo	SIN-004
24	Pozole - Cofradía	SIN-080
25	Ramal a Chametla	SIN-002
26	Ramal a Cosalá	SIN-008
27	Ramal a El Quelite	SIN-060
28	Ramal a Estación Bamao	SIN-022
29	Ramal a La Cruz	SIN
30	Ramal a La Noria	SIN
31	Ramal a La Reforma	SIN-004
32	Rosario - Caimanero	SIN-003
33	San Pedro - Campo Anibal	SIN
34	Topolobampo - Choix	SIN-023
35	Villa Unión - El Walamo	SIN-081
36	Villa Unión - Siqueiros	SIN-063
	---RED ESTATAL DE CUOTA---	
37	Culiacán - Las Brisas (Cuota)	SIN-001D

25 SINALOYA



SINALOA

1 CARR: Culiacán - Los Mochis

CLAVE: 25502

RUTA: MEX-015

AÑO: 2022

LUGAR	ESTACION				CLASIFICACION VEHICULAR EN PORCIENTO										COORDENADAS					
	KM	TE	SC	TDPA	M	A	B	C2	C3	T3S2	T3S3	T3S2R4	OTROS	A	B	C	K'	D	LATITUD	LONGITUD
Culiacán	0.00	0	0																	
T. Der. Los Monzones	4.00	1	1	11039	2.4	84.9	1.3	5.2	1.8	2.2	1.1	0.7	0.4	87.3	1.3	11.4	0.077	0.510	24.830704	-107.429409
T. Der. Los Monzones	4.00	1	2	10606	3.1	84.1	1.3	5.3	1.9	2.2	0.9	0.7	0.5	87.2	1.3	11.5	0.070	0.510	24.830476	-107.429402
Plaza de Cobro Puente Culiacán	22.00	2	1	4535	1.1	88.1	2.7	2.9	1.5	2.7	0.6	0.2	0.2	89.2	2.7	8.1	0.084	0.500	24.948949	-107.545695
Plaza de Cobro Puente Culiacán	22.00	2	2	4535	1.1	88.1	2.7	2.9	1.5	2.7	0.6	0.2	0.2	89.2	2.7	8.1	0.084	0.500	24.948949	-107.545695
T. Der. Presa López Mateos	27.20	3	0	9622	2.7	87.2	2.3	2.8	1.1	2.3	0.7	0.5	0.4	89.9	2.3	7.8	0.097	0.501	24.994068	-107.570820
X. C. Pericos - Los Naranjos	43.60	3	0	5833	2.4	84.6	2.4	2.8	1.8	3.1	1.1	1.0	0.8	87.0	2.4	10.6	0.097	0.506	25.093922	-107.697498
Guamuchil	104.70	1	0	8156	4.9	84.5	3.0	2.4	1.4	2.7	0.7	0.4	0.0	89.4	3.0	7.6	0.081	0.514	25.427507	-108.057729
Guamuchil	104.70	3	1	9377	7.4	81.2	2.9	2.7	2.5	2.3	0.8	0.2	0.0	88.6	2.9	8.5	0.084	0.503	25.470112	-108.099392
Guamuchil	104.70	3	2	9277	7.4	80.0	2.9	4.1	2.4	2.2	0.8	0.2	0.0	87.4	2.9	9.7	0.081	0.503	25.469992	-108.099402
T. Izq. Aut. Culiacán - Las Brisas	121.20	1	0	6759	2.5	81.3	4.3	2.8	2.8	4.2	1.1	0.6	0.4	83.8	4.3	11.9	0.084	0.501	25.489900	-108.223942
T. Izq. Aut. Culiacán - Las Brisas	121.20	3	1	7361	2.5	64.6	5.7	3.3	3.2	14.4	2.2	3.2	0.9	67.1	5.7	27.2	0.077	0.502	25.486855	-108.252042
T. Izq. Aut. Culiacán - Las Brisas	121.20	3	2	7290	2.5	66.1	5.8	3.1	2.8	13.5	2.0	3.3	0.9	68.6	5.8	25.6	0.076	0.502	25.486786	-108.251936
T. Der. Estación Bamoa	133.17	3	1	7880	3.5	67.9	5.7	3.7	2.5	11.1	1.9	3.3	0.4	71.4	5.7	22.9	0.087	0.507	25.519047	-108.361452
T. Der. Estación Bamoa	133.17	3	2	8110	3.7	67.2	5.8	3.9	2.7	11.4	1.7	3.2	0.4	70.9	5.8	23.3	0.085	0.507	25.518180	-108.359746
Plaza de Cobro Puente Sinaloa	136.00	2	1	6845	0.5	64.2	4.6	3.9	3.1	15.9	1.8	4.9	1.1	64.7	4.6	30.7	0.084	0.500	25.512854	-108.347613
Plaza de Cobro Puente Sinaloa	136.00	2	2	6845	0.5	64.2	4.6	3.9	3.1	15.9	1.8	4.9	1.1	64.7	4.6	30.7	0.084	0.500	25.512854	-108.347613
Guasave	146.28	3	1	12227	10.1	68.9	3.7	2.9	2.6	7.7	1.2	2.4	0.5	79.0	3.7	17.3	0.082	0.527	25.590550	-108.494134
Guasave	146.28	3	2	10973	10.5	66.9	3.7	2.9	2.8	8.3	1.6	2.8	0.5	77.4	3.7	18.9	0.082	0.527	25.590420	-108.494065
T. Der. Estación Naranja	155.88	3	1	11780	7.1	73.1	2.7	2.0	4.7	6.1	1.0	2.5	0.8	80.2	2.7	17.1	0.074	0.504	25.627133	-108.562737
T. Der. Estación Naranja	155.88	3	2	11603	6.9	70.9	3.1	2.3	4.8	7.0	1.6	2.6	0.8	77.8	3.1	19.1	0.071	0.504	25.627068	-108.562788
T. Izq. Los Mochis (1º Acceso)	201.97	1	1	13312	3.5	78.3	3.6	3.1	2.2	6.5	1.1	1.3	0.4	81.8	3.6	14.6	0.095	0.525	25.807183	-108.956032
T. Izq. Los Mochis (1º Acceso)	201.97	1	2	14735	4.0	75.0	3.9	3.3	2.4	7.2	1.9	2.0	0.3	79.0	3.9	17.1	0.075	0.525	25.806968	-108.956005
T. Izq. Los Mochis (1º Acceso)	201.97	3	1	14693	5.3	71.8	3.6	4.0	3.5	7.4	1.8	1.9	0.7	77.1	3.6	19.3	0.080	0.506	25.818573	-108.962829
T. Izq. Los Mochis (1º Acceso)	201.97	3	2	15079	5.5	71.1	4.1	4.3	3.7	7.0	1.7	1.9	0.7	76.6	4.1	19.3	0.077	0.506	25.818553	-108.962919
T. C. Topolobampo - Choix	205.21	0	0																	

2 CARR: Durango - Villa Unión

CLAVE: 0083

RUTA: MEX-040

AÑO: 2022

LUGAR	ESTACION				CLASIFICACION VEHICULAR EN PORCIENTO										COORDENADAS					
	KM	TE	SC	TDPA	M	A	B	C2	C3	T3S2	T3S3	T3S2R4	OTROS	A	B	C	K'	D	LATITUD	LONGITUD
Durango	0.00	3	0	4139	3.8	78.9	2.0	6.8	2.3	3.6	2.2	0.4	0.0	82.7	2.0	15.3	0.104	0.506	23.995165	-104.732491
T. Der. Pino	22.86	3	0	2468	5.1	74.3	2.6	8.7	2.7	4.2	2.2	0.1	0.1	79.4	2.6	18.0	0.102	0.530	23.967102	-104.820640
T. Izq. Estación Navíos	58.42	3	0	2268	5.5	80.8	1.5	3.9	4.0	1.8	0.6	1.3	0.6	86.3	1.5	12.2	0.089	0.514	23.894932	-105.054488
Llano Grande	77.23	1	0	2271	9.5	70.3	2.5	4.3	4.0	5.3	3.1	0.6	0.4	79.8	2.5	17.7	0.080	0.509	23.866603	-105.199420

SINALOA

2 CARR : Durango - Villa Unión

CLAVE: 0083

RUTA: MEX-040

AÑO: 2022

LUGAR	ESTACION				CLASIFICACION VEHICULAR EN PORCIENTO										COORDENADAS					
	KM	TE	SC	TDPA	M	A	B	C2	C3	T3S2	T3S3	T3S2R4	OTROS	A	B	C	K'	D	LATITUD	LONGITUD
El Salto	99.76	1	0	2227	9.1	71.3	2.4	4.5	3.8	5.0	2.7	0.8	0.4	80.4	2.4	17.2	0.084	0.505	23.803862	-105.338894
El Salto	99.76	3	0	2064	7.4	83.7	1.2	4.3	1.4	0.8	0.6	0.4	0.2	91.1	1.2	7.7	0.118	0.503	23.784355	-105.376044
Las Adjuntas	119.00	1	0	1505	7.7	76.6	2.8	8.5	1.4	1.4	1.0	0.1	0.5	84.3	2.8	12.9	0.112	0.510	23.724484	-105.490554
La Ciudad	145.50	1	0	1341	10.2	79.7	1.2	6.0	1.2	1.0	0.3	0.2	0.2	89.9	1.2	8.9	0.109	0.504	23.731534	-105.676755
La Ciudad	145.50	3	0	521	33.3	58.1	1.1	3.1	1.8	0.9	0.7	0.9	0.1	91.4	1.1	7.5	0.123	0.506	23.727317	-105.691673
Lim. Edos. Term. Dgo. Ppia. Sin.	198.50	0	0																	
Concordia	273.50	1	0	1871	21.1	64.4	2.1	2.5	1.6	4.8	3.1	0.3	0.1	85.5	2.1	12.4	0.102	0.515	23.293146	-106.051553
T. C. Tepic - Mazatlán	294.40	1	0	4629	8.7	78.5	3.1	4.4	1.4	2.4	1.3	0.2	0.0	87.2	3.1	9.7	0.089	0.501	23.204583	-106.198248

3 CARR : Libramiento de Mazatlán

CLAVE: 25604

RUTA: MEX

AÑO: 2022

LUGAR	ESTACION				CLASIFICACION VEHICULAR EN PORCIENTO										COORDENADAS					
	KM	TE	SC	TDPA	M	A	B	C2	C3	T3S2	T3S3	T3S2R4	OTROS	A	B	C	K'	D	LATITUD	LONGITUD
T. C. Tepic - Mazatlán	0.00	3	1	37848	10.1	80.4	1.5	4.2	1.4	1.3	0.4	0.4	0.3	90.5	1.5	8.0	0.076	0.511	23.237782	-106.389947
T. C. Tepic - Mazatlán	0.00	3	2	39728	10.0	80.2	1.4	4.1	1.5	1.3	0.6	0.5	0.4	90.2	1.4	8.4	0.066	0.511	23.237772	-106.390067
T. C. Mazatlán - Culiacán	5.40	1	1	26552	10.5	77.2	1.4	8.0	1.1	1.0	0.4	0.3	0.1	87.7	1.4	10.9	0.063	0.512	23.261300	-106.411046
T. C. Mazatlán - Culiacán	5.40	1	2	27872	11.1	76.3	1.5	8.2	1.0	1.1	0.4	0.3	0.1	87.4	1.5	11.1	0.061	0.512	23.261213	-106.411118

4 CARR : Libramiento Sur de Culiacán

CLAVE: 25500

RUTA: MEX-015

AÑO: 2022

LUGAR	ESTACION				CLASIFICACION VEHICULAR EN PORCIENTO										COORDENADAS					
	KM	TE	SC	TDPA	M	A	B	C2	C3	T3S2	T3S3	T3S2R4	OTROS	A	B	C	K'	D	LATITUD	LONGITUD
T. C. Mazatlán - Culiacán	0.00	3	1	18462	3.9	89.1	0.8	2.4	1.7	1.5	0.3	0.2	0.1	93.0	0.8	6.2	0.082	0.505	24.752659	-107.361545
T. C. Mazatlán - Culiacán	0.00	3	2	18803	4.9	89.5	0.7	1.5	1.4	1.4	0.3	0.2	0.1	94.4	0.7	4.9	0.076	0.505	24.752907	-107.359785
T. C. Culiacán - El Dorado	8.90	1	1	18951	5.7	84.1	1.9	2.6	2.5	1.9	0.3	0.8	0.2	89.8	1.9	8.3	0.095	0.508	24.742945	-107.442595
T. C. Culiacán - El Dorado	8.90	1	2	18351	4.3	86.3	1.1	3.4	2.2	1.7	0.1	0.7	0.2	90.6	1.1	8.3	0.089	0.508	24.742890	-107.442692

5 CARR : Mazatlán - Culiacán

CLAVE: 25501

RUTA: MEX-015

AÑO: 2022

LUGAR	ESTACION				CLASIFICACION VEHICULAR EN PORCIENTO										COORDENADAS					
	KM	TE	SC	TDPA	M	A	B	C2	C3	T3S2	T3S3	T3S2R4	OTROS	A	B	C	K'	D	LATITUD	LONGITUD
Mazatlán	0.00	0	0																	
T. Der. Libramiento de Mazatlán Libre	0.82	1	1	30405	4.1	86.5	1.4	6.3	0.6	0.4	0.3	0.2	0.2	90.6	1.4	8.0	0.081	0.514	23.259905	-106.417908
T. Der. Libramiento de Mazatlán Libre	0.82	1	2	28634	4.1	86.9	1.3	6.0	0.6	0.4	0.3	0.2	0.2	91.0	1.3	7.7	0.078	0.514	23.259187	-106.418187
T. Der. La Noria	10.92	1	0	6529	6.2	73.1	2.2	9.6	2.8	4.5	1.3	0.1	0.2	79.3	2.2	18.5	0.091	0.504	23.343435	-106.414593

SINALOA

5 CARR: Mazatlán - Culiacán

CLAVE: 25501

RUTA: MEX-015

AÑO: 2022

LUGAR	ESTACION				CLASIFICACION VEHICULAR EN PORCIENTO													COORDENADAS		
	KM	TE	SC	TDPA	M	A	B	C2	C3	T3S2	T3S3	T3S2R4	OTROS	A	B	C	K'	D	LATITUD	LONGITUD
T. Der. La Noria	10.92	3	0	4410	5.6	71.1	2.3	11.4	2.2	5.9	1.1	0.2	0.2	76.7	2.3	21.0	0.069	0.513	23.356266	-106.415809
T. Izq. Playa Los Cerritos	11.08	3	0	4188	6.1	71.0	3.3	9.5	2.8	5.5	1.4	0.2	0.2	77.1	3.3	19.6	0.074	0.500	23.360938	-106.419124
T. Der. El Quelite	33.00	1	0	3864	6.5	71.3	3.7	9.7	3.1	4.6	0.6	0.2	0.3	77.8	3.7	18.5	0.082	0.512	23.527037	-106.500468
T. Der. El Quelite	33.00	3	0	2759	6.9	70.5	3.9	9.9	3.3	4.5	0.5	0.2	0.3	77.4	3.9	18.7	0.070	0.518	23.535191	-106.508252
X. C. Estación Dimas - San Ignacio	66.77	1	0	2722	5.3	77.0	3.0	5.3	3.2	4.4	1.4	0.4	0.0	82.3	3.0	14.7	0.078	0.526	23.785398	-106.608104
X. C. Estación Dimas - San Ignacio	66.77	3	0	3315	6.1	79.1	3.9	4.0	2.0	3.5	1.2	0.2	0.0	85.2	3.9	10.9	0.078	0.520	23.796279	-106.612714
T. Izq. Estación Dimas	73.96	3	0	2723	4.9	80.3	2.9	3.7	2.9	4.7	0.6	0.0	0.0	85.2	2.9	11.9	0.082	0.519	23.841026	-106.614345
T. Der. Elota	91.92	3	0	2516	3.1	82.1	3.3	3.8	2.8	3.8	0.9	0.2	0.0	85.2	3.3	11.5	0.084	0.537	23.965750	-106.723837
T. Izq. La Cruz	105.21	3	0	3705	12.3	73.7	2.4	4.4	2.1	3.7	0.8	0.5	0.1	86.0	2.4	11.6	0.086	0.512	24.057850	-106.798521
El Salado	175.24	1	0	7326	7.2	83.4	1.8	3.1	1.6	1.8	0.8	0.2	0.1	90.6	1.8	7.6	0.086	0.509	24.502296	-107.156357
El Salado	175.24	3	0	8256	3.1	84.9	1.8	3.1	1.8	2.8	2.2	0.2	0.1	88.0	1.8	10.2	0.087	0.524	24.514158	-107.166344
T. Izq. Libramiento de Culiacán	210.40	1	1	9000	3.0	88.5	1.0	2.7	2.1	1.8	0.5	0.3	0.1	91.5	1.0	7.5	0.110	0.519	24.747485	-107.353970
T. Izq. Libramiento de Culiacán	210.40	1	2	9723	3.0	88.4	1.1	2.8	2.0	1.8	0.5	0.3	0.1	91.4	1.1	7.5	0.088	0.519	24.747289	-107.354016
Culiacán	215.30	0	0																	

6 CARR: Pericos - Los Naranjos

CLAVE: 25598

RUTA: MEX-024

AÑO: 2022

LUGAR	ESTACION				CLASIFICACION VEHICULAR EN PORCIENTO													COORDENADAS		
	KM	TE	SC	TDPA	M	A	B	C2	C3	T3S2	T3S3	T3S2R4	OTROS	A	B	C	K'	D	LATITUD	LONGITUD
Pericos	0.00	3	0	3653	6.8	86.4	0.8	3.1	2.0	0.5	0.2	0.2	0.0	93.2	0.8	6.0	0.100	0.503	25.096012	-107.683632
Badiraguato	37.50	1	0	3021	17.4	77.0	0.7	2.6	1.4	0.5	0.2	0.2	0.0	94.4	0.7	4.9	0.104	0.515	25.348223	-107.558914
Naranjos	66.00	0	0																	

7 CARR: Tepic - Mazatlán

CLAVE: 00499

RUTA: MEX-015

AÑO: 2022

LUGAR	ESTACION				CLASIFICACION VEHICULAR EN PORCIENTO													COORDENADAS		
	KM	TE	SC	TDPA	M	A	B	C2	C3	T3S2	T3S3	T3S2R4	OTROS	A	B	C	K'	D	LATITUD	LONGITUD
Tepic (Alta)	0.00	3	1	14525	6.0	91.2	0.3	0.4	1.1	0.7	0.1	0.1	0.1	97.2	0.3	2.5	0.072	0.502	21.511934	-104.905878
Tepic (Baja)	0.00	3	1	10285	7.9	87.1	0.4	2.3	1.8	0.2	0.2	0.1	0.0	95.0	0.4	4.6	0.072	0.506	21.511981	-104.905798
Tepic (Alta)	0.00	3	2	14650	6.0	91.3	0.3	0.3	1.1	0.7	0.1	0.1	0.1	97.3	0.3	2.4	0.060	0.502	21.511888	-104.905913
Tepic (Baja)	0.00	3	2	10028	7.9	87.1	0.4	2.3	1.8	0.2	0.2	0.1	0.0	95.0	0.4	4.6	0.066	0.506	21.511799	-104.905960
T. Izq. Libramiento de Tepic (Alta)	2.56	1	1	10604	2.3	96.8	0.1	0.3	0.2	0.1	0.1	0.1	0.0	99.1	0.1	0.8	0.084	0.529	21.521048	-104.921707
T. Izq. Libramiento de Tepic (Baja)	2.56	1	1	10895	7.8	86.6	0.4	3.0	1.7	0.2	0.2	0.1	0.0	94.4	0.4	5.2	0.085	0.506	21.521137	-104.921683
T. Izq. Libramiento de Tepic (Baja)	2.56	1	2	10621	7.8	86.4	0.4	3.1	1.8	0.2	0.2	0.1	0.0	94.2	0.4	5.4	0.077	0.506	21.520916	-104.921826
T. Izq. Libramiento de Tepic (Alta)	2.56	1	2	11235	2.6	96.4	0.1	0.3	0.3	0.1	0.1	0.1	0.0	99.0	0.1	0.9	0.082	0.529	21.520990	-104.921745

SINALOA

7 CARR: Tepic - Mazatlán

CLAVE: 00499

RUTA: MEX-015

AÑO: 2022

LUGAR	ESTACION				CLASIFICACION VEHICULAR EN PORCIENTO													COORDENADAS		
	KM	TE	SC	TDPA	M	A	B	C2	C3	T3S2	T3S3	T3S2R4	OTROS	A	B	C	K'	D	LATITUD	LONGITUD
T. Izq. Aut. Tepic - Ent. San Blas (Cuota)	3.70	3	0	8168	6.2	77.6	3.1	3.5	3.4	4.0	1.3	0.8	0.1	83.8	3.1	13.1	0.077	0.516	21.538995	-104.934454
Los Otates	19.80	3	0	4480	2.2	75.8	5.0	4.7	3.1	5.6	1.8	1.6	0.2	78.0	5.0	17.0	0.082	0.516	21.640246	-104.972741
T. Izq. Jumatán	28.52	1	0	5151	3.3	76.0	4.0	3.5	3.8	6.1	2.3	0.9	0.1	79.3	4.0	16.7	0.073	0.512	21.669610	-105.021750
T. Izq. Jumatán	28.52	3	1	7941	5.4	67.5	5.7	4.4	2.8	8.7	1.4	3.5	0.6	72.9	5.7	21.4	0.073	0.513	21.668046	-105.029902
T. Izq. Jumatán	28.52	3	2	8380	6.2	66.7	5.7	4.4	2.8	8.7	1.4	3.5	0.6	72.9	5.7	21.4	0.086	0.513	21.667935	-105.029870
T. Izq. San Blas	33.54	1	1	8228	1.4	78.1	2.6	3.2	1.7	9.0	0.5	3.2	0.3	79.5	2.6	17.9	0.084	0.500	21.679320	-105.042453
T. Izq. San Blas	33.54	1	2	8226	1.4	78.2	2.6	3.2	1.6	9.0	0.6	3.1	0.3	79.6	2.6	17.8	0.092	0.500	21.679355	-105.042840
T. Izq. San Blas	33.54	3	1	7737	2.8	70.3	5.6	0.8	2.6	12.3	2.0	2.9	0.7	73.1	5.6	21.3	0.071	0.508	21.704630	-105.055305
T. Izq. San Blas	33.54	3	2	7981	2.4	71.1	5.5	0.9	2.5	12.1	2.0	2.8	0.7	73.5	5.5	21.0	0.080	0.508	21.704573	-105.055429
T. Izq. Villa Hidalgo	48.12	1	0	8600	2.2	74.8	2.2	7.6	3.3	5.9	2.6	0.8	0.6	77.0	2.2	20.8	0.066	0.520	21.806896	-105.102665
T. Izq. Villa Hidalgo	48.12	3	0	8262	7.7	73.3	4.8	3.1	2.6	6.2	2.1	0.1	0.1	81.0	4.8	14.2	0.070	0.501	21.811899	-105.107233
T. Izq. Santiago Ixcuintla	56.42	1	0	8751	2.4	72.1	5.6	8.1	2.4	6.1	2.3	0.4	0.6	74.5	5.6	19.9	0.071	0.516	21.852478	-105.150278
T. Izq. Santiago Ixcuintla	56.42	3	0	6904	3.5	70.8	3.2	7.7	4.3	7.0	2.6	0.4	0.5	74.3	3.2	22.5	0.078	0.521	21.859171	-105.156003
T. Izq. Tuxpan	70.60	1	0	8233	5.0	70.7	3.2	9.8	2.9	5.7	1.8	0.4	0.5	75.7	3.2	21.1	0.076	0.502	21.944193	-105.215836
T. Izq. Tuxpan	70.60	3	0	7776	9.4	60.6	4.3	12.1	4.2	7.4	1.7	0.1	0.2	70.0	4.3	25.7	0.069	0.519	21.962114	-105.221694
T. Der. Rosamorada	90.70	3	0	4977	7.4	56.2	6.5	8.9	4.3	12.7	3.3	0.4	0.3	63.6	6.5	29.9	0.066	0.508	22.124687	-105.219581
Tierra Generosa	110.40	1	0	3250	7.9	55.7	6.0	7.4	4.9	13.2	2.7	1.9	0.3	63.6	6.0	30.4	0.071	0.547	22.293559	-105.272928
T. Der. Acaponeta	136.52	1	0	8436	8.9	69.4	4.7	3.2	2.5	8.3	2.3	0.6	0.1	78.3	4.7	17.0	0.065	0.510	22.482853	-105.384508
T. Der. Acaponeta	136.52	3	0	6086	8.8	64.8	4.3	3.4	3.6	8.7	3.0	3.2	0.2	73.6	4.3	22.1	0.060	0.503	22.493966	-105.384266
Lim. Edos. Term. Nay. Ppia. Sin.	144.60	0	0																	
T. Der. Villa Unión (Cuota)	193.60	1	1	4441	5.8	52.8	9.0	6.3	1.9	17.0	2.8	3.6	0.8	58.6	9.0	32.4	0.070	0.519	22.802653	-105.718090
T. Der. Villa Unión (Cuota)	193.60	1	2	4109	6.1	48.8	10.2	6.6	2.1	18.6	2.8	4.0	0.8	54.9	10.2	34.9	0.072	0.519	22.802568	-105.718162
Escuinapa de Hidalgo	200.00	1	0	4966	13.4	62.2	4.4	4.4	3.5	8.6	2.3	1.0	0.2	75.6	4.4	20.0	0.079	0.510	22.832916	-105.761758
Escuinapa de Hidalgo	200.00	3	0	5435	6.9	69.5	6.7	3.8	2.5	8.1	2.1	0.2	0.2	76.4	6.7	16.9	0.101	0.510	22.847782	-105.792193
Rosario	221.71	1	0	9186	15.4	68.7	4.5	2.6	2.2	4.9	1.4	0.2	0.1	84.1	4.5	11.4	0.081	0.506	22.997103	-105.851388
Rosario	221.71	3	0	6251	7.5	75.5	3.0	3.0	2.2	6.5	1.9	0.3	0.1	83.0	3.0	14.0	0.083	0.506	23.003406	-105.869021
X. C. Durango - Mazatlán (Cuota)	265.20	1	0	5153	4.8	74.3	3.8	3.4	2.4	7.6	2.9	0.3	0.5	79.1	3.8	17.1	0.070	0.513	23.189958	-106.175627
T. Der. Durango	267.99	1	0	6486	9.7	71.1	3.6	4.0	3.1	5.7	1.8	0.9	0.1	80.8	3.6	15.6	0.102	0.505	23.189399	-106.204633
T. Der. Durango	267.99	3	1	9683	7.8	76.7	3.7	3.1	2.2	3.5	1.0	1.6	0.4	84.5	3.7	11.8	0.073	0.504	23.189307	-106.210334
T. Der. Durango	267.99	3	2	9854	8.0	76.8	3.7	3.0	2.2	3.5	1.0	1.5	0.3	84.8	3.7	11.5	0.085	0.504	23.189203	-106.210360
Villa Unión	269.52	3	1	11245	6.6	78.4	4.4	3.9	1.5	3.3	0.9	0.7	0.3	85.0	4.4	10.6	0.099	0.502	23.190444	-106.222390
Villa Unión	269.52	3	2	11328	6.6	78.4	4.4	3.9	1.5	3.3	0.9	0.7	0.3	85.0	4.4	10.6	0.103	0.502	23.190313	-106.222446
T. Der. Libramiento de Mazatlán	288.87	1	1	25263	4.1	86.5	1.7	3.4	1.5	1.5	0.6	0.4	0.3	90.6	1.7	7.7	0.081	0.512	23.225217	-106.383041
T. Der. Libramiento de Mazatlán	288.87	1	2	22682	4.1	86.5	1.7	3.4	1.5	1.5	0.6	0.4	0.3	90.6	1.7	7.7	0.080	0.512	23.225156	-106.383121
Mazatlán	292.00	0	0																	

SINALOA

8 CARR: Durango - Mazatlán (Cuota)

CLAVE: 00084

RUTA: MEX-040D

AÑO: 2022

LUGAR	ESTACION				CLASIFICACION VEHICULAR EN PORCIENTO													COORDENADAS		
	KM	TE	SC	TDPA	M	A	B	C2	C3	T3S2	T3S3	T3S2R4	OTROS	A	B	C	K'	D	LATITUD	LONGITUD
Libramiento de Durango	21.30	3	0	2990	4.8	68.5	5.7	3.8	2.0	7.7	2.0	4.8	0.7	73.3	5.7	21.0	0.108	0.528	24.005963	-104.731442
Plaza de Cobro Durango	22.20	2	0	4352	1.1	70.0	3.2	2.6	3.1	10.7	1.8	6.4	1.1	71.1	3.2	25.7	0.108	0.500	24.005080	-104.734540
Ent. Otinapa	44.50	1	0	3262	2.4	64.9	5.6	5.2	2.2	10.1	2.0	6.9	0.7	67.3	5.6	27.1	0.104	0.511	23.982301	-104.941939
Plaza de Cobro Llano Grande	73.80	2	0	3936	1.1	67.7	3.4	2.8	3.0	11.8	1.9	7.2	1.1	68.8	3.4	27.8	0.108	0.500	23.864514	-105.233202
X. C. Durango - Villa Unión	80.14	1	0	3997	2.9	62.2	6.4	5.9	2.1	11.6	3.0	5.0	0.9	65.1	6.4	28.5	0.098	0.523	23.857287	-105.251553
T. Der. El Salto 1er Acceso	91.60	1	0	4481	3.0	67.1	4.9	4.5	2.2	10.3	2.8	4.6	0.6	70.1	4.9	25.0	0.087	0.540	23.801375	-105.328162
T. Der. El Salto 2do Acceso	104.20	1	0	2892	4.1	56.8	7.0	8.3	2.2	13.2	3.0	5.1	0.3	60.9	7.0	32.1	0.111	0.521	23.755405	-105.422781
T. Der. El Salto 2do Acceso	104.20	3	0	4206	3.6	61.9	5.5	9.8	2.1	9.6	2.5	4.8	0.2	65.5	5.5	29.0	0.112	0.531	23.759403	-105.433838
T. Der. La Campana	111.00	3	0	3421	4.1	57.6	6.2	8.2	2.4	11.8	3.4	6.2	0.1	61.7	6.2	32.1	0.101	0.504	23.721645	-105.488344
Lim. Edos. Term. Dgo. Ppia. Sin.	157.40	0	0																	
Entronque Santa Lucia	172.20	3	0	3246	5.2	63.0	6.1	4.2	2.2	10.3	2.9	5.7	0.4	68.2	6.1	25.7	0.092	0.500	23.451955	-105.842609
Concordia	213.70	1	0	2733	5.3	60.9	6.3	4.9	2.2	11.3	2.5	6.1	0.5	66.2	6.3	27.5	0.098	0.523	23.262566	-106.046526
Concordia	213.70	3	0	2580	2.5	64.7	6.4	3.8	1.2	12.5	1.9	6.2	0.8	67.2	6.4	26.4	0.136	0.513	23.251171	-106.059748
Villa Unión	229.70	1	0	2855	3.1	64.9	6.4	3.6	1.2	11.9	1.9	6.2	0.8	68.0	6.4	25.6	0.130	0.516	23.199084	-106.168826

9 CARR: Libramiento de Culiacán (Cuota)

CLAVE:

RUTA: MEX-015D

AÑO: 2022

LUGAR	ESTACION				CLASIFICACION VEHICULAR EN PORCIENTO													COORDENADAS		
	KM	TE	SC	TDPA	M	A	B	C2	C3	T3S2	T3S3	T3S2R4	OTROS	A	B	C	K'	D	LATITUD	LONGITUD
T. C. Mazatlán - Culiacán (Cuota)	181.80	0	0																	
Plaza de Cobro San Pedro	197.10	2	1	1954	0.3	39.9	1.8	3.7	4.5	33.8	4.3	8.9	2.8	40.2	1.8	58.0	0.101	0.500	24.693361	-107.525419
Plaza de Cobro San Pedro	197.10	2	2	1954	0.3	39.9	1.8	3.7	4.5	33.8	4.3	8.9	2.8	40.2	1.8	58.0	0.101	0.500	24.693361	-107.525419
T. C. Culiacán - Las Brisas (Cuota)	203.30	1	1	1885	5.3	39.8	6.6	4.1	3.4	24.7	6.4	8.8	0.9	45.1	6.6	48.3	0.077	0.510	24.744959	-107.563760
T. C. Culiacán - Las Brisas (Cuota)	203.30	1	2	1963	5.9	42.0	7.0	5.3	2.5	25.6	4.0	6.8	0.9	47.9	7.0	45.1	0.069	0.510	24.744913	-107.563833

10 CARR: Libramiento de Mazatlán (Cuota)

CLAVE:

RUTA: MEX-015D

AÑO: 2022

LUGAR	ESTACION				CLASIFICACION VEHICULAR EN PORCIENTO													COORDENADAS		
	KM	TE	SC	TDPA	M	A	B	C2	C3	T3S2	T3S3	T3S2R4	OTROS	A	B	C	K'	D	LATITUD	LONGITUD
Villa Unión (Ent. Caleritas)	0.00	3	1	3245	2.6	46.0	8.9	6.0	2.2	23.3	3.7	6.4	0.9	48.6	8.9	42.5	0.102	0.519	23.201478	-106.215026
Villa Unión (Ent. Caleritas)	0.00	3	2	3008	2.5	45.8	8.8	6.1	2.2	23.4	3.7	6.6	0.9	48.3	8.8	42.9	0.100	0.519	23.201383	-106.215025
Plaza de Cobro El Vainillo	6.00	2	1	3721	1.0	50.6	3.5	4.0	4.1	24.3	3.2	7.4	1.9	51.6	3.5	44.9	0.090	0.500	23.216186	-106.260339
Plaza de Cobro El Vainillo	6.00	2	2	3721	1.0	50.6	3.5	4.0	4.1	24.3	3.2	7.4	1.9	51.6	3.5	44.9	0.090	0.500	23.216186	-106.260339
T. Izq. Aeropuerto Internacional de Mazatlán	6.45	3	1	4268	4.5	48.7	8.8	6.1	2.1	20.5	2.9	5.5	0.9	53.2	8.8	38.0	0.090	0.507	23.223612	-106.271074
T. Izq. Aeropuerto Internacional de Mazatlán	6.45	3	2	4395	4.3	49.6	8.7	6.0	2.2	20.3	2.8	5.3	0.8	53.9	8.7	37.4	0.080	0.507	23.223561	-106.271147

SINALOA

10 CARR: Libramiento de Mazatlán (Cuota)

CLAVE:

RUTA: MEX-015D

AÑO: 2022

LUGAR	ESTACION				CLASIFICACION VEHICULAR EN PORCIENTO										COORDENADAS					
	KM	TE	SC	TDPA	M	A	B	C2	C3	T3S2	T3S3	T3S2R4	OTROS	A	B	C	K'	D	LATITUD	LONGITUD
T. C. Mazatlán - Culiacán	28.60	1	1	5548	5.2	62.4	5.0	3.4	2.3	14.6	2.3	3.9	0.9	67.6	5.0	27.4	0.089	0.520	23.306208	-106.394595
T. C. Mazatlán - Culiacán	28.60	1	2	6004	5.8	61.7	5.6	4.2	2.1	14.1	2.0	3.7	0.8	67.5	5.6	26.9	0.104	0.520	23.306123	-106.394616
T. C. Mazatlán - Culiacán	28.60	3	1	4779	6.2	60.0	3.4	3.3	3.5	16.2	2.0	4.5	0.9	66.2	3.4	30.4	0.087	0.505	23.308300	-106.410127
T. C. Mazatlán - Culiacán	28.60	3	2	4692	6.2	59.4	3.4	3.5	3.6	16.4	2.1	4.5	0.9	65.6	3.4	31.0	0.103	0.505	23.308236	-106.410075

11 CARR: Los Mochis - Cd. Obregón (Cuota)

CLAVE: 26444

RUTA: MEX-015D

AÑO: 2022

LUGAR	ESTACION				CLASIFICACION VEHICULAR EN PORCIENTO										COORDENADAS					
	KM	TE	SC	TDPA	M	A	B	C2	C3	T3S2	T3S3	T3S2R4	OTROS	A	B	C	K'	D	LATITUD	LONGITUD
T. C. Topolobampo - Choix	0.00	3	1	8901	9.1	72.0	2.9	3.9	4.2	5.7	0.6	1.3	0.3	81.1	2.9	16.0	0.078	0.508	25.836069	-108.975301
T. C. Topolobampo - Choix	0.00	3	2	9187	8.9	71.6	3.3	4.0	4.2	5.7	0.8	1.2	0.3	80.5	3.3	16.2	0.067	0.508	25.835899	-108.975420
T. Izq. Ahome	17.13	3	1	9710	12.8	62.9	3.8	4.1	2.4	9.2	1.9	2.3	0.6	75.7	3.8	20.5	0.068	0.500	25.945595	-109.053343
T. Izq. Ahome	17.13	3	2	9724	10.1	65.2	4.4	3.6	2.2	9.8	1.8	2.3	0.6	75.3	4.4	20.3	0.068	0.500	25.945632	-109.053491
T. Izq. Coahuilampo	19.00	1	1	8365	0.0	70.5	5.7	5.2	2.1	11.3	2.2	2.4	0.6	70.5	5.7	23.8	0.070	0.522	25.958642	-109.053395
T. Izq. Coahuilampo	19.00	1	2	9122	13.0	60.4	4.7	5.5	2.2	9.1	1.6	2.8	0.7	73.4	4.7	21.9	0.075	0.522	25.958620	-109.053571
T. Izq. Coahuilampo	19.00	3	1	6660	6.8	59.8	5.1	3.3	3.1	15.0	1.8	4.4	0.7	66.6	5.1	28.3	0.065	0.535	25.970636	-109.039785
T. Izq. Coahuilampo	19.00	3	2	5783	6.8	57.9	6.3	4.5	2.4	14.5	2.9	4.1	0.6	64.7	6.3	29.0	0.076	0.535	25.970882	-109.039691
Poblado Chico	50.00	3	1	5394	4.8	60.6	6.2	4.1	1.8	14.8	2.9	3.8	1.0	65.4	6.2	28.4	0.069	0.508	26.228028	-109.054368
Poblado Chico	50.00	3	2	5215	5.4	59.5	6.8	4.3	1.8	15.1	2.3	3.8	1.0	64.9	6.8	28.3	0.076	0.508	26.228262	-109.054478
T. Der. El Fuerte	54.80	1	1	5262	5.1	60.4	6.2	3.8	2.5	14.5	2.9	3.7	0.9	65.5	6.2	28.3	0.066	0.504	26.261108	-109.044961
T. Der. El Fuerte	54.80	1	2	5181	5.2	60.6	6.5	4.0	2.1	14.2	2.4	4.1	0.9	65.8	6.5	27.7	0.081	0.504	26.261150	-109.045134
T. Der. El Fuerte	54.80	3	1	5544	6.2	59.8	6.0	3.4	2.0	15.0	2.7	4.0	0.9	66.0	6.0	28.0	0.073	0.520	26.276265	-109.040620
T. Der. El Fuerte	54.80	3	2	5119	5.8	58.7	6.8	4.0	1.9	15.9	2.2	3.9	0.8	64.5	6.8	28.7	0.069	0.520	26.276076	-109.040843
Lim. Edos. Term. Sin. Ppia. Son.	69.80	0	0																	
T. Izq. Camahuira	93.90	1	1	4877	8.2	44.4	8.9	7.6	2.4	19.0	3.8	4.8	0.9	52.6	8.9	38.5	0.069	0.513	26.577260	-109.158703
T. Izq. Camahuira	93.90	1	2	5139	8.3	46.1	8.7	7.3	2.0	19.0	3.6	4.1	0.9	54.4	8.7	36.9	0.069	0.513	26.577189	-109.158801
X. C. Alamos - Masiaca	114.30	1	1	4877	11.7	40.0	8.9	3.7	2.1	23.6	4.2	4.9	0.9	51.7	8.9	39.4	0.068	0.503	26.723175	-109.284882
X. C. Alamos - Masiaca	114.30	1	2	4936	11.9	40.2	9.0	3.4	2.0	23.1	4.6	4.9	0.9	52.1	9.0	38.9	0.067	0.503	26.723028	-109.285103
T. Izq. Huatabampo	128.50	1	1	3827	5.7	51.1	7.3	4.4	3.0	18.6	4.0	5.0	0.9	56.8	7.3	35.9	0.078	0.511	26.836482	-109.365933
T. Izq. Huatabampo	128.50	1	2	3663	6.2	49.5	7.8	4.9	2.8	18.3	4.6	5.0	0.9	55.7	7.8	36.5	0.068	0.511	26.836318	-109.366169
Plaza de Cobro Estacion Don (La Jaula)	129.90	2	1	3151	0.3	47.8	6.7	3.1	2.8	25.5	3.0	8.5	2.3	48.1	6.7	45.2	0.086	0.500	26.849735	-109.373267
Plaza de Cobro Estacion Don (La Jaula)	129.90	2	2	3151	0.3	47.8	6.7	3.1	2.8	25.5	3.0	8.5	2.3	48.1	6.7	45.2	0.086	0.500	26.849735	-109.373267
Navojoa	155.00	1	1	6552	7.8	55.2	8.2	4.8	3.3	13.8	2.4	3.5	1.0	63.0	8.2	28.8	0.087	0.503	27.029155	-109.434976
Navojoa	155.00	1	2	6472	7.2	58.1	8.5	4.9	2.5	12.2	1.8	3.9	0.9	65.3	8.5	26.2	0.110	0.503	27.029561	-109.435297
Navojoa	155.00	3	1	7791	14.4	77.5	3.0	3.4	0.8	0.5	0.1	0.3	0.0	91.9	3.0	5.1	0.073	0.504	27.103781	-109.447803

SINALOA

11 CARR: Los Mochis - Cd. Obregón (Cuota)

CLAVE: 26444

RUTA: MEX-015D

AÑO: 2022

LUGAR	ESTACION				CLASIFICACION VEHICULAR EN PORCIENTO										COORDENADAS					
	KM	TE	SC	TDPA	M	A	B	C2	C3	T3S2	T3S3	T3S2R4	OTROS	A	B	C	K'	D	LATITUD	LONGITUD
Navojoa	155.00	3	2	7919	19.3	72.3	3.4	3.6	0.7	0.5	0.1	0.1	0.0	91.6	3.4	5.0	0.087	0.504	27.103792	-109.447898
T. Izq. Villa Juárez	167.25	1	1	6659	4.9	63.8	6.0	3.6	1.9	12.9	2.7	3.4	0.8	68.7	6.0	25.3	0.066	0.501	27.152783	-109.504042
T. Izq. Villa Juárez	167.25	1	2	6640	5.4	64.7	5.0	4.4	2.0	11.5	2.3	3.8	0.9	70.1	5.0	24.9	0.081	0.501	27.152511	-109.504285
T. Izq. Villa Juárez	167.25	3	1	6305	4.1	63.1	6.7	5.6	2.1	11.9	2.1	3.4	1.0	67.2	6.7	26.1	0.069	0.513	27.158691	-109.511620
T. Izq. Villa Juárez	167.25	3	2	6648	4.2	62.9	6.7	5.6	2.1	12.0	2.2	3.4	0.9	67.1	6.7	26.2	0.072	0.513	27.158447	-109.511914
Plaza de Cobro Fundición	195.80	2	1	4094	0.4	55.7	6.4	3.3	2.6	20.5	2.5	6.7	1.9	56.1	6.4	37.5	0.086	0.500	27.320494	-109.719697
Plaza de Cobro Fundición	195.80	2	2	4094	0.4	55.7	6.4	3.3	2.6	20.5	2.5	6.7	1.9	56.1	6.4	37.5	0.086	0.500	27.320494	-109.719697
T. Der. Fundición	196.30	1	1	5476	2.7	64.0	7.0	4.9	2.1	13.2	2.2	3.7	0.2	66.7	7.0	26.3	0.081	0.506	27.316289	-109.714294
T. Der. Fundición	196.30	1	2	5604	2.9	63.8	7.0	4.9	2.1	13.2	2.2	3.8	0.1	66.7	7.0	26.3	0.074	0.506	27.315966	-109.714489
T. Der. Libramiento de Cd. Obregón (Cuota)	203.52	1	1	7325	3.4	65.1	6.6	2.9	2.5	13.3	2.1	3.3	0.8	68.5	6.6	24.9	0.072	0.539	27.366838	-109.779490
T. Der. Libramiento de Cd. Obregón (Cuota)	203.52	1	2	6265	3.7	65.1	6.6	3.0	2.4	13.4	2.1	2.9	0.8	68.8	6.6	24.6	0.064	0.539	27.366623	-109.779715
Cd. Obregón	222.70	1	1	12014	6.6	72.6	4.9	4.3	3.2	5.0	1.8	1.2	0.4	79.2	4.9	15.9	0.080	0.509	27.455075	-109.892915
Cd. Obregón	222.70	1	2	12434	5.1	72.7	5.2	4.4	3.9	5.8	1.6	1.0	0.3	77.8	5.2	17.0	0.074	0.509	27.454852	-109.893170

12 CARR: Mazatlán - Culiacán (Cuota)

CLAVE: 25045

RUTA: MEX-015D

AÑO: 2022

LUGAR	ESTACION				CLASIFICACION VEHICULAR EN PORCIENTO										COORDENADAS					
	KM	TE	SC	TDPA	M	A	B	C2	C3	T3S2	T3S3	T3S2R4	OTROS	A	B	C	K'	D	LATITUD	LONGITUD
Ent. Venadillo	0.00	3	1	5507	5.4	55.8	6.4	5.0	4.0	16.0	2.5	4.0	0.9	61.2	6.4	32.4	0.106	0.504	23.310167	-106.426928
Ent. Venadillo	0.00	3	2	5431	4.9	55.4	6.5	5.3	4.0	16.2	2.8	4.0	0.9	60.3	6.5	33.2	0.095	0.504	23.310108	-106.426987
Plaza de Cobro Mármol	25.15	3	1	4484	3.3	47.9	8.3	7.3	2.6	20.1	3.6	6.3	0.6	51.2	8.3	40.5	0.088	0.519	23.475479	-106.574527
Plaza de Cobro Mármol	25.15	3	2	4835	3.4	48.5	8.3	7.2	2.4	19.8	3.7	6.1	0.6	51.9	8.3	39.8	0.079	0.519	23.475441	-106.574608
T. Izq. Dimas	62.20	1	1	5202	2.0	49.9	8.2	7.1	2.3	20.4	3.5	6.0	0.6	51.9	8.2	39.9	0.097	0.511	23.721580	-106.769986
T. Izq. Dimas	62.20	1	2	4971	2.0	47.8	8.3	7.0	2.4	22.0	3.6	6.2	0.7	49.8	8.3	41.9	0.074	0.511	23.721536	-106.770060
T. Der. La Cruz	89.37	1	1	4870	1.9	48.4	8.2	7.2	2.4	21.5	3.5	6.2	0.7	50.3	8.2	41.5	0.091	0.507	23.911121	-106.924941
T. Der. La Cruz	89.37	1	2	5015	1.8	48.1	8.3	7.0	2.4	21.6	3.7	6.4	0.7	49.9	8.3	41.8	0.068	0.507	23.911092	-106.925027
T. Der. Quila	153.39	1	1	4675	4.4	50.5	9.0	8.9	2.6	14.9	3.1	6.0	0.6	54.9	9.0	36.1	0.081	0.506	24.395160	-107.268854
T. Der. Quila	153.39	1	2	4787	4.1	46.8	10.2	9.7	2.8	16.2	3.2	6.3	0.7	50.9	10.2	38.9	0.097	0.506	24.394979	-107.269066
Plaza de Cobro Costa Rica	187.80	3	1	4658	4.3	53.7	8.0	4.8	2.9	15.8	3.1	6.5	0.9	58.0	8.0	34.0	0.109	0.505	24.575988	-107.434577
Plaza de Cobro Costa Rica	187.80	3	2	4747	4.4	53.5	8.4	5.0	3.0	14.9	3.4	6.5	0.9	57.9	8.4	33.7	0.082	0.505	24.575679	-107.434684
T. C. Culiacán - El Dorado	190.26	0	0																	

SINALOA

13 CARR : Tepic - Villa Unión (cuota)

CLAVE: 00500

RUTA: MEX-015D

AÑO: 2022

LUGAR	ESTACION				CLASIFICACION VEHICULAR EN PORCIENTO												COORDENADAS			
	KM	TE	SC	TDPA	M	A	B	C2	C3	T3S2	T3S3	T3S2R4	OTROS	A	B	C	K'	D	LATITUD	LONGITUD
Tepic	0.00	0	0																	
Lib. de Tepic (Cuota)	6.60	0	0																	
Plaza de Cobro Trapichillo	8.65	1	1	8063	2.0	77.1	3.8	8.3	1.5	5.0	1.0	1.1	0.2	79.1	3.8	17.1	0.129	0.519	21.554088	-104.959415
Plaza de Cobro Trapichillo	8.65	1	2	8717	2.0	77.2	3.8	8.3	1.4	5.0	0.9	1.1	0.3	79.2	3.8	17.0	0.174	0.519	21.554128	-104.959537
Plaza de Cobro Trapichillo	8.65	2	1	5971	1.0	65.5	5.6	3.4	3.9	14.1	1.7	3.5	1.3	66.5	5.6	27.9	0.098	0.500	21.571789	-104.987394
Plaza de Cobro Trapichillo	8.65	2	2	5971	1.0	65.5	5.6	3.4	3.9	14.1	1.7	3.5	1.3	66.5	5.6	27.9	0.098	0.500	21.571789	-104.987394
T. C. Tepic - Mazatlán	21.00	1	1	5492	3.0	66.4	7.5	8.9	2.3	6.7	2.1	2.1	1.0	69.4	7.5	23.1	0.085	0.521	21.663743	-105.027473
T. C. Tepic - Mazatlán	21.00	1	2	5044	3.0	67.0	7.5	8.6	2.1	6.7	1.9	2.2	1.0	70.0	7.5	22.5	0.095	0.521	21.663752	-105.027591
T. C. Tepic - Mazatlán (Cruce de San Blas)	24.50	3	0	6352	5.4	50.3	10.4	5.9	1.9	17.8	2.2	5.2	0.9	55.7	10.4	33.9	0.062	0.516	21.714388	-105.060421
Est. Ruiz	54.90	1	0	6066	6.3	42.3	11.5	6.4	3.0	20.9	2.8	5.9	0.9	48.6	11.5	39.9	0.061	0.536	21.947106	-105.112030
Est. Ruiz	54.90	3	0	6082	5.6	42.3	9.9	4.6	2.3	24.6	2.8	6.9	1.0	47.9	9.9	42.2	0.060	0.506	21.962150	-105.123335
Rosamorada	73.50	1	0	5806	4.8	40.6	11.3	5.3	1.9	26.1	2.6	6.5	0.9	45.4	11.3	43.3	0.064	0.511	22.084174	-105.210244
Rosamorada	73.50	3	0	5596	5.1	45.8	9.6	5.9	2.3	22.2	2.1	6.1	0.9	50.9	9.6	39.5	0.070	0.509	22.093178	-105.221655
Acajoneta	120.20	1	0	5604	5.1	40.3	10.1	4.7	2.2	26.9	2.5	7.3	0.9	45.4	10.1	44.5	0.064	0.508	22.450572	-105.420940
Plaza de Cobro Acajoneta	120.20	2	0	4524	0.8	40.5	5.5	3.9	4.8	29.9	2.7	9.0	2.9	41.3	5.5	53.2	0.081	0.500	22.454065	-105.418726
Acajoneta	120.20	3	0	4522	4.9	38.6	9.6	5.0	3.3	27.2	2.5	8.0	0.9	43.5	9.6	46.9	0.074	0.507	22.458533	-105.430601
Lim. Edos. Term. Nay. Ppia. Sin.	132.80	0	0																	
T. C. Tepic - Mazatlán	164.00	1	0	5015	8.7	40.2	7.9	5.4	3.2	23.2	3.1	7.4	0.9	48.9	7.9	43.2	0.068	0.506	22.751120	-105.650413
Escuinapa de Hidalgo	208.60	1	1	2484	5.3	41.1	8.7	3.7	3.1	27.0	3.1	7.1	0.9	46.4	8.7	44.9	0.064	0.506	22.840488	-105.739190
Escuinapa de Hidalgo	208.60	1	2	2548	4.8	39.2	9.4	7.1	4.3	22.9	3.3	8.1	0.9	44.0	9.4	46.6	0.073	0.506	22.840476	-105.739232
Escuinapa de Hidalgo	208.60	3	0	5184	4.4	39.6	8.5	4.8	3.1	28.8	2.9	7.1	0.8	44.0	8.5	47.5	0.068	0.502	22.859173	-105.754638
Rosario	220.68	1	0	5459	6.4	40.2	11.0	4.4	2.3	25.4	2.8	6.6	0.9	46.6	11.0	42.4	0.064	0.522	22.979758	-105.872119
Plaza de Cobro Rosario	220.68	2	0	5233	0.7	42.2	6.5	3.3	4.3	29.2	2.8	8.3	2.7	42.9	6.5	50.6	0.081	0.500	22.984690	-105.878103
Rosario	220.68	3	1	3007	3.0	43.9	13.3	7.0	3.4	20.3	2.7	5.5	0.9	46.9	13.3	39.8	0.071	0.517	22.993093	-105.887617
Rosario	220.68	3	2	3222	4.5	44.2	14.0	7.7	1.4	20.5	2.6	4.2	0.9	48.7	14.0	37.3	0.070	0.517	22.993069	-105.887650
X. C. Durango - Villa Unión (Cuota)	240.90	1	0	6309	5.8	43.3	10.3	5.4	2.4	23.6	2.7	6.2	0.3	49.1	10.3	40.6	0.067	0.506	23.185837	-106.174103
X. C. Durango - Villa Unión (Cuota)	240.90	3	1	4694	5.8	47.3	11.0	6.4	1.9	18.4	2.4	5.9	0.9	53.1	11.0	35.9	0.087	0.521	23.195144	-106.192154
X. C. Durango - Villa Unión (Cuota)	240.90	3	2	5106	8.4	47.4	9.4	6.0	1.7	16.8	2.9	6.8	0.6	55.8	9.4	34.8	0.093	0.521	23.194927	-106.192335

14 CARR : Carrizal - Campo Anibal

CLAVE: 25585

RUTA: SIN-019

AÑO: 2022

LUGAR	ESTACION				CLASIFICACION VEHICULAR EN PORCIENTO												COORDENADAS			
	KM	TE	SC	TDPA	M	A	B	C2	C3	T3S2	T3S3	T3S2R4	OTROS	A	B	C	K'	D	LATITUD	LONGITUD
T. C. Mazatlán - Culiacán	0.00	3	0	2142	15.7	74.6	0.7	1.7	3.9	2.0	0.9	0.4	0.1	90.3	0.7	9.0	0.085	0.503	24.635634	-107.273512
X. C. Culiacán - El Dorado	29.20	1	0	11553	14.5	79.0	2.4	1.9	1.3	0.7	0.0	0.2	0.0	93.5	2.4	4.1	0.078	0.504	24.590299	-107.439461

SINALOA

14 CARR: Carrizal - Campo Anibal

CLAVE: 25585

RUTA: SIN-019

AÑO: 2022

LUGAR	ESTACION				CLASIFICACION VEHICULAR EN PORCIENTO										COORDENADAS					
	KM	TE	SC	TDPA	M	A	B	C2	C3	T3S2	T3S3	T3S2R4	OTROS	A	B	C	K'	D	LATITUD	LONGITUD
X. C. Culiacán - El Dorado	29.20	3	0	1286	11.8	74.2	2.5	4.7	3.6	2.0	0.5	0.6	0.1	86.0	2.5	11.5	0.081	0.502	24.599416	-107.477105
T. C. San Pedro - Campo Anibal	32.00	1	0	1476	17.1	71.6	2.5	3.9	2.9	1.2	0.4	0.3	0.1	88.7	2.5	8.8	0.075	0.500	24.590247	-107.540957

15 CARR: Culiacán - Altata

CLAVE: 25013

RUTA: SIN-030

AÑO: 2022

LUGAR	ESTACION				CLASIFICACION VEHICULAR EN PORCIENTO										COORDENADAS					
	KM	TE	SC	TDPA	M	A	B	C2	C3	T3S2	T3S3	T3S2R4	OTROS	A	B	C	K'	D	LATITUD	LONGITUD
Culiacán	0.00	0	0																	
T. Izq. El Dorado	6.20	1	1	42843	14.0	76.8	1.0	2.0	1.2	1.0	0.3	2.9	0.8	90.8	1.0	8.2	0.064	0.511	24.780077	-107.437598
T. Izq. El Dorado	6.20	1	2	45001	14.6	75.3	1.2	2.2	1.4	1.1	0.4	2.9	0.9	89.9	1.2	8.9	0.063	0.511	24.779969	-107.437517
T. Izq. El Dorado	6.20	3	1	36513	7.0	87.0	0.8	1.7	1.2	1.0	0.5	0.6	0.2	94.0	0.8	5.2	0.062	0.509	24.775596	-107.450129
T. Izq. El Dorado	6.20	3	2	35056	7.2	86.2	0.7	1.9	1.3	1.1	0.7	0.6	0.3	93.4	0.7	5.9	0.066	0.509	24.775447	-107.450081
T. Izq. Aeropuerto	8.70	3	1	24892	6.7	87.1	0.6	2.2	1.6	0.8	0.3	0.5	0.2	93.8	0.6	5.6	0.068	0.504	24.775141	-107.474526
T. Izq. Aeropuerto	8.70	3	2	25337	7.0	86.8	0.6	2.2	1.6	0.8	0.3	0.5	0.2	93.8	0.6	5.6	0.061	0.504	24.775018	-107.474535
Navolato	32.40	1	1	11293	14.1	78.9	0.8	2.3	1.5	1.2	0.5	0.4	0.3	93.0	0.8	6.2	0.089	0.503	24.755946	-107.686610
Navolato	32.40	1	2	11446	13.8	78.8	0.9	2.5	1.6	1.1	0.5	0.5	0.3	92.6	0.9	6.5	0.078	0.503	24.755830	-107.686619
Navolato	32.40	3	1	8698	10.3	82.8	1.1	2.1	1.7	0.8	0.5	0.5	0.2	93.1	1.1	5.8	0.087	0.510	24.755529	-107.705893
Navolato	32.40	3	2	9052	10.0	82.7	1.0	2.3	1.7	1.0	0.5	0.5	0.3	92.7	1.0	6.3	0.086	0.510	24.755394	-107.705912
T. Der. 5 Hermanos	38.20	3	1	4200	6.4	86.1	1.0	2.6	2.0	0.8	0.5	0.4	0.2	92.5	1.0	6.5	0.100	0.513	24.751876	-107.743122
T. Der. 5 Hermanos	38.20	3	2	4424	6.6	85.7	1.1	2.5	2.0	0.9	0.5	0.4	0.3	92.3	1.1	6.6	0.088	0.513	24.751782	-107.743063
Altata	67.00	1	1	2782	10.5	83.5	0.5	2.5	1.7	0.5	0.3	0.3	0.2	94.0	0.5	5.5	0.113	0.500	24.646204	-107.919996
Altata	67.00	1	2	2783	10.9	82.8	0.6	2.3	1.9	0.6	0.4	0.3	0.2	93.7	0.6	5.7	0.105	0.500	24.646115	-107.919985

16 CARR: Culiacán - El Dorado

CLAVE: 25044

RUTA: SIN-005

AÑO: 2022

LUGAR	ESTACION				CLASIFICACION VEHICULAR EN PORCIENTO										COORDENADAS					
	KM	TE	SC	TDPA	M	A	B	C2	C3	T3S2	T3S3	T3S2R4	OTROS	A	B	C	K'	D	LATITUD	LONGITUD
T. C. Culiacán - Altata	0.00	3	1	32238	4.4	80.3	2.9	5.9	1.8	2.2	1.4	0.8	0.3	84.7	2.9	12.4	0.083	0.520	24.768264	-107.447367
T. C. Culiacán - Altata	0.00	3	2	29461	4.3	80.9	2.8	5.8	1.7	2.1	1.3	0.8	0.3	85.2	2.8	12.0	0.077	0.520	24.768233	-107.447244
T. C. Libramiento Sur de Culiacán	3.60	3	1	22856	3.8	84.1	1.9	2.9	2.7	3.3	0.4	0.7	0.2	87.9	1.9	10.2	0.085	0.503	24.740877	-107.453952
T. C. Libramiento Sur de Culiacán	3.60	3	2	23159	4.5	83.8	1.8	2.9	2.4	3.2	0.4	0.8	0.2	88.3	1.8	9.9	0.072	0.503	24.739151	-107.454272
X. C. Carrizal - Campo Anibal	21.35	1	1	10264	2.2	79.9	4.4	2.9	2.5	5.7	0.7	1.3	0.4	82.1	4.4	13.5	0.072	0.509	24.602744	-107.444585
X. C. Carrizal - Campo Anibal	21.35	1	2	10640	2.7	79.6	4.1	2.9	2.4	5.5	1.0	1.4	0.4	82.3	4.1	13.6	0.074	0.509	24.602746	-107.444498
X. C. Carrizal - Campo Anibal	21.35	3	0	8233	6.5	82.2	1.7	3.6	2.6	1.8	0.7	0.7	0.2	88.7	1.7	9.6	0.079	0.515	24.580084	-107.444557
El Dorado	55.00	1	1	4419	15.6	77.6	1.4	1.8	2.3	0.7	0.4	0.1	0.1	93.2	1.4	5.4	0.084	0.503	24.341631	-107.370681

SINALOA

16 CARR: Culiacán - El Dorado

CLAVE: 25044

RUTA: SIN-005

AÑO: 2022

LUGAR	ESTACION				CLASIFICACION VEHICULAR EN PORCIENTO														COORDENADAS	
	KM	TE	SC	TDPA	M	A	B	C2	C3	T3S2	T3S3	T3S2R4	OTROS	A	B	C	K'	D	LATITUD	LONGITUD
El Dorado	55.00	1	2	4464	17.4	76.8	1.2	1.7	2.0	0.6	0.2	0.1	0.0	94.2	1.2	4.6	0.088	0.503	24.341633	-107.370582

17 CARR: El Limoncito - Cinco Hermanos

CLAVE: 25016

RUTA: SIN-016

AÑO: 2022

LUGAR	ESTACION				CLASIFICACION VEHICULAR EN PORCIENTO														COORDENADAS	
	KM	TE	SC	TDPA	M	A	B	C2	C3	T3S2	T3S3	T3S2R4	OTROS	A	B	C	K'	D	LATITUD	LONGITUD
T. C. Culiacán - Altata	0.00	3	0	3741	14.1	77.7	1.6	2.4	2.9	0.8	0.3	0.2	0.0	91.8	1.6	6.6	0.080	0.500	24.760418	-107.743445
Cinco Hermanos	16.00	1	0	1207	35.1	57.1	1.2	3.5	1.4	0.9	0.5	0.2	0.1	92.2	1.2	6.6	0.100	0.501	24.809055	-107.856983

18 CARR: El Salado - El Dorado

CLAVE: 25010

RUTA: SIN-010

AÑO: 2022

LUGAR	ESTACION				CLASIFICACION VEHICULAR EN PORCIENTO														COORDENADAS	
	KM	TE	SC	TDPA	M	A	B	C2	C3	T3S2	T3S3	T3S2R4	OTROS	A	B	C	K'	D	LATITUD	LONGITUD
T. C. Mazatlán - Culiacán	0.00	3	0	3757	7.6	80.5	0.7	3.0	1.7	1.9	4.4	0.2	0.0	88.1	0.7	11.2	0.074	0.511	24.505524	-107.167179
El Dorado	31.00	1	0	4828	26.0	69.1	0.9	1.8	1.2	0.6	0.2	0.2	0.0	95.1	0.9	4.0	0.074	0.545	24.333977	-107.345079

19 CARR: Escuinapa de Hidalgo - Teacapan

CLAVE: 25001

RUTA: SIN-001

AÑO: 2022

LUGAR	ESTACION				CLASIFICACION VEHICULAR EN PORCIENTO														COORDENADAS	
	KM	TE	SC	TDPA	M	A	B	C2	C3	T3S2	T3S3	T3S2R4	OTROS	A	B	C	K'	D	LATITUD	LONGITUD
Escuinapa de Hidalgo	0.00	3	0	4031	11.2	77.5	2.6	5.2	1.8	1.2	0.1	0.2	0.2	88.7	2.6	8.7	0.077	0.504	22.816931	-105.794528
Teacapan	41.00	1	0	2336	20.4	73.4	3.3	1.9	0.6	0.1	0.0	0.0	0.3	93.8	3.3	2.9	0.113	0.509	22.548463	-105.741438

20 CARR: Estación Dimas - San Ignacio

CLAVE: 25007

RUTA: SIN-006

AÑO: 2022

LUGAR	ESTACION				CLASIFICACION VEHICULAR EN PORCIENTO														COORDENADAS	
	KM	TE	SC	TDPA	M	A	B	C2	C3	T3S2	T3S3	T3S2R4	OTROS	A	B	C	K'	D	LATITUD	LONGITUD
Dimas	0.00	0	0																	
X. C. Mazatlán - Culiacán	23.15	1	0	903	9.8	79.9	1.0	3.4	4.6	0.9	0.3	0.1	0.0	89.7	1.0	9.3	0.073	0.508	23.838268	-106.617140
X. C. Mazatlán - Culiacán	23.15	3	0	2100	10.8	83.9	0.9	2.8	1.2	0.2	0.1	0.1	0.0	94.7	0.9	4.4	0.092	0.511	23.790830	-106.609295
San Ignacio	56.00	1	0	1616	21.2	69.5	0.5	7.6	0.5	0.6	0.0	0.1	0.0	90.7	0.5	8.8	0.082	0.506	23.925181	-106.429387

SINALOA

21 CARR: Guamuchil - Mocorito

CLAVE: 25021

RUTA: SIN-021

AÑO: 2022

LUGAR	ESTACION				CLASIFICACION VEHICULAR EN PORCIENTO													COORDENADAS		
	KM	TE	SC	TDPA	M	A	B	C2	C3	T3S2	T3S3	T3S2R4	OTROS	A	B	C	K'	D	LATITUD	LONGITUD
Guamuchil	0.00	3	0	7272	8.3	87.1	0.7	1.7	1.6	0.3	0.2	0.1	0.0	95.4	0.7	3.9	0.085	0.525	25.457768	-108.052577
Mocorito	17.00	1	1	3472	9.4	83.4	1.5	2.8	1.7	0.6	0.4	0.2	0.0	92.8	1.5	5.7	0.084	0.535	25.477784	-107.930030
Mocorito	17.00	1	2	3013	9.3	84.0	1.4	2.9	1.4	0.4	0.4	0.2	0.0	93.3	1.4	5.3	0.099	0.535	25.477857	-107.930054

22 CARR: Guasave - Sinaloa de Leyva

CLAVE: 25023

RUTA: SIN-023

AÑO: 2022

LUGAR	ESTACION				CLASIFICACION VEHICULAR EN PORCIENTO													COORDENADAS		
	KM	TE	SC	TDPA	M	A	B	C2	C3	T3S2	T3S3	T3S2R4	OTROS	A	B	C	K'	D	LATITUD	LONGITUD
Guasave	0.00	0	0																	
X. C. Culiacán - Los Mochis	1.15	3	1	6397	10.1	79.5	2.2	1.9	1.9	1.4	0.9	1.2	0.9	89.6	2.2	8.2	0.086	0.500	25.595579	-108.455064
X. C. Culiacán - Los Mochis	1.15	3	2	6388	10.0	80.2	2.0	1.7	1.8	1.3	0.8	1.6	0.6	90.2	2.0	7.8	0.083	0.500	25.595644	-108.455165
Sinaloa de Leyva	74.50	1	1	1762	7.7	87.4	0.8	2.3	1.0	0.3	0.2	0.3	0.0	95.1	0.8	4.1	0.080	0.507	25.829615	-108.233948
Sinaloa de Leyva	74.50	1	2	1712	9.8	84.8	1.0	2.6	0.8	0.3	0.3	0.4	0.0	94.6	1.0	4.4	0.082	0.507	25.829689	-108.233936

23 CARR: Navolato - El Castillo

CLAVE: 25004

RUTA: SIN-004

AÑO: 2022

LUGAR	ESTACION				CLASIFICACION VEHICULAR EN PORCIENTO													COORDENADAS		
	KM	TE	SC	TDPA	M	A	B	C2	C3	T3S2	T3S3	T3S2R4	OTROS	A	B	C	K'	D	LATITUD	LONGITUD
Navolato	0.00	3	0	6298	11.2	82.1	1.1	2.2	2.1	0.9	0.2	0.2	0.0	93.3	1.1	5.6	0.087	0.500	24.739177	-107.685467
El Castillo	29.00	1	0	1442	26.3	67.5	1.1	3.5	0.8	0.3	0.2	0.2	0.1	93.8	1.1	5.1	0.143	0.500	24.548979	-107.705202

24 CARR: Pozole - Cofradía

CLAVE: 25080

RUTA: SIN-080

AÑO: 2022

LUGAR	ESTACION				CLASIFICACION VEHICULAR EN PORCIENTO													COORDENADAS		
	KM	TE	SC	TDPA	M	A	B	C2	C3	T3S2	T3S3	T3S2R4	OTROS	A	B	C	K'	D	LATITUD	LONGITUD
T. C. Tepic - Mazatlán	0.00	3	0	3877	15.8	70.7	1.3	4.8	3.0	1.2	2.1	0.2	0.9	86.5	1.3	12.2	0.088	0.519	23.196152	-106.260199
Cofradía	9.10	1	0	1208	15.2	80.3	1.1	1.2	0.9	0.3	0.3	0.0	0.7	95.5	1.1	3.4	0.118	0.523	23.324895	-106.255734

25 CARR: Ramal a Chametla

CLAVE: 25002

RUTA: SIN-002

AÑO: 2022

LUGAR	ESTACION				CLASIFICACION VEHICULAR EN PORCIENTO													COORDENADAS		
	KM	TE	SC	TDPA	M	A	B	C2	C3	T3S2	T3S3	T3S2R4	OTROS	A	B	C	K'	D	LATITUD	LONGITUD
T. C. Tepic - Mazatlán	0.00	3	0	2843	16.9	69.8	3.8	4.2	2.3	2.2	0.3	0.3	0.2	86.7	3.8	9.5	0.085	0.501	22.930530	-105.835559
Chametla	15.00	1	0	1294	16.2	68.2	2.5	6.0	3.0	1.4	1.9	0.5	0.3	84.4	2.5	13.1	0.093	0.512	22.882937	-105.951937

SINALOA

26 CARR: Ramal a Cosalá

CLAVE: 25008

RUTA: SIN-008

AÑO: 2022

LUGAR	ESTACION				CLASIFICACION VEHICULAR EN PORCIENTO												COORDENADAS			
	KM	TE	SC	TDPA	M	A	B	C2	C3	T3S2	T3S3	T3S2R4	OTROS	A	B	C	K'	D	LATITUD	LONGITUD
T. C. Mazatlán - Culiacán	0.00	3	0	1755	10.6	76.9	2.3	6.2	1.0	0.7	0.7	1.0	0.6	87.5	2.3	10.2	0.076	0.504	24.073724	-106.796278
Cosalá	53.00	1	0	1633	20.4	67.3	1.9	3.5	1.3	2.1	1.5	1.4	0.6	87.7	1.9	10.4	0.082	0.503	24.407395	-106.714040

27 CARR: Ramal a El Quelite

CLAVE: 25060

RUTA: SIN-060

AÑO: 2022

LUGAR	ESTACION				CLASIFICACION VEHICULAR EN PORCIENTO												COORDENADAS			
	KM	TE	SC	TDPA	M	A	B	C2	C3	T3S2	T3S3	T3S2R4	OTROS	A	B	C	K'	D	LATITUD	LONGITUD
T. C. Mazatlán - Culiacán	0.00	3	0	1596	13.0	82.1	0.3	3.1	1.0	0.1	0.4	0.0	0.0	95.1	0.3	4.6	0.138	0.513	23.531976	-106.499918
El Quelite	6.00	1	0	1595	19.6	76.8	0.3	1.8	0.9	0.2	0.4	0.0	0.0	96.4	0.3	3.3	0.218	0.513	23.547968	-106.477421

28 CARR: Ramal a Estación Bamoa

CLAVE: 25022

RUTA: SIN-022

AÑO: 2022

LUGAR	ESTACION				CLASIFICACION VEHICULAR EN PORCIENTO												COORDENADAS			
	KM	TE	SC	TDPA	M	A	B	C2	C3	T3S2	T3S3	T3S2R4	OTROS	A	B	C	K'	D	LATITUD	LONGITUD
T. C. Culiacán - Los Mochis	0.00	3	0	3853	13.3	77.0	1.4	2.4	4.3	1.3	0.2	0.1	0.0	90.3	1.4	8.3	0.077	0.508	25.525895	-108.349534
Estación Bamoa	22.50	1	0	2455	13.0	77.0	3.0	5.2	0.8	0.5	0.3	0.2	0.0	90.0	3.0	7.0	0.092	0.518	25.682651	-108.311797

29 CARR: Ramal a La Cruz

CLAVE: 25043

RUTA: SIN

AÑO: 2022

LUGAR	ESTACION				CLASIFICACION VEHICULAR EN PORCIENTO												COORDENADAS			
	KM	TE	SC	TDPA	M	A	B	C2	C3	T3S2	T3S3	T3S2R4	OTROS	A	B	C	K'	D	LATITUD	LONGITUD
T. C. Mazatlán - Culiacán	0.00	3	0	2649	10.9	82.2	1.5	2.2	1.7	0.7	0.4	0.3	0.1	93.1	1.5	5.4	0.071	0.505	24.052376	-106.798305
La Cruz	18.00	1	0	4374	15.6	77.3	1.1	2.2	2.6	0.5	0.4	0.3	0.0	92.9	1.1	6.0	0.070	0.502	23.942728	-106.872128

30 CARR: Ramal a La Noria

CLAVE: 25592

RUTA: SIN

AÑO: 2022

LUGAR	ESTACION				CLASIFICACION VEHICULAR EN PORCIENTO												COORDENADAS			
	KM	TE	SC	TDPA	M	A	B	C2	C3	T3S2	T3S3	T3S2R4	OTROS	A	B	C	K'	D	LATITUD	LONGITUD
T. C. Mazatlán - Culiacán	0.00	3	0	2046	14.4	80.1	0.3	3.4	0.8	0.1	0.1	0.1	0.7	94.5	0.3	5.2	0.141	0.508	23.350531	-106.406812
La Noria	25.50	1	0	785	18.9	76.8	0.7	2.3	0.4	0.1	0.0	0.0	0.8	95.7	0.7	3.6	0.196	0.504	23.500147	-106.322216

SINALOA

31 CARR: Ramal a La Reforma

CLAVE: 25041

RUTA: SIN-004

AÑO: 2022

LUGAR	ESTACION				CLASIFICACION VEHICULAR EN PORCIENTO												COORDENADAS			
	KM	TE	SC	TDPA	M	A	B	C2	C3	T3S2	T3S3	T3S2R4	OTROS	A	B	C	K'	D	LATITUD	LONGITUD
T. C. Culiacán - Los Mochis	0.00	3	0	10507	6.8	83.0	1.0	5.5	2.5	0.7	0.2	0.3	0.0	89.8	1.0	9.2	0.078	0.508	25.446588	-108.084658
T. Der. La Angostura	14.00	3	0	3289	6.5	77.4	1.5	4.5	7.3	1.2	0.9	0.5	0.2	83.9	1.5	14.6	0.086	0.529	25.365625	-108.142762
La Reforma	60.00	1	0	3934	14.5	82.1	0.3	2.1	0.4	0.3	0.1	0.2	0.0	96.6	0.3	3.1	0.118	0.507	25.085427	-108.049546

32 CARR: Rosario - Caimanero

CLAVE: 25003

RUTA: SIN-003

AÑO: 2022

LUGAR	ESTACION				CLASIFICACION VEHICULAR EN PORCIENTO												COORDENADAS			
	KM	TE	SC	TDPA	M	A	B	C2	C3	T3S2	T3S3	T3S2R4	OTROS	A	B	C	K'	D	LATITUD	LONGITUD
Rosario	0.00	3	0	3683	29.7	63.8	1.3	2.7	1.3	1.0	0.1	0.1	0.0	93.5	1.3	5.2	0.111	0.502	22.981027	-105.878553
Caimanero	30.00	1	0	1204	20.8	72.9	1.6	2.3	1.5	0.6	0.2	0.1	0.0	93.7	1.6	4.7	0.101	0.537	22.882474	-106.061802

33 CARR: San Pedro - Campo Anibal

CLAVE: 25600

RUTA: SIN

AÑO: 2022

LUGAR	ESTACION				CLASIFICACION VEHICULAR EN PORCIENTO												COORDENADAS			
	KM	TE	SC	TDPA	M	A	B	C2	C3	T3S2	T3S3	T3S2R4	OTROS	A	B	C	K'	D	LATITUD	LONGITUD
T. C. Culiacán - Altata	0.00	3	0	4414	10.5	74.9	2.8	3.3	4.3	2.0	0.7	1.2	0.3	85.4	2.8	11.8	0.077	0.522	24.761804	-107.545534
Campo Anibal	24.50	1	0	1430	28.8	63.2	1.6	2.7	2.2	0.7	0.3	0.4	0.1	92.0	1.6	6.4	0.103	0.508	24.555487	-107.543313
Los Puentes	26.50	0	0																	

34 CARR: Topolobampo - Choix

CLAVE: 25032

RUTA: SIN-023

AÑO: 2022

LUGAR	ESTACION				CLASIFICACION VEHICULAR EN PORCIENTO												COORDENADAS			
	KM	TE	SC	TDPA	M	A	B	C2	C3	T3S2	T3S3	T3S2R4	OTROS	A	B	C	K'	D	LATITUD	LONGITUD
Topolobampo	0.00	3	1	4602	3.8	78.6	1.7	6.9	5.6	2.0	0.7	0.6	0.1	82.4	1.7	15.9	0.132	0.528	25.611781	-109.057476
Topolobampo	0.00	3	2	4111	3.5	79.3	1.5	6.5	5.2	2.3	0.8	0.8	0.1	82.8	1.5	15.7	0.151	0.528	25.611780	-109.057568
Los Mochis	24.00	1	1	10526	11.4	83.8	0.4	2.5	1.1	0.4	0.1	0.2	0.1	95.2	0.4	4.4	0.100	0.504	25.758394	-108.999088
Los Mochis	24.00	1	2	10373	11.1	83.4	0.7	2.2	1.4	0.6	0.2	0.3	0.1	94.5	0.7	4.8	0.079	0.504	25.758984	-108.998771
X. C. Los Mochis - Cd. Obregón (Cuota)	29.00	1	1	10338	6.9	83.9	1.8	4.0	1.7	0.8	0.3	0.5	0.1	90.8	1.8	7.4	0.083	0.501	25.819006	-108.974398
X. C. Los Mochis - Cd. Obregón (Cuota)	29.00	1	2	10360	7.3	84.0	1.6	3.8	1.6	0.7	0.3	0.6	0.1	91.3	1.6	7.1	0.078	0.501	25.819035	-108.974542
X. C. Los Mochis - Cd. Obregón (Cuota)	29.00	3	1	7646	3.8	86.6	1.9	5.6	0.7	0.4	0.6	0.3	0.1	90.4	1.9	7.7	0.085	0.522	25.840213	-108.965108
X. C. Los Mochis - Cd. Obregón (Cuota)	29.00	3	2	8365	4.5	85.3	2.2	6.1	0.7	0.4	0.4	0.3	0.1	89.8	2.2	8.0	0.083	0.522	25.840282	-108.965210
San Blas	65.00	1	1	3822	12.0	73.8	2.8	6.7	1.5	1.1	0.7	0.6	0.8	85.8	2.8	11.4	0.078	0.521	26.063030	-108.778426
San Blas	65.00	1	2	3519	11.9	74.2	2.9	6.7	1.6	0.9	0.8	0.4	0.6	86.1	2.9	11.0	0.098	0.521	26.063098	-108.778567
San Blas	65.00	3	1	2036	8.5	76.1	2.3	8.1	1.4	1.2	0.9	1.0	0.5	84.6	2.3	13.1	0.098	0.502	26.137158	-108.737013
San Blas	65.00	3	2	2023	8.2	76.0	2.7	8.1	1.3	1.2	0.9	0.9	0.7	84.2	2.7	13.1	0.116	0.502	26.137175	-108.737069

SINALOA

34 CARR: Topolobampo - Choix

CLAVE: 25032

RUTA: SIN-023

AÑO: 2022

LUGAR	ESTACION				CLASIFICACION VEHICULAR EN PORCIENTO													COORDENADAS		
	KM	TE	SC	TDPA	M	A	B	C2	C3	T3S2	T3S3	T3S2R4	OTROS	A	B	C	K'	D	LATITUD	LONGITUD
El Fuerte	107.70	1	1	2661	7.6	75.2	3.1	8.1	1.8	1.4	1.2	0.9	0.7	82.8	3.1	14.1	0.101	0.502	26.391889	-108.628040
El Fuerte	107.70	1	2	2641	7.7	75.1	3.1	8.3	1.8	1.3	1.1	0.9	0.7	82.8	3.1	14.1	0.088	0.502	26.391822	-108.628205
El Fuerte	107.70	3	0	3325	21.3	56.8	2.4	8.7	6.0	1.4	1.4	1.7	0.3	78.1	2.4	19.5	0.075	0.522	26.421582	-108.607051
Choix	159.00	1	0	2650	10.9	76.8	1.8	7.4	1.0	0.2	1.3	0.5	0.1	87.7	1.8	10.5	0.077	0.501	26.667882	-108.346417

35 CARR: Villa Unión - El Walamo

CLAVE: 25081

RUTA: SIN-081

AÑO: 2022

LUGAR	ESTACION				CLASIFICACION VEHICULAR EN PORCIENTO													COORDENADAS		
	KM	TE	SC	TDPA	M	A	B	C2	C3	T3S2	T3S3	T3S2R4	OTROS	A	B	C	K'	D	LATITUD	LONGITUD
Villa Unión	0.00	3	0	3954	23.9	71.2	1.1	2.8	0.5	0.2	0.1	0.1	0.1	95.1	1.1	3.8	0.098	0.505	23.166722	-106.220830
El Walamo	7.00	1	0	3937	26.4	67.4	1.4	3.4	0.9	0.2	0.0	0.1	0.2	93.8	1.4	4.8	0.084	0.502	23.143501	-106.238945

36 CARR: Villa Unión - Siqueiros

CLAVE: 25063

RUTA: SIN-063

AÑO: 2022

LUGAR	ESTACION				CLASIFICACION VEHICULAR EN PORCIENTO													COORDENADAS		
	KM	TE	SC	TDPA	M	A	B	C2	C3	T3S2	T3S3	T3S2R4	OTROS	A	B	C	K'	D	LATITUD	LONGITUD
Villa Unión	0.00	3	0	3776	19.4	73.7	0.8	2.9	2.0	0.5	0.5	0.1	0.1	93.1	0.8	6.1	0.082	0.501	23.205015	-106.207743
Siqueiros	11.00	1	0	1151	29.2	63.1	1.7	5.5	0.4	0.1	0.0	0.0	0.0	92.3	1.7	6.0	0.082	0.535	23.329750	-106.236476

37 CARR: Culiacán - Las Brisas (Cuota)

CLAVE: 25503

RUTA: SIN-001D

AÑO: 2022

LUGAR	ESTACION				CLASIFICACION VEHICULAR EN PORCIENTO													COORDENADAS		
	KM	TE	SC	TDPA	M	A	B	C2	C3	T3S2	T3S3	T3S2R4	OTROS	A	B	C	K'	D	LATITUD	LONGITUD
T. C. Culiacán - El Dorado	0.00	0	0																	
Plaza de Cobro Culiacán	1.50	3	1	4107	3.3	76.0	3.9	6.8	2.8	4.7	0.8	1.3	0.4	79.3	3.9	16.8	0.089	0.501	24.750709	-107.478385
Plaza de Cobro Culiacán	1.50	3	2	4117	3.6	75.4	4.0	6.7	2.8	4.5	0.9	1.7	0.4	79.0	4.0	17.0	0.080	0.501	24.750613	-107.478282
X. C. Culiacán - Altata	14.70	3	1	4970	3.9	56.1	7.4	4.3	3.9	16.8	2.3	4.4	0.9	60.0	7.4	32.6	0.079	0.515	24.768294	-107.583593
X. C. Culiacán - Altata	14.70	3	2	5281	3.7	55.6	6.7	4.3	3.7	17.2	2.8	5.1	0.9	59.3	6.7	34.0	0.071	0.515	24.768305	-107.583681
T. Der. Caimanero	44.79	1	1	4331	3.0	55.8	7.3	4.5	2.9	17.8	2.9	5.0	0.8	58.8	7.3	33.9	0.088	0.509	24.952949	-107.757950
T. Der. Caimanero	44.79	1	2	4177	2.7	55.6	7.6	4.9	2.7	17.9	2.8	4.9	0.9	58.3	7.6	34.1	0.082	0.509	24.952902	-107.758024
T. Der. Zapotillo	63.36	1	1	4637	3.9	55.3	6.4	6.9	2.8	15.1	3.6	5.3	0.7	59.2	6.4	34.4	0.079	0.509	25.067430	-107.873087
T. Der. Zapotillo	63.36	1	2	4805	3.9	55.9	6.4	7.0	2.6	14.8	3.6	5.2	0.6	59.8	6.4	33.8	0.070	0.509	25.067379	-107.873149
T. Der. Zapotillo	63.36	3	1	4099	7.2	52.4	6.6	4.3	2.7	17.7	3.0	5.2	0.9	59.6	6.6	33.8	0.080	0.508	25.074933	-107.881051
T. Der. Zapotillo	63.36	3	2	4239	7.3	52.7	6.4	4.0	2.9	17.9	2.5	5.4	0.9	60.0	6.4	33.6	0.078	0.508	25.074881	-107.881122
X. C. Ramal a La Reforma	110.00	1	1	3928	3.0	51.6	8.6	4.0	2.5	20.8	3.1	5.6	0.8	54.6	8.6	36.8	0.079	0.511	25.389926	-108.124348

SINALOA

37 CARR: Culiacán - Las Brisas (Cuota)

CLAVE: 25503

RUTA: SIN-001D

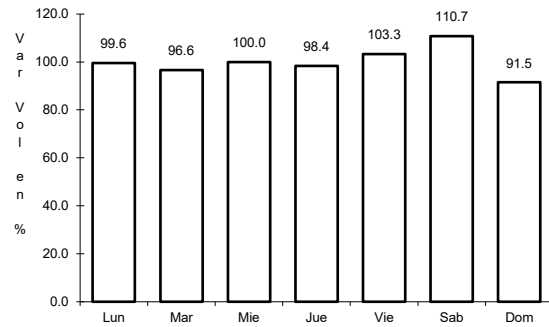
AÑO: 2022

L U G A R	E S T A C I O N				C L A S I F I C A C I O N V E H I C U L A R E N P O R C I E N T O														C O O R D E N A D A S	
	KM	TE	SC	TDPA	M	A	B	C2	C3	T3S2	T3S3	T3S2R4	OTROS	A	B	C	K'	D	LATITUD	LONGITUD
X. C. Ramal a La Reforma	110.00	1	2	4105	3.3	52.1	8.2	3.7	2.6	20.4	3.0	5.8	0.9	55.4	8.2	36.4	0.080	0.511	25.389870	-108.124409
T. C. Culiacán - Los Mochis	125.70	1	1	3886	3.5	49.3	7.6	4.9	3.1	22.2	3.1	5.5	0.8	52.8	7.6	39.6	0.073	0.504	25.481079	-108.224858
T. C. Culiacán - Los Mochis	125.70	1	2	3831	3.6	49.3	7.7	5.0	3.0	21.8	3.3	5.5	0.8	52.9	7.7	39.4	0.072	0.504	25.481035	-108.224919

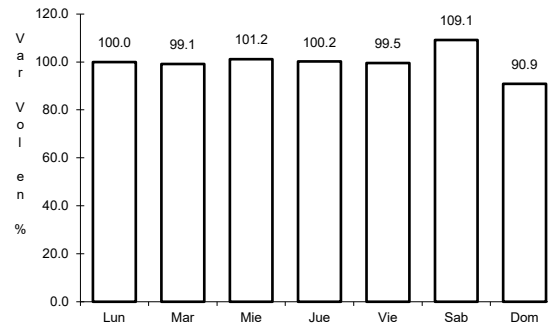
1 CARR: Culiacán - Los Mochis

CLAVE: 25502

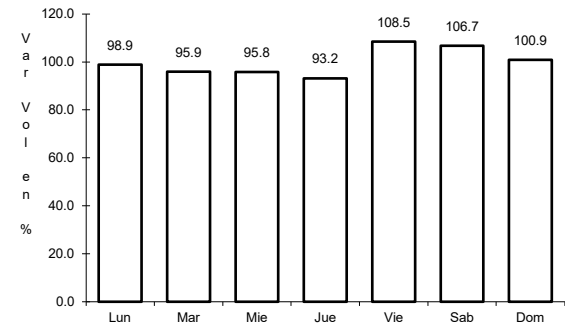
RUTA: MEX-015



Km: 4.00 Tipo: 1 Sent: 1



Km: 4.00 Tipo: 1 Sent: 2

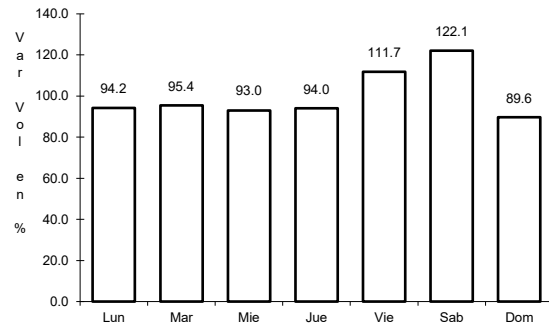


Km: 104.70 Tipo: 1 Sent: 0

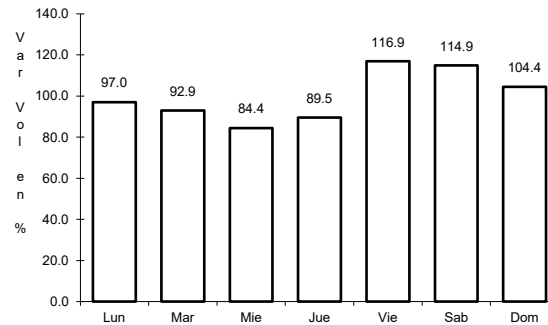
2 CARR: Durango - Villa Unión

CLAVE: 0083

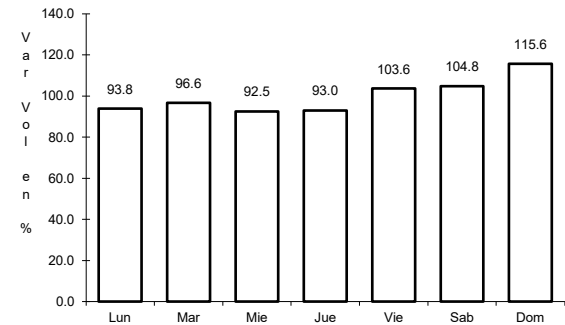
RUTA: MEX-040



Km: 0.00 Tipo: 3 Sent: 0



Km: 145.50 Tipo: 1 Sent: 0

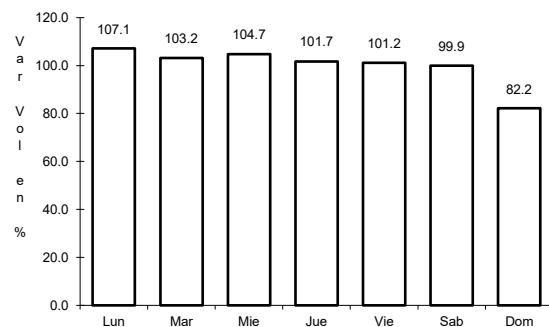


Km: 294.40 Tipo: 1 Sent: 0

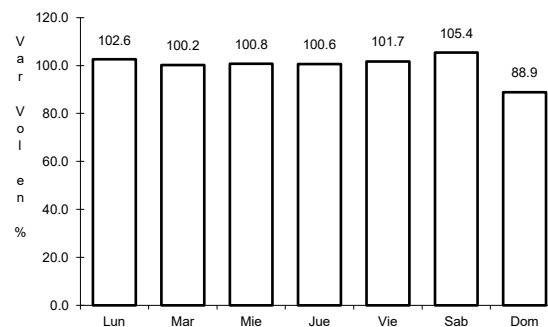
3 CARR: Libramiento de Mazatlán

CLAVE: 25604

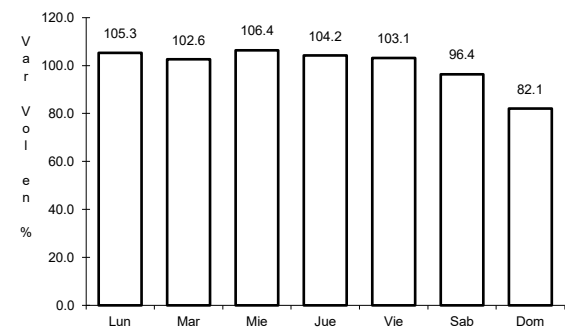
RUTA: MEX



Km: 0.00 Tipo: 3 Sent: 1



Km: 0.00 Tipo: 3 Sent: 2

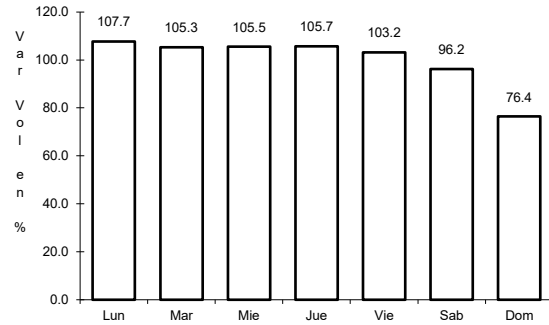


Km: 5.40 Tipo: 1 Sent: 1

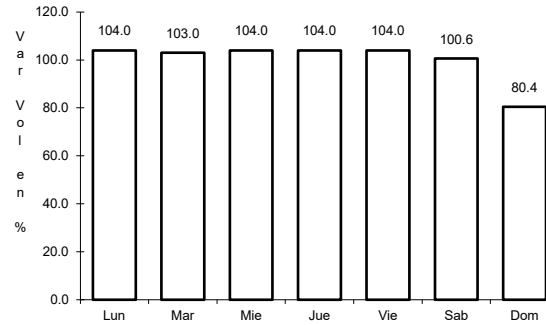
4 CARR: Libramiento Sur de Culiacán

CLAVE: 25500

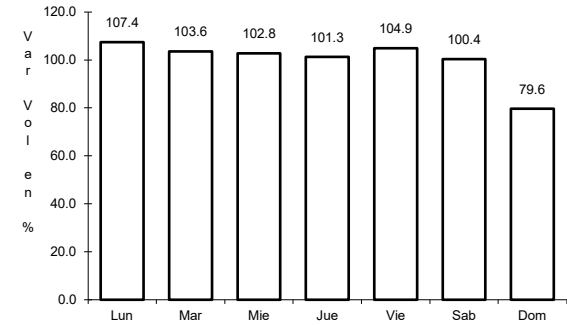
RUTA: MEX-015



Km: 0.00 Tipo: 3 Sent: 1



Km: 0.00 Tipo: 3 Sent: 2

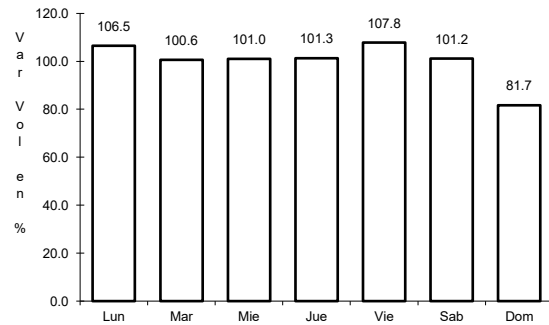


Km: 8.90 Tipo: 1 Sent: 1

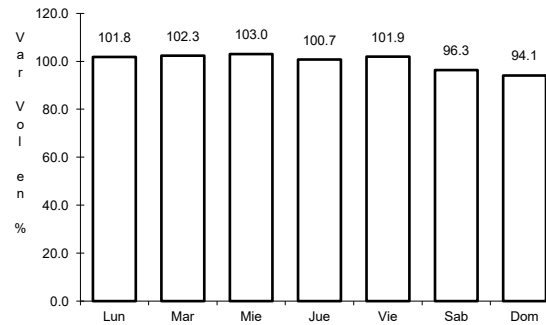
5 CARR: Mazatlán - Culiacán

CLAVE: 25501

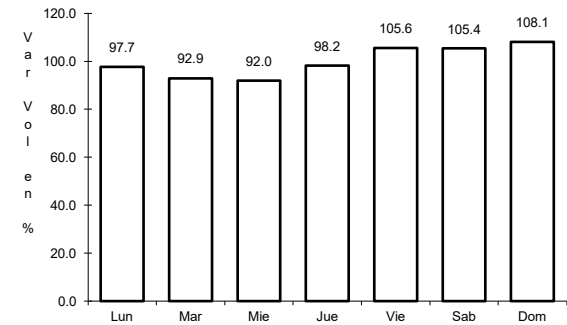
RUTA: MEX-015



Km: 0.82 Tipo: 1 Sent: 1



Km: 0.82 Tipo: 1 Sent: 2

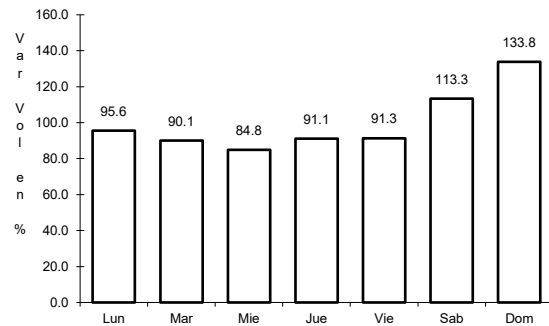


Km: 105.21 Tipo: 3 Sent: 0

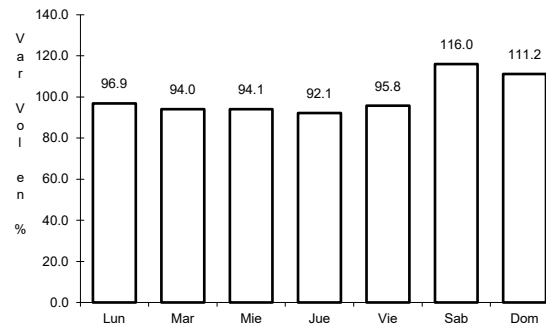
6 CARR: Pericos - Los Naranjos

CLAVE: 25598

RUTA: MEX-024



Km: 0.00 Tipo: 3 Sent: 0

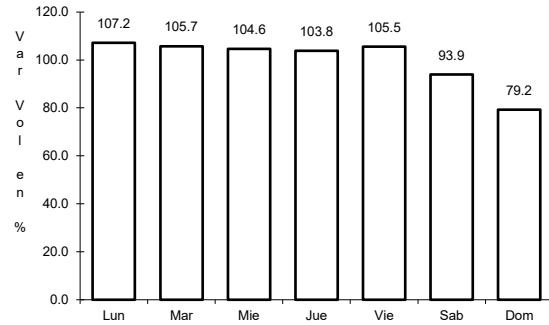


Km: 37.50 Tipo: 1 Sent: 0

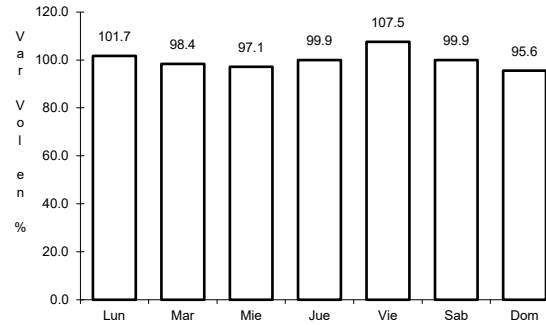
7 CARR: Tepic - Mazatlán

CLAVE: 00499

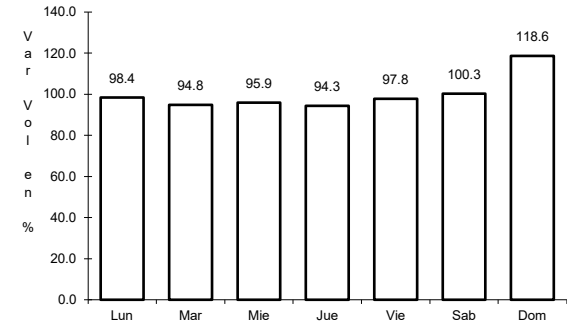
ruta: MEX-015



Km: 0.00 Tipo: 3 Sent: 1



Km: 136.52 Tipo: 1 Sent: 0

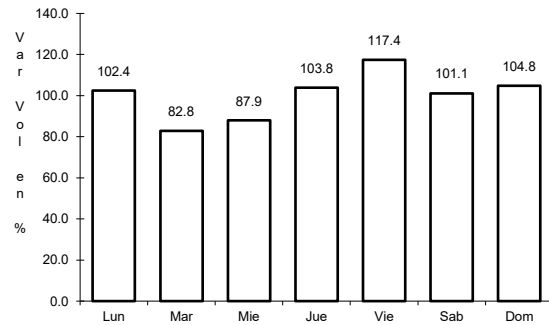


Km: 267.99 Tipo: 1 Sent: 0

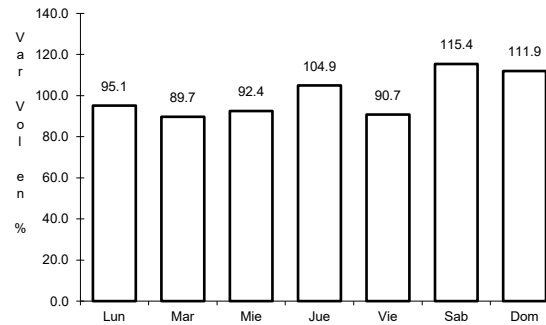
8 CARR: Durango - Mazatlán (Cuota)

CLAVE: 00084

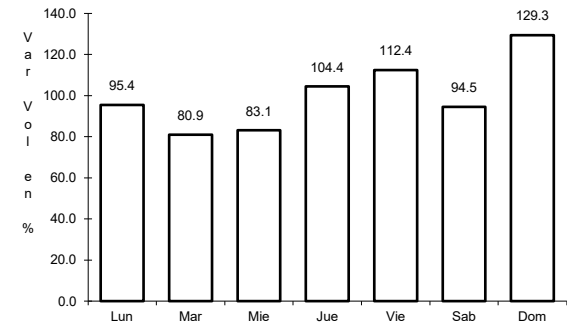
ruta: MEX-040D



Km: 21.30 Tipo: 3 Sent: 0



Km: 111.00 Tipo: 3 Sent: 0

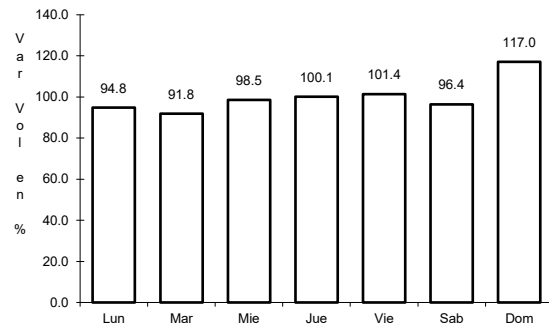


Km: 229.70 Tipo: 1 Sent: 0

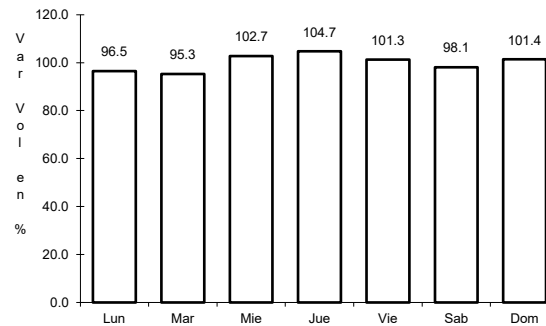
9 CARR: Libramiento de Culiacán (Cuota)

CLAVE:

ruta: MEX-015D



Km: 203.30 Tipo: 1 Sent: 1

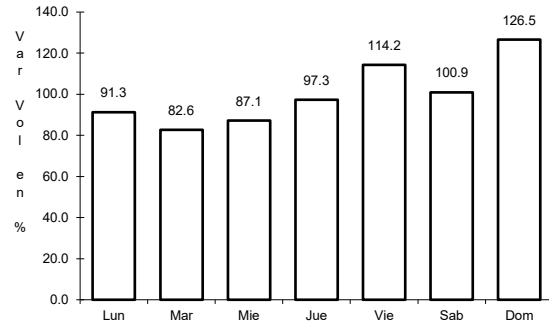


Km: 203.30 Tipo: 1 Sent: 2

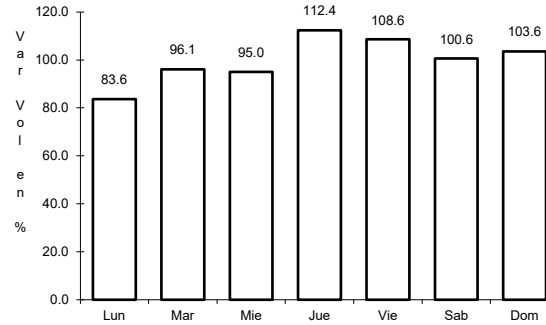
10 CARR: Libramiento de Mazatlán (Cuota)

CLAVE:

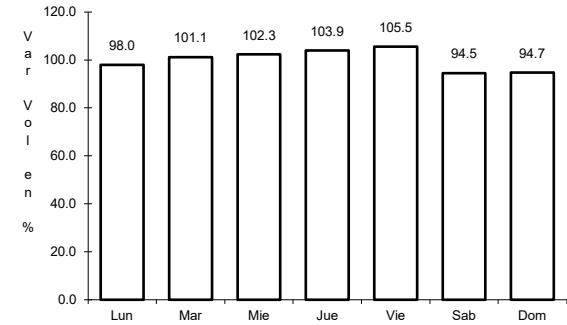
ruta: MEX-015D



Km: 0.00 Tipo: 3 Sent: 1



Km: 0.00 Tipo: 3 Sent: 2

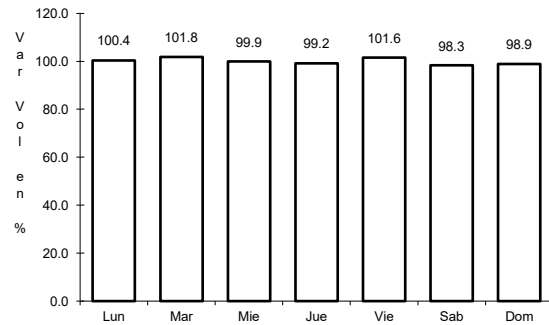


Km: 28.60 Tipo: 3 Sent: 1

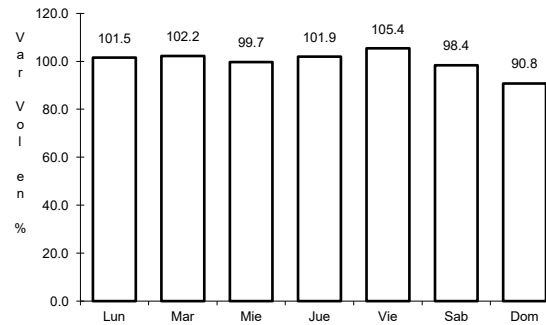
11 CARR: Los Mochis - Cd. Obregón (Cuota)

CLAVE: 26444

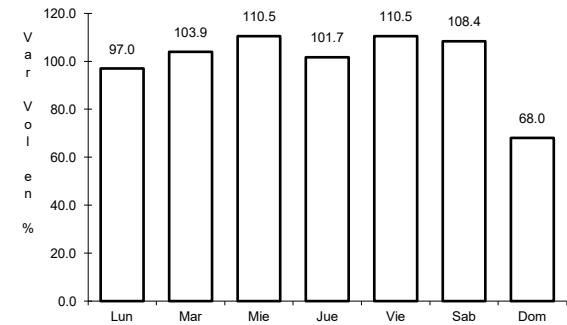
ruta: MEX-015D



Km: 0.00 Tipo: 3 Sent: 1



Km: 0.00 Tipo: 3 Sent: 2

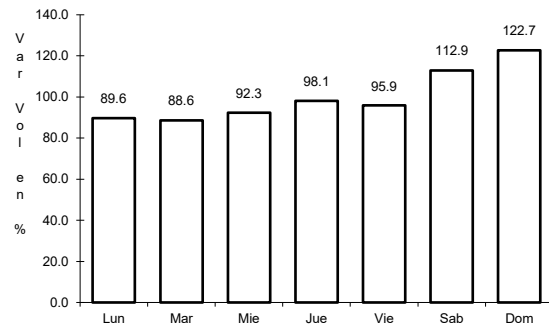


Km: 222.70 Tipo: 1 Sent: 1

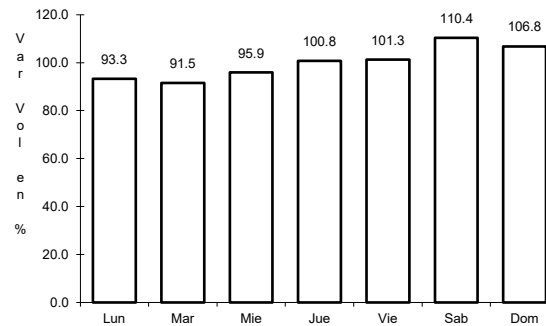
12 CARR: Mazatlán - Culiacán (Cuota)

CLAVE: 25045

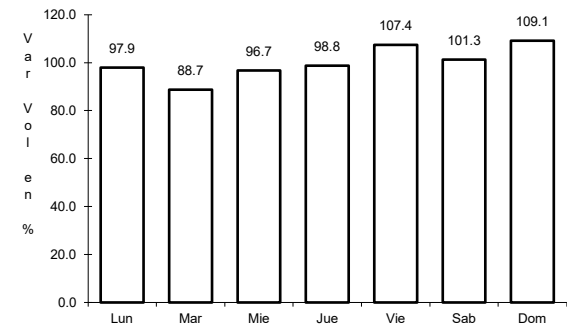
ruta: MEX-015D



Km: 0.00 Tipo: 3 Sent: 1



Km: 0.00 Tipo: 3 Sent: 2

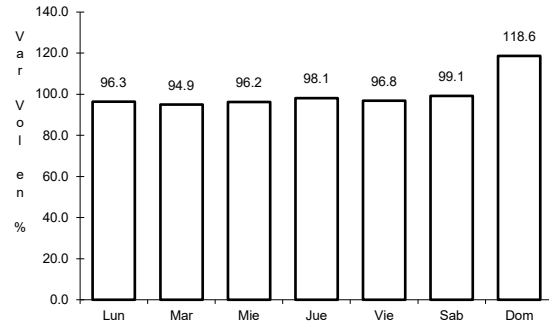


Km: 187.80 Tipo: 3 Sent: 1

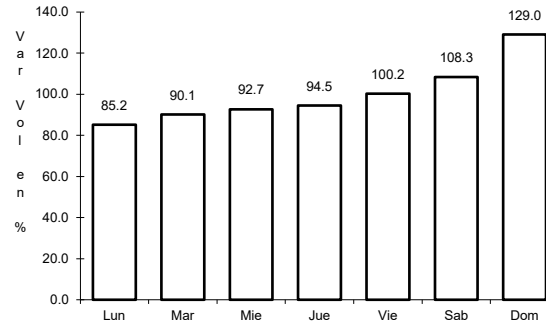
13 CARR: Tepic - Villa Unión (cuota)

CLAVE: 00500

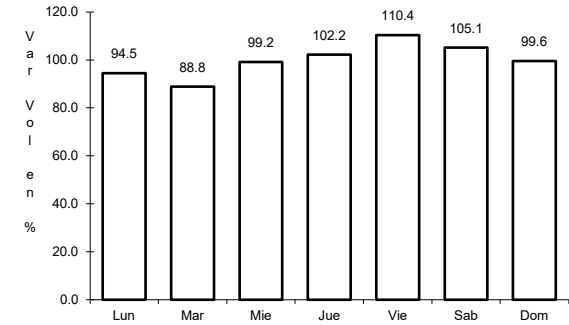
ruta: MEX-015D



Km: 8.65 Tipo: 1 Sent: 1



Km: 8.65 Tipo: 1 Sent: 2

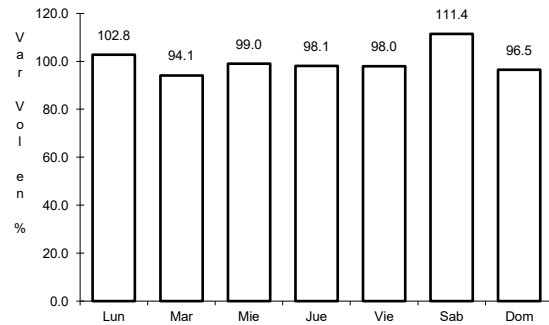


Km: 240.90 Tipo: 1 Sent: 0

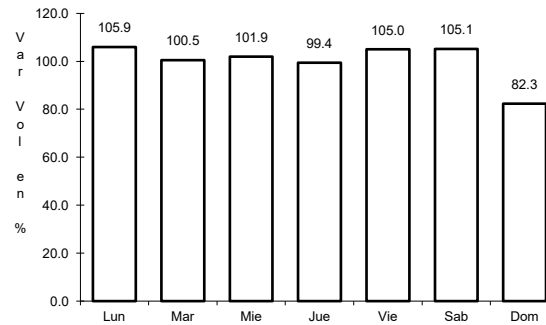
14 CARR: Carrizal - Campo Aníbal

CLAVE: 25585

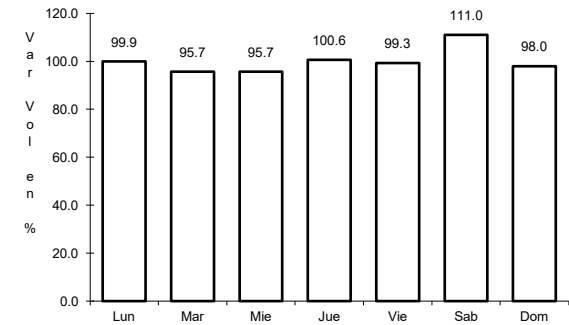
ruta: SIN-019



Km: 0.00 Tipo: 3 Sent: 0



Km: 29.20 Tipo: 1 Sent: 0

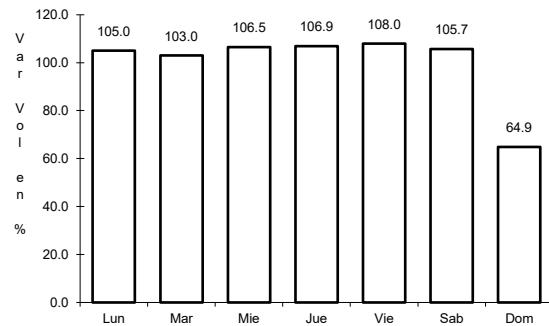


Km: 32.00 Tipo: 1 Sent: 0

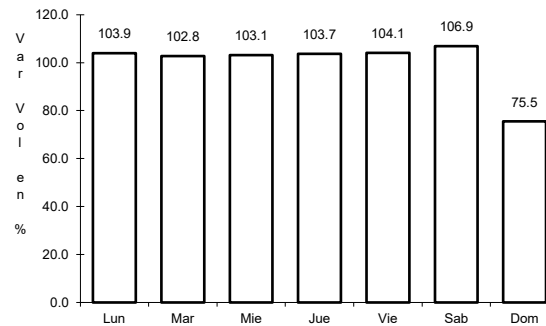
15 CARR: Culiacán - Altata

CLAVE: 25013

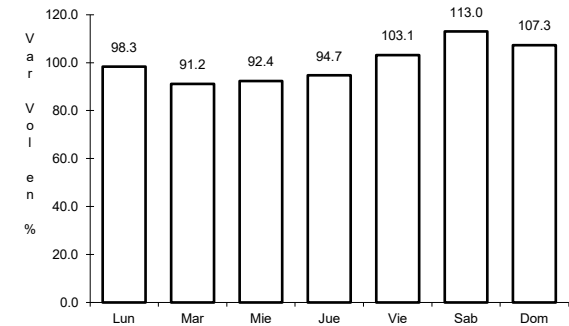
ruta: SIN-030



Km: 6.20 Tipo: 1 Sent: 1



Km: 6.20 Tipo: 1 Sent: 2

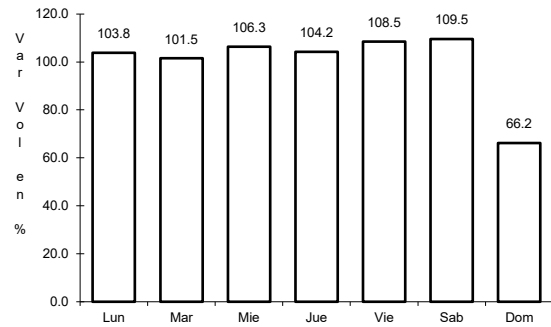


Km: 67.00 Tipo: 1 Sent: 1

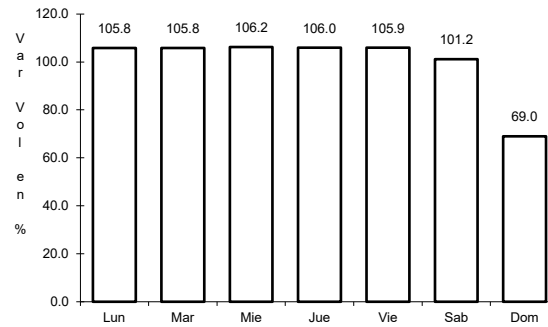
16 CARR: Culiacán - El Dorado

CLAVE: 25044

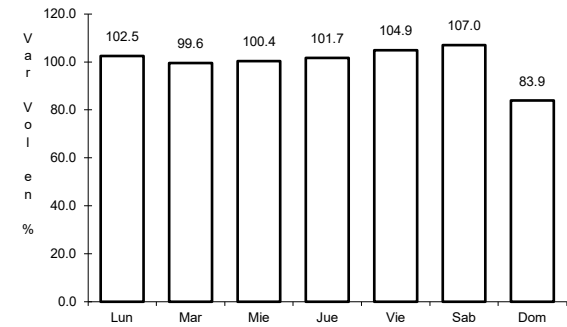
ruta: SIN-005



Km: 0.00 Tipo: 3 Sent: 1

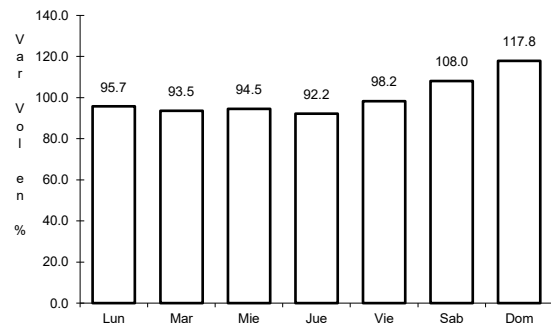


Km: 0.00 Tipo: 3 Sent: 2

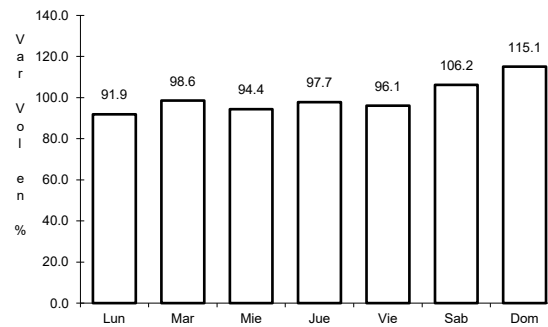


17 CARR: El Limoncito - Cinco Hermanos

CLAVE: 25016



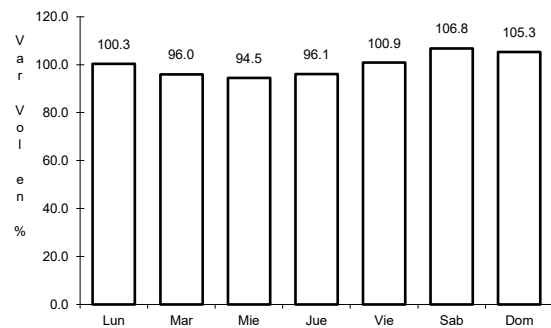
Km: 0.00 Tipo: 3 Sent: 0



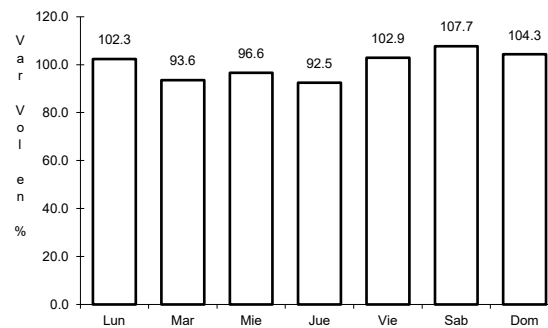
Km: 16.00 Tipo: 1 Sent: 0

18 CARR: El Salado - El Dorado

CLAVE: 25010



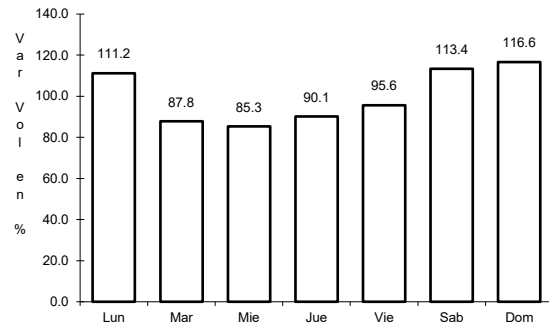
Km: 0.00 Tipo: 3 Sent: 0



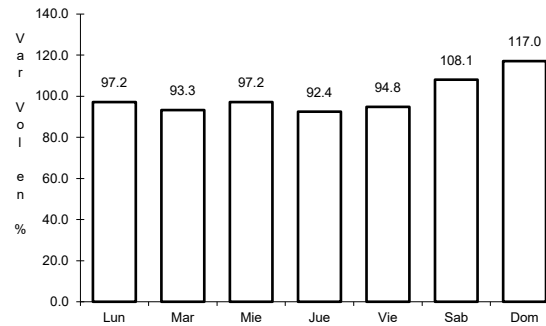
Km: 31.00 Tipo: 1 Sent: 0

19 CARR: Escuinapa de Hidalgo - Teacapan

CLAVE: 25001



Km: 0.00 Tipo: 3 Sent: 0

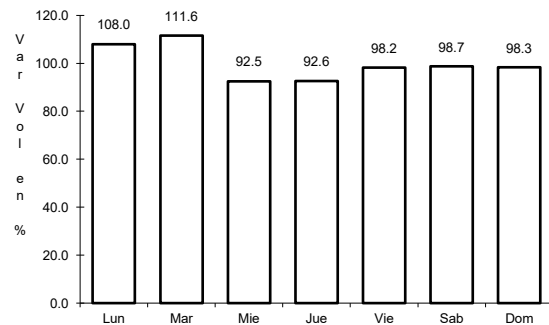


Km: 41.00 Tipo: 1 Sent: 0

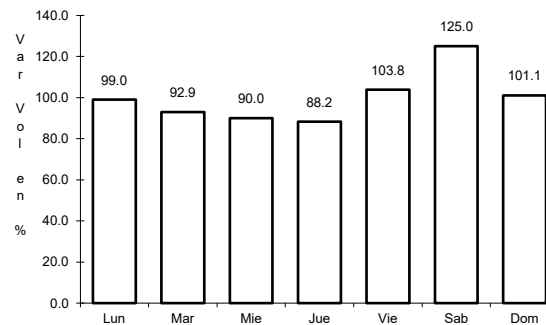
20 CARR: Estación Dimas - San Ignacio

CLAVE: 25007

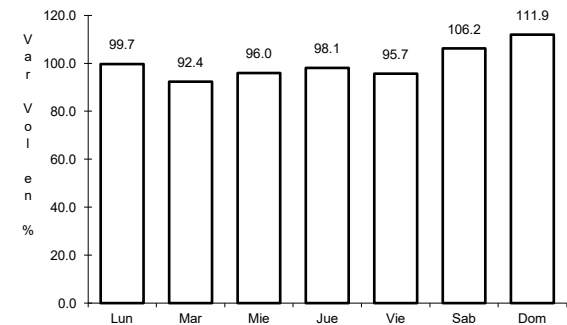
ruta: SIN-006



Km: 23.15 Tipo: 1 Sent: 0



Km: 23.15 Tipo: 3 Sent: 0

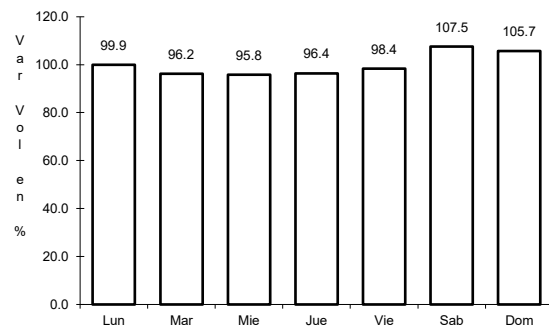


Km: 56.00 Tipo: 1 Sent: 0

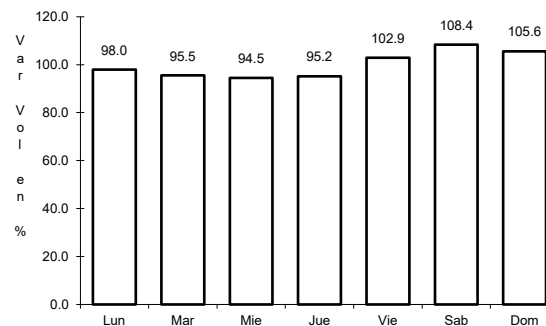
21 CARR: Guamuchil - Mocerito

CLAVE: 25021

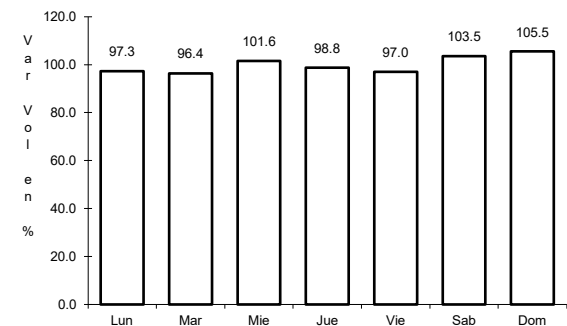
ruta: SIN-021



Km: 0.00 Tipo: 3 Sent: 0



Km: 17.00 Tipo: 1 Sent: 1

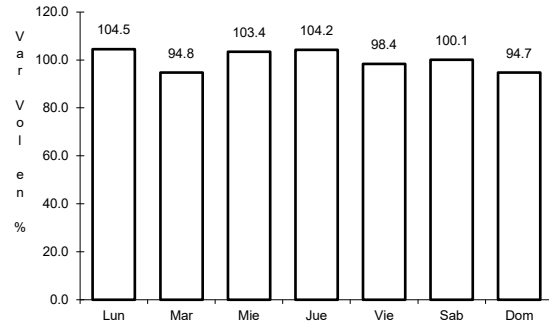


Km: 17.00 Tipo: 1 Sent: 2

22 CARR: Guasave - Sinaloa de Leyva

CLAVE: 25023

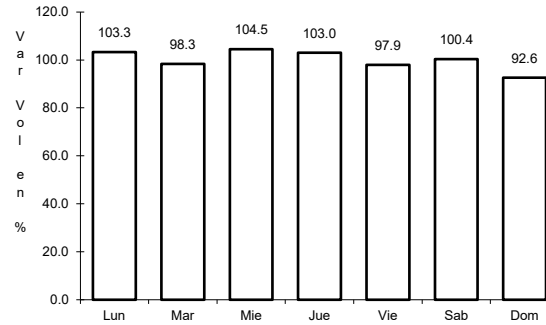
ruta: SIN-023



Km: 1.15

Tipo: 3

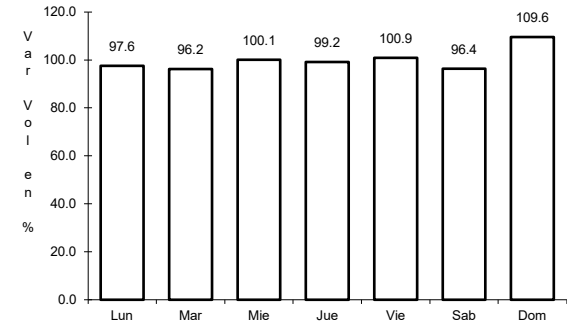
Sent: 1



Km: 1.15

Tipo: 3

Sent: 2



Km: 74.50

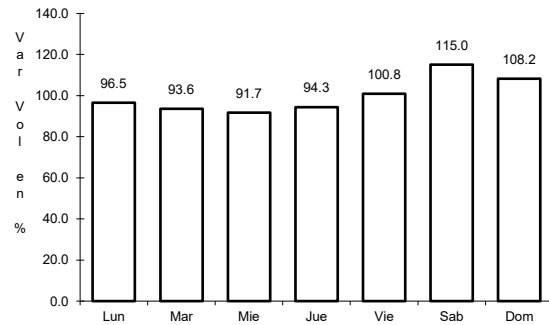
Tipo: 1

Sent: 1

23 CARR: Navolato - El Castillo

CLAVE: 25004

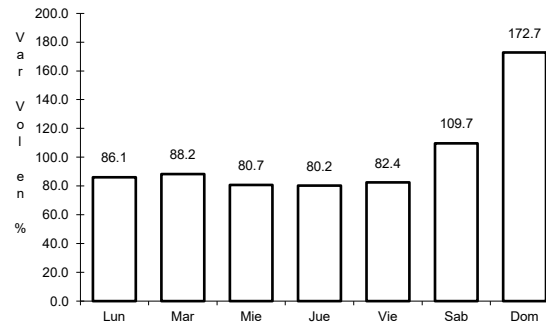
ruta: SIN-004



Km: 0.00

Tipo: 3

Sent: 0



Km: 29.00

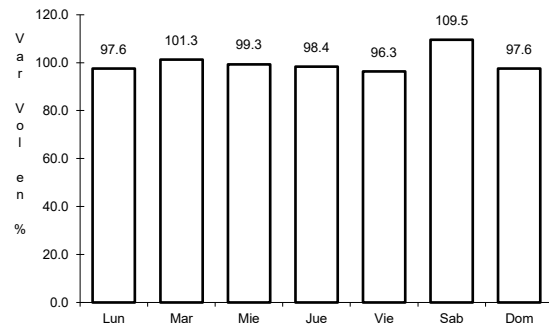
Tipo: 1

Sent: 0

24 CARR: Pozole - Cofradía

CLAVE: 25080

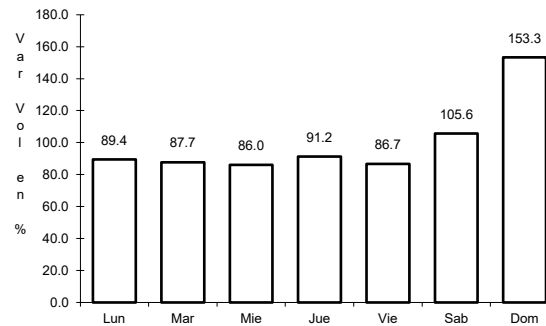
ruta: SIN-080



Km: 0.00

Tipo: 3

Sent: 0



Km: 9.10

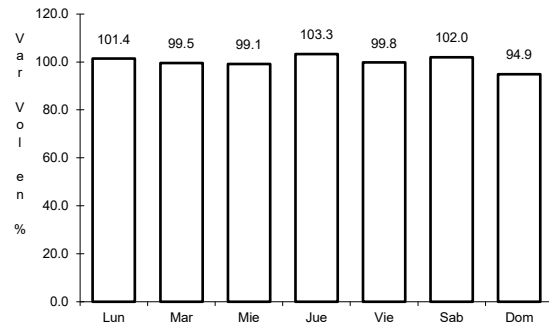
Tipo: 1

Sent: 0

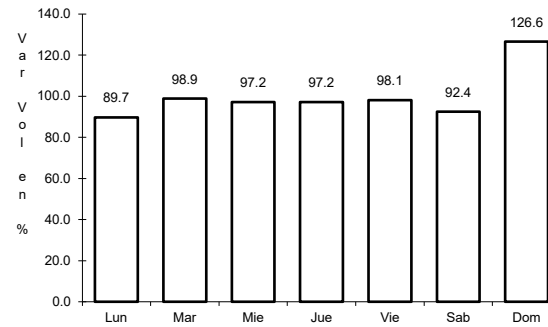
25 CARR: Ramal a Chametla

CLAVE: 25002

ruta: SIN-002



Km: 0.00 Tipo: 3 Sent: 0

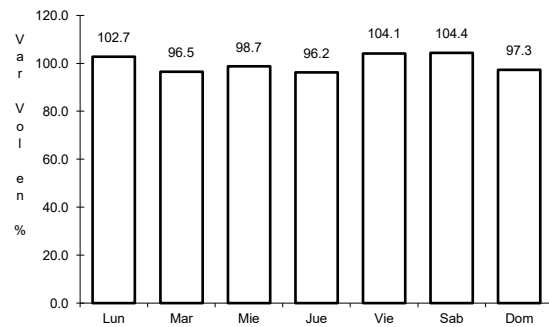


Km: 15.00 Tipo: 1 Sent: 0

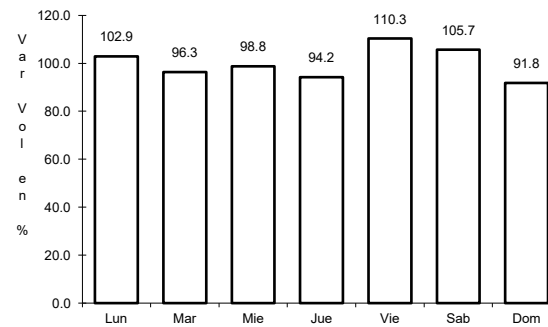
26 CARR: Ramal a Cosalá

CLAVE: 25008

ruta: SIN-008



Km: 0.00 Tipo: 3 Sent: 0

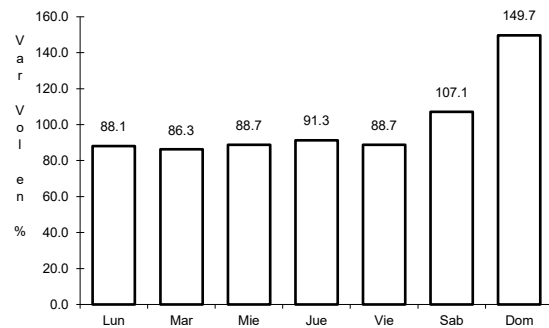


Km: 53.00 Tipo: 1 Sent: 0

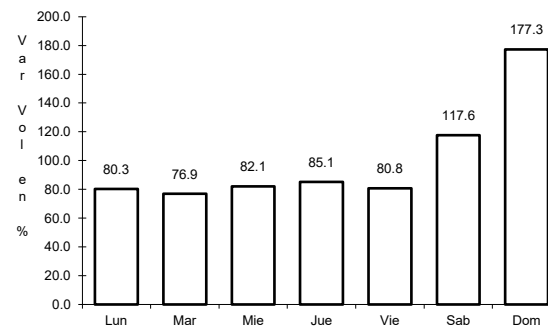
27 CARR: Ramal a El Quelite

CLAVE: 25060

ruta: SIN-060



Km: 0.00 Tipo: 3 Sent: 0

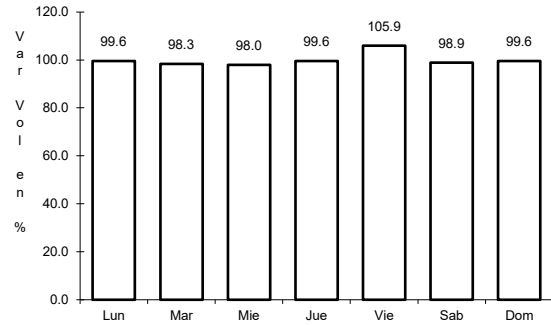


Km: 6.00 Tipo: 1 Sent: 0

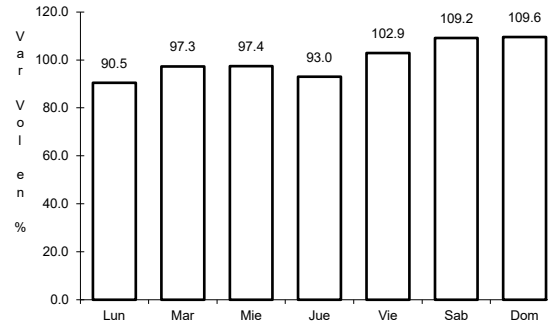
28 CARR: Ramal a Estación Bamoa

CLAVE: 25022

RUTA: SIN-022



Km: 0.00 Tipo: 3 Sent: 0

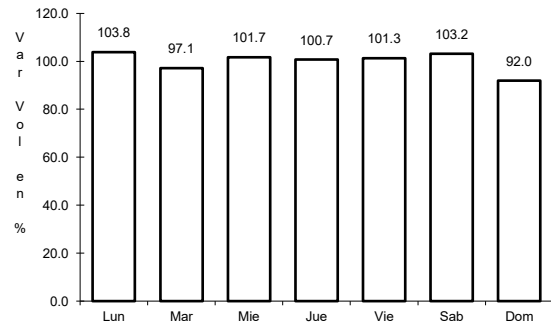


Km: 22.50 Tipo: 1 Sent: 0

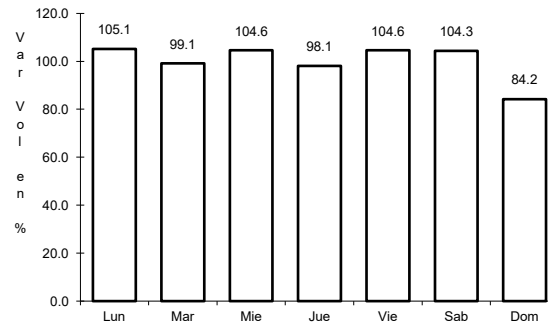
29 CARR: Ramal a La Cruz

CLAVE: 25043

RUTA: SIN



Km: 0.00 Tipo: 3 Sent: 0

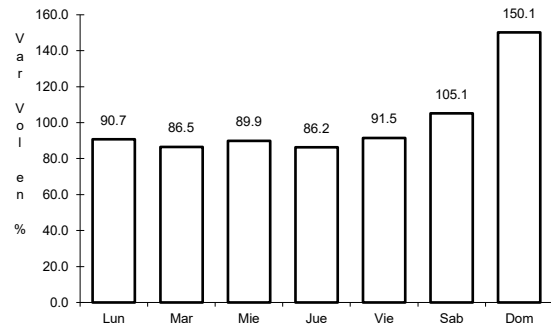


Km: 18.00 Tipo: 1 Sent: 0

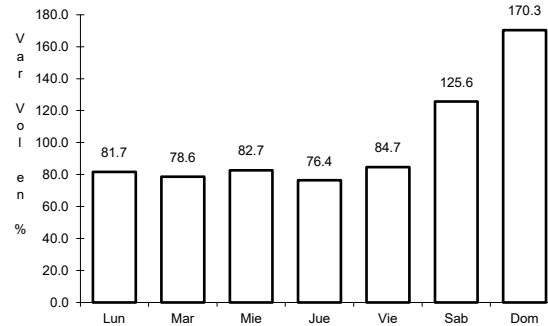
30 CARR: Ramal a La Noria

CLAVE: 25592

RUTA: SIN



Km: 0.00 Tipo: 3 Sent: 0

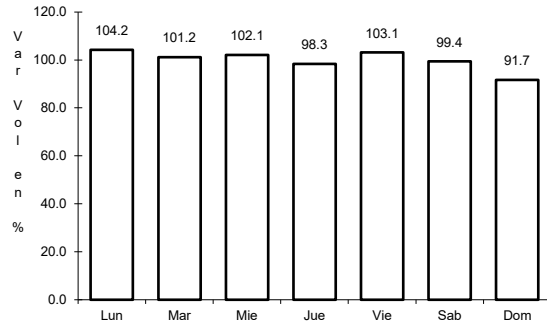


Km: 25.50 Tipo: 1 Sent: 0

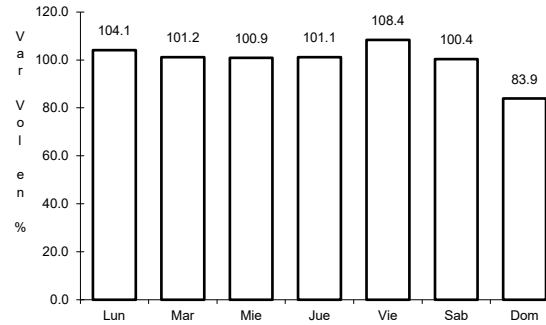
31 CARR: Ramal a La Reforma

CLAVE: 25041

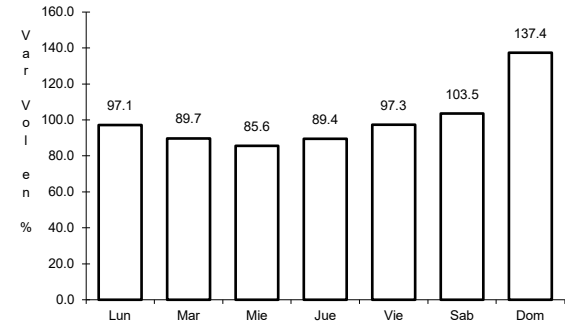
ruta: SIN-004



Km: 0.00 Tipo: 3 Sent: 0



Km: 14.00 Tipo: 3 Sent: 0

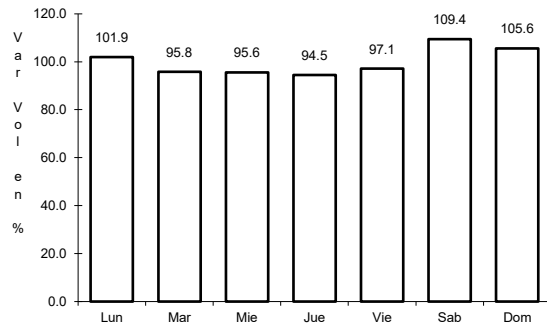


Km: 60.00 Tipo: 1 Sent: 0

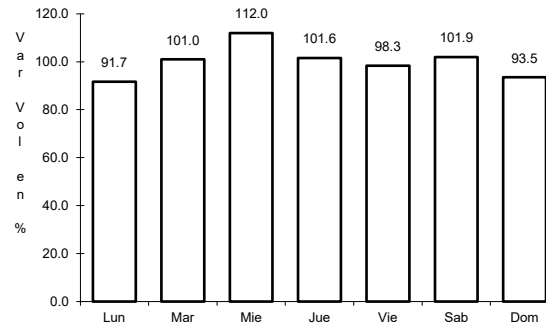
32 CARR: Rosario - Caimanero

CLAVE: 25003

ruta: SIN-003



Km: 0.00 Tipo: 3 Sent: 0

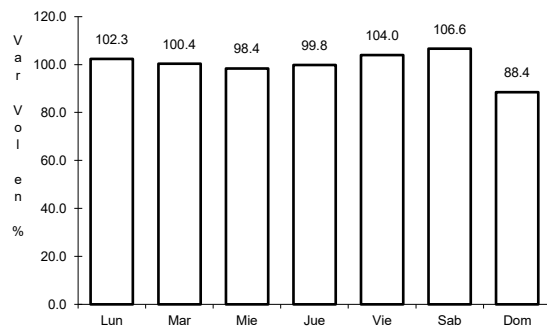


Km: 30.00 Tipo: 1 Sent: 0

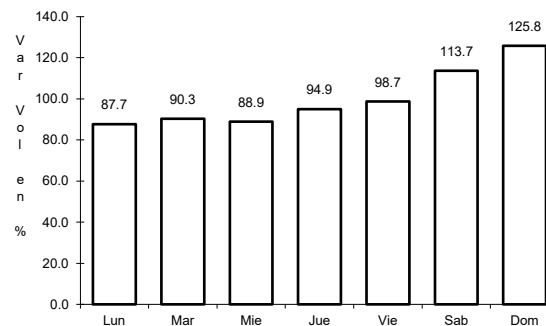
33 CARR: San Pedro - Campo Aníbal

CLAVE: 25600

ruta: SIN



Km: 0.00 Tipo: 3 Sent: 0

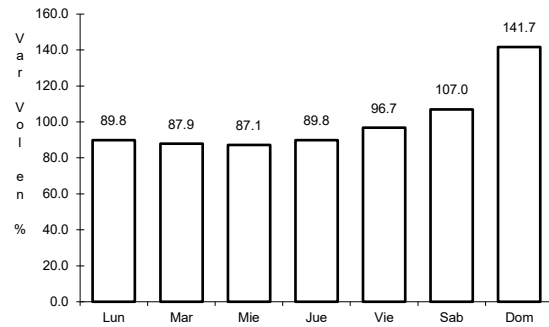


Km: 24.50 Tipo: 1 Sent: 0

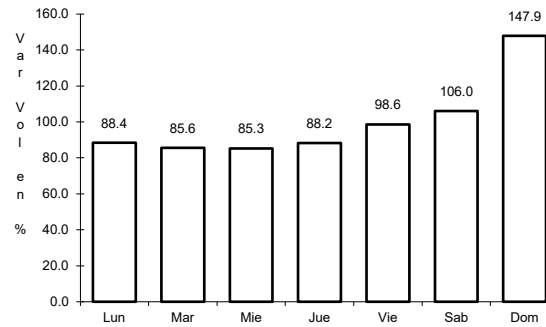
34 CARR: Topolobampo - Choix

CLAVE: 25032

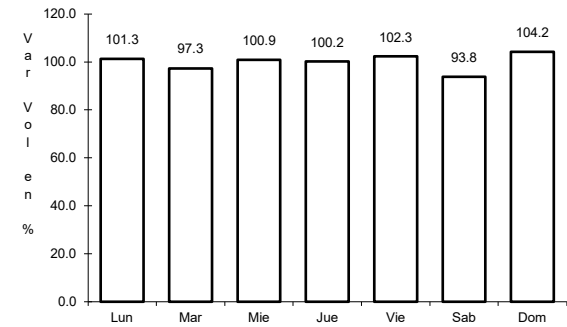
ruta: SIN-023



Km: 0.00 Tipo: 3 Sent: 1



Km: 0.00 Tipo: 3 Sent: 2

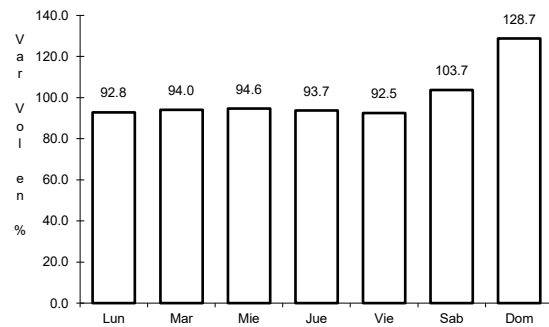


Km: 159.00 Tipo: 1 Sent: 0

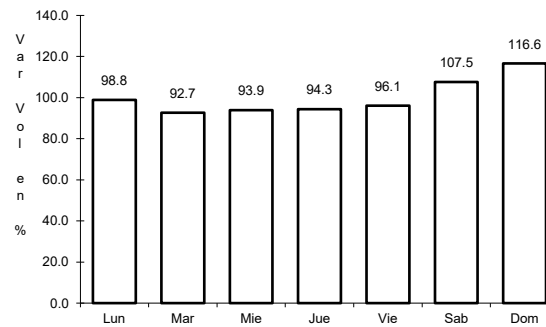
35 CARR: Villa Unión - El Walamo

CLAVE: 25081

ruta: SIN-081



Km: 0.00 Tipo: 3 Sent: 0

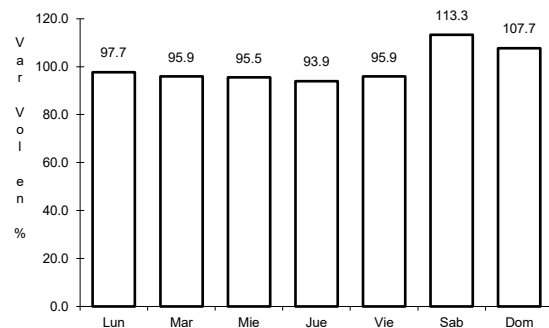


Km: 7.00 Tipo: 1 Sent: 0

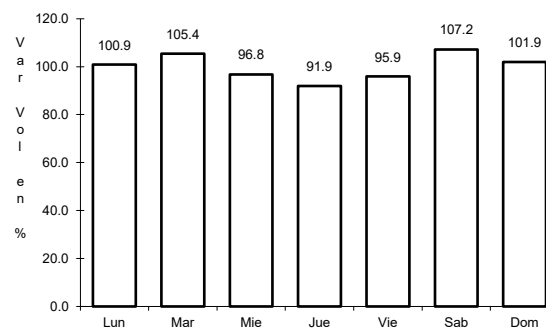
36 CARR: Villa Unión - Siqueiros

CLAVE: 25063

ruta: SIN-063

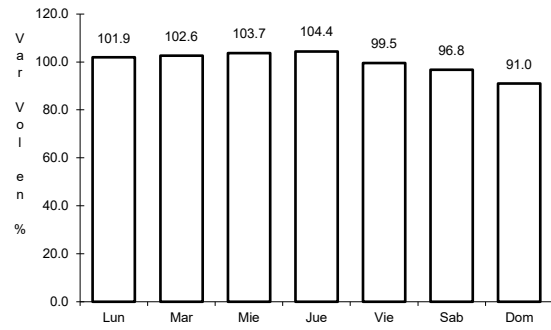


Km: 0.00 Tipo: 3 Sent: 0



Km: 11.00 Tipo: 1 Sent: 0

37 CARR: Culiacán - Las Brisas (Cuota)

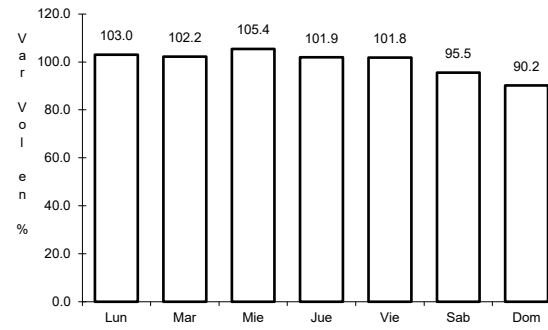


Km: 1.50

Tipo: 3

Sent: 1

CLAVE: 25503

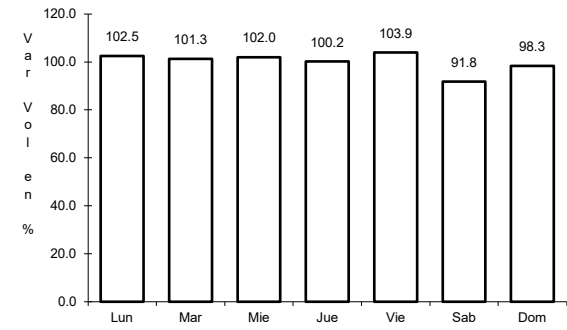


Km: 1.50

Tipo: 3

Sent: 2

RUTA: SIN-001D



Km: 125.70

Tipo: 1

Sent: 1

