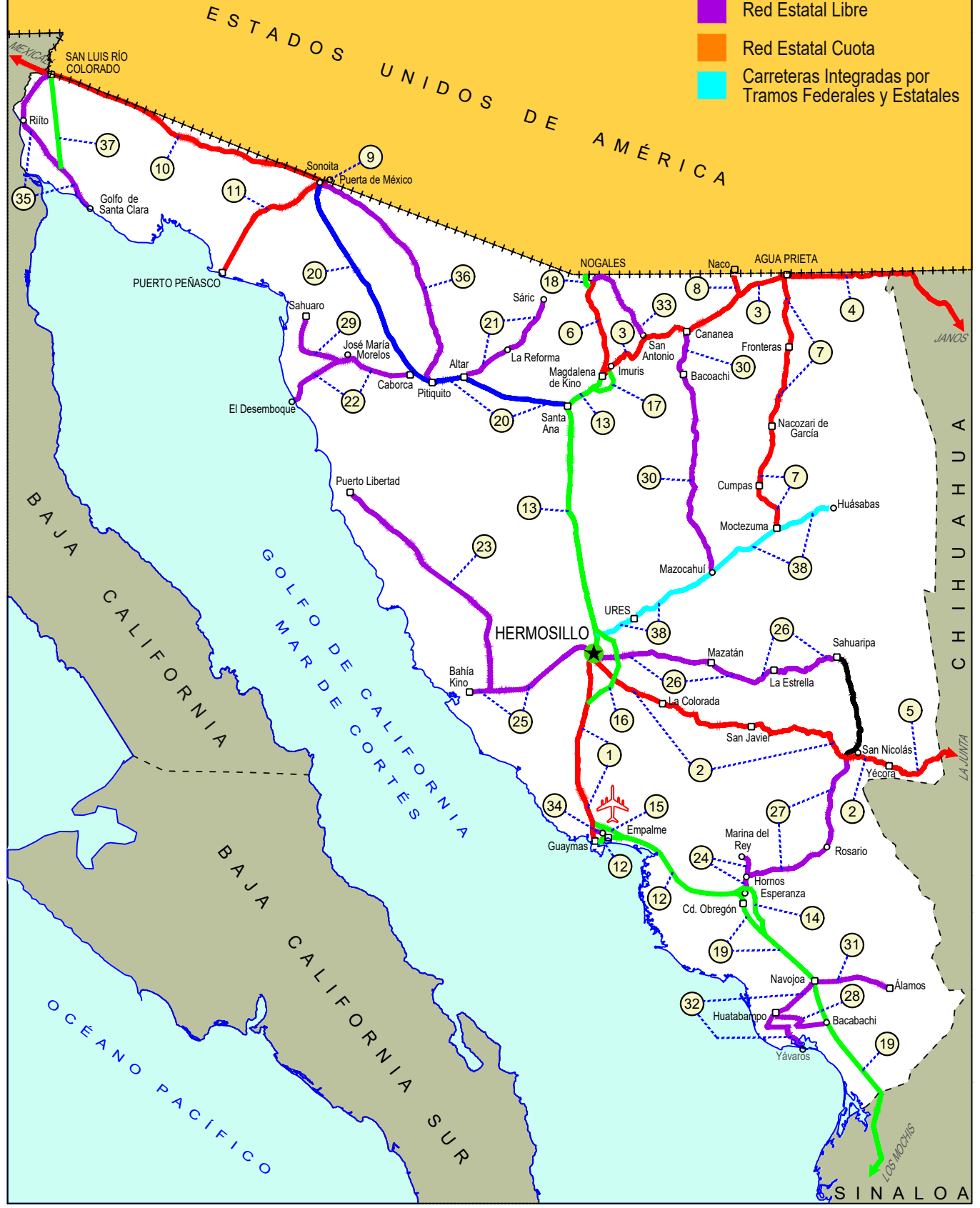


# SONORA

NO. INDICE CARRETERA		RUTA
	---RED FEDERAL LIBRE---	
1	Guaymas - Hermosillo	MEX-015
2	Hermosillo - Yécora	MEX-016
3	Imuris - Agua Prieta	MEX-002
4	Janos - Agua Prieta	MEX-002
5	La Junta - Yécora	MEX-016
6	Magdalena de Kino - Nogales	MEX-015
7	Moctezuma - Agua Prieta	MEX-017
8	Ramal a Naco	MEX-002
9	Ramal a Puerta de México	MEX-002
10	Sonoita - Mexicali	MEX-002
11	Sonoita - Puerto Peñasco	MEX-002
	---RED FEDERAL DE CUOTA---	
12	Cd. Obregón - Guaymas (Cuota)	MEX-015D
13	Hermosillo - Magdalena de Kino (Cuota)	MEX-015D
14	Libramiento de Ciudad Obregón (Cuota)	MEX-015D
15	Libramiento de Empalme - Guaymas (Cuota)	MEX-015D
16	Libramiento de Hermosillo (Cuota)	MEX-015D
17	Libramiento de Magdalena de Kino (Cuota)	MEX-015D
18	Libramiento de Nogales (Cuota)	MEX-15D
19	Los Mochis - Cd. Obregón (Cuota)	MEX-015D
	---RED FEDERAL INTEGRADA POR TRAMOS LIBRES Y DE CUOTA---	
20	Santa Ana - Sonoita	MEX-002D-MEX
	---RED ESTATAL LIBRE---	
21	Altar - Sáríc	SON-064
22	Caborca - El Desemboque	SON-037
23	Calle 36 Norte - Puerto de La Libertad	SON-029
24	Esperanza - Presa Álvaro Obregón	SON-117
25	Hermosillo - Bahía Kino	SON-100
26	Hermosillo - Sahuaripa	SON-020
27	Hornos - San Nicolás	SON-012
28	Huatabampo - Bacabachi	SON-176
29	La Alameda - El Sahuaro	SON-037
30	Mazocahui - Cananea	SON-118
31	Navojoa - Álamos	SON-013
32	Navojoa - Yavaros	SON-056
33	Nogales - San Antonio	SON
34	Ramal a Aeropuerto de Guaymas	SON
35	San Luis Río Colorado - Golfo de Santa Clara	SON-040
36	Sonoita - Pitiquito	SON
	---RED ESTATAL DE CUOTA---	
37	San Luis Río Colorado - Golfo de Santa Clara (Cuota)	SON-D
	---CARRETERAS INTEGRADAS POR TRAMOS FEDERALES Y ESTATALES---	
38	T. C. (Hermosillo - Nogales) - Huásabas	MEX-014-SON

# 26 SONORA

- ① --- Número Índice
- Red Federal Libre
- Red Federal Cuota
- Red Federal Integrada por Tramos Libres y de Cuota
- Red Estatal Libre
- Red Estatal Cuota
- Carreteras Integradas por Tramos Federales y Estatales





SONORA

1 CARR: Guaymas - Hermosillo

CLAVE: 26444

RUTA: MEX-015

AÑO: 2022

LUGAR	ESTACION				CLASIFICACION VEHICULAR EN PORCIENTO										COORDENADAS					
	KM	TE	SC	TDPA	M	A	B	C2	C3	T3S2	T3S3	T3S2R4	OTROS	A	B	C	K'	D	LATITUD	LONGITUD
T. Der. Libramiento de Guaymas	107.70	3	0	5919	3.7	77.4	4.0	6.1	1.6	4.5	1.6	0.9	0.2	81.1	4.0	14.9	0.078	0.513	27.952125	-110.761066
Empalme	115.02	1	0	7950	3.4	82.6	2.3	4.2	2.0	2.4	2.1	0.8	0.2	86.0	2.3	11.7	0.064	0.514	27.952256	-110.810432
Empalme	115.02	3	1	9164	3.8	86.2	3.1	2.3	0.9	1.4	1.6	0.5	0.2	90.0	3.1	6.9	0.089	0.506	27.955043	-110.836575
Empalme	115.02	3	2	9391	3.9	85.7	3.0	2.5	0.9	1.5	1.7	0.6	0.2	89.6	3.0	7.4	0.083	0.506	27.954962	-110.836575
T. Izq. San Carlos	133.00	1	1	8446	2.8	85.9	1.9	4.3	1.7	1.4	0.7	0.9	0.4	88.7	1.9	9.4	0.088	0.501	27.980006	-110.939181
T. Izq. San Carlos	133.00	1	2	8411	2.9	85.8	2.0	4.1	1.7	1.4	0.8	0.9	0.4	88.7	2.0	9.3	0.087	0.501	27.979934	-110.939323
T. Izq. San Carlos	133.00	3	1	4697	5.7	79.0	2.9	4.2	2.8	2.7	1.0	1.4	0.3	84.7	2.9	12.4	0.111	0.530	28.001932	-110.936758
T. Izq. San Carlos	133.00	3	2	5294	5.5	79.9	2.6	4.2	2.6	2.6	0.9	1.4	0.3	85.4	2.6	12.0	0.088	0.530	28.001995	-110.936972
T. Der Lib Empalme-Guaymas	139.40	0	0																	
T. Izq. Bahía Kino	171.30	1	1	6176	3.4	67.4	4.2	5.0	1.6	12.4	1.5	4.0	0.5	70.8	4.2	25.0	0.106	0.513	28.315677	-111.041751
T. Izq. Bahía Kino	171.30	1	2	6500	3.4	68.7	4.1	4.8	1.7	11.6	1.4	3.9	0.4	72.1	4.1	23.8	0.112	0.513	28.315613	-111.042097
T. Izq. Bahía Kino	171.30	3	1	6630	4.8	67.4	4.8	6.6	1.4	9.4	1.4	3.7	0.5	72.2	4.8	23.0	0.090	0.513	28.325137	-111.041938
T. Izq. Bahía Kino	171.30	3	2	6302	4.9	67.5	5.0	6.8	1.5	9.0	1.4	3.5	0.4	72.4	5.0	22.6	0.094	0.513	28.325128	-111.042305
T. Der. Libramiento de Hermosillo (Cuota)	233.80	3	1	7023	4.4	72.9	3.7	5.3	1.3	7.5	1.1	3.2	0.6	77.3	3.7	19.0	0.095	0.513	28.897730	-110.951475
T. Der. Libramiento de Hermosillo (Cuota)	233.80	3	2	6657	4.4	73.8	3.5	5.0	1.2	7.2	1.1	3.2	0.6	78.2	3.5	18.3	0.111	0.513	28.888835	-110.954781
Hermosillo	251.00	1	1	8290	3.7	74.6	2.4	7.0	1.5	6.2	1.1	3.0	0.5	78.3	2.4	19.3	0.120	0.519	29.001152	-110.968280
Hermosillo	251.00	1	2	7696	3.3	75.2	2.6	7.0	1.4	6.0	1.0	3.0	0.5	78.5	2.6	18.9	0.100	0.519	29.001217	-110.968421

2 CARR: Hermosillo - Yécora

CLAVE: 26251

RUTA: MEX-016

AÑO: 2022

LUGAR	ESTACION				CLASIFICACION VEHICULAR EN PORCIENTO										COORDENADAS					
	KM	TE	SC	TDPA	M	A	B	C2	C3	T3S2	T3S3	T3S2R4	OTROS	A	B	C	K'	D	LATITUD	LONGITUD
T. C. Cd. Obregón - Hermosillo	0.00	0	0																	
T. Izq. Sahuaripa	4.00	3	1	1079	2.7	72.4	2.8	6.4	3.5	5.7	4.4	1.7	0.4	75.1	2.8	22.1	0.138	0.507	29.001506	-110.908851
T. Izq. Sahuaripa	4.00	3	2	1050	2.6	72.7	2.6	6.6	3.6	5.1	4.4	1.8	0.6	75.3	2.6	22.1	0.130	0.507	29.001599	-110.908775
La Colorada	47.00	3	0	879	0.3	73.1	2.6	9.7	4.7	3.2	3.7	2.4	0.3	73.4	2.6	24.0	0.084	0.507	28.809653	-110.575614
Tecoripa	138.00	3	0	656	6.9	72.0	1.2	6.7	5.6	4.7	2.5	0.3	0.1	78.9	1.2	19.9	0.081	0.517	28.622280	-109.950049
Yécora	250.60	0	0																	

3 CARR: Imuris - Agua Prieta

CLAVE: 26079

RUTA: MEX-002

AÑO: 2022

LUGAR	ESTACION				CLASIFICACION VEHICULAR EN PORCIENTO										COORDENADAS					
	KM	TE	SC	TDPA	M	A	B	C2	C3	T3S2	T3S3	T3S2R4	OTROS	A	B	C	K'	D	LATITUD	LONGITUD
Imuris	0.00	3	0	4617	6.2	49.4	4.2	13.0	2.2	14.8	3.7	5.8	0.7	55.6	4.2	40.2	0.066	0.504	30.802890	-110.826412
T. Izq a Nogales	45.20	0	0																	

SONORA

3 CARR: Imuris - Agua Prieta

CLAVE: 26079

RUTA: MEX-002

AÑO: 2022

LUGAR	ESTACION				CLASIFICACION VEHICULAR EN PORCIENTO													COORDENADAS		
	KM	TE	SC	TDPA	M	A	B	C2	C3	T3S2	T3S3	T3S2R4	OTROS	A	B	C	K'	D	LATITUD	LONGITUD
T. Der. Cananea	80.93	1	0	4288	2.5	57.3	4.6	6.5	1.7	17.6	3.9	5.7	0.2	59.8	4.6	35.6	0.080	0.502	31.015883	-110.326358
T. Der. Cananea	80.93	3	1	3212	2.9	67.7	3.0	3.5	2.6	13.0	3.0	4.0	0.3	70.6	3.0	26.4	0.080	0.504	31.003041	-110.247363
T. Der. Cananea	80.93	3	2	3267	2.6	68.5	2.9	3.4	2.5	13.2	2.8	3.9	0.2	71.1	2.9	26.0	0.085	0.504	31.003150	-110.247498
Agua Prieta	164.67	1	1	2598	1.1	65.0	2.9	7.4	1.6	14.7	2.9	4.3	0.1	66.1	2.9	31.0	0.085	0.518	31.309556	-109.597761
Agua Prieta	164.67	1	2	2794	1.6	63.1	3.7	7.9	1.3	14.1	3.4	4.8	0.1	64.7	3.7	31.6	0.083	0.518	31.309710	-109.597801

4 CARR: Janos - Agua Prieta

CLAVE: 00220

RUTA: MEX-002

AÑO: 2022

LUGAR	ESTACION				CLASIFICACION VEHICULAR EN PORCIENTO													COORDENADAS		
	KM	TE	SC	TDPA	M	A	B	C2	C3	T3S2	T3S3	T3S2R4	OTROS	A	B	C	K'	D	LATITUD	LONGITUD
T. C. Cd. Juárez - Janos	0.00	3	0	4801	5.6	56.9	3.8	9.3	2.2	12.7	2.9	5.9	0.7	62.5	3.8	33.7	0.083	0.505	30.889816	-108.211930
Los Mimbres	56.00	3	0	3158	2.5	43.1	4.0	6.2	2.2	27.0	3.7	10.5	0.8	45.6	4.0	50.4	0.084	0.537	31.244913	-108.581402
Lim. Edos. Term. Chih. Ppia. Son.	78.00	0	0																	
Rancho Guadalupe	116.00	0	0																	
Agua Prieta	160.00	1	0	2721	4.7	47.0	5.3	7.2	2.0	21.9	4.3	7.2	0.4	51.7	5.3	43.0	0.084	0.507	31.322990	-109.506607

5 CARR: La Junta - Yécora

CLAVE: 00065

RUTA: MEX-016

AÑO: 2022

LUGAR	ESTACION				CLASIFICACION VEHICULAR EN PORCIENTO													COORDENADAS		
	KM	TE	SC	TDPA	M	A	B	C2	C3	T3S2	T3S3	T3S2R4	OTROS	A	B	C	K'	D	LATITUD	LONGITUD
T. C. Chihuahua - Madera	0.00	3	0	3348	1.0	87.2	2.2	4.8	0.8	2.7	1.2	0.1	0.0	88.2	2.2	9.6	0.092	0.501	28.467632	-107.325087
T. Izq. San Juanito	16.00	1	0	3047	2.5	84.7	2.6	5.1	0.9	2.6	1.1	0.5	0.0	87.2	2.6	10.2	0.095	0.511	28.389017	-107.439792
T. Izq. San Juanito	16.00	3	0	1346	6.9	71.0	6.2	11.9	0.4	2.2	0.5	0.9	0.0	77.9	6.2	15.9	0.085	0.529	28.390900	-107.442189
Tomochi	70.00	3	0	1496	2.9	83.7	1.1	7.0	1.1	2.9	1.2	0.1	0.0	86.6	1.1	12.3	0.120	0.516	28.354791	-107.857040
Lim. Edos. Term. Chih. Ppia. Son.	190.00	0	0																	
Yécora	253.00	1	0	333	9.0	72.0	3.4	6.4	3.6	3.1	2.0	0.4	0.1	81.0	3.4	15.6	0.123	0.505	28.367335	-108.920947

6 CARR: Magdalena de Kino - Nogales

CLAVE: 26444

RUTA: MEX-015

AÑO: 2022

LUGAR	ESTACION				CLASIFICACION VEHICULAR EN PORCIENTO													COORDENADAS		
	KM	TE	SC	TDPA	M	A	B	C2	C3	T3S2	T3S3	T3S2R4	OTROS	A	B	C	K'	D	LATITUD	LONGITUD
Magdalena de Kino	181.30	3	1	4350	1.2	87.5	2.9	5.0	0.6	1.1	0.7	0.5	0.5	88.7	2.9	8.4	0.074	0.504	30.649382	-110.944260
Magdalena de Kino	181.30	3	2	4281	1.3	87.3	3.1	5.0	0.5	1.2	0.6	0.5	0.5	88.6	3.1	8.3	0.077	0.504	30.649563	-110.944076
T. Lib de Magdalena	188.40	0	0																	
Imuris	209.00	1	1	6866	2.0	74.2	3.1	7.9	1.6	8.2	1.6	0.9	0.5	76.2	3.1	20.7	0.068	0.505	30.756034	-110.853705

SONORA

6 CARR: Magdalena de Kino - Nogales

CLAVE: 26444

RUTA: MEX-015

AÑO: 2022

LUGAR	ESTACION				CLASIFICACION VEHICULAR EN PORCIENTO														COORDENADAS	
	KM	TE	SC	TDPA	M	A	B	C2	C3	T3S2	T3S3	T3S2R4	OTROS	A	B	C	K'	D	LATITUD	LONGITUD
Imuris	209.00	1	2	6719	2.3	74.1	3.6	7.8	1.5	8.2	1.5	0.6	0.4	76.4	3.6	20.0	0.073	0.505	30.756048	-110.853876
T. Der. Agua Prieta	209.50	3	1	6210	1.6	78.6	2.8	7.1	1.5	6.1	1.0	0.8	0.5	80.2	2.8	17.0	0.081	0.511	30.792346	-110.850613
T. Der. Agua Prieta	209.50	3	2	5952	1.6	77.8	3.1	7.1	1.6	6.2	1.0	1.1	0.5	79.4	3.1	17.5	0.083	0.511	30.792358	-110.850707
T. Izq. Sáric	255.90	1	1	12046	1.1	85.9	2.2	5.0	0.8	3.7	0.4	0.7	0.2	87.0	2.2	10.8	0.075	0.512	31.177003	-110.968359
T. Izq. Sáric	255.90	1	2	11490	1.1	85.2	2.5	5.0	0.9	3.9	0.4	0.7	0.3	86.3	2.5	11.2	0.084	0.512	31.176925	-110.968441
T. Izq. Sáric	255.90	3	1	12954	1.0	83.8	3.0	5.1	0.8	5.0	0.5	0.6	0.2	84.8	3.0	12.2	0.068	0.508	31.195322	-110.973288
T. Izq. Sáric	255.90	3	2	13363	1.1	83.4	3.0	5.2	0.9	5.1	0.5	0.6	0.2	84.5	3.0	12.5	0.074	0.508	31.195320	-110.973389
T. Izq. Libramiento de Nogales (Cuota)	261.00	3	1	15546	0.5	82.0	2.2	9.2	1.7	3.5	0.4	0.3	0.2	82.5	2.2	15.3	0.091	0.515	31.244591	-110.959547
T. Izq. Libramiento de Nogales (Cuota)	261.00	3	2	16490	0.5	81.5	2.3	9.4	1.8	3.6	0.4	0.3	0.2	82.0	2.3	15.7	0.092	0.515	31.244654	-110.959662
T. Izq. Periférico Luis Donaldo Colosio	267.00	1	1	29632	0.3	88.6	1.6	6.8	0.6	1.0	0.8	0.2	0.1	88.9	1.6	9.5	0.072	0.516	31.275190	-110.941538
T. Izq. Periférico Luis Donaldo Colosio	267.00	1	2	31695	0.3	88.6	1.6	6.8	0.6	1.0	0.8	0.2	0.1	88.9	1.6	9.5	0.065	0.516	31.276263	-110.941496
Nogales	272.70	1	1	19754	0.6	92.0	1.4	4.6	0.4	0.3	0.4	0.1	0.2	92.6	1.4	6.0	0.086	0.515	31.290959	-110.936643
Nogales	272.70	1	2	18627	0.6	91.8	1.5	4.6	0.4	0.3	0.4	0.2	0.2	92.4	1.5	6.1	0.065	0.515	31.290950	-110.936759

7 CARR: Moctezuma - Agua Prieta

CLAVE: 26027

RUTA: MEX-017

AÑO: 2022

LUGAR	ESTACION				CLASIFICACION VEHICULAR EN PORCIENTO														COORDENADAS	
	KM	TE	SC	TDPA	M	A	B	C2	C3	T3S2	T3S3	T3S2R4	OTROS	A	B	C	K'	D	LATITUD	LONGITUD
Moctezuma	0.00	3	0	1687	0.7	89.7	0.8	3.6	1.2	1.4	0.6	1.3	0.7	90.4	0.8	8.8	0.090	0.507	29.827966	-109.675133
Nacozeni de García	81.00	3	0	2276	1.4	85.1	1.6	7.0	1.8	1.6	0.5	0.9	0.1	86.5	1.6	11.9	0.084	0.527	30.387482	-109.693280
Turicachi	111.00	1	0	1883	0.9	80.7	1.5	7.7	1.2	2.2	2.3	2.5	1.0	81.6	1.5	16.9	0.105	0.510	30.654988	-109.596334
T. C. Imuris - Agua Prieta	197.60	1	0	4882	3.3	86.3	1.8	3.0	1.5	1.4	1.0	1.3	0.4	89.6	1.8	8.6	0.085	0.514	31.308760	-109.581928

8 CARR: Ramal a Naco

CLAVE: 26579

RUTA: MEX-002

AÑO: 2022

LUGAR	ESTACION				CLASIFICACION VEHICULAR EN PORCIENTO														COORDENADAS	
	KM	TE	SC	TDPA	M	A	B	C2	C3	T3S2	T3S3	T3S2R4	OTROS	A	B	C	K'	D	LATITUD	LONGITUD
T. C. Imuris - Agua Prieta	0.00	3	0	1698	0.7	93.1	1.3	2.5	1.1	1.1	0.1	0.1	0.0	93.8	1.3	4.9	0.108	0.504	31.209760	-109.908735
Naco	14.00	0	0																	

9 CARR: Ramal a Puerta de México

CLAVE: 26577

RUTA: MEX-002

AÑO: 2022

LUGAR	ESTACION				CLASIFICACION VEHICULAR EN PORCIENTO														COORDENADAS	
	KM	TE	SC	TDPA	M	A	B	C2	C3	T3S2	T3S3	T3S2R4	OTROS	A	B	C	K'	D	LATITUD	LONGITUD
T. C. Sonoita - Mexicali	0.00	3	0	13704	4.1	89.9	0.6	3.0	0.8	0.6	0.4	0.4	0.2	94.0	0.6	5.4	0.074	0.504	31.867186	-112.842226

SONORA

9 CARR: Ramal a Puerta de México

CLAVE: 26577

RUTA: MEX-002

AÑO: 2022

LUGAR	ESTACION				CLASIFICACION VEHICULAR EN PORCIENTO													COORDENADAS		
	KM	TE	SC	TDPA	M	A	B	C2	C3	T3S2	T3S3	T3S2R4	OTROS	A	B	C	K'	D	LATITUD	LONGITUD
Frontera E.U.A	3.30	0	0																	

10 CARR: Sonoita - Mexicali

CLAVE: 00081

RUTA: MEX-002

AÑO: 2022

LUGAR	ESTACION				CLASIFICACION VEHICULAR EN PORCIENTO													COORDENADAS		
	KM	TE	SC	TDPA	M	A	B	C2	C3	T3S2	T3S3	T3S2R4	OTROS	A	B	C	K'	D	LATITUD	LONGITUD
Sonoita	0.00	3	0	4933	5.7	43.5	7.7	4.0	2.0	24.4	3.3	8.5	0.9	49.2	7.7	43.1	0.060	0.511	31.886430	-112.858288
Los Vidrios	58.75	3	0	4405	3.1	32.6	11.6	3.9	1.8	33.6	2.9	9.6	0.9	35.7	11.6	52.7	0.061	0.517	32.028728	-113.426803
San Luis Río Colorado	191.80	1	0	5391	3.4	47.2	7.6	3.6	2.0	25.5	2.5	7.3	0.9	50.6	7.6	41.8	0.061	0.508	32.453563	-114.683309
San Luis Río Colorado	191.80	3	1	11690	0.7	82.6	2.8	2.4	1.8	6.1	1.1	1.9	0.6	83.3	2.8	13.9	0.076	0.510	32.486978	-114.792675
San Luis Río Colorado	191.80	3	2	11223	0.8	82.8	2.5	2.7	1.5	5.9	1.3	2.0	0.5	83.6	2.5	13.9	0.072	0.510	32.486851	-114.792735
Lim. Edos. Term. Son. Ppia. B.C.	203.69	0	0																	
X. C. Mexicali - Algodones	206.78	1	1	12054	1.2	83.7	1.9	3.5	0.7	5.9	0.7	1.8	0.6	84.9	1.9	13.2	0.072	0.518	32.497849	-114.829164
X. C. Mexicali - Algodones	206.78	1	2	12943	1.1	84.3	1.7	4.0	0.5	5.6	0.6	1.7	0.5	85.4	1.7	12.9	0.068	0.518	32.497631	-114.828719
X. C. Mexicali - Algodones	206.78	3	1	10417	2.5	79.0	1.8	3.9	1.1	8.5	0.7	1.9	0.6	81.5	1.8	16.7	0.069	0.520	32.511006	-114.873105
X. C. Mexicali - Algodones	206.78	3	2	9611	2.6	79.0	1.7	3.8	1.2	8.1	0.9	2.0	0.7	81.6	1.7	16.7	0.064	0.520	32.510893	-114.873148
T. Izq. Ejido Hermosillo	214.80	3	1	8461	6.1	69.6	3.4	5.7	1.5	9.8	0.9	2.3	0.7	75.7	3.4	20.9	0.073	0.519	32.527548	-114.928776
T. Izq. Ejido Hermosillo	214.80	3	2	9117	6.0	70.1	3.5	5.6	1.3	9.7	0.9	2.2	0.7	76.1	3.5	20.4	0.074	0.519	32.527501	-114.929036
T. Izq. Ejido Tehuantepec	223.83	3	1	10913	1.0	82.4	3.1	2.8	0.9	6.7	0.8	1.7	0.6	83.4	3.1	13.5	0.079	0.513	32.554922	-115.034463
T. Izq. Ejido Tehuantepec	223.83	3	2	10378	1.1	82.4	3.1	2.8	0.9	6.8	0.7	1.7	0.5	83.5	3.1	13.4	0.077	0.513	32.554831	-115.034422
Ejido Monterrey	228.63	3	1	14222	2.2	77.9	2.9	5.1	1.2	7.3	1.0	1.9	0.5	80.1	2.9	17.0	0.083	0.514	32.552013	-115.087333
Ejido Monterrey	228.63	3	2	13422	2.1	77.7	2.7	5.2	1.4	7.5	0.9	2.0	0.5	79.8	2.7	17.5	0.075	0.514	32.551905	-115.087378
X. C. Mexicali - Estación Coahuila	242.17	1	1	11375	1.3	78.1	3.0	4.9	1.1	7.8	1.1	2.1	0.6	79.4	3.0	17.6	0.073	0.504	32.552847	-115.203145
X. C. Mexicali - Estación Coahuila	242.17	1	2	11180	1.5	78.9	2.8	4.7	1.0	7.7	1.1	1.9	0.4	80.4	2.8	16.8	0.076	0.504	32.552748	-115.203179
T. Izq. Libramiento de Mexicali (Cuota)	249.32	1	1	12374	1.1	81.3	2.7	4.0	1.2	6.3	0.9	1.9	0.6	82.4	2.7	14.9	0.079	0.503	32.554569	-115.284462
T. Izq. Libramiento de Mexicali (Cuota)	249.32	1	2	12226	1.3	80.9	2.6	4.2	1.0	6.2	1.1	2.0	0.7	82.2	2.6	15.2	0.075	0.503	32.554498	-115.284496
X. C. Mexicali - Algodones	256.47	1	1	14228	1.3	88.5	1.7	2.7	1.0	2.8	0.6	0.9	0.5	89.8	1.7	8.5	0.085	0.512	32.565155	-115.325714
X. C. Mexicali - Algodones	256.47	1	2	13573	1.4	88.0	1.6	2.8	1.1	3.0	0.6	1.1	0.4	89.4	1.6	9.0	0.081	0.512	32.565038	-115.325738
T. C. Mexicali - San Felipe	265.12	0	0																	

11 CARR: Sonoita - Puerto Peñasco

CLAVE: 26232

RUTA: MEX-002

AÑO: 2022

LUGAR	ESTACION				CLASIFICACION VEHICULAR EN PORCIENTO													COORDENADAS		
	KM	TE	SC	TDPA	M	A	B	C2	C3	T3S2	T3S3	T3S2R4	OTROS	A	B	C	K'	D	LATITUD	LONGITUD
Sonoita	0.00	3	0	2590	5.6	76.8	0.8	12.9	1.4	1.5	0.2	0.7	0.1	82.4	0.8	16.8	0.100	0.513	31.862535	-112.874922



SONORA

11 CARR : Sonoita - Puerto Peñasco

CLAVE: 26232

RUTA: MEX-002

AÑO: 2022

LUGAR	ESTACION				CLASIFICACION VEHICULAR EN PORCIENTO													COORDENADAS		
	KM	TE	SC	TDPA	M	A	B	C2	C3	T3S2	T3S3	T3S2R4	OTROS	A	B	C	K'	D	LATITUD	LONGITUD
Puerto Peñasco	100.40	0	0																	

12 CARR : Cd. Obregón - Guaymas (Cuota)

CLAVE: 26444

RUTA: MEX-015D

AÑO: 2022

LUGAR	ESTACION				CLASIFICACION VEHICULAR EN PORCIENTO													COORDENADAS		
	KM	TE	SC	TDPA	M	A	B	C2	C3	T3S2	T3S3	T3S2R4	OTROS	A	B	C	K'	D	LATITUD	LONGITUD
Cd. Obregón	0.00	0	0																	
Esperanza	7.96	1	1	10003	7.2	79.9	2.0	3.0	1.4	3.5	1.1	1.2	0.7	87.1	2.0	10.9	0.086	0.514	27.566764	-109.927198
Esperanza	7.96	1	2	10581	7.2	79.9	2.0	3.0	1.3	3.5	1.0	1.3	0.8	87.1	2.0	10.9	0.093	0.514	27.566765	-109.927310
Esperanza	7.96	3	1	4071	5.1	60.3	6.1	7.0	2.0	10.0	2.9	6.0	0.6	65.4	6.1	28.5	0.068	0.507	27.597886	-109.933009
Esperanza	7.96	3	2	3952	6.0	59.6	5.9	7.0	2.0	9.9	3.1	6.0	0.5	65.6	5.9	28.5	0.065	0.507	27.597808	-109.933121
Plaza de Cobro Esperanza	10.70	2	1	1974	0.4	60.5	7.6	3.4	2.3	16.8	2.5	5.1	1.4	60.9	7.6	31.5	0.086	0.500	27.603754	-109.939057
Plaza de Cobro Esperanza	10.70	2	2	1974	0.4	60.5	7.6	3.4	2.3	16.8	2.5	5.1	1.4	60.9	7.6	31.5	0.086	0.500	27.603754	-109.939057
T. Der. Estación Corral	13.80	1	1	4986	3.0	64.1	6.0	3.0	2.0	13.1	3.0	5.0	0.8	67.1	6.0	26.9	0.059	0.505	27.611377	-109.946770
T. Der. Estación Corral	13.80	1	2	5089	3.0	64.1	6.0	3.2	1.9	12.9	2.9	5.1	0.9	67.1	6.0	26.9	0.061	0.505	27.611287	-109.946890
T. Der. Estación Corral	13.80	3	1	4282	4.8	58.7	6.3	6.0	2.3	12.9	3.1	5.0	0.9	63.5	6.3	30.2	0.066	0.519	27.618566	-109.963189
T. Der. Estación Corral	13.80	3	2	3975	4.8	58.8	6.2	6.0	2.5	12.9	3.1	4.9	0.8	63.6	6.2	30.2	0.077	0.519	27.618369	-109.963132
T. Izq. Bácum	25.46	1	1	4885	4.1	56.1	8.0	5.3	2.1	15.0	3.0	5.5	0.9	60.2	8.0	31.8	0.060	0.514	27.601539	-110.062118
T. Izq. Bácum	25.46	1	2	4626	4.0	56.7	8.0	5.1	2.1	15.0	2.9	5.3	0.9	60.7	8.0	31.3	0.067	0.514	27.601389	-110.062091
T. Izq. Bácum	25.46	3	1	5772	2.6	66.5	4.5	5.3	1.5	12.2	3.4	3.4	0.6	69.1	4.5	26.4	0.096	0.535	27.598356	-110.092576
T. Izq. Bácum	25.46	3	2	5012	2.8	65.4	4.9	6.2	1.5	12.3	3.0	3.3	0.6	68.2	4.9	26.9	0.087	0.535	27.598184	-110.092618
Vícam	47.28	3	1	5684	6.9	61.7	5.2	7.0	1.5	9.6	2.2	5.1	0.8	68.6	5.2	26.2	0.091	0.529	27.645791	-110.303677
Vícam	47.28	3	2	6381	5.4	63.4	4.8	6.8	1.4	10.2	2.3	4.8	0.9	68.8	4.8	26.4	0.088	0.529	27.645795	-110.303684
T. Izq. Pótam	57.40	1	1	5342	2.4	64.7	4.8	3.1	1.8	13.7	4.6	4.4	0.5	67.1	4.8	28.1	0.097	0.501	27.689736	-110.360755
T. Izq. Pótam	57.40	1	2	5327	2.6	69.3	4.6	2.9	1.9	10.1	4.2	3.8	0.6	71.9	4.6	23.5	0.081	0.501	27.689646	-110.360918
T. Izq. Pótam	57.40	3	1	4896	3.7	64.5	6.1	4.1	1.8	10.1	5.1	3.9	0.7	68.2	6.1	25.7	0.069	0.511	27.704162	-110.370652
T. Izq. Pótam	57.40	3	2	5111	3.5	63.7	6.0	4.0	1.9	11.4	4.9	3.8	0.8	67.2	6.0	26.8	0.075	0.511	27.704009	-110.370764
T. Der. Libramiento de Guaymas	107.70	1	1	8104	3.7	62.4	6.2	7.2	1.5	11.9	2.9	3.3	0.9	66.1	6.2	27.7	0.069	0.506	27.951525	-110.738712
T. Der. Libramiento de Guaymas	107.70	1	2	7901	3.5	63.4	6.4	7.0	1.3	11.7	2.6	3.1	1.0	66.9	6.4	26.7	0.083	0.506	27.951209	-110.739049

13 CARR : Hermosillo - Magdalena de Kino (Cuota)

CLAVE: 26444

RUTA: MEX-015D

AÑO: 2022

LUGAR	ESTACION				CLASIFICACION VEHICULAR EN PORCIENTO													COORDENADAS		
	KM	TE	SC	TDPA	M	A	B	C2	C3	T3S2	T3S3	T3S2R4	OTROS	A	B	C	K'	D	LATITUD	LONGITUD
Hermosillo	0.00	3	1	14975	0.9	85.5	1.9	5.4	1.6	2.8	0.4	0.9	0.6	86.4	1.9	11.7	0.074	0.503	29.115657	-110.912235

SONORA

13 CARR: Hermosillo - Magdalena de Kino (Cuota)

CLAVE: 26444

RUTA: MEX-015D

AÑO: 2022

LUGAR	ESTACION				CLASIFICACION VEHICULAR EN PORCIENTO										COORDENADAS					
	KM	TE	SC	TDPA	M	A	B	C2	C3	T3S2	T3S3	T3S2R4	OTROS	A	B	C	K'	D	LATITUD	LONGITUD
Hermosillo	0.00	3	2	14803	0.9	85.4	1.9	5.4	1.7	2.8	0.4	0.9	0.6	86.3	1.9	11.8	0.084	0.503	29.115644	-110.912438
T. Der. Ures	8.60	1	1	12213	0.9	85.8	1.9	4.4	1.4	3.7	0.8	0.8	0.3	86.7	1.9	11.4	0.083	0.506	29.156805	-110.909535
T. Der. Ures	8.60	1	2	11932	0.9	86.2	1.9	4.3	1.4	3.5	0.8	0.6	0.4	87.1	1.9	11.0	0.078	0.506	29.156805	-110.909735
T. Der. Ures	8.60	3	1	8840	1.6	80.7	2.2	5.0	1.7	6.1	0.9	1.3	0.5	82.3	2.2	15.5	0.099	0.515	29.173562	-110.916133
T. Der. Ures	8.60	3	2	9369	1.4	81.7	2.0	5.0	1.7	6.0	0.7	1.1	0.4	83.1	2.0	14.9	0.078	0.515	29.173436	-110.916246
Plaza de Cobro Hermosillo	15.20	2	1	6180	0.2	68.1	3.6	2.7	1.6	14.8	1.8	6.0	1.2	68.3	3.6	28.1	0.086	0.500	29.220685	-110.930258
Plaza de Cobro Hermosillo	15.20	2	2	6180	0.2	68.1	3.6	2.7	1.6	14.8	1.8	6.0	1.2	68.3	3.6	28.1	0.086	0.500	29.220685	-110.930258
T. Der. Pesqueira	32.39	3	1	6883	3.0	66.6	4.2	5.6	1.5	10.0	2.1	6.2	0.8	69.6	4.2	26.2	0.078	0.500	29.374739	-110.973106
T. Der. Pesqueira	32.39	3	2	6880	2.8	64.4	4.7	6.0	1.4	11.5	2.2	6.1	0.9	67.2	4.7	28.1	0.072	0.500	29.374812	-110.973332
T. Der. Carbó	68.90	1	1	6728	2.1	68.7	5.0	5.0	1.3	11.2	1.9	4.0	0.8	70.8	5.0	24.2	0.082	0.503	29.683345	-111.042242
T. Der. Carbó	68.90	1	2	6655	2.2	68.0	5.1	5.0	1.4	11.4	2.1	3.9	0.9	70.2	5.1	24.7	0.086	0.503	29.683327	-111.042604
T. Der. Carbó	68.90	3	1	5036	2.4	67.9	5.9	4.9	1.7	11.5	1.7	3.1	0.9	70.3	5.9	23.8	0.076	0.542	29.692189	-111.044189
T. Der. Carbó	68.90	3	2	5964	2.4	67.2	6.0	5.0	1.5	11.9	1.7	3.4	0.9	69.6	6.0	24.4	0.097	0.542	29.692144	-111.044540
T. Izq. Benjamín Hill	125.40	1	1	5886	3.2	62.7	4.6	8.5	1.4	12.4	2.1	4.2	0.9	65.9	4.6	29.5	0.080	0.504	30.160759	-111.097153
T. Izq. Benjamín Hill	125.40	1	2	5982	3.1	62.6	4.3	8.6	1.7	12.5	2.2	4.0	1.0	65.7	4.3	30.0	0.088	0.504	30.160741	-111.097474
T. Izq. Benjamín Hill	125.40	3	1	6582	2.0	66.8	3.5	8.0	1.9	11.5	2.0	3.4	0.9	68.8	3.5	27.7	0.074	0.506	30.179016	-111.097264
T. Izq. Benjamín Hill	125.40	3	2	6735	2.0	66.2	3.5	8.0	2.0	11.9	2.1	3.4	0.9	68.2	3.5	28.3	0.074	0.506	30.178970	-111.097575
Santa Ana	167.27	1	1	7463	1.9	69.9	3.7	5.4	1.1	12.0	1.4	3.7	0.9	71.8	3.7	24.5	0.067	0.514	30.508476	-111.102600
Santa Ana	167.27	1	2	7888	1.2	66.5	4.5	7.5	1.3	12.3	1.6	4.2	0.9	67.7	4.5	27.8	0.064	0.514	30.520781	-111.109933
Santa Ana	167.27	3	1	7239	1.5	76.0	3.0	5.1	1.1	8.8	1.1	2.7	0.7	77.5	3.0	19.5	0.072	0.512	30.567706	-111.087729
Santa Ana	167.27	3	2	6893	1.7	72.3	3.6	5.5	1.2	10.1	1.8	2.9	0.9	74.0	3.6	22.4	0.094	0.512	30.567836	-111.087931
T. Lib de Magdalena	178.00	0	0																	
Magdalena de Kino	181.30	1	1	4595	2.1	88.2	2.0	4.4	1.3	0.7	0.6	0.4	0.3	90.3	2.0	7.7	0.079	0.524	30.621469	-110.981532
Magdalena de Kino	181.30	1	2	4169	2.3	87.5	2.4	4.5	1.2	0.8	0.4	0.4	0.5	89.8	2.4	7.8	0.078	0.524	30.621703	-110.981512

14 CARR: Libramiento de Ciudad Obregón (Cuota)

CLAVE:

RUTA: MEX-015D

AÑO: 2022

LUGAR	ESTACION				CLASIFICACION VEHICULAR EN PORCIENTO										COORDENADAS					
	KM	TE	SC	TDPA	M	A	B	C2	C3	T3S2	T3S3	T3S2R4	OTROS	A	B	C	K'	D	LATITUD	LONGITUD
T. C. Los Mochis - Cd. Obregón (Cuota)	0.00	0	0																	
Plaza de Cobro Esperanza-Homos	31.00	2	0	3146	0.2	44.8	2.1	3.3	3.0	30.1	2.6	11.4	2.5	45.0	2.1	52.9	0.090	0.500	27.604518	-109.898767
X. C. Esperanza - Presa Álvaro Obregón	31.40	1	0	3426	2.0	53.8	5.2	3.2	1.5	23.8	2.1	7.8	0.6	55.8	5.2	39.0	0.069	0.507	27.603520	-109.892435
X. C. Esperanza - Presa Álvaro Obregón	31.40	3	0	3306	3.0	54.5	5.3	3.2	1.3	22.7	2.4	7.1	0.5	57.5	5.3	37.2	0.072	0.507	27.606163	-109.909312
T. C. Cd. Obregón - Guaymas (Cuota)	35.00	0	0																	

SONORA

15 CARR: Libramiento de Empalme - Guaymas (Cuota)

CLAVE: 26256

RUTA: MEX-015D

AÑO: 2022

LUGAR	ESTACION				CLASIFICACION VEHICULAR EN PORCIENTO													COORDENADAS		
	KM	TE	SC	TDPA	M	A	B	C2	C3	T3S2	T3S3	T3S2R4	OTROS	A	B	C	K'	D	LATITUD	LONGITUD
T. C. Cd. Obregón - Hermosillo (Sur)	0.00	3	1	3594	2.4	65.4	5.6	3.0	3.4	11.9	3.6	4.3	0.4	67.8	5.6	26.6	0.075	0.524	27.955106	-110.751757
T. C. Cd. Obregón - Hermosillo (Sur)	0.00	3	2	3960	2.4	64.7	5.7	3.0	3.6	12.1	3.4	4.5	0.6	67.1	5.7	27.2	0.090	0.524	27.954971	-110.751961
T. C. Cd. Obregón - Hermosillo (Norte)	21.50	1	1	4132	2.8	62.8	6.3	5.7	1.8	13.1	2.4	4.6	0.5	65.6	6.3	28.1	0.071	0.507	28.038383	-110.933796
T. C. Cd. Obregón - Hermosillo (Norte)	21.50	1	2	4256	3.1	62.3	5.9	6.3	1.8	12.8	2.7	4.5	0.6	65.4	5.9	28.7	0.095	0.507	28.038193	-110.933878

16 CARR: Libramiento de Hermosillo (Cuota)

CLAVE:

RUTA: MEX-015D

AÑO: 2022

LUGAR	ESTACION				CLASIFICACION VEHICULAR EN PORCIENTO													COORDENADAS		
	KM	TE	SC	TDPA	M	A	B	C2	C3	T3S2	T3S3	T3S2R4	OTROS	A	B	C	K'	D	LATITUD	LONGITUD
T. C. Guaymas - Hermosillo	0.00	3	0	3101	3.1	49.9	4.1	2.6	3.7	23.0	3.4	9.3	0.9	53.0	4.1	42.9	0.105	0.536	28.901853	-110.946898
X. C. Hermosillo - Sahuaripa	20.00	3	0	3574	2.5	50.0	4.7	6.0	2.4	22.6	3.0	8.0	0.8	52.5	4.7	42.8	0.075	0.506	29.040632	-110.854604
Hermosillo - Magdalena de Kino (Cuota)	40.00	1	0	3632	2.3	50.0	4.9	5.9	2.4	22.3	2.9	8.6	0.7	52.3	4.9	42.8	0.076	0.521	29.177603	-110.912201

17 CARR: Libramiento de Magdalena de Kino (Cuota)

CLAVE:

RUTA: MEX-015D

AÑO: 2022

LUGAR	ESTACION				CLASIFICACION VEHICULAR EN PORCIENTO													COORDENADAS		
	KM	TE	SC	TDPA	M	A	B	C2	C3	T3S2	T3S3	T3S2R4	OTROS	A	B	C	K'	D	LATITUD	LONGITUD
T. C. Hermosillo - Nogales (Sur)	181.30	3	1	4584	2.0	64.9	3.1	5.0	1.7	14.7	2.7	5.0	0.9	66.9	3.1	30.0	0.096	0.527	30.619193	-110.986736
T. C. Hermosillo - Nogales (Sur)	181.30	3	2	4119	2.2	65.7	3.1	5.0	1.8	14.1	2.3	5.0	0.8	67.9	3.1	29.0	0.077	0.527	30.619317	-110.986669
T. C. Hermosillo - Nogales (Norte)	193.00	1	1	4199	1.7	67.9	3.0	5.1	1.4	12.9	2.1	5.0	0.9	69.6	3.0	27.4	0.083	0.532	30.663453	-110.921598
T. C. Hermosillo - Nogales (Norte)	193.00	1	2	4775	1.5	68.6	3.4	5.0	1.3	12.4	2.0	4.9	0.9	70.1	3.4	26.5	0.078	0.532	30.663758	-110.921789

18 CARR: Libramiento de Nogales (Cuota)

CLAVE: 26100

RUTA: MEX-15D

AÑO: 2022

LUGAR	ESTACION				CLASIFICACION VEHICULAR EN PORCIENTO													COORDENADAS		
	KM	TE	SC	TDPA	M	A	B	C2	C3	T3S2	T3S3	T3S2R4	OTROS	A	B	C	K'	D	LATITUD	LONGITUD
T. C. Hermosillo - Nogales	0.00	3	1	2657	3.0	68.2	2.7	3.5	4.8	16.3	0.3	1.0	0.2	71.2	2.7	26.1	0.099	0.501	31.235652	-110.968676
T. C. Hermosillo - Nogales	0.00	3	2	2663	1.5	64.5	3.4	4.7	5.2	18.9	0.3	1.2	0.3	66.0	3.4	30.6	0.142	0.501	31.235580	-110.968771
Plaza de Cobro Nogales	4.50	2	1	1317	0.1	75.2	0.4	2.1	1.0	21.0	0.0	0.0	0.2	75.3	0.4	24.3	0.184	0.500	31.247675	-110.972370
Plaza de Cobro Nogales	4.50	2	2	1317	0.1	75.2	0.4	2.1	1.0	21.0	0.0	0.0	0.2	75.3	0.4	24.3	0.184	0.500	31.247675	-110.972370
Frontera E.U.A.	12.50	1	1	1880	1.9	60.1	3.5	8.1	4.0	20.0	0.9	1.4	0.1	62.0	3.5	34.5	0.127	0.520	31.285422	-110.979593
Frontera E.U.A.	12.50	1	2	1734	2.1	59.6	3.6	8.0	4.3	20.0	1.0	1.2	0.2	61.7	3.6	34.7	0.149	0.520	31.285396	-110.979760

SONORA

19 CARR: Los Mochis - Cd. Obregón (Cuota)

CLAVE: 26444

RUTA: MEX-015D

AÑO: 2022

LUGAR	ESTACION				CLASIFICACION VEHICULAR EN PORCIENTO														COORDENADAS	
	KM	TE	SC	TDPA	M	A	B	C2	C3	T3S2	T3S3	T3S2R4	OTROS	A	B	C	K'	D	LATITUD	LONGITUD
T. C. Topolobampo - Choix	0.00	3	1	8901	9.1	72.0	2.9	3.9	4.2	5.7	0.6	1.3	0.3	81.1	2.9	16.0	0.078	0.508	25.836069	-108.975301
T. C. Topolobampo - Choix	0.00	3	2	9187	8.9	71.6	3.3	4.0	4.2	5.7	0.8	1.2	0.3	80.5	3.3	16.2	0.067	0.508	25.835899	-108.975420
T. Izq. Ahome	17.13	3	1	9710	12.8	62.9	3.8	4.1	2.4	9.2	1.9	2.3	0.6	75.7	3.8	20.5	0.068	0.500	25.945595	-109.053343
T. Izq. Ahome	17.13	3	2	9724	10.1	65.2	4.4	3.6	2.2	9.8	1.8	2.3	0.6	75.3	4.4	20.3	0.068	0.500	25.945632	-109.053491
T. Izq. Coahuilbampo	19.00	1	1	8365	0.0	70.5	5.7	5.2	2.1	11.3	2.2	2.4	0.6	70.5	5.7	23.8	0.070	0.522	25.958642	-109.053395
T. Izq. Coahuilbampo	19.00	1	2	9122	13.0	60.4	4.7	5.5	2.2	9.1	1.6	2.8	0.7	73.4	4.7	21.9	0.075	0.522	25.958620	-109.053571
T. Izq. Coahuilbampo	19.00	3	1	6660	6.8	59.8	5.1	3.3	3.1	15.0	1.8	4.4	0.7	66.6	5.1	28.3	0.065	0.535	25.970636	-109.039785
T. Izq. Coahuilbampo	19.00	3	2	5783	6.8	57.9	6.3	4.5	2.4	14.5	2.9	4.1	0.6	64.7	6.3	29.0	0.076	0.535	25.970882	-109.039691
Poblado Chico	50.00	3	1	5394	4.8	60.6	6.2	4.1	1.8	14.8	2.9	3.8	1.0	65.4	6.2	28.4	0.069	0.508	26.228028	-109.054368
Poblado Chico	50.00	3	2	5215	5.4	59.5	6.8	4.3	1.8	15.1	2.3	3.8	1.0	64.9	6.8	28.3	0.076	0.508	26.228262	-109.054478
T. Der. El Fuerte	54.80	1	1	5262	5.1	60.4	6.2	3.8	2.5	14.5	2.9	3.7	0.9	65.5	6.2	28.3	0.066	0.504	26.261108	-109.044961
T. Der. El Fuerte	54.80	1	2	5181	5.2	60.6	6.5	4.0	2.1	14.2	2.4	4.1	0.9	65.8	6.5	27.7	0.081	0.504	26.261150	-109.045134
T. Der. El Fuerte	54.80	3	1	5544	6.2	59.8	6.0	3.4	2.0	15.0	2.7	4.0	0.9	66.0	6.0	28.0	0.073	0.520	26.276265	-109.040620
T. Der. El Fuerte	54.80	3	2	5119	5.8	58.7	6.8	4.0	1.9	15.9	2.2	3.9	0.8	64.5	6.8	28.7	0.069	0.520	26.276076	-109.040843
Lim. Edos. Term. Sin. Ppia. Son.	69.80	0	0																	
T. Izq. Camahuiroa	93.90	1	1	4877	8.2	44.4	8.9	7.6	2.4	19.0	3.8	4.8	0.9	52.6	8.9	38.5	0.069	0.513	26.577260	-109.158703
T. Izq. Camahuiroa	93.90	1	2	5139	8.3	46.1	8.7	7.3	2.0	19.0	3.6	4.1	0.9	54.4	8.7	36.9	0.069	0.513	26.577189	-109.158801
X. C. Alamos - Masiaca	114.30	1	1	4877	11.7	40.0	8.9	3.7	2.1	23.6	4.2	4.9	0.9	51.7	8.9	39.4	0.068	0.503	26.723175	-109.284882
X. C. Alamos - Masiaca	114.30	1	2	4936	11.9	40.2	9.0	3.4	2.0	23.1	4.6	4.9	0.9	52.1	9.0	38.9	0.067	0.503	26.723028	-109.285103
T. Izq. Huatabampo	128.50	1	1	3827	5.7	51.1	7.3	4.4	3.0	18.6	4.0	5.0	0.9	56.8	7.3	35.9	0.078	0.511	26.836482	-109.365933
T. Izq. Huatabampo	128.50	1	2	3663	6.2	49.5	7.8	4.9	2.8	18.3	4.6	5.0	0.9	55.7	7.8	36.5	0.068	0.511	26.836318	-109.366169
Plaza de Cobro Estacion Don (La Jaula)	129.90	2	1	3151	0.3	47.8	6.7	3.1	2.8	25.5	3.0	8.5	2.3	48.1	6.7	45.2	0.086	0.500	26.849735	-109.373267
Plaza de Cobro Estacion Don (La Jaula)	129.90	2	2	3151	0.3	47.8	6.7	3.1	2.8	25.5	3.0	8.5	2.3	48.1	6.7	45.2	0.086	0.500	26.849735	-109.373267
Navojoa	155.00	1	1	6552	7.8	55.2	8.2	4.8	3.3	13.8	2.4	3.5	1.0	63.0	8.2	28.8	0.087	0.503	27.029155	-109.434976
Navojoa	155.00	1	2	6472	7.2	58.1	8.5	4.9	2.5	12.2	1.8	3.9	0.9	65.3	8.5	26.2	0.110	0.503	27.029561	-109.435297
Navojoa	155.00	3	1	7791	14.4	77.5	3.0	3.4	0.8	0.5	0.1	0.3	0.0	91.9	3.0	5.1	0.073	0.504	27.103781	-109.447803
Navojoa	155.00	3	2	7919	19.3	72.3	3.4	3.6	0.7	0.5	0.1	0.1	0.0	91.6	3.4	5.0	0.087	0.504	27.103792	-109.447898
T. Izq. Villa Juárez	167.25	1	1	6659	4.9	63.8	6.0	3.6	1.9	12.9	2.7	3.4	0.8	68.7	6.0	25.3	0.066	0.501	27.152783	-109.504042
T. Izq. Villa Juárez	167.25	1	2	6640	5.4	64.7	5.0	4.4	2.0	11.5	2.3	3.8	0.9	70.1	5.0	24.9	0.081	0.501	27.152511	-109.504285
T. Izq. Villa Juárez	167.25	3	1	6305	4.1	63.1	6.7	5.6	2.1	11.9	2.1	3.4	1.0	67.2	6.7	26.1	0.069	0.513	27.158691	-109.511620
T. Izq. Villa Juárez	167.25	3	2	6648	4.2	62.9	6.7	5.6	2.1	12.0	2.2	3.4	0.9	67.1	6.7	26.2	0.072	0.513	27.158447	-109.511914
Plaza de Cobro Fundición	195.80	2	1	4094	0.4	55.7	6.4	3.3	2.6	20.5	2.5	6.7	1.9	56.1	6.4	37.5	0.086	0.500	27.320494	-109.719697
Plaza de Cobro Fundición	195.80	2	2	4094	0.4	55.7	6.4	3.3	2.6	20.5	2.5	6.7	1.9	56.1	6.4	37.5	0.086	0.500	27.320494	-109.719697
T. Der. Fundición	196.30	1	1	5476	2.7	64.0	7.0	4.9	2.1	13.2	2.2	3.7	0.2	66.7	7.0	26.3	0.081	0.506	27.316289	-109.714294
T. Der. Fundición	196.30	1	2	5604	2.9	63.8	7.0	4.9	2.1	13.2	2.2	3.8	0.1	66.7	7.0	26.3	0.074	0.506	27.315966	-109.714489

SONORA

19 CARR: Los Mochis - Cd. Obregón (Cuota)

CLAVE: 26444

RUTA: MEX-015D

AÑO: 2022

LUGAR	ESTACION				CLASIFICACION VEHICULAR EN PORCIENTO													COORDENADAS		
	KM	TE	SC	TDPA	M	A	B	C2	C3	T3S2	T3S3	T3S2R4	OTROS	A	B	C	K'	D	LATITUD	LONGITUD
T. Der. Libramiento de Cd. Obregón (Cuota)	203.52	1	1	7325	3.4	65.1	6.6	2.9	2.5	13.3	2.1	3.3	0.8	68.5	6.6	24.9	0.072	0.539	27.366838	-109.779490
T. Der. Libramiento de Cd. Obregón (Cuota)	203.52	1	2	6265	3.7	65.1	6.6	3.0	2.4	13.4	2.1	2.9	0.8	68.8	6.6	24.6	0.064	0.539	27.366623	-109.779715
Cd. Obregón	222.70	1	1	12014	6.6	72.6	4.9	4.3	3.2	5.0	1.8	1.2	0.4	79.2	4.9	15.9	0.080	0.509	27.455075	-109.892915
Cd. Obregón	222.70	1	2	12434	5.1	72.7	5.2	4.4	3.9	5.8	1.6	1.0	0.3	77.8	5.2	17.0	0.074	0.509	27.454852	-109.893170

20 CARR: Santa Ana - Sonoita

CLAVE: 26080

RUTA: MEX-002D-MEX

AÑO: 2022

LUGAR	ESTACION				CLASIFICACION VEHICULAR EN PORCIENTO													COORDENADAS		
	KM	TE	SC	TDPA	M	A	B	C2	C3	T3S2	T3S3	T3S2R4	OTROS	A	B	C	K'	D	LATITUD	LONGITUD
Santa Ana	0.00	3	1	5934	3.2	55.3	6.7	2.6	1.9	21.3	2.5	5.7	0.8	58.5	6.7	34.8	0.067	0.511	30.553674	-111.130650
Santa Ana	0.00	3	2	5674	2.9	54.6	7.6	3.0	1.7	21.2	2.1	6.3	0.6	57.5	7.6	34.9	0.066	0.511	30.553457	-111.131045
El Ocuca	31.55	1	1	2588	2.4	52.3	6.1	4.3	2.3	22.8	2.8	6.4	0.6	54.7	6.1	39.2	0.090	0.500	30.585642	-111.429546
El Ocuca	31.55	1	2	2586	2.7	51.5	6.4	4.5	2.3	22.6	2.6	6.7	0.7	54.2	6.4	39.4	0.075	0.500	30.585557	-111.429561
El Ocuca	31.55	3	1	3130	2.4	51.0	7.2	3.2	2.2	24.0	2.2	7.1	0.7	53.4	7.2	39.4	0.079	0.504	30.585611	-111.439963
El Ocuca	31.55	3	2	3075	2.4	49.2	7.6	3.5	2.6	24.8	2.1	7.1	0.7	51.6	7.6	40.8	0.062	0.504	30.585476	-111.439403
Altar	72.80	1	1	5410	2.2	52.4	7.7	2.8	1.6	23.4	2.8	6.4	0.7	54.6	7.7	37.7	0.076	0.513	30.701453	-111.816663
Altar	72.80	1	2	5139	2.1	48.7	8.2	3.0	1.7	26.0	2.8	6.8	0.7	50.8	8.2	41.0	0.058	0.513	30.701095	-111.816232
Altar	72.80	3	1	3724	2.7	60.7	7.4	4.2	1.4	15.7	2.0	5.2	0.7	63.4	7.4	29.2	0.077	0.502	30.713441	-111.852865
Altar	72.80	3	2	3753	2.6	60.2	7.6	4.4	1.4	16.0	1.9	5.2	0.7	62.8	7.6	29.6	0.074	0.502	30.713365	-111.852847
T. Izq. Estación Pitiquito	94.28	1	1	3694	1.1	62.5	6.8	3.1	2.2	15.3	2.5	5.9	0.6	63.6	6.8	29.6	0.084	0.502	30.693253	-112.021555
T. Izq. Estación Pitiquito	94.28	1	2	3726	1.4	61.9	6.5	3.3	2.0	16.3	2.3	5.7	0.6	63.3	6.5	30.2	0.072	0.502	30.693197	-112.021488
Caborca	103.83	1	0	10034	3.1	70.1	3.5	2.7	1.3	13.5	1.5	3.4	0.9	73.2	3.5	23.3	0.074	0.500	30.709976	-112.126976
Cozón	180.30	1	0	4293	3.8	37.3	9.8	4.0	1.7	31.0	3.0	8.5	0.9	41.1	9.8	49.1	0.060	0.528	31.301349	-112.557198
Sonoita	253.70	1	0	4407	4.4	44.0	9.5	4.3	1.8	26.4	2.7	6.0	0.9	48.4	9.5	42.1	0.062	0.523	31.845642	-112.859421

21 CARR: Altar - Sáric

CLAVE: 26233

RUTA: SON-064

AÑO: 2022

LUGAR	ESTACION				CLASIFICACION VEHICULAR EN PORCIENTO													COORDENADAS		
	KM	TE	SC	TDPA	M	A	B	C2	C3	T3S2	T3S3	T3S2R4	OTROS	A	B	C	K'	D	LATITUD	LONGITUD
T. C. Santa Ana - Sonoita	0.00	3	0	1269	3.1	89.3	1.0	4.5	1.0	0.8	0.1	0.1	0.1	92.4	1.0	6.6	0.070	0.511	30.722296	-111.831169
Sáric	68.00	1	0	439	2.3	89.3	0.8	6.8	0.7	0.0	0.1	0.0	0.0	91.6	0.8	7.6	0.089	0.517	31.096798	-111.391052

SONORA

22 CARR: Caborca - El Desemboque

CLAVE: 26225

RUTA: SON-037

AÑO: 2022

LUGAR	ESTACION				CLASIFICACION VEHICULAR EN PORCIENTO													COORDENADAS		
	KM	TE	SC	TDPA	M	A	B	C2	C3	T3S2	T3S3	T3S2R4	OTROS	A	B	C	K'	D	LATITUD	LONGITUD
Caborca	0.00	3	1	3740	2.7	93.7	1.2	1.7	0.6	0.1	0.0	0.0	0.0	96.4	1.2	2.4	0.082	0.510	30.709271	-112.177241
Caborca	0.00	3	2	3595	2.5	92.9	1.8	2.3	0.4	0.1	0.0	0.0	0.0	95.4	1.8	2.8	0.074	0.510	30.709165	-112.177224
T. Der. Productora Nal. de Semillas	4.20	3	0	5222	2.5	89.6	2.8	3.6	0.8	0.5	0.1	0.1	0.0	92.1	2.8	5.1	0.075	0.503	30.706324	-112.194011
T. Izq. Ramal El Deseo	6.90	3	0	3950	0.9	86.9	5.2	4.3	1.0	1.3	0.3	0.1	0.0	87.8	5.2	7.0	0.078	0.512	30.702427	-112.214403
T. Der. El Sahuaro	61.20	3	0	1255	3.4	87.8	1.3	5.3	1.1	0.7	0.3	0.1	0.0	91.2	1.3	7.5	0.075	0.515	30.801056	-112.720135
El Desemboque	102.30	0	0																	

23 CARR: Calle 36 Norte - Puerto de La Libertad

CLAVE: 26117

RUTA: SON-029

AÑO: 2022

LUGAR	ESTACION				CLASIFICACION VEHICULAR EN PORCIENTO													COORDENADAS		
	KM	TE	SC	TDPA	M	A	B	C2	C3	T3S2	T3S3	T3S2R4	OTROS	A	B	C	K'	D	LATITUD	LONGITUD
T. C. Hermosillo - Bahía Kino	0.00	3	0	295	4.2	80.4	1.4	4.4	3.3	4.3	0.8	0.8	0.4	84.6	1.4	14.0	0.081	0.526	28.904017	-111.714088
Casas Grandes	45.00	3	0	339	2.8	80.6	2.2	6.2	2.4	4.0	0.7	1.1	0.0	83.4	2.2	14.4	0.088	0.507	29.188680	-111.724848
Puerto de La Libertad	156.00	0	0																	

24 CARR: Esperanza - Presa Álvaro Obregón

CLAVE: 26242

RUTA: SON-117

AÑO: 2022

LUGAR	ESTACION				CLASIFICACION VEHICULAR EN PORCIENTO													COORDENADAS		
	KM	TE	SC	TDPA	M	A	B	C2	C3	T3S2	T3S3	T3S2R4	OTROS	A	B	C	K'	D	LATITUD	LONGITUD
Esperanza	0.00	3	0	4930	8.4	84.5	1.0	1.9	2.5	1.0	0.3	0.3	0.1	92.9	1.0	6.1	0.143	0.510	27.583752	-109.917982
T. Der. Los Hornos	17.00	3	0	1004	7.6	85.4	0.6	2.5	2.7	0.4	0.3	0.3	0.2	93.0	0.6	6.4	0.214	0.502	27.720520	-109.897763
Presa Álvaro Obregón	32.00	0	0																	

25 CARR: Hermosillo - Bahía Kino

CLAVE: 26109

RUTA: SON-100

AÑO: 2022

LUGAR	ESTACION				CLASIFICACION VEHICULAR EN PORCIENTO													COORDENADAS		
	KM	TE	SC	TDPA	M	A	B	C2	C3	T3S2	T3S3	T3S2R4	OTROS	A	B	C	K'	D	LATITUD	LONGITUD
Hermosillo	0.00	3	1	30470	4.4	88.9	1.0	3.0	0.9	0.6	0.1	0.8	0.3	93.3	1.0	5.7	0.071	0.512	29.094891	-111.011048
Hermosillo	0.00	3	2	28956	4.4	88.9	1.0	3.0	1.0	0.6	0.1	0.8	0.2	93.3	1.0	5.7	0.076	0.512	29.094755	-111.011081
T. Der. Aeropuerto	11.00	1	1	14098	8.2	81.3	1.5	5.0	1.7	1.1	0.2	0.8	0.2	89.5	1.5	9.0	0.083	0.508	29.090580	-111.044273
T. Der. Aeropuerto	11.00	1	2	14573	8.1	81.2	1.6	5.0	1.8	1.1	0.2	0.8	0.2	89.3	1.6	9.1	0.087	0.508	29.090412	-111.044373
T. Der. Aeropuerto	11.00	3	1	10325	5.2	81.9	0.7	4.8	4.0	1.9	0.5	0.8	0.2	87.1	0.7	12.2	0.100	0.512	29.088381	-111.052975
T. Der. Aeropuerto	11.00	3	2	9839	4.5	84.3	1.1	4.5	3.1	1.4	0.4	0.5	0.2	88.8	1.1	10.1	0.105	0.512	29.088245	-111.052926
T. Izq. Calle 4 Sur	53.00	3	0	6931	1.4	88.4	1.2	4.6	2.3	1.4	0.3	0.3	0.1	89.8	1.2	9.0	0.097	0.504	28.839465	-111.403869
Miguel Alemán	61.20	1	0	7128	2.2	88.2	1.8	4.5	1.3	1.3	0.3	0.4	0.0	90.4	1.8	7.8	0.110	0.523	28.839668	-111.442073

SONORA

25 CARR: Hermosillo - Bahía Kino

CLAVE: 26109

RUTA: SON-100

AÑO: 2022

LUGAR	ESTACION				CLASIFICACION VEHICULAR EN PORCIENTO													COORDENADAS		
	KM	TE	SC	TDPA	M	A	B	C2	C3	T3S2	T3S3	T3S2R4	OTROS	A	B	C	K'	D	LATITUD	LONGITUD
T. Der. Calle 36	84.40	1	0	3838	2.2	88.0	1.7	4.4	1.4	1.3	0.4	0.5	0.1	90.2	1.7	8.1	0.096	0.527	28.831355	-111.702633
T. Der. Calle 36	84.40	3	0	3355	2.6	85.8	2.0	4.5	1.8	1.6	0.7	0.9	0.1	88.4	2.0	9.6	0.101	0.529	28.831009	-111.730805
Bahía Kino	106.50	1	0	3146	0.9	92.4	0.7	3.8	1.6	0.4	0.1	0.0	0.1	93.3	0.7	6.0	0.135	0.506	28.828510	-111.928384

26 CARR: Hermosillo - Sahuaripa

CLAVE: 26230

RUTA: SON-020

AÑO: 2022

LUGAR	ESTACION				CLASIFICACION VEHICULAR EN PORCIENTO													COORDENADAS		
	KM	TE	SC	TDPA	M	A	B	C2	C3	T3S2	T3S3	T3S2R4	OTROS	A	B	C	K'	D	LATITUD	LONGITUD
T. C. Hermosillo - Yecora	0.00	3	1	1605	1.5	75.1	2.8	10.1	4.2	2.5	2.2	1.3	0.3	76.6	2.8	20.6	0.100	0.505	29.030919	-110.871861
T. C. Hermosillo - Yecora	0.00	3	2	1571	2.0	75.1	2.8	10.4	4.0	2.3	2.0	1.2	0.2	77.1	2.8	20.1	0.090	0.505	29.030929	-110.872590
X. C. Libramiento de Hermosillo Cuota	8.70	0	0																	
Mazatán	88.00	1	0	913	2.6	85.2	0.9	7.9	1.3	1.1	0.4	0.1	0.5	87.8	0.9	11.3	0.125	0.506	29.005556	-110.152743
Mazatán	88.00	3	0	720	4.8	85.3	1.5	4.1	1.8	0.9	0.4	0.5	0.7	90.1	1.5	8.4	0.113	0.508	28.998725	-110.137379
Sahuaripa	199.00	0	0																	

27 CARR: Hornos - San Nicolás

CLAVE: 26243

RUTA: SON-012

AÑO: 2022

LUGAR	ESTACION				CLASIFICACION VEHICULAR EN PORCIENTO													COORDENADAS		
	KM	TE	SC	TDPA	M	A	B	C2	C3	T3S2	T3S3	T3S2R4	OTROS	A	B	C	K'	D	LATITUD	LONGITUD
Hornos	0.00	3	0	1328	4.2	82.7	1.1	6.1	2.6	2.1	0.6	0.4	0.2	86.9	1.1	12.0	0.093	0.506	27.720274	-109.890962
Rosario	58.00	1	0	1205	6.5	84.1	1.4	3.2	1.8	1.9	0.6	0.4	0.1	90.6	1.4	8.0	0.089	0.505	27.842195	-109.383861
San Nicolás	137.20	0	0																	

28 CARR: Huatabampo - Bacabachi

CLAVE: 26237

RUTA: SON-176

AÑO: 2022

LUGAR	ESTACION				CLASIFICACION VEHICULAR EN PORCIENTO													COORDENADAS		
	KM	TE	SC	TDPA	M	A	B	C2	C3	T3S2	T3S3	T3S2R4	OTROS	A	B	C	K'	D	LATITUD	LONGITUD
Huatabampo	0.00	3	0	1951	23.4	65.0	1.3	2.5	3.7	2.7	0.5	0.9	0.0	88.4	1.3	10.3	0.076	0.506	26.825247	-109.603496
T. C. Los Mochis - Cd. Obregón (Cuota)	29.00	1	0	1069	23.6	60.2	2.0	5.9	3.7	2.9	1.1	0.6	0.0	83.8	2.0	14.2	0.084	0.512	26.838730	-109.369577

29 CARR: La Alameda - El Sahuaro

CLAVE: 26234

RUTA: SON-037

AÑO: 2022

LUGAR	ESTACION				CLASIFICACION VEHICULAR EN PORCIENTO													COORDENADAS		
	KM	TE	SC	TDPA	M	A	B	C2	C3	T3S2	T3S3	T3S2R4	OTROS	A	B	C	K'	D	LATITUD	LONGITUD
T. C. Caborca - El Desemboque	0.00	3	0	3991	1.6	83.9	3.8	5.2	3.0	1.5	0.4	0.5	0.1	85.5	3.8	10.7	0.081	0.529	30.819790	-112.740798

SONORA

29 CARR: La Alameda - El Sahuaro

CLAVE: 26234

RUTA: SON-037

AÑO: 2022

LUGAR	ESTACION				CLASIFICACION VEHICULAR EN PORCIENTO														COORDENADAS	
	KM	TE	SC	TDPA	M	A	B	C2	C3	T3S2	T3S3	T3S2R4	OTROS	A	B	C	K'	D	LATITUD	LONGITUD
Estación El Sahuaro	47.00	1	0	1528	2.7	58.5	9.1	18.5	5.7	3.9	1.2	0.3	0.1	61.2	9.1	29.7	0.093	0.519	31.039848	-112.944344

30 CARR: Mazocahui - Cananea

CLAVE: 26118

RUTA: SON-118

AÑO: 2022

LUGAR	ESTACION				CLASIFICACION VEHICULAR EN PORCIENTO														COORDENADAS	
	KM	TE	SC	TDPA	M	A	B	C2	C3	T3S2	T3S3	T3S2R4	OTROS	A	B	C	K'	D	LATITUD	LONGITUD
T. C. Hermosillo - Moctezuma	0.00	3	0	1207	1.8	82.2	1.2	9.6	1.7	1.3	0.9	0.7	0.6	84.0	1.2	14.8	0.097	0.510	29.547661	-110.121589
Baviácora	15.20	3	0	1821	0.8	83.6	0.8	13.0	0.9	0.6	0.3	0.0	0.0	84.4	0.8	14.8	0.096	0.505	29.726927	-110.166539
Arizpe	98.00	1	0	486	3.7	77.3	2.3	12.5	2.5	1.1	0.6	0.0	0.0	81.0	2.3	16.7	0.117	0.503	30.329739	-110.181255
T. C. Imuris - Agua Prieta	204.00	1	0	2972	3.6	75.6	2.3	8.4	3.9	2.7	1.5	1.5	0.5	79.2	2.3	18.5	0.096	0.507	30.986741	-110.257836

31 CARR: Navojoa - Álamos

CLAVE: 26240

RUTA: SON-013

AÑO: 2022

LUGAR	ESTACION				CLASIFICACION VEHICULAR EN PORCIENTO														COORDENADAS	
	KM	TE	SC	TDPA	M	A	B	C2	C3	T3S2	T3S3	T3S2R4	OTROS	A	B	C	K'	D	LATITUD	LONGITUD
Navojoa	0.00	3	0	4100	13.5	76.7	1.4	3.7	2.2	1.3	0.3	0.8	0.1	90.2	1.4	8.4	0.116	0.529	27.074138	-109.406965
Álamos	52.80	1	0	2877	8.6	84.7	1.2	3.0	1.3	0.9	0.1	0.2	0.0	93.3	1.2	5.5	0.162	0.507	27.046521	-108.981048

32 CARR: Navojoa - Yavaros

CLAVE: 26229

RUTA: SON-056

AÑO: 2022

LUGAR	ESTACION				CLASIFICACION VEHICULAR EN PORCIENTO														COORDENADAS	
	KM	TE	SC	TDPA	M	A	B	C2	C3	T3S2	T3S3	T3S2R4	OTROS	A	B	C	K'	D	LATITUD	LONGITUD
Navojoa	0.00	3	1	4664	9.7	83.6	1.9	2.1	1.2	0.9	0.2	0.3	0.1	93.3	1.9	4.8	0.077	0.517	27.040591	-109.466550
Navojoa	0.00	3	2	4992	9.9	83.2	1.9	2.2	1.3	1.0	0.3	0.2	0.0	93.1	1.9	5.0	0.113	0.517	27.040508	-109.466478
Yavaros	55.00	1	0	1877	23.0	70.8	2.4	2.7	0.8	0.2	0.1	0.0	0.0	93.8	2.4	3.8	0.127	0.543	26.705858	-109.544692

33 CARR: Nogales - San Antonio

CLAVE: 26110

RUTA: SON

AÑO: 2022

LUGAR	ESTACION				CLASIFICACION VEHICULAR EN PORCIENTO														COORDENADAS	
	KM	TE	SC	TDPA	M	A	B	C2	C3	T3S2	T3S3	T3S2R4	OTROS	A	B	C	K'	D	LATITUD	LONGITUD
Nogales	0.00	0	0																	
San Antonio	58.00	1	0	405	1.2	91.5	0.8	4.8	1.5	0.1	0.1	0.0	0.0	92.7	0.8	6.5	0.153	0.520	31.136473	-110.717927



SONORA

34 CARR: Ramal a Aeropuerto de Guaymas

CLAVE: 26568

RUTA: SON

AÑO: 2022

LUGAR	ESTACION				CLASIFICACION VEHICULAR EN PORCIENTO										COORDENADAS					
	KM	TE	SC	TDPA	M	A	B	C2	C3	T3S2	T3S3	T3S2R4	OTROS	A	B	C	K'	D	LATITUD	LONGITUD
T. C. Cd. Obregón - Hermosillo	0.00	3	1	5903	8.1	80.3	2.7	4.1	1.6	1.3	0.7	0.9	0.3	88.4	2.7	8.9	0.095	0.522	27.952414	-110.930596
T. C. Cd. Obregón - Hermosillo	0.00	3	2	6450	8.2	80.1	2.7	4.1	1.7	1.3	0.7	0.9	0.3	88.3	2.7	9.0	0.109	0.522	27.952532	-110.930616
Aeropuerto de Guaymas	3.00	3	0	5473	1.7	80.0	2.5	7.2	2.3	3.0	1.2	1.9	0.2	81.7	2.5	15.8	0.084	0.514	27.978052	-110.915093

35 CARR: San Luis Río Colorado - Golfo de Santa Clara

CLAVE: 26226

RUTA: SON-040

AÑO: 2022

LUGAR	ESTACION				CLASIFICACION VEHICULAR EN PORCIENTO										COORDENADAS					
	KM	TE	SC	TDPA	M	A	B	C2	C3	T3S2	T3S3	T3S2R4	OTROS	A	B	C	K'	D	LATITUD	LONGITUD
San Luis Río Colorado	0.00	3	1	2803	1.6	82.7	1.3	11.2	0.7	1.3	0.6	0.5	0.1	84.3	1.3	14.4	0.078	0.502	32.438819	-114.848747
San Luis Río Colorado	0.00	3	2	2832	1.5	82.4	1.3	11.4	0.9	1.4	0.4	0.6	0.1	83.9	1.3	14.8	0.069	0.502	32.438164	-114.849441
T. Izq. Lagunitas	25.50	3	0	6166	1.3	81.0	1.6	11.3	1.2	2.3	0.7	0.5	0.1	82.3	1.6	16.1	0.084	0.503	32.316692	-114.952405
Golfo de Santa Clara	114.30	1	0	1959	2.6	79.7	2.0	10.9	1.2	1.8	0.8	0.9	0.1	82.3	2.0	15.7	0.089	0.512	31.706603	-114.523896

36 CARR: Sonoita - Pitiquito

CLAVE: 26022

RUTA: SON

AÑO: 2022

LUGAR	ESTACION				CLASIFICACION VEHICULAR EN PORCIENTO										COORDENADAS					
	KM	TE	SC	TDPA	M	A	B	C2	C3	T3S2	T3S3	T3S2R4	OTROS	A	B	C	K'	D	LATITUD	LONGITUD
Sonoita	0.00	3	0	1196	1.5	85.6	1.3	10.0	0.4	1.0	0.2	0.0	0.0	87.1	1.3	11.6	0.074	0.500	31.851651	-112.820111
Pitiquito	170.00	1	0	532	4.0	86.9	3.5	2.9	1.0	1.1	0.1	0.5	0.0	90.9	3.5	5.6	0.096	0.508	30.726186	-112.093256

37 CARR: San Luis Río Colorado - Golfo de Santa Clara (Cuota)

CLAVE:

RUTA: SON-D

AÑO: 2022

LUGAR	ESTACION				CLASIFICACION VEHICULAR EN PORCIENTO										COORDENADAS					
	KM	TE	SC	TDPA	M	A	B	C2	C3	T3S2	T3S3	T3S2R4	OTROS	A	B	C	K'	D	LATITUD	LONGITUD
Libramiento de San Luis Río Colorado	0.00	0	0																	
Plaza de Cobro Estación Doctor	0.50	2	0	736	0.9	92.0	0.3	1.5	0.7	2.3	0.6	1.5	0.2	92.9	0.3	6.8	0.090	0.500	32.375135	-114.760664
Golfo de Santa Clara	44.60	0	0																	

38 CARR: T. C. (Hermosillo - Nogales) - Huásabas

CLAVE: 26231

RUTA: MEX-014-SON

AÑO: 2022

LUGAR	ESTACION				CLASIFICACION VEHICULAR EN PORCIENTO										COORDENADAS					
	KM	TE	SC	TDPA	M	A	B	C2	C3	T3S2	T3S3	T3S2R4	OTROS	A	B	C	K'	D	LATITUD	LONGITUD
T. C. Hermosillo - Nogales	0.00	3	1	9233	1.5	91.0	1.0	3.0	1.2	1.0	0.5	0.5	0.3	92.5	1.0	6.5	0.116	0.515	29.169275	-110.902273
T. C. Hermosillo - Nogales	0.00	3	2	8681	1.8	91.1	1.0	2.9	1.1	1.0	0.4	0.4	0.3	92.9	1.0	6.1	0.163	0.515	29.169359	-110.902338
Ures	62.00	3	0	2890	2.4	88.7	0.6	6.0	0.7	1.0	0.4	0.1	0.1	91.1	0.6	8.3	0.083	0.504	29.428338	-110.374597

SONORA

38 CARR: T. C. (Hermosillo - Nogales) - Huásabas

CLAVE: 26231

RUTA: MEX-014-SON

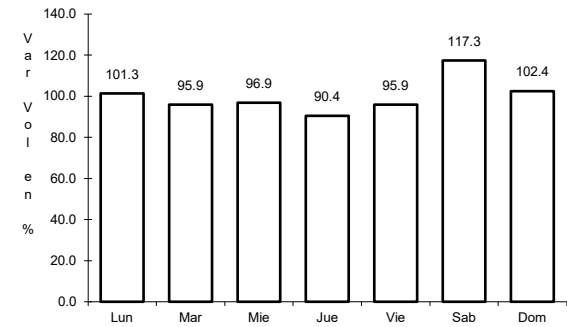
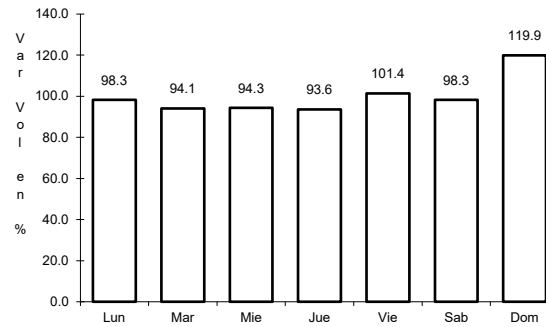
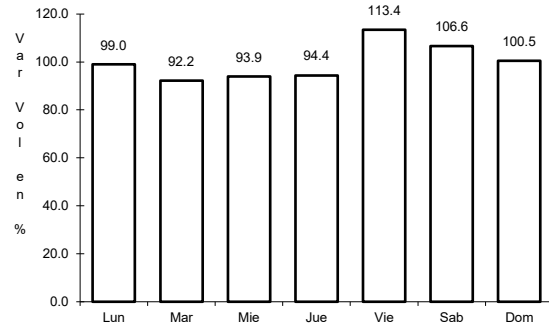
AÑO: 2022

L U G A R	E S T A C I O N				C L A S I F I C A C I O N V E H I C U L A R E N P O R C I E N T O													C O O R D E N A D A S		
	KM	TE	SC	TDPA	M	A	B	C2	C3	T3S2	T3S3	T3S2R4	OTROS	A	B	C	K'	D	LATITUD	LONGITUD
Mazocahui	97.50	3	0	1086	3.8	61.5	3.8	15.2	4.5	5.4	3.8	1.3	0.7	65.3	3.8	30.9	0.087	0.532	29.544240	-110.118770
Moctezuma	165.00	1	0	1384	2.2	85.4	1.0	5.1	1.3	1.9	1.0	1.4	0.7	87.6	1.0	11.4	0.120	0.508	29.799694	-109.690487
Moctezuma	165.00	3	0	1487	3.6	87.7	0.9	4.2	1.8	1.1	0.7	0.0	0.0	91.3	0.9	7.8	0.096	0.522	29.800802	-109.666831
Huásabas	212.50	1	0	469	1.4	89.7	0.9	4.9	1.6	1.2	0.3	0.0	0.0	91.1	0.9	8.0	0.102	0.548	29.917039	-109.310642

1 CARR: Guaymas - Hermosillo

CLAVE: 26444

RUTA: MEX-015



Km: 107.70      Tipo: 3      Sent: 0

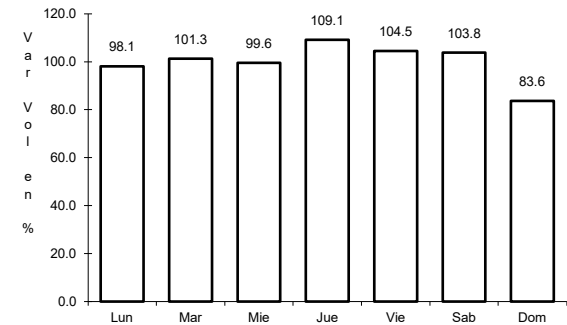
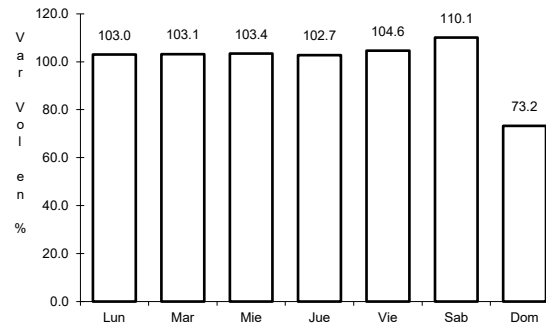
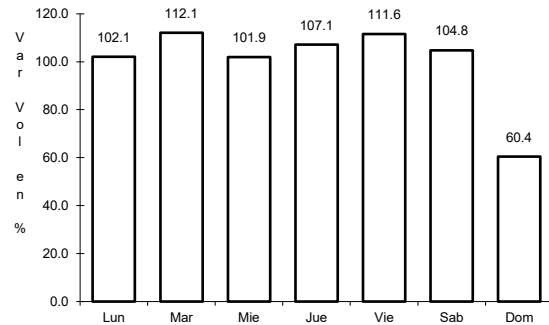
Km: 251.00      Tipo: 1      Sent: 1

Km: 251.00      Tipo: 1      Sent: 2

2 CARR: Hermosillo - Yécora

CLAVE: 26251

RUTA: MEX-016



Km: 4.00      Tipo: 3      Sent: 1

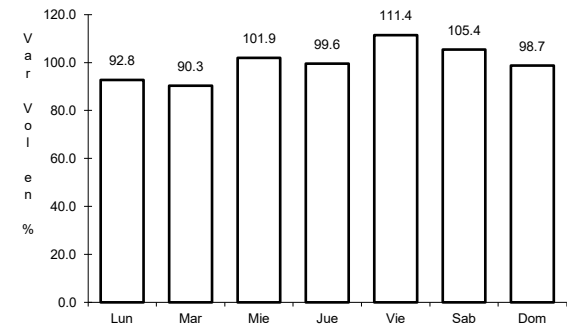
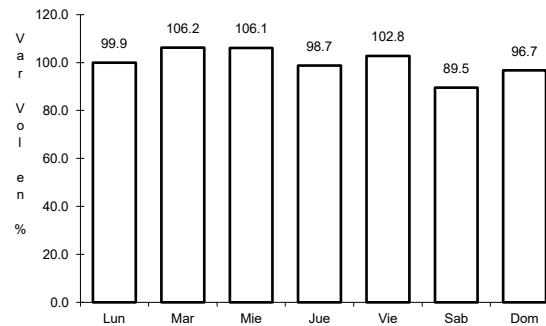
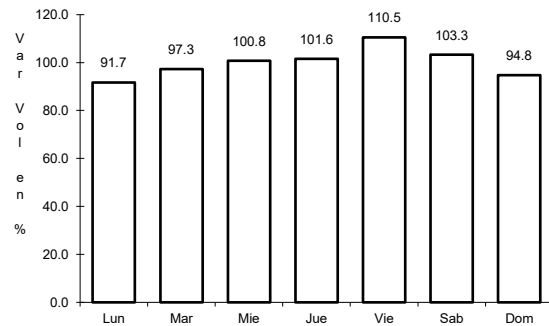
Km: 4.00      Tipo: 3      Sent: 2

Km: 138.00      Tipo: 3      Sent: 0

3 CARR: Imuris - Agua Prieta

CLAVE: 26079

RUTA: MEX-002



Km: 0.00      Tipo: 3      Sent: 0

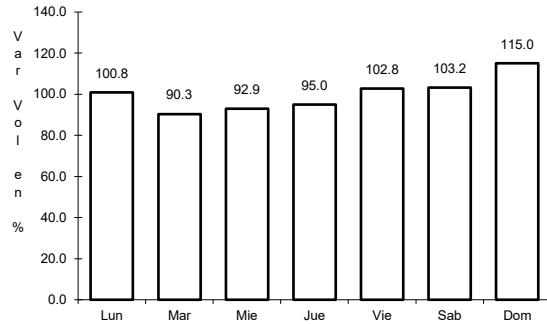
Km: 164.67      Tipo: 1      Sent: 1

Km: 164.67      Tipo: 1      Sent: 2

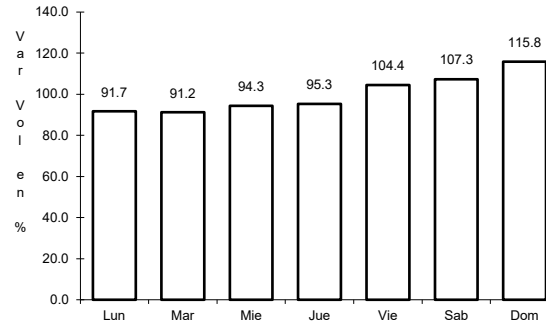
4 CARR: Janos - Agua Prieta

CLAVE: 00220

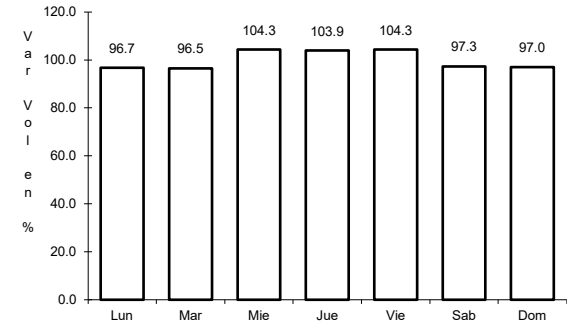
RUTA: MEX-002



Km: 0.00      Tipo: 3      Sent: 0



Km: 56.00      Tipo: 3      Sent: 0

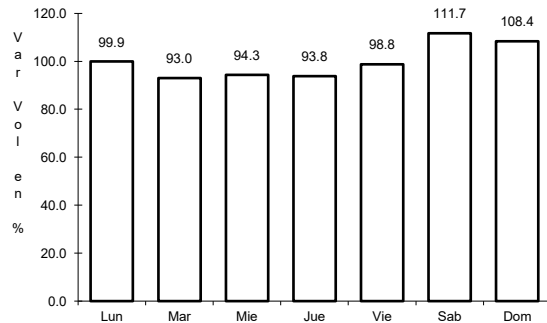


Km: 160.00      Tipo: 1      Sent: 0

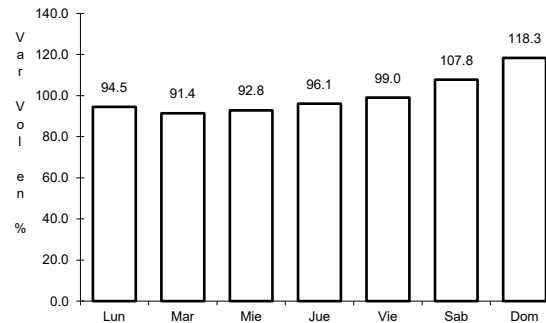
5 CARR: La Junta - Yécora

CLAVE: 00065

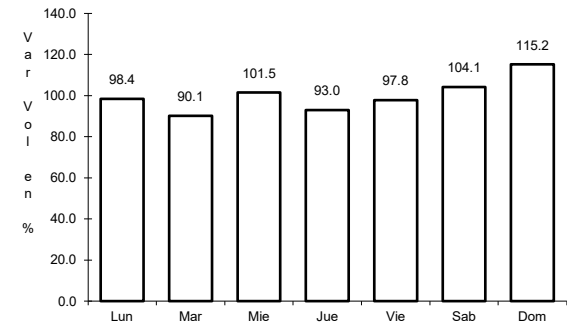
RUTA: MEX-016



Km: 0.00      Tipo: 3      Sent: 0



Km: 70.00      Tipo: 3      Sent: 0

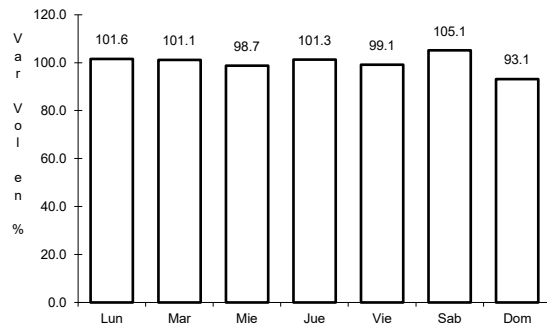


Km: 253.00      Tipo: 1      Sent: 0

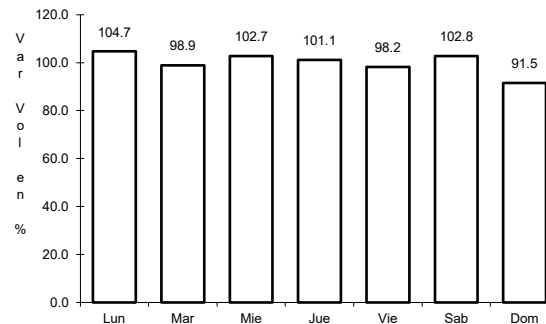
6 CARR: Magdalena de Kino - Nogales

CLAVE: 26444

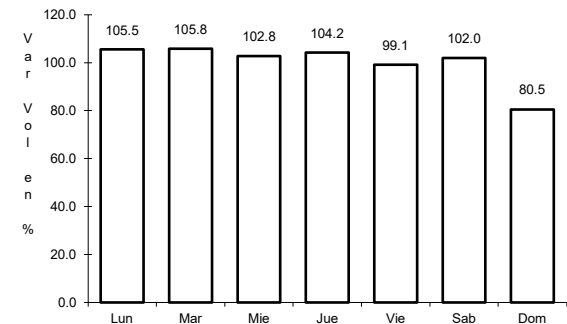
RUTA: MEX-015



Km: 181.30      Tipo: 3      Sent: 1



Km: 181.30      Tipo: 3      Sent: 2

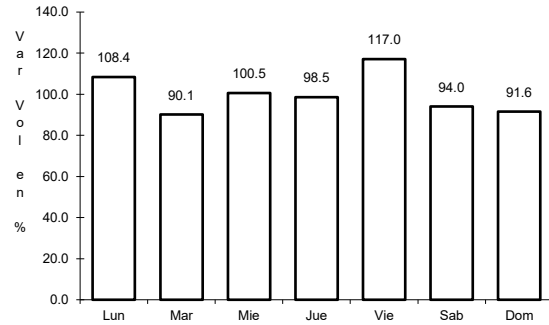


Km: 272.70      Tipo: 1      Sent: 1

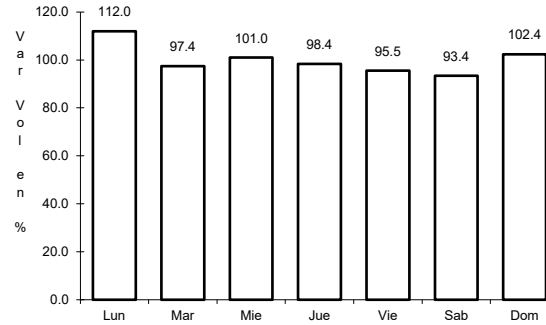
7 CARR: Moctezuma - Agua Prieta

CLAVE: 26027

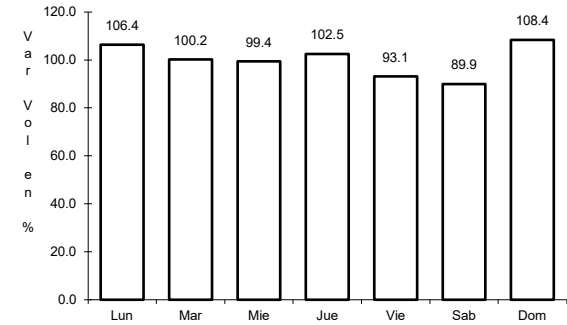
ruta: MEX-017



Km: 0.00                      Tipo: 3                      Sent: 0



Km: 81.00                      Tipo: 3                      Sent: 0

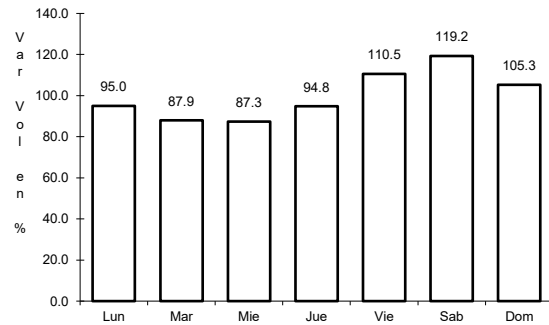


Km: 197.60                      Tipo: 1                      Sent: 0

8 CARR: Ramal a Naco

CLAVE: 26579

ruta: MEX-002

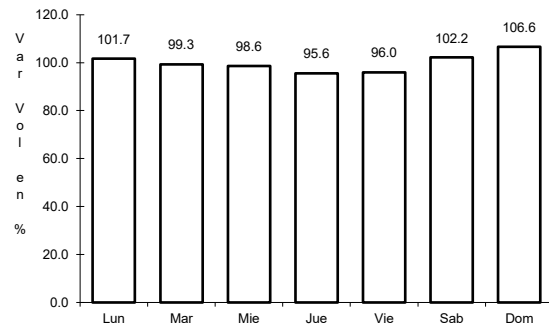


Km: 0.00                      Tipo: 3                      Sent: 0

9 CARR: Ramal a Puerta de México

CLAVE: 26577

ruta: MEX-002

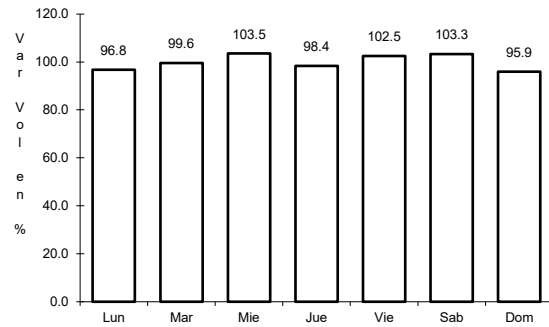


Km: 0.00                      Tipo: 3                      Sent: 0

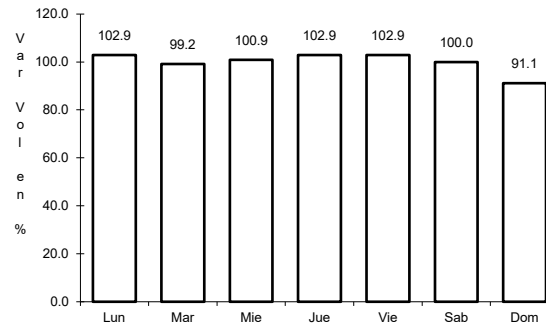
10 CARR: Sonoita - Mexicali

CLAVE: 00081

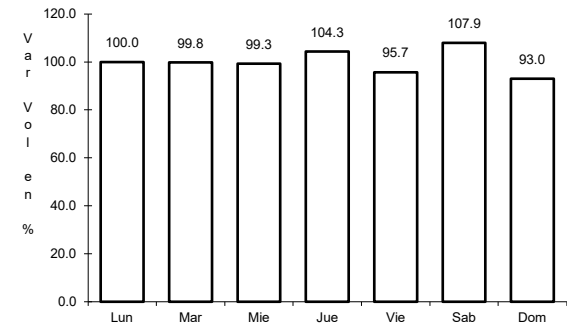
RUTA: MEX-002



Km: 0.00      Tipo: 3      Sent: 0



Km: 256.47      Tipo: 1      Sent: 1

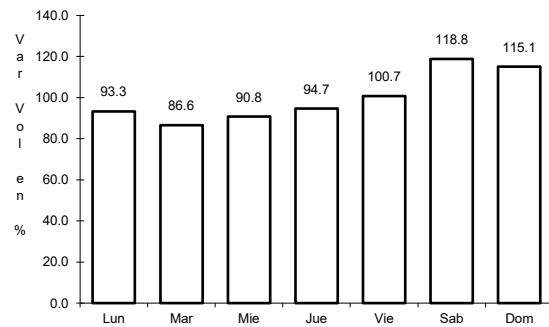


Km: 256.47      Tipo: 1      Sent: 2

11 CARR: Sonoita - Puerto Peñasco

CLAVE: 26232

RUTA: MEX-002

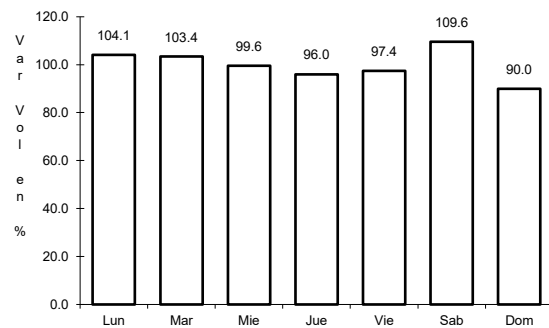


Km: 0.00      Tipo: 3      Sent: 0

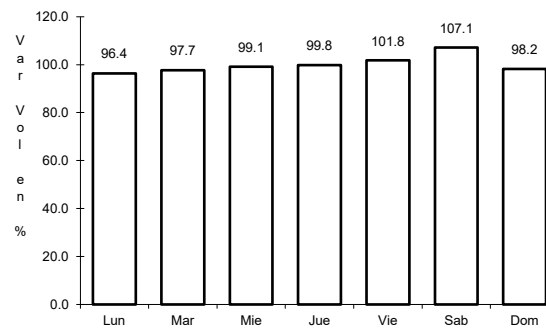
12 CARR: Cd. Obregón - Guaymas (Cuota)

CLAVE: 26444

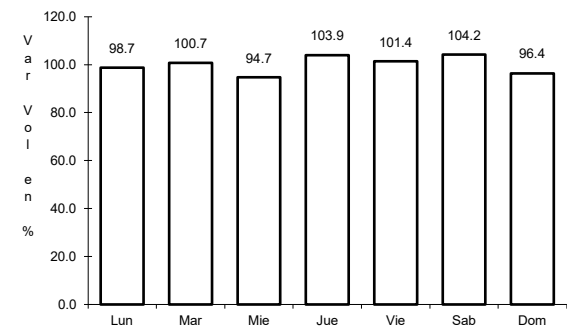
RUTA: MEX-015D



Km: 7.96      Tipo: 1      Sent: 1



Km: 7.96      Tipo: 1      Sent: 2

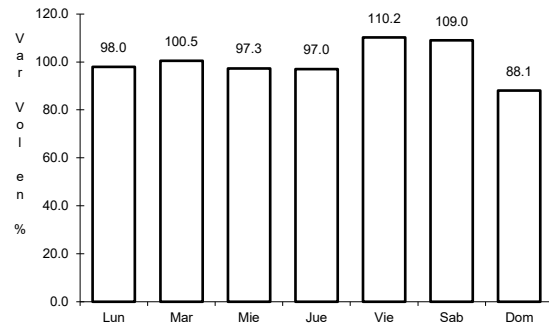


Km: 107.70      Tipo: 1      Sent: 1

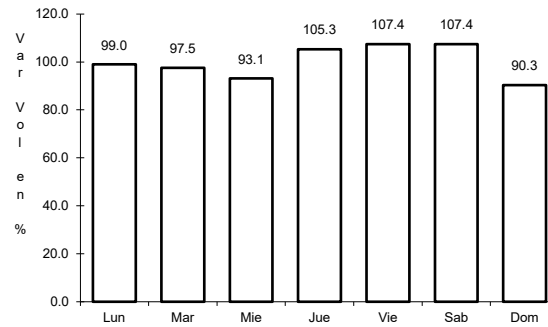
13 CARR: Hermosillo - Magdalena de Kino (Cuota)

CLAVE: 26444

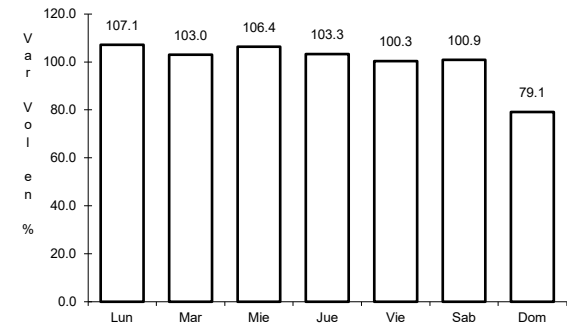
ruta: MEX-015D



Km: 0.00      Tipo: 3      Sent: 1



Km: 0.00      Tipo: 3      Sent: 2

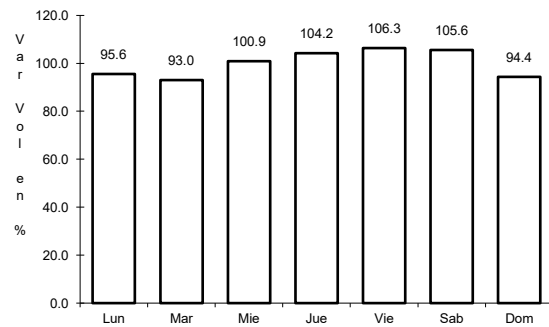


Km: 181.30      Tipo: 1      Sent: 1

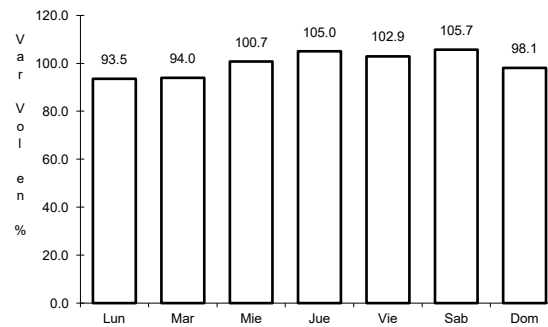
14 CARR: Libramiento de Ciudad Obregón (Cuota)

CLAVE:

ruta: MEX-015D



Km: 31.40      Tipo: 1      Sent: 0

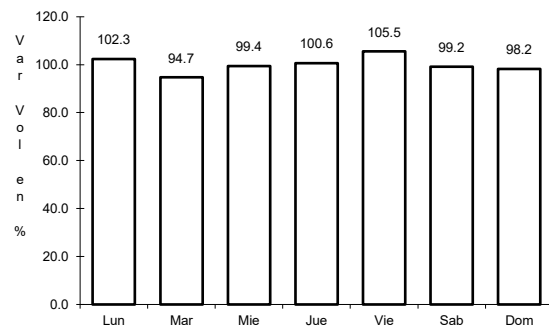


Km: 31.40      Tipo: 3      Sent: 0

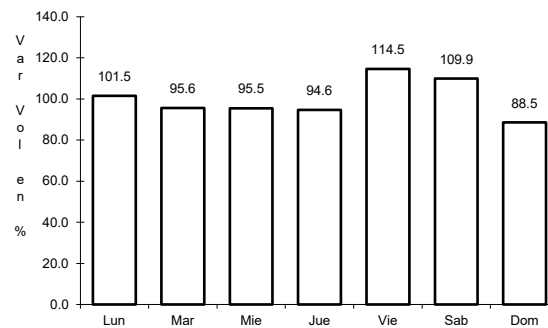
15 CARR: Libramiento de Empalme - Guaymas (Cuota)

CLAVE: 26256

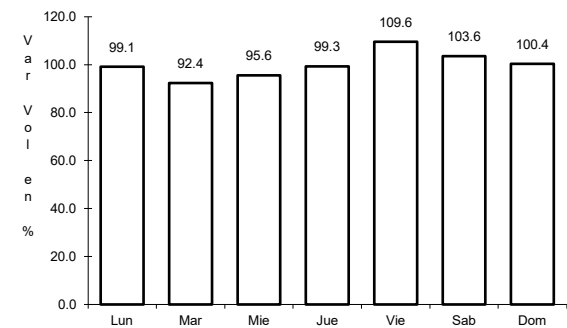
ruta: MEX-015D



Km: 0.00      Tipo: 3      Sent: 1

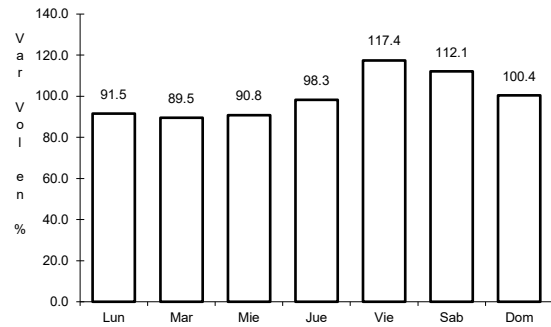


Km: 0.00      Tipo: 3      Sent: 2



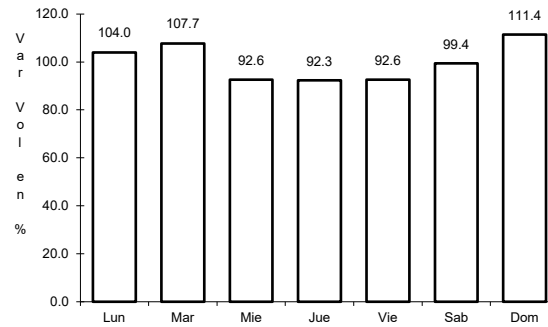
Km: 21.50      Tipo: 1      Sent: 1

16 CARR: Libramiento de Hermosillo (Cuota)



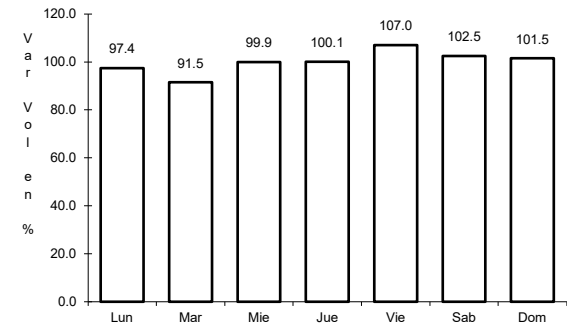
Km: 0.00                      Tipo: 3                      Sent: 0

CLAVE:



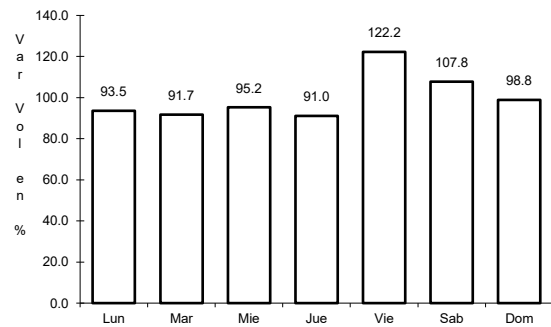
Km: 20.00                      Tipo: 3                      Sent: 0

RUTA: MEX-015D



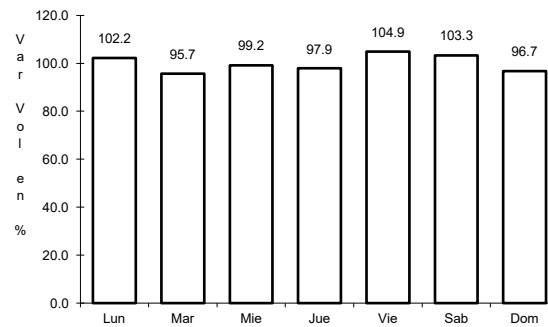
Km: 40.00                      Tipo: 1                      Sent: 0

17 CARR: Libramiento de Magdalena de Kino (Cuota)



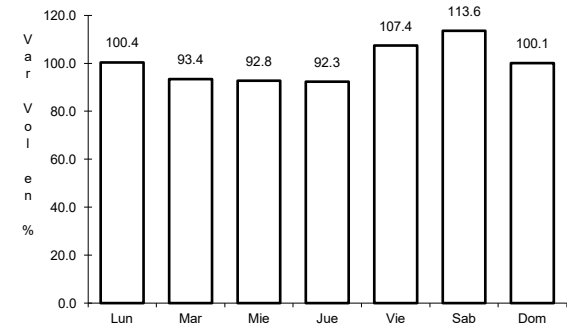
Km: 181.30                      Tipo: 3                      Sent: 1

CLAVE:



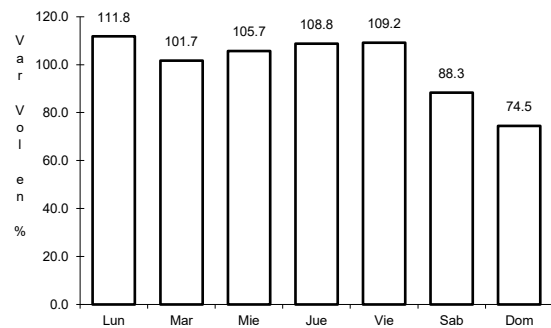
Km: 181.30                      Tipo: 3                      Sent: 2

RUTA: MEX-015D



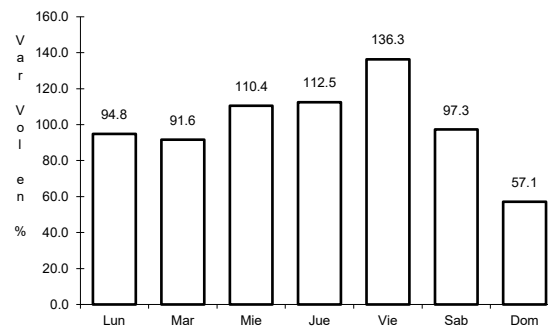
Km: 193.00                      Tipo: 1                      Sent: 1

18 CARR: Libramiento de Nogales (Cuota)



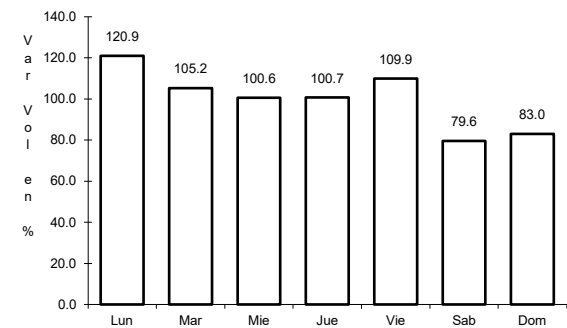
Km: 0.00                      Tipo: 3                      Sent: 1

CLAVE: 26100



Km: 0.00                      Tipo: 3                      Sent: 2

RUTA: MEX-15D



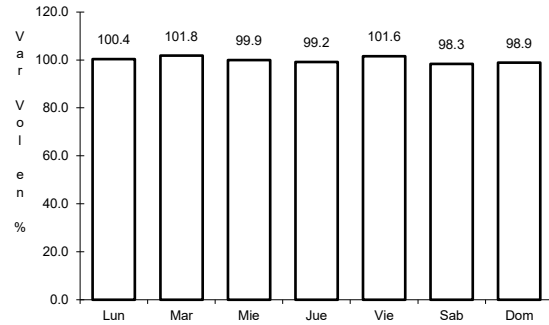
Km: 12.50                      Tipo: 1                      Sent: 1



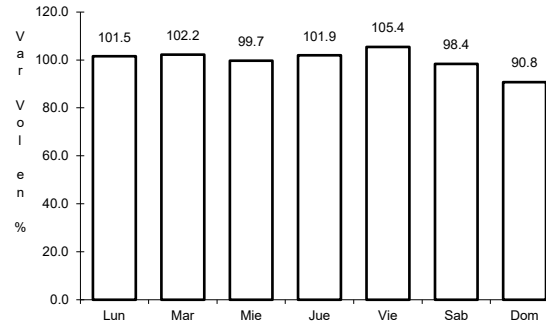
19 CARR: Los Mochis - Cd. Obregón (Cuota)

CLAVE: 26444

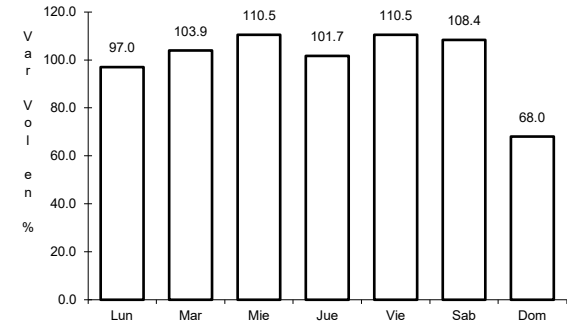
ruta: MEX-015D



Km: 0.00      Tipo: 3      Sent: 1



Km: 0.00      Tipo: 3      Sent: 2

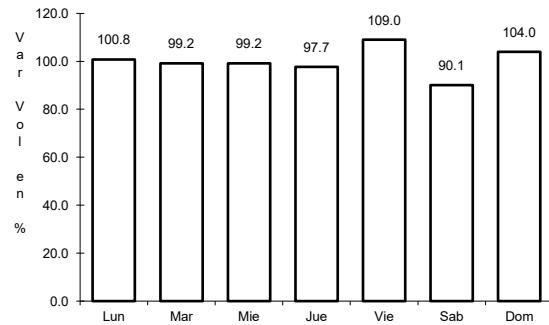


Km: 222.70      Tipo: 1      Sent: 1

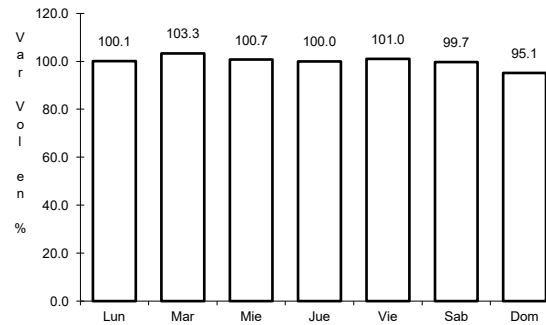
20 CARR: Santa Ana - Sonoita

CLAVE: 26080

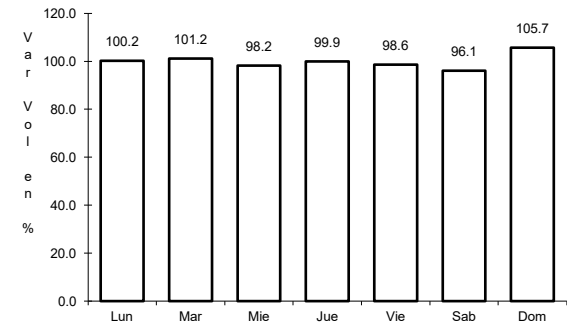
ruta: MEX-002D-MEX



Km: 0.00      Tipo: 3      Sent: 1



Km: 103.83      Tipo: 1      Sent: 0

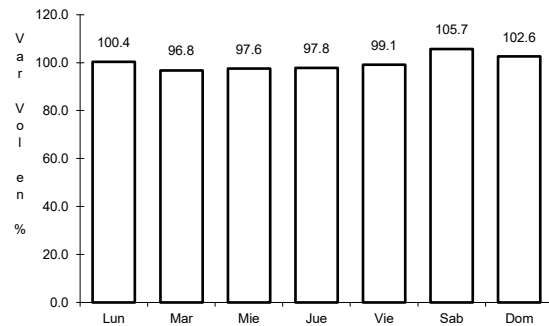


Km: 253.70      Tipo: 1      Sent: 0

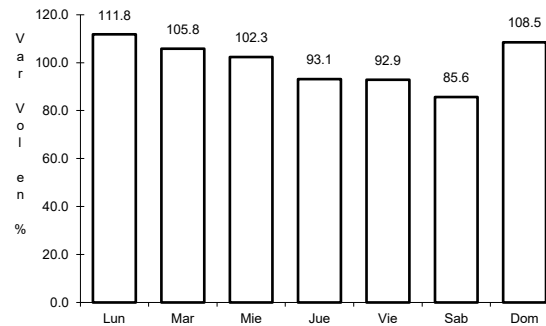
21 CARR: Altar - Sáric

CLAVE: 26233

ruta: SON-064



Km: 0.00      Tipo: 3      Sent: 0

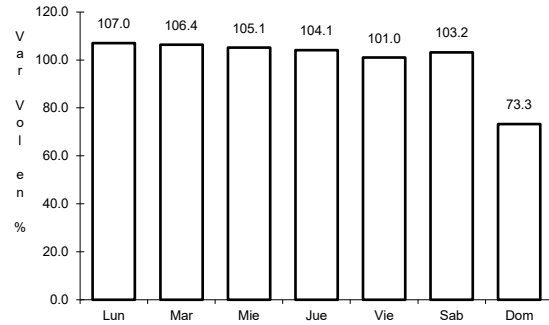


Km: 68.00      Tipo: 1      Sent: 0

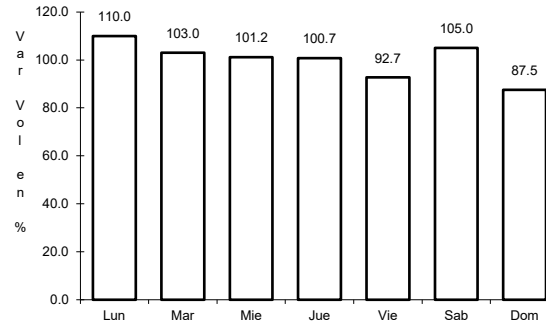
22 CARR: Caborca - El Desemboque

CLAVE: 26225

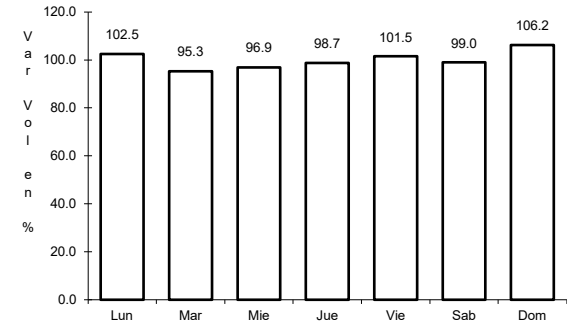
RUTA: SON-037



Km: 0.00      Tipo: 3      Sent: 1



Km: 6.90      Tipo: 3      Sent: 0

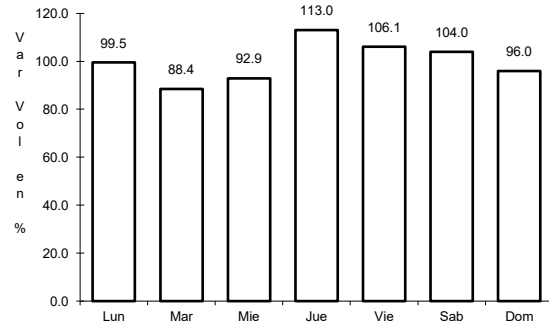


Km: 61.20      Tipo: 3      Sent: 0

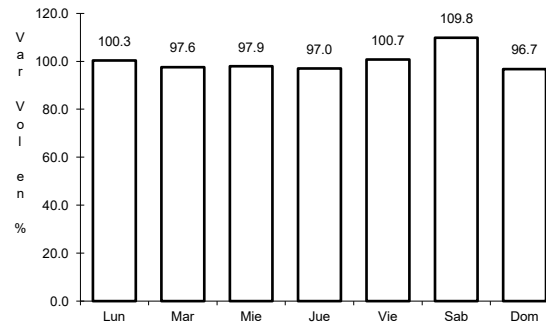
23 CARR: Calle 36 Norte - Puerto de La Libertad

CLAVE: 26117

RUTA: SON-029



Km: 0.00      Tipo: 3      Sent: 0

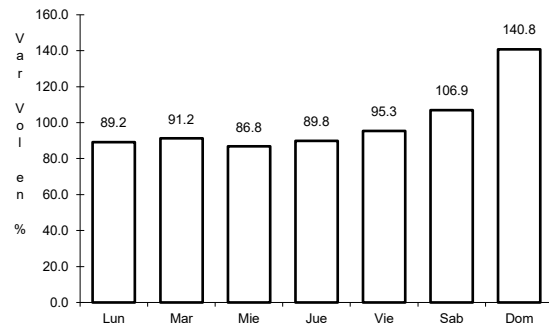


Km: 45.00      Tipo: 3      Sent: 0

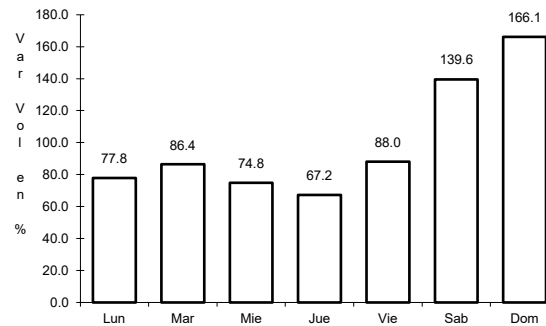
24 CARR: Esperanza - Presa Álvaro Obregón

CLAVE: 26242

RUTA: SON-117



Km: 0.00      Tipo: 3      Sent: 0

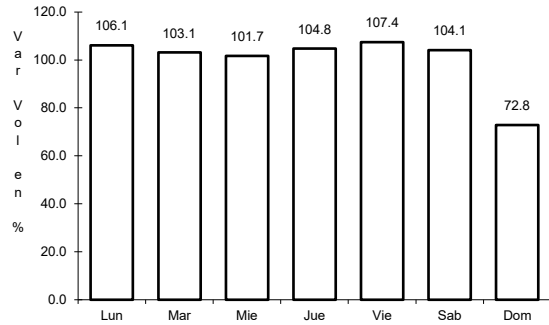


Km: 17.00      Tipo: 3      Sent: 0

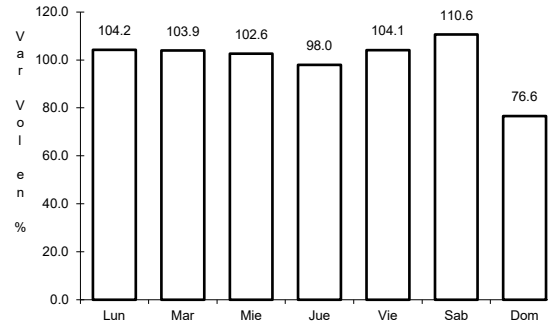
25 CARR: Hermosillo - Bahía Kino

CLAVE: 26109

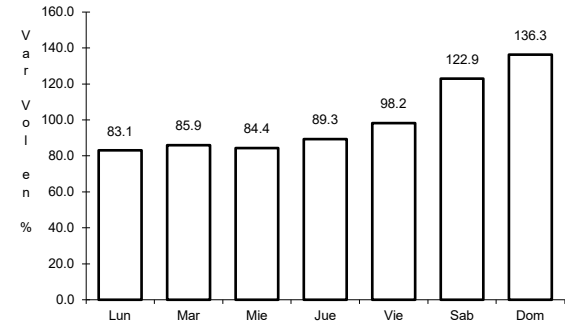
ruta: SON-100



Km: 0.00      Tipo: 3      Sent: 1



Km: 0.00      Tipo: 3      Sent: 2

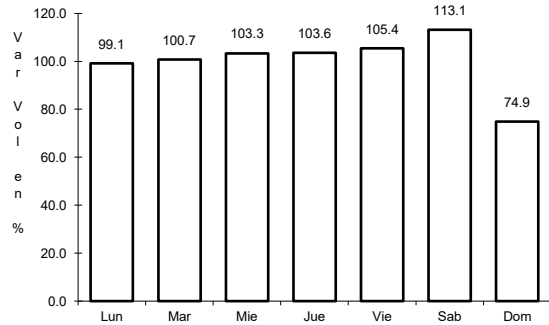


Km: 106.50      Tipo: 1      Sent: 0

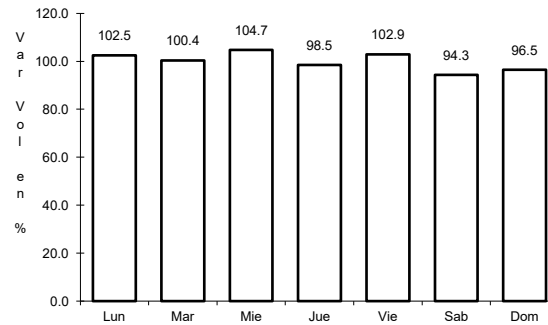
26 CARR: Hermosillo - Sahuaripa

CLAVE: 26230

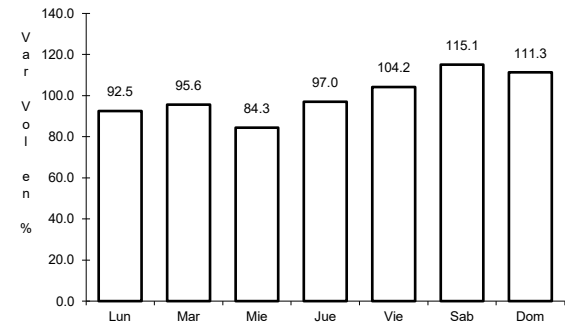
ruta: SON-020



Km: 0.00      Tipo: 3      Sent: 1



Km: 0.00      Tipo: 3      Sent: 2

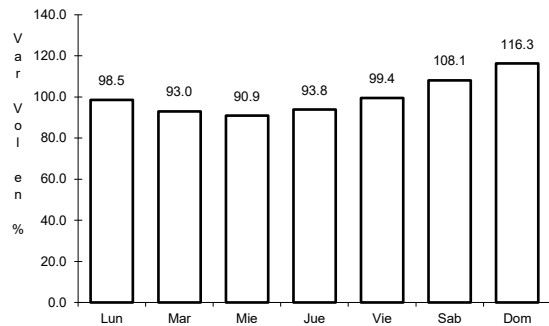


Km: 88.00      Tipo: 3      Sent: 0

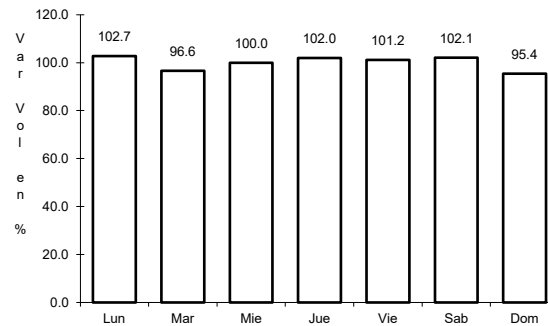
27 CARR: Hornos - San Nicolás

CLAVE: 26243

ruta: SON-012



Km: 0.00      Tipo: 3      Sent: 0

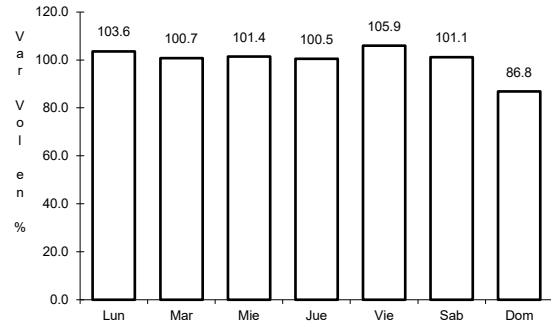


Km: 58.00      Tipo: 1      Sent: 0

28 CARR: Huatabampo - Bacabachi

CLAVE: 26237

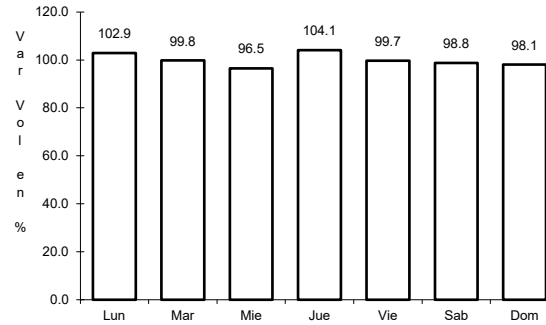
RUTA: SON-176



Km: 0.00

Tipo: 3

Sent: 0



Km: 29.00

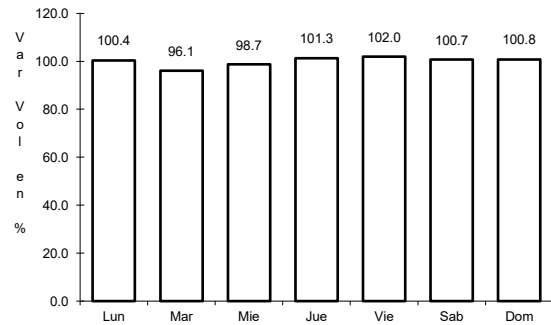
Tipo: 1

Sent: 0

29 CARR: La Alameda - El Sahuaro

CLAVE: 26234

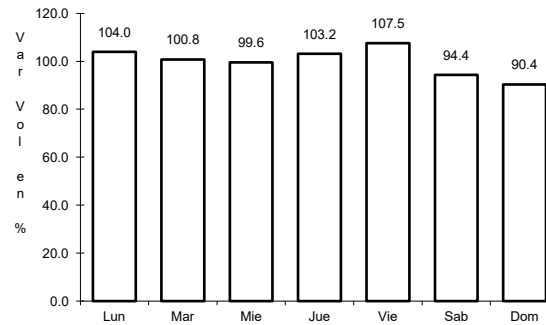
RUTA: SON-037



Km: 0.00

Tipo: 3

Sent: 0



Km: 47.00

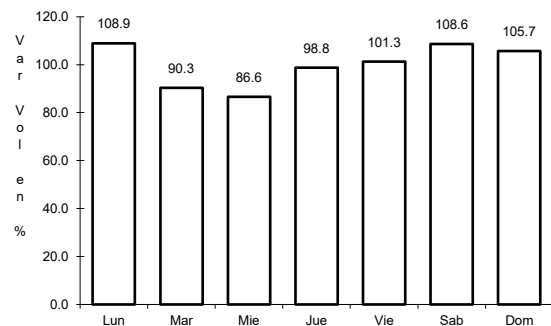
Tipo: 1

Sent: 0

30 CARR: Mazocahui - Cananea

CLAVE: 26118

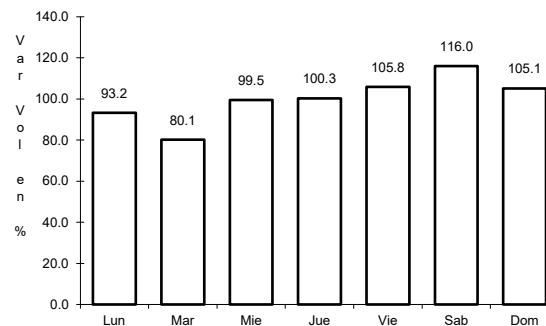
RUTA: SON-118



Km: 0.00

Tipo: 3

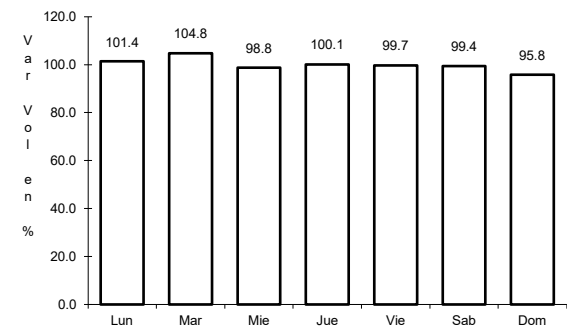
Sent: 0



Km: 98.00

Tipo: 1

Sent: 0



Km: 204.00

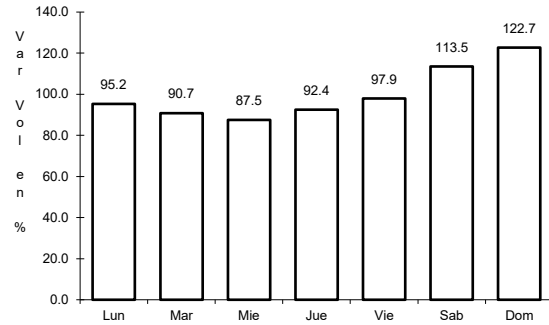
Tipo: 1

Sent: 0

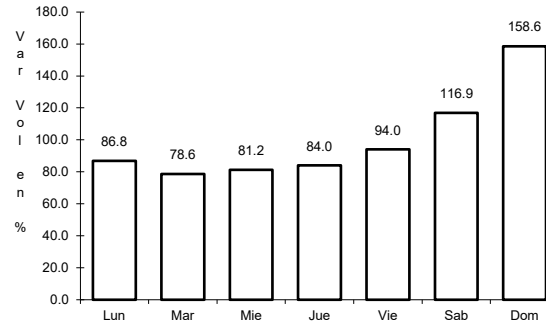
31 CARR: Navojoa - Álamos

CLAVE: 26240

ruta: SON-013



Km: 0.00      Tipo: 3      Sent: 0

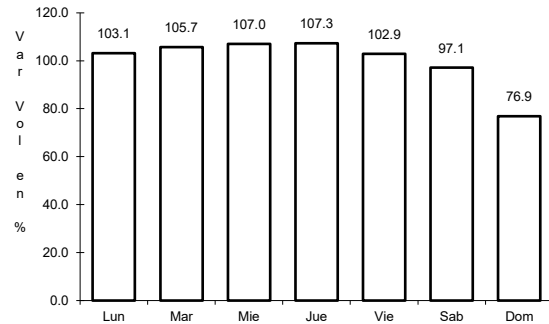


Km: 52.80      Tipo: 1      Sent: 0

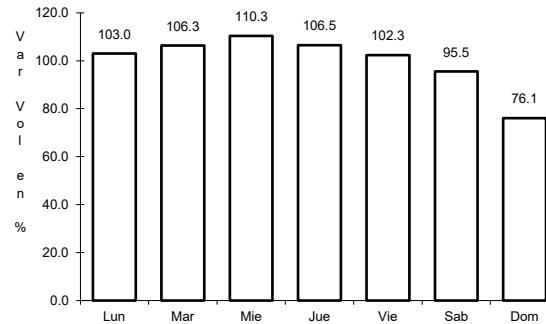
32 CARR: Navojoa - Yavaros

CLAVE: 26229

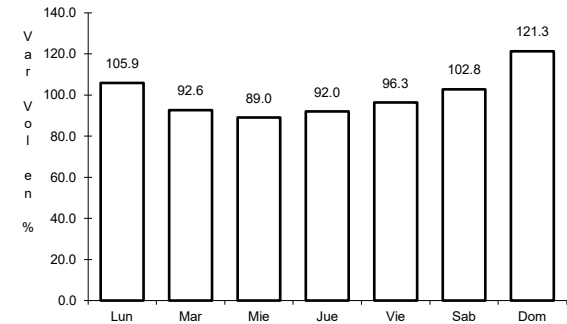
ruta: SON-056



Km: 0.00      Tipo: 3      Sent: 1



Km: 0.00      Tipo: 3      Sent: 2

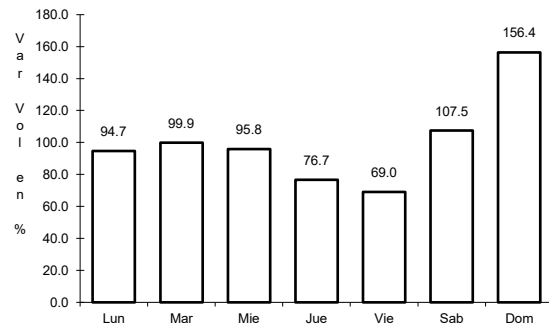


Km: 55.00      Tipo: 1      Sent: 0

33 CARR: Nogales - San Antonio

CLAVE: 26110

ruta: SON

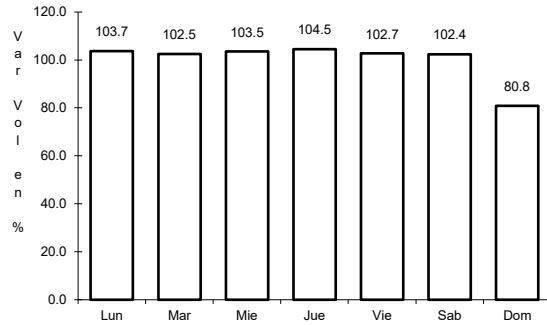


Km: 58.00      Tipo: 1      Sent: 0

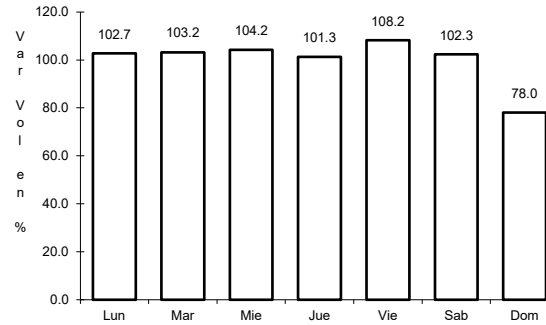
34 CARR: Ramal a Aeropuerto de Guaymas

CLAVE: 26568

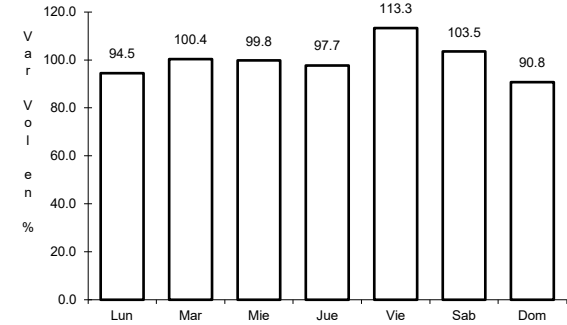
ruta: SON



Km: 0.00      Tipo: 3      Sent: 1



Km: 0.00      Tipo: 3      Sent: 2

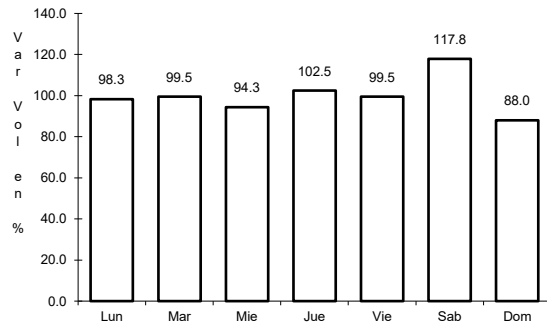


Km: 3.00      Tipo: 3      Sent: 0

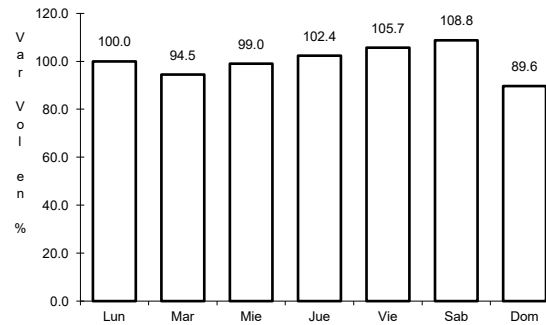
35 CARR: San Luis Río Colorado - Golfo de Santa Clara

CLAVE: 26226

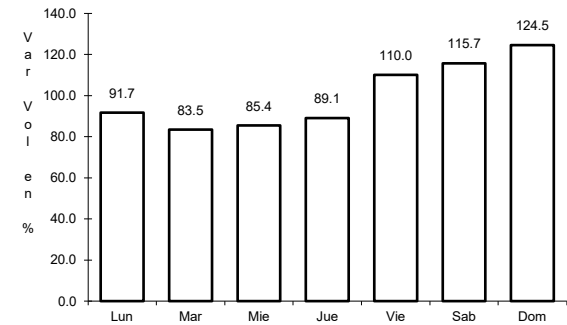
ruta: SON-040



Km: 0.00      Tipo: 3      Sent: 1



Km: 0.00      Tipo: 3      Sent: 2

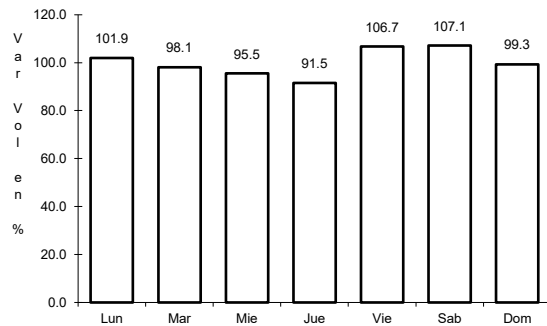


Km: 114.30      Tipo: 1      Sent: 0

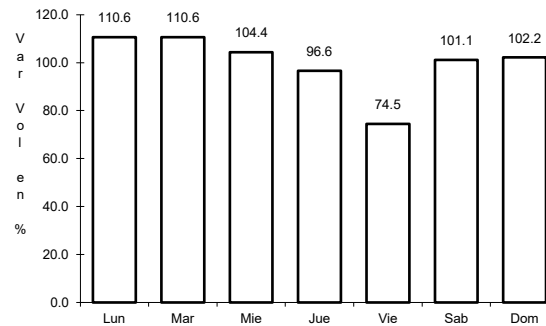
36 CARR: Sonoita - Pitiquito

CLAVE: 26022

ruta: SON



Km: 0.00      Tipo: 3      Sent: 0

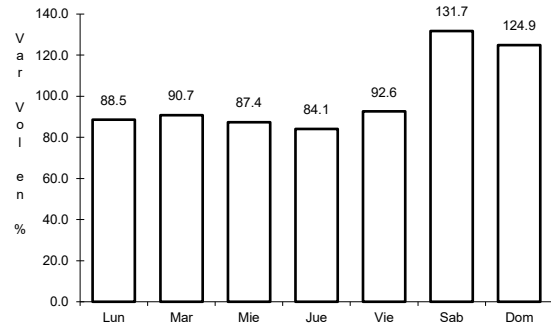


Km: 170.00      Tipo: 1      Sent: 0

38 CARR: T. C. (Hermosillo - Nogales) - Huásabas

CLAVE: 26231

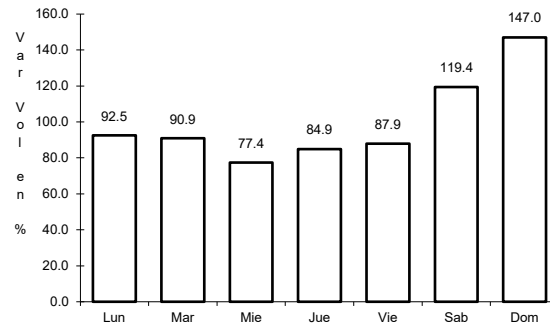
RUTA: MEX-014-SON



Km: 0.00

Tipo: 3

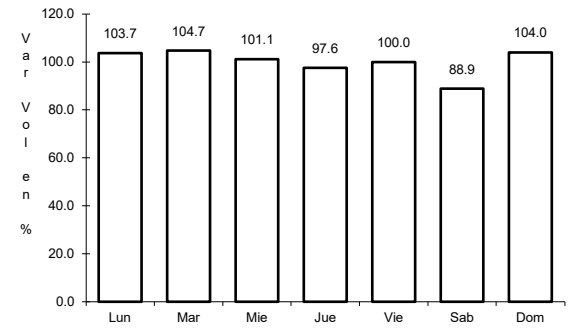
Sent: 1



Km: 0.00

Tipo: 3

Sent: 2



Km: 212.50

Tipo: 1

Sent: 0

