

TAMAULIPAS

---RED FEDERAL LIBRE---

1 Acceso a Puente Internacional Reynosa - Pharr	MEX-002
2 Altamira - T. C. (Petrocel -Puerto Industrial Altamira)	MEX-080
3 Antigua Morelos - Ent. El Huizache	MEX-080
4 Cd. Valles - Cd. Victoria	MEX-085
5 Cd. Valles - Tampico	MEX-070
6 Cd. Victoria - Matamoros	MEX-101-180
7 Cd. Victoria - Soto La Marina	MEX-070
8 Ciudad Victoria - Monterrey	MEX-085
9 Corredor Internacional Reynosa	MEX
10 Ent. Tula - Cd. Victoria	MEX-101
11 Estación Manuel - T. C. (Cd. Victoria - Soto La Marina)	MEX-180
12 González - Llera de Canales	MEX-081
13 Ignacio Zaragoza - T. C. (Ciudad Victoria - Monterrey)	MEX-083
14 Las Urracas - T. C. (Matamoros - Reynosa)	MEX-097
15 Libramiento de Reynosa	MEX-REY-010
16 Libramiento de San Fernando	MEX-101-180
17 Libramiento de San Germán	MEX-101
18 Libramiento de Santander Jiménez	MEX-101
19 Libramiento Estación Manuel - González	MEX-081
20 Libramiento General Francisco Villa	MEX-101-180
21 Matamoros - Playa Lauro Villar	MEX-002
22 Matamoros - Reynosa	MEX-002
23 Monterrey - Mier	MEX-054
24 Monterrey - Nuevo Laredo (Libre)	MEX-085
25 Monterrey - Reynosa (Libre)	MEX-040
26 Paras - Nueva Ciudad Guerrero	MEX-030
27 Petrocel - Puerto Industrial Altamira	MEX-080
28 Piedras Negras - Nuevo Laredo	MEX-002
29 Ramal a Puente Tampico	MEX-180
30 Ramal de Acceso a Puente Anzaldúas	MEX
31 Ramal de Acceso al Puente Internacional Laredo III	MEX
32 Reynosa - Nuevo Laredo	MEX-002
33 Soto La Marina - La Coma	MEX-180
34 Tampico - Cd. Mante	MEX-080
35 Tuxpam - Tampico	MEX-180
36 Viaducto de Reynosa	MEX

---RED FEDERAL DE CUOTA---

37 Libramiento de Reynosa Sur II	MEX-040D
38 Libramiento Poniente de Tampico (Cuota)	MEX-070D
39 Matamoros - Reynosa (Cuota)	MEX-002D

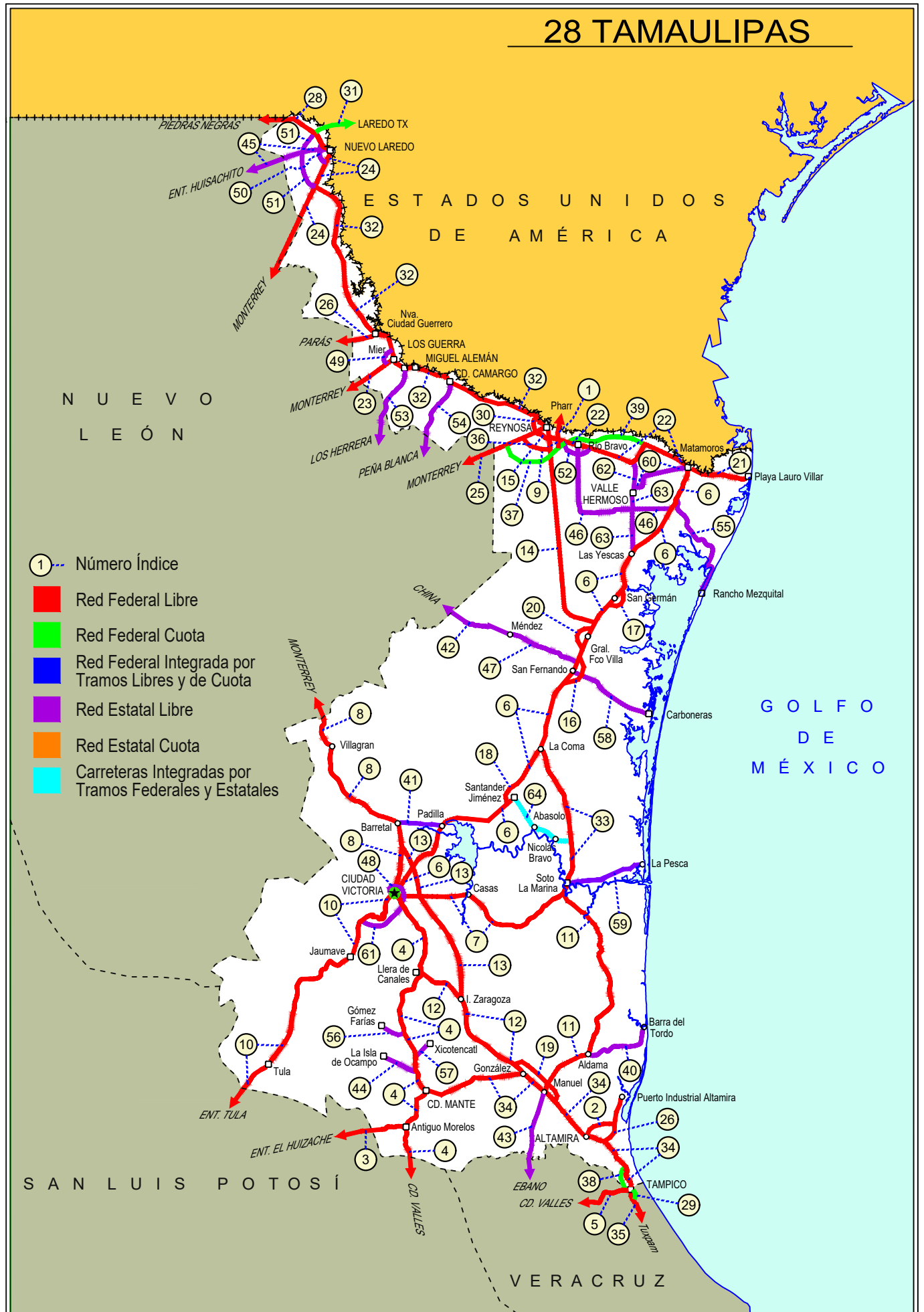
---RED ESTATAL LIBRE---

40 Aldama - Barra El Tordo	TAM
41 Barretal - Nueva Villa de Padilla	TAM-001
42 China - Méndez	NL-TAM
43 Ébano - Estación Manuel	SLP-TAM
44 El Limón - Ocampo	TAM-019
45 Ent. Huisachito - Nuevo Laredo	NL-001-TAM
46 Ent. Las Blancas - Río Bravo	TAM-003
47 La Joya - Méndez	TAM
48 Libramiento de Cd. Victoria	TAM
49 Libramiento de Mier	TAMPS
50 Libramiento de Nuevo Laredo	TAM
51 Libramiento de Nuevo Laredo II	TAM
52 Libramiento de Río Bravo	TAM
53 Los Guerra - Los Herreras	TAM-NL
54 Peña Blanca - Cd. Camargo	NL-TAM
55 Potrero Nuevo - Rancho El Mezquital	TAM
56 Ramal a Gómez Farías	TAM-020
57 Ramal a Xicoténcatl	TAM
58 San Fernando - Carboneras	TAM
59 Soto La Marina - La Pesca	TAM-070
60 T. C. (Valle Hermoso - Empalme) - Matamoros	TAM-005
61 T. C. Libramiento Cd. Victoria - San Antonio	TAM-126
62 Valle Hermoso - Empalme	TAM-004
63 Valle Hermoso - Las Yescas	TAM

---CARRETERAS INTEGRADAS POR TRAMOS FEDERALES Y ESTATALES---

64 Santander Jiménez - Ent. El Ojito	MEX-107-TAM
--------------------------------------	-------------

28 TAMAUlipAS



TAMAULIPAS

1 CARR: Acceso a Puente Internacional Reynosa - Pharr

CLAVE:

RUTA: MEX-002

AÑO: 2022

LUGAR	ESTACION				CLASIFICACION VEHICULAR EN PORCIENTO													COORDENADAS		
	KM	TE	SC	TDPA	M	A	B	C2	C3	T3S2	T3S3	T3S2R4	OTROS	A	B	C	K'	D	LATITUD	LONGITUD
T. C. Matamoros - Reynosa	0.00	3	1	8901	4.7	53.3	2.5	2.5	5.4	29.4	1.4	0.7	0.1	58.0	2.5	39.5	0.097	0.515	26.021523	-98.208323
T. C. Matamoros - Reynosa	0.00	3	2	9453	4.0	52.6	2.8	2.7	6.0	29.4	1.4	1.0	0.1	56.6	2.8	40.6	0.104	0.515	26.021531	-98.208414
Puente Internacional Reynosa - Pharr	3.10	0	0																	

2 CARR: Altamira - T. C. (Petrocel -Puerto Industrial Altamira)

CLAVE:

RUTA: MEX-080

AÑO: 2022

LUGAR	ESTACION				CLASIFICACION VEHICULAR EN PORCIENTO													COORDENADAS		
	KM	TE	SC	TDPA	M	A	B	C2	C3	T3S2	T3S3	T3S2R4	OTROS	A	B	C	K'	D	LATITUD	LONGITUD
Altamira	0.00	3	1	13712	7.6	83.4	0.8	2.5	1.9	1.6	0.8	1.2	0.2	91.0	0.8	8.2	0.082	0.512	22.400615	-97.919319
Altamira	0.00	3	2	13070	7.1	84.2	0.7	2.7	1.9	1.4	0.7	1.1	0.2	91.3	0.7	8.0	0.082	0.512	22.400815	-97.919254
T. C. (Petrocel -Puerto Industrial Altamira)	3.10	0	0																	

3 CARR: Antigua Morelos - Ent. El Huizache

CLAVE: 00136

RUTA: MEX-080

AÑO: 2022

LUGAR	ESTACION				CLASIFICACION VEHICULAR EN PORCIENTO													COORDENADAS		
	KM	TE	SC	TDPA	M	A	B	C2	C3	T3S2	T3S3	T3S2R4	OTROS	A	B	C	K'	D	LATITUD	LONGITUD
Antigua Morelos	0.00	3	0	2803	15.3	78.3	1.1	1.8	1.1	1.0	0.5	0.7	0.2	93.6	1.1	5.3	0.097	0.501	22.553918	-99.090692
Nuevo Morelos	19.28	1	0	1305	7.1	80.7	2.6	3.4	2.5	2.0	0.6	0.7	0.4	87.8	2.6	9.6	0.112	0.508	22.540712	-99.212718
Lim. Edos. Term. Tamps. Ppia. S. L. P.	25.00	0	0																	
El Naranjo	32.00	1	0	4692	5.9	81.0	1.6	6.0	2.8	1.6	0.3	0.6	0.2	86.9	1.6	11.5	0.093	0.504	22.532479	-99.307324
El Naranjo	32.00	3	0	2381	7.5	82.7	1.4	4.8	1.2	1.6	0.4	0.3	0.1	90.2	1.4	8.4	0.093	0.504	22.517970	-99.335455
Cd. del Maíz	86.00	3	0	1535	2.9	87.2	1.9	4.2	1.5	1.8	0.2	0.2	0.1	90.1	1.9	8.0	0.115	0.502	22.418733	-99.627314
T. Der. Tula	141.21	3	0	2698	1.1	40.5	2.9	4.6	3.0	23.8	6.4	16.8	0.9	41.6	2.9	55.5	0.062	0.512	22.736996	-99.978292
T. C. San Luis Potosí - Matehuala (Ent. El Huizache)	198.83	1	0	2974	3.5	47.3	3.2	5.4	3.4	19.2	4.5	12.8	0.7	50.8	3.2	46.0	0.065	0.504	22.930012	-100.450302

4 CARR: Cd. Valles - Cd. Victoria

CLAVE: 00509

RUTA: MEX-085

AÑO: 2022

LUGAR	ESTACION				CLASIFICACION VEHICULAR EN PORCIENTO													COORDENADAS		
	KM	TE	SC	TDPA	M	A	B	C2	C3	T3S2	T3S3	T3S2R4	OTROS	A	B	C	K'	D	LATITUD	LONGITUD
Cd. Valles	0.00	3	0	10574	4.6	83.7	2.8	5.2	0.8	1.5	0.4	0.7	0.3	88.3	2.8	8.9	0.075	0.546	22.006288	-99.005590
Lim. Edos. Term. S. L. P. Ppia. Tamps.	50.40	0	0																	
Antigua Morelos	66.90	1	0	2664	9.4	80.5	3.3	1.7	1.3	1.7	0.3	1.6	0.2	89.9	3.3	6.8	0.088	0.505	22.548421	-99.078350
Antigua Morelos	66.90	3	0	3800	6.9	78.9	4.7	2.3	1.9	2.5	0.8	1.6	0.4	85.8	4.7	9.5	0.086	0.547	22.560752	-99.077947
Cd. Mante	98.00	1	0	9001	10.1	82.5	1.5	1.2	1.9	1.2	0.6	0.8	0.2	92.6	1.5	5.9	0.091	0.520	22.711612	-98.989338
T. Izq. Ocampo	110.00	3	0	4316	11.7	79.7	2.8	2.8	1.5	0.6	0.3	0.4	0.2	91.4	2.8	5.8	0.095	0.500	22.838679	-99.024339

TAMAULIPAS

4 CARR: Cd. Valles - Cd. Victoria

CLAVE: 00509

RUTA: MEX-085

AÑO: 2022

LUGAR	ESTACION				CLASIFICACION VEHICULAR EN PORCIENTO													COORDENADAS		
	KM	TE	SC	TDPA	M	A	B	C2	C3	T3S2	T3S3	T3S2R4	OTROS	A	B	C	K'	D	LATITUD	LONGITUD
T. Izq. Gómez Farías	132.84	3	0	2040	11.0	77.5	3.2	6.1	0.6	1.3	0.1	0.2	0.0	88.5	3.2	8.3	0.086	0.503	23.030359	-99.093799
T. Izq. Llera de Canales	170.00	3	0	4189	1.3	91.7	1.3	4.3	0.7	0.3	0.3	0.1	0.0	93.0	1.3	5.7	0.093	0.506	23.310469	-99.017224
T. Der. González	172.50	3	0	2837	2.1	83.9	3.9	5.6	1.1	1.6	0.9	0.9	0.0	86.0	3.9	10.1	0.116	0.529	23.318160	-98.998111
Cd. Victoria	232.00	1	0	3170	1.4	83.0	4.3	6.6	2.1	1.5	0.9	0.1	0.1	84.4	4.3	11.3	0.089	0.501	23.659913	-99.096587

5 CARR: Cd. Valles - Tampico

CLAVE: 00138

RUTA: MEX-070

AÑO: 2022

LUGAR	ESTACION				CLASIFICACION VEHICULAR EN PORCIENTO													COORDENADAS		
	KM	TE	SC	TDPA	M	A	B	C2	C3	T3S2	T3S3	T3S2R4	OTROS	A	B	C	K'	D	LATITUD	LONGITUD
Cd. Valles	0.00	3	0	8936	3.8	78.0	1.5	8.8	3.5	2.3	0.9	0.7	0.5	81.8	1.5	16.7	0.077	0.505	21.976054	-98.958601
T. Der. Santa Elena	15.25	3	0	6154	4.1	77.3	2.5	8.5	2.5	2.2	1.5	1.2	0.2	81.4	2.5	16.1	0.065	0.533	21.961602	-98.876880
Tamuín	29.60	1	0	5926	3.3	75.7	2.1	9.7	2.2	3.8	1.5	1.3	0.4	79.0	2.1	18.9	0.070	0.503	21.997298	-98.781386
T. C. Rayón - Ent. Tamuín (Cuota)	34.40	1	0	4085	6.6	69.0	2.8	10.7	3.8	3.0	1.7	1.7	0.7	75.6	2.8	21.6	0.093	0.502	22.003332	-98.743312
T. C. Rayón - Ent. Tamuín (Cuota)	34.40	3	1	3018	6.9	66.3	5.5	5.0	3.6	5.4	2.3	4.1	0.9	73.2	5.5	21.3	0.078	0.509	22.010782	-98.729705
T. C. Rayón - Ent. Tamuín (Cuota)	34.40	3	2	2913	6.9	66.6	5.8	4.7	3.4	5.4	2.3	4.0	0.9	73.5	5.8	20.7	0.080	0.509	22.010836	-98.729812
Ébano	79.00	1	0	8922	8.7	71.8	1.6	3.7	1.9	4.3	2.4	4.7	0.9	80.5	1.6	17.9	0.069	0.500	22.214234	-98.391238
Ébano	79.00	3	0	5339	6.8	66.3	4.1	6.7	3.0	4.9	2.3	5.0	0.9	73.1	4.1	22.8	0.085	0.502	22.211887	-98.360977
Lim. Edos. Term. S. L. P. Ppia. Ver.	83.57	0	0																	
T. Der. Pánuco	103.00	1	0	8150	4.3	75.7	2.6	5.7	2.7	3.4	2.1	2.5	1.0	80.0	2.6	17.4	0.069	0.510	22.155681	-98.155178
T. Der. Pánuco	103.00	3	0	9634	7.1	72.6	2.9	5.3	2.0	4.0	1.6	3.6	0.9	79.7	2.9	17.4	0.080	0.520	22.158758	-98.149283
T. C. Anáhuac - El Prieto	128.40	1	1	5372	4.5	76.7	3.0	4.7	1.9	3.4	1.9	3.1	0.8	81.2	3.0	15.8	0.085	0.508	22.214603	-97.948238
T. C. Anáhuac - El Prieto	128.40	1	2	5539	4.5	76.7	3.0	4.8	1.8	3.5	1.8	3.1	0.8	81.2	3.0	15.8	0.096	0.508	22.214720	-97.948267
T. C. Anáhuac - El Prieto	128.40	3	1	8754	4.0	72.0	3.6	6.4	2.0	5.5	2.5	3.2	0.8	76.0	3.6	20.4	0.081	0.504	22.216415	-97.940716
T. C. Anáhuac - El Prieto	128.40	3	2	8622	4.1	70.1	3.7	7.3	2.3	5.8	2.5	3.3	0.9	74.2	3.7	22.1	0.084	0.504	22.216560	-97.940783
Lim. Edos. Term. Ver. Ppia. Tamps.	133.81	0	0																	
Tampico	138.00	1	1	10304	11.5	67.1	2.4	7.0	1.8	4.5	1.7	3.2	0.8	78.6	2.4	19.0	0.072	0.502	22.226851	-97.894280
Tampico	138.00	1	2	10233	11.5	66.8	2.6	7.2	1.9	4.3	1.5	3.3	0.9	78.3	2.6	19.1	0.087	0.502	22.226958	-97.894305

6 CARR: Cd. Victoria - Matamoros

CLAVE: 28139

RUTA: MEX-101-180

AÑO: 2022

LUGAR	ESTACION				CLASIFICACION VEHICULAR EN PORCIENTO													COORDENADAS		
	KM	TE	SC	TDPA	M	A	B	C2	C3	T3S2	T3S3	T3S2R4	OTROS	A	B	C	K'	D	LATITUD	LONGITUD
Cd. Victoria	0.00	0	0																	
X. C. Libramiento de Cd. Victoria	5.00	3	1	9814	5.8	89.5	1.0	1.4	1.0	0.5	0.2	0.4	0.2	95.3	1.0	3.7	0.081	0.509	23.767998	-99.111607
X. C. Libramiento de Cd. Victoria	5.00	3	2	9461	5.2	90.1	1.1	1.4	0.9	0.5	0.3	0.3	0.2	95.3	1.1	3.6	0.074	0.509	23.768070	-99.111637

TAMAULIPAS

6 CARR: Cd. Victoria - Matamoros

CLAVE: 28139

RUTA: MEX-101-180

AÑO: 2022

LUGAR	ESTACION				CLASIFICACION VEHICULAR EN PORCIENTO														COORDENADAS	
	KM	TE	SC	TDPA	M	A	B	C2	C3	T3S2	T3S3	T3S2R4	OTROS	A	B	C	K'	D	LATITUD	LONGITUD
X. C. Ignacio Zaragoza - T. C. (Ciudad Victoria - Monterrey)	15.72	3	0	8540	2.9	70.6	5.0	5.5	1.0	8.7	1.5	3.8	1.0	73.5	5.0	21.5	0.089	0.520	23.858500	-99.049030
T. Izq. Barretal	46.50	1	0	6210	1.1	67.8	5.5	5.0	4.7	8.6	1.9	4.6	0.8	68.9	5.5	25.6	0.083	0.501	24.037854	-98.904819
T. Der. Las Juntas	80.05	1	0	5595	2.3	67.5	3.9	2.6	1.5	14.1	1.6	5.7	0.8	69.8	3.9	26.3	0.088	0.509	24.110843	-98.608188
Santander Jiménez	97.00	1	0	6567	6.0	63.0	3.7	3.8	1.0	14.1	1.7	5.7	1.0	69.0	3.7	27.3	0.079	0.505	24.202279	-98.495446
Santander Jiménez	97.00	3	0	6371	4.2	66.8	3.6	2.4	1.0	12.9	1.7	6.4	1.0	71.0	3.6	25.4	0.095	0.508	24.238761	-98.476178
T. Der. Soto La Marina	129.00	3	1	3577	3.1	71.7	4.9	3.3	1.0	8.5	2.2	4.3	1.0	74.8	4.9	20.3	0.093	0.529	24.471342	-98.340344
T. Der. Soto La Marina	129.00	3	2	3179	3.2	66.3	5.3	6.4	0.9	9.3	2.8	4.8	1.0	69.5	5.3	25.2	0.134	0.529	24.471353	-98.340412
Las Norias	145.80	3	0	7474	0.6	65.9	2.7	7.2	1.0	12.3	2.9	6.4	1.0	66.5	2.7	30.8	0.082	0.508	24.627224	-98.293349
T. Libramiento de San Fernando Sur	162.60	0	0																	
San Fernando	175.00	3	0	4058	3.0	89.1	2.9	2.2	0.9	0.6	0.6	0.7	0.0	92.1	2.9	5.0	0.095	0.509	24.863207	-98.139726
T. Libramiento de San Fernando Norte	186.70	0	0																	
T. C. Libramiento de San Fernando Norte	187.00	3	0	10992	2.3	69.9	2.9	7.0	0.7	9.5	2.2	4.7	0.8	72.2	2.9	24.9	0.076	0.526	24.949696	-98.104612
T. Libramiento General Francisco Villa Sur	193.60	0	0																	
T. Libramiento General Francisco Villa Norte	199.20	0	0																	
T. Izq. Reynosa	202.00	1	0	9523	2.3	67.5	3.6	9.8	0.6	9.1	1.8	4.5	0.8	69.8	3.6	26.6	0.080	0.519	25.051832	-98.070924
T. Izq. Reynosa	202.00	3	0	4672	2.4	80.3	2.9	2.2	0.9	4.5	1.9	4.0	0.9	82.7	2.9	14.4	0.101	0.500	25.076219	-98.064931
T. Der. Los Vergeles	220.00	1	0	4768	2.5	75.9	1.5	6.9	0.7	5.3	1.7	4.6	0.9	78.4	1.5	20.1	0.097	0.504	25.176606	-97.962342
T. Libramiento de San Germán Sur	223.60	0	0																	
T. Libramiento de San Germán Norte	226.90	0	0																	
Santa Teresa	233.00	1	0	4946	1.7	77.8	4.1	7.6	0.8	3.2	1.1	2.7	1.0	79.5	4.1	16.4	0.084	0.507	25.268756	-97.868217
T. Izq. Valle Hermoso	254.50	1	0	6195	2.2	79.6	2.7	5.7	1.1	3.8	1.5	2.5	0.9	81.8	2.7	15.5	0.075	0.516	25.440235	-97.822574
T. Izq. Valle Hermoso	254.50	3	0	3684	1.6	81.4	3.5	4.4	1.4	3.3	1.1	2.5	0.8	83.0	3.5	13.5	0.105	0.513	25.453133	-97.813863
T. Izq. Jarita	286.00	3	1	3226	1.4	87.6	1.8	2.2	0.7	2.8	0.7	2.2	0.6	89.0	1.8	9.2	0.103	0.516	25.667483	-97.600344
T. Izq. Jarita	286.00	3	2	3436	1.2	88.3	1.8	2.1	0.7	2.8	0.6	2.0	0.5	89.5	1.8	8.7	0.104	0.516	25.667132	-97.600649
T. C. Potrero Nuevo - Rancho El Mezquital	293.50	3	1	4462	1.8	85.9	2.1	4.5	0.9	2.4	0.5	1.4	0.5	87.7	2.1	10.2	0.134	0.513	25.717974	-97.570225
T. C. Potrero Nuevo - Rancho El Mezquital	293.50	3	2	4700	1.8	86.0	2.1	4.4	0.9	2.3	0.4	1.5	0.6	87.8	2.1	10.1	0.097	0.513	25.718347	-97.570041
Matamoros	312.00	1	1	5621	1.1	89.2	1.4	3.1	1.0	2.0	0.5	1.2	0.5	90.3	1.4	8.3	0.131	0.514	25.763265	-97.543112
Matamoros	312.00	1	2	5935	1.0	89.4	1.4	3.0	1.1	1.9	0.6	1.2	0.4	90.4	1.4	8.2	0.097	0.514	25.763712	-97.542972

7 CARR: Cd. Victoria - Soto La Marina

CLAVE: 28009

RUTA: MEX-070

AÑO: 2022

LUGAR	ESTACION				CLASIFICACION VEHICULAR EN PORCIENTO														COORDENADAS	
	KM	TE	SC	TDPA	M	A	B	C2	C3	T3S2	T3S3	T3S2R4	OTROS	A	B	C	K'	D	LATITUD	LONGITUD
Cd. Victoria	0.00	3	1	7873	4.0	87.6	1.9	1.8	1.6	1.3	0.6	0.9	0.3	91.6	1.9	6.5	0.091	0.532	23.718710	-99.071046
Cd. Victoria	0.00	3	2	6939	3.9	87.7	2.0	1.8	1.5	1.3	0.5	0.9	0.4	91.6	2.0	6.4	0.083	0.532	23.718751	-99.071045

TAMAULIPAS

7 CARR: Cd. Victoria - Soto La Marina

CLAVE: 28009

RUTA: MEX-070

AÑO: 2022

LUGAR	ESTACION				CLASIFICACION VEHICULAR EN PORCIENTO													COORDENADAS			
	KM	TE	SC	TDPA	M	A	B	C2	C3	T3S2	T3S3	T3S2R4	OTROS	A	B	C	K'	D	LATITUD	LONGITUD	
Casas	40.00	0	0																		
Soto La Marina	116.80	1	0	4814	4.4	75.8	1.8	8.6	1.3	4.7	1.5	1.0	0.9	80.2	1.8	18.0	0.083	0.506	23.758550	-98.207356	

8 CARR: Ciudad Victoria - Monterrey

CLAVE: 00462

RUTA: MEX-085

AÑO: 2022

LUGAR	ESTACION				CLASIFICACION VEHICULAR EN PORCIENTO													COORDENADAS		
	KM	TE	SC	TDPA	M	A	B	C2	C3	T3S2	T3S3	T3S2R4	OTROS	A	B	C	K'	D	LATITUD	LONGITUD
Cd. Victoria (Central)	0.00	3	1	7078	26.1	66.0	1.1	1.6	2.2	0.9	0.3	1.4	0.4	92.1	1.1	6.8	0.072	0.537	23.778106	-99.136623
Cd. Victoria (Lateral)	0.00	3	1	1027	10.3	81.3	1.5	4.1	1.3	0.7	0.5	0.3	0.0	91.6	1.5	6.9	0.082	0.514	23.778094	-99.136562
Cd. Victoria (Lateral)	0.00	3	2	972	10.4	80.9	1.3	4.5	1.3	0.6	0.5	0.5	0.0	91.3	1.3	7.4	0.082	0.514	23.778139	-99.136809
Cd. Victoria (Central)	0.00	3	2	8195	26.1	65.8	1.2	1.6	2.2	1.0	0.3	1.5	0.3	91.9	1.2	6.9	0.084	0.537	23.778123	-99.136733
T. Der. Güemez	19.60	3	0	6534	3.3	84.0	2.8	6.8	0.9	1.2	0.2	0.7	0.1	87.3	2.8	9.9	0.085	0.522	23.915740	-99.112344
T. Izq. Santa Engracia	27.35	3	0	10623	0.7	67.4	4.6	7.1	1.9	7.9	2.3	7.1	1.0	68.1	4.6	27.3	0.079	0.504	23.997235	-99.110420
Barretal	39.00	3	0	9829	5.7	66.1	5.6	4.7	1.8	5.3	2.1	7.8	0.9	71.8	5.6	22.6	0.081	0.509	24.093766	-99.145305
T. Izq. Hidalgo y La Mesa	77.50	1	0	7575	5.7	66.0	5.6	4.7	1.9	5.2	2.2	7.8	0.9	71.7	5.6	22.7	0.090	0.510	24.249346	-99.430354
Villagrán	106.00	1	0	7868	5.6	63.9	4.9	4.3	3.1	6.7	2.0	8.7	0.8	69.5	4.9	25.6	0.078	0.507	24.464058	-99.496357
Villagrán	106.00	3	0	5343	2.3	68.8	7.3	8.1	2.4	4.2	1.4	4.6	0.9	71.1	7.3	21.6	0.073	0.513	24.481772	-99.504306
T. Izq. Villa Mainero	118.00	3	1	4640	2.3	66.2	5.6	3.3	2.0	7.6	3.1	9.0	0.9	68.5	5.6	25.9	0.111	0.521	24.581246	-99.541923
T. Izq. Villa Mainero	118.00	3	2	5050	2.4	66.2	5.5	3.3	2.0	7.6	3.1	9.1	0.8	68.6	5.5	25.9	0.096	0.521	24.581331	-99.541954
Lim. Edos. Term. Tamps. Ppia. N. L.	126.20	0	0																	
T. Libramiento de Linares Sur	152.50	0	0																	
Linares	154.00	1	0	10891	2.6	71.8	4.6	3.0	1.4	7.4	1.6	6.7	0.9	74.4	4.6	21.0	0.083	0.512	24.837983	-99.560171
Linares	154.00	3	1	9264	3.6	77.1	3.7	3.5	1.3	4.2	1.0	4.7	0.9	80.7	3.7	15.6	0.099	0.517	24.882372	-99.587869
Linares	154.00	3	2	8641	3.7	77.2	3.6	3.5	1.3	4.2	1.0	4.7	0.8	80.9	3.6	15.5	0.084	0.517	24.882281	-99.587991
T. Libramiento de Linares Norte	157.30	0	0																	
La Laja	171.00	3	1	7781	1.8	71.3	3.7	6.3	2.0	6.5	1.6	6.1	0.7	73.1	3.7	23.2	0.100	0.522	24.923062	-99.688637
La Laja	171.00	3	2	7137	1.9	71.4	3.6	6.2	1.9	6.6	1.6	6.2	0.6	73.3	3.6	23.1	0.086	0.522	24.923044	-99.688751
T. C. Libramiento de Montemorelos Sur	197.50	3	0	3813	3.2	75.5	2.5	12.4	1.7	2.7	0.9	0.7	0.4	78.7	2.5	18.8	0.077	0.505	25.129113	-99.808484
Montemorelos	205.00	3	1	12091	3.6	76.3	3.4	5.8	1.7	5.1	1.1	2.4	0.6	79.9	3.4	16.7	0.106	0.513	25.200347	-99.902924
Montemorelos	205.00	3	2	12734	3.5	76.4	3.4	5.8	1.7	5.1	1.1	2.4	0.6	79.9	3.4	16.7	0.094	0.513	25.200237	-99.903057
T. C. Libramiento de Montemorelos Norte	208.50	1	1	10140	3.1	75.3	3.6	5.0	1.8	5.2	1.3	3.8	0.9	78.4	3.6	18.0	0.086	0.506	25.191307	-99.882462
T. C. Libramiento de Montemorelos Norte	208.50	1	2	9908	3.1	75.2	3.5	5.4	1.9	5.2	1.3	3.5	0.9	78.3	3.5	18.2	0.102	0.506	25.191152	-99.882487
Allende	227.45	1	1	13695	1.3	78.7	2.3	8.7	1.6	3.6	1.0	2.2	0.6	80.0	2.3	17.7	0.073	0.506	25.254816	-99.990742
Allende	227.45	1	2	14005	1.3	78.7	2.3	8.7	1.6	3.6	1.0	2.2	0.6	80.0	2.3	17.7	0.072	0.506	25.254709	-99.990853
Allende	227.45	3	1	14993	3.0	84.3	2.1	3.0	1.7	3.1	0.6	1.7	0.5	87.3	2.1	10.6	0.083	0.532	25.291041	-100.045153

TAMAULIPAS

8 CARR: Ciudad Victoria - Monterrey

CLAVE: 00462

RUTA: MEX-085

AÑO: 2022

LUGAR	ESTACION				CLASIFICACION VEHICULAR EN PORCIENTO														COORDENADAS	
	KM	TE	SC	TDPA	M	A	B	C2	C3	T3S2	T3S3	T3S2R4	OTROS	A	B	C	K'	D	LATITUD	LONGITUD
Allende	227.45	3	2	17053	3.1	82.9	3.1	3.2	1.5	2.7	0.8	2.1	0.6	86.0	3.1	10.9	0.082	0.532	25.290790	-100.044922
El Cercado	249.00	1	1	23803	2.3	86.9	1.7	2.1	1.7	2.5	0.7	1.5	0.6	89.2	1.7	9.1	0.103	0.506	25.359883	-100.098614
El Cercado	249.00	1	2	24404	2.5	87.0	1.6	2.2	1.8	2.2	0.5	1.5	0.7	89.5	1.6	8.9	0.093	0.506	25.359747	-100.098751
T. Der. Las Huertas	257.00	3	1	30564	8.1	83.9	1.2	2.0	0.9	1.2	0.5	1.7	0.5	92.0	1.2	6.8	0.098	0.507	25.457691	-100.167698
T. Der. Las Huertas	257.00	3	2	31505	8.1	83.6	1.0	2.0	1.1	1.3	0.5	1.8	0.6	91.7	1.0	7.3	0.084	0.507	25.455949	-100.166458
T. Izq. el Barro	266.00	3	1	45362	1.9	91.7	0.8	1.6	1.0	1.4	0.5	0.8	0.3	93.6	0.8	5.6	0.096	0.515	25.532950	-100.215359
T. Izq. el Barro	266.00	3	2	42311	1.6	91.4	0.9	1.8	1.2	1.4	0.5	0.8	0.4	93.0	0.9	6.1	0.098	0.515	25.532805	-100.215467
La Estanzuela	274.82	3	1	73371	5.1	84.4	1.3	2.5	0.9	0.9	0.5	3.5	0.9	89.5	1.3	9.2	0.070	0.520	25.589570	-100.259311
La Estanzuela	274.82	3	2	80413	5.1	84.3	1.2	2.6	0.9	1.2	0.5	3.3	0.9	89.4	1.2	9.4	0.068	0.520	25.589497	-100.259469
Monterrey (Alta)	287.00	1	1	67536	3.2	88.9	1.3	1.6	1.0	1.4	0.3	2.0	0.3	92.1	1.3	6.6	0.084	0.512	25.603229	-100.266872
Monterrey (Baja)	287.00	1	1	21313	6.2	83.5	1.0	6.5	1.3	0.5	0.3	0.5	0.2	89.7	1.0	9.3	0.078	0.509	25.603294	-100.266713
Monterrey (Alta)	287.00	1	2	71579	3.0	89.4	1.2	1.5	1.0	1.3	0.3	2.0	0.3	92.4	1.2	6.4	0.077	0.512	25.603183	-100.266991
Monterrey (Baja)	287.00	1	2	22100	6.2	83.2	1.0	6.4	1.4	0.6	0.3	0.6	0.3	89.4	1.0	9.6	0.071	0.509	25.602822	-100.266977

9 CARR: Corredor Internacional Reynosa

CLAVE:

RUTA: MEX

AÑO: 2022

LUGAR	ESTACION				CLASIFICACION VEHICULAR EN PORCIENTO														COORDENADAS	
	KM	TE	SC	TDPA	M	A	B	C2	C3	T3S2	T3S3	T3S2R4	OTROS	A	B	C	K'	D	LATITUD	LONGITUD
T. C. Matamoros - Reynosa	0.00	1	0	2606	2.4	52.5	2.1	4.6	3.9	24.8	3.3	5.7	0.7	54.9	2.1	43.0	0.089	0.514	26.003459	-98.207298
T. Libramiento de Reynosa Sur II	7.48	0	0																	

10 CARR: Ent. Tula - Cd. Victoria

CLAVE: 00179

RUTA: MEX-101

AÑO: 2022

LUGAR	ESTACION				CLASIFICACION VEHICULAR EN PORCIENTO														COORDENADAS	
	KM	TE	SC	TDPA	M	A	B	C2	C3	T3S2	T3S3	T3S2R4	OTROS	A	B	C	K'	D	LATITUD	LONGITUD
T. C. Antiguo Morelos - El Huizache	0.00	3	0	3834	3.9	47.0	4.4	3.4	1.8	22.3	3.2	13.2	0.8	50.9	4.4	44.7	0.065	0.522	22.737428	-99.968478
Lim. Edos. Term. S. L. P. Ppia. Tamps.	2.40	0	0																	
T. Der. Tula (1º Acceso)	38.00	1	0	6048	1.9	49.3	4.0	4.9	2.6	19.8	3.1	13.5	0.9	51.2	4.0	44.8	0.062	0.503	22.979247	-99.737850
T. Der. Tula (2º Acceso)	41.95	3	0	5002	3.5	49.9	5.6	4.3	1.6	19.5	3.3	11.6	0.7	53.4	5.6	41.0	0.072	0.518	23.021326	-99.713854
Jaumave	112.68	1	0	5954	4.4	60.3	3.3	4.5	1.5	14.2	2.8	8.2	0.8	64.7	3.3	32.0	0.067	0.509	23.392294	-99.418727
Jaumave	112.68	3	0	6631	5.0	53.8	4.3	4.3	1.7	17.1	3.3	9.6	0.9	58.8	4.3	36.9	0.065	0.500	23.420530	-99.373255
T. Libramiento de Cd. Victoria	134.68	0	0																	
Cd. Victoria	180.00	1	1	3752	12.9	45.7	4.1	4.4	1.8	17.3	3.4	9.5	0.9	58.6	4.1	37.3	0.090	0.526	23.711021	-99.175843
Cd. Victoria	180.00	1	2	3384	12.7	46.1	4.3	4.6	1.6	17.2	3.2	9.4	0.9	58.8	4.3	36.9	0.069	0.526	23.711134	-99.175960

TAMAULIPAS

11 CARR: Estación Manuel - T. C. (Cd. Victoria - Soto La Marina)

CLAVE: 28294

RUTA: MEX-180

AÑO: 2022

LUGAR	ESTACION				CLASIFICACION VEHICULAR EN PORCIENTO														COORDENADAS	
	KM	TE	SC	TDPA	M	A	B	C2	C3	T3S2	T3S3	T3S2R4	OTROS	A	B	C	K'	D	LATITUD	LONGITUD
Estación Manuel	0.00	3	0	4050	2.9	81.1	4.2	2.6	1.4	4.5	1.6	1.5	0.2	84.0	4.2	11.8	0.066	0.531	22.762542	-98.309865
T. Der. Aldama	36.00	3	0	3925	5.2	82.9	2.4	2.7	1.3	3.0	1.2	1.0	0.3	88.1	2.4	9.5	0.067	0.514	22.936321	-98.077575
Esperanza	69.00	3	0	2057	7.2	74.0	4.1	3.0	1.1	6.8	1.8	1.7	0.3	81.2	4.1	14.7	0.100	0.506	23.179347	-97.952309
San José de Las Rusias	116.25	3	0	2154	2.0	80.7	5.6	2.5	1.1	5.2	1.2	1.4	0.3	82.7	5.6	11.7	0.094	0.507	23.564674	-98.045098
T. C. (Cd. Victoria - S. La Marina)	145.00	1	0	2338	2.6	76.8	3.3	8.0	1.4	4.6	1.3	1.6	0.4	79.4	3.3	17.3	0.101	0.509	23.720439	-98.215477

12 CARR: González - Llera de Canales

CLAVE: 28578

RUTA: MEX-081

AÑO: 2022

LUGAR	ESTACION				CLASIFICACION VEHICULAR EN PORCIENTO														COORDENADAS	
	KM	TE	SC	TDPA	M	A	B	C2	C3	T3S2	T3S3	T3S2R4	OTROS	A	B	C	K'	D	LATITUD	LONGITUD
González	0.00	3	0	7343	5.6	53.1	5.6	3.6	1.5	11.5	3.3	14.9	0.9	58.7	5.6	35.7	0.069	0.525	22.846176	-98.452932
Estación Ignacio Zaragoza	58.50	1	0	6010	2.6	64.4	3.9	4.5	2.3	8.1	2.1	11.2	0.9	67.0	3.9	29.1	0.073	0.500	23.181882	-98.771733
T. C. Cd. Valles - Cd. Victoria	89.00	1	0	2072	6.0	91.2	0.2	1.1	0.3	0.1	0.3	0.1	0.7	97.2	0.2	2.6	0.095	0.502	23.316561	-98.994051

13 CARR: Ignacio Zaragoza - T. C. (Ciudad Victoria - Monterrey)

CLAVE: 28625

RUTA: MEX-083

AÑO: 2022

LUGAR	ESTACION				CLASIFICACION VEHICULAR EN PORCIENTO														COORDENADAS	
	KM	TE	SC	TDPA	M	A	B	C2	C3	T3S2	T3S3	T3S2R4	OTROS	A	B	C	K'	D	LATITUD	LONGITUD
T. C. González - Llera de Canales	0.00	3	0	7022	3.6	65.8	5.7	4.2	1.3	7.7	1.7	9.2	0.8	69.4	5.7	24.9	0.089	0.503	23.208614	-98.787232
X. C. Cd. Victoria - Soto La Marina	63.45	3	0	5986	9.7	40.4	9.7	4.6	3.4	16.6	3.4	11.4	0.8	50.1	9.7	40.2	0.064	0.506	23.728162	-98.999310
X. C. Cd. Victoria - Matamoros	79.00	3	0	4219	3.2	57.0	4.8	4.2	2.3	10.8	2.8	14.0	0.9	60.2	4.8	35.0	0.066	0.503	23.854970	-99.056122
T. C. Ciudad Victoria - Monterrey	94.30	1	0	4537	2.8	52.4	3.6	5.6	1.4	13.1	3.5	16.9	0.7	55.2	3.6	41.2	0.095	0.515	23.950249	-99.094503

14 CARR: Las Urracas - T. C. (Matamoros - Reynosa)

CLAVE: 28029

RUTA: MEX-097

AÑO: 2022

LUGAR	ESTACION				CLASIFICACION VEHICULAR EN PORCIENTO														COORDENADAS	
	KM	TE	SC	TDPA	M	A	B	C2	C3	T3S2	T3S3	T3S2R4	OTROS	A	B	C	K'	D	LATITUD	LONGITUD
T. C. Cd. Victoria - Matamoros	0.00	3	0	4776	0.8	62.1	3.0	9.8	1.1	14.6	2.0	5.8	0.8	62.9	3.0	34.1	0.089	0.501	25.081200	-98.082950
La Nutria	41.00	1	0	4698	0.5	65.4	4.0	9.1	0.8	13.8	1.8	3.7	0.9	65.9	4.0	30.1	0.076	0.501	25.381559	-98.218409
Santo Domingo	91.50	1	0	5797	2.1	67.2	3.7	5.9	1.3	13.1	1.7	4.1	0.9	69.3	3.7	27.0	0.075	0.506	25.825147	-98.259294
T. C. Matamoros - Reynosa	113.25	1	1	5140	1.3	88.0	3.3	2.0	1.0	2.0	0.7	0.9	0.8	89.3	3.3	7.4	0.088	0.505	25.942248	-98.270432
T. C. Matamoros - Reynosa	113.25	1	2	5236	1.3	88.0	3.3	2.2	1.1	2.0	0.6	0.8	0.7	89.3	3.3	7.4	0.121	0.505	25.942185	-98.270483

TAMAULIPAS

15 CARR : Libramiento de Reynosa

CLAVE: 28008

RUTA : MEX-REY-010

AÑO : 2022

LUGAR	ESTACION				CLASIFICACION VEHICULAR EN PORCIENTO													COORDENADAS		
	KM	TE	SC	TDPA	M	A	B	C2	C3	T3S2	T3S3	T3S2R4	OTROS	A	B	C	K'	D	LATITUD	LONGITUD
T. C. Matamoros - Reynosa	0.00	3	1	42695	3.0	86.0	1.7	2.8	2.0	2.7	0.5	0.9	0.4	89.0	1.7	9.3	0.098	0.516	26.043547	-98.297414
T. C. Matamoros - Reynosa	0.00	3	2	39811	3.3	85.0	1.8	2.8	2.1	3.1	0.5	1.0	0.4	88.3	1.8	9.9	0.084	0.516	26.043180	-98.297047
T. C. Monterrey - Reynosa	10.00	1	1	36744	2.8	86.9	1.5	2.5	1.6	2.3	0.5	1.5	0.4	89.7	1.5	8.8	0.083	0.519	26.049021	-98.353358
T. C. Monterrey - Reynosa	10.00	1	2	39956	2.8	86.8	1.5	2.5	1.6	2.3	0.5	1.6	0.4	89.6	1.5	8.9	0.086	0.519	26.048739	-98.353403

16 CARR : Libramiento de San Fernando

CLAVE:

RUTA : MEX-101-180

AÑO : 2022

LUGAR	ESTACION				CLASIFICACION VEHICULAR EN PORCIENTO													COORDENADAS		
	KM	TE	SC	TDPA	M	A	B	C2	C3	T3S2	T3S3	T3S2R4	OTROS	A	B	C	K'	D	LATITUD	LONGITUD
T. C. Cd. Victoria - Matamoros	0.00	3	0	6473	3.4	64.0	2.4	8.1	0.8	13.0	0.7	6.7	0.9	67.4	2.4	30.2	0.096	0.504	24.779954	-98.209233
X C. San Fernando - Carboneras	14.39	1	0	6581	3.4	66.4	3.6	5.3	1.2	8.9	2.6	8.0	0.6	69.8	3.6	26.6	0.080	0.502	24.822484	-98.112712
X C. San Fernando - Carboneras	14.39	3	0	7081	2.5	70.4	3.5	3.2	0.9	10.9	2.2	5.8	0.6	72.9	3.5	23.6	0.096	0.506	24.836761	-98.107904
T. C. Cd. Victoria - Matamoros	26.46	1	0	7320	3.1	70.1	4.2	3.5	0.9	10.0	2.0	5.6	0.6	73.2	4.2	22.6	0.091	0.503	24.932834	-98.108296

17 CARR : Libramiento de San Germán

CLAVE:

RUTA : MEX-101

AÑO : 2022

LUGAR	ESTACION				CLASIFICACION VEHICULAR EN PORCIENTO													COORDENADAS		
	KM	TE	SC	TDPA	M	A	B	C2	C3	T3S2	T3S3	T3S2R4	OTROS	A	B	C	K'	D	LATITUD	LONGITUD
T. C. Cd. Victoria - Matamoros Sur	0.00	3	0	4762	2.2	74.2	3.5	6.2	0.8	5.4	2.4	4.5	0.8	76.4	3.5	20.1	0.088	0.533	25.209151	-97.921478
T. C. Cd. Victoria - Matamoros Norte	4.50	0	0																	

18 CARR : Libramiento de Santander Jiménez

CLAVE:

RUTA : MEX-101

AÑO : 2022

LUGAR	ESTACION				CLASIFICACION VEHICULAR EN PORCIENTO													COORDENADAS		
	KM	TE	SC	TDPA	M	A	B	C2	C3	T3S2	T3S3	T3S2R4	OTROS	A	B	C	K'	D	LATITUD	LONGITUD
T. C. Cd. Victoria - Matamoros Sur	0.00	3	0	5675	0.6	64.9	1.7	7.4	0.8	14.3	2.4	7.0	0.9	65.5	1.7	32.8	0.094	0.504	24.214732	-98.494413
X. C. Santander - Jiménez	1.70	3	0	5209	1.4	71.2	1.9	4.3	0.9	12.1	1.8	5.4	1.0	72.6	1.9	25.5	0.102	0.500	24.219929	-98.494315
T. C. Cd. Victoria - Matamoros Norte	5.00	0	0																	

19 CARR : Libramiento Estación Manuel - González

CLAVE: 28002

RUTA : MEX-081

AÑO : 2022

LUGAR	ESTACION				CLASIFICACION VEHICULAR EN PORCIENTO													COORDENADAS		
	KM	TE	SC	TDPA	M	A	B	C2	C3	T3S2	T3S3	T3S2R4	OTROS	A	B	C	K'	D	LATITUD	LONGITUD
T. C. Tampico - Cd. Mante (Sur)	0.00	3	0	6234	5.5	57.1	5.4	3.8	2.3	10.4	2.8	11.7	1.0	62.6	5.4	32.0	0.064	0.509	22.712848	-98.288149
T. C. Tampico - Cd. Mante (Norte)	24.80	1	0	6813	5.6	56.8	5.4	3.8	2.3	10.6	2.9	11.7	0.9	62.4	5.4	32.2	0.078	0.520	22.844350	-98.439267

TAMAULIPAS

20 CARR : Libramiento General Francisco Villa

CLAVE:

RUTA : MEX-101-180

AÑO : 2022

LUGAR	ESTACION				CLASIFICACION VEHICULAR EN PORCIENTO													COORDENADAS		
	KM	TE	SC	TDPA	M	A	B	C2	C3	T3S2	T3S3	T3S2R4	OTROS	A	B	C	K'	D	LATITUD	LONGITUD
T. C. Cd. Victoria - Matamoros (Sur)	0.00	3	0	8213	2.5	67.9	2.4	8.9	1.0	9.8	1.3	5.4	0.8	70.4	2.4	27.2	0.089	0.504	25.009338	-98.086791
T. C. Cd. Victoria - Matamoros (Norte)	6.40	1	0	8149	2.3	72.4	4.1	2.7	0.9	9.4	2.2	5.1	0.9	74.7	4.1	21.2	0.098	0.531	25.045050	-98.075647

21 CARR : Matamoros - Playa Lauro Villar

CLAVE: 28078

RUTA : MEX-002

AÑO : 2022

LUGAR	ESTACION				CLASIFICACION VEHICULAR EN PORCIENTO													COORDENADAS		
	KM	TE	SC	TDPA	M	A	B	C2	C3	T3S2	T3S3	T3S2R4	OTROS	A	B	C	K'	D	LATITUD	LONGITUD
Matamoros	0.00	3	1	12966	3.4	91.2	1.1	1.5	0.8	1.2	0.3	0.4	0.1	94.6	1.1	4.3	0.094	0.564	25.837003	-97.434942
Matamoros	0.00	3	2	16772	2.9	91.6	1.1	1.4	0.9	1.3	0.3	0.4	0.1	94.5	1.1	4.4	0.083	0.564	25.837098	-97.435027
Playa Lauro Villar	37.00	0	0																	

22 CARR : Matamoros - Reynosa

CLAVE: 28077

RUTA : MEX-002

AÑO : 2022

LUGAR	ESTACION				CLASIFICACION VEHICULAR EN PORCIENTO													COORDENADAS		
	KM	TE	SC	TDPA	M	A	B	C2	C3	T3S2	T3S3	T3S2R4	OTROS	A	B	C	K'	D	LATITUD	LONGITUD
Matamoros	0.00	3	0	15200	1.3	80.5	3.7	6.8	1.8	4.2	0.7	0.8	0.2	81.8	3.7	14.5	0.077	0.507	25.925425	-97.591335
T. Izq. Libramiento Emilio Portes Gil	7.20	1	1	7345	1.5	82.7	3.2	6.3	1.5	3.4	0.5	0.7	0.2	84.2	3.2	12.6	0.081	0.515	25.916661	-97.571543
T. Izq. Libramiento Emilio Portes Gil	7.20	1	2	6927	1.4	80.7	3.7	6.8	1.8	4.1	0.5	0.8	0.2	82.1	3.7	14.2	0.102	0.515	25.916456	-97.571325
T. C. Matamoros - Reynosa (Cuota)	26.50	0	0																	
Empalme	38.00	1	0	5818	1.4	82.2	1.8	7.2	2.0	2.7	1.2	1.1	0.4	83.6	1.8	14.6	0.086	0.503	25.922487	-97.785507
T. Der. Nuevo Progreso	57.00	1	0	4231	2.7	77.7	2.6	8.9	2.0	3.2	1.2	1.4	0.3	80.4	2.6	17.0	0.093	0.512	25.947087	-97.961222
Río Bravo	67.00	1	0	7748	2.2	80.9	2.1	8.3	1.4	2.2	1.3	1.1	0.5	83.1	2.1	14.8	0.078	0.512	25.970908	-98.041578
Río Bravo	67.00	3	1	12107	3.8	86.8	1.9	2.7	2.2	1.5	0.4	0.6	0.1	90.6	1.9	7.5	0.099	0.506	25.999726	-98.143718
Río Bravo	67.00	3	2	11814	3.5	85.7	2.1	3.1	2.6	1.7	0.4	0.8	0.1	89.2	2.1	8.7	0.103	0.506	25.998997	-98.141683
X. C. Corredor Internacional Reynosa	81.00	1	1	19325	2.0	83.6	2.6	2.9	3.2	4.2	0.5	0.8	0.2	85.6	2.6	11.8	0.084	0.506	26.013301	-98.199471
X. C. Corredor Internacional Reynosa	81.00	1	2	18843	2.0	82.5	2.8	3.2	3.4	4.4	0.5	1.0	0.2	84.5	2.8	12.7	0.088	0.506	26.013134	-98.199435
T. Izq. Aeropuerto	85.65	3	1	27433	8.2	77.8	2.6	2.6	2.8	2.3	0.8	2.3	0.6	86.0	2.6	11.4	0.074	0.538	26.020424	-98.228671
T. Izq. Aeropuerto	85.65	3	2	34097	7.9	78.9	2.5	2.7	2.6	1.8	0.7	2.3	0.6	86.8	2.5	10.7	0.073	0.538	26.020263	-98.228726
Reynosa	98.00	1	1	44900	2.8	86.4	1.7	2.8	1.8	2.4	0.4	1.4	0.3	89.2	1.7	9.1	0.085	0.521	26.035833	-98.273635
Reynosa	98.00	1	2	40975	2.5	87.1	1.6	2.8	1.5	2.2	0.4	1.6	0.3	89.6	1.6	8.8	0.076	0.521	26.035668	-98.273721

TAMAULIPAS

23 CARR: Monterrey - Mier

CLAVE: 00127

RUTA: MEX-054

AÑO: 2022

LUGAR	ESTACION				CLASIFICACION VEHICULAR EN PORCIENTO													COORDENADAS		
	KM	TE	SC	TDPA	M	A	B	C2	C3	T3S2	T3S3	T3S2R4	OTROS	A	B	C	K'	D	LATITUD	LONGITUD
Monterrey	0.00	0	0																	
Apodaca	19.12	1	1	86502	4.1	86.2	1.0	3.2	1.6	1.6	1.1	0.5	0.7	90.3	1.0	8.7	0.063	0.506	25.749472	-100.200585
Apodaca	19.12	1	2	89007	3.8	85.8	1.1	3.5	1.6	1.7	1.2	0.5	0.8	89.6	1.1	9.3	0.054	0.506	25.749551	-100.200756
X. C. Libramiento Noroeste de Monterrey	21.30	3	1	61197	3.9	82.0	1.8	4.3	1.4	3.7	1.2	1.3	0.4	85.9	1.8	12.3	0.057	0.525	25.784766	-100.159509
X. C. Libramiento Noroeste de Monterrey	21.30	3	2	54675	3.9	82.0	1.8	4.3	1.4	3.7	1.2	1.3	0.4	85.9	1.8	12.3	0.056	0.525	25.784931	-100.159586
X. C. Zacatecas - Pesquería	28.15	1	1	20628	2.2	77.7	1.8	9.2	2.6	2.7	1.9	1.2	0.7	79.9	1.8	18.3	0.086	0.506	25.795026	-100.114809
X. C. Zacatecas - Pesquería	28.15	1	2	20150	2.2	77.6	1.9	9.2	2.6	2.7	1.9	1.2	0.7	79.8	1.9	18.3	0.074	0.506	25.799602	-100.101560
X. C. Zacatecas - Pesquería	28.15	3	0	10016	2.2	79.2	1.9	5.9	2.6	3.6	1.7	2.0	0.9	81.4	1.9	16.7	0.075	0.502	25.807354	-100.091301
X. C. Hacienda Guadalupe - Higueras	38.10	1	0	9294	1.9	80.0	1.5	6.9	1.9	4.1	0.9	2.3	0.5	81.9	1.5	16.6	0.100	0.513	25.849583	-100.030072
X. C. Hacienda Guadalupe - Higueras	38.10	3	0	5320	3.4	73.8	1.4	10.4	0.9	3.8	1.1	4.7	0.5	77.2	1.4	21.4	0.083	0.517	25.854705	-100.017313
Dr. González	47.60	1	0	2377	2.1	88.3	0.5	3.6	2.0	2.1	0.9	0.4	0.1	90.4	0.5	9.1	0.091	0.501	25.850688	-99.968521
Dr. González	47.60	3	0	533	9.1	73.0	5.3	10.2	1.2	0.9	0.2	0.0	0.1	82.1	5.3	12.6	0.101	0.508	25.867074	-99.932498
T. Der. Empalme Los Ramones	74.10	1	0	2889	3.3	73.5	2.2	3.2	1.2	5.3	1.8	8.6	0.9	76.8	2.2	21.0	0.088	0.536	25.922529	-99.722254
Cerralvo	95.95	1	0	4117	3.0	79.2	1.2	2.9	1.3	3.7	1.0	6.8	0.9	82.2	1.2	16.6	0.082	0.502	26.066059	-99.626443
Gral. Treviño	115.80	3	0	1874	4.8	61.1	4.6	6.5	2.7	6.7	2.6	10.6	0.4	65.9	4.6	29.5	0.085	0.502	26.234277	-99.467115
Lim. Edos. Term. N. L. Ppia. Tamps.	131.80	0	0																	
Mier	156.21	1	0	2474	1.5	77.4	1.5	2.4	1.2	5.4	1.4	8.9	0.3	78.9	1.5	19.6	0.103	0.505	26.426055	-99.164948

24 CARR: Monterrey - Nuevo Laredo (Libre)

CLAVE: 00463

RUTA: MEX-085

AÑO: 2022

LUGAR	ESTACION				CLASIFICACION VEHICULAR EN PORCIENTO													COORDENADAS		
	KM	TE	SC	TDPA	M	A	B	C2	C3	T3S2	T3S3	T3S2R4	OTROS	A	B	C	K'	D	LATITUD	LONGITUD
Monterrey	0.00	0	0																	
T. Izq. Gral. Escobedo (Central)	12.10	3	1	47443	2.7	88.0	1.6	3.4	0.8	2.3	0.6	0.5	0.1	90.7	1.6	7.7	0.066	0.510	25.795678	-100.279323
T. Izq. Gral. Escobedo (Lateral)	12.10	3	1	24407	5.3	83.1	1.3	6.5	1.2	1.6	0.5	0.4	0.1	88.4	1.3	10.3	0.074	0.528	25.795634	-100.279223
T. Izq. Gral. Escobedo (Lateral)	12.10	3	2	21776	5.3	83.3	1.2	6.7	1.1	1.3	0.5	0.5	0.1	88.6	1.2	10.2	0.074	0.528	25.796365	-100.279261
T. Izq. Gral. Escobedo (Central)	12.10	3	2	45419	2.7	88.0	1.6	3.4	0.8	2.3	0.6	0.5	0.1	90.7	1.6	7.7	0.069	0.510	25.795360	-100.279589
X. C. Libramiento Noroeste de Monterrey (Central)	16.00	1	1	39202	3.3	86.6	1.2	3.9	1.1	2.3	0.6	0.8	0.2	89.9	1.2	8.9	0.072	0.504	25.820352	-100.265114
X. C. Libramiento Noroeste de Monterrey (Lateral)	16.00	1	1	9169	1.8	76.5	2.6	11.9	2.4	3.4	0.6	0.4	0.4	78.3	2.6	19.1	0.076	0.515	25.820371	-100.264974
X. C. Libramiento Noroeste de Monterrey (Central)	16.00	1	2	38543	3.3	86.6	1.2	3.9	1.1	2.3	0.6	0.8	0.2	89.9	1.2	8.9	0.073	0.504	25.820469	-100.265165
X. C. Libramiento Noroeste de Monterrey (Lateral)	16.00	1	2	8621	1.8	76.9	2.5	12.0	2.3	3.3	0.5	0.4	0.3	78.7	2.5	18.8	0.089	0.515	25.820577	-100.265206
X. C. Libramiento Noroeste de Monterrey	16.00	3	1	52385	5.2	70.6	2.2	5.9	3.5	9.5	1.3	1.2	0.6	75.8	2.2	22.0	0.089	0.507	25.835412	-100.254598
X. C. Libramiento Noroeste de Monterrey	16.00	3	2	54092	5.2	70.6	2.2	5.9	3.5	9.5	1.3	1.2	0.6	75.8	2.2	22.0	0.084	0.507	25.835993	-100.254325
X. C. Santa Rosa - Salinas Victoria	20.19	3	1	39504	4.2	71.4	2.1	5.0	2.4	11.6	0.8	2.0	0.5	75.6	2.1	22.3	0.086	0.505	25.857989	-100.238759
X. C. Santa Rosa - Salinas Victoria	20.19	3	2	38627	4.1	69.2	2.3	5.6	2.6	12.6	0.9	2.2	0.5	73.3	2.3	24.4	0.075	0.505	25.858084	-100.238923

TAMAULIPAS

24 CARR: Monterrey - Nuevo Laredo (Libre)

CLAVE: 00463

RUTA: MEX-085

AÑO: 2022

LUGAR	ESTACION				CLASIFICACION VEHICULAR EN PORCIENTO													COORDENADAS			
	KM	TE	SC	TDPA	M	A	B	C2	C3	T3S2	T3S3	T3S2R4	OTROS	A	B	C	K'	D	LATITUD	LONGITUD	
T. C. Monterrey - Nuevo Laredo (Cuota)	23.99	0	0																		
Ciénega de Flores	32.00	1	0	27240	3.9	77.6	2.2	6.9	1.4	6.5	0.4	0.8	0.3	81.5	2.2	16.3	0.074	0.514	25.942152	-100.178646	
T. Der. Agualeguas	78.23	3	0	6968	1.1	46.4	2.9	13.9	2.4	30.0	1.1	1.3	0.9	47.5	2.9	49.6	0.071	0.514	26.335829	-100.111786	
Sabinas Hidalgo	98.90	3	0	5593	1.4	46.1	2.6	13.3	2.3	30.1	1.5	1.9	0.8	47.5	2.6	49.9	0.068	0.501	26.532641	-100.150990	
Vallecillos	124.40	3	0	4356	1.1	34.3	2.2	12.2	3.2	42.0	1.8	2.4	0.8	35.4	2.2	62.4	0.059	0.529	26.662160	-99.981953	
T. Izq. Anáhuac	156.80	1	0	4676	2.7	32.6	3.8	9.0	3.5	43.5	1.5	2.7	0.7	35.3	3.8	60.9	0.055	0.521	26.875244	-99.832376	
T. Izq. Anáhuac	156.80	3	1	9181	2.1	36.2	4.9	6.2	2.9	44.6	1.0	1.4	0.7	38.3	4.9	56.8	0.077	0.510	26.903382	-99.809603	
T. Izq. Anáhuac	156.80	3	2	8826	1.7	27.4	5.4	6.3	3.2	52.5	1.0	1.7	0.8	29.1	5.4	65.5	0.069	0.510	26.903543	-99.809896	
Lim. Edos. Term. N. L. Ppia. Tamps.	184.56	0	0																		
T. Der. Mier	205.90	1	1	9358	1.6	45.6	3.3	4.4	3.4	38.6	0.8	1.8	0.5	47.2	3.3	49.5	0.072	0.513	27.292953	-99.602701	
T. Der. Mier	205.90	1	2	8883	1.5	40.7	3.5	3.8	4.0	43.4	0.8	1.8	0.5	42.2	3.5	54.3	0.068	0.513	27.292952	-99.602822	
T. Der. Mier	205.90	3	1	10334	0.9	44.3	4.4	9.8	5.4	32.8	1.1	1.0	0.3	45.2	4.4	50.4	0.068	0.500	27.308933	-99.594177	
T. Der. Mier	205.90	3	2	10319	0.8	41.3	4.8	9.7	6.2	34.8	1.1	1.0	0.3	42.1	4.8	53.1	0.071	0.500	27.309439	-99.594078	
Nuevo Laredo	228.00	1	1	11668	0.9	63.8	2.4	7.4	5.4	17.0	1.0	1.2	0.9	64.7	2.4	32.9	0.094	0.503	27.377723	-99.557389	
Nuevo Laredo	228.00	1	2	11796	0.9	61.6	2.7	8.4	6.2	17.0	1.1	1.2	0.9	62.5	2.7	34.8	0.089	0.503	27.377867	-99.557491	

25 CARR: Monterrey - Reynosa (Libre)

CLAVE: 00088

RUTA: MEX-040

AÑO: 2022

LUGAR	ESTACION				CLASIFICACION VEHICULAR EN PORCIENTO													COORDENADAS			
	KM	TE	SC	TDPA	M	A	B	C2	C3	T3S2	T3S3	T3S2R4	OTROS	A	B	C	K'	D	LATITUD	LONGITUD	
T. C. Monterrey - Mier	0.00	0	0																		
Villa Juárez	19.10	1	1	29275	4.6	84.7	1.2	5.8	1.1	1.0	0.5	0.8	0.3	89.3	1.2	9.5	0.060	0.543	25.651993	-100.108268	
Villa Juárez	19.10	1	2	37220	4.1	86.0	1.1	5.7	0.7	0.9	0.5	0.7	0.3	90.1	1.1	8.8	0.057	0.543	25.652129	-100.108249	
Villa Juárez	19.10	3	1	17793	7.1	83.6	1.0	4.0	1.3	1.1	0.4	1.0	0.5	90.7	1.0	8.3	0.095	0.512	25.636434	-100.083283	
Villa Juárez	19.10	3	2	16942	7.1	82.2	1.3	4.8	1.5	1.0	0.5	1.0	0.6	89.3	1.3	9.4	0.085	0.512	25.636507	-100.083184	
Puente Cadereyta	30.50	2	1	2742	1.7	76.2	0.2	5.1	3.0	6.8	2.5	3.4	1.1	77.9	0.2	21.9	0.091	0.500	25.601114	-100.005696	
Puente Cadereyta	30.50	2	2	2742	1.7	76.2	0.2	5.1	3.0	6.8	2.5	3.4	1.1	77.9	0.2	21.9	0.091	0.500	25.601114	-100.005696	
Refinería de Cadereyta	33.00	3	0	6690	2.6	81.0	1.4	3.8	2.5	4.7	1.9	1.4	0.7	83.6	1.4	15.0	0.101	0.502	25.595023	-99.923801	
T. Izq. Los Ramones	68.78	3	0	3695	1.2	76.6	1.6	6.7	1.8	8.0	2.4	1.5	0.2	77.8	1.6	20.6	0.087	0.515	25.620359	-99.626315	
China	114.10	0	0																		
Gral. Bravo	125.00	1	0	5949	1.3	79.7	1.8	5.6	1.0	6.8	2.4	1.3	0.1	81.0	1.8	17.2	0.096	0.519	25.774713	-99.190267	
T. C. Cadereyta - Reynosa (Cuota)	178.00	0	0																		
Lim. Edos. Term. N. L. Ppia. Tamps.	192.00	0	0																		
T. Izq. Díaz Ordáz	192.55	1	1	5446	3.4	64.2	3.6	4.7	1.9	14.3	2.9	4.1	0.9	67.6	3.6	28.8	0.095	0.528	25.966449	-98.596763	
T. Izq. Díaz Ordáz	192.55	1	2	6089	3.2	64.7	3.6	4.6	1.8	14.3	2.9	4.1	0.8	67.9	3.6	28.5	0.098	0.528	25.966692	-98.597487	

TAMAULIPAS

25 CARR: Monterrey - Reynosa (Libre)

CLAVE: 00088

RUTA: MEX-040

AÑO: 2022

LUGAR	ESTACION				CLASIFICACION VEHICULAR EN PORCIENTO													COORDENADAS		
	KM	TE	SC	TDPA	M	A	B	C2	C3	T3S2	T3S3	T3S2R4	OTROS	A	B	C	K'	D	LATITUD	LONGITUD
T. Der. Libramiento de Reynosa Sur II	206.33	1	1	5440	2.1	70.6	3.5	3.4	2.2	11.8	2.3	3.2	0.9	72.7	3.5	23.8	0.099	0.534	26.016593	-98.467334
T. Der. Libramiento de Reynosa Sur II	206.33	1	2	6231	2.1	71.0	3.6	3.3	2.3	11.6	2.1	3.2	0.8	73.1	3.6	23.3	0.109	0.534	26.017034	-98.467517
Reynosa	225.00	1	1	23168	4.6	82.0	1.9	4.8	1.2	3.7	0.7	0.9	0.2	86.6	1.9	11.5	0.078	0.519	26.042150	-98.402104
Reynosa	225.00	1	2	21475	4.6	82.3	1.8	4.7	1.2	3.6	0.7	0.9	0.2	86.9	1.8	11.3	0.076	0.519	26.042579	-98.401973

26 CARR: Paras - Nueva Ciudad Guerrero

CLAVE: 00476

RUTA: MEX-030

AÑO: 2022

LUGAR	ESTACION				CLASIFICACION VEHICULAR EN PORCIENTO													COORDENADAS		
	KM	TE	SC	TDPA	M	A	B	C2	C3	T3S2	T3S3	T3S2R4	OTROS	A	B	C	K'	D	LATITUD	LONGITUD
Paras	0.00	3	0	448	0.7	65.9	1.3	23.2	1.4	2.4	1.9	3.2	0.0	66.6	1.3	32.1	0.118	0.514	26.502004	-99.516260
Lim. Edos. Term. N. L. Ppia. Tamps.	13.10	0	0																	
T. C. Reynosa - (T. C. Monterrey - Nuevo Laredo)	32.00	1	0	332	0.0	74.6	0.9	15.4	0.8	1.8	1.8	4.7	0.0	74.6	0.9	24.5	0.172	0.519	26.555008	-99.244291

27 CARR: Petrocel - Puerto Industrial Altamira

CLAVE:

RUTA: MEX-080

AÑO: 2022

LUGAR	ESTACION				CLASIFICACION VEHICULAR EN PORCIENTO													COORDENADAS		
	KM	TE	SC	TDPA	M	A	B	C2	C3	T3S2	T3S3	T3S2R4	OTROS	A	B	C	K'	D	LATITUD	LONGITUD
Petrocel	0.00	3	1	15725	3.4	81.6	1.3	3.4	2.9	3.8	1.6	1.6	0.4	85.0	1.3	13.7	0.102	0.528	22.382966	-97.899270
Petrocel	0.00	3	2	14066	4.9	78.2	1.3	4.0	3.3	4.2	1.8	1.9	0.4	83.1	1.3	15.6	0.097	0.528	22.383069	-97.899406
T. Izq. Altamira	3.80	3	1	12629	6.8	70.6	1.6	3.5	3.8	5.4	1.5	5.8	1.0	77.4	1.6	21.0	0.115	0.500	22.412928	-97.887070
T. Izq. Altamira	3.80	3	2	12651	6.9	70.5	1.5	3.3	4.0	5.3	1.5	6.0	1.0	77.4	1.5	21.1	0.115	0.500	22.412656	-97.887287
Puerto Industrial Altamira	10.60	0	0																	

28 CARR: Piedras Negras - Nuevo Laredo

CLAVE: 00503

RUTA: MEX-002

AÑO: 2022

LUGAR	ESTACION				CLASIFICACION VEHICULAR EN PORCIENTO													COORDENADAS		
	KM	TE	SC	TDPA	M	A	B	C2	C3	T3S2	T3S3	T3S2R4	OTROS	A	B	C	K'	D	LATITUD	LONGITUD
T. C. Monclova - Piedras Negras	0.00	3	1	5114	0.0	88.8	1.0	3.4	3.1	2.7	0.4	0.5	0.1	88.8	1.0	10.2	0.075	0.521	28.639631	-100.552024
T. C. Monclova - Piedras Negras	0.00	3	2	5571	2.6	86.0	1.1	3.4	3.1	2.7	0.4	0.6	0.1	88.6	1.1	10.3	0.084	0.521	28.639682	-100.551907
El Saucito	16.90	3	0	1340	3.7	57.3	3.2	17.2	4.0	8.6	1.1	4.2	0.7	61.0	3.2	35.8	0.089	0.511	28.502014	-100.467375
T. Der. Villa Unión	37.00	1	0	1442	3.5	60.9	2.2	10.7	4.2	7.8	1.8	8.1	0.8	64.4	2.2	33.4	0.071	0.510	28.344419	-100.392029
T. Der. Villa Unión	37.00	3	0	1187	4.4	52.3	2.6	13.1	4.4	12.0	2.7	7.6	0.9	56.7	2.6	40.7	0.061	0.528	28.335524	-100.389315
Guerrero	42.00	3	0	1082	3.7	52.3	4.2	12.9	3.3	13.2	1.6	8.1	0.7	56.0	4.2	39.8	0.072	0.505	28.307214	-100.363712
Lim. Edos. Term. Coah. Ppia. N. L.	124.40	0	0																	
T. C. Monclova - Colombia	134.00	3	0	3158	3.8	62.6	2.5	8.3	3.4	13.4	2.7	2.6	0.7	66.4	2.5	31.1	0.091	0.515	27.688591	-99.778294

TAMAULIPAS

28 CARR: Piedras Negras - Nuevo Laredo

CLAVE: 00503

RUTA: MEX-002

AÑO: 2022

LUGAR	ESTACION				CLASIFICACION VEHICULAR EN PORCIENTO													COORDENADAS			
	KM	TE	SC	TDPA	M	A	B	C2	C3	T3S2	T3S3	T3S2R4	OTROS	A	B	C	K'	D	LATITUD	LONGITUD	
Lim. Edos. Term. N. L. Ppia. Tamps.	138.20	0	0																		
T. Der. Libramiento de Nuevo Laredo	157.70	1	1	5480	8.0	47.9	1.3	5.3	12.1	22.1	1.2	1.3	0.8	55.9	1.3	42.8	0.100	0.507	27.571809	-99.601745	
T. Der. Libramiento de Nuevo Laredo	157.70	1	2	5630	8.0	47.8	1.2	5.4	12.1	22.1	1.2	1.3	0.9	55.8	1.2	43.0	0.096	0.507	27.571952	-99.601709	
Nuevo Laredo	175.00	1	1	10277	2.4	47.2	1.9	5.6	15.1	26.1	0.7	0.6	0.4	49.6	1.9	48.5	0.107	0.519	27.549756	-99.579636	
Nuevo Laredo	175.00	1	2	9534	2.7	41.3	1.9	6.1	18.0	28.2	0.8	0.6	0.4	44.0	1.9	54.1	0.108	0.519	27.549774	-99.579485	

29 CARR: Ramal a Puente Tampico

CLAVE: 28020

RUTA: MEX-180

AÑO: 2022

LUGAR	ESTACION				CLASIFICACION VEHICULAR EN PORCIENTO													COORDENADAS			
	KM	TE	SC	TDPA	M	A	B	C2	C3	T3S2	T3S3	T3S2R4	OTROS	A	B	C	K'	D	LATITUD	LONGITUD	
T. C. Tuxpam - Tampico	186.00	3	1	4484	4.7	68.2	5.7	7.6	2.0	5.2	2.7	3.0	0.9	72.9	5.7	21.4	0.124	0.524	22.178900	-97.827307	
T. C. Tuxpam - Tampico	186.00	3	2	4941	4.5	68.2	5.9	7.7	1.9	5.1	2.7	3.2	0.8	72.7	5.9	21.4	0.106	0.524	22.178919	-97.827414	
Lim. Edos. Term. Ver. Ppia. Tamps.	193.12	0	0																		
Puente Tampico	193.12	1	1	6734	3.7	88.2	2.8	1.8	1.2	0.8	0.5	0.7	0.3	91.9	2.8	5.3	0.082	0.520	22.221688	-97.827185	
Puente Tampico	193.12	1	2	6205	3.8	88.3	2.7	1.6	1.3	0.9	0.4	0.6	0.4	92.1	2.7	5.2	0.090	0.520	22.221598	-97.827234	
Tampico	194.36	0	0																		

30 CARR: Ramal de Acceso a Puente Anzaldúas

CLAVE: 28619

RUTA: MEX

AÑO: 2022

LUGAR	ESTACION				CLASIFICACION VEHICULAR EN PORCIENTO													COORDENADAS			
	KM	TE	SC	TDPA	M	A	B	C2	C3	T3S2	T3S3	T3S2R4	OTROS	A	B	C	K'	D	LATITUD	LONGITUD	
T. C. Monterrey - Reynosa	0.00	3	1	7429	1.6	87.9	1.3	2.6	2.1	2.1	0.7	1.2	0.5	89.5	1.3	9.2	0.102	0.513	26.059869	-98.372556	
T. C. Monterrey - Reynosa	0.00	3	2	7824	1.6	88.0	1.3	2.5	2.1	2.1	0.7	1.3	0.4	89.6	1.3	9.1	0.130	0.513	26.059865	-98.372644	
Puente Anzaldúas	6.20	0	0																		

31 CARR: Ramal de Acceso al Puente Internacional Laredo III

CLAVE:

RUTA: MEX

AÑO: 2022

LUGAR	ESTACION				CLASIFICACION VEHICULAR EN PORCIENTO													COORDENADAS			
	KM	TE	SC	TDPA	M	A	B	C2	C3	T3S2	T3S3	T3S2R4	OTROS	A	B	C	K'	D	LATITUD	LONGITUD	
T. C. Piedras Negras - Nuevo Laredo	0.00	0	0																		
Plaza de Cobro Puente Internacional Nuevo Laredo III	5.20	2	0	5702	0.0	2.1	0.0	5.0	9.8	82.5	0.3	0.0	0.3	2.1	0.0	97.9	0.090	0.500	27.595078	-99.541522	

TAMAULIPAS

32 CARR: Reynosa - Nuevo Laredo

CLAVE: 28076

RUTA: MEX-002

AÑO: 2022

LUGAR	ESTACION				CLASIFICACION VEHICULAR EN PORCIENTO													COORDENADAS		
	KM	TE	SC	TDPA	M	A	B	C2	C3	T3S2	T3S3	T3S2R4	OTROS	A	B	C	K'	D	LATITUD	LONGITUD
Reynosa	0.00	3	1	4381	1.1	81.9	1.9	9.4	1.2	1.6	0.6	1.6	0.7	83.0	1.9	15.1	0.084	0.526	26.151655	-98.361485
Reynosa	0.00	3	2	3941	1.1	80.9	3.0	9.9	0.8	1.4	0.7	1.6	0.6	82.0	3.0	15.0	0.088	0.526	26.151373	-98.360050
X. C. Los Dos Estados - Gustavo Díaz Ordáz	35.68	3	0	6816	1.1	86.2	1.0	6.0	1.2	2.1	0.9	0.9	0.6	87.3	1.0	11.7	0.072	0.509	26.218192	-98.617136
Cd. Camargo	63.40	3	0	5091	1.9	75.8	1.5	8.1	1.4	3.5	1.2	5.8	0.8	77.7	1.5	20.8	0.076	0.501	26.333525	-98.850551
Los Guerra	92.77	3	0	2820	1.7	75.0	1.7	3.1	1.3	6.5	1.2	8.6	0.9	76.7	1.7	21.6	0.098	0.544	26.393041	-99.102244
Mier	102.35	3	0	1207	2.8	76.6	0.9	7.0	2.4	4.2	0.9	4.3	0.9	79.4	0.9	19.7	0.104	0.503	26.462524	-99.157488
T. Der. Nueva Cd. Guerrero (2º Acceso)	122.67	3	0	874	0.9	75.9	1.8	6.1	2.8	5.6	1.1	5.6	0.2	76.8	1.8	21.4	0.090	0.514	26.557902	-99.244506
T. C. Monterrey - Nuevo Laredo	221.08	1	0	827	2.6	68.6	1.8	9.3	5.0	5.5	0.9	5.9	0.4	71.2	1.8	27.0	0.096	0.503	27.297938	-99.587428

33 CARR: Soto La Marina - La Coma

CLAVE: 28052

RUTA: MEX-180

AÑO: 2022

LUGAR	ESTACION				CLASIFICACION VEHICULAR EN PORCIENTO													COORDENADAS		
	KM	TE	SC	TDPA	M	A	B	C2	C3	T3S2	T3S3	T3S2R4	OTROS	A	B	C	K'	D	LATITUD	LONGITUD
Soto La Marina	0.00	3	0	3395	5.1	74.4	2.5	9.2	0.8	4.7	1.6	1.2	0.5	79.5	2.5	18.0	0.095	0.533	23.783221	-98.196776
La Coma	86.00	1	0	1117	0.5	74.9	4.7	8.5	0.7	6.0	1.9	2.5	0.3	75.4	4.7	19.9	0.115	0.525	24.464409	-98.339828

34 CARR: Tampico - Cd. Mante

CLAVE: 28163

RUTA: MEX-080

AÑO: 2022

LUGAR	ESTACION				CLASIFICACION VEHICULAR EN PORCIENTO													COORDENADAS		
	KM	TE	SC	TDPA	M	A	B	C2	C3	T3S2	T3S3	T3S2R4	OTROS	A	B	C	K'	D	LATITUD	LONGITUD
Tampico	0.00	0	0																	
Cd. Madero	9.40	0	0																	
T. Der. Cyanaquim	14.79	1	1	35599	6.4	82.0	2.0	3.4	0.8	1.9	0.6	2.3	0.6	88.4	2.0	9.6	0.066	0.504	22.357223	-97.889907
T. Der. Cyanaquim	14.79	1	2	34923	6.1	82.5	1.8	3.4	0.7	1.8	0.8	2.1	0.8	88.6	1.8	9.6	0.070	0.504	22.357125	-97.890057
Altamira	24.00	1	1	30265	3.7	89.6	1.1	3.1	1.0	0.7	0.3	0.3	0.2	93.3	1.1	5.6	0.088	0.510	22.385986	-97.917984
Altamira	24.00	1	2	31657	3.8	89.7	1.1	3.0	0.9	0.6	0.3	0.4	0.2	93.5	1.1	5.4	0.076	0.510	22.385939	-97.918169
Altamira	24.00	3	1	11503	5.9	83.1	2.0	2.5	2.9	1.0	1.2	1.1	0.3	89.0	2.0	9.0	0.080	0.515	22.423424	-97.945731
Altamira	24.00	3	2	12231	5.8	83.3	2.0	2.6	2.8	0.9	1.1	1.1	0.4	89.1	2.0	8.9	0.075	0.515	22.423617	-97.946147
T. Der. Lomas del Real	33.00	3	1	7327	2.3	72.2	3.6	2.8	2.2	7.7	2.1	6.2	0.9	74.5	3.6	21.9	0.100	0.503	22.476978	-98.003355
T. Der. Lomas del Real	33.00	3	2	7416	2.6	71.3	3.9	2.6	2.2	7.4	2.4	6.6	1.0	73.9	3.9	22.2	0.089	0.503	22.476886	-98.003588
Cuahtémoc	55.80	3	1	4846	3.1	62.6	4.4	3.1	1.7	9.6	4.1	10.5	0.9	65.7	4.4	29.9	0.079	0.530	22.559489	-98.155561
Cuahtémoc	55.80	3	2	5455	3.3	63.0	4.2	3.1	1.5	9.7	3.9	10.4	0.9	66.3	4.2	29.5	0.083	0.530	22.559412	-98.155628
T. Libramiento Estación Manuel - González	73.72	0	0																	
Estación Manuel	78.12	1	1	4633	2.9	63.4	4.8	3.3	1.9	9.6	3.6	9.6	0.9	66.3	4.8	28.9	0.078	0.508	22.699858	-98.281201
Estación Manuel	78.12	1	2	4782	3.0	63.5	4.9	3.5	1.9	9.7	3.2	9.3	1.0	66.5	4.9	28.6	0.077	0.508	22.699831	-98.281328

TAMAULIPAS

34 CARR: Tampico - Cd. Mante

CLAVE: 28163

RUTA: MEX-080

AÑO: 2022

LUGAR	ESTACION				CLASIFICACION VEHICULAR EN PORCIENTO													COORDENADAS		
	KM	TE	SC	TDPA	M	A	B	C2	C3	T3S2	T3S3	T3S2R4	OTROS	A	B	C	K'	D	LATITUD	LONGITUD
González	96.00	3	0	2556	1.5	86.1	2.1	2.5	1.8	2.4	0.5	2.3	0.8	87.6	2.1	10.3	0.091	0.501	22.821635	-98.451501
Magiscatzín	122.50	3	0	2027	2.5	82.1	1.5	3.0	2.3	3.7	0.9	3.6	0.4	84.6	1.5	13.9	0.099	0.503	22.791679	-98.716844
Faja de Oro	143.00	3	0	2608	2.0	84.6	2.6	2.2	2.8	2.3	0.8	2.3	0.4	86.6	2.6	10.8	0.089	0.507	22.724629	-98.868937
T. C. Cd. Valles - Cd. Victoria	155.00	1	0	3946	1.3	88.5	1.3	2.3	1.8	1.7	1.0	1.6	0.5	89.8	1.3	8.9	0.076	0.520	22.724796	-98.952724

35 CARR: Túxpam - Tampico

CLAVE: 00529

RUTA: MEX-180

AÑO: 2022

LUGAR	ESTACION				CLASIFICACION VEHICULAR EN PORCIENTO													COORDENADAS		
	KM	TE	SC	TDPA	M	A	B	C2	C3	T3S2	T3S3	T3S2R4	OTROS	A	B	C	K'	D	LATITUD	LONGITUD
Túxpam	0.00	3	0	7177	10.6	81.0	2.1	3.1	0.8	1.2	0.1	0.9	0.2	91.6	2.1	6.3	0.079	0.543	20.955064	-97.460852
T. C. Tuxpan - Tampico (Cuota)	8.90	3	0	5997	8.2	78.5	4.3	6.2	1.4	0.8	0.2	0.4	0.0	86.7	4.3	9.0	0.097	0.537	20.961398	-97.489658
T. Izq. La Lajuela	28.70	1	0	2625	7.8	79.3	2.7	6.1	1.6	1.9	0.2	0.4	0.0	87.1	2.7	10.2	0.101	0.505	21.039356	-97.592841
T. Izq. Tempoal de Sánchez	45.20	1	0	5030	6.4	74.6	4.7	11.3	1.5	0.9	0.3	0.2	0.1	81.0	4.7	14.3	0.076	0.513	21.090110	-97.730705
T. Izq. Tempoal de Sánchez	45.20	3	0	7247	10.2	70.2	3.4	8.0	1.3	4.0	1.3	1.4	0.2	80.4	3.4	16.2	0.079	0.509	21.097017	-97.731397
Cerro Azul	56.66	1	0	7127	8.2	72.7	4.4	6.8	1.2	4.6	1.1	0.9	0.1	80.9	4.4	14.7	0.081	0.504	21.167341	-97.754992
T. Der. Zacamixtle	64.50	1	0	4718	6.6	70.1	4.3	8.0	2.2	5.5	1.7	1.4	0.2	76.7	4.3	19.0	0.083	0.513	21.233488	-97.733375
T. Der. Zacamixtle	64.50	3	0	7318	7.2	66.6	6.6	10.7	1.9	4.4	1.1	1.1	0.4	73.8	6.6	19.6	0.101	0.520	21.252175	-97.734053
T. Izq. Naranjos	78.60	1	0	6602	7.6	72.3	2.8	7.4	2.6	4.6	1.3	1.1	0.3	79.9	2.8	17.3	0.071	0.513	21.335828	-97.692928
T. Izq. Naranjos	78.60	3	0	9879	15.8	73.2	2.1	2.6	1.5	2.7	0.8	1.0	0.3	89.0	2.1	8.9	0.070	0.513	21.369136	-97.684946
T. Der. El Añoño	81.50	3	0	4375	10.8	69.0	5.0	3.7	1.6	5.9	1.6	2.0	0.4	79.8	5.0	15.2	0.082	0.510	21.379483	-97.691238
T. Der. Campo Mamey	94.39	3	0	4954	6.6	70.3	6.1	3.7	2.1	6.9	2.0	2.0	0.3	76.9	6.1	17.0	0.087	0.510	21.457268	-97.763296
T. Der. Ozuluama	124.42	1	0	4841	11.0	69.9	4.9	3.4	1.7	5.3	1.5	1.9	0.4	80.9	4.9	14.2	0.081	0.501	21.666081	-97.859768
T. Der. Ozuluama	124.42	3	0	6859	9.1	65.1	5.5	6.3	2.2	6.8	1.8	2.6	0.6	74.2	5.5	20.3	0.081	0.532	21.691009	-97.844744
T. C. Tuxpan - Tampico (Cuota)	131.32	3	1	2771	9.2	64.3	6.0	5.6	2.1	7.1	2.4	2.6	0.7	73.5	6.0	20.5	0.091	0.531	21.717980	-97.809745
T. C. Tuxpan - Tampico (Cuota)	131.32	3	2	3135	9.1	64.9	6.0	5.5	2.0	7.1	2.3	2.5	0.6	74.0	6.0	20.0	0.080	0.531	21.718017	-97.809861
Tampico Alto	177.80	1	0	7494	5.3	63.8	6.5	8.5	1.8	7.2	2.9	3.4	0.6	69.1	6.5	24.4	0.080	0.511	22.105450	-97.803342
Tampico Alto	177.80	3	0	9371	5.0	69.2	4.4	5.2	1.9	7.1	2.9	3.6	0.7	74.2	4.4	21.4	0.083	0.514	22.117473	-97.804520
Villa Cuauhtémoc	186.85	1	0	8430	4.5	61.4	6.4	9.5	1.6	8.5	2.6	4.6	0.9	65.9	6.4	27.7	0.066	0.511	22.167435	-97.829565
Villa Cuauhtémoc	186.85	3	1	8086	15.0	71.2	1.1	1.7	1.2	4.3	1.5	3.3	0.7	86.2	1.1	12.7	0.061	0.503	22.201613	-97.841727
Villa Cuauhtémoc	186.85	3	2	8194	15.0	71.3	1.0	1.7	1.2	4.3	1.4	3.3	0.8	86.3	1.0	12.7	0.060	0.503	22.201559	-97.841786
Lim. Edos. Term. Ver. Ppia. Tamps.	189.82	0	0																	
Tampico	191.43	0	0																	

TAMAULIPAS

36 CARR: Viaducto de Reynosa

CLAVE:

RUTA: MEX

AÑO: 2022

LUGAR	ESTACION				CLASIFICACION VEHICULAR EN PORCIENTO										COORDENADAS					
	KM	TE	SC	TDPA	M	A	B	C2	C3	T3S2	T3S3	T3S2R4	OTROS	A	B	C	K'	D	LATITUD	LONGITUD
T. C. Las Urracas - T. C. (Matamoros - Reynosa)	80.50	3	0	13814	3.5	89.7	1.3	2.7	1.1	0.8	0.3	0.5	0.1	93.2	1.3	5.5	0.077	0.539	26.012240	-98.352207
T. C. Monterrey - Reynosa (Libre)	95.40	1	0	7169	2.5	90.2	1.3	2.4	1.1	1.3	0.6	0.5	0.1	92.7	1.3	6.0	0.081	0.567	26.040320	-98.398161

37 CARR: Libramiento de Reynosa Sur II

CLAVE:

RUTA: MEX-040D

AÑO: 2022

LUGAR	ESTACION				CLASIFICACION VEHICULAR EN PORCIENTO										COORDENADAS					
	KM	TE	SC	TDPA	M	A	B	C2	C3	T3S2	T3S3	T3S2R4	OTROS	A	B	C	K'	D	LATITUD	LONGITUD
T. C. Matamoros - Reynosa	0.00	3	1	1389	2.8	62.6	3.9	3.9	3.5	13.0	3.5	5.8	1.0	65.4	3.9	30.7	0.153	0.546	26.003846	-98.169627
T. C. Matamoros - Reynosa	0.00	3	2	1154	2.9	56.4	4.5	4.4	4.1	15.9	3.9	6.9	1.0	59.3	4.5	36.2	0.113	0.546	26.003590	-98.169474
T. C. Las Urracas - T. C. (Matamoros - Reynosa)	13.70	1	0	4458	2.5	44.4	3.8	5.7	3.8	26.6	3.2	9.0	1.0	46.9	3.8	49.3	0.083	0.513	25.942212	-98.235513
T. C. Las Urracas - T. C. (Matamoros - Reynosa)	13.70	3	0	3174	2.8	42.8	4.8	5.4	3.8	25.3	6.6	7.6	0.9	45.6	4.8	49.6	0.087	0.534	25.928480	-98.300463
T. C. Monterrey - Reynosa	35.80	1	0	2533	4.1	39.3	5.1	4.9	3.3	28.6	6.0	8.3	0.4	43.4	5.1	51.5	0.079	0.530	26.007298	-98.451818

38 CARR: Libramiento Poniente de Tampico (Cuota)

CLAVE: 28051

RUTA: MEX-070D

AÑO: 2022

LUGAR	ESTACION				CLASIFICACION VEHICULAR EN PORCIENTO										COORDENADAS					
	KM	TE	SC	TDPA	M	A	B	C2	C3	T3S2	T3S3	T3S2R4	OTROS	A	B	C	K'	D	LATITUD	LONGITUD
T. C. Tampico - Cd. Mante	0.00	3	0	21661	6.0	74.0	2.1	3.3	2.6	5.3	1.9	3.7	1.1	80.0	2.1	17.9	0.074	0.528	22.335397	-97.882248
Plaza de Cobro Tampico	5.10	2	0	7232	1.5	52.4	0.8	6.9	5.5	13.8	5.4	12.0	1.7	53.9	0.8	45.3	0.074	0.500	22.275330	-97.893426
T. C. Cd. Valles - Tampico	14.20	1	0	10545	9.5	60.2	4.0	4.7	2.3	8.5	3.2	6.6	1.0	69.7	4.0	26.3	0.083	0.520	22.231639	-97.891187

39 CARR: Matamoros - Reynosa (Cuota)

CLAVE: 28079

RUTA: MEX-002D

AÑO: 2022

LUGAR	ESTACION				CLASIFICACION VEHICULAR EN PORCIENTO										COORDENADAS					
	KM	TE	SC	TDPA	M	A	B	C2	C3	T3S2	T3S3	T3S2R4	OTROS	A	B	C	K'	D	LATITUD	LONGITUD
T. C. Matamoros - Reynosa	26.50	3	1	2660	2.6	72.3	3.5	5.5	3.6	8.0	1.5	2.2	0.8	74.9	3.5	21.6	0.092	0.537	25.998113	-97.755547
T. C. Matamoros - Reynosa	26.50	3	2	3090	2.9	70.3	3.4	5.8	3.9	8.8	1.7	2.3	0.9	73.2	3.4	23.4	0.093	0.537	25.997309	-97.754315
Plaza de Cobro Nuevo Progreso	29.39	2	1	2294	0.3	68.3	2.8	4.1	4.4	13.8	1.8	2.6	1.9	68.6	2.8	28.6	0.101	0.500	26.036283	-97.954508
Plaza de Cobro Nuevo Progreso	29.39	2	2	2294	0.3	68.3	2.8	4.1	4.4	13.8	1.8	2.6	1.9	68.6	2.8	28.6	0.101	0.500	26.036283	-97.954508
P. C. Nuevo Progreso	49.58	3	1	3154	2.6	73.3	3.3	5.1	3.6	7.7	1.4	2.2	0.8	75.9	3.3	20.8	0.076	0.519	26.035487	-97.963476
P. C. Nuevo Progreso	49.58	3	2	3404	2.9	69.6	3.6	6.1	3.8	8.9	1.7	2.4	1.0	72.5	3.6	23.9	0.074	0.519	26.035215	-97.963252
T. Der. Puente Internacional Río Bravo Donna	62.98	3	1	4713	2.1	78.6	3.5	4.1	3.0	5.1	1.0	2.0	0.6	80.7	3.5	15.8	0.104	0.510	26.013774	-98.097681
T. Der. Puente Internacional Río Bravo Donna	62.98	3	2	4529	1.9	76.9	4.0	5.4	2.9	5.1	1.0	2.1	0.7	78.8	4.0	17.2	0.095	0.510	26.013502	-98.097474
T. C. Matamoros - Reynosa	71.00	1	1	4849	1.9	76.8	3.5	5.1	3.2	5.4	1.2	2.2	0.7	78.7	3.5	17.8	0.091	0.514	26.008104	-98.159096
T. C. Matamoros - Reynosa	71.00	1	2	5139	1.7	77.6	3.5	4.9	3.2	5.4	1.1	2.0	0.6	79.3	3.5	17.2	0.087	0.514	26.007875	-98.158922

TAMAULIPAS

40 CARR: Aldama - Barra El Tordo

CLAVE: 28620

RUTA: TAM

AÑO: 2022

LUGAR	ESTACION				CLASIFICACION VEHICULAR EN PORCIENTO														COORDENADAS	
	KM	TE	SC	TDPA	M	A	B	C2	C3	T3S2	T3S3	T3S2R4	OTROS	A	B	C	K'	D	LATITUD	LONGITUD
Aldama	0.00	3	0	2379	8.9	81.6	0.8	1.6	3.2	1.6	0.4	1.6	0.3	90.5	0.8	8.7	0.076	0.520	22.916452	-98.065770
Barra El Tordo	20.00	0	0																	

41 CARR: Barretal - Nueva Villa de Padilla

CLAVE: 28001

RUTA: TAM-001

AÑO: 2022

LUGAR	ESTACION				CLASIFICACION VEHICULAR EN PORCIENTO														COORDENADAS	
	KM	TE	SC	TDPA	M	A	B	C2	C3	T3S2	T3S3	T3S2R4	OTROS	A	B	C	K'	D	LATITUD	LONGITUD
Barretal	0.00	3	0	3721	2.7	81.9	1.1	7.9	1.7	2.7	1.5	0.2	0.3	84.6	1.1	14.3	0.088	0.503	24.083177	-99.120923
Nueva Villa de Padilla	24.50	1	0	1853	8.6	79.0	0.8	8.0	1.3	1.9	0.2	0.1	0.1	87.6	0.8	11.6	0.094	0.505	24.053149	-98.914536

42 CARR: China - Méndez

CLAVE: 00191

RUTA: NL-TAM

AÑO: 2022

LUGAR	ESTACION				CLASIFICACION VEHICULAR EN PORCIENTO														COORDENADAS	
	KM	TE	SC	TDPA	M	A	B	C2	C3	T3S2	T3S3	T3S2R4	OTROS	A	B	C	K'	D	LATITUD	LONGITUD
China	0.00	3	0	1670	3.0	70.8	1.7	18.4	1.7	2.2	1.2	1.0	0.0	73.8	1.7	24.5	0.089	0.522	25.697385	-99.221127
Lim. Edos. Term. N. L. Ppia. Tamps.	75.00	0	0																	
Méndez	100.00	0	0																	

43 CARR: Ébano - Estación Manuel

CLAVE: 24624

RUTA: SLP-TAM

AÑO: 2022

LUGAR	ESTACION				CLASIFICACION VEHICULAR EN PORCIENTO														COORDENADAS	
	KM	TE	SC	TDPA	M	A	B	C2	C3	T3S2	T3S3	T3S2R4	OTROS	A	B	C	K'	D	LATITUD	LONGITUD
Ébano	0.00	3	0	2829	18.2	66.2	0.4	9.7	1.4	2.1	0.3	1.4	0.3	84.4	0.4	15.2	0.086	0.503	22.233381	-98.366188
Lím. de Edos. Term. S. L. P. Ppia. Ver.	2.71	0	0																	
Lím. de Edos. Term. Ver. Ppia. S. L. P.	3.95	0	0																	
Lím. de Edos. Term. S. L. P. Ppia. Ver.	5.00	0	0																	
Lím. de Edos. Term. Ver. Ppia. Tamps.	25.00	0	0																	
Estación Manuel	65.60	0	0																	

44 CARR: El Limón - Ocampo

CLAVE: 28019

RUTA: TAM-019

AÑO: 2022

LUGAR	ESTACION				CLASIFICACION VEHICULAR EN PORCIENTO														COORDENADAS	
	KM	TE	SC	TDPA	M	A	B	C2	C3	T3S2	T3S3	T3S2R4	OTROS	A	B	C	K'	D	LATITUD	LONGITUD
T. C. Cd. Valles - Cd. Victoria	0.00	3	0	2375	14.6	69.5	1.9	7.2	3.0	1.5	0.2	1.9	0.2	84.1	1.9	14.0	0.087	0.507	22.837048	-99.024849
Ocampo	43.00	1	0	1956	14.6	73.6	1.1	4.0	1.7	1.6	0.7	2.4	0.3	88.2	1.1	10.7	0.090	0.503	22.830499	-99.321063

TAMAULIPAS

45 CARR: Ent. Huisachito - Nuevo Laredo

CLAVE: 00074

RUTA: NL-001-TAM

AÑO: 2022

LUGAR	ESTACION				CLASIFICACION VEHICULAR EN PORCIENTO														COORDENADAS	
	KM	TE	SC	TDPA	M	A	B	C2	C3	T3S2	T3S3	T3S2R4	OTROS	A	B	C	K'	D	LATITUD	LONGITUD
T. C. Monterrey - Colombia	0.00	3	0	1773	0.2	75.2	4.1	9.0	3.8	3.8	3.0	0.6	0.3	75.4	4.1	20.5	0.081	0.507	27.354518	-99.949175
Lim. Edos. Term. N. L. Ppia. Tamps.	19.00	0	0																	
X. C. Libramiento de Nuevo Laredo	47.00	1	0	2439	0.3	74.8	1.8	13.1	2.9	4.1	1.9	1.0	0.1	75.1	1.8	23.1	0.077	0.501	27.473850	-99.650217
Nuevo Laredo	51.00	1	0	15185	0.4	34.9	0.4	18.8	5.6	38.0	1.2	0.4	0.3	35.3	0.4	64.3	0.090	0.527	27.486117	-99.584587

46 CARR: Ent. Las Blancas - Río Bravo

CLAVE: 28003

RUTA: TAM-003

AÑO: 2022

LUGAR	ESTACION				CLASIFICACION VEHICULAR EN PORCIENTO														COORDENADAS	
	KM	TE	SC	TDPA	M	A	B	C2	C3	T3S2	T3S3	T3S2R4	OTROS	A	B	C	K'	D	LATITUD	LONGITUD
T. C. Cd. Victoria - Matamoros	0.00	3	0	3585	0.6	86.0	0.4	10.2	0.3	2.0	0.2	0.1	0.2	86.6	0.4	13.0	0.083	0.512	25.665956	-97.604367
Valle Hermoso	21.00	1	1	2769	1.2	81.6	1.2	13.2	0.9	1.1	0.6	0.1	0.1	82.8	1.2	16.0	0.065	0.501	25.666721	-97.769374
Valle Hermoso	21.00	1	2	2760	0.9	82.2	0.9	13.1	0.9	1.1	0.7	0.1	0.1	83.1	0.9	16.0	0.072	0.501	25.666633	-97.769382
Río Bravo	91.00	1	0	9062	1.0	76.8	1.7	10.4	1.0	6.1	1.3	0.7	1.0	77.8	1.7	20.5	0.078	0.507	25.976416	-98.118749

47 CARR: La Joya - Méndez

CLAVE: 28623

RUTA: TAM

AÑO: 2022

LUGAR	ESTACION				CLASIFICACION VEHICULAR EN PORCIENTO														COORDENADAS	
	KM	TE	SC	TDPA	M	A	B	C2	C3	T3S2	T3S3	T3S2R4	OTROS	A	B	C	K'	D	LATITUD	LONGITUD
T. C. Cd. Victoria - Matamoros	0.00	3	0	832	1.4	88.1	1.6	4.4	1.5	1.3	0.6	0.4	0.7	89.5	1.6	8.9	0.076	0.511	24.932300	-98.118846
Méndez	66.00	0	0																	

48 CARR: Libramiento de Cd. Victoria

CLAVE: 28282

RUTA: TAM

AÑO: 2022

LUGAR	ESTACION				CLASIFICACION VEHICULAR EN PORCIENTO														COORDENADAS	
	KM	TE	SC	TDPA	M	A	B	C2	C3	T3S2	T3S3	T3S2R4	OTROS	A	B	C	K'	D	LATITUD	LONGITUD
X. C. Ent. Tula - Cd. Victoria	0.00	3	1	6500	11.0	68.9	0.4	1.8	3.5	4.7	0.5	8.3	0.9	79.9	0.4	19.7	0.080	0.501	23.713509	-99.176846
X. C. Ent. Tula - Cd. Victoria	0.00	3	2	6482	11.0	68.8	0.5	1.6	3.6	4.6	0.6	8.5	0.8	79.8	0.5	19.7	0.086	0.501	23.713438	-99.177070
X. C. Cd. Victoria - Matamoros	13.40	1	1	12506	4.7	91.6	0.8	1.1	0.7	0.3	0.3	0.2	0.3	96.3	0.8	2.9	0.096	0.520	23.773255	-99.134367
X. C. Cd. Victoria - Matamoros	13.40	1	2	13523	4.8	91.8	0.7	1.0	0.6	0.3	0.2	0.2	0.4	96.6	0.7	2.7	0.099	0.520	23.773503	-99.133686
X. C. Cd. Victoria - Matamoros	13.40	3	1	11046	5.5	87.0	1.3	3.6	0.9	0.6	0.2	0.5	0.4	92.5	1.3	6.2	0.122	0.506	23.762908	-99.111224
X. C. Cd. Victoria - Matamoros	13.40	3	2	10797	5.6	86.7	1.2	3.6	1.1	0.6	0.3	0.5	0.4	92.3	1.2	6.5	0.107	0.506	23.762901	-99.110595
X. C. Cd. Victoria - Soto La Marina	19.70	1	1	5827	7.6	85.0	0.7	3.1	1.7	0.7	0.6	0.5	0.1	92.6	0.7	6.7	0.097	0.509	23.729761	-99.092754
X. C. Cd. Victoria - Soto La Marina	19.70	1	2	5629	7.5	85.1	0.6	3.1	1.7	0.7	0.6	0.6	0.1	92.6	0.6	6.8	0.095	0.509	23.729748	-99.092656
T. C. Cd. Valles - Cd. Victoria	25.90	1	1	1376	3.2	77.2	2.4	3.4	4.2	3.4	3.0	2.6	0.6	80.4	2.4	17.2	0.074	0.510	23.678213	-99.098482
T. C. Cd. Valles - Cd. Victoria	25.90	1	2	1323	3.0	77.5	2.4	3.2	4.3	3.7	2.6	2.6	0.7	80.5	2.4	17.1	0.107	0.510	23.678184	-99.098169

TAMAULIPAS

49 CARR : Libramiento de Mier

CLAVE: 28282

RUTA: TAMPS

AÑO: 2022

LUGAR	ESTACION				CLASIFICACION VEHICULAR EN PORCIENTO													COORDENADAS		
	KM	TE	SC	TDPA	M	A	B	C2	C3	T3S2	T3S3	T3S2R4	OTROS	A	B	C	K'	D	LATITUD	LONGITUD
T. C. Monterrey - Mier	0.00	3	0	690	2.5	65.5	2.6	11.8	4.9	5.5	2.0	4.9	0.3	68.0	2.6	29.4	0.125	0.518	26.428044	-99.163352
T. C. Reynosa - Nuevo Laredo	2.70	0	0																	

50 CARR : Libramiento de Nuevo Laredo

CLAVE: 28030

RUTA: TAM

AÑO: 2022

LUGAR	ESTACION				CLASIFICACION VEHICULAR EN PORCIENTO													COORDENADAS		
	KM	TE	SC	TDPA	M	A	B	C2	C3	T3S2	T3S3	T3S2R4	OTROS	A	B	C	K'	D	LATITUD	LONGITUD
T. C. Monterrey - Nuevo Laredo	0.00	3	1	19249	3.7	72.6	2.0	3.1	7.1	9.0	0.9	1.1	0.5	76.3	2.0	21.7	0.080	0.506	27.426151	-99.536204
T. C. Monterrey - Nuevo Laredo	0.00	3	2	19752	3.7	72.4	2.0	3.2	7.1	9.0	1.0	1.1	0.5	76.1	2.0	21.9	0.076	0.506	27.425997	-99.536355
T. C. Piedras Negras - Nuevo Laredo	18.00	1	1	3850	4.3	39.2	2.1	6.2	12.1	33.4	1.1	1.1	0.5	43.5	2.1	54.4	0.111	0.504	27.526762	-99.581814
T. C. Piedras Negras - Nuevo Laredo	18.00	1	2	3792	4.1	39.6	2.1	6.2	12.1	33.4	1.0	1.0	0.5	43.7	2.1	54.2	0.096	0.504	27.526753	-99.581875

51 CARR : Libramiento de Nuevo Laredo II

CLAVE: 28626

RUTA: TAM

AÑO: 2022

LUGAR	ESTACION				CLASIFICACION VEHICULAR EN PORCIENTO													COORDENADAS		
	KM	TE	SC	TDPA	M	A	B	C2	C3	T3S2	T3S3	T3S2R4	OTROS	A	B	C	K'	D	LATITUD	LONGITUD
T. C. Monterrey - Nuevo Laredo	0.00	3	0	7736	8.9	15.1	4.9	6.1	5.8	53.4	1.0	3.9	0.9	24.0	4.9	71.1	0.072	0.503	27.309104	-99.608842
T. C. Piedras Negras - Nuevo Laredo	32.20	1	1	5506	1.8	33.4	0.6	6.3	11.2	40.4	3.5	1.9	0.9	35.2	0.6	64.2	0.080	0.513	27.563096	-99.595966
T. C. Piedras Negras - Nuevo Laredo	32.20	1	2	5806	1.8	28.4	0.6	6.4	11.2	45.4	3.4	1.9	0.9	30.2	0.6	69.2	0.093	0.513	27.562900	-99.596746

52 CARR : Libramiento de Rio Bravo

CLAVE: 28002

RUTA: TAM

AÑO: 2022

LUGAR	ESTACION				CLASIFICACION VEHICULAR EN PORCIENTO													COORDENADAS		
	KM	TE	SC	TDPA	M	A	B	C2	C3	T3S2	T3S3	T3S2R4	OTROS	A	B	C	K'	D	LATITUD	LONGITUD
T. C. Matamoros - Reynosa (1° Acceso)	0.00	3	1	2961	2.1	82.6	1.7	3.3	2.7	4.3	1.3	1.6	0.4	84.7	1.7	13.6	0.089	0.504	25.971636	-98.052588
T. C. Matamoros - Reynosa (1° Acceso)	0.00	3	2	3004	2.4	80.7	2.0	3.5	3.1	4.6	1.5	1.8	0.4	83.1	2.0	14.9	0.093	0.504	25.971532	-98.052587
T. C. Matamoros - Reynosa (2° Acceso)	13.10	1	1	9235	1.9	86.1	1.9	2.6	2.6	3.1	0.5	1.0	0.3	88.0	1.9	10.1	0.100	0.556	25.989255	-98.125790
T. C. Matamoros - Reynosa (2° Acceso)	13.10	1	2	11549	1.5	86.7	2.2	2.5	2.2	2.6	0.5	1.4	0.4	88.2	2.2	9.6	0.088	0.556	25.989196	-98.125863

53 CARR : Los Guerra - Los Herreras

CLAVE: 19031

RUTA: TAM-NL

AÑO: 2022

LUGAR	ESTACION				CLASIFICACION VEHICULAR EN PORCIENTO													COORDENADAS		
	KM	TE	SC	TDPA	M	A	B	C2	C3	T3S2	T3S3	T3S2R4	OTROS	A	B	C	K'	D	LATITUD	LONGITUD
Los Guerra	0.00	0	0																	
Lim. Edos. Term. Tamps. Ppia. N. L.	46.00	0	0																	

TAMAULIPAS

53 CARR : Los Guerra - Los Herreras

CLAVE: 19031

RUTA: TAM-NL

AÑO: 2022

LUGAR	ESTACION				CLASIFICACION VEHICULAR EN PORCIENTO													COORDENADAS		
	KM	TE	SC	TDPA	M	A	B	C2	C3	T3S2	T3S3	T3S2R4	OTROS	A	B	C	K'	D	LATITUD	LONGITUD
Los Herreras	73.00	1	0	708	1.2	81.0	1.0	14.0	1.0	1.1	0.7	0.0	0.0	82.2	1.0	16.8	0.107	0.518	25.902622	-99.393499

54 CARR : Peña Blanca - Cd. Camargo

CLAVE: 00102

RUTA: NL-TAM

AÑO: 2022

LUGAR	ESTACION				CLASIFICACION VEHICULAR EN PORCIENTO													COORDENADAS		
	KM	TE	SC	TDPA	M	A	B	C2	C3	T3S2	T3S3	T3S2R4	OTROS	A	B	C	K'	D	LATITUD	LONGITUD
T. C. Monterrey - Reynosa	0.00	3	0	406	0.8	77.9	1.1	12.8	1.3	2.3	3.3	0.3	0.2	78.7	1.1	20.2	0.103	0.506	25.836304	-99.008481
Lim. Edos. Term. N. L. Ppia. Tamps.	30.00	0	0																	
Cd. Camargo	65.00	1	0	2822	3.3	83.3	0.8	1.9	3.4	4.7	1.6	0.8	0.2	86.6	0.8	12.6	0.076	0.502	26.304258	-98.834754

55 CARR : Potrero Nuevo - Rancho El Mezquital

CLAVE: 28615

RUTA: TAM

AÑO: 2022

LUGAR	ESTACION				CLASIFICACION VEHICULAR EN PORCIENTO													COORDENADAS		
	KM	TE	SC	TDPA	M	A	B	C2	C3	T3S2	T3S3	T3S2R4	OTROS	A	B	C	K'	D	LATITUD	LONGITUD
T. C. Cd. Victoria - Matamoros	0.00	3	0	1542	0.3	75.1	0.8	10.3	2.0	2.3	2.5	6.6	0.1	75.4	0.8	23.8	0.097	0.509	25.713003	-97.570278
Puerto El Mezquital	66.00	0	0																	

56 CARR : Ramal a Gómez Farías

CLAVE: 28020

RUTA: TAM-020

AÑO: 2022

LUGAR	ESTACION				CLASIFICACION VEHICULAR EN PORCIENTO													COORDENADAS		
	KM	TE	SC	TDPA	M	A	B	C2	C3	T3S2	T3S3	T3S2R4	OTROS	A	B	C	K'	D	LATITUD	LONGITUD
T. C. Cd. Valles - Cd. Victoria	0.00	3	0	1569	21.6	75.7	0.4	1.1	0.7	0.3	0.1	0.1	0.0	97.3	0.4	2.3	0.119	0.503	23.023672	-99.094588
Gómez Farías	11.00	1	0	1049	22.7	69.4	0.3	6.4	0.2	0.8	0.2	0.0	0.0	92.1	0.3	7.6	0.132	0.500	23.025427	-99.143299

57 CARR : Ramal a Xicoténcatl

CLAVE: 28619

RUTA: TAM

AÑO: 2022

LUGAR	ESTACION				CLASIFICACION VEHICULAR EN PORCIENTO													COORDENADAS		
	KM	TE	SC	TDPA	M	A	B	C2	C3	T3S2	T3S3	T3S2R4	OTROS	A	B	C	K'	D	LATITUD	LONGITUD
T. C. Cd. Valles - Cd. Victoria	0.00	3	0	1695	14.1	79.8	0.4	2.2	3.0	0.3	0.0	0.2	0.0	93.9	0.4	5.7	0.083	0.509	22.943824	-99.010221
Xicoténcatl	13.00	1	0	4383	11.1	81.0	1.1	1.9	1.1	1.3	0.4	1.9	0.2	92.1	1.1	6.8	0.078	0.540	22.985598	-98.948783

TAMAULIPAS

58 CARR: San Fernando - Carboneras

CLAVE: 28618

RUTA: TAM

AÑO: 2022

LUGAR	ESTACION				CLASIFICACION VEHICULAR EN PORCIENTO														COORDENADAS	
	KM	TE	SC	TDPA	M	A	B	C2	C3	T3S2	T3S3	T3S2R4	OTROS	A	B	C	K'	D	LATITUD	LONGITUD
San Fernando	0.00	3	0	3011	3.5	91.1	0.3	1.2	1.2	1.3	1.3	0.1	0.0	94.6	0.3	5.1	0.080	0.513	24.834470	-98.113223
Carboneras	57.00	0	0																	

59 CARR: Soto La Marina - La Pesca

CLAVE: 28049

RUTA: TAM-070

AÑO: 2022

LUGAR	ESTACION				CLASIFICACION VEHICULAR EN PORCIENTO														COORDENADAS	
	KM	TE	SC	TDPA	M	A	B	C2	C3	T3S2	T3S3	T3S2R4	OTROS	A	B	C	K'	D	LATITUD	LONGITUD
T. C. Soto La Marina - La Coma	0.00	3	0	2197	0.6	95.4	0.6	2.3	0.5	0.5	0.1	0.0	0.0	96.0	0.6	3.4	0.143	0.512	23.781783	-98.182761
La Pesca	50.00	0	0																	

60 CARR: T. C. (Valle Hermoso - Empalme) - Matamoros

CLAVE: 28005

RUTA: TAM-005

AÑO: 2022

LUGAR	ESTACION				CLASIFICACION VEHICULAR EN PORCIENTO														COORDENADAS	
	KM	TE	SC	TDPA	M	A	B	C2	C3	T3S2	T3S3	T3S2R4	OTROS	A	B	C	K'	D	LATITUD	LONGITUD
T. C. Valle Hermoso - Empalme	0.00	3	0	4048	2.4	85.0	0.8	9.8	0.9	0.5	0.2	0.3	0.1	87.4	0.8	11.8	0.091	0.522	25.775073	-97.793203
Anáhuac	2.00	3	0	1572	0.9	88.2	0.4	9.0	0.9	0.2	0.1	0.2	0.1	89.1	0.4	10.5	0.107	0.505	25.775079	-97.765496
Matamoros	33.90	1	1	10636	4.9	87.6	1.2	2.9	0.9	0.8	0.4	1.0	0.3	92.5	1.2	6.3	0.082	0.503	25.864318	-97.576564
Matamoros	33.90	1	2	10747	5.0	86.7	1.4	3.1	1.0	0.9	0.4	1.1	0.4	91.7	1.4	6.9	0.090	0.503	25.864414	-97.576601

61 CARR: T. C. Libramiento Cd. Victoria - San Antonio

CLAVE:

RUTA: TAM-126

AÑO: 2022

LUGAR	ESTACION				CLASIFICACION VEHICULAR EN PORCIENTO														COORDENADAS	
	KM	TE	SC	TDPA	M	A	B	C2	C3	T3S2	T3S3	T3S2R4	OTROS	A	B	C	K'	D	LATITUD	LONGITUD
T. C. Libramiento Cd. Victoria	0.00	3	0	5801	3.1	52.7	4.2	3.8	2.2	18.1	3.6	11.3	1.0	55.8	4.2	40.0	0.067	0.510	23.657873	-99.116140
San Antonio	37.50	1	0	5309	3.4	61.4	3.7	3.1	1.9	14.4	2.4	8.7	1.0	64.8	3.7	31.5	0.069	0.507	23.586170	-99.320416

62 CARR: Valle Hermoso - Empalme

CLAVE: 28004

RUTA: TAM-004

AÑO: 2022

LUGAR	ESTACION				CLASIFICACION VEHICULAR EN PORCIENTO														COORDENADAS	
	KM	TE	SC	TDPA	M	A	B	C2	C3	T3S2	T3S3	T3S2R4	OTROS	A	B	C	K'	D	LATITUD	LONGITUD
Valle Hermoso	0.00	3	0	6604	2.1	89.0	1.7	3.6	1.0	1.3	0.4	0.7	0.2	91.1	1.7	7.2	0.083	0.509	25.694812	-97.815905
Empalme	28.38	1	0	3902	0.2	80.3	2.1	14.0	1.2	0.4	0.4	1.1	0.3	80.5	2.1	17.4	0.097	0.506	25.873606	-97.795684

TAMAULIPAS

63 CARR: Valle Hermoso - Las Yescas

CLAVE: 28614

RUTA: TAM

AÑO: 2022

LUGAR	ESTACION				CLASIFICACION VEHICULAR EN PORCIENTO													COORDENADAS		
	KM	TE	SC	TDPA	M	A	B	C2	C3	T3S2	T3S3	T3S2R4	OTROS	A	B	C	K'	D	LATITUD	LONGITUD
Valle Hermoso	0.00	3	0	5355	1.6	86.1	1.5	2.3	0.6	2.5	1.4	3.4	0.6	87.7	1.5	10.8	0.087	0.524	25.577375	-97.816017
T. C. Cd. Victoria - Matamoros	26.00	1	0	2107	1.4	86.0	1.9	2.2	0.6	3.0	0.9	3.4	0.6	87.4	1.9	10.7	0.099	0.533	25.466233	-97.816238

64 CARR: Santander Jiménez - Ent. El Ojito

CLAVE: 28579

RUTA: MEX-107-TAM

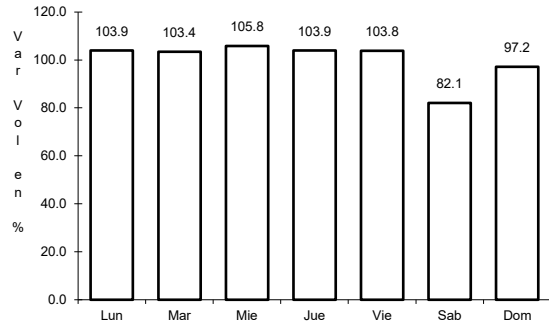
AÑO: 2022

LUGAR	ESTACION				CLASIFICACION VEHICULAR EN PORCIENTO													COORDENADAS		
	KM	TE	SC	TDPA	M	A	B	C2	C3	T3S2	T3S3	T3S2R4	OTROS	A	B	C	K'	D	LATITUD	LONGITUD
T. C. Cd. Victoria - Matamoros	0.00	3	0	1415	3.2	90.0	1.4	2.7	0.8	1.1	0.4	0.4	0.0	93.2	1.4	5.4	0.110	0.508	24.203641	-98.476563
Abasolo	20.00	1	0	2669	4.8	86.7	1.0	4.6	0.5	1.7	0.3	0.2	0.2	91.5	1.0	7.5	0.085	0.507	24.064905	-98.383184
T. C. Soto La Marina - La Coma	58.00	1	0	621	3.2	84.2	1.2	6.5	1.3	1.8	1.0	0.8	0.0	87.4	1.2	11.4	0.100	0.504	23.941751	-98.167151

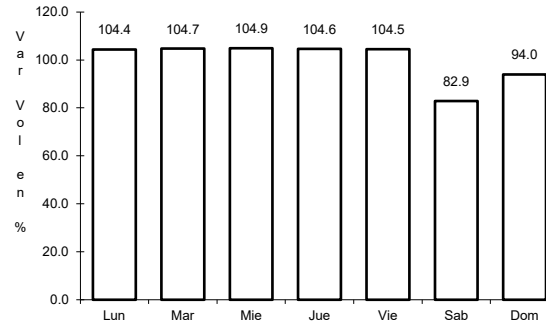
1 CARR: Acceso a Puente Internacional Reynosa - Pharr

CLAVE:

ruta: MEX-002



Km: 0.00 Tipo: 3 Sent: 1

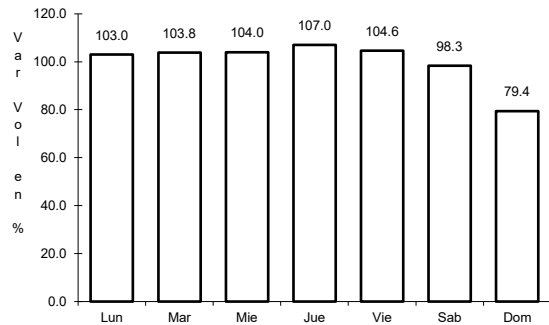


Km: 0.00 Tipo: 3 Sent: 2

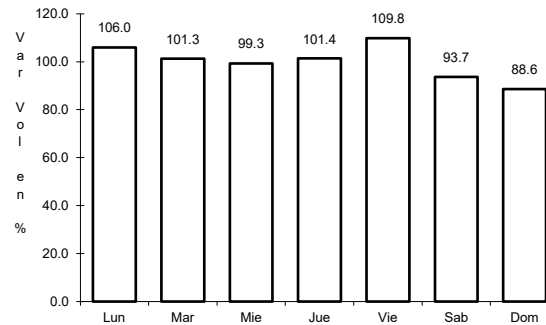
2 CARR: Altamira - T. C. (Petrocel -Puerto Industrial Altamira)

CLAVE:

ruta: MEX-080



Km: 0.00 Tipo: 3 Sent: 1

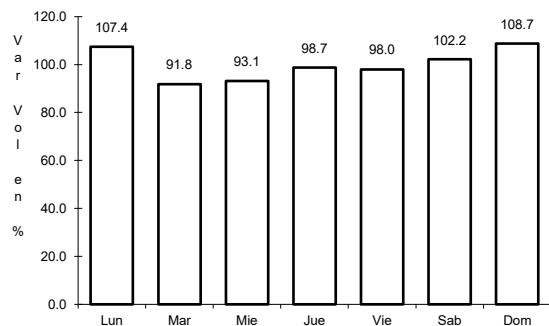


Km: 0.00 Tipo: 3 Sent: 2

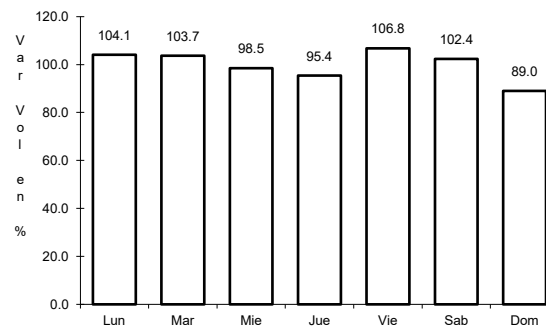
3 CARR: Antigua Morelos - Ent. El Huizache

CLAVE: 00136

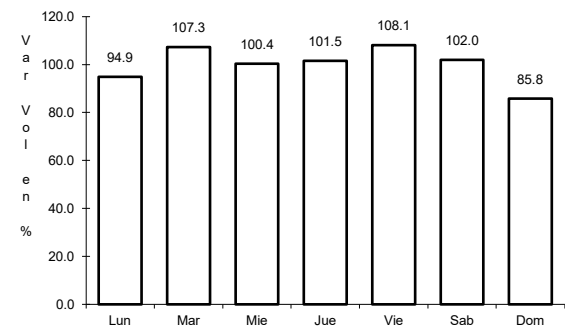
ruta: MEX-080



Km: 0.00 Tipo: 3 Sent: 0



Km: 86.00 Tipo: 3 Sent: 0

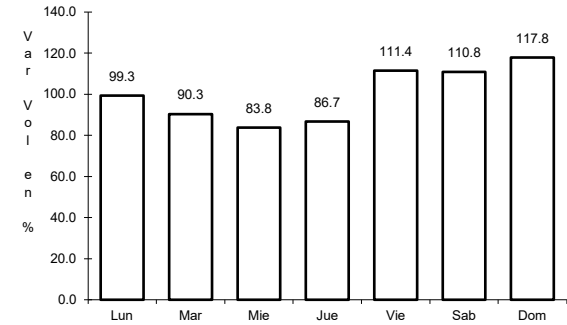
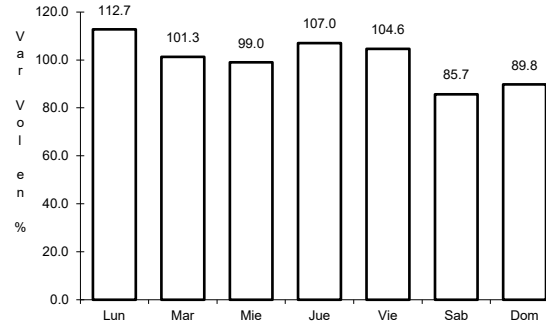
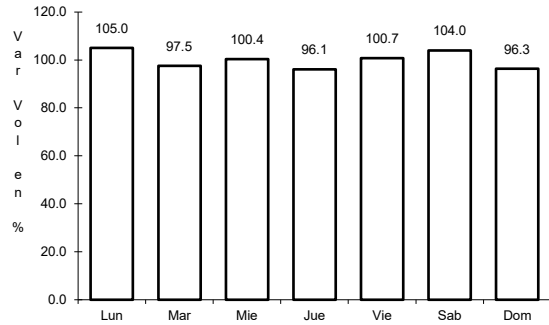


Km: 198.83 Tipo: 1 Sent: 0

4 CARR: Cd. Valles - Cd. Victoria

CLAVE: 00509

RUTA: MEX-085



Km: 0.00 Tipo: 3 Sent: 0

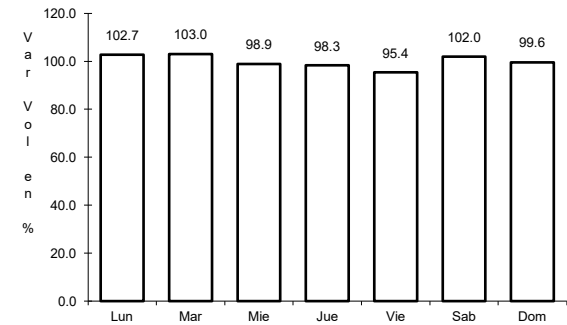
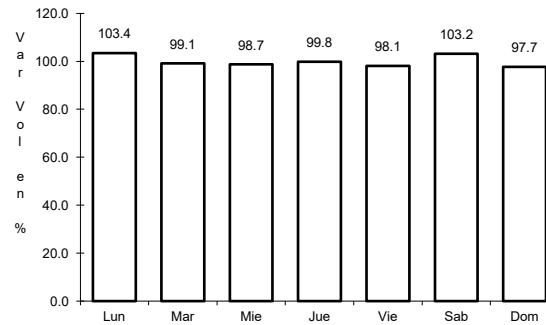
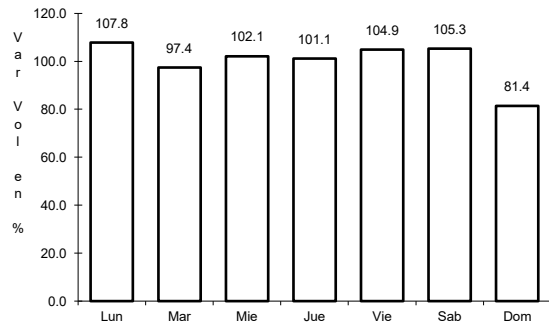
Km: 110.00 Tipo: 3 Sent: 0

Km: 232.00 Tipo: 1 Sent: 0

5 CARR: Cd. Valles - Tampico

CLAVE: 00138

RUTA: MEX-070



Km: 0.00 Tipo: 3 Sent: 0

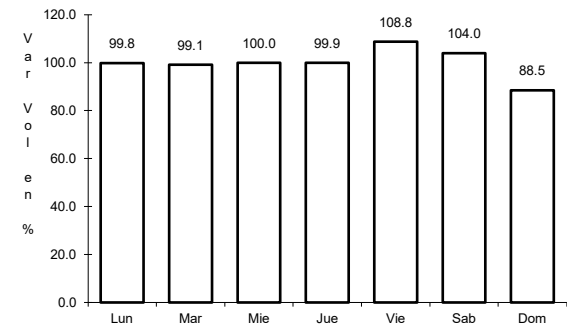
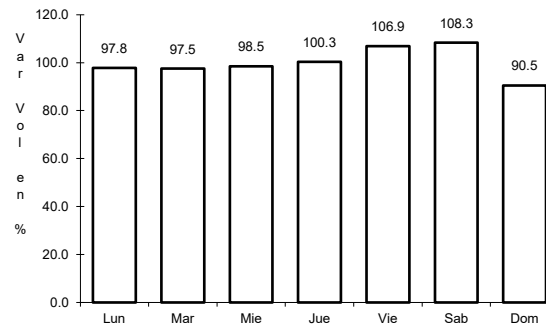
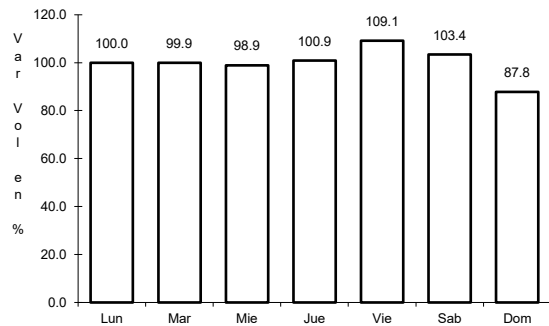
Km: 138.00 Tipo: 1 Sent: 1

Km: 138.00 Tipo: 1 Sent: 2

6 CARR: Cd. Victoria - Matamoros

CLAVE: 28139

RUTA: MEX-101-180



Km: 5.00 Tipo: 3 Sent: 1

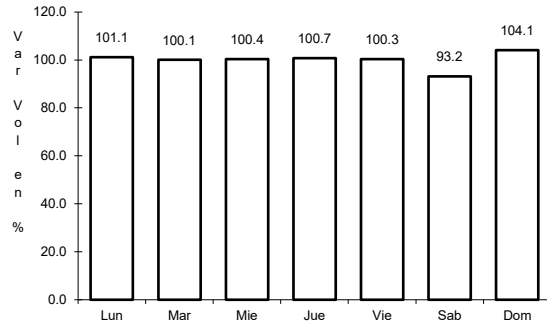
Km: 5.00 Tipo: 3 Sent: 2

Km: 175.00 Tipo: 3 Sent: 0

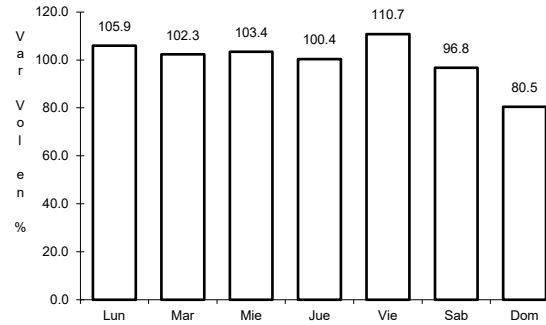
7 CARR: Cd. Victoria - Soto La Marina

CLAVE: 28009

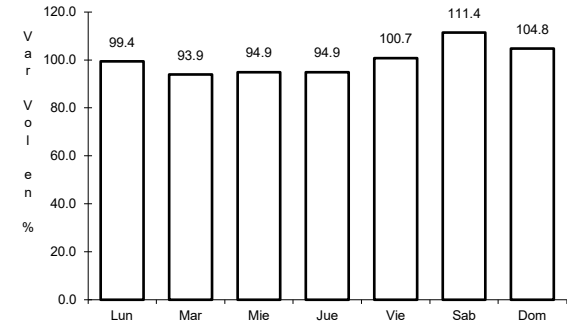
RUTA: MEX-070



Km: 0.00 Tipo: 3 Sent: 1



Km: 0.00 Tipo: 3 Sent: 2

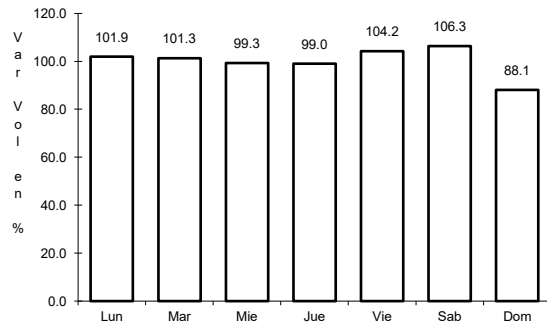


Km: 116.80 Tipo: 1 Sent: 0

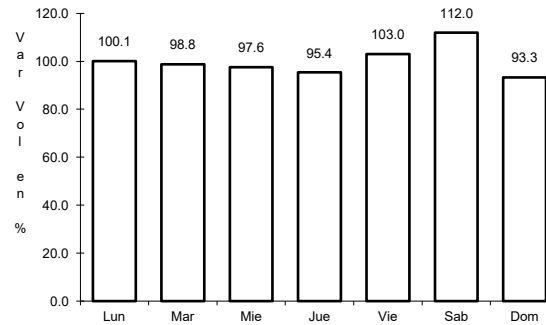
8 CARR: Ciudad Victoria - Monterrey

CLAVE: 00462

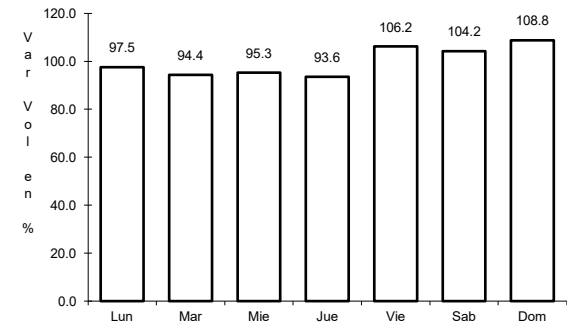
RUTA: MEX-085



Km: 0.00 Tipo: 3 Sent: 1



Km: 0.00 Tipo: 3 Sent: 2

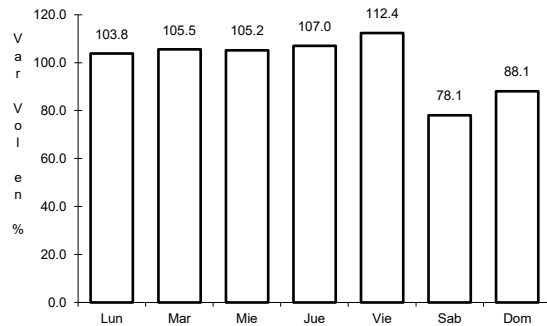


Km: 154.00 Tipo: 1 Sent: 0

9 CARR: Corredor Internacional Reynosa

CLAVE:

RUTA: MEX

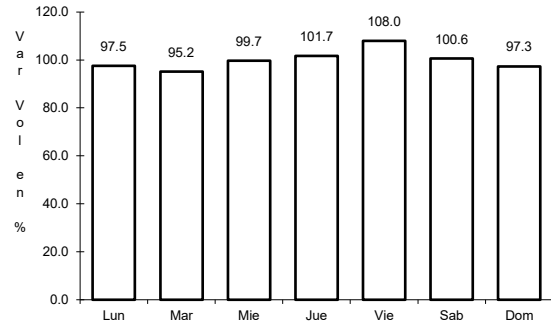


Km: 0.00 Tipo: 1 Sent: 0

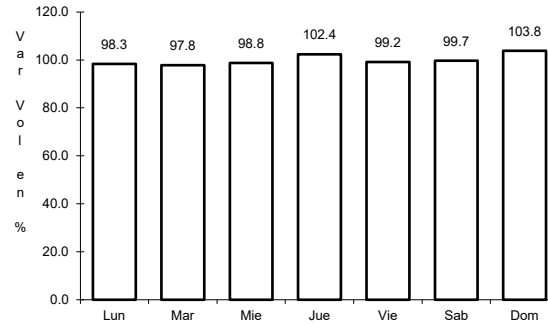
10 CARR: Ent. Tula - Cd. Victoria

CLAVE: 00179

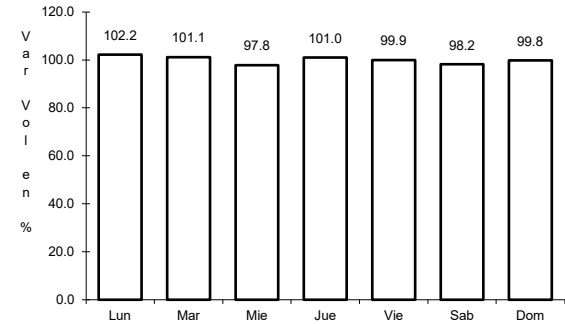
ruta: MEX-101



Km: 0.00 Tipo: 3 Sent: 0



Km: 180.00 Tipo: 1 Sent: 1

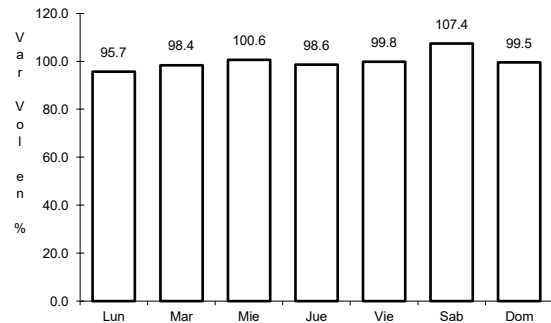


Km: 180.00 Tipo: 1 Sent: 2

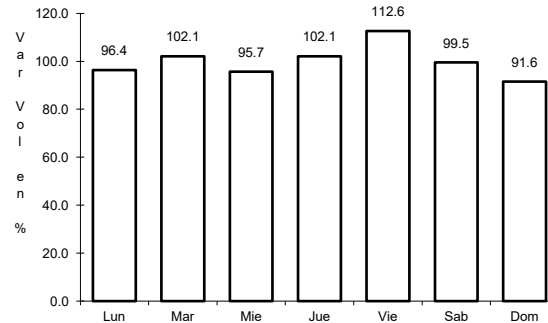
11 CARR: Estación Manuel - T. C. (Cd. Victoria - Soto La Marina)

CLAVE: 28294

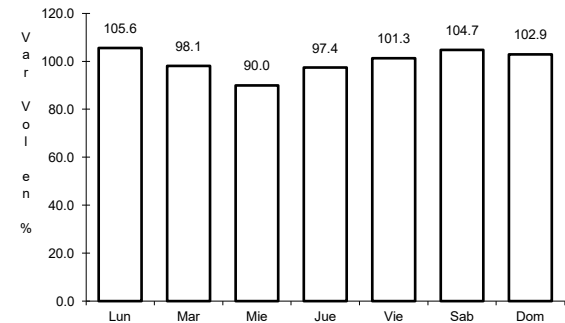
ruta: MEX-180



Km: 36.00 Tipo: 3 Sent: 0



Km: 69.00 Tipo: 3 Sent: 0

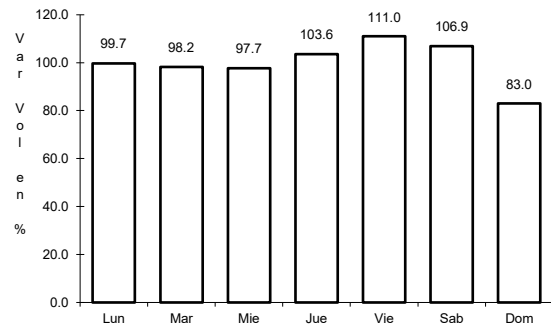


Km: 145.00 Tipo: 1 Sent: 0

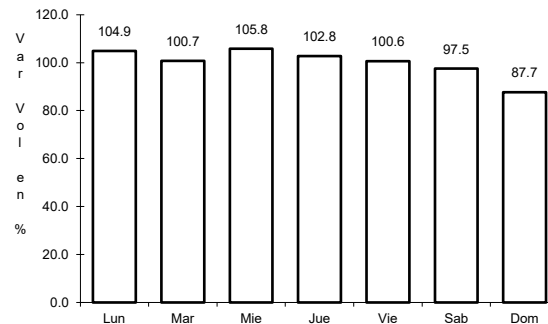
12 CARR: González - Llera de Canales

CLAVE: 28578

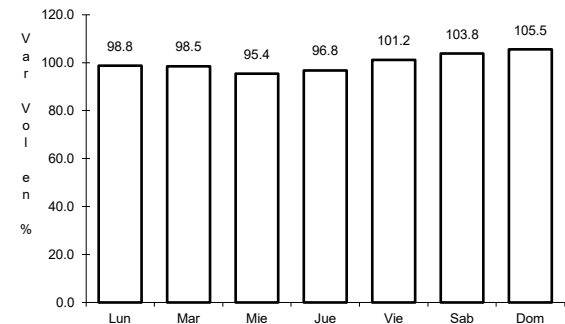
ruta: MEX-081



Km: 0.00 Tipo: 3 Sent: 0



Km: 58.50 Tipo: 1 Sent: 0

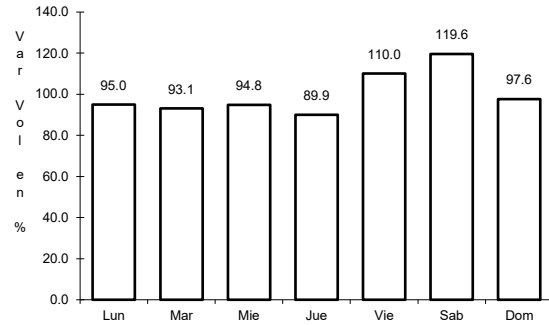


Km: 89.00 Tipo: 1 Sent: 0

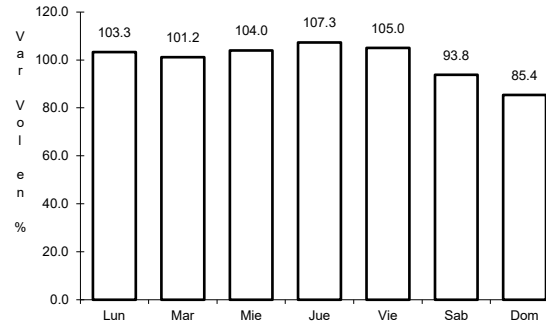
13 CARR: Ignacio Zaragoza - T. C. (Ciudad Victoria - Monterrey)

CLAVE: 28625

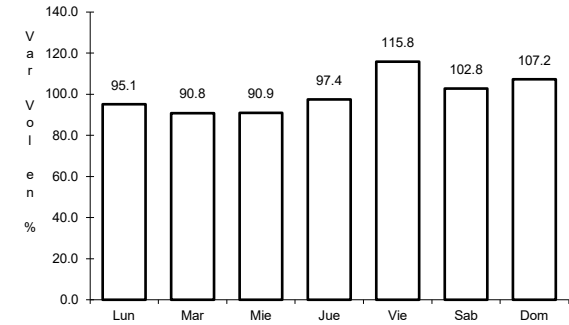
ruta: MEX-083



Km: 0.00 Tipo: 3 Sent: 0



Km: 63.45 Tipo: 3 Sent: 0

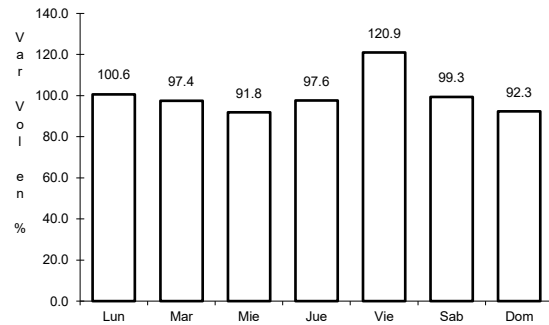


Km: 94.30 Tipo: 1 Sent: 0

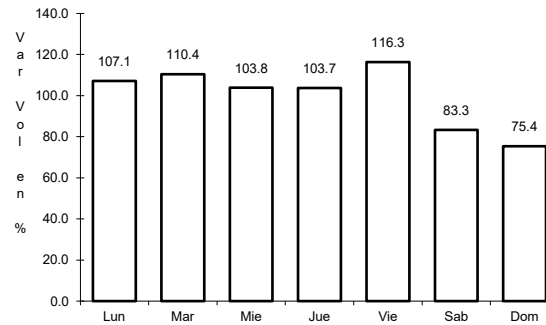
14 CARR: Las Urracas - T. C. (Matamoros - Reynosa)

CLAVE: 28029

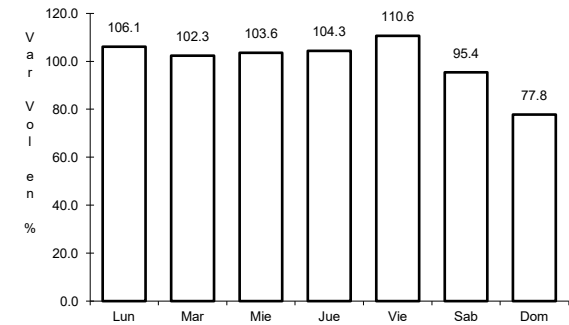
ruta: MEX-097



Km: 0.00 Tipo: 3 Sent: 0



Km: 113.25 Tipo: 1 Sent: 1

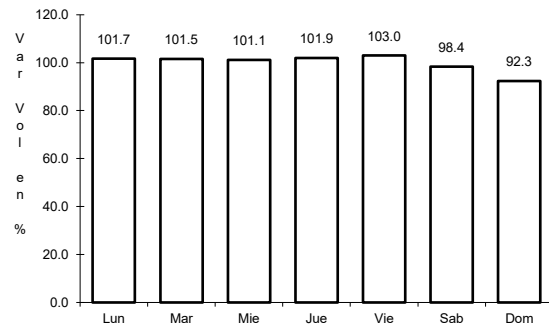


Km: 113.25 Tipo: 1 Sent: 2

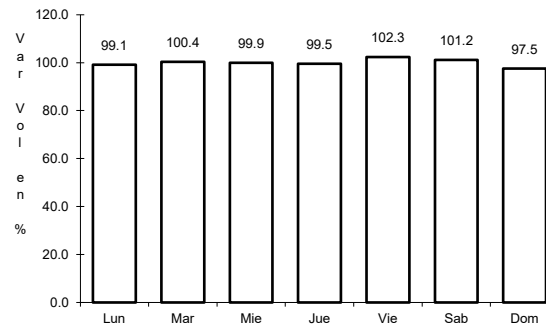
15 CARR: Libramiento de Reynosa

CLAVE: 28008

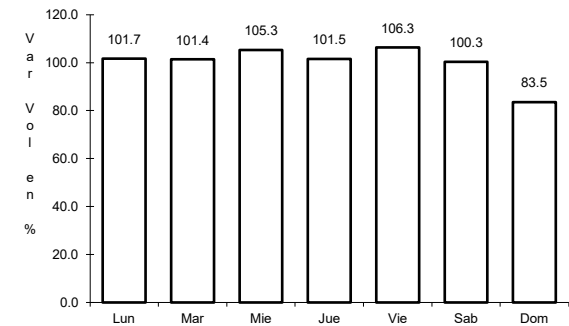
ruta: MEX-REY-010



Km: 0.00 Tipo: 3 Sent: 1



Km: 0.00 Tipo: 3 Sent: 2

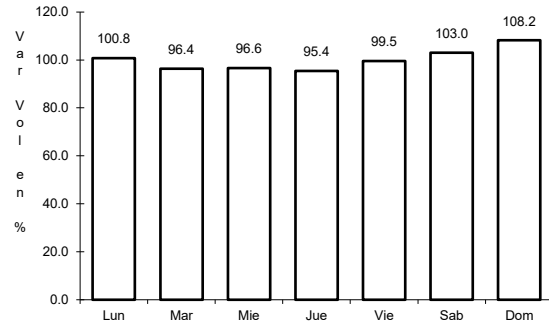


Km: 10.00 Tipo: 1 Sent: 1

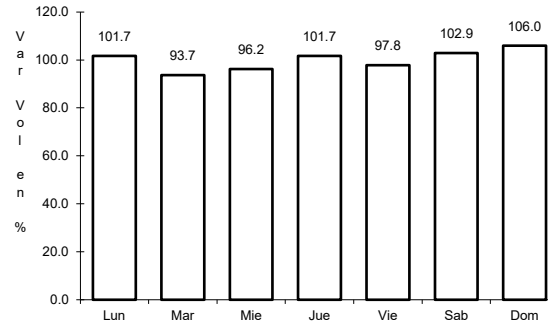
16 CARR: Libramiento de San Fernando

CLAVE:

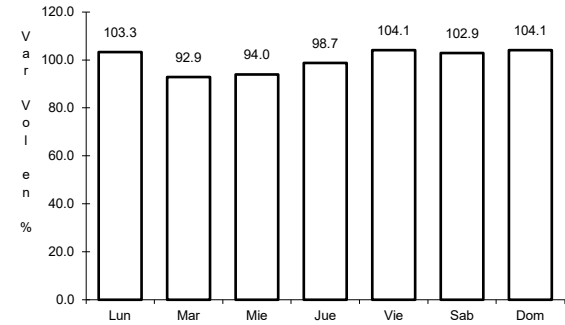
ruta: MEX-101-180



Km: 0.00 Tipo: 3 Sent: 0



Km: 14.39 Tipo: 1 Sent: 0

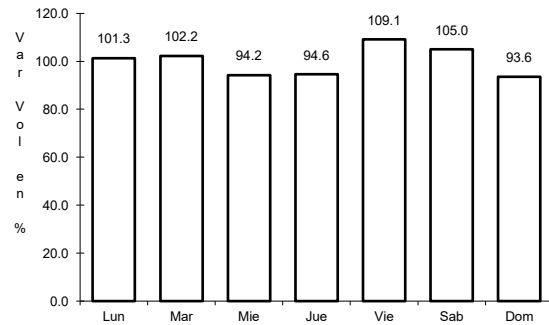


Km: 26.46 Tipo: 1 Sent: 0

17 CARR: Libramiento de San Germán

CLAVE:

ruta: MEX-101

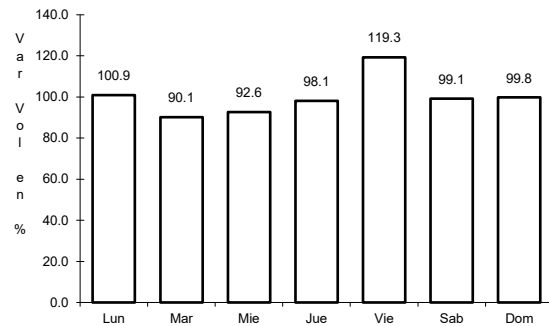


Km: 0.00 Tipo: 3 Sent: 0

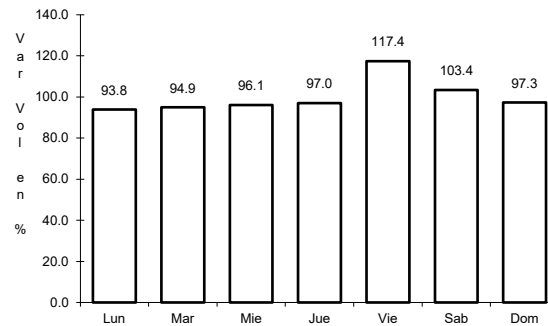
18 CARR: Libramiento de Santander Jiménez

CLAVE:

ruta: MEX-101



Km: 0.00 Tipo: 3 Sent: 0

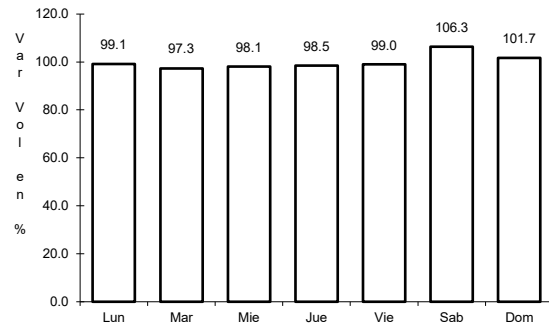


Km: 1.70 Tipo: 3 Sent: 0

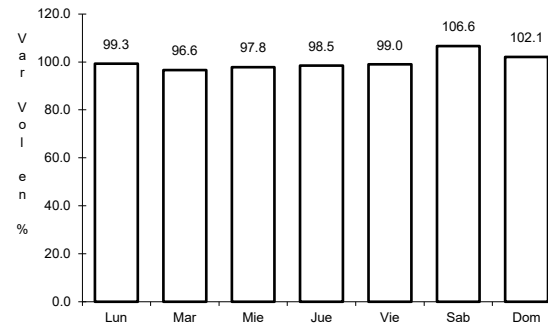
19 CARR: Libramiento Estación Manuel - González

CLAVE: 28002

ruta: MEX-081



Km: 0.00 Tipo: 3 Sent: 0

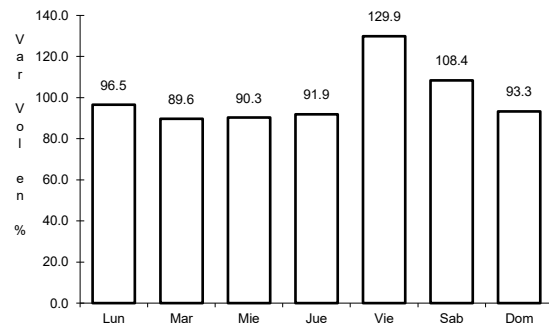


Km: 24.80 Tipo: 1 Sent: 0

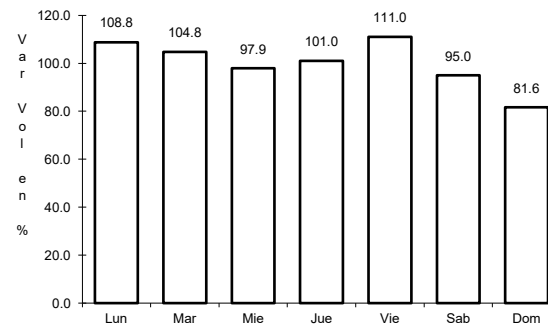
20 CARR: Libramiento General Francisco Villa

CLAVE:

ruta: MEX-101-180



Km: 0.00 Tipo: 3 Sent: 0

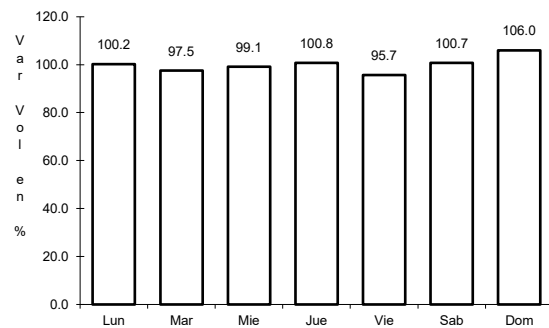


Km: 6.40 Tipo: 1 Sent: 0

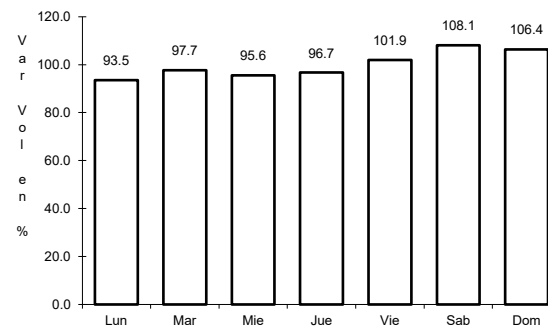
21 CARR: Matamoros - Playa Lauro Villar

CLAVE: 28078

ruta: MEX-002



Km: 0.00 Tipo: 3 Sent: 1

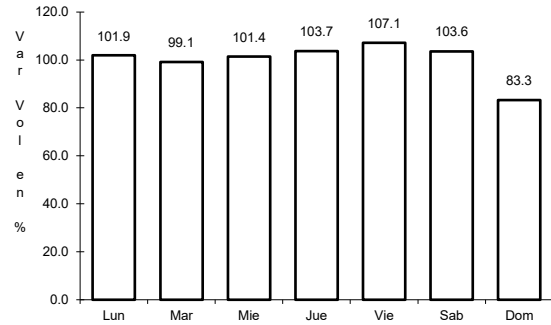


Km: 0.00 Tipo: 3 Sent: 2

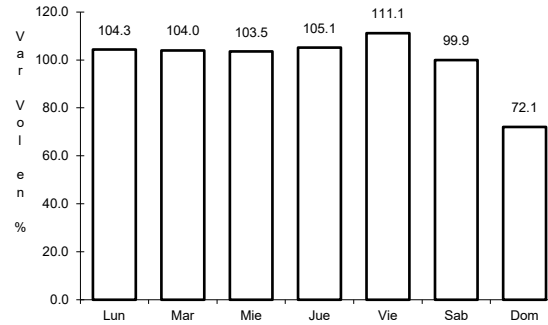
22 CARR: Matamoros - Reynosa

CLAVE: 28077

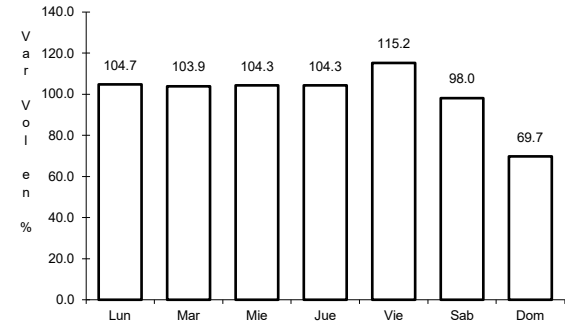
RUTA: MEX-002



Km: 0.00 Tipo: 3 Sent: 0



Km: 98.00 Tipo: 1 Sent: 1

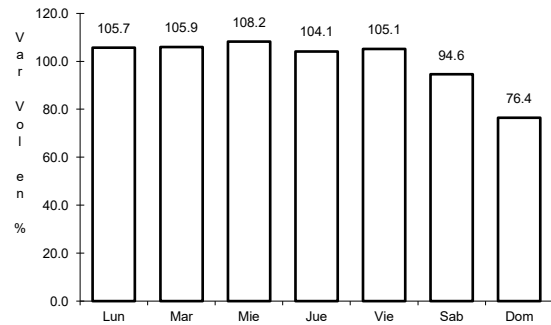


Km: 98.00 Tipo: 1 Sent: 2

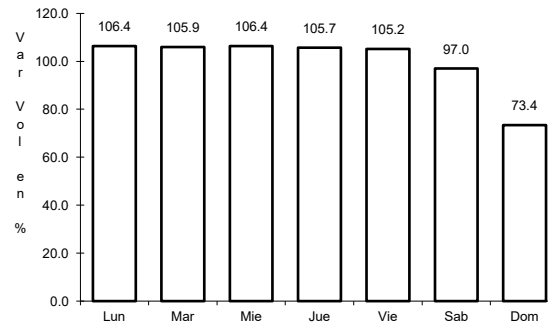
23 CARR: Monterrey - Mier

CLAVE: 00127

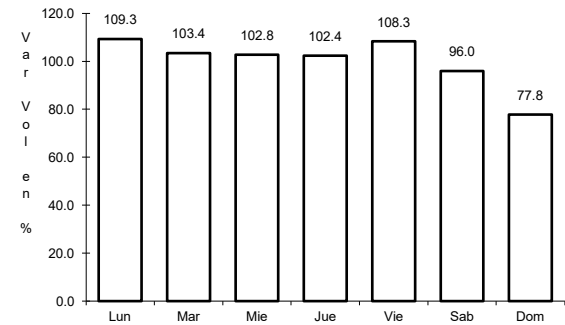
RUTA: MEX-054



Km: 19.12 Tipo: 1 Sent: 1



Km: 19.12 Tipo: 1 Sent: 2

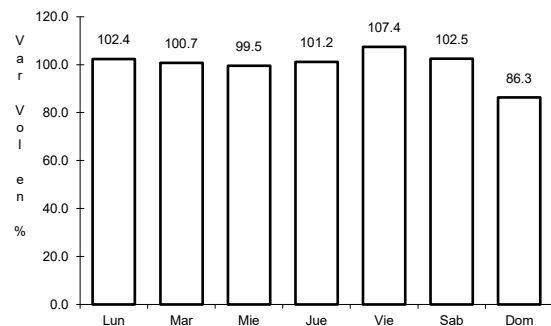


Km: 156.21 Tipo: 1 Sent: 0

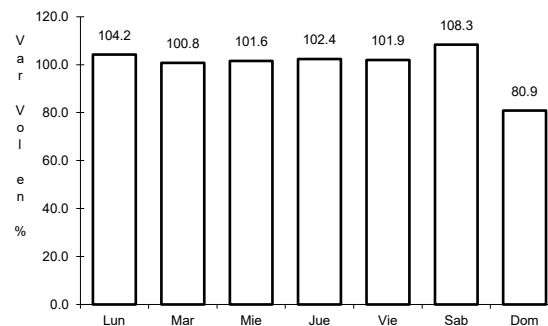
24 CARR: Monterrey - Nuevo Laredo (Libre)

CLAVE: 00463

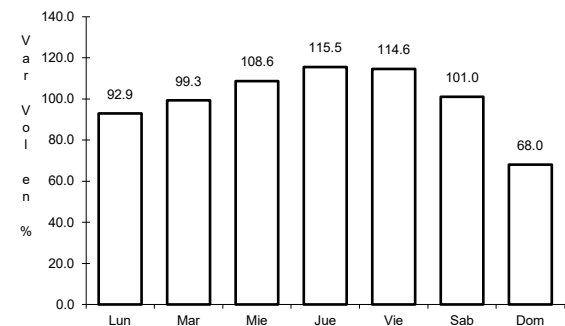
RUTA: MEX-085



Km: 12.10 Tipo: 3 Sent: 1



Km: 12.10 Tipo: 3 Sent: 2

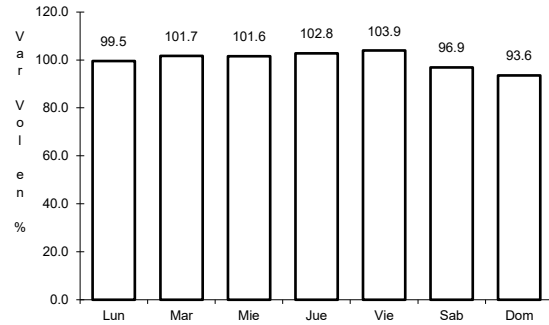


Km: 124.40 Tipo: 3 Sent: 0

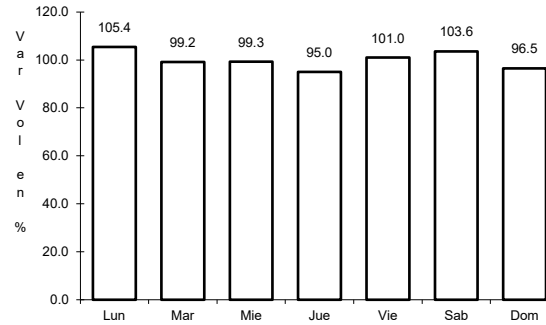
25 CARR: Monterrey - Reynosa (Libre)

CLAVE: 00088

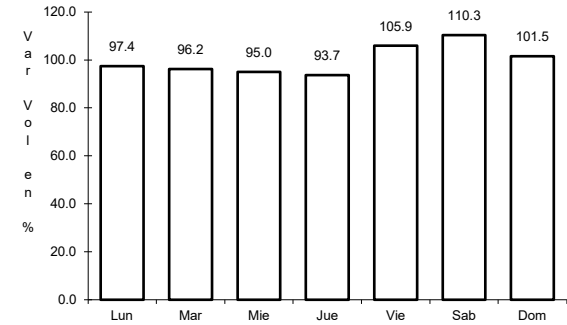
ruta: MEX-040



Km: 19.10 Tipo: 1 Sent: 1



Km: 19.10 Tipo: 1 Sent: 2

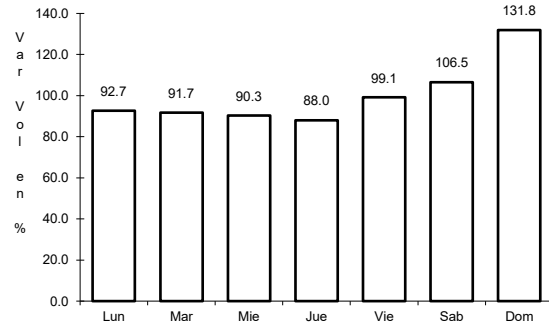


Km: 125.00 Tipo: 1 Sent: 0

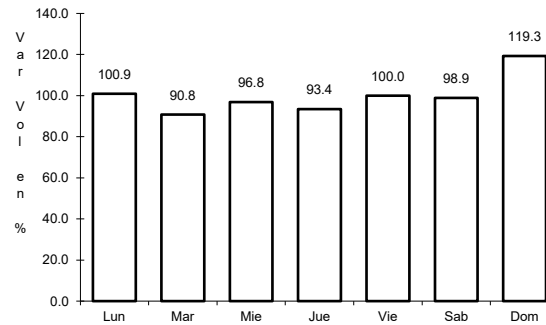
26 CARR: Paras - Nueva Ciudad Guerrero

CLAVE: 00476

ruta: MEX-030



Km: 0.00 Tipo: 3 Sent: 0

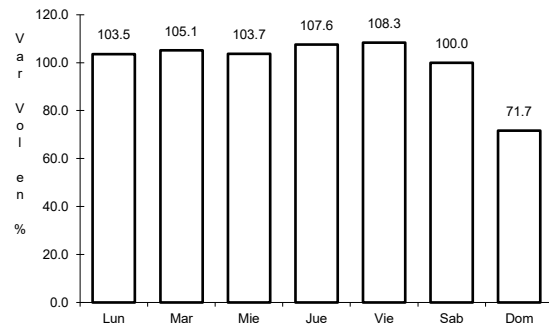


Km: 32.00 Tipo: 1 Sent: 0

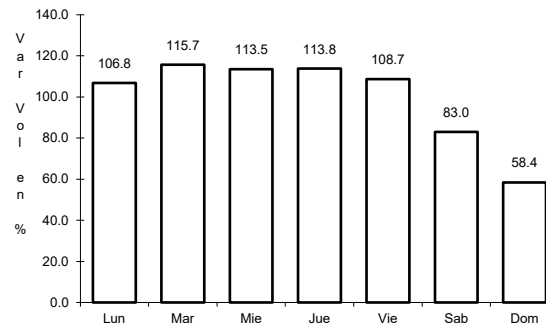
27 CARR: Petrocel - Puerto Industrial Altamira

CLAVE:

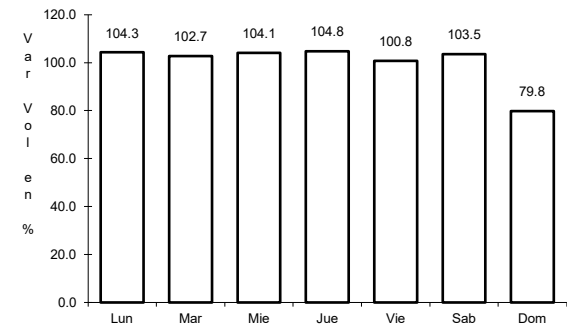
ruta: MEX-080



Km: 0.00 Tipo: 3 Sent: 1



Km: 0.00 Tipo: 3 Sent: 2

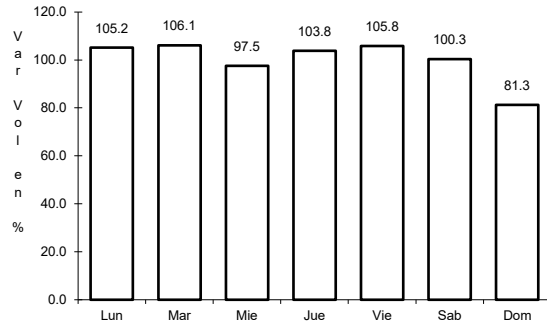


Km: 3.80 Tipo: 3 Sent: 1

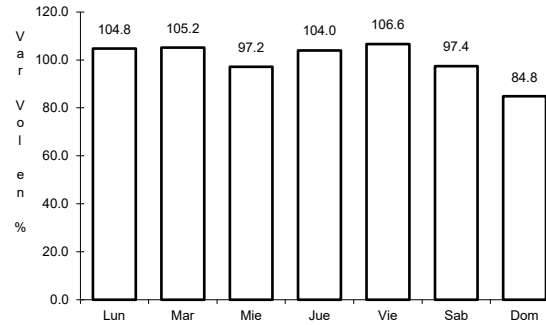
28 CARR: Piedras Negras - Nuevo Laredo

CLAVE: 00503

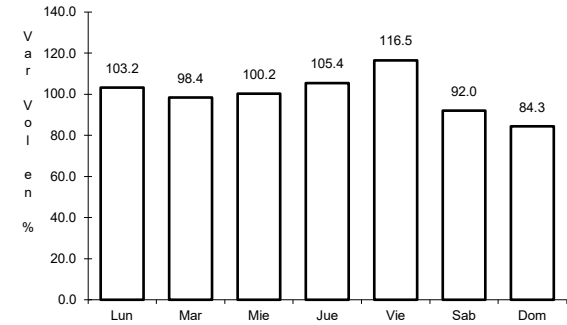
ruta: MEX-002



Km: 0.00 Tipo: 3 Sent: 1



Km: 0.00 Tipo: 3 Sent: 2

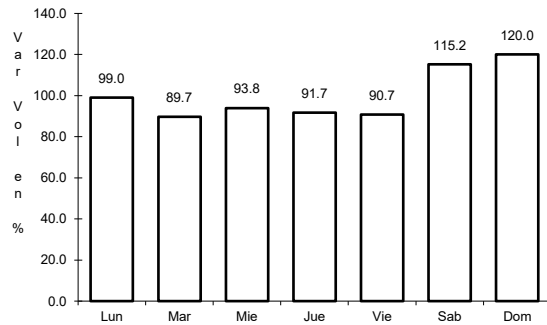


Km: 134.00 Tipo: 3 Sent: 0

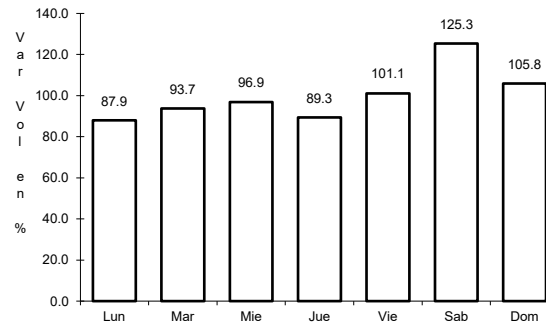
29 CARR: Ramal a Puente Tampico

CLAVE: 28020

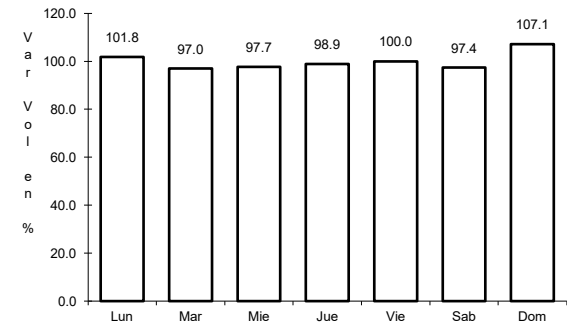
ruta: MEX-180



Km: 186.00 Tipo: 3 Sent: 1



Km: 186.00 Tipo: 3 Sent: 2

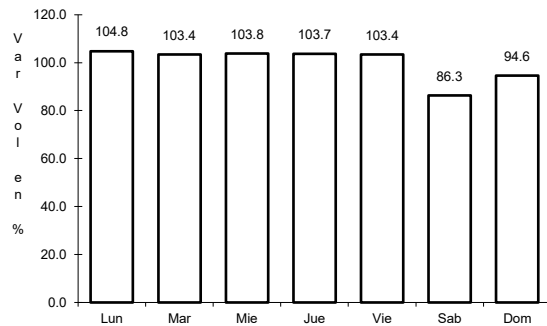


Km: 193.12 Tipo: 1 Sent: 1

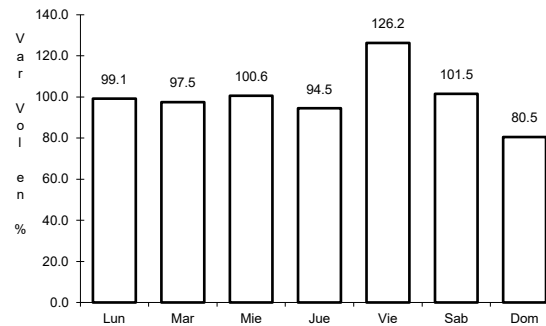
30 CARR: Ramal de Acceso a Puente Anzaldúas

CLAVE: 28619

ruta: MEX



Km: 0.00 Tipo: 3 Sent: 1

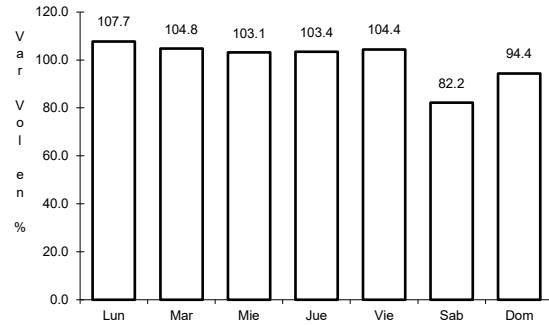


Km: 0.00 Tipo: 3 Sent: 2

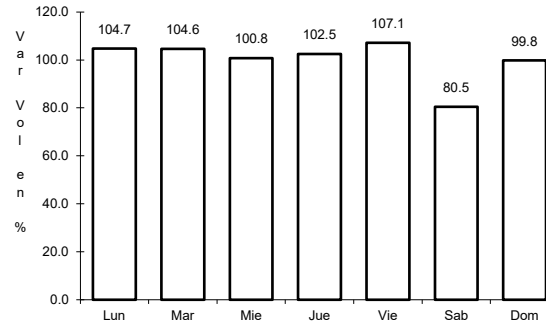
32 CARR: Reynosa - Nuevo Laredo

CLAVE: 28076

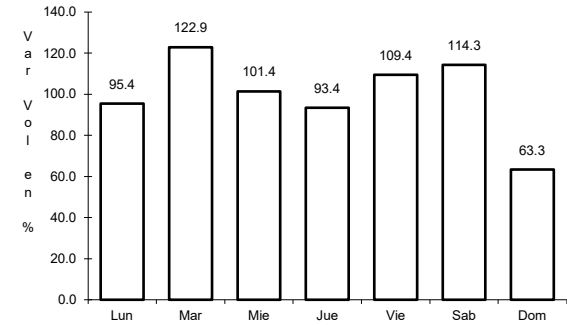
RUTA: MEX-002



Km: 0.00 Tipo: 3 Sent: 1



Km: 0.00 Tipo: 3 Sent: 2

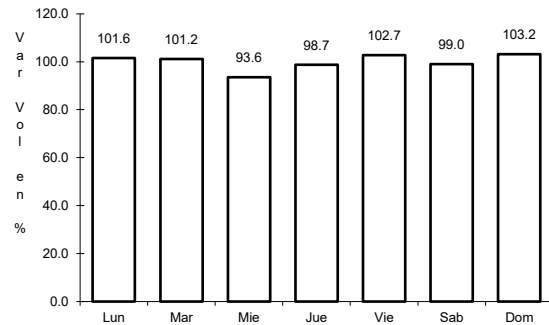


Km: 221.08 Tipo: 1 Sent: 0

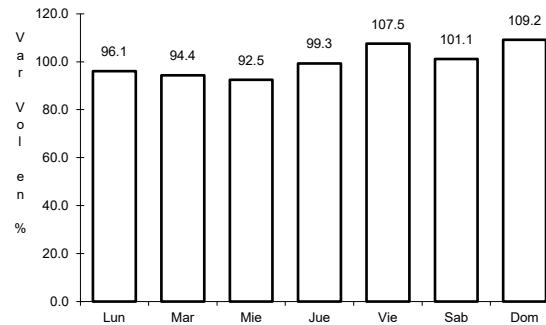
33 CARR: Soto La Marina - La Coma

CLAVE: 28052

RUTA: MEX-180



Km: 0.00 Tipo: 3 Sent: 0

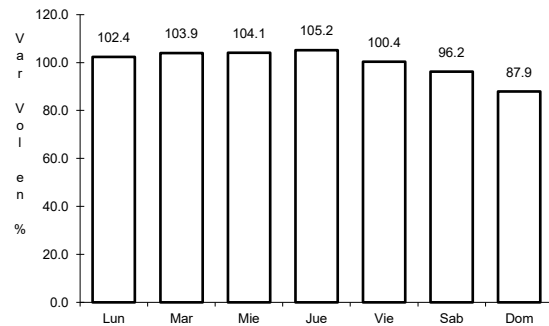


Km: 86.00 Tipo: 1 Sent: 0

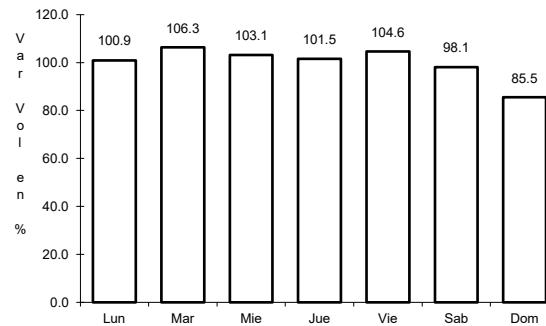
34 CARR: Tampico - Cd. Mante

CLAVE: 28163

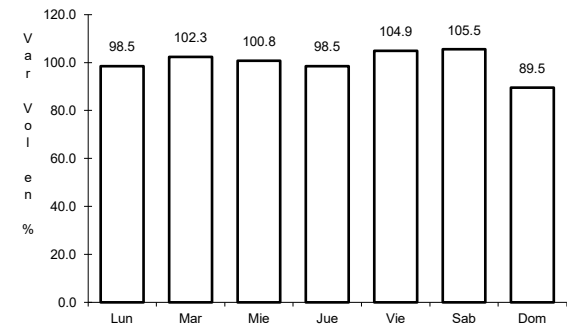
RUTA: MEX-080



Km: 14.79 Tipo: 1 Sent: 1



Km: 14.79 Tipo: 1 Sent: 2

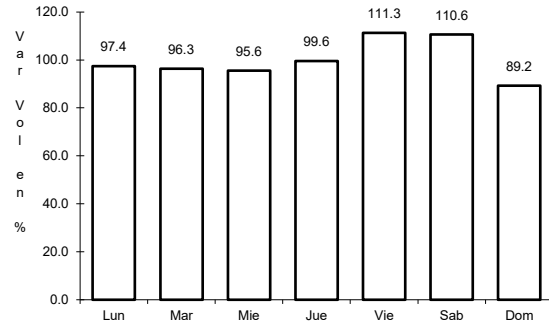


Km: 155.00 Tipo: 1 Sent: 0

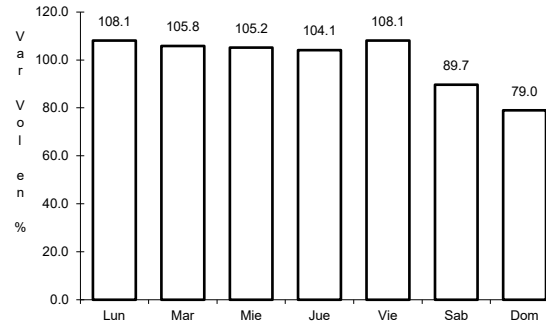
35 CARR: Túxpam - Tampico

CLAVE: 00529

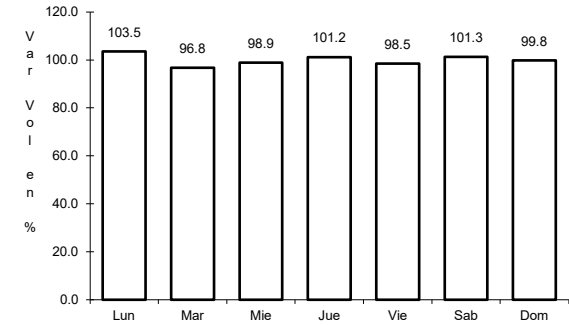
RUTA: MEX-180



Km: 0.00 Tipo: 3 Sent: 0



Km: 78.60 Tipo: 1 Sent: 0

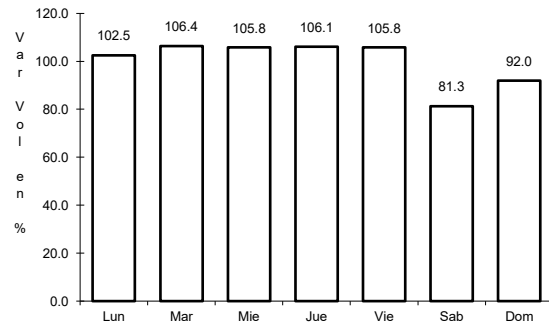


Km: 186.85 Tipo: 3 Sent: 1

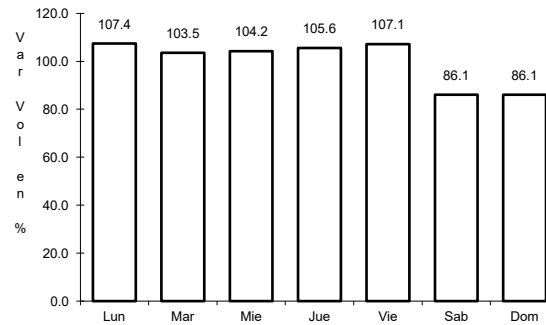
36 CARR: Viaducto de Reynosa

CLAVE:

RUTA: MEX



Km: 80.50 Tipo: 3 Sent: 0

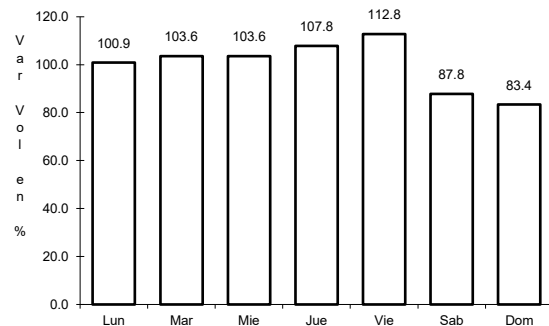


Km: 95.40 Tipo: 1 Sent: 0

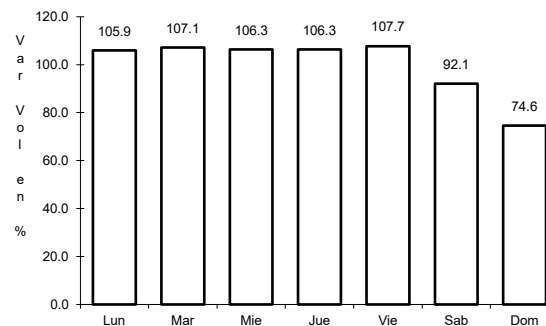
37 CARR: Libramiento de Reynosa Sur II

CLAVE:

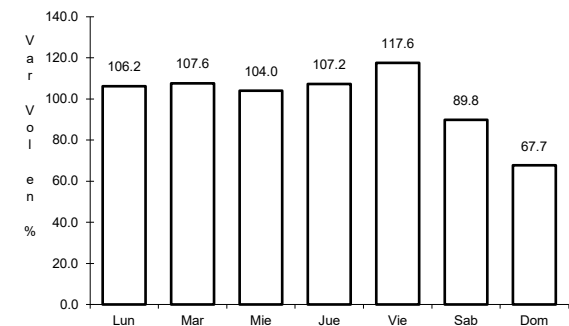
RUTA: MEX-040D



Km: 0.00 Tipo: 3 Sent: 1



Km: 0.00 Tipo: 3 Sent: 2

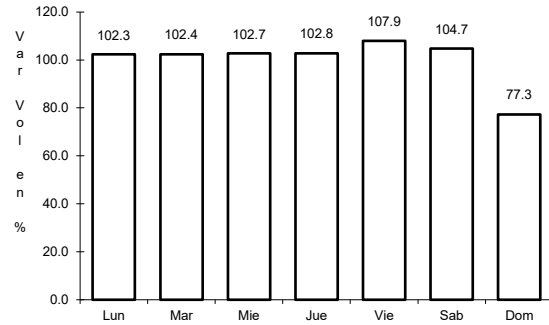


Km: 35.80 Tipo: 1 Sent: 0

38 CARR: Libramiento Poniente de Tampico (Cuota)

CLAVE: 28051

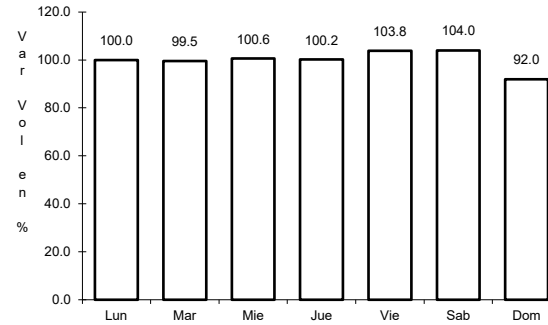
RUTA: MEX-070D



Km: 0.00

Tipo: 3

Sent: 0



Km: 14.20

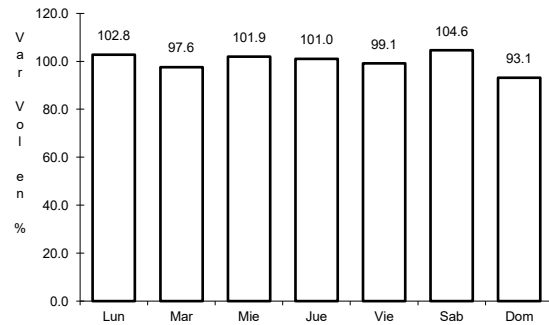
Tipo: 1

Sent: 0

39 CARR: Matamoros - Reynosa (Cuota)

CLAVE: 28079

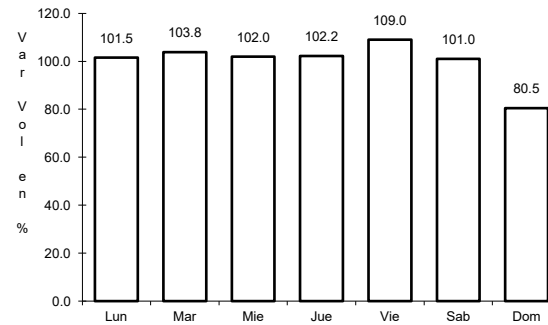
RUTA: MEX-002D



Km: 26.50

Tipo: 3

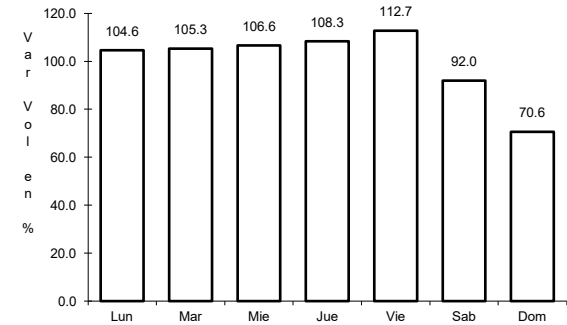
Sent: 1



Km: 26.50

Tipo: 3

Sent: 2



Km: 62.98

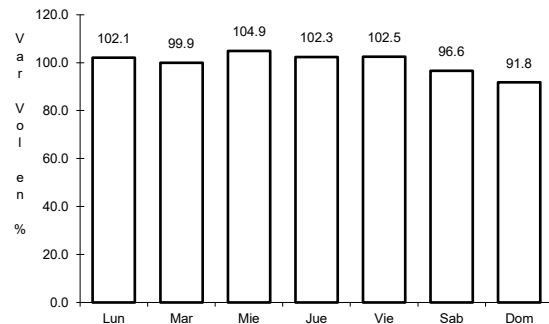
Tipo: 3

Sent: 1

40 CARR: Aldama - Barra El Tordo

CLAVE: 28620

RUTA: TAM



Km: 0.00

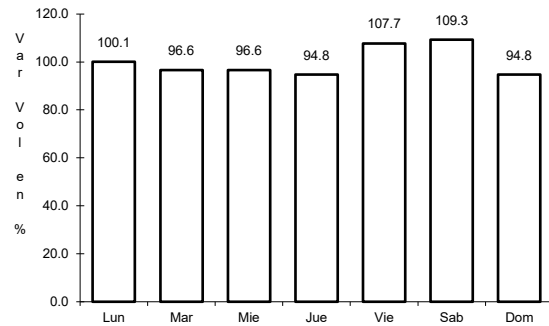
Tipo: 3

Sent: 0

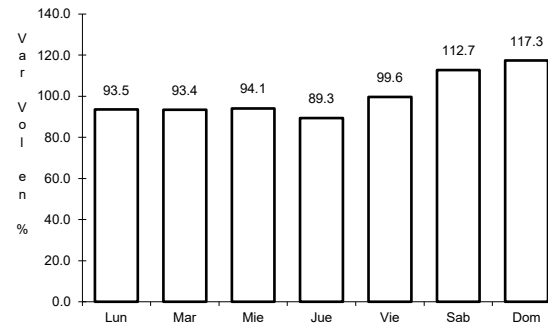
41 CARR: Barretal - Nueva Villa de Padilla

CLAVE: 28001

ruta: TAM-001



Km: 0.00 Tipo: 3 Sent: 0

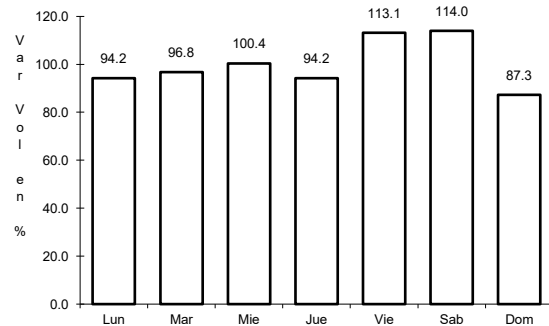


Km: 24.50 Tipo: 1 Sent: 0

42 CARR: China - Méndez

CLAVE: 00191

ruta: NL-TAM

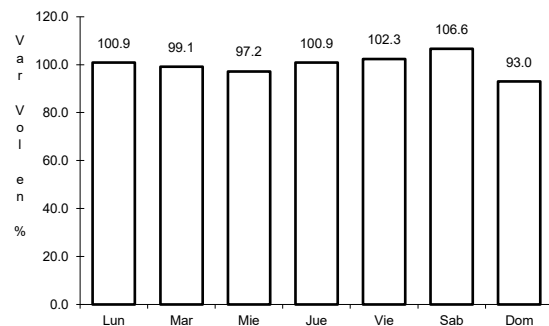


Km: 0.00 Tipo: 3 Sent: 0

43 CARR: Ébano - Estación Manuel

CLAVE: 24624

ruta: SLP-TAM

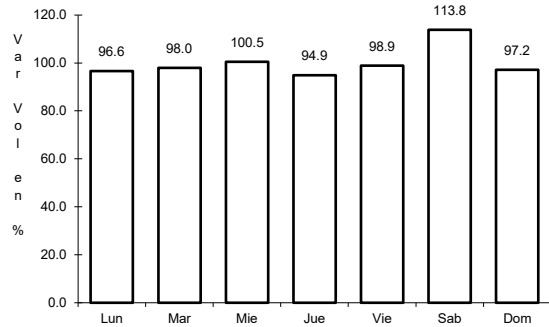


Km: 0.00 Tipo: 3 Sent: 0

44 CARR: El Limón - Ocampo

CLAVE: 28019

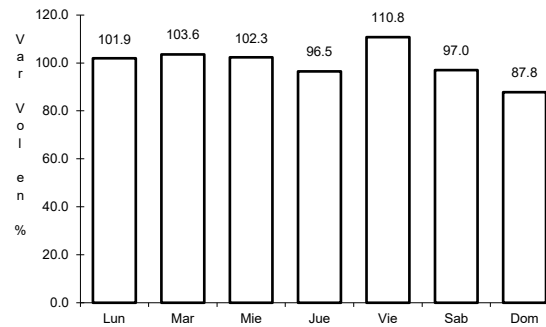
ruta: TAM-019



Km: 0.00

Tipo: 3

Sent: 0



Km: 43.00

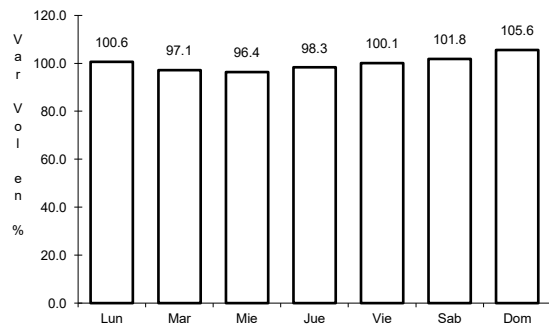
Tipo: 1

Sent: 0

45 CARR: Ent. Huisachito - Nuevo Laredo

CLAVE: 00074

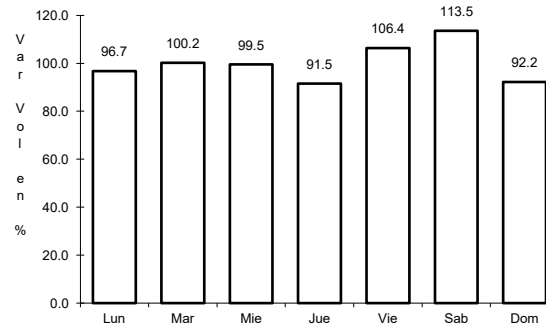
ruta: NL-001-TAM



Km: 0.00

Tipo: 3

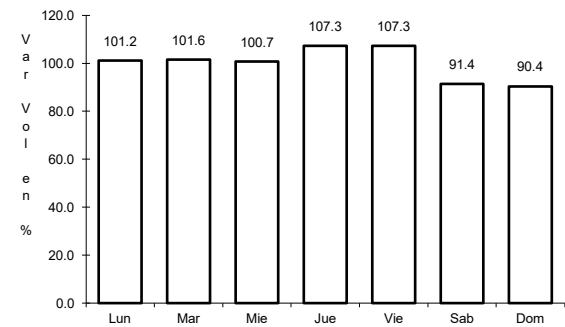
Sent: 0



Km: 47.00

Tipo: 1

Sent: 0



Km: 51.00

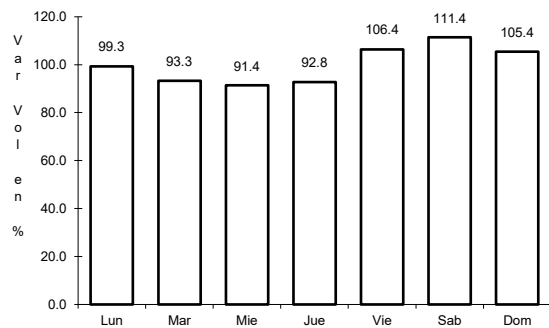
Tipo: 1

Sent: 0

46 CARR: Ent. Las Blancas - Río Bravo

CLAVE: 28003

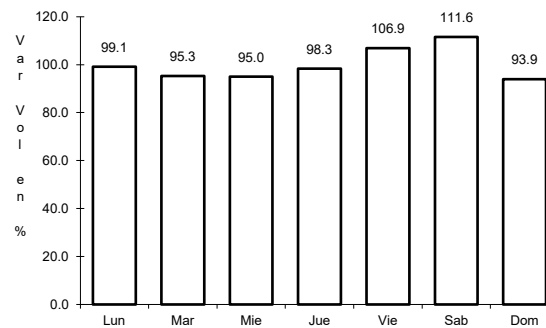
ruta: TAM-003



Km: 0.00

Tipo: 3

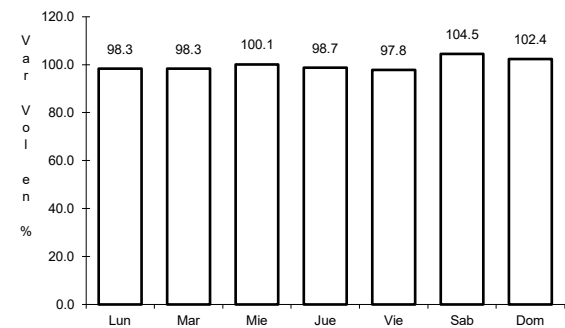
Sent: 0



Km: 21.00

Tipo: 1

Sent: 1



Km: 21.00

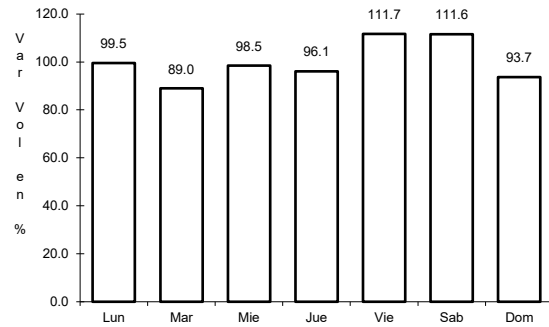
Tipo: 1

Sent: 2

47 CARR: La Joya - Méndez

CLAVE: 28623

RUTA: TAM



Km: 0.00

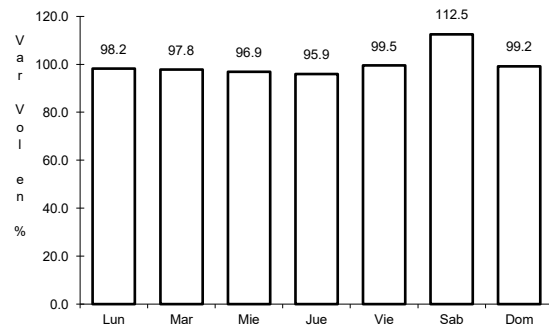
Tipo: 3

Sent: 0

48 CARR: Libramiento de Cd. Victoria

CLAVE: 28282

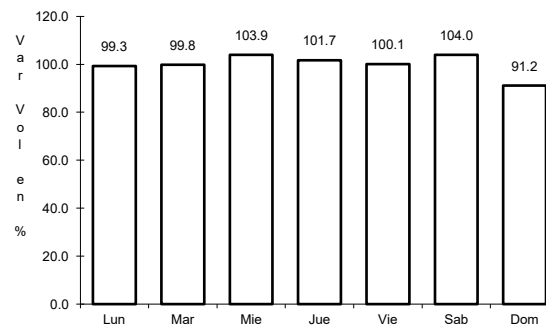
RUTA: TAM



Km: 0.00

Tipo: 3

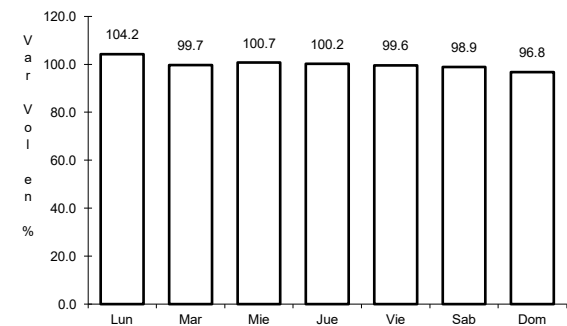
Sent: 1



Km: 0.00

Tipo: 3

Sent: 2



Km: 25.90

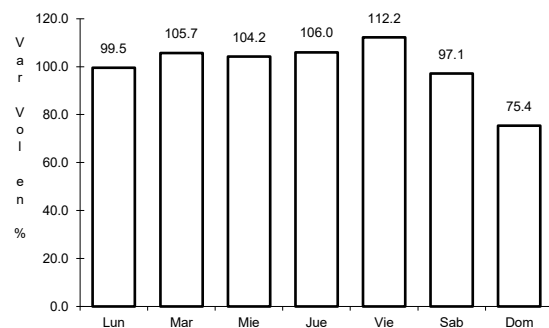
Tipo: 1

Sent: 1

49 CARR: Libramiento de Mier

CLAVE: 28282

RUTA: TAMPS



Km: 0.00

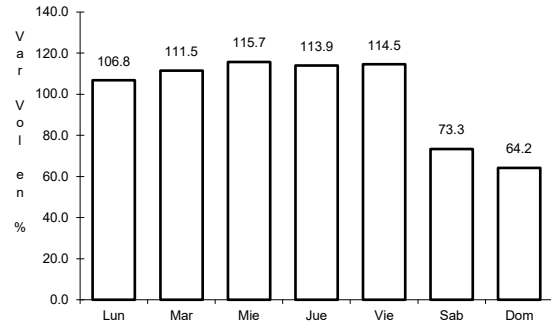
Tipo: 3

Sent: 0

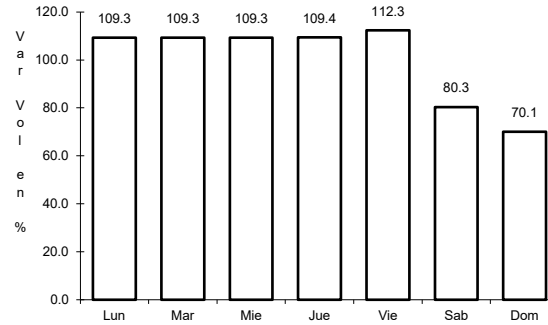
50 CARR: Libramiento de Nuevo Laredo

CLAVE: 28030

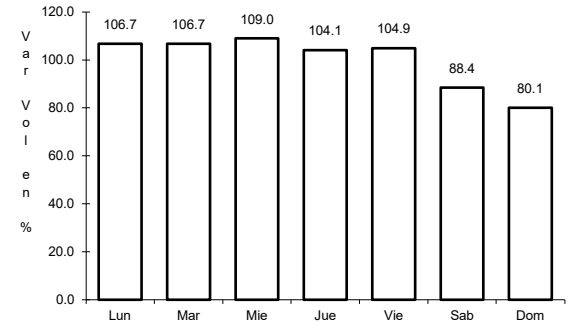
RUTA: TAM



Km: 0.00 Tipo: 3 Sent: 1



Km: 0.00 Tipo: 3 Sent: 2

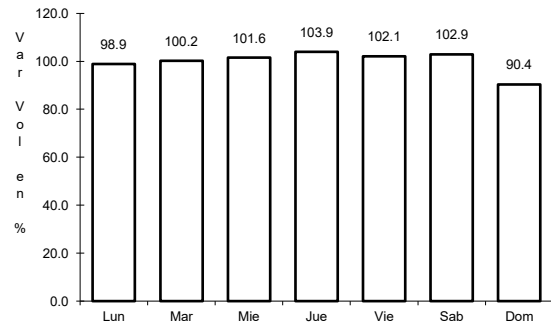


Km: 18.00 Tipo: 1 Sent: 1

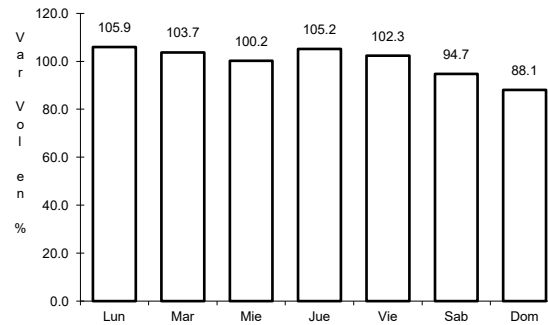
51 CARR: Libramiento de Nuevo Laredo II

CLAVE: 28626

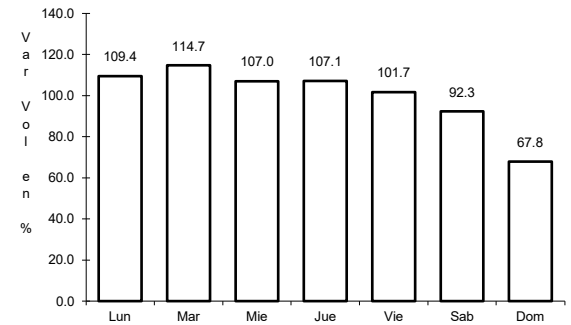
RUTA: TAM



Km: 0.00 Tipo: 3 Sent: 0



Km: 32.20 Tipo: 1 Sent: 1

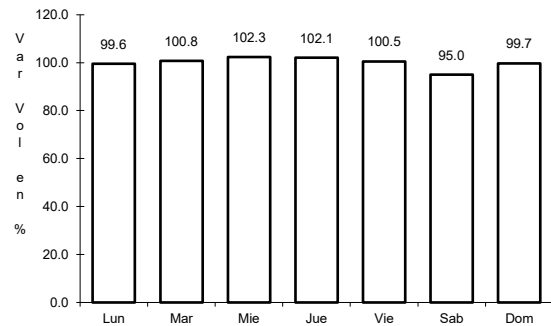


Km: 32.20 Tipo: 1 Sent: 2

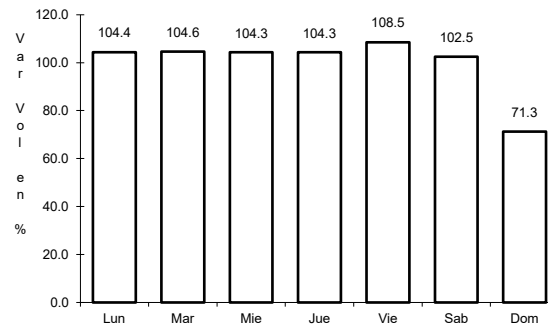
52 CARR: Libramiento de Río Bravo

CLAVE: 28002

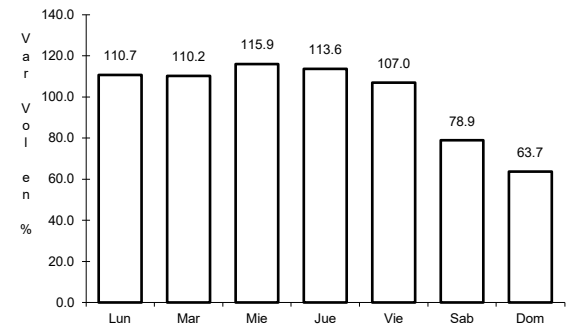
RUTA: TAM



Km: 0.00 Tipo: 3 Sent: 1



Km: 0.00 Tipo: 3 Sent: 2

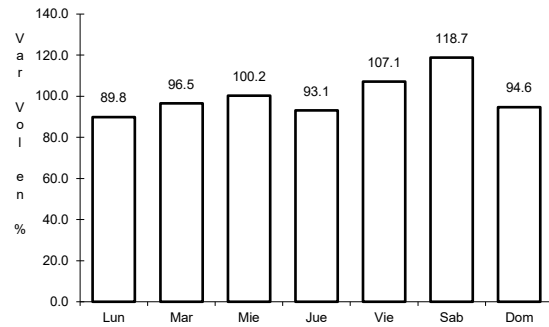


Km: 13.10 Tipo: 1 Sent: 1

53 CARR: Los Guerra - Los Herreras

CLAVE: 19031

RUTA: TAM-NL



Km: 73.00

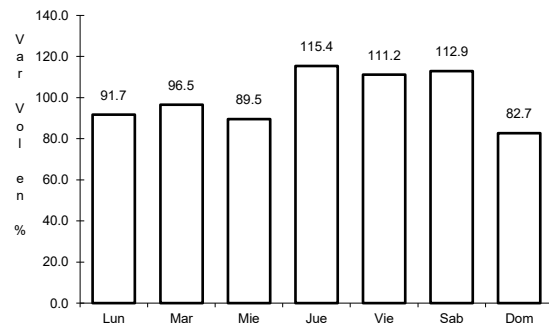
Tipo: 1

Sent: 0

54 CARR: Peña Blanca - Cd. Camargo

CLAVE: 00102

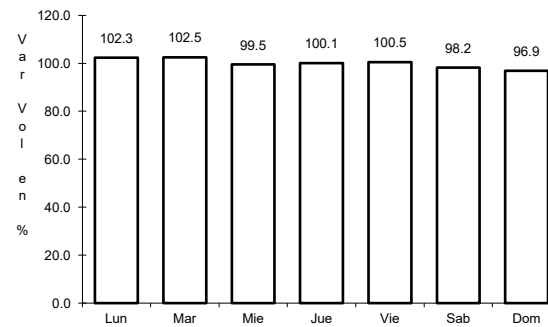
RUTA: NL-TAM



Km: 0.00

Tipo: 3

Sent: 0



Km: 65.00

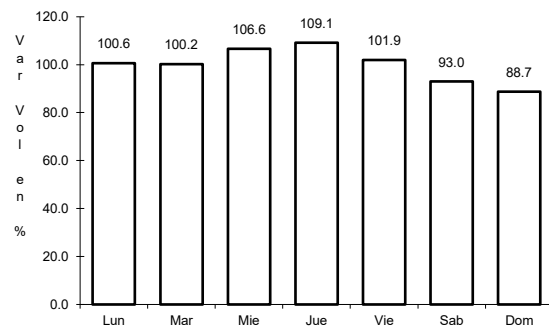
Tipo: 1

Sent: 0

55 CARR: Potrero Nuevo - Rancho El Mezquital

CLAVE: 28615

RUTA: TAM



Km: 0.00

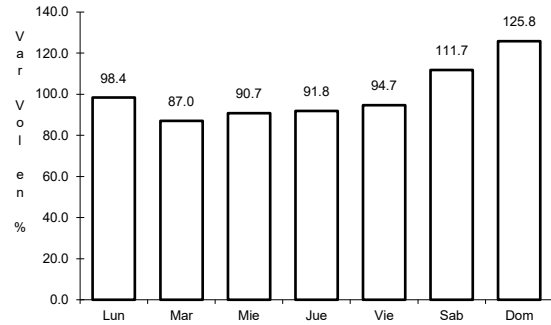
Tipo: 3

Sent: 0

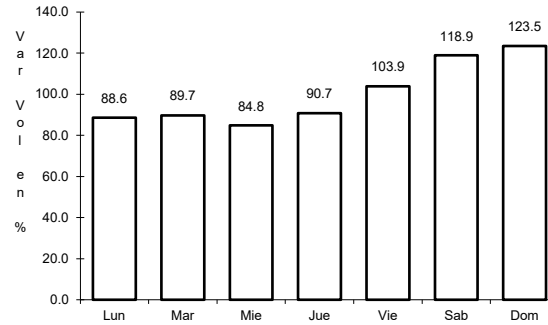
56 CARR: Ramal a Gómez Farías

CLAVE: 28020

RUTA: TAM-020



Km: 0.00 Tipo: 3 Sent: 0

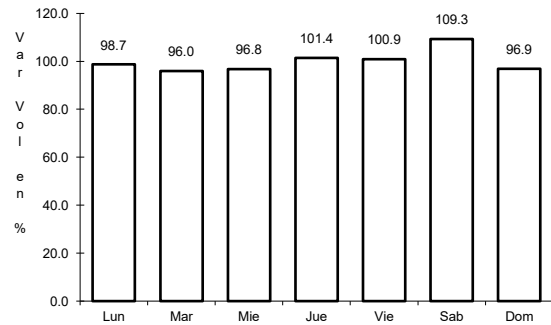


Km: 11.00 Tipo: 1 Sent: 0

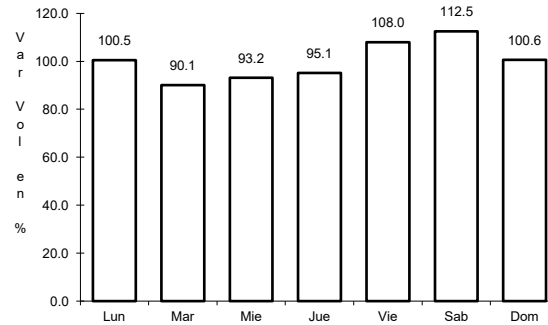
57 CARR: Ramal a Xicotécatl

CLAVE: 28619

RUTA: TAM



Km: 0.00 Tipo: 3 Sent: 0

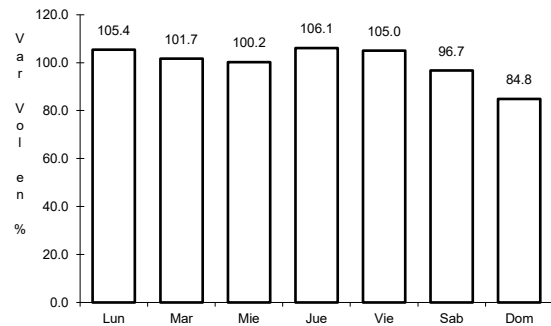


Km: 13.00 Tipo: 1 Sent: 0

58 CARR: San Fernando - Carboneras

CLAVE: 28618

RUTA: TAM

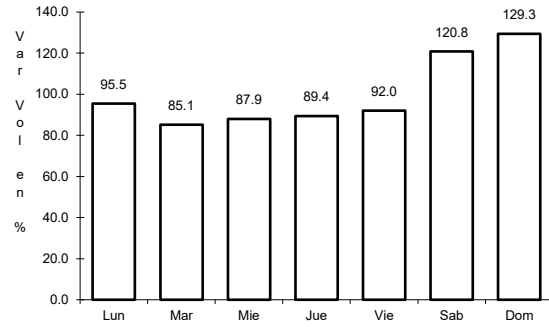


Km: 0.00 Tipo: 3 Sent: 0

59 CARR: Soto La Marina - La Pesca

CLAVE: 28049

ruta: TAM-070



Km: 0.00

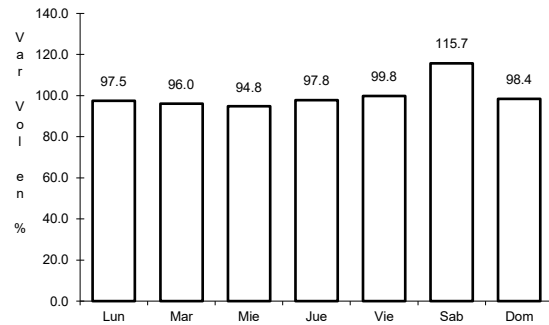
Tipo: 3

Sent: 0

60 CARR: T. C. (Valle Hermoso - Empalme) - Matamoros

CLAVE: 28005

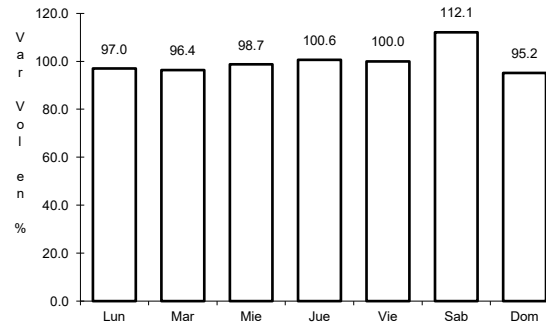
ruta: TAM-005



Km: 0.00

Tipo: 3

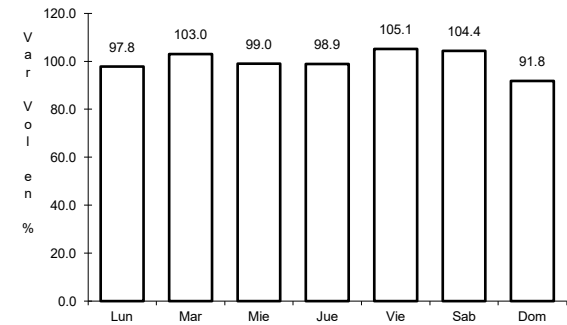
Sent: 0



Km: 33.90

Tipo: 1

Sent: 1



Km: 33.90

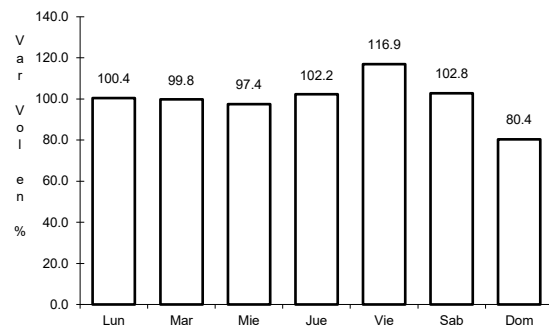
Tipo: 1

Sent: 2

61 CARR: T. C. Libramiento Cd. Victoria - San Antonio

CLAVE:

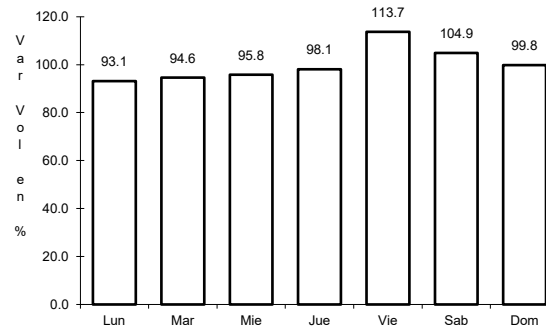
ruta: TAM-126



Km: 0.00

Tipo: 3

Sent: 0



Km: 37.50

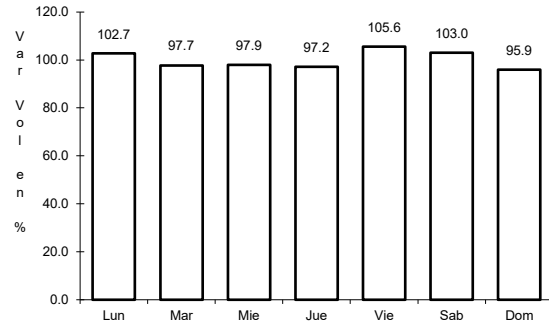
Tipo: 1

Sent: 0

62 CARR: Valle Hermoso - Empalme

CLAVE: 28004

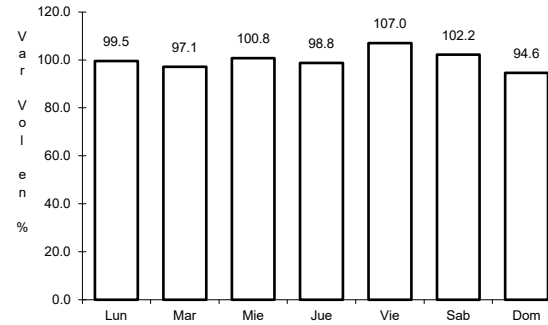
RUTA: TAM-004



Km: 0.00

Tipo: 3

Sent: 0



Km: 28.38

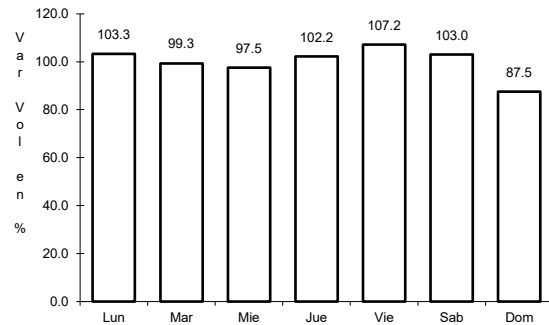
Tipo: 1

Sent: 0

63 CARR: Valle Hermoso - Las Yescas

CLAVE: 28614

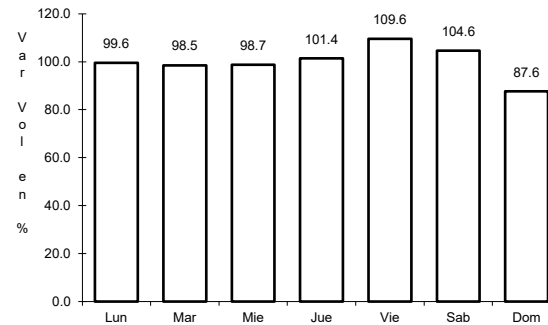
RUTA: TAM



Km: 0.00

Tipo: 3

Sent: 0



Km: 26.00

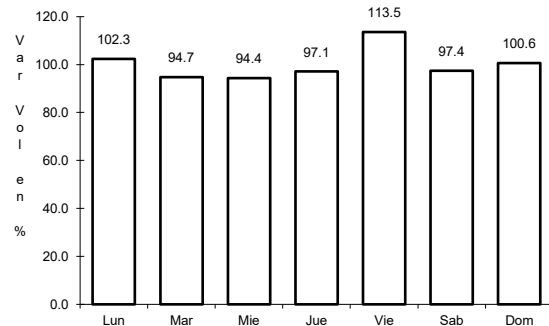
Tipo: 1

Sent: 0

64 CARR: Santander Jiménez - Ent. El Ojito

CLAVE: 28579

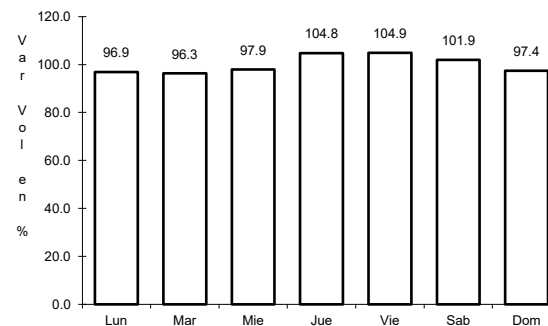
RUTA: MEX-107-TAM



Km: 0.00

Tipo: 3

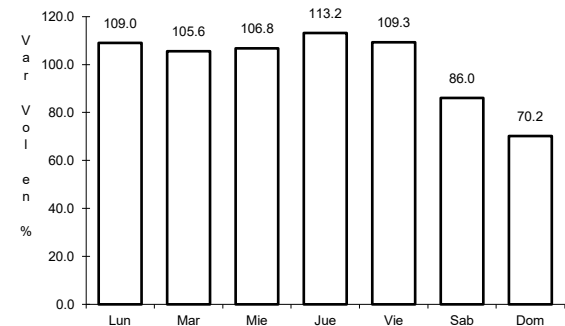
Sent: 0



Km: 20.00

Tipo: 1

Sent: 0



Km: 58.00

Tipo: 1

Sent: 0

