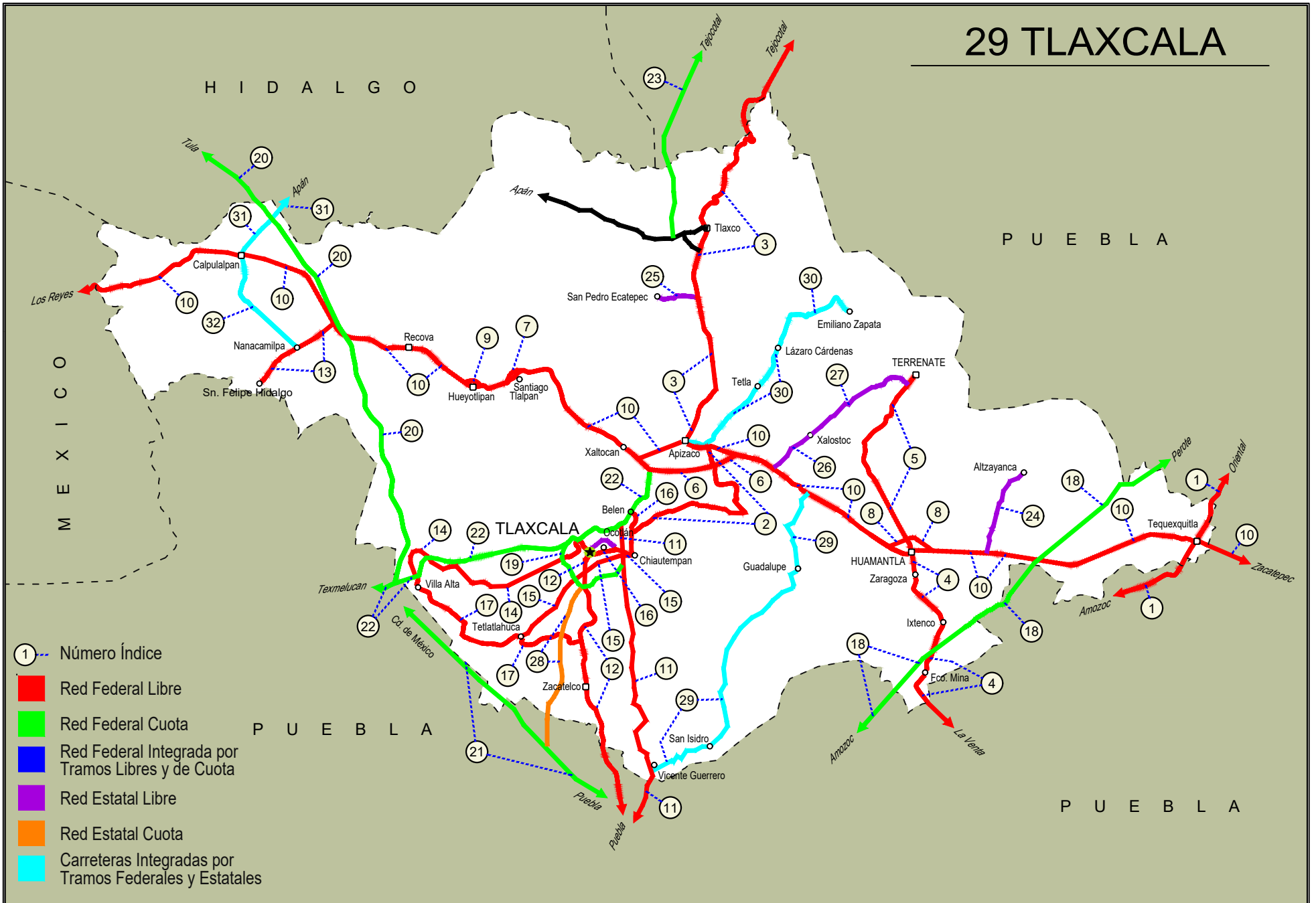


# TLAXCALA

NO. INDICE CARRETERA		RUTA
	---RED FEDERAL LIBRE---	
1	Amozoc - Teziutlán	MEX-129
2	Apizaco - San Pablo Apetatitlán	MEX-119
3	Apizaco - Tejocotal	MEX-119
4	Huamantla - La Venta	MEX-136
5	Huamantla - Terrenate	MEX-136
6	Libramiento de Apizaco	MEX-136
7	Libramiento de Santiago Tlalpan	MEX-136
8	Libramiento Huamantla	MEX-136
9	Libramiento Hueyotlipan	MEX-136
10	Los Reyes - Zacatepec	MEX-136
11	Puebla - Belem	MEX-121
12	Puebla - Tlaxcala	MEX-119
13	Ramal a San Felipe de Hidalgo	MEX-136
14	San Martín Texmelucan - Tlaxcala	MEX-117
15	Tetlatlahuca - Santa Ana Chiautempan	MEX-119
16	Tlaxcala - Belem	MEX-119
17	Villa Alta - T. C. (Puebla - Tlaxcala)	MEX-119
	---RED FEDERAL DE CUOTA---	
18	Amozoc - Perote (Cuota)	MEX-140D
19	Libramiento de Tlaxcala (Cuota)	MEX-117D
20	Libramiento Norte de la Ciudad de México (Cuota)	MEX-M40D
21	México - Puebla (Cuota)	MEX-150D
22	San Martín Texmelucan - Tlaxcala - El Molinito (Cuota)	MEX-117D
23	Tlaxco - Tejocotal (Cuota)	MEX-119D
	---RED ESTATAL LIBRE---	
24	Ramal a Alzayanca de Hidalgo	TLAX
25	Ramal a San Pedro Ecatepec	TLAX
26	Ramal a Xalostoc	TLAX
27	Xalostoc - Terrenate	TLAX
	---RED ESTATAL DE CUOTA---	
28	Puebla - Tlaxcala (Cuota)	PUE-D
	---CARRETERAS INTEGRADAS POR TRAMOS FEDERALES Y ESTATALES---	
29	Acocotla - Vicente Guerrero	MEX-TLAX
30	Apizaco - Emiliano Zapata	TLAX-MEX-136
31	Calpulalpan - El Ocote	MEX-HGO
32	Calpulalpan - Nanacamilpa	TLAX-MEX-136

# 29 TLAXCALA





TLAXCALA

1 CARR: Amozoc - Teziutlán

CLAVE: 00210

RUTA: MEX-129

AÑO: 2022

LUGAR	ESTACION				CLASIFICACION VEHICULAR EN PORCIENTO										COORDENADAS					
	KM	TE	SC	TDPA	M	A	B	C2	C3	T3S2	T3S3	T3S2R4	OTROS	A	B	C	K'	D	LATITUD	LONGITUD
Amozoc	0.00	0	0																	
X. C. Puebla - Córdoba (Cuota)	1.40	3	0	13637	3.0	80.3	2.5	7.5	2.2	1.9	2.2	0.4	0.0	83.3	2.5	14.2	0.082	0.506	19.052390	-98.026112
Acajete	12.00	3	1	4302	2.6	70.2	1.7	14.3	2.4	6.3	1.5	0.8	0.2	72.8	1.7	25.5	0.085	0.513	19.121060	-97.940751
Acajete	12.00	3	2	4537	2.6	70.4	1.8	14.2	2.3	6.2	1.6	0.7	0.2	73.0	1.8	25.2	0.085	0.513	19.121076	-97.940767
Rafael Lara Grajales	35.50	1	0	5112	1.6	74.6	2.9	7.6	5.3	4.3	1.9	1.0	0.8	76.2	2.9	20.9	0.081	0.511	19.236314	-97.807545
Rafael Lara Grajales	35.50	3	0	10338	2.4	79.1	3.8	5.8	2.0	4.5	1.2	0.8	0.4	81.5	3.8	14.7	0.072	0.502	19.231582	-97.785614
Lim. Edos. Term. Pue. Ppia. Tlax.	50.54	0	0																	
X. C. Los Reyes - Zacatepec	56.31	1	0	5026	2.4	79.2	3.3	7.5	2.4	2.8	1.6	0.7	0.1	81.6	3.3	15.1	0.080	0.509	19.315667	-97.654649
Lim. Edos. Term. Tlax. Ppia. Pue.	60.22	0	0																	
Oriental	62.62	1	0	5786	5.3	85.0	2.2	5.0	1.2	0.7	0.3	0.2	0.1	90.3	2.2	7.5	0.093	0.507	19.365087	-97.629221
Oriental	62.62	3	0	8407	3.4	80.3	2.2	6.7	1.8	3.7	1.0	0.5	0.4	83.7	2.2	14.1	0.078	0.518	19.382839	-97.619084
X. C. Amozoc - Perote (Cuota)	69.00	1	1	4616	7.0	81.0	1.8	5.6	1.9	1.1	1.1	0.4	0.1	88.0	1.8	10.2	0.081	0.501	19.411431	-97.635604
X. C. Amozoc - Perote (Cuota)	69.00	1	2	4605	6.7	80.4	1.8	5.9	2.1	1.3	1.3	0.4	0.1	87.1	1.8	11.1	0.086	0.501	19.411207	-97.635565
X. C. Amozoc - Perote (Cuota)	69.00	3	0	10643	2.8	82.1	2.4	6.4	1.7	2.9	1.0	0.3	0.4	84.9	2.4	12.7	0.084	0.502	19.422038	-97.646564
Libres	76.35	3	0	11695	2.5	79.5	2.5	7.5	1.9	3.7	1.2	0.6	0.6	82.0	2.5	15.5	0.078	0.503	19.482182	-97.673866
San Miguel Tenextatiloyán	106.70	1	0	4751	2.6	79.4	2.5	7.6	1.9	3.8	1.2	0.8	0.2	82.0	2.5	15.5	0.088	0.512	19.702382	-97.598913
T. Izq. Zacapoaxtla	114.80	1	0	8408	3.0	84.3	1.6	4.5	1.1	3.4	0.9	0.6	0.6	87.3	1.6	11.1	0.074	0.503	19.759271	-97.568287
T. Izq. Zacapoaxtla	114.80	3	0	10628	2.8	83.5	1.4	5.1	0.6	4.6	0.8	0.5	0.7	86.3	1.4	12.3	0.080	0.515	19.764642	-97.564411
Zaragoza	116.80	3	0	8706	2.3	84.4	2.4	5.3	0.8	3.5	0.6	0.2	0.5	86.7	2.4	10.9	0.073	0.502	19.786922	-97.541524
Teziutlán	157.80	1	0	13536	2.9	77.6	2.0	15.8	0.6	0.6	0.1	0.3	0.1	80.5	2.0	17.5	0.082	0.512	19.817565	-97.379620

2 CARR: Apizaco - San Pablo Apetatitlán

CLAVE: 29035

RUTA: MEX-119

AÑO: 2022

LUGAR	ESTACION				CLASIFICACION VEHICULAR EN PORCIENTO										COORDENADAS					
	KM	TE	SC	TDPA	M	A	B	C2	C3	T3S2	T3S3	T3S2R4	OTROS	A	B	C	K'	D	LATITUD	LONGITUD
T. C. Los Reyes - Zacatepec	0.00	3	0	8306	6.5	88.8	0.8	2.9	0.7	0.2	0.1	0.0	0.0	95.3	0.8	3.9	0.088	0.503	19.410122	-98.118766
T. Der. Tecnológico	0.55	3	0	11471	8.3	88.5	0.5	1.4	0.7	0.3	0.2	0.1	0.0	96.8	0.5	2.7	0.080	0.502	19.405226	-98.117374
Cuaxomulco	9.10	3	0	3099	12.2	83.2	1.0	2.4	0.9	0.1	0.1	0.1	0.0	95.4	1.0	3.6	0.073	0.502	19.355795	-98.105825
Santa Cruz Tlaxcala	14.50	3	0	6266	8.9	86.5	0.7	2.4	0.8	0.4	0.2	0.1	0.0	95.4	0.7	3.9	0.080	0.516	19.353412	-98.157535
T. Izq. Contla	18.90	1	0	10706	10.6	85.1	0.6	2.3	0.8	0.3	0.2	0.1	0.0	95.7	0.6	3.7	0.074	0.512	19.342781	-98.178629
San Pablo Apetatitlán	20.00	1	0	16327	7.9	88.0	0.5	2.0	0.8	0.4	0.3	0.1	0.0	95.9	0.5	3.6	0.069	0.527	19.335767	-98.190259

TLAXCALA

3 CARR: Apizaco - Tejocotal

CLAVE: 00430

RUTA: MEX-119

AÑO: 2022

LUGAR	ESTACION				CLASIFICACION VEHICULAR EN PORCIENTO													COORDENADAS		
	KM	TE	SC	TDPA	M	A	B	C2	C3	T3S2	T3S3	T3S2R4	OTROS	A	B	C	K'	D	LATITUD	LONGITUD
Apizaco	0.00	3	1	11432	1.6	87.1	1.3	4.9	1.1	2.1	1.3	0.4	0.2	88.7	1.3	10.0	0.079	0.501	19.437682	-98.131243
Apizaco	0.00	3	2	11371	1.9	85.6	1.5	5.7	1.1	2.2	1.4	0.4	0.2	87.5	1.5	11.0	0.085	0.501	19.437558	-98.131369
T. Der. Tetla	6.60	3	0	22494	0.5	87.1	1.6	4.9	1.6	2.1	1.2	0.7	0.3	87.6	1.6	10.8	0.076	0.506	19.473536	-98.112537
T. Izq. Atlangatepec	12.15	1	0	14726	1.1	86.2	1.8	4.5	1.9	2.1	1.3	0.5	0.6	87.3	1.8	10.9	0.083	0.504	19.504963	-98.116887
Tlaxco	23.91	1	1	5101	3.6	83.8	1.9	5.1	1.8	2.3	1.0	0.2	0.3	87.4	1.9	10.7	0.088	0.519	19.598720	-98.125462
Tlaxco	23.91	1	2	5510	3.7	83.1	1.9	5.3	2.0	2.4	1.1	0.2	0.3	86.8	1.9	11.3	0.085	0.519	19.598741	-98.125562
Tlaxco	23.91	3	0	6643	3.5	83.5	1.8	5.2	1.6	2.4	1.2	0.4	0.4	87.0	1.8	11.2	0.096	0.504	19.626288	-98.124841
Lim. Edos. Term. Tlax. Ppia. Pue.	34.45	0	0																	
T. Der. Tetela de Ocampo	52.20	1	0	8891	6.8	83.6	1.0	5.4	1.1	0.9	1.0	0.1	0.1	90.4	1.0	8.6	0.094	0.515	19.800578	-98.026691
Zacatlán	71.25	1	0	11572	7.2	84.3	2.1	4.9	0.9	0.1	0.1	0.1	0.3	91.5	2.1	6.4	0.095	0.506	19.918588	-97.959284
Lim. Edos. Term. Pue. Ppia. Hgo.	110.45	0	0																	
T. C. Pachuca - Tuxpam	113.15	1	0	8507	3.3	81.9	1.9	8.3	1.4	1.2	0.8	1.0	0.2	85.2	1.9	12.9	0.091	0.506	20.123851	-98.128640

4 CARR: Huamantla - La Venta

CLAVE: 29564

RUTA: MEX-136

AÑO: 2022

LUGAR	ESTACION				CLASIFICACION VEHICULAR EN PORCIENTO													COORDENADAS		
	KM	TE	SC	TDPA	M	A	B	C2	C3	T3S2	T3S3	T3S2R4	OTROS	A	B	C	K'	D	LATITUD	LONGITUD
Huamantla	0.00	3	1	5219	6.3	87.2	1.0	3.8	0.8	0.3	0.2	0.3	0.1	93.5	1.0	5.5	0.077	0.530	19.298194	-97.921018
Huamantla	0.00	3	2	5883	6.3	87.2	0.9	3.7	1.0	0.3	0.2	0.3	0.1	93.5	0.9	5.6	0.084	0.530	19.298215	-97.920910
Ignacio Zaragoza	2.30	3	0	7523	3.8	87.5	1.2	5.0	0.8	0.6	0.5	0.4	0.2	91.3	1.2	7.5	0.081	0.500	19.283898	-97.920860
Ixtenco	8.00	1	0	6108	3.8	89.2	1.4	4.7	0.5	0.2	0.1	0.1	0.0	93.0	1.4	5.6	0.079	0.510	19.261515	-97.900196
Ixtenco	8.00	3	0	4487	3.2	87.7	2.4	5.5	0.7	0.3	0.1	0.1	0.0	90.9	2.4	6.7	0.077	0.508	19.242197	-97.896570
X. C. Amozoc - Perote (Cuota)	11.40	1	0	4375	3.4	84.1	2.8	6.7	0.8	1.3	0.4	0.4	0.1	87.5	2.8	9.7	0.106	0.515	19.227204	-97.902317
Zitlaltepec	13.60	1	0	3885	3.8	85.6	1.6	6.4	0.6	1.2	0.5	0.2	0.1	89.4	1.6	9.0	0.083	0.503	19.215824	-97.907526
Zitlaltepec	13.60	3	0	3909	4.2	84.1	1.5	7.0	0.9	1.6	0.6	0.1	0.0	88.3	1.5	10.2	0.068	0.502	19.193527	-97.919026
T. C. Amozoc - Teziutlán	17.60	1	0	3559	3.4	81.7	1.3	8.1	1.5	2.8	1.0	0.2	0.0	85.1	1.3	13.6	0.076	0.517	19.176617	-97.909381

5 CARR: Huamantla - Terrenate

CLAVE: 29036

RUTA: MEX-136

AÑO: 2022

LUGAR	ESTACION				CLASIFICACION VEHICULAR EN PORCIENTO													COORDENADAS		
	KM	TE	SC	TDPA	M	A	B	C2	C3	T3S2	T3S3	T3S2R4	OTROS	A	B	C	K'	D	LATITUD	LONGITUD
Huamantla	0.00	3	0	4101	4.7	79.6	2.8	5.1	1.7	3.2	1.5	1.2	0.2	84.3	2.8	12.9	0.094	0.502	19.336920	-97.934582
T. Izq. Xicoténcatl	12.50	1	0	1112	5.2	88.9	0.2	3.8	1.2	0.2	0.4	0.1	0.0	94.1	0.2	5.7	0.085	0.505	19.413341	-97.968777
Terrenate	21.00	1	0	1439	6.4	88.5	0.4	3.1	1.0	0.2	0.3	0.1	0.0	94.9	0.4	4.7	0.081	0.500	19.463875	-97.929960

TLAXCALA

6 CARR : Libramiento de Apizaco

CLAVE: 29567

RUTA: MEX-136

AÑO: 2022

LUGAR	ESTACION				CLASIFICACION VEHICULAR EN PORCIENTO													COORDENADAS		
	KM	TE	SC	TDPA	M	A	B	C2	C3	T3S2	T3S3	T3S2R4	OTROS	A	B	C	K'	D	LATITUD	LONGITUD
T. C. Los Reyes - Zacatepec	0.00	0	0																	
T. C. Los Reyes - Zacatepec	0.00	3	1	13217	8.7	75.3	2.0	3.1	2.5	4.0	2.0	2.1	0.3	84.0	2.0	14.0	0.116	0.533	19.389417	-98.168072
T. C. Los Reyes - Zacatepec	0.00	3	2	15108	8.2	75.5	2.2	3.0	2.4	4.2	2.1	2.0	0.4	83.7	2.2	14.1	0.082	0.533	19.389660	-98.168014
T. Der. Amaxac de Guerrero	6.00	1	1	13482	8.8	72.4	2.7	3.0	2.3	5.6	2.3	2.3	0.6	81.2	2.7	16.1	0.089	0.534	19.377318	-98.156536
T. Der. Amaxac de Guerrero	6.00	1	2	15454	8.9	71.4	2.5	3.7	2.2	5.7	2.5	2.7	0.4	80.3	2.5	17.2	0.074	0.534	19.377480	-98.156507
T. Der. Amaxac de Guerrero	6.00	3	1	11538	3.6	70.1	4.6	3.9	3.0	7.3	3.1	3.5	0.9	73.7	4.6	21.7	0.071	0.510	19.400007	-98.101593
T. Der. Amaxac de Guerrero	6.00	3	2	12012	3.9	72.0	3.5	3.2	3.7	7.2	2.7	3.0	0.8	75.9	3.5	20.6	0.078	0.510	19.400062	-98.101660
T. C. Los Reyes - Zacatepec	10.40	0	0																	

7 CARR : Libramiento de Santiago Tlalpan

CLAVE:

RUTA: MEX-136

AÑO: 2022

LUGAR	ESTACION				CLASIFICACION VEHICULAR EN PORCIENTO													COORDENADAS		
	KM	TE	SC	TDPA	M	A	B	C2	C3	T3S2	T3S3	T3S2R4	OTROS	A	B	C	K'	D	LATITUD	LONGITUD
T. C. Los Reyes - Zacatepec Oeste	0.00	3	1	8811	1.7	68.2	3.1	7.2	3.9	10.3	2.8	2.1	0.7	69.9	3.1	27.0	0.087	0.516	19.474980	-98.314723
T. C. Los Reyes - Zacatepec Oeste	0.00	3	2	9392	1.4	68.6	3.3	7.1	3.8	10.2	2.7	2.3	0.6	70.0	3.3	26.7	0.105	0.516	19.474965	-98.314852
T. C. Los Reyes - Zacatepec Este	3.00	0	0																	

8 CARR : Libramiento Huamantla

CLAVE: 29567

RUTA: MEX-136

AÑO: 2022

LUGAR	ESTACION				CLASIFICACION VEHICULAR EN PORCIENTO													COORDENADAS		
	KM	TE	SC	TDPA	M	A	B	C2	C3	T3S2	T3S3	T3S2R4	OTROS	A	B	C	K'	D	LATITUD	LONGITUD
T. C. Los Reyes - Zacatepec (Poniente)	0.00	3	1	9450	3.1	72.0	4.5	5.5	2.6	6.4	2.4	2.8	0.7	75.1	4.5	20.4	0.088	0.501	19.325314	-97.931033
T. C. Los Reyes - Zacatepec (Poniente)	0.00	3	2	9469	2.9	72.3	4.6	5.6	2.5	6.4	2.3	2.7	0.7	75.2	4.6	20.2	0.071	0.501	19.325371	-97.931102
T. C. Los Reyes - Zacatepec (Oriente)	4.60	1	1	9463	11.7	56.2	4.3	6.3	4.6	8.3	4.1	3.6	0.9	67.9	4.3	27.8	0.072	0.526	19.321958	-97.913487
T. C. Los Reyes - Zacatepec (Oriente)	4.60	1	2	8536	11.6	54.1	4.4	6.3	4.7	10.0	4.1	3.9	0.9	65.7	4.4	29.9	0.063	0.526	19.321499	-97.912803

9 CARR : Libramiento Hueyotlipan

CLAVE: 29567

RUTA: MEX-136

AÑO: 2022

LUGAR	ESTACION				CLASIFICACION VEHICULAR EN PORCIENTO													COORDENADAS		
	KM	TE	SC	TDPA	M	A	B	C2	C3	T3S2	T3S3	T3S2R4	OTROS	A	B	C	K'	D	LATITUD	LONGITUD
T. C. Los Reyes - Zacatepec (Poniente)	0.00	3	1	7848	0.7	74.1	2.9	4.5	3.1	9.2	2.4	2.9	0.2	74.8	2.9	22.3	0.106	0.514	19.476198	-98.352864
T. C. Los Reyes - Zacatepec (Poniente)	0.00	3	2	8288	0.7	73.4	3.0	4.5	3.2	9.3	2.6	3.0	0.3	74.1	3.0	22.9	0.105	0.514	19.476288	-98.352673
T. C. Los Reyes - Zacatepec (Oriente)	2.70	1	1	9472	2.0	69.6	5.9	4.3	3.7	7.4	2.3	4.0	0.8	71.6	5.9	22.5	0.088	0.520	19.474195	-98.341181
T. C. Los Reyes - Zacatepec (Oriente)	2.70	1	2	8745	1.9	70.1	5.8	4.5	3.6	7.3	2.2	3.9	0.7	72.0	5.8	22.2	0.114	0.520	19.475096	-98.342712

TLAXCALA

10 CARR: Los Reyes - Zacatepec

CLAVE: 00052

RUTA: MEX-136

AÑO: 2022

LUGAR	ESTACION				CLASIFICACION VEHICULAR EN PORCIENTO														COORDENADAS		
	KM	TE	SC	TDPA	M	A	B	C2	C3	T3S2	T3S3	T3S2R4	OTROS	A	B	C	K'	D	LATITUD	LONGITUD	
T. C. México - Puebla (Libre)	0.00	0	0																		
T. Izq. La Magdalena	3.35	3	1	42476	5.1	78.4	0.9	10.5	1.1	2.1	1.3	0.2	0.4	83.5	0.9	15.6	0.064	0.505	19.379399	-98.941519	
T. Izq. La Magdalena	3.35	3	2	43450	5.1	78.5	0.8	10.5	1.1	2.2	1.2	0.2	0.4	83.6	0.8	15.6	0.062	0.505	19.380284	-98.941243	
T. Izq. Chimalhuacán	8.45	1	1	41647	7.0	85.3	0.5	2.3	1.0	1.4	1.8	0.2	0.5	92.3	0.5	7.2	0.065	0.513	19.413046	-98.920143	
T. Izq. Chimalhuacán	8.45	1	2	39354	6.8	85.3	0.5	2.3	0.9	1.5	1.9	0.2	0.6	92.1	0.5	7.4	0.064	0.513	19.413118	-98.920305	
T. C. San Bernardino - Tepexpan	17.00	1	1	36361	11.1	79.8	1.1	2.9	1.7	1.9	0.8	0.4	0.3	90.9	1.1	8.0	0.072	0.512	19.469947	-98.893459	
T. C. San Bernardino - Tepexpan	17.00	1	2	38343	11.4	80.7	1.0	2.8	1.4	1.2	0.8	0.4	0.3	92.1	1.0	6.9	0.072	0.512	19.469916	-98.893592	
T. C. San Bernardino - Tepexpan	17.00	3	1	15527	3.7	87.5	0.8	6.2	0.9	0.5	0.2	0.1	0.1	91.2	0.8	8.0	0.068	0.511	19.483718	-98.886548	
T. C. San Bernardino - Tepexpan	17.00	3	2	14862	3.4	88.2	0.8	6.1	0.6	0.4	0.3	0.1	0.1	91.6	0.8	7.6	0.073	0.511	19.483769	-98.886722	
Texcoco	23.02	3	1	19270	2.0	79.1	2.2	10.3	2.3	3.0	0.4	0.5	0.2	81.1	2.2	16.7	0.083	0.509	19.527098	-98.858172	
Texcoco	23.02	3	2	19991	2.7	77.8	2.3	10.2	2.7	3.2	0.5	0.4	0.2	80.5	2.3	17.2	0.074	0.509	19.527239	-98.858132	
T. Izq. Tepetlaoxtoc	30.03	1	1	17199	1.6	79.5	1.9	8.0	2.2	4.1	2.0	0.5	0.2	81.1	1.9	17.0	0.077	0.517	19.545820	-98.826140	
T. Izq. Tepetlaoxtoc	30.03	1	2	16062	1.8	76.4	2.3	9.0	2.7	4.6	2.4	0.6	0.2	78.2	2.3	19.5	0.085	0.517	19.545908	-98.826182	
T. Der. San Jerónimo Amanalco	31.42	3	1	8754	4.1	76.6	3.2	3.8	2.6	7.1	1.5	0.7	0.4	80.7	3.2	16.1	0.086	0.524	19.550333	-98.793518	
T. Der. San Jerónimo Amanalco	31.42	3	2	7950	3.6	74.4	3.8	4.3	2.6	8.5	1.5	0.9	0.4	78.0	3.8	18.2	0.078	0.524	19.548103	-98.786891	
T. Der. Totolapan	42.00	3	1	6891	3.9	74.9	2.5	5.2	2.6	7.4	2.4	0.8	0.3	78.8	2.5	18.7	0.084	0.506	19.557494	-98.728844	
T. Der. Totolapan	42.00	3	2	6726	3.8	73.2	2.7	5.5	3.0	7.8	2.8	0.9	0.3	77.0	2.7	20.3	0.098	0.506	19.557614	-98.728881	
Lim. Edos. Term. Méx. Ppia. Tlax.	43.15	0	0																		
T. C. Calpulalpan - El Ocote	58.15	0	0																		
Calpulalpan	59.58	1	1	7535	2.4	76.8	4.8	3.3	2.8	7.6	1.1	1.0	0.2	79.2	4.8	16.0	0.080	0.507	19.593056	-98.584170	
Calpulalpan	59.58	1	2	7748	2.2	77.7	4.8	3.2	2.6	7.1	1.1	1.0	0.3	79.9	4.8	15.3	0.080	0.507	19.593138	-98.584189	
Calpulalpan	59.58	3	0	23345	1.5	71.6	6.2	8.4	2.6	6.4	1.2	1.5	0.6	73.1	6.2	20.7	0.080	0.524	19.574257	-98.511139	
T. Der. Nanacamilpa	71.76	3	0	18071	1.5	76.2	4.2	4.6	2.9	6.9	1.4	2.0	0.3	77.7	4.2	18.1	0.090	0.507	19.525496	-98.479613	
X. C. Arco Norte de La Ciudad de México	73.80	3	1	10906	5.8	67.5	5.8	4.2	2.5	9.0	2.0	2.6	0.6	73.3	5.8	20.9	0.082	0.516	19.513529	-98.454100	
X. C. Arco Norte de La Ciudad de México	73.80	3	2	10234	5.7	67.7	5.7	4.3	2.8	8.9	1.9	2.5	0.5	73.4	5.7	20.9	0.108	0.516	19.513610	-98.454091	
T. Libramiento Hueyotlipan Oeste	86.84	0	0																		
Hueyotlipan	88.21	1	1	9867	2.1	70.3	4.5	5.1	2.7	9.4	2.5	2.7	0.7	72.4	4.5	23.1	0.085	0.527	19.480039	-98.365617	
Hueyotlipan	88.21	1	2	8865	2.1	70.3	4.5	5.0	2.7	9.5	2.5	2.7	0.7	72.4	4.5	23.1	0.106	0.527	19.480066	-98.365503	
Hueyotlipan	88.21	3	1	10351	1.0	74.3	4.2	8.0	1.0	7.8	1.5	1.7	0.5	75.3	4.2	20.5	0.077	0.503	19.469417	-98.324708	
Hueyotlipan	88.21	3	2	10470	0.9	74.1	4.3	8.1	1.2	7.6	1.6	1.8	0.4	75.0	4.3	20.7	0.114	0.503	19.469508	-98.324727	
T. Libramiento HueyotlipanEste	89.51	0	0																		
T. C. Libramiento de Santiago Tlalpan	93.40	3	1	16724	1.9	71.1	5.0	3.5	2.6	9.9	2.4	2.7	0.9	73.0	5.0	22.0	0.074	0.507	19.483764	-98.295329	
T. C. Libramiento de Santiago Tlalpan	93.40	3	2	16241	1.7	70.4	5.1	3.7	2.8	10.2	2.5	2.7	0.9	72.1	5.1	22.8	0.105	0.507	19.483864	-98.295329	
Ent. Xipetzinco	94.90	3	1	10407	1.4	71.7	4.0	6.0	2.7	8.9	2.2	2.5	0.6	73.1	4.0	22.9	0.076	0.501	19.484325	-98.281520	
Ent. Xipetzinco	94.90	3	2	10456	1.5	72.7	3.9	6.1	2.5	8.2	2.2	2.3	0.6	74.2	3.9	21.9	0.099	0.501	19.484406	-98.281529	



TLAXCALA

10 CARR: Los Reyes - Zacatepec

CLAVE: 00052

RUTA: MEX-136

AÑO: 2022

LUGAR	ESTACION				CLASIFICACION VEHICULAR EN PORCIENTO										COORDENADAS					
	KM	TE	SC	TDPA	M	A	B	C2	C3	T3S2	T3S3	T3S2R4	OTROS	A	B	C	K'	D	LATITUD	LONGITUD
Xaltocan	108.10	1	1	10919	1.4	77.0	3.4	4.1	2.3	7.5	1.9	2.0	0.4	78.4	3.4	18.2	0.075	0.508	19.423532	-98.215285
Xaltocan	108.10	1	2	11280	1.6	76.3	3.3	3.9	2.6	7.9	2.2	1.8	0.4	77.9	3.3	18.8	0.098	0.508	19.423695	-98.215408
T. C. Libramiento de Apizaco	111.30	1	1	16963	1.8	81.2	5.0	1.6	3.3	3.4	1.5	1.7	0.5	83.0	5.0	12.0	0.072	0.542	19.396634	-98.181483
T. C. Libramiento de Apizaco	111.30	1	2	14342	1.7	82.5	4.9	1.8	3.3	3.2	0.6	1.6	0.4	84.2	4.9	10.9	0.079	0.542	19.396697	-98.181425
T. Libramiento de Apizaco Oeste	111.50	0	0																	
Apizaco	117.74	1	1	22640	1.8	85.1	1.3	7.2	0.8	1.2	2.0	0.2	0.4	86.9	1.3	11.8	0.075	0.506	19.405271	-98.171003
Apizaco	117.74	1	2	23172	1.8	84.5	1.3	7.7	0.8	1.3	2.0	0.2	0.4	86.3	1.3	12.4	0.078	0.506	19.405331	-98.171114
Apizaco	117.74	3	0	20018	4.3	89.3	1.0	3.7	0.6	0.4	0.2	0.4	0.1	93.6	1.0	5.4	0.073	0.517	19.412412	-98.132688
T. Der. Cuaxomulco	119.85	3	1	19958	5.0	90.1	0.5	2.6	0.8	0.5	0.1	0.3	0.1	95.1	0.5	4.4	0.076	0.502	19.413206	-98.115223
T. Der. Cuaxomulco	119.85	3	2	19831	5.1	90.1	0.5	2.7	0.7	0.4	0.1	0.3	0.1	95.2	0.5	4.3	0.073	0.502	19.413267	-98.115207
T. Libramiento de Apizaco Este	122.70	3	1	18404	8.3	76.0	2.6	3.4	2.0	3.8	1.4	1.9	0.6	84.3	2.6	13.1	0.080	0.524	19.405204	-98.089165
T. Libramiento de Apizaco Este	122.70	3	2	20273	8.4	75.5	2.0	3.5	2.6	3.6	1.1	2.7	0.6	83.9	2.0	14.1	0.071	0.524	19.405331	-98.089325
T. Izq. Xalostoc	126.67	3	1	13348	4.5	71.9	3.6	5.4	3.5	6.4	1.9	2.2	0.6	76.4	3.6	20.0	0.090	0.508	19.389785	-98.052797
T. Izq. Xalostoc	126.67	3	2	13762	4.2	72.9	3.7	5.4	3.7	5.6	2.2	1.8	0.5	77.1	3.7	19.2	0.090	0.508	19.389784	-98.052651
T. Izq. Libramiento de Huamantla	141.70	1	1	12321	2.8	73.8	4.8	6.3	2.4	5.8	1.8	1.7	0.6	76.6	4.8	18.6	0.081	0.522	19.325196	-97.953220
T. Izq. Libramiento de Huamantla	141.70	1	2	13440	2.4	73.9	4.6	6.3	2.2	6.2	2.0	1.8	0.6	76.3	4.6	19.1	0.085	0.522	19.325259	-97.953156
Huamantla	143.02	3	1	11561	4.1	73.6	3.4	4.1	2.1	7.7	3.0	1.5	0.5	77.7	3.4	18.9	0.065	0.506	19.315255	-97.884277
Huamantla	143.02	3	2	11289	4.4	73.3	3.6	4.0	2.2	7.4	3.1	1.4	0.6	77.7	3.6	18.7	0.067	0.506	19.315341	-97.884280
T. Libramiento de Huamantla Este	144.42	0	0																	
X. C. Amozoc - Perote (Cuota)	156.76	1	1	9265	2.1	71.4	4.6	5.4	2.7	7.9	2.9	2.2	0.8	73.5	4.6	21.9	0.076	0.500	19.308407	-97.810526
X. C. Amozoc - Perote (Cuota)	156.76	1	2	9261	2.5	70.6	4.5	5.7	2.8	7.8	3.0	2.3	0.8	73.1	4.5	22.4	0.076	0.500	19.308413	-97.809978
X. C. Amozoc - Perote (Cuota)	156.76	3	0	16434	3.4	70.3	4.7	5.2	4.1	6.2	2.3	2.9	0.9	73.7	4.7	21.6	0.080	0.521	19.305377	-97.791768
T. Der. Cuapiaxtla	159.40	1	0	10669	2.6	67.9	3.0	7.8	3.1	8.7	4.1	2.1	0.7	70.5	3.0	26.5	0.077	0.517	19.303669	-97.781202
X. C. Amozoc - Teziutlán	173.47	1	0	7748	2.8	69.4	3.9	4.9	4.0	7.9	4.9	1.7	0.5	72.2	3.9	23.9	0.076	0.518	19.327821	-97.672878
X. C. Amozoc - Teziutlán	173.47	3	0	5622	2.6	57.6	3.4	3.7	8.0	12.1	9.0	2.7	0.9	60.2	3.4	36.4	0.070	0.503	19.311197	-97.623272
Lim. Edos. Term. Tlax. Ppia. Pue. Zacatepec	177.57	0	0																	
Zacatepec	187.67	1	0	6190	2.8	53.9	3.6	7.0	8.7	12.3	8.3	2.5	0.9	56.7	3.6	39.7	0.071	0.503	19.271387	-97.543655

11 CARR: Puebla - Belem

CLAVE: 00055

RUTA: MEX-121

AÑO: 2022

LUGAR	ESTACION				CLASIFICACION VEHICULAR EN PORCIENTO										COORDENADAS					
	KM	TE	SC	TDPA	M	A	B	C2	C3	T3S2	T3S3	T3S2R4	OTROS	A	B	C	K'	D	LATITUD	LONGITUD
T. C. Puebla - Tlaxcala	0.00	0	0																	
X. C. Puebla - Córdoba (Cuota)	4.00	3	1	32166	2.8	89.9	1.1	3.9	0.9	1.0	0.2	0.2	0.0	92.7	1.1	6.2	0.067	0.504	19.101916	-98.182591
X. C. Puebla - Córdoba (Cuota)	4.00	3	2	29908	2.5	89.9	1.0	4.2	1.0	1.0	0.2	0.2	0.0	92.4	1.0	6.6	0.062	0.504	19.102007	-98.182714

TLAXCALA

11 CARR: Puebla - Belem

CLAVE: 00055

RUTA: MEX-121

AÑO: 2022

LUGAR	ESTACION				CLASIFICACION VEHICULAR EN PORCIENTO													COORDENADAS		
	KM	TE	SC	TDPA	M	A	B	C2	C3	T3S2	T3S3	T3S2R4	OTROS	A	B	C	K'	D	LATITUD	LONGITUD
Lim. Edos. Term. Pue. Ppia. Tlax.	6.60	0	0																	
Lim. Edos. Term. Tlax. Ppia. Pue.	9.77	0	0																	
Lim. Edos. Term. Pue. Ppia. Tlax.	10.25	0	0																	
T. Izq. Zacatelco	16.70	1	1	17048	2.7	88.1	0.8	4.9	1.1	1.4	0.5	0.3	0.2	90.8	0.8	8.4	0.075	0.505	19.204568	-98.195450
T. Izq. Zacatelco	16.70	1	2	16709	2.8	87.4	0.8	4.9	1.2	1.5	0.7	0.4	0.3	90.2	0.8	9.0	0.065	0.505	19.204532	-98.195583
X. C. Tlaxcala - Belem	28.80	1	1	20417	8.7	80.9	0.9	2.5	1.0	1.5	0.4	3.5	0.6	89.6	0.9	9.5	0.061	0.527	19.316506	-98.203784
X. C. Tlaxcala - Belem	28.80	1	2	22749	8.2	81.6	0.8	2.6	1.2	1.3	0.4	3.1	0.8	89.8	0.8	9.4	0.069	0.527	19.316542	-98.203851
T. C. San Martín Texmelucan - Ocotoxco (Cuota)	34.90	0	0																	

12 CARR: Puebla - Tlaxcala

CLAVE: 00475

RUTA: MEX-119

AÑO: 2022

LUGAR	ESTACION				CLASIFICACION VEHICULAR EN PORCIENTO													COORDENADAS		
	KM	TE	SC	TDPA	M	A	B	C2	C3	T3S2	T3S3	T3S2R4	OTROS	A	B	C	K'	D	LATITUD	LONGITUD
Puebla	0.00	0	0																	
X. C. Puebla - Córdoba (Cuota) Lateral	5.41	3	1	3479	6.7	85.7	0.7	4.6	0.7	0.9	0.5	0.1	0.1	92.4	0.7	6.9	0.070	0.542	19.097722	-98.207175
X. C. Puebla - Córdoba (Cuota) Central	5.41	3	1	12399	6.5	85.1	1.3	3.9	0.9	1.0	0.4	0.7	0.2	91.6	1.3	7.1	0.061	0.517	19.097713	-98.207261
X. C. Puebla - Córdoba (Cuota) Central	5.41	3	2	13261	6.5	85.1	1.3	3.9	0.9	1.0	0.4	0.7	0.2	91.6	1.3	7.1	0.072	0.517	19.097704	-98.207337
X. C. Puebla - Córdoba (Cuota) Lateral	5.41	3	2	4114	6.5	88.4	0.5	3.1	0.7	0.5	0.1	0.2	0.0	94.9	0.5	4.6	0.105	0.542	19.097687	-98.207413
Lim. Edos. Term. Pue. Ppia. Tlax.	11.83	0	0																	
Panzacola	13.14	3	1	11131	5.2	87.6	1.7	2.8	0.9	1.0	0.3	0.3	0.2	92.8	1.7	5.5	0.082	0.507	19.151914	-98.223605
Panzacola	13.14	3	2	11454	5.7	86.4	1.7	3.0	1.1	1.1	0.3	0.3	0.4	92.1	1.7	6.2	0.076	0.507	19.151905	-98.223700
San Toribio Xicohtzinco	16.10	3	1	10880	4.1	90.8	0.5	3.6	0.5	0.3	0.0	0.2	0.0	94.9	0.5	4.6	0.091	0.510	19.187326	-98.237811
San Toribio Xicohtzinco	16.10	3	2	10433	4.1	90.9	0.4	3.5	0.5	0.3	0.1	0.2	0.0	95.0	0.4	4.6	0.091	0.510	19.187332	-98.237881
Zacatelco	20.78	1	1	10173	4.0	91.7	0.5	2.9	0.4	0.3	0.0	0.2	0.0	95.7	0.5	3.8	0.087	0.503	19.207742	-98.240551
Zacatelco	20.78	1	2	10055	4.0	91.4	0.6	3.0	0.5	0.3	0.0	0.2	0.0	95.4	0.6	4.0	0.093	0.503	19.207724	-98.240628
T. Izq. San Martín Texmelucan	22.99	1	1	12365	5.7	90.2	0.6	2.6	0.3	0.4	0.1	0.1	0.0	95.9	0.6	3.5	0.101	0.506	19.234068	-98.243047
T. Izq. San Martín Texmelucan	22.99	1	2	12663	5.7	90.5	0.6	2.6	0.2	0.3	0.0	0.1	0.0	96.2	0.6	3.2	0.097	0.506	19.234059	-98.243171
T. Der. Tepeyanco (2° Acceso)	24.97	3	1	9566	3.3	94.8	0.2	1.3	0.2	0.2	0.0	0.0	0.0	98.1	0.2	1.7	0.086	0.502	19.249958	-98.235248
T. Der. Tepeyanco (2° Acceso)	24.97	3	2	9646	3.3	94.8	0.2	1.3	0.2	0.2	0.0	0.0	0.0	98.1	0.2	1.7	0.082	0.502	19.250031	-98.235267
T. Der. Ocotlán (Baja)	32.45	1	1	4906	2.1	90.3	0.4	3.5	1.1	0.5	0.4	1.6	0.1	92.4	0.4	7.2	0.080	0.517	19.303353	-98.240958
T. Der. Ocotlán (Alta)	32.45	1	1	9167	3.4	87.3	0.8	4.8	1.6	0.4	0.2	1.2	0.3	90.7	0.8	8.5	0.094	0.506	19.303381	-98.241053
T. Der. Ocotlán (Alta)	32.45	1	2	9382	3.4	87.3	0.8	4.7	1.6	0.4	0.2	1.2	0.4	90.7	0.8	8.5	0.090	0.506	19.303408	-98.241158
T. Der. Ocotlán (Baja)	32.45	1	2	4588	2.1	90.1	0.5	3.4	1.2	0.5	0.5	1.6	0.1	92.2	0.5	7.3	0.073	0.517	19.303499	-98.241253
Tlaxcala	33.22	1	1	10117	5.0	90.2	0.3	2.1	0.9	0.4	0.2	0.7	0.2	95.2	0.3	4.5	0.081	0.536	19.308693	-98.240667
Tlaxcala	33.22	1	2	8747	5.0	89.9	0.3	2.2	0.9	0.5	0.2	0.7	0.3	94.9	0.3	4.8	0.072	0.536	19.308693	-98.240705

TLAXCALA

13 CARR: Ramal a San Felipe de Hidalgo

CLAVE: 29565

RUTA: MEX-136

AÑO: 2022

LUGAR	ESTACION				CLASIFICACION VEHICULAR EN PORCIENTO										COORDENADAS					
	KM	TE	SC	TDPA	M	A	B	C2	C3	T3S2	T3S3	T3S2R4	OTROS	A	B	C	K'	D	LATITUD	LONGITUD
T. C. Los Reyes - Zacatepec	0.00	3	0	3641	3.0	91.5	0.9	3.4	0.8	0.2	0.1	0.1	0.0	94.5	0.9	4.6	0.084	0.517	19.524654	-98.485411
San Felipe de Hidalgo	10.50	1	0	1832	12.7	84.7	0.6	1.3	0.6	0.1	0.0	0.0	0.0	97.4	0.6	2.0	0.103	0.512	19.474939	-98.552171

14 CARR: San Martín Texmelucan - Tlaxcala

CLAVE: 00158

RUTA: MEX-117

AÑO: 2022

LUGAR	ESTACION				CLASIFICACION VEHICULAR EN PORCIENTO										COORDENADAS					
	KM	TE	SC	TDPA	M	A	B	C2	C3	T3S2	T3S3	T3S2R4	OTROS	A	B	C	K'	D	LATITUD	LONGITUD
San Martín Texmelucan	0.00	3	1	9460	6.8	83.4	0.6	4.4	0.8	1.1	1.5	0.8	0.6	90.2	0.6	9.2	0.079	0.524	19.288005	-98.422703
San Martín Texmelucan	0.00	3	2	10424	6.5	84.3	0.5	4.3	0.7	1.0	1.2	0.9	0.6	90.8	0.5	8.7	0.074	0.524	19.288123	-98.422759
X. C. San Martín Texmelucan - Ocotoxco (Cuota)	1.65	3	0	21632	7.5	81.8	0.8	5.7	0.7	0.9	1.2	1.0	0.4	89.3	0.8	9.9	0.091	0.520	19.291459	-98.412107
Lim. Edos. Term. Pue. Ppia. Tlax.	2.84	0	0																	
T. Der. Tepetitla	3.45	3	1	7311	11.6	83.7	0.7	1.7	0.6	0.6	0.2	0.7	0.2	95.3	0.7	4.0	0.084	0.515	19.294036	-98.403941
T. Der. Tepetitla	3.45	3	2	6881	11.7	84.3	0.6	1.6	0.6	0.4	0.1	0.5	0.2	96.0	0.6	3.4	0.076	0.515	19.294090	-98.404008
San Diego Xocoyucan	7.21	3	0	7086	9.8	87.5	0.4	1.2	0.5	0.3	0.1	0.2	0.0	97.3	0.4	2.3	0.076	0.502	19.307952	-98.368711
T. Der. Panotla	19.72	1	0	7960	6.5	89.7	0.4	2.5	0.4	0.2	0.2	0.1	0.0	96.2	0.4	3.4	0.081	0.503	19.319594	-98.276989
T. Der. Panotla	19.72	3	0	9161	6.0	90.3	0.5	2.2	0.5	0.3	0.1	0.1	0.0	96.3	0.5	3.2	0.078	0.511	19.319592	-98.269602
Totolac	21.38	1	0	8588	3.9	91.0	0.5	1.9	1.3	0.7	0.1	0.5	0.1	94.9	0.5	4.6	0.079	0.526	19.322197	-98.261195
Totolac	21.38	3	0	13048	6.6	88.2	0.3	1.8	1.0	0.8	0.3	0.8	0.2	94.8	0.3	4.9	0.077	0.540	19.329706	-98.250023
Tlaxcala	24.81	1	0	15928	5.8	90.0	0.3	1.5	0.6	0.6	0.2	0.7	0.3	95.8	0.3	3.9	0.083	0.523	19.326106	-98.246965

15 CARR: Tetlatlahuca - Santa Ana Chiautempan

CLAVE: 00158

RUTA: MEX-119

AÑO: 2022

LUGAR	ESTACION				CLASIFICACION VEHICULAR EN PORCIENTO										COORDENADAS					
	KM	TE	SC	TDPA	M	A	B	C2	C3	T3S2	T3S3	T3S2R4	OTROS	A	B	C	K'	D	LATITUD	LONGITUD
Tetlatlahuca	0.00	0	0																	
San Bartolomé Tenango	2.39	1	0	4854	10.6	84.8	0.3	1.9	1.0	0.5	0.2	0.6	0.1	95.4	0.3	4.3	0.091	0.508	19.247457	-98.296563
San Damián Texoloc	5.50	1	0	4942	8.5	87.8	0.3	1.5	0.8	0.3	0.1	0.6	0.1	96.3	0.3	3.4	0.083	0.507	19.272543	-98.284713
San Damián Texoloc	5.50	3	0	7159	4.7	88.6	0.5	2.5	0.6	2.7	0.2	0.1	0.1	93.3	0.5	6.2	0.083	0.506	19.279967	-98.272281
T. Izq. Cuauhtelulpan	9.63	1	0	11554	2.9	93.7	0.5	1.3	0.5	0.4	0.3	0.3	0.1	96.6	0.5	2.9	0.084	0.511	19.288549	-98.251381
T. Izq. Cuauhtelulpan	9.63	3	0	18816	3.5	92.3	0.4	1.1	0.6	0.6	0.2	1.0	0.3	95.8	0.4	3.8	0.083	0.521	19.292165	-98.249585
T. Der. Puebla	9.94	1	0	13000	2.7	93.8	0.4	1.5	0.5	0.3	0.2	0.3	0.3	96.5	0.4	3.1	0.083	0.512	19.301010	-98.245575
T. C. Tlaxcala - Belem	16.00	1	1	14350	8.9	87.3	0.3	0.4	0.9	0.6	0.1	1.3	0.2	96.2	0.3	3.5	0.077	0.512	19.317746	-98.214696
T. C. Tlaxcala - Belem	16.00	1	2	13650	8.1	88.5	0.3	0.5	0.8	0.4	0.1	1.1	0.2	96.6	0.3	3.1	0.078	0.512	19.317691	-98.214582

TLAXCALA

16 CARR: Tlaxcala - Belem

CLAVE: 29389

RUTA: MEX-119

AÑO: 2022

LUGAR	ESTACION				CLASIFICACION VEHICULAR EN PORCIENTO													COORDENADAS		
	KM	TE	SC	TDPA	M	A	B	C2	C3	T3S2	T3S3	T3S2R4	OTROS	A	B	C	K'	D	LATITUD	LONGITUD
Tlaxcala	0.00	0	0																	
T. Der. Ocotlán	3.91	1	1	14549	4.8	92.0	0.4	1.4	0.4	0.3	0.2	0.3	0.2	96.8	0.4	2.8	0.076	0.524	19.325277	-98.215470
T. Der. Ocotlán	3.91	1	2	13242	4.9	91.5	0.3	1.6	0.7	0.3	0.2	0.3	0.2	96.4	0.3	3.3	0.074	0.524	19.325358	-98.215364
X. C. Puebla - Belem	4.55	1	1	24074	4.2	91.5	0.5	1.9	0.5	0.4	0.3	0.4	0.3	95.7	0.5	3.8	0.081	0.507	19.319255	-98.206360
X. C. Puebla - Belem	4.55	1	2	23383	4.5	91.7	0.4	1.7	0.4	0.4	0.2	0.4	0.3	96.2	0.4	3.4	0.081	0.507	19.319373	-98.206303
Santa Ana Chiautempan	5.82	1	1	12697	6.1	89.4	0.4	1.7	0.3	0.9	0.5	0.4	0.3	95.5	0.4	4.1	0.073	0.534	19.316669	-98.201823
Santa Ana Chiautempan	5.82	1	2	11077	6.4	90.0	0.2	1.6	0.3	0.7	0.3	0.3	0.2	96.4	0.2	3.4	0.084	0.534	19.316750	-98.201794
T. Der. Ixcotla	7.19	3	1	9691	3.4	94.4	0.2	1.4	0.1	0.3	0.2	0.0	0.0	97.8	0.2	2.0	0.082	0.535	19.326918	-98.193958
T. Der. Ixcotla	7.19	3	2	11167	3.9	93.8	0.2	1.5	0.1	0.3	0.2	0.0	0.0	97.7	0.2	2.1	0.074	0.535	19.326892	-98.194091
Belem	10.06	1	0	7008	4.9	92.5	0.4	1.1	0.6	0.3	0.1	0.1	0.0	97.4	0.4	2.2	0.078	0.526	19.337552	-98.193306

17 CARR: Villa Alta - T. C. (Puebla - Tlaxcala)

CLAVE: 29566

RUTA: MEX-119

AÑO: 2022

LUGAR	ESTACION				CLASIFICACION VEHICULAR EN PORCIENTO													COORDENADAS		
	KM	TE	SC	TDPA	M	A	B	C2	C3	T3S2	T3S3	T3S2R4	OTROS	A	B	C	K'	D	LATITUD	LONGITUD
T. C. San Martín Texmelucan - Tlaxcala	0.00	3	0	9206	18.3	77.8	0.6	2.3	0.4	0.2	0.1	0.2	0.1	96.1	0.6	3.3	0.079	0.518	19.284330	-98.401350
Nativitas	10.50	3	0	9680	8.7	82.7	0.3	6.4	0.3	0.4	0.7	0.4	0.1	91.4	0.3	8.3	0.084	0.501	19.238563	-98.308094
T. C. Puebla - Tlaxcala	22.05	1	0	9290	5.4	85.5	0.3	6.9	0.4	0.3	0.1	0.3	0.8	90.9	0.3	8.8	0.082	0.503	19.234868	-98.244223

18 CARR: Amozoc - Perote (Cuota)

CLAVE: 00030

RUTA: MEX-140D

AÑO: 2022

LUGAR	ESTACION				CLASIFICACION VEHICULAR EN PORCIENTO													COORDENADAS		
	KM	TE	SC	TDPA	M	A	B	C2	C3	T3S2	T3S3	T3S2R4	OTROS	A	B	C	K'	D	LATITUD	LONGITUD
T. C. Puebla - Córdoba (Cuota)	0.00	3	0	11707	2.1	75.7	6.9	3.5	1.8	6.9	0.7	1.9	0.5	77.8	6.9	15.3	0.084	0.519	19.071795	-98.062855
Plaza de Cobro Amozoc	0.68	2	0	11248	0.6	75.9	5.1	4.2	3.5	7.1	0.7	2.2	0.7	76.5	5.1	18.4	0.085	0.500	19.063641	-98.069094
Lim. Edos. Term. Pue. Ppia. Tlax.	20.08	0	0																	
X. C. Huamantla - La Venta	25.80	3	0	11355	3.2	73.3	7.2	3.6	2.2	7.1	0.8	2.1	0.5	76.5	7.2	16.3	0.082	0.507	19.228197	-97.897030
Lim. Edos. Term. Tlax. Ppia. Pue.	30.50	0	0																	
Lim. Edos. Term. Pue. Ppia. Tlax.	31.26	0	0																	
Lim. Edos. Term. Tlax. Ppia. Pue.	31.67	0	0																	
Lim. Edos. Term. Pue. Ppia. Tlax.	38.93	0	0																	
Plaza de Cobro Cuapiaxtla	40.34	2	0	6530	0.6	78.9	3.2	3.9	3.6	5.6	0.7	2.6	0.9	79.5	3.2	17.3	0.085	0.500	19.310369	-97.797544
Lim. Edos. Term. Tlax. Ppia. Pue.	54.50	0	0																	
T. Der. Oriental	61.45	1	0	12843	3.0	70.8	7.9	4.5	1.9	5.4	1.7	3.9	0.9	73.8	7.9	18.3	0.098	0.509	19.411589	-97.650723
T. Der. Oriental	61.45	3	1	6171	2.0	64.2	8.9	5.5	1.8	9.0	2.1	5.6	0.9	66.2	8.9	24.9	0.073	0.501	19.421026	-97.637167

TLAXCALA

18 CARR: Amozoc - Perote (Cuota)

CLAVE: 00030

RUTA: MEX-140D

AÑO: 2022

LUGAR	ESTACION				CLASIFICACION VEHICULAR EN PORCIENTO													COORDENADAS		
	KM	TE	SC	TDPA	M	A	B	C2	C3	T3S2	T3S3	T3S2R4	OTROS	A	B	C	K'	D	LATITUD	LONGITUD
T. Der. Oriental	61.45	3	2	6186	2.1	64.2	8.6	5.6	2.1	9.0	2.0	5.5	0.9	66.3	8.6	25.1	0.100	0.501	19.421037	-97.637222
T. Izq. Teziutlán	62.70	3	0	8366	2.5	57.2	10.5	6.5	2.9	10.4	2.6	6.5	0.9	59.7	10.5	29.8	0.088	0.515	19.427254	-97.628943
X. C. Tepeyahualco - Cantoná	80.10	3	0	10901	2.6	63.3	8.8	5.2	2.0	9.3	2.1	5.8	0.9	65.9	8.8	25.3	0.083	0.528	19.508117	-97.493164
Lim. Edos. Term. Pue. Ppia. Ver.	90.36	0	0																	
T. C. Lib. de Perote	105.00	0	0																	

19 CARR: Libramiento de Tlaxcala (Cuota)

CLAVE:

RUTA: MEX-117D

AÑO: 2022

LUGAR	ESTACION				CLASIFICACION VEHICULAR EN PORCIENTO													COORDENADAS		
	KM	TE	SC	TDPA	M	A	B	C2	C3	T3S2	T3S3	T3S2R4	OTROS	A	B	C	K'	D	LATITUD	LONGITUD
T. C. San Martín Texmelucan - Ocotoxco (Cuota)	0.00	3	1	13454	2.0	90.3	1.0	4.0	0.6	1.1	0.4	0.5	0.1	92.3	1.0	6.7	0.098	0.508	19.317279	-98.256400
T. C. San Martín Texmelucan - Ocotoxco (Cuota)	0.00	3	2	13053	2.2	89.9	1.0	4.1	0.5	1.3	0.4	0.5	0.1	92.1	1.0	6.9	0.096	0.508	19.317207	-98.256343
X. C. Puebla - Tlaxcala	6.50	1	1	12177	1.2	94.9	0.7	1.9	0.4	0.5	0.2	0.2	0.0	96.1	0.7	3.2	0.103	0.520	19.295959	-98.253556
X. C. Puebla - Tlaxcala	6.50	1	2	13210	1.2	95.0	0.7	1.9	0.4	0.4	0.2	0.2	0.0	96.2	0.7	3.1	0.112	0.520	19.296004	-98.253479
X. C. Puebla - Tlaxcala	6.50	3	1	14346	0.8	96.6	0.4	1.4	0.3	0.3	0.1	0.1	0.0	97.4	0.4	2.2	0.102	0.501	19.287871	-98.233835
X. C. Puebla - Tlaxcala	6.50	3	2	14390	0.8	96.7	0.4	1.4	0.2	0.3	0.1	0.1	0.0	97.5	0.4	2.1	0.101	0.501	19.287925	-98.233911
T. C. Puebla - Belén Atzizimitlán	11.00	1	1	12028	2.7	91.3	0.9	2.2	0.8	1.0	0.5	0.4	0.2	94.0	0.9	5.1	0.088	0.502	19.301918	-98.203151
T. C. Puebla - Belén Atzizimitlán	11.00	1	2	11949	3.1	92.3	0.6	1.7	0.6	0.7	0.4	0.3	0.3	95.4	0.6	4.0	0.079	0.502	19.301704	-98.203799

20 CARR: Libramiento Norte de la Ciudad de México (Cuota)

CLAVE: 0902

RUTA: MEX-M40D

AÑO: 2022

LUGAR	ESTACION				CLASIFICACION VEHICULAR EN PORCIENTO													COORDENADAS		
	KM	TE	SC	TDPA	M	A	B	C2	C3	T3S2	T3S3	T3S2R4	OTROS	A	B	C	K'	D	LATITUD	LONGITUD
T. C. Toluca - Palmillas	0.00	0	0																	
X. C. Toluca - Palmillas	12.90	1	1	5196	1.7	61.5	4.4	6.4	2.2	14.7	3.9	4.2	1.0	63.2	4.4	32.4	0.125	0.505	19.917880	-99.850396
X. C. Toluca - Palmillas	12.90	1	2	5094	1.8	60.7	4.9	6.4	2.3	14.9	3.9	4.1	1.0	62.5	4.9	32.6	0.099	0.505	19.917931	-99.850584
X. C. Toluca - Palmillas	12.90	3	1	4397	1.9	63.1	8.5	5.6	2.4	11.1	2.9	3.8	0.7	65.0	8.5	26.5	0.105	0.502	19.923191	-99.836847
X. C. Toluca - Palmillas	12.90	3	2	4430	1.9	63.2	8.5	5.5	2.3	11.2	3.0	3.8	0.6	65.1	8.5	26.4	0.102	0.502	19.923023	-99.836846
C. P. Jilotepec	48.70	1	1	4394	1.7	60.6	4.6	9.9	2.7	13.1	1.6	4.9	0.9	62.3	4.6	33.1	0.118	0.511	19.969042	-99.538245
C. P. Jilotepec	48.70	1	2	4585	1.6	60.8	4.6	9.8	2.7	13.1	1.6	4.9	0.9	62.4	4.6	33.0	0.075	0.511	19.968922	-99.538092
C. P. Jilotepec	48.70	3	1	5950	3.5	54.3	8.6	6.4	2.8	16.5	2.0	4.8	1.1	57.8	8.6	33.6	0.094	0.506	19.980248	-99.516013
C. P. Jilotepec	48.70	3	2	5804	3.5	54.3	8.6	6.3	2.8	16.5	2.0	4.9	1.1	57.8	8.6	33.6	0.074	0.506	19.980364	-99.516077
X. C. México - Querétaro	54.00	3	1	9689	1.3	53.7	7.1	5.4	4.2	17.4	3.9	6.1	0.9	55.0	7.1	37.9	0.083	0.518	20.003139	-99.483421
X. C. México - Querétaro	54.00	3	2	9011	1.3	53.7	7.1	5.4	4.2	17.4	3.9	6.1	0.9	55.0	7.1	37.9	0.078	0.518	20.003701	-99.482757
Plaza de Cobro Querétaro	55.00	3	1	9503	0.4	54.5	1.9	4.4	5.8	18.3	4.4	7.8	2.5	54.9	1.9	43.2	0.067	0.500	19.998714	-99.487788

TLAXCALA

20 CARR: Libramiento Norte de la Ciudad de México (Cuota)

CLAVE: 0902

RUTA: MEX-M40D

AÑO: 2022

LUGAR	ESTACION				CLASIFICACION VEHICULAR EN PORCIENTO													COORDENADAS		
	KM	TE	SC	TDPA	M	A	B	C2	C3	T3S2	T3S3	T3S2R4	OTROS	A	B	C	K'	D	LATITUD	LONGITUD
Plaza de Cobro Querétaro	55.00	3	2	9503	0.4	54.5	1.9	4.4	5.8	18.3	4.4	7.8	2.5	54.9	1.9	43.2	0.067	0.500	19.998714	-99.487788
Lim. Edos. Term. Méx. Ppia. Hgo.	60.72	0	0																	
X. C. Ent. Tepeji del Río - Tlahuelilpan	79.00	1	1	8480	2.5	53.2	7.5	6.2	4.4	15.7	4.2	5.4	0.9	55.7	7.5	36.8	0.068	0.531	20.096309	-99.294026
X. C. Ent. Tepeji del Río - Tlahuelilpan	79.00	1	2	9610	2.5	53.2	7.5	6.2	4.4	15.7	4.2	5.4	0.9	55.7	7.5	36.8	0.066	0.531	20.097362	-99.290967
X. C. Ent. Tepeji del Río - Tlahuelilpan	79.00	3	1	10705	3.2	58.7	7.3	6.6	2.3	11.6	3.8	5.6	0.9	61.9	7.3	30.8	0.079	0.508	20.093176	-99.269475
X. C. Ent. Tepeji del Río - Tlahuelilpan	79.00	3	2	10375	3.2	58.7	7.3	6.6	2.4	11.6	3.8	5.5	0.9	61.9	7.3	30.8	0.093	0.508	20.095231	-99.272932
X. C. Los Reyes - El Tephé	86.40	1	1	10948	2.7	63.5	4.0	5.4	1.9	13.3	3.0	5.3	0.9	66.2	4.0	29.8	0.082	0.517	20.069524	-99.226991
X. C. Los Reyes - El Tephé	86.40	1	2	11731	2.7	63.5	4.0	5.4	1.9	13.3	3.0	5.3	0.9	66.2	4.0	29.8	0.075	0.517	20.070074	-99.227642
X. C. Los Reyes - El Tephé	86.40	3	1	10277	2.7	62.3	4.1	6.7	3.2	10.5	3.5	6.1	0.9	65.0	4.1	30.9	0.095	0.514	20.064365	-99.212093
X. C. Los Reyes - El Tephé	86.40	3	2	10851	2.7	62.3	4.1	6.7	3.2	10.5	3.5	6.1	0.9	65.0	4.1	30.9	0.091	0.514	20.065148	-99.214523
Lim. Edos. Term. Hgo. Ppia. Méx.	95.75	0	0																	
X. C. (Los Reyes - El Tephé) - Tianguistongo	108.60	1	1	10222	4.6	55.5	5.3	6.1	2.6	13.9	3.9	7.2	0.9	60.1	5.3	34.6	0.071	0.505	19.958560	-99.068162
X. C. (Los Reyes - El Tephé) - Tianguistongo	108.60	1	2	10020	4.6	55.5	5.3	6.1	2.6	13.9	3.9	7.2	0.9	60.1	5.3	34.6	0.090	0.505	19.958335	-99.066232
X. C. (Los Reyes - El Tephé) - Tianguistongo	108.60	3	1	11163	3.5	60.4	4.8	6.5	2.7	13.1	3.6	4.6	0.8	63.9	4.8	31.3	0.083	0.532	19.955186	-99.050652
X. C. (Los Reyes - El Tephé) - Tianguistongo	108.60	3	2	9812	3.5	60.4	4.8	6.5	2.7	13.1	3.6	4.6	0.8	63.9	4.8	31.3	0.084	0.532	19.955367	-99.050614
Lim. Edos. Term. Méx. Ppia. Hgo.	115.89	0	0																	
X. C. México - Pachuca	127.30	1	1	9835	2.3	66.3	4.5	5.5	2.4	9.9	3.7	4.5	0.9	68.6	4.5	26.9	0.074	0.505	19.932331	-98.902570
X. C. México - Pachuca	127.30	1	2	10018	2.3	66.3	4.5	5.5	2.4	9.9	3.7	4.5	0.9	68.6	4.5	26.9	0.073	0.505	19.932457	-98.902532
X. C. México - Pachuca	127.30	3	1	9009	2.9	51.5	5.9	7.2	3.2	15.6	4.3	8.5	0.9	54.4	5.9	39.7	0.070	0.518	19.926967	-98.879832
X. C. México - Pachuca	127.30	3	2	9670	2.9	51.6	5.9	7.1	3.2	15.6	4.3	8.5	0.9	54.5	5.9	39.6	0.078	0.518	19.926776	-98.878322
Lim. Edos. Term. Hgo. Ppia. Méx.	143.98	0	0																	
X. C. Venta de Carpio - T. C. (Pachuca - Tulancingo)	151.11	1	1	9836	3.5	59.7	5.5	4.5	2.8	13.0	2.9	7.2	0.9	63.2	5.5	31.3	0.070	0.539	19.840605	-98.708843
X. C. Venta de Carpio - T. C. (Pachuca - Tulancingo)	151.11	1	2	8428	3.4	59.2	5.6	4.2	3.2	13.1	3.1	7.3	0.9	62.6	5.6	31.8	0.074	0.539	19.839775	-98.707650
X. C. Venta de Carpio - T. C. (Pachuca - Tulancingo)	151.11	3	1	7419	4.2	59.7	5.2	3.5	4.1	12.9	2.6	6.9	0.9	63.9	5.2	30.9	0.069	0.512	19.826850	-98.691810
X. C. Venta de Carpio - T. C. (Pachuca - Tulancingo)	151.11	3	2	7773	3.2	60.3	5.5	3.4	4.3	12.6	2.6	7.3	0.8	63.5	5.5	31.0	0.076	0.512	19.828435	-98.693547
X. C. Ent. Tolman - Cd. Sahagún	162.55	1	1	8308	3.9	60.7	5.2	3.6	3.8	12.2	2.6	7.1	0.9	64.6	5.2	30.2	0.064	0.510	19.761640	-98.632550
X. C. Ent. Tolman - Cd. Sahagún	162.55	1	2	8646	3.6	60.3	5.5	3.7	3.9	12.0	2.6	7.5	0.9	63.9	5.5	30.6	0.081	0.510	19.770715	-98.637921
X. C. Ent. Tolman - Cd. Sahagún	162.55	3	1	9677	0.0	62.5	6.7	6.0	2.3	12.0	3.4	6.2	0.9	62.5	6.7	30.8	0.067	0.518	19.749246	-98.625633
X. C. Ent. Tolman - Cd. Sahagún	162.55	3	2	8998	4.5	57.8	7.6	5.1	2.3	12.3	3.3	6.3	0.8	62.3	7.6	30.1	0.066	0.518	19.747860	-98.624753
Lim. Edos. Term. Méx. Ppia. Hgo.	166.53	0	0																	
X. C. Calpulallpan - El Ocote	180.39	1	1	10279	7.6	56.3	7.0	4.6	2.7	13.8	2.8	4.2	1.0	63.9	7.0	29.1	0.081	0.508	19.624551	-98.552352
X. C. Calpulallpan - El Ocote	180.39	1	2	10627	8.4	55.3	6.5	4.7	2.7	14.2	2.9	4.3	1.0	63.7	6.5	29.8	0.080	0.508	19.625038	-98.552572
X. C. Calpulallpan - El Ocote	180.39	3	1	9741	3.4	50.0	8.6	5.5	2.6	17.9	4.0	7.0	1.0	53.4	8.6	38.0	0.103	0.525	19.615849	-98.544898
X. C. Calpulallpan - El Ocote	180.39	3	2	8813	3.1	49.7	8.4	5.7	2.8	18.0	4.2	7.1	1.0	52.8	8.4	38.8	0.093	0.525	19.606109	-98.536461
Lim. Edos. Term. Hgo. Ppia. Tlax.	180.98	0	0																	

TLAXCALA

20 CARR: Libramiento Norte de la Ciudad de México (Cuota)

CLAVE: 0902

RUTA: MEX-M40D

AÑO: 2022

LUGAR	ESTACION				CLASIFICACION VEHICULAR EN PORCIENTO													COORDENADAS		
	KM	TE	SC	TDPA	M	A	B	C2	C3	T3S2	T3S3	T3S2R4	OTROS	A	B	C	K'	D	LATITUD	LONGITUD
X. C. Los Reyes - Zacatepec	196.70	1	1	9545	6.0	50.3	5.1	4.0	2.8	19.3	4.3	7.2	1.0	56.3	5.1	38.6	0.074	0.511	19.520236	-98.472940
X. C. Los Reyes - Zacatepec	196.70	1	2	9976	5.8	49.0	5.4	4.2	3.0	18.9	4.8	7.9	1.0	54.8	5.4	39.8	0.084	0.511	19.520281	-98.472854
X. C. Los Reyes - Zacatepec	196.70	3	1	8426	6.0	50.1	7.1	4.7	2.8	17.0	3.9	7.4	1.0	56.1	7.1	36.8	0.067	0.504	19.508688	-98.467211
X. C. Los Reyes - Zacatepec	196.70	3	2	8560	5.9	52.1	6.7	4.6	2.7	16.4	3.4	7.2	1.0	58.0	6.7	35.3	0.085	0.504	19.508769	-98.467125
X. C. San Martín Texmelucan - Tlaxcala - El Molinito	220.95	1	1	8209	9.4	43.2	7.3	5.6	4.3	18.9	3.9	6.4	1.0	52.6	7.3	40.1	0.075	0.510	19.314543	-98.407475
X. C. San Martín Texmelucan - Tlaxcala - El Molinito	220.95	1	2	7872	9.2	41.4	7.3	5.7	4.6	20.1	3.9	6.8	1.0	50.6	7.3	42.1	0.067	0.510	19.314823	-98.407331
X. C. San Martín Texmelucan - Tlaxcala - El Molinito	220.95	3	1	10444	3.4	66.9	5.3	5.0	2.2	10.3	2.2	3.8	0.9	70.3	5.3	24.4	0.067	0.515	19.292774	-98.410560
X. C. San Martín Texmelucan - Tlaxcala - El Molinito	220.95	3	2	9835	3.3	63.7	6.1	5.6	2.4	11.6	2.5	3.9	0.9	67.0	6.1	26.9	0.079	0.515	19.292792	-98.410446
Plaza de Cobro San Martín Texmelucan	222.00	1	1	8009	0.3	52.7	1.9	5.3	5.7	20.6	3.7	7.8	2.0	53.0	1.9	45.1	0.067	0.500	19.301809	-98.409588
Plaza de Cobro San Martín Texmelucan	222.00	1	2	8009	0.3	52.7	1.9	5.3	5.7	20.6	3.7	7.8	2.0	53.0	1.9	45.1	0.067	0.500	19.301809	-98.409588
T. C. San Martín Texmelucan - Ocotoxco (Cuota)	222.44	0	0																	
T. C. México - Puebla (Cuota)	226.73	1	1	9291	3.7	64.5	6.6	4.2	3.1	11.7	1.7	3.7	0.8	68.2	6.6	25.2	0.075	0.513	19.270112	-98.419948
T. C. México - Puebla (Cuota)	226.73	1	2	9774	3.5	61.6	7.3	4.6	3.4	13.0	1.9	3.8	0.9	65.1	7.3	27.6	0.066	0.513	19.270030	-98.419863

21 CARR: México - Puebla (Cuota)

CLAVE: 00450

RUTA: MEX-150D

AÑO: 2022

LUGAR	ESTACION				CLASIFICACION VEHICULAR EN PORCIENTO													COORDENADAS		
	KM	TE	SC	TDPA	M	A	B	C2	C3	T3S2	T3S3	T3S2R4	OTROS	A	B	C	K'	D	LATITUD	LONGITUD
México	0.00	0	0																	
Ent Concordía (T. Izq. Los Reyes) Lateral	17.00	3	1	23568	2.9	83.4	2.3	8.1	0.8	1.3	0.5	0.3	0.4	86.3	2.3	11.4	0.073	0.548	19.351510	-98.987575
Ent Concordía (T. Izq. Los Reyes) Central	17.00	3	1	84451	1.8	89.7	1.5	3.8	0.7	1.4	0.6	0.2	0.3	91.5	1.5	7.0	0.064	0.502	19.351600	-98.987498
Ent Concordía (T. Izq. Los Reyes) Central	17.00	3	2	83549	2.0	89.4	1.5	3.8	0.7	1.4	0.6	0.3	0.3	91.4	1.5	7.1	0.063	0.502	19.353941	-98.989707
Ent Concordía (T. Izq. Los Reyes) Lateral	17.00	3	2	30435	2.9	83.8	2.2	8.0	0.8	1.3	0.5	0.2	0.3	86.7	2.2	11.1	0.069	0.548	19.354031	-98.989641
Lim. Edos. Term. CDMX Ppia. Méx.	17.51	0	0																	
Av. Las Torres (Eje 6) Central	19.27	1	1	74674	4.5	87.8	1.2	3.7	1.0	1.1	0.4	0.2	0.1	92.3	1.2	6.5	0.062	0.510	19.348084	-98.983852
Av. Las Torres (Eje 6) Lateral	19.27	1	1	27041	4.6	76.7	2.2	13.1	1.1	1.6	0.4	0.2	0.1	81.3	2.2	16.5	0.064	0.505	19.348003	-98.983928
Av. Las Torres (Eje 6) Lateral	19.27	1	2	26536	4.2	76.9	2.1	13.4	1.1	1.6	0.4	0.2	0.1	81.1	2.1	16.8	0.079	0.505	19.348491	-98.983833
Av. Las Torres (Eje 6) Central	19.27	1	2	71337	4.2	88.2	1.1	3.6	0.9	1.3	0.4	0.2	0.1	92.4	1.1	6.5	0.059	0.510	19.348400	-98.983928
Av. Las Torres (Eje 6) Lateral	19.27	3	1	32868	4.5	76.7	2.4	13.1	1.2	1.4	0.4	0.2	0.1	81.2	2.4	16.4	0.067	0.516	19.339832	-98.976627
Av. Las Torres (Eje 6) Central	19.27	3	1	75668	3.4	89.2	1.8	2.5	0.9	1.0	0.8	0.2	0.2	92.6	1.8	5.6	0.067	0.521	19.339886	-98.976474
Av. Las Torres (Eje 6) Lateral	19.27	3	2	30629	4.2	77.6	2.2	12.7	1.1	1.5	0.4	0.2	0.1	81.8	2.2	16.0	0.066	0.516	19.341197	-98.976969
Av. Las Torres (Eje 6) Central	19.27	3	2	83683	3.1	89.5	1.9	2.6	1.0	0.9	0.7	0.2	0.1	92.6	1.9	5.5	0.063	0.521	19.341107	-98.977055
Eje 10 Sur (Lateral)	22.80	1	1	31336	4.7	78.4	2.5	10.8	1.1	1.8	0.4	0.2	0.1	83.1	2.5	14.4	0.065	0.515	19.331896	-98.968498
Eje 10 Sur (Central)	22.80	1	1	75668	4.4	86.5	1.1	5.0	1.0	0.9	0.7	0.2	0.2	90.9	1.1	8.0	0.067	0.521	19.331996	-98.968393
Eje 10 Sur (Lateral)	22.80	1	2	29327	4.5	78.7	2.4	11.1	1.0	1.6	0.4	0.2	0.1	83.2	2.4	14.4	0.075	0.515	19.332014	-98.968002

TLAXCALA

21 CARR: México - Puebla (Cuota)

CLAVE: 00450

RUTA: MEX-150D

AÑO: 2022

LUGAR	ESTACION				CLASIFICACION VEHICULAR EN PORCIENTO										COORDENADAS					
	KM	TE	SC	TDPA	M	A	B	C2	C3	T3S2	T3S3	T3S2R4	OTROS	A	B	C	K'	D	LATITUD	LONGITUD
Eje 10 Sur (Central)	22.80	1	2	83683	4.8	85.7	1.2	5.1	1.1	1.0	0.7	0.2	0.2	90.5	1.2	8.3	0.063	0.521	19.331932	-98.968098
Eje 10 Sur (Central)	22.80	3	1	50842	2.4	85.7	2.6	5.6	1.2	1.6	0.4	0.3	0.2	88.1	2.6	9.3	0.065	0.525	19.313835	-98.946988
Eje 10 Sur (Lateral)	22.80	3	1	37927	4.5	79.2	2.5	10.6	1.0	1.5	0.4	0.2	0.1	83.7	2.5	13.8	0.075	0.512	19.313726	-98.947102
Eje 10 Sur (Lateral)	22.80	3	2	36038	4.7	79.2	2.4	10.4	0.9	1.7	0.4	0.2	0.1	83.9	2.4	13.7	0.076	0.512	19.314079	-98.946712
Eje 10 Sur (Central)	22.80	3	2	45479	2.5	86.2	2.4	5.4	1.1	1.5	0.4	0.3	0.2	88.7	2.4	8.9	0.078	0.525	19.313889	-98.946674
X. C. Santa Bárbara - Izúcar de Matamoros (Lateral)	32.14	1	1	16389	2.4	80.2	1.8	12.1	1.0	1.6	0.5	0.2	0.2	82.6	1.8	15.6	0.070	0.503	19.292103	-98.892095
X. C. Santa Bárbara - Izúcar de Matamoros (Central)	32.14	1	1	38713	3.2	82.4	3.5	7.0	1.0	1.5	0.6	0.4	0.4	85.6	3.5	10.9	0.058	0.507	19.292247	-98.892029
X. C. Santa Bárbara - Izúcar de Matamoros (Central)	32.14	1	2	39926	3.3	81.3	3.9	7.4	1.4	1.6	0.6	0.3	0.2	84.6	3.9	11.5	0.065	0.507	19.292428	-98.891943
X. C. Santa Bárbara - Izúcar de Matamoros (Lateral)	32.14	1	2	16612	2.6	80.7	1.7	11.8	0.9	1.5	0.4	0.2	0.2	83.3	1.7	15.0	0.075	0.503	19.292573	-98.892057
X. C. Santa Bárbara - Izúcar de Matamoros (Central)	32.14	3	1	13553	1.0	75.8	5.4	9.2	1.9	4.3	1.6	0.5	0.3	76.8	5.4	17.8	0.072	0.501	19.294733	-98.876366
X. C. Santa Bárbara - Izúcar de Matamoros (Lateral)	32.14	3	1	1432	2.0	70.1	5.2	7.2	2.3	6.0	2.0	4.7	0.5	72.1	5.2	22.7	0.077	0.520	19.294597	-98.876287
X. C. Santa Bárbara - Izúcar de Matamoros (Central)	32.14	3	2	13514	1.3	74.5	5.3	9.9	2.1	4.3	1.8	0.5	0.3	75.8	5.3	18.9	0.092	0.501	19.294871	-98.876416
X. C. Santa Bárbara - Izúcar de Matamoros (Lateral)	32.14	3	2	1554	4.0	69.4	3.4	7.6	2.5	6.4	1.7	4.5	0.5	73.4	3.4	23.2	0.079	0.520	19.294984	-98.876435
Plaza de Cobro San Marcos	33.30	2	1	16826	0.6	75.8	4.9	5.0	3.5	6.6	0.6	2.6	0.4	76.4	4.9	18.7	0.068	0.500	19.296272	-98.870712
Plaza de Cobro San Marcos	33.30	2	2	16826	0.6	75.8	4.9	5.0	3.5	6.6	0.6	2.6	0.4	76.4	4.9	18.7	0.068	0.500	19.296272	-98.870712
T. Izq. Río Frío	63.79	3	1	17718	1.0	73.0	6.3	9.1	1.9	5.7	0.8	1.9	0.3	74.0	6.3	19.7	0.103	0.508	19.350742	-98.658881
T. Izq. Río Frío	63.79	3	2	18279	1.2	71.9	6.7	8.9	2.1	6.0	0.9	1.9	0.4	73.1	6.7	20.2	0.098	0.508	19.351598	-98.660104
Lim. Edos. Term. Méx. Ppia. Pue.	65.46	0	0																	
T. Der. A San Rafael Ixtapalucan	76.80	3	1	25070	2.6	74.7	7.2	4.9	2.4	4.9	0.8	2.0	0.5	77.3	7.2	15.5	0.062	0.505	19.331664	-98.545479
T. Der. A San Rafael Ixtapalucan	76.80	3	2	25554	3.0	74.2	7.1	5.2	2.3	5.0	0.9	1.8	0.5	77.2	7.1	15.7	0.069	0.505	19.331780	-98.545430
T. Izq. Tlaxcala	90.61	1	1	24579	2.3	74.7	7.2	4.7	2.6	5.3	0.7	2.0	0.5	77.0	7.2	15.8	0.068	0.505	19.273913	-98.436067
T. Izq. Tlaxcala	90.61	1	2	26565	2.8	75.0	7.0	5.1	2.1	4.9	0.9	1.7	0.5	77.8	7.0	15.2	0.078	0.505	19.274031	-98.436008
T. Izq. Tlaxcala	90.61	3	1	26630	0.7	67.6	6.2	9.4	2.8	8.3	1.3	3.4	0.3	68.3	6.2	25.5	0.058	0.507	19.261883	-98.417579
T. Izq. Tlaxcala	90.61	3	2	27345	0.9	66.4	6.3	9.1	3.1	8.8	1.5	3.6	0.3	67.3	6.3	26.4	0.060	0.507	19.261982	-98.417485
Plaza de Cobro San Martín Texmelucan	91.17	2	1	25718	0.7	70.2	4.4	4.7	4.3	9.9	1.2	3.9	0.7	70.9	4.4	24.7	0.068	0.500	19.241190	-98.385786
Plaza de Cobro San Martín Texmelucan	91.17	2	2	25718	0.7	70.2	4.4	4.7	4.3	9.9	1.2	3.9	0.7	70.9	4.4	24.7	0.068	0.500	19.241190	-98.385786
Lim. Edos. Term. Pue. Ppia. Tlax.	99.11	0	0																	
T. Der. Aeropuerto Internacional De Puebla	101.10	3	1	32052	0.8	78.5	4.2	5.0	1.8	6.0	1.2	1.6	0.9	79.3	4.2	16.5	0.090	0.522	19.211527	-98.352343
T. Der. Aeropuerto Internacional De Puebla	101.10	3	2	35325	0.8	78.5	4.3	5.1	1.7	5.9	1.2	1.6	0.9	79.3	4.3	16.4	0.073	0.522	19.211620	-98.352251
X. C. Xoxtla - Huactzinco	107.98	1	1	37139	1.1	76.8	3.2	4.7	2.3	6.7	1.8	2.5	0.9	77.9	3.2	18.9	0.081	0.505	19.179909	-98.313885
X. C. Xoxtla - Huactzinco	107.98	1	2	38005	1.2	76.7	3.2	4.7	2.3	6.7	1.8	2.5	0.9	77.9	3.2	18.9	0.082	0.505	19.179991	-98.313785
X. C. Xoxtla - Huactzinco	107.98	3	1	46757	2.0	73.2	3.9	7.2	2.5	6.6	1.6	2.4	0.6	75.2	3.9	20.9	0.095	0.502	19.166407	-98.298902
X. C. Xoxtla - Huactzinco	107.98	3	2	47198	2.0	72.6	4.1	7.1	2.5	6.9	1.7	2.5	0.6	74.6	4.1	21.3	0.065	0.502	19.166486	-98.298784
Lim. Edos. Term. Tlax. Ppia. Pue.	108.00	0	0																	
Anillo Periferico Poniente de Puebla (Lateral)	114.00	3	1	33941	2.2	80.3	2.6	5.8	1.7	3.9	1.6	1.0	0.9	82.5	2.6	14.9	0.069	0.542	19.126943	-98.263822



TLAXCALA

21 CARR: México - Puebla (Cuota)

CLAVE: 00450

RUTA: MEX-150D

AÑO: 2022

LUGAR	ESTACION				CLASIFICACION VEHICULAR EN PORCIENTO													COORDENADAS		
	KM	TE	SC	TDPA	M	A	B	C2	C3	T3S2	T3S3	T3S2R4	OTROS	A	B	C	K'	D	LATITUD	LONGITUD
Anillo Periferico Poniente de Puebla (Central)	114.00	3	1	36246	2.0	70.6	6.1	5.5	3.2	7.7	1.2	3.0	0.7	72.6	6.1	21.3	0.086	0.510	19.127040	-98.263773
Anillo Periferico Poniente de Puebla (Lateral)	114.00	3	2	28292	2.2	80.1	2.3	6.0	1.6	4.1	1.7	1.1	0.9	82.3	2.3	15.4	0.074	0.542	19.127163	-98.263588
Anillo Periferico Poniente de Puebla (Central)	114.00	3	2	37866	2.1	69.5	6.4	5.8	3.2	8.1	1.1	3.2	0.6	71.6	6.4	22.0	0.066	0.510	19.127093	-98.263737
Boulevard Hermanos Serdán	120.46	3	1	67921	1.5	81.5	3.4	5.6	2.4	2.8	1.4	1.0	0.4	83.0	3.4	13.6	0.066	0.504	19.089183	-98.216116
Boulevard Hermanos Serdán	120.46	3	2	69235	1.8	81.1	3.2	6.0	2.2	2.9	1.5	0.9	0.4	82.9	3.2	13.9	0.069	0.504	19.089321	-98.216105
X. C. Puebla - Tlaxcala (Central)	123.00	3	1	49796	1.9	84.7	1.9	4.2	1.7	3.6	1.0	0.7	0.3	86.6	1.9	11.5	0.073	0.521	19.085955	-98.199668
X. C. Puebla - Tlaxcala (Lateral)	123.00	3	1	36857	2.0	84.4	1.8	8.5	0.9	1.1	0.5	0.4	0.4	86.4	1.8	11.8	0.070	0.508	19.085921	-98.200076
X. C. Puebla - Tlaxcala (Central)	123.00	3	2	45237	1.9	86.1	1.9	5.0	1.5	2.5	0.5	0.4	0.2	88.0	1.9	10.1	0.111	0.521	19.086068	-98.199615
X. C. Puebla - Tlaxcala (Lateral)	123.00	3	2	38208	1.9	82.9	2.3	9.3	0.8	1.1	0.7	0.6	0.4	84.8	2.3	12.9	0.078	0.508	19.086158	-98.199488
T. C. Puebla - Tlaxcala	124.90	0	0																	

22 CARR: San Martín Texmelucan - Tlaxcala - El Molinito (Cuota)

CLAVE: 00212

RUTA: MEX-117D

AÑO: 2022

LUGAR	ESTACION				CLASIFICACION VEHICULAR EN PORCIENTO													COORDENADAS		
	KM	TE	SC	TDPA	M	A	B	C2	C3	T3S2	T3S3	T3S2R4	OTROS	A	B	C	K'	D	LATITUD	LONGITUD
T. C. México - Puebla (Cuota)	0.00	0	0																	
X. C. San Martín Texmelucan - Tlaxcala	1.80	1	1	2205	2.8	83.0	3.2	6.3	1.3	2.5	0.5	0.3	0.1	85.8	3.2	11.0	0.069	0.546	19.293915	-98.414287
X. C. San Martín Texmelucan - Tlaxcala	1.80	1	2	1833	3.0	82.5	3.1	6.5	1.3	2.7	0.5	0.3	0.1	85.5	3.1	11.4	0.086	0.546	19.293843	-98.414221
Lim. Edos. Term. Pue. Ppia. Tlax.	4.05	0	0																	
Plaza de Cobro San Martín Texmelucan	5.45	2	1	2724	0.9	79.7	5.4	4.7	2.4	3.6	1.2	1.5	0.6	80.6	5.4	14.0	0.088	0.500	19.301602	-98.404063
Plaza de Cobro San Martín Texmelucan	5.45	2	2	2724	0.9	79.7	5.4	4.7	2.4	3.6	1.2	1.5	0.6	80.6	5.4	14.0	0.088	0.500	19.301602	-98.404063
X. C. San Martín Texmelucan - Tlaxcala (Trébol)	24.75	1	1	21053	3.0	89.2	2.1	3.7	0.6	0.7	0.2	0.4	0.1	92.2	2.1	5.7	0.086	0.513	19.325585	-98.250051
X. C. San Martín Texmelucan - Tlaxcala (Trébol)	24.75	1	2	22204	3.4	88.8	2.1	3.6	0.6	0.8	0.2	0.4	0.1	92.2	2.1	5.7	0.092	0.513	19.325712	-98.250108
X. C. San Martín Texmelucan - Tlaxcala (Trébol)	24.75	3	1	19313	3.1	89.3	1.8	3.4	0.8	0.8	0.2	0.4	0.2	92.4	1.8	5.8	0.077	0.511	19.331669	-98.239666
X. C. San Martín Texmelucan - Tlaxcala (Trébol)	24.75	3	2	20156	3.5	89.6	1.4	3.6	0.6	0.7	0.2	0.3	0.1	93.1	1.4	5.5	0.085	0.511	19.331751	-98.239723
T. Izq. Tizatlán	29.00	3	1	21212	4.5	87.8	1.7	3.6	0.8	0.9	0.2	0.4	0.1	92.3	1.7	6.0	0.075	0.502	19.337910	-98.211144
T. Izq. Tizatlán	29.00	3	2	21061	3.9	89.4	1.7	3.2	0.6	0.6	0.2	0.3	0.1	93.3	1.7	5.0	0.072	0.502	19.337670	-98.214239
T. Der. San Pablo Apetatitlán	31.65	3	1	43841	4.7	86.6	1.0	2.8	1.4	1.6	0.6	0.9	0.4	91.3	1.0	7.7	0.066	0.536	19.347148	-98.195191
T. Der. San Pablo Apetatitlán	31.65	3	2	37333	4.8	86.7	1.2	2.6	1.3	1.5	0.6	0.9	0.4	91.5	1.2	7.3	0.071	0.536	19.347311	-98.195238
Ocotoxco	35.20	1	1	37102	5.6	85.3	1.8	3.9	1.0	1.4	0.4	0.5	0.1	90.9	1.8	7.3	0.072	0.517	19.379175	-98.179246
Ocotoxco	35.20	1	2	34393	5.4	85.6	2.0	3.7	1.1	1.2	0.6	0.3	0.1	91.0	2.0	7.0	0.073	0.517	19.379202	-98.179380

TLAXCALA

23 CARR: Tlaxco - Tejocotal (Cuota)

CLAVE: 00209

RUTA: MEX-119D

AÑO: 2022

LUGAR	ESTACION				CLASIFICACION VEHICULAR EN PORCIENTO													COORDENADAS		
	KM	TE	SC	TDPA	M	A	B	C2	C3	T3S2	T3S3	T3S2R4	OTROS	A	B	C	K'	D	LATITUD	LONGITUD
T.C. Apan - Tlaxco	23.00	3	0	4679	1.7	86.1	3.3	3.5	1.8	1.9	0.9	0.7	0.1	87.8	3.3	8.9	0.097	0.507	19.607780	-98.156707
Lim. Edos. Term. Tlax. Ppia. Pue.	30.70	0	0																	
Ent. Chignahuapan	56.20	3	0	3902	2.0	86.4	1.6	3.5	2.6	1.9	1.1	0.8	0.1	88.4	1.6	10.0	0.129	0.501	19.870664	-98.061050
Lim. Edos. Term. Pue. Ppia. Hgo.	84.80	0	0																	
T. C. Apizaco - Tejocotal	85.60	0	0																	

24 CARR: Ramal a Altzayanca de Hidalgo

CLAVE: 29562

RUTA: TLAX

AÑO: 2022

LUGAR	ESTACION				CLASIFICACION VEHICULAR EN PORCIENTO													COORDENADAS		
	KM	TE	SC	TDPA	M	A	B	C2	C3	T3S2	T3S3	T3S2R4	OTROS	A	B	C	K'	D	LATITUD	LONGITUD
T. C. Los Reyes - Zacatepec	0.00	3	0	2875	3.8	77.0	1.0	13.5	0.8	1.9	0.7	0.4	0.9	80.8	1.0	18.2	0.082	0.531	19.322628	-97.845002
Xicoténcatl	6.50	3	0	2874	6.5	85.9	0.9	5.2	0.8	0.4	0.1	0.1	0.1	92.4	0.9	6.7	0.075	0.512	19.356741	-97.831996
Altzayanca de Hidalgo	15.00	1	0	2457	6.4	85.3	0.3	7.6	0.2	0.1	0.0	0.1	0.0	91.7	0.3	8.0	0.083	0.505	19.422762	-97.804295

25 CARR: Ramal a San Pedro Ecatepec

CLAVE: 29561

RUTA: TLAX

AÑO: 2022

LUGAR	ESTACION				CLASIFICACION VEHICULAR EN PORCIENTO													COORDENADAS		
	KM	TE	SC	TDPA	M	A	B	C2	C3	T3S2	T3S3	T3S2R4	OTROS	A	B	C	K'	D	LATITUD	LONGITUD
T. C. Apizaco - Tejocotal	0.00	3	0	1881	5.3	89.0	0.5	4.1	0.7	0.3	0.1	0.0	0.0	94.3	0.5	5.2	0.090	0.512	19.514490	-98.119646
San Pedro Ecatepec	4.60	1	0	2041	5.3	88.8	0.5	4.0	0.9	0.4	0.1	0.0	0.0	94.1	0.5	5.4	0.098	0.507	19.518921	-98.153731

26 CARR: Ramal a Xalostoc

CLAVE: 29563

RUTA: TLAX

AÑO: 2022

LUGAR	ESTACION				CLASIFICACION VEHICULAR EN PORCIENTO													COORDENADAS		
	KM	TE	SC	TDPA	M	A	B	C2	C3	T3S2	T3S3	T3S2R4	OTROS	A	B	C	K'	D	LATITUD	LONGITUD
T. C. Los Reyes - Zacatepec	0.00	3	0	11031	5.9	91.5	0.2	1.5	0.6	0.2	0.0	0.1	0.0	97.4	0.2	2.4	0.078	0.513	19.396005	-98.057198
Xalostoc	2.50	1	0	11812	6.9	90.2	0.3	1.3	0.8	0.3	0.0	0.2	0.0	97.1	0.3	2.6	0.091	0.505	19.400461	-98.051603

27 CARR: Xalostoc - Terrenate

CLAVE: 29390

RUTA: TLAX

AÑO: 2022

LUGAR	ESTACION				CLASIFICACION VEHICULAR EN PORCIENTO													COORDENADAS		
	KM	TE	SC	TDPA	M	A	B	C2	C3	T3S2	T3S3	T3S2R4	OTROS	A	B	C	K'	D	LATITUD	LONGITUD
Xalostoc	0.00	3	0	4159	3.8	91.8	0.7	2.3	0.9	0.3	0.0	0.2	0.0	95.6	0.7	3.7	0.093	0.505	19.431224	-98.014315
San Francisco Teometitla	7.10	3	0	2103	6.2	89.2	0.5	3.1	0.7	0.2	0.0	0.0	0.1	95.4	0.5	4.1	0.100	0.503	19.458822	-97.978827
T. C. Huamantla - Terrenate	17.50	1	0	2253	5.8	89.8	0.5	3.0	0.6	0.2	0.0	0.0	0.1	95.6	0.5	3.9	0.100	0.504	19.467210	-97.931034

TLAXCALA

28 CARR: Puebla - Tlaxcala (Cuota)

CLAVE:

RUTA: PUE-D

AÑO: 2022

LUGAR	ESTACION				CLASIFICACION VEHICULAR EN PORCIENTO													COORDENADAS		
	KM	TE	SC	TDPA	M	A	B	C2	C3	T3S2	T3S3	T3S2R4	OTROS	A	B	C	K'	D	LATITUD	LONGITUD
Anillo Periferico Poniente de Puebla	0.00	3	0	12860	1.3	91.7	1.6	2.5	0.8	1.0	0.4	0.6	0.1	93.0	1.6	5.4	0.100	0.512	19.149932	-98.269306
Lim. Edos. Term. Pue. Ppia. Tlax	2.40	0	0																	
T Der. Zacatelco	8.00	1	0	10046	1.2	90.4	1.5	2.8	0.7	1.5	0.6	0.9	0.4	91.6	1.5	6.9	0.083	0.504	19.201476	-98.261754
T Der. Zacatelco	8.00	3	0	9224	1.5	89.5	1.4	3.4	0.9	1.3	0.6	1.0	0.4	91.0	1.4	7.6	0.092	0.524	19.215832	-98.267655
Lib. de Tlaxcala (Cuota)	17.80	1	0	10787	1.4	89.6	1.6	4.3	0.8	1.2	0.4	0.6	0.1	91.0	1.6	7.4	0.092	0.526	19.279151	-98.249340

29 CARR: Acocotla - Vicente Guerrero

CLAVE: 29560

RUTA: MEX-TLAX

AÑO: 2022

LUGAR	ESTACION				CLASIFICACION VEHICULAR EN PORCIENTO													COORDENADAS		
	KM	TE	SC	TDPA	M	A	B	C2	C3	T3S2	T3S3	T3S2R4	OTROS	A	B	C	K'	D	LATITUD	LONGITUD
T. C. Los Reyes - Zacatepec	0.00	3	0	2093	3.9	75.8	5.3	5.7	2.9	2.5	1.9	1.8	0.2	79.7	5.3	15.0	0.085	0.529	19.371177	-98.028645
Vicente Guerrero	35.60	1	0	3019	9.5	72.8	1.9	15.2	0.1	0.4	0.1	0.0	0.0	82.3	1.9	15.8	0.100	0.504	19.135883	-98.144353

30 CARR: Apizaco - Emiliano Zapata

CLAVE: 29033

RUTA: TLAX-MEX-136

AÑO: 2022

LUGAR	ESTACION				CLASIFICACION VEHICULAR EN PORCIENTO													COORDENADAS		
	KM	TE	SC	TDPA	M	A	B	C2	C3	T3S2	T3S3	T3S2R4	OTROS	A	B	C	K'	D	LATITUD	LONGITUD
Apizaco	0.00	3	0	10513	4.4	81.9	0.6	5.4	0.6	4.4	1.0	0.9	0.8	86.3	0.6	13.1	0.067	0.518	19.417197	-98.129862
Capula	16.00	1	0	3334	5.1	91.1	0.5	2.6	0.5	0.1	0.1	0.0	0.0	96.2	0.5	3.3	0.079	0.501	19.530803	-98.040752
Emiliano Zapata	37.00	1	0	1551	8.5	88.8	0.5	1.2	0.7	0.1	0.1	0.1	0.0	97.3	0.5	2.2	0.089	0.502	19.552134	-97.917054

31 CARR: Calpulalpan - El Ocote

CLAVE: 00054

RUTA: MEX-HGO

AÑO: 2022

LUGAR	ESTACION				CLASIFICACION VEHICULAR EN PORCIENTO													COORDENADAS		
	KM	TE	SC	TDPA	M	A	B	C2	C3	T3S2	T3S3	T3S2R4	OTROS	A	B	C	K'	D	LATITUD	LONGITUD
Calpulalpan	0.00	3	0	8647	3.6	79.3	3.1	7.1	1.3	3.6	0.9	0.9	0.2	82.9	3.1	14.0	0.083	0.507	19.606271	-98.562489
X. C. Arco Norte de La Ciudad de México	4.00	3	1	4151	3.8	78.7	2.1	6.8	1.9	4.2	1.3	0.9	0.3	82.5	2.1	15.4	0.087	0.500	19.627518	-98.541478
X. C. Arco Norte de La Ciudad de México	4.00	3	2	4145	4.1	78.6	2.4	6.6	1.7	4.1	1.3	0.9	0.3	82.7	2.4	14.9	0.085	0.500	19.627587	-98.541566
Lim. Edos. Term. Tlax. Ppia. Hgo.	5.00	0	0																	
Apan	19.58	3	1	4873	5.1	89.2	0.7	3.2	1.0	0.4	0.1	0.3	0.0	94.3	0.7	5.0	0.073	0.503	19.728455	-98.470790
Apan	19.58	3	2	4819	5.5	88.4	0.7	3.2	1.5	0.4	0.1	0.2	0.0	93.9	0.7	5.4	0.083	0.503	19.728361	-98.470868
Tepeapulco	34.92	3	0	4549	3.6	90.0	1.0	2.3	1.6	1.0	0.4	0.1	0.0	93.6	1.0	5.4	0.093	0.505	19.799298	-98.561098
X. C. Venta de Carpio - Tulancingo	51.18	1	1	1502	2.7	86.1	0.7	6.0	3.2	0.7	0.6	0.0	0.0	88.8	0.7	10.5	0.097	0.512	19.918339	-98.576270
X. C. Venta de Carpio - Tulancingo	51.18	1	2	1432	2.8	84.4	0.7	7.6	3.1	0.9	0.4	0.1	0.0	87.2	0.7	12.1	0.088	0.512	19.918260	-98.576322
X. C. Venta de Carpio - Tulancingo	51.18	3	0	1951	3.6	87.4	0.7	3.9	2.1	1.9	0.3	0.1	0.0	91.0	0.7	8.3	0.097	0.511	19.929714	-98.583951

TLAXCALA

31 CARR: Calpulalpan - El Ocote

CLAVE: 00054

RUTA: MEX-HGO

AÑO: 2022

LUGAR	ESTACION				CLASIFICACION VEHICULAR EN PORCIENTO										COORDENADAS					
	KM	TE	SC	TDPA	M	A	B	C2	C3	T3S2	T3S3	T3S2R4	OTROS	A	B	C	K'	D	LATITUD	LONGITUD
El Ocote	70.44	1	1	1768	2.4	95.6	0.1	1.4	0.4	0.1	0.0	0.0	0.0	98.0	0.1	1.9	0.102	0.518	20.041233	-98.621347
El Ocote	70.44	1	2	1902	2.8	95.2	0.1	1.4	0.4	0.1	0.0	0.0	0.0	98.0	0.1	1.9	0.099	0.518	20.041378	-98.621375

32 CARR: Calpulalpan - Nanacamilpa

CLAVE: 29034

RUTA: TLAX-MEX-136

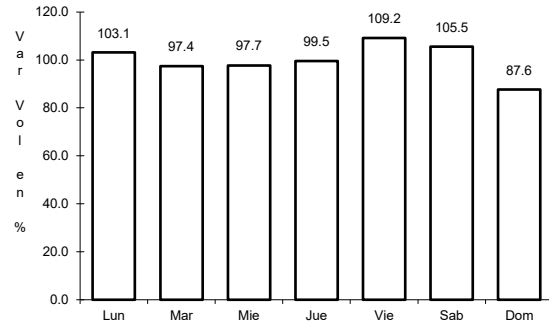
AÑO: 2022

LUGAR	ESTACION				CLASIFICACION VEHICULAR EN PORCIENTO										COORDENADAS					
	KM	TE	SC	TDPA	M	A	B	C2	C3	T3S2	T3S3	T3S2R4	OTROS	A	B	C	K'	D	LATITUD	LONGITUD
Calpulalpan	0.00	3	0	2183	7.6	89.5	0.1	2.1	0.6	0.1	0.0	0.0	0.0	97.1	0.1	2.8	0.090	0.525	19.559897	-98.571604
Mazapa	7.00	0	0																	
Nanacamilpa	15.50	1	0	1995	8.2	81.8	0.5	6.2	1.1	1.7	0.3	0.1	0.1	90.0	0.5	9.5	0.144	0.515	19.500276	-98.533099

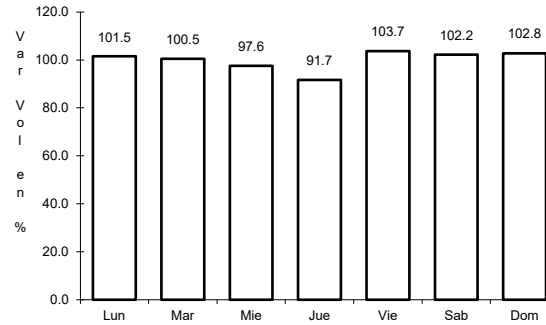
1 CARR: Amozoc - Teziutlán

CLAVE: 00210

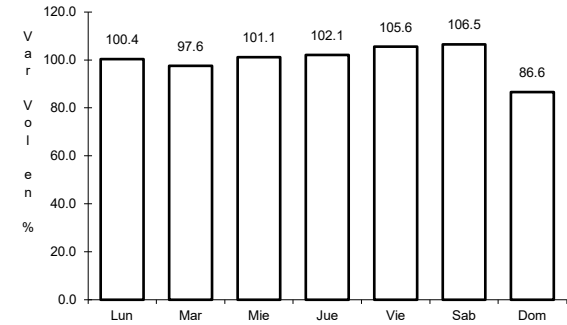
ruta: MEX-129



Km: 1.40 Tipo: 3 Sent: 0



Km: 76.35 Tipo: 3 Sent: 0

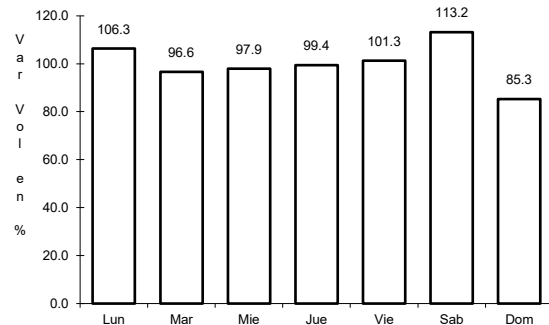


Km: 157.80 Tipo: 1 Sent: 0

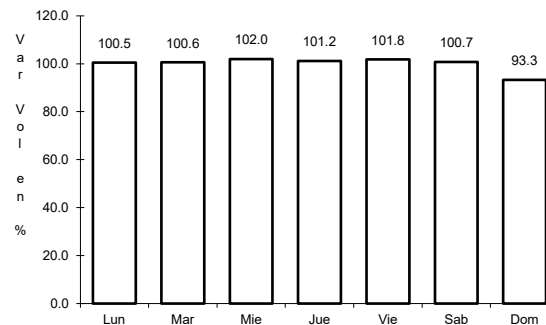
2 CARR: Apizaco - San Pablo Apetatitlán

CLAVE: 29035

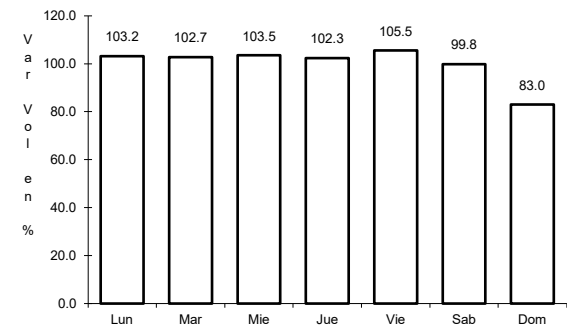
ruta: MEX-119



Km: 0.00 Tipo: 3 Sent: 0



Km: 14.50 Tipo: 3 Sent: 0

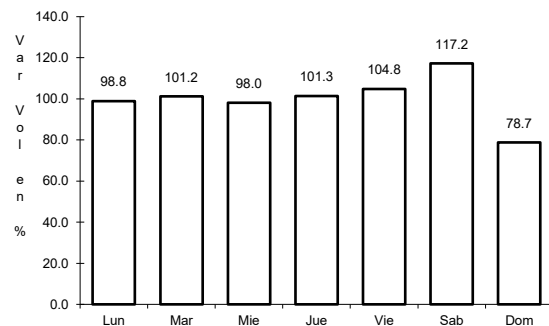


Km: 20.00 Tipo: 1 Sent: 0

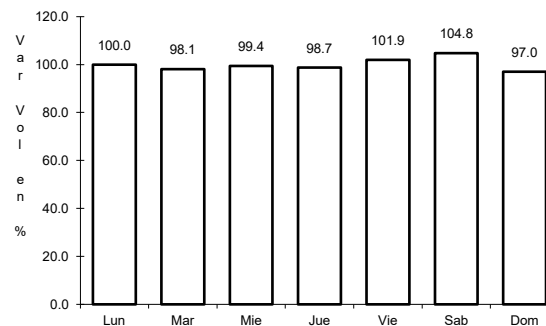
3 CARR: Apizaco - Tejocotal

CLAVE: 00430

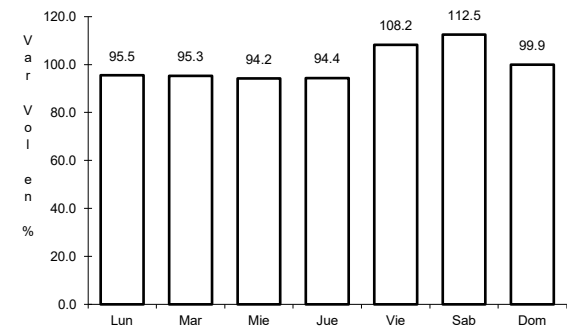
ruta: MEX-119



Km: 0.00 Tipo: 3 Sent: 1



Km: 0.00 Tipo: 3 Sent: 2

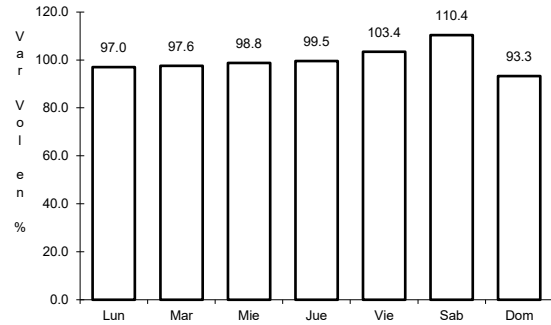


Km: 113.15 Tipo: 1 Sent: 0

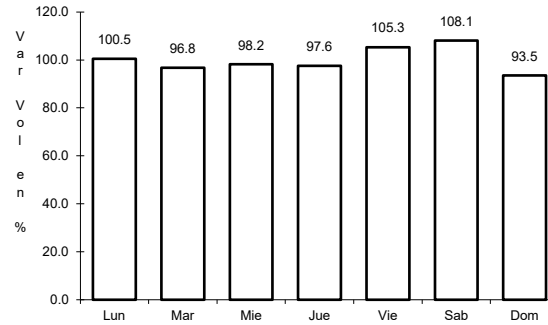
4 CARR: Huamantla - La Venta

CLAVE: 29564

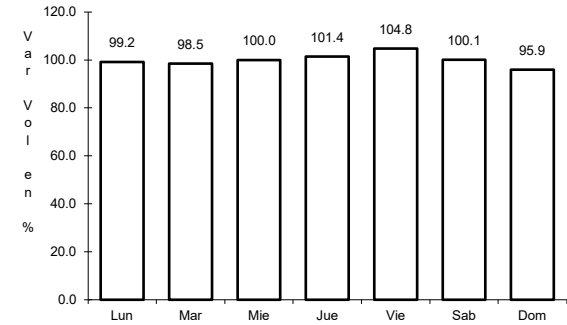
ruta: MEX-136



Km: 0.00      Tipo: 3      Sent: 1



Km: 0.00      Tipo: 3      Sent: 2

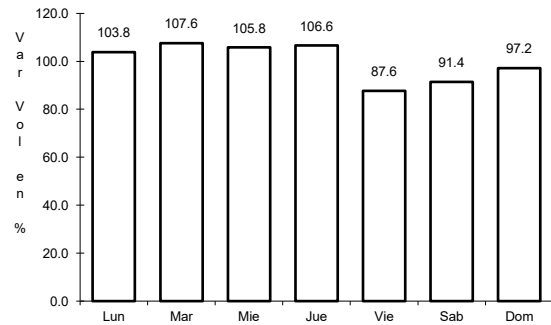


Km: 17.60      Tipo: 1      Sent: 0

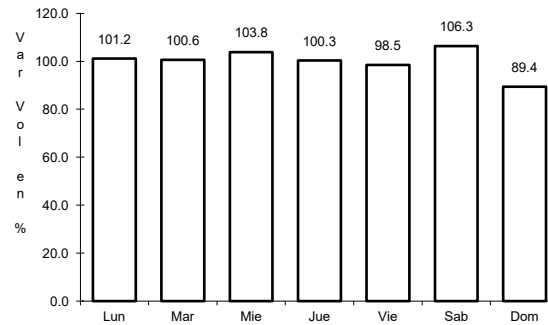
5 CARR: Huamantla - Terrenate

CLAVE: 29036

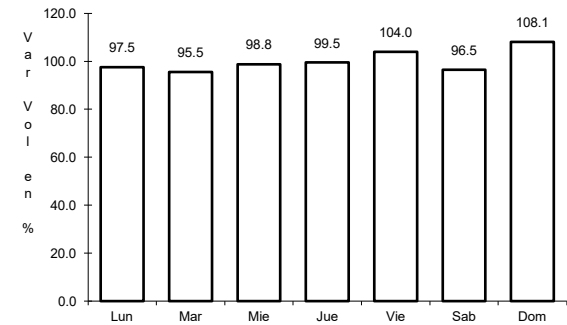
ruta: MEX-136



Km: 0.00      Tipo: 3      Sent: 0



Km: 12.50      Tipo: 1      Sent: 0

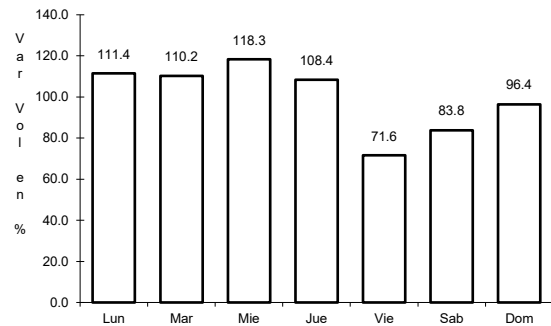


Km: 21.00      Tipo: 1      Sent: 0

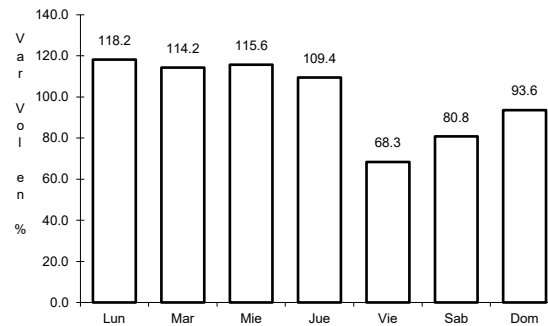
6 CARR: Libramiento de Apizaco

CLAVE: 29567

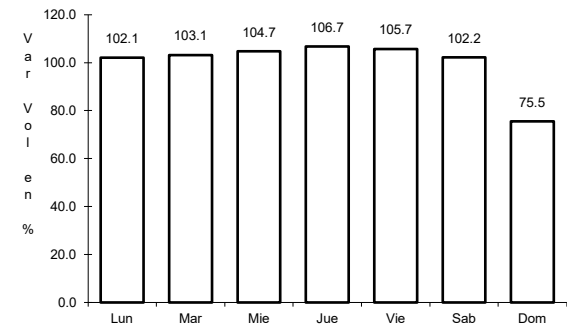
ruta: MEX-136



Km: 6.00      Tipo: 1      Sent: 1



Km: 6.00      Tipo: 1      Sent: 2

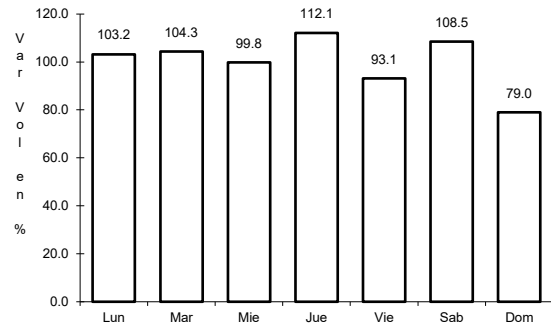


Km: 6.00      Tipo: 3      Sent: 1

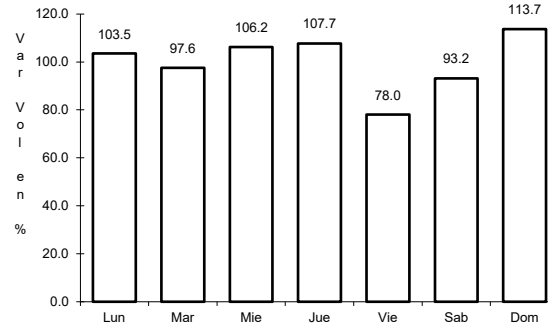
7 CARR: Libramiento de Santiago Tlalpan

CLAVE:

ruta: MEX-136



Km: 0.00      Tipo: 3      Sent: 1

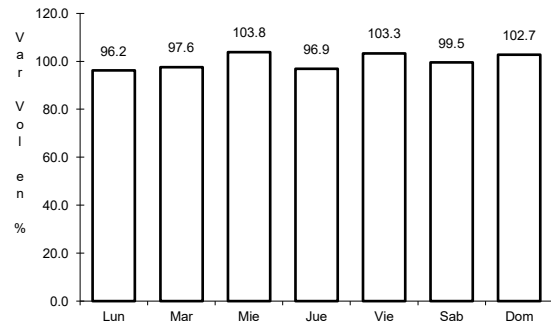


Km: 0.00      Tipo: 3      Sent: 2

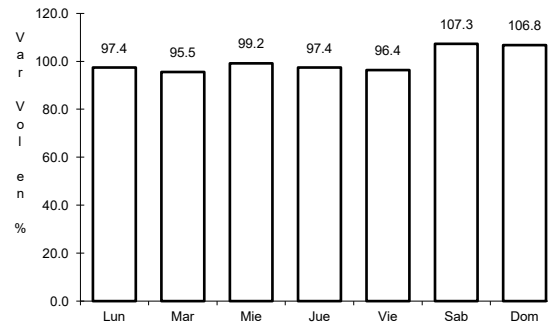
8 CARR: Libramiento Huamantla

CLAVE: 29567

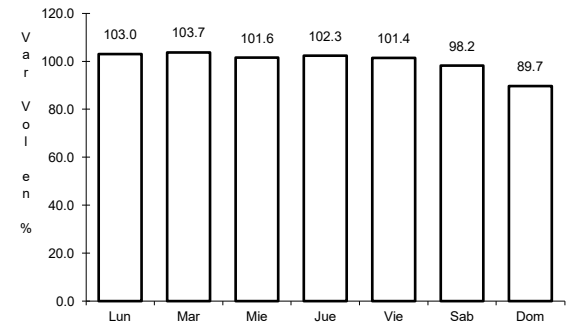
ruta: MEX-136



Km: 0.00      Tipo: 3      Sent: 1



Km: 0.00      Tipo: 3      Sent: 2

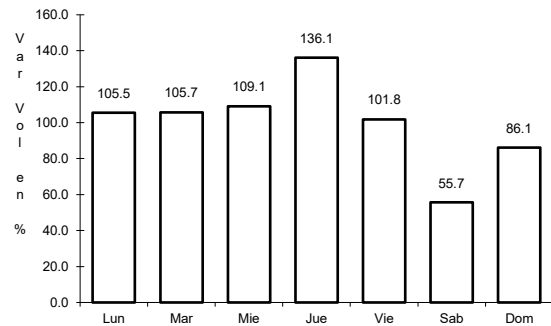


Km: 4.60      Tipo: 1      Sent: 1

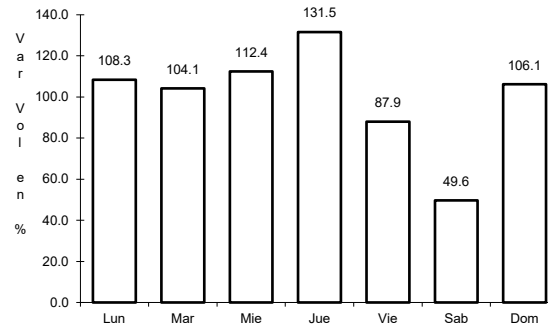
9 CARR: Libramiento Hueyotlipan

CLAVE: 29567

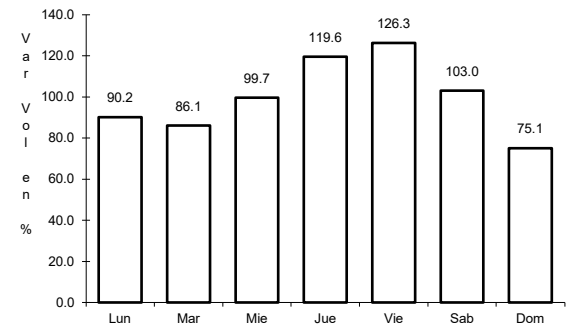
ruta: MEX-136



Km: 0.00      Tipo: 3      Sent: 1



Km: 0.00      Tipo: 3      Sent: 2

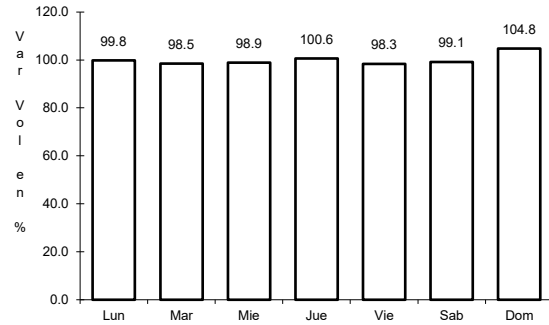


Km: 2.70      Tipo: 1      Sent: 1

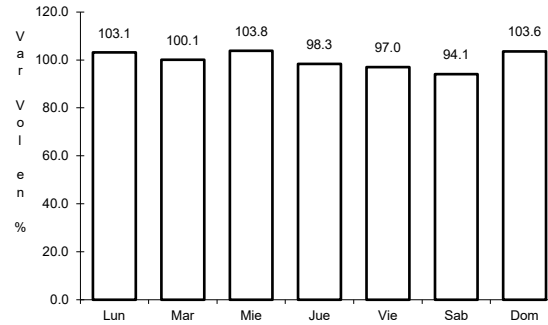
10 CARR: Los Reyes - Zacatepec

CLAVE: 00052

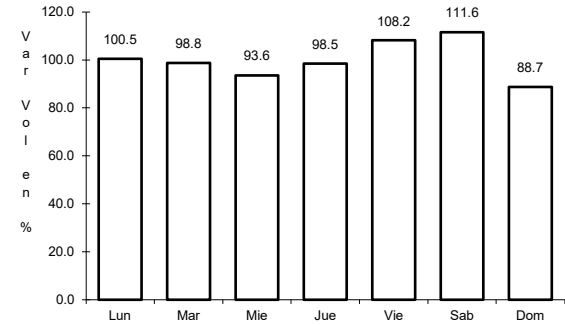
ruta: MEX-136



Km: 3.35      Tipo: 3      Sent: 1



Km: 3.35      Tipo: 3      Sent: 2

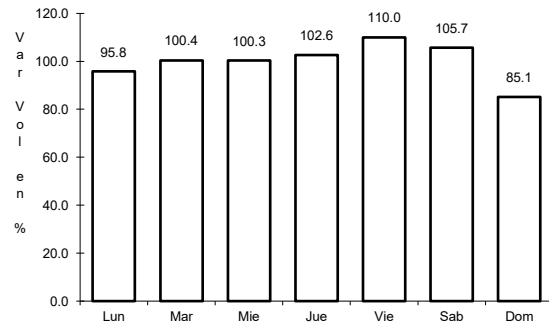


Km: 187.67      Tipo: 1      Sent: 0

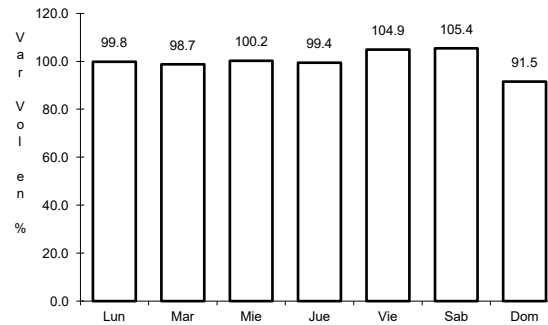
11 CARR: Puebla - Belem

CLAVE: 00055

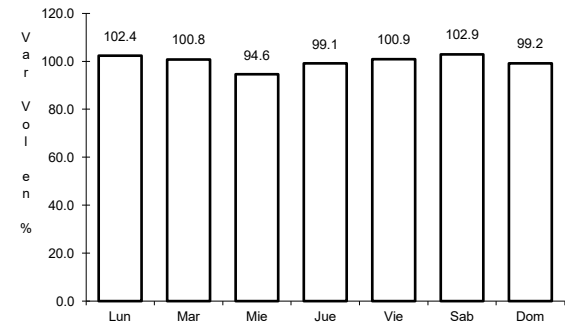
ruta: MEX-121



Km: 4.00      Tipo: 3      Sent: 1



Km: 4.00      Tipo: 3      Sent: 2

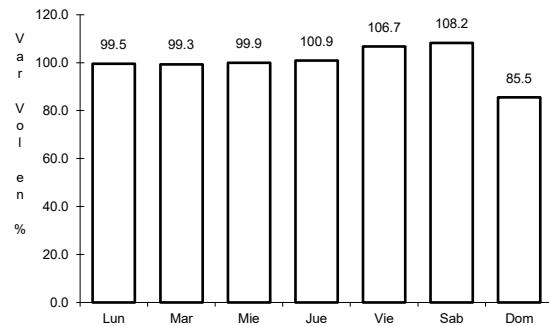


Km: 28.80      Tipo: 1      Sent: 1

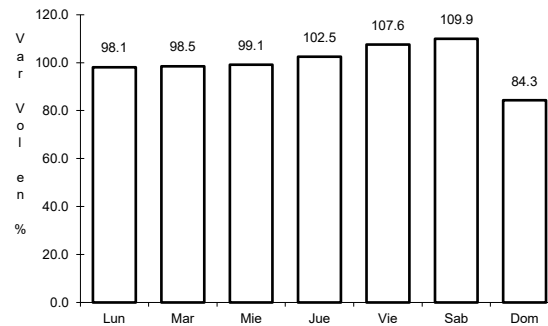
12 CARR: Puebla - Tlaxcala

CLAVE: 00475

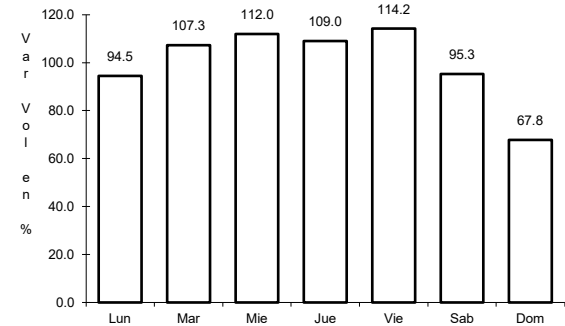
ruta: MEX-119



Km: 5.41      Tipo: 3      Sent: 1



Km: 5.41      Tipo: 3      Sent: 2



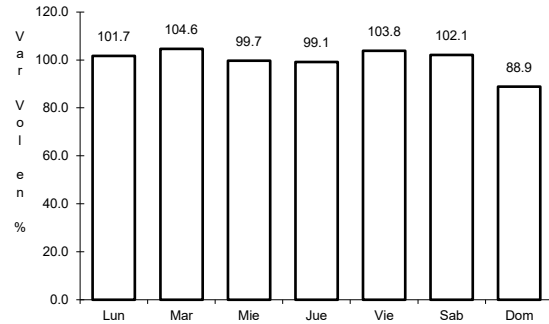
Km: 33.22      Tipo: 1      Sent: 1



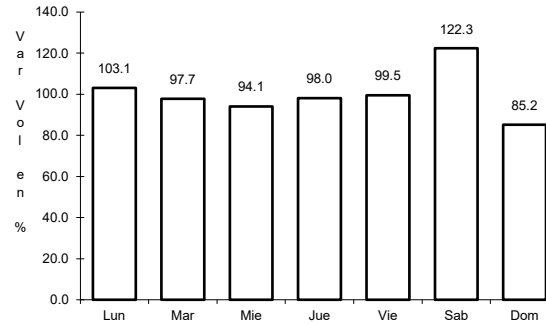
13 CARR: Ramal a San Felipe de Hidalgo

CLAVE: 29565

ruta: MEX-136



Km: 0.00      Tipo: 3      Sent: 0

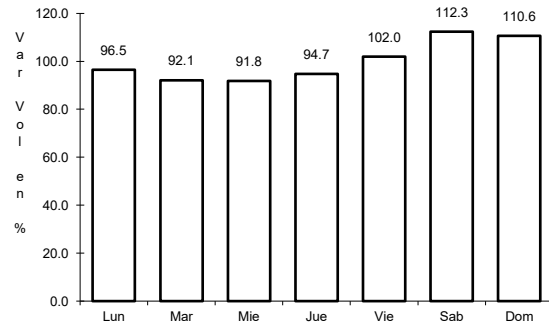


Km: 10.50      Tipo: 1      Sent: 0

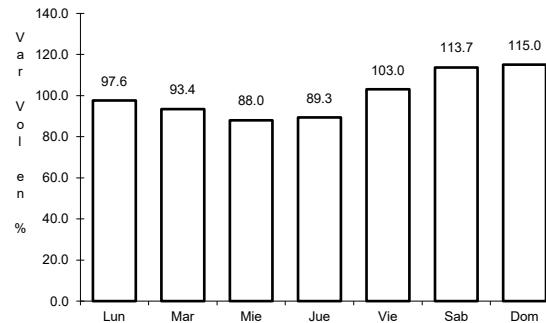
14 CARR: San Martín Texmelucan - Tlaxcala

CLAVE: 00158

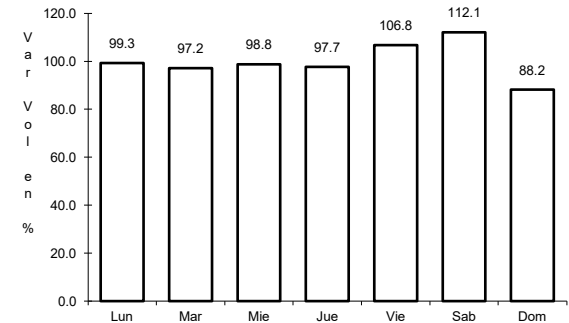
ruta: MEX-117



Km: 0.00      Tipo: 3      Sent: 1



Km: 0.00      Tipo: 3      Sent: 2

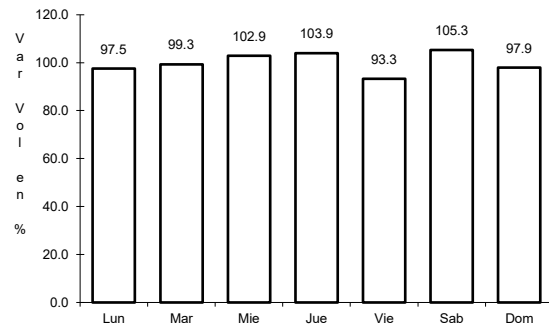


Km: 24.81      Tipo: 1      Sent: 0

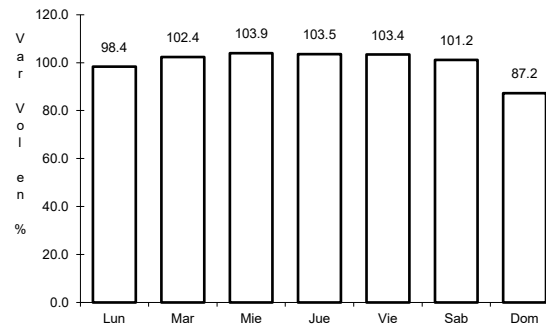
15 CARR: Tetlatlahuca - Santa Ana Chiautempan

CLAVE: 00158

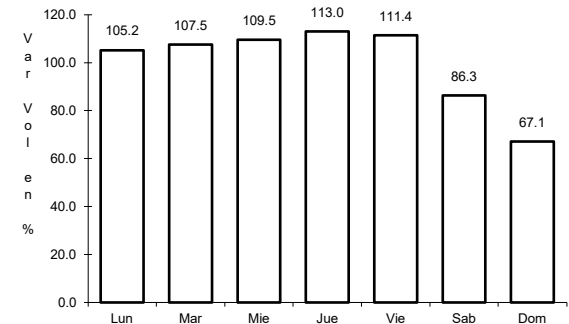
ruta: MEX-119



Km: 2.39      Tipo: 1      Sent: 0



Km: 5.50      Tipo: 1      Sent: 0

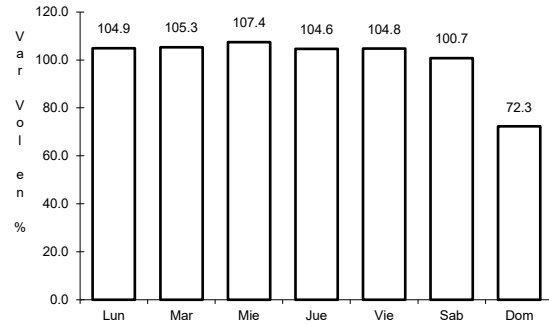


Km: 9.94      Tipo: 1      Sent: 0

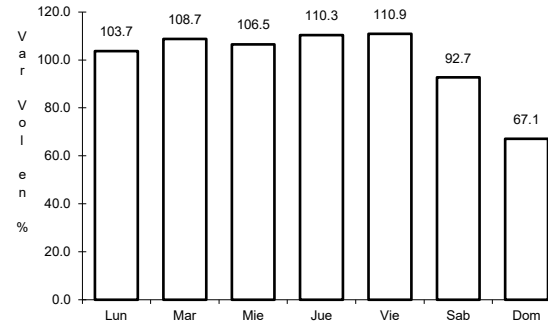
16 CARR: Tlaxcala - Belem

CLAVE: 29389

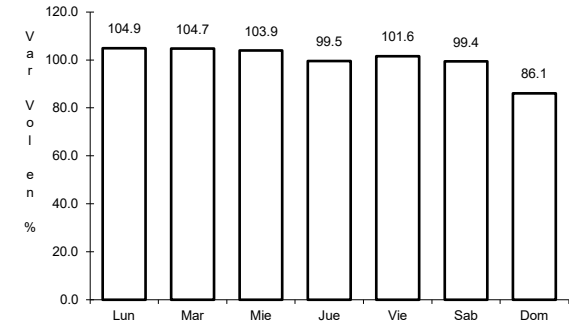
RUTA: MEX-119



Km: 3.91      Tipo: 1      Sent: 1



Km: 3.91      Tipo: 1      Sent: 2

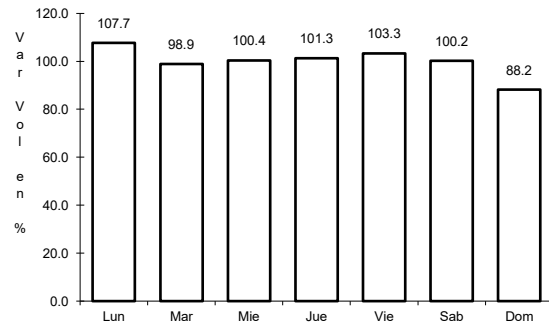


Km: 10.06      Tipo: 1      Sent: 0

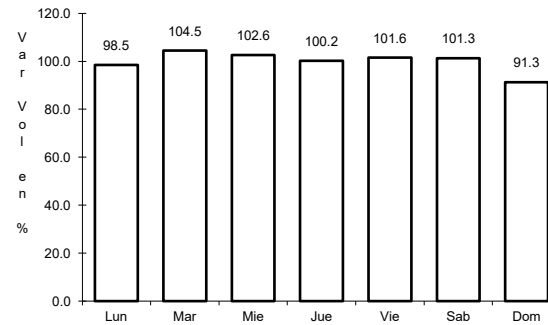
17 CARR: Villa Alta - T. C. (Puebla - Tlaxcala)

CLAVE: 29566

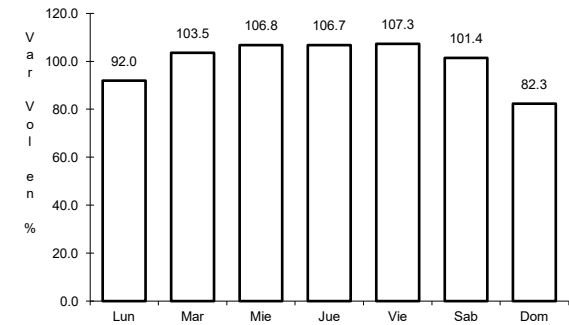
RUTA: MEX-119



Km: 0.00      Tipo: 3      Sent: 0



Km: 10.50      Tipo: 3      Sent: 0

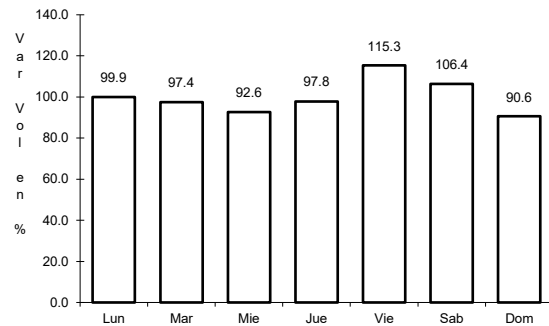


Km: 22.05      Tipo: 1      Sent: 0

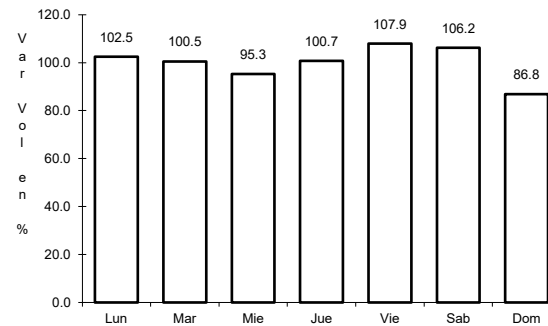
18 CARR: Amozoc - Perote (Cuota)

CLAVE: 00030

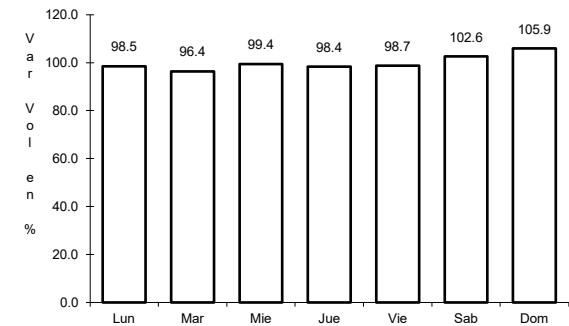
RUTA: MEX-140D



Km: 0.00      Tipo: 3      Sent: 0



Km: 25.80      Tipo: 3      Sent: 0

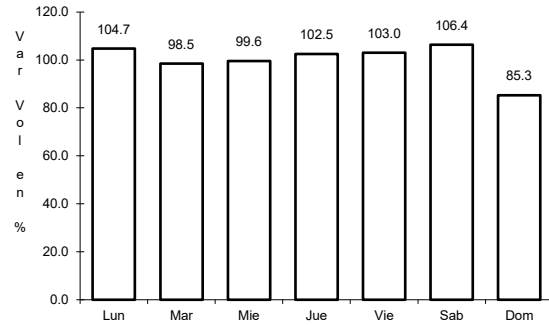


Km: 62.70      Tipo: 3      Sent: 0

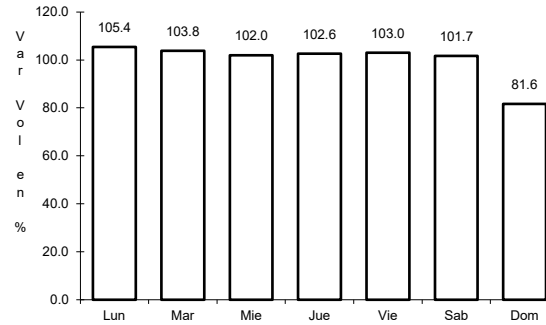
19 CARR: Libramiento de Tlaxcala (Cuota)

CLAVE:

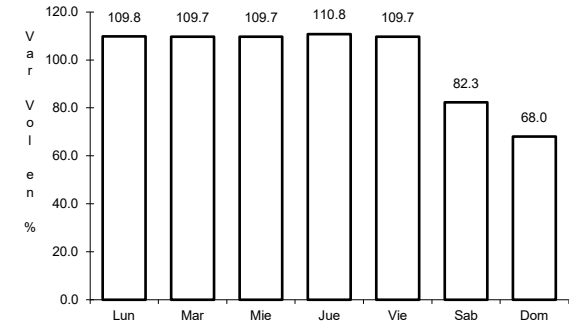
RUTA: MEX-117D



Km: 0.00      Tipo: 3      Sent: 1



Km: 0.00      Tipo: 3      Sent: 2

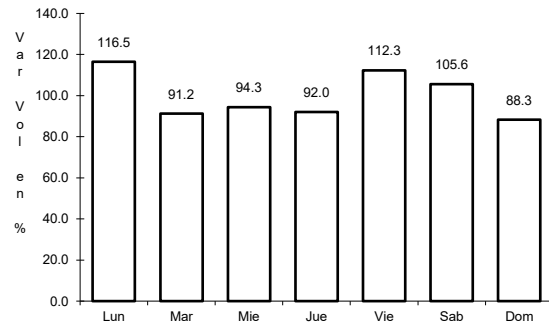


Km: 11.00      Tipo: 1      Sent: 1

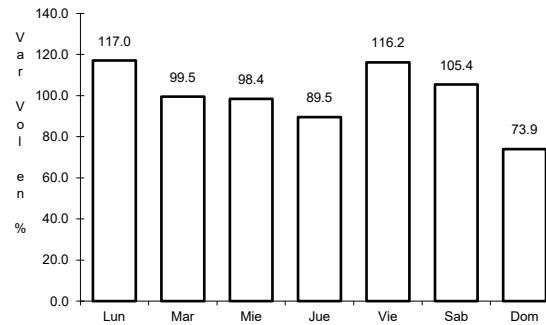
20 CARR: Libramiento Norte de la Ciudad de México (Cuota)

CLAVE: 0902

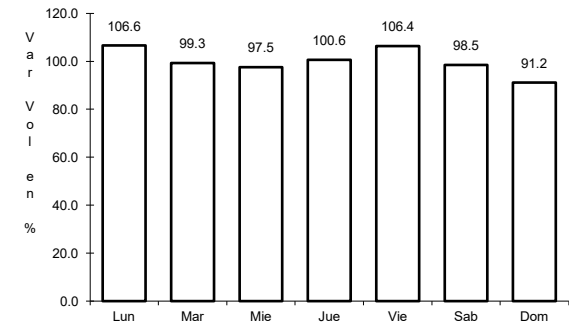
RUTA: MEX-M40D



Km: 12.90      Tipo: 1      Sent: 1



Km: 12.90      Tipo: 1      Sent: 2

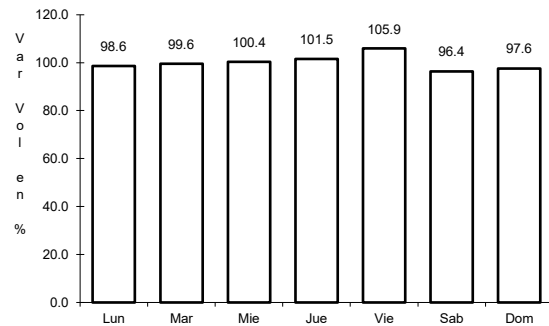


Km: 226.73      Tipo: 1      Sent: 1

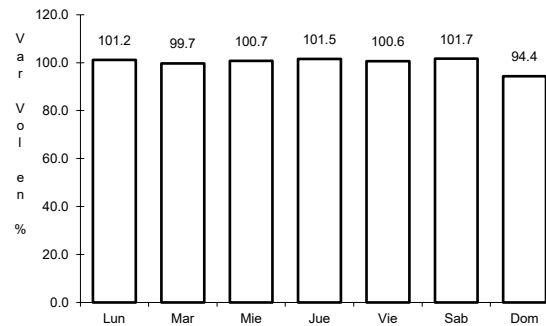
21 CARR: México - Puebla (Cuota)

CLAVE: 00450

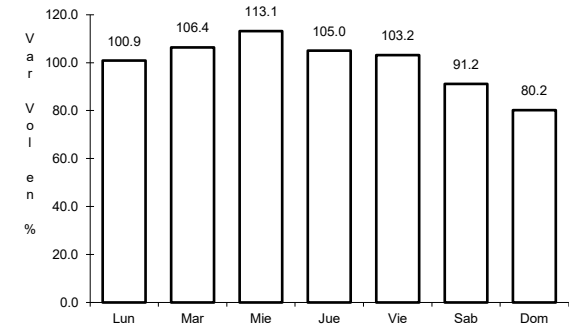
RUTA: MEX-150D



Km: 17.00      Tipo: 3      Sent: 1



Km: 17.00      Tipo: 3      Sent: 2

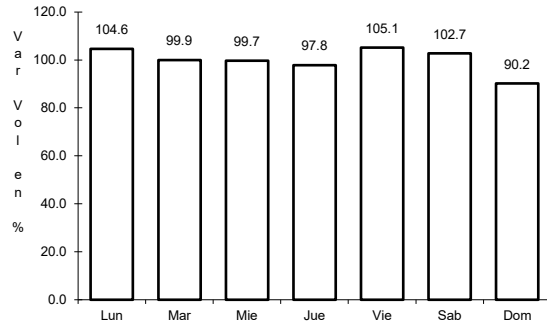


Km: 120.46      Tipo: 3      Sent: 1

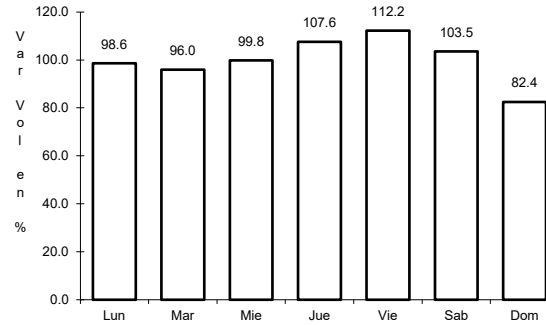
22 CARR: San Martin Texmelucan - Tlaxcala - El Molinito (Cuota)

CLAVE: 00212

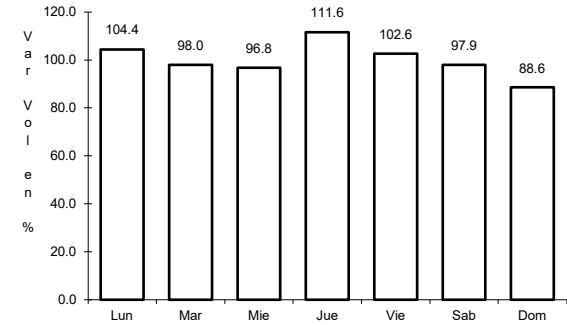
RUTA: MEX-117D



Km: 1.80 Tipo: 1 Sent: 1



Km: 35.20 Tipo: 1 Sent: 1

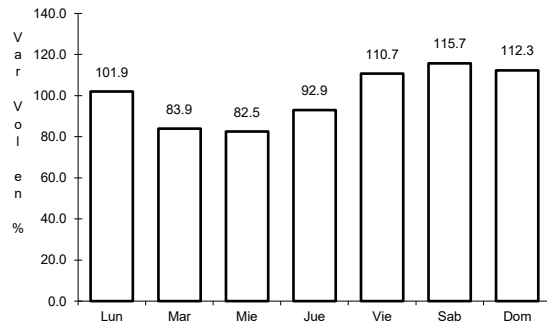


Km: 35.20 Tipo: 1 Sent: 2

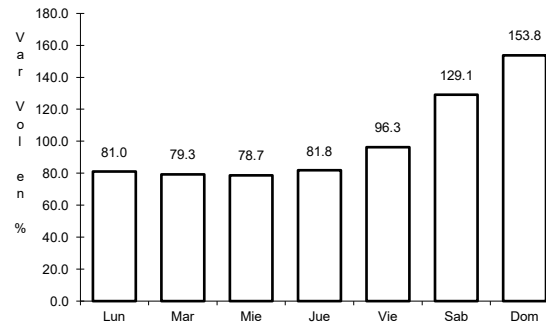
23 CARR: Tlaxco - Tejocotal (Cuota)

CLAVE: 00209

RUTA: MEX-119D



Km: 23.00 Tipo: 3 Sent: 0

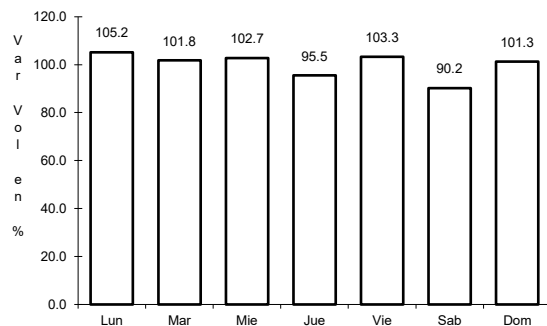


Km: 56.20 Tipo: 3 Sent: 0

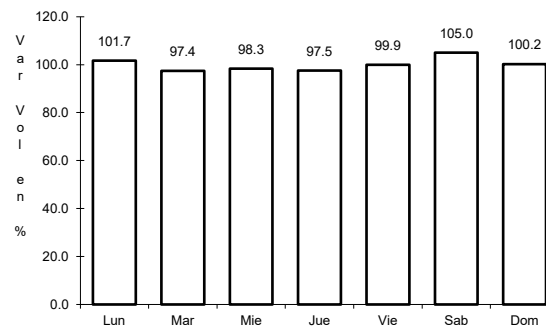
24 CARR: Ramal a Altzayanca de Hidalgo

CLAVE: 29562

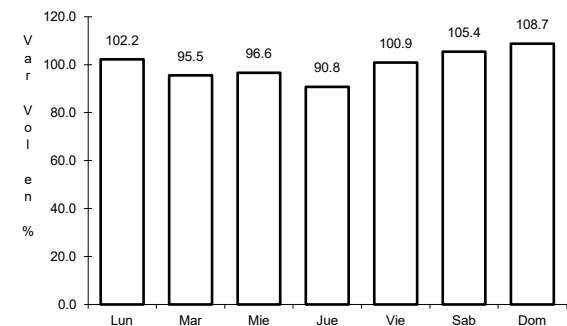
RUTA: TLAX



Km: 0.00 Tipo: 3 Sent: 0



Km: 6.50 Tipo: 3 Sent: 0

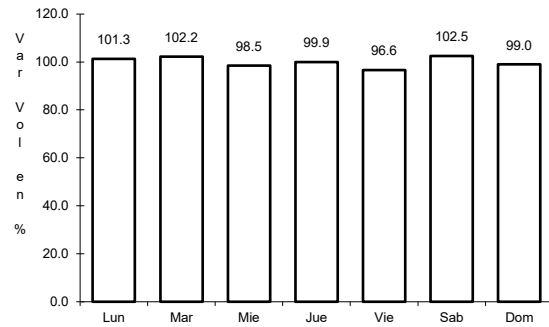


Km: 15.00 Tipo: 1 Sent: 0

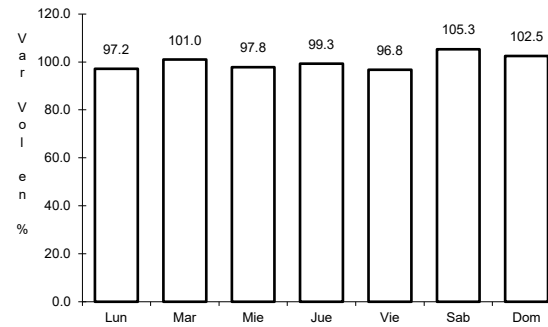
25 CARR: Ramal a San Pedro Ecatepec

CLAVE: 29561

ruta: TLAX



Km: 0.00      Tipo: 3      Sent: 0

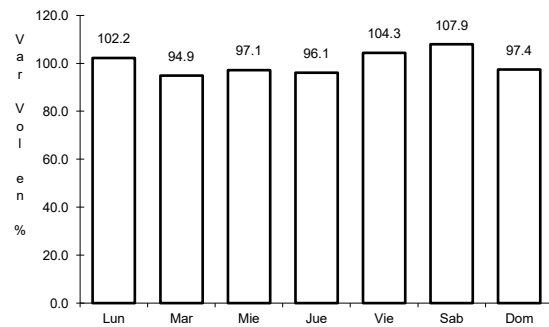


Km: 4.60      Tipo: 1      Sent: 0

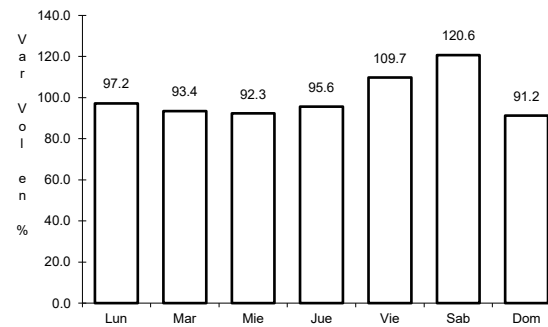
26 CARR: Ramal a Xalostoc

CLAVE: 29563

ruta: TLAX



Km: 0.00      Tipo: 3      Sent: 0

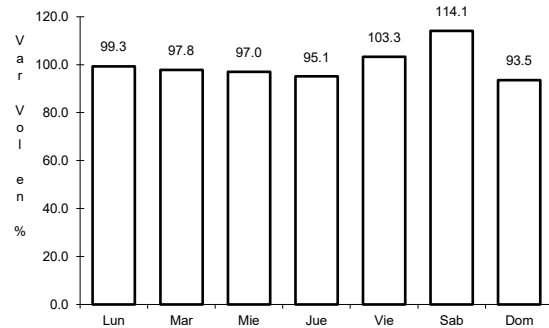


Km: 2.50      Tipo: 1      Sent: 0

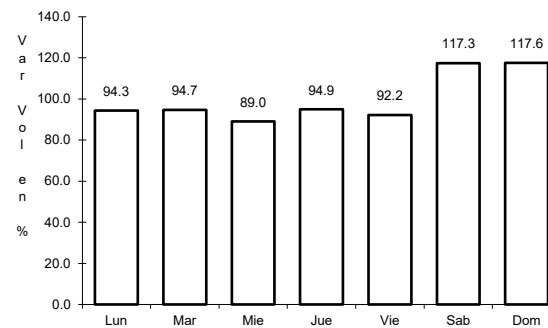
27 CARR: Xalostoc - Terrenate

CLAVE: 29390

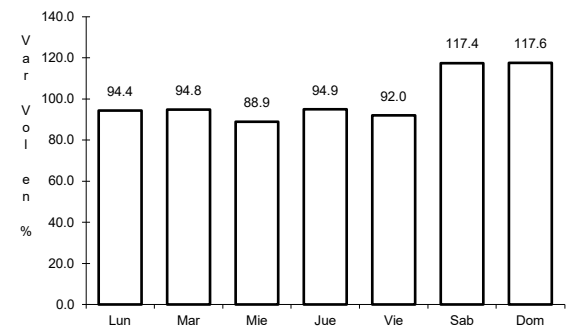
ruta: TLAX



Km: 0.00      Tipo: 3      Sent: 0



Km: 7.10      Tipo: 3      Sent: 0

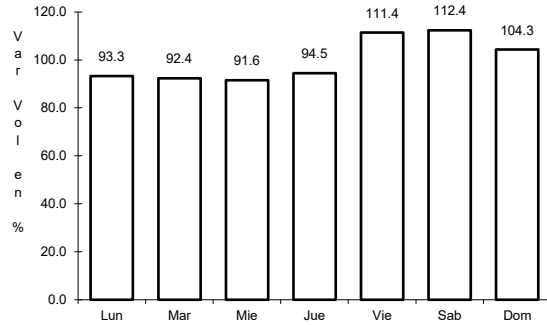


Km: 17.50      Tipo: 1      Sent: 0

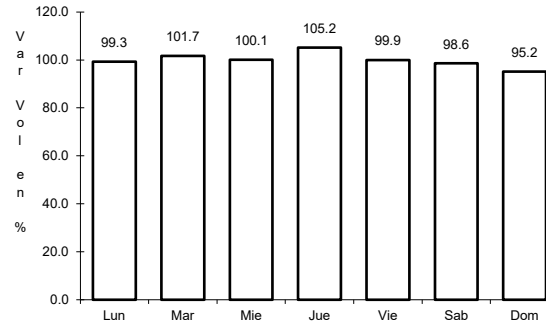
28 CARR: Puebla - Tlaxcala (Cuota)

CLAVE:

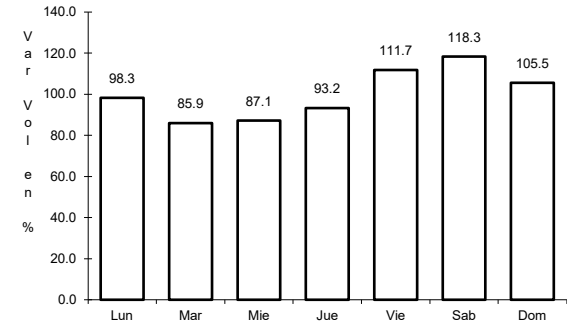
ruta: PUE-D



Km: 0.00      Tipo: 3      Sent: 0



Km: 8.00      Tipo: 3      Sent: 0

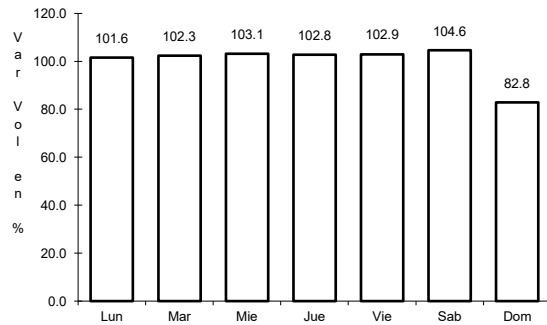


Km: 17.80      Tipo: 1      Sent: 0

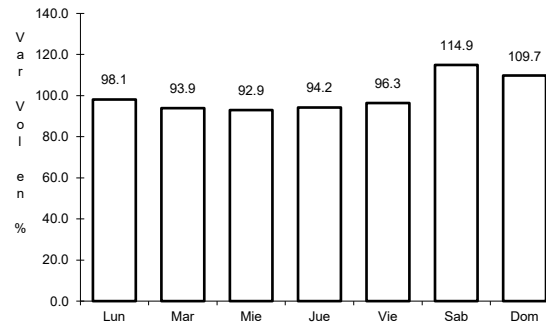
29 CARR: Acocotla - Vicente Guerrero

CLAVE: 29560

ruta: MEX-TLAX



Km: 0.00      Tipo: 3      Sent: 0

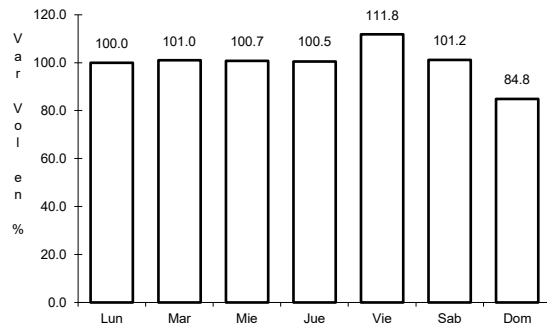


Km: 35.60      Tipo: 1      Sent: 0

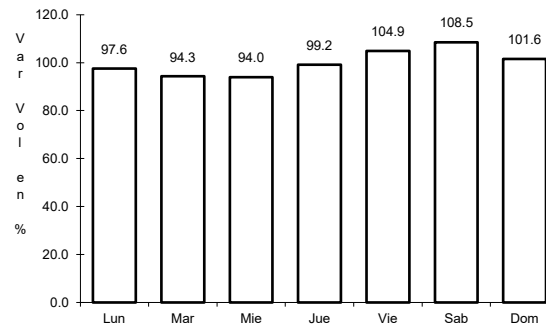
30 CARR: Apizaco - Emiliano Zapata

CLAVE: 29033

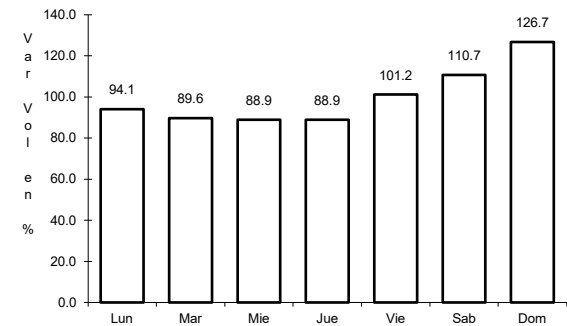
ruta: TLAX-MEX-136



Km: 0.00      Tipo: 3      Sent: 0



Km: 16.00      Tipo: 1      Sent: 0

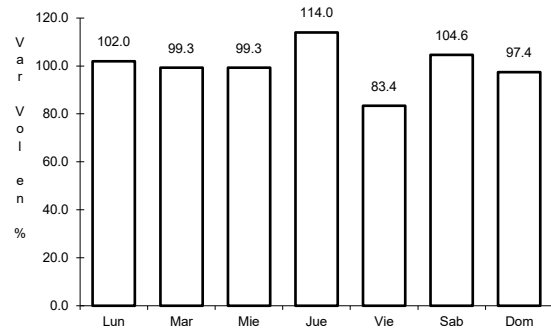


Km: 37.00      Tipo: 1      Sent: 0

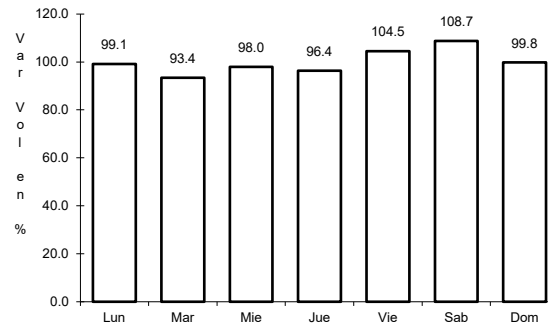
31 CARR: Calpulalpan - El Ocote

CLAVE: 00054

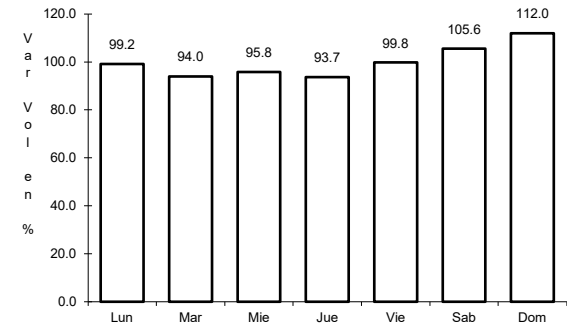
RUTA: MEX-HGO



Km: 0.00      Tipo: 3      Sent: 0



Km: 34.92      Tipo: 3      Sent: 0

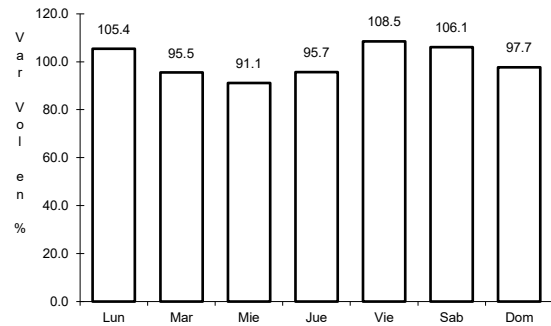


Km: 70.44      Tipo: 1      Sent: 1

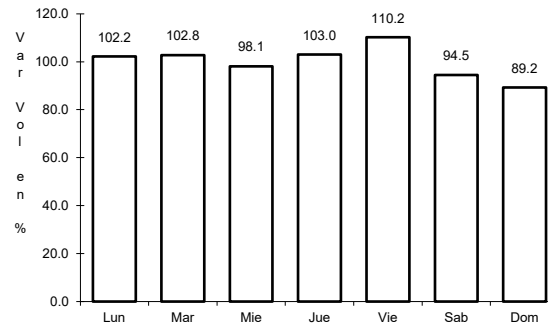
32 CARR: Calpulalpan - Nanacamilpa

CLAVE: 29034

RUTA: TLAX-MEX-136



Km: 0.00      Tipo: 3      Sent: 0



Km: 15.50      Tipo: 1      Sent: 0

