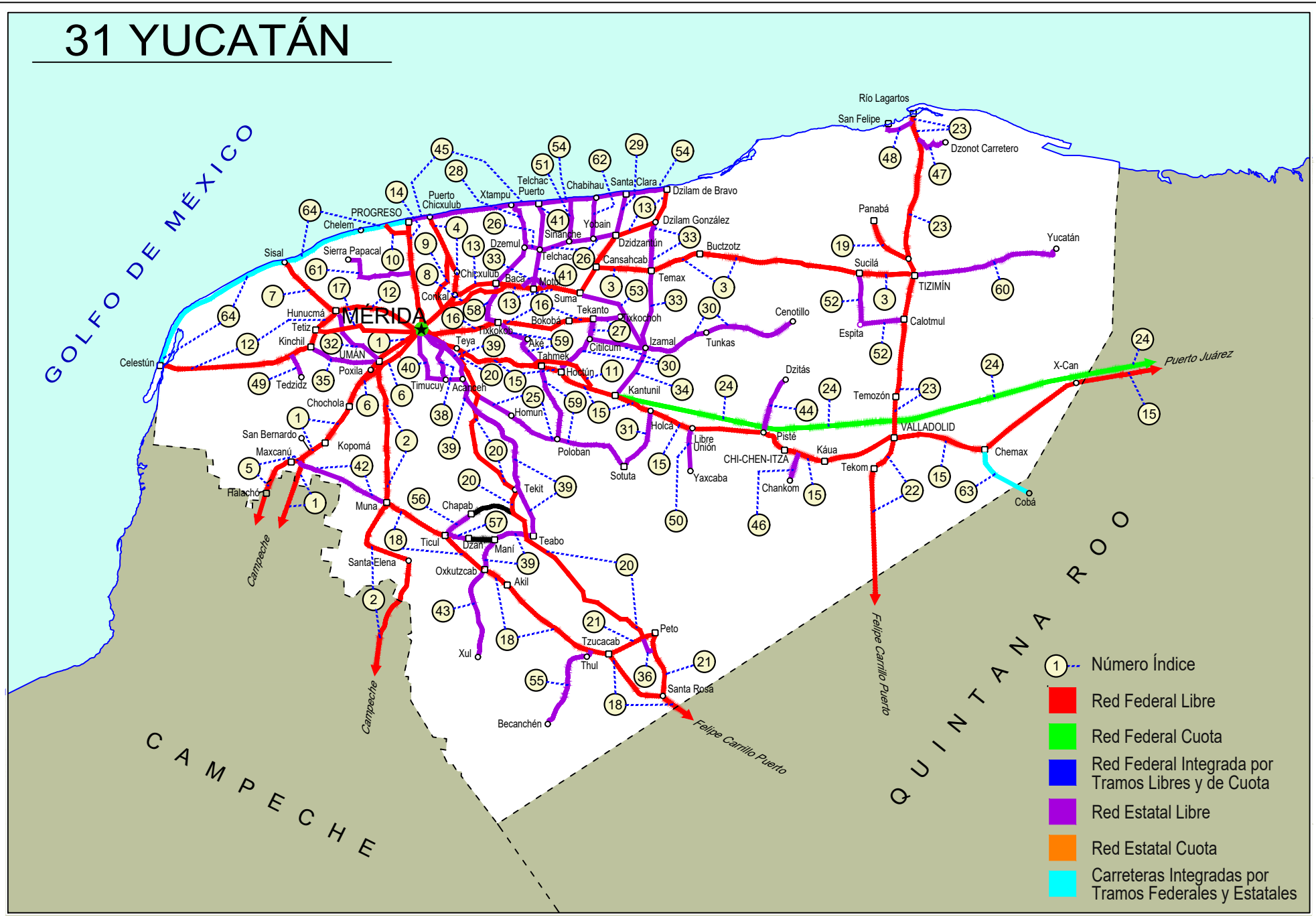


YUCATAN

NO. INDICE CARRETERA		RUTA
	---RED FEDERAL LIBRE---	
1	Campeche - Mérida	MEX-180
2	Campeche - Umán	MEX-261
3	Cansahcab - Tizimin	MEX-176
4	Conkal - Puerto Chicxulub	MEX-176
5	Dzitbalché - Ent. San Bernardo	MEX-180
6	Ent. Poxilá - Mérida	MEX-180
7	Hunucmá - Sisal	MEX-281
8	Libramiento Conkal - Mococho - Baca	MEX-176
9	Libramiento de Conkal	MEX
10	Libramiento de Progreso	MEX-261
11	Libramiento de Tahmek - Hoctun - Xocchel	MEX-180
12	Mérida - Celestún	MEX-281
13	Mérida - Dzilam de Bravo	MEX-176
14	Mérida - Progreso	MEX-261
15	Mérida - Puerto Juárez	MEX-180
16	Mérida - Tekanto	MEX-180
17	Mérida - Tetz	MEX-281
18	Muna - Felipe Carrillo Puerto	MEX-184
19	Ramal a Panabá	MEX-295
20	Teya -Peto	MEX-184
21	Tzucacab - Santa Rosa	MEX
22	Valladolid - Felipe Carrillo Puerto	MEX-295
23	Valladolid - Río Lagartos	MEX-295
	---RED FEDERAL DE CUOTA---	
24	Mérida - Cancún (Cuota)	MEX-180D
	---RED ESTATAL LIBRE---	
25	Acanceh - Estación Polabán	YUC
26	Baca - Dzidzantún	YUC
27	Citilcum - Tixkochoh	YUC
28	Dzemul - Xtampú	YUC
29	Dzidzantún - Santa Clara	YUC
30	Hoctún - Cenotillo	YUC-011
31	Holcá - Sotuta	YUC
32	Hunucmá - Umán	YUC
33	Izamal - Dzilam González	YUC
34	Kantunil - Izamal	YUC
35	Kinchil - Umán	YUC
36	Libramiento de Peto	YUC-018
37	Libramiento Norte de Motul	YUC
38	Mérida - Acanceh	YUC
39	Mérida - Oxkutzcab	YUC-018
40	Mérida - Timucuy	YUC
41	Motul - Puerto Telchac	YUC-172
42	Muna - Maxcanú	YUC
43	Oxkutzcab - Xul	YUC-031
44	Piste - Dzitás	YUC-013
45	Progreso - Telchac Puerto	YUC-027
46	Ramal a Chankom	YUC
47	Ramal a Dzonot Carretero	YUC
48	Ramal a San Felipe	YUC
49	Ramal a Tedzidz	YUC
50	Ramal a Yaxcabá	YUC-289
51	Sinanché - Xitibcanul	YUC
52	Sucilá - Calotmul	YUC
53	Suma - Izamal	YUC-081
54	Telchac Puerto - Dzilam de Bravo	YUC
55	Thul - Becanchén	YUC-281
56	Ticul - Chapab	YUC
57	Ticul - Dzan	YUC
58	Tixkokob - Baca	YUC
59	Tixkokob - Sotuta	YUC
60	Tizimin - Yucatán	YUC
61	Yaxché - Sierra Papacal	YUC
62	Yobain - Chabihau	YUC
	---CARRETERAS INTEGRADAS POR TRAMOS FEDERALES Y ESTATALES---	
63	Chemax - Cobá	YUC-MEX-180
64	Progreso - Celestún	MEX-YUC

31 YUCATÁN



- ① Número Índice
- Red Federal Libre
- Red Federal Cuota
- Red Federal Integrada por Tramos Libres y de Cuota
- Red Estatal Libre
- Red Estatal Cuota
- Carreteras Integradas por Tramos Federales y Estatales

YUCATAN

1 CARR: Campeche - Mérida

CLAVE: 00066

RUTA: MEX-180

AÑO: 2022

LUGAR	ESTACION				CLASIFICACION VEHICULAR EN PORCIENTO													COORDENADAS		
	KM	TE	SC	TDPA	M	A	B	C2	C3	T3S2	T3S3	T3S2R4	OTROS	A	B	C	K'	D	LATITUD	LONGITUD
Campeche	0.00	3	1	4520	9.8	82.7	0.6	5.0	0.7	0.2	0.3	0.4	0.3	92.5	0.6	6.9	0.075	0.523	19.889947	-90.468364
Campeche	0.00	3	2	4118	9.8	82.8	0.6	4.9	0.8	0.2	0.2	0.4	0.3	92.6	0.6	6.8	0.072	0.523	19.890023	-90.468451
T. Der. Periferico Pablo Garcia y Montilla (Libramiento De Campeche)	7.00	3	1	6102	5.0	74.2	2.8	6.1	1.7	5.0	1.3	3.1	0.8	79.2	2.8	18.0	0.082	0.519	19.897388	-90.453684
T. Der. Periferico Pablo Garcia y Montilla (Libramiento De Campeche)	7.00	3	2	6579	4.8	75.1	2.8	6.1	1.3	5.4	1.0	2.7	0.8	79.9	2.8	17.3	0.075	0.519	19.897572	-90.453819
T. Der. Hampolol (2do Acceso)	20.00	1	1	6639	4.2	73.1	3.4	2.8	4.4	6.4	1.4	3.5	0.8	77.3	3.4	19.3	0.077	0.505	19.933483	-90.383421
T. Der. Hampolol (2do Acceso)	20.00	1	2	6510	4.1	73.2	3.2	2.8	4.0	7.4	1.4	3.0	0.9	77.3	3.2	19.5	0.082	0.505	19.933600	-90.383499
X. C. Chencoyi - Tenabo	39.50	1	1	5818	3.1	73.8	3.2	2.6	4.3	7.4	1.3	3.4	0.9	76.9	3.2	19.9	0.078	0.502	20.031070	-90.231314
X. C. Chencoyi - Tenabo	39.50	1	2	5775	3.1	73.9	3.2	2.6	4.2	7.4	1.3	3.4	0.9	77.0	3.2	19.8	0.079	0.502	20.031178	-90.231259
Tenabo	40.00	1	1	5423	4.3	72.5	3.5	3.0	3.1	7.5	1.5	3.7	0.9	76.8	3.5	19.7	0.078	0.505	20.027083	-90.243557
Tenabo	40.00	1	2	5531	4.3	72.4	3.5	3.1	3.1	7.5	1.5	3.7	0.9	76.7	3.5	19.8	0.077	0.505	20.027198	-90.243607
Tenabo	40.00	3	1	5048	3.1	73.4	3.6	3.0	3.2	6.4	2.4	4.1	0.8	76.5	3.6	19.9	0.079	0.502	20.055785	-90.213669
Tenabo	40.00	3	2	5094	3.6	73.4	3.5	2.9	3.1	6.0	2.5	4.1	0.9	77.0	3.5	19.5	0.077	0.502	20.055803	-90.213793
T. Libramiento de Pomuch	46.30	0	0																	
T. Der. Libramiento de Pomuch (2º Acceso)	50.00	3	1	6483	5.1	73.0	3.7	2.6	2.7	7.1	1.3	3.5	1.0	78.1	3.7	18.2	0.073	0.523	20.151096	-90.161841
T. Der. Libramiento de Pomuch (2º Acceso)	50.00	3	2	5915	4.8	74.0	3.5	2.7	2.3	7.2	1.5	3.2	0.8	78.8	3.5	17.7	0.078	0.523	20.151184	-90.161955
T. C. Libramiento de Pomuch	50.80	1	1	6262	4.1	70.7	4.3	4.0	4.1	6.8	1.5	3.6	0.9	74.8	4.3	20.9	0.076	0.513	20.114891	-90.187409
T. C. Libramiento de Pomuch	50.80	1	2	5955	4.3	69.7	4.4	4.5	4.2	6.7	1.4	3.9	0.9	74.0	4.4	21.6	0.100	0.513	20.114992	-90.187492
T. C. Acceso a Hecelchakan	57.60	3	1	5475	9.8	67.6	3.5	2.4	3.5	7.5	1.0	3.8	0.9	77.4	3.5	19.1	0.077	0.521	20.165896	-90.141643
T. C. Acceso a Hecelchakan	57.60	3	2	5032	10.4	64.5	3.5	3.0	3.8	8.9	1.3	3.7	0.9	74.9	3.5	21.6	0.077	0.521	20.165942	-90.141729
T. C. Hecelchakan - (T. C. Holpelchen - Bolonchen)	61.20	3	1	5344	4.5	71.1	2.9	4.7	2.6	8.1	1.5	3.7	0.9	75.6	2.9	21.5	0.077	0.504	20.190008	-90.118587
T. C. Hecelchakan - (T. C. Holpelchen - Bolonchen)	61.20	3	2	5261	3.8	74.2	2.5	3.0	2.5	8.1	1.4	3.6	0.9	78.0	2.5	19.5	0.071	0.504	20.190057	-90.118712
Poc Boc	64.60	3	1	5718	4.4	71.2	3.0	3.2	2.5	8.5	1.4	4.9	0.9	75.6	3.0	21.4	0.075	0.505	20.261496	-90.085549
Poc Boc	64.60	3	2	5613	4.5	71.2	3.0	3.2	2.4	8.5	1.3	5.0	0.9	75.7	3.0	21.3	0.076	0.505	20.261526	-90.085688
T. Izq. Dzitbalché	76.50	3	1	5084	4.9	69.4	3.9	3.2	2.1	9.2	2.1	4.3	0.9	74.3	3.9	21.8	0.099	0.501	20.309577	-90.053750
T. Izq. Dzitbalché	76.50	3	2	5064	4.2	71.1	3.9	2.9	1.9	9.0	1.9	4.2	0.9	75.3	3.9	20.8	0.073	0.501	20.309685	-90.053808
Calkiní	79.76	3	1	4823	5.2	68.7	3.9	3.0	3.8	8.4	1.9	4.2	0.9	73.9	3.9	22.2	0.080	0.506	20.376342	-90.039156
Calkiní	79.76	3	2	4946	6.2	67.9	4.1	3.0	3.5	8.5	1.8	4.2	0.8	74.1	4.1	21.8	0.076	0.506	20.376362	-90.039237
T. Der a Tepakán	86.60	3	1	4424	2.5	67.4	4.3	2.6	4.6	10.7	2.3	4.9	0.7	69.9	4.3	25.8	0.080	0.504	20.394395	-90.033577
T. Der a Tepakán	86.60	3	2	4500	2.4	67.7	4.4	2.6	4.5	10.6	2.5	4.7	0.6	70.1	4.4	25.5	0.077	0.504	20.394476	-90.033748
Lim. Edos. Term. Camp. Ppia. Yuc.	96.96	0	0																	
T. Der. Maxcanú	104.61	1	1	4381	3.0	70.5	4.5	2.7	2.3	9.6	2.1	4.7	0.6	73.5	4.5	22.0	0.071	0.508	20.560864	-89.980194
T. Der. Maxcanú	104.61	1	2	4530	3.1	68.6	4.4	3.1	2.6	10.4	2.1	5.1	0.6	71.7	4.4	23.9	0.098	0.508	20.560918	-89.980354
T. Der. Maxcanú	104.61	3	1	4736	2.1	72.2	4.0	3.0	1.6	10.1	1.4	5.0	0.6	74.3	4.0	21.7	0.072	0.513	20.596038	-89.970569
T. Der. Maxcanú	104.61	3	2	4490	2.0	71.9	4.0	3.1	2.0	10.0	1.5	4.9	0.6	73.9	4.0	22.1	0.075	0.513	20.596695	-89.970625
T. Der. Kopomá (1er Acceso)	119.50	1	1	6259	2.1	77.5	2.0	3.3	3.5	6.0	1.4	3.3	0.9	79.6	2.0	18.4	0.082	0.515	20.637483	-89.918222

YUCATAN

1 CARR: Campeche - Mérida

CLAVE: 00066

RUTA: MEX-180

AÑO: 2022

LUGAR	ESTACION				CLASIFICACION VEHICULAR EN PORCIENTO										COORDENADAS					
	KM	TE	SC	TDPA	M	A	B	C2	C3	T3S2	T3S3	T3S2R4	OTROS	A	B	C	K'	D	LATITUD	LONGITUD
T. Der. Kopomá (1er Acceso)	119.50	1	2	5892	2.0	77.0	2.1	3.0	3.6	6.4	1.4	3.6	0.9	79.0	2.1	18.9	0.104	0.515	20.637772	-89.917964
T. Der. Kopomá (2do Acceso)	121.50	1	1	6235	2.1	76.3	3.5	4.5	2.4	5.4	1.5	3.5	0.8	78.4	3.5	18.1	0.073	0.502	20.653856	-89.900490
T. Der. Kopomá (2do Acceso)	121.50	1	2	6286	2.0	77.0	3.6	4.1	2.3	5.5	1.3	3.5	0.7	79.0	3.6	17.4	0.096	0.502	20.653930	-89.900634
T. Der. Kopomá (2do Acceso)	121.50	3	1	5978	2.1	76.9	3.5	4.3	2.5	5.6	1.4	3.0	0.7	79.0	3.5	17.5	0.088	0.504	20.663554	-89.889973
T. Der. Kopomá (2do Acceso)	121.50	3	2	5892	1.9	75.9	4.0	4.6	2.2	5.8	1.4	3.6	0.6	77.8	4.0	18.2	0.103	0.504	20.663616	-89.890087
T. Izq. Chocolá (1er Acceso)	133.00	3	1	5752	3.5	71.6	3.0	6.5	2.0	6.5	1.5	4.5	0.9	75.1	3.0	21.9	0.074	0.501	20.742920	-89.830234
T. Izq. Chocolá (1er Acceso)	133.00	3	2	5725	3.5	71.4	3.0	6.5	2.0	6.5	1.6	4.6	0.9	74.9	3.0	22.1	0.092	0.501	20.742929	-89.830468
T. Izq. Chocolá (2do Acceso)	135.60	3	1	7465	3.6	71.4	3.0	6.5	2.0	6.4	1.4	4.9	0.8	75.0	3.0	22.0	0.082	0.503	20.764904	-89.825036
T. Izq. Chocolá (2do Acceso)	135.60	3	2	7371	3.7	71.3	3.5	6.5	2.0	6.0	1.5	4.7	0.8	75.0	3.5	21.5	0.094	0.503	20.765128	-89.825088
T. Der. Libramiento de Chochohá (1º Acceso)	137.89	1	1	5529	1.4	74.3	3.0	6.3	2.4	6.3	1.6	4.1	0.6	75.7	3.0	21.3	0.082	0.509	20.726454	-89.842980
T. Der. Libramiento de Chochohá (1º Acceso)	137.89	1	2	5341	1.5	70.7	3.5	9.4	1.5	6.5	1.6	4.5	0.8	72.2	3.5	24.3	0.108	0.509	20.726502	-89.843102
T. Izq. Umán	146.99	3	1	5885	0.9	74.2	3.1	6.5	2.0	6.3	1.5	4.7	0.8	75.1	3.1	21.8	0.085	0.500	20.802193	-89.804937
T. Izq. Umán	146.99	3	2	5876	1.0	73.9	3.5	6.5	2.1	6.0	1.5	4.7	0.8	74.9	3.5	21.6	0.101	0.500	20.802227	-89.805164
X. C. Campeche - Umán	160.49	1	1	7004	2.2	74.5	2.5	5.5	2.7	6.0	2.3	3.5	0.8	76.7	2.5	20.8	0.089	0.512	20.836201	-89.754858
X. C. Campeche - Umán	160.49	1	2	6675	1.6	73.6	2.6	5.5	2.9	6.9	2.4	3.7	0.8	75.2	2.6	22.2	0.095	0.512	20.836414	-89.754818
T. C. Periférico de Mérida	171.21	0	0																	
T. C. Periférico de Mérida	171.21	1	1	8260	4.0	72.7	3.1	3.4	3.9	6.7	2.4	3.0	0.8	76.7	3.1	20.2	0.104	0.516	20.897567	-89.685093
T. C. Periférico de Mérida	171.21	1	2	8816	4.2	72.3	3.2	3.6	3.7	6.8	2.3	3.0	0.9	76.5	3.2	20.3	0.102	0.516	20.897746	-89.685210

2 CARR: Campeche - Umán

CLAVE: 00164

RUTA: MEX-261

AÑO: 2022

LUGAR	ESTACION				CLASIFICACION VEHICULAR EN PORCIENTO										COORDENADAS					
	KM	TE	SC	TDPA	M	A	B	C2	C3	T3S2	T3S3	T3S2R4	OTROS	A	B	C	K'	D	LATITUD	LONGITUD
Campeche	0.00	0	0																	
T. Der. Periférico Pablo García y Montilla (Libramiento De Campeche)	7.00	1	0	4958	12.7	83.0	0.3	2.7	0.8	0.3	0.1	0.1	0.0	95.7	0.3	4.0	0.081	0.504	19.849217	-90.472774
T. Der. Periférico Pablo García y Montilla (Libramiento De Campeche)	7.00	3	0	2829	13.4	82.2	0.4	2.8	0.6	0.4	0.1	0.1	0.0	95.6	0.4	4.0	0.085	0.502	19.848319	-90.452638
T. Izq. Tenabo	30.88	1	0	1616	11.8	78.5	0.7	5.7	0.7	1.0	0.7	0.5	0.4	90.3	0.7	9.0	0.100	0.506	19.805106	-90.283146
T. Izq. Tenabo	30.88	3	0	1925	10.7	76.0	1.0	7.7	1.7	1.4	0.7	0.6	0.2	86.7	1.0	12.3	0.092	0.512	19.804507	-90.272821
T. Der. Edzna	44.51	1	0	1604	11.2	74.8	1.6	8.8	0.6	1.8	0.5	0.5	0.2	86.0	1.6	12.4	0.095	0.526	19.743505	-90.178946
T. Der. Edzna	44.51	3	0	1652	13.8	76.3	0.8	4.4	2.0	1.5	0.5	0.5	0.2	90.1	0.8	9.1	0.096	0.503	19.745162	-90.171029
Hopelchén	84.88	1	0	2375	11.9	76.0	0.9	7.5	1.1	1.5	0.4	0.3	0.4	87.9	0.9	11.2	0.086	0.509	19.754128	-89.854641
Bolonchén de Rejón	117.88	3	0	1108	20.7	66.1	2.4	5.2	1.6	2.1	0.9	0.9	0.1	86.8	2.4	10.8	0.108	0.508	20.012770	-89.733977
Lim. Edos. Term. Camp. Ppia. Yuc.	126.88	0	0																	
T. Der. Sayil	140.88	1	0	620	7.5	70.4	2.2	13.1	2.1	1.6	1.2	1.6	0.3	77.9	2.2	19.9	0.106	0.503	20.208263	-89.670568
Santa Elena	158.88	1	0	1091	26.3	59.8	1.5	6.5	2.9	1.3	0.7	0.9	0.1	86.1	1.5	12.4	0.142	0.508	20.319316	-89.643330

YUCATAN

2 CARR: Campeche - Umán

CLAVE: 00164

RUTA: MEX-261

AÑO: 2022

LUGAR	ESTACION				CLASIFICACION VEHICULAR EN PORCIENTO													COORDENADAS		
	KM	TE	SC	TDPA	M	A	B	C2	C3	T3S2	T3S3	T3S2R4	OTROS	A	B	C	K'	D	LATITUD	LONGITUD
T. Izq. Ruinas de Uxmal	172.48	1	0	778	16.9	66.1	1.5	7.5	2.4	2.0	0.8	2.7	0.1	83.0	1.5	15.5	0.116	0.504	20.361886	-89.763684
Muna	187.43	1	0	1453	18.1	73.8	1.0	3.6	1.2	1.0	0.5	0.6	0.2	91.9	1.0	7.1	0.125	0.525	20.460364	-89.725498
Muna	187.43	3	0	4066	4.9	84.2	1.1	5.0	1.5	2.2	0.4	0.6	0.1	89.1	1.1	9.8	0.091	0.528	20.511430	-89.709227
Xtepén	225.38	1	0	5268	2.3	81.7	1.0	8.8	1.5	1.8	1.7	1.0	0.2	84.0	1.0	15.0	0.098	0.502	20.803101	-89.733868
Umán	230.83	1	0	4278	17.0	65.0	1.5	5.6	4.2	4.8	1.1	0.6	0.2	82.0	1.5	16.5	0.098	0.512	20.866605	-89.746069

3 CARR: Cansahcab - Tizimin

CLAVE: 31014

RUTA: MEX-176

AÑO: 2022

LUGAR	ESTACION				CLASIFICACION VEHICULAR EN PORCIENTO													COORDENADAS		
	KM	TE	SC	TDPA	M	A	B	C2	C3	T3S2	T3S3	T3S2R4	OTROS	A	B	C	K'	D	LATITUD	LONGITUD
Cansahcab	0.00	3	0	3745	4.0	84.4	1.0	3.8	1.8	2.7	0.6	1.4	0.3	88.4	1.0	10.6	0.089	0.515	21.156841	-89.077073
Temax	16.73	3	0	3380	3.2	83.2	1.6	3.7	2.2	3.3	1.0	1.6	0.2	86.4	1.6	12.0	0.078	0.536	21.155540	-88.915864
Buctzotz	32.92	3	0	3470	17.9	70.4	1.8	3.9	1.3	2.5	0.6	1.4	0.2	88.3	1.8	9.9	0.077	0.502	21.199537	-88.773473
Tizimin	99.14	1	0	4003	10.1	79.8	1.3	2.8	1.5	2.3	0.5	1.5	0.2	89.9	1.3	8.8	0.078	0.520	21.150118	-88.187758

4 CARR: Conkal - Puerto Chicxulub

CLAVE: 31004

RUTA: MEX-176

AÑO: 2022

LUGAR	ESTACION				CLASIFICACION VEHICULAR EN PORCIENTO													COORDENADAS		
	KM	TE	SC	TDPA	M	A	B	C2	C3	T3S2	T3S3	T3S2R4	OTROS	A	B	C	K'	D	LATITUD	LONGITUD
Conkal	0.00	3	0	3155	38.0	56.0	0.6	2.1	1.2	0.6	0.5	0.7	0.3	94.0	0.6	5.4	0.071	0.508	21.083471	-89.520049
Puerto Chicxulub	27.00	1	0	3050	34.6	60.9	1.0	2.1	0.6	0.2	0.0	0.0	0.6	95.5	1.0	3.5	0.085	0.504	21.286264	-89.601134

5 CARR: Dzitbalché - Ent. San Bernardo

CLAVE: 00162

RUTA: MEX-180

AÑO: 2022

LUGAR	ESTACION				CLASIFICACION VEHICULAR EN PORCIENTO													COORDENADAS		
	KM	TE	SC	TDPA	M	A	B	C2	C3	T3S2	T3S3	T3S2R4	OTROS	A	B	C	K'	D	LATITUD	LONGITUD
T. C. Campeche - Mérida	0.00	0	0																	
T. Izq. Libramiento de Becal (1º Acceso)	12.33	1	0	3728	23.2	71.2	1.2	2.3	1.2	0.6	0.1	0.2	0.0	94.4	1.2	4.4	0.079	0.504	20.418448	-90.034101
T. Izq. Libramiento de Becal (2º Acceso)	15.41	3	0	1741	16.7	74.9	1.8	3.5	0.8	1.7	0.5	0.0	0.1	91.6	1.8	6.6	0.087	0.511	20.449624	-90.038827
Lim. Edos. Term. Camp. Ppia. Yuc.	15.80	0	0																	
Halachó	21.08	1	0	2246	23.1	62.1	4.1	8.2	1.0	1.4	0.1	0.0	0.0	85.2	4.1	10.7	0.081	0.506	20.469161	-90.066364
T. Izq. Libramiento de Maxcanú (1º Acceso)	35.60	1	0	2900	26.1	62.9	2.9	5.4	1.0	1.5	0.2	0.0	0.0	89.0	2.9	8.1	0.082	0.500	20.577258	-90.035478
T. Der. Muna	40.36	3	0	4269	9.1	79.9	2.2	6.0	1.3	1.3	0.2	0.0	0.0	89.0	2.2	8.8	0.083	0.503	20.601414	-89.975978
Ent. San Bernardo	41.53	0	0																	

YUCATAN

6 CARR: Ent. Poxilá - Mérida

CLAVE: 31003

RUTA: MEX-180

AÑO: 2022

LUGAR	ESTACION				CLASIFICACION VEHICULAR EN PORCIENTO													COORDENADAS			
	KM	TE	SC	TDPA	M	A	B	C2	C3	T3S2	T3S3	T3S2R4	OTROS	A	B	C	K'	D	LATITUD	LONGITUD	
T. C. Campeche - Mérida	0.00	0	0																		
Umán	9.46	1	0	3392	22.1	62.6	1.5	5.9	4.1	3.1	0.3	0.3	0.1	84.7	1.5	13.8	0.102	0.504	20.866530	-89.757799	
X. Periférico de Mérida	16.37	1	1	19458	10.9	75.5	1.0	5.6	2.8	2.6	0.6	0.8	0.2	86.4	1.0	12.6	0.084	0.513	20.920591	-89.696491	
X. Periférico de Mérida	16.37	1	2	20522	11.2	75.9	0.8	5.4	2.7	2.4	0.6	0.8	0.2	87.1	0.8	12.1	0.072	0.513	20.920681	-89.696547	
Mérida	25.70	1	1	21195	11.3	74.8	2.8	5.5	1.7	1.6	0.6	1.3	0.4	86.1	2.8	11.1	0.098	0.522	20.926847	-89.684068	
Mérida	25.70	1	2	23163	11.0	76.3	2.5	5.2	1.6	1.5	0.6	1.0	0.3	87.3	2.5	10.2	0.095	0.522	20.927315	-89.683834	

7 CARR: Hunucmá - Sisal

CLAVE: 31021

RUTA: MEX-281

AÑO: 2022

LUGAR	ESTACION				CLASIFICACION VEHICULAR EN PORCIENTO													COORDENADAS		
	KM	TE	SC	TDPA	M	A	B	C2	C3	T3S2	T3S3	T3S2R4	OTROS	A	B	C	K'	D	LATITUD	LONGITUD
Hunucmá	0.00	3	0	1796	14.9	78.3	0.7	4.0	1.0	0.8	0.1	0.2	0.0	93.2	0.7	6.1	0.177	0.512	21.030344	-89.896579
Sisal	23.20	1	0	1587	14.7	78.8	0.7	4.0	1.0	0.5	0.2	0.1	0.0	93.5	0.7	5.8	0.184	0.504	21.162262	-90.030715

8 CARR: Libramiento Conkal - Mococho - Baca

CLAVE:

RUTA: MEX-176

AÑO: 2022

LUGAR	ESTACION				CLASIFICACION VEHICULAR EN PORCIENTO													COORDENADAS		
	KM	TE	SC	TDPA	M	A	B	C2	C3	T3S2	T3S3	T3S2R4	OTROS	A	B	C	K'	D	LATITUD	LONGITUD
T. C. Mérida - Dzilam de Bravo (Oeste)	4.40	3	1	8449	6.4	87.2	0.6	2.0	1.3	1.3	0.5	0.6	0.1	93.6	0.6	5.8	0.110	0.501	21.053769	-89.529501
T. C. Mérida - Dzilam de Bravo (Oeste)	4.40	3	2	8486	6.5	86.3	0.9	2.1	1.4	1.5	0.5	0.7	0.1	92.8	0.9	6.3	0.112	0.501	21.053853	-89.529516
X. C. Conkal - Yaxkukul	8.74	3	1	6462	7.1	85.3	1.1	2.6	1.5	1.3	0.4	0.6	0.1	92.4	1.1	6.5	0.110	0.503	21.067073	-89.496856
X. C. Conkal - Yaxkukul	8.74	3	2	6537	7.0	84.8	1.2	2.8	1.6	1.5	0.4	0.6	0.1	91.8	1.2	7.0	0.120	0.503	21.067106	-89.496972
X. C. Tixkokob - Baca	20.86	1	1	5711	6.7	86.8	0.7	2.2	1.2	1.2	0.5	0.6	0.1	93.5	0.7	5.8	0.122	0.500	21.099562	-89.402720
X. C. Tixkokob - Baca	20.86	1	2	5701	6.6	86.5	0.8	2.1	1.5	1.3	0.5	0.6	0.1	93.1	0.8	6.1	0.124	0.500	21.099744	-89.402684
T. C. Mérida - Dzilam de Bravo (Este)	24.41	1	1	5253	8.9	84.0	0.8	2.6	1.4	1.1	0.5	0.6	0.1	92.9	0.8	6.3	0.135	0.501	21.103250	-89.370102
T. C. Mérida - Dzilam de Bravo (Este)	24.41	1	2	5232	9.0	84.0	0.7	2.5	1.4	1.0	0.6	0.7	0.1	93.0	0.7	6.3	0.130	0.501	21.103342	-89.370166

9 CARR: Libramiento de Conkal

CLAVE:

RUTA: MEX

AÑO: 2022

LUGAR	ESTACION				CLASIFICACION VEHICULAR EN PORCIENTO													COORDENADAS			
	KM	TE	SC	TDPA	M	A	B	C2	C3	T3S2	T3S3	T3S2R4	OTROS	A	B	C	K'	D	LATITUD	LONGITUD	
T. C. Mérida - Dzilam de Bravo	0.00	3	0	10594	7.7	89.0	0.3	1.3	1.1	0.4	0.1	0.1	0.0	96.7	0.3	3.0	0.082	0.524	21.054986	-89.546959	
X. C. Conkal - Chablekal	4.80	0	0																		
T. C. Conkal - Puerto Chicxulub	14.00	1	0	1757	5.9	75.5	2.5	5.3	2.6	2.6	2.5	2.3	0.8	81.4	2.5	16.1	0.097	0.504	21.151334	-89.531397	

YUCATAN

10 CARR : Libramiento de Progreso

CLAVE: 31631

RUTA : MEX-261

AÑO : 2022

LUGAR	ESTACION				CLASIFICACION VEHICULAR EN PORCIENTO													COORDENADAS		
	KM	TE	SC	TDPA	M	A	B	C2	C3	T3S2	T3S3	T3S2R4	OTROS	A	B	C	K'	D	LATITUD	LONGITUD
T. C. Mérida - Progreso	0.00	3	0	3613	6.2	81.7	1.0	6.2	1.8	2.0	0.6	0.3	0.2	87.9	1.0	11.1	0.095	0.511	21.257897	-89.667843
Yucalpetén	6.50	1	0	3402	6.2	87.7	0.6	2.8	0.8	0.9	0.4	0.3	0.3	93.9	0.6	5.5	0.100	0.520	21.270909	-89.712630

11 CARR : Libramiento de Tahmek - Hoctun - Xocchel

CLAVE:

RUTA : MEX-180

AÑO : 2022

LUGAR	ESTACION				CLASIFICACION VEHICULAR EN PORCIENTO													COORDENADAS		
	KM	TE	SC	TDPA	M	A	B	C2	C3	T3S2	T3S3	T3S2R4	OTROS	A	B	C	K'	D	LATITUD	LONGITUD
T. C. Mérida - Puerto Juárez	14.00	0	0																	
Tahmek	42.00	3	1	5054	3.0	78.9	2.4	3.0	2.6	4.3	1.2	3.6	1.0	81.9	2.4	15.7	0.083	0.509	20.883130	-89.241097
Tahmek	42.00	3	2	5236	3.5	78.2	2.8	3.1	2.5	4.6	1.0	3.4	0.9	81.7	2.8	15.5	0.095	0.509	20.883231	-89.241018
X. C. Hoctún - Cenotillo	48.30	3	1	4317	2.5	79.4	2.1	3.3	2.4	4.4	1.1	4.1	0.7	81.9	2.1	16.0	0.075	0.501	20.869216	-89.188139
X. C. Hoctún - Cenotillo	48.30	3	2	4302	2.4	77.5	2.9	3.5	2.3	4.8	1.2	4.4	1.0	79.9	2.9	17.2	0.097	0.501	20.869329	-89.188055

12 CARR : Mérida - Celestún

CLAVE: 31025

RUTA : MEX-281

AÑO : 2022

LUGAR	ESTACION				CLASIFICACION VEHICULAR EN PORCIENTO													COORDENADAS		
	KM	TE	SC	TDPA	M	A	B	C2	C3	T3S2	T3S3	T3S2R4	OTROS	A	B	C	K'	D	LATITUD	LONGITUD
Mérida	0.00	3	1	18396	9.3	84.1	0.7	4.0	0.8	0.4	0.1	0.3	0.3	93.4	0.7	5.9	0.075	0.500	20.986762	-89.658976
Mérida	0.00	3	2	18391	8.1	85.6	0.6	4.1	0.6	0.3	0.1	0.3	0.3	93.7	0.6	5.7	0.070	0.500	20.986682	-89.659057
X. Periférico de Mérida	5.10	1	1	22805	9.5	85.1	0.6	3.0	0.4	0.4	0.1	0.7	0.2	94.6	0.6	4.8	0.075	0.501	20.992703	-89.668544
X. Periférico de Mérida	5.10	1	2	22701	9.7	86.3	0.4	1.9	0.5	0.3	0.1	0.6	0.2	96.0	0.4	3.6	0.061	0.501	20.992590	-89.668598
X. Periférico de Mérida	5.10	3	1	26126	5.4	90.0	0.6	2.1	0.3	0.5	0.7	0.2	0.2	95.4	0.6	4.0	0.086	0.523	20.999729	-89.679855
X. Periférico de Mérida	5.10	3	2	22462	5.1	89.6	0.6	2.9	0.2	0.6	0.7	0.2	0.1	94.7	0.6	4.7	0.097	0.523	20.999625	-89.679879
Ucú	14.80	1	0	4803	15.8	71.0	1.1	9.3	0.9	1.6	0.1	0.1	0.1	86.8	1.1	12.1	0.068	0.504	21.027767	-89.735418
Hunucmá	26.00	1	0	2600	15.7	66.5	1.4	13.3	0.4	2.0	0.4	0.2	0.1	82.2	1.4	16.4	0.084	0.504	21.027518	-89.850120
Hunucmá	26.00	3	0	2682	30.5	54.5	1.6	10.1	0.4	2.5	0.2	0.1	0.1	85.0	1.6	13.4	0.078	0.515	21.002470	-89.886258
Kinchil	40.00	3	0	2065	10.6	73.7	1.0	8.6	3.7	1.7	0.7	0.0	0.0	84.3	1.0	14.7	0.085	0.519	20.911460	-89.964218
T. Izq. San Mateo	67.00	1	0	1388	2.4	88.6	1.1	6.7	0.7	0.2	0.1	0.1	0.1	91.0	1.1	7.9	0.122	0.511	20.859851	-90.187062
Celestún	89.00	1	0	1317	13.7	72.8	2.2	8.0	1.5	1.4	0.2	0.1	0.1	86.5	2.2	11.3	0.128	0.502	20.857438	-90.380365

13 CARR : Mérida - Dzilam de Bravo

CLAVE: 31001

RUTA : MEX-176

AÑO : 2022

LUGAR	ESTACION				CLASIFICACION VEHICULAR EN PORCIENTO													COORDENADAS		
	KM	TE	SC	TDPA	M	A	B	C2	C3	T3S2	T3S3	T3S2R4	OTROS	A	B	C	K'	D	LATITUD	LONGITUD
Mérida	0.00	0	0																	

YUCATAN

13 CARR: Mérida - Dzilam de Bravo

CLAVE: 31001

RUTA: MEX-176

AÑO: 2022

LUGAR	ESTACION				CLASIFICACION VEHICULAR EN PORCIENTO										COORDENADAS					
	KM	TE	SC	TDPA	M	A	B	C2	C3	T3S2	T3S3	T3S2R4	OTROS	A	B	C	K'	D	LATITUD	LONGITUD
X. Periférico de Mérida	5.90	1	1	13163	6.5	89.4	0.3	2.3	0.4	0.3	0.2	0.5	0.1	95.9	0.3	3.8	0.067	0.504	21.019659	-89.568129
X. Periférico de Mérida	5.90	1	2	13363	6.8	89.2	0.2	2.3	0.4	0.3	0.2	0.5	0.1	96.0	0.2	3.8	0.075	0.504	21.019700	-89.568209
X. Periférico de Mérida	5.90	3	1	20431	8.6	84.7	1.2	2.2	1.1	1.3	0.3	0.5	0.1	93.3	1.2	5.5	0.064	0.510	21.037757	-89.550556
X. Periférico de Mérida	5.90	3	2	21283	8.8	84.2	1.4	2.4	1.1	1.3	0.2	0.5	0.1	93.0	1.4	5.6	0.075	0.510	21.037918	-89.550533
Conkal	18.00	1	1	15438	8.6	85.8	0.6	1.9	1.1	0.9	0.3	0.6	0.2	94.4	0.6	5.0	0.085	0.509	21.051247	-89.536868
Conkal	18.00	1	2	14880	8.3	86.1	0.7	1.8	1.1	1.0	0.4	0.5	0.1	94.4	0.7	4.9	0.102	0.509	21.051032	-89.537742
Baca	34.40	1	0	2074	40.2	50.9	0.4	6.2	0.5	1.2	0.4	0.1	0.1	91.1	0.4	8.5	0.099	0.511	21.108997	-89.409322
Motul	44.00	1	1	5742	13.2	79.5	0.7	2.6	1.1	1.6	0.5	0.7	0.1	92.7	0.7	6.6	0.121	0.505	21.097858	-89.316376
Motul	44.00	1	2	5868	13.6	80.0	0.6	2.4	1.0	1.3	0.4	0.6	0.1	93.6	0.6	5.8	0.132	0.505	21.097908	-89.315486
Motul	44.00	3	0	5365	6.7	82.7	1.1	3.3	1.9	2.3	0.6	1.2	0.2	89.4	1.1	9.5	0.074	0.506	21.115729	-89.270931
Cansahcab	68.00	3	0	1858	24.0	72.8	0.5	1.7	0.7	0.1	0.1	0.1	0.0	96.8	0.5	2.7	0.087	0.503	21.165110	-89.100826
Dzidzantún	80.00	1	0	2110	21.5	72.8	0.4	4.2	0.8	0.2	0.0	0.1	0.0	94.3	0.4	5.3	0.076	0.501	21.235525	-89.051601
Dzilam de Bravo	105.00	1	0	2772	52.9	38.7	0.4	4.9	0.4	1.8	0.4	0.2	0.3	91.6	0.4	8.0	0.071	0.509	21.389892	-88.891956

14 CARR: Mérida - Progreso

CLAVE: 31091

RUTA: MEX-261

AÑO: 2022

LUGAR	ESTACION				CLASIFICACION VEHICULAR EN PORCIENTO										COORDENADAS					
	KM	TE	SC	TDPA	M	A	B	C2	C3	T3S2	T3S3	T3S2R4	OTROS	A	B	C	K'	D	LATITUD	LONGITUD
T. C. Mérida - Dzilam de Bravo	0.00	0	0																	
Periférico Mérida	5.40	1	1	23923	6.1	89.9	0.4	1.0	0.8	0.4	0.1	1.0	0.3	96.0	0.4	3.6	0.077	0.508	21.043338	-89.629128
Periférico Mérida	5.40	1	2	23182	6.4	89.3	0.4	1.0	0.5	0.6	0.1	1.3	0.4	95.7	0.4	3.9	0.078	0.508	21.043224	-89.629236
T. Izq. Dzityá	10.40	1	1	41494	6.2	89.5	0.4	1.2	0.8	0.8	0.2	0.7	0.2	95.7	0.4	3.9	0.095	0.520	21.052754	-89.630764
T. Izq. Dzityá	10.40	1	2	37981	6.0	88.2	0.5	1.5	1.0	1.0	0.3	1.2	0.3	94.2	0.5	5.3	0.083	0.520	21.052818	-89.631073
T. Izq. Dzityá	10.40	3	1	30914	5.4	88.8	0.6	1.3	1.0	1.2	0.3	1.1	0.3	94.2	0.6	5.2	0.091	0.515	21.067354	-89.633202
T. Izq. Dzityá	10.40	3	2	33048	5.4	88.8	0.9	1.4	0.6	0.9	0.5	1.2	0.3	94.2	0.9	4.9	0.094	0.515	21.066606	-89.633507
T. Izq. Komchén	15.30	3	1	16228	5.6	85.3	0.8	1.9	1.4	2.1	0.9	1.5	0.5	90.9	0.8	8.3	0.081	0.504	21.113836	-89.640882
T. Izq. Komchén	15.30	3	2	15993	6.5	84.3	0.9	1.9	1.4	1.5	1.3	1.6	0.6	90.8	0.9	8.3	0.083	0.504	21.113570	-89.641118
Progreso	35.04	1	1	13034	5.6	85.8	1.0	2.4	0.8	1.8	1.0	1.3	0.3	91.4	1.0	7.6	0.084	0.506	21.265104	-89.660314
Progreso	35.04	1	2	12713	6.4	84.0	1.2	2.6	1.0	1.9	1.1	1.5	0.3	90.4	1.2	8.4	0.083	0.506	21.266233	-89.661054

15 CARR: Mérida - Puerto Juárez

CLAVE: 00067

RUTA: MEX-180

AÑO: 2022

LUGAR	ESTACION				CLASIFICACION VEHICULAR EN PORCIENTO										COORDENADAS					
	KM	TE	SC	TDPA	M	A	B	C2	C3	T3S2	T3S3	T3S2R4	OTROS	A	B	C	K'	D	LATITUD	LONGITUD
Mérida	0.00	0	0																	

YUCATAN

15 CARR: Mérida - Puerto Juárez

CLAVE: 00067

RUTA: MEX-180

AÑO: 2022

LUGAR	ESTACION				CLASIFICACION VEHICULAR EN PORCIENTO													COORDENADAS		
	KM	TE	SC	TDPA	M	A	B	C2	C3	T3S2	T3S3	T3S2R4	OTROS	A	B	C	K'	D	LATITUD	LONGITUD
X. Periférico de Mérida	5.60	1	1	11575	12.5	81.8	1.1	3.5	0.5	0.3	0.1	0.1	0.1	94.3	1.1	4.6	0.080	0.534	20.957498	-89.572251
X. Periférico de Mérida	5.60	1	2	13251	12.4	82.8	0.8	2.8	0.6	0.3	0.1	0.1	0.1	95.2	0.8	4.0	0.081	0.534	20.957551	-89.572150
X. Periférico de Mérida	5.60	3	1	18032	11.3	76.1	1.3	4.3	1.7	2.6	0.7	1.6	0.4	87.4	1.3	11.3	0.071	0.506	20.953633	-89.564408
X. Periférico de Mérida	5.60	3	2	18492	11.7	75.8	1.3	3.7	1.9	2.8	0.6	1.8	0.4	87.5	1.3	11.2	0.066	0.506	20.953719	-89.564330
Teya	13.00	1	1	14461	10.6	74.8	2.0	4.2	2.2	2.9	0.7	2.1	0.5	85.4	2.0	12.6	0.078	0.500	20.935104	-89.527459
Teya	13.00	1	2	14437	11.3	73.2	2.2	4.3	2.7	3.1	0.7	2.0	0.5	84.5	2.2	13.3	0.072	0.500	20.935229	-89.527436
T. C. Teya - Peto	14.20	3	1	8709	9.9	74.1	2.0	4.4	2.7	3.2	1.0	2.2	0.5	84.0	2.0	14.0	0.085	0.504	20.920560	-89.492983
T. C. Teya - Peto	14.20	3	2	8843	10.1	74.6	1.9	4.2	2.7	3.3	0.7	2.0	0.5	84.7	1.9	13.4	0.093	0.504	20.920679	-89.492874
T. Der. Ticopó	21.40	3	1	8205	9.2	74.3	2.2	4.7	2.2	3.5	0.8	2.4	0.7	83.5	2.2	14.3	0.090	0.517	20.893163	-89.435373
T. Der. Ticopó	21.40	3	2	7669	8.8	74.8	2.1	4.9	1.8	3.5	0.7	2.8	0.6	83.6	2.1	14.3	0.107	0.517	20.893258	-89.435270
T. Der. Seyé	28.79	1	1	7159	5.6	77.2	3.0	4.7	2.0	3.3	1.0	2.6	0.6	82.8	3.0	14.2	0.090	0.503	20.895831	-89.391665
T. Der. Seyé	28.79	1	2	7232	5.4	78.7	2.8	4.3	1.4	3.5	0.9	2.4	0.6	84.1	2.8	13.1	0.093	0.503	20.895906	-89.391540
T. Der. Seyé	28.79	3	1	7203	5.8	76.2	3.6	5.0	1.5	3.0	1.3	2.8	0.8	82.0	3.6	14.4	0.085	0.516	20.891724	-89.374656
T. Der. Seyé	28.79	3	2	6766	5.9	75.9	3.2	4.6	2.1	3.5	1.1	3.0	0.7	81.8	3.2	15.0	0.094	0.516	20.891844	-89.374582
Tahmek (1er Acceso)	40.00	1	1	6703	4.2	77.0	3.4	4.9	2.2	3.1	1.2	3.1	0.9	81.2	3.4	15.4	0.085	0.501	20.876039	-89.279046
Tahmek (1er Acceso)	40.00	1	2	6721	4.3	78.2	2.8	4.2	1.7	4.8	0.8	2.5	0.7	82.5	2.8	14.7	0.092	0.501	20.876162	-89.278962
T. C. Libramiento de Tahmek - Hoctun - Xocchel Oeste	42.00	1	1	6625	2.8	79.4	3.1	3.5	2.4	3.9	0.8	3.4	0.7	82.2	3.1	14.7	0.091	0.516	20.881834	-89.258871
T. C. Libramiento de Tahmek - Hoctun - Xocchel Oeste	42.00	1	1	6530	2.7	80.9	3.3	3.8	2.0	2.6	0.9	3.0	0.8	83.6	3.3	13.1	0.085	0.516	20.881697	-89.258841
T. Izq. Hoctún (1º Acceso)	46.65	1	0	2802	26.8	62.8	1.1	7.6	0.9	0.4	0.3	0.1	0.0	89.6	1.1	9.3	0.084	0.501	20.867615	-89.214576
T. Izq. Hoctún (2º Acceso)	48.62	1	0	1439	22.3	65.2	1.2	9.2	0.9	0.7	0.2	0.3	0.0	87.5	1.2	11.3	0.082	0.501	20.858709	-89.202919
T. Izq. Hoctún (2º Acceso)	48.62	3	0	2636	31.3	59.3	1.0	6.2	1.1	0.4	0.2	0.4	0.1	90.6	1.0	8.4	0.082	0.508	20.855057	-89.196397
T. Libramiento de Xocchel	55.72	0	0																	
T. C. Libramiento de Tahmek - Hoctun - Xocchel	56.00	1	0	520	24.5	56.4	1.5	12.1	2.7	1.7	0.5	0.6	0.0	80.9	1.5	17.6	0.098	0.512	20.830692	-89.165801
Kantunil	67.28	1	1	4582	2.9	77.4	3.1	3.7	2.1	4.4	1.3	4.2	0.9	80.3	3.1	16.6	0.083	0.521	20.801925	-89.053530
Kantunil	67.28	1	2	4211	2.9	76.1	3.0	4.2	2.4	4.8	1.2	4.5	0.9	79.0	3.0	18.0	0.102	0.521	20.802032	-89.053425
Kantunil	67.28	3	0	4041	6.0	81.5	2.0	4.3	2.7	2.0	0.8	0.6	0.1	87.5	2.0	10.5	0.093	0.501	20.790340	-89.017039
Libre Unión	92.91	1	0	3166	5.8	78.9	2.3	5.9	3.0	2.2	0.8	1.0	0.1	84.7	2.3	13.0	0.100	0.514	20.708758	-88.817955
Libre Unión	92.91	3	0	3005	5.3	79.8	2.6	5.5	2.9	2.1	0.9	0.8	0.1	85.1	2.6	12.3	0.113	0.523	20.707004	-88.796594
Piste	116.30	3	0	8602	14.5	77.7	1.6	2.5	2.0	0.6	0.5	0.5	0.1	92.2	1.6	6.2	0.100	0.524	20.690884	-88.579607
1er. Acceso a Zona Arqueológica de Chichen-Itzá	117.90	3	0	6407	14.1	72.4	2.7	5.9	1.8	1.9	0.6	0.5	0.1	86.5	2.7	10.8	0.082	0.517	20.688689	-88.570685
2do. Acceso a Zona Arqueológica de Chichen-Itzá	121.10	3	0	5920	13.1	75.9	2.4	4.6	1.9	1.2	0.4	0.5	0.0	89.0	2.4	8.6	0.088	0.521	20.668773	-88.556534
T. Der. Chankom	127.00	1	0	4993	8.7	77.3	3.4	5.2	2.4	1.4	0.7	0.8	0.1	86.0	3.4	10.6	0.093	0.512	20.644017	-88.494603
T. Der. Chankom	127.00	3	0	5307	7.7	78.4	2.8	5.8	2.1	1.9	0.6	0.6	0.1	86.1	2.8	11.1	0.093	0.502	20.637939	-88.475533
Kaua	137.47	3	0	5529	8.3	80.1	3.1	4.1	2.0	1.2	0.5	0.6	0.1	88.4	3.1	8.5	0.084	0.516	20.623622	-88.401632
X. C. Periférico de Valladolid	157.12	1	0	7282	11.5	77.3	2.4	4.4	1.9	1.2	0.5	0.7	0.1	88.8	2.4	8.8	0.075	0.503	20.673492	-88.248471

YUCATAN

15 CARR: Mérida - Puerto Juárez

CLAVE: 00067

RUTA: MEX-180

AÑO: 2022

LUGAR	ESTACION				CLASIFICACION VEHICULAR EN PORCIENTO													COORDENADAS		
	KM	TE	SC	TDPA	M	A	B	C2	C3	T3S2	T3S3	T3S2R4	OTROS	A	B	C	K'	D	LATITUD	LONGITUD
Valladolid	160.68	1	0	7771	20.1	73.9	1.4	3.4	0.6	0.2	0.1	0.2	0.1	94.0	1.4	4.6	0.085	0.522	20.682824	-88.233495
Valladolid	160.68	3	0	9667	22.0	73.5	0.6	2.2	0.9	0.4	0.1	0.3	0.0	95.5	0.6	3.9	0.078	0.530	20.694913	-88.164475
X. C. Periférico de Valladolid	165.60	3	0	10449	11.7	76.9	1.6	2.7	3.4	2.0	0.4	1.1	0.2	88.6	1.6	9.8	0.082	0.512	20.696249	-88.155306
T. Der. Coba	187.80	1	0	7534	5.7	83.0	1.8	3.1	2.2	2.3	0.7	1.0	0.2	88.7	1.8	9.5	0.093	0.500	20.659662	-87.961885
T. Der. Chemax	189.79	1	0	5102	10.0	82.7	1.2	3.1	1.2	1.2	0.3	0.3	0.0	92.7	1.2	6.1	0.086	0.501	20.657946	-87.951968
T. Der. Chemax	189.79	3	0	3879	8.9	81.2	1.5	3.7	1.8	2.0	0.3	0.5	0.1	90.1	1.5	8.4	0.088	0.510	20.665124	-87.924634
X-Can	225.00	3	0	2996	4.2	81.2	2.3	6.8	1.8	2.4	0.5	0.7	0.1	85.4	2.3	12.3	0.093	0.517	20.860461	-87.656706
Lim. Edos. Term. Yuc. Ppia. Q. R.	230.40	0	0																	
Nuevo X-Can	231.90	3	0	3415	4.3	81.8	1.5	7.1	2.1	2.1	0.4	0.7	0.0	86.1	1.5	12.4	0.092	0.508	20.871579	-87.591095
Zaragoza	239.00	1	0	5054	8.0	78.0	1.1	5.4	5.1	1.7	0.3	0.4	0.0	86.0	1.1	12.9	0.087	0.504	20.880555	-87.537811
Zaragoza	239.00	3	0	3894	5.0	80.1	1.7	5.4	4.8	2.1	0.4	0.5	0.0	85.1	1.7	13.2	0.085	0.510	20.883924	-87.517748
Vicente Guerrero	261.00	1	0	3394	8.6	77.5	1.8	4.7	3.9	2.4	0.4	0.6	0.1	86.1	1.8	12.1	0.079	0.513	20.940795	-87.332047
Leona Vicario	275.50	1	0	4964	4.5	79.4	1.6	3.3	7.4	2.2	0.6	0.9	0.1	83.9	1.6	14.5	0.084	0.504	20.979766	-87.226480
Leona Vicario	275.50	3	0	7456	11.3	79.9	1.4	3.6	1.6	1.3	0.2	0.6	0.1	91.2	1.4	7.4	0.082	0.519	20.993357	-87.188977
T. Der. Aeropuerto	302.50	1	0	9155	6.2	83.2	1.1	3.9	2.6	1.6	0.8	0.5	0.1	89.4	1.1	9.5	0.088	0.520	21.096173	-86.983554
T. Der. Aeropuerto	302.50	3	1	5578	5.2	76.1	1.9	8.1	3.6	2.1	0.8	1.6	0.6	81.3	1.9	16.8	0.096	0.521	21.102500	-86.970572
T. Der. Aeropuerto	302.50	3	2	6061	5.2	76.2	2.0	8.1	3.6	2.2	0.7	1.6	0.4	81.4	2.0	16.6	0.095	0.521	21.102632	-86.970605
T. Der. Alfredo V. Bonfil	310.00	1	1	28121	7.8	81.8	1.1	2.4	1.6	1.7	0.3	2.6	0.7	89.6	1.1	9.3	0.075	0.523	21.138271	-86.898812
T. Der. Alfredo V. Bonfil	310.00	1	2	31042	7.8	81.8	1.1	2.4	1.6	1.7	0.3	2.6	0.7	89.6	1.1	9.3	0.080	0.523	21.138382	-86.898938
Puerto Juárez	321.41	0	0																	

16 CARR: Mérida - Tekanto

CLAVE: 31587

RUTA: MEX-180

AÑO: 2022

LUGAR	ESTACION				CLASIFICACION VEHICULAR EN PORCIENTO													COORDENADAS		
	KM	TE	SC	TDPA	M	A	B	C2	C3	T3S2	T3S3	T3S2R4	OTROS	A	B	C	K'	D	LATITUD	LONGITUD
T. C. Mérida - Puerto Juárez	0.00	0	0																	
X. Periférico de Mérida	5.70	1	0	16894	11.0	83.3	0.4	2.5	0.8	0.5	1.1	0.3	0.1	94.3	0.4	5.3	0.078	0.515	20.961060	-89.571139
T. Der. Tixpéhual	13.25	1	0	7767	18.3	75.4	0.9	3.4	1.1	0.6	0.2	0.1	0.0	93.7	0.9	5.4	0.108	0.510	20.976404	-89.463534
T. Der. Tixpéhual	13.25	3	0	4108	4.0	87.5	1.4	5.5	0.8	0.5	0.2	0.1	0.0	91.5	1.4	7.1	0.111	0.505	20.981754	-89.454840
Tixkokob	21.00	1	0	4832	3.9	87.0	1.6	5.1	1.2	0.6	0.4	0.2	0.0	90.9	1.6	7.5	0.111	0.505	20.999194	-89.425544
Tixkokob	21.00	3	0	3979	30.7	60.6	0.5	5.1	1.9	0.7	0.3	0.2	0.0	91.3	0.5	8.2	0.084	0.501	21.000315	-89.374152
Cacalchén	38.00	1	0	2065	25.3	66.1	0.7	5.5	1.4	0.7	0.3	0.0	0.0	91.4	0.7	7.9	0.106	0.505	20.985811	-89.247837
Tekanto	51.00	1	0	1292	51.7	41.2	0.5	5.4	1.0	0.1	0.0	0.1	0.0	92.9	0.5	6.6	0.086	0.507	21.010409	-89.118198

YUCATAN

17 CARR: Mérida - Tetiz

CLAVE: 31610

RUTA: MEX-281

AÑO: 2022

LUGAR	ESTACION				CLASIFICACION VEHICULAR EN PORCIENTO												COORDENADAS			
	KM	TE	SC	TDPA	M	A	B	C2	C3	T3S2	T3S3	T3S2R4	OTROS	A	B	C	K'	D	LATITUD	LONGITUD
Anillo Periferico Lic. Manuel Berzunza	0.00	3	0	18563	9.6	82.8	0.8	2.8	1.1	1.4	0.4	0.9	0.2	92.4	0.8	6.8	0.081	0.508	20.983675	-89.699730
X. C. Hunucmá - Umán	17.98	1	0	5891	12.9	73.4	1.5	6.5	1.2	2.2	0.7	1.4	0.2	86.3	1.5	12.2	0.099	0.515	20.982057	-89.841982
X. C. Hunucmá - Umán	17.98	3	0	2687	9.1	80.1	1.9	5.0	1.1	2.1	0.4	0.3	0.0	89.2	1.9	8.9	0.093	0.524	20.979273	-89.860889
X. C. Mérida - Celestún	24.40	1	0	2955	12.7	76.9	1.4	6.4	1.2	1.2	0.2	0.0	0.0	89.6	1.4	9.0	0.095	0.509	20.979191	-89.908120

18 CARR: Muna - Felipe Carrillo Puerto

CLAVE: 00148

RUTA: MEX-184

AÑO: 2022

LUGAR	ESTACION				CLASIFICACION VEHICULAR EN PORCIENTO												COORDENADAS			
	KM	TE	SC	TDPA	M	A	B	C2	C3	T3S2	T3S3	T3S2R4	OTROS	A	B	C	K'	D	LATITUD	LONGITUD
Muna	0.00	3	0	4061	8.7	73.2	1.3	10.1	1.5	2.1	1.1	1.1	0.9	81.9	1.3	16.8	0.077	0.503	20.474317	-89.694347
Ticul	19.10	1	0	2768	8.9	72.4	1.4	10.3	1.5	2.6	1.3	1.3	0.3	81.3	1.4	17.3	0.081	0.503	20.407164	-89.574519
Ticul	19.10	3	0	7005	35.7	52.4	1.0	4.9	0.6	3.7	0.8	0.3	0.6	88.1	1.0	10.9	0.077	0.502	20.371848	-89.516134
Oxkutzcab	40.50	3	0	6503	34.4	53.4	0.9	5.1	1.0	2.7	1.0	0.6	0.9	87.8	0.9	11.3	0.084	0.504	20.281762	-89.374742
Tekax	53.90	3	0	4357	43.1	50.8	0.7	2.3	1.0	0.9	0.2	0.7	0.3	93.9	0.7	5.4	0.098	0.524	20.188984	-89.268682
Tzucacab	86.60	1	0	1876	33.5	59.2	0.9	4.7	0.9	0.3	0.2	0.2	0.1	92.7	0.9	6.4	0.078	0.516	20.078544	-89.062377
Tzucacab	86.60	3	0	1445	39.7	57.3	0.6	1.5	0.6	0.1	0.1	0.1	0.0	97.0	0.6	2.4	0.071	0.506	20.062231	-89.036001
Santa Rosa	109.60	3	0	2284	7.9	76.3	3.1	4.8	1.5	2.0	0.8	3.0	0.6	84.2	3.1	12.7	0.088	0.506	19.947306	-88.880263
Lim. Edos. Term. Yuc. Ppia. Q. R.	117.00	0	0																	
Dziuche	118.00	1	0	2562	8.0	76.5	3.0	4.7	1.7	1.8	0.8	2.9	0.6	84.5	3.0	12.5	0.079	0.516	19.905508	-88.819717
Dziuche	118.00	3	0	3290	9.9	77.0	2.5	4.2	1.4	1.6	0.6	2.4	0.4	86.9	2.5	10.6	0.079	0.502	19.888948	-88.803876
José María Morelos	138.60	1	0	4721	15.5	75.2	1.7	3.2	1.2	1.0	0.4	1.5	0.3	90.7	1.7	7.6	0.071	0.540	19.764441	-88.725104
José María Morelos	138.60	3	0	3241	12.4	75.2	2.2	3.9	1.7	1.6	0.7	2.0	0.3	87.6	2.2	10.2	0.084	0.511	19.736567	-88.691536
Polyuc	161.94	1	0	2860	12.4	71.6	2.4	5.4	2.3	2.1	1.0	2.6	0.2	84.0	2.4	13.6	0.073	0.502	19.611629	-88.571723
Polyuc	161.94	3	0	1451	9.2	81.9	0.8	4.4	1.7	1.1	0.5	0.4	0.0	91.1	0.8	8.1	0.092	0.505	19.609489	-88.553433
T. Der. Dzúlá	178.11	3	0	1458	6.1	84.4	1.3	4.5	1.9	1.0	0.4	0.4	0.0	90.5	1.3	8.2	0.095	0.501	19.643495	-88.405602
Felipe Carrillo Puerto	216.97	1	0	7396	28.1	67.3	1.2	1.7	0.8	0.6	0.1	0.2	0.0	95.4	1.2	3.4	0.070	0.515	19.584459	-88.057869

19 CARR: Ramal a Panabá

CLAVE: 31609

RUTA: MEX-295

AÑO: 2022

LUGAR	ESTACION				CLASIFICACION VEHICULAR EN PORCIENTO												COORDENADAS			
	KM	TE	SC	TDPA	M	A	B	C2	C3	T3S2	T3S3	T3S2R4	OTROS	A	B	C	K'	D	LATITUD	LONGITUD
T. C. Valladolid - Río Lagartos	0.00	3	0	1495	30.1	65.5	1.0	1.9	0.8	0.4	0.1	0.2	0.0	95.6	1.0	3.4	0.092	0.503	21.194270	-88.170467
Panabá	18.00	1	0	1438	29.7	66.2	0.9	1.8	0.7	0.4	0.1	0.2	0.0	95.9	0.9	3.2	0.092	0.503	21.284521	-88.268655

YUCATAN

20 CARR: Teya -Peto

CLAVE: 31042

RUTA: MEX-184

AÑO: 2022

LUGAR	ESTACION				CLASIFICACION VEHICULAR EN PORCIENTO													COORDENADAS			
	KM	TE	SC	TDPA	M	A	B	C2	C3	T3S2	T3S3	T3S2R4	OTROS	A	B	C	K'	D	LATITUD	LONGITUD	
T. C. Mérida - Puerto Juárez	0.00	0	0																		
San Antonio Tehuizt	3.80	3	1	6208	10.7	79.5	1.2	3.2	2.3	1.5	0.5	0.8	0.3	90.2	1.2	8.6	0.104	0.520	20.888195	-89.508001	
San Antonio Tehuizt	3.80	3	2	5720	9.4	79.2	1.4	3.5	2.8	1.7	0.8	0.9	0.3	88.6	1.4	10.0	0.103	0.520	20.888211	-89.507907	
T. Izq. Acanceh	13.70	1	1	4069	8.2	81.6	1.8	3.8	1.2	1.6	0.5	1.1	0.2	89.8	1.8	8.4	0.111	0.518	20.815626	-89.472103	
T. Izq. Acanceh	13.70	1	2	3783	8.2	80.3	1.9	3.3	2.0	2.4	0.6	1.2	0.1	88.5	1.9	9.6	0.097	0.518	20.815565	-89.471920	
Tecoh	22.00	3	1	3288	9.3	78.1	1.5	4.1	2.3	2.4	0.8	1.2	0.3	87.4	1.5	11.1	0.104	0.533	20.711584	-89.476054	
Tecoh	22.00	3	2	3749	10.1	78.7	2.0	4.3	1.2	1.9	0.4	1.2	0.2	88.8	2.0	9.2	0.100	0.533	20.711523	-89.475928	
T. Der. Zona Arq. de Mayapan	37.65	1	1	2638	6.4	80.5	3.6	3.5	1.6	2.1	0.8	1.3	0.2	86.9	3.6	9.5	0.129	0.501	20.633639	-89.459116	
T. Der. Zona Arq. de Mayapan	37.65	1	2	2633	6.6	78.9	2.2	4.1	2.4	3.1	0.8	1.6	0.3	85.5	2.2	12.3	0.111	0.501	20.633695	-89.459002	
T. Izq. Teabo	69.05	1	1	2369	6.6	78.3	3.4	3.7	2.3	2.7	1.0	1.8	0.2	84.9	3.4	11.7	0.117	0.507	20.409715	-89.307234	
T. Izq. Teabo	69.05	1	2	2300	6.6	78.3	3.2	4.0	2.2	2.9	1.0	1.5	0.3	84.9	3.2	11.9	0.110	0.507	20.409711	-89.307083	
T. Izq. Tixmehuac	97.10	1	0	2393	4.7	76.5	3.1	4.0	3.3	3.3	1.5	3.3	0.3	81.2	3.1	15.7	0.079	0.507	20.231332	-89.129559	
T. Izq. Tixmehuac	97.10	3	0	2635	4.3	80.1	3.1	3.6	2.0	2.2	1.2	3.0	0.5	84.4	3.1	12.5	0.077	0.501	20.224830	-89.118247	
Peto	120.70	1	0	2886	8.9	75.5	2.8	3.6	2.8	2.5	1.1	2.4	0.4	84.4	2.8	12.8	0.080	0.502	20.123394	-88.950048	

21 CARR: Tzucacab - Santa Rosa

CLAVE: 31017

RUTA: MEX

AÑO: 2022

LUGAR	ESTACION				CLASIFICACION VEHICULAR EN PORCIENTO													COORDENADAS			
	KM	TE	SC	TDPA	M	A	B	C2	C3	T3S2	T3S3	T3S2R4	OTROS	A	B	C	K'	D	LATITUD	LONGITUD	
Tzucacab	0.00	3	0	1700	32.2	59.7	1.0	5.3	0.8	0.3	0.5	0.2	0.0	91.9	1.0	7.1	0.080	0.503	20.073549	-89.035994	
T. C. Teya -Peto	11.30	0	0																		
Peto	16.00	3	0	2611	26.9	65.4	1.4	4.4	0.6	0.5	0.3	0.3	0.2	92.3	1.4	6.3	0.091	0.502	20.084084	-88.912035	
Santa Rosa	34.50	1	0	2238	11.9	70.4	3.2	5.5	2.0	2.2	0.9	3.2	0.7	82.3	3.2	14.5	0.083	0.512	19.978943	-88.885912	

22 CARR: Valladolid - Felipe Carrillo Puerto

CLAVE: 00010

RUTA: MEX-295

AÑO: 2022

LUGAR	ESTACION				CLASIFICACION VEHICULAR EN PORCIENTO													COORDENADAS			
	KM	TE	SC	TDPA	M	A	B	C2	C3	T3S2	T3S3	T3S2R4	OTROS	A	B	C	K'	D	LATITUD	LONGITUD	
Valladolid	0.00	3	0	7131	35.0	59.7	0.4	4.3	0.3	0.1	0.0	0.2	0.0	94.7	0.4	4.9	0.105	0.505	20.673398	-88.204524	
Chichimilá	6.90	3	0	3035	19.6	77.5	0.3	1.3	0.6	0.3	0.0	0.2	0.2	97.1	0.3	2.6	0.094	0.507	20.620021	-88.236644	
Tekom	12.05	3	0	2435	19.5	77.3	0.3	1.4	0.7	0.4	0.0	0.2	0.2	96.8	0.3	2.9	0.092	0.506	20.590225	-88.265398	
Tixcacalcupul	19.80	3	0	944	14.7	76.2	1.0	5.8	1.0	0.3	0.1	0.4	0.5	90.9	1.0	8.1	0.089	0.502	20.520268	-88.270787	
Lim. Edos. Term. Yuc. Ppia. Q. R.	46.00	0	0																		
Tepich	51.40	1	0	961	21.6	72.9	0.4	1.5	1.9	0.6	0.1	0.4	0.6	94.5	0.4	5.1	0.087	0.505	20.248746	-88.255248	
Tihosuco	65.00	1	0	1096	16.8	76.9	2.5	1.3	1.0	0.3	0.2	0.6	0.4	93.7	2.5	3.8	0.092	0.505	20.193221	-88.360422	

YUCATAN

22 CARR: Valladolid - Felipe Carrillo Puerto

CLAVE: 00010

RUTA: MEX-295

AÑO: 2022

LUGAR	ESTACION				CLASIFICACION VEHICULAR EN PORCIENTO										COORDENADAS					
	KM	TE	SC	TDPA	M	A	B	C2	C3	T3S2	T3S3	T3S2R4	OTROS	A	B	C	K'	D	LATITUD	LONGITUD
Tihosuco	65.00	3	0	1235	16.0	75.7	1.0	5.4	0.7	0.2	0.1	0.4	0.5	91.7	1.0	7.3	0.082	0.514	20.189795	-88.387358
T. Izq. San Felipe Berriozábal	99.00	1	0	703	12.4	83.2	2.0	0.6	1.0	0.3	0.1	0.4	0.0	95.6	2.0	2.4	0.108	0.514	19.962444	-88.241567
T. Izq. San Felipe Berriozábal	99.00	3	0	823	12.4	79.6	1.2	1.8	2.6	1.1	0.3	0.7	0.3	92.0	1.2	6.8	0.090	0.527	19.961718	-88.240816
Señor	116.50	1	0	1109	15.5	78.5	1.8	2.5	0.5	0.2	0.2	0.3	0.5	94.0	1.8	4.2	0.087	0.513	19.851090	-88.143659
Señor	116.50	3	0	1523	12.4	76.6	2.6	4.4	0.8	1.0	0.9	0.9	0.4	89.0	2.6	8.4	0.085	0.511	19.833059	-88.131834
Felipe Carrillo Puerto	147.70	1	0	1931	17.5	77.2	1.0	3.0	0.4	0.5	0.1	0.3	0.0	94.7	1.0	4.3	0.087	0.504	19.602385	-88.053562

23 CARR: Valladolid - Río Lagartos

CLAVE: 31035

RUTA: MEX-295

AÑO: 2022

LUGAR	ESTACION				CLASIFICACION VEHICULAR EN PORCIENTO										COORDENADAS					
	KM	TE	SC	TDPA	M	A	B	C2	C3	T3S2	T3S3	T3S2R4	OTROS	A	B	C	K'	D	LATITUD	LONGITUD
Valladolid	0.00	3	1	5342	17.8	73.3	2.0	2.8	1.7	1.2	0.3	0.7	0.2	91.1	2.0	6.9	0.090	0.501	20.729189	-88.202896
Valladolid	0.00	3	2	5362	17.8	73.3	2.0	2.8	1.6	1.2	0.3	0.7	0.3	91.1	2.0	6.9	0.093	0.501	20.729259	-88.203006
Temozón	12.70	3	0	4181	22.6	69.6	1.0	2.5	1.2	1.4	0.2	1.3	0.2	92.2	1.0	6.8	0.076	0.505	20.820267	-88.194714
Tizimín	51.80	1	0	3738	19.1	68.3	1.2	2.2	3.2	2.3	1.3	2.1	0.3	87.4	1.2	11.4	0.079	0.531	21.092292	-88.161431
Tizimín	51.80	3	0	3886	32.4	60.8	0.9	2.4	0.9	1.2	0.2	1.1	0.1	93.2	0.9	5.9	0.084	0.506	21.188471	-88.166734
T. Der. Dzonot Carretero	79.90	1	0	1567	24.2	58.0	2.1	6.6	2.5	2.5	0.6	2.9	0.6	82.2	2.1	15.7	0.103	0.528	21.365981	-88.143950
Río Lagartos	103.90	0	0																	

24 CARR: Mérida - Cancún (Cuota)

CLAVE: 00071

RUTA: MEX-180D

AÑO: 2022

LUGAR	ESTACION				CLASIFICACION VEHICULAR EN PORCIENTO										COORDENADAS					
	KM	TE	SC	TDPA	M	A	B	C2	C3	T3S2	T3S3	T3S2R4	OTROS	A	B	C	K'	D	LATITUD	LONGITUD
T. C. Mérida - Puerto Juárez	66.00	3	1	4310	2.6	73.7	6.6	5.2	1.7	3.8	1.3	4.2	0.9	76.3	6.6	17.1	0.082	0.509	20.802804	-89.044774
T. C. Mérida - Puerto Juárez	66.00	3	2	4154	2.5	73.6	5.1	4.4	2.6	5.0	1.2	4.7	0.9	76.1	5.1	18.8	0.098	0.509	20.803066	-89.044875
X. C. Kantunil - Izamal	68.00	3	1	3345	3.0	65.4	5.5	4.6	7.8	6.2	1.6	4.9	1.0	68.4	5.5	26.1	0.081	0.543	20.804695	-89.020622
X. C. Kantunil - Izamal	68.00	3	2	2820	3.4	69.5	4.8	5.2	3.5	5.8	1.7	5.2	0.9	72.9	4.8	22.3	0.099	0.543	20.804929	-89.020360
Plaza de Cobro Piste	115.34	1	1	2334	1.4	71.6	5.0	3.6	2.0	5.8	1.3	8.5	0.8	73.0	5.0	22.0	0.090	0.516	20.733484	-88.604207
Plaza de Cobro Piste	115.34	1	2	2192	1.6	73.5	5.0	3.2	1.4	6.0	0.8	7.5	1.0	75.1	5.0	19.9	0.107	0.516	20.732688	-88.599456
X. C. Valladolid - Río Lagartos	155.65	1	1	2741	2.4	68.2	4.7	4.1	5.7	5.4	1.5	7.0	1.0	70.6	4.7	24.7	0.084	0.502	20.745387	-88.251000
X. C. Valladolid - Río Lagartos	155.65	1	2	2715	2.7	68.9	4.5	4.2	5.5	5.2	1.3	6.8	0.9	71.6	4.5	23.9	0.087	0.502	20.745505	-88.250925
Lim. Edos. Term. Yuc. Ppia. Q. R.	160.00	0	0																	
Estación Fitosanitaria X-Can	216.70	3	1	1908	2.3	67.3	5.6	5.9	5.7	4.9	1.4	6.0	0.9	69.6	5.6	24.8	0.091	0.505	20.878752	-87.609466
Estación Fitosanitaria X-Can	216.70	3	2	1873	2.7	65.9	6.4	6.4	5.2	4.9	1.5	6.1	0.9	68.6	6.4	25.0	0.112	0.505	20.879032	-87.609448
X. C. El Cedral - Playa del Carmen	237.20	3	1	1946	6.8	64.7	5.4	4.9	6.9	4.3	0.4	5.7	0.9	71.5	5.4	23.1	0.111	0.516	20.923750	-87.368939

YUCATAN

24 CARR: Mérida - Cancún (Cuota)

CLAVE: 00071

RUTA: MEX-180D

AÑO: 2022

LUGAR	ESTACION				CLASIFICACION VEHICULAR EN PORCIENTO													COORDENADAS		
	KM	TE	SC	TDPA	M	A	B	C2	C3	T3S2	T3S3	T3S2R4	OTROS	A	B	C	K'	D	LATITUD	LONGITUD
X. C. El Cedral - Playa del Carmen	237.20	3	2	1823	6.3	63.8	5.5	4.5	8.0	4.2	0.6	6.1	1.0	70.1	5.5	24.4	0.105	0.516	20.923849	-87.368977
T. C. Mérida - Puerto Juárez	292.00	1	1	1941	6.4	69.0	4.4	3.4	5.5	4.2	1.7	4.5	0.9	75.4	4.4	20.2	0.114	0.522	21.096135	-86.978348
T. C. Mérida - Puerto Juárez	292.00	1	2	1778	6.4	68.7	4.8	3.4	5.6	4.2	1.3	4.7	0.9	75.1	4.8	20.1	0.102	0.522	21.096435	-86.978377
T. Av. Huayacán	300.80	2	0	17802	6.8	78.0	3.6	4.0	3.0	2.1	0.6	1.5	0.4	84.8	3.6	11.6	0.090	0.528	21.053823	-86.910595
T. C. Reforma Agraria - Puerto Juárez	307.80	1	0	24137	4.8	85.9	1.8	3.6	1.4	1.2	0.2	0.9	0.2	90.7	1.8	7.5	0.099	0.543	21.021680	-86.860569

25 CARR: Acanceh - Estación Polabán

CLAVE: 31615

RUTA: YUC

AÑO: 2022

LUGAR	ESTACION				CLASIFICACION VEHICULAR EN PORCIENTO													COORDENADAS		
	KM	TE	SC	TDPA	M	A	B	C2	C3	T3S2	T3S3	T3S2R4	OTROS	A	B	C	K'	D	LATITUD	LONGITUD
Acanceh	0.00	3	0	2521	34.0	59.2	1.0	4.2	0.9	0.3	0.1	0.2	0.1	93.2	1.0	5.8	0.092	0.510	20.808819	-89.439860
Homún	20.00	3	0	1495	57.4	38.1	0.5	3.4	0.4	0.1	0.1	0.0	0.0	95.5	0.5	4.0	0.104	0.501	20.734735	-89.267061
Estación Polabán	24.40	1	0	789	55.0	39.0	0.5	4.7	0.5	0.2	0.1	0.0	0.0	94.0	0.5	5.5	0.091	0.502	20.726801	-89.224797

26 CARR: Baca - Dzidzantún

CLAVE: 31591

RUTA: YUC

AÑO: 2022

LUGAR	ESTACION				CLASIFICACION VEHICULAR EN PORCIENTO													COORDENADAS		
	KM	TE	SC	TDPA	M	A	B	C2	C3	T3S2	T3S3	T3S2R4	OTROS	A	B	C	K'	D	LATITUD	LONGITUD
Baca	0.00	3	0	2195	41.8	53.2	0.6	2.4	0.7	0.5	0.3	0.1	0.4	95.0	0.6	4.4	0.099	0.505	21.122512	-89.393957
Dzemul	15.00	1	0	373	11.2	82.3	0.7	3.8	1.6	0.1	0.1	0.0	0.2	93.5	0.7	5.8	0.123	0.523	21.204998	-89.319433
Dzemul	15.00	3	0	2440	54.7	40.4	0.2	3.2	0.4	0.7	0.2	0.1	0.1	95.1	0.2	4.7	0.092	0.501	21.208760	-89.296140
Pueblo Telchac	19.10	3	0	1715	37.3	59.8	0.3	2.1	0.3	0.1	0.1	0.0	0.0	97.1	0.3	2.6	0.075	0.503	21.202951	-89.255679
Sinanché	29.10	3	0	721	45.5	46.6	0.4	5.7	1.0	0.3	0.0	0.0	0.5	92.1	0.4	7.5	0.098	0.509	21.225949	-89.174563
Dzidzantún	43.00	1	0	1063	39.4	53.4	0.3	5.1	0.7	0.8	0.1	0.0	0.2	92.8	0.3	6.9	0.093	0.517	21.244614	-89.055524

27 CARR: Citilcum - Tixkochoh

CLAVE: 31064

RUTA: YUC

AÑO: 2022

LUGAR	ESTACION				CLASIFICACION VEHICULAR EN PORCIENTO													COORDENADAS		
	KM	TE	SC	TDPA	M	A	B	C2	C3	T3S2	T3S3	T3S2R4	OTROS	A	B	C	K'	D	LATITUD	LONGITUD
Citilcum	0.00	3	0	1133	40.4	56.3	0.6	1.2	0.7	0.7	0.1	0.0	0.0	96.7	0.6	2.7	0.092	0.529	20.959055	-89.115368
Tekanto	7.00	1	0	817	41.1	55.5	0.9	1.3	0.9	0.2	0.1	0.0	0.0	96.6	0.9	2.5	0.106	0.506	20.999991	-89.105247
Tixkochoh	10.00	1	0	821	29.3	67.4	0.7	1.1	0.4	0.9	0.1	0.1	0.0	96.7	0.7	2.6	0.089	0.500	21.013817	-89.088805

YUCATAN

28 CARR: Dzemul - Xtampú

CLAVE: 31608

RUTA: YUC

AÑO: 2022

LUGAR	ESTACION				CLASIFICACION VEHICULAR EN PORCIENTO													COORDENADAS		
	KM	TE	SC	TDPA	M	A	B	C2	C3	T3S2	T3S3	T3S2R4	OTROS	A	B	C	K'	D	LATITUD	LONGITUD
Dzemul	0.00	3	0	625	28.0	67.8	0.5	2.7	0.7	0.1	0.1	0.1	0.0	95.8	0.5	3.7	0.099	0.519	21.212647	-89.321331
Xtampú	10.00	1	0	861	29.0	68.7	0.3	1.4	0.5	0.1	0.0	0.0	0.0	97.7	0.3	2.0	0.125	0.505	21.331642	-89.348655

29 CARR: Dzidzantún - Santa Clara

CLAVE: 31592

RUTA: YUC

AÑO: 2022

LUGAR	ESTACION				CLASIFICACION VEHICULAR EN PORCIENTO													COORDENADAS		
	KM	TE	SC	TDPA	M	A	B	C2	C3	T3S2	T3S3	T3S2R4	OTROS	A	B	C	K'	D	LATITUD	LONGITUD
Dzidzantún	0.00	3	0	1102	48.5	48.2	0.4	0.8	1.4	0.3	0.1	0.2	0.1	96.7	0.4	2.9	0.095	0.512	21.258550	-89.041534
Santa Clara	14.00	1	0	841	39.0	60.1	0.1	0.4	0.3	0.1	0.0	0.0	0.0	99.1	0.1	0.8	0.092	0.510	21.370938	-89.014382

30 CARR: Hoctún - Cenotillo

CLAVE: 31011

RUTA: YUC-011

AÑO: 2022

LUGAR	ESTACION				CLASIFICACION VEHICULAR EN PORCIENTO													COORDENADAS		
	KM	TE	SC	TDPA	M	A	B	C2	C3	T3S2	T3S3	T3S2R4	OTROS	A	B	C	K'	D	LATITUD	LONGITUD
Hoctún	0.00	3	0	3315	9.8	81.6	1.2	3.7	2.2	0.8	0.4	0.3	0.0	91.4	1.2	7.4	0.090	0.515	20.880348	-89.188637
Citilcum	13.20	3	0	2073	33.1	60.2	0.4	5.1	0.7	0.4	0.0	0.1	0.0	93.3	0.4	6.3	0.097	0.531	20.950791	-89.110706
Izamal	24.00	3	0	3065	45.1	46.9	0.6	2.8	3.7	0.5	0.3	0.1	0.0	92.0	0.6	7.4	0.092	0.501	20.933972	-89.000495
Tunkás	55.20	3	0	712	43.9	52.5	0.5	2.3	0.5	0.1	0.2	0.0	0.0	96.4	0.5	3.1	0.081	0.510	20.916024	-88.735549
Cenotillo	70.90	1	0	625	42.4	53.7	0.7	2.4	0.6	0.1	0.1	0.0	0.0	96.1	0.7	3.2	0.096	0.502	20.961725	-88.630777

31 CARR: Holcá - Sotuta

CLAVE: 31626

RUTA: YUC

AÑO: 2022

LUGAR	ESTACION				CLASIFICACION VEHICULAR EN PORCIENTO													COORDENADAS		
	KM	TE	SC	TDPA	M	A	B	C2	C3	T3S2	T3S3	T3S2R4	OTROS	A	B	C	K'	D	LATITUD	LONGITUD
T. C. Mérida - Puerto Juárez	0.00	3	0	880	20.1	73.9	1.3	2.4	1.3	0.6	0.1	0.3	0.0	94.0	1.3	4.7	0.102	0.527	20.750149	-88.930535
Tibolón	10.00	3	0	895	18.8	73.6	1.5	3.8	1.0	0.6	0.3	0.4	0.0	92.4	1.5	6.1	0.104	0.528	20.659615	-88.950028
Sotuta	20.00	1	0	962	27.2	66.5	1.2	2.3	1.4	0.6	0.2	0.6	0.0	93.7	1.2	5.1	0.105	0.528	20.607142	-89.002412

32 CARR: Hunucmá - Umán

CLAVE: 31610

RUTA: YUC

AÑO: 2022

LUGAR	ESTACION				CLASIFICACION VEHICULAR EN PORCIENTO													COORDENADAS		
	KM	TE	SC	TDPA	M	A	B	C2	C3	T3S2	T3S3	T3S2R4	OTROS	A	B	C	K'	D	LATITUD	LONGITUD
Hunucmá	0.00	3	0	5812	12.3	75.7	1.0	7.7	1.0	1.7	0.3	0.1	0.2	88.0	1.0	11.0	0.087	0.533	21.003748	-89.863082
X. C. Mérida - Tetiz	4.87	1	0	5892	12.4	76.4	0.8	7.1	1.0	1.7	0.3	0.1	0.2	88.8	0.8	10.4	0.089	0.520	20.982815	-89.854854
X. C. Mérida - Tetiz	4.87	3	0	1215	42.6	49.6	1.1	4.3	1.4	0.7	0.3	0.0	0.0	92.2	1.1	6.7	0.095	0.510	20.975065	-89.851974

YUCATAN

32 CARR: Hunucmá - Umán

CLAVE: 31610

RUTA: YUC

AÑO: 2022

LUGAR	ESTACION				CLASIFICACION VEHICULAR EN PORCIENTO													COORDENADAS		
	KM	TE	SC	TDPA	M	A	B	C2	C3	T3S2	T3S3	T3S2R4	OTROS	A	B	C	K'	D	LATITUD	LONGITUD
Hacienda Dzibikak	16.16	1	0	1327	27.9	64.9	1.0	3.9	1.2	0.8	0.3	0.0	0.0	92.8	1.0	6.2	0.104	0.532	20.905509	-89.798090
Hacienda Dzibikak	16.16	3	0	3499	47.1	44.5	1.2	3.3	1.3	1.1	0.6	0.7	0.2	91.6	1.2	7.2	0.150	0.500	20.902296	-89.785586
Umán	22.00	1	0	4542	50.3	41.9	1.2	2.9	1.1	1.1	0.6	0.7	0.2	92.2	1.2	6.6	0.122	0.507	20.894399	-89.764117

33 CARR: Izamal - Dzilam González

CLAVE: 31605

RUTA: YUC

AÑO: 2022

LUGAR	ESTACION				CLASIFICACION VEHICULAR EN PORCIENTO													COORDENADAS		
	KM	TE	SC	TDPA	M	A	B	C2	C3	T3S2	T3S3	T3S2R4	OTROS	A	B	C	K'	D	LATITUD	LONGITUD
Izamal	0.00	3	0	1896	50.9	46.0	1.0	1.0	0.7	0.2	0.1	0.1	0.0	96.9	1.0	2.1	0.088	0.504	20.945203	-89.006133
Temax	30.00	1	0	926	32.6	61.0	1.7	2.4	1.0	0.6	0.1	0.6	0.0	93.6	1.7	4.7	0.104	0.518	21.132469	-88.938849
Dzilam González	43.00	1	0	1192	30.4	62.8	1.4	4.7	0.6	0.1	0.0	0.0	0.0	93.2	1.4	5.4	0.077	0.513	21.272259	-88.930955

34 CARR: Kantunil - Izamal

CLAVE: 31012

RUTA: YUC

AÑO: 2022

LUGAR	ESTACION				CLASIFICACION VEHICULAR EN PORCIENTO													COORDENADAS		
	KM	TE	SC	TDPA	M	A	B	C2	C3	T3S2	T3S3	T3S2R4	OTROS	A	B	C	K'	D	LATITUD	LONGITUD
Kantunil	0.00	3	0	1145	19.2	72.0	0.7	6.2	0.5	1.1	0.3	0.0	0.0	91.2	0.7	8.1	0.097	0.504	20.811274	-89.026171
Izamal	17.80	1	0	2090	37.0	54.1	0.6	1.9	5.4	0.6	0.2	0.2	0.0	91.1	0.6	8.3	0.088	0.503	20.919087	-89.012754

35 CARR: Kinchil - Umán

CLAVE: 31009

RUTA: YUC

AÑO: 2022

LUGAR	ESTACION				CLASIFICACION VEHICULAR EN PORCIENTO													COORDENADAS		
	KM	TE	SC	TDPA	M	A	B	C2	C3	T3S2	T3S3	T3S2R4	OTROS	A	B	C	K'	D	LATITUD	LONGITUD
Kinchil	0.00	3	0	1989	42.9	45.5	1.5	6.0	1.2	2.2	0.1	0.6	0.0	88.4	1.5	10.1	0.105	0.537	20.911585	-89.938117
Umán	26.00	0	0																	

36 CARR: Libramiento de Peto

CLAVE:

RUTA: YUC-018

AÑO: 2022

LUGAR	ESTACION				CLASIFICACION VEHICULAR EN PORCIENTO													COORDENADAS		
	KM	TE	SC	TDPA	M	A	B	C2	C3	T3S2	T3S3	T3S2R4	OTROS	A	B	C	K'	D	LATITUD	LONGITUD
T. C. Teya - Peto	0.00	3	0	1588	5.3	73.9	4.0	4.7	2.6	2.8	1.2	4.6	0.9	79.2	4.0	16.8	0.091	0.510	20.112569	-88.943813
T. C. Tzucacab - Santa Rosa	5.60	0	0																	

YUCATAN

37 CARR : Libramiento Norte de Motul

CLAVE: 31610

RUTA: YUC

AÑO : 2022

LUGAR	ESTACION				CLASIFICACION VEHICULAR EN PORCIENTO													COORDENADAS		
	KM	TE	SC	TDPA	M	A	B	C2	C3	T3S2	T3S3	T3S2R4	OTROS	A	B	C	K'	D	LATITUD	LONGITUD
T. C. Mérida - Dzilam de Bravo Poniente	0.00	3	0	7739	10.1	82.9	0.7	2.2	1.3	1.7	0.6	0.5	0.0	93.0	0.7	6.3	0.090	0.524	21.101358	-89.301289
X. C. Motul - Puerto Telchac	3.16	1	0	7658	12.6	77.4	1.3	4.4	1.2	1.8	0.7	0.6	0.0	90.0	1.3	8.7	0.089	0.515	21.114454	-89.284076
X. C. Motul - Puerto Telchac	3.16	3	0	6688	13.5	78.9	0.8	2.6	1.1	1.8	0.5	0.7	0.1	92.4	0.8	6.8	0.089	0.517	21.114491	-89.278586
X. C. Libramiento Suma de Hidalgo	3.70	3	0	1400	26.7	68.5	0.6	2.7	0.9	0.5	0.1	0.0	0.0	95.2	0.6	4.2	0.116	0.527	21.111767	-89.273318
T. C. Mérida - Dzilam de Bravo Oriente	6.53	1	0	919	37.2	58.0	0.5	2.4	1.2	0.4	0.1	0.2	0.0	95.2	0.5	4.3	0.136	0.532	21.096760	-89.261016

38 CARR : Mérida - Acanceh

CLAVE: 31023

RUTA: YUC

AÑO : 2022

LUGAR	ESTACION				CLASIFICACION VEHICULAR EN PORCIENTO													COORDENADAS		
	KM	TE	SC	TDPA	M	A	B	C2	C3	T3S2	T3S3	T3S2R4	OTROS	A	B	C	K'	D	LATITUD	LONGITUD
Mérida	0.00	3	0	11810	25.2	69.3	0.6	2.8	1.2	0.5	0.1	0.3	0.0	94.5	0.6	4.9	0.080	0.590	20.935010	-89.579604
T. Der. Uxec Tamán	11.00	1	0	851	30.8	66.7	0.6	1.3	0.6	0.0	0.0	0.0	0.0	97.5	0.6	1.9	0.096	0.518	20.876500	-89.528346
T. Der. Uxec Tamán	11.00	3	0	736	22.8	66.7	0.7	9.4	0.3	0.1	0.0	0.0	0.0	89.5	0.7	9.8	0.110	0.503	20.862454	-89.531863
Timucuy	20.00	3	0	1229	33.8	60.4	1.2	4.0	0.6	0.0	0.0	0.0	0.0	94.2	1.2	4.6	0.085	0.517	20.812395	-89.504093
Acanceh	26.00	1	0	1277	37.1	57.7	0.7	3.4	0.5	0.4	0.1	0.1	0.0	94.8	0.7	4.5	0.096	0.515	20.812530	-89.473858

39 CARR : Mérida - Oxkutzcab

CLAVE: 31018

RUTA: YUC-018

AÑO : 2022

LUGAR	ESTACION				CLASIFICACION VEHICULAR EN PORCIENTO													COORDENADAS		
	KM	TE	SC	TDPA	M	A	B	C2	C3	T3S2	T3S3	T3S2R4	OTROS	A	B	C	K'	D	LATITUD	LONGITUD
Mérida	0.00	3	1	10971	23.4	68.4	0.7	7.0	0.4	0.1	0.0	0.0	0.0	91.8	0.7	7.5	0.070	0.502	20.944739	-89.582269
Mérida	0.00	3	2	11066	23.3	68.6	0.7	6.9	0.4	0.1	0.0	0.0	0.0	91.9	0.7	7.4	0.082	0.502	20.944812	-89.582242
Kanasín	5.97	1	1	12862	23.9	69.3	0.7	5.5	0.5	0.1	0.0	0.0	0.0	93.2	0.7	6.1	0.081	0.518	20.941195	-89.572434
Kanasín	5.97	1	2	11969	29.3	63.6	0.6	5.8	0.6	0.1	0.0	0.0	0.0	92.9	0.6	6.5	0.081	0.518	20.941277	-89.572397
Acanceh	20.39	1	0	6185	34.2	58.8	1.2	3.3	0.8	0.4	0.2	0.9	0.2	93.0	1.2	5.8	0.103	0.523	20.823034	-89.466183
Acanceh	20.39	3	1	3446	11.8	76.6	1.8	3.8	1.8	2.0	0.8	1.1	0.3	88.4	1.8	9.8	0.105	0.535	20.789481	-89.460452
Acanceh	20.39	3	2	3965	12.3	76.7	2.0	4.0	1.3	1.8	0.5	1.2	0.2	89.0	2.0	9.0	0.128	0.535	20.789392	-89.460355
T. Der. Tecoh	26.64	3	1	3382	5.0	85.5	1.7	2.5	1.4	1.9	0.5	1.3	0.2	90.5	1.7	7.8	0.110	0.524	20.757666	-89.465754
T. Der. Tecoh	26.64	3	2	3071	5.6	82.3	1.8	3.1	2.2	2.6	0.8	1.4	0.2	87.9	1.8	10.3	0.070	0.524	20.757633	-89.465542
Tekit	61.70	1	0	430	21.0	76.0	0.5	1.6	0.9	0.0	0.0	0.0	0.0	97.0	0.5	2.5	0.142	0.517	20.543879	-89.338082
Tekit	61.70	3	1	2483	5.0	81.6	1.8	3.4	2.3	3.1	0.9	1.6	0.3	86.6	1.8	11.6	0.118	0.526	20.514695	-89.346649
Tekit	61.70	3	2	2759	5.7	83.3	1.2	2.9	2.0	2.4	0.6	1.7	0.2	89.0	1.2	9.8	0.097	0.526	20.514597	-89.346551
Maní	98.20	1	0	3973	20.0	73.3	1.2	2.7	1.2	1.1	0.2	0.2	0.1	93.3	1.2	5.5	0.091	0.502	20.399333	-89.361198
Maní	98.20	3	0	2071	34.3	57.0	0.5	6.2	0.2	1.4	0.2	0.1	0.1	91.3	0.5	8.2	0.094	0.508	20.371901	-89.398880
Oxkutzcab	109.30	1	0	1930	29.8	62.3	0.3	5.2	0.3	1.7	0.1	0.2	0.1	92.1	0.3	7.6	0.094	0.501	20.328119	-89.416669

YUCATAN

40 CARR: Mérida - Timucuy

CLAVE: 31024

RUTA: YUC

AÑO: 2022

LUGAR	ESTACION				CLASIFICACION VEHICULAR EN PORCIENTO													COORDENADAS		
	KM	TE	SC	TDPA	M	A	B	C2	C3	T3S2	T3S3	T3S2R4	OTROS	A	B	C	K'	D	LATITUD	LONGITUD
Mérida	0.00	3	0	6932	22.9	70.9	0.5	4.6	0.7	0.4	0.0	0.0	0.0	93.8	0.5	5.7	0.102	0.518	20.898595	-89.599417
Tekik de Regil	15.10	1	0	2274	26.5	66.4	0.5	5.6	0.5	0.2	0.1	0.1	0.1	92.9	0.5	6.6	0.129	0.516	20.823390	-89.559499
Tekik de Regil	15.10	3	0	1584	34.8	57.9	0.9	5.7	0.3	0.2	0.1	0.1	0.0	92.7	0.9	6.4	0.107	0.501	20.815847	-89.555501
Timucuy	18.65	1	0	1475	33.1	59.0	0.7	6.4	0.5	0.1	0.1	0.1	0.0	92.1	0.7	7.2	0.101	0.508	20.812688	-89.526764

41 CARR: Motul - Puerto Telchac

CLAVE: 31006

RUTA: YUC-172

AÑO: 2022

LUGAR	ESTACION				CLASIFICACION VEHICULAR EN PORCIENTO													COORDENADAS		
	KM	TE	SC	TDPA	M	A	B	C2	C3	T3S2	T3S3	T3S2R4	OTROS	A	B	C	K'	D	LATITUD	LONGITUD
Motul	0.00	3	0	4305	31.1	65.5	0.6	1.5	1.0	0.2	0.1	0.0	0.0	96.6	0.6	2.8	0.092	0.511	21.120730	-89.280734
Pueblo Telchac	12.00	3	0	2746	31.8	65.2	0.2	1.7	0.7	0.2	0.1	0.1	0.0	97.0	0.2	2.8	0.085	0.509	21.215380	-89.271416
Puerto Telchac	28.00	0	0																	

42 CARR: Muna - Maxcanú

CLAVE: 31053

RUTA: YUC

AÑO: 2022

LUGAR	ESTACION				CLASIFICACION VEHICULAR EN PORCIENTO													COORDENADAS		
	KM	TE	SC	TDPA	M	A	B	C2	C3	T3S2	T3S3	T3S2R4	OTROS	A	B	C	K'	D	LATITUD	LONGITUD
Muna	0.00	3	0	1275	27.4	62.3	1.8	4.2	1.0	1.7	0.4	0.6	0.6	89.7	1.8	8.5	0.100	0.516	20.491254	-89.736981
Opichén	17.00	3	0	1489	20.1	69.0	1.6	5.3	0.9	1.8	0.5	0.3	0.5	89.1	1.6	9.3	0.103	0.502	20.554792	-89.869101
T. C. Campeche - Mérida	31.00	1	0	1438	18.1	70.0	1.9	6.8	1.2	1.2	0.2	0.6	0.0	88.1	1.9	10.0	0.105	0.512	20.581597	-89.963807

43 CARR: Oxkutzcab - Xul

CLAVE: 31051

RUTA: YUC-031

AÑO: 2022

LUGAR	ESTACION				CLASIFICACION VEHICULAR EN PORCIENTO													COORDENADAS		
	KM	TE	SC	TDPA	M	A	B	C2	C3	T3S2	T3S3	T3S2R4	OTROS	A	B	C	K'	D	LATITUD	LONGITUD
Oxkutzcab	0.00	3	0	3014	34.4	59.6	0.5	3.2	0.5	0.9	0.4	0.3	0.2	94.0	0.5	5.5	0.098	0.502	20.283983	-89.426467
Emiliano Zapata	10.00	3	0	1277	50.1	42.6	0.2	6.1	0.4	0.2	0.1	0.2	0.1	92.7	0.2	7.1	0.109	0.500	20.215044	-89.463757
Xul	25.00	1	0	906	43.7	48.9	0.8	5.6	0.7	0.2	0.1	0.0	0.0	92.6	0.8	6.6	0.095	0.501	20.108189	-89.457770

44 CARR: Piste - Dzitás

CLAVE: 31013

RUTA: YUC-013

AÑO: 2022

LUGAR	ESTACION				CLASIFICACION VEHICULAR EN PORCIENTO													COORDENADAS		
	KM	TE	SC	TDPA	M	A	B	C2	C3	T3S2	T3S3	T3S2R4	OTROS	A	B	C	K'	D	LATITUD	LONGITUD
Piste	0.00	3	0	3164	8.7	83.2	1.7	3.8	0.7	1.5	0.1	0.2	0.1	91.9	1.7	6.4	0.110	0.516	20.708784	-88.586032
Dzitás	18.00	1	0	738	9.3	86.8	0.6	2.1	0.5	0.2	0.4	0.1	0.0	96.1	0.6	3.3	0.111	0.538	20.828825	-88.540937

YUCATAN

45 CARR : Progreso - Telchac Puerto

CLAVE: 31616

RUTA: YUC-027

AÑO: 2022

LUGAR	ESTACION				CLASIFICACION VEHICULAR EN PORCIENTO														COORDENADAS	
	KM	TE	SC	TDPA	M	A	B	C2	C3	T3S2	T3S3	T3S2R4	OTROS	A	B	C	K'	D	LATITUD	LONGITUD
Progreso	0.00	3	1	5915	7.4	87.3	0.2	3.3	0.8	0.4	0.2	0.3	0.1	94.7	0.2	5.1	0.096	0.508	21.276757	-89.654715
Progreso	0.00	3	2	5740	8.9	85.1	0.3	3.6	1.0	0.5	0.2	0.3	0.1	94.0	0.3	5.7	0.102	0.508	21.276880	-89.654694
Chicxulub Puerto	6.00	1	1	4794	7.5	89.3	0.4	1.6	0.7	0.3	0.1	0.1	0.0	96.8	0.4	2.8	0.109	0.512	21.288403	-89.608944
Chicxulub Puerto	6.00	1	2	5038	9.4	87.6	0.3	1.6	0.7	0.2	0.1	0.1	0.0	97.0	0.3	2.7	0.086	0.512	21.288492	-89.608919
Chicxulub Puerto	6.00	3	0	7412	7.6	88.3	0.7	2.1	1.0	0.2	0.0	0.1	0.0	95.9	0.7	3.4	0.123	0.535	21.297355	-89.572582
Xtampú	20.00	1	0	1752	11.6	80.0	0.6	4.7	1.2	1.3	0.5	0.1	0.0	91.6	0.6	7.8	0.121	0.548	21.332615	-89.352608
Xtampú	20.00	3	0	2102	9.6	83.2	0.5	4.0	1.3	1.0	0.3	0.1	0.0	92.8	0.5	6.7	0.121	0.509	21.333980	-89.343117
Telchac Puerto	33.00	1	0	2906	25.9	70.4	0.4	1.7	0.8	0.4	0.2	0.1	0.1	96.3	0.4	3.3	0.121	0.506	21.340146	-89.291617

46 CARR : Ramal a Chankom

CLAVE: 31049

RUTA: YUC

AÑO: 2022

LUGAR	ESTACION				CLASIFICACION VEHICULAR EN PORCIENTO														COORDENADAS	
	KM	TE	SC	TDPA	M	A	B	C2	C3	T3S2	T3S3	T3S2R4	OTROS	A	B	C	K'	D	LATITUD	LONGITUD
T. C. Mérida - Puerto Juárez	0.00	3	0	549	24.2	71.3	0.5	3.2	0.5	0.3	0.0	0.0	0.0	95.5	0.5	4.0	0.089	0.501	20.640179	-88.489220
Chankom	9.00	1	0	521	20.7	75.9	0.6	1.8	0.9	0.0	0.1	0.0	0.0	96.6	0.6	2.8	0.111	0.507	20.584499	-88.507338

47 CARR : Ramal a Dzonot Carretero

CLAVE: 31614

RUTA: YUC

AÑO: 2022

LUGAR	ESTACION				CLASIFICACION VEHICULAR EN PORCIENTO														COORDENADAS	
	KM	TE	SC	TDPA	M	A	B	C2	C3	T3S2	T3S3	T3S2R4	OTROS	A	B	C	K'	D	LATITUD	LONGITUD
T. C. Valladolid - Río Lagartos	0.00	3	0	609	38.9	56.4	1.2	2.5	0.6	0.2	0.1	0.1	0.0	95.3	1.2	3.5	0.102	0.516	21.378134	-88.136850
Dzonot Carretero	35.00	0	0																	

48 CARR : Ramal a San Felipe

CLAVE: 31628

RUTA: YUC

AÑO: 2022

LUGAR	ESTACION				CLASIFICACION VEHICULAR EN PORCIENTO														COORDENADAS	
	KM	TE	SC	TDPA	M	A	B	C2	C3	T3S2	T3S3	T3S2R4	OTROS	A	B	C	K'	D	LATITUD	LONGITUD
T. C. Valladolid - Río Lagartos	0.00	3	0	571	25.9	68.8	1.0	2.0	1.6	0.3	0.2	0.2	0.0	94.7	1.0	4.3	0.102	0.502	21.572257	-88.162550
San Felipe	7.20	1	0	546	26.9	68.7	1.1	1.9	0.7	0.4	0.2	0.1	0.0	95.6	1.1	3.3	0.081	0.509	21.552683	-88.230472

49 CARR : Ramal a Tedzidz

CLAVE: 31600

RUTA: YUC

AÑO: 2022

LUGAR	ESTACION				CLASIFICACION VEHICULAR EN PORCIENTO														COORDENADAS	
	KM	TE	SC	TDPA	M	A	B	C2	C3	T3S2	T3S3	T3S2R4	OTROS	A	B	C	K'	D	LATITUD	LONGITUD
T. C. Mérida - Celestún	0.00	0	0																	

YUCATAN

49 CARR: Ramal a Tedzidz

CLAVE: 31600

RUTA: YUC

AÑO: 2022

LUGAR	ESTACION				CLASIFICACION VEHICULAR EN PORCIENTO														COORDENADAS	
	KM	TE	SC	TDPA	M	A	B	C2	C3	T3S2	T3S3	T3S2R4	OTROS	A	B	C	K'	D	LATITUD	LONGITUD
Tedzidz	6.00	1	0	132	41.1	55.8	0.5	1.9	0.1	0.4	0.1	0.1	0.0	96.9	0.5	2.6	0.152	0.509	20.842666	-89.975055

50 CARR: Ramal a Yaxcabá

CLAVE: 31111

RUTA: YUC-289

AÑO: 2022

LUGAR	ESTACION				CLASIFICACION VEHICULAR EN PORCIENTO														COORDENADAS	
	KM	TE	SC	TDPA	M	A	B	C2	C3	T3S2	T3S3	T3S2R4	OTROS	A	B	C	K'	D	LATITUD	LONGITUD
T. C. Mérida - Puerto Juárez	0.00	3	0	697	20.9	72.1	0.4	2.6	1.0	1.7	0.3	1.0	0.0	93.0	0.4	6.6	0.096	0.527	20.696752	-88.811547
Yaxcabá	18.00	1	0	721	23.4	68.9	0.6	2.4	1.5	1.8	0.3	1.1	0.0	92.3	0.6	7.1	0.130	0.512	20.567352	-88.823219

51 CARR: Sinanché - Xitibcanul

CLAVE: 31619

RUTA: YUC

AÑO: 2022

LUGAR	ESTACION				CLASIFICACION VEHICULAR EN PORCIENTO														COORDENADAS	
	KM	TE	SC	TDPA	M	A	B	C2	C3	T3S2	T3S3	T3S2R4	OTROS	A	B	C	K'	D	LATITUD	LONGITUD
Sinanché	0.00	3	0	706	34.5	64.0	0.3	0.3	0.6	0.0	0.2	0.1	0.0	98.5	0.3	1.2	0.082	0.510	21.234334	-89.184411
Xitibcanul	7.00	1	0	601	49.6	46.1	0.7	2.3	1.0	0.3	0.0	0.0	0.0	95.7	0.7	3.6	0.118	0.522	21.351055	-89.172037

52 CARR: Sucilá - Calotmul

CLAVE: 31617

RUTA: YUC

AÑO: 2022

LUGAR	ESTACION				CLASIFICACION VEHICULAR EN PORCIENTO														COORDENADAS	
	KM	TE	SC	TDPA	M	A	B	C2	C3	T3S2	T3S3	T3S2R4	OTROS	A	B	C	K'	D	LATITUD	LONGITUD
Sucilá	0.00	0	0																	
X. C. Cansahcab - Tizimin	2.00	3	0	1349	17.6	75.2	1.1	5.1	0.4	0.2	0.1	0.2	0.1	92.8	1.1	6.1	0.101	0.506	21.138022	-88.313563
Calotmul	30.20	1	0	904	35.0	60.4	0.5	3.0	0.7	0.1	0.2	0.1	0.0	95.4	0.5	4.1	0.090	0.503	21.017743	-88.186168

53 CARR: Suma - Izamal

CLAVE: 31081

RUTA: YUC-081

AÑO: 2022

LUGAR	ESTACION				CLASIFICACION VEHICULAR EN PORCIENTO														COORDENADAS	
	KM	TE	SC	TDPA	M	A	B	C2	C3	T3S2	T3S3	T3S2R4	OTROS	A	B	C	K'	D	LATITUD	LONGITUD
Suma	0.00	3	0	816	33.6	62.0	0.8	2.8	0.4	0.2	0.1	0.1	0.0	95.6	0.8	3.6	0.103	0.511	21.082856	-89.139364
Izamal	22.00	1	0	1092	35.2	56.8	0.4	7.0	0.4	0.2	0.0	0.0	0.0	92.0	0.4	7.6	0.101	0.502	20.949936	-89.020637

YUCATAN

54 CARR: Telchac Puerto - Dzilam de Bravo

CLAVE: 31042

RUTA: YUC

AÑO: 2022

LUGAR	ESTACION				CLASIFICACION VEHICULAR EN PORCIENTO													COORDENADAS		
	KM	TE	SC	TDPA	M	A	B	C2	C3	T3S2	T3S3	T3S2R4	OTROS	A	B	C	K'	D	LATITUD	LONGITUD
Telchac Puerto	0.00	3	0	1725	18.0	77.9	0.4	3.0	0.6	0.1	0.0	0.0	0.0	95.9	0.4	3.7	0.135	0.509	21.343522	-89.248104
T. Der. Sinanché	8.00	1	0	1397	32.6	62.0	1.4	2.5	1.2	0.3	0.0	0.0	0.0	94.6	1.4	4.0	0.125	0.504	21.352702	-89.177877
T. Der. Sinanché	8.00	3	0	1162	34.1	59.3	0.3	4.8	0.9	0.2	0.2	0.2	0.0	93.4	0.3	6.3	0.100	0.505	21.352106	-89.164151
Chabihau	15.00	1	0	840	25.8	68.2	0.4	4.3	0.9	0.3	0.1	0.0	0.0	94.0	0.4	5.6	0.152	0.502	21.355118	-89.130477
Chabihau	15.00	3	0	492	14.4	79.6	0.5	4.1	0.9	0.3	0.1	0.1	0.0	94.0	0.5	5.5	0.199	0.509	21.358793	-89.102242
Santa Clara	26.00	1	0	512	13.9	79.8	0.5	4.4	1.1	0.3	0.0	0.0	0.0	93.7	0.5	5.8	0.201	0.509	21.371508	-89.025352
Santa Clara	26.00	3	0	458	21.3	74.4	0.8	2.4	0.6	0.1	0.4	0.0	0.0	95.7	0.8	3.5	0.172	0.500	21.374367	-89.002273
Dzilam de Bravo	39.00	1	0	598	28.0	66.7	0.6	3.8	0.7	0.1	0.1	0.0	0.0	94.7	0.6	4.7	0.129	0.500	21.387548	-88.912090

55 CARR: Thul - Becanchén

CLAVE: 31104

RUTA: YUC-281

AÑO: 2022

LUGAR	ESTACION				CLASIFICACION VEHICULAR EN PORCIENTO													COORDENADAS		
	KM	TE	SC	TDPA	M	A	B	C2	C3	T3S2	T3S3	T3S2R4	OTROS	A	B	C	K'	D	LATITUD	LONGITUD
T. C. Muna - Felipe Carrillo Puerto	0.00	3	0	270	30.4	55.7	4.1	6.6	1.0	1.3	0.9	0.0	0.0	86.1	4.1	9.8	0.115	0.550	20.085909	-89.099595
Becanchén	32.00	0	0																	

56 CARR: Ticul - Chapab

CLAVE: 31623

RUTA: YUC

AÑO: 2022

LUGAR	ESTACION				CLASIFICACION VEHICULAR EN PORCIENTO													COORDENADAS		
	KM	TE	SC	TDPA	M	A	B	C2	C3	T3S2	T3S3	T3S2R4	OTROS	A	B	C	K'	D	LATITUD	LONGITUD
Ticul	0.00	3	0	1802	34.7	59.9	1.0	2.4	0.6	0.8	0.3	0.2	0.1	94.6	1.0	4.4	0.131	0.524	20.412456	-89.520859
Chapab	8.00	1	0	1871	26.8	69.6	0.9	1.4	0.5	0.6	0.1	0.1	0.0	96.4	0.9	2.7	0.101	0.503	20.455030	-89.461728

57 CARR: Ticul - Dzan

CLAVE: 31621

RUTA: YUC

AÑO: 2022

LUGAR	ESTACION				CLASIFICACION VEHICULAR EN PORCIENTO													COORDENADAS		
	KM	TE	SC	TDPA	M	A	B	C2	C3	T3S2	T3S3	T3S2R4	OTROS	A	B	C	K'	D	LATITUD	LONGITUD
Ticul	0.00	0	0																	
T. Izq. Libramiento de Ticul	2.50	3	0	3563	41.8	53.9	0.4	1.8	0.4	1.0	0.3	0.2	0.2	95.7	0.4	3.9	0.090	0.501	20.393977	-89.506596
Dzan	7.00	1	0	4232	33.9	60.7	0.4	2.6	0.4	1.3	0.3	0.2	0.2	94.6	0.4	5.0	0.104	0.533	20.390542	-89.482062

YUCATAN

58 CARR: Tixkokob - Baca

CLAVE: 31010

RUTA: YUC

AÑO: 2022

LUGAR	ESTACION				CLASIFICACION VEHICULAR EN PORCIENTO													COORDENADAS		
	KM	TE	SC	TDPA	M	A	B	C2	C3	T3S2	T3S3	T3S2R4	OTROS	A	B	C	K'	D	LATITUD	LONGITUD
Tixkokob	0.00	3	0	4282	56.9	38.9	0.6	1.6	0.8	0.5	0.3	0.4	0.0	95.8	0.6	3.6	0.081	0.502	21.007572	-89.418119
Baca	15.00	1	0	3183	56.4	40.2	0.6	1.7	0.4	0.4	0.2	0.1	0.0	96.6	0.6	2.8	0.083	0.507	21.096480	-89.398016

59 CARR: Tixkokob - Sotuta

CLAVE: 31106

RUTA: YUC

AÑO: 2022

LUGAR	ESTACION				CLASIFICACION VEHICULAR EN PORCIENTO													COORDENADAS		
	KM	TE	SC	TDPA	M	A	B	C2	C3	T3S2	T3S3	T3S2R4	OTROS	A	B	C	K'	D	LATITUD	LONGITUD
Tixkokob	0.00	3	0	2641	58.3	38.6	0.3	1.0	1.2	0.4	0.1	0.1	0.0	96.9	0.3	2.8	0.110	0.509	20.998223	-89.380652
Tahmek	24.00	3	0	1885	29.1	65.8	0.8	3.3	0.7	0.2	0.0	0.1	0.0	94.9	0.8	4.3	0.093	0.522	20.862991	-89.255492
Hocabá	31.00	3	0	818	31.7	60.6	1.9	4.5	1.0	0.2	0.1	0.0	0.0	92.3	1.9	5.8	0.090	0.510	20.810206	-89.239947
Huhí	43.00	1	0	899	33.8	57.9	1.3	6.4	0.3	0.2	0.1	0.0	0.0	91.7	1.3	7.0	0.091	0.505	20.724305	-89.172100
Sotuta	65.00	1	0	273	36.6	58.1	1.1	3.0	0.6	0.3	0.1	0.2	0.0	94.7	1.1	4.2	0.095	0.511	20.603258	-89.021039

60 CARR: Tizimín - Yucatán

CLAVE: 31588

RUTA: YUC

AÑO: 2022

LUGAR	ESTACION				CLASIFICACION VEHICULAR EN PORCIENTO													COORDENADAS		
	KM	TE	SC	TDPA	M	A	B	C2	C3	T3S2	T3S3	T3S2R4	OTROS	A	B	C	K'	D	LATITUD	LONGITUD
Tizimín	0.00	3	0	4187	25.5	68.7	1.0	2.3	1.2	0.3	0.2	0.5	0.3	94.2	1.0	4.8	0.080	0.511	21.149586	-88.110404
T. Der. Buenaventura	30.00	3	0	2132	10.6	79.6	2.4	3.3	2.0	0.9	0.3	0.6	0.3	90.2	2.4	7.4	0.089	0.514	21.179647	-87.923709
Yucatán	46.50	1	0	2291	10.0	80.6	2.2	3.2	1.8	0.6	0.2	0.9	0.5	90.6	2.2	7.2	0.080	0.529	21.203496	-87.728071

61 CARR: Yaxché - Sierra Papacal

CLAVE: 31620

RUTA: YUC

AÑO: 2022

LUGAR	ESTACION				CLASIFICACION VEHICULAR EN PORCIENTO													COORDENADAS		
	KM	TE	SC	TDPA	M	A	B	C2	C3	T3S2	T3S3	T3S2R4	OTROS	A	B	C	K'	D	LATITUD	LONGITUD
T. C. Mérida - Progreso	0.00	3	0	6211	20.5	71.4	1.0	5.1	0.5	0.9	0.5	0.1	0.0	91.9	1.0	7.1	0.109	0.510	21.105278	-89.641932
Sierra Papacal	12.00	1	0	2436	23.0	71.2	0.8	3.1	1.5	0.2	0.1	0.1	0.0	94.2	0.8	5.0	0.094	0.516	21.122391	-89.722241

62 CARR: Yobain - Chabihau

CLAVE: 31610

RUTA: YUC

AÑO: 2022

LUGAR	ESTACION				CLASIFICACION VEHICULAR EN PORCIENTO													COORDENADAS		
	KM	TE	SC	TDPA	M	A	B	C2	C3	T3S2	T3S3	T3S2R4	OTROS	A	B	C	K'	D	LATITUD	LONGITUD
T. C. Baca - Dzidzantún	0.00	3	0	644	48.8	48.7	0.3	1.1	0.6	0.4	0.1	0.0	0.0	97.5	0.3	2.2	0.099	0.502	21.239460	-89.116813
Chabihau	12.00	1	0	489	48.6	49.3	0.2	1.0	0.5	0.3	0.1	0.0	0.0	97.9	0.2	1.9	0.121	0.502	21.354540	-89.117231

YUCATAN

63 CARR: Chemax - Cobá

CLAVE:

RUTA: YUC-MEX-180

AÑO: 2022

LUGAR	ESTACION				CLASIFICACION VEHICULAR EN PORCIENTO													COORDENADAS		
	KM	TE	SC	TDPA	M	A	B	C2	C3	T3S2	T3S3	T3S2R4	OTROS	A	B	C	K'	D	LATITUD	LONGITUD
Chemax	0.00	3	0	4860	3.7	86.5	2.4	2.8	1.1	1.5	0.5	1.3	0.2	90.2	2.4	7.4	0.123	0.501	20.656523	-87.954369
Lim. Edos. Term. Yucatán Ppia. Q Roo.	25.00	0	0																	
Cobá	30.90	1	0	4161	4.3	86.5	2.3	2.6	0.9	1.5	0.5	1.2	0.2	90.8	2.3	6.9	0.147	0.504	20.509804	-87.721977

64 CARR: Progreso - Celestún

CLAVE: 31040

RUTA: MEX-YUC

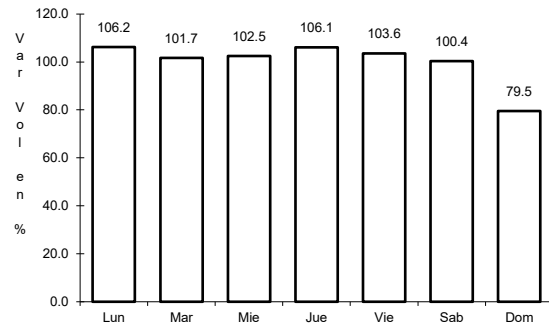
AÑO: 2022

LUGAR	ESTACION				CLASIFICACION VEHICULAR EN PORCIENTO													COORDENADAS		
	KM	TE	SC	TDPA	M	A	B	C2	C3	T3S2	T3S3	T3S2R4	OTROS	A	B	C	K'	D	LATITUD	LONGITUD
T. C. Mérida - Progreso	0.00	3	1	4934	23.9	72.3	0.5	2.6	0.5	0.2	0.0	0.0	0.0	96.2	0.5	3.3	0.083	0.503	21.274372	-89.692673
T. C. Mérida - Progreso	0.00	3	2	4874	22.9	72.9	0.4	2.8	0.6	0.2	0.1	0.1	0.0	95.8	0.4	3.8	0.101	0.503	21.274381	-89.692597
Yucalpetén	6.00	3	0	9094	11.5	86.8	0.2	1.0	0.2	0.2	0.1	0.0	0.0	98.3	0.2	1.5	0.089	0.508	21.274551	-89.725743
Celestún	80.00	0	0																	

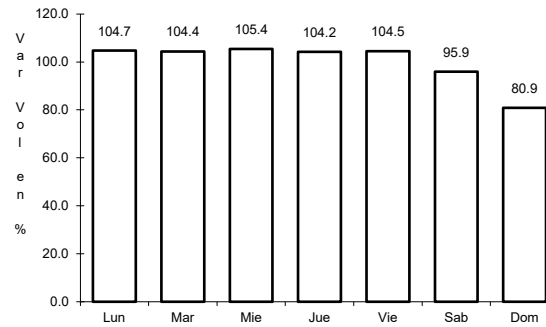
1 CARR: Campeche - Mérida

CLAVE: 00066

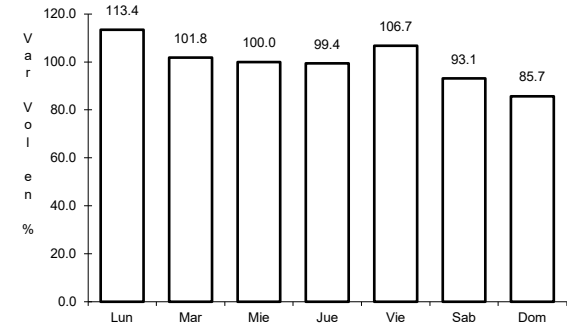
ruta: MEX-180



Km: 0.00 Tipo: 3 Sent: 1



Km: 0.00 Tipo: 3 Sent: 2

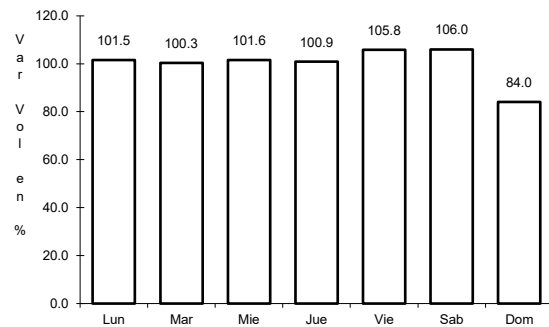


Km: 171.21 Tipo: 1 Sent: 1

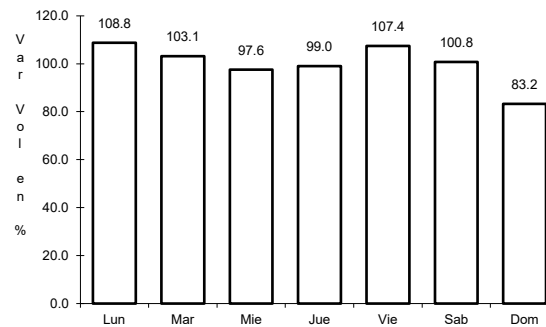
2 CARR: Campeche - Umán

CLAVE: 00164

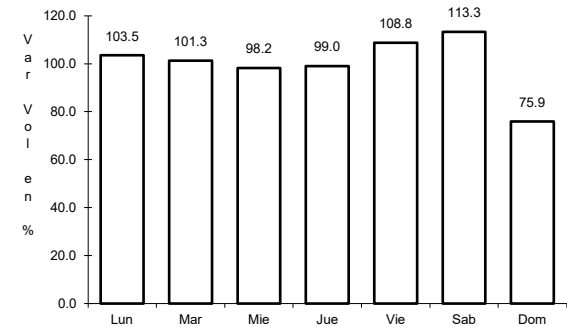
ruta: MEX-261



Km: 7.00 Tipo: 1 Sent: 0



Km: 117.88 Tipo: 3 Sent: 0

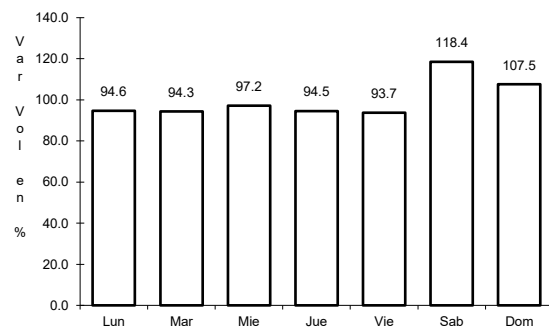


Km: 230.83 Tipo: 1 Sent: 0

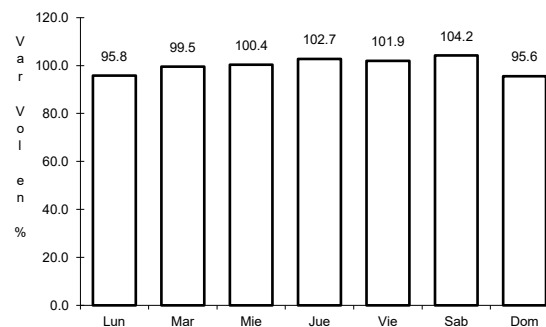
3 CARR: Cansahcab - Tizimin

CLAVE: 31014

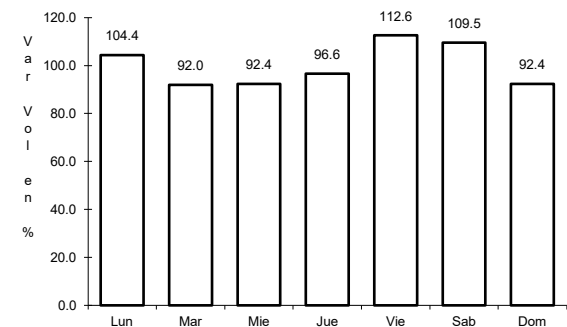
ruta: MEX-176



Km: 0.00 Tipo: 3 Sent: 0



Km: 32.92 Tipo: 3 Sent: 0

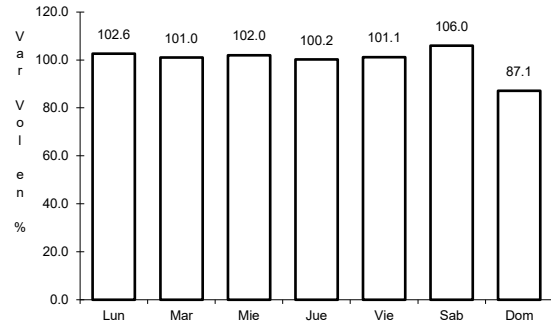


Km: 99.14 Tipo: 1 Sent: 0

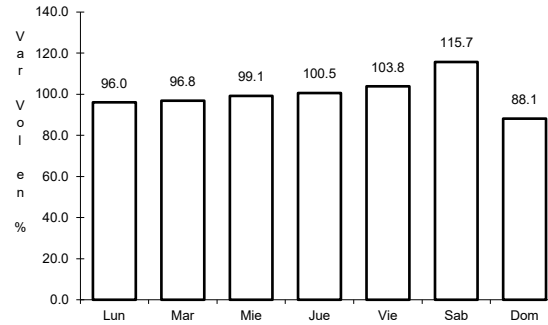
4 CARR: Conkal - Puerto Chicxulub

CLAVE: 31004

ruta: MEX-176



Km: 0.00 Tipo: 3 Sent: 0

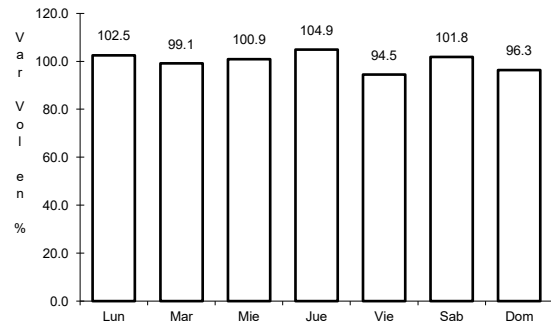


Km: 27.00 Tipo: 1 Sent: 0

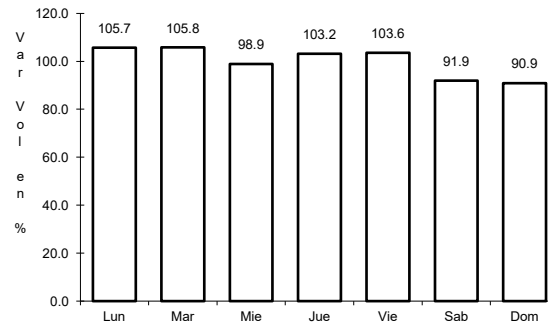
5 CARR: Dzitbalché - Ent. San Bernardo

CLAVE: 00162

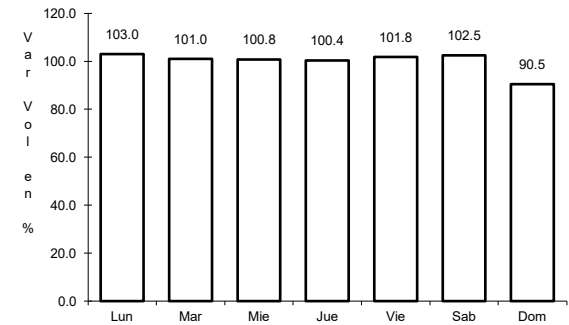
ruta: MEX-180



Km: 12.33 Tipo: 1 Sent: 0



Km: 21.08 Tipo: 1 Sent: 0

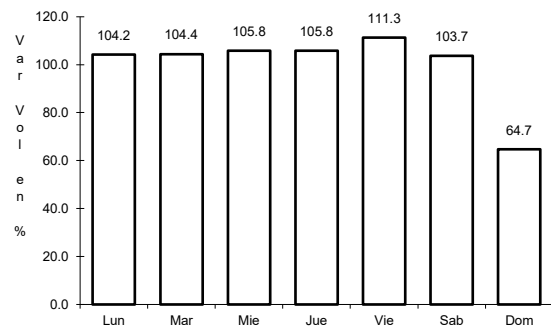


Km: 40.36 Tipo: 3 Sent: 0

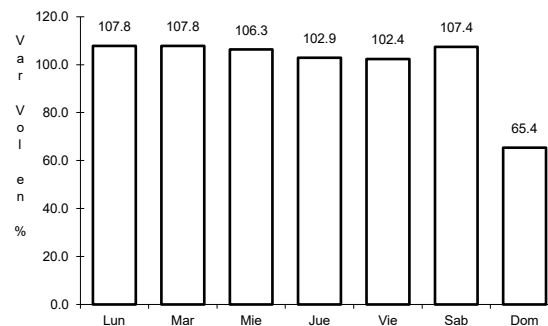
6 CARR: Ent. Poxilá - Mérida

CLAVE: 31003

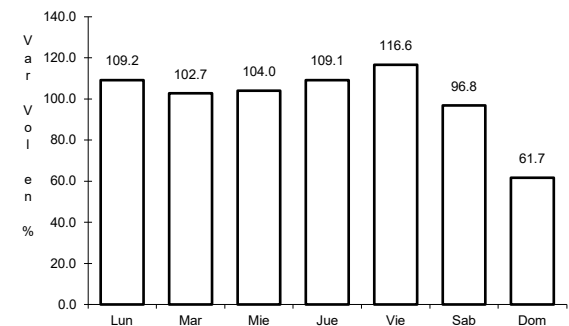
ruta: MEX-180



Km: 9.46 Tipo: 1 Sent: 0



Km: 25.70 Tipo: 1 Sent: 1

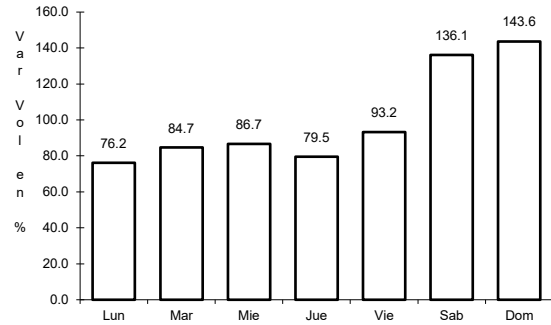


Km: 25.70 Tipo: 1 Sent: 2

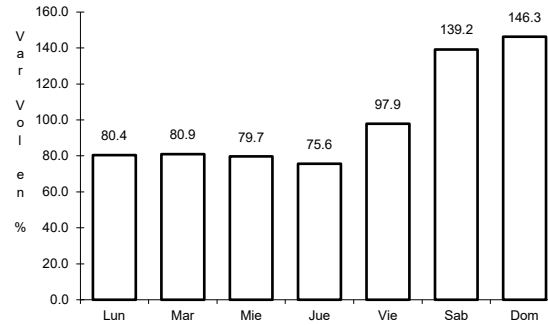
7 CARR: Hunucmá - Sisal

CLAVE: 31021

ruta: MEX-281



Km: 0.00 Tipo: 3 Sent: 0

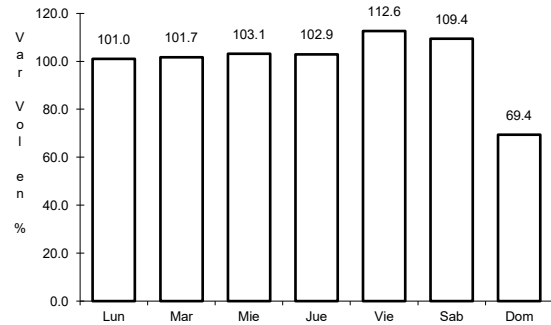


Km: 23.20 Tipo: 1 Sent: 0

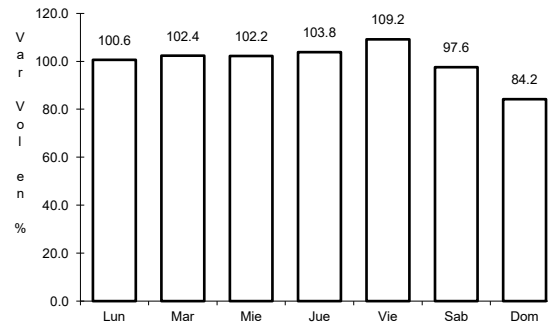
8 CARR: Libramiento Conkal - Mococho - Baca

CLAVE:

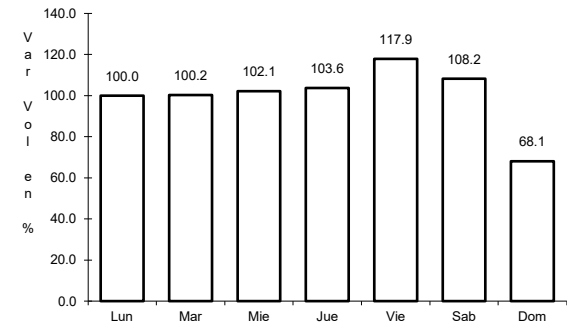
ruta: MEX-176



Km: 4.40 Tipo: 3 Sent: 1



Km: 4.40 Tipo: 3 Sent: 2

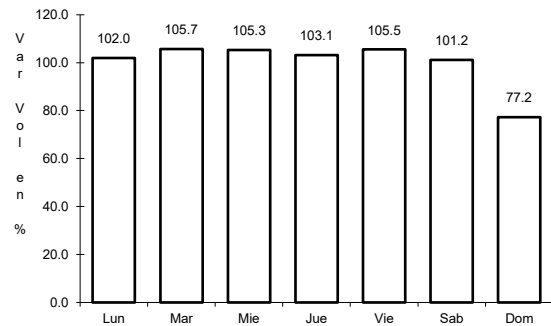


Km: 24.41 Tipo: 1 Sent: 1

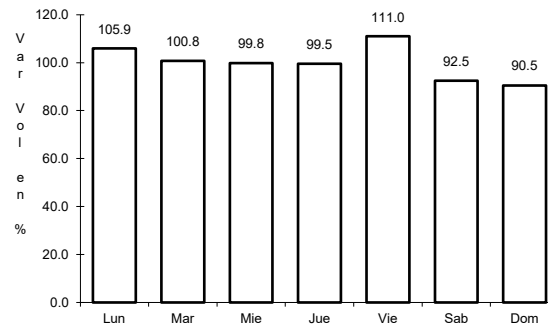
9 CARR: Libramiento de Conkal

CLAVE:

ruta: MEX



Km: 0.00 Tipo: 3 Sent: 0

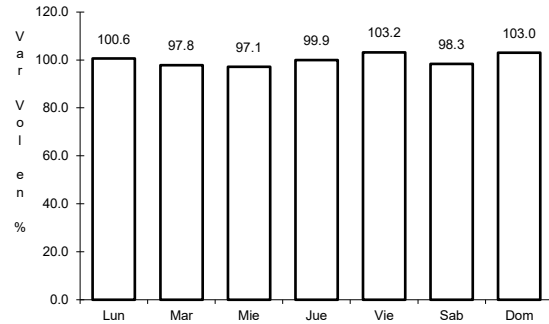


Km: 14.00 Tipo: 1 Sent: 0

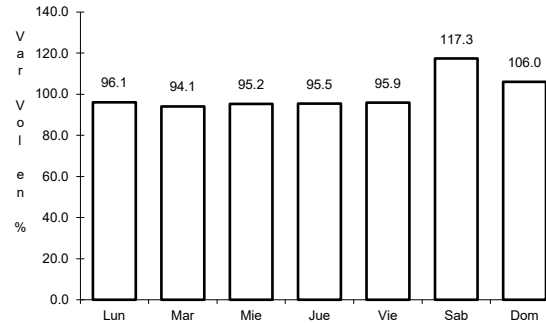
10 CARR: Libramiento de Progreso

CLAVE: 31631

RUTA: MEX-261



Km: 0.00 Tipo: 3 Sent: 0

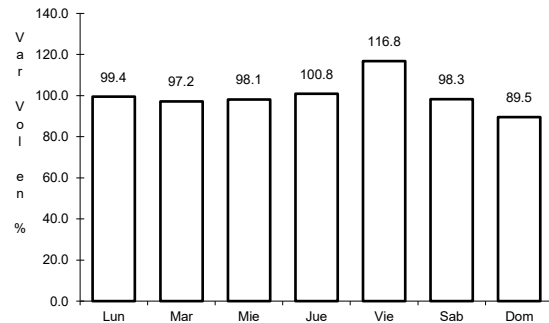


Km: 6.50 Tipo: 1 Sent: 0

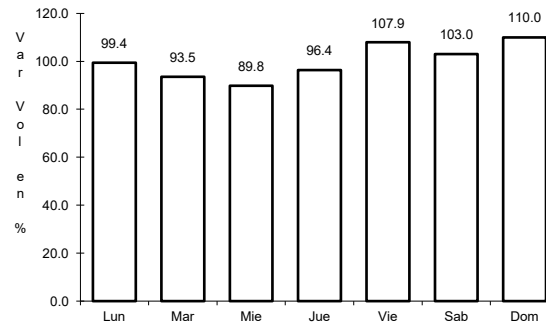
11 CARR: Libramiento de Tahmek - Hoctun - Xocchel

CLAVE:

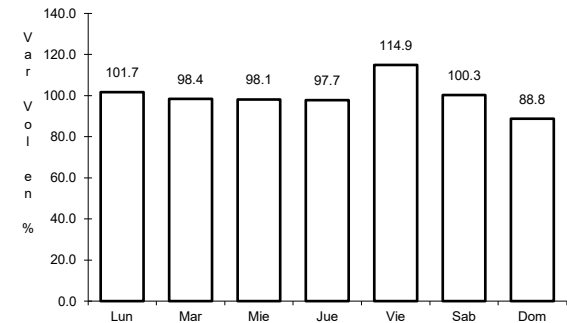
RUTA: MEX-180



Km: 42.00 Tipo: 3 Sent: 1



Km: 42.00 Tipo: 3 Sent: 2

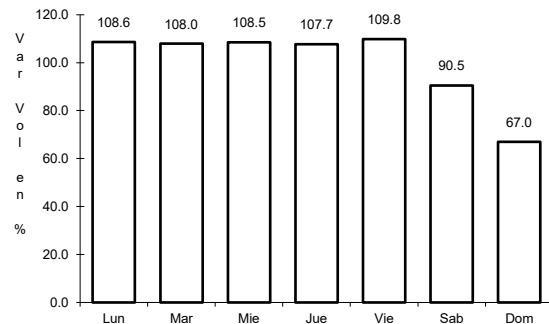


Km: 48.30 Tipo: 3 Sent: 1

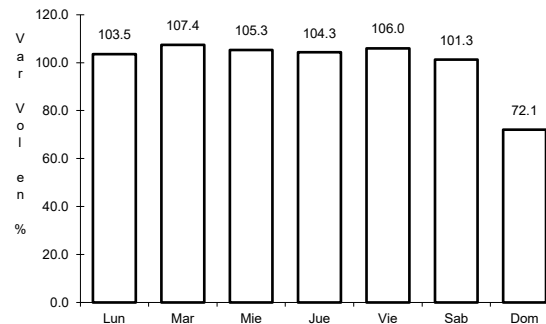
12 CARR: Mérida - Celestún

CLAVE: 31025

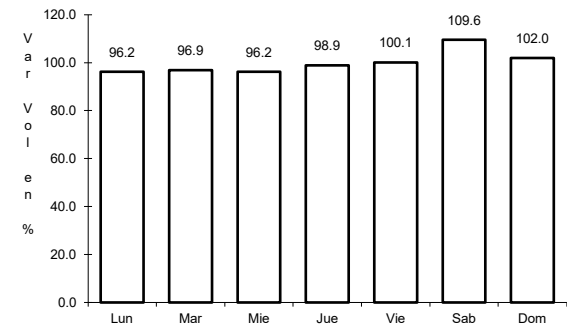
RUTA: MEX-281



Km: 0.00 Tipo: 3 Sent: 1



Km: 0.00 Tipo: 3 Sent: 2

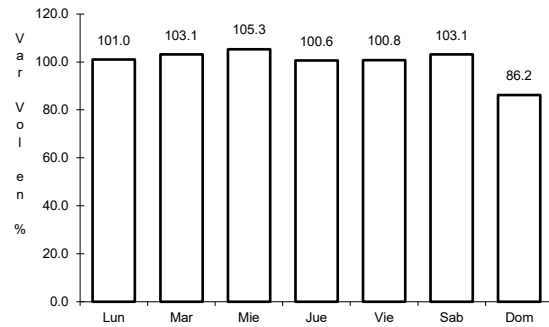


Km: 40.00 Tipo: 3 Sent: 0

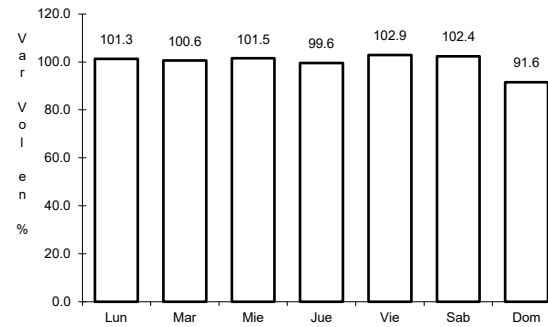
13 CARR: Mérida - Dzilam de Bravo

CLAVE: 31001

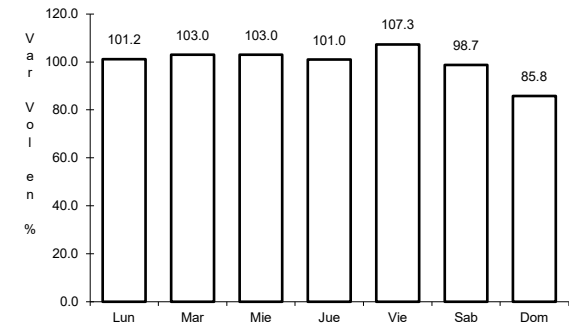
RUTA: MEX-176



Km: 5.90 Tipo: 1 Sent: 1



Km: 5.90 Tipo: 1 Sent: 2

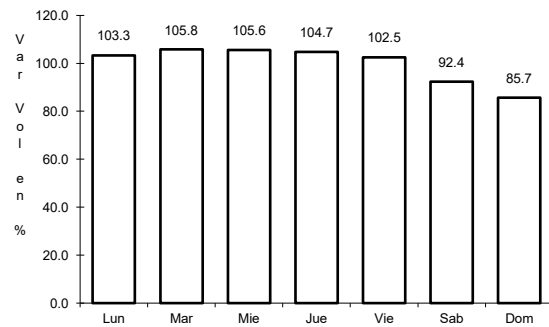


Km: 105.00 Tipo: 1 Sent: 0

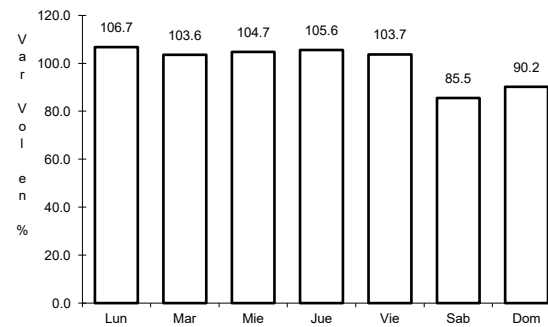
14 CARR: Mérida - Progreso

CLAVE: 31091

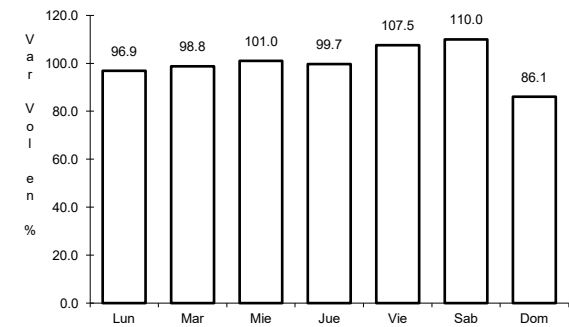
RUTA: MEX-261



Km: 5.40 Tipo: 1 Sent: 1



Km: 5.40 Tipo: 1 Sent: 2

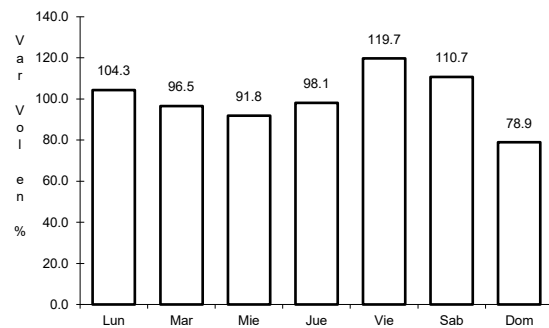


Km: 35.04 Tipo: 1 Sent: 1

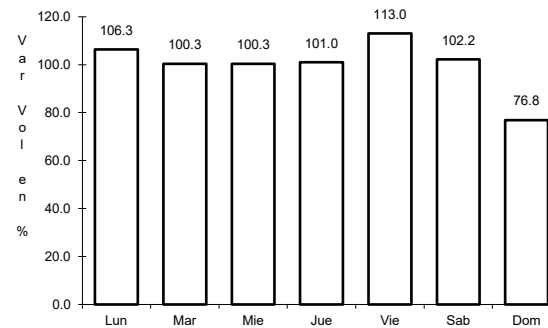
15 CARR: Mérida - Puerto Juárez

CLAVE: 00067

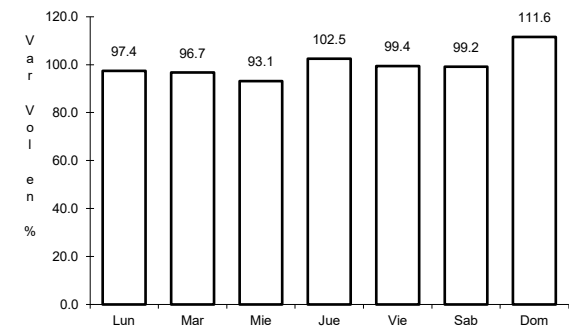
RUTA: MEX-180



Km: 5.60 Tipo: 1 Sent: 1



Km: 5.60 Tipo: 1 Sent: 2

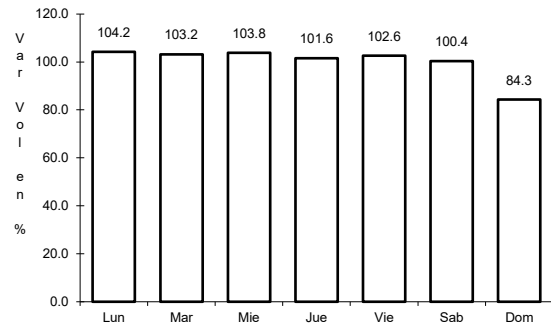


Km: 302.50 Tipo: 1 Sent: 0

16 CARR: Mérida - Tekanto

CLAVE: 31587

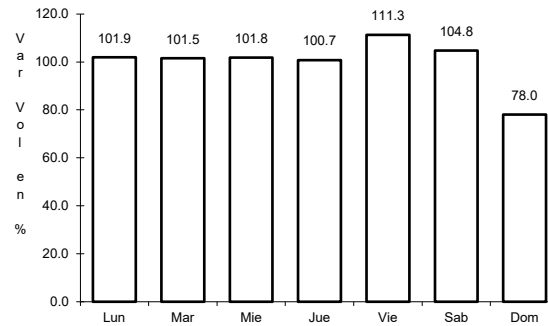
RUTA: MEX-180



Km: 5.70

Tipo: 1

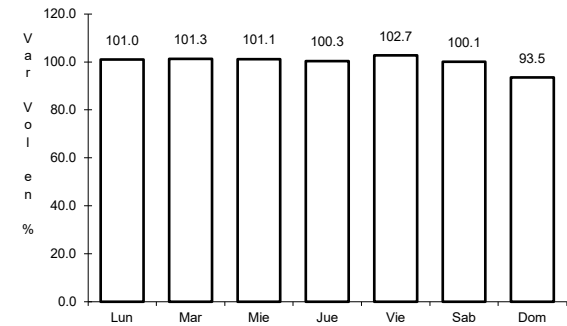
Sent: 0



Km: 21.00

Tipo: 1

Sent: 0



Km: 51.00

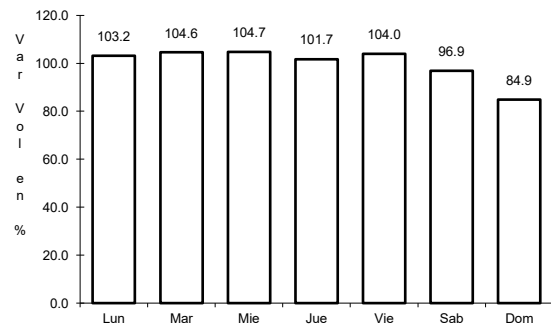
Tipo: 1

Sent: 0

17 CARR: Mérida - Tetiz

CLAVE: 31610

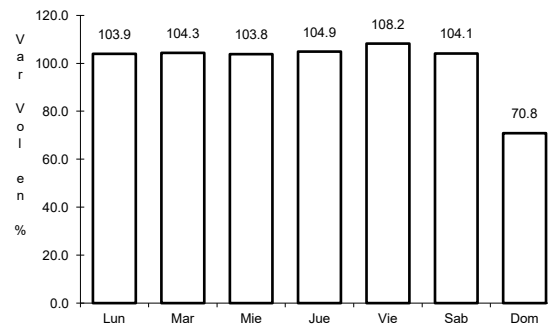
RUTA: MEX-281



Km: 0.00

Tipo: 3

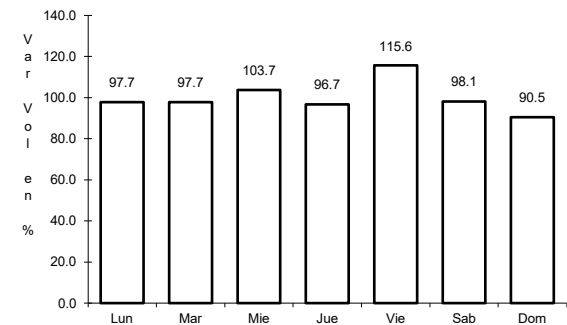
Sent: 0



Km: 17.98

Tipo: 1

Sent: 0



Km: 24.40

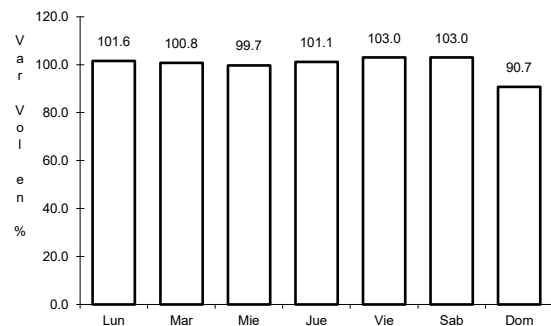
Tipo: 1

Sent: 0

18 CARR: Muna - Felipe Carrillo Puerto

CLAVE: 00148

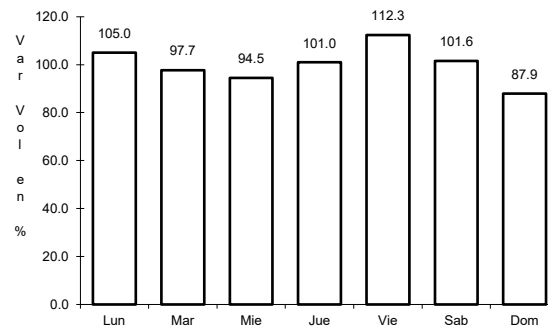
RUTA: MEX-184



Km: 0.00

Tipo: 3

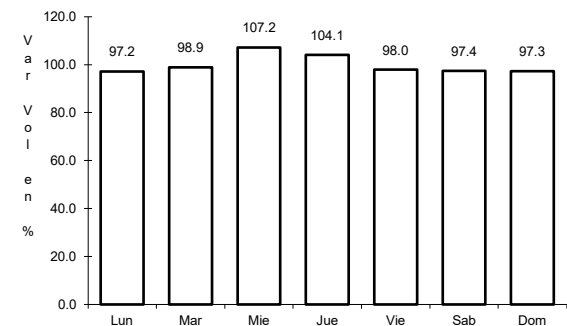
Sent: 0



Km: 109.60

Tipo: 3

Sent: 0



Km: 216.97

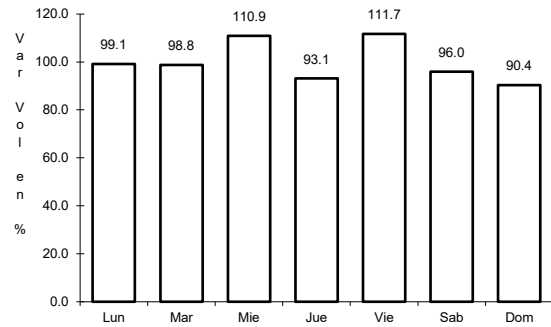
Tipo: 1

Sent: 0

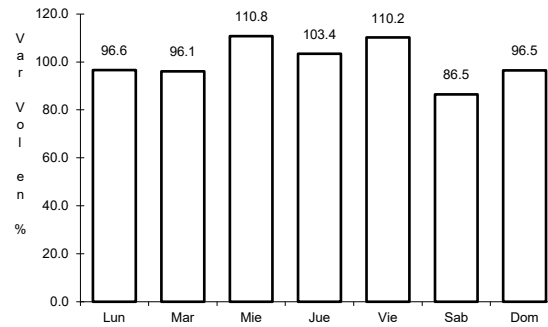
19 CARR: Ramal a Panabá

CLAVE: 31609

ruta: MEX-295



Km: 0.00 Tipo: 3 Sent: 0

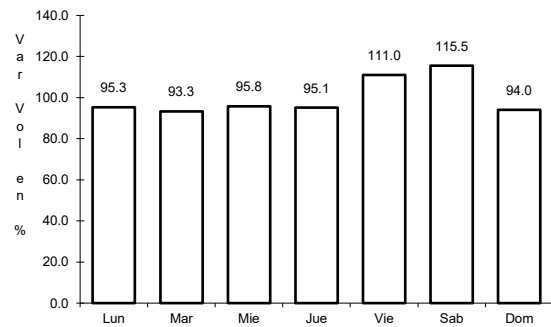


Km: 18.00 Tipo: 1 Sent: 0

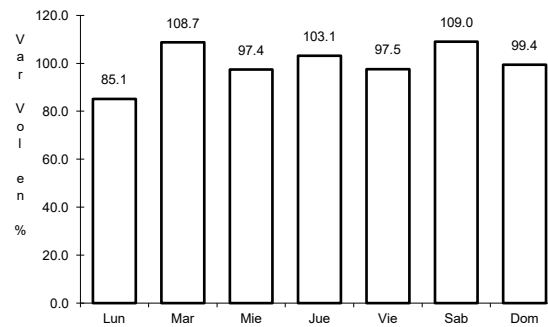
20 CARR: Teya -Peto

CLAVE: 31042

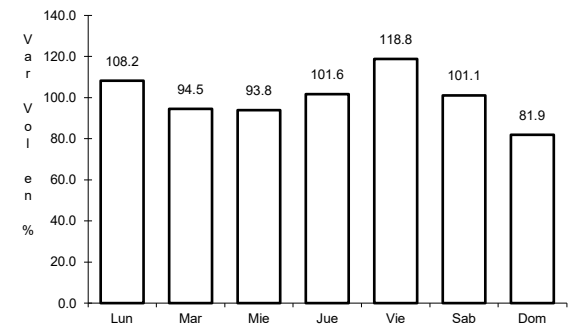
ruta: MEX-184



Km: 3.80 Tipo: 3 Sent: 1



Km: 3.80 Tipo: 3 Sent: 2

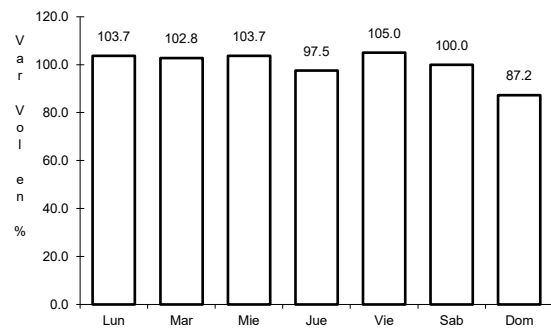


Km: 120.70 Tipo: 1 Sent: 0

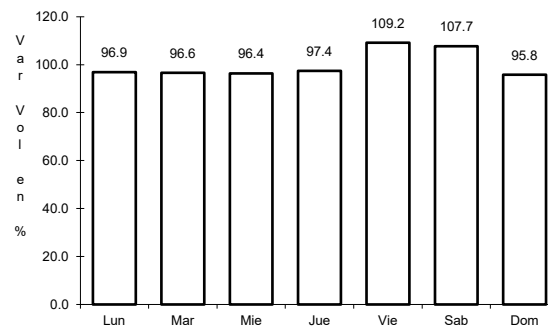
21 CARR: Tzucacab - Santa Rosa

CLAVE: 31017

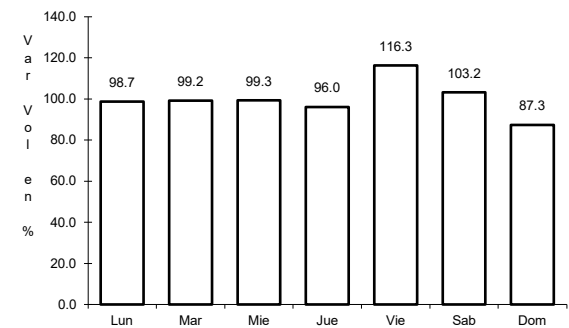
ruta: MEX



Km: 0.00 Tipo: 3 Sent: 0



Km: 16.00 Tipo: 3 Sent: 0

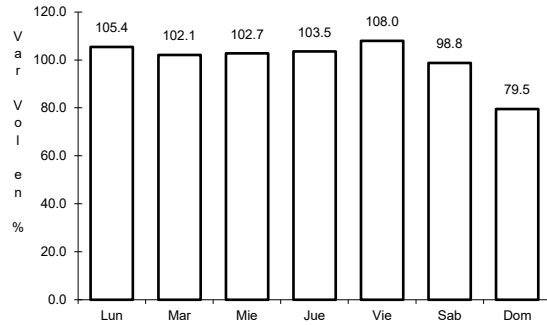


Km: 34.50 Tipo: 1 Sent: 0

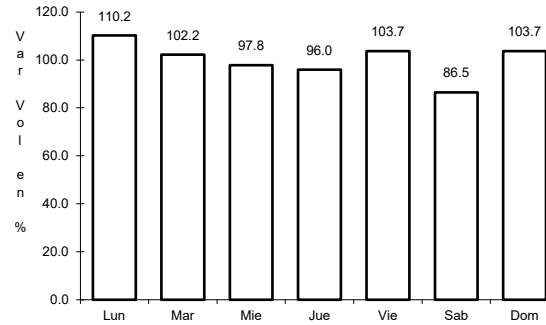
22 CARR: Valladolid - Felipe Carrillo Puerto

CLAVE: 00010

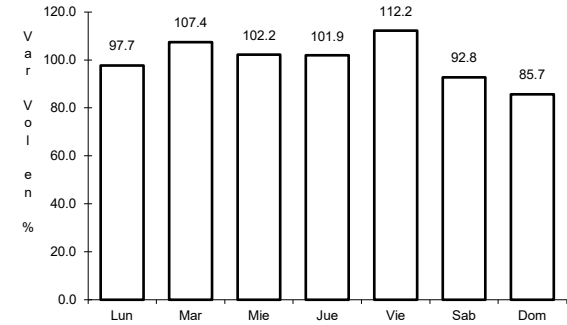
ruta: MEX-295



Km: 0.00 Tipo: 3 Sent: 0



Km: 99.00 Tipo: 1 Sent: 0

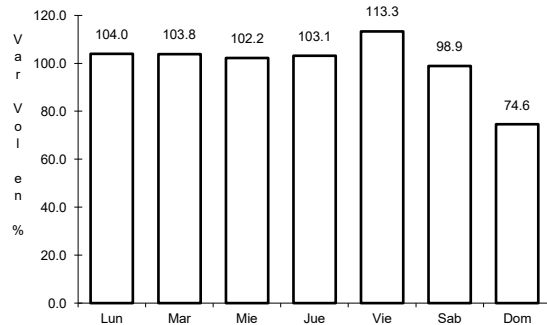


Km: 147.70 Tipo: 1 Sent: 0

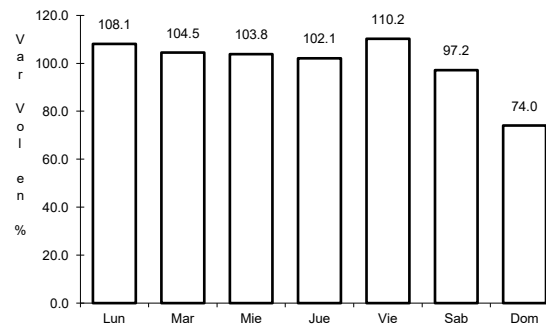
23 CARR: Valladolid - Río Lagartos

CLAVE: 31035

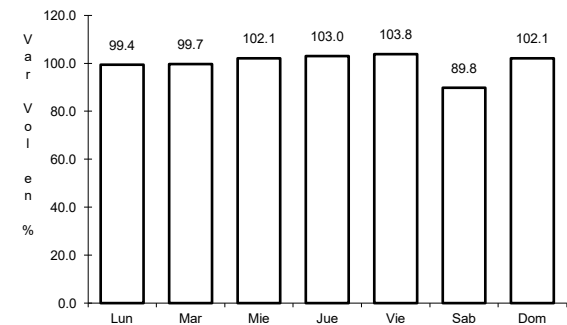
ruta: MEX-295



Km: 0.00 Tipo: 3 Sent: 1



Km: 0.00 Tipo: 3 Sent: 2

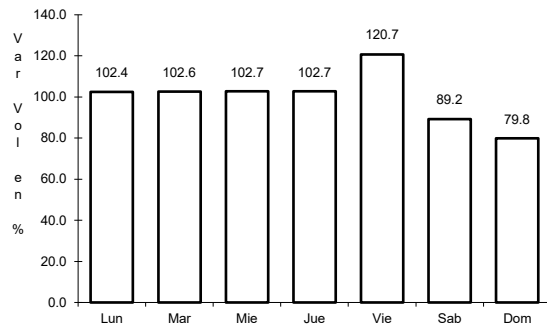


Km: 79.90 Tipo: 1 Sent: 0

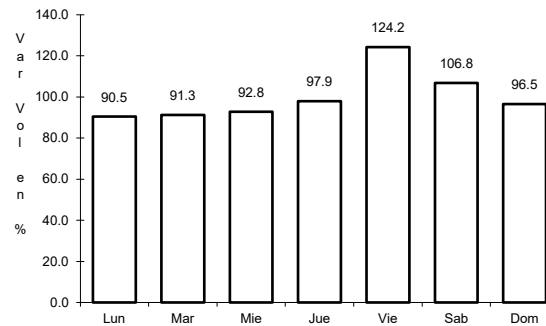
24 CARR: Mérida - Cancún (Cuota)

CLAVE: 00071

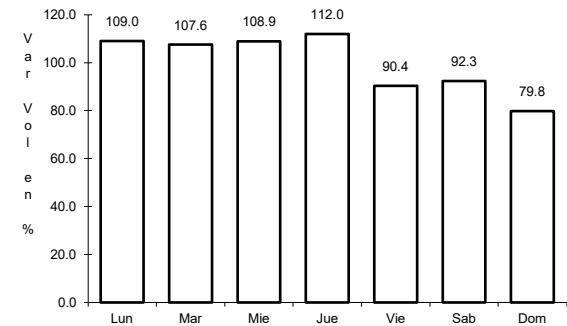
ruta: MEX-180D



Km: 115.34 Tipo: 1 Sent: 1



Km: 115.34 Tipo: 1 Sent: 2

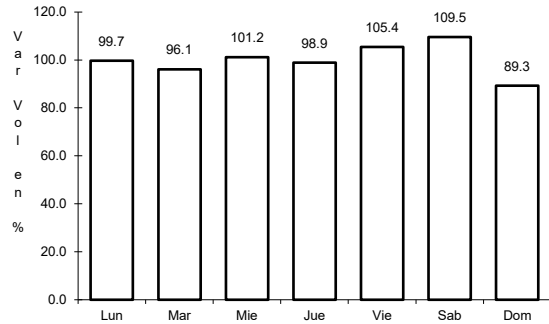


Km: 307.80 Tipo: 1 Sent: 0

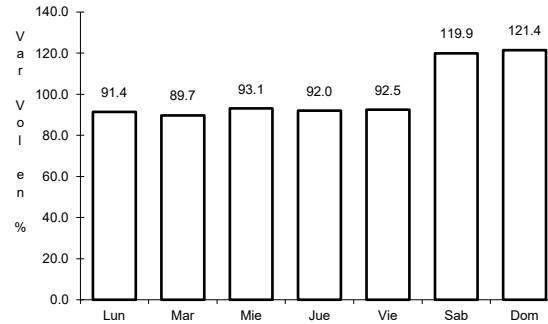
25 CARR: Acanceh - Estación Polabán

CLAVE: 31615

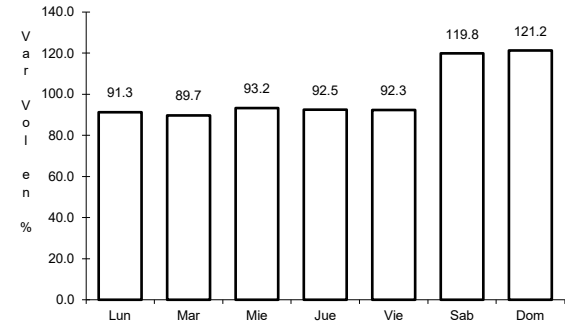
RUTA: YUC



Km: 0.00 Tipo: 3 Sent: 0



Km: 20.00 Tipo: 3 Sent: 0

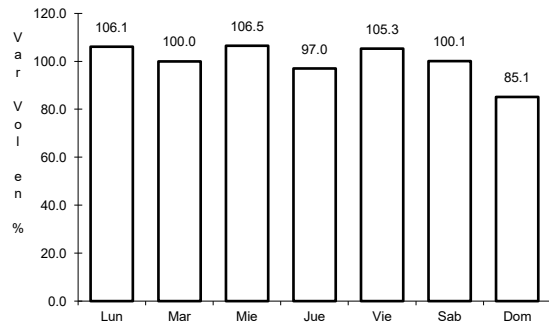


Km: 24.40 Tipo: 1 Sent: 0

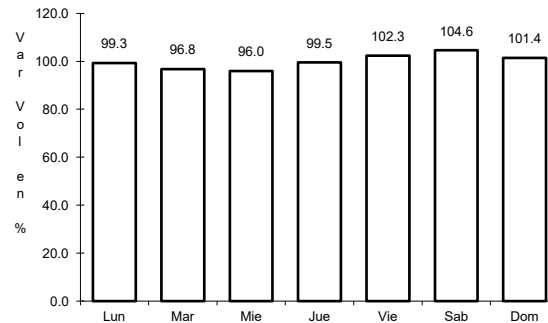
26 CARR: Baca - Dzidzantún

CLAVE: 31591

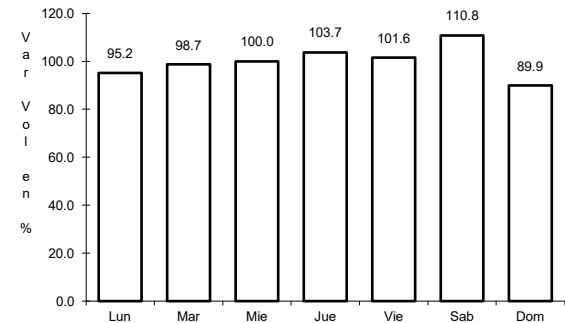
RUTA: YUC



Km: 0.00 Tipo: 3 Sent: 0



Km: 19.10 Tipo: 3 Sent: 0

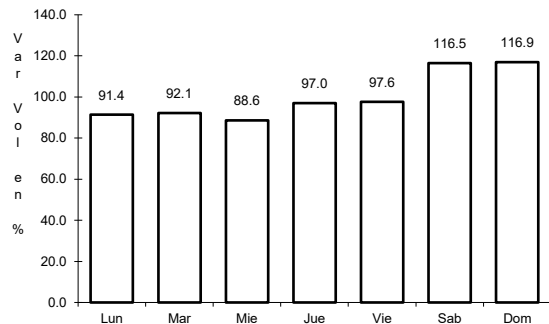


Km: 43.00 Tipo: 1 Sent: 0

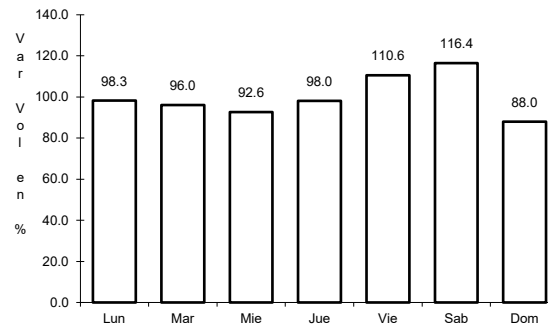
27 CARR: Citilcum - Tixkochoh

CLAVE: 31064

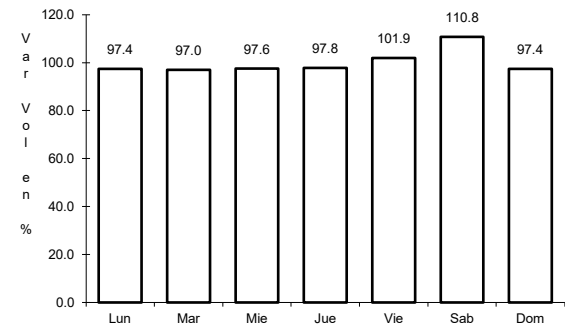
RUTA: YUC



Km: 0.00 Tipo: 3 Sent: 0



Km: 7.00 Tipo: 1 Sent: 0

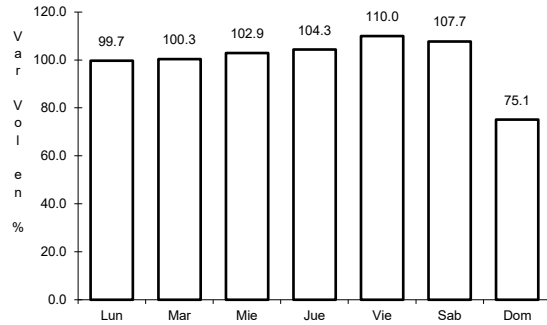


Km: 10.00 Tipo: 1 Sent: 0

28 CARR: Dzemul - Xtampú

CLAVE: 31608

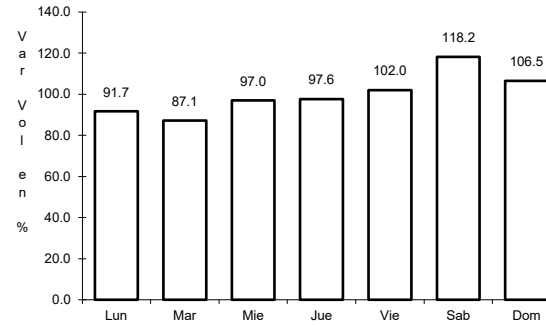
RUTA: YUC



Km: 0.00

Tipo: 3

Sent: 0



Km: 10.00

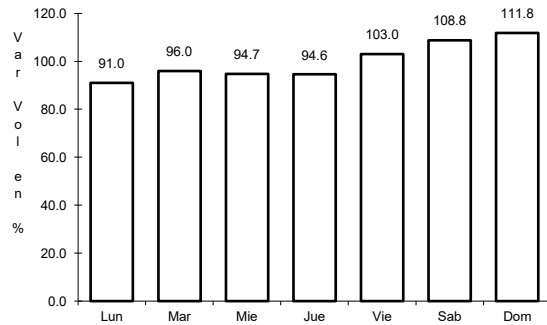
Tipo: 1

Sent: 0

29 CARR: Dzidzantún - Santa Clara

CLAVE: 31592

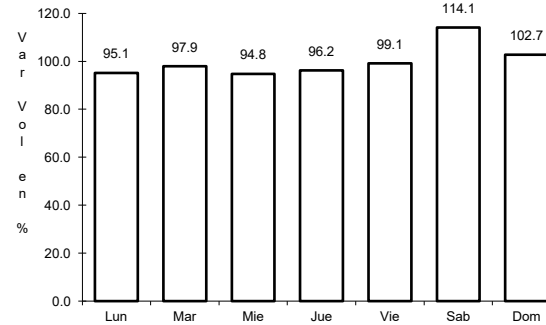
RUTA: YUC



Km: 0.00

Tipo: 3

Sent: 0



Km: 14.00

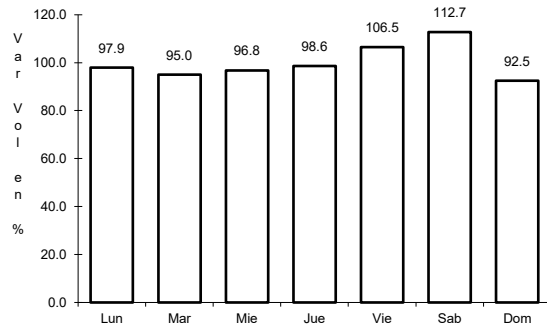
Tipo: 1

Sent: 0

30 CARR: Hochtún - Cenotillo

CLAVE: 31011

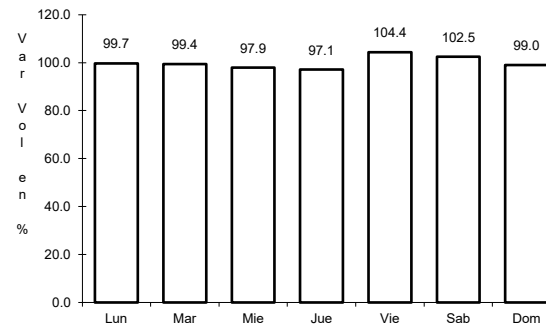
RUTA: YUC-011



Km: 0.00

Tipo: 3

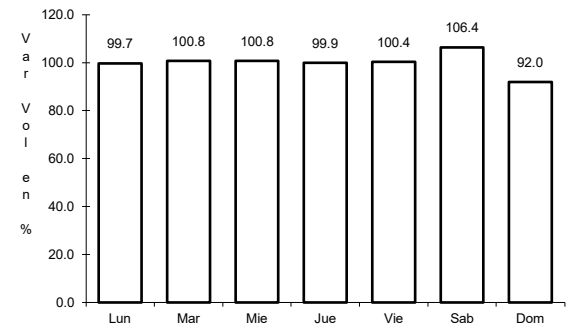
Sent: 0



Km: 24.00

Tipo: 3

Sent: 0



Km: 70.90

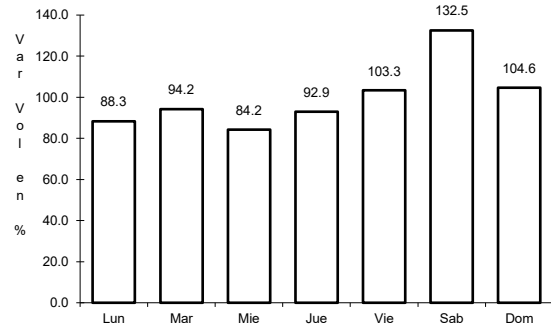
Tipo: 1

Sent: 0

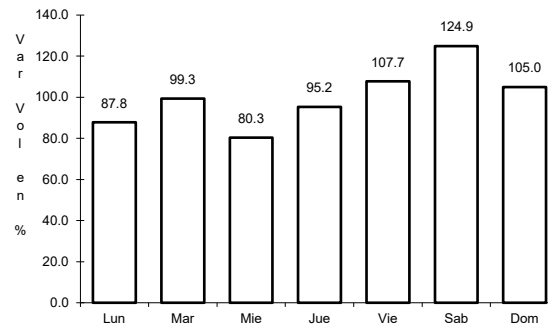
31 CARR: Holcá - Sotuta

CLAVE: 31626

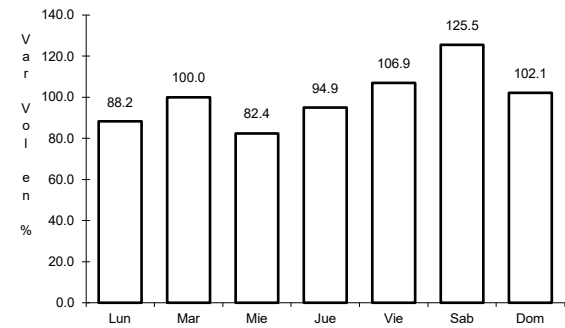
RUTA: YUC



Km: 0.00 Tipo: 3 Sent: 0



Km: 10.00 Tipo: 3 Sent: 0

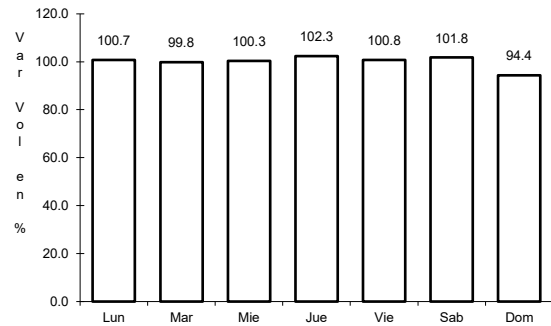


Km: 20.00 Tipo: 1 Sent: 0

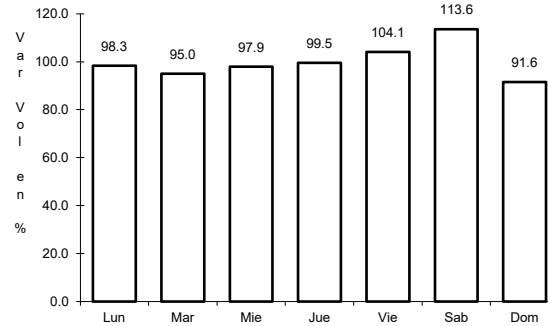
32 CARR: Hunucmá - Umán

CLAVE: 31610

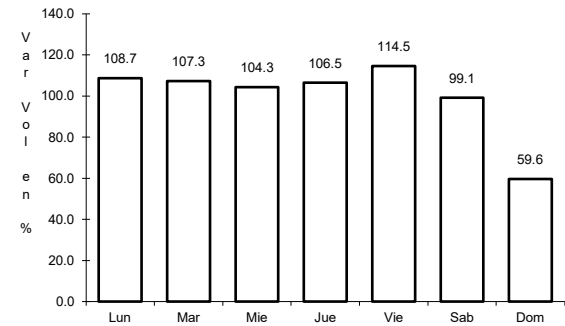
RUTA: YUC



Km: 0.00 Tipo: 3 Sent: 0



Km: 16.16 Tipo: 1 Sent: 0

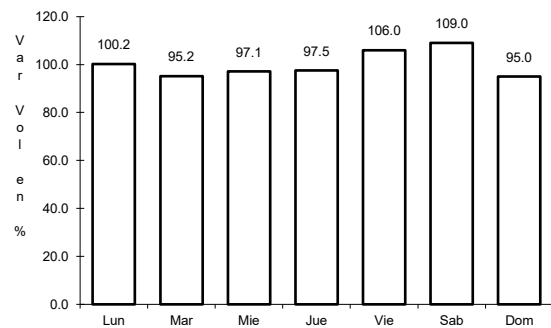


Km: 22.00 Tipo: 1 Sent: 0

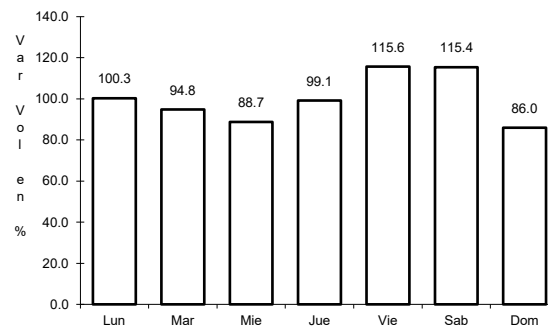
33 CARR: Izamal - Dzilam González

CLAVE: 31605

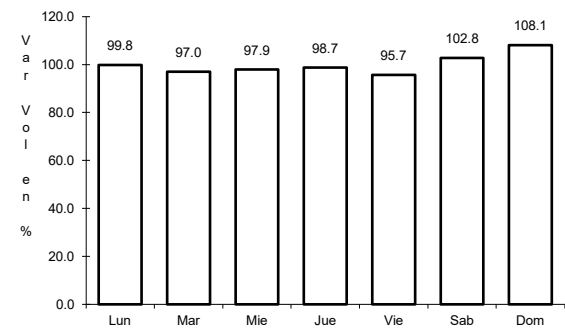
RUTA: YUC



Km: 0.00 Tipo: 3 Sent: 0



Km: 30.00 Tipo: 1 Sent: 0

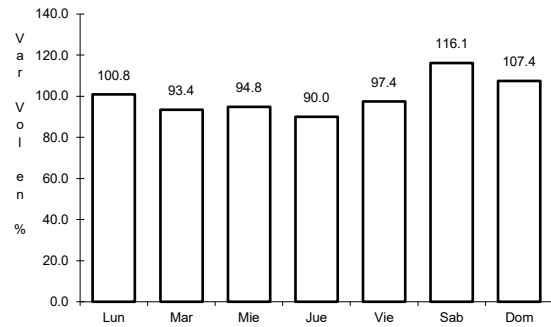


Km: 43.00 Tipo: 1 Sent: 0

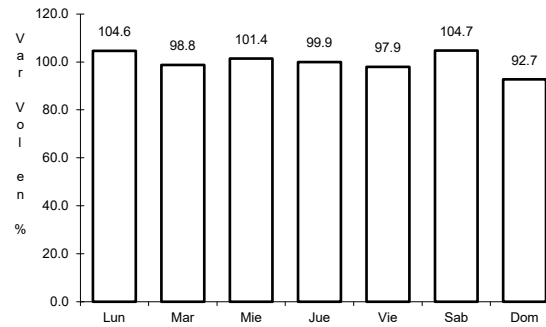
34 CARR: Kantunil - Izamal

CLAVE: 31012

RUTA: YUC



Km: 0.00 Tipo: 3 Sent: 0

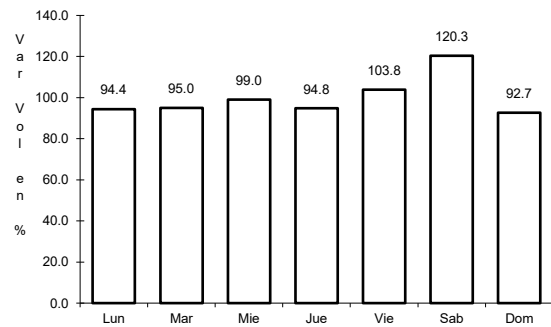


Km: 17.80 Tipo: 1 Sent: 0

35 CARR: Kinchil - Umán

CLAVE: 31009

RUTA: YUC

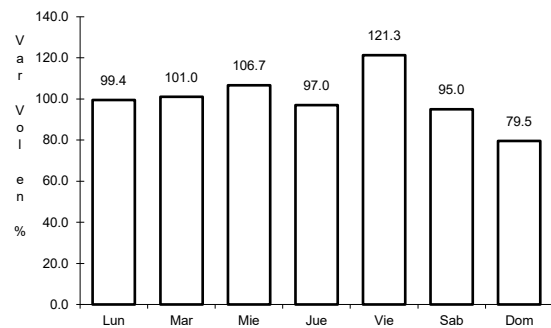


Km: 0.00 Tipo: 3 Sent: 0

36 CARR: Libramiento de Peto

CLAVE:

RUTA: YUC-018

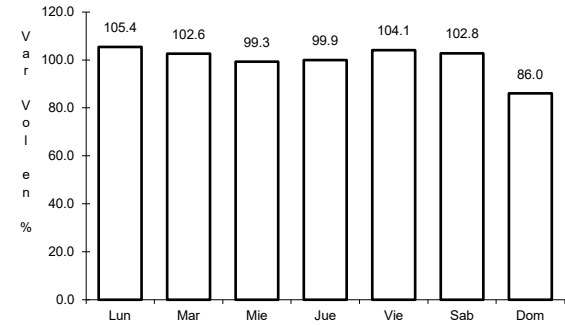
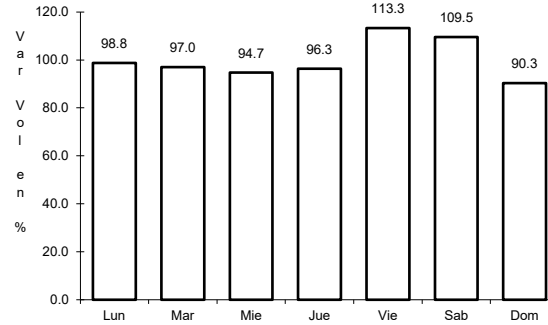
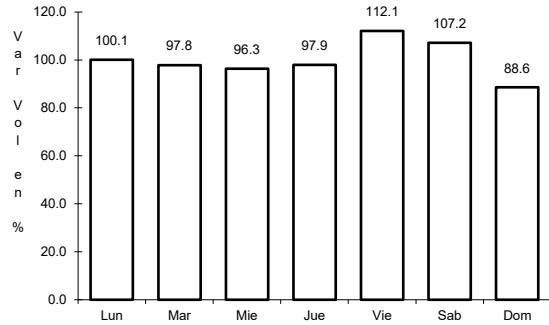


Km: 0.00 Tipo: 3 Sent: 0

37 CARR: Libramiento Norte de Motul

CLAVE: 31610

RUTA: YUC



Km: 0.00

Tipo: 3

Sent: 0

Km: 3.16

Tipo: 3

Sent: 0

Km: 6.53

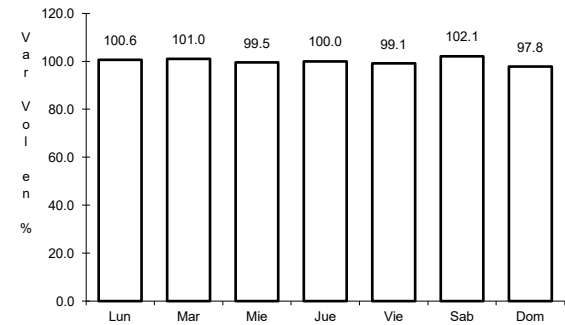
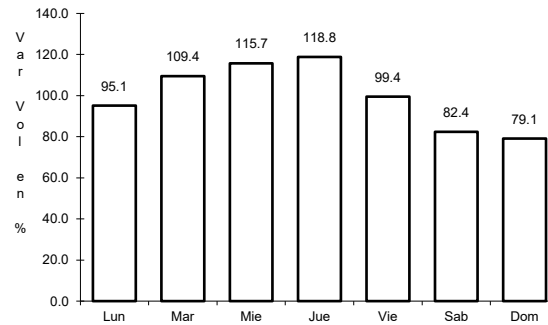
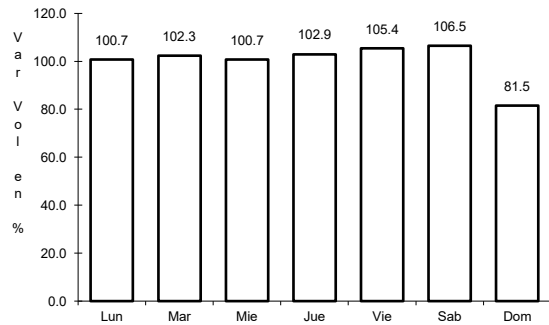
Tipo: 1

Sent: 0

38 CARR: Mérida - Acanceh

CLAVE: 31023

RUTA: YUC



Km: 0.00

Tipo: 3

Sent: 0

Km: 11.00

Tipo: 3

Sent: 0

Km: 26.00

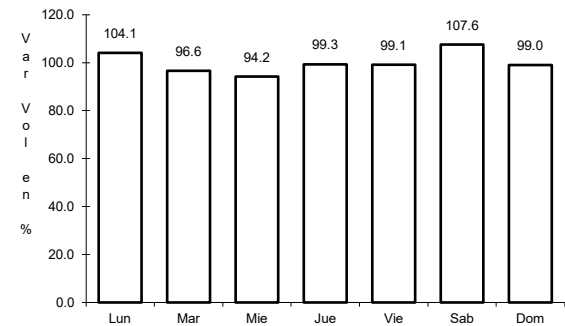
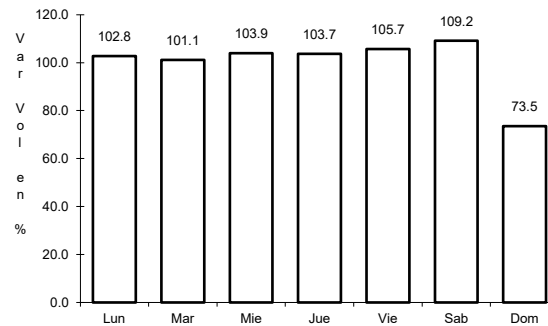
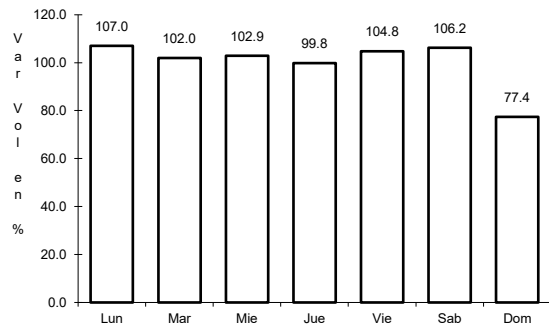
Tipo: 1

Sent: 0

39 CARR: Mérida - Oxkutzcab

CLAVE: 31018

RUTA: YUC-018



Km: 0.00

Tipo: 3

Sent: 1

Km: 0.00

Tipo: 3

Sent: 2

Km: 109.30

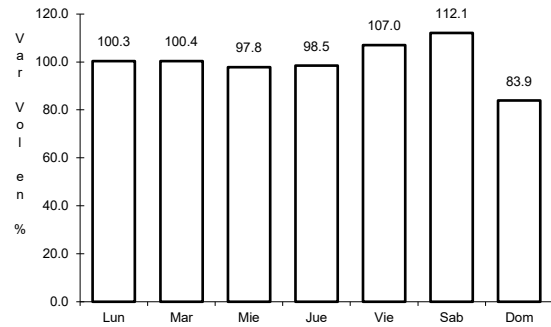
Tipo: 1

Sent: 0

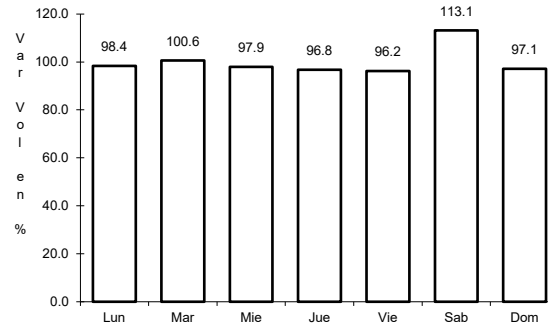
40 CARR: Mérida - Timucuy

CLAVE: 31024

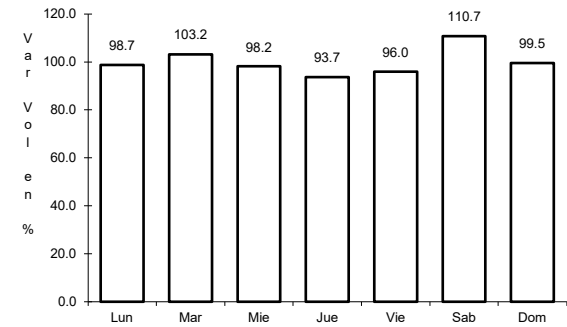
RUTA: YUC



Km: 0.00 Tipo: 3 Sent: 0



Km: 15.10 Tipo: 1 Sent: 0

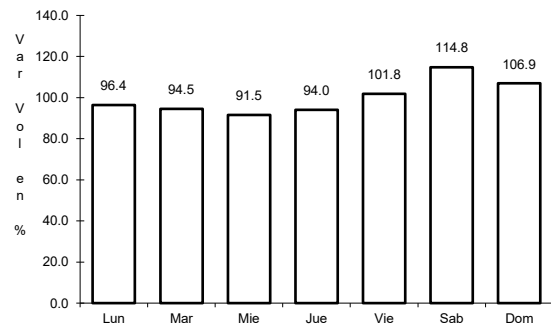


Km: 18.65 Tipo: 1 Sent: 0

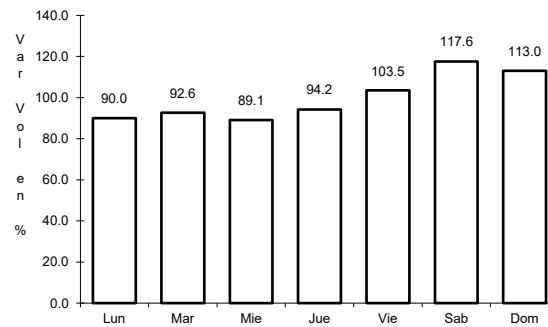
41 CARR: Motul - Puerto Telchac

CLAVE: 31006

RUTA: YUC-172



Km: 0.00 Tipo: 3 Sent: 0

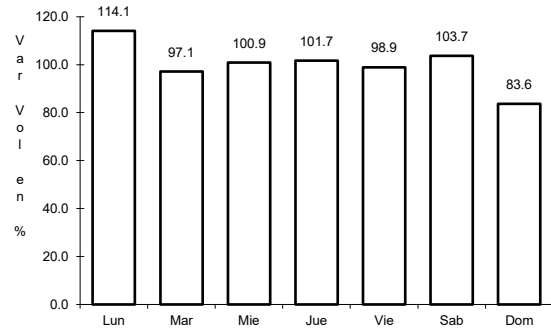


Km: 12.00 Tipo: 3 Sent: 0

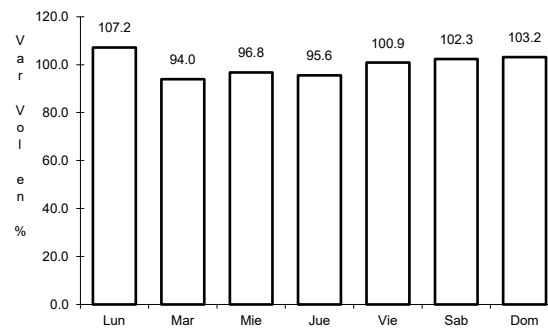
42 CARR: Muna - Maxcanú

CLAVE: 31053

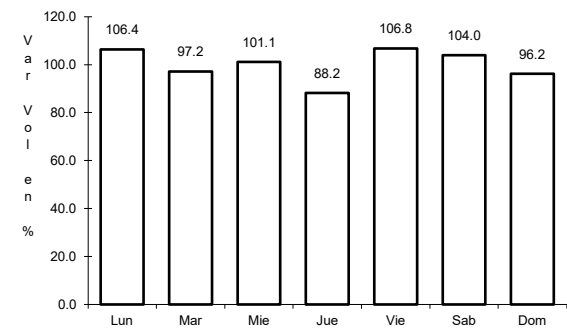
RUTA: YUC



Km: 0.00 Tipo: 3 Sent: 0



Km: 17.00 Tipo: 3 Sent: 0

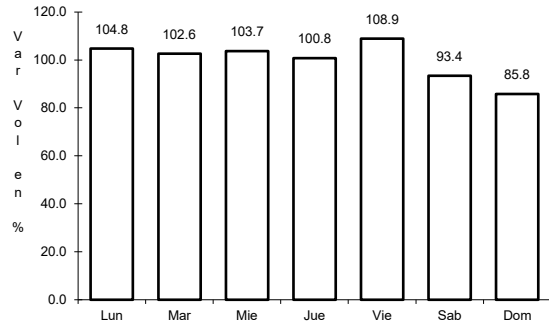


Km: 31.00 Tipo: 1 Sent: 0

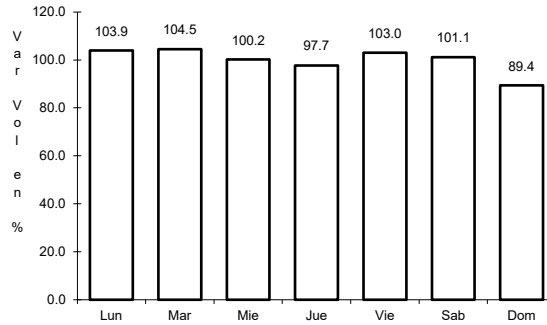
43 CARR: Oxkutzcab - Xul

CLAVE: 31051

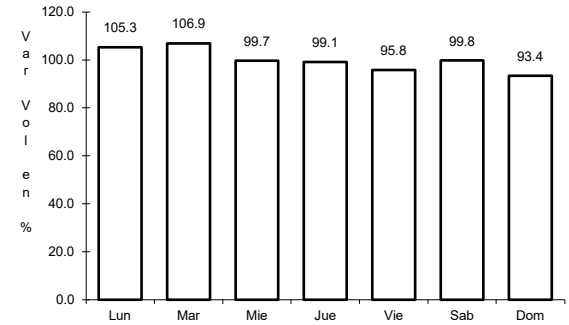
RUTA: YUC-031



Km: 0.00 Tipo: 3 Sent: 0



Km: 10.00 Tipo: 3 Sent: 0

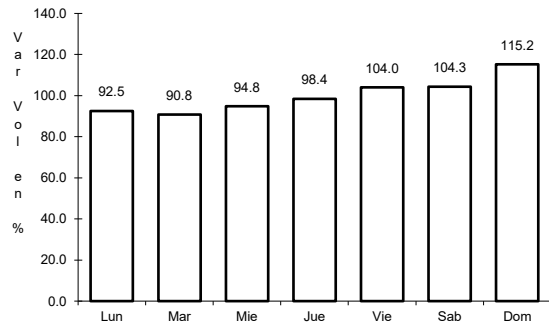


Km: 25.00 Tipo: 1 Sent: 0

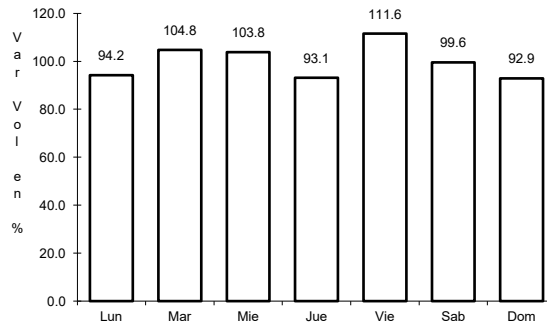
44 CARR: Pisté - Dzitás

CLAVE: 31013

RUTA: YUC-013



Km: 0.00 Tipo: 3 Sent: 0

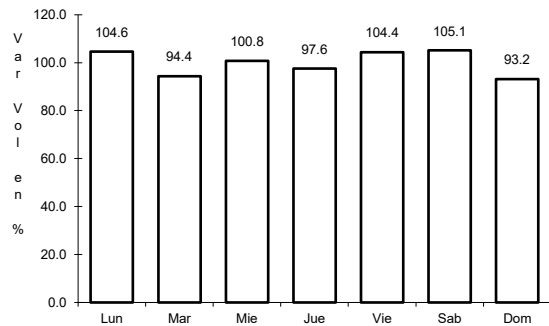


Km: 18.00 Tipo: 1 Sent: 0

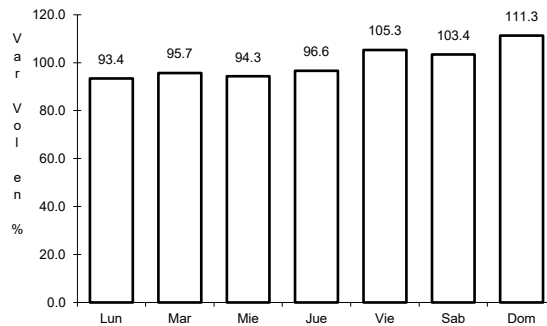
45 CARR: Progreso - Telchac Puerto

CLAVE: 31616

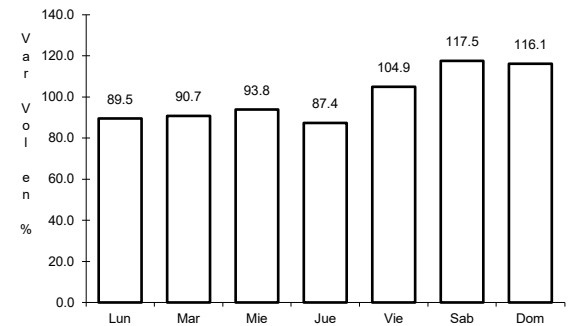
RUTA: YUC-027



Km: 0.00 Tipo: 3 Sent: 1



Km: 0.00 Tipo: 3 Sent: 2

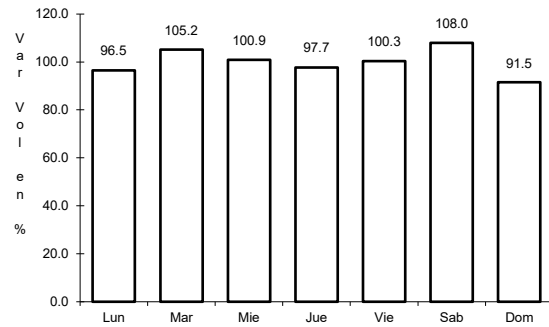


Km: 33.00 Tipo: 1 Sent: 0

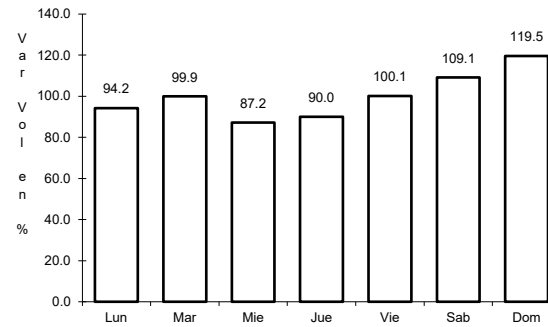
46 CARR: Ramal a Chankom

CLAVE: 31049

ruta: YUC



Km: 0.00 Tipo: 3 Sent: 0

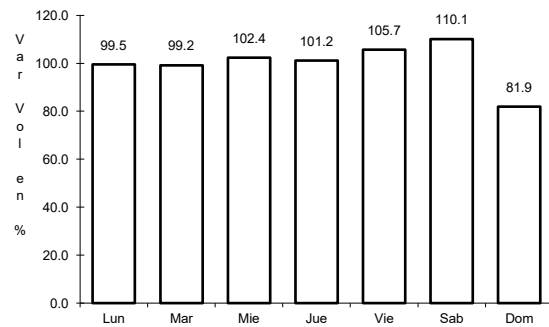


Km: 9.00 Tipo: 1 Sent: 0

47 CARR: Ramal a Dzonot Carretero

CLAVE: 31614

ruta: YUC

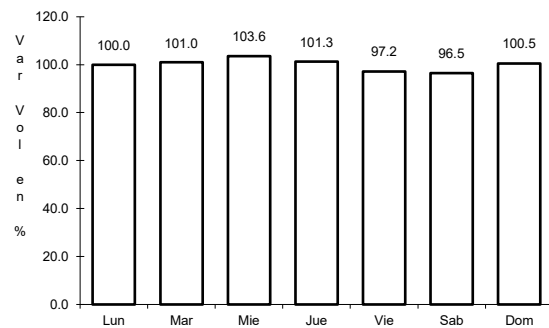


Km: 0.00 Tipo: 3 Sent: 0

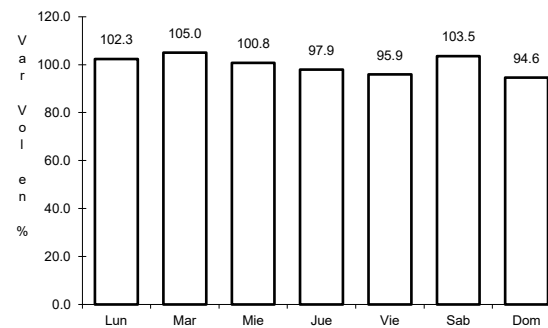
48 CARR: Ramal a San Felipe

CLAVE: 31628

ruta: YUC



Km: 0.00 Tipo: 3 Sent: 0

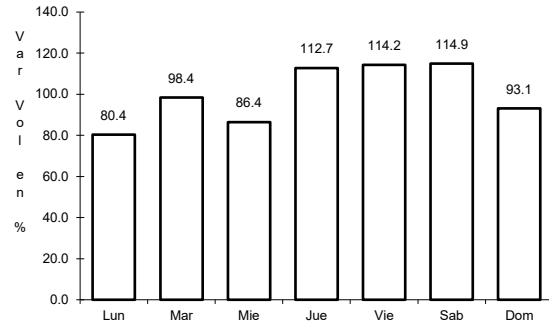


Km: 7.20 Tipo: 1 Sent: 0

49 CARR: Ramal a Tedzidz

CLAVE: 31600

RUTA: YUC



Km: 6.00

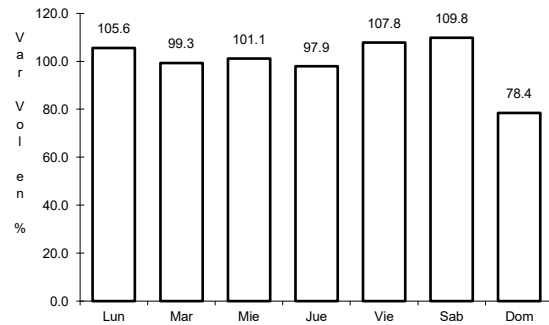
Tipo: 1

Sent: 0

50 CARR: Ramal a Yaxcabá

CLAVE: 31111

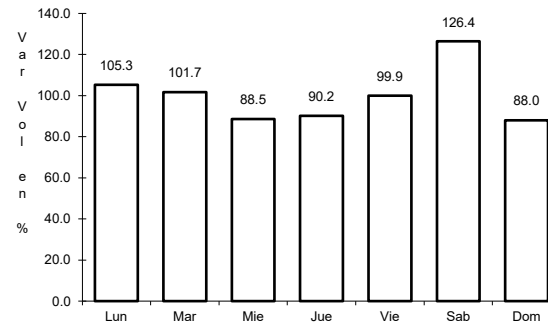
RUTA: YUC-289



Km: 0.00

Tipo: 3

Sent: 0



Km: 18.00

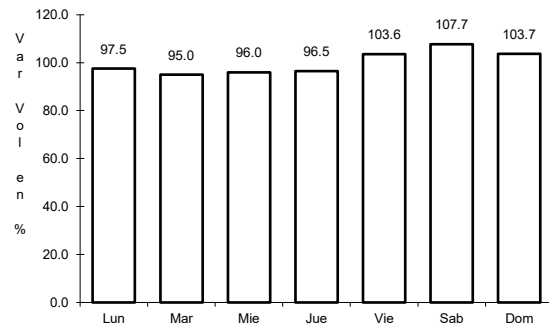
Tipo: 1

Sent: 0

51 CARR: Sinanché - Xitibcanul

CLAVE: 31619

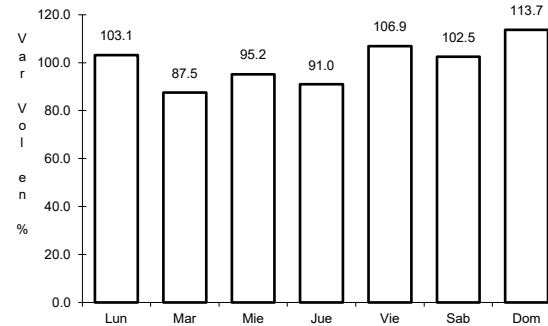
RUTA: YUC



Km: 0.00

Tipo: 3

Sent: 0



Km: 7.00

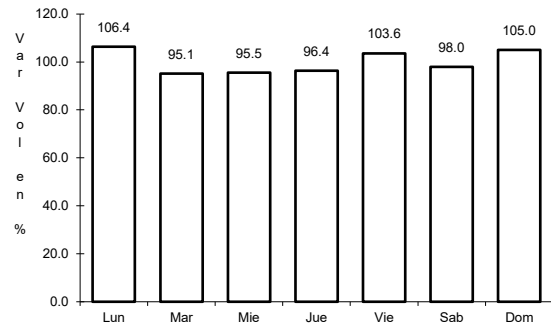
Tipo: 1

Sent: 0

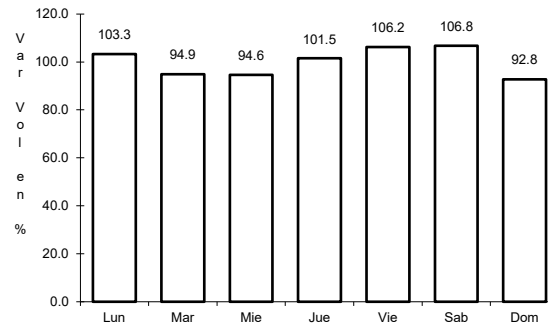
52 CARR: Sucilá - Calotmul

CLAVE: 31617

ruta: YUC



Km: 2.00 Tipo: 3 Sent: 0

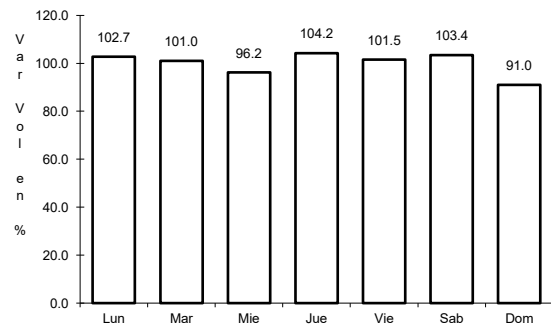


Km: 30.20 Tipo: 1 Sent: 0

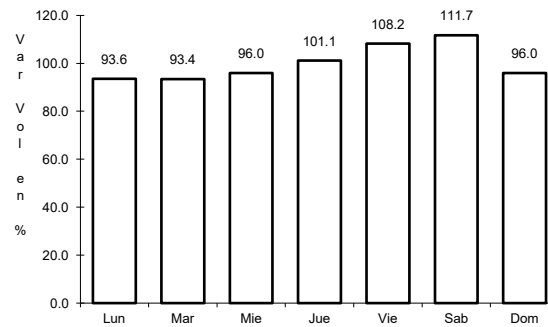
53 CARR: Suma - Izamal

CLAVE: 31081

ruta: YUC-081



Km: 0.00 Tipo: 3 Sent: 0

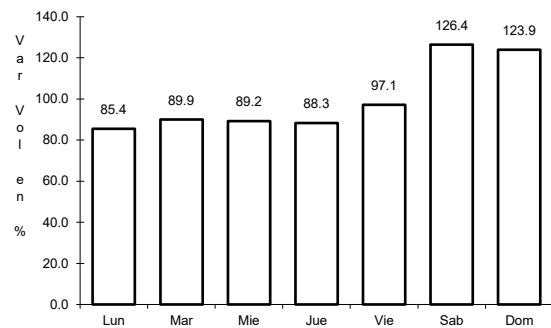


Km: 22.00 Tipo: 1 Sent: 0

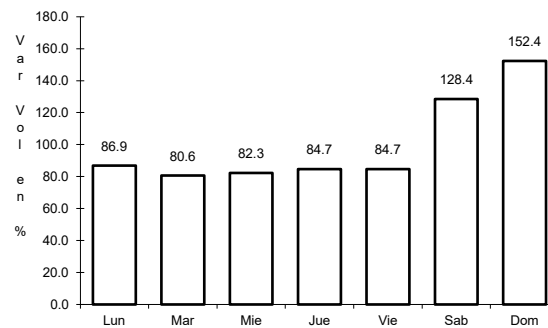
54 CARR: Telchac Puerto - Dzilam de Bravo

CLAVE: 31042

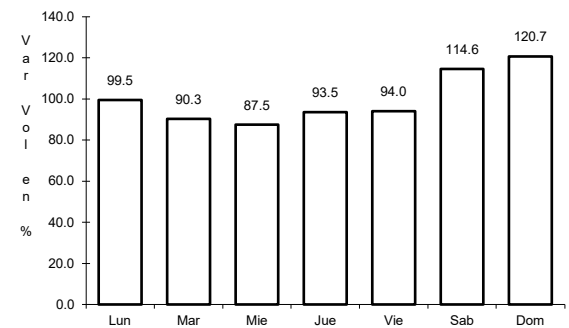
ruta: YUC



Km: 0.00 Tipo: 3 Sent: 0



Km: 26.00 Tipo: 1 Sent: 0

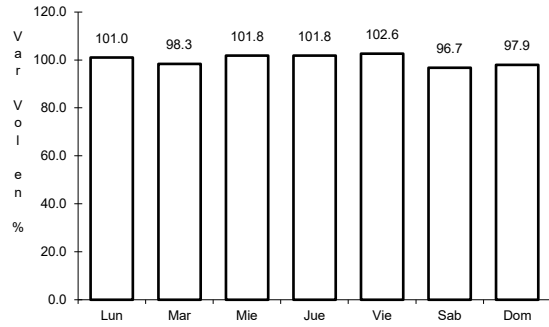


Km: 39.00 Tipo: 1 Sent: 0

55 CARR: Thul - Becanchén

CLAVE: 31104

RUTA: YUC-281



Km: 0.00

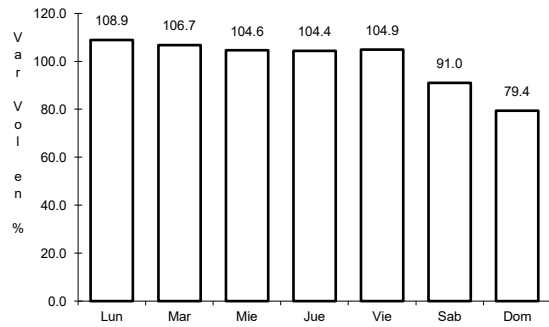
Tipo: 3

Sent: 0

56 CARR: Ticul - Chapab

CLAVE: 31623

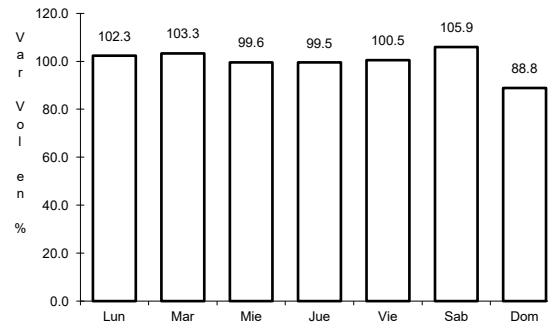
RUTA: YUC



Km: 0.00

Tipo: 3

Sent: 0



Km: 8.00

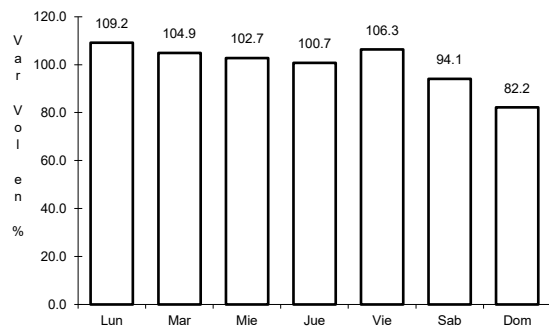
Tipo: 1

Sent: 0

57 CARR: Ticul - Dzan

CLAVE: 31621

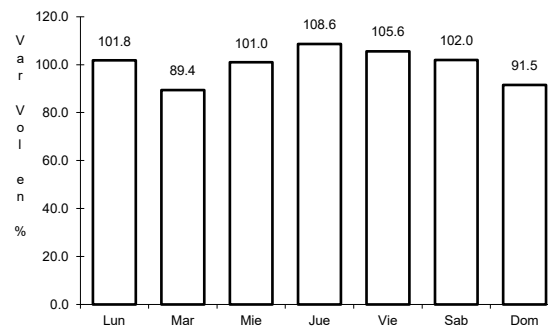
RUTA: YUC



Km: 2.50

Tipo: 3

Sent: 0



Km: 7.00

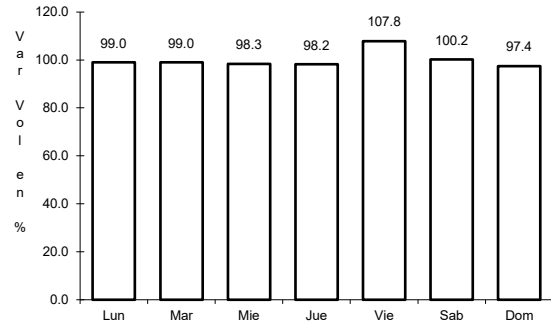
Tipo: 1

Sent: 0

58 CARR: Tixkokob - Baca

CLAVE: 31010

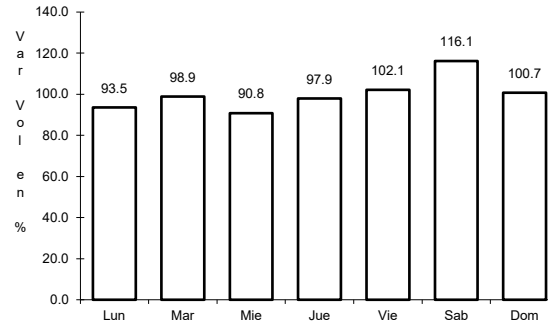
RUTA: YUC



Km: 0.00

Tipo: 3

Sent: 0



Km: 15.00

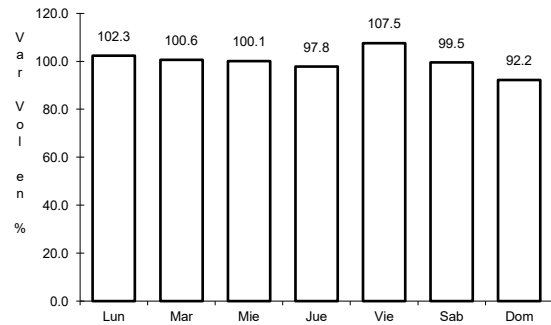
Tipo: 1

Sent: 0

59 CARR: Tixkokob - Sotuta

CLAVE: 31106

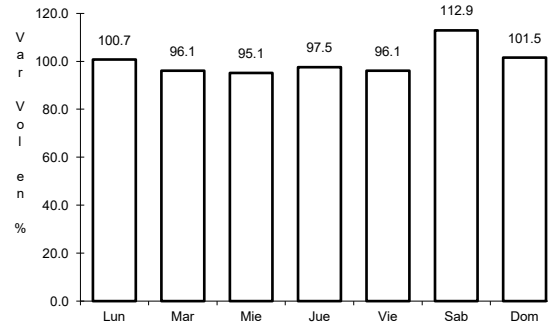
RUTA: YUC



Km: 0.00

Tipo: 3

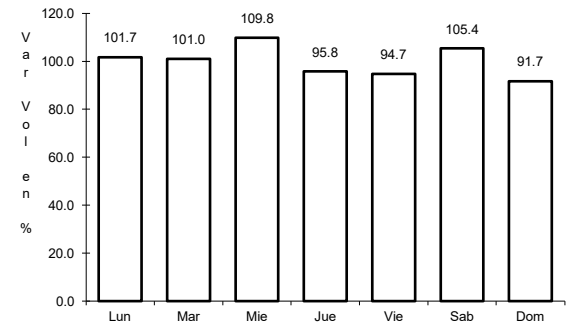
Sent: 0



Km: 31.00

Tipo: 3

Sent: 0



Km: 65.00

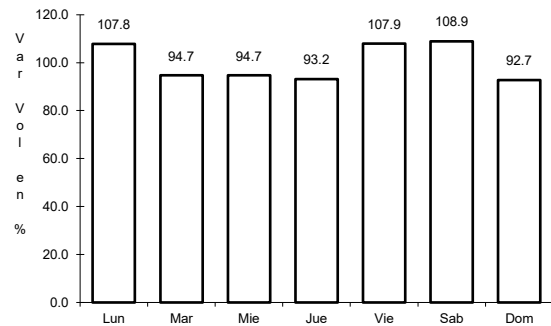
Tipo: 1

Sent: 0

60 CARR: Tizimín - Yucatán

CLAVE: 31588

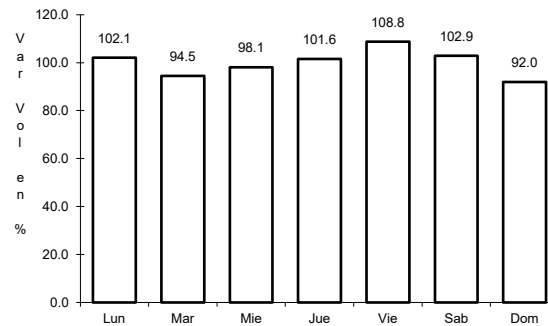
RUTA: YUC



Km: 0.00

Tipo: 3

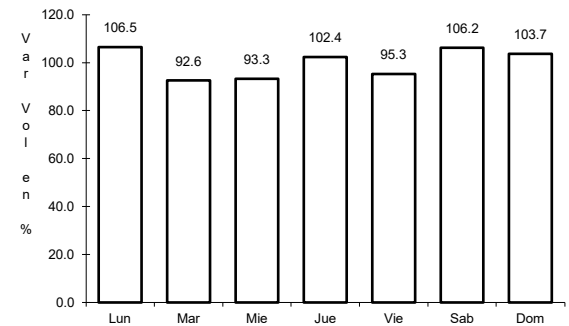
Sent: 0



Km: 30.00

Tipo: 3

Sent: 0



Km: 46.50

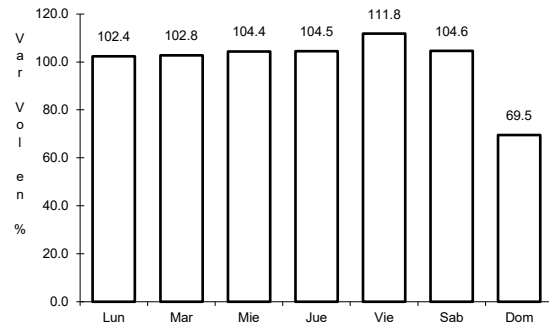
Tipo: 1

Sent: 0

61 CARR: Yaxché - Sierra Papacal

CLAVE: 31620

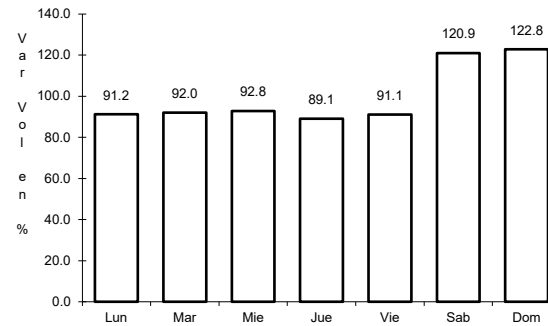
ruta: YUC



Km: 0.00

Tipo: 3

Sent: 0



Km: 12.00

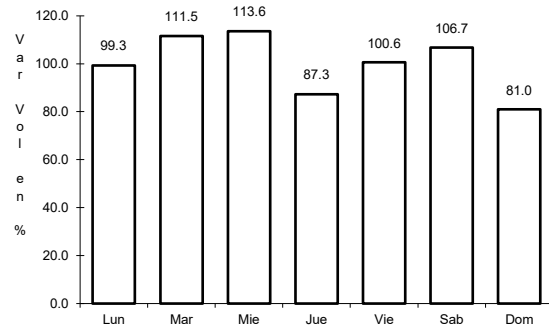
Tipo: 1

Sent: 0

62 CARR: Yobain - Chabihau

CLAVE: 31610

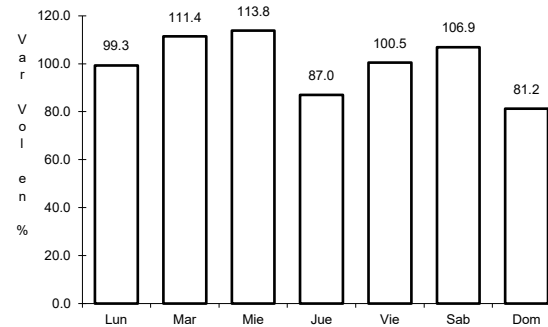
ruta: YUC



Km: 0.00

Tipo: 3

Sent: 0



Km: 12.00

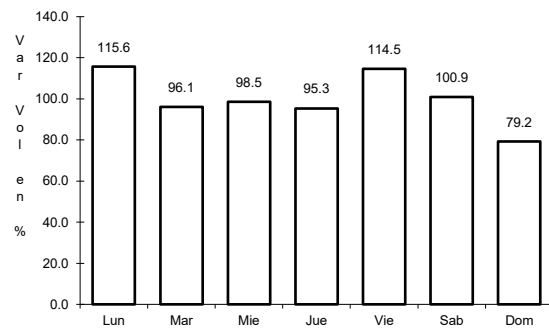
Tipo: 1

Sent: 0

63 CARR: Chemax - Cobá

CLAVE:

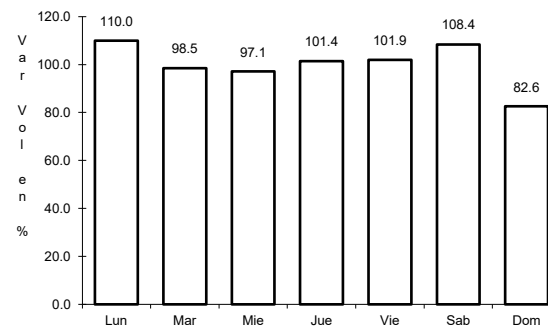
ruta: YUC-MEX-180



Km: 0.00

Tipo: 3

Sent: 0

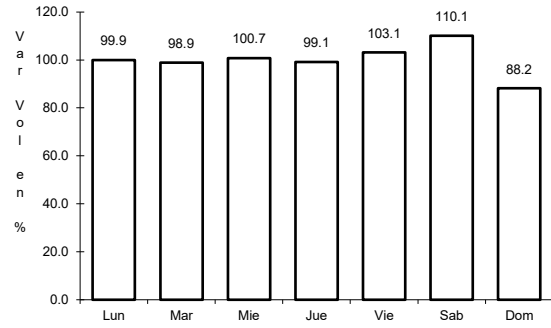


Km: 30.90

Tipo: 1

Sent: 0

64 CARR: Progreso - Celestún

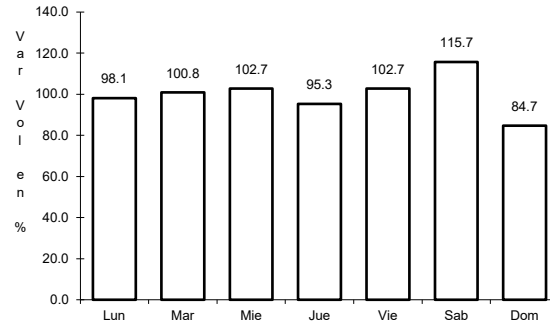


Km: 0.00

Tipo: 3

Sent: 1

CLAVE: 31040

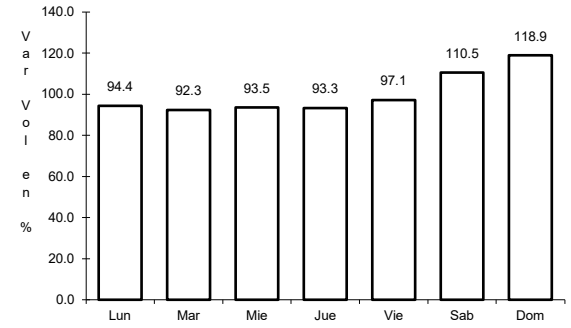


Km: 0.00

Tipo: 3

Sent: 2

RUTA: MEX-YUC



Km: 6.00

Tipo: 3

Sent: 0