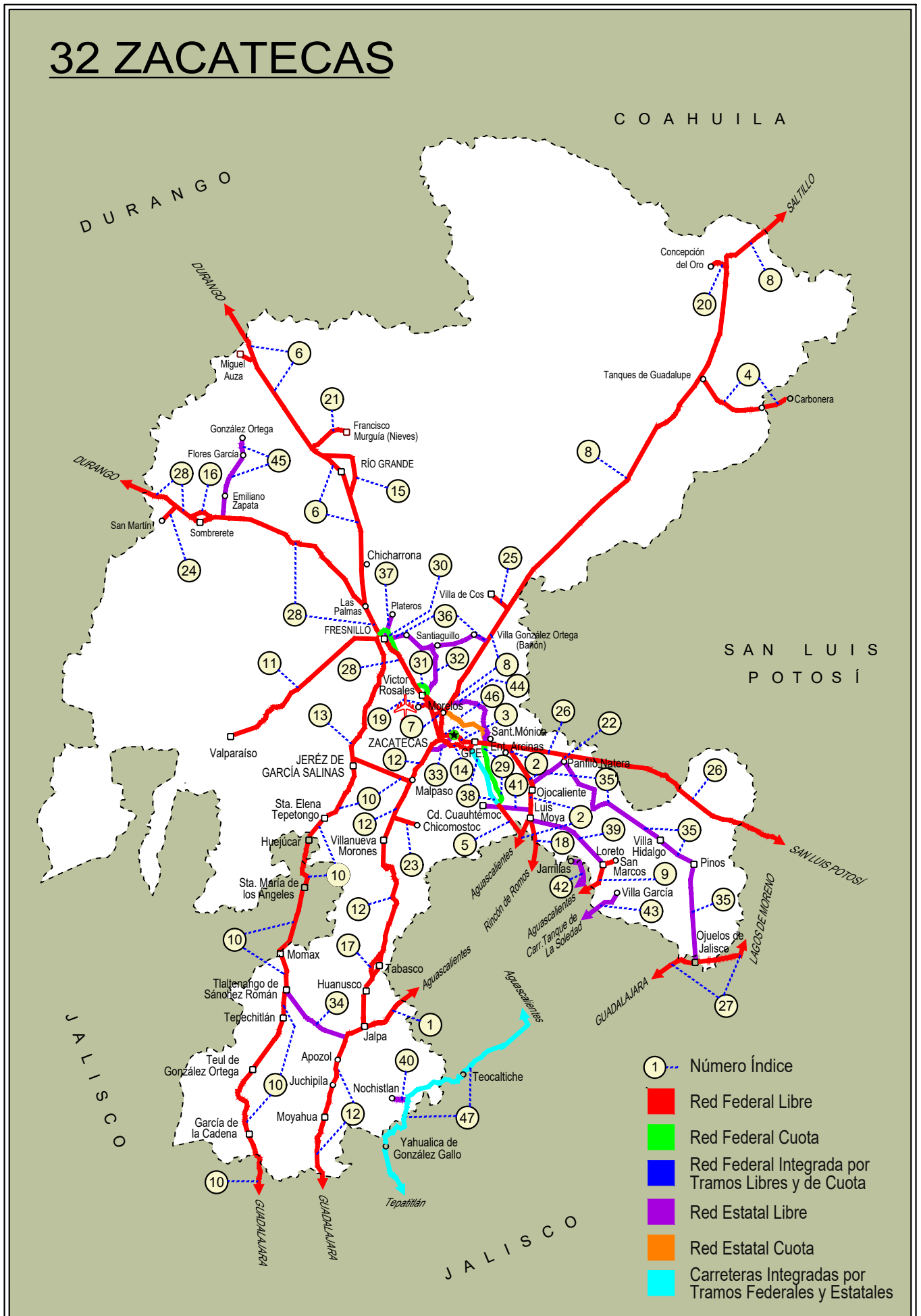


# ZACATECAS

NO. INDICE CARRETERA	RUTA
---RED FEDERAL LIBRE---	
1 Aguascalientes - Jalpa	MEX-070
2 Aguascalientes - Zacatecas	MEX-045
3 Blvd. Guadalupe - Zacatecas - La Escondida	MEX-045
4 Carbonera - T. C. (Ent. Morelos - Saltillo)	MEX-062
5 Ent. Cosío - Ent. Cuauhtémoc	MEX-045
6 Ent. La Chicharrona - Cuencamé	MEX-049
7 Ent. Morelos - Ent. Noria de Gringos	MEX-045
8 Ent. Morelos - Saltillo	MEX-054
9 Ent. Rivier - San Marcos	MEX-066
10 Ent. Tesislán - Ent. Malpaso	MEX-023
11 Fresnillo - Valparaíso	MEX-044
12 Guadalajara - Zacatecas	MEX-054
13 Jerez - Fresnillo	MEX-023
14 Libramiento de Guadalupe - Zacatecas	MEX-045
15 Libramiento de Río Grande	MEX-049
16 Libramiento de Sombrerete	MEX-045
17 Libramiento de Tabasco	MEX-054
18 Providencia - Luis Moya	MEX-071
19 Ramal a Aeropuerto Zacatecas	MEX-045
20 Ramal a Concepción del Oro	MEX-054
21 Ramal a Francisco Murguía (Nieves)	MEX-049
22 Ramal a Gral. Pánfilo Natera	MEX-049
23 Ramal a Ruinas de Chicomostoc	MEX-045
24 Ramal a San Martín	MEX-045
25 Ramal a Villa de Cos	MEX-054
26 San Luis Potosí - Ent. Arcinas	MEX-049
27 San Luis Potosí - Lagos de Moreno	MEX-070-080
28 Zacatecas - Durango	MEX-045
---RED FEDERAL DE CUOTA---	
29 Ent. Cuauhtémoc - Ent. Osiris (Cuota)	MEX-045D
30 Libramiento de Fresnillo (Cuota)	MEX-045D
31 Libramiento de Víctor Rosales (Cuota)	MEX-045D
---RED ESTATAL LIBRE---	
32 Calera de Víctor Rosales - Santiaguillo	ZAC-016
33 Cieneguillas - Zacatecas	ZAC
34 Corral de Piedras - Tlaltenango	ZAC
35 Ent. Ojo Caliente - Ent. Ojuelos de Jalisco	ZAC
36 Fresnillo - Ent. Bañón	ZAC
37 Fresnillo - Plateros	ZAC-022
38 Guadalupe - Ent. Cuauhtémoc	ZAC-118
39 Ramal a Loreto	ZAC
40 Ramal a Nochistlán	ZAC
41 Ramal a San Pedro Piedra Gorda	ZAC-AGS
42 San Gil - Jarillas	AGS-012-ZAC
43 San Rafael - Villa García	AGS-ZAC
44 Santa Mónica - Pozo de Gamboa	ZAC
45 Sombrerete - González Ortega	ZAC
---RED ESTATAL DE CUOTA---	
46 Libramiento Noreste de Zacatecas (Cuota)	ZAC-D
---CARRETERAS INTEGRADAS POR TRAMOS FEDERALES Y ESTATALES---	
47 Tepatitlán - Jaralillo	MEX-JAL-ZAC

# 32 ZACATECAS





ZACATECAS

1 CARR: Aguascalientes - Jalpa

CLAVE: 00095

RUTA: MEX-070

AÑO: 2022

LUGAR	ESTACION				CLASIFICACION VEHICULAR EN PORCIENTO										COORDENADAS					
	KM	TE	SC	TDPA	M	A	B	C2	C3	T3S2	T3S3	T3S2R4	OTROS	A	B	C	K'	D	LATITUD	LONGITUD
Aguascalientes	0.00	3	1	11977	3.8	90.0	1.0	3.6	1.0	0.3	0.2	0.1	0.0	93.8	1.0	5.2	0.107	0.503	21.874158	-102.335298
Aguascalientes	0.00	3	2	11829	4.0	89.9	0.9	3.7	0.9	0.3	0.2	0.1	0.0	93.9	0.9	5.2	0.091	0.503	21.874023	-102.335320
T. Der. Jesús María	7.30	1	1	10859	3.7	88.7	1.1	4.3	1.1	0.8	0.2	0.1	0.0	92.4	1.1	6.5	0.097	0.500	21.881499	-102.362863
T. Der. Jesús María	7.30	1	2	10850	3.7	88.8	1.0	4.3	1.1	0.8	0.2	0.1	0.0	92.5	1.0	6.5	0.092	0.500	21.881382	-102.362904
T. Izq. Villa Hidalgo	7.80	3	1	5934	2.3	91.1	0.9	2.6	1.1	1.1	0.3	0.4	0.2	93.4	0.9	5.7	0.143	0.510	21.884044	-102.372422
T. Izq. Villa Hidalgo	7.80	3	2	6173	2.5	90.5	1.1	2.6	1.1	1.2	0.4	0.4	0.2	93.0	1.1	5.9	0.116	0.510	21.883918	-102.372443
Libramiento Poniente de Aguascalientes	11.00	1	1	6400	2.9	90.0	1.2	3.0	1.1	0.8	0.5	0.3	0.2	92.9	1.2	5.9	0.110	0.518	21.889869	-102.394099
Libramiento Poniente de Aguascalientes	11.00	1	2	5945	2.5	90.3	1.4	3.2	1.0	0.7	0.4	0.4	0.1	92.8	1.4	5.8	0.112	0.518	21.889725	-102.394121
Libramiento Poniente de Aguascalientes	11.00	3	1	6568	2.7	90.6	1.0	2.7	1.3	0.9	0.4	0.3	0.1	93.3	1.0	5.7	0.113	0.500	21.892288	-102.403196
Libramiento Poniente de Aguascalientes	11.00	3	2	6578	2.6	90.6	1.0	2.8	1.3	0.9	0.4	0.3	0.1	93.2	1.0	5.8	0.098	0.500	21.892171	-102.403208
T. Der. Gracias a Dios	20.00	3	0	9726	2.4	90.5	1.0	2.9	1.3	1.0	0.5	0.3	0.1	92.9	1.0	6.1	0.100	0.502	21.886722	-102.466599
T. Izq. El Salitre	23.17	3	0	7874	2.8	88.7	1.5	3.5	1.3	1.2	0.6	0.3	0.1	91.5	1.5	7.0	0.106	0.501	21.889340	-102.497857
T. Izq. Malpaso	45.10	1	0	7608	2.7	89.8	1.2	2.8	1.5	1.0	0.5	0.3	0.2	92.5	1.2	6.3	0.098	0.501	21.881037	-102.653863
T. Der. Presa La Codorniz	49.30	3	1	10778	3.9	91.1	0.7	2.3	0.8	0.5	0.2	0.3	0.2	95.0	0.7	4.3	0.093	0.506	21.863696	-102.692480
T. Der. Presa La Codorniz	49.30	3	2	10509	3.7	91.5	0.6	2.2	0.8	0.5	0.2	0.3	0.2	95.2	0.6	4.2	0.091	0.506	21.863613	-102.692356
Calvillo	52.30	3	1	5531	2.9	92.3	0.5	2.2	0.9	0.5	0.3	0.2	0.2	95.2	0.5	4.3	0.094	0.505	21.834799	-102.747122
Calvillo	52.30	3	2	5632	2.7	92.4	0.5	2.0	0.9	0.6	0.4	0.3	0.2	95.1	0.5	4.4	0.084	0.505	21.834662	-102.747028
T. Der. Jaltiche de Abajo	63.80	3	0	2715	1.9	87.5	1.7	4.4	2.3	1.4	0.5	0.2	0.1	89.4	1.7	8.9	0.096	0.502	21.771276	-102.804234
Lim. Edos. Term. Ags. Ppia. Zac.	65.66	0	0																	
T. C. Guadalajara - Zacatecas	90.66	1	0	4352	3.1	71.5	1.3	17.1	3.0	1.7	0.9	1.2	0.2	74.6	1.3	24.1	0.081	0.509	21.652759	-102.963508

2 CARR: Aguascalientes - Zacatecas

CLAVE: 00524

RUTA: MEX-045

AÑO: 2022

LUGAR	ESTACION				CLASIFICACION VEHICULAR EN PORCIENTO										COORDENADAS					
	KM	TE	SC	TDPA	M	A	B	C2	C3	T3S2	T3S3	T3S2R4	OTROS	A	B	C	K'	D	LATITUD	LONGITUD
Aguascalientes	0.00	0	0																	
T. Izq. Pocitos	6.00	1	1	57146	6.3	86.4	1.0	1.4	0.9	0.8	0.3	2.3	0.6	92.7	1.0	6.3	0.081	0.511	21.919856	-102.291714
T. Izq. Pocitos	6.00	1	2	54313	6.3	86.7	1.0	1.3	0.8	0.8	0.2	2.3	0.6	93.0	1.0	6.0	0.075	0.511	21.919878	-102.291917
T. Der. Loreto	9.83	3	1	28289	3.1	87.6	1.8	2.9	1.1	1.9	0.6	0.8	0.2	90.7	1.8	7.5	0.107	0.507	21.972889	-102.289383
T. Der. Loreto	9.83	3	2	29197	3.2	87.3	2.0	3.0	1.1	1.8	0.6	0.8	0.2	90.5	2.0	7.5	0.088	0.507	21.972929	-102.289576
Santa Fé	16.00	1	1	30339	2.4	87.1	2.2	2.9	1.6	2.5	0.6	0.5	0.2	89.5	2.2	8.3	0.089	0.510	22.012659	-102.286933
Santa Fé	16.00	1	2	29048	2.5	87.1	2.2	2.9	1.6	2.4	0.6	0.5	0.2	89.6	2.2	8.2	0.086	0.510	22.013048	-102.286974
Santa Fé	16.00	3	1	22507	1.9	86.9	2.1	3.2	1.7	2.8	0.7	0.5	0.2	88.8	2.1	9.1	0.115	0.517	22.026324	-102.283526
Santa Fé	16.00	3	2	24102	2.0	86.9	2.1	3.1	1.7	2.8	0.7	0.5	0.2	88.9	2.1	9.0	0.093	0.517	22.026362	-102.283651
La Concepción	18.00	3	1	23490	1.8	78.5	3.1	5.8	2.1	5.2	1.4	1.7	0.4	80.3	3.1	16.6	0.095	0.509	22.037367	-102.280962

ZACATECAS

2 CARR: Aguascalientes - Zacatecas

CLAVE: 00524

RUTA: MEX-045

AÑO: 2022

LUGAR	ESTACION				CLASIFICACION VEHICULAR EN PORCIENTO													COORDENADAS		
	KM	TE	SC	TDPA	M	A	B	C2	C3	T3S2	T3S3	T3S2R4	OTROS	A	B	C	K'	D	LATITUD	LONGITUD
La Concepción	18.00	3	2	22628	1.9	78.1	3.0	5.8	2.0	5.4	1.6	1.8	0.4	80.0	3.0	17.0	0.103	0.509	22.037405	-102.281087
T. Libramiento de San Francisco de los Romo Sur	18.80	0	0																	
T. C. Libramiento San Francisco de Los Romo	19.00	3	0	13821	5.4	82.1	1.7	3.5	2.5	1.6	1.3	1.5	0.4	87.5	1.7	10.8	0.084	0.519	22.056532	-102.277226
San Francisco de Los Romo	22.73	1	1	6332	6.2	87.4	0.8	2.8	1.3	0.8	0.2	0.4	0.1	93.6	0.8	5.6	0.097	0.500	22.065033	-102.275397
San Francisco de Los Romo	22.73	1	2	6323	6.1	87.8	0.9	2.8	1.2	0.6	0.3	0.2	0.1	93.9	0.9	5.2	0.098	0.500	22.065062	-102.275522
T. Izq. Libramiento San Francisco de Los Romo	24.80	3	1	17863	1.8	80.4	2.9	3.8	1.8	6.2	1.3	1.4	0.4	82.2	2.9	14.9	0.090	0.507	22.100131	-102.274355
T. Izq. Libramiento San Francisco de Los Romo	24.80	3	2	18389	2.0	80.1	2.7	3.8	1.9	6.2	1.3	1.6	0.4	82.1	2.7	15.2	0.098	0.507	22.100115	-102.274491
T. Der. Estación Pabellón	31.00	1	1	14212	1.8	78.6	3.3	3.5	1.7	7.0	1.5	2.1	0.5	80.4	3.3	16.3	0.082	0.518	22.131636	-102.286306
T. Der. Estación Pabellón	31.00	1	2	15259	1.8	78.7	3.3	3.5	1.7	7.0	1.5	2.0	0.5	80.5	3.3	16.2	0.081	0.518	22.131593	-102.286433
T. Der. Estación Pabellón	31.00	3	1	13299	3.5	73.8	4.6	4.5	1.8	7.5	1.6	2.2	0.5	77.3	4.6	18.1	0.085	0.506	22.151593	-102.294906
T. Der. Estación Pabellón	31.00	3	2	12960	3.5	73.9	4.5	4.4	1.7	7.5	1.6	2.3	0.6	77.4	4.5	18.1	0.091	0.506	22.151541	-102.295043
T. Der. Libramiento Rincón de Romos	35.50	1	1	11932	2.3	79.7	3.6	2.7	1.5	6.3	1.7	1.8	0.4	82.0	3.6	14.4	0.096	0.507	22.173837	-102.295527
T. Der. Libramiento Rincón de Romos	35.50	1	2	11594	2.1	80.1	3.5	2.8	1.4	6.1	1.6	1.9	0.5	82.2	3.5	14.3	0.076	0.507	22.173840	-102.295663
T. Der. Libramiento Rincón de Romos	35.50	3	1	6181	3.5	87.8	2.6	4.7	0.6	0.4	0.2	0.1	0.1	91.3	2.6	6.1	0.088	0.527	22.198964	-102.302840
T. Der. Libramiento Rincón de Romos	35.50	3	2	5541	3.6	88.0	2.8	4.4	0.5	0.3	0.2	0.1	0.1	91.6	2.8	5.6	0.101	0.527	22.198876	-102.302958
Rincón de Romos	40.90	3	0	6709	2.9	93.3	0.7	1.7	0.9	0.2	0.1	0.1	0.1	96.2	0.7	3.1	0.077	0.533	22.237547	-102.317636
T. Libramiento Rincón de Romos Norte	46.00	0	0																	
La Punta	51.00	1	1	8800	2.3	69.5	5.4	4.5	2.2	9.3	2.9	3.1	0.8	71.8	5.4	22.8	0.071	0.515	22.314379	-102.296581
La Punta	51.00	1	2	8274	2.4	69.6	5.7	4.7	1.7	9.1	2.7	3.2	0.9	72.0	5.7	22.3	0.079	0.515	22.314399	-102.296678
La Punta	51.00	3	1	8206	3.4	63.2	6.3	4.7	2.3	13.4	2.2	3.6	0.9	66.6	6.3	27.1	0.075	0.505	22.334325	-102.292568
La Punta	51.00	3	2	8053	3.2	63.2	6.5	4.5	2.6	13.2	2.7	3.2	0.9	66.4	6.5	27.1	0.085	0.505	22.334318	-102.292665
Cosío	56.00	3	1	7657	5.9	62.3	5.7	3.5	2.4	12.6	2.2	4.5	0.9	68.2	5.7	26.1	0.072	0.502	22.372110	-102.298388
Cosío	56.00	3	2	7712	5.8	62.2	5.7	3.7	2.0	12.4	2.9	4.4	0.9	68.0	5.7	26.3	0.080	0.502	22.372085	-102.298486
Ent. Cosío	57.30	0	0																	
Lim. Edos. Term. Ags. Ppia. Zac.	62.67	0	0																	
Luis Moya	65.80	1	0	3864	1.3	74.1	0.9	14.0	4.6	3.1	1.6	0.3	0.1	75.4	0.9	23.7	0.072	0.517	22.422224	-102.259371
Luis Moya	65.80	3	1	3487	1.4	79.2	3.7	9.2	2.2	2.0	1.7	0.4	0.2	80.6	3.7	15.7	0.080	0.511	22.447678	-102.254166
Luis Moya	65.80	3	2	3339	1.2	78.5	3.4	9.9	2.5	1.9	1.9	0.5	0.2	79.7	3.4	16.9	0.085	0.511	22.447634	-102.254271
T. Der. San Luis Potosí	100.00	1	0	6147	1.8	79.3	3.4	10.5	2.2	1.8	0.6	0.3	0.1	81.1	3.4	15.5	0.082	0.502	22.707317	-102.322045
T. Der. San Luis Potosí	100.00	3	1	5804	1.7	69.0	2.9	11.9	5.5	4.9	2.6	1.2	0.3	70.7	2.9	26.4	0.079	0.503	22.727510	-102.336216
T. Der. San Luis Potosí	100.00	3	2	5876	1.7	66.1	3.2	13.3	6.1	5.4	2.6	1.3	0.3	67.8	3.2	29.0	0.074	0.503	22.727715	-102.336662
T. Izq. Aguascalientes (Cuota)	113.50	1	1	9772	1.6	66.3	4.2	15.4	3.3	4.8	2.6	1.4	0.4	67.9	4.2	27.9	0.110	0.524	22.751120	-102.437710
T. Izq. Aguascalientes (Cuota)	113.50	1	2	10739	1.5	67.4	4.1	14.8	3.2	4.7	2.5	1.4	0.4	68.9	4.1	27.0	0.107	0.524	22.751310	-102.438000
T. Izq. Libramiento De Guadalupe Y Zacatecas	118.20	1	1	23388	2.7	79.7	2.4	8.3	2.6	2.8	0.6	0.7	0.2	82.4	2.4	15.2	0.075	0.502	22.750738	-102.491602
T. Izq. Libramiento De Guadalupe Y Zacatecas	118.20	1	2	23247	2.6	79.6	2.4	8.1	2.8	2.8	0.7	0.8	0.2	82.2	2.4	15.4	0.096	0.502	22.750645	-102.492586

ZACATECAS

2 CARR : Aguascalientes - Zacatecas

CLAVE: 00524

RUTA: MEX-045

AÑO: 2022

LUGAR	ESTACION				CLASIFICACION VEHICULAR EN PORCIENTO													COORDENADAS		
	KM	TE	SC	TDPA	M	A	B	C2	C3	T3S2	T3S3	T3S2R4	OTROS	A	B	C	K'	D	LATITUD	LONGITUD
Zacatecas	119.82	0	0																	

3 CARR : Blvd. Guadalupe - Zacatecas - La Escondida

CLAVE: 00544

RUTA: MEX-045

AÑO: 2022

LUGAR	ESTACION				CLASIFICACION VEHICULAR EN PORCIENTO													COORDENADAS		
	KM	TE	SC	TDPA	M	A	B	C2	C3	T3S2	T3S3	T3S2R4	OTROS	A	B	C	K'	D	LATITUD	LONGITUD
T. Izq. Lib. Guadalupe - Zacatecas (Baja)	0.00	3	1	3976	8.8	80.5	2.1	6.1	0.6	1.1	0.3	0.3	0.2	89.3	2.1	8.6	0.090	0.504	22.754350	-102.504790
T. Izq. Lib. Guadalupe - Zacatecas (Alta)	0.00	3	1	32448	1.4	88.7	3.4	5.0	0.6	0.4	0.2	0.2	0.1	90.1	3.4	6.5	0.087	0.533	22.754236	-102.504826
T. Izq. Lib. Guadalupe - Zacatecas (Alta)	0.00	3	2	28107	1.6	88.5	3.4	5.0	0.5	0.5	0.2	0.2	0.1	90.1	3.4	6.5	0.082	0.533	22.754159	-102.505090
T. Izq. Lib. Guadalupe - Zacatecas (Baja)	0.00	3	2	4034	9.2	80.5	1.9	6.2	0.5	1.1	0.2	0.2	0.2	89.7	1.9	8.4	0.111	0.504	22.754060	-102.505111
X. Av. Universidad	7.70	1	1	53383	1.7	91.8	0.3	5.0	0.5	0.4	0.3	0.0	0.0	93.5	0.3	6.2	0.067	0.506	22.765477	-102.559837
X. Av. Universidad	7.70	1	2	51791	1.7	91.8	0.3	5.0	0.5	0.4	0.3	0.0	0.0	93.5	0.3	6.2	0.067	0.506	22.765343	-102.559898
T. C. Zacatecas - Durango (Alta)	14.50	1	1	23223	2.2	88.6	3.0	4.7	0.4	0.5	0.1	0.4	0.1	90.8	3.0	6.2	0.093	0.543	22.774920	-102.610489
T. C. Zacatecas - Durango (Baja)	14.50	1	1	6312	0.8	85.3	4.1	7.6	0.5	1.4	0.1	0.1	0.1	86.1	4.1	9.8	0.121	0.871	22.775079	-102.610876
T. C. Zacatecas - Durango (Baja)	14.50	1	2	938	0.6	84.6	4.1	7.6	0.2	2.6	0.1	0.1	0.1	85.2	4.1	10.7	0.198	0.871	22.774541	-102.610525
T. C. Zacatecas - Durango (Alta)	14.50	1	2	27577	2.2	88.6	3.0	4.7	0.4	0.5	0.1	0.4	0.1	90.8	3.0	6.2	0.070	0.543	22.774771	-102.610823

4 CARR : Carbonera - T. C. (Ent. Morelos - Saltillo)

CLAVE: 00218

RUTA: MEX-062

AÑO: 2022

LUGAR	ESTACION				CLASIFICACION VEHICULAR EN PORCIENTO													COORDENADAS		
	KM	TE	SC	TDPA	M	A	B	C2	C3	T3S2	T3S3	T3S2R4	OTROS	A	B	C	K'	D	LATITUD	LONGITUD
Carbonera	0.00	3	0	3441	7.4	74.7	1.5	11.6	1.8	1.2	0.8	0.9	0.1	82.1	1.5	16.4	0.089	0.503	23.702566	-100.626115
Cedral	18.00	1	0	5204	8.9	83.6	1.1	3.6	0.8	1.0	0.3	0.6	0.1	92.5	1.1	6.4	0.090	0.502	23.794130	-100.698322
Cedral	18.00	3	0	3817	11.6	70.2	2.5	11.0	1.7	1.5	0.5	0.8	0.2	81.8	2.5	15.7	0.111	0.510	23.827880	-100.735138
Lim. Edos. Term. S. L. P. Ppia. Zac.	79.20	0	0																	
T. C. Ent. Morelos - Saltillo	112.00	1	0	1403	2.7	73.1	1.8	17.1	2.7	2.0	0.1	0.4	0.1	75.8	1.8	22.4	0.095	0.532	24.157488	-101.493902

5 CARR : Ent. Cosio - Ent. Cuauhtémoc

CLAVE: 00579

RUTA: MEX-045

AÑO: 2022

LUGAR	ESTACION				CLASIFICACION VEHICULAR EN PORCIENTO													COORDENADAS		
	KM	TE	SC	TDPA	M	A	B	C2	C3	T3S2	T3S3	T3S2R4	OTROS	A	B	C	K'	D	LATITUD	LONGITUD
T. C. Aguascalientes - Zacatecas	57.20	3	0	12236	2.8	64.5	4.9	3.1	1.6	14.5	1.4	6.3	0.9	67.3	4.9	27.8	0.074	0.503	22.392936	-102.306004
Lim. Edos. Term. Ags. Ppia. Zac.	64.00	0	0																	
T. C. Ent. Cuauhtémoc - Ent. Osiris Cuota	70.40	1	0	11983	0.7	58.5	6.5	7.6	4.0	16.5	1.7	3.6	0.9	59.2	6.5	34.3	0.078	0.537	22.480660	-102.353674

ZACATECAS

6 CARR : Ent. La Chicharrona - Cuencamé

CLAVE: 00152

RUTA: MEX-049

AÑO: 2022

LUGAR	ESTACION				CLASIFICACION VEHICULAR EN PORCIENTO										COORDENADAS					
	KM	TE	SC	TDPA	M	A	B	C2	C3	T3S2	T3S3	T3S2R4	OTROS	A	B	C	K'	D	LATITUD	LONGITUD
Ent. La Chicharrona	0.00	3	1	5483	1.5	55.7	6.3	11.2	3.6	10.7	3.6	6.5	0.9	57.2	6.3	36.5	0.069	0.520	23.307136	-102.958717
Ent. La Chicharrona	0.00	3	2	5941	1.7	54.9	5.9	11.9	3.5	11.3	3.5	6.4	0.9	56.6	5.9	37.5	0.066	0.520	23.307130	-102.958913
T. Der. Cañitas de Felipe Pescador	25.86	1	1	4465	1.3	54.6	6.2	14.6	3.1	14.1	3.1	2.4	0.6	55.9	6.2	37.9	0.072	0.516	23.506200	-102.959479
T. Der. Cañitas de Felipe Pescador	25.86	1	2	4195	1.4	55.8	6.0	14.7	3.0	13.2	2.9	2.4	0.6	57.2	6.0	36.8	0.072	0.516	23.506185	-102.959695
T. Libramiento de Río Grande Sur	57.00	0	0																	
Río Grande	60.00	1	0	8821	1.6	58.9	5.1	11.9	2.4	12.5	4.8	2.2	0.6	60.5	5.1	34.4	0.071	0.507	23.788048	-103.015248
Río Grande	60.00	3	0	7169	2.2	49.7	6.6	16.5	3.8	14.0	3.8	2.7	0.7	51.9	6.6	41.5	0.074	0.552	23.881295	-103.097976
T. Libramiento de Río Grande Norte	67.40	0	0																	
T. Der. Nieves	78.00	3	0	8049	1.4	54.2	6.0	11.7	2.9	14.9	5.6	2.5	0.8	55.6	6.0	38.4	0.065	0.551	23.923509	-103.159809
X. C. Juan Aldama - Miguel Auza	124.50	1	0	7305	1.3	49.8	6.4	14.5	3.3	16.9	3.7	3.2	0.9	51.1	6.4	42.5	0.065	0.513	24.272331	-103.400202
X. C. Juan Aldama - Miguel Auza	124.50	3	0	7434	1.2	46.1	5.9	14.2	3.0	16.7	7.1	5.0	0.8	47.3	5.9	46.8	0.076	0.522	24.286905	-103.406265
T. Izq. Miguel Auza	131.20	3	0	5946	1.5	47.5	5.7	14.1	2.9	15.8	6.6	5.0	0.9	49.0	5.7	45.3	0.064	0.544	24.336643	-103.423628
Lim. Edos. Term. Zac. Ppia. Dgo.	134.30	0	0																	
T. Der. Santa Clara	144.00	1	0	5831	3.5	38.1	8.7	5.9	3.3	25.6	5.4	8.5	1.0	41.6	8.7	49.7	0.065	0.501	24.433420	-103.484632
T. Der. Santa Clara	144.00	3	0	5867	4.3	37.6	8.9	7.3	3.9	23.1	5.9	8.0	1.0	41.9	8.9	49.2	0.061	0.512	24.444964	-103.492178
T. C. Libramiento Exterior Cuencamé	196.10	1	0	5748	3.8	36.4	4.8	10.0	2.8	27.1	5.5	8.6	1.0	40.2	4.8	55.0	0.058	0.502	24.827876	-103.682201
Cuencamé	199.10	1	0	1324	8.8	76.2	2.7	5.2	2.7	2.2	1.2	1.0	0.0	85.0	2.7	12.3	0.091	0.515	24.853196	-103.693621

7 CARR : Ent. Morelos - Ent. Noria de Gringos

CLAVE: 00544

RUTA: MEX-045

AÑO: 2022

LUGAR	ESTACION				CLASIFICACION VEHICULAR EN PORCIENTO										COORDENADAS					
	KM	TE	SC	TDPA	M	A	B	C2	C3	T3S2	T3S3	T3S2R4	OTROS	A	B	C	K'	D	LATITUD	LONGITUD
Ent. Morelos	0.00	0	0																	
T. Der. Lib. Noreste de Zacatecas	0.50	1	1	5082	2.2	69.4	5.2	7.2	4.1	5.8	3.6	2.0	0.5	71.6	5.2	23.2	0.072	0.649	22.862103	-102.627253
T. Der. Lib. Noreste de Zacatecas	0.50	1	2	2753	2.5	67.7	5.2	7.8	4.3	6.6	3.3	1.9	0.7	70.2	5.2	24.6	0.083	0.649	22.861812	-102.626517
T. Der. Lib. Noreste de Zacatecas	0.50	3	0	9490	2.1	71.1	2.9	8.2	2.4	7.0	1.9	3.5	0.9	73.2	2.9	23.9	0.071	0.546	22.858431	-102.636552
Ent. Noria de Gringos	2.20	0	0																	

8 CARR : Ent. Morelos - Saltillo

CLAVE: 00149

RUTA: MEX-054

AÑO: 2022

LUGAR	ESTACION				CLASIFICACION VEHICULAR EN PORCIENTO										COORDENADAS					
	KM	TE	SC	TDPA	M	A	B	C2	C3	T3S2	T3S3	T3S2R4	OTROS	A	B	C	K'	D	LATITUD	LONGITUD
T. C. Zacatecas - Durango	0.00	3	1	4949	1.9	73.6	3.8	8.6	2.4	5.5	1.9	1.8	0.5	75.5	3.8	20.7	0.073	0.526	22.869270	-102.619344
T. C. Zacatecas - Durango	0.00	3	2	4456	1.9	73.7	3.8	8.6	2.4	5.5	1.9	1.6	0.6	75.6	3.8	20.6	0.076	0.526	22.869326	-102.619430
T. Der. Sta. Mónica	11.00	1	1	4408	1.1	53.6	3.7	19.6	2.0	17.0	1.0	1.6	0.4	54.7	3.7	41.6	0.077	0.515	22.937465	-102.570161



ZACATECAS

8 CARR: Ent. Morelos - Saltillo

CLAVE: 00149

RUTA: MEX-054

AÑO: 2022

LUGAR	ESTACION				CLASIFICACION VEHICULAR EN PORCIENTO													COORDENADAS		
	KM	TE	SC	TDPA	M	A	B	C2	C3	T3S2	T3S3	T3S2R4	OTROS	A	B	C	K'	D	LATITUD	LONGITUD
T. Der. Sta. Mónica	11.00	1	2	4679	1.1	54.5	3.4	18.4	2.2	17.5	0.9	1.6	0.4	55.6	3.4	41.0	0.071	0.515	22.937175	-102.570469
T. Der. Sta. Mónica	11.00	3	1	3673	1.4	49.8	4.5	20.1	2.6	15.8	1.8	3.1	0.9	51.2	4.5	44.3	0.076	0.527	22.950381	-102.559173
T. Der. Sta. Mónica	11.00	3	2	4085	1.3	50.5	4.3	19.9	2.5	16.0	1.8	3.0	0.7	51.8	4.3	43.9	0.077	0.527	22.949558	-102.560138
T. Izq. Villa de Cos	53.90	1	1	3739	1.5	50.4	4.6	19.7	2.7	15.3	1.8	3.2	0.8	51.9	4.6	43.5	0.076	0.517	23.264517	-102.333584
T. Izq. Villa de Cos	53.90	1	2	4000	1.4	49.3	4.4	20.1	2.5	16.4	1.9	3.2	0.8	50.7	4.4	44.9	0.076	0.517	23.265080	-102.333291
T. Izq. Villa de Cos	53.90	3	1	3158	2.1	52.0	6.9	18.6	2.3	13.5	1.7	2.3	0.6	54.1	6.9	39.0	0.087	0.535	23.276064	-102.325245
T. Izq. Villa de Cos	53.90	3	2	3630	2.1	51.5	7.1	18.7	2.3	13.5	1.8	2.5	0.5	53.6	7.1	39.3	0.074	0.535	23.279382	-102.323038
T. Der. Illescas	58.41	3	1	2924	2.2	49.0	7.1	19.3	2.4	15.3	1.6	2.5	0.6	51.2	7.1	41.7	0.080	0.500	23.291341	-102.314154
T. Der. Illescas	58.41	3	2	2929	2.2	50.3	6.7	18.9	2.6	14.6	1.7	2.4	0.6	52.5	6.7	40.8	0.070	0.500	23.291427	-102.314304
Sierra Vieja	85.50	3	1	2432	2.1	46.8	6.8	20.1	2.2	17.3	1.7	2.4	0.6	48.9	6.8	44.3	0.081	0.521	23.505372	-102.121886
Sierra Vieja	85.50	3	2	2240	1.9	47.3	6.5	20.4	2.1	17.3	1.6	2.3	0.6	49.2	6.5	44.3	0.072	0.521	23.505491	-102.122002
T. Der. Majoma	144.50	3	1	2287	1.7	46.7	5.2	19.2	3.3	15.9	2.9	4.1	1.0	48.4	5.2	46.4	0.094	0.517	23.886802	-101.730045
T. Der. Majoma	144.50	3	2	2444	1.7	47.1	5.2	19.3	3.1	16.1	2.7	3.8	1.0	48.8	5.2	46.0	0.070	0.517	23.886910	-101.730175
T. Der. San Tiburcio	185.25	1	1	2386	1.8	48.3	5.8	18.3	1.6	11.6	4.6	7.1	0.9	50.1	5.8	44.1	0.073	0.503	24.155302	-101.497515
T. Der. San Tiburcio	185.25	1	2	2357	1.9	48.3	5.5	17.9	1.6	12.1	4.4	7.4	0.9	50.2	5.5	44.3	0.074	0.503	24.155203	-101.497385
T. Der. San Tiburcio	185.25	3	1	2513	3.1	52.1	6.5	17.5	2.8	9.4	2.5	5.1	1.0	55.2	6.5	38.3	0.090	0.528	24.162483	-101.492168
T. Der. San Tiburcio	185.25	3	2	2812	3.0	51.1	6.9	18.0	3.1	10.1	2.0	4.8	1.0	54.1	6.9	39.0	0.072	0.528	24.162405	-101.492431
T. Izq. Concepción del Oro	240.00	1	1	3489	2.8	49.5	5.3	24.4	3.1	10.0	1.7	2.6	0.6	52.3	5.3	42.4	0.087	0.530	24.611992	-101.369597
T. Izq. Concepción del Oro	240.00	1	2	3099	2.7	50.0	4.9	24.1	2.9	10.4	1.9	2.5	0.6	52.7	4.9	42.4	0.081	0.530	24.611694	-101.369325
T. Izq. Concepción del Oro	240.00	3	1	3627	1.6	51.5	5.1	13.8	3.8	18.2	2.4	2.9	0.7	53.1	5.1	41.8	0.084	0.523	24.647841	-101.349716
T. Izq. Concepción del Oro	240.00	3	2	3311	1.8	51.6	5.4	13.6	3.5	17.9	2.3	3.2	0.7	53.4	5.4	41.2	0.064	0.523	24.647779	-101.348497
Lim. Edos. Term. Zac. Ppia. Coah.	266.50	0	0																	
Agua Nueva	322.00	1	0	6790	3.6	63.4	3.6	3.6	2.0	16.1	2.3	4.5	0.9	67.0	3.6	29.4	0.076	0.540	25.178270	-101.094881
T. Der. La Trinidad	333.00	3	1	9235	0.8	83.5	5.3	6.6	1.3	2.0	0.3	0.1	0.1	84.3	5.3	10.4	0.107	0.508	25.282240	-101.087371
T. Der. La Trinidad	333.00	3	2	9521	0.9	82.2	5.7	6.9	1.4	2.4	0.3	0.1	0.1	83.1	5.7	11.2	0.114	0.508	25.282266	-101.087451
X. C. Libramiento de Saltillo	348.00	1	1	20571	1.0	88.7	2.6	5.6	0.7	0.9	0.1	0.3	0.1	89.7	2.6	7.7	0.089	0.512	25.366636	-101.015932
X. C. Libramiento de Saltillo	348.00	1	2	21543	1.0	88.8	2.5	5.4	0.8	1.0	0.1	0.3	0.1	89.8	2.5	7.7	0.073	0.512	25.366688	-101.016092
Saltillo	354.00	1	1	17001	1.7	90.8	1.5	4.5	0.5	0.4	0.2	0.2	0.2	92.5	1.5	6.0	0.090	0.530	25.387847	-101.006228
Saltillo	354.00	1	2	15075	1.5	90.5	1.6	4.9	0.5	0.4	0.2	0.2	0.2	92.0	1.6	6.4	0.098	0.530	25.387908	-101.006318

9 CARR: Ent. Rivier - San Marcos

CLAVE: 00285

RUTA: MEX-066

AÑO: 2022

LUGAR	ESTACION				CLASIFICACION VEHICULAR EN PORCIENTO													COORDENADAS		
	KM	TE	SC	TDPA	M	A	B	C2	C3	T3S2	T3S3	T3S2R4	OTROS	A	B	C	K'	D	LATITUD	LONGITUD
T. C. Aguascalientes - Zacatecas	0.00	3	1	9704	3.9	87.5	1.1	3.6	2.0	1.1	0.4	0.2	0.2	91.4	1.1	7.5	0.090	0.506	21.962451	-102.287549

ZACATECAS

9 CARR: Ent. Rivier - San Marcos

CLAVE: 00285

RUTA: MEX-066

AÑO: 2022

LUGAR	ESTACION				CLASIFICACION VEHICULAR EN PORCIENTO										COORDENADAS					
	KM	TE	SC	TDPA	M	A	B	C2	C3	T3S2	T3S3	T3S2R4	OTROS	A	B	C	K'	D	LATITUD	LONGITUD
T. C. Aguascalientes - Zacatecas	0.00	3	2	9485	3.8	87.6	1.1	3.6	2.0	1.1	0.5	0.2	0.1	91.4	1.1	7.5	0.086	0.506	21.962316	-102.287571
T. Izq. El Tepetate	10.50	3	0	11109	4.6	87.4	1.3	3.7	1.6	0.6	0.4	0.3	0.1	92.0	1.3	6.7	0.093	0.500	21.999578	-102.193065
T. Der. Jilotepec	23.60	3	0	9818	3.8	88.1	1.7	3.7	1.5	0.6	0.3	0.2	0.1	91.9	1.7	6.4	0.084	0.501	22.058484	-102.096814
Villa Juárez	30.00	3	0	10879	4.1	88.4	1.5	3.9	1.2	0.6	0.2	0.1	0.0	92.5	1.5	6.0	0.091	0.504	22.108750	-102.058445
Ciénega Grande	41.50	1	0	9544	9.3	81.4	1.8	4.9	1.3	0.7	0.1	0.3	0.2	90.7	1.8	7.5	0.080	0.506	22.179481	-102.022736
Ciénega Grande	41.50	3	0	7408	5.0	84.0	2.1	5.7	1.6	0.8	0.2	0.1	0.5	89.0	2.1	8.9	0.094	0.518	22.203208	-102.013412
Lim. Edos. Term. Ags. Ppia. Zac.	45.75	0	0																	
San Marcos	55.34	1	0	10311	15.0	77.2	1.5	2.3	1.3	1.2	1.1	0.3	0.1	92.2	1.5	6.3	0.085	0.545	22.276736	-101.956084

10 CARR: Ent. Tesistán - Ent. Malpaso

CLAVE: 00584

RUTA: MEX-023

AÑO: 2022

LUGAR	ESTACION				CLASIFICACION VEHICULAR EN PORCIENTO										COORDENADAS					
	KM	TE	SC	TDPA	M	A	B	C2	C3	T3S2	T3S3	T3S2R4	OTROS	A	B	C	K'	D	LATITUD	LONGITUD
T. C. Guadalajara - Tesistán	0.00	3	1	21036	4.9	88.2	0.6	4.5	0.8	0.4	0.3	0.2	0.1	93.1	0.6	6.3	0.084	0.518	20.796518	-103.459033
T. C. Guadalajara - Tesistán	0.00	3	2	22566	5.1	87.2	0.7	4.7	1.0	0.5	0.5	0.2	0.1	92.3	0.7	7.0	0.097	0.518	20.796546	-103.459110
Lim. Edos. Term. Jal. Ppia. Zac.	42.00	0	0																	
García de La Cadena	54.00	1	0	3778	2.2	82.3	1.9	8.6	1.6	1.2	2.0	0.2	0.0	84.5	1.9	13.6	0.124	0.516	21.193091	-103.464559
Tlaltenango de Sánchez Román	147.50	3	0	7091	3.3	78.0	1.5	9.7	1.8	3.0	1.8	0.8	0.1	81.3	1.5	17.2	0.088	0.511	21.801000	-103.298802
Momax	165.00	3	0	3498	2.3	82.1	1.9	8.0	1.5	1.4	1.8	0.9	0.1	84.4	1.9	13.7	0.092	0.523	21.934905	-103.308108
Lim. Edos. Term. Zac. Ppia. Jal.	171.80	0	0																	
Colotlán	175.00	1	0	5126	2.2	81.8	1.9	9.5	0.7	1.9	1.0	0.8	0.2	84.0	1.9	14.1	0.090	0.521	22.089256	-103.272072
Lim. Edos. Term. Jal. Ppia. Zac.	209.90	0	0																	
Lim. Edos. Term. Zac. Ppia. Jal.	214.80	0	0																	
Lim. Edos. Term. Jal. Ppia. Zac.	223.95	0	0																	
Tepetongo	235.00	3	0	5773	3.4	84.5	1.4	7.5	0.7	0.9	0.9	0.6	0.1	87.9	1.4	10.7	0.089	0.528	22.466591	-103.141836
Jerez de García Salinas	249.00	1	1	4259	1.5	87.2	0.7	7.6	0.7	0.7	0.7	0.7	0.2	88.7	0.7	10.6	0.126	0.505	22.600685	-103.017429
Jerez de García Salinas	249.00	1	2	4175	1.4	87.1	0.6	7.6	0.8	0.8	0.7	0.8	0.2	88.5	0.6	10.9	0.094	0.505	22.600730	-103.017513
T. C. Guadalajara - Zacatecas	275.00	1	1	4387	1.8	85.4	1.4	7.6	0.9	1.3	0.8	0.5	0.3	87.2	1.4	11.4	0.096	0.509	22.617225	-102.785251
T. C. Guadalajara - Zacatecas	275.00	1	2	4548	1.4	85.7	1.5	7.1	1.0	1.8	0.7	0.5	0.3	87.1	1.5	11.4	0.091	0.509	22.617298	-102.785223

11 CARR: Fresnillo - Valparaíso

CLAVE: 32547

RUTA: MEX-044

AÑO: 2022

LUGAR	ESTACION				CLASIFICACION VEHICULAR EN PORCIENTO										COORDENADAS					
	KM	TE	SC	TDPA	M	A	B	C2	C3	T3S2	T3S3	T3S2R4	OTROS	A	B	C	K'	D	LATITUD	LONGITUD
Fresnillo	0.00	3	0	8002	3.7	73.7	2.2	12.9	2.4	3.3	1.4	0.3	0.1	77.4	2.2	20.4	0.100	0.508	23.173995	-102.919154

ZACATECAS

11 CARR: Fresnillo - Valparaíso

CLAVE: 32547

RUTA: MEX-044

AÑO: 2022

LUGAR	ESTACION				CLASIFICACION VEHICULAR EN PORCIENTO										COORDENADAS					
	KM	TE	SC	TDPA	M	A	B	C2	C3	T3S2	T3S3	T3S2R4	OTROS	A	B	C	K'	D	LATITUD	LONGITUD
T. Izq. Guanajuato	24.50	1	0	2427	1.4	76.3	2.3	17.2	1.5	0.8	0.3	0.2	0.0	77.7	2.3	20.0	0.094	0.541	23.106791	-103.079973
T. Izq. Sombreretillo	45.00	3	0	1993	1.1	77.3	2.2	16.6	1.5	0.9	0.4	0.0	0.0	78.4	2.2	19.4	0.090	0.504	22.997247	-103.213655
T. Izq. San José de Llanetes	55.00	3	0	1506	2.5	74.2	2.4	13.8	2.1	3.6	1.4	0.0	0.0	76.7	2.4	20.9	0.091	0.526	22.915508	-103.301858
T. Izq. Lobatos	71.00	3	0	2217	2.1	78.9	2.2	11.4	1.8	2.8	0.8	0.0	0.0	81.0	2.2	16.8	0.097	0.537	22.825946	-103.441578
Valparaíso	90.00	1	0	2421	1.1	78.1	1.8	16.8	1.2	0.7	0.3	0.0	0.0	79.2	1.8	19.0	0.109	0.550	22.797140	-103.542942

12 CARR: Guadalajara - Zacatecas

CLAVE: 00150

RUTA: MEX-054

AÑO: 2022

LUGAR	ESTACION				CLASIFICACION VEHICULAR EN PORCIENTO										COORDENADAS					
	KM	TE	SC	TDPA	M	A	B	C2	C3	T3S2	T3S3	T3S2R4	OTROS	A	B	C	K'	D	LATITUD	LONGITUD
Guadalajara	0.00	0	0																	
X. Periférico de Guadalajara	6.19	3	1	3920	7.7	84.4	1.3	3.2	1.2	1.1	0.6	0.3	0.2	92.1	1.3	6.6	0.111	0.537	20.768752	-103.339994
X. Periférico de Guadalajara	6.19	3	2	4550	7.6	84.1	1.4	3.1	1.3	1.3	0.6	0.3	0.3	91.7	1.4	6.9	0.115	0.537	20.768717	-103.340081
T. Der. Ixtlahuacán del Río	49.46	3	0	4677	5.0	85.6	1.8	3.7	1.3	1.8	0.4	0.3	0.1	90.6	1.8	7.6	0.088	0.506	20.870924	-103.237051
Lim. Edos. Term. Jal. Ppia. Zac.	76.49	0	0																	
T. Izq. Moyahua	106.43	1	0	2332	3.3	76.1	3.5	9.1	2.5	2.8	2.0	0.7	0.0	79.4	3.5	17.1	0.086	0.533	21.251290	-103.161694
Apozol	129.28	1	0	4292	2.8	78.6	1.5	8.1	2.6	3.7	1.4	1.1	0.2	81.4	1.5	17.1	0.098	0.511	21.448688	-103.093466
Jalpa	159.39	1	0	4989	1.9	81.4	2.8	7.4	1.6	2.3	0.9	1.4	0.3	83.3	2.8	13.9	0.093	0.524	21.617299	-103.003098
Tabasco	189.40	1	0	3546	1.3	80.6	2.0	8.7	1.6	3.2	0.8	1.5	0.3	81.9	2.0	16.1	0.095	0.516	21.843552	-102.933659
Tabasco	189.40	3	0	4228	2.1	79.8	1.7	10.7	2.4	1.9	0.9	0.4	0.1	81.9	1.7	16.4	0.079	0.506	21.886388	-102.906338
Villanueva	255.70	3	0	4422	1.9	83.7	2.6	4.7	2.2	2.4	1.0	0.8	0.7	85.6	2.6	11.8	0.091	0.504	22.376297	-102.881403
T. Izq. Jerez de García Salinas	289.13	1	1	2142	1.2	83.1	2.0	6.7	1.8	3.3	1.2	0.6	0.1	84.3	2.0	13.7	0.112	0.521	22.601338	-102.764364
T. Izq. Jerez de García Salinas	289.13	1	2	2330	1.0	82.7	2.2	7.1	2.0	3.4	0.9	0.6	0.1	83.7	2.2	14.1	0.127	0.521	22.601387	-102.764454
T. Izq. Jerez de García Salinas	289.13	3	1	6053	1.7	88.7	2.0	2.8	1.7	1.6	0.7	0.4	0.4	90.4	2.0	7.6	0.096	0.502	22.627155	-102.749995
T. Izq. Jerez de García Salinas	289.13	3	2	5993	1.2	86.7	2.3	3.7	2.0	2.2	1.1	0.4	0.4	87.9	2.3	9.8	0.091	0.502	22.627196	-102.750077
T. C. Zacatecas - Durango	311.83	1	1	11791	2.2	81.6	3.1	7.0	1.8	2.2	1.6	0.4	0.1	83.8	3.1	13.1	0.095	0.508	22.771646	-102.630660
T. C. Zacatecas - Durango	311.83	1	2	12184	2.4	83.5	3.3	6.9	1.9	0.4	0.9	0.5	0.2	85.9	3.3	10.8	0.091	0.508	22.771755	-102.630707

13 CARR: Jerez - Fresnillo

CLAVE: 32542

RUTA: MEX-023

AÑO: 2022

LUGAR	ESTACION				CLASIFICACION VEHICULAR EN PORCIENTO										COORDENADAS					
	KM	TE	SC	TDPA	M	A	B	C2	C3	T3S2	T3S3	T3S2R4	OTROS	A	B	C	K'	D	LATITUD	LONGITUD
Jerez	0.00	3	0	2317	2.9	84.8	1.6	6.7	1.6	1.7	0.5	0.1	0.1	87.7	1.6	10.7	0.098	0.510	22.683227	-103.015880
T. C. Ent. Fresnillo - Valparaíso	60.00	1	0	4552	3.8	81.3	1.0	7.7	3.0	2.2	0.8	0.1	0.1	85.1	1.0	13.9	0.100	0.517	23.156051	-102.881980

ZACATECAS

14 CARR : Libramiento de Guadalupe - Zacatecas

CLAVE: 32582

RUTA: MEX-045

AÑO: 2022

LUGAR	ESTACION				CLASIFICACION VEHICULAR EN PORCIENTO										COORDENADAS					
	KM	TE	SC	TDPA	M	A	B	C2	C3	T3S2	T3S3	T3S2R4	OTROS	A	B	C	K'	D	LATITUD	LONGITUD
T. C. Aguascalientes - Zacatecas (Alta)	0.00	3	1	17415	1.7	73.6	3.8	9.6	2.6	4.1	2.6	1.6	0.4	75.3	3.8	20.9	0.080	0.518	22.740883	-102.504181
T. C. Aguascalientes - Zacatecas (Baja)	0.00	3	1	6497	5.0	83.5	1.0	7.3	1.0	1.3	0.5	0.3	0.1	88.5	1.0	10.5	0.099	0.550	22.740960	-102.504410
T. C. Aguascalientes - Zacatecas (Baja)	0.00	3	2	5326	4.9	83.2	1.1	7.4	1.1	1.3	0.5	0.4	0.1	88.1	1.1	10.8	0.087	0.550	22.739430	-102.507410
T. C. Aguascalientes - Zacatecas (Alta)	0.00	3	2	16235	1.6	73.6	3.8	9.6	2.6	4.2	2.6	1.6	0.4	75.2	3.8	21.0	0.088	0.518	22.739714	-102.507420
X. C. Cieneguillas - Zacatecas (Alta)	13.00	3	1	18751	7.7	74.1	2.5	5.5	2.9	3.9	1.4	1.6	0.4	81.8	2.5	15.7	0.100	0.513	22.757070	-102.598398
X. C. Cieneguillas - Zacatecas (Alta)	13.00	3	2	17796	7.7	74.0	2.6	5.5	2.9	3.9	1.4	1.6	0.4	81.7	2.6	15.7	0.114	0.513	22.756765	-102.596729
T. C. Zacatecas - Durango	17.50	1	1	14706	1.2	81.2	2.5	6.7	1.3	4.3	1.5	1.0	0.3	82.4	2.5	15.1	0.111	0.511	22.772780	-102.617190
T. C. Zacatecas - Durango	17.50	1	2	14095	1.3	80.0	2.8	7.0	1.4	4.5	1.6	1.1	0.3	81.3	2.8	15.9	0.094	0.511	22.772544	-102.616401

15 CARR : Libramiento de Río Grande

CLAVE:

RUTA: MEX-049

AÑO: 2022

LUGAR	ESTACION				CLASIFICACION VEHICULAR EN PORCIENTO										COORDENADAS					
	KM	TE	SC	TDPA	M	A	B	C2	C3	T3S2	T3S3	T3S2R4	OTROS	A	B	C	K'	D	LATITUD	LONGITUD
T. C. La Chicharrona - Cuencamé (Sur)	55.90	3	0	7878	3.1	47.7	3.6	10.8	2.4	18.4	5.2	7.9	0.9	50.8	3.6	45.6	0.070	0.527	23.806914	-103.013643
T. C. La Chicharrona - Cuencamé (Norte)	68.59	1	0	8116	2.9	52.1	4.5	11.2	6.1	16.3	2.5	3.5	0.9	55.0	4.5	40.5	0.061	0.530	23.863160	-103.071355

16 CARR : Libramiento de Sombrerete

CLAVE:

RUTA: MEX-045

AÑO: 2022

LUGAR	ESTACION				CLASIFICACION VEHICULAR EN PORCIENTO										COORDENADAS					
	KM	TE	SC	TDPA	M	A	B	C2	C3	T3S2	T3S3	T3S2R4	OTROS	A	B	C	K'	D	LATITUD	LONGITUD
T. C. Zacatecas - Durango Oriente	158.00	0	0																	
T. C. Zacatecas - Durango Poniente	163.50	1	0	3801	2.4	70.9	3.0	6.2	3.3	10.6	1.7	1.6	0.3	73.3	3.0	23.7	0.081	0.510	23.656036	-103.650670

17 CARR : Libramiento de Tabasco

CLAVE:

RUTA: MEX-054

AÑO: 2022

LUGAR	ESTACION				CLASIFICACION VEHICULAR EN PORCIENTO										COORDENADAS					
	KM	TE	SC	TDPA	M	A	B	C2	C3	T3S2	T3S3	T3S2R4	OTROS	A	B	C	K'	D	LATITUD	LONGITUD
T. C. Guadalajara - Zacatecas Sur	185.00	0	0																	
T. C. Guadalajara - Zacatecas Norte	190.10	1	0	3500	2.0	76.6	1.4	12.5	2.1	2.6	0.8	1.7	0.3	78.6	1.4	20.0	0.087	0.525	21.878534	-102.911058

18 CARR : Providencia - Luis Moya

CLAVE: 00112

RUTA: MEX-071

AÑO: 2022

LUGAR	ESTACION				CLASIFICACION VEHICULAR EN PORCIENTO										COORDENADAS					
	KM	TE	SC	TDPA	M	A	B	C2	C3	T3S2	T3S3	T3S2R4	OTROS	A	B	C	K'	D	LATITUD	LONGITUD
T. C. Aguascalientes - Zacatecas	0.00	3	0	5452	5.1	78.0	1.5	2.9	4.8	2.0	2.3	2.7	0.7	83.1	1.5	15.4	0.076	0.538	22.060668	-102.272421

ZACATECAS

18 CARR: Providencia - Luis Moya

CLAVE: 00112

RUTA: MEX-071

AÑO: 2022

LUGAR	ESTACION				CLASIFICACION VEHICULAR EN PORCIENTO													COORDENADAS		
	KM	TE	SC	TDPA	M	A	B	C2	C3	T3S2	T3S3	T3S2R4	OTROS	A	B	C	K'	D	LATITUD	LONGITUD
T. Izq. Pabellón de Arteaga	12.10	1	0	6398	3.5	81.3	1.7	3.5	2.8	1.4	2.2	2.9	0.7	84.8	1.7	13.5	0.073	0.505	22.144826	-102.251383
T. Der. Villa Juárez	14.90	3	0	7525	4.3	83.8	2.0	2.8	1.7	1.0	1.7	2.1	0.6	88.1	2.0	9.9	0.079	0.507	22.176239	-102.245451
X. C. Rincón de Romos - Ciénega Grande	21.22	3	0	6394	4.4	82.4	1.8	3.9	2.9	1.5	1.7	1.2	0.2	86.8	1.8	11.4	0.072	0.505	22.230891	-102.241397
X. C. La Punta - Mesillas	30.35	3	0	3656	5.4	81.2	1.8	3.6	1.5	2.7	2.0	1.5	0.3	86.6	1.8	11.6	0.069	0.502	22.317895	-102.233733
San Jacinto	34.25	3	0	2788	9.7	75.6	2.1	4.0	1.6	2.9	2.3	1.5	0.3	85.3	2.1	12.6	0.078	0.512	22.353070	-102.232534
Lim. Edos. Term. Ags. Ppia. Zac.	37.50	0	0																	
Luis Moya	43.52	1	0	5016	2.3	73.9	0.5	16.5	2.0	2.7	1.5	0.5	0.1	76.2	0.5	23.3	0.075	0.526	22.423432	-102.246303

19 CARR: Ramal a Aeropuerto Zacatecas

CLAVE: 32546

RUTA: MEX-045

AÑO: 2022

LUGAR	ESTACION				CLASIFICACION VEHICULAR EN PORCIENTO													COORDENADAS		
	KM	TE	SC	TDPA	M	A	B	C2	C3	T3S2	T3S3	T3S2R4	OTROS	A	B	C	K'	D	LATITUD	LONGITUD
T. C. Zacatecas - Durango	0.00	3	1	2406	2.7	78.8	2.7	10.8	2.5	0.8	0.2	0.9	0.6	81.5	2.7	15.8	0.114	0.518	22.909654	-102.674142
T. C. Zacatecas - Durango	0.00	3	2	2589	2.7	79.2	2.5	10.5	2.5	0.8	0.2	0.9	0.7	81.9	2.5	15.6	0.145	0.518	22.909612	-102.674058
Aeropuerto	1.95	0	0																	

20 CARR: Ramal a Concepción del Oro

CLAVE: 32565

RUTA: MEX-054

AÑO: 2022

LUGAR	ESTACION				CLASIFICACION VEHICULAR EN PORCIENTO													COORDENADAS		
	KM	TE	SC	TDPA	M	A	B	C2	C3	T3S2	T3S3	T3S2R4	OTROS	A	B	C	K'	D	LATITUD	LONGITUD
T. C. Ent. Morelos - Saltillo	0.00	3	0	5846	6.3	56.5	3.8	11.2	7.1	8.7	2.5	3.1	0.8	62.8	3.8	33.4	0.083	0.503	24.620320	-101.403722
Concepción del Oro	3.20	0	0																	

21 CARR: Ramal a Francisco Murguía (Nieves)

CLAVE: 32541

RUTA: MEX-049

AÑO: 2022

LUGAR	ESTACION				CLASIFICACION VEHICULAR EN PORCIENTO													COORDENADAS		
	KM	TE	SC	TDPA	M	A	B	C2	C3	T3S2	T3S3	T3S2R4	OTROS	A	B	C	K'	D	LATITUD	LONGITUD
T. C. Ent. La Chicharrona - Cuencamé	0.00	3	0	1568	0.7	77.0	1.3	18.4	0.7	1.1	0.4	0.4	0.0	77.7	1.3	21.0	0.101	0.512	23.924905	-103.155693
Francisco Murguía (Nieves)	17.40	0	0																	

22 CARR: Ramal a Gral. Pánfilo Natera

CLAVE: 32559

RUTA: MEX-049

AÑO: 2022

LUGAR	ESTACION				CLASIFICACION VEHICULAR EN PORCIENTO													COORDENADAS		
	KM	TE	SC	TDPA	M	A	B	C2	C3	T3S2	T3S3	T3S2R4	OTROS	A	B	C	K'	D	LATITUD	LONGITUD
T. C. San Luis Potosí - Ent. Arcinas	0.00	3	1	2639	7.4	77.4	2.0	12.7	0.2	0.2	0.1	0.0	0.0	84.8	2.0	13.2	0.090	0.500	22.673715	-102.107842

ZACATECAS

22 CARR: Ramal a Gral. Pánfilo Natera

CLAVE: 32559

RUTA: MEX-049

AÑO: 2022

LUGAR	ESTACION				CLASIFICACION VEHICULAR EN PORCIENTO													COORDENADAS		
	KM	TE	SC	TDPA	M	A	B	C2	C3	T3S2	T3S3	T3S2R4	OTROS	A	B	C	K'	D	LATITUD	LONGITUD
T. C. San Luis Potosí - Ent. Arcinas	0.00	3	2	2635	7.2	76.5	2.5	13.3	0.2	0.2	0.1	0.0	0.0	83.7	2.5	13.8	0.093	0.500	22.673696	-102.107741
Gral. Pánfilo Natera	1.50	0	0																	

23 CARR: Ramal a Ruinas de Chicomostoc

CLAVE: 00544

RUTA: MEX-045

AÑO: 2022

LUGAR	ESTACION				CLASIFICACION VEHICULAR EN PORCIENTO													COORDENADAS		
	KM	TE	SC	TDPA	M	A	B	C2	C3	T3S2	T3S3	T3S2R4	OTROS	A	B	C	K'	D	LATITUD	LONGITUD
T. C. Guadalajara - Zacatecas	0.00	3	0	89	13.8	76.7	4.1	4.3	1.1	0.0	0.0	0.0	0.0	90.5	4.1	5.4	0.326	0.528	22.456325	-102.826252
Ruinas de Chicomostoc	2.20	0	0																	

24 CARR: Ramal a San Martín

CLAVE: 00544

RUTA: MEX-045

AÑO: 2022

LUGAR	ESTACION				CLASIFICACION VEHICULAR EN PORCIENTO													COORDENADAS		
	KM	TE	SC	TDPA	M	A	B	C2	C3	T3S2	T3S3	T3S2R4	OTROS	A	B	C	K'	D	LATITUD	LONGITUD
T. C. Zacatecas - Durango	0.00	3	0	1355	2.8	79.5	0.7	10.4	4.1	1.5	0.7	0.3	0.0	82.3	0.7	17.0	0.096	0.519	23.691401	-103.718907
San Martín	4.00	0	0																	

25 CARR: Ramal a Villa de Cos

CLAVE: 32564

RUTA: MEX-054

AÑO: 2022

LUGAR	ESTACION				CLASIFICACION VEHICULAR EN PORCIENTO													COORDENADAS		
	KM	TE	SC	TDPA	M	A	B	C2	C3	T3S2	T3S3	T3S2R4	OTROS	A	B	C	K'	D	LATITUD	LONGITUD
T. C. Ent. Morelos - Saltillo	0.00	3	1	2138	4.3	90.9	0.6	2.4	1.1	0.4	0.3	0.0	0.0	95.2	0.6	4.2	0.125	0.537	23.272778	-102.332242
T. C. Ent. Morelos - Saltillo	0.00	3	2	2482	4.5	90.0	0.5	3.0	1.1	0.5	0.3	0.1	0.0	94.5	0.5	5.0	0.141	0.537	23.272733	-102.332318
Villa de Cos	3.30	1	1	3389	4.8	78.9	0.6	13.2	0.8	1.2	0.4	0.0	0.1	83.7	0.6	15.7	0.131	0.525	23.206530	-102.241420
Villa de Cos	3.30	1	2	3072	4.7	78.2	0.6	13.6	0.7	1.5	0.6	0.1	0.0	82.9	0.6	16.5	0.132	0.525	23.286510	-102.241630

26 CARR: San Luis Potosí - Ent. Arcinas

CLAVE: 00134

RUTA: MEX-049

AÑO: 2022

LUGAR	ESTACION				CLASIFICACION VEHICULAR EN PORCIENTO													COORDENADAS		
	KM	TE	SC	TDPA	M	A	B	C2	C3	T3S2	T3S3	T3S2R4	OTROS	A	B	C	K'	D	LATITUD	LONGITUD
T. C. San Luis Potosí - Matehuala	0.00	0	0																	
T. Izq. Periférico de San Luis Potosí	9.35	3	1	10861	5.5	80.6	2.2	4.8	1.5	2.3	1.5	1.2	0.4	86.1	2.2	11.7	0.091	0.504	22.210141	-101.038569
T. Izq. Periférico de San Luis Potosí	9.35	3	2	11021	4.7	81.3	2.4	4.5	1.5	2.6	1.3	1.2	0.5	86.0	2.4	11.6	0.085	0.504	22.210036	-101.038649
Mexquitic	22.50	1	1	7815	8.5	69.8	2.8	4.2	1.7	7.5	1.7	3.0	0.8	78.3	2.8	18.9	0.102	0.502	22.249086	-101.104884
Mexquitic	22.50	1	2	7750	8.6	69.4	2.5	4.3	1.7	7.8	1.9	3.0	0.8	78.0	2.5	19.5	0.116	0.502	22.249364	-101.105571

ZACATECAS

26 CARR : San Luis Potosí - Ent. Arcinas

CLAVE: 00134

RUTA : MEX-049

AÑO : 2022

LUGAR	ESTACION				CLASIFICACION VEHICULAR EN PORCIENTO													COORDENADAS		
	KM	TE	SC	TDPA	M	A	B	C2	C3	T3S2	T3S3	T3S2R4	OTROS	A	B	C	K'	D	LATITUD	LONGITUD
Mexquitic	22.50	3	1	6200	5.5	69.0	3.6	4.5	2.0	9.0	2.1	3.4	0.9	74.5	3.6	21.9	0.094	0.508	22.256614	-101.126006
Mexquitic	22.50	3	2	6404	5.6	67.9	3.5	4.8	2.1	9.5	2.3	3.4	0.9	73.5	3.5	23.0	0.101	0.508	22.256538	-101.126057
T. Der. Charcas	30.90	1	1	6526	4.6	68.4	3.9	5.0	1.9	9.5	2.2	3.6	0.9	73.0	3.9	23.1	0.092	0.505	22.309489	-101.157522
T. Der. Charcas	30.90	1	2	6401	4.5	67.7	4.0	5.2	1.9	9.8	2.3	3.7	0.9	72.2	4.0	23.8	0.094	0.505	22.309390	-101.157609
T. Der. Charcas	30.90	3	1	5115	5.0	69.0	4.1	3.8	2.9	8.4	1.9	4.0	0.9	74.0	4.1	21.9	0.098	0.519	22.318642	-101.170984
T. Der. Charcas	30.90	3	2	4746	5.0	67.9	4.5	4.0	3.0	8.5	2.2	4.0	0.9	72.9	4.5	22.6	0.089	0.519	22.318542	-101.171046
Lim. Edos. Term. S. L. P. Ppia. Zac.	55.13	0	0																	
Lim. Edos. Term. Zac. Ppia. S. L. P.	89.30	0	0																	
T. Der. Salinas	99.00	1	1	3667	5.5	59.7	5.5	4.5	2.4	12.1	3.9	5.6	0.8	65.2	5.5	29.3	0.068	0.517	22.602857	-101.705629
T. Der. Salinas	99.00	1	2	3420	5.6	59.6	5.1	4.9	2.7	11.9	3.5	5.9	0.8	65.2	5.1	29.7	0.079	0.517	22.602744	-101.705683
T. Der. Salinas	99.00	3	1	3891	5.4	57.8	5.3	4.4	1.6	15.3	3.4	5.9	0.9	63.2	5.3	31.5	0.088	0.507	22.619157	-101.736813
T. Der. Salinas	99.00	3	2	4006	5.9	56.4	5.0	4.4	2.1	16.5	3.2	5.7	0.8	62.3	5.0	32.7	0.089	0.507	22.619049	-101.736825
Lim. Edos. Term. S. L. P. Ppia. Zac.	122.47	0	0																	
T. Izq. Pánfilo Natera	139.00	1	1	3492	1.8	57.5	4.6	11.1	3.6	11.8	3.5	5.1	1.0	59.3	4.6	36.1	0.076	0.513	22.678805	-102.096573
T. Izq. Pánfilo Natera	139.00	1	2	3318	1.7	57.9	4.3	10.7	3.6	12.1	3.7	5.0	1.0	59.6	4.3	36.1	0.077	0.513	22.678616	-102.096597
Ent. Arcinas	162.98	1	1	4652	1.8	57.8	4.6	10.8	3.3	12.0	3.6	5.2	0.9	59.6	4.6	35.8	0.080	0.545	22.719962	-102.325328
Ent. Arcinas	162.98	1	2	3889	1.6	58.0	4.1	10.1	3.8	12.5	3.5	5.4	1.0	59.6	4.1	36.3	0.071	0.545	22.719735	-102.325377

27 CARR : San Luis Potosí - Lagos de Moreno

CLAVE: 00133

RUTA : MEX-070-080

AÑO : 2022

LUGAR	ESTACION				CLASIFICACION VEHICULAR EN PORCIENTO													COORDENADAS		
	KM	TE	SC	TDPA	M	A	B	C2	C3	T3S2	T3S3	T3S2R4	OTROS	A	B	C	K'	D	LATITUD	LONGITUD
San Luis Potosí	0.00	3	1	19921	1.9	94.6	0.3	1.4	0.3	0.4	0.4	0.4	0.3	96.5	0.3	3.2	0.089	0.513	22.133841	-101.031014
San Luis Potosí	0.00	3	2	21016	1.8	94.5	0.4	1.6	0.3	0.4	0.8	0.1	0.1	96.3	0.4	3.3	0.078	0.513	22.133540	-101.031269
X. Periférico de San Luis Potosí	8.41	3	0	10786	3.7	81.1	1.3	5.0	2.6	4.1	1.3	0.5	0.4	84.8	1.3	13.9	0.078	0.522	22.127600	-101.045553
El Tepetate	41.90	1	0	9085	2.7	66.9	3.0	6.5	3.1	9.4	3.4	4.1	0.9	69.6	3.0	27.4	0.070	0.501	22.025523	-101.224496
El Tepetate	41.90	3	0	8279	3.4	64.5	3.5	6.4	2.9	10.4	3.0	5.0	0.9	67.9	3.5	28.6	0.078	0.506	22.007160	-101.250094
Villa de Arriaga	61.90	3	0	4758	3.0	65.4	3.9	6.6	3.4	10.4	4.0	2.8	0.5	68.4	3.9	27.7	0.069	0.504	21.896712	-101.410213
Lim. Edos. Term. S. L. P. Ppia. Zac.	70.23	0	0																	
Lim. Edos. Term. Zac. Ppia. Jal.	82.94	0	0																	
Ojuelos de Jalisco	83.20	1	0	5947	4.1	73.8	3.4	6.1	2.0	6.5	2.6	1.3	0.2	77.9	3.4	18.7	0.088	0.516	21.875443	-101.573256
Ojuelos de Jalisco	83.20	3	0	3195	5.5	75.3	3.3	4.8	1.4	5.3	2.5	1.7	0.2	80.8	3.3	15.9	0.069	0.507	21.854465	-101.593857
X. C. Lagos de Moreno - San Luis Potosí (Cuota)	140.00	1	0	4332	5.4	70.2	3.8	6.5	3.0	7.0	2.0	1.7	0.4	75.6	3.8	20.6	0.107	0.519	21.447531	-101.805888
X. C. León - Aguascalientes	146.90	1	1	6906	5.2	64.8	3.9	4.5	2.6	12.0	2.2	4.6	0.2	70.0	3.9	26.1	0.108	0.503	21.375770	-101.894355
X. C. León - Aguascalientes	146.90	1	2	6820	5.3	64.6	4.0	4.5	2.4	12.0	2.1	4.9	0.2	69.9	4.0	26.1	0.098	0.503	21.375672	-101.894289

ZACATECAS

27 CARR : San Luis Potosi - Lagos de Moreno

CLAVE: 00133

RUTA : MEX-070-080

AÑO : 2022

LUGAR	ESTACION				CLASIFICACION VEHICULAR EN PORCIENTO													COORDENADAS		
	KM	TE	SC	TDPA	M	A	B	C2	C3	T3S2	T3S3	T3S2R4	OTROS	A	B	C	K'	D	LATITUD	LONGITUD
Lagos de Moreno	150.00	0	0																	

28 CARR : Zacatecas - Durango

CLAVE: 00544

RUTA : MEX-045

AÑO : 2022

LUGAR	ESTACION				CLASIFICACION VEHICULAR EN PORCIENTO													COORDENADAS		
	KM	TE	SC	TDPA	M	A	B	C2	C3	T3S2	T3S3	T3S2R4	OTROS	A	B	C	K'	D	LATITUD	LONGITUD
Zacatecas	0.00	0	0																	
T. Izq. Guadalajara	6.40	3	1	16291	1.4	79.8	2.9	8.1	3.8	3.1	0.4	0.4	0.1	81.2	2.9	15.9	0.074	0.507	22.782150	-102.627295
T. Izq. Guadalajara	6.40	3	2	16722	1.5	78.0	3.4	8.8	3.8	3.4	0.5	0.5	0.1	79.5	3.4	17.1	0.091	0.507	22.782583	-102.627278
T. Der. Saltillo (T. Morelos)	15.00	1	1	17918	1.4	66.2	3.6	8.6	2.8	12.1	2.2	2.5	0.6	67.6	3.6	28.8	0.078	0.510	22.850389	-102.623978
T. Der. Saltillo (T. Morelos)	15.00	1	2	17205	1.7	66.5	3.9	7.8	2.7	11.7	1.9	3.0	0.8	68.2	3.9	27.9	0.089	0.510	22.851292	-102.643971
T. Der. Saltillo (T. Morelos)	15.00	3	1	14835	1.9	69.6	4.6	8.4	2.8	6.7	2.1	3.1	0.8	71.5	4.6	23.9	0.084	0.501	22.873721	-102.635535
T. Der. Saltillo (T. Morelos)	15.00	3	2	14799	1.9	70.4	4.2	8.1	2.8	6.7	2.0	3.1	0.8	72.3	4.2	23.5	0.099	0.501	22.874301	-102.653503
T. Libramiento de Víctor Rosales	26.20	0	0																	
Víctor Rosales	28.00	1	1	16792	1.3	75.3	3.5	5.9	2.8	6.6	2.1	2.0	0.5	76.6	3.5	19.9	0.066	0.504	22.919412	-102.676082
Víctor Rosales	28.00	1	2	16549	1.2	76.4	3.1	5.5	2.8	6.5	2.1	1.9	0.5	77.6	3.1	19.3	0.084	0.504	22.919217	-102.676274
T. Der. Facultad de Veterinaria	32.30	1	1	10655	1.2	68.4	3.4	9.9	2.3	10.7	2.0	1.6	0.5	69.6	3.4	27.0	0.072	0.534	22.971219	-102.719449
T. Der. Facultad de Veterinaria	32.30	1	2	9287	1.2	68.3	3.2	9.6	2.5	11.2	2.0	1.6	0.4	69.5	3.2	27.3	0.073	0.534	22.971170	-102.719535
Gral. Enrique Estrada	34.60	3	1	10593	1.0	67.4	3.1	9.4	2.5	12.0	2.3	1.8	0.5	68.4	3.1	28.5	0.067	0.542	23.012030	-102.751660
Gral. Enrique Estrada	34.60	3	2	12527	1.1	71.3	3.1	8.1	2.0	9.6	2.3	2.0	0.5	72.4	3.1	24.5	0.072	0.542	23.009980	-102.750950
T. Libramiento de Víctor Rosales	35.90	0	0																	
T. Libramiento de Fresnillo Sur	49.30	0	0																	
Fresnillo	58.50	1	1	9109	1.1	81.2	2.7	8.3	2.1	2.5	1.8	0.2	0.1	82.3	2.7	15.0	0.079	0.509	23.163605	-102.854169
Fresnillo	58.50	1	2	9431	1.4	80.7	2.5	8.6	1.8	2.9	1.8	0.2	0.1	82.1	2.5	15.4	0.081	0.509	23.163554	-102.854263
T. C. Libramiento de Fresnillo (Cuota) Norte	66.40	1	1	6675	0.9	74.8	5.1	9.1	7.5	1.7	0.5	0.3	0.1	75.7	5.1	19.2	0.087	0.508	23.236552	-102.915717
T. C. Libramiento de Fresnillo (Cuota) Norte	66.40	1	2	6468	0.8	74.8	5.1	9.1	7.5	1.8	0.5	0.3	0.1	75.6	5.1	19.3	0.079	0.508	23.236513	-102.915822
T. Libramiento de Fresnillo Norte	66.70	0	0																	
Ent. La Chicharrona	74.30	1	1	8570	1.5	68.4	3.9	9.1	2.7	8.4	3.1	2.3	0.6	69.9	3.9	26.2	0.089	0.533	23.288277	-102.951352
Ent. La Chicharrona	74.30	1	2	7502	1.5	68.6	3.9	9.1	2.6	8.5	3.1	2.2	0.5	70.1	3.9	26.0	0.081	0.533	23.290732	-102.953357
Ent. La Chicharrona	74.30	3	0	6843	1.8	65.8	5.6	17.0	2.6	4.2	2.0	0.9	0.1	67.6	5.6	26.8	0.074	0.512	23.307838	-102.964724
T. Der. Sain Alto	121.00	3	0	5159	1.8	64.1	5.6	17.6	2.6	5.3	2.0	0.9	0.1	65.9	5.6	28.5	0.079	0.516	23.581706	-103.274305
T. Izq. Sombrerete (2° Acceso)	161.50	3	0	6064	2.0	71.8	3.9	10.6	2.1	6.0	2.2	1.2	0.2	73.8	3.9	22.3	0.087	0.538	23.646724	-103.651465
T. C. Libramiento de Sombrerete	165.00	3	0	6277	2.6	71.4	5.1	13.5	1.7	2.8	1.4	1.3	0.2	74.0	5.1	20.9	0.072	0.526	23.660451	-103.668565
Lim. Edos. Term. Zac. Ppia. Dgo.	190.08	0	0																	
X. C. SÚchil - Villa Unión	206.98	1	0	3931	2.2	74.1	5.8	4.2	1.6	6.7	2.3	2.6	0.5	76.3	5.8	17.9	0.083	0.504	23.750110	-103.963323



ZACATECAS

28 CARR: Zacatecas - Durango

CLAVE: 00544

RUTA: MEX-045

AÑO: 2022

LUGAR	ESTACION				CLASIFICACION VEHICULAR EN PORCIENTO														COORDENADAS	
	KM	TE	SC	TDPA	M	A	B	C2	C3	T3S2	T3S3	T3S2R4	OTROS	A	B	C	K'	D	LATITUD	LONGITUD
X. C. Súchil - Villa Unión	206.98	3	0	6063	4.4	75.6	4.9	4.3	1.2	4.9	1.9	2.1	0.7	80.0	4.9	15.1	0.097	0.516	23.744099	-104.000975
T. Izq. Graceros	210.00	1	0	5800	13.7	67.1	3.9	4.7	1.7	4.6	1.7	1.9	0.7	80.8	3.9	15.3	0.089	0.501	23.747333	-104.026697
Amado Nervo	231.51	1	0	4791	2.2	72.4	5.7	5.2	2.1	6.3	2.6	2.7	0.8	74.6	5.7	19.7	0.076	0.507	23.839281	-104.180395
Amado Nervo	231.51	3	0	6079	2.6	77.4	5.1	4.6	1.4	4.5	1.8	2.0	0.6	80.0	5.1	14.9	0.085	0.505	23.844568	-104.199824
Nombre de Dios	236.80	1	0	2733	8.5	77.6	4.6	8.5	0.5	0.1	0.1	0.1	0.0	86.1	4.6	9.3	0.094	0.514	23.843713	-104.225571
Nombre de Dios	236.80	3	0	4353	7.4	84.0	1.8	5.6	0.6	0.3	0.1	0.1	0.1	91.4	1.8	6.8	0.094	0.518	23.852883	-104.250446
T. Der. Constanacia	240.60	3	0	6452	3.1	79.2	3.1	6.7	1.6	3.3	1.3	1.3	0.4	82.3	3.1	14.6	0.091	0.502	23.872094	-104.268785
T. Der. Tuitán	250.80	3	0	6347	1.9	77.7	3.9	6.9	1.3	4.4	1.7	1.8	0.4	79.6	3.9	16.5	0.082	0.500	23.923103	-104.337222
T. Der. Independencia y Libertad	261.70	1	0	5951	2.9	77.1	4.0	7.3	2.0	3.7	1.5	1.2	0.3	80.0	4.0	16.0	0.100	0.501	23.993475	-104.373932
T. Der. Independencia y Libertad	261.70	3	1	3649	1.2	81.5	4.5	3.7	1.5	4.1	1.6	1.5	0.4	82.7	4.5	12.8	0.150	0.500	24.011722	-104.405643
T. Der. Independencia y Libertad	261.70	3	2	3653	1.7	81.4	4.7	3.5	1.5	3.9	1.4	1.5	0.4	83.1	4.7	12.2	0.108	0.500	24.011624	-104.405662
T. Izq. Parras de La Fuente	276.60	1	1	4279	1.6	83.2	4.6	3.7	1.2	3.1	1.3	1.0	0.3	84.8	4.6	10.6	0.125	0.505	24.019154	-104.506531
T. Izq. Parras de La Fuente	276.60	1	2	4372	1.7	81.5	5.2	4.0	1.0	3.3	1.4	1.5	0.4	83.2	5.2	11.6	0.106	0.505	24.019059	-104.506551
T. Izq. Parras de La Fuente	276.60	3	1	4376	3.1	84.3	2.2	5.5	1.5	1.6	0.8	0.7	0.3	87.4	2.2	10.4	0.121	0.509	24.021200	-104.525672
T. Izq. Parras de La Fuente	276.60	3	2	4220	3.0	84.4	2.1	5.7	1.6	1.5	0.8	0.7	0.2	87.4	2.1	10.5	0.102	0.509	24.021093	-104.525695
Durango	287.30	1	1	6224	6.1	83.0	2.0	4.9	1.4	1.3	0.5	0.6	0.2	89.1	2.0	8.9	0.091	0.506	24.026371	-104.574577
Durango	287.30	1	2	6087	6.1	82.6	2.0	4.9	1.5	1.4	0.6	0.6	0.3	88.7	2.0	9.3	0.108	0.506	24.026263	-104.574588

29 CARR: Ent. Cuauhtémoc - Ent. Osiris (Cuota)

CLAVE: 32558

RUTA: MEX-045D

AÑO: 2022

LUGAR	ESTACION				CLASIFICACION VEHICULAR EN PORCIENTO														COORDENADAS	
	KM	TE	SC	TDPA	M	A	B	C2	C3	T3S2	T3S3	T3S2R4	OTROS	A	B	C	K'	D	LATITUD	LONGITUD
T. C. Ent. Cosío - Ent. Cuauhtémoc	70.40	3	0	9173	2.2	57.7	5.8	12.3	3.4	9.8	3.8	4.1	0.9	59.9	5.8	34.3	0.061	0.511	22.491419	-102.360578
Plaza de Cobro Zacatecas	97.80	2	0	9269	0.3	49.8	4.5	4.9	4.0	21.2	4.2	9.1	2.0	50.1	4.5	45.4	0.067	0.500	22.710742	-102.448827
T. C. Aguascalientes - Zacatecas	103.40	1	0	9835	3.3	52.2	9.3	13.0	3.4	13.1	2.9	2.3	0.5	55.5	9.3	35.2	0.061	0.526	22.745120	-102.453220

30 CARR: Libramiento de Fresnillo (Cuota)

CLAVE: 32581

RUTA: MEX-045D

AÑO: 2022

LUGAR	ESTACION				CLASIFICACION VEHICULAR EN PORCIENTO														COORDENADAS	
	KM	TE	SC	TDPA	M	A	B	C2	C3	T3S2	T3S3	T3S2R4	OTROS	A	B	C	K'	D	LATITUD	LONGITUD
T. C. Zacatecas - Durango	49.80	3	1	3432	1.8	52.1	5.3	6.0	3.8	18.0	4.0	8.5	0.5	53.9	5.3	40.8	0.072	0.516	23.118316	-102.806909
T. C. Zacatecas - Durango	49.80	3	2	3664	1.7	49.9	5.4	8.6	3.1	18.7	3.5	8.5	0.6	51.6	5.4	43.0	0.078	0.516	23.118853	-102.807366
Plaza de Cobro Morfín Chávez	57.05	2	1	3818	0.4	52.8	2.9	4.1	4.0	21.1	4.3	0.0	10.4	53.2	2.9	43.9	0.088	0.500	23.177904	-102.828678
Plaza de Cobro Morfín Chávez	57.05	2	2	3818	0.4	52.8	2.9	4.1	4.0	21.1	4.3	0.0	10.4	53.2	2.9	43.9	0.088	0.500	23.177904	-102.828678
T. Der. Plateros	61.70	1	1	4016	1.7	57.9	3.0	8.3	3.9	16.0	2.8	5.5	0.9	59.6	3.0	37.4	0.076	0.503	23.185558	-102.831682

ZACATECAS

30 CARR: Libramiento de Fresnillo (Cuota)

CLAVE: 32581

RUTA: MEX-045D

AÑO: 2022

LUGAR	ESTACION				CLASIFICACION VEHICULAR EN PORCIENTO													COORDENADAS		
	KM	TE	SC	TDPA	M	A	B	C2	C3	T3S2	T3S3	T3S2R4	OTROS	A	B	C	K'	D	LATITUD	LONGITUD
T. Der. Plateros	61.70	1	2	4060	1.8	57.8	3.0	8.5	4.0	15.9	2.7	5.4	0.9	59.6	3.0	37.4	0.080	0.503	23.185456	-102.831941
T. Der. Plateros	61.70	3	1	3573	1.3	53.9	3.0	10.4	2.9	18.4	4.7	4.5	0.9	55.2	3.0	41.8	0.067	0.522	23.211150	-102.855510
T. Der. Plateros	61.70	3	2	3278	1.3	52.5	3.2	11.2	2.9	19.1	4.6	4.3	0.9	53.8	3.2	43.0	0.063	0.522	23.210912	-102.855630
T. C. Zacatecas - Durango	69.85	1	1	3931	1.3	53.1	3.2	11.0	2.9	18.7	4.4	4.5	0.9	54.4	3.2	42.4	0.071	0.505	23.235426	-102.907890
T. C. Zacatecas - Durango	69.85	1	2	4005	1.2	53.4	3.0	11.5	2.7	18.6	4.4	4.3	0.9	54.6	3.0	42.4	0.065	0.505	23.235184	-102.908030

31 CARR: Libramiento de Víctor Rosales (Cuota)

CLAVE: 32015

RUTA: MEX-045D

AÑO: 2022

LUGAR	ESTACION				CLASIFICACION VEHICULAR EN PORCIENTO													COORDENADAS		
	KM	TE	SC	TDPA	M	A	B	C2	C3	T3S2	T3S3	T3S2R4	OTROS	A	B	C	K'	D	LATITUD	LONGITUD
T. C. Zacatecas - Durango	0.00	3	1	9458	0.9	66.4	4.4	9.0	3.3	10.2	2.0	3.0	0.8	67.3	4.4	28.3	0.074	0.514	22.936723	-102.688791
T. C. Zacatecas - Durango	0.00	3	2	8951	1.3	64.8	3.8	8.4	4.3	11.0	2.2	3.3	0.9	66.1	3.8	30.1	0.080	0.514	22.936450	-102.688940
Plaza de Cobro Calera Víctor Rosales	0.50	2	1	8793	0.4	71.2	3.0	3.1	3.3	10.9	2.5	0.0	5.6	71.6	3.0	25.4	0.085	0.500	22.941860	-102.689827
Plaza de Cobro Calera Víctor Rosales	0.50	2	2	8793	0.4	71.2	3.0	3.1	3.3	10.9	2.5	0.0	5.6	71.6	3.0	25.4	0.085	0.500	22.941860	-102.689827
T. C. Calera de Víctor Rosales - Santiagoullo	2.50	3	1	9532	1.5	64.6	5.8	9.1	4.3	9.3	2.1	2.6	0.7	66.1	5.8	28.1	0.073	0.502	22.955496	-102.692616
T. C. Calera de Víctor Rosales - Santiagoullo	2.50	3	2	9457	1.4	64.7	5.8	9.1	4.4	9.3	2.1	2.6	0.6	66.1	5.8	28.1	0.080	0.502	22.955077	-102.692735
T. C. Zacatecas - Durango	12.20	1	1	8927	0.9	65.1	4.1	8.6	4.0	10.8	2.5	3.2	0.8	66.0	4.1	29.9	0.068	0.504	23.005681	-102.744268
T. C. Zacatecas - Durango	12.20	1	2	9069	0.9	65.1	4.2	8.7	4.0	10.7	2.4	3.2	0.8	66.0	4.2	29.8	0.102	0.504	23.005397	-102.743960

32 CARR: Calera de Víctor Rosales - Santiagoullo

CLAVE: 32016

RUTA: ZAC-016

AÑO: 2022

LUGAR	ESTACION				CLASIFICACION VEHICULAR EN PORCIENTO													COORDENADAS		
	KM	TE	SC	TDPA	M	A	B	C2	C3	T3S2	T3S3	T3S2R4	OTROS	A	B	C	K'	D	LATITUD	LONGITUD
Calera de Víctor Rosales	0.00	3	0	4487	11.0	66.8	2.5	12.8	1.8	3.0	1.6	0.3	0.2	77.8	2.5	19.7	0.083	0.516	22.960756	-102.681763
T. C. Fresnillo - Ent. Bañón	23.60	0	0																	

33 CARR: Cieneguillas - Zacatecas

CLAVE: 32579

RUTA: ZAC

AÑO: 2022

LUGAR	ESTACION				CLASIFICACION VEHICULAR EN PORCIENTO													COORDENADAS		
	KM	TE	SC	TDPA	M	A	B	C2	C3	T3S2	T3S3	T3S2R4	OTROS	A	B	C	K'	D	LATITUD	LONGITUD
T. C. Guadalajara - Zacatecas	0.00	3	0	2999	1.7	78.8	0.3	14.5	1.7	2.4	0.4	0.1	0.1	80.5	0.3	19.2	0.085	0.546	22.760574	-102.654264
X. C. Libramiento de Guadalupe - Zacatecas	7.70	3	1	13096	3.7	79.4	2.1	9.0	2.9	2.1	0.4	0.2	0.2	83.1	2.1	14.8	0.084	0.502	22.756601	-102.590619
X. C. Libramiento de Guadalupe - Zacatecas	7.70	3	2	13009	3.7	79.4	2.1	9.0	2.9	2.2	0.4	0.2	0.1	83.1	2.1	14.8	0.115	0.502	22.756658	-102.590813
Zacatecas	9.33	0	0																	

ZACATECAS

34 CARR: Corral de Piedras - Tlaltenango

CLAVE: 32579

RUTA: ZAC

AÑO: 2022

LUGAR	ESTACION				CLASIFICACION VEHICULAR EN PORCIENTO										COORDENADAS					
	KM	TE	SC	TDPA	M	A	B	C2	C3	T3S2	T3S3	T3S2R4	OTROS	A	B	C	K'	D	LATITUD	LONGITUD
T. C. Guadalajara - Zacatecas	0.00	3	0	778	1.9	73.7	0.9	20.1	1.3	1.8	0.3	0.0	0.0	75.6	0.9	23.5	0.081	0.503	21.619393	-103.048224
Tlaltenango	57.10	1	0	1462	11.1	80.3	0.5	4.4	0.8	2.4	0.5	0.0	0.0	91.4	0.5	8.1	0.083	0.518	21.768346	-103.282095

35 CARR: Ent. Ojo Caliente - Ent. Ojuelos de Jalisco

CLAVE: 00126

RUTA: ZAC

AÑO: 2022

LUGAR	ESTACION				CLASIFICACION VEHICULAR EN PORCIENTO										COORDENADAS					
	KM	TE	SC	TDPA	M	A	B	C2	C3	T3S2	T3S3	T3S2R4	OTROS	A	B	C	K'	D	LATITUD	LONGITUD
T. C. Aguascalientes - Zacatecas	0.00	3	0	3239	3.6	74.4	1.6	17.3	1.4	1.7	0.0	0.0	0.0	78.0	1.6	20.4	0.098	0.524	22.604200	-102.240792
Gral. Pánfilo Natera	16.00	3	0	2002	4.1	79.6	0.7	13.5	0.7	1.2	0.2	0.0	0.0	83.7	0.7	15.6	0.089	0.515	22.651911	-102.103436
Lim. Edos. Term. Zac. Ppia. Jal.	134.00	0	0																	
T. C. San Luis Potosí - Lagos de Moreno	137.00	0	0																	

36 CARR: Fresnillo - Ent. Bañón

CLAVE: 32070

RUTA: ZAC

AÑO: 2022

LUGAR	ESTACION				CLASIFICACION VEHICULAR EN PORCIENTO										COORDENADAS					
	KM	TE	SC	TDPA	M	A	B	C2	C3	T3S2	T3S3	T3S2R4	OTROS	A	B	C	K'	D	LATITUD	LONGITUD
T. C. Zacatecas - Durango	0.00	0	0																	
X. Lib. Fresnillo (Cuota)	2.40	3	1	4929	3.7	80.8	0.9	11.9	0.9	0.9	0.5	0.3	0.1	84.5	0.9	14.6	0.081	0.504	23.177960	-102.822945
X. Lib. Fresnillo (Cuota)	2.40	3	2	4846	3.8	81.1	0.9	11.7	0.9	0.8	0.5	0.2	0.1	84.9	0.9	14.2	0.073	0.504	23.178078	-102.822968
T. Der. Víctor Rosales	23.80	1	0	2909	8.5	73.6	2.1	7.4	3.9	1.7	2.3	0.4	0.1	82.1	2.1	15.8	0.093	0.518	23.143872	-102.666084
T. Der. Víctor Rosales	23.80	3	0	1971	5.2	69.4	2.7	13.2	2.5	4.9	1.6	0.5	0.0	74.6	2.7	22.7	0.095	0.509	23.144094	-102.646340
González Ortega Bañón	45.80	1	0	2021	7.7	68.0	2.3	15.0	4.1	1.9	0.7	0.2	0.1	75.7	2.3	22.0	0.088	0.517	23.176594	-102.481247
T. C. Ent. Morelos - Saltillo	49.00	1	0	2607	7.8	66.3	2.1	15.8	4.9	2.1	0.7	0.2	0.1	74.1	2.1	23.8	0.094	0.510	23.153714	-102.417521

37 CARR: Fresnillo - Plateros

CLAVE: 32022

RUTA: ZAC-022

AÑO: 2022

LUGAR	ESTACION				CLASIFICACION VEHICULAR EN PORCIENTO										COORDENADAS					
	KM	TE	SC	TDPA	M	A	B	C2	C3	T3S2	T3S3	T3S2R4	OTROS	A	B	C	K'	D	LATITUD	LONGITUD
Fresnillo (Lateral)	0.00	3	1	104	38.2	50.9	4.5	4.2	1.1	1.1	0.0	0.0	0.0	89.1	4.5	6.4	0.221	1.000	23.203165	-102.855400
Fresnillo (Central)	0.00	3	1	4662	6.3	81.3	0.9	9.2	1.4	0.5	0.2	0.1	0.1	87.6	0.9	11.5	0.087	1.000	23.203687	-102.855339
Fresnillo (Central)	0.00	3	2	4679	7.9	73.1	1.6	13.7	1.6	0.1	1.6	0.3	0.1	81.0	1.6	17.4	0.088	1.000	23.203826	-102.855713
Plateros	4.90	0	0																	

ZACATECAS

38 CARR: Guadalupe - Ent. Cuauhtémoc

CLAVE: 00579

RUTA: ZAC-118

AÑO: 2022

LUGAR	ESTACION				CLASIFICACION VEHICULAR EN PORCIENTO										COORDENADAS					
	KM	TE	SC	TDPA	M	A	B	C2	C3	T3S2	T3S3	T3S2R4	OTROS	A	B	C	K'	D	LATITUD	LONGITUD
T. C. Libramiento de Guadalupe - Zacatecas (Alta)	0.00	3	1	8401	3.1	90.0	0.6	4.4	0.5	0.7	0.3	0.3	0.1	93.1	0.6	6.3	0.087	0.513	22.736074	-102.496166
T. C. Libramiento de Guadalupe - Zacatecas (Baja)	0.00	3	1	3359	2.5	84.5	0.7	9.2	1.7	0.7	0.4	0.2	0.1	87.0	0.7	12.3	0.099	0.554	22.736089	-102.496258
T. C. Libramiento de Guadalupe - Zacatecas (Alta)	0.00	3	2	8842	2.9	90.1	0.8	4.3	0.5	0.7	0.3	0.3	0.1	93.0	0.8	6.2	0.087	0.513	22.736033	-102.496035
T. C. Libramiento de Guadalupe - Zacatecas (Baja)	0.00	3	2	2709	2.5	84.3	0.5	9.2	1.9	0.8	0.4	0.3	0.1	86.8	0.5	12.7	0.074	0.554	22.736216	-102.495988
La Cieneguita	3.00	0	0																	
T. C. Ent. Cuauhtémoc - Ent. Osiris Cuota	39.31	3	0	1640	0.9	86.0	0.6	11.0	0.6	0.8	0.1	0.0	0.0	86.9	0.6	12.5	0.074	0.545	22.485206	-102.360157

39 CARR: Ramal a Loreto

CLAVE: 32067

RUTA: ZAC

AÑO: 2022

LUGAR	ESTACION				CLASIFICACION VEHICULAR EN PORCIENTO										COORDENADAS					
	KM	TE	SC	TDPA	M	A	B	C2	C3	T3S2	T3S3	T3S2R4	OTROS	A	B	C	K'	D	LATITUD	LONGITUD
T. C. Providencia - Luis Moya	0.00	3	0	2191	2.3	77.0	2.2	11.4	2.2	2.8	1.4	0.6	0.1	79.3	2.2	18.5	0.098	0.550	22.390780	-102.239071
Loreto	32.30	0	0																	

40 CARR: Ramal a Nochistlán

CLAVE: 32545

RUTA: ZAC

AÑO: 2022

LUGAR	ESTACION				CLASIFICACION VEHICULAR EN PORCIENTO										COORDENADAS					
	KM	TE	SC	TDPA	M	A	B	C2	C3	T3S2	T3S3	T3S2R4	OTROS	A	B	C	K'	D	LATITUD	LONGITUD
T. C. Tepatitlán - Jaralillo	0.00	3	1	2283	6.5	80.0	1.4	9.6	1.7	0.5	0.1	0.2	0.0	86.5	1.4	12.1	0.105	0.502	21.355445	-102.794253
T. C. Tepatitlán - Jaralillo	0.00	3	2	2299	6.6	79.6	1.8	9.4	1.7	0.5	0.1	0.3	0.0	86.2	1.8	12.0	0.107	0.502	21.355265	-102.793983
Nochistlán	5.70	1	1	2964	6.9	79.5	1.8	10.1	1.1	0.3	0.2	0.1	0.0	86.4	1.8	11.8	0.104	0.514	21.356347	-102.819798
Nochistlán	5.70	1	2	2807	6.7	80.0	1.7	9.9	1.2	0.3	0.1	0.1	0.0	86.7	1.7	11.6	0.104	0.514	21.356240	-102.819830

41 CARR: Ramal a San Pedro Piedra Gorda

CLAVE: 00553

RUTA: ZAC-AGS

AÑO: 2022

LUGAR	ESTACION				CLASIFICACION VEHICULAR EN PORCIENTO										COORDENADAS					
	KM	TE	SC	TDPA	M	A	B	C2	C3	T3S2	T3S3	T3S2R4	OTROS	A	B	C	K'	D	LATITUD	LONGITUD
T. C. Aguascalientes - Zacatecas	0.00	3	0	1471	1.8	81.8	2.2	11.3	1.0	1.6	0.3	0.0	0.0	83.6	2.2	14.2	0.089	0.521	22.465411	-102.263144
Lim. Edos. Term. Zac. Ppia. Ags.	5.00	0	0																	
Lim. Edos. Term. Ags. Ppia. Zac.	8.00	0	0																	
San Pedro Piedra Gorda	9.00	1	0	2447	5.6	82.9	0.8	8.4	0.5	1.4	0.4	0.0	0.0	88.5	0.8	10.7	0.078	0.520	22.452383	-102.338278

ZACATECAS

42 CARR: San Gil - Jarillas

CLAVE: 00527

RUTA: AGS-012-ZAC

AÑO: 2022

LUGAR	ESTACION				CLASIFICACION VEHICULAR EN PORCIENTO													COORDENADAS		
	KM	TE	SC	TDPA	M	A	B	C2	C3	T3S2	T3S3	T3S2R4	OTROS	A	B	C	K'	D	LATITUD	LONGITUD
T. C. Rincón de Romos - Ciénega Grande	0.00	3	0	2659	12.0	77.7	3.3	3.8	1.9	0.7	0.3	0.2	0.1	89.7	3.3	7.0	0.097	0.503	22.213199	-102.022906
Guadalupe de Atlas	5.40	1	0	2446	14.1	75.7	2.8	4.7	1.7	0.7	0.2	0.1	0.0	89.8	2.8	7.4	0.085	0.506	22.255840	-102.025626
Lim. Edos. Term. Ags. Ppia. Zac.	10.00	0	0																	
Lim. Edos. Term. Zac. Ppia. Ags.	11.30	0	0																	
Jarillas	12.00	0	0																	

43 CARR: San Rafael - Villa García

CLAVE: 00525

RUTA: AGS-ZAC

AÑO: 2022

LUGAR	ESTACION				CLASIFICACION VEHICULAR EN PORCIENTO													COORDENADAS		
	KM	TE	SC	TDPA	M	A	B	C2	C3	T3S2	T3S3	T3S2R4	OTROS	A	B	C	K'	D	LATITUD	LONGITUD
T. C. Ent. La Calavera - Ent. San Pedro	0.00	3	0	2624	8.9	84.1	2.1	3.0	0.7	0.9	0.2	0.1	0.0	93.0	2.1	4.9	0.087	0.507	22.116685	-102.011027
Lim. Edos. Term. Ags. Ppia. Zac.	3.00	0	0																	
Villa García	10.00	1	0	4065	7.7	80.7	1.4	6.3	1.0	2.6	0.3	0.0	0.0	88.4	1.4	10.2	0.084	0.523	22.135266	-101.970240

44 CARR: Santa Mónica - Pozo de Gamboa

CLAVE: 32568

RUTA: ZAC

AÑO: 2022

LUGAR	ESTACION				CLASIFICACION VEHICULAR EN PORCIENTO													COORDENADAS		
	KM	TE	SC	TDPA	M	A	B	C2	C3	T3S2	T3S3	T3S2R4	OTROS	A	B	C	K'	D	LATITUD	LONGITUD
T. C. Aguascalientes - Zacatecas	0.00	3	0	7813	3.9	75.3	3.1	10.7	2.7	2.4	1.3	0.5	0.1	79.2	3.1	17.7	0.088	0.503	22.762449	-102.422710
Tacoaleche	7.60	3	0	3849	5.0	72.8	2.1	13.9	2.6	1.9	1.4	0.2	0.1	77.8	2.1	20.1	0.099	0.514	22.831391	-102.398509
Pozo de Gamboa	34.50	0	0																	

45 CARR: Sombrerete - González Ortega

CLAVE: 32568

RUTA: ZAC

AÑO: 2022

LUGAR	ESTACION				CLASIFICACION VEHICULAR EN PORCIENTO													COORDENADAS		
	KM	TE	SC	TDPA	M	A	B	C2	C3	T3S2	T3S3	T3S2R4	OTROS	A	B	C	K'	D	LATITUD	LONGITUD
T. C. Zacatecas - Durango	0.00	3	0	1297	3.3	77.7	3.8	11.5	1.3	1.7	0.3	0.2	0.2	81.0	3.8	15.2	0.095	0.516	23.658629	-103.543643
González Ortega	38.70	1	0	1055	3.7	78.1	3.9	10.9	1.2	1.7	0.3	0.2	0.0	81.8	3.9	14.3	0.084	0.550	23.944689	-103.461972

46 CARR: Libramiento Noreste de Zacatecas (Cuota)

CLAVE: 32582

RUTA: ZAC-D

AÑO: 2022

LUGAR	ESTACION				CLASIFICACION VEHICULAR EN PORCIENTO													COORDENADAS		
	KM	TE	SC	TDPA	M	A	B	C2	C3	T3S2	T3S3	T3S2R4	OTROS	A	B	C	K'	D	LATITUD	LONGITUD
T. C. Aguascalientes - Zacatecas	0.00	3	0	6948	3.1	39.9	6.7	10.7	6.9	19.4	4.8	7.6	0.9	43.0	6.7	50.3	0.063	0.519	22.759160	-102.460080
T. C. Ent. Morelos - Saltillo	21.00	1	0	6847	1.8	45.1	6.6	12.5	7.7	13.8	3.8	7.8	0.9	46.9	6.6	46.5	0.062	0.530	22.851101	-102.610016

ZACATECAS

47 CARR: Tepatitlán - Jaralillo

CLAVE: 00146

RUTA: MEX-JAL-ZAC

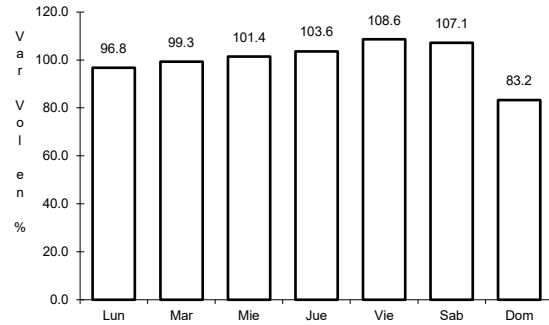
AÑO: 2022

LUGAR	ESTACION				CLASIFICACION VEHICULAR EN PORCIENTO										COORDENADAS					
	KM	TE	SC	TDPA	M	A	B	C2	C3	T3S2	T3S3	T3S2R4	OTROS	A	B	C	K'	D	LATITUD	LONGITUD
T. C. Lagos de Moreno - Guadalajara	0.00	3	0	10037	4.8	78.3	1.9	5.7	3.7	3.2	1.7	0.6	0.1	83.1	1.9	15.0	0.084	0.512	20.800504	-102.791939
T. Izq. Mezcala	22.40	3	0	1810	3.6	86.0	1.9	4.0	2.7	0.7	0.9	0.1	0.1	89.6	1.9	8.5	0.093	0.505	20.962873	-102.816440
Yahualica de González Gallo	57.40	3	1	1740	6.0	89.5	1.0	2.3	0.5	0.4	0.2	0.1	0.0	95.5	1.0	3.5	0.100	0.509	21.196021	-102.884800
Yahualica de González Gallo	57.40	3	2	1680	6.0	89.9	0.9	2.1	0.5	0.3	0.2	0.1	0.0	95.9	0.9	3.2	0.093	0.509	21.196004	-102.884887
T. Der. Mexxicacán	72.45	3	0	1199	2.7	87.1	1.7	4.9	1.8	1.0	0.5	0.2	0.1	89.8	1.7	8.5	0.102	0.510	21.254503	-102.802767
Lim. Edos. Term. Jal. Ppia. Zac.	83.50	0	0																	
Lim. Edos. Term. Zac. Ppia. Jal.	106.00	0	0																	
Teocaltiche	111.00	1	0	3235	4.4	86.6	2.3	3.7	1.1	0.9	0.5	0.4	0.1	91.0	2.3	6.7	0.079	0.506	21.425791	-102.589495
Teocaltiche	111.00	3	0	3521	5.4	86.6	1.6	4.0	1.0	1.0	0.3	0.1	0.0	92.0	1.6	6.4	0.081	0.501	21.455208	-102.555870
T. C. León - Aguascalientes	157.00	1	0	3178	4.7	82.9	2.8	3.0	2.6	1.7	1.2	0.5	0.6	87.6	2.8	9.6	0.098	0.505	21.642698	-102.279122

1 CARR: Aguascalientes - Jalpa

CLAVE: 00095

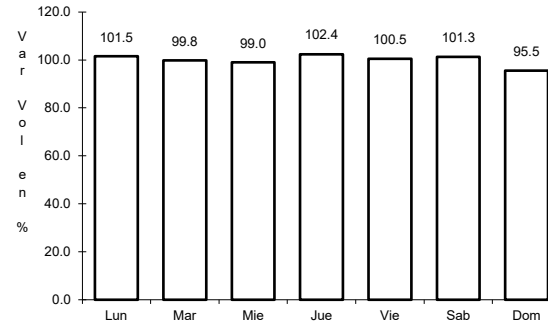
RUTA: MEX-070



Km: 0.00

Tipo: 3

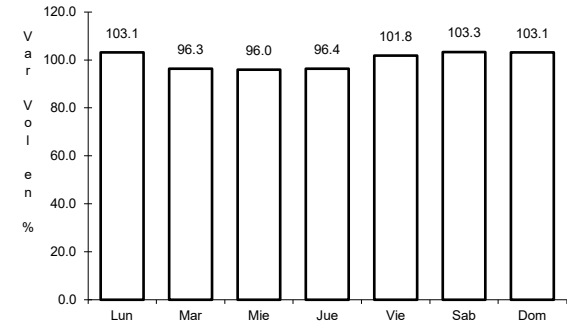
Sent: 1



Km: 0.00

Tipo: 3

Sent: 2



Km: 90.66

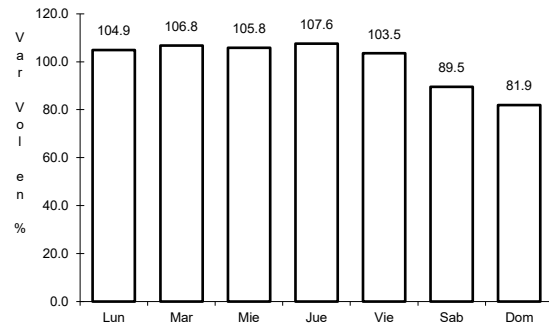
Tipo: 1

Sent: 0

2 CARR: Aguascalientes - Zacatecas

CLAVE: 00524

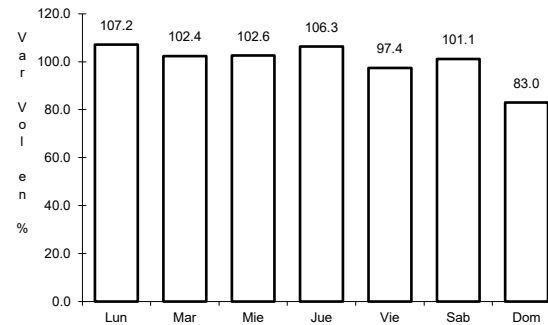
RUTA: MEX-045



Km: 6.00

Tipo: 1

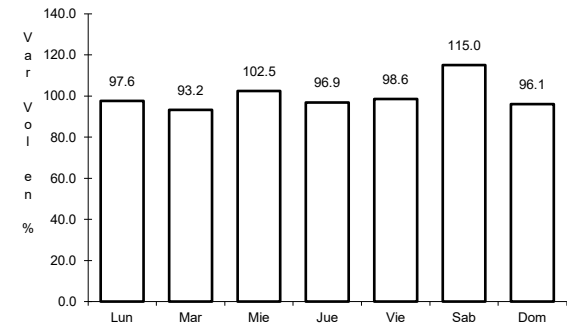
Sent: 1



Km: 6.00

Tipo: 1

Sent: 2



Km: 40.90

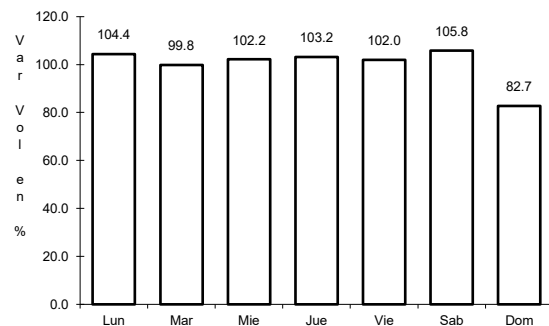
Tipo: 3

Sent: 0

3 CARR: Blvd. Guadalupe - Zacatecas - La Escondida

CLAVE: 00544

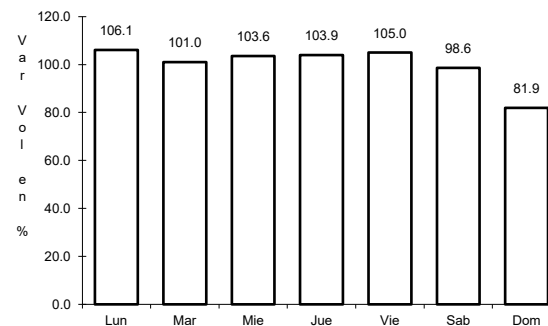
RUTA: MEX-045



Km: 7.70

Tipo: 1

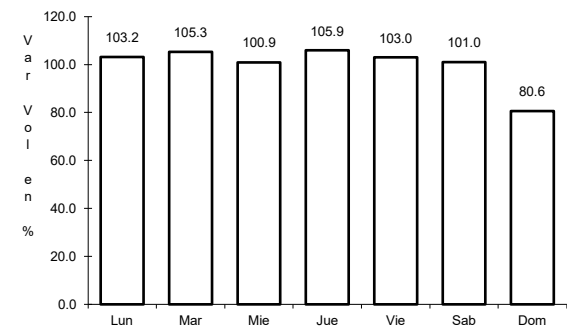
Sent: 1



Km: 7.70

Tipo: 1

Sent: 2



Km: 14.50

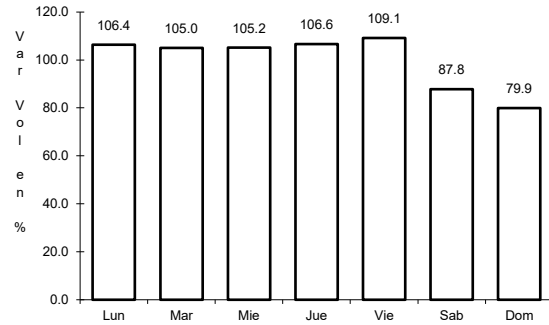
Tipo: 1

Sent: 1

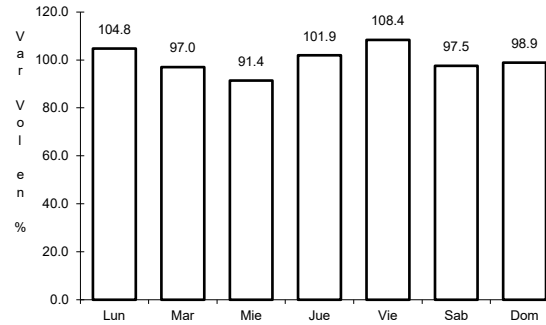
4 CARR: Carbonera - T. C. (Ent. Morelos - Saltillo)

CLAVE: 00218

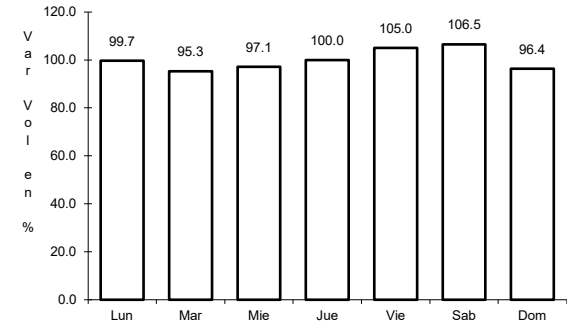
ruta: MEX-062



Km: 0.00      Tipo: 3      Sent: 0



Km: 18.00      Tipo: 1      Sent: 0

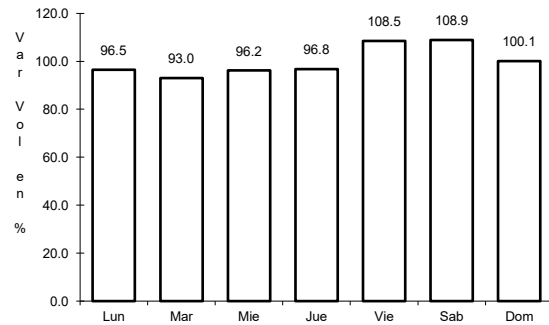


Km: 112.00      Tipo: 1      Sent: 0

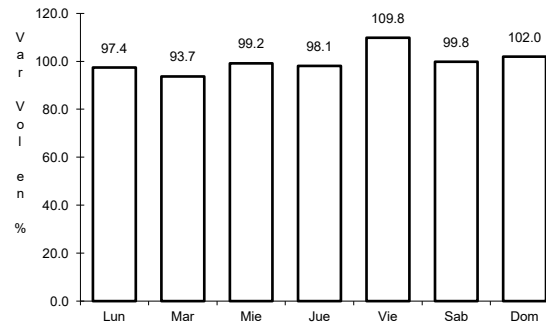
5 CARR: Ent. Cosío - Ent. Cuauhtémoc

CLAVE: 00579

ruta: MEX-045



Km: 57.20      Tipo: 3      Sent: 0

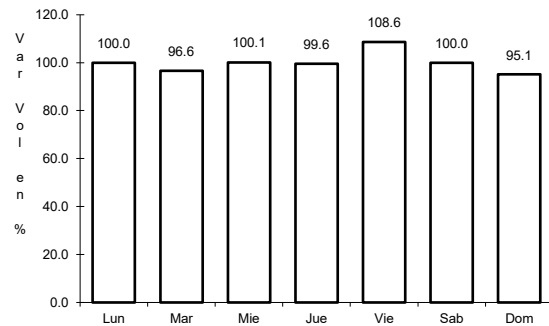


Km: 70.40      Tipo: 1      Sent: 0

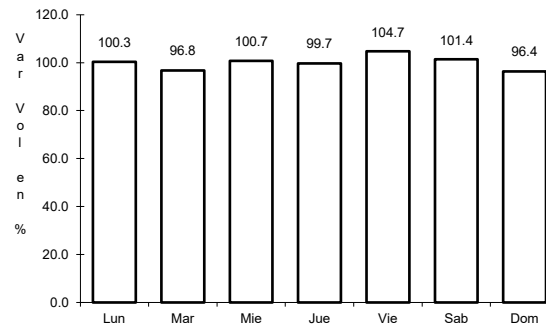
6 CARR: Ent. La Chicharrona - Cuernavaca

CLAVE: 00152

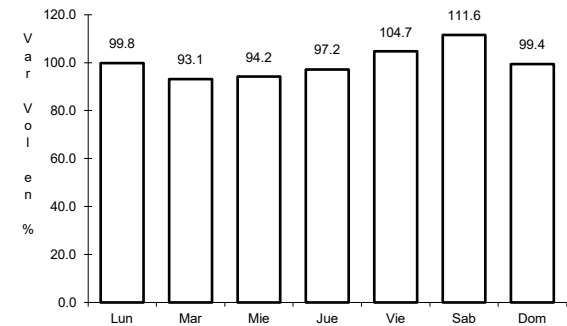
ruta: MEX-049



Km: 0.00      Tipo: 3      Sent: 1



Km: 0.00      Tipo: 3      Sent: 2



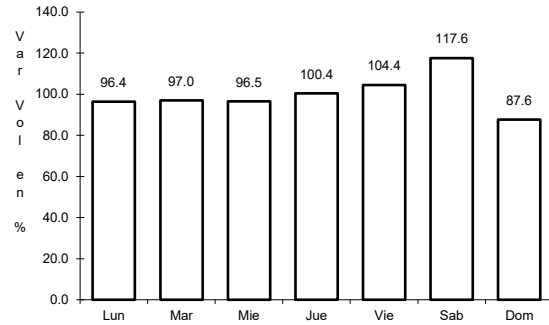
Km: 124.50      Tipo: 1      Sent: 0



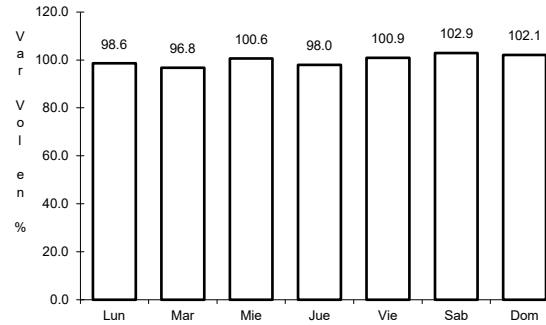
7 CARR: Ent. Morelos - Ent. Noria de Gringos

CLAVE: 00544

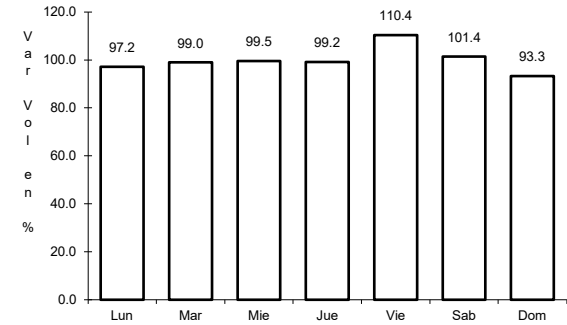
ruta: MEX-045



Km: 0.50      Tipo: 1      Sent: 1



Km: 0.50      Tipo: 1      Sent: 2

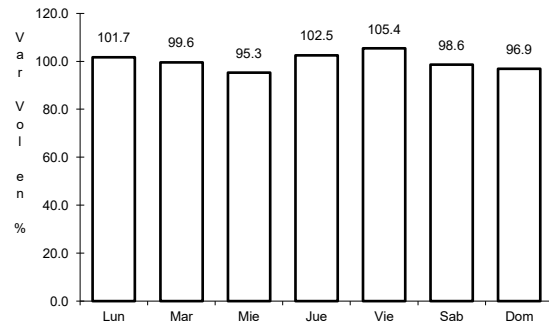


Km: 0.50      Tipo: 3      Sent: 0

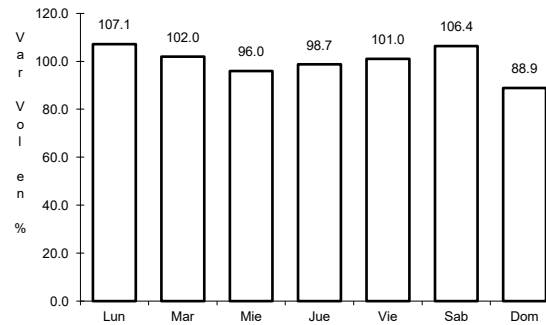
8 CARR: Ent. Morelos - Saltillo

CLAVE: 00149

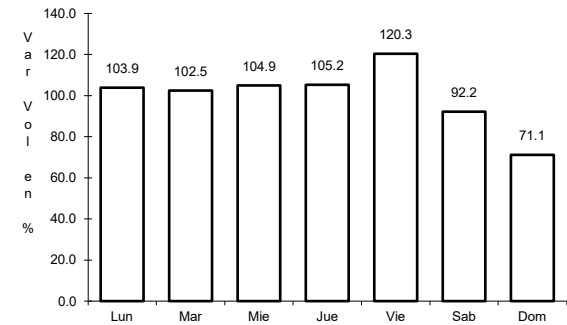
ruta: MEX-054



Km: 0.00      Tipo: 3      Sent: 1



Km: 0.00      Tipo: 3      Sent: 2

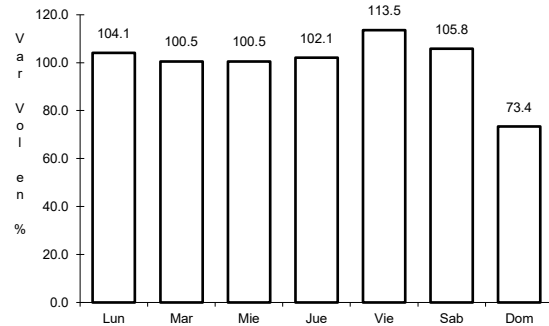


Km: 333.00      Tipo: 3      Sent: 1

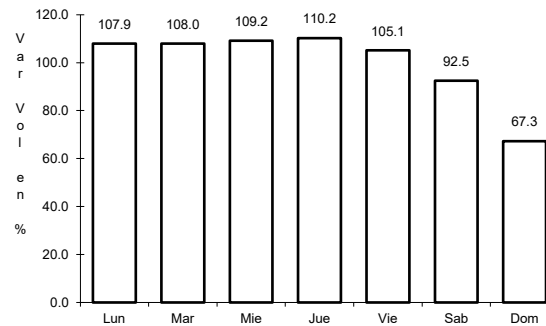
9 CARR: Ent. Rivier - San Marcos

CLAVE: 00285

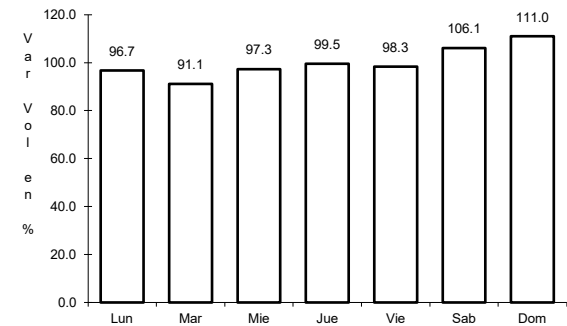
ruta: MEX-066



Km: 0.00      Tipo: 3      Sent: 1



Km: 0.00      Tipo: 3      Sent: 2

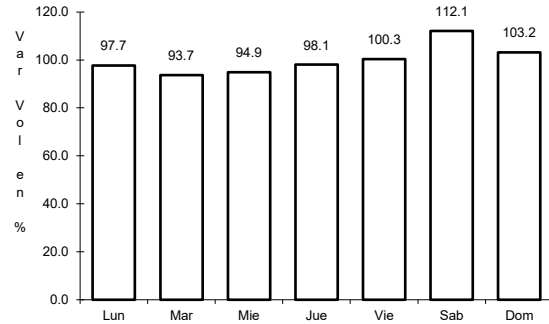


Km: 55.34      Tipo: 1      Sent: 0

10 CARR: Ent. Tesistán - Ent. Malpaso

CLAVE: 00584

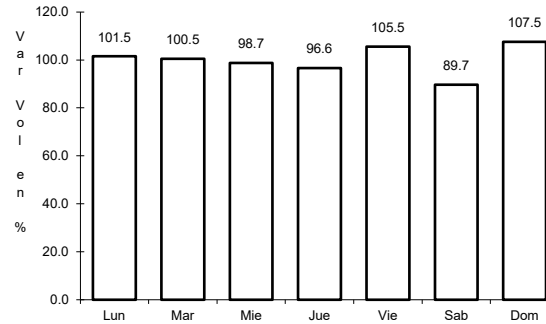
ruta: MEX-023



Km: 54.00

Tipo: 1

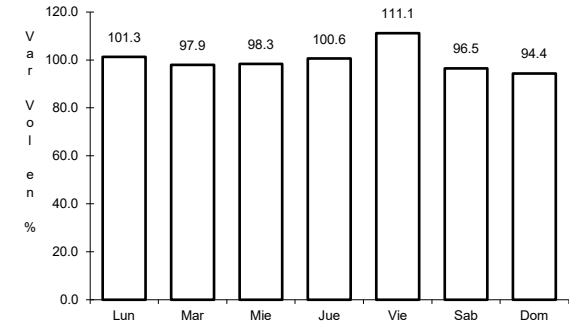
Sent: 0



Km: 275.00

Tipo: 1

Sent: 1



Km: 275.00

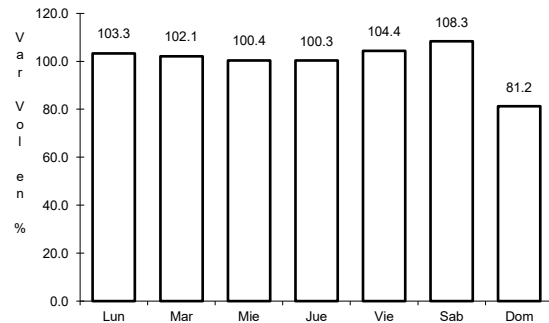
Tipo: 1

Sent: 2

11 CARR: Fresnillo - Valparaíso

CLAVE: 32547

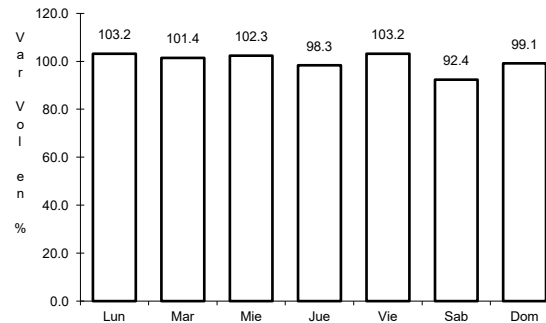
ruta: MEX-044



Km: 0.00

Tipo: 3

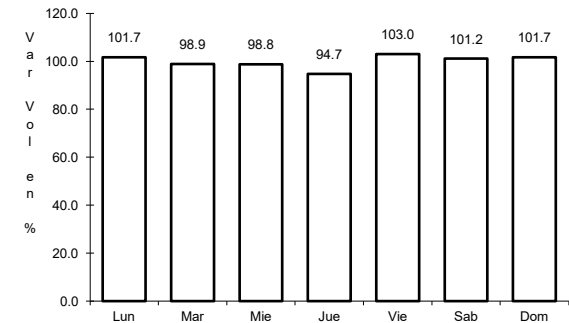
Sent: 0



Km: 45.00

Tipo: 3

Sent: 0



Km: 90.00

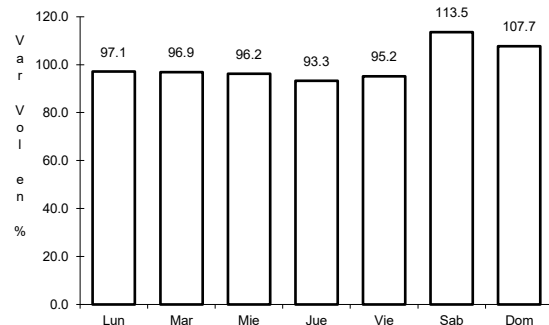
Tipo: 1

Sent: 0

12 CARR: Guadalajara - Zacatecas

CLAVE: 00150

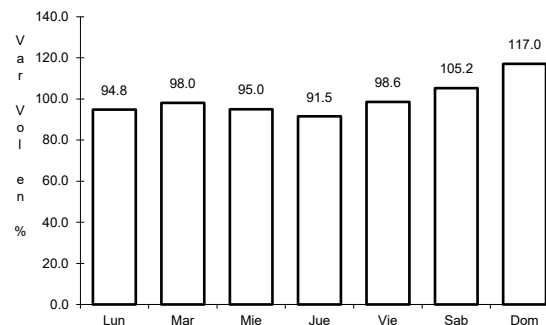
ruta: MEX-054



Km: 6.19

Tipo: 3

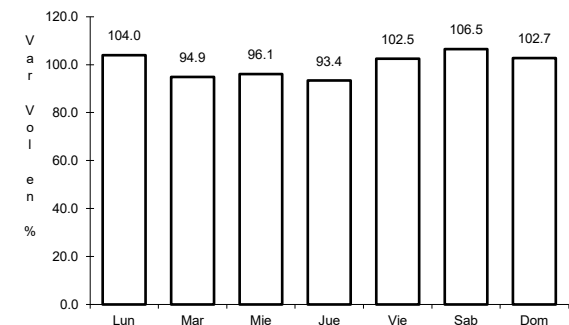
Sent: 1



Km: 6.19

Tipo: 3

Sent: 2



Km: 159.39

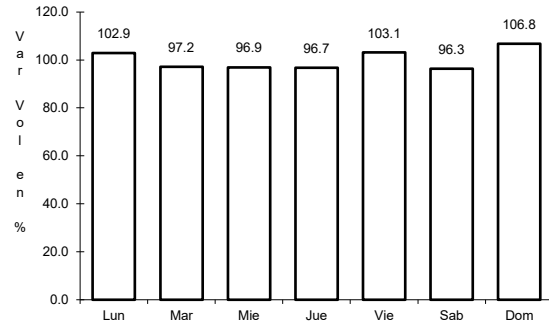
Tipo: 1

Sent: 0

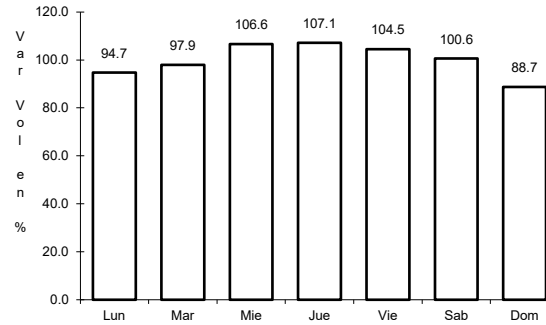
13 CARR: Jerez - Fresnillo

CLAVE: 32542

ruta: MEX-023



Km: 0.00 Tipo: 3 Sent: 0

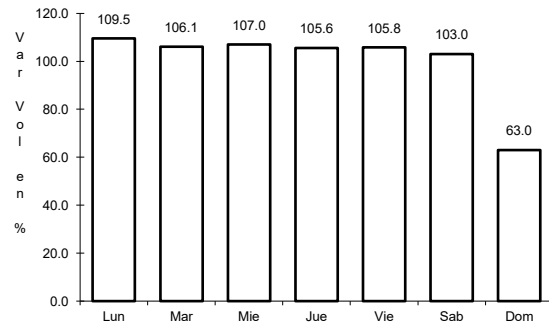


Km: 60.00 Tipo: 1 Sent: 0

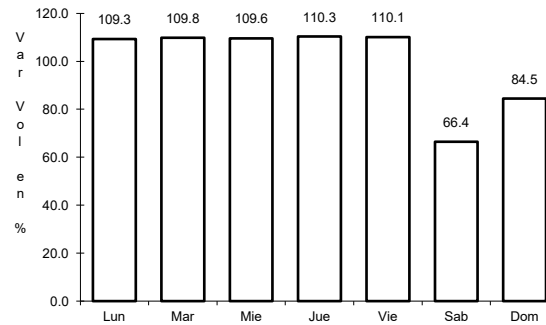
14 CARR: Libramiento de Guadalupe - Zacatecas

CLAVE: 32582

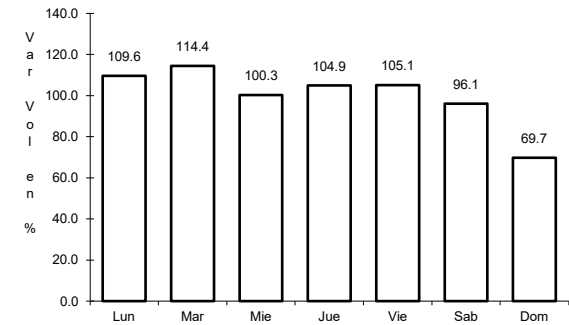
ruta: MEX-045



Km: 13.00 Tipo: 3 Sent: 1



Km: 13.00 Tipo: 3 Sent: 2

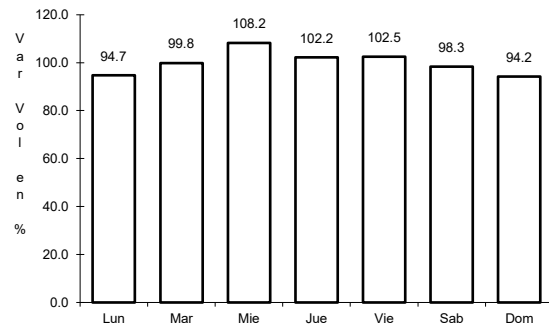


Km: 17.50 Tipo: 1 Sent: 1

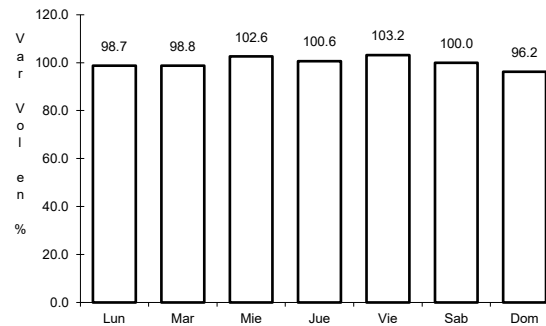
15 CARR: Libramiento de Río Grande

CLAVE:

ruta: MEX-049



Km: 55.90 Tipo: 3 Sent: 0

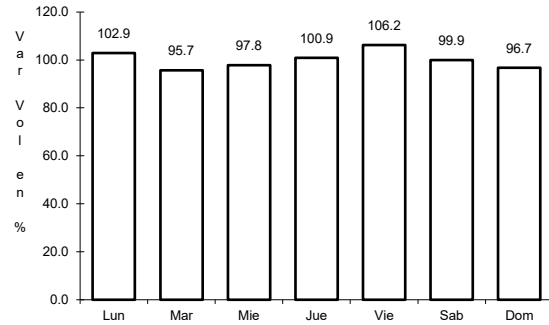


Km: 68.59 Tipo: 1 Sent: 0

16 CARR: Libramiento de Sombrerete

CLAVE:

RUTA: MEX-045



Km: 163.50

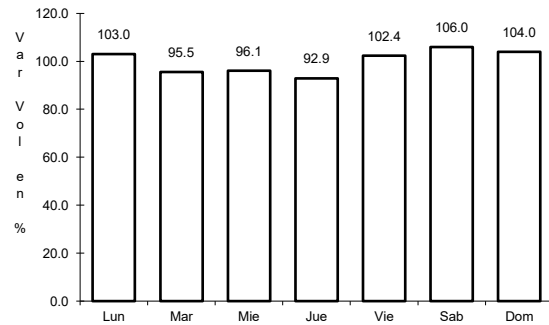
Tipo: 1

Sent: 0

17 CARR: Libramiento de Tabasco

CLAVE:

RUTA: MEX-054



Km: 190.10

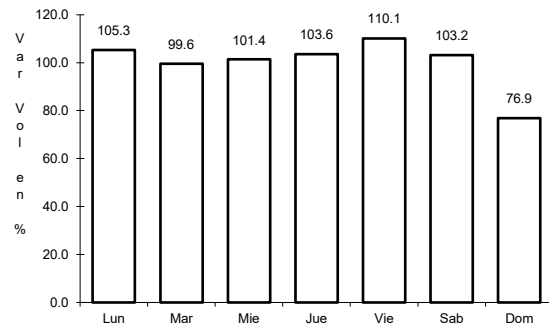
Tipo: 1

Sent: 0

18 CARR: Providencia - Luis Moya

CLAVE: 00112

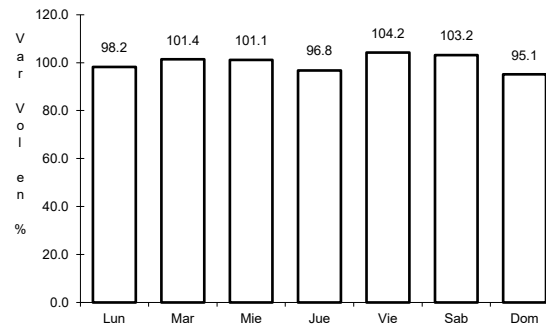
RUTA: MEX-071



Km: 0.00

Tipo: 3

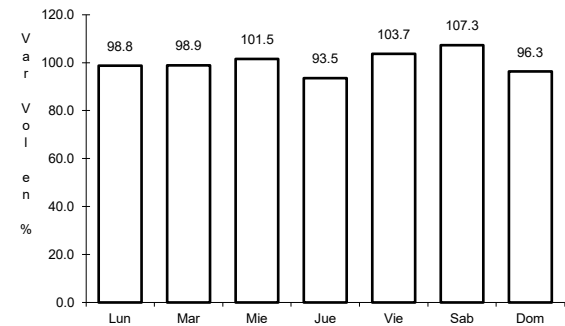
Sent: 0



Km: 21.22

Tipo: 3

Sent: 0



Km: 43.52

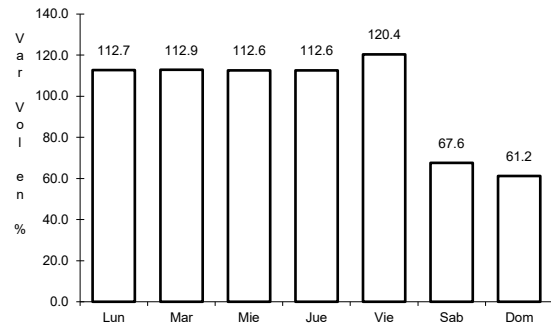
Tipo: 1

Sent: 0

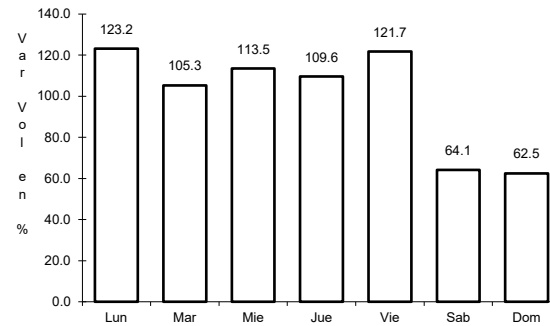
19 CARR: Ramal a Aeropuerto Zacatecas

CLAVE: 32546

ruta: MEX-045



Km: 0.00                      Tipo: 3                      Sent: 1

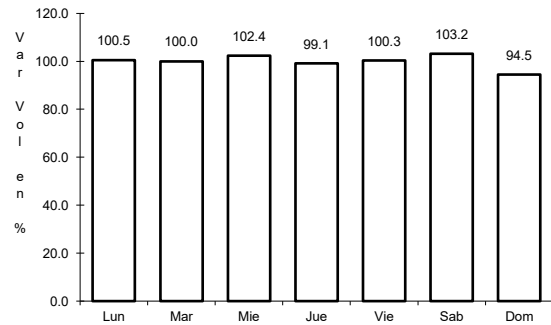


Km: 0.00                      Tipo: 3                      Sent: 2

20 CARR: Ramal a Concepción del Oro

CLAVE: 32565

ruta: MEX-054

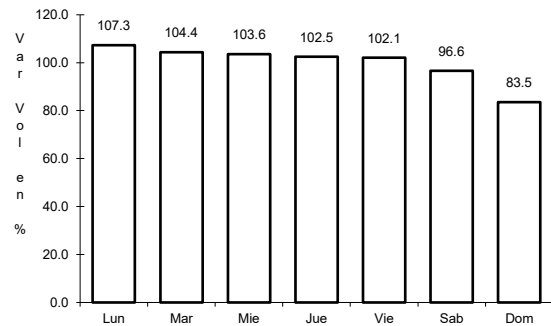


Km: 0.00                      Tipo: 3                      Sent: 0

21 CARR: Ramal a Francisco Murguía (Nieves)

CLAVE: 32541

ruta: MEX-049

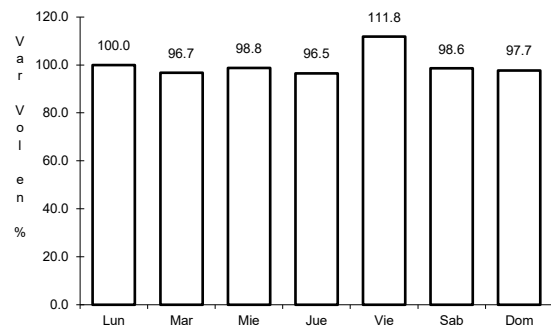


Km: 0.00                      Tipo: 3                      Sent: 0

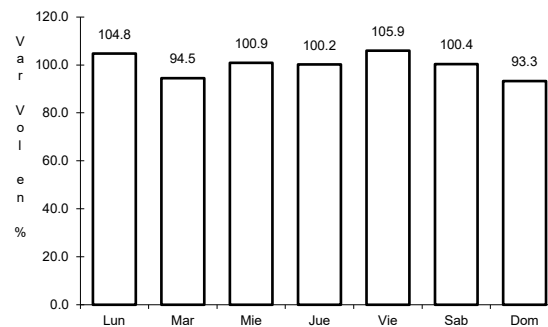
22 CARR: Ramal a Gral. Pánfilo Natera

CLAVE: 32559

ruta: MEX-049



Km: 0.00      Tipo: 3      Sent: 1

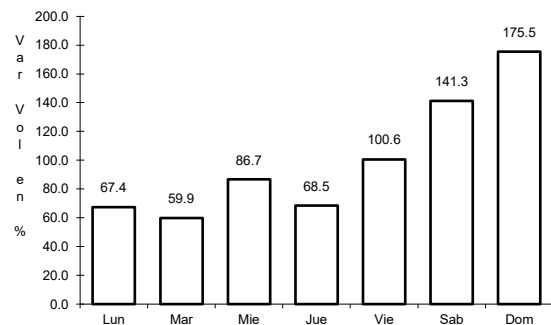


Km: 0.00      Tipo: 3      Sent: 2

23 CARR: Ramal a Ruinas de Chicomostoc

CLAVE: 00544

ruta: MEX-045

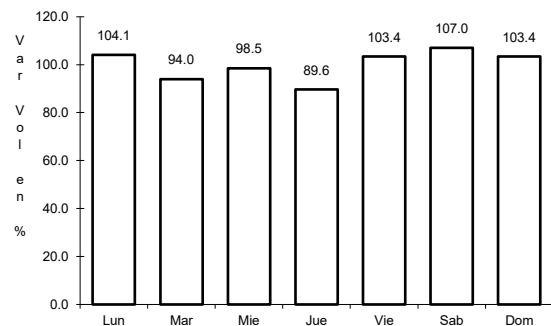


Km: 0.00      Tipo: 3      Sent: 0

24 CARR: Ramal a San Martín

CLAVE: 00544

ruta: MEX-045

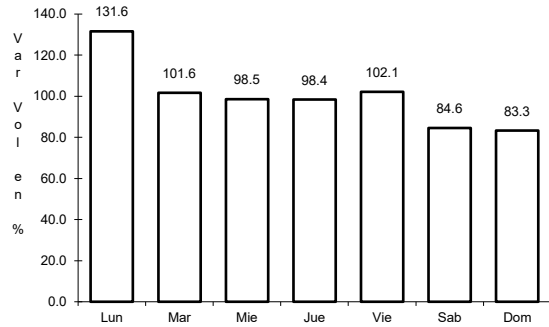


Km: 0.00      Tipo: 3      Sent: 0

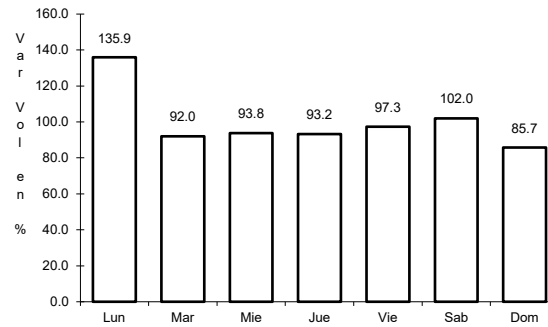
25 CARR: Ramal a Villa de Cos

CLAVE: 32564

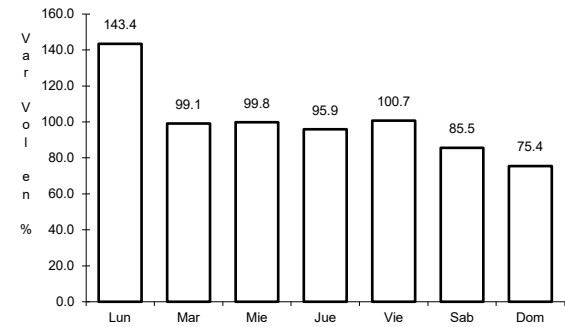
ruta: MEX-054



Km: 0.00 Tipo: 3 Sent: 1



Km: 0.00 Tipo: 3 Sent: 2

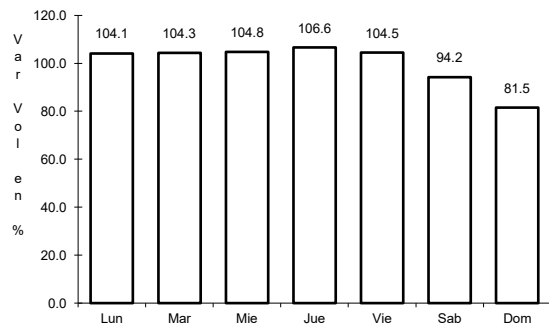


Km: 3.30 Tipo: 1 Sent: 1

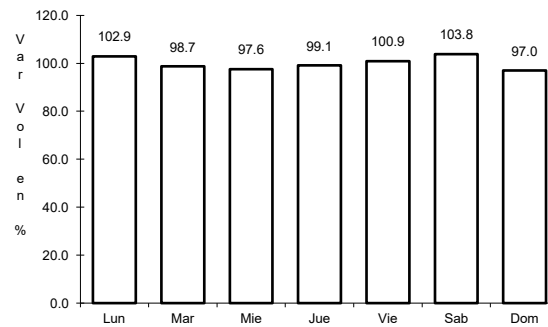
26 CARR: San Luis Potosí - Ent. Arcinas

CLAVE: 00134

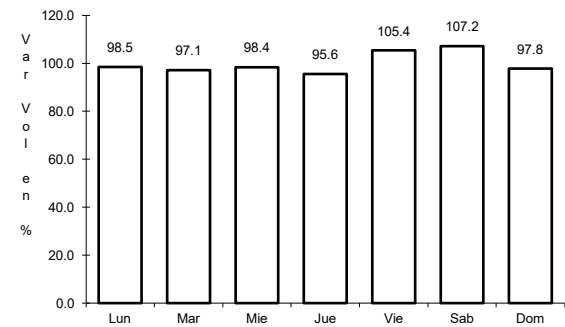
ruta: MEX-049



Km: 9.35 Tipo: 3 Sent: 1



Km: 9.35 Tipo: 3 Sent: 2

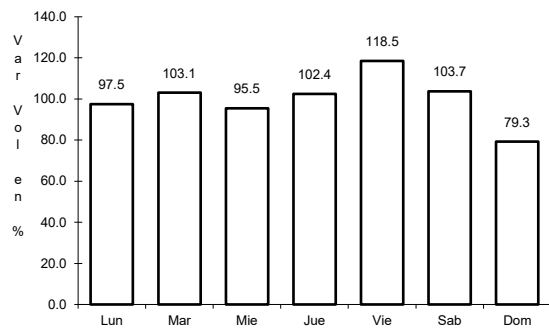


Km: 162.98 Tipo: 1 Sent: 1

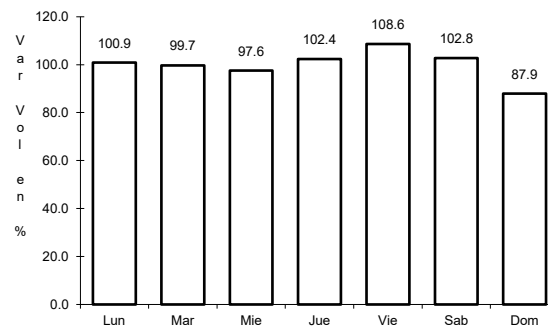
27 CARR: San Luis Potosí - Lagos de Moreno

CLAVE: 00133

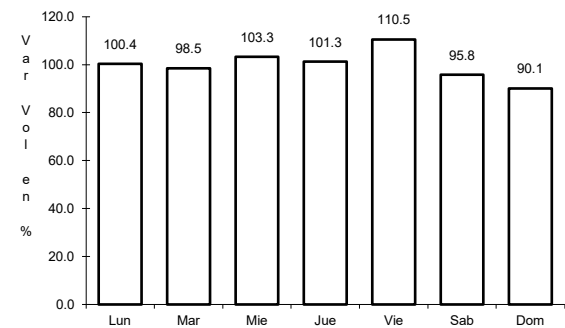
ruta: MEX-070-080



Km: 0.00 Tipo: 3 Sent: 1



Km: 0.00 Tipo: 3 Sent: 2

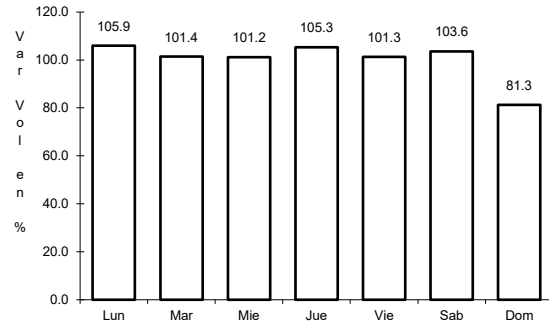


Km: 61.90 Tipo: 3 Sent: 0

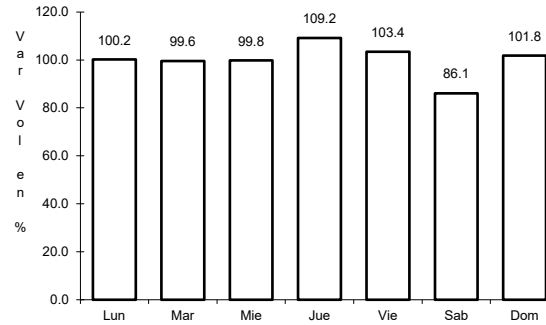
28 CARR: Zacatecas - Durango

CLAVE: 00544

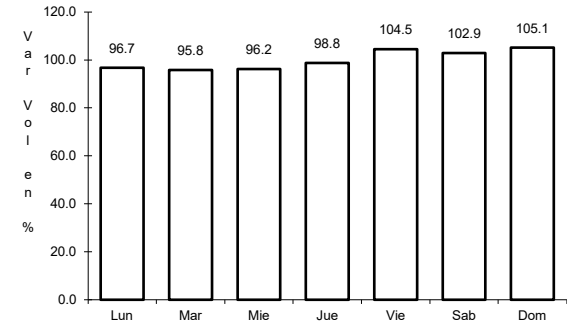
ruta: MEX-045



Km: 6.40 Tipo: 3 Sent: 1



Km: 6.40 Tipo: 3 Sent: 2

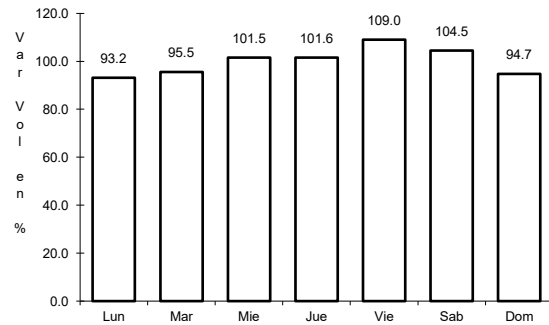


Km: 261.70 Tipo: 1 Sent: 0

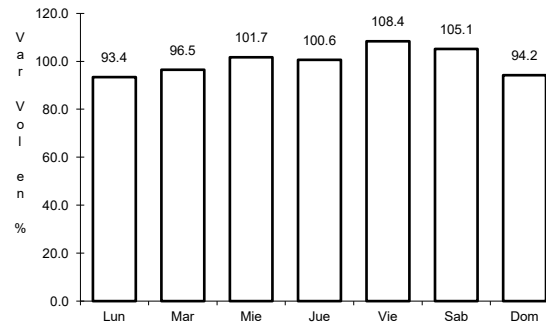
29 CARR: Ent. Cuauhtémoc - Ent. Osiris (Cuota)

CLAVE: 32558

ruta: MEX-045D



Km: 70.40 Tipo: 3 Sent: 0

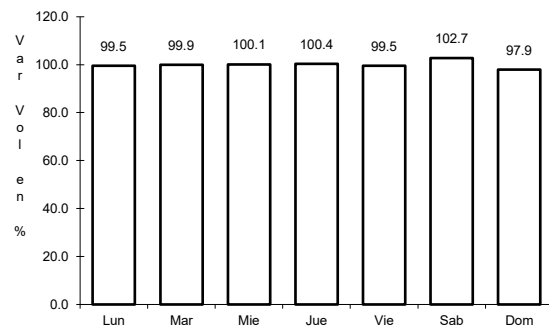


Km: 103.40 Tipo: 1 Sent: 0

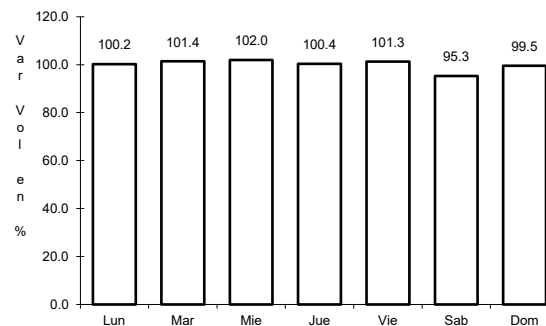
30 CARR: Libramiento de Fresnillo (Cuota)

CLAVE: 32581

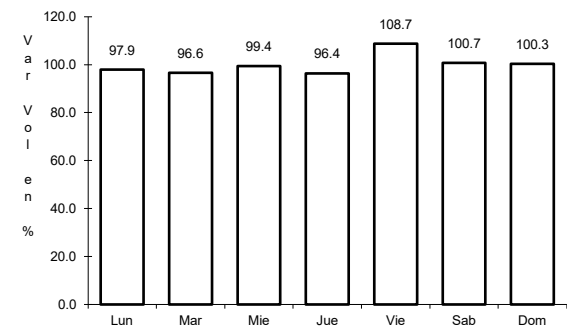
ruta: MEX-045D



Km: 49.80 Tipo: 3 Sent: 1



Km: 49.80 Tipo: 3 Sent: 2



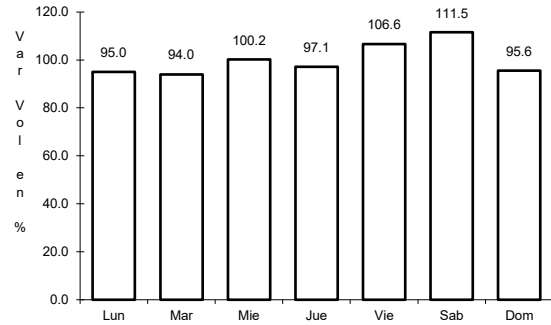
Km: 69.85 Tipo: 1 Sent: 1



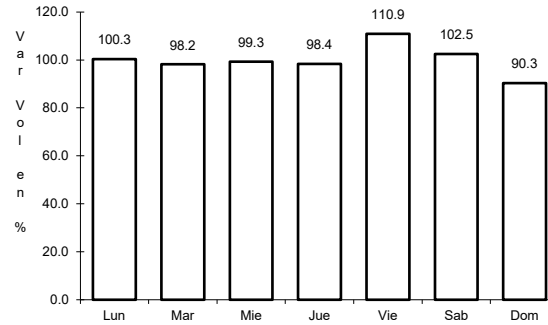
31 CARR: Libramiento de Víctor Rosales (Cuota)

CLAVE: 32015

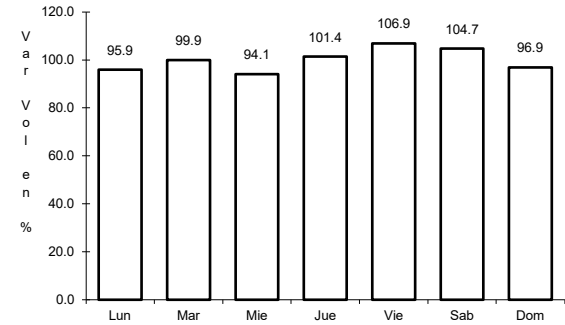
ruta: MEX-045D



Km: 0.00                      Tipo: 3                      Sent: 1



Km: 0.00                      Tipo: 3                      Sent: 2

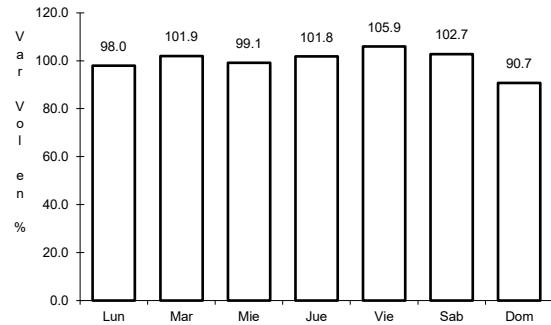


Km: 12.20                      Tipo: 1                      Sent: 1

32 CARR: Calera de Víctor Rosales - Santiaguillo

CLAVE: 32016

ruta: ZAC-016

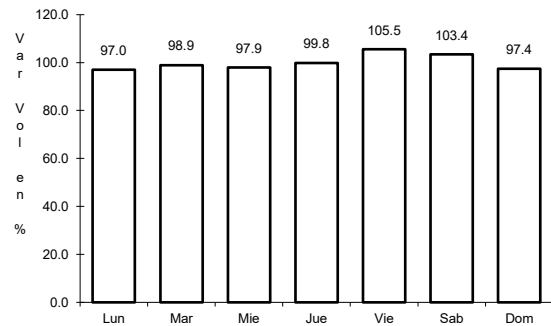


Km: 0.00                      Tipo: 3                      Sent: 0

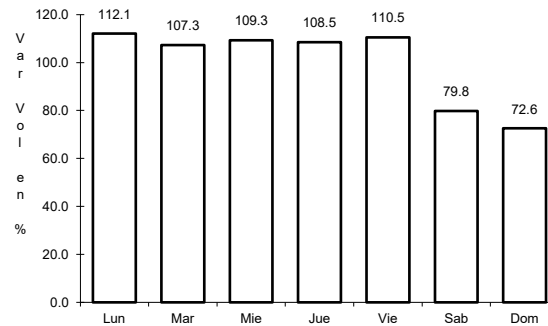
33 CARR: Cieneguillas - Zacatecas

CLAVE: 32579

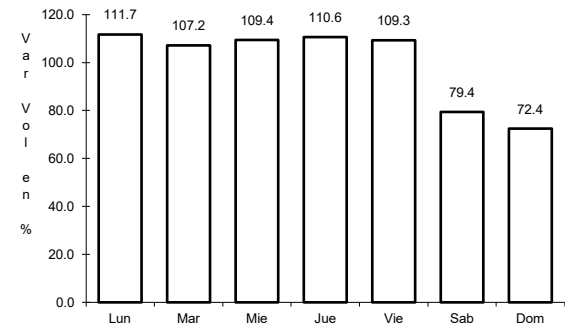
ruta: ZAC



Km: 0.00                      Tipo: 3                      Sent: 0



Km: 7.70                      Tipo: 3                      Sent: 1

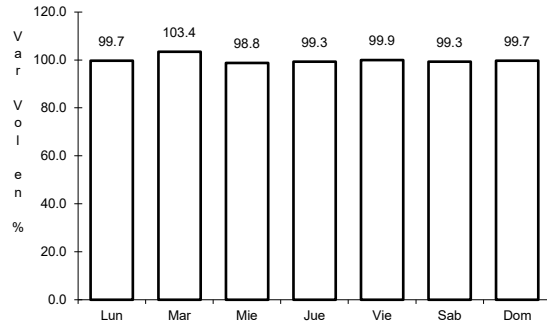


Km: 7.70                      Tipo: 3                      Sent: 2

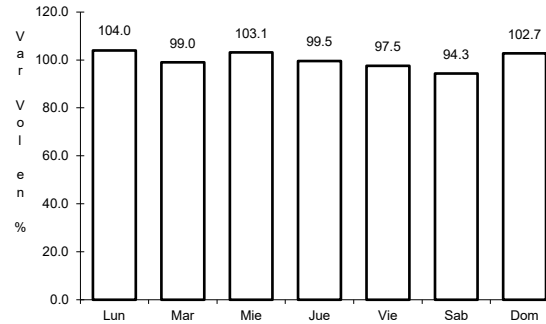
34 CARR: Corral de Piedras - Tlaltenango

CLAVE: 32579

ruta: ZAC



Km: 0.00      Tipo: 3      Sent: 0

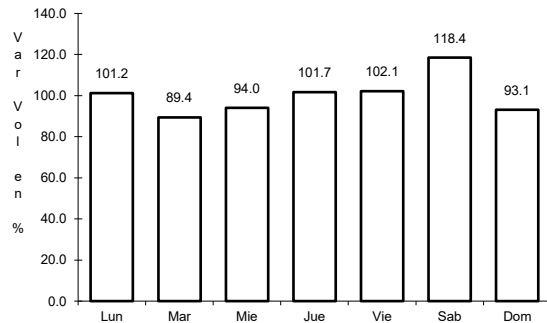


Km: 57.10      Tipo: 1      Sent: 0

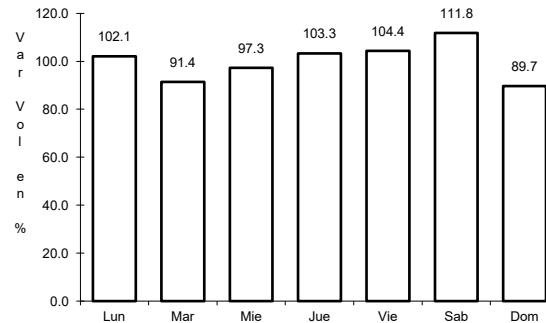
35 CARR: Ent. Ojo Caliente - Ent. Ojos de Jalisco

CLAVE: 00126

ruta: ZAC



Km: 0.00      Tipo: 3      Sent: 0

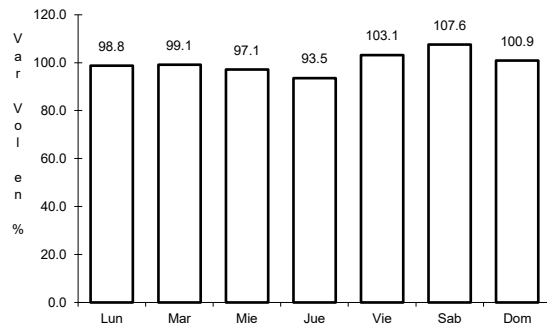


Km: 16.00      Tipo: 3      Sent: 0

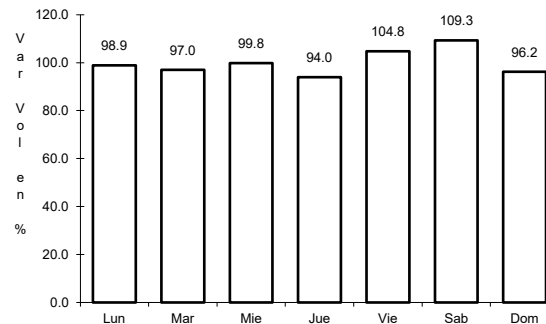
36 CARR: Fresnillo - Ent. Bañón

CLAVE: 32070

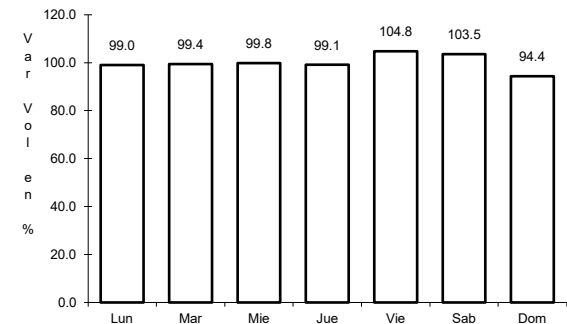
ruta: ZAC



Km: 2.40      Tipo: 3      Sent: 1



Km: 2.40      Tipo: 3      Sent: 2

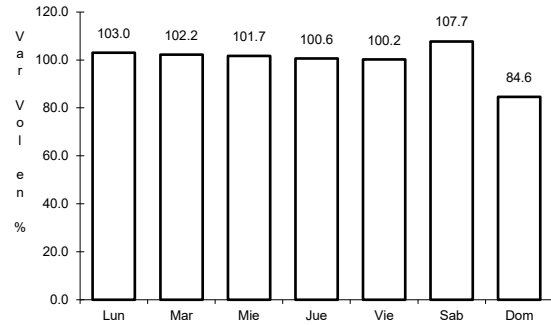


Km: 49.00      Tipo: 1      Sent: 0

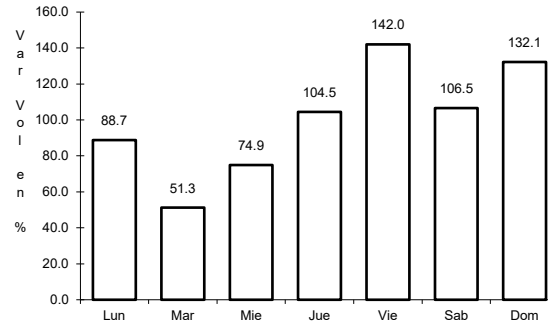
37 CARR: Fresnillo - Plateros

CLAVE: 32022

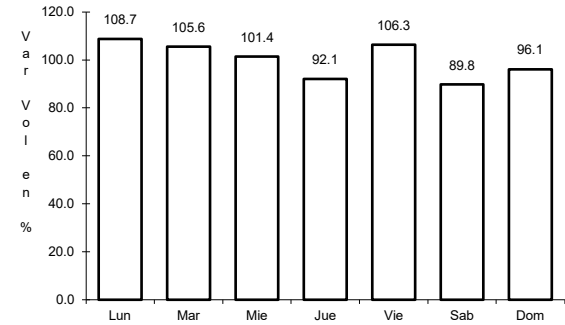
ruta: ZAC-022



Km: 0.00      Tipo: 3      Sent: 1



Km: 0.00      Tipo: 3      Sent: 1

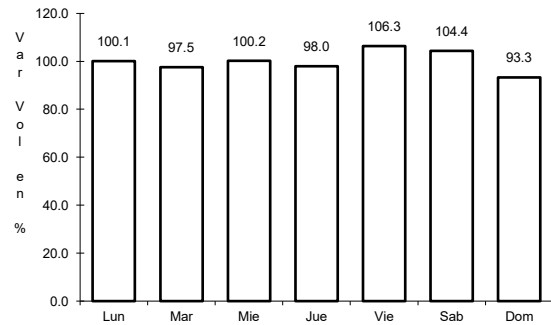


Km: 0.00      Tipo: 3      Sent: 2

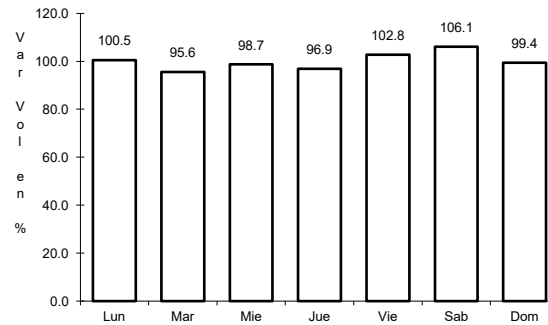
38 CARR: Guadalupe - Ent. Cuauhtémoc

CLAVE: 00579

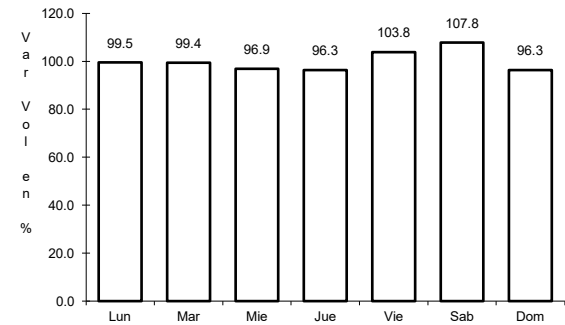
ruta: ZAC-118



Km: 0.00      Tipo: 3      Sent: 1



Km: 0.00      Tipo: 3      Sent: 2

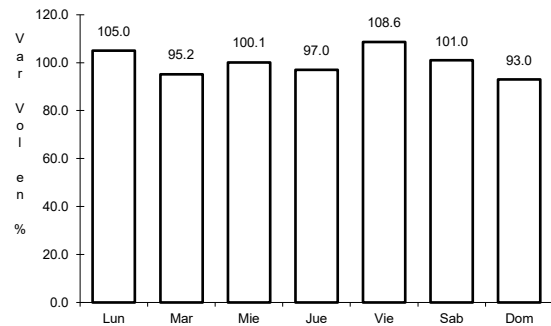


Km: 39.31      Tipo: 3      Sent: 0

39 CARR: Ramal a Loreto

CLAVE: 32067

ruta: ZAC

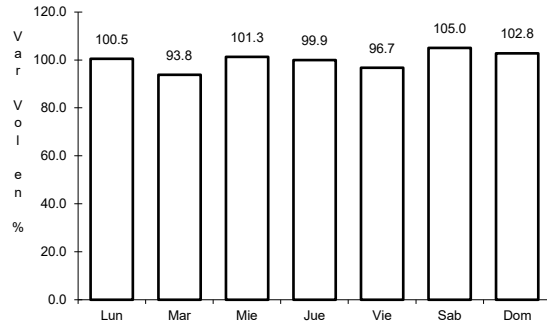


Km: 0.00      Tipo: 3      Sent: 0

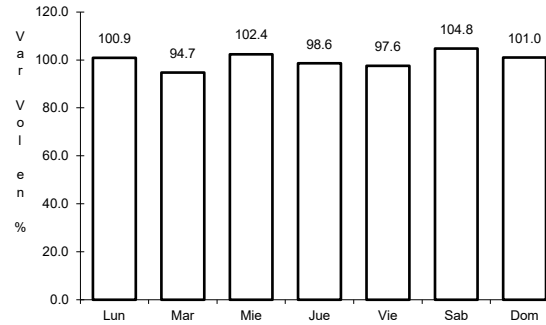
40 CARR: Ramal a Nochistlán

CLAVE: 32545

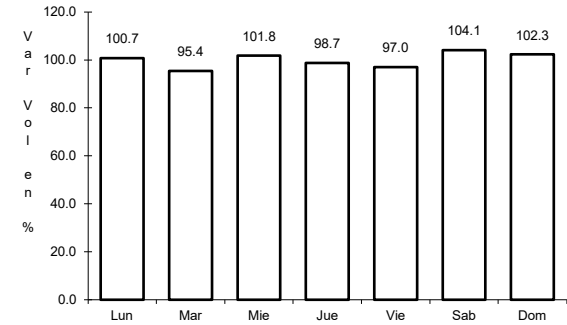
ruta: ZAC



Km: 0.00                      Tipo: 3                      Sent: 1



Km: 0.00                      Tipo: 3                      Sent: 2

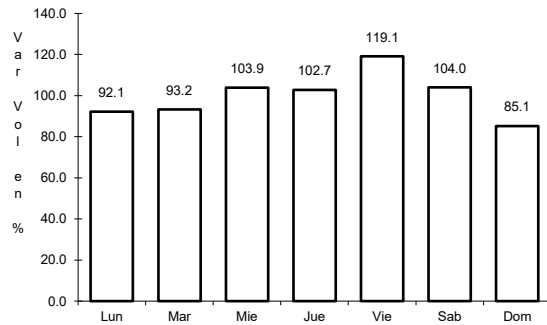


Km: 5.70                      Tipo: 1                      Sent: 1

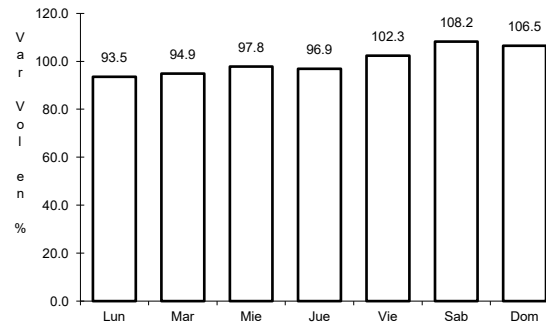
41 CARR: Ramal a San Pedro Piedra Gorda

CLAVE: 00553

ruta: ZAC-AGS



Km: 0.00                      Tipo: 3                      Sent: 0

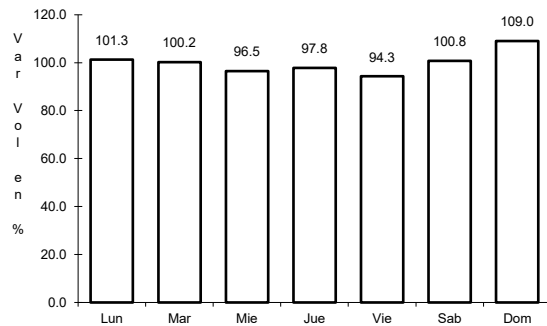


Km: 9.00                      Tipo: 1                      Sent: 0

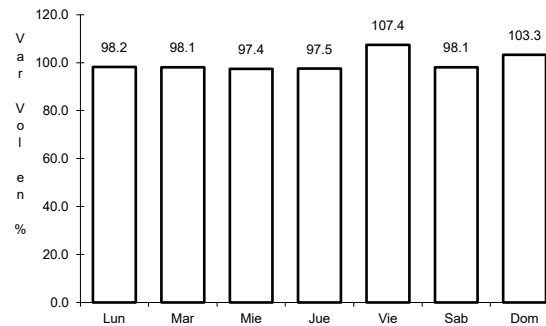
42 CARR: San Gil - Jarillas

CLAVE: 00527

ruta: AGS-012-ZAC



Km: 0.00                      Tipo: 3                      Sent: 0

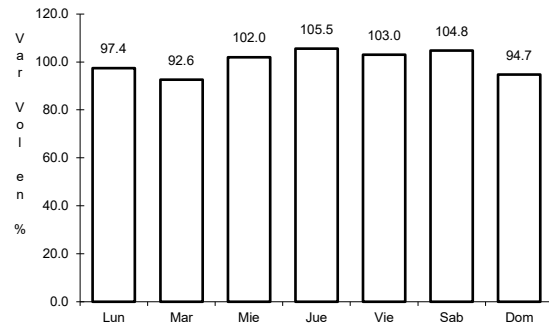


Km: 5.40                      Tipo: 1                      Sent: 0

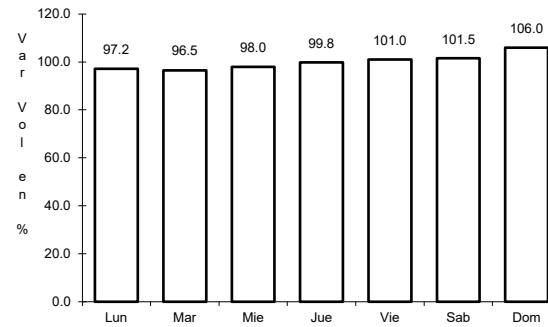
43 CARR: San Rafael - Villa García

CLAVE: 00525

RUTA: AGS-ZAC



Km: 0.00      Tipo: 3      Sent: 0

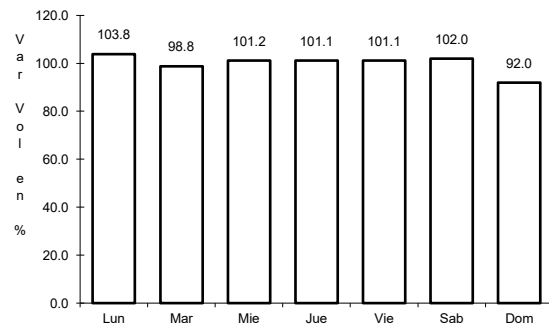


Km: 10.00      Tipo: 1      Sent: 0

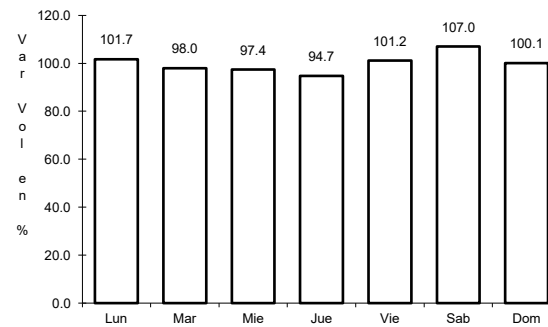
44 CARR: Santa Mónica - Pozo de Gamboa

CLAVE: 32568

RUTA: ZAC



Km: 0.00      Tipo: 3      Sent: 0

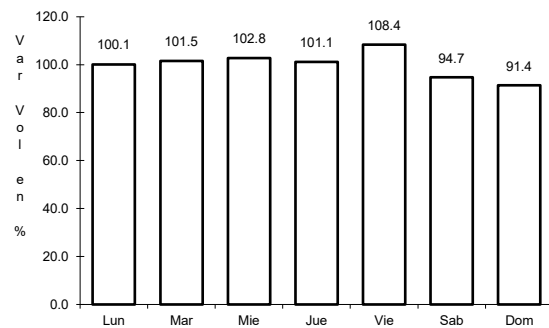


Km: 7.60      Tipo: 3      Sent: 0

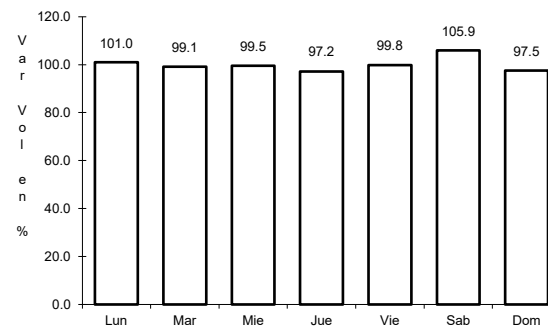
45 CARR: Sombrerete - González Ortega

CLAVE: 32568

RUTA: ZAC



Km: 0.00      Tipo: 3      Sent: 0

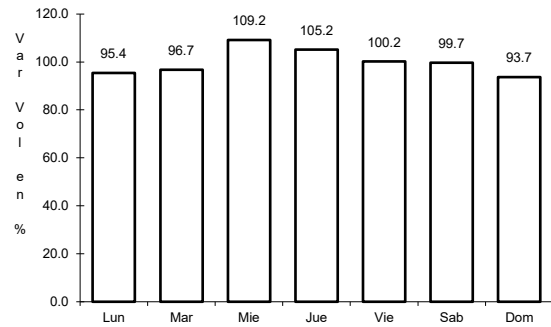


Km: 38.70      Tipo: 1      Sent: 0

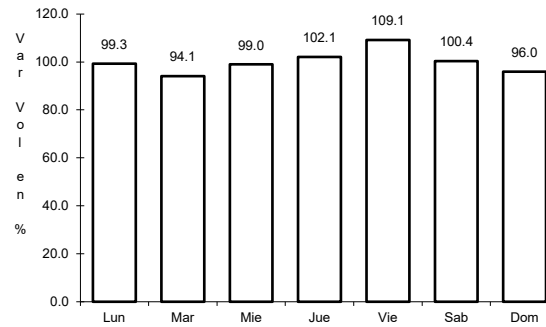
46 CARR: Libramiento Noreste de Zacatecas (Cuota)

CLAVE: 32582

ruta: ZAC-D



Km: 0.00      Tipo: 3      Sent: 0

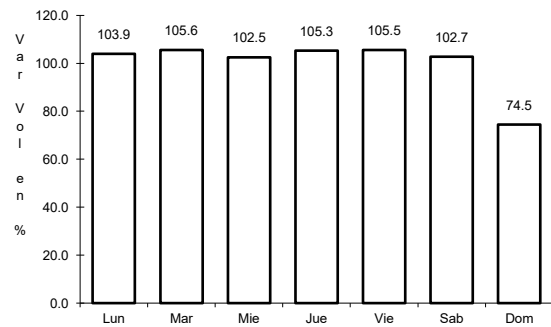


Km: 21.00      Tipo: 1      Sent: 0

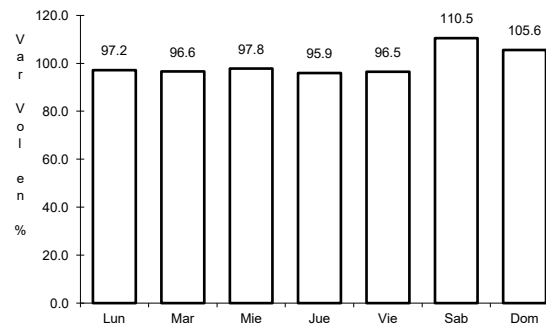
47 CARR: Tepatlán - Jaralillo

CLAVE: 00146

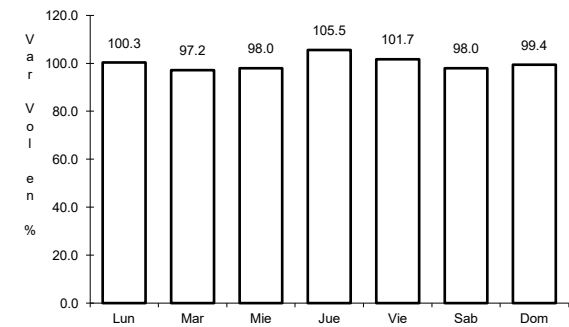
ruta: MEX-JAL-ZAC



Km: 0.00      Tipo: 3      Sent: 0



Km: 72.45      Tipo: 3      Sent: 0



Km: 157.00      Tipo: 1      Sent: 0