

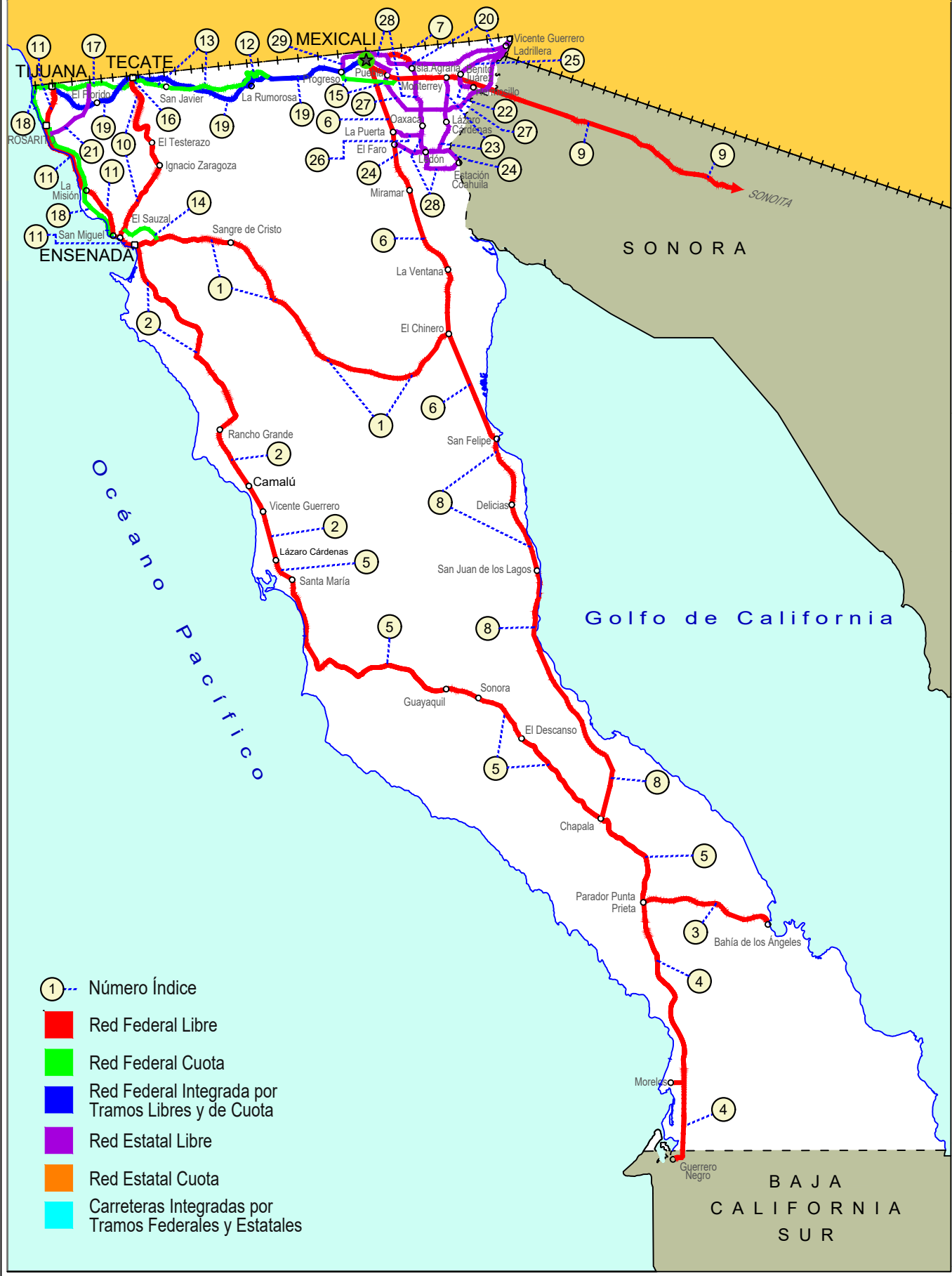


# BAJA CALIFORNIA

NO. INDICE CARRETERA		RUTA
	---RED FEDERAL LIBRE---	
1	Ensenada - El Chinero	MEX-003
2	Ensenada - Lázaro Cárdenas	MEX-001
3	Ent. Punta Prieta - Bahía de Los Ángeles	MEX-001
4	Ent. Punta Prieta - Guerrero Negro	MEX-001
5	Lázaro Cárdenas - Ent. Punta Prieta	MEX-001
6	Mexicali - San Felipe	MEX-005
7	Ramal a Aeropuerto de Mexicali	MEX-002
8	San Felipe - Chapala	MEX-005
9	Sonoita - Mexicali	MEX-002
10	Tecate - El Sauzal	MEX-003
11	Tijuana - Ensenada (Libre)	MEX-001
	---RED FEDERAL DE CUOTA---	
12	El Centinela - La Rumorosa (Cuota)	MEX-002D
13	La Rumorosa - Tecate (Cuota)	MEX-002D
14	Libramiento de Ensenada (Cuota)	MEX-003D
15	Libramiento de Mexicali (Cuota)	MEX-002D
16	Libramiento de Tecate (Cuota)	MEX-002D
17	Tecate - Tijuana (Cuota)	MEX-002D
18	Tijuana - Ensenada (Cuota)	MEX-001D
	---RED FEDERAL INTEGRADA POR TRAMOS LIBRES Y DE CUOTA---	
19	Mexicali - Tijuana	MEX-002D-MEX
	---RED ESTATAL LIBRE---	
20	Algodones - Ent. Islas Agrarias Grupo B	BC-008
21	Corredor Tijuana 2000	BC
22	Ejido Benito Juárez - Ejido Chiapas	BC-061
23	Ejido Monterrey - Mazón	BC-003
24	El Faro - Estación Coahuila	BC-004
25	Ent. Santa Rosa - Ent. Pachuca	BC-006
26	La Puerta - T. C. (Mexicali - Estación Coahuila)	BC-010
27	Mexicali - Algodones	BC-002
28	Mexicali - Estación Coahuila	BC-001
29	Mexicali - Progreso	BC-005

# 02 BAJA CALIFORNIA

ESTADOS UNIDOS DE NORTE AMÉRICA



- ① --- Número Índice
- Red Federal Libre
- Red Federal Cuota
- Red Federal Integrada por Tramos Libres y de Cuota
- Red Estatal Libre
- Red Estatal Cuota
- Carreteras Integradas por Tramos Federales y Estatales

BAJA CALIFORNIA SUR



BAJA CALIFORNIA

1 CARR: Ensenada - El Chinero

CLAVE: 02009

RUTA: MEX-003

AÑO: 2023

LUGAR	ESTACION				CLASIFICACION VEHICULAR EN PORCIENTO													COORDENADAS		
	KM	TE	SC	TDPA	M	A	B	C2	C3	T3S2	T3S3	T3S2R4	OTROS	A	B	C	K'	D	LATITUD	LONGITUD
Ensenada	0.00	3	0	13791	4.2	83.3	0.8	8.4	1.0	1.1	0.4	0.5	0.3	87.5	0.8	11.7	0.073	0.542	31.875227	-116.564915
El Tule	12.40	1	0	3429	2.5	76.1	1.0	14.2	0.6	3.7	1.6	0.3	0.0	78.6	1.0	20.4	0.105	0.506	31.887848	-116.504794
El Tule	12.40	3	0	3252	2.4	75.5	1.0	15.5	1.0	3.0	1.5	0.1	0.0	77.9	1.0	21.1	0.088	0.507	31.887947	-116.492945
Ojos Negros	38.50	1	0	2373	4.7	69.9	1.4	15.6	1.6	3.5	2.0	1.2	0.1	74.6	1.4	24.0	0.103	0.504	31.888869	-116.280557
San Salvador	60.50	1	0	1228	1.9	75.5	2.2	10.8	1.4	6.8	0.9	0.4	0.1	77.4	2.2	20.4	0.104	0.508	31.848649	-116.075738
Héroes de La Independencia	93.00	3	0	1226	1.8	78.6	2.3	9.0	1.2	5.6	0.9	0.4	0.2	80.4	2.3	17.3	0.085	0.511	31.601503	-115.874349
Leyes de Reforma	103.00	3	0	1321	2.7	76.6	1.5	11.6	1.8	4.5	0.9	0.3	0.1	79.3	1.5	19.2	0.110	0.528	31.526456	-115.812125
Lázaro Cárdenas	122.00	3	0	1277	2.1	76.9	3.7	10.5	1.4	4.0	0.9	0.3	0.2	79.0	3.7	17.3	0.085	0.518	31.377896	-115.682717
Francisco R. Serrano	137.50	3	0	765	2.1	71.9	3.2	13.7	1.2	6.5	1.0	0.3	0.1	74.0	3.2	22.8	0.104	0.527	31.328658	-115.532696
El Chinero	196.00	1	0	737	2.8	72.1	2.1	11.6	1.4	7.6	1.5	0.8	0.1	74.9	2.1	23.0	0.114	0.546	31.428477	-115.057702

2 CARR: Ensenada - Lázaro Cárdenas

CLAVE: 02098

RUTA: MEX-001

AÑO: 2023

LUGAR	ESTACION				CLASIFICACION VEHICULAR EN PORCIENTO													COORDENADAS		
	KM	TE	SC	TDPA	M	A	B	C2	C3	T3S2	T3S3	T3S2R4	OTROS	A	B	C	K'	D	LATITUD	LONGITUD
Ensenada	0.00	3	1	27262	6.2	80.7	1.1	3.6	1.9	1.8	0.6	3.3	0.8	86.9	1.1	12.0	0.076	0.505	31.817991	-116.598291
Ensenada	0.00	3	2	26712	6.3	80.6	1.1	3.7	2.0	1.7	0.5	3.4	0.7	86.9	1.1	12.0	0.070	0.505	31.817792	-116.598077
T. Der. Aeropuerto	13.50	3	1	32273	6.2	83.8	1.0	3.9	2.0	1.5	0.2	1.1	0.3	90.0	1.0	9.0	0.078	0.521	31.792555	-116.593273
T. Der. Aeropuerto	13.50	3	2	29451	6.0	83.4	1.0	4.0	2.1	1.7	0.4	1.2	0.2	89.4	1.0	9.6	0.081	0.521	31.792737	-116.593119
T. Der. La Bufadora	21.16	1	1	17280	4.2	88.0	1.0	3.0	0.8	1.7	0.4	0.6	0.3	92.2	1.0	6.8	0.067	0.517	31.731299	-116.580042
T. Der. La Bufadora	21.16	1	2	16169	4.0	88.0	1.1	2.9	0.9	1.8	0.4	0.6	0.3	92.0	1.1	6.9	0.071	0.517	31.731344	-116.579893
T. Der. La Bufadora	21.16	3	0	15706	2.3	85.5	1.8	5.6	1.0	3.1	0.4	0.2	0.1	87.8	1.8	10.4	0.073	0.502	31.700728	-116.553912
Cañón Buenavista	30.40	1	0	10675	2.4	85.4	2.2	4.3	0.9	3.9	0.4	0.4	0.1	87.8	2.2	10.0	0.089	0.506	31.677251	-116.523794
Cañón Buenavista	30.40	3	0	6805	2.7	82.9	1.9	4.9	0.7	5.3	0.8	0.7	0.1	85.6	1.9	12.5	0.098	0.510	31.666222	-116.518691
Santo Tomás	52.00	1	0	6265	1.9	81.8	3.2	4.3	1.2	5.6	1.3	0.7	0.0	83.7	3.2	13.1	0.079	0.511	31.563817	-116.415760
Misión San Vicente	90.00	1	0	6016	2.8	78.0	3.5	4.5	1.1	8.5	1.1	0.5	0.0	80.8	3.5	15.7	0.079	0.526	31.330656	-116.251814
El Salado	104.50	1	0	4146	1.7	78.2	4.8	5.2	0.9	7.5	1.2	0.4	0.1	79.9	4.8	15.3	0.080	0.542	31.223353	-116.165201
Punta Colonet	128.00	1	0	5572	1.5	81.4	4.1	4.3	0.7	7.1	0.5	0.4	0.0	82.9	4.1	13.0	0.077	0.526	31.080471	-116.204257
Punta Colonet	128.00	3	0	5569	2.4	76.7	4.8	6.6	1.4	6.9	0.8	0.4	0.0	79.1	4.8	16.1	0.080	0.515	31.053664	-116.208811
Camalú	159.00	1	0	8695	1.5	83.9	4.6	3.5	0.9	4.5	0.6	0.5	0.0	85.4	4.6	10.0	0.078	0.507	30.849705	-116.069541
Colonia Vicente Guerrero (Lázaro Cárdenas)	172.40	3	0	18997	0.9	89.7	3.5	2.5	0.8	2.0	0.3	0.3	0.0	90.6	3.5	5.9	0.081	0.513	30.700447	-115.984940
San Quintín	193.00	1	1	8450	0.9	91.9	2.3	2.5	0.7	1.3	0.2	0.2	0.0	92.8	2.3	4.9	0.091	0.503	30.583527	-115.949118
San Quintín	193.00	1	2	8558	0.8	91.5	2.4	2.5	1.1	1.5	0.1	0.1	0.0	92.3	2.4	5.3	0.088	0.503	30.583548	-115.948981
San Quintín	193.00	3	1	16978	2.8	89.7	2.2	2.7	1.1	0.7	0.1	0.5	0.2	92.5	2.2	5.3	0.086	0.503	30.531498	-115.932947
San Quintín	193.00	3	2	17168	3.0	89.0	2.3	2.6	1.3	0.9	0.3	0.4	0.2	92.0	2.3	5.7	0.089	0.503	30.531541	-115.932808

BAJA CALIFORNIA

2 CARR : Ensenada - Lázaro Cárdenas

CLAVE: 02098

RUTA: MEX-001

AÑO: 2023

LUGAR	ESTACION	CLASIFICACION VEHICULAR EN PORCIENTO												COORDENADAS								
		KM	TE	SC	TDPA	M	A	B	C2	C3	T3S2	T3S3	T3S2R4	OTROS	A	B	C	K'	D	LATITUD	LONGITUD	
Lázaro Cárdenas		196.00																				

3 CARR : Ent. Punta Prieta - Bahía de Los Ángeles

CLAVE: 02322

RUTA: MEX-001

AÑO: 2023

LUGAR	ESTACION	CLASIFICACION VEHICULAR EN PORCIENTO												COORDENADAS							
		KM	TE	SC	TDPA	M	A	B	C2	C3	T3S2	T3S3	T3S2R4	OTROS	A	B	C	K'	D	LATITUD	LONGITUD
Parador Punta Prieta		0.00	3	0	177	0.1	61.7	3.6	30.4	3.2	1.0	0.0	0.0	0.0	61.8	3.6	34.6	0.149	0.517	29.045391	-114.150486
Bahía de Los Angeles		68.00	1	0	259	4.1	75.4	1.0	16.0	2.6	0.9	0.0	0.0	0.0	79.5	1.0	19.5	0.194	0.506	28.963678	-113.567561

4 CARR : Ent. Punta Prieta - Guerrero Negro

CLAVE: 00321

RUTA: MEX-001

AÑO: 2023

LUGAR	ESTACION	CLASIFICACION VEHICULAR EN PORCIENTO												COORDENADAS							
		KM	TE	SC	TDPA	M	A	B	C2	C3	T3S2	T3S3	T3S2R4	OTROS	A	B	C	K'	D	LATITUD	LONGITUD
Parador Punta Prieta		0.00	3	0	889	3.4	58.5	5.3	10.5	3.3	14.9	3.1	1.0	0.0	61.9	5.3	32.8	0.089	0.553	28.911962	-114.150384
Rosarito		50.60	3	0	892	4.2	51.1	6.0	14.6	3.0	16.6	3.9	0.6	0.0	55.3	6.0	38.7	0.096	0.538	28.629764	-114.023846
Tanatán		70.10	3	0	977	4.0	57.1	6.7	9.2	3.3	15.0	3.7	1.0	0.0	61.1	6.7	32.2	0.080	0.526	28.505507	-114.019866
Tampico		105.00	1	0	1029	2.8	65.6	3.8	5.5	3.3	15.3	2.8	0.8	0.1	68.4	3.8	27.8	0.091	0.539	28.208342	-114.000721
Lim. Edos. Term. B.C. Ppia. B.C.S. (Paralelo 28)		128.56																			
Ent. Guerrero Negro		130.00	1	0	2051	4.0	76.6	3.4	5.1	2.8	5.4	1.9	0.7	0.1	80.6	3.4	16.0	0.097	0.502	27.973593	-114.013591

5 CARR : Lázaro Cárdenas - Ent. Punta Prieta

CLAVE: 02319

RUTA: MEX-001

AÑO: 2023

LUGAR	ESTACION	CLASIFICACION VEHICULAR EN PORCIENTO												COORDENADAS							
		KM	TE	SC	TDPA	M	A	B	C2	C3	T3S2	T3S3	T3S2R4	OTROS	A	B	C	K'	D	LATITUD	LONGITUD
Lázaro Cárdenas		0.00	3	0	13103	2.1	85.2	2.5	7.4	0.9	1.0	0.5	0.4	0.0	87.3	2.5	10.2	0.079	0.523	30.505380	-115.924770
T. Der. Ramal a Venustiano Carranza		14.50	1	0	3087	1.1	83.3	3.2	5.6	1.4	4.6	0.6	0.2	0.0	84.4	3.2	12.4	0.101	0.540	30.394054	-115.871009
Rosario de Arriba		53.70	1	0	1148	2.5	77.0	5.0	6.5	1.1	5.7	1.0	1.2	0.0	79.5	5.0	15.5	0.091	0.533	30.065902	-115.731062
Rosario de Arriba		53.70	3	0	2259	2.0	85.2	2.1	3.7	0.9	5.2	0.6	0.3	0.0	87.2	2.1	10.7	0.079	0.516	30.075454	-115.702933
T. Der. Emiliano Zapata		80.00	3	0	643	1.9	55.4	6.0	12.0	1.3	19.4	2.4	1.6	0.0	57.3	6.0	36.7	0.086	0.544	30.029299	-115.529957
San Agustín		140.00	1	0	607	4.5	57.5	4.9	5.8	1.3	21.8	2.5	1.7	0.0	62.0	4.9	33.1	0.092	0.533	29.922044	-114.981019
San Agustín		140.00	3	0	482	2.8	63.9	3.8	4.9	0.7	20.5	2.3	1.1	0.0	66.7	3.8	29.5	0.100	0.545	29.921329	-114.970479
San Luis		173.00	1	0	531	2.5	65.9	3.5	5.5	0.5	18.8	2.2	1.1	0.0	68.4	3.5	28.1	0.102	0.540	29.738980	-114.731470
Rancho Chapala		222.80	1	0	432	1.8	62.2	4.6	4.5	0.6	22.8	2.4	1.1	0.0	64.0	4.6	31.4	0.095	0.588	29.396531	-114.393960
Parador Punta Prieta		275.66	1	0	827	4.8	64.6	4.0	6.3	1.0	15.6	2.3	1.4	0.0	69.4	4.0	26.6	0.117	0.582	29.070299	-114.155199

BAJA CALIFORNIA

6 CARR: Mexicali - San Felipe

CLAVE: 02096

RUTA: MEX-005

AÑO: 2023

LUGAR	ESTACION				CLASIFICACION VEHICULAR EN PORCIENTO										COORDENADAS					
	KM	TE	SC	TDPA	M	A	B	C2	C3	T3S2	T3S3	T3S2R4	OTROS	A	B	C	K'	D	LATITUD	LONGITUD
Mexicali	0.00	3	1	14503	5.9	77.9	3.6	4.1	3.3	3.4	1.0	0.7	0.1	83.8	3.6	12.6	0.072	0.523	32.555449	-115.417767
Mexicali	0.00	3	2	13207	5.9	77.9	3.6	4.1	3.3	3.4	1.0	0.7	0.1	83.8	3.6	12.6	0.070	0.523	32.555479	-115.417604
La Puerta	32.00	1	1	4721	2.0	87.9	1.3	3.6	1.5	1.9	1.2	0.5	0.1	89.9	1.3	8.8	0.105	0.523	32.339738	-115.331567
La Puerta	32.00	1	2	5168	1.9	88.0	1.3	3.5	1.6	1.9	1.3	0.4	0.1	89.9	1.3	8.8	0.112	0.523	32.339715	-115.331691
T. Izq. Estación Coahuila	39.00	1	1	4048	1.1	87.5	1.8	3.5	1.5	2.4	1.5	0.5	0.2	88.6	1.8	9.6	0.070	0.509	32.280456	-115.322510
T. Izq. Estación Coahuila	39.00	1	2	4201	1.2	87.6	1.7	3.5	1.6	2.3	1.5	0.4	0.2	88.8	1.7	9.5	0.085	0.509	32.280445	-115.322413
T. Izq. Estación Coahuila	39.00	3	0	3456	2.7	86.0	1.2	3.6	1.4	2.7	1.4	0.4	0.6	88.7	1.2	10.1	0.136	0.534	32.267350	-115.321479
El Chinero	141.00	1	0	2148	1.3	87.8	1.4	3.9	0.6	3.7	0.7	0.4	0.2	89.1	1.4	9.5	0.111	0.501	31.441358	-115.053612
El Chinero	141.00	3	0	2164	1.8	85.1	1.7	4.6	0.4	3.9	1.9	0.5	0.1	86.9	1.7	11.4	0.098	0.508	31.424456	-115.045629
San Felipe	189.60	1	1	3958	2.1	90.1	0.8	3.2	1.9	1.1	0.7	0.1	0.0	92.2	0.8	7.0	0.094	0.501	31.039344	-114.866599
San Felipe	189.60	1	2	3974	2.1	89.9	0.8	3.2	1.9	1.2	0.7	0.1	0.1	92.0	0.8	7.2	0.079	0.501	31.039402	-114.866504

7 CARR: Ramal a Aeropuerto de Mexicali

CLAVE: 02321

RUTA: MEX-002

AÑO: 2023

LUGAR	ESTACION				CLASIFICACION VEHICULAR EN PORCIENTO										COORDENADAS					
	KM	TE	SC	TDPA	M	A	B	C2	C3	T3S2	T3S3	T3S2R4	OTROS	A	B	C	K'	D	LATITUD	LONGITUD
T. C. Mexicali - Estación Coahuila	0.00	3	0	16541	1.8	89.1	0.4	2.5	2.1	3.4	0.3	0.3	0.1	90.9	0.4	8.7	0.071	0.512	32.650473	-115.340597
Aeropuerto	10.00	1	0	9611	1.2	91.0	0.7	4.1	0.9	1.5	0.2	0.2	0.2	92.2	0.7	7.1	0.068	0.514	32.630365	-115.258541
T. C. Algodones - Islas Agrarias Grupo B	12.10																			

8 CARR: San Felipe - Chapala

CLAVE: 02503

RUTA: MEX-005

AÑO: 2023

LUGAR	ESTACION				CLASIFICACION VEHICULAR EN PORCIENTO										COORDENADAS					
	KM	TE	SC	TDPA	M	A	B	C2	C3	T3S2	T3S3	T3S2R4	OTROS	A	B	C	K'	D	LATITUD	LONGITUD
San Felipe	0.00	3	1	2414	2.1	91.9	0.4	3.1	0.7	1.5	0.2	0.1	0.0	94.0	0.4	5.6	0.109	0.527	30.997826	-114.836391
San Felipe	0.00	3	2	2162	1.9	92.0	0.4	3.1	0.6	1.7	0.2	0.1	0.0	93.9	0.4	5.7	0.107	0.527	30.997838	-114.836349
Playa Curbina	75.46	3	0	520	2.4	88.5	1.4	3.5	1.1	1.6	1.3	0.2	0.0	90.9	1.4	7.7	0.197	0.525	30.357440	-114.643885
T. C. Lazaro Cárdenas - Parador Punta Prieta	213.00																			

9 CARR: Sonoita - Mexicali

CLAVE: 00081

RUTA: MEX-002

AÑO: 2023

LUGAR	ESTACION				CLASIFICACION VEHICULAR EN PORCIENTO										COORDENADAS					
	KM	TE	SC	TDPA	M	A	B	C2	C3	T3S2	T3S3	T3S2R4	OTROS	A	B	C	K'	D	LATITUD	LONGITUD
Sonoita	0.00	3	0	5549	3.4	46.5	7.8	3.7	1.8	24.4	3.2	8.3	0.9	49.9	7.8	42.3	0.059	0.510	31.886679	-112.858482
Los Vidrios	58.75	3	0	4575	3.3	34.0	11.6	3.4	2.0	32.1	3.0	9.7	0.9	37.3	11.6	51.1	0.054	0.505	32.028748	-113.426858

BAJA CALIFORNIA

9 CARR: Sonoita - Mexicali

CLAVE: 00081

RUTA: MEX-002

AÑO: 2023

LUGAR	ESTACION				CLASIFICACION VEHICULAR EN PORCIENTO										COORDENADAS					
	KM	TE	SC	TDPA	M	A	B	C2	C3	T3S2	T3S3	T3S2R4	OTROS	A	B	C	K'	D	LATITUD	LONGITUD
San Luis Río Colorado	191.80	1	0	5809	3.5	50.6	7.6	3.4	2.0	22.6	2.5	6.9	0.9	54.1	7.6	38.3	0.057	0.511	32.453547	-114.683252
San Luis Río Colorado	191.80	3	1	11583	0.9	83.9	2.4	2.6	0.8	6.4	0.7	1.8	0.5	84.8	2.4	12.8	0.073	0.509	32.486976	-114.792715
San Luis Río Colorado	191.80	3	2	11988	0.9	83.6	2.6	2.8	0.7	6.7	0.7	1.6	0.4	84.5	2.6	12.9	0.074	0.509	32.486840	-114.792774
Lim. Edos. Term. Son. Ppia. B.C.	203.69																			
X. C. Mexicali - Algodones	206.78	1	1	13680	1.5	82.2	1.9	4.3	0.9	5.6	1.0	2.1	0.5	83.7	1.9	14.4	0.072	0.501	32.497871	-114.829188
X. C. Mexicali - Algodones	206.78	1	2	13714	1.7	81.7	1.8	4.5	0.9	5.8	1.1	2.0	0.5	83.4	1.8	14.8	0.074	0.501	32.497650	-114.828751
X. C. Mexicali - Algodones	206.78	3	1	10931	2.6	79.8	2.4	4.5	1.0	6.4	0.8	2.0	0.5	82.4	2.4	15.2	0.071	0.510	32.510437	-114.871197
X. C. Mexicali - Algodones	206.78	3	2	11396	2.6	79.8	2.4	4.7	1.0	6.2	0.7	2.1	0.5	82.4	2.4	15.2	0.071	0.510	32.510367	-114.871235
T. Izq. Ejido Hermosillo	214.80	3	1	8728	2.4	75.4	3.1	5.3	1.2	8.2	1.2	2.6	0.6	77.8	3.1	19.1	0.067	0.507	32.527451	-114.928438
T. Izq. Ejido Hermosillo	214.80	3	2	8499	2.6	75.4	3.1	5.2	1.1	8.4	1.0	2.7	0.5	78.0	3.1	18.9	0.067	0.507	32.527354	-114.928489
T. Izq. Ejido Tehuantepec	223.83	3	1	11070	1.9	79.9	3.1	3.2	1.4	7.1	0.9	1.9	0.6	81.8	3.1	15.1	0.094	0.500	32.554909	-115.034420
T. Izq. Ejido Tehuantepec	223.83	3	2	11088	1.9	80.3	2.9	3.2	1.3	6.7	1.1	1.9	0.7	82.2	2.9	14.9	0.094	0.500	32.554829	-115.034382
Ejido Monterrey	228.63	3	1	12422	2.0	77.5	3.1	5.4	0.9	7.5	0.9	2.2	0.5	79.5	3.1	17.4	0.064	0.511	32.551992	-115.087449
Ejido Monterrey	228.63	3	2	13002	2.2	78.0	3.0	5.8	0.9	7.1	0.7	1.9	0.4	80.2	3.0	16.8	0.066	0.511	32.551911	-115.087450
X. C. Mexicali - Estación Coahuila	242.17	1	1	12350	1.8	78.4	3.2	5.4	1.0	6.5	1.0	2.1	0.6	80.2	3.2	16.6	0.065	0.502	32.552839	-115.202997
X. C. Mexicali - Estación Coahuila	242.17	1	2	12276	2.3	78.4	3.4	5.3	1.0	6.1	0.9	2.1	0.5	80.7	3.4	15.9	0.075	0.502	32.552743	-115.203008
T. Izq. Libramiento de Mexicali (Cuota)	249.32	1	1	14237	1.6	80.2	2.6	5.2	1.3	6.0	1.0	1.6	0.5	81.8	2.6	15.6	0.090	0.517	32.554980	-115.286243
T. Izq. Libramiento de Mexicali (Cuota)	249.32	1	2	15237	1.5	80.7	2.4	5.0	1.2	6.1	1.0	1.6	0.5	82.2	2.4	15.4	0.097	0.517	32.554877	-115.286272
X. C. Mexicali - Algodones	256.47	1	1	16254	1.7	88.5	1.2	3.7	0.9	2.3	0.4	0.9	0.4	90.2	1.2	8.6	0.097	0.513	32.565176	-115.325706
X. C. Mexicali - Algodones	256.47	1	2	17135	1.8	88.0	1.4	3.6	1.0	2.6	0.6	0.7	0.3	89.8	1.4	8.8	0.093	0.513	32.565048	-115.325764
T. C. Mexicali - San Felipe	265.12																			

10 CARR: Tecate - El Sauzal

CLAVE: 02097

RUTA: MEX-003

AÑO: 2023

LUGAR	ESTACION				CLASIFICACION VEHICULAR EN PORCIENTO										COORDENADAS					
	KM	TE	SC	TDPA	M	A	B	C2	C3	T3S2	T3S3	T3S2R4	OTROS	A	B	C	K'	D	LATITUD	LONGITUD
Tecate	0.00	3	0	12464	1.5	88.5	1.7	3.0	0.8	2.7	0.6	0.9	0.3	90.0	1.7	8.3	0.095	0.515	32.539232	-116.627230
T. Der. Valle de Las Palmas	27.80	1	0	4924	2.3	84.2	1.9	3.5	1.0	4.7	0.9	1.3	0.2	86.5	1.9	11.6	0.093	0.515	32.382485	-116.614004
El Tezterazo	48.80	3	0	6747	2.1	87.4	1.8	1.6	1.0	3.4	1.0	1.4	0.3	89.5	1.8	8.7	0.071	0.538	32.287805	-116.530118
T. Izq. San Marcos	63.50	1	0	4669	2.8	84.4	1.9	2.8	1.5	3.3	1.2	1.9	0.2	87.2	1.9	10.9	0.115	0.508	32.195776	-116.488605
El Porvenir Guadalupe	74.80	3	0	6990	1.7	83.8	1.8	3.6	0.9	5.2	1.0	1.5	0.5	85.5	1.8	12.7	0.100	0.527	32.090470	-116.563495
Las Palmas	85.00	1	0	12239	2.2	84.8	1.6	4.1	1.4	3.1	1.0	1.3	0.5	87.0	1.6	11.4	0.064	0.528	32.044984	-116.598267
San Antonio de Las Minas	93.90	1	1	6267	2.0	88.5	1.4	3.1	1.3	1.5	0.6	1.3	0.3	90.5	1.4	8.1	0.114	0.509	31.985193	-116.646370
San Antonio de Las Minas	93.90	1	2	6486	2.1	88.5	1.3	3.2	1.3	1.5	0.6	1.2	0.3	90.6	1.3	8.1	0.104	0.509	31.985137	-116.646261
El Sauzal	104.53	1	1	6938	2.0	85.5	1.3	4.6	2.1	2.3	0.6	1.2	0.4	87.5	1.3	11.2	0.091	0.519	31.910883	-116.693640



BAJA CALIFORNIA

10 CARR: Tecate - El Sauzal

CLAVE: 02097

RUTA: MEX-003

AÑO: 2023

LUGAR	ESTACION				CLASIFICACION VEHICULAR EN PORCIENTO														COORDENADAS	
	KM	TE	SC	TDPA	M	A	B	C2	C3	T3S2	T3S3	T3S2R4	OTROS	A	B	C	K'	D	LATITUD	LONGITUD
El Sauzal	104.53	1	2	7484	2.1	86.1	1.4	4.3	1.9	2.0	0.6	1.2	0.4	88.2	1.4	10.4	0.104	0.519	31.910797	-116.693552

11 CARR: Tijuana - Ensenada (Libre)

CLAVE: 02099

RUTA: MEX-001

AÑO: 2023

LUGAR	ESTACION				CLASIFICACION VEHICULAR EN PORCIENTO														COORDENADAS	
	KM	TE	SC	TDPA	M	A	B	C2	C3	T3S2	T3S3	T3S2R4	OTROS	A	B	C	K'	D	LATITUD	LONGITUD
Tijuana	0.00																			
X. C. Tijuana - San Miguel (Cuota)	22.00	1	1	34289	2.9	91.1	0.7	1.4	1.0	1.2	0.2	1.1	0.4	94.0	0.7	5.3	0.076	0.541	32.381594	-117.057434
X. C. Tijuana - San Miguel (Cuota)	22.00	1	2	41001	2.6	91.2	0.7	1.6	0.9	1.1	0.3	1.3	0.3	93.8	0.7	5.5	0.062	0.541	32.381574	-117.057268
Rosarito	25.94	1	1	14514	4.0	88.2	0.8	3.4	1.2	0.8	0.1	1.2	0.3	92.2	0.8	7.0	0.075	0.532	32.368757	-117.060653
Rosarito	25.94	1	2	16523	4.3	87.9	0.7	3.2	0.9	1.0	0.1	1.5	0.4	92.2	0.7	7.1	0.065	0.532	32.368226	-117.060372
Rosarito	25.94	3	1	10279	6.9	83.0	0.6	4.6	1.7	0.8	0.5	1.5	0.4	89.9	0.6	9.5	0.101	0.543	32.336955	-117.054707
Rosarito	25.94	3	2	12205	7.1	83.7	0.8	4.4	1.6	0.5	0.4	1.2	0.3	90.8	0.8	8.4	0.091	0.543	32.336958	-117.054585
Complejo la Paloma	28.64																			
T. Izq. Aut. Tijuana - San Miguel	46.12	1	1	8178	1.7	92.9	0.7	1.8	0.9	0.6	0.5	0.7	0.2	94.6	0.7	4.7	0.128	0.549	32.229863	-116.921608
T. Izq. Aut. Tijuana - San Miguel	46.12	1	2	6711	1.9	93.1	0.5	2.0	0.8	0.6	0.4	0.5	0.2	95.0	0.5	4.5	0.102	0.549	32.230024	-116.921558
Población Plaza Santa María	56.98	1	0	2383	3.2	93.6	0.3	2.0	0.5	0.2	0.1	0.1	0.0	96.8	0.3	2.9	0.146	0.516	32.144782	-116.892308
La Misión	64.98	1	0	5754	2.3	93.6	0.5	2.3	0.5	0.4	0.2	0.2	0.0	95.9	0.5	3.6	0.110	0.505	32.092970	-116.859690
T. Izq. Colonia Guadalupe	82.90	1	0	3688	2.3	93.4	1.0	2.3	0.5	0.2	0.1	0.2	0.0	95.7	1.0	3.3	0.128	0.521	31.989603	-116.746469
Ent. San Miguel	95.80	1	0	2719	4.2	90.2	1.8	2.5	1.0	0.1	0.1	0.1	0.0	94.4	1.8	3.8	0.086	0.505	31.913605	-116.731113
El Sauzal	102.00	1	1	15178	2.1	81.7	1.9	4.9	1.4	5.9	0.4	1.2	0.5	83.8	1.9	14.3	0.089	0.507	31.900638	-116.710154
El Sauzal	102.00	1	2	15635	1.9	83.4	2.0	3.6	1.2	6.1	0.5	0.9	0.4	85.3	2.0	12.7	0.092	0.507	31.900677	-116.710020
El Sauzal	102.00	3	1	24998	3.3	83.8	1.9	6.0	0.9	2.5	0.4	1.0	0.2	87.1	1.9	11.0	0.081	0.508	31.868933	-116.674712
El Sauzal	102.00	3	2	23455	3.1	83.2	2.1	6.1	1.0	2.7	0.6	1.0	0.2	86.3	2.1	11.6	0.068	0.508	31.869020	-116.674634
Ensenada	110.00																			

12 CARR: El Centinela - La Rumorosa (Cuota)

CLAVE: 02011

RUTA: MEX-002D

AÑO: 2023

LUGAR	ESTACION				CLASIFICACION VEHICULAR EN PORCIENTO														COORDENADAS	
	KM	TE	SC	TDPA	M	A	B	C2	C3	T3S2	T3S3	T3S2R4	OTROS	A	B	C	K'	D	LATITUD	LONGITUD
Ent. El Centinela	20.30																			
Laguna Salada	25.00	1	1	7960	2.5	75.7	3.1	4.0	1.3	9.0	1.5	2.1	0.8	78.2	3.1	18.7	0.055	0.510	32.576954	-115.739094
Laguna Salada	25.00	1	2	7638	2.5	75.8	3.1	3.9	1.4	8.9	1.5	2.1	0.8	78.3	3.1	18.6	0.108	0.510	32.576871	-115.739076
La Rumorosa	67.60	1	1	3013	3.5	74.9	1.8	4.5	1.7	9.8	2.1	1.5	0.2	78.4	1.8	19.8	0.111	0.511	32.551080	-116.043290
La Rumorosa	67.60	1	2	2877	3.6	74.3	1.9	4.7	1.6	10.0	2.2	1.5	0.2	77.9	1.9	20.2	0.127	0.511	32.551032	-116.043233

BAJA CALIFORNIA

13 CARR: La Rumorosa - Tecate (Cuota)

CLAVE: 02011

RUTA: MEX-002D

AÑO: 2023

LUGAR	ESTACION				CLASIFICACION VEHICULAR EN PORCIENTO										COORDENADAS					
	KM	TE	SC	TDPA	M	A	B	C2	C3	T3S2	T3S3	T3S2R4	OTROS	A	B	C	K'	D	LATITUD	LONGITUD
La Rumorosa	62.00	3	1	5820	2.1	68.7	4.2	3.9	1.5	13.7	1.6	3.5	0.8	70.8	4.2	25.0	0.074	0.501	32.549638	-116.065675
La Rumorosa	62.00	3	2	5842	2.1	68.7	4.2	4.1	1.4	13.7	1.4	3.6	0.8	70.8	4.2	25.0	0.079	0.501	32.549577	-116.065607
Plaza de Cobro El Hongo	92.00	1	1	5417	2.6	69.4	4.8	3.6	1.2	11.2	1.6	4.7	0.9	72.0	4.8	23.2	0.082	0.505	32.517927	-116.297772
Plaza de Cobro El Hongo	92.00	1	2	5516	2.6	69.3	4.8	3.7	1.3	11.3	1.4	4.7	0.9	71.9	4.8	23.3	0.090	0.505	32.517843	-116.297780
Plaza de Cobro El Hongo	92.00	2	1	4592	0.2	72.3	2.6	3.8	1.7	12.9	0.9	4.5	1.1	72.5	2.6	24.9	0.087	0.500	32.521843	-116.320010
Plaza de Cobro El Hongo	92.00	2	2	4592	0.2	72.3	2.6	3.8	1.7	12.9	0.9	4.5	1.1	72.5	2.6	24.9	0.087	0.500	32.521843	-116.320010
Plaza de Cobro El Hongo	92.00	3	1	6054	1.9	76.2	4.0	2.9	1.1	8.8	1.3	2.9	0.9	78.1	4.0	17.9	0.084	0.504	32.523854	-116.331193
Plaza de Cobro El Hongo	92.00	3	2	6149	1.7	76.5	4.0	3.0	0.9	8.8	1.2	3.0	0.9	78.2	4.0	17.8	0.091	0.504	32.523771	-116.331202
T. C. Mexicali - Tijuana (Libre)	117.00																			

14 CARR: Libramiento de Ensenada (Cuota)

CLAVE:

RUTA: MEX-003D

AÑO: 2023

LUGAR	ESTACION				CLASIFICACION VEHICULAR EN PORCIENTO										COORDENADAS					
	KM	TE	SC	TDPA	M	A	B	C2	C3	T3S2	T3S3	T3S2R4	OTROS	A	B	C	K'	D	LATITUD	LONGITUD
T. C. Tecate - El Sauzal	0.00	3	0	6788	2.0	90.0	0.6	2.6	1.7	2.1	0.6	0.3	0.1	92.0	0.6	7.4	0.112	0.508	31.904435	-116.672637
T. C. Ensenada - El Chinero	22.30	1	0	3296	2.9	84.9	1.0	3.0	2.8	4.3	0.7	0.3	0.1	87.8	1.0	11.2	0.090	0.511	31.882858	-116.527810

15 CARR: Libramiento de Mexicali (Cuota)

CLAVE: 02319

RUTA: MEX-002D

AÑO: 2023

LUGAR	ESTACION				CLASIFICACION VEHICULAR EN PORCIENTO										COORDENADAS					
	KM	TE	SC	TDPA	M	A	B	C2	C3	T3S2	T3S3	T3S2R4	OTROS	A	B	C	K'	D	LATITUD	LONGITUD
T. C. Sonoita - Mexicali	0.00	3	0	5130	2.6	58.0	4.8	4.4	2.3	18.6	2.4	6.0	0.9	60.6	4.8	34.6	0.077	0.510	32.551245	-115.305934
T. C. Mexicali - Tijuana	40.60	1	0	4680	3.0	48.9	4.9	7.5	3.1	21.0	3.6	7.4	0.6	51.9	4.9	43.2	0.052	0.510	32.585863	-115.666104

16 CARR: Libramiento de Tecate (Cuota)

CLAVE: 02082

RUTA: MEX-002D

AÑO: 2023

LUGAR	ESTACION				CLASIFICACION VEHICULAR EN PORCIENTO										COORDENADAS					
	KM	TE	SC	TDPA	M	A	B	C2	C3	T3S2	T3S3	T3S2R4	OTROS	A	B	C	K'	D	LATITUD	LONGITUD
T. Der. Mexicali (1er. Acceso)	118.00	3	1	6449	2.8	73.8	3.9	2.9	1.5	9.5	1.5	3.2	0.9	76.6	3.9	19.5	0.078	0.502	32.556651	-116.584049
T. Der. Mexicali (1er. Acceso)	118.00	3	2	6394	2.9	73.7	3.9	2.9	1.6	9.5	1.5	3.2	0.8	76.6	3.9	19.5	0.076	0.502	32.556499	-116.584046
X. C. Tecate - El Sauzal	122.85	3	1	5414	2.6	75.8	3.8	2.9	2.5	5.9	1.8	3.8	0.9	78.4	3.8	17.8	0.066	0.521	32.551150	-116.625910
X. C. Tecate - El Sauzal	122.85	3	2	5890	2.5	75.6	3.9	3.0	2.5	6.0	1.7	3.9	0.9	78.1	3.9	18.0	0.102	0.521	32.551003	-116.625906
T. C. Mexicali - Tijuana (Libre) Poniente	130.60																			

BAJA CALIFORNIA

17 CARR: Tecate - Tijuana (Cuota)

CLAVE: 02011

RUTA: MEX-002D

AÑO: 2023

LUGAR	ESTACION				CLASIFICACION VEHICULAR EN PORCIENTO										COORDENADAS					
	KM	TE	SC	TDPA	M	A	B	C2	C3	T3S2	T3S3	T3S2R4	OTROS	A	B	C	K'	D	LATITUD	LONGITUD
T. C. Mexicali - Tijuana (Libre)	130.60																			
X. C. Mexicali - Tijuana	131.10	3	1	5876	3.1	71.5	2.9	2.8	1.0	14.1	1.0	2.8	0.8	74.6	2.9	22.5	0.085	0.538	32.526357	-116.699969
X. C. Mexicali - Tijuana	131.10	3	2	5043	3.0	72.0	2.8	2.7	0.8	14.0	0.9	2.9	0.9	75.0	2.8	22.2	0.085	0.538	32.526283	-116.699869
Plaza de Cobro Tijuana	147.60	1	1	6027	2.3	72.9	3.5	3.7	1.4	10.6	1.4	3.4	0.8	75.2	3.5	21.3	0.082	0.529	32.548731	-116.848522
Plaza de Cobro Tijuana	147.60	1	2	5364	2.4	72.5	3.3	3.9	1.4	10.9	1.5	3.2	0.9	74.9	3.3	21.8	0.103	0.529	32.548594	-116.848556
Plaza de Cobro Tijuana	147.60	2	1	5482	0.4	76.0	1.6	4.0	1.8	11.3	0.8	3.2	0.9	76.4	1.6	22.0	0.091	0.500	32.545717	-116.852059
Plaza de Cobro Tijuana	147.60	2	2	5482	0.4	76.0	1.6	4.0	1.8	11.3	0.8	3.2	0.9	76.4	1.6	22.0	0.091	0.500	32.545717	-116.852059
Plaza de Cobro Tijuana	147.60	3	1	31337	2.1	81.8	3.2	4.9	1.4	5.0	0.6	0.8	0.2	83.9	3.2	12.9	0.113	0.538	32.542344	-116.859660
Plaza de Cobro Tijuana	147.60	3	2	26578	2.0	81.8	3.0	5.1	1.6	5.1	0.5	0.7	0.2	83.8	3.0	13.2	0.126	0.538	32.542270	-116.859675
Termina Autopista Principia Tijuana	148.15																			

18 CARR: Tijuana - Ensenada (Cuota)

CLAVE: 02100

RUTA: MEX-001D

AÑO: 2023

LUGAR	ESTACION				CLASIFICACION VEHICULAR EN PORCIENTO										COORDENADAS					
	KM	TE	SC	TDPA	M	A	B	C2	C3	T3S2	T3S3	T3S2R4	OTROS	A	B	C	K'	D	LATITUD	LONGITUD
Tijuana	0.00																			
T. Der. Playas de Tijuana	7.50	3	1	13078	1.3	92.3	0.6	4.3	0.5	0.3	0.3	0.3	0.1	93.6	0.6	5.8	0.104	0.504	32.528928	-117.108281
T. Der. Playas de Tijuana	7.50	3	2	13279	1.3	92.6	0.5	4.1	0.6	0.4	0.2	0.2	0.1	93.9	0.5	5.6	0.104	0.504	32.528946	-117.108188
Plaza de Cobro Playas de Tijuana	9.70	2	1	12178	0.3	98.2	0.3	0.7	0.3	0.2	0.0	0.0	0.0	98.5	0.3	1.2	0.100	0.500	32.514051	-117.109566
Plaza de Cobro Playas de Tijuana	9.70	2	2	12178	0.3	98.2	0.3	0.7	0.3	0.2	0.0	0.0	0.0	98.5	0.3	1.2	0.100	0.500	32.514051	-117.109566
T. Izq. La Joya	14.50	3	1	12977	1.5	95.4	0.3	1.1	0.5	0.5	0.3	0.2	0.2	96.9	0.3	2.8	0.095	0.512	32.481348	-117.120741
T. Izq. La Joya	14.50	3	2	13616	1.4	95.4	0.4	1.2	0.5	0.6	0.2	0.2	0.1	96.8	0.4	2.8	0.099	0.512	32.481378	-117.120639
San Antonio Norte	17.80	1	1	12069	1.1	95.5	0.8	0.9	0.6	0.4	0.2	0.2	0.3	96.6	0.8	2.6	0.098	0.509	32.459064	-117.113739
San Antonio Norte	17.80	1	2	12503	1.3	95.9	0.5	0.8	0.6	0.4	0.1	0.2	0.2	97.2	0.5	2.3	0.104	0.509	32.459085	-117.113649
San Antonio del Mar	19.30	1	1	11755	1.5	95.3	0.4	1.4	0.6	0.3	0.2	0.2	0.1	96.8	0.4	2.8	0.094	0.503	32.448096	-117.105750
San Antonio del Mar	19.30	1	2	11900	1.6	95.4	0.5	1.2	0.6	0.3	0.1	0.2	0.1	97.0	0.5	2.5	0.104	0.503	32.448151	-117.105679
Brisas del Mar	22.00	1	1	13292	1.0	95.6	0.4	1.5	0.6	0.3	0.1	0.2	0.3	96.6	0.4	3.0	0.112	0.532	32.428072	-117.097103
Brisas del Mar	22.00	1	2	15108	1.1	95.0	0.5	1.7	0.7	0.4	0.1	0.2	0.3	96.1	0.5	3.4	0.094	0.532	32.428089	-117.097012
Baja Malibu	22.50	3	1	16334	1.2	95.6	0.4	1.7	0.3	0.3	0.2	0.1	0.2	96.8	0.4	2.8	0.097	0.536	32.416905	-117.094149
Baja Malibu	22.50	3	2	14145	1.1	95.4	0.5	1.8	0.4	0.3	0.2	0.1	0.2	96.5	0.5	3.0	0.097	0.536	32.416920	-117.094059
T. Izq. Rancho del Mar	24.60	1	1	16469	1.2	95.3	0.3	1.7	0.6	0.4	0.2	0.1	0.2	96.5	0.3	3.2	0.097	0.500	32.405133	-117.090906
T. Izq. Rancho del Mar	24.60	1	2	16491	1.0	95.4	0.3	1.9	0.4	0.4	0.2	0.2	0.2	96.4	0.3	3.3	0.080	0.500	32.405151	-117.090812
T. Izq. Rancho del Mar	24.60	3	1	13467	1.2	96.2	0.3	1.0	0.8	0.2	0.1	0.1	0.1	97.4	0.3	2.3	0.118	0.512	32.391594	-117.084584
T. Izq. Rancho del Mar	24.60	3	2	14112	0.9	96.9	0.3	0.8	0.6	0.2	0.1	0.1	0.1	97.8	0.3	1.9	0.092	0.512	32.391636	-117.084504
X. C. Tijuana - Ensenada	29.50	1	1	13766	1.2	94.4	0.5	2.6	0.7	0.3	0.1	0.2	0.0	95.6	0.5	3.9	0.116	0.507	32.380919	-117.057816

BAJA CALIFORNIA

18 CARR: Tijuana - Ensenada (Cuota)

CLAVE: 02100

RUTA: MEX-001D

AÑO: 2023

LUGAR	ESTACION				CLASIFICACION VEHICULAR EN PORCIENTO										COORDENADAS					
	KM	TE	SC	TDPA	M	A	B	C2	C3	T3S2	T3S3	T3S2R4	OTROS	A	B	C	K'	D	LATITUD	LONGITUD
X. C. Tijuana - Ensenada	29.50	1	2	13368	1.1	94.4	0.5	2.5	0.7	0.5	0.2	0.1	0.0	95.5	0.5	4.0	0.098	0.507	32.380790	-117.057732
X. C. Tijuana - Ensenada	29.50	3	1	28265	2.9	91.0	0.9	3.0	0.7	1.0	0.2	0.2	0.1	93.9	0.9	5.2	0.094	0.525	32.370825	-117.057835
X. C. Tijuana - Ensenada	29.50	3	2	25285	2.7	91.1	0.7	2.6	0.9	1.2	0.3	0.3	0.2	93.8	0.7	5.5	0.088	0.525	32.370834	-117.057743
T. Izq. Rosarito	30.60	3	1	34913	1.4	93.6	0.8	2.0	0.7	0.8	0.2	0.3	0.2	95.0	0.8	4.2	0.080	0.510	32.360815	-117.055976
T. Izq. Rosarito	30.60	3	2	36410	1.2	92.5	0.9	2.9	0.8	1.0	0.2	0.3	0.2	93.7	0.9	5.4	0.081	0.510	32.360924	-117.055905
Plaza de Cobro Rosarito	35.43	2	1	7143	0.7	92.5	1.2	1.8	0.4	2.6	0.2	0.5	0.1	93.2	1.2	5.6	0.100	0.500	32.311096	-117.044403
Plaza de Cobro Rosarito	35.43	2	2	7143	0.7	92.5	1.2	1.8	0.4	2.6	0.2	0.5	0.1	93.2	1.2	5.6	0.100	0.500	32.311096	-117.044403
T. Izq. Corredor Tijuana 2000	40.00	3	1	8431	1.9	84.6	2.3	1.7	0.4	7.0	0.7	0.9	0.5	86.5	2.3	11.2	0.110	0.539	32.272776	-117.024079
T. Izq. Corredor Tijuana 2000	40.00	3	2	9851	2.1	85.0	2.0	2.2	0.6	6.5	0.5	0.7	0.4	87.1	2.0	10.9	0.098	0.539	32.276287	-117.026240
T. Der. Puerto Nuevo	49.27	3	1	9343	2.4	83.2	1.9	2.8	0.6	7.1	0.4	1.2	0.4	85.6	1.9	12.5	0.099	0.521	32.248936	-116.940348
T. Der. Puerto Nuevo	49.27	3	2	10182	2.5	83.2	2.1	2.9	0.7	6.8	0.5	1.0	0.3	85.7	2.1	12.2	0.116	0.521	32.250259	-116.943315
T. Der. Cantamar	53.00	3	1	10959	1.7	84.3	2.0	3.2	1.1	5.3	0.7	1.3	0.4	86.0	2.0	12.0	0.092	0.519	32.224048	-116.916727
T. Der. Cantamar	53.00	3	2	11842	1.5	85.9	1.9	3.1	0.7	5.0	0.5	1.1	0.3	87.4	1.9	10.7	0.100	0.519	32.224695	-116.917087
T. Izq. El Descanso	55.40	3	1	8613	1.9	83.6	2.0	3.3	1.1	6.1	0.8	1.0	0.2	85.5	2.0	12.5	0.129	0.518	32.203923	-116.909995
T. Izq. El Descanso	55.40	3	2	9251	2.1	83.1	2.1	3.4	1.4	6.0	0.6	1.0	0.3	85.2	2.1	12.7	0.121	0.518	32.203969	-116.910158
T. Der. Campo López	58.30	3	1	9446	1.6	83.0	2.3	3.5	1.0	6.5	0.4	1.3	0.4	84.6	2.3	13.1	0.150	0.505	32.177656	-116.906638
T. Der. Campo López	58.30	3	2	9652	1.6	83.2	2.1	3.6	0.9	6.6	0.5	1.2	0.3	84.8	2.1	13.1	0.127	0.505	32.177656	-116.906441
T. Der. La Misión	66.44	3	1	9861	1.5	80.5	1.7	8.2	0.7	5.3	0.7	1.1	0.3	82.0	1.7	16.3	0.088	0.515	32.118218	-116.884170
T. Der. La Misión	66.44	3	2	9298	1.6	80.8	1.5	8.1	0.7	5.2	0.6	1.2	0.3	82.4	1.5	16.1	0.102	0.515	32.119689	-116.883940
T. Der. La Salina	72.85	1	1	9844	1.8	85.1	1.4	3.7	0.9	5.2	0.7	0.9	0.3	86.9	1.4	11.7	0.104	0.522	32.063200	-116.877532
T. Der. La Salina	72.85	1	2	9004	1.6	84.9	1.8	3.6	0.8	5.4	0.6	1.0	0.3	86.5	1.8	11.7	0.112	0.522	32.064784	-116.877403
T. Der. La Salina	72.85	3	1	7988	2.0	83.3	1.9	6.2	0.8	3.9	0.8	0.9	0.2	85.3	1.9	12.8	0.139	0.531	32.054348	-116.877255
T. Der. La Salina	72.85	3	2	7045	2.1	83.7	1.7	6.4	0.6	3.8	0.7	0.8	0.2	85.8	1.7	12.5	0.141	0.531	32.054356	-116.877086
T. Der. Baja Mar	77.60	3	1	8604	1.7	82.9	3.0	5.2	0.9	3.5	1.0	1.4	0.4	84.6	3.0	12.4	0.120	0.545	32.018121	-116.856890
T. Der. Baja Mar	77.60	3	2	7185	1.8	81.9	3.1	5.4	1.1	3.7	1.1	1.5	0.4	83.7	3.1	13.2	0.115	0.545	32.018201	-116.856749
Plaza de Cobro Ensenada	98.60	2	1	7697	0.4	84.2	2.1	2.7	1.1	7.0	0.4	1.9	0.2	84.6	2.1	13.3	0.100	0.500	31.903097	-116.732777
Plaza de Cobro Ensenada	98.60	2	2	7697	0.4	84.2	2.1	2.7	1.1	7.0	0.4	1.9	0.2	84.6	2.1	13.3	0.100	0.500	31.903097	-116.732777
T. C. Tijuana - Ensenada (Libre)	98.80																			

19 CARR: Mexicali - Tijuana

CLAVE: 02082

RUTA: MEX-002D-MEX

AÑO: 2023

LUGAR	ESTACION				CLASIFICACION VEHICULAR EN PORCIENTO										COORDENADAS					
	KM	TE	SC	TDPA	M	A	B	C2	C3	T3S2	T3S3	T3S2R4	OTROS	A	B	C	K'	D	LATITUD	LONGITUD
Mexicali	0.00																			
Colonia Progreso	7.80	3	1	6245	2.3	79.8	2.8	3.9	2.3	6.3	1.0	1.2	0.4	82.1	2.8	15.1	0.083	0.508	32.583703	-115.590867

BAJA CALIFORNIA

19 CARR: Mexicali - Tijuana

CLAVE: 02082

RUTA: MEX-002D-MEX

AÑO: 2023

LUGAR	ESTACION				CLASIFICACION VEHICULAR EN PORCIENTO														COORDENADAS		
	KM	TE	SC	TDPA	M	A	B	C2	C3	T3S2	T3S3	T3S2R4	OTROS	A	B	C	K'	D	LATITUD	LONGITUD	
Colonia Progreso	7.80	3	2	6437	2.3	79.8	2.7	3.9	2.3	6.3	1.0	1.2	0.5	82.1	2.7	15.2	0.126	0.508	32.583846	-115.590807	
La Rumorosa	66.80																				
T. Der. Estación de Microondas	69.62	3	0	3359	1.4	75.1	2.1	2.7	1.2	14.9	2.0	0.4	0.2	76.5	2.1	21.4	0.114	0.502	32.510089	-116.090696	
Agua Hechicera	87.00	1	0	2976	1.7	74.2	2.1	3.0	1.5	15.1	2.1	0.2	0.1	75.9	2.1	22.0	0.096	0.516	32.495919	-116.221237	
El Encinal	112.15	1	0	5687	1.8	82.6	1.6	3.0	1.2	7.5	1.3	0.8	0.2	84.4	1.6	14.0	0.075	0.502	32.555636	-116.436793	
Tecate	132.00	1	1	8125	1.5	86.3	2.3	4.3	0.9	3.5	0.4	0.5	0.3	87.8	2.3	9.9	0.093	0.526	32.563628	-116.579612	
Tecate	132.00	1	2	7321	1.5	86.2	2.3	4.3	0.9	3.5	0.5	0.5	0.3	87.7	2.3	10.0	0.085	0.526	32.563562	-116.579752	
Tecate	132.00	3	1	13657	1.2	88.4	2.5	3.1	1.5	2.2	0.5	0.4	0.2	89.6	2.5	7.9	0.068	0.506	32.547939	-116.672527	
Tecate	132.00	3	2	13349	1.2	88.4	2.5	3.1	1.5	2.2	0.5	0.4	0.2	89.6	2.5	7.9	0.085	0.506	32.547865	-116.672427	
Presa Abelardo L. Rodríguez	165.00	3	0	10423	1.4	92.6	0.8	2.7	0.9	0.6	0.3	0.4	0.3	94.0	0.8	5.2	0.085	0.567	32.455201	-116.914997	
Tijuana	182.60																				

20 CARR: Algodones - Ent. Islas Agrarias Grupo B

CLAVE: 02006

RUTA: BC-008

AÑO: 2023

LUGAR	ESTACION				CLASIFICACION VEHICULAR EN PORCIENTO														COORDENADAS	
	KM	TE	SC	TDPA	M	A	B	C2	C3	T3S2	T3S3	T3S2R4	OTROS	A	B	C	K'	D	LATITUD	LONGITUD
Algodones	0.00	3	0	4872	1.5	95.8	0.5	1.6	0.4	0.1	0.1	0.0	0.0	97.3	0.5	2.2	0.088	0.504	32.702947	-114.742255
T. Izq. Cd. Morelos	14.00	1	0	4206	1.1	94.3	0.5	3.1	0.4	0.3	0.2	0.1	0.0	95.4	0.5	4.1	0.085	0.523	32.665959	-114.837647
Mérida	20.30	3	0	2096	1.1	92.9	0.7	3.8	0.4	0.7	0.3	0.1	0.0	94.0	0.7	5.3	0.101	0.502	32.664699	-114.923716
T. Izq. Ejido Lazáro Cárdenas	31.50	1	0	3072	0.9	94.4	0.5	3.2	0.3	0.3	0.3	0.1	0.0	95.3	0.5	4.2	0.082	0.503	32.614516	-115.015440
Islas Agrarias Grupo B	55.50	1	0	5204	1.6	83.4	1.2	10.2	0.8	2.3	0.2	0.3	0.0	85.0	1.2	13.8	0.078	0.503	32.615500	-115.264524

21 CARR: Corredor Tijuana 2000

CLAVE: 02006

RUTA: BC

AÑO: 2023

LUGAR	ESTACION				CLASIFICACION VEHICULAR EN PORCIENTO														COORDENADAS	
	KM	TE	SC	TDPA	M	A	B	C2	C3	T3S2	T3S3	T3S2R4	OTROS	A	B	C	K'	D	LATITUD	LONGITUD
T. C. Mexicali - Tijuana (Cuota)	0.00	3	1	30765	3.0	83.3	3.1	3.9	1.5	3.4	0.5	0.9	0.4	86.3	3.1	10.6	0.085	0.536	32.539355	-116.856242
T. C. Mexicali - Tijuana (Cuota)	0.00	3	2	25047	3.3	82.7	3.3	4.1	1.4	3.4	0.4	1.0	0.4	86.0	3.3	10.7	0.106	0.536	32.539240	-116.856001
T. C. Mexicali - Tijuana	11.00	1	1	53935	5.0	80.8	2.9	4.4	1.9	2.7	0.5	1.2	0.6	85.8	2.9	11.3	0.067	0.532	32.459269	-116.839159
T. C. Mexicali - Tijuana	11.00	1	2	51935	5.1	80.4	2.8	4.5	1.8	2.9	0.6	1.3	0.6	85.5	2.8	11.7	0.067	0.532	32.459571	-116.839260
T. C. Tijuana - San Miguel (Cuota)	40.00	1	1	6731	2.5	81.2	2.3	3.3	1.9	5.8	1.0	1.5	0.5	83.7	2.3	14.0	0.099	0.541	32.288773	-117.022091
T. C. Tijuana - San Miguel (Cuota)	40.00	1	2	7204	2.6	82.0	2.2	3.1	1.7	5.6	0.9	1.4	0.5	84.6	2.2	13.2	0.141	0.541	32.288656	-117.022037

BAJA CALIFORNIA

22 CARR: Ejido Benito Juárez - Ejido Chiapas

CLAVE: 02501

RUTA: BC-061

AÑO: 2023

LUGAR	ESTACION				CLASIFICACION VEHICULAR EN PORCIENTO										COORDENADAS					
	KM	TE	SC	TDPA	M	A	B	C2	C3	T3S2	T3S3	T3S2R4	OTROS	A	B	C	K'	D	LATITUD	LONGITUD
Ejido Benito Juárez	0.00	3	0	3987	1.1	94.1	0.5	3.8	0.4	0.1	0.0	0.0	0.0	95.2	0.5	4.3	0.126	0.501	32.559390	-114.993045
Ejido México	7.00	1	0	1778	2.6	89.5	0.7	6.6	0.3	0.3	0.0	0.0	0.0	92.1	0.7	7.2	0.092	0.502	32.519710	-114.979696
Ejido Chiapas	10.56	1	0	1456	1.5	93.4	1.3	2.8	0.6	0.3	0.1	0.0	0.0	94.9	1.3	3.8	0.081	0.503	32.499475	-114.968091

23 CARR: Ejido Monterrey - Mazón

CLAVE: 02004

RUTA: BC-003

AÑO: 2023

LUGAR	ESTACION				CLASIFICACION VEHICULAR EN PORCIENTO										COORDENADAS					
	KM	TE	SC	TDPA	M	A	B	C2	C3	T3S2	T3S3	T3S2R4	OTROS	A	B	C	K'	D	LATITUD	LONGITUD
T. C. Sonoita - Mexicali	0.00	3	0	7738	1.0	83.7	2.2	8.3	0.9	2.5	0.5	0.6	0.3	84.7	2.2	13.1	0.085	0.505	32.543135	-115.076347
X. C. Mexicali - Algodones	15.16	1	0	7256	1.4	89.5	1.7	3.8	1.0	1.9	0.4	0.2	0.1	90.9	1.7	7.4	0.083	0.509	32.422500	-115.067438
X. C. Mexicali - Algodones	15.16	3	0	10647	2.0	86.9	1.8	5.6	0.8	2.0	0.3	0.4	0.2	88.9	1.8	9.3	0.089	0.508	32.416817	-115.067181
Guadalupe Victoria	30.47	1	0	12075	1.1	94.5	0.8	2.1	0.5	0.6	0.2	0.1	0.1	95.6	0.8	3.6	0.089	0.501	32.295069	-115.088933
Mazón	35.00	1	0	8507	1.4	93.2	1.1	2.8	0.4	0.6	0.2	0.2	0.1	94.6	1.1	4.3	0.088	0.508	32.242456	-115.111045

24 CARR: El Faro - Estación Coahuila

CLAVE: 02013

RUTA: BC-004

AÑO: 2023

LUGAR	ESTACION				CLASIFICACION VEHICULAR EN PORCIENTO										COORDENADAS					
	KM	TE	SC	TDPA	M	A	B	C2	C3	T3S2	T3S3	T3S2R4	OTROS	A	B	C	K'	D	LATITUD	LONGITUD
T. C. Mexicali - San Felipe	0.00	3	0	3905	0.9	88.0	1.6	3.9	1.4	2.7	1.3	0.2	0.0	88.9	1.6	9.5	0.102	0.505	32.273422	-115.317635
X. C. Mexicali - Estación Coahuila	16.30	1	0	3919	0.8	82.0	0.8	11.7	0.7	2.8	0.9	0.2	0.1	82.8	0.8	16.4	0.090	0.504	32.239536	-115.179586
X. C. Mexicali - Estación Coahuila	16.30	3	0	8384	2.2	91.3	1.3	2.7	0.7	1.1	0.3	0.3	0.1	93.5	1.3	5.2	0.090	0.503	32.239427	-115.158553
T. Izq. Carr. Ejido Monterrey - Mazón	26.70	3	0	6185	2.3	89.7	1.1	4.0	1.0	1.0	0.5	0.3	0.1	92.0	1.1	6.9	0.076	0.503	32.239462	-115.101058
Francisco Murguía	30.00	3	0	4828	1.6	84.9	2.5	8.3	0.7	1.4	0.4	0.1	0.1	86.5	2.5	11.0	0.078	0.503	32.239735	-115.063140
Estación Coahuila	34.50	1	0	7431	2.3	89.3	1.3	2.6	2.1	1.3	0.7	0.3	0.1	91.6	1.3	7.1	0.075	0.503	32.201434	-115.004403

25 CARR: Ent. Santa Rosa - Ent. Pachuca

CLAVE: 02015

RUTA: BC-006

AÑO: 2023

LUGAR	ESTACION				CLASIFICACION VEHICULAR EN PORCIENTO										COORDENADAS					
	KM	TE	SC	TDPA	M	A	B	C2	C3	T3S2	T3S3	T3S2R4	OTROS	A	B	C	K'	D	LATITUD	LONGITUD
T. C. Sonoita - Mexicali	0.00	3	0	8467	1.4	92.4	1.0	3.1	0.7	0.6	0.3	0.4	0.1	93.8	1.0	5.2	0.082	0.509	32.558819	-115.019910
Paredones	10.90	3	0	7150	3.8	90.7	1.2	2.6	0.9	0.5	0.1	0.2	0.0	94.5	1.2	4.3	0.076	0.533	32.609429	-114.923655
Cd. Morelos	18.00	3	0	2041	1.9	86.6	1.3	6.2	1.9	1.6	0.1	0.4	0.0	88.5	1.3	10.2	0.080	0.529	32.647811	-114.802673
T. C. Mexicali - Algodones	23.22																			

BAJA CALIFORNIA

26 CARR: La Puerta - T. C. (Mexicali - Estación Coahuila)

CLAVE: 02502

RUTA: BC-010

AÑO: 2023

LUGAR	ESTACION				CLASIFICACION VEHICULAR EN PORCIENTO										COORDENADAS					
	KM	TE	SC	TDPA	M	A	B	C2	C3	T3S2	T3S3	T3S2R4	OTROS	A	B	C	K'	D	LATITUD	LONGITUD
T. C. Mexicali - San Felipe	0.00																			
Zakamoto	4.60	1	0	3274	0.9	91.2	1.3	5.5	0.3	0.6	0.1	0.1	0.0	92.1	1.3	6.6	0.101	0.503	32.328022	-115.300785
Nayarit	9.00	3	0	3966	1.3	94.4	0.8	2.3	0.5	0.5	0.1	0.1	0.0	95.7	0.8	3.5	0.065	0.505	32.313188	-115.216983
T. C. Mexicali - Estación Coahuila	15.00																			

27 CARR: Mexicali - Algodones

CLAVE: 02012

RUTA: BC-002

AÑO: 2023

LUGAR	ESTACION				CLASIFICACION VEHICULAR EN PORCIENTO										COORDENADAS					
	KM	TE	SC	TDPA	M	A	B	C2	C3	T3S2	T3S3	T3S2R4	OTROS	A	B	C	K'	D	LATITUD	LONGITUD
T. C. Mexicali - San Felipe	0.00																			
Ejido Puebla	12.00	3	0	10381	2.7	83.9	2.2	4.9	1.9	2.0	0.9	1.1	0.4	86.6	2.2	11.2	0.073	0.546	32.557464	-115.359889
T. C. Geotérmica - Estación Delta	31.50	1	0	7530	1.6	88.3	1.9	5.4	0.9	1.0	0.6	0.2	0.1	89.9	1.9	8.2	0.065	0.507	32.426359	-115.263848
X. C. Mexicali - Estación Coahuila	37.70	1	0	4431	1.1	85.9	1.2	8.9	0.9	1.2	0.6	0.1	0.1	87.0	1.2	11.8	0.081	0.509	32.419139	-115.204509
X. C. Mexicali - Estación Coahuila	37.70	3	0	6457	2.0	85.3	2.0	8.0	0.6	0.7	0.7	0.5	0.2	87.3	2.0	10.7	0.081	0.505	32.419016	-115.174138
X. C. Ejido Monterrey - Mazón	49.65	1	0	6918	3.4	84.5	3.0	5.0	1.0	1.4	0.8	0.6	0.3	87.9	3.0	9.1	0.073	0.515	32.418483	-115.069327
X. C. Ejido Monterrey - Mazón	49.65	3	0	2513	1.7	88.9	1.8	4.5	1.4	1.1	0.3	0.2	0.1	90.6	1.8	7.6	0.094	0.510	32.418464	-115.065328
T. Izq. Tres de Marzo	60.50	1	0	1210	3.4	89.8	1.0	2.4	1.0	1.4	0.6	0.3	0.1	93.2	1.0	5.8	0.073	0.504	32.464722	-114.947845
X. C. Sonoita - Mexicali	72.00	1	0	1562	2.7	89.7	1.6	3.2	1.6	0.9	0.1	0.2	0.0	92.4	1.6	6.0	0.092	0.532	32.504059	-114.849084
X. C. Sonoita - Mexicali	72.00	3	0	4454	0.6	94.8	0.8	1.6	0.4	1.3	0.3	0.2	0.0	95.4	0.8	3.8	0.073	0.504	32.513205	-114.841740
Pachuca	83.00	1	0	4474	0.6	96.5	0.6	1.2	0.3	0.5	0.3	0.0	0.0	97.1	0.6	2.3	0.076	0.504	32.586175	-114.830863
Algodones	94.46	1	0	3698	1.5	95.4	0.7	1.2	0.4	0.3	0.2	0.2	0.1	96.9	0.7	2.4	0.083	0.502	32.701981	-114.731667

28 CARR: Mexicali - Estación Coahuila

CLAVE: 02016

RUTA: BC-001

AÑO: 2023

LUGAR	ESTACION				CLASIFICACION VEHICULAR EN PORCIENTO										COORDENADAS					
	KM	TE	SC	TDPA	M	A	B	C2	C3	T3S2	T3S3	T3S2R4	OTROS	A	B	C	K'	D	LATITUD	LONGITUD
Mexicali	0.00	3	1	20998	3.3	90.8	0.5	3.1	0.6	0.4	0.2	0.9	0.2	94.1	0.5	5.4	0.077	0.548	32.652982	-115.390323
Mexicali	0.00	3	2	25496	3.3	90.8	0.5	3.1	0.6	0.4	0.2	0.9	0.2	94.1	0.5	5.4	0.070	0.548	32.653134	-115.390317
T. Izq. Aeropuerto	11.30	1	1	17361	2.8	87.6	0.5	3.9	1.7	2.6	0.3	0.4	0.2	90.4	0.5	9.1	0.079	0.507	32.652894	-115.370187
T. Izq. Aeropuerto	11.30	1	2	17856	2.6	87.6	0.4	3.9	1.7	2.9	0.3	0.4	0.2	90.2	0.4	9.4	0.094	0.507	32.653048	-115.370709
Islas Agrarias Grupo a	14.10	1	0	18993	3.1	89.1	0.7	2.5	1.6	1.7	0.4	0.6	0.3	92.2	0.7	7.1	0.065	0.544	32.614126	-115.342316
X. C. Sonoita - Mexicali	30.79	1	0	4050	1.1	75.7	1.4	16.1	1.1	3.3	0.7	0.0	0.6	76.8	1.4	21.8	0.102	0.513	32.556768	-115.214995
X. C. Sonoita - Mexicali	30.79	3	0	6533	1.7	89.5	1.3	3.3	0.7	2.1	0.5	0.5	0.4	91.2	1.3	7.5	0.075	0.515	32.550072	-115.215098
Ejido Nuevo León	46.83	1	0	6730	1.9	90.0	1.2	2.9	1.0	1.1	0.7	0.9	0.3	91.9	1.2	6.9	0.066	0.517	32.421281	-115.192519
Ejido Nuevo León	46.83	3	0	6969	2.3	87.6	1.7	3.2	2.3	1.2	0.7	0.7	0.3	89.9	1.7	8.4	0.076	0.511	32.398030	-115.194589

BAJA CALIFORNIA

28 CARR: Mexicali - Estación Coahuila

CLAVE: 02016

RUTA: BC-001

AÑO: 2023

LUGAR	ESTACION				CLASIFICACION VEHICULAR EN PORCIENTO														COORDENADAS	
	KM	TE	SC	TDPA	M	A	B	C2	C3	T3S2	T3S3	T3S2R4	OTROS	A	B	C	K'	D	LATITUD	LONGITUD
T. Der. La Puerta	60.26	1	0	3290	0.9	93.3	0.8	3.5	0.4	0.7	0.2	0.1	0.1	94.2	0.8	5.0	0.075	0.503	32.315720	-115.189541
X. C. El Faro - Estación Coahuila	71.30	1	0	2317	1.3	91.1	1.2	4.8	0.6	0.7	0.1	0.1	0.1	92.4	1.2	6.4	0.063	0.500	32.243859	-115.167499
T. Der. Leona Vicario	80.50	1	0	484	5.9	85.4	1.7	3.5	1.4	0.7	0.7	0.6	0.1	91.3	1.7	7.0	0.128	0.508	32.215375	-115.167491
Estación Coahuila	96.65	1	0	1160	1.4	93.0	0.7	3.2	0.7	0.6	0.2	0.1	0.1	94.4	0.7	4.9	0.077	0.517	32.184844	-115.013685

29 CARR: Mexicali - Progreso

CLAVE: 02507

RUTA: BC-005

AÑO: 2023

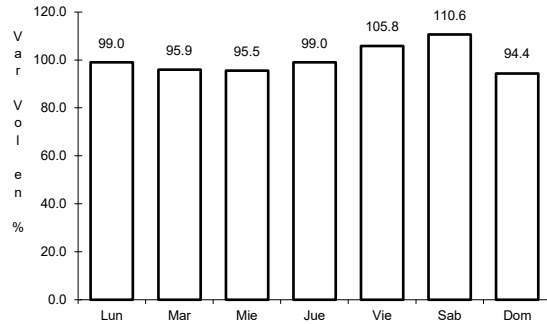
LUGAR	ESTACION				CLASIFICACION VEHICULAR EN PORCIENTO														COORDENADAS	
	KM	TE	SC	TDPA	M	A	B	C2	C3	T3S2	T3S3	T3S2R4	OTROS	A	B	C	K'	D	LATITUD	LONGITUD
T. C. Mexicali - Tijuana	0.00																			
Progreso	15.30	1	0	10821	3.9	84.7	1.9	5.7	0.8	1.4	0.5	0.7	0.4	88.6	1.9	9.5	0.065	0.515	32.601440	-115.573744



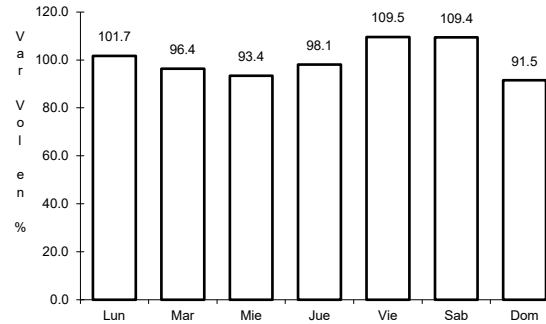
1 CARR: Ensenada - El Chirero

CLAVE: 02009

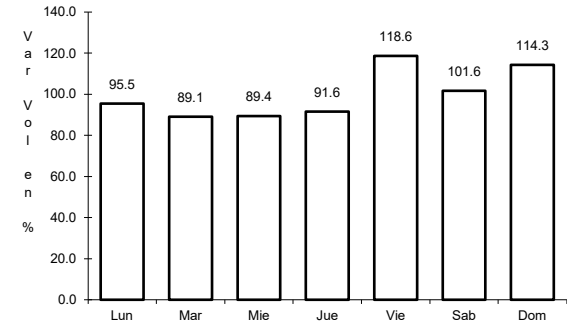
ruta: MEX-003



Km: 0.00      Tipo: 3      Sent: 0



Km: 93.00      Tipo: 3      Sent: 0

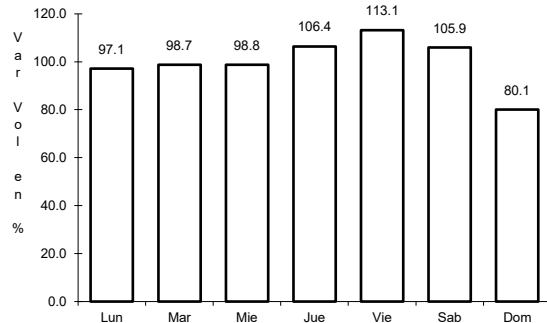


Km: 196.00      Tipo: 1      Sent: 0

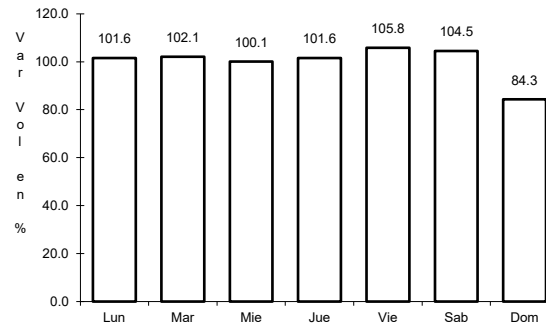
2 CARR: Ensenada - Lázaro Cárdenas

CLAVE: 02098

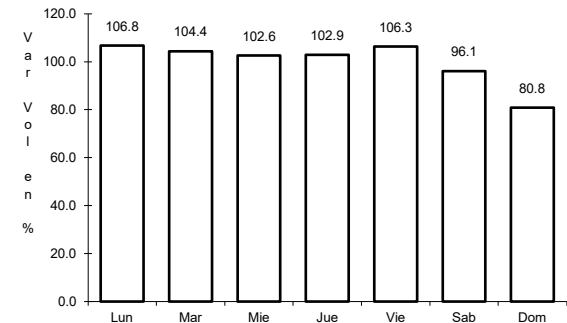
ruta: MEX-001



Km: 0.00      Tipo: 3      Sent: 1



Km: 0.00      Tipo: 3      Sent: 2

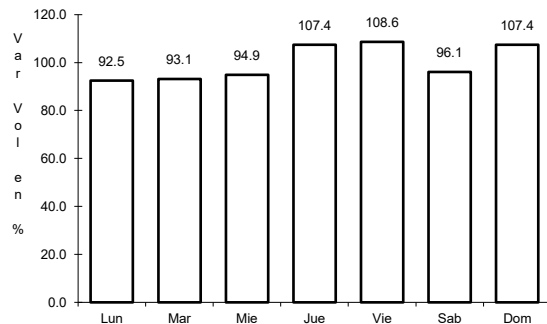


Km: 172.40      Tipo: 3      Sent: 0

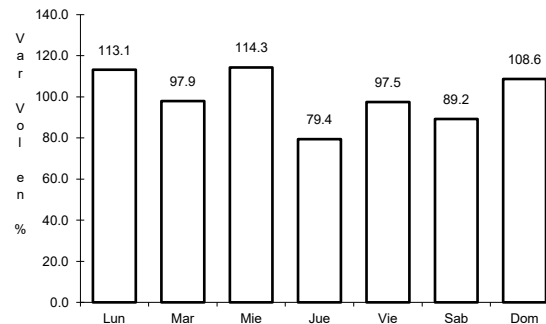
3 CARR: Ent. Punta Prieta - Bahía de Los Ángeles

CLAVE: 02322

ruta: MEX-001



Km: 0.00      Tipo: 3      Sent: 0

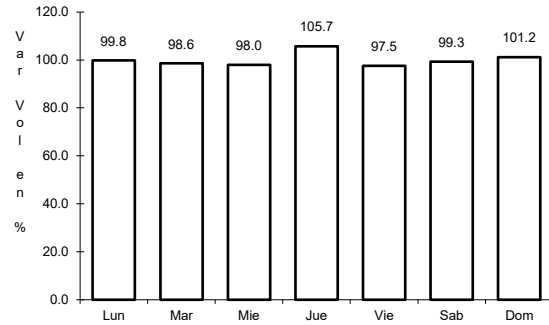


Km: 68.00      Tipo: 1      Sent: 0

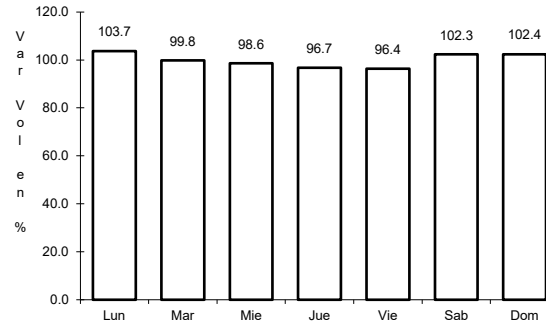
4 CARR: Ent. Punta Prieta - Guerrero Negro

CLAVE: 00321

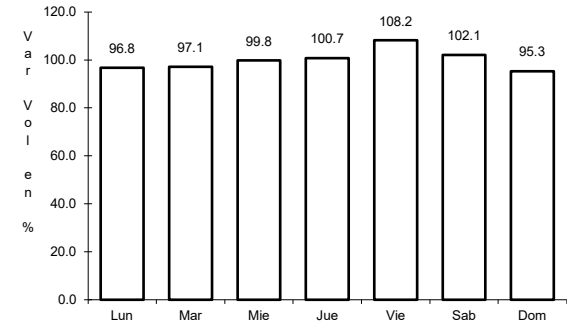
ruta: MEX-001



Km: 0.00      Tipo: 3      Sent: 0



Km: 70.10      Tipo: 3      Sent: 0

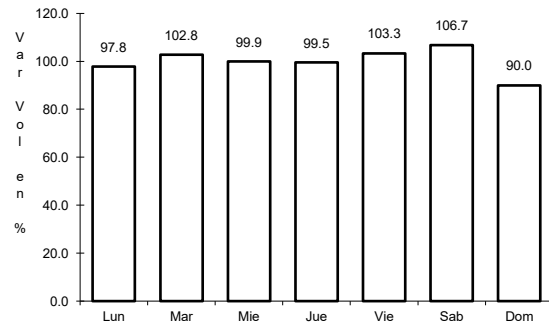


Km: 130.00      Tipo: 1      Sent: 0

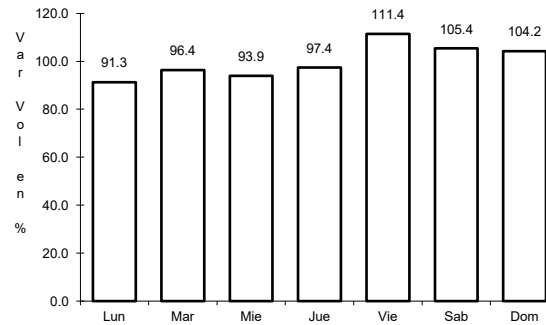
5 CARR: Lázaro Cárdenas - Ent. Punta Prieta

CLAVE: 02319

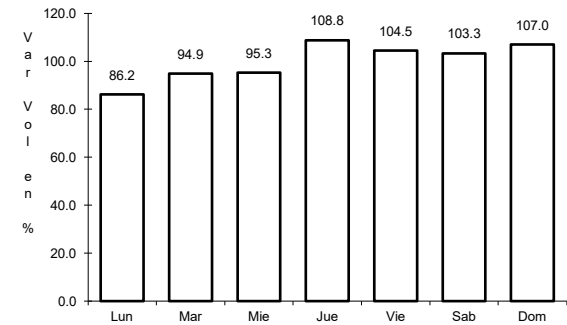
ruta: MEX-001



Km: 0.00      Tipo: 3      Sent: 0



Km: 140.00      Tipo: 1      Sent: 0

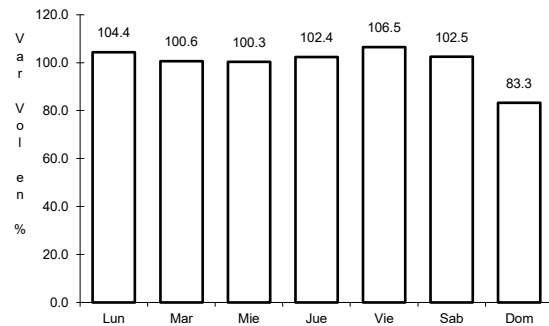


Km: 275.66      Tipo: 1      Sent: 0

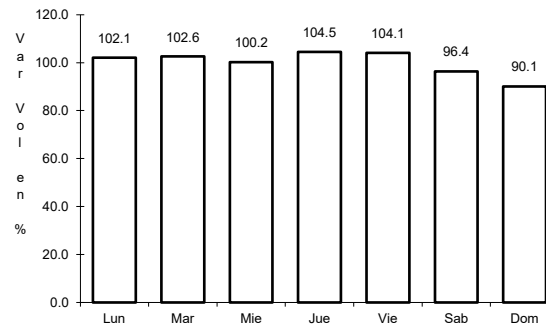
6 CARR: Mexicali - San Felipe

CLAVE: 02096

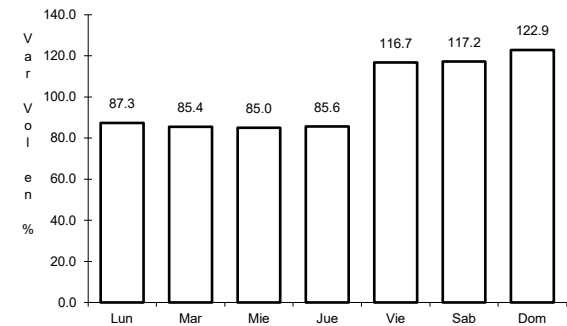
ruta: MEX-005



Km: 0.00      Tipo: 3      Sent: 1



Km: 0.00      Tipo: 3      Sent: 2

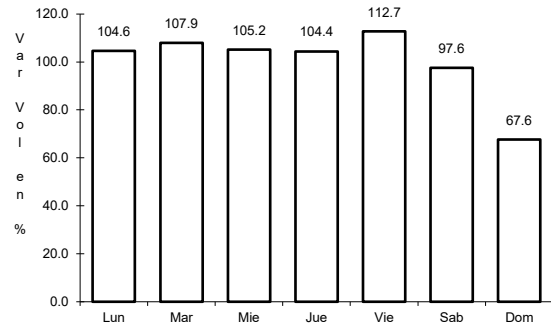


Km: 141.00      Tipo: 1      Sent: 0

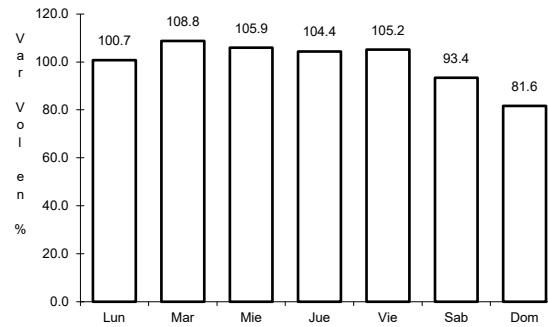
7 CARR: Ramal a Aeropuerto de Mexicali

CLAVE: 02321

ruta: MEX-002



Km: 0.00      Tipo: 3      Sent: 0

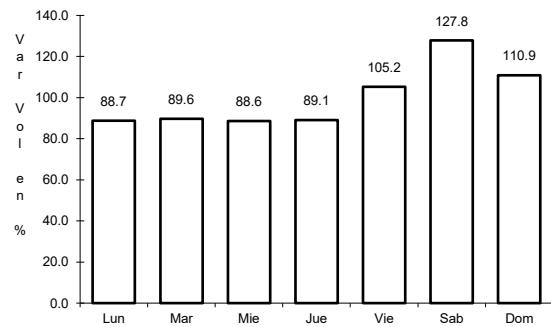


Km: 10.00      Tipo: 1      Sent: 0

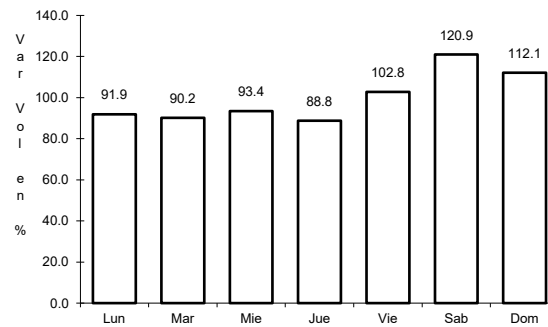
8 CARR: San Felipe - Chapala

CLAVE: 02503

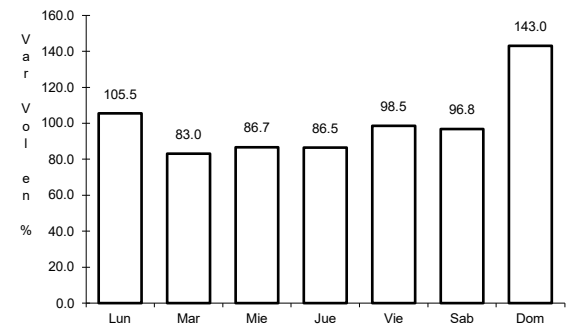
ruta: MEX-005



Km: 0.00      Tipo: 3      Sent: 1



Km: 0.00      Tipo: 3      Sent: 2

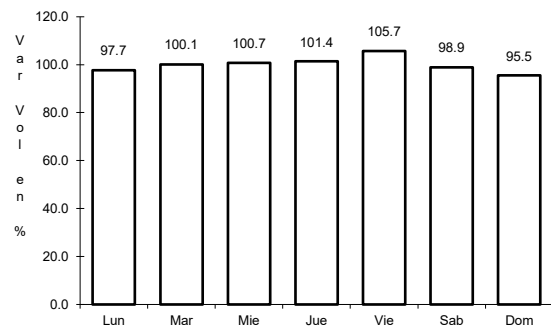


Km: 75.46      Tipo: 3      Sent: 0

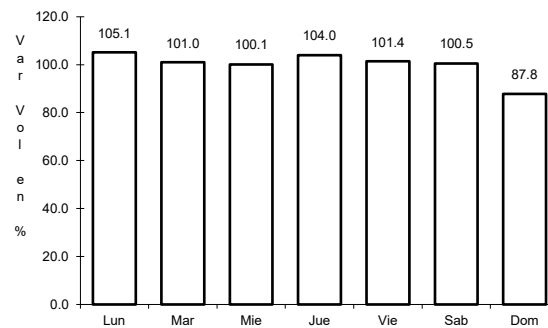
9 CARR: Sonota - Mexicali

CLAVE: 00081

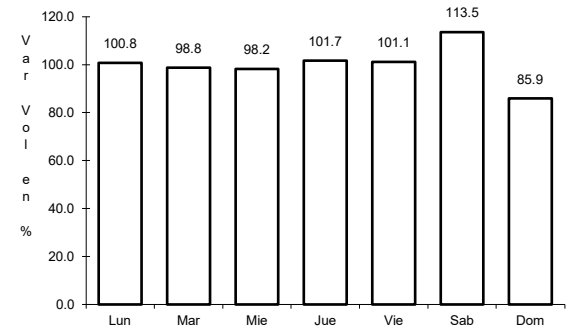
ruta: MEX-002



Km: 0.00      Tipo: 3      Sent: 0



Km: 256.47      Tipo: 1      Sent: 1

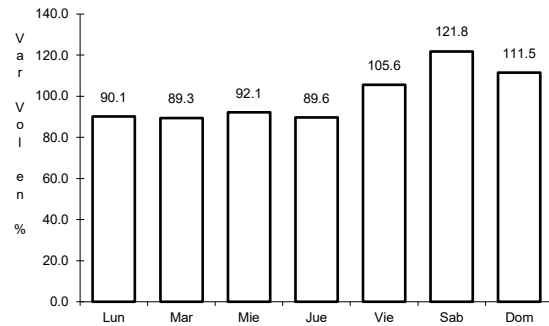


Km: 256.47      Tipo: 1      Sent: 2

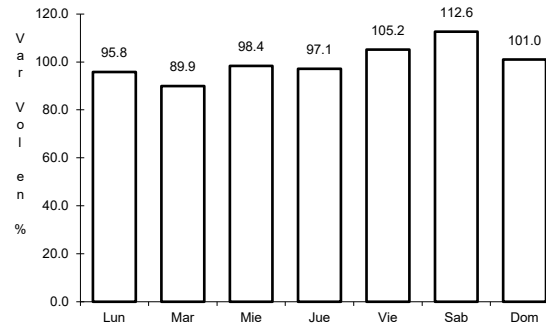
10 CARR: Tecate - El Sauzal

CLAVE: 02097

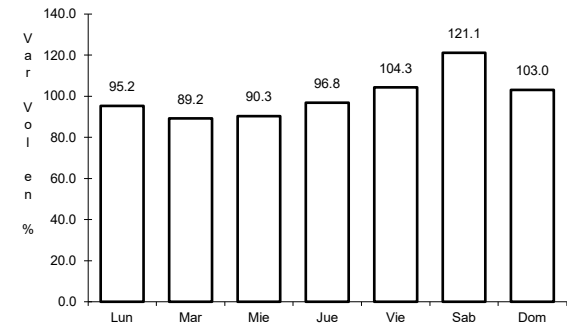
ruta: MEX-003



Km: 0.00      Tipo: 3      Sent: 0



Km: 104.53      Tipo: 1      Sent: 1

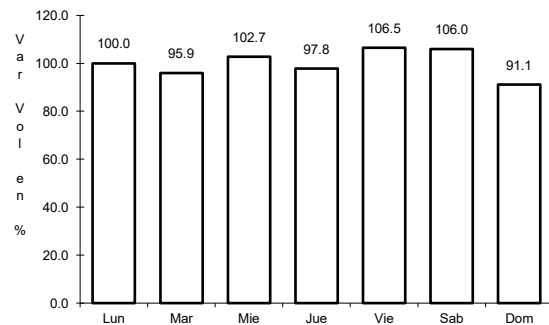


Km: 104.53      Tipo: 1      Sent: 2

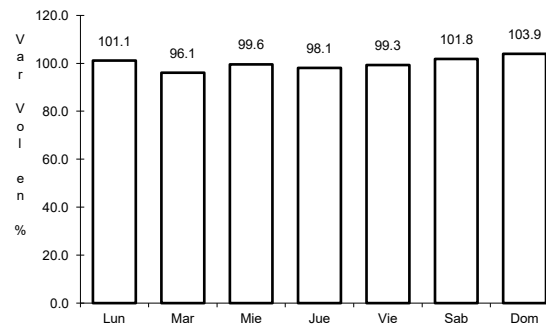
11 CARR: Tijuana - Ensenada (Libre)

CLAVE: 02099

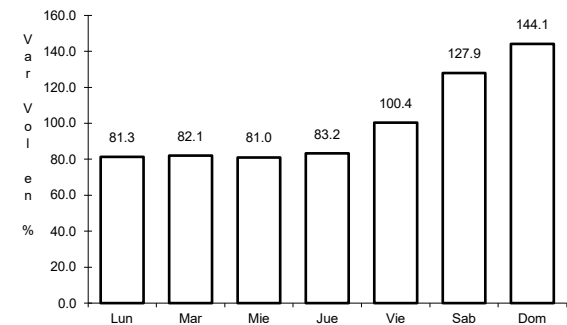
ruta: MEX-001



Km: 22.00      Tipo: 1      Sent: 1



Km: 22.00      Tipo: 1      Sent: 2

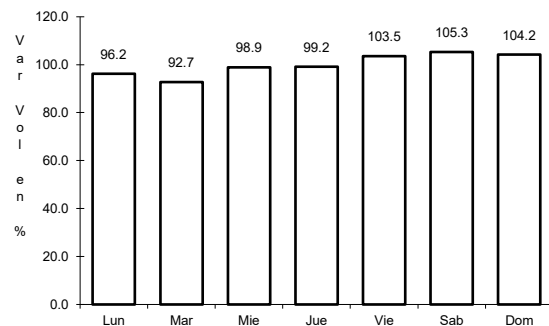


Km: 56.98      Tipo: 1      Sent: 0

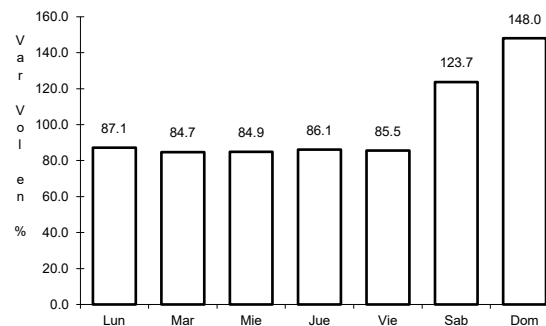
12 CARR: El Centinela - La Rumorosa (Cuota)

CLAVE: 02011

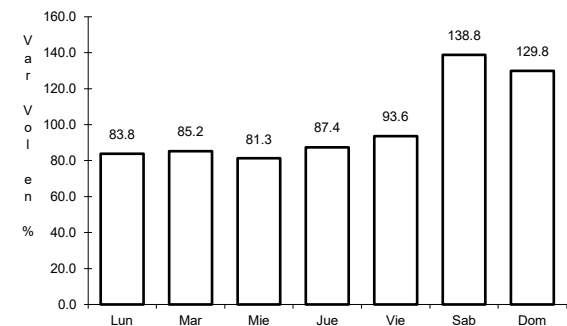
ruta: MEX-002D



Km: 25.00      Tipo: 1      Sent: 1



Km: 25.00      Tipo: 1      Sent: 2

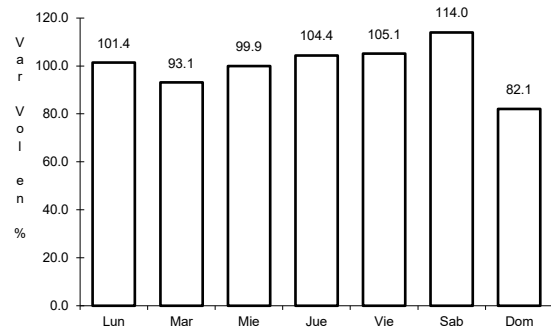


Km: 67.60      Tipo: 1      Sent: 1

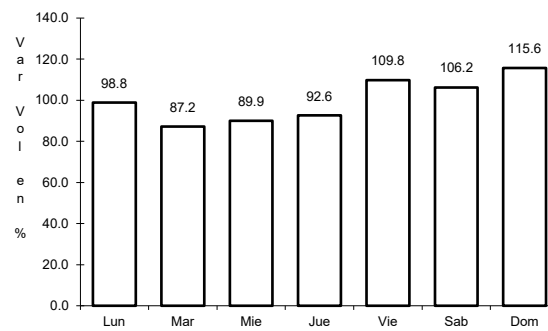
13 CARR: La Rumorosa - Tecate (Cuota)

CLAVE: 02011

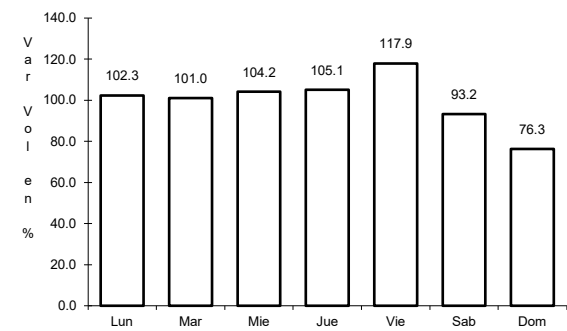
ruta: MEX-002D



Km: 62.00      Tipo: 3      Sent: 1



Km: 62.00      Tipo: 3      Sent: 2

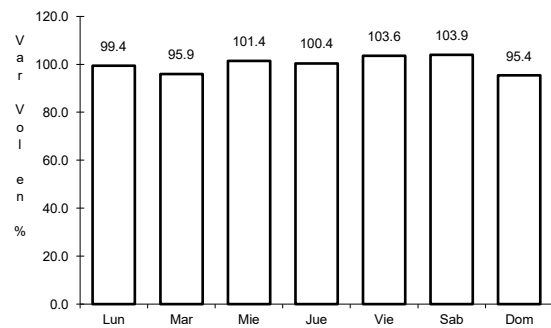


Km: 92.00      Tipo: 3      Sent: 1

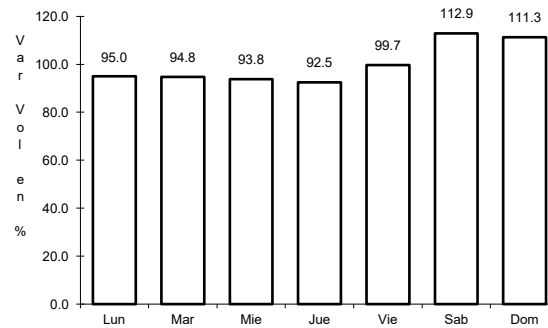
14 CARR: Libramiento de Ensenada (Cuota)

CLAVE:

ruta: MEX-003D



Km: 0.00      Tipo: 3      Sent: 0

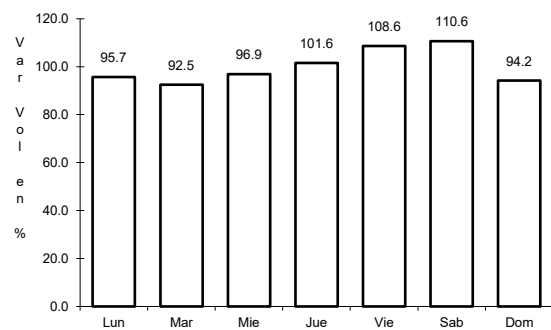


Km: 22.30      Tipo: 1      Sent: 0

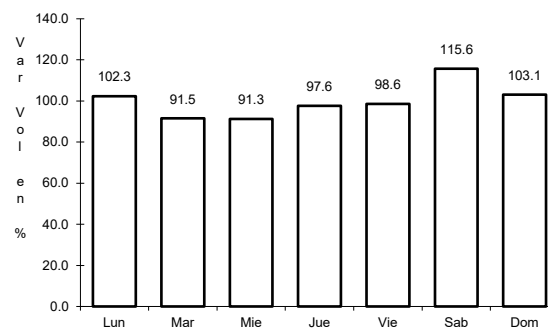
15 CARR: Libramiento de Mexicali (Cuota)

CLAVE: 02319

ruta: MEX-002D



Km: 0.00      Tipo: 3      Sent: 0

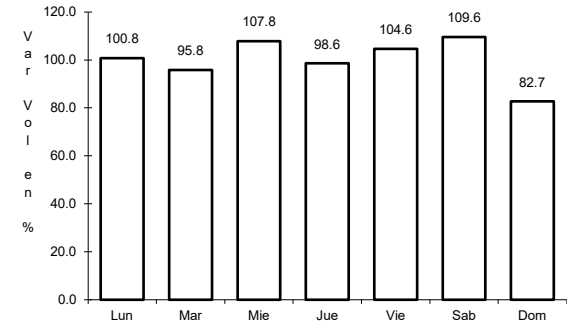
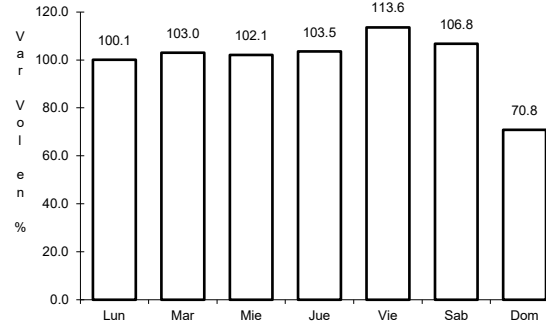
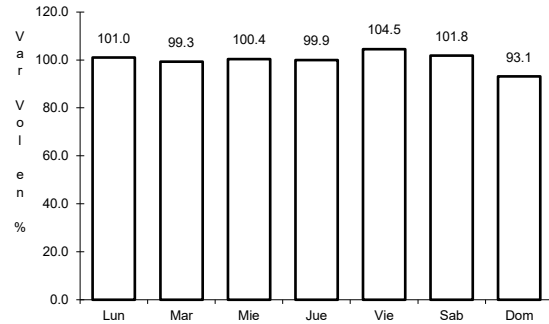


Km: 40.60      Tipo: 1      Sent: 0

16 CARR: Libramiento de Tecate (Cuota)

CLAVE: 02082

ruta: MEX-002D



Km: 118.00

Tipo: 3

Sent: 1

Km: 118.00

Tipo: 3

Sent: 2

Km: 122.85

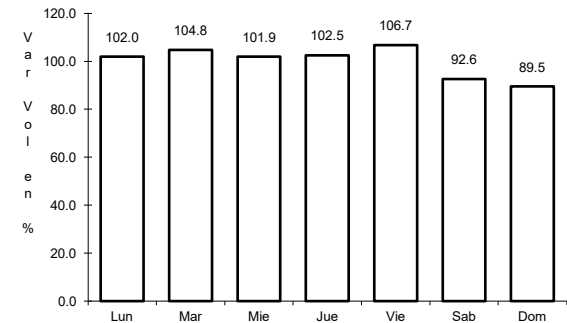
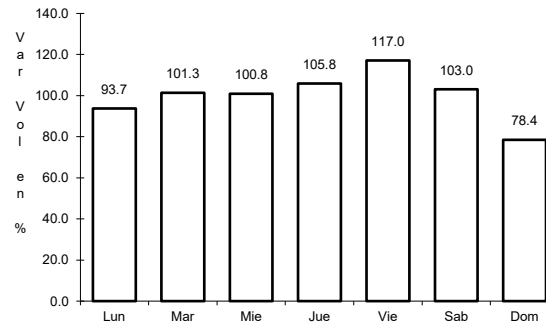
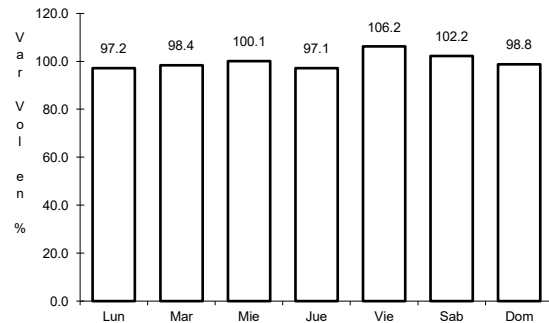
Tipo: 3

Sent: 1

17 CARR: Tecate - Tijuana (Cuota)

CLAVE: 02011

ruta: MEX-002D



Km: 147.60

Tipo: 1

Sent: 1

Km: 147.60

Tipo: 1

Sent: 2

Km: 147.60

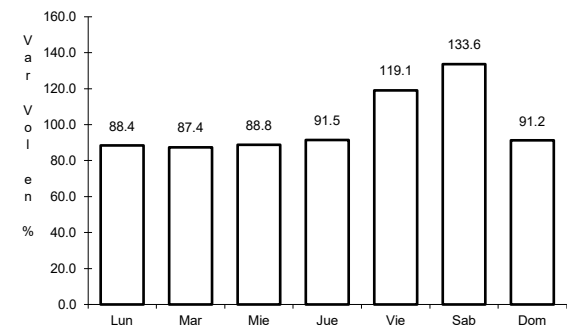
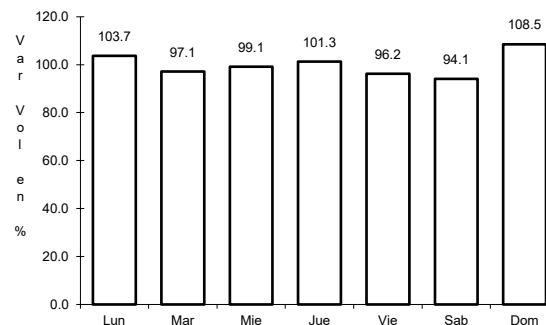
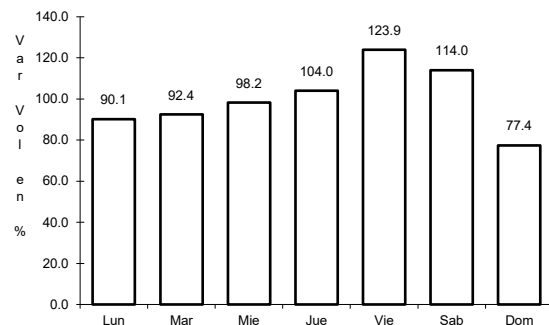
Tipo: 3

Sent: 1

18 CARR: Tijuana - Ensenada (Cuota)

CLAVE: 02100

ruta: MEX-001D



Km: 7.50

Tipo: 3

Sent: 1

Km: 7.50

Tipo: 3

Sent: 2

Km: 77.60

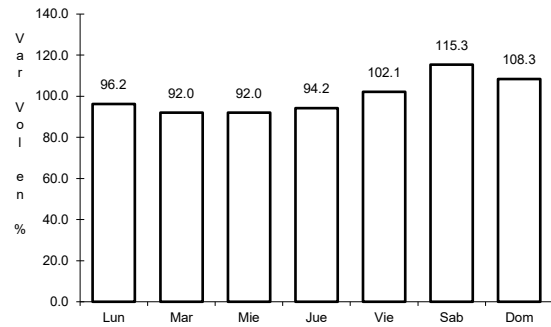
Tipo: 3

Sent: 1

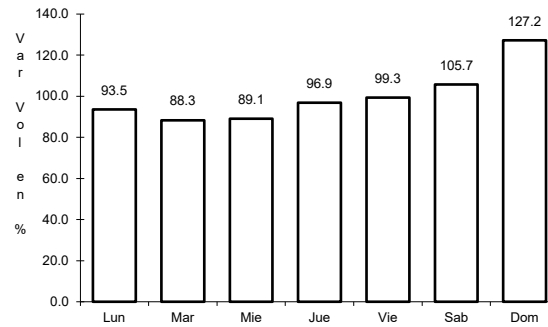
19 CARR: Mexicali - Tijuana

CLAVE: 02082

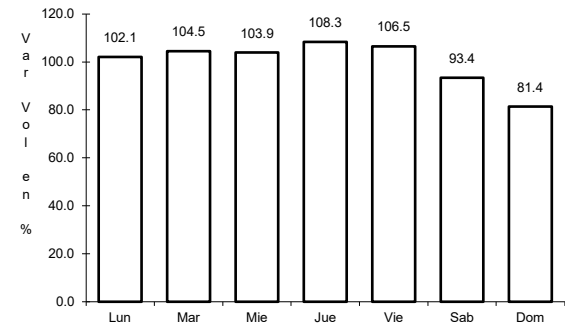
RUTA: MEX-002D-MEX



Km: 7.80      Tipo: 3      Sent: 1



Km: 7.80      Tipo: 3      Sent: 2

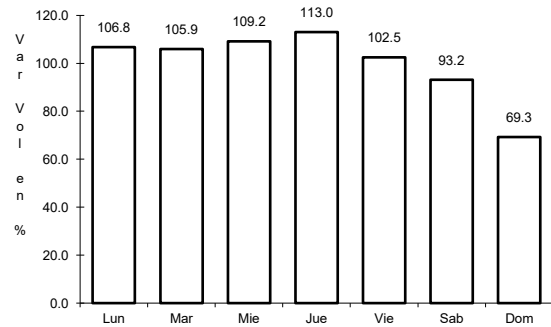


Km: 165.00      Tipo: 3      Sent: 0

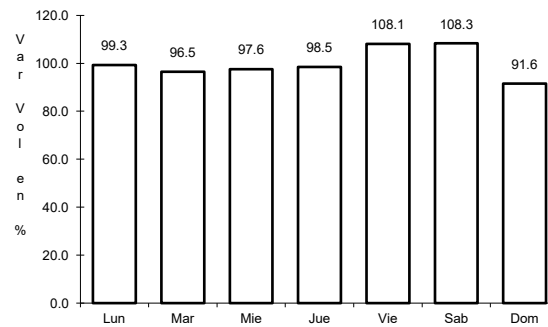
20 CARR: Algodones - Ent. Islas Agrarias Grupo B

CLAVE: 02006

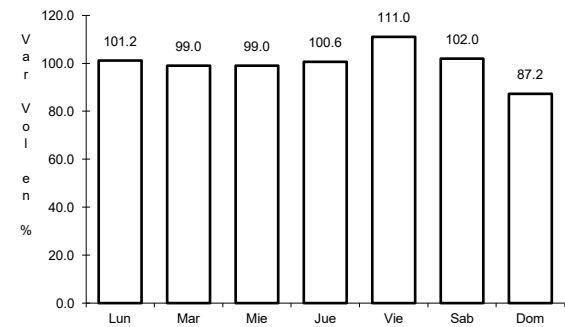
RUTA: BC-008



Km: 0.00      Tipo: 3      Sent: 0



Km: 31.50      Tipo: 1      Sent: 0

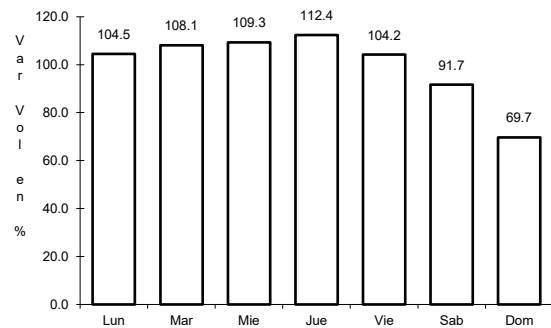


Km: 55.50      Tipo: 1      Sent: 0

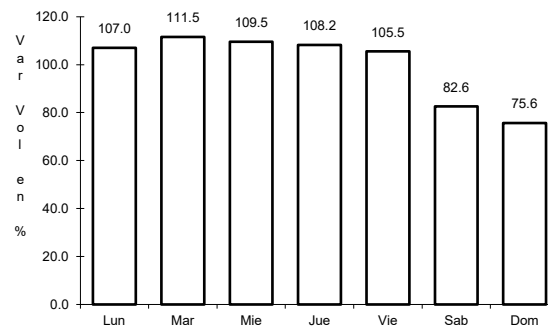
21 CARR: Corredor Tijuana 2000

CLAVE: 02006

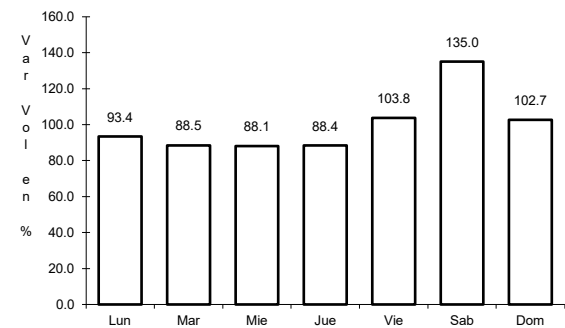
RUTA: BC



Km: 0.00      Tipo: 3      Sent: 1



Km: 0.00      Tipo: 3      Sent: 2

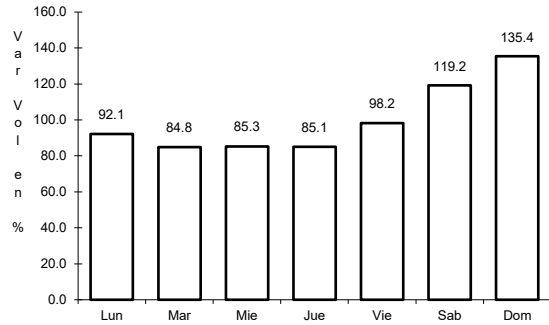


Km: 40.00      Tipo: 1      Sent: 1

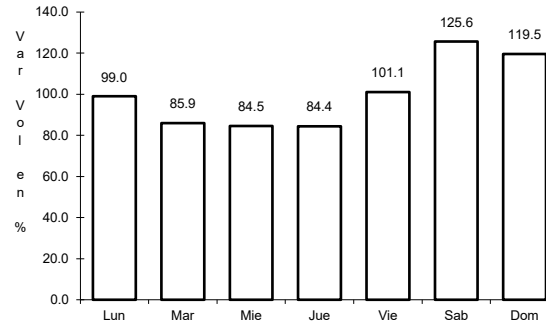
22 CARR: Ejido Benito Juárez - Ejido Chiapas

CLAVE: 02501

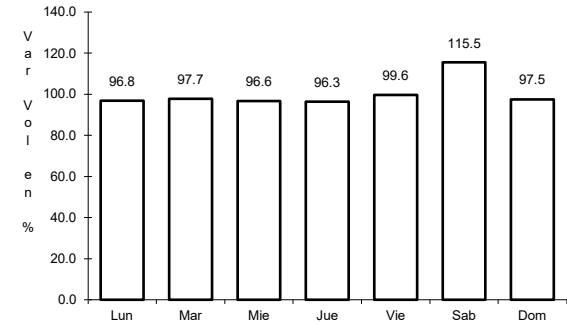
RUTA: BC-061



Km: 0.00      Tipo: 3      Sent: 0



Km: 7.00      Tipo: 1      Sent: 0

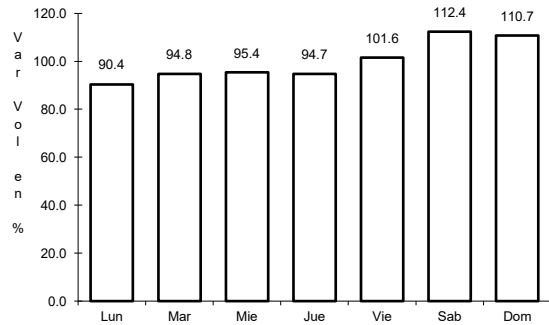


Km: 10.56      Tipo: 1      Sent: 0

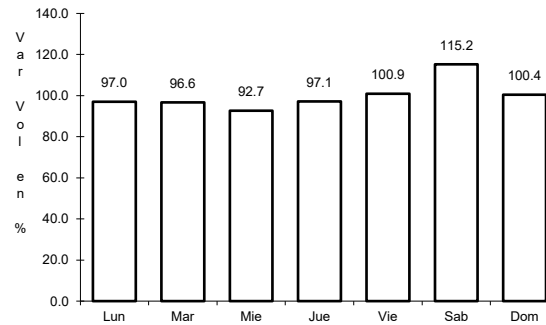
23 CARR: Ejido Monterrey - Mazón

CLAVE: 02004

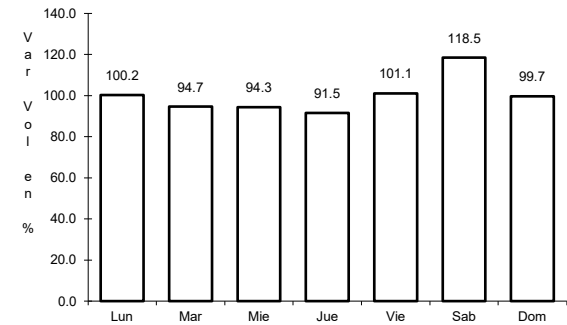
RUTA: BC-003



Km: 0.00      Tipo: 3      Sent: 0



Km: 15.16      Tipo: 3      Sent: 0

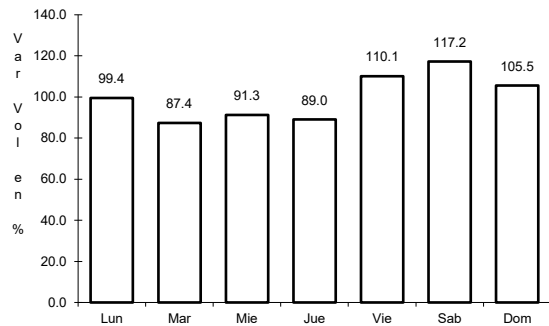


Km: 35.00      Tipo: 1      Sent: 0

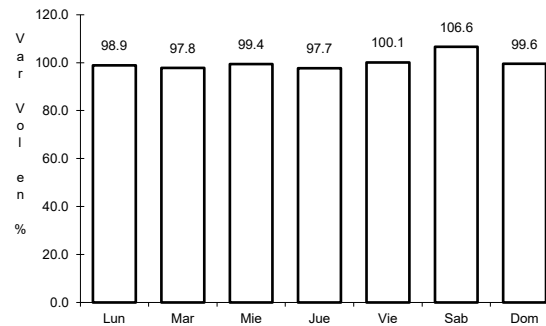
24 CARR: El Faro - Estación Coahuila

CLAVE: 02013

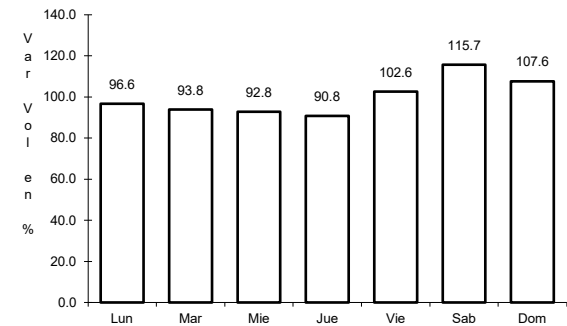
RUTA: BC-004



Km: 0.00      Tipo: 3      Sent: 0



Km: 16.30      Tipo: 1      Sent: 0



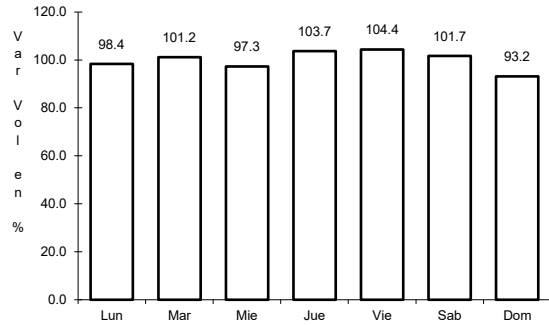
Km: 34.50      Tipo: 1      Sent: 0



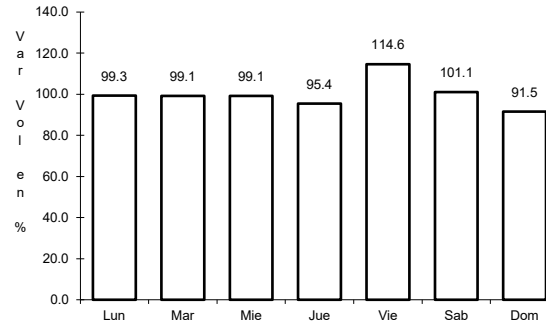
25 CARR: Ent. Santa Rosa - Ent. Pachuca

CLAVE: 02015

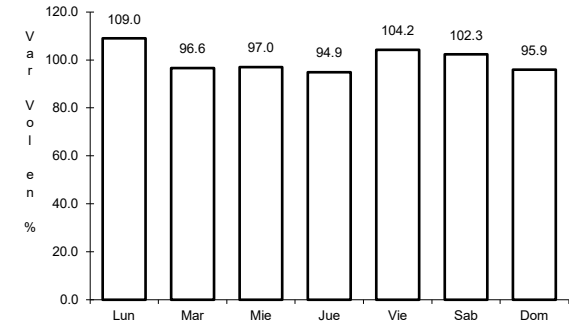
RUTA: BC-006



Km: 0.00      Tipo: 3      Sent: 0



Km: 10.90      Tipo: 3      Sent: 0

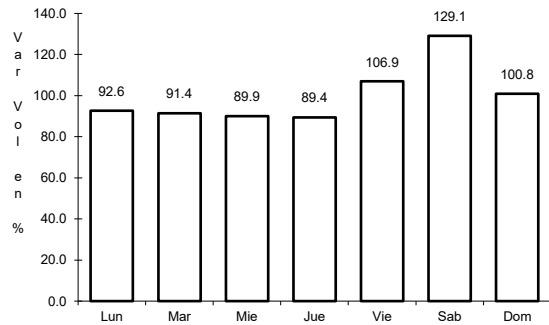


Km: 18.00      Tipo: 3      Sent: 0

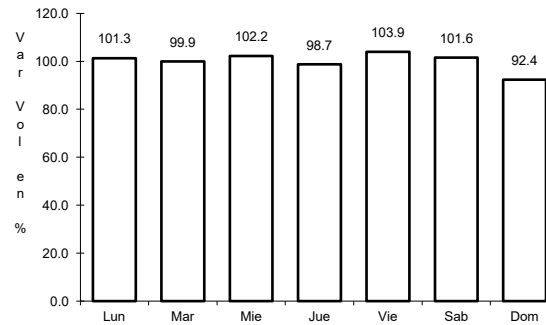
26 CARR: La Puerta - T. C. (Mexicali - Estación Coahuila)

CLAVE: 02502

RUTA: BC-010



Km: 4.60      Tipo: 1      Sent: 0

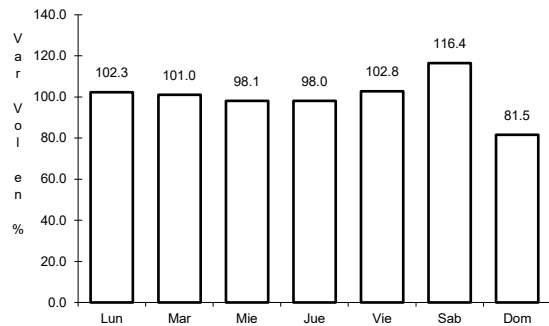


Km: 9.00      Tipo: 3      Sent: 0

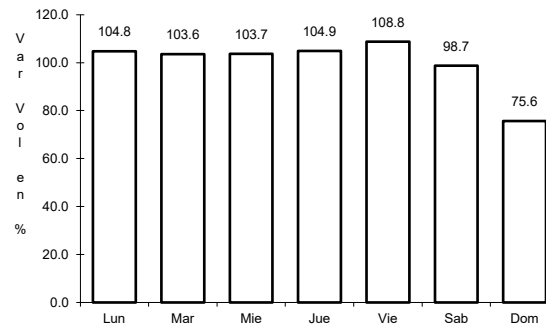
27 CARR: Mexicali - Algodones

CLAVE: 02012

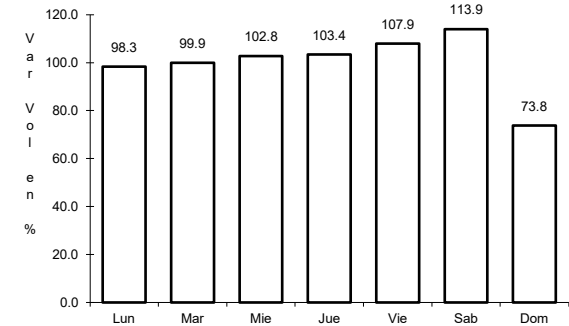
RUTA: BC-002



Km: 12.00      Tipo: 3      Sent: 0



Km: 49.65      Tipo: 1      Sent: 0

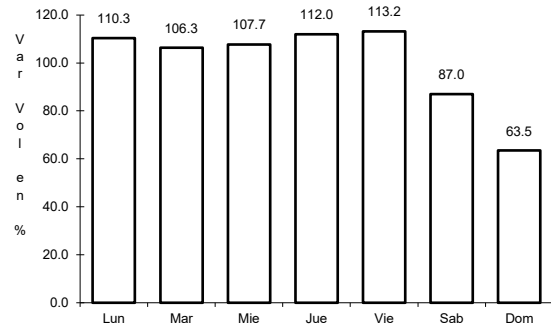


Km: 94.46      Tipo: 1      Sent: 0

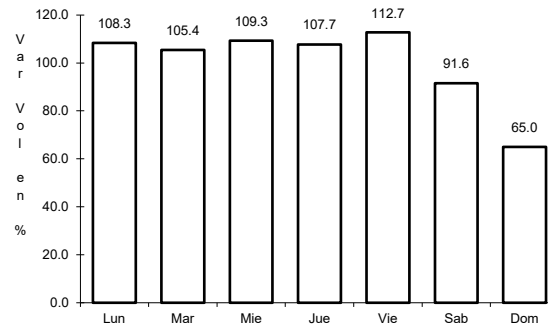
28 CARR: Mexicali - Estación Coahuila

CLAVE: 02016

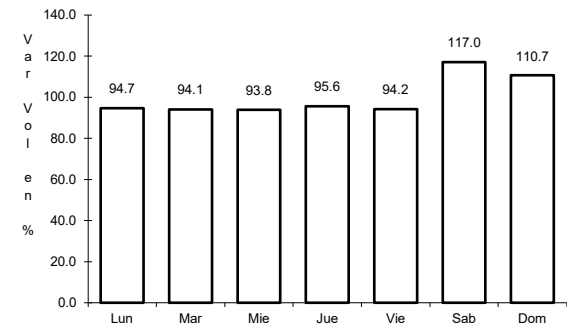
RUTA: BC-001



Km: 0.00                      Tipo: 3                      Sent: 1



Km: 0.00                      Tipo: 3                      Sent: 2

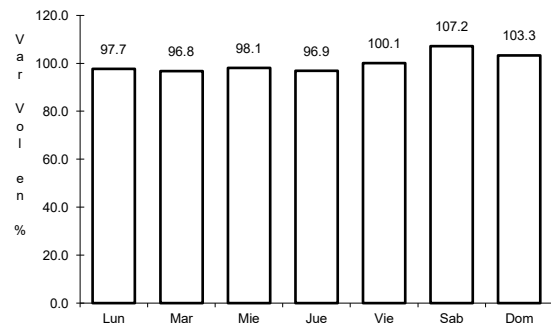


Km: 96.65                      Tipo: 1                      Sent: 0

29 CARR: Mexicali - Progreso

CLAVE: 02507

RUTA: BC-005



Km: 15.30                      Tipo: 1                      Sent: 0