

BAJA CALIFORNIA SUR

NO. INDICE CARRETERA	RUTA
---RED FEDERAL LIBRE---	
1 Cabo San Lucas - La Paz	MEX-001
2 Cd. Constitución - Puerto San Carlos	MEX-001
3 Cd. Insurgentes - Loreto	MEX-001
4 Ent. Punta Prieta - Guerrero Negro	MEX-001
5 La Paz - Cd. Insurgentes	MEX-001
6 La Paz - Pichilingue	MEX-011
7 Libramiento de Cabo San Lucas	MEX-001
8 Libramiento de Todos Santos	MEX-019
9 Loreto - Santa Rosalía	MEX-001
10 Ramal a Aeropuerto de La Paz	MEX-001
11 Ramal a Aeropuerto de Los Cabos	MEX-001
12 Ramal a Los Paredones	MEX-001
13 Ramal a Miraflores	MEX-001
14 Ramal a Puerto Escondido	MEX-001
15 Ramal a San Ignacio	MEX-001
16 Ramal a Santiago	MEX-001
17 Ramal Aeropista San Ignacio	MEX-001
18 San Pedro - Cabo San Lucas	MEX-019
19 Santa Rosalía - Guerrero Negro	MEX-001
---RED FEDERAL DE CUOTA---	
20 Libramiento San José del Cabo - Aeropuerto Los Cabos (Cuota)	MEX-001D
21 Ramal a El Mangle (Cuota)	MEX-001D
22 San José del Cabo - Libramiento de Cabo San Lucas - (Cuota)	MEX-001D
---RED ESTATAL LIBRE---	
23 Cd. Insurgentes - La Purísima	BCS-001
24 Cd. Insurgentes - Pto. Adolfo López Mateos	BCS
25 Ent. Campo Fisher - Punta Abreojos	BCS
26 La Paz - Ensenada de Muertos	BCS-246
27 Libramiento de La Paz	BCS
28 Libramiento Norte de La Paz	BCS
29 Ramal a Benito Juárez	BCS
30 Ramal a Ejido Ley Federal de Aguas Número Cuatro	BCS
31 Ramal a El Carrizal	BCS
32 Ramal a Guerrero Negro	BCS
33 Ramal a La Ribera	BCS
34 Ramal a Melitón Albáñez	BCS
35 Ramal a Santa Catarina	BCS
---CARRETERAS INTEGRADAS POR TRAMOS FEDERALES Y ESTATALES---	
36 Ramal a Bahía de Tortugas	MEX-001-BCS
37 Ramal a Ejido Ley Federal de Aguas Número Dos	BCS-MEX-001
38 Ramal a Ley Federal de Aguas Número Cinco	BCS-MEX-001
39 Ramal a San Juan de La Costa	BCS-163-MEX-001

03 BAJA CALIFORNIA SUR



BAJA CALIFORNIA SUR

1 CARR: Cabo San Lucas - La Paz

CLAVE: 03102

RUTA: MEX-001

AÑO: 2023

LUGAR	ESTACION				CLASIFICACION VEHICULAR EN PORCIENTO										COORDENADAS					
	KM	TE	SC	TDPA	M	A	B	C2	C3	T3S2	T3S3	T3S2R4	OTROS	A	B	C	K'	D	LATITUD	LONGITUD
Cabo San Lucas	0.00	3	1	42729	2.6	91.7	0.7	3.2	1.0	0.4	0.1	0.2	0.1	94.3	0.7	5.0	0.106	0.517	22.901400	-109.896111
Cabo San Lucas	0.00	3	2	39637	3.1	90.4	0.8	3.5	1.1	0.3	0.2	0.5	0.1	93.5	0.8	5.7	0.114	0.517	22.901491	-109.896169
El Tule	13.00	3	1	18558	3.5	89.6	1.0	4.1	1.1	0.3	0.2	0.1	0.1	93.1	1.0	5.9	0.098	0.507	22.954280	-109.809439
El Tule	13.00	3	2	19082	3.6	88.0	1.6	5.0	1.1	0.3	0.2	0.1	0.1	91.6	1.6	6.8	0.111	0.507	22.954349	-109.809538
San José del Cabo	31.00	1	1	27482	3.1	89.9	0.7	3.7	1.4	0.3	0.3	0.4	0.2	93.0	0.7	6.3	0.095	0.517	23.037461	-109.708911
San José del Cabo	31.00	1	2	25462	2.1	90.5	0.8	4.7	1.2	0.2	0.2	0.2	0.1	92.6	0.8	6.6	0.129	0.517	23.036651	-109.710211
San José del Cabo	31.00	3	1	28588	4.6	88.7	1.0	3.7	1.0	0.4	0.2	0.3	0.1	93.3	1.0	5.7	0.088	0.515	23.066176	-109.703462
San José del Cabo	31.00	3	2	30474	4.6	88.3	1.1	3.8	1.2	0.4	0.2	0.3	0.1	92.9	1.1	6.0	0.095	0.515	23.066124	-109.703564
T. Der. Santa Catarina	41.00	1	1	19032	2.3	85.8	1.2	8.3	0.8	0.9	0.3	0.2	0.2	88.1	1.2	10.7	0.073	0.510	23.127911	-109.710991
T. Der. Santa Catarina	41.00	1	2	19826	3.0	85.2	1.3	8.5	0.9	0.6	0.2	0.1	0.2	88.2	1.3	10.5	0.075	0.510	23.127915	-109.711115
T. Izq. Aeropuerto	43.46	1	1	12598	0.2	88.9	1.5	7.5	0.9	0.4	0.2	0.3	0.1	89.1	1.5	9.4	0.080	0.509	23.153093	-109.708523
T. Izq. Aeropuerto	43.46	1	2	13080	0.2	87.6	1.7	8.5	1.0	0.4	0.2	0.3	0.1	87.8	1.7	10.5	0.080	0.509	23.153113	-109.708657
Santa Anita	46.00	1	0	12175	2.1	89.8	0.6	5.9	1.1	0.2	0.2	0.1	0.0	91.9	0.6	7.5	0.078	0.510	23.172068	-109.704244
Santa Anita	46.00	3	0	5778	2.6	88.8	1.1	5.3	1.3	0.5	0.2	0.2	0.0	91.4	1.1	7.5	0.110	0.508	23.187853	-109.707807
T. Izq. Miraflores	71.50	3	0	3697	1.3	90.3	1.4	4.3	1.7	0.5	0.2	0.3	0.0	91.6	1.4	7.0	0.098	0.515	23.371196	-109.752052
T. Izq. Santiago	84.00	3	0	3333	2.7	84.6	2.0	7.8	2.4	0.3	0.1	0.1	0.0	87.3	2.0	10.7	0.103	0.535	23.476826	-109.694422
La Cueva	95.20	3	0	3164	1.3	92.5	0.7	3.9	1.0	0.4	0.1	0.1	0.0	93.8	0.7	5.5	0.100	0.502	23.547589	-109.675084
T. Der. Bahía de Las Palmas	110.00	3	0	2263	2.4	78.3	2.7	14.5	1.0	0.6	0.2	0.3	0.0	80.7	2.7	16.6	0.100	0.546	23.683058	-109.720878
San Bartolo	128.50	1	0	1959	2.8	88.0	0.8	6.1	1.0	0.8	0.3	0.2	0.0	90.8	0.8	8.4	0.102	0.500	23.739369	-109.837076
San Antonio	156.00	3	0	1605	3.1	89.8	0.9	3.9	1.1	0.8	0.3	0.1	0.0	92.9	0.9	6.2	0.113	0.504	23.809724	-110.059207
El Triunfo	162.80	1	0	1586	2.2	84.0	1.9	9.7	1.2	0.6	0.1	0.2	0.1	86.2	1.9	11.9	0.115	0.534	23.806365	-110.102253
El Triunfo	162.80	3	0	1790	1.6	91.0	1.1	4.9	0.8	0.4	0.2	0.0	0.0	92.6	1.1	6.3	0.110	0.503	23.796431	-110.111324
T. Izq. Todos Santos	184.40	1	0	1991	4.0	88.8	1.1	4.5	0.8	0.6	0.2	0.0	0.0	92.8	1.1	6.1	0.119	0.525	23.882930	-110.248179
T. Izq. Todos Santos	184.40	3	1	4145	1.5	86.9	1.5	3.3	1.6	3.3	0.8	0.8	0.3	88.4	1.5	10.1	0.138	0.519	23.889700	-110.256997
T. Izq. Todos Santos	184.40	3	2	4477	1.3	87.3	1.4	3.2	1.9	3.0	0.8	0.9	0.2	88.6	1.4	10.0	0.103	0.519	23.889741	-110.257174
San Pedro	191.00	1	1	5290	1.5	87.5	1.7	3.4	1.4	2.6	0.8	0.9	0.2	89.0	1.7	9.3	0.116	0.510	23.917414	-110.261276
San Pedro	191.00	1	2	5079	1.3	87.2	1.9	3.4	1.7	2.4	0.9	1.0	0.2	88.5	1.9	9.6	0.107	0.510	23.917399	-110.261421
San Pedro	191.00	3	1	5380	1.1	87.3	1.6	3.8	1.4	2.7	0.9	1.0	0.2	88.4	1.6	10.0	0.116	0.505	23.938686	-110.274874
San Pedro	191.00	3	2	5269	1.2	87.1	1.8	3.6	1.7	2.7	0.8	0.9	0.2	88.3	1.8	9.9	0.088	0.505	23.938606	-110.274976
Limite Zona Urbana de La Paz	211.00	1	1	7216	2.1	88.5	1.2	3.2	1.4	1.9	0.6	0.9	0.2	90.6	1.2	8.2	0.090	0.537	24.032999	-110.297891
Limite Zona Urbana de La Paz	211.00	1	2	8352	2.2	88.5	1.4	3.4	1.2	1.8	0.6	0.7	0.2	90.7	1.4	7.9	0.076	0.537	24.032742	-110.297911
La Paz	213.00																			

BAJA CALIFORNIA SUR

2 CARR: Cd. Constitución - Puerto San Carlos

CLAVE: 03231

RUTA: MEX-001

AÑO: 2023

LUGAR	ESTACION				CLASIFICACION VEHICULAR EN PORCIENTO													COORDENADAS		
	KM	TE	SC	TDPA	M	A	B	C2	C3	T3S2	T3S3	T3S2R4	OTROS	A	B	C	K'	D	LATITUD	LONGITUD
Cd. Constitución	0.00	3	0	2744	0.9	89.6	1.9	2.9	3.0	0.9	0.5	0.2	0.1	90.5	1.9	7.6	0.082	0.502	25.039685	-111.690200
T. Der. Benito Juárez	10.00	1	0	1933	0.9	90.3	2.8	3.8	0.9	0.7	0.4	0.2	0.0	91.2	2.8	6.0	0.095	0.506	25.040455	-111.758236
T. Der. Benito Juárez	10.00	3	0	1373	0.8	92.2	1.7	2.9	0.5	1.1	0.7	0.1	0.0	93.0	1.7	5.3	0.099	0.506	25.031992	-111.777674
Puerto San Carlos	57.70																			

3 CARR: Cd. Insurgentes - Loreto

CLAVE: 03092

RUTA: MEX-001

AÑO: 2023

LUGAR	ESTACION				CLASIFICACION VEHICULAR EN PORCIENTO													COORDENADAS		
	KM	TE	SC	TDPA	M	A	B	C2	C3	T3S2	T3S3	T3S2R4	OTROS	A	B	C	K'	D	LATITUD	LONGITUD
Cd. Insurgentes	0.00	3	0	3086	2.9	82.0	3.0	4.5	1.1	4.1	0.9	1.3	0.2	84.9	3.0	12.1	0.100	0.520	25.259277	-111.766793
T. Der. Ley Federal de Aguas Número Dos	13.46	3	0	1918	5.3	75.4	3.0	3.9	3.3	5.7	1.8	1.4	0.2	80.7	3.0	16.3	0.100	0.523	25.318617	-111.655625
T. Izq. Ley Federal de Aguas Número Uno	16.50	3	0	1459	3.2	72.1	4.1	5.4	2.5	9.0	1.8	1.8	0.1	75.3	4.1	20.6	0.080	0.533	25.334187	-111.632525
T. Der. Puerto Agua Verde	65.00	1	0	1442	3.0	71.4	5.7	4.6	1.3	9.6	2.7	1.6	0.1	74.4	5.7	19.9	0.099	0.505	25.607781	-111.316852
T. Der. Puerto Agua Verde	65.00	3	0	1779	5.8	73.4	3.5	6.0	1.6	8.0	0.9	0.7	0.1	79.2	3.5	17.3	0.093	0.504	25.610761	-111.311629
El Ligüi	84.50	1	0	1954	1.8	73.3	3.8	11.4	1.4	5.8	1.0	1.4	0.1	75.1	3.8	21.1	0.094	0.524	25.728740	-111.266666
T. Der. Puerto Escondido	95.40	1	0	2036	2.0	72.6	3.9	11.4	2.1	6.2	0.8	0.9	0.1	74.6	3.9	21.5	0.098	0.522	25.797638	-111.326266
T. Der. Puerto Escondido	95.40	3	0	2396	1.2	80.4	3.3	4.7	2.0	5.9	1.7	0.7	0.1	81.6	3.3	15.1	0.092	0.524	25.809536	-111.330807
Nopoló	109.50	1	0	2836	3.1	82.0	2.8	3.8	1.6	4.4	1.6	0.6	0.1	85.1	2.8	12.1	0.084	0.514	25.910784	-111.345802
T. Der. Aeropuerto de Loreto	117.30	1	0	3905	2.5	82.7	2.4	6.6	1.0	3.3	0.7	0.7	0.1	85.2	2.4	12.4	0.109	0.501	25.968385	-111.367623
T. Der. Loreto	120.00	1	0	5546	2.9	87.4	1.5	3.2	1.4	2.2	0.6	0.7	0.1	90.3	1.5	8.2	0.091	0.534	26.000718	-111.366511

4 CARR: Ent. Punta Prieta - Guerrero Negro

CLAVE: 00321

RUTA: MEX-001

AÑO: 2023

LUGAR	ESTACION				CLASIFICACION VEHICULAR EN PORCIENTO													COORDENADAS		
	KM	TE	SC	TDPA	M	A	B	C2	C3	T3S2	T3S3	T3S2R4	OTROS	A	B	C	K'	D	LATITUD	LONGITUD
Parador Punta Prieta	0.00	3	0	889	3.4	58.5	5.3	10.5	3.3	14.9	3.1	1.0	0.0	61.9	5.3	32.8	0.089	0.553	28.911962	-114.150384
Rosarito	50.60	3	0	892	4.2	51.1	6.0	14.6	3.0	16.6	3.9	0.6	0.0	55.3	6.0	38.7	0.096	0.538	28.629764	-114.023846
Tanatán	70.10	3	0	977	4.0	57.1	6.7	9.2	3.3	15.0	3.7	1.0	0.0	61.1	6.7	32.2	0.080	0.526	28.505507	-114.019866
Tampico	105.00	1	0	1029	2.8	65.6	3.8	5.5	3.3	15.3	2.8	0.8	0.1	68.4	3.8	27.8	0.091	0.539	28.208342	-114.000721
Lim. Edos. Term. B.C. Ppia. B.C.S. (Paralelo 28)	128.56																			
Ent. Guerrero Negro	130.00	1	0	2051	4.0	76.6	3.4	5.1	2.8	5.4	1.9	0.7	0.1	80.6	3.4	16.0	0.097	0.502	27.973593	-114.013591

BAJA CALIFORNIA SUR

5 CARR : La Paz - Cd. Insurgentes

CLAVE: 03101

RUTA: MEX-001

AÑO: 2023

LUGAR	ESTACION				CLASIFICACION VEHICULAR EN PORCIENTO										COORDENADAS					
	KM	TE	SC	TDPA	M	A	B	C2	C3	T3S2	T3S3	T3S2R4	OTROS	A	B	C	K'	D	LATITUD	LONGITUD
La Paz	0.00	3	1	14828	2.9	92.5	0.4	1.3	1.2	0.7	0.2	0.3	0.5	95.4	0.4	4.2	0.080	0.516	24.120993	-110.337410
La Paz	0.00	3	2	13899	2.7	92.5	0.5	1.5	0.9	0.8	0.2	0.4	0.5	95.2	0.5	4.3	0.077	0.516	24.120893	-110.337293
T. Izq. Aeropuerto	8.90	1	1	12385	3.0	92.0	0.7	1.7	1.1	0.9	0.1	0.3	0.2	95.0	0.7	4.3	0.091	0.511	24.109167	-110.358686
T. Izq. Aeropuerto	8.90	1	2	12955	3.1	92.1	0.6	1.7	1.0	0.9	0.2	0.1	0.3	95.2	0.6	4.2	0.099	0.511	24.109009	-110.358650
T. Izq. Aeropuerto	8.90	3	1	11707	4.0	90.2	0.6	2.4	1.4	0.9	0.3	0.2	0.0	94.2	0.6	5.2	0.086	0.516	24.104560	-110.369319
T. Izq. Aeropuerto	8.90	3	2	10967	4.2	90.3	0.4	2.2	1.6	0.8	0.3	0.2	0.0	94.5	0.4	5.1	0.098	0.516	24.104463	-110.369275
El Centenario	13.50	3	1	5003	6.5	86.1	0.8	2.0	1.4	1.3	0.6	0.9	0.4	92.6	0.8	6.6	0.084	0.522	24.105375	-110.413964
El Centenario	13.50	3	2	5454	6.4	86.2	0.6	2.0	1.6	1.3	0.4	1.2	0.3	92.6	0.6	6.8	0.095	0.522	24.105315	-110.414048
T. Der. San Juan de La Costa	17.00	1	1	3283	2.7	87.7	1.3	3.3	1.0	2.4	0.7	0.7	0.2	90.4	1.3	8.3	0.108	0.503	24.118014	-110.431954
T. Der. San Juan de La Costa	17.00	1	2	3247	3.4	86.3	1.3	3.5	1.2	2.6	0.9	0.6	0.2	89.7	1.3	9.0	0.119	0.503	24.117948	-110.432004
T. Der. San Juan de La Costa	17.00	3	0	2915	2.3	78.5	2.8	4.9	1.6	5.5	2.3	1.7	0.4	80.8	2.8	16.4	0.078	0.500	24.120232	-110.447412
T. Der. Alfredo V. Bonfil	24.00	3	0	2528	1.8	79.0	2.8	4.5	2.3	5.8	2.2	1.5	0.1	80.8	2.8	16.4	0.103	0.515	24.089698	-110.520970
T. Izq. El Conejo	79.60	1	0	2331	2.2	77.4	3.0	4.4	2.0	6.2	3.1	1.5	0.2	79.6	3.0	17.4	0.108	0.536	24.177786	-110.938169
T. Izq. El Conejo	79.60	3	0	2297	1.4	80.3	2.8	4.5	1.6	6.0	1.7	1.6	0.1	81.7	2.8	15.5	0.112	0.517	24.186094	-110.945542
El Ciento Veintiocho	118.20	1	0	2397	2.1	78.7	2.7	4.2	1.7	6.0	2.7	1.8	0.1	80.8	2.7	16.5	0.103	0.522	24.464582	-111.213169
Santa Rita	156.70	1	0	2296	6.2	74.8	2.4	7.6	2.1	3.4	1.8	1.6	0.1	81.0	2.4	16.6	0.105	0.513	24.586154	-111.460744
Santa Rita	156.70	3	0	2284	4.5	78.7	2.9	3.8	1.9	4.7	1.4	1.9	0.2	83.2	2.9	13.9	0.106	0.539	24.597276	-111.472958
Cd. Constitución	213.00	1	0	4593	2.8	84.1	2.4	2.5	2.0	3.2	1.4	1.3	0.3	86.9	2.4	10.7	0.088	0.506	25.006834	-111.661386
Cd. Constitución	213.00	3	1	4580	1.4	92.1	1.0	1.4	1.6	1.3	0.2	0.8	0.2	93.5	1.0	5.5	0.125	0.504	25.045357	-111.679171
Cd. Constitución	213.00	3	2	4658	1.4	92.1	1.5	1.4	1.2	1.4	0.3	0.6	0.1	93.5	1.5	5.0	0.128	0.504	25.045310	-111.679269
T. Der. Ley Federal de Aguas Número Cuatro	229.00	1	1	2341	1.2	87.3	1.8	3.0	1.2	3.4	1.0	0.9	0.2	88.5	1.8	9.7	0.095	0.512	25.186628	-111.744472
T. Der. Ley Federal de Aguas Número Cuatro	229.00	1	2	2458	1.3	87.1	1.8	3.1	1.4	3.4	0.7	0.9	0.3	88.4	1.8	9.8	0.100	0.512	25.186603	-111.744549
Cd. Insurgentes	236.50	1	1	2416	1.5	89.6	1.6	2.1	1.0	2.6	0.6	0.6	0.4	91.1	1.6	7.3	0.096	0.511	25.235910	-111.767281
Cd. Insurgentes	236.50	1	2	2526	1.4	89.7	1.6	2.3	1.0	2.5	0.5	0.6	0.4	91.1	1.6	7.3	0.092	0.511	25.235878	-111.767360

6 CARR : La Paz - Pichilingue

CLAVE: 03230

RUTA: MEX-011

AÑO: 2023

LUGAR	ESTACION				CLASIFICACION VEHICULAR EN PORCIENTO										COORDENADAS					
	KM	TE	SC	TDPA	M	A	B	C2	C3	T3S2	T3S3	T3S2R4	OTROS	A	B	C	K'	D	LATITUD	LONGITUD
La Paz	0.00	3	1	9009	5.3	90.1	0.4	1.8	1.0	0.5	0.4	0.4	0.1	95.4	0.4	4.2	0.084	0.502	24.178108	-110.303159
La Paz	0.00	3	2	8933	6.0	89.2	0.3	1.6	1.6	0.5	0.4	0.4	0.0	95.2	0.3	4.5	0.095	0.502	24.178024	-110.303359
Escuela Técnica Pesquera	9.30	3	0	2177	5.6	78.1	0.5	2.7	3.7	3.7	3.0	2.1	0.6	83.7	0.5	15.8	0.086	0.504	24.230320	-110.308481
Pichilingue	17.00	1	0	4636	4.2	74.2	2.1	4.0	4.3	7.5	1.6	1.7	0.4	78.4	2.1	19.5	0.086	0.507	24.269325	-110.318620

BAJA CALIFORNIA SUR

7 CARR: Libramiento de Cabo San Lucas

CLAVE: 03100

RUTA: MEX-001

AÑO: 2023

LUGAR	ESTACION				CLASIFICACION VEHICULAR EN PORCIENTO										COORDENADAS					
	KM	TE	SC	TDPA	M	A	B	C2	C3	T3S2	T3S3	T3S2R4	OTROS	A	B	C	K'	D	LATITUD	LONGITUD
T. C. San Pedro - Cabo San Lucas	0.00	3	1	17243	3.0	88.3	1.4	3.5	1.5	0.9	0.4	0.7	0.3	91.3	1.4	7.3	0.068	0.506	22.899490	-109.923170
T. C. San Pedro - Cabo San Lucas	0.00	3	2	17637	3.1	88.1	1.4	3.7	1.7	0.7	0.3	0.8	0.2	91.2	1.4	7.4	0.071	0.506	22.899575	-109.923237
T. C. Cabo San Lucas - La Paz	3.00	1	1	26493	4.6	88.2	1.2	2.9	1.2	0.7	0.1	0.9	0.2	92.8	1.2	6.0	0.086	0.504	22.900406	-109.910993
T. C. Cabo San Lucas - La Paz	3.00	1	2	25985	4.6	87.8	1.0	3.0	1.4	0.8	0.2	0.9	0.3	92.4	1.0	6.6	0.101	0.504	22.900510	-109.910956

8 CARR: Libramiento de Todos Santos

CLAVE:

RUTA: MEX-019

AÑO: 2023

LUGAR	ESTACION				CLASIFICACION VEHICULAR EN PORCIENTO										COORDENADAS					
	KM	TE	SC	TDPA	M	A	B	C2	C3	T3S2	T3S3	T3S2R4	OTROS	A	B	C	K'	D	LATITUD	LONGITUD
T. C. San Pedro - Cabo San Lucas Norte	0.00	3	0	5171	1.2	83.1	2.1	3.7	1.7	4.8	1.6	1.5	0.3	84.3	2.1	13.6	0.115	0.510	23.474511	-110.212021
T. C. San Pedro - Cabo San Lucas Sur	7.50																			

9 CARR: Loreto - Santa Rosalía

CLAVE: 03393

RUTA: MEX-001

AÑO: 2023

LUGAR	ESTACION				CLASIFICACION VEHICULAR EN PORCIENTO										COORDENADAS					
	KM	TE	SC	TDPA	M	A	B	C2	C3	T3S2	T3S3	T3S2R4	OTROS	A	B	C	K'	D	LATITUD	LONGITUD
Loreto	0.00	3	0	1498	7.0	70.6	2.9	5.8	2.7	7.8	1.1	2.0	0.1	77.6	2.9	19.5	0.081	0.516	26.036696	-111.363627
Rosarito	63.00	1	0	1143	3.5	73.2	3.5	5.6	0.5	9.5	2.8	1.4	0.0	76.7	3.5	19.8	0.089	0.506	26.433768	-111.637025
Rosarito	63.00	3	0	918	2.4	71.7	4.2	5.6	0.9	11.6	2.2	1.4	0.0	74.1	4.2	21.7	0.089	0.517	26.462585	-111.657792
Mulegé	135.00	1	0	3043	3.0	84.8	2.2	3.4	1.0	4.1	0.9	0.6	0.0	87.8	2.2	10.0	0.090	0.519	26.889177	-111.979302
Mulegé	135.00	3	0	1398	2.6	75.7	3.6	5.1	1.0	9.6	1.3	1.0	0.1	78.3	3.6	18.1	0.089	0.537	26.893414	-112.000686
T. Izq. Santa Águeda	189.00	1	0	2502	2.2	82.6	2.6	4.8	0.9	5.4	0.8	0.7	0.0	84.8	2.6	12.6	0.095	0.502	27.270660	-112.244067
T. Izq. Santa Águeda	189.00	3	0	2632	2.0	83.4	1.8	4.5	1.0	5.6	1.1	0.6	0.0	85.4	1.8	12.8	0.098	0.522	27.283901	-112.244436
Santa Rosalía	197.00	1	0	3886	2.5	85.8	2.0	2.9	0.9	4.3	0.9	0.7	0.0	88.3	2.0	9.7	0.082	0.504	27.319972	-112.244486

10 CARR: Ramal a Aeropuerto de La Paz

CLAVE: 03396

RUTA: MEX-001

AÑO: 2023

LUGAR	ESTACION				CLASIFICACION VEHICULAR EN PORCIENTO										COORDENADAS					
	KM	TE	SC	TDPA	M	A	B	C2	C3	T3S2	T3S3	T3S2R4	OTROS	A	B	C	K'	D	LATITUD	LONGITUD
T. C. La Paz - Cd. Insurgentes	0.00	3	1	3338	4.2	92.2	0.6	1.2	0.6	0.5	0.2	0.4	0.1	96.4	0.6	3.0	0.119	0.509	24.098255	-110.367275
T. C. La Paz - Cd. Insurgentes	0.00	3	2	3462	4.4	92.1	0.6	1.2	0.6	0.5	0.2	0.3	0.1	96.5	0.6	2.9	0.142	0.509	24.098211	-110.367152
Aeropuerto	3.44																			

BAJA CALIFORNIA SUR

11 CARR: Ramal a Aeropuerto de Los Cabos

CLAVE: 03394

RUTA: MEX-001

AÑO: 2023

LUGAR	ESTACION				CLASIFICACION VEHICULAR EN PORCIENTO													COORDENADAS		
	KM	TE	SC	TDPA	M	A	B	C2	C3	T3S2	T3S3	T3S2R4	OTROS	A	B	C	K'	D	LATITUD	LONGITUD
T. C. Cabo San Lucas - La Paz	0.00	3	0	17591	2.5	86.4	0.8	7.5	1.5	0.4	0.2	0.5	0.2	88.9	0.8	10.3	0.132	0.513	23.160115	-109.712379
Aeropuerto Los Cabos	1.00																			

12 CARR: Ramal a Los Paredones

CLAVE: 03407

RUTA: MEX-001

AÑO: 2023

LUGAR	ESTACION				CLASIFICACION VEHICULAR EN PORCIENTO													COORDENADAS		
	KM	TE	SC	TDPA	M	A	B	C2	C3	T3S2	T3S3	T3S2R4	OTROS	A	B	C	K'	D	LATITUD	LONGITUD
T. C. Cd. Santa Rosalía - Guerrero Negro	0.00	3	0	1192	3.0	87.0	0.3	8.9	0.3	0.5	0.0	0.0	0.0	90.0	0.3	9.7	0.088	0.532	27.300884	-112.899722
Paredones	1.40																			

13 CARR: Ramal a Miraflores

CLAVE: 03407

RUTA: MEX-001

AÑO: 2023

LUGAR	ESTACION				CLASIFICACION VEHICULAR EN PORCIENTO													COORDENADAS		
	KM	TE	SC	TDPA	M	A	B	C2	C3	T3S2	T3S3	T3S2R4	OTROS	A	B	C	K'	D	LATITUD	LONGITUD
T. C. Cabo San Lucas - La Paz	0.00	3	1	1315	2.1	95.0	0.2	1.0	0.8	0.2	0.0	0.0	0.7	97.1	0.2	2.7	0.109	0.500	23.371040	-109.754820
T. C. Cabo San Lucas - La Paz	0.00	3	2	1314	0.9	96.5	0.2	1.7	0.4	0.0	0.0	0.0	0.3	97.4	0.2	2.4	0.102	0.500	23.370970	-109.754844
Miraflores	2.20																			

14 CARR: Ramal a Puerto Escondido

CLAVE: 03407

RUTA: MEX-001

AÑO: 2023

LUGAR	ESTACION				CLASIFICACION VEHICULAR EN PORCIENTO													COORDENADAS		
	KM	TE	SC	TDPA	M	A	B	C2	C3	T3S2	T3S3	T3S2R4	OTROS	A	B	C	K'	D	LATITUD	LONGITUD
T. C. Cd. Insurgentes - Loreto	0.00	3	0	387	1.5	92.9	0.9	3.9	0.7	0.0	0.1	0.0	0.0	94.4	0.9	4.7	0.128	0.503	25.803355	-111.325720
Puerto Escondido	2.50																			

15 CARR: Ramal a San Ignacio

CLAVE: 03413

RUTA: MEX-001

AÑO: 2023

LUGAR	ESTACION				CLASIFICACION VEHICULAR EN PORCIENTO													COORDENADAS		
	KM	TE	SC	TDPA	M	A	B	C2	C3	T3S2	T3S3	T3S2R4	OTROS	A	B	C	K'	D	LATITUD	LONGITUD
T. C. Santa Rosalía - Guerrero Negro	0.00	3	0	1446	1.5	94.8	0.8	1.6	0.6	0.4	0.1	0.2	0.0	96.3	0.8	2.9	0.084	0.502	27.300207	-112.893985
San Ignacio	2.70																			

BAJA CALIFORNIA SUR

16 CARR: Ramal a Santiago

CLAVE: 03051

RUTA: MEX-001

AÑO: 2023

LUGAR	ESTACION				CLASIFICACION VEHICULAR EN PORCIENTO													COORDENADAS		
	KM	TE	SC	TDPA	M	A	B	C2	C3	T3S2	T3S3	T3S2R4	OTROS	A	B	C	K'	D	LATITUD	LONGITUD
T. C. Cabo San Lucas - La Paz	0.00	3	1	800	2.0	89.6	1.9	5.6	0.9	0.0	0.0	0.0	0.0	91.6	1.9	6.5	0.122	0.501	23.479455	-109.706769
T. C. Cabo San Lucas - La Paz	0.00	3	2	796	1.8	89.1	1.9	6.4	0.8	0.0	0.0	0.0	0.0	90.9	1.9	7.2	0.125	0.501	23.479408	-109.706796
Santiago	2.30																			

17 CARR: Ramal Aeropista San Ignacio

CLAVE: 03053

RUTA: MEX-001

AÑO: 2023

LUGAR	ESTACION				CLASIFICACION VEHICULAR EN PORCIENTO													COORDENADAS		
	KM	TE	SC	TDPA	M	A	B	C2	C3	T3S2	T3S3	T3S2R4	OTROS	A	B	C	K'	D	LATITUD	LONGITUD
T.C. Cd. Santa Rosalía - Guerrero Negro	0.00	3	0	3	0.0	100.0	0.0	0.0	0.0	0.0	0.0	0.0	0.0	100.0	0.0	0.0	0.667	0.522	27.289544	-112.937790
Aeropista San Ignacio	1.00																			

18 CARR: San Pedro - Cabo San Lucas

CLAVE: 03003

RUTA: MEX-019

AÑO: 2023

LUGAR	ESTACION				CLASIFICACION VEHICULAR EN PORCIENTO													COORDENADAS		
	KM	TE	SC	TDPA	M	A	B	C2	C3	T3S2	T3S3	T3S2R4	OTROS	A	B	C	K'	D	LATITUD	LONGITUD
T. C. Cabo San Lucas - La Paz	0.00	3	1	3503	1.1	84.7	2.6	3.0	1.8	3.6	1.5	1.4	0.3	85.8	2.6	11.6	0.093	0.505	23.880054	-110.253887
T. C. Cabo San Lucas - La Paz	0.00	3	2	3569	1.3	85.3	2.6	2.9	1.7	3.3	1.5	1.2	0.2	86.6	2.6	10.8	0.134	0.505	23.880016	-110.253782
T. Der. Melitón Albáñez	16.00	1	1	2978	1.1	87.0	1.8	3.1	1.4	3.3	1.2	0.9	0.2	88.1	1.8	10.1	0.104	0.522	23.661055	-110.223156
T. Der. Melitón Albáñez	16.00	1	2	3252	1.4	86.5	1.6	3.0	1.6	3.4	1.1	1.1	0.3	87.9	1.6	10.5	0.145	0.522	23.661000	-110.223038
T. Der. Melitón Albáñez	16.00	3	1	3225	2.0	84.5	2.3	3.7	1.5	3.5	0.8	1.3	0.4	86.5	2.3	11.2	0.114	0.525	23.650443	-110.225303
T. Der. Melitón Albáñez	16.00	3	2	3565	2.2	84.8	2.6	3.5	1.5	3.1	1.0	1.1	0.2	87.0	2.6	10.4	0.130	0.525	23.650417	-110.225183
T. Izq. Libramiento de Todos Santos	47.30	1	1	2831	2.4	84.5	1.7	4.0	1.7	3.1	1.3	1.1	0.2	86.9	1.7	11.4	0.098	0.518	23.492958	-110.207309
T. Izq. Libramiento de Todos Santos	47.30	1	2	2639	2.3	84.6	1.8	4.0	1.5	3.4	1.1	1.1	0.2	86.9	1.8	11.3	0.110	0.518	23.492930	-110.207191
Todos Santos	52.00	1	0	3751	3.0	90.4	1.7	2.4	1.4	0.6	0.3	0.2	0.0	93.4	1.7	4.9	0.142	0.527	23.468942	-110.216387
Todos Santos	52.00	3	0	6325	1.7	95.1	0.6	1.6	0.7	0.2	0.1	0.0	0.0	96.8	0.6	2.6	0.097	0.507	23.439021	-110.219255
El Pescadero	62.00	1	1	5618	1.6	89.5	1.0	2.1	1.2	2.4	0.7	1.2	0.3	91.1	1.0	7.9	0.080	0.503	23.381419	-110.182689
El Pescadero	62.00	1	2	5687	1.5	89.7	1.1	2.1	1.4	2.5	0.7	0.8	0.2	91.2	1.1	7.7	0.099	0.503	23.381467	-110.182582
El Pescadero	62.00	3	1	4646	1.2	87.0	1.7	3.2	2.0	2.6	1.1	0.9	0.3	88.2	1.7	10.1	0.104	0.509	23.349125	-110.162033
El Pescadero	62.00	3	2	4822	1.6	87.7	1.2	3.0	1.8	2.8	0.8	0.8	0.3	89.3	1.2	9.5	0.107	0.509	23.349143	-110.161917
Migriño	102.50	1	1	3696	1.3	84.7	2.4	2.9	1.9	3.8	1.4	1.3	0.3	86.0	2.4	11.6	0.119	0.508	23.050318	-110.094168
Migriño	102.50	1	2	3820	1.1	85.7	2.1	2.5	1.9	3.9	1.4	1.2	0.2	86.8	2.1	11.1	0.110	0.508	23.050281	-110.094029
Cabo San Lucas	131.00	1	1	6710	2.3	82.1	1.4	4.9	5.4	2.5	0.9	0.4	0.1	84.4	1.4	14.2	0.083	0.505	22.922379	-109.975918
Cabo San Lucas	131.00	1	2	6574	2.0	83.3	1.1	5.0	5.2	2.2	0.7	0.4	0.1	85.3	1.1	13.6	0.086	0.505	22.922450	-109.975856

BAJA CALIFORNIA SUR

19 CARR: Santa Rosalía - Guerrero Negro

CLAVE: 03095

RUTA: MEX-001

AÑO: 2023

LUGAR	ESTACION				CLASIFICACION VEHICULAR EN PORCIENTO										COORDENADAS					
	KM	TE	SC	TDPA	M	A	B	C2	C3	T3S2	T3S3	T3S2R4	OTROS	A	B	C	K'	D	LATITUD	LONGITUD
Santa Rosalía	0.00	3	0	3629	4.3	79.7	2.6	4.3	1.9	5.0	0.9	1.1	0.2	84.0	2.6	13.4	0.097	0.504	27.356678	-112.272685
Cuesta Infiernillo	12.00	1	0	1167	2.7	76.9	4.0	5.8	1.9	6.5	1.0	1.1	0.1	79.6	4.0	16.4	0.099	0.503	27.391235	-112.341373
Cuesta Infiernillo	12.00	3	0	1104	1.4	79.1	4.3	6.2	1.0	6.0	1.1	0.9	0.0	80.5	4.3	15.2	0.084	0.563	27.386648	-112.355659
T. Izq. San Ignacio	73.60	1	0	1425	4.2	76.2	3.0	5.5	0.3	7.9	2.0	0.9	0.0	80.4	3.0	16.6	0.084	0.501	27.299970	-112.872557
T. Izq. San Ignacio	73.60	3	0	2081	2.9	77.2	3.1	9.2	1.6	3.7	1.5	0.7	0.1	80.1	3.1	16.8	0.088	0.503	27.302042	-112.895990
T. Izq. Punta Abreojos	95.70	1	0	1292	3.9	68.9	4.4	9.2	2.1	7.9	1.9	1.6	0.1	72.8	4.4	22.8	0.087	0.502	27.327929	-113.116005
T. Izq. Punta Abreojos	95.70	3	0	1150	3.8	69.2	3.9	6.8	1.6	10.9	2.8	0.9	0.1	73.0	3.9	23.1	0.089	0.533	27.330659	-113.117279
Los Ángeles	117.90	1	0	1491	3.0	72.9	4.2	4.9	2.1	9.5	2.4	0.9	0.1	75.9	4.2	19.9	0.072	0.524	27.463259	-113.283872
Los Ángeles	117.90	3	0	1607	3.5	74.3	3.7	4.8	2.0	9.2	1.8	0.6	0.1	77.8	3.7	18.5	0.088	0.544	27.491416	-113.299669
T. Izq. Vizcaíno	144.00	1	0	3093	1.9	77.8	4.1	6.3	1.9	5.5	1.5	0.9	0.1	79.7	4.1	16.2	0.082	0.502	27.631619	-113.377261
T. Izq. Vizcaíno	144.00	3	0	1650	2.6	74.6	5.0	5.7	0.5	8.5	2.3	0.7	0.1	77.2	5.0	17.8	0.105	0.538	27.660638	-113.391276
T. Der. El Arco	189.00	1	0	1241	2.6	73.5	3.5	6.6	1.7	9.4	1.9	0.7	0.1	76.1	3.5	20.4	0.097	0.546	27.850220	-113.760879
T. Der. El Arco	189.00	3	0	1402	9.6	64.5	4.4	6.2	3.1	9.4	2.2	0.6	0.0	74.1	4.4	21.5	0.098	0.530	27.857356	-113.779393
Ent. Guerrero Negro	216.85	1	0	1726	1.5	73.7	4.1	5.9	2.0	10.7	1.3	0.8	0.0	75.2	4.1	20.7	0.077	0.533	27.963474	-114.006907

20 CARR: Libramiento San José del Cabo - Aeropuerto Los Cabos (Cuota)

CLAVE: 03392

RUTA: MEX-001D

AÑO: 2023

LUGAR	ESTACION				CLASIFICACION VEHICULAR EN PORCIENTO										COORDENADAS					
	KM	TE	SC	TDPA	M	A	B	C2	C3	T3S2	T3S3	T3S2R4	OTROS	A	B	C	K'	D	LATITUD	LONGITUD
Aeropuerto de Los Cabos	100.00																			
Plaza de Cobro Aeropuerto los Cabos	105.10	2	0	8950	0.1	97.5	0.5	0.7	0.2	0.4	0.2	0.4	0.0	97.6	0.5	1.9	0.102	0.500	23.150467	-109.740500
Plaza de Cobro Los Cabos	118.20	2	0	6959	0.2	98.1	0.7	0.6	0.1	0.2	0.1	0.0	0.0	98.3	0.7	1.0	0.102	0.500	23.049876	-109.719565
T. Der. Cabo San Lucas	119.90	1	0	9719	0.3	93.5	0.7	4.5	0.2	0.3	0.2	0.3	0.0	93.8	0.7	5.5	0.112	0.515	23.080869	-109.746337
T. C. Cabo San Lucas - La Paz	120.20	1	0	23460	0.2	97.2	0.4	1.9	0.2	0.1	0.0	0.0	0.0	97.4	0.4	2.2	0.119	0.522	23.049090	-109.714624

21 CARR: Ramal a El Mangle (Cuota)

CLAVE:

RUTA: MEX-001D

AÑO: 2023

LUGAR	ESTACION				CLASIFICACION VEHICULAR EN PORCIENTO										COORDENADAS					
	KM	TE	SC	TDPA	M	A	B	C2	C3	T3S2	T3S3	T3S2R4	OTROS	A	B	C	K'	D	LATITUD	LONGITUD
T. C. Libramiento Cabo San Lucas - San José del Cabo (Cuota)	0.00																			
T. C. San Pedro - Cabo San Lucas	11.20	1	0	2540	1.1	90.7	1.7	3.0	0.8	1.2	0.6	0.8	0.1	91.8	1.7	6.5	0.131	0.501	22.949644	-109.982163

BAJA CALIFORNIA SUR

22 CARR: San José del Cabo - Libramiento de Cabo San Lucas - (Cuota)

CLAVE:

RUTA: MEX-001D

AÑO: 2023

LUGAR	ESTACION				CLASIFICACION VEHICULAR EN PORCIENTO										COORDENADAS					
	KM	TE	SC	TDPA	M	A	B	C2	C3	T3S2	T3S3	T3S2R4	OTROS	A	B	C	K'	D	LATITUD	LONGITUD
T. C. Libramiento San José del Cabo	0.00	3	0	3588	2.5	77.2	2.5	14.7	0.5	0.8	0.5	1.0	0.3	79.7	2.5	17.8	0.116	0.504	23.065829	-109.750684
Cabo San Lucas	27.48	1	0	2634	1.6	95.1	0.6	2.3	0.3	0.1	0.0	0.0	0.0	96.7	0.6	2.7	0.125	0.514	22.913189	-109.915970

23 CARR: Cd. Insurgentes - La Purísima

CLAVE: 03005

RUTA: BCS-001

AÑO: 2023

LUGAR	ESTACION				CLASIFICACION VEHICULAR EN PORCIENTO										COORDENADAS					
	KM	TE	SC	TDPA	M	A	B	C2	C3	T3S2	T3S3	T3S2R4	OTROS	A	B	C	K'	D	LATITUD	LONGITUD
Cd. Insurgentes	0.00	3	0	2414	3.0	89.4	1.3	1.8	1.9	1.6	0.5	0.5	0.0	92.4	1.3	6.3	0.092	0.519	25.271215	-111.783728
Ignacio Zaragoza	18.00	1	0	1318	1.8	92.3	1.8	2.1	0.9	0.8	0.2	0.1	0.0	94.1	1.8	4.1	0.090	0.509	25.388365	-111.837939
Ignacio Zaragoza	18.00	3	1	931	4.5	88.6	1.2	1.9	1.8	1.5	0.2	0.3	0.0	93.1	1.2	5.7	0.078	0.500	25.401586	-111.843981
Ignacio Zaragoza	18.00	3	2	930	3.8	89.9	0.9	1.5	1.7	1.7	0.2	0.3	0.0	93.7	0.9	5.4	0.091	0.500	25.401553	-111.844113
T. Izq. Santo Domingo	28.70	1	0	747	2.4	92.7	1.0	2.7	0.4	0.6	0.2	0.0	0.0	95.1	1.0	3.9	0.082	0.508	25.499814	-111.889684
Francisco Villa	64.00	3	0	329	7.6	84.7	1.2	3.7	1.6	0.5	0.3	0.3	0.1	92.3	1.2	6.5	0.125	0.503	25.799458	-112.028571
La Purísima	107.00	1	0	317	1.0	92.4	0.8	2.4	2.2	0.5	0.6	0.1	0.0	93.4	0.8	5.8	0.140	0.517	26.121803	-112.103314

24 CARR: Cd. Insurgentes - Pto. Adolfo López Mateos

CLAVE: 03404

RUTA: BCS

AÑO: 2023

LUGAR	ESTACION				CLASIFICACION VEHICULAR EN PORCIENTO										COORDENADAS					
	KM	TE	SC	TDPA	M	A	B	C2	C3	T3S2	T3S3	T3S2R4	OTROS	A	B	C	K'	D	LATITUD	LONGITUD
T. C. Cd. Insurgentes - La Purísima	0.00	3	0	713	3.4	89.6	1.8	2.7	0.7	0.8	0.4	0.6	0.0	93.0	1.8	5.2	0.104	0.523	25.275320	-111.805966
Puerto Adolfo López Mateos	35.50	1	0	523	1.3	93.4	1.3	2.9	0.4	0.5	0.2	0.0	0.0	94.7	1.3	4.0	0.136	0.503	25.193968	-112.093670

25 CARR: Ent. Campo Fisher - Punta Abreojos

CLAVE: 03411

RUTA: BCS

AÑO: 2023

LUGAR	ESTACION				CLASIFICACION VEHICULAR EN PORCIENTO										COORDENADAS					
	KM	TE	SC	TDPA	M	A	B	C2	C3	T3S2	T3S3	T3S2R4	OTROS	A	B	C	K'	D	LATITUD	LONGITUD
T. C. Santa Rosalía - Paralelo 28	0.00	3	0	261	1.8	81.5	2.4	9.9	2.5	1.5	0.2	0.2	0.0	83.3	2.4	14.3	0.109	0.506	27.326577	-113.117960
Punta Abreojos	88.00																			

26 CARR: La Paz - Ensenada de Muertos

CLAVE: 03103

RUTA: BCS-246

AÑO: 2023

LUGAR	ESTACION				CLASIFICACION VEHICULAR EN PORCIENTO										COORDENADAS					
	KM	TE	SC	TDPA	M	A	B	C2	C3	T3S2	T3S3	T3S2R4	OTROS	A	B	C	K'	D	LATITUD	LONGITUD
La Paz	0.00	3	0	6929	2.1	88.4	0.5	6.4	1.0	0.6	0.5	0.4	0.1	90.5	0.5	9.0	0.107	0.515	24.117577	-110.293612
T. Izq. El Sargento	45.00	1	0	2589	2.1	89.2	0.5	6.1	1.1	0.7	0.2	0.1	0.0	91.3	0.5	8.2	0.124	0.500	23.982788	-109.995117

BAJA CALIFORNIA SUR

26 CARR: La Paz - Ensenada de Muertos

CLAVE: 03103

RUTA: BCS-246

AÑO: 2023

LUGAR	ESTACION				CLASIFICACION VEHICULAR EN PORCIENTO										COORDENADAS					
	KM	TE	SC	TDPA	M	A	B	C2	C3	T3S2	T3S3	T3S2R4	OTROS	A	B	C	K'	D	LATITUD	LONGITUD
T. Izq. El Sargento	45.00	3	0	2341	2.0	89.7	1.1	5.9	0.8	0.4	0.1	0.0	0.0	91.7	1.1	7.2	0.115	0.506	23.981688	-109.991926
Ensenada de Muertos	57.50	1	0	436	2.6	90.7	0.4	4.6	0.8	0.6	0.1	0.2	0.0	93.3	0.4	6.3	0.131	0.501	24.007618	-109.854084

27 CARR: Libramiento de La Paz

CLAVE: 03004

RUTA: BCS

AÑO: 2023

LUGAR	ESTACION				CLASIFICACION VEHICULAR EN PORCIENTO										COORDENADAS					
	KM	TE	SC	TDPA	M	A	B	C2	C3	T3S2	T3S3	T3S2R4	OTROS	A	B	C	K'	D	LATITUD	LONGITUD
T. C. Cabo San Lucas - La Paz	0.00	3	0	12763	3.0	89.7	0.6	2.2	1.9	1.6	0.5	0.4	0.1	92.7	0.6	6.7	0.080	0.507	24.107638	-110.314322
T. C. La Paz - Cd. Insurgentes	10.00																			

28 CARR: Libramiento Norte de La Paz

CLAVE: 03006

RUTA: BCS

AÑO: 2023

LUGAR	ESTACION				CLASIFICACION VEHICULAR EN PORCIENTO										COORDENADAS					
	KM	TE	SC	TDPA	M	A	B	C2	C3	T3S2	T3S3	T3S2R4	OTROS	A	B	C	K'	D	LATITUD	LONGITUD
T. C. La Paz - Pichilingue	0.00	3	0	4466	6.1	70.6	3.1	7.3	2.4	4.1	1.6	3.8	1.0	76.7	3.1	20.2	0.112	0.528	24.230795	-110.297552
T. C. La Paz - Ensenada de Muertos	18.80	1	0	4992	3.6	65.8	1.8	8.6	7.6	7.1	2.5	2.5	0.5	69.4	1.8	28.8	0.070	0.506	24.122852	-110.292251
T. C. La Paz - Ensenada de Muertos	18.80	3	0	9862	3.4	73.3	2.4	6.7	3.3	5.1	1.6	3.4	0.8	76.7	2.4	20.9	0.098	0.518	24.119786	-110.297577
T. C. Cabo San Lucas - La Paz	20.70	1	0	15732	7.9	80.0	0.7	2.5	3.6	2.8	0.7	1.4	0.4	87.9	0.7	11.4	0.092	0.552	24.113768	-110.308894

29 CARR: Ramal a Benito Juárez

CLAVE: 03405

RUTA: BCS

AÑO: 2023

LUGAR	ESTACION				CLASIFICACION VEHICULAR EN PORCIENTO										COORDENADAS					
	KM	TE	SC	TDPA	M	A	B	C2	C3	T3S2	T3S3	T3S2R4	OTROS	A	B	C	K'	D	LATITUD	LONGITUD
T. C. Cd. Constitución - Puerto San Carlos	0.00	3	0	819	2.5	89.7	3.2	2.2	1.7	0.4	0.2	0.1	0.0	92.2	3.2	4.6	0.113	0.513	25.037923	-111.770252
Benito Juárez	11.50	1	0	763	0.8	90.6	3.9	2.5	1.7	0.3	0.1	0.1	0.0	91.4	3.9	4.7	0.120	0.501	25.108658	-111.821281

30 CARR: Ramal a Ejido Ley Federal de Aguas Número Cuatro

CLAVE: 03007

RUTA: BCS

AÑO: 2023

LUGAR	ESTACION				CLASIFICACION VEHICULAR EN PORCIENTO										COORDENADAS					
	KM	TE	SC	TDPA	M	A	B	C2	C3	T3S2	T3S3	T3S2R4	OTROS	A	B	C	K'	D	LATITUD	LONGITUD
T. C. La Paz - Cd. Insurgentes	0.00	3	0	774	1.5	86.9	1.2	4.2	4.4	1.5	0.3	0.0	0.0	88.4	1.2	10.4	0.105	0.535	25.198577	-111.748627
Ejido Ley Federal de Aguas Número Cuatro	19.20																			

BAJA CALIFORNIA SUR

31 CARR: Ramal a El Carrizal

CLAVE: 03050

RUTA: BCS

AÑO: 2023

LUGAR	ESTACION				CLASIFICACION VEHICULAR EN PORCIENTO														COORDENADAS	
	KM	TE	SC	TDPA	M	A	B	C2	C3	T3S2	T3S3	T3S2R4	OTROS	A	B	C	K'	D	LATITUD	LONGITUD
T. C. San Pedro - Cabo San Lucas Carrizal	0.00	3	0	555	3.1	89.7	3.3	2.4	0.4	1.0	0.0	0.1	0.0	92.8	3.3	3.9	0.110	0.505	23.829562	-110.257147
	10.00																			

32 CARR: Ramal a Guerrero Negro

CLAVE: 03395

RUTA: BCS

AÑO: 2023

LUGAR	ESTACION				CLASIFICACION VEHICULAR EN PORCIENTO														COORDENADAS	
	KM	TE	SC	TDPA	M	A	B	C2	C3	T3S2	T3S3	T3S2R4	OTROS	A	B	C	K'	D	LATITUD	LONGITUD
T. C. Santa Rosalía - Guerrero Negro Guerrero Negro	0.00	3	0	2797	3.0	83.5	2.0	9.1	0.8	1.1	0.3	0.2	0.0	86.5	2.0	11.5	0.089	0.510	27.967505	-114.020129
	4.50																			

33 CARR: Ramal a La Ribera

CLAVE: 03406

RUTA: BCS

AÑO: 2023

LUGAR	ESTACION				CLASIFICACION VEHICULAR EN PORCIENTO														COORDENADAS	
	KM	TE	SC	TDPA	M	A	B	C2	C3	T3S2	T3S3	T3S2R4	OTROS	A	B	C	K'	D	LATITUD	LONGITUD
T. C. Cabo San Lucas - La Paz La Ribera	0.00	3	0	1896	4.2	81.4	2.3	6.5	2.7	1.6	1.3	0.0	0.0	85.6	2.3	12.1	0.084	0.502	23.543056	-109.664127
	12.00																			

34 CARR: Ramal a Melitón Albáñez

CLAVE: 03407

RUTA: BCS

AÑO: 2023

LUGAR	ESTACION				CLASIFICACION VEHICULAR EN PORCIENTO														COORDENADAS	
	KM	TE	SC	TDPA	M	A	B	C2	C3	T3S2	T3S3	T3S2R4	OTROS	A	B	C	K'	D	LATITUD	LONGITUD
T. C. San Pedro - Cabo San Lucas Melitón Albáñez	0.00	3	0	616	1.7	87.1	4.9	4.5	0.3	1.2	0.1	0.2	0.0	88.8	4.9	6.3	0.112	0.503	23.653239	-110.226034
	23.50																			

35 CARR: Ramal a Santa Catarina

CLAVE: 03052

RUTA: BCS

AÑO: 2023

LUGAR	ESTACION				CLASIFICACION VEHICULAR EN PORCIENTO														COORDENADAS	
	KM	TE	SC	TDPA	M	A	B	C2	C3	T3S2	T3S3	T3S2R4	OTROS	A	B	C	K'	D	LATITUD	LONGITUD
T. C. Cabo San Lucas - La Paz Santa Catarina	0.00	3	0	1741	6.4	84.1	0.6	3.6	4.3	0.6	0.2	0.2	0.0	90.5	0.6	8.9	0.106	0.509	23.134820	-109.706363
	1.00																			

BAJA CALIFORNIA SUR

36 CARR: Ramal a Bahía de Tortugas

CLAVE: 03397

RUTA: MEX-001-BCS

AÑO: 2023

LUGAR	ESTACION				CLASIFICACION VEHICULAR EN PORCIENTO													COORDENADAS		
	KM	TE	SC	TDPA	M	A	B	C2	C3	T3S2	T3S3	T3S2R4	OTROS	A	B	C	K'	D	LATITUD	LONGITUD
T. C. Santa Rosalía - Guerrero Negro	0.00	3	0	4625	1.7	87.8	4.3	3.2	1.0	1.2	0.3	0.4	0.1	89.5	4.3	6.2	0.090	0.503	27.641758	-113.403466
Vizcaíno	6.00	3	0	1471	2.3	78.1	5.6	11.5	0.6	1.5	0.3	0.1	0.0	80.4	5.6	14.0	0.087	0.503	27.642439	-113.453762
Bahía de Tortugas	198.00																			

37 CARR: Ramal a Ejido Ley Federal de Aguas Número Dos

CLAVE: 03050

RUTA: BCS-MEX-001

AÑO: 2023

LUGAR	ESTACION				CLASIFICACION VEHICULAR EN PORCIENTO													COORDENADAS		
	KM	TE	SC	TDPA	M	A	B	C2	C3	T3S2	T3S3	T3S2R4	OTROS	A	B	C	K'	D	LATITUD	LONGITUD
T. C. Cd. Insurgentes - Loreto	0.00	3	0	196	5.9	85.1	3.0	3.0	1.1	0.5	0.9	0.5	0.0	91.0	3.0	6.0	0.145	0.514	25.294321	-111.649750
T. Ramal a Ley Federal de Aguas No 3	5.40																			
Ejido Ley Federal de Aguas Número Dos	10.00																			

38 CARR: Ramal a Ley Federal de Aguas Número Cinco

CLAVE: 03407

RUTA: BCS-MEX-001

AÑO: 2023

LUGAR	ESTACION				CLASIFICACION VEHICULAR EN PORCIENTO													COORDENADAS		
	KM	TE	SC	TDPA	M	A	B	C2	C3	T3S2	T3S3	T3S2R4	OTROS	A	B	C	K'	D	LATITUD	LONGITUD
Cd. Constitución	0.00	3	1	1419	3.1	84.2	1.2	4.3	4.6	1.2	1.0	0.3	0.1	87.3	1.2	11.5	0.097	0.525	25.034658	-111.631736
Cd. Constitución	0.00	3	2	1283	3.3	83.7	1.3	4.3	4.9	1.3	0.8	0.3	0.1	87.0	1.3	11.7	0.098	0.525	25.034746	-111.631784
Ramal a el Quemado	7.35																			
Ley Federal de Aguas Número Cinco	17.50																			

39 CARR: Ramal a San Juan de La Costa

CLAVE: 03403

RUTA: BCS-163-MEX-001

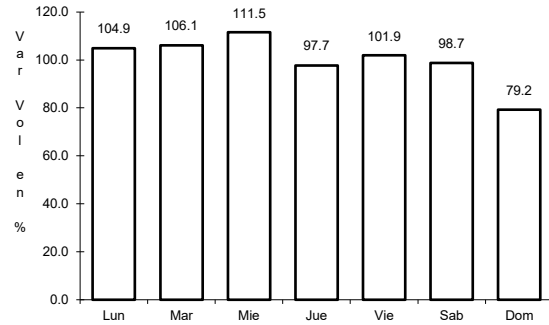
AÑO: 2023

LUGAR	ESTACION				CLASIFICACION VEHICULAR EN PORCIENTO													COORDENADAS		
	KM	TE	SC	TDPA	M	A	B	C2	C3	T3S2	T3S3	T3S2R4	OTROS	A	B	C	K'	D	LATITUD	LONGITUD
T. C. La Paz - Cd. Insurgentes	0.00	3	0	837	3.3	84.6	0.8	8.3	1.5	0.8	0.2	0.4	0.1	87.9	0.8	11.3	0.152	0.504	24.123710	-110.442234
Puerto Cajete	23.00	3	0	446	2.4	77.8	2.2	13.7	2.2	1.4	0.2	0.1	0.0	80.2	2.2	17.6	0.104	0.525	24.254297	-110.611564
San Juan de La Costa	40.70	1	0	520	1.8	77.9	1.7	14.5	2.0	1.8	0.2	0.0	0.1	79.7	1.7	18.6	0.107	0.503	24.365809	-110.687048

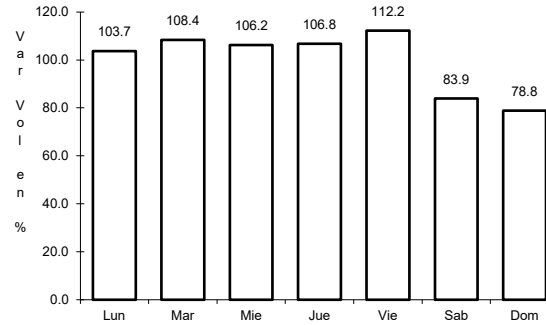
1 CARR: Cabo San Lucas - La Paz

CLAVE: 03102

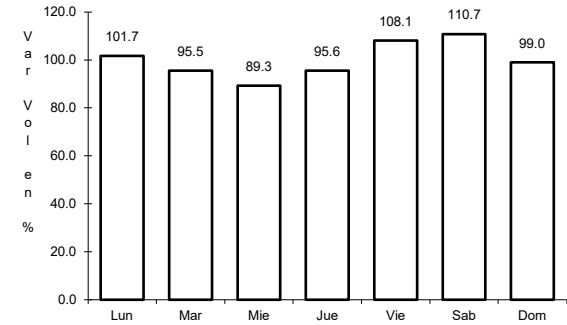
RUTA: MEX-001



Km: 0.00 Tipo: 3 Sent: 1



Km: 0.00 Tipo: 3 Sent: 2

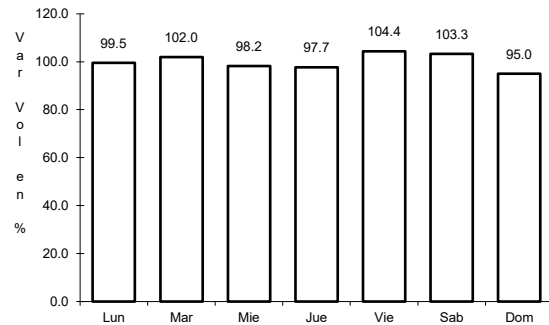


Km: 110.00 Tipo: 3 Sent: 0

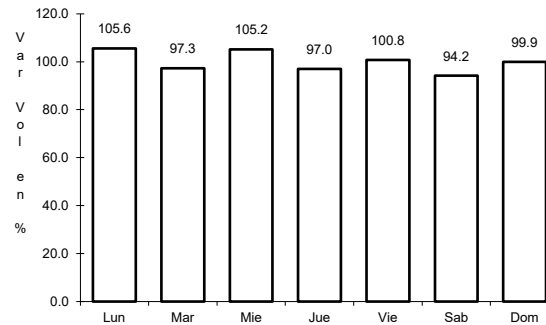
2 CARR: Cd. Constitución - Puerto San Carlos

CLAVE: 03231

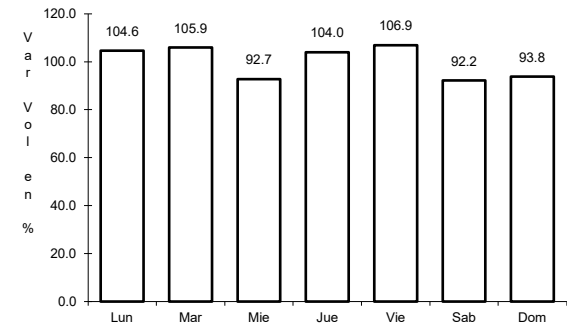
RUTA: MEX-001



Km: 0.00 Tipo: 3 Sent: 0



Km: 10.00 Tipo: 1 Sent: 0

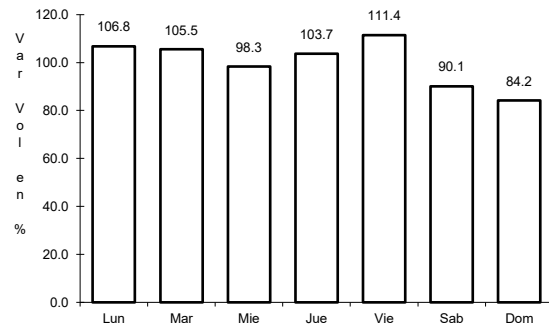


Km: 10.00 Tipo: 3 Sent: 0

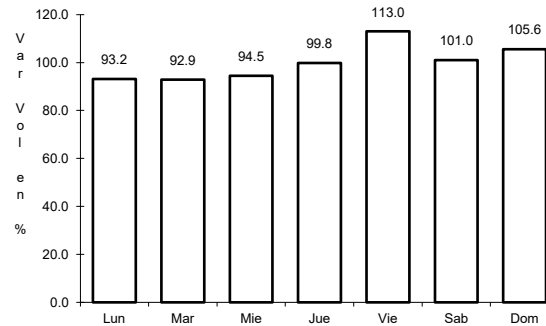
3 CARR: Cd. Insurgentes - Loreto

CLAVE: 03092

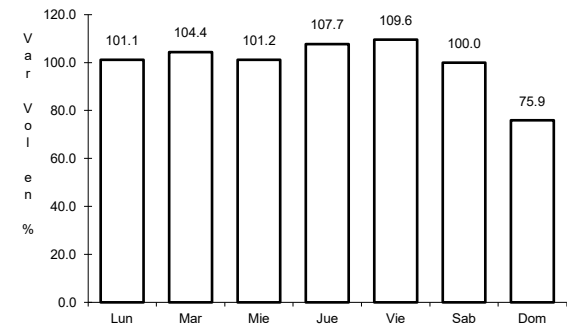
RUTA: MEX-001



Km: 0.00 Tipo: 3 Sent: 0



Km: 65.00 Tipo: 1 Sent: 0

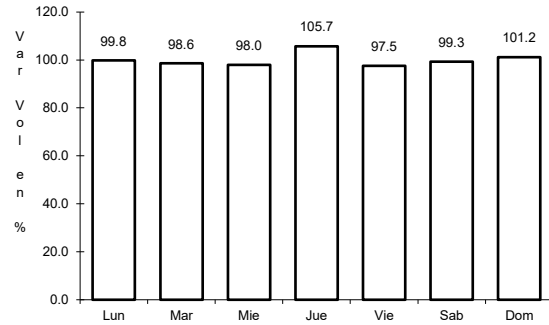


Km: 117.30 Tipo: 1 Sent: 0

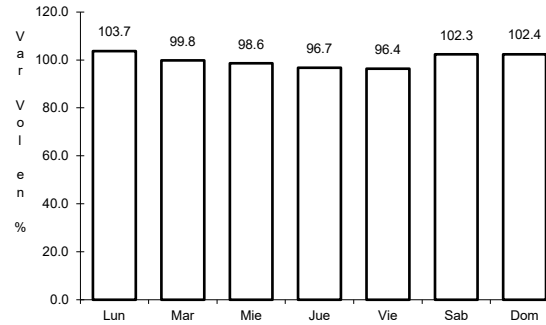
4 CARR: Ent. Punta Prieta - Guerrero Negro

CLAVE: 00321

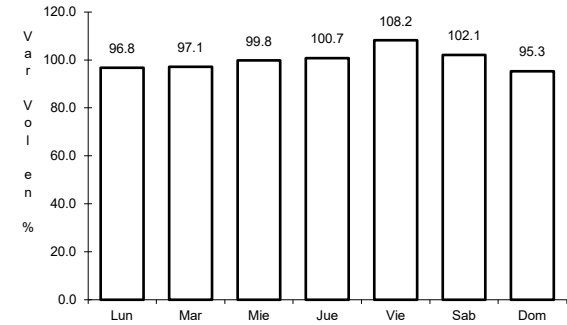
ruta: MEX-001



Km: 0.00 Tipo: 3 Sent: 0



Km: 70.10 Tipo: 3 Sent: 0

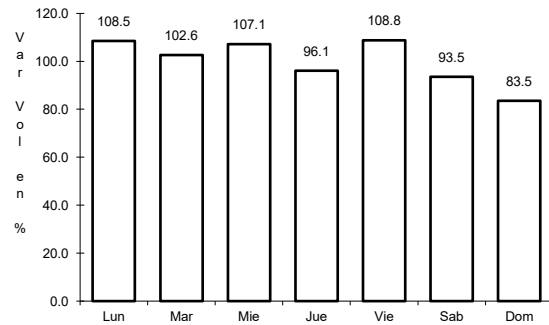


Km: 130.00 Tipo: 1 Sent: 0

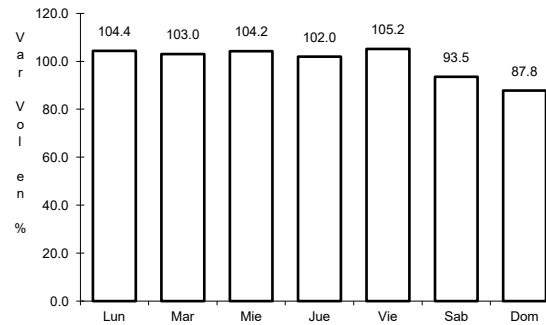
5 CARR: La Paz - Cd. Insurgentes

CLAVE: 03101

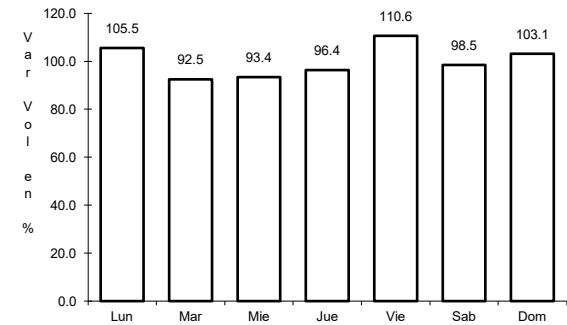
ruta: MEX-001



Km: 0.00 Tipo: 3 Sent: 1



Km: 0.00 Tipo: 3 Sent: 2

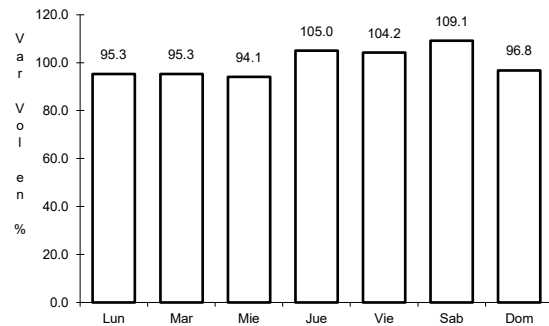


Km: 118.20 Tipo: 1 Sent: 0

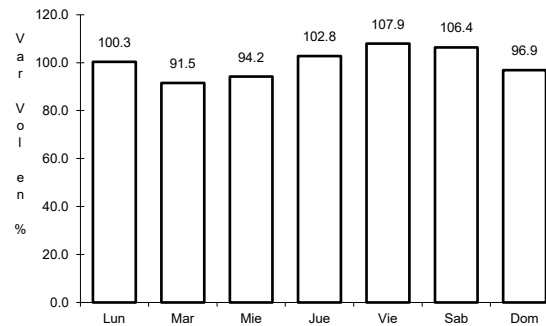
6 CARR: La Paz - Pichilingue

CLAVE: 03230

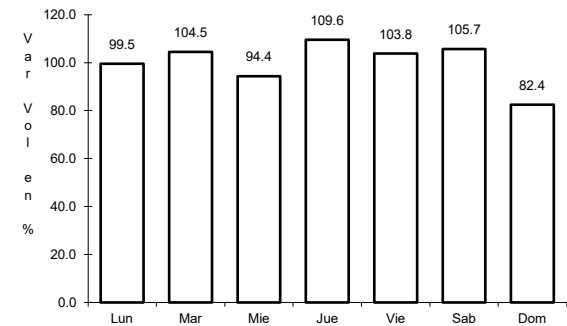
ruta: MEX-011



Km: 0.00 Tipo: 3 Sent: 1



Km: 0.00 Tipo: 3 Sent: 2

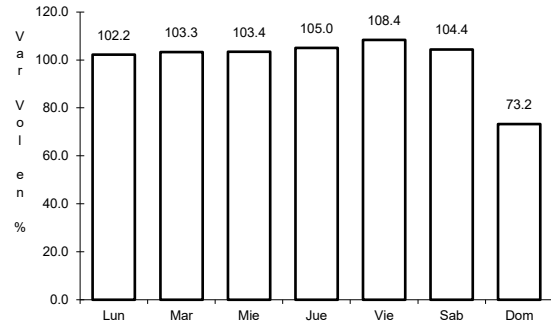


Km: 17.00 Tipo: 1 Sent: 0

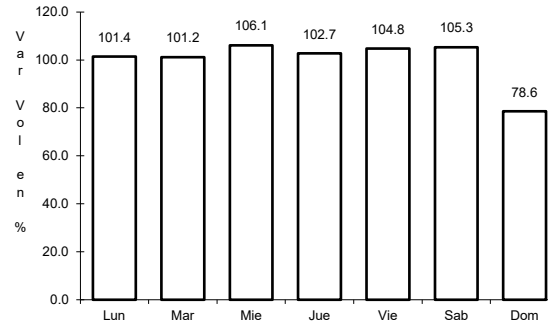
7 CARR: Libramiento de Cabo San Lucas

CLAVE: 03100

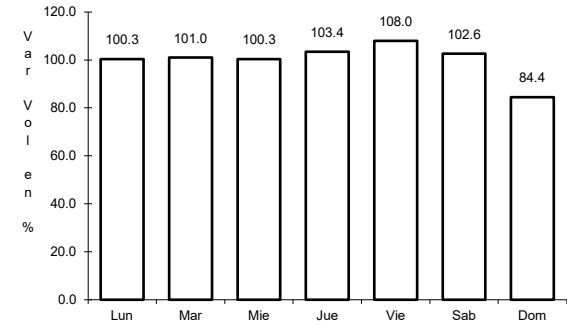
ruta: MEX-001



Km: 0.00 Tipo: 3 Sent: 1



Km: 0.00 Tipo: 3 Sent: 2

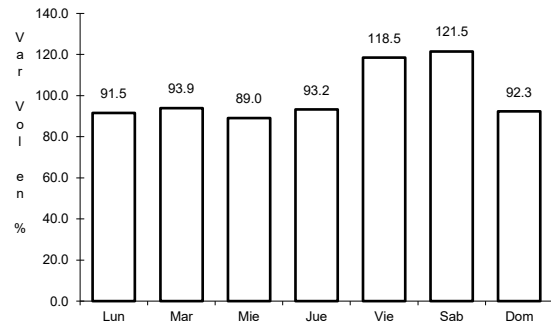


Km: 3.00 Tipo: 1 Sent: 1

8 CARR: Libramiento de Todos Santos

CLAVE:

ruta: MEX-019

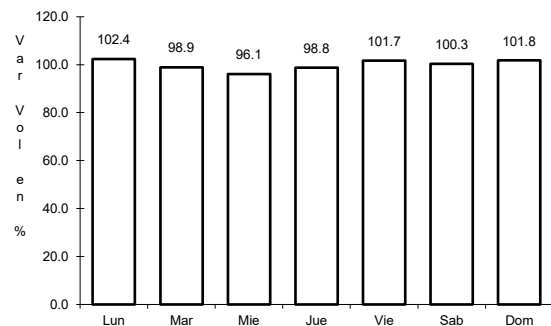


Km: 0.00 Tipo: 3 Sent: 0

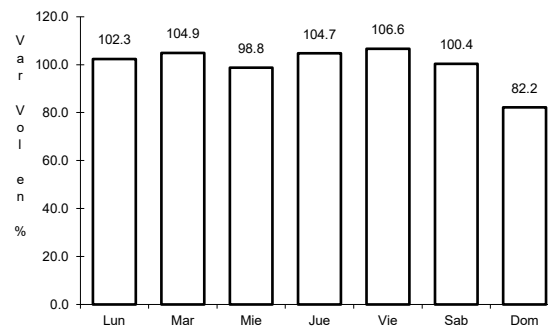
9 CARR: Loreto - Santa Rosalía

CLAVE: 03393

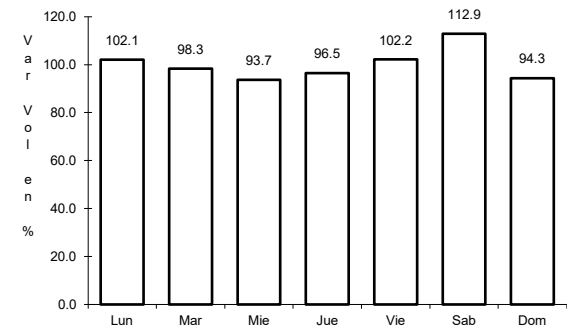
ruta: MEX-001



Km: 0.00 Tipo: 3 Sent: 0



Km: 135.00 Tipo: 1 Sent: 0

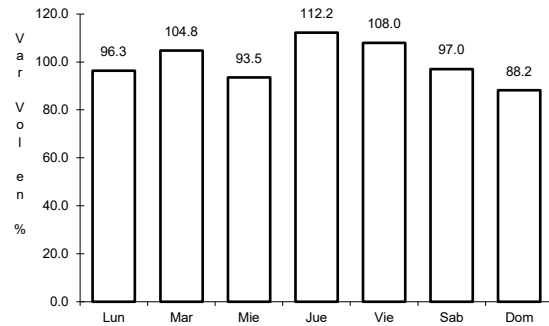


Km: 197.00 Tipo: 1 Sent: 0

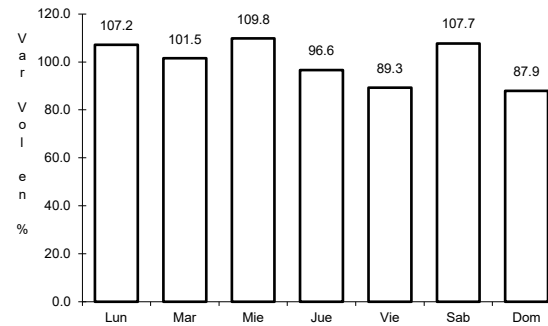
10 CARR: Ramal a Aeropuerto de La Paz

CLAVE: 03396

ruta: MEX-001



Km: 0.00 Tipo: 3 Sent: 1

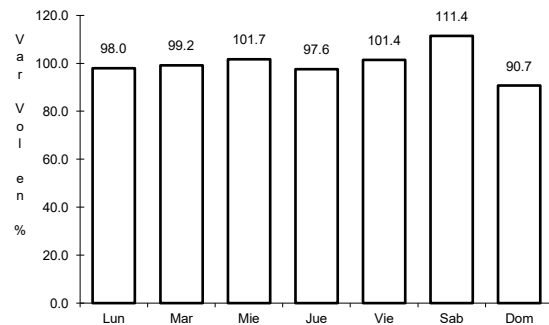


Km: 0.00 Tipo: 3 Sent: 2

11 CARR: Ramal a Aeropuerto de Los Cabos

CLAVE: 03394

ruta: MEX-001

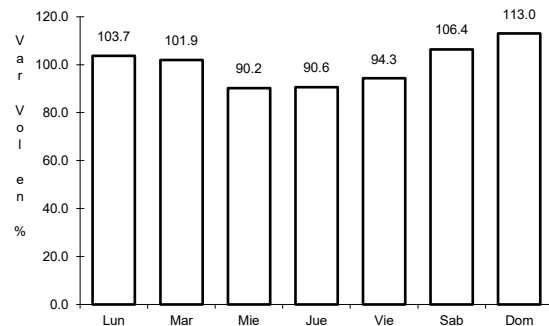


Km: 0.00 Tipo: 3 Sent: 0

12 CARR: Ramal a Los Paredones

CLAVE: 03407

ruta: MEX-001

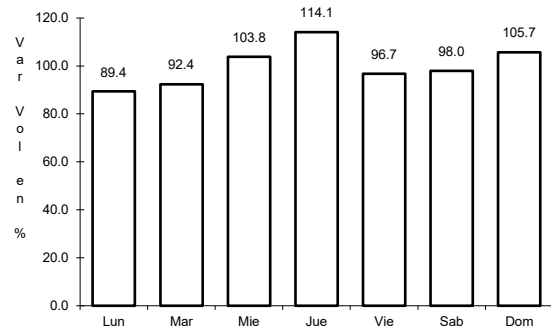


Km: 0.00 Tipo: 3 Sent: 0

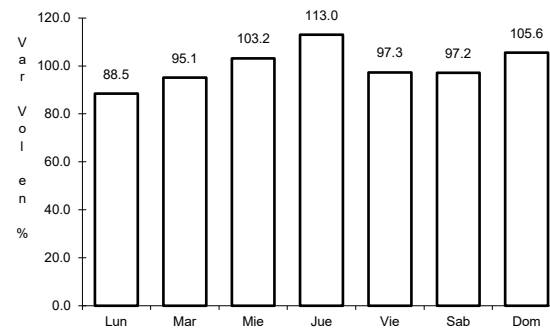
13 CARR: Ramal a Miraflores

CLAVE: 03407

ruta: MEX-001



Km: 0.00 Tipo: 3 Sent: 1

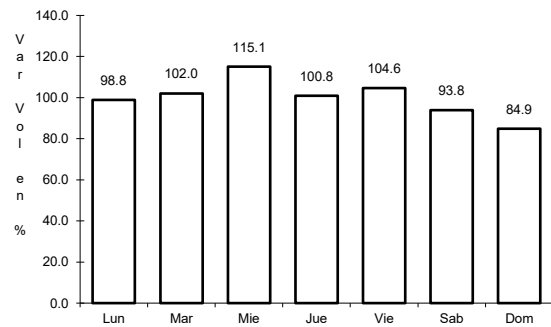


Km: 0.00 Tipo: 3 Sent: 2

14 CARR: Ramal a Puerto Escondido

CLAVE: 03407

ruta: MEX-001

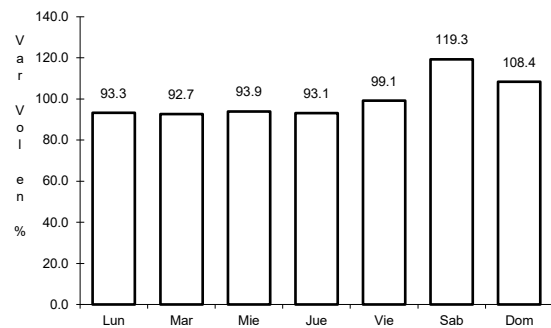


Km: 0.00 Tipo: 3 Sent: 0

15 CARR: Ramal a San Ignacio

CLAVE: 03413

ruta: MEX-001

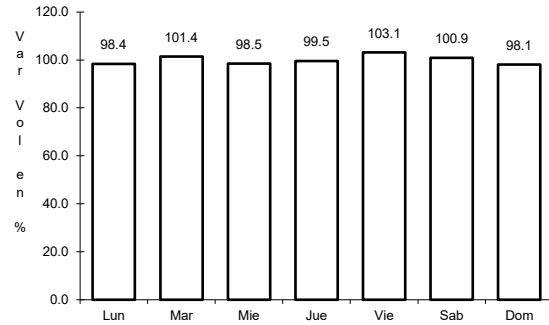


Km: 0.00 Tipo: 3 Sent: 0

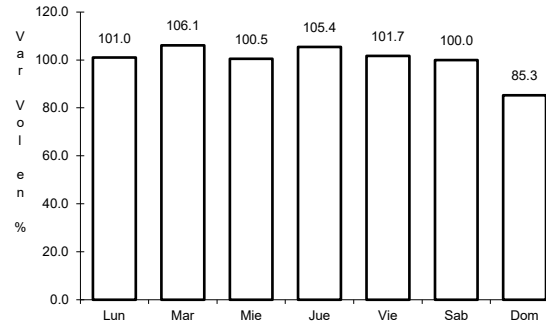
16 CARR: Ramal a Santiago

CLAVE: 03051

ruta: MEX-001



Km: 0.00 Tipo: 3 Sent: 1

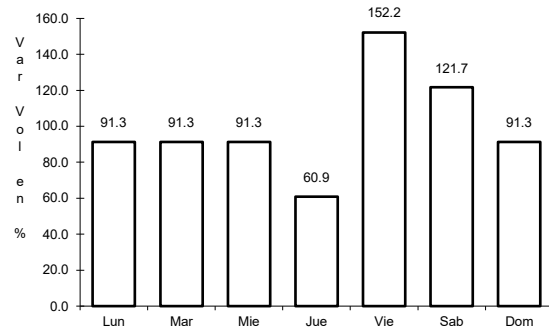


Km: 0.00 Tipo: 3 Sent: 2

17 CARR: Ramal Aeropista San Ignacio

CLAVE: 03053

ruta: MEX-001

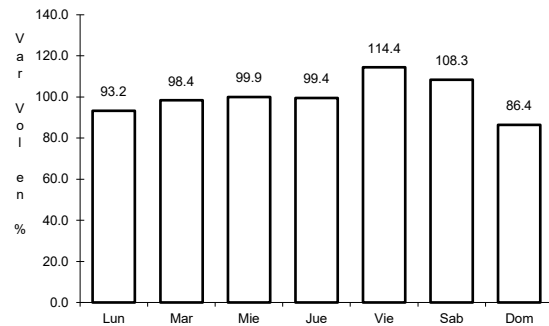


Km: 0.00 Tipo: 3 Sent: 0

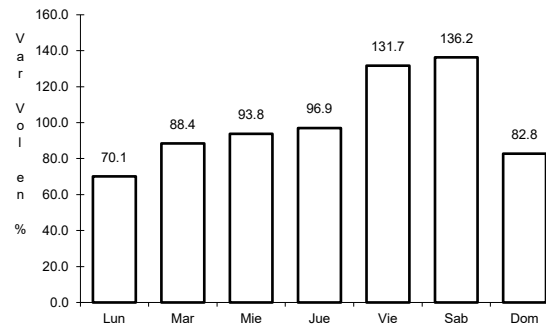
18 CARR: San Pedro - Cabo San Lucas

CLAVE: 03003

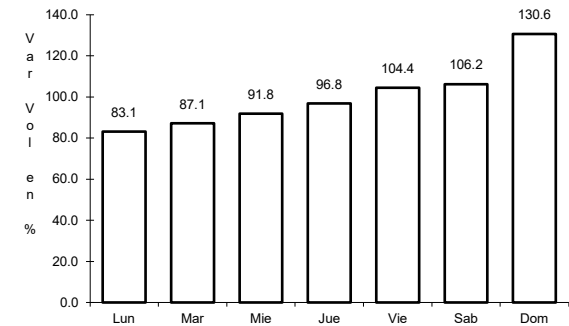
ruta: MEX-019



Km: 0.00 Tipo: 3 Sent: 1



Km: 0.00 Tipo: 3 Sent: 2

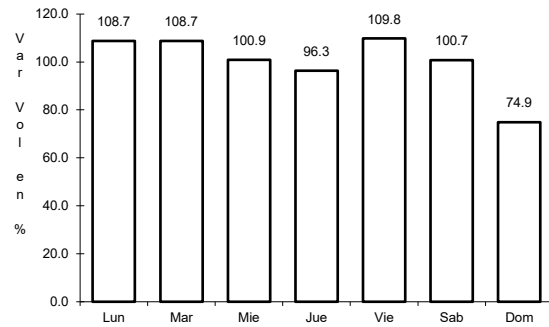


Km: 52.00 Tipo: 1 Sent: 0

19 CARR: Santa Rosalía - Guerrero Negro

CLAVE: 03095

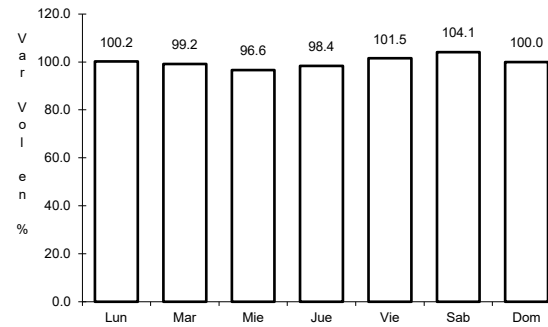
RUTA: MEX-001



Km: 0.00

Tipo: 3

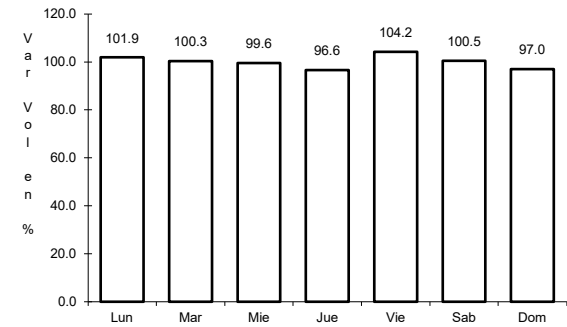
Sent: 0



Km: 117.90

Tipo: 1

Sent: 0



Km: 216.85

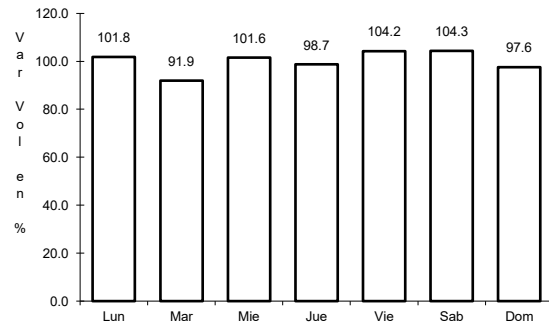
Tipo: 1

Sent: 0

20 CARR: Libramiento San José del Cabo - Aeropuerto Los Cabos (Cuota)

CLAVE: 03392

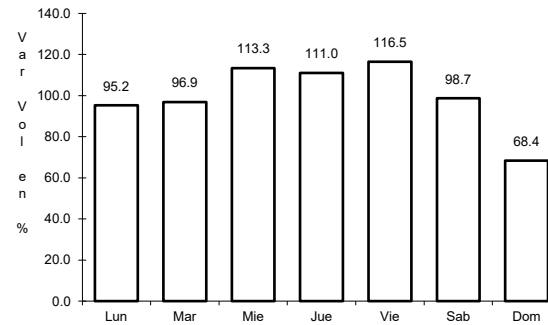
RUTA: MEX-001D



Km: 119.90

Tipo: 1

Sent: 0



Km: 120.20

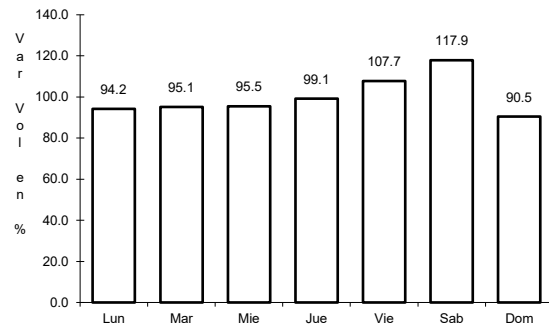
Tipo: 1

Sent: 0

21 CARR: Ramal a El Mangle (Cuota)

CLAVE:

RUTA: MEX-001D



Km: 11.20

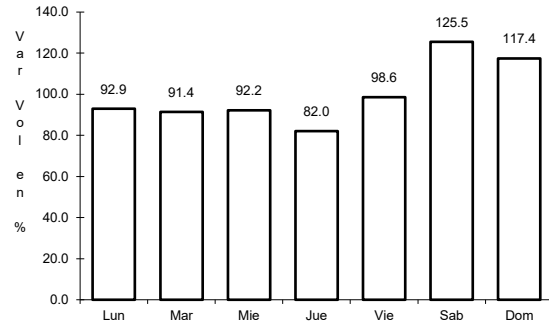
Tipo: 1

Sent: 0

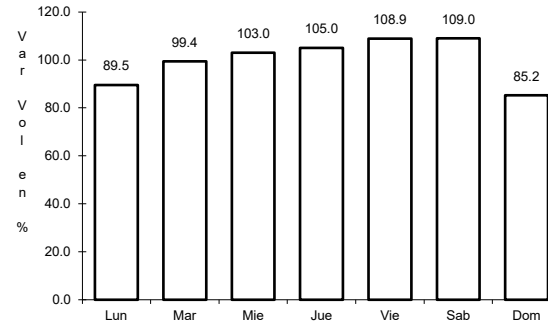
22 CARR: San José del Cabo - Libramiento de Cabo San Lucas - (Cuota)

CLAVE:

RUTA: MEX-001D



Km: 0.00 Tipo: 3 Sent: 0

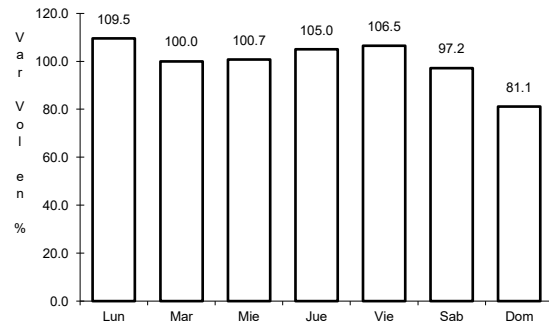


Km: 27.48 Tipo: 1 Sent: 0

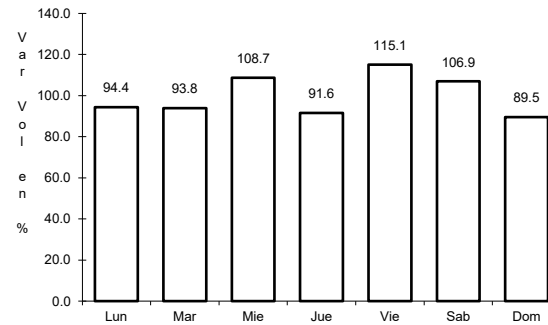
23 CARR: Cd. Insurgentes - La Purísima

CLAVE: 03005

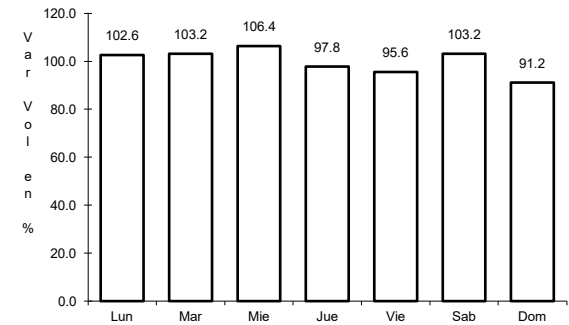
RUTA: BCS-001



Km: 0.00 Tipo: 3 Sent: 0



Km: 64.00 Tipo: 3 Sent: 0

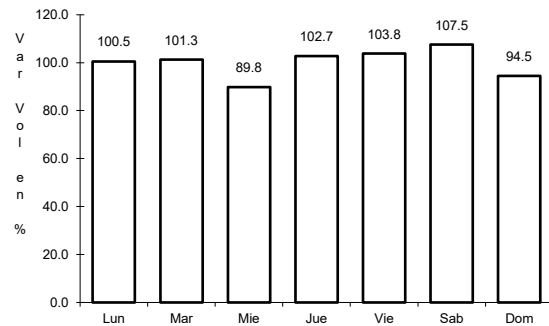


Km: 107.00 Tipo: 1 Sent: 0

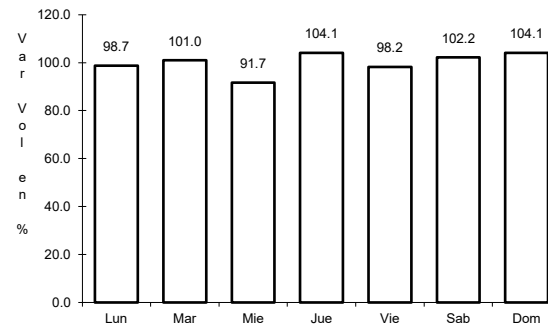
24 CARR: Cd. Insurgentes - Pto. Adolfo López Mateos

CLAVE: 03404

RUTA: BCS



Km: 0.00 Tipo: 3 Sent: 0

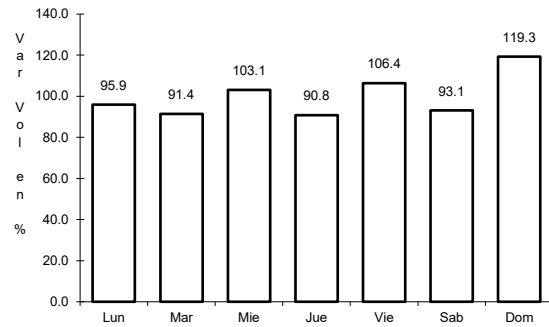


Km: 35.50 Tipo: 1 Sent: 0

25 CARR: Ent. Campo Fisher - Punta Abreojos

CLAVE: 03411

RUTA: BCS



Km: 0.00

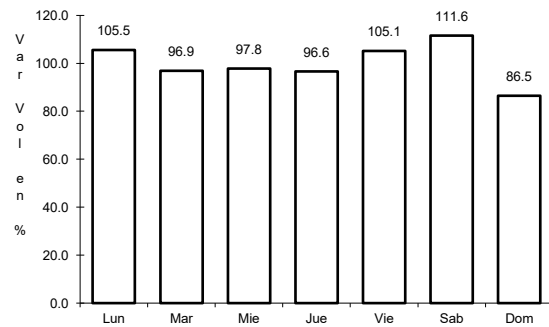
Tipo: 3

Sent: 0

26 CARR: La Paz - Ensenada de Muertos

CLAVE: 03103

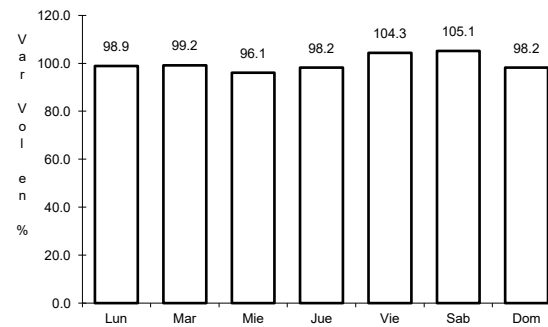
RUTA: BCS-246



Km: 0.00

Tipo: 3

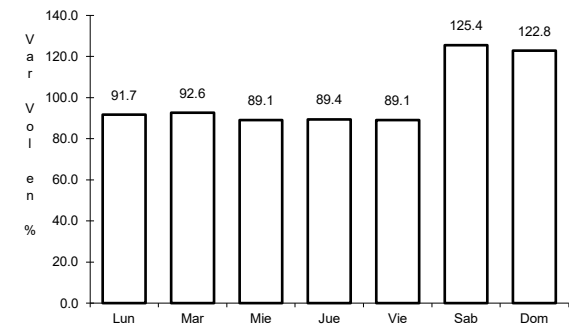
Sent: 0



Km: 45.00

Tipo: 1

Sent: 0



Km: 57.50

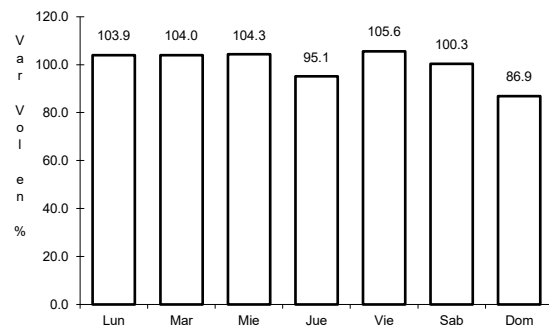
Tipo: 1

Sent: 0

27 CARR: Libramiento de La Paz

CLAVE: 03004

RUTA: BCS



Km: 0.00

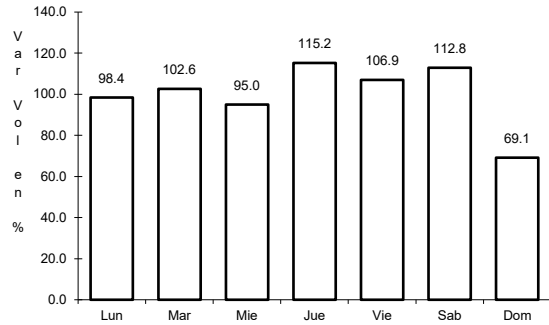
Tipo: 3

Sent: 0

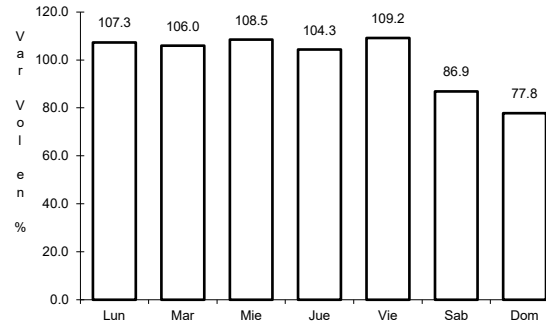
28 CARR: Libramiento Norte de La Paz

CLAVE: 03006

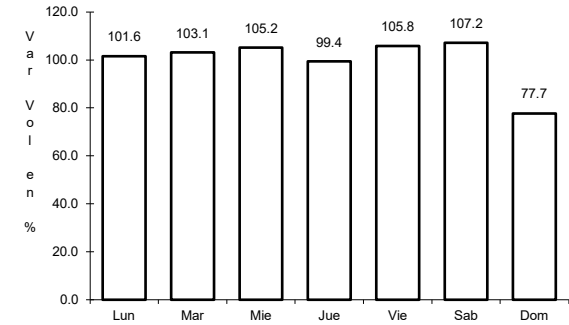
ruta: BCS



Km: 0.00 Tipo: 3 Sent: 0



Km: 18.80 Tipo: 1 Sent: 0

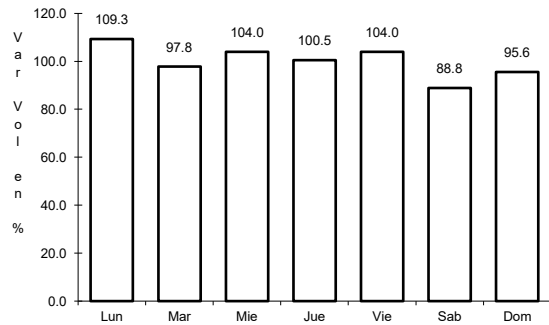


Km: 20.70 Tipo: 1 Sent: 0

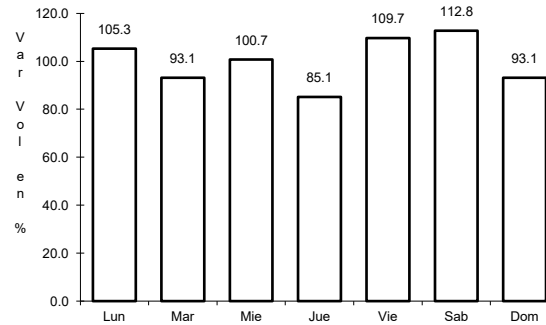
29 CARR: Ramal a Benito Juárez

CLAVE: 03405

ruta: BCS



Km: 0.00 Tipo: 3 Sent: 0

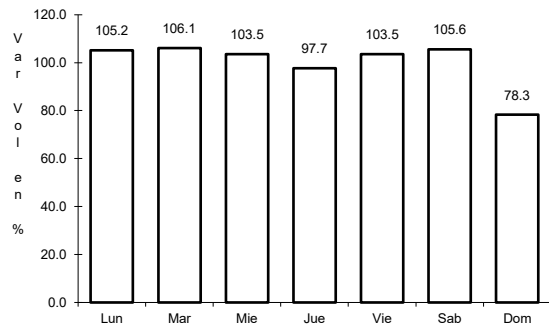


Km: 11.50 Tipo: 1 Sent: 0

30 CARR: Ramal a Ejido Ley Federal de Aguas Número Cuatro

CLAVE: 03007

ruta: BCS

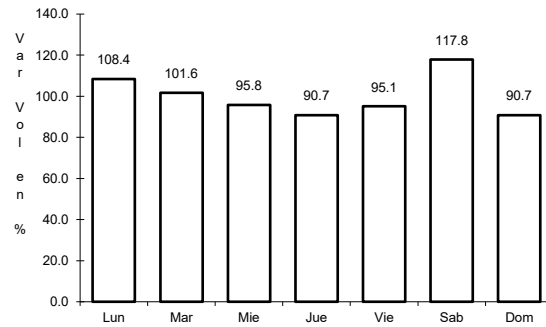


Km: 0.00 Tipo: 3 Sent: 0

31 CARR: Ramal a El Carrizal

CLAVE: 03050

RUTA: BCS



Km: 0.00

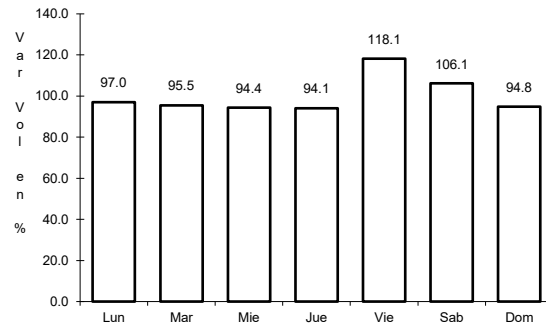
Tipo: 3

Sent: 0

32 CARR: Ramal a Guerrero Negro

CLAVE: 03395

RUTA: BCS



Km: 0.00

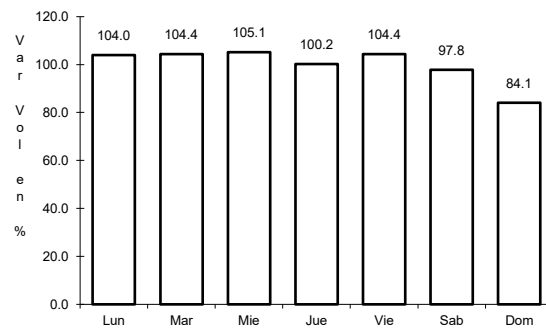
Tipo: 3

Sent: 0

33 CARR: Ramal a La Ribera

CLAVE: 03406

RUTA: BCS



Km: 0.00

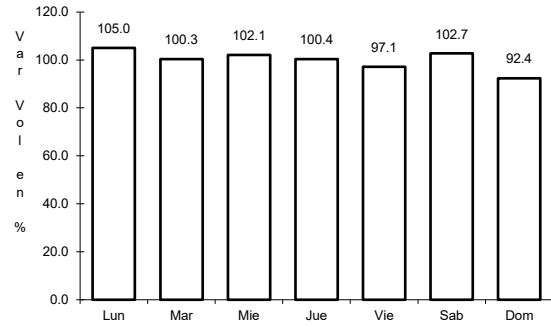
Tipo: 3

Sent: 0

34 CARR: Ramal a Melitón Albáñez

CLAVE: 03407

RUTA: BCS



Km: 0.00

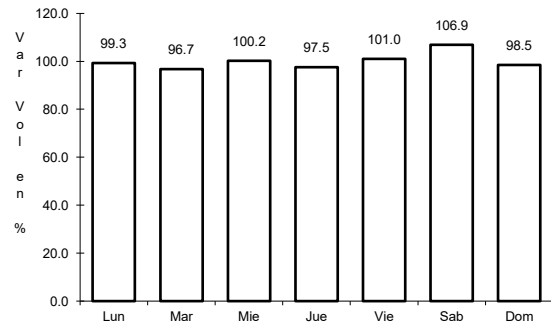
Tipo: 3

Sent: 0

35 CARR: Ramal a Santa Catarina

CLAVE: 03052

RUTA: BCS



Km: 0.00

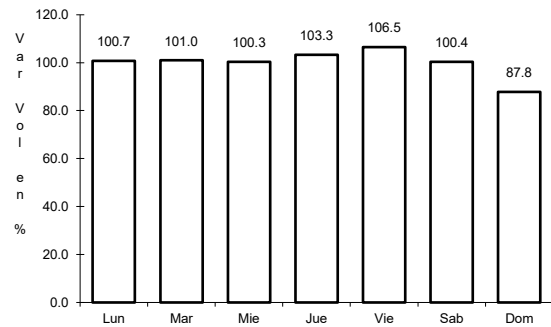
Tipo: 3

Sent: 0

36 CARR: Ramal a Bahía de Tortugas

CLAVE: 03397

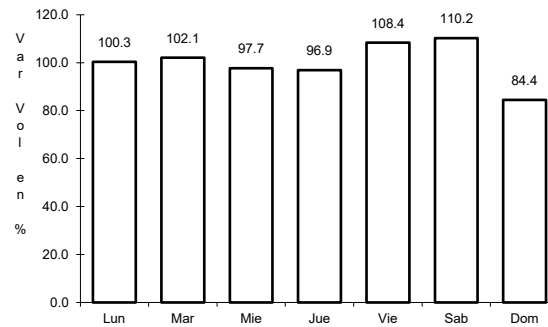
RUTA: MEX-001-BCS



Km: 0.00

Tipo: 3

Sent: 0



Km: 6.00

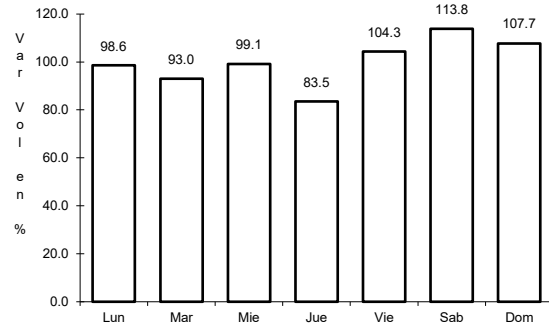
Tipo: 3

Sent: 0

37 CARR: Ramal a Ejido Ley Federal de Aguas Número Dos

CLAVE: 03050

ruta: BCS-MEX-001



Km: 0.00

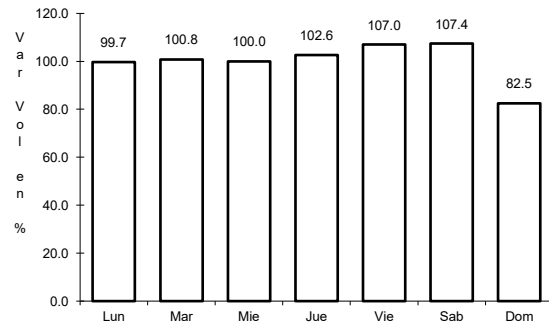
Tipo: 3

Sent: 0

38 CARR: Ramal a Ley Federal de Aguas Número Cinco

CLAVE: 03407

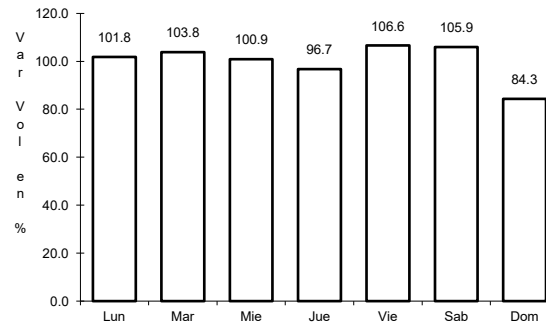
ruta: BCS-MEX-001



Km: 0.00

Tipo: 3

Sent: 1



Km: 0.00

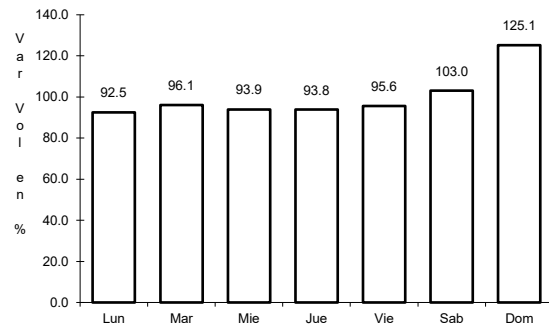
Tipo: 3

Sent: 2

39 CARR: Ramal a San Juan de La Costa

CLAVE: 03403

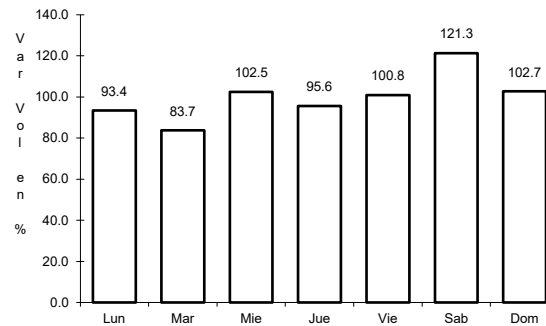
ruta: BCS-163-MEX-001



Km: 0.00

Tipo: 3

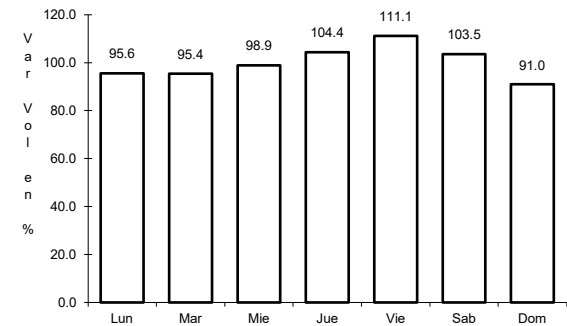
Sent: 0



Km: 23.00

Tipo: 3

Sent: 0



Km: 40.70

Tipo: 1

Sent: 0