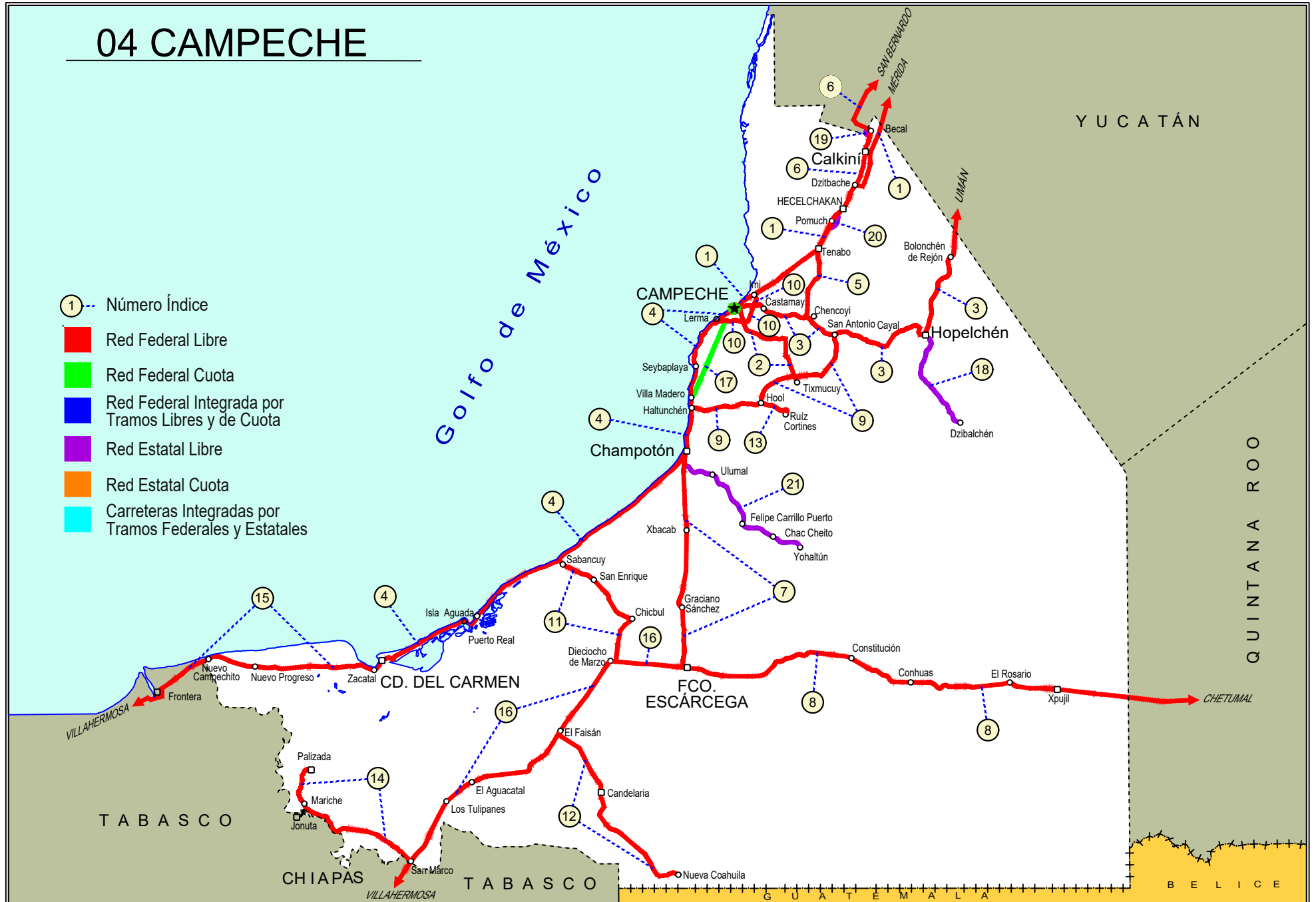


# CAMPECHE

NO. INDICE CARRETERA		RUTA
	---RED FEDERAL LIBRE---	
1	Campeche - Mérida	MEX-180
2	Campeche - Tixmucuy	MEX-180
3	Campeche - Umán	MEX-261
4	Cd. del Carmen - Campeche	MEX-180
5	Chencoyi - Tenabo	MEX-180
6	Dzitbalché - Ent. San Bernardo	MEX-180
7	Francisco Escárcega - Champotón	MEX-201
8	Francisco Escárcega - Chetumal	MEX-186-307
9	Haltunchén - San Antonio Cayal	MEX-180
10	Periférico Pablo García y Montilla (Libramiento de Campeche)	MEX-202
11	Presidente Díaz Ordaz - Sabancuy	MEX-186
12	Ramal a Nuevo Coahuila	MEX-186
13	Ramal a Ruíz Cortines	MEX-180
14	San Marcos - Palizada	MEX-186
15	Villahermosa - Cd. del Carmen	MEX-180
16	Villahermosa - Francisco Escárcega	MEX-186-307
	---RED FEDERAL DE CUOTA---	
17	Chapotón - Campeche (Cuota)	MEX-180D
	---RED ESTATAL LIBRE---	
18	Hopelchén - Dzibalchén	CAM-261
19	Libramiento de Becal	CAM
20	Libramiento de Pomuch	CAM
21	T. C. (Francisco Escárcega - Champotón) - Yohaltún	CAM

# 04 CAMPECHE

- ① - Número Índice
- Red Federal Libre
- Red Federal Cuota
- Red Federal Integrada por Tramos Libres y de Cuota
- Red Estatal Libre
- Red Estatal Cuota
- Carreteras Integradas por Tramos Federales y Estatales





CAMPECHE

1 CARR: Campeche - Mérida

CLAVE: 00066

RUTA: MEX-180

AÑO: 2023

LUGAR	ESTACION				CLASIFICACION VEHICULAR EN PORCIENTO														COORDENADAS	
	KM	TE	SC	TDPA	M	A	B	C2	C3	T3S2	T3S3	T3S2R4	OTROS	A	B	C	K'	D	LATITUD	LONGITUD
Campeche	0.00	3	1	4515	10.0	81.7	0.6	5.2	0.9	0.5	0.5	0.4	0.2	91.7	0.6	7.7	0.074	0.521	19.890251	-90.468067
Campeche	0.00	3	2	4144	10.0	81.8	0.6	5.1	1.0	0.4	0.6	0.4	0.1	91.8	0.6	7.6	0.071	0.521	19.890309	-90.468158
T. Der. Periferico Pablo García y Montilla (Libramiento De Campeche)	9.85	3	1	7553	5.0	74.2	2.9	6.2	1.8	5.4	1.3	2.9	0.3	79.2	2.9	17.9	0.068	0.509	19.897193	-90.454065
T. Der. Periferico Pablo García y Montilla (Libramiento De Campeche)	9.85	3	2	7844	5.0	74.1	3.0	6.2	1.7	5.4	1.3	2.9	0.4	79.1	3.0	17.9	0.063	0.509	19.897685	-90.453570
T. Der. Hampolol (2do Acceso)	20.00	1	1	6626	4.2	73.1	3.4	2.8	4.4	6.4	1.4	3.5	0.8	77.3	3.4	19.3	0.077	0.505	19.933483	-90.383421
T. Der. Hampolol (2do Acceso)	20.00	1	2	6497	4.1	73.2	3.2	2.8	4.0	7.4	1.4	3.0	0.9	77.3	3.2	19.5	0.082	0.505	19.933600	-90.383499
Acceso a Tenabo	38.30	1	1	6365	4.5	71.4	3.8	3.5	2.8	7.6	1.6	3.9	0.9	75.9	3.8	20.3	0.082	0.508	20.027120	-90.243520
Acceso a Tenabo	38.30	1	2	6161	4.5	71.4	3.8	3.5	2.8	7.6	1.6	3.9	0.9	75.9	3.8	20.3	0.077	0.508	20.027229	-90.243574
X. C. Chencoyi - Tenabo	39.50	1	1	5806	3.1	73.8	3.2	2.6	4.3	7.4	1.3	3.4	0.9	76.9	3.2	19.9	0.078	0.502	20.031070	-90.231314
X. C. Chencoyi - Tenabo	39.50	1	2	5763	3.1	73.9	3.2	2.6	4.2	7.4	1.3	3.4	0.9	77.0	3.2	19.8	0.079	0.502	20.031178	-90.231259
Tenabo	40.00	3	1	5929	3.1	72.8	4.9	3.2	2.1	6.2	2.4	4.4	0.9	75.9	4.9	19.2	0.082	0.511	20.055747	-90.213685
Tenabo	40.00	3	2	5669	3.1	72.5	4.9	3.2	2.2	6.2	2.6	4.5	0.8	75.6	4.9	19.5	0.075	0.511	20.055761	-90.213808
T. Lib de Pomuch Sur	50.80	1	1	6437	4.1	70.7	4.3	4.0	4.1	6.8	1.5	3.6	0.9	74.8	4.3	20.9	0.076	0.513	20.114891	-90.187409
T. Lib de Pomuch Sur	50.80	1	2	6122	4.3	69.7	4.4	4.5	4.2	6.7	1.4	3.9	0.9	74.0	4.4	21.6	0.100	0.513	20.114992	-90.187492
T. Lib de Pomuch Norte	54.80	3	1	6691	7.8	67.2	4.7	5.3	1.4	7.5	1.2	3.9	1.0	75.0	4.7	20.3	0.077	0.504	20.153480	-90.159808
T. Lib de Pomuch Norte	54.80	3	2	6584	7.6	70.2	3.8	2.8	1.8	8.0	1.0	3.8	1.0	77.8	3.8	18.4	0.068	0.504	20.153552	-90.159905
T. C. Acceso a Hecelchakan	57.60	3	1	5628	9.8	67.6	3.5	2.4	3.5	7.5	1.0	3.8	0.9	77.4	3.5	19.1	0.077	0.521	20.165896	-90.141643
T. C. Acceso a Hecelchakan	57.60	3	2	5173	10.4	64.5	3.5	3.0	3.8	8.9	1.3	3.7	0.9	74.9	3.5	21.6	0.077	0.521	20.165942	-90.141729
T. C. Hecelchakan - (T. C. Holpelchen - Bolonchen)	61.20	3	1	5547	4.5	71.1	2.9	4.7	2.6	8.1	1.5	3.7	0.9	75.6	2.9	21.5	0.077	0.504	20.190008	-90.118587
T. C. Hecelchakan - (T. C. Holpelchen - Bolonchen)	61.20	3	2	5461	3.8	74.2	2.5	3.0	2.5	8.1	1.4	3.6	0.9	78.0	2.5	19.5	0.071	0.504	20.190057	-90.118712
Poc Boc	69.00	3	1	5939	4.6	70.5	3.5	3.4	2.2	8.4	1.4	5.1	0.9	75.1	3.5	21.4	0.083	0.519	20.261480	-90.085559
Poc Boc	69.00	3	2	6404	4.6	70.7	3.4	3.4	2.1	8.4	1.4	5.1	0.9	75.3	3.4	21.3	0.070	0.519	20.261569	-90.085649
T. Izq. Dzitbalché	76.50	3	1	5135	4.9	69.4	3.9	3.2	2.1	9.2	2.1	4.3	0.9	74.3	3.9	21.8	0.099	0.501	20.309577	-90.053750
T. Izq. Dzitbalché	76.50	3	2	5115	4.2	71.1	3.9	2.9	1.9	9.0	1.9	4.2	0.9	75.3	3.9	20.8	0.073	0.501	20.309685	-90.053808
Calkiní	84.20	3	1	5674	4.6	70.4	3.5	3.4	2.2	8.4	1.5	5.1	0.9	75.0	3.5	21.5	0.066	0.502	20.376341	-90.039170
Calkiní	84.20	3	2	5729	4.6	70.3	3.5	3.4	2.3	8.4	1.5	5.1	0.9	74.9	3.5	21.6	0.071	0.502	20.376355	-90.039264
T. Der a Tepakán	86.60	3	1	4468	2.5	67.4	4.3	2.6	4.6	10.7	2.3	4.9	0.7	69.9	4.3	25.8	0.080	0.504	20.394395	-90.033577
T. Der a Tepakán	86.60	3	2	4545	2.4	67.7	4.4	2.6	4.5	10.6	2.5	4.7	0.6	70.1	4.4	25.5	0.077	0.504	20.394476	-90.033748
Lim. Edos. Term. Camp. Ppia. Yuc.	96.96																			
T. Der. Maxcanú	109.70	1	1	5547	3.2	69.1	4.7	3.1	1.9	10.1	2.0	5.0	0.9	72.3	4.7	23.0	0.075	0.534	20.560844	-89.980223
T. Der. Maxcanú	109.70	1	2	4846	3.1	68.8	4.7	3.1	2.1	10.1	2.1	5.1	0.9	71.9	4.7	23.4	0.083	0.534	20.560894	-89.980360
T. Der. Maxcanú	109.70	3	1	4666	2.2	70.8	3.9	3.3	1.8	10.2	1.7	5.2	0.9	73.0	3.9	23.1	0.080	0.508	20.596034	-89.970575
T. Der. Maxcanú	109.70	3	2	4824	2.3	70.7	4.0	3.3	1.8	10.2	1.8	5.1	0.8	73.0	4.0	23.0	0.064	0.508	20.596718	-89.970620
T. Der. Kopomá (1er Acceso)	119.50	1	1	6459	2.1	77.5	2.0	3.3	3.5	6.0	1.4	3.3	0.9	79.6	2.0	18.4	0.082	0.515	20.637483	-89.918222
T. Der. Kopomá (1er Acceso)	119.50	1	2	6081	2.0	77.0	2.1	3.0	3.6	6.4	1.4	3.6	0.9	79.0	2.1	18.9	0.104	0.515	20.637772	-89.917964

CAMPECHE

1 CARR: Campeche - Mérida

CLAVE: 00066

RUTA: MEX-180

AÑO: 2023

LUGAR	ESTACION				CLASIFICACION VEHICULAR EN PORCIENTO														COORDENADAS	
	KM	TE	SC	TDPA	M	A	B	C2	C3	T3S2	T3S3	T3S2R4	OTROS	A	B	C	K'	D	LATITUD	LONGITUD
T. Der. Kopomá (2do Acceso)	121.50	1	1	6428	2.1	76.3	3.5	4.5	2.4	5.4	1.5	3.5	0.8	78.4	3.5	18.1	0.073	0.502	20.653856	-89.900490
T. Der. Kopomá (2do Acceso)	121.50	1	2	6481	2.0	77.0	3.6	4.1	2.3	5.5	1.3	3.5	0.7	79.0	3.6	17.4	0.096	0.502	20.653930	-89.900634
T. Der. Kopomá (2do Acceso)	121.50	3	1	6606	3.7	74.3	3.2	3.6	2.2	7.1	1.5	3.5	0.9	78.0	3.2	18.8	0.081	0.502	20.663314	-89.890129
T. Der. Kopomá (2do Acceso)	121.50	3	2	6544	3.4	74.1	3.5	3.9	2.2	7.0	1.4	3.6	0.9	77.5	3.5	19.0	0.102	0.502	20.663380	-89.890237
T. Izq. Chocolá (1er Acceso)	133.00	1	1	5979	2.2	76.3	3.2	3.8	2.0	6.2	1.7	3.7	0.9	78.5	3.2	18.3	0.101	0.540	20.726447	-89.842973
T. Izq. Chocolá (1er Acceso)	133.00	1	2	6316	2.4	75.3	2.9	4.2	2.4	6.6	1.4	3.9	0.9	77.7	2.9	19.4	0.111	0.540	20.726507	-89.843092
T. Izq. Chocolá (1er Acceso)	133.00	3	1	5930	3.5	71.6	3.0	6.5	2.0	6.5	1.5	4.5	0.9	75.1	3.0	21.9	0.074	0.501	20.742920	-89.830234
T. Izq. Chocolá (1er Acceso)	133.00	3	2	5902	3.5	71.4	3.0	6.5	2.0	6.5	1.6	4.6	0.9	74.9	3.0	22.1	0.092	0.501	20.742929	-89.830468
T. Izq. Chocolá (2do Acceso)	135.60	3	1	7547	3.6	71.4	3.0	6.5	2.0	6.4	1.4	4.9	0.8	75.0	3.0	22.0	0.082	0.503	20.764904	-89.825036
T. Izq. Chocolá (2do Acceso)	135.60	3	2	7452	3.7	71.3	3.5	6.5	2.0	6.0	1.5	4.7	0.8	75.0	3.5	21.5	0.094	0.503	20.765128	-89.825088
T. Izq. Umán	139.50	3	1	7023	3.2	71.9	3.5	5.4	2.2	7.6	1.7	3.6	0.9	75.1	3.5	21.4	0.092	0.504	20.802175	-89.804941
T. Izq. Umán	139.50	3	2	6907	3.4	72.5	3.3	5.2	1.9	7.9	1.5	3.4	0.9	75.9	3.3	20.8	0.093	0.504	20.802261	-89.805115
X. C. Campeche - Umán	149.00	1	1	7414	2.5	73.9	2.4	5.1	2.9	7.0	2.0	3.4	0.8	76.4	2.4	21.2	0.080	0.506	20.836207	-89.754845
X. C. Campeche - Umán	149.00	1	2	7590	2.7	72.7	2.4	5.3	3.1	7.3	2.0	3.6	0.9	75.4	2.4	22.2	0.093	0.506	20.836391	-89.754871
T. C. Periférico de Mérida	159.00	1	1	10148	4.2	71.6	2.9	3.2	4.4	7.0	2.6	3.3	0.8	75.8	2.9	21.3	0.081	0.511	20.897555	-89.685126
T. C. Periférico de Mérida	159.00	1	2	10620	4.4	71.8	2.9	3.2	4.3	6.8	2.8	3.1	0.7	76.2	2.9	20.9	0.086	0.511	20.897705	-89.685237

2 CARR: Campeche - Tixmucuy

CLAVE: 04575

RUTA: MEX-180

AÑO: 2023

LUGAR	ESTACION				CLASIFICACION VEHICULAR EN PORCIENTO														COORDENADAS	
	KM	TE	SC	TDPA	M	A	B	C2	C3	T3S2	T3S3	T3S2R4	OTROS	A	B	C	K'	D	LATITUD	LONGITUD
Campeche	0.00	3	1	7080	14.1	78.2	0.9	3.5	1.7	0.7	0.5	0.4	0.0	92.3	0.9	6.8	0.094	0.515	19.810286	-90.506064
Campeche	0.00	3	2	6669	14.1	78.1	0.9	3.5	1.8	0.7	0.5	0.4	0.0	92.2	0.9	6.9	0.077	0.515	19.810215	-90.505878
T. Der. Periférico Pablo García y Montilla (Libramiento De Campeche)	4.00	3	1	3512	25.3	71.0	0.1	2.7	0.6	0.2	0.0	0.1	0.0	96.3	0.1	3.6	0.093	0.507	19.786562	-90.499970
T. Der. Periférico Pablo García y Montilla (Libramiento De Campeche)	4.00	3	2	3409	29.5	67.0	0.1	2.4	0.5	0.2	0.1	0.1	0.1	96.5	0.1	3.4	0.086	0.507	19.787344	-90.499900
X. C. Haltunchén - Cayal	39.00	1	0	1858	6.8	79.1	1.9	8.3	1.7	1.2	0.5	0.4	0.1	85.9	1.9	12.2	0.088	0.511	19.604812	-90.319457
Tixmucuy	42.00	1	0	583	17.8	70.7	1.4	7.8	0.9	0.6	0.4	0.3	0.1	88.5	1.4	10.1	0.102	0.507	19.586114	-90.317805

3 CARR: Campeche - Umán

CLAVE: 00164

RUTA: MEX-261

AÑO: 2023

LUGAR	ESTACION				CLASIFICACION VEHICULAR EN PORCIENTO														COORDENADAS	
	KM	TE	SC	TDPA	M	A	B	C2	C3	T3S2	T3S3	T3S2R4	OTROS	A	B	C	K'	D	LATITUD	LONGITUD
Campeche	0.00																			
T. Der. Periférico Pablo García y Montilla (Libramiento De Campeche)	7.00	1	0	5182	12.8	81.5	0.7	3.0	1.1	0.6	0.2	0.1	0.0	94.3	0.7	5.0	0.101	0.520	19.849221	-90.473557
T. Der. Periférico Pablo García y Montilla (Libramiento De Campeche)	7.00	3	0	2866	13.4	82.2	0.4	2.8	0.6	0.4	0.1	0.1	0.0	95.6	0.4	4.0	0.085	0.502	19.848319	-90.452638

CAMPECHE

3 CARR: Campeche - Umán

CLAVE: 00164

RUTA: MEX-261

AÑO: 2023

LUGAR	ESTACION				CLASIFICACION VEHICULAR EN PORCIENTO													COORDENADAS		
	KM	TE	SC	TDPA	M	A	B	C2	C3	T3S2	T3S3	T3S2R4	OTROS	A	B	C	K'	D	LATITUD	LONGITUD
T. Izq. Tenabo	30.88	1	0	1619	11.8	78.5	0.7	5.7	0.7	1.0	0.7	0.5	0.4	90.3	0.7	9.0	0.100	0.506	19.805106	-90.283146
T. Izq. Tenabo	30.88	3	0	1979	10.7	76.0	1.0	7.7	1.7	1.4	0.7	0.6	0.2	86.7	1.0	12.3	0.092	0.512	19.804507	-90.272821
T. Der. Edzna	44.51	1	0	1614	11.2	74.8	1.6	8.8	0.6	1.8	0.5	0.5	0.2	86.0	1.6	12.4	0.095	0.526	19.743505	-90.178946
T. Der. Edzna	44.51	3	0	1667	13.8	76.3	0.8	4.4	2.0	1.5	0.5	0.5	0.2	90.1	0.8	9.1	0.096	0.503	19.745162	-90.171029
Hopelchén	84.88	1	0	2437	11.9	76.0	0.9	7.5	1.1	1.5	0.4	0.3	0.4	87.9	0.9	11.2	0.086	0.509	19.754128	-89.854641
Bolonchén de Rejón	117.88	3	0	1125	20.7	66.1	2.4	5.2	1.6	2.1	0.9	0.9	0.1	86.8	2.4	10.8	0.108	0.508	20.012770	-89.733977
Lim. Edos. Term. Camp. Ppia. Yuc.	126.88																			
T. Der. Sayil	140.88	1	0	636	7.5	70.4	2.2	13.1	2.1	1.6	1.2	1.6	0.3	77.9	2.2	19.9	0.106	0.503	20.208263	-89.670568
Santa Elena	158.88	1	0	1111	26.3	59.8	1.5	6.5	2.9	1.3	0.7	0.9	0.1	86.1	1.5	12.4	0.142	0.508	20.319316	-89.643330
T. Izq. Ruinas de Uxmal	172.48	1	0	786	16.9	66.1	1.5	7.5	2.4	2.0	0.8	2.7	0.1	83.0	1.5	15.5	0.116	0.504	20.361886	-89.763684
Muna	187.43	1	0	1468	18.1	73.8	1.0	3.6	1.2	1.0	0.5	0.6	0.2	91.9	1.0	7.1	0.125	0.525	20.460364	-89.725498
Muna	187.43	3	0	4090	4.9	84.2	1.1	5.0	1.5	2.2	0.4	0.6	0.1	89.1	1.1	9.8	0.091	0.528	20.511430	-89.709227
Xtepén	225.38	1	0	5363	2.3	81.7	1.0	8.8	1.5	1.8	1.7	1.0	0.2	84.0	1.0	15.0	0.098	0.502	20.803101	-89.733868
Umán	230.83	1	0	4376	17.0	65.0	1.5	5.6	4.2	4.8	1.1	0.6	0.2	82.0	1.5	16.5	0.098	0.512	20.866605	-89.746069

4 CARR: Cd. del Carmen - Campeche

CLAVE: 04065

RUTA: MEX-180

AÑO: 2023

LUGAR	ESTACION				CLASIFICACION VEHICULAR EN PORCIENTO													COORDENADAS		
	KM	TE	SC	TDPA	M	A	B	C2	C3	T3S2	T3S3	T3S2R4	OTROS	A	B	C	K'	D	LATITUD	LONGITUD
Cd. del Carmen	0.00	3	1	13238	6.3	81.9	2.1	4.9	1.0	2.0	0.4	1.1	0.3	88.2	2.1	9.7	0.086	0.535	18.659103	-91.774656
Cd. del Carmen	0.00	3	2	15257	6.5	81.4	2.1	4.5	1.1	2.3	0.6	1.2	0.3	87.9	2.1	10.0	0.085	0.535	18.659197	-91.774704
La Palma	26.70	1	0	6663	3.5	69.4	5.0	3.6	1.6	10.0	1.4	4.5	1.0	72.9	5.0	22.1	0.086	0.503	18.730638	-91.641481
Isla Aguada	37.75	3	0	5755	4.8	64.5	5.2	3.9	2.1	11.3	1.7	5.5	1.0	69.3	5.2	25.5	0.078	0.511	18.796992	-91.483610
T. Der. Sabancuy	78.05	3	0	5094	4.9	61.3	6.6	4.2	2.3	12.2	1.9	5.6	1.0	66.2	6.6	27.2	0.072	0.509	18.992142	-91.187057
Champotón	141.80	1	0	6187	9.8	59.3	5.9	3.8	1.8	11.1	2.1	5.2	1.0	69.1	5.9	25.0	0.072	0.512	19.321866	-90.746370
Champotón	141.80	3	1	6122	7.7	67.7	3.9	5.3	1.6	7.3	1.7	3.9	0.9	75.4	3.9	20.7	0.087	0.504	19.374775	-90.721560
Champotón	141.80	3	2	6027	7.7	67.7	3.9	5.3	1.7	7.3	1.6	3.9	0.9	75.4	3.9	20.7	0.066	0.504	19.374896	-90.721782
T. C. Haltunchén - San Antonio Cayal	159.60	1	1	5992	6.7	69.8	4.1	4.1	2.0	7.3	1.5	3.6	0.9	76.5	4.1	19.4	0.092	0.523	19.495112	-90.702726
T. C. Haltunchén - San Antonio Cayal	159.60	1	2	5461	6.5	69.3	4.4	4.2	2.0	7.8	1.4	3.5	0.9	75.8	4.4	19.8	0.075	0.523	19.494518	-90.702956
Haltunchén	161.81																			
T. Der. Libramiento de Seybaplaya (1º Acceso)	175.71	1	0	3251	17.1	78.2	1.0	2.6	0.7	0.2	0.0	0.0	0.2	95.3	1.0	3.7	0.085	0.509	19.622300	-90.685451
T. Der. Libramiento de Seybaplaya (1º Acceso)	175.71	3	1	560	22.7	71.0	0.5	4.6	0.6	0.3	0.1	0.1	0.1	93.7	0.5	5.8	0.135	0.506	19.626076	-90.685174
T. Der. Libramiento de Seybaplaya (1º Acceso)	175.71	3	2	546	22.7	70.8	0.6	4.8	0.5	0.2	0.2	0.1	0.1	93.5	0.6	5.9	0.101	0.506	19.626082	-90.685259
T. Der. Libramiento de Seybaplaya (2do. Acceso)	179.00	3	0	2107	10.4	79.0	1.5	4.7	2.1	1.4	0.5	0.3	0.1	89.4	1.5	9.1	0.103	0.515	19.655906	-90.687484
T. Der. Periférico Pablo García y Montilla (Libramiento De Campeche)	195.70	1	0	2683	14.1	80.5	0.9	3.2	0.5	0.3	0.2	0.2	0.1	94.6	0.9	4.5	0.107	0.512	19.786637	-90.625573

CAMPECHE

4 CARR: Cd. del Carmen - Campeche

CLAVE: 04065

RUTA: MEX-180

AÑO: 2023

LUGAR	ESTACION				CLASIFICACION VEHICULAR EN PORCIENTO													COORDENADAS		
	KM	TE	SC	TDPA	M	A	B	C2	C3	T3S2	T3S3	T3S2R4	OTROS	A	B	C	K'	D	LATITUD	LONGITUD
Lerma	199.51	1	1	959	20.4	73.1	0.4	3.7	1.4	0.3	0.1	0.6	0.0	93.5	0.4	6.1	0.085	0.512	19.792148	-90.618835
Lerma	199.51	1	2	913	20.5	74.0	0.6	2.2	1.3	0.4	0.2	0.8	0.0	94.5	0.6	4.9	0.101	0.512	19.792246	-90.618952
Campeche	203.18																			

5 CARR: Chencoyi - Tenabo

CLAVE: 04576

RUTA: MEX-180

AÑO: 2023

LUGAR	ESTACION				CLASIFICACION VEHICULAR EN PORCIENTO													COORDENADAS		
	KM	TE	SC	TDPA	M	A	B	C2	C3	T3S2	T3S3	T3S2R4	OTROS	A	B	C	K'	D	LATITUD	LONGITUD
T. C. Campeche - Umán	0.00																			
Tenabo	28.00	1	0	1321	18.0	74.1	0.7	3.8	1.0	1.1	0.8	0.3	0.2	92.1	0.7	7.2	0.075	0.539	20.026152	-90.226664

6 CARR: Dzitbalché - Ent. San Bernardo

CLAVE: 00162

RUTA: MEX-180

AÑO: 2023

LUGAR	ESTACION				CLASIFICACION VEHICULAR EN PORCIENTO													COORDENADAS		
	KM	TE	SC	TDPA	M	A	B	C2	C3	T3S2	T3S3	T3S2R4	OTROS	A	B	C	K'	D	LATITUD	LONGITUD
T. C. Campeche - Mérida	0.00																			
T. Izq. Libramiento de Becal (1º Acceso)	12.33	1	0	3791	23.2	71.2	1.2	2.3	1.2	0.6	0.1	0.2	0.0	94.4	1.2	4.4	0.079	0.504	20.418448	-90.034101
T. Izq. Libramiento de Becal (2º Acceso)	15.41	3	0	1751	16.7	74.9	1.8	3.5	0.8	1.7	0.5	0.0	0.1	91.6	1.8	6.6	0.087	0.511	20.449624	-90.038827
Lim. Edos. Term. Camp. Ppia. Yuc.	15.80																			
Halachó	21.08	1	0	2291	23.1	62.1	4.1	8.2	1.0	1.4	0.1	0.0	0.0	85.2	4.1	10.7	0.081	0.506	20.469161	-90.066364
T. Izq. Libramiento de Maxcanú (1º Acceso)	35.60	1	0	2964	26.1	62.9	2.9	5.4	1.0	1.5	0.2	0.0	0.0	89.0	2.9	8.1	0.082	0.500	20.577258	-90.035478
T. Der. Muna	40.36	3	0	4427	9.1	79.9	2.2	6.0	1.3	1.3	0.2	0.0	0.0	89.0	2.2	8.8	0.083	0.503	20.601414	-89.975978
Ent. San Bernardo	41.53																			

7 CARR: Francisco Escárcega - Champotón

CLAVE: 04103

RUTA: MEX-201

AÑO: 2023

LUGAR	ESTACION				CLASIFICACION VEHICULAR EN PORCIENTO													COORDENADAS		
	KM	TE	SC	TDPA	M	A	B	C2	C3	T3S2	T3S3	T3S2R4	OTROS	A	B	C	K'	D	LATITUD	LONGITUD
Francisco Escárcega	0.00	3	0	5741	13.1	68.1	1.9	3.3	2.6	5.5	1.1	3.5	0.9	81.2	1.9	16.9	0.096	0.535	18.622247	-90.742082
T. Izq. Ley Federal de La Reforma Agraria	51.40	1	0	3557	5.9	71.1	3.2	3.8	2.2	6.3	2.4	4.2	0.9	77.0	3.2	19.8	0.072	0.508	19.051344	-90.725053
T. Der. Ulumal y Patzajol	77.00	1	0	3695	5.6	72.2	3.0	3.9	2.0	6.2	2.3	4.0	0.8	77.8	3.0	19.2	0.085	0.521	19.295562	-90.732179
Champotón	81.40	1	0	7207	7.1	75.0	2.5	3.5	2.4	3.9	1.8	2.9	0.9	82.1	2.5	15.4	0.068	0.513	19.318169	-90.729005



CAMPECHE

8 CARR: Francisco Escárcega - Chetumal

CLAVE: 00093

RUTA: MEX-186-307

AÑO: 2023

LUGAR	ESTACION				CLASIFICACION VEHICULAR EN PORCIENTO										COORDENADAS					
	KM	TE	SC	TDPA	M	A	B	C2	C3	T3S2	T3S3	T3S2R4	OTROS	A	B	C	K'	D	LATITUD	LONGITUD
Francisco Escárcega	0.00	3	0	4651	16.3	62.9	4.1	3.6	1.9	5.3	1.6	3.4	0.9	79.2	4.1	16.7	0.074	0.501	18.604135	-90.718017
Adolfo López Mateos	41.50	1	0	3368	8.6	66.5	5.1	3.9	2.0	5.8	1.8	5.4	0.9	75.1	5.1	19.8	0.069	0.516	18.642490	-90.315461
T. Der. Silvituc	55.70	1	0	3493	11.0	64.9	5.1	3.6	2.2	5.5	2.1	4.7	0.9	75.9	5.1	19.0	0.068	0.517	18.651278	-90.276193
T. Der. Silvituc	55.70	3	0	2896	10.0	64.4	5.3	4.0	2.3	6.6	1.9	4.6	0.9	74.4	5.3	20.3	0.067	0.527	18.649406	-90.261322
Conhuás	100.00	1	0	2533	11.8	57.7	5.7	5.0	2.9	7.0	3.1	5.9	0.9	69.5	5.7	24.8	0.062	0.514	18.540463	-89.918617
Xpujil	155.73	1	0	3324	8.7	65.8	4.8	4.1	2.2	5.9	1.9	5.8	0.8	74.5	4.8	20.7	0.082	0.546	18.509289	-89.409415
Lim. Edos. Term. Camp. Ppia. Oroo.	179.90																			
X. C. Caobas - Chacanbacab	186.00	3	0	2148	6.6	62.5	7.7	4.6	1.9	8.0	2.2	5.5	1.0	69.1	7.7	23.2	0.076	0.518	18.468471	-89.093592
Nicolás Bravo	206.01	1	0	3782	6.9	67.6	4.6	5.6	1.5	7.4	1.3	4.8	0.3	74.5	4.6	20.9	0.081	0.506	18.458538	-88.938988
Nicolás Bravo	206.01	3	0	4290	7.4	70.4	4.2	3.9	1.5	5.5	1.3	4.9	0.9	77.8	4.2	18.0	0.075	0.507	18.459118	-88.920283
T. Izq. Morocoy	214.90	1	0	3390	7.4	70.3	4.3	3.8	1.7	5.9	1.7	4.2	0.7	77.7	4.3	18.0	0.109	0.506	18.478773	-88.818429
T. Izq. Morocoy	214.90	3	0	3473	5.8	69.7	4.0	4.5	1.6	7.4	2.1	4.1	0.8	75.5	4.0	20.5	0.083	0.523	18.478898	-88.814779
T. Der. Unión	247.50	1	0	6272	7.6	68.1	5.3	4.3	1.5	7.3	1.8	3.3	0.8	75.7	5.3	19.0	0.083	0.505	18.503954	-88.534374
T. Der. Unión	247.50	3	0	9339	10.1	75.7	1.6	4.8	1.1	3.2	0.8	2.1	0.6	85.8	1.6	12.6	0.095	0.501	18.508708	-88.504602
T. Izq. Fpe. Carrillo Puerto	255.15	1	0	8705	8.5	76.4	1.9	4.1	2.2	3.3	0.9	2.0	0.7	84.9	1.9	13.2	0.103	0.504	18.523843	-88.473420
T. Der. Subteniente López	268.57	1	1	10905	4.2	89.7	1.4	2.7	0.9	0.5	0.3	0.2	0.1	93.9	1.4	4.7	0.094	0.505	18.516647	-88.377995
T. Der. Subteniente López	268.57	1	2	11146	4.4	89.0	1.2	2.6	1.1	0.7	0.5	0.4	0.1	93.4	1.2	5.4	0.104	0.505	18.516748	-88.377967
T. Izq. Av. Insurgentes	270.00	1	1	14129	8.7	84.8	1.0	3.2	1.0	0.7	0.3	0.2	0.1	93.5	1.0	5.5	0.083	0.519	18.512969	-88.361354
T. Izq. Av. Insurgentes	270.00	1	2	15269	8.9	85.1	0.9	3.1	0.9	0.6	0.2	0.2	0.1	94.0	0.9	5.1	0.089	0.519	18.513076	-88.361324
T. Izq. Av. Insurgentes	270.00	3	1	5262	5.7	89.9	0.6	1.9	0.9	0.4	0.2	0.3	0.1	95.6	0.6	3.8	0.094	0.509	18.511541	-88.356361
T. Izq. Av. Insurgentes	270.00	3	2	5070	5.6	89.4	0.8	2.0	1.1	0.5	0.3	0.2	0.1	95.0	0.8	4.2	0.091	0.509	18.511554	-88.356115
Chetumal	277.36	1	1	7816	7.8	88.8	0.5	2.0	0.5	0.2	0.0	0.1	0.1	96.6	0.5	2.9	0.090	0.501	18.501945	-88.322141
Chetumal	277.36	1	2	7771	7.5	89.4	0.5	1.8	0.4	0.2	0.0	0.1	0.1	96.9	0.5	2.6	0.100	0.501	18.502047	-88.322092

9 CARR: Haltunchén - San Antonio Cayal

CLAVE: 04009

RUTA: MEX-180

AÑO: 2023

LUGAR	ESTACION				CLASIFICACION VEHICULAR EN PORCIENTO										COORDENADAS					
	KM	TE	SC	TDPA	M	A	B	C2	C3	T3S2	T3S3	T3S2R4	OTROS	A	B	C	K'	D	LATITUD	LONGITUD
T. C. Cd. del Carmen - Campeche	0.00	3	0	1573	17.7	69.4	0.9	5.9	1.8	2.5	0.4	1.1	0.3	87.1	0.9	12.0	0.086	0.534	19.499091	-90.700068
Sihochac	14.00	3	0	1408	22.0	65.8	0.5	6.3	0.9	2.7	0.9	0.7	0.2	87.8	0.5	11.7	0.089	0.502	19.502164	-90.569454
X. C. China - Tixmucuy	47.10	1	0	653	9.1	74.9	1.2	7.4	2.1	2.2	1.2	1.4	0.5	84.0	1.2	14.8	0.098	0.510	19.603477	-90.321387
Edzna	59.00	1	0	1230	8.0	74.4	1.2	9.1	3.3	1.8	0.9	1.0	0.3	82.4	1.2	16.4	0.095	0.506	19.604236	-90.226977
T. Der. Pichucalco	60.00	3	0	695	20.1	66.5	0.6	7.8	1.9	1.1	0.4	1.3	0.3	86.6	0.6	12.8	0.109	0.502	19.608873	-90.220443
San Antonio Cayal	79.00	1	0	685	22.1	60.7	1.3	9.0	1.6	2.2	0.7	2.2	0.2	82.8	1.3	15.9	0.096	0.514	19.740341	-90.173994

CAMPECHE

10 CARR: Periférico Pablo García y Montilla (Libramiento de Campeche)

CLAVE: 04573

RUTA: MEX-202

AÑO: 2023

LUGAR	ESTACION				CLASIFICACION VEHICULAR EN PORCIENTO													COORDENADAS		
	KM	TE	SC	TDPA	M	A	B	C2	C3	T3S2	T3S3	T3S2R4	OTROS	A	B	C	K'	D	LATITUD	LONGITUD
Ent. Lerma	0.00	3	1	2422	11.0	85.0	0.5	1.4	1.0	0.5	0.2	0.4	0.0	96.0	0.5	3.5	0.154	0.513	19.797819	-90.587688
Ent. Lerma	0.00	3	2	2552	10.9	84.9	0.6	1.3	1.1	0.6	0.2	0.4	0.0	95.8	0.6	3.6	0.162	0.513	19.797923	-90.587777
T. Izq. Av. Escenica	5.00	3	1	2547	10.1	82.0	1.2	3.3	1.4	0.9	0.3	0.6	0.2	92.1	1.2	6.7	0.095	0.528	19.798945	-90.567211
T. Izq. Av. Escenica	5.00	3	2	2844	10.1	81.8	1.4	3.3	1.5	0.9	0.3	0.5	0.2	91.9	1.4	6.7	0.132	0.528	19.799051	-90.567169
X. C. Champotón - Campeche (Cuota)	10.00	3	1	7809	7.5	72.2	2.6	3.7	2.4	6.4	1.3	3.2	0.7	79.7	2.6	17.7	0.079	0.537	19.796613	-90.517747
X. C. Champotón - Campeche (Cuota)	10.00	3	2	9052	7.5	71.8	2.6	3.7	2.4	6.5	1.4	3.3	0.8	79.3	2.6	18.1	0.098	0.537	19.796727	-90.517708
X. C. Campeche - Umán	21.00	1	1	5692	4.4	71.3	3.8	5.4	2.1	6.5	1.5	4.0	1.0	75.7	3.8	20.5	0.075	0.539	19.843341	-90.471061
X. C. Campeche - Umán	21.00	1	2	6662	4.4	71.3	3.8	5.5	2.1	6.6	1.4	4.0	0.9	75.7	3.8	20.5	0.081	0.539	19.843458	-90.471138
T. C. Campeche - Mérida	26.00	1	1	6245	4.3	69.3	3.6	6.5	2.8	7.2	1.6	3.7	1.0	73.6	3.6	22.8	0.068	0.510	19.881399	-90.462092
T. C. Campeche - Mérida	26.00	1	2	6513	4.3	69.7	3.5	6.5	2.7	7.2	1.5	3.8	0.8	74.0	3.5	22.5	0.064	0.510	19.881324	-90.462188

11 CARR: Presidente Díaz Ordaz - Sabancuy

CLAVE: 04570

RUTA: MEX-186

AÑO: 2023

LUGAR	ESTACION				CLASIFICACION VEHICULAR EN PORCIENTO													COORDENADAS		
	KM	TE	SC	TDPA	M	A	B	C2	C3	T3S2	T3S3	T3S2R4	OTROS	A	B	C	K'	D	LATITUD	LONGITUD
T. C. Villahermosa - Francisco Escárcega	0.00	3	0	1431	15.8	76.1	1.2	3.5	1.2	0.8	0.4	1.0	0.0	91.9	1.2	6.9	0.078	0.506	18.630779	-90.982861
Chicbul	18.00	1	0	1658	19.2	71.0	1.5	4.0	1.1	1.3	0.7	1.2	0.0	90.2	1.5	8.3	0.076	0.503	18.767259	-90.934943
T. C. Cd. del Carmen - Campeche	57.00	1	0	1700	13.6	77.2	2.7	2.8	1.0	1.0	0.5	0.8	0.4	90.8	2.7	6.5	0.089	0.508	18.987672	-91.188632

12 CARR: Ramal a Nuevo Coahuila

CLAVE: 04015

RUTA: MEX-186

AÑO: 2023

LUGAR	ESTACION				CLASIFICACION VEHICULAR EN PORCIENTO													COORDENADAS		
	KM	TE	SC	TDPA	M	A	B	C2	C3	T3S2	T3S3	T3S2R4	OTROS	A	B	C	K'	D	LATITUD	LONGITUD
T. C. Villahermosa - Francisco Escárcega	0.00	3	0	1005	8.0	78.6	1.7	4.8	1.7	2.2	1.0	1.9	0.1	86.6	1.7	11.7	0.092	0.510	18.377599	-91.196270
Candelaria	28.00	3	0	2633	5.9	89.2	0.7	1.8	0.9	0.7	0.4	0.3	0.1	95.1	0.7	4.2	0.091	0.501	18.176760	-91.053202
Reforma	44.50	3	0	1459	4.4	92.2	0.6	1.6	0.5	0.3	0.1	0.3	0.0	96.6	0.6	2.8	0.097	0.511	18.074178	-91.026175
T. Izq. Pedro Baranda	54.80	1	0	842	12.7	83.2	0.8	1.7	0.6	0.4	0.1	0.5	0.0	95.9	0.8	3.3	0.102	0.525	17.971927	-90.909548
T. Izq. Pedro Baranda	54.80	3	0	840	14.6	82.8	0.5	1.3	0.3	0.3	0.0	0.2	0.0	97.4	0.5	2.1	0.133	0.507	17.965337	-90.902503
Nuevo Coahuila	70.00	1	0	829	17.8	79.3	0.5	1.1	0.7	0.5	0.0	0.1	0.0	97.1	0.5	2.4	0.128	0.500	17.894332	-90.784508

13 CARR: Ramal a Ruíz Cortines

CLAVE: 04101

RUTA: MEX-180

AÑO: 2023

LUGAR	ESTACION				CLASIFICACION VEHICULAR EN PORCIENTO													COORDENADAS		
	KM	TE	SC	TDPA	M	A	B	C2	C3	T3S2	T3S3	T3S2R4	OTROS	A	B	C	K'	D	LATITUD	LONGITUD
Hool	0.00																			

CAMPECHE

13 CARR: Ramal a Ruíz Cortines

CLAVE: 04101

RUTA: MEX-180

AÑO: 2023

LUGAR	ESTACION				CLASIFICACION VEHICULAR EN PORCIENTO													COORDENADAS		
	KM	TE	SC	TDPA	M	A	B	C2	C3	T3S2	T3S3	T3S2R4	OTROS	A	B	C	K'	D	LATITUD	LONGITUD
T. Der. Hool	1.00	3	0	420	39.6	50.2	0.8	3.3	5.0	0.5	0.3	0.2	0.1	89.8	0.8	9.4	0.146	0.506	19.512232	-90.439875
Ruíz Cortines	12.00																			

14 CARR: San Marcos - Palizada

CLAVE: 00490

RUTA: MEX-186

AÑO: 2023

LUGAR	ESTACION				CLASIFICACION VEHICULAR EN PORCIENTO													COORDENADAS		
	KM	TE	SC	TDPA	M	A	B	C2	C3	T3S2	T3S3	T3S2R4	OTROS	A	B	C	K'	D	LATITUD	LONGITUD
T. C. Villahermosa - Francisco Escárcega	0.00	3	0	1003	11.3	75.1	1.4	8.0	2.5	1.4	0.3	0.0	0.0	86.4	1.4	12.2	0.131	0.502	17.942919	-91.735728
Lim. Edos. Term. Tab. Ppia. Camp.	1.50																			
T. Izq. Jonuta	46.20	1	0	652	6.5	78.5	1.8	10.1	1.7	1.1	0.3	0.0	0.0	85.0	1.8	13.2	0.109	0.504	18.123779	-92.103119
T. Izq. Jonuta	46.20	3	0	829	11.4	79.7	0.5	7.1	1.0	0.3	0.0	0.0	0.0	91.1	0.5	8.4	0.100	0.500	18.131341	-92.113483
Palizada	68.00																			

15 CARR: Villahermosa - Cd. del Carmen

CLAVE: 00064

RUTA: MEX-180

AÑO: 2023

LUGAR	ESTACION				CLASIFICACION VEHICULAR EN PORCIENTO													COORDENADAS		
	KM	TE	SC	TDPA	M	A	B	C2	C3	T3S2	T3S3	T3S2R4	OTROS	A	B	C	K'	D	LATITUD	LONGITUD
Villahermosa	0.00																			
T. Izq. Cd. Industrial	4.30	3	1	32311	6.0	87.3	0.7	1.5	1.1	1.9	0.6	0.7	0.2	93.3	0.7	6.0	0.072	0.503	18.037242	-92.901472
T. Izq. Cd. Industrial	4.30	3	2	32747	5.5	87.6	0.7	1.7	1.2	1.6	0.5	0.7	0.5	93.1	0.7	6.2	0.098	0.503	18.037258	-92.901576
X. C. Libramiento de Villahermosa	8.10	3	1	22597	5.3	87.5	1.2	1.6	0.9	1.8	0.5	1.0	0.2	92.8	1.2	6.0	0.088	0.503	18.062956	-92.882168
X. C. Libramiento de Villahermosa	8.10	3	2	22291	5.1	88.0	1.4	1.5	0.7	1.8	0.5	0.8	0.2	93.1	1.4	5.5	0.117	0.503	18.063038	-92.882198
Macultepec	18.60	1	1	15221	8.3	80.6	1.2	2.8	1.3	3.4	0.6	1.3	0.5	88.9	1.2	9.9	0.094	0.513	18.141568	-92.864647
Macultepec	18.60	1	2	14430	8.0	79.1	1.5	3.6	1.2	3.8	0.8	1.5	0.5	87.1	1.5	11.4	0.095	0.513	18.141495	-92.864754
Macultepec	18.60	3	1	6639	3.5	75.6	3.7	5.6	1.2	5.8	1.6	2.4	0.6	79.1	3.7	17.2	0.077	0.501	18.166584	-92.858652
Macultepec	18.60	3	2	6660	4.0	74.1	4.0	6.3	1.5	5.5	1.4	2.5	0.7	78.1	4.0	17.9	0.095	0.501	18.166853	-92.858628
El Espino	33.20	1	0	10251	2.5	70.4	4.4	5.9	2.4	8.2	1.9	3.4	0.9	72.9	4.4	22.7	0.072	0.521	18.206697	-92.822635
El Espino	33.20	3	0	10339	2.9	72.4	3.8	5.1	1.9	8.6	1.4	3.1	0.8	75.3	3.8	20.9	0.073	0.510	18.257573	-92.831546
T. Izq. Simon Sarlat	45.00	3	0	9912	3.8	74.4	3.7	3.8	1.6	7.9	1.4	2.7	0.7	78.2	3.7	18.1	0.071	0.510	18.349710	-92.789801
T. Izq. El Bellote	49.67	3	0	10092	4.7	68.7	4.8	6.4	1.5	8.3	1.6	3.2	0.8	73.4	4.8	21.8	0.067	0.509	18.394258	-92.798061
T. Izq. Constanca y Venecia	56.10	3	0	10097	6.5	69.9	4.0	4.7	1.6	8.0	1.7	2.9	0.7	76.4	4.0	19.6	0.077	0.507	18.443909	-92.796034
Frontera	74.59	1	0	11773	9.8	70.9	2.2	3.4	1.4	7.4	1.4	2.8	0.7	80.7	2.2	17.1	0.072	0.513	18.512418	-92.649236
Frontera	74.59	3	0	7802	8.2	62.4	5.6	4.5	2.4	9.8	1.8	4.4	0.9	70.6	5.6	23.8	0.067	0.515	18.542033	-92.632297
T. Izq. Escolleras	78.00	3	0	6870	5.8	64.1	6.3	6.1	1.8	9.0	1.9	4.1	0.9	69.9	6.3	23.8	0.079	0.501	18.562312	-92.601495
Puente San Pedro	96.50	3	0	6110	3.8	63.5	6.2	6.8	2.4	9.6	2.4	4.4	0.9	67.3	6.2	26.5	0.081	0.528	18.641250	-92.464241

CAMPECHE

15 CARR: Villahermosa - Cd. del Carmen

CLAVE: 00064

RUTA: MEX-180

AÑO: 2023

LUGAR	ESTACION				CLASIFICACION VEHICULAR EN PORCIENTO										COORDENADAS					
	KM	TE	SC	TDPA	M	A	B	C2	C3	T3S2	T3S3	T3S2R4	OTROS	A	B	C	K'	D	LATITUD	LONGITUD
Lim. Edos. Term. Tab. Ppia. Camp.	99.75																			
Nuevo Campechito	100.00	3	0	5728	3.1	61.7	6.0	6.7	2.0	12.8	2.3	4.9	0.5	64.8	6.0	29.2	0.085	0.507	18.643207	-92.453996
Nuevo Progreso	113.60	1	0	6400	4.5	63.2	5.1	5.8	2.0	11.5	2.4	4.8	0.7	67.7	5.1	27.2	0.079	0.523	18.627129	-92.330682
Nuevo Progreso (2do Acceso)	119.00	1	0	6033	4.1	62.6	4.2	6.4	2.9	12.0	2.5	5.0	0.3	66.7	4.2	29.1	0.073	0.507	18.616623	-92.287911
T. Der. San Antonio Cárdenas (1er Acceso)	121.80	1	0	7382	8.8	61.3	6.3	4.2	2.2	10.6	1.8	3.9	0.9	70.1	6.3	23.6	0.078	0.541	18.618799	-92.248086
T. Der. San Antonio Cárdenas (2do Acceso)	125.20	1	0	5773	4.1	63.6	6.7	4.8	1.9	12.3	2.2	4.1	0.3	67.7	6.7	25.6	0.078	0.505	18.622234	-92.226972
T. Der. San Antonio Cárdenas (2do Acceso)	125.20	3	0	6626	7.1	63.5	5.8	3.9	2.3	11.2	1.9	3.9	0.4	70.6	5.8	23.6	0.079	0.524	18.617614	-92.208637
Puente Zacatal	162.41	1	0	7711	4.7	64.6	5.4	4.6	1.9	11.0	2.2	4.7	0.9	69.3	5.4	25.3	0.063	0.518	18.615208	-91.869769
Puente Zacatal	162.41	2	0	5138	1.0	55.5	5.3	6.4	5.0	15.4	2.6	7.7	1.1	56.5	5.3	38.2	0.077	0.500	18.641814	-92.460301
Cd. del Carmen	167.50																			

16 CARR: Villahermosa - Francisco Escárcega

CLAVE: 00092

RUTA: MEX-186-307

AÑO: 2023

LUGAR	ESTACION				CLASIFICACION VEHICULAR EN PORCIENTO										COORDENADAS					
	KM	TE	SC	TDPA	M	A	B	C2	C3	T3S2	T3S3	T3S2R4	OTROS	A	B	C	K'	D	LATITUD	LONGITUD
Villahermosa	0.00	3	1	15254	4.1	83.7	1.0	6.0	0.6	2.7	0.4	1.3	0.2	87.8	1.0	11.2	0.086	0.505	18.001044	-92.890714
Villahermosa	0.00	3	2	14954	4.2	83.5	1.0	5.9	0.6	2.7	0.6	1.3	0.2	87.7	1.0	11.3	0.102	0.505	18.001142	-92.890698
T. Izq. Aeropuerto (Alta)	12.00	1	1	17642	5.7	78.3	1.6	6.0	1.4	3.1	1.5	1.9	0.5	84.0	1.6	14.4	0.073	0.515	17.985033	-92.829579
T. Izq. Aeropuerto (Baja)	12.00	1	1	1913	16.6	69.2	1.9	5.9	2.3	1.3	0.7	1.7	0.4	85.8	1.9	12.3	0.115	0.525	17.984976	-92.829630
T. Izq. Aeropuerto (Baja)	12.00	1	2	2118	16.6	68.5	1.9	6.5	2.3	1.4	1.0	1.5	0.3	85.1	1.9	13.0	0.077	0.525	17.985175	-92.829468
T. Izq. Aeropuerto (Alta)	12.00	1	2	16592	6.6	78.2	2.1	5.8	1.2	2.8	1.2	1.7	0.4	84.8	2.1	13.1	0.078	0.515	17.985105	-92.829525
Puente Grijalva	17.60	2	1	8927	3.7	77.6	2.7	3.2	2.2	4.4	2.2	3.5	0.5	81.3	2.7	16.0	0.079	0.500	17.947602	-92.785235
Puente Grijalva	17.60	2	2	8927	3.7	77.6	2.7	3.2	2.2	4.4	2.2	3.5	0.5	81.3	2.7	16.0	0.079	0.500	17.947602	-92.785235
X. C. Cacaos - La Granja	32.46	1	1	6651	4.2	77.4	3.0	3.4	1.8	4.6	2.4	2.6	0.6	81.6	3.0	15.4	0.089	0.523	17.832820	-92.719585
X. C. Cacaos - La Granja	32.46	1	2	7289	3.6	76.8	3.2	3.6	1.8	4.9	2.5	2.9	0.7	80.4	3.2	16.4	0.083	0.523	17.832856	-92.719510
X. C. Cacaos - La Granja	32.46	3	1	6500	3.2	75.9	3.0	3.7	2.2	4.9	2.5	3.6	1.0	79.1	3.0	17.9	0.083	0.500	17.817529	-92.710938
X. C. Cacaos - La Granja	32.46	3	2	6505	3.6	75.4	3.3	3.8	1.9	5.4	2.4	3.4	0.8	79.0	3.3	17.7	0.082	0.500	17.817709	-92.710934
X. C. Jalapa - Jonuta	40.00	3	1	6491	2.8	75.6	3.1	4.4	2.3	5.1	2.4	3.4	0.9	78.4	3.1	18.5	0.087	0.505	17.775058	-92.673834
X. C. Jalapa - Jonuta	40.00	3	2	6351	3.3	73.6	4.1	5.0	3.0	4.4	2.3	3.4	0.9	76.9	4.1	19.0	0.092	0.505	17.775189	-92.673865
T. Izq. Macuspana	46.20	1	1	6447	3.5	74.2	2.4	5.2	2.8	5.2	2.4	3.4	0.9	77.7	2.4	19.9	0.089	0.512	17.744579	-92.634712
T. Izq. Macuspana	46.20	1	2	6150	4.0	72.0	3.8	6.0	3.3	4.8	1.7	3.5	0.9	76.0	3.8	20.2	0.091	0.512	17.744648	-92.634661
T. Izq. Macuspana	46.20	3	1	6295	4.0	75.2	3.3	3.2	2.9	5.1	2.2	3.3	0.8	79.2	3.3	17.5	0.084	0.510	17.734724	-92.622118
T. Izq. Macuspana	46.20	3	2	6051	3.9	75.3	3.0	3.4	2.5	5.5	2.3	3.3	0.8	79.2	3.0	17.8	0.086	0.510	17.734756	-92.622014
X. C. Estación Macuspana - Vernet	54.30	1	0	11804	7.0	70.9	2.3	3.2	3.1	6.3	2.6	3.7	0.9	77.9	2.3	19.8	0.071	0.510	17.712886	-92.583871
T. Der. Chivalito (Est. Pino Suárez)	70.00	1	0	9719	7.3	66.5	4.2	5.6	2.0	7.1	2.4	4.0	0.9	73.8	4.2	22.0	0.083	0.503	17.670641	-92.446899

CAMPECHE

16 CARR: Villahermosa - Francisco Escárcega

CLAVE: 00092

RUTA: MEX-186-307

AÑO: 2023

LUGAR	ESTACION				CLASIFICACION VEHICULAR EN PORCIENTO										COORDENADAS					
	KM	TE	SC	TDPA	M	A	B	C2	C3	T3S2	T3S3	T3S2R4	OTROS	A	B	C	K'	D	LATITUD	LONGITUD
T. Der. Chivalito (Est. Pino Suárez)	70.00	3	1	4264	5.8	70.9	3.0	3.6	1.7	6.9	2.6	4.6	0.9	76.7	3.0	20.3	0.094	0.511	17.666173	-92.432477
T. Der. Chivalito (Est. Pino Suárez)	70.00	3	2	4077	5.4	68.7	3.0	3.5	2.7	9.1	1.9	4.8	0.9	74.1	3.0	22.9	0.125	0.511	17.666928	-92.434760
T. Der. Estación Zopo	71.00	1	0	8167	5.0	67.0	4.8	4.0	2.3	8.0	3.4	4.7	0.8	72.0	4.8	23.2	0.085	0.503	17.671311	-92.416742
T. Der. Estación Zopo	71.00	3	1	3421	4.0	65.7	5.1	5.4	2.4	7.7	3.5	5.3	0.9	69.7	5.1	25.2	0.115	0.500	17.679658	-92.403830
T. Der. Estación Zopo	71.00	3	2	3422	5.5	66.2	4.5	4.1	2.4	8.5	3.3	4.7	0.8	71.7	4.5	23.8	0.122	0.500	17.679068	-92.404793
Lim. Edos. Term. Tab. Ppia. Chis.	76.90																			
T. Izq. Bonanza	88.00	1	0	7663	6.8	63.9	2.9	7.1	2.8	7.3	2.7	5.8	0.7	70.7	2.9	26.4	0.086	0.505	17.698113	-92.268841
T. Izq. Jonuta	101.00	1	0	7489	2.3	69.2	2.7	7.9	2.8	6.9	2.5	4.8	0.9	71.5	2.7	25.8	0.079	0.520	17.698148	-92.145108
T. Izq. Jonuta	101.00	3	0	7513	4.8	66.0	2.5	8.2	3.2	6.7	2.8	5.1	0.7	70.8	2.5	26.7	0.084	0.509	17.697744	-92.128640
X. C. Catazajá - Palenque	114.00	1	0	8968	6.3	63.8	3.1	7.7	2.8	7.7	2.2	5.6	0.8	70.1	3.1	26.8	0.073	0.518	17.707138	-92.026121
X. C. Catazajá - Palenque	114.00	3	0	6555	4.3	64.6	3.1	7.2	3.2	8.4	2.9	5.4	0.9	68.9	3.1	28.0	0.083	0.515	17.722880	-91.976434
T. Der. Emiliano Zapata	134.70	1	0	6738	4.1	64.8	3.5	7.2	2.8	8.6	2.9	5.4	0.7	68.9	3.5	27.6	0.071	0.513	17.770550	-91.837622
T. Der. Emiliano Zapata	134.70	3	0	5151	4.0	68.0	3.3	5.4	4.4	6.7	2.5	4.8	0.9	72.0	3.3	24.7	0.064	0.506	17.785075	-91.822203
Lim. Edos. Term. Chis. Ppia. Tab.	140.70																			
Puente Usumacinta	145.20	2	0	5455	7.2	56.3	3.0	3.3	4.6	10.6	3.8	9.8	1.4	63.5	3.0	33.5	0.079	0.500	17.859905	-91.783654
T. Izq. Palizada	154.05	1	0	4784	9.9	58.2	5.5	3.7	3.3	7.8	3.3	7.5	0.8	68.1	5.5	26.4	0.078	0.500	17.937798	-91.737231
T. Izq. Palizada	154.05	3	0	3466	5.5	56.3	6.2	4.1	2.9	12.6	3.1	8.4	0.9	61.8	6.2	32.0	0.068	0.520	17.946407	-91.729933
Lim. Edos. Term. Tab. Ppia. Camp.	154.60																			
T. Der. Candelaria	233.40	1	0	4072	4.8	56.3	6.1	5.3	2.3	12.2	2.9	9.2	0.9	61.1	6.1	32.8	0.070	0.509	18.370555	-91.203339
T. Der. Felipe Ángeles	253.00	1	0	5208	3.5	61.4	5.8	4.9	2.3	11.7	2.7	6.8	0.9	64.9	5.8	29.3	0.064	0.520	18.503966	-91.106494
T. Izq. Sabancuy	274.10	1	0	5924	6.8	61.0	5.0	5.7	2.4	9.1	2.2	6.8	1.0	67.8	5.0	27.2	0.060	0.503	18.629650	-90.988455
Francisco Escárcega	297.04	1	0	9007	14.3	67.1	2.3	2.8	2.0	5.9	1.4	3.3	0.9	81.4	2.3	16.3	0.083	0.514	18.610048	-90.776109

17 CARR: Champotón - Campeche (Cuota)

CLAVE: 04014

RUTA: MEX-180D

AÑO: 2023

LUGAR	ESTACION				CLASIFICACION VEHICULAR EN PORCIENTO										COORDENADAS					
	KM	TE	SC	TDPA	M	A	B	C2	C3	T3S2	T3S3	T3S2R4	OTROS	A	B	C	K'	D	LATITUD	LONGITUD
T. C. Cd. del Carmen - Campeche	160.00	3	1	4262	4.4	64.7	4.2	5.2	2.5	11.1	2.4	4.6	0.9	69.1	4.2	26.7	0.067	0.509	19.511702	-90.700272
T. C. Cd. del Carmen - Campeche	160.00	3	2	4418	4.3	64.9	4.2	5.1	2.3	11.1	2.5	4.7	0.9	69.2	4.2	26.6	0.065	0.509	19.512050	-90.700343
Plaza de Cobro Seybaplaya	174.80	2	1	3864	1.1	63.9	2.5	4.2	4.1	12.8	2.3	8.0	1.1	65.0	2.5	32.5	0.088	0.500	19.636235	-90.671582
Plaza de Cobro Seybaplaya	174.80	2	2	3864	1.1	63.9	2.5	4.2	4.1	12.8	2.3	8.0	1.1	65.0	2.5	32.5	0.088	0.500	19.636235	-90.671582
Plaza de Cobro Seybaplaya	174.80	3	1	4758	7.7	62.3	3.5	4.3	2.8	10.8	1.8	6.3	0.5	70.0	3.5	26.5	0.079	0.517	19.641786	-90.667196
Plaza de Cobro Seybaplaya	174.80	3	2	4437	7.3	63.4	4.1	3.4	2.6	11.8	1.9	5.0	0.5	70.7	4.1	25.2	0.075	0.517	19.641935	-90.667176
T. Der. Periferico Pablo García y Montilla (Libramiento De Campeche)	199.80	1	1	4820	6.9	64.2	4.0	5.5	2.2	9.3	2.0	5.1	0.8	71.1	4.0	24.9	0.090	0.519	19.791301	-90.535461
T. Der. Periferico Pablo García y Montilla (Libramiento De Campeche)	199.80	1	2	4463	6.9	64.1	4.1	5.5	2.3	9.1	2.0	5.2	0.8	71.0	4.1	24.9	0.071	0.519	19.791360	-90.535530

CAMPECHE

18 CARR: Hopelchén - Dzibalchén

CLAVE: 04572

RUTA: CAM-261

AÑO: 2023

LUGAR	ESTACION				CLASIFICACION VEHICULAR EN PORCIENTO														COORDENADAS	
	KM	TE	SC	TDPA	M	A	B	C2	C3	T3S2	T3S3	T3S2R4	OTROS	A	B	C	K'	D	LATITUD	LONGITUD
Hopelchén	0.00	3	0	1478	8.8	73.8	0.5	14.0	0.5	0.9	0.5	0.8	0.2	82.6	0.5	16.9	0.092	0.511	19.729724	-89.835300
Dzibalchén	41.00																			

19 CARR: Libramiento de Becal

CLAVE: 04010

RUTA: CAM

AÑO: 2023

LUGAR	ESTACION				CLASIFICACION VEHICULAR EN PORCIENTO														COORDENADAS	
	KM	TE	SC	TDPA	M	A	B	C2	C3	T3S2	T3S3	T3S2R4	OTROS	A	B	C	K'	D	LATITUD	LONGITUD
T. C. Dzitbalché - Ent. San Bernardo (1° Acceso)	0.00																			
T. C. Campeche - Mérida (2° Acceso)	2.30	1	0	1871	23.1	71.1	1.4	1.6	1.8	0.6	0.4	0.0	0.0	94.2	1.4	4.4	0.085	0.505	20.441293	-90.034430

20 CARR: Libramiento de Pomuch

CLAVE: 04579

RUTA: CAM

AÑO: 2023

LUGAR	ESTACION				CLASIFICACION VEHICULAR EN PORCIENTO														COORDENADAS	
	KM	TE	SC	TDPA	M	A	B	C2	C3	T3S2	T3S3	T3S2R4	OTROS	A	B	C	K'	D	LATITUD	LONGITUD
T. C. Campeche - Mérida (1° Acceso)	0.00	3	1	4340	3.6	72.9	3.7	2.6	3.3	7.3	1.5	4.2	0.9	76.5	3.7	19.8	0.091	0.505	20.122196	-90.177479
T. C. Campeche - Mérida (1° Acceso)	0.00	3	2	4262	3.6	72.4	3.5	2.7	3.5	7.6	1.6	4.4	0.7	76.0	3.5	20.5	0.086	0.505	20.122311	-90.177518
T. C. Campeche - Mérida (2° Acceso)	4.10																			

21 CARR: T. C. (Francisco Escárcega - Champotón) - Yohaltún

CLAVE: 04581

RUTA: CAM

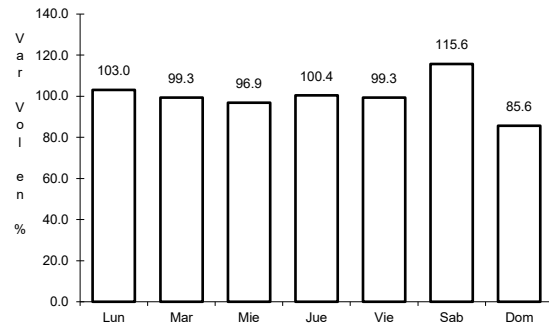
AÑO: 2023

LUGAR	ESTACION				CLASIFICACION VEHICULAR EN PORCIENTO														COORDENADAS	
	KM	TE	SC	TDPA	M	A	B	C2	C3	T3S2	T3S3	T3S2R4	OTROS	A	B	C	K'	D	LATITUD	LONGITUD
T. C. Francisco Escárcega - Champotón	0.00	3	0	1643	20.5	73.4	0.9	2.1	1.7	0.5	0.5	0.3	0.1	93.9	0.9	5.2	0.104	0.507	19.291265	-90.710650
Felipe Carrillo Puerto	36.50	1	0	805	28.6	60.5	1.1	4.0	3.9	0.5	0.6	0.5	0.3	89.1	1.1	9.8	0.087	0.502	19.104231	-90.516087
Felipe Carrillo Puerto	36.50	3	0	1000	24.1	70.0	0.7	1.3	2.4	0.6	0.3	0.5	0.1	94.1	0.7	5.2	0.123	0.504	19.092118	-90.517978
Yohaltún	70.60																			

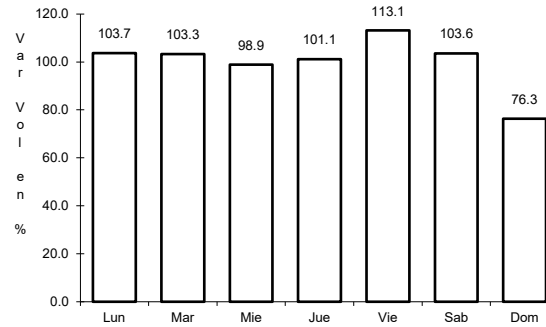
1 CARR: Campeche - Mérida

CLAVE: 00066

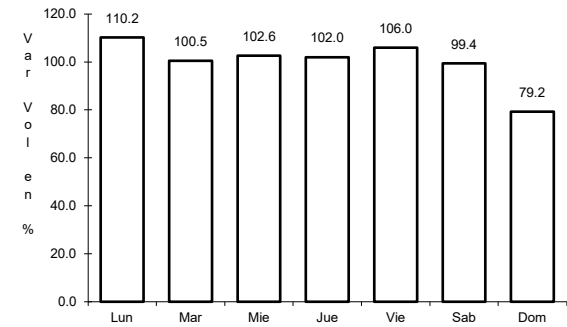
RUTA: MEX-180



Km: 0.00      Tipo: 3      Sent: 1



Km: 0.00      Tipo: 3      Sent: 2

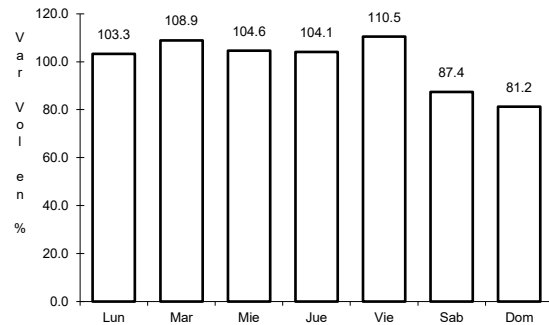


Km: 159.00      Tipo: 1      Sent: 1

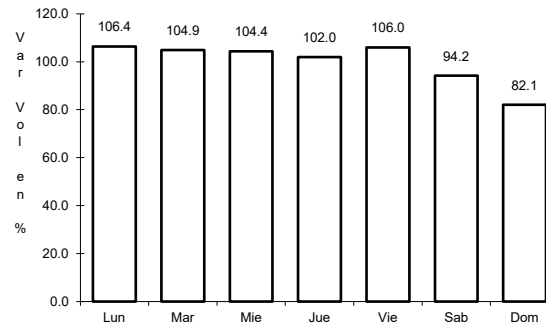
2 CARR: Campeche - Tixmucuy

CLAVE: 04575

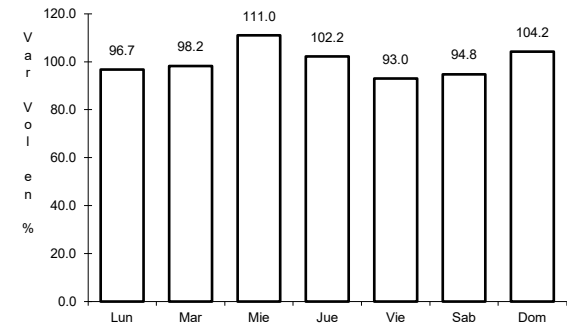
RUTA: MEX-180



Km: 0.00      Tipo: 3      Sent: 1



Km: 0.00      Tipo: 3      Sent: 2

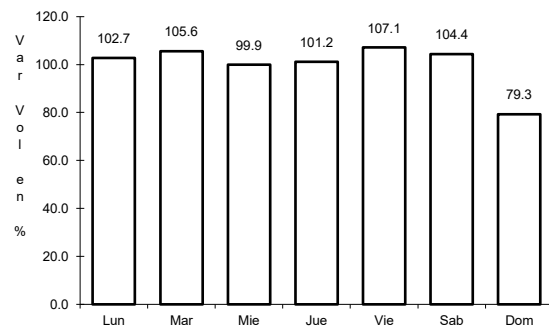


Km: 42.00      Tipo: 1      Sent: 0

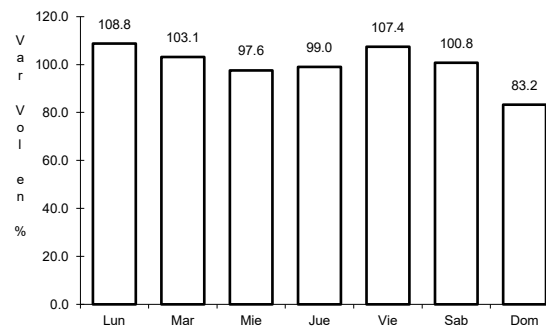
3 CARR: Campeche - Umán

CLAVE: 00164

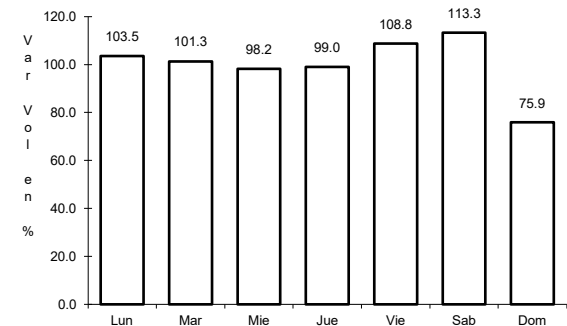
RUTA: MEX-261



Km: 7.00      Tipo: 1      Sent: 0



Km: 117.88      Tipo: 3      Sent: 0

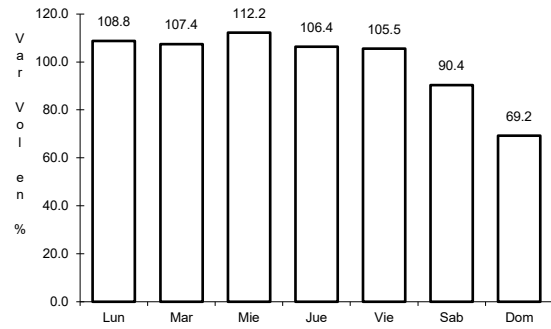


Km: 230.83      Tipo: 1      Sent: 0

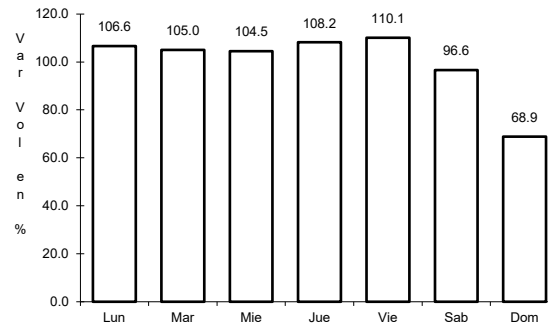
4 CARR: Cd. del Carmen - Campeche

CLAVE: 04065

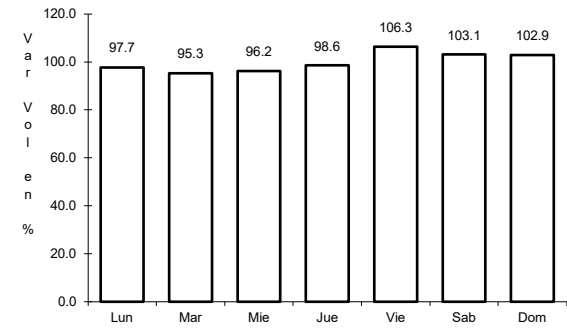
ruta: MEX-180



Km: 0.00      Tipo: 3      Sent: 1



Km: 0.00      Tipo: 3      Sent: 2

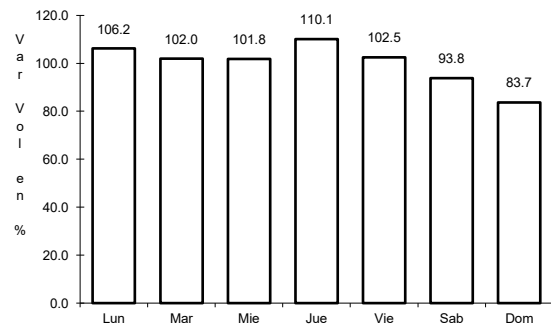


Km: 141.80      Tipo: 1      Sent: 0

5 CARR: Chencoyi - Tenabo

CLAVE: 04576

ruta: MEX-180

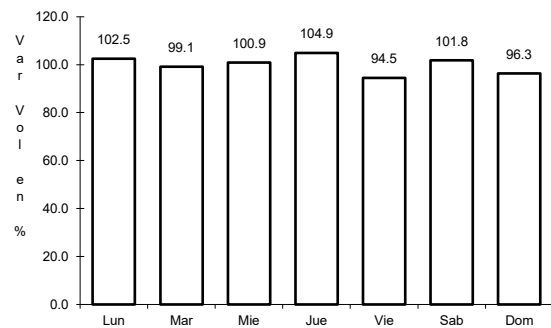


Km: 28.00      Tipo: 1      Sent: 0

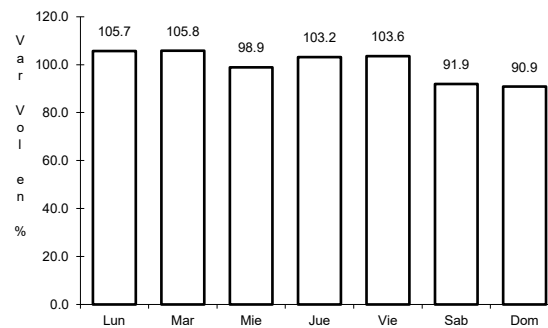
6 CARR: Dzitbalché - Ent. San Bernardo

CLAVE: 00162

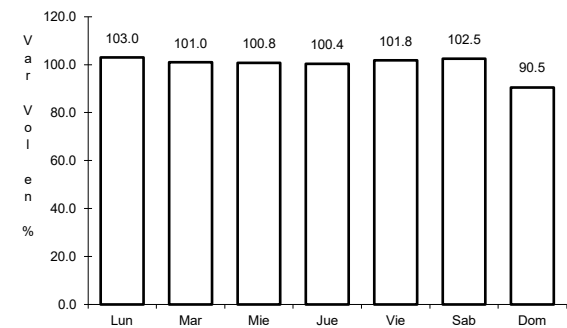
ruta: MEX-180



Km: 12.33      Tipo: 1      Sent: 0



Km: 21.08      Tipo: 1      Sent: 0



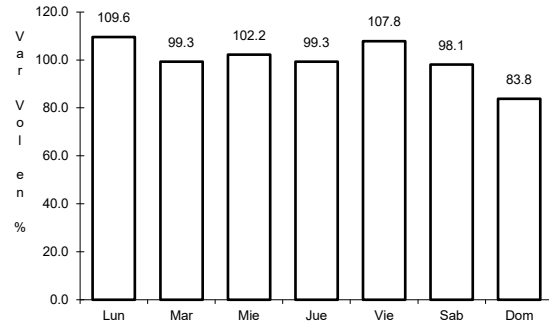
Km: 40.36      Tipo: 3      Sent: 0



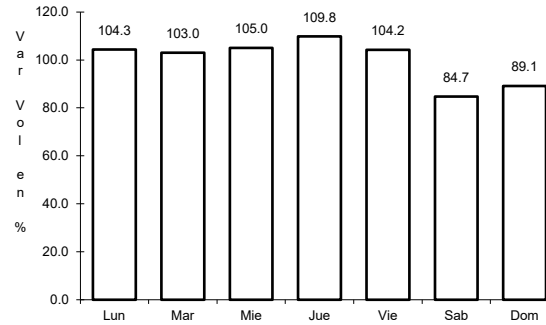
7 CARR: Francisco Escárcega - Champotón

CLAVE: 04103

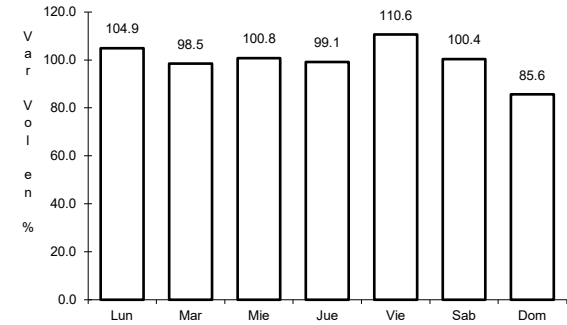
ruta: MEX-201



Km: 0.00      Tipo: 3      Sent: 0



Km: 51.40      Tipo: 1      Sent: 0

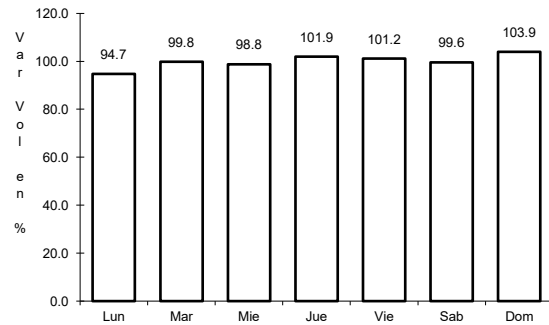


Km: 81.40      Tipo: 1      Sent: 0

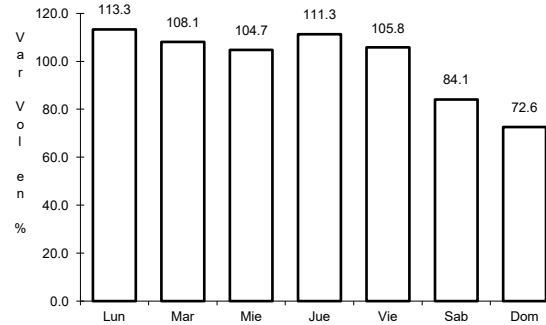
8 CARR: Francisco Escárcega - Chetumal

CLAVE: 00093

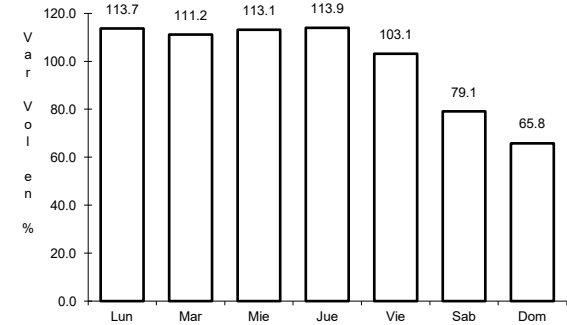
ruta: MEX-186-307



Km: 0.00      Tipo: 3      Sent: 0



Km: 277.36      Tipo: 1      Sent: 1

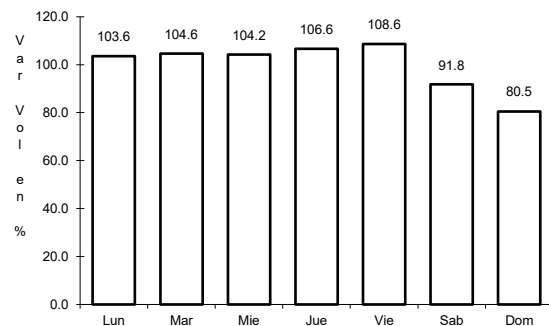


Km: 277.36      Tipo: 1      Sent: 2

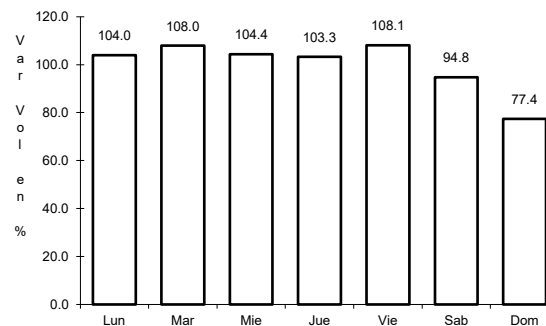
9 CARR: Hantunchén - San Antonio Cayal

CLAVE: 04009

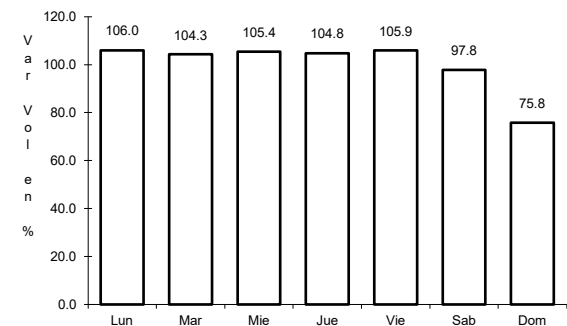
ruta: MEX-180



Km: 0.00      Tipo: 3      Sent: 0



Km: 47.10      Tipo: 1      Sent: 0

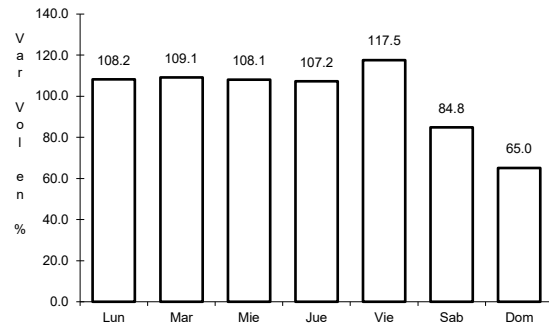


Km: 79.00      Tipo: 1      Sent: 0

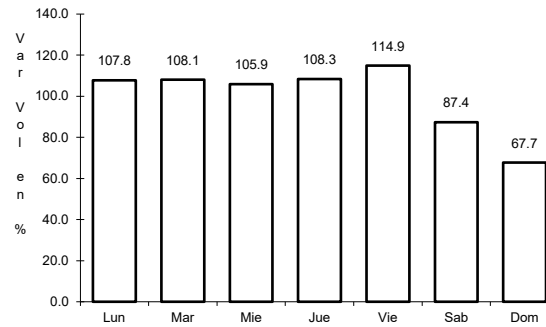
10 CARR: Periférico Pablo García y Montilla (Libramiento de Campeche)

CLAVE: 04573

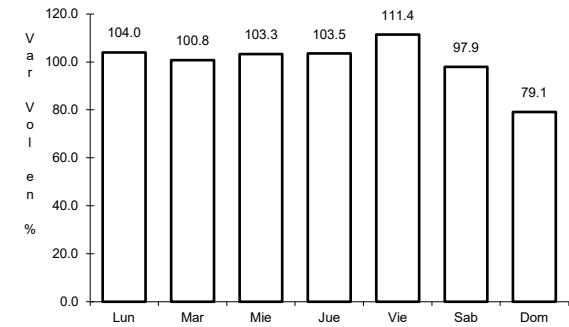
ruta: MEX-202



Km: 0.00 Tipo: 3 Sent: 1



Km: 0.00 Tipo: 3 Sent: 2

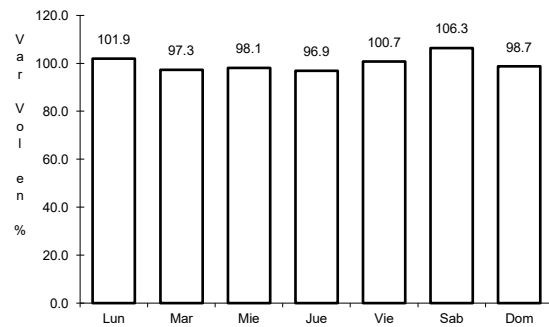


Km: 26.00 Tipo: 1 Sent: 1

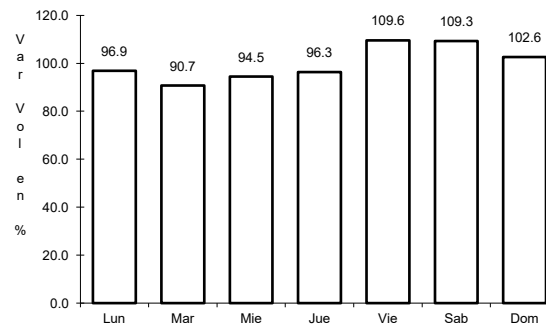
11 CARR: Presidente Díaz Ordaz - Sabancuy

CLAVE: 04570

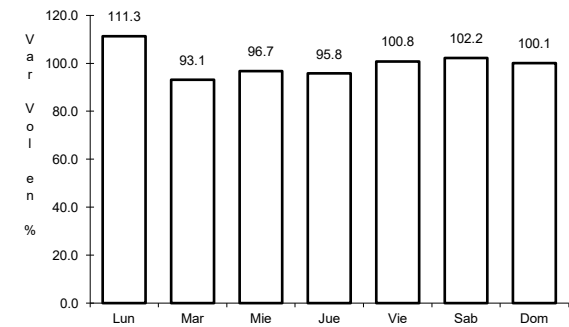
ruta: MEX-186



Km: 0.00 Tipo: 3 Sent: 0



Km: 18.00 Tipo: 1 Sent: 0

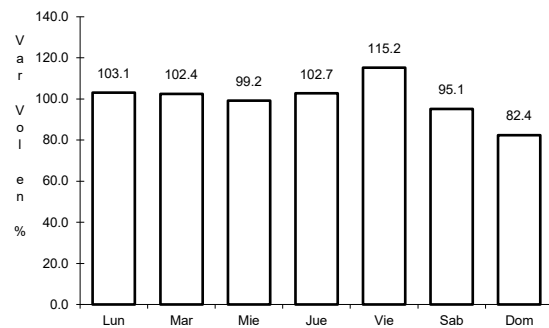


Km: 57.00 Tipo: 1 Sent: 0

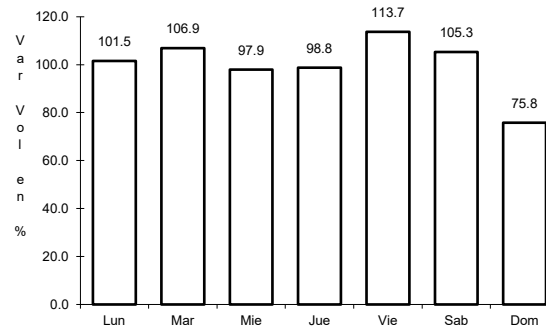
12 CARR: Ramal a Nuevo Coahuila

CLAVE: 04015

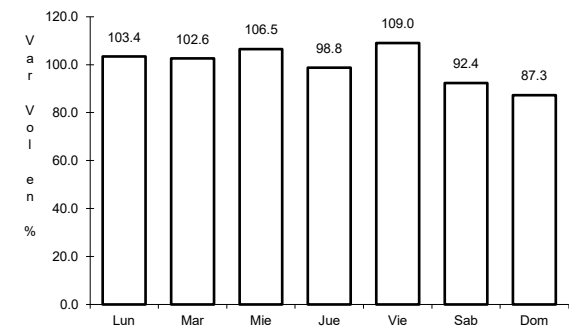
ruta: MEX-186



Km: 0.00 Tipo: 3 Sent: 0



Km: 44.50 Tipo: 3 Sent: 0

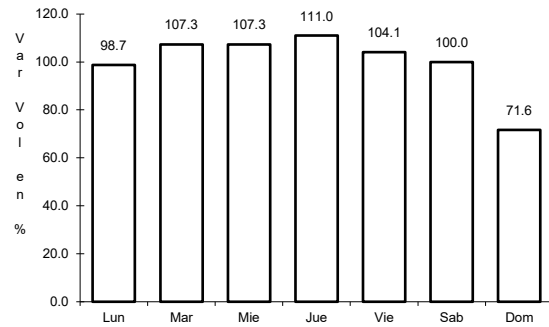


Km: 70.00 Tipo: 1 Sent: 0

13 CARR: Ramal a Ruíz Cortines

CLAVE: 04101

ruta: MEX-180

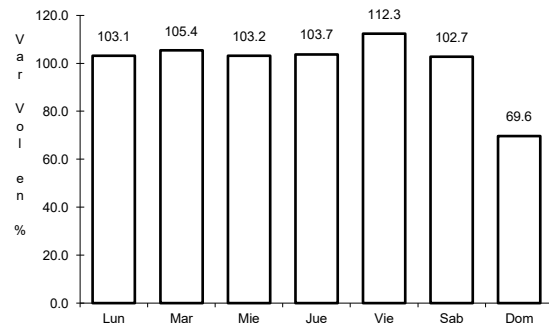


Km: 1.00      Tipo: 3      Sent: 0

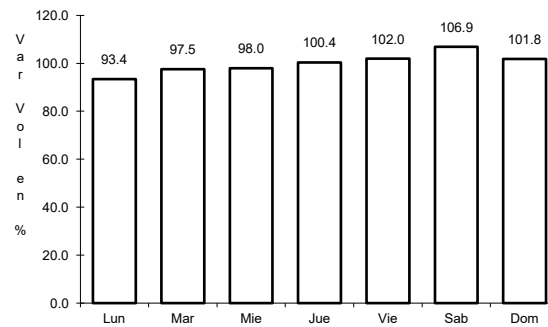
14 CARR: San Marcos - Palizada

CLAVE: 00490

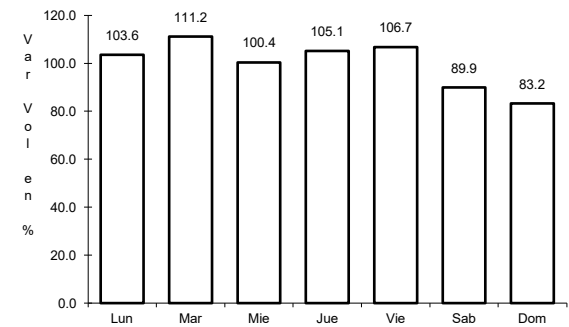
ruta: MEX-186



Km: 0.00      Tipo: 3      Sent: 0



Km: 46.20      Tipo: 1      Sent: 0

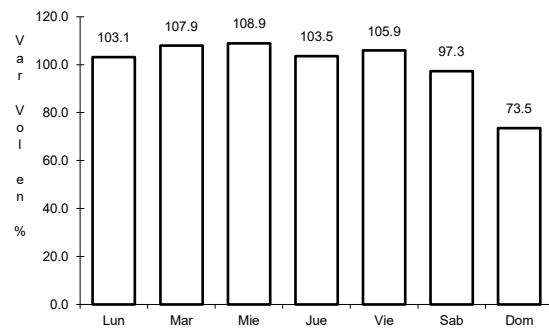


Km: 46.20      Tipo: 3      Sent: 0

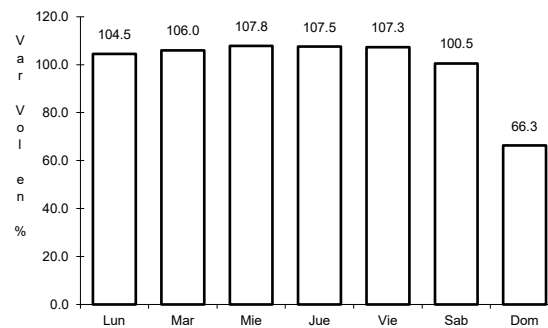
15 CARR: Villahermosa - Cd. del Carmen

CLAVE: 00064

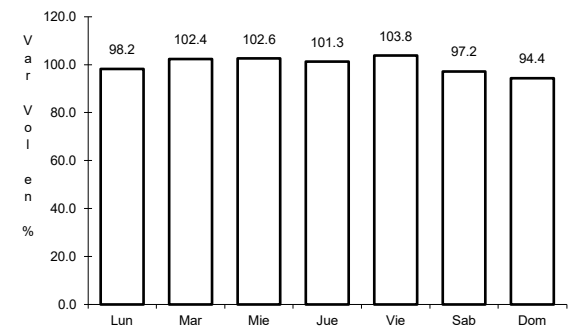
ruta: MEX-180



Km: 4.30      Tipo: 3      Sent: 1



Km: 4.30      Tipo: 3      Sent: 2

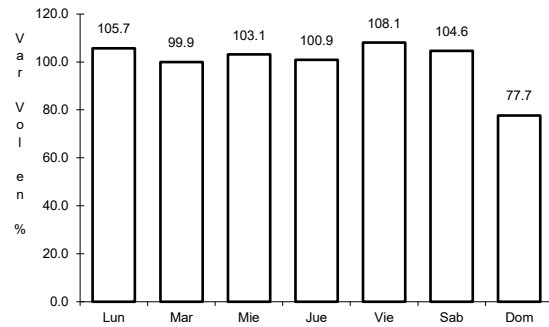


Km: 162.41      Tipo: 1      Sent: 0

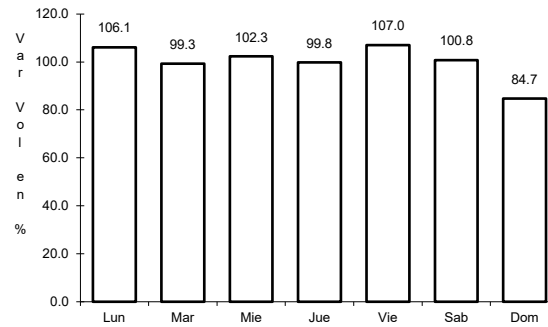
16 CARR: Villahermosa - Francisco Escárcega

CLAVE: 00092

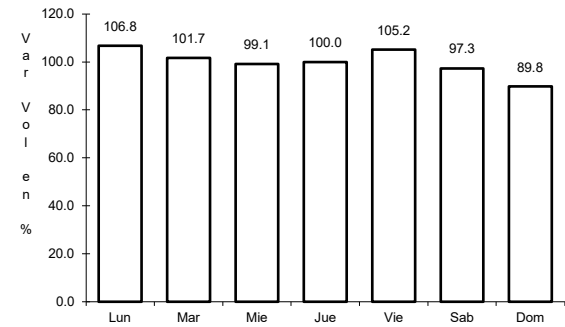
ruta: MEX-186-307



Km: 0.00      Tipo: 3      Sent: 1



Km: 0.00      Tipo: 3      Sent: 2

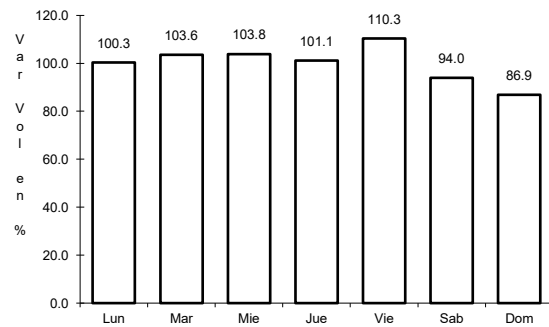


Km: 297.04      Tipo: 1      Sent: 0

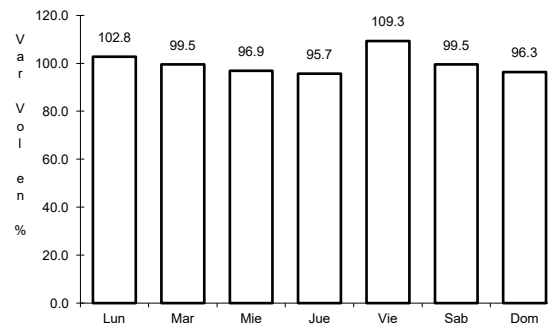
17 CARR: Champotón - Campeche (Cuota)

CLAVE: 04014

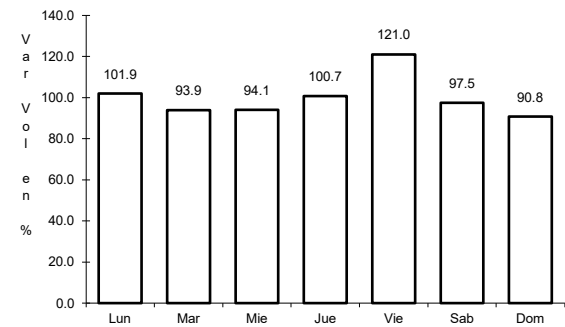
ruta: MEX-180D



Km: 160.00      Tipo: 3      Sent: 1



Km: 160.00      Tipo: 3      Sent: 2

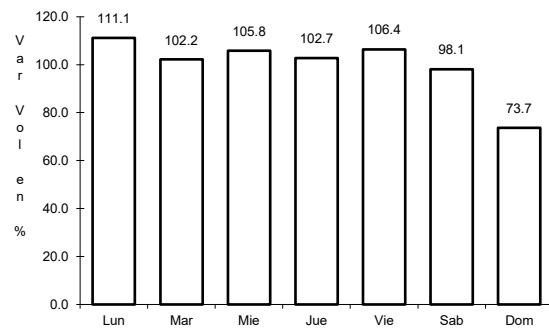


Km: 199.80      Tipo: 1      Sent: 1

18 CARR: Hopolchén - Dzibalchén

CLAVE: 04572

ruta: CAM-261

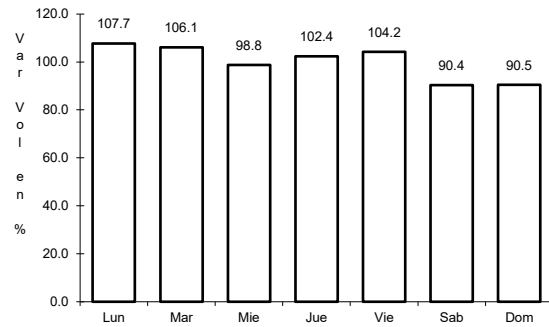


Km: 0.00      Tipo: 3      Sent: 0

19 CARR: Libramiento de Becal

CLAVE: 04010

ruta: CAM



Km: 2.30

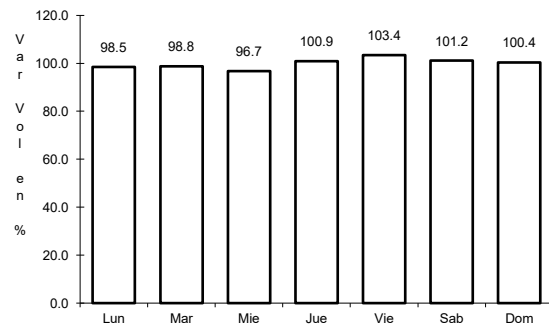
Tipo: 1

Sent: 0

20 CARR: Libramiento de Pomuch

CLAVE: 04579

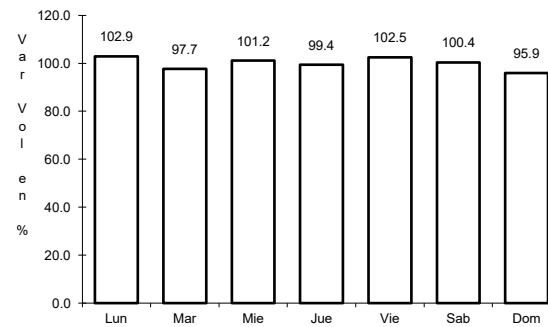
ruta: CAM



Km: 0.00

Tipo: 3

Sent: 1



Km: 0.00

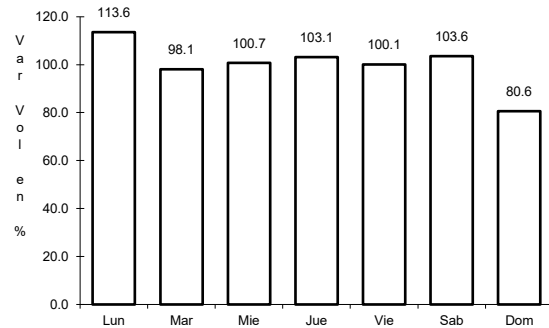
Tipo: 3

Sent: 2

21 CARR: T. C. (Francisco Escárcega - Champotón) - Yohaltún

CLAVE: 04581

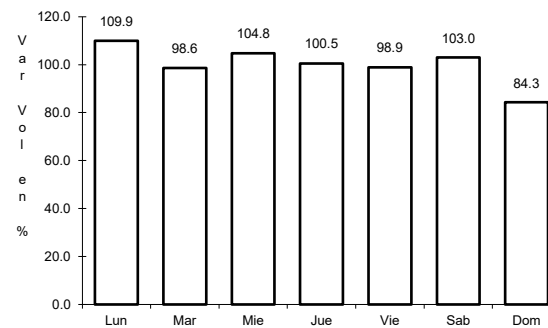
ruta: CAM



Km: 0.00

Tipo: 3

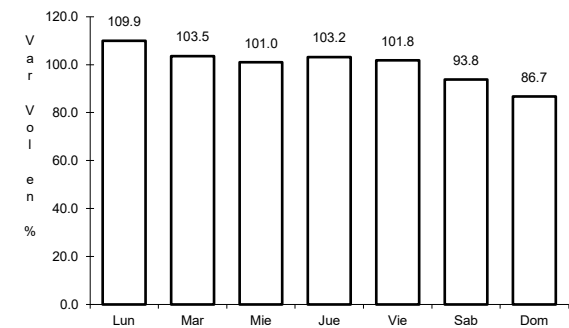
Sent: 0



Km: 36.50

Tipo: 1

Sent: 0



Km: 36.50

Tipo: 3

Sent: 0

