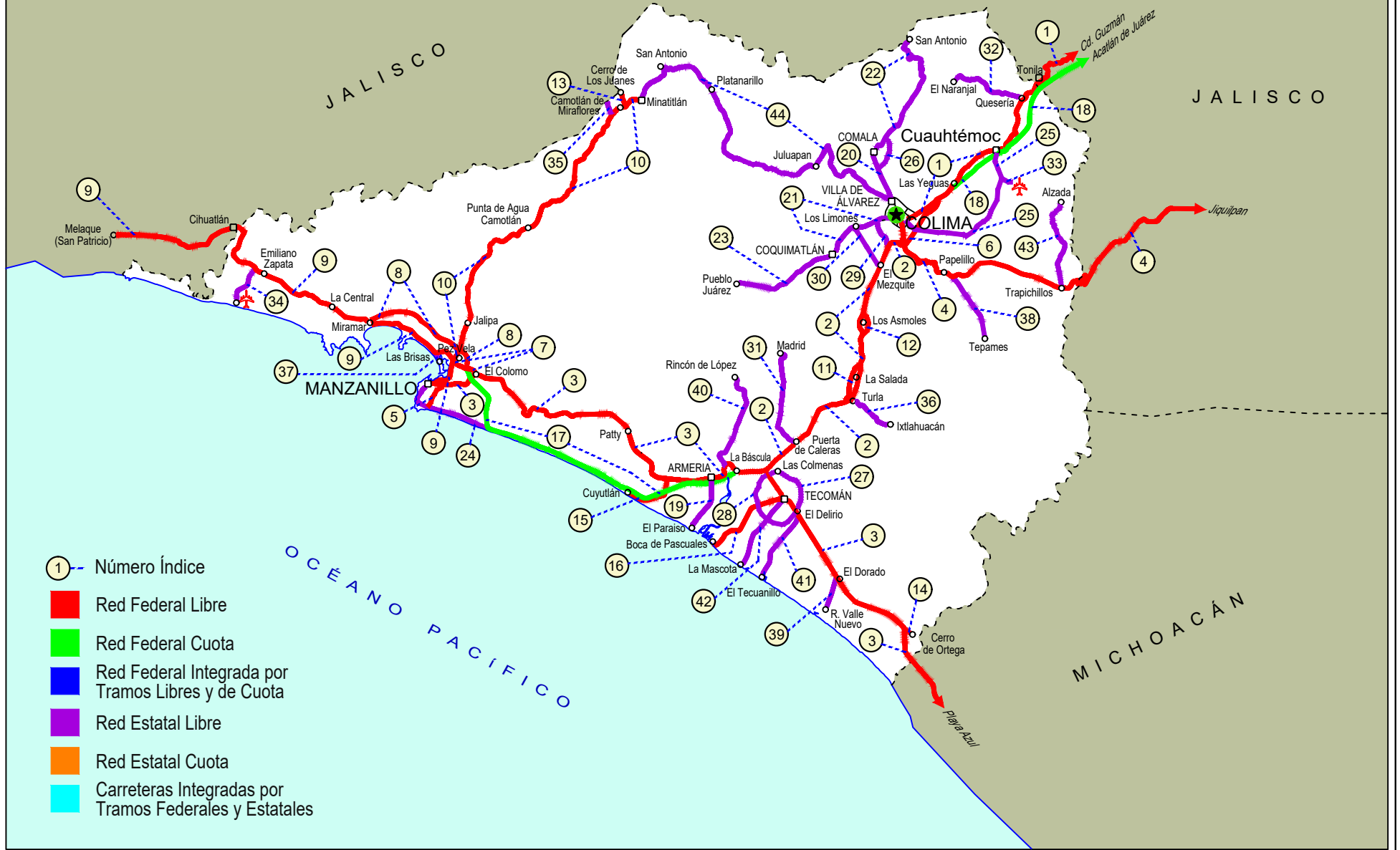


COLIMA

NO. INDICE CARRETERA		RUTA
	---RED FEDERAL LIBRE---	
1	Cd. Guzmán - Colima	MEX-054
2	Colima - Ent. Tecomán	MEX-110
3	Ent. Playa Azul - Manzanillo	MEX-200
4	Jiquilpan - Colima	MEX-110
5	Libramiento Campos - Alameda	MEX
6	Libramiento de Colima	MEX-054
7	Libramiento de Manzanillo (Libre)	MEX-200
8	Libramiento de Manzanillo Norte	MEX-200
9	Manzanillo - Puerto Vallarta	MEX-200
10	Minatitlán - Ent. Pez Vela	MEX-098
11	Paso por La Salada	MEX-110
12	Paso por Los Asmoles	MEX-110
13	Ramal a Cerro de Los Juanes	MEX-098
14	Ramal a Cerro de Ortega	MEX-200
15	Ramal a Cuyutlán	MEX-200
16	Tecomán - Boca de Pascuales	MEX-200
	---RED FEDERAL DE CUOTA---	
17	Armería - Manzanillo (Cuota)	MEX-200D
18	Guadalajara - Colima (Cuota)	MEX-054D
	---RED ESTATAL LIBRE---	
19	Armería - Playa El Paraiso	COL
20	Colima - Comala	COL-016
21	Colima - Coquimatlán	COL-034
22	Comala - San Antonio	COL-016
23	Coquimatlán - Pueblo Juárez	COL-034
24	Costera Laguna de Cuyutlán	COL
25	Cuahtémoc - Colima	COL-019
26	Libramiento de Comala	COL-016
27	Libramiento de Tecomán	COL
28	Libramiento Poniente Arco Sur de Tecomán	COL
29	Libramiento Poniente de Colima	COL
30	Los Limones - Loma de Juárez	COL
31	Puerta de Caleras - Madrid	COL-014
32	Quesería - El Naranjal	COL-001
33	Ramal a Aeropuerto de Colima	COL
34	Ramal a Aeropuerto Manzanillo	COL
35	Ramal a Camotlán de Miraflores	COL
36	Ramal a Ixtlahuacán	COL-005
37	Ramal a Las Brisas	COL
38	Ramal a Los Tepames	COL-004
39	Ramal a Rancho Valle Nuevo	COL
40	Ramal a Rincón de López	COL
41	Ramal a Tecuanillo	COL-009
42	Tecomán - La Mascota	COL
43	Trapichillos - Estación Alzada	COL-003
44	Villa de Álvarez - Minatitlán	COL

06 COLIMA



COLIMA

1 CARR: Cd. Guzmán - Colima

CLAVE: 00117

RUTA: MEX-054

AÑO: 2023

LUGAR	ESTACION				CLASIFICACION VEHICULAR EN PORCIENTO										COORDENADAS					
	KM	TE	SC	TDPA	M	A	B	C2	C3	T3S2	T3S3	T3S2R4	OTROS	A	B	C	K'	D	LATITUD	LONGITUD
Cd. Guzmán	0.00	3	1	11496	5.5	87.3	0.9	3.3	1.6	0.6	0.4	0.3	0.1	92.8	0.9	6.3	0.098	0.526	19.676541	-103.475771
Cd. Guzmán	0.00	3	2	10356	5.5	87.2	0.9	3.2	1.6	0.6	0.4	0.4	0.2	92.7	0.9	6.4	0.095	0.526	19.676065	-103.475898
T. Izq. Zapotiltic	4.35	3	0	5620	3.2	84.9	1.8	4.1	2.8	1.2	1.0	0.8	0.2	88.1	1.8	10.1	0.091	0.541	19.646023	-103.471669
T. Der. Tepozal y Nevado de Colima	15.50	1	0	4263	2.7	86.0	1.7	4.1	2.2	1.8	1.1	0.3	0.1	88.7	1.7	9.6	0.085	0.542	19.570602	-103.444554
Atenquique	23.10	1	0	2958	5.4	74.2	5.0	4.5	4.0	4.0	1.9	0.7	0.3	79.6	5.0	15.4	0.078	0.536	19.529947	-103.434434
Atenquique	23.10	3	0	2065	6.0	76.1	2.4	4.7	4.3	4.6	1.3	0.4	0.2	82.1	2.4	15.5	0.075	0.557	19.526037	-103.440010
Lim. Edos. Term. Jal. Ppia. Col.	53.80																			
T. Der. Quesería	56.90	1	0	3015	8.8	76.3	1.7	10.1	0.9	1.3	0.5	0.3	0.1	85.1	1.7	13.2	0.090	0.503	19.392541	-103.564887
Cuahtémoc	65.40	1	0	5814	2.7	88.3	1.7	5.2	0.2	1.0	0.5	0.2	0.2	91.0	1.7	7.3	0.080	0.533	19.333467	-103.590974
Cuahtémoc	65.40	3	0	6051	5.4	81.1	1.7	7.8	1.6	1.3	0.9	0.2	0.0	86.5	1.7	11.8	0.078	0.508	19.324254	-103.609055
T. C. Guadalajara - Colima (Cuota)	72.40	3	1	16860	2.3	76.6	1.9	5.2	1.6	4.9	2.4	4.5	0.6	78.9	1.9	19.2	0.082	0.517	19.289861	-103.652638
T. C. Guadalajara - Colima (Cuota)	72.40	3	2	15732	2.1	74.2	2.3	5.4	1.9	5.7	2.6	5.0	0.8	76.3	2.3	21.4	0.085	0.517	19.286563	-103.655908
El Trapiche	73.60	3	1	16786	2.6	80.9	1.2	3.9	1.2	4.8	1.7	2.9	0.8	83.5	1.2	15.3	0.066	0.511	19.283587	-103.660614
El Trapiche	73.60	3	2	17518	3.0	81.3	1.2	3.5	1.2	4.6	1.7	2.6	0.9	84.3	1.2	14.5	0.084	0.511	19.282930	-103.661407
T. Izq. Libramiento de Colima	77.10	1	1	19848	3.1	76.7	1.9	4.5	1.7	5.1	2.5	3.6	0.9	79.8	1.9	18.3	0.062	0.503	19.267368	-103.678562
T. Izq. Libramiento de Colima	77.10	1	2	20072	2.8	74.6	2.2	5.2	1.9	5.4	2.9	4.0	1.0	77.4	2.2	20.4	0.068	0.503	19.268266	-103.676195
Colima	80.60																			

2 CARR: Colima - Ent. Tecomán

CLAVE: 06119

RUTA: MEX-110

AÑO: 2023

LUGAR	ESTACION				CLASIFICACION VEHICULAR EN PORCIENTO										COORDENADAS					
	KM	TE	SC	TDPA	M	A	B	C2	C3	T3S2	T3S3	T3S2R4	OTROS	A	B	C	K'	D	LATITUD	LONGITUD
T. C. Jiquilpan - Colima	0.00	3	1	17784	2.6	79.2	1.6	6.2	0.8	4.4	1.9	2.5	0.8	81.8	1.6	16.6	0.091	0.503	19.215241	-103.735301
T. C. Jiquilpan - Colima	0.00	3	2	17985	2.7	79.0	2.0	6.7	1.2	4.1	2.0	1.7	0.6	81.7	2.0	16.3	0.075	0.503	19.214991	-103.734576
T. Izq. Libramiento Poniente de Colima	2.00	3	1	12831	2.6	79.2	2.6	3.9	1.4	4.6	1.8	3.1	0.8	81.8	2.6	15.6	0.080	0.507	19.204510	-103.743665
T. Izq. Libramiento Poniente de Colima	2.00	3	2	12458	2.5	77.5	2.9	4.4	1.5	5.0	1.9	3.4	0.9	80.0	2.9	17.1	0.099	0.507	19.204399	-103.743490
T. Izq. Los Asmoles	13.00	3	1	11277	2.0	75.6	3.2	4.8	1.8	5.1	2.0	4.7	0.8	77.6	3.2	19.2	0.085	0.517	19.109324	-103.775928
T. Izq. Los Asmoles	13.00	3	2	10531	2.1	73.1	3.3	5.4	2.0	5.6	2.3	5.2	1.0	75.2	3.3	21.5	0.109	0.517	19.109162	-103.775848
Ramal a Ixtlahuacán	24.50	3	1	6969	5.0	73.6	2.0	5.1	1.7	5.3	2.7	3.8	0.8	78.6	2.0	19.4	0.085	0.508	19.023228	-103.805929
Ramal a Ixtlahuacán	24.50	3	2	6753	4.9	73.7	2.1	5.0	1.7	5.3	2.6	3.8	0.9	78.6	2.1	19.3	0.099	0.508	19.023397	-103.805559
T. Der. Caleras	34.55	1	1	10597	3.6	75.1	3.7	4.9	1.5	5.2	2.4	2.8	0.8	78.7	3.7	17.6	0.079	0.516	18.981762	-103.853125
T. Der. Caleras	34.55	1	2	11300	3.4	73.2	4.1	5.6	1.7	5.6	2.5	3.1	0.8	76.6	4.1	19.3	0.100	0.516	18.981539	-103.853273
T. C. Ent. Playa Azul - Manzanillo	40.10	1	1	14862	4.1	70.4	4.7	3.8	2.1	6.9	2.0	5.1	0.9	74.5	4.7	20.8	0.081	0.537	18.962995	-103.875789
T. C. Ent. Playa Azul - Manzanillo	40.10	1	2	12792	4.8	75.7	2.4	3.3	1.6	5.3	2.0	4.0	0.9	80.5	2.4	17.1	0.098	0.537	18.962684	-103.876023

COLIMA

3 CARR: Ent. Playa Azul - Manzanillo

CLAVE: 00495

RUTA: MEX-200

AÑO: 2023

LUGAR	ESTACION				CLASIFICACION VEHICULAR EN PORCIENTO										COORDENADAS					
	KM	TE	SC	TDPA	M	A	B	C2	C3	T3S2	T3S3	T3S2R4	OTROS	A	B	C	K'	D	LATITUD	LONGITUD
T. C. Carapan - Playa Azul	0.00	3	0	5347	6.6	81.9	1.4	6.4	1.7	1.2	0.3	0.3	0.2	88.5	1.4	10.1	0.075	0.523	18.019750	-102.340701
Caleta de Campos	50.24	1	0	3741	11.1	77.3	1.0	7.6	1.3	1.0	0.3	0.3	0.1	88.4	1.0	10.6	0.076	0.503	18.077276	-102.745707
Caleta de Campos	50.24	3	0	2095	13.5	76.5	0.7	5.4	1.7	1.5	0.4	0.2	0.1	90.0	0.7	9.3	0.107	0.502	18.080536	-102.768383
Tizupan	106.60	1	0	642	21.1	65.5	2.8	5.2	2.0	2.0	1.1	0.2	0.1	86.6	2.8	10.6	0.079	0.503	18.220808	-103.124597
Maruata	149.75	1	0	577	18.2	64.4	1.4	8.7	2.5	2.9	1.4	0.3	0.2	82.6	1.4	16.0	0.120	0.515	18.273344	-103.342268
Maruata	149.75	3	0	1438	18.2	63.7	1.7	8.5	3.1	2.9	1.6	0.2	0.1	81.9	1.7	16.4	0.088	0.505	18.278731	-103.353236
T. Der. Aquila	190.10	1	0	1597	12.5	74.1	1.8	6.5	1.6	2.1	1.0	0.4	0.0	86.6	1.8	11.6	0.092	0.519	18.554787	-103.600218
T. Der. Aquila	190.10	3	0	2218	10.4	74.2	1.8	7.0	1.9	3.0	1.6	0.1	0.0	84.6	1.8	13.6	0.086	0.503	18.566733	-103.628758
Lim. Edos. Term. Mich. Ppia. Col.	229.60																			
Cerro de Ortega	233.20	1	0	5747	16.0	71.6	1.7	3.6	1.1	2.3	3.1	0.4	0.2	87.6	1.7	10.7	0.098	0.516	18.736458	-103.723838
El Balcón	242.95	1	0	5103	13.6	69.2	1.9	5.1	2.0	4.3	2.8	0.8	0.3	82.8	1.9	15.3	0.096	0.507	18.781469	-103.766814
El Balcón	242.95	3	0	5775	10.4	68.2	1.7	8.9	2.2	4.7	2.9	0.6	0.4	78.6	1.7	19.7	0.078	0.511	18.788317	-103.785708
Cofradía de Morelos	252.45	1	0	9629	12.7	70.7	1.3	6.3	2.3	3.3	3.0	0.1	0.3	83.4	1.3	15.3	0.078	0.507	18.862678	-103.836643
Cofradía de Morelos	252.45	3	1	5384	11.9	72.4	1.4	7.4	1.8	2.5	1.9	0.4	0.3	84.3	1.4	14.3	0.088	0.505	18.877461	-103.846143
Cofradía de Morelos	252.45	3	2	5489	11.8	72.4	1.4	7.5	2.0	2.3	1.7	0.5	0.4	84.2	1.4	14.4	0.119	0.505	18.877420	-103.846197
Tecomán	258.15																			
T. C. Colima - Ent. Tecomán	263.75	1	1	5823	19.2	67.1	1.2	4.8	2.4	2.5	1.5	0.9	0.4	86.3	1.2	12.5	0.148	0.502	18.895319	-103.857781
T. C. Colima - Ent. Tecomán	263.75	1	2	5869	18.7	67.4	1.1	5.0	2.5	2.2	1.8	0.9	0.4	86.1	1.1	12.8	0.126	0.502	18.895273	-103.857849
T. C. Colima - Ent. Tecomán	263.75	3	1	13011	5.6	74.4	3.4	3.1	2.2	5.2	1.6	3.6	0.9	80.0	3.4	16.6	0.084	0.513	18.944682	-103.910368
T. C. Colima - Ent. Tecomán	263.75	3	2	12345	5.7	72.5	2.6	5.0	1.6	5.4	1.5	4.7	1.0	78.2	2.6	19.2	0.092	0.513	18.944589	-103.910351
Ent. Armería	267.55																			
T. Der. Rincón de López	269.70	1	0	5770	13.7	57.4	2.5	9.0	3.1	11.2	2.4	0.4	0.3	71.1	2.5	26.4	0.074	0.509	18.949803	-103.937849
Armería	272.80	1	0	5277	13.8	59.2	2.5	12.2	3.8	6.0	1.8	0.4	0.3	73.0	2.5	24.5	0.084	0.505	18.941924	-103.947422
T. Izq. Cuyutlán	278.70	1	0	3885	8.9	55.8	3.1	5.7	3.8	18.3	4.0	0.4	0.0	64.7	3.1	32.2	0.062	0.519	18.935508	-104.018380
Santa Rita	292.50	1	0	3688	14.1	58.3	7.2	6.8	2.4	3.9	4.6	2.7	0.0	72.4	7.2	20.4	0.065	0.519	18.990511	-104.067117
Santa Rita	292.50	3	0	4069	10.5	53.6	3.2	10.8	3.0	14.5	3.1	0.9	0.4	64.1	3.2	32.7	0.074	0.514	19.013393	-104.097031
Las Nuevas Juntas	309.60	1	0	4778	12.1	42.9	3.8	11.1	5.2	16.8	4.5	2.9	0.7	55.0	3.8	41.2	0.077	0.518	19.040639	-104.215488
T. Der. Libramiento de Manzanillo (Libre)	312.65	1	0	10382	15.0	57.1	2.3	6.4	3.6	9.3	4.1	1.4	0.8	72.1	2.3	25.6	0.083	0.502	19.055538	-104.235200
T. Der. Libramiento de Manzanillo (Libre)	312.65	3	0	4982	27.6	61.5	1.0	5.3	2.1	0.8	0.2	1.3	0.2	89.1	1.0	9.9	0.092	0.515	19.055667	-104.243022
Manzanillo	321.12	1	0	10096	12.6	79.0	0.8	4.6	0.8	0.9	0.7	0.4	0.2	91.6	0.8	7.6	0.074	0.510	19.049600	-104.293592

COLIMA

4 CARR: Jiquilpan - Colima

CLAVE: 00156

RUTA: MEX-110

AÑO: 2023

LUGAR	ESTACION				CLASIFICACION VEHICULAR EN PORCIENTO										COORDENADAS					
	KM	TE	SC	TDPA	M	A	B	C2	C3	T3S2	T3S3	T3S2R4	OTROS	A	B	C	K'	D	LATITUD	LONGITUD
Jiquilpan	0.00	3	0	5919	4.8	76.6	1.4	10.1	2.0	3.2	0.7	0.8	0.4	81.4	1.4	17.2	0.072	0.515	19.995333	-102.744897
San José de Gracia	37.93	1	0	5110	3.6	86.3	0.5	7.3	1.2	0.9	0.1	0.1	0.0	89.9	0.5	9.6	0.080	0.511	20.001161	-103.013322
Lim. Edos. Term. Mich. Ppia. Jal.	41.00																			
Mazamilla	48.65	1	0	4702	4.8	90.3	0.4	2.1	1.2	0.9	0.1	0.2	0.0	95.1	0.4	4.5	0.089	0.505	19.940354	-103.008902
Mazamilla	48.65	3	0	4814	4.3	85.0	3.5	3.3	1.1	1.3	0.8	0.5	0.2	89.3	3.5	7.2	0.124	0.515	19.923800	-103.054321
Villa de Contla	84.25	3	0	5244	9.5	80.3	1.1	2.7	2.3	2.4	0.7	0.9	0.1	89.8	1.1	9.1	0.075	0.506	19.747987	-103.184952
T. Izq. Tamazula de Gordiano (2º Acceso)	96.70	3	0	9331	11.6	80.0	1.2	2.3	1.7	2.5	0.4	0.3	0.0	91.6	1.2	7.2	0.082	0.503	19.682945	-103.262543
T. Der. Cd. Guzmán	108.50	1	0	7592	3.5	84.3	1.6	3.7	2.9	2.7	0.8	0.5	0.0	87.8	1.6	10.6	0.078	0.508	19.647504	-103.335800
T. Der. Cd. Guzmán	108.50	3	0	3858	5.0	77.6	1.7	3.4	5.3	4.4	1.5	1.0	0.1	82.6	1.7	15.7	0.072	0.511	19.645078	-103.335462
T. Der. Cerca Lisa	110.00	1	0	1538	10.0	76.3	2.5	3.2	6.5	1.0	0.3	0.2	0.0	86.3	2.5	11.2	0.114	0.508	19.631260	-103.331408
Tecalitlán	132.00	3	0	3755	5.9	85.6	1.6	4.0	1.9	0.4	0.2	0.4	0.0	91.5	1.6	6.9	0.082	0.506	19.462276	-103.318920
T. Der. Atenquique	137.67	3	0	1867	4.8	82.3	1.6	5.9	2.9	0.8	1.1	0.4	0.2	87.1	1.6	11.3	0.089	0.505	19.457112	-103.348254
Pihuamo	168.19	3	0	3220	9.1	82.6	0.9	5.2	1.5	0.3	0.3	0.1	0.0	91.7	0.9	7.4	0.092	0.517	19.248956	-103.395202
Lim. Edos. Term. Jal. Ppia. Col.	189.60																			
T. Der. Estación Alzada	198.60	3	0	1780	6.0	75.7	1.9	7.3	1.5	5.2	2.2	0.2	0.0	81.7	1.9	16.4	0.074	0.547	19.163386	-103.534990
T. Izq. Los Tepames	214.20	1	0	2516	5.4	80.8	1.2	6.3	1.1	3.4	1.5	0.2	0.1	86.2	1.2	12.6	0.071	0.512	19.175008	-103.657306
T. Izq. Los Tepames	214.20	3	0	3061	5.5	82.8	0.9	6.9	1.0	1.8	0.7	0.3	0.1	88.3	0.9	10.8	0.086	0.505	19.175241	-103.663874
X. C. Libramiento de Colima	220.00	1	0	9842	11.1	81.9	0.6	2.1	1.4	1.1	1.1	0.6	0.1	93.0	0.6	6.4	0.060	0.500	19.210078	-103.721223
Colima	222.00	1	1	10286	8.3	84.8	0.5	4.9	0.4	0.4	0.2	0.2	0.3	93.1	0.5	6.4	0.093	0.507	19.217466	-103.721923
Colima	222.00	1	2	10564	8.3	84.8	0.4	4.9	0.4	0.4	0.3	0.2	0.3	93.1	0.4	6.5	0.107	0.507	19.217462	-103.722054

5 CARR: Libramiento Campos - Alameda

CLAVE:

RUTA: MEX

AÑO: 2023

LUGAR	ESTACION				CLASIFICACION VEHICULAR EN PORCIENTO										COORDENADAS					
	KM	TE	SC	TDPA	M	A	B	C2	C3	T3S2	T3S3	T3S2R4	OTROS	A	B	C	K'	D	LATITUD	LONGITUD
T. C. Costera Laguna de Cuyutlán	0.00	3	0	2111	11.4	77.0	0.8	8.0	1.3	0.7	0.4	0.3	0.1	88.4	0.8	10.8	0.097	0.529	19.026583	-104.315883
T. C. Playa Azul - Manzanillo	5.00	1	0	2383	14.0	76.0	0.9	7.1	0.8	0.5	0.4	0.2	0.1	90.0	0.9	9.1	0.108	0.514	19.047280	-104.301518

6 CARR: Libramiento de Colima

CLAVE: 06573

RUTA: MEX-054

AÑO: 2023

LUGAR	ESTACION				CLASIFICACION VEHICULAR EN PORCIENTO										COORDENADAS					
	KM	TE	SC	TDPA	M	A	B	C2	C3	T3S2	T3S3	T3S2R4	OTROS	A	B	C	K'	D	LATITUD	LONGITUD
T. C. Cd. Guzmán - Colima	0.00	3	1	8900	2.1	74.5	2.7	5.7	1.9	5.3	2.3	4.7	0.8	76.6	2.7	20.7	0.083	0.508	19.261407	-103.682836
T. C. Cd. Guzmán - Colima	0.00	3	2	8605	2.2	71.6	3.0	6.5	2.2	5.7	2.5	5.3	1.0	73.8	3.0	23.2	0.089	0.508	19.263155	-103.681585
T. C. Colima - Ent. Tecomán	9.00	1	1	20757	1.8	82.5	1.4	4.7	1.4	3.3	1.8	2.2	0.9	84.3	1.4	14.3	0.081	0.514	19.228792	-103.707833

COLIMA

6 CARR: Libramiento de Colima

CLAVE: 06573

RUTA: MEX-054

AÑO: 2023

LUGAR	ESTACION				CLASIFICACION VEHICULAR EN PORCIENTO														COORDENADAS	
	KM	TE	SC	TDPA	M	A	B	C2	C3	T3S2	T3S3	T3S2R4	OTROS	A	B	C	K'	D	LATITUD	LONGITUD
T. C. Colima - Ent. Tecmán	9.00	1	2	21933	1.7	80.8	1.4	5.2	1.5	3.8	2.1	2.6	0.9	82.5	1.4	16.1	0.076	0.514	19.228894	-103.707610

7 CARR: Libramiento de Manzanillo (Libre)

CLAVE: 06574

RUTA: MEX-200

AÑO: 2023

LUGAR	ESTACION				CLASIFICACION VEHICULAR EN PORCIENTO														COORDENADAS	
	KM	TE	SC	TDPA	M	A	B	C2	C3	T3S2	T3S3	T3S2R4	OTROS	A	B	C	K'	D	LATITUD	LONGITUD
T. C. Ent. Playa Azul - Manzanillo	0.00	3	0	10935	11.4	62.3	2.0	4.0	3.5	9.3	2.7	4.2	0.6	73.7	2.0	24.3	0.075	0.503	19.057522	-104.244192
T. C. Manzanillo - Puerto Vallarta	6.30	1	1	7488	9.7	66.5	2.7	5.0	2.8	5.4	2.5	4.8	0.6	76.2	2.7	21.1	0.087	0.513	19.072134	-104.279103
T. C. Manzanillo - Puerto Vallarta	6.30	1	2	7103	9.8	67.3	2.7	4.2	2.9	5.1	2.0	5.3	0.7	77.1	2.7	20.2	0.106	0.513	19.072044	-104.279169

8 CARR: Libramiento de Manzanillo Norte

CLAVE: 06122

RUTA: MEX-200

AÑO: 2023

LUGAR	ESTACION				CLASIFICACION VEHICULAR EN PORCIENTO														COORDENADAS	
	KM	TE	SC	TDPA	M	A	B	C2	C3	T3S2	T3S3	T3S2R4	OTROS	A	B	C	K'	D	LATITUD	LONGITUD
T. C. Armeria - Manzanillo (Cuota)	0.00	3	0	20780	10.6	67.4	1.9	4.8	2.4	5.7	2.4	3.9	0.9	78.0	1.9	20.1	0.077	0.525	19.084662	-104.268421
T. C. Minatitlán - Ent. Pez Vela	3.00	3	0	25212	12.1	78.3	1.0	3.5	1.5	1.7	0.9	0.7	0.3	90.4	1.0	8.6	0.094	0.513	19.096286	-104.277431
T. Izq. Manzanillo	6.60	3	0	26927	14.2	79.4	0.9	2.1	1.2	1.1	0.6	0.3	0.2	93.6	0.9	5.5	0.092	0.517	19.119982	-104.311636
T. Der. Chandiablo	12.00	1	1	7044	14.0	76.5	1.0	3.7	1.5	2.0	0.7	0.4	0.2	90.5	1.0	8.5	0.124	0.515	19.137018	-104.338463
T. Der. Chandiablo	12.00	1	2	7490	14.1	77.2	1.0	3.2	1.4	1.8	0.7	0.4	0.2	91.3	1.0	7.7	0.121	0.515	19.136965	-104.338508
T. C. Manzanillo - Puerto Vallarta	19.00	1	0	5688	5.6	81.9	2.4	4.7	1.9	1.6	1.1	0.5	0.3	87.5	2.4	10.1	0.092	0.508	19.127204	-104.396277

9 CARR: Manzanillo - Puerto Vallarta

CLAVE: 00070

RUTA: MEX-200

AÑO: 2023

LUGAR	ESTACION				CLASIFICACION VEHICULAR EN PORCIENTO														COORDENADAS	
	KM	TE	SC	TDPA	M	A	B	C2	C3	T3S2	T3S3	T3S2R4	OTROS	A	B	C	K'	D	LATITUD	LONGITUD
Manzanillo	0.00	3	1	17333	14.1	77.4	1.1	5.9	0.5	0.2	0.1	0.5	0.2	91.5	1.1	7.4	0.077	0.512	19.055339	-104.298884
Manzanillo	0.00	3	2	16491	14.0	76.6	1.2	6.7	0.5	0.2	0.1	0.5	0.2	90.6	1.2	8.2	0.074	0.512	19.055402	-104.298912
T. Der. Minatitlán	4.50	1	1	17898	8.7	86.1	0.5	3.3	0.2	0.7	0.2	0.2	0.1	94.8	0.5	4.7	0.075	0.503	19.063755	-104.289638
T. Der. Minatitlán	4.50	1	2	17712	9.1	85.1	0.5	3.9	0.2	0.7	0.2	0.2	0.1	94.2	0.5	5.3	0.087	0.503	19.063770	-104.289767
Santiago	13.80	1	1	12994	12.1	77.0	0.6	4.5	1.6	3.5	0.4	0.2	0.1	89.1	0.6	10.3	0.078	0.503	19.115622	-104.349054
Santiago	13.80	1	2	12816	11.9	76.4	0.7	4.6	1.9	3.8	0.4	0.2	0.1	88.3	0.7	11.0	0.077	0.503	19.115511	-104.348979
Santiago	13.80	3	1	6837	8.2	83.9	0.7	5.5	0.8	0.5	0.3	0.1	0.0	92.1	0.7	7.2	0.083	0.517	19.120533	-104.377165
Santiago	13.80	3	2	7321	8.0	83.9	0.8	5.6	0.8	0.5	0.3	0.1	0.0	91.9	0.8	7.3	0.095	0.517	19.120438	-104.377163
T. Der. Libramiento de Manzanillo Norte	19.00	3	0	10208	8.5	77.3	1.6	7.7	2.0	1.5	0.8	0.4	0.2	85.8	1.6	12.6	0.066	0.510	19.135954	-104.428359
San Juan de Cuatro Vientos	35.65	3	0	6484	1.4	82.5	2.4	6.2	2.2	3.0	1.1	0.4	0.8	83.9	2.4	13.7	0.099	0.506	19.195135	-104.547550

COLIMA

9 CARR: Manzanillo - Puerto Vallarta

CLAVE: 00070

RUTA: MEX-200

AÑO: 2023

LUGAR	ESTACION				CLASIFICACION VEHICULAR EN PORCIENTO										COORDENADAS					
	KM	TE	SC	TDPA	M	A	B	C2	C3	T3S2	T3S3	T3S2R4	OTROS	A	B	C	K'	D	LATITUD	LONGITUD
T. Izq. Aeropuerto Manzanillo	37.35	3	0	5886	10.4	77.2	2.1	6.7	1.3	1.1	0.7	0.4	0.1	87.6	2.1	10.3	0.084	0.517	19.195594	-104.552342
Lim. Edos. Term. Col. Ppia. Jal.	43.44																			
Cihuatlán	44.70	1	0	8728	12.8	80.7	1.7	2.2	0.8	0.6	0.9	0.2	0.1	93.5	1.7	4.8	0.083	0.503	19.233908	-104.549846
Cihuatlán	44.70	3	0	8710	13.9	73.9	2.9	7.6	0.6	0.5	0.4	0.2	0.0	87.8	2.9	9.3	0.100	0.504	19.229171	-104.583063
T. Izq. San Francisco	50.97	3	0	8992	13.0	75.5	3.4	5.8	0.8	0.8	0.5	0.2	0.0	88.5	3.4	8.1	0.081	0.512	19.216821	-104.624950
Melaque	61.00	1	0	19096	12.6	77.9	1.8	6.2	0.7	0.5	0.2	0.1	0.0	90.5	1.8	7.7	0.081	0.523	19.228671	-104.692468
Melaque	61.00	3	0	8599	12.7	79.8	1.1	4.6	0.8	0.6	0.3	0.1	0.0	92.5	1.1	6.4	0.080	0.516	19.239146	-104.711494
T. Izq. La Manzanilla	75.90	1	0	3301	12.2	74.7	3.7	6.5	1.0	0.8	0.7	0.4	0.0	86.9	3.7	9.4	0.088	0.516	19.291380	-104.775267
T. Izq. La Manzanilla	75.90	3	0	2896	10.2	78.9	2.3	4.7	1.0	1.3	0.8	0.8	0.0	89.1	2.3	8.6	0.093	0.525	19.297808	-104.781529
T. Izq. Boca de Iguanas	78.85	3	0	2351	9.5	79.5	2.8	4.1	1.1	1.6	0.9	0.5	0.0	89.0	2.8	8.2	0.098	0.508	19.319275	-104.821010
T. Izq. Tenacatita	89.60	3	0	2573	13.8	77.4	2.2	2.8	1.0	1.4	0.8	0.5	0.1	91.2	2.2	6.6	0.084	0.515	19.347539	-104.880640
T. Der. Villa Purificación	133.30	1	0	2866	18.1	74.6	2.0	1.9	0.8	1.3	0.8	0.5	0.0	92.7	2.0	5.3	0.084	0.515	19.585872	-105.091528
T. Der. Villa Purificación	133.30	3	0	2925	11.7	80.4	2.2	2.2	1.2	1.1	0.8	0.4	0.0	92.1	2.2	5.7	0.095	0.521	19.589317	-105.095342
T. Der. Tomatlán	177.50	1	0	2533	5.1	82.9	1.9	2.6	4.4	1.6	1.0	0.5	0.0	88.0	1.9	10.1	0.084	0.507	19.871174	-105.330706
T. Der. Tomatlán	177.50	3	0	2966	9.5	81.0	1.4	2.4	3.3	1.3	0.7	0.4	0.0	90.5	1.4	8.1	0.104	0.511	19.876918	-105.336365
T. Izq. El Tuito	231.71	3	0	3236	7.0	83.2	2.0	4.4	0.9	1.3	0.8	0.4	0.0	90.2	2.0	7.8	0.091	0.504	20.329071	-105.317446
Puerto Vallarta	275.84	1	0	12025	6.0	87.1	1.3	3.4	0.8	0.5	0.2	0.6	0.1	93.1	1.3	5.6	0.082	0.507	20.556215	-105.259252

10 CARR: Minatitlán - Ent. Pez Vela

CLAVE: 06015

RUTA: MEX-098

AÑO: 2023

LUGAR	ESTACION				CLASIFICACION VEHICULAR EN PORCIENTO										COORDENADAS					
	KM	TE	SC	TDPA	M	A	B	C2	C3	T3S2	T3S3	T3S2R4	OTROS	A	B	C	K'	D	LATITUD	LONGITUD
Minatitlán	0.00																			
T. Der. Jalipa	49.50	1	0	2213	17.0	76.1	0.6	5.4	0.4	0.3	0.2	0.0	0.0	93.1	0.6	6.3	0.092	0.509	19.139148	-104.265745
T. Der. Jalipa	49.50	3	1	5586	3.2	74.6	1.3	4.3	2.4	6.6	3.3	3.4	0.9	77.8	1.3	20.9	0.094	0.502	19.113198	-104.261028
T. Der. Jalipa	49.50	3	2	5633	3.2	74.9	1.3	4.5	2.3	6.5	3.2	3.4	0.7	78.1	1.3	20.6	0.074	0.502	19.106953	-104.332655
T. C. Manzanillo - Puerto Vallarta	58.50	1	1	10056	3.8	71.3	1.4	4.2	2.8	7.4	3.3	5.0	0.8	75.1	1.4	23.5	0.081	0.523	19.092237	-104.277217
T. C. Manzanillo - Puerto Vallarta	58.50	1	2	11006	3.9	71.5	1.5	4.3	2.3	7.2	3.5	5.0	0.8	75.4	1.5	23.1	0.074	0.523	19.092129	-104.277058

11 CARR: Paso por La Salada

CLAVE: 06121

RUTA: MEX-110

AÑO: 2023

LUGAR	ESTACION				CLASIFICACION VEHICULAR EN PORCIENTO										COORDENADAS					
	KM	TE	SC	TDPA	M	A	B	C2	C3	T3S2	T3S3	T3S2R4	OTROS	A	B	C	K'	D	LATITUD	LONGITUD
La Salada	4.80	3	0	67	0.8	82.7	3.4	12.7	0.4	0.0	0.0	0.0	0.0	83.5	3.4	13.1	0.194	0.513	19.052853	-103.786120
T. C. Ramal a Ixtlahuacán	8.00																			

COLIMA

12 CARR: Paso por Los Asmoles

CLAVE: 06120

RUTA: MEX-110

AÑO: 2023

LUGAR	ESTACION				CLASIFICACION VEHICULAR EN PORCIENTO														COORDENADAS		
	KM	TE	SC	TDPA	M	A	B	C2	C3	T3S2	T3S3	T3S2R4	OTROS	A	B	C	K'	D	LATITUD	LONGITUD	
T. C. Colima - Ent. Tecomán	0.00																				
Los Asmoles	1.80	3	0	1894	3.6	89.3	0.5	4.2	0.4	1.1	0.4	0.3	0.2	92.9	0.5	6.6	0.085	0.506	19.122153	-103.772070	
T. C. Colima - Ent. Tecomán	2.90																				

13 CARR: Ramal a Cerro de Los Juanes

CLAVE: 06009

RUTA: MEX-098

AÑO: 2023

LUGAR	ESTACION				CLASIFICACION VEHICULAR EN PORCIENTO														COORDENADAS		
	KM	TE	SC	TDPA	M	A	B	C2	C3	T3S2	T3S3	T3S2R4	OTROS	A	B	C	K'	D	LATITUD	LONGITUD	
T. C. Minatitlán - Ent. Pez Vela	0.00	3	0	881	1.5	83.1	1.5	12.6	0.3	0.5	0.3	0.1	0.1	84.6	1.5	13.9	0.135	0.533	19.377805	-104.092403	
Cerro de Los Juanes	3.30																				

14 CARR: Ramal a Cerro de Ortega

CLAVE: 06009

RUTA: MEX-200

AÑO: 2023

LUGAR	ESTACION				CLASIFICACION VEHICULAR EN PORCIENTO														COORDENADAS		
	KM	TE	SC	TDPA	M	A	B	C2	C3	T3S2	T3S3	T3S2R4	OTROS	A	B	C	K'	D	LATITUD	LONGITUD	
T. C. Ent. Playa Azul - Manzanillo	0.00	3	0	3529	35.2	53.2	1.6	7.5	1.0	0.5	0.1	0.6	0.3	88.4	1.6	10.0	0.101	0.504	18.754526	-103.722407	
Cerro de Ortega	1.00																				

15 CARR: Ramal a Cuyutlán

CLAVE: 06225

RUTA: MEX-200

AÑO: 2023

LUGAR	ESTACION				CLASIFICACION VEHICULAR EN PORCIENTO														COORDENADAS	
	KM	TE	SC	TDPA	M	A	B	C2	C3	T3S2	T3S3	T3S2R4	OTROS	A	B	C	K'	D	LATITUD	LONGITUD
T. C. Ent. Playa Azul - Manzanillo	0.00	3	0	831	11.1	79.9	0.9	6.8	0.5	0.2	0.3	0.1	0.2	91.0	0.9	8.1	0.107	0.500	18.934448	-104.019618
Cuyutlán	7.00	1	0	710	5.5	88.6	0.2	5.3	0.2	0.1	0.1	0.0	0.0	94.1	0.2	5.7	0.115	0.503	18.911377	-104.054517

16 CARR: Tecomán - Boca de Pascuales

CLAVE: 06226

RUTA: MEX-200

AÑO: 2023

LUGAR	ESTACION				CLASIFICACION VEHICULAR EN PORCIENTO														COORDENADAS		
	KM	TE	SC	TDPA	M	A	B	C2	C3	T3S2	T3S3	T3S2R4	OTROS	A	B	C	K'	D	LATITUD	LONGITUD	
Tecomán	0.00	3	0	2518	13.1	80.0	0.8	5.2	0.5	0.1	0.1	0.1	0.1	93.1	0.8	6.1	0.201	0.502	18.894267	-103.917472	
Boca de Pascuales	12.00																				

COLIMA

17 CARR: Armería - Manzanillo (Cuota)

CLAVE: 06585

RUTA: MEX-200D

AÑO: 2023

LUGAR	ESTACION				CLASIFICACION VEHICULAR EN PORCIENTO														COORDENADAS	
	KM	TE	SC	TDPA	M	A	B	C2	C3	T3S2	T3S3	T3S2R4	OTROS	A	B	C	K'	D	LATITUD	LONGITUD
T. C. Ent. Playa Azul - Manzanillo	0.00	3	1	8310	5.0	73.8	4.1	4.4	1.4	4.5	2.0	4.5	0.3	78.8	4.1	17.1	0.101	0.507	18.934110	-103.945787
T. C. Ent. Playa Azul - Manzanillo	0.00	3	2	8544	5.1	74.0	2.5	3.3	1.6	5.1	1.5	6.3	0.6	79.1	2.5	18.4	0.099	0.507	18.933979	-103.945757
T. Izq. Playa Paraíso	3.50	3	1	7119	4.0	71.5	3.4	3.1	1.3	5.6	2.5	7.7	0.9	75.5	3.4	21.1	0.087	0.506	18.928143	-103.969431
T. Izq. Playa Paraíso	3.50	3	2	7279	3.6	68.6	3.7	3.5	1.5	6.1	2.7	9.2	1.1	72.2	3.7	24.1	0.086	0.506	18.928063	-103.969410
1er Acceso a Cuyutlán	15.78	3	1	6041	4.2	72.2	2.1	3.4	1.6	8.2	3.0	4.9	0.4	76.4	2.1	21.5	0.085	0.523	18.926218	-104.071104
1er Acceso a Cuyutlán	15.78	3	2	6616	4.4	72.3	2.4	3.1	1.5	8.1	2.9	4.9	0.4	76.7	2.4	20.9	0.093	0.523	18.926450	-104.069659
T. Izq. Cuyutlán	17.58	3	1	5262	4.2	68.9	4.3	3.9	1.3	7.2	2.6	6.6	1.0	73.1	4.3	22.6	0.102	0.521	18.931324	-104.087861
T. Izq. Cuyutlán	17.58	3	2	5713	4.8	67.4	4.7	5.0	1.2	7.8	2.7	5.6	0.8	72.2	4.7	23.1	0.110	0.521	18.931256	-104.087903
Plaza de Cobro Cuyutlán	18.00	2	1	7231	0.0	72.6	1.7	1.8	1.5	6.0	2.9	11.1	2.4	72.6	1.7	25.7	0.096	0.500	18.927852	-104.081512
Plaza de Cobro Cuyutlán	18.00	2	2	7231	0.0	72.6	1.7	1.8	1.5	6.0	2.9	11.1	2.4	72.6	1.7	25.7	0.096	0.500	18.927852	-104.081512
T. C. Ent. Playa Azul - Manzanillo	44.00	1	1	7585	2.1	76.7	3.0	3.5	2.1	5.8	2.6	3.4	0.8	78.8	3.0	18.2	0.080	0.501	19.049517	-104.265958
T. C. Ent. Playa Azul - Manzanillo	44.00	1	2	7558	2.2	77.2	2.8	3.4	1.9	5.2	2.6	3.9	0.8	79.4	2.8	17.8	0.093	0.501	19.049446	-104.266002
T. C. Ent. Playa Azul - Manzanillo	44.00	3	1	7711	7.9	70.6	3.7	4.9	1.7	4.8	2.2	3.4	0.8	78.5	3.7	17.8	0.074	0.529	19.056268	-104.269321
T. C. Ent. Playa Azul - Manzanillo	44.00	3	2	6854	8.3	71.0	3.2	4.4	1.9	5.0	2.0	3.4	0.8	79.3	3.2	17.5	0.089	0.529	19.055772	-104.269127
T. C. Libramiento de Manzanillo (Libre)	46.00																			

18 CARR: Guadalajara - Colima (Cuota)

CLAVE: 00118

RUTA: MEX-054D

AÑO: 2023

LUGAR	ESTACION				CLASIFICACION VEHICULAR EN PORCIENTO														COORDENADAS	
	KM	TE	SC	TDPA	M	A	B	C2	C3	T3S2	T3S3	T3S2R4	OTROS	A	B	C	K'	D	LATITUD	LONGITUD
T. C. Ent. Santa Cruz - Melaque	0.00																			
Plaza de Cobro Acatlán	7.70	1	1	8077	2.7	67.9	6.2	4.5	2.0	7.5	2.2	6.3	0.7	70.6	6.2	23.2	0.079	0.502	20.417683	-103.556626
Plaza de Cobro Acatlán	7.70	1	2	8154	2.8	67.8	6.1	4.5	2.1	7.5	2.2	6.3	0.7	70.6	6.1	23.3	0.091	0.502	20.418329	-103.556366
Plaza de Cobro Acatlán	7.70	2	1	7919	0.4	64.7	2.2	4.2	4.0	8.3	4.0	9.7	2.5	65.1	2.2	32.7	0.084	0.500	20.373443	-103.576317
Plaza de Cobro Acatlán	7.70	2	2	7919	0.4	64.7	2.2	4.2	4.0	8.3	4.0	9.7	2.5	65.1	2.2	32.7	0.084	0.500	20.373443	-103.576317
T. Izq. San Marcos	10.80	1	1	8123	2.5	67.1	5.3	4.3	2.6	8.4	2.9	6.3	0.6	69.6	5.3	25.1	0.089	0.513	20.343825	-103.573176
T. Izq. San Marcos	10.80	1	2	7700	2.5	67.0	5.2	4.3	2.7	8.4	2.9	6.3	0.7	69.5	5.2	25.3	0.082	0.513	20.343530	-103.572849
T. Izq. Teocuitatlán de Corona	36.12	3	1	8724	3.0	66.1	4.8	3.8	2.9	9.1	3.0	6.8	0.5	69.1	4.8	26.1	0.078	0.508	20.123178	-103.509176
T. Izq. Teocuitatlán de Corona	36.12	3	2	9004	3.0	66.2	4.7	3.8	2.9	9.1	3.0	6.8	0.5	69.2	4.7	26.1	0.071	0.508	20.123801	-103.508653
T. Der. Usmajac	67.80	1	1	8607	3.2	68.0	4.2	3.5	2.9	8.8	2.5	6.5	0.4	71.2	4.2	24.6	0.075	0.530	19.883379	-103.517041
T. Der. Usmajac	67.80	1	2	9700	3.2	68.0	4.2	3.5	2.9	8.7	2.5	6.5	0.5	71.2	4.2	24.6	0.085	0.530	19.883388	-103.516957
T. Izq. Cd. Guzmán	86.70	1	1	8249	1.9	69.5	3.5	5.0	3.0	7.2	2.8	6.2	0.9	71.4	3.5	25.1	0.072	0.507	19.708160	-103.500952
T. Izq. Cd. Guzmán	86.70	1	2	8030	1.9	69.5	3.4	5.0	3.1	7.2	2.8	6.2	0.9	71.4	3.4	25.2	0.082	0.507	19.708198	-103.500855
T. Izq. Cd. Guzmán	86.70	3	1	9298	1.5	71.9	3.7	4.6	3.0	6.0	2.8	6.0	0.5	73.4	3.7	22.9	0.068	0.511	19.691621	-103.493918
T. Izq. Cd. Guzmán	86.70	3	2	9734	1.5	71.8	3.7	4.6	3.1	6.0	2.8	6.0	0.5	73.3	3.7	23.0	0.084	0.511	19.691670	-103.493821

COLIMA

18 CARR: Guadalajara - Colima (Cuota)

CLAVE: 00118

RUTA: MEX-054D

AÑO: 2023

LUGAR	ESTACION				CLASIFICACION VEHICULAR EN PORCIENTO										COORDENADAS					
	KM	TE	SC	TDPA	M	A	B	C2	C3	T3S2	T3S3	T3S2R4	OTROS	A	B	C	K'	D	LATITUD	LONGITUD
T. Izq. Cd. Tuxpan	107.27	1	1	7124	2.8	77.4	1.0	3.6	1.5	7.0	3.8	2.6	0.3	80.2	1.0	18.8	0.083	0.509	19.550454	-103.442904
T. Izq. Cd. Tuxpan	107.27	1	2	7372	2.9	77.3	0.9	3.6	1.5	7.0	3.8	2.6	0.4	80.2	0.9	18.9	0.066	0.509	19.540562	-103.425589
Plaza de Cobro San Marcos	126.60	2	1	6687	0.5	57.4	2.1	4.3	4.4	11.4	5.3	11.8	2.8	57.9	2.1	40.0	0.084	0.500	19.433745	-103.494491
Plaza de Cobro San Marcos	126.60	2	2	6687	0.5	57.4	2.1	4.3	4.4	11.4	5.3	11.8	2.8	57.9	2.1	40.0	0.084	0.500	19.433745	-103.494491
Lim. Edos. Term. Jal. Ppia. Col.	129.50																			
X. C. Cuauhtémoc - Colima	140.70	1	1	10100	1.1	77.9	3.8	3.4	2.3	5.7	1.9	3.5	0.4	79.0	3.8	17.2	0.074	0.509	19.315062	-103.597706
X. C. Cuauhtémoc - Colima	140.70	1	2	9749	1.2	75.8	4.0	3.6	2.5	6.3	2.2	4.0	0.4	77.0	4.0	19.0	0.085	0.509	19.314923	-103.597618
X. C. Cuauhtémoc - Colima	140.70	3	1	10109	1.3	74.6	3.9	2.8	1.8	5.9	1.9	7.3	0.5	75.9	3.9	20.2	0.073	0.502	19.305824	-103.617024
X. C. Cuauhtémoc - Colima	140.70	3	2	10189	1.0	73.2	4.1	3.2	2.2	6.1	2.0	7.7	0.5	74.2	4.1	21.7	0.069	0.502	19.306281	-103.614720
T. C. Cd. Guzmán - Colima	146.10																			

19 CARR: Armería - Playa El Paraíso

CLAVE: 06580

RUTA: COL

AÑO: 2023

LUGAR	ESTACION				CLASIFICACION VEHICULAR EN PORCIENTO										COORDENADAS					
	KM	TE	SC	TDPA	M	A	B	C2	C3	T3S2	T3S3	T3S2R4	OTROS	A	B	C	K'	D	LATITUD	LONGITUD
T. C. Ent. Playa Azul - Manzanillo	0.00	3	0	2634	14.1	77.2	0.5	6.8	0.8	0.3	0.3	0.0	0.0	91.3	0.5	8.2	0.118	0.533	18.924766	-103.963923
Playa Paraíso	7.50	1	0	1574	13.6	80.1	0.6	5.3	0.4	0.0	0.0	0.0	0.0	93.7	0.6	5.7	0.183	0.504	18.877295	-103.990372

20 CARR: Colima - Comala

CLAVE: 06016

RUTA: COL-016

AÑO: 2023

LUGAR	ESTACION				CLASIFICACION VEHICULAR EN PORCIENTO										COORDENADAS					
	KM	TE	SC	TDPA	M	A	B	C2	C3	T3S2	T3S3	T3S2R4	OTROS	A	B	C	K'	D	LATITUD	LONGITUD
Colima	0.00																			
Villa Álvarez	3.00	3	1	16666	8.6	85.9	0.6	2.2	0.5	0.8	0.6	0.3	0.5	94.5	0.6	4.9	0.082	0.502	19.287176	-103.746060
Villa Álvarez	3.00	3	2	16538	8.7	85.4	0.6	2.5	0.5	0.9	0.6	0.3	0.5	94.1	0.6	5.3	0.077	0.502	19.287210	-103.746202
Comala	10.00																			

21 CARR: Colima - Coquimatlán

CLAVE: 06034

RUTA: COL-034

AÑO: 2023

LUGAR	ESTACION				CLASIFICACION VEHICULAR EN PORCIENTO										COORDENADAS					
	KM	TE	SC	TDPA	M	A	B	C2	C3	T3S2	T3S3	T3S2R4	OTROS	A	B	C	K'	D	LATITUD	LONGITUD
Colima	0.00																			
T. Der. Villa Álvarez	3.00	3	1	13874	6.1	86.0	0.8	5.6	0.5	0.3	0.4	0.2	0.1	92.1	0.8	7.1	0.081	0.516	19.241599	-103.754604
T. Der. Villa Álvarez	3.00	3	2	14773	6.0	85.7	0.8	6.0	0.5	0.3	0.4	0.2	0.1	91.7	0.8	7.5	0.074	0.516	19.241527	-103.754565
Coquimatlán	11.00	1	1	6832	8.5	83.9	1.2	4.6	0.5	0.7	0.4	0.0	0.2	92.4	1.2	6.4	0.075	0.507	19.217212	-103.802543

COLIMA

21 CARR: Colima - Coquimatlán

CLAVE: 06034

RUTA: COL-034

AÑO: 2023

LUGAR	ESTACION				CLASIFICACION VEHICULAR EN PORCIENTO														COORDENADAS	
	KM	TE	SC	TDPA	M	A	B	C2	C3	T3S2	T3S3	T3S2R4	OTROS	A	B	C	K'	D	LATITUD	LONGITUD
Coquimatlán	11.00	1	2	7026	8.4	83.6	1.2	4.9	0.5	0.8	0.4	0.0	0.2	92.0	1.2	6.8	0.074	0.507	19.217204	-103.802415

22 CARR: Comala - San Antonio

CLAVE: 06030

RUTA: COL-016

AÑO: 2023

LUGAR	ESTACION				CLASIFICACION VEHICULAR EN PORCIENTO														COORDENADAS	
	KM	TE	SC	TDPA	M	A	B	C2	C3	T3S2	T3S3	T3S2R4	OTROS	A	B	C	K'	D	LATITUD	LONGITUD
Comala	0.00	3	1	1672	0.3	92.7	0.4	6.4	0.0	0.0	0.0	0.0	0.2	93.0	0.4	6.6	0.086	0.526	19.335991	-103.746464
Comala	0.00	3	2	1509	0.3	92.3	0.3	6.9	0.0	0.0	0.0	0.0	0.2	92.6	0.3	7.1	0.092	0.526	19.335807	-103.746593
Suchitlán	10.00	1	0	5950	6.8	87.1	0.7	4.8	0.2	0.1	0.3	0.0	0.0	93.9	0.7	5.4	0.078	0.505	19.368949	-103.722321
San Antonio	20.50																			

23 CARR: Coquimatlán - Pueblo Juárez

CLAVE: 06029

RUTA: COL-034

AÑO: 2023

LUGAR	ESTACION				CLASIFICACION VEHICULAR EN PORCIENTO														COORDENADAS	
	KM	TE	SC	TDPA	M	A	B	C2	C3	T3S2	T3S3	T3S2R4	OTROS	A	B	C	K'	D	LATITUD	LONGITUD
Coquimatlán	0.00	3	0	3792	4.8	83.7	1.2	6.9	1.3	1.5	0.4	0.1	0.1	88.5	1.2	10.3	0.081	0.504	19.198587	-103.815805
Pueblo Juárez	16.00																			

24 CARR: Costera Laguna de Cuyutlán

CLAVE: 06010

RUTA: COL

AÑO: 2023

LUGAR	ESTACION				CLASIFICACION VEHICULAR EN PORCIENTO														COORDENADAS	
	KM	TE	SC	TDPA	M	A	B	C2	C3	T3S2	T3S3	T3S2R4	OTROS	A	B	C	K'	D	LATITUD	LONGITUD
T. C. Armería - Manzanillo (Cuota)	0.00	3	0	490	12.2	58.6	1.8	19.8	2.7	1.7	1.3	1.2	0.7	70.8	1.8	27.4	0.163	0.513	19.019534	-104.305429
Manzanillo	13.00	1	0	2646	16.3	71.6	1.0	10.7	0.2	0.1	0.1	0.0	0.0	87.9	1.0	11.1	0.090	0.506	19.034414	-104.330116

25 CARR: Cuauhtémoc - Colima

CLAVE: 06019

RUTA: COL-019

AÑO: 2023

LUGAR	ESTACION				CLASIFICACION VEHICULAR EN PORCIENTO														COORDENADAS	
	KM	TE	SC	TDPA	M	A	B	C2	C3	T3S2	T3S3	T3S2R4	OTROS	A	B	C	K'	D	LATITUD	LONGITUD
Cuauhtémoc	0.00	3	0	5927	3.9	91.0	0.9	2.1	0.8	0.7	0.2	0.3	0.1	94.9	0.9	4.2	0.089	0.510	19.316539	-103.603509
X. C. Libramiento de Colima	19.50	1	1	12884	7.1	88.2	0.4	3.1	0.3	0.3	0.2	0.2	0.2	95.3	0.4	4.3	0.074	0.518	19.236362	-103.701072
X. C. Libramiento de Colima	19.50	1	2	13850	7.7	87.7	0.3	3.2	0.2	0.3	0.2	0.2	0.2	95.4	0.3	4.3	0.087	0.518	19.236149	-103.700864
Colima	22.40																			

COLIMA

26 CARR: Libramiento de Comala

CLAVE:

RUTA: COL-016

AÑO: 2023

LUGAR	ESTACION				CLASIFICACION VEHICULAR EN PORCIENTO													COORDENADAS		
	KM	TE	SC	TDPA	M	A	B	C2	C3	T3S2	T3S3	T3S2R4	OTROS	A	B	C	K'	D	LATITUD	LONGITUD
T. C. Colima - Comala	0.00	3	0	5363	5.6	85.1	0.6	3.7	0.7	2.5	0.6	0.5	0.7	90.7	0.6	8.7	0.097	0.503	19.294361	-103.746909
T. C. Comala - San Antonio	7.10	1	0	3217	6.0	86.7	0.4	4.0	0.5	1.8	0.3	0.2	0.1	92.7	0.4	6.9	0.119	0.511	19.343227	-103.740730

27 CARR: Libramiento de Tecmán

CLAVE: 06122

RUTA: COL

AÑO: 2023

LUGAR	ESTACION				CLASIFICACION VEHICULAR EN PORCIENTO													COORDENADAS		
	KM	TE	SC	TDPA	M	A	B	C2	C3	T3S2	T3S3	T3S2R4	OTROS	A	B	C	K'	D	LATITUD	LONGITUD
T. C. Ent. Playa Azul - Manzanillo (Sur)	0.00	3	1	2428	7.9	66.6	2.7	15.9	1.9	2.6	1.8	0.4	0.2	74.5	2.7	22.8	0.106	0.528	18.900213	-103.858096
T. C. Ent. Playa Azul - Manzanillo (Sur)	0.00	3	2	2712	8.0	66.1	2.6	15.8	2.1	2.5	2.1	0.7	0.1	74.1	2.6	23.3	0.099	0.528	18.900216	-103.858235
T. C. Ent. Playa Azul - Manzanillo (Norte)	7.90	1	1	3566	8.3	75.1	0.8	5.0	3.3	3.4	3.7	0.2	0.2	83.4	0.8	15.8	0.079	0.545	18.942479	-103.890334
T. C. Ent. Playa Azul - Manzanillo (Norte)	7.90	1	2	2974	7.9	73.4	1.1	5.4	3.2	4.9	3.7	0.2	0.2	81.3	1.1	17.6	0.088	0.545	18.942386	-103.890240

28 CARR: Libramiento Poniente Arco Sur de Tecmán

CLAVE:

RUTA: COL

AÑO: 2023

LUGAR	ESTACION				CLASIFICACION VEHICULAR EN PORCIENTO													COORDENADAS		
	KM	TE	SC	TDPA	M	A	B	C2	C3	T3S2	T3S3	T3S2R4	OTROS	A	B	C	K'	D	LATITUD	LONGITUD
Ent. C. Playa Azul - Manzanillo	0.00	3	0	3702	8.4	78.2	1.2	6.9	1.6	2.3	1.0	0.2	0.2	86.6	1.2	12.2	0.099	0.511	18.939781	-103.896807
X. C. Tecmán - Boca de Pascuales	4.60	3	0	2710	8.3	70.2	2.3	8.1	3.3	5.0	1.8	0.5	0.5	78.5	2.3	19.2	0.079	0.501	18.900404	-103.905092
X. C. Tecmán - La Mascota	6.90	3	0	3059	9.0	68.4	2.4	10.2	2.8	4.6	1.7	0.6	0.3	77.4	2.4	20.2	0.094	0.521	18.889022	-103.888312
Ent. C. Playa Azul - Manzanillo	11.17																			

29 CARR: Libramiento Poniente de Colima

CLAVE: 06122

RUTA: COL

AÑO: 2023

LUGAR	ESTACION				CLASIFICACION VEHICULAR EN PORCIENTO													COORDENADAS		
	KM	TE	SC	TDPA	M	A	B	C2	C3	T3S2	T3S3	T3S2R4	OTROS	A	B	C	K'	D	LATITUD	LONGITUD
T. C. Colima - Ent. Tecmán	0.00	3	1	11750	4.7	85.2	0.7	5.2	1.9	0.8	0.5	0.7	0.3	89.9	0.7	9.4	0.074	0.512	19.222150	-103.753274
T. C. Colima - Ent. Tecmán	0.00	3	2	12304	4.5	84.6	0.8	5.8	2.0	0.8	0.5	0.7	0.3	89.1	0.8	10.1	0.095	0.512	19.222019	-103.753313
T. C. Colima - Coquimatlán	6.00																			

30 CARR: Los Limones - Loma de Juárez

CLAVE: 06122

RUTA: COL

AÑO: 2023

LUGAR	ESTACION				CLASIFICACION VEHICULAR EN PORCIENTO													COORDENADAS		
	KM	TE	SC	TDPA	M	A	B	C2	C3	T3S2	T3S3	T3S2R4	OTROS	A	B	C	K'	D	LATITUD	LONGITUD
Los Limones	0.00																			
T. C. Colima - Ent. Tecmán	5.77	1	0	2098	3.7	79.4	1.8	12.4	0.5	1.9	0.2	0.1	0.0	83.1	1.8	15.1	0.082	0.529	19.196349	-103.756499

COLIMA

31 CARR: Puerta de Caleras - Madrid

CLAVE: 06014

RUTA: COL-014

AÑO: 2023

LUGAR	ESTACION				CLASIFICACION VEHICULAR EN PORCIENTO														COORDENADAS	
	KM	TE	SC	TDPA	M	A	B	C2	C3	T3S2	T3S3	T3S2R4	OTROS	A	B	C	K'	D	LATITUD	LONGITUD
T. C. Colima - Ent. Tecomán	0.00	3	0	3089	12.7	70.0	1.6	7.4	2.8	2.5	2.4	0.4	0.2	82.7	1.6	15.7	0.083	0.512	18.979437	-103.862456
Madrid	14.00																			

32 CARR: Quesería - El Naranjal

CLAVE: 06001

RUTA: COL-001

AÑO: 2023

LUGAR	ESTACION				CLASIFICACION VEHICULAR EN PORCIENTO														COORDENADAS	
	KM	TE	SC	TDPA	M	A	B	C2	C3	T3S2	T3S3	T3S2R4	OTROS	A	B	C	K'	D	LATITUD	LONGITUD
Quesería	0.00	3	0	1664	5.4	66.3	1.6	11.8	13.6	0.7	0.5	0.0	0.1	71.7	1.6	26.7	0.083	0.515	19.392101	-103.590322
El Naranjal	10.00	1	0	909	14.6	73.2	1.5	5.2	3.7	1.7	0.0	0.1	0.0	87.8	1.5	10.7	0.121	0.514	19.412118	-103.651789

33 CARR: Ramal a Aeropuerto de Colima

CLAVE: 06224

RUTA: COL

AÑO: 2023

LUGAR	ESTACION				CLASIFICACION VEHICULAR EN PORCIENTO														COORDENADAS	
	KM	TE	SC	TDPA	M	A	B	C2	C3	T3S2	T3S3	T3S2R4	OTROS	A	B	C	K'	D	LATITUD	LONGITUD
T. C. Cuauhtémoc - Colima	0.00	3	0	1541	1.1	91.5	0.6	6.2	0.3	0.0	0.0	0.2	0.1	92.6	0.6	6.8	0.075	0.507	19.289163	-103.593286
Aeropuerto de Colima	1.00																			

34 CARR: Ramal a Aeropuerto Manzanillo

CLAVE: 06582

RUTA: COL

AÑO: 2023

LUGAR	ESTACION				CLASIFICACION VEHICULAR EN PORCIENTO														COORDENADAS	
	KM	TE	SC	TDPA	M	A	B	C2	C3	T3S2	T3S3	T3S2R4	OTROS	A	B	C	K'	D	LATITUD	LONGITUD
T. C. Manzanillo - Puerto Vallarta	0.00	3	0	1007	9.5	81.7	0.2	7.3	0.8	0.2	0.2	0.1	0.0	91.2	0.2	8.6	0.089	0.507	19.189586	-104.550689
Aeropuerto Manzanillo	5.50	1	0	1060	7.2	84.9	0.3	6.9	0.3	0.1	0.2	0.1	0.0	92.1	0.3	7.6	0.074	0.535	19.151760	-104.560186

35 CARR: Ramal a Camotlán de Miraflores

CLAVE: 06009

RUTA: COL

AÑO: 2023

LUGAR	ESTACION				CLASIFICACION VEHICULAR EN PORCIENTO														COORDENADAS	
	KM	TE	SC	TDPA	M	A	B	C2	C3	T3S2	T3S3	T3S2R4	OTROS	A	B	C	K'	D	LATITUD	LONGITUD
T. C. Minatitlán - Ent. Pez Vela	0.00	3	0	2179	18.3	69.9	0.3	11.1	0.2	0.1	0.1	0.0	0.0	88.2	0.3	11.5	0.090	0.511	19.220011	-104.234077
Camotlán de Miraflores	1.00																			

COLIMA

36 CARR: Ramal a Ixtlahuacán

CLAVE: 06577

RUTA: COL-005

AÑO: 2023

LUGAR	ESTACION				CLASIFICACION VEHICULAR EN PORCIENTO													COORDENADAS		
	KM	TE	SC	TDPA	M	A	B	C2	C3	T3S2	T3S3	T3S2R4	OTROS	A	B	C	K'	D	LATITUD	LONGITUD
T. C. Colima - Ent. Tecomán Ixtlahuacán	0.00	3	0	816	4.0	80.8	1.1	8.1	2.7	1.0	2.2	0.1	0.0	84.8	1.1	14.1	0.093	0.517	19.025989	-103.790938
	8.50																			

37 CARR: Ramal a Las Brisas

CLAVE: 06571

RUTA: COL

AÑO: 2023

LUGAR	ESTACION				CLASIFICACION VEHICULAR EN PORCIENTO													COORDENADAS		
	KM	TE	SC	TDPA	M	A	B	C2	C3	T3S2	T3S3	T3S2R4	OTROS	A	B	C	K'	D	LATITUD	LONGITUD
T. C. Manzanillo - Puerto Vallarta (Central)	0.00	3	0	6162	12.2	84.0	1.0	2.2	0.1	0.1	0.3	0.1	0.0	96.2	1.0	2.8	0.076	0.619	19.083501	-104.307775
T. C. Manzanillo - Puerto Vallarta (Lateral)	0.00	3	1	6450	8.7	85.4	0.1	5.2	0.1	0.4	0.1	0.0	0.0	94.1	0.1	5.8	0.081	0.507	19.083804	-104.308104
T. C. Manzanillo - Puerto Vallarta (Lateral)	0.00	3	2	6263	8.4	85.4	0.1	5.5	0.1	0.4	0.1	0.0	0.0	93.8	0.1	6.1	0.081	0.507	19.083574	-104.307690
Las Brisas	2.30																			

38 CARR: Ramal a Los Tepames

CLAVE: 06004

RUTA: COL-004

AÑO: 2023

LUGAR	ESTACION				CLASIFICACION VEHICULAR EN PORCIENTO													COORDENADAS		
	KM	TE	SC	TDPA	M	A	B	C2	C3	T3S2	T3S3	T3S2R4	OTROS	A	B	C	K'	D	LATITUD	LONGITUD
T. C. Jiquilpan - Colima Los Tepames	0.00	3	0	1556	3.7	84.6	0.7	10.7	0.1	0.1	0.0	0.1	0.0	88.3	0.7	11.0	0.080	0.512	19.172529	-103.660186
	9.50																			

39 CARR: Ramal a Rancho Valle Nuevo

CLAVE: 06583

RUTA: COL

AÑO: 2023

LUGAR	ESTACION				CLASIFICACION VEHICULAR EN PORCIENTO													COORDENADAS		
	KM	TE	SC	TDPA	M	A	B	C2	C3	T3S2	T3S3	T3S2R4	OTROS	A	B	C	K'	D	LATITUD	LONGITUD
T. C. Ent. Playa Azul - Manzanillo Rancho Valle Nuevo	0.00	3	0	734	8.3	75.6	0.8	12.9	1.5	0.7	0.1	0.1	0.0	83.9	0.8	15.3	0.113	0.532	18.817773	-103.808875
	4.00																			

40 CARR: Ramal a Rincón de López

CLAVE: 06578

RUTA: COL

AÑO: 2023

LUGAR	ESTACION				CLASIFICACION VEHICULAR EN PORCIENTO													COORDENADAS		
	KM	TE	SC	TDPA	M	A	B	C2	C3	T3S2	T3S3	T3S2R4	OTROS	A	B	C	K'	D	LATITUD	LONGITUD
T. C. Ent. Playa Azul - Manzanillo Rincón de López	0.00	3	0	5582	16.3	74.2	0.8	7.3	0.5	0.3	0.3	0.2	0.1	90.5	0.8	8.7	0.079	0.530	18.951922	-103.947417
	14.00																			

COLIMA

41 CARR: Ramal a Tecuanillo

CLAVE: 06009

RUTA: COL-009

AÑO: 2023

LUGAR	ESTACION				CLASIFICACION VEHICULAR EN PORCIENTO										COORDENADAS					
	KM	TE	SC	TDPA	M	A	B	C2	C3	T3S2	T3S3	T3S2R4	OTROS	A	B	C	K'	D	LATITUD	LONGITUD
T. C. Ent. Playa Azul - Manzanillo	0.00	3	0	1797	10.2	71.2	2.0	13.0	0.4	2.6	0.2	0.2	0.2	81.4	2.0	16.6	0.086	0.513	18.890313	-103.855393
Tecuanillo	10.00																			

42 CARR: Tecomán - La Mascota

CLAVE: 06572

RUTA: COL

AÑO: 2023

LUGAR	ESTACION				CLASIFICACION VEHICULAR EN PORCIENTO										COORDENADAS					
	KM	TE	SC	TDPA	M	A	B	C2	C3	T3S2	T3S3	T3S2R4	OTROS	A	B	C	K'	D	LATITUD	LONGITUD
Tecomán	0.00	3	0	3272	11.4	74.0	1.2	8.6	1.6	2.7	0.3	0.1	0.1	85.4	1.2	13.4	0.088	0.523	18.895049	-103.888312
X. Libramiento Poniente Arco Sur de Tecomán	2.70	3	0	1926	15.2	71.5	1.2	9.3	0.8	1.7	0.1	0.1	0.1	86.7	1.2	12.1	0.106	0.519	18.889065	-103.892120
La Mascota	11.00																			

43 CARR: Trapichillos - Estación Alzada

CLAVE: 06003

RUTA: COL-003

AÑO: 2023

LUGAR	ESTACION				CLASIFICACION VEHICULAR EN PORCIENTO										COORDENADAS					
	KM	TE	SC	TDPA	M	A	B	C2	C3	T3S2	T3S3	T3S2R4	OTROS	A	B	C	K'	D	LATITUD	LONGITUD
T. C. Jiquilpan - Colima	0.00	3	0	403	3.8	73.8	2.1	7.5	7.0	3.4	1.8	0.2	0.4	77.6	2.1	20.3	0.101	0.516	19.173796	-103.526741
Estación Alzada	12.50	1	0	593	12.0	63.9	2.0	14.9	2.3	2.6	1.6	0.2	0.5	75.9	2.0	22.1	0.096	0.517	19.251800	-103.531076

44 CARR: Villa de Álvarez - Minatitlán

CLAVE: 06040

RUTA: COL

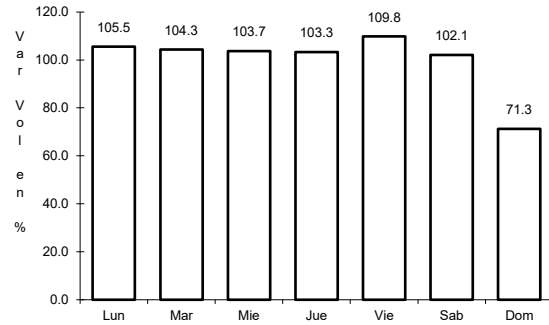
AÑO: 2023

LUGAR	ESTACION				CLASIFICACION VEHICULAR EN PORCIENTO										COORDENADAS					
	KM	TE	SC	TDPA	M	A	B	C2	C3	T3S2	T3S3	T3S2R4	OTROS	A	B	C	K'	D	LATITUD	LONGITUD
T. C. Colima - Comala	0.00	3	0	9962	12.0	79.7	1.0	4.2	1.4	0.9	0.5	0.2	0.1	91.7	1.0	7.3	0.070	0.502	19.283207	-103.778354
T. C. Minatitlán - Ent. Pez Vela	55.00																			

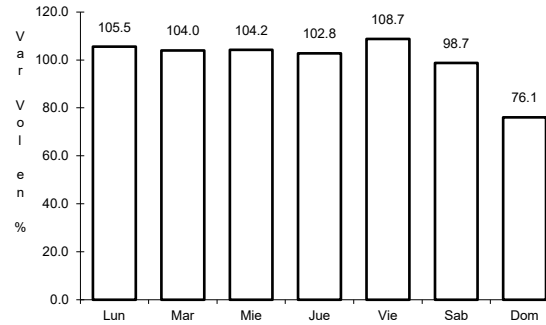
1 CARR: Cd. Guzmán - Colima

CLAVE: 00117

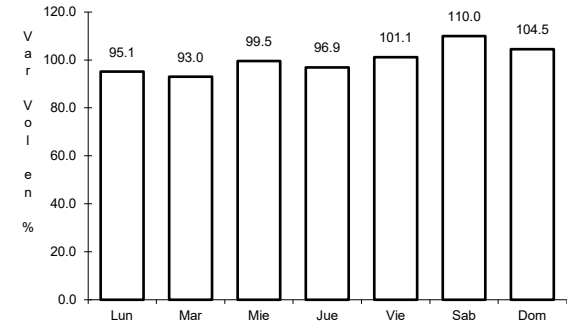
RUTA: MEX-054



Km: 0.00 Tipo: 3 Sent: 1



Km: 0.00 Tipo: 3 Sent: 2

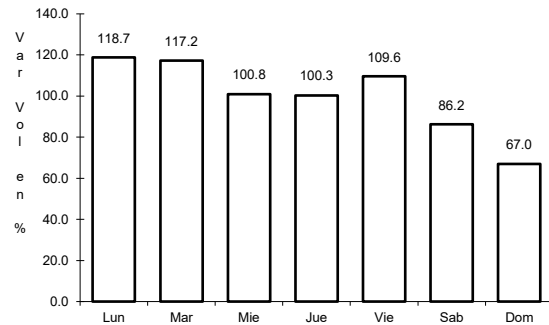


Km: 56.90 Tipo: 1 Sent: 0

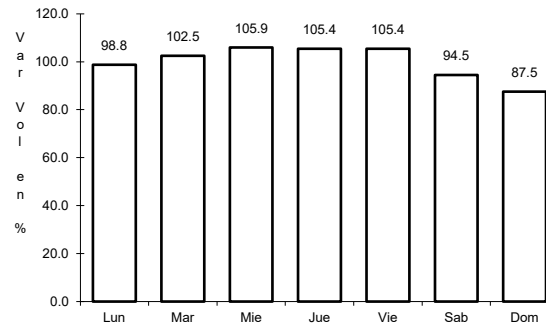
2 CARR: Colima - Ent. Tecomán

CLAVE: 06119

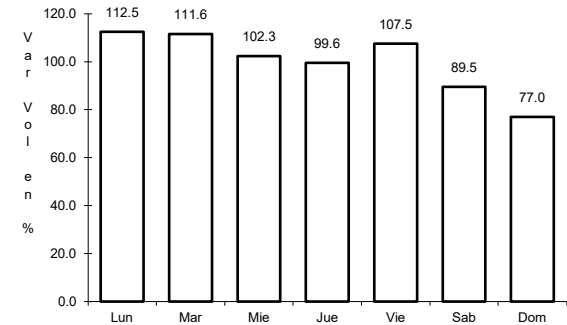
RUTA: MEX-110



Km: 0.00 Tipo: 3 Sent: 1



Km: 0.00 Tipo: 3 Sent: 2

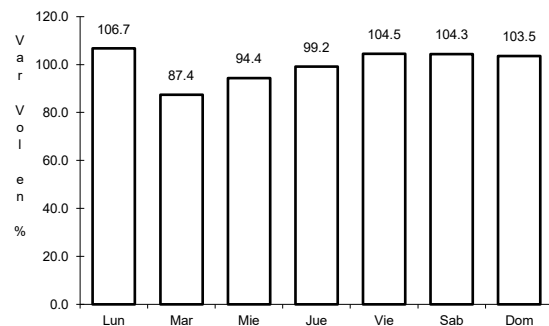


Km: 40.10 Tipo: 1 Sent: 1

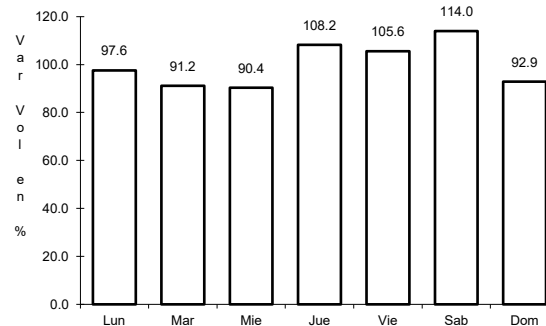
3 CARR: Ent. Playa Azul - Manzanillo

CLAVE: 00495

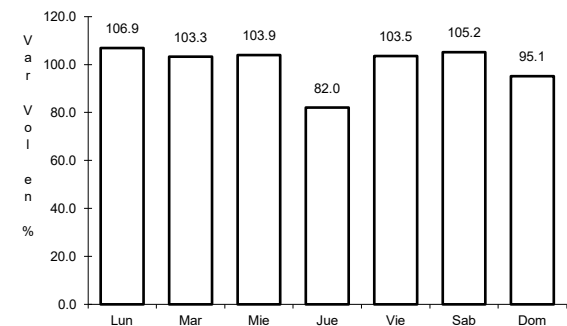
RUTA: MEX-200



Km: 0.00 Tipo: 3 Sent: 0



Km: 190.10 Tipo: 3 Sent: 0

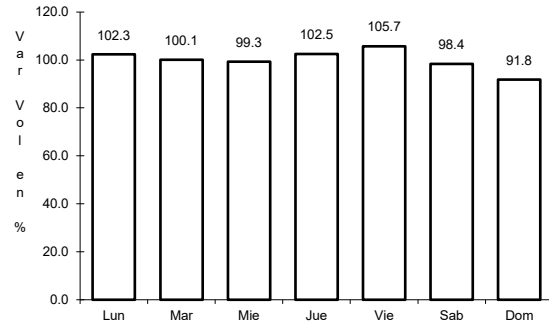


Km: 321.12 Tipo: 1 Sent: 0

4 CARR: Jiquilpan - Colima

CLAVE: 00156

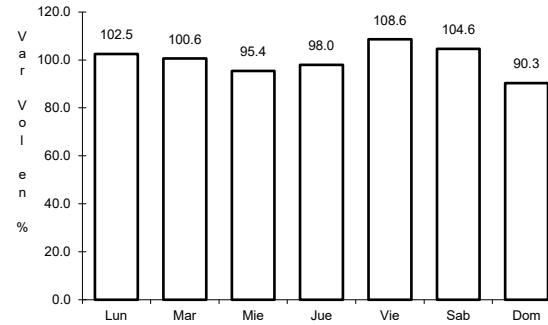
RUTA: MEX-110



Km: 0.00

Tipo: 3

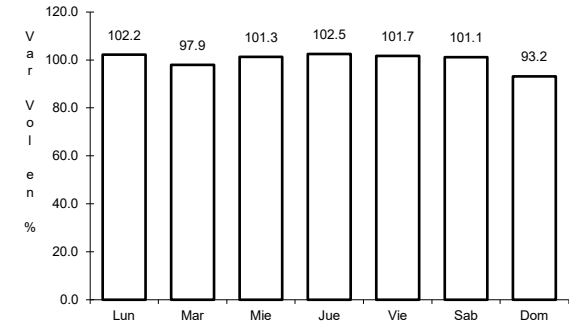
Sent: 0



Km: 108.50

Tipo: 1

Sent: 0



Km: 220.00

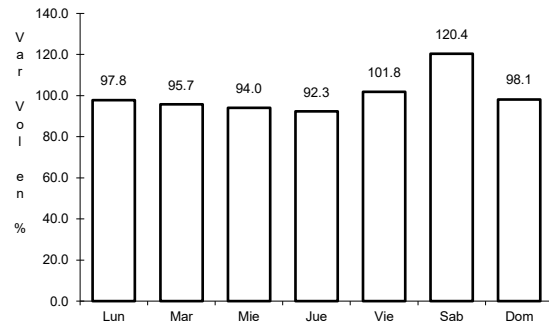
Tipo: 1

Sent: 0

5 CARR: Libramiento Campos - Alameda

CLAVE:

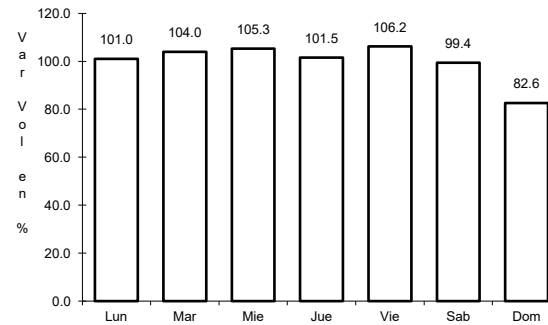
RUTA: MEX



Km: 0.00

Tipo: 3

Sent: 0



Km: 5.00

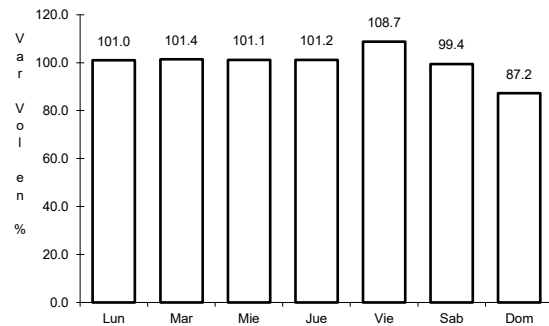
Tipo: 1

Sent: 0

6 CARR: Libramiento de Colima

CLAVE: 06573

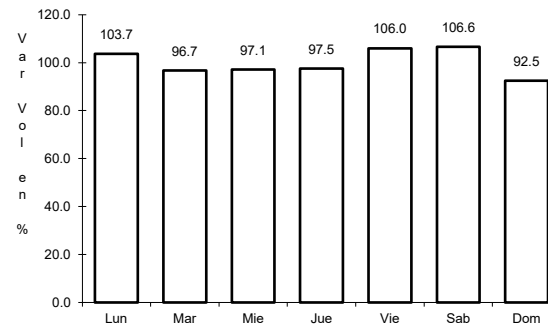
RUTA: MEX-054



Km: 0.00

Tipo: 3

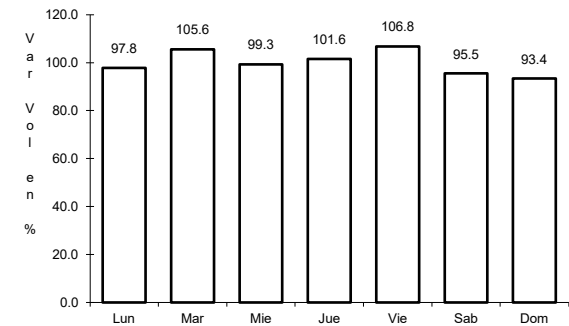
Sent: 1



Km: 0.00

Tipo: 3

Sent: 2



Km: 9.00

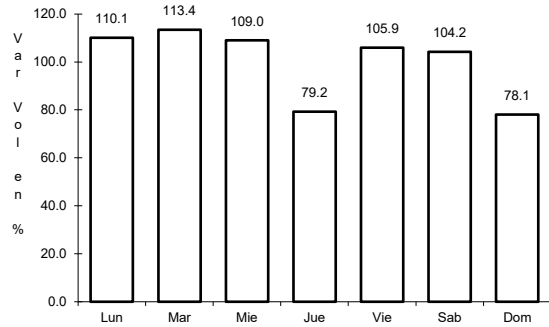
Tipo: 1

Sent: 1

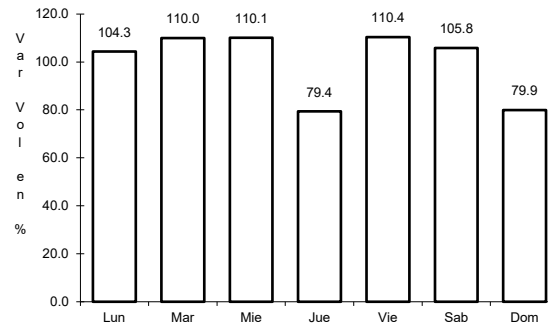
7 CARR: Libramiento de Manzanillo (Libre)

CLAVE: 06574

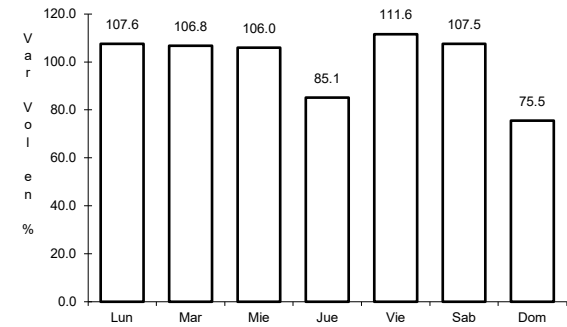
ruta: MEX-200



Km: 0.00 Tipo: 3 Sent: 0



Km: 6.30 Tipo: 1 Sent: 1

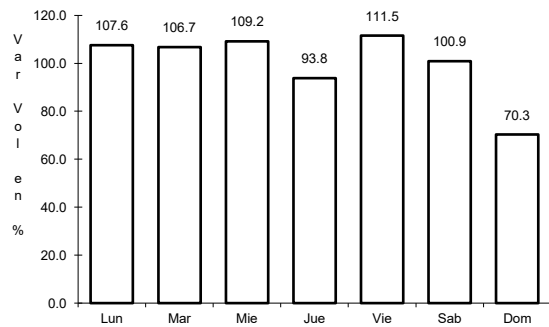


Km: 6.30 Tipo: 1 Sent: 2

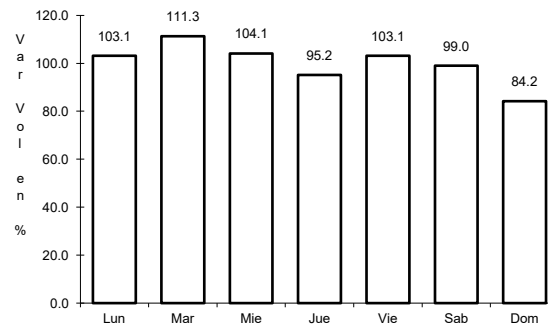
8 CARR: Libramiento de Manzanillo Norte

CLAVE: 06122

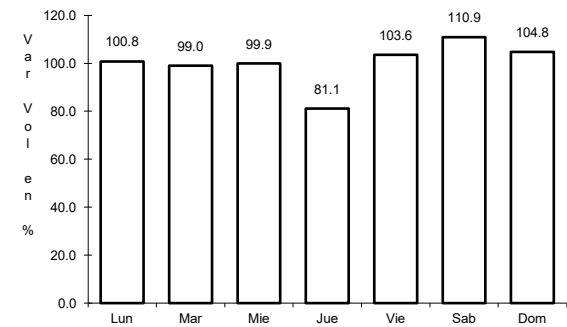
ruta: MEX-200



Km: 0.00 Tipo: 3 Sent: 0



Km: 6.60 Tipo: 3 Sent: 0

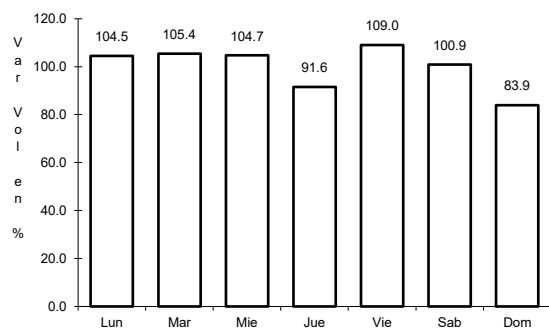


Km: 19.00 Tipo: 1 Sent: 0

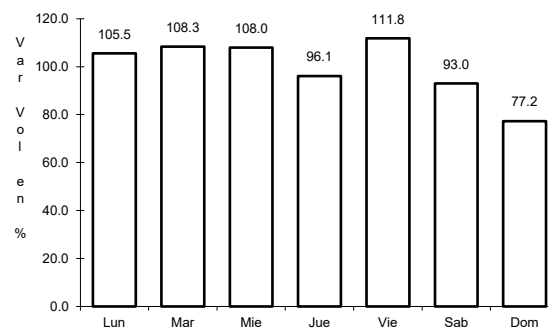
9 CARR: Manzanillo - Puerto Vallarta

CLAVE: 00070

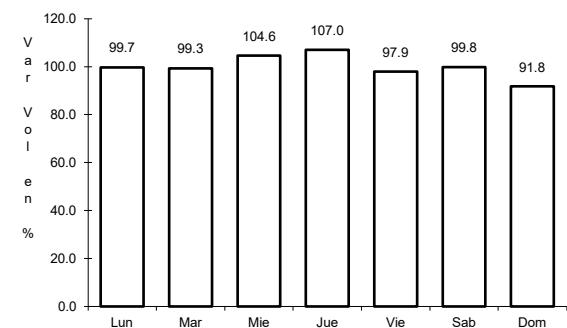
ruta: MEX-200



Km: 0.00 Tipo: 3 Sent: 1



Km: 0.00 Tipo: 3 Sent: 2

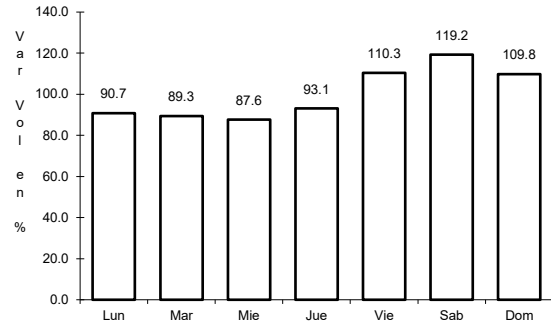


Km: 275.84 Tipo: 1 Sent: 0

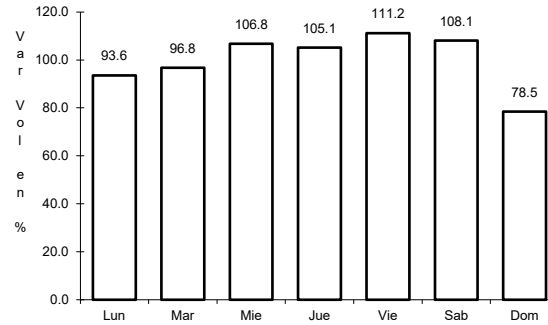
10 CARR: Minatitlán - Ent. Pez Vela

CLAVE: 06015

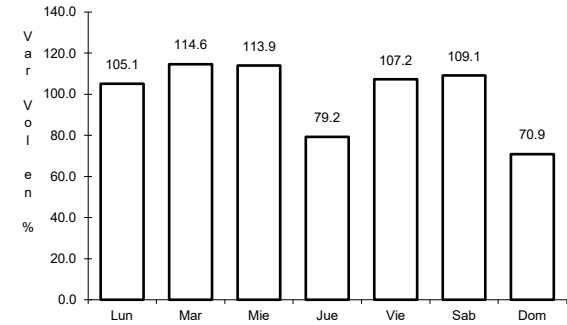
ruta: MEX-098



Km: 49.50 Tipo: 1 Sent: 0



Km: 58.50 Tipo: 1 Sent: 1

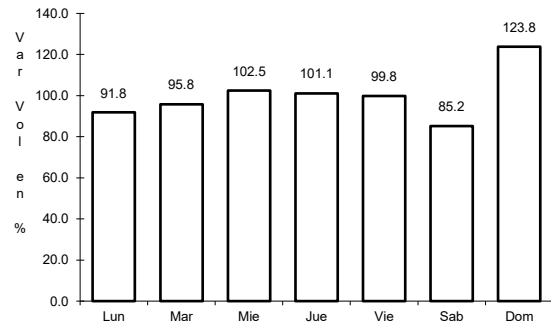


Km: 58.50 Tipo: 1 Sent: 2

11 CARR: Paso por La Salada

CLAVE: 06121

ruta: MEX-110

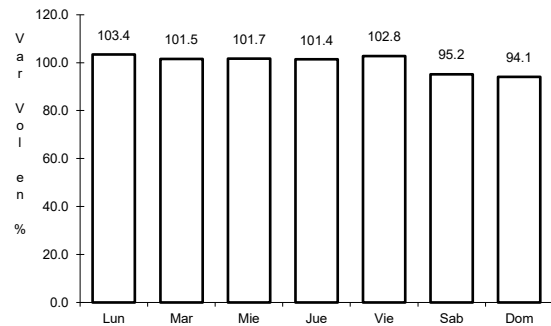


Km: 4.80 Tipo: 3 Sent: 0

12 CARR: Paso por Los Asmoles

CLAVE: 06120

ruta: MEX-110

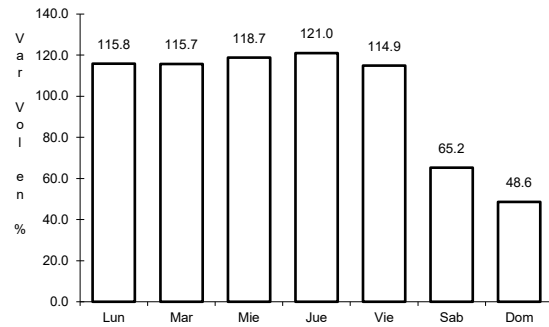


Km: 1.80 Tipo: 3 Sent: 0

13 CARR: Ramal a Cerro de Los Juanes

CLAVE: 06009

RUTA: MEX-098



Km: 0.00

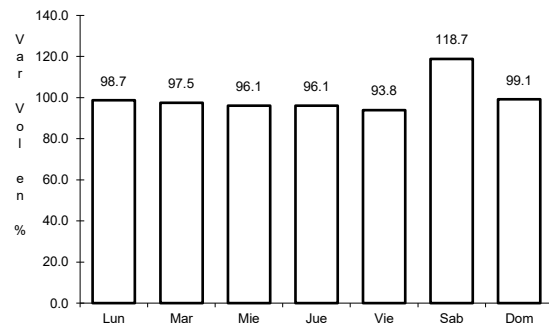
Tipo: 3

Sent: 0

14 CARR: Ramal a Cerro de Ortega

CLAVE: 06009

RUTA: MEX-200



Km: 0.00

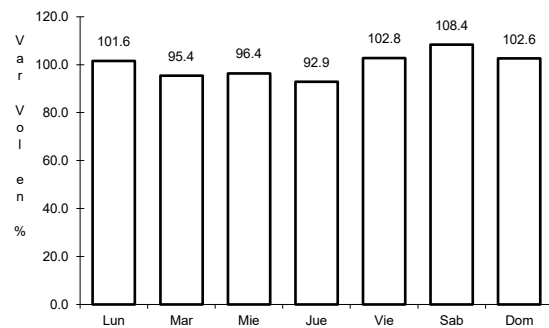
Tipo: 3

Sent: 0

15 CARR: Ramal a Cuyutlán

CLAVE: 06225

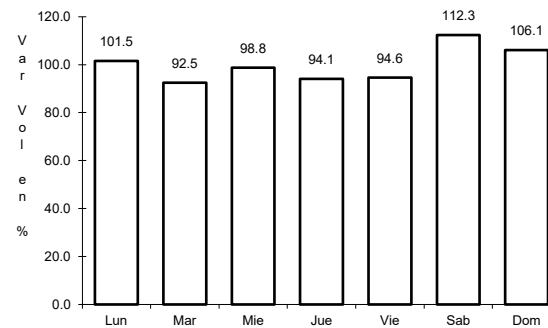
RUTA: MEX-200



Km: 0.00

Tipo: 3

Sent: 0



Km: 7.00

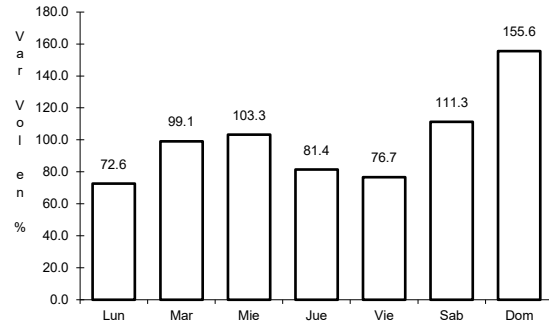
Tipo: 1

Sent: 0

16 CARR: Tecomán - Boca de Pascuales

CLAVE: 06226

ruta: MEX-200



Km: 0.00

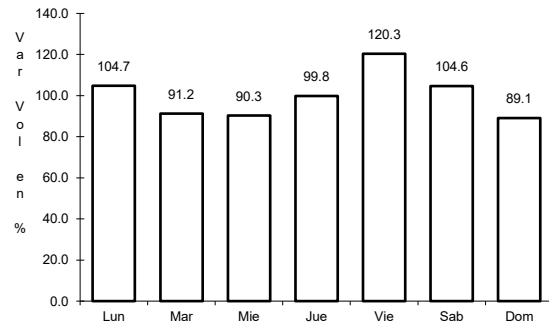
Tipo: 3

Sent: 0

17 CARR: Armería - Manzanillo (Cuota)

CLAVE: 06585

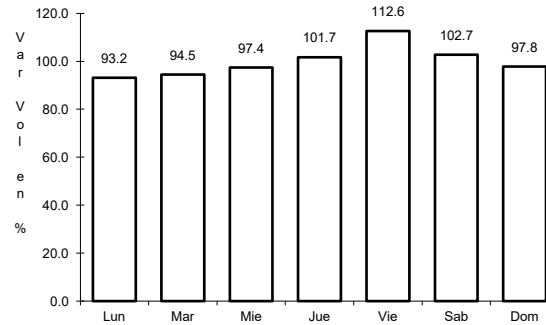
ruta: MEX-200D



Km: 0.00

Tipo: 3

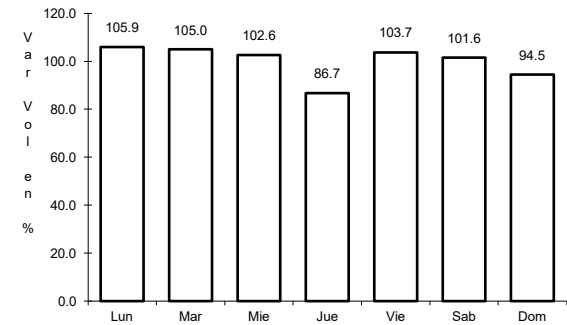
Sent: 1



Km: 0.00

Tipo: 3

Sent: 2



Km: 44.00

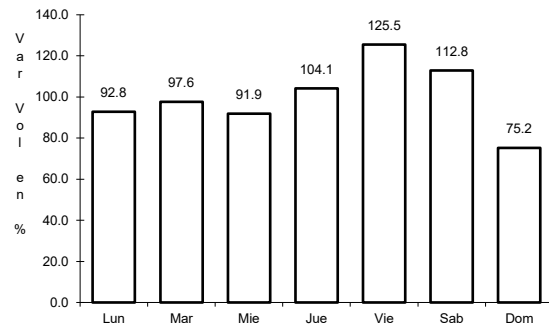
Tipo: 3

Sent: 1

18 CARR: Guadalajara - Colima (Cuota)

CLAVE: 00118

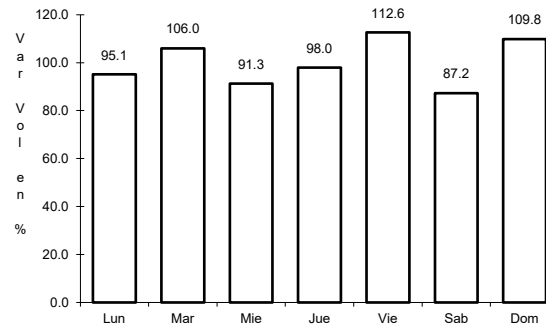
ruta: MEX-054D



Km: 7.70

Tipo: 1

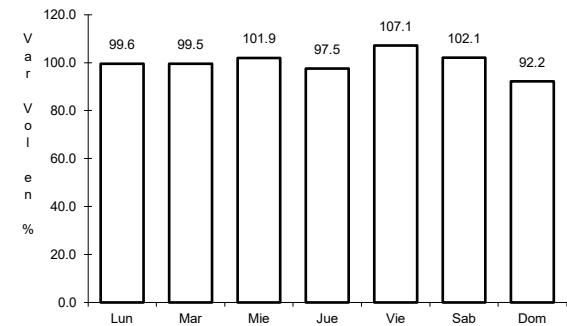
Sent: 1



Km: 7.70

Tipo: 1

Sent: 2



Km: 140.70

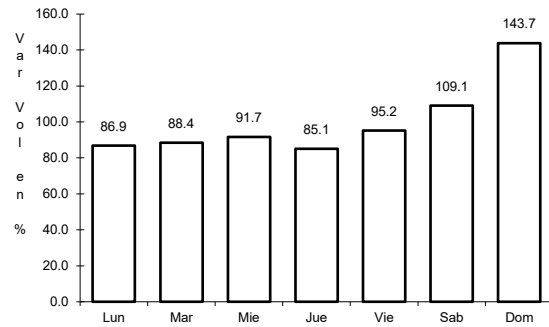
Tipo: 3

Sent: 1

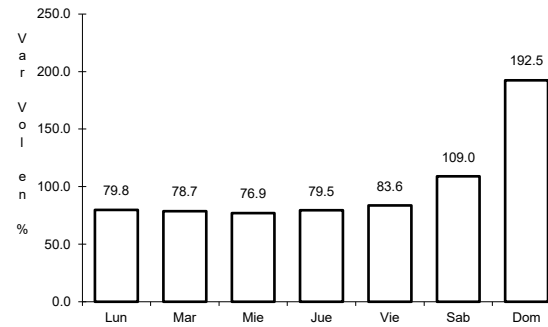
19 CARR: Armería - Playa El Paraíso

CLAVE: 06580

RUTA: COL



Km: 0.00 Tipo: 3 Sent: 0

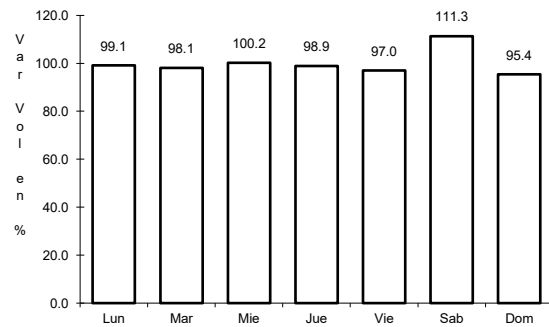


Km: 7.50 Tipo: 1 Sent: 0

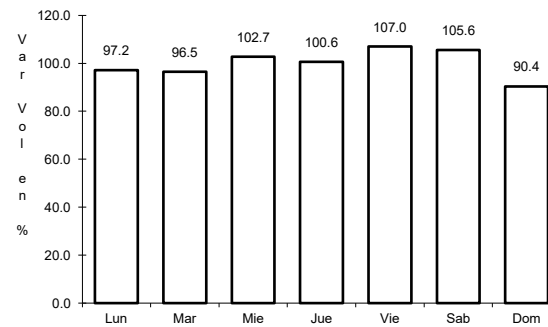
20 CARR: Colima - Comala

CLAVE: 06016

RUTA: COL-016



Km: 3.00 Tipo: 3 Sent: 1

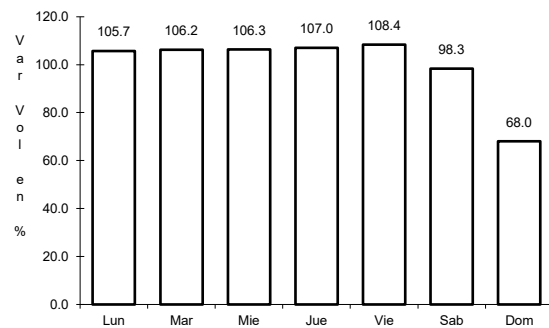


Km: 3.00 Tipo: 3 Sent: 2

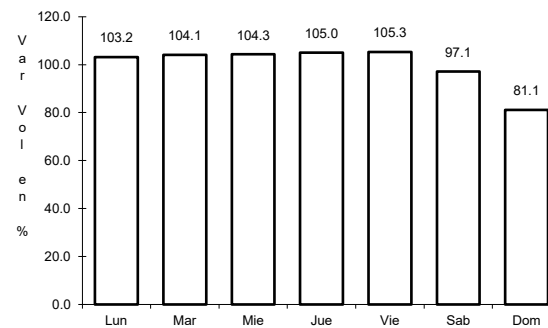
21 CARR: Colima - Coquimatlán

CLAVE: 06034

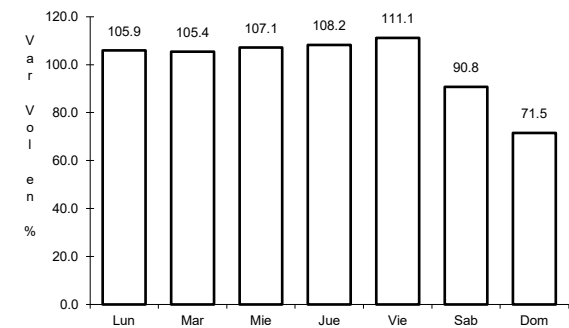
RUTA: COL-034



Km: 3.00 Tipo: 3 Sent: 1



Km: 3.00 Tipo: 3 Sent: 2

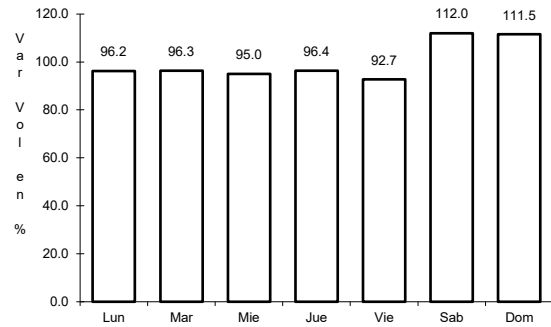


Km: 11.00 Tipo: 1 Sent: 1

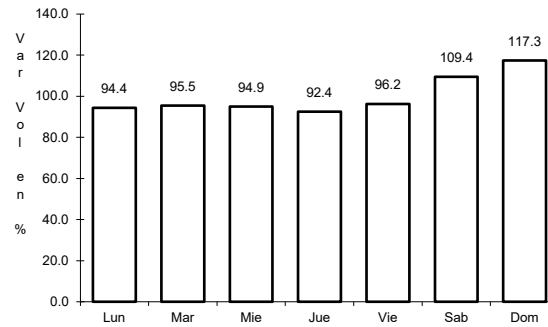
22 CARR: Comala - San Antonio

CLAVE: 06030

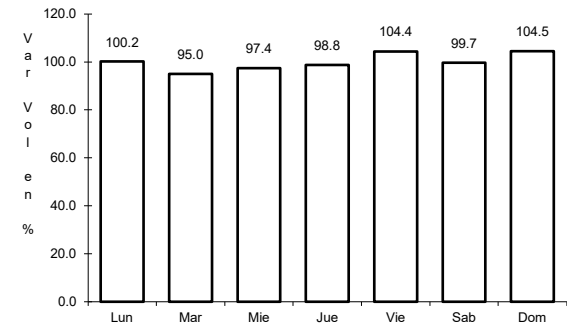
RUTA: COL-016



Km: 0.00 Tipo: 3 Sent: 1



Km: 0.00 Tipo: 3 Sent: 2

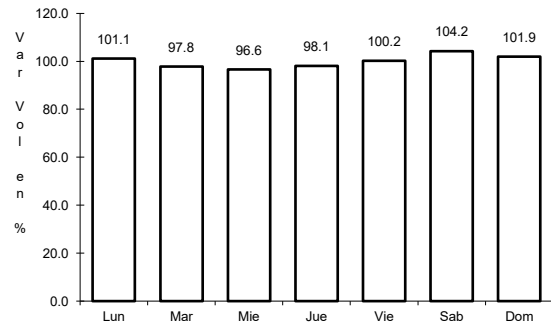


Km: 10.00 Tipo: 1 Sent: 0

23 CARR: Coquimatlán - Pueblo Juárez

CLAVE: 06029

RUTA: COL-034

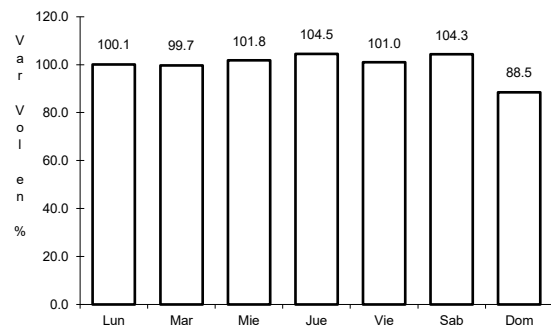


Km: 0.00 Tipo: 3 Sent: 0

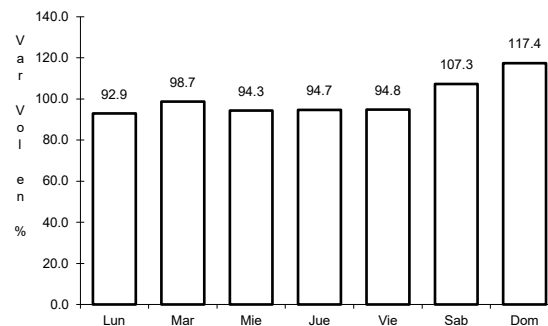
24 CARR: Costera Laguna de Cuyutlán

CLAVE: 06010

RUTA: COL



Km: 0.00 Tipo: 3 Sent: 0

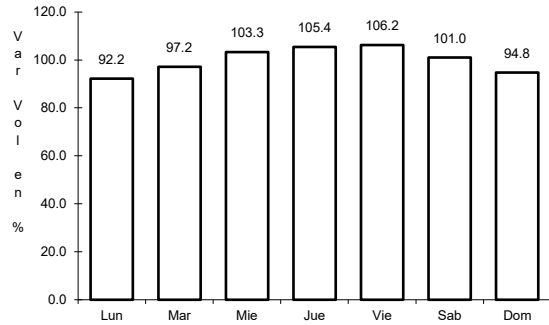


Km: 13.00 Tipo: 1 Sent: 0

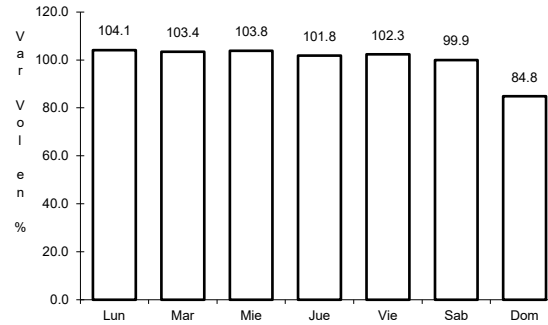
25 CARR: Cuauhtémoc - Colima

CLAVE: 06019

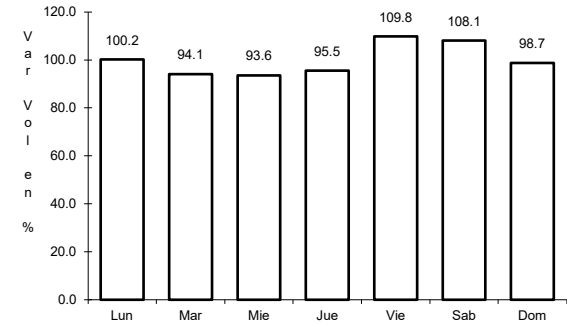
ruta: COL-019



Km: 0.00 Tipo: 3 Sent: 0



Km: 19.50 Tipo: 1 Sent: 1

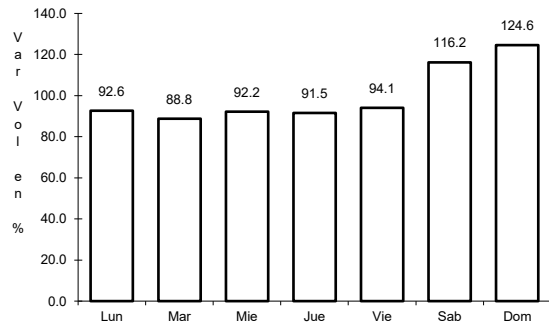


Km: 19.50 Tipo: 1 Sent: 2

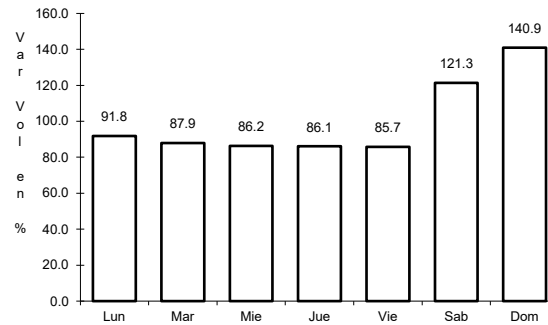
26 CARR: Libramiento de Comala

CLAVE:

ruta: COL-016



Km: 0.00 Tipo: 3 Sent: 0

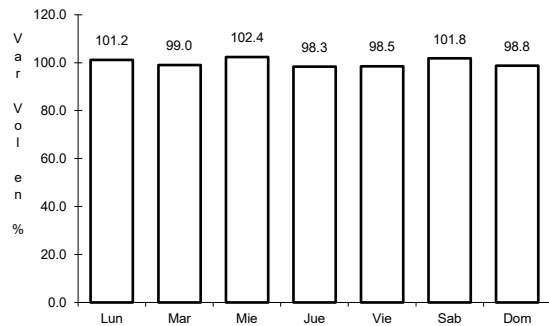


Km: 7.10 Tipo: 1 Sent: 0

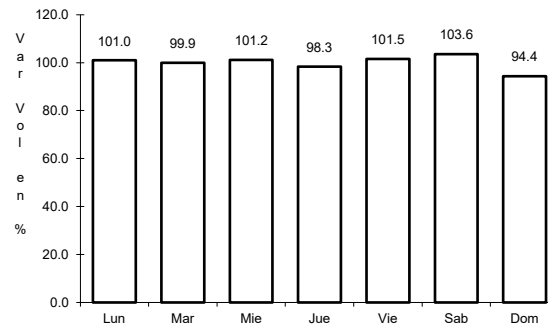
27 CARR: Libramiento de Tecomán

CLAVE: 06122

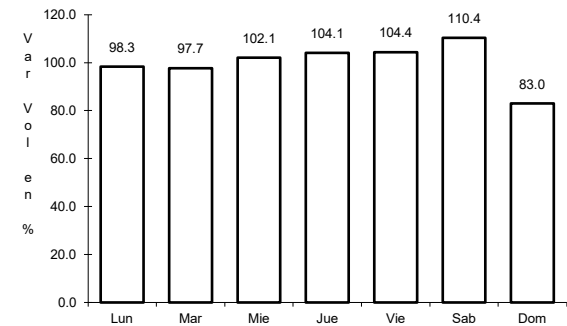
ruta: COL



Km: 0.00 Tipo: 3 Sent: 1



Km: 0.00 Tipo: 3 Sent: 2

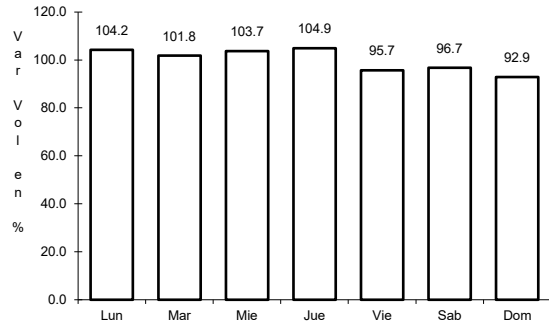


Km: 7.90 Tipo: 1 Sent: 1

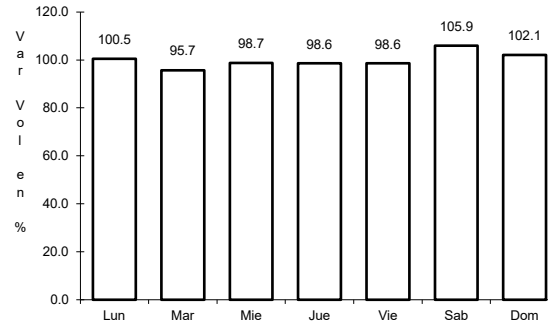
28 CARR: Libramiento Poniente Arco Sur de Tecomán

CLAVE:

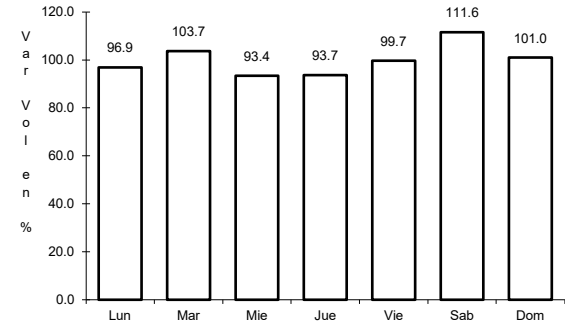
RUTA: COL



Km: 0.00 Tipo: 3 Sent: 0



Km: 4.60 Tipo: 3 Sent: 0

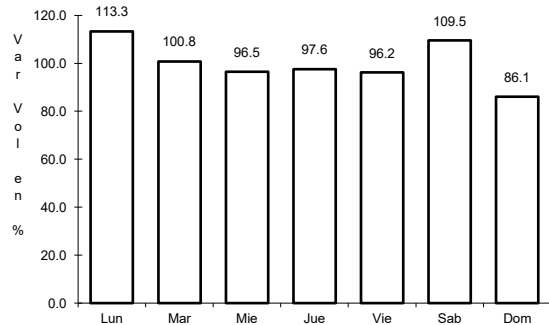


Km: 6.90 Tipo: 3 Sent: 0

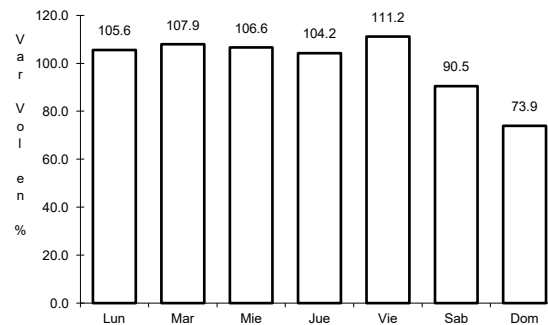
29 CARR: Libramiento Poniente de Colima

CLAVE: 06122

RUTA: COL



Km: 0.00 Tipo: 3 Sent: 1

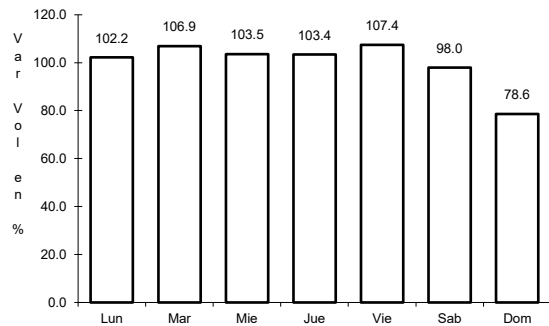


Km: 0.00 Tipo: 3 Sent: 2

30 CARR: Los Limones - Loma de Juárez

CLAVE: 06122

RUTA: COL

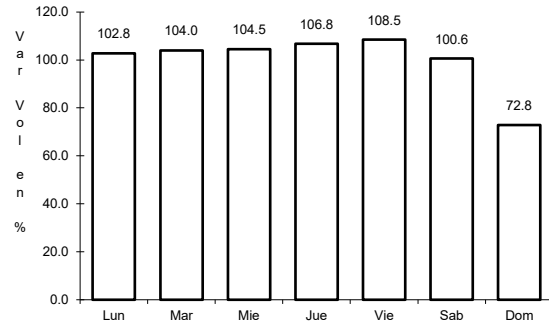


Km: 5.77 Tipo: 1 Sent: 0

31 CARR: Puerta de Caleras - Madrid

CLAVE: 06014

RUTA: COL-014



Km: 0.00

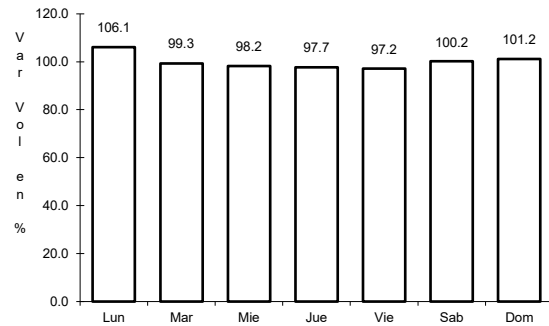
Tipo: 3

Sent: 0

32 CARR: Quesería - El Naranjal

CLAVE: 06001

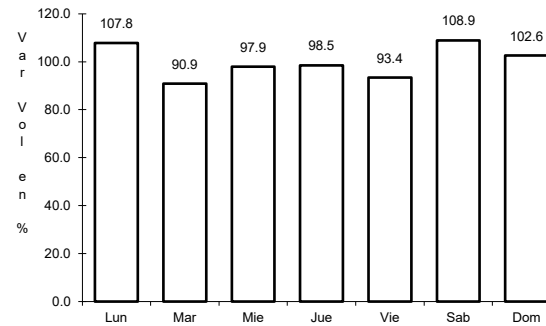
RUTA: COL-001



Km: 0.00

Tipo: 3

Sent: 0



Km: 10.00

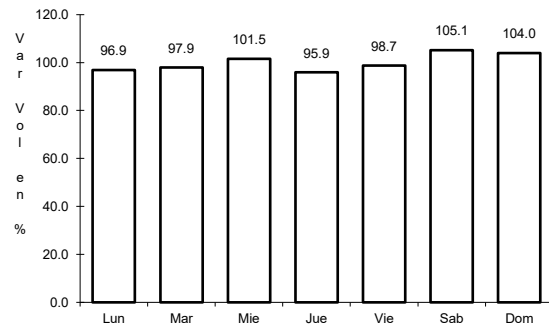
Tipo: 1

Sent: 0

33 CARR: Ramal a Aeropuerto de Colima

CLAVE: 06224

RUTA: COL



Km: 0.00

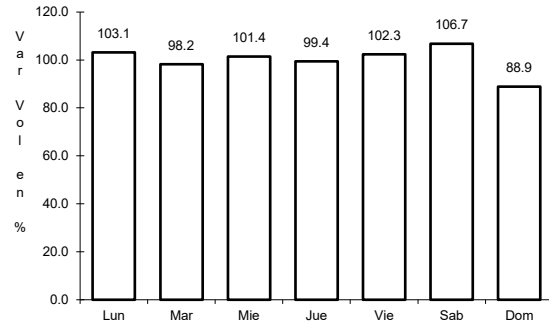
Tipo: 3

Sent: 0

34 CARR: Ramal a Aeropuerto Manzanillo

CLAVE: 06582

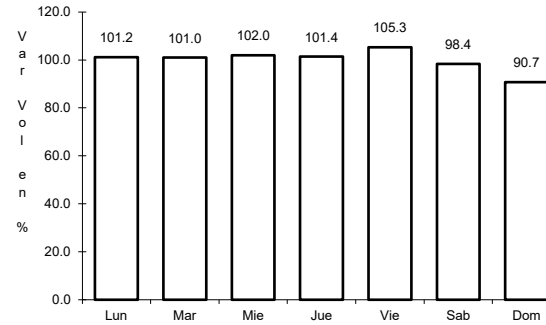
RUTA: COL



Km: 0.00

Tipo: 3

Sent: 0



Km: 5.50

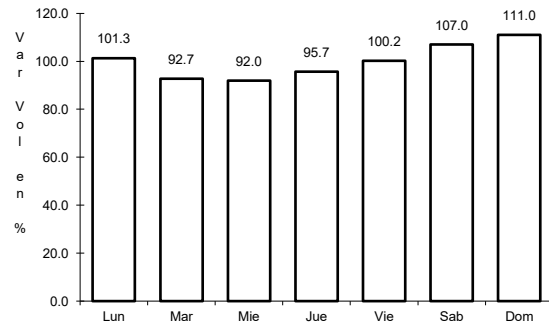
Tipo: 1

Sent: 0

35 CARR: Ramal a Camotlán de Miraflores

CLAVE: 06009

RUTA: COL



Km: 0.00

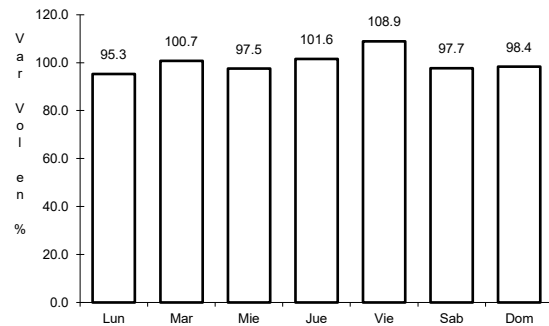
Tipo: 3

Sent: 0

36 CARR: Ramal a Ixtlahuacán

CLAVE: 06577

RUTA: COL-005



Km: 0.00

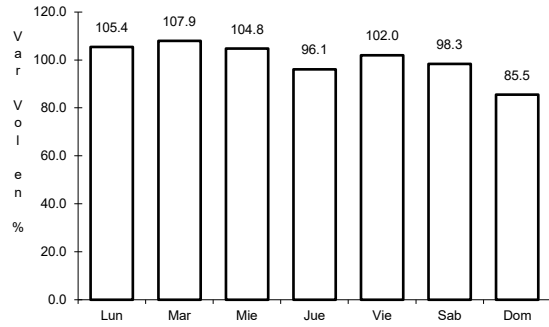
Tipo: 3

Sent: 0

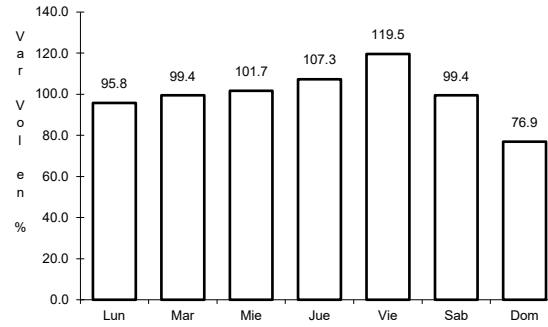
37 CARR: Ramal a Las Brisas

CLAVE: 06571

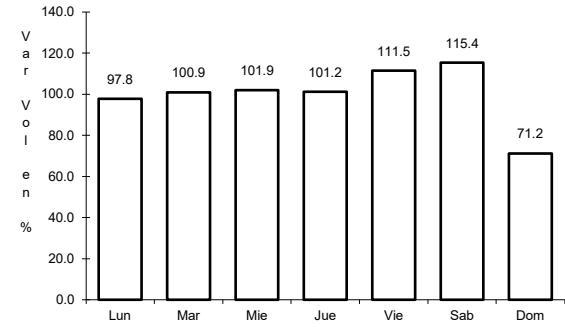
RUTA: COL



Km: 0.00 Tipo: 3 Sent: 0



Km: 0.00 Tipo: 3 Sent: 1

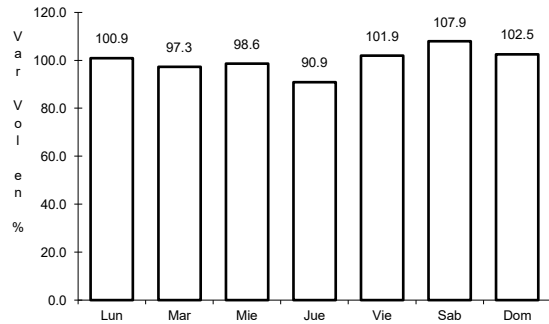


Km: 0.00 Tipo: 3 Sent: 2

38 CARR: Ramal a Los Tepames

CLAVE: 06004

RUTA: COL-004

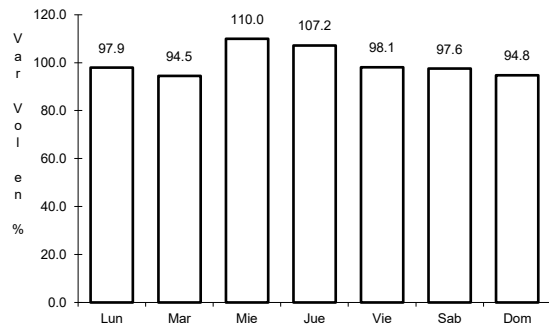


Km: 0.00 Tipo: 3 Sent: 0

39 CARR: Ramal a Rancho Valle Nuevo

CLAVE: 06583

RUTA: COL

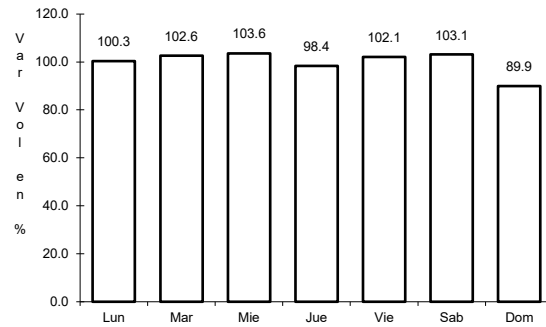


Km: 0.00 Tipo: 3 Sent: 0

40 CARR: Ramal a Rincón de López

CLAVE: 06578

RUTA: COL



Km: 0.00

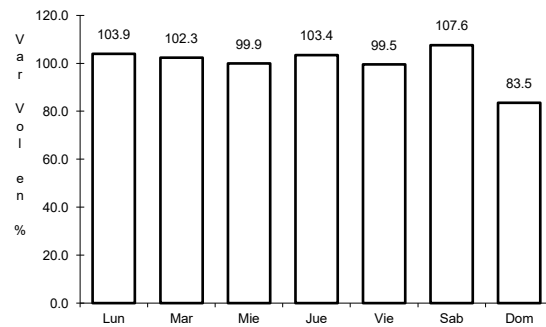
Tipo: 3

Sent: 0

41 CARR: Ramal a Tecuanillo

CLAVE: 06009

RUTA: COL-009



Km: 0.00

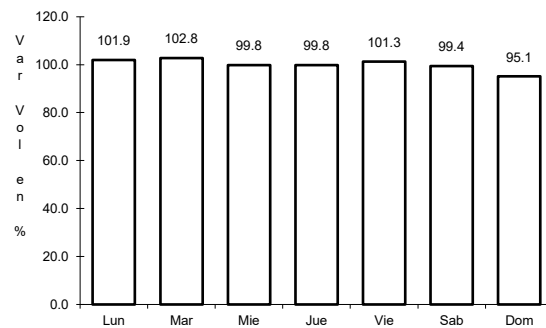
Tipo: 3

Sent: 0

42 CARR: Tecomán - La Mascota

CLAVE: 06572

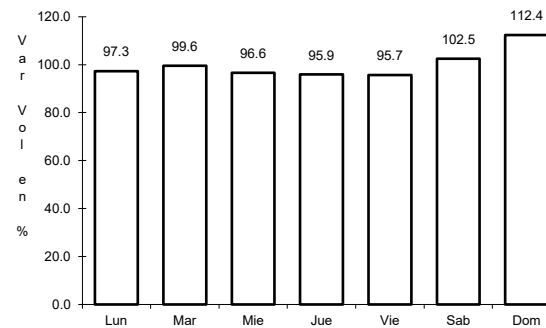
RUTA: COL



Km: 0.00

Tipo: 3

Sent: 0



Km: 2.70

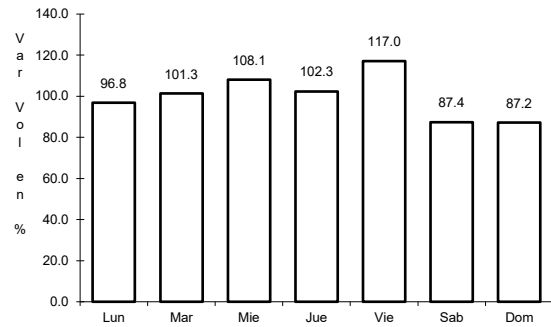
Tipo: 3

Sent: 0

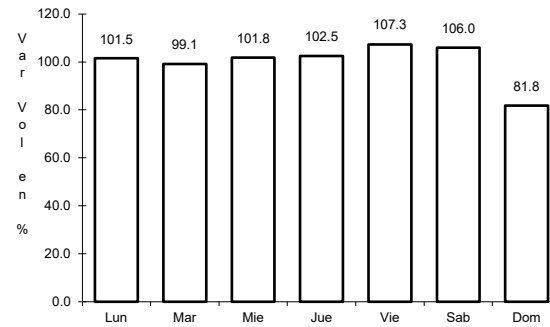
43 CARR: Trapichillos - Estación Alzada

CLAVE: 06003

RUTA: COL-003



Km: 0.00 Tipo: 3 Sent: 0

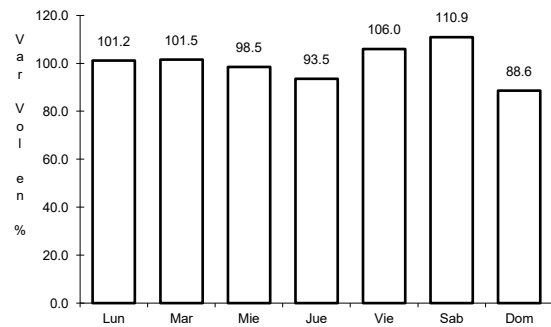


Km: 12.50 Tipo: 1 Sent: 0

44 CARR: Villa de Álvarez - Minatitlán

CLAVE: 06040

RUTA: COL



Km: 0.00 Tipo: 3 Sent: 0