

# CHIAPAS

## ---RED FEDERAL LIBRE---

1	Benemérito de Las Américas - Palenque	MEX-307
2	Catazajá - T. C. (Tuxtla Gtz. - Cd. Cuauhtémoc)	MEX-199-307
3	El Suspiro - Tenosique	MEX-203
4	Ent. Jaritas - Ciudad Hidalgo	MEX-225
5	Huixtla - El Jocote	MEX-211
6	La Trinitaria - Benemérito de Las Américas	MEX-307
7	Las Cruces - Arriaga	MEX-190
8	Libramiento de Arriaga	MEX-200
9	Libramiento de Ciudad Hidalgo Chis.	MEX-225
10	Libramiento de Huixtla	MEX-200
11	Libramiento de Ocozacoautla	MEX-190
12	Libramiento Sur de Tuxtla Gutiérrez (Dr. Manuel Velasco)	MEX
13	Malpaso - El Bellote	MEX-187
14	Ocozacoautla - Ent. El Sabino	MEX-190
15	Ramal a Cd. Hidalgo	MEX-200
16	Ramal a La Gloria	MEX-200
17	Ramal a Paredón	MEX-200
18	Ramal a Puerto Arista	MEX-200
19	Ramal a Unión Juárez	MEX-200
20	Tapachula - Puerto Madero	MEX-225
21	Tapanatepec - Talismán	MEX-200
22	Tapanatepec - Tuxtla Gutiérrez	MEX-190
23	Terán - Chicoasén	MEX-190
24	Tuxtla Gutiérrez - Angostura	MEX-190
25	Tuxtla Gutiérrez - Cd. Cuauhtémoc	MEX-190
26	Villahermosa - Escopetazo	MEX-195
27	Villahermosa - Francisco Escárcega	MEX-186-307

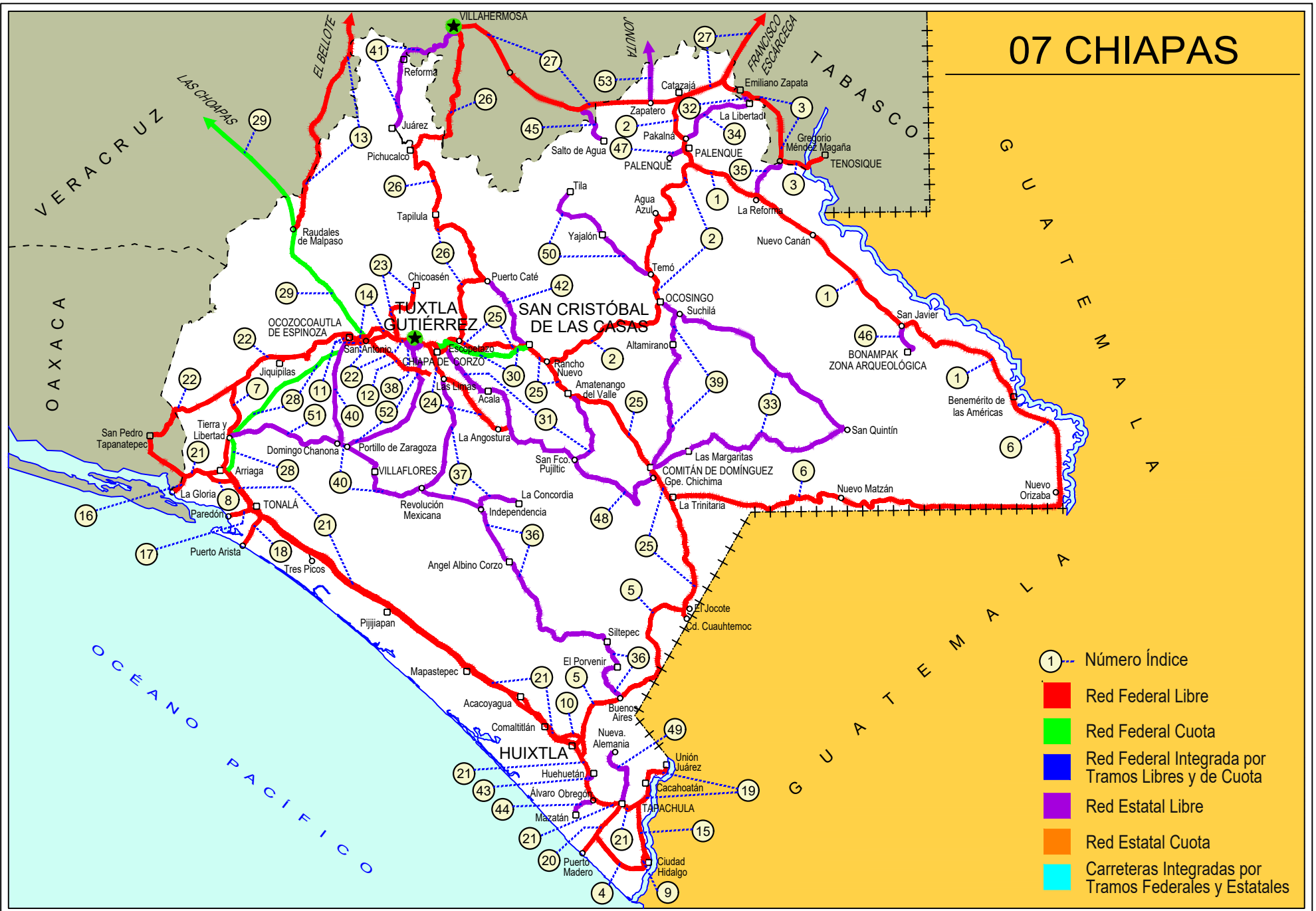
## ---RED FEDERAL DE CUOTA---

28	Arriaga - Ocozacoautla (Cuota)	MEX-200D
29	Las Choapas - Ocozacoautla (Cuota)	MEX-187D
30	Tuxtla Gutiérrez - San Cristóbal de Las Casas (Cuota)	MEX-190D

## ---RED ESTATAL LIBRE---

31	Chiapa de Corzo - Amatenango del Valle	CHIS
32	Ent. Emiliano Zapata - La Libertad	CHIS-TAB
33	Ent. Suschilá - Comitán	CHIS-TAB
34	Estación Palenque - La Libertad	CHIS-010
35	Gregorio Méndez Magaña - Reforma de Ocampo	CHIS
36	Independencia - Buenos Aires	CHIS
37	Las Limas - La Concordia	CHIS
38	Libramiento Sur de Tuxtla Gutiérrez	CHIS
39	Ocosingo - Comitán	CHIS
40	Ocozacoautla - Revolución Mexicana	CHIS-053-230
41	Paso de Cunduacán - Estación Juárez	TAB-CHIS
42	Puerto Caté - San Cristóbal de Las Casas	CHIS
43	Ramal a Huehuetán	CHIS
44	Ramal a Mazatán	CHIS-219
45	Ramal a Salto del Agua	TAB-CHIS
46	Ramal Zona Arqueológica " Bonampak "	CHIS
47	Ramal Zona Arqueológica " Palenque "	CHIS
48	San Francisco Pujilic - Ent. Comitán	CHIS
49	Tapachula - Nueva Alemania	CHIS-229
50	Temo - Tila	CHIS
51	Tierra y Libertad - Ent. Dr. Domingo Chanona	CHIS
52	Tuxtla Gutiérrez - Portillo Zaragoza	CHIS-133
53	Zapatero - T. C. (Jalapa - Jonuta)	CHIS-TAB

# 07 CHIAPAS





CHIAPAS

1 CARR: Benemérito de las Américas - Palenque

CLAVE: 07095

RUTA: MEX-307

AÑO: 2023

LUGAR	ESTACION				CLASIFICACION VEHICULAR EN PORCIENTO										COORDENADAS					
	KM	TE	SC	TDPA	M	A	B	C2	C3	T3S2	T3S3	T3S2R4	OTROS	A	B	C	K'	D	LATITUD	LONGITUD
Benemérito de las Américas	0.00																			
Frontera Corozal	42.00	3	0	947	14.5	71.7	1.0	1.3	1.8	6.0	2.9	0.6	0.2	86.2	1.0	12.8	0.093	0.503	16.761476	-91.011658
San Javier	67.00	3	0	1045	9.3	77.4	1.0	1.4	1.3	5.9	2.0	1.5	0.2	86.7	1.0	12.3	0.094	0.514	16.802424	-91.107802
Reforma de Ocampo	160.00	1	0	2256	18.6	73.8	0.5	1.6	1.0	3.0	1.0	0.5	0.0	92.4	0.5	7.1	0.088	0.502	17.317273	-91.685182
T. C. Catazajá - T. C. (Tuxtla Gtz. - Cd. Cuauhtémoc)	194.00	1	0	4665	10.6	79.3	0.5	2.8	3.3	1.9	0.6	0.9	0.1	89.9	0.5	9.6	0.087	0.505	17.442328	-91.960440

2 CARR: Catazajá - T. C. (Tuxtla Gtz. - Cd. Cuauhtémoc)

CLAVE: 07582

RUTA: MEX-199-307

AÑO: 2023

LUGAR	ESTACION				CLASIFICACION VEHICULAR EN PORCIENTO										COORDENADAS					
	KM	TE	SC	TDPA	M	A	B	C2	C3	T3S2	T3S3	T3S2R4	OTROS	A	B	C	K'	D	LATITUD	LONGITUD
Catazajá	0.00																			
X. C. Villahermosa - Francisco Escárcega	2.20	3	0	5297	2.8	73.8	2.1	9.0	3.6	5.7	1.7	0.7	0.6	76.6	2.1	21.3	0.085	0.527	17.705471	-92.016034
Pakalná	23.46	1	0	12191	16.7	71.1	1.1	6.4	2.1	1.2	0.6	0.4	0.4	87.8	1.1	11.1	0.072	0.506	17.549678	-91.985160
T. Izq. Palenque	27.50	1	1	10944	17.1	73.6	1.0	5.5	1.3	0.7	0.3	0.4	0.1	90.7	1.0	8.3	0.094	0.509	17.531050	-91.991917
T. Izq. Palenque	27.50	1	2	10552	17.7	72.7	1.0	5.6	1.4	0.7	0.4	0.4	0.1	90.4	1.0	8.6	0.100	0.509	17.530967	-91.991839
T. Izq. Palenque	27.50	3	0	9081	11.3	75.9	0.6	7.0	2.6	1.3	0.6	0.4	0.3	87.2	0.6	12.2	0.084	0.515	17.486789	-91.978045
T. Izq. Bonampak	33.20	3	0	3663	1.9	85.5	1.4	5.5	1.2	2.1	1.6	0.1	0.7	87.4	1.4	11.2	0.079	0.505	17.444083	-91.965451
T. Der. Salto del Agua	54.00	1	0	2739	8.1	81.8	1.0	4.6	0.9	2.4	0.9	0.1	0.2	89.9	1.0	9.1	0.089	0.501	17.361997	-92.050675
T. Der. Agua Azul	68.30	1	0	1630	6.0	81.4	1.4	6.0	1.1	2.5	1.4	0.1	0.1	87.4	1.4	11.2	0.114	0.509	17.235551	-92.091579
T. Der. Chilón	111.00	1	0	2450	5.9	85.8	0.2	3.4	1.5	2.2	0.8	0.1	0.1	91.7	0.2	8.1	0.088	0.501	17.019294	-92.134792
T. Der. Chilón	111.00	3	0	3362	7.7	80.8	1.1	5.3	0.4	2.9	1.2	0.2	0.4	88.5	1.1	10.4	0.088	0.514	17.014590	-92.133705
Ocosingo	136.00	3	0	3864	19.7	75.4	0.7	2.2	0.5	0.8	0.3	0.3	0.1	95.1	0.7	4.2	0.104	0.502	16.891915	-92.104102
T. Izq. Altamirano	152.00	1	0	3175	9.6	84.7	0.8	1.7	1.1	1.0	0.6	0.4	0.1	94.3	0.8	4.9	0.092	0.511	16.816503	-92.170479
Huixtán	190.60	1	0	3363	5.0	90.2	0.7	1.6	1.1	0.8	0.2	0.4	0.0	95.2	0.7	4.1	0.084	0.507	16.717946	-92.447405
Huixtán	190.60	3	0	3855	5.8	87.9	0.9	1.9	1.6	1.0	0.5	0.3	0.1	93.7	0.9	5.4	0.086	0.506	16.706463	-92.463375
T. C. Tuxtla Gutiérrez - Cd. Cuauhtémoc	210.00	1	0	6058	14.0	77.5	0.7	4.9	1.1	0.9	0.3	0.4	0.2	91.5	0.7	7.8	0.083	0.513	16.669561	-92.559230

3 CARR: El Suspiro - Tenosique

CLAVE: 00276

RUTA: MEX-203

AÑO: 2023

LUGAR	ESTACION				CLASIFICACION VEHICULAR EN PORCIENTO										COORDENADAS					
	KM	TE	SC	TDPA	M	A	B	C2	C3	T3S2	T3S3	T3S2R4	OTROS	A	B	C	K'	D	LATITUD	LONGITUD
Ent. El Suspiro	0.00	3	0	6026	10.1	73.7	1.3	4.8	6.5	1.5	0.7	1.2	0.2	83.8	1.3	14.9	0.093	0.542	17.749284	-91.813157
Lim. Edos. Term. Chis. Ppia. Tab.	8.00																			
Emiliano Zapata	8.61	3	0	6139	10.5	78.3	0.9	4.9	2.1	1.7	0.8	0.4	0.4	88.8	0.9	10.3	0.071	0.501	17.727354	-91.756373
T. Der. La Libertad	12.10	3	0	4001	10.8	71.8	2.0	4.9	5.9	1.8	1.3	1.2	0.3	82.6	2.0	15.4	0.073	0.515	17.723863	-91.739329

CHIAPAS

3 CARR: El Suspiro - Tenosique

CLAVE: 00276

RUTA: MEX-203

AÑO: 2023

LUGAR	ESTACION				CLASIFICACION VEHICULAR EN PORCIENTO										COORDENADAS					
	KM	TE	SC	TDPA	M	A	B	C2	C3	T3S2	T3S3	T3S2R4	OTROS	A	B	C	K'	D	LATITUD	LONGITUD
T. Izq. Balancán	32.60	1	0	3417	5.7	76.7	5.2	6.8	1.4	1.8	1.2	1.0	0.2	82.4	5.2	12.4	0.083	0.504	17.634938	-91.602580
T. Izq. Balancán	32.60	3	0	2527	6.6	76.3	3.0	5.7	2.6	2.7	2.1	0.9	0.1	82.9	3.0	14.1	0.086	0.531	17.628368	-91.599983
Estación Zapata	53.00	1	0	3059	7.8	82.5	1.3	3.7	2.5	1.1	0.6	0.4	0.1	90.3	1.3	8.4	0.074	0.541	17.463346	-91.598707
Estación Zapata	53.00	3	0	4382	7.2	76.2	1.6	3.5	5.1	2.6	2.2	1.3	0.3	83.4	1.6	15.0	0.083	0.511	17.456325	-91.593667
Tenosique	75.30																			

4 CARR: Ent. Jaritas - Ciudad Hidalgo

CLAVE: 07094

RUTA: MEX-225

AÑO: 2023

LUGAR	ESTACION				CLASIFICACION VEHICULAR EN PORCIENTO										COORDENADAS					
	KM	TE	SC	TDPA	M	A	B	C2	C3	T3S2	T3S3	T3S2R4	OTROS	A	B	C	K'	D	LATITUD	LONGITUD
T. C. Tapachula - Puerto Madero	0.00	3	0	3580	13.9	67.9	3.0	7.3	3.1	1.2	1.8	0.9	0.9	81.8	3.0	15.2	0.095	0.533	14.782508	-92.364431
T. Der. Ignacio López Rayón	33.35	1	0	3751	14.1	64.7	3.1	7.7	2.8	4.2	1.3	1.2	0.9	78.8	3.1	18.1	0.092	0.502	14.630454	-92.190553
Ciudad Hidalgo	49.00	1	0	8663	15.1	66.8	2.3	7.0	2.0	4.8	0.6	1.0	0.4	81.9	2.3	15.8	0.097	0.517	14.672923	-92.162418

5 CARR: Huixtla - El Jocote

CLAVE: 07577

RUTA: MEX-211

AÑO: 2023

LUGAR	ESTACION				CLASIFICACION VEHICULAR EN PORCIENTO										COORDENADAS					
	KM	TE	SC	TDPA	M	A	B	C2	C3	T3S2	T3S3	T3S2R4	OTROS	A	B	C	K'	D	LATITUD	LONGITUD
Huixtla	0.00	3	0	3254	16.9	70.3	1.8	5.0	1.4	2.9	1.3	0.2	0.2	87.2	1.8	11.0	0.088	0.545	15.148657	-92.443925
B. Domínguez (Loma Bonita)	27.00	3	0	2581	13.9	74.0	1.3	6.1	1.4	2.0	0.8	0.3	0.2	87.9	1.3	10.8	0.083	0.505	15.305071	-92.375593
Motozintla	57.00	1	0	3228	18.0	71.3	0.8	4.2	1.5	2.9	1.1	0.1	0.1	89.3	0.8	9.9	0.091	0.514	15.355990	-92.252161
Motozintla	57.00	3	0	6131	18.2	70.9	0.7	4.0	0.9	3.2	1.0	1.0	0.1	89.1	0.7	10.2	0.076	0.501	15.371957	-92.233396
Amatenango de La Frontera	77.00	1	0	1451	9.9	81.8	1.5	2.9	1.7	1.8	0.3	0.1	0.0	91.7	1.5	6.8	0.090	0.500	15.433555	-92.119090
Amatenango de La Frontera	77.00	3	0	1409	10.8	79.6	1.8	2.9	1.8	1.7	1.1	0.3	0.0	90.4	1.8	7.8	0.089	0.500	15.439210	-92.113727
Frontera Comalapa	108.00	1	0	5959	19.0	74.4	0.3	2.3	0.5	1.5	1.0	0.6	0.4	93.4	0.3	6.3	0.087	0.505	15.642491	-92.144982
El Jocote	126.00	1	0	5269	14.7	76.9	0.9	3.3	0.5	2.3	0.8	0.2	0.4	91.6	0.9	7.5	0.102	0.558	15.684144	-92.006596

6 CARR: La Trinitaria - Benemérito de Las Américas

CLAVE: 07267

RUTA: MEX-307

AÑO: 2023

LUGAR	ESTACION				CLASIFICACION VEHICULAR EN PORCIENTO										COORDENADAS					
	KM	TE	SC	TDPA	M	A	B	C2	C3	T3S2	T3S3	T3S2R4	OTROS	A	B	C	K'	D	LATITUD	LONGITUD
T. C. Tuxtla Gutiérrez - Cd. Cuauhtémoc	0.00	3	0	6462	9.1	82.0	0.7	5.3	1.3	0.7	0.3	0.4	0.2	91.1	0.7	8.2	0.081	0.507	16.130072	-92.062082
Santa Rita	10.00	1	0	4926	5.3	86.5	0.8	5.7	0.7	0.5	0.4	0.1	0.0	91.8	0.8	7.4	0.088	0.504	16.139688	-91.986903
Santa Rita	10.00	3	0	4977	9.0	83.7	0.5	5.2	0.7	0.5	0.2	0.2	0.0	92.7	0.5	6.8	0.086	0.512	16.140634	-91.969546
T. Izq. La Independencia	20.00	3	0	4488	9.7	85.6	0.9	2.3	0.6	0.4	0.3	0.2	0.0	95.3	0.9	3.8	0.103	0.502	16.126480	-91.847904

CHIAPAS

6 CARR: La Trinitaria - Benemérito de Las Américas

CLAVE: 07267

RUTA: MEX-307

AÑO: 2023

LUGAR	ESTACION				CLASIFICACION VEHICULAR EN PORCIENTO										COORDENADAS					
	KM	TE	SC	TDPA	M	A	B	C2	C3	T3S2	T3S3	T3S2R4	OTROS	A	B	C	K'	D	LATITUD	LONGITUD
Montebello	39.76	1	0	2067	7.5	81.7	1.7	6.7	1.3	0.6	0.4	0.1	0.0	89.2	1.7	9.1	0.097	0.534	16.101083	-91.742541
Montebello	39.76	3	0	1597	7.2	88.6	1.1	1.9	0.8	0.2	0.1	0.1	0.0	95.8	1.1	3.1	0.106	0.514	16.101289	-91.730835
Nuevo San Juan Chamula	72.00	3	0	2212	24.4	71.2	0.3	1.1	2.3	0.5	0.1	0.1	0.0	95.6	0.3	4.1	0.108	0.501	16.144681	-91.437270
Benemérito de las Américas	268.00																			
Benemérito de las Américas	268.00	1	0	2906	12.9	82.1	0.8	1.2	0.6	1.4	0.7	0.3	0.0	95.0	0.8	4.2	0.090	0.505	16.496984	-90.653425

7 CARR: Las Cruces - Arriaga

CLAVE: 07196

RUTA: MEX-190

AÑO: 2023

LUGAR	ESTACION				CLASIFICACION VEHICULAR EN PORCIENTO										COORDENADAS					
	KM	TE	SC	TDPA	M	A	B	C2	C3	T3S2	T3S3	T3S2R4	OTROS	A	B	C	K'	D	LATITUD	LONGITUD
Las Cruces	0.00	3	0	1689	7.6	81.3	0.9	5.3	2.3	1.2	0.8	0.6	0.0	88.9	0.9	10.2	0.079	0.513	16.568466	-93.844582
Santa Isabel	27.90	3	0	361	13.4	83.9	0.2	1.4	0.7	0.2	0.2	0.0	0.0	97.3	0.2	2.5	0.119	0.514	16.345268	-93.871166
Arriaga	49.00	1	0	1308	35.9	60.9	0.3	2.1	0.5	0.2	0.1	0.0	0.0	96.8	0.3	2.9	0.093	0.506	16.247855	-93.886161

8 CARR: Libramiento de Arriaga

CLAVE:

RUTA: MEX-200

AÑO: 2023

LUGAR	ESTACION				CLASIFICACION VEHICULAR EN PORCIENTO										COORDENADAS					
	KM	TE	SC	TDPA	M	A	B	C2	C3	T3S2	T3S3	T3S2R4	OTROS	A	B	C	K'	D	LATITUD	LONGITUD
T. C. Tapanatepec - Talismán	0.00	3	0	2548	7.7	51.2	3.7	7.9	3.3	13.2	4.1	8.2	0.7	58.9	3.7	37.4	0.070	0.506	16.220049	-93.924958
T. Der. Villa del Mar	2.60	1	0	2716	7.6	53.7	4.5	6.4	2.8	12.9	3.7	7.6	0.8	61.3	4.5	34.2	0.066	0.515	16.209357	-93.913942
T. Der. Villa del Mar	2.60	3	0	2650	5.3	55.8	3.9	7.5	4.0	10.2	4.7	7.8	0.8	61.1	3.9	35.0	0.062	0.503	16.208860	-93.897744
T. C. Tapanatepec - Talismán	7.50	1	0	2471	5.4	55.4	4.4	7.1	4.0	11.0	3.9	8.2	0.6	60.8	4.4	34.8	0.064	0.519	16.215608	-93.879418

9 CARR: Libramiento de Ciudad Hidalgo Chis.

CLAVE:

RUTA: MEX-225

AÑO: 2023

LUGAR	ESTACION				CLASIFICACION VEHICULAR EN PORCIENTO										COORDENADAS					
	KM	TE	SC	TDPA	M	A	B	C2	C3	T3S2	T3S3	T3S2R4	OTROS	A	B	C	K'	D	LATITUD	LONGITUD
T. C. Ramal a Ciudad Hidalgo	0.00																			
T. C. Ent. Jaritas - Ciudad Hidalgo	5.00	3	0	4397	22.6	53.0	1.7	2.5	3.7	11.8	2.1	2.0	0.6	75.6	1.7	22.7	0.078	0.526	14.675683	-92.168910

10 CARR: Libramiento de Huixtla

CLAVE:

RUTA: MEX-200

AÑO: 2023

LUGAR	ESTACION				CLASIFICACION VEHICULAR EN PORCIENTO										COORDENADAS					
	KM	TE	SC	TDPA	M	A	B	C2	C3	T3S2	T3S3	T3S2R4	OTROS	A	B	C	K'	D	LATITUD	LONGITUD
T. C. Tapanatepec - Talismán	0.00	3	1	4365	6.3	71.7	4.3	4.8	2.0	6.1	1.6	2.3	0.9	78.0	4.3	17.7	0.076	0.504	15.161187	-92.487590

CHIAPAS

10 CARR: Libramiento de Huixtla

CLAVE:

RUTA: MEX-200

AÑO: 2023

LUGAR	ESTACION				CLASIFICACION VEHICULAR EN PORCIENTO										COORDENADAS					
	KM	TE	SC	TDPA	M	A	B	C2	C3	T3S2	T3S3	T3S2R4	OTROS	A	B	C	K'	D	LATITUD	LONGITUD
T. C. Tapanatepec - Talismán	0.00	3	2	4437	6.1	71.8	4.2	4.5	2.2	6.3	1.5	2.5	0.9	77.9	4.2	17.9	0.080	0.504	15.161262	-92.487629
T. C. Huixtla - El Jocote	5.80	1	1	4370	6.5	70.1	3.9	4.7	1.8	8.0	1.6	2.4	1.0	76.6	3.9	19.5	0.081	0.507	15.154096	-92.454667
T. C. Huixtla - El Jocote	5.80	1	2	4252	6.2	70.0	3.9	4.6	1.7	8.1	2.1	2.6	0.8	76.2	3.9	19.9	0.091	0.507	15.154190	-92.454664
T. C. Huixtla - El Jocote	5.80	3	1	4850	4.6	74.2	3.9	4.2	1.8	6.0	1.3	3.3	0.7	78.8	3.9	17.3	0.091	0.550	15.141731	-92.447959
T. C. Huixtla - El Jocote	5.80	3	2	3969	4.6	75.0	2.3	4.9	1.8	6.0	1.7	2.9	0.8	79.6	2.3	18.1	0.075	0.550	15.141775	-92.447870
T. C. Tapanatepec - Talismán	7.07																			

11 CARR: Libramiento de Ocozocoautla

CLAVE: 07583

RUTA: MEX-190

AÑO: 2023

LUGAR	ESTACION				CLASIFICACION VEHICULAR EN PORCIENTO										COORDENADAS					
	KM	TE	SC	TDPA	M	A	B	C2	C3	T3S2	T3S3	T3S2R4	OTROS	A	B	C	K'	D	LATITUD	LONGITUD
T. C. Tapanatepec - Tuxtla Gutiérrez	0.00	3	0	8757	7.5	79.5	1.2	6.5	2.2	1.7	0.5	0.7	0.2	87.0	1.2	11.8	0.092	0.521	16.762881	-93.384855
T. C. Arriaga - Ocozocoautla (Cuota)	5.54	1	0	9050	7.6	78.7	1.4	6.4	2.4	1.7	0.7	0.9	0.2	86.3	1.4	12.3	0.098	0.512	16.748724	-93.377209
T. C. Arriaga - Ocozocoautla (Cuota)	5.54	3	1	6109	3.0	80.8	2.6	5.1	1.7	3.4	1.1	1.7	0.6	83.8	2.6	13.6	0.094	0.501	16.735424	-93.353947
T. C. Arriaga - Ocozocoautla (Cuota)	5.54	3	2	6125	3.1	80.4	2.4	5.2	1.8	3.5	1.2	1.8	0.6	83.5	2.4	14.1	0.093	0.501	16.735507	-93.353956
T. C. Tapanatepec - Tuxtla Gutiérrez	9.00	1	0	13174	2.5	81.1	2.5	5.2	1.8	3.5	1.0	1.8	0.6	83.6	2.5	13.9	0.079	0.512	16.745942	-93.341171

12 CARR: Libramiento Sur de Tuxtla Gutierrez (Dr. Manuel Velasco)

CLAVE:

RUTA: MEX

AÑO: 2023

LUGAR	ESTACION				CLASIFICACION VEHICULAR EN PORCIENTO										COORDENADAS					
	KM	TE	SC	TDPA	M	A	B	C2	C3	T3S2	T3S3	T3S2R4	OTROS	A	B	C	K'	D	LATITUD	LONGITUD
Ent C. (Ocozocoautla - Ent. el Sabino)	0.00	3	0	4442	4.1	73.0	3.1	3.0	2.9	6.8	2.8	3.4	0.9	77.1	3.1	19.8	0.081	0.521	16.758367	-93.301241
X. C. Terán - El Nuevo Triunfo	15.94	3	0	6196	4.4	78.3	2.0	3.3	2.4	4.5	1.9	2.6	0.6	82.7	2.0	15.3	0.080	0.503	16.693625	-93.175191
Tuxtla Gutiérrez - Portillo Zaragoza	22.10	3	0	5195	3.8	76.2	2.6	3.3	2.5	5.3	2.4	3.1	0.8	80.0	2.6	17.4	0.080	0.508	16.637300	-93.086192
T. C. Ramal a Aeropuerto Inter. Angel Albino Corzo	36.00																			

13 CARR: Malpaso - El Bellote

CLAVE: 00137

RUTA: MEX-187

AÑO: 2023

LUGAR	ESTACION				CLASIFICACION VEHICULAR EN PORCIENTO										COORDENADAS					
	KM	TE	SC	TDPA	M	A	B	C2	C3	T3S2	T3S3	T3S2R4	OTROS	A	B	C	K'	D	LATITUD	LONGITUD
Presa Malpaso	0.00																			
Lim. Edos. Term. Chis. Ppia. Tab.	43.99																			
Lim. Edos. Term. Tab. Ppia. Chis.	44.59																			
Lim. Edos. Term. Chis. Ppia. Tab.	45.26																			
Lim. Edos. Term. Tab. Ppia. Chis.	45.63																			



CHIAPAS

13 CARR: Malpaso - El Bellote

CLAVE: 00137

RUTA: MEX-187

AÑO: 2023

LUGAR	ESTACION				CLASIFICACION VEHICULAR EN PORCIENTO										COORDENADAS					
	KM	TE	SC	TDPA	M	A	B	C2	C3	T3S2	T3S3	T3S2R4	OTROS	A	B	C	K'	D	LATITUD	LONGITUD
Lim. Edos. Term. Chis. Ppia. Tab.	55.04																			
Macabil (La Estrella)	70.12	1	0	4626	13.9	74.5	2.7	4.2	1.6	2.0	0.7	0.3	0.1	88.4	2.7	8.9	0.076	0.508	17.604253	-93.520060
Estación Chontalpa	75.69	1	0	6108	15.8	75.0	2.2	4.0	1.4	0.8	0.4	0.2	0.2	90.8	2.2	7.0	0.076	0.500	17.653799	-93.485594
Estación Chontalpa	75.69	3	0	7451	14.0	75.9	2.0	4.4	1.3	1.4	0.4	0.5	0.1	89.9	2.0	8.1	0.075	0.500	17.676411	-93.475867
T. Izq. Francisco Rueda	90.49	1	0	6886	14.0	76.1	1.9	4.4	1.3	1.4	0.5	0.2	0.2	90.1	1.9	8.0	0.085	0.503	17.786992	-93.439564
T. Izq. Francisco Rueda	90.49	3	0	9581	14.0	80.7	0.8	1.6	0.6	1.4	0.4	0.4	0.1	94.7	0.8	4.5	0.076	0.515	17.793203	-93.431960
Huimanguillo	98.03	1	1	6197	13.6	78.8	1.6	2.8	1.1	1.3	0.3	0.3	0.2	92.4	1.6	6.0	0.092	0.522	17.818723	-93.402093
Huimanguillo	98.03	1	2	6754	14.0	81.0	0.8	1.6	0.6	1.3	0.2	0.3	0.2	95.0	0.8	4.2	0.090	0.522	17.818790	-93.402174
Huimanguillo	98.03	3	1	6373	13.4	77.7	1.2	2.9	2.6	0.9	0.7	0.3	0.3	91.1	1.2	7.7	0.087	0.518	17.853356	-93.397031
Huimanguillo	98.03	3	2	6847	13.6	78.7	1.2	3.1	1.4	0.9	0.6	0.3	0.2	92.3	1.2	6.5	0.089	0.518	17.853083	-93.397134
Cárdenas	117.56	1	0	16110	13.8	79.8	0.9	2.9	0.5	1.3	0.3	0.3	0.2	93.6	0.9	5.5	0.084	0.504	17.946140	-93.362126
Cárdenas	117.56	3	0	16783	14.1	76.5	1.3	4.1	1.1	1.2	0.7	0.6	0.4	90.6	1.3	8.1	0.087	0.506	18.016628	-93.368618
Tulipán	134.70	3	0	9829	6.5	81.7	1.5	6.2	0.9	1.9	1.0	0.2	0.1	88.2	1.5	10.3	0.094	0.515	18.128116	-93.289966
T. Der. Conduacán	141.70	1	0	9292	6.2	79.6	1.5	8.5	0.9	2.1	0.9	0.2	0.1	85.8	1.5	12.7	0.084	0.514	18.140292	-93.271330
T. Der. Conduacán	141.70	3	0	7272	6.8	79.0	1.7	8.2	1.2	2.0	0.9	0.2	0.0	85.8	1.7	12.5	0.106	0.500	18.145451	-93.267704
T. Der. Jalpa	153.50	1	0	12034	10.0	78.5	1.4	6.0	1.2	1.3	0.8	0.6	0.2	88.5	1.4	10.1	0.095	0.505	18.241602	-93.210405
T. Der. Jalpa	153.50	3	1	9914	10.9	82.6	1.1	4.3	0.5	0.3	0.1	0.2	0.0	93.5	1.1	5.4	0.086	0.530	18.248979	-93.213545
T. Der. Jalpa	153.50	3	2	8793	10.0	82.4	1.2	5.0	0.7	0.3	0.0	0.3	0.1	92.4	1.2	6.4	0.090	0.530	18.248948	-93.213620
Paraíso	176.85	1	1	14472	5.9	88.2	1.2	3.2	0.8	0.3	0.2	0.1	0.1	94.1	1.2	4.7	0.157	0.501	18.377230	-93.221882
Paraíso	176.85	1	2	14545	6.2	88.3	1.3	2.9	0.7	0.3	0.1	0.1	0.1	94.5	1.3	4.2	0.139	0.501	18.377261	-93.221963
Paraíso	176.85	3	1	12061	9.7	79.7	1.5	5.3	2.0	0.7	0.5	0.4	0.2	89.4	1.5	9.1	0.135	0.501	18.409623	-93.195977
Paraíso	176.85	3	2	11999	9.8	80.1	1.5	5.2	2.0	0.6	0.3	0.4	0.1	89.9	1.5	8.6	0.144	0.501	18.409648	-93.196056
Ceiba	182.00	3	0	11602	10.6	78.6	0.5	3.4	1.4	4.0	1.0	0.2	0.3	89.2	0.5	10.3	0.082	0.513	18.422610	-93.163283
El Bellote	185.47																			

14 CARR: Ocozocoautla - Ent. El Sabino

CLAVE: 07579

RUTA: MEX-190

AÑO: 2023

LUGAR	ESTACION				CLASIFICACION VEHICULAR EN PORCIENTO										COORDENADAS					
	KM	TE	SC	TDPA	M	A	B	C2	C3	T3S2	T3S3	T3S2R4	OTROS	A	B	C	K'	D	LATITUD	LONGITUD
T. C. Tapanatepec - Tuxtla Gutiérrez	0.00																			
X. C. Tapanatepec - Tuxtla Gutiérrez	7.85	3	0	6443	7.2	79.8	1.4	7.6	0.9	2.0	0.5	0.3	0.3	87.0	1.4	11.6	0.091	0.502	16.772642	-93.284169
T. C. Tapanatepec - Tuxtla Gutiérrez	18.25	1	0	9533	4.6	86.8	0.3	6.9	0.2	0.4	0.5	0.1	0.2	91.4	0.3	8.3	0.096	0.509	16.776118	-93.207179

CHIAPAS

15 CARR: Ramal a Cd. Hidalgo

CLAVE: 07274

RUTA: MEX-200

AÑO: 2023

LUGAR	ESTACION				CLASIFICACION VEHICULAR EN PORCIENTO												COORDENADAS			
	KM	TE	SC	TDPA	M	A	B	C2	C3	T3S2	T3S3	T3S2R4	OTROS	A	B	C	K'	D	LATITUD	LONGITUD
T. C. Tapanatepec - Talismán	0.00	3	0	10981	3.6	83.9	0.7	5.4	0.9	3.2	0.4	1.5	0.4	87.5	0.7	11.8	0.082	0.508	14.913000	-92.191892
T. Izq Paso por Metapa de Dominguez Norte	6.80	3	0	6304	9.6	78.2	0.4	2.3	1.3	5.9	0.5	1.3	0.5	87.8	0.4	11.8	0.086	0.515	14.852590	-92.193605
Metapa de Dominguez	9.00	3	0	8851	2.5	84.6	1.5	2.6	1.6	4.8	0.5	1.5	0.4	87.1	1.5	11.4	0.082	0.505	14.804709	-92.189267
Frontera Hidalgo	15.30	3	0	8457	4.8	85.1	1.0	1.4	0.9	4.5	0.5	1.4	0.4	89.9	1.0	9.1	0.092	0.505	14.761560	-92.175827
T. C. Libramiento de Ciudad de Hidalgo	23.80	1	0	9085	5.4	81.2	1.7	3.6	1.1	4.5	0.6	1.4	0.5	86.6	1.7	11.7	0.083	0.505	14.719028	-92.162199
Cd. Hidalgo	27.00	1	0	8131	5.7	87.2	1.5	2.0	1.2	1.6	0.2	0.5	0.1	92.9	1.5	5.6	0.098	0.519	14.694656	-92.154347

16 CARR: Ramal a La Gloria

CLAVE: 07091

RUTA: MEX-200

AÑO: 2023

LUGAR	ESTACION				CLASIFICACION VEHICULAR EN PORCIENTO												COORDENADAS			
	KM	TE	SC	TDPA	M	A	B	C2	C3	T3S2	T3S3	T3S2R4	OTROS	A	B	C	K'	D	LATITUD	LONGITUD
T. C. Tapanatepec - Talismán	0.00	3	0	1621	27.0	67.3	0.1	3.8	0.1	1.4	0.2	0.0	0.1	94.3	0.1	5.6	0.087	0.506	16.212272	-94.048081
La Gloria	6.00																			

17 CARR: Ramal a Paredón

CLAVE: 07269

RUTA: MEX-200

AÑO: 2023

LUGAR	ESTACION				CLASIFICACION VEHICULAR EN PORCIENTO												COORDENADAS			
	KM	TE	SC	TDPA	M	A	B	C2	C3	T3S2	T3S3	T3S2R4	OTROS	A	B	C	K'	D	LATITUD	LONGITUD
T. C. Tapanatepec - Talismán	0.00	3	0	5688	19.7	70.6	0.5	5.1	0.8	2.1	0.6	0.4	0.2	90.3	0.5	9.2	0.099	0.502	16.079618	-93.778951
Paredón	14.00																			

18 CARR: Ramal a Puerto Arista

CLAVE: 07270

RUTA: MEX-200

AÑO: 2023

LUGAR	ESTACION				CLASIFICACION VEHICULAR EN PORCIENTO												COORDENADAS			
	KM	TE	SC	TDPA	M	A	B	C2	C3	T3S2	T3S3	T3S2R4	OTROS	A	B	C	K'	D	LATITUD	LONGITUD
T. C. Tapanatepec - Talismán	0.00	3	0	4979	12.0	78.6	0.4	2.7	0.3	4.2	1.6	0.2	0.0	90.6	0.4	9.0	0.081	0.514	16.052132	-93.736761
T. Der. Paredón	11.00	3	0	4042	11.9	78.4	0.2	3.1	0.6	4.3	1.5	0.0	0.0	90.3	0.2	9.5	0.093	0.519	15.974182	-93.775181
Puerto Arista	17.00	1	0	2664	26.7	66.0	0.2	3.4	0.6	1.6	1.5	0.0	0.0	92.7	0.2	7.1	0.102	0.504	15.942516	-93.798830

19 CARR: Ramal a Unión Juárez

CLAVE: 07273

RUTA: MEX-200

AÑO: 2023

LUGAR	ESTACION				CLASIFICACION VEHICULAR EN PORCIENTO												COORDENADAS			
	KM	TE	SC	TDPA	M	A	B	C2	C3	T3S2	T3S3	T3S2R4	OTROS	A	B	C	K'	D	LATITUD	LONGITUD
T. C. Tapanatepec - Talismán	0.00																			
Cacahoatán	5.00	1	0	9419	6.2	87.8	0.4	4.6	0.5	0.2	0.1	0.1	0.1	94.0	0.4	5.6	0.079	0.501	14.982590	-92.157006

CHIAPAS

19 CARR: Ramal a Unión Juárez

CLAVE: 07273

RUTA: MEX-200

AÑO: 2023

LUGAR	ESTACION				CLASIFICACION VEHICULAR EN PORCIENTO													COORDENADAS		
	KM	TE	SC	TDPA	M	A	B	C2	C3	T3S2	T3S3	T3S2R4	OTROS	A	B	C	K'	D	LATITUD	LONGITUD
Unión Juárez	22.00	1	0	1301	6.1	86.2	0.5	3.2	3.0	0.5	0.1	0.4	0.0	92.3	0.5	7.2	0.105	0.513	15.055990	-92.080582

20 CARR: Tapachula - Puerto Madero

CLAVE: 07018

RUTA: MEX-225

AÑO: 2023

LUGAR	ESTACION				CLASIFICACION VEHICULAR EN PORCIENTO													COORDENADAS		
	KM	TE	SC	TDPA	M	A	B	C2	C3	T3S2	T3S3	T3S2R4	OTROS	A	B	C	K'	D	LATITUD	LONGITUD
Tapachula	0.00	3	1	10511	7.7	82.3	0.7	5.8	1.2	1.1	0.5	0.4	0.3	90.0	0.7	9.3	0.114	0.535	14.868700	-92.289852
Tapachula	0.00	3	2	9126	8.0	81.1	0.6	6.2	1.5	1.3	0.6	0.3	0.4	89.1	0.6	10.3	0.094	0.535	14.868255	-92.290037
T. Der. Aeropuerto	14.50	3	1	4170	11.5	80.2	0.9	2.8	1.1	1.8	0.5	0.7	0.5	91.7	0.9	7.4	0.133	0.516	14.786625	-92.366450
T. Der. Aeropuerto	14.50	3	2	4447	11.5	78.6	1.2	3.2	1.5	2.1	0.6	0.8	0.5	90.1	1.2	8.7	0.108	0.516	14.786536	-92.366417
Puerto Madero	27.00	1	0	8466	36.4	59.3	0.6	1.1	0.7	0.6	0.4	0.5	0.4	95.7	0.6	3.7	0.083	0.512	14.721308	-92.420280

21 CARR: Tapanatepec - Talismán

CLAVE: 00075

RUTA: MEX-200

AÑO: 2023

LUGAR	ESTACION				CLASIFICACION VEHICULAR EN PORCIENTO													COORDENADAS		
	KM	TE	SC	TDPA	M	A	B	C2	C3	T3S2	T3S3	T3S2R4	OTROS	A	B	C	K'	D	LATITUD	LONGITUD
Tapanatepec	0.00	3	0	6345	9.1	68.7	2.9	4.0	3.2	5.4	1.8	4.0	0.9	77.8	2.9	19.3	0.074	0.521	16.344984	-94.190602
Lim. Edos. Term. Oax. Ppia. Chis.	25.90																			
T. Der. Emiliano Zapata	26.20	1	0	3826	7.7	62.8	3.2	5.7	2.1	8.6	2.6	6.5	0.8	70.5	3.2	26.3	0.069	0.508	16.217618	-94.052459
T. Der. Emiliano Zapata	26.20	3	0	4128	6.8	62.7	3.6	6.8	2.4	8.5	2.6	5.7	0.9	69.5	3.6	26.9	0.069	0.507	16.214645	-94.038691
T. C. Libramiento de Arriaga	41.00	3	0	4517	7.6	69.1	2.4	3.4	4.9	6.1	2.0	3.7	0.8	76.7	2.4	20.9	0.084	0.502	16.224836	-93.925585
Arriaga	45.00	1	0	6124	8.5	67.4	2.7	3.2	4.6	6.0	2.5	4.2	0.9	75.9	2.7	21.4	0.073	0.519	16.221852	-93.936368
Arriaga	45.00	3	1	3982	17.2	71.4	2.5	6.6	0.7	0.8	0.5	0.2	0.1	88.6	2.5	8.9	0.080	0.529	16.237099	-93.882846
Arriaga	45.00	3	2	4474	17.3	71.2	2.4	6.7	0.7	0.8	0.5	0.3	0.1	88.5	2.4	9.1	0.073	0.529	16.238967	-93.883261
X. C. Arriaga- Ocozacoautla (Cuota)	47.00	3	1	4486	8.4	74.7	3.6	4.5	1.6	3.6	1.1	2.0	0.5	83.1	3.6	13.3	0.068	0.516	16.229029	-93.872697
X. C. Arriaga- Ocozacoautla (Cuota)	47.00	3	2	4779	8.4	74.7	3.6	4.5	1.5	3.7	1.1	2.0	0.5	83.1	3.6	13.3	0.069	0.516	16.232918	-93.876293
T. Der. Libramiento de Arriaga	49.50	1	1	4497	7.9	75.7	4.0	3.6	1.2	3.9	1.1	2.0	0.6	83.6	4.0	12.4	0.068	0.507	16.223332	-93.867969
T. Der. Libramiento de Arriaga	49.50	1	2	4371	7.9	75.5	4.1	3.5	1.4	3.9	1.1	2.1	0.5	83.4	4.1	12.5	0.078	0.507	16.223413	-93.867879
T. Der. Libramiento de Arriaga	49.50	3	1	4575	6.1	70.4	2.9	7.4	1.6	6.2	1.8	2.9	0.7	76.5	2.9	20.6	0.077	0.524	16.208861	-93.855960
T. Der. Libramiento de Arriaga	49.50	3	2	4153	6.1	70.3	2.8	7.4	1.7	6.3	1.9	2.8	0.7	76.4	2.8	20.8	0.082	0.524	16.208944	-93.855872
X. C. Ramal a Paredón	68.60	1	1	3824	6.0	74.0	2.3	6.1	1.8	5.9	1.0	2.4	0.5	80.0	2.3	17.7	0.080	0.523	16.082746	-93.771023
X. C. Ramal a Paredón	68.60	1	2	4186	6.0	74.2	2.3	6.1	1.5	5.9	1.0	2.4	0.6	80.2	2.3	17.5	0.078	0.523	16.082809	-93.770957
Tonalá	68.80	1	1	4966	6.6	71.2	2.8	7.2	1.6	6.3	1.4	2.3	0.6	77.8	2.8	19.4	0.076	0.511	16.116757	-93.790025
Tonalá	68.80	1	2	4761	6.5	71.4	2.7	7.2	1.7	6.2	1.5	2.2	0.6	77.9	2.7	19.4	0.080	0.511	16.116812	-93.789911
T. Der. Puerto Arista	73.00	1	1	3465	6.4	68.3	2.4	6.2	2.0	8.1	2.3	3.4	0.9	74.7	2.4	22.9	0.077	0.521	16.059949	-93.741867

CHIAPAS

21 CARR: Tapanatepec - Talismán

CLAVE: 00075

RUTA: MEX-200

AÑO: 2023

LUGAR	ESTACION				CLASIFICACION VEHICULAR EN PORCIENTO														COORDENADAS	
	KM	TE	SC	TDPA	M	A	B	C2	C3	T3S2	T3S3	T3S2R4	OTROS	A	B	C	K'	D	LATITUD	LONGITUD
T. Der. Puerto Arista	73.00	1	2	3180	7.9	68.5	2.2	5.5	2.5	7.7	1.7	3.2	0.8	76.4	2.2	21.4	0.086	0.521	16.060016	-93.741824
T. Der. Puerto Arista	73.00	3	1	3313	7.5	65.3	3.3	6.5	2.6	8.2	2.6	3.2	0.8	72.8	3.3	23.9	0.080	0.516	16.055793	-93.734464
T. Der. Puerto Arista	73.00	3	2	3114	8.0	66.1	3.3	6.6	2.2	7.9	1.9	3.2	0.8	74.1	3.3	22.6	0.075	0.516	16.055932	-93.734412
T. Der. Tres Picos	100.40	1	1	3351	6.7	65.9	5.8	3.6	2.0	8.9	2.6	3.6	0.9	72.6	5.8	21.6	0.067	0.535	15.922686	-93.554944
T. Der. Tres Picos	100.40	1	2	2918	6.8	64.5	6.0	4.1	2.9	9.3	2.0	3.5	0.9	71.3	6.0	22.7	0.072	0.535	15.922830	-93.554920
T. Der. Tres Picos	100.40	3	1	3075	5.9	61.1	5.1	8.1	2.3	9.8	2.9	3.9	0.9	67.0	5.1	27.9	0.065	0.537	15.905957	-93.522381
T. Der. Tres Picos	100.40	3	2	2649	6.0	62.5	3.7	7.6	2.7	9.4	2.9	4.3	0.9	68.5	3.7	27.8	0.069	0.537	15.906087	-93.522339
T. Der. Los Patos	114.75	1	1	2995	4.6	65.7	4.0	7.4	2.0	9.7	2.0	3.7	0.9	70.3	4.0	25.7	0.067	0.528	15.838490	-93.435856
T. Der. Los Patos	114.75	1	2	2676	5.3	64.1	3.9	8.0	2.3	9.4	1.9	4.2	0.9	69.4	3.9	26.7	0.070	0.528	15.840941	-93.437101
T. Der. Los Patos	114.75	3	1	2991	4.5	67.3	3.9	4.1	2.3	10.7	2.6	3.7	0.9	71.8	3.9	24.3	0.069	0.515	15.815297	-93.415766
T. Der. Los Patos	114.75	3	2	2815	4.7	65.0	4.3	4.5	2.5	11.3	2.8	4.0	0.9	69.7	4.3	26.0	0.070	0.515	15.815268	-93.415075
T. Der. San Isidro	125.00	1	1	3048	7.2	64.1	3.6	6.7	2.3	8.0	3.0	4.2	0.9	71.3	3.6	25.1	0.064	0.510	15.779774	-93.364916
T. Der. San Isidro	125.00	1	2	2926	6.9	64.0	3.8	6.4	3.0	7.4	3.0	4.6	0.9	70.9	3.8	25.3	0.069	0.510	15.781636	-93.364881
T. Der. San Isidro	125.00	3	1	3106	5.5	67.8	3.7	6.1	1.9	7.4	2.9	3.8	0.9	73.3	3.7	23.0	0.071	0.512	15.774639	-93.353270
T. Der. San Isidro	125.00	3	2	2956	5.2	67.1	4.0	5.9	2.4	7.5	2.8	4.2	0.9	72.3	4.0	23.7	0.090	0.512	15.776072	-93.353613
Pijijapan	144.45	1	1	6983	6.5	65.2	3.8	8.2	2.3	7.3	1.7	4.1	0.9	71.7	3.8	24.5	0.065	0.521	15.697807	-93.210625
Pijijapan	144.45	1	2	6409	7.0	65.5	3.5	7.8	2.0	7.5	1.8	4.2	0.7	72.5	3.5	24.0	0.075	0.521	15.698940	-93.211666
Valdivia	180.39	1	1	3780	20.4	53.7	3.8	3.1	3.1	8.9	2.0	4.1	0.9	74.1	3.8	22.1	0.059	0.512	15.510955	-92.956000
Valdivia	180.39	1	2	3596	20.0	53.4	3.6	3.7	2.6	9.8	2.0	4.0	0.9	73.4	3.6	23.0	0.083	0.512	15.511531	-92.956212
Valdivia	180.39	3	1	4427	14.2	65.3	2.6	3.1	1.8	7.2	2.0	3.0	0.8	79.5	2.6	17.9	0.064	0.508	15.499323	-92.940068
Valdivia	180.39	3	2	4296	14.1	64.8	3.3	2.9	1.5	7.9	1.5	3.2	0.8	78.9	3.3	17.8	0.080	0.508	15.499935	-92.940599
T. Der. Mapastepec	188.85	3	1	4352	15.4	64.7	4.1	2.5	1.6	6.6	1.9	2.5	0.7	80.1	4.1	15.8	0.074	0.512	15.454463	-92.880528
T. Der. Mapastepec	188.85	3	2	4144	16.1	63.8	4.4	2.7	1.4	6.9	1.1	2.7	0.9	79.9	4.4	15.7	0.097	0.512	15.454568	-92.879391
Sesecapa	197.20	3	1	3172	7.2	70.7	3.1	3.6	3.3	6.2	1.9	3.0	1.0	77.9	3.1	19.0	0.070	0.530	15.401362	-92.814198
Sesecapa	197.20	3	2	2817	8.9	68.2	4.3	3.0	2.1	7.7	1.5	3.5	0.8	77.1	4.3	18.6	0.089	0.530	15.401706	-92.814379
T. Der. Estación Soconusco	213.30	1	1	4225	12.6	62.0	3.1	3.9	2.7	9.0	1.9	3.8	1.0	74.6	3.1	22.3	0.077	0.512	15.338057	-92.711373
T. Der. Estación Soconusco	213.30	1	2	4022	11.5	64.0	3.5	3.7	2.5	8.3	1.7	3.9	0.9	75.5	3.5	21.0	0.091	0.512	15.350622	-92.694095
T. Der. Estación Soconusco	213.30	3	1	4390	14.3	63.4	2.9	3.1	2.1	7.8	1.8	3.7	0.9	77.7	2.9	19.4	0.073	0.508	15.331607	-92.703565
T. Der. Estación Soconusco	213.30	3	2	4539	14.2	62.0	3.2	2.9	2.3	7.9	2.3	4.2	1.0	76.2	3.2	20.6	0.088	0.508	15.346394	-92.684663
Villa Comaltitlán	233.00	1	1	4738	10.8	62.8	4.1	7.5	1.7	7.4	1.4	3.4	0.9	73.6	4.1	22.3	0.066	0.519	15.237556	-92.587794
Villa Comaltitlán	233.00	1	2	4391	9.4	64.7	3.8	7.6	2.0	7.3	1.5	2.9	0.8	74.1	3.8	22.1	0.087	0.519	15.237896	-92.587530
T. Der a Lázaro Cárdenas	238.20	1	1	5431	7.9	74.3	3.4	3.2	1.5	5.9	1.1	2.2	0.5	82.2	3.4	14.4	0.081	0.535	15.182914	-92.550238
T. Der a Lázaro Cárdenas	238.20	1	2	4719	7.8	73.4	3.6	3.4	1.8	5.9	0.8	2.6	0.7	81.2	3.6	15.2	0.091	0.535	15.184851	-92.550365
T. Libramiento de Huixtla Oeste	245.00																			
Huixtla	250.50	1	1	5310	10.4	65.6	3.7	7.6	1.6	5.8	2.0	2.5	0.8	76.0	3.7	20.3	0.074	0.502	15.158007	-92.505456

CHIAPAS

21 CARR: Tapanatepec - Talismán

CLAVE: 00075

RUTA: MEX-200

AÑO: 2023

LUGAR	ESTACION				CLASIFICACION VEHICULAR EN PORCIENTO										COORDENADAS					
	KM	TE	SC	TDPA	M	A	B	C2	C3	T3S2	T3S3	T3S2R4	OTROS	A	B	C	K'	D	LATITUD	LONGITUD
Huixtla	250.50	1	2	5260	10.0	65.7	3.8	7.6	1.7	6.2	1.8	2.4	0.8	75.7	3.8	20.5	0.080	0.502	15.158209	-92.505763
Huixtla	250.50	3	1	9490	10.0	76.2	2.3	4.8	1.3	3.3	0.6	1.2	0.3	86.2	2.3	11.5	0.082	0.503	15.129012	-92.443104
Huixtla	250.50	3	2	9381	10.0	77.0	1.7	4.8	1.1	3.5	0.4	1.2	0.3	87.0	1.7	11.3	0.076	0.503	15.129039	-92.443003
T. Libramiento de Huixtla Este	251.80																			
T. Izq. Hamburgo	262.70	3	1	7331	9.8	72.7	2.9	6.0	1.6	4.4	0.7	1.5	0.4	82.5	2.9	14.6	0.082	0.507	15.106351	-92.431401
T. Izq. Hamburgo	262.70	3	2	7530	9.6	74.6	2.3	6.1	1.1	3.8	0.7	1.4	0.4	84.2	2.3	13.5	0.087	0.507	15.106596	-92.431377
T. Izq. Huehuetán	273.70	1	1	6656	12.4	72.4	2.6	4.1	1.3	4.0	1.2	1.6	0.4	84.8	2.6	12.6	0.087	0.509	15.015879	-92.402775
T. Izq. Huehuetán	273.70	1	2	6423	12.4	72.1	2.6	4.1	1.4	4.2	1.2	1.6	0.4	84.5	2.6	12.9	0.091	0.509	15.015647	-92.402654
T. Izq. Huehuetán	273.70	3	1	8253	11.0	73.5	1.9	6.5	1.0	3.8	0.5	1.4	0.4	84.5	1.9	13.6	0.070	0.507	14.992553	-92.402446
T. Izq. Huehuetán	273.70	3	2	8039	12.9	71.4	2.6	6.2	1.0	3.8	0.4	1.4	0.3	84.3	2.6	13.1	0.081	0.507	14.992581	-92.402368
T. C. Libramiento Sur de Tapachula Oeste	283.61	3	1	6403	3.5	86.1	1.4	6.8	0.7	1.0	0.3	0.2	0.0	89.6	1.4	9.0	0.097	0.508	14.906103	-92.320224
T. C. Libramiento Sur de Tapachula Oeste	283.61	3	2	6207	3.1	86.8	1.2	7.1	0.5	1.0	0.2	0.1	0.0	89.9	1.2	8.9	0.100	0.508	14.906183	-92.320229
Tapachula	292.25	1	1	8584	5.4	80.2	1.2	6.4	1.0	2.6	1.5	1.3	0.4	85.6	1.2	13.2	0.093	0.508	14.911735	-92.336578
Tapachula	292.25	1	2	8875	5.3	79.2	1.3	6.4	1.5	2.7	1.4	1.5	0.7	84.5	1.3	14.2	0.092	0.508	14.911569	-92.335964
T. C. Libramiento Sur de Tapachula Este	298.00	1	1	11479	5.3	90.3	0.4	3.1	0.2	0.5	0.2	0.0	0.0	95.6	0.4	4.0	0.084	0.525	14.890635	-92.232376
T. C. Libramiento Sur de Tapachula Este	298.00	1	2	10366	5.3	89.7	0.4	3.5	0.3	0.6	0.2	0.0	0.0	95.0	0.4	4.6	0.082	0.525	14.890796	-92.232300
T. Der. Cd. Hidalgo	302.75	1	1	12871	6.6	86.5	0.7	3.3	0.5	1.6	0.2	0.5	0.1	93.1	0.7	6.2	0.085	0.508	14.908311	-92.203522
T. Der. Cd. Hidalgo	302.75	1	2	12450	6.6	86.5	0.7	3.4	0.4	1.7	0.1	0.5	0.1	93.1	0.7	6.2	0.080	0.508	14.907970	-92.204269
Tuxtla Chico	307.00	1	0	13464	11.7	83.1	0.4	3.7	0.4	0.3	0.4	0.0	0.0	94.8	0.4	4.8	0.092	0.509	14.930879	-92.164849
Talismán	310.77	1	0	2825	36.0	60.7	0.4	1.8	0.2	0.4	0.1	0.1	0.3	96.7	0.4	2.9	0.088	0.520	14.960771	-92.151037

22 CARR: Tapanatepec - Tuxtla Gutiérrez

CLAVE: 00060

RUTA: MEX-190

AÑO: 2023

LUGAR	ESTACION				CLASIFICACION VEHICULAR EN PORCIENTO										COORDENADAS					
	KM	TE	SC	TDPA	M	A	B	C2	C3	T3S2	T3S3	T3S2R4	OTROS	A	B	C	K'	D	LATITUD	LONGITUD
Tapanatepec	0.00	3	0	2792	15.1	73.0	1.9	6.0	1.5	1.8	0.3	0.2	0.2	88.1	1.9	10.0	0.078	0.545	16.371141	-94.184547
Libramiento de San Pedro Tapanatepec	0.75	3	0	1287	14.3	64.5	3.2	7.8	1.9	2.8	5.0	0.5	0.0	78.8	3.2	18.0	0.090	0.500	16.372430	-94.175838
Lim. Edos. Term. Oax. Ppia. Chis.	17.90																			
Rizo de Oro	26.60	1	0	1060	22.6	56.0	3.4	8.1	1.7	2.9	4.4	0.9	0.0	78.6	3.4	18.0	0.084	0.526	16.475535	-94.084787
T. Der. Arriaga	56.80	1	0	2581	17.0	68.5	1.6	7.2	1.7	1.8	2.1	0.1	0.0	85.5	1.6	12.9	0.082	0.503	16.567988	-93.851279
T. Der. Arriaga	56.80	3	0	3766	11.0	74.7	1.7	5.6	2.0	2.4	1.9	0.3	0.4	85.7	1.7	12.6	0.090	0.502	16.574258	-93.841362
Cintalapa	75.60	1	0	5414	12.4	76.9	1.1	3.5	1.1	2.5	1.3	0.7	0.5	89.3	1.1	9.6	0.081	0.524	16.653505	-93.754507
T. Der. Jiquipilas	82.00	1	0	7553	9.8	79.7	2.2	3.5	1.7	1.2	0.7	0.7	0.5	89.5	2.2	8.3	0.074	0.513	16.687869	-93.667292
T. Der. Jiquipilas	82.00	3	0	5212	6.8	78.0	2.6	5.4	2.6	2.5	1.2	0.6	0.3	84.8	2.6	12.6	0.086	0.501	16.688220	-93.662337
T. C. Arriaga - Ocozocoautla (Cuota)	96.20	1	0	4913	3.8	81.0	2.3	5.9	2.6	2.4	1.2	0.6	0.2	84.8	2.3	12.9	0.083	0.520	16.686119	-93.545889

CHIAPAS

22 CARR: Tapanatepec - Tuxtla Gutiérrez

CLAVE: 00060

RUTA: MEX-190

AÑO: 2023

LUGAR	ESTACION				CLASIFICACION VEHICULAR EN PORCIENTO													COORDENADAS		
	KM	TE	SC	TDPA	M	A	B	C2	C3	T3S2	T3S3	T3S2R4	OTROS	A	B	C	K'	D	LATITUD	LONGITUD
Ocozocoautla	123.29	1	0	4660	11.5	80.7	0.7	2.7	1.5	1.9	0.7	0.2	0.1	92.2	0.7	7.1	0.090	0.505	16.772054	-93.391098
Ocozocoautla	123.29	3	0	4852	11.1	81.8	0.9	4.1	0.7	0.3	0.5	0.3	0.3	92.9	0.9	6.2	0.083	0.517	16.758003	-93.362184
T. Izq. Aeropuerto	132.70	1	0	4773	11.2	80.8	0.7	5.1	0.8	0.3	0.5	0.3	0.3	92.0	0.7	7.3	0.083	0.531	16.752980	-93.340194
T. Izq. Aeropuerto	132.70	3	1	7699	3.3	82.9	2.8	4.9	1.5	2.6	0.6	1.1	0.3	86.2	2.8	11.0	0.082	0.501	16.758554	-93.326479
T. Izq. Aeropuerto	132.70	3	2	7675	3.2	82.6	3.2	4.7	1.5	2.8	0.6	1.1	0.3	85.8	3.2	11.0	0.082	0.501	16.758636	-93.326520
T. Izq. Berriozábal (1° Acceso)	136.40	1	1	10133	3.9	78.6	3.5	7.2	1.9	2.2	0.9	1.4	0.4	82.5	3.5	14.0	0.081	0.531	16.767498	-93.296100
T. Izq. Berriozábal (1° Acceso)	136.40	1	2	8947	4.0	78.4	3.5	7.2	1.9	2.2	0.9	1.5	0.4	82.4	3.5	14.1	0.083	0.531	16.767573	-93.296058
T. Izq. Berriozábal (1° Acceso)	136.40	3	1	10860	3.7	83.3	3.5	4.8	1.2	1.7	0.6	0.9	0.3	87.0	3.5	9.5	0.081	0.502	16.768914	-93.280681
T. Izq. Berriozábal (1° Acceso)	136.40	3	2	10765	3.9	83.5	2.7	4.5	1.9	1.8	0.4	1.1	0.2	87.4	2.7	9.9	0.095	0.502	16.768898	-93.281666
T. Izq. San Fernando	151.70	1	1	19368	3.0	87.6	1.3	4.6	1.1	1.0	0.5	0.7	0.2	90.6	1.3	8.1	0.089	0.539	16.770518	-93.197108
T. Izq. San Fernando	151.70	1	2	16558	3.2	86.1	1.6	4.6	1.5	1.2	0.6	0.8	0.4	89.3	1.6	9.1	0.074	0.539	16.770593	-93.197056
Tuxtla Gutiérrez	159.00	1	1	13385	4.0	84.5	1.6	6.0	1.5	1.1	0.6	0.5	0.2	88.5	1.6	9.9	0.076	0.511	16.767587	-93.192833
Tuxtla Gutiérrez	159.00	1	2	12795	4.3	85.1	1.4	5.7	1.3	0.9	0.5	0.6	0.2	89.4	1.4	9.2	0.084	0.511	16.767672	-93.192767

23 CARR: Terán - Chicoasén

CLAVE: 07072

RUTA: MEX-190

AÑO: 2023

LUGAR	ESTACION				CLASIFICACION VEHICULAR EN PORCIENTO													COORDENADAS		
	KM	TE	SC	TDPA	M	A	B	C2	C3	T3S2	T3S3	T3S2R4	OTROS	A	B	C	K'	D	LATITUD	LONGITUD
Terán	0.00	3	0	9399	7.0	88.5	0.3	2.2	0.5	0.4	0.4	0.5	0.2	95.5	0.3	4.2	0.093	0.501	16.790387	-93.178375
T. Izq. San Fernando (1° Acceso)	14.00	1	0	10240	9.2	87.2	0.4	1.6	0.4	0.4	0.5	0.1	0.2	96.4	0.4	3.2	0.079	0.504	16.853493	-93.199365
Chicoasén	34.00																			

24 CARR: Tuxtla Gutiérrez - Angostura

CLAVE: 07584

RUTA: MEX-190

AÑO: 2023

LUGAR	ESTACION				CLASIFICACION VEHICULAR EN PORCIENTO													COORDENADAS		
	KM	TE	SC	TDPA	M	A	B	C2	C3	T3S2	T3S3	T3S2R4	OTROS	A	B	C	K'	D	LATITUD	LONGITUD
T. C. Tuxtla Gutiérrez - Cd. Cuauhtémoc	0.00	3	1	14055	5.4	88.6	0.7	2.3	1.0	1.0	0.5	0.3	0.2	94.0	0.7	5.3	0.097	0.502	16.731830	-93.045630
T. C. Tuxtla Gutiérrez - Cd. Cuauhtémoc	0.00	3	2	14144	5.4	88.5	0.7	2.3	1.1	1.0	0.5	0.4	0.1	93.9	0.7	5.4	0.102	0.502	16.731893	-93.045551
T. Der. Revolución Mexicana	16.70	3	0	4651	6.5	84.6	1.2	3.7	1.6	0.8	0.7	0.8	0.1	91.1	1.2	7.7	0.077	0.512	16.609330	-92.992321
Angostura	52.00	1	0	2461	8.1	83.8	0.4	5.7	0.6	1.1	0.3	0.0	0.0	91.9	0.4	7.7	0.085	0.511	16.404065	-92.767415

CHIAPAS

25 CARR : Tuxtla Gutiérrez - Cd. Cuauhtémoc

CLAVE: 07061

RUTA: MEX-190

AÑO: 2023

LUGAR	ESTACION				CLASIFICACION VEHICULAR EN PORCIENTO										COORDENADAS					
	KM	TE	SC	TDPA	M	A	B	C2	C3	T3S2	T3S3	T3S2R4	OTROS	A	B	C	K'	D	LATITUD	LONGITUD
Tuxtla Gutiérrez	0.00																			
T. Der. Presa La Angostura	7.50	1	1	33152	3.4	92.1	0.8	2.3	0.4	0.4	0.1	0.4	0.1	95.5	0.8	3.7	0.087	0.506	16.735414	-93.058873
T. Der. Presa La Angostura	7.50	1	2	32333	3.4	91.6	0.8	2.5	0.5	0.4	0.1	0.5	0.2	95.0	0.8	4.2	0.080	0.506	16.735359	-93.058486
T. Der. Presa La Angostura	7.50	3	1	16829	4.6	89.1	1.2	2.8	0.7	0.9	0.3	0.3	0.1	93.7	1.2	5.1	0.078	0.502	16.742466	-93.031653
T. Der. Presa La Angostura	7.50	3	2	16938	4.6	89.0	1.2	2.8	0.7	0.9	0.4	0.3	0.1	93.6	1.2	5.2	0.076	0.502	16.742564	-93.031523
Chiapa de Corzo	15.33	3	0	11222	4.8	89.9	0.6	2.5	0.7	0.6	0.4	0.4	0.1	94.7	0.6	4.7	0.073	0.512	16.713281	-92.990594
T. Izq. Pichucalco	34.41	1	0	3553	3.8	88.7	1.1	2.5	2.2	0.9	0.4	0.3	0.1	92.5	1.1	6.4	0.101	0.504	16.760062	-92.946507
T. Izq. Pichucalco	34.41	3	0	1136	4.2	93.7	0.4	0.5	0.8	0.2	0.1	0.1	0.0	97.9	0.4	1.7	0.102	0.519	16.752793	-92.929735
San Cristóbal de Las Casas	85.19	1	0	6008	14.1	80.6	0.7	2.1	0.9	0.6	0.1	0.7	0.2	94.7	0.7	4.6	0.093	0.545	16.724385	-92.674252
San Cristóbal de Las Casas	85.19	3	0	13738	4.7	88.4	1.0	2.0	1.2	1.4	0.8	0.4	0.1	93.1	1.0	5.9	0.098	0.510	16.701242	-92.607001
T. Izq. Ocosingo	95.90	3	0	9129	3.4	88.4	1.7	1.9	1.1	2.2	0.9	0.3	0.1	91.8	1.7	6.5	0.078	0.511	16.660728	-92.558860
Teopisca	116.90	1	0	9602	9.2	78.1	1.7	6.9	1.3	1.6	0.8	0.3	0.1	87.3	1.7	11.0	0.082	0.505	16.555932	-92.481571
Teopisca	116.90	3	0	7579	9.1	82.2	1.6	2.2	1.1	2.3	0.7	0.7	0.1	91.3	1.6	7.1	0.089	0.506	16.533588	-92.461854
T. Der. Las Rosas	121.00	3	0	8383	7.0	85.8	1.5	2.1	1.3	1.4	0.4	0.4	0.1	92.8	1.5	5.7	0.094	0.509	16.300851	-92.183625
Amatenango del Valle	122.00	3	0	5956	4.0	83.0	3.1	4.4	1.3	2.7	0.8	0.3	0.4	87.0	3.1	9.9	0.074	0.509	16.522070	-92.422674
Comitán	171.60	1	0	7429	6.1	86.8	1.4	1.8	0.8	1.8	0.6	0.2	0.5	92.9	1.4	5.7	0.111	0.514	16.277481	-92.169031
Comitán	171.60	3	1	7999	7.3	88.1	0.6	2.3	0.7	0.4	0.3	0.2	0.1	95.4	0.6	4.0	0.114	0.506	16.208792	-92.111844
Comitán	171.60	3	2	7824	7.8	86.7	0.8	2.9	0.8	0.5	0.2	0.2	0.1	94.5	0.8	4.7	0.112	0.506	16.208837	-92.111755
T. Izq. Montebello	187.46	1	1	5955	8.4	84.1	0.6	3.9	0.9	1.5	0.3	0.2	0.1	92.5	0.6	6.9	0.089	0.501	16.132313	-92.064876
T. Izq. Montebello	187.46	1	2	5981	7.4	85.2	0.6	4.0	0.8	1.5	0.2	0.2	0.1	92.6	0.6	6.8	0.085	0.501	16.132346	-92.064814
La Trinitaria	189.00	3	0	3717	4.0	89.3	1.0	3.4	1.0	0.9	0.2	0.1	0.1	93.3	1.0	5.7	0.090	0.512	16.098595	-92.047320
T. Izq. Chihuahua	201.04	3	0	3544	3.7	89.7	1.2	3.1	0.9	0.9	0.4	0.1	0.0	93.4	1.2	5.4	0.093	0.504	16.014988	-92.019734
T. Der. Frontera Comalapa	251.26	1	0	3242	14.2	77.7	1.2	4.0	0.9	1.1	0.4	0.3	0.2	91.9	1.2	6.9	0.093	0.504	15.686755	-92.004717
Cd. Cuauhtémoc	256.00	1	0	5184	25.9	65.9	0.5	3.1	0.5	3.3	0.1	0.2	0.5	91.8	0.5	7.7	0.099	0.500	15.677042	-92.002856

26 CARR : Villahermosa - Escopetazo

CLAVE: 00104

RUTA: MEX-195

AÑO: 2023

LUGAR	ESTACION				CLASIFICACION VEHICULAR EN PORCIENTO										COORDENADAS					
	KM	TE	SC	TDPA	M	A	B	C2	C3	T3S2	T3S3	T3S2R4	OTROS	A	B	C	K'	D	LATITUD	LONGITUD
Villahermosa	0.00	3	1	21425	6.2	88.0	0.6	3.2	0.5	0.7	0.4	0.3	0.1	94.2	0.6	5.2	0.099	0.523	17.941827	-92.917892
Villahermosa	0.00	3	2	19505	5.7	87.9	0.6	3.5	0.6	0.7	0.6	0.3	0.1	93.6	0.6	5.8	0.135	0.523	17.942099	-92.917755
Parrilla	10.00	1	1	18766	6.2	85.8	0.5	4.4	0.9	1.3	0.4	0.3	0.2	92.0	0.5	7.5	0.086	0.524	17.913611	-92.923308
Parrilla	10.00	1	2	20648	6.4	86.2	0.6	4.4	0.6	0.9	0.4	0.3	0.2	92.6	0.6	6.8	0.107	0.524	17.913600	-92.923223
Parrilla	10.00	3	1	24179	4.0	88.4	1.0	3.8	0.8	1.0	0.3	0.5	0.2	92.4	1.0	6.6	0.078	0.502	17.887136	-92.922544
Parrilla	10.00	3	2	24013	3.8	89.0	0.6	4.2	0.5	0.8	0.4	0.5	0.2	92.8	0.6	6.6	0.108	0.502	17.887148	-92.922456

CHIAPAS

26 CARR: Villahermosa - Escopetazo

CLAVE: 00104

RUTA: MEX-195

AÑO: 2023

LUGAR	ESTACION				CLASIFICACION VEHICULAR EN PORCIENTO										COORDENADAS					
	KM	TE	SC	TDPA	M	A	B	C2	C3	T3S2	T3S3	T3S2R4	OTROS	A	B	C	K'	D	LATITUD	LONGITUD
T. Izq. Subte. García	20.00	3	1	7243	11.3	80.5	0.6	3.6	1.3	1.7	0.6	0.3	0.1	91.8	0.6	7.6	0.084	0.503	17.827327	-92.928992
T. Izq. Subte. García	20.00	3	2	7317	12.0	79.9	0.5	3.6	1.3	1.6	0.6	0.4	0.1	91.9	0.5	7.6	0.080	0.503	17.827547	-92.928887
La Arena	44.00	1	0	6356	8.5	78.7	2.0	4.3	1.2	3.6	1.2	0.5	0.0	87.2	2.0	10.8	0.069	0.507	17.653503	-92.958958
T. Izq. Teapa	54.80	1	0	10762	9.0	76.2	1.1	6.1	0.9	5.8	0.5	0.4	0.0	85.2	1.1	13.7	0.090	0.509	17.571833	-92.956714
T. Izq. Teapa	54.80	3	0	6155	8.1	80.5	0.8	6.6	0.9	2.5	0.4	0.2	0.0	88.6	0.8	10.6	0.080	0.511	17.568347	-92.963697
Lim. Edos. Term. Tab. Ppia. Chis.	61.42																			
Pichucalco	76.00	1	0	3247	9.4	83.2	0.4	4.2	0.7	1.4	0.6	0.1	0.0	92.6	0.4	7.0	0.082	0.501	17.519919	-93.101860
Pichucalco	76.00	3	0	4199	10.7	81.7	0.3	4.1	0.7	1.7	0.6	0.1	0.1	92.4	0.3	7.3	0.086	0.502	17.497604	-93.102685
Solusuchiapa	112.00	1	0	1804	8.0	84.1	0.7	3.1	1.9	0.3	1.6	0.2	0.1	92.1	0.7	7.2	0.080	0.500	17.428156	-93.038305
Solusuchiapa	112.00	3	0	1683	10.0	81.5	0.6	4.4	1.8	0.9	0.6	0.2	0.0	91.5	0.6	7.9	0.092	0.503	17.420298	-93.027027
Rayón	146.00	1	0	2292	9.6	83.0	0.5	3.8	0.7	1.8	0.2	0.3	0.1	92.6	0.5	6.9	0.088	0.510	17.205339	-93.011847
Jitotol	197.79	1	0	2162	5.1	86.9	0.7	3.0	1.9	1.5	0.5	0.4	0.0	92.0	0.7	7.3	0.091	0.501	17.081174	-92.867845
Jitotol	197.79	3	0	3020	5.9	88.5	0.7	2.0	1.8	0.5	0.3	0.2	0.1	94.4	0.7	4.9	0.074	0.506	17.052763	-92.857086
Bochil	211.00	1	0	4939	5.3	86.2	1.6	2.6	1.8	1.3	0.3	0.8	0.1	91.5	1.6	6.9	0.077	0.508	16.988710	-92.877196
Soyaló	229.00	3	0	2998	3.5	88.1	1.3	3.0	1.9	1.2	0.6	0.4	0.0	91.6	1.3	7.1	0.092	0.543	16.880293	-92.918604
Ixtapa	247.00	1	0	4129	2.8	89.0	1.3	2.5	2.3	1.5	0.4	0.2	0.0	91.8	1.3	6.9	0.089	0.501	16.814838	-92.908555
Escopetazo	259.00	1	0	3345	2.6	89.8	1.1	2.8	1.8	1.3	0.4	0.2	0.0	92.4	1.1	6.5	0.086	0.510	16.756061	-92.934978

27 CARR: Villahermosa - Francisco Escárcega

CLAVE: 00092

RUTA: MEX-186-307

AÑO: 2023

LUGAR	ESTACION				CLASIFICACION VEHICULAR EN PORCIENTO										COORDENADAS					
	KM	TE	SC	TDPA	M	A	B	C2	C3	T3S2	T3S3	T3S2R4	OTROS	A	B	C	K'	D	LATITUD	LONGITUD
Villahermosa	0.00	3	1	15254	4.1	83.7	1.0	6.0	0.6	2.7	0.4	1.3	0.2	87.8	1.0	11.2	0.086	0.505	18.001044	-92.890714
Villahermosa	0.00	3	2	14954	4.2	83.5	1.0	5.9	0.6	2.7	0.6	1.3	0.2	87.7	1.0	11.3	0.102	0.505	18.001142	-92.890698
T. Izq. Aeropuerto (Baja)	12.00	1	1	1913	16.6	69.2	1.9	5.9	2.3	1.3	0.7	1.7	0.4	85.8	1.9	12.3	0.115	0.525	17.984976	-92.829630
T. Izq. Aeropuerto (Alta)	12.00	1	1	17642	5.7	78.3	1.6	6.0	1.4	3.1	1.5	1.9	0.5	84.0	1.6	14.4	0.073	0.515	17.985033	-92.829579
T. Izq. Aeropuerto (Alta)	12.00	1	2	16592	6.6	78.2	2.1	5.8	1.2	2.8	1.2	1.7	0.4	84.8	2.1	13.1	0.078	0.515	17.985105	-92.829525
T. Izq. Aeropuerto (Baja)	12.00	1	2	2118	16.6	68.5	1.9	6.5	2.3	1.4	1.0	1.5	0.3	85.1	1.9	13.0	0.077	0.525	17.985175	-92.829468
Puente Grijalva	17.60	2	1	8927	3.7	77.6	2.7	3.2	2.2	4.4	2.2	3.5	0.5	81.3	2.7	16.0	0.079	0.500	17.947602	-92.785235
Puente Grijalva	17.60	2	2	8927	3.7	77.6	2.7	3.2	2.2	4.4	2.2	3.5	0.5	81.3	2.7	16.0	0.079	0.500	17.947602	-92.785235
X. C. Cacaos - La Granja	32.46	1	1	6651	4.2	77.4	3.0	3.4	1.8	4.6	2.4	2.6	0.6	81.6	3.0	15.4	0.089	0.523	17.832820	-92.719585
X. C. Cacaos - La Granja	32.46	1	2	7289	3.6	76.8	3.2	3.6	1.8	4.9	2.5	2.9	0.7	80.4	3.2	16.4	0.083	0.523	17.832856	-92.719510
X. C. Cacaos - La Granja	32.46	3	1	6500	3.2	75.9	3.0	3.7	2.2	4.9	2.5	3.6	1.0	79.1	3.0	17.9	0.083	0.500	17.817529	-92.710938
X. C. Cacaos - La Granja	32.46	3	2	6505	3.6	75.4	3.3	3.8	1.9	5.4	2.4	3.4	0.8	79.0	3.3	17.7	0.082	0.500	17.817709	-92.710934
X. C. Jalapa - Jonuta	40.00	3	1	6491	2.8	75.6	3.1	4.4	2.3	5.1	2.4	3.4	0.9	78.4	3.1	18.5	0.087	0.505	17.775058	-92.673834



CHIAPAS

27 CARR: Villahermosa - Francisco Escárcega

CLAVE: 00092

RUTA: MEX-186-307

AÑO: 2023

LUGAR	ESTACION				CLASIFICACION VEHICULAR EN PORCIENTO													COORDENADAS		
	KM	TE	SC	TDPA	M	A	B	C2	C3	T3S2	T3S3	T3S2R4	OTROS	A	B	C	K'	D	LATITUD	LONGITUD
X. C. Jalapa - Jonuta	40.00	3	2	6351	3.3	73.6	4.1	5.0	3.0	4.4	2.3	3.4	0.9	76.9	4.1	19.0	0.092	0.505	17.775189	-92.673865
T. Izq. Macuspana	46.20	1	1	6447	3.5	74.2	2.4	5.2	2.8	5.2	2.4	3.4	0.9	77.7	2.4	19.9	0.089	0.512	17.744579	-92.634712
T. Izq. Macuspana	46.20	1	2	6150	4.0	72.0	3.8	6.0	3.3	4.8	1.7	3.5	0.9	76.0	3.8	20.2	0.091	0.512	17.744648	-92.634661
T. Izq. Macuspana	46.20	3	1	6295	4.0	75.2	3.3	3.2	2.9	5.1	2.2	3.3	0.8	79.2	3.3	17.5	0.084	0.510	17.734724	-92.622118
T. Izq. Macuspana	46.20	3	2	6051	3.9	75.3	3.0	3.4	2.5	5.5	2.3	3.3	0.8	79.2	3.0	17.8	0.086	0.510	17.734756	-92.622014
X. C. Estación Macuspana - Vernet	54.30	1	0	11804	7.0	70.9	2.3	3.2	3.1	6.3	2.6	3.7	0.9	77.9	2.3	19.8	0.071	0.510	17.712886	-92.583871
T. Der. Chivalito (Est. Pino Suárez)	70.00	1	0	9719	7.3	66.5	4.2	5.6	2.0	7.1	2.4	4.0	0.9	73.8	4.2	22.0	0.083	0.503	17.670641	-92.446899
T. Der. Chivalito (Est. Pino Suárez)	70.00	3	1	4264	5.8	70.9	3.0	3.6	1.7	6.9	2.6	4.6	0.9	76.7	3.0	20.3	0.094	0.511	17.666173	-92.432477
T. Der. Chivalito (Est. Pino Suárez)	70.00	3	2	4077	5.4	68.7	3.0	3.5	2.7	9.1	1.9	4.8	0.9	74.1	3.0	22.9	0.125	0.511	17.666928	-92.434760
T. Der. Estación Zopo	71.00	1	0	8167	5.0	67.0	4.8	4.0	2.3	8.0	3.4	4.7	0.8	72.0	4.8	23.2	0.085	0.503	17.671311	-92.416742
T. Der. Estación Zopo	71.00	3	1	3421	4.0	65.7	5.1	5.4	2.4	7.7	3.5	5.3	0.9	69.7	5.1	25.2	0.115	0.500	17.679658	-92.403830
T. Der. Estación Zopo	71.00	3	2	3422	5.5	66.2	4.5	4.1	2.4	8.5	3.3	4.7	0.8	71.7	4.5	23.8	0.122	0.500	17.679068	-92.404793
Lim. Edos. Term. Tab. Ppia. Chis.	76.90																			
T. Izq. Bonanza	88.00	1	0	7663	6.8	63.9	2.9	7.1	2.8	7.3	2.7	5.8	0.7	70.7	2.9	26.4	0.086	0.505	17.698113	-92.268841
T. Izq. Jonuta	101.00	1	0	7489	2.3	69.2	2.7	7.9	2.8	6.9	2.5	4.8	0.9	71.5	2.7	25.8	0.079	0.520	17.698148	-92.145108
T. Izq. Jonuta	101.00	3	0	7513	4.8	66.0	2.5	8.2	3.2	6.7	2.8	5.1	0.7	70.8	2.5	26.7	0.084	0.509	17.697744	-92.128640
X. C. Catazajá - Palenque	114.00	1	0	8968	6.3	63.8	3.1	7.7	2.8	7.7	2.2	5.6	0.8	70.1	3.1	26.8	0.073	0.518	17.707138	-92.026121
X. C. Catazajá - Palenque	114.00	3	0	6555	4.3	64.6	3.1	7.2	3.2	8.4	2.9	5.4	0.9	68.9	3.1	28.0	0.083	0.515	17.722880	-91.976434
T. Der. Emiliano Zapata	134.70	1	0	6738	4.1	64.8	3.5	7.2	2.8	8.6	2.9	5.4	0.7	68.9	3.5	27.6	0.071	0.513	17.770550	-91.837622
T. Der. Emiliano Zapata	134.70	3	0	5151	4.0	68.0	3.3	5.4	4.4	6.7	2.5	4.8	0.9	72.0	3.3	24.7	0.064	0.506	17.785075	-91.822203
Lim. Edos. Term. Chis. Ppia. Tab.	140.70																			
Puente Usumacinta	145.20	2	0	5455	7.2	56.3	3.0	3.3	4.6	10.6	3.8	9.8	1.4	63.5	3.0	33.5	0.079	0.500	17.859905	-91.783654
T. Izq. Palizada	154.05	1	0	4784	9.9	58.2	5.5	3.7	3.3	7.8	3.3	7.5	0.8	68.1	5.5	26.4	0.078	0.500	17.937798	-91.737231
T. Izq. Palizada	154.05	3	0	3466	5.5	56.3	6.2	4.1	2.9	12.6	3.1	8.4	0.9	61.8	6.2	32.0	0.068	0.520	17.946407	-91.729933
Lim. Edos. Term. Tab. Ppia. Camp.	154.60																			
T. Der. Candelaria	233.40	1	0	4072	4.8	56.3	6.1	5.3	2.3	12.2	2.9	9.2	0.9	61.1	6.1	32.8	0.070	0.509	18.370555	-91.203339
T. Der. Felipe Ángeles	253.00	1	0	5208	3.5	61.4	5.8	4.9	2.3	11.7	2.7	6.8	0.9	64.9	5.8	29.3	0.064	0.520	18.503966	-91.106494
T. Izq. Sabancuy	274.10	1	0	5924	6.8	61.0	5.0	5.7	2.4	9.1	2.2	6.8	1.0	67.8	5.0	27.2	0.060	0.503	18.629650	-90.988455
Francisco Escárcega	297.04	1	0	9007	14.3	67.1	2.3	2.8	2.0	5.9	1.4	3.3	0.9	81.4	2.3	16.3	0.083	0.514	18.610048	-90.776109

28 CARR: Arriaga - Ocozocoautla (Cuota)

CLAVE: 00092

RUTA: MEX-200D

AÑO: 2023

LUGAR	ESTACION				CLASIFICACION VEHICULAR EN PORCIENTO													COORDENADAS		
	KM	TE	SC	TDPA	M	A	B	C2	C3	T3S2	T3S3	T3S2R4	OTROS	A	B	C	K'	D	LATITUD	LONGITUD
Arriaga	0.00	3	0	5455	2.6	69.2	3.5	10.1	2.0	6.4	2.0	3.3	0.9	71.8	3.5	24.7	0.082	0.504	16.244397	-93.880688

CHIAPAS

28 CARR: Arriaga - Ocozocoautla (Cuota)

CLAVE: 00092

RUTA: MEX-200D

AÑO: 2023

LUGAR	ESTACION				CLASIFICACION VEHICULAR EN PORCIENTO													COORDENADAS		
	KM	TE	SC	TDPA	M	A	B	C2	C3	T3S2	T3S3	T3S2R4	OTROS	A	B	C	K'	D	LATITUD	LONGITUD
Plaza de Cobro Arriaga	2.70	2	0	5502	1.1	74.5	3.9	5.8	3.2	6.3	1.1	3.5	0.6	75.6	3.9	20.5	0.087	0.500	16.257485	-93.875377
Plaza de Cobro Arriaga	2.70	3	0	5397	2.7	69.1	3.5	10.0	2.0	6.8	1.9	3.3	0.7	71.8	3.5	24.7	0.079	0.512	16.262382	-93.869783
T. Izq. Tierra y Libertad	20.30	1	0	5516	2.4	69.5	3.4	10.0	2.2	6.6	1.9	3.3	0.7	71.9	3.4	24.7	0.084	0.510	16.353278	-93.865298
T. Izq. Tierra y Libertad	20.30	3	0	3877	2.3	68.0	4.7	9.4	2.0	7.8	1.8	3.1	0.9	70.3	4.7	25.0	0.094	0.510	16.369846	-93.863782
Plaza de Cobro Jiquipilas	61.05	2	0	4669	0.7	72.6	3.7	5.9	3.5	7.4	1.3	4.2	0.7	73.3	3.7	23.0	0.087	0.500	16.620512	-93.602104
Plaza de Cobro Jiquipilas	61.05	3	0	4455	2.7	68.5	3.9	6.9	2.7	8.2	2.3	4.0	0.8	71.2	3.9	24.9	0.086	0.500	16.632379	-93.593394
Plaza de Cobro Montes Azules	70.60	2	0	4972	1.0	72.1	3.7	6.4	3.6	7.3	1.3	3.9	0.7	73.1	3.7	23.2	0.087	0.500	16.620609	-93.600526
Plaza de Cobro Ocozocoautla	92.00	1	0	6823	1.1	71.8	4.3	9.9	2.0	5.8	1.6	2.8	0.7	72.9	4.3	22.8	0.081	0.523	16.736596	-93.413858
Plaza de Cobro Ocozocoautla	92.00	2	0	7390	0.9	75.3	4.9	5.8	3.2	5.4	1.3	2.7	0.5	76.2	4.9	18.9	0.087	0.500	16.738487	-93.400346
Ocozocoautla	93.77																			

29 CARR: Las Choapas - Ocozocoautla (Cuota)

CLAVE: 00077

RUTA: MEX-187D

AÑO: 2023

LUGAR	ESTACION				CLASIFICACION VEHICULAR EN PORCIENTO													COORDENADAS		
	KM	TE	SC	TDPA	M	A	B	C2	C3	T3S2	T3S3	T3S2R4	OTROS	A	B	C	K'	D	LATITUD	LONGITUD
T. C. Coatzacoalcos - Villahermosa	0.00	3	0	6147	4.2	45.2	10.0	5.7	4.6	15.4	4.2	9.8	0.9	49.4	10.0	40.6	0.070	0.505	18.061491	-94.245558
Plaza de Cobro Las Choapas	16.80	1	0	5084	4.8	54.3	8.1	5.0	4.0	11.5	3.0	8.3	1.0	59.1	8.1	32.8	0.058	0.502	17.953786	-94.176884
Plaza de Cobro Las Choapas	16.80	3	0	3400	3.8	38.0	11.0	6.9	5.7	18.1	3.6	11.9	1.0	41.8	11.0	47.2	0.057	0.511	17.926450	-94.162357
Ent. Nuevo Progreso	62.40	1	0	3776	6.8	40.6	11.7	6.9	3.5	18.1	2.5	9.1	0.8	47.4	11.7	40.9	0.070	0.506	17.670218	-93.869373
Lim. Edos. Term. Ver. Ppia. Tab.	96.68																			
Plaza de Cobro Malpasito	112.70	1	0	2876	1.0	49.4	5.8	11.3	5.9	15.3	3.5	6.8	1.0	50.4	5.8	43.8	0.073	0.524	17.351813	-93.587602
Plaza de Cobro Malpasito	112.70	2	0	4928	0.7	51.0	4.3	7.3	7.7	14.9	2.7	10.0	1.4	51.7	4.3	44.0	0.072	0.500	17.349070	-93.586472
Lim. Edos. Term. Tab. Ppia. Chis.	113.70																			
T. Izq. Malpaso	123.79	1	0	4975	1.4	66.6	6.2	6.0	3.5	7.8	2.3	5.4	0.8	68.0	6.2	25.8	0.064	0.519	17.269207	-93.572239
X. C. Tepatán - Raudales Malpaso	134.00	1	0	5054	3.6	55.1	5.2	8.5	3.9	12.1	2.9	8.0	0.7	58.7	5.2	36.1	0.072	0.505	17.191633	-93.554752
T. Der a América Libre	163.40	1	0	5463	4.7	54.3	5.4	9.5	3.6	10.7	3.2	8.0	0.6	59.0	5.4	35.6	0.064	0.516	17.005032	-93.501411
Carrizal	173.60	1	0	5956	3.0	57.2	5.2	9.5	3.8	11.0	2.8	6.9	0.6	60.2	5.2	34.6	0.069	0.514	16.921506	-93.452359
Plaza de Cobro Ocozocoautla	182.50	1	0	5122	3.5	55.1	9.1	5.8	3.2	12.8	2.3	7.4	0.8	58.6	9.1	32.3	0.067	0.505	16.870697	-93.414328
Plaza de Cobro Ocozocoautla	182.50	2	0	5120	0.6	55.7	4.2	6.9	6.8	13.2	2.4	8.9	1.3	56.3	4.2	39.5	0.072	0.500	16.863183	-93.406856
T. C. Tapanatepec - Tuxtla Gutiérrez	197.50	1	0	6101	4.8	59.5	7.8	5.2	2.9	10.7	2.0	6.5	0.6	64.3	7.8	27.9	0.069	0.506	16.774230	-93.320007

CHIAPAS

30 CARR: Tuxtla Gutiérrez - San Cristóbal de Las Casas (Cuota)

CLAVE: 07580

RUTA: MEX-190D

AÑO: 2023

LUGAR	ESTACION				CLASIFICACION VEHICULAR EN PORCIENTO										COORDENADAS					
	KM	TE	SC	TDPA	M	A	B	C2	C3	T3S2	T3S3	T3S2R4	OTROS	A	B	C	K'	D	LATITUD	LONGITUD
T. C. Tuxtla Gutiérrez - Cd. Cuauhtémoc	0.00																			
Plaza de Cobro Chiapa de Corzo	1.30	2	0	10625	1.0	87.5	1.5	4.3	2.0	1.8	0.9	0.8	0.2	88.5	1.5	10.0	0.088	0.500	16.730567	-93.009544
Plaza de Cobro Chiapa de Corzo	1.30	3	0	10876	1.4	85.9	2.5	4.7	1.4	2.1	1.1	0.7	0.2	87.3	2.5	10.2	0.090	0.508	16.727764	-93.000331
T. C. Libramiento de San Cristóbal de Las Casas	46.00	1	0	12010	3.4	85.1	1.9	3.6	1.4	2.0	0.6	1.6	0.4	88.5	1.9	9.6	0.084	0.511	16.719467	-92.665675

31 CARR: Chiapa de Corzo - Amatenango del Valle

CLAVE: 07024

RUTA: CHIS

AÑO: 2023

LUGAR	ESTACION				CLASIFICACION VEHICULAR EN PORCIENTO										COORDENADAS					
	KM	TE	SC	TDPA	M	A	B	C2	C3	T3S2	T3S3	T3S2R4	OTROS	A	B	C	K'	D	LATITUD	LONGITUD
T. C. Tuxtla Gutiérrez - Cd. Cuauhtémoc	0.00	3	0	1991	9.3	81.0	0.2	5.7	0.7	1.9	0.6	0.4	0.2	90.3	0.2	9.5	0.085	0.522	16.721622	-92.980722
Flores Magón	74.00	1	0	3179	5.6	81.7	0.8	4.6	1.6	2.5	1.9	0.9	0.4	87.3	0.8	11.9	0.083	0.525	16.399414	-92.705498
Flores Magón	74.00	3	0	1921	5.6	80.6	0.6	5.6	1.4	3.0	1.9	1.1	0.2	86.2	0.6	13.2	0.114	0.513	16.385393	-92.699057
T. Izq. Venustiano Carranza (1º Acceso)	92.80	1	0	4041	5.8	82.4	0.5	5.2	1.1	2.8	1.4	0.7	0.1	88.2	0.5	11.3	0.078	0.523	16.344022	-92.584654
T. Izq. Venustiano Carranza (1º Acceso)	92.80	3	0	1945	11.5	70.9	0.6	9.4	1.7	3.0	1.6	1.1	0.2	82.4	0.6	17.0	0.113	0.508	16.341377	-92.577629
Soyatitán	111.20	1	0	3451	28.1	66.1	0.0	2.7	0.4	1.9	0.5	0.1	0.2	94.2	0.0	5.8	0.082	0.506	16.297097	-92.430085
T. Der. Las Rosas (1º Acceso)	120.22	1	0	3813	23.4	70.5	0.1	3.1	0.3	2.1	0.2	0.1	0.2	93.9	0.1	6.0	0.087	0.506	16.347917	-92.378304
T. Der. Las Rosas (1º Acceso)	120.22	3	0	4340	18.2	74.0	0.2	2.1	0.2	3.9	0.5	0.2	0.7	92.2	0.2	7.6	0.087	0.505	16.360177	-92.379286
T. C. Tuxtla Gutiérrez - Cd. Cuauhtémoc	146.50	1	0	1866	17.6	77.1	0.4	3.6	0.6	0.5	0.1	0.1	0.0	94.7	0.4	4.9	0.091	0.510	16.523717	-92.445243

32 CARR: Ent. Emiliano Zapata - La Libertad

CLAVE: 00062

RUTA: CHIS-TAB

AÑO: 2023

LUGAR	ESTACION				CLASIFICACION VEHICULAR EN PORCIENTO										COORDENADAS					
	KM	TE	SC	TDPA	M	A	B	C2	C3	T3S2	T3S3	T3S2R4	OTROS	A	B	C	K'	D	LATITUD	LONGITUD
T. C. El Suspiro - Tenosique	0.00	3	0	1858	16.1	82.0	0.2	1.0	0.4	0.3	0.0	0.0	0.0	98.1	0.2	1.7	0.092	0.501	17.721422	-91.744585
Lim. Edos. Term. Tab. Ppia. Chis.	8.00																			
La Libertad	10.00	1	0	1560	7.9	85.5	0.2	2.7	0.4	3.0	0.1	0.1	0.1	93.4	0.2	6.4	0.075	0.511	17.690542	-91.722327

33 CARR: Ent. Suschilá - Comitán

CLAVE: 00061

RUTA: CHIS-TAB

AÑO: 2023

LUGAR	ESTACION				CLASIFICACION VEHICULAR EN PORCIENTO										COORDENADAS					
	KM	TE	SC	TDPA	M	A	B	C2	C3	T3S2	T3S3	T3S2R4	OTROS	A	B	C	K'	D	LATITUD	LONGITUD
T. C. Ocosingo - Comitán	0.00	3	0	505	7.4	83.8	0.2	6.3	0.9	0.7	0.6	0.1	0.0	91.2	0.2	8.6	0.083	0.504	16.863266	-92.025529
Shuvi	23.40	1	0	520	7.3	83.9	0.1	6.9	1.1	0.5	0.0	0.2	0.0	91.2	0.1	8.7	0.097	0.507	16.805763	-91.893408
Shuvi	23.40	3	0	512	6.2	85.5	0.2	7.1	0.7	0.2	0.0	0.1	0.0	91.7	0.2	8.1	0.101	0.505	16.801195	-91.881161
Nuevo Momón	205.00	1	0	284	7.0	82.7	0.3	7.4	1.3	1.2	0.0	0.1	0.0	89.7	0.3	10.0	0.105	0.503	16.333454	-91.746082

CHIAPAS

33 CARR: Ent. Suschilá - Comitán

CLAVE: 00061

RUTA: CHIS-TAB

AÑO: 2023

LUGAR	ESTACION				CLASIFICACION VEHICULAR EN PORCIENTO										COORDENADAS					
	KM	TE	SC	TDPA	M	A	B	C2	C3	T3S2	T3S3	T3S2R4	OTROS	A	B	C	K'	D	LATITUD	LONGITUD
Nuevo Momón	205.00	3	0	469	8.6	81.6	0.2	8.3	1.2	0.1	0.0	0.0	0.0	90.2	0.2	9.6	0.106	0.502	16.335532	-91.753660
Las Margaritas	242.50	1	0	3536	6.9	86.1	0.3	5.5	0.8	0.2	0.1	0.1	0.0	93.0	0.3	6.7	0.093	0.505	16.323713	-91.976039
Las Margaritas	242.50	3	1	3598	13.3	84.7	0.1	1.4	0.4	0.1	0.0	0.0	0.0	98.0	0.1	1.9	0.092	0.513	16.312334	-91.995071
Las Margaritas	242.50	3	2	3412	13.1	84.6	0.1	1.7	0.3	0.1	0.1	0.0	0.0	97.7	0.1	2.2	0.092	0.513	16.312271	-91.995043
Caxh	257.50	1	0	6198	9.9	87.5	0.2	1.3	0.6	0.3	0.1	0.1	0.0	97.4	0.2	2.4	0.096	0.503	16.270920	-92.082826
Caxh	257.50	3	1	7542	13.8	82.3	0.1	3.1	0.3	0.2	0.1	0.1	0.0	96.1	0.1	3.8	0.078	0.504	16.259163	-92.108292
Caxh	257.50	3	2	7416	13.7	82.3	0.2	3.1	0.4	0.1	0.1	0.1	0.0	96.0	0.2	3.8	0.078	0.504	16.259099	-92.108264
Comitán	261.00																			

34 CARR: Estación Palenque - La Libertad

CLAVE: 07002

RUTA: CHIS-010

AÑO: 2023

LUGAR	ESTACION				CLASIFICACION VEHICULAR EN PORCIENTO										COORDENADAS					
	KM	TE	SC	TDPA	M	A	B	C2	C3	T3S2	T3S3	T3S2R4	OTROS	A	B	C	K'	D	LATITUD	LONGITUD
Estación Palenque	0.00	3	0	3132	20.2	61.0	0.3	7.8	5.7	3.3	1.0	0.3	0.4	81.2	0.3	18.5	0.111	0.511	17.549519	-91.983217
La Libertad	40.00	1	0	1105	13.0	78.3	0.4	6.0	0.5	1.3	0.5	0.0	0.0	91.3	0.4	8.3	0.084	0.501	17.681141	-91.727475

35 CARR: Gregorio Méndez Magaña - Reforma de Ocampo

CLAVE: 00103

RUTA: CHIS

AÑO: 2023

LUGAR	ESTACION				CLASIFICACION VEHICULAR EN PORCIENTO										COORDENADAS					
	KM	TE	SC	TDPA	M	A	B	C2	C3	T3S2	T3S3	T3S2R4	OTROS	A	B	C	K'	D	LATITUD	LONGITUD
Gregorio Méndez Magaña	0.00	3	0	954	27.3	62.7	1.4	4.1	2.1	0.8	1.3	0.3	0.0	90.0	1.4	8.6	0.092	0.514	17.446892	-91.596077
Lim. Edos. Term. Tab. Ppia. Chis.	3.00																			
T. C. Benemérito de Las Américas - Palenque	21.00	1	0	2592	8.9	82.9	1.4	5.1	1.0	0.3	0.2	0.1	0.1	91.8	1.4	6.8	0.074	0.505	17.322862	-91.692999
Reforma de Ocampo	22.00																			

36 CARR: Independencia - Buenos Aires

CLAVE: 07098

RUTA: CHIS

AÑO: 2023

LUGAR	ESTACION				CLASIFICACION VEHICULAR EN PORCIENTO										COORDENADAS					
	KM	TE	SC	TDPA	M	A	B	C2	C3	T3S2	T3S3	T3S2R4	OTROS	A	B	C	K'	D	LATITUD	LONGITUD
Independencia	0.00																			
El Porvenir	139.00	3	0	1301	7.2	85.0	0.4	6.0	0.7	0.5	0.2	0.0	0.0	92.2	0.4	7.4	0.106	0.515	15.448412	-92.290487
Buenos Aires	159.00	1	0	1442	6.9	85.6	0.4	5.8	0.6	0.5	0.2	0.0	0.0	92.5	0.4	7.1	0.109	0.515	15.334861	-92.277699

CHIAPAS

37 CARR: Las Limas - La Concordia

CLAVE: 07028

RUTA: CHIS

AÑO: 2023

LUGAR	ESTACION				CLASIFICACION VEHICULAR EN PORCIENTO													COORDENADAS		
	KM	TE	SC	TDPA	M	A	B	C2	C3	T3S2	T3S3	T3S2R4	OTROS	A	B	C	K'	D	LATITUD	LONGITUD
T. C. Tuxtla Gutiérrez - Angostura	0.00	3	0	4869	5.7	80.9	0.1	7.8	1.2	3.3	0.7	0.1	0.2	86.6	0.1	13.3	0.078	0.502	16.606283	-92.993044
Revolución Mexicana	83.00	1	0	3144	2.5	85.5	1.2	7.1	0.9	1.7	0.6	0.3	0.2	88.0	1.2	10.8	0.088	0.506	16.175950	-93.056475
La Concordia	135.00																			

38 CARR: Libramiento Sur de Tuxtla Gutiérrez

CLAVE: 07578

RUTA: CHIS

AÑO: 2023

LUGAR	ESTACION				CLASIFICACION VEHICULAR EN PORCIENTO													COORDENADAS		
	KM	TE	SC	TDPA	M	A	B	C2	C3	T3S2	T3S3	T3S2R4	OTROS	A	B	C	K'	D	LATITUD	LONGITUD
T. C. Tapanatepec - Tuxtla Gutiérrez	0.00	3	1	18608	3.9	86.4	0.9	5.8	1.0	0.6	0.2	0.8	0.4	90.3	0.9	8.8	0.068	0.529	16.752528	-93.141894
T. C. Tapanatepec - Tuxtla Gutiérrez	0.00	3	2	16596	4.1	85.0	1.0	6.2	1.2	0.8	0.3	0.9	0.5	89.1	1.0	9.9	0.073	0.529	16.752608	-93.141781
T. C. Tuxtla Gutiérrez - Cd. Cuauhtémoc	9.20	1	1	26681	5.1	87.0	1.1	4.5	0.9	0.6	0.3	0.4	0.1	92.1	1.1	6.8	0.072	0.503	16.740877	-93.079067
T. C. Tuxtla Gutiérrez - Cd. Cuauhtémoc	9.20	1	2	27097	5.2	86.2	1.3	4.8	0.8	0.8	0.2	0.5	0.2	91.4	1.3	7.3	0.085	0.503	16.741020	-93.079019

39 CARR: Ocosingo - Comitán

CLAVE: 07092

RUTA: CHIS

AÑO: 2023

LUGAR	ESTACION				CLASIFICACION VEHICULAR EN PORCIENTO													COORDENADAS		
	KM	TE	SC	TDPA	M	A	B	C2	C3	T3S2	T3S3	T3S2R4	OTROS	A	B	C	K'	D	LATITUD	LONGITUD
Ocosingo	0.00	3	0	10830	4.8	93.2	0.2	0.7	0.5	0.3	0.1	0.2	0.0	98.0	0.2	1.8	0.084	0.522	16.896424	-92.074185
Altamirano	24.00	1	0	1693	2.7	92.1	0.7	3.4	0.6	0.3	0.1	0.1	0.0	94.8	0.7	4.5	0.094	0.509	16.745538	-92.040961
Altamirano	24.00	3	0	2538	21.2	73.3	0.7	3.3	0.5	0.3	0.4	0.3	0.0	94.5	0.7	4.8	0.110	0.514	16.716878	-92.043477
La Mendoza	30.00	1	0	1410	22.3	69.8	1.0	5.6	0.3	0.4	0.3	0.3	0.0	92.1	1.0	6.9	0.122	0.515	16.685045	-92.022460
Comitán	100.00	1	0	6190	12.5	80.3	0.5	1.2	0.7	3.0	1.1	0.5	0.2	92.8	0.5	6.7	0.088	0.501	16.281754	-92.124052

40 CARR: Ocozacoautla - Revolución Mexicana

CLAVE: 07571

RUTA: CHIS-053-230

AÑO: 2023

LUGAR	ESTACION				CLASIFICACION VEHICULAR EN PORCIENTO													COORDENADAS		
	KM	TE	SC	TDPA	M	A	B	C2	C3	T3S2	T3S3	T3S2R4	OTROS	A	B	C	K'	D	LATITUD	LONGITUD
Ocozacoautla	0.00	3	0	5854	8.3	71.9	1.3	8.3	3.5	4.5	0.8	0.9	0.5	80.2	1.3	18.5	0.091	0.500	16.750526	-93.384435
Nuevo México	36.00	3	0	2970	6.3	80.5	1.0	7.1	1.3	2.4	0.7	0.4	0.3	86.8	1.0	12.2	0.104	0.530	16.453482	-93.434707
T. Der. Cristóbal Obregón	41.00	3	0	2465	4.9	80.0	1.0	8.3	1.6	2.5	0.7	0.8	0.2	84.9	1.0	14.1	0.091	0.520	16.415009	-93.416676
T. Izq. Tuxtla Gutiérrez	76.00	1	0	4324	6.1	76.6	2.5	8.3	2.1	2.9	0.8	0.5	0.2	82.7	2.5	14.8	0.084	0.512	16.318597	-93.336704
T. Izq. Tuxtla Gutiérrez	76.00	3	0	6125	6.2	83.3	0.7	3.9	1.5	3.1	0.6	0.4	0.3	89.5	0.7	9.8	0.091	0.513	16.313712	-93.325781
Villa Flores	84.00	1	0	7971	5.8	81.7	0.6	6.1	1.2	3.1	0.8	0.4	0.3	87.5	0.6	11.9	0.088	0.507	16.265901	-93.266275
Villa de Corzo	94.00	1	0	9819	14.0	76.5	0.5	4.1	0.7	3.1	0.5	0.4	0.2	90.5	0.5	9.0	0.081	0.506	16.207232	-93.265579
Revolución Mexicana	119.00	1	0	4147	22.0	71.2	0.2	3.5	0.3	2.2	0.3	0.1	0.2	93.2	0.2	6.6	0.077	0.501	16.167513	-93.089633

CHIAPAS

41 CARR: Paso de Cunduacán - Estación Juárez

CLAVE: 00588

RUTA: TAB-CHIS

AÑO: 2023

LUGAR	ESTACION				CLASIFICACION VEHICULAR EN PORCIENTO													COORDENADAS		
	KM	TE	SC	TDPA	M	A	B	C2	C3	T3S2	T3S3	T3S2R4	OTROS	A	B	C	K'	D	LATITUD	LONGITUD
Paso de Cunduacán	0.00	3	0	10346	6.2	82.9	0.4	6.1	1.0	1.6	0.8	0.6	0.4	89.1	0.4	10.5	0.113	0.512	17.960031	-93.138246
Lim. Edos. Term. Tab. Ppia. Chis.	9.00																			
Santa Teresa 2º Secc.	18.00	3	0	2330	11.0	77.8	0.4	6.8	1.6	1.9	0.4	0.0	0.1	88.8	0.4	10.8	0.080	0.505	17.766736	-93.169224
Estación Juárez	57.80	1	0	2846	14.9	76.1	0.2	5.2	1.0	1.8	0.5	0.1	0.2	91.0	0.2	8.8	0.070	0.501	17.621964	-93.166913

42 CARR: Puerto Caté - San Cristóbal de Las Casas

CLAVE: 07097

RUTA: CHIS

AÑO: 2023

LUGAR	ESTACION				CLASIFICACION VEHICULAR EN PORCIENTO													COORDENADAS		
	KM	TE	SC	TDPA	M	A	B	C2	C3	T3S2	T3S3	T3S2R4	OTROS	A	B	C	K'	D	LATITUD	LONGITUD
Puerto Caté	0.00	3	0	1407	2.3	83.7	4.6	5.0	1.0	1.9	0.7	0.6	0.2	86.0	4.6	9.4	0.083	0.528	16.995328	-92.820331
Larrazar	20.00	1	0	4338	4.8	87.8	0.3	2.1	0.3	2.9	0.8	0.3	0.7	92.6	0.3	7.1	0.078	0.506	16.885617	-92.724528
T. Izq. Chamula	32.00	1	0	5287	5.4	84.9	0.4	3.8	0.4	3.3	0.8	0.3	0.7	90.3	0.4	9.3	0.083	0.532	16.790601	-92.698286
San Cristóbal de Las Casas	40.00	1	0	11721	7.9	86.8	0.6	2.5	0.6	0.4	0.5	0.4	0.3	94.7	0.6	4.7	0.082	0.513	16.755659	-92.670111

43 CARR: Ramal a Huehuetán

CLAVE: 07360

RUTA: CHIS

AÑO: 2023

LUGAR	ESTACION				CLASIFICACION VEHICULAR EN PORCIENTO													COORDENADAS		
	KM	TE	SC	TDPA	M	A	B	C2	C3	T3S2	T3S3	T3S2R4	OTROS	A	B	C	K'	D	LATITUD	LONGITUD
T. C. Tapanatepec - Talismán	0.00	3	1	4465	1.2	93.9	0.1	3.7	0.1	0.6	0.3	0.0	0.1	95.1	0.1	4.8	0.075	0.500	15.010444	-92.398015
T. C. Tapanatepec - Talismán	0.00	3	2	4465	2.5	91.8	0.1	4.4	0.1	0.7	0.3	0.0	0.1	94.3	0.1	5.6	0.077	0.500	15.010510	-92.398010
Huehuetán	2.50																			

44 CARR: Ramal a Mazatán

CLAVE: 07560

RUTA: CHIS-219

AÑO: 2023

LUGAR	ESTACION				CLASIFICACION VEHICULAR EN PORCIENTO													COORDENADAS		
	KM	TE	SC	TDPA	M	A	B	C2	C3	T3S2	T3S3	T3S2R4	OTROS	A	B	C	K'	D	LATITUD	LONGITUD
T. C. Tapanatepec - Talismán	0.00	3	1	4179	14.5	72.7	0.4	8.8	0.4	2.0	0.7	0.2	0.3	87.2	0.4	12.4	0.075	0.500	14.926401	-92.375361
T. C. Tapanatepec - Talismán	0.00	3	2	4173	13.8	71.8	0.4	10.2	0.5	2.2	0.7	0.1	0.3	85.6	0.4	14.0	0.071	0.500	14.926372	-92.375296
Mazatán	12.00																			

45 CARR: Ramal a Salto del Agua

CLAVE: 00069

RUTA: TAB-CHIS

AÑO: 2023

LUGAR	ESTACION				CLASIFICACION VEHICULAR EN PORCIENTO													COORDENADAS		
	KM	TE	SC	TDPA	M	A	B	C2	C3	T3S2	T3S3	T3S2R4	OTROS	A	B	C	K'	D	LATITUD	LONGITUD
T. C. Villahermosa - Francisco Escárcega	0.00	3	0	1818	7.0	68.7	2.2	2.9	4.8	5.4	3.6	4.9	0.5	75.7	2.2	22.1	0.075	0.540	17.665253	-92.436006

CHIAPAS

45 CARR: Ramal a Salto del Agua

CLAVE: 00069

RUTA: TAB-CHIS

AÑO: 2023

LUGAR	ESTACION				CLASIFICACION VEHICULAR EN PORCIENTO													COORDENADAS			
	KM	TE	SC	TDPA	M	A	B	C2	C3	T3S2	T3S3	T3S2R4	OTROS	A	B	C	K'	D	LATITUD	LONGITUD	
Lim. Edos. Term. Tab. Ppia. Chis.	12.00																				
Salto del Agua	17.00	1	0	2513	7.4	85.2	0.6	4.1	0.6	1.5	0.5	0.0	0.1	92.6	0.6	6.8	0.089	0.501	17.559572	-92.354077	

46 CARR: Ramal Zona Arqueológica " Bonampak "

CLAVE: 07100

RUTA: CHIS

AÑO: 2023

LUGAR	ESTACION				CLASIFICACION VEHICULAR EN PORCIENTO													COORDENADAS			
	KM	TE	SC	TDPA	M	A	B	C2	C3	T3S2	T3S3	T3S2R4	OTROS	A	B	C	K'	D	LATITUD	LONGITUD	
T. C. Benemérito de Las Américas - Palenque	0.00	3	0	505	11.1	87.4	0.1	0.8	0.5	0.0	0.1	0.0	0.0	98.5	0.1	1.4	0.103	0.514	16.798401	-91.105828	
Zona Arqueológica Bonampak	13.00																				

47 CARR: Ramal Zona Arqueológica " Palenque "

CLAVE: 07099

RUTA: CHIS

AÑO: 2023

LUGAR	ESTACION				CLASIFICACION VEHICULAR EN PORCIENTO													COORDENADAS		
	KM	TE	SC	TDPA	M	A	B	C2	C3	T3S2	T3S3	T3S2R4	OTROS	A	B	C	K'	D	LATITUD	LONGITUD
T. C. (Catatzajá - T. C. (Tuxtla Gtz. - Cd. Cuauhtémoc)	0.00	3	0	5490	0.2	87.8	0.4	11.4	0.1	0.1	0.0	0.0	0.0	88.0	0.4	11.6	0.089	0.501	17.503449	-91.995901
Zona Arqueológica Palenque	7.30	1	0	1130	4.0	88.9	1.2	4.7	0.2	0.9	0.1	0.0	0.0	92.9	1.2	5.9	0.104	0.510	17.487598	-92.042515

48 CARR: San Francisco Pujilic - Ent. Comitán

CLAVE: 07093

RUTA: CHIS

AÑO: 2023

LUGAR	ESTACION				CLASIFICACION VEHICULAR EN PORCIENTO													COORDENADAS		
	KM	TE	SC	TDPA	M	A	B	C2	C3	T3S2	T3S3	T3S2R4	OTROS	A	B	C	K'	D	LATITUD	LONGITUD
T. C. Chiapa de Corzo - Amatenango del Valle	0.00	3	0	2328	6.7	79.0	0.6	6.2	1.7	2.9	1.7	1.0	0.2	85.7	0.6	13.7	0.086	0.519	16.272439	-92.444635
Comitán	54.00	1	0	5652	11.9	83.2	0.6	1.7	1.1	0.6	0.4	0.5	0.0	95.1	0.6	4.3	0.079	0.507	16.204434	-92.132165

49 CARR: Tapachula - Nueva Alemania

CLAVE: 07581

RUTA: CHIS-229

AÑO: 2023

LUGAR	ESTACION				CLASIFICACION VEHICULAR EN PORCIENTO													COORDENADAS			
	KM	TE	SC	TDPA	M	A	B	C2	C3	T3S2	T3S3	T3S2R4	OTROS	A	B	C	K'	D	LATITUD	LONGITUD	
Tapachula	0.00	3	0	5952	14.5	83.3	0.2	1.4	0.3	0.2	0.0	0.1	0.0	97.8	0.2	2.0	0.094	0.503	14.957539	-92.254482	
Nueva Alemania	27.20																				

CHIAPAS

50 CARR: Temo - Tila

CLAVE: 07090

RUTA: CHIS

AÑO: 2023

LUGAR	ESTACION				CLASIFICACION VEHICULAR EN PORCIENTO										COORDENADAS					
	KM	TE	SC	TDPA	M	A	B	C2	C3	T3S2	T3S3	T3S2R4	OTROS	A	B	C	K'	D	LATITUD	LONGITUD
Temo	0.00	3	0	2732	7.8	84.9	0.2	3.1	1.0	2.4	0.3	0.3	0.0	92.7	0.2	7.1	0.090	0.513	17.018157	-92.156725
Yajalón	28.00	1	0	2657	13.2	79.7	0.2	3.0	0.8	2.4	0.5	0.2	0.0	92.9	0.2	6.9	0.097	0.500	17.159011	-92.318265
Tila	50.00	1	0	1803	12.1	80.5	0.4	3.2	0.9	1.9	0.6	0.4	0.0	92.6	0.4	7.0	0.083	0.504	17.292101	-92.428830

51 CARR: Tierra y Libertad - Ent. Dr. Domingo Chanona

CLAVE: 07096

RUTA: CHIS

AÑO: 2023

LUGAR	ESTACION				CLASIFICACION VEHICULAR EN PORCIENTO										COORDENADAS					
	KM	TE	SC	TDPA	M	A	B	C2	C3	T3S2	T3S3	T3S2R4	OTROS	A	B	C	K'	D	LATITUD	LONGITUD
T. C. Las Cruces - Arriaga	0.00	3	0	299	7.4	81.1	1.7	3.5	4.9	0.8	0.2	0.3	0.1	88.5	1.7	9.8	0.109	0.522	16.375483	-93.857080
T. C. Ocozacoautla - Revolución Mexicana	60.00	1	0	4401	22.9	67.8	0.4	4.5	0.6	2.8	0.5	0.2	0.3	90.7	0.4	8.9	0.076	0.502	16.345517	-93.408636

52 CARR: Tuxtla Gutiérrez - Portillo Zaragoza

CLAVE: 07574

RUTA: CHIS-133

AÑO: 2023

LUGAR	ESTACION				CLASIFICACION VEHICULAR EN PORCIENTO										COORDENADAS					
	KM	TE	SC	TDPA	M	A	B	C2	C3	T3S2	T3S3	T3S2R4	OTROS	A	B	C	K'	D	LATITUD	LONGITUD
Ent. Periférico Tuxtla Gutiérrez	0.00	3	0	15557	6.6	89.8	0.5	1.6	0.3	0.5	0.2	0.4	0.1	96.4	0.5	3.1	0.082	0.502	16.730112	-93.110511
Suchiapa	19.00	1	0	7393	8.8	88.1	0.2	1.3	0.4	0.2	0.5	0.2	0.3	96.9	0.2	2.9	0.091	0.504	16.637391	-93.092718
Las Cruces	53.50	1	0	2674	8.1	83.8	0.4	5.4	0.7	1.1	0.3	0.0	0.2	91.9	0.4	7.7	0.089	0.507	16.415527	-93.168328
Las Cruces	53.50	3	0	2757	10.4	81.3	0.5	5.6	0.5	1.4	0.2	0.0	0.1	91.7	0.5	7.8	0.088	0.500	16.397558	-93.206410
Portillo de Tacubaya	79.00	1	0	4079	12.0	79.1	0.5	4.9	0.9	1.9	0.3	0.1	0.3	91.1	0.5	8.4	0.079	0.521	16.317332	-93.330570

53 CARR: Zapatero - T. C. (Jalapa - Jonuta)

CLAVE: 00061

RUTA: CHIS-TAB

AÑO: 2023

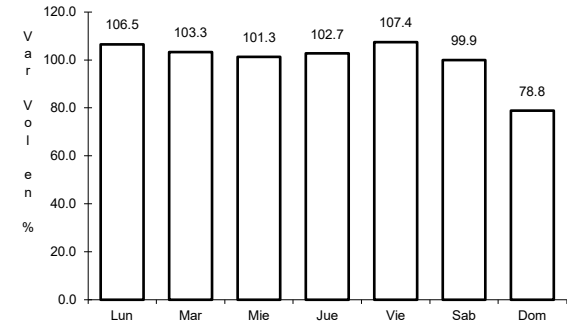
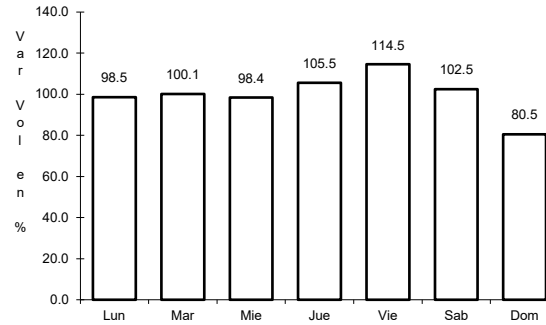
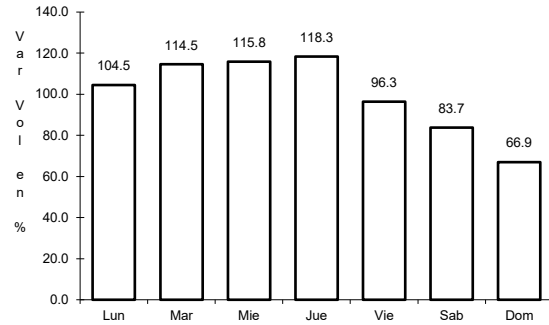
LUGAR	ESTACION				CLASIFICACION VEHICULAR EN PORCIENTO										COORDENADAS					
	KM	TE	SC	TDPA	M	A	B	C2	C3	T3S2	T3S3	T3S2R4	OTROS	A	B	C	K'	D	LATITUD	LONGITUD
T. C. Villahermosa - Francisco Escárcega	0.00	3	0	1559	18.6	71.7	0.2	5.0	1.9	1.9	0.3	0.2	0.2	90.3	0.2	9.5	0.104	0.513	17.698994	-92.131890
Lim. Edos. Term. Chis. Ppia. Tab.	16.00																			
T. C. Jalapa - Jonuta	41.00	1	0	1528	15.4	77.9	0.2	4.6	1.4	0.2	0.2	0.1	0.0	93.3	0.2	6.5	0.086	0.503	18.029245	-92.157804



1 CARR: Benemérito de Las Américas - Palenque

CLAVE: 07095

RUTA: MEX-307



Km: 42.00

Tipo: 3

Sent: 0

Km: 160.00

Tipo: 1

Sent: 0

Km: 194.00

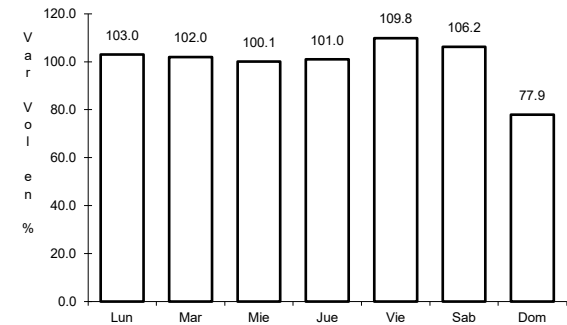
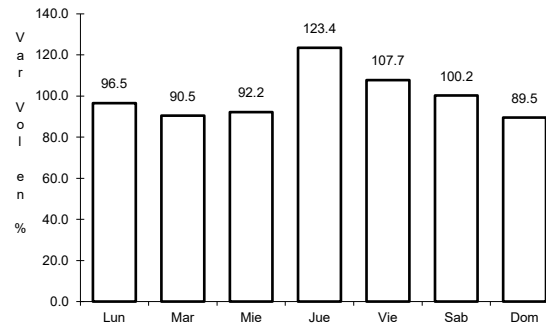
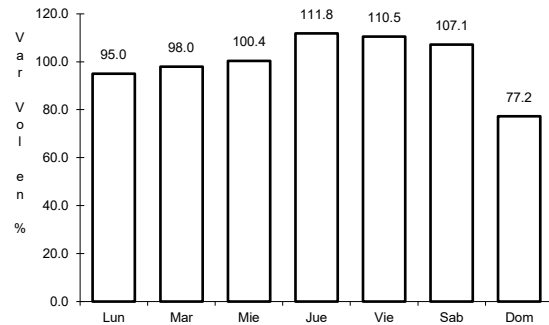
Tipo: 1

Sent: 0

2 CARR: Catazajá - T. C. (Tuxtla Gtz. - Cd. Cuauhtémoc)

CLAVE: 07582

RUTA: MEX-199-307



Km: 2.20

Tipo: 3

Sent: 0

Km: 68.30

Tipo: 1

Sent: 0

Km: 210.00

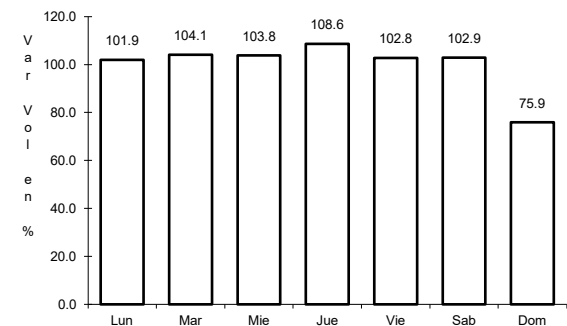
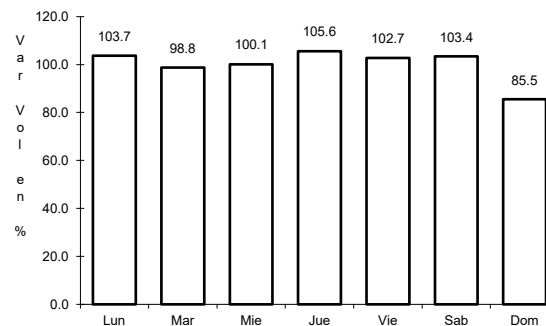
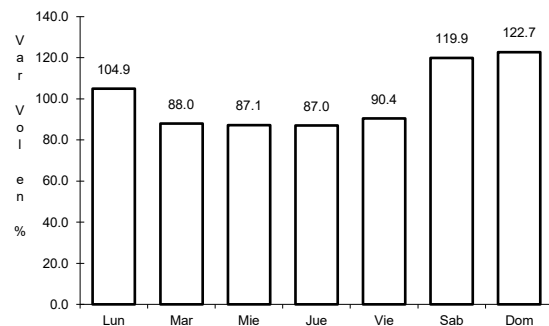
Tipo: 1

Sent: 0

3 CARR: El Suspiro - Tenosique

CLAVE: 00276

RUTA: MEX-203



Km: 0.00

Tipo: 3

Sent: 0

Km: 32.60

Tipo: 1

Sent: 0

Km: 53.00

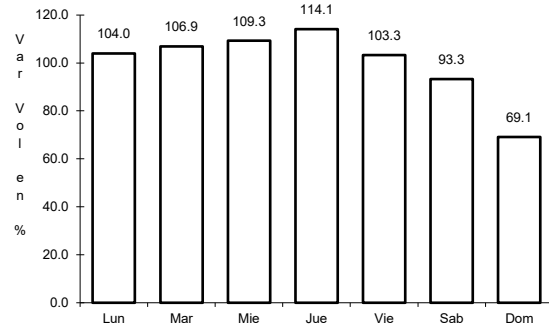
Tipo: 3

Sent: 0

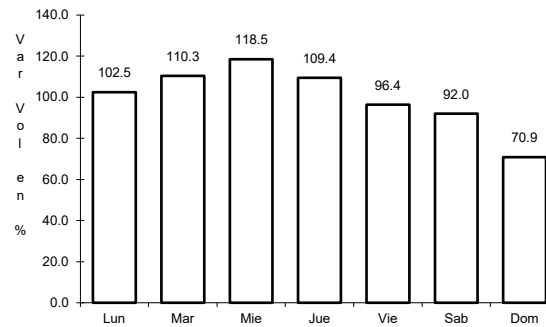
4 CARR: Ent. Jaritas - Ciudad Hidalgo

CLAVE: 07094

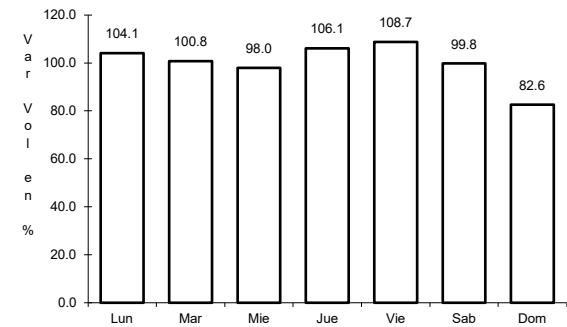
ruta: MEX-225



Km: 0.00      Tipo: 3      Sent: 0



Km: 33.35      Tipo: 1      Sent: 0

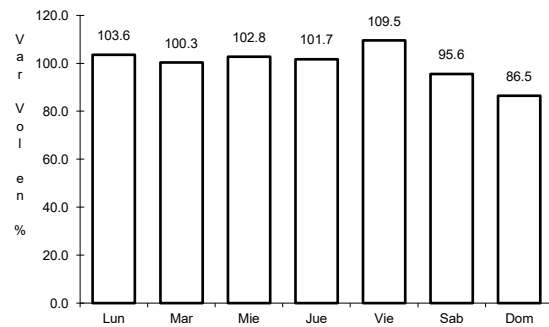


Km: 49.00      Tipo: 1      Sent: 0

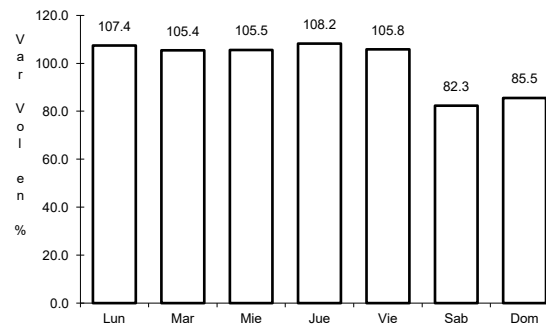
5 CARR: Huixtla - El Jocote

CLAVE: 07577

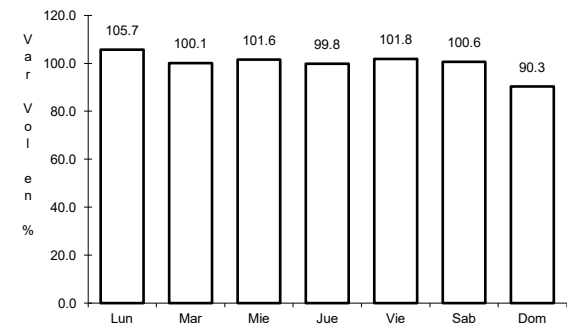
ruta: MEX-211



Km: 0.00      Tipo: 3      Sent: 0



Km: 57.00      Tipo: 1      Sent: 0

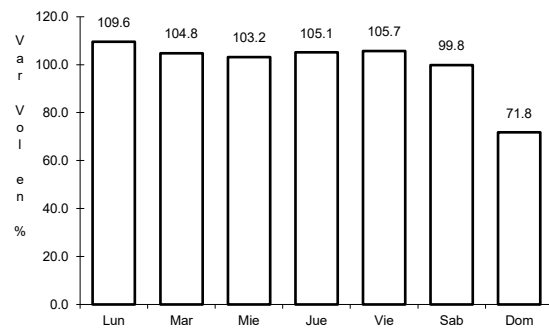


Km: 126.00      Tipo: 1      Sent: 0

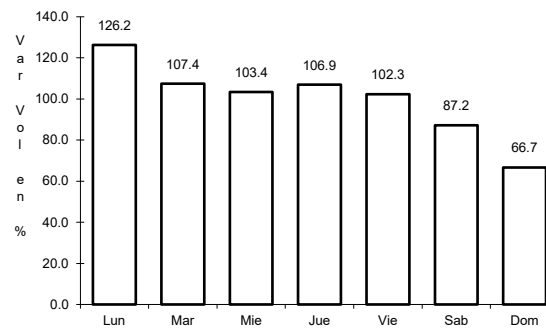
6 CARR: La Trinitaria - Benemérito de Las Américas

CLAVE: 07267

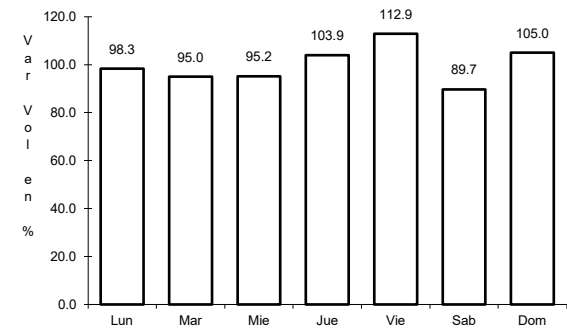
ruta: MEX-307



Km: 0.00      Tipo: 3      Sent: 0



Km: 39.76      Tipo: 3      Sent: 0

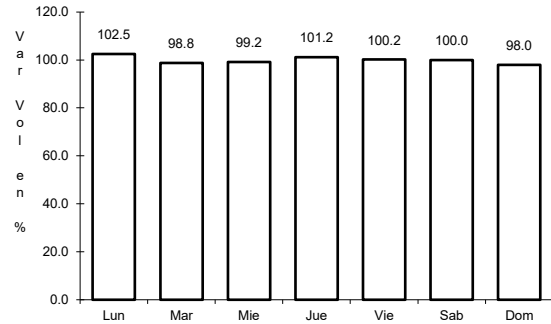


Km: 72.00      Tipo: 3      Sent: 0

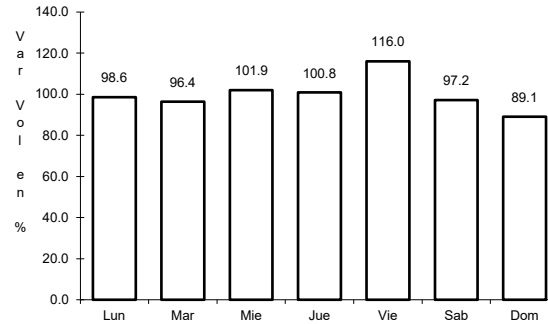
7 CARR: Las Cruces - Arriaga

CLAVE: 07196

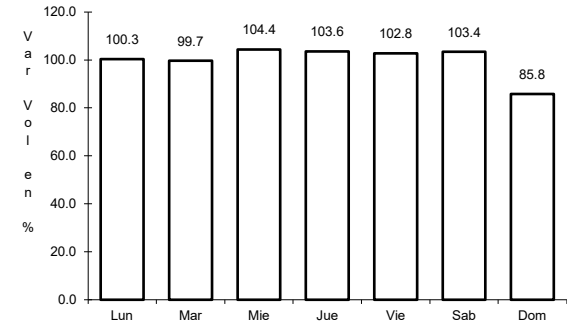
RUTA: MEX-190



Km: 0.00      Tipo: 3      Sent: 0



Km: 27.90      Tipo: 3      Sent: 0

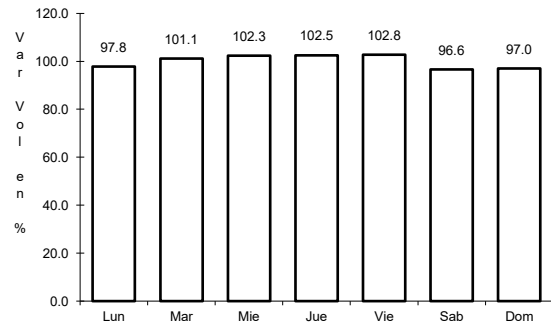


Km: 49.00      Tipo: 1      Sent: 0

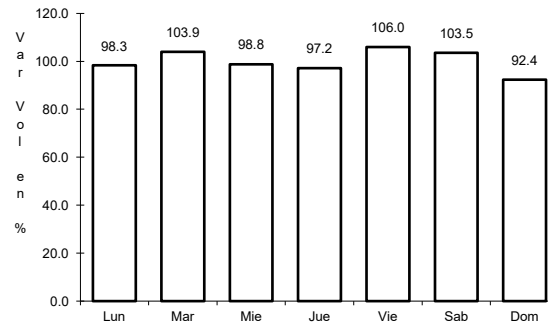
8 CARR: Libramiento de Arriaga

CLAVE:

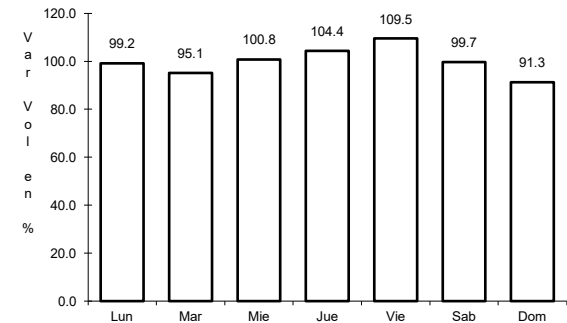
RUTA: MEX-200



Km: 0.00      Tipo: 3      Sent: 0



Km: 2.60      Tipo: 1      Sent: 0

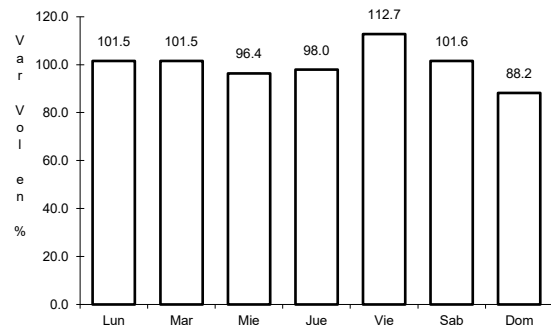


Km: 7.50      Tipo: 1      Sent: 0

9 CARR: Libramiento de Ciudad Hidalgo Chis.

CLAVE:

RUTA: MEX-225

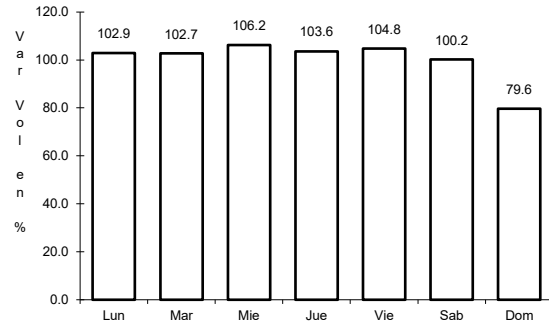


Km: 5.00      Tipo: 3      Sent: 0

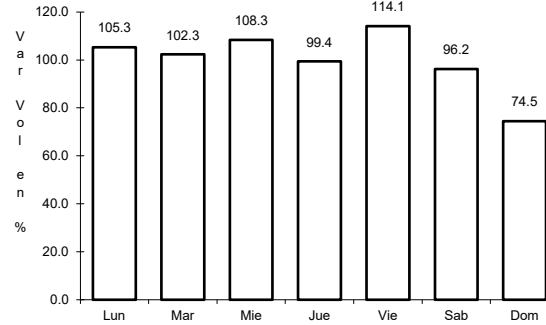
10 CARR: Libramiento de Huixtla

CLAVE:

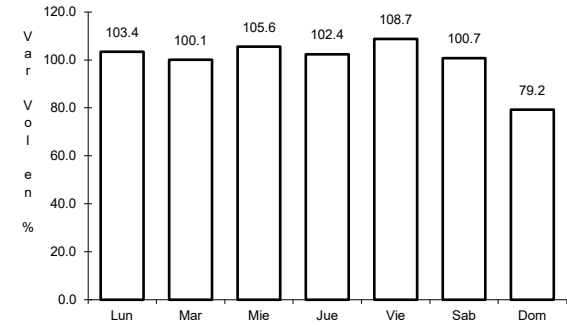
ruta: MEX-200



Km: 0.00      Tipo: 3      Sent: 1



Km: 0.00      Tipo: 3      Sent: 2

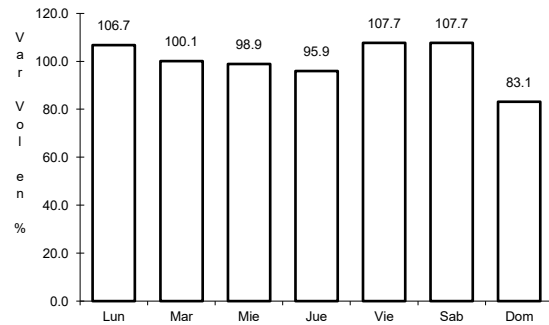


Km: 5.80      Tipo: 3      Sent: 1

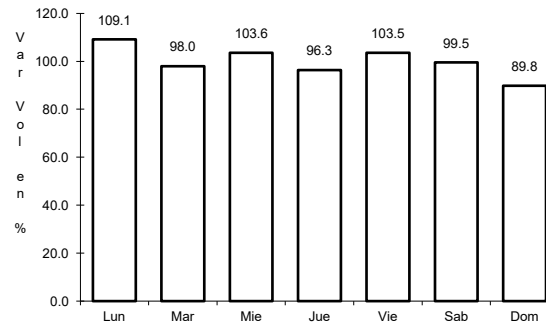
11 CARR: Libramiento de Ocozocoautla

CLAVE: 07583

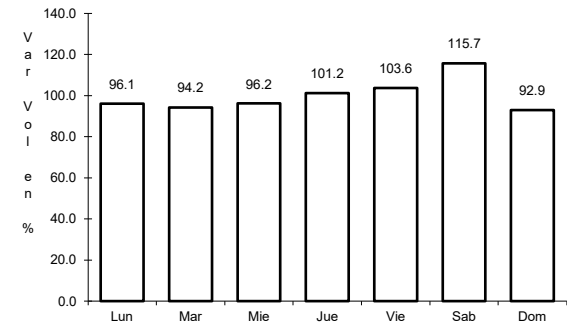
ruta: MEX-190



Km: 0.00      Tipo: 3      Sent: 0



Km: 5.54      Tipo: 1      Sent: 0

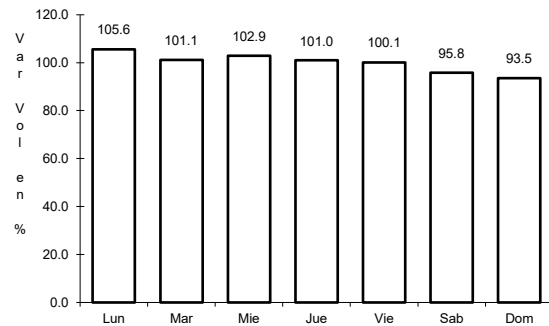


Km: 9.00      Tipo: 1      Sent: 0

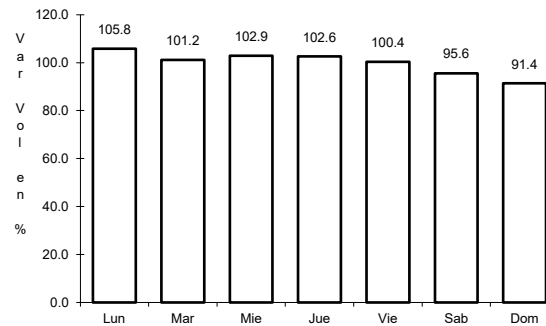
12 CARR: Libramiento Sur de Tuxtla Gutierrez (Dr. Manuel Velasco)

CLAVE:

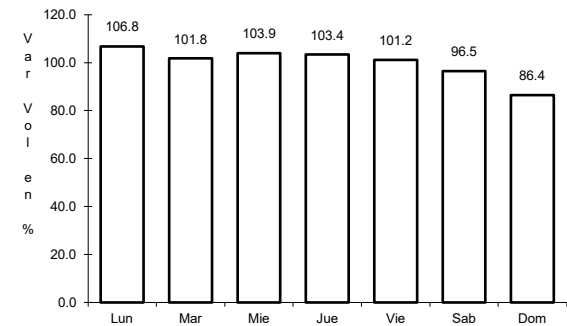
ruta: MEX



Km: 0.00      Tipo: 3      Sent: 0



Km: 15.94      Tipo: 3      Sent: 0

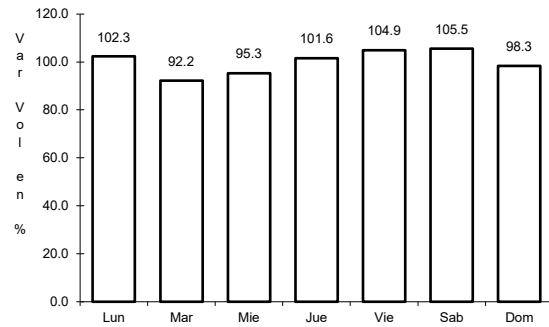


Km: 22.10      Tipo: 3      Sent: 0

13 CARR: Malpaso - El Bellote

CLAVE: 00137

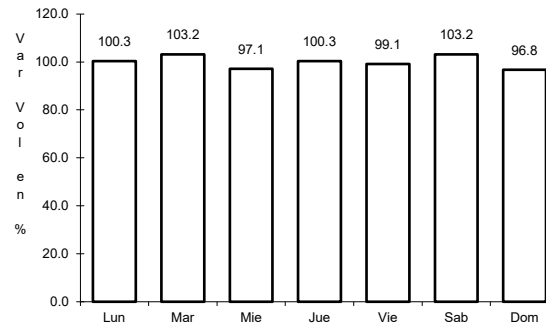
RUTA: MEX-187



Km: 70.12

Tipo: 1

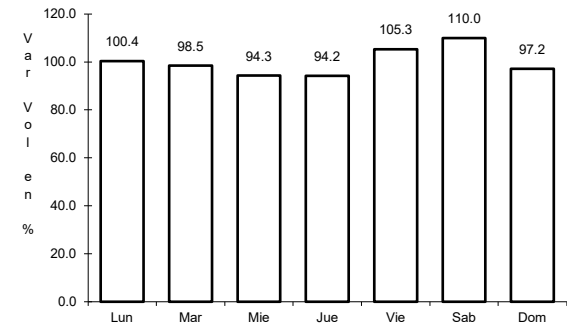
Sent: 0



Km: 134.70

Tipo: 3

Sent: 0



Km: 182.00

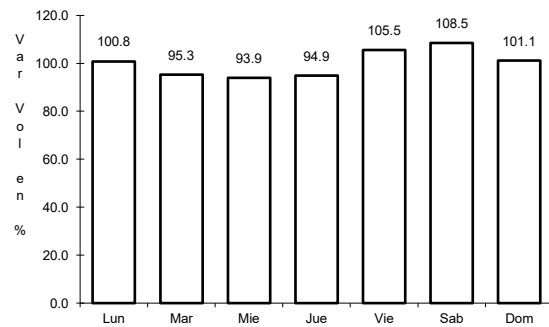
Tipo: 3

Sent: 0

14 CARR: Ocozocoautla - Ent. El Sabino

CLAVE: 07579

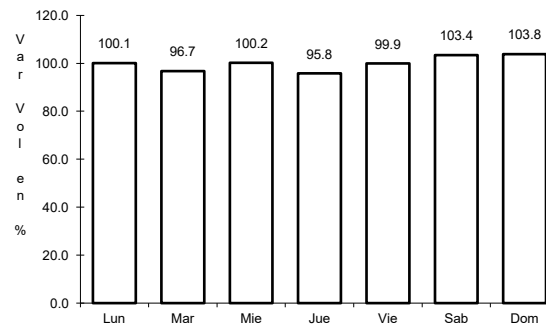
RUTA: MEX-190



Km: 7.85

Tipo: 3

Sent: 0



Km: 18.25

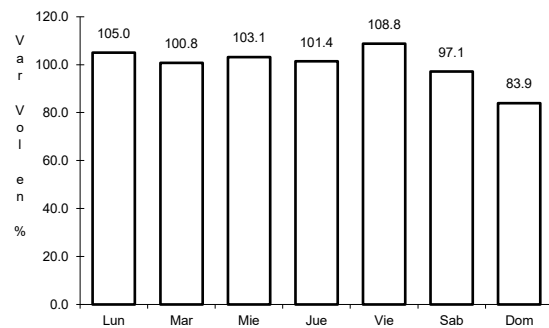
Tipo: 1

Sent: 0

15 CARR: Ramal a Cd. Hidalgo

CLAVE: 07274

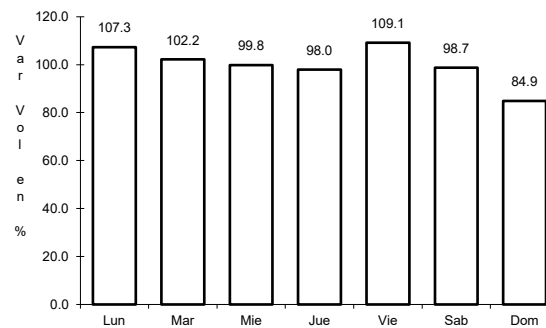
RUTA: MEX-200



Km: 0.00

Tipo: 3

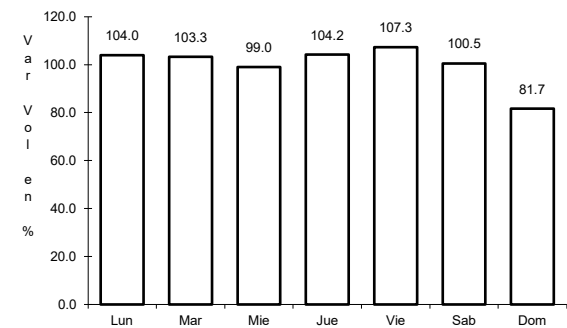
Sent: 0



Km: 15.30

Tipo: 3

Sent: 0



Km: 27.00

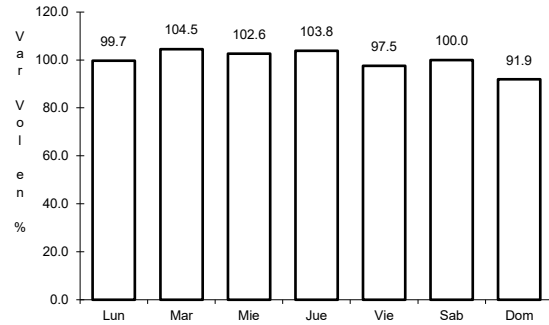
Tipo: 1

Sent: 0

16 CARR: Ramal a La Gloria

CLAVE: 07091

ruta: MEX-200



Km: 0.00

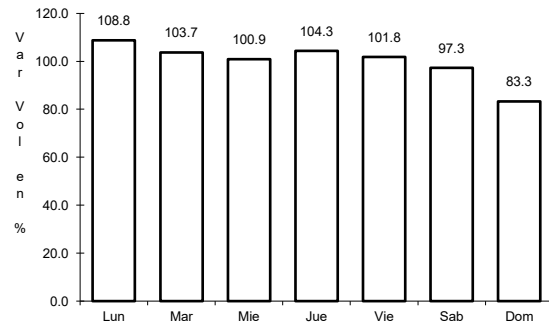
Tipo: 3

Sent: 0

17 CARR: Ramal a Paredón

CLAVE: 07269

ruta: MEX-200



Km: 0.00

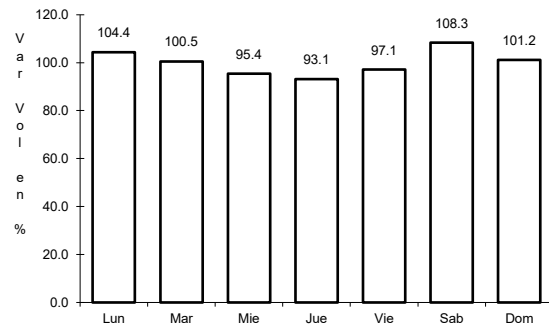
Tipo: 3

Sent: 0

18 CARR: Ramal a Puerto Arista

CLAVE: 07270

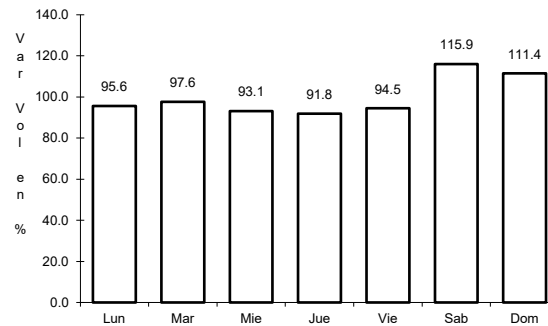
ruta: MEX-200



Km: 0.00

Tipo: 3

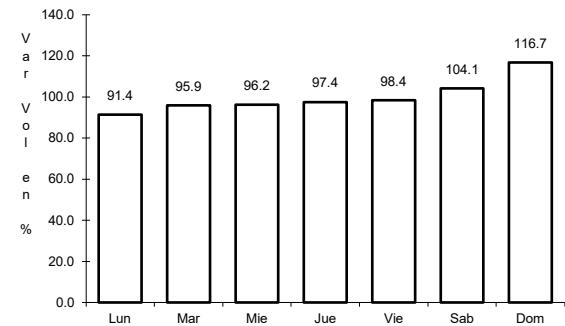
Sent: 0



Km: 11.00

Tipo: 3

Sent: 0



Km: 17.00

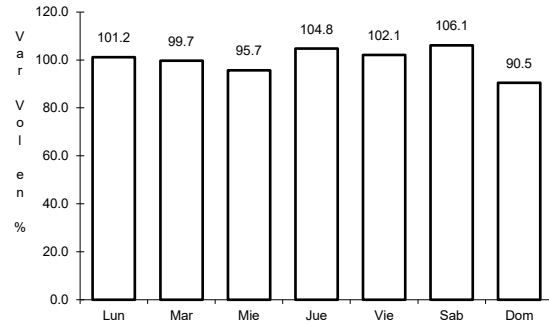
Tipo: 1

Sent: 0

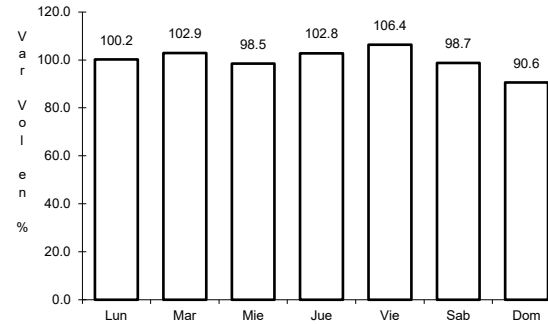
19 CARR: Ramal a Unión Juárez

CLAVE: 07273

RUTA: MEX-200



Km: 5.00      Tipo: 1      Sent: 0

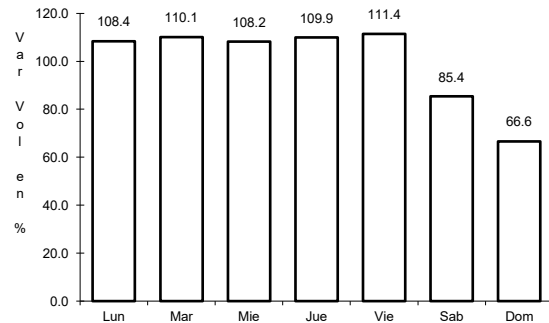


Km: 22.00      Tipo: 1      Sent: 0

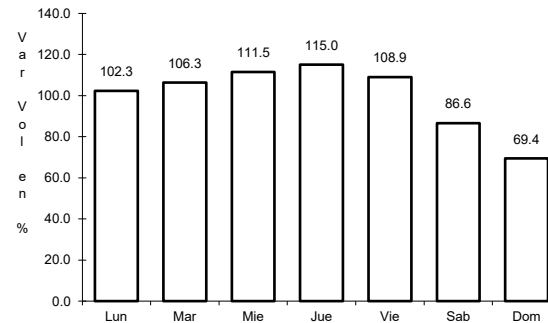
20 CARR: Tapachula - Puerto Madero

CLAVE: 07018

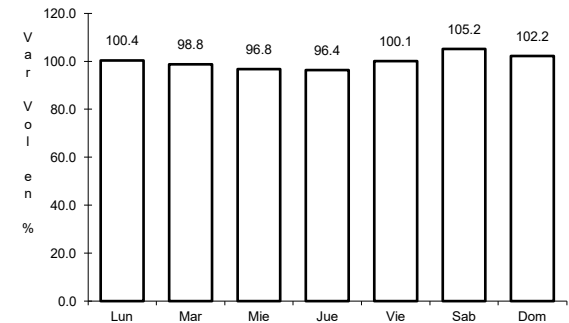
RUTA: MEX-225



Km: 0.00      Tipo: 3      Sent: 1



Km: 0.00      Tipo: 3      Sent: 2

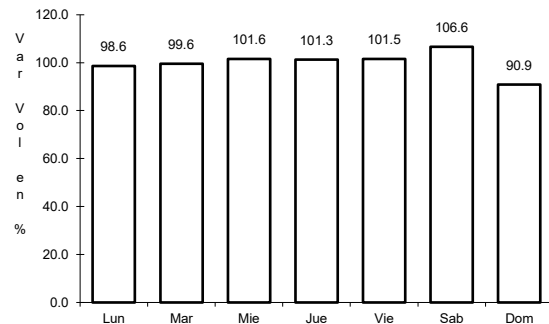


Km: 27.00      Tipo: 1      Sent: 0

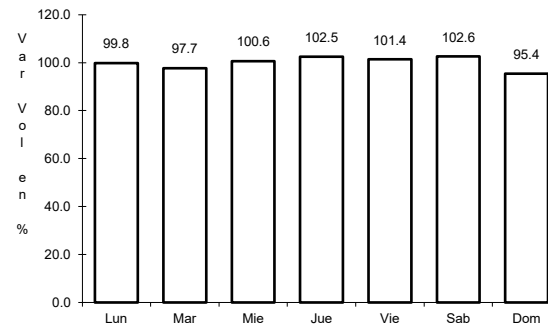
21 CARR: Tapanatepec - Talismán

CLAVE: 00075

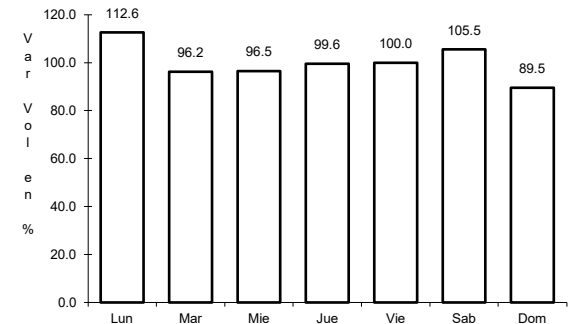
RUTA: MEX-200



Km: 0.00      Tipo: 3      Sent: 0



Km: 45.00      Tipo: 1      Sent: 0

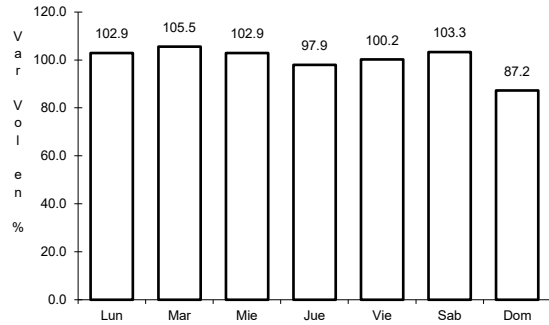


Km: 310.77      Tipo: 1      Sent: 0

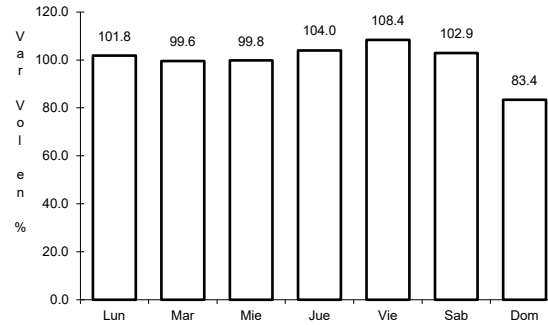
22 CARR: Tapanatepec - Tuxtla Gutiérrez

CLAVE: 00060

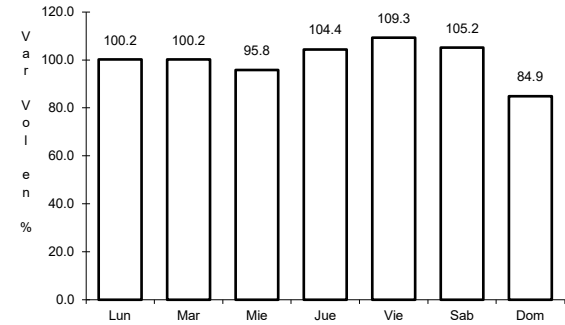
ruta: MEX-190



Km: 0.00      Tipo: 3      Sent: 0



Km: 159.00      Tipo: 1      Sent: 1

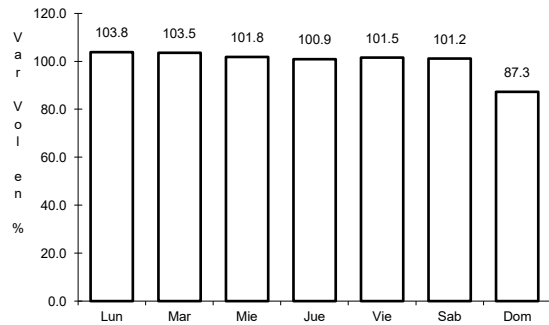


Km: 159.00      Tipo: 1      Sent: 2

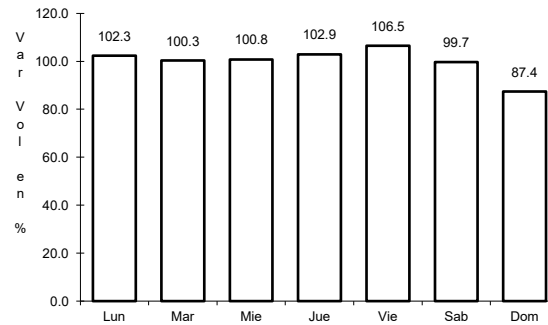
23 CARR: Terán - Chicoasén

CLAVE: 07072

ruta: MEX-190



Km: 0.00      Tipo: 3      Sent: 0

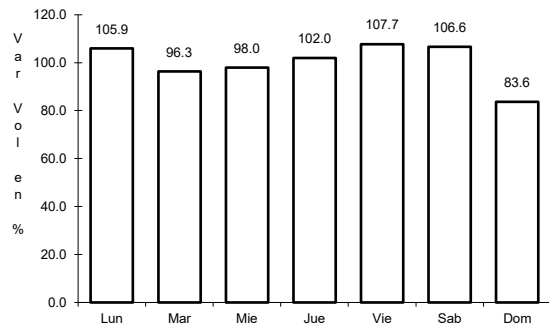


Km: 14.00      Tipo: 1      Sent: 0

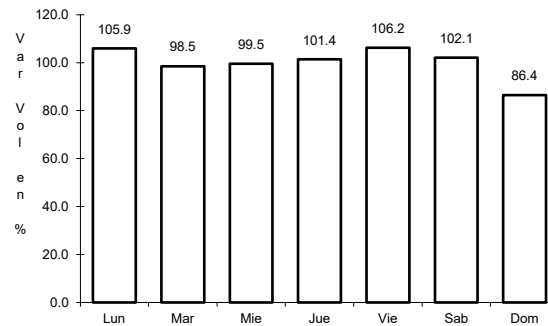
24 CARR: Tuxtla Gutiérrez - Angostura

CLAVE: 07584

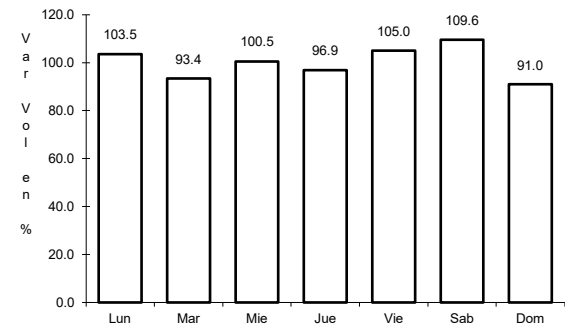
ruta: MEX-190



Km: 0.00      Tipo: 3      Sent: 1



Km: 0.00      Tipo: 3      Sent: 2



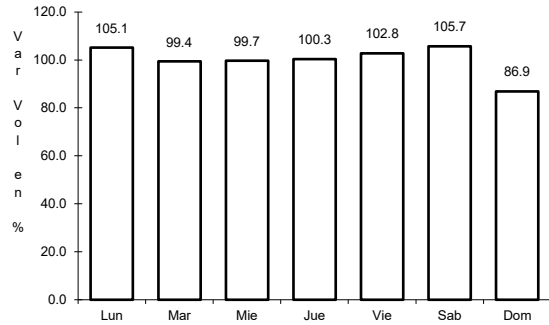
Km: 52.00      Tipo: 1      Sent: 0



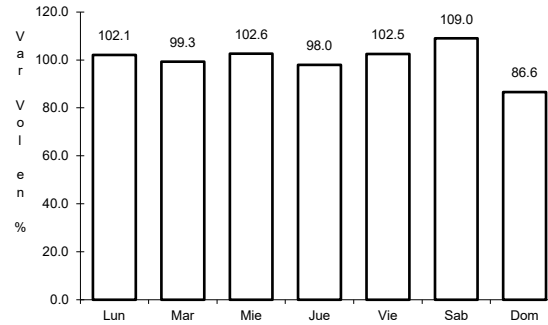
25 CARR: Tuxtla Gutiérrez - Cd. Cuauhtémoc

CLAVE: 07061

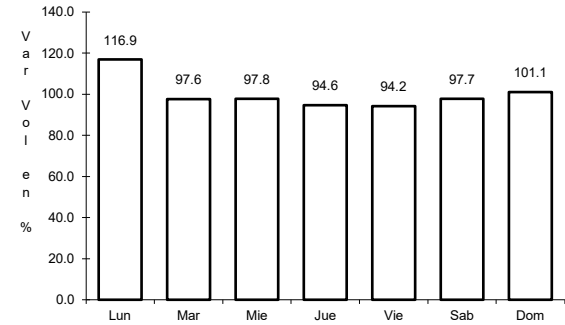
RUTA: MEX-190



Km: 7.50      Tipo: 1      Sent: 1



Km: 7.50      Tipo: 1      Sent: 2

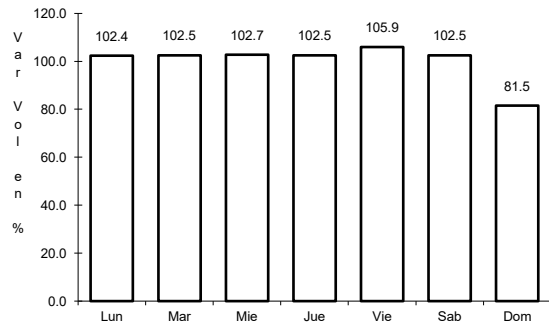


Km: 256.00      Tipo: 1      Sent: 0

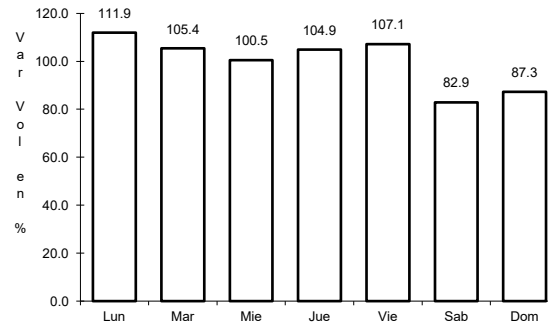
26 CARR: Villahermosa - Escopetazo

CLAVE: 00104

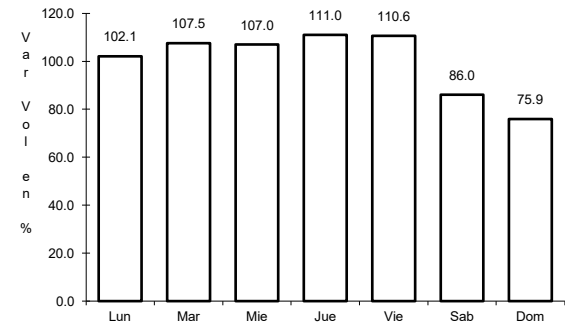
RUTA: MEX-195



Km: 0.00      Tipo: 3      Sent: 1



Km: 0.00      Tipo: 3      Sent: 2

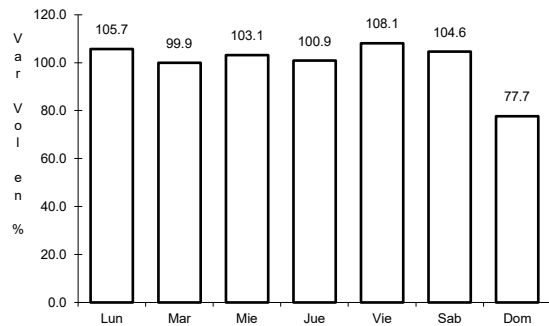


Km: 259.00      Tipo: 1      Sent: 0

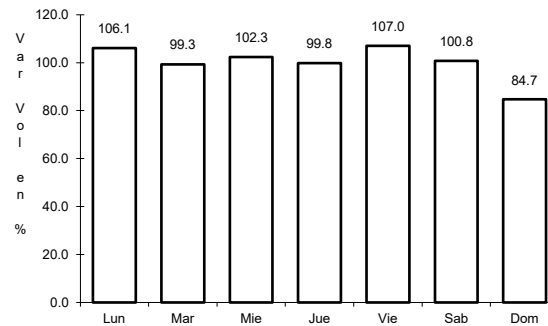
27 CARR: Villahermosa - Francisco Escárcega

CLAVE: 00092

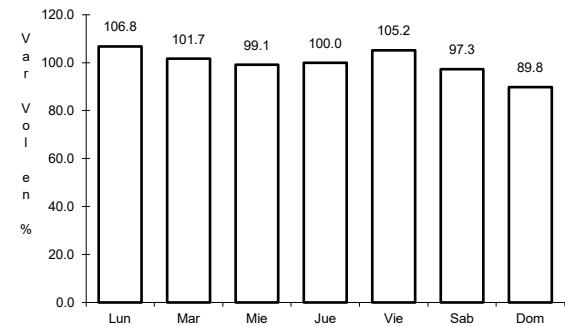
RUTA: MEX-186-307



Km: 0.00      Tipo: 3      Sent: 1



Km: 0.00      Tipo: 3      Sent: 2

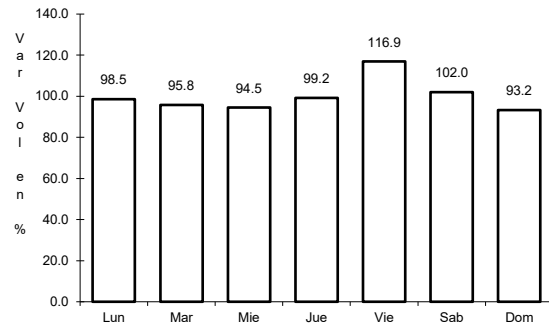


Km: 297.04      Tipo: 1      Sent: 0

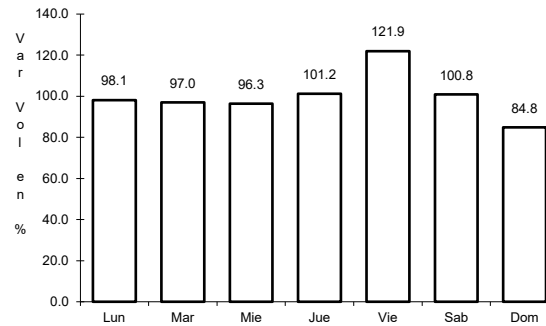
28 CARR: Arriaga - Ocozocoautla (Cuota)

CLAVE: 00092

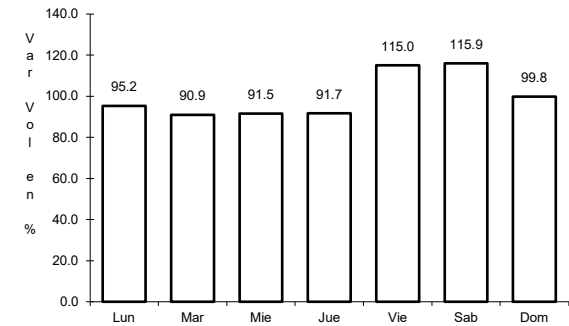
ruta: MEX-200D



Km: 0.00      Tipo: 3      Sent: 0



Km: 20.30      Tipo: 1      Sent: 0

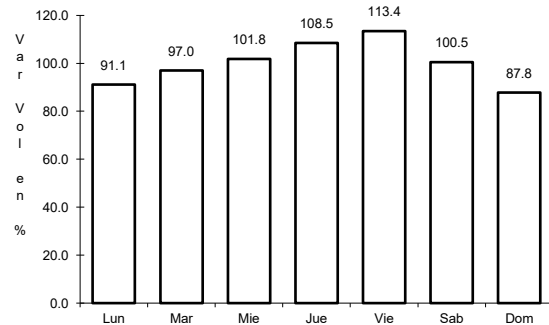


Km: 92.00      Tipo: 1      Sent: 0

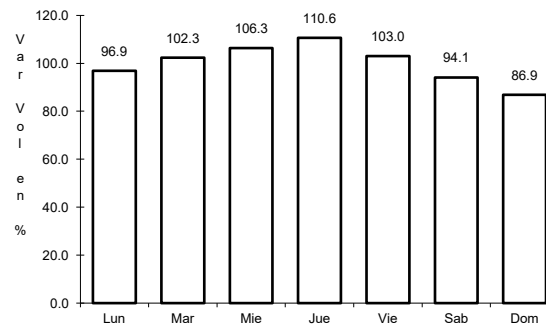
29 CARR: Las Choapas - Ocozocoautla (Cuota)

CLAVE: 00077

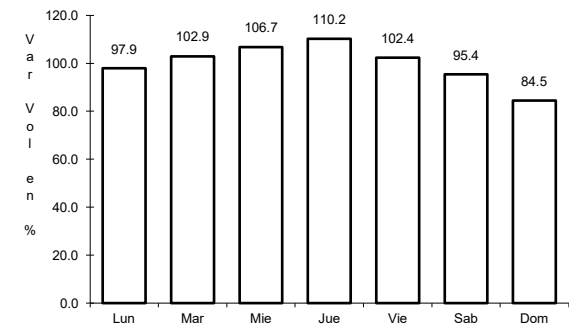
ruta: MEX-187D



Km: 0.00      Tipo: 3      Sent: 0



Km: 123.79      Tipo: 1      Sent: 0

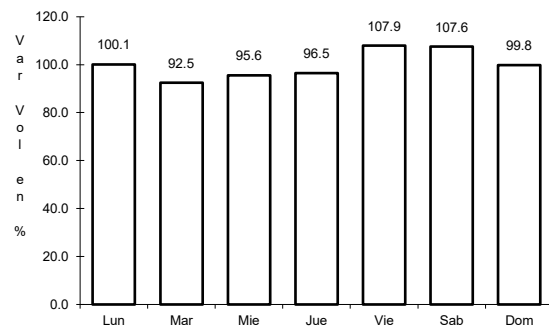


Km: 197.50      Tipo: 1      Sent: 0

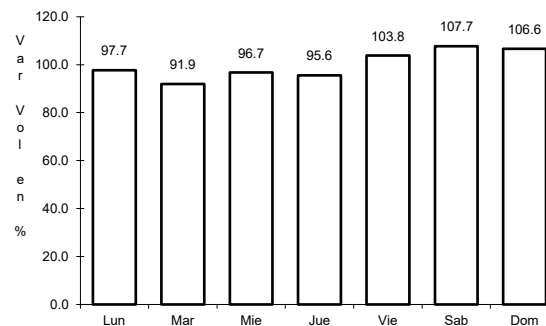
30 CARR: Tuxtla Gutiérrez - San Cristóbal de Las Casas (Cuota)

CLAVE: 07580

ruta: MEX-190D



Km: 1.30      Tipo: 3      Sent: 0

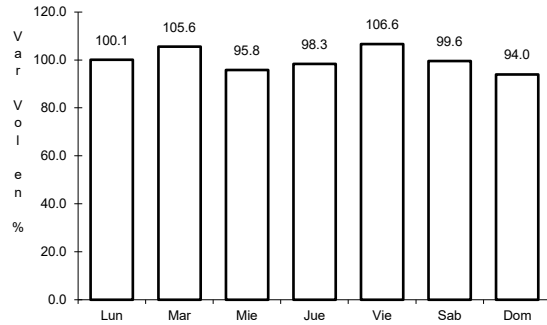


Km: 46.00      Tipo: 1      Sent: 0

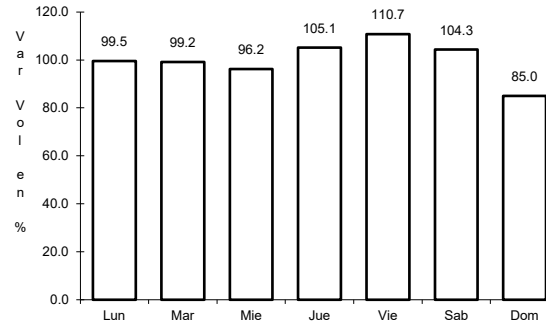
31 CARR: Chiapa de Corzo - Amatenango del Valle

CLAVE: 07024

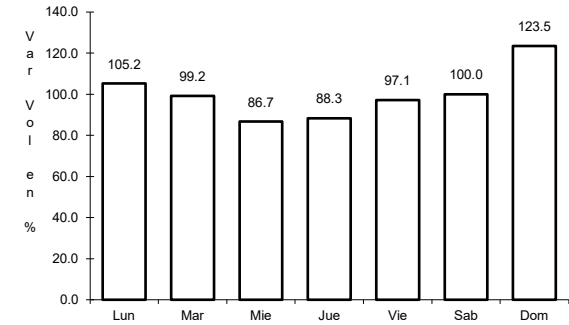
RUTA: CHIS



Km: 0.00      Tipo: 3      Sent: 0



Km: 74.00      Tipo: 1      Sent: 0

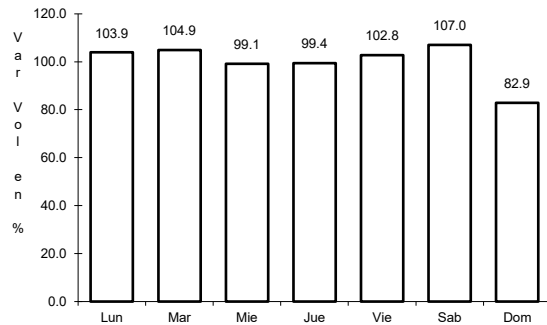


Km: 146.50      Tipo: 1      Sent: 0

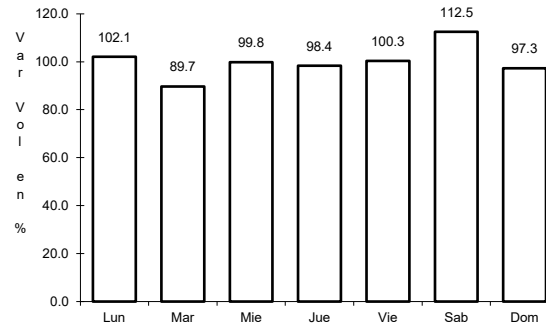
32 CARR: Ent. Emiliano Zapata - La Libertad

CLAVE: 00062

RUTA: CHIS-TAB



Km: 0.00      Tipo: 3      Sent: 0

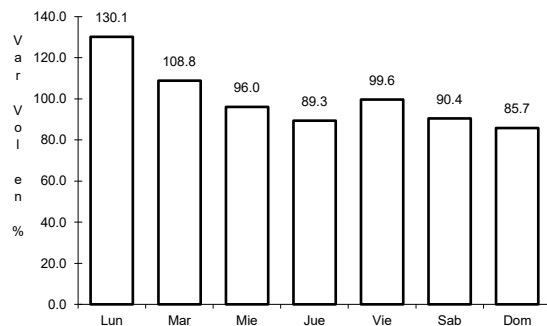


Km: 10.00      Tipo: 1      Sent: 0

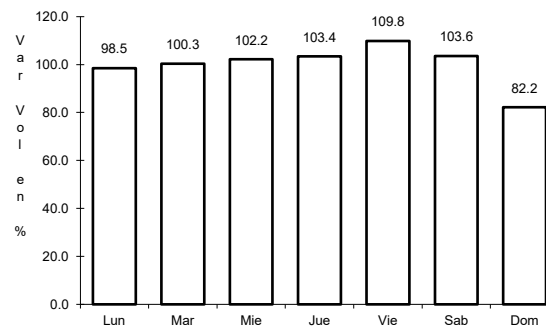
33 CARR: Ent. Suschilá - Comitán

CLAVE: 00061

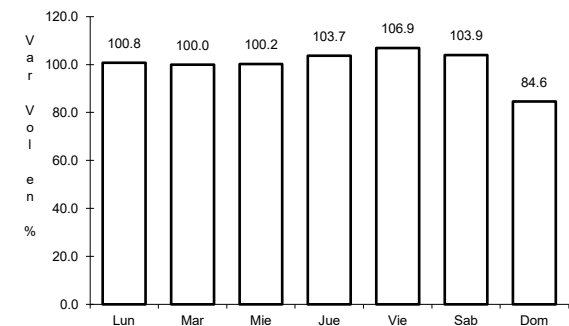
RUTA: CHIS-TAB



Km: 205.00      Tipo: 1      Sent: 0



Km: 257.50      Tipo: 3      Sent: 1

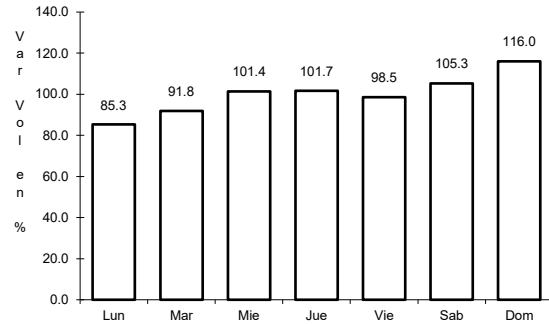


Km: 257.50      Tipo: 3      Sent: 2

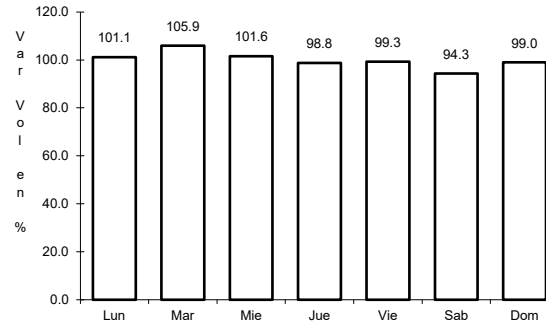
34 CARR: Estación Palenque - La Libertad

CLAVE: 07002

RUTA: CHIS-010



Km: 0.00      Tipo: 3      Sent: 0

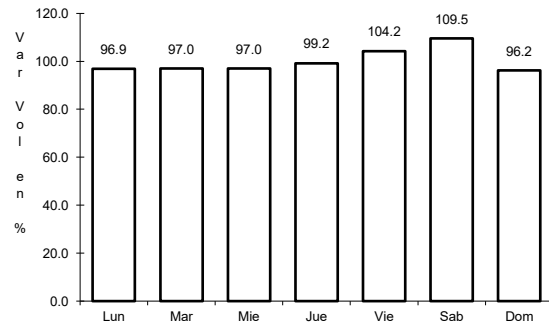


Km: 40.00      Tipo: 1      Sent: 0

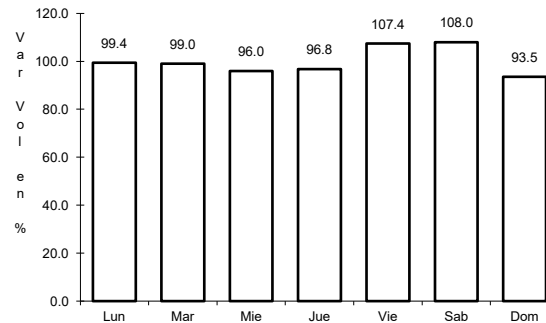
35 CARR: Gregorio Méndez Magaña - Reforma de Ocampo

CLAVE: 00103

RUTA: CHIS



Km: 0.00      Tipo: 3      Sent: 0

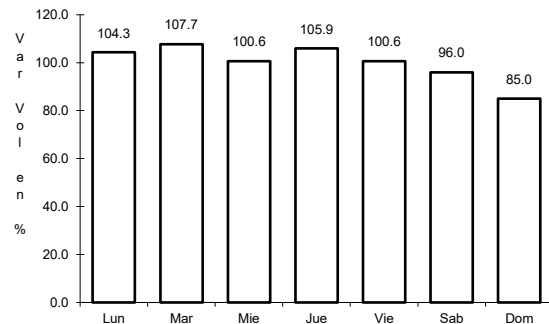


Km: 21.00      Tipo: 1      Sent: 0

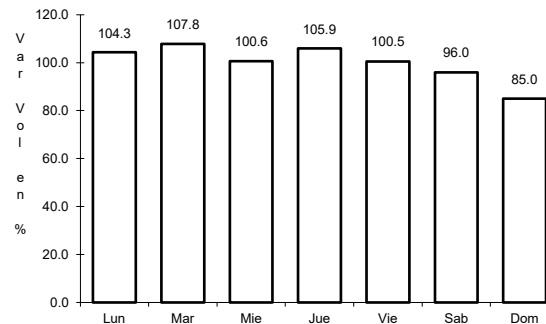
36 CARR: Independencia - Buenos Aires

CLAVE: 07098

RUTA: CHIS



Km: 139.00      Tipo: 3      Sent: 0

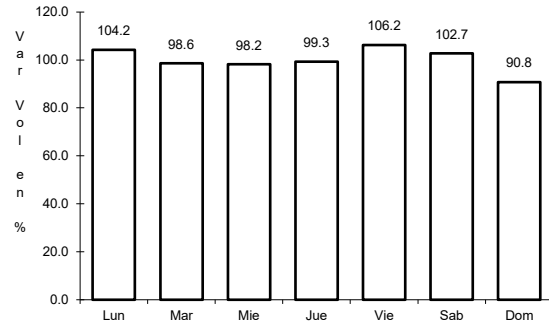


Km: 159.00      Tipo: 1      Sent: 0

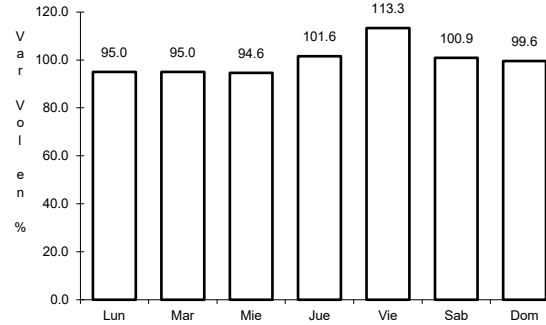
37 CARR: Las Limas - La Concordia

CLAVE: 07028

RUTA: CHIS



Km: 0.00      Tipo: 3      Sent: 0

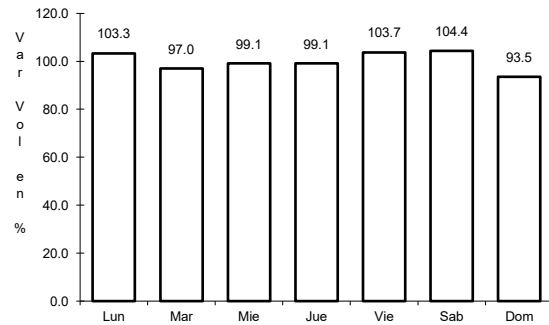


Km: 83.00      Tipo: 1      Sent: 0

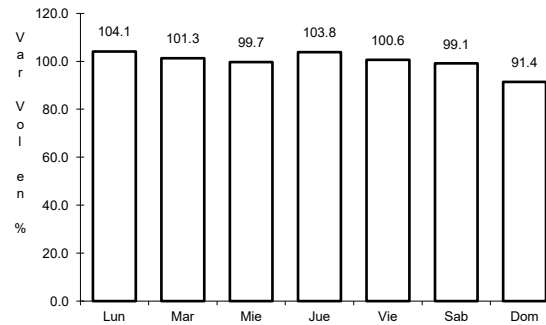
38 CARR: Libramiento Sur de Tuxtla Gutiérrez

CLAVE: 07578

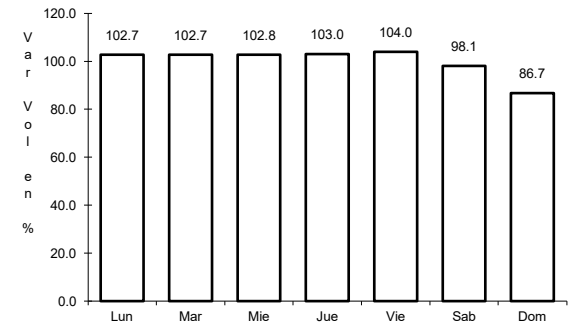
RUTA: CHIS



Km: 0.00      Tipo: 3      Sent: 1



Km: 0.00      Tipo: 3      Sent: 2

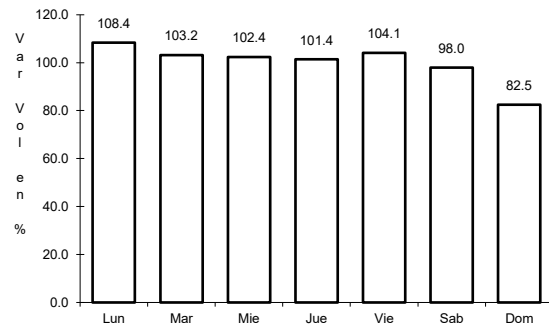


Km: 9.20      Tipo: 1      Sent: 1

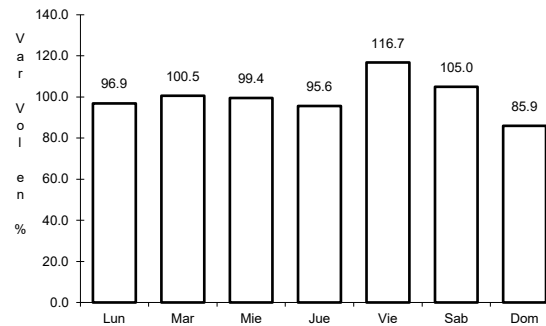
39 CARR: Ocosingo - Comitán

CLAVE: 07092

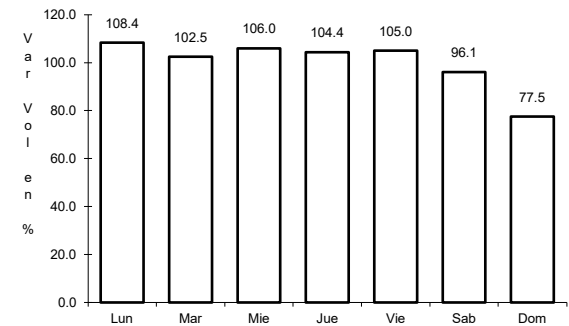
RUTA: CHIS



Km: 0.00      Tipo: 3      Sent: 0



Km: 30.00      Tipo: 1      Sent: 0

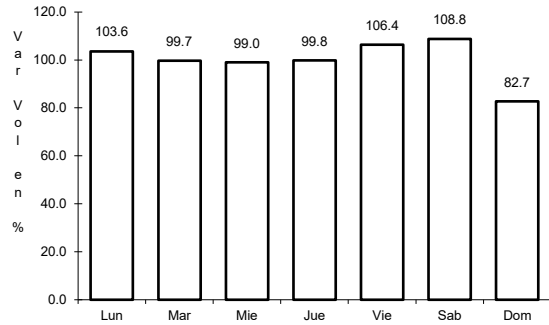


Km: 100.00      Tipo: 1      Sent: 0

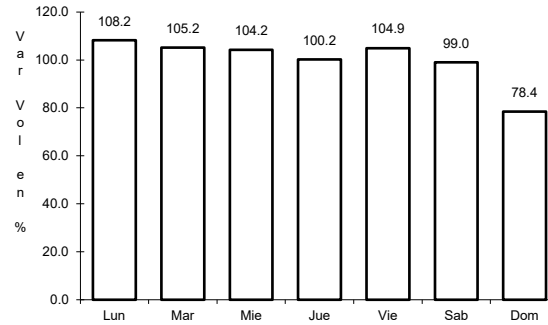
40 CARR: Ocozocoautla - Revolución Mexicana

CLAVE: 07571

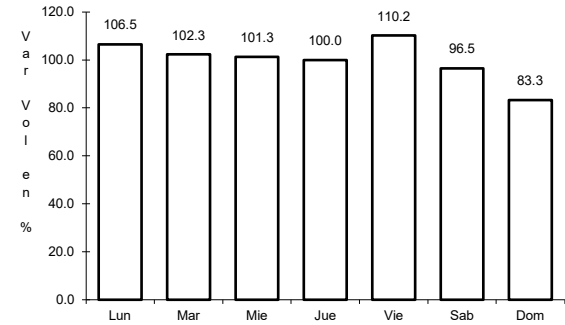
ruta: CHIS-053-230



Km: 0.00 Tipo: 3 Sent: 0



Km: 76.00 Tipo: 1 Sent: 0

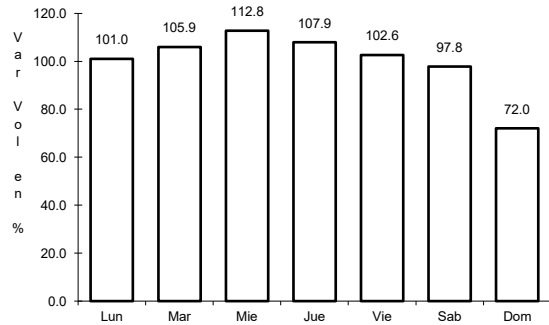


Km: 119.00 Tipo: 1 Sent: 0

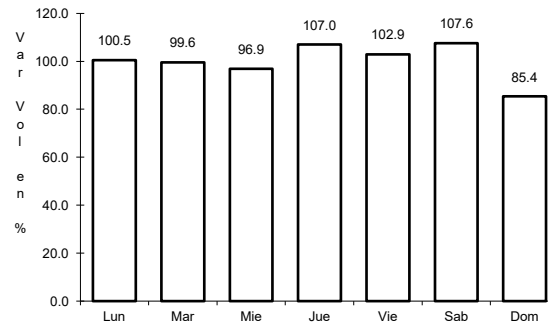
41 CARR: Paso de Cunduacán - Estación Juárez

CLAVE: 00588

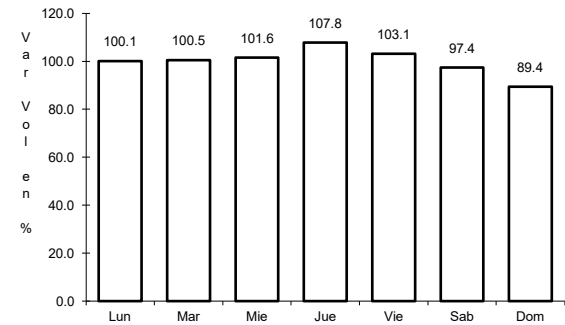
ruta: TAB-CHIS



Km: 0.00 Tipo: 3 Sent: 0



Km: 18.00 Tipo: 3 Sent: 0

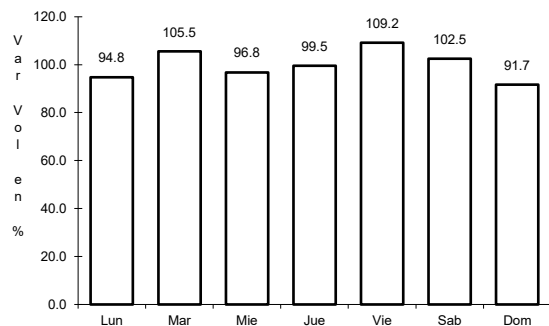


Km: 57.80 Tipo: 1 Sent: 0

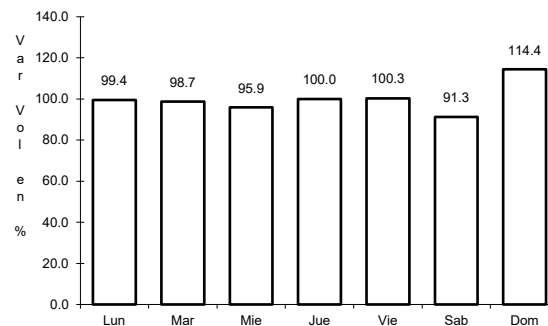
42 CARR: Puerto Caté - San Cristóbal de Las Casas

CLAVE: 07097

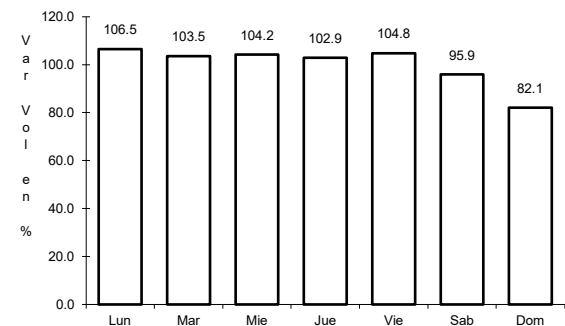
ruta: CHIS



Km: 0.00 Tipo: 3 Sent: 0



Km: 20.00 Tipo: 1 Sent: 0

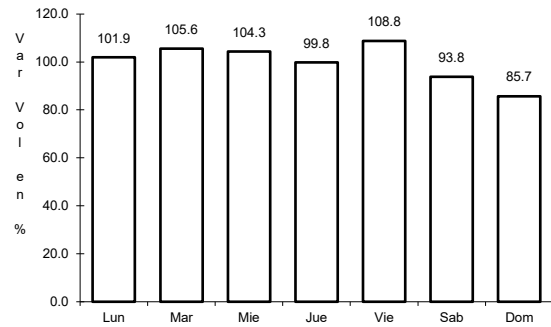


Km: 40.00 Tipo: 1 Sent: 0

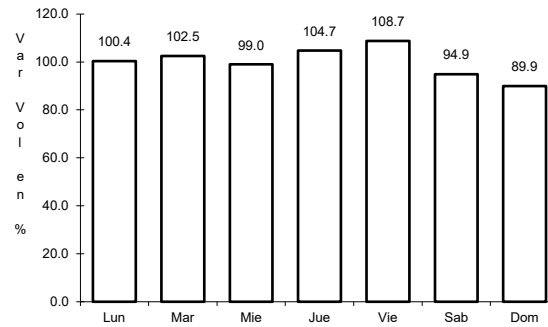
43 CARR: Ramal a Huehuetán

CLAVE: 07360

ruta: CHIS



Km: 0.00      Tipo: 3      Sent: 1

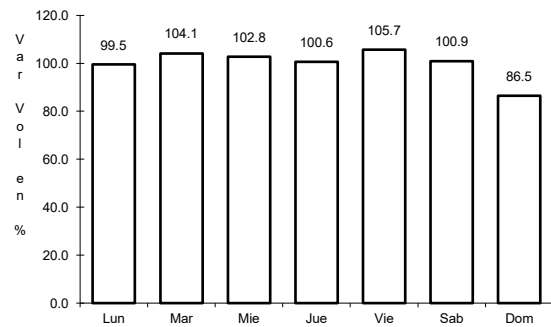


Km: 0.00      Tipo: 3      Sent: 2

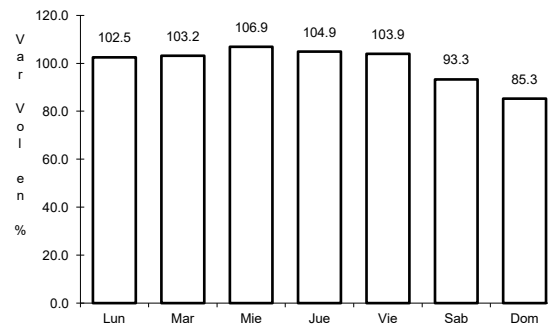
44 CARR: Ramal a Mazatán

CLAVE: 07560

ruta: CHIS-219



Km: 0.00      Tipo: 3      Sent: 1

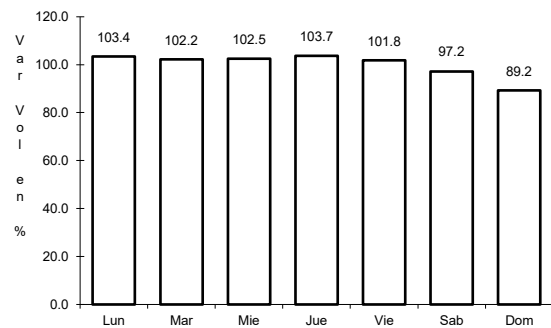


Km: 0.00      Tipo: 3      Sent: 2

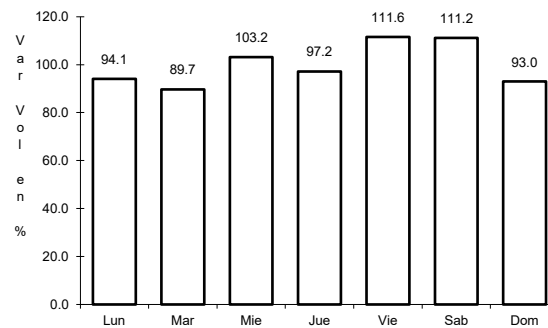
45 CARR: Ramal a Salto del Agua

CLAVE: 00069

ruta: TAB-CHIS



Km: 0.00      Tipo: 3      Sent: 0

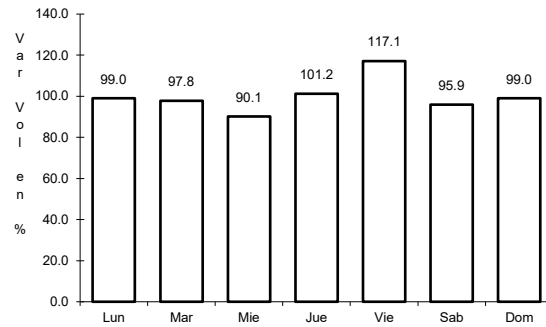


Km: 17.00      Tipo: 1      Sent: 0

46 CARR: Ramal Zona Arqueológica " Bonampak "

CLAVE: 07100

RUTA: CHIS



Km: 0.00

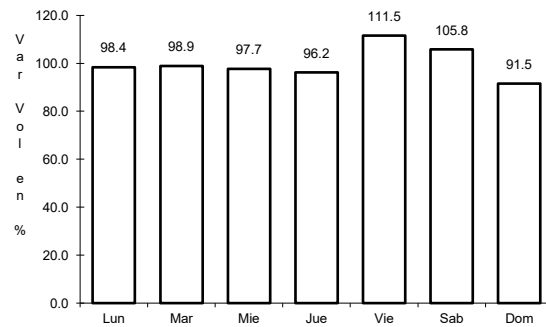
Tipo: 3

Sent: 0

47 CARR: Ramal Zona Arqueológica " Palenque "

CLAVE: 07099

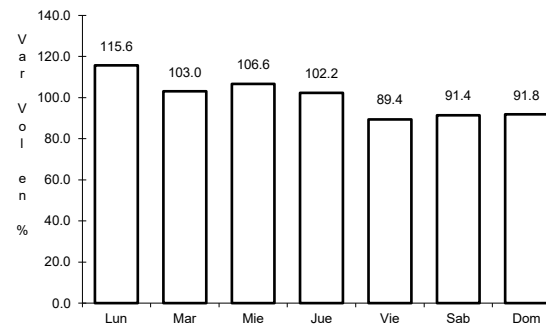
RUTA: CHIS



Km: 0.00

Tipo: 3

Sent: 0



Km: 7.30

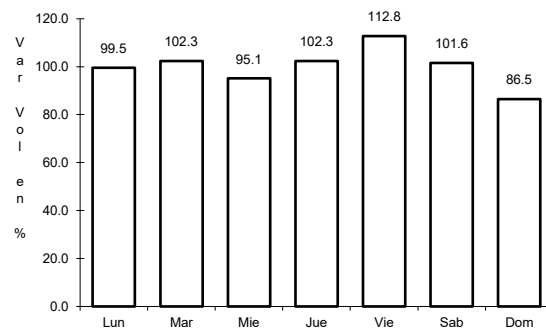
Tipo: 1

Sent: 0

48 CARR: San Francisco Pujilic - Ent. Comitán

CLAVE: 07093

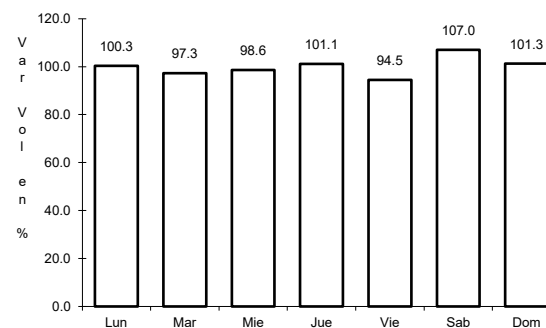
RUTA: CHIS



Km: 0.00

Tipo: 3

Sent: 0



Km: 54.00

Tipo: 1

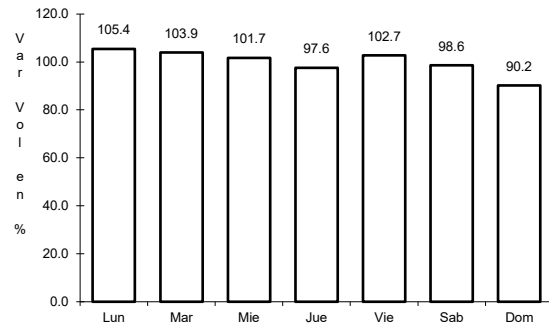
Sent: 0



49 CARR: Tapachula - Nueva Alemania

CLAVE: 07581

ruta: CHIS-229



Km: 0.00

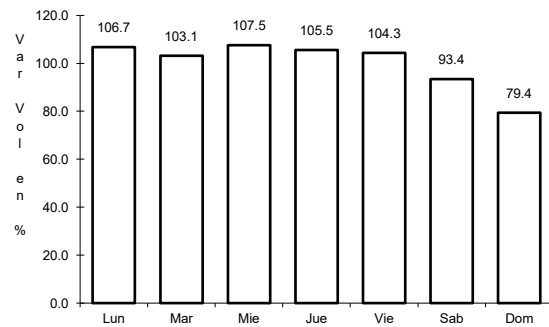
Tipo: 3

Sent: 0

50 CARR: Temo - Tila

CLAVE: 07090

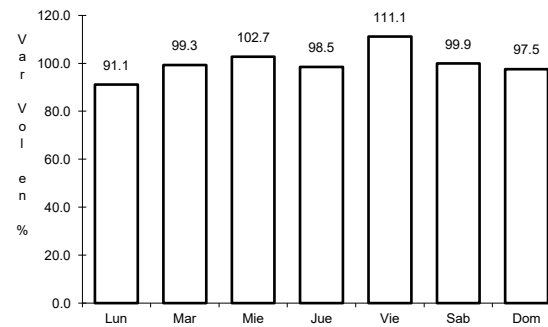
ruta: CHIS



Km: 0.00

Tipo: 3

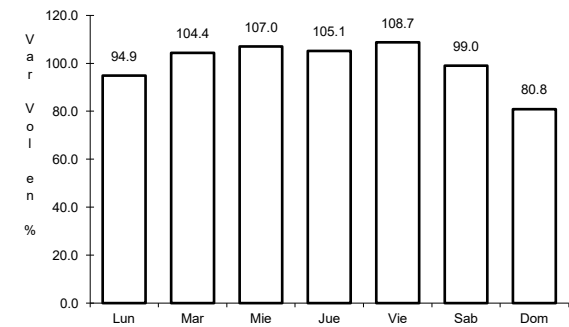
Sent: 0



Km: 28.00

Tipo: 1

Sent: 0



Km: 50.00

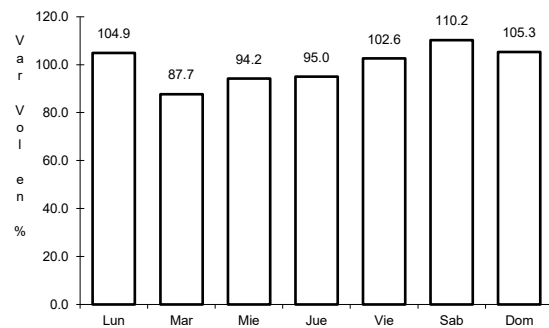
Tipo: 1

Sent: 0

51 CARR: Tierra y Libertad - Ent. Dr. Domingo Chanona

CLAVE: 07096

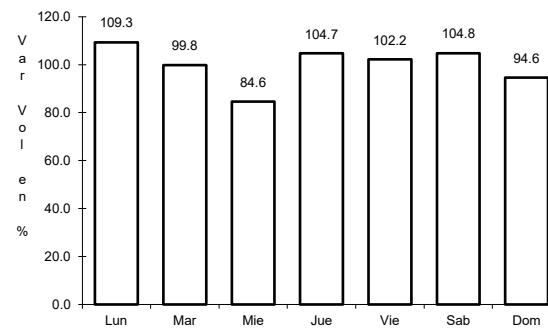
ruta: CHIS



Km: 0.00

Tipo: 3

Sent: 0



Km: 60.00

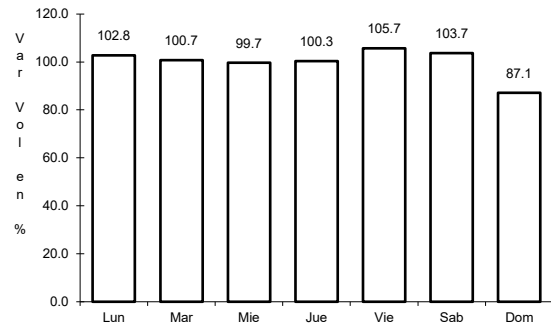
Tipo: 1

Sent: 0

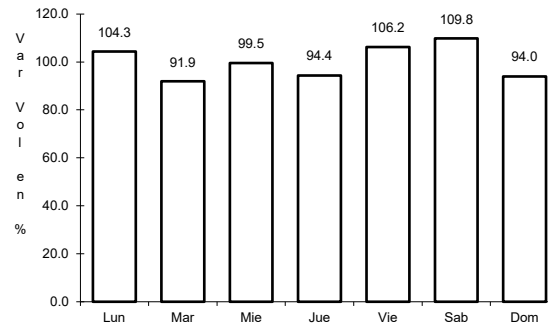
52 CARR: Tuxtla Gutiérrez - Portillo Zaragoza

CLAVE: 07574

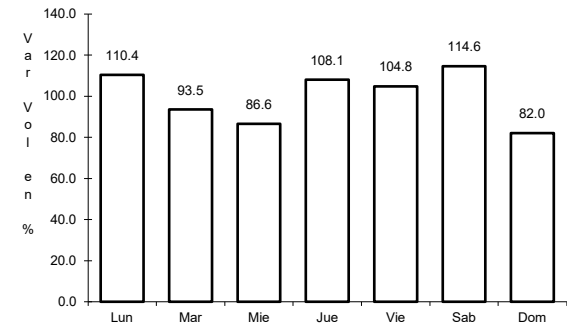
RUTA: CHIS-133



Km: 0.00                      Tipo: 3                      Sent: 0



Km: 53.50                      Tipo: 1                      Sent: 0

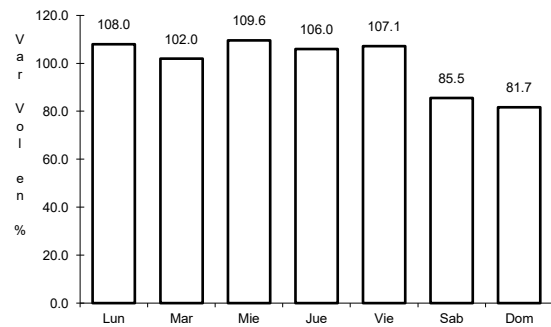


Km: 79.00                      Tipo: 1                      Sent: 0

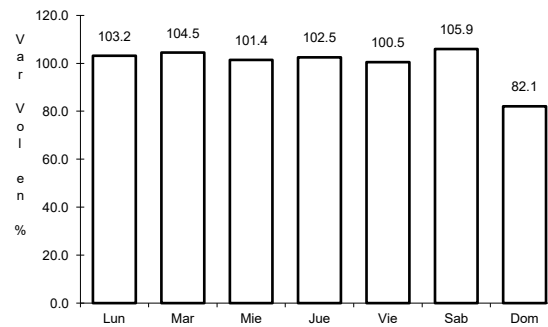
53 CARR: Zapatero - T. C. (Jalapa - Jonuta)

CLAVE: 00061

RUTA: CHIS-TAB



Km: 0.00                      Tipo: 3                      Sent: 0



Km: 41.00                      Tipo: 1                      Sent: 0