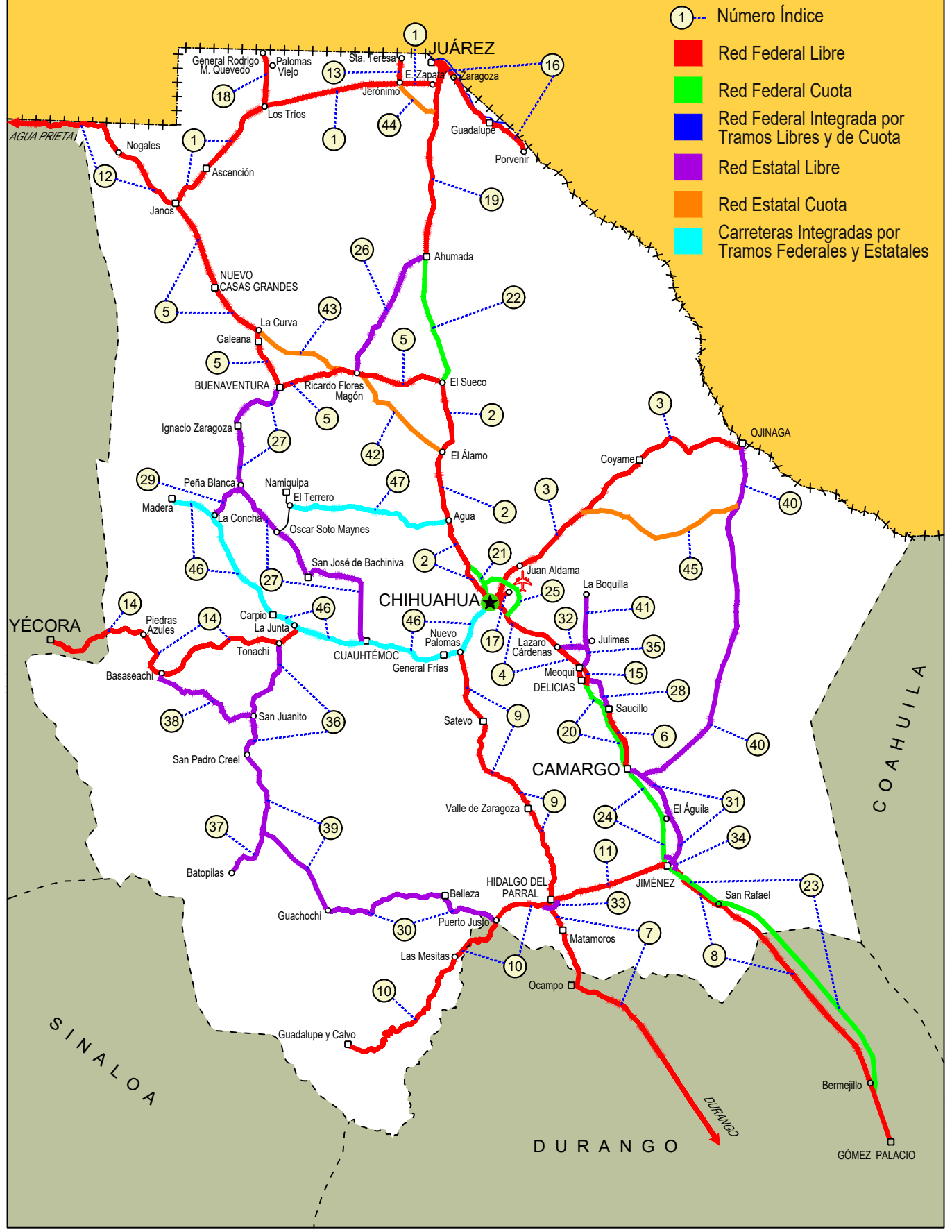


CHIHUAHUA

NO. INDICE CARRETERA		RUTA
	---RED FEDERAL LIBRE---	
1	Cd. Juárez - Janos	MEX-002
2	Chihuahua - El Sueco	MEX-045
3	Chihuahua - Ojinaga	MEX-016
4	Delicias - Chihuahua (Libre)	MEX-045
5	El Sueco - Janos	MEX-010
6	Ent. Ciudad Camargo - Saucillo	MEX-045
7	Ent. La Zarca - Hidalgo del Parral	MEX-045
8	Gómez Palacio - Jiménez	MEX-049
9	Hidalgo del Parral - Ent. Nuevo Palomas (Vía Corta)	MEX-024
10	Hidalgo del Parral - Guadalupe y Calvo	MEX-024
11	Hidalgo del Parral - Jiménez	MEX-045
12	Janos - Agua Prieta	MEX-002
13	Jerónimo - Sta. Teresa	MEX-002
14	La Junta - Yécora	MEX-016
15	Libramiento de Delicias - Mecoqui	MEX-045
16	Porvenir - Cd. Juárez	MEX-002
17	Ramal a Aeropuerto de Chihuahua	MEX-016
18	Ramal a Palomas	MEX-002
19	Villa Ahumada - Cd. Juárez (Libre)	MEX-045
	---RED FEDERAL DE CUOTA---	
20	Camargo - Delicias (Cuota)	MEX-045D
21	Chihuahua - Sacramento (Cuota)	MEX-045D
22	El Sueco - Villa Ahumada (Cuota)	MEX-045D
23	Gómez Palacio - Corralitos (Cuota)	MEX-049D
24	Jiménez - Camargo (Cuota)	MEX-045D
25	Libramiento Oriente Chihuahua (Cuota)	MEX-045D
	---RED ESTATAL LIBRE---	
26	Ahumada - Ricardo Flores Magón	CHIH
27	Cuauhtémoc - Buenaventura	CHIH
28	Delicias - Saucillo	CHIH-007
29	Ent. Peña Blanca - Ent. La Concha	CHIH
30	Ent. Puerto Justo - Ent. Guachochic	CHIH
31	Jiménez - Camargo	CHIH-049
32	Lázaro Cárdenas - Ent. Colonia San José	CHIH-004
33	Libramiento de Hidalgo del Parral	CHIH
34	Libramiento de Jiménez	CHIH
35	Mecoqui - Julimes	CHIH-005
36	Ramal a San Pedro Creel	CHIH-025
37	Samachique - Batopilas	CHIH
38	San Juanito - Ent. Basaseachi	CHIH
39	San Pedro Creel - Guachochi	CHIH-025
40	T. C. (Jiménez - Camargo) - Ojinaga	CHIH-018
41	T. Julimes - La Boquilla	CHIH-018
	---RED ESTATAL DE CUOTA---	
42	Ent. El Álamo - Ent. Ricardo Flores Magón (Cuota)	CHIH-D
43	Ricardo Flores Magón - Galeana (Cuota)	CHIH-D
44	Samalayuca - San Jerónimo (Cuota)	CHIH-D
45	T. C. (Chihuahua - Ojinaga) - La Mula (Cuota)	CHIH-D
	---CARRETERAS INTEGRADAS POR TRAMOS FEDERALES Y ESTATALES---	
46	Chihuahua - Madera	CHIH-D-MEX-001-CHIH
47	Ent. Agua Caliente - El Terrero	CHIH-MEX

08 CHIHUAHUA

ESTADOS UNIDOS DE AMERICA



- ① Número Índice
- Red Federal Libre
- Red Federal Cuota
- Red Federal Integrada por Tramos Libres y de Cuota
- Red Estatal Libre
- Red Estatal Cuota
- Carreteras Integradas por Tramos Federales y Estatales

CHIHUAHUA

1 CARR: Cd. Juárez - Janos

CLAVE: 08041

RUTA: MEX-002

AÑO: 2023

LUGAR	ESTACION				CLASIFICACION VEHICULAR EN PORCIENTO													COORDENADAS		
	KM	TE	SC	TDPA	M	A	B	C2	C3	T3S2	T3S3	T3S2R4	OTROS	A	B	C	K'	D	LATITUD	LONGITUD
T. C. El Sueco - Cd. Juárez	0.00	3	1	8897	3.1	73.9	4.2	9.6	2.7	4.8	0.7	0.8	0.2	77.0	4.2	18.8	0.081	0.502	31.605557	-106.487790
T. C. El Sueco - Cd. Juárez	0.00	3	2	8968	3.2	73.2	4.1	10.0	2.5	5.1	0.7	1.0	0.2	76.4	4.1	19.5	0.087	0.502	31.605444	-106.487755
T. C. Jerónimo - Sta. Teresa	22.40																			
T. Der. Palomas	112.00	1	0	2237	2.4	76.1	2.6	3.3	1.8	8.4	1.4	3.3	0.7	78.5	2.6	18.9	0.073	0.503	31.471292	-107.609041
Ascensión	170.95	1	0	3330	1.7	76.7	3.2	5.1	1.0	8.3	1.2	2.3	0.5	78.4	3.2	18.4	0.086	0.512	31.105096	-107.986816
Janos	205.00	1	0	3056	1.2	78.8	2.6	6.2	0.8	7.2	0.9	1.9	0.4	80.0	2.6	17.4	0.091	0.505	30.896948	-108.182116

2 CARR: Chihuahua - El Sueco

CLAVE: 08419

RUTA: MEX-045

AÑO: 2023

LUGAR	ESTACION				CLASIFICACION VEHICULAR EN PORCIENTO													COORDENADAS		
	KM	TE	SC	TDPA	M	A	B	C2	C3	T3S2	T3S3	T3S2R4	OTROS	A	B	C	K'	D	LATITUD	LONGITUD
Chihuahua	0.00																			
T. C. Chihuahua - Sacramento (Cuota)	16.70																			
San Cristóbal	24.00	1	0	4014	2.3	72.9	2.2	3.5	1.6	13.9	2.8	0.7	0.1	75.2	2.2	22.6	0.093	0.539	28.799492	-106.217102
T. C. Chihuahua - Sacramento (Cuota)	32.00	1	0	4699	2.2	76.5	1.6	3.5	1.5	11.5	2.2	0.6	0.4	78.7	1.6	19.7	0.104	0.534	28.858624	-106.219353
T. C. Chihuahua - Sacramento (Cuota)	32.00	3	1	6847	3.7	67.3	3.7	6.1	1.9	11.7	2.1	2.8	0.7	71.0	3.7	25.3	0.093	0.512	28.869492	-106.228486
T. C. Chihuahua - Sacramento (Cuota)	32.00	3	2	7171	3.7	67.2	3.8	6.1	1.8	11.7	2.1	2.8	0.8	70.9	3.8	25.3	0.076	0.512	28.869439	-106.228596
T. Der. El Sauz	55.38	3	1	5313	2.4	66.3	4.5	5.0	1.3	14.9	2.0	3.2	0.4	68.7	4.5	26.8	0.107	0.523	29.053061	-106.329727
T. Der. El Sauz	55.38	3	2	4848	2.2	66.8	4.6	5.1	1.4	14.4	2.0	3.1	0.4	69.0	4.6	26.4	0.102	0.523	29.052606	-106.329885
T. Izq. El Terrero	60.67	3	1	6152	1.4	65.4	5.1	2.8	0.9	18.2	2.1	3.3	0.8	66.8	5.1	28.1	0.092	0.513	29.098631	-106.342287
T. Izq. El Terrero	60.67	3	2	5842	1.4	66.4	4.9	3.2	0.9	18.0	1.7	2.7	0.8	67.8	4.9	27.3	0.095	0.513	29.098536	-106.342556
Ent. El Sueco	155.87	1	1	4024	3.7	60.6	6.6	5.9	0.9	17.6	1.8	2.2	0.7	64.3	6.6	29.1	0.107	0.504	29.863291	-106.392288
Ent. El Sueco	155.87	1	2	3952	3.8	60.1	5.6	5.9	1.3	18.5	2.0	2.2	0.6	63.9	5.6	30.5	0.116	0.504	29.864088	-106.392683

3 CARR: Chihuahua - Ojinaga

CLAVE: 08042

RUTA: MEX-016

AÑO: 2023

LUGAR	ESTACION				CLASIFICACION VEHICULAR EN PORCIENTO													COORDENADAS		
	KM	TE	SC	TDPA	M	A	B	C2	C3	T3S2	T3S3	T3S2R4	OTROS	A	B	C	K'	D	LATITUD	LONGITUD
Chihuahua	0.00																			
T. Der. Aeropuerto	6.50	1	1	25827	1.3	84.9	1.4	7.8	1.1	2.4	0.5	0.4	0.2	86.2	1.4	12.4	0.095	0.513	28.686418	-106.015279
T. Der. Aeropuerto	6.50	1	2	24399	1.3	84.9	1.4	7.8	1.1	2.4	0.5	0.4	0.2	86.2	1.4	12.4	0.088	0.513	28.686502	-106.015385
T. Der. Aeropuerto	6.50	3	1	9987	1.2	85.6	2.0	7.9	1.0	1.0	0.5	0.6	0.2	86.8	2.0	11.2	0.115	0.530	28.692296	-106.011799
T. Der. Aeropuerto	6.50	3	2	11260	1.2	85.4	2.0	8.0	1.0	1.1	0.5	0.6	0.2	86.6	2.0	11.4	0.101	0.530	28.692330	-106.011935
Aldama	26.80	1	1	6322	1.3	86.5	2.1	7.6	0.7	1.0	0.6	0.2	0.0	87.8	2.1	10.1	0.107	0.503	28.817834	-105.927206
Aldama	26.80	1	2	6240	1.4	86.8	2.1	7.6	0.7	0.8	0.5	0.1	0.0	88.2	2.1	9.7	0.126	0.503	28.817960	-105.927294

CHIHUAHUA

3 CARR: Chihuahua - Ojinaga

CLAVE: 08042

RUTA: MEX-016

AÑO: 2023

LUGAR	ESTACION				CLASIFICACION VEHICULAR EN PORCIENTO													COORDENADAS		
	KM	TE	SC	TDPA	M	A	B	C2	C3	T3S2	T3S3	T3S2R4	OTROS	A	B	C	K'	D	LATITUD	LONGITUD
Aldama	26.80	3	0	2385	1.2	87.2	1.6	4.8	1.0	2.7	1.0	0.3	0.2	88.4	1.6	10.0	0.172	0.519	28.851781	-105.871457
El Morrión	84.00	3	0	1753	0.6	87.8	1.9	4.5	1.2	2.2	1.0	0.5	0.3	88.4	1.9	9.7	0.098	0.541	29.064177	-105.604321
Coyame	141.00	1	0	278	1.5	79.3	0.5	14.2	2.0	1.0	0.9	0.1	0.5	80.8	0.5	18.7	0.099	0.521	29.446867	-105.097943
Ojinaga	224.00	1	0	2639	1.2	91.9	0.3	5.4	0.5	0.4	0.1	0.1	0.1	93.1	0.3	6.6	0.077	0.504	29.540026	-104.445051

4 CARR: Delicias - Chihuahua (Libre)

CLAVE: 08418

RUTA: MEX-045

AÑO: 2023

LUGAR	ESTACION				CLASIFICACION VEHICULAR EN PORCIENTO													COORDENADAS		
	KM	TE	SC	TDPA	M	A	B	C2	C3	T3S2	T3S3	T3S2R4	OTROS	A	B	C	K'	D	LATITUD	LONGITUD
Delicias	138.00																			
T. C. Libramiento de Delicias - Meoqui	150.10	3	1	11292	5.5	68.6	4.2	4.8	1.9	11.0	1.5	2.0	0.5	74.1	4.2	21.7	0.075	0.523	28.294686	-105.503899
T. C. Libramiento de Delicias - Meoqui	150.10	3	2	10285	5.3	68.2	4.1	4.9	1.9	11.4	1.5	2.2	0.5	73.5	4.1	22.4	0.087	0.523	28.294626	-105.503961
X. C. Santa Cruz Rosales - Las Nieves	156.50	1	1	8633	5.2	69.6	4.0	4.0	1.5	11.9	1.1	2.2	0.5	74.8	4.0	21.2	0.082	0.523	28.324353	-105.544390
X. C. Santa Cruz Rosales - Las Nieves	156.50	1	2	9462	5.0	70.0	4.2	3.9	1.7	11.5	1.2	2.0	0.5	75.0	4.2	20.8	0.074	0.523	28.324429	-105.544670
X. C. Orinda - Nuevo San Lucas	159.00	1	1	9487	4.8	67.9	5.0	3.7	1.5	12.2	1.8	2.3	0.8	72.7	5.0	22.3	0.089	0.505	28.338922	-105.564291
X. C. Orinda - Nuevo San Lucas	159.00	1	2	9690	4.4	68.4	4.9	3.5	1.6	12.5	1.6	2.4	0.7	72.8	4.9	22.3	0.068	0.505	28.339087	-105.564688
T. Der. Lazáro Cárdenas	166.87	1	1	9366	5.9	67.1	4.3	5.5	1.4	11.2	1.6	2.4	0.6	73.0	4.3	22.7	0.106	0.512	28.376371	-105.615469
T. Der. Lazáro Cárdenas	166.87	1	2	8921	5.5	69.0	4.2	5.0	1.3	10.7	1.6	2.3	0.4	74.5	4.2	21.3	0.109	0.512	28.376287	-105.615589
T. Der. Lazáro Cárdenas	166.87	3	1	9338	5.5	66.1	4.8	6.0	1.3	11.8	1.8	2.2	0.5	71.6	4.8	23.6	0.101	0.520	28.391052	-105.635485
T. Der. Lazáro Cárdenas	166.87	3	2	10126	5.0	68.1	4.4	5.5	1.5	11.3	1.6	2.2	0.4	73.1	4.4	22.5	0.101	0.520	28.391066	-105.635822
T. C. Libramiento Oriente Chihuahua (Cuota)	208.40	1	1	10081	4.9	67.7	4.5	5.9	1.8	11.1	1.5	2.1	0.5	72.6	4.5	22.9	0.102	0.502	28.569996	-105.955985
T. C. Libramiento Oriente Chihuahua (Cuota)	208.40	1	2	10155	4.5	68.5	4.8	5.6	1.8	10.8	1.6	2.0	0.4	73.0	4.8	22.2	0.089	0.502	28.569929	-105.956190
T. Der. Aquiles Serdán	210.00	1	1	9486	4.6	72.4	4.2	5.6	1.9	8.2	1.2	1.4	0.5	77.0	4.2	18.8	0.101	0.506	28.585345	-105.959856
T. Der. Aquiles Serdán	210.00	1	2	9264	4.7	73.3	4.4	5.4	1.8	7.9	1.0	1.2	0.3	78.0	4.4	17.6	0.084	0.506	28.585601	-105.960114
Chihuahua	222.56																			

5 CARR: El Sueco - Janos

CLAVE: 08037

RUTA: MEX-010

AÑO: 2023

LUGAR	ESTACION				CLASIFICACION VEHICULAR EN PORCIENTO													COORDENADAS		
	KM	TE	SC	TDPA	M	A	B	C2	C3	T3S2	T3S3	T3S2R4	OTROS	A	B	C	K'	D	LATITUD	LONGITUD
El Sueco	0.00	3	0	300	2.8	60.6	2.0	4.4	1.1	23.9	2.9	2.0	0.3	63.4	2.0	34.6	0.120	0.548	29.893599	-106.401537
Ricardo Flores Magón	59.00	3	0	4238	1.9	64.8	4.0	3.6	1.6	16.6	3.2	3.9	0.4	66.7	4.0	29.3	0.082	0.507	29.946174	-106.977869
T. C. Ricardo Flores Magón - Galeana (Cuota)	68.90																			
Buenaventura	114.00	1	0	1611	3.3	74.5	5.3	6.3	2.3	4.4	2.4	1.4	0.1	77.8	5.3	16.9	0.090	0.505	29.853512	-107.444543
Buenaventura	114.00	3	0	4342	1.7	83.8	1.1	11.0	0.7	1.0	0.5	0.2	0.0	85.5	1.1	13.4	0.086	0.507	29.867132	-107.478487

CHIHUAHUA

5 CARR: El Sueco - Janos

CLAVE: 08037

RUTA: MEX-010

AÑO: 2023

LUGAR	ESTACION				CLASIFICACION VEHICULAR EN PORCIENTO										COORDENADAS					
	KM	TE	SC	TDPA	M	A	B	C2	C3	T3S2	T3S3	T3S2R4	OTROS	A	B	C	K'	D	LATITUD	LONGITUD
T. C. Ricardo Flores Magón - Galeana (Cuota)	154.90																			
Nuevo Casas Grandes	195.00	3	0	9347	3.5	69.5	5.9	8.8	3.3	3.8	0.9	4.0	0.3	73.0	5.9	21.1	0.082	0.535	30.455531	-107.915592
Janos	257.00	1	0	5998	2.3	66.3	3.4	4.4	1.1	14.3	3.4	3.9	0.9	68.6	3.4	28.0	0.065	0.508	30.884661	-108.184798

6 CARR: Ent. Ciudad Camargo - Saucillo

CLAVE: 08417

RUTA: MEX-045

AÑO: 2023

LUGAR	ESTACION				CLASIFICACION VEHICULAR EN PORCIENTO										COORDENADAS					
	KM	TE	SC	TDPA	M	A	B	C2	C3	T3S2	T3S3	T3S2R4	OTROS	A	B	C	K'	D	LATITUD	LONGITUD
Camargo	0.00	3	0	4150	2.2	76.2	1.7	5.8	2.5	8.7	1.8	0.8	0.3	78.4	1.7	19.9	0.070	0.502	27.726493	-105.191322
T. Der. La Cruz	20.92	3	0	2648	3.3	71.0	2.0	5.4	2.3	12.1	2.3	1.2	0.4	74.3	2.0	23.7	0.076	0.506	27.870500	-105.213948
Saucillo	42.52	1	0	4211	2.7	89.8	1.5	2.6	1.1	1.5	0.5	0.3	0.0	92.5	1.5	6.0	0.086	0.508	28.018733	-105.290301

7 CARR: Ent. La Zarca - Hidalgo del Parral

CLAVE: 00488

RUTA: MEX-045

AÑO: 2023

LUGAR	ESTACION				CLASIFICACION VEHICULAR EN PORCIENTO										COORDENADAS					
	KM	TE	SC	TDPA	M	A	B	C2	C3	T3S2	T3S3	T3S2R4	OTROS	A	B	C	K'	D	LATITUD	LONGITUD
Ent. La Zarca	0.00	3	0	1305	3.3	79.1	2.5	4.6	3.2	3.5	2.7	0.7	0.4	82.4	2.5	15.1	0.079	0.548	25.786698	-104.766366
T. Der. Ceballos	47.85	1	0	1499	1.1	81.1	4.5	4.1	1.7	4.1	2.5	0.6	0.3	82.2	4.5	13.3	0.093	0.503	26.134632	-105.024780
T. Der. Ceballos	47.85	3	0	1539	1.2	85.5	3.3	3.5	0.7	3.3	2.2	0.2	0.1	86.7	3.3	10.0	0.081	0.534	26.143020	-105.031074
T. Izq. Canutillo	92.35	3	0	1526	2.0	82.8	3.7	4.1	1.6	3.1	2.3	0.3	0.1	84.8	3.7	11.5	0.085	0.506	26.389539	-105.354005
Las Nieves	97.60	3	0	1935	4.4	79.2	3.2	4.1	2.1	3.2	2.3	1.0	0.5	83.6	3.2	13.2	0.062	0.502	26.400118	-105.404907
T. Izq. Ocampo	109.22	3	0	1357	5.9	77.9	3.4	5.1	1.9	2.8	2.2	0.5	0.3	83.8	3.4	12.8	0.074	0.501	26.442332	-105.494137
Lim. Edos. Term. Dgo. Ppia. Chih.	122.89																			
Matamoros	148.00	1	0	1273	3.0	78.9	3.7	4.9	2.5	3.4	3.2	0.3	0.1	81.9	3.7	14.4	0.085	0.502	26.750891	-105.580959
Hidalgo del Parral	171.00	1	0	4595	2.8	86.1	2.0	4.0	1.2	1.6	1.5	0.6	0.2	88.9	2.0	9.1	0.065	0.503	26.917817	-105.640429

8 CARR: Gómez Palacio - Jiménez

CLAVE: 00006

RUTA: MEX-049

AÑO: 2023

LUGAR	ESTACION				CLASIFICACION VEHICULAR EN PORCIENTO										COORDENADAS					
	KM	TE	SC	TDPA	M	A	B	C2	C3	T3S2	T3S3	T3S2R4	OTROS	A	B	C	K'	D	LATITUD	LONGITUD
Gómez Palacio	0.00	3	1	16971	6.0	76.9	2.6	3.6	2.0	4.6	1.5	2.3	0.5	82.9	2.6	14.5	0.087	0.513	25.614465	-103.513444
Gómez Palacio	0.00	3	2	17841	5.8	77.0	2.6	3.7	1.9	4.9	1.4	2.2	0.5	82.8	2.6	14.6	0.075	0.513	25.614418	-103.513567
X. C. La Torreña - Brittingham	10.96	1	1	12265	9.2	63.8	3.8	4.5	2.8	8.3	2.0	4.5	1.1	73.0	3.8	23.2	0.074	0.511	25.632631	-103.520756
X. C. La Torreña - Brittingham	10.96	1	2	12836	9.0	63.6	3.7	4.8	3.2	8.6	2.2	4.0	0.9	72.6	3.7	23.7	0.063	0.511	25.632595	-103.520878
T. Izq. Dinamita	26.27	1	1	6951	3.9	61.0	6.0	4.6	1.8	15.0	3.3	3.5	0.9	64.9	6.0	29.1	0.076	0.515	25.751430	-103.568027

CHIHUAHUA

8 CARR: Gómez Palacio - Jiménez

CLAVE: 00006

RUTA: MEX-049

AÑO: 2023

LUGAR	ESTACION				CLASIFICACION VEHICULAR EN PORCIENTO													COORDENADAS		
	KM	TE	SC	TDPA	M	A	B	C2	C3	T3S2	T3S3	T3S2R4	OTROS	A	B	C	K'	D	LATITUD	LONGITUD
T. Izq. Dinamita	26.27	1	2	7375	3.9	61.5	6.1	4.5	1.7	15.0	3.0	3.4	0.9	65.4	6.1	28.5	0.101	0.515	25.751434	-103.568256
T. C. Gómez Palacio - Corralitos (Cuota)	37.92	1	1	5983	4.0	56.0	6.3	4.4	2.3	18.3	3.7	4.2	0.8	60.0	6.3	33.7	0.062	0.506	25.861398	-103.610194
T. C. Gómez Palacio - Corralitos (Cuota)	37.92	1	2	5848	4.1	53.0	7.3	4.9	2.5	18.6	4.1	4.6	0.9	57.1	7.3	35.6	0.067	0.506	25.861352	-103.610389
Bermejillo	39.30	1	1	3126	13.5	59.9	4.9	5.5	2.1	9.0	2.6	2.0	0.5	73.4	4.9	21.7	0.077	0.573	25.878494	-103.618366
Bermejillo	39.30	1	2	4200	13.4	61.0	4.9	5.3	2.0	8.8	2.4	1.9	0.3	74.4	4.9	20.7	0.071	0.573	25.878475	-103.618437
T. Izq. Ent. La Zarca	40.89	3	0	2687	5.0	40.0	6.0	11.2	4.6	25.6	5.0	1.7	0.9	45.0	6.0	49.0	0.072	0.514	25.902942	-103.628293
Yermo	107.95	1	0	1773	4.6	39.5	4.0	11.3	4.2	24.5	7.8	3.5	0.6	44.1	4.0	51.9	0.068	0.516	26.382671	-103.998049
Yermo	107.95	3	0	1995	3.7	42.3	8.1	10.2	4.2	23.2	6.3	1.9	0.1	46.0	8.1	45.9	0.066	0.534	26.396122	-104.010582
Ceballos	127.20	1	0	1784	2.8	42.9	4.6	5.6	3.0	30.4	7.7	2.5	0.5	45.7	4.6	49.7	0.063	0.510	26.517291	-104.120911
Ceballos	127.20	3	0	1902	6.3	40.7	4.7	6.0	3.7	25.8	8.3	4.0	0.5	47.0	4.7	48.3	0.070	0.545	26.536627	-104.139036
Lim. Edos. Term. Dgo. Ppia. Chih.	146.15																			
Estación Escalón	160.89	3	0	1936	3.6	31.6	5.9	5.4	2.2	37.8	8.7	4.1	0.7	35.2	5.9	58.9	0.071	0.526	26.773960	-104.363737
Jiménez	223.00	1	1	4520	5.6	44.5	8.1	5.3	2.2	23.5	4.9	5.0	0.9	50.1	8.1	41.8	0.081	0.509	27.116955	-104.889886
Jiménez	223.00	1	2	4687	5.5	45.6	8.0	5.2	1.8	23.6	4.6	4.8	0.9	51.1	8.0	40.9	0.071	0.509	27.116877	-104.889972

9 CARR: Hidalgo del Parral - Ent. Nuevo Palomas (Vía Corta)

CLAVE: 08811

RUTA: MEX-024

AÑO: 2023

LUGAR	ESTACION				CLASIFICACION VEHICULAR EN PORCIENTO													COORDENADAS		
	KM	TE	SC	TDPA	M	A	B	C2	C3	T3S2	T3S3	T3S2R4	OTROS	A	B	C	K'	D	LATITUD	LONGITUD
Hidalgo del Parral	0.00	3	0	5735	2.5	76.4	2.5	8.9	2.3	3.5	2.6	1.0	0.3	78.9	2.5	18.6	0.075	0.517	26.980797	-105.663758
Valle Zaragoza	66.00	1	0	4685	3.2	81.4	3.7	3.2	2.2	2.7	2.2	1.0	0.4	84.6	3.7	11.7	0.093	0.507	27.441316	-105.806959
Satevo	126.00	3	0	4540	1.9	82.9	2.8	4.2	1.1	3.4	2.5	0.9	0.3	84.8	2.8	12.4	0.085	0.530	27.975089	-106.124327
T. C. Chihuahua - Madera	182.40	1	0	5335	1.3	79.7	2.4	7.9	1.2	4.0	2.5	0.9	0.1	81.0	2.4	16.6	0.077	0.527	28.351757	-106.261369

10 CARR: Hidalgo del Parral - Guadalupe y Calvo

CLAVE: 00802

RUTA: MEX-024

AÑO: 2023

LUGAR	ESTACION				CLASIFICACION VEHICULAR EN PORCIENTO													COORDENADAS		
	KM	TE	SC	TDPA	M	A	B	C2	C3	T3S2	T3S3	T3S2R4	OTROS	A	B	C	K'	D	LATITUD	LONGITUD
T. C. Hidalgo del Parral - Santa Bárbara	0.00	3	0	2844	3.4	82.8	1.5	3.0	3.9	2.1	1.5	0.9	0.9	86.2	1.5	12.3	0.083	0.509	26.915489	-105.764753
T. Der. Guacho chic	35.00	1	0	907	3.4	65.6	5.8	8.6	7.0	4.1	2.8	1.7	1.0	69.0	5.8	25.2	0.088	0.509	26.815901	-106.014885
T. Der. Guacho chic	35.00	3	0	944	5.0	71.1	2.8	7.2	5.0	5.1	1.9	1.0	0.9	76.1	2.8	21.1	0.083	0.512	26.808369	-106.016710
Lim. Edos. Term. Chih. Ppia. Dgo	38.00																			
Lim. Edos. Term. Dgo. Ppia. Chih.	57.00																			
El Vergel	110.00	1	0	972	6.1	74.1	1.6	10.9	3.8	1.8	0.8	0.1	0.8	80.2	1.6	18.2	0.097	0.526	26.523014	-106.357289
Puerto Sabinal	212.00	1	0	890	3.8	74.3	2.0	8.0	6.0	4.0	1.5	0.2	0.2	78.1	2.0	19.9	0.083	0.506	26.451306	-106.386500

CHIHUAHUA

10 CARR: Hidalgo del Parral - Guadalupe y Calvo

CLAVE: 00802

RUTA: MEX-024

AÑO: 2023

LUGAR	ESTACION				CLASIFICACION VEHICULAR EN PORCIENTO													COORDENADAS		
	KM	TE	SC	TDPA	M	A	B	C2	C3	T3S2	T3S3	T3S2R4	OTROS	A	B	C	K'	D	LATITUD	LONGITUD
Guadalupe y Calvo	234.00																			

11 CARR: Hidalgo del Parral - Jiménez

CLAVE: 08444

RUTA: MEX-045

AÑO: 2023

LUGAR	ESTACION				CLASIFICACION VEHICULAR EN PORCIENTO													COORDENADAS		
	KM	TE	SC	TDPA	M	A	B	C2	C3	T3S2	T3S3	T3S2R4	OTROS	A	B	C	K'	D	LATITUD	LONGITUD
Hidalgo del Parral	0.00	3	1	4310	2.0	75.0	2.1	13.2	2.6	2.1	1.3	1.2	0.5	77.0	2.1	20.9	0.079	0.510	26.934351	-105.634174
Hidalgo del Parral	0.00	3	2	4489	2.1	75.0	2.0	13.4	2.7	2.0	1.3	1.1	0.4	77.1	2.0	20.9	0.094	0.510	26.934404	-105.634401
Jiménez	76.63	1	1	2869	3.6	67.3	1.9	15.5	2.5	4.7	2.6	1.5	0.4	70.9	1.9	27.2	0.075	0.503	27.138796	-104.948022
Jiménez	76.63	1	2	2900	3.9	66.9	2.2	16.1	2.2	4.4	2.6	1.3	0.4	70.8	2.2	27.0	0.074	0.503	27.138943	-104.948082

12 CARR: Janos - Agua Prieta

CLAVE: 00220

RUTA: MEX-002

AÑO: 2023

LUGAR	ESTACION				CLASIFICACION VEHICULAR EN PORCIENTO													COORDENADAS		
	KM	TE	SC	TDPA	M	A	B	C2	C3	T3S2	T3S3	T3S2R4	OTROS	A	B	C	K'	D	LATITUD	LONGITUD
T. C. Cd. Juárez - Janos	0.00	3	0	4371	5.8	57.5	3.5	9.2	2.0	12.7	2.9	5.7	0.7	63.3	3.5	33.2	0.075	0.501	30.889817	-108.211912
Los Mimbres	56.00	3	0	3354	2.9	52.3	5.6	7.3	3.1	15.1	3.3	9.6	0.8	55.2	5.6	39.2	0.073	0.535	31.244869	-108.581376
Lim. Edos. Term. Chih. Ppia. Son.	78.00																			
Rancho Guadalupe	116.00																			
Agua Prieta	160.00	1	0	2797	6.6	46.5	5.8	6.9	2.3	19.4	4.3	7.3	0.9	53.1	5.8	41.1	0.081	0.507	31.322992	-109.506580

13 CARR: Jerónimo - Sta. Teresa

CLAVE: 08043

RUTA: MEX-002

AÑO: 2023

LUGAR	ESTACION				CLASIFICACION VEHICULAR EN PORCIENTO													COORDENADAS		
	KM	TE	SC	TDPA	M	A	B	C2	C3	T3S2	T3S3	T3S2R4	OTROS	A	B	C	K'	D	LATITUD	LONGITUD
X. C. Cd. Juárez - Janos	0.00	3	0	3533	1.6	64.3	6.2	10.8	3.1	12.4	1.1	0.4	0.1	65.9	6.2	27.9	0.123	0.543	31.614304	-106.684637
El Mirador	20.00																			

14 CARR: La Junta - Yécora

CLAVE: 00065

RUTA: MEX-016

AÑO: 2023

LUGAR	ESTACION				CLASIFICACION VEHICULAR EN PORCIENTO													COORDENADAS		
	KM	TE	SC	TDPA	M	A	B	C2	C3	T3S2	T3S3	T3S2R4	OTROS	A	B	C	K'	D	LATITUD	LONGITUD
T. C. Chihuahua - Madera	0.00	3	0	3076	1.2	85.2	2.2	6.1	1.1	2.5	1.3	0.3	0.1	86.4	2.2	11.4	0.106	0.501	28.456186	-107.338267
T. Izq. San Juanito	16.00	1	0	3468	2.3	82.6	2.4	5.7	1.6	2.5	1.5	1.0	0.4	84.9	2.4	12.7	0.084	0.513	28.388783	-107.439624
T. Izq. San Juanito	16.00	3	0	1205	3.5	73.7	5.3	11.5	1.1	2.9	1.5	0.4	0.1	77.2	5.3	17.5	0.098	0.533	28.390019	-107.440531

CHIHUAHUA

14 CARR: La Junta - Yécora

CLAVE: 00065

RUTA: MEX-016

AÑO: 2023

LUGAR	ESTACION				CLASIFICACION VEHICULAR EN PORCIENTO														COORDENADAS	
	KM	TE	SC	TDPA	M	A	B	C2	C3	T3S2	T3S3	T3S2R4	OTROS	A	B	C	K'	D	LATITUD	LONGITUD
Tomochi	70.00	3	0	1335	3.4	80.5	1.4	7.9	2.1	3.1	1.2	0.2	0.2	83.9	1.4	14.7	0.112	0.511	28.365474	-107.863757
Lim. Edos. Term. Chih. Ppia. Son.	190.00																			
Yécora	253.00	1	0	321	8.7	64.6	3.4	14.7	3.0	3.4	1.7	0.3	0.2	73.3	3.4	23.3	0.103	0.502	28.367854	-108.919395

15 CARR: Libramiento de Delicias - Meoqui

CLAVE: 08813

RUTA: MEX-045

AÑO: 2023

LUGAR	ESTACION				CLASIFICACION VEHICULAR EN PORCIENTO														COORDENADAS	
	KM	TE	SC	TDPA	M	A	B	C2	C3	T3S2	T3S3	T3S2R4	OTROS	A	B	C	K'	D	LATITUD	LONGITUD
T. C. Jiménez - Chihuahua (Sur)	136.40	3	1	14145	4.0	72.5	2.7	6.3	2.0	9.0	1.2	1.8	0.5	76.5	2.7	20.8	0.068	0.518	28.190129	-105.452257
T. C. Jiménez - Chihuahua (Sur)	136.40	3	2	13145	4.0	72.9	2.7	6.6	1.4	9.0	1.2	1.7	0.5	76.9	2.7	20.4	0.074	0.518	28.190109	-105.452422
T. Izq. Delicias	141.40	1	1	12234	3.2	68.7	4.4	6.5	2.3	10.7	1.7	2.0	0.5	71.9	4.4	23.7	0.079	0.517	28.225837	-105.458690
T. Izq. Delicias	141.40	1	2	11440	3.2	68.4	4.4	6.7	2.4	10.7	1.7	2.0	0.5	71.6	4.4	24.0	0.072	0.517	28.225803	-105.458859
T. Izq. Delicias	141.40	3	1	14812	2.5	75.6	3.2	4.4	1.6	9.3	1.2	1.6	0.6	78.1	3.2	18.7	0.082	0.533	28.236945	-105.462113
T. Izq. Delicias	141.40	3	2	12979	2.5	75.1	3.3	4.6	1.6	9.3	1.3	1.7	0.6	77.6	3.3	19.1	0.082	0.533	28.237077	-105.462328
T. C. Meoqui - Julimes	146.70	3	1	11750	4.0	69.5	4.7	3.2	2.2	11.5	1.9	2.3	0.7	73.5	4.7	21.8	0.094	0.513	28.284673	-105.477883
T. C. Meoqui - Julimes	146.70	3	2	11156	4.1	70.8	4.4	3.1	2.0	11.3	1.5	2.1	0.7	74.9	4.4	20.7	0.068	0.513	28.284557	-105.478006
T. C. Jiménez - Chihuahua (Norte)	150.00	1	1	11537	2.1	69.5	4.7	5.5	2.4	11.6	1.7	2.0	0.5	71.6	4.7	23.7	0.100	0.537	28.290136	-105.488393
T. C. Jiménez - Chihuahua (Norte)	150.00	1	2	9947	2.1	69.2	4.7	5.8	2.4	11.6	1.7	2.0	0.5	71.3	4.7	24.0	0.084	0.537	28.290035	-105.488003

16 CARR: Porvenir - Cd. Juárez

CLAVE: 08169

RUTA: MEX-002

AÑO: 2023

LUGAR	ESTACION				CLASIFICACION VEHICULAR EN PORCIENTO														COORDENADAS	
	KM	TE	SC	TDPA	M	A	B	C2	C3	T3S2	T3S3	T3S2R4	OTROS	A	B	C	K'	D	LATITUD	LONGITUD
Porvenir	0.00																			
T. Der. Puente Porvenir	1.67	3	0	1268	0.8	87.8	3.7	6.5	0.3	0.3	0.0	0.0	0.6	88.6	3.7	7.7	0.111	0.510	31.256278	-105.879561
Guadalupe	30.54	1	0	2566	1.4	88.5	4.4	4.6	0.3	0.5	0.1	0.1	0.1	89.9	4.4	5.7	0.118	0.503	31.387331	-106.093399
San Isidro	55.93	1	0	5549	2.5	79.8	4.8	8.2	1.7	1.6	0.7	0.5	0.2	82.3	4.8	12.9	0.091	0.547	31.541293	-106.272909
Zaragoza	70.32	1	1	26415	1.4	87.5	3.8	3.1	1.5	1.7	0.3	0.4	0.3	88.9	3.8	7.3	0.086	0.534	31.641870	-106.343043
Zaragoza	70.32	1	2	21535	2.0	87.1	3.8	3.1	1.4	1.7	0.3	0.4	0.2	89.1	3.8	7.1	0.094	0.534	31.641758	-106.343105
Cd. Juárez	81.43																			

CHIHUAHUA

17 CARR: Ramal a Aeropuerto de Chihuahua

CLAVE: 08421

RUTA: MEX-016

AÑO: 2023

LUGAR	ESTACION				CLASIFICACION VEHICULAR EN PORCIENTO										COORDENADAS					
	KM	TE	SC	TDPA	M	A	B	C2	C3	T3S2	T3S3	T3S2R4	OTROS	A	B	C	K'	D	LATITUD	LONGITUD
T. C. Chihuahua - Ojinaga	0.00	3	1	14233	2.7	92.2	1.5	1.3	1.2	0.4	0.2	0.5	0.0	94.9	1.5	3.6	0.089	0.513	28.678973	-105.994399
T. C. Chihuahua - Ojinaga Aeropuerto	0.00 5.00	3	2	15002	2.7	92.3	1.5	1.3	1.1	0.4	0.2	0.5	0.0	95.0	1.5	3.5	0.082	0.513	28.678779	-105.994684

18 CARR: Ramal a Palomas

CLAVE: 08019

RUTA: MEX-002

AÑO: 2023

LUGAR	ESTACION				CLASIFICACION VEHICULAR EN PORCIENTO										COORDENADAS					
	KM	TE	SC	TDPA	M	A	B	C2	C3	T3S2	T3S3	T3S2R4	OTROS	A	B	C	K'	D	LATITUD	LONGITUD
T. C. Cd. Juárez - Janos	0.00	3	0	2005	2.7	82.3	1.7	7.7	0.9	4.0	0.5	0.1	0.1	85.0	1.7	13.3	0.101	0.508	31.476916	-107.614506
T. Izq. Guadalupe Victoria Palomas	4.50 34.10	3	0	1541	2.6	83.8	0.9	7.8	0.8	3.4	0.5	0.1	0.1	86.4	0.9	12.7	0.095	0.503	31.518809	-107.613266

19 CARR: Villa Ahumada - Cd. Juárez (Libre)

CLAVE: 08420

RUTA: MEX-045

AÑO: 2023

LUGAR	ESTACION				CLASIFICACION VEHICULAR EN PORCIENTO										COORDENADAS					
	KM	TE	SC	TDPA	M	A	B	C2	C3	T3S2	T3S3	T3S2R4	OTROS	A	B	C	K'	D	LATITUD	LONGITUD
Villa Ahumada	83.63	3	1	5215	2.6	73.6	4.0	2.7	1.2	11.8	1.6	2.0	0.5	76.2	4.0	19.8	0.120	0.507	30.634458	-106.514237
Villa Ahumada	83.63	3	2	5081	2.0	72.7	4.1	3.4	1.3	12.5	1.5	2.0	0.5	74.7	4.1	21.2	0.103	0.507	30.634906	-106.514520
Samalayuca	167.65	3	1	6565	2.4	74.3	3.7	3.3	1.0	11.9	1.3	1.6	0.5	76.7	3.7	19.6	0.131	0.508	31.372871	-106.466347
Samalayuca	167.65	3	2	6770	2.3	76.9	2.9	3.2	1.0	10.5	1.3	1.5	0.4	79.2	2.9	17.9	0.097	0.508	31.372764	-106.466906
T. Izq. Janos	197.92	1	1	10259	1.3	77.2	2.4	5.8	3.2	7.9	0.8	1.2	0.2	78.5	2.4	19.1	0.120	0.500	31.600936	-106.454545
T. Izq. Janos	197.92	1	2	10262	1.6	77.1	2.1	5.9	3.0	8.3	0.9	1.0	0.1	78.7	2.1	19.2	0.094	0.500	31.601205	-106.454547
T. Der. Antiguo Aeropuerto	201.35	1	1	24786	4.5	82.8	2.6	4.8	1.0	1.8	1.0	0.9	0.6	87.3	2.6	10.1	0.087	0.549	31.634388	-106.439273
T. Der. Antiguo Aeropuerto Cd. Juárez	201.35 219.00	1	2	25175	4.5	82.8	2.6	4.8	1.0	1.8	1.0	0.9	0.6	87.3	2.6	10.1	0.092	0.549	31.634454	-106.439530

20 CARR: Camargo - Delicias (Cuota)

CLAVE: 08418

RUTA: MEX-045D

AÑO: 2023

LUGAR	ESTACION				CLASIFICACION VEHICULAR EN PORCIENTO										COORDENADAS					
	KM	TE	SC	TDPA	M	A	B	C2	C3	T3S2	T3S3	T3S2R4	OTROS	A	B	C	K'	D	LATITUD	LONGITUD
Camargo	68.98																			
T. C. Ent. Ciudad Camargo - Saucillo	72.00	1	1	5252	4.0	62.2	5.3	4.9	1.9	14.7	2.5	3.6	0.9	66.2	5.3	28.5	0.099	0.511	27.716304	-105.191156
T. C. Ent. Ciudad Camargo - Saucillo	72.00	1	2	5480	4.1	62.2	5.2	5.0	1.8	14.7	2.5	3.6	0.9	66.3	5.2	28.5	0.087	0.511	27.716236	-105.191227
T. C. Ent. Ciudad Camargo - Saucillo	72.00	3	1	3926	3.2	54.9	7.2	4.1	1.6	19.5	3.4	5.7	0.4	58.1	7.2	34.7	0.106	0.507	27.724221	-105.196243
T. C. Ent. Ciudad Camargo - Saucillo	72.00	3	2	4035	3.2	54.2	7.2	4.4	1.6	19.6	3.4	5.9	0.5	57.4	7.2	35.4	0.074	0.507	27.723741	-105.195783

CHIHUAHUA

20 CARR: Camargo - Delicias (Cuota)

CLAVE: 08418

RUTA: MEX-045D

AÑO: 2023

LUGAR	ESTACION				CLASIFICACION VEHICULAR EN PORCIENTO														COORDENADAS	
	KM	TE	SC	TDPA	M	A	B	C2	C3	T3S2	T3S3	T3S2R4	OTROS	A	B	C	K'	D	LATITUD	LONGITUD
Plaza de Cobro Altavista	73.20	2	1	3623	0.2	51.4	3.0	5.9	3.5	24.2	3.0	6.5	2.3	51.6	3.0	45.4	0.088	0.500	27.730871	-105.197567
Plaza de Cobro Altavista	73.20	2	2	3623	0.2	51.4	3.0	5.9	3.5	24.2	3.0	6.5	2.3	51.6	3.0	45.4	0.088	0.500	27.730871	-105.197567
Estación Conchos	104.30	3	1	4584	2.5	58.0	5.9	4.3	1.5	19.5	2.9	4.8	0.6	60.5	5.9	33.6	0.117	0.503	27.980582	-105.293752
Estación Conchos	104.30	3	2	4535	3.8	55.9	5.7	4.4	1.5	20.7	2.7	4.8	0.5	59.7	5.7	34.6	0.078	0.503	27.980521	-105.293877
Saucillo	113.50	3	1	4509	4.0	50.8	7.0	9.7	2.0	19.2	2.4	4.2	0.7	54.8	7.0	38.2	0.101	0.512	28.036009	-105.325045
Saucillo	113.50	3	2	4725	4.0	50.6	7.0	9.8	2.0	19.2	2.4	4.1	0.9	54.6	7.0	38.4	0.087	0.512	28.035983	-105.325170
Plaza de Cobro Saucillo	116.30	2	1	4582	0.2	56.5	3.8	4.8	2.5	22.1	2.7	5.2	2.2	56.7	3.8	39.5	0.088	0.500	28.046417	-105.329309
Plaza de Cobro Saucillo	116.30	2	2	4582	0.2	56.5	3.8	4.8	2.5	22.1	2.7	5.2	2.2	56.7	3.8	39.5	0.088	0.500	28.046417	-105.329309
Delicias	138.00	1	1	9439	2.7	67.6	4.4	8.2	1.6	9.8	2.7	2.3	0.7	70.3	4.4	25.3	0.086	0.505	28.178764	-105.446302
Delicias	138.00	1	2	9628	2.8	67.6	4.3	8.2	1.7	9.8	2.7	2.2	0.7	70.4	4.3	25.3	0.089	0.505	28.178686	-105.446408

21 CARR: Chihuahua - Sacramento (Cuota)

CLAVE: 08015

RUTA: MEX-045D

AÑO: 2023

LUGAR	ESTACION				CLASIFICACION VEHICULAR EN PORCIENTO														COORDENADAS	
	KM	TE	SC	TDPA	M	A	B	C2	C3	T3S2	T3S3	T3S2R4	OTROS	A	B	C	K'	D	LATITUD	LONGITUD
T. C. Chihuahua - El Sueco	18.12	3	1	8378	1.7	82.8	3.4	3.9	2.0	4.4	0.6	0.9	0.3	84.5	3.4	12.1	0.093	0.549	28.770283	-106.170772
T. C. Chihuahua - El Sueco	18.12	3	2	10198	1.7	83.4	3.3	3.8	1.9	4.4	0.5	0.8	0.2	85.1	3.3	11.6	0.108	0.549	28.770254	-106.170965
Francisco Villa	20.00	3	1	9731	2.0	82.0	3.0	3.6	2.2	5.7	0.6	0.6	0.3	84.0	3.0	13.0	0.110	0.510	28.783257	-106.173258
Francisco Villa	20.00	3	2	9340	2.0	82.2	3.0	3.6	2.1	5.7	0.6	0.6	0.2	84.2	3.0	12.8	0.118	0.510	28.783237	-106.173448
T. C. Libramiento Oriente Chihuahua (Cuota)	21.17	3	1	8252	1.8	74.9	3.8	4.3	2.0	9.0	1.0	2.5	0.7	76.7	3.8	19.5	0.102	0.509	28.805502	-106.177608
T. C. Libramiento Oriente Chihuahua (Cuota)	21.17	3	2	7954	1.8	74.8	3.8	4.3	2.0	9.0	1.1	2.5	0.7	76.6	3.8	19.6	0.114	0.509	28.805471	-106.177795
T. C. (Chihuahua - El Sueco)	31.30																			

22 CARR: El Sueco - Villa Ahumada (Cuota)

CLAVE: 08420

RUTA: MEX-045D

AÑO: 2023

LUGAR	ESTACION				CLASIFICACION VEHICULAR EN PORCIENTO														COORDENADAS	
	KM	TE	SC	TDPA	M	A	B	C2	C3	T3S2	T3S3	T3S2R4	OTROS	A	B	C	K'	D	LATITUD	LONGITUD
Ent. El Sueco	0.00	3	1	5043	2.9	63.7	3.4	5.2	1.2	18.4	2.1	2.6	0.5	66.6	3.4	30.0	0.099	0.526	29.895417	-106.395446
Ent. El Sueco	0.00	3	2	4546	2.7	63.8	3.4	5.2	1.2	18.4	2.1	2.6	0.6	66.5	3.4	30.1	0.095	0.526	29.895633	-106.395911
Plaza de Cobro Villa Ahumada	82.00	2	1	4129	0.2	65.5	3.7	3.2	1.6	19.6	1.4	3.2	1.6	65.7	3.7	30.6	0.103	0.500	30.437059	-106.521897
Plaza de Cobro Villa Ahumada	82.00	2	2	4129	0.2	65.5	3.7	3.2	1.6	19.6	1.4	3.2	1.6	65.7	3.7	30.6	0.103	0.500	30.437059	-106.521897
Villa Ahumada	83.63																			

CHIHUAHUA

23 CARR: Gómez Palacio - Corralitos (Cuota)

CLAVE: 00016

RUTA: MEX-049D

AÑO: 2023

LUGAR	ESTACION				CLASIFICACION VEHICULAR EN PORCIENTO										COORDENADAS						
	KM	TE	SC	TDPA	M	A	B	C2	C3	T3S2	T3S3	T3S2R4	OTROS	A	B	C	K'	D	LATITUD	LONGITUD	
T. C. Gómez Palacio - Jiménez (Libre)	38.00																				
T. Izq. Bermejillo	40.10	1	1	2920	2.3	42.5	6.3	5.1	2.2	28.5	4.9	7.3	0.9	44.8	6.3	48.9	0.068	0.501	25.879291	-103.611933	
T. Izq. Bermejillo	40.10	1	2	2927	2.3	38.8	7.3	5.6	2.4	29.8	5.5	7.4	0.9	41.1	7.3	51.6	0.073	0.501	25.879347	-103.612081	
T. Izq. Bermejillo	40.10	3	1	2724	3.1	49.6	8.1	5.4	1.9	20.4	4.3	6.6	0.6	52.7	8.1	39.2	0.063	0.511	25.898463	-103.612537	
T. Izq. Bermejillo	40.10	3	2	2848	2.9	44.9	8.7	5.9	2.1	22.2	5.0	7.7	0.6	47.8	8.7	43.5	0.069	0.511	25.898384	-103.612786	
Plaza de Cobro Bermejillo	44.16	2	1	2613	0.2	34.1	9.3	2.7	1.9	32.4	6.5	9.4	3.5	34.3	9.3	56.4	0.079	0.500	25.923705	-103.622079	
Plaza de Cobro Bermejillo	44.16	2	2	2613	0.2	34.1	9.3	2.7	1.9	32.4	6.5	9.4	3.5	34.3	9.3	56.4	0.079	0.500	25.923705	-103.622079	
T. Izq. Ceballos	123.80	1	1	2859	4.7	31.4	10.0	4.9	1.9	33.9	5.7	6.6	0.9	36.1	10.0	53.9	0.064	0.505	26.560058	-104.036667	
T. Izq. Ceballos	123.80	1	2	2915	4.3	30.8	10.5	4.8	1.8	34.2	5.9	6.8	0.9	35.1	10.5	54.4	0.063	0.505	26.559883	-104.037037	
Plaza de Cobro Ceballos	128.80	2	1	2597	0.2	34.6	5.3	2.7	5.5	31.5	6.8	9.3	4.1	34.8	5.3	59.9	0.079	0.500	26.586801	-104.057535	
Plaza de Cobro Ceballos	128.80	2	2	2597	0.2	34.6	5.3	2.7	5.5	31.5	6.8	9.3	4.1	34.8	5.3	59.9	0.079	0.500	26.586801	-104.057535	
Lim. Edos. Term. Dgo. Ppia. Chih.	158.00																				
T. C. Gómez Palacio - Jiménez	188.46	1	1	2001	2.9	36.2	12.0	5.0	2.9	27.4	6.2	6.5	0.9	39.1	12.0	48.9	0.073	0.528	26.902434	-104.549603	
T. C. Gómez Palacio - Jiménez	188.46	1	2	1787	3.5	34.3	11.9	5.4	3.4	27.5	6.6	6.5	0.9	37.8	11.9	50.3	0.078	0.528	26.901782	-104.550483	
T. C. Gómez Palacio - Jiménez	188.46	3	1	3070	6.3	40.0	8.6	6.8	2.1	22.3	6.2	6.8	0.9	46.3	8.6	45.1	0.068	0.504	26.907695	-104.559261	
T. C. Gómez Palacio - Jiménez	188.46	3	2	3114	6.2	40.3	9.3	6.7	2.4	21.3	5.9	6.9	1.0	46.5	9.3	44.2	0.065	0.504	26.906815	-104.559673	
T. C. Gómez Palacio - Jiménez (Libre)	226.50	1	1	3018	3.3	40.1	7.4	5.7	2.7	25.4	6.5	8.0	0.9	43.4	7.4	49.2	0.062	0.524	27.103559	-104.871110	
T. C. Gómez Palacio - Jiménez (Libre)	226.50	1	2	3323	2.7	40.6	7.6	6.3	2.4	25.4	6.6	7.5	0.9	43.3	7.6	49.1	0.063	0.524	27.103366	-104.871358	

24 CARR: Jiménez - Camargo (Cuota)

CLAVE: 08418

RUTA: MEX-045D

AÑO: 2023

LUGAR	ESTACION				CLASIFICACION VEHICULAR EN PORCIENTO										COORDENADAS					
	KM	TE	SC	TDPA	M	A	B	C2	C3	T3S2	T3S3	T3S2R4	OTROS	A	B	C	K'	D	LATITUD	LONGITUD
Jiménez	0.00	3	1	3897	4.0	48.0	7.5	4.9	2.1	23.4	3.7	5.5	0.9	52.0	7.5	40.5	0.072	0.515	27.151851	-104.930213
Jiménez	0.00	3	2	4136	4.6	48.3	7.9	5.0	1.8	22.9	3.8	4.8	0.9	52.9	7.9	39.2	0.069	0.515	27.151848	-104.930328
T. Izq. Providencia	2.20	3	1	3937	4.1	42.9	8.6	7.8	3.3	23.9	2.9	5.6	0.9	47.0	8.6	44.4	0.065	0.519	27.159480	-104.930443
T. Izq. Providencia	2.20	3	2	3650	4.0	44.6	8.5	7.2	2.9	24.3	2.7	5.0	0.8	48.6	8.5	42.9	0.062	0.519	27.159573	-104.930596
Plaza de Cobro Camargo	11.00	2	1	3170	0.2	41.6	5.0	4.9	3.1	31.2	3.6	7.6	2.8	41.8	5.0	53.2	0.085	0.500	27.244960	-104.933154
Plaza de Cobro Camargo	11.00	2	2	3170	0.2	41.6	5.0	4.9	3.1	31.2	3.6	7.6	2.8	41.8	5.0	53.2	0.085	0.500	27.244960	-104.933154
Camargo	68.98	1	1	3948	4.7	48.0	7.4	4.3	3.3	22.5	3.2	5.7	0.9	52.7	7.4	39.9	0.060	0.514	27.624814	-105.118547
Camargo	68.98	1	2	4170	5.3	48.1	7.8	4.7	2.8	22.1	2.8	5.5	0.9	53.4	7.8	38.8	0.064	0.514	27.624615	-105.118906

CHIHUAHUA

25 CARR: Libramiento Oriente Chihuahua (Cuota)

CLAVE:

RUTA: MEX-045D

AÑO: 2023

LUGAR	ESTACION				CLASIFICACION VEHICULAR EN PORCIENTO													COORDENADAS		
	KM	TE	SC	TDPA	M	A	B	C2	C3	T3S2	T3S3	T3S2R4	OTROS	A	B	C	K'	D	LATITUD	LONGITUD
T. C. Delicias - Chihuahua	0.00	3	0	5119	5.7	45.7	6.4	5.3	2.3	23.8	3.0	6.8	1.0	51.4	6.4	42.2	0.060	0.501	28.586072	-105.951457
Plaza de Cobro Jiménez	3.00	2	0	3802	0.2	43.5	2.3	4.0	2.9	31.3	6.0	8.8	1.0	43.7	2.3	54.0	0.090	0.500	28.603444	-105.951440
T. C. Chihuahua - Ojinaga	22.00	1	0	6648	3.8	65.5	4.2	5.6	2.2	11.3	2.6	4.0	0.8	69.3	4.2	26.5	0.073	0.531	28.736910	-105.980852
T. C. Chihuahua - Ojinaga	22.00	3	0	5685	5.2	58.2	7.0	3.9	2.2	14.8	2.9	5.0	0.8	63.4	7.0	29.6	0.078	0.550	28.742395	-105.992863
Plaza de Cobro Sacramento	38.30	2	0	4596	0.4	50.7	2.1	3.8	2.7	26.6	5.4	7.6	0.7	51.1	2.1	46.8	0.090	0.500	28.790516	-106.139354
T. C. Chihuahua - Sacramento (Cuota)	42.20																			

26 CARR: Ahumada - Ricardo Flores Magón

CLAVE: 08804

RUTA: CHIH

AÑO: 2023

LUGAR	ESTACION				CLASIFICACION VEHICULAR EN PORCIENTO													COORDENADAS		
	KM	TE	SC	TDPA	M	A	B	C2	C3	T3S2	T3S3	T3S2R4	OTROS	A	B	C	K'	D	LATITUD	LONGITUD
Ahumada	0.00	3	0	1913	1.3	70.3	1.5	15.1	1.3	7.9	1.9	0.6	0.1	71.6	1.5	26.9	0.085	0.519	30.616014	-106.528698
Ricardo Flores Magón	96.00	1	0	2185	3.4	77.0	2.7	6.6	1.3	6.9	1.1	0.9	0.1	80.4	2.7	16.9	0.073	0.517	29.958303	-106.951968

27 CARR: Cuauhtémoc - Buenaventura

CLAVE: 08015

RUTA: CHIH

AÑO: 2023

LUGAR	ESTACION				CLASIFICACION VEHICULAR EN PORCIENTO													COORDENADAS		
	KM	TE	SC	TDPA	M	A	B	C2	C3	T3S2	T3S3	T3S2R4	OTROS	A	B	C	K'	D	LATITUD	LONGITUD
T. C. Chihuahua - Madera	0.00	3	1	13143	3.0	81.6	1.2	9.6	1.3	1.2	0.9	0.7	0.5	84.6	1.2	14.2	0.074	0.519	28.406409	-106.895764
T. C. Chihuahua - Madera	0.00	3	2	14196	2.9	81.4	1.3	10.0	0.9	1.5	1.0	0.6	0.4	84.3	1.3	14.4	0.100	0.519	28.406421	-106.895904
Álvaro Obregón	42.00	3	1	3645	1.5	86.3	1.3	3.7	1.5	3.5	1.4	0.6	0.2	87.8	1.3	10.9	0.088	0.501	28.752776	-106.918176
Álvaro Obregón	42.00	3	2	3665	1.5	84.7	1.7	4.0	1.7	3.7	1.7	0.7	0.3	86.2	1.7	12.1	0.082	0.501	28.752652	-106.918161
Bachiniva	77.50	1	0	3273	3.1	87.7	1.3	4.7	1.1	1.1	0.5	0.4	0.1	90.8	1.3	7.9	0.082	0.502	28.772023	-107.249168
T. Der. Namiqupa	112.06	3	0	3355	2.7	84.5	1.0	8.1	1.2	1.1	0.9	0.4	0.1	87.2	1.0	11.8	0.094	0.512	29.026872	-107.451753
T. Izq. Madera	150.50	3	0	1471	1.5	88.6	2.1	5.2	1.0	0.8	0.7	0.1	0.0	90.1	2.1	7.8	0.099	0.505	29.268268	-107.709236
Buenaventura	253.30	1	0	722	5.6	86.7	1.5	2.5	0.8	1.4	1.0	0.5	0.0	92.3	1.5	6.2	0.114	0.506	29.841111	-107.480994

28 CARR: Delicias - Saucillo

CLAVE: 08007

RUTA: CHIH-007

AÑO: 2023

LUGAR	ESTACION				CLASIFICACION VEHICULAR EN PORCIENTO													COORDENADAS		
	KM	TE	SC	TDPA	M	A	B	C2	C3	T3S2	T3S3	T3S2R4	OTROS	A	B	C	K'	D	LATITUD	LONGITUD
Delicias	0.00	3	0	5129	14.3	75.1	1.6	5.1	1.3	1.1	0.7	0.7	0.1	89.4	1.6	9.0	0.076	0.501	28.194989	-105.426319
Las Varas	17.00	1	0	2032	8.5	77.4	1.6	11.1	1.0	0.2	0.1	0.1	0.0	85.9	1.6	12.5	0.083	0.504	28.165761	-105.341005
Saucillo	33.00	1	0	5968	5.9	84.5	1.4	4.7	1.4	0.9	0.8	0.4	0.0	90.4	1.4	8.2	0.072	0.507	28.046476	-105.300025

CHIHUAHUA

29 CARR: Ent. Peña Blanca - Ent. La Concha

CLAVE: 08493

RUTA: CHIH

AÑO: 2023

LUGAR	ESTACION				CLASIFICACION VEHICULAR EN PORCIENTO										COORDENADAS					
	KM	TE	SC	TDPA	M	A	B	C2	C3	T3S2	T3S3	T3S2R4	OTROS	A	B	C	K'	D	LATITUD	LONGITUD
T. C. Cuauhtémoc - Buenaventura	0.00	3	0	790	1.5	86.1	0.9	7.9	1.8	0.7	1.0	0.1	0.0	87.6	0.9	11.5	0.124	0.526	29.262759	-107.710874
T. C. Chihuahua - Madera	17.00	1	0	381	1.5	79.6	1.4	4.3	1.7	4.7	6.4	0.4	0.0	81.1	1.4	17.5	0.106	0.533	29.122066	-107.905932

30 CARR: Ent. Puerto Justo - Ent. Guacho chic

CLAVE: 08044

RUTA: CHIH

AÑO: 2023

LUGAR	ESTACION				CLASIFICACION VEHICULAR EN PORCIENTO										COORDENADAS					
	KM	TE	SC	TDPA	M	A	B	C2	C3	T3S2	T3S3	T3S2R4	OTROS	A	B	C	K'	D	LATITUD	LONGITUD
T. C. Hidalgo del Parral - Pto. Sabinal	0.00	3	0	155	6.3	78.3	3.3	6.8	3.4	0.8	0.3	0.8	0.0	84.6	3.3	12.1	0.151	0.566	26.813683	-106.017227
Guacho chic	130.00																			

31 CARR: Jiménez - Camargo

CLAVE: 08021

RUTA: CHIH-049

AÑO: 2023

LUGAR	ESTACION				CLASIFICACION VEHICULAR EN PORCIENTO										COORDENADAS					
	KM	TE	SC	TDPA	M	A	B	C2	C3	T3S2	T3S3	T3S2R4	OTROS	A	B	C	K'	D	LATITUD	LONGITUD
Jiménez	0.00	3	0	3201	3.5	75.4	4.7	8.8	1.7	3.8	1.5	0.5	0.1	78.9	4.7	16.4	0.074	0.509	27.156974	-104.888444
T. Der. Ojinaga	65.80	3	0	2140	1.7	77.4	3.9	5.9	2.0	6.2	2.2	0.6	0.1	79.1	3.9	17.0	0.062	0.519	27.650472	-105.081283
T. C. Jiménez - Chihuahua (Cuota)	78.20	1	0	2589	2.4	76.6	2.2	8.1	2.7	5.4	2.0	0.6	0.0	79.0	2.2	18.8	0.066	0.506	27.678753	-105.140223

32 CARR: Lázaro Cárdenas - Ent. Colonia San José

CLAVE: 08004

RUTA: CHIH-004

AÑO: 2023

LUGAR	ESTACION				CLASIFICACION VEHICULAR EN PORCIENTO										COORDENADAS					
	KM	TE	SC	TDPA	M	A	B	C2	C3	T3S2	T3S3	T3S2R4	OTROS	A	B	C	K'	D	LATITUD	LONGITUD
T. C. Jiménez - Chihuahua	0.00	3	1	3059	12.7	79.3	1.4	3.6	1.4	0.6	0.6	0.4	0.0	92.0	1.4	6.6	0.089	0.539	28.387464	-105.628654
T. C. Jiménez - Chihuahua	0.00	3	2	3580	12.2	78.6	1.4	4.5	1.3	0.7	0.7	0.5	0.1	90.8	1.4	7.8	0.078	0.539	28.387554	-105.628617
T. C. Meoqui - Julimes	16.00	1	0	1472	6.3	83.5	2.0	5.2	1.6	1.0	0.2	0.1	0.1	89.8	2.0	8.2	0.106	0.511	28.387687	-105.449700

33 CARR: Libramiento de Hidalgo del Parral

CLAVE: 08221

RUTA: CHIH

AÑO: 2023

LUGAR	ESTACION				CLASIFICACION VEHICULAR EN PORCIENTO										COORDENADAS					
	KM	TE	SC	TDPA	M	A	B	C2	C3	T3S2	T3S3	T3S2R4	OTROS	A	B	C	K'	D	LATITUD	LONGITUD
T. C. Hidalgo del Parral - Santa Bárbara	0.00																			
T. C. Ent. La Zarca - Hidalgo del Parral	8.00	3	1	4682	7.2	86.8	1.0	2.0	1.1	1.0	0.5	0.4	0.0	94.0	1.0	5.0	0.086	0.525	26.923304	-105.643514
T. C. Ent. La Zarca - Hidalgo del Parral	8.00	3	2	5167	7.1	87.1	0.9	1.7	1.1	0.9	0.6	0.5	0.1	94.2	0.9	4.9	0.096	0.525	26.923409	-105.643576
T. C. Hidalgo del Parral - Jiménez	10.00																			

CHIHUAHUA

34 CARR: Libramiento de Jiménez

CLAVE: 08047

RUTA: CHIH

AÑO: 2023

LUGAR	ESTACION				CLASIFICACION VEHICULAR EN PORCIENTO													COORDENADAS		
	KM	TE	SC	TDPA	M	A	B	C2	C3	T3S2	T3S3	T3S2R4	OTROS	A	B	C	K'	D	LATITUD	LONGITUD
T. C. Gómez Palacio - Jiménez	0.00	3	1	6058	10.0	55.4	3.1	8.7	2.6	10.5	3.1	5.7	0.9	65.4	3.1	31.5	0.064	0.513	27.133693	-104.909546
T. C. Gómez Palacio - Jiménez	0.00	3	2	5748	9.7	55.1	2.9	8.6	3.3	10.9	3.1	5.5	0.9	64.8	2.9	32.3	0.066	0.513	27.133629	-104.909643
T. C. Jiménez - Chihuahua (Cuota)	3.40	1	1	5452	3.6	54.3	6.1	4.1	1.6	21.4	3.8	4.2	0.9	57.9	6.1	36.0	0.064	0.522	27.141235	-104.921819
T. C. Jiménez - Chihuahua (Cuota)	3.40	1	2	4997	3.9	54.3	6.2	4.1	1.6	21.3	3.4	4.4	0.8	58.2	6.2	35.6	0.062	0.522	27.141165	-104.921850

35 CARR: Meoqui - Julimes

CLAVE: 08005

RUTA: CHIH-005

AÑO: 2023

LUGAR	ESTACION				CLASIFICACION VEHICULAR EN PORCIENTO													COORDENADAS		
	KM	TE	SC	TDPA	M	A	B	C2	C3	T3S2	T3S3	T3S2R4	OTROS	A	B	C	K'	D	LATITUD	LONGITUD
Meoqui	0.00	3	0	7327	5.3	84.3	0.8	7.1	1.2	0.5	0.3	0.3	0.2	89.6	0.8	9.6	0.076	0.506	28.284129	-105.462702
Loreto	8.00	3	0	4477	9.9	81.5	1.5	2.9	1.2	0.9	0.4	1.3	0.4	91.4	1.5	7.1	0.069	0.517	28.322882	-105.433231
Regina	15.40	3	0	4122	4.7	78.4	1.6	13.9	0.8	0.3	0.1	0.1	0.1	83.1	1.6	15.3	0.117	0.514	28.421248	-105.454413
Julimes	23.00	1	0	3638	4.3	85.3	3.3	3.9	1.4	1.2	0.2	0.2	0.2	89.6	3.3	7.1	0.072	0.519	28.427447	-105.441086

36 CARR: Ramal a San Pedro Creel

CLAVE: 08812

RUTA: CHIH-025

AÑO: 2023

LUGAR	ESTACION				CLASIFICACION VEHICULAR EN PORCIENTO													COORDENADAS		
	KM	TE	SC	TDPA	M	A	B	C2	C3	T3S2	T3S3	T3S2R4	OTROS	A	B	C	K'	D	LATITUD	LONGITUD
T. C. La Junta - Yepachi	0.00	3	0	2354	1.3	88.2	2.4	4.1	0.7	2.1	1.1	0.1	0.0	89.5	2.4	8.1	0.105	0.507	28.385197	-107.441759
San Juanito	58.00	3	0	2354	4.8	85.3	1.8	3.3	2.0	1.8	0.6	0.2	0.2	90.1	1.8	8.1	0.108	0.501	27.962119	-107.608619
San Pedro Creel	85.00	1	0	1642	4.2	83.3	2.4	6.8	1.3	1.5	0.5	0.0	0.0	87.5	2.4	10.1	0.127	0.525	27.768235	-107.638201

37 CARR: Samachique - Batopilas

CLAVE:

RUTA: CHIH

AÑO: 2023

LUGAR	ESTACION				CLASIFICACION VEHICULAR EN PORCIENTO													COORDENADAS			
	KM	TE	SC	TDPA	M	A	B	C2	C3	T3S2	T3S3	T3S2R4	OTROS	A	B	C	K'	D	LATITUD	LONGITUD	
Samachique	0.00	3	0	102	7.0	78.8	1.1	10.5	1.6	0.3	0.6	0.1	0.0	85.8	1.1	13.1	0.144	0.507	27.286871	-107.530503	
Batopilas	61.00																				

38 CARR: San Juanito - Ent. Basaseachi

CLAVE: 08045

RUTA: CHIH

AÑO: 2023

LUGAR	ESTACION				CLASIFICACION VEHICULAR EN PORCIENTO													COORDENADAS		
	KM	TE	SC	TDPA	M	A	B	C2	C3	T3S2	T3S3	T3S2R4	OTROS	A	B	C	K'	D	LATITUD	LONGITUD
San Juanito	0.00	3	0	710	2.8	83.5	0.5	7.1	5.2	0.8	0.1	0.0	0.0	86.3	0.5	13.2	0.107	0.502	27.972422	-107.616690
T. C. La Junta - Yécora	84.00	1	0	683	2.6	89.8	0.7	3.6	2.4	0.5	0.3	0.1	0.0	92.4	0.7	6.9	0.098	0.529	28.189667	-108.172748

CHIHUAHUA

39 CARR: San Pedro Creel - Guachochi

CLAVE:

RUTA: CHIH-025

AÑO: 2023

LUGAR	ESTACION	CLASIFICACION VEHICULAR EN PORCIENTO												COORDENADAS								
		KM	TE	SC	TDPA	M	A	B	C2	C3	T3S2	T3S3	T3S2R4	OTROS	A	B	C	K'	D	LATITUD	LONGITUD	
San Pedro Creel	90.30																					
Samachique	164.30	1	0	122	2.5	82.9	0.9	9.6	1.5	1.3	0.7	0.3	0.3	85.4	0.9	13.7	0.177	0.505	27.298823	-107.526819		
Samachique	164.30	3	0	181	4.0	70.6	0.9	21.1	1.7	1.7	0.0	0.0	0.0	74.6	0.9	24.5	0.216	0.506	27.295450	-107.523062		
Guachochi	246.00																					

40 CARR: T. C. (Jiménez - Camargo) - Ojinaga

CLAVE: 08009

RUTA: CHIH-018

AÑO: 2023

LUGAR	ESTACION	CLASIFICACION VEHICULAR EN PORCIENTO												COORDENADAS						
		KM	TE	SC	TDPA	M	A	B	C2	C3	T3S2	T3S3	T3S2R4	OTROS	A	B	C	K'	D	LATITUD
T. C. Jimenez - Camargo	0.00	3	1	442	2.6	75.5	1.7	6.7	1.3	6.3	2.7	2.9	0.3	78.1	1.7	20.2	0.080	0.500	27.658168	-105.059108
T. C. Jimenez - Camargo	0.00	3	2	442	2.8	75.0	1.9	6.1	1.1	5.8	3.4	3.5	0.4	77.8	1.9	20.3	0.078	0.500	27.658191	-105.059138
T. Der. La Perla	97.00	3	0	560	0.7	62.2	2.6	14.7	1.6	9.1	5.6	3.2	0.3	62.9	2.6	34.5	0.078	0.511	28.307602	-104.573149
T. Der. Majjoma	174.20	3	0	483	1.1	75.2	1.7	16.5	0.8	3.4	1.0	0.3	0.0	76.3	1.7	22.0	0.098	0.505	28.957333	-104.487442
T. Der. Manuel Benavides	218.00	3	0	2163	0.4	83.4	1.8	10.3	0.6	2.6	0.5	0.3	0.1	83.8	1.8	14.4	0.087	0.522	29.325766	-104.396101
Ojinaga	247.00	1	0	2511	0.7	86.1	1.7	7.1	0.8	2.5	0.6	0.3	0.2	86.8	1.7	11.5	0.160	0.526	29.517225	-104.422581

41 CARR: T. Julimes - La Boquilla

CLAVE: 08009

RUTA: CHIH-018

AÑO: 2023

LUGAR	ESTACION	CLASIFICACION VEHICULAR EN PORCIENTO												COORDENADAS								
		KM	TE	SC	TDPA	M	A	B	C2	C3	T3S2	T3S3	T3S2R4	OTROS	A	B	C	K'	D	LATITUD	LONGITUD	
T. C. Meoqui - Julimes	0.00	3	0	1330	8.9	81.2	2.4	5.2	1.0	0.8	0.2	0.2	0.1	90.1	2.4	7.5	0.078	0.502	28.427588	-105.456317		
La Boquilla	7.50																					

42 CARR: Ent. El Álamo - Ent. Ricardo Flores Magón (Cuota)

CLAVE: 08046

RUTA: CHIH-D

AÑO: 2023

LUGAR	ESTACION	CLASIFICACION VEHICULAR EN PORCIENTO												COORDENADAS								
		KM	TE	SC	TDPA	M	A	B	C2	C3	T3S2	T3S3	T3S2R4	OTROS	A	B	C	K'	D	LATITUD	LONGITUD	
T. C. Chihuahua - El Sueco	0.00	3	0	1901	3.1	45.3	6.0	4.2	1.6	26.8	5.6	7.0	0.4	48.4	6.0	45.6	0.087	0.504	29.486113	-106.410458		
T. C. El Sueco - Janos	75.00																					

43 CARR: Ricardo Flores Magón - Galeana (Cuota)

CLAVE: 08019

RUTA: CHIH-D

AÑO: 2023

LUGAR	ESTACION	CLASIFICACION VEHICULAR EN PORCIENTO												COORDENADAS						
		KM	TE	SC	TDPA	M	A	B	C2	C3	T3S2	T3S3	T3S2R4	OTROS	A	B	C	K'	D	LATITUD
T. C. El Sueco - Janos	0.00	3	0	2448	2.3	51.2	4.9	5.5	1.6	23.3	4.9	5.4	0.9	53.5	4.9	41.6	0.092	0.502	29.969427	-107.070335

CHIHUAHUA

43 CARR: Ricardo Flores Magón - Galeana (Cuota)

CLAVE: 08019

RUTA: CHIH-D

AÑO: 2023

LUGAR	ESTACION				CLASIFICACION VEHICULAR EN PORCIENTO														COORDENADAS	
	KM	TE	SC	TDPA	M	A	B	C2	C3	T3S2	T3S3	T3S2R4	OTROS	A	B	C	K'	D	LATITUD	LONGITUD
Galeana	58.00	1	0	2697	2.4	52.0	5.2	5.1	1.4	23.0	4.6	5.4	0.9	54.4	5.2	40.4	0.087	0.507	30.175938	-107.619154

44 CARR: Samalayuca - San Jerónimo (Cuota)

CLAVE: 08019

RUTA: CHIH-D

AÑO: 2023

LUGAR	ESTACION				CLASIFICACION VEHICULAR EN PORCIENTO														COORDENADAS	
	KM	TE	SC	TDPA	M	A	B	C2	C3	T3S2	T3S3	T3S2R4	OTROS	A	B	C	K'	D	LATITUD	LONGITUD
T. C. El Sueco - Cd. Juárez	0.00	3	0	1487	2.9	80.4	0.5	7.0	1.7	5.9	1.1	0.5	0.0	83.3	0.5	16.2	0.132	0.534	31.453191	-106.477567
San Jerónimo	28.10																			

45 CARR: T. C. (Chihuahua - Ojinaga) - La Mula (Cuota)

CLAVE: 08170

RUTA: CHIH-D

AÑO: 2023

LUGAR	ESTACION				CLASIFICACION VEHICULAR EN PORCIENTO														COORDENADAS	
	KM	TE	SC	TDPA	M	A	B	C2	C3	T3S2	T3S3	T3S2R4	OTROS	A	B	C	K'	D	LATITUD	LONGITUD
T. C. Chihuahua - Ojinaga	0.00	3	0	1489	1.7	71.7	2.8	15.0	1.6	5.2	1.1	0.8	0.1	73.4	2.8	23.8	0.109	0.501	29.146141	-105.486032
La Mula	110.00	1	0	1606	0.7	79.9	2.6	11.5	0.9	2.4	1.1	0.9	0.0	80.6	2.6	16.8	0.094	0.521	29.179664	-104.475781

46 CARR: Chihuahua - Madera

CLAVE: 08038

RUTA: CHIH-D-MEX-001-CHIH

AÑO: 2023

LUGAR	ESTACION				CLASIFICACION VEHICULAR EN PORCIENTO														COORDENADAS	
	KM	TE	SC	TDPA	M	A	B	C2	C3	T3S2	T3S3	T3S2R4	OTROS	A	B	C	K'	D	LATITUD	LONGITUD
Chihuahua	0.00																			
T. Der. Presa Chihuahua	10.50	1	1	11907	1.8	82.2	2.4	8.0	1.2	2.8	1.2	0.3	0.1	84.0	2.4	13.6	0.096	0.508	28.568475	-106.142945
T. Der. Presa Chihuahua	10.50	1	2	12278	1.8	82.2	2.4	8.0	1.2	2.8	1.2	0.3	0.1	84.0	2.4	13.6	0.129	0.508	28.568443	-106.142792
T. Der. Presa Chihuahua	10.50	3	1	9527	1.4	80.6	2.1	9.9	1.6	3.1	0.8	0.3	0.2	82.0	2.1	15.9	0.110	0.519	28.565434	-106.146647
T. Der. Presa Chihuahua	10.50	3	2	10281	1.4	80.6	2.1	9.9	1.6	3.1	0.8	0.3	0.2	82.0	2.1	15.9	0.144	0.519	28.565366	-106.146561
T. Izq. Hidalgo del Parral (Vía Corta)	36.20	1	1	8457	1.9	77.1	2.2	11.1	1.4	3.5	1.5	1.0	0.3	79.0	2.2	18.8	0.106	0.549	28.364793	-106.257973
T. Izq. Hidalgo del Parral (Vía Corta)	36.20	1	2	6946	1.5	77.4	2.6	11.5	1.1	3.4	1.6	0.7	0.2	78.9	2.6	18.5	0.131	0.549	28.364720	-106.257881
T. Izq. Hidalgo del Parral (Vía Corta)	36.20	3	1	5955	1.4	76.9	2.5	11.4	1.1	4.0	1.6	0.8	0.3	78.3	2.5	19.2	0.091	0.503	28.359029	-106.271509
T. Izq. Hidalgo del Parral (Vía Corta)	36.20	3	2	5886	1.4	76.5	2.6	11.8	1.1	4.2	1.4	0.7	0.3	77.9	2.6	19.5	0.128	0.503	28.358863	-106.271429
Cuahtémoc	103.50	1	1	6472	1.8	76.8	2.9	13.9	1.2	1.7	1.0	0.7	0.0	78.6	2.9	18.5	0.086	0.514	28.401695	-106.829136
Cuahtémoc	103.50	1	2	6121	2.0	76.7	2.8	13.7	1.6	1.6	1.0	0.6	0.0	78.7	2.8	18.5	0.072	0.514	28.401519	-106.828981
Cuahtémoc	103.50	3	1	12546	2.8	77.7	2.0	13.3	1.2	1.5	1.0	0.3	0.2	80.5	2.0	17.5	0.109	0.509	28.401632	-106.887467
Cuahtémoc	103.50	3	2	12089	2.7	78.4	2.2	12.8	1.2	1.2	1.0	0.3	0.2	81.1	2.2	16.7	0.122	0.509	28.401533	-106.887632
T. Der. Álvaro Obregón	107.10	3	1	6924	1.8	82.3	1.6	7.7	2.0	2.1	1.4	0.6	0.5	84.1	1.6	14.3	0.082	0.517	28.399159	-106.925752
T. Der. Álvaro Obregón	107.10	3	2	6468	2.2	82.7	1.8	8.1	1.7	1.5	1.2	0.5	0.3	84.9	1.8	13.3	0.094	0.517	28.399083	-106.925743

CHIHUAHUA

46 CARR: Chihuahua - Madera

CLAVE: 08038

RUTA: CHIH-D-MEX-001-CHIH

AÑO: 2023

LUGAR	ESTACION				CLASIFICACION VEHICULAR EN PORCIENTO													COORDENADAS		
	KM	TE	SC	TDPA	M	A	B	C2	C3	T3S2	T3S3	T3S2R4	OTROS	A	B	C	K'	D	LATITUD	LONGITUD
T. Izq. Yepachi	150.80	1	1	3374	1.6	81.2	2.2	9.8	0.7	2.1	1.4	0.6	0.4	82.8	2.2	15.0	0.087	0.514	28.467343	-107.287910
T. Izq. Yepachi	150.80	1	2	3190	1.1	81.9	2.1	10.1	1.0	1.9	1.2	0.4	0.3	83.0	2.1	14.9	0.091	0.514	28.467206	-107.287959
Guerrero	169.80	3	0	2626	2.9	86.9	1.4	4.3	1.5	1.5	1.5	0.0	0.0	89.8	1.4	8.8	0.087	0.524	28.554179	-107.498077
T. Der. Peña Blanca	261.30	1	0	1042	1.5	79.9	1.7	8.5	1.3	2.3	4.2	0.5	0.1	81.4	1.7	16.9	0.105	0.500	29.117580	-107.901863
T. Der. Peña Blanca	261.30	3	0	1200	1.1	81.7	1.7	6.9	3.7	1.8	2.7	0.2	0.2	82.8	1.7	15.5	0.107	0.503	29.120052	-107.908091
Madera	279.00																			

47 CARR: Ent. Agua Caliente - El Terrero

CLAVE: 08170

RUTA: CHIH-MEX

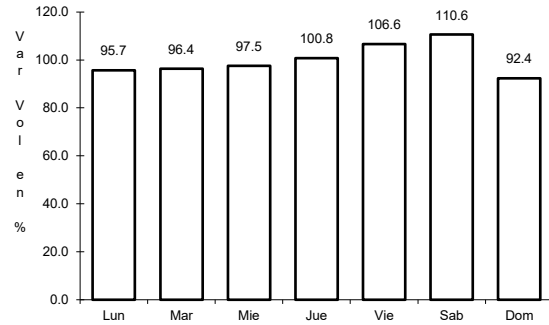
AÑO: 2023

LUGAR	ESTACION				CLASIFICACION VEHICULAR EN PORCIENTO													COORDENADAS		
	KM	TE	SC	TDPA	M	A	B	C2	C3	T3S2	T3S3	T3S2R4	OTROS	A	B	C	K'	D	LATITUD	LONGITUD
T. C. Chihuahua - El Sueco	0.00	3	0	743	3.5	59.0	0.9	23.2	5.4	5.7	1.7	0.4	0.2	62.5	0.9	36.6	0.097	0.508	29.095499	-106.345575
Nuevas Delicias	22.00	1	0	872	4.5	74.6	1.1	14.7	1.8	2.4	0.8	0.1	0.0	79.1	1.1	19.8	0.138	0.520	29.088657	-106.467914
El Terrero	120.00	1	0	1577	2.4	91.9	0.7	3.2	0.6	0.5	0.5	0.1	0.1	94.3	0.7	5.0	0.093	0.515	29.177293	-107.373631

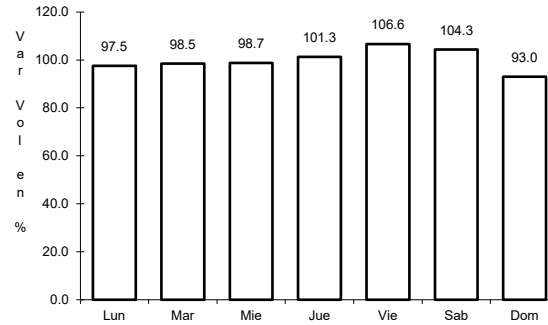
1 CARR: Cd. Juárez - Janos

CLAVE: 08041

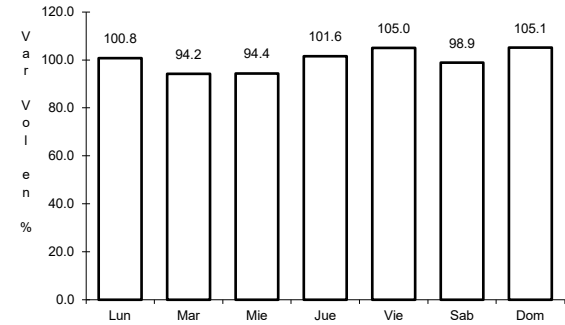
RUTA: MEX-002



Km: 0.00 Tipo: 3 Sent: 1



Km: 0.00 Tipo: 3 Sent: 2

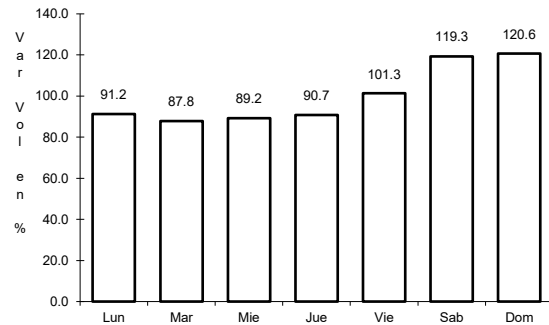


Km: 205.00 Tipo: 1 Sent: 0

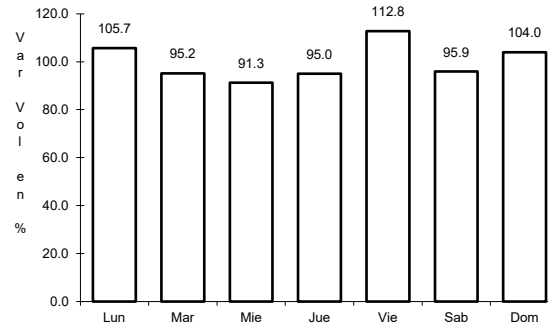
2 CARR: Chihuahua - El Succo

CLAVE: 08419

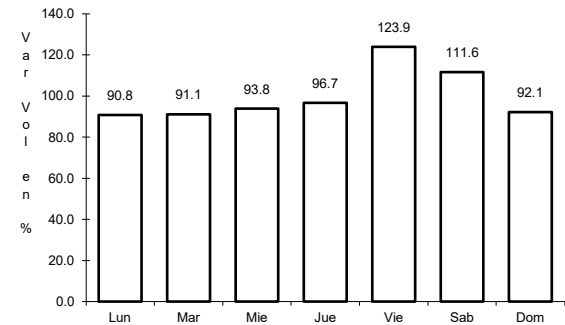
RUTA: MEX-045



Km: 24.00 Tipo: 1 Sent: 0



Km: 155.87 Tipo: 1 Sent: 1

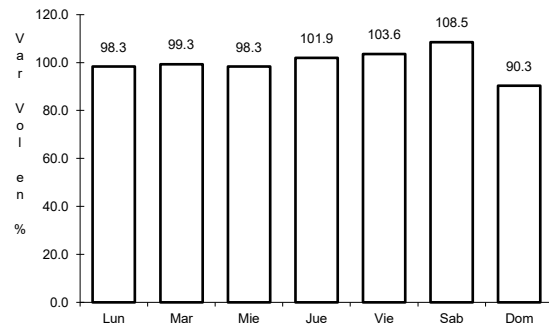


Km: 155.87 Tipo: 1 Sent: 2

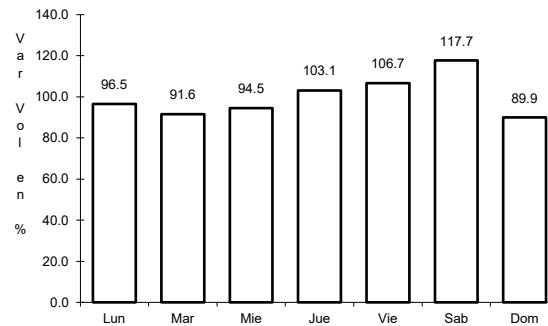
3 CARR: Chihuahua - Ojinaga

CLAVE: 08042

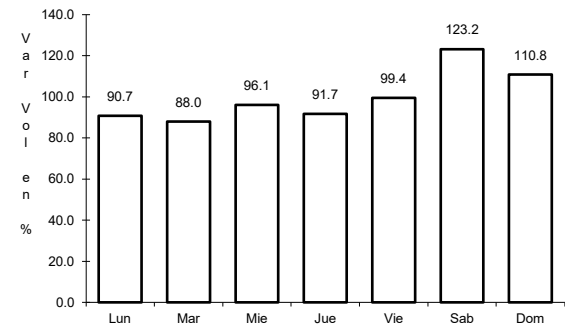
RUTA: MEX-016



Km: 6.50 Tipo: 1 Sent: 1



Km: 6.50 Tipo: 1 Sent: 2

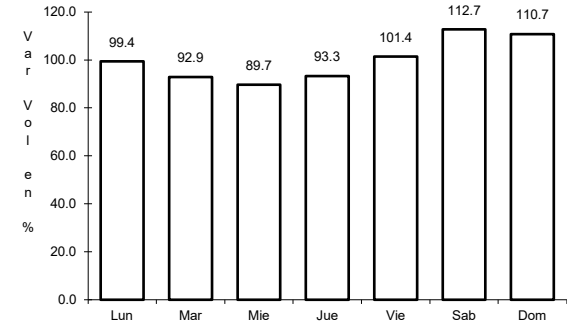
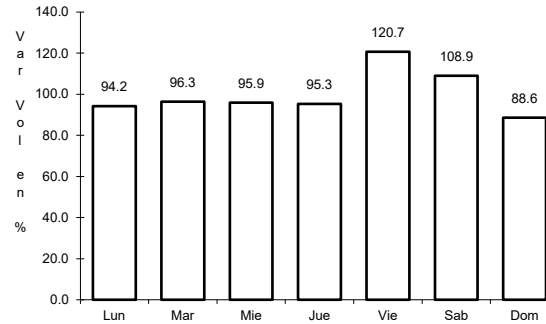
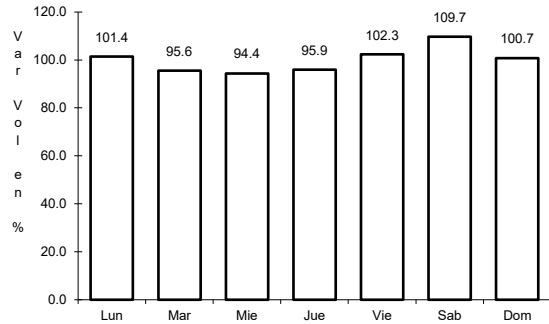


Km: 224.00 Tipo: 1 Sent: 0

4 CARR: Delicias - Chihuahua (Libre)

CLAVE: 08418

RUTA: MEX-045



Km: 150.10

Tipo: 3

Sent: 1

Km: 150.10

Tipo: 3

Sent: 2

Km: 210.00

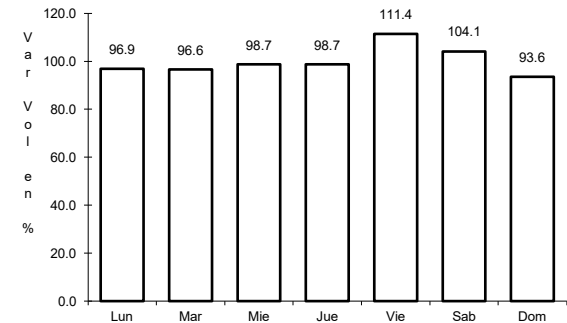
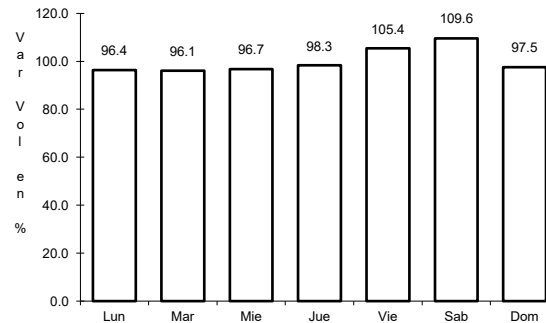
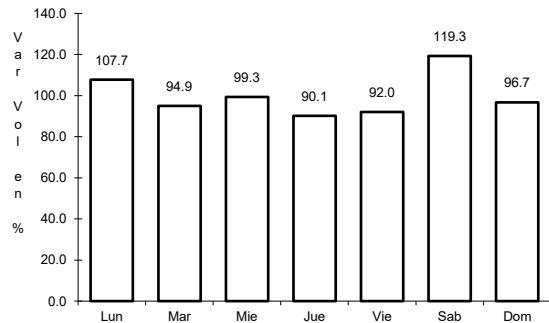
Tipo: 1

Sent: 1

5 CARR: El Sueco - Janos

CLAVE: 08037

RUTA: MEX-010



Km: 0.00

Tipo: 3

Sent: 0

Km: 114.00

Tipo: 1

Sent: 0

Km: 257.00

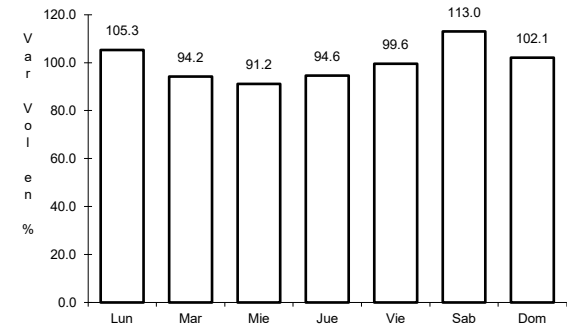
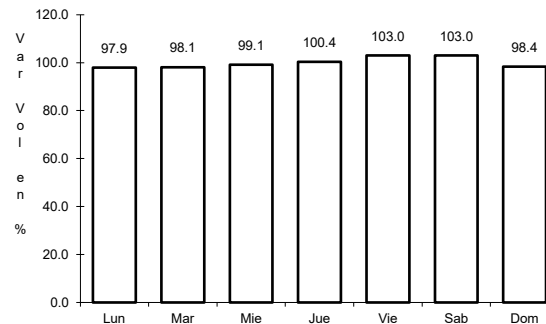
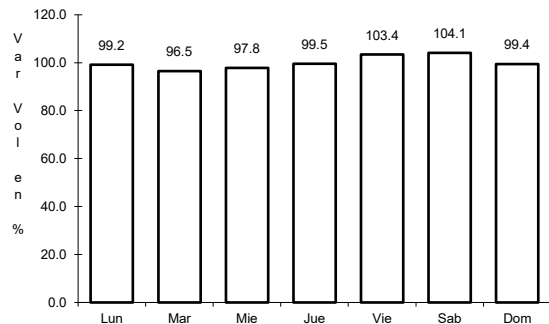
Tipo: 1

Sent: 0

6 CARR: Ent. Ciudad Camargo - Saucillo

CLAVE: 08417

RUTA: MEX-045



Km: 0.00

Tipo: 3

Sent: 0

Km: 20.92

Tipo: 3

Sent: 0

Km: 42.52

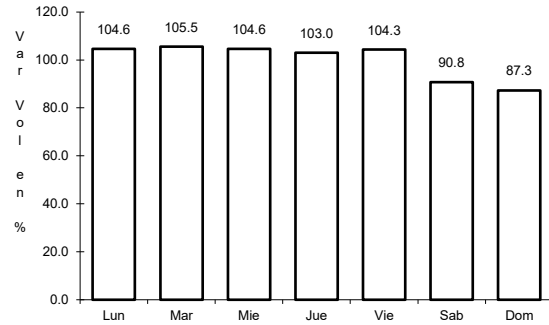
Tipo: 1

Sent: 0

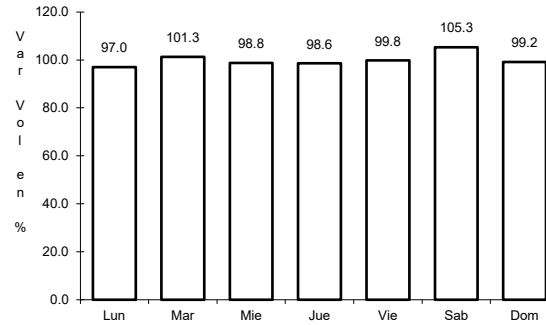
7 CARR: Ent. La Zarca - Hidalgo del Parral

CLAVE: 00488

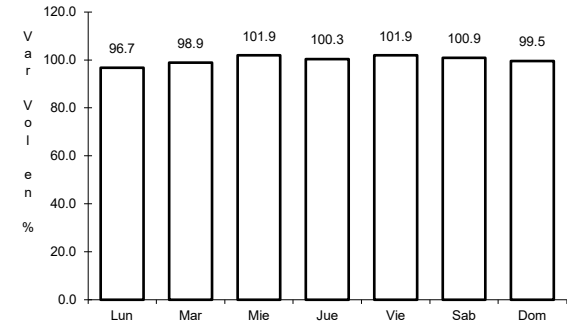
RUTA: MEX-045



Km: 0.00 Tipo: 3 Sent: 0



Km: 92.35 Tipo: 3 Sent: 0

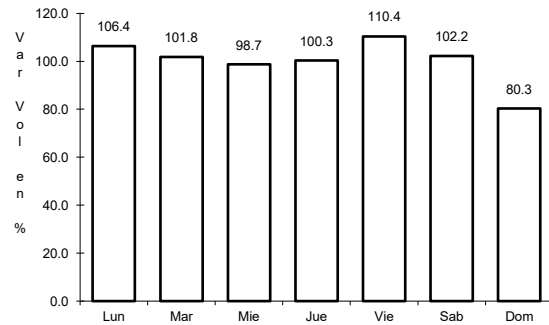


Km: 171.00 Tipo: 1 Sent: 0

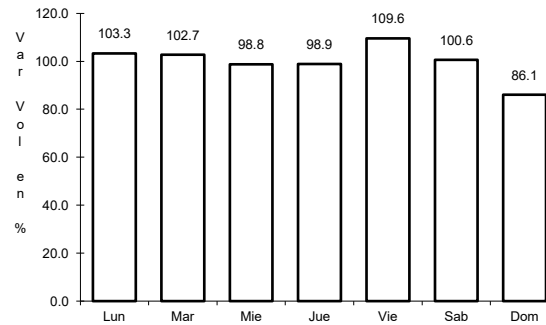
8 CARR: Gómez Palacio - Jiménez

CLAVE: 00006

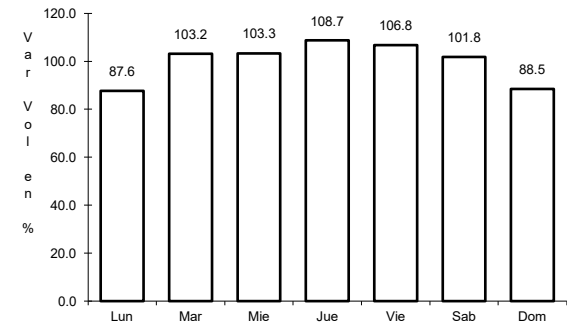
RUTA: MEX-049



Km: 0.00 Tipo: 3 Sent: 1



Km: 0.00 Tipo: 3 Sent: 2

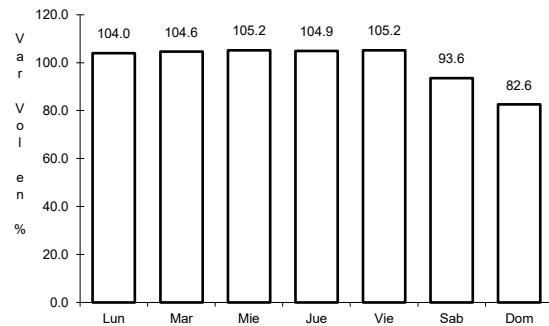


Km: 107.95 Tipo: 1 Sent: 0

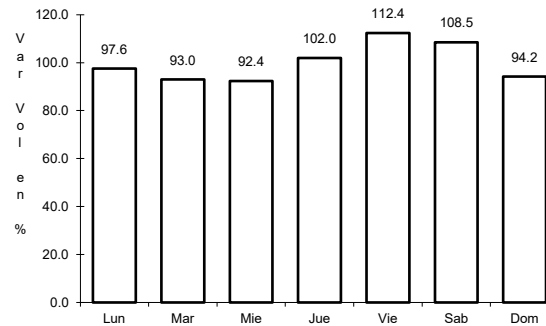
9 CARR: Hidalgo del Parral - Ent. Nuevo Palomas (Vía Corta)

CLAVE: 08811

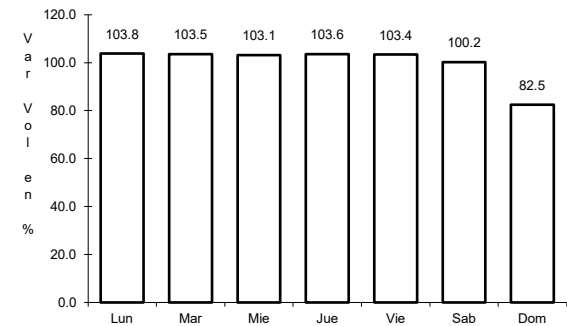
RUTA: MEX-024



Km: 0.00 Tipo: 3 Sent: 0



Km: 66.00 Tipo: 1 Sent: 0

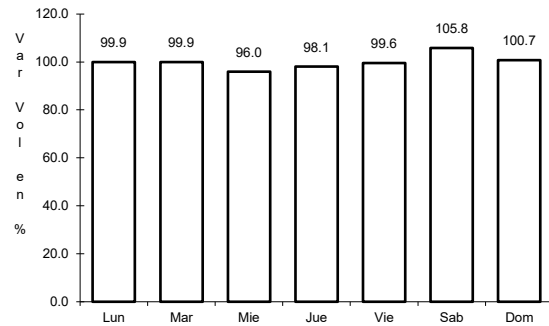


Km: 182.40 Tipo: 1 Sent: 0

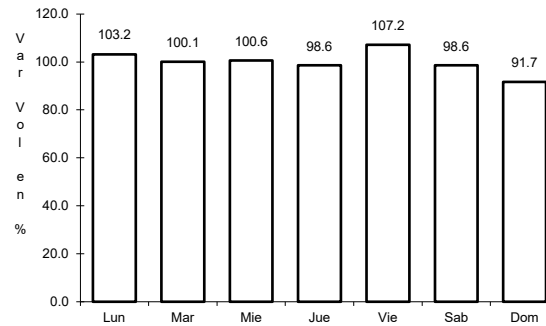
10 CARR: Hidalgo del Parral - Guadalupe y Calvo

CLAVE: 00802

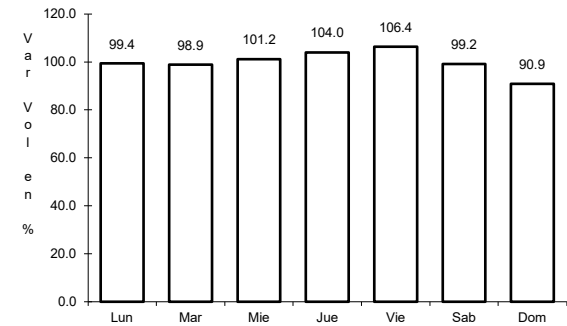
ruta: MEX-024



Km: 0.00 Tipo: 3 Sent: 0



Km: 110.00 Tipo: 1 Sent: 0

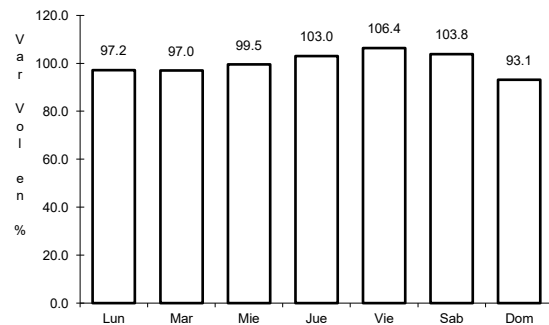


Km: 212.00 Tipo: 1 Sent: 0

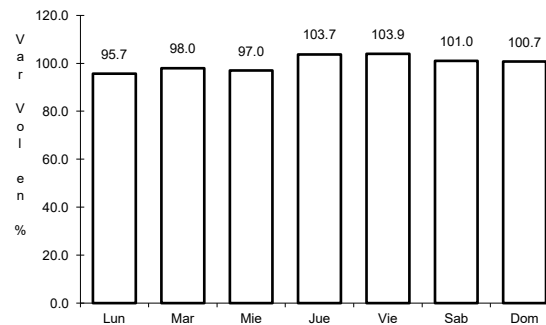
11 CARR: Hidalgo del Parral - Jiménez

CLAVE: 08444

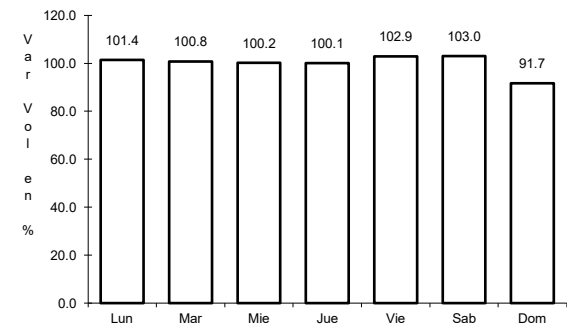
ruta: MEX-045



Km: 0.00 Tipo: 3 Sent: 1



Km: 0.00 Tipo: 3 Sent: 2

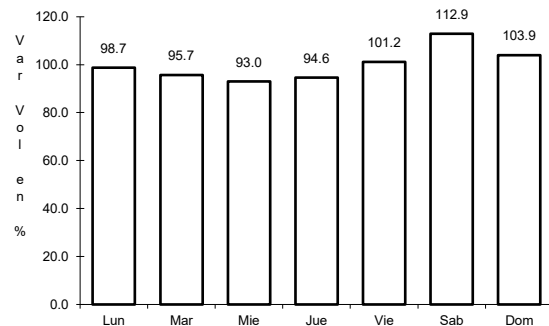


Km: 76.63 Tipo: 1 Sent: 1

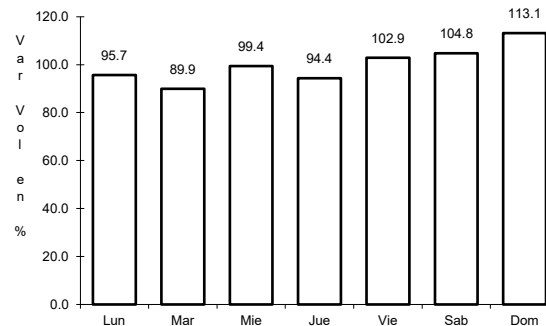
12 CARR: Janos - Agua Prieta

CLAVE: 00220

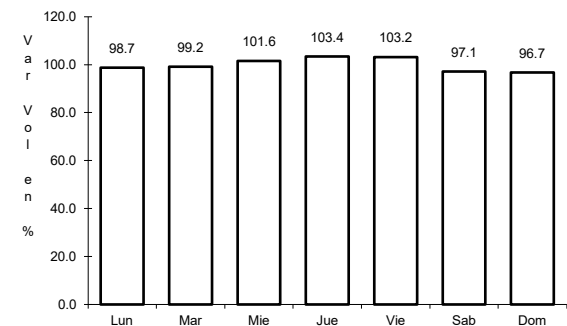
ruta: MEX-002



Km: 0.00 Tipo: 3 Sent: 0



Km: 56.00 Tipo: 3 Sent: 0

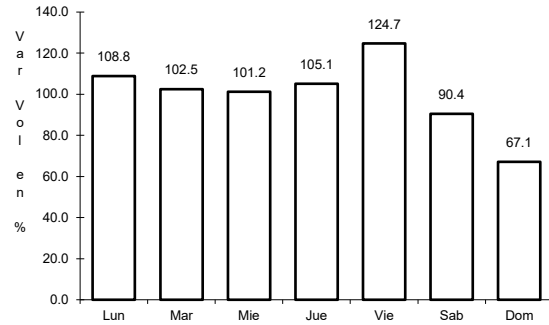


Km: 160.00 Tipo: 1 Sent: 0

13 CARR: Jerónimo - Sta. Teresa

CLAVE: 08043

ruta: MEX-002



Km: 0.00

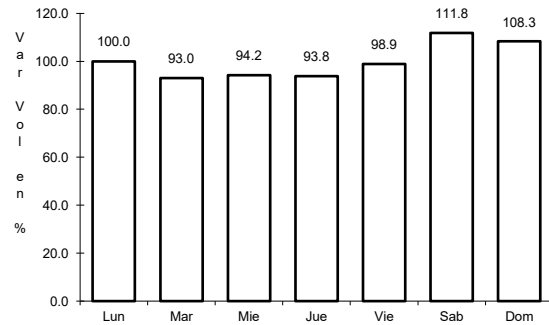
Tipo: 3

Sent: 0

14 CARR: La Junta - Yécora

CLAVE: 00065

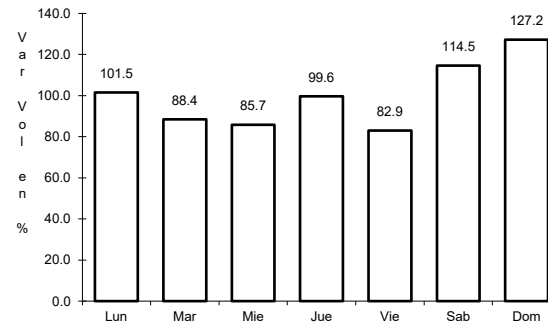
ruta: MEX-016



Km: 0.00

Tipo: 3

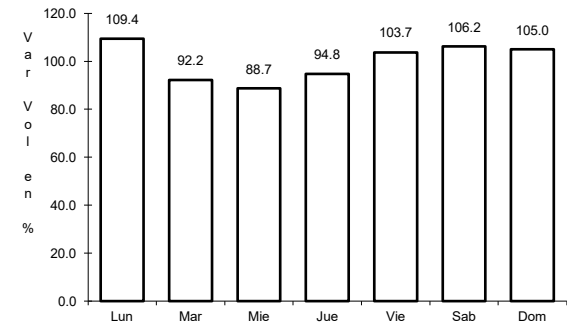
Sent: 0



Km: 70.00

Tipo: 3

Sent: 0



Km: 253.00

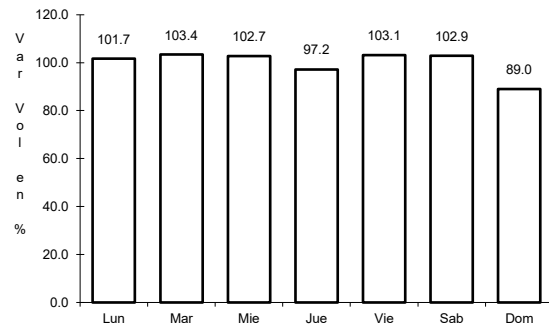
Tipo: 1

Sent: 0

15 CARR: Libramiento de Delicias - Meoqui

CLAVE: 08813

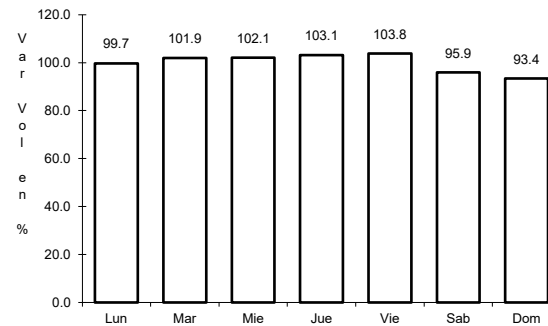
ruta: MEX-045



Km: 136.40

Tipo: 3

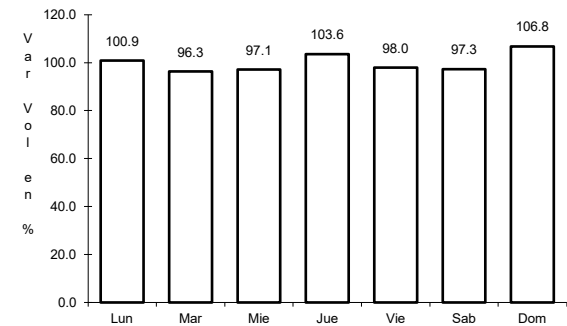
Sent: 1



Km: 136.40

Tipo: 3

Sent: 2



Km: 150.00

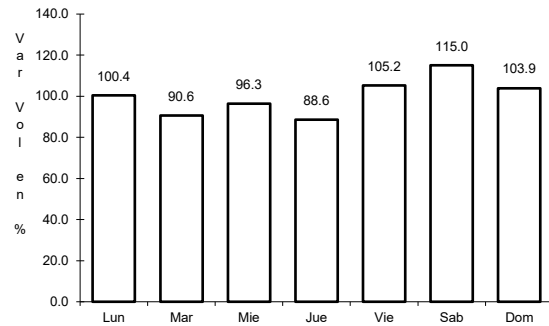
Tipo: 1

Sent: 1

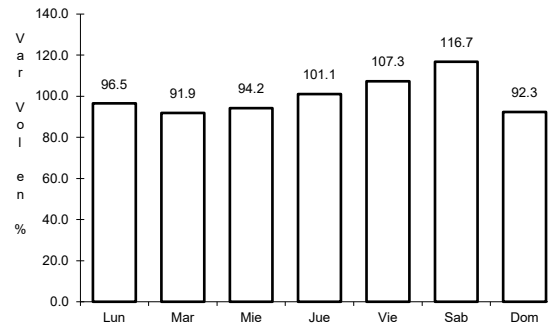
16 CARR: Porvenir - Cd. Juárez

CLAVE: 08169

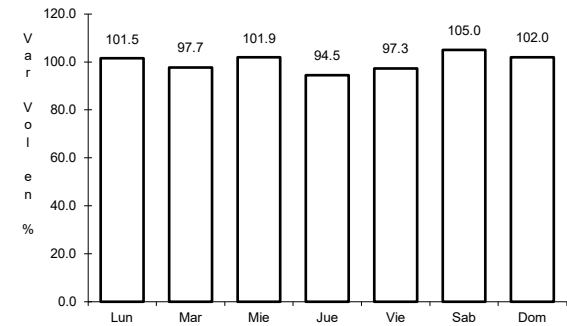
ruta: MEX-002



Km: 1.67 Tipo: 3 Sent: 0



Km: 70.32 Tipo: 1 Sent: 1

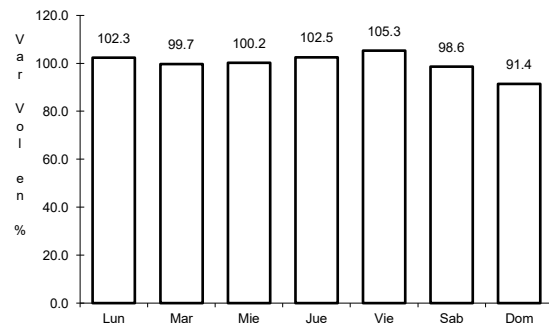


Km: 70.32 Tipo: 1 Sent: 2

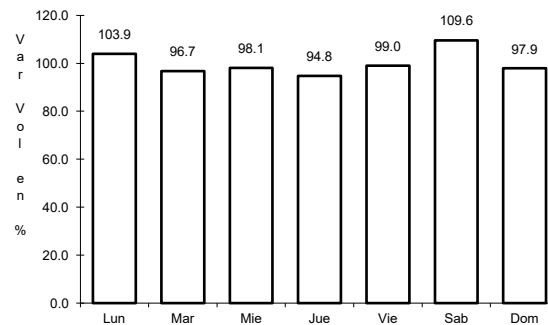
17 CARR: Ramal a Aeropuerto de Chihuahua

CLAVE: 08421

ruta: MEX-016



Km: 0.00 Tipo: 3 Sent: 1

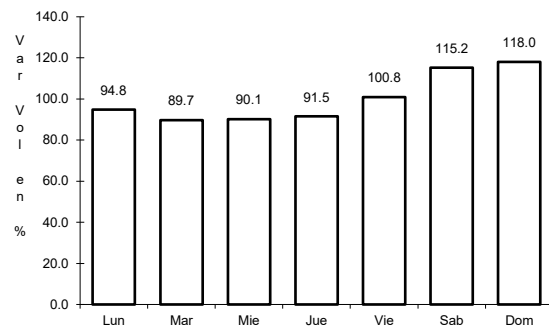


Km: 0.00 Tipo: 3 Sent: 2

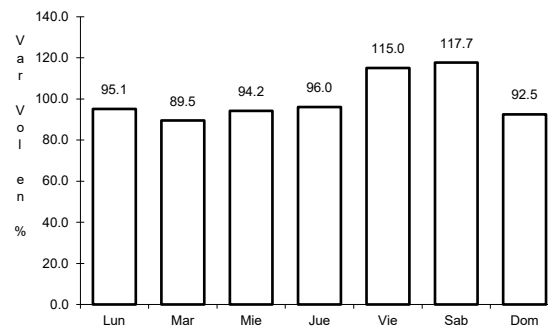
18 CARR: Ramal a Palomas

CLAVE: 08019

ruta: MEX-002



Km: 0.00 Tipo: 3 Sent: 0

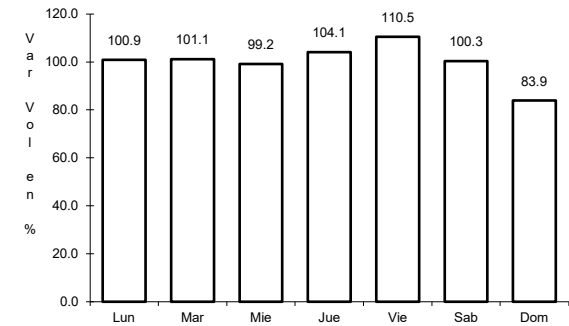
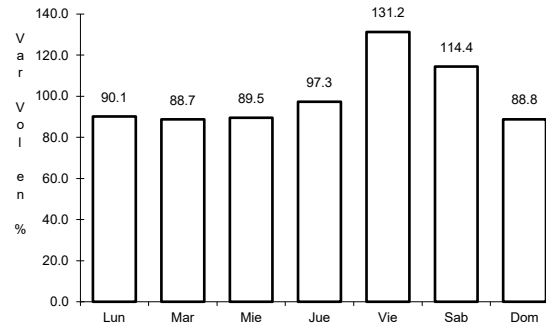
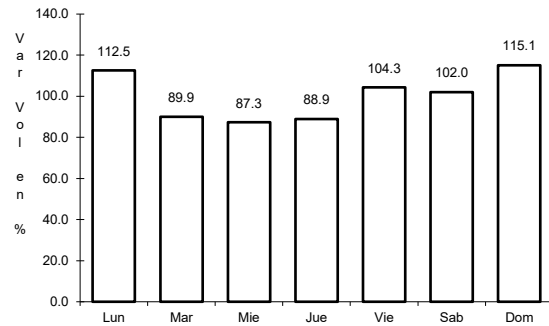


Km: 4.50 Tipo: 3 Sent: 0

19 CARR: Villa Ahumada - Cd. Juárez (Libre)

CLAVE: 08420

RUTA: MEX-045



Km: 83.63

Tipo: 3

Sent: 1

Km: 83.63

Tipo: 3

Sent: 2

Km: 201.35

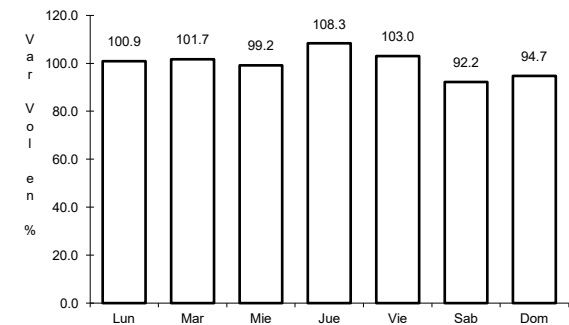
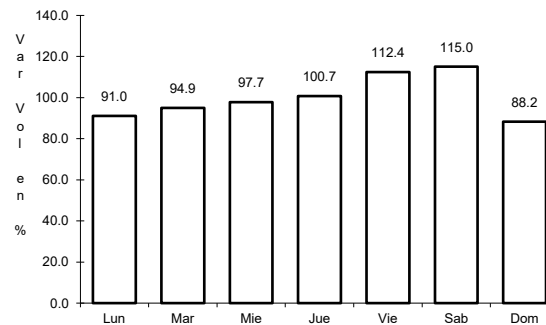
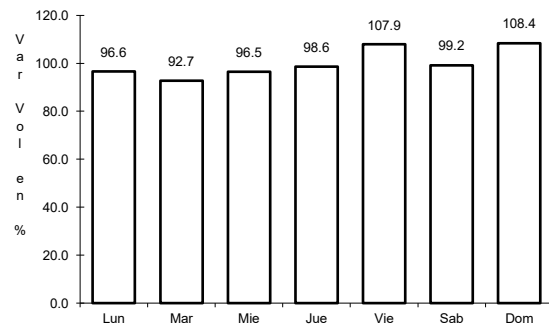
Tipo: 1

Sent: 1

20 CARR: Camargo - Delicias (Cuota)

CLAVE: 08418

RUTA: MEX-045D



Km: 72.00

Tipo: 1

Sent: 1

Km: 72.00

Tipo: 1

Sent: 2

Km: 138.00

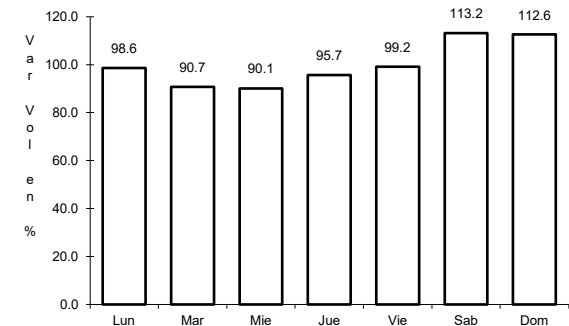
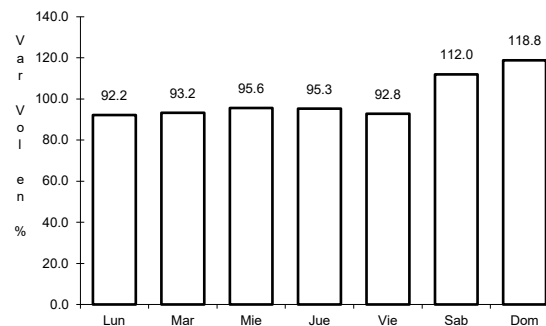
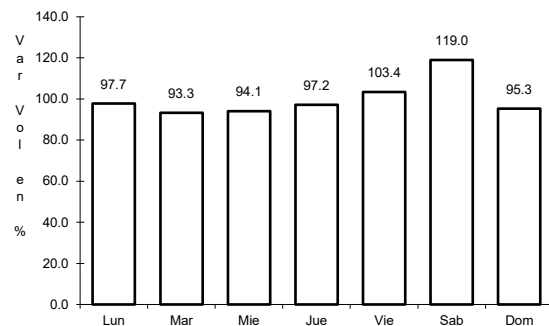
Tipo: 1

Sent: 1

21 CARR: Chihuahua - Sacramento (Cuota)

CLAVE: 08015

RUTA: MEX-045D



Km: 18.12

Tipo: 3

Sent: 1

Km: 18.12

Tipo: 3

Sent: 2

Km: 21.17

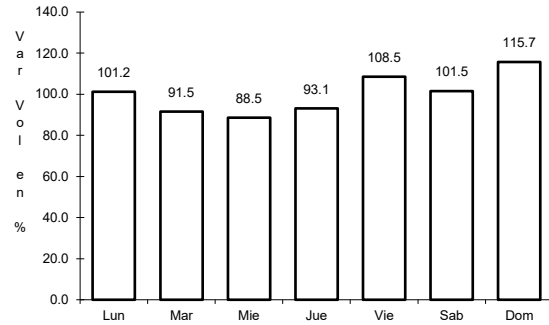
Tipo: 3

Sent: 1

22 CARR: El Sueco - Villa Ahumada (Cuota)

CLAVE: 08420

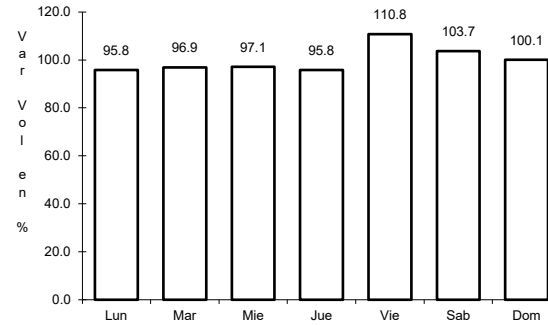
ruta: MEX-045D



Km: 0.00

Tipo: 3

Sent: 1



Km: 0.00

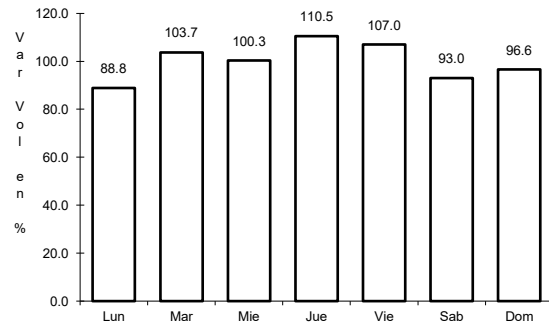
Tipo: 3

Sent: 2

23 CARR: Gómez Palacio - Corralitos (Cuota)

CLAVE: 00016

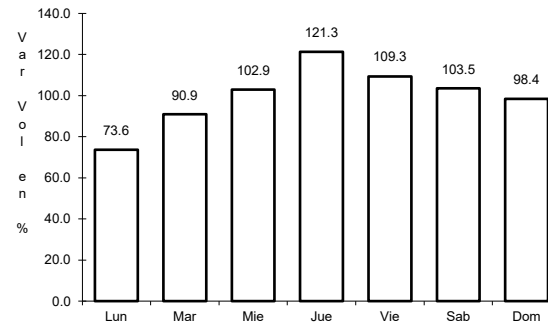
ruta: MEX-049D



Km: 40.10

Tipo: 1

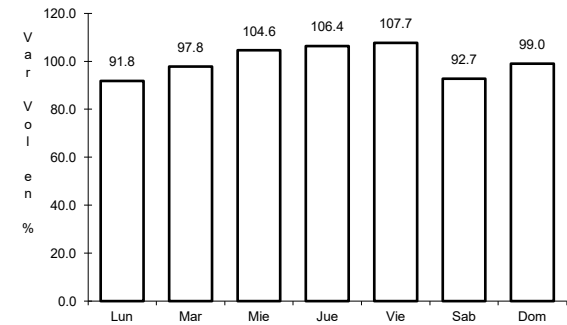
Sent: 1



Km: 40.10

Tipo: 1

Sent: 2



Km: 226.50

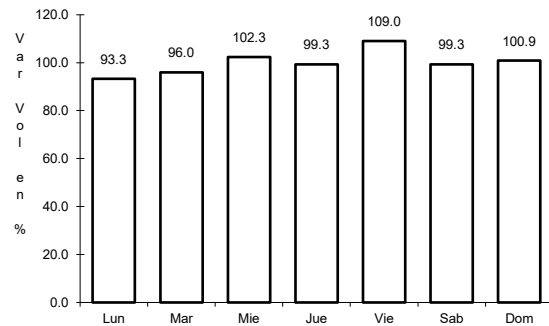
Tipo: 1

Sent: 1

24 CARR: Jiménez - Camargo (Cuota)

CLAVE: 08418

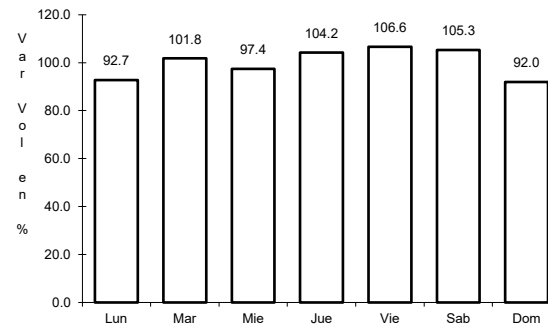
ruta: MEX-045D



Km: 0.00

Tipo: 3

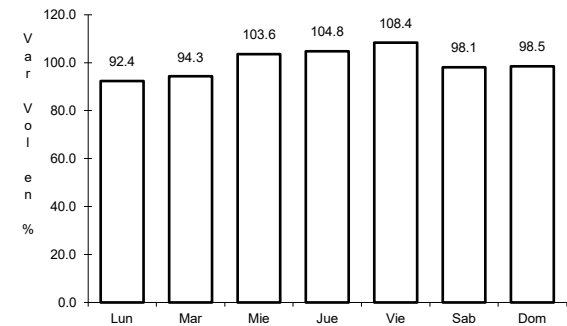
Sent: 1



Km: 0.00

Tipo: 3

Sent: 2



Km: 68.98

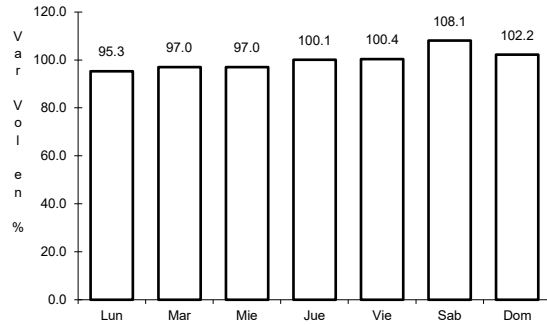
Tipo: 1

Sent: 1

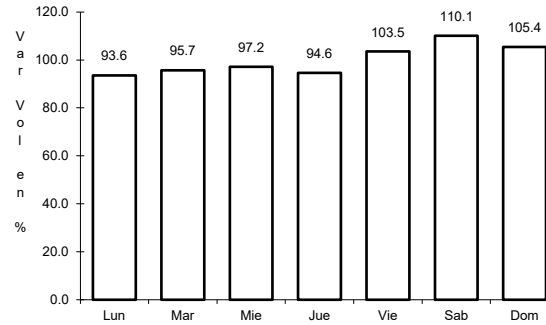
25 CARR: Libramiento Oriente Chihuahua (Cuota)

CLAVE:

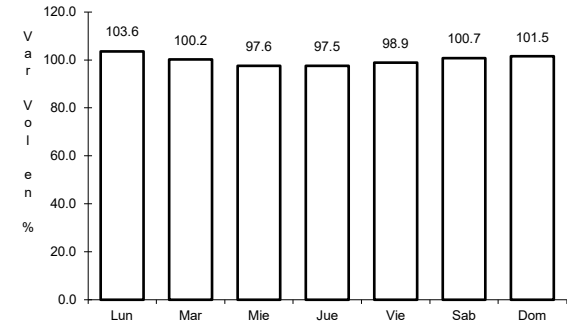
RUTA: MEX-045D



Km: 0.00 Tipo: 3 Sent: 0



Km: 22.00 Tipo: 1 Sent: 0

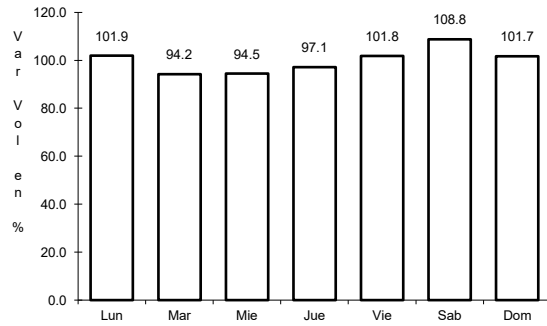


Km: 22.00 Tipo: 3 Sent: 0

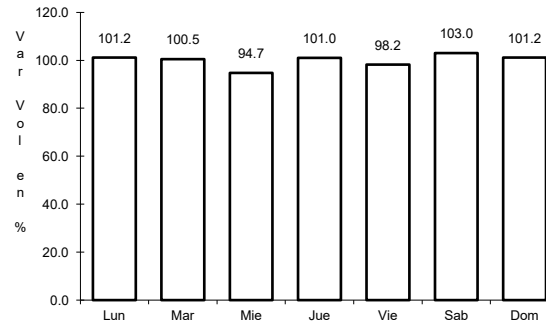
26 CARR: Ahumada - Ricardo Flores Magón

CLAVE: 08804

RUTA: CHIH



Km: 0.00 Tipo: 3 Sent: 0

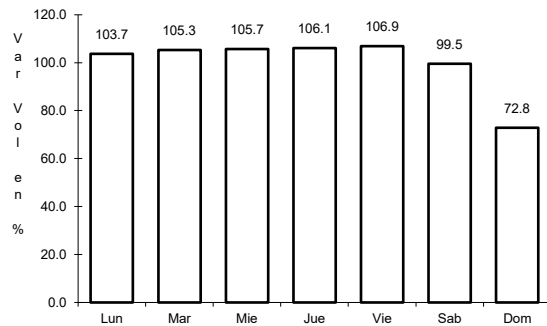


Km: 96.00 Tipo: 1 Sent: 0

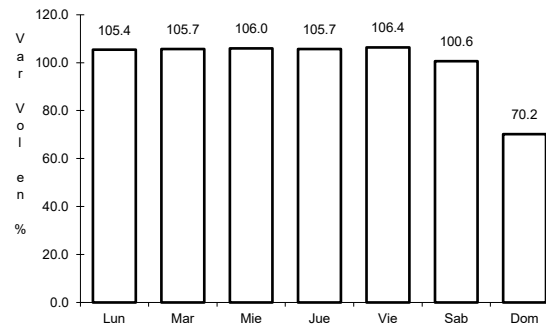
27 CARR: Cuauhtémoc - Buenaventura

CLAVE: 08015

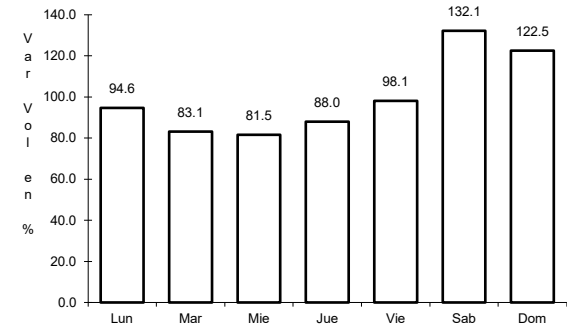
RUTA: CHIH



Km: 0.00 Tipo: 3 Sent: 1



Km: 0.00 Tipo: 3 Sent: 2

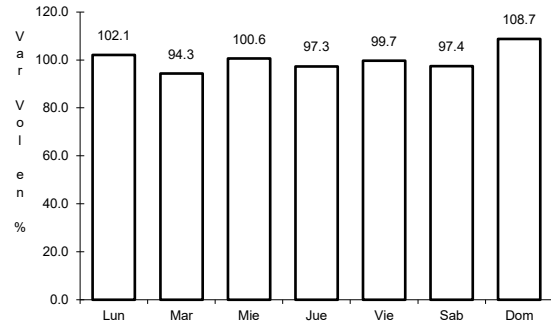


Km: 253.30 Tipo: 1 Sent: 0

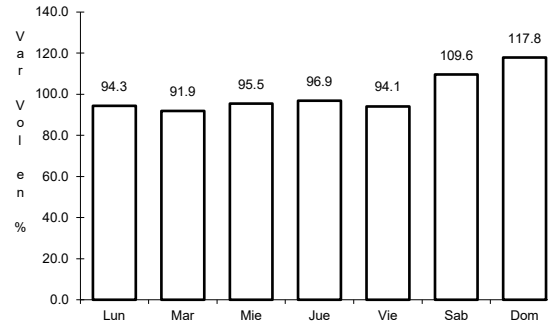
28 CARR: Delicias - Saucillo

CLAVE: 08007

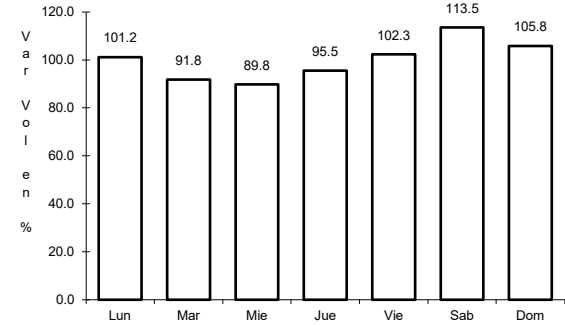
RUTA: CHIH-007



Km: 0.00 Tipo: 3 Sent: 0



Km: 17.00 Tipo: 1 Sent: 0

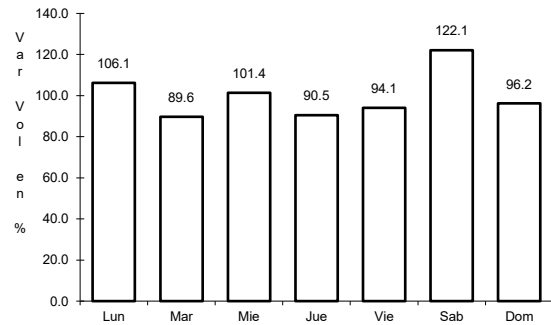


Km: 33.00 Tipo: 1 Sent: 0

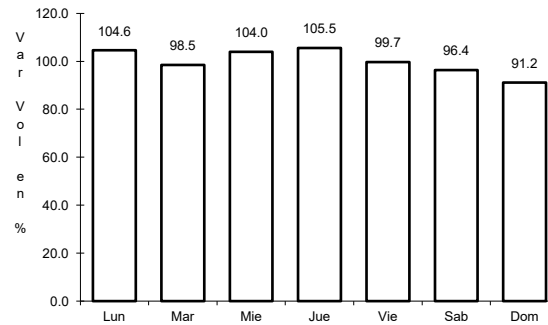
29 CARR: Ent. Peña Blanca - Ent. La Concha

CLAVE: 08493

RUTA: CHIH



Km: 0.00 Tipo: 3 Sent: 0

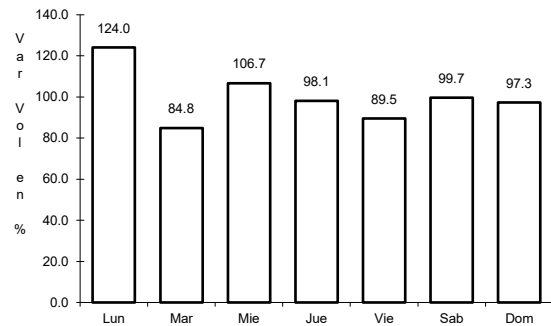


Km: 17.00 Tipo: 1 Sent: 0

30 CARR: Ent. Puerto Justo - Ent. Guachochic

CLAVE: 08044

RUTA: CHIH

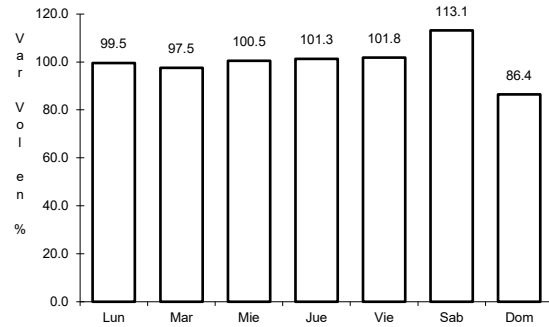


Km: 0.00 Tipo: 3 Sent: 0

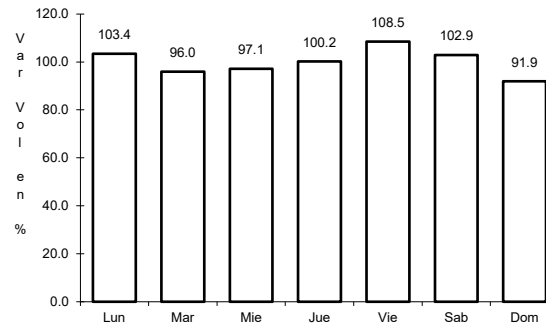
31 CARR: Jiménez - Camargo

CLAVE: 08021

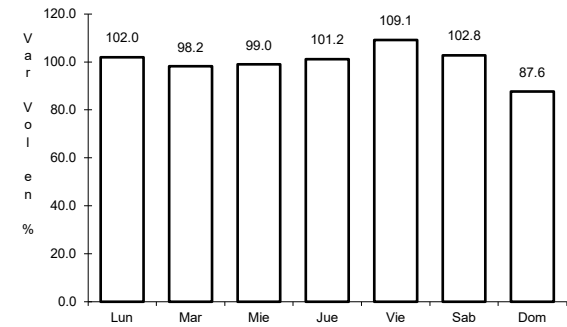
ruta: CHIH-049



Km: 0.00 Tipo: 3 Sent: 0



Km: 65.80 Tipo: 3 Sent: 0

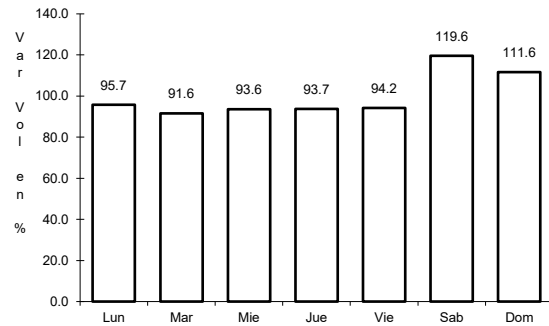


Km: 78.20 Tipo: 1 Sent: 0

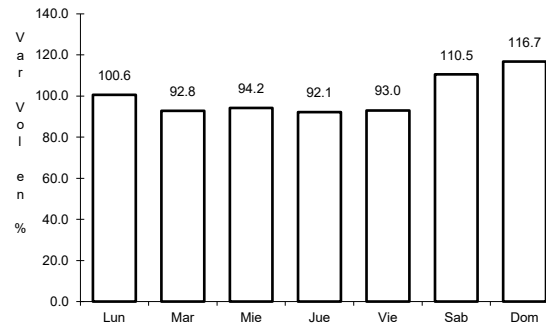
32 CARR: Lázaro Cárdenas - Ent. Colonia San José

CLAVE: 08004

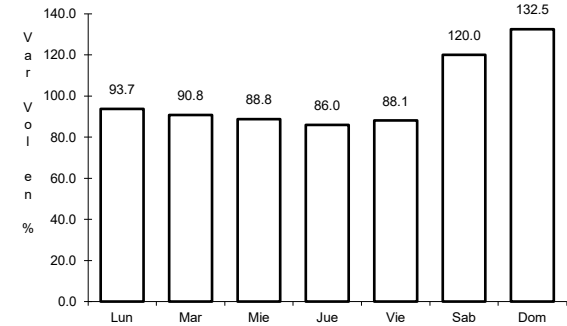
ruta: CHIH-004



Km: 0.00 Tipo: 3 Sent: 1



Km: 0.00 Tipo: 3 Sent: 2

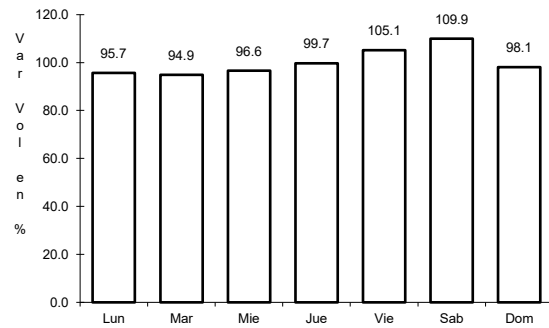


Km: 16.00 Tipo: 1 Sent: 0

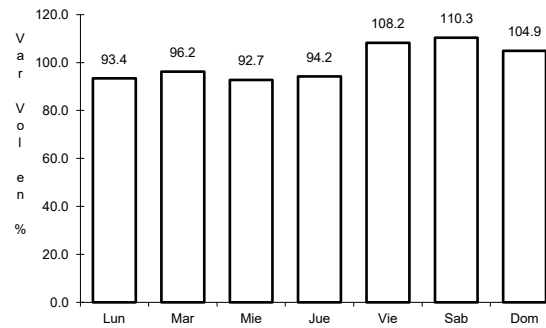
33 CARR: Libramiento de Hidalgo del Parral

CLAVE: 08221

ruta: CHIH



Km: 8.00 Tipo: 3 Sent: 1

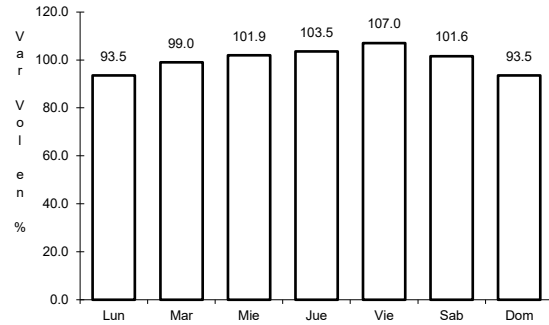


Km: 8.00 Tipo: 3 Sent: 2

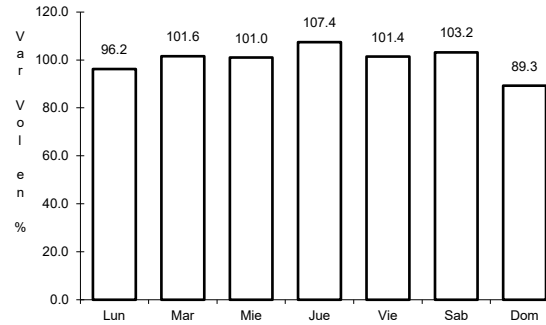
34 CARR: Libramiento de Jiménez

CLAVE: 08047

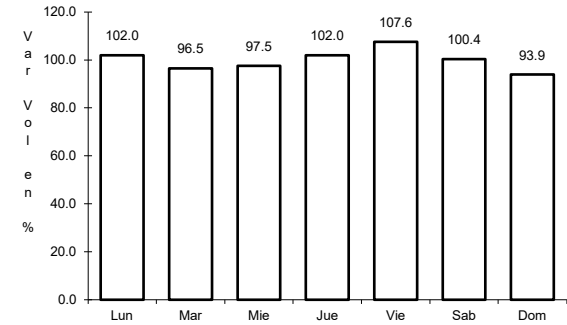
RUTA: CHIH



Km: 0.00 Tipo: 3 Sent: 1



Km: 0.00 Tipo: 3 Sent: 2

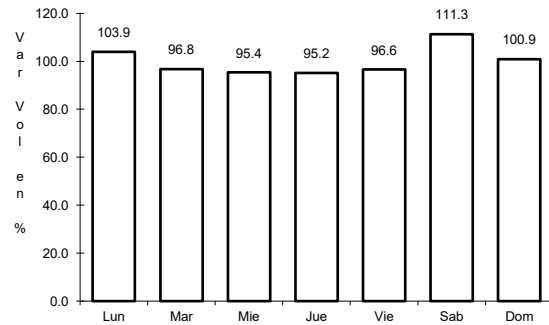


Km: 3.40 Tipo: 1 Sent: 1

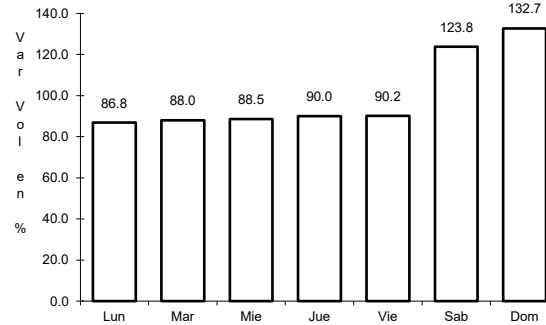
35 CARR: Meoqui - Julimes

CLAVE: 08005

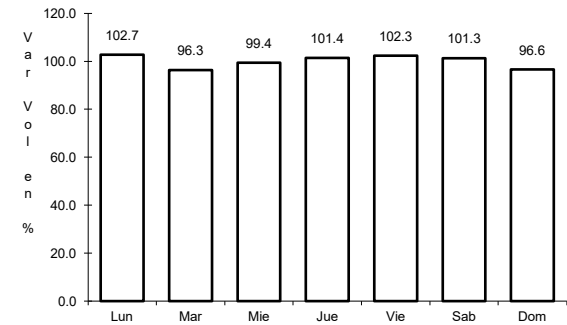
RUTA: CHIH-005



Km: 0.00 Tipo: 3 Sent: 0



Km: 15.40 Tipo: 3 Sent: 0

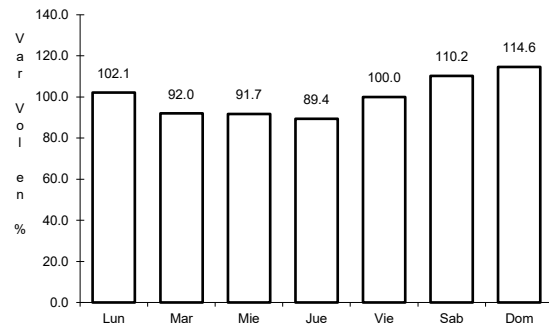


Km: 23.00 Tipo: 1 Sent: 0

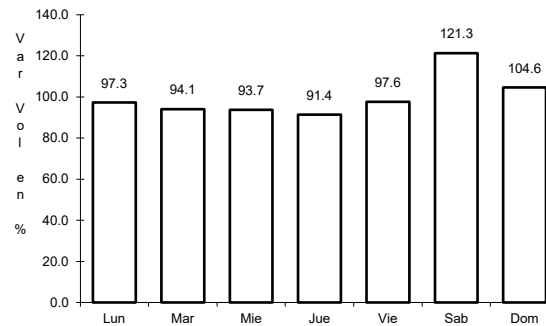
36 CARR: Ramal a San Pedro Creel

CLAVE: 08812

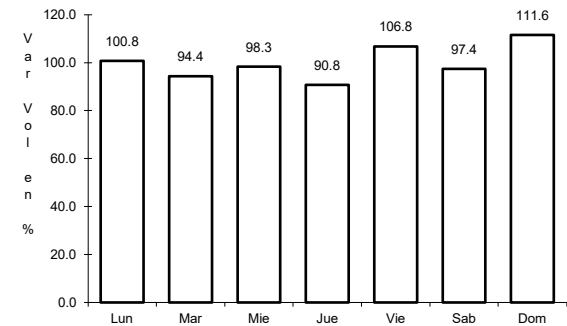
RUTA: CHIH-025



Km: 0.00 Tipo: 3 Sent: 0



Km: 58.00 Tipo: 3 Sent: 0

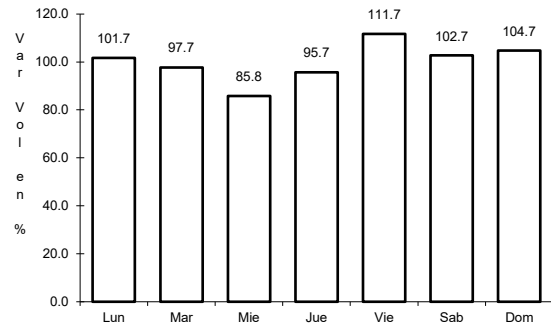


Km: 85.00 Tipo: 1 Sent: 0

37 CARR: Samachique - Batopilas

CLAVE:

RUTA: CHIH



Km: 0.00

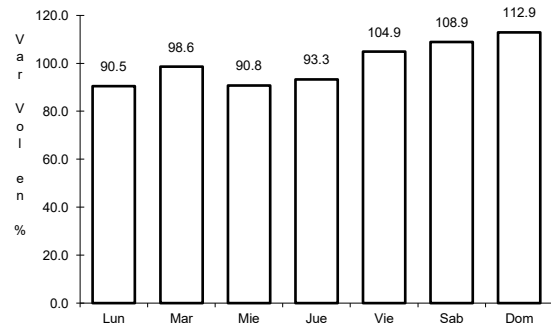
Tipo: 3

Sent: 0

38 CARR: San Juanito - Ent. Basaseachi

CLAVE: 08045

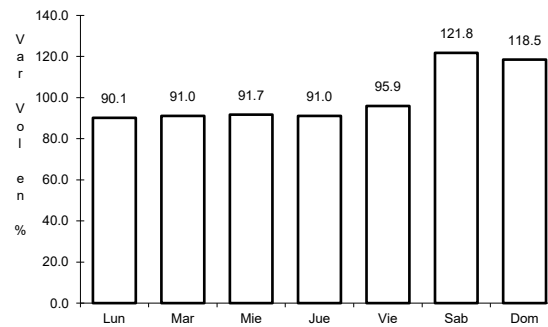
RUTA: CHIH



Km: 0.00

Tipo: 3

Sent: 0



Km: 84.00

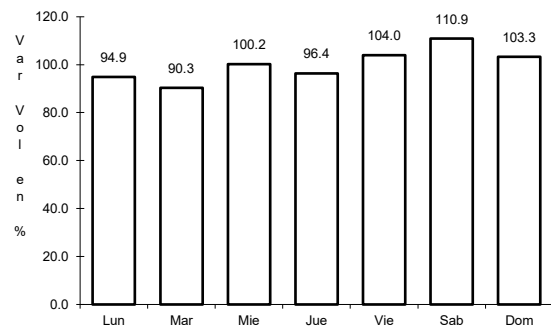
Tipo: 1

Sent: 0

39 CARR: San Pedro Creel - Guachochi

CLAVE:

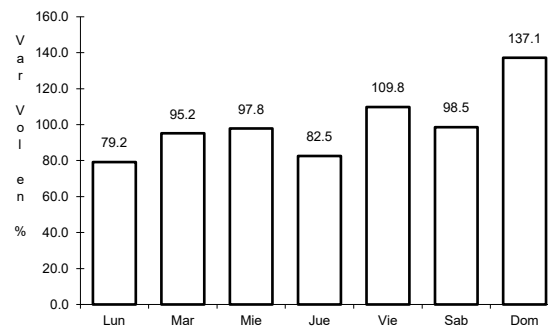
RUTA: CHIH-025



Km: 164.30

Tipo: 1

Sent: 0



Km: 164.30

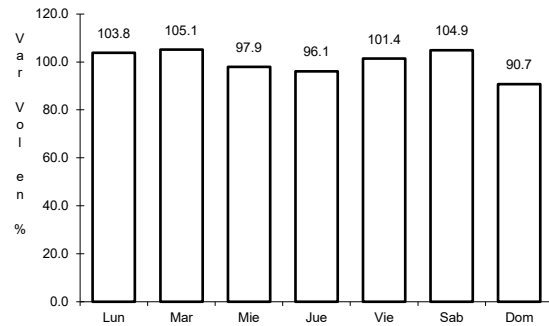
Tipo: 3

Sent: 0

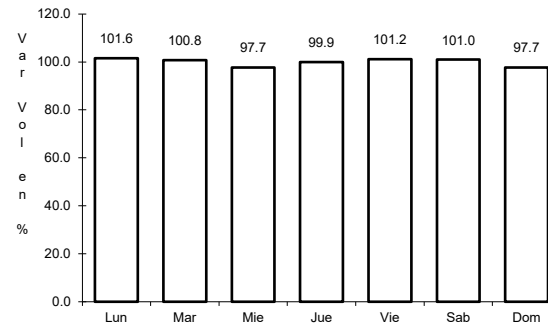
40 CARR: T. C. (Jiménez - Camargo) - Ojinaga

CLAVE: 08009

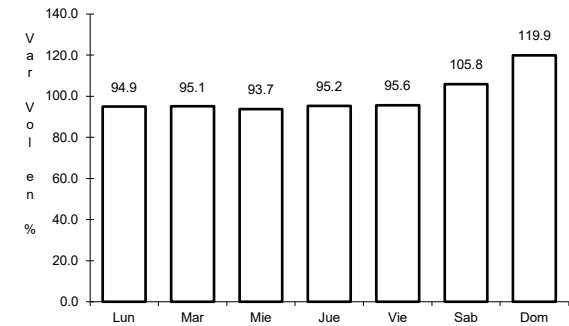
RUTA: CHIH-018



Km: 0.00 Tipo: 3 Sent: 1



Km: 97.00 Tipo: 3 Sent: 0

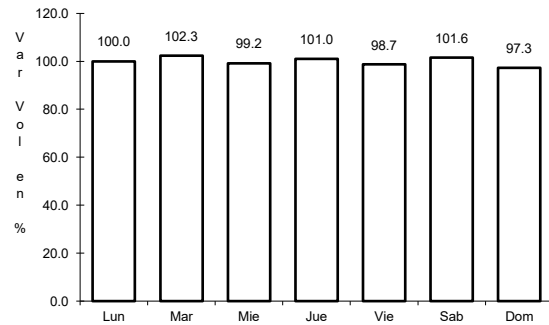


Km: 247.00 Tipo: 1 Sent: 0

41 CARR: T. Julimes - La Boquilla

CLAVE: 08009

RUTA: CHIH-018

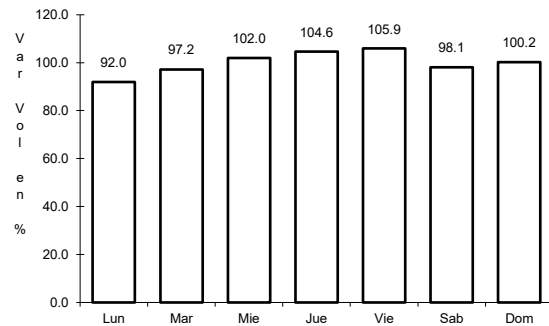


Km: 0.00 Tipo: 3 Sent: 0

42 CARR: Ent. El Álamo - Ent. Ricardo Flores Magón (Cuota)

CLAVE: 08046

RUTA: CHIH-D

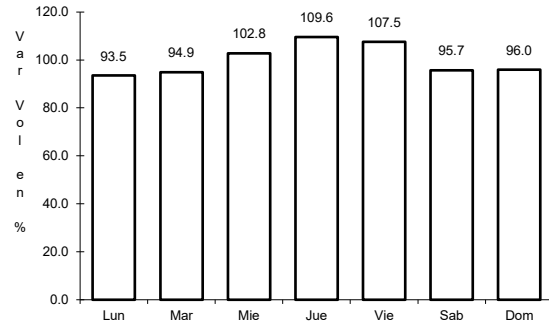


Km: 0.00 Tipo: 3 Sent: 0

43 CARR: Ricardo Flores Magón - Galeana (Cuota)

CLAVE: 08019

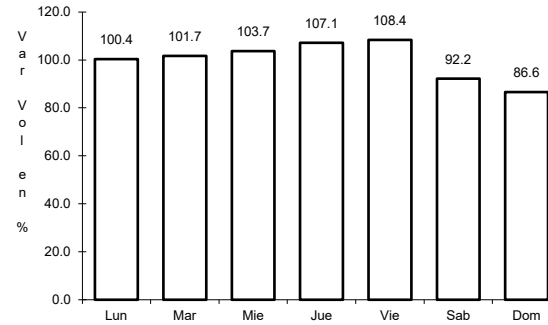
RUTA: CHIH-D



Km: 0.00

Tipo: 3

Sent: 0



Km: 58.00

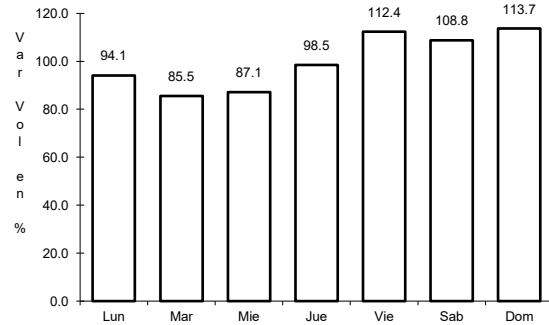
Tipo: 1

Sent: 0

44 CARR: Samalayuca - San Jerónimo (Cuota)

CLAVE: 08019

RUTA: CHIH-D



Km: 0.00

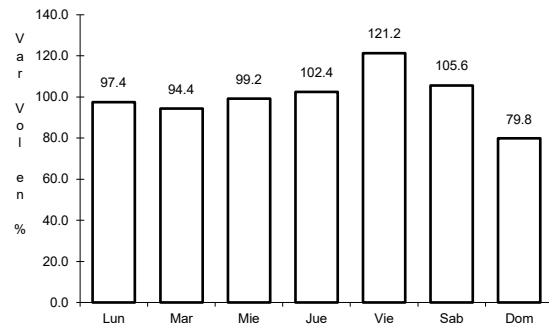
Tipo: 3

Sent: 0

45 CARR: T. C. (Chihuahua - Ojinaga) - La Mula (Cuota)

CLAVE: 08170

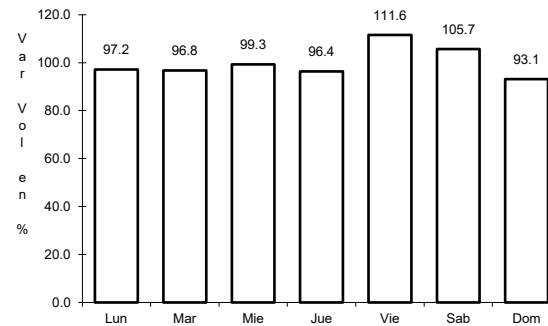
RUTA: CHIH-D



Km: 0.00

Tipo: 3

Sent: 0



Km: 110.00

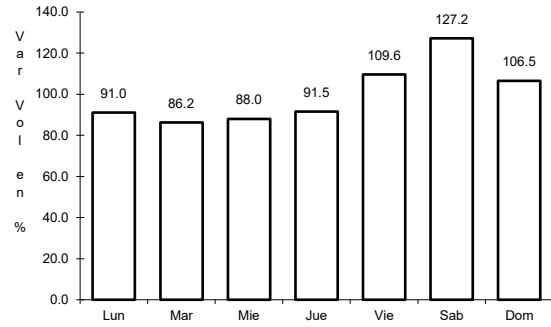
Tipo: 1

Sent: 0

46 CARR: Chihuahua - Madera

CLAVE: 08038

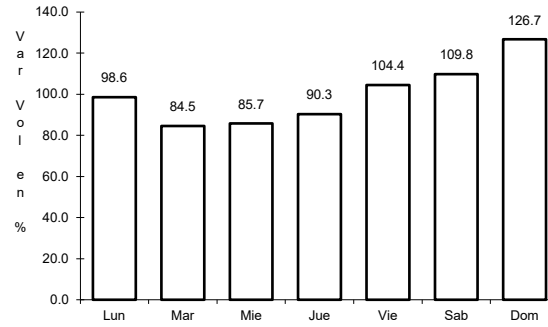
RUTA: CHIH-D-MEX-001-CHIH



Km: 10.50

Tipo: 1

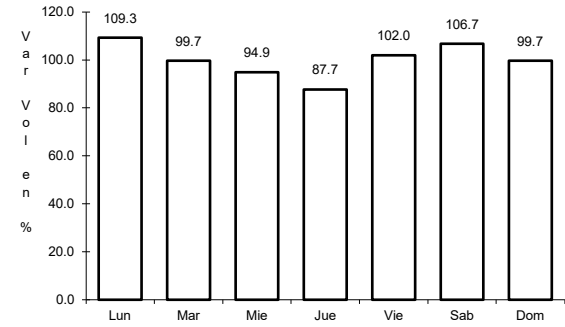
Sent: 1



Km: 10.50

Tipo: 1

Sent: 2



Km: 261.30

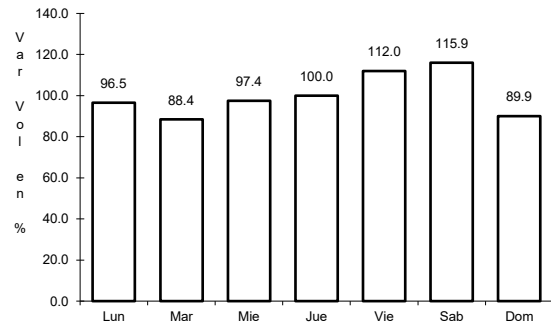
Tipo: 3

Sent: 0

47 CARR: Ent. Agua Caliente - El Terrero

CLAVE: 08170

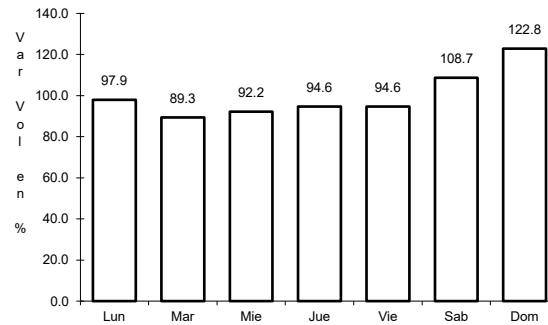
RUTA: CHIH-MEX



Km: 0.00

Tipo: 3

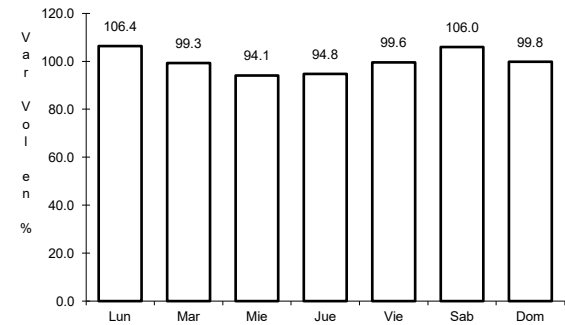
Sent: 0



Km: 22.00

Tipo: 1

Sent: 0



Km: 120.00

Tipo: 1

Sent: 0

