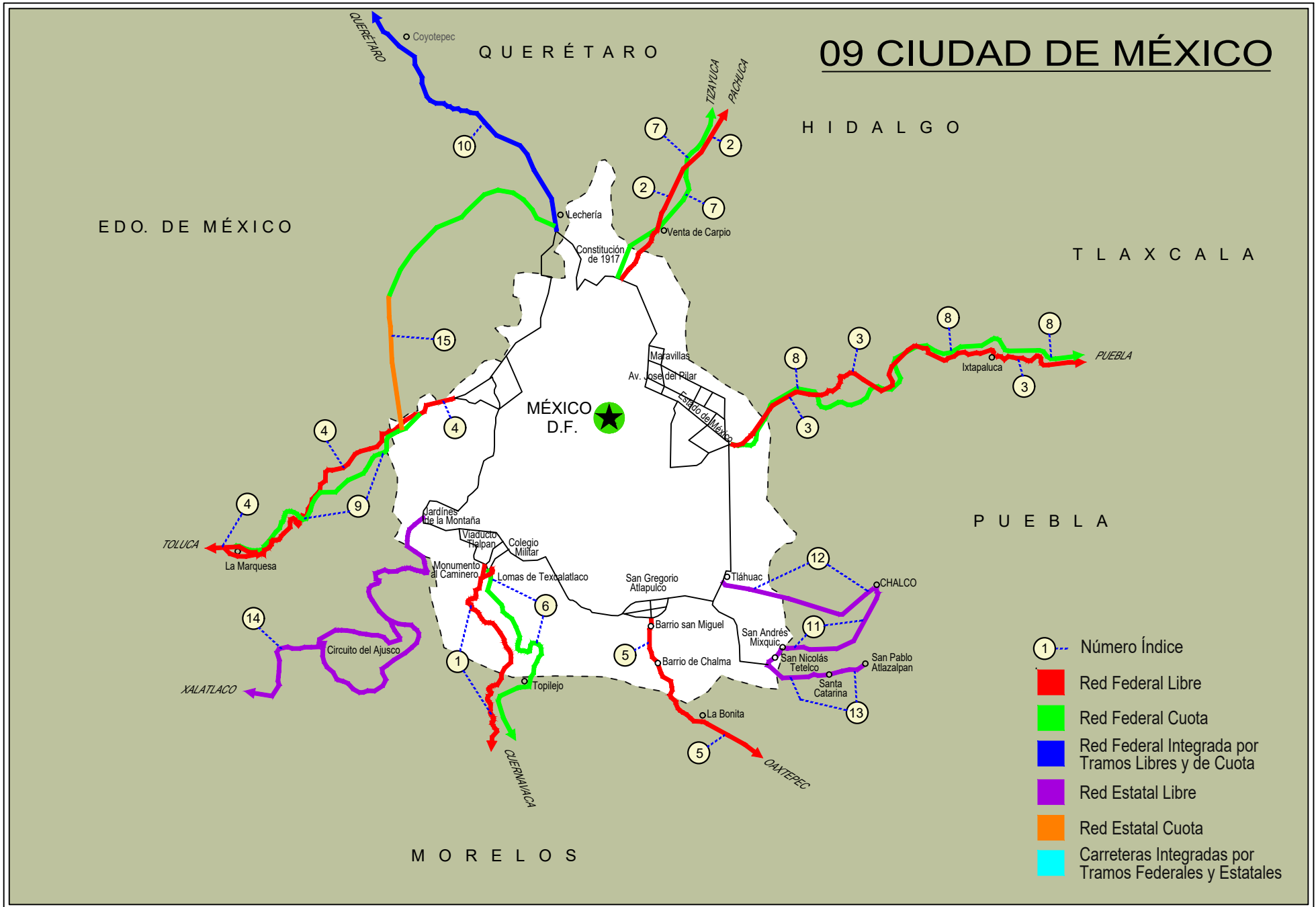


CIUDAD DE MEXICO

NO. INDICE CARRETERA		RUTA
	---RED FEDERAL LIBRE---	
1	México - Cuernavaca (Libre)	MEX-095
2	México - Pachuca (Libre)	MEX-085
3	México - Puebla (Libre)	MEX-150
4	México - Toluca	MEX-015
5	San Gregorio - Oaxtepec	MEX-113
	---RED FEDERAL DE CUOTA---	
6	México - Cuernavaca (Cuota)	MEX-095D
7	México - Pachuca (Cuota)	MEX-085D
8	México - Puebla (Cuota)	MEX-150D
9	México - Toluca (Cuota)	MEX-015D
	---RED FEDERAL INTEGRADA POR TRAMOS LIBRES Y DE CUOTA---	
10	México - Querétaro (Cuota)	MEX-057-MEX-057D
	---RED ESTATAL LIBRE---	
11	Chalco - Mixquic	EM-CDMX
12	Chalco - Tláhuac	EM-CDMX
13	T. C. (México - Mixquic) - San Pablo Atlazalpan	EM-106-CDMX
14	Xalatlaco - El Ajusco	EM-CDMX
	---RED ESTATAL DE CUOTA---	
15	La Venta - Chamapa (Cuota)	EM-D

09 CIUDAD DE MÉXICO



CIUDAD DE MEXICO

1 CARR: México - Cuernavaca (Libre)

CLAVE: 00040

RUTA: MEX-095

AÑO: 2023

LUGAR	ESTACION				CLASIFICACION VEHICULAR EN PORCIENTO										COORDENADAS					
	KM	TE	SC	TDPA	M	A	B	C2	C3	T3S2	T3S3	T3S2R4	OTROS	A	B	C	K'	D	LATITUD	LONGITUD
México	0.00																			
T. Der. San Miguel Xicalco	25.50	1	0	24811	4.2	84.7	0.2	7.7	1.3	0.8	0.7	0.2	0.2	88.9	0.2	10.9	0.075	0.506	19.235965	-99.158176
T. Der. San Miguel Xicalco	25.50	3	0	26941	5.7	85.8	0.2	6.0	1.0	0.5	0.7	0.0	0.1	91.5	0.2	8.3	0.068	0.502	19.233347	-99.156298
T. Izq. San Miguel Topilejo	28.78	1	1	11389	5.2	85.7	0.5	6.5	0.9	0.4	0.7	0.0	0.1	90.9	0.5	8.6	0.072	0.515	19.213849	-99.151667
T. Izq. San Miguel Topilejo	28.78	1	2	12069	6.5	85.1	0.3	6.3	1.0	0.3	0.5	0.0	0.0	91.6	0.3	8.1	0.092	0.515	19.213822	-99.151663
T. Izq. San Miguel Topilejo	28.78	3	0	9114	4.5	86.7	0.4	7.0	0.9	0.4	0.1	0.0	0.0	91.2	0.4	8.4	0.090	0.504	19.192609	-99.165791
Parres El Guarda	39.50	1	0	8227	5.9	85.0	0.3	7.3	1.0	0.4	0.1	0.0	0.0	90.9	0.3	8.8	0.083	0.507	19.139633	-99.170126
Parres El Guarda	39.50	3	0	7378	5.7	86.1	0.3	6.8	0.8	0.2	0.1	0.0	0.0	91.8	0.3	7.9	0.088	0.516	19.129300	-99.180487
Lim. Edos. Term. CDMX Ppia. Mor.	45.44																			
T. Der. Zempoala	51.40	1	0	9304	4.3	88.6	0.3	5.7	0.6	0.3	0.2	0.0	0.0	92.9	0.3	6.8	0.087	0.502	19.056891	-99.242667
T. Der. Zempoala	51.40	3	0	6664	3.9	92.2	0.2	2.9	0.6	0.1	0.1	0.0	0.0	96.1	0.2	3.7	0.092	0.502	19.044668	-99.235870
T. Izq. Coajomulco	57.12	3	0	5168	3.6	88.4	0.3	6.1	0.7	0.4	0.5	0.0	0.0	92.0	0.3	7.7	0.092	0.507	19.027136	-99.207146
T. Der. Huitzilac	64.20	1	0	7659	5.5	90.4	0.2	3.4	0.1	0.1	0.3	0.0	0.0	95.9	0.2	3.9	0.090	0.505	19.002780	-99.257430
T. Der. Huitzilac	64.20	3	0	15072	4.5	87.0	0.5	5.6	0.4	0.6	1.2	0.0	0.2	91.5	0.5	8.0	0.075	0.513	18.995677	-99.260728
T. Izq. Tepoztlán	71.36	1	0	27719	3.9	89.9	0.3	4.8	0.2	0.4	0.4	0.0	0.1	93.8	0.3	5.9	0.078	0.514	18.970898	-99.249755
T. Izq. Tepoztlán	71.36	3	1	14963	5.4	89.2	0.5	4.1	0.1	0.2	0.1	0.1	0.3	94.6	0.5	4.9	0.093	0.507	18.959679	-99.246060
T. Izq. Tepoztlán	71.36	3	2	15372	5.4	88.9	0.5	4.1	0.2	0.2	0.2	0.2	0.3	94.3	0.5	5.2	0.083	0.507	18.959705	-99.246018
Cuernavaca	75.42																			

2 CARR: México - Pachuca (Libre)

CLAVE: 00431

RUTA: MEX-085

AÑO: 2023

LUGAR	ESTACION				CLASIFICACION VEHICULAR EN PORCIENTO										COORDENADAS					
	KM	TE	SC	TDPA	M	A	B	C2	C3	T3S2	T3S3	T3S2R4	OTROS	A	B	C	K'	D	LATITUD	LONGITUD
México	0.00																			
Lim. Edos. Term. CDMX Ppia. Méx.	9.89																			
T. Der. Pirámides	26.93	1	1	14762	5.1	85.6	0.5	4.3	0.4	2.0	1.4	0.4	0.3	90.7	0.5	8.8	0.074	0.510	19.616796	-99.011600
T. Der. Pirámides	26.93	1	2	15365	4.9	85.3	0.5	4.6	0.4	2.1	1.5	0.4	0.3	90.2	0.5	9.3	0.063	0.510	19.616796	-99.011600
Venta de Carpio	27.00	3	1	32114	4.1	87.8	0.6	4.4	0.8	1.1	0.9	0.1	0.2	91.9	0.6	7.5	0.059	0.509	19.625809	-99.002976
Venta de Carpio	27.00	3	2	30922	4.0	87.6	0.5	4.6	0.8	1.3	0.9	0.1	0.2	91.6	0.5	7.9	0.054	0.509	19.625494	-99.003299
T. Der. Aut. México - Pachuca (Cuota)	37.52	1	1	31335	5.1	89.0	0.3	3.4	0.9	0.7	0.4	0.1	0.1	94.1	0.3	5.6	0.068	0.503	19.704508	-98.978262
T. Der. Aut. México - Pachuca (Cuota)	37.52	1	2	30960	5.3	89.3	0.3	3.0	0.8	0.7	0.4	0.1	0.1	94.6	0.3	5.1	0.069	0.503	19.703736	-98.978738
Acceso al AIFA por San Jerónimo	42.00	1	1	18647	7.0	86.2	1.1	4.4	0.6	0.5	0.1	0.1	0.0	93.2	1.1	5.7	0.075	0.511	19.739732	-98.972050
Acceso al AIFA por San Jerónimo	42.00	1	2	19518	6.9	86.4	1.1	4.2	0.7	0.5	0.1	0.1	0.0	93.3	1.1	5.6	0.078	0.511	19.739730	-98.972130
Acceso al AIFA por San Jerónimo	42.00	3	1	18577	5.8	87.8	0.5	4.2	0.9	0.4	0.1	0.3	0.0	93.6	0.5	5.9	0.081	0.526	19.749263	-98.972564
Acceso al AIFA por San Jerónimo	42.00	3	2	20592	5.4	88.3	0.5	4.3	0.8	0.4	0.1	0.2	0.0	93.7	0.5	5.8	0.078	0.526	19.750974	-98.972914

CIUDAD DE MEXICO

2 CARR: México - Pachuca (Libre)

CLAVE: 00431

RUTA: MEX-085

AÑO: 2023

LUGAR	ESTACION				CLASIFICACION VEHICULAR EN PORCIENTO										COORDENADAS					
	KM	TE	SC	TDPA	M	A	B	C2	C3	T3S2	T3S3	T3S2R4	OTROS	A	B	C	K'	D	LATITUD	LONGITUD
T. C. Vía Perimentral AIFA	42.70	3	1	20348	7.2	83.0	0.9	7.4	0.7	0.5	0.1	0.2	0.0	90.2	0.9	8.9	0.077	0.510	19.756362	-98.973381
T. C. Vía Perimentral AIFA	42.70	3	2	21166	6.9	83.1	1.0	7.6	0.6	0.5	0.1	0.2	0.0	90.0	1.0	9.0	0.090	0.510	19.756353	-98.973471
T. Izq. Zumpango	44.68	1	1	19113	6.3	82.6	2.0	6.6	1.0	0.7	0.3	0.2	0.3	88.9	2.0	9.1	0.078	0.501	19.760446	-98.973573
T. Izq. Zumpango	44.68	1	2	19189	6.4	82.9	1.8	6.8	0.7	0.7	0.3	0.2	0.2	89.3	1.8	8.9	0.088	0.501	19.759555	-98.973703
T. Izq. Zumpango	44.68	3	1	11721	8.9	76.4	2.1	6.3	3.0	1.4	0.8	0.7	0.4	85.3	2.1	12.6	0.078	0.510	19.773062	-98.973087
T. Izq. Zumpango	44.68	3	2	12193	9.1	76.2	2.0	6.2	2.9	1.6	0.8	0.7	0.5	85.3	2.0	12.7	0.082	0.510	19.773001	-98.973121
Lim. Edos. Term. Méx. Ppia. Hgo.	49.30																			
Tizayuca	52.50	1	1	10362	9.0	80.8	1.8	5.7	0.9	1.1	0.3	0.2	0.2	89.8	1.8	8.4	0.085	0.536	19.814804	-98.975362
Tizayuca	52.50	1	2	11971	8.8	80.5	1.9	5.9	1.0	1.2	0.3	0.2	0.2	89.3	1.9	8.8	0.086	0.536	19.814861	-98.975499
Tizayuca	52.50	3	1	18918	3.6	88.7	1.5	4.4	0.7	0.5	0.3	0.1	0.2	92.3	1.5	6.2	0.090	0.503	19.858331	-98.968159
Tizayuca	52.50	3	2	18686	3.6	87.3	2.0	4.8	1.0	0.6	0.2	0.2	0.3	90.9	2.0	7.1	0.078	0.503	19.858395	-98.968247
T. C. México - Tizayuca (Cuota)	61.00	1	1	7300	5.5	82.2	3.0	5.7	1.7	0.8	0.5	0.4	0.2	87.7	3.0	9.3	0.074	0.502	19.878629	-98.947829
T. C. México - Tizayuca (Cuota)	61.00	1	2	7234	5.4	81.9	2.9	6.6	1.5	0.7	0.4	0.4	0.2	87.3	2.9	9.8	0.082	0.502	19.878741	-98.947886
T. C. México - Tizayuca (Cuota)	61.00	3	1	29282	0.6	87.4	2.6	5.4	1.8	1.2	0.7	0.1	0.2	88.0	2.6	9.4	0.069	0.513	19.898300	-98.928364
T. C. México - Tizayuca (Cuota)	61.00	3	2	31054	0.6	87.6	2.3	5.7	1.3	1.6	0.5	0.3	0.1	88.2	2.3	9.5	0.089	0.513	19.900959	-98.926136
X. C. Arco Norte de La Ciudad de México	64.20	1	1	29444	0.5	88.6	2.6	4.6	1.2	1.7	0.4	0.3	0.1	89.1	2.6	8.3	0.089	0.502	19.923080	-98.900667
X. C. Arco Norte de La Ciudad de México	64.20	1	2	29204	0.5	87.6	2.8	5.2	1.2	1.9	0.4	0.3	0.1	88.1	2.8	9.1	0.109	0.502	19.923251	-98.900865
X. C. Arco Norte de La Ciudad de México	64.20	3	1	32027	1.1	86.1	3.6	5.7	0.9	1.5	0.6	0.3	0.2	87.2	3.6	9.2	0.075	0.522	19.930872	-98.890873
X. C. Arco Norte de La Ciudad de México	64.20	3	2	29027	1.2	84.7	4.0	6.3	1.0	1.7	0.6	0.3	0.2	85.9	4.0	10.1	0.089	0.522	19.931075	-98.891034
Ent. Colonia	83.97	1	1	53044	0.9	90.3	2.7	3.5	0.5	0.7	0.5	0.7	0.2	91.2	2.7	6.1	0.094	0.515	20.043707	-98.792889
Ent. Colonia	83.97	1	2	49433	0.8	89.3	2.9	4.2	0.5	0.8	0.5	0.8	0.2	90.1	2.9	7.0	0.087	0.515	20.044919	-98.792571
X. C. Libramiento de Pachuca	86.50	1	1	42963	3.9	89.0	3.2	1.7	0.7	0.4	0.6	0.3	0.2	92.9	3.2	3.9	0.077	0.501	20.097784	-98.766022
X. C. Libramiento de Pachuca	86.50	1	2	42679	3.8	89.0	3.3	1.6	0.8	0.4	0.6	0.3	0.2	92.8	3.3	3.9	0.081	0.501	20.098026	-98.766122
Pachuca	94.00																			

3 CARR: México - Puebla (Libre)

CLAVE: 00449

RUTA: MEX-150

AÑO: 2023

LUGAR	ESTACION				CLASIFICACION VEHICULAR EN PORCIENTO										COORDENADAS					
	KM	TE	SC	TDPA	M	A	B	C2	C3	T3S2	T3S3	T3S2R4	OTROS	A	B	C	K'	D	LATITUD	LONGITUD
México	0.00																			
Lim. Edos. Term. CDMX Ppia. Méx.	18.66																			
T. Der. Chalco	28.85	1	1	35317	5.6	88.9	0.3	3.0	0.8	0.5	0.5	0.3	0.1	94.5	0.3	5.2	0.066	0.522	19.310948	-98.904574
T. Der. Chalco	28.85	1	2	32020	4.2	88.7	0.6	3.8	1.0	0.7	0.4	0.5	0.1	92.9	0.6	6.5	0.069	0.522	19.311177	-98.903984
T. Der. Chalco (Central)	28.85	3	1	21072	4.1	89.8	0.5	3.8	0.5	0.3	0.7	0.1	0.2	93.9	0.5	5.6	0.085	0.507	19.312685	-98.894240
T. Der. Chalco (Lateral)	28.85	3	1	7770	5.6	86.5	0.2	6.2	0.4	0.4	0.3	0.3	0.1	92.1	0.2	7.7	0.073	0.529	19.312613	-98.894221

CIUDAD DE MEXICO

3 CARR: México - Puebla (Libre)

CLAVE: 00449

RUTA: MEX-150

AÑO: 2023

LUGAR	ESTACION				CLASIFICACION VEHICULAR EN PORCIENTO										COORDENADAS					
	KM	TE	SC	TDPA	M	A	B	C2	C3	T3S2	T3S3	T3S2R4	OTROS	A	B	C	K'	D	LATITUD	LONGITUD
T. Der. Chalco (Lateral)	28.85	3	2	8739	6.5	86.0	0.2	6.1	0.3	0.3	0.3	0.2	0.1	92.5	0.2	7.3	0.076	0.529	19.312854	-98.894082
T. Der. Chalco (Central)	28.85	3	2	21294	3.8	89.7	0.6	4.0	0.6	0.3	0.6	0.2	0.2	93.5	0.6	5.9	0.086	0.507	19.312776	-98.894069
Ixtapaluca	31.06	3	1	24479	5.9	89.3	0.2	3.6	0.2	0.4	0.2	0.1	0.1	95.2	0.2	4.6	0.065	0.510	19.315825	-98.874624
Ixtapaluca	31.06	3	2	23480	6.6	88.1	0.3	3.7	0.4	0.4	0.3	0.1	0.1	94.7	0.3	5.0	0.072	0.510	19.315926	-98.874914
T. Der. C. México - Puebla (Cuota) (Río Frío)	62.06	1	0	3082	2.9	71.3	2.4	10.8	6.1	5.3	1.1	0.0	0.1	74.2	2.4	23.4	0.084	0.565	19.349588	-98.670850
T. Der. C. México - Puebla (Cuota) (Río Frío)	62.06	3	0	1138	3.1	77.7	2.0	7.7	3.2	5.4	0.6	0.2	0.1	80.8	2.0	17.2	0.105	0.507	19.353168	-98.663879
Lim. Edos. Term. Méx. Ppia. Pue.	62.98																			
San Martín Texmelucan	70.00	1	0	15355	14.6	73.8	1.5	6.7	0.8	0.6	0.3	1.5	0.2	88.4	1.5	10.1	0.095	0.508	19.301203	-98.452437
X. C. México - Puebla (Cuota)	74.10	3	1	10918	5.7	80.4	1.5	6.9	1.1	2.3	1.5	0.5	0.1	86.1	1.5	12.4	0.093	0.527	19.254820	-98.428553
X. C. México - Puebla (Cuota)	74.10	3	2	12187	5.8	80.4	1.6	6.7	1.0	2.3	1.6	0.5	0.1	86.2	1.6	12.2	0.078	0.527	19.254828	-98.428447
Huejotzingo	88.00	1	1	7049	5.7	77.6	4.8	10.0	1.0	0.6	0.1	0.1	0.1	83.3	4.8	11.9	0.071	0.505	19.177078	-98.415307
Huejotzingo	88.00	1	2	7193	5.7	77.8	4.9	9.7	0.9	0.7	0.1	0.1	0.1	83.5	4.9	11.6	0.077	0.505	19.177117	-98.415224
Huejotzingo	88.00	3	1	6230	5.5	83.8	1.2	6.1	1.2	1.5	0.4	0.2	0.1	89.3	1.2	9.5	0.096	0.514	19.145962	-98.388277
Huejotzingo	88.00	3	2	5888	5.6	83.5	1.1	6.2	1.3	1.5	0.4	0.3	0.1	89.1	1.1	9.8	0.090	0.514	19.146046	-98.388240
T. Izq. Aeropuerto	92.80	1	1	6456	6.1	82.7	2.4	4.5	2.0	1.5	0.3	0.4	0.1	88.8	2.4	8.8	0.094	0.519	19.136660	-98.377623
T. Izq. Aeropuerto	92.80	1	2	5985	6.3	83.1	2.6	4.2	1.6	1.4	0.3	0.4	0.1	89.4	2.6	8.0	0.095	0.519	19.136723	-98.377547
T. Der. Cholula	101.00	1	1	15091	6.3	83.3	1.4	5.7	1.5	1.2	0.3	0.1	0.2	89.6	1.4	9.0	0.098	0.522	19.076633	-98.322444
T. Der. Cholula	101.00	1	2	13813	6.5	83.2	1.3	5.6	1.6	1.2	0.3	0.1	0.2	89.7	1.3	9.0	0.083	0.522	19.076701	-98.322393
T. Der. Cholula	101.00	3	1	19839	5.9	87.9	0.6	2.1	1.4	1.2	0.3	0.4	0.2	93.8	0.6	5.6	0.081	0.501	19.070268	-98.312802
T. Der. Cholula	101.00	3	2	19898	5.5	88.4	0.5	2.2	1.3	1.2	0.3	0.4	0.2	93.9	0.5	5.6	0.080	0.501	19.070387	-98.312757
Puebla	131.00																			

4 CARR: México - Toluca

CLAVE: 00447

RUTA: MEX-015

AÑO: 2023

LUGAR	ESTACION				CLASIFICACION VEHICULAR EN PORCIENTO										COORDENADAS					
	KM	TE	SC	TDPA	M	A	B	C2	C3	T3S2	T3S3	T3S2R4	OTROS	A	B	C	K'	D	LATITUD	LONGITUD
México	0.00																			
Ent. Constituyentes y Reforma	12.84	3	1	44223	3.2	88.5	1.9	2.6	0.4	2.1	0.8	0.4	0.1	91.7	1.9	6.4	0.073	0.503	19.386157	-99.247517
Ent. Constituyentes y Reforma	12.84	3	2	44828	3.3	88.5	1.9	2.8	0.4	2.0	0.7	0.3	0.1	91.8	1.9	6.3	0.069	0.503	19.385542	-99.247995
T. Der. Cuajimalpa (1° Acceso)	20.56	1	1	45729	3.2	89.0	1.5	2.5	0.7	2.1	0.6	0.3	0.1	92.2	1.5	6.3	0.073	0.508	19.364454	-99.277693
T. Der. Cuajimalpa (1° Acceso)	20.56	1	2	47528	3.1	88.5	1.7	2.7	0.7	2.3	0.6	0.3	0.1	91.6	1.7	6.7	0.082	0.508	19.364338	-99.277835
T. Izq. Desierto de Los Leones	23.96	1	1	34881	2.8	84.6	2.5	6.0	1.3	1.1	0.6	0.9	0.2	87.4	2.5	10.1	0.067	0.523	19.338354	-99.311319
T. Izq. Desierto de Los Leones	23.96	1	2	38641	2.7	84.1	2.9	5.9	1.5	1.1	0.7	0.9	0.2	86.8	2.9	10.3	0.062	0.523	19.338960	-99.311120
Lim. Edos. Term. CDMX Ppia. Méx.	33.44																			
T. Der. Huixquilucan	33.98	1	1	26892	1.1	85.1	2.0	8.0	1.2	1.5	0.2	0.7	0.2	86.2	2.0	11.8	0.067	0.529	19.295854	-99.359870

CIUDAD DE MEXICO

4 CARR: México - Toluca

CLAVE: 00447

RUTA: MEX-015

AÑO: 2023

LUGAR	ESTACION				CLASIFICACION VEHICULAR EN PORCIENTO										COORDENADAS					
	KM	TE	SC	TDPA	M	A	B	C2	C3	T3S2	T3S3	T3S2R4	OTROS	A	B	C	K'	D	LATITUD	LONGITUD
T. Der. Huixquilucan	33.98	1	2	28832	1.4	84.7	2.1	8.0	1.1	1.6	0.3	0.6	0.2	86.1	2.1	11.8	0.111	0.529	19.295741	-99.357681
T. C. Constituyentes - La Marquesa (Cuota)	35.28																			
T. C. La Marquesa - Lerma (Cuota)	36.98																			
X. C. Amomolulco - Stgo. Tianguistenco	47.26	1	1	52094	1.0	86.0	2.2	7.1	1.1	1.5	0.2	0.7	0.2	87.0	2.2	10.8	0.070	0.504	19.282581	-99.477567
X. C. Amomolulco - Stgo. Tianguistenco	47.26	1	2	53020	1.1	85.5	2.4	6.9	1.3	1.6	0.2	0.8	0.2	86.6	2.4	11.0	0.074	0.504	19.281806	-99.484724
T. Der. Lerma - Izq. San Pedro Tultepec	51.71	1	1	102360	2.4	86.1	1.7	6.6	0.5	1.3	0.5	0.7	0.2	88.5	1.7	9.8	0.076	0.534	19.283955	-99.503586
T. Der. Lerma - Izq. San Pedro Tultepec	51.71	1	2	89404	2.5	85.4	1.8	6.7	0.6	1.4	0.6	0.8	0.2	87.9	1.8	10.3	0.085	0.534	19.280304	-99.502954
T. Izq. San Mateo Atenco (Baja)	52.00	3	1	21641	11.4	59.7	3.5	14.8	2.9	5.4	0.9	1.0	0.4	71.1	3.5	25.4	0.066	0.531	19.286333	-99.535167
T. Izq. San Mateo Atenco (Alta)	52.00	3	1	71941	7.1	92.9	0.0	0.0	0.0	0.0	0.0	0.0	0.0	100.0	0.0	0.0	0.063	0.502	19.285909	-99.535798
T. Izq. San Mateo Atenco (Baja)	52.00	3	2	19077	11.4	59.7	3.5	14.8	2.9	5.4	0.9	1.0	0.4	71.1	3.5	25.4	0.060	0.531	19.285186	-99.532663
T. Izq. San Mateo Atenco (Alta)	52.00	3	2	72619	7.3	92.7	0.0	0.0	0.0	0.0	0.0	0.0	0.0	100.0	0.0	0.0	0.070	0.502	19.285561	-99.535841
X. C. Libramiento de Toluca (Baja)	62.20	1	1	18268	3.9	79.9	3.0	9.9	0.9	0.8	0.2	0.9	0.5	83.8	3.0	13.2	0.065	0.503	19.288582	-99.624709
X. C. Libramiento de Toluca (Alta)	62.20	1	1	78467	4.1	95.9	0.0	0.0	0.0	0.0	0.0	0.0	0.0	100.0	0.0	0.0	0.063	0.504	19.288063	-99.619545
X. C. Libramiento de Toluca (Baja)	62.20	1	2	18067	3.9	79.5	2.7	10.3	1.0	0.7	0.4	1.0	0.5	83.4	2.7	13.9	0.076	0.503	19.287552	-99.623102
X. C. Libramiento de Toluca (Alta)	62.20	1	2	79909	4.2	95.8	0.0	0.0	0.0	0.0	0.0	0.0	0.0	100.0	0.0	0.0	0.061	0.504	19.287772	-99.621224
Toluca	66.00																			

5 CARR: San Gregorio - Oaxtepec

CLAVE: 00901

RUTA: MEX-113

AÑO: 2023

LUGAR	ESTACION				CLASIFICACION VEHICULAR EN PORCIENTO										COORDENADAS					
	KM	TE	SC	TDPA	M	A	B	C2	C3	T3S2	T3S3	T3S2R4	OTROS	A	B	C	K'	D	LATITUD	LONGITUD
San Gregorio	0.00	3	0	23765	7.5	82.7	1.0	5.9	0.6	0.8	0.8	0.4	0.3	90.2	1.0	8.8	0.062	0.502	19.238268	-99.054793
X. C. Milpa Alta - San Lorenzo Tlacoacan	9.00	3	0	7714	4.9	86.1	1.2	5.2	0.7	0.6	0.8	0.3	0.2	91.0	1.2	7.8	0.089	0.517	19.180777	-99.029622
Lim. Edos. Term. CDMX Ppia. Méx.	18.80																			
Lim. Edos. Term. Méx. Ppia. Mor.	28.50																			
T. Der. San Felipe Neri	33.80	1	0	3787	2.1	87.2	1.6	7.1	1.3	0.4	0.2	0.1	0.0	89.3	1.6	9.1	0.122	0.501	19.046276	-98.936248
T. Der. Tlalnepantla	40.50	3	0	5363	7.1	83.5	0.4	7.8	0.6	0.2	0.3	0.0	0.1	90.6	0.4	9.0	0.101	0.513	19.004017	-98.990073
Tlayacapan	48.50	3	0	12822	10.7	83.5	0.3	4.6	0.5	0.3	0.1	0.0	0.0	94.2	0.3	5.5	0.082	0.502	18.939574	-98.974107
T. Der. Yautepec	53.00	1	0	12914	11.0	83.7	0.3	3.9	0.2	0.4	0.3	0.1	0.1	94.7	0.3	5.0	0.082	0.503	18.925236	-98.968010
T. Der. Yautepec	53.00	3	1	8689	12.0	81.4	0.3	5.3	0.3	0.3	0.1	0.1	0.2	93.4	0.3	6.3	0.074	0.517	18.916269	-98.969980
T. Der. Yautepec	53.00	3	2	8104	12.0	81.5	0.3	5.2	0.3	0.3	0.1	0.1	0.2	93.5	0.3	6.2	0.078	0.517	18.916252	-98.969944
Oaxtepec	56.00																			

CIUDAD DE MEXICO

6 CARR : México - Cuernavaca (Cuota)

CLAVE: 00041

RUTA: MEX-095D

AÑO: 2023

LUGAR	ESTACION				CLASIFICACION VEHICULAR EN PORCIENTO										COORDENADAS					
	KM	TE	SC	TDPA	M	A	B	C2	C3	T3S2	T3S3	T3S2R4	OTROS	A	B	C	K'	D	LATITUD	LONGITUD
México	0.00																			
T. C. México - Cuernavaca (Libre)	18.65	3	1	33260	3.9	86.8	1.5	4.7	0.7	1.5	0.5	0.3	0.1	90.7	1.5	7.8	0.082	0.509	19.264293	-99.165781
T. C. México - Cuernavaca (Libre)	18.65	3	2	32014	3.9	86.4	1.7	4.4	0.9	1.6	0.7	0.3	0.1	90.3	1.7	8.0	0.089	0.509	19.267176	-99.164544
Plaza de Cobro Tlalpan	23.36	2	1	15077	2.2	83.7	4.7	2.7	2.0	2.9	0.6	0.8	0.4	85.9	4.7	9.4	0.145	0.500	19.242519	-99.148716
Plaza de Cobro Tlalpan	23.36	2	2	15077	2.2	83.7	4.7	2.7	2.0	2.9	0.6	0.8	0.4	85.9	4.7	9.4	0.145	0.500	19.242519	-99.148716
Lim. Edos. Term. CDMX Ppia. Mor.	47.09																			
Tres Marías	53.00	1	1	23314	2.3	83.6	3.8	5.8	0.8	2.4	0.7	0.5	0.1	85.9	3.8	10.3	0.133	0.538	19.077516	-99.233508
Tres Marías	53.00	1	2	20053	3.1	81.8	4.3	5.6	0.9	2.7	0.8	0.6	0.2	84.9	4.3	10.8	0.132	0.538	19.079180	-99.232773
Tres Marías	53.00	3	1	21964	1.5	81.9	4.9	5.9	1.2	3.0	0.8	0.6	0.2	83.4	4.9	11.7	0.122	0.520	19.043058	-99.233310
Tres Marías	53.00	3	2	20289	1.6	81.6	4.9	5.9	1.2	3.1	0.8	0.6	0.3	83.2	4.9	11.9	0.141	0.520	19.045478	-99.235433
T. Izq. Cuautla	70.50	1	1	19656	1.2	85.3	3.7	5.1	0.9	2.4	0.7	0.4	0.3	86.5	3.7	9.8	0.135	0.521	19.014491	-99.155689
T. Izq. Cuautla	70.50	1	2	18079	2.0	83.3	4.7	4.8	1.0	2.6	0.8	0.6	0.2	85.3	4.7	10.0	0.119	0.521	19.014443	-99.154473
T. Der. A Glorieta La Paloma	79.26	1	1	19396	1.3	84.9	2.6	5.4	1.1	3.0	0.9	0.5	0.3	86.2	2.6	11.2	0.123	0.513	18.982316	-99.219397
T. Der. A Glorieta La Paloma	79.26	1	2	20427	1.5	84.7	2.5	6.2	0.8	2.8	0.7	0.7	0.1	86.2	2.5	11.3	0.132	0.513	18.982191	-99.219532
Libramiento de Cuernavaca	80.50	1	1	23589	2.4	85.6	1.7	6.1	0.8	2.1	0.7	0.5	0.1	88.0	1.7	10.3	0.120	0.513	18.967372	-99.236698
Libramiento de Cuernavaca	80.50	1	2	26380	2.4	84.7	1.6	7.1	0.9	2.0	0.7	0.5	0.1	87.1	1.6	11.3	0.087	0.513	18.967395	-99.236606

7 CARR : México - Pachuca (Cuota)

CLAVE: 00432

RUTA: MEX-085D

AÑO: 2023

LUGAR	ESTACION				CLASIFICACION VEHICULAR EN PORCIENTO										COORDENADAS					
	KM	TE	SC	TDPA	M	A	B	C2	C3	T3S2	T3S3	T3S2R4	OTROS	A	B	C	K'	D	LATITUD	LONGITUD
T. C. México - Pachuca (Libre)	0.00																			
Lim. Edos. Term. CDMX Ppia. Méx.	9.86																			
Plaza de Cobro Ojo de Agua	25.00	2	1	41785	2.2	87.2	4.2	2.5	1.6	1.7	0.2	0.3	0.1	89.4	4.2	6.4	0.081	0.500	19.618737	-99.029315
Plaza de Cobro Ojo de Agua	25.00	2	2	41785	2.2	87.2	4.2	2.5	1.6	1.7	0.2	0.3	0.1	89.4	4.2	6.4	0.081	0.500	19.618737	-99.029315
Plaza de Cobro Ojo de Agua	25.00	3	1	37486	2.7	86.7	1.7	5.2	1.1	1.5	0.2	0.7	0.2	89.4	1.7	8.9	0.077	0.503	19.636511	-99.019993
Plaza de Cobro Ojo de Agua	25.00	3	2	37023	2.9	86.9	1.8	5.4	0.8	1.3	0.2	0.5	0.2	89.8	1.8	8.4	0.074	0.503	19.629626	-99.023942
X. C. México - Pachuca (Libre) Ent. Ojo de Agua	30.62	3	1	38428	3.4	85.7	2.0	5.0	1.1	1.5	0.3	0.7	0.3	89.1	2.0	8.9	0.074	0.508	19.671562	-98.994905
X. C. México - Pachuca (Libre) Ent. Ojo de Agua	30.62	3	2	37127	3.4	85.0	2.3	5.2	1.0	1.5	0.4	0.8	0.4	88.4	2.3	9.3	0.069	0.508	19.675510	-98.990889
T. Izq. Tecámac	35.62	3	1	33653	1.7	86.5	2.5	3.6	2.6	2.3	0.5	0.2	0.1	88.2	2.5	9.3	0.088	0.510	19.707984	-98.966460
T. Izq. Tecámac	35.62	3	2	32269	1.9	86.6	2.4	3.4	2.7	2.0	0.6	0.2	0.2	88.5	2.4	9.1	0.086	0.510	19.712025	-98.964121
T. Izq. AIFA	40.50	3	1	33471	2.9	88.2	2.2	2.9	1.4	1.9	0.2	0.2	0.1	91.1	2.2	6.7	0.086	0.524	19.744425	-98.946003
T. Izq. AIFA	40.50	3	2	30138	2.6	88.4	2.5	2.8	1.3	1.8	0.3	0.2	0.1	91.0	2.5	6.5	0.096	0.524	19.743946	-98.946110
Lim. Edos. Term. Méx. Ppia. Hgo.	49.60																			
X. C. Otumba - Tizayuca	53.45	1	1	32605	1.8	88.6	2.4	2.8	1.2	2.2	0.5	0.3	0.2	90.4	2.4	7.2	0.092	0.500	19.826754	-98.949358

CIUDAD DE MEXICO

7 CARR: México - Pachuca (Cuota)

CLAVE: 00432

RUTA: MEX-085D

AÑO: 2023

LUGAR	ESTACION				CLASIFICACION VEHICULAR EN PORCIENTO										COORDENADAS					
	KM	TE	SC	TDPA	M	A	B	C2	C3	T3S2	T3S3	T3S2R4	OTROS	A	B	C	K'	D	LATITUD	LONGITUD
X. C. Otumba - Tizayuca	53.45	1	2	32562	1.9	89.4	2.2	2.8	1.1	2.0	0.3	0.2	0.1	91.3	2.2	6.5	0.100	0.500	19.826852	-98.949473
T. C. México - Pachuca (Libre)	60.50	1	1	23378	2.7	88.9	2.3	2.1	1.1	1.9	0.4	0.4	0.2	91.6	2.3	6.1	0.083	0.526	19.883620	-98.937487
T. C. México - Pachuca (Libre)	60.50	1	2	21080	2.5	89.7	2.3	1.9	1.0	1.7	0.4	0.3	0.2	92.2	2.3	5.5	0.113	0.526	19.881383	-98.937794

8 CARR: México - Puebla (Cuota)

CLAVE: 00450

RUTA: MEX-150D

AÑO: 2023

LUGAR	ESTACION				CLASIFICACION VEHICULAR EN PORCIENTO										COORDENADAS					
	KM	TE	SC	TDPA	M	A	B	C2	C3	T3S2	T3S3	T3S2R4	OTROS	A	B	C	K'	D	LATITUD	LONGITUD
México	0.00																			
Ent Concordía (T. Izq. Los Reyes) Lateral	17.00	3	1	31308	4.4	83.0	2.0	7.9	0.6	0.9	0.8	0.2	0.2	87.4	2.0	10.6	0.071	0.529	19.351125	-98.987175
Ent Concordía (T. Izq. Los Reyes) Central	17.00	3	1	84544	3.3	88.3	1.4	4.0	0.7	1.3	0.5	0.2	0.3	91.6	1.4	7.0	0.067	0.502	19.351412	-98.987251
Ent Concordía (T. Izq. Los Reyes) Central	17.00	3	2	87173	2.8	87.9	1.6	4.3	0.6	1.5	0.8	0.2	0.3	90.7	1.6	7.7	0.062	0.502	19.355279	-98.991076
Ent Concordía (T. Izq. Los Reyes) Lateral	17.00	3	2	26061	4.4	81.3	2.0	8.4	1.1	1.3	1.0	0.2	0.3	85.7	2.0	12.3	0.065	0.529	19.355366	-98.991002
Lim. Edos. Term. CDMX Ppia. Méx.	17.51																			
Av. Las Torres (Eje 6) Lateral	19.27	1	1	29814	4.6	78.5	2.1	11.5	1.0	1.6	0.4	0.2	0.1	83.1	2.1	14.8	0.067	0.509	19.348056	-98.983964
Av. Las Torres (Eje 6) Central	19.27	1	1	76942	4.0	87.1	1.5	4.2	0.8	1.4	0.6	0.2	0.2	91.1	1.5	7.4	0.066	0.503	19.348169	-98.983864
Av. Las Torres (Eje 6) Central	19.27	1	2	81266	4.2	87.4	1.2	4.1	1.1	1.3	0.4	0.2	0.1	91.6	1.2	7.2	0.062	0.503	19.351338	-98.986963
Av. Las Torres (Eje 6) Lateral	19.27	1	2	31046	4.7	78.4	1.6	11.8	0.6	1.9	0.5	0.2	0.3	83.1	1.6	15.3	0.072	0.509	19.351424	-98.986870
Av. Las Torres (Eje 6) Central	19.27	3	1	74081	4.1	86.8	1.6	3.6	1.1	1.3	1.0	0.2	0.3	90.9	1.6	7.5	0.065	0.509	19.339795	-98.976424
Av. Las Torres (Eje 6) Lateral	19.27	3	1	28313	3.0	77.0	2.3	13.8	1.2	1.8	0.6	0.2	0.1	80.0	2.3	17.7	0.066	0.514	19.339735	-98.976548
Av. Las Torres (Eje 6) Central	19.27	3	2	81435	3.6	87.4	1.6	3.9	1.0	1.2	0.8	0.3	0.2	91.0	1.6	7.4	0.063	0.509	19.342375	-98.977919
Av. Las Torres (Eje 6) Lateral	19.27	3	2	25239	3.2	75.7	2.3	14.0	1.7	2.0	0.6	0.3	0.2	78.9	2.3	18.8	0.066	0.514	19.342479	-98.977768
Eje 10 Sur (Central)	22.80	1	1	84251	2.3	87.3	1.7	5.5	0.9	1.1	0.9	0.1	0.2	89.6	1.7	8.7	0.070	0.555	19.329670	-98.965626
Eje 10 Sur (Lateral)	22.80	1	1	33339	4.9	80.9	1.8	9.9	0.8	1.1	0.2	0.3	0.1	85.8	1.8	12.4	0.070	1.000	19.329589	-98.965702
Eje 10 Sur (Central)	22.80	1	2	108004	2.6	84.3	2.7	6.0	1.3	1.5	1.1	0.2	0.3	86.9	2.7	10.4	0.057	0.555	19.332123	-98.968418
Eje 10 Sur (Lateral)	22.80	3	1	47390	5.3	80.6	1.9	10.0	0.6	1.0	0.4	0.1	0.1	85.9	1.9	12.2	0.077	0.519	19.315233	-98.948787
Eje 10 Sur (Central)	22.80	3	1	51374	2.8	84.8	2.5	5.8	1.2	1.9	0.5	0.2	0.3	87.6	2.5	9.9	0.069	0.530	19.315299	-98.948730
Eje 10 Sur (Central)	22.80	3	2	45539	2.8	84.9	2.2	6.0	1.1	1.9	0.6	0.2	0.3	87.7	2.2	10.1	0.078	0.530	19.315522	-98.948531
Eje 10 Sur (Lateral)	22.80	3	2	43601	4.9	80.9	2.1	10.0	0.6	0.8	0.4	0.2	0.1	85.8	2.1	12.1	0.076	0.519	19.315595	-98.948472
X. C. Santa Bárbara - Izúcar de Matamoros (Central)	32.14	1	1	38114	3.6	87.4	1.9	2.6	2.0	1.4	0.3	0.5	0.3	91.0	1.9	7.1	0.081	0.510	19.292282	-98.891955
X. C. Santa Bárbara - Izúcar de Matamoros (Lateral)	32.14	1	1	15106	2.8	85.1	1.6	6.8	1.5	1.5	0.3	0.3	0.1	87.9	1.6	10.5	0.065	0.539	19.292134	-98.891949
X. C. Santa Bárbara - Izúcar de Matamoros (Lateral)	32.14	1	2	17629	2.7	84.8	1.6	7.0	1.7	1.6	0.3	0.2	0.1	87.5	1.6	10.9	0.083	0.539	19.292590	-98.892042
X. C. Santa Bárbara - Izúcar de Matamoros (Central)	32.14	1	2	43042	3.4	87.0	2.2	3.2	1.8	1.5	0.2	0.4	0.3	90.4	2.2	7.4	0.065	0.510	19.292445	-98.892037
X. C. Santa Bárbara - Izúcar de Matamoros (Lateral)	32.14	3	1	1457	2.2	68.5	5.1	9.1	2.2	6.7	1.7	4.2	0.3	70.7	5.1	24.2	0.077	0.537	19.294624	-98.876197
X. C. Santa Bárbara - Izúcar de Matamoros (Central)	32.14	3	1	13594	1.0	77.6	3.4	6.0	5.3	5.0	0.6	0.9	0.2	78.6	3.4	18.0	0.068	0.501	19.294774	-98.876226

CIUDAD DE MEXICO

8 CARR: México - Puebla (Cuota)

CLAVE: 00450

RUTA: MEX-150D

AÑO: 2023

LUGAR	ESTACION				CLASIFICACION VEHICULAR EN PORCIENTO														COORDENADAS	
	KM	TE	SC	TDPA	M	A	B	C2	C3	T3S2	T3S3	T3S2R4	OTROS	A	B	C	K'	D	LATITUD	LONGITUD
X. C. Santa Bárbara - Izúcar de Matamoros (Central)	32.14	3	2	13650	0.9	77.3	3.4	6.3	5.3	5.2	0.7	0.8	0.1	78.2	3.4	18.4	0.065	0.501	19.294980	-98.875891
X. C. Santa Bárbara - Izúcar de Matamoros (Lateral)	32.14	3	2	1257	2.7	68.8	4.8	8.6	1.9	6.7	1.6	4.5	0.4	71.5	4.8	23.7	0.069	0.537	19.295358	-98.875014
Plaza de Cobro San Marcos	33.30	2	1	16974	0.6	74.9	5.1	5.2	3.6	7.0	0.6	2.5	0.5	75.5	5.1	19.4	0.068	0.500	19.296272	-98.870712
Plaza de Cobro San Marcos	33.30	2	2	16974	0.6	74.9	5.1	5.2	3.6	7.0	0.6	2.5	0.5	75.5	5.1	19.4	0.068	0.500	19.296272	-98.870712
T. Izq. Río Frío	63.79	3	1	17203	1.0	77.6	4.5	7.1	2.1	4.7	0.7	1.9	0.4	78.6	4.5	16.9	0.099	0.507	19.350139	-98.657828
T. Izq. Río Frío	63.79	3	2	17657	0.9	77.7	4.9	6.6	2.0	5.0	0.7	1.8	0.4	78.6	4.9	16.5	0.098	0.507	19.351616	-98.660184
Lim. Edos. Term. Méx. Ppia. Pue.	65.46																			
T. Der. A San Rafael Ixtapalucan	76.80	3	1	25810	2.6	74.7	7.2	4.9	2.4	4.9	0.8	2.0	0.5	77.3	7.2	15.5	0.062	0.505	19.331664	-98.545479
T. Der. A San Rafael Ixtapalucan	76.80	3	2	26308	3.0	74.2	7.1	5.2	2.3	5.0	0.9	1.8	0.5	77.2	7.1	15.7	0.069	0.505	19.331780	-98.545430
T. Izq. Tlaxcala	90.61	1	1	26095	1.8	75.7	5.3	6.0	2.0	5.7	1.0	2.1	0.4	77.5	5.3	17.2	0.065	0.502	19.274034	-98.436283
T. Izq. Tlaxcala	90.61	1	2	25912	1.9	74.5	5.5	6.3	2.3	5.9	1.1	2.0	0.5	76.4	5.5	18.1	0.080	0.502	19.274132	-98.436223
T. Izq. Tlaxcala	90.61	3	1	24154	1.2	70.9	5.8	7.9	2.2	6.9	1.8	2.7	0.6	72.1	5.8	22.1	0.058	0.530	19.261849	-98.417515
T. Izq. Tlaxcala	90.61	3	2	27248	1.1	71.3	5.5	7.7	2.4	6.6	1.8	3.0	0.6	72.4	5.5	22.1	0.066	0.530	19.261937	-98.417434
Plaza de Cobro San Martín Texmelucan	91.17	2	1	26578	0.8	69.4	4.7	4.7	4.4	10.1	1.2	3.9	0.8	70.2	4.7	25.1	0.068	0.500	19.241190	-98.385786
Plaza de Cobro San Martín Texmelucan	91.17	2	2	26578	0.8	69.4	4.7	4.7	4.4	10.1	1.2	3.9	0.8	70.2	4.7	25.1	0.068	0.500	19.241190	-98.385786
Lim. Edos. Term. Pue. Ppia. Tlax.	99.11																			
T. Der. Aeropuerto Internacional De Puebla	101.10	3	1	33827	1.5	74.4	4.3	7.0	2.3	6.1	1.7	1.8	0.9	75.9	4.3	19.8	0.066	0.509	19.210354	-98.350918
T. Der. Aeropuerto Internacional De Puebla	101.10	3	2	32487	1.3	75.0	4.0	7.3	2.1	5.9	1.7	1.9	0.8	76.3	4.0	19.7	0.077	0.509	19.211564	-98.352187
X. C. Xoxtla - Huactzinco	107.98	1	1	40173	1.3	76.3	3.5	6.9	2.1	5.8	1.7	1.6	0.8	77.6	3.5	18.9	0.065	0.515	19.179809	-98.313740
X. C. Xoxtla - Huactzinco	107.98	1	2	42952	1.3	75.8	3.7	7.2	1.9	6.0	1.5	1.7	0.9	77.1	3.7	19.2	0.066	0.515	19.179894	-98.313656
X. C. Xoxtla - Huactzinco	107.98	3	1	50157	1.7	77.7	3.1	7.1	2.0	4.5	1.4	1.9	0.6	79.4	3.1	17.5	0.062	0.510	19.163043	-98.296562
X. C. Xoxtla - Huactzinco	107.98	3	2	47962	1.7	78.3	3.0	7.0	1.8	4.3	1.3	2.1	0.5	80.0	3.0	17.0	0.066	0.510	19.166464	-98.298777
Lim. Edos. Term. Tlax. Ppia. Pue.	108.00																			
Anillo Periferico Poniente de Puebla (Lateral)	114.00	3	1	35900	2.5	80.3	2.7	6.2	1.9	3.3	1.5	0.9	0.7	82.8	2.7	14.5	0.065	0.516	19.128437	-98.265214
Anillo Periferico Poniente de Puebla (Central)	114.00	3	1	34937	2.4	69.3	5.4	7.4	3.0	7.0	1.1	3.6	0.8	71.7	5.4	22.9	0.078	0.514	19.127040	-98.263774
Anillo Periferico Poniente de Puebla (Lateral)	114.00	3	2	33501	2.3	80.0	2.5	6.5	1.7	3.6	1.6	1.0	0.8	82.3	2.5	15.2	0.071	0.516	19.127483	-98.263941
Anillo Periferico Poniente de Puebla (Central)	114.00	3	2	32879	2.4	69.8	5.4	6.9	2.8	7.2	1.2	3.5	0.8	72.2	5.4	22.4	0.068	0.514	19.127094	-98.263737
Boulevard Hermanos Serdán	120.46	3	1	64638	1.8	82.1	2.7	5.5	1.9	3.3	1.6	0.5	0.6	83.9	2.7	13.4	0.069	0.512	19.089452	-98.217133
Boulevard Hermanos Serdán	120.46	3	2	61196	2.0	82.8	2.6	5.1	1.7	3.2	1.4	0.7	0.5	84.8	2.6	12.6	0.079	0.512	19.089524	-98.217097
X. C. Puebla - Tlaxcala (Lateral)	123.00	3	1	30774	2.1	83.5	2.0	9.0	1.0	1.3	0.5	0.4	0.2	85.6	2.0	12.4	0.073	0.503	19.086021	-98.200545
X. C. Puebla - Tlaxcala (Central)	123.00	3	1	48790	2.1	82.7	2.4	5.4	1.8	3.2	1.2	0.7	0.5	84.8	2.4	12.8	0.071	0.507	19.086143	-98.200508
X. C. Puebla - Tlaxcala (Central)	123.00	3	2	49221	2.3	83.1	2.0	5.1	1.6	3.5	1.3	0.5	0.6	85.4	2.0	12.6	0.067	0.507	19.085968	-98.199195
X. C. Puebla - Tlaxcala (Lateral)	123.00	3	2	31200	1.9	83.2	2.3	9.2	1.0	1.2	0.5	0.4	0.3	85.1	2.3	12.6	0.069	0.503	19.086098	-98.199158
T. C. Puebla - Tlaxcala	124.90																			

CIUDAD DE MEXICO

9 CARR: México - Toluca (Cuota)

CLAVE: 00446

RUTA: MEX-015D

AÑO: 2023

LUGAR	ESTACION				CLASIFICACION VEHICULAR EN PORCIENTO										COORDENADAS					
	KM	TE	SC	TDPA	M	A	B	C2	C3	T3S2	T3S3	T3S2R4	OTROS	A	B	C	K'	D	LATITUD	LONGITUD
T. C. México - Toluca (Libre) (Puente Conafrut)	0.00	3	1	31582	0.8	87.2	3.5	4.7	0.5	1.7	0.9	0.4	0.3	88.0	3.5	8.5	0.080	0.513	19.380173	-99.251760
T. C. México - Toluca (Libre) (Puente Conafrut)	0.00	3	2	29817	0.7	85.9	3.9	5.4	0.5	1.8	1.1	0.4	0.3	86.6	3.9	9.5	0.101	0.513	19.381114	-99.250211
Plaza de Cobro Santa Fe	3.50	1	1	28506	0.7	88.5	2.9	4.3	0.5	1.5	0.9	0.4	0.3	89.2	2.9	7.9	0.121	0.517	19.368578	-99.266579
Plaza de Cobro Santa Fe	3.50	1	2	30700	0.6	87.8	3.3	4.5	0.5	1.6	1.0	0.4	0.3	88.4	3.3	8.3	0.093	0.517	19.370498	-99.265602
Plaza de Cobro Santa Fe	3.50	3	1	23656	0.6	88.0	3.2	4.7	0.5	1.4	0.9	0.4	0.3	88.6	3.2	8.2	0.104	0.508	19.356111	-99.277887
Plaza de Cobro Santa Fe	3.50	3	2	24452	0.6	86.9	3.5	5.3	0.5	1.5	1.0	0.4	0.3	87.5	3.5	9.0	0.101	0.508	19.355981	-99.277758
Plaza de Cobro La Venta	10.00	1	1	32725	1.1	86.5	2.5	5.6	0.7	1.9	1.0	0.4	0.3	87.6	2.5	9.9	0.104	0.509	19.334785	-99.306753
Plaza de Cobro La Venta	10.00	1	2	34087	1.1	85.4	2.7	6.0	0.9	2.2	1.0	0.4	0.3	86.5	2.7	10.8	0.095	0.509	19.334682	-99.306983
Plaza de Cobro La Venta	10.00	2	1	23394	0.8	89.9	4.6	2.1	0.8	1.2	0.1	0.4	0.1	90.7	4.6	4.7	0.089	0.500	19.332816	-99.314301
Plaza de Cobro La Venta	10.00	2	2	23394	0.8	89.9	4.6	2.1	0.8	1.2	0.1	0.4	0.1	90.7	4.6	4.7	0.089	0.500	19.332816	-99.314301
Plaza de Cobro La Venta	10.00	3	1	35597	1.8	84.5	2.6	6.0	1.2	2.1	0.8	0.7	0.3	86.3	2.6	11.1	0.097	0.525	19.318759	-99.322005
Plaza de Cobro La Venta	10.00	3	2	31928	1.9	83.3	2.8	6.4	1.4	2.3	0.8	0.8	0.3	85.2	2.8	12.0	0.082	0.525	19.323197	-99.318895
Lim. Edos. Term. CDMX Ppia. Méx.	18.66																			
T. C. México - Toluca (Libre) (La Marquesa)	19.20	1	1	31423	2.2	84.4	3.7	3.2	1.1	3.5	0.5	1.1	0.3	86.6	3.7	9.7	0.079	0.509	19.300461	-99.365242
T. C. México - Toluca (Libre) (La Marquesa)	19.20	1	2	30193	2.3	83.7	3.6	3.3	1.2	3.6	0.6	1.2	0.5	86.0	3.6	10.4	0.101	0.509	19.299221	-99.362810

10 CARR: México - Querétaro (Cuota)

CLAVE: 00411

RUTA: MEX-057-MEX-057D

AÑO: 2023

LUGAR	ESTACION				CLASIFICACION VEHICULAR EN PORCIENTO										COORDENADAS					
	KM	TE	SC	TDPA	M	A	B	C2	C3	T3S2	T3S3	T3S2R4	OTROS	A	B	C	K'	D	LATITUD	LONGITUD
México	0.00																			
Lim. Edos. Term. CDMX Ppia. Méx.	11.30																			
Lechería	29.41																			
Plaza de Cobro Tepetzotlán	43.01	2	1	30040	0.9	71.0	4.0	5.3	3.7	11.6	0.7	2.2	0.6	71.9	4.0	24.1	0.077	0.500	19.715361	-99.207448
Plaza de Cobro Tepetzotlán	43.01	2	2	30040	0.9	71.0	4.0	5.3	3.7	11.6	0.7	2.2	0.6	71.9	4.0	24.1	0.077	0.500	19.715361	-99.207448
Ent. Jorobas	56.18	1	1	30672	1.2	68.0	4.6	7.9	3.0	10.9	1.5	2.1	0.8	69.2	4.6	26.2	0.081	0.519	19.811442	-99.238533
Ent. Jorobas	56.18	1	2	33309	1.2	68.0	4.6	7.9	3.0	10.9	1.5	2.1	0.8	69.2	4.6	26.2	0.071	0.519	19.801623	-99.234252
Ent. Jorobas	56.18	3	1	41756	3.0	60.8	4.6	8.1	3.1	14.7	1.8	3.0	0.9	63.8	4.6	31.6	0.071	0.500	19.829442	-99.258270
Ent. Jorobas	56.18	3	2	41832	3.1	57.3	5.2	9.3	3.4	15.3	2.1	3.3	1.0	60.4	5.2	34.4	0.074	0.500	19.832155	-99.265559
Lim. Edos. Term. Méx. Ppia. Hgo.	59.85																			
T. Der. Tepeji del Río	69.36	1	1	37709	4.4	69.6	4.2	7.2	2.7	7.5	1.1	2.5	0.8	74.0	4.2	21.8	0.087	0.506	19.863072	-99.313993
T. Der. Tepeji del Río	69.36	1	2	38626	4.4	69.6	4.2	7.2	2.7	7.5	1.1	2.5	0.8	74.0	4.2	21.8	0.094	0.506	19.872719	-99.339396
T. Der. Tepeji del Río	69.36	3	1	32597	4.9	68.4	4.5	7.8	3.0	7.4	1.1	2.3	0.6	73.3	4.5	22.2	0.090	0.508	19.920899	-99.370419
T. Der. Tepeji del Río	69.36	3	2	33788	4.9	68.4	4.5	7.8	3.0	7.4	1.1	2.3	0.6	73.3	4.5	22.2	0.077	0.508	19.919966	-99.369715
T. Izq. Jilotepec	83.75	1	1	32362	4.8	67.4	4.9	7.5	2.9	7.8	1.5	2.6	0.6	72.2	4.9	22.9	0.091	0.517	19.972250	-99.434119

CIUDAD DE MEXICO

10 CARR: México - Querétaro (Cuota)

CLAVE: 00411

RUTA: MEX-057-MEX-057D

AÑO: 2023

LUGAR	ESTACION				CLASIFICACION VEHICULAR EN PORCIENTO										COORDENADAS					
	KM	TE	SC	TDPA	M	A	B	C2	C3	T3S2	T3S3	T3S2R4	OTROS	A	B	C	K'	D	LATITUD	LONGITUD
T. Izq. Jilotepec	83.75	1	2	29987	4.7	67.5	4.9	7.5	2.9	7.8	1.5	2.6	0.6	72.2	4.9	22.9	0.084	0.517	19.977429	-99.437878
T. Izq. Jilotepec	83.75	3	1	33105	4.7	67.1	5.3	7.3	3.0	7.9	1.5	2.7	0.5	71.8	5.3	22.9	0.090	0.529	19.989620	-99.458438
T. Izq. Jilotepec	83.75	3	2	29113	4.7	67.1	5.3	7.3	3.0	7.9	1.5	2.7	0.5	71.8	5.3	22.9	0.074	0.529	19.988248	-99.454169
Lim. Edos. Term. Hgo. Ppia. Méx.	86.00																			
X. C. Libramiento Norte de La Ciudad de México (Cuota)	89.44	3	1	38239	4.4	67.7	5.2	6.8	2.9	7.1	2.2	2.9	0.8	72.1	5.2	22.7	0.089	0.518	20.005128	-99.500836
X. C. Libramiento Norte de La Ciudad de México (Cuota)	89.44	3	2	35261	4.5	67.3	5.3	6.9	2.9	7.2	2.2	2.9	0.8	71.8	5.3	22.9	0.069	0.518	20.003025	-99.497867
T. Der. Palos Altos	97.80	1	1	30735	4.7	68.5	4.1	6.9	2.7	8.0	1.8	2.6	0.7	73.2	4.1	22.7	0.069	0.509	20.024315	-99.532143
T. Der. Palos Altos	97.80	1	2	31926	4.7	68.6	4.1	6.9	2.7	8.0	1.8	2.6	0.6	73.3	4.1	22.6	0.079	0.509	20.034618	-99.557691
X. C. Jilotepec - Maravillas	107.00	1	1	29210	5.3	65.2	4.3	4.0	3.8	10.6	1.5	4.6	0.7	70.5	4.3	25.2	0.080	0.505	20.080760	-99.619503
X. C. Jilotepec - Maravillas	107.00	1	2	29851	5.2	63.5	4.4	4.2	3.9	11.6	1.6	4.8	0.8	68.7	4.4	26.9	0.095	0.505	20.075984	-99.614228
X. C. Jilotepec - Maravillas	107.00	3	1	30897	4.7	57.8	9.7	5.9	2.2	13.8	1.6	3.5	0.8	62.5	9.7	27.8	0.084	0.505	20.082425	-99.635798
X. C. Jilotepec - Maravillas	107.00	3	2	31608	4.6	57.9	8.3	5.4	2.7	14.5	2.0	3.9	0.7	62.5	8.3	29.2	0.094	0.505	20.082539	-99.633651
T. Izq. Aculco	114.80	1	1	32925	5.2	59.1	6.8	5.0	2.9	14.5	1.8	4.0	0.7	64.3	6.8	28.9	0.081	0.507	20.097490	-99.692832
T. Izq. Aculco	114.80	1	2	33906	5.2	58.7	6.7	5.0	3.1	14.5	1.9	4.2	0.7	63.9	6.7	29.4	0.082	0.507	20.091113	-99.686463
T. Izq. Aculco	114.80	3	1	31084	4.6	60.4	7.7	5.9	2.5	12.9	1.7	3.5	0.8	65.0	7.7	27.3	0.083	0.519	20.109932	-99.707192
T. Izq. Aculco	114.80	3	2	33774	4.6	59.6	8.1	6.9	2.4	12.5	1.7	3.4	0.8	64.2	8.1	27.7	0.069	0.519	20.108582	-99.704357
T. Izq. Encinillas	121.70	1	1	31527	4.6	60.5	7.0	4.6	2.7	14.3	1.9	3.5	0.9	65.1	7.0	27.9	0.084	0.513	20.142743	-99.732436
T. Izq. Encinillas	121.70	1	2	33380	5.0	59.9	7.0	5.4	2.2	13.8	2.2	3.6	0.9	64.9	7.0	28.1	0.074	0.513	20.145110	-99.734098
Polotitlán	133.00	1	1	33481	5.2	63.5	7.2	3.6	2.7	11.7	2.0	3.4	0.7	68.7	7.2	24.1	0.086	0.508	20.220571	-99.804088
Polotitlán	133.00	1	2	34649	5.3	60.5	7.2	3.7	2.9	13.6	2.3	3.7	0.8	65.8	7.2	27.0	0.090	0.508	20.220080	-99.803835
Lim. Edos. Term. Méx. Ppia. Oro.	145.50																			
Plaza de Cobro Palmillas	147.92	2	1	20964	0.5	59.5	3.1	6.3	4.8	18.8	1.8	4.1	1.1	60.0	3.1	36.9	0.077	0.500	20.296112	-99.929069
Plaza de Cobro Palmillas	147.92	2	2	20964	0.5	59.5	3.1	6.3	4.8	18.8	1.8	4.1	1.1	60.0	3.1	36.9	0.077	0.500	20.296112	-99.929069
T. Izq. Toluca	148.50	1	1	31654	4.6	62.1	5.0	4.1	3.0	14.5	1.8	4.0	0.9	66.7	5.0	28.3	0.086	0.503	20.287534	-99.913611
T. Izq. Toluca	148.50	1	2	31209	4.6	62.0	5.0	4.1	3.0	14.5	1.9	4.0	0.9	66.6	5.0	28.4	0.080	0.503	20.284593	-99.909231
T. Izq. Toluca	148.50	3	1	38253	1.2	67.1	5.7	6.2	3.6	11.2	1.9	2.3	0.8	68.3	5.7	26.0	0.061	0.502	20.312934	-99.931626
T. Izq. Toluca	148.50	3	2	38568	1.1	64.3	6.2	6.9	4.1	12.0	2.1	2.4	0.9	65.4	6.2	28.4	0.068	0.502	20.320074	-99.934114
T. Der. Portezuelo	151.53	3	1	39058	5.6	63.3	6.5	5.3	2.0	12.5	1.4	2.7	0.7	68.9	6.5	24.6	0.066	0.510	20.336777	-99.941306
T. Der. Portezuelo	151.53	3	2	40919	5.3	60.2	7.1	5.8	2.4	14.0	1.6	2.9	0.7	65.5	7.1	27.4	0.077	0.510	20.336548	-99.941629
T. Der. Poniente San Juan del Río	164.10	3	1	46192	7.4	65.5	5.4	5.3	2.5	8.4	1.3	3.4	0.8	72.9	5.4	21.7	0.065	0.513	20.373858	-99.994415
T. Der. Poniente San Juan del Río	164.10	3	2	43604	6.7	63.9	5.9	5.3	2.8	9.5	1.5	3.5	0.9	70.6	5.9	23.5	0.072	0.513	20.371958	-99.990429
La Estancia	169.40	1	1	52067	5.3	67.8	5.5	4.7	2.3	9.0	1.5	3.0	0.9	73.1	5.5	21.4	0.074	0.520	20.423584	-100.052229
La Estancia	169.40	1	2	57158	5.0	66.6	5.2	5.3	2.3	10.2	1.5	2.9	1.0	71.6	5.2	23.2	0.073	0.520	20.424511	-100.053515
T. Izq. Acámbaro	170.45	3	1	49441	5.1	67.0	5.6	5.4	2.0	10.2	1.2	2.7	0.8	72.1	5.6	22.3	0.077	0.516	20.447680	-100.079298
T. Izq. Acámbaro	170.45	3	2	46112	5.0	64.9	5.7	5.3	2.4	11.9	1.3	2.7	0.8	69.9	5.7	24.4	0.091	0.516	20.449881	-100.082349

CIUDAD DE MEXICO

10 CARR: México - Querétaro (Cuota)

CLAVE: 00411

RUTA: MEX-057-MEX-057D

AÑO: 2023

LUGAR	ESTACION				CLASIFICACION VEHICULAR EN PORCIENTO													COORDENADAS		
	KM	TE	SC	TDPA	M	A	B	C2	C3	T3S2	T3S3	T3S2R4	OTROS	A	B	C	K'	D	LATITUD	LONGITUD
T. Izq. El Sauz	176.50	3	1	46222	6.0	65.1	4.3	5.1	2.9	11.1	1.7	2.9	0.9	71.1	4.3	24.6	0.077	0.522	20.477772	-100.110882
T. Izq. El Sauz	176.50	3	2	41894	6.0	66.9	3.5	6.2	2.7	9.7	1.6	2.5	0.9	72.9	3.5	23.6	0.074	0.522	20.497771	-100.133982
T. Der. San Ildefonso	185.30	1	1	47931	4.2	72.0	4.2	6.9	1.1	7.5	1.8	1.5	0.8	76.2	4.2	19.6	0.074	0.536	20.520996	-100.168496
T. Der. San Ildefonso	185.30	1	2	40874	3.8	73.2	4.2	6.4	1.3	7.3	1.7	1.3	0.8	77.0	4.2	18.8	0.079	0.536	20.517314	-100.163865
T. Der. Libramiento Nororiente de Querétaro (Cuota)	192.50	1	1	50610	3.5	74.8	4.2	6.1	1.5	6.5	1.2	1.7	0.5	78.3	4.2	17.5	0.077	0.519	20.552636	-100.215635
T. Der. Libramiento Nororiente de Querétaro (Cuota)	192.50	1	2	46382	3.1	72.3	4.6	7.0	1.6	7.5	1.4	1.9	0.6	75.4	4.6	20.0	0.073	0.519	20.551670	-100.214620
T. Der. Libramiento Nororiente de Querétaro (Cuota)	192.50	3	1	58446	1.9	77.6	2.8	7.9	1.8	4.8	1.7	0.8	0.7	79.5	2.8	17.7	0.074	0.534	20.562657	-100.237199
T. Der. Libramiento Nororiente de Querétaro (Cuota)	192.50	3	2	68407	1.7	75.5	3.0	9.0	1.9	5.3	1.9	0.9	0.8	77.2	3.0	19.8	0.074	0.534	20.561648	-100.234728
T. Der. Libramiento de Querétaro a San Luis Potosí	207.00	1	1	77616	2.2	83.8	1.4	2.8	2.3	4.1	0.6	2.0	0.8	86.0	1.4	12.6	0.077	0.520	20.573483	-100.324085
T. Der. Libramiento de Querétaro a San Luis Potosí	207.00	1	2	70581	1.9	82.6	1.5	3.3	2.6	4.5	0.7	2.0	0.9	84.5	1.5	14.0	0.099	0.520	20.574448	-100.330912
T. Der. Libramiento de Querétaro a San Luis Potosí	207.00	3	1	74267	1.8	82.8	1.8	4.4	1.6	4.5	1.5	0.8	0.8	84.6	1.8	13.6	0.077	0.506	20.578195	-100.380764
T. Der. Libramiento de Querétaro a San Luis Potosí	207.00	3	1	28978	2.1	91.2	0.6	4.0	0.3	0.7	0.6	0.3	0.2	93.3	0.6	6.1	0.094	0.505	20.579404	-100.375490
T. Der. Libramiento de Querétaro a San Luis Potosí	207.00	3	2	29653	2.2	90.9	0.7	4.1	0.3	0.7	0.6	0.3	0.2	93.1	0.7	6.2	0.093	0.505	20.578375	-100.378506
T. Der. Libramiento de Querétaro a San Luis Potosí Querétaro	207.00	3	2	70699	1.5	81.3	1.9	5.0	1.7	5.2	1.6	0.9	0.9	82.8	1.9	15.3	0.079	0.506	20.578513	-100.378541

11 CARR: Chalco - Mixquic

CLAVE: 00171

RUTA: EM-CDMX

AÑO: 2023

LUGAR	ESTACION				CLASIFICACION VEHICULAR EN PORCIENTO													COORDENADAS		
	KM	TE	SC	TDPA	M	A	B	C2	C3	T3S2	T3S3	T3S2R4	OTROS	A	B	C	K'	D	LATITUD	LONGITUD
Chalco	0.00	3	1	14612	5.4	89.2	0.5	3.3	0.6	0.4	0.2	0.2	0.2	94.6	0.5	4.9	0.066	0.548	19.240458	-98.909085
Chalco	0.00	3	2	17688	5.4	89.1	0.5	3.3	0.6	0.4	0.2	0.3	0.2	94.5	0.5	5.0	0.069	0.548	19.240194	-98.909162
Lim. Edos. Term. Méx. Ppia. CDMX	8.00																			
Mixquic	10.00	1	0	7723	7.3	87.6	0.5	2.6	0.6	0.6	0.4	0.2	0.2	94.9	0.5	4.6	0.081	0.502	19.224870	-98.945989

12 CARR: Chalco - Tláhuac

CLAVE: 00170

RUTA: EM-CDMX

AÑO: 2023

LUGAR	ESTACION				CLASIFICACION VEHICULAR EN PORCIENTO													COORDENADAS		
	KM	TE	SC	TDPA	M	A	B	C2	C3	T3S2	T3S3	T3S2R4	OTROS	A	B	C	K'	D	LATITUD	LONGITUD
Chalco	0.00	3	1	9807	3.4	88.0	1.2	5.0	0.4	1.0	0.3	0.3	0.4	91.4	1.2	7.4	0.083	0.502	19.248300	-98.927235
Chalco	0.00	3	2	9886	3.4	88.1	1.2	5.0	0.4	1.0	0.3	0.3	0.3	91.5	1.2	7.3	0.066	0.502	19.248185	-98.927236
Lim. Edos. Term. Méx. Ppia. CDMX	7.50																			
Tláhuac	12.00	1	1	11524	8.9	78.4	1.2	7.7	1.1	1.2	0.8	0.3	0.4	87.3	1.2	11.5	0.068	0.516	19.264363	-98.992882
Tláhuac	12.00	1	2	12309	8.9	78.4	1.2	7.7	1.1	1.2	0.8	0.3	0.4	87.3	1.2	11.5	0.079	0.516	19.264337	-98.992898

CIUDAD DE MEXICO

13 CARR: T. C. (México - Mixquic) - San Pablo Atlazalpan

CLAVE: 00044

RUTA: EM-106-CDMX

AÑO: 2023

LUGAR	ESTACION				CLASIFICACION VEHICULAR EN PORCIENTO														COORDENADAS	
	KM	TE	SC	TDPA	M	A	B	C2	C3	T3S2	T3S3	T3S2R4	OTROS	A	B	C	K'	D	LATITUD	LONGITUD
T. C. México - Mixquic	0.00	3	0	9304	10.4	81.2	0.9	4.9	0.7	0.8	0.7	0.2	0.2	91.6	0.9	7.5	0.072	0.515	19.210774	-98.968929
Lim. Edos. Term. CDMX Ppia. Méx.	2.00																			
San Pablo Atlazalpan	7.00																			

14 CARR: Xatlalaco - El Ajusco

CLAVE: 00017

RUTA: EM-CDMX

AÑO: 2023

LUGAR	ESTACION				CLASIFICACION VEHICULAR EN PORCIENTO														COORDENADAS	
	KM	TE	SC	TDPA	M	A	B	C2	C3	T3S2	T3S3	T3S2R4	OTROS	A	B	C	K'	D	LATITUD	LONGITUD
T. C. Ent. Cruz de La Misión - San Nicolás Coatepec	0.00	3	0	2036	5.1	84.0	0.7	6.9	1.6	0.9	0.7	0.1	0.0	89.1	0.7	10.2	0.071	0.513	19.162746	-99.406139
Lim. Edos. Term. Méx. Ppia. CDMX	17.70																			
T. C. Circuito del Ajusco	27.60	1	0	832	5.9	81.5	0.8	9.3	1.0	0.9	0.4	0.2	0.0	87.4	0.8	11.8	0.085	0.512	19.201407	-99.280837

15 CARR: La Venta - Chamapa (Cuota)

CLAVE: 15014

RUTA: EM-D

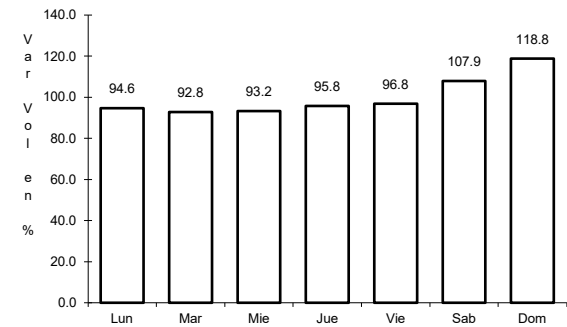
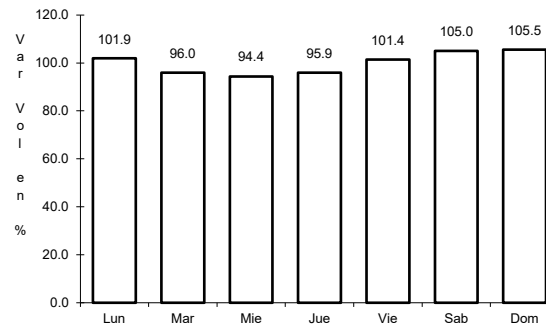
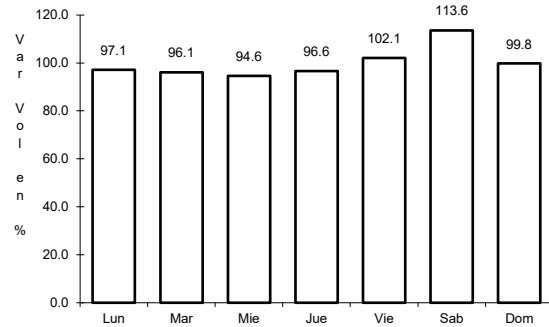
AÑO: 2023

LUGAR	ESTACION				CLASIFICACION VEHICULAR EN PORCIENTO														COORDENADAS	
	KM	TE	SC	TDPA	M	A	B	C2	C3	T3S2	T3S3	T3S2R4	OTROS	A	B	C	K'	D	LATITUD	LONGITUD
T. C. México - Toluca	0.00																			
Plaza de Cobro La Venta	0.10	2	1	18830	0.6	89.2	0.7	3.5	1.8	3.3	0.2	0.5	0.2	89.8	0.7	9.5	0.090	0.500	19.348946	-99.306623
Plaza de Cobro La Venta	0.10	2	2	18830	0.6	89.2	0.7	3.5	1.8	3.3	0.2	0.5	0.2	89.8	0.7	9.5	0.090	0.500	19.348946	-99.306623
Plaza de Cobro La Venta	0.10	3	1	12390	1.9	80.5	1.5	8.4	1.7	3.4	1.0	1.2	0.4	82.4	1.5	16.1	0.105	0.537	19.356233	-99.304147
Plaza de Cobro La Venta	0.10	3	2	10668	2.0	80.5	1.5	8.4	1.7	3.4	1.0	1.1	0.4	82.5	1.5	16.0	0.111	0.537	19.355129	-99.304702
Lim. Edos. Term. CDMX Tab. Ppia. Méx.	2.70																			
T. Der. Interlomas	5.60	3	1	17299	2.3	86.1	1.1	4.6	1.1	3.1	0.8	0.4	0.5	88.4	1.1	10.5	0.099	0.515	19.399325	-99.296781
T. Der. Interlomas	5.60	3	2	16268	2.3	86.1	1.0	4.6	1.2	3.1	0.8	0.4	0.5	88.4	1.0	10.6	0.146	0.515	19.399483	-99.296934
X. C. Naucalpan - Toluca	11.10	1	1	22286	4.2	83.9	1.0	3.9	1.7	3.2	0.7	0.9	0.5	88.1	1.0	10.9	0.098	0.513	19.423609	-99.296713
X. C. Naucalpan - Toluca	11.10	1	2	21147	4.2	83.9	1.0	3.9	1.7	3.2	0.8	0.8	0.5	88.1	1.0	10.9	0.155	0.513	19.429281	-99.295762

1 CARR: México - Cuernavaca (Libre)

CLAVE: 00040

RUTA: MEX-095



Km: 28.78 Tipo: 1 Sent: 1

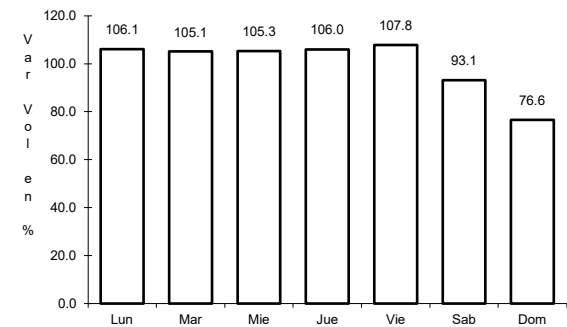
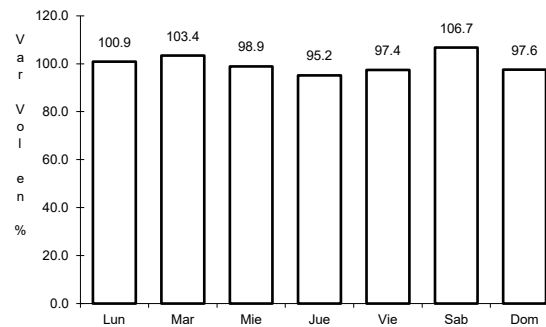
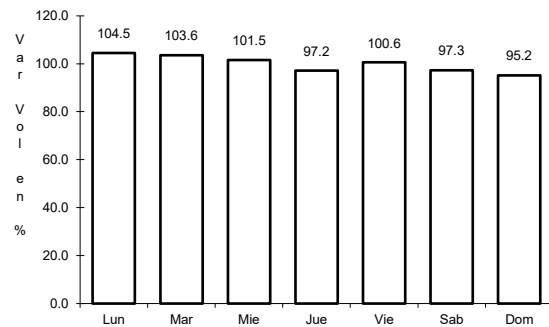
Km: 28.78 Tipo: 1 Sent: 2

Km: 51.40 Tipo: 3 Sent: 0

2 CARR: México - Pachuca (Libre)

CLAVE: 00431

RUTA: MEX-085



Km: 26.93 Tipo: 1 Sent: 1

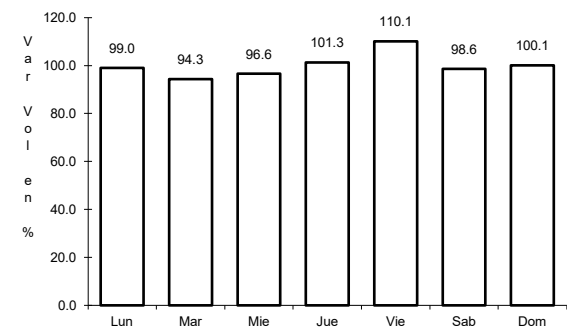
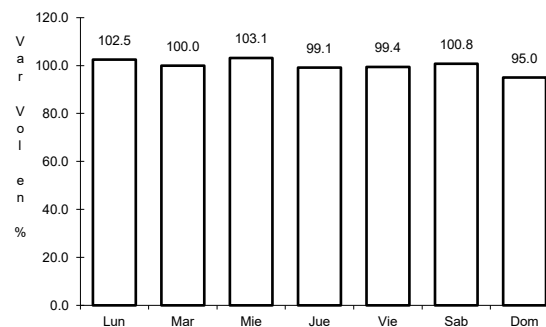
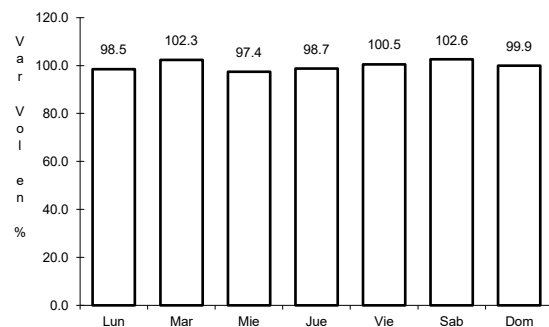
Km: 26.93 Tipo: 1 Sent: 2

Km: 86.50 Tipo: 1 Sent: 1

3 CARR: México - Puebla (Libre)

CLAVE: 00449

RUTA: MEX-150



Km: 28.85 Tipo: 1 Sent: 1

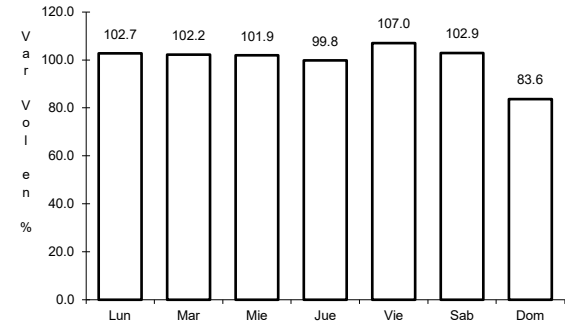
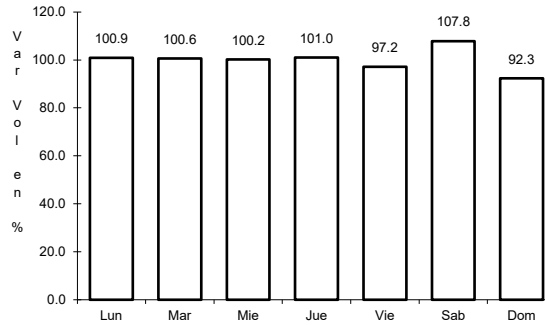
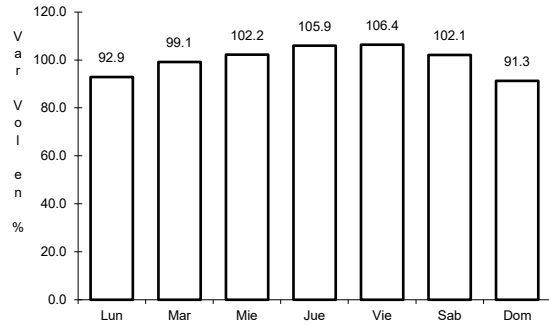
Km: 28.85 Tipo: 1 Sent: 2

Km: 62.06 Tipo: 1 Sent: 0

4 CARR: México - Toluca

CLAVE: 00447

ruta: MEX-015



Km: 12.84

Tipo: 3

Sent: 1

Km: 12.84

Tipo: 3

Sent: 2

Km: 51.71

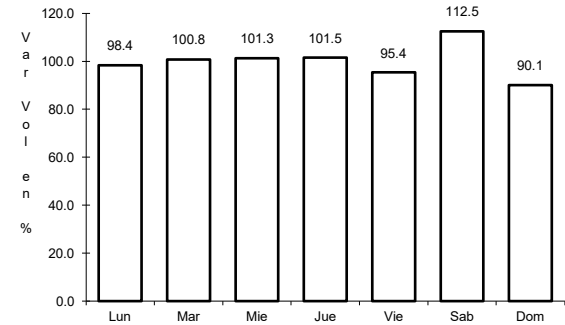
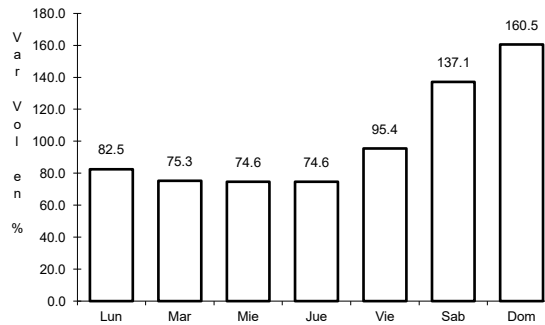
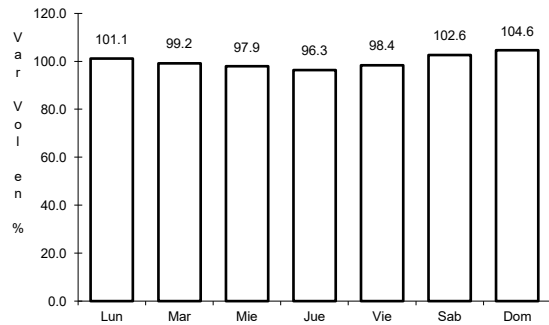
Tipo: 1

Sent: 1

5 CARR: San Gregorio - Oaxtepec

CLAVE: 00901

ruta: MEX-113



Km: 0.00

Tipo: 3

Sent: 0

Km: 33.80

Tipo: 1

Sent: 0

Km: 53.00

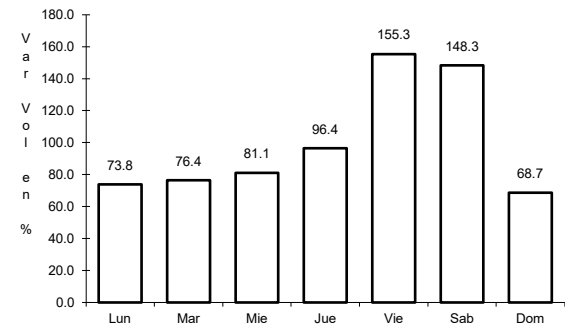
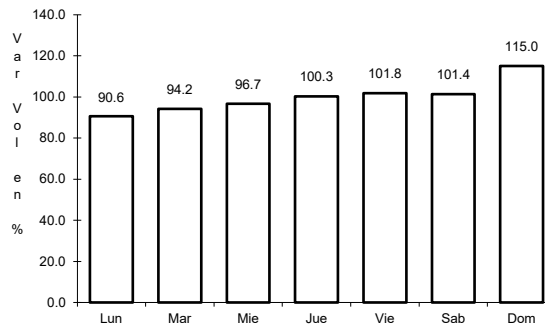
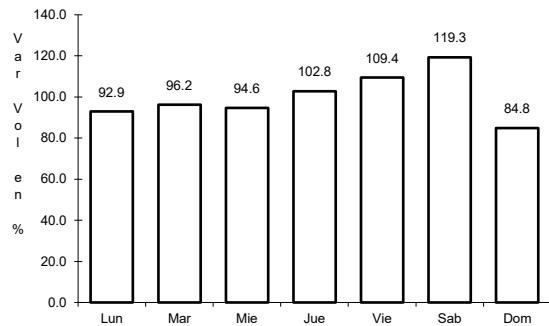
Tipo: 3

Sent: 1

6 CARR: México - Cuernavaca (Cuota)

CLAVE: 00041

ruta: MEX-095D



Km: 18.65

Tipo: 3

Sent: 1

Km: 18.65

Tipo: 3

Sent: 2

Km: 70.50

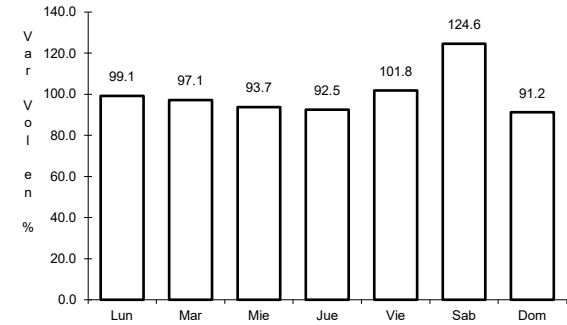
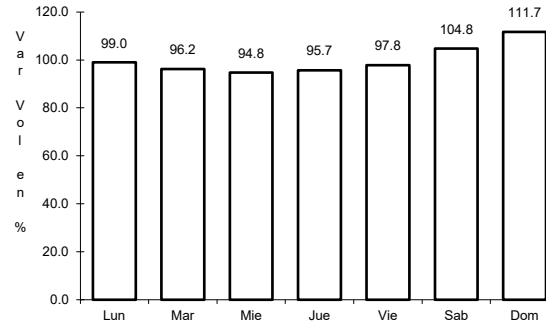
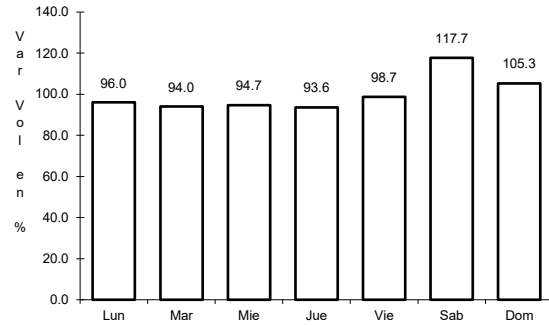
Tipo: 1

Sent: 1

7 CARR: México - Pachuca (Cuota)

CLAVE: 00432

ruta: MEX-085D



Km: 25.00

Tipo: 3

Sent: 1

Km: 25.00

Tipo: 3

Sent: 2

Km: 60.50

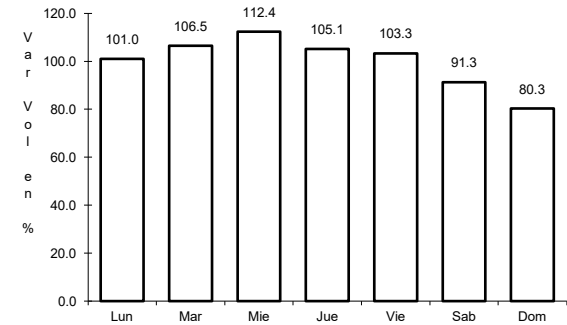
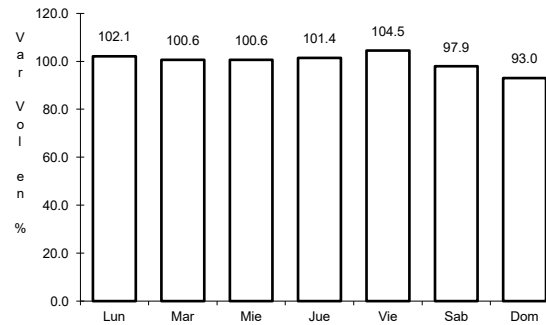
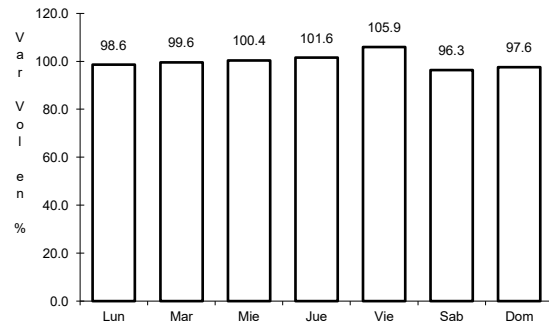
Tipo: 1

Sent: 1

8 CARR: México - Puebla (Cuota)

CLAVE: 00450

ruta: MEX-150D



Km: 17.00

Tipo: 3

Sent: 1

Km: 17.00

Tipo: 3

Sent: 2

Km: 120.46

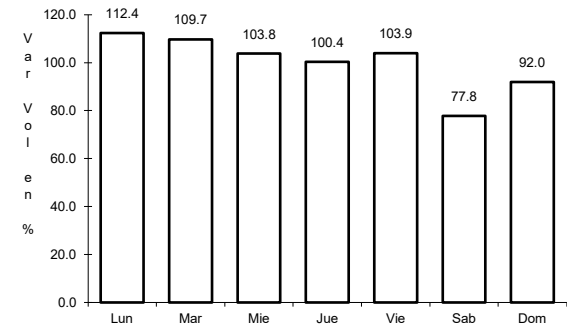
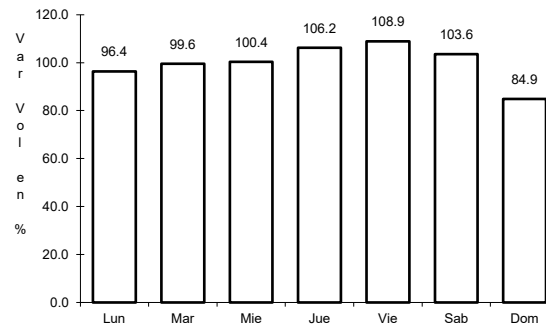
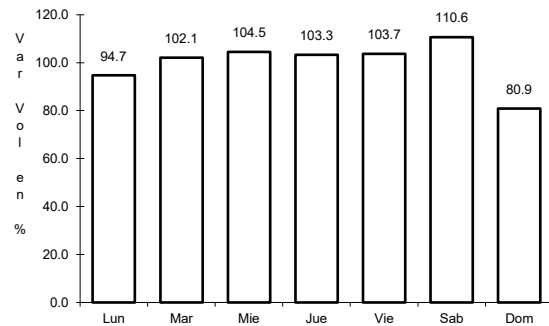
Tipo: 3

Sent: 1

9 CARR: México - Toluca (Cuota)

CLAVE: 00446

ruta: MEX-015D



Km: 0.00

Tipo: 3

Sent: 1

Km: 0.00

Tipo: 3

Sent: 2

Km: 19.20

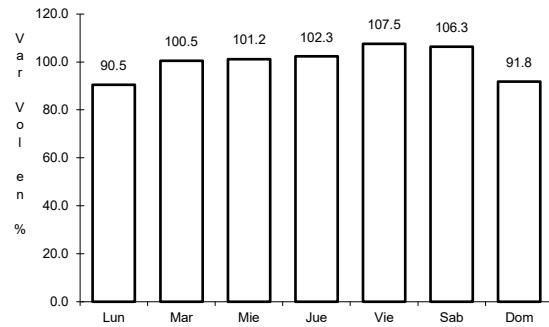
Tipo: 1

Sent: 1

10 CARR: México - Querétaro (Cuota)

CLAVE: 00411

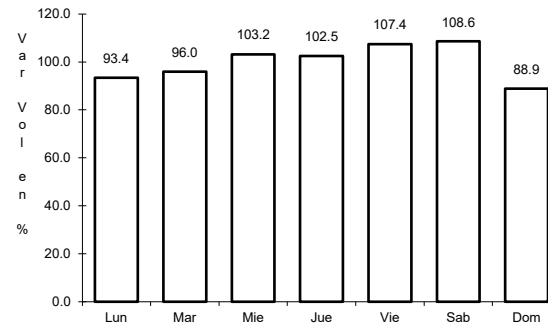
RUTA: MEX-057-MEX-057D



Km: 56.18

Tipo: 1

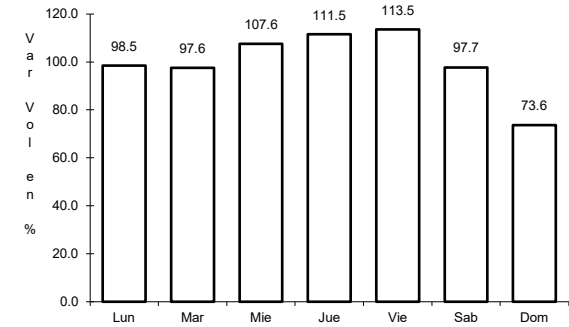
Sent: 1



Km: 56.18

Tipo: 1

Sent: 2



Km: 207.00

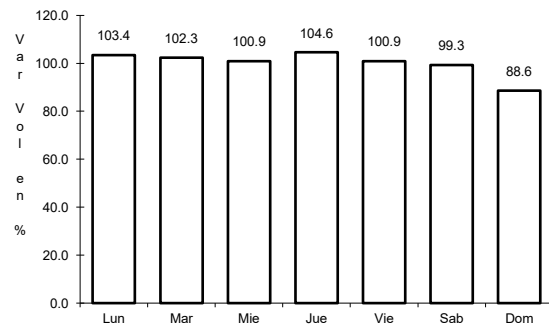
Tipo: 3

Sent: 1

11 CARR: Chalco - Mixquic

CLAVE: 00171

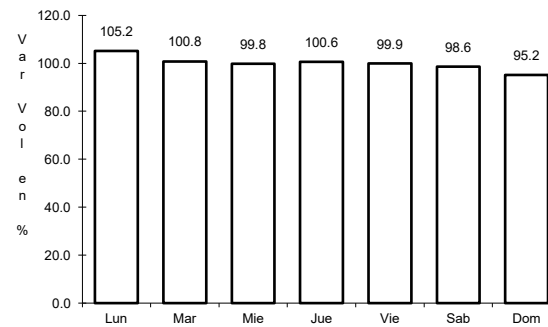
RUTA: EM-CDMX



Km: 0.00

Tipo: 3

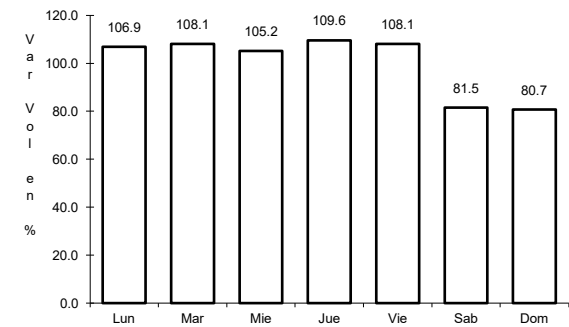
Sent: 1



Km: 0.00

Tipo: 3

Sent: 2



Km: 10.00

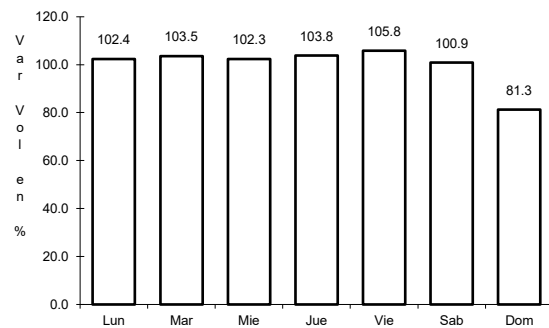
Tipo: 1

Sent: 0

12 CARR: Chalco - Tláhuac

CLAVE: 00170

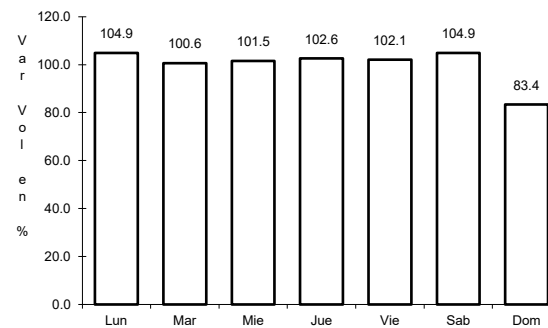
RUTA: EM-CDMX



Km: 0.00

Tipo: 3

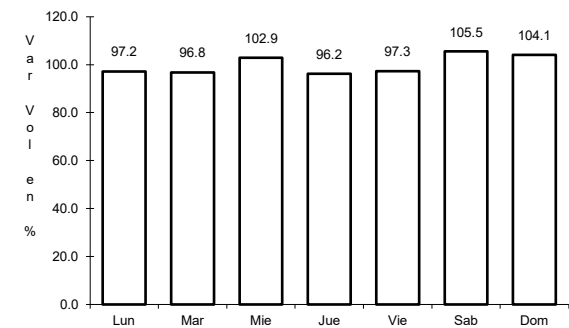
Sent: 1



Km: 0.00

Tipo: 3

Sent: 2



Km: 12.00

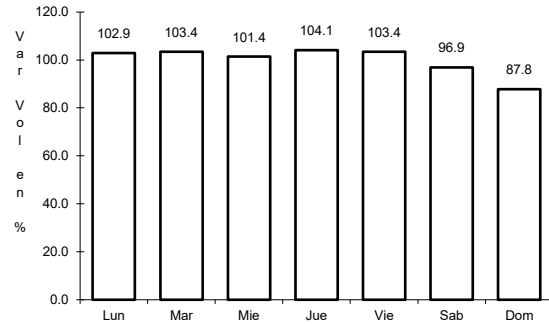
Tipo: 1

Sent: 1

13 CARR: T. C. (México - Mixquic) - San Pablo Atlazalpan

CLAVE: 00044

RUTA: EM-106-CDMX

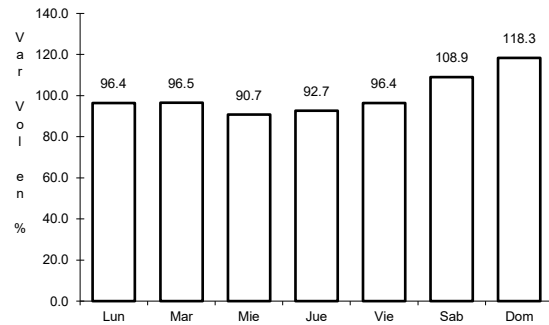


Km: 0.00 Tipo: 3 Sent: 0

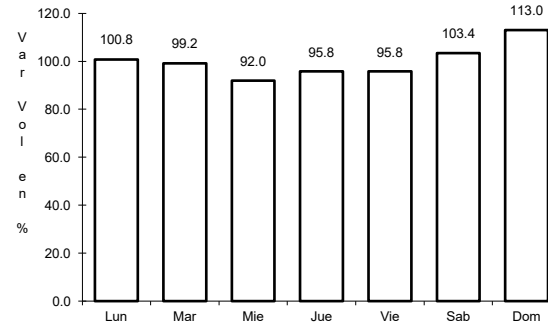
14 CARR: Xalatlaco - El Ajusco

CLAVE: 00017

RUTA: EM-CDMX



Km: 0.00 Tipo: 3 Sent: 0

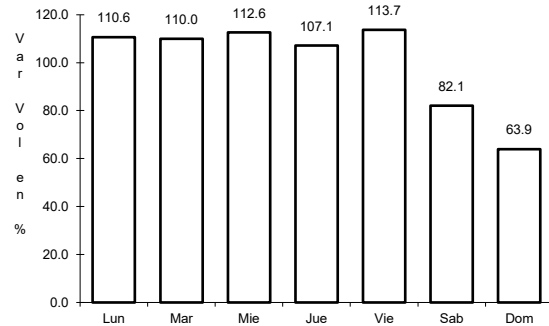


Km: 27.60 Tipo: 1 Sent: 0

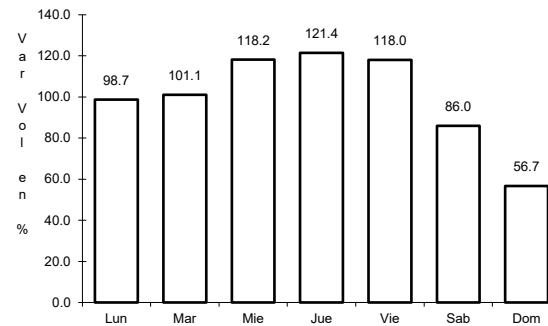
15 CARR: La Venta - Chamapa (Cuota)

CLAVE: 15014

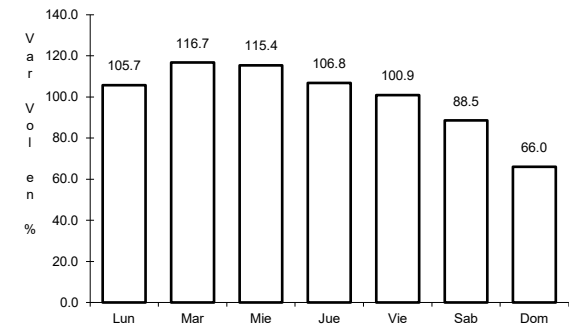
RUTA: EM-D



Km: 0.10 Tipo: 3 Sent: 1



Km: 0.10 Tipo: 3 Sent: 2



Km: 11.10 Tipo: 1 Sent: 1