



DURANGO

---RED FEDERAL LIBRE---

1 Bermejillo - El Palmito	MEX-030
2 Durango - Ent. La Zarca	MEX-045
3 Durango - Mezquital	MEX-023
4 Durango - Torreón	MEX-040
5 Durango - Villa Unión	MEX-040
6 Ent. La Chicharrona - Cuencamé	MEX-049
7 Ent. La Zarca - Hidalgo del Parral	MEX-045
8 Ent. Los Herrera - Topia	MEX-036
9 Gómez Palacio - Jiménez	MEX-049
10 Gómez Palacio - La Unión	MEX-040
11 Gómez Palacio - Tlahualillo	MEX-040
12 Gregorio García - Francisco I. Madero	MEX-040
13 Guadalupe Aguilera - Tepehuanes	MEX-023
14 Hidalgo del Parral - Guadalupe y Calvo	MEX-024
15 Libramiento Cuencamé	MEX
16 Libramiento Oriente de Durango	MEX-045
17 Libramiento Sur de Durango	MEX-045
18 Pedriceña - Ent. Rodeo	MEX-034
19 Ramal a Otinapa	MEX
20 Ramal a Santa Clara	MEX-049
21 Ramal a Villa Juárez	MEX-040
22 Ramal Distribuidor Presa Peña del Águila	MEX-045
23 Zacatecas - Durango	MEX-045

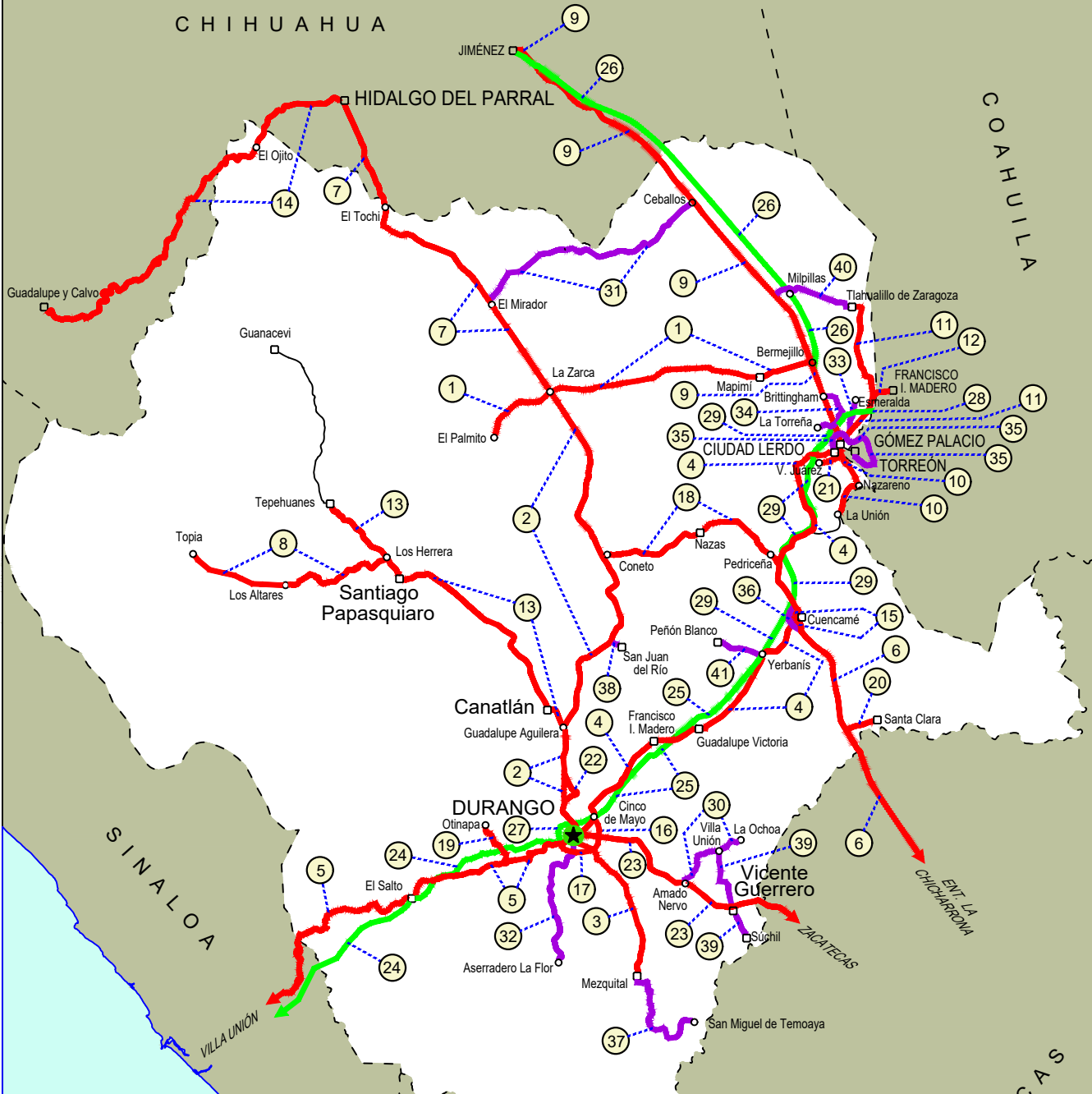
---RED FEDERAL DE CUOTA---

24 Durango - Mazatlán (Cuota)	MEX-040D
25 Durango - Yerbanís (Cuota)	MEX-040D
26 Gómez Palacio - Corralitos (Cuota)	MEX-049D
27 Libramiento de Durango (Cuota)	MEX-040D
28 Libramiento Norte de Torreón (Cuota)	MEX-040D
29 Yerbanís - Gómez Palicio (Cuota)	MEX-040D

---RED ESTATAL LIBRE---

30 Amado Nervo - La Ochoa	DGO-542
31 Ceballos - El Mirador	DGO-044
32 Durango - Aserradero La Flor	DGO-115
33 Jabonoso - Esmeralda	DGO-363
34 La Torreña - Brittingham	DGO-325
35 Libramiento de Torreón	COA
36 Libramiento Exterior Cuencamé	DGO
37 Mezquital - San Miguel de Temoaya	DGO
38 Ramal a San Juan del Río	DGO-290
39 Súchil - Villa Unión	DGO-241
40 Tlahualillo de Zaragoza - T.C. Gómez Palacio - Jiménez	DGO
41 Yerbanís - Peñón Blanco	DGO-316

10 DURANGO



- ① --- Número Índice
- Red Federal Libre
- Red Federal Cuota
- Red Federal Integrada por Tramos Libres y de Cuota
- Red Estatal Libre
- Red Estatal Cuota
- Carreteras Integradas por Tramos Federales y Estatales

DURANGO

1 CARR: Bermejillo - El Palmito

CLAVE: 10105

RUTA: MEX-030

AÑO: 2023

LUGAR	ESTACION				CLASIFICACION VEHICULAR EN PORCIENTO										COORDENADAS					
	KM	TE	SC	TDPA	M	A	B	C2	C3	T3S2	T3S3	T3S2R4	OTROS	A	B	C	K'	D	LATITUD	LONGITUD
Bermejillo	0.00	3	0	2400	2.7	82.1	1.8	5.4	2.3	4.4	0.7	0.4	0.2	84.8	1.8	13.4	0.074	0.508	25.892206	-103.631901
Santo Domingo	86.00	1	0	478	2.0	76.0	1.4	9.8	4.2	3.7	2.2	0.2	0.5	78.0	1.4	20.6	0.086	0.510	25.817106	-104.424517
Santo Domingo	86.00	3	0	311	1.5	83.7	1.5	4.3	2.3	4.3	2.0	0.4	0.0	85.2	1.5	13.3	0.126	0.500	25.813385	-104.448473
Ent. La Zarca	120.00	1	0	643	3.6	83.4	1.4	4.6	1.8	3.6	1.2	0.0	0.4	87.0	1.4	11.6	0.096	0.507	25.785907	-104.755528
Ent. La Zarca	120.00	3	0	188	0.9	93.0	0.3	4.0	1.0	0.6	0.0	0.2	0.0	93.9	0.3	5.8	0.130	0.515	25.779151	-104.770027
El Palmito	160.00	1	0	370	6.8	83.4	0.1	6.8	2.1	0.6	0.2	0.0	0.0	90.2	0.1	9.7	0.148	0.511	25.615604	-105.002899

2 CARR: Durango - Ent. La Zarca

CLAVE: 10016

RUTA: MEX-045

AÑO: 2023

LUGAR	ESTACION				CLASIFICACION VEHICULAR EN PORCIENTO										COORDENADAS					
	KM	TE	SC	TDPA	M	A	B	C2	C3	T3S2	T3S3	T3S2R4	OTROS	A	B	C	K'	D	LATITUD	LONGITUD
Durango	0.00	3	1	16334	3.9	87.6	2.3	1.6	0.7	1.3	0.2	1.6	0.8	91.5	2.3	6.2	0.074	0.522	24.041612	-104.658024
Durango	0.00	3	2	17858	3.7	87.5	1.8	2.0	0.9	1.0	0.3	2.1	0.7	91.2	1.8	7.0	0.074	0.522	24.041601	-104.658151
Caseta Fiscal Zona Industrial	5.30	1	1	12244	3.1	82.4	1.7	9.0	1.9	1.0	0.5	0.2	0.2	85.5	1.7	12.8	0.086	0.506	24.048319	-104.658154
Caseta Fiscal Zona Industrial	5.30	1	2	11962	3.1	83.1	1.7	8.7	1.8	0.8	0.5	0.2	0.1	86.2	1.7	12.1	0.080	0.506	24.048341	-104.658287
Caseta Fiscal Zona Industrial	5.30	3	1	9639	4.1	87.2	1.5	3.3	1.7	1.0	0.6	0.4	0.2	91.3	1.5	7.2	0.086	0.540	24.058721	-104.656294
Caseta Fiscal Zona Industrial	5.30	3	2	8208	4.2	87.0	1.4	3.0	2.1	1.0	0.6	0.5	0.2	91.2	1.4	7.4	0.099	0.540	24.058790	-104.656415
X. Periférico de Durango	6.20	3	1	5014	5.0	84.8	2.0	3.0	2.5	1.5	0.5	0.6	0.1	89.8	2.0	8.2	0.081	0.503	24.079611	-104.668359
X. Periférico de Durango	6.20	3	2	4961	4.2	85.5	1.7	2.9	2.9	1.7	0.6	0.4	0.1	89.7	1.7	8.6	0.086	0.503	24.079560	-104.668433
T. Der. San José del Molino	28.00																			
T. Izq. Canatlán	55.25	1	0	6446	2.5	86.6	2.8	3.2	1.2	1.8	1.3	0.4	0.2	89.1	2.8	8.1	0.083	0.501	24.431554	-104.698807
T. Izq. Canatlán	55.25	3	0	3088	2.4	89.3	2.0	2.7	0.9	1.6	1.0	0.1	0.0	91.7	2.0	6.3	0.092	0.505	24.446005	-104.699149
T. Der. San Juan del Río	105.81	1	0	2684	5.0	83.3	2.8	3.5	1.5	2.1	1.3	0.3	0.2	88.3	2.8	8.9	0.096	0.528	24.790814	-104.506097
T. Der. San Juan del Río	105.81	3	0	2375	3.2	83.5	2.5	2.5	4.8	1.9	1.1	0.4	0.1	86.7	2.5	10.8	0.095	0.503	24.801499	-104.498412
T. Der. Nazas	155.50	3	0	2815	6.9	79.4	2.1	6.5	1.5	1.6	1.1	0.6	0.3	86.3	2.1	11.6	0.092	0.511	25.131263	-104.540809
T. Der. Rodeo	160.70	1	0	4499	2.4	89.4	1.7	2.6	1.3	1.4	1.0	0.1	0.1	91.8	1.7	6.5	0.071	0.514	25.158229	-104.550732
T. Izq. Abasolo	178.00	3	0	1334	2.6	76.1	3.8	10.3	1.7	2.9	2.2	0.2	0.2	78.7	3.8	17.5	0.099	0.505	25.309934	-104.640117
Ent. La Zarca	239.50	1	0	947	1.4	83.3	3.8	3.3	0.9	4.1	2.3	0.1	0.8	84.7	3.8	11.5	0.098	0.522	25.772640	-104.756050

3 CARR: Durango - Mezquital

CLAVE: 10423

RUTA: MEX-023

AÑO: 2023

LUGAR	ESTACION				CLASIFICACION VEHICULAR EN PORCIENTO										COORDENADAS					
	KM	TE	SC	TDPA	M	A	B	C2	C3	T3S2	T3S3	T3S2R4	OTROS	A	B	C	K'	D	LATITUD	LONGITUD
Durango	0.00	3	1	9469	6.0	85.3	1.5	4.9	1.1	0.5	0.2	0.3	0.2	91.3	1.5	7.2	0.102	0.502	23.991330	-104.623831
Durango	0.00	3	2	9541	6.0	85.4	1.5	4.8	1.1	0.5	0.2	0.3	0.2	91.4	1.5	7.1	0.101	0.502	23.991318	-104.623410

DURANGO

3 CARR: Durango - Mezquital

CLAVE: 10423

RUTA: MEX-023

AÑO: 2023

LUGAR	ESTACION				CLASIFICACION VEHICULAR EN PORCIENTO										COORDENADAS					
	KM	TE	SC	TDPA	M	A	B	C2	C3	T3S2	T3S3	T3S2R4	OTROS	A	B	C	K'	D	LATITUD	LONGITUD
Gabino Santillán	8.00	3	1	4930	5.8	83.3	0.9	5.5	2.5	0.9	0.7	0.4	0.0	89.1	0.9	10.0	0.088	0.502	23.980671	-104.591850
Gabino Santillán	8.00	3	2	4898	5.8	83.5	0.8	5.4	2.6	0.9	0.6	0.3	0.1	89.3	0.8	9.9	0.103	0.502	23.980755	-104.591786
T. Izq. Monte Morelos	13.00	3	0	5819	6.9	81.6	0.9	5.4	3.7	0.9	0.2	0.1	0.3	88.5	0.9	10.6	0.082	0.501	23.948112	-104.562597
Pino Suarez	24.20	3	0	2645	5.2	84.8	1.3	6.7	1.2	0.4	0.2	0.1	0.1	90.0	1.3	8.7	0.103	0.505	23.872310	-104.481382
Mezquital	82.00	1	1	1773	9.5	84.0	0.5	3.9	1.6	0.1	0.3	0.1	0.0	93.5	0.5	6.0	0.080	0.537	23.485502	-104.385703
Mezquital	82.00	1	2	1527	7.5	83.9	0.5	5.2	1.7	0.2	0.4	0.4	0.2	91.4	0.5	8.1	0.091	0.537	23.485471	-104.385600

4 CARR: Durango - Torreón

CLAVE: 10085

RUTA: MEX-040

AÑO: 2023

LUGAR	ESTACION				CLASIFICACION VEHICULAR EN PORCIENTO										COORDENADAS					
	KM	TE	SC	TDPA	M	A	B	C2	C3	T3S2	T3S3	T3S2R4	OTROS	A	B	C	K'	D	LATITUD	LONGITUD
Durango	0.00	3	1	10383	5.2	85.2	2.7	3.7	1.3	1.3	0.3	0.2	0.1	90.4	2.7	6.9	0.085	0.506	24.077611	-104.590175
Durango	0.00	3	2	10138	4.9	86.4	1.7	4.0	1.1	1.2	0.3	0.3	0.1	91.3	1.7	7.0	0.079	0.506	24.077507	-104.590458
T. Der. Cd. de Los Niños	7.70	3	1	7794	4.3	86.2	2.1	4.1	1.1	1.5	0.4	0.2	0.1	90.5	2.1	7.4	0.080	0.504	24.081823	-104.586560
T. Der. Cd. de Los Niños	7.70	3	2	7917	4.1	86.0	2.3	4.0	1.4	1.5	0.4	0.2	0.1	90.1	2.3	7.6	0.079	0.504	24.082203	-104.586432
X. Periférico de Durango	9.00	1	1	8087	4.0	86.2	1.7	4.1	2.3	0.9	0.5	0.2	0.1	90.2	1.7	8.1	0.082	0.507	24.088751	-104.580628
X. Periférico de Durango	9.00	1	2	8319	4.1	86.4	1.6	4.1	2.2	1.0	0.3	0.2	0.1	90.5	1.6	7.9	0.077	0.507	24.088851	-104.580730
T. Der. Aeropuerto	9.42	1	1	8017	3.7	85.9	2.2	3.7	1.5	1.9	0.5	0.5	0.1	89.6	2.2	8.2	0.104	0.515	24.093223	-104.576793
T. Der. Aeropuerto	9.42	1	2	8508	3.4	87.9	1.9	3.3	1.2	1.4	0.4	0.4	0.1	91.3	1.9	6.8	0.092	0.515	24.092563	-104.577583
T. Der. Aeropuerto	9.42	3	1	5363	13.5	74.1	1.5	3.3	4.1	1.7	0.9	0.4	0.5	87.6	1.5	10.9	0.078	0.506	24.098547	-104.576125
T. Der. Aeropuerto	9.42	3	2	5241	13.5	74.1	1.5	3.3	3.8	2.0	0.8	0.4	0.6	87.6	1.5	10.9	0.080	0.506	24.098627	-104.576208
La Calera	10.85	3	0	5486	3.6	79.7	2.7	6.2	2.0	3.4	1.6	0.7	0.1	83.3	2.7	14.0	0.085	0.502	24.111680	-104.571820
Abraham González	27.10	3	0	3920	2.4	78.8	2.8	5.2	1.4	5.5	3.3	0.5	0.1	81.2	2.8	16.0	0.067	0.514	24.201431	-104.524783
Francisco I. Madero	56.30	1	0	3731	4.6	73.6	3.5	6.2	1.9	5.3	3.6	1.1	0.2	78.2	3.5	18.3	0.087	0.525	24.392024	-104.331595
Francisco I. Madero	56.30	3	0	3954	3.5	75.5	3.7	5.1	2.3	5.2	2.5	1.9	0.3	79.0	3.7	17.3	0.083	0.503	24.405142	-104.306055
Guadalupe Victoria	77.50	1	0	6112	4.2	76.7	3.7	3.3	2.9	4.8	3.1	1.0	0.3	80.9	3.7	15.4	0.083	0.510	24.446798	-104.140063
Guadalupe Victoria	77.50	3	0	6681	3.7	81.2	2.4	3.3	1.5	4.2	2.8	0.8	0.1	84.9	2.4	12.7	0.085	0.506	24.452910	-104.104151
T. Der. Ignacio Allende	90.13	1	0	4311	1.9	79.9	2.7	3.2	1.6	5.6	4.3	0.7	0.1	81.8	2.7	15.5	0.080	0.511	24.494785	-104.028631
T. Der. Ignacio Allende	90.13	3	0	2773	2.1	71.6	3.7	4.4	3.3	9.4	4.2	1.2	0.1	73.7	3.7	22.6	0.092	0.510	24.505459	-104.012745
T. Izq. Peñón Blanco	120.90	1	0	2432	3.3	64.1	4.4	5.8	3.7	10.2	6.6	1.8	0.1	67.4	4.4	28.2	0.082	0.500	24.733991	-103.842818
T. Izq. Peñón Blanco	120.90	3	0	2272	3.2	62.3	6.1	5.6	2.8	10.3	7.1	2.3	0.3	65.5	6.1	28.4	0.084	0.516	24.742880	-103.837708
Cuencamé	144.30	1	0	1801	5.0	82.0	3.9	2.6	3.1	1.4	1.6	0.3	0.1	87.0	3.9	9.1	0.073	0.506	24.861251	-103.701351
Cuencamé	144.30	3	1	4912	3.6	51.2	5.0	11.1	3.7	15.6	4.5	4.6	0.7	54.8	5.0	40.2	0.106	0.502	24.878219	-103.698965
Cuencamé	144.30	3	2	4874	3.4	51.2	4.8	11.1	3.9	15.6	4.4	5.0	0.6	54.6	4.8	40.6	0.087	0.502	24.878217	-103.699046
T. C. Libramiento Exterior Cuencamé	148.70	1	0	2347	4.9	74.2	3.4	10.3	2.7	1.9	1.7	0.8	0.1	79.1	3.4	17.5	0.085	0.502	24.895381	-103.702079

DURANGO

4 CARR: Durango - Torreón

CLAVE: 10085

RUTA: MEX-040

AÑO: 2023

LUGAR	ESTACION				CLASIFICACION VEHICULAR EN PORCIENTO										COORDENADAS					
	KM	TE	SC	TDPA	M	A	B	C2	C3	T3S2	T3S3	T3S2R4	OTROS	A	B	C	K'	D	LATITUD	LONGITUD
X. C. Yerbanís - Gómez Palicio (Cuota)	157.80	1	0	7987	1.9	46.5	2.2	7.4	3.4	25.3	6.3	6.1	0.9	48.4	2.2	49.4	0.060	0.547	24.971273	-103.731772
T. Izq. Nazas	171.61	1	0	4035	2.6	57.4	5.5	5.3	4.0	16.0	6.4	2.3	0.5	60.0	5.5	34.5	0.076	0.501	25.085907	-103.771248
T. Izq. Nazas	171.61	3	0	5918	2.8	64.2	3.6	6.1	4.3	10.4	3.4	4.3	0.9	67.0	3.6	29.4	0.072	0.523	25.091731	-103.769791
T. Der. Villa Juárez	194.40	3	0	8018	3.0	60.3	2.8	7.0	4.1	14.5	5.0	2.4	0.9	63.3	2.8	33.9	0.067	0.502	25.226565	-103.627169
León Guzmán	229.58	3	0	10140	7.3	71.1	2.4	5.5	2.2	6.7	2.9	1.5	0.4	78.4	2.4	19.2	0.073	0.502	25.508619	-103.650590
Cd. Lerdo	244.80	1	1	7175	3.6	75.6	3.2	4.3	3.3	5.1	2.5	1.7	0.7	79.2	3.2	17.6	0.094	0.506	25.511926	-103.541993
Cd. Lerdo	244.80	1	2	7359	3.9	75.8	3.1	4.7	3.2	4.8	2.3	1.7	0.5	79.7	3.1	17.2	0.083	0.506	25.512031	-103.541988
T. Izq. Gómez Palacio	248.90	3	1	27886	9.1	85.9	0.8	2.1	0.8	0.3	0.1	0.7	0.2	95.0	0.8	4.2	0.089	0.506	25.550663	-103.480704
T. Izq. Gómez Palacio	248.90	3	2	28624	9.1	86.4	0.6	1.9	0.7	0.4	0.1	0.6	0.2	95.5	0.6	3.9	0.088	0.506	25.550797	-103.480672
Lim. Edos. Term. Dgo. Ppia. Coah.	251.00																			
Torreón	255.80	1	1	22938	6.7	85.2	1.8	4.6	0.2	0.4	0.2	0.8	0.1	91.9	1.8	6.3	0.068	0.501	25.547216	-103.470886
Torreón	255.80	1	2	22867	6.8	85.1	1.6	4.4	0.3	0.4	0.2	1.0	0.2	91.9	1.6	6.5	0.080	0.501	25.546102	-103.469155

5 CARR: Durango - Villa Unión

CLAVE: 0083

RUTA: MEX-040

AÑO: 2023

LUGAR	ESTACION				CLASIFICACION VEHICULAR EN PORCIENTO										COORDENADAS					
	KM	TE	SC	TDPA	M	A	B	C2	C3	T3S2	T3S3	T3S2R4	OTROS	A	B	C	K'	D	LATITUD	LONGITUD
Durango	0.00	3	0	4223	6.2	77.6	2.1	4.2	2.8	3.9	2.7	0.4	0.1	83.8	2.1	14.1	0.109	0.506	23.995132	-104.732795
T. Der. Pino	22.86	3	0	2448	5.7	77.4	2.0	4.6	2.8	4.3	2.9	0.2	0.1	83.1	2.0	14.9	0.127	0.508	23.967099	-104.820632
T. Izq. Estación Navíos	58.42	3	0	2224	4.2	77.2	2.0	3.9	2.9	5.1	2.8	1.5	0.4	81.4	2.0	16.6	0.111	0.513	23.896795	-105.051068
Llano Grande	77.23	1	0	2230	9.1	71.5	2.7	4.4	3.1	5.2	3.2	0.6	0.2	80.6	2.7	16.7	0.092	0.500	23.866618	-105.199287
El Salto	99.76	1	0	2440	9.7	77.0	2.4	4.7	2.7	1.6	0.5	1.0	0.4	86.7	2.4	10.9	0.083	0.511	23.805621	-105.338346
El Salto	99.76	3	0	2068	7.2	83.4	1.3	4.5	1.9	0.6	0.3	0.6	0.2	90.6	1.3	8.1	0.081	0.510	23.784359	-105.375910
Las Adjuntas	119.00	1	0	1615	7.7	75.5	3.1	8.8	1.7	1.6	1.4	0.1	0.1	83.2	3.1	13.7	0.113	0.529	23.725052	-105.491196
La Ciudad	145.50	1	0	1563	12.2	77.4	1.4	6.3	1.5	0.6	0.3	0.2	0.1	89.6	1.4	9.0	0.091	0.543	23.731835	-105.674610
La Ciudad	145.50	3	0	525	31.8	59.8	1.7	3.3	1.8	0.8	0.5	0.3	0.0	91.6	1.7	6.7	0.101	0.543	23.727222	-105.691847
Lim. Edos. Term. Dgo. Ppia. Sin.	198.50																			
Concordia	273.50	1	0	1864	18.3	65.4	2.1	2.6	1.6	6.4	3.5	0.1	0.0	83.7	2.1	14.2	0.099	0.507	23.293202	-106.051449
T. C. Tepic - Mazatlán	294.40	1	0	4423	8.5	77.2	3.8	3.9	2.1	2.8	1.4	0.2	0.1	85.7	3.8	10.5	0.099	0.510	23.204810	-106.197796

6 CARR: Ent. La Chicharrona - Cuencamé

CLAVE: 00152

RUTA: MEX-049

AÑO: 2023

LUGAR	ESTACION				CLASIFICACION VEHICULAR EN PORCIENTO										COORDENADAS					
	KM	TE	SC	TDPA	M	A	B	C2	C3	T3S2	T3S3	T3S2R4	OTROS	A	B	C	K'	D	LATITUD	LONGITUD
Ent. La Chicharrona	0.00	3	1	5361	1.8	53.1	6.2	12.4	3.2	14.1	3.3	5.1	0.8	54.9	6.2	38.9	0.076	0.520	23.307655	-102.958716

DURANGO

6 CARR: Ent. La Chicharrona - Cuencamé

CLAVE: 00152

RUTA: MEX-049

AÑO: 2023

LUGAR	ESTACION				CLASIFICACION VEHICULAR EN PORCIENTO														COORDENADAS	
	KM	TE	SC	TDPA	M	A	B	C2	C3	T3S2	T3S3	T3S2R4	OTROS	A	B	C	K'	D	LATITUD	LONGITUD
Ent. La Chicharrona	0.00	3	2	5812	2.0	53.3	6.4	12.4	3.2	13.7	3.7	4.6	0.7	55.3	6.4	38.3	0.072	0.520	23.307655	-102.958909
T. Der. Cañitas de Felipe Pescador	25.86	1	1	3772	2.4	56.3	5.8	11.8	4.0	13.5	3.1	2.7	0.4	58.7	5.8	35.5	0.080	0.518	23.506167	-102.959489
T. Der. Cañitas de Felipe Pescador	25.86	1	2	4048	1.4	56.8	6.1	12.4	3.6	13.3	3.5	2.6	0.3	58.2	6.1	35.7	0.068	0.518	23.506164	-102.959677
T. Libramiento de Río Grande Sur	57.00																			
Río Grande	60.00	1	0	8459	2.0	55.1	4.9	11.8	2.9	15.2	4.4	3.1	0.6	57.1	4.9	38.0	0.066	0.510	23.788077	-103.015239
Río Grande	60.00	3	0	6873	2.4	48.5	6.6	16.6	3.6	14.2	4.2	3.2	0.7	50.9	6.6	42.5	0.066	0.505	23.881981	-103.099155
T. Libramiento de Río Grande Norte	67.40																			
T. Der. Nieves	78.00	3	0	7417	1.8	46.8	6.3	17.1	3.1	15.8	5.2	3.0	0.9	48.6	6.3	45.1	0.062	0.511	23.923483	-103.159769
X. C. Juan Aldama - Miguel Auza	124.50	1	0	7059	1.5	48.9	7.1	15.0	2.8	16.2	4.0	3.6	0.9	50.4	7.1	42.5	0.066	0.516	24.268412	-103.398563
X. C. Juan Aldama - Miguel Auza	124.50	3	0	8516	1.7	47.4	5.7	14.3	3.2	15.2	6.2	5.5	0.8	49.1	5.7	45.2	0.072	0.536	24.289705	-103.407420
T. Izq. Miguel Auza	131.20	3	0	6208	1.5	47.5	5.7	14.1	2.9	15.8	6.6	5.0	0.9	49.0	5.7	45.3	0.064	0.544	24.336643	-103.423628
Lim. Edos. Term. Zac. Ppia. Dgo.	134.30																			
T. Der. Santa Clara	144.00	1	0	5881	4.6	37.9	8.0	5.9	3.2	25.4	6.1	8.0	0.9	42.5	8.0	49.5	0.063	0.504	24.436192	-103.486436
T. Der. Santa Clara	144.00	3	0	5493	4.5	37.6	9.3	7.5	3.1	22.8	5.9	8.4	0.9	42.1	9.3	48.6	0.062	0.512	24.445015	-103.492208
T. C. Libramiento Exterior Cuencamé	196.10	1	0	5671	3.9	38.8	4.8	9.6	2.9	25.3	5.4	8.4	0.9	42.7	4.8	52.5	0.060	0.502	24.828010	-103.682298
Cuencamé	199.10	1	0	1494	8.5	77.7	2.4	5.0	3.1	1.4	1.0	0.8	0.1	86.2	2.4	11.4	0.072	0.503	24.853108	-103.693517

7 CARR: Ent. La Zarca - Hidalgo del Parral

CLAVE: 00488

RUTA: MEX-045

AÑO: 2023

LUGAR	ESTACION				CLASIFICACION VEHICULAR EN PORCIENTO														COORDENADAS	
	KM	TE	SC	TDPA	M	A	B	C2	C3	T3S2	T3S3	T3S2R4	OTROS	A	B	C	K'	D	LATITUD	LONGITUD
Ent. La Zarca	0.00	3	0	1305	3.3	79.1	2.5	4.6	3.2	3.5	2.7	0.7	0.4	82.4	2.5	15.1	0.079	0.548	25.786698	-104.766366
T. Der. Ceballos	47.85	1	0	1499	1.1	81.1	4.5	4.1	1.7	4.1	2.5	0.6	0.3	82.2	4.5	13.3	0.093	0.503	26.134632	-105.024780
T. Der. Ceballos	47.85	3	0	1539	1.2	85.5	3.3	3.5	0.7	3.3	2.2	0.2	0.1	86.7	3.3	10.0	0.081	0.534	26.143020	-105.031074
T. Izq. Canutillo	92.35	3	0	1526	2.0	82.8	3.7	4.1	1.6	3.1	2.3	0.3	0.1	84.8	3.7	11.5	0.085	0.506	26.389539	-105.354005
Las Nieves	97.60	3	0	1935	4.4	79.2	3.2	4.1	2.1	3.2	2.3	1.0	0.5	83.6	3.2	13.2	0.062	0.502	26.400118	-105.404907
T. Izq. Ocampo	109.22	3	0	1357	5.9	77.9	3.4	5.1	1.9	2.8	2.2	0.5	0.3	83.8	3.4	12.8	0.074	0.501	26.442332	-105.494137
Lim. Edos. Term. Dgo. Ppia. Chih.	122.89																			
Matamoros	148.00	1	0	1273	3.0	78.9	3.7	4.9	2.5	3.4	3.2	0.3	0.1	81.9	3.7	14.4	0.085	0.502	26.750891	-105.580959
Hidalgo del Parral	171.00	1	0	4595	2.8	86.1	2.0	4.0	1.2	1.6	1.5	0.6	0.2	88.9	2.0	9.1	0.065	0.503	26.917817	-105.640429

DURANGO

8 CARR: Ent. Los Herrera - Topia

CLAVE: 10090

RUTA: MEX-036

AÑO: 2023

LUGAR	ESTACION				CLASIFICACION VEHICULAR EN PORCIENTO										COORDENADAS					
	KM	TE	SC	TDPA	M	A	B	C2	C3	T3S2	T3S3	T3S2R4	OTROS	A	B	C	K'	D	LATITUD	LONGITUD
T. C. Guadalupe Aguilera - Tepehuanes	0.00	3	0	637	4.8	74.9	2.0	3.6	5.4	5.0	3.3	0.2	0.8	79.7	2.0	18.3	0.095	0.506	25.121805	-105.481333
Los Altares	80.00	1	0	771	15.9	64.6	1.2	4.8	6.5	3.1	2.4	0.6	0.9	80.5	1.2	18.3	0.112	0.509	25.016486	-105.901833
Topia	229.00																			

9 CARR: Gómez Palacio - Jiménez

CLAVE: 00006

RUTA: MEX-049

AÑO: 2023

LUGAR	ESTACION				CLASIFICACION VEHICULAR EN PORCIENTO										COORDENADAS					
	KM	TE	SC	TDPA	M	A	B	C2	C3	T3S2	T3S3	T3S2R4	OTROS	A	B	C	K'	D	LATITUD	LONGITUD
Gómez Palacio	0.00	3	1	16971	6.0	76.9	2.6	3.6	2.0	4.6	1.5	2.3	0.5	82.9	2.6	14.5	0.087	0.513	25.614465	-103.513444
Gómez Palacio	0.00	3	2	17841	5.8	77.0	2.6	3.7	1.9	4.9	1.4	2.2	0.5	82.8	2.6	14.6	0.075	0.513	25.614418	-103.513567
X. C. La Torreña - Brittingham	10.96	1	1	12265	9.2	63.8	3.8	4.5	2.8	8.3	2.0	4.5	1.1	73.0	3.8	23.2	0.074	0.511	25.632631	-103.520756
X. C. La Torreña - Brittingham	10.96	1	2	12836	9.0	63.6	3.7	4.8	3.2	8.6	2.2	4.0	0.9	72.6	3.7	23.7	0.063	0.511	25.632595	-103.520878
T. Izq. Dinamita	26.27	1	1	6951	3.9	61.0	6.0	4.6	1.8	15.0	3.3	3.5	0.9	64.9	6.0	29.1	0.076	0.515	25.751430	-103.568027
T. Izq. Dinamita	26.27	1	2	7375	3.9	61.5	6.1	4.5	1.7	15.0	3.0	3.4	0.9	65.4	6.1	28.5	0.101	0.515	25.751434	-103.568256
T. C. Gómez Palacio - Corralitos (Cuota)	37.92	1	1	5983	4.0	56.0	6.3	4.4	2.3	18.3	3.7	4.2	0.8	60.0	6.3	33.7	0.062	0.506	25.861398	-103.610194
T. C. Gómez Palacio - Corralitos (Cuota)	37.92	1	2	5848	4.1	53.0	7.3	4.9	2.5	18.6	4.1	4.6	0.9	57.1	7.3	35.6	0.067	0.506	25.861352	-103.610389
Bermejillo	39.30	1	1	3126	13.5	59.9	4.9	5.5	2.1	9.0	2.6	2.0	0.5	73.4	4.9	21.7	0.077	0.573	25.878494	-103.618366
Bermejillo	39.30	1	2	4200	13.4	61.0	4.9	5.3	2.0	8.8	2.4	1.9	0.3	74.4	4.9	20.7	0.071	0.573	25.878475	-103.618437
T. Izq. Ent. La Zarca	40.89	3	0	2687	5.0	40.0	6.0	11.2	4.6	25.6	5.0	1.7	0.9	45.0	6.0	49.0	0.072	0.514	25.902942	-103.628293
Yermo	107.95	1	0	1773	4.6	39.5	4.0	11.3	4.2	24.5	7.8	3.5	0.6	44.1	4.0	51.9	0.068	0.516	26.382671	-103.998049
Yermo	107.95	3	0	1995	3.7	42.3	8.1	10.2	4.2	23.2	6.3	1.9	0.1	46.0	8.1	45.9	0.066	0.534	26.396122	-104.010582
Ceballos	127.20	1	0	1784	2.8	42.9	4.6	5.6	3.0	30.4	7.7	2.5	0.5	45.7	4.6	49.7	0.063	0.510	26.517291	-104.120911
Ceballos	127.20	3	0	1902	6.3	40.7	4.7	6.0	3.7	25.8	8.3	4.0	0.5	47.0	4.7	48.3	0.070	0.545	26.536627	-104.139036
Lim. Edos. Term. Dgo. Ppia. Chih.	146.15																			
Estación Escalón	160.89	3	0	1936	3.6	31.6	5.9	5.4	2.2	37.8	8.7	4.1	0.7	35.2	5.9	58.9	0.071	0.526	26.773960	-104.363737
Jiménez	223.00	1	1	4520	5.6	44.5	8.1	5.3	2.2	23.5	4.9	5.0	0.9	50.1	8.1	41.8	0.081	0.509	27.116955	-104.889886
Jiménez	223.00	1	2	4687	5.5	45.6	8.0	5.2	1.8	23.6	4.6	4.8	0.9	51.1	8.0	40.9	0.071	0.509	27.116877	-104.889972

10 CARR: Gómez Palacio - La Unión

CLAVE: 10009

RUTA: MEX-040

AÑO: 2023

LUGAR	ESTACION				CLASIFICACION VEHICULAR EN PORCIENTO										COORDENADAS					
	KM	TE	SC	TDPA	M	A	B	C2	C3	T3S2	T3S3	T3S2R4	OTROS	A	B	C	K'	D	LATITUD	LONGITUD
Gómez Palacio	0.00	3	0	6847	8.9	84.6	1.0	3.1	1.3	0.5	0.2	0.3	0.1	93.5	1.0	5.5	0.080	0.510	25.529179	-103.494177
X. C. Torreón - Villa Juárez	4.30	3	0	6269	10.4	78.5	1.8	6.0	1.4	0.8	0.2	0.8	0.1	88.9	1.8	9.3	0.078	0.500	25.517300	-103.487070
Nazareno	20.90	1	0	3111	7.1	80.4	1.9	7.5	1.8	0.6	0.4	0.3	0.0	87.5	1.9	10.6	0.070	0.509	25.422030	-103.428860

DURANGO

10 CARR: Gómez Palacio - La Unión

CLAVE: 10009

RUTA: MEX-040

AÑO: 2023

LUGAR	ESTACION				CLASIFICACION VEHICULAR EN PORCIENTO													COORDENADAS		
	KM	TE	SC	TDPA	M	A	B	C2	C3	T3S2	T3S3	T3S2R4	OTROS	A	B	C	K'	D	LATITUD	LONGITUD
Nazareno	20.90	3	0	2104	5.1	81.5	1.8	5.6	2.4	2.2	0.8	0.5	0.1	86.6	1.8	11.6	0.093	0.525	25.398418	-103.440547
La Unión	42.20	1	0	752	6.5	80.7	1.0	5.8	3.1	1.2	1.0	0.7	0.0	87.2	1.0	11.8	0.117	0.503	25.292619	-103.511045

11 CARR: Gómez Palacio - Tlahualillo

CLAVE: 10005

RUTA: MEX-040

AÑO: 2023

LUGAR	ESTACION				CLASIFICACION VEHICULAR EN PORCIENTO													COORDENADAS			
	KM	TE	SC	TDPA	M	A	B	C2	C3	T3S2	T3S3	T3S2R4	OTROS	A	B	C	K'	D	LATITUD	LONGITUD	
T. C. Gómez Palacio - Jiménez	0.00																				
T. Izq. Esmeralda	5.60	1	0	18308	8.0	79.7	2.2	3.5	2.2	1.6	0.6	1.7	0.5	87.7	2.2	10.1	0.087	0.510	25.605536	-103.466527	
T. Izq. Esmeralda	5.60	3	1	5514	7.9	81.2	0.9	4.1	1.7	2.0	0.7	1.2	0.3	89.1	0.9	10.0	0.092	0.520	25.618119	-103.453763	
T. Izq. Esmeralda	5.60	3	2	5983	8.3	80.2	1.0	4.3	2.1	2.1	0.6	1.1	0.3	88.5	1.0	10.5	0.082	0.520	25.618218	-103.453830	
Gregorio García	26.00	3	0	6432	7.2	74.7	2.2	7.3	3.0	2.7	1.1	1.5	0.3	81.9	2.2	15.9	0.090	0.508	25.733404	-103.357304	
T. Izq. Esmeralda	31.44	1	0	8743	9.2	69.1	1.9	11.5	2.5	2.6	1.0	1.6	0.6	78.3	1.9	19.8	0.081	0.507	25.756952	-103.351766	
San Francisco	48.90	1	0	2863	10.1	78.3	1.2	8.3	0.9	0.9	0.1	0.2	0.0	88.4	1.2	10.4	0.078	0.505	25.929094	-103.416829	
San Francisco	48.90	3	0	1856	10.2	73.6	1.8	8.5	3.1	1.5	0.8	0.4	0.1	83.8	1.8	14.4	0.065	0.514	25.951928	-103.423753	
Tlahualillo	72.90	1	0	2687	8.3	81.7	1.7	6.6	0.6	0.3	0.1	0.2	0.5	90.0	1.7	8.3	0.085	0.503	26.109558	-103.423503	

12 CARR: Gregorio García - Francisco I. Madero

CLAVE: 00110

RUTA: MEX-040

AÑO: 2023

LUGAR	ESTACION				CLASIFICACION VEHICULAR EN PORCIENTO													COORDENADAS			
	KM	TE	SC	TDPA	M	A	B	C2	C3	T3S2	T3S3	T3S2R4	OTROS	A	B	C	K'	D	LATITUD	LONGITUD	
T. C. Gómez Palacio - Tlahualillo	0.00																				
Lim. Edos. Term. Dgo. Ppia. Coah.	3.60																				
Francisco I. Madero	9.60	1	0	11218	7.9	82.2	2.4	4.0	1.1	1.5	0.5	0.3	0.1	90.1	2.4	7.5	0.083	0.540	25.772240	-103.298081	

13 CARR: Guadalupe Aguilera - Tepehuanes

CLAVE: 10220

RUTA: MEX-023

AÑO: 2023

LUGAR	ESTACION				CLASIFICACION VEHICULAR EN PORCIENTO													COORDENADAS		
	KM	TE	SC	TDPA	M	A	B	C2	C3	T3S2	T3S3	T3S2R4	OTROS	A	B	C	K'	D	LATITUD	LONGITUD
Guadalupe Aguilera	0.00	3	1	3981	4.6	86.5	1.6	2.3	1.1	1.6	1.3	0.6	0.4	91.1	1.6	7.3	0.077	0.506	24.464434	-104.713371
Guadalupe Aguilera	0.00	3	2	3878	5.2	85.7	1.6	1.8	1.2	1.9	1.5	0.6	0.5	90.9	1.6	7.5	0.077	0.506	24.464415	-104.713435
Canatlán	14.00	3	0	3366	1.9	86.3	1.9	2.6	1.2	2.3	1.7	1.2	0.9	88.2	1.9	9.9	0.091	0.501	24.540631	-104.776306
La Soledad	45.80	3	0	3198	1.2	85.8	2.5	3.0	1.2	2.5	1.9	1.1	0.8	87.0	2.5	10.5	0.092	0.510	24.773180	-104.933097
T. Der. Coneto de Comonfort	51.60	1	0	3078	1.9	83.4	2.5	3.2	1.7	2.8	2.2	1.4	0.9	85.3	2.5	12.2	0.070	0.503	24.802820	-104.924487
José María Morelos	90.20	1	0	2858	1.9	83.8	2.1	4.5	1.6	1.9	2.0	1.3	0.9	85.7	2.1	12.2	0.082	0.502	25.007638	-105.202225

DURANGO

13 CARR: Guadalupe Aguilera - Tepehuanes

CLAVE: 10220

RUTA: MEX-023

AÑO: 2023

LUGAR	ESTACION				CLASIFICACION VEHICULAR EN PORCIENTO													COORDENADAS		
	KM	TE	SC	TDPA	M	A	B	C2	C3	T3S2	T3S3	T3S2R4	OTROS	A	B	C	K'	D	LATITUD	LONGITUD
Santiago Papasquiaro	117.00	3	0	4752	4.0	85.5	1.0	3.4	2.5	1.5	1.0	0.9	0.2	89.5	1.0	9.5	0.103	0.501	25.078392	-105.431261
Las Herreras	133.00	3	0	1299	3.9	81.4	3.4	3.8	3.2	1.7	1.0	0.8	0.8	85.3	3.4	11.3	0.085	0.504	25.159179	-105.508457
Tepehuanes	169.00	1	0	1653	6.6	77.5	2.5	5.0	4.4	2.1	0.6	0.7	0.6	84.1	2.5	13.4	0.093	0.528	25.322336	-105.714492

14 CARR: Hidalgo del Parral - Guadalupe y Calvo

CLAVE: 00802

RUTA: MEX-024

AÑO: 2023

LUGAR	ESTACION				CLASIFICACION VEHICULAR EN PORCIENTO													COORDENADAS		
	KM	TE	SC	TDPA	M	A	B	C2	C3	T3S2	T3S3	T3S2R4	OTROS	A	B	C	K'	D	LATITUD	LONGITUD
T. C. Hidalgo del Parral - Santa Bárbara	0.00	3	0	2844	3.4	82.8	1.5	3.0	3.9	2.1	1.5	0.9	0.9	86.2	1.5	12.3	0.083	0.509	26.915489	-105.764753
T. Der. Guacho chic	35.00	1	0	907	3.4	65.6	5.8	8.6	7.0	4.1	2.8	1.7	1.0	69.0	5.8	25.2	0.088	0.509	26.815901	-106.014885
T. Der. Guacho chic	35.00	3	0	944	5.0	71.1	2.8	7.2	5.0	5.1	1.9	1.0	0.9	76.1	2.8	21.1	0.083	0.512	26.808369	-106.016710
Lim. Edos. Term. Chih. Ppia. Dgo	38.00																			
Lim. Edos. Term. Dgo. Ppia. Chih.	57.00																			
El Vergel	110.00	1	0	972	6.1	74.1	1.6	10.9	3.8	1.8	0.8	0.1	0.8	80.2	1.6	18.2	0.097	0.526	26.523014	-106.357289
Puerto Sabinal	212.00	1	0	890	3.8	74.3	2.0	8.0	6.0	4.0	1.5	0.2	0.2	78.1	2.0	19.9	0.083	0.506	26.451306	-106.386500
Guadalupe y Calvo	234.00																			

15 CARR: Libramiento Cuencamé

CLAVE: 10006

RUTA: MEX

AÑO: 2023

LUGAR	ESTACION				CLASIFICACION VEHICULAR EN PORCIENTO													COORDENADAS		
	KM	TE	SC	TDPA	M	A	B	C2	C3	T3S2	T3S3	T3S2R4	OTROS	A	B	C	K'	D	LATITUD	LONGITUD
T. C. La Chicharrona - Cuencamé	0.00	3	1	1125	6.2	70.7	3.2	12.8	2.1	2.8	1.6	0.5	0.1	76.9	3.2	19.9	0.086	0.527	24.863829	-103.699745
T. C. La Chicharrona - Cuencamé	0.00	3	2	1255	6.4	70.6	3.3	13.1	2.1	2.8	1.2	0.4	0.1	77.0	3.3	19.7	0.087	0.527	24.863783	-103.699817
T. C. Durango - Torreón	2.60	1	1	734	6.3	66.7	3.3	11.9	4.1	3.5	3.2	0.9	0.1	73.0	3.3	23.7	0.079	0.524	24.880693	-103.700527
T. C. Durango - Torreón	2.60	1	2	807	6.3	65.1	3.6	12.6	4.9	3.4	3.3	0.8	0.0	71.4	3.6	25.0	0.082	0.524	24.880732	-103.700591

16 CARR: Libramiento Oriente de Durango

CLAVE:

RUTA: MEX-045

AÑO: 2023

LUGAR	ESTACION				CLASIFICACION VEHICULAR EN PORCIENTO													COORDENADAS		
	KM	TE	SC	TDPA	M	A	B	C2	C3	T3S2	T3S3	T3S2R4	OTROS	A	B	C	K'	D	LATITUD	LONGITUD
T. C. Zacatecas - Durango	0.00	3	1	3136	3.5	73.4	3.8	4.6	3.1	6.0	2.3	2.7	0.6	76.9	3.8	19.3	0.089	0.503	24.022576	-104.519349
T. C. Zacatecas - Durango	0.00	3	2	3168	3.3	73.5	3.8	5.0	3.2	6.0	2.4	2.2	0.6	76.8	3.8	19.4	0.087	0.503	24.022668	-104.519428
T. C. Durango - Ent. La Zarca	10.50	1	1	3183	7.0	73.8	2.7	4.4	2.4	5.0	2.2	2.0	0.5	80.8	2.7	16.5	0.083	0.519	24.084611	-104.560462
T. C. Durango - Ent. La Zarca	10.50	1	2	3438	7.0	73.8	2.5	4.6	2.3	5.1	2.2	2.0	0.5	80.8	2.5	16.7	0.085	0.519	24.084411	-104.560777

DURANGO

17 CARR: Libramiento Sur de Durango

CLAVE:

RUTA: MEX-045

AÑO: 2023

LUGAR	ESTACION				CLASIFICACION VEHICULAR EN PORCIENTO										COORDENADAS					
	KM	TE	SC	TDPA	M	A	B	C2	C3	T3S2	T3S3	T3S2R4	OTROS	A	B	C	K'	D	LATITUD	LONGITUD
T. C. Zacatecas - Durango	0.00	3	0	3449	3.6	79.8	2.6	4.0	3.2	3.1	2.5	1.0	0.2	83.4	2.6	14.0	0.106	0.502	24.005813	-104.530570
T. C. Durango - Mezquital	8.45	1	0	3633	3.4	81.9	1.9	4.3	1.9	3.4	2.0	1.0	0.2	85.3	1.9	12.8	0.088	0.512	23.970735	-104.569718
T. C. Durango - Mezquital	8.45	3	0	2081	6.0	76.1	1.1	5.5	6.1	2.3	0.7	1.8	0.4	82.1	1.1	16.8	0.085	0.504	23.966446	-104.577753
T. C. Durango - Aserradero La Flor	19.50	1	0	1192	6.3	74.8	2.4	5.6	3.5	3.5	1.4	2.3	0.2	81.1	2.4	16.5	0.120	0.533	23.952464	-104.662772
T. C. Durango - Aserradero La Flor	19.50	3	0	2193	9.4	75.5	2.0	4.3	3.8	2.4	0.8	1.6	0.2	84.9	2.0	13.1	0.078	0.503	23.952796	-104.670791
T. C. Durango - Villa Unión	27.70	1	0	2611	3.6	85.4	1.1	2.8	2.9	2.6	0.6	0.9	0.1	89.0	1.1	9.9	0.151	0.536	23.992220	-104.721003
Libramiento de Durango	29.20	1	0	3741	4.2	80.3	1.7	2.4	4.0	4.6	1.6	1.1	0.1	84.5	1.7	13.8	0.088	0.526	24.000553	-104.725675

18 CARR: Pedriceña - Ent. Rodeo

CLAVE: 10002

RUTA: MEX-034

AÑO: 2023

LUGAR	ESTACION				CLASIFICACION VEHICULAR EN PORCIENTO										COORDENADAS					
	KM	TE	SC	TDPA	M	A	B	C2	C3	T3S2	T3S3	T3S2R4	OTROS	A	B	C	K'	D	LATITUD	LONGITUD
T. C. Cuencamé - Torreón	0.00	3	0	2895	2.7	75.2	1.4	14.8	2.4	1.8	0.8	0.3	0.6	77.9	1.4	20.7	0.075	0.504	25.092641	-103.774917
Nazas	45.00	1	0	2649	5.8	79.4	0.8	9.6	2.5	1.3	0.3	0.2	0.1	85.2	0.8	14.0	0.070	0.501	25.238944	-104.095152
Nazas	45.00	3	0	1232	8.6	74.8	1.0	9.1	4.4	1.2	0.7	0.1	0.1	83.4	1.0	15.6	0.087	0.508	25.217644	-104.125427
T. C. (Durango - Ent. La Zarca)-Ent. Rodeo	98.00	1	0	815	3.2	85.2	1.5	3.3	2.7	1.2	1.0	1.0	0.9	88.4	1.5	10.1	0.101	0.504	25.129526	-104.536666

19 CARR: Ramal a Otinapa

CLAVE: 10002

RUTA: MEX

AÑO: 2023

LUGAR	ESTACION				CLASIFICACION VEHICULAR EN PORCIENTO										COORDENADAS					
	KM	TE	SC	TDPA	M	A	B	C2	C3	T3S2	T3S3	T3S2R4	OTROS	A	B	C	K'	D	LATITUD	LONGITUD
T. C. Durango - Villa Unión	0.00	3	0	263	5.7	86.8	0.6	2.9	1.9	1.2	0.4	0.3	0.2	92.5	0.6	6.9	0.222	0.511	23.926859	-104.940673
Otinapa	19.65																			

20 CARR: Ramal a Santa Clara

CLAVE: 10287

RUTA: MEX-049

AÑO: 2023

LUGAR	ESTACION				CLASIFICACION VEHICULAR EN PORCIENTO										COORDENADAS					
	KM	TE	SC	TDPA	M	A	B	C2	C3	T3S2	T3S3	T3S2R4	OTROS	A	B	C	K'	D	LATITUD	LONGITUD
T. C. Ent. La Chicharrona - Cuencamé	0.00	3	0	846	2.6	90.6	2.1	3.8	0.2	0.2	0.5	0.0	0.0	93.2	2.1	4.7	0.091	0.508	24.442571	-103.482333
Santa Clara	14.00																			

DURANGO

21 CARR: Ramal a Villa Juárez

CLAVE: 10287

RUTA: MEX-040

AÑO: 2023

LUGAR	ESTACION				CLASIFICACION VEHICULAR EN PORCIENTO													COORDENADAS		
	KM	TE	SC	TDPA	M	A	B	C2	C3	T3S2	T3S3	T3S2R4	OTROS	A	B	C	K'	D	LATITUD	LONGITUD
T. C. Gómez Palacio - La Unión	0.00	3	1	3196	11.3	82.1	0.7	4.6	0.6	0.3	0.1	0.1	0.2	93.4	0.7	5.9	0.132	0.504	25.517953	-103.493898
T. C. Gómez Palacio - La Unión	0.00	3	2	3145	10.9	82.7	0.8	4.5	0.5	0.2	0.1	0.1	0.2	93.6	0.8	5.6	0.101	0.504	25.517861	-103.493862
Villa Juárez	13.00																			

22 CARR: Ramal Distribuidor Presa Peña del Águila

CLAVE: 10016

RUTA: MEX-045

AÑO: 2023

LUGAR	ESTACION				CLASIFICACION VEHICULAR EN PORCIENTO													COORDENADAS		
	KM	TE	SC	TDPA	M	A	B	C2	C3	T3S2	T3S3	T3S2R4	OTROS	A	B	C	K'	D	LATITUD	LONGITUD
T. C. Durango - Ent. La Zarca Sur	0.00																			
T. Der. San José del Molino	10.50	1	0	733	9.1	79.3	2.4	6.3	1.5	0.7	0.4	0.3	0.0	88.4	2.4	9.2	0.097	0.508	24.207031	-104.661750
T. C. Durango - Ent. La Zarca Norte	19.00																			

23 CARR: Zacatecas - Durango

CLAVE: 00544

RUTA: MEX-045

AÑO: 2023

LUGAR	ESTACION				CLASIFICACION VEHICULAR EN PORCIENTO													COORDENADAS		
	KM	TE	SC	TDPA	M	A	B	C2	C3	T3S2	T3S3	T3S2R4	OTROS	A	B	C	K'	D	LATITUD	LONGITUD
Zacatecas	0.00																			
T. Izq. Guadalajara	6.40	3	1	14420	1.2	78.9	2.7	8.5	4.0	3.5	0.4	0.6	0.2	80.1	2.7	17.2	0.087	0.525	22.783641	-102.626971
T. Izq. Guadalajara	6.40	3	2	15932	1.1	79.7	2.8	8.1	3.8	3.3	0.4	0.6	0.2	80.8	2.8	16.4	0.083	0.525	22.782727	-102.627267
T. Der. Saltillo (T. Morelos)	15.00	1	1	18384	1.4	66.2	3.6	8.6	2.8	12.1	2.2	2.5	0.6	67.6	3.6	28.8	0.078	0.510	22.850389	-102.623978
T. Der. Saltillo (T. Morelos)	15.00	1	2	17652	1.7	66.5	3.9	7.8	2.7	11.7	1.9	3.0	0.8	68.2	3.9	27.9	0.089	0.510	22.851292	-102.643971
T. Der. Saltillo (T. Morelos)	15.00	3	1	14532	1.8	70.3	4.7	7.9	3.0	6.7	1.9	2.9	0.8	72.1	4.7	23.2	0.091	0.535	22.875871	-102.637466
T. Der. Saltillo (T. Morelos)	15.00	3	2	16715	1.6	71.0	4.5	7.8	2.7	7.0	1.8	2.8	0.8	72.6	4.5	22.9	0.078	0.535	22.874424	-102.653552
T. Libramiento de Víctor Rosales	26.20																			
Víctor Rosales	28.00	1	1	15226	1.6	74.4	3.3	6.2	2.8	7.0	2.3	2.0	0.4	76.0	3.3	20.7	0.103	0.506	22.919342	-102.676056
Víctor Rosales	28.00	1	2	15572	2.1	73.8	3.4	5.7	3.2	6.7	2.3	2.2	0.6	75.9	3.4	20.7	0.090	0.506	22.919222	-102.676303
T. Der. Facultad de Veterinaria	32.30	1	1	10261	1.7	65.6	4.4	9.8	2.4	12.0	2.2	1.5	0.4	67.3	4.4	28.3	0.089	0.516	22.971630	-102.719757
T. Der. Facultad de Veterinaria	32.30	1	2	9619	1.5	66.9	4.0	9.5	2.4	11.5	2.3	1.3	0.6	68.4	4.0	27.6	0.077	0.516	22.971346	-102.719673
Gral. Enrique Estrada	34.60	3	1	11762	1.3	69.1	3.6	9.1	2.6	10.2	2.2	1.5	0.4	70.4	3.6	26.0	0.075	0.501	23.012253	-102.751732
Gral. Enrique Estrada	34.60	3	2	11822	1.5	68.1	3.9	9.2	2.8	10.4	2.0	1.7	0.4	69.6	3.9	26.5	0.069	0.501	23.010245	-102.750968
T. Libramiento de Víctor Rosales	35.90																			
T. Libramiento de Fresnillo Sur	49.30																			
Fresnillo	58.50	1	1	9611	1.5	80.6	2.4	8.4	2.7	2.7	1.4	0.2	0.1	82.1	2.4	15.5	0.084	0.522	23.160595	-102.852467
Fresnillo	58.50	1	2	10487	1.2	80.2	2.6	8.2	2.9	2.8	1.8	0.2	0.1	81.4	2.6	16.0	0.080	0.522	23.160551	-102.852574
T. C. Libramiento de Fresnillo (Cuota) Norte	66.40	1	1	6772	0.9	74.8	5.1	9.1	7.5	1.7	0.5	0.3	0.1	75.7	5.1	19.2	0.087	0.508	23.236552	-102.915717

DURANGO

23 CARR: Zacatecas - Durango

CLAVE: 00544

RUTA: MEX-045

AÑO: 2023

LUGAR	ESTACION				CLASIFICACION VEHICULAR EN PORCIENTO										COORDENADAS					
	KM	TE	SC	TDPA	M	A	B	C2	C3	T3S2	T3S3	T3S2R4	OTROS	A	B	C	K'	D	LATITUD	LONGITUD
T. C. Libramiento de Fresnillo (Cuota) Norte	66.40	1	2	6562	0.8	74.8	5.1	9.1	7.5	1.8	0.5	0.3	0.1	75.6	5.1	19.3	0.079	0.508	23.236513	-102.915822
Ent. La Chicharrona	74.30	1	1	9481	1.8	67.2	3.6	9.2	3.3	8.0	3.7	2.5	0.7	69.0	3.6	27.4	0.092	0.510	23.288715	-102.951634
Ent. La Chicharrona	74.30	1	2	9100	2.1	64.3	4.0	10.4	3.5	8.4	4.2	2.3	0.8	66.4	4.0	29.6	0.096	0.510	23.288682	-102.951954
Ent. La Chicharrona	74.30	3	0	7268	1.3	64.3	5.6	18.8	2.6	4.1	2.0	1.1	0.2	65.6	5.6	28.8	0.086	0.536	23.307799	-102.964707
T. Der. Sain Alto	121.00	3	0	4790	1.8	66.3	5.0	14.9	2.8	5.0	2.6	1.3	0.3	68.1	5.0	26.9	0.070	0.511	23.580888	-103.273903
T. Izq. Sombrerete (2º Acceso)	161.50	3	0	5695	1.7	71.2	3.9	11.0	2.7	5.1	2.6	1.5	0.3	72.9	3.9	23.2	0.072	0.504	23.646569	-103.651395
T. C. Libramiento de Sombrerete	165.00	3	0	5851	2.4	72.2	5.0	12.5	1.7	3.0	1.7	1.2	0.3	74.6	5.0	20.4	0.076	0.508	23.660597	-103.668766
Lim. Edos. Term. Zac. Ppia. Dgo.	190.08																			
X. C. Súchil - Villa Unión	206.98	1	0	3673	2.2	72.3	5.9	4.6	2.0	6.9	2.9	2.7	0.5	74.5	5.9	19.6	0.075	0.505	23.750127	-103.963291
X. C. Súchil - Villa Unión	206.98	3	0	6701	2.5	76.6	4.8	5.1	1.3	4.7	2.0	2.3	0.7	79.1	4.8	16.1	0.083	0.511	23.744284	-104.000249
T. Izq. Graceros	210.00	1	0	5343	13.7	67.0	3.9	4.7	1.7	4.7	1.7	1.9	0.7	80.7	3.9	15.4	0.087	0.504	23.748051	-104.038500
Amado Nervo	231.51	1	0	4739	2.2	72.2	5.5	5.3	2.1	6.4	2.7	2.7	0.9	74.4	5.5	20.1	0.076	0.509	23.841101	-104.184828
Amado Nervo	231.51	3	0	5936	2.6	77.6	5.1	4.6	1.5	4.4	1.7	1.9	0.6	80.2	5.1	14.7	0.090	0.503	23.844285	-104.195742
Nombre de Dios	236.80	1	0	2962	8.8	82.3	2.0	5.8	0.5	0.3	0.1	0.1	0.1	91.1	2.0	6.9	0.085	0.514	23.843788	-104.223798
Nombre de Dios	236.80	3	0	4072	7.4	83.9	1.8	5.7	0.6	0.3	0.1	0.1	0.1	91.3	1.8	6.9	0.089	0.523	23.851430	-104.248925
T. Der. Constanacia	240.60	3	0	6315	3.1	78.6	3.1	6.8	1.7	3.4	1.6	1.1	0.6	81.7	3.1	15.2	0.085	0.514	23.872080	-104.268676
T. Der. Tuitán	250.80	3	0	6547	2.2	77.4	3.9	6.9	1.4	4.4	1.7	1.7	0.4	79.6	3.9	16.5	0.091	0.502	23.923138	-104.337226
T. Der. Independencia y Libertad	261.70	1	0	6483	3.1	76.4	4.0	7.3	2.1	3.8	1.6	1.2	0.5	79.5	4.0	16.5	0.081	0.506	23.993409	-104.373866
T. Der. Independencia y Libertad	261.70	3	1	3872	1.2	82.3	4.5	3.4	1.4	3.7	1.6	1.5	0.4	83.5	4.5	12.0	0.143	0.501	24.011685	-104.405947
T. Der. Independencia y Libertad	261.70	3	2	3852	1.7	80.3	4.9	4.0	1.6	4.0	1.6	1.5	0.4	82.0	4.9	13.1	0.102	0.501	24.011576	-104.406171
T. Izq. Parras de La Fuente	276.60	1	1	4550	1.6	82.0	4.8	4.0	1.2	3.4	1.5	1.1	0.4	83.6	4.8	11.6	0.125	0.501	24.019156	-104.506514
T. Izq. Parras de La Fuente	276.60	1	2	4563	1.8	81.6	4.9	4.0	1.3	3.3	1.4	1.3	0.4	83.4	4.9	11.7	0.090	0.501	24.019067	-104.506579
T. Izq. Parras de La Fuente	276.60	3	1	4571	3.1	84.4	2.5	5.1	1.5	1.7	0.8	0.7	0.2	87.5	2.5	10.0	0.113	0.541	24.021210	-104.525673
T. Izq. Parras de La Fuente	276.60	3	2	5382	3.0	83.9	2.5	5.1	1.8	1.8	0.8	0.8	0.3	86.9	2.5	10.6	0.079	0.541	24.021103	-104.525687
Durango	287.30	1	1	7110	6.2	82.4	2.1	4.8	1.6	1.4	0.6	0.6	0.3	88.6	2.1	9.3	0.086	0.504	24.026392	-104.574777
Durango	287.30	1	2	6983	6.1	82.5	2.2	5.1	1.5	1.3	0.5	0.6	0.2	88.6	2.2	9.2	0.098	0.504	24.026280	-104.574732

24 CARR: Durango - Mazatlán (Cuota)

CLAVE: 00084

RUTA: MEX-040D

AÑO: 2023

LUGAR	ESTACION				CLASIFICACION VEHICULAR EN PORCIENTO										COORDENADAS					
	KM	TE	SC	TDPA	M	A	B	C2	C3	T3S2	T3S3	T3S2R4	OTROS	A	B	C	K'	D	LATITUD	LONGITUD
Libramiento de Durango	21.30	3	0	3532	5.4	61.8	5.6	3.9	2.4	10.3	2.7	7.0	0.9	67.2	5.6	27.2	0.101	0.510	24.006277	-104.730809
Plaza de Cobro Durango	22.20	2	0	4401	1.1	67.3	3.4	2.6	3.2	11.5	1.9	7.6	1.4	68.4	3.4	28.2	0.108	0.500	24.005080	-104.734540
Ent. Olinapa	44.50	1	0	3188	2.7	64.2	5.3	4.9	2.7	10.0	2.4	6.9	0.9	66.9	5.3	27.8	0.119	0.510	23.982230	-104.943277
Plaza de Cobro Llano Grande	73.80	2	0	4031	1.1	64.8	3.7	2.8	3.5	12.5	1.9	8.6	1.1	65.9	3.7	30.4	0.108	0.500	23.864514	-105.233202

DURANGO

24 CARR: Durango - Mazatlán (Cuota)

CLAVE: 00084

RUTA: MEX-040D

AÑO: 2023

LUGAR	ESTACION				CLASIFICACION VEHICULAR EN PORCIENTO										COORDENADAS					
	KM	TE	SC	TDPA	M	A	B	C2	C3	T3S2	T3S3	T3S2R4	OTROS	A	B	C	K'	D	LATITUD	LONGITUD
X. C. Durango - Villa Unión	80.14	1	0	4321	2.9	62.2	6.4	5.9	2.1	11.6	3.0	5.0	0.9	65.1	6.4	28.5	0.098	0.523	23.857287	-105.251553
T. Der. El Salto 1er Acceso	91.60	1	0	4844	3.0	67.1	4.9	4.5	2.2	10.3	2.8	4.6	0.6	70.1	4.9	25.0	0.087	0.540	23.801375	-105.328162
T. Der. El Salto 2do Acceso	104.20	1	0	2775	4.3	54.3	7.2	8.0	2.2	14.9	3.0	5.5	0.6	58.6	7.2	34.2	0.100	0.523	23.756316	-105.424051
T. Der. El Salto 2do Acceso	104.20	3	0	5096	4.3	57.9	5.6	9.0	2.7	11.9	3.4	4.9	0.3	62.2	5.6	32.2	0.073	0.505	23.759357	-105.433967
T. Der. La Campana	111.00	3	0	4552	4.2	54.1	6.5	8.0	3.0	11.5	3.4	8.5	0.8	58.3	6.5	35.2	0.070	0.521	23.721699	-105.488159
Lim. Edos. Term. Dgo. Ppia. Sin.	157.40																			
Entronque Santa Lucia	172.20	3	0	4377	4.7	62.1	7.0	4.0	1.7	10.4	2.2	7.3	0.6	66.8	7.0	26.2	0.090	0.502	23.451933	-105.842560
Concordia	213.70	1	0	3362	4.4	61.3	5.5	5.0	1.8	11.0	2.5	7.6	0.9	65.7	5.5	28.8	0.112	0.534	23.263974	-106.045009
Concordia	213.70	3	0	3474	4.0	61.6	7.1	4.2	1.6	11.3	1.8	7.7	0.7	65.6	7.1	27.3	0.113	0.525	23.250122	-106.061853
Villa Unión	229.70	1	0	3645	3.8	60.2	7.6	7.3	1.4	9.7	2.1	7.3	0.6	64.0	7.6	28.4	0.108	0.506	23.200228	-106.166428

25 CARR: Durango - Yerbanís (Cuota)

CLAVE: 10003

RUTA: MEX-040D

AÑO: 2023

LUGAR	ESTACION				CLASIFICACION VEHICULAR EN PORCIENTO										COORDENADAS					
	KM	TE	SC	TDPA	M	A	B	C2	C3	T3S2	T3S3	T3S2R4	OTROS	A	B	C	K'	D	LATITUD	LONGITUD
T. C. Durango - Torreón	0.00																			
T. Der. Aeropuerto	5.30	1	1	4708	2.4	81.2	3.7	2.8	0.8	5.1	1.4	2.1	0.5	83.6	3.7	12.7	0.088	0.503	24.124024	-104.540475
T. Der. Aeropuerto	5.30	1	2	4758	2.5	81.1	3.3	2.7	0.9	5.3	1.6	2.1	0.5	83.6	3.3	13.1	0.092	0.503	24.124141	-104.540595
Plaza de Cobro Durango	5.50	2	1	1981	0.6	68.4	4.6	3.2	2.2	10.2	2.0	7.5	1.3	69.0	4.6	26.4	0.117	0.500	24.131646	-104.534037
Plaza de Cobro Durango	5.50	2	2	1981	0.6	68.4	4.6	3.2	2.2	10.2	2.0	7.5	1.3	69.0	4.6	26.4	0.117	0.500	24.131646	-104.534037
X. C. Durango - Torreón	49.10	3	1	1959	3.4	65.6	5.9	6.8	1.7	9.3	2.2	4.3	0.8	69.0	5.9	25.1	0.089	0.501	24.407689	-104.245093
X. C. Durango - Torreón	49.10	3	2	1964	3.4	66.0	6.0	6.6	1.4	9.3	2.2	4.4	0.7	69.4	6.0	24.6	0.078	0.501	24.407816	-104.245083
Plaza de Cobro Yerbanís	112.19	2	1	1650	0.6	64.3	5.4	3.4	2.4	11.6	2.2	8.7	1.4	64.9	5.4	29.7	0.117	0.500	24.730819	-103.861843
Plaza de Cobro Yerbanís	112.19	2	2	1650	0.6	64.3	5.4	3.4	2.4	11.6	2.2	8.7	1.4	64.9	5.4	29.7	0.117	0.500	24.730819	-103.861843
Ent. Yerbanís	118.00																			

26 CARR: Gómez Palacio - Corralitos (Cuota)

CLAVE: 00016

RUTA: MEX-049D

AÑO: 2023

LUGAR	ESTACION				CLASIFICACION VEHICULAR EN PORCIENTO										COORDENADAS					
	KM	TE	SC	TDPA	M	A	B	C2	C3	T3S2	T3S3	T3S2R4	OTROS	A	B	C	K'	D	LATITUD	LONGITUD
T. C. Gómez Palacio - Jiménez (Libre)	38.00																			
T. Izq. Bermejillo	40.10	1	1	2920	2.3	42.5	6.3	5.1	2.2	28.5	4.9	7.3	0.9	44.8	6.3	48.9	0.068	0.501	25.879291	-103.611933
T. Izq. Bermejillo	40.10	1	2	2927	2.3	38.8	7.3	5.6	2.4	29.8	5.5	7.4	0.9	41.1	7.3	51.6	0.073	0.501	25.879347	-103.612081
T. Izq. Bermejillo	40.10	3	1	2724	3.1	49.6	8.1	5.4	1.9	20.4	4.3	6.6	0.6	52.7	8.1	39.2	0.063	0.511	25.898463	-103.612537
T. Izq. Bermejillo	40.10	3	2	2848	2.9	44.9	8.7	5.9	2.1	22.2	5.0	7.7	0.6	47.8	8.7	43.5	0.069	0.511	25.898384	-103.612786

DURANGO

26 CARR: Gómez Palacio - Corralitos (Cuota)

CLAVE: 00016

RUTA: MEX-049D

AÑO: 2023

LUGAR	ESTACION				CLASIFICACION VEHICULAR EN PORCIENTO														COORDENADAS	
	KM	TE	SC	TDPA	M	A	B	C2	C3	T3S2	T3S3	T3S2R4	OTROS	A	B	C	K'	D	LATITUD	LONGITUD
Plaza de Cobro Bermejillo	44.16	2	1	2613	0.2	34.1	9.3	2.7	1.9	32.4	6.5	9.4	3.5	34.3	9.3	56.4	0.079	0.500	25.923705	-103.622079
Plaza de Cobro Bermejillo	44.16	2	2	2613	0.2	34.1	9.3	2.7	1.9	32.4	6.5	9.4	3.5	34.3	9.3	56.4	0.079	0.500	25.923705	-103.622079
T. Izq. Ceballos	123.80	1	1	2859	4.7	31.4	10.0	4.9	1.9	33.9	5.7	6.6	0.9	36.1	10.0	53.9	0.064	0.505	26.560058	-104.036667
T. Izq. Ceballos	123.80	1	2	2915	4.3	30.8	10.5	4.8	1.8	34.2	5.9	6.8	0.9	35.1	10.5	54.4	0.063	0.505	26.559883	-104.037037
Plaza de Cobro Ceballos	128.80	2	1	2597	0.2	34.6	5.3	2.7	5.5	31.5	6.8	9.3	4.1	34.8	5.3	59.9	0.079	0.500	26.586801	-104.057535
Plaza de Cobro Ceballos	128.80	2	2	2597	0.2	34.6	5.3	2.7	5.5	31.5	6.8	9.3	4.1	34.8	5.3	59.9	0.079	0.500	26.586801	-104.057535
Lim. Edos. Term. Dgo. Ppia. Chih.	158.00																			
T. C. Gómez Palacio - Jiménez	188.46	1	1	2001	2.9	36.2	12.0	5.0	2.9	27.4	6.2	6.5	0.9	39.1	12.0	48.9	0.073	0.528	26.902434	-104.549603
T. C. Gómez Palacio - Jiménez	188.46	1	2	1787	3.5	34.3	11.9	5.4	3.4	27.5	6.6	6.5	0.9	37.8	11.9	50.3	0.078	0.528	26.901782	-104.550483
T. C. Gómez Palacio - Jiménez	188.46	3	1	3070	6.3	40.0	8.6	6.8	2.1	22.3	6.2	6.8	0.9	46.3	8.6	45.1	0.068	0.504	26.907695	-104.559261
T. C. Gómez Palacio - Jiménez	188.46	3	2	3114	6.2	40.3	9.3	6.7	2.4	21.3	5.9	6.9	1.0	46.5	9.3	44.2	0.065	0.504	26.906815	-104.559673
T. C. Gómez Palacio - Jiménez (Libre)	226.50	1	1	3018	3.3	40.1	7.4	5.7	2.7	25.4	6.5	8.0	0.9	43.4	7.4	49.2	0.062	0.524	27.103559	-104.871110
T. C. Gómez Palacio - Jiménez (Libre)	226.50	1	2	3323	2.7	40.6	7.6	6.3	2.4	25.4	6.6	7.5	0.9	43.3	7.6	49.1	0.063	0.524	27.103366	-104.871358

27 CARR: Libramiento de Durango (Cuota)

CLAVE: 10006

RUTA: MEX-040D

AÑO: 2023

LUGAR	ESTACION				CLASIFICACION VEHICULAR EN PORCIENTO														COORDENADAS	
	KM	TE	SC	TDPA	M	A	B	C2	C3	T3S2	T3S3	T3S2R4	OTROS	A	B	C	K'	D	LATITUD	LONGITUD
T. C. Durango - Torreón	0.00	3	0	6181	6.0	66.9	5.5	6.0	2.3	7.0	2.2	3.2	0.9	72.9	5.5	21.6	0.074	0.512	24.093523	-104.583016
T. C. Av. Estaño	5.90	3	0	9526	4.2	76.1	2.0	2.9	2.9	6.7	2.7	2.0	0.5	80.3	2.0	17.7	0.083	0.517	24.075327	-104.625849
X. C. Durango - Ent. La Zarca	10.40	3	0	5504	4.8	65.4	5.3	5.5	2.7	9.9	2.7	3.0	0.7	70.2	5.3	24.5	0.078	0.505	24.068807	-104.667874
T. C. Durango - Villa Unión (Cuota)	21.60	1	0	5896	2.1	70.1	4.5	3.4	2.7	8.8	2.6	4.9	0.9	72.2	4.5	23.3	0.085	0.553	24.015414	-104.727101

28 CARR: Libramiento Norte de Torreón (Cuota)

CLAVE:

RUTA: MEX-040D

AÑO: 2023

LUGAR	ESTACION				CLASIFICACION VEHICULAR EN PORCIENTO														COORDENADAS	
	KM	TE	SC	TDPA	M	A	B	C2	C3	T3S2	T3S3	T3S2R4	OTROS	A	B	C	K'	D	LATITUD	LONGITUD
X. C. Gómez Palacio - Jiménez	0.00	3	0	4611	2.5	36.5	4.2	8.2	2.8	28.7	5.5	10.7	0.9	39.0	4.2	56.8	0.064	0.502	25.631340	-103.507214
Lim. Edos. Term. Dgo. Ppia. Coah.	15.60																			
X. C. La Cuchilla - Torreón	17.36	1	0	4374	3.5	38.5	5.6	4.5	3.8	26.4	5.1	11.8	0.8	42.0	5.6	52.4	0.068	0.505	25.660613	-103.388593
X. C. La Cuchilla - Torreón	17.36	3	0	3226	4.7	33.0	5.8	5.1	3.4	28.5	6.3	12.3	0.9	37.7	5.8	56.5	0.071	0.540	25.647728	-103.353691
X. C. Torreón - Saltillo	40.70	1	0	3913	5.7	28.5	9.1	7.1	4.2	29.0	4.7	10.8	0.9	34.2	9.1	56.7	0.087	0.502	25.547466	-103.226297

DURANGO

29 CARR: Yerbanis - Gómez Palicio (Cuota)

CLAVE: 10003

RUTA: MEX-040D

AÑO: 2023

LUGAR	ESTACION				CLASIFICACION VEHICULAR EN PORCIENTO										COORDENADAS						
	KM	TE	SC	TDPA	M	A	B	C2	C3	T3S2	T3S3	T3S2R4	OTROS	A	B	C	K'	D	LATITUD	LONGITUD	
Ent. Yerbanis	118.00																				
Durango - Torreón	143.20	1	1	1586	1.5	65.6	8.3	3.7	1.9	10.8	2.0	5.2	1.0	67.1	8.3	24.6	0.119	0.540	24.976398	-103.736623	
Durango - Torreón	143.20	1	2	1348	2.5	60.9	10.0	4.5	2.1	11.7	2.2	5.1	1.0	63.4	10.0	26.6	0.057	0.540	24.976525	-103.736781	
Plaza de Cobro Cuencamé	143.22	2	1	1612	0.7	64.8	5.7	3.3	2.4	11.5	2.0	8.2	1.4	65.5	5.7	28.8	0.089	0.500	24.981714	-103.735206	
Plaza de Cobro Cuencamé	143.22	2	2	1612	0.7	64.8	5.7	3.3	2.4	11.5	2.0	8.2	1.4	65.5	5.7	28.8	0.089	0.500	24.981714	-103.735206	
X. C. Cuencamé - Torreón	180.00	1	1	3399	2.4	45.7	10.2	4.9	2.1	22.0	3.6	8.4	0.7	48.1	10.2	41.7	0.076	0.506	25.130833	-103.753785	
X. C. Cuencamé - Torreón	180.00	1	2	3475	2.8	44.7	10.8	4.9	1.7	22.1	3.9	8.3	0.8	47.5	10.8	41.7	0.072	0.506	25.130803	-103.753869	
X. C. Cuencamé - Torreón	180.00	3	1	3655	2.9	48.8	8.7	5.1	2.6	19.4	4.0	7.8	0.7	51.7	8.7	39.6	0.083	0.509	25.146184	-103.752993	
X. C. Cuencamé - Torreón	180.00	3	2	3523	3.0	48.6	8.8	5.0	2.6	19.3	4.0	7.8	0.9	51.6	8.8	39.6	0.077	0.509	25.146258	-103.753042	
Plaza de Cobro León Guzmán	212.71	1	1	3637	2.8	51.7	8.5	4.3	2.0	18.0	3.9	7.9	0.9	54.5	8.5	37.0	0.101	0.508	25.504581	-103.639785	
Plaza de Cobro León Guzmán	212.71	1	2	3757	2.9	51.4	8.6	4.3	2.2	18.1	3.7	7.9	0.9	54.3	8.6	37.1	0.074	0.508	25.504571	-103.639880	
Plaza de Cobro León Guzmán	212.71	2	1	2553	0.4	43.7	5.3	3.8	3.7	26.1	4.0	10.6	2.4	44.1	5.3	50.6	0.089	0.500	25.520645	-103.639471	
Plaza de Cobro León Guzmán	212.71	2	2	2553	0.4	43.7	5.3	3.8	3.7	26.1	4.0	10.6	2.4	44.1	5.3	50.6	0.089	0.500	25.520645	-103.639471	
Plaza de Cobro León Guzmán	212.71	3	1	2942	5.5	41.2	8.6	6.3	3.9	21.6	5.1	6.9	0.9	46.7	8.6	44.7	0.085	0.509	25.537902	-103.638340	
Plaza de Cobro León Guzmán	212.71	3	2	3053	5.2	42.5	8.5	6.1	3.6	21.6	4.8	6.8	0.9	47.7	8.5	43.8	0.068	0.509	25.537925	-103.638628	
T. C. Gómez Palacio - Jiménez	220.00																				

30 CARR: Amado Nervo - La Ochoa

CLAVE: 10012

RUTA: DGO-542

AÑO: 2023

LUGAR	ESTACION				CLASIFICACION VEHICULAR EN PORCIENTO										COORDENADAS					
	KM	TE	SC	TDPA	M	A	B	C2	C3	T3S2	T3S3	T3S2R4	OTROS	A	B	C	K'	D	LATITUD	LONGITUD
Amado Nervo	0.00	3	0	1806	8.0	83.7	1.2	4.5	1.5	0.4	0.4	0.1	0.2	91.7	1.2	7.1	0.089	0.509	23.853542	-104.172718
Villa Unión	25.00	1	0	4148	11.9	80.8	1.6	4.3	0.4	0.3	0.3	0.2	0.2	92.7	1.6	5.7	0.097	0.512	23.958890	-104.057353
La Ochoa	42.00	1	0	486	12.7	80.7	1.7	3.2	1.3	0.1	0.2	0.1	0.0	93.4	1.7	4.9	0.101	0.505	24.019805	-103.926716

31 CARR: Ceballos - El Mirador

CLAVE: 10417

RUTA: DGO-044

AÑO: 2023

LUGAR	ESTACION				CLASIFICACION VEHICULAR EN PORCIENTO										COORDENADAS					
	KM	TE	SC	TDPA	M	A	B	C2	C3	T3S2	T3S3	T3S2R4	OTROS	A	B	C	K'	D	LATITUD	LONGITUD
Ceballos	0.00	3	0	783	3.1	74.4	0.8	19.3	1.2	0.6	0.3	0.1	0.2	77.5	0.8	21.7	0.091	0.512	26.527144	-104.137966
T. C. Ent. La Zarca - Hidalgo del Parral	113.50	1	0	257	1.6	91.3	0.4	5.0	0.5	0.7	0.5	0.0	0.0	92.9	0.4	6.7	0.098	0.507	26.141959	-105.027994

DURANGO

32 CARR: Durango - Aserradero La Flor

CLAVE: 10422

RUTA: DGO-115

AÑO: 2023

LUGAR	ESTACION				CLASIFICACION VEHICULAR EN PORCIENTO												COORDENADAS			
	KM	TE	SC	TDPA	M	A	B	C2	C3	T3S2	T3S3	T3S2R4	OTROS	A	B	C	K'	D	LATITUD	LONGITUD
Durango	0.00	3	1	12375	11.1	82.1	0.6	5.0	0.6	0.2	0.1	0.2	0.1	93.2	0.6	6.2	0.095	0.503	23.984398	-104.664535
Durango	0.00	3	2	12536	10.8	82.3	0.7	5.0	0.5	0.2	0.1	0.3	0.1	93.1	0.7	6.2	0.080	0.503	23.984585	-104.664434
T. Der. Presa Guadalupe Victoria	4.00	3	1	6916	7.5	84.0	0.6	6.0	0.8	0.4	0.2	0.4	0.1	91.5	0.6	7.9	0.089	0.503	23.975770	-104.664704
T. Der. Presa Guadalupe Victoria	4.00	3	2	6995	7.5	84.2	0.6	5.9	0.8	0.4	0.2	0.3	0.1	91.7	0.6	7.7	0.081	0.503	23.975744	-104.664578
Periférico Sur de Durango	8.00	3	0	595	16.0	56.0	2.3	12.4	6.2	4.1	1.2	1.1	0.7	72.0	2.3	25.7	0.084	0.544	23.948693	-104.672494
La Casita	39.00	1	0	231	11.8	54.2	2.3	4.7	15.4	6.7	2.9	1.7	0.3	66.0	2.3	31.7	0.114	0.517	23.754122	-104.756962
Aserradero La Flor	72.00																			

33 CARR: Jabonoso - Esmeralda

CLAVE: 10004

RUTA: DGO-363

AÑO: 2023

LUGAR	ESTACION				CLASIFICACION VEHICULAR EN PORCIENTO												COORDENADAS			
	KM	TE	SC	TDPA	M	A	B	C2	C3	T3S2	T3S3	T3S2R4	OTROS	A	B	C	K'	D	LATITUD	LONGITUD
Jabonoso	0.00	3	0	4288	14.1	72.7	1.0	4.4	3.4	1.8	1.0	1.4	0.2	86.8	1.0	12.2	0.073	0.505	25.644463	-103.457134
T. Izq. Chimal	10.00	3	0	3826	20.1	70.5	1.4	4.6	1.5	0.6	0.3	0.9	0.1	90.6	1.4	8.0	0.078	0.503	25.699928	-103.442240
Esmeralda	16.30	1	0	2577	26.2	64.9	1.7	4.0	2.1	0.5	0.2	0.4	0.0	91.1	1.7	7.2	0.075	0.528	25.731291	-103.433502

34 CARR: La Torreña - Brittingham

CLAVE: 10010

RUTA: DGO-325

AÑO: 2023

LUGAR	ESTACION				CLASIFICACION VEHICULAR EN PORCIENTO												COORDENADAS			
	KM	TE	SC	TDPA	M	A	B	C2	C3	T3S2	T3S3	T3S2R4	OTROS	A	B	C	K'	D	LATITUD	LONGITUD
La Torreña	0.00	3	0	3083	26.9	58.6	1.2	4.2	2.2	3.5	1.6	1.5	0.3	85.5	1.2	13.3	0.085	0.517	25.639091	-103.579929
X. C. Gómez Palacio - Jiménez	7.00	1	0	5163	17.6	65.9	1.3	5.5	3.6	2.9	1.8	1.2	0.2	83.5	1.3	15.2	0.074	0.505	25.638436	-103.535486
X. C. Gómez Palacio - Jiménez	7.00	3	0	2490	13.4	79.4	1.2	2.4	1.5	1.0	0.5	0.6	0.0	92.8	1.2	6.0	0.088	0.515	25.641327	-103.520500
Chimal	16.00	1	0	3131	11.2	73.1	1.4	5.5	4.1	2.1	0.9	1.5	0.2	84.3	1.4	14.3	0.079	0.509	25.690575	-103.491206
Chimal	16.00	3	0	1335	15.0	64.3	2.0	3.2	9.9	3.3	1.3	1.0	0.0	79.3	2.0	18.7	0.095	0.507	25.697551	-103.490958
Brittingham	33.00	1	0	1272	5.7	79.4	1.9	4.2	3.5	4.0	0.7	0.5	0.1	85.1	1.9	13.0	0.104	0.513	25.774553	-103.572427

35 CARR: Libramiento de Torreón

CLAVE: 05516

RUTA: COA

AÑO: 2023

LUGAR	ESTACION				CLASIFICACION VEHICULAR EN PORCIENTO												COORDENADAS			
	KM	TE	SC	TDPA	M	A	B	C2	C3	T3S2	T3S3	T3S2R4	OTROS	A	B	C	K'	D	LATITUD	LONGITUD
X. C. Saltillo - Torreón	0.00	3	1	47521	5.2	83.9	1.4	3.9	1.3	2.1	0.7	1.2	0.3	89.1	1.4	9.5	0.073	0.530	25.539466	-103.370536
X. C. Saltillo - Torreón	0.00	3	2	54503	5.2	84.3	1.6	3.8	1.2	1.9	0.6	1.0	0.4	89.5	1.6	8.9	0.082	0.530	25.539759	-103.370966
T. C. La Cuchilla - Torreón (Alta)	7.30	1	1	17460	1.7	86.9	1.3	3.6	2.0	2.7	0.9	0.7	0.2	88.6	1.3	10.1	0.104	0.506	25.582057	-103.402005
T. C. La Cuchilla - Torreón (Baja)	7.30	1	1	41072	3.4	84.9	1.3	4.2	0.7	3.2	0.9	1.1	0.3	88.3	1.3	10.4	0.094	0.532	25.582252	-103.402004

DURANGO

35 CARR: Libramiento de Torreón

CLAVE: 05516

RUTA: COA

AÑO: 2023

LUGAR	ESTACION				CLASIFICACION VEHICULAR EN PORCIENTO										COORDENADAS					
	KM	TE	SC	TDPA	M	A	B	C2	C3	T3S2	T3S3	T3S2R4	OTROS	A	B	C	K'	D	LATITUD	LONGITUD
T. C. La Cuchilla - Torreón (Alta)	7.30	1	2	17884	1.8	86.9	1.2	3.7	2.0	2.6	0.9	0.7	0.2	88.7	1.2	10.1	0.087	0.506	25.581993	-103.402076
T. C. La Cuchilla - Torreón (Baja)	7.30	1	2	47419	3.5	83.3	1.4	5.1	0.8	3.4	1.0	1.2	0.3	86.8	1.4	11.8	0.089	0.532	25.581844	-103.402184
Lim. Edos. Term. Coah. Ppia. Dgo.	11.80																			
T. C. Durango - Torreón	28.60																			

36 CARR: Libramiento Exterior Cuencamé

CLAVE: 10006

RUTA: DGO

AÑO: 2023

LUGAR	ESTACION				CLASIFICACION VEHICULAR EN PORCIENTO										COORDENADAS					
	KM	TE	SC	TDPA	M	A	B	C2	C3	T3S2	T3S3	T3S2R4	OTROS	A	B	C	K'	D	LATITUD	LONGITUD
Ent. La Chicharrona - Cuencamé	0.00	3	0	5390	4.2	35.3	7.0	5.6	3.2	29.7	5.7	8.4	0.9	39.5	7.0	53.5	0.066	0.500	24.843529	-103.695058
T. C. Durango - Torreón	7.65	1	0	6177	5.1	39.1	8.9	6.2	3.6	21.6	6.7	7.9	0.9	44.2	8.9	46.9	0.065	0.540	24.894611	-103.706943

37 CARR: Mezquital - San Miguel de Temoaya

CLAVE: 10006

RUTA: DGO

AÑO: 2023

LUGAR	ESTACION				CLASIFICACION VEHICULAR EN PORCIENTO										COORDENADAS					
	KM	TE	SC	TDPA	M	A	B	C2	C3	T3S2	T3S3	T3S2R4	OTROS	A	B	C	K'	D	LATITUD	LONGITUD
T. C. Durango - Mezquital	0.00	3	0	317	5.9	75.7	1.2	12.3	3.8	0.6	0.3	0.2	0.0	81.6	1.2	17.2	0.096	0.541	23.497695	-104.391035
San Miguel de Temoaya	48.00	1	0	256	20.4	68.4	0.8	5.0	4.3	0.3	0.3	0.2	0.3	88.8	0.8	10.4	0.134	0.508	23.304290	-104.507196

38 CARR: Ramal a San Juan del Río

CLAVE: 10001

RUTA: DGO-290

AÑO: 2023

LUGAR	ESTACION				CLASIFICACION VEHICULAR EN PORCIENTO										COORDENADAS					
	KM	TE	SC	TDPA	M	A	B	C2	C3	T3S2	T3S3	T3S2R4	OTROS	A	B	C	K'	D	LATITUD	LONGITUD
T. C. Durango - Ent. La Zarca	0.00	3	0	4187	5.0	86.3	1.3	2.1	1.9	1.0	0.9	0.8	0.7	91.3	1.3	7.4	0.074	0.508	24.797382	-104.498612
San Juan del Río	5.00	1	1	2540	4.6	89.1	1.0	1.0	0.5	1.0	1.1	0.9	0.8	93.7	1.0	5.3	0.075	0.508	24.785913	-104.473983
San Juan del Río	5.00	1	2	2464	4.2	89.0	1.1	1.0	0.5	1.2	1.2	0.9	0.9	93.2	1.1	5.7	0.072	0.508	24.785996	-104.473920

39 CARR: Súchil - Villa Unión

CLAVE: 10419

RUTA: DGO-241

AÑO: 2023

LUGAR	ESTACION				CLASIFICACION VEHICULAR EN PORCIENTO										COORDENADAS					
	KM	TE	SC	TDPA	M	A	B	C2	C3	T3S2	T3S3	T3S2R4	OTROS	A	B	C	K'	D	LATITUD	LONGITUD
Súchil	0.00	3	1	1857	6.2	84.1	2.0	2.2	0.9	1.4	1.5	1.0	0.7	90.3	2.0	7.7	0.083	0.523	23.630073	-103.924351
Súchil	0.00	3	2	1698	7.8	80.6	2.4	3.0	1.3	1.4	1.4	1.2	0.9	88.4	2.4	9.2	0.090	0.523	23.630026	-103.924417
Vicente Guerrero	13.40	1	0	2804	4.6	89.3	1.9	2.9	0.7	0.2	0.2	0.1	0.1	93.9	1.9	4.2	0.088	0.500	23.711551	-103.970208
X. C. Zacatecas - Durango	14.50	1	1	5179	10.0	79.7	1.7	2.4	2.4	1.7	1.3	0.4	0.4	89.7	1.7	8.6	0.089	0.508	23.741171	-103.984615

DURANGO

39 CARR: SÚCHIL - VILLA UNIÓN

CLAVE: 10419

RUTA: DGO-241

AÑO: 2023

LUGAR	ESTACION				CLASIFICACION VEHICULAR EN PORCIENTO														COORDENADAS	
	KM	TE	SC	TDPA	M	A	B	C2	C3	T3S2	T3S3	T3S2R4	OTROS	A	B	C	K'	D	LATITUD	LONGITUD
X. C. Zacatecas - Durango	14.50	1	2	5006	9.9	78.9	1.8	2.6	2.7	1.9	1.4	0.4	0.4	88.8	1.8	9.4	0.085	0.508	23.741153	-103.984715
X. C. Zacatecas - Durango	14.50	3	0	2950	4.4	90.2	1.1	3.2	0.5	0.2	0.2	0.2	0.0	94.6	1.1	4.3	0.089	0.522	23.746836	-103.987705
Villa Unión	41.40	1	0	2666	10.3	85.0	1.0	2.6	0.6	0.2	0.2	0.1	0.0	95.3	1.0	3.7	0.104	0.518	23.959876	-104.049582

40 CARR: TLAHUALILLO DE ZARAGOZA - T.C. GÓMEZ PALACIO - JIMÉNEZ

CLAVE: 10419

RUTA: DGO

AÑO: 2023

LUGAR	ESTACION				CLASIFICACION VEHICULAR EN PORCIENTO														COORDENADAS	
	KM	TE	SC	TDPA	M	A	B	C2	C3	T3S2	T3S3	T3S2R4	OTROS	A	B	C	K'	D	LATITUD	LONGITUD
Tlahualillo	0.00	3	0	789	13.7	79.6	1.0	1.5	0.5	1.8	1.0	0.9	0.0	93.3	1.0	5.7	0.124	0.508	26.119803	-103.448943
T. C. Gómez Palacio - Jiménez	37.00	1	0	74	7.2	70.3	3.1	7.6	1.6	6.1	0.5	3.6	0.0	77.5	3.1	19.4	0.160	0.535	26.155775	-103.776359

41 CARR: YERBANIS - PEÑÓN BLANCO

CLAVE: 10032

RUTA: DGO-316

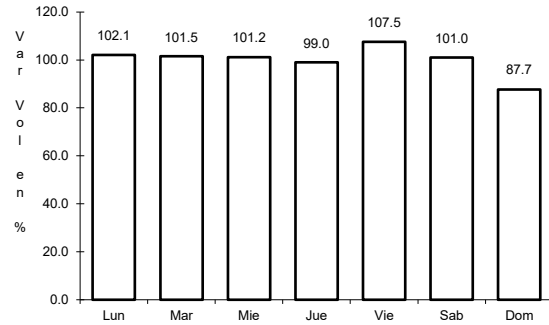
AÑO: 2023

LUGAR	ESTACION				CLASIFICACION VEHICULAR EN PORCIENTO														COORDENADAS	
	KM	TE	SC	TDPA	M	A	B	C2	C3	T3S2	T3S3	T3S2R4	OTROS	A	B	C	K'	D	LATITUD	LONGITUD
Yerbanis	0.00	3	0	1238	2.1	81.9	2.9	4.8	3.3	2.3	1.5	1.2	0.0	84.0	2.9	13.1	0.105	0.532	24.735754	-103.847797
Peñón Blanco	22.00	1	0	911	3.8	91.2	0.7	3.0	0.9	0.1	0.3	0.0	0.0	95.0	0.7	4.3	0.116	0.501	24.779153	-104.006495

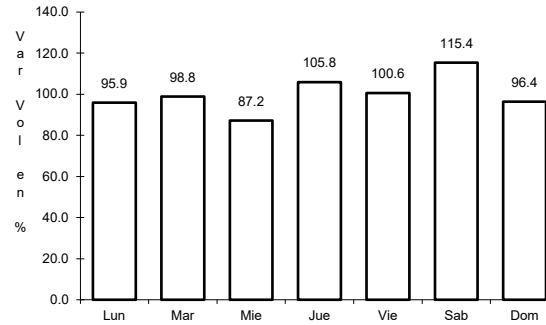
1 CARR: Bermejillo - El Palmito

CLAVE: 10105

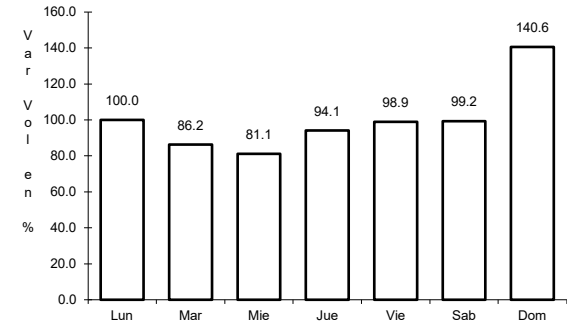
RUTA: MEX-030



Km: 0.00 Tipo: 3 Sent: 0



Km: 86.00 Tipo: 1 Sent: 0

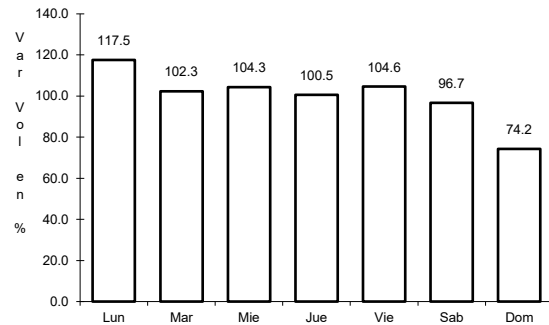


Km: 160.00 Tipo: 1 Sent: 0

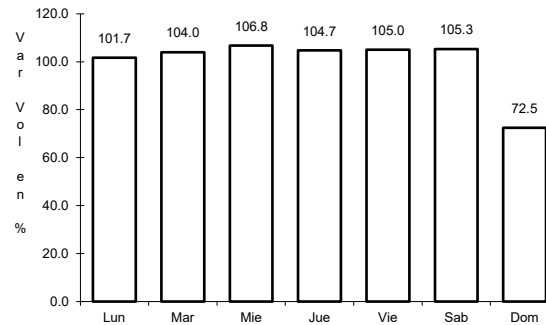
2 CARR: Durango - Ent. La Zarca

CLAVE: 10016

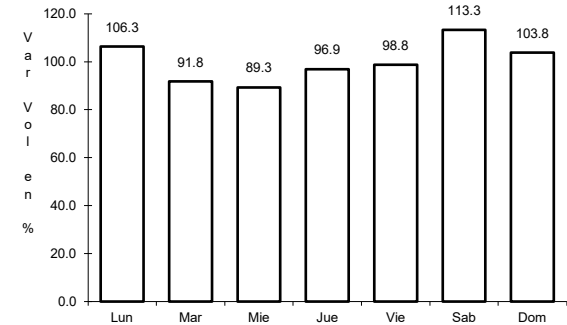
RUTA: MEX-045



Km: 0.00 Tipo: 3 Sent: 1



Km: 0.00 Tipo: 3 Sent: 2

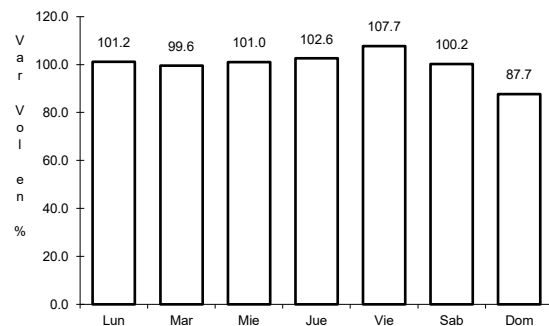


Km: 239.50 Tipo: 1 Sent: 0

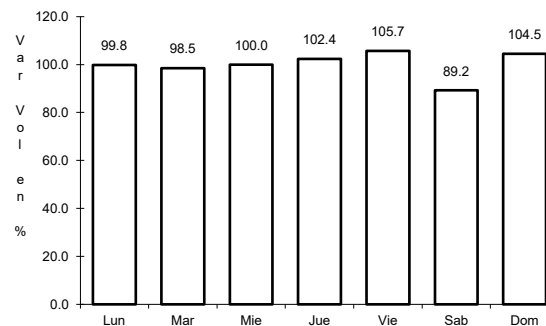
3 CARR: Durango - Mezquital

CLAVE: 10423

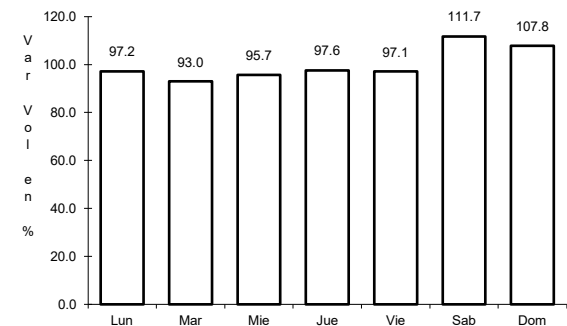
RUTA: MEX-023



Km: 0.00 Tipo: 3 Sent: 1



Km: 0.00 Tipo: 3 Sent: 2

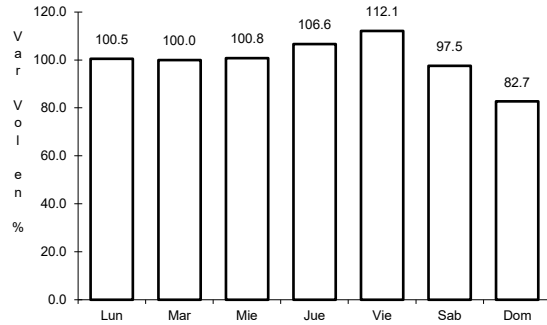


Km: 13.00 Tipo: 3 Sent: 0

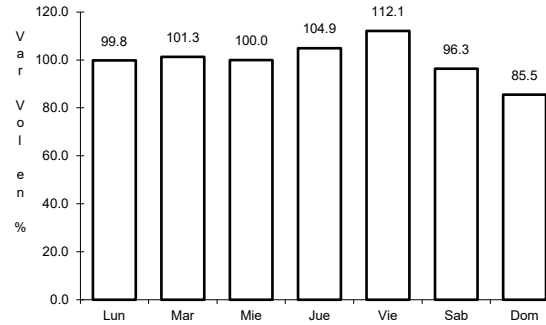
4 CARR: Durango - Torreón

CLAVE: 10085

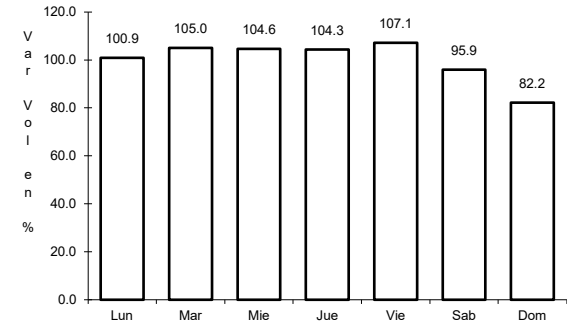
RUTA: MEX-040



Km: 0.00 Tipo: 3 Sent: 1



Km: 0.00 Tipo: 3 Sent: 2

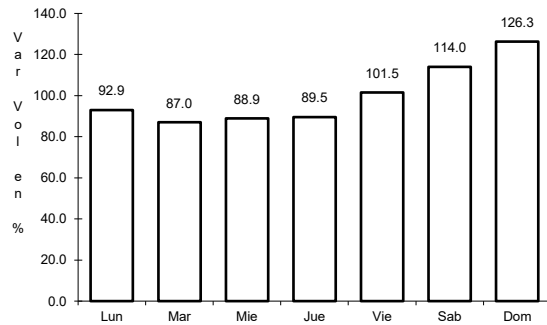


Km: 120.90 Tipo: 1 Sent: 0

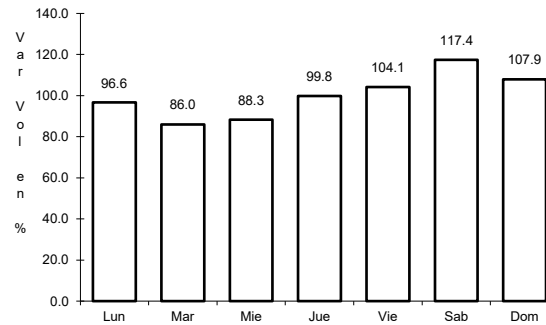
5 CARR: Durango - Villa Unión

CLAVE: 0083

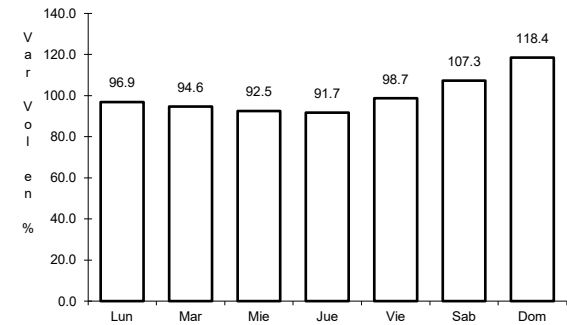
RUTA: MEX-040



Km: 0.00 Tipo: 3 Sent: 0



Km: 145.50 Tipo: 1 Sent: 0

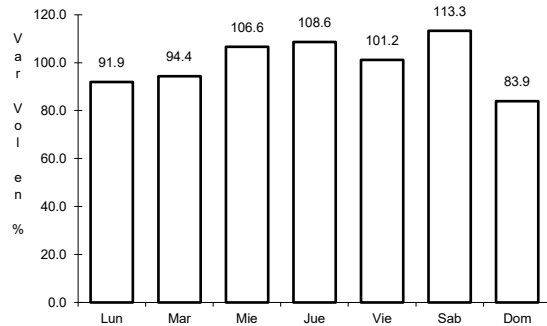


Km: 294.40 Tipo: 1 Sent: 0

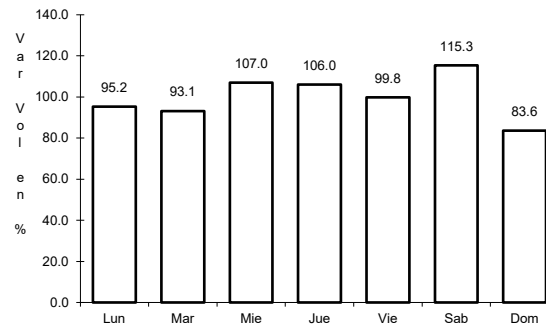
6 CARR: Ent. La Chicharrona - Cuencamé

CLAVE: 00152

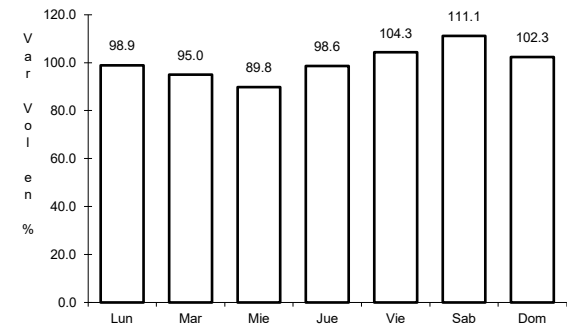
RUTA: MEX-049



Km: 0.00 Tipo: 3 Sent: 1



Km: 0.00 Tipo: 3 Sent: 2

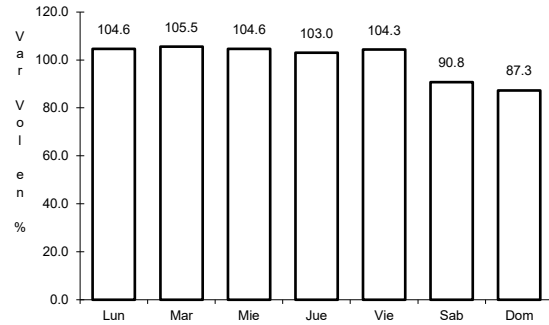


Km: 124.50 Tipo: 1 Sent: 0

7 CARR: Ent. La Zarca - Hidalgo del Parral

CLAVE: 00488

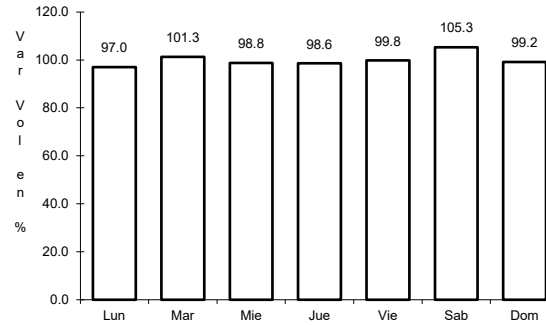
ruta: MEX-045



Km: 0.00

Tipo: 3

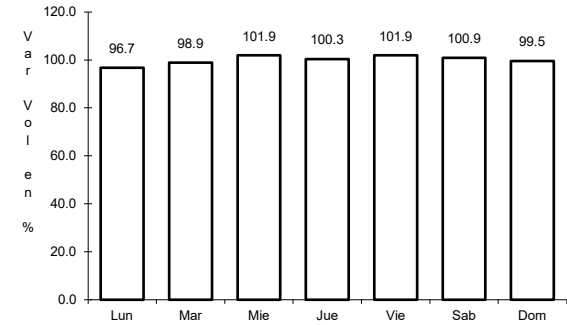
Sent: 0



Km: 92.35

Tipo: 3

Sent: 0



Km: 171.00

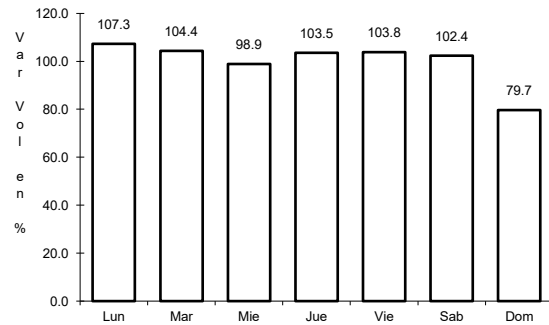
Tipo: 1

Sent: 0

8 CARR: Ent. Los Herrera - Topia

CLAVE: 10090

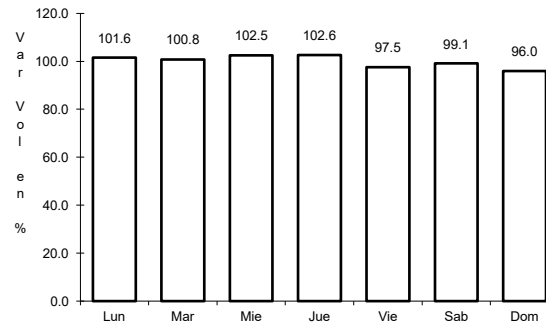
ruta: MEX-036



Km: 0.00

Tipo: 3

Sent: 0



Km: 80.00

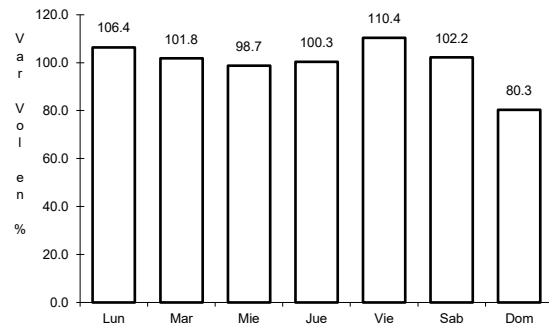
Tipo: 1

Sent: 0

9 CARR: Gómez Palacio - Jiménez

CLAVE: 00006

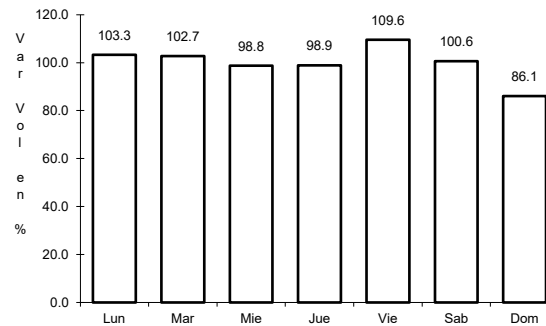
ruta: MEX-049



Km: 0.00

Tipo: 3

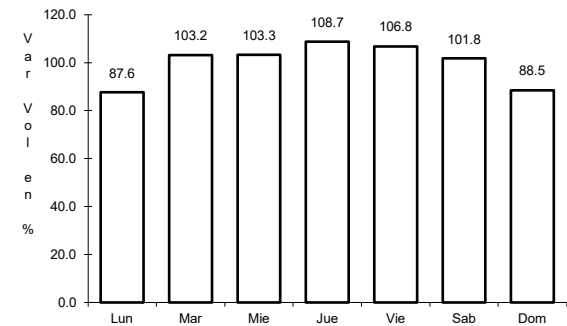
Sent: 1



Km: 0.00

Tipo: 3

Sent: 2



Km: 107.95

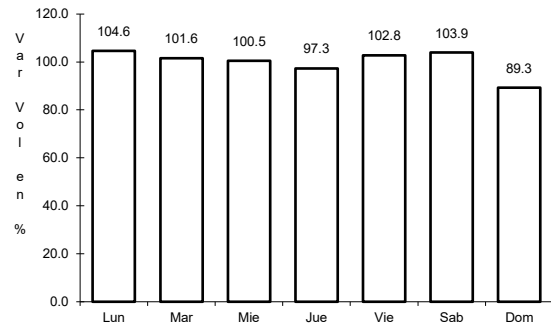
Tipo: 1

Sent: 0

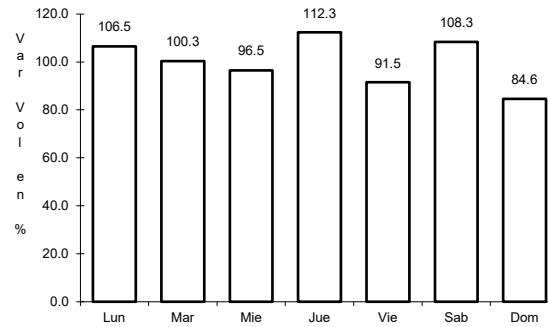
10 CARR: Gómez Palacio - La Unión

CLAVE: 10009

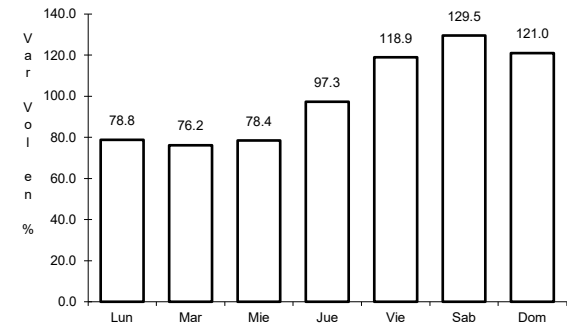
ruta: MEX-040



Km: 0.00 Tipo: 3 Sent: 0



Km: 20.90 Tipo: 1 Sent: 0

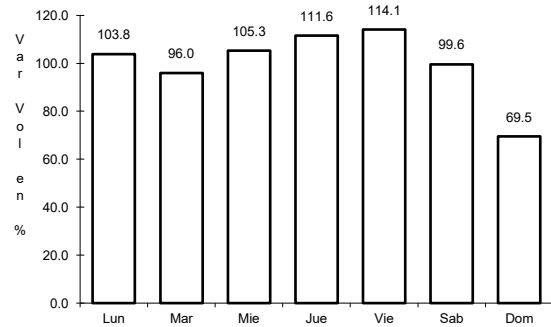


Km: 42.20 Tipo: 1 Sent: 0

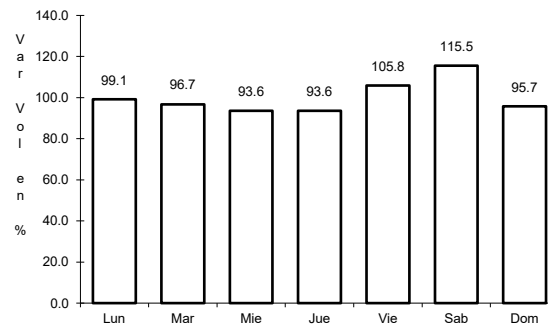
11 CARR: Gómez Palacio - Tlahualillo

CLAVE: 10005

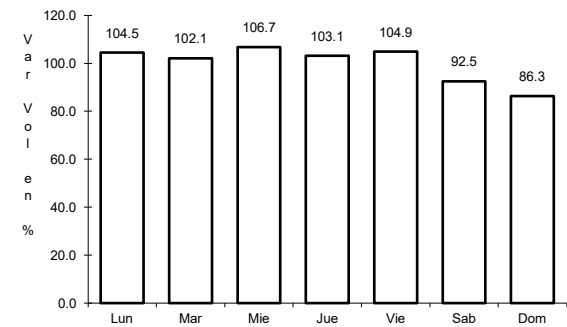
ruta: MEX-040



Km: 5.60 Tipo: 1 Sent: 0



Km: 31.44 Tipo: 1 Sent: 0

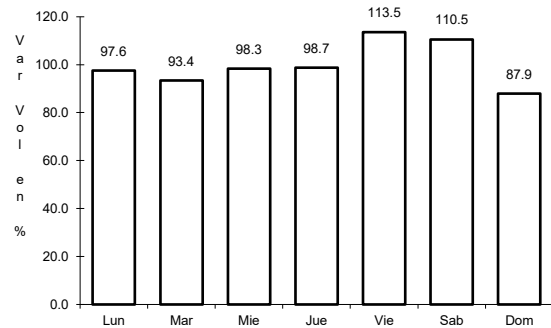


Km: 72.90 Tipo: 1 Sent: 0

12 CARR: Gregorio García - Francisco I. Madero

CLAVE: 00110

ruta: MEX-040

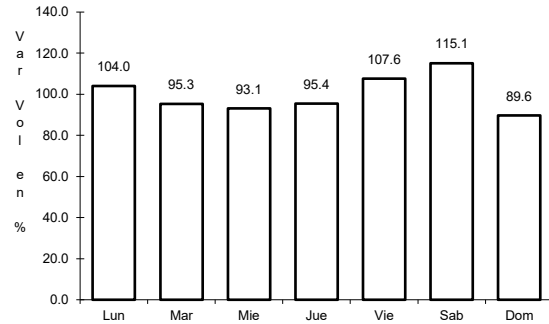


Km: 9.60 Tipo: 1 Sent: 0

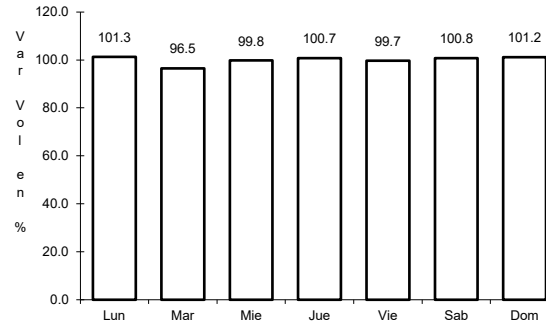
13 CARR: Guadalupe Aguilera - Tepehuanes

CLAVE: 10220

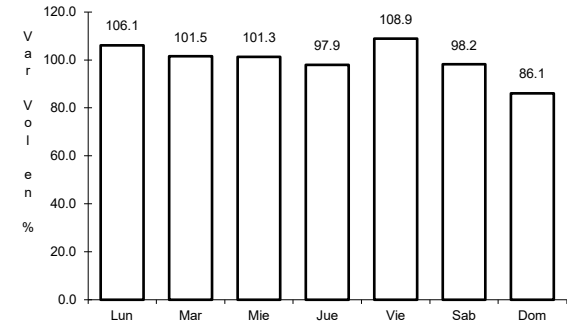
ruta: MEX-023



Km: 0.00 Tipo: 3 Sent: 1



Km: 0.00 Tipo: 3 Sent: 2

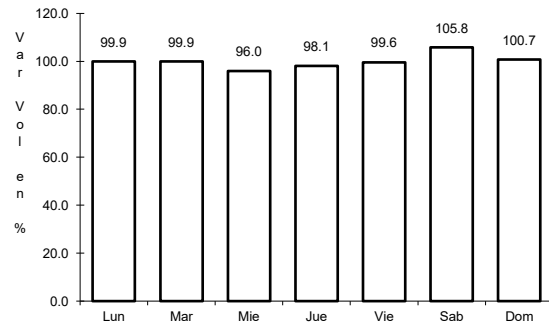


Km: 169.00 Tipo: 1 Sent: 0

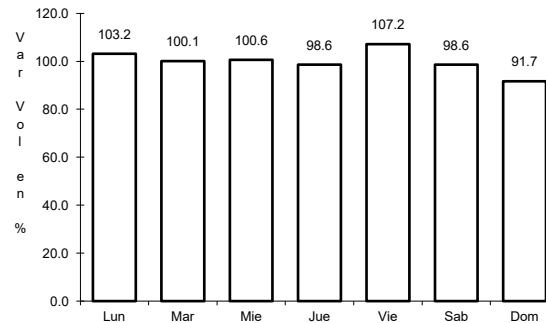
14 CARR: Hidalgo del Parral - Guadalupe y Calvo

CLAVE: 00802

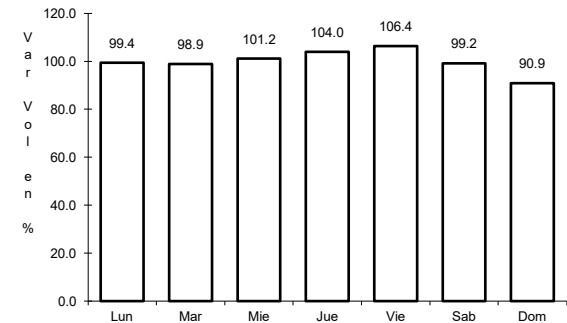
ruta: MEX-024



Km: 0.00 Tipo: 3 Sent: 0



Km: 110.00 Tipo: 1 Sent: 0

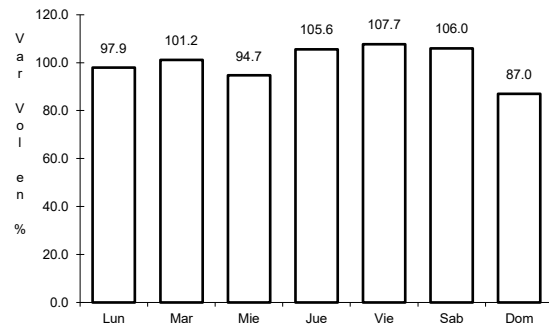


Km: 212.00 Tipo: 1 Sent: 0

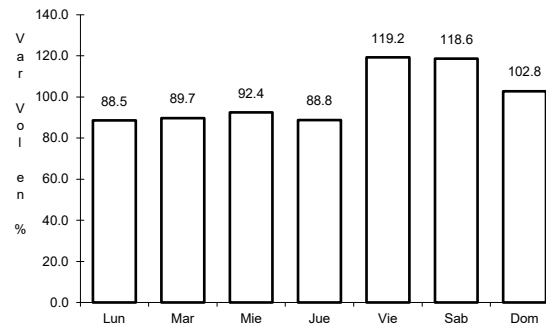
15 CARR: Libramiento Cuencamé

CLAVE: 10006

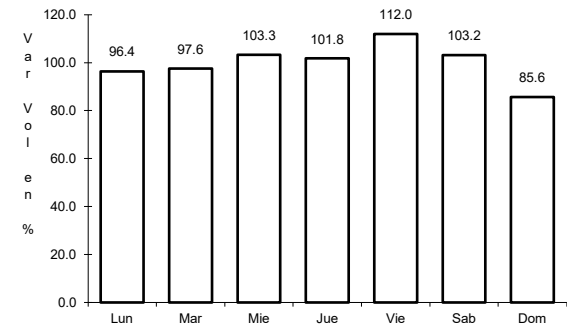
ruta: MEX



Km: 0.00 Tipo: 3 Sent: 1



Km: 0.00 Tipo: 3 Sent: 2

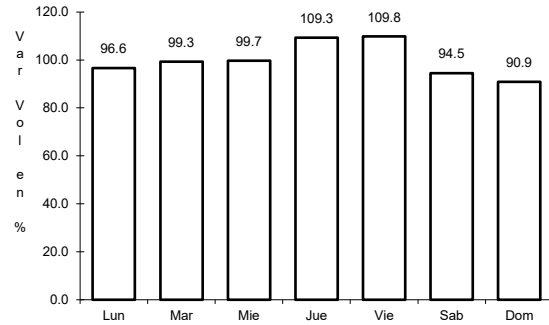


Km: 2.60 Tipo: 1 Sent: 1

16 CARR: Libramiento Oriente de Durango

CLAVE:

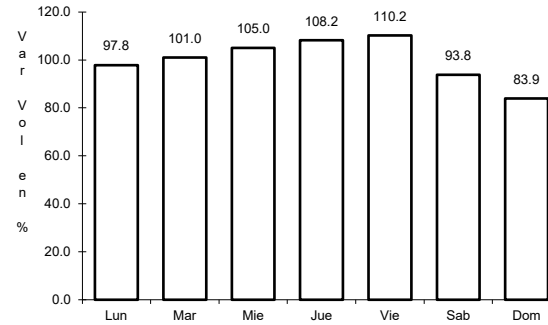
ruta: MEX-045



Km: 0.00

Tipo: 3

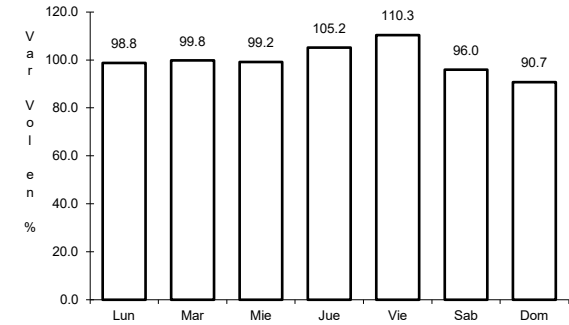
Sent: 1



Km: 0.00

Tipo: 3

Sent: 2



Km: 10.50

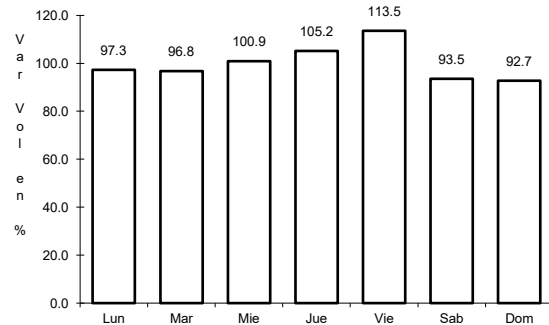
Tipo: 1

Sent: 1

17 CARR: Libramiento Sur de Durango

CLAVE:

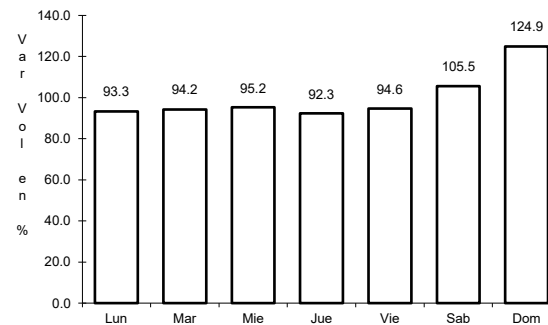
ruta: MEX-045



Km: 0.00

Tipo: 3

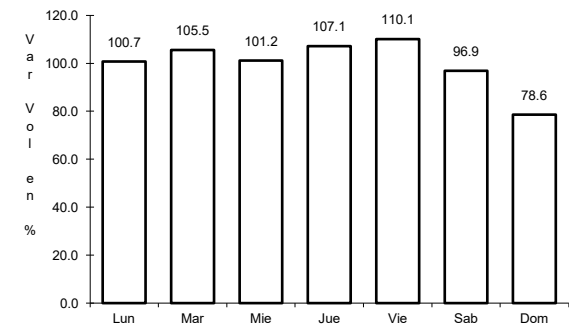
Sent: 0



Km: 19.50

Tipo: 1

Sent: 0



Km: 27.70

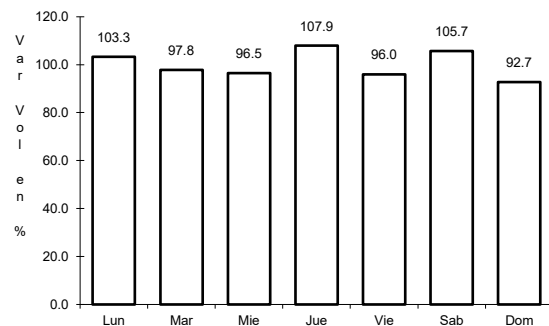
Tipo: 1

Sent: 0

18 CARR: Pedriceña - Ent. Rodeo

CLAVE: 10002

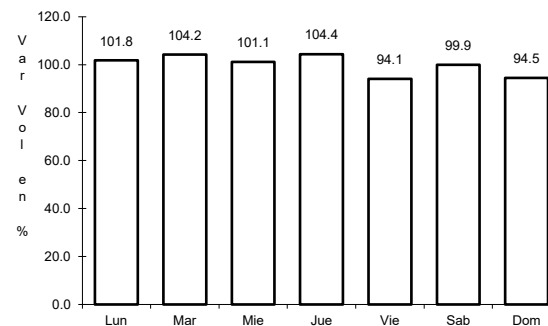
ruta: MEX-034



Km: 0.00

Tipo: 3

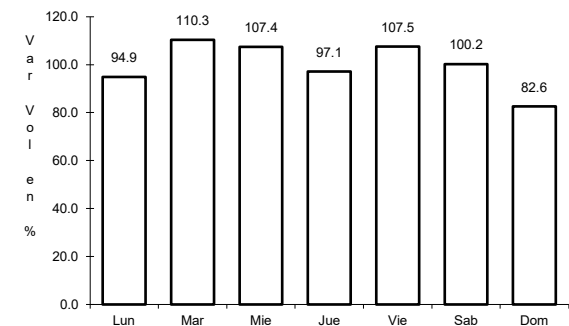
Sent: 0



Km: 45.00

Tipo: 1

Sent: 0



Km: 98.00

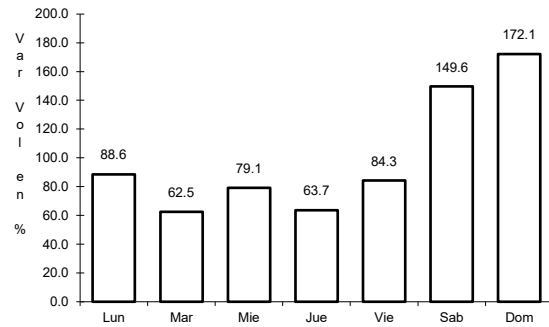
Tipo: 1

Sent: 0

19 CARR: Ramal a Otinapa

CLAVE: 10002

RUTA: MEX



Km: 0.00

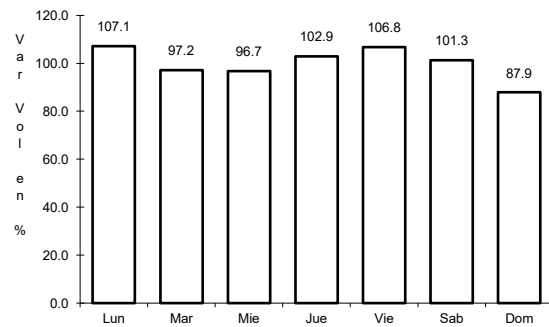
Tipo: 3

Sent: 0

20 CARR: Ramal a Santa Clara

CLAVE: 10287

RUTA: MEX-049



Km: 0.00

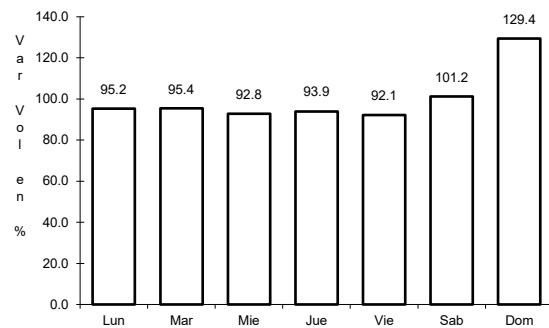
Tipo: 3

Sent: 0

21 CARR: Ramal a Villa Juárez

CLAVE: 10287

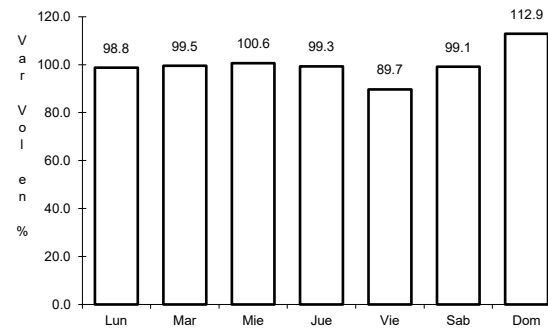
RUTA: MEX-040



Km: 0.00

Tipo: 3

Sent: 1



Km: 0.00

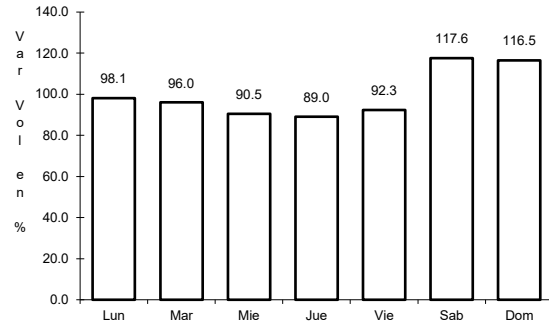
Tipo: 3

Sent: 2

22 CARR: Ramal Distribuidor Presa Peña del Águila

CLAVE: 10016

ruta: MEX-045



Km: 10.50

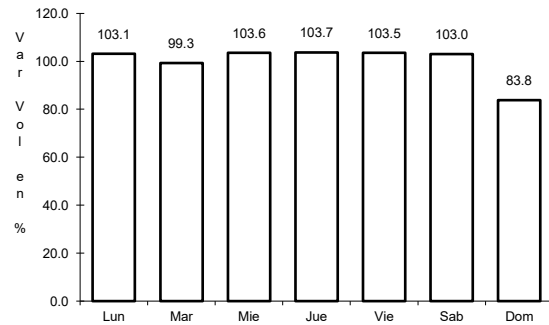
Tipo: 1

Sent: 0

23 CARR: Zacatecas - Durango

CLAVE: 00544

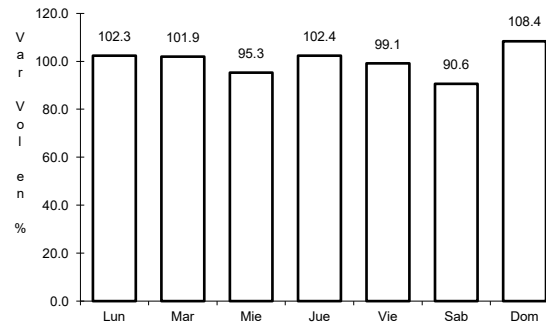
ruta: MEX-045



Km: 6.40

Tipo: 3

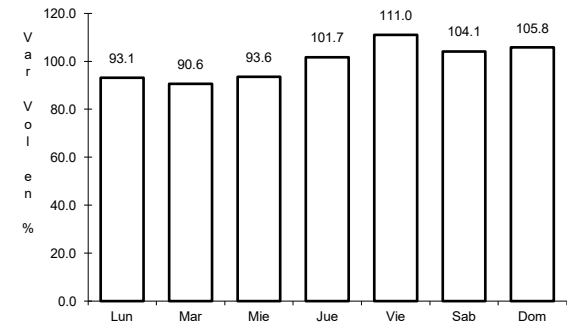
Sent: 1



Km: 6.40

Tipo: 3

Sent: 2



Km: 261.70

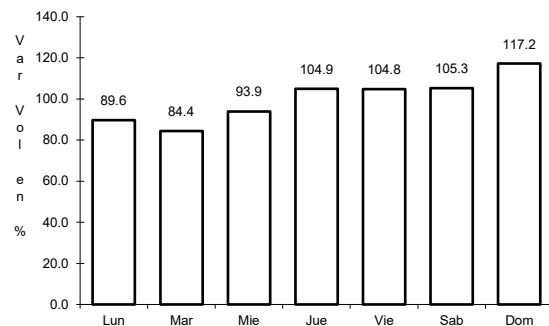
Tipo: 1

Sent: 0

24 CARR: Durango - Mazatlán (Cuota)

CLAVE: 00084

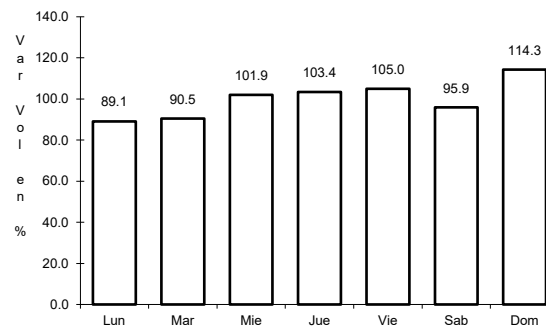
ruta: MEX-040D



Km: 21.30

Tipo: 3

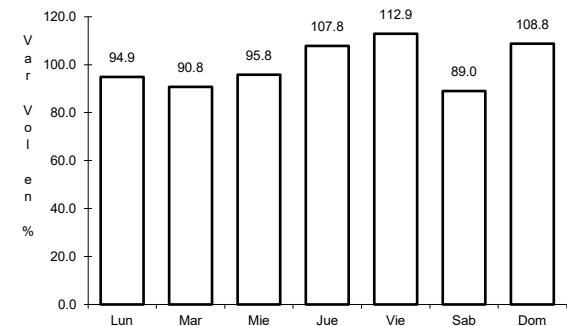
Sent: 0



Km: 111.00

Tipo: 3

Sent: 0



Km: 229.70

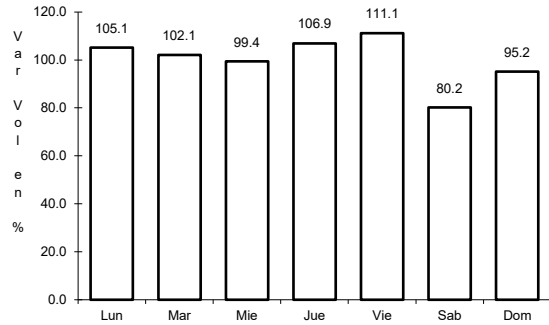
Tipo: 1

Sent: 0

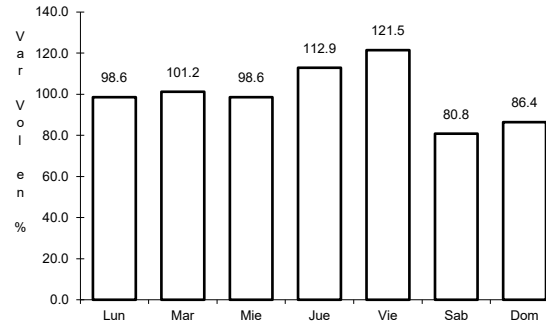
25 CARR: Durango - Yerbanís (Cuota)

CLAVE: 10003

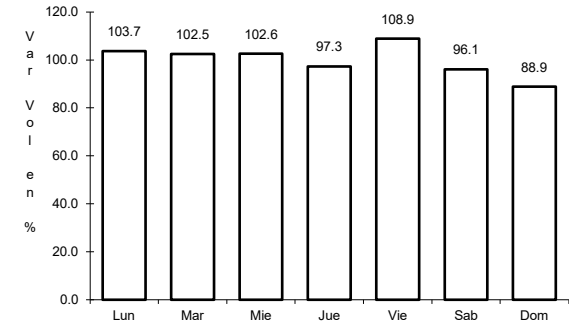
ruta: MEX-040D



Km: 5.30 Tipo: 1 Sent: 1



Km: 5.30 Tipo: 1 Sent: 2

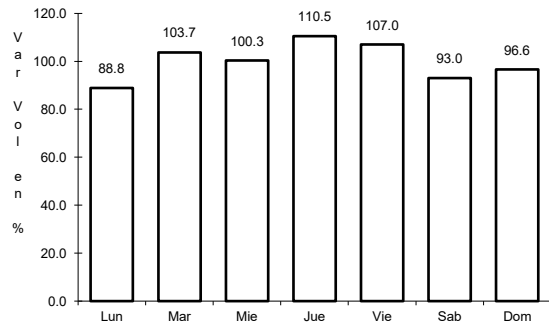


Km: 49.10 Tipo: 3 Sent: 1

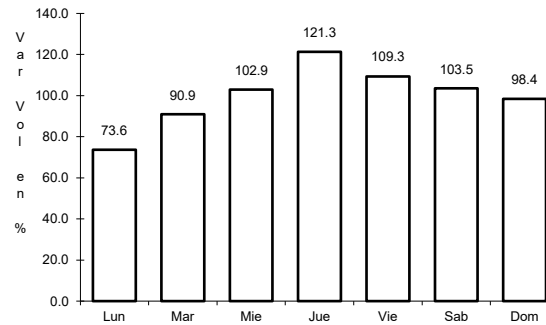
26 CARR: Gómez Palacio - Corralitos (Cuota)

CLAVE: 00016

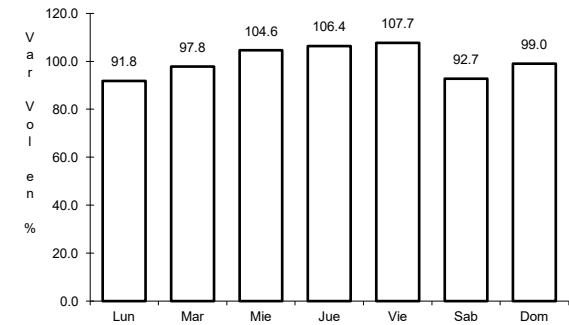
ruta: MEX-049D



Km: 40.10 Tipo: 1 Sent: 1



Km: 40.10 Tipo: 1 Sent: 2

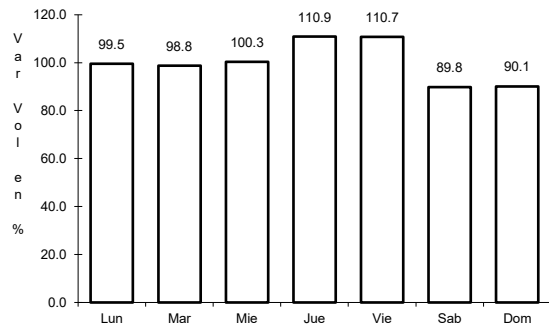


Km: 226.50 Tipo: 1 Sent: 1

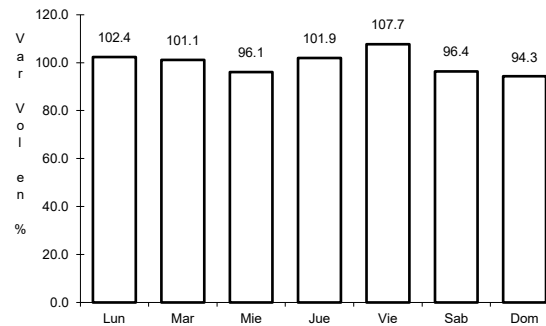
27 CARR: Libramiento de Durango (Cuota)

CLAVE: 10006

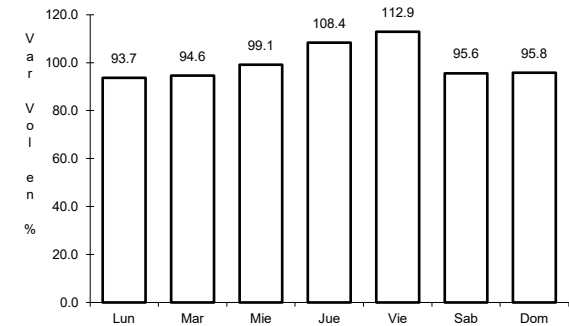
ruta: MEX-040D



Km: 0.00 Tipo: 3 Sent: 0



Km: 10.40 Tipo: 3 Sent: 0

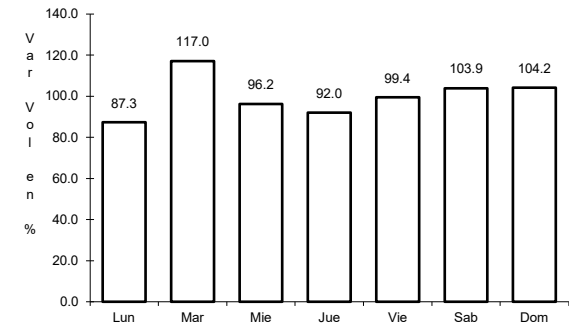
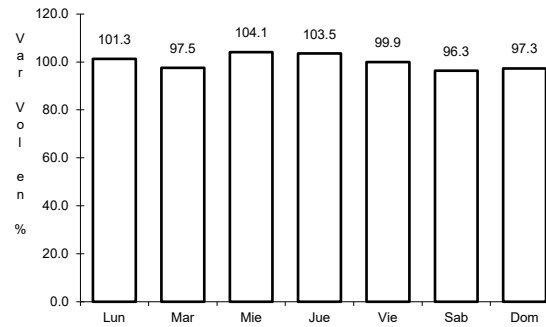
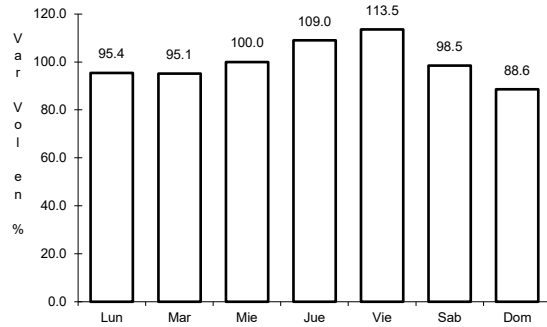


Km: 21.60 Tipo: 1 Sent: 0

28 CARR: Libramiento Norte de Torreón (Cuota)

CLAVE:

ruta: MEX-040D



Km: 0.00 Tipo: 3 Sent: 0

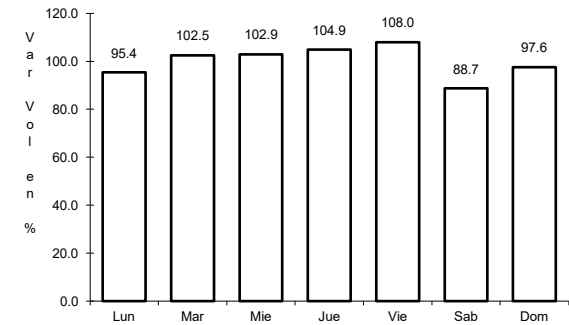
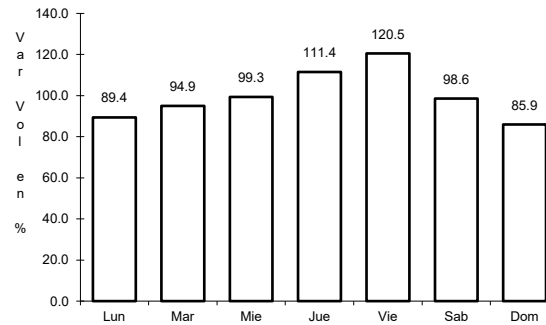
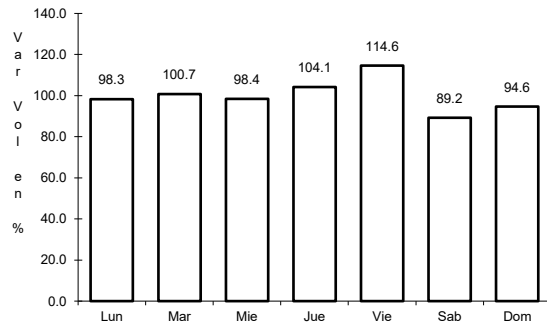
Km: 17.36 Tipo: 1 Sent: 0

Km: 40.70 Tipo: 1 Sent: 0

29 CARR: Yerbanis - Gómez Palicio (Cuota)

CLAVE: 10003

ruta: MEX-040D



Km: 180.00 Tipo: 1 Sent: 1

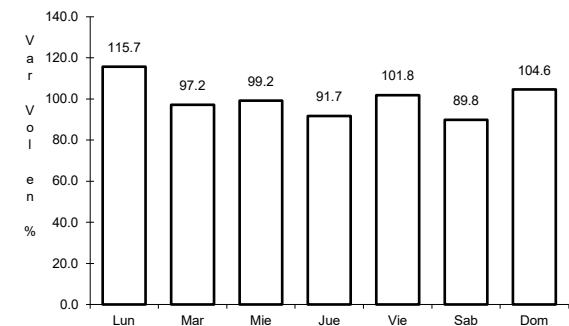
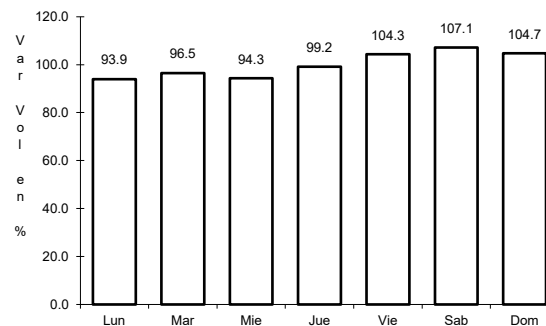
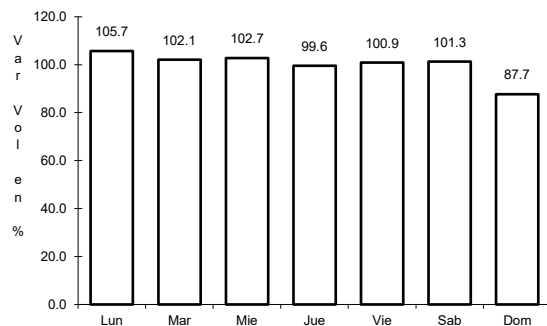
Km: 180.00 Tipo: 1 Sent: 2

Km: 212.71 Tipo: 3 Sent: 1

30 CARR: Amado Nervo - La Ochoa

CLAVE: 10012

ruta: DGO-542



Km: 0.00 Tipo: 3 Sent: 0

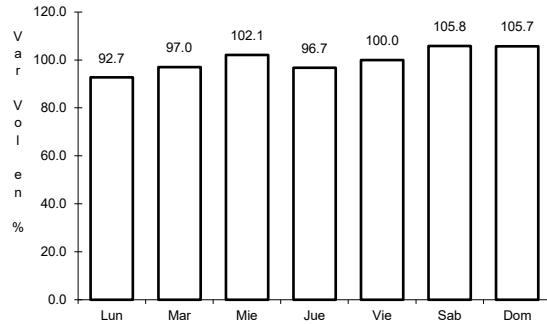
Km: 25.00 Tipo: 1 Sent: 0

Km: 42.00 Tipo: 1 Sent: 0

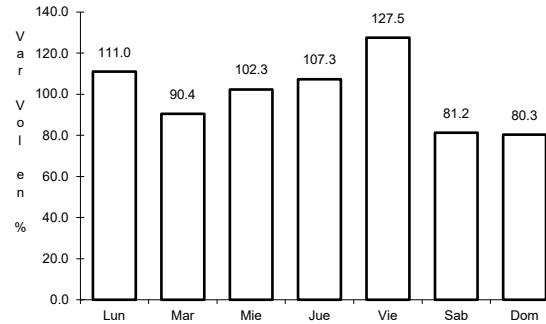
31 CARR: Ceballos - El Mirador

CLAVE: 10417

RUTA: DGO-044



Km: 0.00 Tipo: 3 Sent: 0

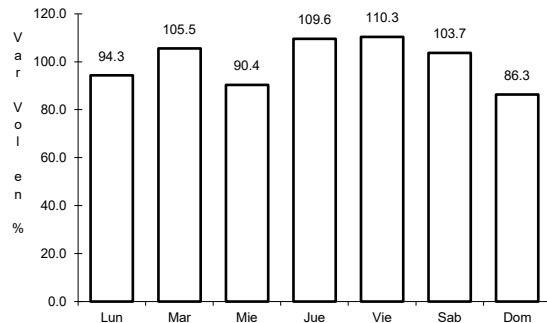


Km: 113.50 Tipo: 1 Sent: 0

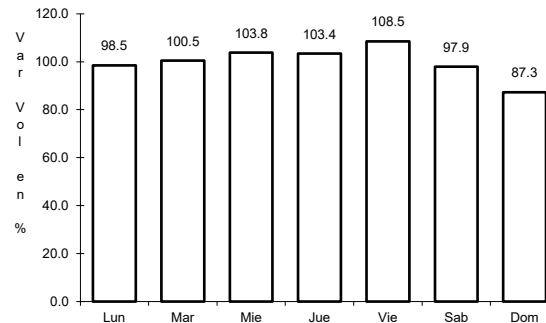
32 CARR: Durango - Aserradero La Flor

CLAVE: 10422

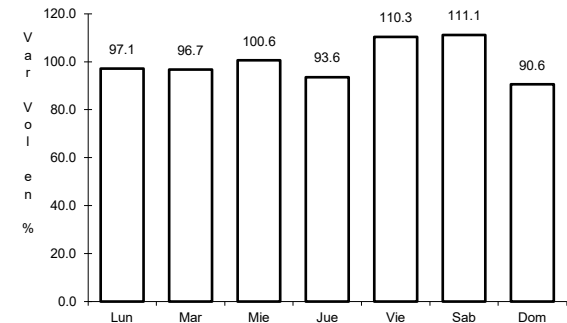
RUTA: DGO-115



Km: 0.00 Tipo: 3 Sent: 1



Km: 0.00 Tipo: 3 Sent: 2

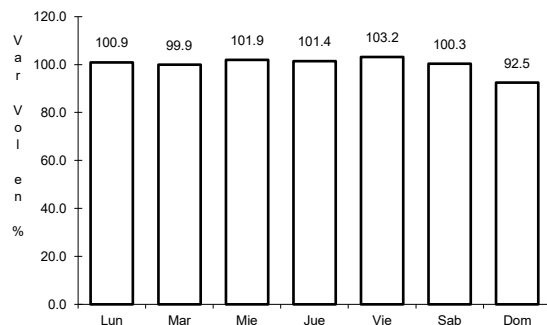


Km: 39.00 Tipo: 1 Sent: 0

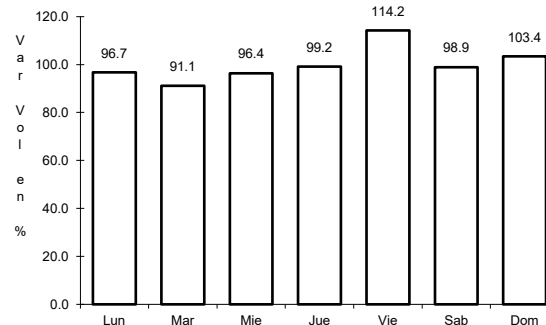
33 CARR: Jabonoso - Esmeralda

CLAVE: 10004

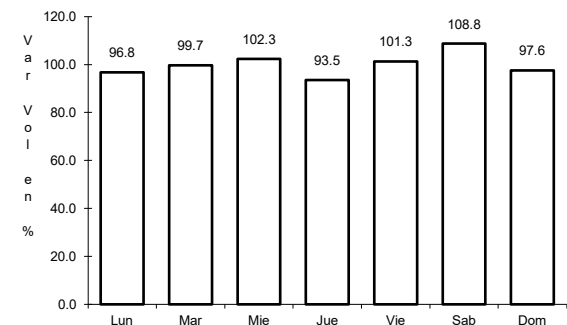
RUTA: DGO-363



Km: 0.00 Tipo: 3 Sent: 0



Km: 10.00 Tipo: 3 Sent: 0

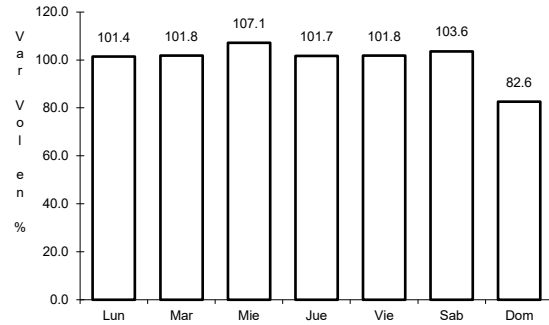


Km: 16.30 Tipo: 1 Sent: 0

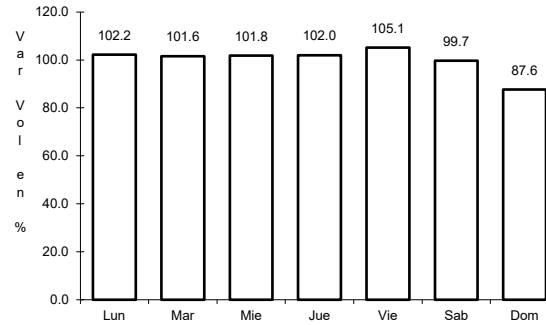
34 CARR: La Torreña - Brittingham

CLAVE: 10010

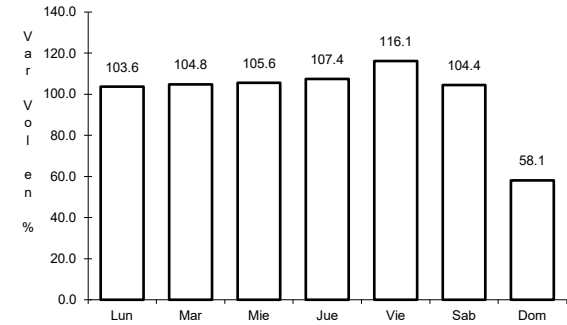
RUTA: DGO-325



Km: 0.00 Tipo: 3 Sent: 0



Km: 16.00 Tipo: 1 Sent: 0

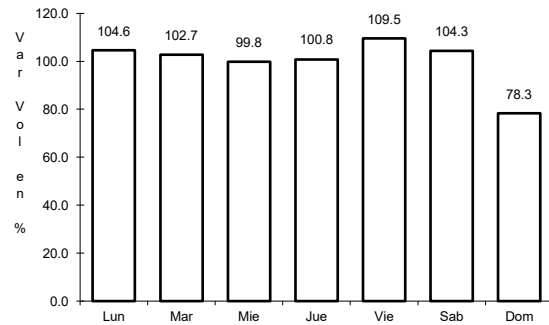


Km: 33.00 Tipo: 1 Sent: 0

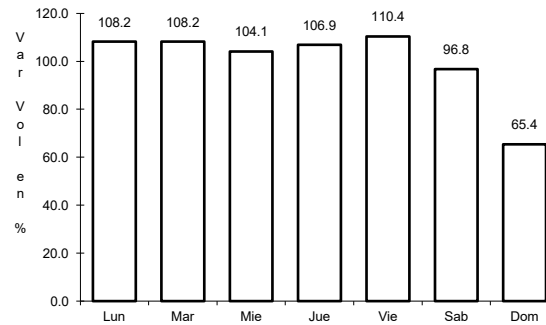
35 CARR: Libramiento de Torreón

CLAVE: 05516

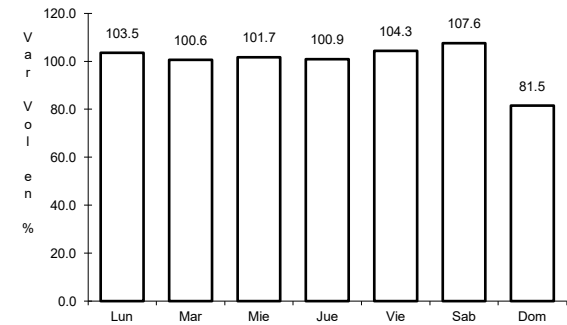
RUTA: COA



Km: 0.00 Tipo: 3 Sent: 1



Km: 0.00 Tipo: 3 Sent: 2

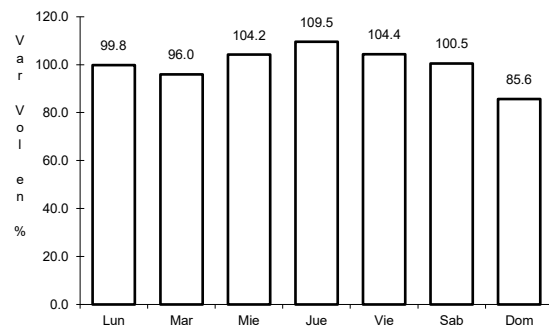


Km: 7.30 Tipo: 1 Sent: 1

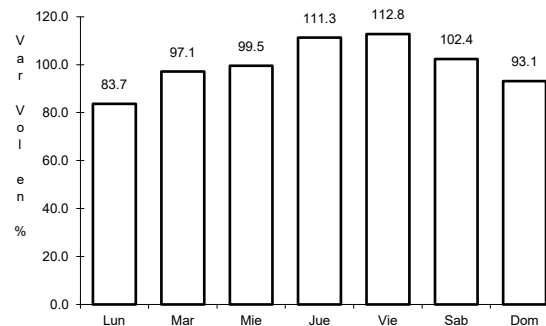
36 CARR: Libramiento Exterior Cuencamé

CLAVE: 10006

RUTA: DGO



Km: 0.00 Tipo: 3 Sent: 0

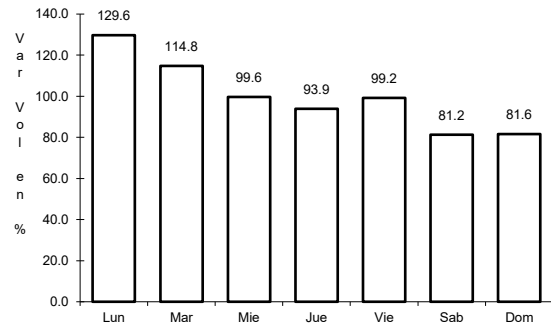


Km: 7.65 Tipo: 1 Sent: 0

37 CARR: Mezquital - San Miguel de Temoaya

CLAVE: 10006

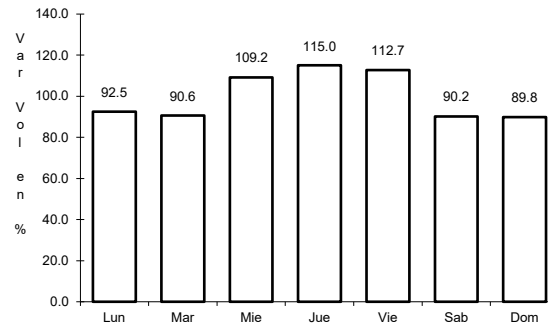
RUTA: DGO



Km: 0.00

Tipo: 3

Sent: 0



Km: 48.00

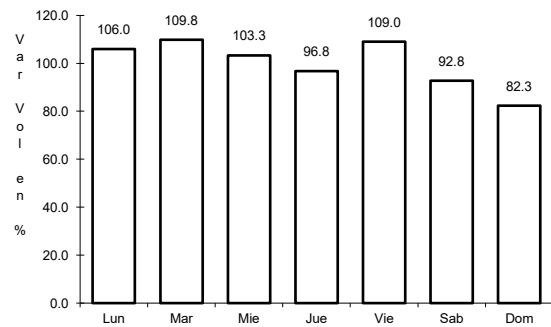
Tipo: 1

Sent: 0

38 CARR: Ramal a San Juan del Río

CLAVE: 10001

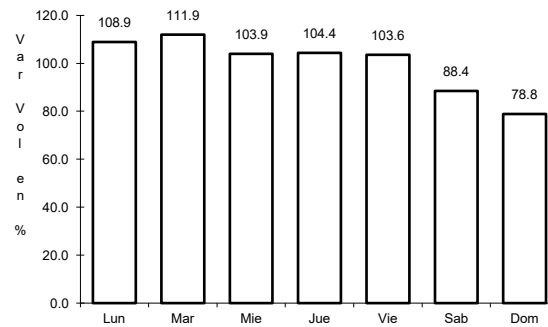
RUTA: DGO-290



Km: 0.00

Tipo: 3

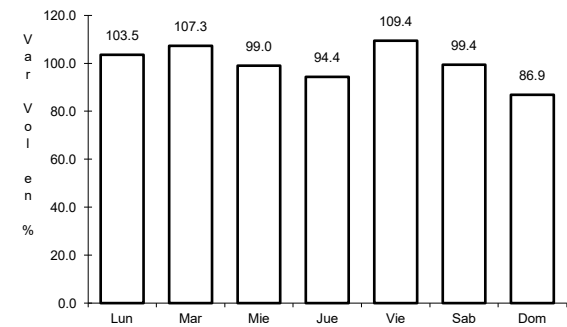
Sent: 0



Km: 5.00

Tipo: 1

Sent: 1



Km: 5.00

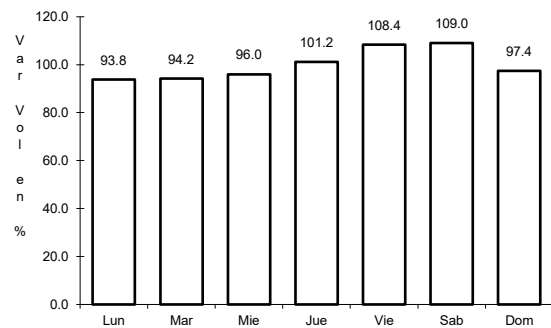
Tipo: 1

Sent: 2

39 CARR: Súchil - Villa Unión

CLAVE: 10419

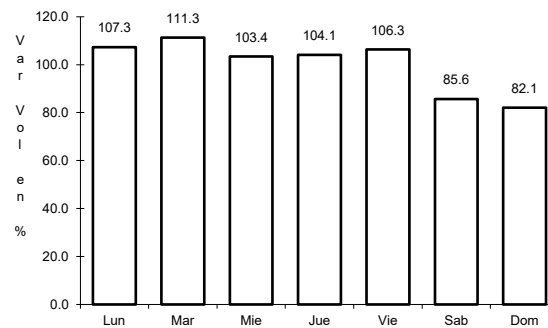
RUTA: DGO-241



Km: 0.00

Tipo: 3

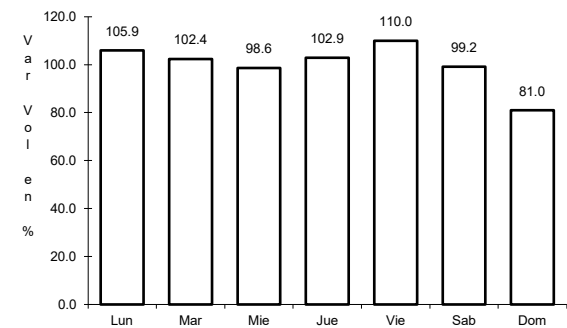
Sent: 1



Km: 0.00

Tipo: 3

Sent: 2



Km: 41.40

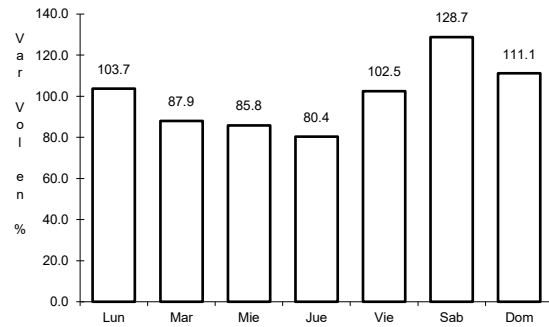
Tipo: 1

Sent: 0

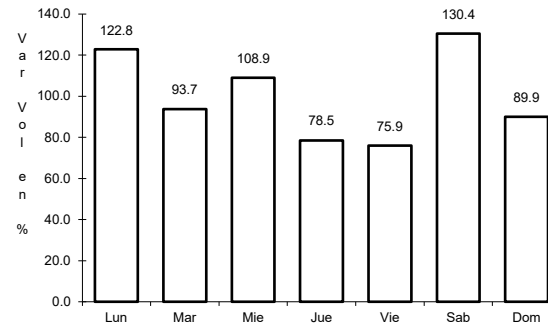
40 CARR: Tlahualillo de Zaragoza - T.C. Gómez Palacio - Jiménez

CLAVE: 10419

RUTA: DGO



Km: 0.00 Tipo: 3 Sent: 0

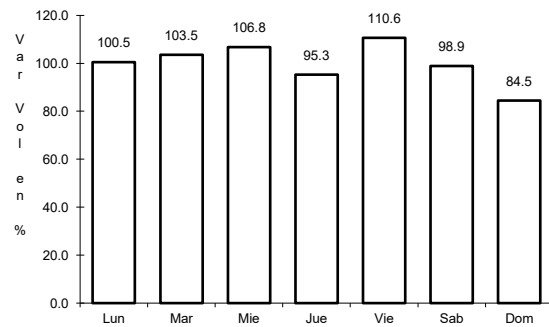


Km: 37.00 Tipo: 1 Sent: 0

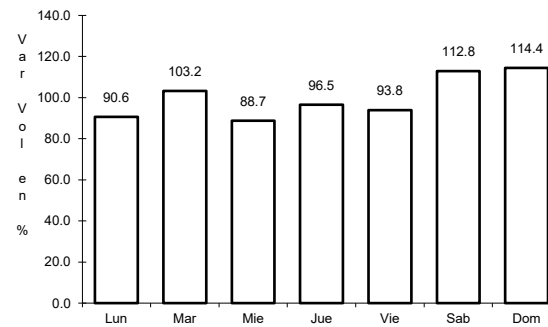
41 CARR: Yerbanís - Peñón Blanco

CLAVE: 10032

RUTA: DGO-316



Km: 0.00 Tipo: 3 Sent: 0



Km: 22.00 Tipo: 1 Sent: 0