



GUERRERO

NO. INDICE CARRETERA	RUTA
---RED FEDERAL LIBRE---	
1 Acapulco - Zihuatanejo	MEX-200
2 Cd. Altamirano - T. C. (Zihuatanejo - La Mira)	MEX-134
3 Chilpancingo - Acapulco	MEX-095
4 Chilpancingo - Chichihualco	MEX-095
5 Chilpancingo - Jilotepec	MEX-093
6 Cuernavaca - Chilpancingo	MEX-095
7 Ent. Alpuyeca - Grutas de Cacahuamilpa	MEX-166
8 Iguala - Cd. Altamirano	MEX-051
9 La Sabana - Puerto Marqués	MEX-200
10 Las Cruces - Pinotepa Nacional	MEX-200
11 Libramiento Norte de Acapulco	MEX-095
12 Milpillas - T. C. (Acapulco - Zihuatanejo)	MEX-196
13 Ramal a Aeropuerto Zihuatanejo	MEX-200
14 Ramal a La Unión	MEX-200
15 San Juan de Los Llanos - Ometepec	MEX-200
16 Tierra Colorada - Cruz Grande	MEX-198
17 Toluca - Cd. Altamirano	MEX-134
18 Zihuatanejo - La Mira	MEX-200
---RED FEDERAL DE CUOTA---	
19 Cuernavaca - Acapulco (Cuota)	MEX-095D
20 Libramiento de Técpan (Cuota)	MEX-200D
21 Nueva Italia - Lázaro Cárdenas (Cuota)	MEX-037D
22 Puente de Ixtla - Iguala (Cuota)	MEX-091D
23 Rancho Viejo - Taxco (Cuota)	MEX-092D
24 Zacapalco - Rancho Viejo (Cuota)	MEX-092D
---RED ESTATAL LIBRE---	
25 Acapulco - Aeropuerto Acapulco	GRO
26 Ent. Potrero - Lomas de Chapultepec	GRO
27 Las Petaquillas - Quechultenango	GRO
28 Pie de La Cuesta - Barra de Coyuca	GRO
29 Ramal a Cocula	GRO
30 T. C. (Iguala - Chilpancingo) - Atenango del Río	GRO-001
31 Taxco - Ixcateopan	GRO
32 Teloloapan - Apaxtla de Castrejón	GRO
33 Tlapa de Comonfort - Marquelia	GRO
---RED ESTATAL DE CUOTA---	
34 Puerto Marqués - La Venta (Cuota)	GRO-D
---CARRETERAS INTEGRADAS POR TRAMOS FEDERALES Y ESTATALES---	
35 Toluca - Axixintla	EM-MEX-055

# 12 GUERRERO





GUERRERO

1 CARR: Acapulco - Zihuatanejo

CLAVE: 12072

RUTA: MEX-200

AÑO: 2023

LUGAR	ESTACION				CLASIFICACION VEHICULAR EN PORCIENTO										COORDENADAS					
	KM	TE	SC	TDPA	M	A	B	C2	C3	T3S2	T3S3	T3S2R4	OTROS	A	B	C	K'	D	LATITUD	LONGITUD
Acapulco	0.00																			
T. Izq. Pie de La Cuesta	10.37	1	0	20628	12.0	84.2	0.7	1.8	0.6	0.3	0.1	0.2	0.1	96.2	0.7	3.1	0.074	0.501	16.894180	-99.958021
T. Izq. Pie de La Cuesta	10.37	3	0	18153	12.6	81.9	0.8	1.9	0.7	0.8	0.5	0.6	0.2	94.5	0.8	4.7	0.084	0.507	16.901540	-99.962034
T. Der. Libramiento de Acapulco	21.37	3	0	7931	4.3	90.1	1.4	1.9	0.9	0.7	0.4	0.2	0.1	94.4	1.4	4.2	0.083	0.514	16.961643	-99.977912
Coyuca de Benítez	33.60	3	0	8331	9.5	84.5	1.5	2.1	0.9	0.7	0.5	0.2	0.1	94.0	1.5	4.5	0.085	0.500	17.010480	-100.099666
Pénjamo	36.60	3	0	4961	3.0	86.7	2.3	4.1	1.6	1.3	0.9	0.1	0.0	89.7	2.3	8.0	0.081	0.512	17.011521	-100.118732
Col La Laja	72.60	1	0	5476	5.7	82.4	1.9	6.4	1.4	1.4	0.7	0.1	0.0	88.1	1.9	10.0	0.083	0.528	17.132909	-100.383901
T. Der. Atoyac de Álvarez	77.85	3	0	8876	9.2	84.4	1.1	3.3	0.8	0.6	0.4	0.1	0.1	93.6	1.1	5.3	0.081	0.505	17.152729	-100.446367
San Jerónimo de Juárez	82.40	3	0	4836	13.6	75.7	1.3	7.6	0.8	0.7	0.2	0.1	0.0	89.3	1.3	9.4	0.078	0.519	17.147673	-100.478562
T. C. Libramiento de Técpan (Cuota)	102.00	1	0	5782	8.4	80.0	1.7	7.6	1.0	0.8	0.4	0.1	0.0	88.4	1.7	9.9	0.075	0.536	17.191461	-100.616662
Técpan de Galeana	103.60	1	0	5297	7.1	82.9	1.5	7.1	0.7	0.4	0.2	0.1	0.0	90.0	1.5	8.5	0.081	0.531	17.201837	-100.627509
Técpan de Galeana	103.60	3	0	12641	6.1	88.2	0.7	3.9	0.4	0.4	0.2	0.1	0.0	94.3	0.7	5.0	0.076	0.503	17.233257	-100.633214
T. C. Libramiento de Técpan (Cuota)	110.20	3	0	9049	6.1	83.5	2.1	5.6	1.0	0.8	0.6	0.1	0.2	89.6	2.1	8.3	0.053	0.518	17.205367	-100.660236
T. Ixq. Nuxco	119.00	1	0	4043	5.1	83.3	2.4	5.6	1.4	1.3	0.8	0.1	0.0	88.4	2.4	9.2	0.070	0.512	17.217287	-100.762845
San Luis San Pedro	131.50	1	0	6558	6.9	83.5	2.0	4.8	1.0	1.0	0.8	0.0	0.0	90.4	2.0	7.6	0.056	0.519	17.246433	-100.845015
Buenavista de Juárez	138.45	3	0	4328	7.3	80.4	2.2	7.0	1.2	1.0	0.8	0.1	0.0	87.7	2.2	10.1	0.083	0.507	17.272469	-100.946065
Papanao	162.25	1	0	4292	9.9	75.3	3.6	6.8	1.6	1.5	1.0	0.2	0.1	85.2	3.6	11.2	0.075	0.504	17.315044	-101.047937
Petatán	206.30	1	0	4640	9.2	79.2	2.1	5.6	1.5	1.4	0.8	0.1	0.1	88.4	2.1	9.5	0.081	0.503	17.529617	-101.261500
Petatán	206.30	3	0	6416	5.1	84.8	1.7	5.7	1.1	0.9	0.4	0.2	0.1	89.9	1.7	8.4	0.080	0.506	17.552971	-101.301412
San Jerónimo	216.00	3	0	6478	5.8	82.4	1.9	6.5	1.3	1.0	0.9	0.1	0.1	88.2	1.9	9.9	0.073	0.522	17.574303	-101.358116
T. Izq al Aeropuerto de Zihuatanejo	226.00	1	0	5415	5.2	72.0	2.2	14.6	1.6	2.3	1.1	0.4	0.6	77.2	2.2	20.6	0.075	0.525	17.619373	-101.451771
T. Izq. Aeropuerto	234.75	1	0	17691	6.1	85.6	0.9	5.3	0.8	0.6	0.5	0.1	0.1	91.7	0.9	7.4	0.049	0.511	17.638679	-101.486392
Zihuatanejo	242.90	1	1	10982	6.1	87.0	1.0	2.9	1.2	0.5	0.4	0.6	0.3	93.1	1.0	5.9	0.091	0.511	17.646728	-101.515950
Zihuatanejo	242.90	1	2	10509	6.2	86.6	1.0	3.1	1.2	0.5	0.4	0.6	0.4	92.8	1.0	6.2	0.086	0.511	17.646628	-101.515883

2 CARR: Cd. Altamirano - T. C. (Zihuatanejo - La Mira)

CLAVE: 12422

RUTA: MEX-134

AÑO: 2023

LUGAR	ESTACION				CLASIFICACION VEHICULAR EN PORCIENTO										COORDENADAS					
	KM	TE	SC	TDPA	M	A	B	C2	C3	T3S2	T3S3	T3S2R4	OTROS	A	B	C	K'	D	LATITUD	LONGITUD
Cd. Altamirano	0.00	3	1	8344	21.6	76.8	0.2	0.4	0.3	0.3	0.1	0.2	0.1	98.4	0.2	1.4	0.089	0.505	18.332644	-100.689638
Cd. Altamirano	0.00	3	2	8193	21.9	76.4	0.3	0.4	0.3	0.3	0.1	0.2	0.1	98.3	0.3	1.4	0.075	0.505	18.332557	-100.689571
T. Der. Zirándaro	15.00	3	0	2295	4.1	86.2	0.5	5.7	0.6	2.3	0.2	0.1	0.3	90.3	0.5	9.2	0.066	0.506	18.318693	-100.785141
T. C. Zihuatanejo - La Mira	187.36	1	0	862	13.3	77.5	0.5	4.5	3.6	0.2	0.2	0.1	0.1	90.8	0.5	8.7	0.074	0.523	17.735797	-101.596405

GUERRERO

3 CARR: Chilpancingo - Acapulco

CLAVE: 12045

RUTA: MEX-095

AÑO: 2023

LUGAR	ESTACION				CLASIFICACION VEHICULAR EN PORCIENTO												COORDENADAS			
	KM	TE	SC	TDPA	M	A	B	C2	C3	T3S2	T3S3	T3S2R4	OTROS	A	B	C	K'	D	LATITUD	LONGITUD
Chilpancingo	0.00																			
T. C. Cuernavaca - Acapulco (Cuota) Central	4.20	1	1	16648	5.0	81.5	2.0	4.7	1.0	1.2	0.7	3.8	0.1	86.5	2.0	11.5	0.078	0.517	17.523293	-99.486711
T. C. Cuernavaca - Acapulco (Cuota) Lateral	4.20	1	1	16140	6.5	88.7	0.8	1.9	0.6	0.4	0.7	0.2	0.2	95.2	0.8	4.0	0.067	0.527	17.523245	-99.486783
T. C. Cuernavaca - Acapulco (Cuota) Central	4.20	1	2	17834	5.1	81.5	2.0	4.6	1.0	1.2	0.7	3.8	0.1	86.6	2.0	11.4	0.079	0.517	17.523313	-99.486630
T. C. Cuernavaca - Acapulco (Cuota) Lateral	4.20	1	2	14485	6.5	88.7	0.8	1.9	0.6	0.4	0.7	0.2	0.2	95.2	0.8	4.0	0.073	0.527	17.523398	-99.486583
T. C. Cuernavaca - Acapulco (Cuota)	4.20	3	1	16286	2.3	92.6	0.5	2.0	0.7	0.8	0.6	0.4	0.1	94.9	0.5	4.6	0.079	0.524	17.511546	-99.478577
T. C. Cuernavaca - Acapulco (Cuota)	4.20	3	2	17899	2.3	92.6	0.5	2.0	0.7	0.8	0.6	0.4	0.1	94.9	0.5	4.6	0.076	0.524	17.511599	-99.478479
Petaquillas	12.01	1	1	11471	6.8	88.5	0.7	2.8	0.6	0.3	0.2	0.1	0.0	95.3	0.7	4.0	0.097	0.505	17.495092	-99.465676
Petaquillas	12.01	1	2	11224	7.5	87.7	0.9	2.8	0.6	0.3	0.1	0.1	0.0	95.2	0.9	3.9	0.089	0.505	17.495123	-99.465550
Petaquillas	12.01	3	0	9009	2.4	92.4	0.6	2.1	0.7	1.0	0.5	0.2	0.1	94.8	0.6	4.6	0.069	0.523	17.477182	-99.459119
El Ocotito	50.68	1	0	7528	10.8	82.3	1.0	3.0	0.9	1.1	0.7	0.1	0.1	93.1	1.0	5.9	0.069	0.506	17.254430	-99.505561
El Ocotito	50.68	3	0	5474	7.6	85.2	1.1	3.2	1.3	0.8	0.6	0.2	0.0	92.8	1.1	6.1	0.061	0.504	17.231938	-99.520127
T. Izq. Tierra Colorada Inicia	61.18	1	0	5127	7.0	85.1	1.8	3.0	1.0	1.2	0.8	0.0	0.1	92.1	1.8	6.1	0.081	0.505	17.175986	-99.519652
T. Izq. Tierra Colorada Termina	65.14	3	0	5065	6.8	83.7	2.0	4.4	1.1	0.8	0.9	0.3	0.0	90.5	2.0	7.5	0.064	0.514	17.171722	-99.543757
X. C. Cuernavaca - Acapulco (Cuota)	70.10	3	0	2801	5.7	85.6	0.7	6.0	1.1	0.4	0.4	0.1	0.0	91.3	0.7	8.0	0.071	0.509	17.177717	-99.562397
T. Der. Pablo Galeana	88.15	3	0	2817	6.1	88.1	0.8	2.1	1.2	0.4	1.3	0.0	0.0	94.2	0.8	5.0	0.067	0.514	17.118721	-99.697678
T. Der. Libramiento Norte de Acapulco	112.80	1	0	10048	4.5	89.3	0.6	3.1	0.5	0.5	0.9	0.4	0.2	93.8	0.6	5.6	0.076	0.506	16.984296	-99.810458
T. Der. Libramiento Norte de Acapulco	112.80	3	0	11562	5.2	85.8	0.6	4.0	1.4	1.2	0.9	0.5	0.4	91.0	0.6	8.4	0.067	0.503	16.965870	-99.810734
T. C. Cuernavaca - Acapulco (Cuota)	120.60																			
Acapulco	132.67																			

4 CARR: Chilpancingo - Chichihualco

CLAVE: 12426

RUTA: MEX-095

AÑO: 2023

LUGAR	ESTACION				CLASIFICACION VEHICULAR EN PORCIENTO												COORDENADAS			
	KM	TE	SC	TDPA	M	A	B	C2	C3	T3S2	T3S3	T3S2R4	OTROS	A	B	C	K'	D	LATITUD	LONGITUD
T. C. Cuernavaca - Chilpancingo	0.00	3	0	4371	7.9	72.1	0.4	16.3	2.2	0.5	0.3	0.2	0.1	80.0	0.4	19.6	0.081	0.504	17.590814	-99.518494
T. Der. El Palmar	15.10	1	0	1399	7.6	76.2	0.5	15.5	0.1	0.1	0.0	0.0	0.0	83.8	0.5	15.7	0.074	0.522	17.643875	-99.603066
Chichihualco	26.30	1	0	1977	7.8	76.5	0.3	14.4	0.5	0.3	0.2	0.0	0.0	84.3	0.3	15.4	0.080	0.501	17.646533	-99.667471

5 CARR: Chilpancingo - Jilotepec

CLAVE: 12002

RUTA: MEX-093

AÑO: 2023

LUGAR	ESTACION				CLASIFICACION VEHICULAR EN PORCIENTO												COORDENADAS			
	KM	TE	SC	TDPA	M	A	B	C2	C3	T3S2	T3S3	T3S2R4	OTROS	A	B	C	K'	D	LATITUD	LONGITUD
Chilpancingo	0.00	3	0	6617	9.1	89.5	0.2	0.8	0.1	0.1	0.2	0.0	0.0	98.6	0.2	1.2	0.075	0.506	17.543359	-99.478540
T. Der. Tixtla de Guerrero	16.30	3	0	9148	14.7	82.8	0.4	1.7	0.2	0.1	0.1	0.0	0.0	97.5	0.4	2.1	0.063	0.505	17.578712	-99.392784

GUERRERO

5 CARR: Chilpancingo - Jilotepec

CLAVE: 12002

RUTA: MEX-093

AÑO: 2023

LUGAR	ESTACION				CLASIFICACION VEHICULAR EN PORCIENTO										COORDENADAS					
	KM	TE	SC	TDPA	M	A	B	C2	C3	T3S2	T3S3	T3S2R4	OTROS	A	B	C	K'	D	LATITUD	LONGITUD
T. Izq. Almolonga	28.20	3	0	4246	4.8	81.1	1.8	9.8	1.0	0.7	0.7	0.1	0.0	85.9	1.8	12.3	0.066	0.507	17.603913	-99.309534
Chilapa de Álvarez	53.62	3	0	5430	26.3	70.0	1.1	1.3	0.5	0.6	0.1	0.1	0.0	96.3	1.1	2.6	0.084	0.502	17.597033	-99.146840
Tlapa de Comonfort	178.50	1	0	4336	5.9	76.2	0.7	16.7	0.1	0.3	0.1	0.0	0.0	82.1	0.7	17.2	0.078	0.505	17.541677	-98.628547
Huamuxtítlan	200.63	1	0	5522	12.2	78.7	1.6	4.7	0.9	1.0	0.9	0.0	0.0	90.9	1.6	7.5	0.078	0.508	17.790614	-98.563388
Xochihuehuatlán	216.80	1	0	2263	10.5	79.2	1.7	7.4	0.6	0.2	0.3	0.0	0.1	89.7	1.7	8.6	0.077	0.511	17.898034	-98.500353
Jilotepec	235.00	1	0	2404	3.5	78.9	2.5	11.3	0.8	2.1	0.8	0.1	0.0	82.4	2.5	15.1	0.065	0.516	17.961630	-98.478892

6 CARR: Cuernavaca - Chilpancingo

CLAVE: 00042

RUTA: MEX-095

AÑO: 2023

LUGAR	ESTACION				CLASIFICACION VEHICULAR EN PORCIENTO										COORDENADAS					
	KM	TE	SC	TDPA	M	A	B	C2	C3	T3S2	T3S3	T3S2R4	OTROS	A	B	C	K'	D	LATITUD	LONGITUD
Cuernavaca	0.00																			
T. Izq. Chipitlán	4.85	1	1	21236	2.7	80.8	4.6	5.5	0.4	2.8	2.0	0.4	0.8	83.5	4.6	11.9	0.060	0.509	18.894002	-99.228609
T. Izq. Chipitlán	4.85	1	2	20467	2.7	80.8	4.6	5.5	0.4	2.8	2.0	0.4	0.8	83.5	4.6	11.9	0.061	0.509	18.894017	-99.228541
T. Izq. Chipitlán	4.85	3	1	13684	11.6	76.8	2.3	7.6	1.7	0.0	0.0	0.0	0.0	88.4	2.3	9.3	0.090	0.544	18.880547	-99.229850
T. Izq. Chipitlán	4.85	3	2	13619	10.3	79.9	2.1	6.0	1.7	0.0	0.0	0.0	0.0	90.2	2.1	7.7	0.082	0.544	18.880538	-99.229775
Temixco	9.80	1	1	11520	3.6	85.2	0.5	8.9	0.7	0.3	0.3	0.3	0.2	88.8	0.5	10.7	0.081	0.516	18.865944	-99.226282
Temixco	9.80	1	2	12287	3.6	85.2	0.5	8.9	0.7	0.3	0.3	0.3	0.2	88.8	0.5	10.7	0.090	0.516	18.866049	-99.226272
Temixco	9.80	3	1	22016	3.4	86.2	0.8	4.8	1.0	0.7	0.3	1.8	1.0	89.6	0.8	9.6	0.065	0.521	18.844167	-99.224057
Temixco	9.80	3	2	20269	3.4	85.9	0.8	4.8	1.0	0.7	0.3	2.0	1.1	89.3	0.8	9.9	0.068	0.521	18.844165	-99.223947
Acatlipa	12.43	1	1	16407	3.0	86.9	1.7	5.9	1.1	0.5	0.3	0.4	0.2	89.9	1.7	8.4	0.081	0.511	18.828697	-99.228109
Acatlipa	12.43	1	2	17136	3.0	86.9	1.7	5.9	1.1	0.5	0.3	0.4	0.2	89.9	1.7	8.4	0.081	0.511	18.828607	-99.228067
Acatlipa	12.43	3	1	13514	3.8	89.6	3.1	1.1	1.1	0.7	0.2	0.2	0.2	93.4	3.1	3.5	0.080	0.534	18.823967	-99.230620
Acatlipa	12.43	3	2	15478	3.8	89.6	3.2	1.1	1.1	0.7	0.1	0.2	0.2	93.4	3.2	3.4	0.079	0.534	18.824014	-99.230496
T. Izq. Emiliano Zapata	13.50	1	1	13156	6.3	82.1	4.0	6.1	0.5	0.3	0.3	0.2	0.2	88.4	4.0	7.6	0.087	0.513	18.838130	-99.225366
T. Izq. Emiliano Zapata	13.50	1	2	12508	6.6	82.0	3.8	5.8	0.6	0.3	0.4	0.3	0.2	88.6	3.8	7.6	0.093	0.513	18.838119	-99.225227
T. Izq. Emiliano Zapata	13.50	3	1	14042	3.0	86.9	3.3	4.8	0.5	0.6	0.5	0.3	0.1	89.9	3.3	6.8	0.080	0.504	18.830135	-99.227365
T. Izq. Emiliano Zapata	13.50	3	2	13842	3.0	86.9	3.3	4.8	0.5	0.6	0.5	0.3	0.1	89.9	3.3	6.8	0.077	0.504	18.830091	-99.227277
T. Izq. Xochitepec	16.05	1	1	6769	3.0	87.8	1.5	5.0	0.7	0.6	0.4	0.6	0.4	90.8	1.5	7.7	0.086	0.506	18.801845	-99.237488
T. Izq. Xochitepec	16.05	1	2	6617	3.0	87.8	1.5	5.0	0.7	0.6	0.5	0.5	0.4	90.8	1.5	7.7	0.086	0.506	18.801868	-99.237396
T. Izq. Xochitepec	16.05	3	1	5135	3.0	87.8	1.0	6.7	0.8	0.3	0.2	0.1	0.1	90.8	1.0	8.2	0.088	0.510	18.797565	-99.240254
T. Izq. Xochitepec	16.05	3	2	4942	3.0	87.8	0.9	6.7	0.9	0.4	0.1	0.1	0.1	90.8	0.9	8.3	0.095	0.510	18.797511	-99.240192
X. C. Alpuyecá - Jojutla	24.15	1	1	11270	11.3	82.7	0.6	3.9	0.7	0.4	0.2	0.2	0.0	94.0	0.6	5.4	0.079	0.508	18.739410	-99.255314
X. C. Alpuyecá - Jojutla	24.15	1	2	10927	11.3	82.7	0.6	3.9	0.7	0.4	0.2	0.2	0.0	94.0	0.6	5.4	0.092	0.508	18.739394	-99.255235
X. C. Alpuyecá - Jojutla	24.15	3	0	11767	4.0	84.4	2.0	7.0	1.2	0.6	0.5	0.2	0.1	88.4	2.0	9.6	0.073	0.509	18.730251	-99.264680

GUERRERO

6 CARR: Cuernavaca - Chilpancingo

CLAVE: 00042

RUTA: MEX-095

AÑO: 2023

LUGAR	ESTACION				CLASIFICACION VEHICULAR EN PORCIENTO										COORDENADAS					
	KM	TE	SC	TDPA	M	A	B	C2	C3	T3S2	T3S3	T3S2R4	OTROS	A	B	C	K'	D	LATITUD	LONGITUD
T. Der. Coatetelco	28.00	3	0	6118	4.0	83.0	2.2	6.4	2.2	1.5	0.3	0.2	0.2	87.0	2.2	10.8	0.075	0.505	18.710221	-99.273702
T. Der. Michapa	44.36	1	0	8958	7.8	83.7	1.4	3.7	1.3	0.8	0.6	0.4	0.3	91.5	1.4	7.1	0.073	0.507	18.611975	-99.355569
T. Izq. Cuernavaca - Iguala (Cuota)	46.93	1	0	6550	11.7	78.6	1.3	5.2	1.0	0.6	0.6	0.6	0.4	90.3	1.3	8.4	0.071	0.500	18.604795	-99.377249
T. Izq. Cuernavaca - Iguala (Cuota)	46.93	3	0	4906	10.9	83.0	1.2	2.3	1.0	0.6	0.5	0.3	0.2	93.9	1.2	4.9	0.090	0.502	18.603175	-99.381474
Huajintla	52.00	3	0	4718	9.4	84.0	1.2	2.2	1.2	0.9	0.7	0.3	0.1	93.4	1.2	5.4	0.082	0.555	18.612893	-99.430548
Lim. Edos. Term. Mor. Ppia. Gro.	57.10																			
T. Der. Ixtapan de La Sal (Axixintla)	63.47	1	0	1634	7.7	83.4	0.4	6.6	1.3	0.3	0.3	0.0	0.0	91.1	0.4	8.5	0.089	0.514	18.611123	-99.506232
Taxco	89.90	3	0	5059	11.1	84.2	0.8	2.2	0.5	0.3	0.8	0.0	0.1	95.3	0.8	3.9	0.088	0.511	18.537414	-99.609270
Iguala	119.63	1	0	9699	13.9	83.0	0.7	1.2	0.6	0.3	0.2	0.1	0.0	96.9	0.7	2.4	0.061	0.507	18.377099	-99.529202
T. Izq. Puente de Ixtla	123.98	3	0	17846	7.1	86.7	1.2	2.2	1.3	0.9	0.5	0.1	0.0	93.8	1.2	5.0	0.061	0.502	18.317452	-99.500119
T. Izq. Sabana Grande	144.95	1	0	7273	3.9	85.6	1.7	2.4	2.6	2.2	1.2	0.4	0.0	89.5	1.7	8.8	0.064	0.518	18.173996	-99.551757
T. Der. Tecuexcontitlán	146.78	1	0	6947	3.5	84.2	3.0	2.7	3.0	1.8	1.6	0.2	0.0	87.7	3.0	9.3	0.067	0.501	18.156605	-99.552725
T. Der. Mezcala	173.14	1	0	6783	6.6	81.0	2.9	2.6	3.9	1.8	0.9	0.2	0.1	87.6	2.9	9.5	0.067	0.510	17.934728	-99.589489
T. Der. Filo de Caballo	189.89	3	0	5356	2.5	84.0	4.1	2.7	3.9	1.1	1.5	0.2	0.0	86.5	4.1	9.4	0.073	0.502	17.794948	-99.566763
T. C. Cuernavaca - Acapulco (Cuota)	219.89																			
Chilpancingo	223.70	1	1	26929	5.7	86.6	2.1	1.9	1.6	1.1	0.5	0.3	0.2	92.3	2.1	5.6	0.061	0.508	17.582845	-99.515431
Chilpancingo	223.70	1	2	27782	5.7	86.6	2.1	1.9	1.6	1.1	0.5	0.3	0.2	92.3	2.1	5.6	0.076	0.508	17.582861	-99.515348

7 CARR: Ent. Alpuyecá - Grutas de Cacahuamilpa

CLAVE: 00421

RUTA: MEX-166

AÑO: 2023

LUGAR	ESTACION				CLASIFICACION VEHICULAR EN PORCIENTO										COORDENADAS					
	KM	TE	SC	TDPA	M	A	B	C2	C3	T3S2	T3S3	T3S2R4	OTROS	A	B	C	K'	D	LATITUD	LONGITUD
T. C. Cuernavaca - Chilpancingo	0.00	3	0	8556	7.5	85.0	1.0	5.0	0.9	0.2	0.1	0.2	0.1	92.5	1.0	6.5	0.065	0.505	18.749341	-99.257283
T. Der. Zona Arq. de Xochicalco	8.40	3	1	3360	10.5	84.4	1.0	3.0	0.8	0.2	0.1	0.0	0.0	94.9	1.0	4.1	0.074	0.508	18.777725	-99.304509
T. Der. Zona Arq. de Xochicalco	8.40	3	2	3464	8.4	86.7	0.9	2.5	1.0	0.3	0.2	0.0	0.0	95.1	0.9	4.0	0.090	0.508	18.777644	-99.304528
Miacatlán	14.95	3	1	6220	5.0	91.7	0.4	1.0	0.7	0.4	0.2	0.5	0.1	96.7	0.4	2.9	0.068	0.502	18.750190	-99.365751
Miacatlán	14.95	3	2	6172	5.0	92.0	0.4	0.9	0.6	0.4	0.2	0.4	0.1	97.0	0.4	2.6	0.070	0.502	18.750166	-99.365680
Mazatepec	18.28	3	0	10067	9.0	87.7	0.5	1.6	0.7	0.2	0.1	0.1	0.1	96.7	0.5	2.8	0.076	0.516	18.721137	-99.364913
Tepecala	25.05	3	0	6716	7.0	90.2	0.5	0.9	0.7	0.3	0.1	0.2	0.1	97.2	0.5	2.3	0.069	0.504	18.729380	-99.406381
Coatlán del Río	29.80	3	0	3810	9.5	86.1	1.1	2.5	0.3	0.2	0.3	0.0	0.0	95.6	1.1	3.3	0.075	0.504	18.748000	-99.444406
Michapa	41.26	1	0	2977	10.2	81.2	2.0	4.8	0.3	1.0	0.4	0.1	0.0	91.4	2.0	6.6	0.076	0.509	18.708443	-99.473667
Lim. Edos. Term. Mor. Ppia. Gro.	42.40																			
T. C. Toluca - Axixintla	48.65																			



GUERRERO

8 CARR: Iguala - Cd. Altamirano

CLAVE: 12195

RUTA: MEX-051

AÑO: 2023

LUGAR	ESTACION				CLASIFICACION VEHICULAR EN PORCIENTO										COORDENADAS					
	KM	TE	SC	TDPA	M	A	B	C2	C3	T3S2	T3S3	T3S2R4	OTROS	A	B	C	K'	D	LATITUD	LONGITUD
Iguala	0.00																			
T. Izq. Cocula	9.40	1	0	8072	12.7	81.0	1.5	2.9	0.7	0.4	0.3	0.3	0.2	93.7	1.5	4.8	0.062	0.503	18.326917	-99.596984
T. Izq. Cocula	9.40	3	0	4085	16.9	66.5	2.6	8.6	1.6	2.2	0.9	0.2	0.5	83.4	2.6	14.0	0.086	0.513	18.322354	-99.607172
T. Izq. Teloloapan	63.99	1	0	4095	6.8	87.0	0.5	2.2	1.5	1.0	0.8	0.2	0.0	93.8	0.5	5.7	0.084	0.502	18.348640	-99.839567
T. Izq. Almoloya	116.60	1	0	1248	9.2	77.6	2.4	5.5	3.0	1.2	1.1	0.0	0.0	86.8	2.4	10.8	0.076	0.509	18.375509	-100.172788
T. Izq. Arcelia	131.98	3	0	6553	26.2	69.3	1.4	1.4	0.6	0.7	0.3	0.1	0.0	95.5	1.4	3.1	0.057	0.525	18.318907	-100.298581
Cd. Altamirano	184.55	1	1	9625	21.8	75.2	1.0	1.1	0.4	0.2	0.2	0.1	0.0	97.0	1.0	2.0	0.096	0.500	18.347084	-100.657581
Cd. Altamirano	184.55	1	2	9641	22.2	74.8	1.0	1.1	0.4	0.2	0.2	0.1	0.0	97.0	1.0	2.0	0.084	0.500	18.346900	-100.657523

9 CARR: La Sabana - Puerto Marqués

CLAVE: 12291

RUTA: MEX-200

AÑO: 2023

LUGAR	ESTACION				CLASIFICACION VEHICULAR EN PORCIENTO										COORDENADAS					
	KM	TE	SC	TDPA	M	A	B	C2	C3	T3S2	T3S3	T3S2R4	OTROS	A	B	C	K'	D	LATITUD	LONGITUD
T. C. Las Cruces - Pinotepa Nacional	0.00	3	1	15145	7.5	84.2	0.7	3.9	1.4	0.9	0.7	0.3	0.4	91.7	0.7	7.6	0.064	0.502	16.847864	-99.811485
T. C. Las Cruces - Pinotepa Nacional	0.00	3	2	15042	7.4	84.8	0.7	3.7	1.2	0.9	0.7	0.3	0.3	92.2	0.7	7.1	0.063	0.502	16.848046	-99.811364
X. C. Acapulco - Aeropuerto Acapulco	7.20	1	1	18570	5.8	87.5	0.6	3.4	1.5	0.6	0.3	0.2	0.1	93.3	0.6	6.1	0.070	0.508	16.808079	-99.821682
X. C. Acapulco - Aeropuerto Acapulco	7.20	1	2	17997	5.5	87.6	0.6	3.3	1.6	0.6	0.3	0.3	0.2	93.1	0.6	6.3	0.069	0.508	16.808095	-99.821518
Puerto Marqués	8.70																			

10 CARR: Las Cruces - Pinotepa Nacional

CLAVE: 00073

RUTA: MEX-200

AÑO: 2023

LUGAR	ESTACION				CLASIFICACION VEHICULAR EN PORCIENTO										COORDENADAS					
	KM	TE	SC	TDPA	M	A	B	C2	C3	T3S2	T3S3	T3S2R4	OTROS	A	B	C	K'	D	LATITUD	LONGITUD
T. C. Chilpancingo - Acapulco	0.00	3	1	18367	7.8	85.2	0.7	2.1	1.2	1.6	0.5	0.4	0.5	93.0	0.7	6.3	0.066	0.509	16.885675	-99.833775
T. C. Chilpancingo - Acapulco	0.00	3	2	17745	7.7	85.7	0.5	2.1	1.1	1.5	0.4	0.3	0.7	93.4	0.5	6.1	0.059	0.509	16.885787	-99.833773
T. Der. Puerto Marqués	4.62	1	1	23932	7.7	86.3	0.4	2.4	1.3	0.9	0.4	0.4	0.2	94.0	0.4	5.6	0.087	0.506	16.865789	-99.810586
T. Der. Puerto Marqués	4.62	1	2	23376	7.8	85.9	0.5	2.4	1.4	0.8	0.6	0.3	0.3	93.7	0.5	5.8	0.077	0.506	16.865760	-99.810457
T. Der. Puerto Marqués	4.62	3	0	15167	6.7	85.0	0.9	4.1	1.2	1.0	0.7	0.3	0.1	91.7	0.9	7.4	0.074	0.517	16.851984	-99.794230
X. C. Puerto Marqués - La Venta (Cuota)	11.70	1	1	4300	6.0	84.9	1.3	3.2	1.7	1.1	1.1	0.5	0.2	90.9	1.3	7.8	0.088	0.502	16.831099	-99.769293
X. C. Puerto Marqués - La Venta (Cuota)	11.70	1	2	4259	5.6	85.6	1.0	3.5	1.5	1.2	0.9	0.5	0.2	91.2	1.0	7.8	0.076	0.502	16.831186	-99.769212
X. C. Puerto Marqués - La Venta (Cuota)	11.70	3	1	4454	7.7	82.5	0.9	4.0	1.6	1.5	1.0	0.5	0.3	90.2	0.9	8.9	0.082	0.522	16.830131	-99.750356
X. C. Puerto Marqués - La Venta (Cuota)	11.70	3	2	4855	7.4	82.9	0.9	3.9	1.7	1.5	1.0	0.4	0.3	90.3	0.9	8.8	0.094	0.522	16.830214	-99.750364
T. Der El Arenal	17.00	1	1	4075	5.4	82.8	1.3	6.0	1.2	1.7	1.0	0.2	0.4	88.2	1.3	10.5	0.077	0.503	16.824316	-99.716131
T. Der El Arenal	17.00	1	2	4118	5.5	82.7	1.4	6.0	1.4	1.7	0.9	0.1	0.3	88.2	1.4	10.4	0.081	0.503	16.824402	-99.716133
Sn Pedro Cacahuatpec	21.60	1	0	7075	6.5	81.3	1.3	5.3	1.8	2.2	1.2	0.1	0.3	87.8	1.3	10.9	0.076	0.504	16.815864	-99.672509

GUERRERO

10 CARR: Las Cruces - Pinotepa Nacional

CLAVE: 00073

RUTA: MEX-200

AÑO: 2023

LUGAR	ESTACION				CLASIFICACION VEHICULAR EN PORCIENTO										COORDENADAS					
	KM	TE	SC	TDPA	M	A	B	C2	C3	T3S2	T3S3	T3S2R4	OTROS	A	B	C	K'	D	LATITUD	LONGITUD
T. Der. a Barra Vieja	35.00	1	0	4096	3.9	81.3	2.4	6.1	1.5	2.7	1.7	0.1	0.3	85.2	2.4	12.4	0.070	0.502	16.756162	-99.580193
San Marcos	58.90	1	0	5934	5.6	82.0	1.7	5.6	1.9	2.0	0.9	0.2	0.1	87.6	1.7	10.7	0.080	0.508	16.779859	-99.410143
San Marcos	58.90	3	0	5179	6.4	81.4	1.4	5.8	1.8	2.0	0.9	0.2	0.1	87.8	1.4	10.8	0.087	0.512	16.792182	-99.367755
Nexpa	84.96	3	0	4672	6.1	80.9	1.9	5.8	2.0	2.1	0.9	0.2	0.1	87.0	1.9	11.1	0.086	0.520	16.782600	-99.209896
Cruz Grande	97.00	3	0	6437	5.3	81.7	1.6	6.3	2.0	2.0	0.7	0.3	0.1	87.0	1.6	11.4	0.086	0.501	16.712276	-99.116069
T. Izq. Copala (1º Acceso)	117.50	1	0	6190	6.7	80.1	1.9	6.1	2.1	2.0	0.8	0.2	0.1	86.8	1.9	11.3	0.075	0.505	16.607575	-98.986420
T. Izq. Copala (1º Acceso)	117.50	3	0	6258	5.8	80.0	1.8	7.5	1.9	1.9	0.8	0.2	0.1	85.8	1.8	12.4	0.072	0.505	16.601459	-98.957946
T. Der. Playa Ventura	124.00	1	0	4363	5.0	78.0	2.7	7.2	2.9	2.8	1.1	0.2	0.1	83.0	2.7	14.3	0.087	0.509	16.594022	-98.926611
T. Der. Playa Ventura	124.00	3	0	3864	5.1	76.9	3.2	7.2	3.1	2.9	1.3	0.2	0.1	82.0	3.2	14.8	0.090	0.507	16.590802	-98.913064
Marquelia	136.80	1	0	6046	6.9	79.5	2.4	6.5	1.9	1.6	0.9	0.2	0.1	86.4	2.4	11.2	0.077	0.500	16.581473	-98.831845
Marquelia	136.80	3	0	5258	5.3	79.9	2.9	7.1	1.7	1.9	0.9	0.2	0.1	85.2	2.9	11.9	0.086	0.507	16.581840	-98.801972
Juchitán	158.00	3	0	4480	6.0	81.5	2.4	6.3	1.1	1.6	0.8	0.2	0.1	87.5	2.4	10.1	0.072	0.501	16.633346	-98.623554
T. Izq. Ometepec	175.88	1	0	4432	7.0	79.8	2.2	6.2	2.0	1.7	0.8	0.2	0.1	86.8	2.2	11.0	0.081	0.505	16.654849	-98.503956
T. Izq. Ometepec	175.88	3	0	4129	7.1	79.2	2.4	6.3	1.9	1.9	0.9	0.2	0.1	86.3	2.4	11.3	0.066	0.505	16.649183	-98.495830
Cuajinicuilapa	200.60	1	0	3870	5.4	79.0	2.4	8.0	1.6	2.4	0.9	0.1	0.2	84.4	2.4	13.2	0.082	0.507	16.478927	-98.440608
Cuajinicuilapa	200.60	3	0	2830	6.8	75.9	2.8	7.2	2.7	2.9	1.4	0.1	0.2	82.7	2.8	14.5	0.084	0.513	16.462392	-98.393803
Lim. Edos. Term. Gro. Ppia. Oax.	207.80																			
T. Izq. San Pedro Orizaba	215.00	3	0	2022	5.1	82.7	3.9	2.4	1.2	3.7	0.8	0.1	0.1	87.8	3.9	8.3	0.108	0.502	16.443160	-98.343706
T. Izq. Tlaxiaco	245.47	1	0	3343	9.2	74.7	1.8	6.4	1.7	3.9	1.9	0.3	0.1	83.9	1.8	14.3	0.104	0.505	16.379369	-98.094210
T. Izq. Tlaxiaco	245.47	3	0	6371	6.8	82.3	1.6	3.1	1.3	2.8	1.5	0.4	0.2	89.1	1.6	9.3	0.101	0.500	16.376709	-98.092058
Pinotepa Nacional	252.50																			

11 CARR: Libramiento Norte de Acapulco

CLAVE: 12421

RUTA: MEX-095

AÑO: 2023

LUGAR	ESTACION				CLASIFICACION VEHICULAR EN PORCIENTO										COORDENADAS					
	KM	TE	SC	TDPA	M	A	B	C2	C3	T3S2	T3S3	T3S2R4	OTROS	A	B	C	K'	D	LATITUD	LONGITUD
T. C. Chilpancingo - Acapulco	0.00	3	0	3959	4.7	75.8	2.6	11.3	2.5	1.6	1.2	0.2	0.1	80.5	2.6	16.9	0.068	0.503	16.982460	-99.820895
T. Der. Pelillo	6.40	3	0	4643	3.8	76.6	2.6	11.6	2.4	1.7	1.2	0.1	0.0	80.4	2.6	17.0	0.070	0.504	16.980322	-99.866773
T. C. Acapulco - Zihuatanejo	21.10	1	0	5622	6.9	80.7	1.9	5.0	2.3	1.7	1.0	0.3	0.2	87.6	1.9	10.5	0.062	0.506	16.964754	-99.973525

12 CARR: Milpillas - T. C. (Acapulco - Zihuatanejo)

CLAVE: 12012

RUTA: MEX-196

AÑO: 2023

LUGAR	ESTACION				CLASIFICACION VEHICULAR EN PORCIENTO										COORDENADAS					
	KM	TE	SC	TDPA	M	A	B	C2	C3	T3S2	T3S3	T3S2R4	OTROS	A	B	C	K'	D	LATITUD	LONGITUD
T. C. Cuernavaca - Chilpancingo	0.00	3	0	1452	1.1	81.4	0.6	12.7	2.0	1.5	0.6	0.0	0.1	82.5	0.6	16.9	0.088	0.514	17.798564	-99.565069

GUERRERO

12 CARR: Milpillan - T. C. (Acapulco - Zihuatanejo)

CLAVE: 12012

RUTA: MEX-196

AÑO: 2023

LUGAR	ESTACION				CLASIFICACION VEHICULAR EN PORCIENTO										COORDENADAS					
	KM	TE	SC	TDPA	M	A	B	C2	C3	T3S2	T3S3	T3S2R4	OTROS	A	B	C	K'	D	LATITUD	LONGITUD
Los Morros	45.07	1	0	1103	2.3	78.9	0.9	13.5	2.0	1.5	0.6	0.1	0.2	81.2	0.9	17.9	0.085	0.517	17.697144	-99.801436
Atoyac de Álvarez	233.50	1	0	1637	26.1	68.5	0.4	4.0	0.4	0.2	0.2	0.1	0.1	94.6	0.4	5.0	0.085	0.570	17.217450	-100.425390
T. C. Acapulco - Zihuatanejo	237.00	1	1	5292	12.2	83.1	0.4	3.3	0.5	0.3	0.1	0.1	0.0	95.3	0.4	4.3	0.095	0.500	17.166020	-100.433828
T. C. Acapulco - Zihuatanejo	237.00	1	2	5286	12.8	82.8	0.3	3.1	0.5	0.3	0.1	0.1	0.0	95.6	0.3	4.1	0.080	0.500	17.166042	-100.433750

13 CARR: Ramal a Aeropuerto Zihuatanejo

CLAVE: 12423

RUTA: MEX-200

AÑO: 2023

LUGAR	ESTACION				CLASIFICACION VEHICULAR EN PORCIENTO										COORDENADAS					
	KM	TE	SC	TDPA	M	A	B	C2	C3	T3S2	T3S3	T3S2R4	OTROS	A	B	C	K'	D	LATITUD	LONGITUD
T. C. Acapulco - Zihuatanejo	0.00	3	0	4947	11.2	84.0	0.2	4.3	0.1	0.2	0.0	0.0	0.0	95.2	0.2	4.6	0.080	0.523	17.617829	-101.462994
Aeropuerto	2.00																			

14 CARR: Ramal a La Unión

CLAVE:

RUTA: MEX-200

AÑO: 2023

LUGAR	ESTACION				CLASIFICACION VEHICULAR EN PORCIENTO										COORDENADAS					
	KM	TE	SC	TDPA	M	A	B	C2	C3	T3S2	T3S3	T3S2R4	OTROS	A	B	C	K'	D	LATITUD	LONGITUD
T. C. Zihuatanejo - La Mira	0.00	3	0	1893	10.0	71.3	4.0	8.6	2.4	1.0	0.9	0.9	0.9	81.3	4.0	14.7	0.088	0.570	17.950146	-101.820294
La Unión	6.10																			

15 CARR: San Juan de Los Llanos - Ometepec

CLAVE: 12011

RUTA: MEX-200

AÑO: 2023

LUGAR	ESTACION				CLASIFICACION VEHICULAR EN PORCIENTO										COORDENADAS					
	KM	TE	SC	TDPA	M	A	B	C2	C3	T3S2	T3S3	T3S2R4	OTROS	A	B	C	K'	D	LATITUD	LONGITUD
T. C. Las Cruces - Pinotepa Nacional	0.00	3	0	6167	7.3	87.0	1.1	2.0	1.2	0.6	0.2	0.6	0.0	94.3	1.1	4.6	0.067	0.506	16.661585	-98.497468
Ometepec	15.94	1	1	4890	6.1	87.2	0.8	2.8	1.0	1.3	0.5	0.2	0.1	93.3	0.8	5.9	0.079	0.504	16.687550	-98.437483
Ometepec	15.94	1	2	4806	6.1	87.2	0.9	2.8	1.0	1.3	0.5	0.1	0.1	93.3	0.9	5.8	0.086	0.504	16.687602	-98.437546

16 CARR: Tierra Colorada - Cruz Grande

CLAVE: 12420

RUTA: MEX-198

AÑO: 2023

LUGAR	ESTACION				CLASIFICACION VEHICULAR EN PORCIENTO										COORDENADAS					
	KM	TE	SC	TDPA	M	A	B	C2	C3	T3S2	T3S3	T3S2R4	OTROS	A	B	C	K'	D	LATITUD	LONGITUD
Tierra Colorada	0.00	3	0	2347	7.8	85.2	1.4	4.3	0.6	0.4	0.3	0.0	0.0	93.0	1.4	5.6	0.080	0.504	17.143939	-99.529363
Tecoanapa	61.00	1	0	3316	6.2	84.2	1.3	5.0	2.0	0.5	0.6	0.1	0.1	90.4	1.3	8.3	0.078	0.503	16.985820	-99.265446
Ayutla de Los Libres	82.00	1	0	4956	5.5	85.0	1.4	5.9	1.8	0.3	0.1	0.0	0.0	90.5	1.4	8.1	0.082	0.504	16.978414	-99.112566
Ayutla de Los Libres	82.00	3	0	4349	5.4	85.7	1.3	5.5	1.8	0.2	0.1	0.0	0.0	91.1	1.3	7.6	0.071	0.504	16.948444	-99.103913

GUERRERO

16 CARR: Tierra Colorada - Cruz Grande

CLAVE: 12420

RUTA: MEX-198

AÑO: 2023

LUGAR	ESTACION				CLASIFICACION VEHICULAR EN PORCIENTO										COORDENADAS					
	KM	TE	SC	TDPA	M	A	B	C2	C3	T3S2	T3S3	T3S2R4	OTROS	A	B	C	K'	D	LATITUD	LONGITUD
Cruz Grande	113.80	1	0	2298	7.2	86.3	0.8	5.4	0.2	0.1	0.0	0.0	0.0	93.5	0.8	5.7	0.087	0.514	16.745668	-99.131848
T. C. Las Cruces - Pinotepa Nacional	114.80																			

17 CARR: Toluca - Cd. Altamirano

CLAVE: 00020

RUTA: MEX-134

AÑO: 2023

LUGAR	ESTACION				CLASIFICACION VEHICULAR EN PORCIENTO										COORDENADAS					
	KM	TE	SC	TDPA	M	A	B	C2	C3	T3S2	T3S3	T3S2R4	OTROS	A	B	C	K'	D	LATITUD	LONGITUD
T. C. Toluca - Axixintla	0.00																			
T. Izq. Capultitlán	1.78	3	1	20163	3.5	89.8	0.9	3.9	0.7	0.6	0.3	0.2	0.1	93.3	0.9	5.8	0.090	0.509	19.256631	-99.667179
T. Izq. Capultitlán	1.78	3	2	20938	3.5	89.8	0.9	3.9	0.7	0.6	0.3	0.2	0.1	93.3	0.9	5.8	0.080	0.509	19.256403	-99.667208
T. Der. Zinacatepec	10.21	3	1	14117	2.3	89.8	1.2	4.3	1.0	0.7	0.4	0.2	0.1	92.1	1.2	6.7	0.084	0.515	19.250613	-99.758688
T. Der. Zinacatepec	10.21	3	2	13309	2.3	89.7	1.1	4.3	1.1	0.7	0.4	0.2	0.2	92.0	1.1	6.9	0.083	0.515	19.250514	-99.758679
T. Izq. Sultepec	18.72	3	0	6530	1.0	88.7	2.0	3.6	1.4	1.7	1.2	0.3	0.1	89.7	2.0	8.3	0.101	0.504	19.202402	-99.827989
T. Der. Valle de Bravo	52.00	3	0	5972	2.8	86.8	1.9	4.1	1.6	1.5	1.0	0.2	0.1	89.6	1.9	8.5	0.081	0.506	19.140443	-99.924520
Temascaltepec	68.76	1	0	5166	1.6	87.1	2.3	4.0	1.8	1.5	1.3	0.3	0.1	88.7	2.3	9.0	0.072	0.504	19.048218	-100.043741
Temascaltepec	68.76	3	0	4882	2.9	85.3	2.3	5.2	1.6	1.4	1.1	0.2	0.0	88.2	2.3	9.5	0.085	0.505	19.041340	-100.045025
T. Izq. San Diego Cuentla	84.34	3	0	6197	3.1	86.1	2.0	5.1	1.5	1.2	0.8	0.1	0.1	89.2	2.0	8.8	0.086	0.504	18.969948	-100.073748
Tejupilco de Hidalgo	100.76	1	0	7570	3.2	86.2	1.8	5.2	1.8	1.1	0.5	0.2	0.0	89.4	1.8	8.8	0.077	0.514	18.923405	-100.147367
Tejupilco de Hidalgo	100.76	3	0	4842	4.2	84.3	1.9	6.2	1.3	1.2	0.6	0.2	0.1	88.5	1.9	9.6	0.089	0.507	18.900644	-100.168660
Cuadrilla de López	113.20	3	0	3454	4.8	84.4	1.1	4.8	1.4	1.8	1.2	0.4	0.1	89.2	1.1	9.7	0.071	0.507	18.868427	-100.228532
T. Izq. Bejucos	147.57	1	0	1803	11.5	75.9	2.3	5.1	1.4	2.3	1.4	0.1	0.0	87.4	2.3	10.3	0.088	0.509	18.784759	-100.421156
Lim. Edos. Term. Méx. Ppia. Gro.	148.00																			
Cutzamala	196.00	1	0	3839	11.7	75.5	1.2	6.3	1.5	1.9	1.5	0.2	0.2	87.2	1.2	11.6	0.099	0.502	18.479065	-100.582259
Lim. Edos. Term. Gro. Ppia. Mich.	201.00																			
Lim. Edos. Term. Mich. Ppia. Gro.	210.30																			
Cd. Altamirano	216.00	1	0	5397	13.5	77.4	1.0	4.1	1.1	1.7	1.0	0.1	0.1	90.9	1.0	8.1	0.096	0.500	18.383006	-100.650617

18 CARR: Zihuatanejo - La Mira

CLAVE: 00121

RUTA: MEX-200

AÑO: 2023

LUGAR	ESTACION				CLASIFICACION VEHICULAR EN PORCIENTO										COORDENADAS					
	KM	TE	SC	TDPA	M	A	B	C2	C3	T3S2	T3S3	T3S2R4	OTROS	A	B	C	K'	D	LATITUD	LONGITUD
Zihuatanejo	0.00	3	1	15675	8.3	84.7	0.9	5.1	0.4	0.3	0.2	0.1	0.0	93.0	0.9	6.1	0.085	0.510	17.659277	-101.561320
Zihuatanejo	0.00	3	2	15085	8.2	84.7	0.8	5.3	0.5	0.2	0.1	0.2	0.0	92.9	0.8	6.3	0.078	0.510	17.659191	-101.561342
T. Izq. Ixtapa (1er Acceso)	2.25	3	0	20029	8.1	85.6	1.0	2.8	0.9	0.7	0.6	0.2	0.1	93.7	1.0	5.3	0.084	0.534	17.660700	-101.574501
T. Izq 2do Acceso a Ixtapa Zihutanejo	4.70	3	0	3247	2.8	71.8	1.7	19.6	1.0	1.3	1.1	0.3	0.4	74.6	1.7	23.7	0.075	0.501	17.671850	-101.572619

GUERRERO

18 CARR: Zihuatanejo - La Mira

CLAVE: 00121

RUTA: MEX-200

AÑO: 2023

LUGAR	ESTACION				CLASIFICACION VEHICULAR EN PORCIENTO										COORDENADAS					
	KM	TE	SC	TDPA	M	A	B	C2	C3	T3S2	T3S3	T3S2R4	OTROS	A	B	C	K'	D	LATITUD	LONGITUD
T. Izq. Ixtapa (2do Acceso)	8.00	3	0	8047	9.1	85.6	0.4	2.4	0.9	0.5	0.5	0.5	0.1	94.7	0.4	4.9	0.077	0.520	17.680035	-101.603496
T. Der. Cd. Altamirano	16.30	1	0	3209	15.7	79.0	0.7	2.2	2.0	0.2	0.1	0.1	0.0	94.7	0.7	4.6	0.087	0.513	17.726360	-101.602917
T. Der. Cd. Altamirano	16.30	3	0	3615	15.6	79.5	0.3	2.4	1.4	0.6	0.1	0.1	0.0	95.1	0.3	4.6	0.073	0.514	17.731948	-101.612700
T. Izq. Panitla (1er Acceso)	19.00	1	0	6289	3.1	87.5	2.9	3.3	1.4	1.1	0.4	0.2	0.1	90.6	2.9	6.5	0.080	0.517	17.735497	-101.613662
T. Izq. Panitla (2do Acceso)	22.50	1	0	4977	3.7	84.1	3.4	4.2	1.6	1.5	0.7	0.5	0.3	87.8	3.4	8.8	0.109	0.505	17.754353	-101.645393
T. Der. Buenavista	27.30	3	0	5494	4.5	82.6	3.1	4.4	1.3	1.7	1.2	0.8	0.4	87.1	3.1	9.8	0.097	0.516	17.783269	-101.680207
T. Der 1er Acceso a Lagunillas	28.00	3	0	5102	4.1	79.6	4.1	6.4	1.4	2.4	1.2	0.6	0.2	83.7	4.1	12.2	0.100	0.522	17.814579	-101.705235
T. Izq. Lagunillas	35.20	3	0	4261	5.6	80.5	4.5	4.0	1.6	2.1	1.2	0.2	0.3	86.1	4.5	9.4	0.094	0.527	17.838071	-101.716039
T. Der. La Unión	52.00	1	0	4234	4.7	82.8	3.6	4.1	1.4	1.7	1.0	0.4	0.3	87.5	3.6	8.9	0.090	0.510	17.930183	-101.823929
T. Der. La Unión	52.00	3	0	4583	3.4	84.1	3.3	3.8	1.8	1.7	1.2	0.5	0.2	87.5	3.3	9.2	0.081	0.510	17.941712	-101.835674
Joluta	60.70	3	0	3431	3.7	81.5	4.1	4.3	3.0	1.8	1.2	0.2	0.2	85.2	4.1	10.7	0.106	0.543	17.980757	-101.929472
X. C. Nueva Italia - Lázaro Cárdenas (Cuota) Este	69.00	3	0	1358	6.6	75.2	2.3	7.7	5.4	1.6	1.1	0.1	0.0	81.8	2.3	15.9	0.151	0.512	18.006272	-101.970183
X. C. Nueva Italia - Lázaro Cárdenas (Cuota) Oeste	95.80	1	0	7674	5.7	79.9	1.5	2.1	3.6	2.1	0.8	3.7	0.6	85.6	1.5	12.9	0.080	0.520	17.993474	-102.163078
Zacatula	97.00	1	0	3472	13.1	78.8	0.6	1.4	3.6	1.0	0.5	0.8	0.2	91.9	0.6	7.5	0.083	0.506	18.004851	-102.175090
Lim. Edos. Term. Gro. Ppia. Mich.	102.30																			
La Villita	103.80	3	0	2075	13.1	77.7	0.5	2.7	3.3	1.4	0.6	0.5	0.2	90.8	0.5	8.7	0.094	0.511	18.046097	-102.184210
Guacamayas	107.00	1	0	3394	14.1	80.0	0.4	3.3	0.7	0.4	0.4	0.4	0.3	94.1	0.4	5.5	0.074	0.515	18.028971	-102.200612
T. Izq. Lázaro Cárdenas	110.85	1	1	16948	14.1	81.0	0.6	1.4	1.3	0.6	0.2	0.5	0.3	95.1	0.6	4.3	0.079	0.517	18.003508	-102.220490
T. Izq. Lázaro Cárdenas	110.85	1	2	15823	14.4	80.9	0.6	1.7	1.0	0.5	0.2	0.4	0.3	95.3	0.6	4.1	0.077	0.517	18.003431	-102.220351
Buenos Aires	117.00	1	0	13241	6.1	86.3	2.0	2.2	1.5	0.8	0.3	0.5	0.3	92.4	2.0	5.6	0.077	0.503	18.010420	-102.265367
La Mira	123.60	1	0	13578	6.9	85.4	1.5	2.7	1.5	0.6	0.5	0.6	0.3	92.3	1.5	6.2	0.080	0.516	18.031479	-102.320687

19 CARR: Cuernavaca - Acapulco (Cuota)

CLAVE: 00045

RUTA: MEX-095D

AÑO: 2023

LUGAR	ESTACION				CLASIFICACION VEHICULAR EN PORCIENTO										COORDENADAS					
	KM	TE	SC	TDPA	M	A	B	C2	C3	T3S2	T3S3	T3S2R4	OTROS	A	B	C	K'	D	LATITUD	LONGITUD
Cuernavaca	0.00	3	1	56068	4.8	87.6	1.5	2.4	2.0	1.0	0.4	0.2	0.1	92.4	1.5	6.1	0.071	0.508	18.875337	-99.227209
Cuernavaca	0.00	3	2	54097	4.8	87.6	1.5	2.4	2.0	1.0	0.4	0.2	0.1	92.4	1.5	6.1	0.091	0.508	18.875369	-99.227111
T. Izq. Burgos	3.35	1	1	59846	4.3	88.3	1.4	2.4	2.0	0.9	0.4	0.2	0.1	92.6	1.4	6.0	0.068	0.520	18.862067	-99.221070
T. Izq. Burgos	3.35	1	2	60788	4.3	88.3	1.4	2.4	2.0	0.9	0.4	0.2	0.1	92.6	1.4	6.0	0.068	0.520	18.862069	-99.220984
T. Izq. Burgos	3.35	3	1	45683	4.8	87.9	1.8	2.7	1.0	0.8	0.5	0.4	0.1	92.7	1.8	5.5	0.082	0.503	18.854993	-99.220706
T. Izq. Burgos	3.35	3	2	45036	4.8	88.1	1.8	2.7	0.9	0.8	0.4	0.4	0.1	92.9	1.8	5.3	0.117	0.503	18.854226	-99.220578
T. Der. Acatlipa	4.70	1	1	39956	6.9	84.9	1.7	3.1	1.0	1.3	0.7	0.3	0.1	91.8	1.7	6.5	0.065	0.505	18.851966	-99.220467
T. Der. Acatlipa	4.70	1	2	39049	6.9	84.9	1.7	3.1	1.0	1.3	0.7	0.3	0.1	91.8	1.7	6.5	0.084	0.505	18.851728	-99.220335
T. Der. Acatlipa	4.70	3	1	36929	4.5	87.3	1.9	3.0	0.9	1.1	0.5	0.5	0.3	91.8	1.9	6.3	0.068	0.505	18.844878	-99.218436

GUERRERO

19 CARR: Cuernavaca - Acapulco (Cuota)

CLAVE: 00045

RUTA: MEX-095D

AÑO: 2023

LUGAR	ESTACION				CLASIFICACION VEHICULAR EN PORCIENTO										COORDENADAS					
	KM	TE	SC	TDPA	M	A	B	C2	C3	T3S2	T3S3	T3S2R4	OTROS	A	B	C	K'	D	LATITUD	LONGITUD
T. Der. Acallipa	4.70	3	2	36212	4.5	87.4	1.9	3.0	0.9	1.0	0.5	0.5	0.3	91.9	1.9	6.2	0.064	0.505	18.844897	-99.218343
T. Izq. Miguel Hidalgo	5.85	3	1	29669	5.2	87.5	1.7	2.2	1.0	1.3	0.7	0.3	0.1	92.7	1.7	5.6	0.080	0.504	18.831057	-99.217824
T. Izq. Miguel Hidalgo	5.85	3	2	31986	5.2	87.4	1.7	2.1	1.1	1.4	0.7	0.3	0.1	92.6	1.7	5.7	0.083	0.504	18.830424	-99.217815
T. Der. Aeropuerto Cuernavaca	9.83	1	1	31341	4.0	84.6	2.9	4.6	1.1	1.3	0.7	0.5	0.3	88.6	2.9	8.5	0.097	0.519	18.812615	-99.219528
T. Der. Aeropuerto Cuernavaca	9.83	1	2	27258	4.0	84.9	2.8	4.6	1.1	1.2	0.6	0.5	0.3	88.9	2.8	8.3	0.080	0.519	18.812244	-99.219466
T. Der. Aeropuerto Cuernavaca	9.83	3	1	18207	3.7	88.8	1.7	2.3	1.2	1.3	0.5	0.3	0.2	92.5	1.7	5.8	0.082	0.522	18.789610	-99.221622
T. Der. Aeropuerto Cuernavaca	9.83	3	2	19891	3.7	88.9	1.7	2.3	1.2	1.3	0.5	0.3	0.1	92.6	1.7	5.7	0.095	0.522	18.789330	-99.221568
T. Izq. Club de Golf Santa Fe	17.48	1	1	15832	4.6	86.9	1.9	2.4	1.5	1.6	0.6	0.4	0.1	91.5	1.9	6.6	0.087	0.503	18.748900	-99.245132
T. Izq. Club de Golf Santa Fe	17.48	1	2	16025	4.6	86.7	1.9	2.4	1.6	1.6	0.6	0.4	0.2	91.3	1.9	6.8	0.109	0.503	18.748278	-99.245354
Plaza de Cobro Alpuyecá	19.80	1	1	11033	2.3	80.1	4.3	5.3	3.9	2.3	0.7	0.9	0.2	82.4	4.3	13.3	0.089	0.507	18.724155	-99.259283
Plaza de Cobro Alpuyecá	19.80	1	2	11337	2.3	80.5	4.2	5.3	3.8	2.2	0.7	0.9	0.1	82.8	4.2	13.0	0.115	0.507	18.724066	-99.259085
Plaza de Cobro Alpuyecá	19.80	3	1	8401	1.4	81.2	5.0	6.2	2.0	2.2	0.8	0.9	0.3	82.6	5.0	12.4	0.096	0.503	18.710698	-99.270182
Plaza de Cobro Alpuyecá	19.80	3	2	8489	1.4	81.4	5.0	6.2	2.0	2.2	0.8	0.8	0.2	82.8	5.0	12.2	0.126	0.503	18.710549	-99.270107
Plaza de Cobro Ing. Francisco Velasco Durán	23.10	2	1	8339	1.6	83.4	5.3	2.7	2.7	2.3	0.8	0.8	0.4	85.0	5.3	9.7	0.111	0.500	18.698498	-99.278028
Plaza de Cobro Ing. Francisco Velasco Durán	23.10	2	2	8339	1.6	83.4	5.3	2.7	2.7	2.3	0.8	0.8	0.4	85.0	5.3	9.7	0.111	0.500	18.698498	-99.278028
T. C. Puente de Ixtla - Iguala (Cuota)	28.58	3	1	7742	2.1	84.4	3.3	4.9	1.5	2.1	0.7	0.8	0.2	86.5	3.3	10.2	0.095	0.511	18.648281	-99.295477
T. C. Puente de Ixtla - Iguala (Cuota)	28.58	3	2	7419	2.1	84.3	3.3	4.9	1.5	2.1	0.7	0.8	0.3	86.4	3.3	10.3	0.130	0.511	18.648269	-99.295354
T. C. Xoxocotla - Tilzapotla	37.50	3	1	5815	2.9	81.2	4.4	5.3	1.5	2.5	0.7	1.3	0.2	84.1	4.4	11.5	0.114	0.503	18.586365	-99.256028
T. C. Xoxocotla - Tilzapotla	37.50	3	2	5735	2.9	81.1	4.5	5.3	1.6	2.5	0.7	1.2	0.2	84.0	4.5	11.5	0.137	0.503	18.586446	-99.255983
T. C. Autopista Siglo XXI (Jaltetelco - Xicatlacotla)	41.00	3	1	5985	3.0	82.8	3.6	5.2	1.3	2.3	0.5	1.1	0.2	85.8	3.6	10.6	0.111	0.517	18.566340	-99.221688
T. C. Autopista Siglo XXI (Jaltetelco - Xicatlacotla)	41.00	3	2	5595	3.1	82.5	3.6	5.1	1.3	2.3	0.6	1.3	0.2	85.6	3.6	10.8	0.154	0.517	18.566406	-99.221633
Lim. Edos. Term. Mor. Ppia. Gro.	53.30																			
Plaza de Cobro Paso Morelos	82.94	1	1	4617	1.5	79.7	5.6	4.3	1.7	4.4	0.9	1.6	0.3	81.2	5.6	13.2	0.076	0.502	18.238272	-99.213919
Plaza de Cobro Paso Morelos	82.94	1	2	4578	1.5	79.7	5.7	4.2	1.7	4.4	0.9	1.5	0.4	81.2	5.7	13.1	0.124	0.502	18.238166	-99.213849
Plaza de Cobro Paso Morelos	82.94	2	1	4660	1.0	82.6	5.9	2.3	2.3	3.1	0.7	1.5	0.6	83.6	5.9	10.5	0.111	0.500	18.231462	-99.215446
Plaza de Cobro Paso Morelos	82.94	2	2	4660	1.0	82.6	5.9	2.3	2.3	3.1	0.7	1.5	0.6	83.6	5.9	10.5	0.111	0.500	18.231462	-99.215446
T. C. Cuernavaca - Chilpancingo	171.90	1	1	3915	1.3	78.2	8.6	3.5	1.4	3.9	1.0	1.7	0.4	79.5	8.6	11.9	0.085	0.533	17.606777	-99.518116
T. C. Cuernavaca - Chilpancingo	171.90	1	2	4473	1.4	77.9	8.2	4.4	1.3	4.1	0.7	1.6	0.4	79.3	8.2	12.5	0.130	0.533	17.606744	-99.518040
Plaza de Cobro Palo Blanco	193.90	1	1	6160	1.7	80.2	5.7	5.1	1.1	3.1	1.4	1.1	0.6	81.9	5.7	12.4	0.116	0.503	17.435611	-99.477441
Plaza de Cobro Palo Blanco	193.90	1	2	6222	1.7	80.2	5.6	5.1	1.1	3.2	1.3	1.2	0.6	81.9	5.6	12.5	0.163	0.503	17.492803	-99.477918
Plaza de Cobro Palo Blanco	193.90	2	1	5716	1.1	85.2	3.6	2.3	2.7	2.7	0.8	1.1	0.5	86.3	3.6	10.1	0.097	0.500	17.423983	-99.466911
Plaza de Cobro Palo Blanco	193.90	2	2	5716	1.1	85.2	3.6	2.3	2.7	2.7	0.8	1.1	0.5	86.3	3.6	10.1	0.097	0.500	17.423983	-99.466911
X. C. Chilpancingo - Acapulco (Tierra Colorada)	226.20	1	1	5184	1.5	78.8	8.4	3.6	1.9	3.1	1.2	1.2	0.3	80.3	8.4	11.3	0.093	0.525	17.180596	-99.552154
X. C. Chilpancingo - Acapulco (Tierra Colorada)	226.20	1	2	5741	1.4	79.7	8.2	3.5	1.8	3.3	0.8	1.1	0.2	81.1	8.2	10.7	0.173	0.525	17.180602	-99.552062
Plaza de Cobro La Venta	269.95	1	1	6252	6.3	73.7	6.0	5.5	1.8	3.1	1.4	1.6	0.6	80.0	6.0	14.0	0.085	0.545	16.929447	-99.796564

GUERRERO

19 CARR: Cuernavaca - Acapulco (Cuota)

CLAVE: 00045

RUTA: MEX-095D

AÑO: 2023

LUGAR	ESTACION				CLASIFICACION VEHICULAR EN PORCIENTO													COORDENADAS		
	KM	TE	SC	TDPA	M	A	B	C2	C3	T3S2	T3S3	T3S2R4	OTROS	A	B	C	K'	D	LATITUD	LONGITUD
Plaza de Cobro La Venta	269.95	1	2	7491	6.2	73.8	5.9	5.7	2.0	2.8	1.5	1.5	0.6	80.0	5.9	14.1	0.072	0.545	16.929367	-99.796562
Plaza de Cobro La Venta	269.95	2	1	5696	1.7	82.4	5.6	2.4	2.7	2.7	0.9	1.2	0.4	84.1	5.6	10.3	0.097	0.500	16.928232	-99.801857
Plaza de Cobro La Venta	269.95	2	2	5696	1.7	82.4	5.6	2.4	2.7	2.7	0.9	1.2	0.4	84.1	5.6	10.3	0.097	0.500	16.928232	-99.801857
T. C. Chilpancingo - Acapulco (Ent. La Venta)	271.50	1	1	5733	1.2	81.3	6.3	4.2	1.5	3.0	0.8	1.2	0.5	82.5	6.3	11.2	0.077	0.506	16.923291	-99.811205
T. C. Chilpancingo - Acapulco (Ent. La Venta)	271.50	1	2	5599	1.4	81.3	6.4	4.3	1.5	2.9	0.8	1.0	0.4	82.7	6.4	10.9	0.096	0.506	16.923207	-99.811200

20 CARR: Libramiento de Técpan (Cuota)

CLAVE: 00073

RUTA: MEX-200D

AÑO: 2023

LUGAR	ESTACION				CLASIFICACION VEHICULAR EN PORCIENTO													COORDENADAS		
	KM	TE	SC	TDPA	M	A	B	C2	C3	T3S2	T3S3	T3S2R4	OTROS	A	B	C	K'	D	LATITUD	LONGITUD
T. C. Acapulco - Zihuatanejo (Oriente)	0.00	3	0	2079	11.0	75.1	2.8	4.8	2.1	2.3	1.7	0.2	0.0	86.1	2.8	11.1	0.085	0.531	17.203841	-100.646756
Plaza de Cobro Técpan	2.60	2	0	1739	2.9	80.3	0.5	4.2	5.6	2.8	2.4	0.2	1.1	83.2	0.5	16.3	0.102	0.500	17.197071	-100.626751
T. C. Acapulco - Zihuatanejo (Poniente)	4.40																			

21 CARR: Nueva Italia - Lázaro Cárdenas (Cuota)

CLAVE: 00032

RUTA: MEX-037D

AÑO: 2023

LUGAR	ESTACION				CLASIFICACION VEHICULAR EN PORCIENTO													COORDENADAS		
	KM	TE	SC	TDPA	M	A	B	C2	C3	T3S2	T3S3	T3S2R4	OTROS	A	B	C	K'	D	LATITUD	LONGITUD
T. Der. Apatzingán	153.90	3	0	6914	5.5	70.2	3.7	7.4	1.7	3.3	2.7	4.8	0.7	75.7	3.7	20.6	0.067	0.501	18.981480	-102.088400
Plaza de Cobro Las Cañas	211.40	2	0	5311	0.7	62.4	3.5	2.3	2.9	8.2	4.5	11.4	4.1	63.1	3.5	33.4	0.078	0.500	18.554183	-101.970404
Lim. Edos. Term. Mich. Ppia. Gro.	252.25																			
Plaza de Cobro Feliciano	282.00	2	0	5640	0.7	63.0	3.3	2.4	3.2	8.0	4.3	11.1	4.0	63.7	3.3	33.0	0.078	0.500	18.004090	-101.961847
X. C. Zihuatanejo - La Mira Este	282.37	1	0	6445	7.3	58.2	6.8	8.7	2.3	3.8	2.8	9.3	0.8	65.5	6.8	27.7	0.066	0.513	18.014077	-101.958454
X. C. Zihuatanejo - La Mira Este	282.37	3	0	5179	6.7	63.1	5.4	7.6	2.9	4.5	3.7	5.2	0.9	69.8	5.4	24.8	0.068	0.516	17.991359	-101.969952
X. C. Zihuatanejo - La Mira Oeste	306.47	3	1	7528	5.2	78.5	2.0	3.9	2.7	3.0	2.0	1.8	0.9	83.7	2.0	14.3	0.070	0.516	17.995559	-102.172248
X. C. Zihuatanejo - La Mira Oeste	306.47	3	2	7052	5.1	80.3	1.7	3.9	2.5	2.5	1.8	1.4	0.8	85.4	1.7	12.9	0.097	0.516	17.995447	-102.172122
Lim. Edos. Term. Gro. Ppia. Mich.	307.00																			
T. Der. Acceso 8 Puerto Lázaro Cárdenas	309.60	3	1	7925	5.7	80.0	2.1	2.3	2.2	2.7	2.7	1.4	0.9	85.7	2.1	12.2	0.084	0.527	17.976548	-102.188026
T. Der. Acceso 8 Puerto Lázaro Cárdenas	309.60	3	2	7109	5.6	81.3	1.8	2.0	1.9	2.7	2.4	1.4	0.9	86.9	1.8	11.3	0.078	0.527	17.976550	-102.187703
Lázaro Cárdenas	311.30																			

GUERRERO

22 CARR: Puente de Ixtla - Iguala (Cuota)

CLAVE: 00043

RUTA: MEX-091D

AÑO: 2023

LUGAR	ESTACION				CLASIFICACION VEHICULAR EN PORCIENTO													COORDENADAS		
	KM	TE	SC	TDPA	M	A	B	C2	C3	T3S2	T3S3	T3S2R4	OTROS	A	B	C	K'	D	LATITUD	LONGITUD
T. C. Cuernavaca - Acapulco (Cuota)	0.00																			
T. Izq. Puente de Ixtla	2.00	3	0	9111	3.0	83.4	3.0	5.0	2.0	1.6	0.8	0.9	0.3	86.4	3.0	10.6	0.082	0.510	18.628097	-99.327853
T. Der. Amacuzac	9.63	3	0	9371	3.0	82.3	4.9	3.3	2.5	1.6	1.0	0.8	0.6	85.3	4.9	9.8	0.080	0.504	18.590457	-99.376486
Lim. Edos. Term. Mor. Ppia. Gro.	18.20																			
T. Izq. Buenavista	33.58	3	0	5193	6.2	72.8	5.4	9.3	2.2	2.3	1.1	0.5	0.2	79.0	5.4	15.6	0.076	0.510	18.457727	-99.434497
Plaza de Cobro Iguala	59.14	2	0	4172	0.9	72.8	4.4	5.6	7.3	3.9	2.8	1.1	1.2	73.7	4.4	21.9	0.076	0.500	18.336191	-99.508296
T. Der. Iguala	59.50	1	0	5248	1.4	78.4	6.8	3.6	3.3	3.0	2.2	1.1	0.2	79.8	6.8	13.4	0.071	0.509	18.348188	-99.513515
T. C. Cuernavaca - Chilpancingo	62.80																			

23 CARR: Rancho Viejo - Taxco (Cuota)

CLAVE: 12010

RUTA: MEX-092D

AÑO: 2023

LUGAR	ESTACION				CLASIFICACION VEHICULAR EN PORCIENTO													COORDENADAS		
	KM	TE	SC	TDPA	M	A	B	C2	C3	T3S2	T3S3	T3S2R4	OTROS	A	B	C	K'	D	LATITUD	LONGITUD
X. C. Cuernavaca - Chilpancingo	0.00																			
Plaza de Cobro Taxco	0.62	2	0	3280	7.3	86.7	2.9	2.3	0.5	0.1	0.1	0.0	0.1	94.0	2.9	3.1	0.111	0.500	18.588609	-99.559993
T. C. Cuernavaca - Chilpancingo	8.10	1	0	3522	7.9	85.6	2.0	3.7	0.3	0.2	0.3	0.0	0.0	93.5	2.0	4.5	0.123	0.504	18.569906	-99.590422

24 CARR: Zacapalco - Rancho Viejo (Cuota)

CLAVE: 12010

RUTA: MEX-092D

AÑO: 2023

LUGAR	ESTACION				CLASIFICACION VEHICULAR EN PORCIENTO													COORDENADAS		
	KM	TE	SC	TDPA	M	A	B	C2	C3	T3S2	T3S3	T3S2R4	OTROS	A	B	C	K'	D	LATITUD	LONGITUD
T. C. Puente de Ixtla - Iguala (Cuota)	0.00																			
Plaza de Cobro Zacapalco	0.50	2	0	1979	4.5	87.6	3.7	2.6	0.9	0.2	0.2	0.0	0.3	92.1	3.7	4.2	0.131	0.500	18.537999	-99.447424
X. C. Cuernavaca - Chilpancingo	17.20	1	0	2187	4.7	83.8	3.6	6.6	0.6	0.5	0.2	0.0	0.0	88.5	3.6	7.9	0.114	0.502	18.584772	-99.546634

25 CARR: Acapulco - Aeropuerto Acapulco

CLAVE: 12292

RUTA: GRO

AÑO: 2023

LUGAR	ESTACION				CLASIFICACION VEHICULAR EN PORCIENTO													COORDENADAS		
	KM	TE	SC	TDPA	M	A	B	C2	C3	T3S2	T3S3	T3S2R4	OTROS	A	B	C	K'	D	LATITUD	LONGITUD
Acapulco	0.00																			
Puerto Marqués	8.70	1	1	19726	4.0	90.8	0.5	2.9	0.5	0.6	0.3	0.2	0.2	94.8	0.5	4.7	0.081	0.502	16.807328	-99.833789
Puerto Marqués	8.70	1	2	19594	4.0	90.6	0.5	3.1	0.5	0.6	0.3	0.2	0.2	94.6	0.5	4.9	0.083	0.502	16.807430	-99.833819
Puerto Marqués	8.70	3	1	29606	4.1	92.3	0.6	1.5	0.5	0.2	0.3	0.3	0.2	96.4	0.6	3.0	0.077	0.513	16.800488	-99.819514
Puerto Marqués	8.70	3	2	28160	3.9	92.4	0.4	1.8	0.5	0.2	0.3	0.3	0.2	96.3	0.4	3.3	0.065	0.513	16.800535	-99.819327
T. Der. Los Amates	14.90	3	1	3623	2.5	91.9	0.3	4.4	0.3	0.1	0.1	0.2	0.2	94.4	0.3	5.3	0.088	0.515	16.767347	-99.766774



GUERRERO

25 CARR: Acapulco - Aeropuerto Acapulco

CLAVE: 12292

RUTA: GRO

AÑO: 2023

LUGAR	ESTACION				CLASIFICACION VEHICULAR EN PORCIENTO													COORDENADAS		
	KM	TE	SC	TDPA	M	A	B	C2	C3	T3S2	T3S3	T3S2R4	OTROS	A	B	C	K'	D	LATITUD	LONGITUD
T. Der. Los Amates	14.90	3	2	3840	2.9	92.7	0.2	3.3	0.2	0.3	0.2	0.1	0.1	95.6	0.2	4.2	0.077	0.515	16.767443	-99.766699
Aeropuerto	16.20																			

26 CARR: Ent. Potrero - Lomas de Chapultepec

CLAVE: 12293

RUTA: GRO

AÑO: 2023

LUGAR	ESTACION				CLASIFICACION VEHICULAR EN PORCIENTO													COORDENADAS		
	KM	TE	SC	TDPA	M	A	B	C2	C3	T3S2	T3S3	T3S2R4	OTROS	A	B	C	K'	D	LATITUD	LONGITUD
T. C. Acapulco - Aeropuerto Acapulco	0.00	3	1	7389	4.0	89.8	0.5	3.4	1.2	0.6	0.2	0.2	0.1	93.8	0.5	5.7	0.107	0.506	16.766613	-99.776695
T. C. Acapulco - Aeropuerto Acapulco	0.00	3	2	7203	3.8	89.6	0.5	3.6	1.3	0.6	0.2	0.2	0.2	93.4	0.5	6.1	0.118	0.506	16.766489	-99.776573
T. C. Las Cruces - Pinotepa Nacional	29.00																			

27 CARR: Las Petaquillas - Quechultenango

CLAVE:

RUTA: GRO

AÑO: 2023

LUGAR	ESTACION				CLASIFICACION VEHICULAR EN PORCIENTO													COORDENADAS		
	KM	TE	SC	TDPA	M	A	B	C2	C3	T3S2	T3S3	T3S2R4	OTROS	A	B	C	K'	D	LATITUD	LONGITUD
Las Petaquillas	0.00	3	0	4530	8.4	84.4	0.6	5.1	0.9	0.3	0.2	0.1	0.0	92.8	0.6	6.6	0.071	0.505	17.482880	-99.426952
Quechultenango	26.60																			

28 CARR: Pie de La Cuesta - Barra de Coyuca

CLAVE: 12427

RUTA: GRO

AÑO: 2023

LUGAR	ESTACION				CLASIFICACION VEHICULAR EN PORCIENTO													COORDENADAS		
	KM	TE	SC	TDPA	M	A	B	C2	C3	T3S2	T3S3	T3S2R4	OTROS	A	B	C	K'	D	LATITUD	LONGITUD
T. C. Acapulco - Zihuatanejo	0.00	3	0	6248	15.6	79.9	0.5	2.4	0.7	0.4	0.2	0.3	0.0	95.5	0.5	4.0	0.063	0.502	16.903688	-99.975841
Barra de Coyuca	16.50	1	1	714	14.5	79.7	0.3	5.3	0.1	0.1	0.0	0.0	0.0	94.2	0.3	5.5	0.116	0.510	16.944854	-100.088031
Barra de Coyuca	16.50	1	2	743	11.3	83.5	0.5	4.5	0.1	0.1	0.0	0.0	0.0	94.8	0.5	4.7	0.083	0.510	16.944767	-100.088050

29 CARR: Ramal a Cocula

CLAVE: 12082

RUTA: GRO

AÑO: 2023

LUGAR	ESTACION				CLASIFICACION VEHICULAR EN PORCIENTO													COORDENADAS		
	KM	TE	SC	TDPA	M	A	B	C2	C3	T3S2	T3S3	T3S2R4	OTROS	A	B	C	K'	D	LATITUD	LONGITUD
T. C. Iguala - Ciudad Altamirano	0.00	3	0	4786	12.8	80.2	0.4	5.4	0.5	0.3	0.1	0.1	0.2	93.0	0.4	6.6	0.088	0.502	18.317625	-99.605149
Cocula	13.00																			

GUERRERO

30 CARR: T. C. (Iguala - Chilpancingo) - Atenango del Río

CLAVE: 12001

RUTA: GRO-001

AÑO: 2023

LUGAR	ESTACION				CLASIFICACION VEHICULAR EN PORCIENTO										COORDENADAS					
	KM	TE	SC	TDPA	M	A	B	C2	C3	T3S2	T3S3	T3S2R4	OTROS	A	B	C	K'	D	LATITUD	LONGITUD
T. C. Cuernavaca - Chilpancingo	0.00	3	0	7427	9.4	86.7	0.6	2.1	0.8	0.2	0.1	0.1	0.0	96.1	0.6	3.3	0.084	0.506	18.289367	-99.503078
T. Der. Pololcingo	11.20	1	0	3920	10.0	83.4	0.5	5.0	0.4	0.3	0.1	0.1	0.2	93.4	0.5	6.1	0.079	0.522	18.304597	-99.425567
T. Der. Pololcingo	11.20	3	0	3780	9.1	83.0	0.6	6.1	0.4	0.3	0.2	0.1	0.2	92.1	0.6	7.3	0.075	0.502	18.306570	-99.420604
Huitzucu	22.00	3	0	2711	9.1	80.8	0.8	8.1	0.5	0.3	0.2	0.1	0.1	89.9	0.8	9.3	0.075	0.508	18.295664	-99.315588
Atenango del Río	62.00	1	0	1657	9.3	80.8	0.4	8.0	0.4	0.7	0.1	0.0	0.3	90.1	0.4	9.5	0.060	0.501	18.121626	-99.119586

31 CARR: Taxco - Ixcateopan

CLAVE: 12083

RUTA: GRO

AÑO: 2023

LUGAR	ESTACION				CLASIFICACION VEHICULAR EN PORCIENTO										COORDENADAS					
	KM	TE	SC	TDPA	M	A	B	C2	C3	T3S2	T3S3	T3S2R4	OTROS	A	B	C	K'	D	LATITUD	LONGITUD
Taxco	0.00	3	0	3471	13.9	81.2	0.0	1.4	0.3	2.7	0.4	0.1	0.0	95.1	0.0	4.9	0.075	0.522	18.552366	-99.618527
Ixcateopan	36.00	1	0	419	15.4	79.7	0.2	3.2	1.0	0.5	0.0	0.0	0.0	95.1	0.2	4.7	0.086	0.515	18.504752	-99.783283

32 CARR: Teloloapan - Apaxtla de Castrejón

CLAVE: 12081

RUTA: GRO

AÑO: 2023

LUGAR	ESTACION				CLASIFICACION VEHICULAR EN PORCIENTO										COORDENADAS					
	KM	TE	SC	TDPA	M	A	B	C2	C3	T3S2	T3S3	T3S2R4	OTROS	A	B	C	K'	D	LATITUD	LONGITUD
T. C. Iguala - Ciudad Altamirano	0.00	3	0	7064	20.7	75.5	1.0	1.2	0.7	0.4	0.2	0.2	0.1	96.2	1.0	2.8	0.077	0.510	18.355051	-99.855877
Apaxtla de Castrejón	34.00																			

33 CARR: Tlapa de Comonfort - Marquelia

CLAVE:

RUTA: GRO

AÑO: 2023

LUGAR	ESTACION				CLASIFICACION VEHICULAR EN PORCIENTO										COORDENADAS					
	KM	TE	SC	TDPA	M	A	B	C2	C3	T3S2	T3S3	T3S2R4	OTROS	A	B	C	K'	D	LATITUD	LONGITUD
Tlapa de Comonfort	0.00	3	0	3740	5.1	87.9	0.3	5.7	0.4	0.2	0.2	0.1	0.1	93.0	0.3	6.7	0.087	0.500	17.525996	-98.598885
Marquelia	163.00	1	0	3679	21.6	74.0	0.4	3.9	0.1	0.0	0.0	0.0	0.0	95.6	0.4	4.0	0.087	0.505	16.589598	-98.817129

34 CARR: Puerto Marqués - La Venta (Cuota)

CLAVE: 00043

RUTA: GRO-D

AÑO: 2023

LUGAR	ESTACION				CLASIFICACION VEHICULAR EN PORCIENTO										COORDENADAS					
	KM	TE	SC	TDPA	M	A	B	C2	C3	T3S2	T3S3	T3S2R4	OTROS	A	B	C	K'	D	LATITUD	LONGITUD
Puerto Marqués	0.00																			
X. C. Las Cruces - Pinolepa Nacional	6.33	1	1	3194	6.9	81.9	1.2	6.0	1.3	1.3	0.5	0.5	0.4	88.8	1.2	10.0	0.113	0.531	16.821208	-99.766529
X. C. Las Cruces - Pinolepa Nacional	6.33	1	2	3621	7.5	81.2	1.3	6.0	1.2	1.4	0.6	0.6	0.2	88.7	1.3	10.0	0.100	0.531	16.821476	-99.766633
X. C. Las Cruces - Pinolepa Nacional	6.33	3	1	3165	4.9	82.1	2.0	2.9	2.2	3.3	1.2	0.8	0.6	87.0	2.0	11.0	0.142	0.550	16.836099	-99.758335

GUERRERO

34 CARR: Puerto Marqués - La Venta (Cuota)

CLAVE: 00043

RUTA: GRO-D

AÑO: 2023

LUGAR	ESTACION				CLASIFICACION VEHICULAR EN PORCIENTO										COORDENADAS					
	KM	TE	SC	TDPA	M	A	B	C2	C3	T3S2	T3S3	T3S2R4	OTROS	A	B	C	K'	D	LATITUD	LONGITUD
X. C. Las Cruces - Pinolepa Nacional	6.33	3	2	2589	4.7	81.9	2.2	3.4	2.3	3.2	1.2	0.8	0.3	86.6	2.2	11.2	0.135	0.550	16.836278	-99.758582
La Venta	20.80																			

35 CARR: Toluca - Axixintla

CLAVE: 00122

RUTA: EM-MEX-055

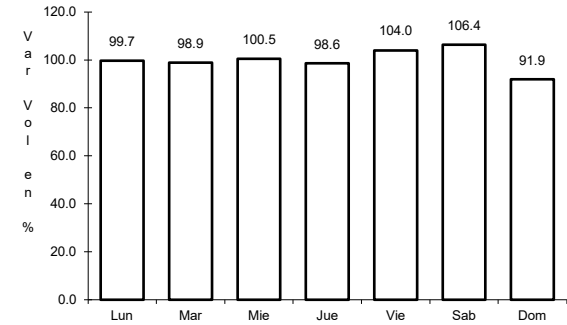
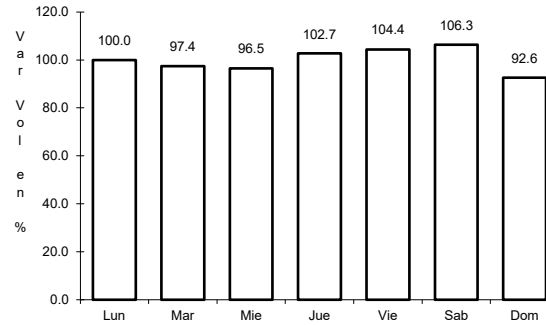
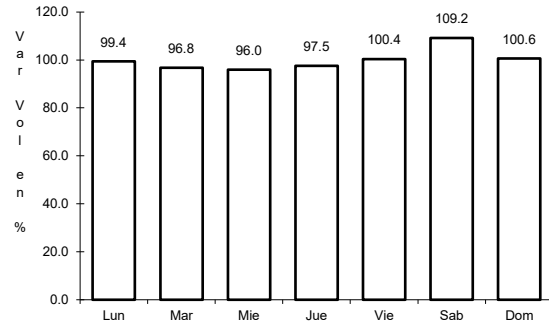
AÑO: 2023

LUGAR	ESTACION				CLASIFICACION VEHICULAR EN PORCIENTO										COORDENADAS					
	KM	TE	SC	TDPA	M	A	B	C2	C3	T3S2	T3S3	T3S2R4	OTROS	A	B	C	K'	D	LATITUD	LONGITUD
Toluca	0.00																			
T. Izq. Metepec	4.74	1	1	58602	0.9	91.5	0.5	3.5	0.9	1.3	1.1	0.2	0.1	92.4	0.5	7.1	0.072	0.508	19.242566	-99.601963
T. Izq. Metepec	4.74	1	2	56409	0.8	90.8	0.5	3.7	1.0	1.6	1.3	0.2	0.1	91.6	0.5	7.9	0.077	0.508	19.244357	-99.604347
Mexicalcingo	8.80	1	1	57611	0.7	94.2	0.7	2.1	1.0	0.8	0.3	0.1	0.1	94.9	0.7	4.4	0.079	0.516	19.223315	-99.593466
Mexicalcingo	8.80	1	2	61975	0.6	94.4	0.4	2.2	1.0	0.7	0.3	0.3	0.1	95.0	0.4	4.6	0.068	0.516	19.223343	-99.593311
Mexicalcingo	8.80	3	1	46977	1.6	89.8	0.5	4.3	1.4	1.1	0.9	0.3	0.1	91.4	0.5	8.1	0.085	0.517	19.199614	-99.584782
Mexicalcingo	8.80	3	2	50843	1.5	89.8	0.6	4.5	1.2	1.1	0.9	0.3	0.1	91.3	0.6	8.1	0.076	0.517	19.199698	-99.584569
T. Der. Calimaya	12.70	3	1	30957	1.4	88.9	0.7	5.9	1.1	1.2	0.5	0.2	0.1	90.3	0.7	9.0	0.089	0.512	19.180895	-99.577797
T. Der. Calimaya	12.70	3	2	32631	1.3	89.0	0.7	6.0	1.0	1.2	0.5	0.2	0.1	90.3	0.7	9.0	0.072	0.512	19.180832	-99.577602
Santa María Rayón	17.60	3	1	23637	1.6	92.1	0.7	3.3	1.2	0.7	0.3	0.1	0.0	93.7	0.7	5.6	0.079	0.508	19.146749	-99.585940
Santa María Rayón	17.60	3	2	24383	1.5	92.5	0.5	3.1	1.3	0.7	0.3	0.1	0.0	94.0	0.5	5.5	0.083	0.508	19.146637	-99.585834
Tenango de Arista	23.00	1	1	19443	3.9	88.0	0.8	4.6	1.2	0.6	0.3	0.4	0.2	91.9	0.8	7.3	0.095	0.503	19.117134	-99.590353
Tenango de Arista	23.00	1	2	19186	3.9	88.0	0.8	4.6	1.2	0.6	0.3	0.4	0.2	91.9	0.8	7.3	0.071	0.503	19.117328	-99.590208
San Bartolomé Atlalahuaca	28.12	1	0	18016	2.0	87.1	1.0	4.9	0.6	3.0	0.7	0.4	0.3	89.1	1.0	9.9	0.085	0.514	19.077645	-99.598768
San Bartolomé Atlalahuaca	28.12	3	0	12762	1.9	92.0	1.1	2.8	0.6	0.8	0.5	0.2	0.1	93.9	1.1	5.0	0.075	0.502	19.056120	-99.601263
T. Izq. Joquicingo de León Guzmán	35.70	1	0	14811	2.4	92.3	1.1	2.6	0.5	0.6	0.4	0.1	0.0	94.7	1.1	4.2	0.078	0.522	19.029193	-99.564521
T. Izq. Joquicingo de León Guzmán	35.70	3	0	14895	3.0	89.2	0.9	4.8	0.7	0.6	0.5	0.1	0.2	92.2	0.9	6.9	0.079	0.501	19.018380	-99.561374
Tenancingo	44.80	3	0	17408	8.4	86.8	0.4	3.3	0.3	0.2	0.4	0.1	0.1	95.2	0.4	4.4	0.086	0.505	18.965635	-99.604861
T. Izq. Villa Guerrero	56.84	3	0	9768	9.7	86.5	0.4	1.3	0.8	0.5	0.1	0.6	0.1	96.2	0.4	3.4	0.083	0.545	18.965383	-99.644712
Ixtapan de La Sal	80.00	1	1	3321	1.5	95.0	0.4	2.5	0.2	0.1	0.1	0.1	0.1	96.5	0.4	3.1	0.095	0.501	18.853812	-99.672447
Ixtapan de La Sal	80.00	1	2	3311	1.7	95.4	0.4	2.0	0.1	0.1	0.1	0.1	0.1	97.1	0.4	2.5	0.115	0.501	18.853807	-99.672426
Ixtapan de La Sal	80.00	3	1	9408	9.3	86.1	0.6	3.3	0.3	0.2	0.2	0.0	0.0	95.4	0.6	4.0	0.094	0.505	18.825382	-99.668451
Ixtapan de La Sal	80.00	3	2	9218	9.3	86.2	0.6	3.2	0.3	0.2	0.2	0.0	0.0	95.5	0.6	3.9	0.091	0.505	18.825386	-99.668314
Tonatico	86.20	3	0	5951	9.4	85.3	1.6	2.3	0.6	0.4	0.1	0.3	0.0	94.7	1.6	3.7	0.094	0.502	18.801207	-99.658742
Lim. Edos. Term. Méx. Ppia. Gro.	98.50																			
Cacahuamilpa	120.30	1	0	2483	6.0	80.6	1.6	7.9	1.3	0.6	0.7	0.6	0.7	86.6	1.6	11.8	0.122	0.516	18.609275	-99.317499
T. C. Cuernavaca - Chilpancingo	125.30	1	0	1273	7.6	81.5	1.5	7.0	1.0	0.4	0.3	0.2	0.5	89.1	1.5	9.4	0.147	0.542	18.621454	-99.508244

1 CARR: Acapulco - Zihuatanejo

CLAVE: 12072

RUTA: MEX-200



Km: 10.37 Tipo: 1 Sent: 0

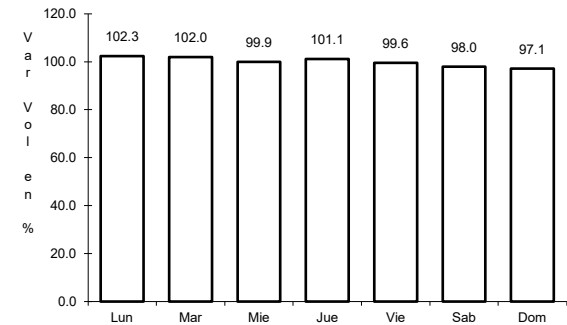
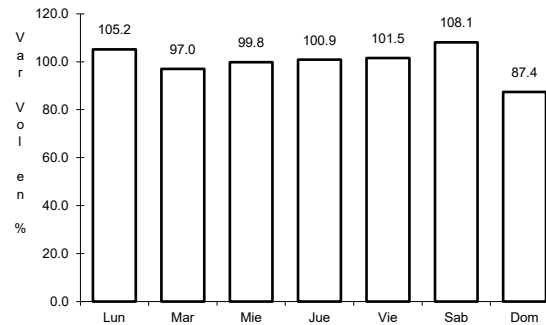
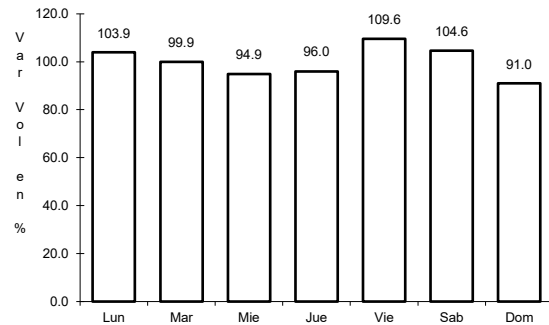
Km: 242.90 Tipo: 1 Sent: 1

Km: 242.90 Tipo: 1 Sent: 2

2 CARR: Cd. Altamirano - T. C. (Zihuatanejo - La Mira)

CLAVE: 12422

RUTA: MEX-134



Km: 0.00 Tipo: 3 Sent: 1

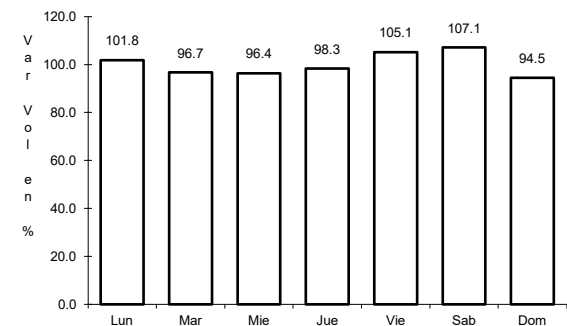
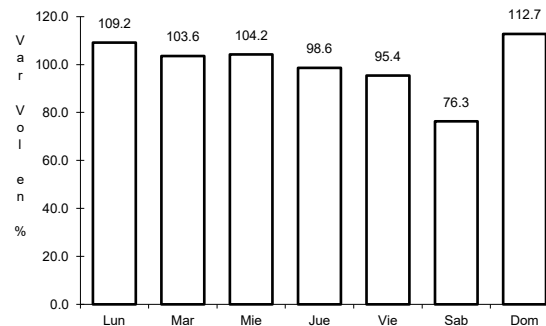
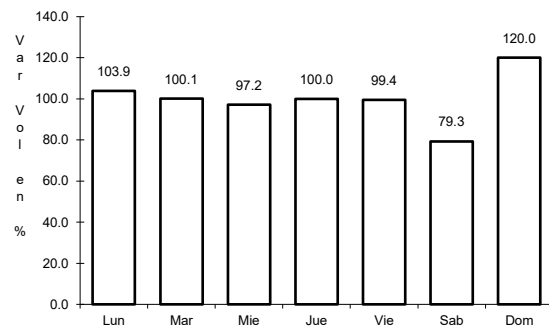
Km: 0.00 Tipo: 3 Sent: 2

Km: 187.36 Tipo: 1 Sent: 0

3 CARR: Chilpancingo - Acapulco

CLAVE: 12045

RUTA: MEX-095



Km: 4.20 Tipo: 1 Sent: 1

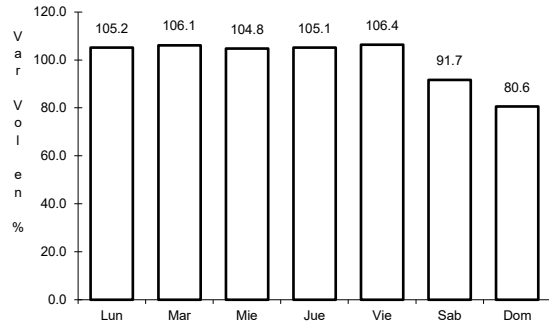
Km: 4.20 Tipo: 1 Sent: 2

Km: 112.80 Tipo: 3 Sent: 0

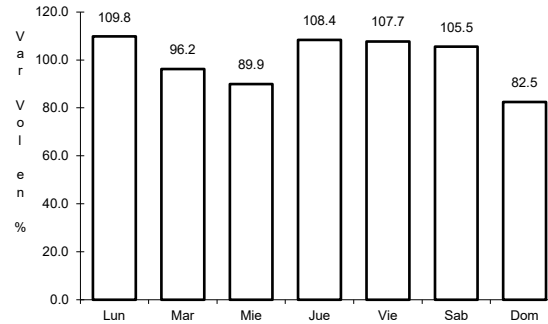
4 CARR: Chilpancingo - Chichihualco

CLAVE: 12426

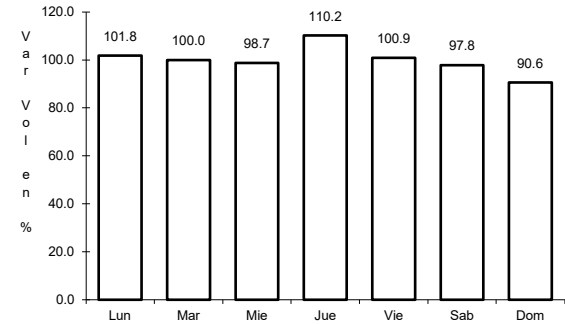
RUTA: MEX-095



Km: 0.00      Tipo: 3      Sent: 0



Km: 15.10      Tipo: 1      Sent: 0

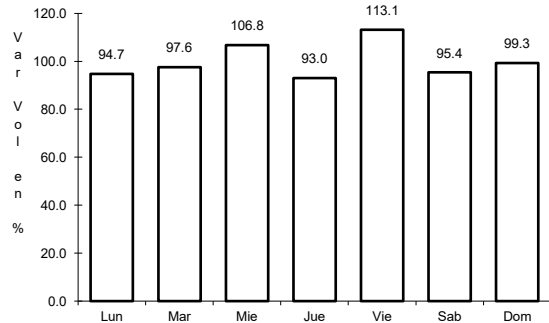


Km: 26.30      Tipo: 1      Sent: 0

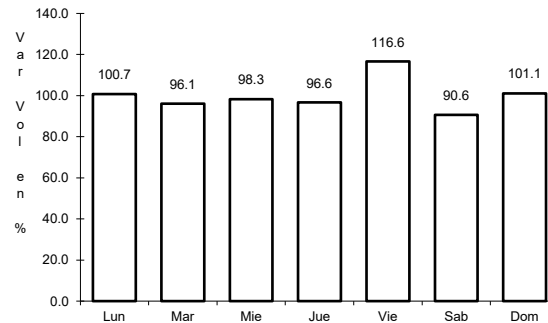
5 CARR: Chilpancingo - Jilotepec

CLAVE: 12002

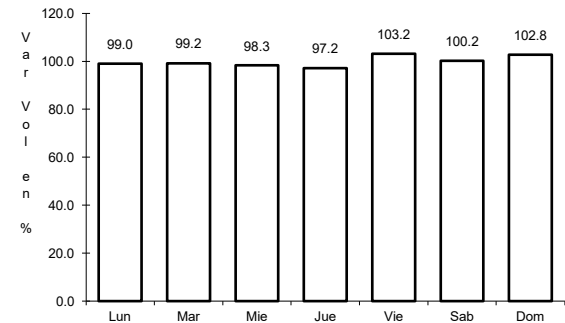
RUTA: MEX-093



Km: 0.00      Tipo: 3      Sent: 0



Km: 53.62      Tipo: 3      Sent: 0

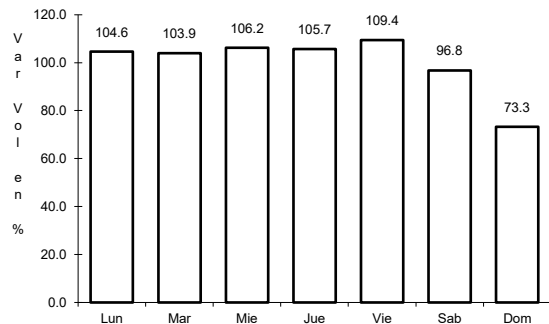


Km: 235.00      Tipo: 1      Sent: 0

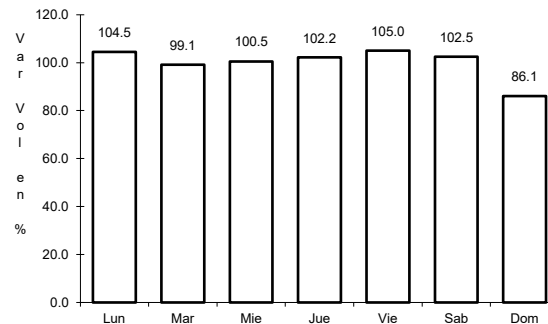
6 CARR: Cuernavaca - Chilpancingo

CLAVE: 00042

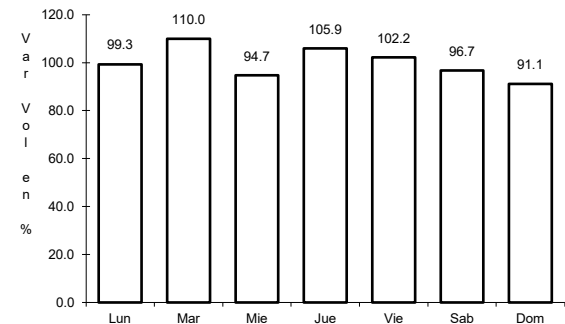
RUTA: MEX-095



Km: 9.80      Tipo: 1      Sent: 1



Km: 9.80      Tipo: 1      Sent: 2

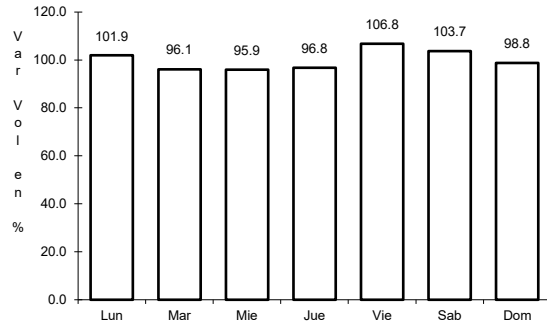


Km: 119.63      Tipo: 1      Sent: 0

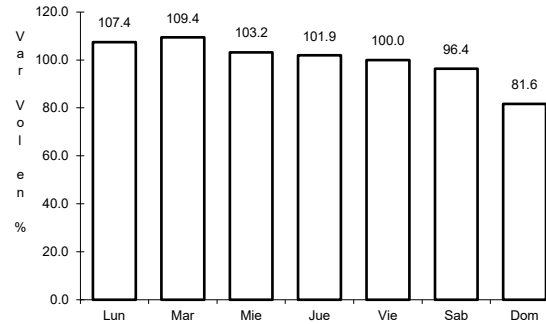
7 CARR: Ent. Alpuyea - Grutas de Cacahuamilpa

CLAVE: 00421

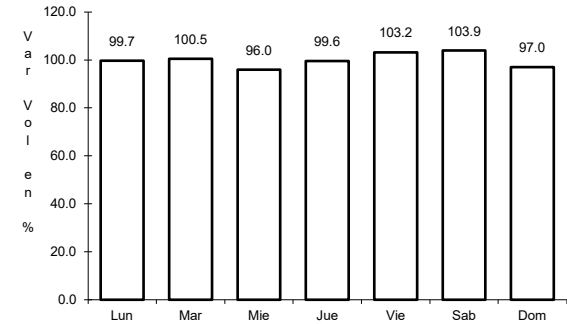
RUTA: MEX-166



Km: 0.00      Tipo: 3      Sent: 0



Km: 18.28      Tipo: 3      Sent: 0

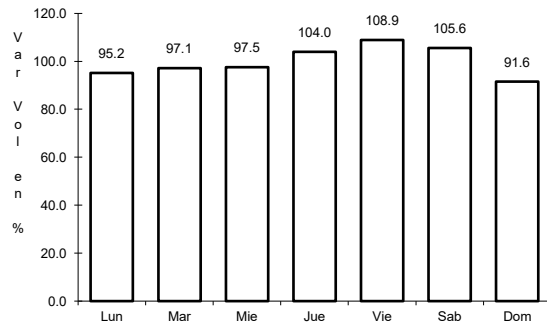


Km: 41.26      Tipo: 1      Sent: 0

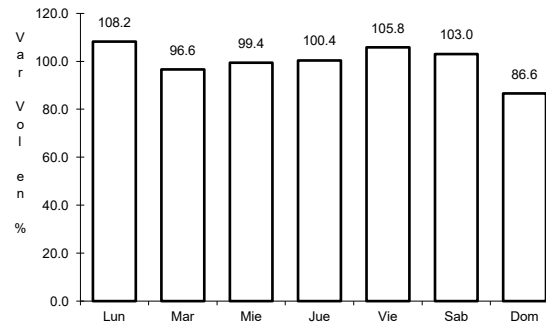
8 CARR: Iguala - Cd. Altamirano

CLAVE: 12195

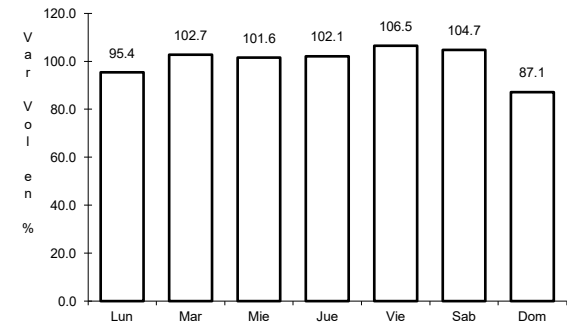
RUTA: MEX-051



Km: 9.40      Tipo: 1      Sent: 0



Km: 184.55      Tipo: 1      Sent: 1

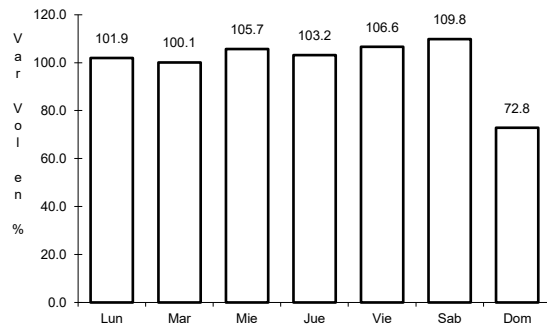


Km: 184.55      Tipo: 1      Sent: 2

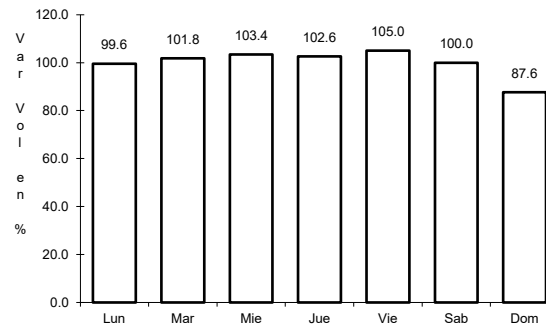
9 CARR: La Sabana - Puerto Marqués

CLAVE: 12291

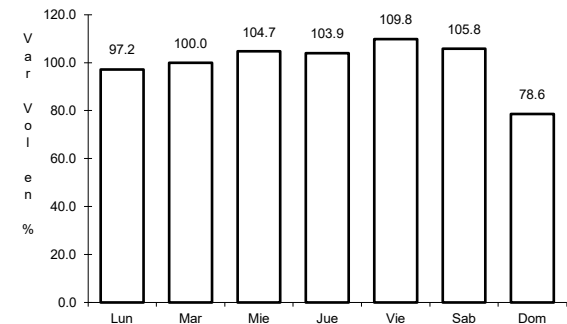
RUTA: MEX-200



Km: 0.00      Tipo: 3      Sent: 1



Km: 0.00      Tipo: 3      Sent: 2

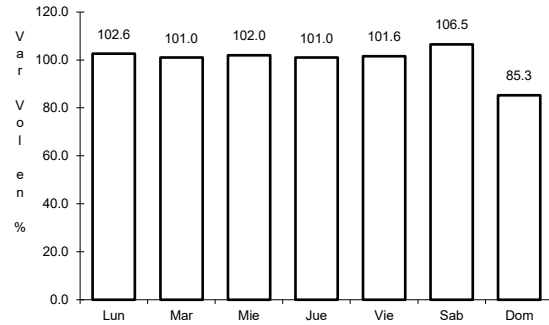


Km: 7.20      Tipo: 1      Sent: 1

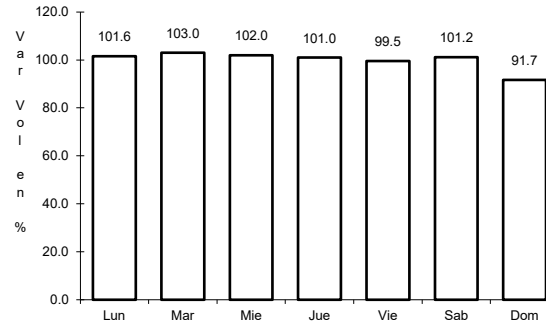
10 CARR: Las Cruces - Pinotepa Nacional

CLAVE: 00073

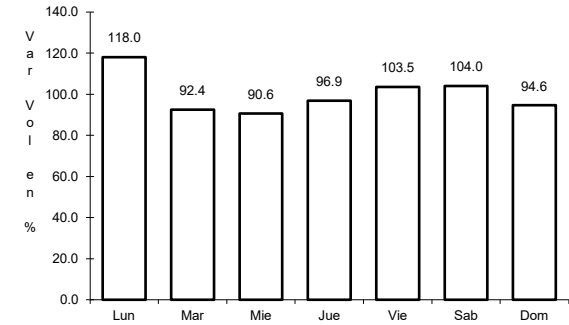
ruta: MEX-200



Km: 0.00      Tipo: 3      Sent: 1



Km: 0.00      Tipo: 3      Sent: 2

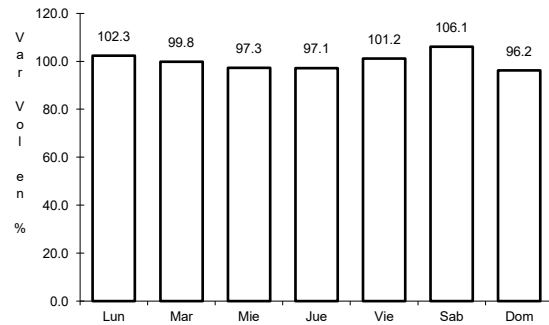


Km: 245.47      Tipo: 3      Sent: 0

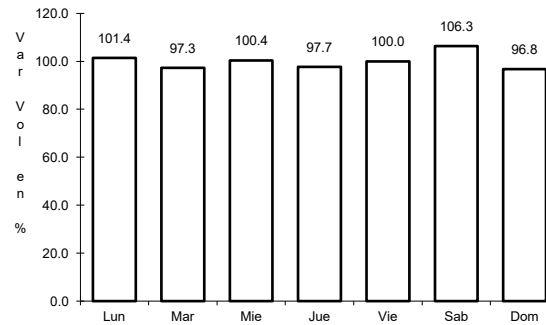
11 CARR: Libramiento Norte de Acapulco

CLAVE: 12421

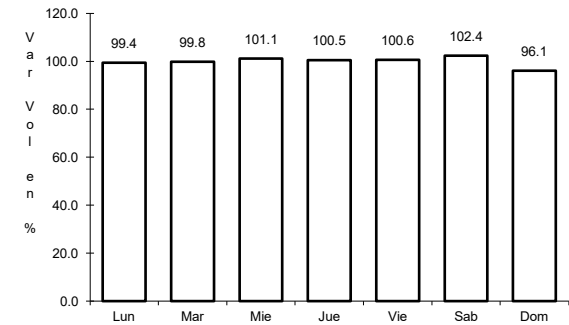
ruta: MEX-095



Km: 0.00      Tipo: 3      Sent: 0



Km: 6.40      Tipo: 3      Sent: 0

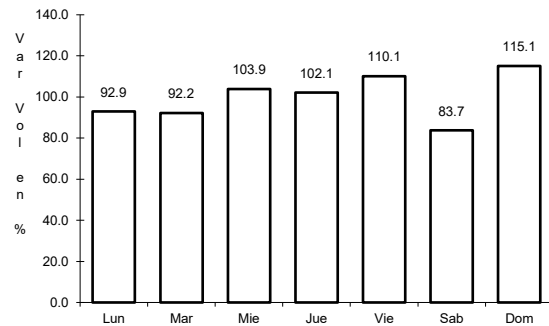


Km: 21.10      Tipo: 1      Sent: 0

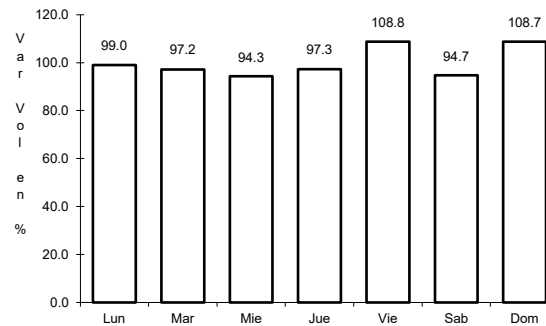
12 CARR: Milpillas - T. C. (Acapulco - Zihuatanejo)

CLAVE: 12012

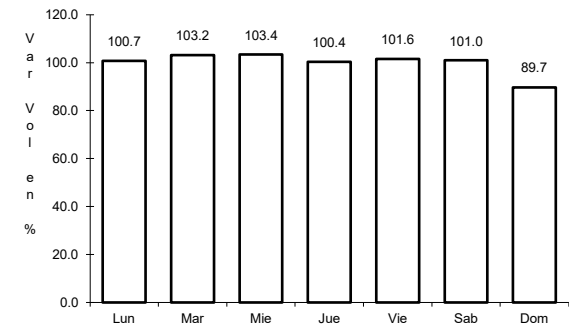
ruta: MEX-196



Km: 0.00      Tipo: 3      Sent: 0



Km: 237.00      Tipo: 1      Sent: 1

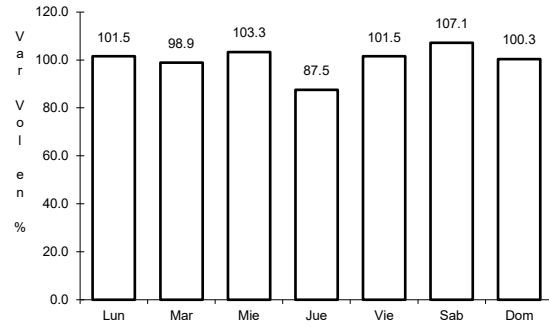


Km: 237.00      Tipo: 1      Sent: 2

13 CARR: Ramal a Aeropuerto Zihuatanejo

CLAVE: 12423

ruta: MEX-200



Km: 0.00

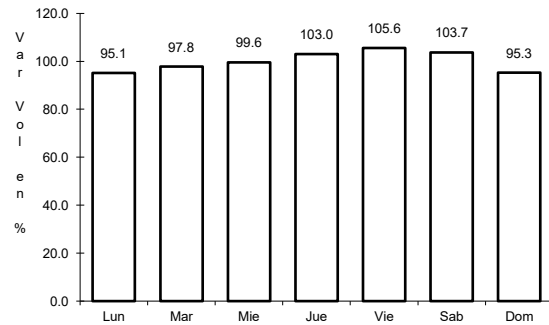
Tipo: 3

Sent: 0

14 CARR: Ramal a La Unión

CLAVE:

ruta: MEX-200



Km: 0.00

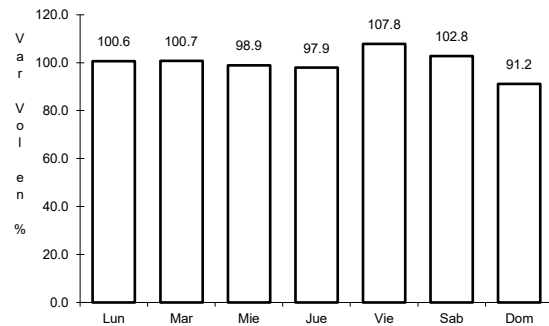
Tipo: 3

Sent: 0

15 CARR: San Juan de Los Llanos - Ometepec

CLAVE: 12011

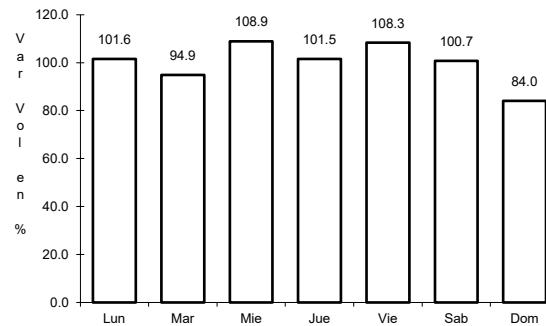
ruta: MEX-200



Km: 0.00

Tipo: 3

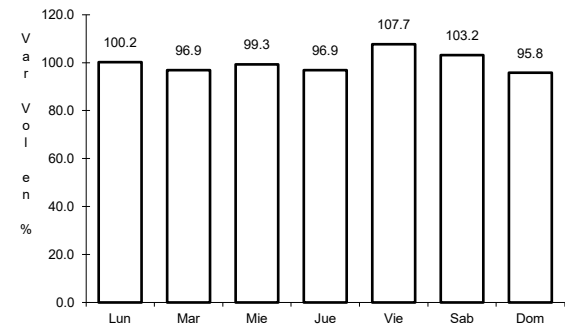
Sent: 0



Km: 15.94

Tipo: 1

Sent: 1



Km: 15.94

Tipo: 1

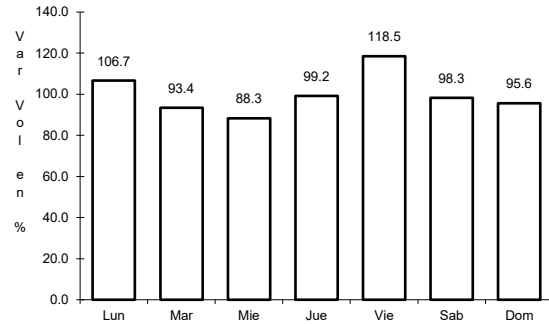
Sent: 2



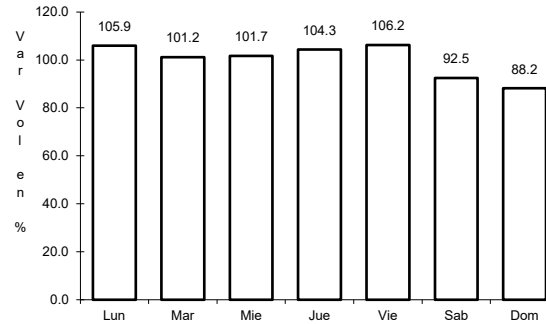
16 CARR: Tierra Colorada - Cruz Grande

CLAVE: 12420

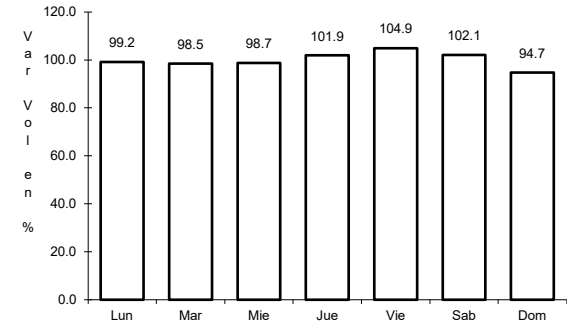
ruta: MEX-198



Km: 0.00      Tipo: 3      Sent: 0



Km: 61.00      Tipo: 1      Sent: 0

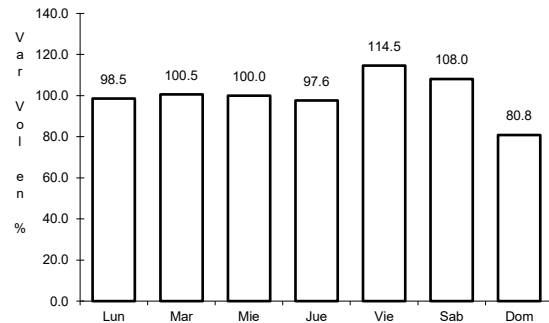


Km: 113.80      Tipo: 1      Sent: 0

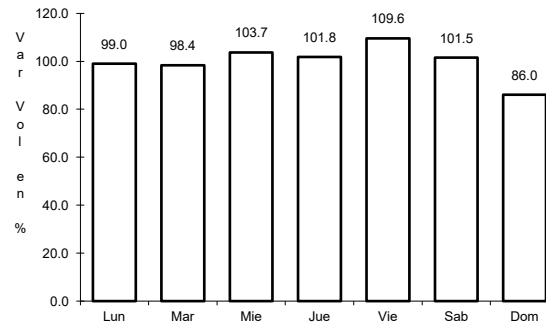
17 CARR: Toluca - Cd. Altamirano

CLAVE: 00020

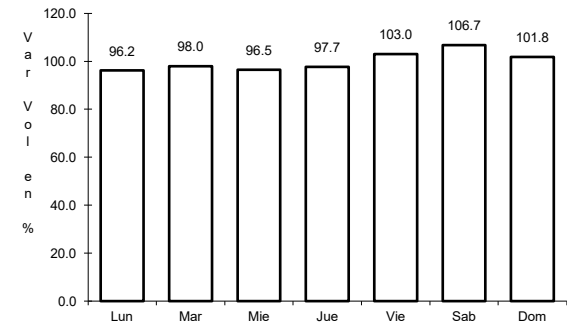
ruta: MEX-134



Km: 1.78      Tipo: 3      Sent: 1



Km: 1.78      Tipo: 3      Sent: 2

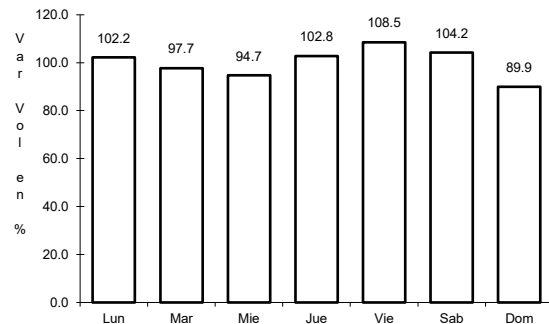


Km: 216.00      Tipo: 1      Sent: 0

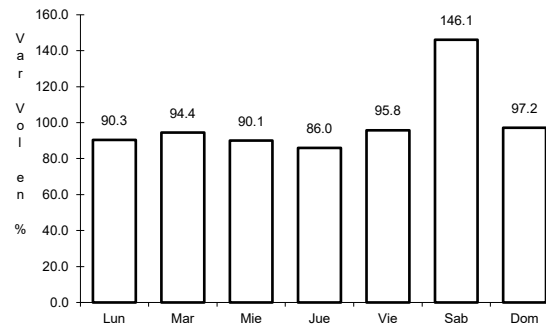
18 CARR: Zihuatanejo - La Mira

CLAVE: 00121

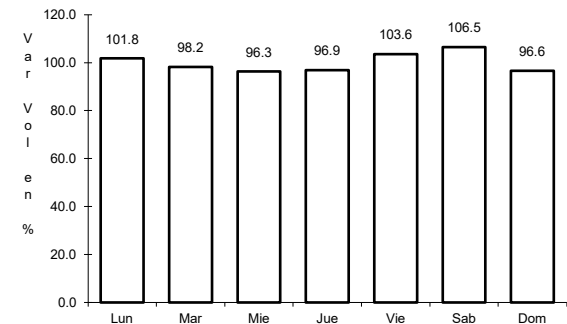
ruta: MEX-200



Km: 2.25      Tipo: 3      Sent: 0



Km: 69.00      Tipo: 3      Sent: 0

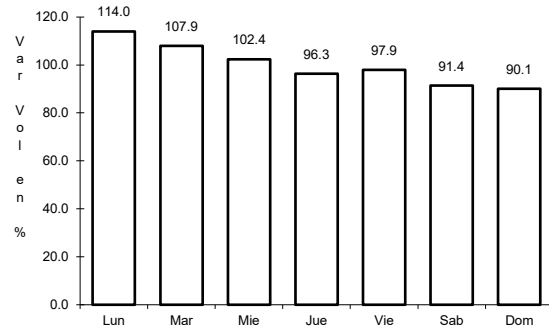


Km: 123.60      Tipo: 1      Sent: 0

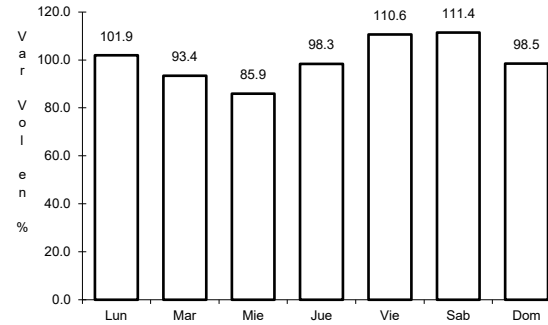
19 CARR: Cuernavaca - Acapulco (Cuota)

CLAVE: 00045

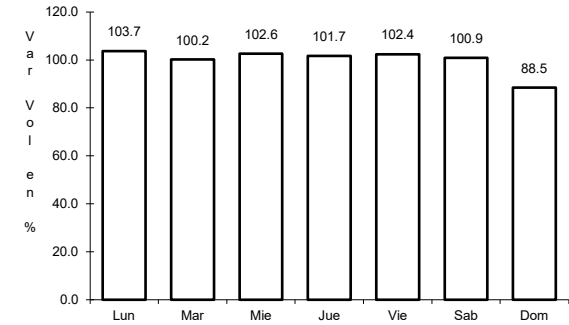
ruta: MEX-095D



Km: 0.00      Tipo: 3      Sent: 1



Km: 0.00      Tipo: 3      Sent: 2

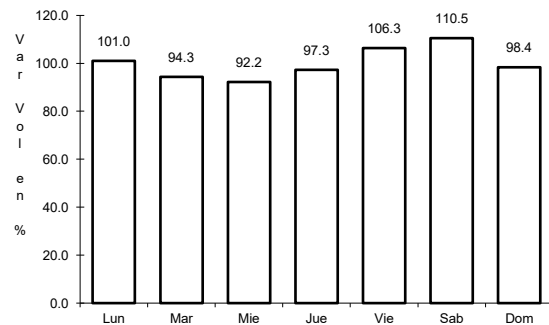


Km: 271.50      Tipo: 1      Sent: 1

20 CARR: Libramiento de Técpan (Cuota)

CLAVE: 00073

ruta: MEX-200D

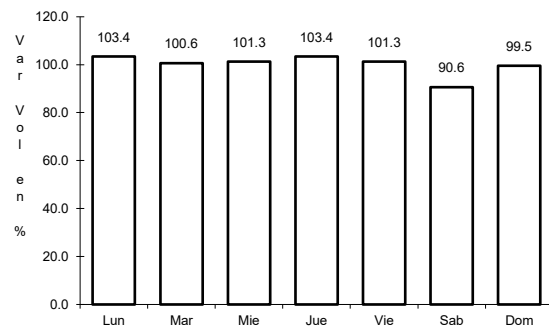


Km: 0.00      Tipo: 3      Sent: 0

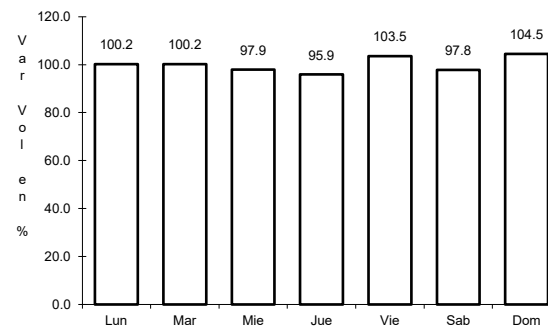
21 CARR: Nueva Italia - Lázaro Cárdenas (Cuota)

CLAVE: 00032

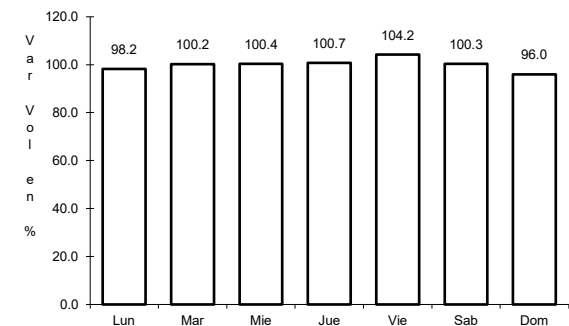
ruta: MEX-037D



Km: 153.90      Tipo: 3      Sent: 0



Km: 282.37      Tipo: 1      Sent: 0

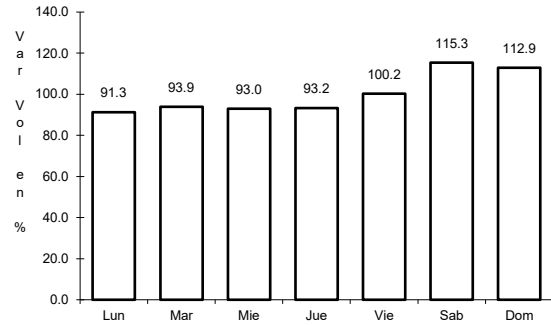


Km: 282.37      Tipo: 3      Sent: 0

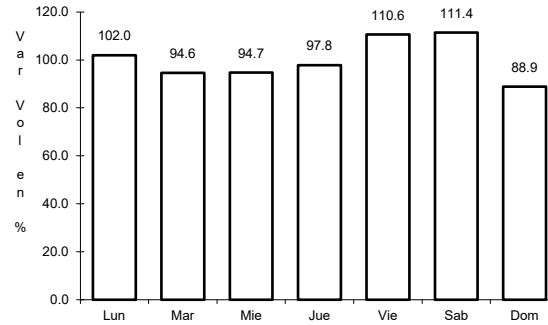
22 CARR: Puente de Ixtla - Iguala (Cuota)

CLAVE: 00043

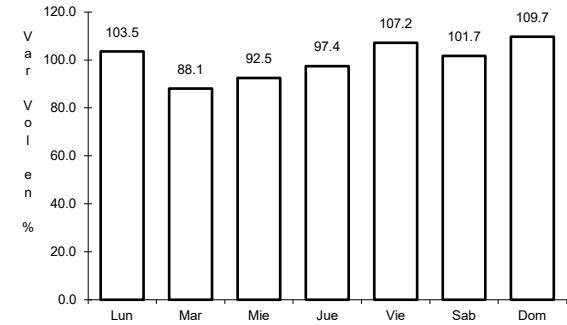
RUTA: MEX-091D



Km: 2.00                      Tipo: 3                      Sent: 0



Km: 33.58                      Tipo: 3                      Sent: 0

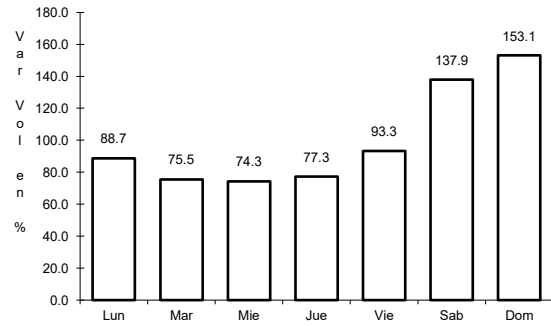


Km: 59.50                      Tipo: 1                      Sent: 0

23 CARR: Rancho Viejo - Taxco (Cuota)

CLAVE: 12010

RUTA: MEX-092D

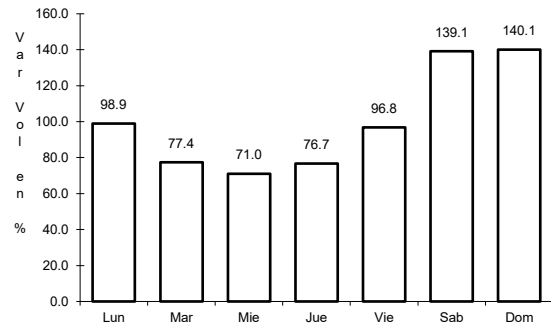


Km: 8.10                      Tipo: 1                      Sent: 0

24 CARR: Zacapalco - Rancho Viejo (Cuota)

CLAVE: 12010

RUTA: MEX-092D

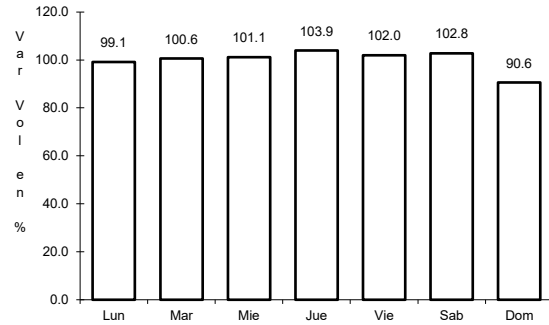


Km: 17.20                      Tipo: 1                      Sent: 0

25 CARR: Acapulco - Aeropuerto Acapulco

CLAVE: 12292

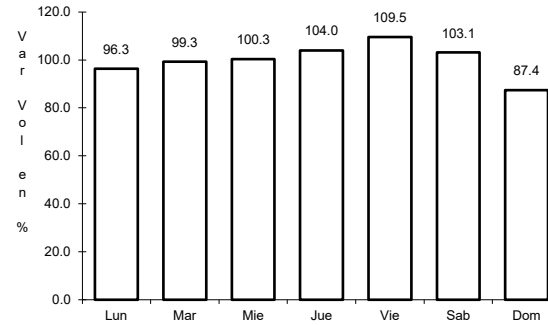
ruta: GRO



Km: 8.70

Tipo: 1

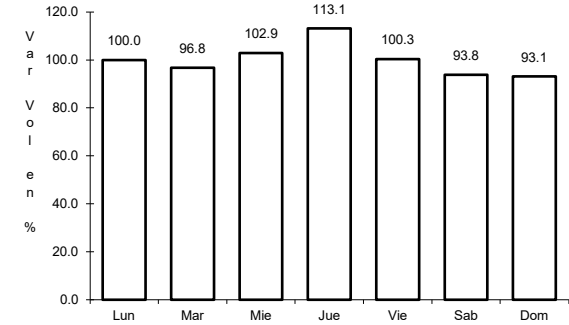
Sent: 1



Km: 8.70

Tipo: 1

Sent: 2



Km: 14.90

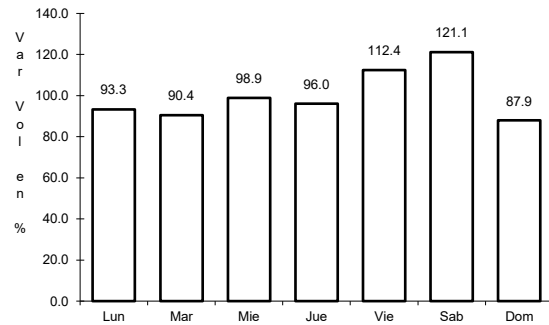
Tipo: 3

Sent: 1

26 CARR: Ent. Potrero - Lomas de Chapultepec

CLAVE: 12293

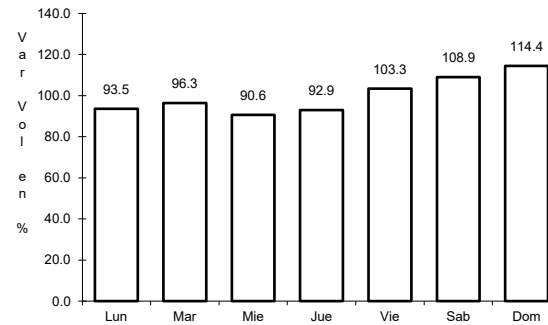
ruta: GRO



Km: 0.00

Tipo: 3

Sent: 1



Km: 0.00

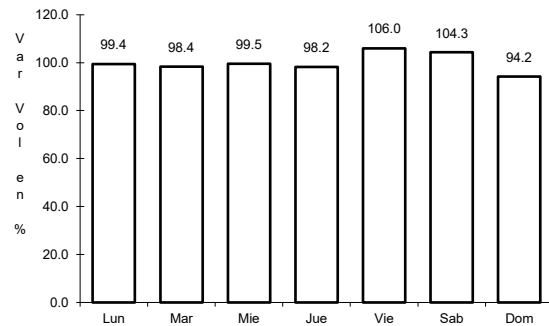
Tipo: 3

Sent: 2

27 CARR: Las Petaquillas - Quechultenango

CLAVE:

ruta: GRO



Km: 0.00

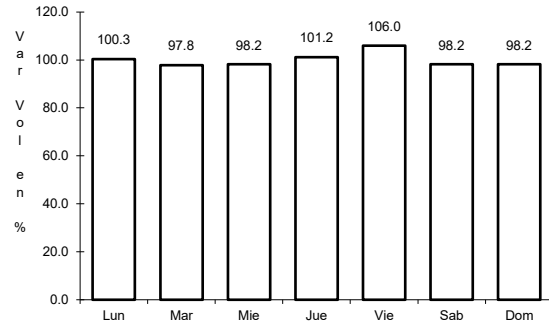
Tipo: 3

Sent: 0

28 CARR: Pie de La Cuesta - Barra de Coyuca

CLAVE: 12427

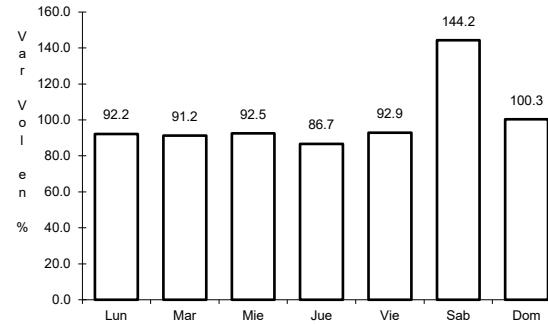
RUTA: GRO



Km: 0.00

Tipo: 3

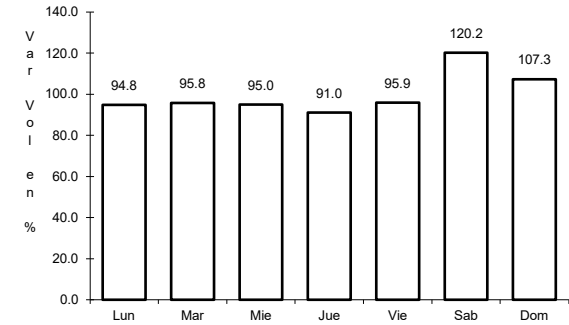
Sent: 0



Km: 16.50

Tipo: 1

Sent: 1



Km: 16.50

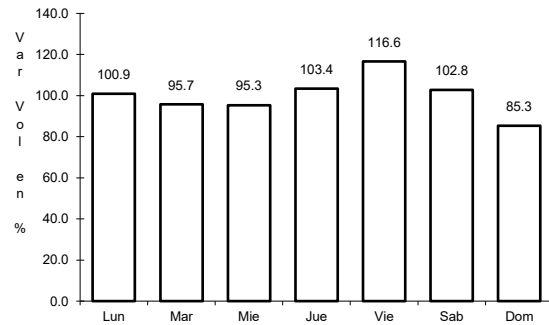
Tipo: 1

Sent: 2

29 CARR: Ramal a Cocula

CLAVE: 12082

RUTA: GRO



Km: 0.00

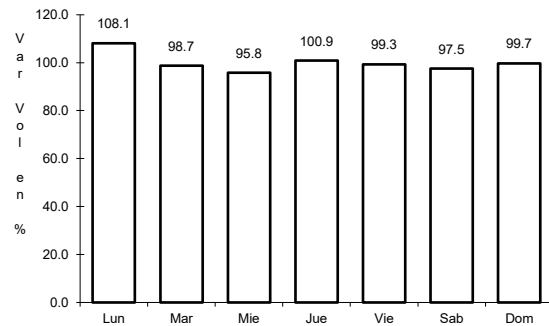
Tipo: 3

Sent: 0

30 CARR: T. C. (Iguala - Chilpancingo) - Atenango del Río

CLAVE: 12001

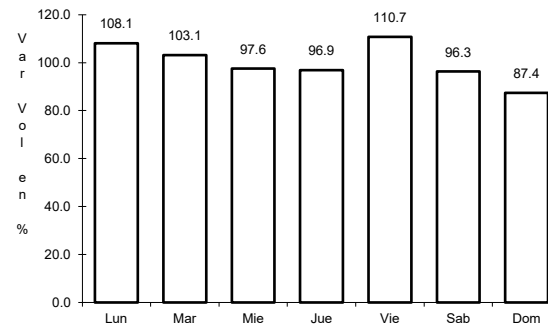
RUTA: GRO-001



Km: 0.00

Tipo: 3

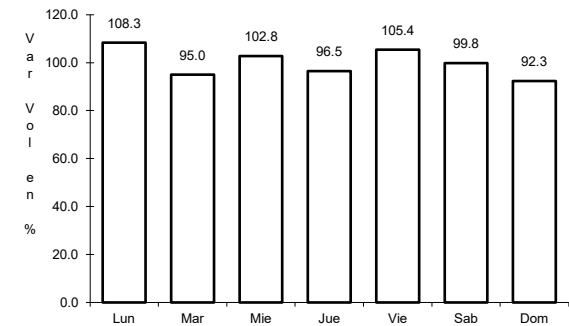
Sent: 0



Km: 22.00

Tipo: 3

Sent: 0



Km: 62.00

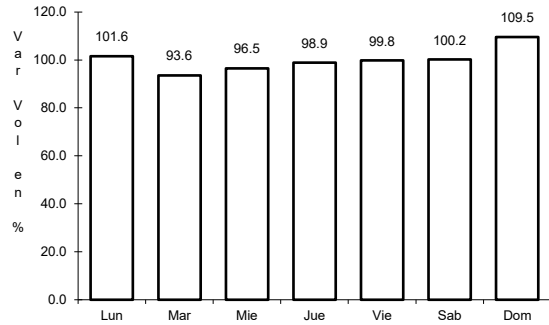
Tipo: 1

Sent: 0

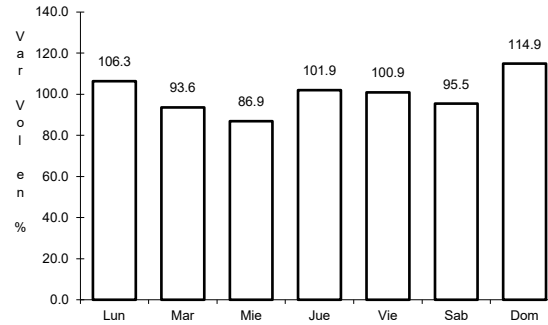
31 CARR: Taxco - Ixcateopan

CLAVE: 12083

ruta: GRO



Km: 0.00      Tipo: 3      Sent: 0

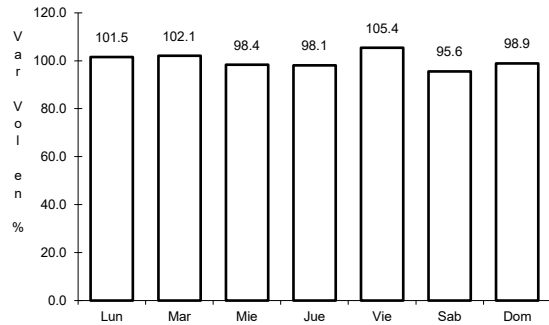


Km: 36.00      Tipo: 1      Sent: 0

32 CARR: Teloloapan - Apaxtla de Castrejón

CLAVE: 12081

ruta: GRO

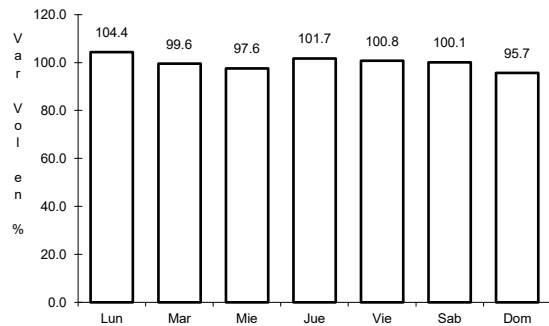


Km: 0.00      Tipo: 3      Sent: 0

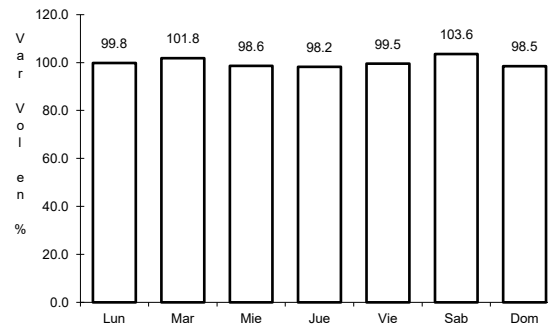
33 CARR: Tlapa de Comonfort - Marquelia

CLAVE:

ruta: GRO



Km: 0.00      Tipo: 3      Sent: 0

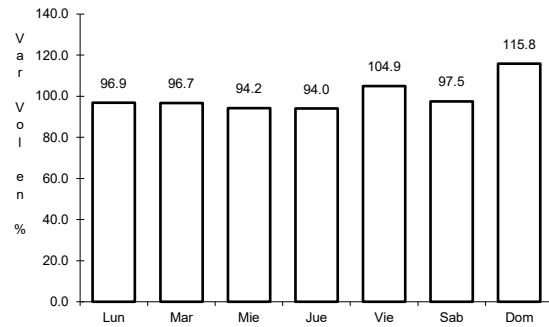


Km: 163.00      Tipo: 1      Sent: 0

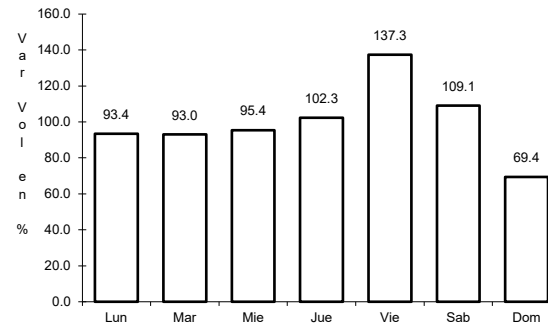
34 CARR: Puerto Marqués - La Venta (Cuota)

CLAVE: 00043

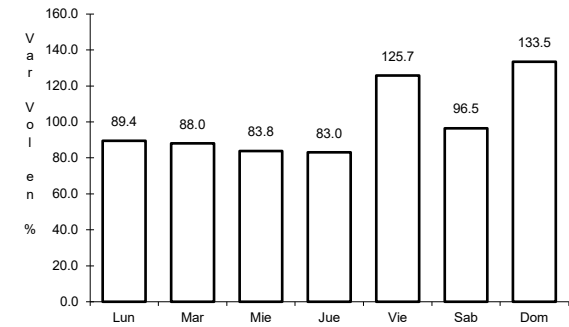
ruta: GRO-D



Km: 6.33      Tipo: 1      Sent: 1



Km: 6.33      Tipo: 1      Sent: 2

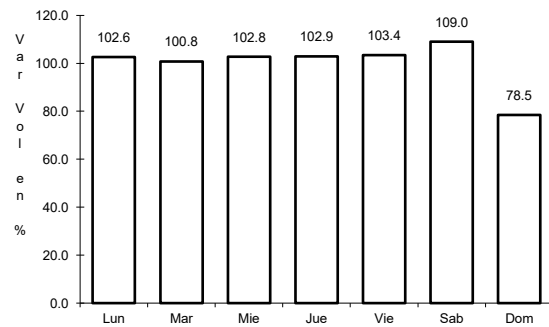


Km: 6.33      Tipo: 3      Sent: 1

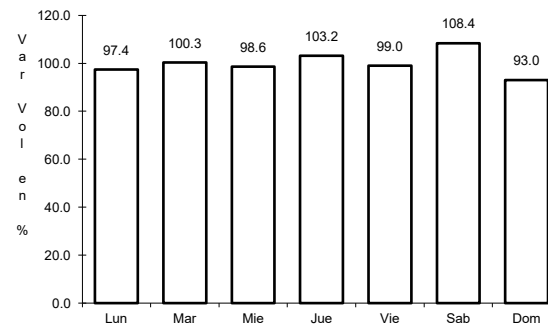
35 CARR: Toluca - Axixintla

CLAVE: 00122

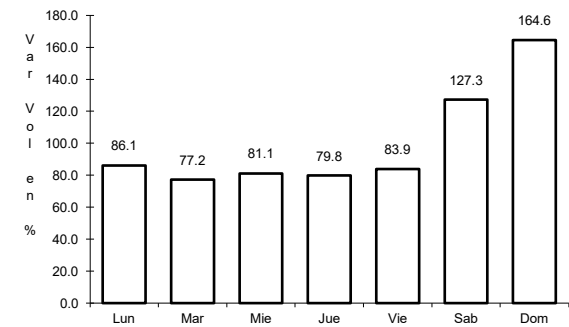
ruta: EM-MEX-055



Km: 4.74      Tipo: 1      Sent: 1



Km: 4.74      Tipo: 1      Sent: 2



Km: 125.30      Tipo: 1      Sent: 0

