

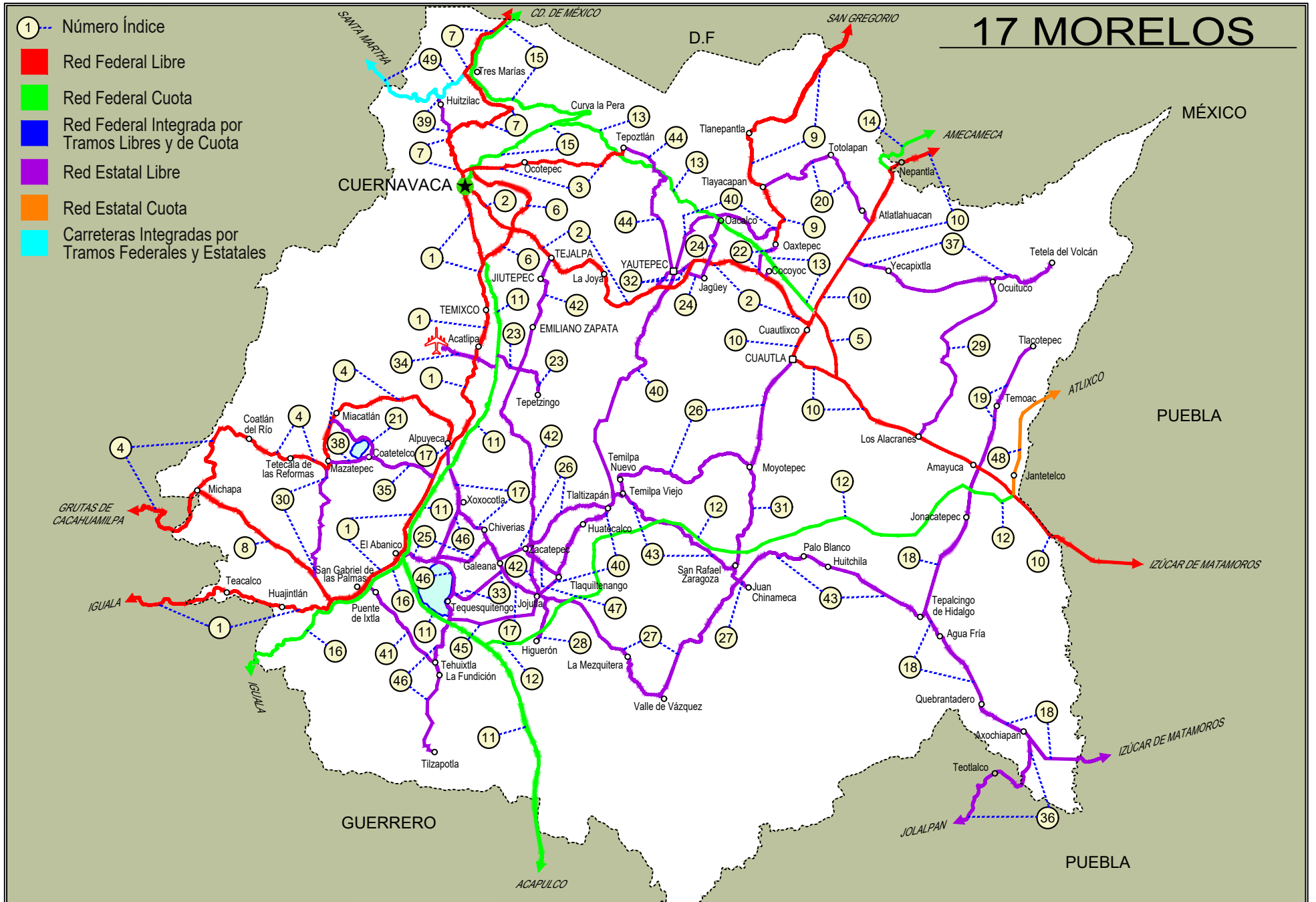


MORELOS

NO. INDICE CARRETERA	RUTA
---RED FEDERAL LIBRE---	
1 Cuernavaca - Chilpancingo	MEX-095
2 Cuernavaca - Cuautlilco	MEX-138
3 Cuernavaca - Tepoztlán	MEX-162
4 Ent. Alpuyecá - Grutas de Cacahuamilpa	MEX-166
5 Libramiento de Cuautla	MEX-160
6 Libramiento de Cuernavaca	MEX-095
7 México - Cuernavaca (Libre)	MEX-095
8 Ramal a Michapa	MEX-166
9 San Gregorio - Oaxtepec	MEX-113
10 Santa Bárbara - Izúcar de Matamoros	MEX-115-160
---RED FEDERAL DE CUOTA---	
11 Cuernavaca - Acapulco (Cuota)	MEX-095D
12 Jantetelco - El Higuero (Cuota)	MEX-037-D
13 La Pera - Cuautla (Cuota)	MEX-160D
14 Libramiento Amecameca - Nepantla (Cuota)	MEX-115D
15 México - Cuernavaca (Cuota)	MEX-095D
16 Puente de Ixtla - Iguala (Cuota)	MEX-091D
---RED ESTATAL LIBRE---	
17 Alpuyecá - Jojutla	MOR-021
18 Amayuca - Izúcar de Matamoros	MOR-031-PUE
19 Amayuca - Tlacotepec	MOR-017
20 Atlatlahucan - Tlayacapan	MOR-002
21 Coatetelco - Miaatlán	MOR
22 Cocoyoc - Oaxtepec	MOR
23 Ent. C. (Cuernavaca - Acapulco Cuota) - Tepetzingo	MOR
24 Ent. C. (Cuernavaca - Cuautlilco) - Oacalco	MOR
25 Ent. Chiverías - Ent. El Abanico	MOR
26 Galeana - Cuautla	MOR-004
27 Jojutla - Chinameca	MOR
28 Jojutla - El Higuero	MOR-039
29 Los Alacranes - Ocuituco	MOR
30 Mazatepec - T. C. Ramal a Michapa	MOR
31 Moyotepec - San Rafael	MOR
32 Paso por Yautepec	MOR
33 Pilares - T. C. (Xoxocotla - Tilzapotla)	MOR-008
34 Ramal a Aeropuerto de Cuernavaca	MOR
35 Ramal a Coatetelco	MOR
36 Ramal a Jolalpan	MOR-PUE
37 Ramal a Tetela del Volcán	MOR-010
38 T. C. (Coatetelco - Miaatlán) - Mazatepec	MOR
39 T. C. (México - Cuernavaca (Libre)) - Huitzilac	MOR
40 T. C. (San Gregorio - Oaxtepec) - Jojutla	MOR-002
41 Tehuixtla - Puente de Ixtla	MOR
42 Tejalpa - Jojutla	MOR-014
43 Temilpa - Tepalcingo	MOR-009
44 Tepoztlán - Yautepec	MOR-013
45 Tequesquitengo - Jojutla	MOR
46 Xoxocotla - Tilzapotla	MOR-006
47 Zacatepec - Tlaquiltenango	MOR
---RED ESTATAL DE CUOTA---	
48 Atlixco - Jantetelco (Cuota)	PUE-D
---CARRETERAS INTEGRADAS POR TRAMOS FEDERALES Y ESTATALES---	
49 Tres Marias - Santa Martha	MEX-106-EM

17 MORELOS

- ① --- Número Índice
- Red Federal Libre
- Red Federal Cuota
- Red Federal Integrada por Tramos Libres y de Cuota
- Red Estatal Libre
- Red Estatal Cuota
- Carreteras Integradas por Tramos Federales y Estatales



MORELOS

1 CARR: Cuernavaca - Chilpancingo

CLAVE: 00042

RUTA: MEX-095

AÑO: 2023

LUGAR	ESTACION				CLASIFICACION VEHICULAR EN PORCIENTO										COORDENADAS					
	KM	TE	SC	TDPA	M	A	B	C2	C3	T3S2	T3S3	T3S2R4	OTROS	A	B	C	K'	D	LATITUD	LONGITUD
Cuernavaca	0.00																			
T. Izq. Chipitlán	4.85	1	1	21236	2.7	80.8	4.6	5.5	0.4	2.8	2.0	0.4	0.8	83.5	4.6	11.9	0.060	0.509	18.894002	-99.228609
T. Izq. Chipitlán	4.85	1	2	20467	2.7	80.8	4.6	5.5	0.4	2.8	2.0	0.4	0.8	83.5	4.6	11.9	0.061	0.509	18.894017	-99.228541
T. Izq. Chipitlán	4.85	3	1	13684	11.6	76.8	2.3	7.6	1.7	0.0	0.0	0.0	0.0	88.4	2.3	9.3	0.090	0.544	18.880547	-99.229850
T. Izq. Chipitlán	4.85	3	2	13619	10.3	79.9	2.1	6.0	1.7	0.0	0.0	0.0	0.0	90.2	2.1	7.7	0.082	0.544	18.880538	-99.229775
Temixco	9.80	1	1	11520	3.6	85.2	0.5	8.9	0.7	0.3	0.3	0.3	0.2	88.8	0.5	10.7	0.081	0.516	18.865944	-99.226282
Temixco	9.80	1	2	12287	3.6	85.2	0.5	8.9	0.7	0.3	0.3	0.3	0.2	88.8	0.5	10.7	0.090	0.516	18.866049	-99.226272
Temixco	9.80	3	1	22016	3.4	86.2	0.8	4.8	1.0	0.7	0.3	1.8	1.0	89.6	0.8	9.6	0.065	0.521	18.844167	-99.224057
Temixco	9.80	3	2	20269	3.4	85.9	0.8	4.8	1.0	0.7	0.3	2.0	1.1	89.3	0.8	9.9	0.068	0.521	18.844165	-99.223947
Acatlipa	12.43	1	1	16407	3.0	86.9	1.7	5.9	1.1	0.5	0.3	0.4	0.2	89.9	1.7	8.4	0.081	0.511	18.828697	-99.228109
Acatlipa	12.43	1	2	17136	3.0	86.9	1.7	5.9	1.1	0.5	0.3	0.4	0.2	89.9	1.7	8.4	0.081	0.511	18.828607	-99.228067
Acatlipa	12.43	3	1	13514	3.8	89.6	3.1	1.1	1.1	0.7	0.2	0.2	0.2	93.4	3.1	3.5	0.080	0.534	18.823967	-99.230620
Acatlipa	12.43	3	2	15478	3.8	89.6	3.2	1.1	1.1	0.7	0.1	0.2	0.2	93.4	3.2	3.4	0.079	0.534	18.824014	-99.230496
T. Izq. Emiliano Zapata	13.50	1	1	13156	6.3	82.1	4.0	6.1	0.5	0.3	0.3	0.2	0.2	88.4	4.0	7.6	0.087	0.513	18.838130	-99.225366
T. Izq. Emiliano Zapata	13.50	1	2	12508	6.6	82.0	3.8	5.8	0.6	0.3	0.4	0.3	0.2	88.6	3.8	7.6	0.093	0.513	18.838119	-99.225227
T. Izq. Emiliano Zapata	13.50	3	1	14042	3.0	86.9	3.3	4.8	0.5	0.6	0.5	0.3	0.1	89.9	3.3	6.8	0.080	0.504	18.830135	-99.227365
T. Izq. Emiliano Zapata	13.50	3	2	13842	3.0	86.9	3.3	4.8	0.5	0.6	0.5	0.3	0.1	89.9	3.3	6.8	0.077	0.504	18.830091	-99.227277
T. Izq. Xochitepec	16.05	1	1	6769	3.0	87.8	1.5	5.0	0.7	0.6	0.4	0.6	0.4	90.8	1.5	7.7	0.086	0.506	18.801845	-99.237488
T. Izq. Xochitepec	16.05	1	2	6617	3.0	87.8	1.5	5.0	0.7	0.6	0.5	0.5	0.4	90.8	1.5	7.7	0.086	0.506	18.801868	-99.237396
T. Izq. Xochitepec	16.05	3	1	5135	3.0	87.8	1.0	6.7	0.8	0.3	0.2	0.1	0.1	90.8	1.0	8.2	0.088	0.510	18.797565	-99.240254
T. Izq. Xochitepec	16.05	3	2	4942	3.0	87.8	0.9	6.7	0.9	0.4	0.1	0.1	0.1	90.8	0.9	8.3	0.095	0.510	18.797511	-99.240192
X. C. Alpuyeca - Jojutla	24.15	1	1	11270	11.3	82.7	0.6	3.9	0.7	0.4	0.2	0.2	0.0	94.0	0.6	5.4	0.079	0.508	18.739410	-99.255314
X. C. Alpuyeca - Jojutla	24.15	1	2	10927	11.3	82.7	0.6	3.9	0.7	0.4	0.2	0.2	0.0	94.0	0.6	5.4	0.092	0.508	18.739394	-99.255235
X. C. Alpuyeca - Jojutla	24.15	3	0	11767	4.0	84.4	2.0	7.0	1.2	0.6	0.5	0.2	0.1	88.4	2.0	9.6	0.073	0.509	18.730251	-99.264680
T. Der. Coatepec	28.00	3	0	6118	4.0	83.0	2.2	6.4	2.2	1.5	0.3	0.2	0.2	87.0	2.2	10.8	0.075	0.505	18.710221	-99.273702
T. Der. Michapa	44.36	1	0	8958	7.8	83.7	1.4	3.7	1.3	0.8	0.6	0.4	0.3	91.5	1.4	7.1	0.073	0.507	18.611975	-99.355569
T. Izq. Cuernavaca - Iguala (Cuota)	46.93	1	0	6550	11.7	78.6	1.3	5.2	1.0	0.6	0.6	0.6	0.4	90.3	1.3	8.4	0.071	0.500	18.604795	-99.377249
T. Izq. Cuernavaca - Iguala (Cuota)	46.93	3	0	4906	10.9	83.0	1.2	2.3	1.0	0.6	0.5	0.3	0.2	93.9	1.2	4.9	0.090	0.502	18.603175	-99.381474
Huajintla	52.00	3	0	4718	9.4	84.0	1.2	2.2	1.2	0.9	0.7	0.3	0.1	93.4	1.2	5.4	0.082	0.555	18.612893	-99.430548
Lim. Edos. Term. Mor. Ppia. Gro.	57.10																			
T. Der. Ixtapan de La Sal (Axixintla)	63.47	1	0	1634	7.7	83.4	0.4	6.6	1.3	0.3	0.3	0.0	0.0	91.1	0.4	8.5	0.089	0.514	18.611123	-99.506232
Taxco	89.90	3	0	5059	11.1	84.2	0.8	2.2	0.5	0.3	0.8	0.0	0.1	95.3	0.8	3.9	0.088	0.511	18.537414	-99.609270
Iguala	119.63	1	0	9699	13.9	83.0	0.7	1.2	0.6	0.3	0.2	0.1	0.0	96.9	0.7	2.4	0.061	0.507	18.377099	-99.529202
T. Izq. Puente de Ixtla	123.98	3	0	17846	7.1	86.7	1.2	2.2	1.3	0.9	0.5	0.1	0.0	93.8	1.2	5.0	0.061	0.502	18.317452	-99.500119
T. Izq. Sabana Grande	144.95	1	0	7273	3.9	85.6	1.7	2.4	2.6	2.2	1.2	0.4	0.0	89.5	1.7	8.8	0.064	0.518	18.173996	-99.551757

MORELOS

1 CARR: Cuernavaca - Chilpancingo

CLAVE: 00042

RUTA: MEX-095

AÑO: 2023

LUGAR	ESTACION				CLASIFICACION VEHICULAR EN PORCIENTO										COORDENADAS					
	KM	TE	SC	TDPA	M	A	B	C2	C3	T3S2	T3S3	T3S2R4	OTROS	A	B	C	K'	D	LATITUD	LONGITUD
T. Der. Tecuescontitlán	146.78	1	0	6947	3.5	84.2	3.0	2.7	3.0	1.8	1.6	0.2	0.0	87.7	3.0	9.3	0.067	0.501	18.156605	-99.552725
T. Der. Mezcala	173.14	1	0	6783	6.6	81.0	2.9	2.6	3.9	1.8	0.9	0.2	0.1	87.6	2.9	9.5	0.067	0.510	17.934728	-99.589489
T. Der. Filo de Caballo	189.89	3	0	5356	2.5	84.0	4.1	2.7	3.9	1.1	1.5	0.2	0.0	86.5	4.1	9.4	0.073	0.502	17.794948	-99.566763
T. C. Cuernavaca - Acapulco (Cuota)	219.89																			
Chilpancingo	223.70	1	1	26929	5.7	86.6	2.1	1.9	1.6	1.1	0.5	0.3	0.2	92.3	2.1	5.6	0.061	0.508	17.582845	-99.515431
Chilpancingo	223.70	1	2	27782	5.7	86.6	2.1	1.9	1.6	1.1	0.5	0.3	0.2	92.3	2.1	5.6	0.076	0.508	17.582861	-99.515348

2 CARR: Cuernavaca - Cuautlixco

CLAVE: 17199

RUTA: MEX-138

AÑO: 2023

LUGAR	ESTACION				CLASIFICACION VEHICULAR EN PORCIENTO										COORDENADAS					
	KM	TE	SC	TDPA	M	A	B	C2	C3	T3S2	T3S3	T3S2R4	OTROS	A	B	C	K'	D	LATITUD	LONGITUD
Cuernavaca	0.00																			
T. Izq. Civac Poniente	7.78	1	1	49997	10.4	78.1	1.0	4.8	0.9	1.5	1.8	0.8	0.7	88.5	1.0	10.5	0.075	0.508	18.912858	-99.182812
T. Izq. Civac Poniente	7.78	1	2	48157	12.1	76.5	0.9	4.5	1.1	1.5	1.9	0.8	0.7	88.6	0.9	10.5	0.073	0.508	18.913028	-99.182725
T. Izq. Civac Poniente	7.78	3	1	38295	11.8	75.5	1.3	3.8	1.2	1.0	1.5	3.4	0.5	87.3	1.3	11.4	0.068	0.501	18.901613	-99.173487
T. Izq. Civac Poniente	7.78	3	2	38399	11.9	75.7	1.2	3.7	1.2	1.0	1.5	3.3	0.5	87.6	1.2	11.2	0.071	0.501	18.901552	-99.173125
X. C. Tejalpa - Jojutla	9.70	3	1	27699	5.9	87.2	0.8	3.7	1.0	0.6	0.2	0.4	0.2	93.1	0.8	6.1	0.071	0.502	18.885354	-99.157456
X. C. Tejalpa - Jojutla	9.70	3	2	27463	5.6	88.6	0.6	2.7	1.4	0.5	0.1	0.4	0.1	94.2	0.6	5.2	0.086	0.502	18.885528	-99.157326
La Joya	16.50	1	1	20209	7.5	84.6	0.6	5.7	0.8	0.5	0.3	0.0	0.0	92.1	0.6	7.3	0.064	0.504	18.893278	-99.131060
La Joya	16.50	1	2	19925	9.3	82.8	0.5	5.7	0.8	0.6	0.3	0.0	0.0	92.1	0.5	7.4	0.079	0.504	18.893483	-99.131125
La Joya	16.50	3	1	12850	4.2	87.2	1.0	5.6	1.0	0.6	0.3	0.1	0.0	91.4	1.0	7.6	0.081	0.503	18.881912	-99.121511
La Joya	16.50	3	2	13017	4.2	87.1	1.0	5.6	1.0	0.7	0.3	0.1	0.0	91.3	1.0	7.7	0.079	0.503	18.882008	-99.121422
T. Izq. Yautepec (1° Acceso)	24.75	1	1	12690	12.5	81.9	0.5	2.0	1.6	0.6	0.4	0.3	0.2	94.4	0.5	5.1	0.072	0.503	18.869654	-99.081423
T. Izq. Yautepec (1° Acceso)	24.75	1	2	12535	12.5	81.8	0.6	2.1	1.6	0.6	0.3	0.3	0.2	94.3	0.6	5.1	0.076	0.503	18.869910	-99.081152
X. C. (San Gregorio - Oaxtepec) - Jojutla	27.10	1	1	13713	13.8	81.4	0.7	2.1	1.2	0.4	0.2	0.1	0.1	95.2	0.7	4.1	0.072	0.503	18.871059	-99.071345
X. C. (San Gregorio - Oaxtepec) - Jojutla	27.10	1	2	13542	15.6	79.6	0.7	1.9	1.4	0.4	0.1	0.2	0.1	95.2	0.7	4.1	0.085	0.503	18.871212	-99.071348
X. C. (San Gregorio - Oaxtepec) - Jojutla	27.10	3	1	11581	9.4	84.1	1.1	3.1	1.1	0.6	0.4	0.2	0.0	93.5	1.1	5.4	0.075	0.528	18.872685	-99.059062
X. C. (San Gregorio - Oaxtepec) - Jojutla	27.10	3	2	10362	8.2	84.9	1.2	3.3	1.0	0.8	0.4	0.2	0.0	93.1	1.2	5.7	0.087	0.528	18.872785	-99.059169
Tabachines	31.50	1	1	10916	9.6	84.3	0.7	2.4	1.2	1.1	0.3	0.3	0.1	93.9	0.7	5.4	0.075	0.502	18.892933	-99.041285
Tabachines	31.50	1	2	10832	9.6	84.4	0.7	2.4	1.2	1.1	0.3	0.2	0.1	94.0	0.7	5.3	0.080	0.502	18.893061	-99.041403
Tabachines	31.50	3	1	13862	16.5	78.5	0.6	2.0	0.9	0.7	0.3	0.3	0.2	95.0	0.6	4.4	0.075	0.505	18.894939	-99.034133
Tabachines	31.50	3	2	14129	16.5	78.6	0.6	2.0	0.9	0.7	0.3	0.3	0.1	95.1	0.6	4.3	0.074	0.505	18.894999	-99.034104
T. Izq. Oaxtepec	36.11	3	1	8501	17.4	80.2	0.3	1.0	0.3	0.3	0.2	0.2	0.1	97.6	0.3	2.1	0.076	0.518	18.884677	-98.985275
T. Izq. Oaxtepec	36.11	3	2	7910	17.5	80.0	0.3	1.1	0.3	0.3	0.2	0.2	0.1	97.5	0.3	2.2	0.075	0.518	18.884712	-98.985232
T. C. Santa Bárbara - Izúcar de Matamoros	43.15	1	1	11487	10.9	84.5	0.3	2.4	1.2	0.3	0.2	0.1	0.1	95.4	0.3	4.3	0.079	0.516	18.841786	-98.943706

MORELOS

2 CARR: Cuernavaca - Cuautlixco

CLAVE: 17199

RUTA: MEX-138

AÑO: 2023

LUGAR	ESTACION				CLASIFICACION VEHICULAR EN PORCIENTO													COORDENADAS		
	KM	TE	SC	TDPA	M	A	B	C2	C3	T3S2	T3S3	T3S2R4	OTROS	A	B	C	K'	D	LATITUD	LONGITUD
T. C. Santa Bárbara - Izúcar de Matamoros	43.15	1	2	10753	10.6	84.7	0.3	2.4	1.3	0.3	0.2	0.1	0.1	95.3	0.3	4.4	0.080	0.516	18.841807	-98.943619

3 CARR: Cuernavaca - Tepoztlán

CLAVE: 17198

RUTA: MEX-162

AÑO: 2023

LUGAR	ESTACION				CLASIFICACION VEHICULAR EN PORCIENTO													COORDENADAS		
	KM	TE	SC	TDPA	M	A	B	C2	C3	T3S2	T3S3	T3S2R4	OTROS	A	B	C	K'	D	LATITUD	LONGITUD
T. C. México - Cuernavaca (Libre)	0.00																			
Ocoatepec	2.83	1	1	9823	9.4	84.6	0.3	2.4	1.4	0.7	0.8	0.2	0.2	94.0	0.3	5.7	0.076	0.542	18.966821	-99.233317
Ocoatepec	2.83	1	2	11603	9.4	84.7	0.3	2.4	1.3	0.7	0.8	0.2	0.2	94.1	0.3	5.6	0.088	0.542	18.967049	-99.232873
Ahuatepec	4.16	3	0	12028	11.3	81.6	0.7	3.7	1.2	0.4	0.4	0.4	0.3	92.9	0.7	6.4	0.078	0.507	18.975844	-99.169956
X. C. La Pera - Cuautla (Cuota)	16.34	1	0	9004	18.3	73.7	0.9	4.0	0.5	1.5	0.3	0.5	0.3	92.0	0.9	7.1	0.097	0.541	18.981214	-99.113275
Tepoztlán	18.20	1	0	13506	11.4	82.1	0.4	2.6	1.4	0.6	0.2	1.0	0.3	93.5	0.4	6.1	0.086	0.516	18.980924	-99.103630

4 CARR: Ent. Alpuyecá - Grutas de Cacahuamilpa

CLAVE: 00421

RUTA: MEX-166

AÑO: 2023

LUGAR	ESTACION				CLASIFICACION VEHICULAR EN PORCIENTO													COORDENADAS		
	KM	TE	SC	TDPA	M	A	B	C2	C3	T3S2	T3S3	T3S2R4	OTROS	A	B	C	K'	D	LATITUD	LONGITUD
T. C. Cuernavaca - Chilpancingo	0.00	3	0	8556	7.5	85.0	1.0	5.0	0.9	0.2	0.1	0.2	0.1	92.5	1.0	6.5	0.065	0.505	18.749341	-99.257283
T. Der. Zona Arq. de Xochicalco	8.40	3	1	3360	10.5	84.4	1.0	3.0	0.8	0.2	0.1	0.0	0.0	94.9	1.0	4.1	0.074	0.508	18.777725	-99.304509
T. Der. Zona Arq. de Xochicalco	8.40	3	2	3464	8.4	86.7	0.9	2.5	1.0	0.3	0.2	0.0	0.0	95.1	0.9	4.0	0.090	0.508	18.777644	-99.304528
Miacatlán	14.95	3	1	6220	5.0	91.7	0.4	1.0	0.7	0.4	0.2	0.5	0.1	96.7	0.4	2.9	0.068	0.502	18.750190	-99.365751
Miacatlán	14.95	3	2	6172	5.0	92.0	0.4	0.9	0.6	0.4	0.2	0.4	0.1	97.0	0.4	2.6	0.070	0.502	18.750166	-99.365680
Mazatepec	18.28	3	0	10067	9.0	87.7	0.5	1.6	0.7	0.2	0.1	0.1	0.1	96.7	0.5	2.8	0.076	0.516	18.721137	-99.364913
Tepecala	25.05	3	0	6716	7.0	90.2	0.5	0.9	0.7	0.3	0.1	0.2	0.1	97.2	0.5	2.3	0.069	0.504	18.729380	-99.406381
Coatlán del Río	29.80	3	0	3810	9.5	86.1	1.1	2.5	0.3	0.2	0.3	0.0	0.0	95.6	1.1	3.3	0.075	0.504	18.748000	-99.444406
Michapa	41.26	1	0	2977	10.2	81.2	2.0	4.8	0.3	1.0	0.4	0.1	0.0	91.4	2.0	6.6	0.076	0.509	18.708443	-99.473667
Lim. Edos. Term. Mor. Ppia. Gro.	42.40																			
T. C. Toluca - Axixintla	48.65																			

5 CARR: Libramiento de Cuautla

CLAVE: 17309

RUTA: MEX-160

AÑO: 2023

LUGAR	ESTACION				CLASIFICACION VEHICULAR EN PORCIENTO													COORDENADAS		
	KM	TE	SC	TDPA	M	A	B	C2	C3	T3S2	T3S3	T3S2R4	OTROS	A	B	C	K'	D	LATITUD	LONGITUD
T. C. Santa Bárbara - Izúcar de Matamoros (Norte)	0.00	3	1	23211	8.1	82.3	0.9	4.8	1.4	1.5	0.5	0.3	0.2	90.4	0.9	8.7	0.083	0.506	18.847782	-98.932692
T. C. Santa Bárbara - Izúcar de Matamoros (Norte)	0.00	3	2	22658	8.1	82.3	0.9	4.8	1.4	1.5	0.5	0.3	0.2	90.4	0.9	8.7	0.076	0.506	18.847843	-98.932619

MORELOS

5 CARR : Libramiento de Cuautla

CLAVE: 17309

RUTA: MEX-160

AÑO: 2023

LUGAR	ESTACION	CLASIFICACION VEHICULAR EN PORCIENTO													COORDENADAS							
		KM	TE	SC	TDPA	M	A	B	C2	C3	T3S2	T3S3	T3S2R4	OTROS	A	B	C	K'	D	LATITUD	LONGITUD	
T. C. Santa Bárbara - Izúcar de Matamoros (Sur)	4.00																					

6 CARR : Libramiento de Cuernavaca

CLAVE: 17400

RUTA: MEX-095

AÑO: 2023

LUGAR	ESTACION	CLASIFICACION VEHICULAR EN PORCIENTO													COORDENADAS							
		KM	TE	SC	TDPA	M	A	B	C2	C3	T3S2	T3S3	T3S2R4	OTROS	A	B	C	K'	D	LATITUD	LONGITUD	
T. C. México - Cuernavaca (Cuota)	0.00																					
T. Izq. Xicapan (Central)	1.30	1	1	51815	3.3	87.9	1.4	4.1	0.7	1.7	0.5	0.3	0.1	91.2	1.4	7.4	0.072	0.516	18.962404	-99.232428		
T. Izq. Xicapan (Central)	1.30	1	2	48241	3.3	87.8	1.4	4.1	0.7	1.7	0.6	0.3	0.1	91.1	1.4	7.5	0.079	0.516	18.962348	-99.232088		
T. Izq. Xicapan (Central)	1.30	3	1	44223	3.9	88.6	1.1	3.5	0.7	1.3	0.5	0.3	0.1	92.5	1.1	6.4	0.081	0.502	18.958391	-99.225450		
T. Izq. Xicapan (Central)	1.30	3	2	44698	4.1	87.8	1.2	4.1	0.7	1.2	0.5	0.3	0.1	91.9	1.2	6.9	0.085	0.502	18.958468	-99.225285		
T. Izq. Villas del Lago (Central)	8.40	1	1	17826	1.3	87.6	1.7	5.7	0.5	1.9	0.8	0.3	0.2	88.9	1.7	9.4	0.086	0.507	18.936733	-99.193720		
T. Izq. Villas del Lago (Lateral)	8.40	1	1	53666	4.3	87.1	0.8	4.4	1.0	1.2	0.7	0.2	0.3	91.4	0.8	7.8	0.086	0.507	18.936804	-99.193776		
T. Izq. Villas del Lago (Lateral)	8.40	1	2	52039	4.3	87.1	0.8	4.4	1.0	1.2	0.7	0.2	0.3	91.4	0.8	7.8	0.085	0.507	18.936663	-99.193475		
T. Izq. Villas del Lago (Central)	8.40	1	2	18418	1.3	87.7	1.7	5.7	0.5	1.9	0.7	0.3	0.2	89.0	1.7	9.3	0.093	0.507	18.937407	-99.192283		
T. Izq. Villas del Lago (Lateral)	8.40	3	1	50254	3.3	84.9	1.0	8.5	0.5	0.9	0.6	0.2	0.1	88.2	1.0	10.8	0.082	0.502	18.934729	-99.197519		
T. Izq. Villas del Lago (Central)	8.40	3	1	22151	0.6	91.5	1.1	4.9	0.5	0.8	0.3	0.2	0.1	92.1	1.1	6.8	0.080	0.512	18.934666	-99.197458		
T. Izq. Villas del Lago (Central)	8.40	3	2	20692	0.6	90.6	1.2	5.6	0.5	0.9	0.3	0.2	0.1	91.2	1.2	7.6	0.084	0.512	18.934883	-99.196947		
T. Izq. Villas del Lago (Lateral)	8.40	3	2	50584	3.3	84.9	1.0	8.5	0.5	0.9	0.6	0.2	0.1	88.2	1.0	10.8	0.086	0.502	18.934822	-99.196904		
X. C. Cuernavaca - Cuautlixco (Central)	10.54	1	1	21071	8.0	84.9	0.8	4.0	0.7	1.0	0.4	0.1	0.1	92.9	0.8	6.3	0.094	0.505	18.923784	-99.202640		
X. C. Cuernavaca - Cuautlixco (Lateral)	10.54	1	1	47523	6.1	86.7	0.6	3.2	0.4	1.6	0.9	0.2	0.3	92.8	0.6	6.6	0.076	0.504	18.923837	-99.202721		
X. C. Cuernavaca - Cuautlixco (Central)	10.54	1	2	21531	8.0	85.0	0.8	4.0	0.6	1.0	0.4	0.1	0.1	93.0	0.8	6.2	0.074	0.505	18.923878	-99.202571		
X. C. Cuernavaca - Cuautlixco (Lateral)	10.54	1	2	48433	6.1	86.7	0.6	3.2	0.4	1.6	0.9	0.2	0.3	92.8	0.6	6.6	0.071	0.504	18.923940	-99.202492		
X. C. Cuernavaca - Cuautlixco (Central)	10.54	3	1	57916	1.9	91.4	0.8	3.0	0.4	1.3	0.7	0.2	0.3	93.3	0.8	5.9	0.075	0.507	18.915165	-99.205751		
X. C. Cuernavaca - Cuautlixco (Central)	10.54	3	2	56124	1.9	91.3	0.9	3.0	0.4	1.3	0.7	0.2	0.3	93.2	0.9	5.9	0.086	0.507	18.915131	-99.205685		
T. Der. Av. Morelos	14.70	1	1	89169	3.0	87.7	1.3	4.9	0.6	1.1	0.9	0.2	0.3	90.7	1.3	8.0	0.087	0.509	18.897762	-99.225609		
T. Der. Av. Morelos	14.70	1	2	85305	3.0	87.8	1.3	4.9	0.6	1.0	0.9	0.2	0.3	90.8	1.3	7.9	0.072	0.509	18.896875	-99.226176		

7 CARR : México - Cuernavaca (Libre)

CLAVE: 00040

RUTA: MEX-095

AÑO: 2023

LUGAR	ESTACION	CLASIFICACION VEHICULAR EN PORCIENTO													COORDENADAS							
		KM	TE	SC	TDPA	M	A	B	C2	C3	T3S2	T3S3	T3S2R4	OTROS	A	B	C	K'	D	LATITUD	LONGITUD	
México	0.00																					
T. Der. San Miguel Xicalco	25.50	1	0	24811	4.2	84.7	0.2	7.7	1.3	0.8	0.7	0.2	0.2	88.9	0.2	10.9	0.075	0.506	19.235965	-99.158176		
T. Der. San Miguel Xicalco	25.50	3	0	26941	5.7	85.8	0.2	6.0	1.0	0.5	0.7	0.0	0.1	91.5	0.2	8.3	0.068	0.502	19.233347	-99.156298		

MORELOS

7 CARR: México - Cuernavaca (Libre)

CLAVE: 00040

RUTA: MEX-095

AÑO: 2023

LUGAR	ESTACION				CLASIFICACION VEHICULAR EN PORCIENTO										COORDENADAS					
	KM	TE	SC	TDPA	M	A	B	C2	C3	T3S2	T3S3	T3S2R4	OTROS	A	B	C	K'	D	LATITUD	LONGITUD
T. Izq. San Miguel Topilejo	28.78	1	1	11389	5.2	85.7	0.5	6.5	0.9	0.4	0.7	0.0	0.1	90.9	0.5	8.6	0.072	0.515	19.213849	-99.151667
T. Izq. San Miguel Topilejo	28.78	1	2	12069	6.5	85.1	0.3	6.3	1.0	0.3	0.5	0.0	0.0	91.6	0.3	8.1	0.092	0.515	19.213822	-99.151663
T. Izq. San Miguel Topilejo	28.78	3	0	9114	4.5	86.7	0.4	7.0	0.9	0.4	0.1	0.0	0.0	91.2	0.4	8.4	0.090	0.504	19.192609	-99.165791
Parres El Guarda	39.50	1	0	8227	5.9	85.0	0.3	7.3	1.0	0.4	0.1	0.0	0.0	90.9	0.3	8.8	0.083	0.507	19.139633	-99.170126
Parres El Guarda	39.50	3	0	7378	5.7	86.1	0.3	6.8	0.8	0.2	0.1	0.0	0.0	91.8	0.3	7.9	0.088	0.516	19.129300	-99.180487
Lim. Edos. Term. CDMX Ppia. Mor.	45.44																			
T. Der. Zempoala	51.40	1	0	9304	4.3	88.6	0.3	5.7	0.6	0.3	0.2	0.0	0.0	92.9	0.3	6.8	0.087	0.502	19.056891	-99.242667
T. Der. Zempoala	51.40	3	0	6664	3.9	92.2	0.2	2.9	0.6	0.1	0.1	0.0	0.0	96.1	0.2	3.7	0.092	0.502	19.044668	-99.235870
T. Izq. Coajomulco	57.12	3	0	5168	3.6	88.4	0.3	6.1	0.7	0.4	0.5	0.0	0.0	92.0	0.3	7.7	0.092	0.507	19.027136	-99.207146
T. Der. Huitzilac	64.20	1	0	7659	5.5	90.4	0.2	3.4	0.1	0.1	0.3	0.0	0.0	95.9	0.2	3.9	0.090	0.505	19.002780	-99.257430
T. Der. Huitzilac	64.20	3	0	15072	4.5	87.0	0.5	5.6	0.4	0.6	1.2	0.0	0.2	91.5	0.5	8.0	0.075	0.513	18.995677	-99.260728
T. Izq. Tepoztlán	71.36	1	0	27719	3.9	89.9	0.3	4.8	0.2	0.4	0.4	0.0	0.1	93.8	0.3	5.9	0.078	0.514	18.970898	-99.249755
T. Izq. Tepoztlán	71.36	3	1	14963	5.4	89.2	0.5	4.1	0.1	0.2	0.1	0.1	0.3	94.6	0.5	4.9	0.093	0.507	18.959679	-99.246060
T. Izq. Tepoztlán	71.36	3	2	15372	5.4	88.9	0.5	4.1	0.2	0.2	0.2	0.2	0.3	94.3	0.5	5.2	0.083	0.507	18.959705	-99.246018
Cuernavaca	75.42																			

8 CARR: Ramal a Michapa

CLAVE: 17303

RUTA: MEX-166

AÑO: 2023

LUGAR	ESTACION				CLASIFICACION VEHICULAR EN PORCIENTO										COORDENADAS					
	KM	TE	SC	TDPA	M	A	B	C2	C3	T3S2	T3S3	T3S2R4	OTROS	A	B	C	K'	D	LATITUD	LONGITUD
T. C. Cuernavaca - Chilpancingo	0.00	3	0	4127	8.1	82.1	1.8	3.5	1.4	1.3	1.2	0.3	0.3	90.2	1.8	8.0	0.081	0.501	18.610194	-99.362056
Michapa	16.22	1	0	4275	5.9	82.0	2.6	4.5	1.5	1.3	1.7	0.3	0.2	87.9	2.6	9.5	0.085	0.500	18.701322	-99.476805

9 CARR: San Gregorio - Oaxtepec

CLAVE: 00901

RUTA: MEX-113

AÑO: 2023

LUGAR	ESTACION				CLASIFICACION VEHICULAR EN PORCIENTO										COORDENADAS					
	KM	TE	SC	TDPA	M	A	B	C2	C3	T3S2	T3S3	T3S2R4	OTROS	A	B	C	K'	D	LATITUD	LONGITUD
San Gregorio	0.00	3	0	23765	7.5	82.7	1.0	5.9	0.6	0.8	0.8	0.4	0.3	90.2	1.0	8.8	0.062	0.502	19.238268	-99.054793
X. C. Milpa Alta - San Lorenzo Tlacoyucan	9.00	3	0	7714	4.9	86.1	1.2	5.2	0.7	0.6	0.8	0.3	0.2	91.0	1.2	7.8	0.089	0.517	19.180777	-99.029622
Lim. Edos. Term. CDMX Ppia. Méx.	18.80																			
Lim. Edos. Term. Méx. Ppia. Mor.	28.50																			
T. Der. San Felipe Neri	33.80	1	0	3787	2.1	87.2	1.6	7.1	1.3	0.4	0.2	0.1	0.0	89.3	1.6	9.1	0.122	0.501	19.046276	-98.936248
T. Der. Tlalnepantla	40.50	3	0	5363	7.1	83.5	0.4	7.8	0.6	0.2	0.3	0.0	0.1	90.6	0.4	9.0	0.101	0.513	19.004017	-98.990073
Tlayacapan	48.50	3	0	12822	10.7	83.5	0.3	4.6	0.5	0.3	0.1	0.0	0.0	94.2	0.3	5.5	0.082	0.502	18.939574	-98.974107
T. Der. Yautepec	53.00	1	0	12914	11.0	83.7	0.3	3.9	0.2	0.4	0.3	0.1	0.1	94.7	0.3	5.0	0.082	0.503	18.925236	-98.968010

MORELOS

9 CARR: San Gregorio - Oaxtepec

CLAVE: 00901

RUTA: MEX-113

AÑO: 2023

LUGAR	ESTACION				CLASIFICACION VEHICULAR EN PORCIENTO										COORDENADAS					
	KM	TE	SC	TDPA	M	A	B	C2	C3	T3S2	T3S3	T3S2R4	OTROS	A	B	C	K'	D	LATITUD	LONGITUD
T. Der. Yautepec	53.00	3	1	8689	12.0	81.4	0.3	5.3	0.3	0.3	0.1	0.1	0.2	93.4	0.3	6.3	0.074	0.517	18.916269	-98.969980
T. Der. Yautepec	53.00	3	2	8104	12.0	81.5	0.3	5.2	0.3	0.3	0.1	0.1	0.2	93.5	0.3	6.2	0.078	0.517	18.916252	-98.969944
Oaxtepec	56.00																			

10 CARR: Santa Bárbara - Izúcar de Matamoros

CLAVE: 00451

RUTA: MEX-115-160

AÑO: 2023

LUGAR	ESTACION				CLASIFICACION VEHICULAR EN PORCIENTO										COORDENADAS					
	KM	TE	SC	TDPA	M	A	B	C2	C3	T3S2	T3S3	T3S2R4	OTROS	A	B	C	K'	D	LATITUD	LONGITUD
T. C. México - Puebla (Libre)	0.00	3	1	21822	5.0	89.1	0.6	3.6	0.6	0.5	0.2	0.2	0.2	94.1	0.6	5.3	0.077	0.512	19.310903	-98.896329
T. C. México - Puebla (Libre)	0.00	3	2	22931	4.7	88.5	0.8	4.3	0.6	0.5	0.2	0.2	0.2	93.2	0.8	6.0	0.070	0.512	19.311030	-98.896314
X. C. México - Puebla (Cuota)	3.61	1	1	28999	3.6	91.2	0.4	3.0	0.6	0.5	0.3	0.2	0.2	94.8	0.4	4.8	0.071	0.510	19.302327	-98.885563
X. C. México - Puebla (Cuota)	3.61	1	2	27811	3.6	91.2	0.4	3.0	0.6	0.5	0.3	0.2	0.2	94.8	0.4	4.8	0.074	0.510	19.302335	-98.885443
X. C. México - Puebla (Cuota)	3.61	3	1	47363	3.0	81.6	1.1	8.4	1.0	2.2	1.9	0.4	0.4	84.6	1.1	14.3	0.064	0.522	19.284543	-98.880648
X. C. México - Puebla (Cuota)	3.61	3	2	52183	3.7	81.2	1.1	7.9	1.2	2.2	1.8	0.4	0.5	84.9	1.1	14.0	0.066	0.522	19.285934	-98.880180
Chalco (Lateral)	8.00	3	1	11988	3.5	83.5	1.2	7.6	1.3	1.8	0.5	0.4	0.2	87.0	1.2	11.8	0.068	0.528	19.246041	-98.867130
Chalco (Central)	8.00	3	1	24098	4.0	87.8	0.8	4.0	1.2	1.2	0.5	0.3	0.2	91.8	0.8	7.4	0.075	0.501	19.246118	-98.867081
Chalco (Central)	8.00	3	2	24035	4.0	87.8	0.8	4.0	1.2	1.2	0.5	0.3	0.2	91.8	0.8	7.4	0.096	0.501	19.246156	-98.866983
Chalco (Lateral)	8.00	3	2	13393	3.5	83.6	1.2	7.6	1.2	1.8	0.5	0.4	0.2	87.1	1.2	11.7	0.074	0.528	19.246235	-98.866940
T. Der. Juchitepec	12.46	3	1	23685	3.3	85.6	1.0	6.2	1.4	1.4	0.5	0.4	0.2	88.9	1.0	10.1	0.071	0.510	19.231592	-98.844343
T. Der. Juchitepec	12.46	3	2	24630	3.6	84.3	1.1	7.0	1.4	1.5	0.6	0.3	0.2	87.9	1.1	11.0	0.083	0.510	19.232256	-98.845070
T. Der. Libramiento de Tlalmanalco de Velázquez	15.00	1	1	18564	3.3	85.7	1.1	6.6	1.0	1.2	0.6	0.3	0.2	89.0	1.1	9.9	0.064	0.502	19.216555	-98.830081
T. Der. Libramiento de Tlalmanalco de Velázquez	15.00	1	2	18412	3.4	86.0	1.0	6.1	1.0	1.4	0.5	0.3	0.3	89.4	1.0	9.6	0.079	0.502	19.219032	-98.830345
Tlalmanalco	20.51	1	0	13300	6.4	89.1	0.4	3.3	0.3	0.2	0.1	0.1	0.1	95.5	0.4	4.1	0.074	0.503	19.206380	-98.820165
Tlalmanalco	20.51	3	0	7608	3.2	90.0	0.6	5.2	0.6	0.2	0.2	0.0	0.0	93.2	0.6	6.2	0.086	0.516	19.198839	-98.799514
Amecameca de Juárez	28.00	1	1	6591	7.4	81.3	0.3	6.9	0.8	1.6	0.8	0.4	0.5	88.7	0.3	11.0	0.087	0.543	19.140689	-98.773190
Amecameca de Juárez	28.00	1	2	7844	7.3	81.7	0.3	6.9	0.8	1.6	0.6	0.3	0.5	89.0	0.3	10.7	0.088	0.543	19.140720	-98.773107
Amecameca de Juárez	28.00	3	1	10436	5.3	84.6	0.5	7.6	1.2	0.5	0.3	0.0	0.0	89.9	0.5	9.6	0.082	0.519	19.102551	-98.780605
Amecameca de Juárez	28.00	3	2	9675	5.3	84.5	0.5	7.6	1.2	0.6	0.3	0.0	0.0	89.8	0.5	9.7	0.084	0.519	19.102548	-98.780546
T. Izq a Tlamacas	32.21																			
T. Izq. Ozumba (Iº Acceso)	38.81	1	0	21847	4.9	84.0	0.7	9.3	0.4	0.4	0.3	0.0	0.0	88.9	0.7	10.4	0.068	0.510	19.058517	-98.786753
T. Izq. Ozumba (Iº Acceso)	38.81	3	0	19181	3.0	80.3	1.2	13.2	1.0	0.4	0.3	0.4	0.2	83.3	1.2	15.5	0.077	0.502	19.048723	-98.792572
Tepetitlpa	42.29	3	0	10221	3.2	85.0	0.7	7.9	1.8	0.5	0.3	0.3	0.3	88.2	0.7	11.1	0.079	0.517	19.020198	-98.824497
Lim. Edos. Term. Méx. Ppia. Mor.	51.70																			
T. Der. Atlallahucan	58.95	1	1	10154	6.2	79.8	1.6	6.1	2.5	1.7	0.5	1.3	0.3	86.0	1.6	12.4	0.093	0.527	18.929467	-98.887141
T. Der. Atlallahucan	58.95	1	2	9128	5.8	79.7	1.6	6.2	2.1	2.6	0.6	1.1	0.3	85.5	1.6	12.9	0.085	0.527	18.929981	-98.886689

MORELOS

10 CARR: Santa Bárbara - Izúcar de Matamoros

CLAVE: 00451

RUTA: MEX-115-160

AÑO: 2023

LUGAR	ESTACION				CLASIFICACION VEHICULAR EN PORCIENTO										COORDENADAS					
	KM	TE	SC	TDPA	M	A	B	C2	C3	T3S2	T3S3	T3S2R4	OTROS	A	B	C	K'	D	LATITUD	LONGITUD
T. Izq. Tetela del Volcán	62.99	1	1	12478	7.5	80.6	1.6	6.2	1.2	1.6	0.4	0.7	0.2	88.1	1.6	10.3	0.090	0.512	18.907219	-98.902093
T. Izq. Tetela del Volcán	62.99	1	2	11900	8.2	79.3	1.3	6.2	1.5	2.0	0.6	0.7	0.2	87.5	1.3	11.2	0.125	0.512	18.907167	-98.902011
T. Izq. Tetela del Volcán	62.99	3	1	14951	5.9	85.2	1.4	2.3	2.4	1.5	0.4	0.4	0.5	91.1	1.4	7.5	0.083	0.504	18.895723	-98.909788
T. Izq. Tetela del Volcán	62.99	3	2	14720	6.1	85.6	1.3	2.5	2.0	1.4	0.4	0.4	0.3	91.7	1.3	7.0	0.096	0.504	18.895689	-98.909711
T. Izq. Libramiento de Cuautla (1º Acceso)	67.00	1	1	18447	7.7	80.2	1.4	6.3	1.8	1.5	0.5	0.4	0.2	87.9	1.4	10.7	0.081	0.534	18.878016	-98.921681
T. Izq. Libramiento de Cuautla (1º Acceso)	67.00	1	2	16108	7.5	79.2	1.7	6.4	1.7	1.9	0.8	0.5	0.3	86.7	1.7	11.6	0.071	0.534	18.877970	-98.921600
T. Der. La Pera	68.90	1	1	26771	5.9	86.9	0.7	4.1	0.7	1.0	0.3	0.3	0.1	92.8	0.7	6.5	0.077	0.501	18.856556	-98.935540
T. Der. La Pera	68.90	1	2	26838	5.9	86.2	0.6	4.9	0.5	1.0	0.3	0.4	0.2	92.1	0.6	7.3	0.073	0.501	18.856469	-98.935469
T. Izq. Libramiento de Cuautla (2º Acceso)	77.05	3	1	18494	7.1	85.0	1.3	3.1	1.3	1.3	0.4	0.4	0.1	92.1	1.3	6.6	0.091	0.505	18.790847	-98.909225
T. Izq. Libramiento de Cuautla (2º Acceso)	77.05	3	2	18836	7.6	84.3	1.3	3.2	1.4	1.3	0.4	0.4	0.1	91.9	1.3	6.8	0.086	0.505	18.790761	-98.908987
T. Der. Tlayecac	85.06	1	1	13374	6.9	84.5	1.6	3.0	1.6	1.2	0.4	0.6	0.2	91.4	1.6	7.0	0.095	0.500	18.771105	-98.894149
T. Der. Tlayecac	85.06	1	2	13360	5.4	86.0	1.6	3.5	1.3	1.0	0.4	0.6	0.2	91.4	1.6	7.0	0.084	0.500	18.770780	-98.893589
T. Der. Tlayecac	85.06	3	1	12507	4.6	77.4	1.9	13.2	0.6	1.2	0.4	0.7	0.0	82.0	1.9	16.1	0.095	0.509	18.761613	-98.883851
T. Der. Tlayecac	85.06	3	2	12045	4.9	77.0	1.9	13.2	0.6	1.2	0.4	0.7	0.1	81.9	1.9	16.2	0.099	0.509	18.761683	-98.883768
T. Izq. Amayuca	91.36	1	1	10494	7.5	79.1	2.5	5.3	2.0	1.7	0.7	1.0	0.2	86.6	2.5	10.9	0.074	0.529	18.733634	-98.817313
T. Izq. Amayuca	91.36	1	2	11770	6.8	80.1	2.3	5.2	1.8	1.6	1.0	1.0	0.2	86.9	2.3	10.8	0.074	0.529	18.733712	-98.817267
T. Izq. Amayuca	91.36	3	1	6422	4.4	81.8	2.6	3.8	2.3	2.9	1.3	0.7	0.2	86.2	2.6	11.2	0.082	0.522	18.714981	-98.788459
T. Izq. Amayuca	91.36	3	2	7007	4.2	81.7	2.7	4.0	2.0	2.8	1.1	1.1	0.4	85.9	2.7	11.4	0.070	0.522	18.715064	-98.788431
T. C. Atlixco - Jantetelco (Cuota)	94.70	3	1	2989	3.9	76.8	3.8	6.3	2.7	3.1	2.0	1.1	0.3	80.7	3.8	15.5	0.085	0.531	18.698384	-98.762446
T. C. Atlixco - Jantetelco (Cuota)	94.70	3	2	2645	4.0	77.1	3.6	6.4	2.7	3.1	2.0	0.9	0.2	81.1	3.6	15.3	0.079	0.531	18.698407	-98.762431
T. Der. Tenango	102.96	1	1	2872	4.4	77.3	3.4	5.6	3.1	2.5	2.2	1.2	0.3	81.7	3.4	14.9	0.081	0.510	18.678557	-98.740794
T. Der. Tenango	102.96	1	2	2760	4.5	76.3	3.6	5.6	3.2	2.6	2.3	1.5	0.4	80.8	3.6	15.6	0.086	0.510	18.678406	-98.740677
T. Der. Tenango	102.96	3	0	4824	4.6	72.5	4.3	5.4	3.6	4.4	2.9	2.0	0.3	77.1	4.3	18.6	0.074	0.510	18.664374	-98.727019
Lim. Edos. Term. Mor. Ppia. Pue.	103.23																			
X. C. Amayuca - Izúcar de Matamoros	134.99	1	1	6367	18.6	71.3	2.0	2.6	1.6	1.8	1.1	0.7	0.3	89.9	2.0	8.1	0.092	0.505	18.605409	-98.485520
X. C. Amayuca - Izúcar de Matamoros	134.99	1	2	6505	18.6	71.2	2.0	2.6	1.7	1.8	1.1	0.7	0.3	89.8	2.0	8.2	0.100	0.505	18.605467	-98.485461
X. C. Amayuca - Izúcar de Matamoros	134.99	3	1	9048	19.8	72.4	1.5	2.5	1.8	0.9	0.5	0.4	0.2	92.2	1.5	6.3	0.088	0.510	18.594831	-98.476332
X. C. Amayuca - Izúcar de Matamoros	134.99	3	2	9424	19.8	72.4	1.5	2.5	1.8	0.9	0.5	0.4	0.2	92.2	1.5	6.3	0.084	0.510	18.594881	-98.476237
T. C. Puebla - Huajuapán de León	138.14																			

11 CARR: Cuernavaca - Acapulco (Cuota)

CLAVE: 00045

RUTA: MEX-095D

AÑO: 2023

LUGAR	ESTACION				CLASIFICACION VEHICULAR EN PORCIENTO										COORDENADAS					
	KM	TE	SC	TDPA	M	A	B	C2	C3	T3S2	T3S3	T3S2R4	OTROS	A	B	C	K'	D	LATITUD	LONGITUD
Cuernavaca	0.00	3	1	56068	4.8	87.6	1.5	2.4	2.0	1.0	0.4	0.2	0.1	92.4	1.5	6.1	0.071	0.508	18.875337	-99.227209

MORELOS

11 CARR: Cuernavaca - Acapulco (Cuota)

CLAVE: 00045

RUTA: MEX-095D

AÑO: 2023

LUGAR	ESTACION				CLASIFICACION VEHICULAR EN PORCIENTO										COORDENADAS					
	KM	TE	SC	TDPA	M	A	B	C2	C3	T3S2	T3S3	T3S2R4	OTROS	A	B	C	K'	D	LATITUD	LONGITUD
Cuernavaca	0.00	3	2	54097	4.8	87.6	1.5	2.4	2.0	1.0	0.4	0.2	0.1	92.4	1.5	6.1	0.091	0.508	18.875369	-99.227111
T. Izq. Burgos	3.35	1	1	59846	4.3	88.3	1.4	2.4	2.0	0.9	0.4	0.2	0.1	92.6	1.4	6.0	0.068	0.520	18.862067	-99.221070
T. Izq. Burgos	3.35	1	2	60788	4.3	88.3	1.4	2.4	2.0	0.9	0.4	0.2	0.1	92.6	1.4	6.0	0.068	0.520	18.862069	-99.220984
T. Izq. Burgos	3.35	3	1	45683	4.8	87.9	1.8	2.7	1.0	0.8	0.5	0.4	0.1	92.7	1.8	5.5	0.082	0.503	18.854993	-99.220706
T. Izq. Burgos	3.35	3	2	45036	4.8	88.1	1.8	2.7	0.9	0.8	0.4	0.4	0.1	92.9	1.8	5.3	0.117	0.503	18.854226	-99.220578
T. Der. Acatlipa	4.70	1	1	39956	6.9	84.9	1.7	3.1	1.0	1.3	0.7	0.3	0.1	91.8	1.7	6.5	0.065	0.505	18.851966	-99.220467
T. Der. Acatlipa	4.70	1	2	39049	6.9	84.9	1.7	3.1	1.0	1.3	0.7	0.3	0.1	91.8	1.7	6.5	0.084	0.505	18.851728	-99.220335
T. Der. Acatlipa	4.70	3	1	36929	4.5	87.3	1.9	3.0	0.9	1.1	0.5	0.5	0.3	91.8	1.9	6.3	0.068	0.505	18.844878	-99.218436
T. Der. Acatlipa	4.70	3	2	36212	4.5	87.4	1.9	3.0	0.9	1.0	0.5	0.5	0.3	91.9	1.9	6.2	0.064	0.505	18.844897	-99.218343
T. Izq. Miguel Hidalgo	5.85	3	1	29669	5.2	87.5	1.7	2.2	1.0	1.3	0.7	0.3	0.1	92.7	1.7	5.6	0.080	0.504	18.831057	-99.217824
T. Izq. Miguel Hidalgo	5.85	3	2	31986	5.2	87.4	1.7	2.1	1.1	1.4	0.7	0.3	0.1	92.6	1.7	5.7	0.083	0.504	18.830424	-99.217815
T. Der. Aeropuerto Cuernavaca	9.83	1	1	31341	4.0	84.6	2.9	4.6	1.1	1.3	0.7	0.5	0.3	88.6	2.9	8.5	0.097	0.519	18.812615	-99.219528
T. Der. Aeropuerto Cuernavaca	9.83	1	2	27258	4.0	84.9	2.8	4.6	1.1	1.2	0.6	0.5	0.3	88.9	2.8	8.3	0.080	0.519	18.812244	-99.219466
T. Der. Aeropuerto Cuernavaca	9.83	3	1	18207	3.7	88.8	1.7	2.3	1.2	1.3	0.5	0.3	0.2	92.5	1.7	5.8	0.082	0.522	18.789610	-99.221622
T. Der. Aeropuerto Cuernavaca	9.83	3	2	19891	3.7	88.9	1.7	2.3	1.2	1.3	0.5	0.3	0.1	92.6	1.7	5.7	0.095	0.522	18.789330	-99.221568
T. Izq. Club de Golf Santa Fe	17.48	1	1	15832	4.6	86.9	1.9	2.4	1.5	1.6	0.6	0.4	0.1	91.5	1.9	6.6	0.087	0.503	18.748900	-99.245132
T. Izq. Club de Golf Santa Fe	17.48	1	2	16025	4.6	86.7	1.9	2.4	1.6	1.6	0.6	0.4	0.2	91.3	1.9	6.8	0.109	0.503	18.748278	-99.245354
Plaza de Cobro Alpuyec	19.80	1	1	11033	2.3	80.1	4.3	5.3	3.9	2.3	0.7	0.9	0.2	82.4	4.3	13.3	0.089	0.507	18.724155	-99.259283
Plaza de Cobro Alpuyec	19.80	1	2	11337	2.3	80.5	4.2	5.3	3.8	2.2	0.7	0.9	0.1	82.8	4.2	13.0	0.115	0.507	18.724066	-99.259085
Plaza de Cobro Alpuyec	19.80	3	1	8401	1.4	81.2	5.0	6.2	2.0	2.2	0.8	0.9	0.3	82.6	5.0	12.4	0.096	0.503	18.710698	-99.270182
Plaza de Cobro Alpuyec	19.80	3	2	8489	1.4	81.4	5.0	6.2	2.0	2.2	0.8	0.8	0.2	82.8	5.0	12.2	0.126	0.503	18.710549	-99.270107
Plaza de Cobro Ing. Francisco Velasco Durán	23.10	2	1	8339	1.6	83.4	5.3	2.7	2.7	2.3	0.8	0.8	0.4	85.0	5.3	9.7	0.111	0.500	18.698498	-99.278028
Plaza de Cobro Ing. Francisco Velasco Durán	23.10	2	2	8339	1.6	83.4	5.3	2.7	2.7	2.3	0.8	0.8	0.4	85.0	5.3	9.7	0.111	0.500	18.698498	-99.278028
T. C. Puente de Ixtla - Iguala (Cuota)	28.58	3	1	7742	2.1	84.4	3.3	4.9	1.5	2.1	0.7	0.8	0.2	86.5	3.3	10.2	0.095	0.511	18.648281	-99.295477
T. C. Puente de Ixtla - Iguala (Cuota)	28.58	3	2	7419	2.1	84.3	3.3	4.9	1.5	2.1	0.7	0.8	0.3	86.4	3.3	10.3	0.130	0.511	18.648269	-99.295354
T. C. Xoxocotla - Tilzapotla	37.50	3	1	5815	2.9	81.2	4.4	5.3	1.5	2.5	0.7	1.3	0.2	84.1	4.4	11.5	0.114	0.503	18.586365	-99.256028
T. C. Xoxocotla - Tilzapotla	37.50	3	2	5735	2.9	81.1	4.5	5.3	1.6	2.5	0.7	1.2	0.2	84.0	4.5	11.5	0.137	0.503	18.586446	-99.255983
T. C. Autopista Siglo XXI (Jaltetelco - Xicatlacotla)	41.00	3	1	5985	3.0	82.8	3.6	5.2	1.3	2.3	0.5	1.1	0.2	85.8	3.6	10.6	0.111	0.517	18.566340	-99.221688
T. C. Autopista Siglo XXI (Jaltetelco - Xicatlacotla)	41.00	3	2	5595	3.1	82.5	3.6	5.1	1.3	2.3	0.6	1.3	0.2	85.6	3.6	10.8	0.154	0.517	18.566406	-99.221633
Lim. Edos. Term. Mor. Ppia. Gro.	53.30																			
Plaza de Cobro Paso Morelos	82.94	1	1	4617	1.5	79.7	5.6	4.3	1.7	4.4	0.9	1.6	0.3	81.2	5.6	13.2	0.076	0.502	18.238272	-99.213919
Plaza de Cobro Paso Morelos	82.94	1	2	4578	1.5	79.7	5.7	4.2	1.7	4.4	0.9	1.5	0.4	81.2	5.7	13.1	0.124	0.502	18.238166	-99.213849
Plaza de Cobro Paso Morelos	82.94	2	1	4660	1.0	82.6	5.9	2.3	2.3	3.1	0.7	1.5	0.6	83.6	5.9	10.5	0.111	0.500	18.231462	-99.215446
Plaza de Cobro Paso Morelos	82.94	2	2	4660	1.0	82.6	5.9	2.3	2.3	3.1	0.7	1.5	0.6	83.6	5.9	10.5	0.111	0.500	18.231462	-99.215446
T. C. Cuernavaca - Chilpancingo	171.90	1	1	3915	1.3	78.2	8.6	3.5	1.4	3.9	1.0	1.7	0.4	79.5	8.6	11.9	0.085	0.533	17.606777	-99.518116

MORELOS

11 CARR: Cuernavaca - Acapulco (Cuota)

CLAVE: 00045

RUTA: MEX-095D

AÑO: 2023

LUGAR	ESTACION				CLASIFICACION VEHICULAR EN PORCIENTO													COORDENADAS		
	KM	TE	SC	TDPA	M	A	B	C2	C3	T3S2	T3S3	T3S2R4	OTROS	A	B	C	K'	D	LATITUD	LONGITUD
T. C. Cuernavaca - Chilpancingo	171.90	1	2	4473	1.4	77.9	8.2	4.4	1.3	4.1	0.7	1.6	0.4	79.3	8.2	12.5	0.130	0.533	17.606744	-99.518040
Plaza de Cobro Palo Blanco	193.90	1	1	6160	1.7	80.2	5.7	5.1	1.1	3.1	1.4	1.1	0.6	81.9	5.7	12.4	0.116	0.503	17.435611	-99.477441
Plaza de Cobro Palo Blanco	193.90	1	2	6222	1.7	80.2	5.6	5.1	1.1	3.2	1.3	1.2	0.6	81.9	5.6	12.5	0.163	0.503	17.492803	-99.477918
Plaza de Cobro Palo Blanco	193.90	2	1	5716	1.1	85.2	3.6	2.3	2.7	2.7	0.8	1.1	0.5	86.3	3.6	10.1	0.097	0.500	17.423983	-99.466911
Plaza de Cobro Palo Blanco	193.90	2	2	5716	1.1	85.2	3.6	2.3	2.7	2.7	0.8	1.1	0.5	86.3	3.6	10.1	0.097	0.500	17.423983	-99.466911
X. C. Chilpancingo - Acapulco (Tierra Colorada)	226.20	1	1	5184	1.5	78.8	8.4	3.6	1.9	3.1	1.2	1.2	0.3	80.3	8.4	11.3	0.093	0.525	17.180596	-99.552154
X. C. Chilpancingo - Acapulco (Tierra Colorada)	226.20	1	2	5741	1.4	79.7	8.2	3.5	1.8	3.3	0.8	1.1	0.2	81.1	8.2	10.7	0.173	0.525	17.180602	-99.552062
Plaza de Cobro La Venta	269.95	1	1	6252	6.3	73.7	6.0	5.5	1.8	3.1	1.4	1.6	0.6	80.0	6.0	14.0	0.085	0.545	16.929447	-99.796564
Plaza de Cobro La Venta	269.95	1	2	7491	6.2	73.8	5.9	5.7	2.0	2.8	1.5	1.5	0.6	80.0	5.9	14.1	0.072	0.545	16.929367	-99.796562
Plaza de Cobro La Venta	269.95	2	1	5696	1.7	82.4	5.6	2.4	2.7	2.7	0.9	1.2	0.4	84.1	5.6	10.3	0.097	0.500	16.928232	-99.801857
Plaza de Cobro La Venta	269.95	2	2	5696	1.7	82.4	5.6	2.4	2.7	2.7	0.9	1.2	0.4	84.1	5.6	10.3	0.097	0.500	16.928232	-99.801857
T. C. Chilpancingo - Acapulco (Ent. La Venta)	271.50	1	1	5733	1.2	81.3	6.3	4.2	1.5	3.0	0.8	1.2	0.5	82.5	6.3	11.2	0.077	0.506	16.923291	-99.811205
T. C. Chilpancingo - Acapulco (Ent. La Venta)	271.50	1	2	5599	1.4	81.3	6.4	4.3	1.5	2.9	0.8	1.0	0.4	82.7	6.4	10.9	0.096	0.506	16.923207	-99.811200

12 CARR: Jantetelco - El Higuera (Cuota)

CLAVE:

RUTA: MEX-037-D

AÑO: 2023

LUGAR	ESTACION				CLASIFICACION VEHICULAR EN PORCIENTO													COORDENADAS		
	KM	TE	SC	TDPA	M	A	B	C2	C3	T3S2	T3S3	T3S2R4	OTROS	A	B	C	K'	D	LATITUD	LONGITUD
T. C. Santa Bárbara - Izúcar de Matamoros	0.00	3	0	2485	3.4	71.0	5.6	4.4	4.2	4.8	3.0	2.9	0.7	74.4	5.6	20.0	0.115	0.535	18.700826	-98.777748
T. C. Moyotepec - San Rafael	30.00	1	0	2768	3.5	71.6	5.3	7.3	3.4	2.9	2.5	3.1	0.4	75.1	5.3	19.6	0.090	0.516	18.655418	-98.995043
Plaza de Cobro Tlaltizapán	30.00	3	0	2756	1.1	81.5	1.9	2.9	4.0	3.3	1.7	2.8	0.8	82.6	1.9	15.5	0.070	0.500	18.652761	-99.008771
T. C. Jojutla - Chinameca	54.00	1	0	3417	2.5	81.5	3.8	5.4	2.1	1.7	1.1	1.6	0.3	84.0	3.8	12.2	0.074	0.519	18.612352	-99.151158
T. C. Cuernavaca - Acapulco (Cuota)	62.00	1	0	3611	3.7	76.4	3.9	6.2	2.3	2.9	1.6	2.3	0.7	80.1	3.9	16.0	0.076	0.520	18.572986	-99.223533

13 CARR: La Pera - Cuautla (Cuota)

CLAVE: 17161

RUTA: MEX-160D

AÑO: 2023

LUGAR	ESTACION				CLASIFICACION VEHICULAR EN PORCIENTO													COORDENADAS		
	KM	TE	SC	TDPA	M	A	B	C2	C3	T3S2	T3S3	T3S2R4	OTROS	A	B	C	K'	D	LATITUD	LONGITUD
La Pera	0.00	3	1	7517	2.2	88.9	1.7	3.8	0.8	1.2	0.5	0.6	0.3	91.1	1.7	7.2	0.132	0.515	19.008818	-99.161154
La Pera	0.00	3	2	7075	2.1	89.1	1.6	3.8	0.9	1.1	0.5	0.6	0.3	91.2	1.6	7.2	0.120	0.515	19.008965	-99.161157
Tepoztlán	7.96	1	1	8697	2.2	87.0	2.3	4.6	1.0	1.5	0.6	0.6	0.2	89.2	2.3	8.5	0.139	0.504	18.993602	-99.121151
Tepoztlán	7.96	1	2	8569	2.0	86.2	3.0	4.9	1.0	1.4	0.7	0.6	0.2	88.2	3.0	8.8	0.133	0.504	18.993640	-99.120979
Plaza de Cobro Tepoztlán	7.96	2	0	15183	2.0	89.2	1.7	2.3	1.4	2.0	0.4	0.8	0.2	91.2	1.7	7.1	0.085	0.500	18.986765	-99.112493
Tepoztlán	7.96	3	1	7514	2.0	84.9	3.0	5.5	1.2	1.3	0.9	0.6	0.6	86.9	3.0	10.1	0.140	0.507	18.979450	-99.103716
Tepoztlán	7.96	3	2	7740	2.1	84.7	3.1	5.5	1.3	1.3	0.9	0.5	0.6	86.8	3.1	10.1	0.128	0.507	18.979547	-99.103728

MORELOS

13 CARR: La Pera - Cuautla (Cuota)

CLAVE: 17161

RUTA: MEX-160D

AÑO: 2023

LUGAR	ESTACION				CLASIFICACION VEHICULAR EN PORCIENTO										COORDENADAS					
	KM	TE	SC	TDPA	M	A	B	C2	C3	T3S2	T3S3	T3S2R4	OTROS	A	B	C	K'	D	LATITUD	LONGITUD
T. Der. Amatlán	13.40	1	1	7904	2.5	84.2	2.5	5.4	1.4	2.2	0.8	0.6	0.4	86.7	2.5	10.8	0.107	0.503	18.970795	-99.076789
T. Der. Amatlán	13.40	1	2	7814	2.5	84.3	2.5	5.4	1.4	2.2	0.7	0.6	0.4	86.8	2.5	10.7	0.106	0.503	18.970855	-99.076721
T. Der. Amatlán	13.40	3	1	7601	3.3	84.9	2.4	4.1	1.1	2.2	1.0	0.7	0.3	88.2	2.4	9.4	0.115	0.501	18.964405	-99.066729
T. Der. Amatlán	13.40	3	2	7621	3.3	84.9	2.5	4.1	1.0	2.2	1.1	0.7	0.2	88.2	2.5	9.3	0.111	0.501	18.964493	-99.066715
Plaza de Cobro Oacalco	21.21	1	1	8140	2.3	85.7	2.4	4.7	1.4	1.7	0.7	0.6	0.5	88.0	2.4	9.6	0.130	0.504	18.933604	-99.028352
Plaza de Cobro Oacalco	21.21	1	2	8026	2.3	85.6	2.5	4.7	1.4	1.7	0.7	0.6	0.5	87.9	2.5	9.6	0.130	0.504	18.933676	-99.028282
Plaza de Cobro Oacalco	21.21	2	0	12764	2.0	87.5	2.3	2.8	1.5	2.3	0.5	0.9	0.2	89.5	2.3	8.2	0.085	0.500	18.931082	-99.025645
Plaza de Cobro Oacalco	21.21	3	1	7867	2.4	85.7	2.5	3.9	1.4	2.2	1.0	0.5	0.4	88.1	2.5	9.4	0.100	0.501	18.927073	-99.021378
Plaza de Cobro Oacalco	21.21	3	2	7897	2.4	85.8	2.5	3.9	1.3	2.2	1.0	0.5	0.4	88.2	2.5	9.3	0.095	0.501	18.927130	-99.021311
X. C. Cocoyoc - Oaxtepec (Central)	27.00	3	1	6304	9.5	82.2	0.7	4.4	0.7	1.3	0.5	0.4	0.3	91.7	0.7	7.6	0.093	0.506	18.898501	-98.979376
X. C. Cocoyoc - Oaxtepec (Lateral)	27.00	3	1	12803	9.3	80.7	1.1	6.8	0.6	0.6	0.5	0.2	0.2	90.0	1.1	8.9	0.081	0.528	18.898441	-98.979476
X. C. Cocoyoc - Oaxtepec (Central)	27.00	3	2	6150	9.5	81.9	0.9	4.4	0.7	1.2	0.6	0.4	0.4	91.4	0.9	7.7	0.088	0.506	18.898485	-98.979239
X. C. Cocoyoc - Oaxtepec (Lateral)	27.00	3	2	11468	9.3	80.7	1.1	6.8	0.5	0.6	0.5	0.2	0.3	90.0	1.1	8.9	0.076	0.528	18.898597	-98.979150
T. C. Santa Bárbara - Izúcar de Matamoros (Central)	34.16	1	1	21406	4.6	85.2	2.0	5.2	1.1	1.2	0.4	0.2	0.1	89.8	2.0	8.2	0.086	0.501	18.858931	-98.944246
T. C. Santa Bárbara - Izúcar de Matamoros (Lateral)	34.16	1	1	6653	3.1	88.9	1.7	4.0	0.8	0.5	0.4	0.3	0.3	92.0	1.7	6.3	0.083	0.525	18.858852	-98.944352
T. C. Santa Bárbara - Izúcar de Matamoros (Central)	34.16	1	2	21318	4.6	85.1	2.0	5.2	1.1	1.3	0.4	0.2	0.1	89.7	2.0	8.3	0.087	0.501	18.855152	-98.940541
T. C. Santa Bárbara - Izúcar de Matamoros (Lateral)	34.16	1	2	7341	3.1	88.8	1.7	4.0	0.8	0.5	0.5	0.3	0.3	91.9	1.7	6.4	0.088	0.525	18.854586	-98.939815

14 CARR: Libramiento Amecameca - Nepantla (Cuota)

CLAVE:

RUTA: MEX-115D

AÑO: 2023

LUGAR	ESTACION				CLASIFICACION VEHICULAR EN PORCIENTO										COORDENADAS					
	KM	TE	SC	TDPA	M	A	B	C2	C3	T3S2	T3S3	T3S2R4	OTROS	A	B	C	K'	D	LATITUD	LONGITUD
T. C. Santa Bárbara - Izúcar de Matamoros (Norte)	28.60	3	1	5269	2.6	84.5	2.0	3.2	1.6	3.8	0.9	1.1	0.3	87.1	2.0	10.9	0.113	0.502	19.106583	-98.788559
T. C. Santa Bárbara - Izúcar de Matamoros (Norte)	28.60	3	2	5231	2.8	83.9	1.9	3.6	1.8	3.9	0.9	1.0	0.2	86.7	1.9	11.4	0.199	0.502	19.106527	-98.788475
Plaza de Cobro Tepetlixpa	38.60	2	1	5079	1.7	82.5	0.8	3.9	3.3	4.8	1.0	1.4	0.6	84.2	0.8	15.0	0.101	0.500	19.046112	-98.828394
Plaza de Cobro Tepetlixpa	38.60	2	2	5079	1.7	82.5	0.8	3.9	3.3	4.8	1.0	1.4	0.6	84.2	0.8	15.0	0.101	0.500	19.046112	-98.828394
Lim. Edos. Term. Méx. Ppia. Mor.	48.10																			
T. C. Santa Bárbara - Izúcar de Matamoros (Sur)	51.80	3	1	5368	2.5	80.8	2.1	6.2	1.7	4.1	1.1	1.2	0.3	83.3	2.1	14.6	0.119	0.503	18.974332	-98.875609
T. C. Santa Bárbara - Izúcar de Matamoros (Sur)	51.80	3	2	5307	3.1	77.9	2.7	6.4	2.0	4.6	1.2	1.6	0.5	81.0	2.7	16.3	0.191	0.503	18.974397	-98.875553

15 CARR: México - Cuernavaca (Cuota)

CLAVE: 00041

RUTA: MEX-095D

AÑO: 2023

LUGAR	ESTACION				CLASIFICACION VEHICULAR EN PORCIENTO										COORDENADAS					
	KM	TE	SC	TDPA	M	A	B	C2	C3	T3S2	T3S3	T3S2R4	OTROS	A	B	C	K'	D	LATITUD	LONGITUD
México	0.00																			

MORELOS

15 CARR: México - Cuernavaca (Cuota)

CLAVE: 00041

RUTA: MEX-095D

AÑO: 2023

LUGAR	ESTACION				CLASIFICACION VEHICULAR EN PORCIENTO										COORDENADAS					
	KM	TE	SC	TDPA	M	A	B	C2	C3	T3S2	T3S3	T3S2R4	OTROS	A	B	C	K'	D	LATITUD	LONGITUD
T. C. México - Cuernavaca (Libre)	18.65	3	1	33260	3.9	86.8	1.5	4.7	0.7	1.5	0.5	0.3	0.1	90.7	1.5	7.8	0.082	0.509	19.264293	-99.165781
T. C. México - Cuernavaca (Libre)	18.65	3	2	32014	3.9	86.4	1.7	4.4	0.9	1.6	0.7	0.3	0.1	90.3	1.7	8.0	0.089	0.509	19.267176	-99.164544
Plaza de Cobro Tlalpan	23.36	2	1	15077	2.2	83.7	4.7	2.7	2.0	2.9	0.6	0.8	0.4	85.9	4.7	9.4	0.145	0.500	19.242519	-99.148716
Plaza de Cobro Tlalpan	23.36	2	2	15077	2.2	83.7	4.7	2.7	2.0	2.9	0.6	0.8	0.4	85.9	4.7	9.4	0.145	0.500	19.242519	-99.148716
Lim. Edos. Term. CDMX Ppia. Mor.	47.09																			
Tres Marías	53.00	1	1	23314	2.3	83.6	3.8	5.8	0.8	2.4	0.7	0.5	0.1	85.9	3.8	10.3	0.133	0.538	19.077516	-99.233508
Tres Marías	53.00	1	2	20053	3.1	81.8	4.3	5.6	0.9	2.7	0.8	0.6	0.2	84.9	4.3	10.8	0.132	0.538	19.079180	-99.232773
Tres Marías	53.00	3	1	21964	1.5	81.9	4.9	5.9	1.2	3.0	0.8	0.6	0.2	83.4	4.9	11.7	0.122	0.520	19.043058	-99.233310
Tres Marías	53.00	3	2	20289	1.6	81.6	4.9	5.9	1.2	3.1	0.8	0.6	0.3	83.2	4.9	11.9	0.141	0.520	19.045478	-99.235433
T. Izq. Cuautla	70.50	1	1	19656	1.2	85.3	3.7	5.1	0.9	2.4	0.7	0.4	0.3	86.5	3.7	9.8	0.135	0.521	19.014491	-99.155689
T. Izq. Cuautla	70.50	1	2	18079	2.0	83.3	4.7	4.8	1.0	2.6	0.8	0.6	0.2	85.3	4.7	10.0	0.119	0.521	19.014443	-99.154473
T. Der. A Glorieta La Paloma	79.26	1	1	19396	1.3	84.9	2.6	5.4	1.1	3.0	0.9	0.5	0.3	86.2	2.6	11.2	0.123	0.513	18.982316	-99.219397
T. Der. A Glorieta La Paloma	79.26	1	2	20427	1.5	84.7	2.5	6.2	0.8	2.8	0.7	0.7	0.1	86.2	2.5	11.3	0.132	0.513	18.982191	-99.219532
Libramiento de Cuernavaca	80.50	1	1	23589	2.4	85.6	1.7	6.1	0.8	2.1	0.7	0.5	0.1	88.0	1.7	10.3	0.120	0.513	18.967372	-99.236698
Libramiento de Cuernavaca	80.50	1	2	26380	2.4	84.7	1.6	7.1	0.9	2.0	0.7	0.5	0.1	87.1	1.6	11.3	0.087	0.513	18.967395	-99.236606

16 CARR: Puente de Ixtla - Iguala (Cuota)

CLAVE: 00043

RUTA: MEX-091D

AÑO: 2023

LUGAR	ESTACION				CLASIFICACION VEHICULAR EN PORCIENTO										COORDENADAS					
	KM	TE	SC	TDPA	M	A	B	C2	C3	T3S2	T3S3	T3S2R4	OTROS	A	B	C	K'	D	LATITUD	LONGITUD
T. C. Cuernavaca - Acapulco (Cuota)	0.00																			
T. Izq. Puente de Ixtla	2.00	3	0	9111	3.0	83.4	3.0	5.0	2.0	1.6	0.8	0.9	0.3	86.4	3.0	10.6	0.082	0.510	18.628097	-99.327853
T. Der. Amacuzac	9.63	3	0	9371	3.0	82.3	4.9	3.3	2.5	1.6	1.0	0.8	0.6	85.3	4.9	9.8	0.080	0.504	18.590457	-99.376486
Lim. Edos. Term. Mor. Ppia. Gro.	18.20																			
T. Izq. Buenavista	33.58	3	0	5193	6.2	72.8	5.4	9.3	2.2	2.3	1.1	0.5	0.2	79.0	5.4	15.6	0.076	0.510	18.457727	-99.434497
Plaza de Cobro Iguala	59.14	2	0	4172	0.9	72.8	4.4	5.6	7.3	3.9	2.8	1.1	1.2	73.7	4.4	21.9	0.076	0.500	18.336191	-99.508296
T. Der. Iguala	59.50	1	0	5248	1.4	78.4	6.8	3.6	3.3	3.0	2.2	1.1	0.2	79.8	6.8	13.4	0.071	0.509	18.348188	-99.513515
T. C. Cuernavaca - Chilpancingo	62.80																			

17 CARR: Alpuyeca - Jojutla

CLAVE: 17021

RUTA: MOR-021

AÑO: 2023

LUGAR	ESTACION				CLASIFICACION VEHICULAR EN PORCIENTO										COORDENADAS					
	KM	TE	SC	TDPA	M	A	B	C2	C3	T3S2	T3S3	T3S2R4	OTROS	A	B	C	K'	D	LATITUD	LONGITUD
T. C. Cuernavaca - Chilpancingo	0.00																			
X. C. Cuernavaca - Iguala (Cuota)	2.20	1	0	16622	5.5	89.3	0.4	3.4	0.7	0.3	0.2	0.1	0.1	94.8	0.4	4.8	0.079	0.522	18.731902	-99.262257

MORELOS

17 CARR: Alpuyecá - Jojutla

CLAVE: 17021

RUTA: MOR-021

AÑO: 2023

LUGAR	ESTACION				CLASIFICACION VEHICULAR EN PORCIENTO										COORDENADAS					
	KM	TE	SC	TDPA	M	A	B	C2	C3	T3S2	T3S3	T3S2R4	OTROS	A	B	C	K'	D	LATITUD	LONGITUD
Xoxocotla	7.70	1	1	8268	7.0	85.4	0.8	4.2	0.7	1.0	0.5	0.3	0.1	92.4	0.8	6.8	0.083	0.501	18.704018	-99.250775
Xoxocotla	7.70	1	2	8233	7.0	85.5	0.8	4.2	0.6	1.0	0.5	0.3	0.1	92.5	0.8	6.7	0.090	0.501	18.704049	-99.250700
T. Izq. Zacatepec	11.94	1	1	7619	6.5	90.0	0.6	2.1	0.5	0.2	0.1	0.0	0.0	96.5	0.6	2.9	0.077	0.502	18.653575	-99.218930
T. Izq. Zacatepec	11.94	1	2	7678	6.0	90.7	0.7	2.0	0.4	0.1	0.1	0.0	0.0	96.7	0.7	2.6	0.079	0.502	18.653611	-99.218845
Jojutla	17.15	1	1	9962	6.8	90.2	0.4	2.3	0.2	0.1	0.0	0.0	0.0	97.0	0.4	2.6	0.085	0.517	18.627733	-99.205897
Jojutla	17.15	1	2	9289	5.7	90.9	0.5	2.5	0.3	0.1	0.0	0.0	0.0	96.6	0.5	2.9	0.090	0.517	18.627790	-99.205825

18 CARR: Amayuca - Izúcar de Matamoros

CLAVE: 00030

RUTA: MOR-031-PUE

AÑO: 2023

LUGAR	ESTACION				CLASIFICACION VEHICULAR EN PORCIENTO										COORDENADAS					
	KM	TE	SC	TDPA	M	A	B	C2	C3	T3S2	T3S3	T3S2R4	OTROS	A	B	C	K'	D	LATITUD	LONGITUD
Amayuca	0.00																			
X. C. Santa Bárbara - Izúcar de Matamoros	0.66	3	1	8143	15.5	74.7	1.4	4.6	1.9	0.7	0.5	0.3	0.4	90.2	1.4	8.4	0.075	0.516	18.714723	-98.796429
X. C. Santa Bárbara - Izúcar de Matamoros	0.66	3	2	8696	14.9	75.1	1.0	4.9	2.3	0.6	0.5	0.3	0.4	90.0	1.0	9.0	0.074	0.516	18.714717	-98.796345
Jonacatepec	3.84	3	1	4876	15.1	78.6	0.6	3.1	1.1	0.7	0.2	0.5	0.1	93.7	0.6	5.7	0.080	0.509	18.671966	-98.805404
Jonacatepec	3.84	3	2	4713	14.2	78.2	0.8	3.8	1.4	0.5	0.4	0.6	0.1	92.4	0.8	6.8	0.086	0.509	18.671941	-98.805332
T. Der. Tepalcingo	14.50	3	1	3010	14.0	76.5	1.1	4.0	2.4	0.7	0.5	0.7	0.1	90.5	1.1	8.4	0.081	0.507	18.589123	-98.833393
T. Der. Tepalcingo	14.50	3	2	2928	12.9	77.8	1.1	3.6	2.7	0.5	0.5	0.8	0.1	90.7	1.1	8.2	0.097	0.507	18.589476	-98.833506
Axochiapan	29.50	1	0	7162	14.9	75.2	0.9	5.9	1.5	0.7	0.2	0.6	0.1	90.1	0.9	9.0	0.074	0.502	18.511588	-98.776302
Axochiapan	29.50	3	1	3458	31.3	64.2	0.5	1.8	1.0	0.5	0.2	0.4	0.1	95.5	0.5	4.0	0.085	0.502	18.493957	-98.748248
Axochiapan	29.50	3	2	3480	26.6	68.5	0.5	2.0	1.0	0.5	0.2	0.6	0.1	95.1	0.5	4.4	0.092	0.502	18.493984	-98.748182
Lim. Edos. Term. Mor. Ppia. Pue.	36.85																			
Barranca Del Muerto	38.40	3	0	2840	17.6	65.3	1.0	5.1	5.5	1.8	1.4	2.0	0.3	82.9	1.0	16.1	0.077	0.502	18.476510	-98.690912
T. Der. Chietla	53.00	1	0	7168	21.5	74.1	0.5	2.2	1.3	0.2	0.1	0.1	0.0	95.6	0.5	3.9	0.083	0.516	18.526567	-98.587729
X. C. Santa Bárbara - Izúcar de Matamoros	67.50	1	0	8636	17.3	74.5	0.3	3.3	2.1	0.8	0.6	0.8	0.3	91.8	0.3	7.9	0.078	0.503	18.593562	-98.495680
X. C. Santa Bárbara - Izúcar de Matamoros	67.50	3	1	11003	23.5	70.7	0.7	1.5	1.3	0.8	0.3	0.9	0.3	94.2	0.7	5.1	0.065	0.525	18.600858	-98.475524
X. C. Santa Bárbara - Izúcar de Matamoros	67.50	3	2	12145	23.5	70.9	0.7	1.5	1.3	0.8	0.2	0.9	0.2	94.4	0.7	4.9	0.074	0.525	18.600917	-98.475531
Izúcar de Matamoros	69.00																			

19 CARR: Amayuca - Tlacotepec

CLAVE: 17020

RUTA: MOR-017

AÑO: 2023

LUGAR	ESTACION				CLASIFICACION VEHICULAR EN PORCIENTO										COORDENADAS					
	KM	TE	SC	TDPA	M	A	B	C2	C3	T3S2	T3S3	T3S2R4	OTROS	A	B	C	K'	D	LATITUD	LONGITUD
Amayuca	0.00	3	0	8194	6.3	90.6	0.5	1.1	0.7	0.3	0.3	0.1	0.1	96.9	0.5	2.6	0.084	0.504	18.729805	-98.789497
Temoac	5.50	3	0	7163	7.9	88.0	0.6	1.2	1.0	0.5	0.2	0.2	0.4	95.9	0.6	3.5	0.082	0.520	18.777732	-98.775061

MORELOS

19 CARR: Amayuca - Tlacotepec

CLAVE: 17020

RUTA: MOR-017

AÑO: 2023

LUGAR	ESTACION				CLASIFICACION VEHICULAR EN PORCIENTO													COORDENADAS		
	KM	TE	SC	TDPA	M	A	B	C2	C3	T3S2	T3S3	T3S2R4	OTROS	A	B	C	K'	D	LATITUD	LONGITUD
Zacualpan de Amilpas	7.50	1	0	6663	7.1	89.2	0.5	1.3	1.0	0.4	0.1	0.1	0.3	96.3	0.5	3.2	0.087	0.516	18.787083	-98.770213
Tlacotepec	12.00	1	0	5273	10.9	85.2	2.2	0.9	0.3	0.3	0.1	0.1	0.0	96.1	2.2	1.7	0.074	0.508	18.808493	-98.759058

20 CARR: Atlallahucan - Tlayacapan

CLAVE: 17301

RUTA: MOR-002

AÑO: 2023

LUGAR	ESTACION				CLASIFICACION VEHICULAR EN PORCIENTO													COORDENADAS		
	KM	TE	SC	TDPA	M	A	B	C2	C3	T3S2	T3S3	T3S2R4	OTROS	A	B	C	K'	D	LATITUD	LONGITUD
T. C. Santa Bárbara - Izúcar de Matamoros	0.00																			
Atlallahucan	1.50	1	1	6399	9.7	81.3	0.7	5.0	2.2	0.5	0.2	0.3	0.1	91.0	0.7	8.3	0.083	0.531	18.930030	-98.889134
Atlallahucan	1.50	1	2	5641	9.3	82.5	0.5	5.0	1.6	0.5	0.2	0.3	0.1	91.8	0.5	7.7	0.079	0.531	18.930001	-98.889205
Totolapan	7.00	1	0	4536	6.1	86.9	0.4	2.5	1.2	2.3	0.1	0.4	0.1	93.0	0.4	6.6	0.109	0.501	18.977689	-98.914567
Tlayacapan	15.50	1	0	5177	14.3	78.4	0.3	2.9	0.4	2.9	0.3	0.2	0.3	92.7	0.3	7.0	0.074	0.501	18.961615	-98.973431

21 CARR: Coatetelco - Miacatlán

CLAVE:

RUTA: MOR

AÑO: 2023

LUGAR	ESTACION				CLASIFICACION VEHICULAR EN PORCIENTO													COORDENADAS		
	KM	TE	SC	TDPA	M	A	B	C2	C3	T3S2	T3S3	T3S2R4	OTROS	A	B	C	K'	D	LATITUD	LONGITUD
Coatetelco	0.00	3	0	3888	10.3	85.1	0.2	3.3	0.4	0.3	0.1	0.2	0.1	95.4	0.2	4.4	0.094	0.501	18.737434	-99.326502
Miacatlán	6.00																			

22 CARR: Cocoyoc - Oaxtepec

CLAVE: 17001

RUTA: MOR

AÑO: 2023

LUGAR	ESTACION				CLASIFICACION VEHICULAR EN PORCIENTO													COORDENADAS		
	KM	TE	SC	TDPA	M	A	B	C2	C3	T3S2	T3S3	T3S2R4	OTROS	A	B	C	K'	D	LATITUD	LONGITUD
Cocoyoc	0.00	3	1	13568	10.3	85.2	0.8	1.5	0.8	0.7	0.3	0.2	0.2	95.5	0.8	3.7	0.085	0.512	18.886915	-98.985388
Cocoyoc	0.00	3	2	12928	10.1	86.7	0.5	1.3	0.5	0.4	0.2	0.2	0.1	96.8	0.5	2.7	0.089	0.512	18.888564	-98.989327
X. C. La Pera - Cuautla (Cuota)	2.50	1	1	11322	10.7	83.1	0.8	3.5	0.7	0.6	0.5	0.0	0.1	93.8	0.8	5.4	0.085	0.514	18.893700	-98.984229
X. C. La Pera - Cuautla (Cuota)	2.50	1	2	11997	9.0	85.0	0.8	3.2	0.7	0.7	0.2	0.2	0.2	94.0	0.8	5.2	0.089	0.514	18.898157	-98.985232
Oaxtepec	3.92	1	0	22996	8.6	87.5	0.4	1.1	0.9	0.5	0.4	0.4	0.2	96.1	0.4	3.5	0.079	0.516	18.902953	-98.976570

23 CARR: Ent. C. (Cuernavaca - Acapulco Cuota) - Tepetzingo

CLAVE: 00421

RUTA: MOR

AÑO: 2023

LUGAR	ESTACION				CLASIFICACION VEHICULAR EN PORCIENTO													COORDENADAS		
	KM	TE	SC	TDPA	M	A	B	C2	C3	T3S2	T3S3	T3S2R4	OTROS	A	B	C	K'	D	LATITUD	LONGITUD
T. C. (Cuernavaca - Acapulco Cuota)	0.00	3	0	4950	12.4	71.2	2.1	8.4	0.5	3.5	0.7	0.5	0.7	83.6	2.1	14.3	0.070	0.516	18.813663	-99.217934

MORELOS

23 CARR: Ent. C. (Cuernavaca - Acapulco Cuota) - Tepetzingo

CLAVE: 00421

RUTA: MOR

AÑO: 2023

LUGAR	ESTACION				CLASIFICACION VEHICULAR EN PORCIENTO														COORDENADAS	
	KM	TE	SC	TDPA	M	A	B	C2	C3	T3S2	T3S3	T3S2R4	OTROS	A	B	C	K'	D	LATITUD	LONGITUD
Tepetzingo	5.50	1	0	3490	15.8	76.1	1.2	3.5	1.3	1.3	0.2	0.6	0.0	91.9	1.2	6.9	0.081	0.519	18.791206	-99.179894

24 CARR: Ent. C. (Cuernavaca - Cuautlixco) - Oacalco

CLAVE: 00421

RUTA: MOR

AÑO: 2023

LUGAR	ESTACION				CLASIFICACION VEHICULAR EN PORCIENTO														COORDENADAS	
	KM	TE	SC	TDPA	M	A	B	C2	C3	T3S2	T3S3	T3S2R4	OTROS	A	B	C	K'	D	LATITUD	LONGITUD
T. C. (Cuernavaca - Cuautlixco)	0.00	3	0	1205	26.5	65.3	0.4	4.3	1.9	0.6	0.5	0.2	0.3	91.8	0.4	7.8	0.092	0.536	18.875928	-99.051458
Oacalco	10.00	1	0	4214	21.6	72.3	0.7	3.3	1.4	0.5	0.1	0.1	0.0	93.9	0.7	5.4	0.083	0.503	18.915160	-99.031135

25 CARR: Ent. Chiverías - Ent. El Abanico

CLAVE: 17302

RUTA: MOR

AÑO: 2023

LUGAR	ESTACION				CLASIFICACION VEHICULAR EN PORCIENTO														COORDENADAS	
	KM	TE	SC	TDPA	M	A	B	C2	C3	T3S2	T3S3	T3S2R4	OTROS	A	B	C	K'	D	LATITUD	LONGITUD
T. C. Alpuyecá - Jojutla	0.00	3	0	3726	2.7	90.9	1.2	3.3	1.0	0.4	0.3	0.2	0.0	93.6	1.2	5.2	0.071	0.502	18.659179	-99.225236
X. C. Xoxocotla - Tlzapotla	5.56	3	0	4558	2.9	88.4	1.1	4.5	1.3	0.7	0.3	0.6	0.2	91.3	1.1	7.6	0.105	0.503	18.644422	-99.271864
T. C. Cuernavaca - Acapulco (Cuota)	14.50	1	0	3936	2.7	89.1	0.9	4.4	1.8	0.4	0.3	0.2	0.2	91.8	0.9	7.3	0.073	0.501	18.649168	-99.294637

26 CARR: Galeana - Cuautla

CLAVE: 17004

RUTA: MOR-004

AÑO: 2023

LUGAR	ESTACION				CLASIFICACION VEHICULAR EN PORCIENTO														COORDENADAS	
	KM	TE	SC	TDPA	M	A	B	C2	C3	T3S2	T3S3	T3S2R4	OTROS	A	B	C	K'	D	LATITUD	LONGITUD
Galeana	0.00	3	1	9335	6.3	83.6	1.5	7.0	0.7	0.3	0.4	0.1	0.1	89.9	1.5	8.6	0.082	0.509	18.648887	-99.201564
Galeana	0.00	3	2	8988	6.2	83.8	1.6	7.0	0.6	0.3	0.3	0.1	0.1	90.0	1.6	8.4	0.079	0.509	18.648949	-99.201618
Zacatepec	4.00	3	0	4904	9.2	81.3	1.0	6.0	1.3	0.6	0.3	0.2	0.1	90.5	1.0	8.5	0.077	0.510	18.658715	-99.182224
Tlaltizapán	13.10	3	0	3230	9.4	78.2	1.2	7.2	1.4	1.1	1.2	0.2	0.1	87.6	1.2	11.2	0.115	0.508	18.698669	-99.111487
T. Der. Chinameca	16.06	3	0	1187	10.9	79.2	0.4	6.4	2.6	0.1	0.2	0.1	0.1	90.1	0.4	9.5	0.108	0.505	18.707556	-99.106988
Moyotepec	34.00	1	0	1499	14.3	74.9	0.7	2.6	6.6	0.4	0.4	0.0	0.1	89.2	0.7	10.1	0.096	0.510	18.727933	-99.002153
Villa de Ayala	38.62	1	0	11194	13.6	80.2	0.9	3.5	0.9	0.3	0.2	0.3	0.1	93.8	0.9	5.3	0.076	0.509	18.758150	-98.984567
T. Izq. Anenecuilco	40.50	1	1	7016	13.8	82.8	0.5	0.7	0.7	0.3	0.2	0.7	0.3	96.6	0.5	2.9	0.073	0.516	18.781807	-98.980155
T. Izq. Anenecuilco	40.50	1	2	7492	13.8	82.8	0.5	0.8	0.7	0.4	0.2	0.5	0.3	96.6	0.5	2.9	0.068	0.516	18.781815	-98.980199
Cuautla	46.00	1	1	8677	13.5	83.9	0.4	0.6	0.9	0.3	0.1	0.2	0.1	97.4	0.4	2.2	0.087	0.502	18.801683	-98.965527
Cuautla	46.00	1	2	8618	15.3	82.4	0.3	0.6	0.8	0.2	0.1	0.2	0.1	97.7	0.3	2.0	0.079	0.502	18.801818	-98.965482

MORELOS

27 CARR: Jojutla - Chinameca

CLAVE: 17310

RUTA: MOR

AÑO: 2023

LUGAR	ESTACION				CLASIFICACION VEHICULAR EN PORCIENTO													COORDENADAS		
	KM	TE	SC	TDPA	M	A	B	C2	C3	T3S2	T3S3	T3S2R4	OTROS	A	B	C	K'	D	LATITUD	LONGITUD
Jojutla	0.00	3	0	3031	13.0	76.3	1.0	4.4	3.7	0.4	0.3	0.8	0.1	89.3	1.0	9.7	0.084	0.513	18.610717	-99.164704
T. C. Temilpa - Tepalcingo	32.00	1	0	1318	8.7	83.9	0.3	5.3	1.3	0.3	0.2	0.0	0.0	92.6	0.3	7.1	0.070	0.516	18.622925	-99.007914
Chinameca	34.00																			

28 CARR: Jojutla - El Higuierón

CLAVE: 17039

RUTA: MOR-039

AÑO: 2023

LUGAR	ESTACION				CLASIFICACION VEHICULAR EN PORCIENTO													COORDENADAS		
	KM	TE	SC	TDPA	M	A	B	C2	C3	T3S2	T3S3	T3S2R4	OTROS	A	B	C	K'	D	LATITUD	LONGITUD
Jojutla	0.00	3	0	8075	12.9	84.9	0.2	1.3	0.3	0.2	0.1	0.1	0.0	97.8	0.2	2.0	0.067	0.532	18.606898	-99.174495
El Higuierón	4.50	1	0	5819	15.2	82.2	0.3	1.2	0.5	0.4	0.1	0.1	0.0	97.4	0.3	2.3	0.072	0.504	18.584446	-99.177603

29 CARR: Los Alacranes - Ocuituco

CLAVE:

RUTA: MOR

AÑO: 2023

LUGAR	ESTACION				CLASIFICACION VEHICULAR EN PORCIENTO													COORDENADAS		
	KM	TE	SC	TDPA	M	A	B	C2	C3	T3S2	T3S3	T3S2R4	OTROS	A	B	C	K'	D	LATITUD	LONGITUD
Los Alacranes	0.00	3	0	1861	7.4	86.2	0.4	5.0	0.6	0.3	0.1	0.0	0.0	93.6	0.4	6.0	0.113	0.514	18.748603	-98.838769
Ocuituco	19.00	1	0	1530	3.6	93.2	0.5	1.5	0.7	0.3	0.1	0.1	0.0	96.8	0.5	2.7	0.078	0.511	18.863292	-98.784090

30 CARR: Mazatepec - T. C. Ramal a Michapa

CLAVE:

RUTA: MOR

AÑO: 2023

LUGAR	ESTACION				CLASIFICACION VEHICULAR EN PORCIENTO													COORDENADAS		
	KM	TE	SC	TDPA	M	A	B	C2	C3	T3S2	T3S3	T3S2R4	OTROS	A	B	C	K'	D	LATITUD	LONGITUD
Mazatepec	0.00	3	0	755	9.2	85.8	0.1	4.5	0.4	0.0	0.0	0.0	0.0	95.0	0.1	4.9	0.090	0.504	18.722448	-99.370590
T. C. Ramal a Michapa	12.00	1	0	1429	9.6	84.6	0.1	4.6	0.8	0.2	0.1	0.0	0.0	94.2	0.1	5.7	0.076	0.504	18.634793	-99.378401

31 CARR: Moyotepec - San Rafael

CLAVE: 17306

RUTA: MOR

AÑO: 2023

LUGAR	ESTACION				CLASIFICACION VEHICULAR EN PORCIENTO													COORDENADAS		
	KM	TE	SC	TDPA	M	A	B	C2	C3	T3S2	T3S3	T3S2R4	OTROS	A	B	C	K'	D	LATITUD	LONGITUD
T. C. Galeana - Cuautla	0.00	3	0	3136	8.6	84.6	0.4	3.1	0.6	2.1	0.3	0.2	0.1	93.2	0.4	6.4	0.085	0.506	18.715168	-98.990442
T. C. Temilpa - Tepalcingo	7.50	1	0	2394	22.7	73.8	0.2	1.5	1.3	0.3	0.1	0.1	0.0	96.5	0.2	3.3	0.086	0.504	18.646585	-99.004388

MORELOS

32 CARR: Paso por Yautepec

CLAVE: 17025

RUTA: MOR

AÑO: 2023

LUGAR	ESTACION				CLASIFICACION VEHICULAR EN PORCIENTO													COORDENADAS		
	KM	TE	SC	TDPA	M	A	B	C2	C3	T3S2	T3S3	T3S2R4	OTROS	A	B	C	K'	D	LATITUD	LONGITUD
T. C. Cuernavaca - Cuautlixco (Poniente)	0.00	3	1	8645	21.8	71.9	0.6	3.5	1.0	0.5	0.3	0.2	0.2	93.7	0.6	5.7	0.077	0.510	18.872355	-99.077680
T. C. Cuernavaca - Cuautlixco (Poniente)	0.00	3	2	8290	21.8	71.7	0.7	3.4	1.0	0.5	0.4	0.3	0.2	93.5	0.7	5.8	0.079	0.510	18.872312	-99.077901
T. C. Cuernavaca - Cuautlixco (Oriente)	5.50	1	1	6144	7.3	86.5	0.4	3.0	0.4	1.2	0.4	0.3	0.5	93.8	0.4	5.8	0.076	0.509	18.896600	-99.041388
T. C. Cuernavaca - Cuautlixco (Oriente)	5.50	1	2	6371	7.3	86.5	0.4	3.0	0.5	1.2	0.4	0.3	0.4	93.8	0.4	5.8	0.079	0.509	18.896636	-99.041406

33 CARR: Pilares - T. C. (Xoxocotla - Tilzapotla)

CLAVE: 17008

RUTA: MOR-008

AÑO: 2023

LUGAR	ESTACION				CLASIFICACION VEHICULAR EN PORCIENTO													COORDENADAS		
	KM	TE	SC	TDPA	M	A	B	C2	C3	T3S2	T3S3	T3S2R4	OTROS	A	B	C	K'	D	LATITUD	LONGITUD
Pilares	0.00	3	1	6943	16.7	80.5	0.4	1.3	0.5	0.4	0.1	0.1	0.0	97.2	0.4	2.4	0.072	0.501	18.629664	-99.218350
Pilares	0.00	3	2	6964	16.7	80.9	0.3	1.1	0.5	0.3	0.1	0.1	0.0	97.6	0.3	2.1	0.065	0.501	18.629609	-99.218310
T. C. Xoxocotla - Tilzapotla	6.50	1	0	3133	7.0	87.2	0.3	4.3	0.3	0.2	0.2	0.3	0.2	94.2	0.3	5.5	0.072	0.501	18.614545	-99.256820

34 CARR: Ramal a Aeropuerto de Cuernavaca

CLAVE: 17250

RUTA: MOR

AÑO: 2023

LUGAR	ESTACION				CLASIFICACION VEHICULAR EN PORCIENTO													COORDENADAS		
	KM	TE	SC	TDPA	M	A	B	C2	C3	T3S2	T3S3	T3S2R4	OTROS	A	B	C	K'	D	LATITUD	LONGITUD
T. C. Cuernavaca - Chilpancingo	0.00	3	0	7243	13.9	83.0	0.2	1.6	0.5	0.6	0.1	0.1	0.0	96.9	0.2	2.9	0.088	0.506	18.804416	-99.226682
Aeropuerto de Cuernavaca	5.64																			

35 CARR: Ramal a Coatetelco

CLAVE: 17304

RUTA: MOR

AÑO: 2023

LUGAR	ESTACION				CLASIFICACION VEHICULAR EN PORCIENTO													COORDENADAS		
	KM	TE	SC	TDPA	M	A	B	C2	C3	T3S2	T3S3	T3S2R4	OTROS	A	B	C	K'	D	LATITUD	LONGITUD
T. C. Cuernavaca - Chilpancingo	0.00	3	0	4442	8.8	88.1	0.1	2.3	0.6	0.1	0.0	0.0	0.0	96.9	0.1	3.0	0.083	0.504	18.714930	-99.275401
Coatetelco	7.00																			

36 CARR: Ramal a Jolalpan

CLAVE: 00143

RUTA: MOR-PUE

AÑO: 2023

LUGAR	ESTACION				CLASIFICACION VEHICULAR EN PORCIENTO													COORDENADAS		
	KM	TE	SC	TDPA	M	A	B	C2	C3	T3S2	T3S3	T3S2R4	OTROS	A	B	C	K'	D	LATITUD	LONGITUD
Axochiapan	0.00	3	0	2969	11.2	75.9	0.8	8.9	1.6	0.5	0.4	0.5	0.2	87.1	0.8	12.1	0.083	0.527	18.480934	-98.748248
Lim. Edos. Term. Mor. Ppia. Pue.	4.00																			
Jolalpan	24.00																			

MORELOS

37 CARR: Ramal a Tetela del Volcán

CLAVE: 17010

RUTA: MOR-010

AÑO: 2023

LUGAR	ESTACION				CLASIFICACION VEHICULAR EN PORCIENTO										COORDENADAS					
	KM	TE	SC	TDPA	M	A	B	C2	C3	T3S2	T3S3	T3S2R4	OTROS	A	B	C	K'	D	LATITUD	LONGITUD
T. C. Santa Bárbara - Izúcar de Matamoros	0.00	3	1	7955	11.3	85.1	0.4	1.1	0.7	0.7	0.3	0.1	0.3	96.4	0.4	3.2	0.081	0.540	18.896218	-98.905909
T. C. Santa Bárbara - Izúcar de Matamoros	0.00	3	2	6781	11.4	84.0	0.7	1.3	0.8	1.1	0.3	0.1	0.3	95.4	0.7	3.9	0.079	0.540	18.896280	-98.905861
Yecapixtla	5.50	3	0	7134	10.7	84.8	0.4	2.2	0.9	0.3	0.1	0.1	0.5	95.5	0.4	4.1	0.073	0.508	18.869475	-98.844132
Ocuituco	15.00	1	0	4962	12.5	85.2	0.2	1.4	0.1	0.2	0.1	0.2	0.1	97.7	0.2	2.1	0.086	0.501	18.879159	-98.778815
Tetela del Volcán	22.00	1	0	6503	16.8	79.5	0.3	1.4	1.1	0.1	0.1	0.3	0.4	96.3	0.3	3.4	0.082	0.505	18.880444	-98.742422

38 CARR: T. C. (Coatetelco - Miacatlán) - Mazatepec

CLAVE:

RUTA: MOR

AÑO: 2023

LUGAR	ESTACION				CLASIFICACION VEHICULAR EN PORCIENTO										COORDENADAS					
	KM	TE	SC	TDPA	M	A	B	C2	C3	T3S2	T3S3	T3S2R4	OTROS	A	B	C	K'	D	LATITUD	LONGITUD
T. C. Coatetelco - Miacatlán	0.00																			
Mazatepec	4.14	1	0	4731	13.6	82.4	0.2	2.0	0.7	0.2	0.2	0.6	0.1	96.0	0.2	3.8	0.075	0.502	18.725794	-99.356046

39 CARR: T. C. (México - Cuernavaca (Libre)) - Huitzilac

CLAVE: 00451

RUTA: MOR

AÑO: 2023

LUGAR	ESTACION				CLASIFICACION VEHICULAR EN PORCIENTO										COORDENADAS					
	KM	TE	SC	TDPA	M	A	B	C2	C3	T3S2	T3S3	T3S2R4	OTROS	A	B	C	K'	D	LATITUD	LONGITUD
T. C. México - Cuernavaca (Libre)	0.00	3	0	5733	5.4	87.1	1.1	5.1	0.3	0.2	0.1	0.5	0.2	92.5	1.1	6.4	0.082	0.514	19.003426	-99.258818
Huitzilac	4.00	1	0	5127	5.6	89.7	0.8	2.1	0.3	0.6	0.3	0.5	0.1	95.3	0.8	3.9	0.080	0.512	19.022130	-99.266641

40 CARR: T. C. (San Gregorio - Oaxtepec) - Jojutla

CLAVE: 17002

RUTA: MOR-002

AÑO: 2023

LUGAR	ESTACION				CLASIFICACION VEHICULAR EN PORCIENTO										COORDENADAS					
	KM	TE	SC	TDPA	M	A	B	C2	C3	T3S2	T3S3	T3S2R4	OTROS	A	B	C	K'	D	LATITUD	LONGITUD
T. C. San Gregorio - Oaxtepec	0.00	3	0	5093	15.3	74.7	0.8	4.8	0.9	1.1	0.7	0.9	0.8	90.0	0.8	9.2	0.109	0.516	18.921705	-98.973597
X. C. La Pera - Cuautla (Cuota)	7.50	3	0	9560	27.1	68.7	0.6	1.1	0.8	0.8	0.4	0.5	0.0	95.8	0.6	3.6	0.083	0.501	18.927862	-99.026377
Yautepec	14.00	1	1	4053	29.6	64.7	0.8	2.2	1.0	0.7	0.5	0.5	0.0	94.3	0.8	4.9	0.087	0.507	18.908104	-99.048918
Yautepec	14.00	1	2	3947	29.6	64.6	0.7	2.2	1.0	0.7	0.6	0.6	0.0	94.2	0.7	5.1	0.083	0.507	18.908064	-99.048841
Yautepec	14.00	3	0	9960	7.5	84.9	0.6	3.6	0.7	0.8	0.6	0.9	0.4	92.4	0.6	7.0	0.091	0.511	18.867972	-99.069746
Tucumán	32.30	1	0	2386	6.1	87.9	0.2	3.2	1.4	0.5	0.2	0.4	0.1	94.0	0.2	5.8	0.091	0.519	18.769722	-99.116553
X. C. Galeana - Cuautla	40.50	3	0	5431	17.0	77.5	0.8	3.0	0.8	0.3	0.4	0.2	0.0	94.5	0.8	4.7	0.074	0.506	18.678470	-99.130566
Tlaquiltenango	50.50	1	0	8566	13.0	82.6	0.7	3.0	0.7	0.0	0.0	0.0	0.0	95.6	0.7	3.7	0.086	0.501	18.648937	-99.155809
Jojutla	53.50	1	0	13837	15.3	78.7	0.4	3.8	0.7	0.4	0.4	0.3	0.0	94.0	0.4	5.6	0.073	0.528	18.621853	-99.170480

MORELOS

41 CARR: Tehuixtla - Puente de Ixtla

CLAVE: 17307

RUTA: MOR

AÑO: 2023

LUGAR	ESTACION				CLASIFICACION VEHICULAR EN PORCIENTO													COORDENADAS		
	KM	TE	SC	TDPA	M	A	B	C2	C3	T3S2	T3S3	T3S2R4	OTROS	A	B	C	K'	D	LATITUD	LONGITUD
Tehuixtla	0.00	3	0	2571	16.6	75.6	1.0	4.0	1.3	0.4	0.9	0.2	0.0	92.2	1.0	6.8	0.085	0.502	18.565907	-99.279368
Puente de Ixtla	9.60	1	0	2568	18.6	79.9	0.2	0.7	0.5	0.1	0.0	0.0	0.0	98.5	0.2	1.3	0.073	0.504	18.601323	-99.309626
T. C. Cuernavaca - Chilpancingo	10.60																			

42 CARR: Tejalpa - Jojutla

CLAVE: 17014

RUTA: MOR-014

AÑO: 2023

LUGAR	ESTACION				CLASIFICACION VEHICULAR EN PORCIENTO													COORDENADAS		
	KM	TE	SC	TDPA	M	A	B	C2	C3	T3S2	T3S3	T3S2R4	OTROS	A	B	C	K'	D	LATITUD	LONGITUD
T. C. Cuernavaca - Cuautlixco	0.00																			
Jiutepec	1.97	3	0	9136	15.0	74.3	0.7	8.1	0.9	0.5	0.2	0.2	0.1	89.3	0.7	10.0	0.085	0.500	18.871899	-99.172936
Emiliano Zapata	7.00	3	1	7293	11.7	83.1	0.7	2.2	1.0	0.5	0.5	0.3	0.0	94.8	0.7	4.5	0.083	0.505	18.818474	-99.190983
Emiliano Zapata	7.00	3	2	7438	11.7	83.2	0.7	2.2	1.0	0.4	0.5	0.3	0.0	94.9	0.7	4.4	0.088	0.505	18.818468	-99.190904
T. Izq. Chiconcuac	14.50	1	1	8917	16.4	78.9	0.5	2.0	1.1	0.3	0.4	0.2	0.2	95.3	0.5	4.2	0.097	0.501	18.784981	-99.205710
T. Izq. Chiconcuac	14.50	1	2	8951	16.4	78.8	0.5	2.0	1.1	0.4	0.4	0.2	0.2	95.2	0.5	4.3	0.084	0.501	18.784782	-99.205716
T. Izq. Chiconcuac	14.50	3	1	6985	20.7	72.6	0.6	2.0	1.6	0.9	0.5	0.7	0.4	93.3	0.6	6.1	0.082	0.501	18.779595	-99.208192
T. Izq. Chiconcuac	14.50	3	2	7026	20.7	72.5	0.6	2.0	1.6	0.9	0.6	0.8	0.3	93.2	0.6	6.2	0.094	0.501	18.779518	-99.208151
X. C. Zacatepec - Tlaquiltenango	32.90	1	0	9045	13.5	79.9	0.5	4.0	1.2	0.6	0.1	0.2	0.0	93.4	0.5	6.1	0.065	0.506	18.649948	-99.184333
Jojutla	35.00	1	0	9914	12.0	81.0	0.9	4.0	1.3	0.6	0.1	0.0	0.1	93.0	0.9	6.1	0.072	0.513	18.625924	-99.183792

43 CARR: Temilpa - Tepalcingo

CLAVE: 17009

RUTA: MOR-009

AÑO: 2023

LUGAR	ESTACION				CLASIFICACION VEHICULAR EN PORCIENTO													COORDENADAS		
	KM	TE	SC	TDPA	M	A	B	C2	C3	T3S2	T3S3	T3S2R4	OTROS	A	B	C	K'	D	LATITUD	LONGITUD
T. C. Galeana - Cuautla	0.00	3	0	1826	7.1	77.3	0.9	6.5	3.3	2.3	2.4	0.1	0.1	84.4	0.9	14.7	0.107	0.510	18.694524	-99.101115
Tepalcingo	40.50	1	0	3294	10.6	77.6	0.4	6.8	2.5	1.0	1.0	0.0	0.1	88.2	0.4	11.4	0.075	0.514	18.604641	-98.853947

44 CARR: Tepoztlán - Yauatepec

CLAVE: 17013

RUTA: MOR-013

AÑO: 2023

LUGAR	ESTACION				CLASIFICACION VEHICULAR EN PORCIENTO													COORDENADAS		
	KM	TE	SC	TDPA	M	A	B	C2	C3	T3S2	T3S3	T3S2R4	OTROS	A	B	C	K'	D	LATITUD	LONGITUD
Tepoztlán	0.00	3	0	12604	15.5	79.1	0.6	2.2	0.5	0.5	0.5	0.7	0.4	94.6	0.6	4.8	0.084	0.503	18.980485	-99.085347
Yauatepec	14.82	1	0	5703	28.0	66.6	0.7	2.5	1.3	0.8	0.1	0.0	0.0	94.6	0.7	4.7	0.086	0.505	18.901888	-99.064003

MORELOS

45 CARR: Tequesquitengo - Jojutla

CLAVE: 17013

RUTA: MOR

AÑO: 2023

LUGAR	ESTACION				CLASIFICACION VEHICULAR EN PORCIENTO										COORDENADAS					
	KM	TE	SC	TDPA	M	A	B	C2	C3	T3S2	T3S3	T3S2R4	OTROS	A	B	C	K'	D	LATITUD	LONGITUD
T. C. Xoxocotla - Tilzapotla	0.00	3	1	2866	7.0	86.8	0.5	4.2	0.7	0.4	0.2	0.2	0.0	93.8	0.5	5.7	0.085	0.504	18.595841	-99.253911
T. C. Xoxocotla - Tilzapotla	0.00	3	2	2915	6.8	86.5	0.5	4.3	0.9	0.6	0.2	0.2	0.0	93.3	0.5	6.2	0.092	0.504	18.595904	-99.253901
Jojutla	9.50																			

46 CARR: Xoxocotla - Tilzapotla

CLAVE: 17005

RUTA: MOR-006

AÑO: 2023

LUGAR	ESTACION				CLASIFICACION VEHICULAR EN PORCIENTO										COORDENADAS					
	KM	TE	SC	TDPA	M	A	B	C2	C3	T3S2	T3S3	T3S2R4	OTROS	A	B	C	K'	D	LATITUD	LONGITUD
Xoxocotla	0.00	3	1	4410	17.4	78.0	0.8	1.4	0.9	1.1	0.1	0.3	0.0	95.4	0.8	3.8	0.093	0.507	18.680013	-99.252253
Xoxocotla	0.00	3	2	4293	17.4	78.1	0.8	1.5	0.8	1.0	0.1	0.3	0.0	95.5	0.8	3.7	0.097	0.507	18.679995	-99.252187
Tehuixtla	19.50	1	0	6166	10.1	84.1	0.6	3.7	0.9	0.4	0.2	0.0	0.0	94.2	0.6	5.2	0.078	0.503	18.574028	-99.263982
Tehuixtla	19.50	3	0	4609	20.9	76.3	0.3	0.9	1.1	0.3	0.1	0.1	0.0	97.2	0.3	2.5	0.081	0.508	18.550686	-99.267385
Tilzapotla	29.50	1	0	3333	9.8	88.2	0.1	1.1	0.6	0.1	0.0	0.1	0.0	98.0	0.1	1.9	0.083	0.509	18.494047	-99.277992

47 CARR: Zacatepec - Tlaquiltenango

CLAVE: 17300

RUTA: MOR

AÑO: 2023

LUGAR	ESTACION				CLASIFICACION VEHICULAR EN PORCIENTO										COORDENADAS					
	KM	TE	SC	TDPA	M	A	B	C2	C3	T3S2	T3S3	T3S2R4	OTROS	A	B	C	K'	D	LATITUD	LONGITUD
Zacatepec	0.00	3	0	8711	14.2	83.6	0.5	1.4	0.2	0.1	0.0	0.0	0.0	97.8	0.5	1.7	0.078	0.501	18.647405	-99.186740
Tlaquiltenango	4.08	1	0	7397	23.0	72.6	0.6	1.3	0.9	0.6	0.2	0.7	0.1	95.6	0.6	3.8	0.070	0.502	18.639845	-99.174416

48 CARR: Atlixco - Jantetelco (Cuota)

CLAVE: 00430

RUTA: PUE-D

AÑO: 2023

LUGAR	ESTACION				CLASIFICACION VEHICULAR EN PORCIENTO										COORDENADAS					
	KM	TE	SC	TDPA	M	A	B	C2	C3	T3S2	T3S3	T3S2R4	OTROS	A	B	C	K'	D	LATITUD	LONGITUD
T. C. Puebla - Izúcar de Matamoros	0.00	3	0	7923	2.0	77.8	3.2	11.9	1.7	0.9	0.7	1.5	0.3	79.8	3.2	17.0	0.100	0.510	18.942812	-98.401937
Lim. Edos. Term. Pue. Ppia. Mor.	48.60																			
T. C. Santa Bárbara - Izúcar de Matamoros	54.90	1	0	7804	2.6	79.2	4.1	5.7	2.6	2.6	1.0	1.5	0.7	81.8	4.1	14.1	0.085	0.513	18.706600	-98.767659

49 CARR: Tres Marías - Santa Martha

CLAVE: 00172

RUTA: MEX-106-EM

AÑO: 2023

LUGAR	ESTACION				CLASIFICACION VEHICULAR EN PORCIENTO										COORDENADAS					
	KM	TE	SC	TDPA	M	A	B	C2	C3	T3S2	T3S3	T3S2R4	OTROS	A	B	C	K'	D	LATITUD	LONGITUD
Tres Marías	0.00	3	0	6970	5.1	89.0	0.7	2.7	1.0	0.5	0.3	0.6	0.1	94.1	0.7	5.2	0.080	0.506	19.048901	-99.248768
Laguna de Zempoala	14.00																			

MORELOS

49 CARR: Tres Marias - Santa Martha

CLAVE: 00172

RUTA: MEX-106-EM

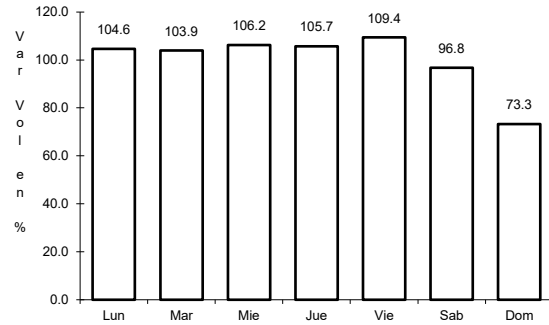
AÑO: 2023

LUGAR	ESTACION				CLASIFICACION VEHICULAR EN PORCIENTO													COORDENADAS		
	KM	TE	SC	TDPA	M	A	B	C2	C3	T3S2	T3S3	T3S2R4	OTROS	A	B	C	K'	D	LATITUD	LONGITUD
Lim. Edos. Term. Mor. Ppia. Méx.	14.50																			
Santa Martha	28.35	1	0	4197	3.1	86.5	1.9	6.9	1.0	0.4	0.1	0.1	0.0	89.6	1.9	8.5	0.101	0.514	19.063220	-99.379565

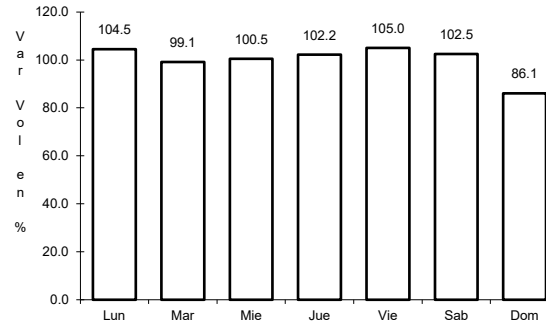
1 CARR: Cuernavaca - Chilpancingo

CLAVE: 00042

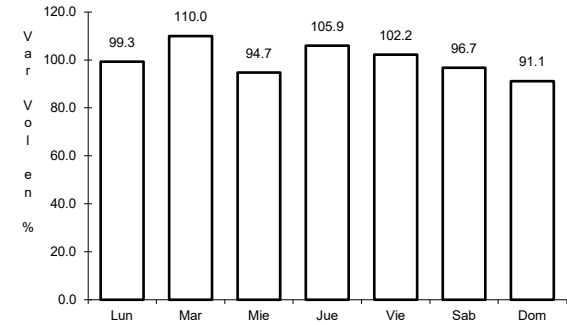
RUTA: MEX-095



Km: 9.80 Tipo: 1 Sent: 1



Km: 9.80 Tipo: 1 Sent: 2

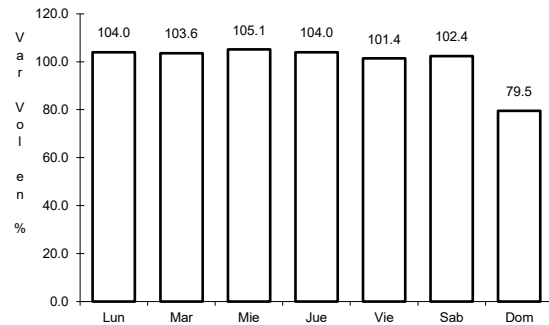


Km: 119.63 Tipo: 1 Sent: 0

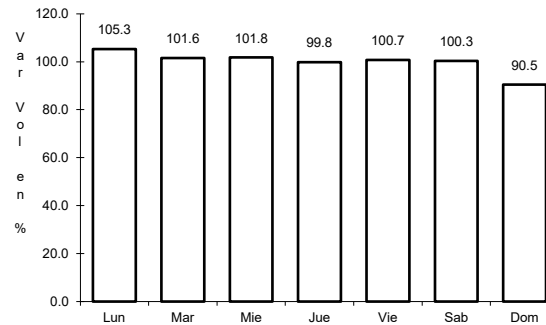
2 CARR: Cuernavaca - Cuautlixco

CLAVE: 17199

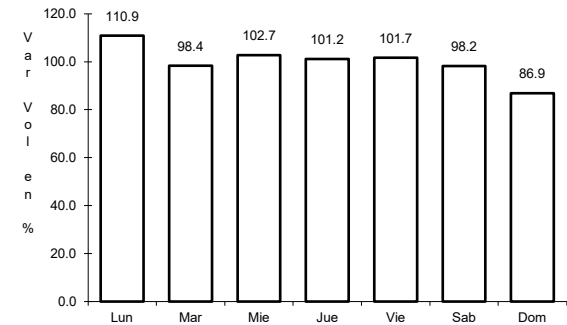
RUTA: MEX-138



Km: 7.78 Tipo: 1 Sent: 1



Km: 7.78 Tipo: 1 Sent: 2

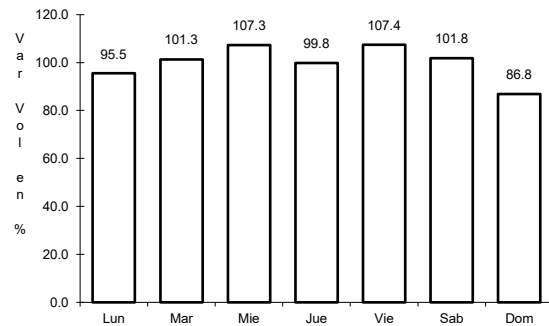


Km: 43.15 Tipo: 1 Sent: 1

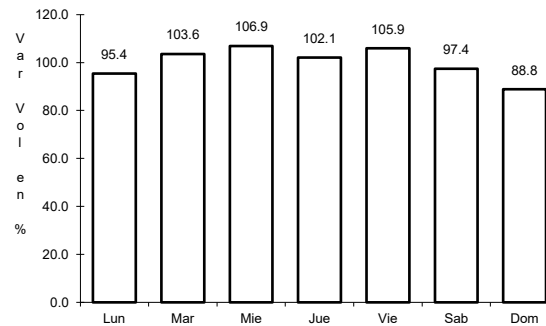
3 CARR: Cuernavaca - Tepoztlán

CLAVE: 17198

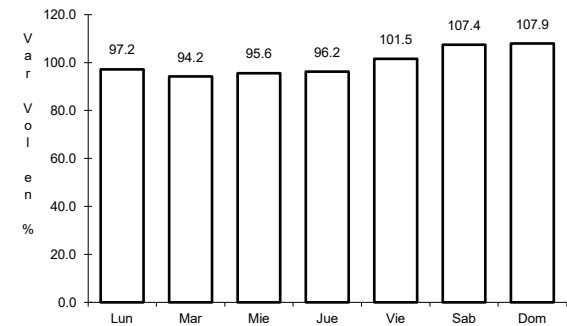
RUTA: MEX-162



Km: 2.83 Tipo: 1 Sent: 1



Km: 2.83 Tipo: 1 Sent: 2

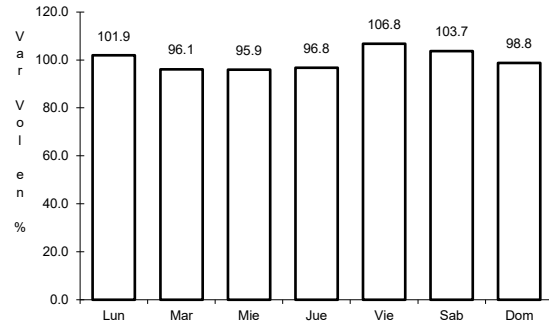


Km: 18.20 Tipo: 1 Sent: 0

4 CARR: Ent. Alpuyecá - Grutas de Cacahuamilpa

CLAVE: 00421

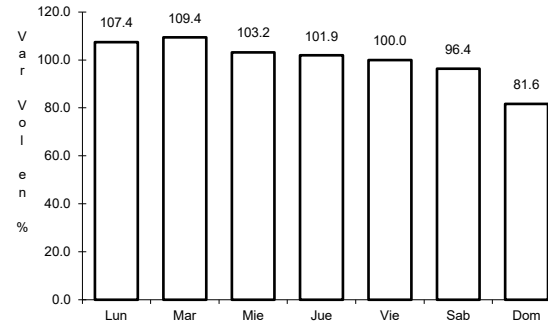
ruta: MEX-166



Km: 0.00

Tipo: 3

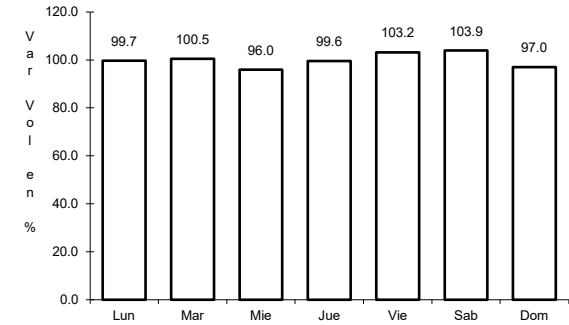
Sent: 0



Km: 18.28

Tipo: 3

Sent: 0



Km: 41.26

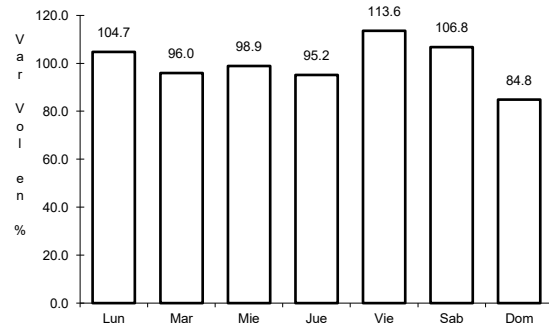
Tipo: 1

Sent: 0

5 CARR: Libramiento de Cuautla

CLAVE: 17309

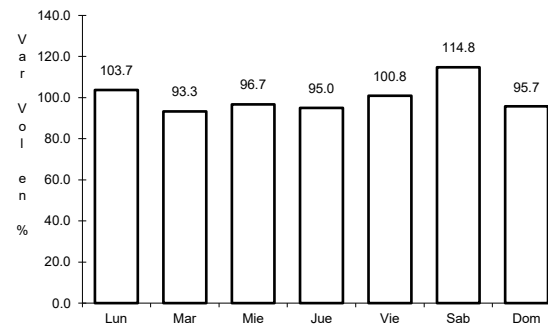
ruta: MEX-160



Km: 0.00

Tipo: 3

Sent: 1



Km: 0.00

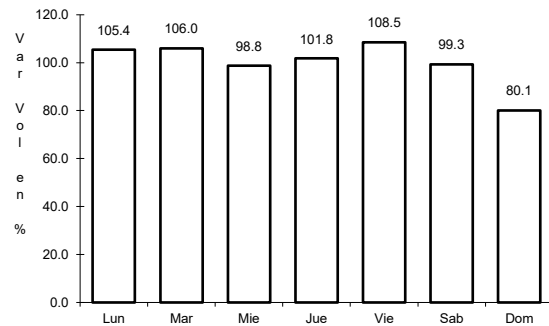
Tipo: 3

Sent: 2

6 CARR: Libramiento de Cuernavaca

CLAVE: 17400

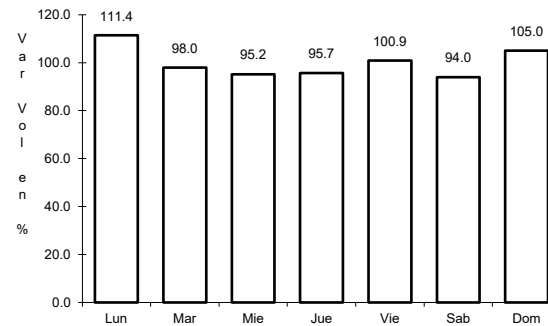
ruta: MEX-095



Km: 1.30

Tipo: 1

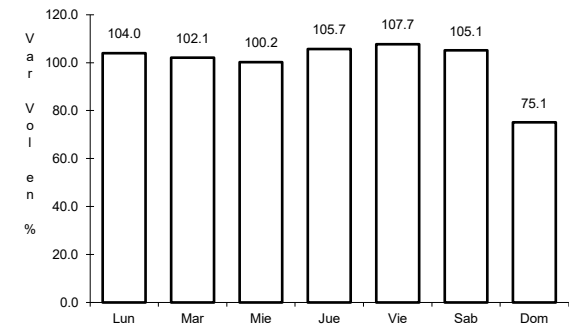
Sent: 1



Km: 1.30

Tipo: 1

Sent: 2



Km: 14.70

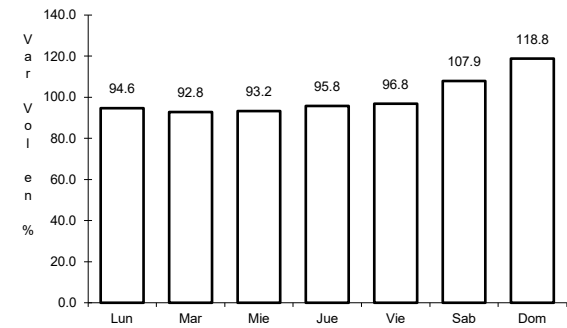
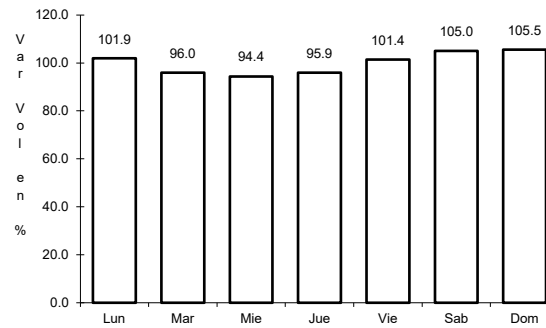
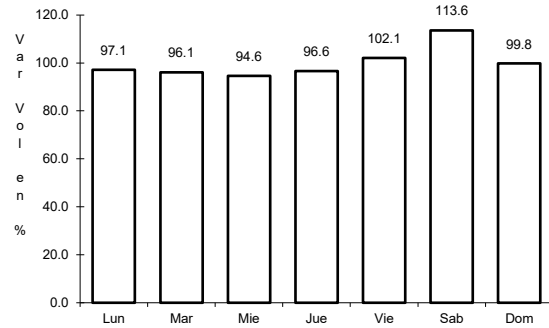
Tipo: 1

Sent: 1

7 CARR: México - Cuernavaca (Libre)

CLAVE: 00040

ruta: MEX-095



Km: 28.78 Tipo: 1 Sent: 1

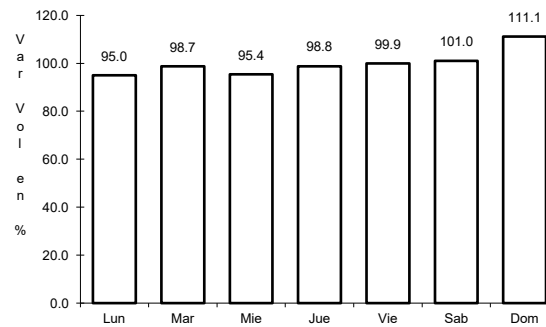
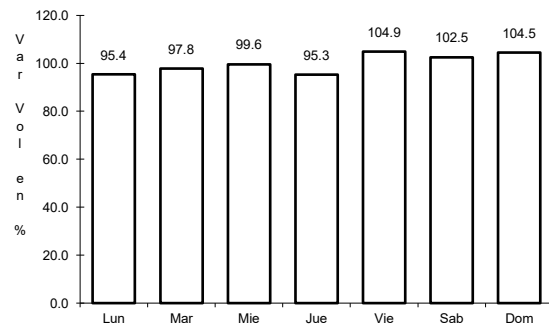
Km: 28.78 Tipo: 1 Sent: 2

Km: 51.40 Tipo: 3 Sent: 0

8 CARR: Ramal a Michapa

CLAVE: 17303

ruta: MEX-166



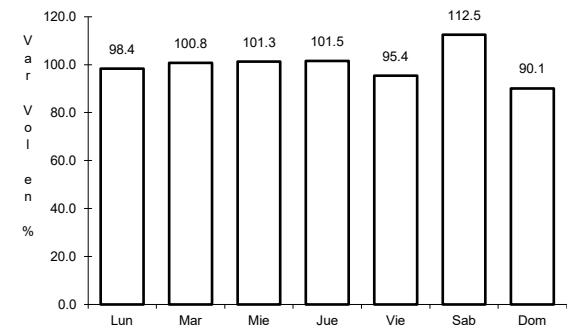
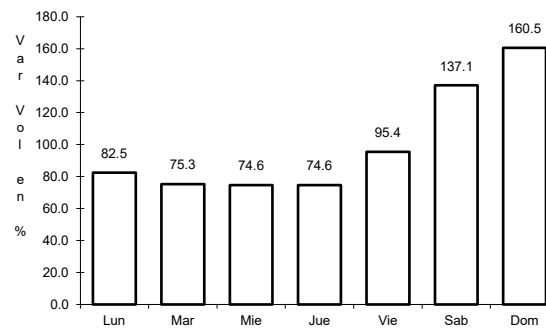
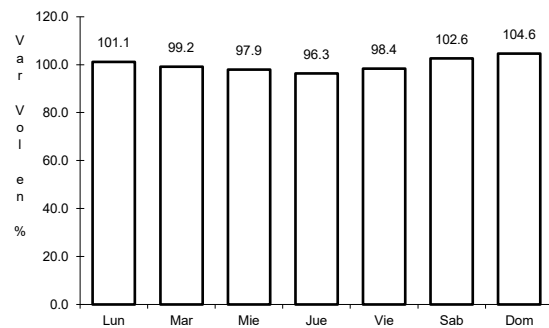
Km: 0.00 Tipo: 3 Sent: 0

Km: 16.22 Tipo: 1 Sent: 0

9 CARR: San Gregorio - Oaxtepec

CLAVE: 00901

ruta: MEX-113



Km: 0.00 Tipo: 3 Sent: 0

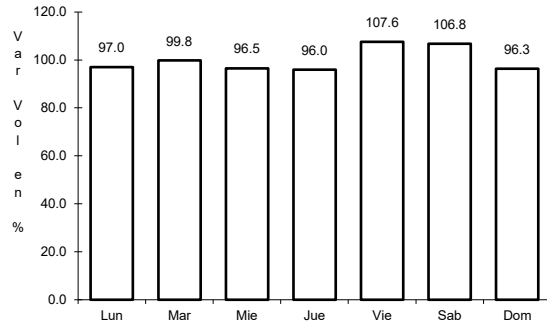
Km: 33.80 Tipo: 1 Sent: 0

Km: 53.00 Tipo: 3 Sent: 1

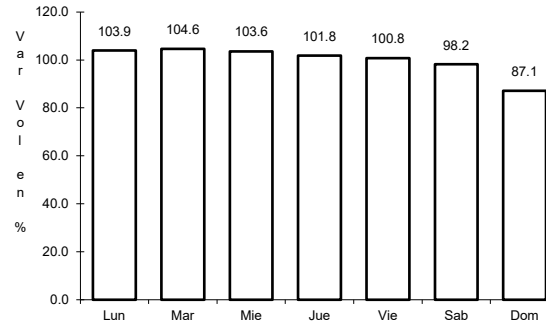
10 CARR: Santa Bárbara - Izúcar de Matamoros

CLAVE: 00451

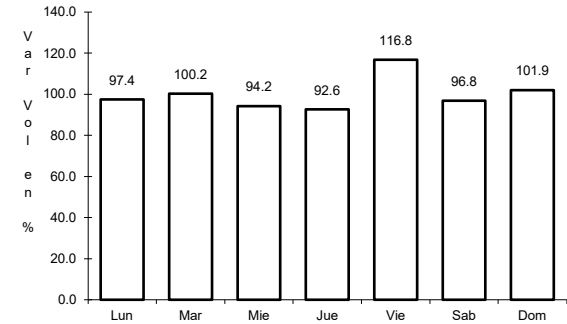
ruta: MEX-115-160



Km: 0.00 Tipo: 3 Sent: 1



Km: 0.00 Tipo: 3 Sent: 2

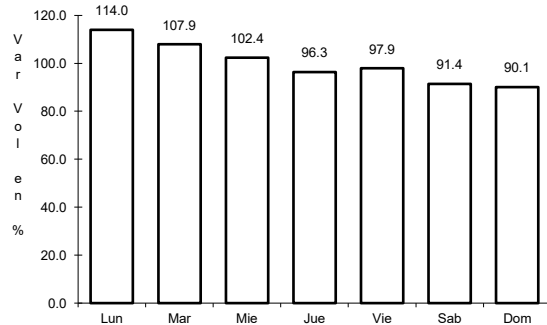


Km: 102.96 Tipo: 3 Sent: 0

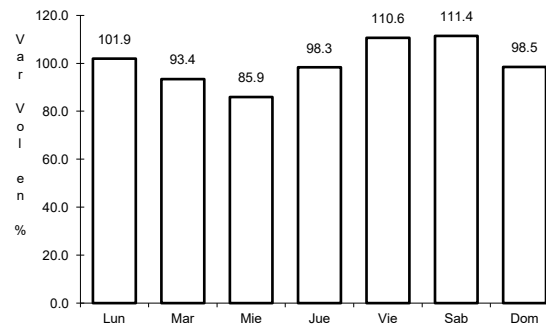
11 CARR: Cuernavaca - Acapulco (Cuota)

CLAVE: 00045

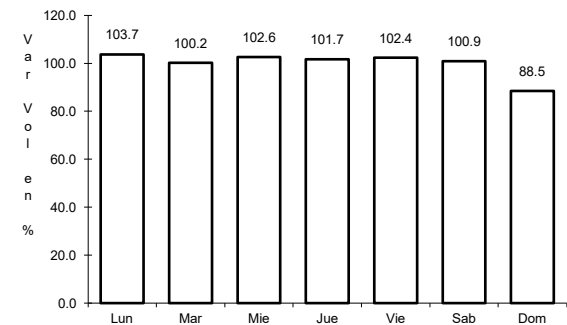
ruta: MEX-095D



Km: 0.00 Tipo: 3 Sent: 1



Km: 0.00 Tipo: 3 Sent: 2

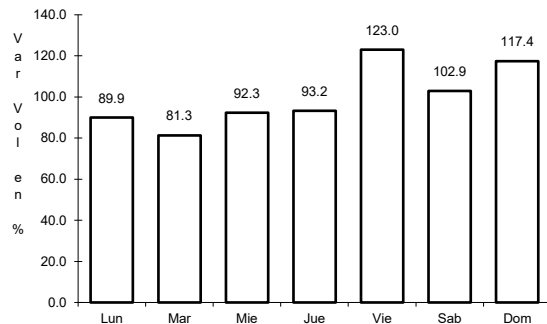


Km: 271.50 Tipo: 1 Sent: 1

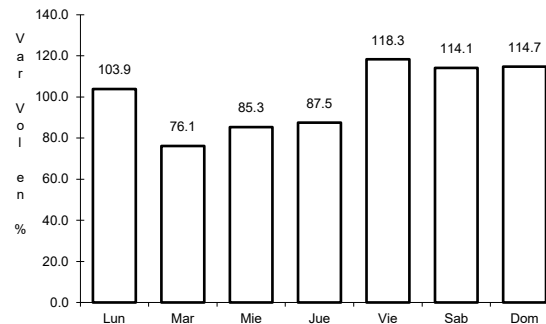
12 CARR: Jantetelco - El Higuérón (Cuota)

CLAVE:

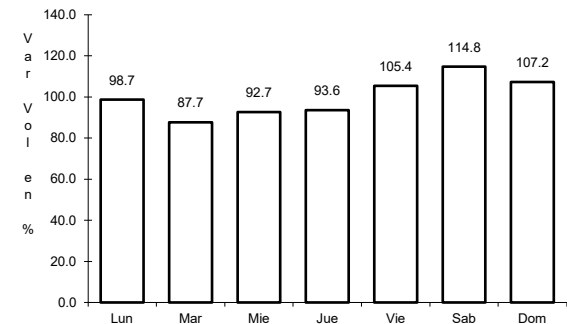
ruta: MEX-037-D



Km: 0.00 Tipo: 3 Sent: 0



Km: 30.00 Tipo: 1 Sent: 0

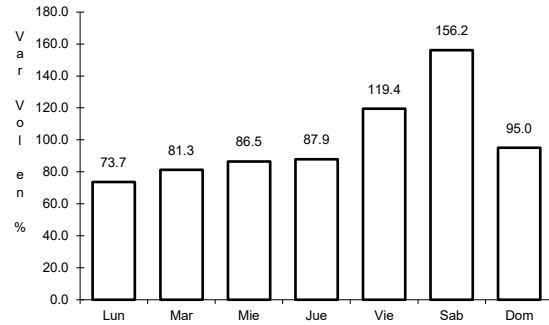


Km: 62.00 Tipo: 1 Sent: 0

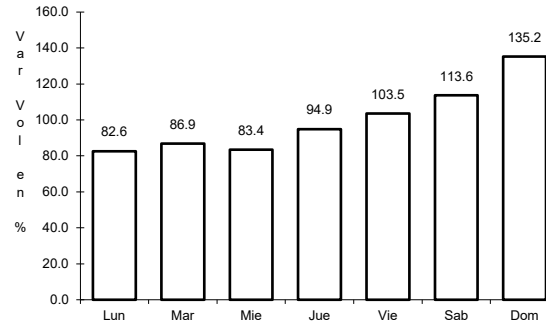
13 CARR: La Pera - Cuautla (Cuota)

CLAVE: 17161

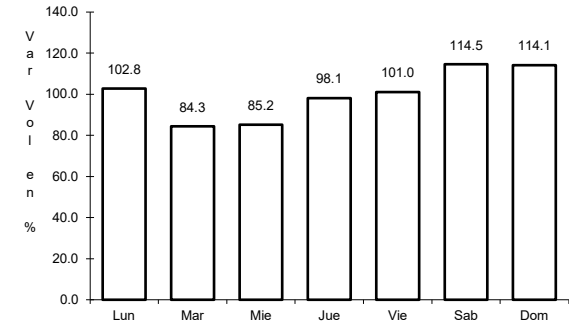
RUTA: MEX-160D



Km: 0.00 Tipo: 3 Sent: 1



Km: 0.00 Tipo: 3 Sent: 2

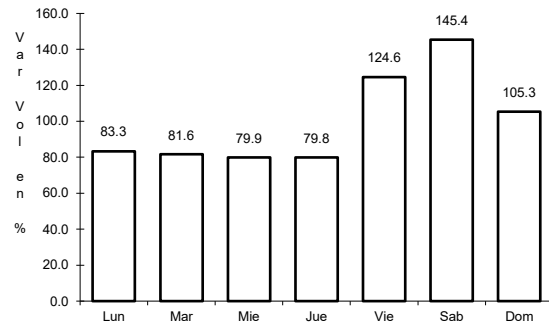


Km: 34.16 Tipo: 1 Sent: 1

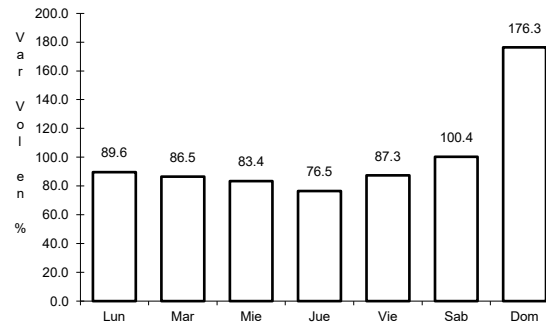
14 CARR: Libramiento Amecameca - Nepantla (Cuota)

CLAVE:

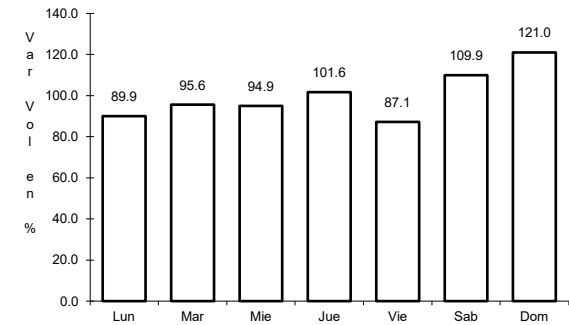
RUTA: MEX-115D



Km: 28.60 Tipo: 3 Sent: 1



Km: 28.60 Tipo: 3 Sent: 2

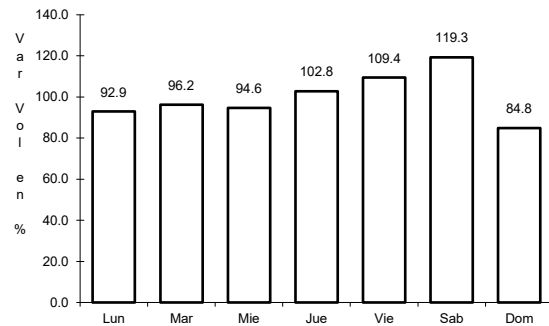


Km: 51.80 Tipo: 3 Sent: 1

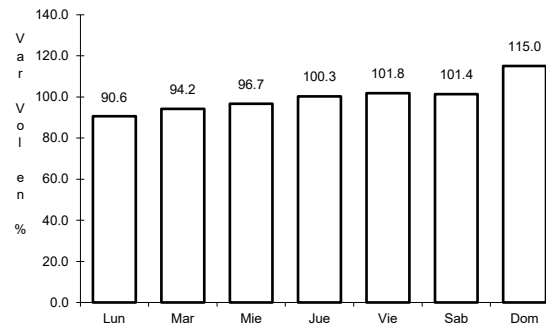
15 CARR: México - Cuernavaca (Cuota)

CLAVE: 00041

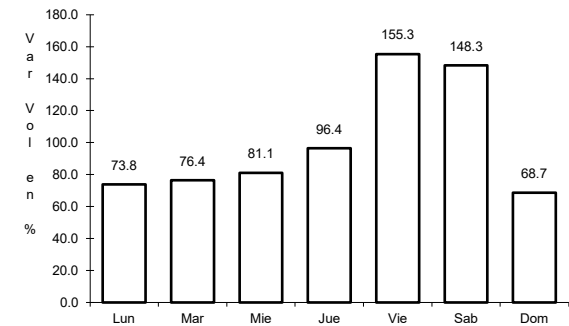
RUTA: MEX-095D



Km: 18.65 Tipo: 3 Sent: 1



Km: 18.65 Tipo: 3 Sent: 2

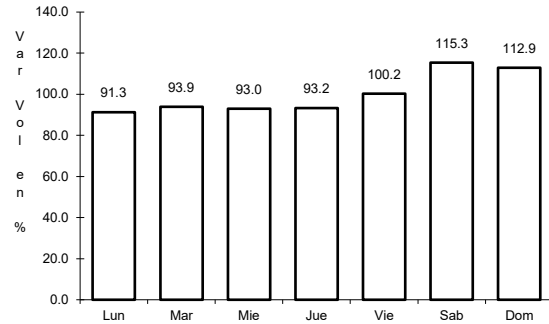


Km: 70.50 Tipo: 1 Sent: 1

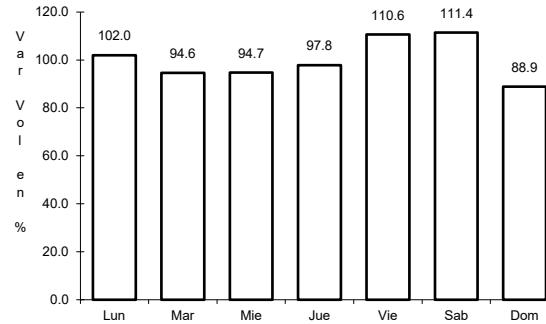
16 CARR: Puente de Ixtla - Iguala (Cuota)

CLAVE: 00043

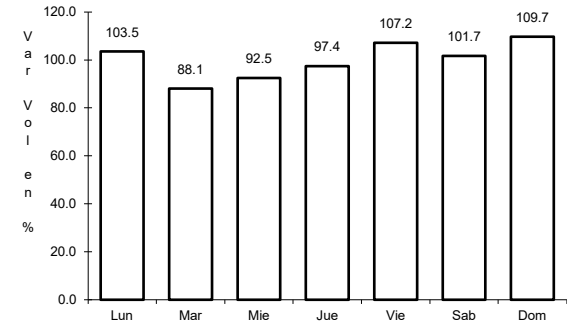
RUTA: MEX-091D



Km: 2.00 Tipo: 3 Sent: 0



Km: 33.58 Tipo: 3 Sent: 0

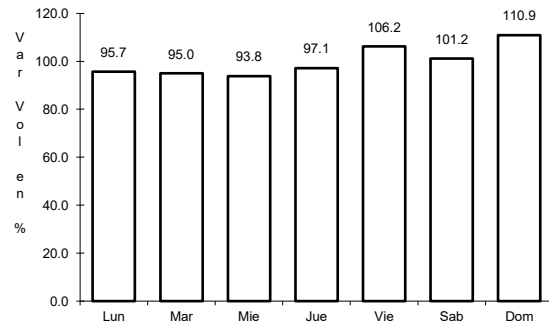


Km: 59.50 Tipo: 1 Sent: 0

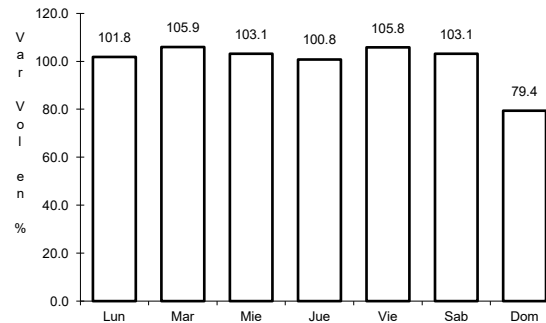
17 CARR: Alpuyecá - Jojutla

CLAVE: 17021

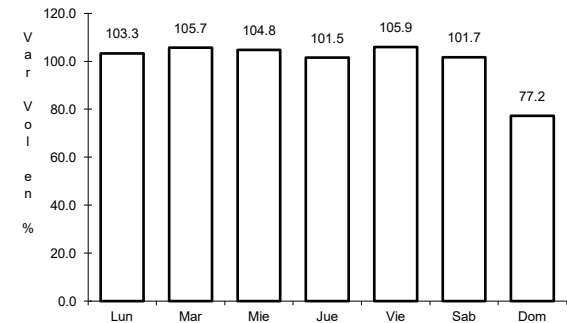
RUTA: MOR-021



Km: 2.20 Tipo: 1 Sent: 0



Km: 17.15 Tipo: 1 Sent: 1

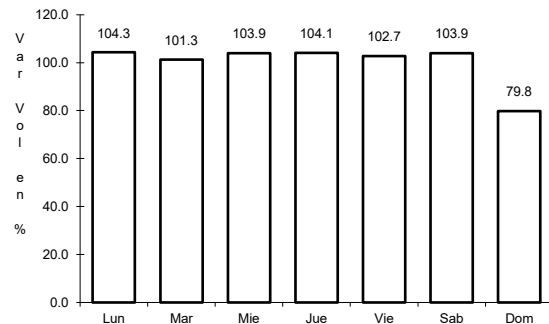


Km: 17.15 Tipo: 1 Sent: 2

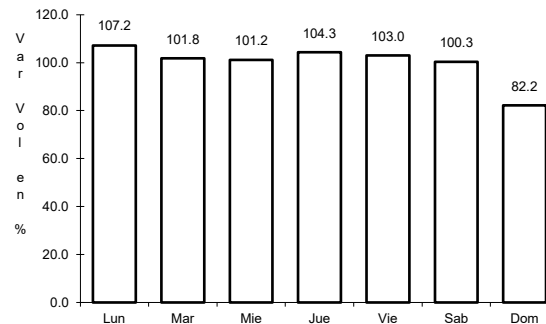
18 CARR: Amayuca - Izúcar de Matamoros

CLAVE: 00030

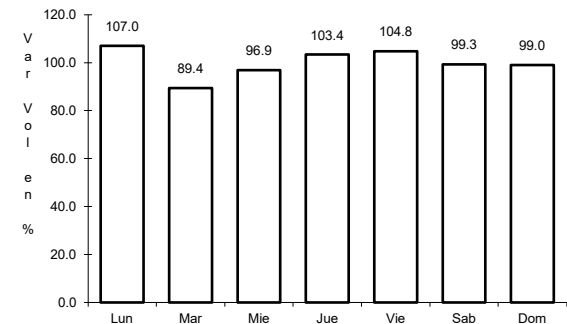
RUTA: MOR-031-PUE



Km: 0.66 Tipo: 3 Sent: 1



Km: 0.66 Tipo: 3 Sent: 2

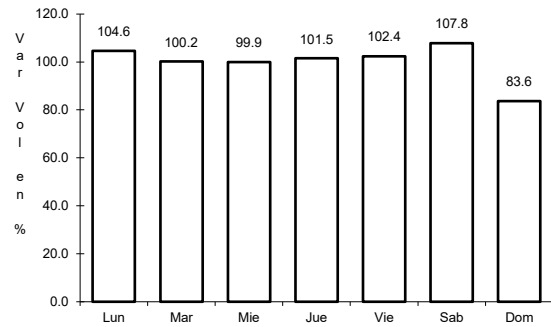


Km: 38.40 Tipo: 3 Sent: 0

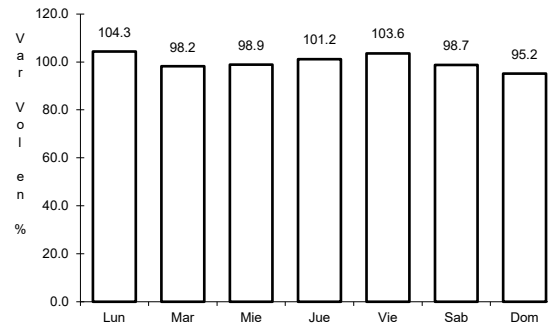
19 CARR: Amayuca - Tlacotepec

CLAVE: 17020

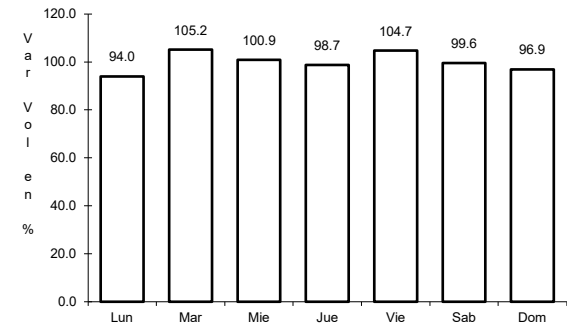
RUTA: MOR-017



Km: 0.00 Tipo: 3 Sent: 0



Km: 5.50 Tipo: 3 Sent: 0

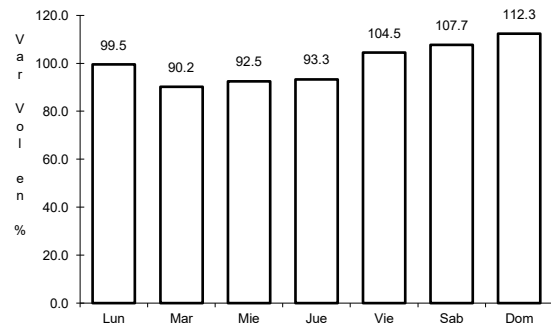


Km: 12.00 Tipo: 1 Sent: 0

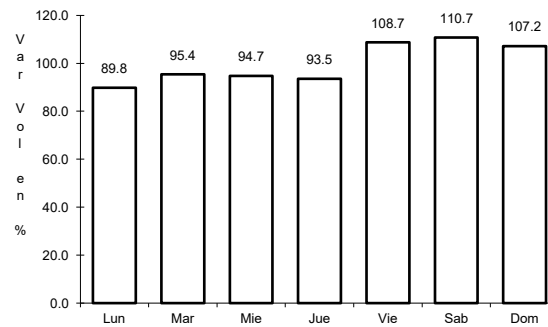
20 CARR: Atlatlahun - Tlayacapan

CLAVE: 17301

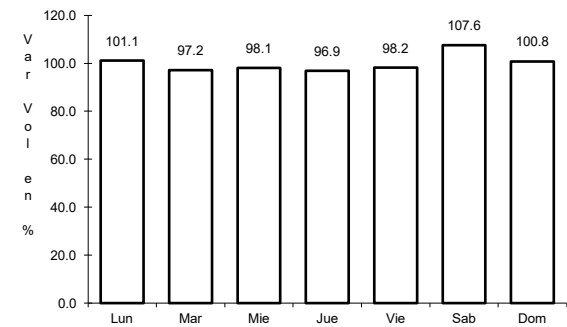
RUTA: MOR-002



Km: 1.50 Tipo: 1 Sent: 1



Km: 1.50 Tipo: 1 Sent: 2

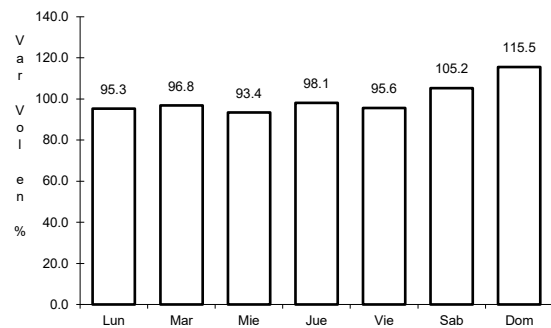


Km: 15.50 Tipo: 1 Sent: 0

21 CARR: Coatetelco - Miacatlán

CLAVE:

RUTA: MOR

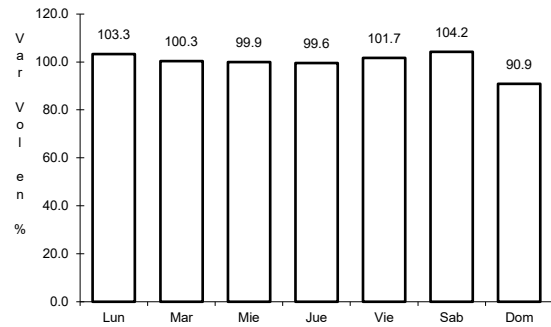


Km: 0.00 Tipo: 3 Sent: 0

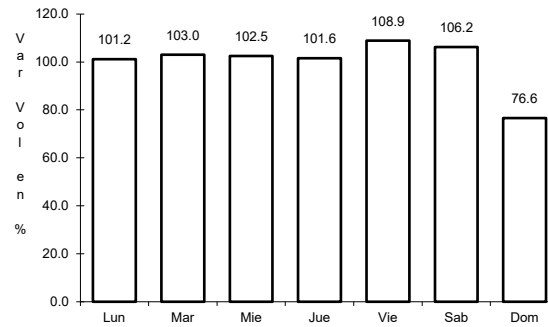
22 CARR: Cocoyoc - Oaxtepec

CLAVE: 17001

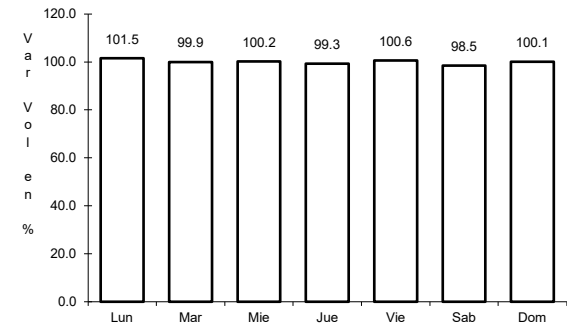
RUTA: MOR



Km: 0.00 Tipo: 3 Sent: 1



Km: 0.00 Tipo: 3 Sent: 2

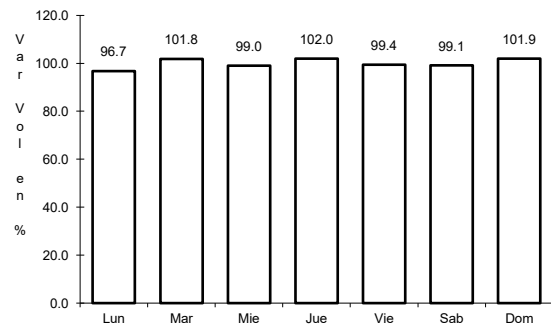


Km: 3.92 Tipo: 1 Sent: 0

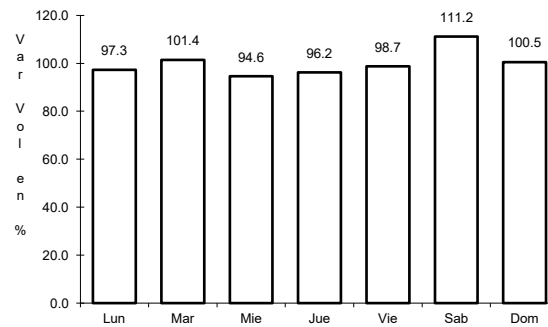
23 CARR: Ent. C. (Cuernavaca - Acapulco Cuota) - Tepetzingo

CLAVE: 00421

RUTA: MOR



Km: 0.00 Tipo: 3 Sent: 0

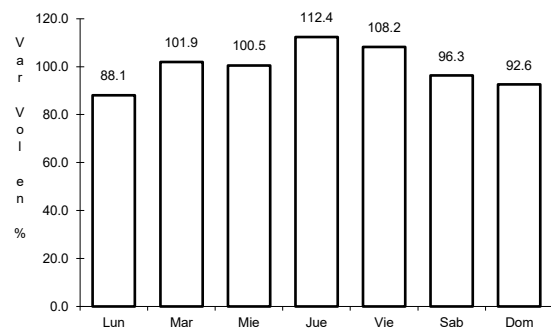


Km: 5.50 Tipo: 1 Sent: 0

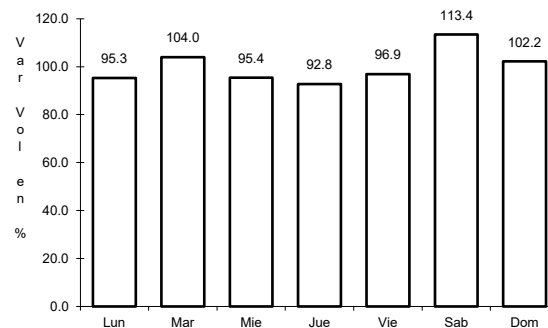
24 CARR: Ent. C. (Cuernavaca - Cuautlixco) - Oacalco

CLAVE: 00421

RUTA: MOR



Km: 0.00 Tipo: 3 Sent: 0

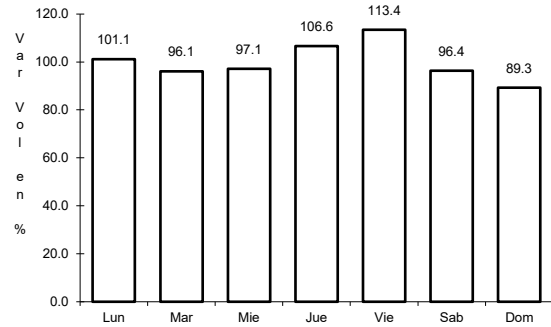


Km: 10.00 Tipo: 1 Sent: 0

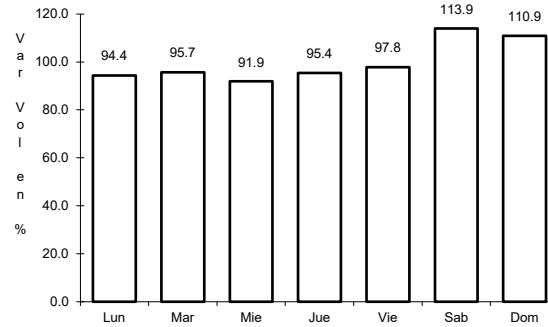
25 CARR: Ent. Chiverías - Ent. El Abanico

CLAVE: 17302

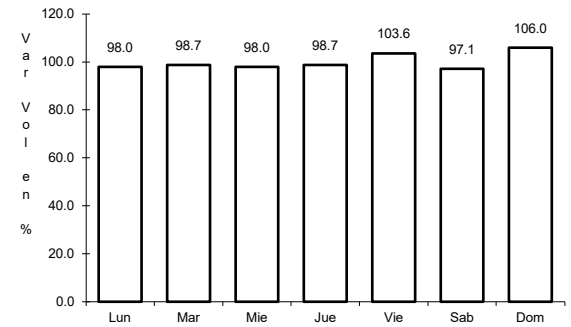
RUTA: MOR



Km: 0.00 Tipo: 3 Sent: 0



Km: 5.56 Tipo: 3 Sent: 0

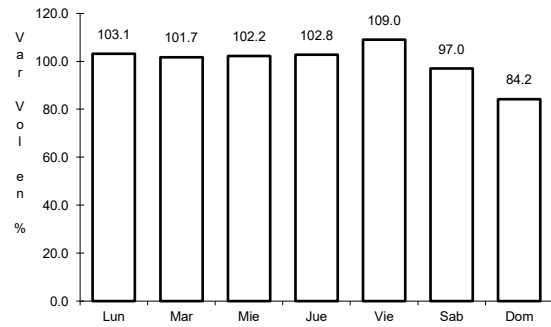


Km: 14.50 Tipo: 1 Sent: 0

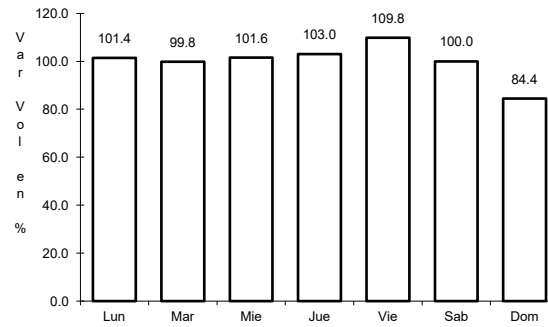
26 CARR: Galeana - Cuautla

CLAVE: 17004

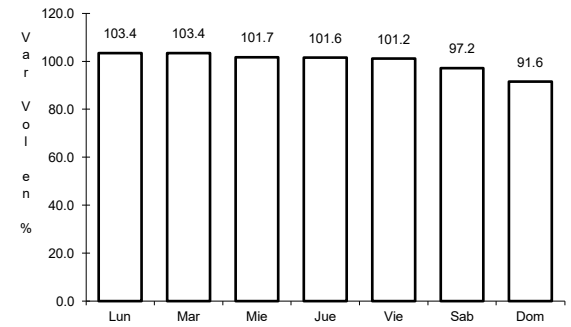
RUTA: MOR-004



Km: 0.00 Tipo: 3 Sent: 1



Km: 0.00 Tipo: 3 Sent: 2

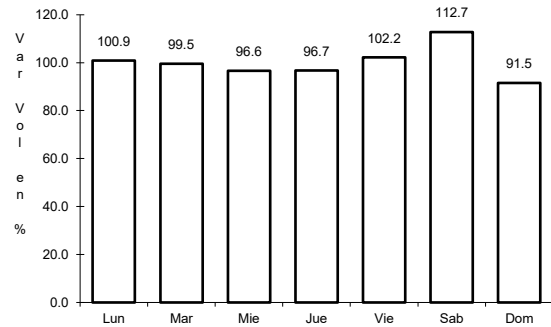


Km: 40.50 Tipo: 1 Sent: 1

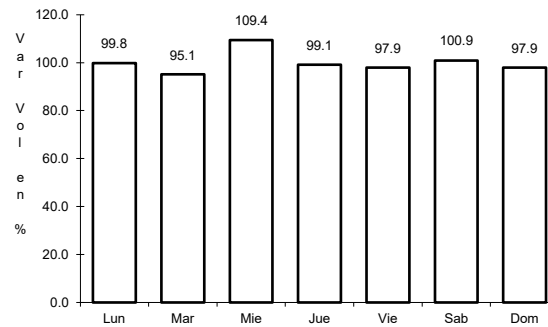
27 CARR: Jotutla - Chinameca

CLAVE: 17310

RUTA: MOR



Km: 0.00 Tipo: 3 Sent: 0

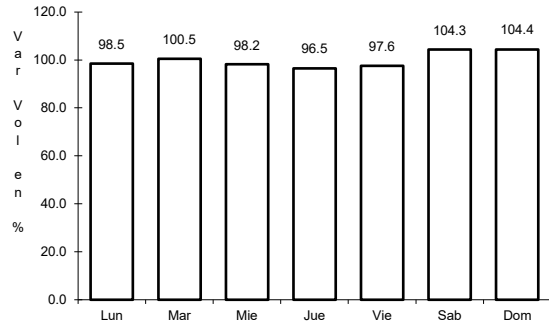


Km: 32.00 Tipo: 1 Sent: 0

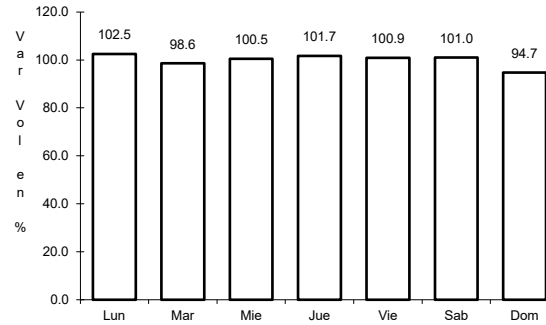
28 CARR: Jojutla - El Higuero

CLAVE: 17039

ruta: MOR-039



Km: 0.00 Tipo: 3 Sent: 0

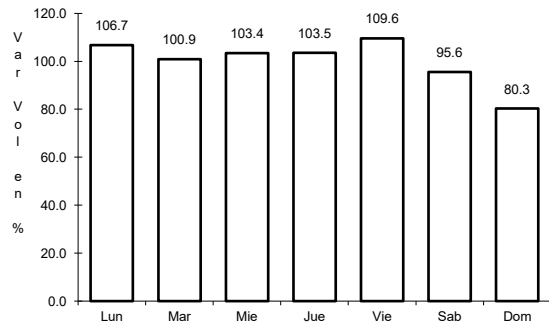


Km: 4.50 Tipo: 1 Sent: 0

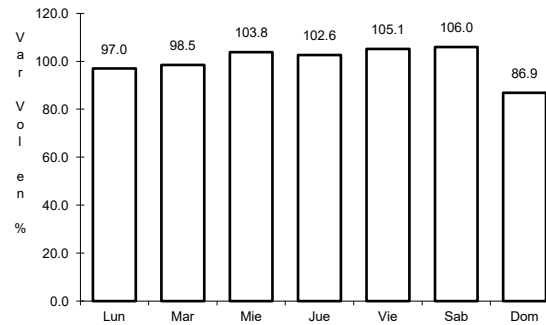
29 CARR: Los Alacranes - Ocuilco

CLAVE:

ruta: MOR



Km: 0.00 Tipo: 3 Sent: 0

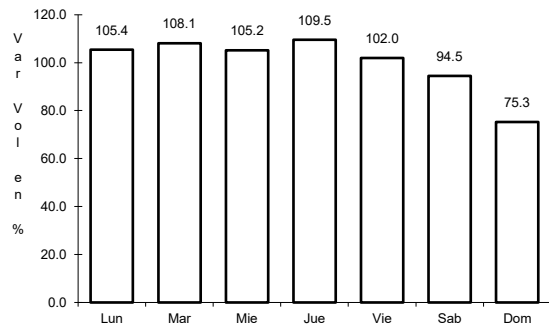


Km: 19.00 Tipo: 1 Sent: 0

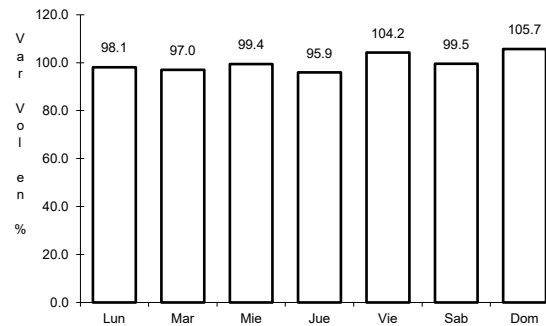
30 CARR: Mazatepec - T. C. Ramal a Michapa

CLAVE:

ruta: MOR



Km: 0.00 Tipo: 3 Sent: 0

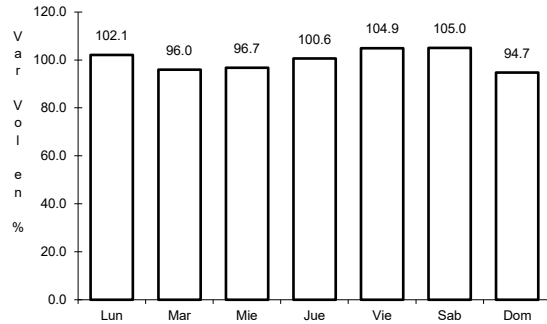


Km: 12.00 Tipo: 1 Sent: 0

31 CARR: Moyotepec - San Rafael

CLAVE: 17306

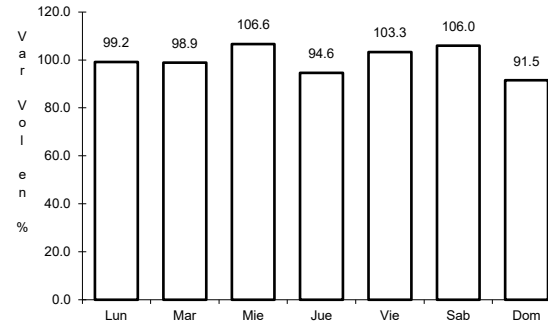
ruta: MOR



Km: 0.00

Tipo: 3

Sent: 0



Km: 7.50

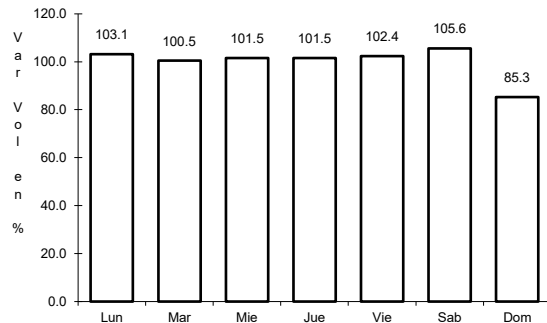
Tipo: 1

Sent: 0

32 CARR: Paso por Yautepec

CLAVE: 17025

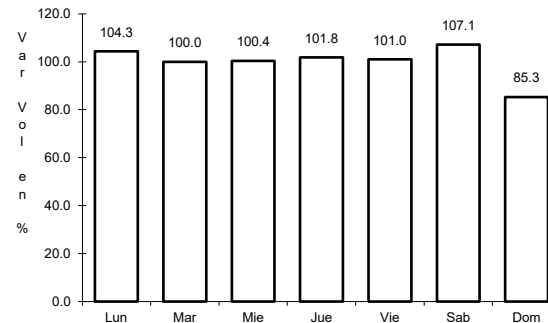
ruta: MOR



Km: 0.00

Tipo: 3

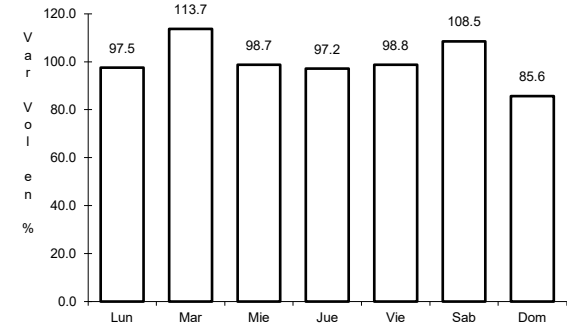
Sent: 1



Km: 0.00

Tipo: 3

Sent: 2



Km: 5.50

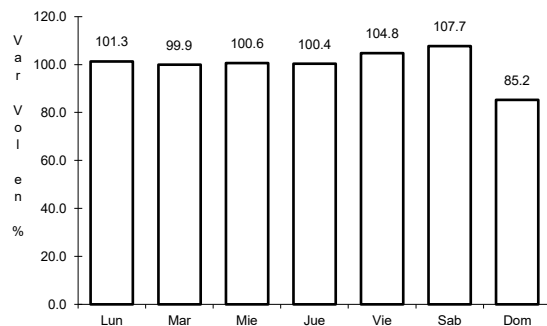
Tipo: 1

Sent: 1

33 CARR: Pilares - T. C. (Xoxocotla - Tilzapotla)

CLAVE: 17008

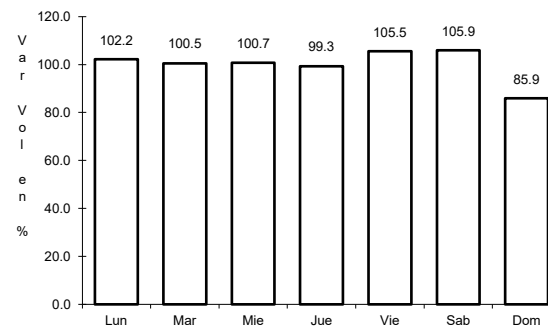
ruta: MOR-008



Km: 0.00

Tipo: 3

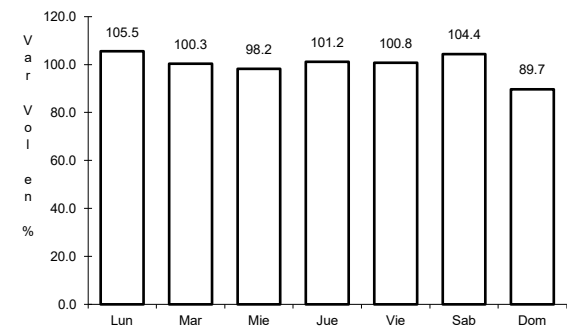
Sent: 1



Km: 0.00

Tipo: 3

Sent: 2



Km: 6.50

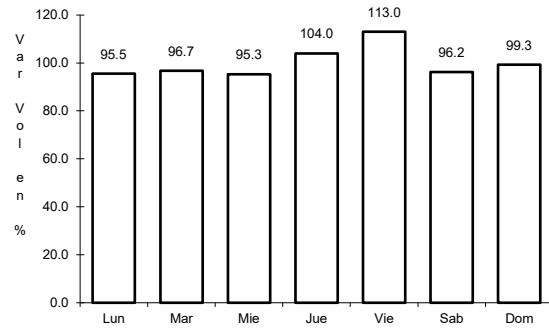
Tipo: 1

Sent: 0

34 CARR: Ramal a Aeropuerto de Cuernavaca

CLAVE: 17250

RUTA: MOR



Km: 0.00

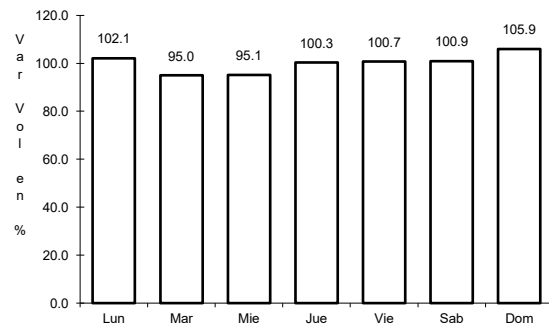
Tipo: 3

Sent: 0

35 CARR: Ramal a Coatetelco

CLAVE: 17304

RUTA: MOR



Km: 0.00

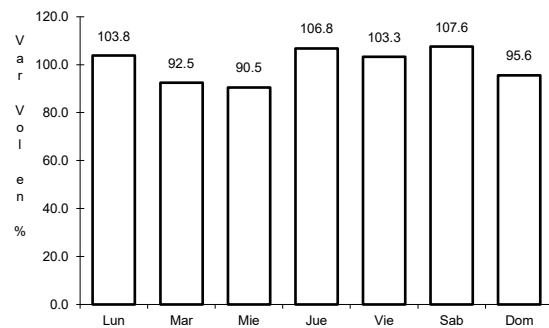
Tipo: 3

Sent: 0

36 CARR: Ramal a Jolalpan

CLAVE: 00143

RUTA: MOR-PUE



Km: 0.00

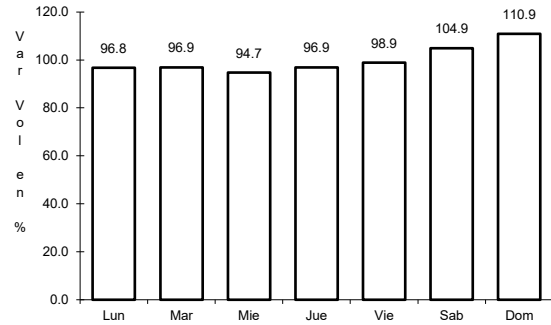
Tipo: 3

Sent: 0

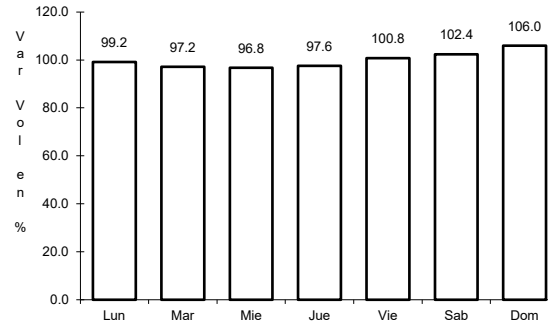
37 CARR: Ramal a Tetela del Volcán

CLAVE: 17010

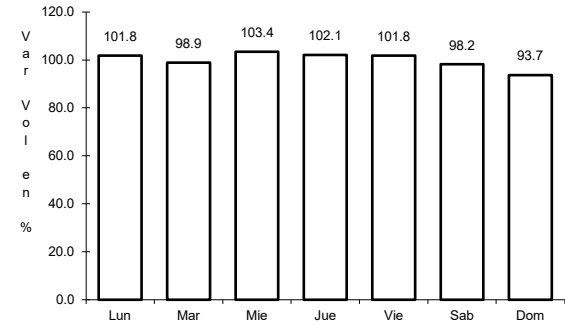
RUTA: MOR-010



Km: 0.00 Tipo: 3 Sent: 1



Km: 0.00 Tipo: 3 Sent: 2

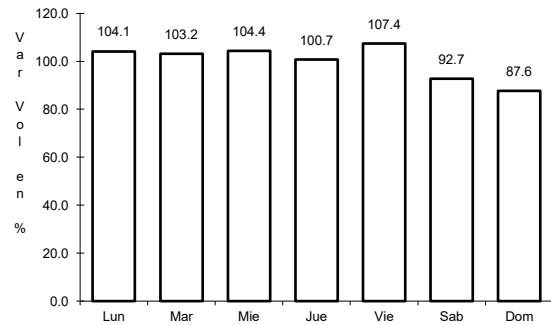


Km: 22.00 Tipo: 1 Sent: 0

38 CARR: T. C. (Coatetelco - Miacatlán) - Mazatepec

CLAVE:

RUTA: MOR

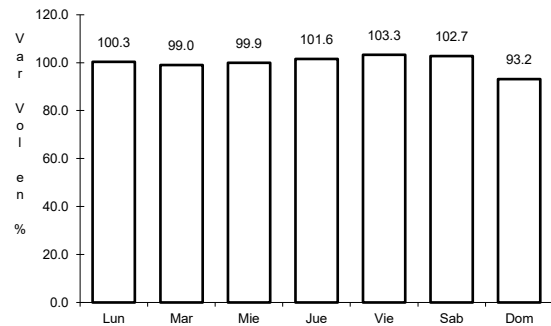


Km: 4.14 Tipo: 1 Sent: 0

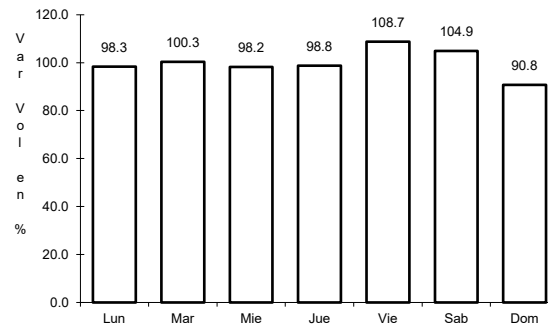
39 CARR: T. C. (México - Cuernavaca (Libre)) - Huitzilac

CLAVE: 00451

RUTA: MOR



Km: 0.00 Tipo: 3 Sent: 0

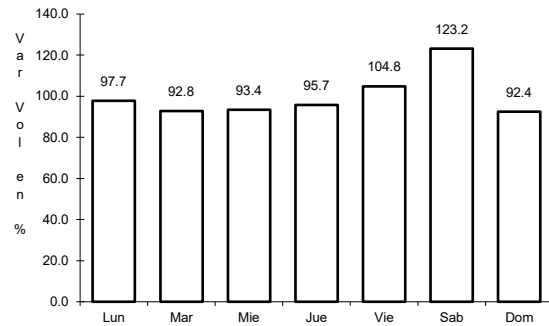


Km: 4.00 Tipo: 1 Sent: 0

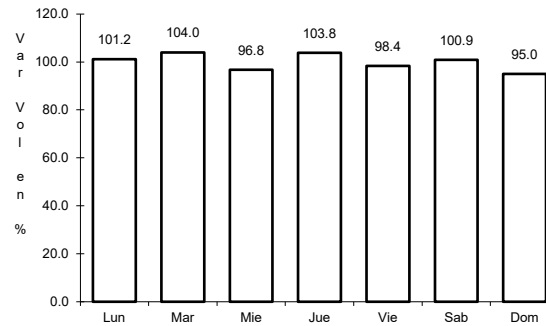
40 CARR: T. C. (San Gregorio - Oaxtepec) - Jojutla

CLAVE: 17002

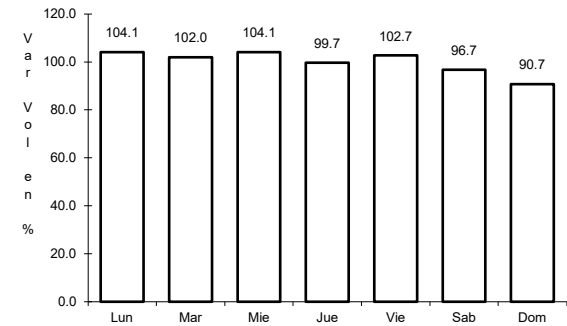
RUTA: MOR-002



Km: 0.00 Tipo: 3 Sent: 0



Km: 32.30 Tipo: 1 Sent: 0

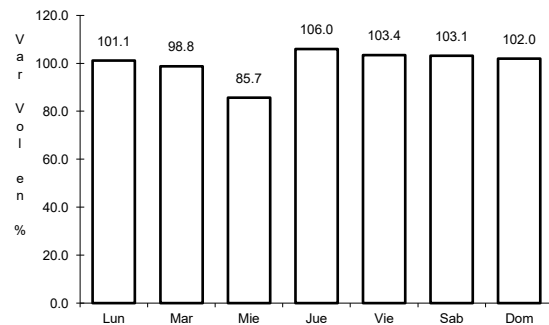


Km: 53.50 Tipo: 1 Sent: 0

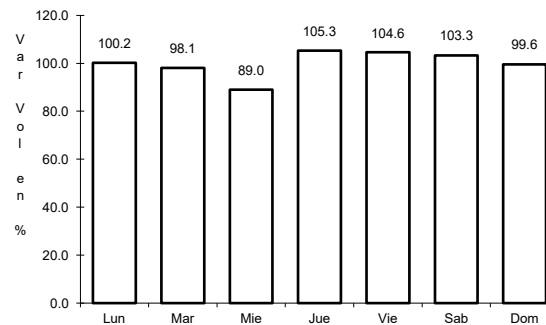
41 CARR: Tehuixtla - Puente de Ixtla

CLAVE: 17307

RUTA: MOR



Km: 0.00 Tipo: 3 Sent: 0

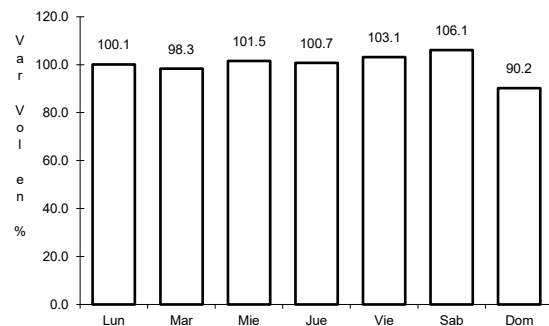


Km: 9.60 Tipo: 1 Sent: 0

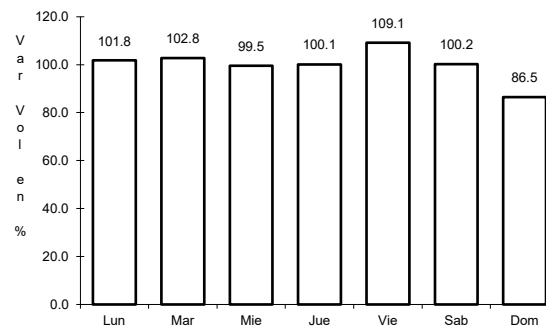
42 CARR: Tejalpa - Jojutla

CLAVE: 17014

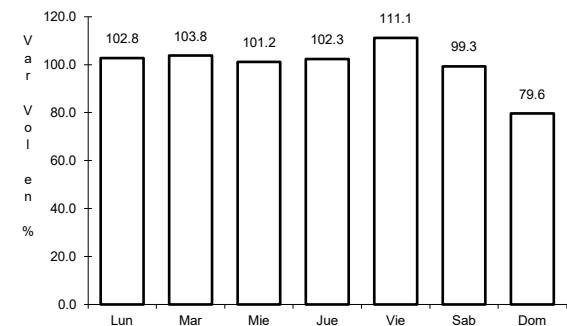
RUTA: MOR-014



Km: 1.97 Tipo: 3 Sent: 0



Km: 32.90 Tipo: 1 Sent: 0

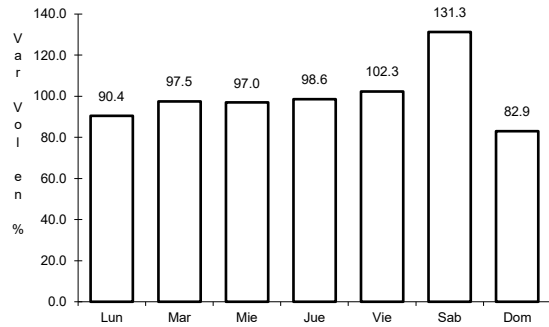


Km: 35.00 Tipo: 1 Sent: 0

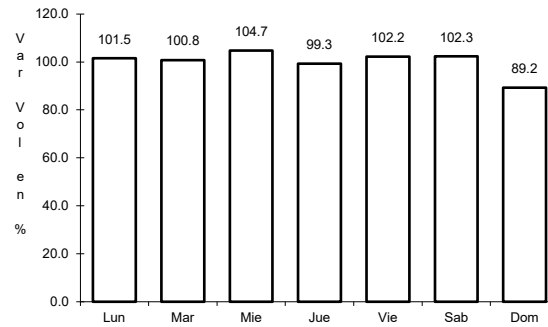
43 CARR: Temilpa - Tepalcingo

CLAVE: 17009

RUTA: MOR-009



Km: 0.00 Tipo: 3 Sent: 0

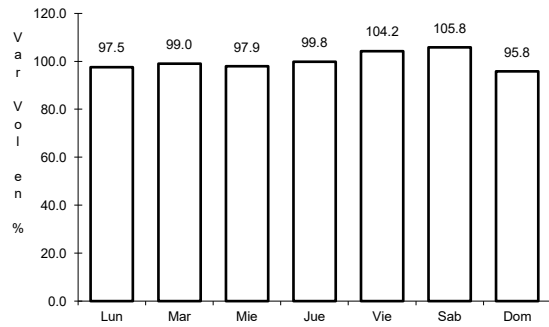


Km: 40.50 Tipo: 1 Sent: 0

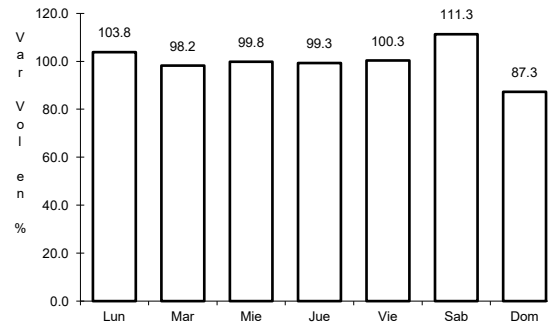
44 CARR: Tepoztlán - Yauhtepec

CLAVE: 17013

RUTA: MOR-013



Km: 0.00 Tipo: 3 Sent: 0

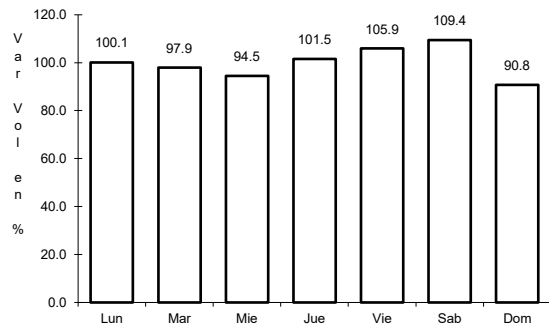


Km: 14.82 Tipo: 1 Sent: 0

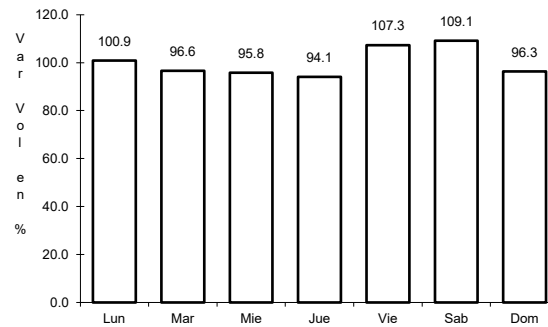
45 CARR: Tequesquitengo - Jojutla

CLAVE: 17013

RUTA: MOR



Km: 0.00 Tipo: 3 Sent: 1

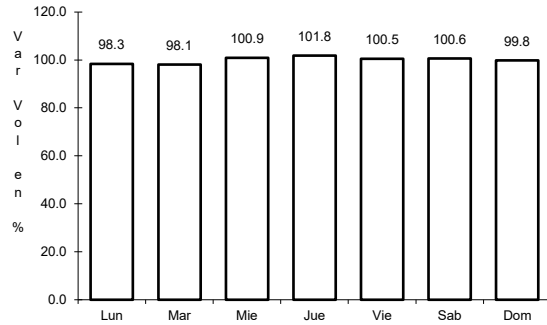


Km: 0.00 Tipo: 3 Sent: 2

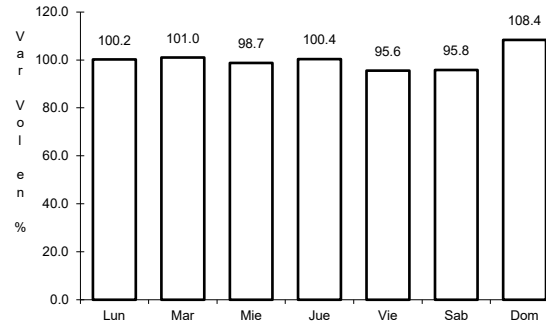
46 CARR: Xoxocotla - Tilzapotla

CLAVE: 17005

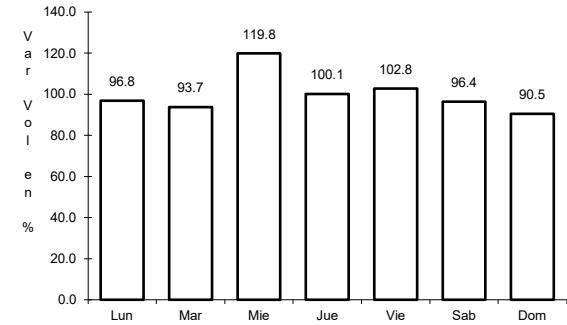
RUTA: MOR-006



Km: 0.00 Tipo: 3 Sent: 1



Km: 0.00 Tipo: 3 Sent: 2

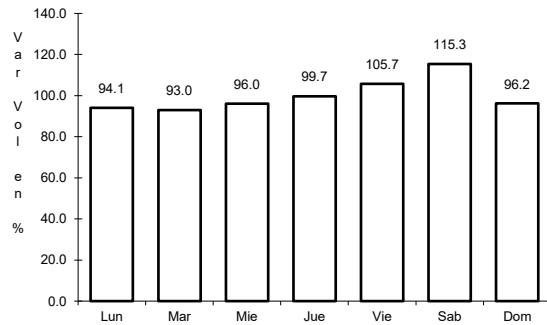


Km: 29.50 Tipo: 1 Sent: 0

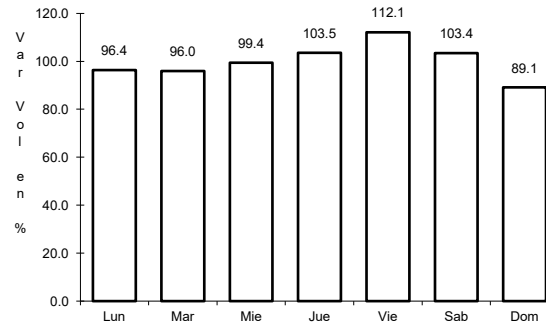
47 CARR: Zacatepec - Tlaquiltenango

CLAVE: 17300

RUTA: MOR



Km: 0.00 Tipo: 3 Sent: 0

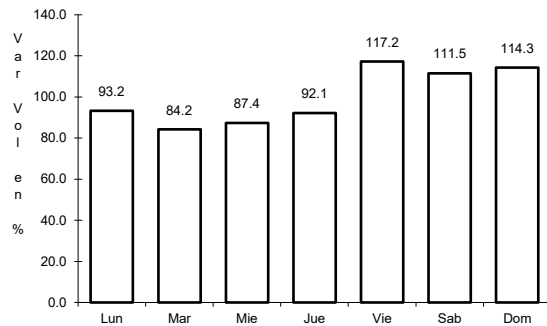


Km: 4.08 Tipo: 1 Sent: 0

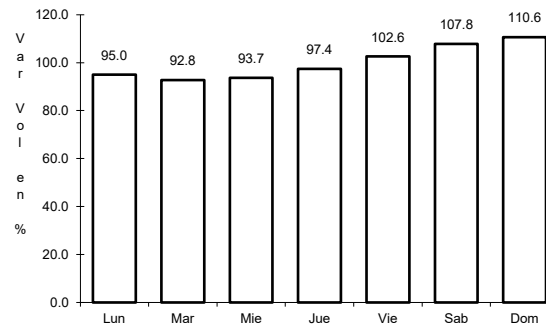
48 CARR: Atlixco - Jantetelco (Cuota)

CLAVE: 00430

RUTA: PUE-D



Km: 0.00 Tipo: 3 Sent: 0

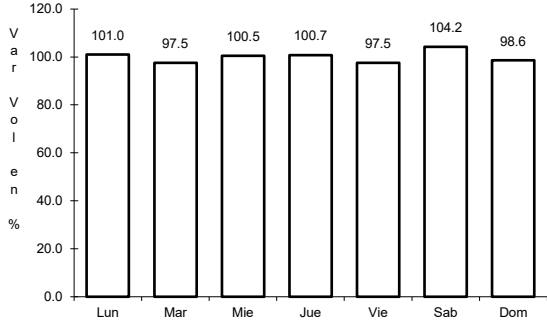


Km: 54.90 Tipo: 1 Sent: 0

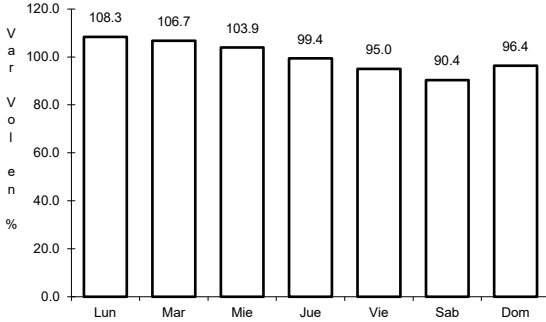
49 CARR: Tres Marías - Santa Martha

CLAVE: 00172

RUTA: MEX-106-EM



Km: 0.00 Tipo: 3 Sent: 0



Km: 28.35 Tipo: 1 Sent: 0

