

OAXACA

## ---RED FEDERAL LIBRE---

1 Acceso al Puerto Salina Cruz	MEX-090
2 Buenavista - Tuxtepec	MEX-175
3 Cd. Alemán - Sayula	MEX-145
4 Coatzacoalcos - Salina Cruz	MEX-185
5 Ent. La Ventosa - San Pedro Tapanatepec	MEX-190
6 Huajuapán de León - Oaxaca	MEX-190
7 Juchitán - Ixtepec	MEX-185
8 La Granja - Temascal	MEX-145
9 Las Cruces - Pinotepa Nacional	MEX-200
10 Libramiento de Ejutla	MEX-175
11 Libramiento de Ocotlán Oax.	MEX-175
12 Libramiento de Pochutla	MEX-200
13 Libramiento de San Pedro Tapanatepec	MEX-200
14 Libramiento de Santa María del Tule	MEX-190
15 Oaxaca - Puerto Ángel	MEX-175
16 Oaxaca - Tehuantepec	MEX-190
17 Puebla - Huajuapán de León	MEX-190
18 Ramal a Asunción Ixtaltepec	MEX-185
19 Ramal a Monte Albán	MEX
20 Ramal a Refinería Pemex (Refinería del Pacífico)	MEX
21 San Pablo Villa de Mitla - T. C. (Tuxtepec - Palomares)	MEX-179
22 Santiago Pinotepa Nacional - Salina Cruz	MEX-200
23 Tapanatepec - Talismán	MEX-200
24 Tapanatepec - Tuxtla Gutiérrez	MEX-190
25 Tehuacán - Huajuapán de León	MEX-125
26 Tuxtepec - Ent. Palomares	MEX-147
27 Tuxtepec - T. C. (Oaxaca - Tehuantepec)	MEX-175
28 Yucudaa - Santiago Pinotepa Nacional	MEX-125

## ---RED FEDERAL DE CUOTA---

29 Cuacnopalan - Oaxaca (Cuota)	MEX-135D
30 Mitla - Tehuantepec (Cuota)	MEX-190D
31 Salina Cruz - La Ventosa (Cuota)	MEX-185D

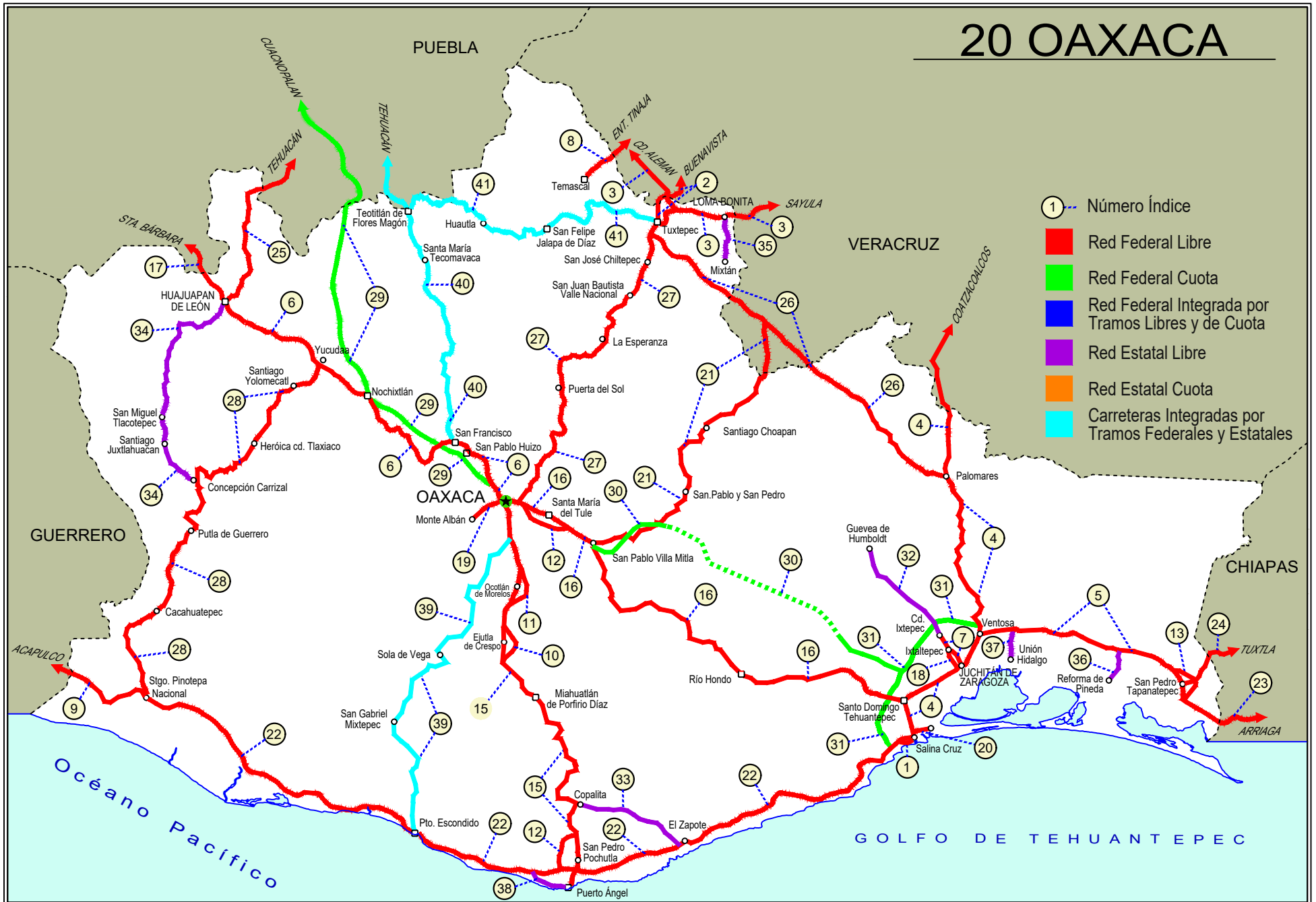
## ---RED ESTATAL LIBRE---

32 Cd. Ixtepec - Guevea de Humboldt	OAX
33 El Zapote - Copalita	OAX
34 Huajuapán de León - El Carrizal	OAX
35 Loma Bonita - Mixtán	OAX
36 Ramal a Reforma de Pineda	OAX
37 Ramal a Unión Hidalgo	OAX
38 San Antonio - Puerto Ángel	OAX

## ---CARRETERAS INTEGRADAS POR TRAMOS FEDERALES Y ESTATALES---

39 T. C. (Oaxaca - Puerto Ángel) - Puerto Escondido	MEX-OAX-161
40 Tehuacán - Huitzo	PUE-MEX-135
41 Teotitlán de Flores Magón - Tuxtepec	OAX-PUE-MEX-182

# 20 OAXACA





OAXACA

1 CARR: Acceso al Puerto Salina Cruz

CLAVE:

RUTA: MEX-090

AÑO: 2023

LUGAR	ESTACION				CLASIFICACION VEHICULAR EN PORCIENTO													COORDENADAS		
	KM	TE	SC	TDPA	M	A	B	C2	C3	T3S2	T3S3	T3S2R4	OTROS	A	B	C	K'	D	LATITUD	LONGITUD
T. C. Santiago Pinotepa Nacional - Salina Cruz	0.00	3	0	2740	7.1	84.6	1.1	4.2	0.9	0.8	0.6	0.6	0.1	91.7	1.1	7.2	0.081	0.547	16.177007	-95.216792
Salina Cruz	3.80																			

2 CARR: Buenavista - Tuxtepec

CLAVE: 00624

RUTA: MEX-175

AÑO: 2023

LUGAR	ESTACION				CLASIFICACION VEHICULAR EN PORCIENTO													COORDENADAS		
	KM	TE	SC	TDPA	M	A	B	C2	C3	T3S2	T3S3	T3S2R4	OTROS	A	B	C	K'	D	LATITUD	LONGITUD
T. C. Paso del Toro - Acayucan	0.00	3	0	1417	9.7	84.7	0.5	3.4	0.9	0.4	0.1	0.3	0.0	94.4	0.5	5.1	0.089	0.518	18.713321	-95.637994
Puente Tlacotalpan	1.55	2	0	1658	9.8	82.3	2.8	2.3	1.9	0.7	0.1	0.0	0.1	92.1	2.8	5.1	0.085	0.500	18.704579	-95.641360
Tlacotalpan	18.00	1	0	1777	16.5	79.2	0.4	2.6	0.7	0.2	0.1	0.3	0.0	95.7	0.4	3.9	0.096	0.522	18.614722	-95.645138
Tlacotalpan	18.00	3	0	2220	12.7	81.1	0.7	3.8	0.8	0.5	0.2	0.1	0.1	93.8	0.7	5.5	0.084	0.501	18.616423	-95.680529
Carlos A. Carrillo	56.00	1	0	4809	14.1	78.7	0.7	4.0	0.7	0.5	0.4	0.4	0.5	92.8	0.7	6.5	0.076	0.529	18.380304	-95.743037
Cosamaloapan	60.00	1	0	18965	14.9	81.4	0.4	1.4	0.5	0.4	0.3	0.5	0.2	96.3	0.4	3.3	0.073	0.504	18.366262	-95.774183
Cosamaloapan	60.00	3	0	8100	13.1	81.1	1.5	1.6	0.8	0.7	0.5	0.5	0.2	94.2	1.5	4.3	0.070	0.501	18.354706	-95.804891
T. C. La Tinaja - Santa Cruz	107.00	1	0	4096	18.6	68.4	1.4	4.3	1.3	1.7	0.5	3.1	0.7	87.0	1.4	11.6	0.078	0.502	18.168756	-96.087962
T. C. Cd. Alemán - Sayula	108.92	1	0	3817	16.8	63.9	3.5	8.9	1.8	1.6	0.3	2.6	0.6	80.7	3.5	15.8	0.085	0.503	18.168428	-96.096176
T. C. Cd. Alemán - Sayula	108.92	3	0	7233	13.8	65.8	3.2	7.1	1.9	2.4	0.7	4.2	0.9	79.6	3.2	17.2	0.071	0.502	18.172325	-96.091566
Lim. Edos. Term. Ver. Ppia. Oax.	115.00																			
Puente Caracol	117.20	2	0	6975	11.0	69.2	5.4	3.6	2.4	2.5	0.5	5.2	0.2	80.2	5.4	14.4	0.085	0.500	18.133084	-96.136714
Tuxtepec	121.25	1	1	5705	13.8	70.1	2.0	6.6	1.4	2.0	0.8	2.6	0.7	83.9	2.0	14.1	0.068	0.508	18.119162	-96.135002
Tuxtepec	121.25	1	2	5517	13.8	70.2	1.9	6.5	1.5	2.0	0.7	2.7	0.7	84.0	1.9	14.1	0.069	0.508	18.119180	-96.134937

3 CARR: Cd. Alemán - Sayula

CLAVE: 00301

RUTA: MEX-145

AÑO: 2023

LUGAR	ESTACION				CLASIFICACION VEHICULAR EN PORCIENTO													COORDENADAS		
	KM	TE	SC	TDPA	M	A	B	C2	C3	T3S2	T3S3	T3S2R4	OTROS	A	B	C	K'	D	LATITUD	LONGITUD
Cd. Alemán	0.00	3	0	7660	14.9	66.5	4.0	4.4	2.1	3.1	0.8	3.5	0.7	81.4	4.0	14.6	0.071	0.518	18.181750	-96.094483
Lim. Edos. Term. Ver. Ppia. Oax.	2.80																			
Puente Papaloapan	3.50	2	0	2485	14.5	65.2	4.3	5.4	5.4	3.3	0.6	1.1	0.2	79.7	4.3	16.0	0.076	0.500	18.159601	-96.096694
T. Der. Tuxtepec	9.36	3	0	4578	17.9	66.6	2.1	5.7	3.0	2.3	1.0	1.1	0.3	84.5	2.1	13.4	0.085	0.524	18.118354	-96.061684
T. Izq. Loma Bonita	30.00	1	0	5029	29.5	51.9	1.8	8.1	3.0	3.0	1.2	0.7	0.8	81.4	1.8	16.8	0.090	0.503	18.095676	-95.879367
T. Izq. Loma Bonita	30.00	3	0	4567	19.1	66.8	1.8	5.4	1.9	2.6	1.0	0.9	0.5	85.9	1.8	12.3	0.083	0.511	18.096045	-95.862760
Lim. Edos. Term. Oax. Ppia. Ver.	34.40																			
T. Der. Villa Azueta	41.50	1	0	3946	17.0	69.0	2.6	4.9	2.3	2.6	0.5	0.8	0.3	86.0	2.6	11.4	0.076	0.513	18.089800	-95.784567
T. Izq. Tesechoacán	56.70	1	0	3908	10.8	71.1	3.2	5.2	3.5	3.2	1.3	1.3	0.4	81.9	3.2	14.9	0.075	0.522	18.127600	-95.655200

OAXACA

3 CARR: Cd. Alemán - Sayula

CLAVE: 00301

RUTA: MEX-145

AÑO: 2023

LUGAR	ESTACION				CLASIFICACION VEHICULAR EN PORCIENTO										COORDENADAS					
	KM	TE	SC	TDPA	M	A	B	C2	C3	T3S2	T3S3	T3S2R4	OTROS	A	B	C	K'	D	LATITUD	LONGITUD
X. C. Santiago Tuxtla - Playa Vicente	71.40	1	0	3602	13.3	73.5	3.0	4.1	2.4	1.8	0.7	1.0	0.2	86.8	3.0	10.2	0.071	0.519	18.068325	-95.533357
X. C. Santiago Tuxtla - Playa Vicente	71.40	3	0	4991	12.6	73.0	3.0	3.6	2.5	3.1	0.8	1.2	0.2	85.6	3.0	11.4	0.075	0.511	18.066177	-95.527622
San Juan Evangelista	118.35	1	0	3398	10.5	72.7	3.4	3.7	2.4	3.5	1.3	2.0	0.5	83.2	3.4	13.4	0.073	0.515	17.915054	-95.145613
Sayula de Alemán	136.40	1	0	5285	10.7	72.9	3.5	3.8	2.1	3.2	0.9	2.2	0.7	83.6	3.5	12.9	0.073	0.510	17.887400	-94.964783

4 CARR: Coatzacoalcos - Salina Cruz

CLAVE: 00147

RUTA: MEX-185

AÑO: 2023

LUGAR	ESTACION				CLASIFICACION VEHICULAR EN PORCIENTO										COORDENADAS					
	KM	TE	SC	TDPA	M	A	B	C2	C3	T3S2	T3S3	T3S2R4	OTROS	A	B	C	K'	D	LATITUD	LONGITUD
Coatzacoalcos	0.00	3	1	10422	3.5	82.3	3.1	6.0	1.3	1.3	0.6	1.5	0.4	85.8	3.1	11.1	0.084	0.525	18.088009	-94.466486
Coatzacoalcos	0.00	3	2	9435	2.9	82.9	3.2	6.1	1.3	1.4	0.7	1.2	0.3	85.8	3.2	11.0	0.092	0.525	18.087678	-94.465963
T. C. Nuevo Teapa - Cosoleacaque	21.00	1	1	10909	7.0	77.5	4.2	6.5	1.2	1.2	0.6	1.4	0.4	84.5	4.2	11.3	0.086	0.508	18.024330	-94.537523
T. C. Nuevo Teapa - Cosoleacaque	21.00	1	2	10585	7.3	77.4	4.4	6.2	1.1	1.3	0.7	1.3	0.3	84.7	4.4	10.9	0.085	0.508	18.027049	-94.534024
Minatitlán	21.60	3	1	17181	6.0	85.2	1.4	3.8	1.9	0.6	0.1	0.8	0.2	91.2	1.4	7.4	0.066	0.516	17.998713	-94.588617
Minatitlán	21.60	3	2	18284	6.3	84.5	1.6	3.5	1.7	0.8	0.2	1.1	0.3	90.8	1.6	7.6	0.076	0.516	17.998804	-94.589081
Cosoleacaque	31.50	1	0	29772	8.6	83.0	1.1	4.8	0.7	0.9	0.3	0.5	0.1	91.6	1.1	7.3	0.062	0.511	18.007202	-94.623147
T. Der. Soteapan	34.00	1	0	17949	10.1	79.8	1.5	4.9	1.1	1.0	0.3	1.1	0.2	89.9	1.5	8.6	0.061	0.506	17.987707	-94.656574
T. Der. Soteapan	34.00	3	0	12161	10.5	77.5	2.2	4.4	1.4	1.3	0.5	1.7	0.5	88.0	2.2	9.8	0.066	0.503	17.986566	-94.659184
Jáltipan de Morelos	38.60	3	1	4382	7.3	79.7	2.6	5.6	1.2	1.4	0.8	1.2	0.2	87.0	2.6	10.4	0.073	0.504	17.962265	-94.734658
Jáltipan de Morelos	38.60	3	2	4459	7.6	80.3	2.4	5.4	1.0	1.3	0.7	1.1	0.2	87.9	2.4	9.7	0.075	0.504	17.962191	-94.734681
Acayucan	59.60	1	1	4745	7.8	80.0	2.5	5.3	1.0	1.2	0.5	1.4	0.3	87.8	2.5	9.7	0.074	0.501	17.956836	-94.835650
Acayucan	59.60	1	2	4731	7.6	80.6	2.3	5.0	1.1	1.2	0.6	1.3	0.3	88.2	2.3	9.5	0.075	0.501	17.956752	-94.835651
Acayucan	59.60	3	1	8505	8.5	79.9	3.3	2.2	1.5	1.8	0.8	1.6	0.4	88.4	3.3	8.3	0.077	0.502	17.929690	-94.923768
Acayucan	59.60	3	2	8570	8.1	81.4	2.7	2.4	1.4	1.5	0.6	1.5	0.4	89.5	2.7	7.8	0.082	0.502	17.929238	-94.923963
Sayula de Alemán	71.00	1	1	8512	8.3	75.9	3.0	2.7	1.8	4.2	1.4	2.0	0.7	84.2	3.0	12.8	0.076	0.502	17.895950	-94.950346
Sayula de Alemán	71.00	1	2	8585	8.0	75.8	3.6	2.9	1.4	4.1	1.2	2.2	0.8	83.8	3.6	12.6	0.080	0.502	17.895873	-94.950244
Sayula de Alemán	71.00	3	0	7266	8.2	67.1	4.2	2.9	3.5	6.6	2.2	4.4	0.9	75.3	4.2	20.5	0.071	0.509	17.871864	-94.969216
Aguilera	82.40	3	0	6143	8.5	69.8	4.0	2.7	1.8	6.0	1.9	4.5	0.8	78.3	4.0	17.7	0.063	0.509	17.804781	-95.024686
Campo Nuevo	94.50	3	0	6641	9.1	67.1	3.5	3.2	2.2	6.3	2.5	5.2	0.9	76.2	3.5	20.3	0.061	0.503	17.695032	-95.075192
T. Der a El Paraiso	117.20	3	0	6691	8.9	66.1	4.8	3.2	2.3	6.5	2.0	5.3	0.9	75.0	4.8	20.2	0.065	0.535	17.534891	-95.102848
Nuevo Morelos	119.00	3	0	5632	8.8	63.2	4.8	3.2	2.1	8.5	2.5	6.1	0.8	72.0	4.8	23.2	0.065	0.535	17.519030	-95.086704
T. Izq. Jesús Carranza	126.80	1	0	5883	7.3	65.6	4.1	4.5	4.2	7.3	3.0	3.1	0.9	72.9	4.1	23.0	0.063	0.503	17.437955	-95.077865
T. Izq. Jesús Carranza	126.80	3	0	5267	5.9	64.6	5.0	4.7	2.9	7.8	2.5	6.1	0.5	70.5	5.0	24.5	0.059	0.528	17.425546	-95.075095
T. C. Ramal a Suchilapan	138.21	3	0	4271	9.9	53.1	4.7	7.6	1.7	9.9	3.7	8.5	0.9	63.0	4.7	32.3	0.066	0.509	17.359135	-95.047527
Lim. Edos. Term. Ver. Ppia. Oax.	139.90																			

OAXACA

4 CARR: Coatzacoalcos - Salina Cruz

CLAVE: 00147

RUTA: MEX-185

AÑO: 2023

LUGAR	ESTACION				CLASIFICACION VEHICULAR EN PORCIENTO													COORDENADAS		
	KM	TE	SC	TDPA	M	A	B	C2	C3	T3S2	T3S3	T3S2R4	OTROS	A	B	C	K'	D	LATITUD	LONGITUD
Donaji	153.60	3	0	5610	10.1	54.7	4.6	6.3	2.2	10.0	2.5	8.7	0.9	64.8	4.6	30.6	0.060	0.518	17.216084	-95.053572
Tolosita	156.78	3	0	5411	9.9	56.6	4.6	6.1	2.1	9.1	2.7	8.0	0.9	66.5	4.6	28.9	0.062	0.510	17.197254	-95.053462
T. Der. Tuxtepec	166.20	1	0	5118	9.1	62.3	4.0	5.2	2.0	8.3	2.1	6.0	1.0	71.4	4.0	24.6	0.076	0.505	17.146860	-95.064287
T. Der. Tuxtepec	166.20	3	0	5732	9.1	64.5	3.7	5.8	2.2	5.9	2.0	6.0	0.8	73.6	3.7	22.7	0.077	0.513	17.131727	-95.059889
T. Der. Santa Ana	171.50	1	0	5949	5.4	62.6	3.4	5.1	2.2	9.8	2.5	8.0	1.0	68.0	3.4	28.6	0.065	0.518	17.080083	-95.040400
Boca del Monte	174.50	1	0	5262	6.8	61.6	4.6	5.6	2.1	8.8	2.8	6.8	0.9	68.4	4.6	27.0	0.060	0.503	17.070003	-95.028174
Boca del Monte	174.50	3	0	6225	7.7	62.3	4.4	5.0	1.7	8.3	2.4	7.3	0.9	70.0	4.4	25.6	0.065	0.511	17.054554	-95.017844
T. Der. Estación Mogoñe	182.15	1	0	6544	7.6	65.2	5.4	3.3	2.2	7.1	2.8	5.4	1.0	72.8	5.4	21.8	0.067	0.501	17.018908	-95.008691
Piedra Blanca	183.30	1	0	7624	7.6	66.4	5.0	3.1	2.1	7.6	2.4	5.0	0.8	74.0	5.0	21.0	0.069	0.520	16.992262	-95.016156
T. Der. Matías Romero	196.00	1	0	11623	12.8	68.0	3.0	4.0	1.8	4.4	1.8	3.3	0.9	80.8	3.0	16.2	0.067	0.514	16.883398	-95.020407
T. Der. Barrio de La Soledad	203.05	1	0	9550	8.6	67.6	4.0	4.5	2.3	5.6	2.3	4.2	0.9	76.2	4.0	19.8	0.064	0.513	16.827936	-95.028555
T. Der. Barrio de La Soledad	203.05	3	0	5700	8.2	66.4	3.3	3.6	2.9	5.1	2.8	6.8	0.9	74.6	3.3	22.1	0.065	0.506	16.806367	-95.026317
El Ajal	211.60	1	0	6534	9.4	58.8	5.5	5.8	2.7	6.6	4.1	6.2	0.9	68.2	5.5	26.3	0.064	0.502	16.774421	-95.019044
El Mezquite	222.64	1	0	5518	4.3	64.6	6.2	5.1	2.7	7.1	4.9	4.1	1.0	68.9	6.2	24.9	0.065	0.519	16.705056	-94.964015
T. C. La Ventosa - Salina Cruz (Cuota)	236.00	1	0	5274	5.9	61.8	5.2	5.8	2.5	8.5	4.4	5.0	0.9	67.7	5.2	27.1	0.093	0.516	16.596571	-94.945232
T. C. La Ventosa - Salina Cruz (Cuota)	236.00	3	0	3344	4.2	75.8	5.4	6.2	2.4	2.3	2.1	1.2	0.4	80.0	5.4	14.6	0.073	0.512	16.576375	-94.945008
T. Izq. San Pedro Tapanatepec (2º Acceso)	241.70	1	0	3736	3.9	78.7	4.2	6.2	1.5	2.4	2.0	0.9	0.2	82.6	4.2	13.2	0.076	0.508	16.558514	-94.948298
T. Izq. San Pedro Tapanatepec (2º Acceso)	241.70	3	0	8148	4.0	84.6	3.9	4.6	0.8	1.1	0.8	0.2	0.0	88.6	3.9	7.5	0.079	0.506	16.542744	-94.953448
Juchitán de Zaragoza	255.55	1	0	9235	7.5	84.1	2.8	2.9	0.9	0.9	0.6	0.3	0.0	91.6	2.8	5.6	0.099	0.501	16.454785	-95.001741
Juchitán de Zaragoza	255.55	3	1	8667	7.7	86.2	1.7	2.9	0.6	0.4	0.4	0.1	0.0	93.9	1.7	4.4	0.089	0.502	16.437486	-95.032309
Juchitán de Zaragoza	255.55	3	2	8751	7.7	86.0	1.8	2.9	0.6	0.5	0.4	0.1	0.0	93.7	1.8	4.5	0.096	0.502	16.437443	-95.032230
Santo Domingo Tehuantepec	283.95	1	1	4371	7.2	81.1	2.9	6.2	1.0	0.9	0.7	0.0	0.0	88.3	2.9	8.8	0.077	0.502	16.347311	-95.209530
Santo Domingo Tehuantepec	283.95	1	2	4411	7.2	81.1	2.8	6.2	1.0	0.9	0.8	0.0	0.0	88.3	2.8	8.9	0.079	0.502	16.347271	-95.209502
Santo Domingo Tehuantepec	283.95	3	1	10804	8.2	85.7	1.1	2.6	0.7	0.5	0.3	0.7	0.2	93.9	1.1	5.0	0.097	0.501	16.311008	-95.236355
Santo Domingo Tehuantepec	283.95	3	2	10746	8.2	85.5	1.2	2.6	0.7	0.5	0.3	0.7	0.3	93.7	1.2	5.1	0.083	0.501	16.311036	-95.236262
Salina Cruz	302.35	1	1	10383	5.3	87.4	1.3	3.5	0.8	0.5	0.4	0.6	0.2	92.7	1.3	6.0	0.095	0.504	16.236681	-95.213210
Salina Cruz	302.35	1	2	10552	5.3	87.5	1.3	3.5	0.8	0.5	0.3	0.6	0.2	92.8	1.3	5.9	0.086	0.504	16.236700	-95.213126

5 CARR: Ent. La Ventosa - San Pedro Tapanatepec

CLAVE: 20059

RUTA: MEX-190

AÑO: 2023

LUGAR	ESTACION				CLASIFICACION VEHICULAR EN PORCIENTO													COORDENADAS		
	KM	TE	SC	TDPA	M	A	B	C2	C3	T3S2	T3S3	T3S2R4	OTROS	A	B	C	K'	D	LATITUD	LONGITUD
La Ventosa	0.00	3	0	3499	4.8	87.8	2.7	2.6	0.7	0.5	0.4	0.3	0.2	92.6	2.7	4.7	0.082	0.511	16.552096	-94.939519
T. C. La Ventosa - Salina Cruz (Cuota)	7.20	3	0	6075	3.5	74.1	2.9	3.4	2.1	6.1	2.8	4.2	0.9	77.6	2.9	19.5	0.069	0.508	16.571629	-94.883638
T. Der. Unión Hidalgo	14.55	3	0	6007	4.1	71.8	5.0	4.7	1.4	5.2	2.6	4.2	1.0	75.9	5.0	19.1	0.069	0.507	16.573722	-94.805535

OAXACA

5 CARR: Ent. La Ventosa - San Pedro Tapanatepec

CLAVE: 20059

RUTA: MEX-190

AÑO: 2023

LUGAR	ESTACION				CLASIFICACION VEHICULAR EN PORCIENTO										COORDENADAS					
	KM	TE	SC	TDPA	M	A	B	C2	C3	T3S2	T3S3	T3S2R4	OTROS	A	B	C	K'	D	LATITUD	LONGITUD
T. Izq. Santo Domingo Ingenio	20.50	3	0	4820	3.5	64.6	4.3	5.8	2.0	9.5	4.0	5.9	0.4	68.1	4.3	27.6	0.076	0.522	16.570641	-94.766406
T. Izq. Nilttepec	38.01	3	0	4358	5.5	65.8	5.0	6.0	2.7	7.0	3.0	4.4	0.6	71.3	5.0	23.7	0.063	0.507	16.554884	-94.589065
T. Der. Reforma de Pineda	59.80	1	0	4503	5.6	62.7	4.9	6.0	2.7	9.5	3.2	4.7	0.7	68.3	4.9	26.8	0.061	0.521	16.499975	-94.448826
T. Der. Reforma de Pineda	59.80	3	0	4346	5.4	64.8	5.2	5.9	2.9	7.3	3.3	4.4	0.8	70.2	5.2	24.6	0.064	0.502	16.493289	-94.420769
Santo Domingo Zanatepec	68.25	3	0	4295	5.6	64.1	4.1	6.0	3.2	7.1	3.9	5.0	1.0	69.7	4.1	26.2	0.067	0.508	16.476193	-94.345697
San Pedro Tapanatepec	91.80	1	0	2369	6.0	80.8	4.1	6.0	0.5	2.0	0.6	0.0	0.0	86.8	4.1	9.1	0.067	0.516	16.384288	-94.201029

6 CARR: Huajuapán de León - Oaxaca

CLAVE: 20056

RUTA: MEX-190

AÑO: 2023

LUGAR	ESTACION				CLASIFICACION VEHICULAR EN PORCIENTO										COORDENADAS					
	KM	TE	SC	TDPA	M	A	B	C2	C3	T3S2	T3S3	T3S2R4	OTROS	A	B	C	K'	D	LATITUD	LONGITUD
Huajuapán de León	0.00																			
T. Izq. Tehuacán	1.35	1	0	19414	10.2	83.8	0.5	3.1	0.6	0.7	0.4	0.5	0.2	94.0	0.5	5.5	0.065	0.546	17.812995	-97.766802
T. Izq. Tehuacán	1.35	3	0	13294	11.2	79.8	0.4	6.8	0.6	0.5	0.3	0.3	0.1	91.0	0.4	8.6	0.075	0.514	17.810538	-97.760050
Tamazulapán	38.61	1	0	3523	6.5	77.6	1.3	9.9	1.5	1.9	0.9	0.3	0.1	84.1	1.3	14.6	0.082	0.509	17.686597	-97.585636
Tamazulapán	38.61	3	0	4142	5.5	79.6	0.9	10.4	1.1	1.4	0.7	0.3	0.1	85.1	0.9	14.0	0.080	0.505	17.671513	-97.559889
T. Izq. Santiago Tejuapán	49.62	3	0	3372	2.5	78.0	2.0	12.2	1.4	2.4	1.0	0.4	0.1	80.5	2.0	17.5	0.063	0.534	17.655974	-97.471847
T. Der. Tlaxiaco	61.43	3	0	3014	2.8	75.7	1.9	12.7	1.8	2.7	1.7	0.4	0.3	78.5	1.9	19.6	0.062	0.505	17.575966	-97.420810
Asunción Nochixtlán	90.40	1	0	7815	5.5	83.2	1.2	6.4	1.0	1.2	0.9	0.5	0.1	88.7	1.2	10.1	0.079	0.508	17.464899	-97.259018
T. Izq. Tehuacán	161.73	1	0	982	11.5	84.9	0.1	2.7	0.7	0.1	0.0	0.0	0.0	96.4	0.1	3.5	0.074	0.507	17.285044	-96.913158
T. Izq. Tehuacán	161.73	3	0	7810	12.2	84.6	0.6	1.5	0.3	0.4	0.1	0.2	0.1	96.8	0.6	2.6	0.086	0.511	17.284886	-96.900164
T. Der. Tlaltinango	170.29	1	0	7924	12.4	84.1	0.2	1.5	0.7	0.7	0.1	0.2	0.1	96.5	0.2	3.3	0.098	0.509	17.247907	-96.851602
T. Der. Tlaltinango	170.29	3	0	9302	9.5	85.6	0.7	2.5	0.8	0.6	0.1	0.1	0.1	95.1	0.7	4.2	0.113	0.511	17.241691	-96.833289
T. Der. Nazareno Etla	179.23	3	1	17049	10.2	85.7	0.3	2.3	0.6	0.3	0.1	0.4	0.1	95.9	0.3	3.8	0.078	0.503	17.166763	-96.787712
T. Der. Nazareno Etla	179.23	3	2	17231	10.2	85.7	0.3	2.4	0.6	0.3	0.1	0.3	0.1	95.9	0.3	3.8	0.073	0.503	17.166769	-96.787605
T. Aut. Cuacnopalan - Oaxaca	181.80	3	1	24187	11.3	79.1	1.9	3.1	1.6	1.4	0.5	0.9	0.2	90.4	1.9	7.7	0.067	0.541	17.140069	-96.776656
T. Aut. Cuacnopalan - Oaxaca	181.80	3	2	30215	11.3	79.1	1.9	3.1	1.6	1.4	0.5	0.9	0.2	90.4	1.9	7.7	0.067	0.541	17.140116	-96.776550
Oaxaca	190.60	1	1	39618	11.0	81.3	1.5	3.5	0.6	0.7	0.4	0.8	0.2	92.3	1.5	6.2	0.074	0.514	17.099748	-96.751090
Oaxaca	190.60	1	2	37201	11.0	81.3	1.5	3.5	0.6	0.7	0.4	0.8	0.2	92.3	1.5	6.2	0.063	0.514	17.099785	-96.750987

7 CARR: Juchitán - Ixtepec

CLAVE: 20359

RUTA: MEX-185

AÑO: 2023

LUGAR	ESTACION				CLASIFICACION VEHICULAR EN PORCIENTO										COORDENADAS					
	KM	TE	SC	TDPA	M	A	B	C2	C3	T3S2	T3S3	T3S2R4	OTROS	A	B	C	K'	D	LATITUD	LONGITUD
Juchitán de Zaragoza	0.00																			



OAXACA

7 CARR: Juchitán - Ixtepec

CLAVE: 20359

RUTA: MEX-185

AÑO: 2023

LUGAR	ESTACION				CLASIFICACION VEHICULAR EN PORCIENTO										COORDENADAS					
	KM	TE	SC	TDPA	M	A	B	C2	C3	T3S2	T3S3	T3S2R4	OTROS	A	B	C	K'	D	LATITUD	LONGITUD
X. C. Coatzacoalcos - Salina Cruz	0.15	3	1	7828	11.4	84.3	0.6	2.5	0.7	0.2	0.1	0.1	0.1	95.7	0.6	3.7	0.071	0.500	16.454708	-95.027816
X. C. Coatzacoalcos - Salina Cruz	0.15	3	2	7835	12.1	84.1	0.5	2.4	0.6	0.1	0.1	0.1	0.0	96.2	0.5	3.3	0.076	0.500	16.454165	-95.027742
Asunción Ixtaltepec	7.40	1	1	4589	12.0	79.1	2.6	4.7	0.9	0.4	0.2	0.1	0.0	91.1	2.6	6.3	0.087	0.501	16.503742	-95.053473
Asunción Ixtaltepec	7.40	1	2	4614	12.4	78.4	2.6	5.2	1.0	0.2	0.1	0.1	0.0	90.8	2.6	6.6	0.098	0.501	16.501529	-95.055248
Asunción Ixtaltepec	7.40	3	1	3945	12.5	79.8	1.0	4.1	0.8	0.7	0.6	0.3	0.2	92.3	1.0	6.7	0.070	0.507	16.510855	-95.066107
Asunción Ixtaltepec	7.40	3	2	4061	12.5	80.1	0.9	4.0	0.8	0.6	0.6	0.3	0.2	92.6	0.9	6.5	0.080	0.507	16.510827	-95.066182
Ixtepec	16.00	1	1	3984	14.0	80.7	1.5	3.0	0.4	0.2	0.1	0.1	0.0	94.7	1.5	3.8	0.077	0.501	16.535939	-95.079487
Ixtepec	16.00	1	2	4001	14.6	79.9	1.5	3.2	0.4	0.2	0.1	0.1	0.0	94.5	1.5	4.0	0.081	0.501	16.535883	-95.079581

8 CARR: La Granja - Temascal

CLAVE: 00275

RUTA: MEX-145

AÑO: 2023

LUGAR	ESTACION				CLASIFICACION VEHICULAR EN PORCIENTO										COORDENADAS					
	KM	TE	SC	TDPA	M	A	B	C2	C3	T3S2	T3S3	T3S2R4	OTROS	A	B	C	K'	D	LATITUD	LONGITUD
T. C. La Tinaja - Santa Cruz	0.00	3	0	3675	24.7	65.8	1.0	5.6	1.7	0.4	0.3	0.4	0.1	90.5	1.0	8.5	0.076	0.512	18.353066	-96.261560
Lim. Edos. Term. Ver. Ppia. Oax.	5.00																			
Temascal	23.00	1	0	4769	26.6	59.9	1.0	6.2	1.0	2.5	0.9	1.0	0.9	86.5	1.0	12.5	0.079	0.500	18.255057	-96.393144

9 CARR: Las Cruces - Pinotepa Nacional

CLAVE: 00073

RUTA: MEX-200

AÑO: 2023

LUGAR	ESTACION				CLASIFICACION VEHICULAR EN PORCIENTO										COORDENADAS					
	KM	TE	SC	TDPA	M	A	B	C2	C3	T3S2	T3S3	T3S2R4	OTROS	A	B	C	K'	D	LATITUD	LONGITUD
T. C. Chilpancingo - Acapulco	0.00	3	1	18367	7.8	85.2	0.7	2.1	1.2	1.6	0.5	0.4	0.5	93.0	0.7	6.3	0.066	0.509	16.885675	-99.833775
T. C. Chilpancingo - Acapulco	0.00	3	2	17745	7.7	85.7	0.5	2.1	1.1	1.5	0.4	0.3	0.7	93.4	0.5	6.1	0.059	0.509	16.885787	-99.833773
T. Der. Puerto Marqués	4.62	1	1	23932	7.7	86.3	0.4	2.4	1.3	0.9	0.4	0.4	0.2	94.0	0.4	5.6	0.087	0.506	16.865789	-99.810586
T. Der. Puerto Marqués	4.62	1	2	23376	7.8	85.9	0.5	2.4	1.4	0.8	0.6	0.3	0.3	93.7	0.5	5.8	0.077	0.506	16.865760	-99.810457
T. Der. Puerto Marqués	4.62	3	0	15167	6.7	85.0	0.9	4.1	1.2	1.0	0.7	0.3	0.1	91.7	0.9	7.4	0.074	0.517	16.851984	-99.794230
X. C. Puerto Marqués - La Venta (Cuota)	11.70	1	1	4300	6.0	84.9	1.3	3.2	1.7	1.1	1.1	0.5	0.2	90.9	1.3	7.8	0.088	0.502	16.831099	-99.769293
X. C. Puerto Marqués - La Venta (Cuota)	11.70	1	2	4259	5.6	85.6	1.0	3.5	1.5	1.2	0.9	0.5	0.2	91.2	1.0	7.8	0.076	0.502	16.831186	-99.769212
X. C. Puerto Marqués - La Venta (Cuota)	11.70	3	1	4454	7.7	82.5	0.9	4.0	1.6	1.5	1.0	0.5	0.3	90.2	0.9	8.9	0.082	0.522	16.830131	-99.750356
X. C. Puerto Marqués - La Venta (Cuota)	11.70	3	2	4855	7.4	82.9	0.9	3.9	1.7	1.5	1.0	0.4	0.3	90.3	0.9	8.8	0.094	0.522	16.830214	-99.750364
T. Der El Arenal	17.00	1	1	4075	5.4	82.8	1.3	6.0	1.2	1.7	1.0	0.2	0.4	88.2	1.3	10.5	0.077	0.503	16.824316	-99.716131
T. Der El Arenal	17.00	1	2	4118	5.5	82.7	1.4	6.0	1.4	1.7	0.9	0.1	0.3	88.2	1.4	10.4	0.081	0.503	16.824402	-99.716133
Sn Pedro Cacahuatpec	21.60	1	0	7075	6.5	81.3	1.3	5.3	1.8	2.2	1.2	0.1	0.3	87.8	1.3	10.9	0.076	0.504	16.815864	-99.672509
T. Der. a Barra Vieja	35.00	1	0	4096	3.9	81.3	2.4	6.1	1.5	2.7	1.7	0.1	0.3	85.2	2.4	12.4	0.070	0.502	16.756162	-99.580193
San Marcos	58.90	1	0	5934	5.6	82.0	1.7	5.6	1.9	2.0	0.9	0.2	0.1	87.6	1.7	10.7	0.080	0.508	16.779859	-99.410143

OAXACA

9 CARR: Las Cruces - Pinotepa Nacional

CLAVE: 00073

RUTA: MEX-200

AÑO: 2023

LUGAR	ESTACION				CLASIFICACION VEHICULAR EN PORCIENTO										COORDENADAS					
	KM	TE	SC	TDPA	M	A	B	C2	C3	T3S2	T3S3	T3S2R4	OTROS	A	B	C	K'	D	LATITUD	LONGITUD
San Marcos	58.90	3	0	5179	6.4	81.4	1.4	5.8	1.8	2.0	0.9	0.2	0.1	87.8	1.4	10.8	0.087	0.512	16.792182	-99.367755
Nexpa	84.96	3	0	4672	6.1	80.9	1.9	5.8	2.0	2.1	0.9	0.2	0.1	87.0	1.9	11.1	0.086	0.520	16.782600	-99.209896
Cruz Grande	97.00	3	0	6437	5.3	81.7	1.6	6.3	2.0	2.0	0.7	0.3	0.1	87.0	1.6	11.4	0.086	0.501	16.712276	-99.116069
T. Izq. Copala (1º Acceso)	117.50	1	0	6190	6.7	80.1	1.9	6.1	2.1	2.0	0.8	0.2	0.1	86.8	1.9	11.3	0.075	0.505	16.607575	-98.986420
T. Izq. Copala (1º Acceso)	117.50	3	0	6258	5.8	80.0	1.8	7.5	1.9	1.9	0.8	0.2	0.1	85.8	1.8	12.4	0.072	0.505	16.601459	-98.957946
T. Der. Playa Ventura	124.00	1	0	4363	5.0	78.0	2.7	7.2	2.9	2.8	1.1	0.2	0.1	83.0	2.7	14.3	0.087	0.509	16.594022	-98.926611
T. Der. Playa Ventura	124.00	3	0	3864	5.1	76.9	3.2	7.2	3.1	2.9	1.3	0.2	0.1	82.0	3.2	14.8	0.090	0.507	16.590802	-98.913064
Marquelia	136.80	1	0	6046	6.9	79.5	2.4	6.5	1.9	1.6	0.9	0.2	0.1	86.4	2.4	11.2	0.077	0.500	16.581473	-98.831845
Marquelia	136.80	3	0	5258	5.3	79.9	2.9	7.1	1.7	1.9	0.9	0.2	0.1	85.2	2.9	11.9	0.086	0.507	16.581840	-98.801972
Juchitán	158.00	3	0	4480	6.0	81.5	2.4	6.3	1.1	1.6	0.8	0.2	0.1	87.5	2.4	10.1	0.072	0.501	16.633346	-98.623554
T. Izq. Ometepec	175.88	1	0	4432	7.0	79.8	2.2	6.2	2.0	1.7	0.8	0.2	0.1	86.8	2.2	11.0	0.081	0.505	16.654849	-98.503956
T. Izq. Ometepec	175.88	3	0	4129	7.1	79.2	2.4	6.3	1.9	1.9	0.9	0.2	0.1	86.3	2.4	11.3	0.066	0.505	16.649183	-98.495830
Cuajinicuilapa	200.60	1	0	3870	5.4	79.0	2.4	8.0	1.6	2.4	0.9	0.1	0.2	84.4	2.4	13.2	0.082	0.507	16.478927	-98.440608
Cuajinicuilapa	200.60	3	0	2830	6.8	75.9	2.8	7.2	2.7	2.9	1.4	0.1	0.2	82.7	2.8	14.5	0.084	0.513	16.462392	-98.393803
Lim. Edos. Term. Gro. Ppia. Oax.	207.80																			
T. Izq. San Pedro Orizaba	215.00	3	0	2022	5.1	82.7	3.9	2.4	1.2	3.7	0.8	0.1	0.1	87.8	3.9	8.3	0.108	0.502	16.443160	-98.343706
T. Izq. Tlaxiaco	245.47	1	0	3343	9.2	74.7	1.8	6.4	1.7	3.9	1.9	0.3	0.1	83.9	1.8	14.3	0.104	0.505	16.379369	-98.094210
T. Izq. Tlaxiaco	245.47	3	0	6371	6.8	82.3	1.6	3.1	1.3	2.8	1.5	0.4	0.2	89.1	1.6	9.3	0.101	0.500	16.376709	-98.092058
Pinotepa Nacional	252.50																			

10 CARR: Libramiento de Ejutla

CLAVE:

RUTA: MEX-175

AÑO: 2023

LUGAR	ESTACION				CLASIFICACION VEHICULAR EN PORCIENTO										COORDENADAS					
	KM	TE	SC	TDPA	M	A	B	C2	C3	T3S2	T3S3	T3S2R4	OTROS	A	B	C	K'	D	LATITUD	LONGITUD
T. C. Oaxaca - Puerto Ángel Norte	0.00	3	0	4386	4.2	82.7	0.8	9.8	1.6	0.5	0.2	0.1	0.1	86.9	0.8	12.3	0.082	0.501	16.594999	-96.735032
X. C. Ejutla - Coatecas	5.70	3	0	4113	15.5	67.2	2.6	11.4	1.4	1.0	0.3	0.3	0.3	82.7	2.6	14.7	0.084	0.529	16.551413	-96.716074
T. C. Oaxaca - Puerto Ángel Sur	10.00																			

11 CARR: Libramiento de Ocotlán Oax.

CLAVE:

RUTA: MEX-175

AÑO: 2023

LUGAR	ESTACION				CLASIFICACION VEHICULAR EN PORCIENTO										COORDENADAS					
	KM	TE	SC	TDPA	M	A	B	C2	C3	T3S2	T3S3	T3S2R4	OTROS	A	B	C	K'	D	LATITUD	LONGITUD
T. C. Oaxaca - Puerto Ángel Norte	0.00	3	0	5791	2.7	81.0	0.9	10.5	1.2	2.4	0.8	0.1	0.4	83.7	0.9	15.4	0.084	0.508	16.858762	-96.678070
X. C. Ocotlán - Santa Catarina Minas	9.60	3	0	6002	3.0	80.6	0.9	10.4	1.3	2.3	1.0	0.1	0.4	83.6	0.9	15.5	0.088	0.505	16.784169	-96.647016
T. C. Oaxaca - Puerto Ángel Norte	15.60																			

OAXACA

12 CARR: Libramiento de Pochutla

CLAVE:

RUTA: MEX-200

AÑO: 2023

LUGAR	ESTACION				CLASIFICACION VEHICULAR EN PORCIENTO										COORDENADAS					
	KM	TE	SC	TDPA	M	A	B	C2	C3	T3S2	T3S3	T3S2R4	OTROS	A	B	C	K'	D	LATITUD	LONGITUD
T. C. Santiago Pinotepa Nacional - Salina Cruz	0.00	3	0	2183	24.2	61.0	1.3	9.9	1.5	1.3	0.4	0.2	0.2	85.2	1.3	13.5	0.108	0.510	15.734749	-96.480590
Pio Macaya	2.40	1	0	2397	26.9	60.8	1.3	7.3	1.5	1.5	0.5	0.1	0.1	87.7	1.3	11.0	0.091	0.506	15.749523	-96.477425
Pio Macaya	2.40	3	0	1868	23.4	63.7	1.3	7.9	1.6	1.4	0.4	0.2	0.1	87.1	1.3	11.6	0.097	0.515	15.757362	-96.473658
T. C. Oaxaca - Puerto Ángel	5.20	1	0	1861	23.5	64.0	1.3	7.7	1.6	1.3	0.4	0.1	0.1	87.5	1.3	11.2	0.104	0.534	15.762049	-96.465725

13 CARR: Libramiento de San Pedro Tapanatepec

CLAVE:

RUTA: MEX-200

AÑO: 2023

LUGAR	ESTACION				CLASIFICACION VEHICULAR EN PORCIENTO										COORDENADAS					
	KM	TE	SC	TDPA	M	A	B	C2	C3	T3S2	T3S3	T3S2R4	OTROS	A	B	C	K'	D	LATITUD	LONGITUD
T. C. Ent. La Ventosa - San Pedro Tapanatepec	0.00																			
T. C. Tapanatepec - Tuxtla Gutiérrez	3.35	1	0	3068	3.5	65.6	3.6	6.0	3.4	10.2	3.7	3.6	0.4	69.1	3.6	27.3	0.069	0.506	16.375063	-94.182094
X. C. Tapanatepec - Talismán Este	5.80	1	0	4485	5.9	67.5	2.7	4.2	3.6	7.9	2.6	4.7	0.9	73.4	2.7	23.9	0.072	0.505	16.355586	-94.188857

14 CARR: Libramiento de Santa María del Tule

CLAVE:

RUTA: MEX-190

AÑO: 2023

LUGAR	ESTACION				CLASIFICACION VEHICULAR EN PORCIENTO										COORDENADAS					
	KM	TE	SC	TDPA	M	A	B	C2	C3	T3S2	T3S3	T3S2R4	OTROS	A	B	C	K'	D	LATITUD	LONGITUD
T. C. Oaxaca - Tehuantepec (Poniente)	0.00	3	0	20643	4.1	91.2	0.7	2.1	0.7	0.4	0.3	0.3	0.2	95.3	0.7	4.0	0.090	0.504	17.050463	-96.656386
T. C. Oaxaca - Tehuantepec (Oriente)	5.80	1	0	20462	6.2	87.6	0.9	2.9	1.0	0.7	0.2	0.4	0.1	93.8	0.9	5.3	0.089	0.506	17.036754	-96.624782

15 CARR: Oaxaca - Puerto Ángel

CLAVE: 20091

RUTA: MEX-175

AÑO: 2023

LUGAR	ESTACION				CLASIFICACION VEHICULAR EN PORCIENTO										COORDENADAS					
	KM	TE	SC	TDPA	M	A	B	C2	C3	T3S2	T3S3	T3S2R4	OTROS	A	B	C	K'	D	LATITUD	LONGITUD
Oaxaca	0.00	3	1	32834	9.3	85.5	0.6	2.5	0.5	0.4	0.2	0.6	0.4	94.8	0.6	4.6	0.074	0.513	17.031828	-96.712732
Oaxaca	0.00	3	2	34736	9.3	85.5	0.6	2.5	0.5	0.4	0.2	0.6	0.4	94.8	0.6	4.6	0.074	0.513	17.031926	-96.712646
T. Der. Aeropuerto	10.46	1	1	25620	9.3	86.3	0.3	2.7	0.6	0.3	0.1	0.3	0.1	95.6	0.3	4.1	0.092	0.507	17.007792	-96.712902
T. Der. Aeropuerto	10.46	1	2	26432	9.3	86.2	0.4	2.7	0.6	0.3	0.1	0.3	0.1	95.5	0.4	4.1	0.085	0.507	17.007781	-96.712790
T. Der. Puerto Escondido	19.07	1	1	16098	11.0	83.2	0.8	3.5	0.8	0.3	0.1	0.2	0.1	94.2	0.8	5.0	0.103	0.510	16.933756	-96.704376
T. Der. Puerto Escondido	19.07	1	2	16726	11.0	83.3	0.7	3.5	0.8	0.3	0.1	0.2	0.1	94.3	0.7	5.0	0.105	0.510	16.933793	-96.704265
T. Der. Puerto Escondido	19.07	3	0	21826	12.5	81.0	0.5	3.7	1.0	0.5	0.2	0.4	0.2	93.5	0.5	6.0	0.081	0.505	16.926940	-96.702366
T. C. Libramiento de Ocotlán Oax. Norte	22.80	3	0	6407	6.5	81.0	0.3	5.6	0.2	4.8	0.6	0.2	0.8	87.5	0.3	12.2	0.098	0.519	16.855352	-96.683330
T. C. Libramiento de Ocotlán Oax. Sur	35.30	3	0	11194	12.9	79.5	0.7	4.4	1.6	0.5	0.1	0.2	0.1	92.4	0.7	6.9	0.093	0.516	16.750141	-96.682865
Ocotlán	35.67	3	0	7867	8.0	87.2	0.3	2.8	0.5	0.4	0.3	0.3	0.2	95.2	0.3	4.5	0.107	0.518	16.765446	-96.677019
T. C. Libramiento de Ejutla Norte	55.50	1	0	6786	4.9	84.5	1.0	7.1	1.2	0.7	0.3	0.2	0.1	89.4	1.0	9.6	0.078	0.513	16.609896	-96.737840

OAXACA

15 CARR : Oaxaca - Puerto Ángel

CLAVE: 20091

RUTA: MEX-175

AÑO: 2023

LUGAR	ESTACION				CLASIFICACION VEHICULAR EN PORCIENTO													COORDENADAS		
	KM	TE	SC	TDPA	M	A	B	C2	C3	T3S2	T3S3	T3S2R4	OTROS	A	B	C	K'	D	LATITUD	LONGITUD
T. C. Libramiento de Ejutla Norte	55.50	3	0	3227	11.0	79.7	0.3	6.6	0.4	1.7	0.2	0.0	0.1	90.7	0.3	9.0	0.091	0.502	16.590281	-96.739023
T. C. Libramiento de Ejutla Sur	64.70	1	0	3203	12.0	81.0	0.4	4.6	0.4	1.3	0.2	0.0	0.1	93.0	0.4	6.6	0.094	0.504	16.528658	-96.736042
T. C. Libramiento de Ejutla Sur	64.70	3	0	5114	4.6	76.6	0.9	13.4	1.2	2.5	0.5	0.1	0.2	81.2	0.9	17.9	0.087	0.509	16.515710	-96.736392
T. Der. A San Vicente Coatlán	69.50	3	0	4954	5.2	82.2	1.1	9.0	1.2	0.6	0.5	0.1	0.1	87.4	1.1	11.5	0.077	0.503	16.479268	-96.736728
Miahuatlán	100.64	1	0	5572	8.3	81.8	1.0	6.7	1.0	0.6	0.2	0.3	0.1	90.1	1.0	8.9	0.106	0.500	16.359240	-96.619747
Miahuatlán	100.64	3	0	5164	12.6	76.5	0.8	6.1	0.9	2.4	0.3	0.0	0.4	89.1	0.8	10.1	0.074	0.504	16.285415	-96.583997
San Miguel Suchixtepec	144.00	1	0	2302	4.6	90.3	0.1	1.9	1.6	0.4	0.3	0.7	0.1	94.9	0.1	5.0	0.084	0.500	16.100078	-96.469883
Candelaria Loxicha	205.00	1	0	2247	19.2	72.2	0.8	5.8	1.2	0.3	0.4	0.1	0.0	91.4	0.8	7.8	0.084	0.507	15.930856	-96.481362
Candelaria Loxicha	205.00	3	0	2236	13.8	74.1	0.7	7.9	1.2	1.5	0.6	0.1	0.1	87.9	0.7	11.4	0.085	0.504	15.919779	-96.492816
San José Chacalapa	224.00	3	0	3689	22.8	71.1	0.7	4.4	0.4	0.4	0.1	0.1	0.0	93.9	0.7	5.4	0.082	0.502	15.819951	-96.463815
T. Izq. Santa María Huatulco	233.80	1	0	5904	21.7	68.9	0.2	3.3	0.2	2.7	1.9	0.7	0.4	90.6	0.2	9.2	0.077	0.535	15.757926	-96.464028
T. Der. De San Pedro Pochutla	236.00	1	0	5710	21.3	70.3	0.3	3.8	0.3	2.6	0.8	0.1	0.5	91.6	0.3	8.1	0.076	0.505	15.763417	-96.463824
X. C. Santiago Pinotepa Nacional - Salina Cruz	237.70	1	1	7691	30.3	63.6	0.4	2.3	0.8	1.4	0.3	0.6	0.3	93.9	0.4	5.7	0.072	0.510	15.731692	-96.474749
X. C. Santiago Pinotepa Nacional - Salina Cruz	237.70	1	2	7377	29.9	64.3	0.5	2.1	0.7	1.3	0.3	0.6	0.3	94.2	0.5	5.3	0.072	0.510	15.731647	-96.474687
X. C. Santiago Pinotepa Nacional - Salina Cruz	237.70	3	0	6809	29.0	63.4	0.1	2.9	0.1	3.1	0.7	0.2	0.5	92.4	0.1	7.5	0.074	0.503	15.729017	-96.474608
Puerto Ángel	245.40	1	0	4168	21.3	73.2	0.5	2.9	0.2	0.3	0.7	0.7	0.2	94.5	0.5	5.0	0.088	0.509	15.676148	-96.482112

16 CARR : Oaxaca - Tehuantepec

CLAVE: 20057

RUTA: MEX-190

AÑO: 2023

LUGAR	ESTACION				CLASIFICACION VEHICULAR EN PORCIENTO													COORDENADAS		
	KM	TE	SC	TDPA	M	A	B	C2	C3	T3S2	T3S3	T3S2R4	OTROS	A	B	C	K'	D	LATITUD	LONGITUD
Oaxaca	0.00	3	1	27940	9.2	87.1	0.2	2.1	0.6	0.2	0.2	0.2	0.2	96.3	0.2	3.5	0.080	0.502	17.066840	-96.684741
Oaxaca	0.00	3	2	27625	9.2	87.1	0.2	2.1	0.6	0.2	0.2	0.2	0.2	96.3	0.2	3.5	0.083	0.502	17.066974	-96.684599
T. Izq. Guelatao	8.69	3	1	19695	9.1	86.0	0.7	2.9	0.3	0.3	0.3	0.2	0.2	95.1	0.7	4.2	0.078	0.502	17.063966	-96.675085
T. Izq. Guelatao	8.69	3	2	19550	9.0	86.4	0.6	2.9	0.2	0.3	0.2	0.2	0.2	95.4	0.6	4.0	0.092	0.502	17.064101	-96.675045
Libramiento Santa María el Tule	12.00	1	1	19360	8.5	88.0	0.4	2.0	0.6	0.1	0.1	0.2	0.1	96.5	0.4	3.1	0.073	0.512	17.062255	-96.669293
Libramiento Santa María el Tule	12.00	1	2	20341	9.1	87.1	0.5	2.1	0.6	0.1	0.1	0.2	0.2	96.2	0.5	3.3	0.076	0.512	17.062324	-96.668963
Santa María El Tule	13.90	1	1	8854	12.2	84.3	0.5	1.9	0.3	0.3	0.2	0.3	0.0	96.5	0.5	3.0	0.084	0.501	17.048851	-96.642001
Santa María El Tule	13.90	1	2	8811	12.2	84.1	0.6	1.9	0.3	0.3	0.2	0.3	0.1	96.3	0.6	3.1	0.097	0.501	17.048931	-96.641934
Santa María El Tule	13.90	3	0	6296	12.5	84.5	0.3	2.1	0.3	0.2	0.0	0.1	0.0	97.0	0.3	2.7	0.070	0.517	17.043311	-96.629366
T. Izq. Teotitlán del Valle	26.50	1	0	18470	5.7	88.0	1.0	3.2	0.9	0.6	0.3	0.3	0.0	93.7	1.0	5.3	0.072	0.506	16.997152	-96.529134
T. Izq. Teotitlán del Valle	26.50	3	0	18323	6.3	86.9	1.1	3.7	0.9	0.6	0.3	0.2	0.0	93.2	1.1	5.7	0.073	0.503	16.992376	-96.521875
T. Der. Tlacolula	33.64	1	0	19125	7.3	86.1	1.1	3.6	0.9	0.5	0.3	0.2	0.0	93.4	1.1	5.5	0.081	0.503	16.970414	-96.489013
T. Der. Tlacolula	33.64	3	1	5900	3.2	88.2	1.3	4.3	1.1	0.8	0.6	0.4	0.1	91.4	1.3	7.3	0.085	0.508	16.946975	-96.457526
T. Der. Tlacolula	33.64	3	2	5717	3.3	87.9	1.5	4.2	1.2	0.8	0.6	0.4	0.1	91.2	1.5	7.3	0.084	0.508	16.947055	-96.457487

OAXACA

16 CARR: Oaxaca - Tehuantepec

CLAVE: 20057

RUTA: MEX-190

AÑO: 2023

LUGAR	ESTACION				CLASIFICACION VEHICULAR EN PORCIENTO										COORDENADAS					
	KM	TE	SC	TDPA	M	A	B	C2	C3	T3S2	T3S3	T3S2R4	OTROS	A	B	C	K'	D	LATITUD	LONGITUD
T. Izq. Villa de Mitla	42.66	1	0	9889	4.6	85.5	1.3	4.9	1.0	1.2	0.7	0.5	0.3	90.1	1.3	8.6	0.085	0.516	16.921417	-96.406155
T. Izq. Villa de Mitla	42.66	3	0	5416	3.4	83.0	2.5	5.3	1.5	2.1	1.2	0.7	0.3	86.4	2.5	11.1	0.081	0.503	16.912370	-96.397691
San Pedro Totolapan	81.00	1	0	4087	7.9	73.5	3.4	6.3	2.4	2.6	1.8	1.6	0.5	81.4	3.4	15.2	0.076	0.503	16.672476	-96.306952
T. Izq. Nejapa de Madero	127.00	1	0	3288	9.9	71.8	4.8	5.1	1.8	2.9	1.6	1.6	0.5	81.7	4.8	13.5	0.077	0.511	16.621667	-96.037955
La Reforma	184.62	1	0	2674	3.3	75.8	5.2	7.3	1.8	3.3	1.8	1.3	0.2	79.1	5.2	15.7	0.077	0.502	16.399479	-95.767444
La Reforma	184.62	3	0	2548	4.3	75.4	5.3	6.1	2.1	3.3	1.6	1.7	0.2	79.7	5.3	15.0	0.080	0.509	16.398439	-95.760940
T. Der. Magdalena Tequisistlán	206.66	1	0	4499	8.6	76.6	2.7	3.5	2.3	2.2	2.1	1.0	1.0	85.2	2.7	12.1	0.063	0.506	16.415068	-95.597509
T. Izq. Jalapa de Márquez	224.60	3	0	3870	3.4	80.0	4.6	6.0	1.4	2.2	1.3	1.0	0.1	83.4	4.6	12.0	0.071	0.504	16.421986	-95.423433
X. C. La Ventosa - Salina Cruz (Cuota)	246.18	1	0	4010	3.6	81.4	4.3	5.1	1.4	1.7	1.4	1.0	0.1	85.0	4.3	10.7	0.072	0.505	16.334675	-95.286116
X. C. La Ventosa - Salina Cruz (Cuota)	246.18	3	0	6141	5.9	78.3	2.2	5.1	1.4	2.2	1.0	3.1	0.8	84.2	2.2	13.6	0.072	0.508	16.331286	-95.272045
Tehuantepec	250.60	1	0	9387	6.3	82.4	1.3	4.8	1.1	1.2	0.8	1.8	0.3	88.7	1.3	10.0	0.082	0.511	16.326104	-95.250794

17 CARR: Puebla - Huajuapán de León

CLAVE: 00049

RUTA: MEX-190

AÑO: 2023

LUGAR	ESTACION				CLASIFICACION VEHICULAR EN PORCIENTO										COORDENADAS					
	KM	TE	SC	TDPA	M	A	B	C2	C3	T3S2	T3S3	T3S2R4	OTROS	A	B	C	K'	D	LATITUD	LONGITUD
Puebla	0.00	3	1	32314	5.1	86.3	2.6	3.4	1.2	0.5	0.4	0.3	0.2	91.4	2.6	6.0	0.057	0.506	19.034269	-98.260584
Puebla	0.00	3	2	31520	5.2	87.0	1.9	3.5	1.2	0.4	0.3	0.4	0.1	92.2	1.9	5.9	0.078	0.506	19.034131	-98.260526
T. Izq. Santa María Acuyah	8.68	1	1	17248	4.0	88.2	0.6	4.1	1.1	0.9	0.4	0.5	0.2	92.2	0.6	7.2	0.086	0.519	19.025302	-98.290979
T. Izq. Santa María Acuyah	8.68	1	2	18639	4.5	86.9	0.7	4.0	1.4	1.1	0.5	0.8	0.1	91.4	0.7	7.9	0.081	0.519	19.025217	-98.290960
T. Izq. Santa María Acuyah	8.68	3	1	17559	4.9	87.2	1.3	2.8	1.6	1.2	0.3	0.6	0.1	92.1	1.3	6.6	0.089	0.517	19.023241	-98.302329
T. Izq. Santa María Acuyah	8.68	3	2	16378	4.6	87.4	1.5	2.7	1.6	1.3	0.2	0.6	0.1	92.0	1.5	6.5	0.084	0.517	19.023149	-98.302331
Chipilo	13.00	1	1	14780	7.0	83.7	1.4	3.3	2.1	1.3	0.4	0.6	0.2	90.7	1.4	7.9	0.085	0.504	19.012020	-98.321120
Chipilo	13.00	1	2	14565	7.2	83.8	1.4	3.1	2.2	1.1	0.4	0.6	0.2	91.0	1.4	7.6	0.104	0.504	19.011970	-98.321039
T. Der. Santa Isabel Cholula	17.28	1	0	20103	8.8	85.0	0.6	2.2	1.5	0.7	0.4	0.6	0.2	93.8	0.6	5.6	0.073	0.504	18.986435	-98.361806
T. Der. Santa Isabel Cholula	17.28	3	0	17000	8.4	84.8	0.9	2.5	1.3	1.0	0.4	0.6	0.1	93.2	0.9	5.9	0.085	0.512	18.978132	-98.371113
Atlixco	29.88	1	0	25700	8.3	85.9	0.4	2.7	0.9	0.8	0.3	0.4	0.3	94.2	0.4	5.4	0.071	0.501	18.930717	-98.407092
Atlixco	29.88	3	1	8709	6.9	83.8	1.1	4.2	1.5	0.9	0.6	0.8	0.2	90.7	1.1	8.2	0.088	0.507	18.867206	-98.440118
Atlixco	29.88	3	2	8966	6.8	82.7	1.8	4.7	1.3	1.1	0.7	0.7	0.2	89.5	1.8	8.7	0.089	0.507	18.867190	-98.440026
Tepeojuma	51.90	1	1	5918	6.8	81.9	1.7	3.8	2.0	1.5	1.0	1.0	0.3	88.7	1.7	9.6	0.088	0.501	18.735446	-98.448788
Tepeojuma	51.90	1	2	5932	7.0	81.3	2.6	3.8	1.8	1.7	0.6	1.0	0.2	88.3	2.6	9.1	0.089	0.501	18.735447	-98.448702
Izúcar de Matamoros	67.00	1	0	10013	17.7	74.3	0.8	2.8	1.9	1.0	0.7	0.5	0.3	92.0	0.8	7.2	0.066	0.502	18.634547	-98.468906
T. Der. Cuautla	70.00	3	0	11364	19.9	70.8	1.9	2.5	1.4	1.4	1.1	0.6	0.4	90.7	1.9	7.4	0.074	0.505	18.582760	-98.452063
Tehuizingo	113.30	1	0	7670	14.2	74.7	2.3	3.4	1.6	1.4	0.8	1.3	0.3	88.9	2.3	8.8	0.088	0.526	18.337207	-98.281920
Acatlán de Osorio	154.20	1	0	8121	11.2	81.4	1.4	2.8	0.9	0.8	0.5	0.6	0.4	92.6	1.4	6.0	0.080	0.513	18.182499	-98.058492

OAXACA

17 CARR: Puebla - Huajuapán de León

CLAVE: 00049

RUTA: MEX-190

AÑO: 2023

LUGAR	ESTACION				CLASIFICACION VEHICULAR EN PORCIENTO										COORDENADAS					
	KM	TE	SC	TDPA	M	A	B	C2	C3	T3S2	T3S3	T3S2R4	OTROS	A	B	C	K'	D	LATITUD	LONGITUD
Chila	192.30	3	0	2531	3.9	77.7	4.7	8.4	3.3	1.2	0.4	0.4	0.0	81.6	4.7	13.7	0.087	0.533	17.966493	-97.864125
Lim. Edos. Term. Pue. Ppia. Oax.	200.30																			
T. Izq. Las Palmas	202.10	1	0	2332	3.8	84.6	3.8	4.2	1.8	1.0	0.5	0.3	0.0	88.4	3.8	7.8	0.079	0.504	17.885102	-97.840039
Huajuapán de León	219.30	1	0	3891	8.2	78.4	1.2	5.1	1.3	3.9	1.3	0.4	0.2	86.6	1.2	12.2	0.075	0.519	17.838859	-97.792056

18 CARR: Ramal a Asunción Ixtaltepec

CLAVE: 20624

RUTA: MEX-185

AÑO: 2023

LUGAR	ESTACION				CLASIFICACION VEHICULAR EN PORCIENTO										COORDENADAS					
	KM	TE	SC	TDPA	M	A	B	C2	C3	T3S2	T3S3	T3S2R4	OTROS	A	B	C	K'	D	LATITUD	LONGITUD
T. C. Coatzacoalcos - Salina Cruz	0.00	3	0	2959	20.8	75.3	0.5	1.8	0.9	0.4	0.2	0.1	0.0	96.1	0.5	3.4	0.079	0.502	16.443131	-95.034390
Asunción Ixtaltepec	9.70	1	0	4170	12.2	84.4	0.5	1.3	0.9	0.4	0.1	0.2	0.0	96.6	0.5	2.9	0.080	0.500	16.493292	-95.064151

19 CARR: Ramal a Monte Albán

CLAVE:

RUTA: MEX

AÑO: 2023

LUGAR	ESTACION				CLASIFICACION VEHICULAR EN PORCIENTO										COORDENADAS					
	KM	TE	SC	TDPA	M	A	B	C2	C3	T3S2	T3S3	T3S2R4	OTROS	A	B	C	K'	D	LATITUD	LONGITUD
T. C. Oaxaca - Tehuantepec	0.00																			
Chimalpopoca	1.80	3	0	21730	25.0	69.6	0.4	3.4	0.5	0.3	0.2	0.4	0.2	94.6	0.4	5.0	0.073	0.507	17.073317	-96.760392
T. Der. San Pedro Ixtlahuaca	2.75	3	0	2301	14.3	79.6	0.5	4.3	0.2	0.9	0.1	0.0	0.1	93.9	0.5	5.6	0.090	0.522	17.070783	-96.765493
Monte Albán	8.00																			

20 CARR: Ramal a Refinería Pemex (Refinería del Pacifico)

CLAVE:

RUTA: MEX

AÑO: 2023

LUGAR	ESTACION				CLASIFICACION VEHICULAR EN PORCIENTO										COORDENADAS					
	KM	TE	SC	TDPA	M	A	B	C2	C3	T3S2	T3S3	T3S2R4	OTROS	A	B	C	K'	D	LATITUD	LONGITUD
T. C. Coatzacoalcos - Salina Cruz	0.00	3	1	6049	7.1	82.5	1.9	4.1	1.5	0.9	0.4	1.2	0.4	89.6	1.9	8.5	0.100	0.502	16.220939	-95.202302
T. C. Coatzacoalcos - Salina Cruz	0.00	3	2	6110	7.1	82.2	2.0	4.1	1.5	1.0	0.5	1.2	0.4	89.3	2.0	8.7	0.102	0.502	16.221051	-95.202282
Refinería de Pemex	3.00																			

21 CARR: San Pablo Villa de Mitla - T. C. (Tuxtepec - Palomares)

CLAVE: 00106

RUTA: MEX-179

AÑO: 2023

LUGAR	ESTACION				CLASIFICACION VEHICULAR EN PORCIENTO										COORDENADAS					
	KM	TE	SC	TDPA	M	A	B	C2	C3	T3S2	T3S3	T3S2R4	OTROS	A	B	C	K'	D	LATITUD	LONGITUD
T. C. Oaxaca - Tehuantepec	0.00	3	0	4501	3.0	90.6	0.9	3.1	1.1	0.5	0.3	0.3	0.2	93.6	0.9	5.5	0.081	0.529	16.918145	-96.392182
San Pedro y San Pablo Ayutla	55.00	1	0	1783	7.0	88.4	0.4	2.1	1.4	0.3	0.2	0.2	0.0	95.4	0.4	4.2	0.078	0.502	17.016355	-96.082457

OAXACA

21 CARR: San Pablo Villa de Mitla - T. C. (Tuxtepec - Palomares)

CLAVE: 00106

RUTA: MEX-179

AÑO: 2023

LUGAR	ESTACION				CLASIFICACION VEHICULAR EN PORCIENTO										COORDENADAS					
	KM	TE	SC	TDPA	M	A	B	C2	C3	T3S2	T3S3	T3S2R4	OTROS	A	B	C	K'	D	LATITUD	LONGITUD
T. Der. Zacatepec	90.00	1	0	585	1.6	87.7	0.4	8.4	0.8	0.7	0.0	0.3	0.1	89.3	0.4	10.3	0.093	0.509	17.148229	-96.034645
Lim. Edos. Term. Oax. Ppia. Ver.	217.70																			
T. C. Tuxtepec - Ent. Palomares	238.70	1	0	1263	15.5	80.1	0.7	0.8	0.4	1.0	0.8	0.2	0.5	95.6	0.7	3.7	0.105	0.505	17.691448	-95.735291

22 CARR: Santiago Pinotepa Nacional - Salina Cruz

CLAVE: 20074

RUTA: MEX-200

AÑO: 2023

LUGAR	ESTACION				CLASIFICACION VEHICULAR EN PORCIENTO										COORDENADAS					
	KM	TE	SC	TDPA	M	A	B	C2	C3	T3S2	T3S3	T3S2R4	OTROS	A	B	C	K'	D	LATITUD	LONGITUD
Santiago Pinotepa Nacional	0.00	3	0	4163	14.7	75.8	1.2	3.6	1.0	3.1	0.3	0.3	0.0	90.5	1.2	8.3	0.092	0.506	16.329069	-98.022793
San Andrés Huaxpaltepec	18.07	3	0	4168	12.5	74.4	2.4	3.0	1.8	3.8	1.6	0.4	0.1	86.9	2.4	10.7	0.082	0.512	16.324427	-97.905455
San José del Progreso	59.51	1	0	4270	9.0	82.7	1.4	2.5	1.2	1.6	1.2	0.3	0.1	91.7	1.4	6.9	0.098	0.520	16.106238	-97.706829
T. Izq. Tututepec	65.85	1	0	4342	9.9	80.9	1.4	3.2	1.4	1.9	1.0	0.2	0.1	90.8	1.4	7.8	0.104	0.511	16.083033	-97.648081
T. Izq. Tututepec	65.85	3	0	5597	16.5	77.0	1.1	3.3	0.7	0.8	0.4	0.2	0.0	93.5	1.1	5.4	0.095	0.507	16.076162	-97.628211
Río Grande	91.00	1	0	4274	16.2	74.9	1.7	3.4	1.3	1.4	0.8	0.2	0.1	91.1	1.7	7.2	0.106	0.500	16.013481	-97.465800
Río Grande	91.00	3	0	4477	17.9	74.0	1.6	2.7	1.2	1.5	0.8	0.2	0.1	91.9	1.6	6.5	0.119	0.505	15.986554	-97.413298
San Isidro Llano Grande	110.50	1	0	3423	8.4	79.9	1.4	5.4	1.6	1.5	1.3	0.4	0.1	88.3	1.4	10.3	0.094	0.522	15.949342	-97.288717
T. Izq. Bajos de Chila	131.94	1	0	4781	9.8	81.7	1.3	2.9	1.4	1.4	0.6	0.8	0.1	91.5	1.3	7.2	0.085	0.516	15.914192	-97.123273
T. Izq. Bajos de Chila	131.94	3	0	7300	16.9	76.7	1.2	2.3	0.9	1.0	0.5	0.4	0.1	93.6	1.2	5.2	0.083	0.500	15.908033	-97.118026
T. Izq. Aeropuerto	137.40	1	0	7296	15.5	73.9	1.1	4.5	1.3	1.7	1.0	0.8	0.2	89.4	1.1	9.5	0.083	0.509	15.874941	-97.097906
Puerto Escondido	141.54	1	1	6806	15.3	75.8	0.4	4.5	0.5	1.9	0.8	0.5	0.3	91.1	0.4	8.5	0.089	0.522	15.868745	-97.083322
Puerto Escondido	141.54	1	2	7419	15.3	75.7	0.4	4.5	0.5	1.9	0.8	0.5	0.4	91.0	0.4	8.6	0.093	0.522	15.868828	-97.083286
Puerto Escondido	141.54	3	1	10817	19.5	71.5	0.9	4.2	0.9	1.4	0.8	0.5	0.3	91.0	0.9	8.1	0.080	0.519	15.852969	-97.052919
Puerto Escondido	141.54	3	1	8043	23.1	70.8	0.5	3.7	0.5	0.5	0.4	0.3	0.2	93.9	0.5	5.6	0.085	0.503	15.834131	-97.036411
Puerto Escondido	141.54	3	2	8128	23.0	71.0	0.5	3.7	0.5	0.5	0.4	0.2	0.2	94.0	0.5	5.5	0.083	0.503	15.834183	-97.036345
Puerto Escondido	141.54	3	2	10035	19.5	71.4	0.9	4.2	0.9	1.5	0.8	0.5	0.3	90.9	0.9	8.2	0.076	0.519	15.852944	-97.052802
T. Izq. Oaxaca (Cuota)	151.76	1	1	3686	16.7	76.5	0.9	3.0	0.9	1.1	0.5	0.2	0.2	93.2	0.9	5.9	0.089	0.510	15.811125	-96.993606
T. Izq. Oaxaca (Cuota)	151.76	1	2	3834	16.7	76.7	0.9	2.9	0.9	1.1	0.5	0.2	0.1	93.4	0.9	5.7	0.089	0.510	15.811222	-96.993571
T. Izq. Oaxaca (Cuota)	151.76	3	1	3761	15.7	74.8	0.9	5.7	0.8	1.0	0.9	0.1	0.1	90.5	0.9	8.6	0.090	0.504	15.805783	-96.974945
T. Izq. Oaxaca (Cuota)	151.76	3	2	3827	15.3	74.3	1.0	6.2	0.8	1.1	1.0	0.2	0.1	89.6	1.0	9.4	0.084	0.504	15.805878	-96.974900
T. Izq. Valdeflores Colotepec	167.00	1	1	2298	15.8	72.8	1.5	5.4	1.2	1.6	1.1	0.5	0.1	88.6	1.5	9.9	0.102	0.514	15.768346	-96.861373
T. Izq. Valdeflores Colotepec	167.00	1	2	2168	15.9	72.0	1.4	5.6	1.3	1.8	1.3	0.6	0.1	87.9	1.4	10.7	0.112	0.514	15.768446	-96.861365
T. Izq. Valdeflores Colotepec	167.00	3	1	2469	16.1	72.2	1.5	6.2	0.9	1.5	1.0	0.5	0.1	88.3	1.5	10.2	0.096	0.508	15.766653	-96.846371
T. Izq. Valdeflores Colotepec	167.00	3	2	2547	15.9	72.6	1.3	6.2	1.1	1.5	0.8	0.4	0.2	88.5	1.3	10.2	0.093	0.508	15.766777	-96.846337
T. Izq. Oaxaca	170.70	1	1	2465	15.7	71.2	1.5	6.4	1.6	1.7	1.3	0.4	0.2	86.9	1.5	11.6	0.101	0.524	15.760037	-96.826447
T. Izq. Oaxaca	170.70	1	2	2241	14.9	71.8	1.7	6.6	1.4	1.9	1.3	0.3	0.1	86.7	1.7	11.6	0.100	0.524	15.760160	-96.826450

OAXACA

22 CARR: Santiago Pinotepa Nacional - Salina Cruz

CLAVE: 20074

RUTA: MEX-200

AÑO: 2023

LUGAR	ESTACION				CLASIFICACION VEHICULAR EN PORCIENTO													COORDENADAS		
	KM	TE	SC	TDPA	M	A	B	C2	C3	T3S2	T3S3	T3S2R4	OTROS	A	B	C	K'	D	LATITUD	LONGITUD
T. Izq. Oaxaca	170.70	3	1	2292	15.1	72.1	1.9	6.7	1.1	1.4	1.2	0.3	0.2	87.2	1.9	10.9	0.098	0.525	15.747881	-96.812771
T. Izq. Oaxaca	170.70	3	2	2536	14.8	71.9	1.5	7.1	1.3	1.5	1.4	0.3	0.2	86.7	1.5	11.8	0.091	0.525	15.747943	-96.812696
San Isidro del Palmar	195.00	1	1	2305	10.8	76.7	1.9	6.7	1.0	1.6	0.9	0.2	0.2	87.5	1.9	10.6	0.085	0.531	15.722962	-96.617912
San Isidro del Palmar	195.00	1	2	2037	10.8	76.6	2.0	6.8	0.9	1.4	1.0	0.3	0.2	87.4	2.0	10.6	0.107	0.531	15.723058	-96.617915
T. Der. Mazunte	198.87	1	1	3227	12.8	75.7	1.4	6.7	0.9	1.3	0.9	0.2	0.1	88.5	1.4	10.1	0.081	0.504	15.716128	-96.586912
T. Der. Mazunte	198.87	1	2	3180	12.7	75.5	1.3	7.1	0.9	1.2	0.9	0.2	0.2	88.2	1.3	10.5	0.079	0.504	15.716231	-96.586905
T. Der. Mazunte	198.87	3	1	4108	20.7	68.5	1.4	5.8	0.8	1.3	1.0	0.3	0.2	89.2	1.4	9.4	0.073	0.505	15.719391	-96.576174
T. Der. Mazunte	198.87	3	2	4190	20.6	69.0	1.3	6.1	0.7	1.1	0.9	0.2	0.1	89.6	1.3	9.1	0.094	0.505	15.719481	-96.576228
T. Izq. Sta. María Tonameca	202.93	3	1	3829	15.2	74.8	1.1	5.3	0.6	1.8	0.9	0.2	0.1	90.0	1.1	8.9	0.093	0.501	15.729932	-96.537374
T. Izq. Sta. María Tonameca	202.93	3	2	3846	15.6	74.5	1.0	5.5	0.7	1.7	0.7	0.2	0.1	90.1	1.0	8.9	0.089	0.501	15.730022	-96.537419
T. Libramiento de Pochutla	209.15	1	1	4203	15.8	74.5	1.2	5.2	0.5	1.6	0.8	0.3	0.1	90.3	1.2	8.5	0.077	0.505	15.731639	-96.483264
T. Libramiento de Pochutla	209.15	1	2	4118	15.8	75.1	1.3	5.0	0.5	1.2	0.8	0.2	0.1	90.9	1.3	7.8	0.091	0.505	15.731779	-96.483367
X. C. Oaxaca - Puerto Ángel	209.95	1	0	8933	10.6	80.0	1.4	5.0	0.7	1.2	0.5	0.4	0.2	90.6	1.4	8.0	0.074	0.503	15.730615	-96.475754
X. C. Oaxaca - Puerto Ángel	209.95	3	0	6092	15.7	73.0	1.4	6.0	0.8	1.4	1.0	0.4	0.3	88.7	1.4	9.9	0.070	0.502	15.729068	-96.471121
T. Der. Cuatunanco	226.00	1	0	3731	6.8	79.4	1.9	5.9	1.3	2.3	0.8	0.7	0.9	86.2	1.9	11.9	0.079	0.501	15.733148	-96.351002
T. Der. Cuatunanco	226.00	3	0	4104	11.1	72.5	2.3	6.6	1.5	3.6	1.2	0.5	0.7	83.6	2.3	14.1	0.081	0.513	15.735223	-96.339928
T. C. El Zapote - Copalita	236.00	1	0	6186	11.6	76.2	1.4	6.0	1.2	1.6	0.9	0.4	0.7	87.8	1.4	10.8	0.070	0.512	15.757970	-96.277190
T. C. El Zapote - Copalita	236.00	3	0	9942	12.4	76.2	1.0	6.4	0.9	1.0	0.8	0.7	0.6	88.6	1.0	10.4	0.073	0.502	15.763910	-96.268881
T. Izq. Aeropuerto	237.68	3	0	9526	9.8	79.6	1.1	7.3	0.7	0.7	0.6	0.2	0.0	89.4	1.1	9.5	0.081	0.532	15.769941	-96.253289
T. Der. Santa Cruz Huatulco	250.00	1	0	10492	6.4	81.0	1.3	7.3	1.1	0.9	0.8	0.5	0.7	87.4	1.3	11.3	0.086	0.512	15.780324	-96.165079
T. Der. Santa Cruz Huatulco	250.00	3	0	3765	5.0	80.1	1.4	7.7	1.5	2.1	1.1	0.7	0.4	85.1	1.4	13.5	0.096	0.518	15.783907	-96.152546
T. Der. Tangolunda	254.50	1	0	4068	12.3	70.8	2.2	7.5	1.8	3.4	1.6	0.3	0.1	83.1	2.2	14.7	0.094	0.539	15.790016	-96.129781
T. Der. Tangolunda 2do Acceso	263.00	1	0	2997	13.9	68.5	3.0	7.0	1.3	4.1	1.8	0.2	0.2	82.4	3.0	14.6	0.071	0.504	15.818414	-96.068746
Barra de Copalita	264.00	1	0	4024	14.8	70.5	2.3	4.8	1.6	3.2	2.2	0.4	0.2	85.3	2.3	12.4	0.079	0.543	15.820281	-96.063244
Barra de Copalita	264.00	3	0	3546	12.1	67.3	3.2	12.1	1.2	2.1	1.6	0.2	0.2	79.4	3.2	17.4	0.077	0.516	15.819721	-96.054384
El Coyul	300.30	3	0	2493	5.9	76.5	2.6	8.0	1.4	3.2	1.8	0.5	0.1	82.4	2.6	15.0	0.085	0.506	15.918820	-95.800305
T. Der. Río Seco	307.00	3	0	2294	5.5	75.6	3.0	6.6	1.4	4.7	2.6	0.4	0.2	81.1	3.0	15.9	0.091	0.504	15.944791	-95.751515
Sta. Ma. Huamelula	316.00	1	0	2488	8.7	74.3	2.3	6.9	1.2	4.5	1.8	0.1	0.2	83.0	2.3	14.7	0.091	0.507	15.988734	-95.710928
Santiago Astata	320.00	1	0	2367	5.5	78.3	2.9	6.4	1.5	3.2	1.9	0.1	0.2	83.8	2.9	13.3	0.086	0.504	15.990239	-95.676623
T. Der. Concepción Bamba	352.10	1	0	2168	6.6	75.1	2.5	6.8	1.4	4.8	2.1	0.1	0.6	81.7	2.5	15.8	0.105	0.504	16.013835	-95.439454
Morro de Mazatán	365.50	1	0	3392	5.8	70.4	2.6	5.6	7.7	4.6	2.7	0.2	0.4	76.2	2.6	21.2	0.079	0.510	16.099399	-95.383898
T. C. La Ventosa - Salina Cruz (Cuota)	380.00	1	0	3580	3.0	78.4	2.7	8.7	2.0	2.4	1.8	0.4	0.6	81.4	2.7	15.9	0.083	0.514	16.138705	-95.300730
T. C. La Ventosa - Salina Cruz (Cuota)	380.00	3	0	3651	3.6	81.8	2.1	6.5	1.6	2.2	1.5	0.4	0.3	85.4	2.1	12.5	0.084	0.524	16.155125	-95.278999
Salina Cruz	394.00																			



OAXACA

23 CARR: Tapanatepec - Talismán

CLAVE: 00075

RUTA: MEX-200

AÑO: 2023

LUGAR	ESTACION				CLASIFICACION VEHICULAR EN PORCIENTO										COORDENADAS					
	KM	TE	SC	TDPA	M	A	B	C2	C3	T3S2	T3S3	T3S2R4	OTROS	A	B	C	K'	D	LATITUD	LONGITUD
Tapanatepec	0.00	3	0	6345	9.1	68.7	2.9	4.0	3.2	5.4	1.8	4.0	0.9	77.8	2.9	19.3	0.074	0.521	16.344984	-94.190602
Lim. Edos. Term. Oax. Ppia. Chis.	25.90																			
T. Der. Emiliano Zapata	26.20	1	0	3826	7.7	62.8	3.2	5.7	2.1	8.6	2.6	6.5	0.8	70.5	3.2	26.3	0.069	0.508	16.217618	-94.052459
T. Der. Emiliano Zapata	26.20	3	0	4128	6.8	62.7	3.6	6.8	2.4	8.5	2.6	5.7	0.9	69.5	3.6	26.9	0.069	0.507	16.214645	-94.038691
T. C. Libramiento de Arriaga	41.00	3	0	4517	7.6	69.1	2.4	3.4	4.9	6.1	2.0	3.7	0.8	76.7	2.4	20.9	0.084	0.502	16.224836	-93.925585
Arriaga	45.00	1	0	6124	8.5	67.4	2.7	3.2	4.6	6.0	2.5	4.2	0.9	75.9	2.7	21.4	0.073	0.519	16.221852	-93.936368
Arriaga	45.00	3	1	3982	17.2	71.4	2.5	6.6	0.7	0.8	0.5	0.2	0.1	88.6	2.5	8.9	0.080	0.529	16.237099	-93.882846
Arriaga	45.00	3	2	4474	17.3	71.2	2.4	6.7	0.7	0.8	0.5	0.3	0.1	88.5	2.4	9.1	0.073	0.529	16.238967	-93.883261
X. C. Arriaga- Ocozocoautla (Cuota)	47.00	3	1	4486	8.4	74.7	3.6	4.5	1.6	3.6	1.1	2.0	0.5	83.1	3.6	13.3	0.068	0.516	16.229029	-93.872697
X. C. Arriaga- Ocozocoautla (Cuota)	47.00	3	2	4779	8.4	74.7	3.6	4.5	1.5	3.7	1.1	2.0	0.5	83.1	3.6	13.3	0.069	0.516	16.232918	-93.876293
T. Der. Libramiento de Arriaga	49.50	1	1	4497	7.9	75.7	4.0	3.6	1.2	3.9	1.1	2.0	0.6	83.6	4.0	12.4	0.068	0.507	16.223332	-93.867969
T. Der. Libramiento de Arriaga	49.50	1	2	4371	7.9	75.5	4.1	3.5	1.4	3.9	1.1	2.1	0.5	83.4	4.1	12.5	0.078	0.507	16.223413	-93.867879
T. Der. Libramiento de Arriaga	49.50	3	1	4575	6.1	70.4	2.9	7.4	1.6	6.2	1.8	2.9	0.7	76.5	2.9	20.6	0.077	0.524	16.208861	-93.855960
T. Der. Libramiento de Arriaga	49.50	3	2	4153	6.1	70.3	2.8	7.4	1.7	6.3	1.9	2.8	0.7	76.4	2.8	20.8	0.082	0.524	16.208944	-93.855872
X. C. Ramal a Paredón	68.60	1	1	3824	6.0	74.0	2.3	6.1	1.8	5.9	1.0	2.4	0.5	80.0	2.3	17.7	0.080	0.523	16.082746	-93.771023
X. C. Ramal a Paredón	68.60	1	2	4186	6.0	74.2	2.3	6.1	1.5	5.9	1.0	2.4	0.6	80.2	2.3	17.5	0.078	0.523	16.082809	-93.770957
Tonalá	68.80	1	1	4966	6.6	71.2	2.8	7.2	1.6	6.3	1.4	2.3	0.6	77.8	2.8	19.4	0.076	0.511	16.116757	-93.790025
Tonalá	68.80	1	2	4761	6.5	71.4	2.7	7.2	1.7	6.2	1.5	2.2	0.6	77.9	2.7	19.4	0.080	0.511	16.116812	-93.789911
T. Der. Puerto Arista	73.00	1	1	3465	6.4	68.3	2.4	6.2	2.0	8.1	2.3	3.4	0.9	74.7	2.4	22.9	0.077	0.521	16.059949	-93.741867
T. Der. Puerto Arista	73.00	1	2	3180	7.9	68.5	2.2	5.5	2.5	7.7	1.7	3.2	0.8	76.4	2.2	21.4	0.086	0.521	16.060016	-93.741824
T. Der. Puerto Arista	73.00	3	1	3313	7.5	65.3	3.3	6.5	2.6	8.2	2.6	3.2	0.8	72.8	3.3	23.9	0.080	0.516	16.055793	-93.734464
T. Der. Puerto Arista	73.00	3	2	3114	8.0	66.1	3.3	6.6	2.2	7.9	1.9	3.2	0.8	74.1	3.3	22.6	0.075	0.516	16.055932	-93.734412
T. Der. Tres Picos	100.40	1	1	3351	6.7	65.9	5.8	3.6	2.0	8.9	2.6	3.6	0.9	72.6	5.8	21.6	0.067	0.535	15.922686	-93.554944
T. Der. Tres Picos	100.40	1	2	2918	6.8	64.5	6.0	4.1	2.9	9.3	2.0	3.5	0.9	71.3	6.0	22.7	0.072	0.535	15.922830	-93.554920
T. Der. Tres Picos	100.40	3	1	3075	5.9	61.1	5.1	8.1	2.3	9.8	2.9	3.9	0.9	67.0	5.1	27.9	0.065	0.537	15.905957	-93.522381
T. Der. Tres Picos	100.40	3	2	2649	6.0	62.5	3.7	7.6	2.7	9.4	2.9	4.3	0.9	68.5	3.7	27.8	0.069	0.537	15.906087	-93.522339
T. Der. Los Patos	114.75	1	1	2995	4.6	65.7	4.0	7.4	2.0	9.7	2.0	3.7	0.9	70.3	4.0	25.7	0.067	0.528	15.838490	-93.435856
T. Der. Los Patos	114.75	1	2	2676	5.3	64.1	3.9	8.0	2.3	9.4	1.9	4.2	0.9	69.4	3.9	26.7	0.070	0.528	15.840941	-93.437101
T. Der. Los Patos	114.75	3	1	2991	4.5	67.3	3.9	4.1	2.3	10.7	2.6	3.7	0.9	71.8	3.9	24.3	0.069	0.515	15.815297	-93.415766
T. Der. Los Patos	114.75	3	2	2815	4.7	65.0	4.3	4.5	2.5	11.3	2.8	4.0	0.9	69.7	4.3	26.0	0.070	0.515	15.815268	-93.415075
T. Der. San Isidro	125.00	1	1	3048	7.2	64.1	3.6	6.7	2.3	8.0	3.0	4.2	0.9	71.3	3.6	25.1	0.064	0.510	15.779774	-93.364916
T. Der. San Isidro	125.00	1	2	2926	6.9	64.0	3.8	6.4	3.0	7.4	3.0	4.6	0.9	70.9	3.8	25.3	0.069	0.510	15.781636	-93.364881
T. Der. San Isidro	125.00	3	1	3106	5.5	67.8	3.7	6.1	1.9	7.4	2.9	3.8	0.9	73.3	3.7	23.0	0.071	0.512	15.774639	-93.353270
T. Der. San Isidro	125.00	3	2	2956	5.2	67.1	4.0	5.9	2.4	7.5	2.8	4.2	0.9	72.3	4.0	23.7	0.090	0.512	15.776072	-93.353613
Pijijapan	144.45	1	1	6983	6.5	65.2	3.8	8.2	2.3	7.3	1.7	4.1	0.9	71.7	3.8	24.5	0.065	0.521	15.697807	-93.210625

OAXACA

23 CARR: Tapanatepec - Talismán

CLAVE: 00075

RUTA: MEX-200

AÑO: 2023

LUGAR	ESTACION				CLASIFICACION VEHICULAR EN PORCIENTO													COORDENADAS		
	KM	TE	SC	TDPA	M	A	B	C2	C3	T3S2	T3S3	T3S2R4	OTROS	A	B	C	K'	D	LATITUD	LONGITUD
Pijijiapan	144.45	1	2	6409	7.0	65.5	3.5	7.8	2.0	7.5	1.8	4.2	0.7	72.5	3.5	24.0	0.075	0.521	15.698940	-93.211666
Valdivia	180.39	1	1	3780	20.4	53.7	3.8	3.1	3.1	8.9	2.0	4.1	0.9	74.1	3.8	22.1	0.059	0.512	15.510955	-92.956000
Valdivia	180.39	1	2	3596	20.0	53.4	3.6	3.7	2.6	9.8	2.0	4.0	0.9	73.4	3.6	23.0	0.083	0.512	15.511531	-92.956212
Valdivia	180.39	3	1	4427	14.2	65.3	2.6	3.1	1.8	7.2	2.0	3.0	0.8	79.5	2.6	17.9	0.064	0.508	15.499323	-92.940068
Valdivia	180.39	3	2	4296	14.1	64.8	3.3	2.9	1.5	7.9	1.5	3.2	0.8	78.9	3.3	17.8	0.080	0.508	15.499935	-92.940599
T. Der. Mapastepec	188.85	3	1	4352	15.4	64.7	4.1	2.5	1.6	6.6	1.9	2.5	0.7	80.1	4.1	15.8	0.074	0.512	15.454463	-92.880528
T. Der. Mapastepec	188.85	3	2	4144	16.1	63.8	4.4	2.7	1.4	6.9	1.1	2.7	0.9	79.9	4.4	15.7	0.097	0.512	15.454568	-92.879391
Sesecapa	197.20	3	1	3172	7.2	70.7	3.1	3.6	3.3	6.2	1.9	3.0	1.0	77.9	3.1	19.0	0.070	0.530	15.401362	-92.814198
Sesecapa	197.20	3	2	2817	8.9	68.2	4.3	3.0	2.1	7.7	1.5	3.5	0.8	77.1	4.3	18.6	0.089	0.530	15.401706	-92.814379
T. Der. Estación Soconusco	213.30	1	1	4225	12.6	62.0	3.1	3.9	2.7	9.0	1.9	3.8	1.0	74.6	3.1	22.3	0.077	0.512	15.338057	-92.711373
T. Der. Estación Soconusco	213.30	1	2	4022	11.5	64.0	3.5	3.7	2.5	8.3	1.7	3.9	0.9	75.5	3.5	21.0	0.091	0.512	15.350622	-92.694095
T. Der. Estación Soconusco	213.30	3	1	4390	14.3	63.4	2.9	3.1	2.1	7.8	1.8	3.7	0.9	77.7	2.9	19.4	0.073	0.508	15.331607	-92.703565
T. Der. Estación Soconusco	213.30	3	2	4539	14.2	62.0	3.2	2.9	2.3	7.9	2.3	4.2	1.0	76.2	3.2	20.6	0.088	0.508	15.346394	-92.684663
Villa Comaltitlán	233.00	1	1	4738	10.8	62.8	4.1	7.5	1.7	7.4	1.4	3.4	0.9	73.6	4.1	22.3	0.066	0.519	15.237556	-92.587794
Villa Comaltitlán	233.00	1	2	4391	9.4	64.7	3.8	7.6	2.0	7.3	1.5	2.9	0.8	74.1	3.8	22.1	0.087	0.519	15.237896	-92.587530
T. Der a Lázaro Cárdenas	238.20	1	1	5431	7.9	74.3	3.4	3.2	1.5	5.9	1.1	2.2	0.5	82.2	3.4	14.4	0.081	0.535	15.182914	-92.550238
T. Der a Lázaro Cárdenas	238.20	1	2	4719	7.8	73.4	3.6	3.4	1.8	5.9	0.8	2.6	0.7	81.2	3.6	15.2	0.091	0.535	15.184851	-92.550365
T. Libramiento de Huixtla Oeste	245.00																			
Huixtla	250.50	1	1	5310	10.4	65.6	3.7	7.6	1.6	5.8	2.0	2.5	0.8	76.0	3.7	20.3	0.074	0.502	15.158007	-92.505456
Huixtla	250.50	1	2	5260	10.0	65.7	3.8	7.6	1.7	6.2	1.8	2.4	0.8	75.7	3.8	20.5	0.080	0.502	15.158209	-92.505763
Huixtla	250.50	3	1	9490	10.0	76.2	2.3	4.8	1.3	3.3	0.6	1.2	0.3	86.2	2.3	11.5	0.082	0.503	15.129012	-92.443104
Huixtla	250.50	3	2	9381	10.0	77.0	1.7	4.8	1.1	3.5	0.4	1.2	0.3	87.0	1.7	11.3	0.076	0.503	15.129039	-92.443003
T. Libramiento de Huixtla Este	251.80																			
T. Izq. Hamburgo	262.70	3	1	7331	9.8	72.7	2.9	6.0	1.6	4.4	0.7	1.5	0.4	82.5	2.9	14.6	0.082	0.507	15.106351	-92.431401
T. Izq. Hamburgo	262.70	3	2	7530	9.6	74.6	2.3	6.1	1.1	3.8	0.7	1.4	0.4	84.2	2.3	13.5	0.087	0.507	15.106596	-92.431377
T. Izq. Huehuetán	273.70	1	1	6656	12.4	72.4	2.6	4.1	1.3	4.0	1.2	1.6	0.4	84.8	2.6	12.6	0.087	0.509	15.015879	-92.402775
T. Izq. Huehuetán	273.70	1	2	6423	12.4	72.1	2.6	4.1	1.4	4.2	1.2	1.6	0.4	84.5	2.6	12.9	0.091	0.509	15.015647	-92.402654
T. Izq. Huehuetán	273.70	3	1	8253	11.0	73.5	1.9	6.5	1.0	3.8	0.5	1.4	0.4	84.5	1.9	13.6	0.070	0.507	14.992553	-92.402446
T. Izq. Huehuetán	273.70	3	2	8039	12.9	71.4	2.6	6.2	1.0	3.8	0.4	1.4	0.3	84.3	2.6	13.1	0.081	0.507	14.992581	-92.402368
T. C. Libramiento Sur de Tapachula Oeste	283.61	3	1	6403	3.5	86.1	1.4	6.8	0.7	1.0	0.3	0.2	0.0	89.6	1.4	9.0	0.097	0.508	14.906103	-92.320224
T. C. Libramiento Sur de Tapachula Oeste	283.61	3	2	6207	3.1	86.8	1.2	7.1	0.5	1.0	0.2	0.1	0.0	89.9	1.2	8.9	0.100	0.508	14.906183	-92.320229
Tapachula	292.25	1	1	8584	5.4	80.2	1.2	6.4	1.0	2.6	1.5	1.3	0.4	85.6	1.2	13.2	0.093	0.508	14.911735	-92.336578
Tapachula	292.25	1	2	8875	5.3	79.2	1.3	6.4	1.5	2.7	1.4	1.5	0.7	84.5	1.3	14.2	0.092	0.508	14.911569	-92.335964
T. C. Libramiento Sur de Tapachula Este	298.00	1	1	11479	5.3	90.3	0.4	3.1	0.2	0.5	0.2	0.0	0.0	95.6	0.4	4.0	0.084	0.525	14.890635	-92.232376
T. C. Libramiento Sur de Tapachula Este	298.00	1	2	10366	5.3	89.7	0.4	3.5	0.3	0.6	0.2	0.0	0.0	95.0	0.4	4.6	0.082	0.525	14.890796	-92.232300

OAXACA

23 CARR: Tapanatepec - Talismán

CLAVE: 00075

RUTA: MEX-200

AÑO: 2023

LUGAR	ESTACION				CLASIFICACION VEHICULAR EN PORCIENTO										COORDENADAS					
	KM	TE	SC	TDPA	M	A	B	C2	C3	T3S2	T3S3	T3S2R4	OTROS	A	B	C	K'	D	LATITUD	LONGITUD
T. Der. Cd. Hidalgo	302.75	1	1	12871	6.6	86.5	0.7	3.3	0.5	1.6	0.2	0.5	0.1	93.1	0.7	6.2	0.085	0.508	14.908311	-92.203522
T. Der. Cd. Hidalgo	302.75	1	2	12450	6.6	86.5	0.7	3.4	0.4	1.7	0.1	0.5	0.1	93.1	0.7	6.2	0.080	0.508	14.907970	-92.204269
Tuxtla Chico	307.00	1	0	13464	11.7	83.1	0.4	3.7	0.4	0.3	0.4	0.0	0.0	94.8	0.4	4.8	0.092	0.509	14.930879	-92.164849
Talismán	310.77	1	0	2825	36.0	60.7	0.4	1.8	0.2	0.4	0.1	0.1	0.3	96.7	0.4	2.9	0.088	0.520	14.960771	-92.151037

24 CARR: Tapanatepec - Tuxtla Gutiérrez

CLAVE: 00060

RUTA: MEX-190

AÑO: 2023

LUGAR	ESTACION				CLASIFICACION VEHICULAR EN PORCIENTO										COORDENADAS					
	KM	TE	SC	TDPA	M	A	B	C2	C3	T3S2	T3S3	T3S2R4	OTROS	A	B	C	K'	D	LATITUD	LONGITUD
Tapanatepec	0.00	3	0	2792	15.1	73.0	1.9	6.0	1.5	1.8	0.3	0.2	0.2	88.1	1.9	10.0	0.078	0.545	16.371141	-94.184547
Libramiento de San Pedro Tapanatepec	0.75	3	0	1287	14.3	64.5	3.2	7.8	1.9	2.8	5.0	0.5	0.0	78.8	3.2	18.0	0.090	0.500	16.372430	-94.175838
Lim. Edos. Term. Oax. Ppia. Chis.	17.90																			
Rizo de Oro	26.60	1	0	1060	22.6	56.0	3.4	8.1	1.7	2.9	4.4	0.9	0.0	78.6	3.4	18.0	0.084	0.526	16.475535	-94.084787
T. Der. Arriaga	56.80	1	0	2581	17.0	68.5	1.6	7.2	1.7	1.8	2.1	0.1	0.0	85.5	1.6	12.9	0.082	0.503	16.567988	-93.851279
T. Der. Arriaga	56.80	3	0	3766	11.0	74.7	1.7	5.6	2.0	2.4	1.9	0.3	0.4	85.7	1.7	12.6	0.090	0.502	16.574258	-93.841362
Cintalapa	75.60	1	0	5414	12.4	76.9	1.1	3.5	1.1	2.5	1.3	0.7	0.5	89.3	1.1	9.6	0.081	0.524	16.653505	-93.754507
T. Der. Jiquipilas	82.00	1	0	7553	9.8	79.7	2.2	3.5	1.7	1.2	0.7	0.7	0.5	89.5	2.2	8.3	0.074	0.513	16.687869	-93.667292
T. Der. Jiquipilas	82.00	3	0	5212	6.8	78.0	2.6	5.4	2.6	2.5	1.2	0.6	0.3	84.8	2.6	12.6	0.086	0.501	16.688220	-93.662337
T. C. Arriaga - Ocozocoautla (Cuota)	96.20	1	0	4913	3.8	81.0	2.3	5.9	2.6	2.4	1.2	0.6	0.2	84.8	2.3	12.9	0.083	0.520	16.686119	-93.545889
Ocozocoautla	123.29	1	0	4660	11.5	80.7	0.7	2.7	1.5	1.9	0.7	0.2	0.1	92.2	0.7	7.1	0.090	0.505	16.772054	-93.391098
Ocozocoautla	123.29	3	0	4852	11.1	81.8	0.9	4.1	0.7	0.3	0.5	0.3	0.3	92.9	0.9	6.2	0.083	0.517	16.758003	-93.362184
T. Izq. Aeropuerto	132.70	1	0	4773	11.2	80.8	0.7	5.1	0.8	0.3	0.5	0.3	0.3	92.0	0.7	7.3	0.083	0.531	16.752980	-93.340194
T. Izq. Aeropuerto	132.70	3	1	7699	3.3	82.9	2.8	4.9	1.5	2.6	0.6	1.1	0.3	86.2	2.8	11.0	0.082	0.501	16.758554	-93.326479
T. Izq. Aeropuerto	132.70	3	2	7675	3.2	82.6	3.2	4.7	1.5	2.8	0.6	1.1	0.3	85.8	3.2	11.0	0.082	0.501	16.758636	-93.326520
T. Izq. Berriozábal (1º Acceso)	136.40	1	1	10133	3.9	78.6	3.5	7.2	1.9	2.2	0.9	1.4	0.4	82.5	3.5	14.0	0.081	0.531	16.767498	-93.296100
T. Izq. Berriozábal (1º Acceso)	136.40	1	2	8947	4.0	78.4	3.5	7.2	1.9	2.2	0.9	1.5	0.4	82.4	3.5	14.1	0.083	0.531	16.767573	-93.296058
T. Izq. Berriozábal (1º Acceso)	136.40	3	1	10860	3.7	83.3	3.5	4.8	1.2	1.7	0.6	0.9	0.3	87.0	3.5	9.5	0.081	0.502	16.768914	-93.280681
T. Izq. Berriozábal (1º Acceso)	136.40	3	2	10765	3.9	83.5	2.7	4.5	1.9	1.8	0.4	1.1	0.2	87.4	2.7	9.9	0.095	0.502	16.768898	-93.281666
T. Izq. San Fernando	151.70	1	1	19368	3.0	87.6	1.3	4.6	1.1	1.0	0.5	0.7	0.2	90.6	1.3	8.1	0.089	0.539	16.770518	-93.197108
T. Izq. San Fernando	151.70	1	2	16558	3.2	86.1	1.6	4.6	1.5	1.2	0.6	0.8	0.4	89.3	1.6	9.1	0.074	0.539	16.770593	-93.197056
Tuxtla Gutiérrez	159.00	1	1	13385	4.0	84.5	1.6	6.0	1.5	1.1	0.6	0.5	0.2	88.5	1.6	9.9	0.076	0.511	16.767587	-93.192833
Tuxtla Gutiérrez	159.00	1	2	12795	4.3	85.1	1.4	5.7	1.3	0.9	0.5	0.6	0.2	89.4	1.4	9.2	0.084	0.511	16.767672	-93.192767

OAXACA

25 CARR: Tehuacán - Huajuapán de León

CLAVE: 00211

RUTA: MEX-125

AÑO: 2023

LUGAR	ESTACION				CLASIFICACION VEHICULAR EN PORCIENTO										COORDENADAS					
	KM	TE	SC	TDPA	M	A	B	C2	C3	T3S2	T3S3	T3S2R4	OTROS	A	B	C	K'	D	LATITUD	LONGITUD
Tehuacán	0.00	3	1	9906	7.0	83.4	1.1	4.5	1.4	1.7	0.4	0.2	0.3	90.4	1.1	8.5	0.081	0.540	18.436297	-97.402159
Tehuacán	0.00	3	2	8448	7.1	83.4	1.0	4.6	1.3	1.3	0.6	0.3	0.4	90.5	1.0	8.5	0.082	0.540	18.436229	-97.402116
Zapotitlán Salinas	28.00	1	0	2821	9.1	74.3	1.5	8.2	2.5	2.1	1.5	0.4	0.4	83.4	1.5	15.1	0.086	0.501	18.334052	-97.461124
Lim. Edos. Term. Pue. Ppia. Oax.	55.80																			
Santiago Chazumba	63.02	1	0	1243	6.1	74.4	1.2	6.6	2.9	3.7	3.7	0.8	0.6	80.5	1.2	18.3	0.085	0.502	18.201024	-97.674222
Santiago Chazumba	63.02	3	0	1847	9.4	75.7	0.7	5.8	1.6	2.8	2.8	0.7	0.5	85.1	0.7	14.2	0.096	0.503	18.181350	-97.681194
T. Izq. Santa María Camotlán	103.13	1	0	1684	3.1	74.9	1.6	9.3	2.5	4.4	3.0	0.7	0.5	78.0	1.6	20.4	0.088	0.526	17.906551	-97.688011
T. C. Huajuapán de León - Oaxaca	119.40	1	0	10444	13.5	80.5	0.8	3.1	0.6	0.7	0.3	0.4	0.1	94.0	0.8	5.2	0.082	0.506	17.821181	-97.756369

26 CARR: Tuxtepec - Ent. Palomares

CLAVE: 00180

RUTA: MEX-147

AÑO: 2023

LUGAR	ESTACION				CLASIFICACION VEHICULAR EN PORCIENTO										COORDENADAS					
	KM	TE	SC	TDPA	M	A	B	C2	C3	T3S2	T3S3	T3S2R4	OTROS	A	B	C	K'	D	LATITUD	LONGITUD
T. C. Tuxtepec - Oaxaca	0.00	3	0	4952	9.7	71.7	1.6	9.4	2.7	2.8	1.1	0.5	0.5	81.4	1.6	17.0	0.073	0.510	18.038276	-96.161438
X. C. El Rodeo - Reforma	15.20	3	0	3012	8.1	74.0	2.3	7.8	2.7	2.8	1.7	0.2	0.4	82.1	2.3	15.6	0.076	0.509	17.950289	-96.069695
Lim. Edos. Term. Oax. Ppia. Ver.	40.00																			
X. C. Playa Vicente - El Tomate	48.16	1	0	2224	13.6	76.5	2.2	3.1	2.2	1.0	0.5	0.4	0.5	90.1	2.2	7.7	0.087	0.504	17.783699	-95.833343
X. C. Playa Vicente - El Tomate	48.16	3	0	2812	13.6	78.0	0.9	3.9	1.3	0.8	0.5	0.2	0.8	91.6	0.9	7.5	0.091	0.501	17.781437	-95.827453
T. Der. Xochiapa	65.00	3	0	1758	14.7	75.0	1.9	2.5	1.7	2.2	0.8	0.6	0.6	89.7	1.9	8.4	0.093	0.501	17.694120	-95.721077
T. Izq. San Juan Evangelista	81.20	1	0	1609	20.5	69.7	1.1	2.7	3.5	0.9	0.8	0.6	0.2	90.2	1.1	8.7	0.095	0.506	17.617479	-95.639197
Lim. Edos. Term. Ver. Ppia. Oax.	87.00																			
María Lombardo de Caso	110.50	1	0	4348	12.6	77.0	0.6	7.6	1.0	0.7	0.2	0.2	0.1	89.6	0.6	9.8	0.078	0.501	17.453875	-95.435906
T. C. Coatzacoalcos - Salina Cruz	175.00	1	0	2318	14.4	78.6	1.0	4.3	0.6	0.5	0.4	0.1	0.1	93.0	1.0	6.0	0.077	0.504	17.138367	-95.070428

27 CARR: Tuxtepec - T. C. (Oaxaca - Tehuantepec)

CLAVE: 20090

RUTA: MEX-175

AÑO: 2023

LUGAR	ESTACION				CLASIFICACION VEHICULAR EN PORCIENTO										COORDENADAS					
	KM	TE	SC	TDPA	M	A	B	C2	C3	T3S2	T3S3	T3S2R4	OTROS	A	B	C	K'	D	LATITUD	LONGITUD
Tuxtepec	0.00	3	1	8254	18.2	73.4	0.8	4.5	1.0	0.7	0.5	0.6	0.3	91.6	0.8	7.6	0.071	0.503	18.055429	-96.152481
Tuxtepec	0.00	3	2	8148	18.2	73.6	0.7	4.5	0.9	0.8	0.5	0.5	0.3	91.8	0.7	7.5	0.072	0.503	18.055524	-96.152337
T. Izq. Palomares	5.75	3	0	6701	26.8	67.1	0.8	3.0	0.9	0.7	0.5	0.1	0.1	93.9	0.8	5.3	0.092	0.519	18.034528	-96.164735
San José Chiltepec	17.93	3	0	4319	14.3	69.5	0.7	7.4	5.9	1.0	0.1	1.0	0.1	83.8	0.7	15.5	0.069	0.502	17.943476	-96.173142
Valle Nacional	47.07	1	0	4259	7.5	81.6	0.9	7.1	1.0	1.5	0.1	0.1	0.2	89.1	0.9	10.0	0.071	0.503	17.779183	-96.293047
Valle Nacional	47.07	3	0	3163	8.2	84.8	0.9	3.6	0.4	1.7	0.2	0.1	0.1	93.0	0.9	6.1	0.074	0.502	17.767252	-96.311677
La Esperanza	79.85	3	0	605	2.4	89.1	1.3	5.0	1.3	0.6	0.1	0.1	0.1	91.5	1.3	7.2	0.092	0.517	17.624766	-96.366593

OAXACA

27 CARR: Tuxtepec - T. C. (Oaxaca - Tehuantepec)

CLAVE: 20090

RUTA: MEX-175

AÑO: 2023

LUGAR	ESTACION				CLASIFICACION VEHICULAR EN PORCIENTO										COORDENADAS					
	KM	TE	SC	TDPA	M	A	B	C2	C3	T3S2	T3S3	T3S2R4	OTROS	A	B	C	K'	D	LATITUD	LONGITUD
Puerta del Sol	125.00	3	0	795	0.4	90.9	1.2	5.0	1.5	0.5	0.2	0.2	0.1	91.3	1.2	7.5	0.085	0.504	17.529576	-96.511747
T. Der. Ixtepeji	181.39	3	0	2440	3.0	84.1	1.7	8.0	1.6	1.2	0.2	0.1	0.1	87.1	1.7	11.2	0.084	0.513	17.238679	-96.562725
T. Izq. Yuvila	193.67	1	0	2553	1.8	94.0	0.2	2.0	1.5	0.2	0.1	0.1	0.1	95.8	0.2	4.0	0.104	0.504	17.175928	-96.605501
T. C. Oaxaca - Tehuantepec	212.70	1	1	7479	11.5	84.6	0.3	2.3	0.8	0.2	0.1	0.1	0.1	96.1	0.3	3.6	0.085	0.509	17.069098	-96.675218
T. C. Oaxaca - Tehuantepec	212.70	1	2	7221	11.3	84.8	0.3	2.3	0.8	0.2	0.1	0.1	0.1	96.1	0.3	3.6	0.089	0.509	17.069025	-96.675154

28 CARR: Yucudaa - Santiago Pinotepa Nacional

CLAVE: 20030

RUTA: MEX-125

AÑO: 2023

LUGAR	ESTACION				CLASIFICACION VEHICULAR EN PORCIENTO										COORDENADAS					
	KM	TE	SC	TDPA	M	A	B	C2	C3	T3S2	T3S3	T3S2R4	OTROS	A	B	C	K'	D	LATITUD	LONGITUD
T. C. Huajuapán de León - Oaxaca	0.00	3	0	2879	2.9	76.0	2.5	11.3	1.9	3.2	1.7	0.3	0.2	78.9	2.5	18.6	0.069	0.507	17.564695	-97.426435
Yolomécatl	24.40	3	0	2702	4.3	75.6	2.3	11.1	1.8	3.0	1.4	0.2	0.3	79.9	2.3	17.8	0.064	0.511	17.459537	-97.574893
Tlaxiaco	57.00	3	0	4172	4.2	85.1	0.7	5.6	0.9	2.5	0.5	0.2	0.3	89.3	0.7	10.0	0.088	0.501	17.237056	-97.699020
T. Der. Santiago Juxcatlán	104.00	1	0	761	4.5	75.9	2.6	9.4	3.9	1.7	0.8	0.9	0.3	80.4	2.6	17.0	0.073	0.504	17.152051	-97.889872
Putla de Guerrero	145.00	1	0	2860	12.6	72.5	1.4	8.3	2.2	2.0	0.3	0.3	0.4	85.1	1.4	13.5	0.072	0.503	17.038421	-97.915104
Cacahuatpec	229.00	1	0	1356	8.6	80.7	3.0	4.9	0.9	0.9	0.4	0.5	0.1	89.3	3.0	7.7	0.085	0.502	16.625773	-98.141493
T. C. Las Cruces - Pinotepa Nacional	268.00	1	0	3914	10.7	81.4	0.4	3.1	0.5	2.5	0.9	0.1	0.4	92.1	0.4	7.5	0.078	0.506	16.381229	-98.091176

29 CARR: Cuacnopalan - Oaxaca (Cuota)

CLAVE: 00109

RUTA: MEX-135D

AÑO: 2023

LUGAR	ESTACION				CLASIFICACION VEHICULAR EN PORCIENTO										COORDENADAS					
	KM	TE	SC	TDPA	M	A	B	C2	C3	T3S2	T3S3	T3S2R4	OTROS	A	B	C	K'	D	LATITUD	LONGITUD
T. C. Puebla - Acatzingo (Cuota)	0.00	3	0	12225	0.9	69.6	6.5	8.3	3.2	6.4	2.0	2.5	0.6	70.5	6.5	23.0	0.066	0.516	18.817421	-97.491090
T. Der. Cuacnopalan	1.80	3	0	11609	0.6	72.2	5.2	9.5	2.8	5.2	1.4	2.5	0.6	72.8	5.2	22.0	0.061	0.511	18.811936	-97.490708
Plaza de Cobro Tehuacán	40.00	2	0	11619	0.7	72.5	4.6	5.7	5.3	6.1	1.3	2.9	0.9	73.2	4.6	22.2	0.083	0.500	18.487088	-97.456196
Plaza de Cobro Tehuacán	40.00	3	0	6620	4.0	63.8	8.8	6.2	3.7	5.5	2.8	4.3	0.9	67.8	8.8	23.4	0.061	0.517	18.483883	-97.456522
X. C. Tehuacán - Huajuapán de León	48.00	3	0	6848	4.1	64.8	7.3	13.9	1.7	3.3	1.2	2.9	0.8	68.9	7.3	23.8	0.066	0.509	18.421766	-97.412077
T. Izq. San Gabriel Chilac	61.00	3	0	5834	2.6	70.4	7.8	5.4	3.0	4.9	1.6	3.4	0.9	73.0	7.8	19.2	0.069	0.517	18.323531	-97.367623
Plaza de Cobro Miahuatlán	70.70	2	0	5973	0.9	69.2	6.4	4.9	6.4	5.9	1.7	3.7	0.9	70.1	6.4	23.5	0.083	0.500	18.264632	-97.315617
Plaza de Cobro Miahuatlán	70.70	3	0	5464	2.5	67.1	8.4	6.6	3.4	6.1	1.4	4.3	0.2	69.6	8.4	22.0	0.069	0.532	18.261232	-97.311996
Lim. Edos. Term. Pue. Ppia. Oax.	83.50																			
T. Izq. Tepelmeme	123.60	3	0	5351	1.5	62.8	7.6	11.6	3.8	5.0	3.5	3.9	0.3	64.3	7.6	28.1	0.066	0.517	17.860652	-97.377600
X. C. Tlacotepec - Tepelmeme	125.78	3	0	5574	3.0	61.7	7.9	9.3	4.6	5.2	3.6	4.4	0.3	64.7	7.9	27.4	0.070	0.516	17.884615	-97.373337
Plaza de Cobro Coixtlahuaca	141.30	2	0	5055	0.8	66.3	7.1	5.1	7.1	6.6	1.7	4.4	0.9	67.1	7.1	25.8	0.083	0.500	17.726021	-97.353781
T. Izq. Asunción Nochistlán	175.50	1	0	5318	1.9	65.5	8.3	8.1	3.7	5.5	2.9	3.8	0.3	67.4	8.3	24.3	0.064	0.528	17.465724	-97.248915

OAXACA

29 CARR: Cuacnopalan - Oaxaca (Cuota)

CLAVE: 00109

RUTA: MEX-135D

AÑO: 2023

LUGAR	ESTACION				CLASIFICACION VEHICULAR EN PORCIENTO													COORDENADAS		
	KM	TE	SC	TDPA	M	A	B	C2	C3	T3S2	T3S3	T3S2R4	OTROS	A	B	C	K'	D	LATITUD	LONGITUD
T. Izq. Asunción Nochistlán	175.50	3	0	6974	1.6	67.0	4.6	12.4	3.5	5.2	2.5	3.0	0.2	68.6	4.6	26.8	0.061	0.518	17.457371	-97.242813
Plaza de Cobro Huitzo	220.00	2	0	7117	1.3	76.6	4.5	4.3	4.6	4.3	0.9	2.9	0.6	77.9	4.5	17.6	0.083	0.500	17.275031	-96.915296
Plaza de Cobro Huitzo	220.00	3	1	4229	2.3	74.4	5.3	7.8	2.5	3.2	1.3	2.3	0.9	76.7	5.3	18.0	0.087	0.520	17.272110	-96.911936
Plaza de Cobro Huitzo	220.00	3	2	3907	2.2	74.4	5.2	7.9	2.6	3.3	1.2	2.4	0.8	76.6	5.2	18.2	0.092	0.520	17.272159	-96.911866
T. C. Huajuapán de León - Oaxaca	242.70	1	1	4794	2.5	68.4	4.2	11.6	3.5	5.1	1.3	2.6	0.8	70.9	4.2	24.9	0.070	0.520	17.147278	-96.785087
T. C. Huajuapán de León - Oaxaca	242.70	1	2	4425	2.5	67.5	4.5	12.0	3.7	5.1	1.4	2.6	0.7	70.0	4.5	25.5	0.093	0.520	17.147369	-96.785092

30 CARR: Mitla - Tehuantepec (Cuota)

CLAVE:

RUTA: MEX-190D

AÑO: 2023

LUGAR	ESTACION				CLASIFICACION VEHICULAR EN PORCIENTO													COORDENADAS		
	KM	TE	SC	TDPA	M	A	B	C2	C3	T3S2	T3S3	T3S2R4	OTROS	A	B	C	K'	D	LATITUD	LONGITUD
Ent. C. Oaxaca - Tehuantepec	43.00	3	0	1486	3.2	82.8	2.8	4.3	3.4	1.3	1.1	0.9	0.2	86.0	2.8	11.2	0.078	0.528	16.913717	-96.394250
Ent. Mitla	50.90	1	0	1578	2.4	87.7	1.6	4.1	1.8	1.0	1.0	0.2	0.2	90.1	1.6	8.3	0.091	0.518	16.918723	-96.332981
Ent. Mitla	50.90	3	0	1937	1.7	87.7	1.4	5.5	1.8	0.9	0.6	0.3	0.1	89.4	1.4	9.2	0.085	0.511	16.927707	-96.322440
Ent. Hierve el Agua	62.10	1	0	2043	2.0	88.1	1.1	4.8	2.2	0.7	0.5	0.3	0.3	90.1	1.1	8.8	0.087	0.524	16.927275	-96.259932
Ent. Hierve el Agua	62.10	3	0	1856	2.8	88.0	0.7	4.5	2.8	0.5	0.5	0.1	0.1	90.8	0.7	8.5	0.103	0.524	16.921881	-96.251013
Ent. Sta. María Albarradas	71.00	1	0	2162	2.5	89.1	0.8	4.6	1.2	1.0	0.4	0.2	0.2	91.6	0.8	7.6	0.085	0.505	16.954604	-96.201482

31 CARR: Salina Cruz - La Ventosa (Cuota)

CLAVE: 00275

RUTA: MEX-185D

AÑO: 2023

LUGAR	ESTACION				CLASIFICACION VEHICULAR EN PORCIENTO													COORDENADAS		
	KM	TE	SC	TDPA	M	A	B	C2	C3	T3S2	T3S3	T3S2R4	OTROS	A	B	C	K'	D	LATITUD	LONGITUD
T. C. Santiago Pinotepa Nacional - Salina Cruz	0.00																			
Plaza de Cobro Tehuantepec	1.89	2	0	1223	3.5	75.4	2.3	4.1	4.4	4.5	3.2	2.1	0.5	78.9	2.3	18.8	0.082	0.500	16.162185	-95.289280
X. C. Oaxaca - Tehuantepec	23.19	1	0	1443	5.5	70.5	4.6	6.5	3.2	4.2	3.1	2.3	0.1	76.0	4.6	19.4	0.095	0.515	16.327190	-95.279546
X. C. Oaxaca - Tehuantepec	23.19	3	0	3531	5.6	72.4	1.2	3.0	2.8	4.1	2.6	7.7	0.6	78.0	1.2	20.8	0.072	0.520	16.339038	-95.276317
T. Izq. Oaxaca (Cuota)	34.00	3	0	2760	3.8	72.7	3.6	3.5	2.4	4.2	2.8	6.7	0.3	76.5	3.6	19.9	0.081	0.504	16.430972	-95.218674
Plaza de Cobro Ixtepec	47.49	2	0	1640	0.8	58.3	1.5	5.2	5.8	7.7	4.8	14.5	1.4	59.1	1.5	39.4	0.082	0.500	16.561479	-95.134267
T. C. Coatzacoalcos - Salina Cruz	75.39	1	0	2429	5.9	59.5	3.6	8.9	3.5	6.2	4.5	7.2	0.7	65.4	3.6	31.0	0.070	0.502	16.586754	-94.955231
T. C. Coatzacoalcos - Salina Cruz	75.39	3	0	2625	1.2	48.6	5.6	5.2	3.2	17.9	6.7	10.9	0.7	49.8	5.6	44.6	0.063	0.527	16.582870	-94.932892
Entronque La Ventosa	82.00																			

OAXACA

32 CARR: Cd. Ixtepec - Guevea de Humboldt

CLAVE: 00301

RUTA: OAX

AÑO: 2023

LUGAR	ESTACION				CLASIFICACION VEHICULAR EN PORCIENTO												COORDENADAS			
	KM	TE	SC	TDPA	M	A	B	C2	C3	T3S2	T3S3	T3S2R4	OTROS	A	B	C	K'	D	LATITUD	LONGITUD
Ciudad Ixtepec	0.00																			
T. C. La Ventosa - Salina Cruz (Cuota)	4.00	1	1	2421	10.8	82.8	1.1	4.0	0.4	0.5	0.2	0.0	0.2	93.6	1.1	5.3	0.090	0.505	16.560870	-95.127357
T. C. La Ventosa - Salina Cruz (Cuota)	4.00	1	2	2373	11.1	82.7	1.1	3.8	0.3	0.5	0.3	0.0	0.2	93.8	1.1	5.1	0.086	0.505	16.560775	-95.127393
T. C. La Ventosa - Salina Cruz (Cuota)	4.00	3	0	2462	12.2	82.2	0.2	3.6	0.3	1.4	0.1	0.0	0.0	94.4	0.2	5.4	0.088	0.506	16.564082	-95.141339
Guevea de Humboldt	57.05																			

33 CARR: El Zapote - Copalita

CLAVE: 00109

RUTA: OAX

AÑO: 2023

LUGAR	ESTACION				CLASIFICACION VEHICULAR EN PORCIENTO												COORDENADAS			
	KM	TE	SC	TDPA	M	A	B	C2	C3	T3S2	T3S3	T3S2R4	OTROS	A	B	C	K'	D	LATITUD	LONGITUD
T. C. Santiago Pinotepe Nacional - Salina Cruz	0.00	3	1	2757	15.5	77.6	1.0	4.9	0.3	0.3	0.1	0.2	0.1	93.1	1.0	5.9	0.097	0.503	15.767693	-96.272304
T. C. Santiago Pinotepe Nacional - Salina Cruz	0.00	3	2	2721	16.1	77.1	1.1	4.7	0.3	0.3	0.1	0.2	0.1	93.2	1.1	5.7	0.091	0.503	15.767778	-96.272402
Copalita	43.04																			

34 CARR: Huajuapán de León - El Carrizal

CLAVE: 00109

RUTA: OAX

AÑO: 2023

LUGAR	ESTACION				CLASIFICACION VEHICULAR EN PORCIENTO												COORDENADAS			
	KM	TE	SC	TDPA	M	A	B	C2	C3	T3S2	T3S3	T3S2R4	OTROS	A	B	C	K'	D	LATITUD	LONGITUD
Huajuapán de León	0.00	3	0	2299	9.7	82.2	1.6	2.4	2.1	0.9	0.5	0.6	0.0	91.9	1.6	6.5	0.081	0.522	17.777274	-97.789853
San Miguel Tlacotepec	83.60	1	0	1536	5.0	79.7	1.7	6.0	2.7	2.1	1.6	0.6	0.6	84.7	1.7	13.6	0.078	0.512	17.461262	-98.004715
Santiago Juxtlahuaca	100.00	1	0	6541	9.7	81.1	0.4	3.9	0.7	2.9	0.8	0.3	0.2	90.8	0.4	8.8	0.091	0.508	17.352630	-98.014655
Putla	130.00	1	0	670	3.3	85.9	0.9	7.1	1.3	0.8	0.5	0.1	0.1	89.2	0.9	9.9	0.089	0.515	17.154755	-97.893819
El Carrizal	131.30																			

35 CARR: Loma Bonita - Mixtán

CLAVE: 20043

RUTA: OAX

AÑO: 2023

LUGAR	ESTACION				CLASIFICACION VEHICULAR EN PORCIENTO												COORDENADAS			
	KM	TE	SC	TDPA	M	A	B	C2	C3	T3S2	T3S3	T3S2R4	OTROS	A	B	C	K'	D	LATITUD	LONGITUD
Loma Bonita	0.00																			
X. C. Cd. Alemán - Sayula	1.00	1	1	5196	43.5	42.5	1.4	8.0	1.0	1.5	1.2	0.5	0.4	86.0	1.4	12.6	0.078	0.515	18.099694	-95.877979
X. C. Cd. Alemán - Sayula	1.00	1	2	5513	43.5	42.6	1.4	8.0	0.9	1.4	1.1	0.6	0.5	86.1	1.4	12.5	0.077	0.515	18.099727	-95.877912
X. C. Cd. Alemán - Sayula	1.00	3	0	2680	23.4	62.3	1.1	10.9	1.4	0.2	0.4	0.1	0.2	85.7	1.1	13.2	0.079	0.522	18.094859	-95.876404
T. Izq. Aeropuerto	12.00	3	0	886	22.5	62.0	0.9	12.1	1.3	0.5	0.4	0.2	0.1	84.5	0.9	14.6	0.100	0.506	18.014838	-95.869131
Mixtán	27.00																			

OAXACA

36 CARR: Ramal a Reforma de Pineda

CLAVE: 20010

RUTA: OAX

AÑO: 2023

LUGAR	ESTACION				CLASIFICACION VEHICULAR EN PORCIENTO													COORDENADAS		
	KM	TE	SC	TDPA	M	A	B	C2	C3	T3S2	T3S3	T3S2R4	OTROS	A	B	C	K'	D	LATITUD	LONGITUD
T. C. La Ventosa - San Pedro Tapanatepec	0.00	3	0	1615	14.7	77.8	0.8	5.0	0.4	0.8	0.3	0.1	0.1	92.5	0.8	6.7	0.085	0.519	16.492664	-94.427612
Reforma de Pineda	12.00																			

37 CARR: Ramal a Unión Hidalgo

CLAVE: 20044

RUTA: OAX

AÑO: 2023

LUGAR	ESTACION				CLASIFICACION VEHICULAR EN PORCIENTO													COORDENADAS		
	KM	TE	SC	TDPA	M	A	B	C2	C3	T3S2	T3S3	T3S2R4	OTROS	A	B	C	K'	D	LATITUD	LONGITUD
T. C. La Ventosa - San Pedro Tapanatepec	0.00	3	1	1707	13.2	83.9	0.1	2.0	0.1	0.5	0.2	0.0	0.0	97.1	0.1	2.8	0.092	0.522	16.574043	-94.816407
T. C. La Ventosa - San Pedro Tapanatepec	0.00	3	2	1565	14.0	83.1	0.1	1.7	0.1	0.6	0.3	0.0	0.1	97.1	0.1	2.8	0.110	0.522	16.574052	-94.816341
Unión Hidalgo	12.00	1	0	1542	20.2	75.1	0.2	2.0	0.5	1.7	0.2	0.0	0.1	95.3	0.2	4.5	0.104	0.510	16.489352	-94.832445

38 CARR: San Antonio - Puerto Angel

CLAVE:

RUTA: OAX

AÑO: 2023

LUGAR	ESTACION				CLASIFICACION VEHICULAR EN PORCIENTO													COORDENADAS		
	KM	TE	SC	TDPA	M	A	B	C2	C3	T3S2	T3S3	T3S2R4	OTROS	A	B	C	K'	D	LATITUD	LONGITUD
T. C. Santiago Pinotepe Nacional - Salina Cruz	0.00	3	0	2520	19.0	74.3	0.1	3.5	0.2	2.5	0.3	0.0	0.1	93.3	0.1	6.6	0.096	0.500	15.713345	-96.582074
Mazunte	7.30	1	0	2180	28.6	64.3	0.1	3.1	0.1	2.8	0.5	0.1	0.4	92.9	0.1	7.0	0.094	0.502	15.669866	-96.557830
Mazunte	7.30	3	0	2150	28.8	63.3	0.1	3.9	0.1	2.5	0.9	0.1	0.3	92.1	0.1	7.8	0.102	0.507	15.666651	-96.540686
Puerto Ángel	15.90																			

39 CARR: T. C. (Oaxaca - Puerto Ángel) - Puerto Escondido

CLAVE: 20009

RUTA: MEX-OAX-161

AÑO: 2023

LUGAR	ESTACION				CLASIFICACION VEHICULAR EN PORCIENTO													COORDENADAS		
	KM	TE	SC	TDPA	M	A	B	C2	C3	T3S2	T3S3	T3S2R4	OTROS	A	B	C	K'	D	LATITUD	LONGITUD
T. C. Oaxaca - Puerto Ángel	0.00	3	1	7991	12.1	82.8	0.7	3.5	0.7	0.1	0.1	0.0	0.0	94.9	0.7	4.4	0.119	0.507	16.920405	-96.712487
T. C. Oaxaca - Puerto Ángel	0.00	3	2	8230	13.1	81.6	0.6	2.9	1.3	0.3	0.1	0.1	0.0	94.7	0.6	4.7	0.108	0.507	16.920162	-96.712583
T. Izq. San Pablo Huixtepec	16.80	1	0	10687	13.5	80.4	0.9	3.2	1.2	0.4	0.1	0.2	0.1	93.9	0.9	5.2	0.074	0.516	16.841017	-96.788207
T. Izq. San Pablo Huixtepec	16.80	3	0	8157	13.5	82.2	0.8	2.0	1.0	0.4	0.1	0.0	0.0	95.7	0.8	3.5	0.088	0.500	16.827413	-96.788884
T. Der. El Trapiche	30.00	1	0	3915	5.1	78.5	1.1	9.2	2.9	2.4	0.2	0.3	0.3	83.6	1.1	15.3	0.079	0.508	16.761235	-96.855978
T. Der. El Trapiche	30.00	3	0	4400	7.8	81.4	1.2	4.4	2.7	1.3	0.7	0.3	0.2	89.2	1.2	9.6	0.076	0.512	16.760709	-96.858761
T. Der. Cofradía San Pedro	53.00	3	0	1813	4.5	85.5	2.1	4.3	2.2	0.6	0.3	0.2	0.3	90.0	2.1	7.9	0.070	0.530	16.598647	-96.889911
Sola de Vega	78.40	3	0	1831	14.8	74.7	1.5	3.5	3.8	0.7	0.2	0.3	0.5	89.5	1.5	9.0	0.087	0.546	16.509220	-96.984097
T. Der. Yalotepec	134.50	1	0	1618	22.2	67.1	1.7	4.0	3.1	0.8	0.4	0.3	0.4	89.3	1.7	9.0	0.098	0.500	16.347270	-97.094517
San Gabriel Mixtepec	208.00	1	0	1680	21.7	70.1	0.6	4.5	0.6	1.5	0.6	0.2	0.2	91.8	0.6	7.6	0.086	0.503	16.093579	-97.075232
Puerto Escondido	248.00	1	0	5491	16.0	79.1	0.7	2.3	0.8	0.6	0.2	0.2	0.1	95.1	0.7	4.2	0.094	0.503	15.894074	-97.076869



OAXACA

40 CARR: Tehuacán - Huitzo

CLAVE: 00211

RUTA: PUE-MEX-135

AÑO: 2023

LUGAR	ESTACION				CLASIFICACION VEHICULAR EN PORCIENTO										COORDENADAS					
	KM	TE	SC	TDPA	M	A	B	C2	C3	T3S2	T3S3	T3S2R4	OTROS	A	B	C	K'	D	LATITUD	LONGITUD
Tehuacán	0.00	3	0	10022	10.6	84.6	0.2	3.8	0.5	0.2	0.1	0.0	0.0	95.2	0.2	4.6	0.074	0.526	18.457349	-97.370665
T. Der. San Gabriel Chilac	14.40	1	0	8719	16.3	75.4	0.4	4.3	1.2	1.1	0.4	0.5	0.4	91.7	0.4	7.9	0.083	0.513	18.407062	-97.330412
San Sebastián Zinacatepec	23.00	3	0	7900	8.5	78.1	1.0	4.7	2.3	3.1	1.1	0.6	0.6	86.6	1.0	12.4	0.075	0.505	18.322179	-97.226877
Lim. Edos. Term. Pue. Ppia. Oax.	60.90																			
Teotitlán del Camino	63.15	3	0	2566	10.8	80.0	0.7	5.6	0.8	1.5	0.2	0.2	0.2	90.8	0.7	8.5	0.070	0.504	18.118775	-97.073708
Santa María Tecomavaca	88.34	1	0	1108	18.5	74.3	0.2	4.3	1.0	1.3	0.3	0.0	0.1	92.8	0.2	7.0	0.103	0.516	17.955380	-97.025328
Santa María Tecomavaca	88.34	3	0	930	7.9	84.3	0.4	5.2	0.7	0.9	0.4	0.1	0.1	92.2	0.4	7.4	0.092	0.520	17.949509	-97.022258
T. Izq. Cuicatlán	118.80	1	0	1352	27.7	62.9	0.7	6.6	0.8	0.7	0.2	0.4	0.0	90.6	0.7	8.7	0.083	0.516	17.793846	-96.959708
T. Izq. Nacaltepec	169.84	1	0	698	8.8	79.7	0.6	7.3	1.1	1.6	0.4	0.5	0.0	88.5	0.6	10.9	0.092	0.542	17.505708	-96.933068
T. C. Huajuapán de León - Oaxaca	202.70	1	0	8089	15.3	79.0	0.6	3.1	0.7	0.6	0.2	0.4	0.1	94.3	0.6	5.1	0.090	0.502	17.287582	-96.903704

41 CARR: Teotitlán de Flores Magón - Tuxtepec

CLAVE: 00108

RUTA: OAX-PUE-MEX-182

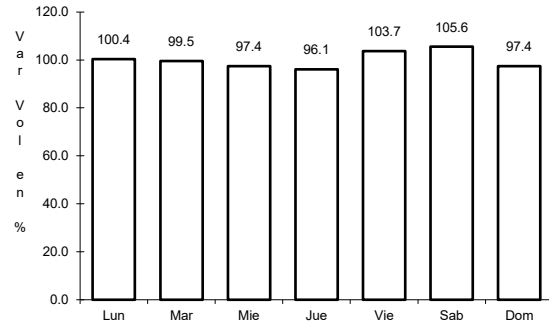
AÑO: 2023

LUGAR	ESTACION				CLASIFICACION VEHICULAR EN PORCIENTO										COORDENADAS					
	KM	TE	SC	TDPA	M	A	B	C2	C3	T3S2	T3S3	T3S2R4	OTROS	A	B	C	K'	D	LATITUD	LONGITUD
Teotitlán del Camino	0.00	3	0	1269	22.6	67.6	1.8	3.0	3.0	1.0	0.3	0.6	0.1	90.2	1.8	8.0	0.101	0.501	18.131531	-97.063925
Lim. Edos. Term. Oax. Ppia. Pue.	2.00																			
Lim. Edos. Term. Pue. Ppia. Oax.	10.00																			
Huautla	65.00	1	0	1455	3.7	85.2	1.3	8.5	0.4	0.3	0.4	0.1	0.1	88.9	1.3	9.8	0.081	0.538	18.125162	-96.846628
San Felipe Jalapa de Díaz	140.00	3	0	4316	3.9	83.4	1.1	6.6	1.5	1.6	0.9	0.9	0.1	87.3	1.1	11.6	0.077	0.502	18.081837	-96.522573
Tuxtepec	185.00	1	0	6677	30.0	55.5	1.1	8.2	1.8	1.5	1.0	0.8	0.1	85.5	1.1	13.4	0.069	0.502	18.089839	-96.171798

1 CARR: Acceso al Puerto Salina Cruz

CLAVE:

ruta: MEX-090

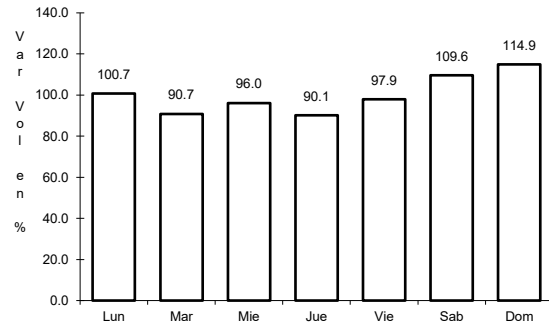


Km: 0.00      Tipo: 3      Sent: 0

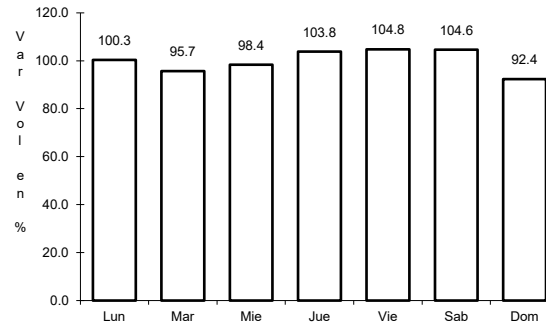
2 CARR: Buenavista - Tuxtepec

CLAVE: 00624

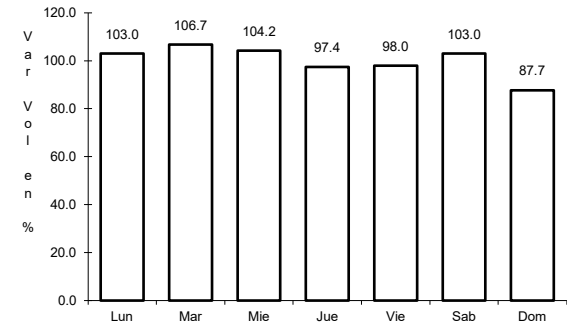
ruta: MEX-175



Km: 0.00      Tipo: 3      Sent: 0



Km: 121.25      Tipo: 1      Sent: 1

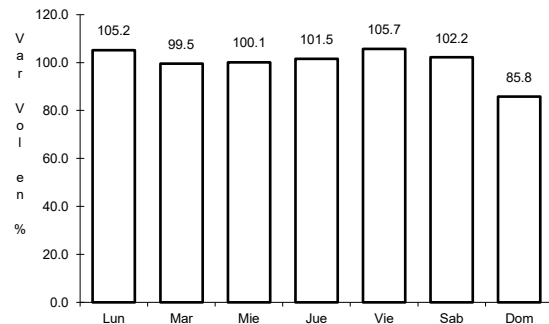


Km: 121.25      Tipo: 1      Sent: 2

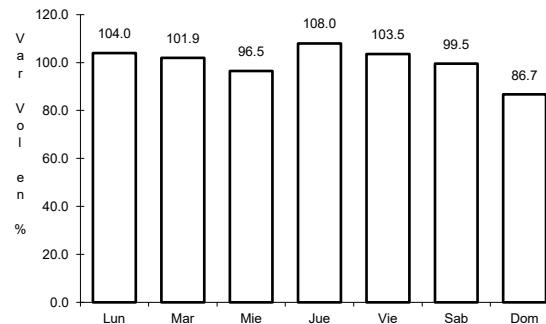
3 CARR: Cd. Alemán - Sayula

CLAVE: 00301

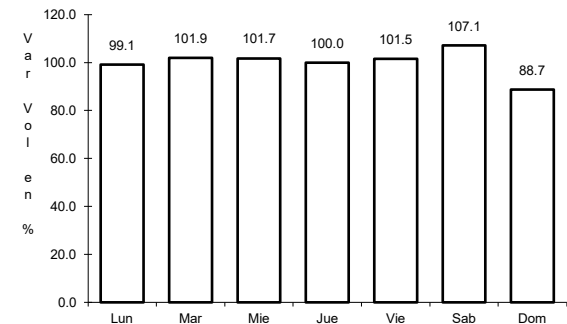
ruta: MEX-145



Km: 0.00      Tipo: 3      Sent: 0



Km: 71.40      Tipo: 1      Sent: 0

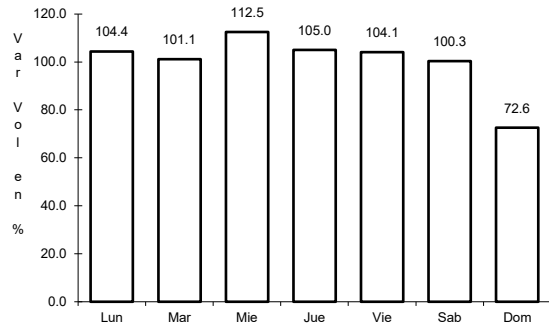


Km: 136.40      Tipo: 1      Sent: 0

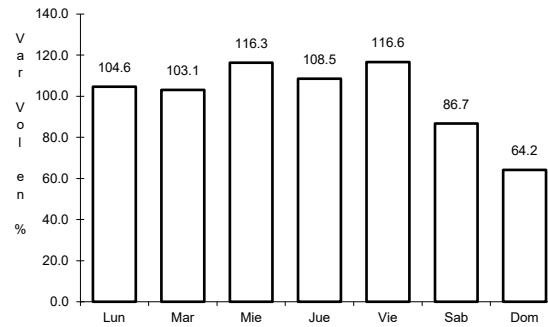
4 CARR: Coatzacoalcos - Salina Cruz

CLAVE: 00147

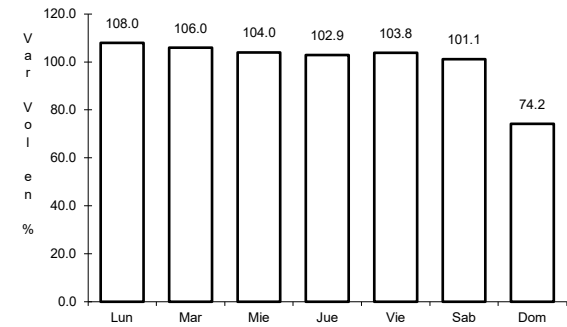
RUTA: MEX-185



Km: 0.00      Tipo: 3      Sent: 1



Km: 0.00      Tipo: 3      Sent: 2

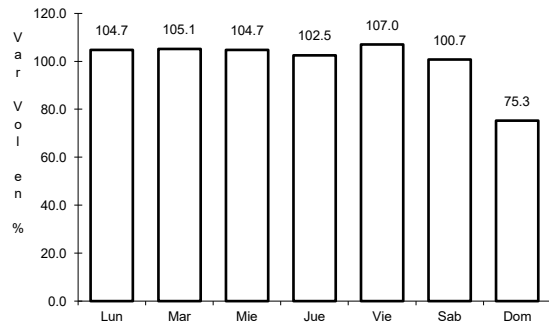


Km: 255.55      Tipo: 1      Sent: 0

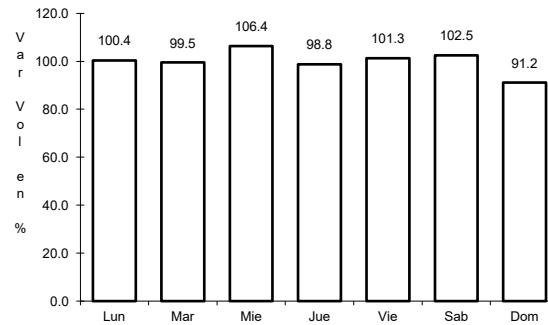
5 CARR: Ent. La Ventosa - San Pedro Tapanatepec

CLAVE: 20059

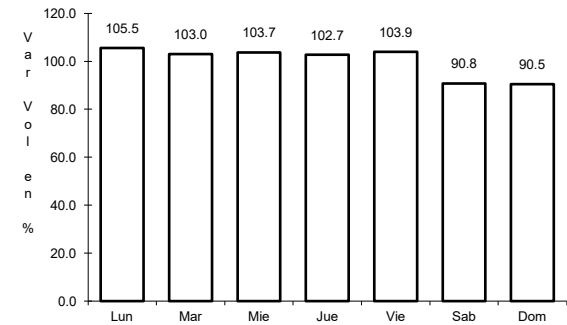
RUTA: MEX-190



Km: 0.00      Tipo: 3      Sent: 0



Km: 38.01      Tipo: 3      Sent: 0

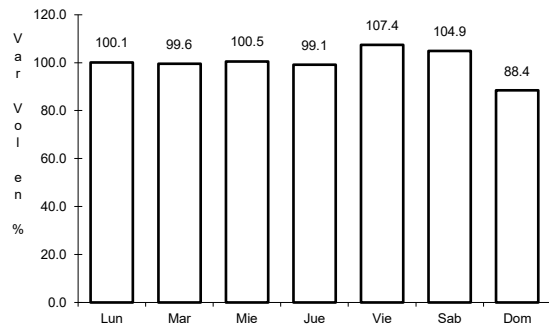


Km: 91.80      Tipo: 1      Sent: 0

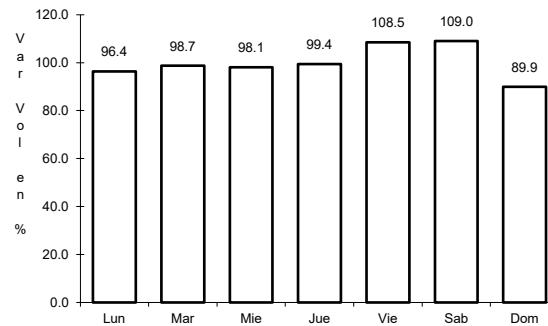
6 CARR: Huajuapán de León - Oaxaca

CLAVE: 20056

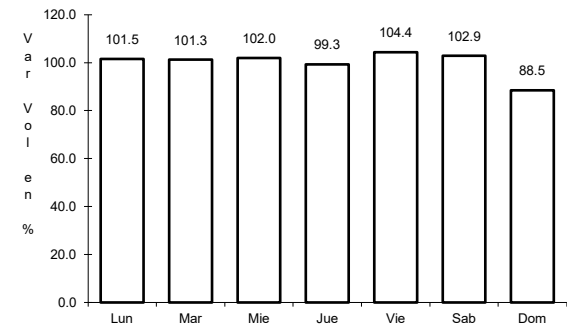
RUTA: MEX-190



Km: 1.35      Tipo: 1      Sent: 0



Km: 190.60      Tipo: 1      Sent: 1

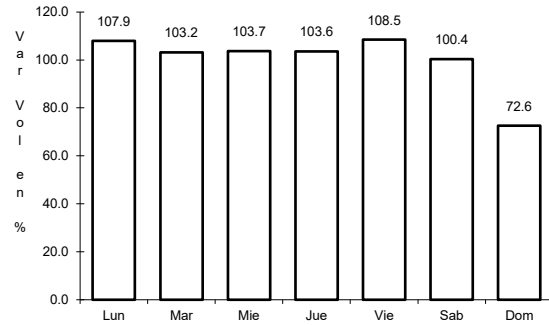


Km: 190.60      Tipo: 1      Sent: 2

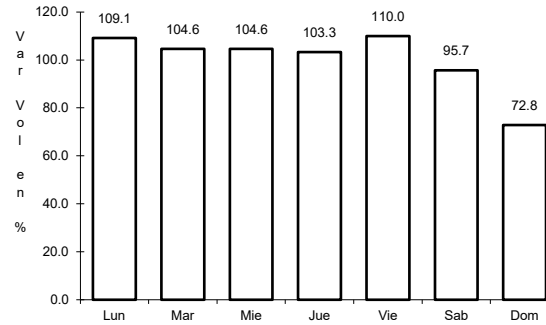
7 CARR: Juchitán - Ixtepec

CLAVE: 20359

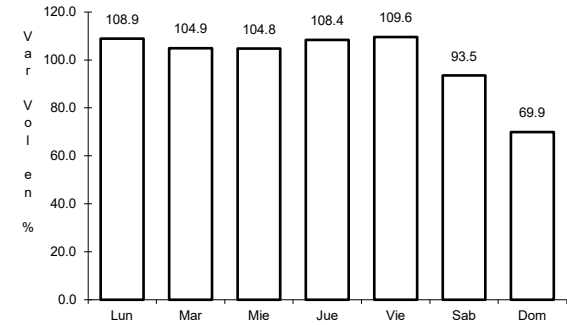
ruta: MEX-185



Km: 0.15 Tipo: 3 Sent: 1



Km: 0.15 Tipo: 3 Sent: 2

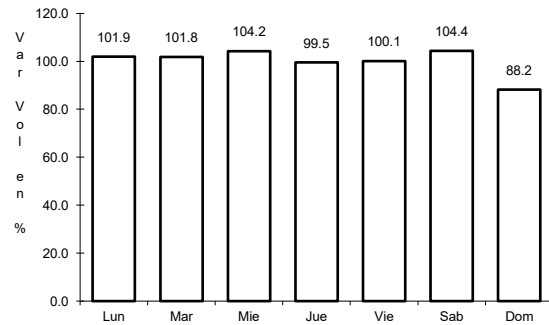


Km: 16.00 Tipo: 1 Sent: 1

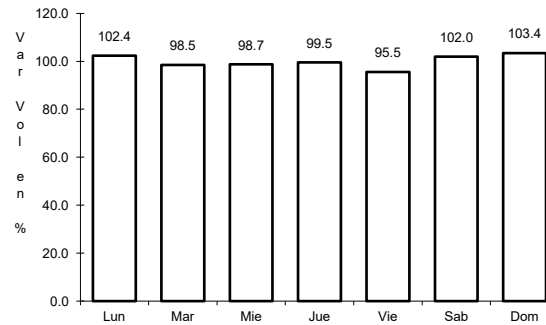
8 CARR: La Granja - Temascal

CLAVE: 00275

ruta: MEX-145



Km: 0.00 Tipo: 3 Sent: 0

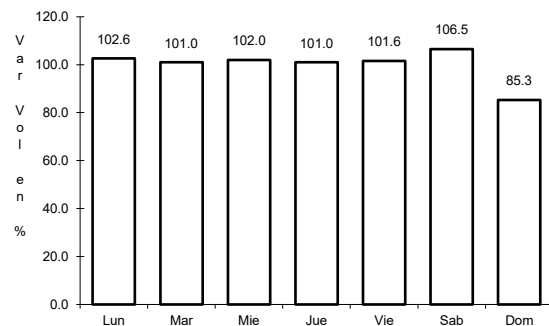


Km: 23.00 Tipo: 1 Sent: 0

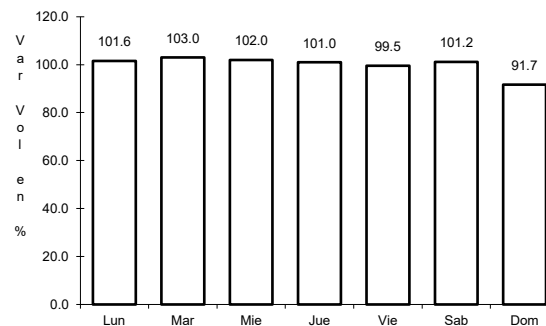
9 CARR: Las Cruces - Pinotepa Nacional

CLAVE: 00073

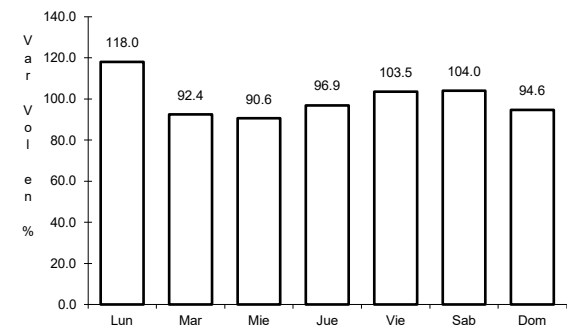
ruta: MEX-200



Km: 0.00 Tipo: 3 Sent: 1



Km: 0.00 Tipo: 3 Sent: 2

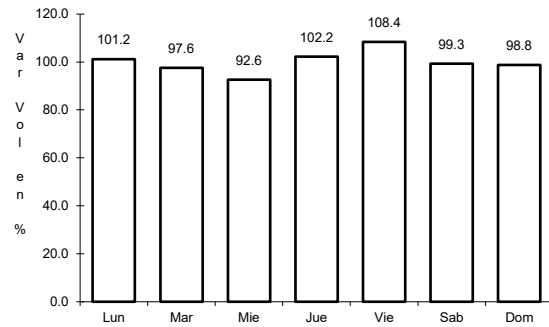


Km: 245.47 Tipo: 3 Sent: 0

10 CARR: Libramiento de Ejutla

CLAVE:

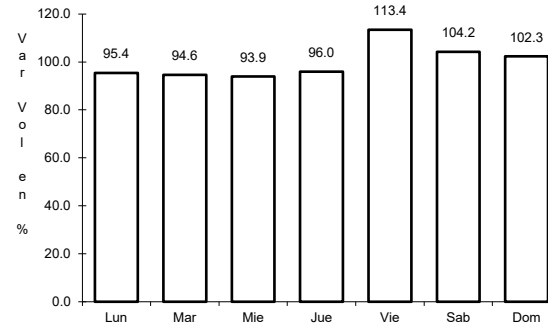
RUTA: MEX-175



Km: 0.00

Tipo: 3

Sent: 0



Km: 5.70

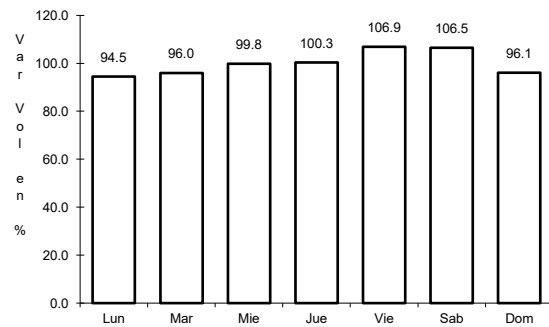
Tipo: 3

Sent: 0

11 CARR: Libramiento de Ocotlán Oax.

CLAVE:

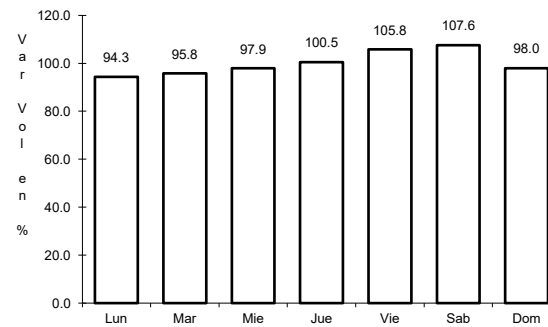
RUTA: MEX-175



Km: 0.00

Tipo: 3

Sent: 0



Km: 9.60

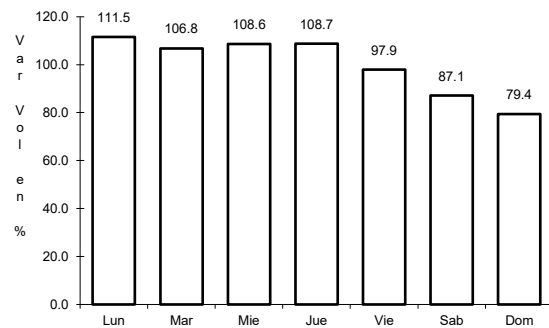
Tipo: 3

Sent: 0

12 CARR: Libramiento de Pochutla

CLAVE:

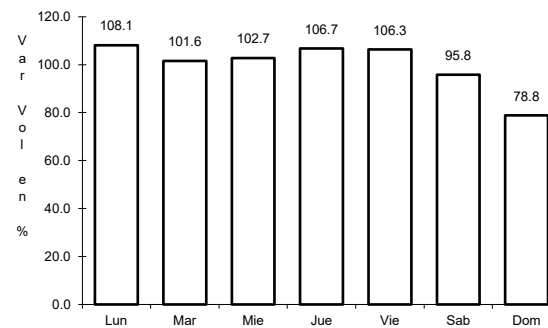
RUTA: MEX-200



Km: 0.00

Tipo: 3

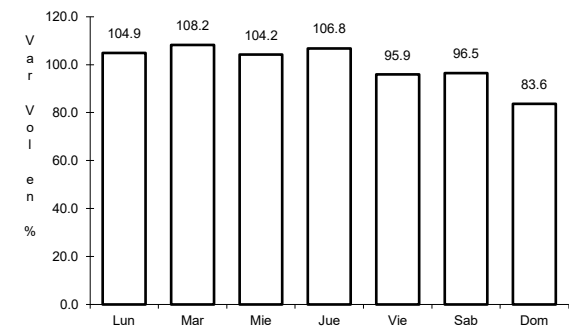
Sent: 0



Km: 2.40

Tipo: 1

Sent: 0



Km: 5.20

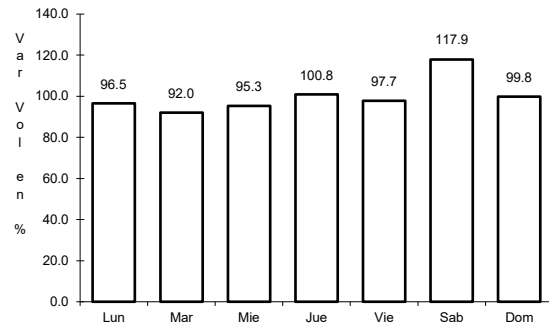
Tipo: 1

Sent: 0

13 CARR: Libramiento de San Pedro Tapanatepec

CLAVE:

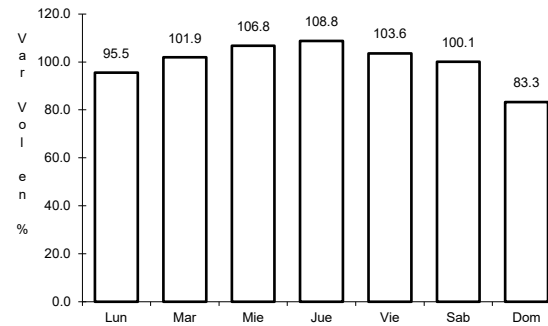
RUTA: MEX-200



Km: 3.35

Tipo: 1

Sent: 0



Km: 5.80

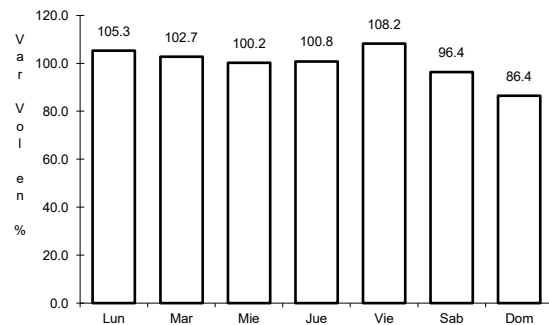
Tipo: 1

Sent: 0

14 CARR: Libramiento de Santa María del Tule

CLAVE:

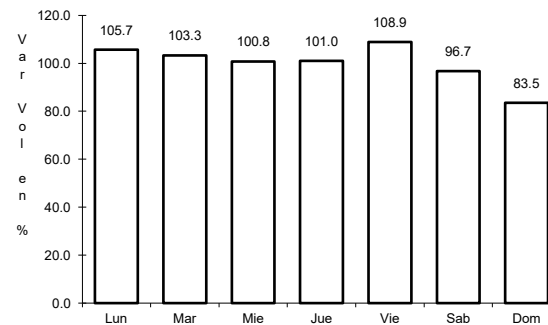
RUTA: MEX-190



Km: 0.00

Tipo: 3

Sent: 0



Km: 5.80

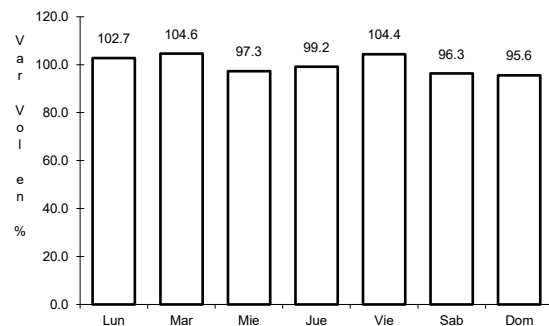
Tipo: 1

Sent: 0

15 CARR: Oaxaca - Puerto Ángel

CLAVE: 20091

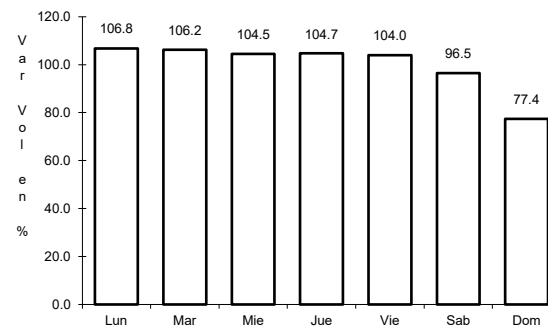
RUTA: MEX-175



Km: 0.00

Tipo: 3

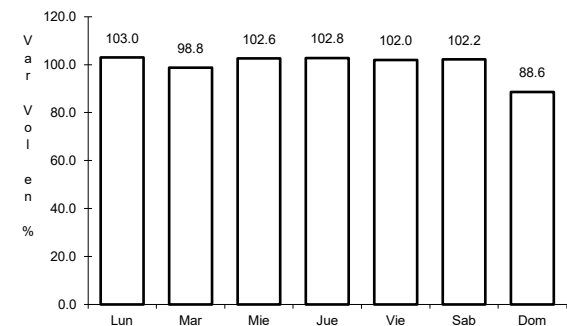
Sent: 1



Km: 0.00

Tipo: 3

Sent: 2



Km: 245.40

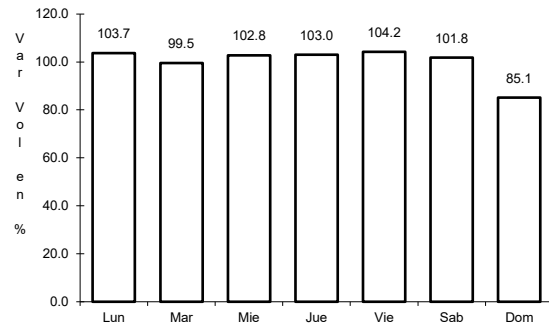
Tipo: 1

Sent: 0

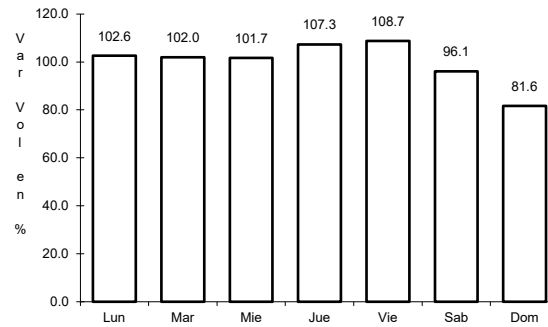
16 CARR: Oaxaca - Tehuantepec

CLAVE: 20057

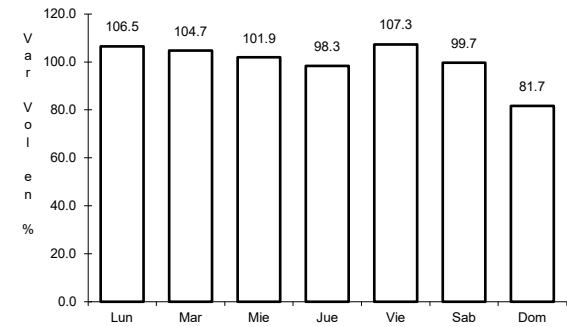
ruta: MEX-190



Km: 0.00 Tipo: 3 Sent: 1



Km: 0.00 Tipo: 3 Sent: 2

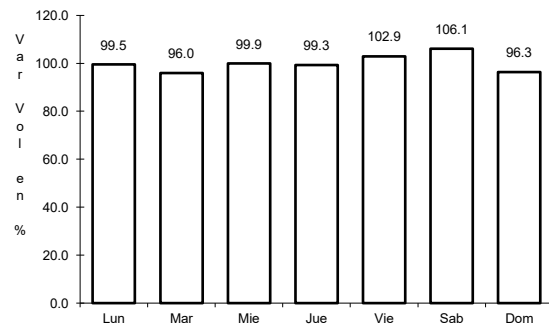


Km: 250.60 Tipo: 1 Sent: 0

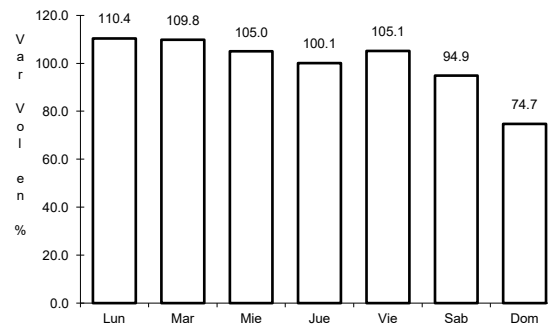
17 CARR: Puebla - Huajuapán de León

CLAVE: 00049

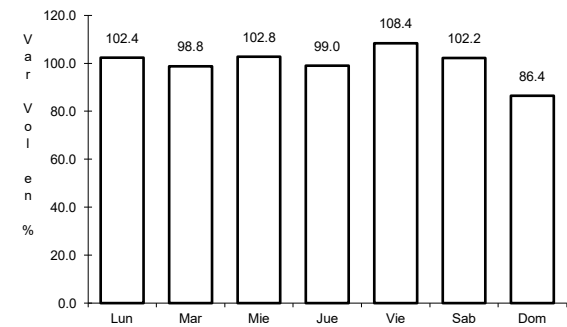
ruta: MEX-190



Km: 0.00 Tipo: 3 Sent: 1



Km: 0.00 Tipo: 3 Sent: 2

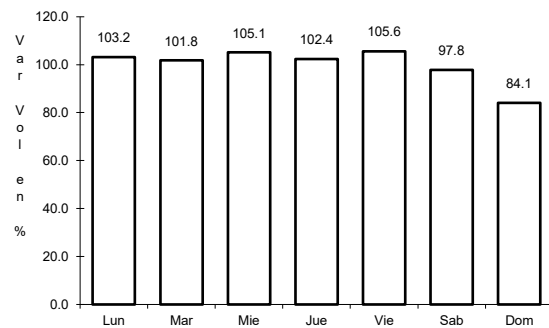


Km: 219.30 Tipo: 1 Sent: 0

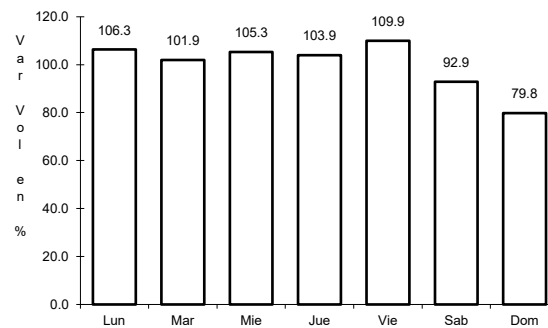
18 CARR: Ramal a Asunción Ixtaltepec

CLAVE: 20624

ruta: MEX-185



Km: 0.00 Tipo: 3 Sent: 0

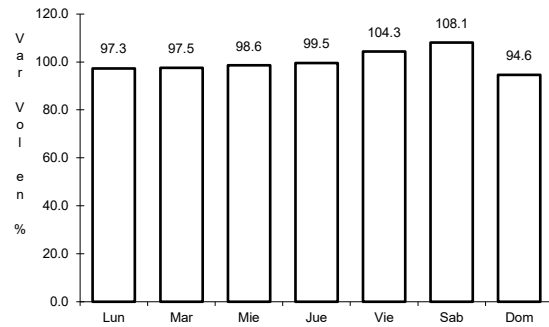


Km: 9.70 Tipo: 1 Sent: 0

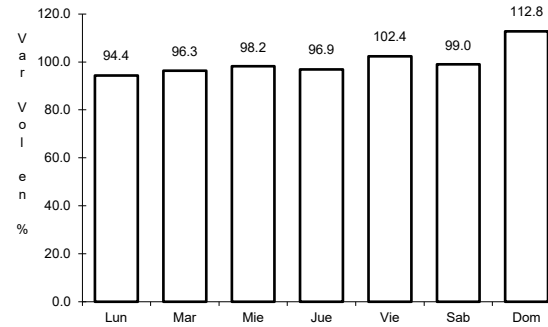
19 CARR: Ramal a Monte Albán

CLAVE:

ruta: MEX



Km: 1.80      Tipo: 3      Sent: 0

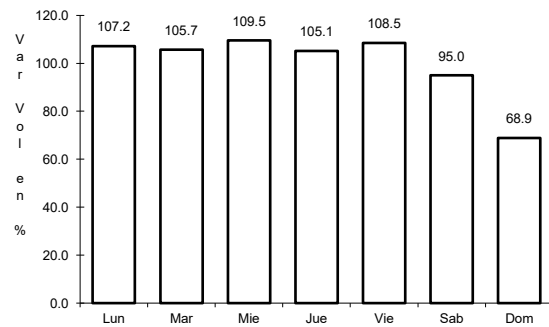


Km: 2.75      Tipo: 3      Sent: 0

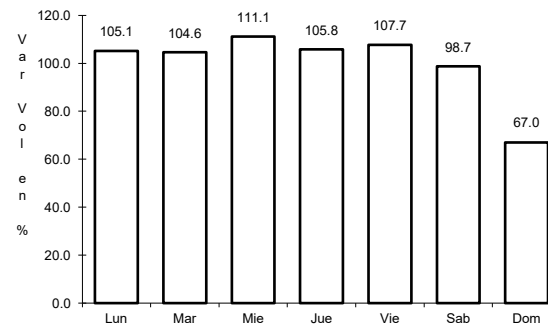
20 CARR: Ramal a Refinería Pemex (Refinería del Pacifico)

CLAVE:

ruta: MEX



Km: 0.00      Tipo: 3      Sent: 1

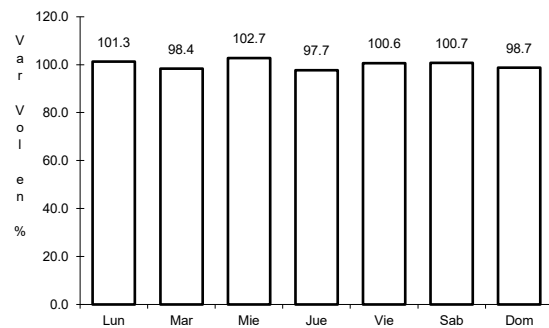


Km: 0.00      Tipo: 3      Sent: 2

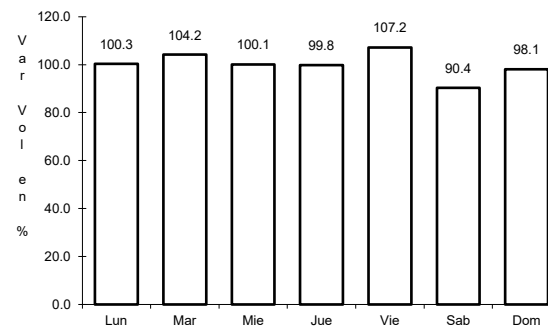
21 CARR: San Pablo Villa de Mitla - T. C. (Tuxtepec - Palomares)

CLAVE: 00106

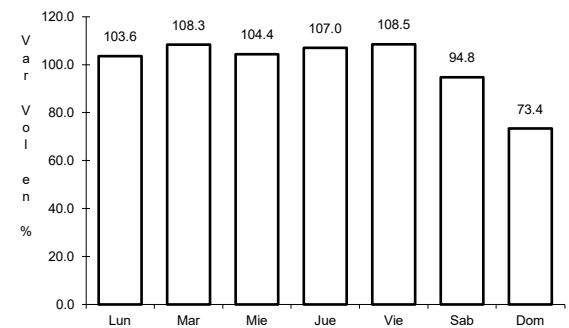
ruta: MEX-179



Km: 0.00      Tipo: 3      Sent: 0



Km: 90.00      Tipo: 1      Sent: 0



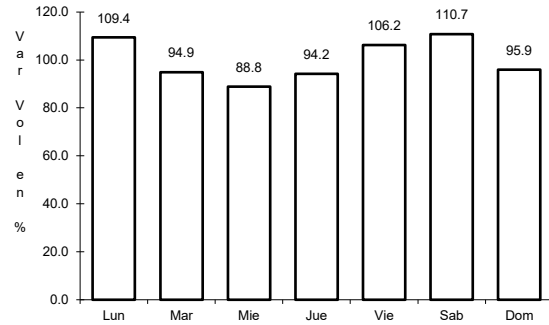
Km: 238.70      Tipo: 1      Sent: 0



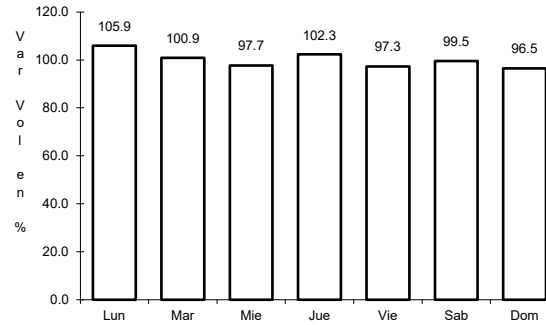
22 CARR: Santiago Pinotepa Nacional - Salina Cruz

CLAVE: 20074

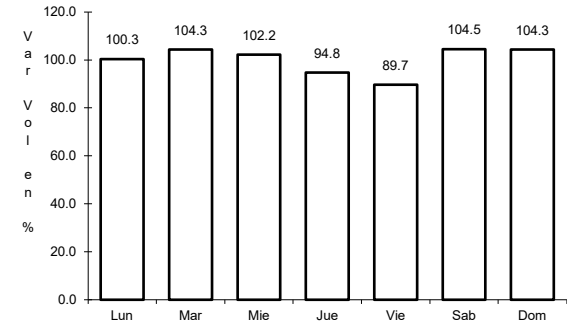
ruta: MEX-200



Km: 0.00      Tipo: 3      Sent: 0



Km: 209.15      Tipo: 1      Sent: 1

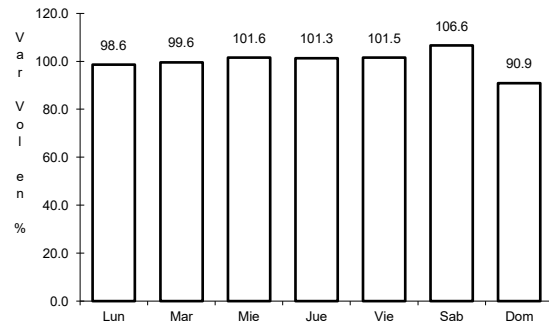


Km: 380.00      Tipo: 3      Sent: 0

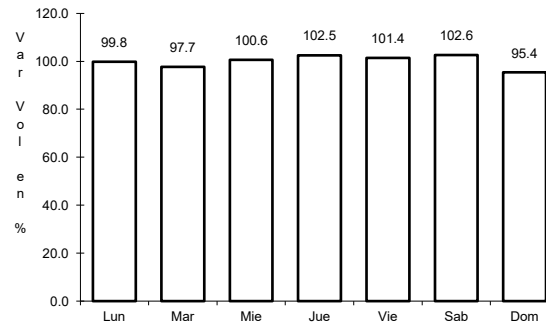
23 CARR: Tapanatepec - Talismán

CLAVE: 00075

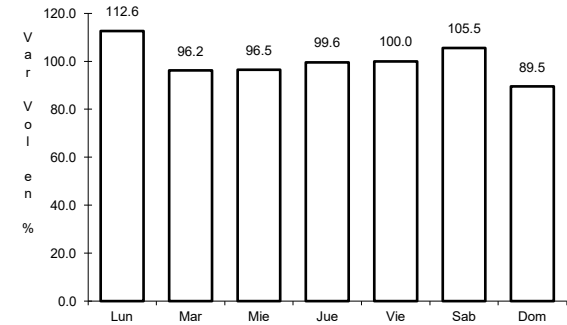
ruta: MEX-200



Km: 0.00      Tipo: 3      Sent: 0



Km: 45.00      Tipo: 1      Sent: 0

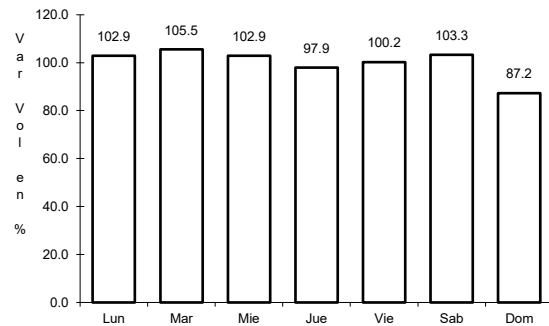


Km: 310.77      Tipo: 1      Sent: 0

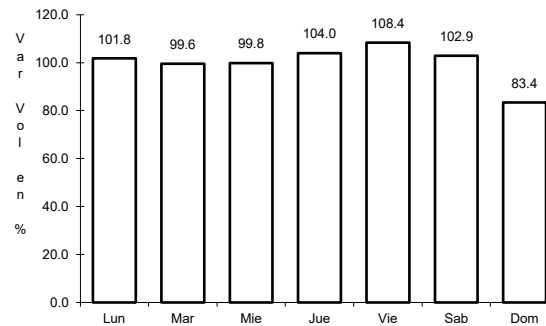
24 CARR: Tapanatepec - Tuxtla Gutiérrez

CLAVE: 00060

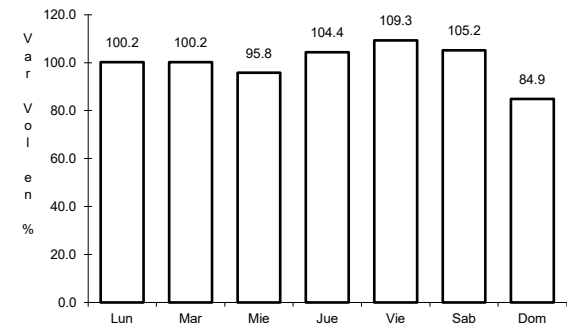
ruta: MEX-190



Km: 0.00      Tipo: 3      Sent: 0



Km: 159.00      Tipo: 1      Sent: 1

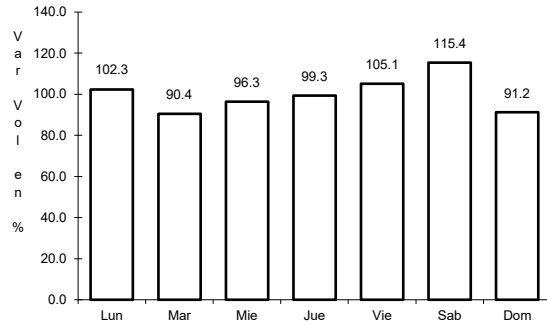


Km: 159.00      Tipo: 1      Sent: 2

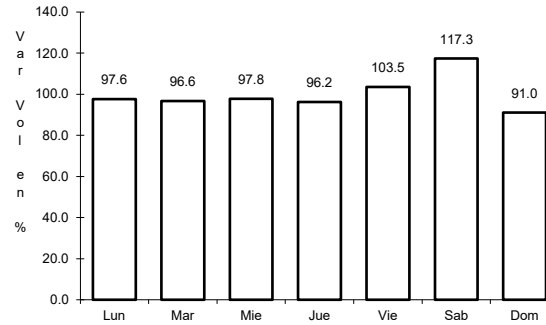
25 CARR: Tehuacán - Huajuapán de León

CLAVE: 00211

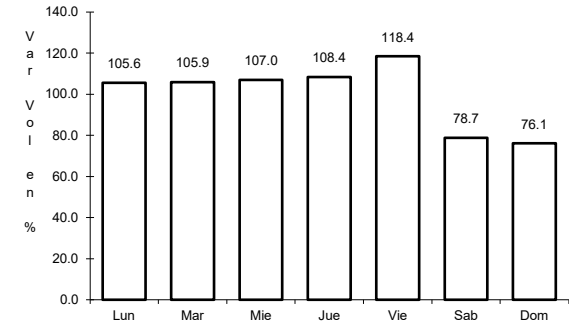
ruta: MEX-125



Km: 0.00 Tipo: 3 Sent: 1



Km: 0.00 Tipo: 3 Sent: 2

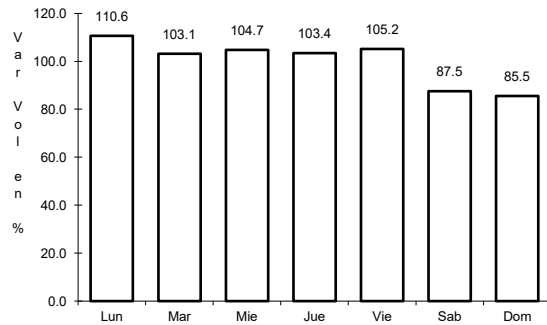


Km: 119.40 Tipo: 1 Sent: 0

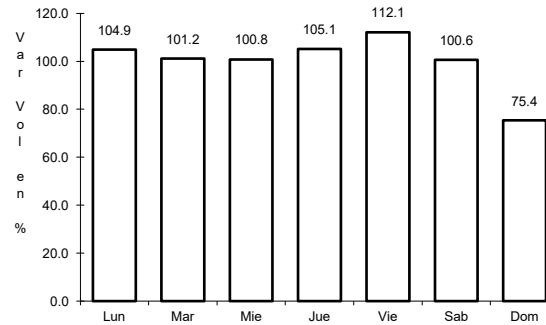
26 CARR: Tuxtepec - Ent. Palomares

CLAVE: 00180

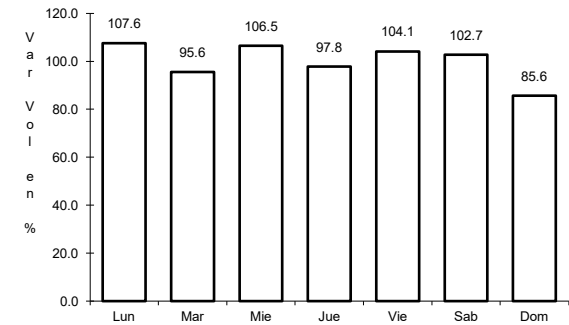
ruta: MEX-147



Km: 0.00 Tipo: 3 Sent: 0



Km: 81.20 Tipo: 1 Sent: 0

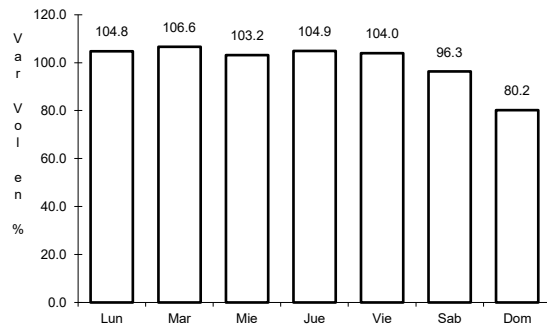


Km: 175.00 Tipo: 1 Sent: 0

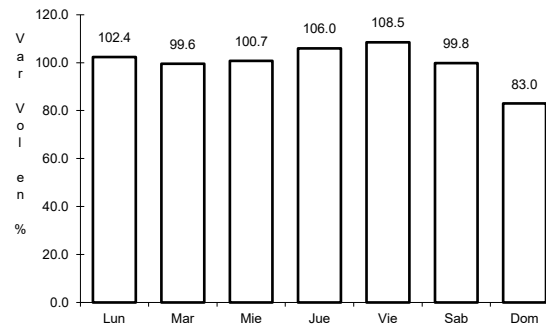
27 CARR: Tuxtepec - T. C. (Oaxaca - Tehuantepec)

CLAVE: 20090

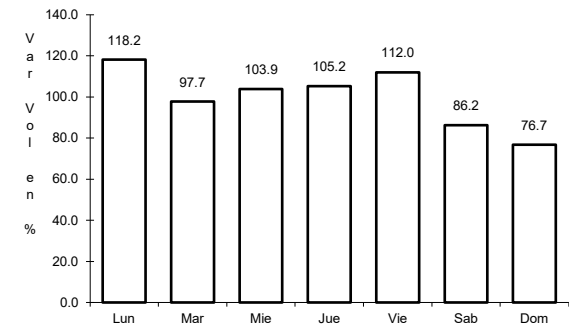
ruta: MEX-175



Km: 0.00 Tipo: 3 Sent: 1



Km: 0.00 Tipo: 3 Sent: 2

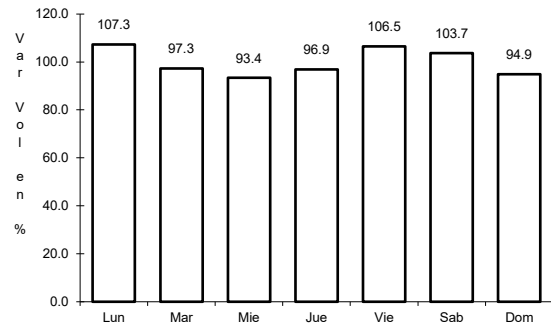


Km: 125.00 Tipo: 3 Sent: 0

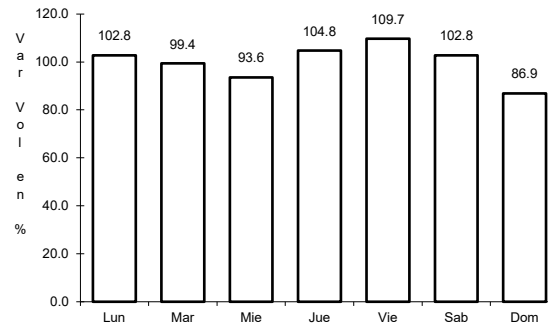
28 CARR: Yucudaa - Santiago Pinotepa Nacional

CLAVE: 20030

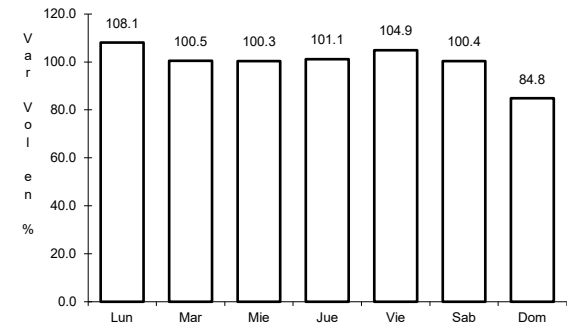
ruta: MEX-125



Km: 0.00      Tipo: 3      Sent: 0



Km: 104.00      Tipo: 1      Sent: 0

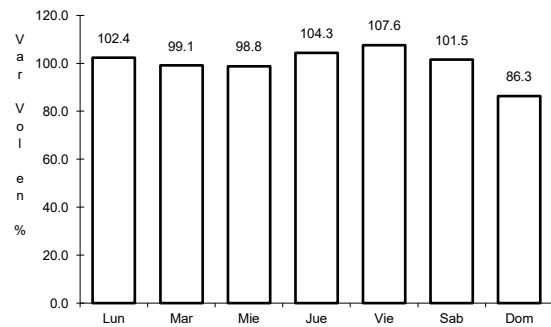


Km: 268.00      Tipo: 1      Sent: 0

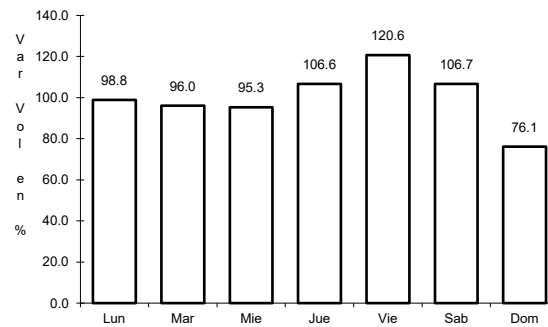
29 CARR: Cuacnopalan - Oaxaca (Cuota)

CLAVE: 00109

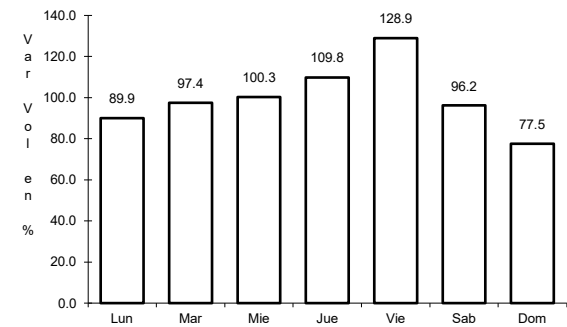
ruta: MEX-135D



Km: 0.00      Tipo: 3      Sent: 0



Km: 242.70      Tipo: 1      Sent: 1

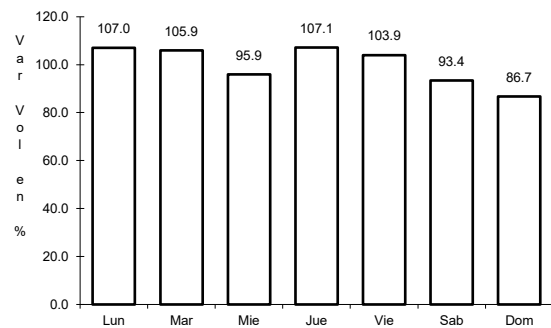


Km: 242.70      Tipo: 1      Sent: 2

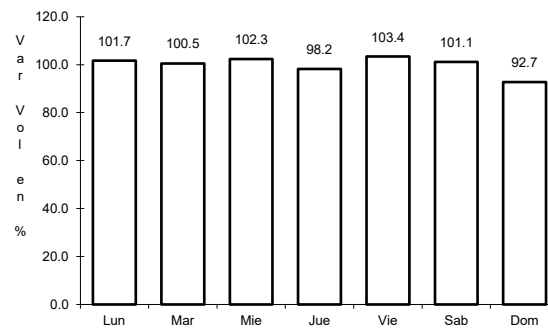
30 CARR: Mitla - Tehuantepec (Cuota)

CLAVE:

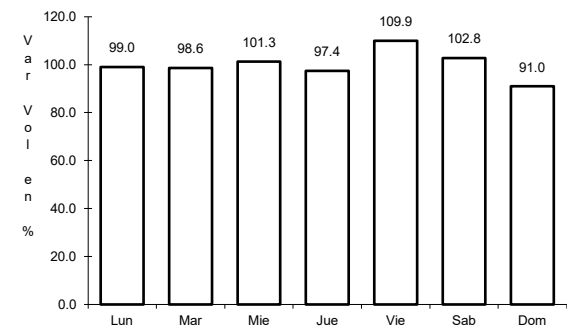
ruta: MEX-190D



Km: 43.00      Tipo: 3      Sent: 0



Km: 50.90      Tipo: 3      Sent: 0

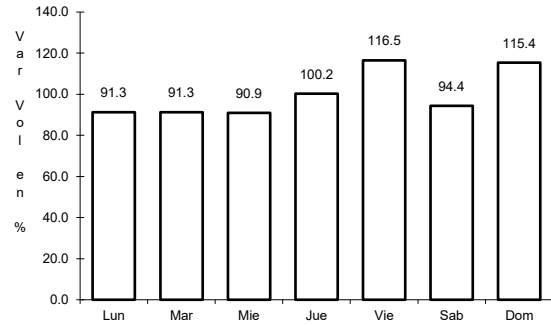


Km: 71.00      Tipo: 1      Sent: 0

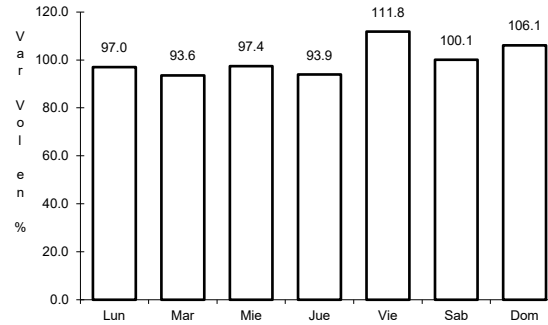
31 CARR: Salina Cruz - La Ventosa (Cuota)

CLAVE: 00275

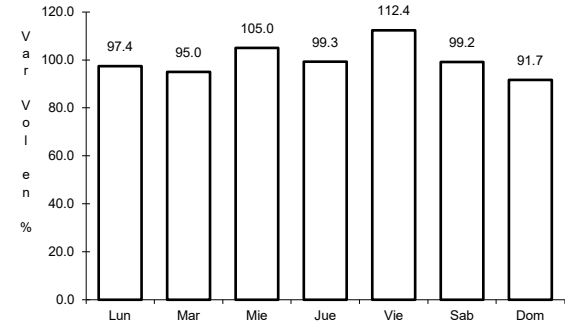
ruta: MEX-185D



Km: 23.19      Tipo: 1      Sent: 0



Km: 34.00      Tipo: 3      Sent: 0

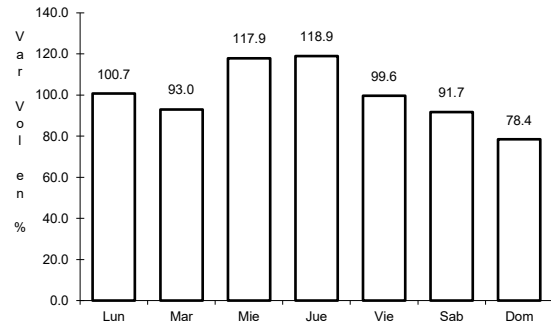


Km: 75.39      Tipo: 1      Sent: 0

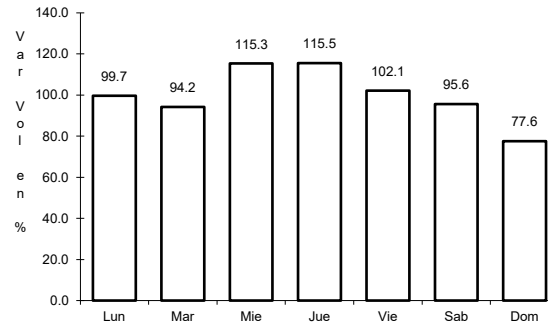
32 CARR: Cd. Ixtepec - Guevea de Humboldt

CLAVE: 00301

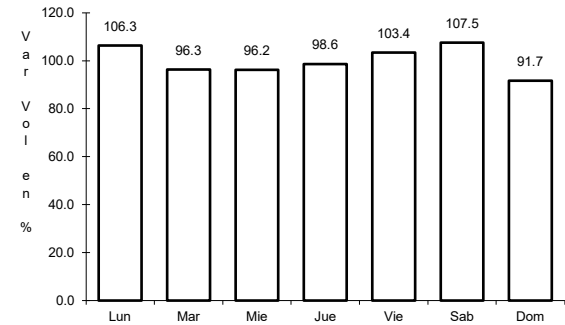
ruta: OAX



Km: 4.00      Tipo: 1      Sent: 1



Km: 4.00      Tipo: 1      Sent: 2

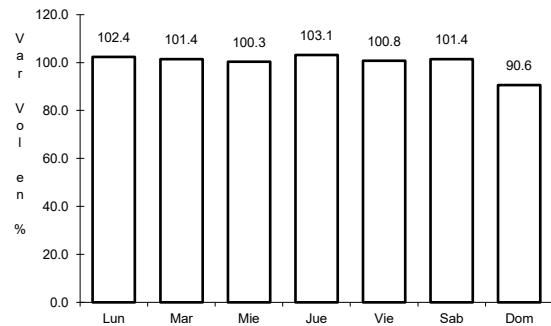


Km: 4.00      Tipo: 3      Sent: 0

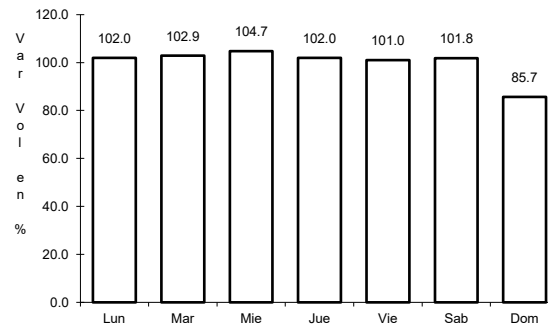
33 CARR: El Zapote - Copalita

CLAVE: 00109

ruta: OAX



Km: 0.00      Tipo: 3      Sent: 1

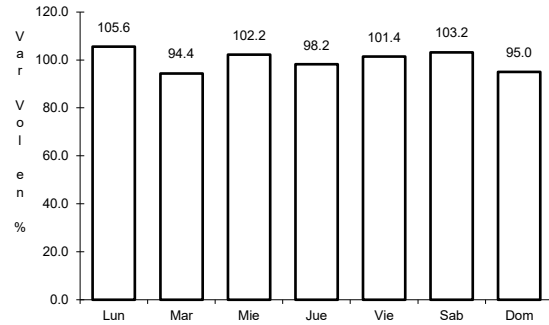


Km: 0.00      Tipo: 3      Sent: 2

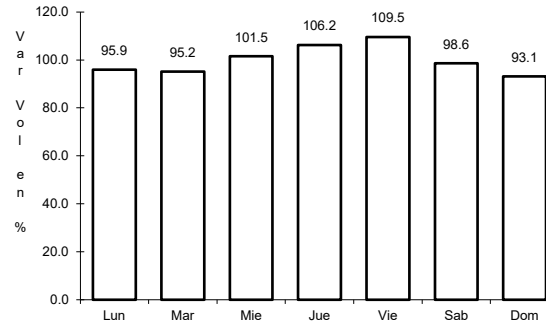
34 CARR: Huajuapán de León - El Carrizal

CLAVE: 00109

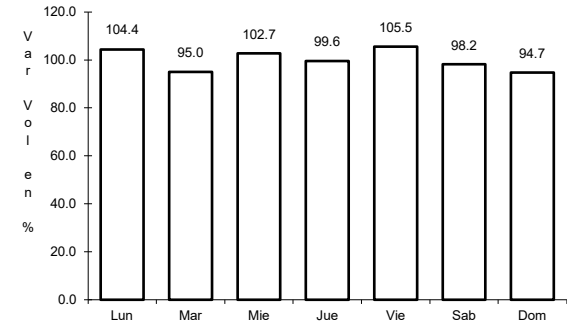
RUTA: OAX



Km: 0.00                      Tipo: 3                      Sent: 0



Km: 83.60                      Tipo: 1                      Sent: 0

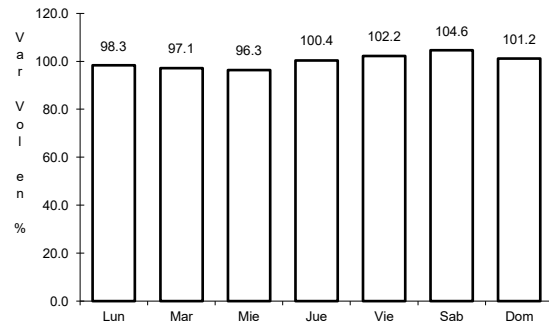


Km: 130.00                      Tipo: 1                      Sent: 0

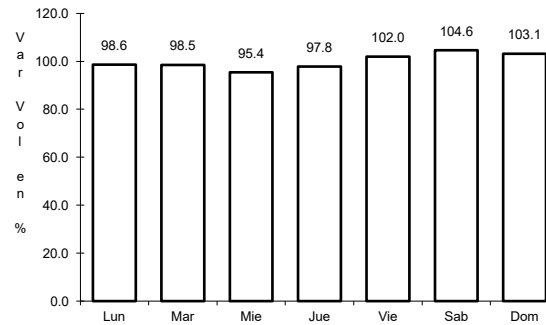
35 CARR: Loma Bonita - Mixtán

CLAVE: 20043

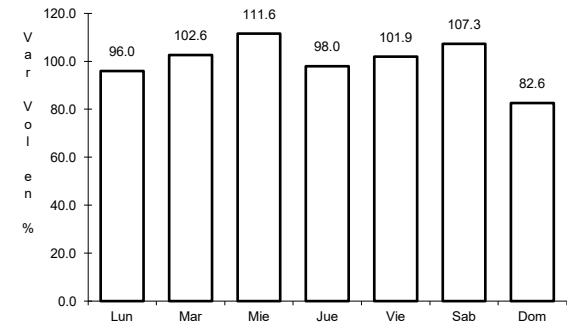
RUTA: OAX



Km: 1.00                      Tipo: 1                      Sent: 1



Km: 1.00                      Tipo: 1                      Sent: 2

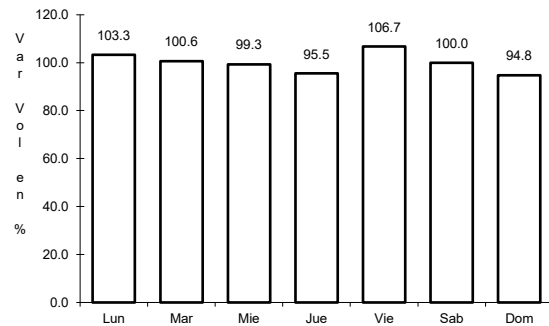


Km: 12.00                      Tipo: 3                      Sent: 0

36 CARR: Ramal a Reforma de Pineda

CLAVE: 20010

RUTA: OAX

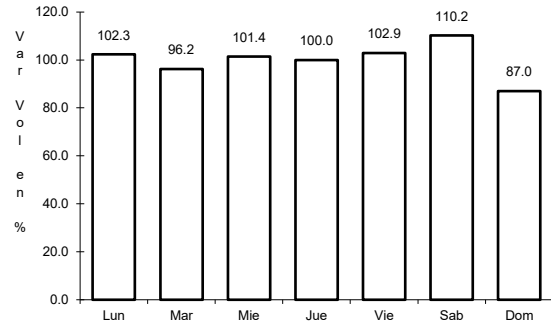


Km: 0.00                      Tipo: 3                      Sent: 0

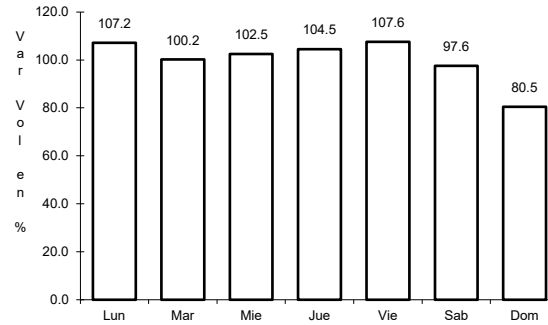
37 CARR: Ramal a Unión Hidalgo

CLAVE: 20044

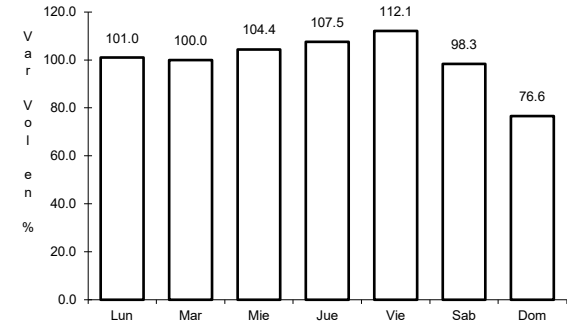
RUTA: OAX



Km: 0.00      Tipo: 3      Sent: 1



Km: 0.00      Tipo: 3      Sent: 2

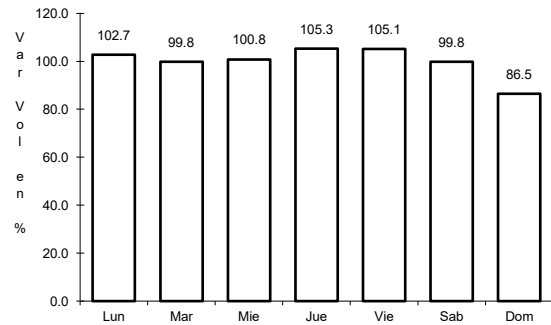


Km: 12.00      Tipo: 1      Sent: 0

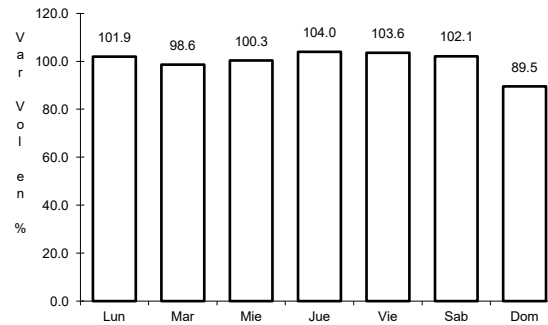
38 CARR: San Antonio - Puerto Angel

CLAVE:

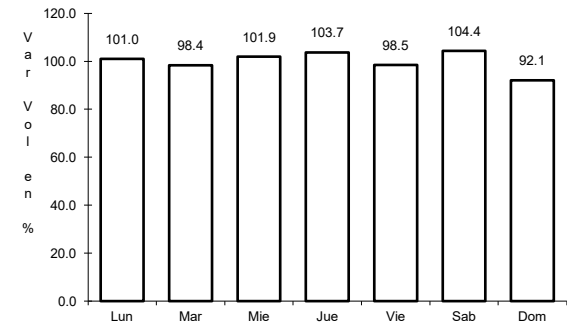
RUTA: OAX



Km: 0.00      Tipo: 3      Sent: 0



Km: 7.30      Tipo: 1      Sent: 0

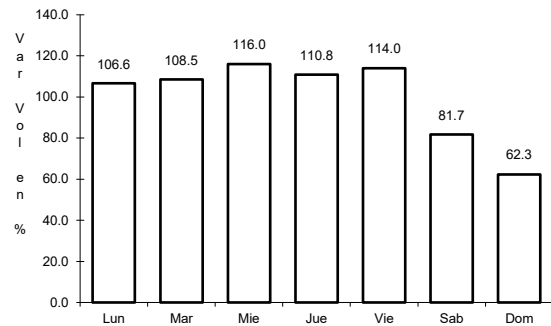


Km: 7.30      Tipo: 3      Sent: 0

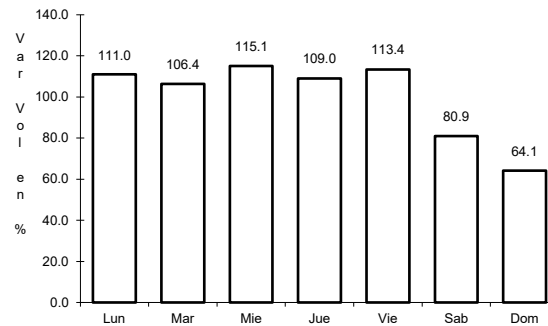
39 CARR: T. C. (Oaxaca - Puerto Ángel) - Puerto Escondido

CLAVE: 20009

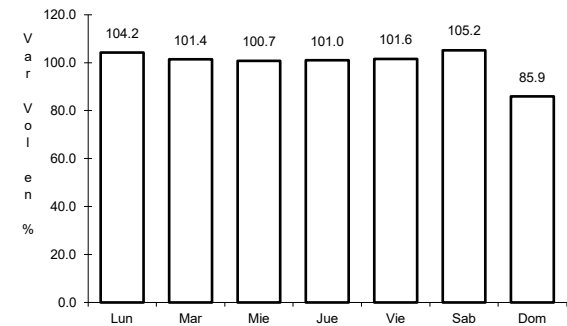
RUTA: MEX-OAX-161



Km: 0.00      Tipo: 3      Sent: 1



Km: 0.00      Tipo: 3      Sent: 2

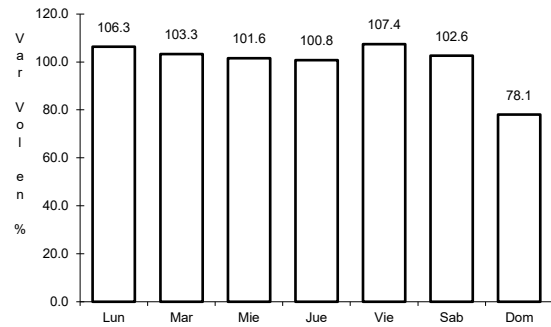


Km: 248.00      Tipo: 1      Sent: 0

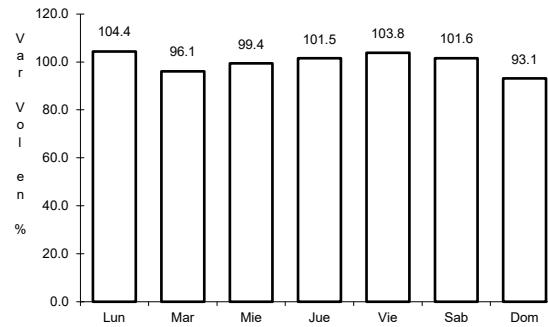
40 CARR: Tehuacán - Huitzo

CLAVE: 00211

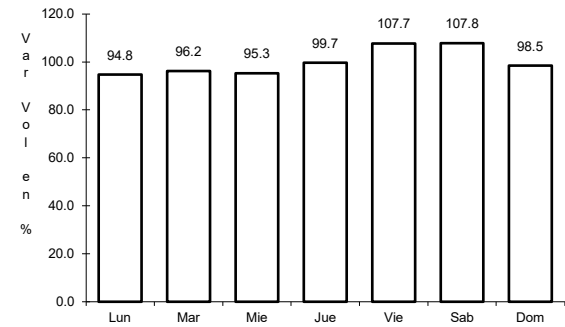
ruta: PUE-MEX-135



Km: 0.00 Tipo: 3 Sent: 0



Km: 118.80 Tipo: 1 Sent: 0

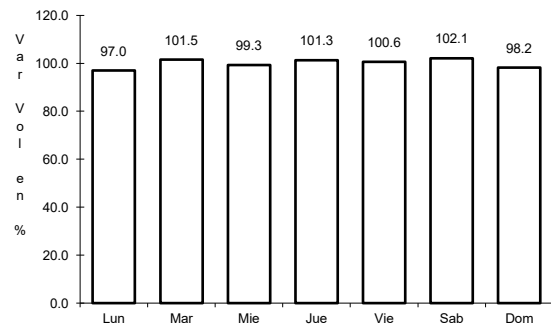


Km: 202.70 Tipo: 1 Sent: 0

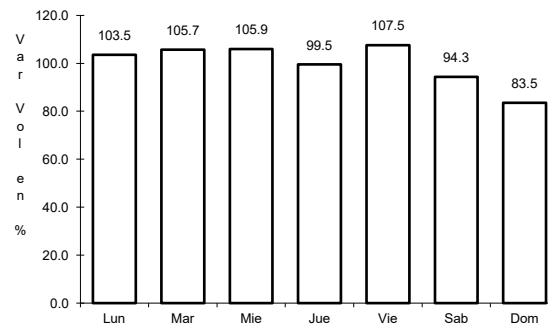
41 CARR: Teotitlán de Flores Magón - Tuxtepec

CLAVE: 00108

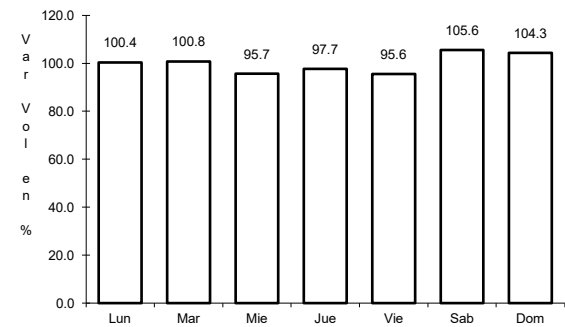
ruta: OAX-PUE-MEX-182



Km: 0.00 Tipo: 3 Sent: 0



Km: 65.00 Tipo: 1 Sent: 0



Km: 185.00 Tipo: 1 Sent: 0

