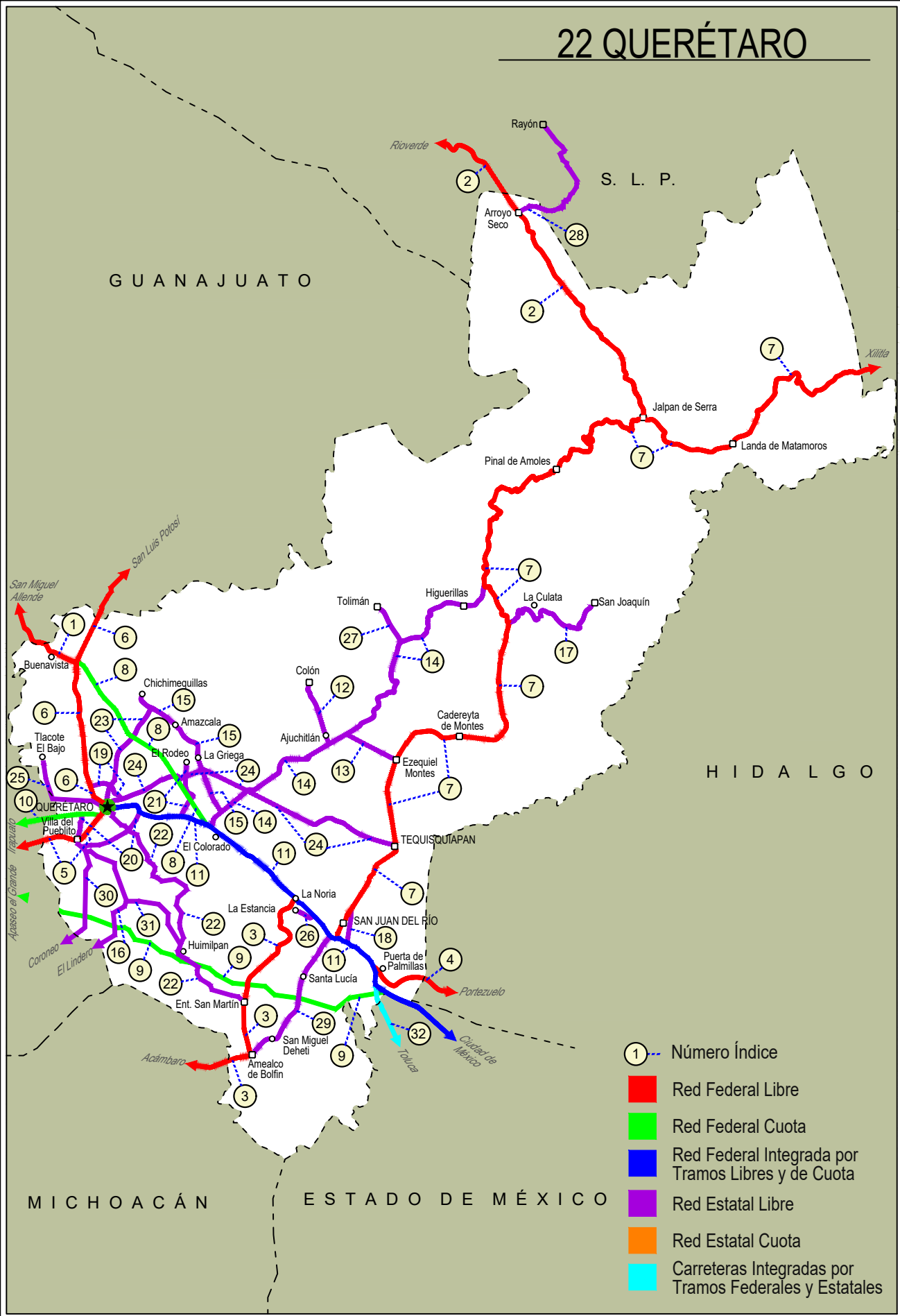


QUERETARO

NO. INDICE CARRETERA	RUTA
---RED FEDERAL LIBRE---	
1 Ent. Buenavista - San Miguel de Allende	MEX-057
2 Jalpan de Serra - Rioverde	MEX-069
3 La Noria - Acámbaro	MEX-120
4 Portezuelo - Palmillas	MEX-045
5 Querétaro - Irapuato (Libre)	MEX-045
6 Querétaro - San Luis Potosí	MEX-057
7 San Juan del Río - Xilitla	MEX-120
---RED FEDERAL DE CUOTA---	
8 Libramiento Nororiente de Querétaro (Cuota)	MEX-057D
9 Palmillas - Apaseo el Grande (Cuota)	MEX-045D
10 Querétaro - Irapuato (Cuota)	MEX-045D
---RED FEDERAL INTEGRADA POR TRAMOS LIBRES Y DE CUOTA---	
11 México - Querétaro (Cuota)	MEX-057-MEX-057D
---RED ESTATAL LIBRE---	
12 Ajuchitlán - Colón	ORO-005
13 Ajuchitlán - Ezequiel Montes	ORO-005
14 El Colorado - Higuera	ORO-004
15 Hacienda Paraíso - Chichimequillas	ORO-001
16 Huimilpan - El Lindero	ORO-GTO
17 La Culata - San Joaquín	ORO-021
18 Libramiento de San Juan del Río	ORO
19 Libramiento Norte de Querétaro	ORO
20 Libramiento Surponiente de Querétaro	ORO
21 Peña Colorada - El Rodeo	ORO
22 Querétaro - Ent. San Martín	ORO
23 Querétaro - Estación Chichimequillas	ORO
24 Querétaro - Tequisquiapan	ORO
25 Querétaro - Tlacote El Bajo	ORO
26 Ramal a La Estancia	ORO
27 Ramal a Tolimán	ORO
28 Rayón - Arroyo Seco	SLP-011
29 San Juan del Río - Amealco	ORO
30 T. C. (Villa del Pueblito - Huimilpan) - Coroneo	ORO-GTO
31 Villa del Pueblito - Huimilpan	ORO
---CARRETERAS INTEGRADAS POR TRAMOS FEDERALES Y ESTATALES---	
32 Toluca - Palmillas	EM(D)-MEX-055

22 QUERÉTARO



- ① Número Índice
- Red Federal Libre
- Red Federal Cuota
- Red Federal Integrada por Tramos Libres y de Cuota
- Red Estatal Libre
- Red Estatal Cuota
- Carreteras Integradas por Tramos Federales y Estatales

QUERETARO

1 CARR: Ent. Buenavista - San Miguel de Allende

CLAVE: 00111

RUTA: MEX-057

AÑO: 2023

LUGAR	ESTACION				CLASIFICACION VEHICULAR EN PORCIENTO													COORDENADAS		
	KM	TE	SC	TDPA	M	A	B	C2	C3	T3S2	T3S3	T3S2R4	OTROS	A	B	C	K'	D	LATITUD	LONGITUD
T. C. Querétaro - San Luis Potosí	0.00	3	0	24247	2.9	87.4	0.9	4.7	1.4	1.7	0.3	0.4	0.3	90.3	0.9	8.8	0.082	0.509	20.824415	-100.462613
Lim. Edos. Term. Oro. Ppia. Gto.	7.91																			
T. Izq. Guadalupe	12.00	1	0	11644	1.3	82.7	1.8	8.2	1.9	3.1	0.7	0.3	0.0	84.0	1.8	14.2	0.084	0.512	20.882724	-100.572741
San Miguel de Allende	35.11	1	0	18385	3.6	88.1	1.5	4.1	1.3	0.8	0.3	0.2	0.1	91.7	1.5	6.8	0.090	0.528	20.902434	-100.709780

2 CARR: Jalpan de Serra - Rioverde

CLAVE: 00265

RUTA: MEX-069

AÑO: 2023

LUGAR	ESTACION				CLASIFICACION VEHICULAR EN PORCIENTO													COORDENADAS		
	KM	TE	SC	TDPA	M	A	B	C2	C3	T3S2	T3S3	T3S2R4	OTROS	A	B	C	K'	D	LATITUD	LONGITUD
Jalpan de Serra	0.00	3	0	7249	3.1	91.6	0.9	2.9	0.6	0.5	0.1	0.2	0.1	94.7	0.9	4.4	0.073	0.507	21.239334	-99.482402
T. Izq. Conca	35.01	1	0	3112	5.3	90.2	0.3	2.4	1.1	0.4	0.2	0.0	0.1	95.5	0.3	4.2	0.096	0.504	21.449680	-99.631148
Arroyo Seco	48.60	1	0	2129	4.1	88.3	0.5	5.2	1.1	0.4	0.3	0.0	0.1	92.4	0.5	7.1	0.082	0.525	21.541394	-99.687669
Lim. Edos. Term. Oro. Ppia. S. L. P.	52.27																			
San Ciro de Acosta	69.42	1	0	2309	6.5	76.3	0.5	12.6	1.4	1.9	0.6	0.1	0.1	82.8	0.5	16.7	0.080	0.501	21.647981	-99.808437
San Ciro de Acosta	69.42	3	0	3216	4.6	80.2	0.9	11.1	1.3	1.3	0.3	0.2	0.1	84.8	0.9	14.3	0.083	0.504	21.661917	-99.827612
Rioverde	105.43	1	0	7779	3.1	76.2	0.6	15.7	0.8	2.2	0.8	0.4	0.2	79.3	0.6	20.1	0.081	0.503	21.872840	-99.972840

3 CARR: La Noria - Acámbaro

CLAVE: 00131

RUTA: MEX-120

AÑO: 2023

LUGAR	ESTACION				CLASIFICACION VEHICULAR EN PORCIENTO													COORDENADAS		
	KM	TE	SC	TDPA	M	A	B	C2	C3	T3S2	T3S3	T3S2R4	OTROS	A	B	C	K'	D	LATITUD	LONGITUD
La Noria	0.00	3	0	10742	2.3	85.5	2.0	5.9	1.9	1.2	0.5	0.4	0.3	87.8	2.0	10.2	0.087	0.503	20.437975	-100.074460
Amealco	34.66	1	0	5937	2.7	86.6	3.0	4.7	1.1	0.8	0.6	0.3	0.2	89.3	3.0	7.7	0.102	0.509	20.199607	-100.150051
Amealco	34.66	3	0	6134	2.6	88.5	1.2	4.7	1.2	0.9	0.6	0.1	0.2	91.1	1.2	7.7	0.119	0.505	20.186518	-100.158926
Lim. Edos. Term. Oro. Ppia. Mich.	39.15																			
Lim. Edos. Term. Mich. Ppia. Gto.	55.90																			
Coroneo	59.35	3	0	2233	1.6	86.8	3.6	4.4	1.3	2.1	0.2	0.0	0.0	88.4	3.6	8.0	0.081	0.502	20.194952	-100.376061
Jerécuaro	79.70	3	0	3108	3.9	84.8	2.8	6.9	0.9	0.5	0.2	0.0	0.0	88.7	2.8	8.5	0.093	0.510	20.144156	-100.539012
Acámbaro	111.12	1	0	8132	2.4	84.0	1.9	6.9	2.5	1.3	0.6	0.4	0.0	86.4	1.9	11.7	0.086	0.511	20.051648	-100.697726

4 CARR: Portezuelo - Palmillas

CLAVE: 00194

RUTA: MEX-045

AÑO: 2023

LUGAR	ESTACION				CLASIFICACION VEHICULAR EN PORCIENTO													COORDENADAS		
	KM	TE	SC	TDPA	M	A	B	C2	C3	T3S2	T3S3	T3S2R4	OTROS	A	B	C	K'	D	LATITUD	LONGITUD
Portezuelo	0.00	3	1	4732	3.0	71.9	3.3	9.0	2.4	5.6	2.5	1.8	0.5	74.9	3.3	21.8	0.091	0.506	20.486603	-99.304287

QUERETARO

4 CARR: Portezuelo - Palmillas

CLAVE: 00194

RUTA: MEX-045

AÑO: 2023

LUGAR	ESTACION				CLASIFICACION VEHICULAR EN PORCIENTO										COORDENADAS					
	KM	TE	SC	TDPA	M	A	B	C2	C3	T3S2	T3S3	T3S2R4	OTROS	A	B	C	K'	D	LATITUD	LONGITUD
Portezuelo	0.00	3	2	4851	2.7	72.5	2.9	8.5	2.0	6.2	3.2	1.6	0.4	75.2	2.9	21.9	0.086	0.506	20.486513	-99.304292
Jonacapa	29.41	3	0	5261	3.6	73.2	3.1	7.4	2.7	5.0	3.0	1.5	0.5	76.8	3.1	20.1	0.092	0.525	20.435452	-99.536380
Huichapan	45.10	1	1	4396	2.1	78.0	2.5	5.5	2.4	3.5	2.7	2.7	0.6	80.1	2.5	17.4	0.109	0.501	20.395415	-99.635343
Huichapan	45.10	1	2	4407	2.0	77.4	3.0	5.9	2.1	4.1	2.1	2.7	0.7	79.4	3.0	17.6	0.104	0.501	20.395336	-99.635276
T. Izq. Nopala	56.15	1	0	10355	2.8	75.8	3.1	4.8	3.1	4.8	2.8	2.3	0.5	78.6	3.1	18.3	0.096	0.519	20.317999	-99.713288
T. Izq. Nopala	56.15	3	0	7697	3.0	72.2	3.1	5.1	2.9	6.0	4.0	2.8	0.9	75.2	3.1	21.7	0.085	0.505	20.309694	-99.721394
Lim. Edos. Term. Hgo. Ppia. Oro.	71.40																			
Palmillas	80.00	1	1	5248	2.0	74.5	2.5	9.2	2.2	3.5	3.4	2.0	0.7	76.5	2.5	21.0	0.078	0.509	20.322142	-99.928659
Palmillas	80.00	1	2	5444	1.7	75.3	2.4	9.2	1.9	4.0	3.1	1.9	0.5	77.0	2.4	20.6	0.081	0.509	20.322177	-99.928788

5 CARR: Querétaro - Irapuato (Libre)

CLAVE: 00154

RUTA: MEX-045

AÑO: 2023

LUGAR	ESTACION				CLASIFICACION VEHICULAR EN PORCIENTO										COORDENADAS					
	KM	TE	SC	TDPA	M	A	B	C2	C3	T3S2	T3S3	T3S2R4	OTROS	A	B	C	K'	D	LATITUD	LONGITUD
Querétaro Poniente	0.00	3	1	71629	2.5	84.5	0.6	5.2	0.4	3.5	2.3	0.4	0.6	87.0	0.6	12.4	0.075	0.523	20.553754	-100.421481
Querétaro Poniente	0.00	3	2	79951	2.7	83.9	0.4	5.4	0.3	3.6	2.4	0.5	0.8	86.6	0.4	13.0	0.079	0.523	20.553676	-100.421380
T. Der. Villa del Pueblito	6.67	3	1	25051	2.8	85.4	0.3	4.1	0.6	3.4	2.6	0.2	0.6	88.2	0.3	11.5	0.076	0.505	20.533996	-100.450458
T. Der. Villa del Pueblito	6.67	3	2	24596	2.6	86.0	0.2	4.3	0.4	3.2	2.5	0.2	0.6	88.6	0.2	11.2	0.088	0.505	20.533935	-100.450518
Los Ángeles	12.60	3	1	23434	2.2	81.1	1.6	7.0	1.5	3.9	1.8	0.5	0.4	83.3	1.6	15.1	0.078	0.502	20.534139	-100.499073
Los Ángeles	12.60	3	2	23260	1.9	81.0	1.5	7.3	1.7	3.8	1.8	0.4	0.6	82.9	1.5	15.6	0.090	0.502	20.534046	-100.499042
Lim. Edos. Term. Oro. Ppia. Gto.	13.49																			
T. C. Palmillas - Apaseo el Grande (Cuota)	23.50	1	1	12947	1.2	76.6	1.4	7.6	3.4	7.4	1.7	0.6	0.1	77.8	1.4	20.8	0.085	0.522	20.504567	-100.581687
T. C. Palmillas - Apaseo el Grande (Cuota)	23.50	1	2	11866	1.2	75.3	2.0	8.0	3.4	7.5	1.6	0.8	0.2	76.5	2.0	21.5	0.078	0.522	20.504511	-100.581624
T. C. Palmillas - Apaseo el Grande (Cuota)	23.50	3	1	14214	0.7	71.0	3.2	10.0	4.0	8.6	1.5	0.8	0.2	71.7	3.2	25.1	0.076	0.544	20.487404	-100.601592
T. C. Palmillas - Apaseo el Grande (Cuota)	23.50	3	2	11906	0.8	72.8	2.6	9.5	3.8	8.1	1.5	0.7	0.2	73.6	2.6	23.8	0.094	0.544	20.488338	-100.600964
T. Izq. Apaseo El Alto	28.37	3	1	15440	2.7	76.6	2.3	5.6	2.0	8.9	1.2	0.5	0.2	79.3	2.3	18.4	0.075	0.517	20.471519	-100.639683
T. Izq. Apaseo El Alto	28.37	3	2	16519	2.4	74.1	2.8	5.8	3.2	9.3	1.5	0.7	0.2	76.5	2.8	20.7	0.078	0.517	20.471469	-100.639747
T. Der. Apaseo El Grande	40.11	3	1	20739	1.5	74.9	2.8	7.7	2.2	7.4	2.4	0.9	0.2	76.4	2.8	20.8	0.076	0.510	20.531289	-100.718580
T. Der. Apaseo El Grande	40.11	3	2	21611	2.0	73.8	3.0	7.6	2.3	7.4	2.6	1.0	0.3	75.8	3.0	21.2	0.074	0.510	20.531373	-100.718041
T. Izq. Libramiento de Celaya Ote.	49.90	1	1	19066	1.9	74.7	4.7	7.9	2.3	5.6	2.3	0.4	0.2	76.6	4.7	18.7	0.096	0.504	20.521377	-100.749763
T. Izq. Libramiento de Celaya Ote.	49.90	1	2	18778	2.3	72.8	5.2	8.5	2.8	5.8	2.1	0.3	0.2	75.1	5.2	19.7	0.085	0.504	20.520585	-100.751979
T. Izq. Libramiento de Celaya Pte.	55.61	3	1	26767	1.6	77.7	3.2	7.9	3.2	4.5	1.4	0.4	0.1	79.3	3.2	17.5	0.088	0.533	20.516066	-100.885461
T. Izq. Libramiento de Celaya Pte.	55.61	3	2	30953	1.3	77.4	3.3	8.3	3.0	4.5	1.5	0.5	0.2	78.7	3.3	18.0	0.091	0.533	20.515870	-100.886936
T. Izq. Cortazar	67.50	3	1	28976	3.4	71.6	5.4	10.2	2.8	4.1	1.6	0.7	0.2	75.0	5.4	19.6	0.078	0.544	20.509928	-100.971587
T. Izq. Cortazar	67.50	3	2	22766	3.6	70.5	5.4	10.3	3.1	4.3	2.2	0.5	0.1	74.1	5.4	20.5	0.076	0.544	20.510046	-100.968702

QUERETARO

5 CARR: Querétaro - Irapuato (Libre)

CLAVE: 00154

RUTA: MEX-045

AÑO: 2023

LUGAR	ESTACION				CLASIFICACION VEHICULAR EN PORCIENTO										COORDENADAS					
	KM	TE	SC	TDPA	M	A	B	C2	C3	T3S2	T3S3	T3S2R4	OTROS	A	B	C	K'	D	LATITUD	LONGITUD
T. Izq. Libramiento de Salamanca Este	93.80	1	1	20715	3.9	66.0	7.1	11.8	2.3	6.2	1.7	0.8	0.2	69.9	7.1	23.0	0.080	0.543	20.553108	-101.150603
T. Izq. Libramiento de Salamanca Este	93.80	1	2	24640	3.7	65.6	7.2	12.1	2.6	6.0	1.8	0.8	0.2	69.3	7.2	23.5	0.065	0.543	20.553351	-101.151522
T. Izq. Libramiento de Salamanca Oeste	102.10																			
Irapuato	113.70	1	1	12996	4.5	76.8	4.0	7.1	2.3	2.6	1.5	0.9	0.3	81.3	4.0	14.7	0.077	0.518	20.656947	-101.301836
Irapuato	113.70	1	2	13939	4.5	78.5	3.8	6.9	1.9	2.5	1.2	0.6	0.1	83.0	3.8	13.2	0.080	0.518	20.657831	-101.302949

6 CARR: Querétaro - San Luis Potosi

CLAVE: 00165

RUTA: MEX-057

AÑO: 2023

LUGAR	ESTACION				CLASIFICACION VEHICULAR EN PORCIENTO										COORDENADAS					
	KM	TE	SC	TDPA	M	A	B	C2	C3	T3S2	T3S3	T3S2R4	OTROS	A	B	C	K'	D	LATITUD	LONGITUD
Querétaro	0.00																			
T. Der. Libramiento de Querétaro Central	6.28	3	1	47697	0.8	91.5	1.0	3.5	0.6	1.7	0.6	0.1	0.2	92.3	1.0	6.7	0.126	0.505	20.636721	-100.428789
T. Der. Libramiento de Querétaro Lateral	6.28	3	1	20442	1.8	89.0	0.9	5.3	0.6	1.4	0.7	0.1	0.2	90.8	0.9	8.3	0.099	0.521	20.631787	-100.426349
T. Der. Libramiento de Querétaro Central	6.28	3	2	43386	0.9	90.6	1.1	4.0	0.7	1.8	0.6	0.1	0.2	91.5	1.1	7.4	0.109	0.505	20.636682	-100.428894
T. Der. Libramiento de Querétaro Lateral	6.28	3	2	18823	1.6	89.0	0.9	5.6	0.5	1.5	0.6	0.1	0.2	90.6	0.9	8.5	0.102	0.521	20.637082	-100.429246
T. C. Anillo Vial Fray Junípero Serra (Laterales)	14.00	1	1	32176	1.7	92.2	0.3	3.9	0.5	1.0	0.3	0.0	0.1	93.9	0.3	5.8	0.083	0.504	20.688180	-100.435382
T. C. Anillo Vial Fray Junípero Serra (Centrales)	14.00	1	1	30762	1.5	79.1	2.7	13.7	0.6	1.4	0.6	0.2	0.2	80.6	2.7	16.7	0.074	0.545	20.688314	-100.435575
T. C. Anillo Vial Fray Junípero Serra (Centrales)	14.00	1	2	24143	1.5	79.2	2.7	13.7	0.6	1.4	0.5	0.2	0.2	80.7	2.7	16.6	0.082	0.545	20.687410	-100.435644
T. C. Anillo Vial Fray Junípero Serra (Laterales)	14.00	1	2	32792	1.7	92.0	0.3	3.9	0.5	1.1	0.3	0.1	0.1	93.7	0.3	6.0	0.093	0.504	20.687409	-100.435788
T. Izq. Juriquilla	15.63	3	1	38959	0.6	89.0	1.1	6.4	0.9	1.3	0.2	0.4	0.1	89.6	1.1	9.3	0.082	0.513	20.719411	-100.438937
T. Izq. Juriquilla	15.63	3	2	36768	0.6	89.1	1.1	6.4	0.9	1.2	0.2	0.4	0.1	89.7	1.1	9.2	0.098	0.513	20.719406	-100.439055
T. Izq. San Miguel de Allende	28.53	1	1	32821	0.9	81.0	1.4	9.5	1.5	4.0	0.9	0.6	0.2	81.9	1.4	16.7	0.133	0.501	20.803082	-100.448752
T. Izq. San Miguel de Allende	28.53	1	2	32576	0.9	81.0	1.4	9.5	1.5	4.0	0.9	0.6	0.2	81.9	1.4	16.7	0.133	0.501	20.802801	-100.448905
T. Izq. San Miguel de Allende	28.53	3	1	24009	1.2	55.2	3.5	9.0	3.8	19.7	2.7	4.0	0.9	56.4	3.5	40.1	0.065	0.516	20.835342	-100.440111
T. Izq. San Miguel de Allende	28.53	3	2	25549	1.2	55.0	3.5	9.0	3.8	19.7	2.7	4.3	0.8	56.2	3.5	40.3	0.056	0.516	20.835613	-100.440170
Lim. Edos. Term. Oro. Ppia. Gto.	36.70																			
X. C. San José Iturbide - El Arenal	46.83	1	1	23451	16.1	51.3	3.7	5.1	3.2	17.3	1.2	1.7	0.4	67.4	3.7	28.9	0.075	0.503	20.969350	-100.429395
X. C. San José Iturbide - El Arenal	46.83	1	2	23177	16.1	51.1	3.8	5.1	3.2	17.3	1.2	1.7	0.5	67.2	3.8	29.0	0.086	0.503	20.969246	-100.429551
X. C. San José Iturbide - El Arenal	46.83	3	1	19554	6.4	52.7	6.2	5.7	3.1	18.8	2.8	3.4	0.9	59.1	6.2	34.7	0.064	0.504	20.984013	-100.434987
X. C. San José Iturbide - El Arenal	46.83	3	2	19206	6.4	52.6	6.2	5.7	3.1	18.8	2.8	3.5	0.9	59.0	6.2	34.8	0.077	0.504	20.983797	-100.435106
X. C. Ent. San Miguel de Allende - Dr. Mora	61.93	1	1	16652	2.2	51.8	5.1	5.9	3.3	24.0	3.4	3.4	0.9	54.0	5.1	40.9	0.066	0.521	21.077074	-100.512513
X. C. Ent. San Miguel de Allende - Dr. Mora	61.93	1	2	15293	2.1	51.9	5.1	5.9	3.3	24.0	3.4	3.4	0.9	54.0	5.1	40.9	0.072	0.521	21.076879	-100.512549
X. C. San Luis de La Paz - Guanajuato	86.68	1	1	15309	1.9	47.7	5.1	5.5	2.9	29.6	4.0	2.5	0.8	49.6	5.1	45.3	0.070	0.534	21.256273	-100.586609
X. C. San Luis de La Paz - Guanajuato	86.68	1	2	17530	2.0	47.6	5.1	5.5	2.9	29.6	4.0	2.5	0.8	49.6	5.1	45.3	0.078	0.534	21.256350	-100.586805
T. Izq. San Diego de La Unión	119.07	1	1	12621	5.6	32.1	7.9	7.9	3.9	34.4	3.5	3.9	0.8	37.7	7.9	54.4	0.096	0.508	21.528152	-100.740115

QUERETARO

6 CARR: Querétaro - San Luis Potosí

CLAVE: 00165

RUTA: MEX-057

AÑO: 2023

LUGAR	ESTACION				CLASIFICACION VEHICULAR EN PORCIENTO										COORDENADAS					
	KM	TE	SC	TDPA	M	A	B	C2	C3	T3S2	T3S3	T3S2R4	OTROS	A	B	C	K'	D	LATITUD	LONGITUD
T. Izq. San Diego de La Unión	119.07	1	2	12242	5.7	31.5	7.9	7.9	4.0	34.5	3.6	4.0	0.9	37.2	7.9	54.9	0.087	0.508	21.528117	-100.740301
T. Izq. San Diego de La Unión	119.07	3	1	12208	3.0	43.7	6.3	5.9	3.3	30.4	3.4	3.2	0.8	46.7	6.3	47.0	0.074	0.517	21.541316	-100.747441
T. Izq. San Diego de La Unión	119.07	3	2	11389	3.0	43.4	6.3	6.0	3.4	30.5	3.4	3.2	0.8	46.4	6.3	47.3	0.083	0.517	21.540742	-100.747324
Lim. Edos. Term. Gto. Ppia. S. L. P.	124.74																			
T. Der. Tierra Nueva	140.65	1	1	11264	7.4	45.8	5.4	4.9	2.5	26.2	2.4	4.5	0.9	53.2	5.4	41.4	0.078	0.513	21.685185	-100.694142
T. Der. Tierra Nueva	140.65	1	2	10702	7.4	45.8	5.4	4.9	2.5	26.2	2.4	4.5	0.9	53.2	5.4	41.4	0.072	0.513	21.685311	-100.694258
T. Der. Tierra Nueva	140.65	3	1	13356	8.1	49.3	5.1	4.8	2.7	22.4	2.5	4.2	0.9	57.4	5.1	37.5	0.062	0.500	21.703675	-100.684162
T. Der. Tierra Nueva	140.65	3	2	13383	8.1	49.3	5.1	4.8	2.7	22.4	2.5	4.2	0.9	57.4	5.1	37.5	0.067	0.500	21.707047	-100.685617
T. Izq. Santa María del Río	155.88	3	1	15847	7.8	52.5	5.8	4.5	2.3	20.0	2.0	4.2	0.9	60.3	5.8	33.9	0.074	0.520	21.846299	-100.741803
T. Izq. Santa María del Río	155.88	3	2	14644	7.8	52.5	5.8	4.5	2.3	20.0	2.0	4.2	0.9	60.3	5.8	33.9	0.078	0.520	21.846127	-100.741880
T. Izq. Villa de Reyes	176.35	1	1	15712	8.8	40.9	5.4	5.7	4.0	26.6	3.0	4.7	0.9	49.7	5.4	44.9	0.067	0.525	21.961171	-100.811667
T. Izq. Villa de Reyes	176.35	1	2	14198	8.8	40.9	5.4	5.7	4.0	26.6	3.0	4.7	0.9	49.7	5.4	44.9	0.066	0.525	21.961202	-100.811889
T. Izq. Villa de Reyes	176.35	3	1	22533	2.7	58.4	4.1	6.9	2.3	19.1	2.5	3.1	0.9	61.1	4.1	34.8	0.069	0.509	21.985783	-100.825011
T. Izq. Villa de Reyes	176.35	3	2	23343	2.7	58.4	4.1	6.9	2.3	19.1	2.5	3.1	0.9	61.1	4.1	34.8	0.072	0.509	21.985718	-100.825166
T. Izq. Villa de Arriaga (Cuota)	182.60	1	1	31243	3.1	60.3	4.6	6.3	2.7	17.8	2.3	2.2	0.7	63.4	4.6	32.0	0.068	0.500	22.011691	-100.839071
T. Izq. Villa de Arriaga (Cuota)	182.60	1	2	31220	2.8	57.0	4.8	6.6	2.9	20.2	2.5	2.4	0.8	59.8	4.8	35.4	0.097	0.500	22.011685	-100.839264
X. C. Libramiento de San Luis Potosí	184.80	1	1	37310	2.1	62.9	4.0	6.0	3.0	16.2	2.3	2.9	0.6	65.0	4.0	31.0	0.086	0.506	22.030172	-100.849097
X. C. Libramiento de San Luis Potosí	184.80	1	2	36349	1.7	59.4	4.4	6.5	3.5	18.2	2.5	3.1	0.7	61.1	4.4	34.5	0.095	0.506	22.030307	-100.849363
X. Periférico de San Luis Potosí (Central)	197.50	1	1	70228	4.3	90.7	0.5	2.1	0.4	0.6	0.3	0.8	0.3	95.0	0.5	4.5	0.080	0.510	22.121752	-100.912674
X. Periférico de San Luis Potosí (Lateral)	197.50	1	1	23299	4.2	80.0	1.3	7.1	2.6	2.3	0.7	1.1	0.7	84.2	1.3	14.5	0.136	0.533	22.121964	-100.912739
X. Periférico de San Luis Potosí (Lateral)	197.50	1	2	20384	4.5	78.8	1.4	7.5	2.7	2.5	0.7	1.1	0.8	83.3	1.4	15.3	0.093	0.533	22.121333	-100.913021
X. Periférico de San Luis Potosí (Central)	197.50	1	2	79749	4.1	90.7	0.5	2.3	0.4	0.6	0.3	0.8	0.3	94.8	0.5	4.7	0.064	0.510	22.121738	-100.912980
San Luis Potosí	201.66																			

7 CARR: San Juan del Río - Xilitla

CLAVE: 00183

RUTA: MEX-120

AÑO: 2023

LUGAR	ESTACION				CLASIFICACION VEHICULAR EN PORCIENTO										COORDENADAS					
	KM	TE	SC	TDPA	M	A	B	C2	C3	T3S2	T3S3	T3S2R4	OTROS	A	B	C	K'	D	LATITUD	LONGITUD
San Juan del Río	0.00																			
T. Der. Libramiento de San Juan del Río	5.20	3	1	15583	2.6	89.4	1.1	3.4	1.3	1.2	0.6	0.2	0.2	92.0	1.1	6.9	0.109	0.532	20.426966	-99.974356
T. Der. Libramiento de San Juan del Río	5.20	3	2	13728	2.9	88.6	1.4	3.2	1.4	1.3	0.6	0.4	0.2	91.5	1.4	7.1	0.099	0.532	20.427038	-99.974483
T. Der. Tequisquiapan	19.80	1	1	12876	4.0	88.1	1.5	2.7	1.3	1.3	0.5	0.4	0.2	92.1	1.5	6.4	0.083	0.522	20.513171	-99.905756
T. Der. Tequisquiapan	19.80	1	2	11793	3.7	89.0	1.0	3.0	1.6	0.8	0.5	0.3	0.1	92.7	1.0	6.3	0.080	0.522	20.513272	-99.905832
T. Der. Tequisquiapan	19.80	3	1	11377	3.2	89.1	1.5	2.8	1.3	1.2	0.6	0.2	0.1	92.3	1.5	6.2	0.090	0.506	20.543452	-99.901956
T. Der. Tequisquiapan	19.80	3	2	11086	3.4	87.5	1.9	3.2	1.3	1.3	0.8	0.4	0.2	90.9	1.9	7.2	0.086	0.506	20.543440	-99.902083

QUERETARO

7 CARR: San Juan del Río - Xilitla

CLAVE: 00183

RUTA: MEX-120

AÑO: 2023

LUGAR	ESTACION				CLASIFICACION VEHICULAR EN PORCIENTO										COORDENADAS					
	KM	TE	SC	TDPA	M	A	B	C2	C3	T3S2	T3S3	T3S2R4	OTROS	A	B	C	K'	D	LATITUD	LONGITUD
Ezequiel Montes	36.50	1	1	8579	4.0	86.5	1.5	2.4	2.5	1.8	0.8	0.4	0.1	90.5	1.5	8.0	0.087	0.505	20.640756	-99.906964
Ezequiel Montes	36.50	1	2	8399	3.9	85.8	1.4	2.7	2.7	1.7	1.1	0.5	0.2	89.7	1.4	8.9	0.088	0.505	20.640790	-99.907073
Ezequiel Montes	36.50	3	1	6441	3.7	90.5	0.8	3.1	1.1	0.4	0.3	0.1	0.0	94.2	0.8	5.0	0.091	0.509	20.681000	-99.888291
Ezequiel Montes	36.50	3	2	6216	4.1	90.5	0.7	3.1	0.9	0.4	0.2	0.1	0.0	94.6	0.7	4.7	0.092	0.509	20.681077	-99.888387
Cadereyta	47.90	3	1	5711	3.7	85.1	0.5	3.8	3.1	1.9	1.4	0.5	0.0	88.8	0.5	10.7	0.099	0.500	20.702417	-99.801908
Cadereyta	47.90	3	2	5720	3.8	84.6	1.1	3.6	2.9	1.7	1.8	0.5	0.0	88.4	1.1	10.5	0.085	0.500	20.702503	-99.801912
Vizarrón de Montes	73.50	3	0	3545	2.6	83.2	0.7	7.5	2.7	1.4	1.0	0.4	0.5	85.8	0.7	13.5	0.079	0.508	20.847504	-99.713263
T. Der. San Joaquin	79.50	3	0	1627	1.4	81.4	1.8	12.2	1.5	1.2	0.5	0.0	0.0	82.8	1.8	15.4	0.105	0.546	20.885367	-99.707509
T. Izq. Higuerrillas	89.10	3	0	2506	1.8	84.2	2.0	9.4	1.8	0.5	0.3	0.0	0.0	86.0	2.0	12.0	0.100	0.505	20.949475	-99.749178
T. Izq. Peñamiller	103.00	3	0	2029	3.7	85.8	1.1	8.5	0.5	0.2	0.2	0.0	0.0	89.5	1.1	9.4	0.111	0.521	21.039181	-99.739540
Pinal de Amoles	140.00	3	0	2443	2.4	85.9	1.8	8.3	0.9	0.4	0.3	0.0	0.0	88.3	1.8	9.9	0.086	0.502	21.137553	-99.620601
Jalpan de Serra	179.30	3	0	10272	4.3	91.9	0.4	2.2	0.4	0.3	0.2	0.2	0.1	96.2	0.4	3.4	0.077	0.503	21.209408	-99.454166
Landa de Matamoros	201.60	3	0	3309	1.8	92.9	1.2	3.0	0.4	0.2	0.2	0.2	0.1	94.7	1.2	4.1	0.089	0.509	21.186114	-99.314461
El Lobo	236.40	3	0	1593	4.3	85.4	0.6	7.6	1.3	0.3	0.5	0.0	0.0	89.7	0.6	9.7	0.110	0.511	21.292306	-99.116327
Lim. Edos. Term. Oro. Ppia. S. L. P.	238.33																			
Xilitla	266.40	1	0	3028	7.4	77.4	1.3	9.6	1.3	2.0	0.5	0.1	0.4	84.8	1.3	13.9	0.097	0.508	21.379004	-98.998505
T. C. Portezuelo - Cd. Valles	276.98	1	0	3866	5.7	81.3	1.3	7.4	1.8	1.3	0.7	0.4	0.1	87.0	1.3	11.7	0.079	0.502	21.442597	-98.929830

8 CARR: Libramiento Nororiental de Querétaro (Cuota)

CLAVE: 22266

RUTA: MEX-057D

AÑO: 2023

LUGAR	ESTACION				CLASIFICACION VEHICULAR EN PORCIENTO										COORDENADAS					
	KM	TE	SC	TDPA	M	A	B	C2	C3	T3S2	T3S3	T3S2R4	OTROS	A	B	C	K'	D	LATITUD	LONGITUD
T. C. México - Querétaro	0.00	3	1	10062	4.4	39.8	6.3	6.5	3.1	30.2	3.6	5.4	0.7	44.2	6.3	49.5	0.051	0.501	20.568663	-100.233257
T. C. México - Querétaro	0.00	3	2	10096	3.8	34.4	7.2	7.7	3.5	32.9	4.0	5.8	0.7	38.2	7.2	54.6	0.052	0.501	20.569109	-100.233714
Plaza de Cobro Chichimequillas	20.32	2	1	10034	0.3	38.8	1.5	6.8	5.6	35.8	3.7	6.4	1.1	39.1	1.5	59.4	0.066	0.500	20.705589	-100.343736
Plaza de Cobro Chichimequillas	20.32	2	2	10034	0.3	38.8	1.5	6.8	5.6	35.8	3.7	6.4	1.1	39.1	1.5	59.4	0.066	0.500	20.705589	-100.343736
T. C. Querétaro - San Luis Potosí	37.50	1	1	9868	2.0	47.9	6.7	6.2	2.7	22.9	3.3	7.6	0.7	49.9	6.7	43.4	0.066	0.507	20.804988	-100.435135
T. C. Querétaro - San Luis Potosí	37.50	1	2	10156	1.7	45.8	6.9	6.5	3.1	23.3	3.9	8.0	0.8	47.5	6.9	45.6	0.069	0.507	20.815543	-100.445760

9 CARR: Palmillas - Apaseo el Grande (Cuota)

CLAVE:

RUTA: MEX-045D

AÑO: 2023

LUGAR	ESTACION				CLASIFICACION VEHICULAR EN PORCIENTO										COORDENADAS					
	KM	TE	SC	TDPA	M	A	B	C2	C3	T3S2	T3S3	T3S2R4	OTROS	A	B	C	K'	D	LATITUD	LONGITUD
T. C. México - Querétaro (Cuota)	0.00																			
Ent. Palmillas	1.60	1	1	5819	3.3	58.3	8.6	5.0	3.6	12.5	2.3	5.4	1.0	61.6	8.6	29.8	0.100	0.518	20.292679	-99.929139

QUERETARO

9 CARR: Palmillas - Apaseo el Grande (Cuota)

CLAVE:

RUTA: MEX-045D

AÑO: 2023

LUGAR	ESTACION				CLASIFICACION VEHICULAR EN PORCIENTO										COORDENADAS					
	KM	TE	SC	TDPA	M	A	B	C2	C3	T3S2	T3S3	T3S2R4	OTROS	A	B	C	K'	D	LATITUD	LONGITUD
Ent. Palmillas	1.60	1	2	5409	3.2	58.1	8.7	4.9	3.5	12.6	2.5	5.5	1.0	61.3	8.7	30.0	0.099	0.518	20.292649	-99.928336
Ent. Palmillas	1.60	3	1	7462	2.5	58.3	8.4	5.1	3.9	13.1	2.4	5.5	0.8	60.8	8.4	30.8	0.087	0.541	20.292099	-99.938472
Ent. Palmillas	1.60	3	2	6341	2.7	56.9	8.6	5.1	3.7	14.0	2.6	5.4	1.0	59.6	8.6	31.8	0.098	0.541	20.292073	-99.937896
T. Izq. Amealco	15.40	3	1	7216	2.4	56.9	8.5	5.1	4.1	14.0	2.9	5.2	0.9	59.3	8.5	32.2	0.081	0.522	20.281123	-100.060649
T. Izq. Amealco	15.40	3	2	6611	2.4	56.3	8.8	5.3	4.0	14.2	3.1	5.0	0.9	58.7	8.8	32.5	0.101	0.522	20.281875	-100.066265
T. C. (Villa del Pueblito - Huimilpan) - Coroneo	40.60	3	1	6982	2.2	57.8	8.6	5.9	3.8	13.2	3.0	4.7	0.8	60.0	8.6	31.4	0.101	0.501	20.349790	-100.277196
T. C. (Villa del Pueblito - Huimilpan) - Coroneo	40.60	3	2	7008	2.5	57.1	8.6	6.0	4.0	13.5	2.9	4.5	0.9	59.6	8.6	31.8	0.090	0.501	20.350598	-100.278427
Lim. Edos. Term. Oro. Ppia. Gto.	65.40																			
T. C. Querétaro - Irapuato (Libre)	78.80																			
T. C. Querétaro - Irapuato (Cuota)	85.20	1	1	6298	2.3	55.4	9.8	6.5	3.6	15.3	2.8	3.4	0.9	57.7	9.8	32.5	0.081	0.510	20.527894	-100.618168
T. C. Querétaro - Irapuato (Cuota)	85.20	1	2	6045	2.6	54.4	10.2	6.3	3.8	16.0	2.7	3.2	0.8	57.0	10.2	32.8	0.090	0.510	20.526871	-100.617161

10 CARR: Querétaro - Irapuato (Cuota)

CLAVE: 00423

RUTA: MEX-045D

AÑO: 2023

LUGAR	ESTACION				CLASIFICACION VEHICULAR EN PORCIENTO										COORDENADAS					
	KM	TE	SC	TDPA	M	A	B	C2	C3	T3S2	T3S3	T3S2R4	OTROS	A	B	C	K'	D	LATITUD	LONGITUD
Querétaro	0.00	3	1	20209	2.8	73.4	6.3	5.6	3.8	5.0	1.5	1.2	0.4	76.2	6.3	17.5	0.099	0.509	20.576622	-100.420428
Querétaro	0.00	3	2	20909	2.6	70.1	6.1	5.8	3.7	7.9	2.0	1.4	0.4	72.7	6.1	21.2	0.098	0.509	20.576520	-100.420431
Plaza de Cobro Querétaro	7.00	2	1	7573	0.4	65.7	3.7	6.8	5.0	12.7	1.4	3.1	1.2	66.1	3.7	30.2	0.079	0.500	20.572203	-100.472827
Plaza de Cobro Querétaro	7.00	2	2	7573	0.4	65.7	3.7	6.8	5.0	12.7	1.4	3.1	1.2	66.1	3.7	30.2	0.079	0.500	20.572203	-100.472827
Lim. Edos. Term. Oro. Ppia. Gto.	8.97																			
T. C. Palmillas - Apaseo el Grande (Cuota)	24.50	1	1	16326	1.3	64.1	3.0	7.9	5.6	13.3	1.6	2.7	0.5	65.4	3.0	31.6	0.073	0.532	20.536902	-100.607366
T. C. Palmillas - Apaseo el Grande (Cuota)	24.50	1	2	14365	1.2	64.9	2.7	7.4	5.6	13.5	1.4	2.8	0.5	66.1	2.7	31.2	0.084	0.532	20.536615	-100.607738
T. C. Palmillas - Apaseo el Grande (Cuota)	24.50	3	1	16356	0.7	67.2	2.2	6.5	6.7	12.3	1.2	2.8	0.4	67.9	2.2	29.9	0.066	0.519	20.532337	-100.635194
T. C. Palmillas - Apaseo el Grande (Cuota)	24.50	3	2	17620	1.0	65.9	2.0	7.0	7.4	12.0	1.2	3.0	0.5	66.9	2.0	31.1	0.071	0.519	20.532256	-100.631444
T. C. Libramiento de Celaya (Cuota)	37.20	3	1	22692	1.2	65.0	4.8	6.6	5.5	12.5	1.6	2.3	0.5	66.2	4.8	29.0	0.081	0.519	20.552259	-100.766349
T. C. Libramiento de Celaya (Cuota)	37.20	3	2	24516	1.1	64.8	5.2	6.4	5.6	12.8	1.9	1.8	0.4	65.9	5.2	28.9	0.068	0.519	20.552094	-100.766357
X. C. Celaya - Dolores Hidalgo	44.10	1	1	16426	0.9	66.0	5.4	8.5	3.8	10.2	1.7	2.6	0.9	66.9	5.4	27.7	0.085	0.515	20.557013	-100.812254
X. C. Celaya - Dolores Hidalgo	44.10	1	2	17419	0.7	64.6	5.5	8.8	3.8	11.4	1.5	3.0	0.7	65.3	5.5	29.2	0.080	0.515	20.556649	-100.810346
T. Der. Juventino Rosas	63.00	1	1	15291	0.7	67.5	5.3	8.0	4.0	10.1	1.6	2.0	0.8	68.2	5.3	26.5	0.109	0.501	20.580699	-100.990666
T. Der. Juventino Rosas	63.00	1	2	15209	0.7	66.9	5.1	8.4	4.0	10.4	1.6	2.0	0.9	67.6	5.1	27.3	0.074	0.501	20.580346	-100.989287
T. Der. Juventino Rosas	63.00	3	1	16187	1.3	61.7	6.3	8.7	4.8	10.4	2.1	3.8	0.9	63.0	6.3	30.7	0.063	0.502	20.582174	-101.001273
T. Der. Juventino Rosas	63.00	3	2	16301	1.1	62.1	6.2	9.0	4.9	10.1	2.4	3.3	0.9	63.2	6.2	30.6	0.070	0.502	20.581739	-100.999361
T. C. Salamanca - León (Cuota)	78.00	1	1	17551	1.1	67.3	5.4	7.8	4.2	8.7	1.5	3.3	0.7	68.4	5.4	26.2	0.075	0.535	20.589774	-101.111917
T. C. Salamanca - León (Cuota)	78.00	1	2	15247	1.1	69.0	5.1	7.3	3.9	8.5	1.4	2.9	0.8	70.1	5.1	24.8	0.072	0.535	20.589598	-101.111825

QUERETARO

10 CARR: Querétaro - Irapuato (Cuota)

CLAVE: 00423

RUTA: MEX-045D

AÑO: 2023

LUGAR	ESTACION				CLASIFICACION VEHICULAR EN PORCIENTO												COORDENADAS			
	KM	TE	SC	TDPA	M	A	B	C2	C3	T3S2	T3S3	T3S2R4	OTROS	A	B	C	K'	D	LATITUD	LONGITUD
T. Izq. Salamanca	81.54	1	1	7464	1.1	69.2	5.2	6.8	2.5	10.0	1.4	3.0	0.8	70.3	5.2	24.5	0.077	0.506	20.593196	-101.154057
T. Izq. Salamanca	81.54	1	2	7658	1.2	68.1	5.6	7.2	3.1	9.7	1.5	2.8	0.8	69.3	5.6	25.1	0.072	0.506	20.593033	-101.154098
T. Izq. Salamanca	81.54	3	1	9270	1.0	61.8	6.6	10.5	3.7	9.7	2.0	3.8	0.9	62.8	6.6	30.6	0.064	0.523	20.599610	-101.186393
T. Izq. Salamanca	81.54	3	2	8456	1.2	62.1	6.3	10.0	4.0	9.3	2.3	3.9	0.9	63.3	6.3	30.4	0.070	0.523	20.602396	-101.201258
Plaza de Cobro Salamanca	83.25	2	1	6281	0.3	55.7	3.7	7.0	7.5	17.4	2.1	5.3	1.0	56.0	3.7	40.3	0.079	0.500	20.598482	-101.180975
Plaza de Cobro Salamanca	83.25	2	2	6281	0.3	55.7	3.7	7.0	7.5	17.4	2.1	5.3	1.0	56.0	3.7	40.3	0.079	0.500	20.598482	-101.180975
T. Der. Libramiento de Irapuato	96.30	1	1	8270	0.9	65.3	5.5	9.3	3.5	10.4	1.5	2.9	0.7	66.2	5.5	28.3	0.074	0.524	20.651438	-101.284136
T. Der. Libramiento de Irapuato	96.30	1	2	7498	1.1	64.3	5.2	9.3	3.4	11.2	1.8	3.0	0.7	65.4	5.2	29.4	0.085	0.524	20.650854	-101.283484
T. Der. Libramiento de Irapuato	96.30	3	1	17966	1.6	67.6	4.9	7.6	3.5	9.9	2.4	2.0	0.5	69.2	4.9	25.9	0.087	0.519	20.654650	-101.293996
T. Der. Libramiento de Irapuato	96.30	3	2	19369	2.1	67.9	4.7	7.9	3.7	9.3	1.9	2.2	0.3	70.0	4.7	25.3	0.088	0.519	20.654590	-101.293219
X. C. Querétaro - Irapuato (Libre)	97.00	3	1	14792	1.1	69.4	3.4	9.0	3.2	9.3	1.9	2.2	0.5	70.5	3.4	26.1	0.074	0.509	20.653217	-101.309553
X. C. Querétaro - Irapuato (Libre)	97.00	3	2	15331	1.0	69.3	3.2	9.1	3.5	9.1	2.1	2.1	0.6	70.3	3.2	26.5	0.086	0.509	20.653102	-101.308969
T. C. Irapuato - Zapotlanejo	104.70																			

11 CARR: México - Querétaro (Cuota)

CLAVE: 00411

RUTA: MEX-057-MEX-057D

AÑO: 2023

LUGAR	ESTACION				CLASIFICACION VEHICULAR EN PORCIENTO												COORDENADAS			
	KM	TE	SC	TDPA	M	A	B	C2	C3	T3S2	T3S3	T3S2R4	OTROS	A	B	C	K'	D	LATITUD	LONGITUD
México	0.00																			
Lim. Edos. Term. CDMX Ppia. Méx.	11.30																			
Lechería	29.41																			
Plaza de Cobro Tepozotlán	43.01	2	1	30040	0.9	71.0	4.0	5.3	3.7	11.6	0.7	2.2	0.6	71.9	4.0	24.1	0.077	0.500	19.715361	-99.207448
Plaza de Cobro Tepozotlán	43.01	2	2	30040	0.9	71.0	4.0	5.3	3.7	11.6	0.7	2.2	0.6	71.9	4.0	24.1	0.077	0.500	19.715361	-99.207448
Ent. Jorobas	56.18	1	1	30672	1.2	68.0	4.6	7.9	3.0	10.9	1.5	2.1	0.8	69.2	4.6	26.2	0.081	0.519	19.811442	-99.238533
Ent. Jorobas	56.18	1	2	33309	1.2	68.0	4.6	7.9	3.0	10.9	1.5	2.1	0.8	69.2	4.6	26.2	0.071	0.519	19.801623	-99.234252
Ent. Jorobas	56.18	3	1	41756	3.0	60.8	4.6	8.1	3.1	14.7	1.8	3.0	0.9	63.8	4.6	31.6	0.071	0.500	19.829442	-99.258270
Ent. Jorobas	56.18	3	2	41832	3.1	57.3	5.2	9.3	3.4	15.3	2.1	3.3	1.0	60.4	5.2	34.4	0.074	0.500	19.832155	-99.265559
Lim. Edos. Term. Méx. Ppia. Hgo.	59.85																			
T. Der. Tepeji del Río	69.36	1	1	37709	4.4	69.6	4.2	7.2	2.7	7.5	1.1	2.5	0.8	74.0	4.2	21.8	0.087	0.506	19.863072	-99.313993
T. Der. Tepeji del Río	69.36	1	2	38626	4.4	69.6	4.2	7.2	2.7	7.5	1.1	2.5	0.8	74.0	4.2	21.8	0.094	0.506	19.872719	-99.339396
T. Der. Tepeji del Río	69.36	3	1	32597	4.9	68.4	4.5	7.8	3.0	7.4	1.1	2.3	0.6	73.3	4.5	22.2	0.090	0.508	19.920899	-99.370419
T. Der. Tepeji del Río	69.36	3	2	33788	4.9	68.4	4.5	7.8	3.0	7.4	1.1	2.3	0.6	73.3	4.5	22.2	0.077	0.508	19.919966	-99.369715
T. Izq. Jilotepec	83.75	1	1	32362	4.8	67.4	4.9	7.5	2.9	7.8	1.5	2.6	0.6	72.2	4.9	22.9	0.091	0.517	19.972250	-99.434119
T. Izq. Jilotepec	83.75	1	2	29987	4.7	67.5	4.9	7.5	2.9	7.8	1.5	2.6	0.6	72.2	4.9	22.9	0.084	0.517	19.977429	-99.437878
T. Izq. Jilotepec	83.75	3	1	33105	4.7	67.1	5.3	7.3	3.0	7.9	1.5	2.7	0.5	71.8	5.3	22.9	0.090	0.529	19.989620	-99.458438

QUERETARO

11 CARR: México - Querétaro (Cuota)

CLAVE: 00411

RUTA: MEX-057-MEX-057D

AÑO: 2023

LUGAR	ESTACION				CLASIFICACION VEHICULAR EN PORCIENTO										COORDENADAS					
	KM	TE	SC	TDPA	M	A	B	C2	C3	T3S2	T3S3	T3S2R4	OTROS	A	B	C	K'	D	LATITUD	LONGITUD
T. Izq. Jilotepec	83.75	3	2	29113	4.7	67.1	5.3	7.3	3.0	7.9	1.5	2.7	0.5	71.8	5.3	22.9	0.074	0.529	19.988248	-99.454169
Lim. Edos. Term. Hgo. Ppia. Méx.	86.00																			
X. C. Libramiento Norte de La Ciudad de México (Cuota)	89.44	3	1	38239	4.4	67.7	5.2	6.8	2.9	7.1	2.2	2.9	0.8	72.1	5.2	22.7	0.089	0.518	20.005128	-99.500836
X. C. Libramiento Norte de La Ciudad de México (Cuota)	89.44	3	2	35261	4.5	67.3	5.3	6.9	2.9	7.2	2.2	2.9	0.8	71.8	5.3	22.9	0.069	0.518	20.003025	-99.497867
T. Der. Palos Altos	97.80	1	1	30735	4.7	68.5	4.1	6.9	2.7	8.0	1.8	2.6	0.7	73.2	4.1	22.7	0.069	0.509	20.024315	-99.532143
T. Der. Palos Altos	97.80	1	2	31926	4.7	68.6	4.1	6.9	2.7	8.0	1.8	2.6	0.6	73.3	4.1	22.6	0.079	0.509	20.034618	-99.557691
X. C. Jilotepec - Maravillas	107.00	1	1	29210	5.3	65.2	4.3	4.0	3.8	10.6	1.5	4.6	0.7	70.5	4.3	25.2	0.080	0.505	20.080760	-99.619503
X. C. Jilotepec - Maravillas	107.00	1	2	29851	5.2	63.5	4.4	4.2	3.9	11.6	1.6	4.8	0.8	68.7	4.4	26.9	0.095	0.505	20.075984	-99.614228
X. C. Jilotepec - Maravillas	107.00	3	1	30897	4.7	57.8	9.7	5.9	2.2	13.8	1.6	3.5	0.8	62.5	9.7	27.8	0.084	0.505	20.082425	-99.635798
X. C. Jilotepec - Maravillas	107.00	3	2	31608	4.6	57.9	8.3	5.4	2.7	14.5	2.0	3.9	0.7	62.5	8.3	29.2	0.094	0.505	20.082539	-99.633651
T. Izq. Aculco	114.80	1	1	32925	5.2	59.1	6.8	5.0	2.9	14.5	1.8	4.0	0.7	64.3	6.8	28.9	0.081	0.507	20.097490	-99.692832
T. Izq. Aculco	114.80	1	2	33906	5.2	58.7	6.7	5.0	3.1	14.5	1.9	4.2	0.7	63.9	6.7	29.4	0.082	0.507	20.091113	-99.686463
T. Izq. Aculco	114.80	3	1	31084	4.6	60.4	7.7	5.9	2.5	12.9	1.7	3.5	0.8	65.0	7.7	27.3	0.083	0.519	20.109932	-99.707192
T. Izq. Aculco	114.80	3	2	33774	4.6	59.6	8.1	6.9	2.4	12.5	1.7	3.4	0.8	64.2	8.1	27.7	0.069	0.519	20.108582	-99.704357
T. Izq. Encinillas	121.70	1	1	31527	4.6	60.5	7.0	4.6	2.7	14.3	1.9	3.5	0.9	65.1	7.0	27.9	0.084	0.513	20.142743	-99.732436
T. Izq. Encinillas	121.70	1	2	33380	5.0	59.9	7.0	5.4	2.2	13.8	2.2	3.6	0.9	64.9	7.0	28.1	0.074	0.513	20.145110	-99.734098
Polotitlán	133.00	1	1	33481	5.2	63.5	7.2	3.6	2.7	11.7	2.0	3.4	0.7	68.7	7.2	24.1	0.086	0.508	20.220571	-99.804088
Polotitlán	133.00	1	2	34649	5.3	60.5	7.2	3.7	2.9	13.6	2.3	3.7	0.8	65.8	7.2	27.0	0.090	0.508	20.220080	-99.803835
Lim. Edos. Term. Méx. Ppia. Qro.	145.50																			
Plaza de Cobro Palmillas	147.92	2	1	20964	0.5	59.5	3.1	6.3	4.8	18.8	1.8	4.1	1.1	60.0	3.1	36.9	0.077	0.500	20.296112	-99.929069
Plaza de Cobro Palmillas	147.92	2	2	20964	0.5	59.5	3.1	6.3	4.8	18.8	1.8	4.1	1.1	60.0	3.1	36.9	0.077	0.500	20.296112	-99.929069
T. Izq. Toluca	148.50	1	1	31654	4.6	62.1	5.0	4.1	3.0	14.5	1.8	4.0	0.9	66.7	5.0	28.3	0.086	0.503	20.287534	-99.913611
T. Izq. Toluca	148.50	1	2	31209	4.6	62.0	5.0	4.1	3.0	14.5	1.9	4.0	0.9	66.6	5.0	28.4	0.080	0.503	20.284593	-99.909231
T. Izq. Toluca	148.50	3	1	38253	1.2	67.1	5.7	6.2	3.6	11.2	1.9	2.3	0.8	68.3	5.7	26.0	0.061	0.502	20.312934	-99.931626
T. Izq. Toluca	148.50	3	2	38568	1.1	64.3	6.2	6.9	4.1	12.0	2.1	2.4	0.9	65.4	6.2	28.4	0.068	0.502	20.320074	-99.934114
T. Der. Portezuelo	151.53	3	1	39058	5.6	63.3	6.5	5.3	2.0	12.5	1.4	2.7	0.7	68.9	6.5	24.6	0.066	0.510	20.336777	-99.941306
T. Der. Portezuelo	151.53	3	2	40919	5.3	60.2	7.1	5.8	2.4	14.0	1.6	2.9	0.7	65.5	7.1	27.4	0.077	0.510	20.336548	-99.941629
T. Der. Poniente San Juan del Río	164.10	3	1	46192	7.4	65.5	5.4	5.3	2.5	8.4	1.3	3.4	0.8	72.9	5.4	21.7	0.065	0.513	20.373858	-99.994415
T. Der. Poniente San Juan del Río	164.10	3	2	43604	6.7	63.9	5.9	5.3	2.8	9.5	1.5	3.5	0.9	70.6	5.9	23.5	0.072	0.513	20.371958	-99.990429
La Estancia	169.40	1	1	52067	5.3	67.8	5.5	4.7	2.3	9.0	1.5	3.0	0.9	73.1	5.5	21.4	0.074	0.520	20.423584	-100.052229
La Estancia	169.40	1	2	57158	5.0	66.6	5.2	5.3	2.3	10.2	1.5	2.9	1.0	71.6	5.2	23.2	0.073	0.520	20.424511	-100.053515
T. Izq. Acámbaro	170.45	3	1	49441	5.1	67.0	5.6	5.4	2.0	10.2	1.2	2.7	0.8	72.1	5.6	22.3	0.077	0.516	20.447680	-100.079298
T. Izq. Acámbaro	170.45	3	2	46112	5.0	64.9	5.7	5.3	2.4	11.9	1.3	2.7	0.8	69.9	5.7	24.4	0.091	0.516	20.449881	-100.082349
T. Izq. El Sauz	176.50	3	1	46222	6.0	65.1	4.3	5.1	2.9	11.1	1.7	2.9	0.9	71.1	4.3	24.6	0.077	0.522	20.477772	-100.110882
T. Izq. El Sauz	176.50	3	2	41894	6.0	66.9	3.5	6.2	2.7	9.7	1.6	2.5	0.9	72.9	3.5	23.6	0.074	0.522	20.497771	-100.133982

QUERETARO

11 CARR: México - Querétaro (Cuota)

CLAVE: 00411

RUTA: MEX-057-MEX-057D

AÑO: 2023

LUGAR	ESTACION				CLASIFICACION VEHICULAR										EN PORCIENTO				COORDENADAS	
	KM	TE	SC	TDPA	M	A	B	C2	C3	T3S2	T3S3	T3S2R4	OTROS	A	B	C	K'	D	LATITUD	LONGITUD
T. Der. San Ildefonso	185.30	1	1	47931	4.2	72.0	4.2	6.9	1.1	7.5	1.8	1.5	0.8	76.2	4.2	19.6	0.074	0.536	20.520996	-100.168496
T. Der. San Ildefonso	185.30	1	2	40874	3.8	73.2	4.2	6.4	1.3	7.3	1.7	1.3	0.8	77.0	4.2	18.8	0.079	0.536	20.517314	-100.163865
T. Der. Libramiento Nororiente de Querétaro (Cuota)	192.50	1	1	50610	3.5	74.8	4.2	6.1	1.5	6.5	1.2	1.7	0.5	78.3	4.2	17.5	0.077	0.519	20.552636	-100.215635
T. Der. Libramiento Nororiente de Querétaro (Cuota)	192.50	1	2	46382	3.1	72.3	4.6	7.0	1.6	7.5	1.4	1.9	0.6	75.4	4.6	20.0	0.073	0.519	20.551670	-100.214620
T. Der. Libramiento Nororiente de Querétaro (Cuota)	192.50	3	1	58446	1.9	77.6	2.8	7.9	1.8	4.8	1.7	0.8	0.7	79.5	2.8	17.7	0.074	0.534	20.562657	-100.237199
T. Der. Libramiento Nororiente de Querétaro (Cuota)	192.50	3	2	68407	1.7	75.5	3.0	9.0	1.9	5.3	1.9	0.9	0.8	77.2	3.0	19.8	0.074	0.534	20.561648	-100.234728
T. Der. Libramiento de Querétaro a San Luis Potosí	207.00	1	1	77616	2.2	83.8	1.4	2.8	2.3	4.1	0.6	2.0	0.8	86.0	1.4	12.6	0.077	0.520	20.573483	-100.324085
T. Der. Libramiento de Querétaro a San Luis Potosí	207.00	1	2	70581	1.9	82.6	1.5	3.3	2.6	4.5	0.7	2.0	0.9	84.5	1.5	14.0	0.099	0.520	20.574448	-100.330912
T. Der. Libramiento de Querétaro a San Luis Potosí	207.00	3	1	74267	1.8	82.8	1.8	4.4	1.6	4.5	1.5	0.8	0.8	84.6	1.8	13.6	0.077	0.506	20.578195	-100.380764
T. Der. Libramiento de Querétaro a San Luis Potosí	207.00	3	1	28978	2.1	91.2	0.6	4.0	0.3	0.7	0.6	0.3	0.2	93.3	0.6	6.1	0.094	0.505	20.579404	-100.375490
T. Der. Libramiento de Querétaro a San Luis Potosí	207.00	3	2	70699	1.5	81.3	1.9	5.0	1.7	5.2	1.6	0.9	0.9	82.8	1.9	15.3	0.079	0.506	20.578513	-100.378541
T. Der. Libramiento de Querétaro a San Luis Potosí Querétaro	207.00	3	2	29653	2.2	90.9	0.7	4.1	0.3	0.7	0.6	0.3	0.2	93.1	0.7	6.2	0.093	0.505	20.578375	-100.378506

12 CARR: Ajuchitlán - Colón

CLAVE: 22010

RUTA: QRO-005

AÑO: 2023

LUGAR	ESTACION				CLASIFICACION VEHICULAR										EN PORCIENTO				COORDENADAS	
	KM	TE	SC	TDPA	M	A	B	C2	C3	T3S2	T3S3	T3S2R4	OTROS	A	B	C	K'	D	LATITUD	LONGITUD
T. C. El Colorado - Higuerrillas	0.00	3	1	5006	1.2	90.8	0.9	3.7	1.4	0.7	0.5	0.5	0.3	92.0	0.9	7.1	0.102	0.503	20.695298	-100.016637
T. C. El Colorado - Higuerrillas	0.00	3	2	4949	1.2	90.7	0.9	3.7	1.3	0.7	0.6	0.5	0.4	91.9	0.9	7.2	0.113	0.503	20.695288	-100.016742
Colón	14.00	1	1	4530	2.2	89.9	1.2	4.0	1.1	0.5	0.4	0.4	0.3	92.1	1.2	6.7	0.107	0.504	20.763598	-100.045872
Colón	14.00	1	2	4605	2.1	89.9	1.2	4.0	1.0	0.6	0.5	0.4	0.3	92.0	1.2	6.8	0.115	0.504	20.763543	-100.045948

13 CARR: Ajuchitlán - Ezequiel Montes

CLAVE: 22005

RUTA: QRO-005

AÑO: 2023

LUGAR	ESTACION				CLASIFICACION VEHICULAR										EN PORCIENTO				COORDENADAS	
	KM	TE	SC	TDPA	M	A	B	C2	C3	T3S2	T3S3	T3S2R4	OTROS	A	B	C	K'	D	LATITUD	LONGITUD
T. C. El Colorado - Higuerrillas	0.00	3	1	9540	1.8	85.8	1.5	4.6	2.1	2.4	1.0	0.6	0.2	87.6	1.5	10.9	0.102	0.505	20.703175	-99.977414
T. C. El Colorado - Higuerrillas	0.00	3	2	9729	2.4	85.6	1.6	4.5	1.9	1.8	1.4	0.5	0.3	88.0	1.6	10.4	0.082	0.505	20.703259	-99.977372
Ezequiel Montes	10.60	1	0	14671	1.9	91.5	0.5	4.1	0.9	0.3	0.3	0.2	0.3	93.4	0.5	6.1	0.087	0.508	20.670084	-99.909820

QUERETARO

14 CARR: El Colorado - Higuerrillas

CLAVE: 22004

RUTA: QRO-004

AÑO: 2023

LUGAR	ESTACION				CLASIFICACION VEHICULAR EN PORCIENTO										COORDENADAS					
	KM	TE	SC	TDPA	M	A	B	C2	C3	T3S2	T3S3	T3S2R4	OTROS	A	B	C	K'	D	LATITUD	LONGITUD
T. C. México - Querétaro (Cuota)	0.00	3	1	23489	1.6	75.2	1.8	10.6	3.9	4.2	1.0	1.5	0.2	76.8	1.8	21.4	0.114	0.532	20.573276	-100.207709
T. C. México - Querétaro (Cuota)	0.00	3	2	28592	1.4	75.1	1.9	10.4	3.8	4.1	1.3	1.7	0.3	76.5	1.9	21.6	0.092	0.532	20.573370	-100.207770
T. Izq. Chichimequillas	3.80	3	1	17290	1.5	82.4	0.9	7.4	2.2	2.8	1.3	1.0	0.5	83.9	0.9	15.2	0.086	0.542	20.605817	-100.166104
T. Izq. Chichimequillas	3.80	3	2	20448	1.6	82.3	1.0	7.6	2.3	2.5	1.5	0.9	0.3	83.9	1.0	15.1	0.090	0.542	20.605885	-100.166171
X. C. Querétaro - Tequisquiapan	9.10	3	1	12718	2.3	79.9	1.5	8.2	2.2	3.1	1.8	0.5	0.5	82.2	1.5	16.3	0.104	0.512	20.617465	-100.139959
X. C. Querétaro - Tequisquiapan	9.10	3	2	13326	1.8	80.9	1.3	7.9	2.1	2.9	2.0	0.6	0.5	82.7	1.3	16.0	0.117	0.512	20.617382	-100.140229
T. Der. Ezequiel Montes	31.90	1	1	11065	2.9	81.7	1.2	7.3	2.4	2.3	1.5	0.5	0.2	84.6	1.2	14.2	0.102	0.503	20.699548	-99.997744
T. Der. Ezequiel Montes	31.90	1	2	11197	3.3	81.9	0.8	7.1	2.7	2.0	1.7	0.4	0.1	85.2	0.8	14.0	0.113	0.503	20.699654	-99.997820
T. Der. Ezequiel Montes	31.90	3	1	5187	1.6	85.2	1.1	6.4	2.0	1.3	1.5	0.5	0.4	86.8	1.1	12.1	0.098	0.509	20.710146	-99.978528
T. Der. Ezequiel Montes	31.90	3	2	5007	1.5	85.5	1.1	6.4	2.1	1.1	1.4	0.5	0.4	87.0	1.1	11.9	0.109	0.509	20.710263	-99.978596
T. Izq. San Pablo Tolimán	57.00	3	0	1684	2.2	86.2	1.5	6.2	1.7	1.3	0.7	0.0	0.2	88.4	1.5	10.1	0.135	0.502	20.856159	-99.885581
T. C. San Juan del Río - Xilitla	81.90	1	0	1698	4.0	85.7	1.5	6.0	1.5	0.5	0.5	0.0	0.3	89.7	1.5	8.8	0.101	0.529	20.937579	-99.750552

15 CARR: Hacienda Paraíso - Chichimequillas

CLAVE: 22001

RUTA: QRO-001

AÑO: 2023

LUGAR	ESTACION				CLASIFICACION VEHICULAR EN PORCIENTO										COORDENADAS					
	KM	TE	SC	TDPA	M	A	B	C2	C3	T3S2	T3S3	T3S2R4	OTROS	A	B	C	K'	D	LATITUD	LONGITUD
Hacienda Paraíso	0.00	3	1	7228	4.2	76.0	2.0	6.6	3.7	4.8	1.3	1.0	0.4	80.2	2.0	17.8	0.094	0.512	20.586950	-100.203941
Hacienda Paraíso	0.00	3	2	6875	4.0	75.4	2.1	7.2	3.9	5.0	1.1	1.0	0.3	79.4	2.1	18.5	0.108	0.512	20.586904	-100.204012
T. Der. Navajas	7.90	3	0	17918	2.2	81.8	1.6	7.3	3.8	2.0	0.4	0.6	0.3	84.0	1.6	14.4	0.091	0.503	20.644721	-100.231936
La Griega	10.35	3	0	11478	2.9	80.1	1.3	8.5	3.4	2.1	1.0	0.4	0.3	83.0	1.3	15.7	0.090	0.525	20.675634	-100.239881
Amazcala	15.45	3	0	9912	3.4	74.3	2.1	8.4	4.1	5.0	1.7	0.7	0.3	77.7	2.1	20.2	0.091	0.512	20.714643	-100.273021
Chichimequillas	26.61																			

16 CARR: Huimilpan - El Lindero

CLAVE: 00155

RUTA: QRO-GTO

AÑO: 2023

LUGAR	ESTACION				CLASIFICACION VEHICULAR EN PORCIENTO										COORDENADAS					
	KM	TE	SC	TDPA	M	A	B	C2	C3	T3S2	T3S3	T3S2R4	OTROS	A	B	C	K'	D	LATITUD	LONGITUD
Huimilpan	0.00																			
T. C. Palmillas - Apaseo el Grande (Cuota)	2.60	1	0	3951	2.4	91.8	1.1	1.7	0.8	1.3	0.2	0.2	0.5	94.2	1.1	4.7	0.110	0.509	20.353061	-100.278308
T. C. Palmillas - Apaseo el Grande (Cuota)	2.60	3	0	2148	2.9	93.4	0.6	1.3	0.7	0.6	0.1	0.1	0.3	96.3	0.6	3.1	0.097	0.504	20.346042	-100.280093
Lim. Edos. Term. Oro. Ppia. Gto.	17.50																			
El Lindero	20.50																			

QUERETARO

17 CARR: La Culata - San Joaquín

CLAVE: 22021

RUTA: QRO-021

AÑO: 2023

LUGAR	ESTACION				CLASIFICACION VEHICULAR EN PORCIENTO													COORDENADAS		
	KM	TE	SC	TDPA	M	A	B	C2	C3	T3S2	T3S3	T3S2R4	OTROS	A	B	C	K'	D	LATITUD	LONGITUD
La Culata	0.00	3	0	1621	2.0	82.2	0.6	3.6	2.6	4.4	3.7	0.6	0.3	84.2	0.6	15.2	0.124	0.500	20.886853	-99.702219
San Joaquín	31.80	1	0	2072	6.0	80.2	0.5	8.5	2.0	1.7	0.4	0.6	0.1	86.2	0.5	13.3	0.084	0.518	20.895471	-99.577103

18 CARR: Libramiento de San Juan del Río

CLAVE: 22266

RUTA: QRO

AÑO: 2023

LUGAR	ESTACION				CLASIFICACION VEHICULAR EN PORCIENTO													COORDENADAS		
	KM	TE	SC	TDPA	M	A	B	C2	C3	T3S2	T3S3	T3S2R4	OTROS	A	B	C	K'	D	LATITUD	LONGITUD
T. C. México - Querétaro (Después del F.F.C.C.)	0.00	3	1	21700	6.6	78.7	2.0	3.5	1.8	3.2	0.6	2.9	0.7	85.3	2.0	12.7	0.072	0.514	20.379227	-99.985680
T. C. México - Querétaro (Después del F.F.C.C.)	0.00	3	2	20482	6.8	78.0	1.8	4.0	1.6	3.1	0.6	3.3	0.8	84.8	1.8	13.4	0.066	0.514	20.379245	-99.985830
T. C. San Juan del Río - Xilitla	5.05	1	1	22410	5.8	80.9	2.3	3.7	1.8	2.8	0.6	1.5	0.6	86.7	2.3	11.0	0.082	0.546	20.412921	-99.981255
T. C. San Juan del Río - Xilitla	5.05	1	2	18611	6.3	81.6	1.7	3.5	1.5	2.6	0.6	1.7	0.5	87.9	1.7	10.4	0.077	0.546	20.412930	-99.981420

19 CARR: Libramiento Norte de Querétaro

CLAVE: 22500

RUTA: QRO

AÑO: 2023

LUGAR	ESTACION				CLASIFICACION VEHICULAR EN PORCIENTO													COORDENADAS		
	KM	TE	SC	TDPA	M	A	B	C2	C3	T3S2	T3S3	T3S2R4	OTROS	A	B	C	K'	D	LATITUD	LONGITUD
T. C. Querétaro - San Luis Potosí	0.00	3	1	75184	2.1	93.7	0.5	2.1	0.3	0.3	0.5	0.4	0.1	95.8	0.5	3.7	0.070	0.515	20.619506	-100.410874
T. C. Querétaro - San Luis Potosí	0.00	3	2	70200	2.2	94.0	0.3	1.9	0.2	0.2	0.6	0.5	0.1	96.2	0.3	3.5	0.063	0.515	20.619597	-100.410830
T. C. México - Querétaro	8.00	1	1	74684	1.0	92.0	0.6	2.3	0.7	1.1	0.6	0.9	0.8	93.0	0.6	6.4	0.076	0.510	20.583690	-100.362014
T. C. México - Querétaro	8.00	1	2	71328	1.0	93.0	0.3	2.3	0.5	0.9	0.8	0.7	0.5	94.0	0.3	5.7	0.075	0.510	20.583690	-100.361899
T. C. México - Querétaro	8.00	3	1	37694	2.2	93.5	0.6	2.4	0.6	0.3	0.1	0.2	0.1	95.7	0.6	3.7	0.090	0.507	20.567079	-100.357492
T. C. México - Querétaro	8.00	3	2	36594	2.5	93.3	0.8	2.2	0.5	0.3	0.1	0.2	0.1	95.8	0.8	3.4	0.104	0.507	20.567258	-100.357184
T.C. Libramiento Surponiente de Querétaro	12.00																			

20 CARR: Libramiento Surponiente de Querétaro

CLAVE: 22501

RUTA: QRO

AÑO: 2023

LUGAR	ESTACION				CLASIFICACION VEHICULAR EN PORCIENTO													COORDENADAS		
	KM	TE	SC	TDPA	M	A	B	C2	C3	T3S2	T3S3	T3S2R4	OTROS	A	B	C	K'	D	LATITUD	LONGITUD
X. C. Querétaro - Ent. San Martín	0.00	3	1	40069	0.9	93.3	0.4	3.3	0.5	0.6	0.7	0.1	0.2	94.2	0.4	5.4	0.096	0.505	20.551897	-100.371248
X. C. Querétaro - Ent. San Martín	0.00	3	2	40928	1.1	93.2	0.3	3.6	0.3	0.5	0.7	0.1	0.2	94.3	0.3	5.4	0.126	0.505	20.551805	-100.371168
T. Der. a Candiles	4.20	1	1	26833	2.2	91.8	0.4	2.5	0.7	0.8	1.2	0.2	0.2	94.0	0.4	5.6	0.099	0.516	20.537581	-100.393448
T. Der. a Candiles	4.20	1	2	25082	1.8	91.8	0.4	2.9	0.7	0.9	1.1	0.2	0.2	93.6	0.4	6.0	0.101	0.516	20.537421	-100.393491
T. Izq. a Santa Bárbara (1º acceso)	5.00	1	1	25390	2.4	90.1	0.5	3.2	1.0	1.1	1.4	0.1	0.2	92.5	0.5	7.0	0.097	0.516	20.534337	-100.398309
T. Izq. a Santa Bárbara (1º acceso)	5.00	1	2	22467	2.4	91.6	0.4	2.9	0.6	0.8	1.0	0.2	0.1	94.0	0.4	5.6	0.111	0.516	20.534263	-100.398219
T. Izq. a Santa Bárbara (2º acceso)	7.30	3	1	17181	2.2	92.4	0.6	2.4	1.2	0.6	0.3	0.2	0.1	94.6	0.6	4.8	0.106	0.511	20.526222	-100.422667

QUERETARO

20 CARR: Libramiento Surponiente de Querétaro

CLAVE: 22501

RUTA: QRO

AÑO: 2023

LUGAR	ESTACION				CLASIFICACION VEHICULAR EN PORCIENTO										COORDENADAS					
	KM	TE	SC	TDPA	M	A	B	C2	C3	T3S2	T3S3	T3S2R4	OTROS	A	B	C	K'	D	LATITUD	LONGITUD
T. Izq. a Santa Bárbara (2º acceso)	7.30	3	2	16471	2.3	91.4	0.9	2.3	1.7	0.8	0.3	0.2	0.1	93.7	0.9	5.4	0.115	0.511	20.526117	-100.422612
T. C. Villa del Pueblito - Huimilpan	9.40	3	1	13345	2.6	90.3	0.6	4.1	1.4	0.5	0.3	0.1	0.1	92.9	0.6	6.5	0.103	0.530	20.529868	-100.445939
T. C. Villa del Pueblito - Huimilpan	9.40	3	2	15045	2.8	90.3	0.5	4.0	1.2	0.6	0.3	0.2	0.1	93.1	0.5	6.4	0.103	0.530	20.529759	-100.445967
T. Izq. a La Negreta	10.10	3	1	11778	3.6	90.1	0.4	3.2	1.5	0.7	0.2	0.1	0.2	93.7	0.4	5.9	0.097	0.518	20.525634	-100.462915
T. Izq. a La Negreta	10.10	3	2	12663	4.1	89.2	0.3	3.2	1.8	1.0	0.2	0.1	0.1	93.3	0.3	6.4	0.100	0.518	20.525649	-100.462549
Querétaro - Irapuato	15.00	1	1	9635	2.3	86.5	0.9	7.2	1.6	0.7	0.4	0.2	0.2	88.8	0.9	10.3	0.121	0.502	20.529221	-100.479285
Querétaro - Irapuato	15.00	1	2	9726	1.9	86.9	1.2	7.1	1.6	0.8	0.2	0.2	0.1	88.8	1.2	10.0	0.093	0.502	20.529167	-100.479400
T. C. Querétaro - Irapuato (Cuota)	18.60	1	1	22217	4.3	81.6	2.1	4.0	1.7	4.1	1.0	0.9	0.3	85.9	2.1	12.0	0.071	0.539	20.555602	-100.482017
T. C. Querétaro - Irapuato (Cuota)	18.60	1	2	25990	3.7	83.6	1.9	3.2	1.5	3.8	0.9	1.1	0.3	87.3	1.9	10.8	0.079	0.539	20.555591	-100.482137
T. C. Querétaro - Irapuato (Cuota)	18.60	3	1	32958	1.7	86.7	1.9	3.8	1.5	2.7	1.0	0.4	0.3	88.4	1.9	9.7	0.094	0.503	20.577682	-100.483056
T. C. Querétaro - Irapuato (Cuota)	18.60	3	2	33464	1.8	85.8	2.1	3.9	1.4	3.1	1.2	0.5	0.2	87.6	2.1	10.3	0.089	0.503	20.577561	-100.483084
T. Der. a Las Adjuntas	21.00	3	1	29069	3.3	84.6	1.3	4.2	1.5	2.7	1.1	1.1	0.2	87.9	1.3	10.8	0.099	0.517	20.595515	-100.490060
T. Der. a Las Adjuntas	21.00	3	2	31336	3.3	84.6	1.3	4.2	1.5	2.7	1.1	1.1	0.2	87.9	1.3	10.8	0.098	0.517	20.595485	-100.490180
T. Der. a Tlacote el Bajo	27.70	1	1	35034	5.2	83.5	1.3	3.5	1.6	3.2	0.4	1.0	0.3	88.7	1.3	10.0	0.098	0.534	20.632193	-100.499137
T. Der. a Tlacote el Bajo	27.70	1	2	30083	5.0	83.7	1.2	3.5	1.7	3.4	0.4	0.9	0.2	88.7	1.2	10.1	0.099	0.534	20.632178	-100.499252
T. Der. a Tlacote el Bajo	27.70	3	1	14246	4.2	79.8	2.5	4.5	2.1	5.1	0.7	0.9	0.2	84.0	2.5	13.5	0.132	0.522	20.653787	-100.512206
T. Der. a Tlacote el Bajo	27.70	3	2	15567	4.0	79.5	2.1	4.7	2.4	5.4	0.7	1.0	0.2	83.5	2.1	14.4	0.127	0.522	20.653684	-100.512239
Obrajuelos (El Zapote)	29.70	3	1	14524	5.4	75.0	3.5	6.7	1.9	5.0	0.6	1.5	0.4	80.4	3.5	16.1	0.168	0.504	20.661948	-100.515442
Obrajuelos (El Zapote)	29.70	3	2	14741	5.4	74.9	3.2	6.5	2.2	5.3	0.6	1.5	0.4	80.3	3.2	16.5	0.126	0.504	20.662173	-100.515300
Santo Niño de Praga	31.20	3	1	16065	5.7	73.8	3.5	6.8	2.2	5.2	0.7	1.6	0.5	79.5	3.5	17.0	0.133	0.509	20.671148	-100.508221
Santo Niño de Praga	31.20	3	2	15500	5.2	74.6	3.6	6.7	2.2	5.1	0.6	1.6	0.4	79.8	3.6	16.6	0.122	0.509	20.671174	-100.508336
X. C. juriquilla - Mompani	34.00	3	1	11794	2.8	74.3	2.8	7.6	2.0	7.3	0.7	2.0	0.5	77.1	2.8	20.1	0.152	0.514	20.692486	-100.493136
X. C. juriquilla - Mompani	34.00	3	2	11141	2.8	76.3	2.7	6.4	1.6	7.4	0.8	1.6	0.4	79.1	2.7	18.2	0.134	0.514	20.692574	-100.493196
T. Der. a El Nabo	36.30	3	1	12548	2.6	77.3	3.3	6.9	1.8	5.2	1.0	1.4	0.5	79.9	3.3	16.8	0.151	0.518	20.701374	-100.480060
T. Der. a El Nabo	36.30	3	2	11688	2.6	76.9	3.3	6.7	2.1	5.2	1.0	1.7	0.5	79.5	3.3	17.2	0.132	0.518	20.701427	-100.480179
Pie de Gallo	44.10	1	1	15853	2.5	79.1	2.9	6.1	1.8	5.4	0.6	1.3	0.3	81.6	2.9	15.5	0.110	0.503	20.745555	-100.459337
Pie de Gallo	44.10	1	2	15681	2.5	79.0	2.9	6.2	1.6	5.3	0.5	1.6	0.4	81.5	2.9	15.6	0.117	0.503	20.745614	-100.459444
Pie de Gallo	44.10	3	1	16078	1.5	79.9	2.5	5.5	2.0	4.9	0.9	2.2	0.6	81.4	2.5	16.1	0.164	0.507	20.755605	-100.450850
Pie de Gallo	44.10	3	2	15658	1.5	79.7	2.5	5.8	2.0	4.9	1.0	2.1	0.5	81.2	2.5	16.3	0.126	0.507	20.755685	-100.450874
T. C. Querétaro - San Luis Potosi	45.70																			

QUERETARO

21 CARR: Peña Colorada - El Rodeo

CLAVE: 22002

RUTA: QRO

AÑO: 2023

LUGAR	ESTACION				CLASIFICACION VEHICULAR EN PORCIENTO										COORDENADAS					
	KM	TE	SC	TDPA	M	A	B	C2	C3	T3S2	T3S3	T3S2R4	OTROS	A	B	C	K'	D	LATITUD	LONGITUD
T. C. México - Querétaro	0.00	3	1	15753	3.3	88.8	0.6	4.5	1.4	0.6	0.2	0.4	0.2	92.1	0.6	7.3	0.097	0.501	20.584308	-100.250877
T. C. México - Querétaro	0.00	3	2	15665	3.6	88.1	0.5	4.3	1.6	0.8	0.4	0.5	0.2	91.7	0.5	7.8	0.080	0.501	20.584369	-100.250985
X. C. Querétaro - Tequisquiapan	9.00	1	1	12066	4.8	83.8	0.6	6.0	2.1	1.1	0.5	0.7	0.4	88.6	0.6	10.8	0.077	0.512	20.633936	-100.260149
X. C. Querétaro - Tequisquiapan	9.00	1	2	11496	4.5	84.4	0.8	6.0	2.3	0.9	0.3	0.5	0.3	88.9	0.8	10.3	0.088	0.512	20.633946	-100.260275
El Rodeo	11.00	1	0	3290	5.9	79.7	1.2	11.9	0.5	0.6	0.1	0.0	0.1	85.6	1.2	13.2	0.067	0.520	20.658743	-100.258986

22 CARR: Querétaro - Ent. San Martín

CLAVE: 22067

RUTA: QRO

AÑO: 2023

LUGAR	ESTACION				CLASIFICACION VEHICULAR EN PORCIENTO										COORDENADAS					
	KM	TE	SC	TDPA	M	A	B	C2	C3	T3S2	T3S3	T3S2R4	OTROS	A	B	C	K'	D	LATITUD	LONGITUD
T. C. México - Querétaro	0.00	3	1	19082	2.9	93.5	0.5	1.9	0.5	0.2	0.1	0.3	0.1	96.4	0.5	3.1	0.100	0.502	20.558541	-100.366660
T. C. México - Querétaro	0.00	3	2	19264	3.2	92.6	0.8	2.3	0.4	0.3	0.1	0.2	0.1	95.8	0.8	3.4	0.117	0.502	20.558907	-100.366590
Lagunillas	18.70	1	0	8085	1.4	87.3	0.8	8.9	0.9	0.1	0.2	0.2	0.2	88.7	0.8	10.5	0.069	0.521	20.464194	-100.266615
T. Der. Huimilpan	32.70	1	0	8235	2.0	86.8	0.8	9.7	0.5	0.1	0.1	0.0	0.0	88.8	0.8	10.4	0.060	0.503	20.394087	-100.269011
Ent. San Martín	53.00	1	0	2567	3.4	83.3	1.1	9.8	0.9	1.0	0.5	0.0	0.0	86.7	1.1	12.2	0.083	0.508	20.278217	-100.158135

23 CARR: Querétaro - Estación Chichimequillas

CLAVE: 22270

RUTA: QRO

AÑO: 2023

LUGAR	ESTACION				CLASIFICACION VEHICULAR EN PORCIENTO										COORDENADAS					
	KM	TE	SC	TDPA	M	A	B	C2	C3	T3S2	T3S3	T3S2R4	OTROS	A	B	C	K'	D	LATITUD	LONGITUD
T. C. Libramiento de Querétaro	0.00	3	1	15192	4.5	89.8	0.4	3.8	0.3	0.6	0.2	0.2	0.2	94.3	0.4	5.3	0.083	0.519	20.625806	-100.386779
T. C. Libramiento de Querétaro	0.00	3	2	16362	4.8	89.5	0.5	3.7	0.6	0.5	0.2	0.1	0.1	94.3	0.5	5.2	0.082	0.519	20.625883	-100.386823
X. C. Hacienda Paraiso - Chichimequillas	18.00	1	0	7649	2.0	85.2	2.6	5.8	2.1	1.0	0.6	0.5	0.2	87.2	2.6	10.2	0.094	0.515	20.751148	-100.322135
Estación Chichimequillas	19.20																			

24 CARR: Querétaro - Tequisquiapan

CLAVE: 22502

RUTA: QRO

AÑO: 2023

LUGAR	ESTACION				CLASIFICACION VEHICULAR EN PORCIENTO										COORDENADAS					
	KM	TE	SC	TDPA	M	A	B	C2	C3	T3S2	T3S3	T3S2R4	OTROS	A	B	C	K'	D	LATITUD	LONGITUD
Querétaro	0.00	3	1	8841	4.8	87.9	1.8	4.4	0.6	0.2	0.1	0.1	0.1	92.7	1.8	5.5	0.076	0.509	20.600227	-100.361758
Querétaro	0.00	3	2	8544	4.3	88.2	1.9	4.5	0.4	0.1	0.1	0.3	0.2	92.5	1.9	5.6	0.079	0.509	20.600286	-100.361734
X. C. Peña Colorada - El Rodeo	14.00	1	1	9732	4.0	83.7	0.9	7.9	2.3	0.6	0.2	0.1	0.3	87.7	0.9	11.4	0.097	0.507	20.633839	-100.266360
X. C. Peña Colorada - El Rodeo	14.00	1	2	10003	4.2	83.2	0.6	8.2	2.4	0.7	0.3	0.1	0.3	87.4	0.6	12.0	0.097	0.507	20.633942	-100.266410
T. Izq. La Griega	16.60	3	1	8046	3.6	87.5	1.8	3.3	1.8	1.2	0.4	0.3	0.1	91.1	1.8	7.1	0.117	0.502	20.642837	-100.225885
T. Izq. La Griega	16.60	3	2	8114	3.5	87.2	2.3	3.5	1.8	0.9	0.4	0.3	0.1	90.7	2.3	7.0	0.122	0.502	20.642909	-100.225824

QUERETARO

24 CARR: Querétaro - Tequisquiapan

CLAVE: 22502

RUTA: QRO

AÑO: 2023

LUGAR	ESTACION				CLASIFICACION VEHICULAR EN PORCIENTO										COORDENADAS					
	KM	TE	SC	TDPA	M	A	B	C2	C3	T3S2	T3S3	T3S2R4	OTROS	A	B	C	K'	D	LATITUD	LONGITUD
X. C. El Colorado - Higuerrillas	25.70	1	1	11081	2.9	83.7	1.5	7.2	1.9	1.9	0.3	0.2	0.4	86.6	1.5	11.9	0.099	0.508	20.615893	-100.161745
X. C. El Colorado - Higuerrillas	25.70	1	2	10715	3.2	83.2	1.8	7.5	1.7	1.5	0.4	0.4	0.3	86.4	1.8	11.8	0.134	0.508	20.615898	-100.161556
X. C. San Juan del Río - Xilitla	56.90	1	1	5073	7.8	82.2	2.5	4.6	1.2	0.8	0.4	0.4	0.1	90.0	2.5	7.5	0.096	0.530	20.528418	-99.911164
X. C. San Juan del Río - Xilitla	56.90	1	2	5714	8.0	81.4	2.7	4.7	1.2	1.2	0.3	0.4	0.1	89.4	2.7	7.9	0.112	0.530	20.528481	-99.911175
Tequisquiapan	57.40	1	0	10938	6.5	87.5	0.8	3.1	0.7	0.5	0.3	0.4	0.2	94.0	0.8	5.2	0.085	0.525	20.533868	-99.897625

25 CARR: Querétaro - Tlacote El Bajo

CLAVE: 22069

RUTA: QRO

AÑO: 2023

LUGAR	ESTACION				CLASIFICACION VEHICULAR EN PORCIENTO										COORDENADAS					
	KM	TE	SC	TDPA	M	A	B	C2	C3	T3S2	T3S3	T3S2R4	OTROS	A	B	C	K'	D	LATITUD	LONGITUD
Querétaro	0.00	3	1	11877	3.9	87.2	1.0	4.3	1.2	1.3	0.5	0.3	0.3	91.1	1.0	7.9	0.075	0.512	20.591268	-100.454326
Querétaro	0.00	3	2	11330	3.9	87.2	0.8	4.6	1.2	1.3	0.5	0.3	0.2	91.1	0.8	8.1	0.106	0.512	20.591195	-100.454344
Tlacote El Bajo	18.00																			

26 CARR: Ramal a La Estancia

CLAVE: 22504

RUTA: QRO

AÑO: 2023

LUGAR	ESTACION				CLASIFICACION VEHICULAR EN PORCIENTO										COORDENADAS					
	KM	TE	SC	TDPA	M	A	B	C2	C3	T3S2	T3S3	T3S2R4	OTROS	A	B	C	K'	D	LATITUD	LONGITUD
T. C. México - Querétaro (Cuota)	0.00	3	0	6886	7.3	82.1	1.4	5.7	1.1	0.9	0.3	0.7	0.5	89.4	1.4	9.2	0.080	0.506	20.424744	-100.063289
La Estancia	3.00																			

27 CARR: Ramal a Tolimán

CLAVE: 22265

RUTA: QRO

AÑO: 2023

LUGAR	ESTACION				CLASIFICACION VEHICULAR EN PORCIENTO										COORDENADAS					
	KM	TE	SC	TDPA	M	A	B	C2	C3	T3S2	T3S3	T3S2R4	OTROS	A	B	C	K'	D	LATITUD	LONGITUD
T. C. El Colorado - Higuerrillas	0.00	3	0	3892	4.1	81.7	1.2	8.3	1.0	2.3	0.9	0.2	0.3	85.8	1.2	13.0	0.075	0.529	20.859146	-99.895047
Tolimán	7.00	1	0	4368	4.8	88.0	0.2	5.3	0.5	1.0	0.1	0.0	0.1	92.8	0.2	7.0	0.084	0.507	20.896235	-99.918755

28 CARR: Rayón - Arroyo Seco

CLAVE: 24008

RUTA: SLP-011

AÑO: 2023

LUGAR	ESTACION				CLASIFICACION VEHICULAR EN PORCIENTO										COORDENADAS					
	KM	TE	SC	TDPA	M	A	B	C2	C3	T3S2	T3S3	T3S2R4	OTROS	A	B	C	K'	D	LATITUD	LONGITUD
Rayón	0.00	3	0	1534	6.4	69.6	0.5	21.5	1.5	0.2	0.1	0.2	0.0	76.0	0.5	23.5	0.092	0.516	21.848724	-99.627137
Lagunillas	36.00	1	0	351	4.4	74.7	0.7	17.7	1.8	0.4	0.1	0.2	0.0	79.1	0.7	20.2	0.109	0.508	21.595034	-99.564772
Lim. De Edos. Term. S.L.P. Ppia Oro.	51.00																			

QUERETARO

28 CARR: Rayón - Arroyo Seco

CLAVE: 24008

RUTA: SLP-011

AÑO: 2023

LUGAR	ESTACION				CLASIFICACION VEHICULAR EN PORCIENTO														COORDENADAS	
	KM	TE	SC	TDPA	M	A	B	C2	C3	T3S2	T3S3	T3S2R4	OTROS	A	B	C	K'	D	LATITUD	LONGITUD
Arroyo Seco	57.00	1	0	760	6.6	92.2	0.1	0.4	0.4	0.0	0.3	0.0	0.0	98.8	0.1	1.1	0.090	0.525	21.553924	-99.681287

29 CARR: San Juan del Río - Amealco

CLAVE: 22011

RUTA: QRO

AÑO: 2023

LUGAR	ESTACION				CLASIFICACION VEHICULAR EN PORCIENTO														COORDENADAS	
	KM	TE	SC	TDPA	M	A	B	C2	C3	T3S2	T3S3	T3S2R4	OTROS	A	B	C	K'	D	LATITUD	LONGITUD
T. C. México - Querétaro	0.00	3	0	13689	3.8	91.7	0.4	3.3	0.4	0.2	0.1	0.1	0.0	95.5	0.4	4.1	0.083	0.508	20.373063	-100.017461
Amealco	28.00	1	0	5706	1.0	84.2	1.1	9.8	0.7	1.4	0.7	0.5	0.6	85.2	1.1	13.7	0.094	0.515	20.199029	-100.135489

30 CARR: T. C. (Villa del Pueblito - Huimilpan) - Coroneo

CLAVE: 00155

RUTA: QRO-GTO

AÑO: 2023

LUGAR	ESTACION				CLASIFICACION VEHICULAR EN PORCIENTO														COORDENADAS	
	KM	TE	SC	TDPA	M	A	B	C2	C3	T3S2	T3S3	T3S2R4	OTROS	A	B	C	K'	D	LATITUD	LONGITUD
T. C. Villa del Pueblito - Huimilpan	0.00	3	1	5342	1.3	90.3	0.6	5.0	1.3	0.8	0.1	0.5	0.1	91.6	0.6	7.8	0.108	0.533	20.499720	-100.424062
T. C. Villa del Pueblito - Huimilpan	0.00	3	2	4677	0.7	90.9	0.9	4.7	1.0	0.6	0.4	0.4	0.4	91.6	0.9	7.5	0.126	0.533	20.499766	-100.423997
T. der a Joaquín Herrera	5.00	3	1	4547	1.9	83.5	0.4	10.6	2.2	0.6	0.5	0.1	0.2	85.4	0.4	14.2	0.109	0.500	20.474354	-100.429108
T. der a Joaquín Herrera	5.00	3	2	4548	1.9	83.6	0.4	10.6	2.1	0.6	0.5	0.1	0.2	85.5	0.4	14.1	0.110	0.500	20.474345	-100.429021
Lim. Edos. Term. Oro. Ppia. Gto.	20.00																			
Coroneo	45.20	1	0	4022	5.6	86.0	4.2	3.3	0.7	0.2	0.0	0.0	0.0	91.6	4.2	4.2	0.118	0.501	20.213814	-100.366604

31 CARR: Villa del Pueblito - Huimilpan

CLAVE: 22503

RUTA: QRO

AÑO: 2023

LUGAR	ESTACION				CLASIFICACION VEHICULAR EN PORCIENTO														COORDENADAS	
	KM	TE	SC	TDPA	M	A	B	C2	C3	T3S2	T3S3	T3S2R4	OTROS	A	B	C	K'	D	LATITUD	LONGITUD
T. C. Querétaro - Irapuato (Libre)	0.00	3	1	17916	4.0	87.3	0.7	5.9	0.5	0.8	0.3	0.4	0.1	91.3	0.7	8.0	0.082	0.532	20.529876	-100.441420
T. C. Querétaro - Irapuato (Libre)	0.00	3	2	15782	3.3	88.0	0.4	6.1	0.7	0.7	0.3	0.4	0.1	91.3	0.4	8.3	0.095	0.532	20.529890	-100.441246
Huimilpan	27.00	1	0	2266	3.2	89.5	0.4	6.1	0.4	0.3	0.1	0.0	0.0	92.7	0.4	6.9	0.110	0.510	20.379686	-100.278896

32 CARR: Toluca - Palmillas

CLAVE: 00496

RUTA: EM(D)-MEX-055

AÑO: 2023

LUGAR	ESTACION				CLASIFICACION VEHICULAR EN PORCIENTO														COORDENADAS	
	KM	TE	SC	TDPA	M	A	B	C2	C3	T3S2	T3S3	T3S2R4	OTROS	A	B	C	K'	D	LATITUD	LONGITUD
Toluca	0.00																			
T. Izq. Calixtlahuaca de Rayón (Baja)	7.21	3	1	9435	7.1	66.0	5.9	9.4	3.3	6.1	1.0	1.0	0.2	73.1	5.9	21.0	0.083	0.503	19.341073	-99.670358
T. Izq. Calixtlahuaca de Rayón (Alta)	7.21	3	1	30778	3.0	89.9	0.6	4.1	0.7	0.8	0.4	0.3	0.2	92.9	0.6	6.5	0.085	0.521	19.340602	-99.671044

QUERETARO

32 CARR: Toluca - Palmillas

CLAVE: 00496

RUTA: EM(D)-MEX-055

AÑO: 2023

LUGAR	ESTACION				CLASIFICACION VEHICULAR EN PORCIENTO														COORDENADAS	
	KM	TE	SC	TDPA	M	A	B	C2	C3	T3S2	T3S3	T3S2R4	OTROS	A	B	C	K'	D	LATITUD	LONGITUD
T. Izq. Calixtlahuaca de Rayón (Baja)	7.21	3	2	9329	7.2	65.4	6.2	9.2	3.5	5.9	1.1	1.3	0.2	72.6	6.2	21.2	0.092	0.503	19.339930	-99.671042
T. Izq. Calixtlahuaca de Rayón (Alta)	7.21	3	2	33783	3.1	89.6	0.7	3.9	0.8	0.9	0.5	0.3	0.2	92.7	0.7	6.6	0.082	0.521	19.340027	-99.670939
X. C. Lib. Nororiente de Toluca (Cuota)	14.21	1	1	34790	3.5	82.9	2.8	3.9	1.7	3.7	0.5	0.8	0.2	86.4	2.8	10.8	0.080	0.509	19.382336	-99.704861
X. C. Lib. Nororiente de Toluca (Cuota)	14.21	1	2	36158	3.7	82.3	2.9	4.2	1.5	3.9	0.6	0.7	0.2	86.0	2.9	11.1	0.074	0.509	19.379374	-99.703298
El Dorado	16.00	1	1	38883	2.7	77.3	3.8	6.8	2.1	5.7	0.7	0.7	0.2	80.0	3.8	16.2	0.072	0.506	19.401272	-99.713000
El Dorado	16.00	1	2	37890	2.8	76.7	4.0	6.7	2.2	5.9	0.8	0.7	0.2	79.5	4.0	16.5	0.071	0.506	19.401180	-99.713295
T. C. Amomolulco - T. C. (Toluca - Palmillas)	19.76	1	1	18486	2.8	76.0	6.3	6.3	2.4	3.9	1.2	0.9	0.2	78.8	6.3	14.9	0.082	0.527	19.429248	-99.724695
T. C. Amomolulco - T. C. (Toluca - Palmillas)	19.76	1	2	20556	2.3	76.4	6.6	6.6	2.0	4.1	1.0	0.8	0.2	78.7	6.6	14.7	0.085	0.527	19.428435	-99.724701
Ixtlahuaca de Rayón	31.20	1	1	26136	2.5	80.7	2.9	5.6	1.7	5.0	0.7	0.7	0.2	83.2	2.9	13.9	0.078	0.534	19.556740	-99.759247
Ixtlahuaca de Rayón	31.20	1	2	30288	2.3	81.4	3.5	3.8	1.6	5.6	0.9	0.7	0.2	83.7	3.5	12.8	0.094	0.534	19.556973	-99.759696
Ixtlahuaca de Rayón	31.20	3	1	23466	2.3	79.7	2.7	6.6	2.2	4.4	1.0	0.9	0.2	82.0	2.7	15.3	0.083	0.513	19.581857	-99.763870
Ixtlahuaca de Rayón	31.20	3	2	22244	2.4	79.6	2.9	6.4	2.2	4.4	1.0	0.9	0.2	82.0	2.9	15.1	0.089	0.513	19.584300	-99.769376
T. C. Ixtlahuaca de Rayón - Naucalpan	32.20	1	1	21211	2.4	78.8	3.0	6.2	2.5	5.0	1.0	0.9	0.2	81.2	3.0	15.8	0.073	0.547	19.567511	-99.760388
T. C. Ixtlahuaca de Rayón - Naucalpan	32.20	1	2	25652	2.6	79.1	3.0	6.0	2.3	4.7	1.1	1.0	0.2	81.7	3.0	15.3	0.086	0.547	19.562849	-99.761327
Pastejé	45.20	1	1	20654	1.3	79.4	3.1	6.1	1.6	5.9	1.2	1.1	0.3	80.7	3.1	16.2	0.086	0.504	19.631515	-99.780392
Pastejé	45.20	1	2	20966	1.3	79.4	3.0	6.2	1.6	6.1	1.2	1.0	0.2	80.7	3.0	16.3	0.093	0.504	19.632697	-99.781100
Pastejé	45.20	3	1	20062	1.3	77.8	3.2	6.0	2.1	6.7	1.4	1.2	0.3	79.1	3.2	17.7	0.086	0.503	19.658098	-99.793453
Pastejé	45.20	3	2	20282	1.4	77.3	3.3	6.1	2.1	6.9	1.4	1.2	0.3	78.7	3.3	18.0	0.098	0.503	19.657950	-99.793705
Atlacomulco	65.00	1	1	21437	1.9	77.6	3.0	6.2	2.0	6.7	1.2	1.1	0.3	79.5	3.0	17.5	0.083	0.527	19.779622	-99.863491
Atlacomulco	65.00	1	2	19271	2.1	77.0	3.1	6.0	2.0	6.9	1.3	1.2	0.4	79.1	3.1	17.8	0.080	0.527	19.781787	-99.864651
Atlacomulco	65.00	3	1	19313	1.8	79.7	2.1	6.1	1.5	5.5	1.8	1.0	0.5	81.5	2.1	16.4	0.082	0.508	19.811188	-99.871802
Atlacomulco	65.00	3	2	18727	2.0	78.9	2.4	5.9	1.5	5.7	1.7	1.3	0.6	80.9	2.4	16.7	0.089	0.508	19.811200	-99.871907
X. C. Libramiento Norte de la Ciudad de México (Cuota)	81.52	1	1	10136	1.6	78.6	2.7	5.3	2.9	6.5	1.1	0.7	0.6	80.2	2.7	17.1	0.083	0.501	19.918594	-99.844832
X. C. Libramiento Norte de la Ciudad de México (Cuota)	81.52	1	2	10109	1.8	78.0	3.0	5.2	2.9	6.5	1.1	0.8	0.7	79.8	3.0	17.2	0.104	0.501	19.918623	-99.844913
X. C. Libramiento Norte de la Ciudad de México (Cuota)	81.52	3	1	8970	1.9	78.0	2.6	5.0	2.9	6.7	1.5	0.8	0.6	79.9	2.6	17.5	0.083	0.503	19.930265	-99.842019
X. C. Libramiento Norte de la Ciudad de México (Cuota)	81.52	3	2	8850	1.8	78.2	2.5	4.8	2.9	6.8	1.6	0.8	0.6	80.0	2.5	17.5	0.105	0.503	19.928971	-99.842091
Acambay	85.64	3	0	11433	2.0	92.1	0.8	1.7	1.4	0.9	0.5	0.4	0.2	94.1	0.8	5.1	0.088	0.501	19.964396	-99.852411
T. Der. Aculco de Espinoza	104.43	1	1	6156	2.9	71.4	3.0	8.9	2.7	8.3	1.4	1.0	0.4	74.3	3.0	22.7	0.084	0.503	20.079941	-99.862947
T. Der. Aculco de Espinoza	104.43	1	2	6228	2.9	71.2	3.0	9.0	2.7	8.2	1.6	1.0	0.4	74.1	3.0	22.9	0.096	0.503	20.079885	-99.863014
T. Der. Aculco de Espinoza	104.43	3	1	5794	2.9	71.6	2.9	8.8	2.7	8.2	1.5	1.0	0.4	74.5	2.9	22.6	0.096	0.503	20.092311	-99.862270
T. Der. Aculco de Espinoza	104.43	3	2	5862	2.9	70.5	3.2	9.1	2.9	8.4	1.6	1.0	0.4	73.4	3.2	23.4	0.109	0.503	20.092311	-99.862357
T. Der. Polotitlán	122.73	1	1	6087	2.0	71.9	3.7	8.0	3.0	8.5	1.5	1.0	0.4	73.9	3.7	22.4	0.091	0.514	20.227638	-99.901382
T. Der. Polotitlán	122.73	1	2	6444	2.2	71.3	3.9	8.0	3.0	8.6	1.5	1.1	0.4	73.5	3.9	22.6	0.116	0.514	20.227587	-99.901445
Lim. Edos. Term. Méx. Ppia. Oro.	128.10																			
T. C. Palmillas - Apaseo el Grande (Cuota)	130.60	1	1	9116	1.4	74.8	2.9	7.2	3.0	7.9	1.4	1.0	0.4	76.2	2.9	20.9	0.090	0.522	20.280253	-99.931031

QUERETARO

32 CARR: Toluca - Palmillas

CLAVE: 00496

RUTA: EM(D)-MEX-055

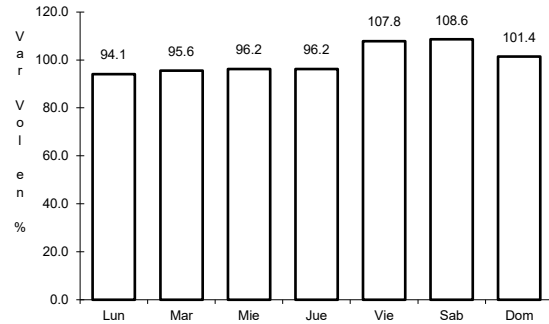
AÑO: 2023

L U G A R	E S T A C I O N				C L A S I F I C A C I O N V E H I C U L A R E N P O R C I E N T O														C O O R D E N A D A S	
	KM	TE	SC	TDPA	M	A	B	C2	C3	T3S2	T3S3	T3S2R4	OTROS	A	B	C	K'	D	LATITUD	LONGITUD
T. C. Palmillas - Apaseo el Grande (Cuota)	130.60	1	2	9956	1.6	74.6	3.0	7.0	3.1	7.9	1.4	1.0	0.4	76.2	3.0	20.8	0.156	0.522	20.280254	-99.931115
T. C. México - Querétaro	131.52	1	1	7858	1.5	73.7	3.0	7.2	3.3	7.9	1.7	1.2	0.5	75.2	3.0	21.8	0.093	0.501	20.294531	-99.933107
T. C. México - Querétaro	131.52	1	2	7902	1.5	74.1	3.0	7.1	3.2	8.0	1.6	1.1	0.4	75.6	3.0	21.4	0.154	0.501	20.294838	-99.933241

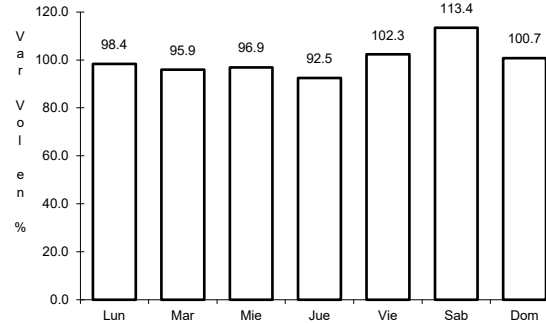
1 CARR: Ent. Buenavista - San Miguel de Allende

CLAVE: 00111

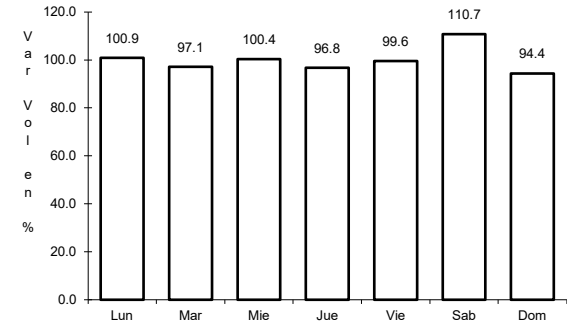
RUTA: MEX-057



Km: 0.00 Tipo: 3 Sent: 0



Km: 12.00 Tipo: 1 Sent: 0

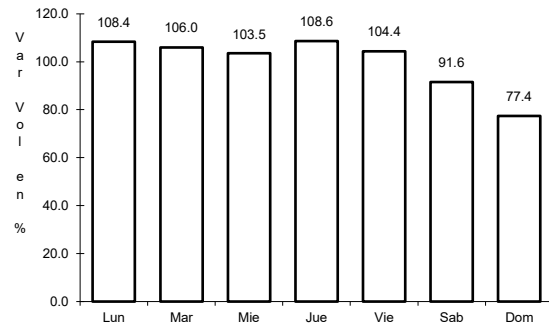


Km: 35.11 Tipo: 1 Sent: 0

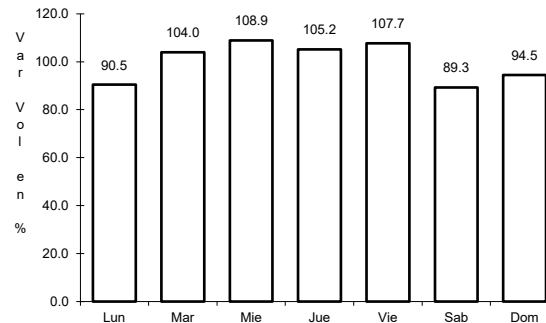
2 CARR: Jalpan de Serra - Rioverde

CLAVE: 00265

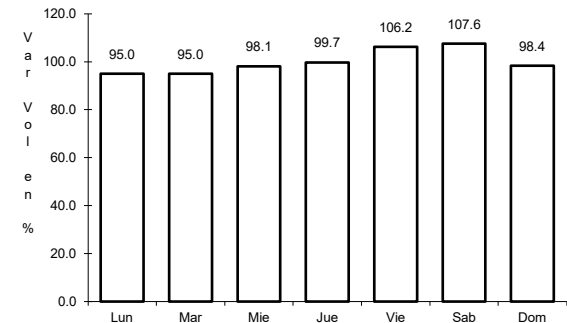
RUTA: MEX-069



Km: 0.00 Tipo: 3 Sent: 0



Km: 48.60 Tipo: 1 Sent: 0

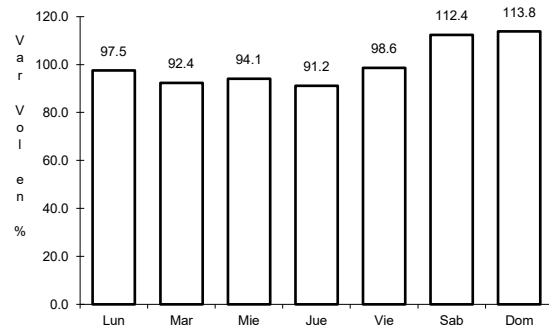


Km: 105.43 Tipo: 1 Sent: 0

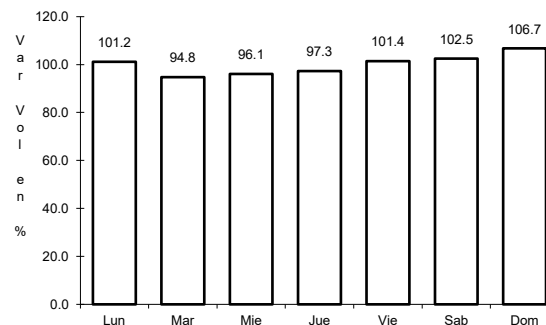
3 CARR: La Noria - Acámbaro

CLAVE: 00131

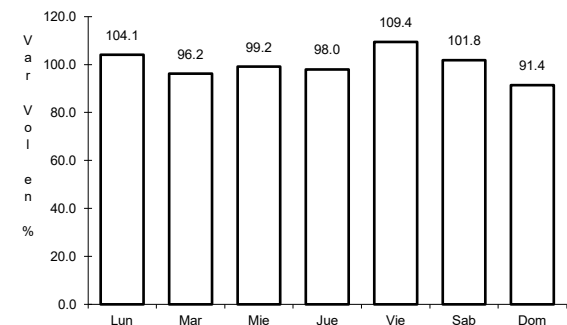
RUTA: MEX-120



Km: 0.00 Tipo: 3 Sent: 0



Km: 59.35 Tipo: 3 Sent: 0

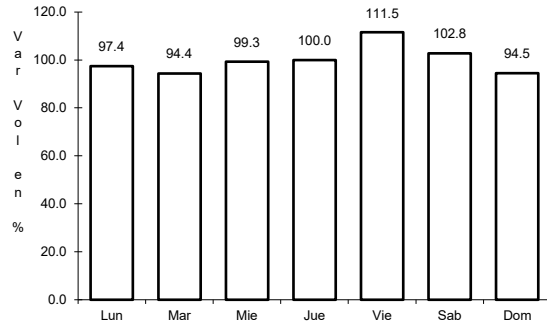


Km: 111.12 Tipo: 1 Sent: 0

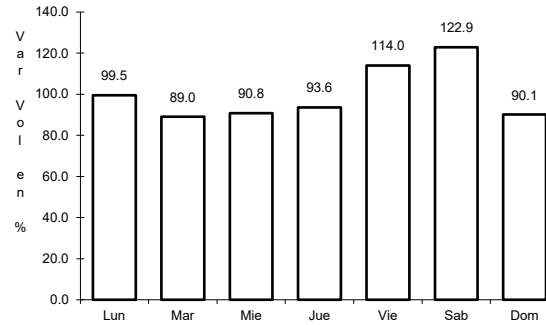
4 CARR: Portezuelo - Palmillas

CLAVE: 00194

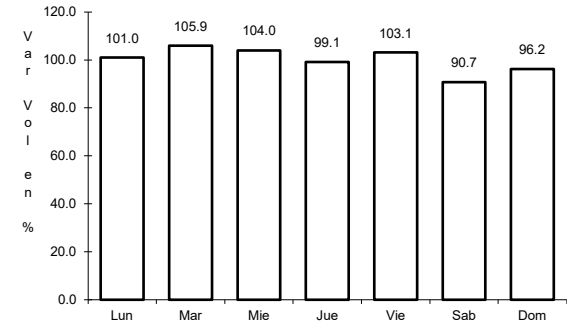
ruta: MEX-045



Km: 0.00 Tipo: 3 Sent: 1



Km: 0.00 Tipo: 3 Sent: 2

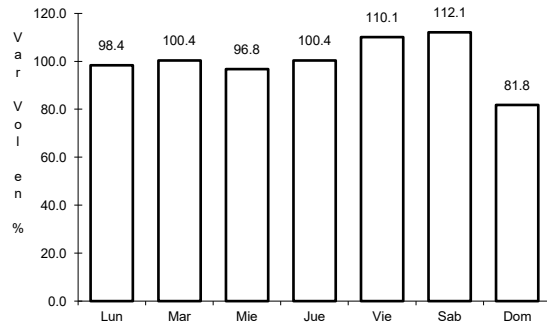


Km: 80.00 Tipo: 1 Sent: 1

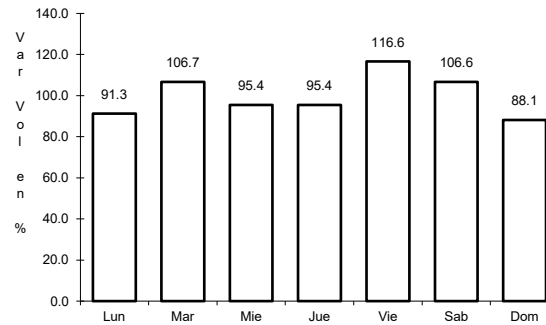
5 CARR: Querétaro - Irapuato (Libre)

CLAVE: 00154

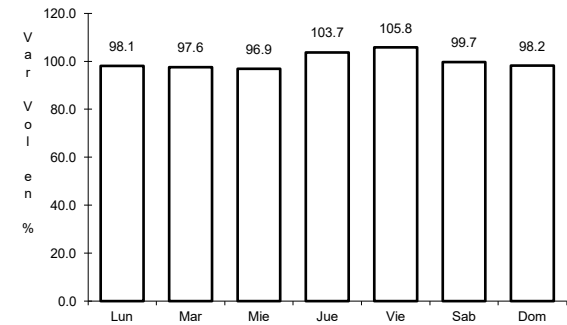
ruta: MEX-045



Km: 0.00 Tipo: 3 Sent: 1



Km: 0.00 Tipo: 3 Sent: 2

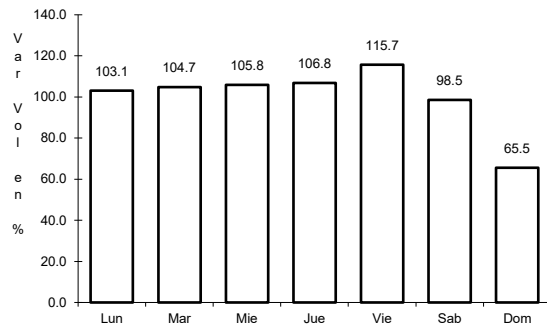


Km: 113.70 Tipo: 1 Sent: 1

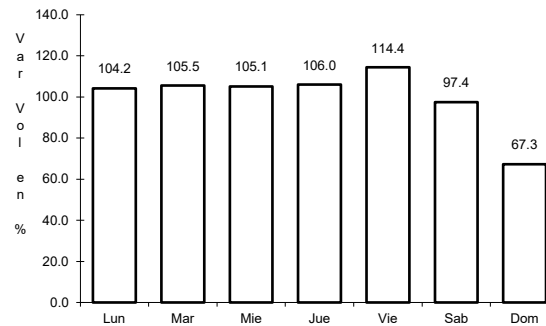
6 CARR: Querétaro - San Luis Potosí

CLAVE: 00165

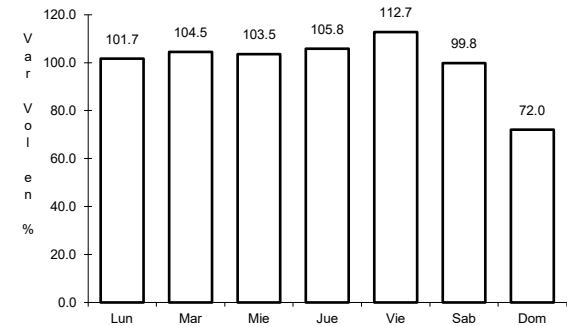
ruta: MEX-057



Km: 6.28 Tipo: 3 Sent: 1



Km: 6.28 Tipo: 3 Sent: 2

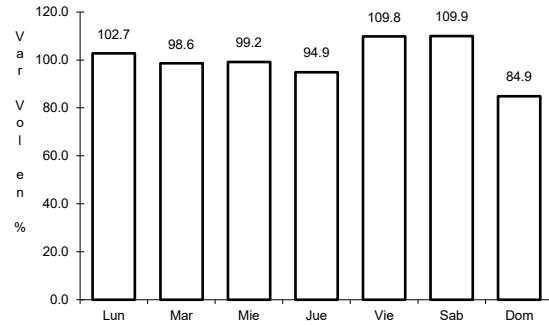


Km: 184.80 Tipo: 1 Sent: 1

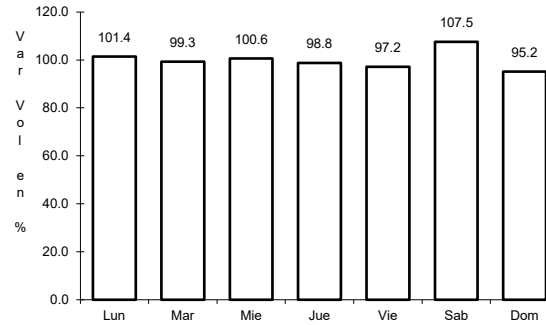
7 CARR: San Juan del Río - Xilitla

CLAVE: 00183

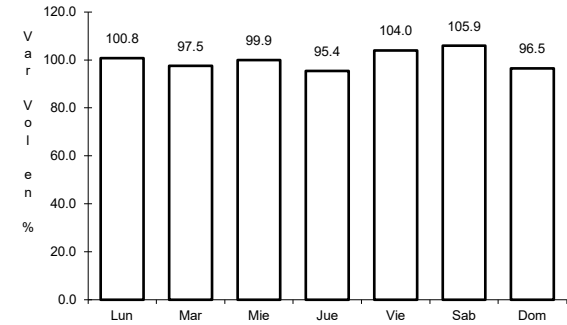
ruta: MEX-120



Km: 5.20 Tipo: 3 Sent: 1



Km: 5.20 Tipo: 3 Sent: 2

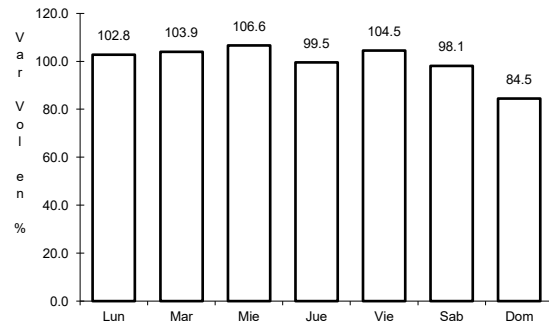


Km: 276.98 Tipo: 1 Sent: 0

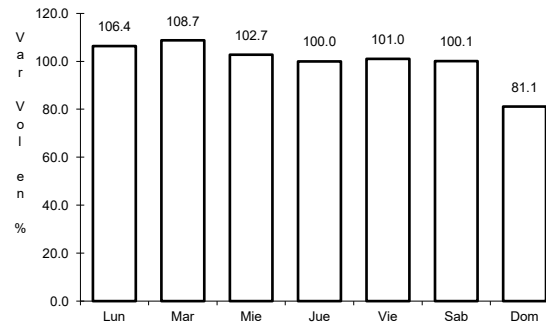
8 CARR: Libramiento Nororiente de Querétaro (Cuota)

CLAVE: 22266

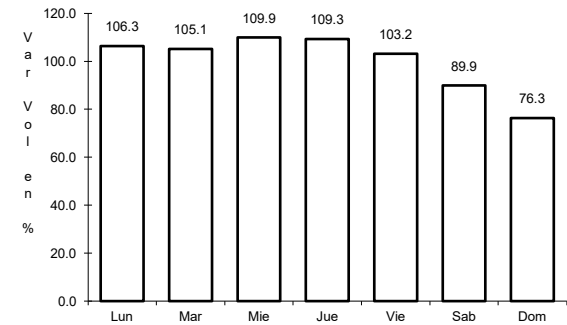
ruta: MEX-057D



Km: 0.00 Tipo: 3 Sent: 1



Km: 0.00 Tipo: 3 Sent: 2

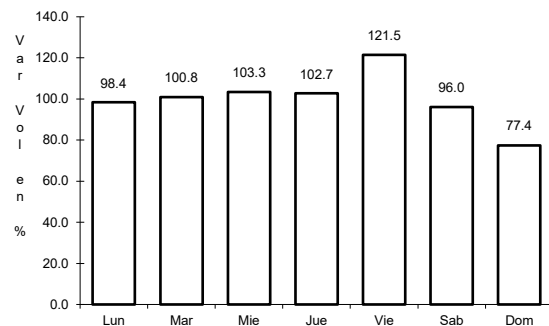


Km: 37.50 Tipo: 1 Sent: 1

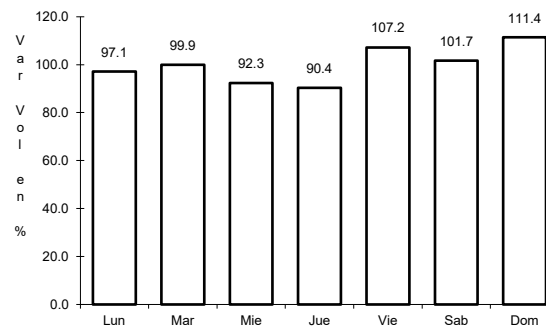
9 CARR: Palmillas - Apaseo el Grande (Cuota)

CLAVE:

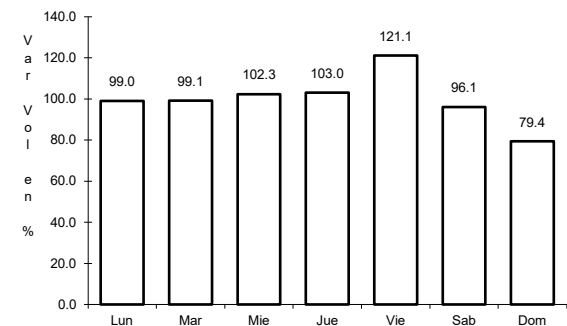
ruta: MEX-045D



Km: 1.60 Tipo: 1 Sent: 1



Km: 1.60 Tipo: 1 Sent: 2

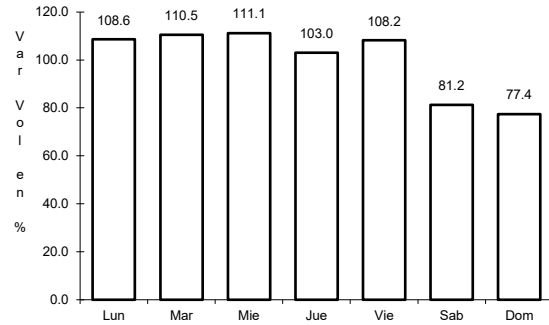


Km: 85.20 Tipo: 1 Sent: 1

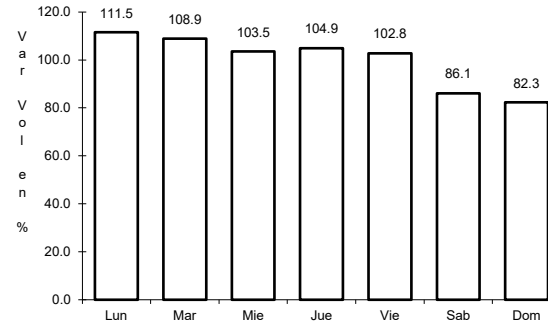
10 CARR: Querétaro - Irapuato (Cuota)

CLAVE: 00423

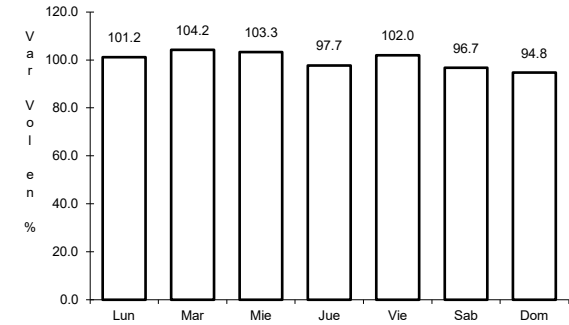
RUTA: MEX-045D



Km: 0.00 Tipo: 3 Sent: 1



Km: 0.00 Tipo: 3 Sent: 2

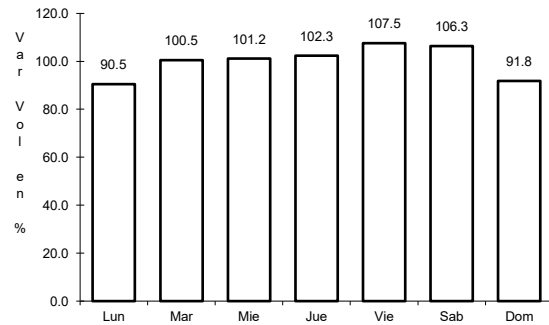


Km: 96.30 Tipo: 3 Sent: 1

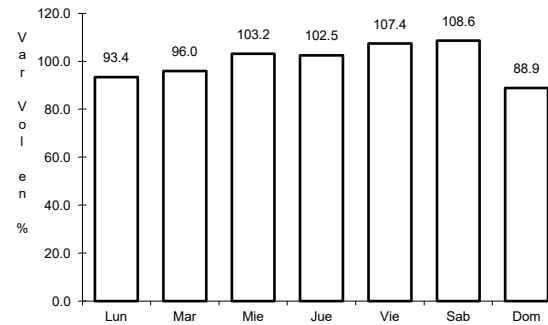
11 CARR: México - Querétaro (Cuota)

CLAVE: 00411

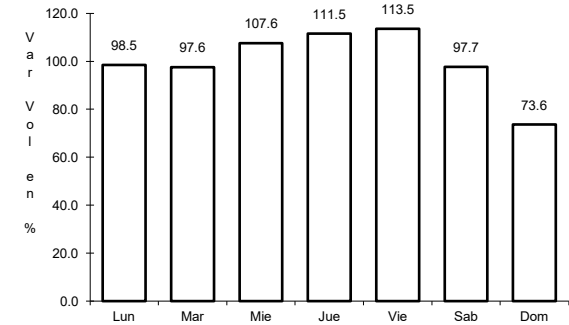
RUTA: MEX-057-MEX-057D



Km: 56.18 Tipo: 1 Sent: 1



Km: 56.18 Tipo: 1 Sent: 2

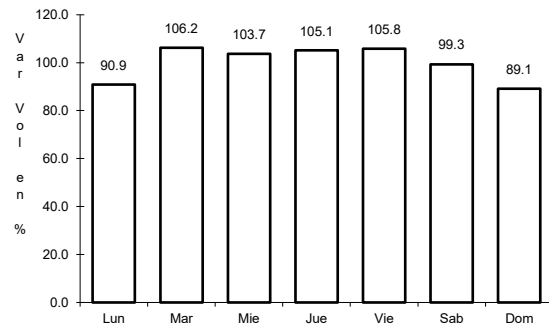


Km: 207.00 Tipo: 3 Sent: 1

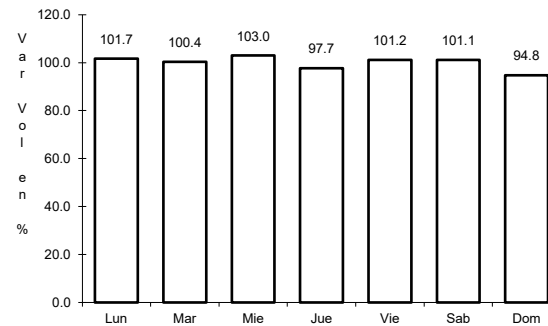
12 CARR: Ajuchitlán - Colón

CLAVE: 22010

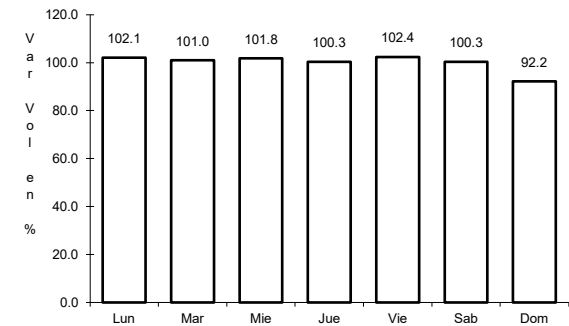
RUTA: QRO-005



Km: 0.00 Tipo: 3 Sent: 1



Km: 14.00 Tipo: 1 Sent: 1

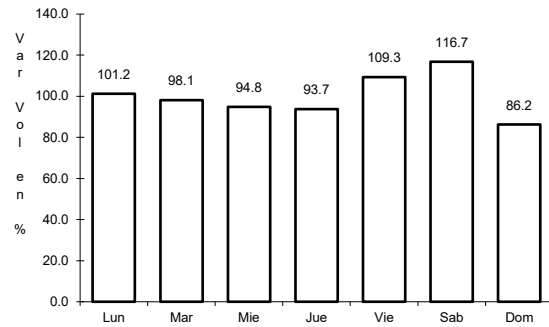


Km: 14.00 Tipo: 1 Sent: 2

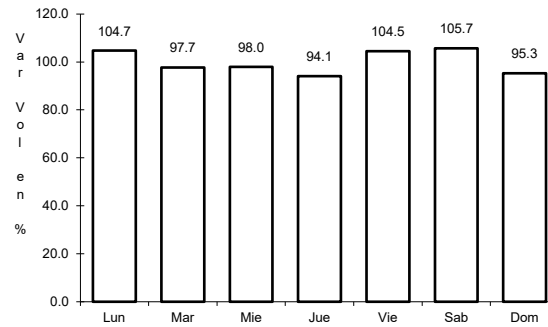
13 CARR: Ajuchitlán - Ezequiel Montes

CLAVE: 22005

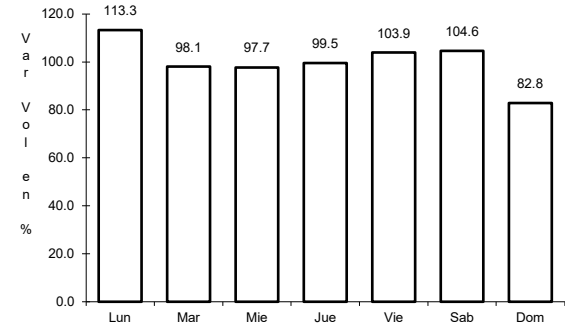
RUTA: QRO-005



Km: 0.00 Tipo: 3 Sent: 1



Km: 0.00 Tipo: 3 Sent: 2

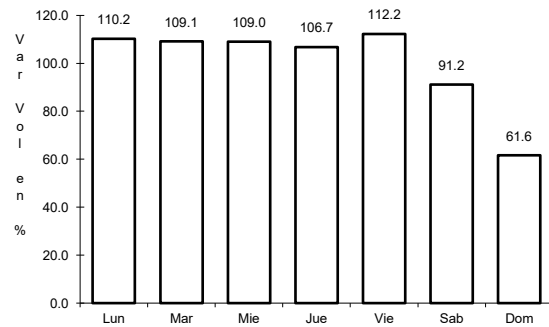


Km: 10.60 Tipo: 1 Sent: 0

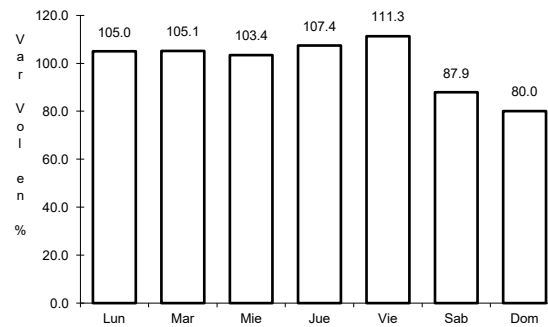
14 CARR: El Colorado - Higuierillas

CLAVE: 22004

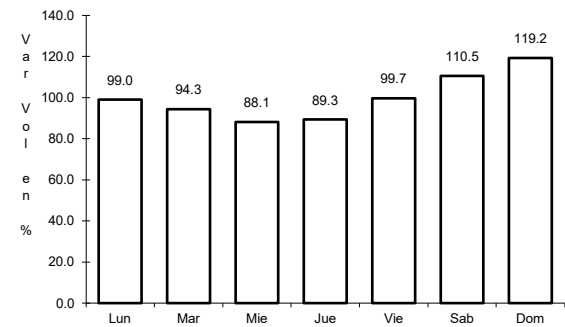
RUTA: QRO-004



Km: 0.00 Tipo: 3 Sent: 1



Km: 0.00 Tipo: 3 Sent: 2

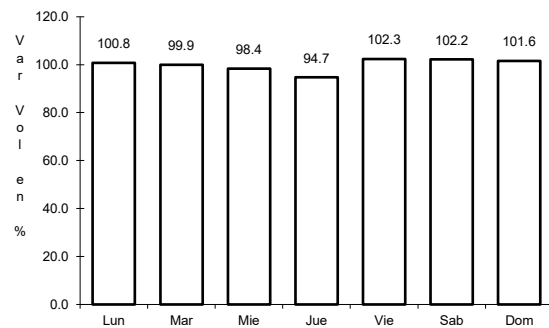


Km: 81.90 Tipo: 1 Sent: 0

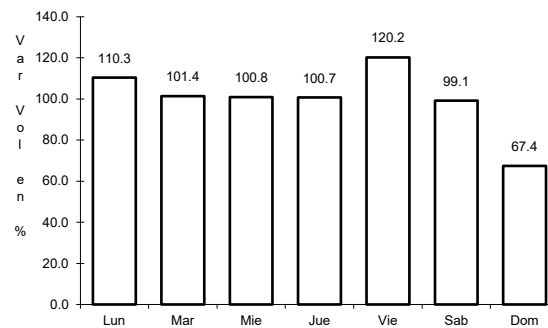
15 CARR: Hacienda Paraíso - Chichimequillas

CLAVE: 22001

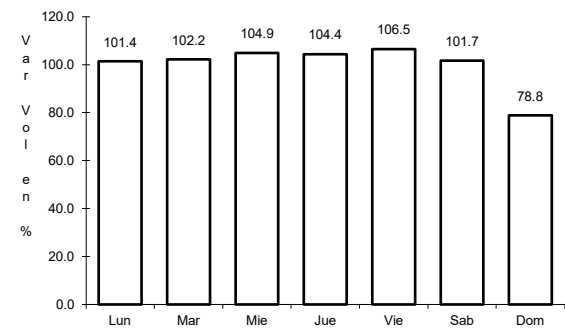
RUTA: QRO-001



Km: 0.00 Tipo: 3 Sent: 1



Km: 0.00 Tipo: 3 Sent: 2

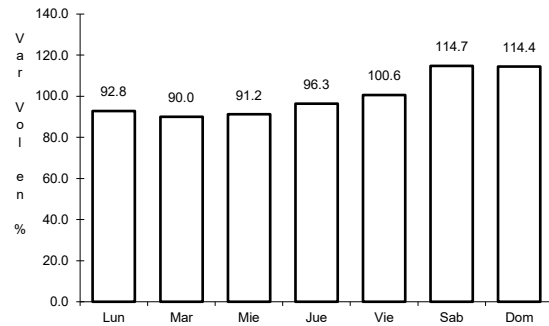


Km: 15.45 Tipo: 3 Sent: 0

16 CARR: Huimilpan - El Lindero

CLAVE: 00155

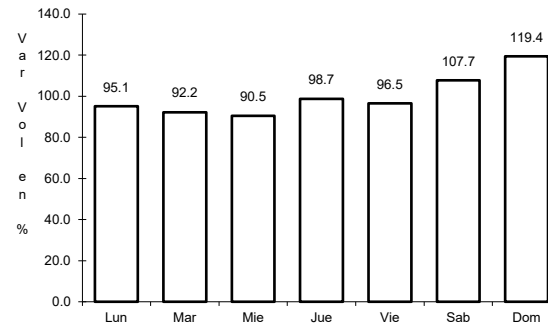
RUTA: QRO-GTO



Km: 2.60

Tipo: 1

Sent: 0



Km: 2.60

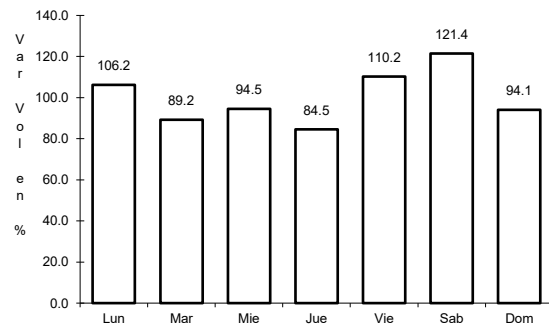
Tipo: 3

Sent: 0

17 CARR: La Culata - San Joaquín

CLAVE: 22021

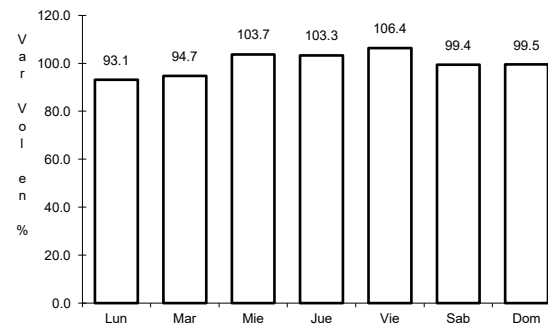
RUTA: QRO-021



Km: 0.00

Tipo: 3

Sent: 0



Km: 31.80

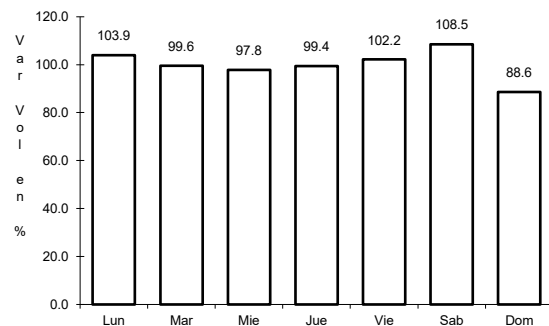
Tipo: 1

Sent: 0

18 CARR: Libramiento de San Juan del Río

CLAVE: 22266

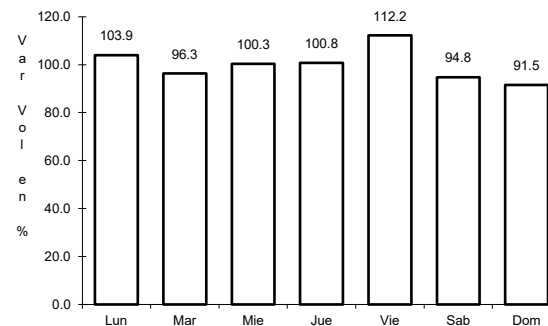
RUTA: QRO



Km: 0.00

Tipo: 3

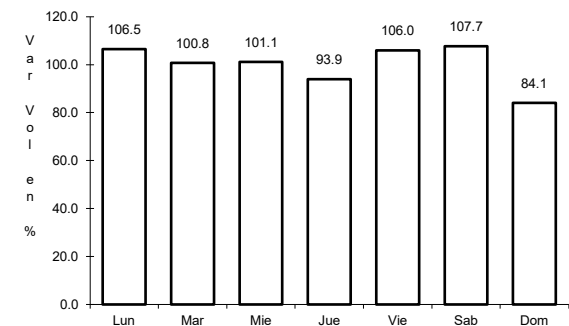
Sent: 1



Km: 0.00

Tipo: 3

Sent: 2



Km: 5.05

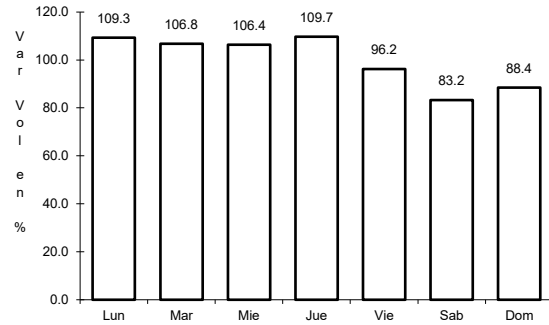
Tipo: 1

Sent: 1

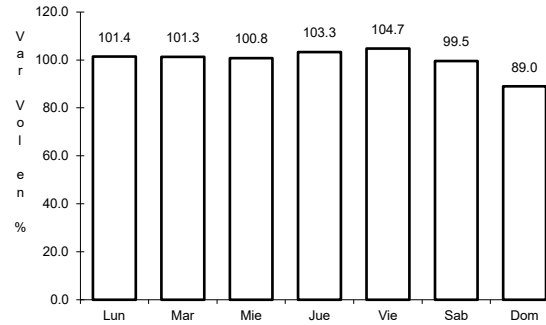
19 CARR: Libramiento Norte de Querétaro

CLAVE: 22500

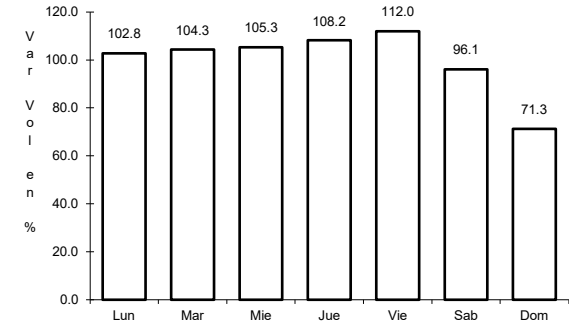
RUTA: QRO



Km: 0.00 Tipo: 3 Sent: 1



Km: 0.00 Tipo: 3 Sent: 2

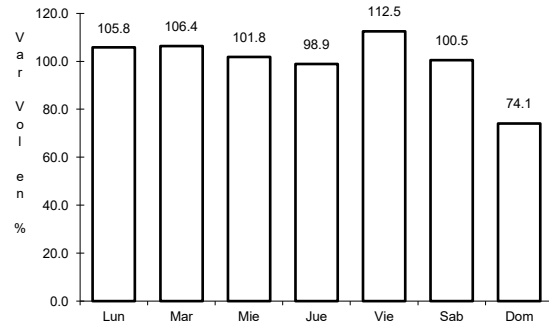


Km: 8.00 Tipo: 3 Sent: 1

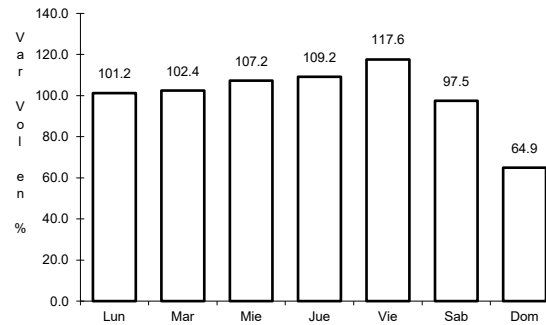
20 CARR: Libramiento Surponiente de Querétaro

CLAVE: 22501

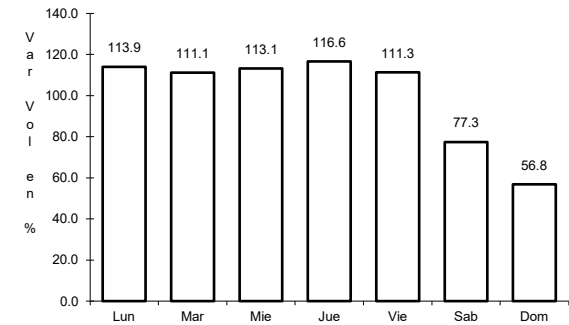
RUTA: QRO



Km: 0.00 Tipo: 3 Sent: 1



Km: 0.00 Tipo: 3 Sent: 2

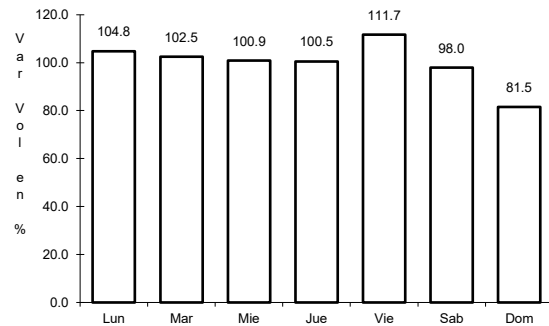


Km: 44.10 Tipo: 3 Sent: 1

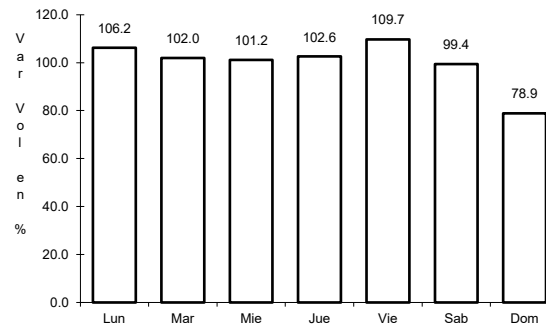
21 CARR: Peña Colorada - El Rodeo

CLAVE: 22002

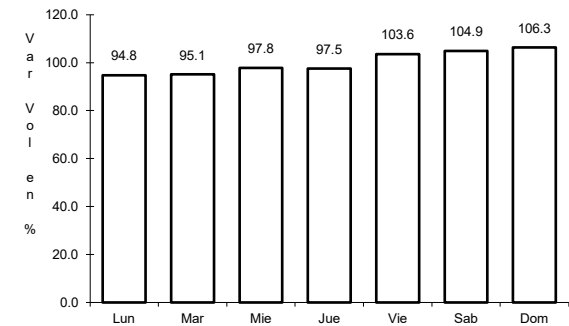
RUTA: QRO



Km: 0.00 Tipo: 3 Sent: 1



Km: 0.00 Tipo: 3 Sent: 2

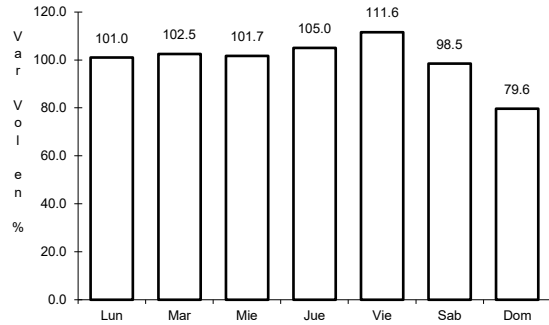


Km: 11.00 Tipo: 1 Sent: 0

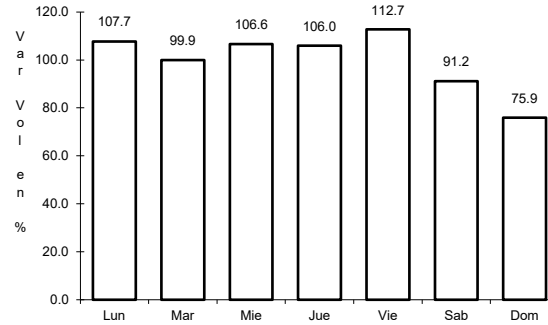
22 CARR: Querétaro - Ent. San Martín

CLAVE: 22067

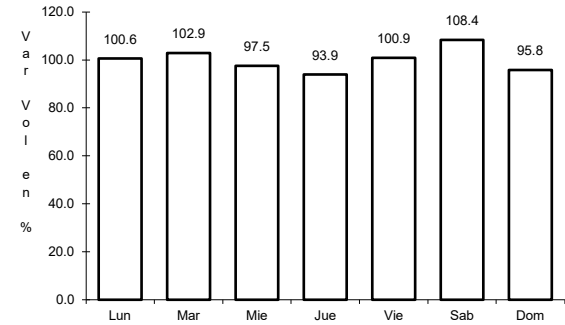
RUTA: QRO



Km: 0.00 Tipo: 3 Sent: 1



Km: 0.00 Tipo: 3 Sent: 2

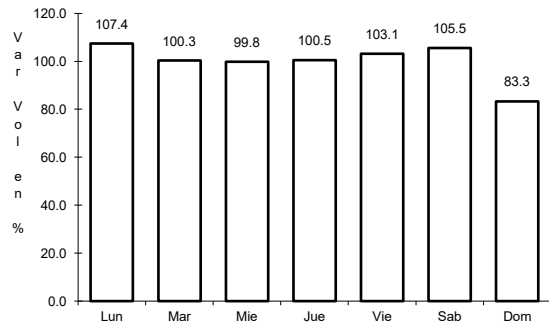


Km: 53.00 Tipo: 1 Sent: 0

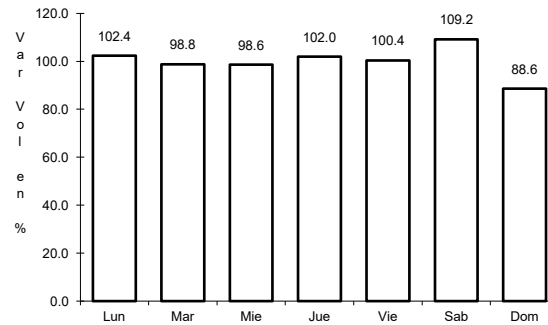
23 CARR: Querétaro - Estación Chichimequillas

CLAVE: 22270

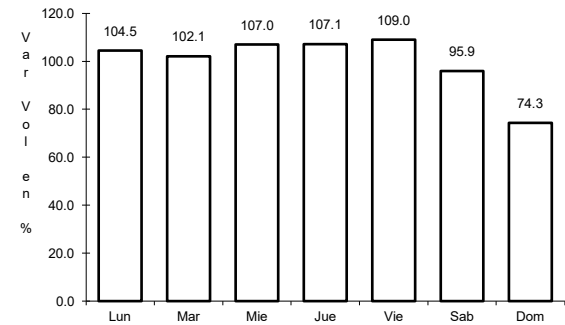
RUTA: QRO



Km: 0.00 Tipo: 3 Sent: 1



Km: 0.00 Tipo: 3 Sent: 2

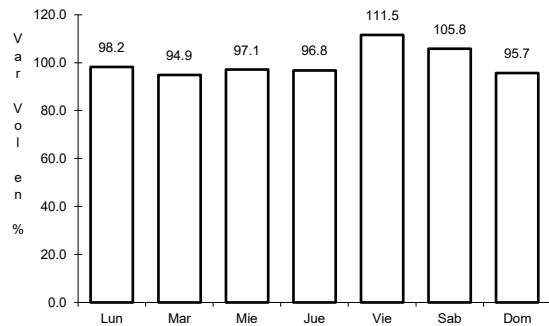


Km: 18.00 Tipo: 1 Sent: 0

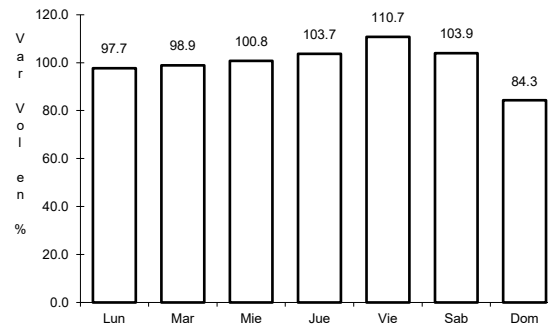
24 CARR: Querétaro - Tequisquiapan

CLAVE: 22502

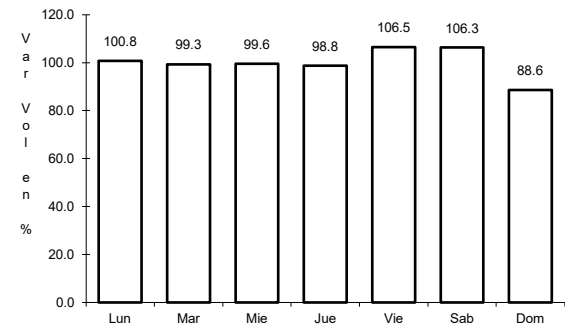
RUTA: QRO



Km: 0.00 Tipo: 3 Sent: 1



Km: 0.00 Tipo: 3 Sent: 2

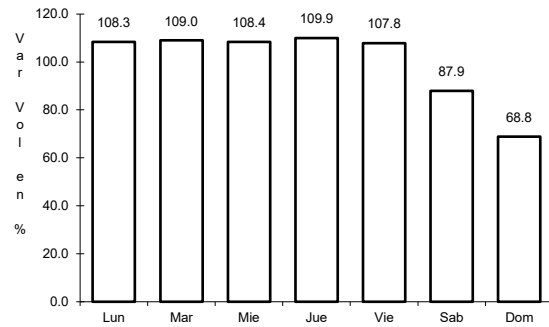


Km: 57.40 Tipo: 1 Sent: 0

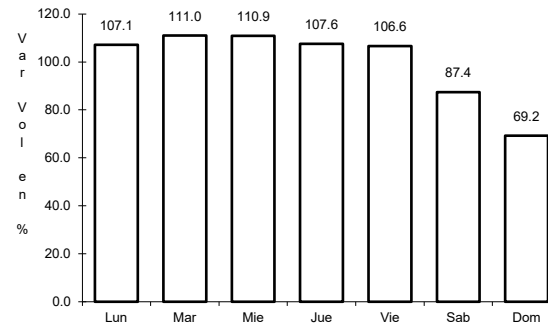
25 CARR: Querétaro - Tlacote El Bajo

CLAVE: 22069

RUTA: QRO



Km: 0.00 Tipo: 3 Sent: 1

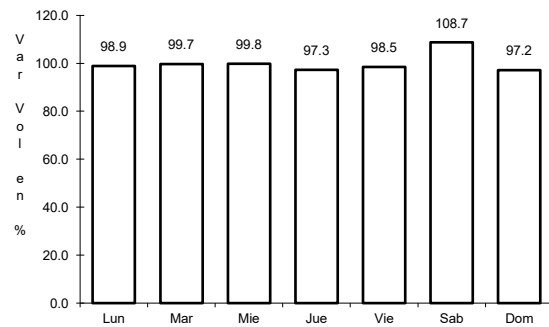


Km: 0.00 Tipo: 3 Sent: 2

26 CARR: Ramal a La Estancia

CLAVE: 22504

RUTA: QRO

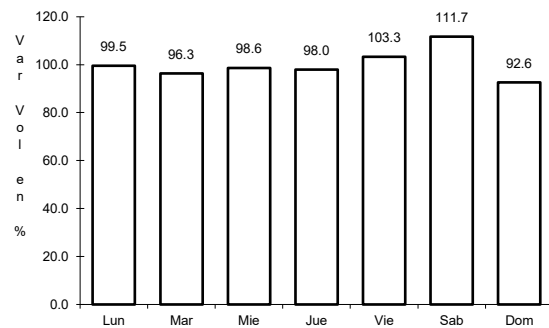


Km: 0.00 Tipo: 3 Sent: 0

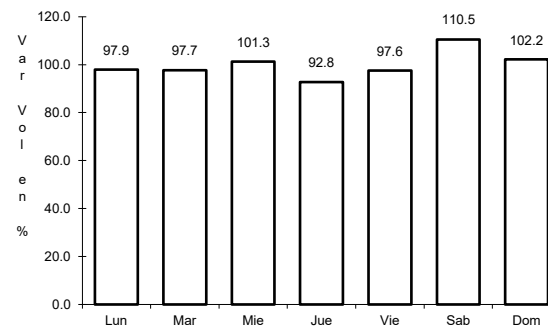
27 CARR: Ramal a Tolimán

CLAVE: 22265

RUTA: QRO



Km: 0.00 Tipo: 3 Sent: 0

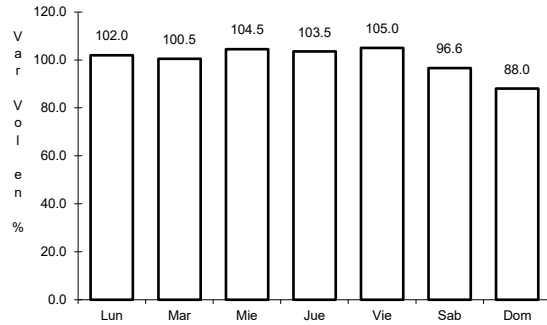


Km: 7.00 Tipo: 1 Sent: 0

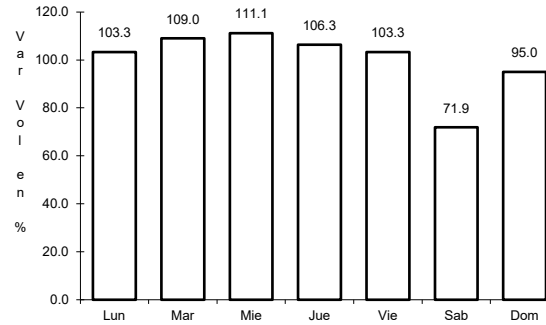
28 CARR: Rayón - Arroyo Seco

CLAVE: 24008

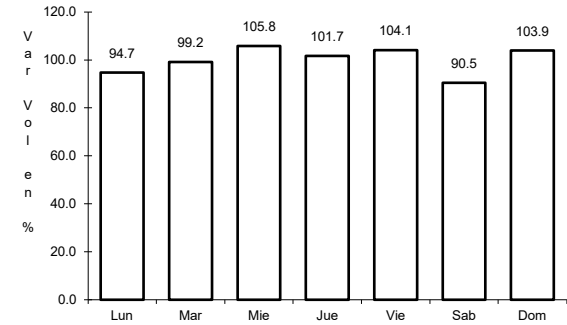
RUTA: SLP-011



Km: 0.00 Tipo: 3 Sent: 0



Km: 36.00 Tipo: 1 Sent: 0

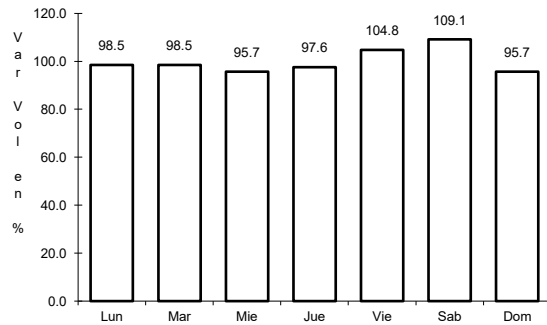


Km: 57.00 Tipo: 1 Sent: 0

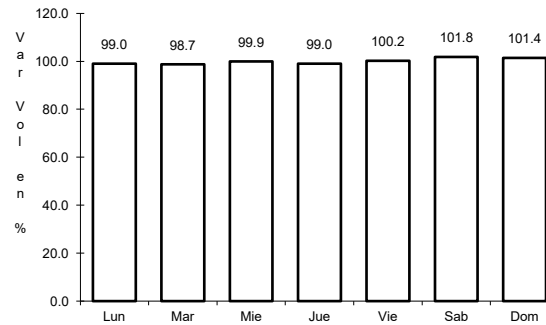
29 CARR: San Juan del Río - Amealco

CLAVE: 22011

RUTA: QRO



Km: 0.00 Tipo: 3 Sent: 0

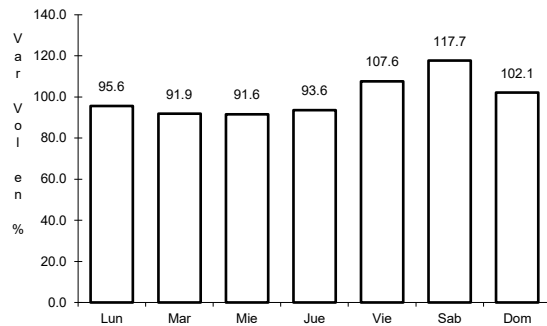


Km: 28.00 Tipo: 1 Sent: 0

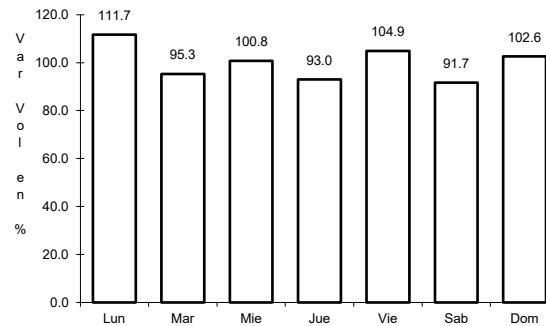
30 CARR: T. C. (Villa del Pueblito - Huimilpan) - Coroneo

CLAVE: 00155

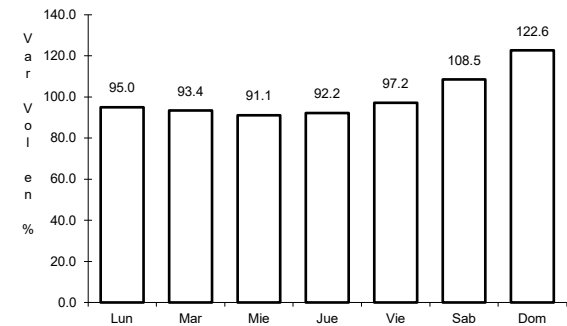
RUTA: QRO-GTO



Km: 0.00 Tipo: 3 Sent: 1



Km: 0.00 Tipo: 3 Sent: 2

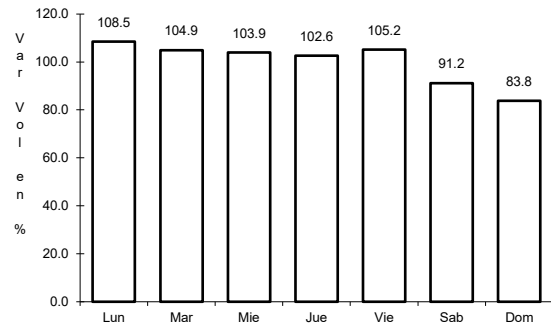


Km: 45.20 Tipo: 1 Sent: 0

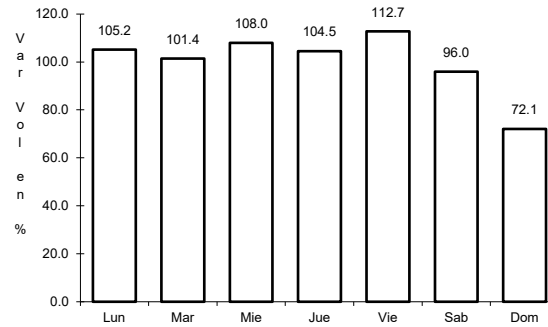
31 CARR: Villa del Pueblito - Huimilpan

CLAVE: 22503

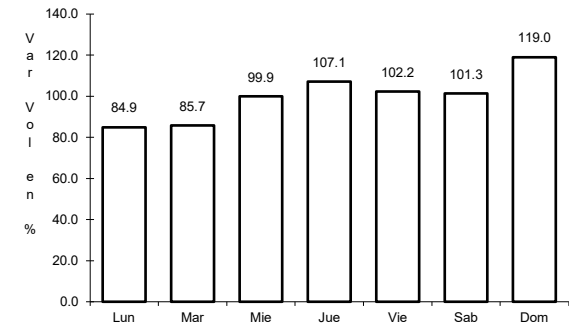
ruta: QRO



Km: 0.00 Tipo: 3 Sent: 1



Km: 0.00 Tipo: 3 Sent: 2

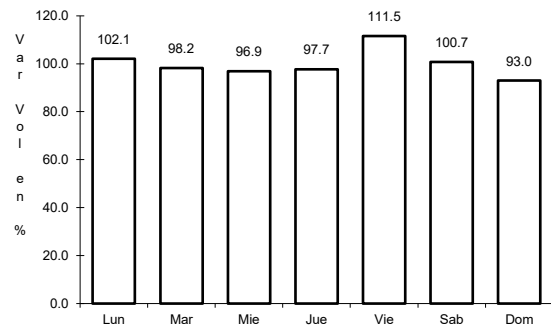


Km: 27.00 Tipo: 1 Sent: 0

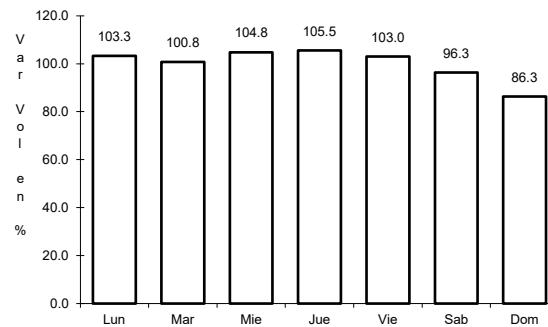
32 CARR: Toluca - Palmillas

CLAVE: 00496

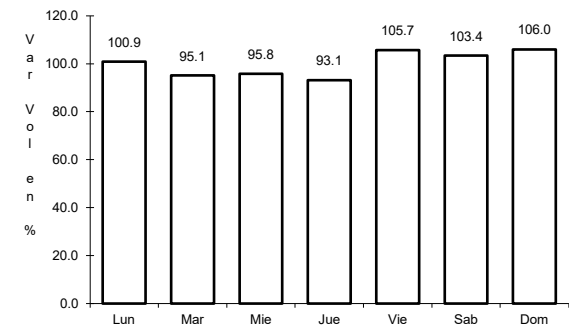
ruta: EM(D)-MEX-055



Km: 14.21 Tipo: 1 Sent: 1



Km: 14.21 Tipo: 1 Sent: 2



Km: 85.64 Tipo: 3 Sent: 0