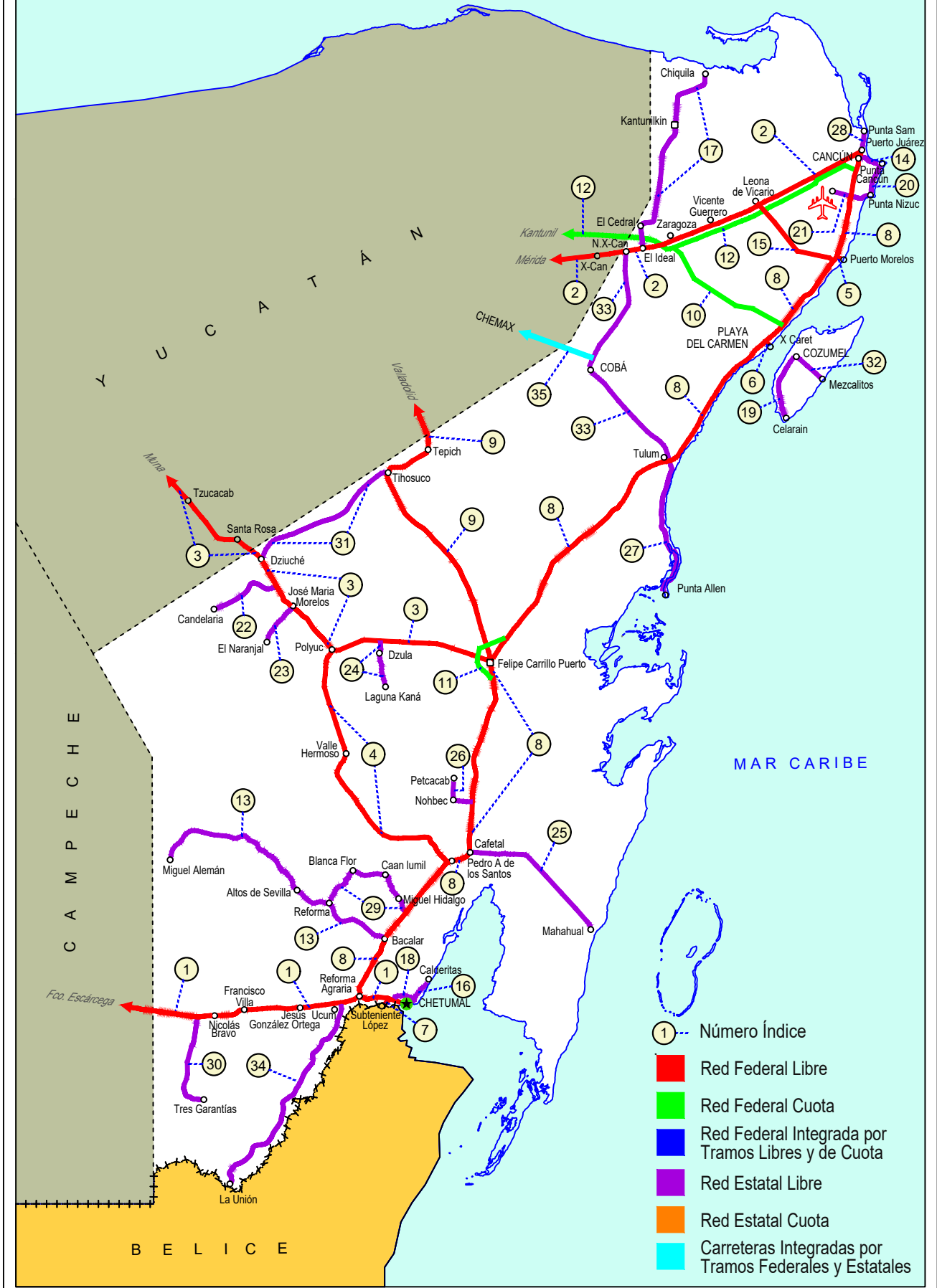




QUINTANA ROO

NO. INDICE CARRETERA		RUTA
	---RED FEDERAL LIBRE---	
1	Francisco Escárcega - Chetumal	MEX-186-307
2	Mérida - Puerto Juárez	MEX-180
3	Muna - Felipe Carrillo Puerto	MEX-184
4	Polyuc - T. C. (Reforma Agraria - Puerto Juárez)	MEX-293
5	Ramal a Puerto Morelos	MEX
6	Ramal a Punta Piedra	MEX
7	Ramal a Subteniente López	MEX-186
8	Reforma Agraria - Puerto Juárez	MEX-307
9	Valladolid - Felipe Carrillo Puerto	MEX-295
	---RED FEDERAL DE CUOTA---	
10	El Cedral - Playa del Carmen (Cuota)	MEX-180D
11	Libramiento de Felipe Carrillo Puerto (Cuota)	MEX-307D
12	Mérida - Cancún (Cuota)	MEX-180D
	---RED ESTATAL LIBRE---	
13	Bacalar - Miguel Alemán	QR
14	Cancún - Punta Cancún	QR
15	Central Vallarta - Leona Vicario	QR
16	Chetumal - Calderitas	QR-004
17	El Ideal - Chiquila	QR-005
18	Libramiento de Chetumal	QR
19	Perimetral Cozumel	QR
20	Punta Nizuc - Cancún	QR
21	Ramal a Aeropuerto Cancún	QR
22	Ramal a Candelaria	QR
23	Ramal a El Naranjal	QR
24	Ramal a Laguna de Kaná	QR
25	Ramal a Mahahual	QR
26	Ramal a Petcacab	QR-018
27	Ramal a Punta Allen	QR-015
28	Ramal a Punta Sam	QR
29	Ramal a Reforma	QR-016
30	Ramal a Tres Garantías	QR
31	Tihosuco - Dziuche	QR
32	Transversal de Cozumel	QR
33	Tulum - Nuevo X-Can	QR
34	Ucum - Unión	QR
	---CARRETERAS INTEGRADAS POR TRAMOS FEDERALES Y ESTATALES---	
35	Chemax - Cobá	YUC-MEX-180

23 QUINTANA ROO



QUINTANA ROO

1 CARR: Francisco Escárcega - Chetumal

CLAVE: 00093

RUTA: MEX-186-307

AÑO: 2023

LUGAR	ESTACION				CLASIFICACION VEHICULAR EN PORCIENTO										COORDENADAS					
	KM	TE	SC	TDPA	M	A	B	C2	C3	T3S2	T3S3	T3S2R4	OTROS	A	B	C	K'	D	LATITUD	LONGITUD
Francisco Escárcega	0.00	3	0	4651	16.3	62.9	4.1	3.6	1.9	5.3	1.6	3.4	0.9	79.2	4.1	16.7	0.074	0.501	18.604135	-90.718017
Adolfo López Mateos	41.50	1	0	3368	8.6	66.5	5.1	3.9	2.0	5.8	1.8	5.4	0.9	75.1	5.1	19.8	0.069	0.516	18.642490	-90.315461
T. Der. Silvituc	55.70	1	0	3493	11.0	64.9	5.1	3.6	2.2	5.5	2.1	4.7	0.9	75.9	5.1	19.0	0.068	0.517	18.651278	-90.276193
T. Der. Silvituc	55.70	3	0	2896	10.0	64.4	5.3	4.0	2.3	6.6	1.9	4.6	0.9	74.4	5.3	20.3	0.067	0.527	18.649406	-90.261322
Conhuás	100.00	1	0	2533	11.8	57.7	5.7	5.0	2.9	7.0	3.1	5.9	0.9	69.5	5.7	24.8	0.062	0.514	18.540463	-89.918617
Xpujil	155.73	1	0	3324	8.7	65.8	4.8	4.1	2.2	5.9	1.9	5.8	0.8	74.5	4.8	20.7	0.082	0.546	18.509289	-89.409415
Lim. Edos. Term. Camp. Ppia. Oroo.	179.90																			
X. C. Caobas - Chacanbacab	186.00	3	0	2148	6.6	62.5	7.7	4.6	1.9	8.0	2.2	5.5	1.0	69.1	7.7	23.2	0.076	0.518	18.468471	-89.093592
Nicolás Bravo	206.01	1	0	3782	6.9	67.6	4.6	5.6	1.5	7.4	1.3	4.8	0.3	74.5	4.6	20.9	0.081	0.506	18.458538	-88.938988
Nicolás Bravo	206.01	3	0	4290	7.4	70.4	4.2	3.9	1.5	5.5	1.3	4.9	0.9	77.8	4.2	18.0	0.075	0.507	18.459118	-88.920283
T. Izq. Morocoy	214.90	1	0	3390	7.4	70.3	4.3	3.8	1.7	5.9	1.7	4.2	0.7	77.7	4.3	18.0	0.109	0.506	18.478773	-88.818429
T. Izq. Morocoy	214.90	3	0	3473	5.8	69.7	4.0	4.5	1.6	7.4	2.1	4.1	0.8	75.5	4.0	20.5	0.083	0.523	18.478898	-88.814779
T. Der. Unión	247.50	1	0	6272	7.6	68.1	5.3	4.3	1.5	7.3	1.8	3.3	0.8	75.7	5.3	19.0	0.083	0.505	18.503954	-88.534374
T. Der. Unión	247.50	3	0	9339	10.1	75.7	1.6	4.8	1.1	3.2	0.8	2.1	0.6	85.8	1.6	12.6	0.095	0.501	18.508708	-88.504602
T. Izq. Fpe. Carrillo Puerto	255.15	1	0	8705	8.5	76.4	1.9	4.1	2.2	3.3	0.9	2.0	0.7	84.9	1.9	13.2	0.103	0.504	18.523843	-88.473420
T. Der. Subteniente López	268.57	1	1	10905	4.2	89.7	1.4	2.7	0.9	0.5	0.3	0.2	0.1	93.9	1.4	4.7	0.094	0.505	18.516647	-88.377995
T. Der. Subteniente López	268.57	1	2	11146	4.4	89.0	1.2	2.6	1.1	0.7	0.5	0.4	0.1	93.4	1.2	5.4	0.104	0.505	18.516748	-88.377967
T. Izq. Av. Insurgentes	270.00	1	1	14129	8.7	84.8	1.0	3.2	1.0	0.7	0.3	0.2	0.1	93.5	1.0	5.5	0.083	0.519	18.512969	-88.361354
T. Izq. Av. Insurgentes	270.00	1	2	15269	8.9	85.1	0.9	3.1	0.9	0.6	0.2	0.2	0.1	94.0	0.9	5.1	0.089	0.519	18.513076	-88.361324
T. Izq. Av. Insurgentes	270.00	3	1	5262	5.7	89.9	0.6	1.9	0.9	0.4	0.2	0.3	0.1	95.6	0.6	3.8	0.094	0.509	18.511541	-88.356361
T. Izq. Av. Insurgentes	270.00	3	2	5070	5.6	89.4	0.8	2.0	1.1	0.5	0.3	0.2	0.1	95.0	0.8	4.2	0.091	0.509	18.511554	-88.356115
Chetumal	277.36	1	1	7816	7.8	88.8	0.5	2.0	0.5	0.2	0.0	0.1	0.1	96.6	0.5	2.9	0.090	0.501	18.501945	-88.322141
Chetumal	277.36	1	2	7771	7.5	89.4	0.5	1.8	0.4	0.2	0.0	0.1	0.1	96.9	0.5	2.6	0.100	0.501	18.502047	-88.322092

2 CARR: Mérida - Puerto Juárez

CLAVE: 00067

RUTA: MEX-180

AÑO: 2023

LUGAR	ESTACION				CLASIFICACION VEHICULAR EN PORCIENTO										COORDENADAS					
	KM	TE	SC	TDPA	M	A	B	C2	C3	T3S2	T3S3	T3S2R4	OTROS	A	B	C	K'	D	LATITUD	LONGITUD
Mérida	0.00																			
X. Periférico de Mérida	5.60	1	1	13960	12.9	81.9	0.5	3.1	0.9	0.2	0.2	0.2	0.1	94.8	0.5	4.7	0.075	0.510	20.957321	-89.571844
X. Periférico de Mérida	5.60	1	2	13433	13.1	81.9	0.5	3.1	0.8	0.2	0.2	0.1	0.1	95.0	0.5	4.5	0.077	0.510	20.957406	-89.571825
X. Periférico de Mérida	5.60	3	1	19677	10.8	77.2	1.6	3.7	1.5	2.4	0.8	1.6	0.4	88.0	1.6	10.4	0.068	0.526	20.953659	-89.564428
X. Periférico de Mérida	5.60	3	2	17708	10.6	76.8	1.7	3.9	1.9	2.4	0.8	1.6	0.3	87.4	1.7	10.9	0.073	0.526	20.953751	-89.564338
Teya	13.00	1	1	15060	7.7	77.5	2.6	3.7	2.4	3.0	0.5	2.1	0.5	85.2	2.6	12.2	0.072	0.509	20.935154	-89.527563
Teya	13.00	1	2	15606	7.4	77.7	2.4	4.0	2.3	3.3	0.7	1.8	0.4	85.1	2.4	12.5	0.081	0.509	20.935265	-89.527491

QUINTANA ROO

2 CARR: Mérida - Puerto Juárez

CLAVE: 00067

RUTA: MEX-180

AÑO: 2023

LUGAR	ESTACION				CLASIFICACION VEHICULAR EN PORCIENTO														COORDENADAS	
	KM	TE	SC	TDPA	M	A	B	C2	C3	T3S2	T3S3	T3S2R4	OTROS	A	B	C	K'	D	LATITUD	LONGITUD
T. C. Teya - Peto	14.20	3	1	9214	9.9	74.1	2.0	4.4	2.7	3.2	1.0	2.2	0.5	84.0	2.0	14.0	0.085	0.504	20.920560	-89.492983
T. C. Teya - Peto	14.20	3	2	9356	10.1	74.6	1.9	4.2	2.7	3.3	0.7	2.0	0.5	84.7	1.9	13.4	0.093	0.504	20.920679	-89.492874
T. Der. Ticopó	21.40	3	1	8574	9.2	74.3	2.2	4.7	2.2	3.5	0.8	2.4	0.7	83.5	2.2	14.3	0.090	0.517	20.893163	-89.435373
T. Der. Ticopó	21.40	3	2	8014	8.8	74.8	2.1	4.9	1.8	3.5	0.7	2.8	0.6	83.6	2.1	14.3	0.107	0.517	20.893258	-89.435270
T. Der. Seyé	28.79	1	1	8842	5.5	77.5	3.0	4.5	1.7	3.5	1.1	2.6	0.6	83.0	3.0	14.0	0.069	0.514	20.895834	-89.391658
T. Der. Seyé	28.79	1	2	9339	5.5	77.4	3.0	4.5	1.7	3.5	1.2	2.6	0.6	82.9	3.0	14.1	0.073	0.514	20.895970	-89.391573
T. Der. Seyé	28.79	3	1	7189	6.0	75.4	3.4	4.9	1.8	3.5	1.3	2.9	0.8	81.4	3.4	15.2	0.078	0.513	20.891730	-89.374375
T. Der. Seyé	28.79	3	2	6820	6.0	75.2	3.4	4.9	1.8	3.6	1.4	2.9	0.8	81.2	3.4	15.4	0.093	0.513	20.891845	-89.374654
Tahmek (1er Acceso)	40.00	1	1	6666	4.5	76.2	3.2	4.8	2.1	4.2	1.2	2.9	0.9	80.7	3.2	16.1	0.088	0.501	20.876039	-89.279066
Tahmek (1er Acceso)	40.00	1	2	6683	4.5	76.0	3.2	4.9	2.2	4.2	1.2	2.9	0.9	80.5	3.2	16.3	0.095	0.501	20.876172	-89.279053
T. C. Libramiento de Tahmek - Hoctun - Xocchel Oeste	42.00	1	1	6767	2.8	79.4	3.1	3.5	2.4	3.9	0.8	3.4	0.7	82.2	3.1	14.7	0.091	0.516	20.881834	-89.258871
T. C. Libramiento de Tahmek - Hoctun - Xocchel Oeste	42.00	1	1	6670	2.7	80.9	3.3	3.8	2.0	2.6	0.9	3.0	0.8	83.6	3.3	13.1	0.085	0.516	20.881697	-89.258841
T. Izq. Hoctún (1º Acceso)	46.65	1	0	3403	10.1	77.8	1.7	7.7	1.1	0.9	0.4	0.3	0.0	87.9	1.7	10.4	0.068	0.513	20.867554	-89.214322
T. Izq. Hoctún (2º Acceso)	48.62	1	0	1746	10.1	78.4	1.5	7.7	0.7	0.7	0.4	0.5	0.0	88.5	1.5	10.0	0.078	0.502	20.858709	-89.202827
T. Izq. Hoctún (2º Acceso)	48.62	3	0	3087	28.2	61.9	1.5	6.7	0.7	0.5	0.2	0.2	0.1	90.1	1.5	8.4	0.068	0.508	20.854486	-89.195973
Xocchel	51.70																			
T. C. Libramiento de Tahmek - Hoctun - Xocchel	56.00	1	0	538	24.5	56.4	1.5	12.1	2.7	1.7	0.5	0.6	0.0	80.9	1.5	17.6	0.098	0.512	20.830692	-89.165801
Kantunil	67.28	1	1	5917	3.1	76.4	3.2	4.0	2.3	4.7	1.2	4.2	0.9	79.5	3.2	17.3	0.070	0.549	20.801952	-89.053552
Kantunil	67.28	1	2	4862	3.1	76.3	3.1	4.0	2.4	4.6	1.4	4.2	0.9	79.4	3.1	17.5	0.088	0.549	20.802056	-89.053511
Kantunil	67.28	3	0	5418	6.2	80.0	2.3	4.6	2.9	2.2	0.9	0.8	0.1	86.2	2.3	11.5	0.078	0.504	20.791286	-89.019256
Libre Unión	92.91	1	0	3548	5.4	76.7	2.9	6.5	3.4	2.6	1.3	1.1	0.1	82.1	2.9	15.0	0.087	0.528	20.708784	-88.818012
Libre Unión	92.91	3	0	3179	6.1	77.7	3.0	6.3	2.9	2.0	1.3	0.6	0.1	83.8	3.0	13.2	0.082	0.527	20.706923	-88.799662
Piste	116.30	3	0	9707	14.7	77.2	1.7	2.7	2.0	0.7	0.4	0.5	0.1	91.9	1.7	6.4	0.091	0.514	20.690966	-88.579648
1er. Acceso a Zona Arqueológica de Chichen-Itzá	117.90	3	0	7829	14.2	72.4	2.3	5.3	1.8	2.3	0.8	0.5	0.4	86.6	2.3	11.1	0.082	0.512	20.688326	-88.572400
2do. Acceso a Zona Arqueológica de Chichen-Itzá	121.10	3	0	6150	14.3	73.8	2.6	4.3	2.1	1.7	0.6	0.5	0.1	88.1	2.6	9.3	0.087	0.517	20.668815	-88.556557
T. Der. Chankom	127.00	1	0	5955	9.0	76.4	3.5	5.3	2.4	1.4	0.8	1.0	0.2	85.4	3.5	11.1	0.090	0.525	20.644181	-88.495171
T. Der. Chankom	127.00	3	0	5200	7.7	78.2	2.9	5.5	2.1	2.0	0.7	0.7	0.2	85.9	2.9	11.2	0.093	0.512	20.637636	-88.474660
Kaua	137.47	3	0	5809	8.7	79.0	3.2	4.4	2.1	1.3	0.6	0.6	0.1	87.7	3.2	9.1	0.087	0.504	20.623598	-88.401764
X. C. Periférico de Valladolid	157.12	1	0	8575	11.8	76.7	2.6	4.1	2.1	1.3	0.5	0.8	0.1	88.5	2.6	8.9	0.079	0.505	20.673525	-88.248349
Valladolid	160.68	1	0	9301	19.0	75.5	1.3	3.0	0.6	0.2	0.1	0.2	0.1	94.5	1.3	4.2	0.091	0.501	20.682800	-88.233517
Valladolid	160.68	3	0	10122	22.6	73.0	0.6	2.2	0.7	0.4	0.1	0.3	0.1	95.6	0.6	3.8	0.074	0.533	20.694981	-88.164067
X. C. Periférico de Valladolid	165.60	3	0	10714	12.6	75.4	1.6	3.0	2.7	2.5	0.8	1.2	0.2	88.0	1.6	10.4	0.076	0.501	20.696294	-88.155130
T. Der. Coba	187.80	1	0	7670	6.0	82.1	1.8	3.2	2.2	2.8	0.6	1.1	0.2	88.1	1.8	10.1	0.083	0.502	20.659629	-87.961731
T. Der. Chemax	189.79	1	0	6353	9.9	82.3	1.1	3.1	1.2	1.2	0.3	0.7	0.2	92.2	1.1	6.7	0.083	0.504	20.657870	-87.951465
T. Der. Chemax	189.79	3	0	4397	9.2	80.4	1.6	3.6	1.9	2.1	0.4	0.6	0.2	89.6	1.6	8.8	0.085	0.500	20.665085	-87.924677

QUINTANA ROO

2 CARR: Mérida - Puerto Juárez

CLAVE: 00067

RUTA: MEX-180

AÑO: 2023

LUGAR	ESTACION				CLASIFICACION VEHICULAR EN PORCIENTO										COORDENADAS					
	KM	TE	SC	TDPA	M	A	B	C2	C3	T3S2	T3S3	T3S2R4	OTROS	A	B	C	K'	D	LATITUD	LONGITUD
X-Can	225.00	3	0	3210	4.9	82.2	2.1	4.6	1.9	2.6	0.7	0.8	0.2	87.1	2.1	10.8	0.083	0.506	20.860448	-87.656785
Lim. Edos. Term. Yuc. Ppia. Q. R.	230.40																			
Nuevo X-Can	231.90	3	0	3844	4.3	83.7	1.4	4.9	2.1	2.2	0.4	0.8	0.2	88.0	1.4	10.6	0.082	0.504	20.871577	-87.591142
Zaragoza	239.00	1	0	5235	10.9	77.2	1.6	4.6	2.1	2.4	0.5	0.7	0.0	88.1	1.6	10.3	0.080	0.505	20.880576	-87.537662
Zaragoza	239.00	3	0	4001	6.6	78.6	2.2	5.6	2.4	2.9	0.5	1.0	0.2	85.2	2.2	12.6	0.082	0.503	20.883935	-87.517716
Vicente Guerrero	261.00	1	0	3851	8.4	77.4	1.8	4.9	3.9	2.5	0.4	0.6	0.1	85.8	1.8	12.4	0.078	0.509	20.940875	-87.331815
Leona Vicario	275.50	1	0	4951	5.7	82.4	2.2	4.6	1.5	2.1	0.7	0.7	0.1	88.1	2.2	9.7	0.086	0.528	20.979981	-87.225879
Leona Vicario	275.50	3	0	7261	14.6	75.9	2.0	3.8	1.3	1.3	0.3	0.7	0.1	90.5	2.0	7.5	0.084	0.533	20.993427	-87.188800
T. Der. Aeropuerto	302.50	1	0	12518	6.2	83.3	1.2	3.8	2.5	1.6	0.8	0.5	0.1	89.5	1.2	9.3	0.060	0.526	21.096412	-86.982974
T. Der. Aeropuerto	302.50	3	1	5866	5.2	77.0	1.7	7.9	3.4	2.0	0.8	1.5	0.5	82.2	1.7	16.1	0.097	0.507	21.102759	-86.970021
T. Der. Aeropuerto	302.50	3	2	6036	5.1	75.0	1.9	8.9	3.9	2.2	0.8	1.7	0.5	80.1	1.9	18.0	0.096	0.507	21.102885	-86.970111
T. Der. Alfredo V. Bonfil	310.00	1	1	32552	7.9	82.7	1.0	2.3	1.3	1.6	0.3	2.2	0.7	90.6	1.0	8.4	0.071	0.516	21.138152	-86.899046
T. Der. Alfredo V. Bonfil	310.00	1	2	34938	7.8	82.4	1.0	2.5	1.3	1.7	0.2	2.4	0.7	90.2	1.0	8.8	0.068	0.516	21.138372	-86.898919
Puerto Juárez	321.41																			

3 CARR: Muna - Felipe Carrillo Puerto

CLAVE: 00148

RUTA: MEX-184

AÑO: 2023

LUGAR	ESTACION				CLASIFICACION VEHICULAR EN PORCIENTO										COORDENADAS					
	KM	TE	SC	TDPA	M	A	B	C2	C3	T3S2	T3S3	T3S2R4	OTROS	A	B	C	K'	D	LATITUD	LONGITUD
Muna	0.00	3	0	4098	8.7	73.2	1.3	10.1	1.5	2.1	1.1	1.1	0.9	81.9	1.3	16.8	0.077	0.503	20.474317	-89.694347
Ticul	19.10	1	0	2655	8.9	72.4	1.4	10.3	1.5	2.6	1.3	1.3	0.3	81.3	1.4	17.3	0.081	0.503	20.407164	-89.574519
Ticul	19.10	3	0	8029	35.6	52.3	1.0	4.8	0.9	3.4	0.8	0.6	0.6	87.9	1.0	11.1	0.075	0.530	20.372799	-89.516997
Oxkutzcab	40.50	3	0	7467	21.2	67.3	1.0	5.3	1.0	1.9	1.4	0.6	0.3	88.5	1.0	10.5	0.071	0.527	20.281696	-89.374523
Tekax	53.90	3	0	4496	43.1	50.8	0.7	2.3	1.0	0.9	0.2	0.7	0.3	93.9	0.7	5.4	0.098	0.524	20.188984	-89.268682
Tzucacab	86.60	1	0	1882	33.5	59.2	0.9	4.7	0.9	0.3	0.2	0.2	0.1	92.7	0.9	6.4	0.078	0.516	20.078544	-89.062377
Tzucacab	86.60	3	0	1448	39.7	57.3	0.6	1.5	0.6	0.1	0.1	0.1	0.0	97.0	0.6	2.4	0.071	0.506	20.062231	-89.036001
Santa Rosa	109.60	3	0	2289	7.9	76.3	3.1	4.8	1.5	2.0	0.8	3.0	0.6	84.2	3.1	12.7	0.088	0.506	19.947306	-88.880263
Lim. Edos. Term. Yuc. Ppia. Q. R.	117.00																			
Dziuche	118.00	1	0	2611	8.0	76.5	3.0	4.7	1.7	1.8	0.8	2.9	0.6	84.5	3.0	12.5	0.079	0.516	19.905508	-88.819717
Dziuche	118.00	3	0	3372	9.9	77.0	2.5	4.2	1.4	1.6	0.6	2.4	0.4	86.9	2.5	10.6	0.079	0.502	19.888948	-88.803876
José María Morelos	138.60	1	0	4877	15.5	75.2	1.7	3.2	1.2	1.0	0.4	1.5	0.3	90.7	1.7	7.6	0.071	0.540	19.764441	-88.725104
José María Morelos	138.60	3	0	3293	12.4	75.2	2.2	3.9	1.7	1.6	0.7	2.0	0.3	87.6	2.2	10.2	0.084	0.511	19.736567	-88.691536
Polyuc	161.94	1	0	2909	12.4	71.6	2.4	5.4	2.3	2.1	1.0	2.6	0.2	84.0	2.4	13.6	0.073	0.502	19.611629	-88.571723
Polyuc	161.94	3	0	1473	9.2	81.9	0.8	4.4	1.7	1.1	0.5	0.4	0.0	91.1	0.8	8.1	0.092	0.505	19.609489	-88.553433
T. Der. Dzúlá	178.11	3	0	1480	6.1	84.4	1.3	4.5	1.9	1.0	0.4	0.4	0.0	90.5	1.3	8.2	0.095	0.501	19.643495	-88.405602

QUINTANA ROO

3 CARR: Muna - Felipe Carrillo Puerto

CLAVE: 00148

RUTA: MEX-184

AÑO: 2023

LUGAR	ESTACION				CLASIFICACION VEHICULAR EN PORCIENTO													COORDENADAS		
	KM	TE	SC	TDPA	M	A	B	C2	C3	T3S2	T3S3	T3S2R4	OTROS	A	B	C	K'	D	LATITUD	LONGITUD
Felipe Carrillo Puerto	216.97	1	0	7824	28.1	67.8	1.0	1.5	0.7	0.5	0.1	0.3	0.0	95.9	1.0	3.1	0.103	0.501	19.584486	-88.057972

4 CARR: Polyuc - T. C. (Reforma Agraria - Puerto Juárez)

CLAVE: 23014

RUTA: MEX-293

AÑO: 2023

LUGAR	ESTACION				CLASIFICACION VEHICULAR EN PORCIENTO													COORDENADAS		
	KM	TE	SC	TDPA	M	A	B	C2	C3	T3S2	T3S3	T3S2R4	OTROS	A	B	C	K'	D	LATITUD	LONGITUD
Polyuc	0.00	3	0	3103	11.0	80.4	1.5	2.4	1.2	1.3	0.5	1.4	0.3	91.4	1.5	7.1	0.083	0.506	19.607562	-88.572062
T. Der. Ramonal	24.00	1	0	1707	4.2	79.4	3.0	4.2	1.9	2.4	1.2	3.2	0.5	83.6	3.0	13.4	0.094	0.524	19.400684	-88.565115
T. Der. Ramonal	24.00	3	0	1433	3.9	78.7	3.4	4.2	2.5	2.9	0.7	3.1	0.6	82.6	3.4	14.0	0.085	0.517	19.398017	-88.564319
T. Izq. Santa María Poniente	35.00	1	0	1642	4.2	80.4	2.8	4.0	2.1	2.3	0.9	2.9	0.4	84.6	2.8	12.6	0.086	0.510	19.344849	-88.548287
T. Izq. Santa María Poniente	35.00	3	0	1587	8.1	75.1	2.1	4.2	3.6	2.6	1.5	2.7	0.1	83.2	2.1	14.7	0.079	0.508	19.339497	-88.546647
Valle Hermoso	50.00	3	0	1647	13.9	70.4	2.9	4.5	2.2	2.0	0.7	3.0	0.4	84.3	2.9	12.8	0.087	0.509	19.180814	-88.523309
T. Izq. Chacchoben	93.50	1	0	1822	7.9	77.2	3.0	3.8	1.8	2.3	0.7	2.9	0.4	85.1	3.0	11.9	0.086	0.516	18.982547	-88.218443
T. Izq. Chacchoben	93.50	3	0	1896	7.9	78.0	2.8	3.6	1.7	2.3	0.6	2.8	0.3	85.9	2.8	11.3	0.094	0.517	18.967098	-88.204207
T. C. Reforma Agraria - Puerto Juárez	99.00	1	0	1852	5.8	79.9	2.8	3.5	1.7	2.3	0.8	2.8	0.4	85.7	2.8	11.5	0.099	0.508	18.950705	-88.188990

5 CARR: Ramal a Puerto Morelos

CLAVE: 23569

RUTA: MEX

AÑO: 2023

LUGAR	ESTACION				CLASIFICACION VEHICULAR EN PORCIENTO													COORDENADAS		
	KM	TE	SC	TDPA	M	A	B	C2	C3	T3S2	T3S3	T3S2R4	OTROS	A	B	C	K'	D	LATITUD	LONGITUD
T. C. Reforma Agraria - Puerto Juárez	0.00	3	0	14178	9.8	85.9	1.4	2.3	0.3	0.2	0.0	0.1	0.0	95.7	1.4	2.9	0.079	0.501	20.852840	-86.889188
Puerto Morelos	2.20																			

6 CARR: Ramal a Punta Piedra

CLAVE: 23575

RUTA: MEX

AÑO: 2023

LUGAR	ESTACION				CLASIFICACION VEHICULAR EN PORCIENTO													COORDENADAS		
	KM	TE	SC	TDPA	M	A	B	C2	C3	T3S2	T3S3	T3S2R4	OTROS	A	B	C	K'	D	LATITUD	LONGITUD
T. C. Reforma Agraria - Puerto Juárez	0.00	3	1	11084	18.5	74.4	1.6	2.7	0.8	0.5	0.2	1.1	0.2	92.9	1.6	5.5	0.072	0.534	20.626023	-87.080990
T. C. Reforma Agraria - Puerto Juárez	0.00	3	2	9678	18.5	74.0	1.6	2.7	0.9	0.6	0.3	1.1	0.3	92.5	1.6	5.9	0.064	0.534	20.626075	-87.080948
Punta Piedra (Playa del Carmen)	1.50																			

QUINTANA ROO

7 CARR: Ramal a Subteniente López

CLAVE: 23567

RUTA: MEX-186

AÑO: 2023

LUGAR	ESTACION				CLASIFICACION VEHICULAR EN PORCIENTO										COORDENADAS					
	KM	TE	SC	TDPA	M	A	B	C2	C3	T3S2	T3S3	T3S2R4	OTROS	A	B	C	K'	D	LATITUD	LONGITUD
T. C. Francisco Escárcega - Chetumal	0.00	3	1	3876	8.7	84.3	0.8	2.7	1.0	0.9	0.6	0.7	0.3	93.0	0.8	6.2	0.110	0.502	18.509484	-88.379086
T. C. Francisco Escárcega - Chetumal	0.00	3	2	3900	8.4	84.1	0.8	3.0	1.0	1.0	0.5	0.8	0.4	92.5	0.8	6.7	0.092	0.502	18.509432	-88.379011
T Der. Aduana Santa Elena	1.80	3	1	2796	13.9	82.4	0.8	1.1	0.7	0.7	0.1	0.2	0.1	96.3	0.8	2.9	0.110	0.513	18.500760	-88.385537
T Der. Aduana Santa Elena	1.80	3	2	2942	15.2	82.0	0.5	0.9	0.5	0.6	0.1	0.1	0.1	97.2	0.5	2.3	0.098	0.513	18.500598	-88.385448
Subteniente López	3.00																			

8 CARR: Reforma Agraria - Puerto Juárez

CLAVE: 23132

RUTA: MEX-307

AÑO: 2023

LUGAR	ESTACION				CLASIFICACION VEHICULAR EN PORCIENTO										COORDENADAS					
	KM	TE	SC	TDPA	M	A	B	C2	C3	T3S2	T3S3	T3S2R4	OTROS	A	B	C	K'	D	LATITUD	LONGITUD
T. C. Francisco Escárcega - Chetumal	0.00	3	1	7327	3.0	84.3	2.0	5.1	1.0	2.0	0.6	1.6	0.4	87.3	2.0	10.7	0.096	0.512	18.540151	-88.467269
T. C. Francisco Escárcega - Chetumal	0.00	3	2	6993	3.0	83.0	2.4	5.4	1.1	2.1	0.7	1.8	0.5	86.0	2.4	11.6	0.085	0.512	18.540151	-88.467375
Bacalar	19.15	1	1	6281	3.3	84.1	1.9	5.0	0.9	2.0	0.6	1.7	0.5	87.4	1.9	10.7	0.108	0.503	18.661044	-88.403981
Bacalar	19.15	1	2	6364	3.3	82.3	2.2	5.8	1.1	2.3	0.6	1.9	0.5	85.6	2.2	12.2	0.091	0.503	18.661109	-88.404063
Bacalar	19.15	3	0	9956	3.0	80.7	2.7	6.0	1.3	2.6	0.7	2.4	0.6	83.7	2.7	13.6	0.088	0.502	18.695991	-88.388280
T. Izq. Reforma	22.24	3	0	9473	3.0	81.6	2.6	5.8	1.2	2.8	0.7	1.8	0.5	84.6	2.6	12.8	0.093	0.505	18.706829	-88.384515
Buenavista	46.90	1	0	5411	3.4	81.0	2.2	5.8	1.5	2.5	0.8	2.2	0.6	84.4	2.2	13.4	0.091	0.513	18.879166	-88.246449
Buenavista	46.90	3	0	6910	3.5	79.7	2.5	5.8	1.8	2.6	1.1	2.4	0.6	83.2	2.5	14.3	0.084	0.515	18.889899	-88.237202
T. Izq. Lazáro Cárdenas	56.30	1	0	6568	3.5	79.3	2.7	5.8	1.9	2.6	1.2	2.4	0.6	82.8	2.7	14.5	0.093	0.503	18.941811	-88.189567
T. Izq. Lazáro Cárdenas	56.30	3	0	5348	3.7	78.8	2.7	5.7	1.8	2.7	1.2	2.7	0.7	82.5	2.7	14.8	0.089	0.503	18.949608	-88.181955
T. Izq. Chacchoben	70.80	1	0	4665	4.9	74.9	3.9	5.9	2.0	3.8	0.9	3.0	0.7	79.8	3.9	16.3	0.090	0.505	19.010961	-88.111228
T. Izq. Chacchoben	70.80	3	0	5325	4.5	75.5	3.5	6.0	1.8	3.8	1.2	3.0	0.7	80.0	3.5	16.5	0.076	0.515	19.034362	-88.110128
T. Izq. Noh-Bec	81.94	1	0	5107	4.6	74.7	3.5	6.1	2.3	3.8	1.3	3.0	0.7	79.3	3.5	17.2	0.090	0.518	19.131789	-88.105384
T. Izq. Noh-Bec	81.94	3	0	4565	4.8	74.6	3.9	6.0	2.1	3.7	1.1	3.1	0.7	79.4	3.9	16.7	0.094	0.533	19.140942	-88.104946
Libramiento Felipe Carrillo Puerto (Cuota)	128.00	1	0	5053	4.5	75.3	3.7	6.0	2.1	3.4	1.1	3.1	0.8	79.8	3.7	16.5	0.109	0.516	19.537381	-88.040305
Felipe Carrillo Puerto	132.00	1	0	4412	4.2	84.0	3.1	3.6	1.0	1.6	0.5	1.6	0.4	88.2	3.1	8.7	0.111	0.529	19.554701	-88.043083
Felipe Carrillo Puerto	132.00	3	0	4343	3.5	82.8	3.8	4.5	1.3	1.6	0.6	1.6	0.3	86.3	3.8	9.9	0.104	0.507	19.597221	-88.033778
Libramiento Felipe Carrillo Puerto (Cuota)	138.25	1	0	3884	2.8	82.2	4.1	5.0	1.4	2.1	0.4	1.6	0.4	85.0	4.1	10.9	0.119	0.527	19.620597	-88.015161
T. Izq. Chumpón	184.40	1	0	4181	2.4	79.5	5.0	5.6	1.1	3.7	0.6	1.8	0.3	81.9	5.0	13.1	0.108	0.515	19.954023	-87.763174
Tulum Pueblo	227.00	1	0	14715	9.7	78.0	2.7	3.3	2.0	1.9	0.7	0.9	0.8	87.7	2.7	9.6	0.101	0.503	20.201678	-87.492219
Tulum Pueblo	227.00	3	1	12855	4.2	91.0	0.4	2.3	0.3	0.7	0.5	0.4	0.2	95.2	0.4	4.4	0.076	0.518	20.209631	-87.467381
Tulum Pueblo	227.00	3	2	11969	4.2	90.9	0.4	2.4	0.3	0.7	0.5	0.4	0.2	95.1	0.4	4.5	0.073	0.518	20.209735	-87.467318
T. Izq. Cobá	229.19	1	1	11106	3.0	91.8	0.6	1.4	1.1	0.8	0.4	0.5	0.4	94.8	0.6	4.6	0.067	0.503	20.213844	-87.454193
T. Izq. Cobá	229.19	1	2	10991	3.0	91.8	0.6	1.3	1.1	0.8	0.4	0.6	0.4	94.8	0.6	4.6	0.074	0.503	20.213960	-87.454239
T. Izq. Cobá	229.19	3	1	15038	6.2	83.9	1.8	4.5	1.3	1.0	0.3	0.7	0.3	90.1	1.8	8.1	0.090	0.501	20.215542	-87.448887

QUINTANA ROO

8 CARR: Reforma Agraria - Puerto Juárez

CLAVE: 23132

RUTA: MEX-307

AÑO: 2023

LUGAR	ESTACION				CLASIFICACION VEHICULAR EN PORCIENTO														COORDENADAS	
	KM	TE	SC	TDPA	M	A	B	C2	C3	T3S2	T3S3	T3S2R4	OTROS	A	B	C	K'	D	LATITUD	LONGITUD
T. Izq. Cobá	229.19	3	2	15121	6.1	84.1	1.8	4.4	1.3	1.0	0.3	0.7	0.3	90.2	1.8	8.0	0.084	0.501	20.215393	-87.449711
X. C. Tulum - Aeropuerto	231.19	1	1	14321	11.5	77.2	2.2	4.6	1.6	1.0	0.6	1.0	0.3	88.7	2.2	9.1	0.077	0.515	20.219007	-87.438100
X. C. Tulum - Aeropuerto	231.19	1	2	13510	11.6	75.6	2.4	5.4	1.7	1.4	0.6	1.0	0.3	87.2	2.4	10.4	0.081	0.515	20.219127	-87.438083
X. C. Tulum - Aeropuerto	231.19	3	1	13052	12.7	75.6	2.3	3.9	2.7	1.2	0.6	0.8	0.2	88.3	2.3	9.4	0.082	0.509	20.220085	-87.434792
X. C. Tulum - Aeropuerto	231.19	3	2	13513	12.6	75.7	2.2	4.3	2.4	1.1	0.6	0.9	0.2	88.3	2.2	9.5	0.086	0.509	20.220179	-87.434872
T. Der. Xel-Ha	244.80	1	1	11023	2.1	87.7	2.3	4.1	1.5	0.9	0.5	0.7	0.2	89.8	2.3	7.9	0.092	0.512	20.314679	-87.367754
T. Der. Xel-Ha	244.80	1	2	11552	2.2	87.7	2.5	4.0	1.4	1.0	0.4	0.6	0.2	89.9	2.5	7.6	0.087	0.512	20.314746	-87.367861
T. Der. Xel-Ha	244.80	3	1	11325	2.0	88.0	2.4	4.0	1.4	0.9	0.4	0.7	0.2	90.0	2.4	7.6	0.102	0.512	20.330647	-87.358499
T. Der. Xel-Ha	244.80	3	2	11873	2.0	87.9	2.3	4.1	1.3	1.0	0.4	0.8	0.2	89.9	2.3	7.8	0.092	0.512	20.330744	-87.358587
T. Der. Akumal	254.44	1	1	13090	2.6	87.6	2.9	4.1	1.1	0.8	0.3	0.5	0.1	90.2	2.9	6.9	0.103	0.502	20.395728	-87.321319
T. Der. Akumal	254.44	1	2	13176	2.5	86.7	3.4	4.5	1.2	0.8	0.3	0.5	0.1	89.2	3.4	7.4	0.102	0.502	20.395798	-87.321448
Puerto Aventuras	269.34	3	1	20700	2.5	88.1	2.6	3.9	1.4	0.7	0.3	0.4	0.1	90.6	2.6	6.8	0.100	0.502	20.518174	-87.209243
Puerto Aventuras	269.34	3	2	20905	2.1	87.9	2.8	4.2	1.4	0.8	0.3	0.4	0.1	90.0	2.8	7.2	0.090	0.502	20.518285	-87.209296
Playa del Carmen	289.70	1	1	36330	7.7	84.0	2.7	3.4	0.8	0.6	0.3	0.4	0.1	91.7	2.7	5.6	0.086	0.506	20.609449	-87.105173
Playa del Carmen	289.70	1	2	37316	7.4	81.5	3.4	4.9	1.2	0.8	0.2	0.5	0.1	88.9	3.4	7.7	0.097	0.506	20.609595	-87.105290
Playa del Carmen	289.70	3	1	32208	7.2	84.9	2.1	4.0	1.1	0.3	0.1	0.2	0.1	92.1	2.1	5.8	0.072	0.506	20.666137	-87.054023
Playa del Carmen	289.70	3	2	33087	7.0	85.2	2.0	4.1	1.0	0.3	0.1	0.2	0.1	92.2	2.0	5.8	0.070	0.506	20.666337	-87.054145
T. Der. Puerto Morelos	321.48	1	1	23222	4.0	88.1	1.9	4.5	0.5	0.4	0.2	0.3	0.1	92.1	1.9	6.0	0.082	0.518	20.838199	-86.909825
T. Der. Puerto Morelos	321.48	1	2	21577	4.0	87.3	2.2	5.0	0.5	0.4	0.2	0.3	0.1	91.3	2.2	6.5	0.086	0.518	20.838295	-86.910037
T. Der. Puerto Morelos	321.48	3	1	31258	6.9	85.1	2.3	4.0	0.6	0.5	0.3	0.2	0.1	92.0	2.3	5.7	0.074	0.511	20.873297	-86.890441
T. Der. Puerto Morelos	321.48	3	2	28204	6.8	84.3	2.6	4.6	0.6	0.5	0.3	0.2	0.1	91.1	2.6	6.3	0.073	0.511	20.873349	-86.890614
T. Izq. Aeropuerto Cancún	341.50	1	1	36262	2.2	82.8	2.6	10.8	0.6	0.4	0.1	0.4	0.1	85.0	2.6	12.4	0.069	0.539	21.027410	-86.852881
T. Izq. Aeropuerto Cancún	341.50	1	2	43143	2.4	82.5	2.9	10.6	0.6	0.4	0.1	0.4	0.1	84.9	2.9	12.2	0.064	0.539	21.027445	-86.853009
T. Izq. Aeropuerto Cancún	341.50	3	1	42953	1.6	87.7	1.7	6.1	0.3	1.0	1.3	0.2	0.1	89.3	1.7	9.0	0.097	0.501	21.041698	-86.849766
T. Izq. Aeropuerto Cancún	341.50	3	2	43082	1.5	87.4	2.1	6.1	0.2	1.0	1.4	0.2	0.1	88.9	2.1	9.0	0.090	0.501	21.040830	-86.850036
T. Izq. Alfredo V. Bonfil	348.22	1	1	38589	2.3	82.9	2.5	9.5	0.6	0.4	1.0	0.6	0.2	85.2	2.5	12.3	0.103	0.511	21.082743	-86.843367
T. Izq. Alfredo V. Bonfil	348.22	1	2	40583	2.2	83.3	2.4	9.7	0.5	0.3	1.0	0.4	0.2	85.5	2.4	12.1	0.110	0.511	21.082891	-86.843476
Cancún	355.48	1	1	42337	1.5	84.4	2.1	9.6	0.7	0.3	0.9	0.4	0.1	85.9	2.1	12.0	0.078	0.540	21.107769	-86.839454
Cancún	355.48	1	2	50671	1.6	84.4	2.1	9.5	0.6	0.3	1.0	0.4	0.1	86.0	2.1	11.9	0.071	0.540	21.107785	-86.839591
T. C. Mérida - Puerto Juárez	357.48																			

QUINTANA ROO

9 CARR: Valladolid - Felipe Carrillo Puerto

CLAVE: 00010

RUTA: MEX-295

AÑO: 2023

LUGAR	ESTACION				CLASIFICACION VEHICULAR EN PORCIENTO										COORDENADAS					
	KM	TE	SC	TDPA	M	A	B	C2	C3	T3S2	T3S3	T3S2R4	OTROS	A	B	C	K'	D	LATITUD	LONGITUD
Valladolid	0.00	3	0	8385	31.2	63.5	0.5	2.4	0.5	1.1	0.1	0.2	0.5	94.7	0.5	4.8	0.094	0.507	20.673274	-88.204493
Chichimilá	6.90	3	0	3181	19.6	77.5	0.3	1.3	0.6	0.3	0.0	0.2	0.2	97.1	0.3	2.6	0.094	0.507	20.620021	-88.236644
Tekom	12.05	3	0	2630	19.5	77.3	0.3	1.4	0.7	0.4	0.0	0.2	0.2	96.8	0.3	2.9	0.092	0.506	20.590225	-88.265398
Tixcacalcupul	19.80	3	0	946	14.7	76.2	1.0	5.8	1.0	0.3	0.1	0.4	0.5	90.9	1.0	8.1	0.089	0.502	20.520268	-88.270787
Lim. Edos. Term. Yuc. Ppia. Q. R.	46.00																			
Tepich	51.40	1	0	1006	21.6	72.9	0.4	1.5	1.9	0.6	0.1	0.4	0.6	94.5	0.4	5.1	0.087	0.505	20.248746	-88.255248
Tihosuco	65.00	1	0	1138	16.8	76.9	2.5	1.3	1.0	0.3	0.2	0.6	0.4	93.7	2.5	3.8	0.092	0.505	20.193221	-88.360422
Tihosuco	65.00	3	0	1281	16.0	75.7	1.0	5.4	0.7	0.2	0.1	0.4	0.5	91.7	1.0	7.3	0.082	0.514	20.189795	-88.387358
T. Izq. San Felipe Berriozábal	99.00	1	0	718	12.4	83.2	2.0	0.6	1.0	0.3	0.1	0.4	0.0	95.6	2.0	2.4	0.108	0.514	19.962444	-88.241567
T. Izq. San Felipe Berriozábal	99.00	3	0	848	12.4	79.6	1.2	1.8	2.6	1.1	0.3	0.7	0.3	92.0	1.2	6.8	0.090	0.527	19.961718	-88.240816
Señor	116.50	1	0	1149	15.5	78.5	1.8	2.5	0.5	0.2	0.2	0.3	0.5	94.0	1.8	4.2	0.087	0.513	19.851090	-88.143659
Señor	116.50	3	0	1572	12.4	76.6	2.6	4.4	0.8	1.0	0.9	0.9	0.4	89.0	2.6	8.4	0.085	0.511	19.833059	-88.131834
Felipe Carrillo Puerto	147.70	1	0	2014	17.5	77.2	1.0	3.0	0.4	0.5	0.1	0.3	0.0	94.7	1.0	4.3	0.087	0.504	19.602385	-88.053562

10 CARR: El Cedral - Playa del Carmen (Cuota)

CLAVE:

RUTA: MEX-180D

AÑO: 2023

LUGAR	ESTACION				CLASIFICACION VEHICULAR EN PORCIENTO										COORDENADAS					
	KM	TE	SC	TDPA	M	A	B	C2	C3	T3S2	T3S3	T3S2R4	OTROS	A	B	C	K'	D	LATITUD	LONGITUD
El Cedral	0.00																			
X. C. Mérida - Cancún (Cuota)	10.05	1	0	1490	4.5	78.7	4.0	3.8	4.3	2.8	1.5	0.3	0.1	83.2	4.0	12.8	0.077	0.500	20.909203	-87.447040
X. C. Mérida - Cancún (Cuota)	10.05	3	0	2342	2.8	81.2	5.4	3.4	1.4	1.9	0.5	3.1	0.3	84.0	5.4	10.6	0.096	0.517	20.884204	-87.426694
Plaza de Cobro Tintal	50.00	2	0	2430	1.4	83.2	5.3	2.0	1.1	2.0	0.8	4.0	0.2	84.6	5.3	10.1	0.090	0.500	20.698987	-87.144285
Playa del Carmen	56.30																			

11 CARR: Libramiento de Felipe Carrillo Puerto (Cuota)

CLAVE:

RUTA: MEX-307D

AÑO: 2023

LUGAR	ESTACION				CLASIFICACION VEHICULAR EN PORCIENTO										COORDENADAS					
	KM	TE	SC	TDPA	M	A	B	C2	C3	T3S2	T3S3	T3S2R4	OTROS	A	B	C	K'	D	LATITUD	LONGITUD
T. C. Reforma Agraria - Puerto Juárez (Sur)	0.00	3	0	1618	2.0	79.8	4.6	4.2	1.9	4.6	1.1	1.6	0.2	81.8	4.6	13.6	0.068	0.510	19.549786	-88.049183
Plaza de Cobro Felipe Carrillo Puerto	6.10	2	0	1126	0.6	66.0	6.2	2.7	3.2	9.7	3.0	7.8	0.8	66.6	6.2	27.2	0.090	0.500	19.590397	-88.071289
X. C. Valladolid - Felipe Carrillo Puerto	9.00	1	0	2151	4.6	73.7	5.6	3.8	2.2	4.9	0.9	3.8	0.5	78.3	5.6	16.1	0.081	0.546	19.606078	-88.060532
T. C. Reforma Agraria - Puerto Juárez (Norte)	13.92	1	0	1299	3.6	74.6	5.9	4.0	2.0	4.1	1.2	3.8	0.8	78.2	5.9	15.9	0.109	0.565	19.623335	-88.016246

QUINTANA ROO

12 CARR: Mérida - Cancún (Cuota)

CLAVE: 00071

RUTA: MEX-180D

AÑO: 2023

LUGAR	ESTACION				CLASIFICACION VEHICULAR EN PORCIENTO										COORDENADAS					
	KM	TE	SC	TDPA	M	A	B	C2	C3	T3S2	T3S3	T3S2R4	OTROS	A	B	C	K'	D	LATITUD	LONGITUD
T. C. Mérida - Puerto Juárez	66.00	3	1	4370	2.6	73.7	6.6	5.2	1.7	3.8	1.3	4.2	0.9	76.3	6.6	17.1	0.082	0.509	20.802804	-89.044774
T. C. Mérida - Puerto Juárez	66.00	3	2	4212	2.5	73.6	5.1	4.4	2.6	5.0	1.2	4.7	0.9	76.1	5.1	18.8	0.098	0.509	20.803066	-89.044875
X. C. Kantunil - Izamal	68.00	3	1	3392	3.0	65.4	5.5	4.6	7.8	6.2	1.6	4.9	1.0	68.4	5.5	26.1	0.081	0.543	20.804695	-89.020622
X. C. Kantunil - Izamal	68.00	3	2	2859	3.4	69.5	4.8	5.2	3.5	5.8	1.7	5.2	0.9	72.9	4.8	22.3	0.099	0.543	20.804929	-89.020360
Plaza de Cobro Piste	115.34	1	1	2385	2.1	70.7	4.9	3.9	2.0	5.7	1.6	8.2	0.9	72.8	4.9	22.3	0.096	0.526	20.732628	-88.599203
Plaza de Cobro Piste	115.34	1	2	2649	1.8	71.6	4.9	3.5	2.2	5.9	1.2	8.1	0.8	73.4	4.9	21.7	0.112	0.526	20.732712	-88.599210
X. C. Valladolid - Río Lagartos	155.65	1	1	2836	2.4	68.2	4.7	4.1	5.7	5.4	1.5	7.0	1.0	70.6	4.7	24.7	0.084	0.502	20.745387	-88.251000
X. C. Valladolid - Río Lagartos	155.65	1	2	2809	2.7	68.9	4.5	4.2	5.5	5.2	1.3	6.8	0.9	71.6	4.5	23.9	0.087	0.502	20.745505	-88.250925
Estación Fitosanitaria X-Can	216.70	3	1	2631	2.8	64.1	6.3	6.7	5.5	5.2	2.2	6.3	0.9	66.9	6.3	26.8	0.105	0.508	20.880195	-87.596299
Estación Fitosanitaria X-Can	216.70	3	2	2549	2.9	64.9	6.3	6.4	5.7	5.1	1.8	6.1	0.8	67.8	6.3	25.9	0.085	0.508	20.880298	-87.596311
Lim. Edos. Term. Yuc. Ppia. Q. R.	219.80																			
X. C. El Cedral - Playa del Carmen	237.20	3	1	2038	6.8	64.7	5.4	4.9	6.9	4.3	0.4	5.7	0.9	71.5	5.4	23.1	0.111	0.516	20.923750	-87.368939
X. C. El Cedral - Playa del Carmen	237.20	3	2	1910	6.3	63.8	5.5	4.5	8.0	4.2	0.6	6.1	1.0	70.1	5.5	24.4	0.105	0.516	20.923849	-87.368977
T. C. Mérida - Puerto Juárez	292.00	1	1	2383	8.0	69.1	5.0	4.1	2.2	4.6	1.3	4.9	0.8	77.1	5.0	17.9	0.106	0.514	21.096178	-86.978256
T. C. Mérida - Puerto Juárez	292.00	1	2	2525	8.9	70.7	5.0	3.5	2.0	3.6	1.3	4.1	0.9	79.6	5.0	15.4	0.107	0.514	21.096452	-86.978346
T. Av. Huayacán	300.80	2	0	19021	6.8	78.0	3.6	4.0	3.0	2.1	0.6	1.5	0.4	84.8	3.6	11.6	0.090	0.528	21.053823	-86.910595
T. C. Reforma Agraria - Puerto Juárez	307.80	1	0	24256	4.8	85.1	1.8	3.8	1.6	1.2	0.4	1.1	0.2	89.9	1.8	8.3	0.081	0.508	21.021569	-86.860428

13 CARR: Bacalar - Miguel Alemán

CLAVE: 20030

RUTA: QR

AÑO: 2023

LUGAR	ESTACION				CLASIFICACION VEHICULAR EN PORCIENTO										COORDENADAS					
	KM	TE	SC	TDPA	M	A	B	C2	C3	T3S2	T3S3	T3S2R4	OTROS	A	B	C	K'	D	LATITUD	LONGITUD
T. C. (Reforma Agraria - Puerto Juárez)	0.00																			
Reforma	21.00	3	0	1157	29.9	66.8	0.3	1.3	0.5	0.5	0.4	0.3	0.0	96.7	0.3	3.0	0.085	0.506	18.813220	-88.580680
Altos de Sevilla	31.00	1	0	796	20.0	75.9	0.2	1.7	1.0	0.7	0.4	0.1	0.0	95.9	0.2	3.9	0.099	0.513	18.848042	-88.673738
Altos de Sevilla	31.00	3	0	558	28.2	68.3	0.6	1.1	0.4	0.9	0.4	0.1	0.0	96.5	0.6	2.9	0.101	0.504	18.854980	-88.677535
Miguel Alemán	110.00																			

14 CARR: Cancún - Punta Cancún

CLAVE: 23581

RUTA: QR

AÑO: 2023

LUGAR	ESTACION				CLASIFICACION VEHICULAR EN PORCIENTO										COORDENADAS					
	KM	TE	SC	TDPA	M	A	B	C2	C3	T3S2	T3S3	T3S2R4	OTROS	A	B	C	K'	D	LATITUD	LONGITUD
Cancún	0.00	3	1	31993	7.8	84.8	0.7	5.8	0.3	0.2	0.1	0.2	0.1	92.6	0.7	6.7	0.088	0.514	21.158134	-86.810393
Cancún	0.00	3	2	30141	7.5	84.3	1.0	6.3	0.2	0.2	0.1	0.3	0.1	91.8	1.0	7.2	0.083	0.514	21.158184	-86.810584
T. Der. Colibrí	7.00	1	1	25973	3.0	87.7	1.0	7.6	0.2	0.1	0.0	0.3	0.1	90.7	1.0	8.3	0.082	0.500	21.136827	-86.766601

QUINTANA ROO

14 CARR: Cancún - Punta Cancún

CLAVE: 23581

RUTA: QR

AÑO: 2023

LUGAR	ESTACION				CLASIFICACION VEHICULAR EN PORCIENTO										COORDENADAS					
	KM	TE	SC	TDPA	M	A	B	C2	C3	T3S2	T3S3	T3S2R4	OTROS	A	B	C	K'	D	LATITUD	LONGITUD
T. Der. Colibrí	7.00	1	2	26020	2.9	87.8	1.1	7.6	0.2	0.0	0.0	0.3	0.1	90.7	1.1	8.2	0.077	0.500	21.137226	-86.767140
Punta Cancún	8.00	1	1	27088	3.9	86.6	1.0	7.7	0.2	0.1	0.1	0.3	0.1	90.5	1.0	8.5	0.080	0.518	21.134687	-86.756257
Punta Cancún	8.00	1	2	25204	3.8	87.3	0.8	7.2	0.3	0.1	0.1	0.3	0.1	91.1	0.8	8.1	0.078	0.518	21.134789	-86.756275

15 CARR: Central Vallarta - Leona Vicario

CLAVE:

RUTA: QR

AÑO: 2023

LUGAR	ESTACION				CLASIFICACION VEHICULAR EN PORCIENTO										COORDENADAS					
	KM	TE	SC	TDPA	M	A	B	C2	C3	T3S2	T3S3	T3S2R4	OTROS	A	B	C	K'	D	LATITUD	LONGITUD
Puerto Morelos	0.00	3	0	4160	10.0	80.4	1.9	4.3	1.9	0.8	0.4	0.2	0.1	90.4	1.9	7.7	0.078	0.503	20.847954	-86.904698
T Izq. Kin - Ha	19.17	3	0	1698	12.1	77.9	2.8	4.6	1.4	0.6	0.3	0.2	0.1	90.0	2.8	7.2	0.113	0.522	20.877910	-87.081360
Leona Vicario	37.60																			

16 CARR: Chetumal - Calderitas

CLAVE: 23004

RUTA: QR-004

AÑO: 2023

LUGAR	ESTACION				CLASIFICACION VEHICULAR EN PORCIENTO										COORDENADAS					
	KM	TE	SC	TDPA	M	A	B	C2	C3	T3S2	T3S3	T3S2R4	OTROS	A	B	C	K'	D	LATITUD	LONGITUD
Chetumal	0.00	3	1	13130	18.9	78.0	0.3	2.2	0.1	0.2	0.1	0.1	0.1	96.9	0.3	2.8	0.083	0.503	18.533577	-88.277680
Chetumal	0.00	3	2	12980	19.2	77.3	0.4	2.4	0.2	0.1	0.1	0.2	0.1	96.5	0.4	3.1	0.097	0.503	18.533643	-88.277757
Calderitas	9.00	1	1	2543	8.5	89.1	0.0	2.3	0.1	0.0	0.0	0.0	0.0	97.6	0.0	2.4	0.107	0.504	18.553679	-88.257944
Calderitas	9.00	1	2	2506	8.9	87.9	0.0	3.1	0.1	0.0	0.0	0.0	0.0	96.8	0.0	3.2	0.090	0.504	18.553779	-88.257916

17 CARR: El Ideal - Chiquila

CLAVE: 23005

RUTA: QR-005

AÑO: 2023

LUGAR	ESTACION				CLASIFICACION VEHICULAR EN PORCIENTO										COORDENADAS					
	KM	TE	SC	TDPA	M	A	B	C2	C3	T3S2	T3S3	T3S2R4	OTROS	A	B	C	K'	D	LATITUD	LONGITUD
T. C. Mérida - Puerto Juárez	0.00	3	0	1244	7.4	84.8	1.5	3.9	1.4	0.5	0.1	0.3	0.1	92.2	1.5	6.3	0.090	0.529	20.891045	-87.546405
Kantunilkin	31.20	1	0	3741	7.9	85.8	1.5	2.4	1.4	0.5	0.2	0.3	0.0	93.7	1.5	4.8	0.083	0.506	21.077411	-87.489362
Kantunilkin	31.20	3	0	3674	20.0	75.0	1.3	1.9	1.2	0.3	0.1	0.2	0.0	95.0	1.3	3.7	0.119	0.504	21.117144	-87.484610
Chiquila	75.60	1	0	2475	16.9	76.4	1.7	2.7	1.3	0.4	0.1	0.5	0.0	93.3	1.7	5.0	0.098	0.534	21.418997	-87.337555

18 CARR: Libramiento de Chetumal

CLAVE: 23130

RUTA: QR

AÑO: 2023

LUGAR	ESTACION				CLASIFICACION VEHICULAR EN PORCIENTO										COORDENADAS					
	KM	TE	SC	TDPA	M	A	B	C2	C3	T3S2	T3S3	T3S2R4	OTROS	A	B	C	K'	D	LATITUD	LONGITUD
T. C. Francisco Escárcega - Chetumal	0.00	3	1	11371	12.5	83.1	0.9	1.4	0.9	0.6	0.1	0.4	0.1	95.6	0.9	3.5	0.081	0.507	18.517470	-88.344287

QUINTANA ROO

18 CARR: Libramiento de Chetumal

CLAVE: 23130

RUTA: QR

AÑO: 2023

LUGAR	ESTACION				CLASIFICACION VEHICULAR EN PORCIENTO													COORDENADAS		
	KM	TE	SC	TDPA	M	A	B	C2	C3	T3S2	T3S3	T3S2R4	OTROS	A	B	C	K'	D	LATITUD	LONGITUD
T. C. Francisco Escárcega - Chetumal	0.00	3	2	11685	12.0	84.0	0.8	1.3	0.7	0.6	0.2	0.3	0.1	96.0	0.8	3.2	0.093	0.507	18.517635	-88.344342
T. C. Chetumal - Calderitas	5.00																			

19 CARR: Perimetral Cozumel

CLAVE: 00148

RUTA: QR

AÑO: 2023

LUGAR	ESTACION				CLASIFICACION VEHICULAR EN PORCIENTO													COORDENADAS		
	KM	TE	SC	TDPA	M	A	B	C2	C3	T3S2	T3S3	T3S2R4	OTROS	A	B	C	K'	D	LATITUD	LONGITUD
Cozumel	0.00	3	0	14268	31.2	65.5	0.4	1.9	0.5	0.1	0.1	0.2	0.1	96.7	0.4	2.9	0.127	0.505	20.465802	-86.976824
El Cedral	13.40	1	1	1933	37.2	57.3	0.4	2.7	1.0	0.3	0.2	0.6	0.3	94.5	0.4	5.1	0.124	0.514	20.385290	-87.018410
El Cedral	13.40	1	2	2047	32.6	62.3	0.3	2.7	1.0	0.2	0.1	0.6	0.2	94.9	0.3	4.8	0.150	0.514	20.385298	-87.018374
El Cedral	13.40	3	1	569	29.5	65.9	0.6	2.2	0.5	0.3	0.2	0.6	0.2	95.4	0.6	4.0	0.186	0.505	20.363037	-87.018056
El Cedral	13.40	3	2	559	29.7	65.7	0.7	2.2	0.6	0.2	0.2	0.6	0.1	95.4	0.7	3.9	0.182	0.505	20.362983	-87.018009
Celarain	25.00	1	0	952	23.0	71.8	0.5	2.4	0.8	0.3	0.1	0.8	0.3	94.8	0.5	4.7	0.180	0.518	20.294410	-86.965996

20 CARR: Punta Nizuc - Cancún

CLAVE: 23014

RUTA: QR

AÑO: 2023

LUGAR	ESTACION				CLASIFICACION VEHICULAR EN PORCIENTO													COORDENADAS		
	KM	TE	SC	TDPA	M	A	B	C2	C3	T3S2	T3S3	T3S2R4	OTROS	A	B	C	K'	D	LATITUD	LONGITUD
Punta Nizuc	0.00	3	1	12516	4.9	81.4	1.8	10.4	0.7	0.3	0.2	0.2	0.1	86.3	1.8	11.9	0.086	0.507	21.045587	-86.783130
Punta Nizuc	0.00	3	2	12876	4.7	82.7	1.6	9.6	0.6	0.3	0.2	0.2	0.1	87.4	1.6	11.0	0.088	0.507	21.045716	-86.783274
Punta Cancún	12.40																			

21 CARR: Ramal a Aeropuerto Cancún

CLAVE: 23574

RUTA: QR

AÑO: 2023

LUGAR	ESTACION				CLASIFICACION VEHICULAR EN PORCIENTO													COORDENADAS		
	KM	TE	SC	TDPA	M	A	B	C2	C3	T3S2	T3S3	T3S2R4	OTROS	A	B	C	K'	D	LATITUD	LONGITUD
T. C. Reforma Agraria - Puerto Juárez	0.00	3	1	27329	1.5	90.0	1.6	6.1	0.1	0.2	0.2	0.1	0.2	91.5	1.6	6.9	0.097	0.528	21.038804	-86.862459
T. C. Reforma Agraria - Puerto Juárez	0.00	3	2	24218	1.7	89.3	1.8	6.4	0.1	0.2	0.2	0.1	0.2	91.0	1.8	7.2	0.096	0.528	21.038745	-86.862530
Aeropuerto Cancún	2.00	1	1	25994	1.7	90.7	1.4	5.3	0.1	0.2	0.2	0.3	0.1	92.4	1.4	6.2	0.101	0.511	21.040596	-86.865332
Aeropuerto Cancún	2.00	1	2	27245	1.6	91.2	1.3	5.0	0.1	0.2	0.2	0.3	0.1	92.8	1.3	5.9	0.093	0.511	21.040513	-86.865379

QUINTANA ROO

22 CARR: Ramal a Candelaria

CLAVE: 23027

RUTA: QR

AÑO: 2023

LUGAR	ESTACION				CLASIFICACION VEHICULAR EN PORCIENTO													COORDENADAS		
	KM	TE	SC	TDPA	M	A	B	C2	C3	T3S2	T3S3	T3S2R4	OTROS	A	B	C	K'	D	LATITUD	LONGITUD
T. C. Muna - Felipe Carrillo Puerto	0.00	3	0	1655	32.6	63.9	0.8	1.2	0.9	0.3	0.1	0.2	0.0	96.5	0.8	2.7	0.086	0.504	19.806763	-88.757630
Candelaria	15.30																			

23 CARR: Ramal a El Naranjal

CLAVE: 23579

RUTA: QR

AÑO: 2023

LUGAR	ESTACION				CLASIFICACION VEHICULAR EN PORCIENTO													COORDENADAS		
	KM	TE	SC	TDPA	M	A	B	C2	C3	T3S2	T3S3	T3S2R4	OTROS	A	B	C	K'	D	LATITUD	LONGITUD
José María Morelos	0.00	3	0	1122	44.9	50.2	0.4	0.8	1.8	0.8	0.3	0.8	0.0	95.1	0.4	4.5	0.106	0.500	19.734909	-88.716706
El Naranjal	16.00																			

24 CARR: Ramal a Laguna de Kaná

CLAVE: 23213

RUTA: QR

AÑO: 2023

LUGAR	ESTACION				CLASIFICACION VEHICULAR EN PORCIENTO													COORDENADAS		
	KM	TE	SC	TDPA	M	A	B	C2	C3	T3S2	T3S3	T3S2R4	OTROS	A	B	C	K'	D	LATITUD	LONGITUD
T. C. Muna - Felipe Carrillo Puerto	0.00	3	0	579	21.3	74.7	1.1	1.8	0.9	0.1	0.1	0.0	0.0	96.0	1.1	2.9	0.096	0.501	19.642941	-88.411672
Laguna de Kaná	12.20																			

25 CARR: Ramal a Mahahual

CLAVE: 23583

RUTA: QR

AÑO: 2023

LUGAR	ESTACION				CLASIFICACION VEHICULAR EN PORCIENTO													COORDENADAS		
	KM	TE	SC	TDPA	M	A	B	C2	C3	T3S2	T3S3	T3S2R4	OTROS	A	B	C	K'	D	LATITUD	LONGITUD
T. C. Reforma Agraria - Puerto Juárez	0.00	3	0	1450	6.5	85.7	1.5	5.5	0.0	0.4	0.2	0.2	0.0	92.2	1.5	6.3	0.096	0.506	18.980108	-88.110626
Mahahual	60.09																			

26 CARR: Ramal a Petcacab

CLAVE: 23018

RUTA: QR-018

AÑO: 2023

LUGAR	ESTACION				CLASIFICACION VEHICULAR EN PORCIENTO													COORDENADAS		
	KM	TE	SC	TDPA	M	A	B	C2	C3	T3S2	T3S3	T3S2R4	OTROS	A	B	C	K'	D	LATITUD	LONGITUD
T. C. Reforma Agraria - Puerto Juárez	0.00	3	0	847	16.1	61.3	0.6	5.1	5.8	8.5	0.6	1.5	0.5	77.4	0.6	22.0	0.099	0.510	19.135326	-88.105889
Petcacab	37.00																			

QUINTANA ROO

27 CARR: Ramal a Punta Allen

CLAVE: 23015

RUTA: QR-015

AÑO: 2023

LUGAR	ESTACION				CLASIFICACION VEHICULAR EN PORCIENTO													COORDENADAS		
	KM	TE	SC	TDPA	M	A	B	C2	C3	T3S2	T3S3	T3S2R4	OTROS	A	B	C	K'	D	LATITUD	LONGITUD
T. C. Reforma Agraria - Puerto Juárez	0.00	3	0	16281	12.8	80.9	0.5	3.9	0.7	0.3	0.3	0.5	0.1	93.7	0.5	5.8	0.081	0.505	20.205728	-87.450262
Beh-Ha	10.20	1	0	1207	10.9	83.9	0.5	0.8	2.2	1.0	0.1	0.6	0.0	94.8	0.5	4.7	0.096	0.517	20.128841	-87.465410
Punta Allen	57.00																			

28 CARR: Ramal a Punta Sam

CLAVE: 23582

RUTA: QR

AÑO: 2023

LUGAR	ESTACION				CLASIFICACION VEHICULAR EN PORCIENTO													COORDENADAS		
	KM	TE	SC	TDPA	M	A	B	C2	C3	T3S2	T3S3	T3S2R4	OTROS	A	B	C	K'	D	LATITUD	LONGITUD
Puerto Juárez	0.00	3	0	6956	18.6	76.5	0.4	2.2	1.1	0.6	0.1	0.4	0.1	95.1	0.4	4.5	0.083	0.501	21.192971	-86.806296
Punta Sam	5.00	1	0	2508	9.1	85.8	0.5	2.5	0.4	0.2	1.3	0.1	0.1	94.9	0.5	4.6	0.077	0.545	21.217179	-86.802316

29 CARR: Ramal a Reforma

CLAVE: 23016

RUTA: QR-016

AÑO: 2023

LUGAR	ESTACION				CLASIFICACION VEHICULAR EN PORCIENTO													COORDENADAS		
	KM	TE	SC	TDPA	M	A	B	C2	C3	T3S2	T3S3	T3S2R4	OTROS	A	B	C	K'	D	LATITUD	LONGITUD
T. C. Reforma Agraria - Puerto Juárez	0.00	3	0	2373	21.4	71.4	0.5	5.5	0.5	0.2	0.3	0.2	0.0	92.8	0.5	6.7	0.084	0.510	18.705255	-88.388374
Reforma	44.00																			

30 CARR: Ramal a Tres Garantías

CLAVE: 23585

RUTA: QR

AÑO: 2023

LUGAR	ESTACION				CLASIFICACION VEHICULAR EN PORCIENTO													COORDENADAS		
	KM	TE	SC	TDPA	M	A	B	C2	C3	T3S2	T3S3	T3S2R4	OTROS	A	B	C	K'	D	LATITUD	LONGITUD
T. C. Francisco Escárcega - Chetumal	0.00	3	0	184	19.0	78.3	0.6	0.6	0.6	0.6	0.2	0.1	0.0	97.3	0.6	2.1	0.137	0.516	18.456352	-89.000886
Tres Garantías	30.00																			

31 CARR: Tihosuco - Dziuche

CLAVE: 23576

RUTA: QR

AÑO: 2023

LUGAR	ESTACION				CLASIFICACION VEHICULAR EN PORCIENTO													COORDENADAS		
	KM	TE	SC	TDPA	M	A	B	C2	C3	T3S2	T3S3	T3S2R4	OTROS	A	B	C	K'	D	LATITUD	LONGITUD
T. C. Valladolid - Felipe Carrillo Puerto	0.00	3	0	580	18.3	78.2	0.7	1.3	0.9	0.1	0.0	0.1	0.4	96.5	0.7	2.8	0.110	0.501	20.176812	-88.397644
Dziuche	60.50	1	0	1078	36.7	60.8	0.7	0.7	0.7	0.1	0.1	0.2	0.0	97.5	0.7	1.8	0.113	0.509	19.912807	-88.808168

QUINTANA ROO

32 CARR: Transversal de Cozumel

CLAVE: 23577

RUTA: QR

AÑO: 2023

LUGAR	ESTACION				CLASIFICACION VEHICULAR EN PORCIENTO													COORDENADAS		
	KM	TE	SC	TDPA	M	A	B	C2	C3	T3S2	T3S3	T3S2R4	OTROS	A	B	C	K'	D	LATITUD	LONGITUD
Cozumel	0.00	3	1	3070	47.1	50.3	0.4	1.2	0.5	0.2	0.1	0.1	0.1	97.4	0.4	2.2	0.087	0.504	20.480567	-86.912192
Cozumel	0.00	3	2	3119	48.3	48.7	0.5	1.6	0.5	0.1	0.1	0.1	0.1	97.0	0.5	2.5	0.070	0.504	20.480606	-86.912162
Mezcalitos	14.00																			

33 CARR: Tulum - Nuevo X-Can

CLAVE: 23570

RUTA: QR

AÑO: 2023

LUGAR	ESTACION				CLASIFICACION VEHICULAR EN PORCIENTO													COORDENADAS		
	KM	TE	SC	TDPA	M	A	B	C2	C3	T3S2	T3S3	T3S2R4	OTROS	A	B	C	K'	D	LATITUD	LONGITUD
T. C. Reforma Agraria - Puerto Juárez	0.00	3	1	7968	8.7	72.9	2.6	5.8	4.1	2.4	0.9	1.8	0.8	81.6	2.6	15.8	0.081	0.506	20.218091	-87.454704
T. C. Reforma Agraria - Puerto Juárez	0.00	3	2	8145	8.7	74.3	2.5	5.7	3.9	2.1	0.6	1.6	0.6	83.0	2.5	14.5	0.084	0.506	20.218372	-87.454906
T. Izq. Ruinas Cobá	42.95	1	0	7061	3.8	87.9	2.2	2.7	0.9	1.1	0.3	1.0	0.1	91.7	2.2	6.1	0.122	0.501	20.502736	-87.713754
T. Izq. Ruinas Cobá	42.95	3	0	679	14.0	83.2	0.8	1.1	0.6	0.3	0.0	0.0	0.0	97.2	0.8	2.0	0.101	0.503	20.509887	-87.717115
Lim. Edos. Term. Q. Roo. Ppia. Yuc.	49.42																			
Lim. Edos. Term. Yuc. Ppia. Q. Roo.	64.97																			
Nuevo X-Can	87.40	1	0	650	10.1	86.7	0.9	1.2	0.9	0.1	0.1	0.0	0.0	96.8	0.9	2.3	0.086	0.501	20.858671	-87.600859

34 CARR: Ucum - Unión

CLAVE: 23571

RUTA: QR

AÑO: 2023

LUGAR	ESTACION				CLASIFICACION VEHICULAR EN PORCIENTO													COORDENADAS		
	KM	TE	SC	TDPA	M	A	B	C2	C3	T3S2	T3S3	T3S2R4	OTROS	A	B	C	K'	D	LATITUD	LONGITUD
Ucum	0.00	3	0	4644	16.1	78.2	0.6	2.2	1.6	0.5	0.1	0.6	0.1	94.3	0.6	5.1	0.080	0.502	18.475739	-88.518197
T. Der. Ingenio Álvaro Obregón	31.00	1	0	1835	14.0	80.6	0.8	1.9	1.7	0.4	0.1	0.4	0.1	94.6	0.8	4.6	0.090	0.503	18.253494	-88.648344
T. Der. Ingenio Álvaro Obregón	31.00	3	0	2564	16.0	79.2	0.8	1.3	2.3	0.3	0.1	0.0	0.0	95.2	0.8	4.0	0.103	0.501	18.245462	-88.652325
T. Der. U. A. Galeras	75.00	1	0	226	36.0	59.0	0.8	2.2	1.1	0.2	0.5	0.2	0.0	95.0	0.8	4.2	0.145	0.506	17.989926	-88.847757
T. Der. U. A. Galeras	75.00	3	0	212	33.7	62.7	0.8	1.8	0.5	0.0	0.3	0.2	0.0	96.4	0.8	2.8	0.130	0.502	17.987661	-88.856974
Unión	88.00	1	0	571	67.1	30.5	0.4	1.5	0.3	0.1	0.1	0.0	0.0	97.6	0.4	2.0	0.154	0.520	17.907446	-88.881730

35 CARR: Chemax - Cobá

CLAVE:

RUTA: YUC-MEX-180

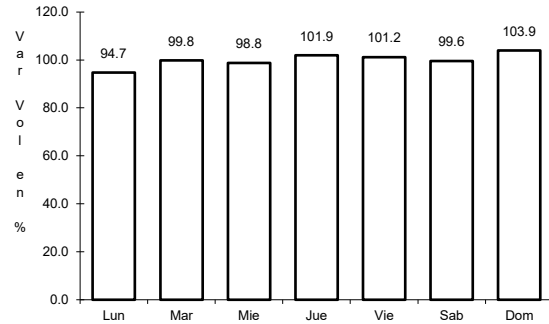
AÑO: 2023

LUGAR	ESTACION				CLASIFICACION VEHICULAR EN PORCIENTO													COORDENADAS		
	KM	TE	SC	TDPA	M	A	B	C2	C3	T3S2	T3S3	T3S2R4	OTROS	A	B	C	K'	D	LATITUD	LONGITUD
Chemax	0.00	3	0	4845	3.7	86.5	2.4	2.8	1.1	1.5	0.5	1.3	0.2	90.2	2.4	7.4	0.123	0.501	20.656523	-87.954369
Lim. Edos. Term. Yucatán Ppia. Q Roo.	25.00																			
Cobá	30.90	1	0	4128	4.3	86.5	2.3	2.6	0.9	1.5	0.5	1.2	0.2	90.8	2.3	6.9	0.147	0.504	20.509804	-87.721977

1 CARR: Francisco Escárcega - Chetumal

CLAVE: 00093

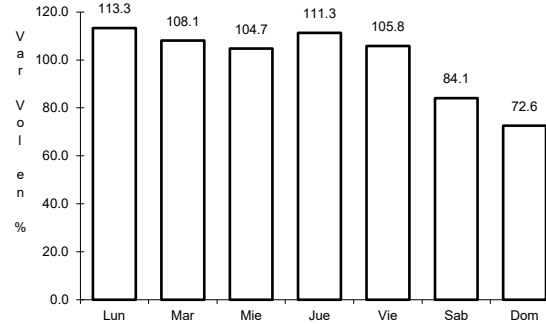
RUTA: MEX-186-307



Km: 0.00

Tipo: 3

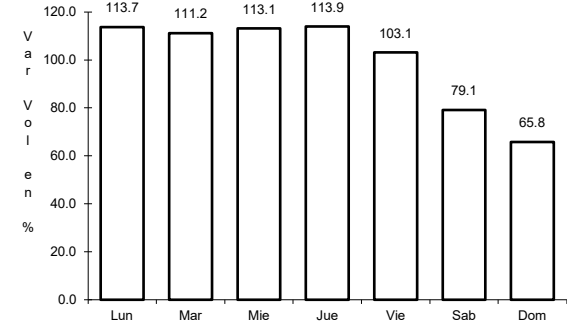
Sent: 0



Km: 277.36

Tipo: 1

Sent: 1



Km: 277.36

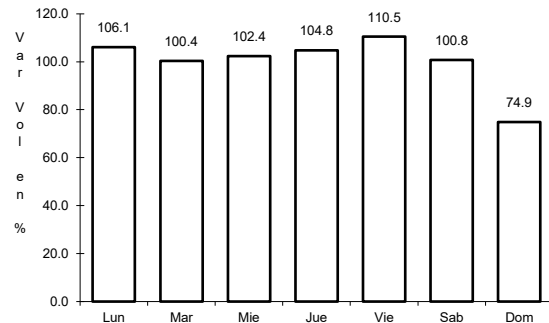
Tipo: 1

Sent: 2

2 CARR: Mérida - Puerto Juárez

CLAVE: 00067

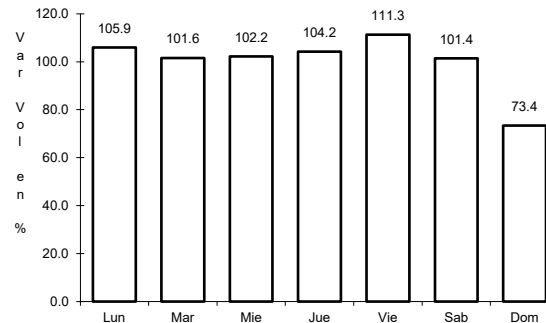
RUTA: MEX-180



Km: 5.60

Tipo: 1

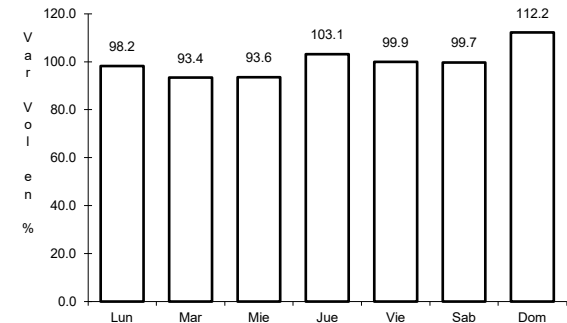
Sent: 1



Km: 5.60

Tipo: 1

Sent: 2



Km: 302.50

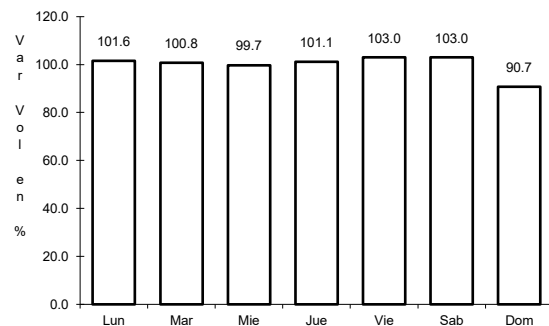
Tipo: 1

Sent: 0

3 CARR: Muna - Felipe Carrillo Puerto

CLAVE: 00148

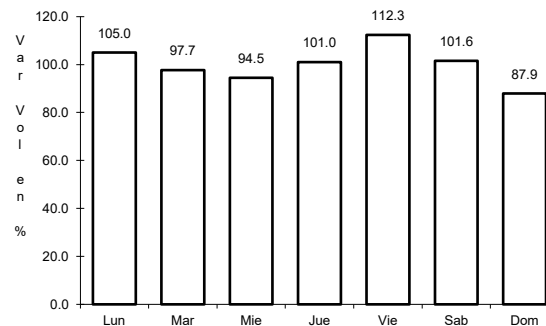
RUTA: MEX-184



Km: 0.00

Tipo: 3

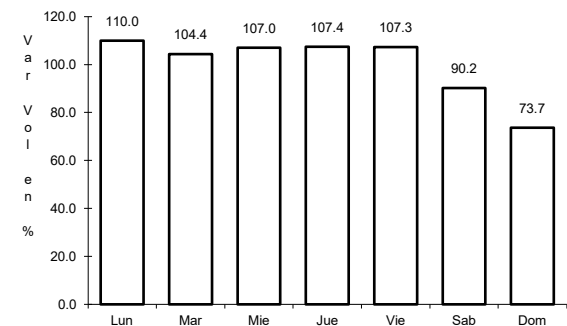
Sent: 0



Km: 109.60

Tipo: 3

Sent: 0



Km: 216.97

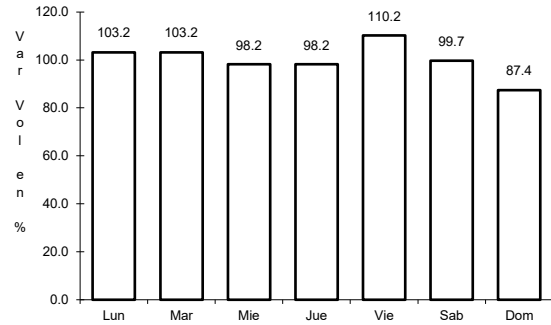
Tipo: 1

Sent: 0

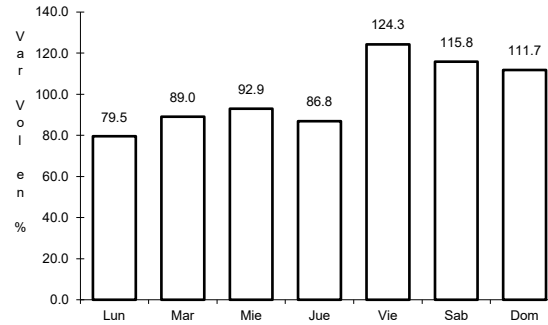
4 CARR: Polyuc - T. C. (Reforma Agraria - Puerto Juárez)

CLAVE: 23014

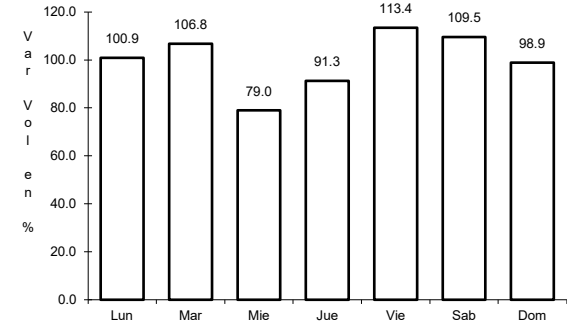
ruta: MEX-293



Km: 0.00 Tipo: 3 Sent: 0



Km: 50.00 Tipo: 3 Sent: 0

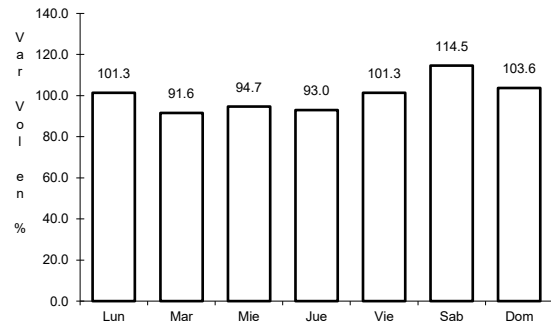


Km: 99.00 Tipo: 1 Sent: 0

5 CARR: Ramal a Puerto Morelos

CLAVE: 23569

ruta: MEX

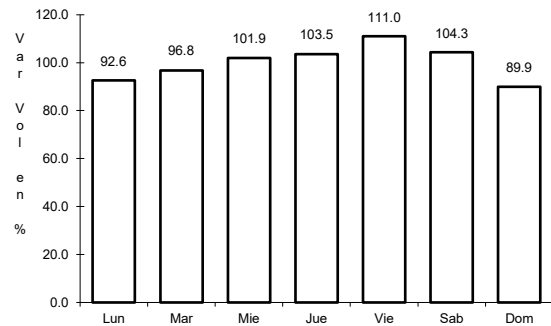


Km: 0.00 Tipo: 3 Sent: 0

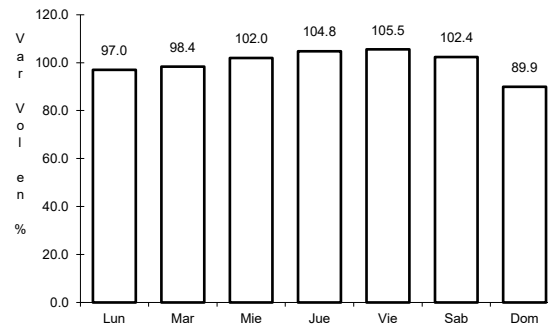
6 CARR: Ramal a Punta Piedra

CLAVE: 23575

ruta: MEX



Km: 0.00 Tipo: 3 Sent: 1

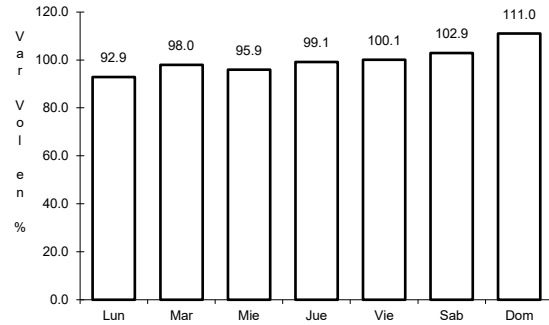


Km: 0.00 Tipo: 3 Sent: 2

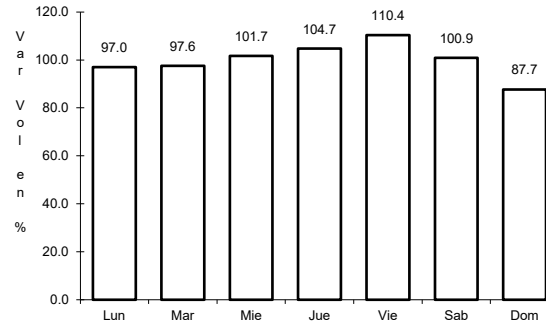
7 CARR: Ramal a Subteniente López

CLAVE: 23567

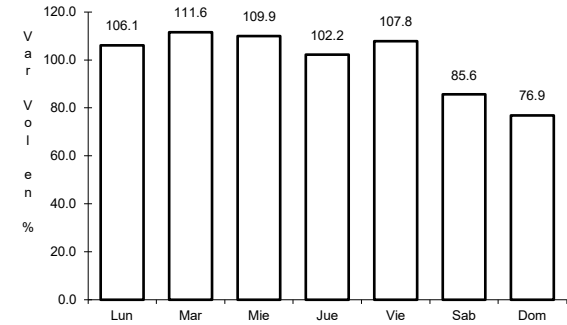
ruta: MEX-186



Km: 0.00 Tipo: 3 Sent: 1



Km: 0.00 Tipo: 3 Sent: 2

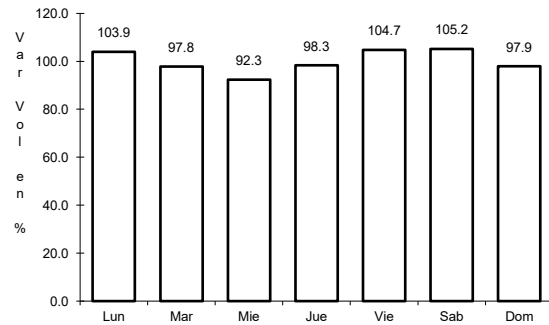


Km: 1.80 Tipo: 3 Sent: 1

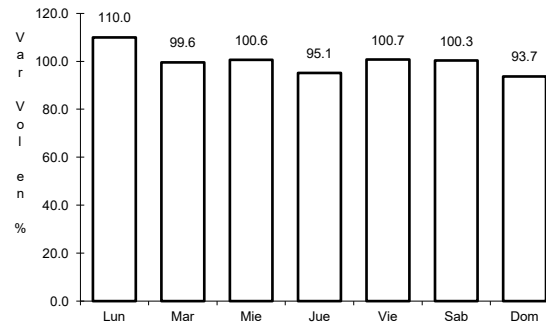
8 CARR: Reforma Agraria - Puerto Juárez

CLAVE: 23132

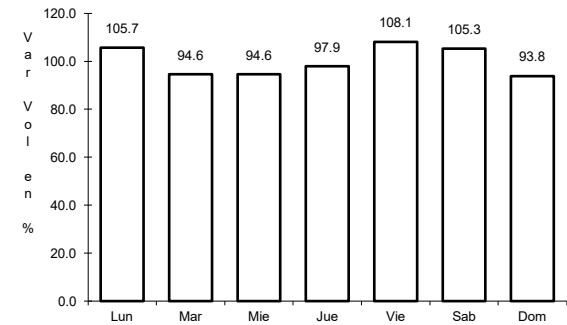
ruta: MEX-307



Km: 0.00 Tipo: 3 Sent: 1



Km: 0.00 Tipo: 3 Sent: 2

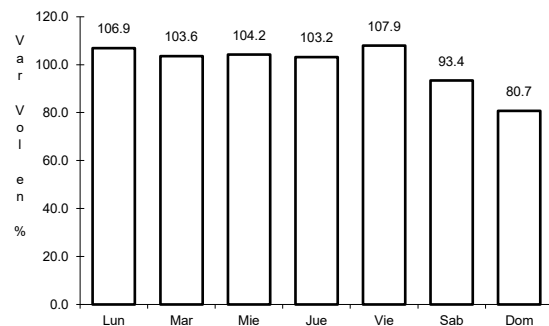


Km: 227.00 Tipo: 1 Sent: 0

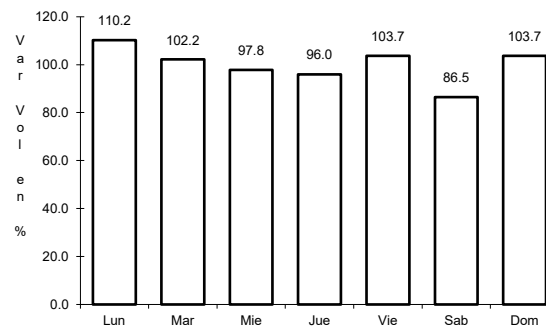
9 CARR: Valladolid - Felipe Carrillo Puerto

CLAVE: 00010

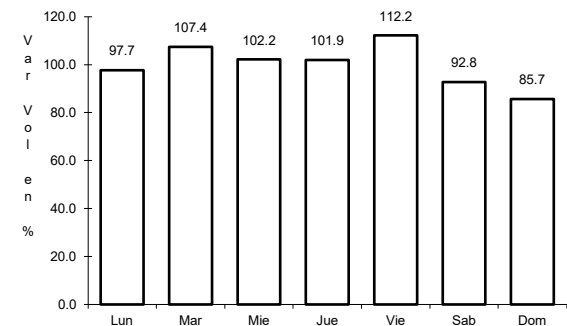
ruta: MEX-295



Km: 0.00 Tipo: 3 Sent: 0



Km: 99.00 Tipo: 1 Sent: 0

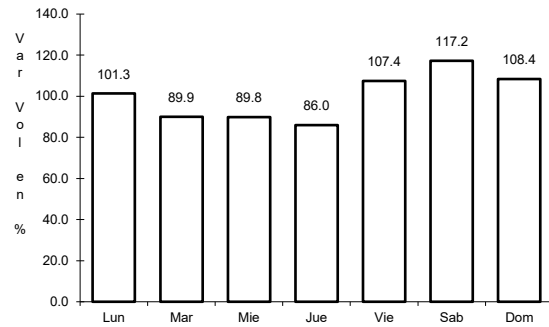


Km: 147.70 Tipo: 1 Sent: 0

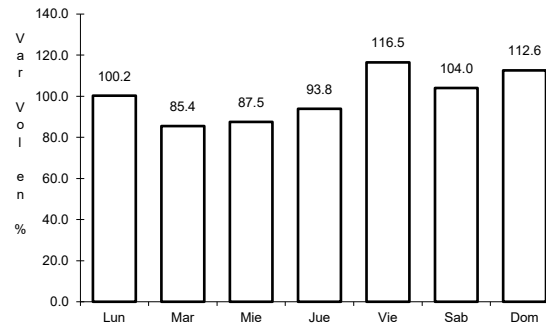
10 CARR: El Cedral - Playa del Carmen (Cuota)

CLAVE:

ruta: MEX-180D



Km: 10.05 Tipo: 1 Sent: 0

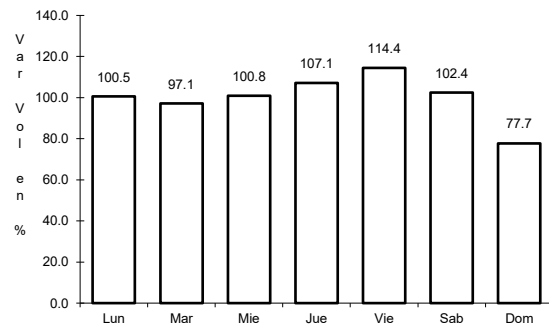


Km: 10.05 Tipo: 3 Sent: 0

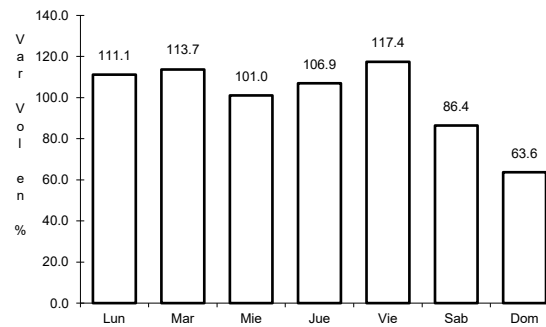
11 CARR: Libramiento de Felipe Carrillo Puerto (Cuota)

CLAVE:

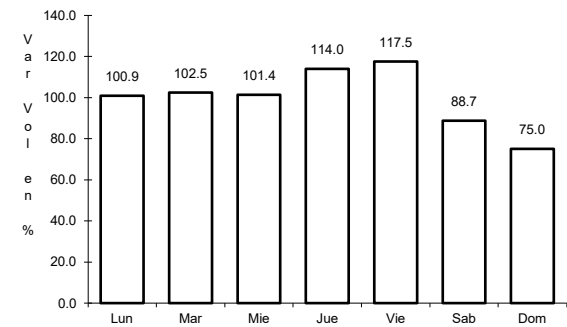
ruta: MEX-307D



Km: 0.00 Tipo: 3 Sent: 0



Km: 9.00 Tipo: 1 Sent: 0

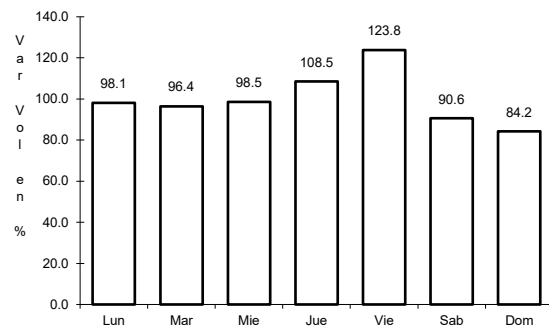


Km: 13.92 Tipo: 1 Sent: 0

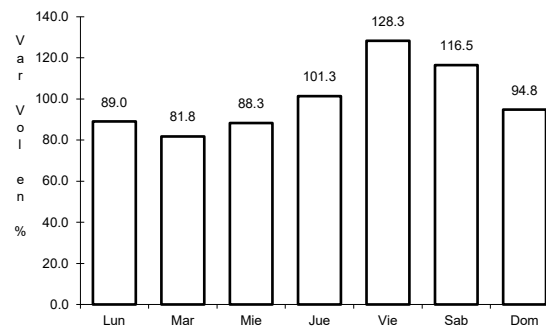
12 CARR: Mérida - Cancún (Cuota)

CLAVE: 00071

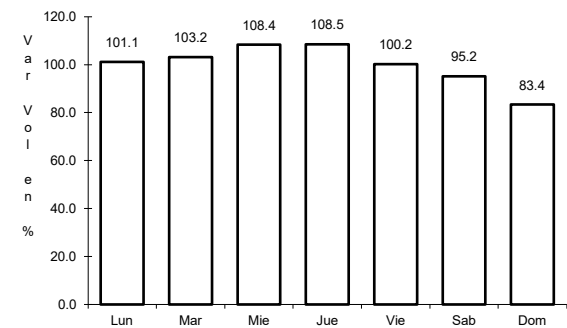
ruta: MEX-180D



Km: 115.34 Tipo: 1 Sent: 1



Km: 115.34 Tipo: 1 Sent: 2

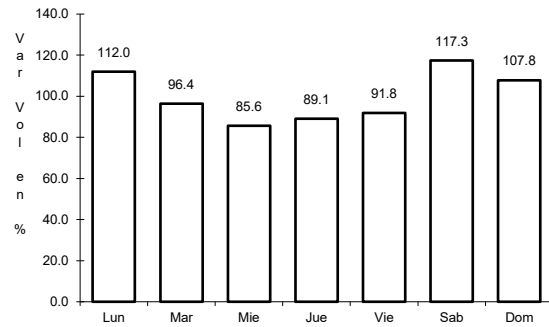


Km: 307.80 Tipo: 1 Sent: 0

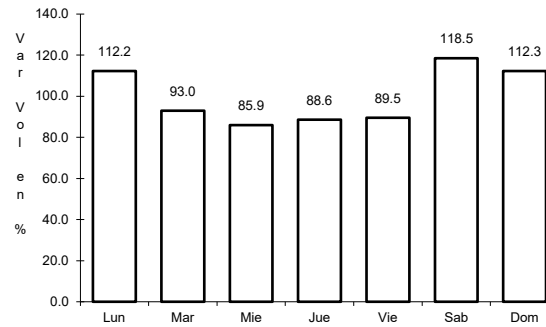
13 CARR: Bacalar - Miguel Alemán

CLAVE: 20030

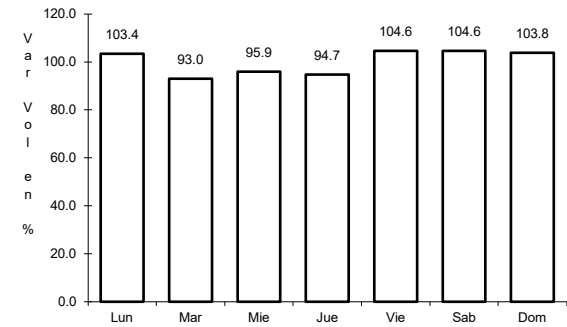
ruta: QR



Km: 21.00 Tipo: 3 Sent: 0



Km: 31.00 Tipo: 1 Sent: 0

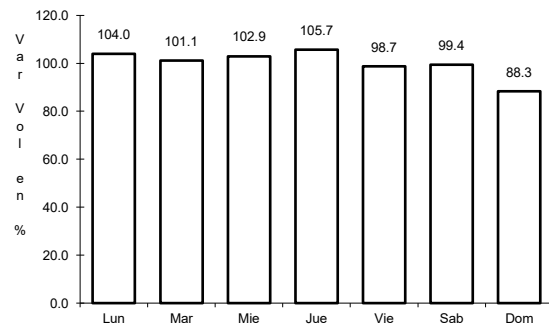


Km: 31.00 Tipo: 3 Sent: 0

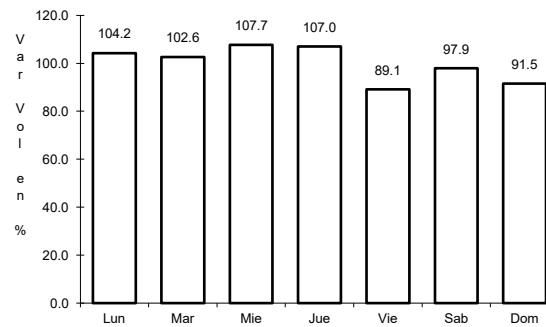
14 CARR: Cancún - Punta Cancún

CLAVE: 23581

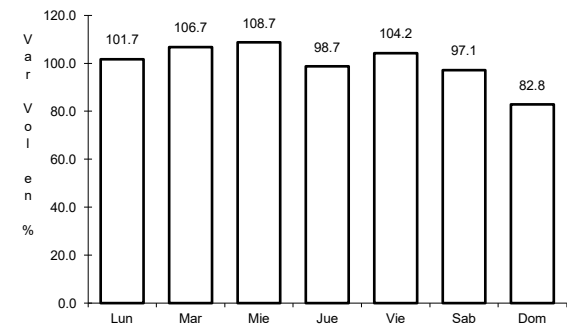
ruta: QR



Km: 0.00 Tipo: 3 Sent: 1



Km: 0.00 Tipo: 3 Sent: 2

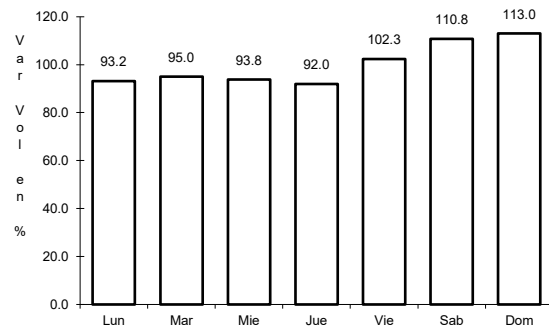


Km: 8.00 Tipo: 1 Sent: 1

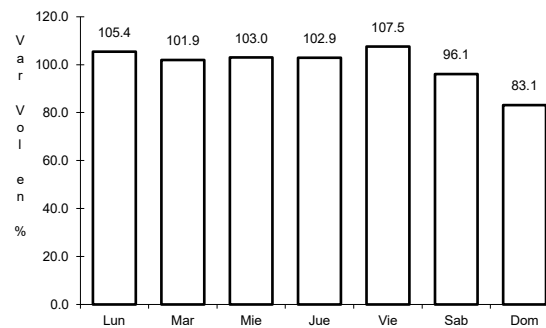
15 CARR: Central Vallarta - Leona Vicario

CLAVE:

ruta: QR



Km: 0.00 Tipo: 3 Sent: 0

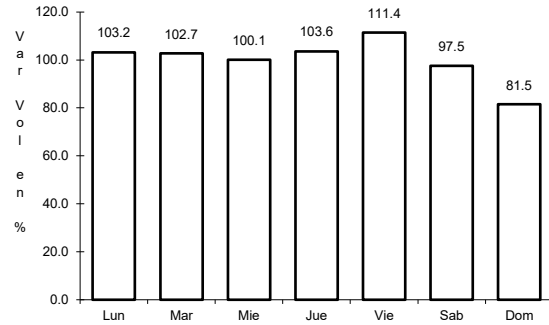


Km: 19.17 Tipo: 3 Sent: 0

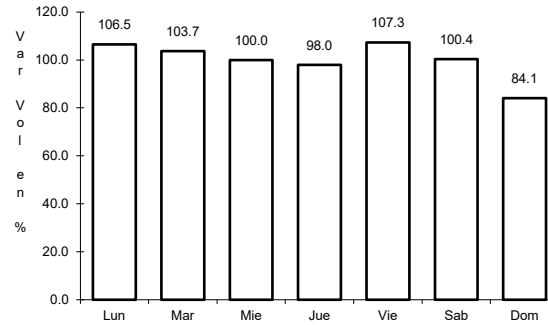
16 CARR: Chetumal - Calderitas

CLAVE: 23004

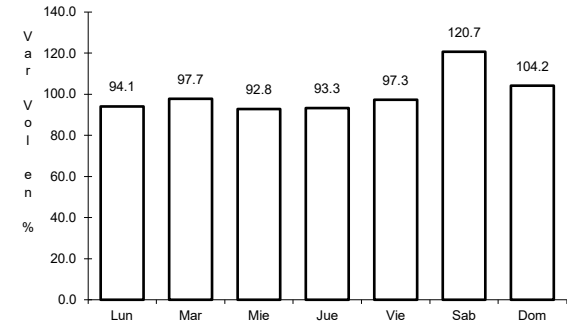
RUTA: QR-004



Km: 0.00 Tipo: 3 Sent: 1



Km: 0.00 Tipo: 3 Sent: 2

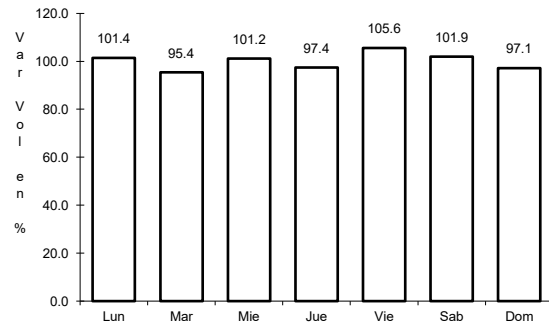


Km: 9.00 Tipo: 1 Sent: 1

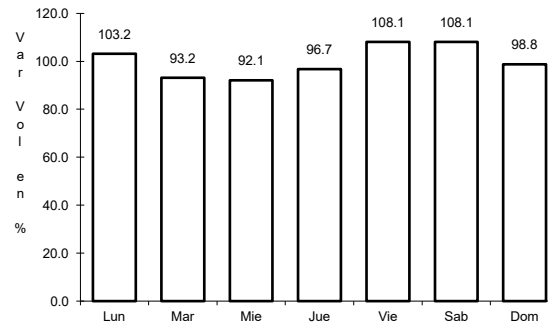
17 CARR: El Ideal - Chiquila

CLAVE: 23005

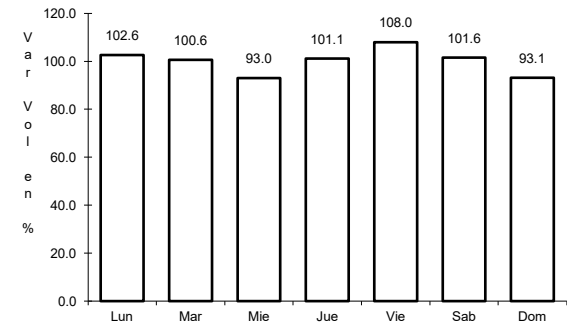
RUTA: QR-005



Km: 0.00 Tipo: 3 Sent: 0



Km: 31.20 Tipo: 1 Sent: 0

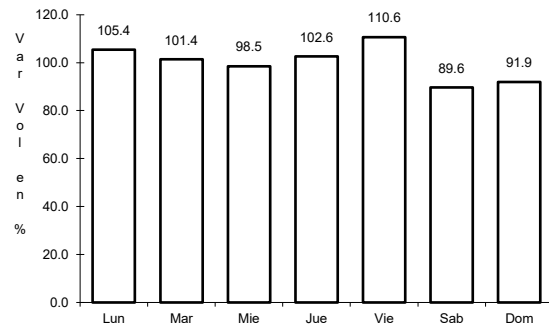


Km: 75.60 Tipo: 1 Sent: 0

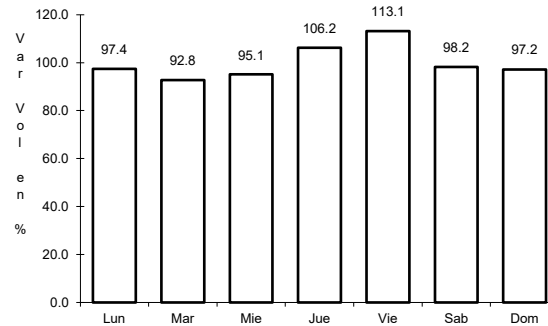
18 CARR: Libramiento de Chetumal

CLAVE: 23130

RUTA: QR



Km: 0.00 Tipo: 3 Sent: 1

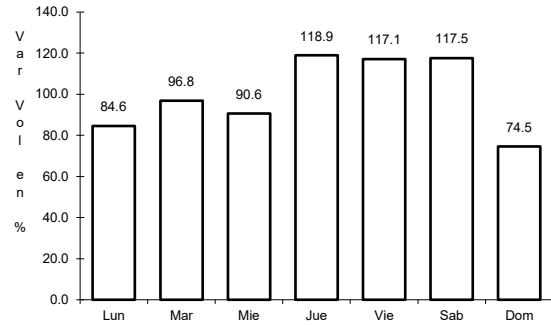


Km: 0.00 Tipo: 3 Sent: 2

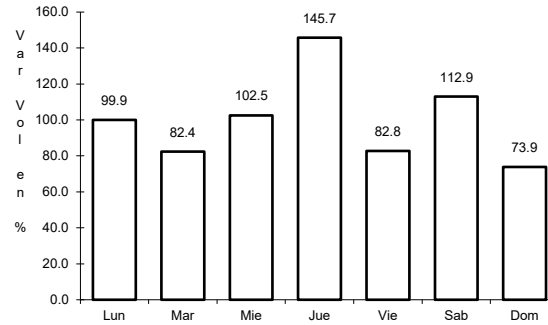
19 CARR: Perimetral Cozumel

CLAVE: 00148

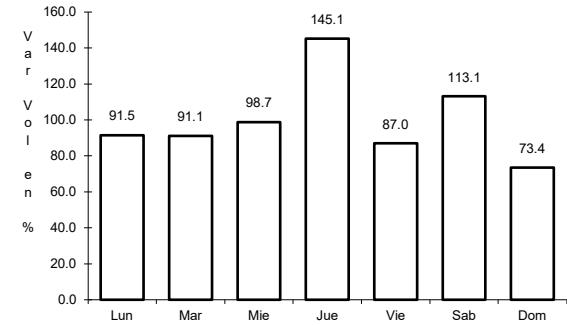
ruta: QR



Km: 0.00 Tipo: 3 Sent: 0



Km: 13.40 Tipo: 3 Sent: 1

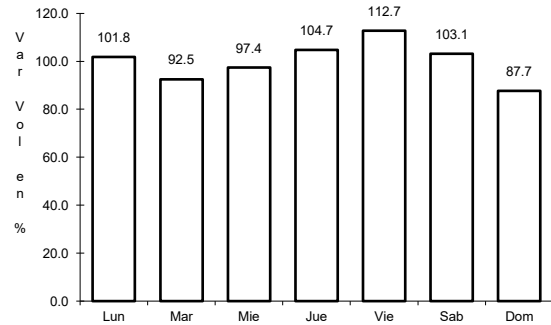


Km: 13.40 Tipo: 3 Sent: 2

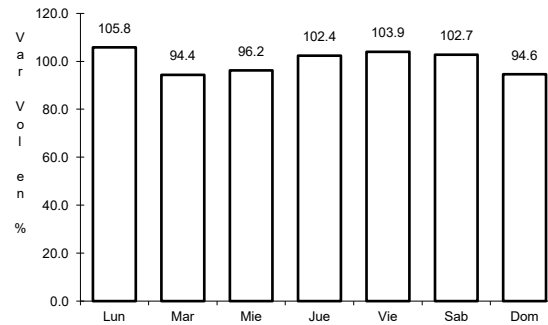
20 CARR: Punta Nizuc - Cancún

CLAVE: 23014

ruta: QR



Km: 0.00 Tipo: 3 Sent: 1

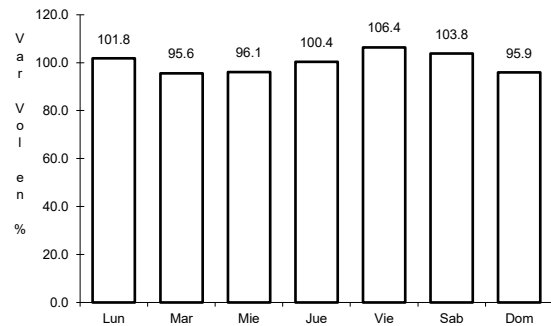


Km: 0.00 Tipo: 3 Sent: 2

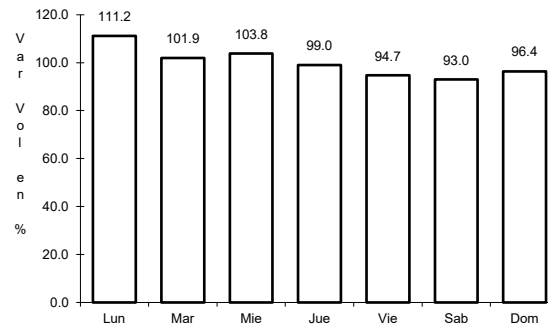
21 CARR: Ramal a Aeropuerto Cancún

CLAVE: 23574

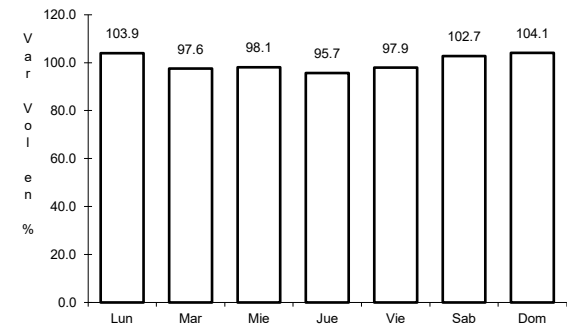
ruta: QR



Km: 0.00 Tipo: 3 Sent: 1



Km: 0.00 Tipo: 3 Sent: 2

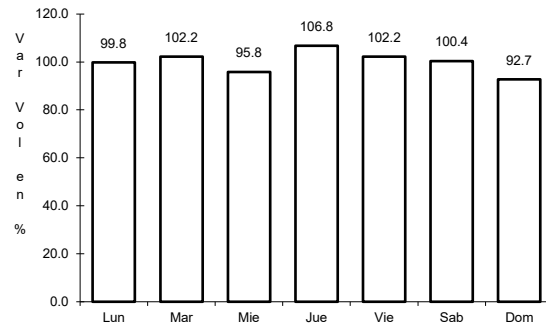


Km: 2.00 Tipo: 1 Sent: 1

22 CARR: Ramal a Candelaria

CLAVE: 23027

RUTA: QR



Km: 0.00

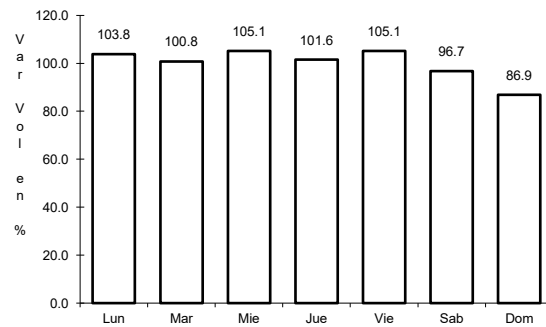
Tipo: 3

Sent: 0

23 CARR: Ramal a El Naranjal

CLAVE: 23579

RUTA: QR



Km: 0.00

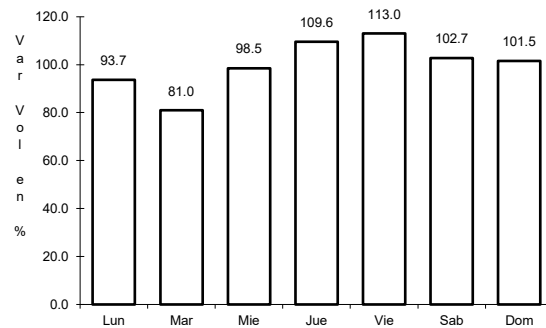
Tipo: 3

Sent: 0

24 CARR: Ramal a Laguna de Kaná

CLAVE: 23213

RUTA: QR



Km: 0.00

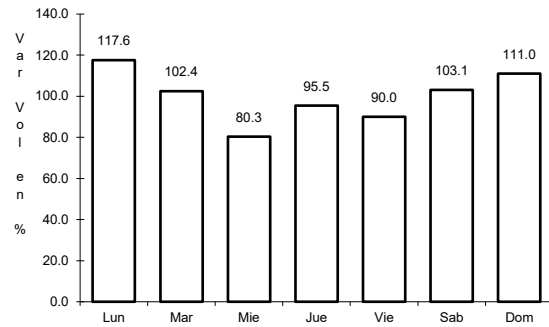
Tipo: 3

Sent: 0

25 CARR: Ramal a Mahahual

CLAVE: 23583

RUTA: QR



Km: 0.00

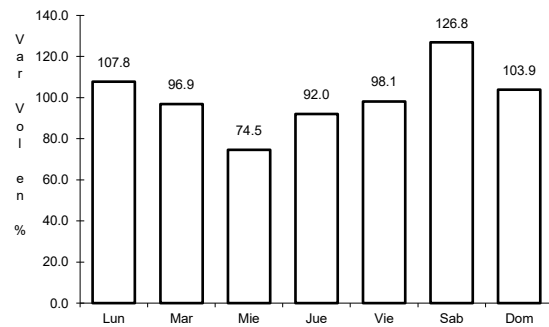
Tipo: 3

Sent: 0

26 CARR: Ramal a Petcacab

CLAVE: 23018

RUTA: QR-018



Km: 0.00

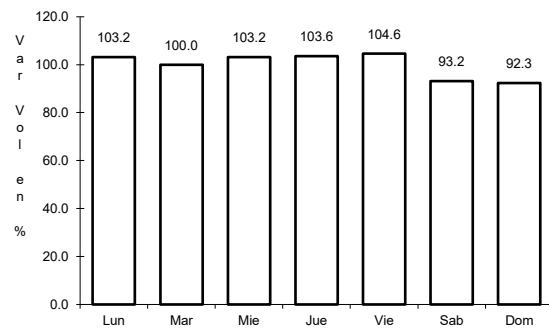
Tipo: 3

Sent: 0

27 CARR: Ramal a Punta Allen

CLAVE: 23015

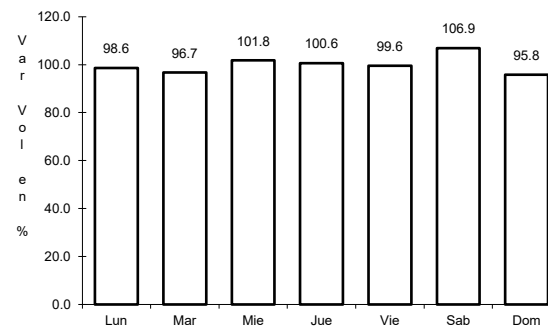
RUTA: QR-015



Km: 0.00

Tipo: 3

Sent: 0



Km: 10.20

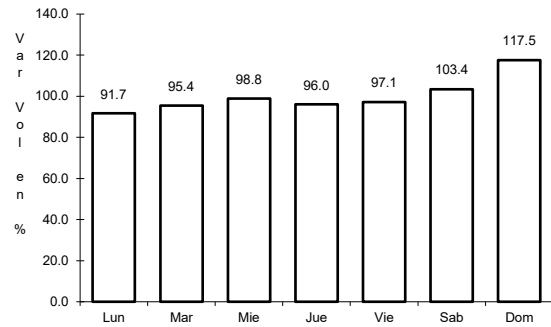
Tipo: 1

Sent: 0

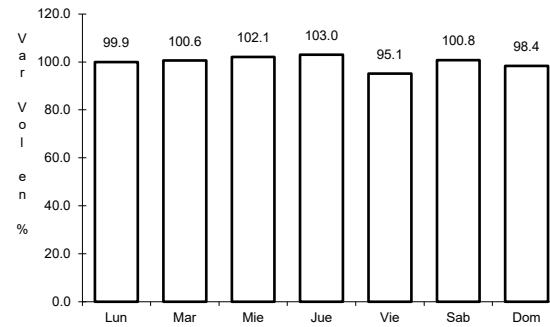
28 CARR: Ramal a Punta Sam

CLAVE: 23582

RUTA: QR



Km: 0.00 Tipo: 3 Sent: 0

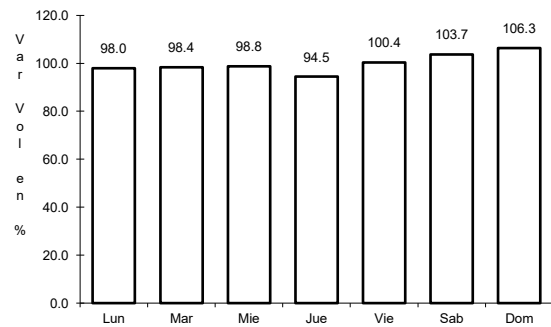


Km: 5.00 Tipo: 1 Sent: 0

29 CARR: Ramal a Reforma

CLAVE: 23016

RUTA: QR-016

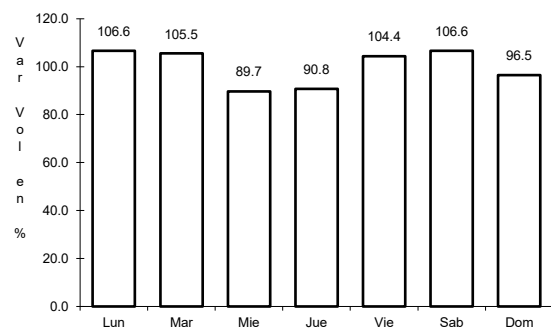


Km: 0.00 Tipo: 3 Sent: 0

30 CARR: Ramal a Tres Garantías

CLAVE: 23585

RUTA: QR

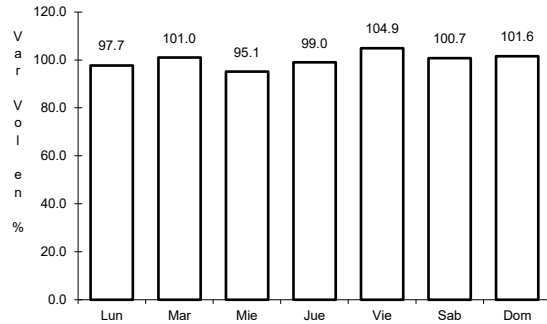


Km: 0.00 Tipo: 3 Sent: 0

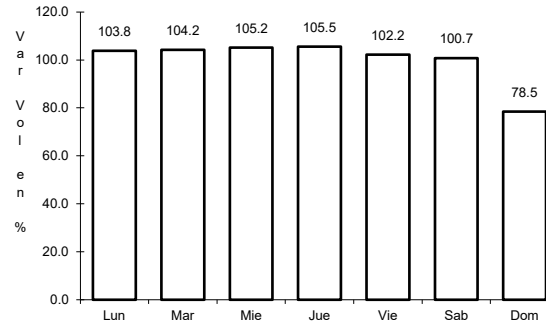
31 CARR: Tihosuco - Dziuche

CLAVE: 23576

RUTA: QR



Km: 0.00 Tipo: 3 Sent: 0

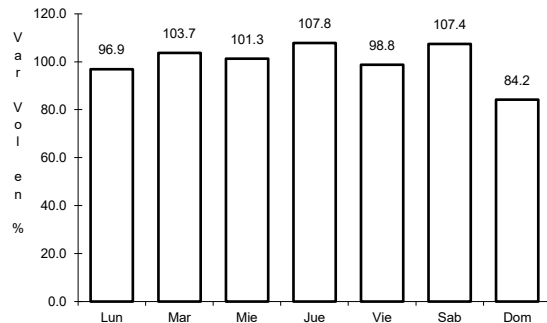


Km: 60.50 Tipo: 1 Sent: 0

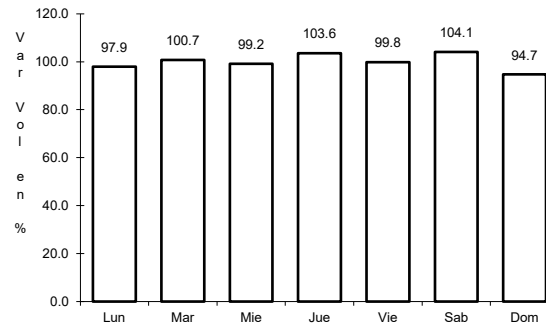
32 CARR: Transversal de Cozumel

CLAVE: 23577

RUTA: QR



Km: 0.00 Tipo: 3 Sent: 1

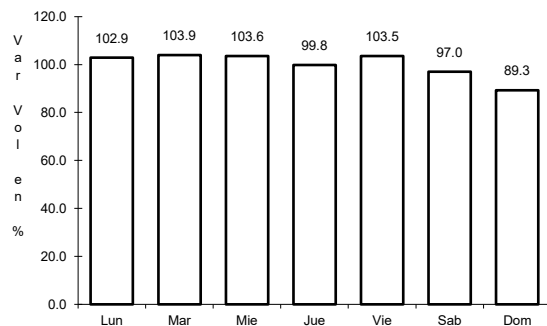


Km: 0.00 Tipo: 3 Sent: 2

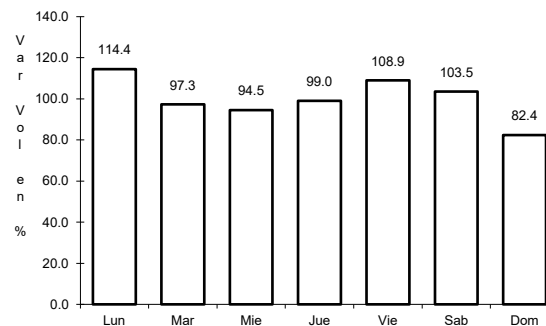
33 CARR: Tulum - Nuevo X-Can

CLAVE: 23570

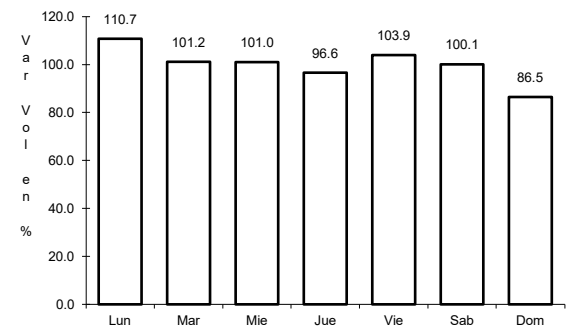
RUTA: QR



Km: 0.00 Tipo: 3 Sent: 1



Km: 42.95 Tipo: 1 Sent: 0

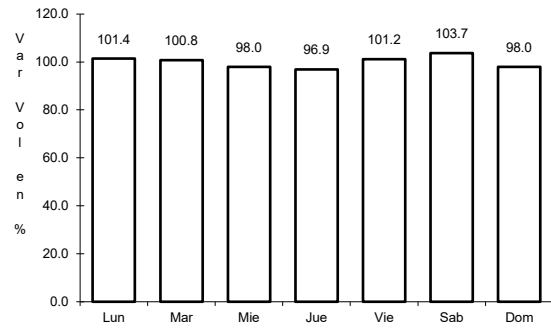


Km: 87.40 Tipo: 1 Sent: 0

34 CARR: Ucum - Unión

CLAVE: 23571

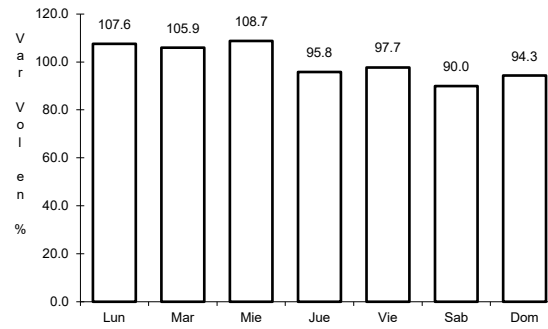
RUTA: QR



Km: 0.00

Tipo: 3

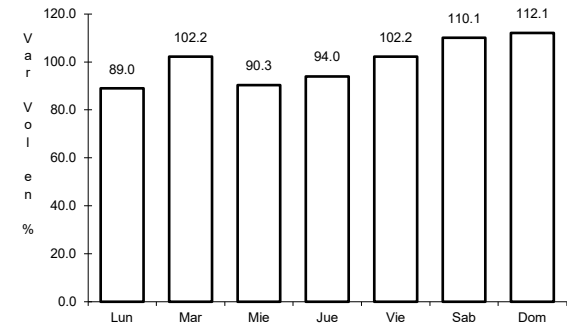
Sent: 0



Km: 31.00

Tipo: 3

Sent: 0



Km: 88.00

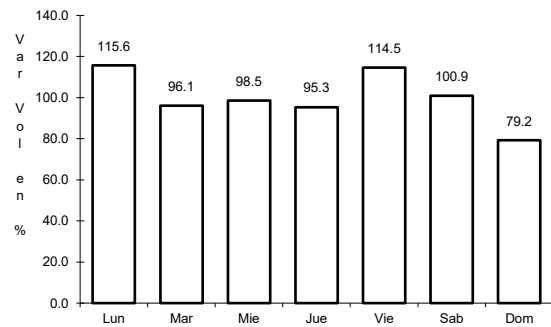
Tipo: 1

Sent: 0

35 CARR: Chemax - Cobá

CLAVE:

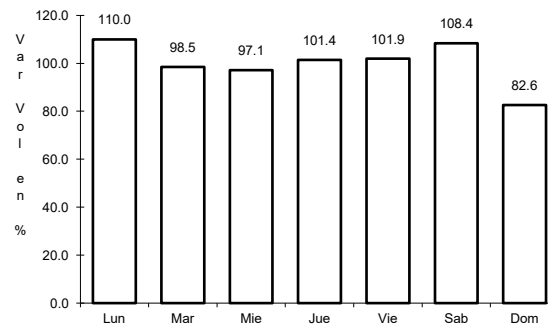
RUTA: YUC-MEX-180



Km: 0.00

Tipo: 3

Sent: 0



Km: 30.90

Tipo: 1

Sent: 0

