



# SAN LUIS POTOSI

NO. INDICE CARRETERA	RUTA
---RED FEDERAL LIBRE---	
1 Antiguo Morelos - Ent. El Huizache	MEX-080
2 Carbonera - T. C. (Ent. Morelos - Saltillo)	MEX-062
3 Cd. Valles - Cd. Victoria	MEX-085
4 Cd. Valles - San Luis Potosí	MEX-070
5 Cd. Valles - Tampico	MEX-070
6 El Clarín - Agua Buena	MEX-070
7 Ent. Ahualulco - Ent. La Bonita	MEX-063
8 Ent. de Zaragoza - San Felipe	MEX-037
9 Ent. Tula - Cd. Victoria	MEX-101
10 Jalpan de Serra - Rioverde	MEX-069
11 Libramiento de Cd. Valles	MEX-070
12 Libramiento de Villa de Reyes	MEX-037
13 Libramiento de Villa de Reyes (Poniente)	MEX-037
14 Libramiento Villa de Arriaga	MEX-080
15 Matehuala - Ent. Puerto México	MEX-057
16 Portezuelo - Cd. Valles	MEX-085
17 Querétaro - San Luis Potosí	MEX-057
18 Ramal a Aeropuerto de S. L. P.	MEX-057
19 Ramal a Ojo de Agua	MEX-062
20 Ramal a Rayón	MEX-070
21 San Juan del Río - Xilitla	MEX-120
22 San Luis Potosí - Ent. Arcinas	MEX-049
23 San Luis Potosí - Lagos de Moreno	MEX-070-080
24 San Luis Potosí - Matehuala	MEX-057
25 T. C. (Ent. El Huizache- Ant. Morelos)-El Salto	MEX-080
26 T. C. (Oro - S.L.P.) - Tierra Nueva	MEX-057
27 T. C. (S.L.P. - Matehuala) - Villa Hidalgo	MEX-057
28 Tamazunchale - San Felipe Orizatlán	MEX-085
---RED FEDERAL DE CUOTA---	
29 Lagos de Moreno - Villa de Arriaga (Cuota)	MEX-080D
30 Libramiento de Matehuala (Cuota)	MEX-057D
31 Libramiento Norponiente de San Luis Potosí (Cuota)	MEX-057D
32 Libramiento Oriente de San Luis Potosí (Cuota)	MEX-057D
33 Rayón - Ent. Tamuín (Cuota)	MEX-070D
---RED ESTATAL LIBRE---	
34 Charcas - Villa Santo Domingo	SLP-017
35 Ébano - Estación Manuel	SLP-TAM
36 Matehuala - La Paz	SLP-020
37 Matehuala - La Poza	SLP-029-NL-061
38 Periférico de San Luis Potosí	SLP-032
39 Ramal a Cerritos	SLP-007
40 Ramal a Pozo de Acuña	SLP-009
41 Rayón - Arroyo Seco	SLP-011
42 Santo Domingo - Cerro Gordo	SLP-022
43 Tamuín - Estación F.F.C.C. Tamuín	SLP-040
44 Tamuín - Xolol	SLP-014
---RED ESTATAL DE CUOTA---	
45 Cerritos - Ent. Tula (Cuota)	SLP-075D
46 Cerritos - Rioverde (Cuota)	SLP-D
47 San Luis Potosí - Villa de Arriaga (Cuota)	SLP-D
---CARRETERAS INTEGRADAS POR TRAMOS FEDERALES Y ESTATALES---	
48 Rayón - Cd. del Maíz	MEX-070-SLP-005
49 San Lorenzo - Moctezuma	MEX-063-SLP-012





SAN LUIS POTOSI

1 CARR: Antiguo Morelos - Ent. El Huizache

CLAVE: 00136

RUTA: MEX-080

AÑO: 2023

LUGAR	ESTACION				CLASIFICACION VEHICULAR EN PORCIENTO										COORDENADAS					
	KM	TE	SC	TDPA	M	A	B	C2	C3	T3S2	T3S3	T3S2R4	OTROS	A	B	C	K'	D	LATITUD	LONGITUD
Antiguo Morelos	0.00	3	0	2901	15.3	78.3	1.1	1.8	1.1	1.0	0.5	0.7	0.2	93.6	1.1	5.3	0.097	0.501	22.553918	-99.090692
Nuevo Morelos	19.28	1	0	1339	7.1	80.7	2.6	3.4	2.5	2.0	0.6	0.7	0.4	87.8	2.6	9.6	0.112	0.508	22.540712	-99.212718
Lim. Edos. Term. Tamps. Ppia. S. L. P.	25.00																			
El Naranjo	32.00	1	0	4753	5.9	81.0	1.6	6.0	2.8	1.6	0.3	0.6	0.2	86.9	1.6	11.5	0.093	0.504	22.532479	-99.307324
El Naranjo	32.00	3	0	2364	7.5	82.7	1.4	4.8	1.2	1.6	0.4	0.3	0.1	90.2	1.4	8.4	0.093	0.504	22.517970	-99.335455
Cd. del Maíz	86.00	3	0	1532	2.9	87.2	1.9	4.2	1.5	1.8	0.2	0.2	0.1	90.1	1.9	8.0	0.115	0.502	22.418733	-99.627314
T. Der. Tula	141.21	3	0	2711	1.1	40.5	2.9	4.6	3.0	23.8	6.4	16.8	0.9	41.6	2.9	55.5	0.062	0.512	22.736996	-99.978292
T. C. San Luis Potosí - Matehuala (Ent. El Huizache)	198.83	1	0	2989	3.5	47.3	3.2	5.4	3.4	19.2	4.5	12.8	0.7	50.8	3.2	46.0	0.065	0.504	22.930012	-100.450302

2 CARR: Carbonera - T. C. (Ent. Morelos - Saltillo)

CLAVE: 00218

RUTA: MEX-062

AÑO: 2023

LUGAR	ESTACION				CLASIFICACION VEHICULAR EN PORCIENTO										COORDENADAS					
	KM	TE	SC	TDPA	M	A	B	C2	C3	T3S2	T3S3	T3S2R4	OTROS	A	B	C	K'	D	LATITUD	LONGITUD
Carbonera	0.00	3	0	3503	7.4	74.7	1.5	11.6	1.8	1.2	0.8	0.9	0.1	82.1	1.5	16.4	0.089	0.503	23.702566	-100.626115
Cedral	18.00	1	0	5506	8.9	83.6	1.1	3.6	0.8	1.0	0.3	0.6	0.1	92.5	1.1	6.4	0.090	0.502	23.794130	-100.698322
Cedral	18.00	3	0	3851	11.6	70.2	2.5	11.0	1.7	1.5	0.5	0.8	0.2	81.8	2.5	15.7	0.111	0.510	23.827880	-100.735138
Lim. Edos. Term. S. L. P. Ppia. Zac.	79.20																			
T. C. Ent. Morelos - Saltillo	112.00	1	0	1417	2.7	73.1	1.8	17.1	2.7	2.0	0.1	0.4	0.1	75.8	1.8	22.4	0.095	0.532	24.157488	-101.493902

3 CARR: Cd. Valles - Cd. Victoria

CLAVE: 00509

RUTA: MEX-085

AÑO: 2023

LUGAR	ESTACION				CLASIFICACION VEHICULAR EN PORCIENTO										COORDENADAS					
	KM	TE	SC	TDPA	M	A	B	C2	C3	T3S2	T3S3	T3S2R4	OTROS	A	B	C	K'	D	LATITUD	LONGITUD
Cd. Valles	0.00	3	0	10296	4.4	86.4	2.2	4.8	0.7	0.6	0.3	0.4	0.2	90.8	2.2	7.0	0.082	0.504	22.007370	-99.004538
Lim. Edos. Term. S. L. P. Ppia. Tamps.	50.40																			
Antiguo Morelos	66.90	1	0	2773	9.4	80.5	3.3	1.7	1.3	1.7	0.3	1.6	0.2	89.9	3.3	6.8	0.088	0.505	22.548421	-99.078350
Antiguo Morelos	66.90	3	0	3815	6.9	78.9	4.7	2.3	1.9	2.5	0.8	1.6	0.4	85.8	4.7	9.5	0.086	0.547	22.560752	-99.077947
Cd. Mante	98.00	1	0	9088	10.6	79.5	1.9	3.9	1.8	1.3	0.3	0.5	0.2	90.1	1.9	8.0	0.093	0.506	22.712021	-98.988827
T. Izq. Ocampo	110.00	3	0	4458	11.7	79.7	2.8	2.8	1.5	0.6	0.3	0.4	0.2	91.4	2.8	5.8	0.095	0.500	22.838679	-99.024339
T. Izq. Gómez Farías	132.84	3	0	2071	11.0	77.5	3.2	6.1	0.6	1.3	0.1	0.2	0.0	88.5	3.2	8.3	0.086	0.503	23.030359	-99.093799
T. Izq. Llera de Canales	170.00	3	0	4298	1.3	91.7	1.3	4.3	0.7	0.3	0.3	0.1	0.0	93.0	1.3	5.7	0.093	0.506	23.310469	-99.017224
T. Der. González	172.50	3	0	2965	2.1	83.9	3.9	5.6	1.1	1.6	0.9	0.9	0.0	86.0	3.9	10.1	0.116	0.529	23.318160	-98.998111
Cd. Victoria	232.00	1	0	3297	1.4	83.0	4.3	6.6	2.1	1.5	0.9	0.1	0.1	84.4	4.3	11.3	0.089	0.501	23.659913	-99.096587

SAN LUIS POTOSI

4 CARR: Cd. Valles - San Luis Potosi

CLAVE: 24135

RUTA: MEX-070

AÑO: 2023

LUGAR	ESTACION				CLASIFICACION VEHICULAR EN PORCIENTO										COORDENADAS					
	KM	TE	SC	TDPA	M	A	B	C2	C3	T3S2	T3S3	T3S2R4	OTROS	A	B	C	K'	D	LATITUD	LONGITUD
Cd. Valles	0.00	3	1	4418	5.7	80.1	2.2	6.3	1.7	1.6	1.0	0.9	0.5	85.8	2.2	12.0	0.091	0.523	21.990128	-99.045019
Cd. Valles	0.00	3	2	4850	5.6	80.4	2.2	6.2	1.7	1.6	1.0	0.9	0.4	86.0	2.2	11.8	0.088	0.523	21.990028	-99.045063
X. C. Rayón - Ent. Tamuín (Cuota)	11.59	1	1	2888	5.7	79.7	2.3	6.3	1.7	1.7	1.0	0.9	0.7	85.4	2.3	12.3	0.092	0.516	22.002734	-99.100851
X. C. Rayón - Ent. Tamuín (Cuota)	11.59	1	2	3078	5.7	79.8	2.2	6.3	1.9	1.6	1.0	0.9	0.6	85.5	2.2	12.3	0.086	0.516	22.002646	-99.100877
T. Der. Damián Carmona	31.25	3	0	2313	4.8	81.6	1.6	5.8	1.8	2.3	1.3	0.5	0.3	86.4	1.6	12.0	0.089	0.502	21.925228	-99.229627
T. Der. Canoas	75.40	1	0	1789	5.2	81.1	1.9	5.4	1.8	2.4	1.4	0.5	0.3	86.3	1.9	11.8	0.079	0.528	21.873126	-99.495120
X. C. Cárdenas - Rayón	93.00	1	0	2820	3.9	73.2	1.4	15.2	2.1	2.6	1.1	0.3	0.2	77.1	1.4	21.5	0.082	0.503	21.852859	-99.625479
X. C. Cárdenas - Rayón	93.00	3	0	6671	3.7	76.0	3.4	4.5	1.8	5.2	1.2	3.5	0.7	79.7	3.4	16.9	0.079	0.519	21.859335	-99.653106
T. Der. Cerrito de la Cruz	104.30	3	0	7049	2.9	76.7	3.7	4.9	2.3	5.1	1.7	2.1	0.6	79.6	3.7	16.7	0.072	0.518	21.880704	-99.722338
T. Der. Santa Rita	118.00	3	0	7123	4.2	77.1	3.2	3.5	1.9	4.6	1.9	2.7	0.9	81.3	3.2	15.5	0.080	0.503	21.897875	-99.853625
Río Verde	133.76	1	1	11683	8.1	83.2	0.9	5.6	0.6	0.7	0.4	0.3	0.2	91.3	0.9	7.8	0.110	0.532	21.922669	-99.983885
Río Verde	133.76	1	2	10259	8.1	83.2	0.9	5.6	0.6	0.7	0.4	0.3	0.2	91.3	0.9	7.8	0.124	0.532	21.922587	-99.984476
Río Verde	133.76	3	1	10006	7.5	82.4	0.7	7.5	0.8	0.2	0.4	0.3	0.2	89.9	0.7	9.4	0.087	0.504	21.937872	-100.031913
Río Verde	133.76	3	2	9861	7.5	82.3	0.7	7.5	0.8	0.2	0.4	0.4	0.2	89.8	0.7	9.5	0.082	0.504	21.937787	-100.032076
T. Der. La Reformita	145.90	1	0	6512	5.3	82.8	1.8	6.1	2.1	1.3	0.3	0.2	0.1	88.1	1.8	10.1	0.094	0.539	21.963642	-100.090025
T. Der. La Reformita	145.90	3	0	6010	5.1	83.2	1.8	6.1	1.9	1.3	0.3	0.2	0.1	88.3	1.8	9.9	0.085	0.515	21.972443	-100.101362
T. Izq. La Tapona	157.76	1	0	3678	5.3	81.9	1.8	6.4	2.2	1.5	0.5	0.3	0.1	87.2	1.8	11.0	0.101	0.526	22.020824	-100.185832
T. Izq. La Tapona	157.76	3	0	4496	5.3	82.2	1.9	6.4	2.2	1.4	0.3	0.2	0.1	87.5	1.9	10.6	0.092	0.503	22.021738	-100.192842
T. Der. Guaxcama	161.04	3	0	3166	5.4	80.9	1.9	6.6	2.3	1.7	0.6	0.5	0.1	86.3	1.9	11.8	0.095	0.540	22.037030	-100.279201
San Antonio	180.70	1	0	3531	5.2	81.6	2.0	6.5	2.0	1.8	0.6	0.2	0.1	86.8	2.0	11.2	0.095	0.510	22.017412	-100.365781
T. Izq. Puente Prieto	181.93	3	0	3474	6.6	78.7	2.0	7.1	2.4	1.9	0.9	0.3	0.1	85.3	2.0	12.7	0.113	0.505	22.018553	-100.396111
San Nicolás Tolentino	191.00	1	0	3655	4.7	81.4	2.0	6.9	2.4	1.6	0.6	0.3	0.1	86.1	2.0	11.9	0.098	0.510	22.049095	-100.447740
T. Der. San Martín de Abajo	199.60	1	0	3170	4.4	82.1	2.3	6.8	2.1	1.6	0.3	0.3	0.1	86.5	2.3	11.2	0.109	0.504	22.069288	-100.492800
T. Der. San Martín de Abajo	199.60	3	0	2986	4.3	82.3	2.3	6.8	2.2	1.5	0.3	0.2	0.1	86.6	2.3	11.1	0.117	0.512	22.078828	-100.507426
T. Izq. Zaragoza	239.50	1	0	5302	4.0	80.7	2.1	7.8	1.8	2.1	1.0	0.4	0.1	84.7	2.1	13.2	0.091	0.510	22.097496	-100.739624
T. Izq. Zaragoza	239.50	3	0	8850	5.4	81.2	1.3	8.0	1.2	1.4	0.9	0.5	0.1	86.6	1.3	12.1	0.088	0.538	22.102160	-100.752706
X. Lib. Ote. de San Luis Potosí	255.00	1	0	9263	6.8	79.1	1.9	6.6	1.6	2.0	1.3	0.5	0.2	85.9	1.9	12.2	0.090	0.510	22.121337	-100.806370
X. Periférico de San Luis Potosí	257.44	1	1	28736	4.3	88.8	1.0	3.0	1.3	0.9	0.3	0.3	0.1	93.1	1.0	5.9	0.083	0.508	22.148847	-100.883109
X. Periférico de San Luis Potosí	257.44	1	2	29710	4.0	88.5	1.1	3.3	1.4	1.0	0.3	0.3	0.1	92.5	1.1	6.4	0.085	0.508	22.148815	-100.883439
San Luis Potosí	261.94																			

SAN LUIS POTOSI

5 CARR: Cd. Valles - Tampico

CLAVE: 00138

RUTA: MEX-070

AÑO: 2023

LUGAR	ESTACION				CLASIFICACION VEHICULAR EN PORCIENTO										COORDENADAS					
	KM	TE	SC	TDPA	M	A	B	C2	C3	T3S2	T3S3	T3S2R4	OTROS	A	B	C	K'	D	LATITUD	LONGITUD
Cd. Valles	0.00	3	0	8786	3.9	77.3	1.7	8.8	3.8	2.1	1.1	0.8	0.5	81.2	1.7	17.1	0.078	0.508	21.976029	-98.958665
T. Der. Santa Elena	15.25	3	0	5669	4.2	76.8	2.5	8.8	2.5	2.3	1.3	1.3	0.3	81.0	2.5	16.5	0.076	0.530	21.961360	-98.877664
Tamuín	29.60	1	0	5508	3.5	74.9	2.2	10.0	2.2	3.7	1.6	1.4	0.5	78.4	2.2	19.4	0.077	0.504	21.998119	-98.781933
T. C. Rayón - Ent. Tamuín (Cuota)	34.40	1	0	4366	9.4	72.3	2.5	3.9	3.9	3.1	1.7	2.6	0.6	81.7	2.5	15.8	0.092	0.511	22.002449	-98.745308
T. C. Rayón - Ent. Tamuín (Cuota)	34.40	3	1	3197	7.1	66.8	5.0	4.6	3.0	6.0	2.2	4.4	0.9	73.9	5.0	21.1	0.080	0.501	22.010469	-98.729871
T. C. Rayón - Ent. Tamuín (Cuota)	34.40	3	2	3185	7.0	66.9	5.1	4.5	3.0	5.7	2.3	4.6	0.9	73.9	5.1	21.0	0.073	0.501	22.010649	-98.729916
Ébano	79.00	1	0	11300	8.8	74.8	2.4	2.6	1.1	4.0	1.0	4.4	0.9	83.6	2.4	14.0	0.075	0.502	22.214249	-98.391265
Ébano	79.00	3	0	6915	7.3	65.5	6.6	4.4	2.8	4.0	2.9	5.7	0.8	72.8	6.6	20.6	0.076	0.505	22.211588	-98.360126
Lim. Edos. Term. S. L. P. Ppia. Ver.	83.57																			
T. Der. Pánuco	103.00	1	0	7461	5.3	74.6	2.6	4.2	2.3	3.5	1.7	4.9	0.9	79.9	2.6	17.5	0.072	0.507	22.155744	-98.155109
T. Der. Pánuco	103.00	3	0	9021	6.6	73.4	3.3	4.4	2.2	3.8	1.7	3.7	0.9	80.0	3.3	16.7	0.093	0.523	22.158993	-98.148897
T. C. Anáhuac - El Prieto	128.40	1	1	5020	4.6	77.7	3.3	3.9	1.7	3.1	1.4	3.4	0.9	82.3	3.3	14.4	0.108	0.509	22.213464	-97.953230
T. C. Anáhuac - El Prieto	128.40	1	2	5213	4.4	77.0	3.3	4.1	1.8	3.3	1.6	3.6	0.9	81.4	3.3	15.3	0.102	0.509	22.213564	-97.953194
T. C. Anáhuac - El Prieto	128.40	3	1	7964	4.1	70.1	3.2	6.2	2.5	6.4	3.1	3.5	0.9	74.2	3.2	22.6	0.083	0.503	22.216195	-97.941477
T. C. Anáhuac - El Prieto	128.40	3	2	7863	4.0	70.5	3.6	6.0	2.3	6.2	2.9	3.6	0.9	74.5	3.6	21.9	0.087	0.503	22.218311	-97.933031
Lim. Edos. Term. Ver. Ppia. Tamps.	133.81																			
Tampico	138.00	1	1	11226	5.8	72.0	2.2	6.9	1.7	4.6	1.9	4.0	0.9	77.8	2.2	20.0	0.078	0.507	22.226837	-97.894215
Tampico	138.00	1	2	10905	5.6	71.8	2.4	6.9	1.9	4.8	1.9	3.8	0.9	77.4	2.4	20.2	0.095	0.507	22.226931	-97.894236

6 CARR: El Clarín - Agua Buena

CLAVE: 24283

RUTA: MEX-070

AÑO: 2023

LUGAR	ESTACION				CLASIFICACION VEHICULAR EN PORCIENTO										COORDENADAS					
	KM	TE	SC	TDPA	M	A	B	C2	C3	T3S2	T3S3	T3S2R4	OTROS	A	B	C	K'	D	LATITUD	LONGITUD
T. C. Cd. Valles - San Luis Potosí	0.00	3	0	1491	4.7	76.6	1.8	15.2	0.5	0.7	0.2	0.1	0.2	81.3	1.8	16.9	0.093	0.543	21.892035	-99.382519
Agua Buena	11.23	1	0	4534	10.4	76.1	2.0	8.7	0.3	2.1	0.2	0.1	0.1	86.5	2.0	11.5	0.079	0.529	21.951923	-99.390960

7 CARR: Ent. Aqualulco - Ent. La Bonita

CLAVE: 24258

RUTA: MEX-063

AÑO: 2023

LUGAR	ESTACION				CLASIFICACION VEHICULAR EN PORCIENTO										COORDENADAS					
	KM	TE	SC	TDPA	M	A	B	C2	C3	T3S2	T3S3	T3S2R4	OTROS	A	B	C	K'	D	LATITUD	LONGITUD
T. C. San Luis Potosí - Ent. Arcinas	0.00	3	0	5241	5.8	82.9	1.8	6.9	1.0	0.7	0.5	0.4	0.0	88.7	1.8	9.5	0.118	0.511	22.322118	-101.165320
Aqualulco	11.00	3	0	4810	8.7	75.2	1.4	12.1	0.9	0.9	0.5	0.2	0.1	83.9	1.4	14.7	0.093	0.518	22.412925	-101.158869
Moctezuma	59.00	1	0	2714	4.8	87.8	1.6	3.8	0.7	0.7	0.2	0.4	0.0	92.6	1.6	5.8	0.102	0.500	22.733709	-101.085805
Charcas	100.00	1	0	2439	15.6	74.4	2.7	4.7	1.3	0.5	0.4	0.4	0.0	90.0	2.7	7.3	0.101	0.502	23.113070	-101.104017
Charcas	100.00	3	0	1400	22.9	67.8	1.9	5.0	0.9	0.8	0.3	0.4	0.0	90.7	1.9	7.4	0.126	0.501	23.133725	-101.098203

SAN LUIS POTOSI

7 CARR : Ent. Ahualulco - Ent. La Bonita

CLAVE: 24258

RUTA: MEX-063

AÑO: 2023

LUGAR	ESTACION				CLASIFICACION VEHICULAR EN PORCIENTO														COORDENADAS	
	KM	TE	SC	TDPA	M	A	B	C2	C3	T3S2	T3S3	T3S2R4	OTROS	A	B	C	K'	D	LATITUD	LONGITUD
T. C. San Luis Potosí - Matehuala	169.90	1	0	1365	5.3	84.0	1.9	5.9	1.5	0.8	0.2	0.4	0.0	89.3	1.9	8.8	0.109	0.507	23.481037	-100.624409

8 CARR : Ent. de Zaragoza - San Felipe

CLAVE: 00240

RUTA: MEX-037

AÑO: 2023

LUGAR	ESTACION				CLASIFICACION VEHICULAR EN PORCIENTO														COORDENADAS	
	KM	TE	SC	TDPA	M	A	B	C2	C3	T3S2	T3S3	T3S2R4	OTROS	A	B	C	K'	D	LATITUD	LONGITUD
T. C. Querétaro - San Luis Potosí	0.00	3	0	16022	1.5	62.9	5.3	11.7	2.1	12.0	2.8	1.1	0.6	64.4	5.3	30.3	0.088	0.520	21.958187	-100.825204
Lim. Edos. Term. S. L. P. Ppia. Gto.	32.00																			
San Felipe	72.00	1	0	8561	3.7	52.4	4.7	15.2	4.7	13.7	3.6	1.5	0.5	56.1	4.7	39.2	0.080	0.500	21.481411	-101.153368

9 CARR : Ent. Tula - Cd. Victoria

CLAVE: 00179

RUTA: MEX-101

AÑO: 2023

LUGAR	ESTACION				CLASIFICACION VEHICULAR EN PORCIENTO														COORDENADAS	
	KM	TE	SC	TDPA	M	A	B	C2	C3	T3S2	T3S3	T3S2R4	OTROS	A	B	C	K'	D	LATITUD	LONGITUD
T. C. Antiguo Morelos - El Huizache	0.00	3	0	3865	3.8	45.7	4.5	3.7	1.8	21.8	3.2	14.6	0.9	49.5	4.5	46.0	0.070	0.528	22.738082	-99.967929
Lim. Edos. Term. S. L. P. Ppia. Tamps.	2.40																			
T. Der. Tula (1º Acceso)	38.00	1	0	6779	2.3	51.4	4.5	5.0	2.4	18.2	3.1	12.2	0.9	53.7	4.5	41.8	0.060	0.520	22.979114	-99.737887
T. Der. Tula (2º Acceso)	41.95	3	0	4861	3.9	51.4	5.4	4.4	1.9	17.8	2.7	11.6	0.9	55.3	5.4	39.3	0.071	0.506	23.021091	-99.714022
Jaumave	112.68	1	0	6051	4.9	63.0	4.1	3.4	1.6	11.7	2.1	8.2	1.0	67.9	4.1	28.0	0.068	0.518	23.393694	-99.415780
Jaumave	112.68	3	0	6539	4.7	62.1	3.8	2.8	1.1	12.8	2.3	9.4	1.0	66.8	3.8	29.4	0.067	0.512	23.420606	-99.373232
T. Libramiento de Cd. Victoria	134.68																			
Cd. Victoria	180.00	1	1	3443	16.0	79.4	0.5	1.2	2.0	0.7	0.1	0.1	0.0	95.4	0.5	4.1	0.087	0.504	23.710993	-99.175922
Cd. Victoria	180.00	1	2	3497	16.8	78.4	0.4	1.0	2.1	0.8	0.2	0.2	0.1	95.2	0.4	4.4	0.086	0.504	23.711133	-99.175961

10 CARR : Jalpan de Serra - Rioverde

CLAVE: 00265

RUTA: MEX-069

AÑO: 2023

LUGAR	ESTACION				CLASIFICACION VEHICULAR EN PORCIENTO														COORDENADAS	
	KM	TE	SC	TDPA	M	A	B	C2	C3	T3S2	T3S3	T3S2R4	OTROS	A	B	C	K'	D	LATITUD	LONGITUD
Jalpan de Serra	0.00	3	0	7249	3.1	91.6	0.9	2.9	0.6	0.5	0.1	0.2	0.1	94.7	0.9	4.4	0.073	0.507	21.239334	-99.482402
T. Izq. Conca	35.01	1	0	3112	5.3	90.2	0.3	2.4	1.1	0.4	0.2	0.0	0.1	95.5	0.3	4.2	0.096	0.504	21.449680	-99.631148
Arroyo Seco	48.60	1	0	2129	4.1	88.3	0.5	5.2	1.1	0.4	0.3	0.0	0.1	92.4	0.5	7.1	0.082	0.525	21.541394	-99.687669
Lim. Edos. Term. Oro. Ppia. S. L. P.	52.27																			
San Ciro de Acosta	69.42	1	0	2309	6.5	76.3	0.5	12.6	1.4	1.9	0.6	0.1	0.1	82.8	0.5	16.7	0.080	0.501	21.647981	-99.808437
San Ciro de Acosta	69.42	3	0	3216	4.6	80.2	0.9	11.1	1.3	1.3	0.3	0.2	0.1	84.8	0.9	14.3	0.083	0.504	21.661917	-99.827612
Rioverde	105.43	1	0	7779	3.1	76.2	0.6	15.7	0.8	2.2	0.8	0.4	0.2	79.3	0.6	20.1	0.081	0.503	21.872840	-99.972840



SAN LUIS POTOSI

11 CARR: Libramiento de Cd. Valles

CLAVE: 24205

RUTA: MEX-070

AÑO: 2023

LUGAR	ESTACION				CLASIFICACION VEHICULAR EN PORCIENTO														COORDENADAS	
	KM	TE	SC	TDPA	M	A	B	C2	C3	T3S2	T3S3	T3S2R4	OTROS	A	B	C	K'	D	LATITUD	LONGITUD
T. C. Cd. Valles - San Luis Potosí	0.00	3	0	9280	9.5	74.5	3.1	5.9	2.8	1.8	1.0	1.1	0.3	84.0	3.1	12.9	0.084	0.535	21.984406	-99.034956
T. C. Cd. Valles - Tampico	11.54	1	0	2707	4.5	67.4	5.0	4.4	7.9	4.7	3.3	2.4	0.4	71.9	5.0	23.1	0.086	0.509	21.974287	-98.966455

12 CARR: Libramiento de Villa de Reyes

CLAVE: 24010

RUTA: MEX-037

AÑO: 2023

LUGAR	ESTACION				CLASIFICACION VEHICULAR EN PORCIENTO														COORDENADAS	
	KM	TE	SC	TDPA	M	A	B	C2	C3	T3S2	T3S3	T3S2R4	OTROS	A	B	C	K'	D	LATITUD	LONGITUD
T. C. Ent. Zaragoza - San Felipe	0.00	3	0	8079	15.0	71.0	2.1	8.5	1.2	1.5	0.3	0.4	0.0	86.0	2.1	11.9	0.084	0.505	21.802435	-100.931095
T. C. Villa de Reyes - Bledos	3.10																			

13 CARR: Libramiento de Villa de Reyes (Poniente)

CLAVE:

RUTA: MEX-037

AÑO: 2023

LUGAR	ESTACION				CLASIFICACION VEHICULAR EN PORCIENTO														COORDENADAS	
	KM	TE	SC	TDPA	M	A	B	C2	C3	T3S2	T3S3	T3S2R4	OTROS	A	B	C	K'	D	LATITUD	LONGITUD
T. C. Ent. Zaragoza - San Felipe Sur	125.60																			
Lim. Edos. Term. Gto. Ppia. S. L. P.	132.90																			
T. C. Ent. Zaragoza - San Felipe Norte	143.64	1	0	6682	6.3	54.9	3.1	9.9	2.5	18.5	2.2	1.9	0.7	61.2	3.1	35.7	0.061	0.507	21.819005	-100.943896

14 CARR: Libramiento Villa de Arriaga

CLAVE: 24009

RUTA: MEX-080

AÑO: 2023

LUGAR	ESTACION				CLASIFICACION VEHICULAR EN PORCIENTO														COORDENADAS	
	KM	TE	SC	TDPA	M	A	B	C2	C3	T3S2	T3S3	T3S2R4	OTROS	A	B	C	K'	D	LATITUD	LONGITUD
T. C. San Luis Potosí - Lagos de Moreno (Poniente)	0.00	3	0	6968	4.7	58.3	6.6	4.0	2.6	13.6	2.3	7.0	0.9	63.0	6.6	30.4	0.060	0.518	21.924053	-101.371733
T. C. San Luis Potosí - Lagos de Moreno (Oriente)	5.00																			

15 CARR: Matehuala - Ent. Puerto México

CLAVE: 00405

RUTA: MEX-057

AÑO: 2023

LUGAR	ESTACION				CLASIFICACION VEHICULAR EN PORCIENTO														COORDENADAS	
	KM	TE	SC	TDPA	M	A	B	C2	C3	T3S2	T3S3	T3S2R4	OTROS	A	B	C	K'	D	LATITUD	LONGITUD
Matehuala	0.00	3	1	7081	5.1	68.9	2.7	9.6	1.8	8.8	1.8	1.1	0.2	74.0	2.7	23.3	0.100	0.518	23.668949	-100.631971
Matehuala	0.00	3	2	7607	5.2	68.7	2.6	9.5	1.7	9.0	1.9	1.2	0.2	73.9	2.6	23.5	0.083	0.518	23.669023	-100.632162
T. Izq. Cedral	8.47	1	1	5115	7.0	62.3	3.8	11.3	2.2	10.1	2.0	1.2	0.1	69.3	3.8	26.9	0.075	0.502	23.693444	-100.619840
T. Izq. Cedral	8.47	1	2	5149	7.2	61.8	3.7	11.4	2.3	10.2	2.2	1.1	0.1	69.0	3.7	27.3	0.066	0.502	23.693644	-100.620069
T. Izq. Cedral	8.47	3	1	2476	8.3	54.8	4.1	14.2	0.9	11.2	2.9	2.8	0.8	63.1	4.1	32.8	0.086	0.540	23.698921	-100.617143
T. Izq. Cedral	8.47	3	2	2908	8.4	55.4	4.1	14.3	0.9	11.1	2.7	2.4	0.7	63.8	4.1	32.1	0.083	0.540	23.699058	-100.617390

SAN LUIS POTOSI

15 CARR: Matehuala - Ent. Puerto México

CLAVE: 00405

RUTA: MEX-057

AÑO: 2023

LUGAR	ESTACION				CLASIFICACION VEHICULAR EN PORCIENTO										COORDENADAS					
	KM	TE	SC	TDPA	M	A	B	C2	C3	T3S2	T3S3	T3S2R4	OTROS	A	B	C	K'	D	LATITUD	LONGITUD
T. Izq. Libramiento de Matehuala (Cuota)	9.30	3	1	10425	1.7	33.4	6.0	8.0	2.4	39.1	3.7	4.8	0.9	35.1	6.0	58.9	0.063	0.508	23.713053	-100.610148
T. Izq. Libramiento de Matehuala (Cuota)	9.30	3	2	10092	1.8	32.9	6.1	8.2	2.5	39.2	3.8	4.7	0.8	34.7	6.1	59.2	0.068	0.508	23.713149	-100.610409
Lim. Edos. Term. S. L. P. Ppia. N. L.	24.64																			
Santa Ana	59.65	1	1	10609	2.8	30.5	5.3	6.1	3.2	42.2	4.2	4.8	0.9	33.3	5.3	61.4	0.059	0.514	24.084492	-100.384860
Santa Ana	59.65	1	2	11233	2.5	30.8	5.6	5.8	3.0	42.0	4.4	5.0	0.9	33.3	5.6	61.1	0.060	0.514	24.084636	-100.385104
T. Der. Linares	128.99	1	1	10757	3.0	34.1	5.9	5.7	2.9	38.0	4.3	5.2	0.9	37.1	5.9	57.0	0.056	0.510	24.612011	-100.274680
T. Der. Linares	128.99	1	2	10336	3.3	34.2	5.6	5.9	2.8	38.2	4.0	5.1	0.9	37.5	5.6	56.9	0.057	0.510	24.612089	-100.275028
T. Der. Linares	128.99	3	1	10640	2.4	36.0	6.0	5.6	2.6	37.8	3.4	5.3	0.9	38.4	6.0	55.6	0.060	0.506	24.680557	-100.300287
T. Der. Linares	128.99	3	2	10408	2.2	37.0	5.9	5.4	2.4	37.6	3.5	5.1	0.9	39.2	5.9	54.9	0.055	0.506	24.680628	-100.300588
San Rafael	177.18	1	1	10945	3.0	36.9	5.8	6.7	2.5	35.6	3.4	5.2	0.9	39.9	5.8	54.3	0.061	0.520	25.023191	-100.546063
San Rafael	177.18	1	2	11872	2.9	36.5	6.0	6.9	2.7	35.8	3.3	5.0	0.9	39.4	6.0	54.6	0.049	0.520	25.023115	-100.546462
T. C. Puerto México - La Carbonera (Cuota)	202.40	1	1	11321	6.2	33.7	6.0	6.0	2.5	36.0	3.3	5.5	0.8	39.9	6.0	54.1	0.060	0.503	25.166536	-100.717750
T. C. Puerto México - La Carbonera (Cuota)	202.40	1	2	11206	6.3	33.5	6.1	6.0	2.5	36.0	3.3	5.5	0.8	39.8	6.1	54.1	0.072	0.503	25.166679	-100.718596

16 CARR: Portezuelo - Cd. Valles

CLAVE: 00023

RUTA: MEX-085

AÑO: 2023

LUGAR	ESTACION				CLASIFICACION VEHICULAR EN PORCIENTO										COORDENADAS					
	KM	TE	SC	TDPA	M	A	B	C2	C3	T3S2	T3S3	T3S2R4	OTROS	A	B	C	K'	D	LATITUD	LONGITUD
Portezuelo	0.00	3	0	6476	5.8	87.8	1.4	2.4	0.7	1.0	0.5	0.3	0.1	93.6	1.4	5.0	0.083	0.505	20.488373	-99.298631
T. Der. Tasquillo (2º Acceso)	10.50	1	0	4844	5.7	86.3	1.3	3.1	1.2	1.1	0.8	0.2	0.3	92.0	1.3	6.7	0.085	0.510	20.542206	-99.318295
T. Izq. Zimapán (1º Acceso)	32.00	1	0	6167	6.6	86.7	1.1	2.8	0.8	1.0	0.7	0.2	0.1	93.3	1.1	5.6	0.076	0.500	20.702941	-99.334508
T. Izq. Zimapán (1º Acceso)	32.00	3	0	2263	5.1	86.7	1.3	2.6	1.4	1.4	1.2	0.2	0.1	91.8	1.3	6.9	0.084	0.513	20.706057	-99.336200
La Estancia	41.00	3	0	2279	3.0	83.1	1.7	7.8	1.3	1.7	0.9	0.3	0.2	86.1	1.7	12.2	0.094	0.504	20.777742	-99.309861
Trancas	51.00	3	0	1880	3.6	81.2	1.9	8.4	1.5	1.2	1.5	0.4	0.3	84.8	1.9	13.3	0.088	0.513	20.801478	-99.261738
Jacala	98.60	3	0	2420	7.6	80.6	1.1	8.0	0.8	1.1	0.4	0.3	0.1	88.2	1.1	10.7	0.089	0.509	21.002261	-99.184735
Zacate Grande	143.10	1	0	1130	4.8	83.5	2.4	5.8	1.5	0.9	0.7	0.3	0.1	88.3	2.4	9.3	0.072	0.509	21.106569	-99.003043
T. Izq. Pisaflores	154.00	3	0	2287	6.2	83.9	1.5	5.5	1.4	0.6	0.5	0.3	0.1	90.1	1.5	8.4	0.088	0.501	21.153707	-98.945147
Lim. Edos. Term. Hgo. Ppia. S. L. P.	168.63																			
Tamazunchale	192.80	1	0	7018	25.1	65.4	2.2	3.8	2.0	0.6	0.2	0.6	0.1	90.5	2.2	7.3	0.075	0.500	21.263533	-98.799566
T. Izq. Xilitla	228.75	1	0	6373	8.6	78.8	2.2	4.6	3.1	1.1	0.5	0.9	0.2	87.4	2.2	10.4	0.094	0.501	21.443217	-98.925696
T. Izq. Xilitla	228.75	3	0	5561	13.0	74.6	2.3	4.4	2.8	1.3	0.7	0.4	0.5	87.6	2.3	10.1	0.084	0.506	21.448931	-98.930551
T. Izq. Aquismón	252.50	1	0	6325	8.5	78.1	2.3	4.4	3.6	1.4	0.7	0.8	0.2	86.6	2.3	11.1	0.088	0.503	21.622380	-98.987299
Agua Hedionda	265.00	1	0	6566	4.2	81.4	2.2	4.9	3.8	1.6	0.9	0.8	0.2	85.6	2.2	12.2	0.079	0.509	21.712375	-98.962011
X. C. Rayón - Ent. Tamuín (Cuota)	286.41	1	1	4548	3.8	82.1	2.1	5.6	3.7	1.5	0.7	0.3	0.2	85.9	2.1	12.0	0.086	0.516	21.884734	-98.947361
X. C. Rayón - Ent. Tamuín (Cuota)	286.41	1	2	4262	3.9	82.2	2.1	5.4	3.7	1.4	0.7	0.4	0.2	86.1	2.1	11.8	0.082	0.516	21.884688	-98.947495

SAN LUIS POTOSI

16 CARR: Portezuelo - Cd. Valles

CLAVE: 00023

RUTA: MEX-085

AÑO: 2023

LUGAR	ESTACION				CLASIFICACION VEHICULAR EN PORCIENTO										COORDENADAS					
	KM	TE	SC	TDPA	M	A	B	C2	C3	T3S2	T3S3	T3S2R4	OTROS	A	B	C	K'	D	LATITUD	LONGITUD
Cd. Valles	300.00	1	1	6784	6.5	83.3	1.9	4.9	1.6	0.7	0.5	0.4	0.2	89.8	1.9	8.3	0.083	0.502	21.959228	-98.998614
Cd. Valles	300.00	1	2	6722	6.5	83.2	1.9	4.9	1.7	0.7	0.5	0.4	0.2	89.7	1.9	8.4	0.083	0.502	21.959289	-98.998784

17 CARR: Querétaro - San Luis Potosí

CLAVE: 00165

RUTA: MEX-057

AÑO: 2023

LUGAR	ESTACION				CLASIFICACION VEHICULAR EN PORCIENTO										COORDENADAS					
	KM	TE	SC	TDPA	M	A	B	C2	C3	T3S2	T3S3	T3S2R4	OTROS	A	B	C	K'	D	LATITUD	LONGITUD
Querétaro	0.00																			
T. Der. Libramiento de Querétaro Lateral	6.28	3	1	20442	1.8	89.0	0.9	5.3	0.6	1.4	0.7	0.1	0.2	90.8	0.9	8.3	0.099	0.521	20.631787	-100.426349
T. Der. Libramiento de Querétaro Central	6.28	3	1	47697	0.8	91.5	1.0	3.5	0.6	1.7	0.6	0.1	0.2	92.3	1.0	6.7	0.126	0.505	20.636721	-100.428789
T. Der. Libramiento de Querétaro Central	6.28	3	2	43386	0.9	90.6	1.1	4.0	0.7	1.8	0.6	0.1	0.2	91.5	1.1	7.4	0.109	0.505	20.636682	-100.428894
T. Der. Libramiento de Querétaro Lateral	6.28	3	2	18823	1.6	89.0	0.9	5.6	0.5	1.5	0.6	0.1	0.2	90.6	0.9	8.5	0.102	0.521	20.637082	-100.429246
T. C. Anillo Vial Fray Junipero Serra (Centrales)	14.00	1	1	30762	1.5	79.1	2.7	13.7	0.6	1.4	0.6	0.2	0.2	80.6	2.7	16.7	0.074	0.545	20.688314	-100.435575
T. C. Anillo Vial Fray Junipero Serra (Laterales)	14.00	1	1	32176	1.7	92.2	0.3	3.9	0.5	1.0	0.3	0.0	0.1	93.9	0.3	5.8	0.083	0.504	20.688180	-100.435382
T. C. Anillo Vial Fray Junipero Serra (Laterales)	14.00	1	2	32792	1.7	92.0	0.3	3.9	0.5	1.1	0.3	0.1	0.1	93.7	0.3	6.0	0.093	0.504	20.687409	-100.435788
T. C. Anillo Vial Fray Junipero Serra (Centrales)	14.00	1	2	24143	1.5	79.2	2.7	13.7	0.6	1.4	0.5	0.2	0.2	80.7	2.7	16.6	0.082	0.545	20.687410	-100.435644
T. Izq. Juriquilla	15.63	3	1	38959	0.6	89.0	1.1	6.4	0.9	1.3	0.2	0.4	0.1	89.6	1.1	9.3	0.082	0.513	20.719411	-100.438937
T. Izq. Juriquilla	15.63	3	2	36768	0.6	89.1	1.1	6.4	0.9	1.2	0.2	0.4	0.1	89.7	1.1	9.2	0.098	0.513	20.719406	-100.439055
T. Izq. San Miguel de Allende	28.53	1	1	32821	0.9	81.0	1.4	9.5	1.5	4.0	0.9	0.6	0.2	81.9	1.4	16.7	0.133	0.501	20.803082	-100.448752
T. Izq. San Miguel de Allende	28.53	1	2	32576	0.9	81.0	1.4	9.5	1.5	4.0	0.9	0.6	0.2	81.9	1.4	16.7	0.133	0.501	20.802801	-100.448905
T. Izq. San Miguel de Allende	28.53	3	1	24009	1.2	55.2	3.5	9.0	3.8	19.7	2.7	4.0	0.9	56.4	3.5	40.1	0.065	0.516	20.835342	-100.440111
T. Izq. San Miguel de Allende	28.53	3	2	25549	1.2	55.0	3.5	9.0	3.8	19.7	2.7	4.3	0.8	56.2	3.5	40.3	0.056	0.516	20.835613	-100.440170
Lim. Edos. Term. Oro. Ppia. Gto.	36.70																			
X. C. San José Iturbide - El Arenal	46.83	1	1	23451	16.1	51.3	3.7	5.1	3.2	17.3	1.2	1.7	0.4	67.4	3.7	28.9	0.075	0.503	20.969350	-100.429395
X. C. San José Iturbide - El Arenal	46.83	1	2	23177	16.1	51.1	3.8	5.1	3.2	17.3	1.2	1.7	0.5	67.2	3.8	29.0	0.086	0.503	20.969246	-100.429551
X. C. San José Iturbide - El Arenal	46.83	3	1	19554	6.4	52.7	6.2	5.7	3.1	18.8	2.8	3.4	0.9	59.1	6.2	34.7	0.064	0.504	20.984013	-100.434987
X. C. San José Iturbide - El Arenal	46.83	3	2	19206	6.4	52.6	6.2	5.7	3.1	18.8	2.8	3.5	0.9	59.0	6.2	34.8	0.077	0.504	20.983797	-100.435106
X. C. Ent. San Miguel de Allende - Dr. Mora	61.93	1	1	16652	2.2	51.8	5.1	5.9	3.3	24.0	3.4	3.4	0.9	54.0	5.1	40.9	0.066	0.521	21.077074	-100.512513
X. C. Ent. San Miguel de Allende - Dr. Mora	61.93	1	2	15293	2.1	51.9	5.1	5.9	3.3	24.0	3.4	3.4	0.9	54.0	5.1	40.9	0.072	0.521	21.076879	-100.512549
X. C. San Luis de La Paz - Guanajuato	86.68	1	1	15309	1.9	47.7	5.1	5.5	2.9	29.6	4.0	2.5	0.8	49.6	5.1	45.3	0.070	0.534	21.256273	-100.586609
X. C. San Luis de La Paz - Guanajuato	86.68	1	2	17530	2.0	47.6	5.1	5.5	2.9	29.6	4.0	2.5	0.8	49.6	5.1	45.3	0.078	0.534	21.256350	-100.586805
T. Izq. San Diego de La Unión	119.07	1	1	12621	5.6	32.1	7.9	7.9	3.9	34.4	3.5	3.9	0.8	37.7	7.9	54.4	0.096	0.508	21.528152	-100.740115
T. Izq. San Diego de La Unión	119.07	1	2	12242	5.7	31.5	7.9	7.9	4.0	34.5	3.6	4.0	0.9	37.2	7.9	54.9	0.087	0.508	21.528117	-100.740301
T. Izq. San Diego de La Unión	119.07	3	1	12208	3.0	43.7	6.3	5.9	3.3	30.4	3.4	3.2	0.8	46.7	6.3	47.0	0.074	0.517	21.541316	-100.747441
T. Izq. San Diego de La Unión	119.07	3	2	11389	3.0	43.4	6.3	6.0	3.4	30.5	3.4	3.2	0.8	46.4	6.3	47.3	0.083	0.517	21.540742	-100.747324

SAN LUIS POTOSI

17 CARR: Querétaro - San Luis Potosi

CLAVE: 00165

RUTA: MEX-057

AÑO: 2023

LUGAR	ESTACION				CLASIFICACION VEHICULAR EN PORCIENTO										COORDENADAS					
	KM	TE	SC	TDPA	M	A	B	C2	C3	T3S2	T3S3	T3S2R4	OTROS	A	B	C	K'	D	LATITUD	LONGITUD
Lim. Edos. Term. Gto. Ppia. S. L. P.	124.74																			
T. Der. Tierra Nueva	140.65	1	1	11264	7.4	45.8	5.4	4.9	2.5	26.2	2.4	4.5	0.9	53.2	5.4	41.4	0.078	0.513	21.685185	-100.694142
T. Der. Tierra Nueva	140.65	1	2	10702	7.4	45.8	5.4	4.9	2.5	26.2	2.4	4.5	0.9	53.2	5.4	41.4	0.072	0.513	21.685311	-100.694258
T. Der. Tierra Nueva	140.65	3	1	13356	8.1	49.3	5.1	4.8	2.7	22.4	2.5	4.2	0.9	57.4	5.1	37.5	0.062	0.500	21.703675	-100.684162
T. Der. Tierra Nueva	140.65	3	2	13383	8.1	49.3	5.1	4.8	2.7	22.4	2.5	4.2	0.9	57.4	5.1	37.5	0.067	0.500	21.707047	-100.685617
T. Izq. Santa María del Río	155.88	3	1	15847	7.8	52.5	5.8	4.5	2.3	20.0	2.0	4.2	0.9	60.3	5.8	33.9	0.074	0.520	21.846299	-100.741803
T. Izq. Santa María del Río	155.88	3	2	14644	7.8	52.5	5.8	4.5	2.3	20.0	2.0	4.2	0.9	60.3	5.8	33.9	0.078	0.520	21.846127	-100.741880
T. Izq. Villa de Reyes	176.35	1	1	15712	8.8	40.9	5.4	5.7	4.0	26.6	3.0	4.7	0.9	49.7	5.4	44.9	0.067	0.525	21.961171	-100.811667
T. Izq. Villa de Reyes	176.35	1	2	14198	8.8	40.9	5.4	5.7	4.0	26.6	3.0	4.7	0.9	49.7	5.4	44.9	0.066	0.525	21.961202	-100.811889
T. Izq. Villa de Reyes	176.35	3	1	22533	2.7	58.4	4.1	6.9	2.3	19.1	2.5	3.1	0.9	61.1	4.1	34.8	0.069	0.509	21.985783	-100.825011
T. Izq. Villa de Reyes	176.35	3	2	23343	2.7	58.4	4.1	6.9	2.3	19.1	2.5	3.1	0.9	61.1	4.1	34.8	0.072	0.509	21.985718	-100.825166
T. Izq. Villa de Arriaga (Cuota)	182.60	1	1	31243	3.1	60.3	4.6	6.3	2.7	17.8	2.3	2.2	0.7	63.4	4.6	32.0	0.068	0.500	22.011691	-100.839071
T. Izq. Villa de Arriaga (Cuota)	182.60	1	2	31220	2.8	57.0	4.8	6.6	2.9	20.2	2.5	2.4	0.8	59.8	4.8	35.4	0.097	0.500	22.011685	-100.839264
X. C. Libramiento de San Luis Potosí	184.80	1	1	37310	2.1	62.9	4.0	6.0	3.0	16.2	2.3	2.9	0.6	65.0	4.0	31.0	0.086	0.506	22.030172	-100.849097
X. C. Libramiento de San Luis Potosí	184.80	1	2	36349	1.7	59.4	4.4	6.5	3.5	18.2	2.5	3.1	0.7	61.1	4.4	34.5	0.095	0.506	22.030307	-100.849363
X. Periférico de San Luis Potosí (Central)	197.50	1	1	70228	4.3	90.7	0.5	2.1	0.4	0.6	0.3	0.8	0.3	95.0	0.5	4.5	0.080	0.510	22.121752	-100.912674
X. Periférico de San Luis Potosí (Lateral)	197.50	1	1	23299	4.2	80.0	1.3	7.1	2.6	2.3	0.7	1.1	0.7	84.2	1.3	14.5	0.136	0.533	22.121964	-100.912739
X. Periférico de San Luis Potosí (Central)	197.50	1	2	79749	4.1	90.7	0.5	2.3	0.4	0.6	0.3	0.8	0.3	94.8	0.5	4.7	0.064	0.510	22.121738	-100.912980
X. Periférico de San Luis Potosí (Lateral)	197.50	1	2	20384	4.5	78.8	1.4	7.5	2.7	2.5	0.7	1.1	0.8	83.3	1.4	15.3	0.093	0.533	22.121333	-100.913021
San Luis Potosí	201.66																			

18 CARR: Ramal a Aeropuerto de S. L. P.

CLAVE: 24206

RUTA: MEX-057

AÑO: 2023

LUGAR	ESTACION				CLASIFICACION VEHICULAR EN PORCIENTO										COORDENADAS					
	KM	TE	SC	TDPA	M	A	B	C2	C3	T3S2	T3S3	T3S2R4	OTROS	A	B	C	K'	D	LATITUD	LONGITUD
T. C. San Luis Potosí - Matehuala	0.00	3	1	3292	11.7	78.0	1.0	5.6	1.3	1.1	0.2	0.7	0.4	89.7	1.0	9.3	0.083	0.504	22.228832	-100.920783
T. C. San Luis Potosí - Matehuala	0.00	3	2	3237	8.4	80.7	1.1	6.0	1.4	1.2	0.2	0.7	0.3	89.1	1.1	9.8	0.079	0.504	22.228776	-100.920831
Aeropuerto de S. L. P.	6.00																			

19 CARR: Ramal a Ojo de Agua

CLAVE: 24023

RUTA: MEX-062

AÑO: 2023

LUGAR	ESTACION				CLASIFICACION VEHICULAR EN PORCIENTO										COORDENADAS					
	KM	TE	SC	TDPA	M	A	B	C2	C3	T3S2	T3S3	T3S2R4	OTROS	A	B	C	K'	D	LATITUD	LONGITUD
T. C. Ent. Carbonera - Ent. San Tiburcio	0.00	3	0	3085	9.4	76.1	0.4	10.8	0.2	2.5	0.3	0.1	0.2	85.5	0.4	14.1	0.085	0.535	23.719893	-100.650183
Ojo de Agua	6.23																			

SAN LUIS POTOSI

20 CARR: Ramal a Rayón

CLAVE: 24626

RUTA: MEX-070

AÑO: 2023

LUGAR	ESTACION				CLASIFICACION VEHICULAR EN PORCIENTO										COORDENADAS					
	KM	TE	SC	TDPA	M	A	B	C2	C3	T3S2	T3S3	T3S2R4	OTROS	A	B	C	K'	D	LATITUD	LONGITUD
T. C. (Cd. Valles - San Luis Potosí)	0.00																			
Rayón	1.50	1	0	4639	9.5	86.7	0.2	1.9	0.9	0.4	0.1	0.2	0.1	96.2	0.2	3.6	0.091	0.512	21.847774	-99.629920

21 CARR: San Juan del Río - Xilitla

CLAVE: 00183

RUTA: MEX-120

AÑO: 2023

LUGAR	ESTACION				CLASIFICACION VEHICULAR EN PORCIENTO										COORDENADAS					
	KM	TE	SC	TDPA	M	A	B	C2	C3	T3S2	T3S3	T3S2R4	OTROS	A	B	C	K'	D	LATITUD	LONGITUD
San Juan del Río	0.00																			
T. Der. Libramiento de San Juan del Río	5.20	3	1	15583	2.6	89.4	1.1	3.4	1.3	1.2	0.6	0.2	0.2	92.0	1.1	6.9	0.109	0.532	20.426966	-99.974356
T. Der. Libramiento de San Juan del Río	5.20	3	2	13728	2.9	88.6	1.4	3.2	1.4	1.3	0.6	0.4	0.2	91.5	1.4	7.1	0.099	0.532	20.427038	-99.974483
T. Der. Tequisquiapan	19.80	1	1	12876	4.0	88.1	1.5	2.7	1.3	1.3	0.5	0.4	0.2	92.1	1.5	6.4	0.083	0.522	20.513171	-99.905756
T. Der. Tequisquiapan	19.80	1	2	11793	3.7	89.0	1.0	3.0	1.6	0.8	0.5	0.3	0.1	92.7	1.0	6.3	0.080	0.522	20.513272	-99.905832
T. Der. Tequisquiapan	19.80	3	1	11377	3.2	89.1	1.5	2.8	1.3	1.2	0.6	0.2	0.1	92.3	1.5	6.2	0.090	0.506	20.543452	-99.901956
T. Der. Tequisquiapan	19.80	3	2	11086	3.4	87.5	1.9	3.2	1.3	1.3	0.8	0.4	0.2	90.9	1.9	7.2	0.086	0.506	20.543440	-99.902083
Ezequiel Montes	36.50	1	1	8579	4.0	86.5	1.5	2.4	2.5	1.8	0.8	0.4	0.1	90.5	1.5	8.0	0.087	0.505	20.640756	-99.906964
Ezequiel Montes	36.50	1	2	8399	3.9	85.8	1.4	2.7	2.7	1.7	1.1	0.5	0.2	89.7	1.4	8.9	0.088	0.505	20.640790	-99.907073
Ezequiel Montes	36.50	3	1	6441	3.7	90.5	0.8	3.1	1.1	0.4	0.3	0.1	0.0	94.2	0.8	5.0	0.091	0.509	20.681000	-99.888291
Ezequiel Montes	36.50	3	2	6216	4.1	90.5	0.7	3.1	0.9	0.4	0.2	0.1	0.0	94.6	0.7	4.7	0.092	0.509	20.681077	-99.888387
Cadereyta	47.90	3	1	5711	3.7	85.1	0.5	3.8	3.1	1.9	1.4	0.5	0.0	88.8	0.5	10.7	0.099	0.500	20.702417	-99.801908
Cadereyta	47.90	3	2	5720	3.8	84.6	1.1	3.6	2.9	1.7	1.8	0.5	0.0	88.4	1.1	10.5	0.085	0.500	20.702503	-99.801912
Vizarrón de Montes	73.50	3	0	3545	2.6	83.2	0.7	7.5	2.7	1.4	1.0	0.4	0.5	85.8	0.7	13.5	0.079	0.508	20.847504	-99.713263
T. Der. San Joaquín	79.50	3	0	1627	1.4	81.4	1.8	12.2	1.5	1.2	0.5	0.0	0.0	82.8	1.8	15.4	0.105	0.546	20.885367	-99.707509
T. Izq. Higuerrillas	89.10	3	0	2506	1.8	84.2	2.0	9.4	1.8	0.5	0.3	0.0	0.0	86.0	2.0	12.0	0.100	0.505	20.949475	-99.749178
T. Izq. Peñamiller	103.00	3	0	2029	3.7	85.8	1.1	8.5	0.5	0.2	0.2	0.0	0.0	89.5	1.1	9.4	0.111	0.521	21.039181	-99.739540
Pinal de Amoles	140.00	3	0	2443	2.4	85.9	1.8	8.3	0.9	0.4	0.3	0.0	0.0	88.3	1.8	9.9	0.086	0.502	21.137553	-99.620601
Jalpan de Serra	179.30	3	0	10272	4.3	91.9	0.4	2.2	0.4	0.3	0.2	0.2	0.1	96.2	0.4	3.4	0.077	0.503	21.209408	-99.454166
Landa de Matamoros	201.60	3	0	3309	1.8	92.9	1.2	3.0	0.4	0.2	0.2	0.2	0.1	94.7	1.2	4.1	0.089	0.509	21.186114	-99.314461
El Lobo	236.40	3	0	1593	4.3	85.4	0.6	7.6	1.3	0.3	0.5	0.0	0.0	89.7	0.6	9.7	0.110	0.511	21.292306	-99.116327
Lim. Edos. Term. Oro. Ppia. S. L. P.	238.33																			
Xilitla	266.40	1	0	3028	7.4	77.4	1.3	9.6	1.3	2.0	0.5	0.1	0.4	84.8	1.3	13.9	0.097	0.508	21.379004	-98.998505
T. C. Portezuelo - Cd. Valles	276.98	1	0	3866	5.7	81.3	1.3	7.4	1.8	1.3	0.7	0.4	0.1	87.0	1.3	11.7	0.079	0.502	21.442597	-98.929830

SAN LUIS POTOSI

22 CARR : San Luis Potosí - Ent. Arcinas

CLAVE: 00134

RUTA: MEX-049

AÑO : 2023

LUGAR	ESTACION				CLASIFICACION VEHICULAR EN PORCIENTO										COORDENADAS					
	KM	TE	SC	TDPA	M	A	B	C2	C3	T3S2	T3S3	T3S2R4	OTROS	A	B	C	K'	D	LATITUD	LONGITUD
T. C. San Luis Potosí - Matehuala	0.00																			
T. Izq. Periférico de San Luis Potosí	9.35	3	1	11674	5.3	83.4	2.1	4.1	1.3	1.8	0.7	0.9	0.4	88.7	2.1	9.2	0.108	0.505	22.206626	-101.031921
T. Izq. Periférico de San Luis Potosí	9.35	3	2	11431	5.3	83.4	2.1	4.1	1.3	1.8	0.7	0.9	0.4	88.7	2.1	9.2	0.099	0.505	22.206583	-101.032094
Mexquitic	22.50	1	1	7291	9.1	67.3	2.6	4.5	1.8	8.3	2.3	3.2	0.9	76.4	2.6	21.0	0.088	0.511	22.247911	-101.102542
Mexquitic	22.50	1	2	6984	9.1	67.4	2.6	4.5	1.9	8.3	2.2	3.1	0.9	76.5	2.6	20.9	0.078	0.511	22.249076	-101.105093
Mexquitic	22.50	3	1	6395	5.8	67.3	3.7	4.6	2.1	10.1	2.1	3.4	0.9	73.1	3.7	23.2	0.085	0.507	22.256369	-101.125569
Mexquitic	22.50	3	2	6571	5.8	67.2	3.4	4.6	1.9	10.2	2.3	3.7	0.9	73.0	3.4	23.6	0.093	0.507	22.256321	-101.125674
T. Der. Charcas	30.90	1	1	7043	4.4	67.7	4.2	5.4	2.1	9.4	2.0	3.9	0.9	72.1	4.2	23.7	0.081	0.510	22.308321	-101.155923
T. Der. Charcas	30.90	1	2	6769	4.0	67.8	4.6	5.4	1.9	9.4	2.2	3.9	0.8	71.8	4.6	23.6	0.086	0.510	22.308222	-101.156007
T. Der. Charcas	30.90	3	1	5045	4.8	67.0	3.8	5.1	2.4	8.7	3.0	4.3	0.9	71.8	3.8	24.4	0.083	0.509	22.319087	-101.171688
T. Der. Charcas	30.90	3	2	4870	4.8	66.7	3.9	5.1	2.4	8.7	3.1	4.5	0.8	71.5	3.9	24.6	0.087	0.509	22.319011	-101.171768
Lim. Edos. Term. S. L. P. Ppia. Zac.	55.13																			
Lim. Edos. Term. Zac. Ppia. S. L. P.	89.30																			
T. Der. Salinas	99.00	1	1	3423	5.5	59.2	5.2	4.3	2.6	13.1	3.6	5.6	0.9	64.7	5.2	30.1	0.080	0.517	22.603100	-101.706143
T. Der. Salinas	99.00	1	2	3198	4.9	59.5	5.3	4.4	2.7	13.1	3.6	5.6	0.9	64.4	5.3	30.3	0.094	0.517	22.602992	-101.706228
T. Der. Salinas	99.00	3	1	3887	5.0	57.0	5.5	4.3	2.3	15.7	3.4	5.8	1.0	62.0	5.5	32.5	0.078	0.512	22.619174	-101.736859
T. Der. Salinas	99.00	3	2	4084	5.2	56.9	5.5	4.4	2.3	15.7	3.4	5.8	0.8	62.1	5.5	32.4	0.077	0.512	22.619077	-101.737055
Lim. Edos. Term. S. L. P. Ppia. Zac.	122.47																			
T. Izq. Pánfilo Natera	139.00	1	1	3469	1.6	57.3	4.5	12.0	2.5	13.0	3.6	4.7	0.8	58.9	4.5	36.6	0.078	0.507	22.678762	-102.096402
T. Izq. Pánfilo Natera	139.00	1	2	3377	2.0	56.3	5.0	11.5	3.2	12.5	3.9	4.8	0.8	58.3	5.0	36.7	0.090	0.507	22.678579	-102.096471
Ent. Arcinas	162.98	1	1	4427	1.9	55.7	5.8	11.0	3.9	11.6	3.6	5.7	0.8	57.6	5.8	36.6	0.078	0.531	22.719960	-102.325392
Ent. Arcinas	162.98	1	2	3909	1.6	58.0	5.5	10.3	3.4	11.5	3.3	5.6	0.8	59.6	5.5	34.9	0.068	0.531	22.719781	-102.325430

23 CARR : San Luis Potosí - Lagos de Moreno

CLAVE: 00133

RUTA: MEX-070-080

AÑO : 2023

LUGAR	ESTACION				CLASIFICACION VEHICULAR EN PORCIENTO										COORDENADAS					
	KM	TE	SC	TDPA	M	A	B	C2	C3	T3S2	T3S3	T3S2R4	OTROS	A	B	C	K'	D	LATITUD	LONGITUD
San Luis Potosí	0.00	3	1	19741	1.9	94.5	0.4	1.5	0.3	0.4	0.5	0.3	0.2	96.4	0.4	3.2	0.087	0.509	22.133863	-101.030969
San Luis Potosí	0.00	3	2	20481	1.8	94.4	0.4	1.6	0.3	0.4	0.6	0.3	0.2	96.2	0.4	3.4	0.070	0.509	22.133772	-101.030888
X. Periférico de San Luis Potosí	8.41	3	0	12981	3.7	84.9	1.4	5.0	1.0	1.7	1.4	0.5	0.4	88.6	1.4	10.0	0.078	0.516	22.127621	-101.045541
El Tepetate	41.90	1	0	8344	3.3	67.3	3.9	4.2	2.7	9.6	3.8	4.2	1.0	70.6	3.9	25.5	0.077	0.502	22.025685	-101.224284
El Tepetate	41.90	3	0	8297	3.7	66.0	3.4	4.0	2.5	10.3	2.7	6.5	0.9	69.7	3.4	26.9	0.077	0.501	22.004516	-101.253779
Villa de Arriaga	61.90	3	0	4735	2.6	69.1	4.4	6.3	2.8	8.7	3.2	2.3	0.6	71.7	4.4	23.9	0.079	0.508	21.896862	-101.409021
Lim. Edos. Term. S. L. P. Ppia. Zac.	70.23																			
Lim. Edos. Term. Zac. Ppia. Jal.	82.94																			

SAN LUIS POTOSI

23 CARR: San Luis Potosi - Lagos de Moreno

CLAVE: 00133

RUTA: MEX-070-080

AÑO: 2023

LUGAR	ESTACION				CLASIFICACION VEHICULAR EN PORCIENTO										COORDENADAS					
	KM	TE	SC	TDPA	M	A	B	C2	C3	T3S2	T3S3	T3S2R4	OTROS	A	B	C	K'	D	LATITUD	LONGITUD
Ojuelos de Jalisco	83.20	1	0	5472	4.1	74.3	4.6	6.4	2.0	5.7	1.8	1.0	0.1	78.4	4.6	17.0	0.093	0.500	21.875495	-101.572980
Ojuelos de Jalisco	83.20	3	0	2918	6.3	73.6	3.2	5.9	1.7	6.0	2.2	1.0	0.1	79.9	3.2	16.9	0.075	0.501	21.854401	-101.593870
X. C. Lagos de Moreno - San Luis Potosi (Cuota)	140.00	1	0	4111	6.8	73.6	3.0	5.8	2.4	4.7	1.7	1.8	0.2	80.4	3.0	16.6	0.076	0.505	21.447583	-101.805827
X. C. León - Aguascalientes	146.90	1	1	6744	6.9	63.6	4.1	5.4	2.2	10.5	1.8	5.1	0.4	70.5	4.1	25.4	0.108	0.516	21.375753	-101.894397
X. C. León - Aguascalientes	146.90	1	2	7182	6.8	63.7	4.1	5.4	2.3	10.5	1.7	5.1	0.4	70.5	4.1	25.4	0.114	0.516	21.375643	-101.894327
Lagos de Moreno	150.00																			

24 CARR: San Luis Potosi - Matehuala

CLAVE: 24508

RUTA: MEX-057

AÑO: 2023

LUGAR	ESTACION				CLASIFICACION VEHICULAR EN PORCIENTO										COORDENADAS					
	KM	TE	SC	TDPA	M	A	B	C2	C3	T3S2	T3S3	T3S2R4	OTROS	A	B	C	K'	D	LATITUD	LONGITUD
San Luis Potosi	0.00																			
X. Periférico de San Luis Potosi	7.36	3	1	18548	3.2	81.5	1.8	7.5	1.9	2.2	0.9	0.7	0.3	84.7	1.8	13.5	0.084	0.503	22.206862	-100.920225
X. Periférico de San Luis Potosi	7.36	3	2	18765	3.0	80.2	1.8	8.5	2.0	2.4	1.1	0.7	0.3	83.2	1.8	15.0	0.075	0.503	22.206922	-100.920287
X. C. Libramiento Norponiente de San Luis Potosi (Cuota)	16.16	3	1	7887	2.2	63.9	3.4	8.0	3.4	10.8	3.7	4.3	0.3	66.1	3.4	30.5	0.079	0.501	22.267564	-100.864714
X. C. Libramiento Norponiente de San Luis Potosi (Cuota)	16.16	3	2	7867	2.0	64.6	3.0	8.0	3.0	10.6	3.6	4.9	0.3	66.6	3.0	30.4	0.100	0.501	22.267310	-100.865099
Ventura (X. Nuevo Libramiento de SLP)	33.20	3	1	16824	2.1	42.9	4.7	4.4	3.0	31.9	3.9	6.3	0.8	45.0	4.7	50.3	0.088	0.509	22.339217	-100.797547
Ventura (X. Nuevo Libramiento de SLP)	33.20	3	2	17409	1.8	37.9	5.7	5.0	3.6	34.4	4.0	6.7	0.9	39.7	5.7	54.6	0.076	0.509	22.336306	-100.798687
T. Der. Villa Hidalgo Sur	45.94	1	1	14577	2.8	49.4	6.3	2.7	1.7	26.1	4.1	6.1	0.8	52.2	6.3	41.5	0.068	0.513	22.421740	-100.715659
T. Der. Villa Hidalgo Sur	45.94	1	2	15350	2.7	49.0	6.2	2.8	1.9	26.2	4.2	6.2	0.8	51.7	6.2	42.1	0.059	0.513	22.421872	-100.715784
T. Der. Villa Hidalgo Sur	45.94	3	1	14310	2.6	43.4	6.4	7.5	2.1	27.0	4.1	6.2	0.7	46.0	6.4	47.6	0.062	0.521	22.433581	-100.710150
T. Der. Villa Hidalgo Sur	45.94	3	2	13182	2.5	43.3	6.3	7.7	2.2	26.9	4.2	6.1	0.8	45.8	6.3	47.9	0.067	0.521	22.433665	-100.710423
T. Der. Villa Hidalgo Norte	52.00	3	1	15467	1.6	47.8	4.0	5.8	3.0	27.5	3.5	6.0	0.8	49.4	4.0	46.6	0.055	0.526	22.512396	-100.665256
T. Der. Villa Hidalgo Norte	52.00	3	2	17167	1.6	49.1	4.0	5.9	3.0	25.8	3.7	6.1	0.8	50.7	4.0	45.3	0.066	0.526	22.509924	-100.665519
T. Izq. Villa Arista	61.35	1	1	15977	2.5	47.9	6.5	3.2	2.4	26.5	4.1	6.1	0.8	50.4	6.5	43.1	0.064	0.532	22.567057	-100.638997
T. Izq. Villa Arista	61.35	1	2	14078	2.6	48.1	6.4	3.1	2.3	26.4	4.2	6.2	0.7	50.7	6.4	42.9	0.069	0.532	22.565895	-100.641681
T. Der. Ríoverde (Cuota)	65.22	1	1	14390	2.7	44.7	5.0	6.2	2.1	29.7	2.9	5.8	0.9	47.4	5.0	47.6	0.065	0.525	22.587622	-100.598800
T. Der. Ríoverde (Cuota)	65.22	1	2	15928	2.7	44.7	5.0	6.2	2.1	29.7	2.9	5.8	0.9	47.4	5.0	47.6	0.059	0.525	22.587955	-100.598546
T. Der. Guadalcázar	75.70	1	1	12317	3.6	44.0	4.9	4.7	3.2	30.0	3.4	5.4	0.8	47.6	4.9	47.5	0.055	0.524	22.634406	-100.522744
T. Der. Guadalcázar	75.70	1	2	13540	3.8	42.9	4.8	4.6	3.1	31.0	3.5	5.5	0.8	46.7	4.8	48.5	0.054	0.524	22.633420	-100.523434
T. Der. Guadalcázar	75.70	3	1	13859	3.6	44.1	4.9	4.7	3.2	30.0	3.4	5.4	0.7	47.7	4.9	47.4	0.061	0.544	22.643998	-100.516255
T. Der. Guadalcázar	75.70	3	2	11636	3.7	43.1	4.8	4.6	3.1	31.0	3.5	5.5	0.7	46.8	4.8	48.4	0.060	0.544	22.644890	-100.515963
T. Der. Cd. del Maiz	109.62	3	1	10812	3.6	41.2	5.1	4.6	2.6	33.0	3.6	5.4	0.9	44.8	5.1	50.1	0.058	0.503	22.941084	-100.461525
T. Der. Cd. del Maiz	109.62	3	2	10933	3.7	42.4	4.9	4.5	2.5	32.2	3.7	5.3	0.8	46.1	4.9	49.0	0.056	0.503	22.939662	-100.461318
La Bonita	171.40	1	1	10242	3.6	40.9	5.1	4.7	2.7	33.0	3.6	5.5	0.9	44.5	5.1	50.4	0.062	0.510	23.473122	-100.611622

SAN LUIS POTOSI

24 CARR: San Luis Potosi - Matehuala

CLAVE: 24508

RUTA: MEX-057

AÑO: 2023

LUGAR	ESTACION				CLASIFICACION VEHICULAR EN PORCIENTO													COORDENADAS		
	KM	TE	SC	TDPA	M	A	B	C2	C3	T3S2	T3S3	T3S2R4	OTROS	A	B	C	K'	D	LATITUD	LONGITUD
La Bonita	171.40	1	2	10642	3.7	40.4	5.2	4.8	2.8	33.1	3.7	5.5	0.8	44.1	5.2	50.7	0.059	0.510	23.472888	-100.611738
Matehuala	187.39	1	1	11531	2.7	45.8	5.3	4.9	2.4	28.8	3.4	5.8	0.9	48.5	5.3	46.2	0.068	0.509	23.574548	-100.631167
Matehuala	187.39	1	2	11941	2.6	45.1	5.2	5.1	2.5	29.3	3.5	5.8	0.9	47.7	5.2	47.1	0.061	0.509	23.574575	-100.631478

25 CARR: T. C. (Ent. El Huizache- Ant. Morelos)-El Salto

CLAVE: 24204

RUTA: MEX-080

AÑO: 2023

LUGAR	ESTACION				CLASIFICACION VEHICULAR EN PORCIENTO													COORDENADAS		
	KM	TE	SC	TDPA	M	A	B	C2	C3	T3S2	T3S3	T3S2R4	OTROS	A	B	C	K'	D	LATITUD	LONGITUD
T. C. El Huizache - Ant. Morelos	0.00	3	0	3078	3.1	84.8	0.1	7.4	1.5	2.0	0.3	0.5	0.3	87.9	0.1	12.0	0.081	0.514	22.535271	-99.307498
Salto del Agua	12.00																			

26 CARR: T. C. (Oro - S.L.P.) - Tierra Nueva

CLAVE: 24203

RUTA: MEX-057

AÑO: 2023

LUGAR	ESTACION				CLASIFICACION VEHICULAR EN PORCIENTO													COORDENADAS		
	KM	TE	SC	TDPA	M	A	B	C2	C3	T3S2	T3S3	T3S2R4	OTROS	A	B	C	K'	D	LATITUD	LONGITUD
T. C. Querétaro - San Luis Potosi	0.00	3	0	2032	5.6	74.1	0.4	12.7	3.1	1.8	1.9	0.2	0.2	79.7	0.4	19.9	0.090	0.521	21.693762	-100.684643
Tierra Nueva	13.10																			

27 CARR: T. C. (S.L.P. - Matehuala) - Villa Hidalgo

CLAVE: 24619

RUTA: MEX-057

AÑO: 2023

LUGAR	ESTACION				CLASIFICACION VEHICULAR EN PORCIENTO													COORDENADAS		
	KM	TE	SC	TDPA	M	A	B	C2	C3	T3S2	T3S3	T3S2R4	OTROS	A	B	C	K'	D	LATITUD	LONGITUD
Paso por Villa Hidalgo (Sur)	0.00	3	0	2676	4.0	79.7	2.6	5.6	2.3	3.0	1.6	0.9	0.3	83.7	2.6	13.7	0.085	0.506	22.433706	-100.699107
Paso por Villa Hidalgo (Norte)	10.20	1	0	3046	3.7	79.5	3.4	6.4	1.5	2.6	2.1	0.5	0.3	83.2	3.4	13.4	0.081	0.535	22.495089	-100.665806

28 CARR: Tamazunchale - San Felipe Orizatlán

CLAVE: 00609

RUTA: MEX-085

AÑO: 2023

LUGAR	ESTACION				CLASIFICACION VEHICULAR EN PORCIENTO													COORDENADAS		
	KM	TE	SC	TDPA	M	A	B	C2	C3	T3S2	T3S3	T3S2R4	OTROS	A	B	C	K'	D	LATITUD	LONGITUD
T. C. Portezuelo - Cd. Valles	0.00	3	0	16449	23.1	68.9	0.7	4.2	0.9	0.5	1.2	0.4	0.1	92.0	0.7	7.3	0.079	0.511	21.250516	-98.765904
Lim. Edos. Term. S. L. P. Ppia. Hgo.	18.50																			
San Felipe Orizatlán	27.10	1	0	3160	18.6	69.8	2.0	6.8	1.5	0.5	0.4	0.3	0.1	88.4	2.0	9.6	0.086	0.507	21.170705	-98.617920



SAN LUIS POTOSI

29 CARR : Lagos de Moreno - Villa de Arriaga (Cuota)

CLAVE:

RUTA : MEX-080D

AÑO : 2023

LUGAR	ESTACION				CLASIFICACION VEHICULAR EN PORCIENTO										COORDENADAS					
	KM	TE	SC	TDPA	M	A	B	C2	C3	T3S2	T3S3	T3S2R4	OTROS	A	B	C	K'	D	LATITUD	LONGITUD
X. C. San Luis Potosí - Lagos de Moreno	12.10	3	0	7083	9.6	38.1	8.8	5.4	4.4	20.6	3.5	8.7	0.9	47.7	8.8	43.5	0.072	0.513	21.448509	-101.813082
T. Der. El Cuarenta	22.20	3	0	6514	5.1	37.2	6.7	8.6	2.2	24.9	3.4	10.9	1.0	42.3	6.7	51.0	0.062	0.512	21.510883	-101.736604
Lim. Edos. Term. Jal. Ppia. Gto.	46.30																			
X. C. Dolores Hidalgo - Ojuelos de Jalisco	58.18	1	0	9418	2.0	69.1	6.7	16.0	1.7	1.0	1.7	1.3	0.5	71.1	6.7	22.2	0.063	0.514	21.739182	-101.524398
Lim. Edos. Term. Gto. Ppia. SLP.	68.63																			
X. C. San Luis Potosí - Villa de Arriaga (Cuota)	78.00	1	0	7479	3.7	41.4	7.2	6.9	2.4	23.9	3.3	10.3	0.9	45.1	7.2	47.7	0.062	0.519	21.893867	-101.404732

30 CARR : Libramiento de Matehuala (Cuota)

CLAVE: 24205

RUTA : MEX-057D

AÑO : 2023

LUGAR	ESTACION				CLASIFICACION VEHICULAR EN PORCIENTO										COORDENADAS					
	KM	TE	SC	TDPA	M	A	B	C2	C3	T3S2	T3S3	T3S2R4	OTROS	A	B	C	K'	D	LATITUD	LONGITUD
T. C. San Luis Potosí - Matehuala	0.00	3	1	8339	2.5	26.9	6.5	5.4	2.6	46.2	3.8	5.2	0.9	29.4	6.5	64.1	0.073	0.508	23.602324	-100.622586
T. C. San Luis Potosí - Matehuala	0.00	3	2	8068	2.5	26.2	6.9	5.5	2.7	46.1	4.0	5.3	0.8	28.7	6.9	64.4	0.064	0.508	23.602527	-100.622766
Plaza de Cobro Matehuala	7.00	2	1	7769	0.1	24.1	1.7	6.0	3.6	52.0	4.0	7.1	1.4	24.2	1.7	74.1	0.073	0.500	23.664125	-100.607230
Plaza de Cobro Matehuala	7.00	2	2	7769	0.1	24.1	1.7	6.0	3.6	52.0	4.0	7.1	1.4	24.2	1.7	74.1	0.073	0.500	23.664125	-100.607230
T. C. Matehuala - Ent. Puerto México	14.20	1	1	7918	2.6	24.8	7.0	7.9	2.5	44.1	3.8	6.5	0.8	27.4	7.0	65.6	0.070	0.506	23.694225	-100.611545
T. C. Matehuala - Ent. Puerto México	14.20	1	2	8122	2.5	23.5	8.6	7.8	2.4	44.2	3.7	6.4	0.9	26.0	8.6	65.4	0.077	0.506	23.694272	-100.611843

31 CARR : Libramiento Norponiente de San Luis Potosí (Cuota)

CLAVE:

RUTA : MEX-057D

AÑO : 2023

LUGAR	ESTACION				CLASIFICACION VEHICULAR EN PORCIENTO										COORDENADAS					
	KM	TE	SC	TDPA	M	A	B	C2	C3	T3S2	T3S3	T3S2R4	OTROS	A	B	C	K'	D	LATITUD	LONGITUD
T. Libramiento Oriente de San Luis Potosí (Cuota)	0.00																			
X. C. San Luis Potosí - Matehuala	5.60	1	0	3453	8.0	31.6	9.2	5.7	4.6	25.4	4.3	10.3	0.9	39.6	9.2	51.2	0.054	0.519	22.254828	-100.856348
X. C. San Luis Potosí - Matehuala	5.60	3	0	6227	8.0	33.4	9.0	7.2	4.1	24.3	4.2	9.3	0.5	41.4	9.0	49.6	0.060	0.540	22.282539	-100.894156
Plaza de Cobro Vicente Rangel Lozano	17.40	2	0	5368	0.2	22.6	2.1	4.4	5.4	37.6	6.1	18.3	3.3	22.8	2.1	75.1	0.067	0.500	22.299904	-100.971154
T. C. San Luis Potosí - Ent. Arcinas	31.20	1	0	5923	5.5	32.6	5.1	4.8	3.5	28.4	5.4	13.8	0.9	38.1	5.1	56.8	0.056	0.504	22.228766	-101.048314
T. C. San Luis Potosí - Ent. Arcinas	31.20	3	0	3861	6.6	35.5	5.1	8.5	4.3	23.5	5.3	10.3	0.9	42.1	5.1	52.8	0.080	0.533	22.211357	-101.057300
T. C. San Luis Potosí Lagos de Moreno	54.50																			

32 CARR : Libramiento Oriente de San Luis Potosí (Cuota)

CLAVE: 24009

RUTA : MEX-057D

AÑO : 2023

LUGAR	ESTACION				CLASIFICACION VEHICULAR EN PORCIENTO										COORDENADAS					
	KM	TE	SC	TDPA	M	A	B	C2	C3	T3S2	T3S3	T3S2R4	OTROS	A	B	C	K'	D	LATITUD	LONGITUD
T. C. Querétaro - San Luis Potosí	0.00																			

SAN LUIS POTOSI

32 CARR: Libramiento Oriente de San Luis Potosí (Cuota)

CLAVE: 24009

RUTA: MEX-057D

AÑO: 2023

LUGAR	ESTACION				CLASIFICACION VEHICULAR EN PORCIENTO										COORDENADAS					
	KM	TE	SC	TDPA	M	A	B	C2	C3	T3S2	T3S3	T3S2R4	OTROS	A	B	C	K'	D	LATITUD	LONGITUD
X. C. Cd. Valles - San Luis Potosí	11.00	1	1	12802	4.1	25.5	7.2	6.1	3.2	42.0	4.1	6.9	0.9	29.6	7.2	63.2	0.070	0.504	22.118721	-100.826010
X. C. Cd. Valles - San Luis Potosí	11.00	1	2	12581	4.2	24.4	7.1	6.2	3.3	43.0	4.2	6.8	0.8	28.6	7.1	64.3	0.057	0.504	22.118801	-100.826184
Plaza de Cobro San Nicolás de Los Jassos	11.22	2	1	11109	0.4	26.7	2.1	5.6	4.7	46.2	4.7	7.9	1.7	27.1	2.1	70.8	0.067	0.500	22.129780	-100.825002
Plaza de Cobro San Nicolás de Los Jassos	11.22	2	2	11109	0.4	26.7	2.1	5.6	4.7	46.2	4.7	7.9	1.7	27.1	2.1	70.8	0.067	0.500	22.129780	-100.825002
T. C. San Luis Potosí - Matehuala	33.76	1	1	9577	1.9	27.1	5.8	6.3	2.3	46.0	3.9	5.8	0.9	29.0	5.8	65.2	0.063	0.502	22.312254	-100.805569
T. C. San Luis Potosí - Matehuala	33.76	1	2	9637	1.8	27.8	5.8	6.2	2.2	45.9	3.8	5.7	0.8	29.6	5.8	64.6	0.060	0.502	22.312306	-100.805736

33 CARR: Rayón - Ent. Tamuín (Cuota)

CLAVE:

RUTA: MEX-070D

AÑO: 2023

LUGAR	ESTACION				CLASIFICACION VEHICULAR EN PORCIENTO										COORDENADAS					
	KM	TE	SC	TDPA	M	A	B	C2	C3	T3S2	T3S3	T3S2R4	OTROS	A	B	C	K'	D	LATITUD	LONGITUD
Rayón	0.00																			
T. C. Rayón - Arroyo Seco	1.50	1	0	5748	2.9	75.0	5.8	3.7	1.6	5.5	1.7	3.0	0.8	77.9	5.8	16.3	0.081	0.507	21.862145	-99.630583
Plaza de Cobro Rayón	2.05	2	0	3552	0.6	66.0	3.9	4.3	3.3	9.2	4.3	7.8	0.6	66.6	3.9	29.5	0.090	0.500	21.863597	-99.623291
Vicente Guerrero	19.70	1	0	3887	4.2	67.0	6.7	3.4	2.5	7.6	2.7	5.0	0.9	71.2	6.7	22.1	0.096	0.500	21.865801	-99.498972
Vicente Guerrero	19.70	3	0	4491	5.1	65.6	6.3	4.4	2.4	7.5	2.8	5.0	0.9	70.7	6.3	23.0	0.072	0.511	21.864912	-99.476366
T. Izq. Tamasopo	34.50	3	0	4179	4.9	67.2	6.1	7.1	1.0	6.6	2.3	4.0	0.8	72.1	6.1	21.8	0.079	0.501	21.905927	-99.380136
Plaza de Cobro La Pitahaya	62.00	2	0	3945	0.7	67.9	3.6	3.9	3.7	7.8	4.8	7.0	0.6	68.6	3.6	27.8	0.090	0.500	21.967581	-99.174618
Ent. La Pitahaya	68.58	1	0	4322	4.2	69.3	5.7	4.0	2.8	7.1	2.7	3.4	0.8	73.5	5.7	20.8	0.082	0.510	22.004482	-99.131467
Ent. La Pitahaya	68.58	3	0	2224	5.9	59.1	8.1	4.4	2.3	8.9	3.8	6.7	0.8	65.0	8.1	26.9	0.085	0.518	21.996032	-99.109024
Plaza de Cobro La Calera	89.60	2	0	1533	0.4	46.2	1.3	3.2	3.8	20.0	6.8	15.9	2.4	46.6	1.3	52.1	0.090	0.500	21.904164	-98.955523
X. C. Cd. Valles - Tampico	107.33	1	0	2366	8.5	58.2	9.0	5.0	1.9	8.9	4.0	3.6	0.9	66.7	9.0	24.3	0.100	0.520	21.959321	-98.818937
X. C. Tamuín - Xolol	112.53	1	0	2640	5.6	59.4	7.4	3.4	2.1	10.0	2.8	8.4	0.9	65.0	7.4	27.6	0.088	0.505	21.980912	-98.771735
X. C. Cd. Valles - Tampico	117.30	1	0	2484	6.5	55.8	7.4	3.7	2.4	9.7	4.0	9.6	0.9	62.3	7.4	30.3	0.089	0.502	21.994922	-98.734840

34 CARR: Charcas - Villa Santo Domingo

CLAVE: 24624

RUTA: SLP-017

AÑO: 2023

LUGAR	ESTACION				CLASIFICACION VEHICULAR EN PORCIENTO										COORDENADAS					
	KM	TE	SC	TDPA	M	A	B	C2	C3	T3S2	T3S3	T3S2R4	OTROS	A	B	C	K'	D	LATITUD	LONGITUD
Charcas	0.00	3	0	1840	30.3	55.9	3.8	4.7	3.8	0.6	0.5	0.4	0.0	86.2	3.8	10.0	0.117	0.521	23.138085	-101.131462
Villa Santo Domingo	75.00																			

SAN LUIS POTOSI

35 CARR: Ébano - Estación Manuel

CLAVE: 24624

RUTA: SLP-TAM

AÑO: 2023

LUGAR	ESTACION	CLASIFICACION VEHICULAR EN PORCIENTO														COORDENADAS				
		KM	TE	SC	TDPA	M	A	B	C2	C3	T3S2	T3S3	T3S2R4	OTROS	A	B	C	K'	D	LATITUD
Ébano	0.00	3	0	2874	18.2	66.2	0.4	9.7	1.4	2.1	0.3	1.4	0.3	84.4	0.4	15.2	0.086	0.503	22.233381	-98.366188
Lim. de Edos. Term. S. L. P. Ppia. Ver.	2.71																			
Lim. de Edos. Term. Ver. Ppia. S. L. P.	3.95																			
Lim. de Edos. Term. S. L. P. Ppia. Ver.	5.00																			
Lim. de Edos. Term. Ver. Ppia. Tamps.	25.00																			
Estación Manuel	65.60																			

36 CARR: Matehuala - La Paz

CLAVE: 24621

RUTA: SLP-020

AÑO: 2023

LUGAR	ESTACION	CLASIFICACION VEHICULAR EN PORCIENTO														COORDENADAS				
		KM	TE	SC	TDPA	M	A	B	C2	C3	T3S2	T3S3	T3S2R4	OTROS	A	B	C	K'	D	LATITUD
Matehuala	0.00	3	1	3378	26.6	67.7	0.1	4.8	0.4	0.3	0.1	0.0	0.0	94.3	0.1	5.6	0.094	0.502	23.669870	-100.654054
Matehuala	0.00	3	2	3405	25.6	69.3	0.1	4.2	0.4	0.3	0.1	0.0	0.0	94.9	0.1	5.0	0.103	0.502	23.669842	-100.654132
La Paz	8.00	1	1	2536	30.3	63.6	0.1	5.4	0.3	0.2	0.1	0.0	0.0	93.9	0.1	6.0	0.126	0.505	23.680266	-100.700572
La Paz	8.00	1	2	2582	30.3	63.7	0.1	5.1	0.4	0.3	0.1	0.0	0.0	94.0	0.1	5.9	0.101	0.505	23.680212	-100.700542

37 CARR: Matehuala - La Poza

CLAVE: 00086

RUTA: SLP-029-NL-061

AÑO: 2023

LUGAR	ESTACION	CLASIFICACION VEHICULAR EN PORCIENTO														COORDENADAS				
		KM	TE	SC	TDPA	M	A	B	C2	C3	T3S2	T3S3	T3S2R4	OTROS	A	B	C	K'	D	LATITUD
Matehuala	0.00	3	0	4380	14.2	77.9	1.4	3.2	2.6	0.3	0.3	0.1	0.0	92.1	1.4	6.5	0.084	0.519	23.665208	-100.603663
Lim. Edos. Term. S. L. P. Ppia. N. L.	19.70																			
Lim. Edos. Term. N. L. Ppia. S. L. P.	19.90																			
Lim. Edos. Term. S. L. P. Ppia. N. L.	21.53																			
Doctor Arroyo	49.00	1	0	3900	7.0	83.6	1.3	5.4	1.6	0.5	0.3	0.2	0.1	90.6	1.3	8.1	0.079	0.507	23.688424	-100.215942
La Ascención	131.00	1	0	956	9.6	78.7	2.7	5.8	1.2	1.8	0.2	0.0	0.0	88.3	2.7	9.0	0.089	0.536	24.321671	-99.905830

38 CARR: Periférico de San Luis Potosí

CLAVE: 24618

RUTA: SLP-032

AÑO: 2023

LUGAR	ESTACION	CLASIFICACION VEHICULAR EN PORCIENTO														COORDENADAS				
		KM	TE	SC	TDPA	M	A	B	C2	C3	T3S2	T3S3	T3S2R4	OTROS	A	B	C	K'	D	LATITUD
T. C. San Luis Potosí - Ent. Arcinas	0.00																			
X. C. Querétaro - San Luis Potosí (Central)	22.00	3	1	18489	7.5	76.0	1.7	6.7	2.3	3.5	1.2	0.5	0.6	83.5	1.7	14.8	0.085	0.503	22.138115	-100.916850
X. C. Querétaro - San Luis Potosí (Lateral)	22.00	3	1	8070	7.0	72.3	2.3	6.7	2.9	4.5	1.7	2.0	0.6	79.3	2.3	18.4	0.077	0.529	22.138155	-100.916743
X. C. Querétaro - San Luis Potosí (Lateral)	22.00	3	2	9062	6.8	70.8	2.7	7.3	3.1	4.7	1.9	2.1	0.6	77.6	2.7	19.7	0.089	0.529	22.138128	-100.917017

SAN LUIS POTOSI

38 CARR: Periférico de San Luis Potosí

CLAVE: 24618

RUTA: SLP-032

AÑO: 2023

LUGAR	ESTACION				CLASIFICACION VEHICULAR EN PORCIENTO												COORDENADAS			
	KM	TE	SC	TDPA	M	A	B	C2	C3	T3S2	T3S3	T3S2R4	OTROS	A	B	C	K'	D	LATITUD	LONGITUD
X. C. Querétaro - San Luis Potosí (Central)	22.00	3	2	18786	8.2	73.7	1.9	7.4	2.7	3.7	1.3	0.5	0.6	81.9	1.9	16.2	0.081	0.503	22.138136	-100.916928
X. C. San Luis Potosí - Cd. Valles	25.00	3	1	24282	5.3	83.2	1.2	5.2	1.4	1.8	0.6	1.0	0.3	88.5	1.2	10.3	0.082	0.518	22.166140	-100.915130
X. C. San Luis Potosí - Cd. Valles	25.00	3	2	27703	4.9	83.0	1.4	5.2	1.5	2.1	0.6	1.0	0.3	87.9	1.4	10.7	0.075	0.518	22.166135	-100.915247
X. C. San Luis Potosí - Matehuala	30.70	1	1	18691	6.0	75.8	1.5	7.5	2.7	3.7	1.3	1.0	0.5	81.8	1.5	16.7	0.092	0.506	22.195237	-100.920002
X. C. San Luis Potosí - Matehuala	30.70	1	2	19128	5.4	75.9	1.5	7.7	2.9	3.8	1.3	1.0	0.5	81.3	1.5	17.2	0.070	0.506	22.195223	-100.920123
T. C. San Luis Potosí - Ent. Arcinas	44.80																			

39 CARR: Ramal a Cerritos

CLAVE: 24615

RUTA: SLP-007

AÑO: 2023

LUGAR	ESTACION				CLASIFICACION VEHICULAR EN PORCIENTO												COORDENADAS			
	KM	TE	SC	TDPA	M	A	B	C2	C3	T3S2	T3S3	T3S2R4	OTROS	A	B	C	K'	D	LATITUD	LONGITUD
T. C. San Luis Potosí - Matehuala	0.00	3	0	353	2.8	63.3	3.8	23.8	2.3	4.0	0.0	0.0	0.0	66.1	3.8	30.1	0.112	0.539	22.612196	-100.546980
Cerritos	37.00																			

40 CARR: Ramal a Pozo de Acuña

CLAVE: 24626

RUTA: SLP-009

AÑO: 2023

LUGAR	ESTACION				CLASIFICACION VEHICULAR EN PORCIENTO												COORDENADAS			
	KM	TE	SC	TDPA	M	A	B	C2	C3	T3S2	T3S3	T3S2R4	OTROS	A	B	C	K'	D	LATITUD	LONGITUD
T. C. San Luis Potosí - Matehuala	0.00	3	0	525	1.7	80.7	0.6	16.0	1.0	0.0	0.0	0.0	0.0	82.4	0.6	17.0	0.114	0.519	22.641869	-100.515487
Pozo de Acuña	37.90																			

41 CARR: Rayón - Arroyo Seco

CLAVE: 24008

RUTA: SLP-011

AÑO: 2023

LUGAR	ESTACION				CLASIFICACION VEHICULAR EN PORCIENTO												COORDENADAS			
	KM	TE	SC	TDPA	M	A	B	C2	C3	T3S2	T3S3	T3S2R4	OTROS	A	B	C	K'	D	LATITUD	LONGITUD
Rayón	0.00	3	0	1534	6.4	69.6	0.5	21.5	1.5	0.2	0.1	0.2	0.0	76.0	0.5	23.5	0.092	0.516	21.848724	-99.627137
Lagunillas	36.00	1	0	351	4.4	74.7	0.7	17.7	1.8	0.4	0.1	0.2	0.0	79.1	0.7	20.2	0.109	0.508	21.595034	-99.564772
Lim. De Edos. Term. S.L.P. Ppia Oro.	51.00																			
Arroyo Seco	57.00	1	0	760	6.6	92.2	0.1	0.4	0.4	0.0	0.3	0.0	0.0	98.8	0.1	1.1	0.090	0.525	21.553924	-99.681287

42 CARR: Santo Domingo - Cerro Gordo

CLAVE: 24614

RUTA: SLP-022

AÑO: 2023

LUGAR	ESTACION				CLASIFICACION VEHICULAR EN PORCIENTO												COORDENADAS			
	KM	TE	SC	TDPA	M	A	B	C2	C3	T3S2	T3S3	T3S2R4	OTROS	A	B	C	K'	D	LATITUD	LONGITUD
T. C. Cd. Valles - San Luis Potosí	0.00	3	0	5281	4.3	72.4	1.8	14.8	1.7	3.0	1.5	0.3	0.2	76.7	1.8	21.5	0.081	0.503	22.095501	-100.745932

SAN LUIS POTOSI

42 CARR: Santo Domingo - Cerro Gordo

CLAVE: 24614

RUTA: SLP-022

AÑO: 2023

LUGAR	ESTACION				CLASIFICACION VEHICULAR EN PORCIENTO														COORDENADAS	
	KM	TE	SC	TDPA	M	A	B	C2	C3	T3S2	T3S3	T3S2R4	OTROS	A	B	C	K'	D	LATITUD	LONGITUD
T. C. Querétaro - San Luis Potosí	19.00	1	0	4542	8.8	72.6	1.2	11.5	2.2	1.5	0.8	1.2	0.2	81.4	1.2	17.4	0.089	0.517	21.976351	-100.818519

43 CARR: Tamuín - Estación F.F.C.C. Tamuín

CLAVE: 24022

RUTA: SLP-040

AÑO: 2023

LUGAR	ESTACION				CLASIFICACION VEHICULAR EN PORCIENTO														COORDENADAS	
	KM	TE	SC	TDPA	M	A	B	C2	C3	T3S2	T3S3	T3S2R4	OTROS	A	B	C	K'	D	LATITUD	LONGITUD
Tamuín	0.00	3	0	6197	13.5	73.2	2.6	5.9	2.2	1.1	0.5	0.8	0.2	86.7	2.6	10.7	0.073	0.506	22.009633	-98.782495
Estación F.F.C.C. Tamuín	10.00	1	0	1532	43.0	49.6	0.9	1.0	2.8	1.4	0.3	1.0	0.0	92.6	0.9	6.5	0.101	0.521	22.078167	-98.811233

44 CARR: Tamuín - Xolol

CLAVE: 24027

RUTA: SLP-014

AÑO: 2023

LUGAR	ESTACION				CLASIFICACION VEHICULAR EN PORCIENTO														COORDENADAS	
	KM	TE	SC	TDPA	M	A	B	C2	C3	T3S2	T3S3	T3S2R4	OTROS	A	B	C	K'	D	LATITUD	LONGITUD
Tamuín	0.00	3	0	4321	15.0	67.6	0.6	7.3	3.0	3.3	1.2	1.6	0.4	82.6	0.6	16.8	0.091	0.506	21.999178	-98.762802
X. C. Rayón - Ent. Tamuín (Cuota)	2.56	3	0	2883	14.8	67.3	2.0	6.7	2.9	3.6	1.5	1.0	0.2	82.1	2.0	15.9	0.105	0.506	21.977918	-98.756354
San Vicente Tancuayalab	37.62																			
Xolol	97.00																			

45 CARR: Cerritos - Ent. Tula (Cuota)

CLAVE:

RUTA: SLP-075D

AÑO: 2023

LUGAR	ESTACION				CLASIFICACION VEHICULAR EN PORCIENTO														COORDENADAS	
	KM	TE	SC	TDPA	M	A	B	C2	C3	T3S2	T3S3	T3S2R4	OTROS	A	B	C	K'	D	LATITUD	LONGITUD
T. C. Cerritos - Rioverde (Cuota)	0.00	3	0	2758	3.0	72.1	3.9	3.8	2.4	7.2	1.6	5.1	0.9	75.1	3.9	21.0	0.083	0.505	22.455155	-100.314510
T. Der. Cerritos	2.69	3	0	2469	3.6	73.8	5.4	3.6	1.7	5.6	1.3	4.2	0.8	77.4	5.4	17.2	0.085	0.544	22.461789	-100.313019
T. Der. San José	18.70	3	0	2381	1.8	76.4	2.7	3.4	1.4	8.1	1.1	4.3	0.8	78.2	2.7	19.1	0.079	0.507	22.581470	-100.213624
T. Der. Buenavista	32.15	3	0	1960	1.6	65.4	5.5	3.2	1.2	12.8	1.8	7.6	0.9	67.0	5.5	27.5	0.076	0.524	22.635008	-100.103203
T. C. Antigua Morelos-Ent. El Huizache	51.20																			

46 CARR: Cerritos - Rioverde (Cuota)

CLAVE: 00138

RUTA: SLP-D

AÑO: 2023

LUGAR	ESTACION				CLASIFICACION VEHICULAR EN PORCIENTO														COORDENADAS	
	KM	TE	SC	TDPA	M	A	B	C2	C3	T3S2	T3S3	T3S2R4	OTROS	A	B	C	K'	D	LATITUD	LONGITUD
Cerritos	0.00	3	0	6495	2.4	59.2	6.4	6.9	2.2	9.3	5.2	7.5	0.9	61.6	6.4	32.0	0.075	0.513	22.586292	-100.581548
Villa Juárez	58.00	3	0	4408	2.6	68.4	8.5	5.4	2.5	6.3	2.1	3.3	0.9	71.0	8.5	20.5	0.081	0.506	22.316100	-100.283239
Río Verde	103.00	1	0	5428	2.5	72.3	5.5	4.7	2.1	5.2	2.2	4.6	0.9	74.8	5.5	19.7	0.079	0.512	21.923975	-99.959263

SAN LUIS POTOSI

47 CARR: San Luis Potosi - Villa de Arriaga (Cuota)

CLAVE: 24209

RUTA: SLP-D

AÑO: 2023

LUGAR	ESTACION				CLASIFICACION VEHICULAR EN PORCIENTO										COORDENADAS					
	KM	TE	SC	TDPA	M	A	B	C2	C3	T3S2	T3S3	T3S2R4	OTROS	A	B	C	K'	D	LATITUD	LONGITUD
T. C. Querétaro - San Luis Potosi	0.00	3	0	11526	2.3	63.6	2.3	4.5	2.9	18.5	1.7	3.4	0.8	65.9	2.3	31.8	0.099	0.546	22.006488	-100.848726
Villa de Arriaga	77.00	1	0	3481	2.5	40.7	5.6	7.1	3.1	25.5	3.7	11.2	0.6	43.2	5.6	51.2	0.073	0.530	21.892707	-101.387674

48 CARR: Rayón - Cd. del Maíz

CLAVE: 24206

RUTA: MEX-070-SLP-005

AÑO: 2023

LUGAR	ESTACION				CLASIFICACION VEHICULAR EN PORCIENTO										COORDENADAS					
	KM	TE	SC	TDPA	M	A	B	C2	C3	T3S2	T3S3	T3S2R4	OTROS	A	B	C	K'	D	LATITUD	LONGITUD
T. C. (Cd. Valles - San Luis Potosi)	0.00																			
Cárdenas	15.80	1	0	3092	4.1	89.2	0.9	3.9	1.1	0.3	0.2	0.2	0.1	93.3	0.9	5.8	0.104	0.504	21.983535	-99.647662
Cd. del Maíz	55.70	1	0	969	4.6	89.4	1.2	2.7	1.4	0.4	0.2	0.1	0.0	94.0	1.2	4.8	0.091	0.515	22.393879	-99.611824

49 CARR: San Lorenzo - Moctezuma

CLAVE: 24016

RUTA: MEX-063-SLP-012

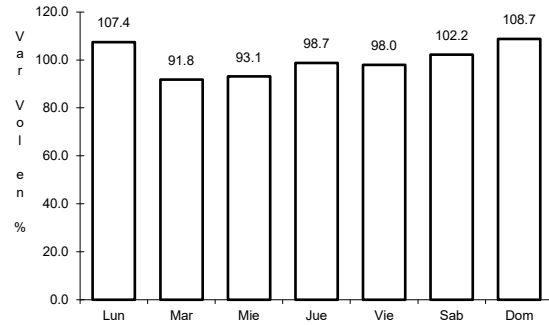
AÑO: 2023

LUGAR	ESTACION				CLASIFICACION VEHICULAR EN PORCIENTO										COORDENADAS					
	KM	TE	SC	TDPA	M	A	B	C2	C3	T3S2	T3S3	T3S2R4	OTROS	A	B	C	K'	D	LATITUD	LONGITUD
T. C. San Luis Potosi - Matehuala	0.00	3	0	1771	4.9	70.1	3.8	10.7	2.8	3.7	1.8	1.7	0.5	75.0	3.8	21.2	0.079	0.538	22.568106	-100.639360
Estación Moctezuma	49.00																			
Moctezuma	54.00	1	0	1987	9.8	78.4	1.9	5.7	1.2	0.7	0.1	2.2	0.0	88.2	1.9	9.9	0.101	0.502	22.757911	-101.066864

1 CARR: Antiguo Morelos - Ent. El Huizache

CLAVE: 00136

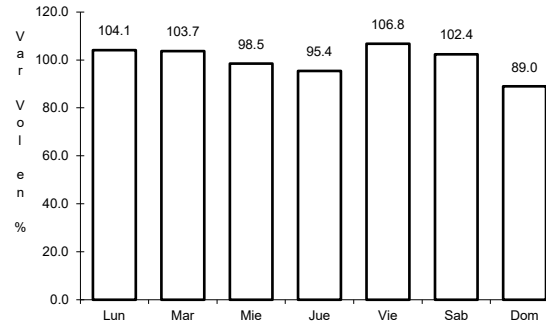
RUTA: MEX-080



Km: 0.00

Tipo: 3

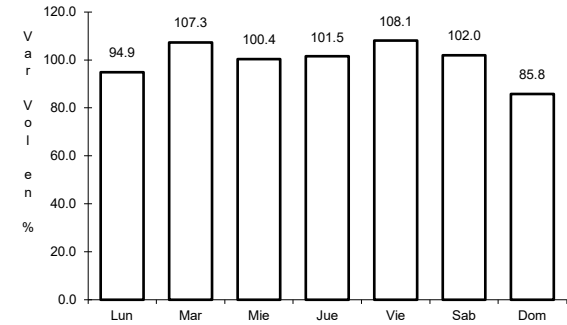
Sent: 0



Km: 86.00

Tipo: 3

Sent: 0



Km: 198.83

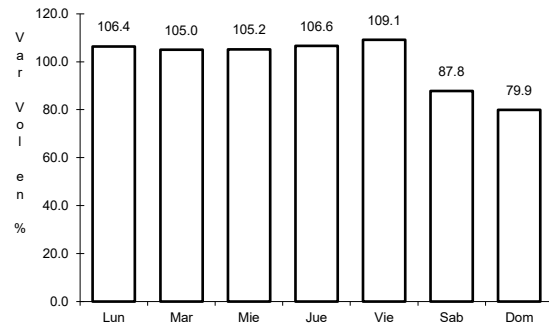
Tipo: 1

Sent: 0

2 CARR: Carbonera - T. C. (Ent. Morelos - Saltillo)

CLAVE: 00218

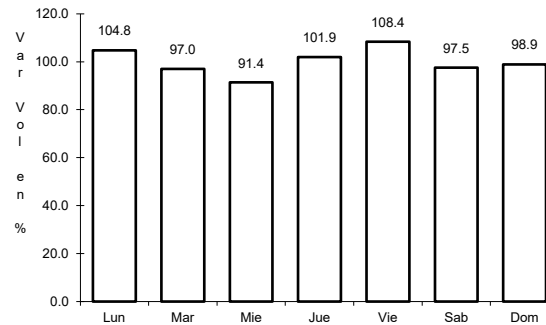
RUTA: MEX-062



Km: 0.00

Tipo: 3

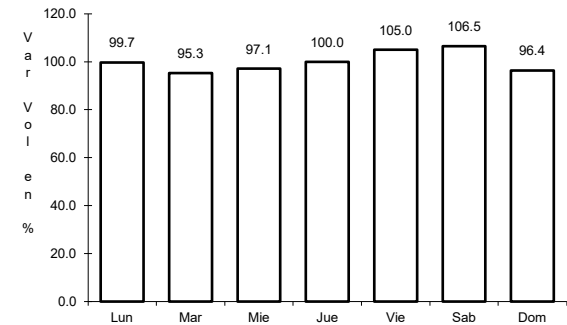
Sent: 0



Km: 18.00

Tipo: 1

Sent: 0



Km: 112.00

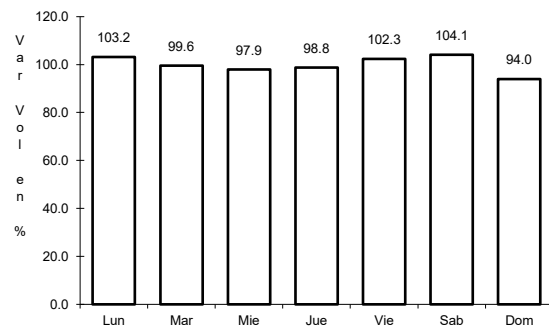
Tipo: 1

Sent: 0

3 CARR: Cd. Valles - Cd. Victoria

CLAVE: 00509

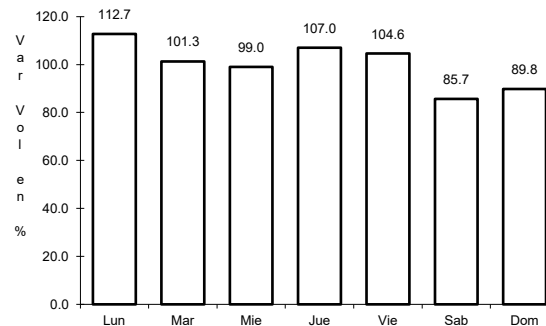
RUTA: MEX-085



Km: 0.00

Tipo: 3

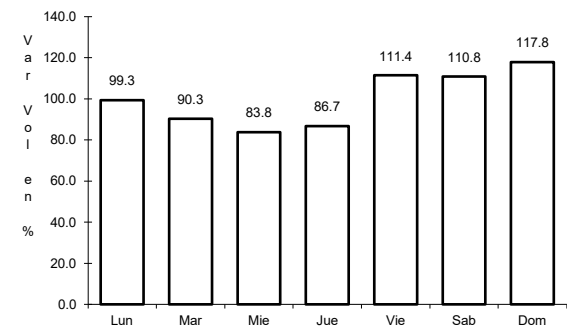
Sent: 0



Km: 110.00

Tipo: 3

Sent: 0



Km: 232.00

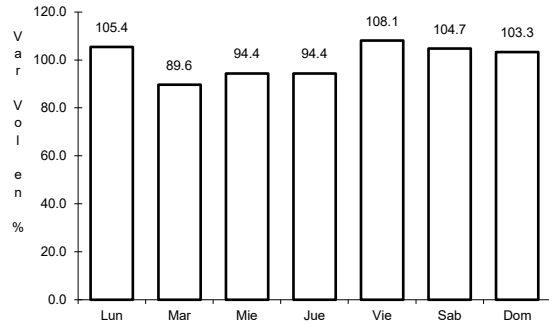
Tipo: 1

Sent: 0

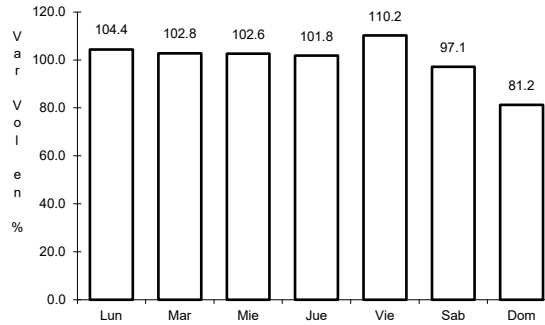
4 CARR: Cd. Valles - San Luis Potosí

CLAVE: 24135

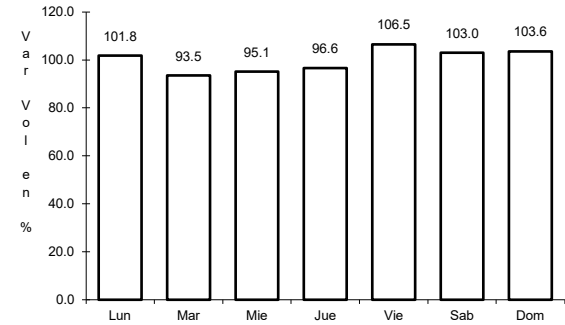
RUTA: MEX-070



Km: 0.00      Tipo: 3      Sent: 1



Km: 0.00      Tipo: 3      Sent: 2

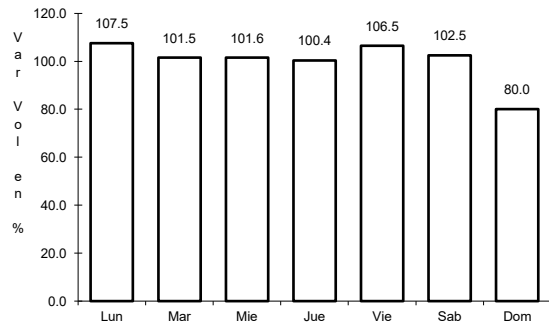


Km: 145.90      Tipo: 1      Sent: 0

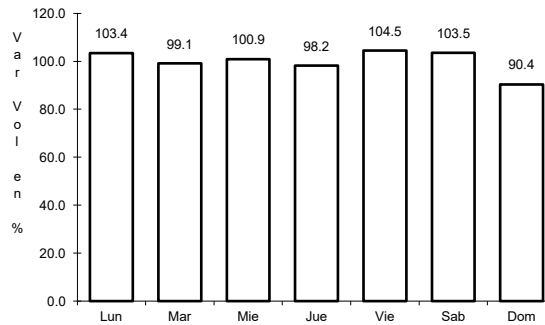
5 CARR: Cd. Valles - Tampico

CLAVE: 00138

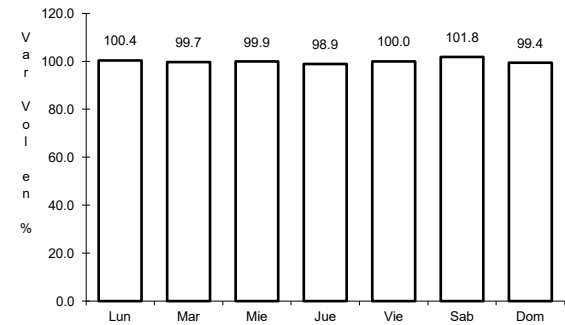
RUTA: MEX-070



Km: 0.00      Tipo: 3      Sent: 0



Km: 138.00      Tipo: 1      Sent: 1

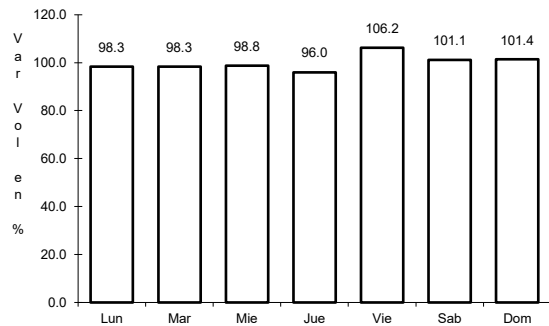


Km: 138.00      Tipo: 1      Sent: 2

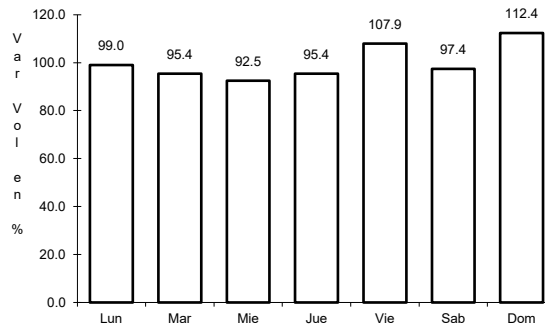
6 CARR: El Clarín - Agua Buena

CLAVE: 24283

RUTA: MEX-070



Km: 0.00      Tipo: 3      Sent: 0



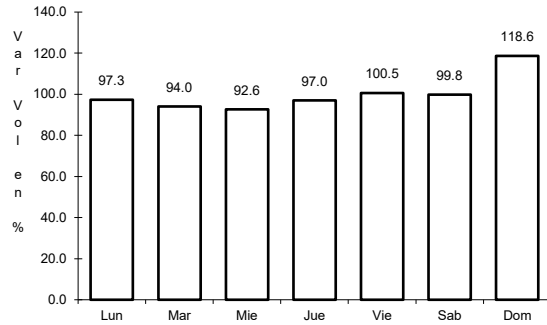
Km: 11.23      Tipo: 1      Sent: 0



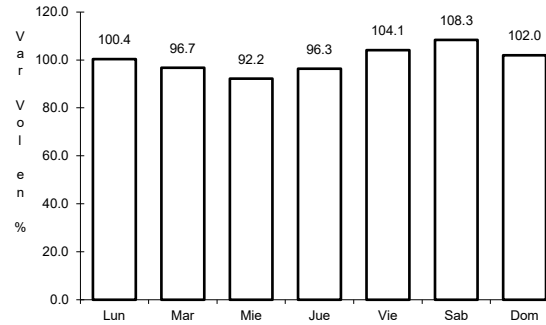
7 CARR: Ent. Ahualulco - Ent. La Bonita

CLAVE: 24258

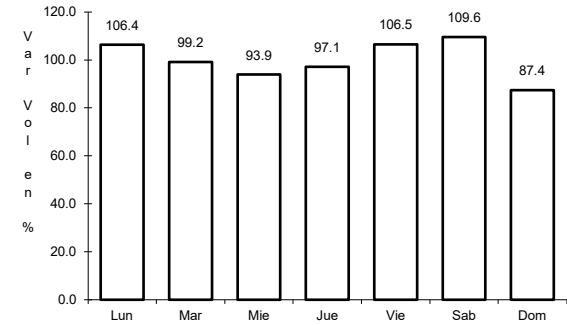
ruta: MEX-063



Km: 0.00      Tipo: 3      Sent: 0



Km: 59.00      Tipo: 1      Sent: 0

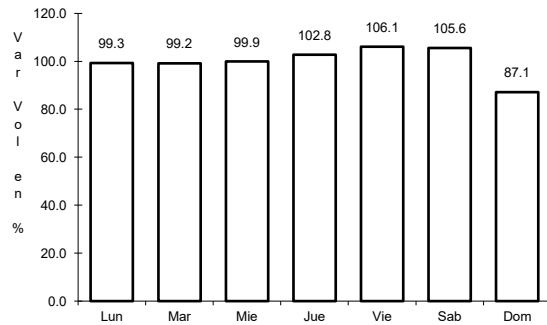


Km: 169.90      Tipo: 1      Sent: 0

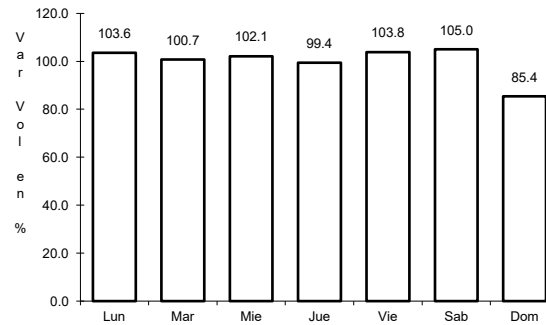
8 CARR: Ent. de Zaragoza - San Felipe

CLAVE: 00240

ruta: MEX-037



Km: 0.00      Tipo: 3      Sent: 0

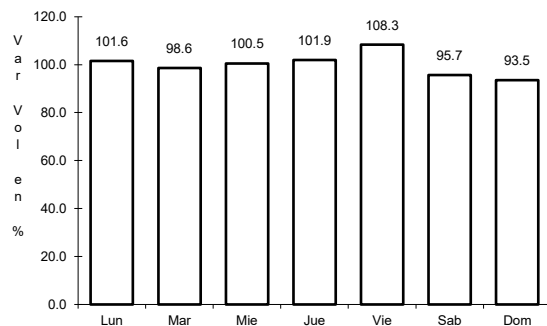


Km: 72.00      Tipo: 1      Sent: 0

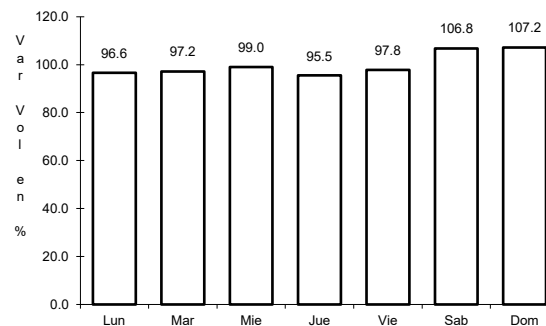
9 CARR: Ent. Tula - Cd. Victoria

CLAVE: 00179

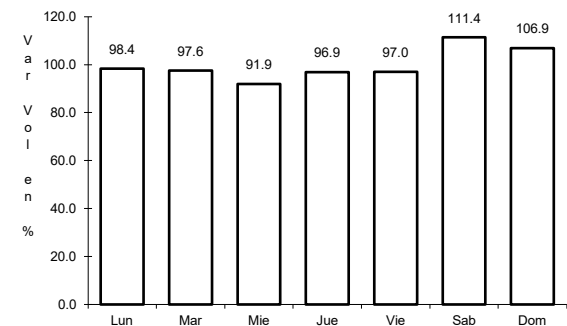
ruta: MEX-101



Km: 0.00      Tipo: 3      Sent: 0



Km: 180.00      Tipo: 1      Sent: 1

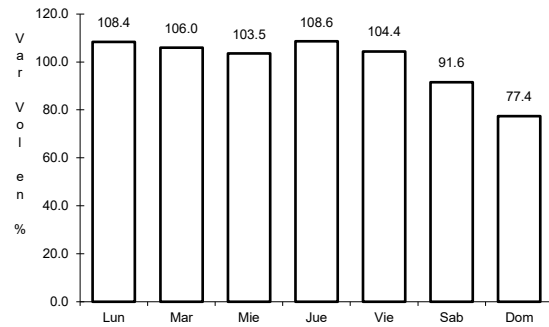


Km: 180.00      Tipo: 1      Sent: 2

10 CARR: Jalpan de Serra - Rioverde

CLAVE: 00265

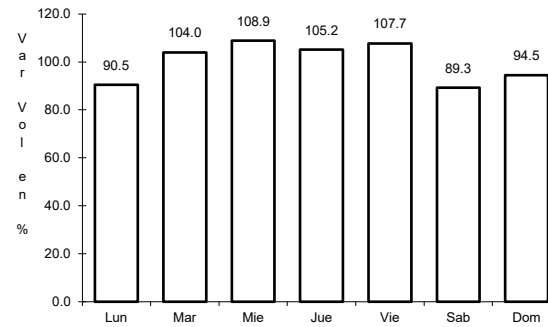
ruta: MEX-069



Km: 0.00

Tipo: 3

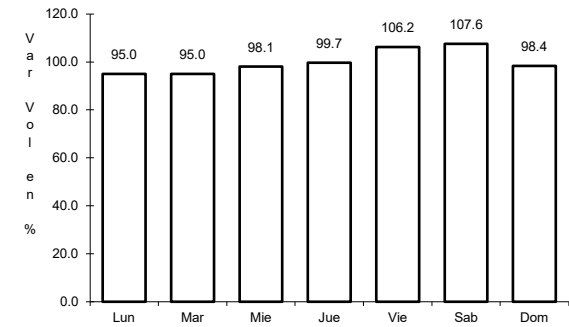
Sent: 0



Km: 48.60

Tipo: 1

Sent: 0



Km: 105.43

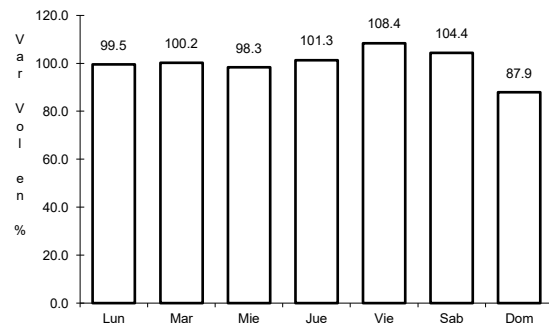
Tipo: 1

Sent: 0

11 CARR: Libramiento de Cd. Valles

CLAVE: 24205

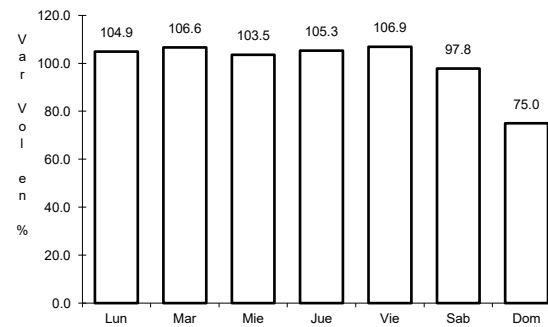
ruta: MEX-070



Km: 0.00

Tipo: 3

Sent: 0



Km: 11.54

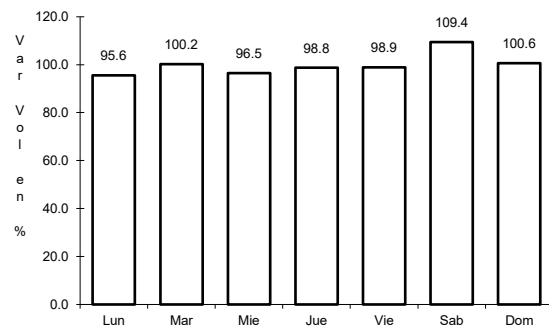
Tipo: 1

Sent: 0

12 CARR: Libramiento de Villa de Reyes

CLAVE: 24010

ruta: MEX-037



Km: 0.00

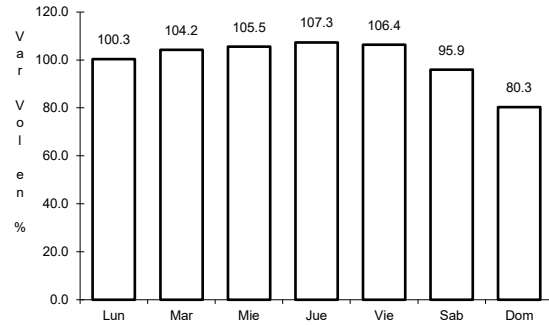
Tipo: 3

Sent: 0

13 CARR: Libramiento de Villa de Reyes (Poniente)

CLAVE:

RUTA: MEX-037



Km: 143.64

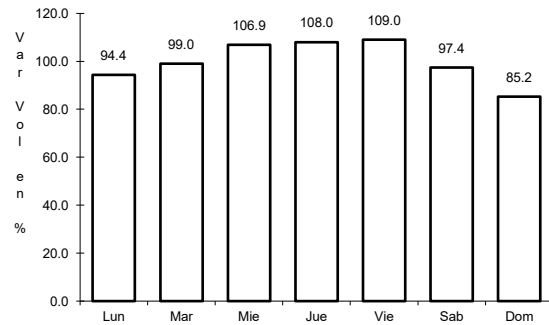
Tipo: 1

Sent: 0

14 CARR: Libramiento Villa de Arriaga

CLAVE: 24009

RUTA: MEX-080



Km: 0.00

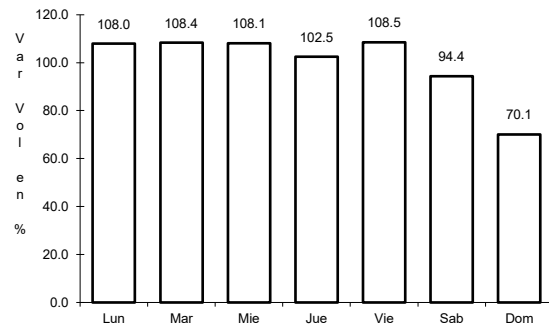
Tipo: 3

Sent: 0

15 CARR: Matchuala - Ent. Puerto México

CLAVE: 00405

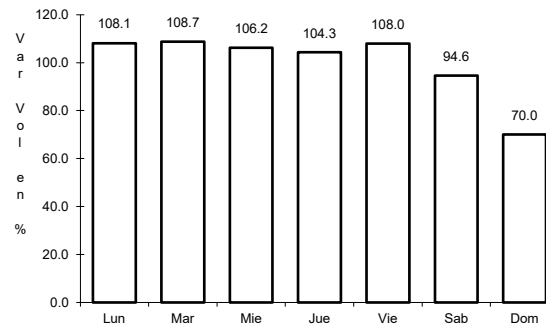
RUTA: MEX-057



Km: 0.00

Tipo: 3

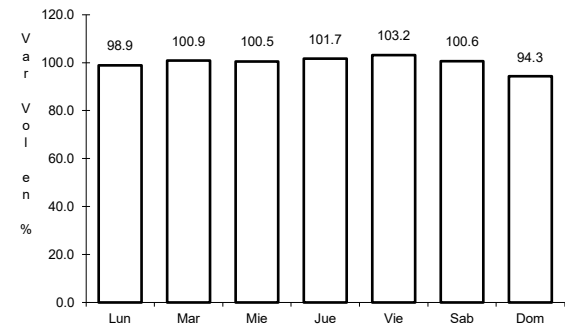
Sent: 1



Km: 0.00

Tipo: 3

Sent: 2



Km: 177.18

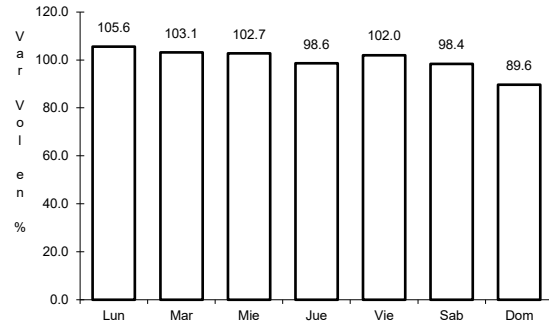
Tipo: 1

Sent: 1

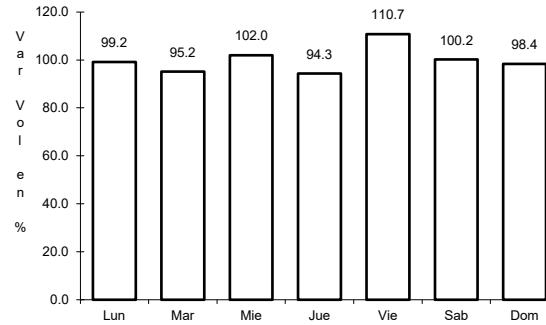
16 CARR: Portezuelo - Cd. Valles

CLAVE: 00023

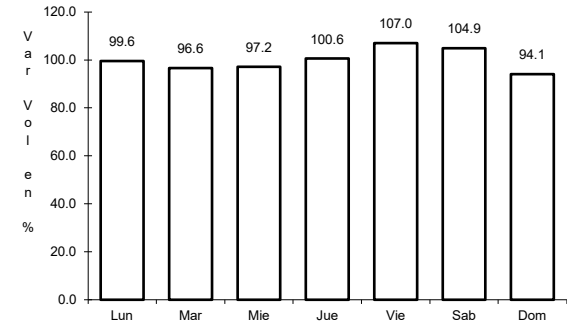
RUTA: MEX-085



Km: 0.00      Tipo: 3      Sent: 0



Km: 154.00      Tipo: 3      Sent: 0

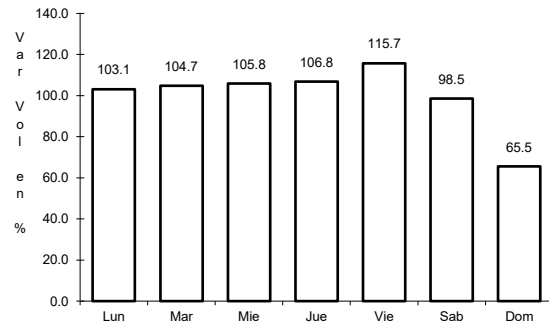


Km: 286.41      Tipo: 1      Sent: 1

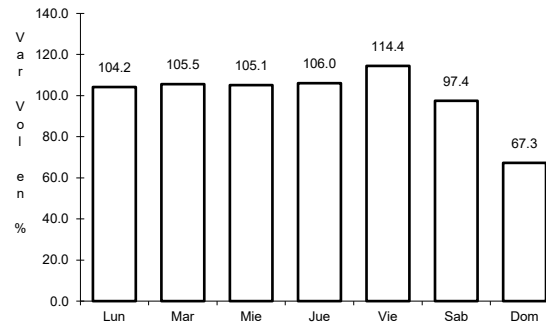
17 CARR: Querétaro - San Luis Potosí

CLAVE: 00165

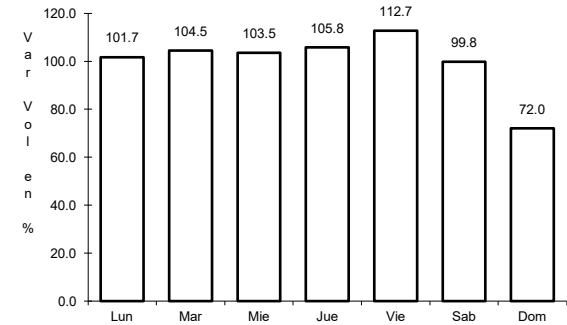
RUTA: MEX-057



Km: 6.28      Tipo: 3      Sent: 1



Km: 6.28      Tipo: 3      Sent: 2

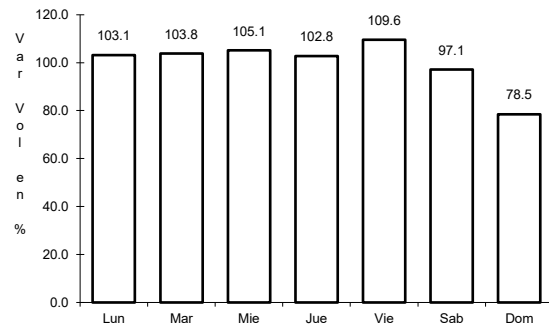


Km: 184.80      Tipo: 1      Sent: 1

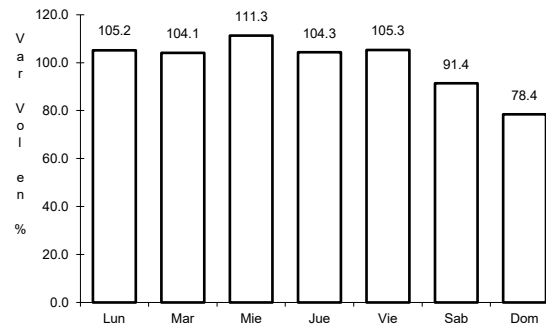
18 CARR: Ramal a Aeropuerto de S. L. P.

CLAVE: 24206

RUTA: MEX-057



Km: 0.00      Tipo: 3      Sent: 1

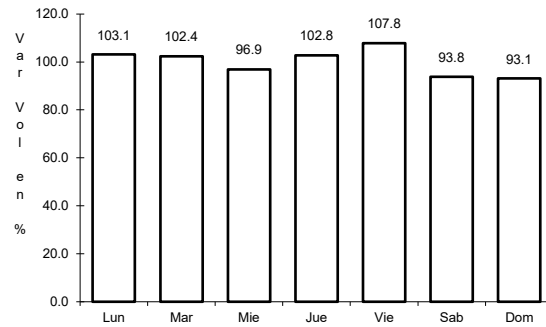


Km: 0.00      Tipo: 3      Sent: 2

19 CARR: Ramal a Ojo de Agua

CLAVE: 24023

ruta: MEX-062



Km: 0.00

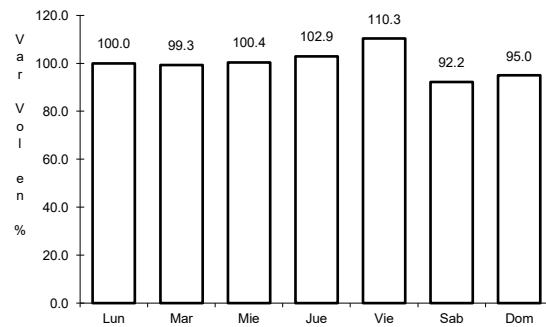
Tipo: 3

Sent: 0

20 CARR: Ramal a Rayón

CLAVE: 24626

ruta: MEX-070



Km: 1.50

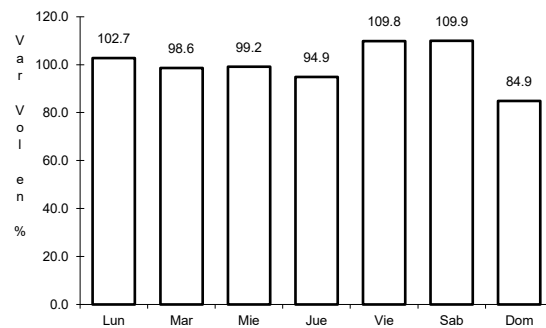
Tipo: 1

Sent: 0

21 CARR: San Juan del Río - Xilitla

CLAVE: 00183

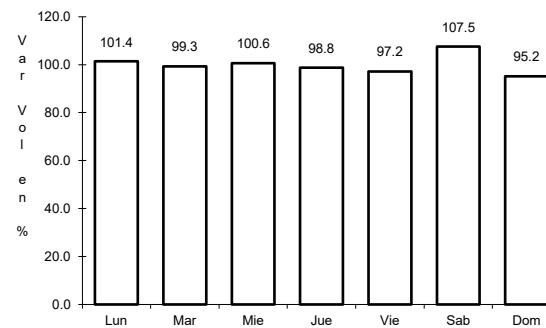
ruta: MEX-120



Km: 5.20

Tipo: 3

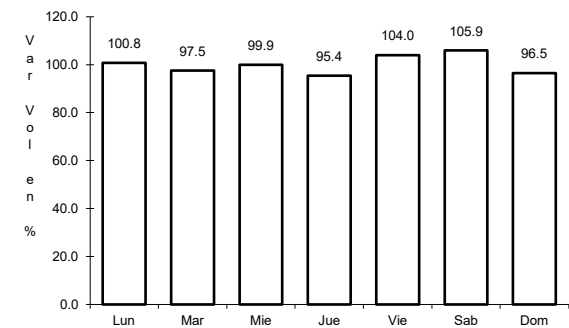
Sent: 1



Km: 5.20

Tipo: 3

Sent: 2



Km: 276.98

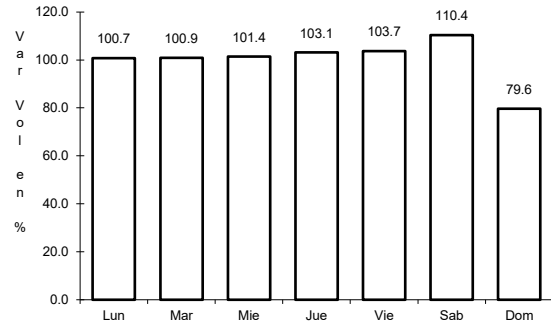
Tipo: 1

Sent: 0

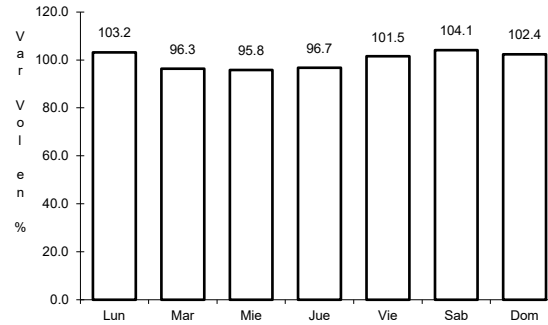
22 CARR: San Luis Potosí - Ent. Arcinas

CLAVE: 00134

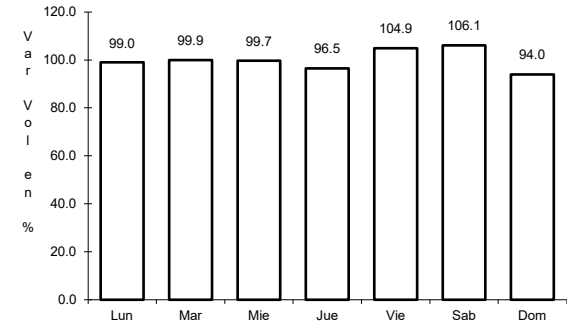
ruta: MEX-049



Km: 9.35      Tipo: 3      Sent: 1



Km: 9.35      Tipo: 3      Sent: 2

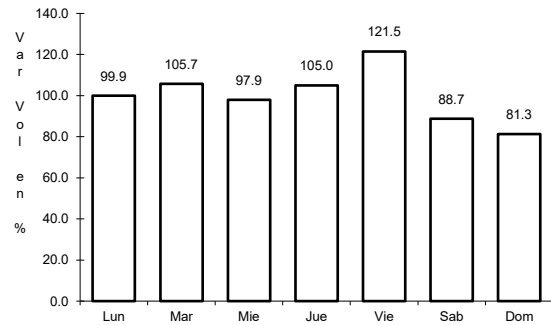


Km: 162.98      Tipo: 1      Sent: 1

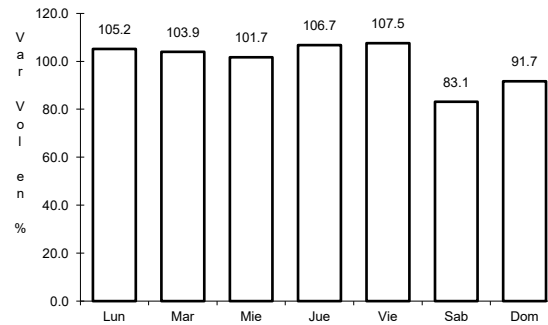
23 CARR: San Luis Potosí - Lagos de Moreno

CLAVE: 00133

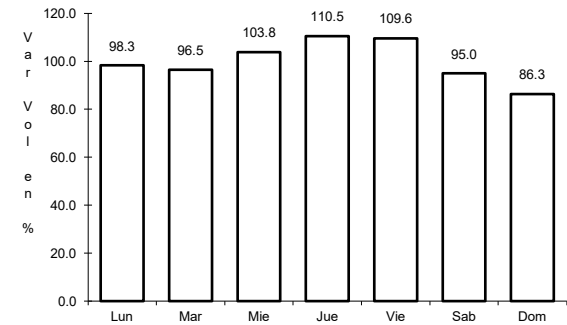
ruta: MEX-070-080



Km: 0.00      Tipo: 3      Sent: 1



Km: 0.00      Tipo: 3      Sent: 2

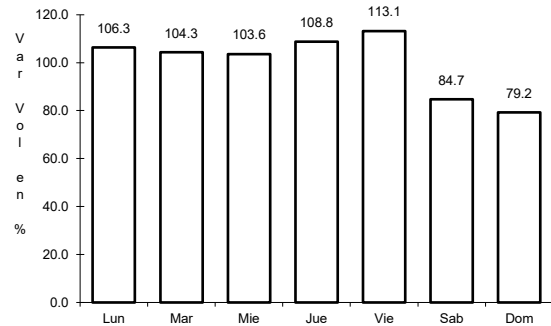


Km: 61.90      Tipo: 3      Sent: 0

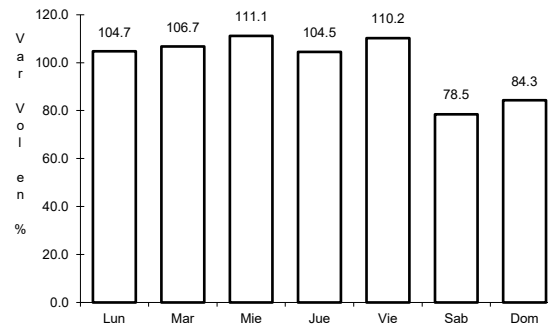
24 CARR: San Luis Potosí - Matchuala

CLAVE: 24508

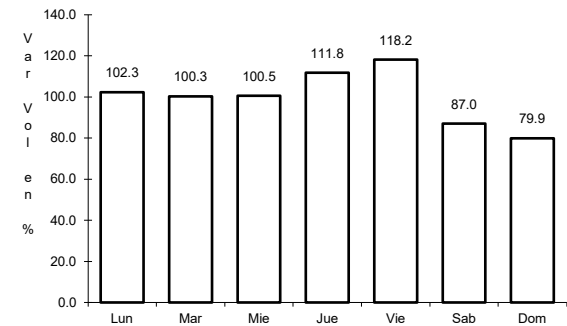
ruta: MEX-057



Km: 7.36      Tipo: 3      Sent: 1



Km: 7.36      Tipo: 3      Sent: 2

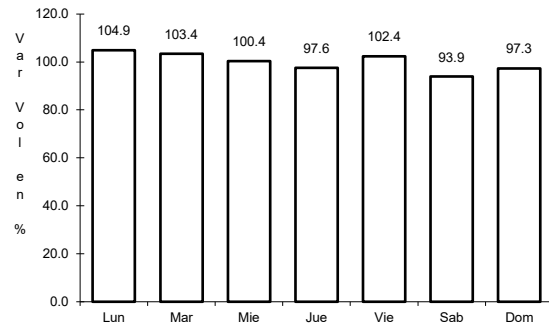


Km: 187.39      Tipo: 1      Sent: 1

25 CARR: T. C. (Ent. El Huizache- Ant. Morelos)-El Salto

CLAVE: 24204

ruta: MEX-080



Km: 0.00

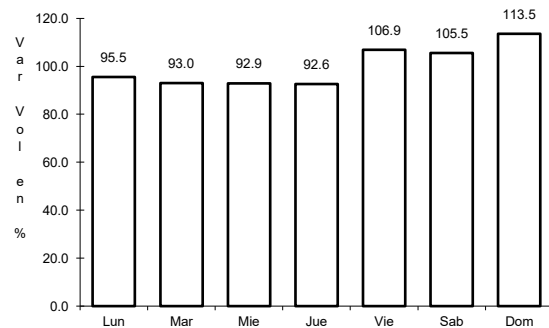
Tipo: 3

Sent: 0

26 CARR: T. C. (Qro - S.L.P.) - Tierra Nueva

CLAVE: 24203

ruta: MEX-057



Km: 0.00

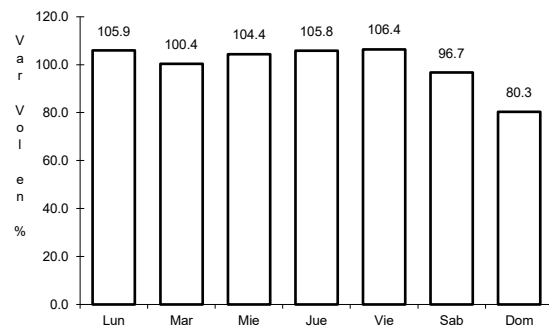
Tipo: 3

Sent: 0

27 CARR: T. C. (S.L.P. - Matchuala) - Villa Hidalgo

CLAVE: 24619

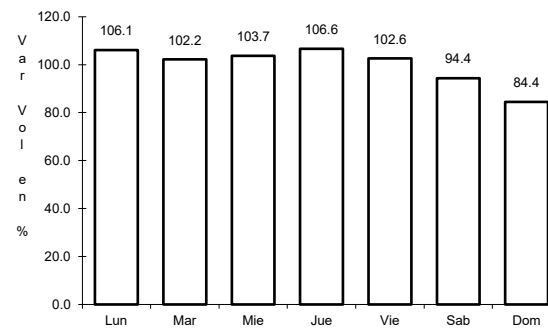
ruta: MEX-057



Km: 0.00

Tipo: 3

Sent: 0



Km: 10.20

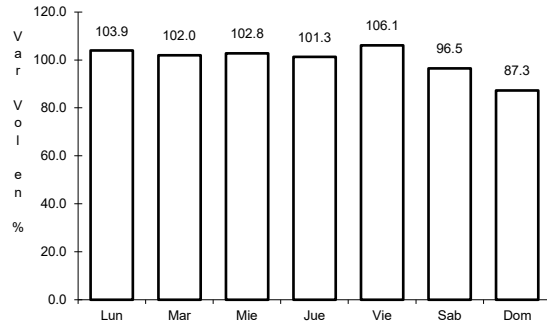
Tipo: 1

Sent: 0

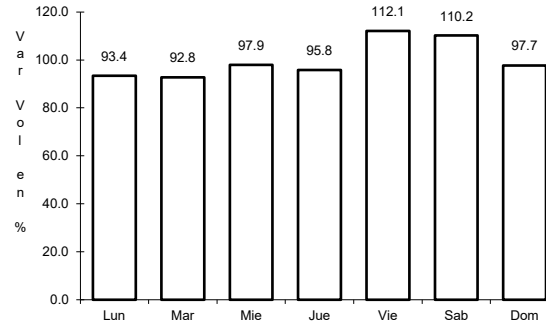
28 CARR: Tamazunchale - San Felipe Orizatlán

CLAVE: 00609

ruta: MEX-085



Km: 0.00      Tipo: 3      Sent: 0

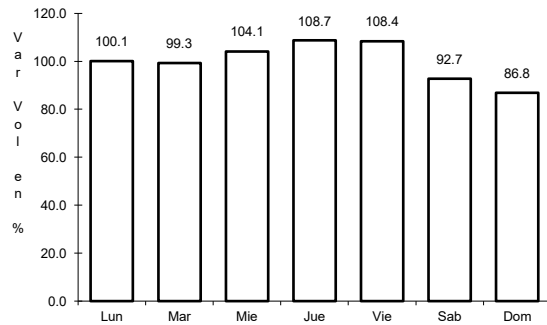


Km: 27.10      Tipo: 1      Sent: 0

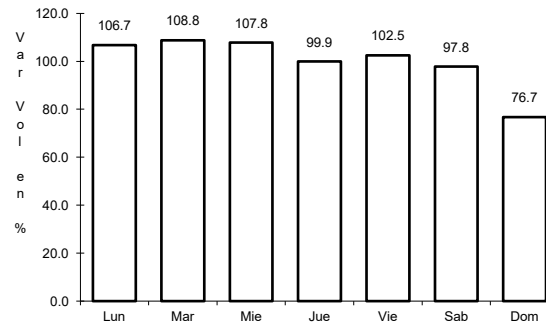
29 CARR: Lagos de Moreno - Villa de Arriaga (Cuota)

CLAVE:

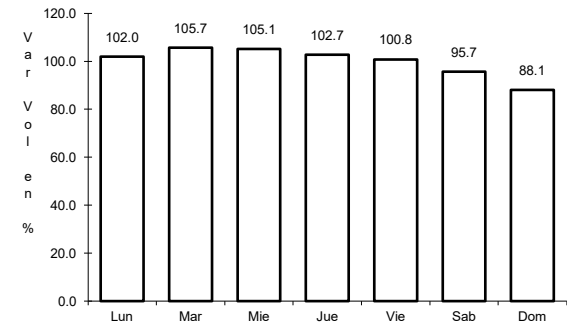
ruta: MEX-080D



Km: 12.10      Tipo: 3      Sent: 0



Km: 58.18      Tipo: 1      Sent: 0

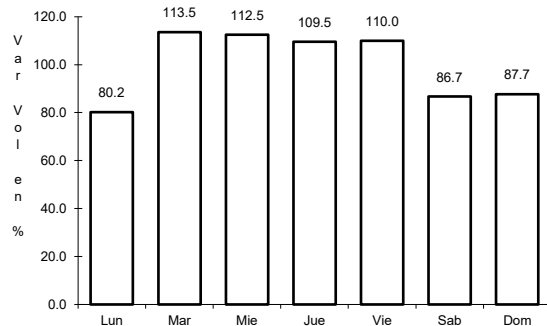


Km: 78.00      Tipo: 1      Sent: 0

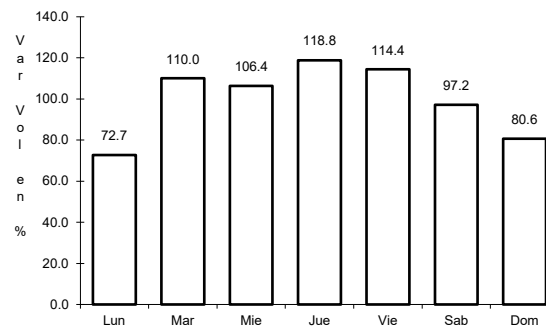
30 CARR: Libramiento de Matchuala (Cuota)

CLAVE: 24205

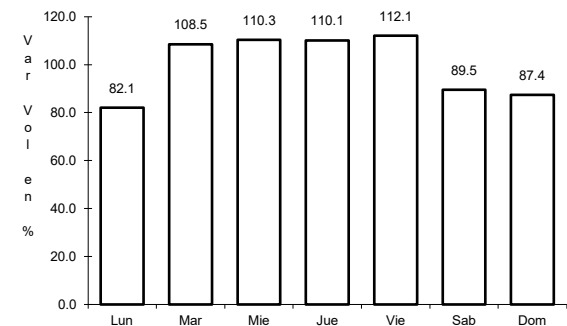
ruta: MEX-057D



Km: 0.00      Tipo: 3      Sent: 1



Km: 0.00      Tipo: 3      Sent: 2



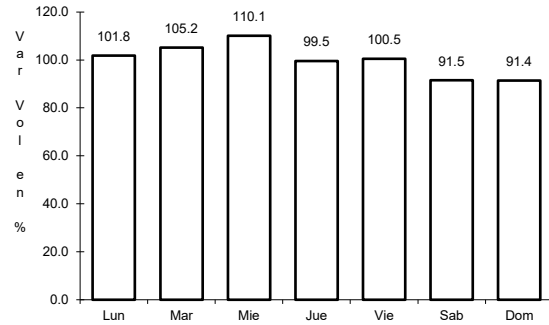
Km: 14.20      Tipo: 1      Sent: 1



31 CARR: Libramiento Norponiente de San Luis Potosí (Cuota)

CLAVE:

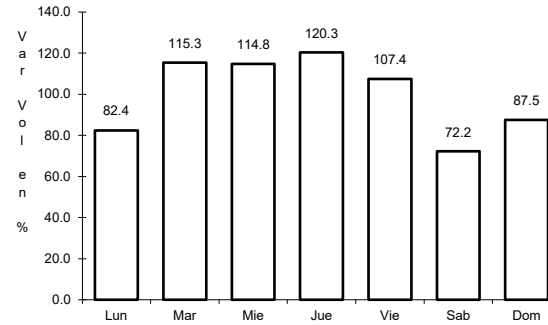
RUTA: MEX-057D



Km: 5.60

Tipo: 1

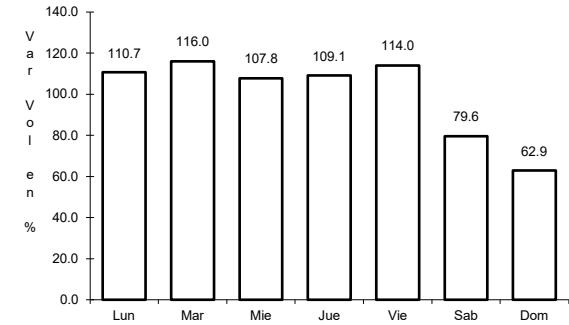
Sent: 0



Km: 5.60

Tipo: 3

Sent: 0



Km: 31.20

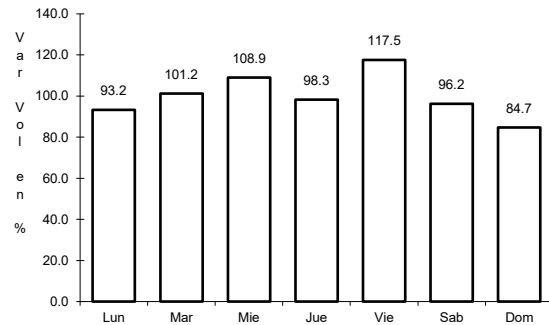
Tipo: 3

Sent: 0

32 CARR: Libramiento Oriente de San Luis Potosí (Cuota)

CLAVE: 24009

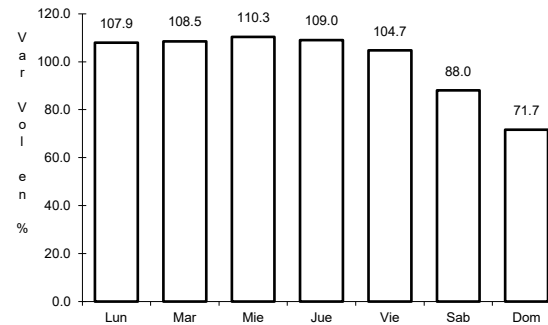
RUTA: MEX-057D



Km: 11.00

Tipo: 1

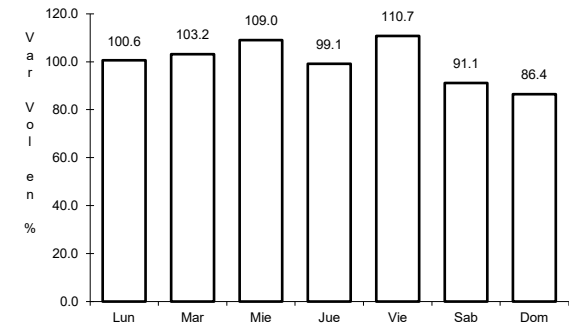
Sent: 1



Km: 11.00

Tipo: 1

Sent: 2



Km: 33.76

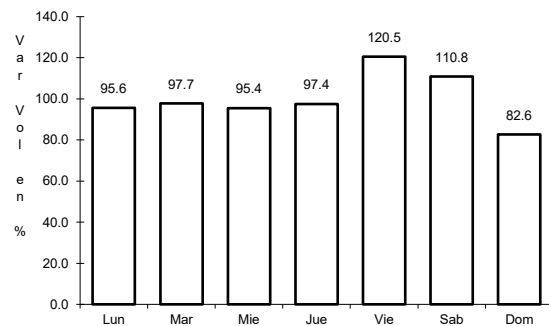
Tipo: 1

Sent: 1

33 CARR: Rayón - Ent. Tamuín (Cuota)

CLAVE:

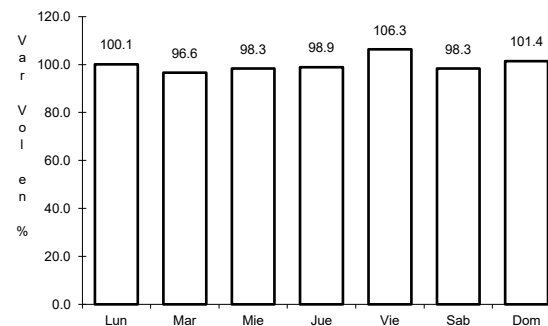
RUTA: MEX-070D



Km: 19.70

Tipo: 1

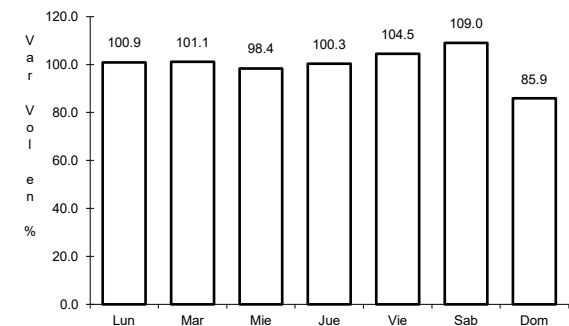
Sent: 0



Km: 68.58

Tipo: 3

Sent: 0



Km: 117.30

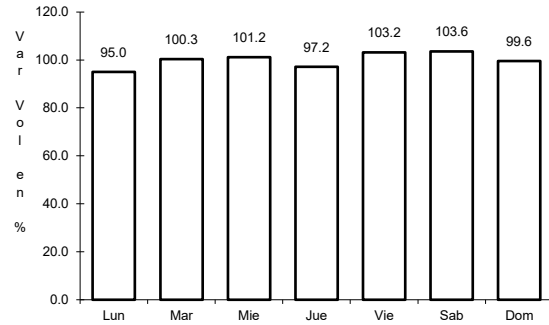
Tipo: 1

Sent: 0

34 CARR: Charcas - Villa Santo Domingo

CLAVE: 24624

ruta: SLP-017



Km: 0.00

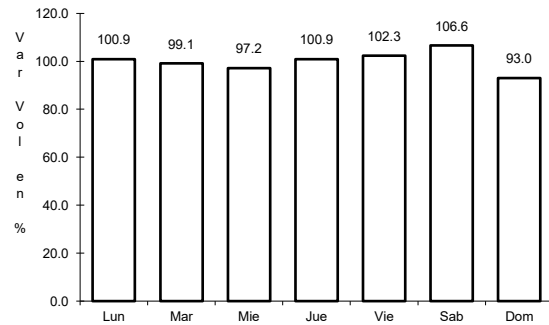
Tipo: 3

Sent: 0

35 CARR: Ébano - Estación Manuel

CLAVE: 24624

ruta: SLP-TAM



Km: 0.00

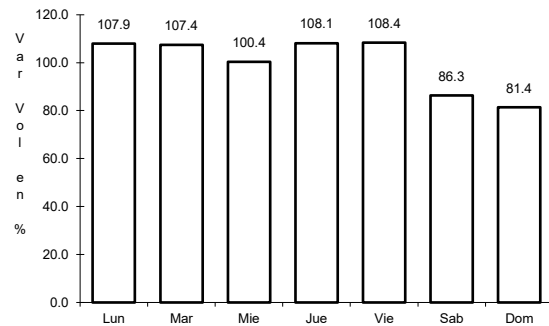
Tipo: 3

Sent: 0

36 CARR: Matchuala - La Paz

CLAVE: 24621

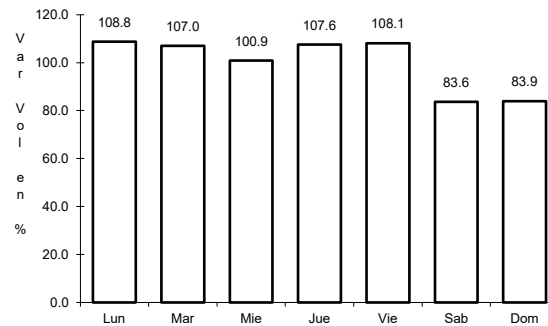
ruta: SLP-020



Km: 0.00

Tipo: 3

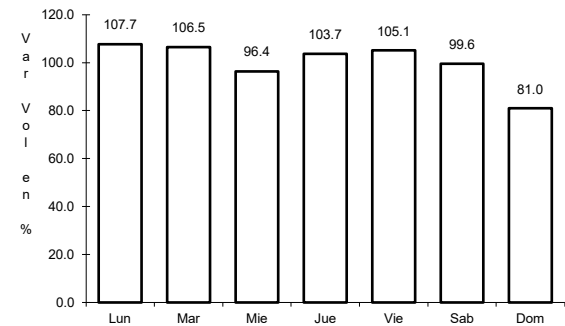
Sent: 1



Km: 0.00

Tipo: 3

Sent: 2



Km: 8.00

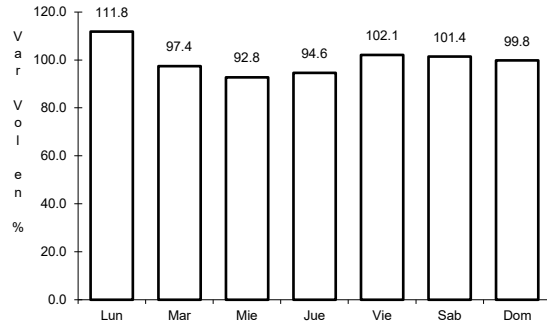
Tipo: 1

Sent: 1

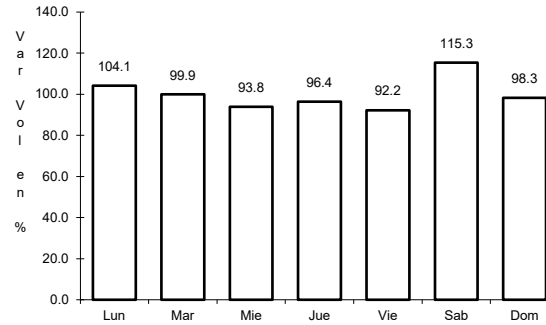
37 CARR: Matchuala - La Poza

CLAVE: 00086

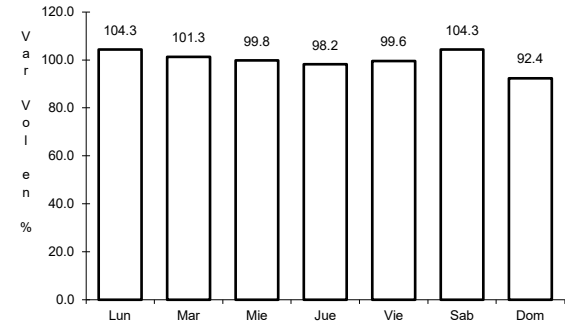
RUTA: SLP-029-NL-061



Km: 0.00 Tipo: 3 Sent: 0



Km: 49.00 Tipo: 1 Sent: 0

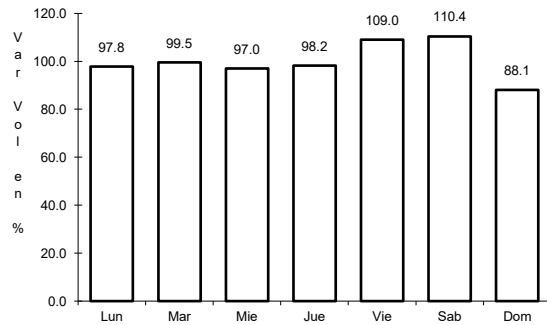


Km: 131.00 Tipo: 1 Sent: 0

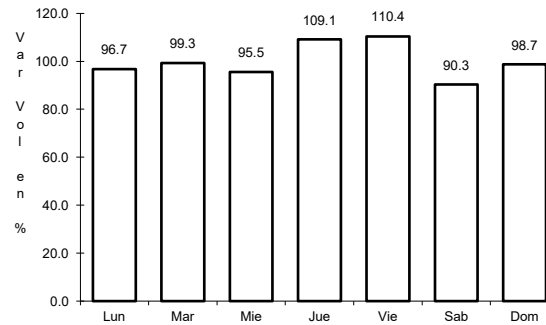
38 CARR: Periférico de San Luis Potosí

CLAVE: 24618

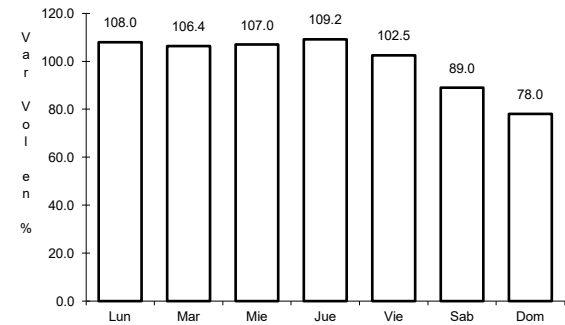
RUTA: SLP-032



Km: 22.00 Tipo: 3 Sent: 1



Km: 22.00 Tipo: 3 Sent: 2

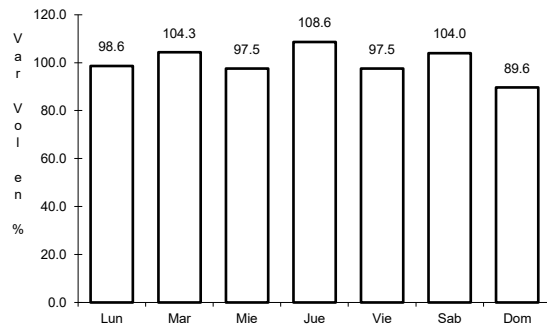


Km: 30.70 Tipo: 1 Sent: 1

39 CARR: Ramal a Cerritos

CLAVE: 24615

RUTA: SLP-007

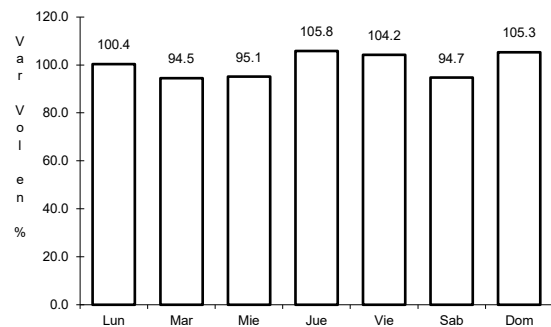


Km: 0.00 Tipo: 3 Sent: 0

40 CARR: Ramal a Pozo de Acuña

CLAVE: 24626

ruta: SLP-009



Km: 0.00

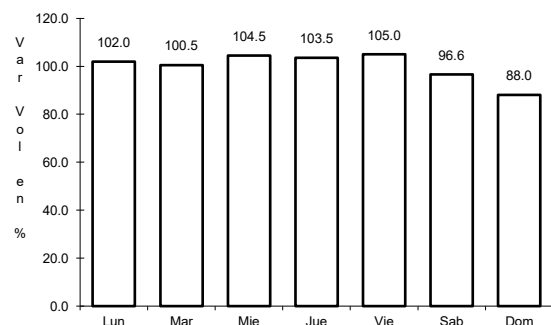
Tipo: 3

Sent: 0

41 CARR: Rayón - Arroyo Seco

CLAVE: 24008

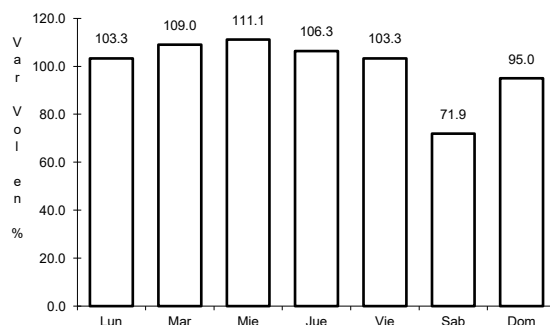
ruta: SLP-011



Km: 0.00

Tipo: 3

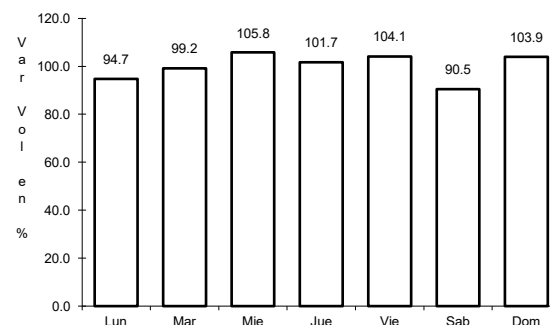
Sent: 0



Km: 36.00

Tipo: 1

Sent: 0



Km: 57.00

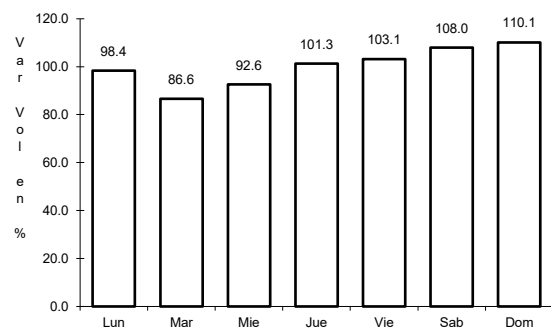
Tipo: 1

Sent: 0

42 CARR: Santo Domingo - Cerro Gordo

CLAVE: 24614

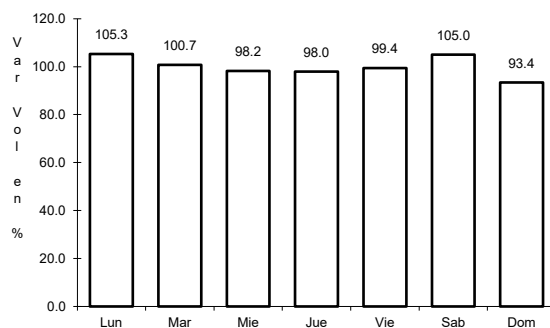
ruta: SLP-022



Km: 0.00

Tipo: 3

Sent: 0



Km: 19.00

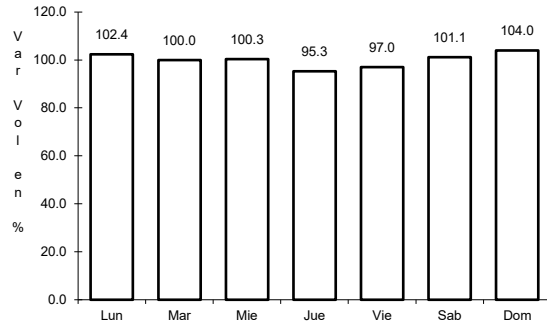
Tipo: 1

Sent: 0

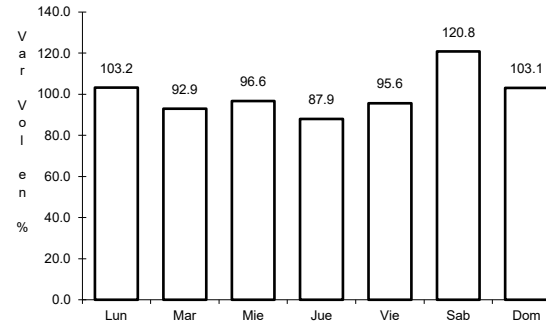
43 CARR: Tamuín - Estación F.F.C.C. Tamuín

CLAVE: 24022

RUTA: SLP-040



Km: 0.00      Tipo: 3      Sent: 0

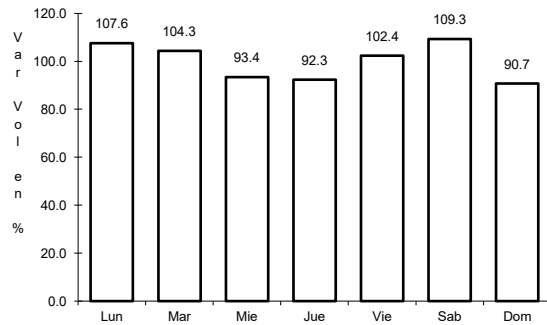


Km: 10.00      Tipo: 1      Sent: 0

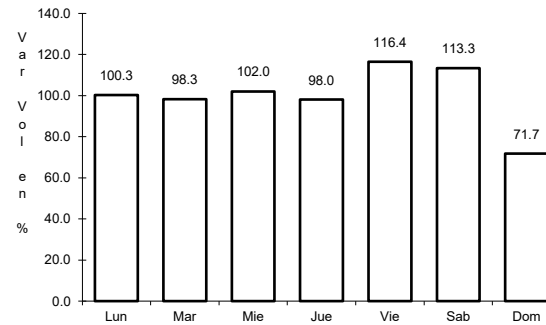
44 CARR: Tamuín - Xolol

CLAVE: 24027

RUTA: SLP-014



Km: 0.00      Tipo: 3      Sent: 0

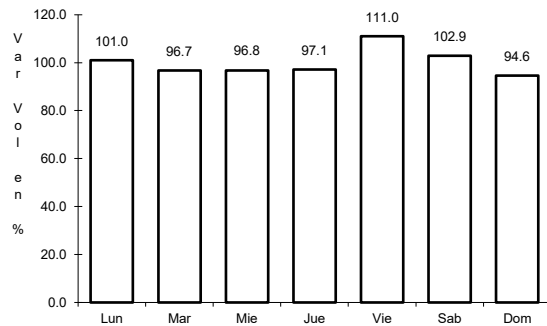


Km: 2.56      Tipo: 3      Sent: 0

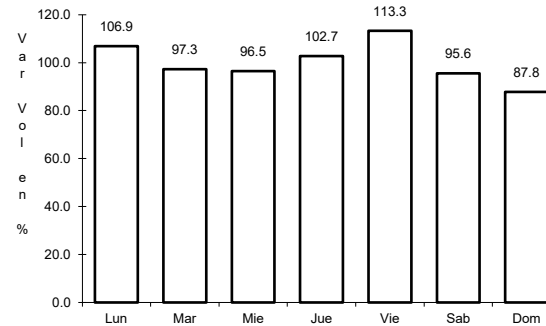
45 CARR: Cerritos - Ent. Tula (Cuota)

CLAVE:

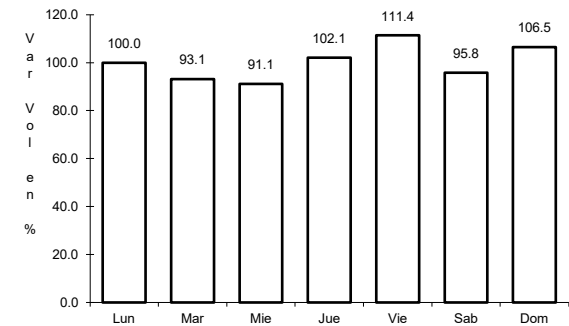
RUTA: SLP-075D



Km: 0.00      Tipo: 3      Sent: 0



Km: 18.70      Tipo: 3      Sent: 0

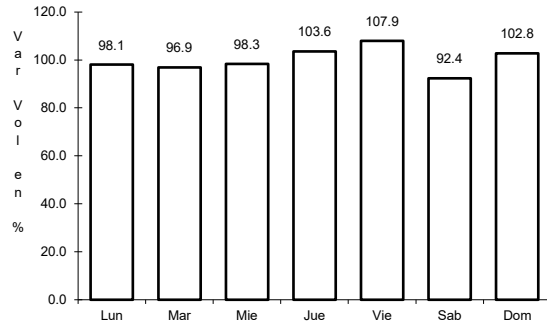


Km: 32.15      Tipo: 3      Sent: 0

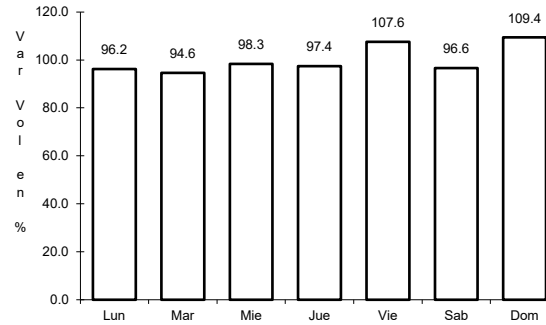
46 CARR: Cerritos - Rioverde (Cuota)

CLAVE: 00138

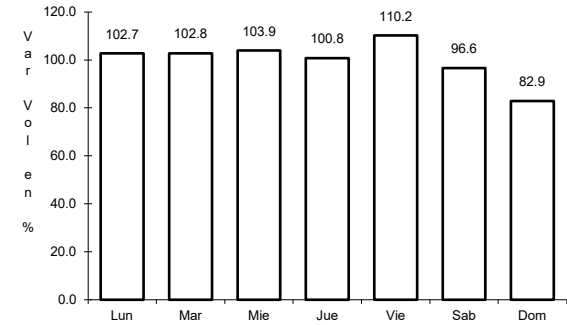
RUTA: SLP-D



Km: 0.00      Tipo: 3      Sent: 0



Km: 58.00      Tipo: 3      Sent: 0

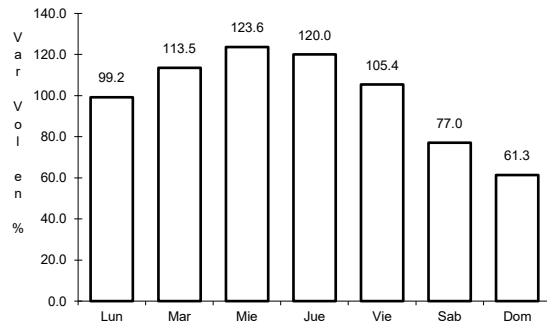


Km: 103.00      Tipo: 1      Sent: 0

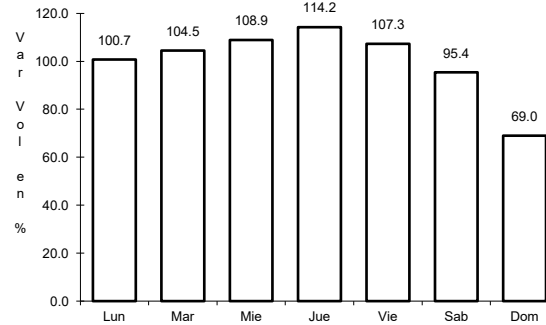
47 CARR: San Luis Potosí - Villa de Arriaga (Cuota)

CLAVE: 24209

RUTA: SLP-D



Km: 0.00      Tipo: 3      Sent: 0

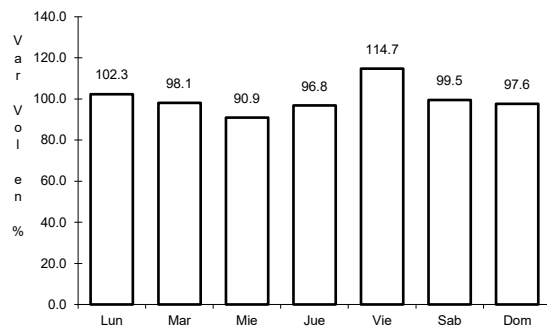


Km: 77.00      Tipo: 1      Sent: 0

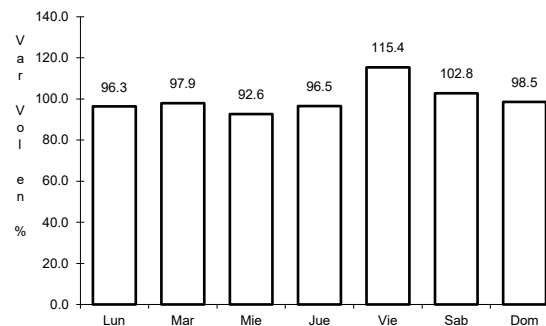
48 CARR: Rayón - Cd. del Maíz

CLAVE: 24206

RUTA: MEX-070-SLP-005



Km: 15.80      Tipo: 1      Sent: 0

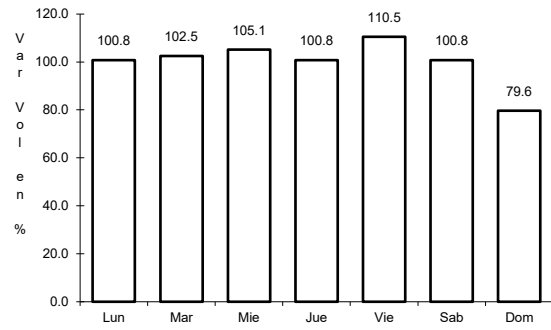


Km: 55.70      Tipo: 1      Sent: 0

49 CARR: San Lorenzo - Moctezuma

CLAVE: 24016

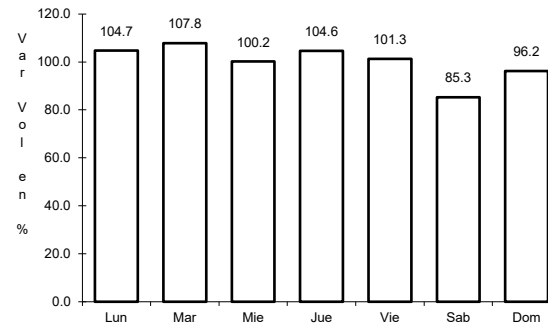
RUTA: MEX-063-SLP-012



Km: 0.00

Tipo: 3

Sent: 0



Km: 54.00

Tipo: 1

Sent: 0

