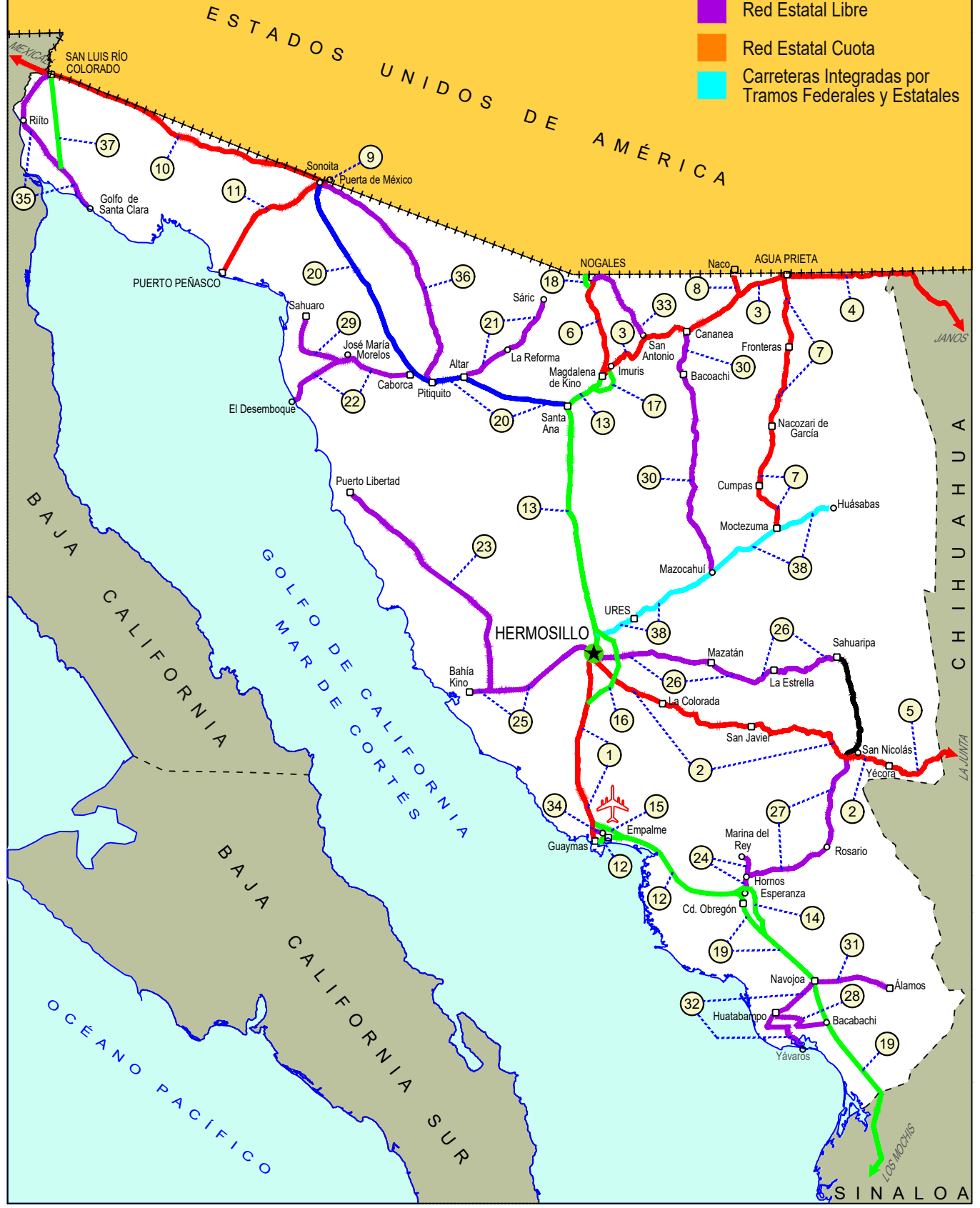


# SONORA

NO. INDICE CARRETERA		RUTA
	---RED FEDERAL LIBRE---	
1	Guaymas - Hermosillo	MEX-015
2	Hermosillo - Yécora	MEX-016
3	Imuris - Agua Prieta	MEX-002
4	Janos - Agua Prieta	MEX-002
5	La Junta - Yécora	MEX-016
6	Magdalena de Kino - Nogales	MEX-015
7	Moctezuma - Agua Prieta	MEX-017
8	Ramal a Naco	MEX-002
9	Ramal a Puerta de México	MEX-002
10	Sonoita - Mexicali	MEX-002
11	Sonoita - Puerto Peñasco	MEX-002
	---RED FEDERAL DE CUOTA---	
12	Cd. Obregón - Guaymas (Cuota)	MEX-015D
13	Hermosillo - Magdalena de Kino (Cuota)	MEX-015D
14	Libramiento de Ciudad Obregón (Cuota)	MEX-015D
15	Libramiento de Empalme - Guaymas (Cuota)	MEX-015D
16	Libramiento de Hermosillo (Cuota)	MEX-015D
17	Libramiento de Magdalena de Kino (Cuota)	MEX-015D
18	Libramiento de Nogales (Cuota)	MEX-15D
19	Los Mochis - Cd. Obregón (Cuota)	MEX-015D
	---RED FEDERAL INTEGRADA POR TRAMOS LIBRES Y DE CUOTA---	
20	Santa Ana - Sonoita	MEX-002D-MEX
	---RED ESTATAL LIBRE---	
21	Altar - Sáríc	SON-064
22	Caborca - El Desemboque	SON-037
23	Calle 36 Norte - Puerto de La Libertad	SON-029
24	Esperanza - Presa Álvaro Obregón	SON-117
25	Hermosillo - Bahía Kino	SON-100
26	Hermosillo - Sahuaripa	SON-020
27	Hornos - San Nicolás	SON-012
28	Huatabampo - Bacabachi	SON-176
29	La Alameda - El Sahuaro	SON-037
30	Mazocahui - Cananea	SON-118
31	Navojoa - Álamos	SON-013
32	Navojoa - Yavaros	SON-056
33	Nogales - San Antonio	SON
34	Ramal a Aeropuerto de Guaymas	SON
35	San Luis Rio Colorado - Golfo de Santa Clara	SON-040
36	Sonoita - Pitiquito	SON
	---RED ESTATAL DE CUOTA---	
37	San Luis Rio Colorado - Golfo de Santa Clara (Cuota)	SON-D
	---CARRETERAS INTEGRADAS POR TRAMOS FEDERALES Y ESTATALES---	
38	T. C. (Hermosillo - Nogales) - Huásabas	MEX-014-SON

# 26 SONORA

- ① --- Número Índice
- Red Federal Libre
- Red Federal Cuota
- Red Federal Integrada por Tramos Libres y de Cuota
- Red Estatal Libre
- Red Estatal Cuota
- Carreteras Integradas por Tramos Federales y Estatales





SONORA

1 CARR: Guaymas - Hermosillo

CLAVE: 26444

RUTA: MEX-015

AÑO: 2023

LUGAR	ESTACION				CLASIFICACION VEHICULAR EN PORCIENTO										COORDENADAS					
	KM	TE	SC	TDPA	M	A	B	C2	C3	T3S2	T3S3	T3S2R4	OTROS	A	B	C	K'	D	LATITUD	LONGITUD
Guaymas	123.00																			
T. Izq. San Carlos	133.00	1	1	8938	3.0	86.7	1.9	3.8	1.6	1.2	0.7	0.8	0.3	89.7	1.9	8.4	0.081	0.529	27.979905	-110.939138
T. Izq. San Carlos	133.00	1	2	7963	3.1	86.5	2.0	3.8	1.6	1.2	0.7	0.8	0.3	89.6	2.0	8.4	0.089	0.529	27.979894	-110.939299
T. Izq. San Carlos	133.00	3	1	4249	5.7	79.2	2.9	4.6	2.4	2.7	0.8	1.3	0.4	84.9	2.9	12.2	0.108	0.546	27.991718	-110.940261
T. Izq. San Carlos	133.00	3	2	5101	5.7	79.5	2.8	4.5	2.4	2.6	0.8	1.3	0.4	85.2	2.8	12.0	0.104	0.546	27.991743	-110.940368
T. Der Lib Empalme-Guaymas	139.40																			
T. Izq. Bahía Kino	171.30	1	1	6481	0.0	71.2	4.0	4.9	1.5	11.9	1.6	4.3	0.6	71.2	4.0	24.8	0.099	0.527	28.315729	-111.041701
T. Izq. Bahía Kino	171.30	1	2	7222	3.6	67.7	3.9	5.0	1.5	11.9	1.5	4.3	0.6	71.3	3.9	24.8	0.095	0.527	28.315728	-111.042058
T. Izq. Bahía Kino	171.30	3	1	7150	0.0	73.1	4.8	4.2	1.5	10.7	1.6	3.4	0.7	73.1	4.8	22.1	0.097	0.505	28.325090	-111.041881
T. Izq. Bahía Kino	171.30	3	2	7306	2.3	70.7	4.8	4.2	1.5	10.7	1.6	3.5	0.7	73.0	4.8	22.2	0.098	0.505	28.325132	-111.042251
T. Der. Libramiento de Hermosillo (Cuota)	233.80	3	1	7016	4.4	72.9	3.7	5.3	1.3	7.5	1.1	3.2	0.6	77.3	3.7	19.0	0.095	0.513	28.897730	-110.951475
T. Der. Libramiento de Hermosillo (Cuota)	233.80	3	2	6650	4.4	73.8	3.5	5.0	1.2	7.2	1.1	3.2	0.6	78.2	3.5	18.3	0.111	0.513	28.888835	-110.954781
Hermosillo	251.00	1	1	9145	3.5	74.8	3.0	6.9	1.6	5.8	1.1	2.9	0.4	78.3	3.0	18.7	0.095	0.529	29.001179	-110.968201
Hermosillo	251.00	1	2	8131	3.4	74.6	3.0	7.0	1.7	5.8	1.1	2.9	0.5	78.0	3.0	19.0	0.095	0.529	29.001232	-110.968447

2 CARR: Hermosillo - Yécora

CLAVE: 26251

RUTA: MEX-016

AÑO: 2023

LUGAR	ESTACION				CLASIFICACION VEHICULAR EN PORCIENTO										COORDENADAS					
	KM	TE	SC	TDPA	M	A	B	C2	C3	T3S2	T3S3	T3S2R4	OTROS	A	B	C	K'	D	LATITUD	LONGITUD
T. C. Cd. Obregón - Hermosillo	0.00																			
T. Izq. Sahuaripa	4.00	3	1	1034	2.7	72.4	2.8	6.4	3.5	5.7	4.4	1.7	0.4	75.1	2.8	22.1	0.138	0.507	29.001506	-110.908851
T. Izq. Sahuaripa	4.00	3	2	1006	2.6	72.7	2.6	6.6	3.6	5.1	4.4	1.8	0.6	75.3	2.6	22.1	0.130	0.507	29.001599	-110.908775
La Colorada	47.00	3	0	906	0.3	73.1	2.6	9.7	4.7	3.2	3.7	2.4	0.3	73.4	2.6	24.0	0.084	0.507	28.809653	-110.575614
Tecoripa	138.00	3	0	652	6.9	72.0	1.2	6.7	5.6	4.7	2.5	0.3	0.1	78.9	1.2	19.9	0.081	0.517	28.622280	-109.950049
Yécora	250.60																			

3 CARR: Imuris - Agua Prieta

CLAVE: 26079

RUTA: MEX-002

AÑO: 2023

LUGAR	ESTACION				CLASIFICACION VEHICULAR EN PORCIENTO										COORDENADAS					
	KM	TE	SC	TDPA	M	A	B	C2	C3	T3S2	T3S3	T3S2R4	OTROS	A	B	C	K'	D	LATITUD	LONGITUD
Imuris	0.00	3	0	4268	3.7	54.5	4.2	10.0	1.9	15.5	3.7	5.7	0.8	58.2	4.2	37.6	0.072	0.503	30.802906	-110.826383
T. Izq a Nogales	45.20																			
T. Der. Cananea	80.93	1	0	4203	2.7	57.5	4.5	5.7	1.9	16.7	4.2	5.9	0.9	60.2	4.5	35.3	0.074	0.509	31.015878	-110.326330
T. Der. Cananea	80.93	3	1	3459	3.0	65.4	3.0	8.2	2.1	10.8	2.6	4.2	0.7	68.4	3.0	28.6	0.080	0.515	31.003008	-110.247401
T. Der. Cananea	80.93	3	2	3255	2.6	66.1	3.1	8.0	1.6	10.8	2.9	4.2	0.7	68.7	3.1	28.2	0.080	0.515	31.003123	-110.247533

SONORA

3 CARR: Imuris - Agua Prieta

CLAVE: 26079

RUTA: MEX-002

AÑO: 2023

LUGAR	ESTACION				CLASIFICACION VEHICULAR EN PORCIENTO										COORDENADAS					
	KM	TE	SC	TDPA	M	A	B	C2	C3	T3S2	T3S3	T3S2R4	OTROS	A	B	C	K'	D	LATITUD	LONGITUD
Agua Prieta	164.67	1	1	2540	1.8	64.2	3.3	6.5	1.5	14.6	2.8	4.4	0.9	66.0	3.3	30.7	0.094	0.536	31.309573	-109.597715
Agua Prieta	164.67	1	2	2930	1.6	64.7	3.2	6.5	1.5	14.6	2.9	4.4	0.6	66.3	3.2	30.5	0.108	0.536	31.309721	-109.597765

4 CARR: Janos - Agua Prieta

CLAVE: 00220

RUTA: MEX-002

AÑO: 2023

LUGAR	ESTACION				CLASIFICACION VEHICULAR EN PORCIENTO										COORDENADAS					
	KM	TE	SC	TDPA	M	A	B	C2	C3	T3S2	T3S3	T3S2R4	OTROS	A	B	C	K'	D	LATITUD	LONGITUD
T. C. Cd. Juárez - Janos	0.00	3	0	4371	5.8	57.5	3.5	9.2	2.0	12.7	2.9	5.7	0.7	63.3	3.5	33.2	0.075	0.501	30.889817	-108.211912
Los Mimbres	56.00	3	0	3354	2.9	52.3	5.6	7.3	3.1	15.1	3.3	9.6	0.8	55.2	5.6	39.2	0.073	0.535	31.244869	-108.581376
Lim. Edos. Term. Chih. Ppia. Son.	78.00																			
Rancho Guadalupe	116.00																			
Agua Prieta	160.00	1	0	2797	6.6	46.5	5.8	6.9	2.3	19.4	4.3	7.3	0.9	53.1	5.8	41.1	0.081	0.507	31.322992	-109.506580

5 CARR: La Junta - Yécora

CLAVE: 00065

RUTA: MEX-016

AÑO: 2023

LUGAR	ESTACION				CLASIFICACION VEHICULAR EN PORCIENTO										COORDENADAS					
	KM	TE	SC	TDPA	M	A	B	C2	C3	T3S2	T3S3	T3S2R4	OTROS	A	B	C	K'	D	LATITUD	LONGITUD
T. C. Chihuahua - Madera	0.00	3	0	3076	1.2	85.2	2.2	6.1	1.1	2.5	1.3	0.3	0.1	86.4	2.2	11.4	0.106	0.501	28.456186	-107.338267
T. Izq. San Juanito	16.00	1	0	3468	2.3	82.6	2.4	5.7	1.6	2.5	1.5	1.0	0.4	84.9	2.4	12.7	0.084	0.513	28.388783	-107.439624
T. Izq. San Juanito	16.00	3	0	1205	3.5	73.7	5.3	11.5	1.1	2.9	1.5	0.4	0.1	77.2	5.3	17.5	0.098	0.533	28.390019	-107.440531
Tomochi	70.00	3	0	1335	3.4	80.5	1.4	7.9	2.1	3.1	1.2	0.2	0.2	83.9	1.4	14.7	0.112	0.511	28.365474	-107.863757
Lim. Edos. Term. Chih. Ppia. Son.	190.00																			
Yécora	253.00	1	0	321	8.7	64.6	3.4	14.7	3.0	3.4	1.7	0.3	0.2	73.3	3.4	23.3	0.103	0.502	28.367854	-108.919395

6 CARR: Magdalena de Kino - Nogales

CLAVE: 26444

RUTA: MEX-015

AÑO: 2023

LUGAR	ESTACION				CLASIFICACION VEHICULAR EN PORCIENTO										COORDENADAS					
	KM	TE	SC	TDPA	M	A	B	C2	C3	T3S2	T3S3	T3S2R4	OTROS	A	B	C	K'	D	LATITUD	LONGITUD
Magdalena de Kino	181.30	3	1	4347	1.7	90.6	2.1	3.4	0.4	0.9	0.2	0.5	0.2	92.3	2.1	5.6	0.113	0.509	30.649548	-110.944100
Magdalena de Kino	181.30	3	2	4192	1.4	89.9	2.3	3.5	0.5	1.1	0.4	0.5	0.4	91.3	2.3	6.4	0.093	0.509	30.649552	-110.944036
T. Lib de Magdalena	188.40																			
Imuris	209.00	1	1	6944	2.8	78.0	3.4	4.1	1.3	7.8	1.2	0.9	0.5	80.8	3.4	15.8	0.087	0.522	30.755984	-110.853701
Imuris	209.00	1	2	7589	3.0	78.1	3.5	3.9	1.1	7.5	1.4	0.9	0.6	81.1	3.5	15.4	0.098	0.522	30.755999	-110.853886
T. Der. Agua Prieta	209.50	3	1	5699	1.7	80.5	2.7	6.1	1.5	4.9	1.1	1.2	0.3	82.2	2.7	15.1	0.101	0.535	30.792224	-110.850613
T. Der. Agua Prieta	209.50	3	2	6565	1.5	81.2	2.6	6.0	1.3	5.1	1.0	1.0	0.3	82.7	2.6	14.7	0.110	0.535	30.792228	-110.850696

SONORA

6 CARR: Magdalena de Kino - Nogales

CLAVE: 26444

RUTA: MEX-015

AÑO: 2023

LUGAR	ESTACION				CLASIFICACION VEHICULAR EN PORCIENTO										COORDENADAS					
	KM	TE	SC	TDPA	M	A	B	C2	C3	T3S2	T3S3	T3S2R4	OTROS	A	B	C	K'	D	LATITUD	LONGITUD
T. Izq. Sáric	255.90	1	1	11919	1.5	86.5	2.5	3.7	1.6	3.2	0.4	0.5	0.1	88.0	2.5	9.5	0.082	0.508	31.176968	-110.968336
T. Izq. Sáric	255.90	1	2	12316	1.7	85.7	2.7	3.5	1.9	3.0	0.7	0.7	0.1	87.4	2.7	9.9	0.103	0.508	31.176886	-110.968419
T. Izq. Sáric	255.90	3	1	12647	1.3	85.0	2.5	4.6	2.2	3.3	0.5	0.5	0.1	86.3	2.5	11.2	0.082	0.518	31.195224	-110.973281
T. Izq. Sáric	255.90	3	2	11773	1.0	85.4	2.6	4.7	2.0	3.4	0.4	0.4	0.1	86.4	2.6	11.0	0.088	0.518	31.195220	-110.973383
T. Izq. Libramiento de Nogales (Cuota)	261.00	3	1	16829	1.1	89.5	2.0	4.0	1.4	1.6	0.1	0.2	0.1	90.6	2.0	7.4	0.076	0.509	31.249194	-110.956496
T. Izq. Libramiento de Nogales (Cuota)	261.00	3	2	17423	1.2	89.3	2.1	4.1	1.2	1.5	0.2	0.3	0.1	90.5	2.1	7.4	0.093	0.509	31.249247	-110.956599
T. Izq. Periférico Luis Donaldo Colosio	267.00	1	1	28910	1.2	91.5	1.5	3.8	0.6	0.7	0.2	0.2	0.3	92.7	1.5	5.8	0.089	0.537	31.275477	-110.941486
T. Izq. Periférico Luis Donaldo Colosio	267.00	1	2	33979	1.1	91.1	1.7	3.8	0.7	0.8	0.2	0.2	0.4	92.2	1.7	6.1	0.061	0.537	31.275481	-110.941637
Nogales	272.70	1	1	18843	1.0	92.3	1.4	3.9	0.5	0.2	0.3	0.2	0.2	93.3	1.4	5.3	0.094	0.526	31.291046	-110.936642
Nogales	272.70	1	2	17010	1.1	91.3	1.4	4.2	0.6	0.4	0.5	0.3	0.2	92.4	1.4	6.2	0.068	0.526	31.291057	-110.936767

7 CARR: Moctezuma - Agua Prieta

CLAVE: 26027

RUTA: MEX-017

AÑO: 2023

LUGAR	ESTACION				CLASIFICACION VEHICULAR EN PORCIENTO										COORDENADAS					
	KM	TE	SC	TDPA	M	A	B	C2	C3	T3S2	T3S3	T3S2R4	OTROS	A	B	C	K'	D	LATITUD	LONGITUD
Moctezuma	0.00	3	0	1672	0.7	89.7	0.8	3.6	1.2	1.4	0.6	1.3	0.7	90.4	0.8	8.8	0.090	0.507	29.827966	-109.675133
Nacozeni de García	81.00	3	0	2306	1.4	85.1	1.6	7.0	1.8	1.6	0.5	0.9	0.1	86.5	1.6	11.9	0.084	0.527	30.387482	-109.693280
Turicachi	111.00	1	0	1885	0.9	80.7	1.5	7.7	1.2	2.2	2.3	2.5	1.0	81.6	1.5	16.9	0.105	0.510	30.654988	-109.596334
T. C. Imuris - Agua Prieta	197.60	1	0	5014	3.3	86.3	1.8	3.0	1.5	1.4	1.0	1.3	0.4	89.6	1.8	8.6	0.085	0.514	31.308760	-109.581928

8 CARR: Ramal a Naco

CLAVE: 26579

RUTA: MEX-002

AÑO: 2023

LUGAR	ESTACION				CLASIFICACION VEHICULAR EN PORCIENTO										COORDENADAS					
	KM	TE	SC	TDPA	M	A	B	C2	C3	T3S2	T3S3	T3S2R4	OTROS	A	B	C	K'	D	LATITUD	LONGITUD
T. C. Imuris - Agua Prieta	0.00	3	0	1759	0.7	93.1	1.3	2.5	1.1	1.1	0.1	0.1	0.0	93.8	1.3	4.9	0.108	0.504	31.209760	-109.908735
Naco	14.00																			

9 CARR: Ramal a Puerta de México

CLAVE: 26577

RUTA: MEX-002

AÑO: 2023

LUGAR	ESTACION				CLASIFICACION VEHICULAR EN PORCIENTO										COORDENADAS					
	KM	TE	SC	TDPA	M	A	B	C2	C3	T3S2	T3S3	T3S2R4	OTROS	A	B	C	K'	D	LATITUD	LONGITUD
T. C. Sonoita - Mexicali	0.00	3	0	13133	4.3	90.1	0.5	2.9	0.8	0.4	0.2	0.6	0.2	94.4	0.5	5.1	0.072	0.512	31.867203	-112.842295
Frontera E.U.A	3.30																			

SONORA

10 CARR: Sonoita - Mexicali

CLAVE: 00081

RUTA: MEX-002

AÑO: 2023

LUGAR	ESTACION				CLASIFICACION VEHICULAR EN PORCIENTO										COORDENADAS					
	KM	TE	SC	TDPA	M	A	B	C2	C3	T3S2	T3S3	T3S2R4	OTROS	A	B	C	K'	D	LATITUD	LONGITUD
Sonoita	0.00	3	0	5549	3.4	46.5	7.8	3.7	1.8	24.4	3.2	8.3	0.9	49.9	7.8	42.3	0.059	0.510	31.886679	-112.858482
Los Vidrios	58.75	3	0	4575	3.3	34.0	11.6	3.4	2.0	32.1	3.0	9.7	0.9	37.3	11.6	51.1	0.054	0.505	32.028748	-113.426858
San Luis Río Colorado	191.80	1	0	5809	3.5	50.6	7.6	3.4	2.0	22.6	2.5	6.9	0.9	54.1	7.6	38.3	0.057	0.511	32.453547	-114.683252
San Luis Río Colorado	191.80	3	1	11583	0.9	83.9	2.4	2.6	0.8	6.4	0.7	1.8	0.5	84.8	2.4	12.8	0.073	0.509	32.486976	-114.792715
San Luis Río Colorado	191.80	3	2	11988	0.9	83.6	2.6	2.8	0.7	6.7	0.7	1.6	0.4	84.5	2.6	12.9	0.074	0.509	32.486840	-114.792774
Lim. Edos. Term. Son. Ppia. B.C.	203.69																			
X. C. Mexicali - Algodones	206.78	1	1	13680	1.5	82.2	1.9	4.3	0.9	5.6	1.0	2.1	0.5	83.7	1.9	14.4	0.072	0.501	32.497871	-114.829188
X. C. Mexicali - Algodones	206.78	1	2	13714	1.7	81.7	1.8	4.5	0.9	5.8	1.1	2.0	0.5	83.4	1.8	14.8	0.074	0.501	32.497650	-114.828751
X. C. Mexicali - Algodones	206.78	3	1	10931	2.6	79.8	2.4	4.5	1.0	6.4	0.8	2.0	0.5	82.4	2.4	15.2	0.071	0.510	32.510437	-114.871197
X. C. Mexicali - Algodones	206.78	3	2	11396	2.6	79.8	2.4	4.7	1.0	6.2	0.7	2.1	0.5	82.4	2.4	15.2	0.071	0.510	32.510367	-114.871235
T. Izq. Ejido Hermosillo	214.80	3	1	8728	2.4	75.4	3.1	5.3	1.2	8.2	1.2	2.6	0.6	77.8	3.1	19.1	0.067	0.507	32.527451	-114.928438
T. Izq. Ejido Hermosillo	214.80	3	2	8499	2.6	75.4	3.1	5.2	1.1	8.4	1.0	2.7	0.5	78.0	3.1	18.9	0.067	0.507	32.527354	-114.928489
T. Izq. Ejido Tehuantepec	223.83	3	1	11070	1.9	79.9	3.1	3.2	1.4	7.1	0.9	1.9	0.6	81.8	3.1	15.1	0.094	0.500	32.554909	-115.034420
T. Izq. Ejido Tehuantepec	223.83	3	2	11088	1.9	80.3	2.9	3.2	1.3	6.7	1.1	1.9	0.7	82.2	2.9	14.9	0.094	0.500	32.554829	-115.034382
Ejido Monterrey	228.63	3	1	12422	2.0	77.5	3.1	5.4	0.9	7.5	0.9	2.2	0.5	79.5	3.1	17.4	0.064	0.511	32.551992	-115.087449
Ejido Monterrey	228.63	3	2	13002	2.2	78.0	3.0	5.8	0.9	7.1	0.7	1.9	0.4	80.2	3.0	16.8	0.066	0.511	32.551911	-115.087450
X. C. Mexicali - Estación Coahuila	242.17	1	1	12350	1.8	78.4	3.2	5.4	1.0	6.5	1.0	2.1	0.6	80.2	3.2	16.6	0.065	0.502	32.552839	-115.202997
X. C. Mexicali - Estación Coahuila	242.17	1	2	12276	2.3	78.4	3.4	5.3	1.0	6.1	0.9	2.1	0.5	80.7	3.4	15.9	0.075	0.502	32.552743	-115.203008
T. Izq. Libramiento de Mexicali (Cuota)	249.32	1	1	14237	1.6	80.2	2.6	5.2	1.3	6.0	1.0	1.6	0.5	81.8	2.6	15.6	0.090	0.517	32.554980	-115.286243
T. Izq. Libramiento de Mexicali (Cuota)	249.32	1	2	15237	1.5	80.7	2.4	5.0	1.2	6.1	1.0	1.6	0.5	82.2	2.4	15.4	0.097	0.517	32.554877	-115.286272
X. C. Mexicali - Algodones	256.47	1	1	16254	1.7	88.5	1.2	3.7	0.9	2.3	0.4	0.9	0.4	90.2	1.2	8.6	0.097	0.513	32.565176	-115.325706
X. C. Mexicali - Algodones	256.47	1	2	17135	1.8	88.0	1.4	3.6	1.0	2.6	0.6	0.7	0.3	89.8	1.4	8.8	0.093	0.513	32.565048	-115.325764
T. C. Mexicali - San Felipe	265.12																			

11 CARR: Sonoita - Puerto Peñasco

CLAVE: 26232

RUTA: MEX-002

AÑO: 2023

LUGAR	ESTACION				CLASIFICACION VEHICULAR EN PORCIENTO										COORDENADAS						
	KM	TE	SC	TDPA	M	A	B	C2	C3	T3S2	T3S3	T3S2R4	OTROS	A	B	C	K'	D	LATITUD	LONGITUD	
Sonoita	0.00	3	0	2541	6.2	76.0	1.0	13.2	0.7	1.8	0.3	0.7	0.1	82.2	1.0	16.8	0.102	0.501	31.862266	-112.877607	
Puerto Peñasco	100.40																				



SONORA

12 CARR: Cd. Obregón - Guaymas (Cuota)

CLAVE: 26444

RUTA: MEX-015D

AÑO: 2023

LUGAR	ESTACION				CLASIFICACION VEHICULAR EN PORCIENTO										COORDENADAS					
	KM	TE	SC	TDPA	M	A	B	C2	C3	T3S2	T3S3	T3S2R4	OTROS	A	B	C	K'	D	LATITUD	LONGITUD
Cd. Obregón	0.00																			
Esperanza	7.96	1	1	12749	6.7	80.7	2.7	3.0	1.5	3.2	0.8	1.0	0.4	87.4	2.7	9.9	0.082	0.517	27.558762	-109.927168
Esperanza	7.96	1	2	11899	7.0	80.3	2.4	3.2	1.4	3.7	0.7	0.9	0.4	87.3	2.4	10.3	0.104	0.517	27.558756	-109.927278
Esperanza	7.96	3	1	3587	2.5	63.6	7.5	3.6	2.5	13.5	2.7	3.2	0.9	66.1	7.5	26.4	0.063	0.508	27.597899	-109.932977
Esperanza	7.96	3	2	3700	2.6	64.3	7.8	3.2	2.5	13.4	2.0	3.3	0.9	66.9	7.8	25.3	0.066	0.508	27.597817	-109.933078
Plaza de Cobro Esperanza	10.70	2	1	1999	0.3	56.5	10.0	3.7	2.5	17.3	2.8	5.3	1.6	56.8	10.0	33.2	0.086	0.500	27.603754	-109.939057
Plaza de Cobro Esperanza	10.70	2	2	1999	0.3	56.5	10.0	3.7	2.5	17.3	2.8	5.3	1.6	56.8	10.0	33.2	0.086	0.500	27.603754	-109.939057
T. Der. Estación Corral	13.80	1	1	4776	4.1	60.2	7.7	3.3	2.0	13.7	2.4	5.7	0.9	64.3	7.7	28.0	0.069	0.533	27.611362	-109.946767
T. Der. Estación Corral	13.80	1	2	5445	4.5	59.0	8.4	4.0	2.4	13.3	2.7	4.8	0.9	63.5	8.4	28.1	0.066	0.533	27.611272	-109.946885
T. Der. Estación Corral	13.80	3	1	5035	8.6	52.0	5.8	6.4	2.8	14.1	2.7	6.7	0.9	60.6	5.8	33.6	0.062	0.505	27.618550	-109.963180
T. Der. Estación Corral	13.80	3	2	4936	9.4	52.7	5.9	7.7	2.6	13.0	2.3	5.5	0.9	62.1	5.9	32.0	0.057	0.505	27.618400	-109.963126
T. Izq. Bäum	25.46	1	1	4523	6.1	52.6	6.1	4.9	3.1	18.1	2.6	5.6	0.9	58.7	6.1	35.2	0.065	0.541	27.601536	-110.062129
T. Izq. Bäum	25.46	1	2	5338	5.9	52.7	7.1	4.7	3.0	17.6	3.1	5.0	0.9	58.6	7.1	34.3	0.069	0.541	27.601391	-110.062095
T. Izq. Bäum	25.46	3	1	6759	4.3	62.4	5.6	4.3	1.9	14.9	1.0	5.0	0.6	66.7	5.6	27.7	0.069	0.519	27.598529	-110.093582
T. Izq. Bäum	25.46	3	2	6268	4.1	62.8	5.9	4.1	1.8	14.7	1.8	4.1	0.7	66.9	5.9	27.2	0.075	0.519	27.598343	-110.093644
Vícam	47.28	3	1	6060	4.1	63.7	7.1	6.1	1.4	9.5	2.7	4.6	0.8	67.8	7.1	25.1	0.078	0.532	27.655632	-110.316049
Vícam	47.28	3	2	6894	4.7	62.3	7.2	6.3	1.3	9.6	2.3	5.4	0.9	67.0	7.2	25.8	0.066	0.532	27.655499	-110.316344
T. Izq. Pótam	57.40	1	1	5776	3.6	65.9	4.9	6.6	1.8	9.8	2.9	3.9	0.6	69.5	4.9	25.6	0.084	0.537	27.689757	-110.360771
T. Izq. Pótam	57.40	1	2	4980	4.3	63.4	5.3	7.4	2.1	9.5	3.3	4.1	0.6	67.7	5.3	27.0	0.074	0.537	27.689685	-110.360923
T. Izq. Pótam	57.40	3	1	4827	4.6	60.1	5.1	6.4	1.5	14.7	2.6	4.2	0.8	64.7	5.1	30.2	0.094	0.519	27.704937	-110.371189
T. Izq. Pótam	57.40	3	2	5210	4.6	60.6	6.2	7.9	1.0	13.3	1.7	3.8	0.9	65.2	6.2	28.6	0.095	0.519	27.704845	-110.371356
T. Der. Libramiento de Guaymas	107.70	1	1	7910	3.0	65.3	6.1	4.6	1.2	13.6	1.9	3.4	0.9	68.3	6.1	25.6	0.082	0.528	27.951487	-110.737971
T. Der. Libramiento de Guaymas	107.70	1	2	8052	2.7	66.1	5.8	5.4	1.0	13.7	1.6	2.9	0.8	68.8	5.8	25.4	0.067	0.528	27.951177	-110.737979
T. Der. Libramiento de Guaymas	107.70	3	0	5359	3.3	77.6	4.9	6.0	1.2	4.3	1.5	1.0	0.2	80.9	4.9	14.2	0.081	0.510	27.952195	-110.764432
Empalme	115.02	1	0	6556	4.4	80.3	2.4	5.8	1.7	2.0	1.8	1.1	0.5	84.7	2.4	12.9	0.070	0.504	27.952281	-110.810155
Empalme	115.02	3	1	9404	5.3	85.8	3.5	3.0	0.4	0.6	0.9	0.3	0.2	91.1	3.5	5.4	0.086	0.508	27.954685	-110.839865
Empalme	115.02	3	2	9119	4.2	87.2	3.4	2.2	0.7	0.9	0.8	0.4	0.2	91.4	3.4	5.2	0.082	0.508	27.954606	-110.839874
Guaymas	123.00																			

13 CARR: Hermosillo - Magdalena de Kino (Cuota)

CLAVE: 26444

RUTA: MEX-015D

AÑO: 2023

LUGAR	ESTACION				CLASIFICACION VEHICULAR EN PORCIENTO										COORDENADAS					
	KM	TE	SC	TDPA	M	A	B	C2	C3	T3S2	T3S3	T3S2R4	OTROS	A	B	C	K'	D	LATITUD	LONGITUD
Hermosillo	0.00	3	1	13666	1.2	84.5	1.9	5.6	1.8	3.2	0.6	0.9	0.3	85.7	1.9	12.4	0.084	0.524	29.115648	-110.912224
Hermosillo	0.00	3	2	15063	1.2	84.3	2.0	5.6	1.8	3.3	0.6	0.9	0.3	85.5	2.0	12.5	0.080	0.524	29.115107	-110.912418

SONORA

13 CARR: Hermosillo - Magdalena de Kino (Cuota)

CLAVE: 26444

RUTA: MEX-015D

AÑO: 2023

LUGAR	ESTACION				CLASIFICACION VEHICULAR EN PORCIENTO										COORDENADAS					
	KM	TE	SC	TDPA	M	A	B	C2	C3	T3S2	T3S3	T3S2R4	OTROS	A	B	C	K'	D	LATITUD	LONGITUD
T. Der. Ures	8.60	1	1	11655	1.1	85.5	1.9	4.7	1.6	3.4	0.7	0.8	0.3	86.6	1.9	11.5	0.078	0.506	29.156778	-110.909535
T. Der. Ures	8.60	1	2	11948	1.1	85.6	1.9	4.8	1.6	3.3	0.7	0.8	0.2	86.7	1.9	11.4	0.087	0.506	29.156784	-110.909706
T. Der. Ures	8.60	3	1	8948	1.9	81.0	2.5	5.2	1.4	5.9	0.7	1.0	0.4	82.9	2.5	14.6	0.103	0.512	29.171158	-110.914094
T. Der. Ures	8.60	3	2	9382	1.3	81.1	2.5	5.3	1.9	5.9	0.7	1.0	0.3	82.4	2.5	15.1	0.089	0.512	29.171083	-110.914209
Plaza de Cobro Hermosillo	15.20	2	1	6380	0.2	67.9	3.8	2.7	1.6	14.6	1.8	6.1	1.3	68.1	3.8	28.1	0.086	0.500	29.220685	-110.930258
Plaza de Cobro Hermosillo	15.20	2	2	6380	0.2	67.9	3.8	2.7	1.6	14.6	1.8	6.1	1.3	68.1	3.8	28.1	0.086	0.500	29.220685	-110.930258
T. Der. Pesqueira	32.39	3	1	6450	2.7	63.9	5.7	6.7	1.7	12.4	2.0	4.0	0.9	66.6	5.7	27.7	0.070	0.516	29.374710	-110.973087
T. Der. Pesqueira	32.39	3	2	6868	2.7	63.1	5.7	7.2	1.5	12.5	2.3	4.1	0.9	65.8	5.7	28.5	0.085	0.516	29.374649	-110.973280
T. Der. Carbó	68.90	1	1	6560	2.3	67.2	5.3	4.9	1.6	11.5	1.9	4.4	0.9	69.5	5.3	25.2	0.087	0.503	29.683378	-111.042208
T. Der. Carbó	68.90	1	2	6475	2.4	67.4	5.3	4.8	1.6	11.4	1.9	4.3	0.9	69.8	5.3	24.9	0.091	0.503	29.683336	-111.042561
T. Der. Carbó	68.90	3	1	6562	2.6	62.8	5.0	5.8	1.5	14.6	2.5	4.4	0.8	65.4	5.0	29.6	0.070	0.512	29.692197	-111.044166
T. Der. Carbó	68.90	3	2	6259	2.1	63.0	4.8	6.2	1.5	14.7	2.7	4.2	0.8	65.1	4.8	30.1	0.083	0.512	29.692178	-111.044522
T. Izq. Benjamín Hill	125.40	1	1	5779	2.1	67.7	4.2	3.0	1.9	13.8	2.3	4.2	0.8	69.8	4.2	26.0	0.066	0.513	30.160803	-111.097136
T. Izq. Benjamín Hill	125.40	1	2	6083	2.4	67.2	4.9	3.4	1.6	13.5	2.3	4.0	0.7	69.6	4.9	25.5	0.076	0.513	30.160819	-111.097466
T. Izq. Benjamín Hill	125.40	3	1	6424	2.1	66.1	3.7	7.9	1.8	11.6	1.9	4.0	0.9	68.2	3.7	28.1	0.080	0.539	30.178996	-111.097240
T. Izq. Benjamín Hill	125.40	3	2	7500	2.0	66.5	3.7	7.9	1.7	11.6	1.8	3.9	0.9	68.5	3.7	27.8	0.077	0.539	30.179020	-111.097568
Santa Ana	167.27	1	1	7794	2.1	69.8	3.5	5.5	1.5	11.5	1.3	3.9	0.9	71.9	3.5	24.6	0.070	0.506	30.517934	-111.107885
Santa Ana	167.27	1	2	7599	2.0	71.0	3.4	5.4	1.4	11.0	1.3	3.6	0.9	73.0	3.4	23.6	0.104	0.506	30.513349	-111.106947
Santa Ana	167.27	3	1	6619	2.0	73.4	3.3	5.3	1.1	10.0	1.5	2.7	0.7	75.4	3.3	21.3	0.069	0.545	30.567702	-111.087735
Santa Ana	167.27	3	2	7920	2.0	73.0	3.6	5.6	1.3	9.7	1.7	2.6	0.5	75.0	3.6	21.4	0.083	0.545	30.567840	-111.087909
T. Lib de Magdalena	178.00																			
Magdalena de Kino	181.30	1	1	3212	2.8	86.2	2.5	4.7	2.1	0.9	0.2	0.5	0.1	89.0	2.5	8.5	0.085	0.509	30.621461	-110.981492
Magdalena de Kino	181.30	1	2	3102	3.0	85.6	2.5	4.7	2.0	1.0	0.3	0.7	0.2	88.6	2.5	8.9	0.086	0.509	30.621699	-110.981466

14 CARR: Libramiento de Ciudad Obregón (Cuota)

CLAVE:

RUTA: MEX-015D

AÑO: 2023

LUGAR	ESTACION				CLASIFICACION VEHICULAR EN PORCIENTO										COORDENADAS					
	KM	TE	SC	TDPA	M	A	B	C2	C3	T3S2	T3S3	T3S2R4	OTROS	A	B	C	K'	D	LATITUD	LONGITUD
T. C. Los Mochis - Cd. Obregón (Cuota)	0.00																			
Plaza de Cobro Esperanza-Hornos	31.00	2	0	3282	0.2	43.1	2.5	3.3	3.0	30.4	2.8	11.8	2.9	43.3	2.5	54.2	0.090	0.500	27.604518	-109.898767
X. C. Esperanza - Presa Álvaro Obregón	31.40	1	0	4229	2.7	45.6	5.5	3.4	1.8	29.3	2.1	8.7	0.9	48.3	5.5	46.2	0.064	0.515	27.603501	-109.892228
X. C. Esperanza - Presa Álvaro Obregón	31.40	3	0	3557	3.0	54.5	5.3	3.2	1.3	22.7	2.4	7.1	0.5	57.5	5.3	37.2	0.072	0.507	27.606163	-109.909312
T. C. Cd. Obregón - Guaymas (Cuota)	35.00																			

SONORA

15 CARR: Libramiento de Empalme - Guaymas (Cuota)

CLAVE: 26256

RUTA: MEX-015D

AÑO: 2023

LUGAR	ESTACION				CLASIFICACION VEHICULAR EN PORCIENTO														COORDENADAS	
	KM	TE	SC	TDPA	M	A	B	C2	C3	T3S2	T3S3	T3S2R4	OTROS	A	B	C	K'	D	LATITUD	LONGITUD
T. C. Cd. Obregón - Hermosillo (Sur)	0.00	3	1	3670	3.0	55.7	5.6	3.0	2.8	20.8	2.7	5.8	0.6	58.7	5.6	35.7	0.105	0.507	27.955045	-110.751688
T. C. Cd. Obregón - Hermosillo (Sur)	0.00	3	2	3770	3.8	56.7	5.4	3.8	3.3	19.0	2.0	5.4	0.6	60.5	5.4	34.1	0.086	0.507	27.955010	-110.752026
T. C. Cd. Obregón - Hermosillo (Norte)	21.50	1	1	4353	3.1	61.4	5.7	6.2	2.1	13.3	2.6	4.9	0.7	64.5	5.7	29.8	0.064	0.528	28.038429	-110.933957
T. C. Cd. Obregón - Hermosillo (Norte)	21.50	1	2	4865	3.0	61.8	5.6	6.2	2.0	13.3	2.6	4.9	0.6	64.8	5.6	29.6	0.073	0.528	28.038233	-110.934008

16 CARR: Libramiento de Hermosillo (Cuota)

CLAVE:

RUTA: MEX-015D

AÑO: 2023

LUGAR	ESTACION				CLASIFICACION VEHICULAR EN PORCIENTO														COORDENADAS	
	KM	TE	SC	TDPA	M	A	B	C2	C3	T3S2	T3S3	T3S2R4	OTROS	A	B	C	K'	D	LATITUD	LONGITUD
T. C. Guaymas - Hermosillo	0.00	3	0	3225	3.1	49.9	4.1	2.6	3.7	23.0	3.4	9.3	0.9	53.0	4.1	42.9	0.105	0.536	28.901853	-110.946898
X. C. Hermosillo - Sahuaripa	20.00	1	0	3015	3.0	52.3	4.5	3.6	2.1	21.6	3.1	9.1	0.7	55.3	4.5	40.2	0.073	0.537	29.024543	-110.854095
X. C. Hermosillo - Sahuaripa	20.00	3	0	3167	3.4	50.5	4.4	3.1	2.3	23.4	3.5	8.5	0.9	53.9	4.4	41.7	0.080	0.540	29.039368	-110.854527
Hermosillo - Magdalena de Kino (Cuota)	40.00	1	0	3777	2.3	50.0	4.9	5.9	2.4	22.3	2.9	8.6	0.7	52.3	4.9	42.8	0.076	0.521	29.177603	-110.912201

17 CARR: Libramiento de Magdalena de Kino (Cuota)

CLAVE:

RUTA: MEX-015D

AÑO: 2023

LUGAR	ESTACION				CLASIFICACION VEHICULAR EN PORCIENTO														COORDENADAS	
	KM	TE	SC	TDPA	M	A	B	C2	C3	T3S2	T3S3	T3S2R4	OTROS	A	B	C	K'	D	LATITUD	LONGITUD
T. C. Hermosillo - Nogales (Sur)	181.30	3	1	4740	1.7	68.1	3.4	5.0	1.2	13.5	1.6	4.6	0.9	69.8	3.4	26.8	0.088	0.520	30.619212	-110.986719
T. C. Hermosillo - Nogales (Sur)	181.30	3	2	5140	2.0	67.1	3.3	5.3	1.4	13.1	1.8	5.0	1.0	69.1	3.3	27.6	0.097	0.520	30.619287	-110.986685
T. C. Hermosillo - Nogales (Norte)	193.00	1	1	4480	2.1	71.0	3.4	4.8	1.6	9.8	1.9	4.5	0.9	73.1	3.4	23.5	0.117	0.501	30.663114	-110.922614
T. C. Hermosillo - Nogales (Norte)	193.00	1	2	4468	1.9	70.1	3.6	5.0	1.7	10.1	1.8	4.8	1.0	72.0	3.6	24.4	0.118	0.501	30.663536	-110.922465

18 CARR: Libramiento de Nogales (Cuota)

CLAVE: 26100

RUTA: MEX-15D

AÑO: 2023

LUGAR	ESTACION				CLASIFICACION VEHICULAR EN PORCIENTO														COORDENADAS	
	KM	TE	SC	TDPA	M	A	B	C2	C3	T3S2	T3S3	T3S2R4	OTROS	A	B	C	K'	D	LATITUD	LONGITUD
T. C. Hermosillo - Nogales	0.00	3	1	2749	2.1	71.1	3.0	4.3	3.6	14.2	0.4	1.2	0.1	73.2	3.0	23.8	0.113	0.515	31.235711	-110.968708
T. C. Hermosillo - Nogales	0.00	3	2	2916	2.1	71.2	3.7	4.4	3.2	13.7	0.2	1.2	0.3	73.3	3.7	23.0	0.169	0.515	31.235658	-110.968812
Plaza de Cobro Nogales	4.50	2	1	1595	0.2	71.7	0.4	1.9	1.0	24.6	0.0	0.0	0.2	71.9	0.4	27.7	0.184	0.500	31.247675	-110.972370
Plaza de Cobro Nogales	4.50	2	2	1595	0.2	71.7	0.4	1.9	1.0	24.6	0.0	0.0	0.2	71.9	0.4	27.7	0.184	0.500	31.247675	-110.972370
Frontera E.U.A.	12.50	1	1	1773	2.8	60.5	3.1	7.6	4.0	19.7	0.9	1.2	0.2	63.3	3.1	33.6	0.127	0.506	31.285416	-110.979602
Frontera E.U.A.	12.50	1	2	1819	2.4	61.1	3.1	7.3	4.0	19.7	1.2	1.1	0.1	63.5	3.1	33.4	0.164	0.506	31.285404	-110.979760

SONORA

19 CARR: Los Mochis - Cd. Obregón (Cuota)

CLAVE: 26444

RUTA: MEX-015D

AÑO: 2023

LUGAR	ESTACION				CLASIFICACION VEHICULAR EN PORCIENTO													COORDENADAS		
	KM	TE	SC	TDPA	M	A	B	C2	C3	T3S2	T3S3	T3S2R4	OTROS	A	B	C	K'	D	LATITUD	LONGITUD
T. C. Topolobampo - Choix	0.00	3	1	10337	7.5	65.2	3.5	4.4	4.0	10.0	2.4	2.4	0.6	72.7	3.5	23.8	0.080	0.515	25.836071	-108.975300
T. C. Topolobampo - Choix	0.00	3	2	10962	7.9	67.4	3.1	4.5	3.5	8.5	1.9	2.5	0.7	75.3	3.1	21.6	0.079	0.515	25.836239	-108.975647
T. Izq. Ahome	17.13	3	1	9787	9.4	64.4	4.1	4.0	2.8	10.3	1.7	2.6	0.7	73.8	4.1	22.1	0.068	0.501	25.945602	-109.053353
T. Izq. Ahome	17.13	3	2	9817	10.6	64.1	4.2	3.6	3.0	9.5	1.8	2.5	0.7	74.7	4.2	21.1	0.078	0.501	25.945560	-109.053472
T. Izq. Coahuilbampo	19.00	1	1	7905	6.5	64.1	3.7	5.0	3.4	11.9	1.9	2.8	0.7	70.6	3.7	25.7	0.069	0.513	25.958576	-109.053417
T. Izq. Coahuilbampo	19.00	1	2	8311	6.1	67.4	4.2	4.7	2.7	10.5	1.5	2.3	0.6	73.5	4.2	22.3	0.069	0.513	25.958623	-109.053576
T. Izq. Coahuilbampo	19.00	3	1	5886	6.2	57.6	6.3	5.1	2.6	14.1	2.3	4.9	0.9	63.8	6.3	29.9	0.073	0.516	25.970651	-109.039807
T. Izq. Coahuilbampo	19.00	3	2	6273	5.7	56.8	5.5	4.5	3.7	15.6	2.6	4.7	0.9	62.5	5.5	32.0	0.080	0.516	25.970796	-109.039915
Poblado Chico	50.00	3	1	4968	5.3	59.7	5.7	5.4	2.4	14.3	2.1	4.2	0.9	65.0	5.7	29.3	0.076	0.505	26.228004	-109.054376
Poblado Chico	50.00	3	2	5059	5.2	61.5	4.7	4.2	2.4	14.7	2.6	3.8	0.9	66.7	4.7	28.6	0.079	0.505	26.228051	-109.054546
T. Der. El Fuerte	54.80	1	1	5399	5.1	59.5	7.0	4.7	2.1	14.1	2.5	4.1	0.9	64.6	7.0	28.4	0.073	0.506	26.261102	-109.044975
T. Der. El Fuerte	54.80	1	2	5281	4.6	60.3	6.5	4.3	2.0	15.2	2.2	4.0	0.9	64.9	6.5	28.6	0.091	0.506	26.261132	-109.045155
T. Der. El Fuerte	54.80	3	1	5868	6.0	56.1	7.2	5.0	1.4	16.3	2.8	4.3	0.9	62.1	7.2	30.7	0.067	0.502	26.278779	-109.039906
T. Der. El Fuerte	54.80	3	2	5925	6.4	56.0	6.8	4.5	1.8	15.8	3.4	4.4	0.9	62.4	6.8	30.8	0.071	0.502	26.280418	-109.039655
Lim. Edos. Term. Sin. Ppia. Son.	69.80																			
T. Izq. Camahuiroa	93.90	1	1	4931	8.2	44.4	8.9	7.6	2.4	19.0	3.8	4.8	0.9	52.6	8.9	38.5	0.069	0.513	26.577260	-109.158703
T. Izq. Camahuiroa	93.90	1	2	5196	8.3	46.1	8.7	7.3	2.0	19.0	3.6	4.1	0.9	54.4	8.7	36.9	0.069	0.513	26.577189	-109.158801
X. C. Alamos - Masiaca	114.30	1	1	4931	11.7	40.0	8.9	3.7	2.1	23.6	4.2	4.9	0.9	51.7	8.9	39.4	0.068	0.503	26.723175	-109.284882
X. C. Alamos - Masiaca	114.30	1	2	4990	11.9	40.2	9.0	3.4	2.0	23.1	4.6	4.9	0.9	52.1	9.0	38.9	0.067	0.503	26.723028	-109.285103
T. Izq. Huatabampo	128.50	1	1	3606	4.7	49.4	6.9	4.1	2.7	22.2	3.2	5.9	0.9	54.1	6.9	39.0	0.086	0.512	26.836457	-109.365916
T. Izq. Huatabampo	128.50	1	2	3786	4.9	51.6	7.2	4.0	2.1	21.1	2.4	5.8	0.9	56.5	7.2	36.3	0.113	0.512	26.836360	-109.366169
Plaza de Cobro Estacion Don (La Jaula)	129.90	2	1	3004	0.3	45.2	7.3	3.1	2.9	26.2	3.3	9.0	2.7	45.5	7.3	47.2	0.086	0.500	26.849735	-109.373267
Plaza de Cobro Estacion Don (La Jaula)	129.90	2	2	3004	0.3	45.2	7.3	3.1	2.9	26.2	3.3	9.0	2.7	45.5	7.3	47.2	0.086	0.500	26.849735	-109.373267
Navojoa	155.00	1	1	6151	8.8	56.0	7.2	4.5	2.5	13.9	2.2	4.0	0.9	64.8	7.2	28.0	0.096	0.508	27.029118	-109.434961
Navojoa	155.00	1	2	6350	9.1	56.7	8.0	4.3	2.2	13.5	1.6	3.7	0.9	65.8	8.0	26.2	0.133	0.508	27.029527	-109.435268
Navojoa	155.00	3	1	7646	14.2	74.7	4.3	4.3	0.8	0.7	0.3	0.4	0.3	88.9	4.3	6.8	0.077	0.510	27.103782	-109.447806
Navojoa	155.00	3	2	7973	13.7	76.9	3.3	3.7	0.8	0.8	0.3	0.3	0.2	90.6	3.3	6.1	0.086	0.510	27.103778	-109.447896
T. Izq. Villa Juárez	167.25	1	1	7152	4.6	64.6	5.6	3.8	2.0	13.1	1.9	3.5	0.9	69.2	5.6	25.2	0.075	0.502	27.152786	-109.504047
T. Izq. Villa Juárez	167.25	1	2	7208	5.2	63.9	5.5	4.5	1.9	13.4	1.8	2.9	0.9	69.1	5.5	25.4	0.066	0.502	27.152524	-109.504303
T. Izq. Villa Juárez	167.25	3	1	6911	4.7	62.1	6.5	4.4	2.0	13.3	2.3	3.8	0.9	66.8	6.5	26.7	0.082	0.519	27.158716	-109.511631
T. Izq. Villa Juárez	167.25	3	2	7443	4.2	61.9	7.1	4.8	1.6	13.5	2.2	3.8	0.9	66.1	7.1	26.8	0.069	0.519	27.158423	-109.511873
Plaza de Cobro Fundición	195.80	2	1	3962	0.3	54.2	7.0	3.4	2.6	20.9	2.6	7.0	2.0	54.5	7.0	38.5	0.086	0.500	27.320494	-109.719697
Plaza de Cobro Fundición	195.80	2	2	3962	0.3	54.2	7.0	3.4	2.6	20.9	2.6	7.0	2.0	54.5	7.0	38.5	0.086	0.500	27.320494	-109.719697
T. Der. Fundición	196.30	1	1	5768	2.7	60.6	7.0	3.3	1.9	16.5	2.6	4.5	0.9	63.3	7.0	29.7	0.074	0.504	27.312755	-109.709694
T. Der. Fundición	196.30	1	2	5869	3.1	60.6	7.2	3.5	1.9	16.1	2.3	4.4	0.9	63.7	7.2	29.1	0.075	0.504	27.312497	-109.709944

SONORA

19 CARR: Los Mochis - Cd. Obregón (Cuota)

CLAVE: 26444

RUTA: MEX-015D

AÑO: 2023

LUGAR	ESTACION				CLASIFICACION VEHICULAR EN PORCIENTO													COORDENADAS		
	KM	TE	SC	TDPA	M	A	B	C2	C3	T3S2	T3S3	T3S2R4	OTROS	A	B	C	K'	D	LATITUD	LONGITUD
T. Der. Libramiento de Cd. Obregón (Cuota)	203.52	1	1	7009	3.3	63.0	7.2	3.9	2.5	14.0	2.2	3.0	0.9	66.3	7.2	26.5	0.081	0.504	27.365643	-109.777938
T. Der. Libramiento de Cd. Obregón (Cuota)	203.52	1	2	6886	3.7	61.8	8.4	3.6	2.1	14.1	2.1	3.3	0.9	65.5	8.4	26.1	0.068	0.504	27.360584	-109.771889
Cd. Obregón	222.70	1	1	10992	4.6	75.7	5.1	3.2	2.8	5.7	1.5	1.1	0.3	80.3	5.1	14.6	0.088	0.508	27.455094	-109.892912
Cd. Obregón	222.70	1	2	11371	5.4	75.9	4.5	2.9	2.6	5.4	1.4	1.5	0.4	81.3	4.5	14.2	0.079	0.508	27.454867	-109.893128

20 CARR: Santa Ana - Sonoita

CLAVE: 26080

RUTA: MEX-002D-MEX

AÑO: 2023

LUGAR	ESTACION				CLASIFICACION VEHICULAR EN PORCIENTO													COORDENADAS		
	KM	TE	SC	TDPA	M	A	B	C2	C3	T3S2	T3S3	T3S2R4	OTROS	A	B	C	K'	D	LATITUD	LONGITUD
Santa Ana	0.00	3	1	5805	2.7	54.4	9.2	6.0	2.0	17.1	2.2	5.6	0.8	57.1	9.2	33.7	0.057	0.504	30.553650	-111.130615
Santa Ana	0.00	3	2	5888	2.6	55.7	8.2	5.3	2.1	17.5	2.3	5.3	1.0	58.3	8.2	33.5	0.054	0.504	30.553424	-111.130905
El Ocuca	31.55	1	1	2601	2.8	50.8	7.1	4.4	2.1	23.2	2.3	6.4	0.9	53.6	7.1	39.3	0.087	0.508	30.585664	-111.429558
El Ocuca	31.55	1	2	2515	2.7	50.9	6.8	4.4	2.4	22.9	2.6	6.4	0.9	53.6	6.8	39.6	0.076	0.508	30.585583	-111.429556
El Ocuca	31.55	3	1	3328	3.1	53.2	7.3	3.6	2.3	20.6	2.2	6.8	0.9	56.3	7.3	36.4	0.080	0.502	30.585616	-111.439991
El Ocuca	31.55	3	2	3302	2.4	53.1	7.6	3.8	2.0	21.2	2.3	6.7	0.9	55.5	7.6	36.9	0.064	0.502	30.585488	-111.439978
Altar	72.80	1	1	4984	2.5	54.8	7.7	2.8	1.4	20.7	2.8	6.5	0.8	57.3	7.7	35.0	0.065	0.500	30.701439	-111.816669
Altar	72.80	1	2	4987	2.6	54.3	8.6	3.1	1.3	21.0	2.5	5.8	0.8	56.9	8.6	34.5	0.058	0.500	30.701065	-111.816206
Altar	72.80	3	1	4177	2.6	61.7	6.7	4.1	1.3	16.1	1.9	4.8	0.8	64.3	6.7	29.0	0.073	0.508	30.713409	-111.853068
Altar	72.80	3	2	4316	2.3	62.3	6.4	4.6	1.3	16.1	1.6	4.7	0.7	64.6	6.4	29.0	0.070	0.508	30.713329	-111.853043
T. Izq. Estación Pitiquito	94.28	1	1	4039	1.6	62.1	6.7	3.6	1.6	15.7	2.7	5.4	0.6	63.7	6.7	29.6	0.079	0.525	30.693024	-112.021850
T. Izq. Estación Pitiquito	94.28	1	2	4459	1.2	62.0	6.5	3.3	1.6	16.4	2.7	5.5	0.8	63.2	6.5	30.3	0.081	0.525	30.692955	-112.021800
Caborca	103.83	1	0	11230	3.7	71.6	3.9	3.0	1.1	11.3	1.5	3.0	0.9	75.3	3.9	20.8	0.073	0.530	30.710257	-112.127289
Cozón	180.30	1	0	4759	3.7	35.3	9.7	5.6	1.9	31.6	3.1	8.2	0.9	39.0	9.7	51.3	0.059	0.507	31.301322	-112.557176
Sonoita	253.70	1	0	4562	4.1	42.9	9.3	3.9	1.6	26.9	2.9	7.6	0.8	47.0	9.3	43.7	0.065	0.509	31.845640	-112.859407

21 CARR: Altar - Sáric

CLAVE: 26233

RUTA: SON-064

AÑO: 2023

LUGAR	ESTACION				CLASIFICACION VEHICULAR EN PORCIENTO													COORDENADAS		
	KM	TE	SC	TDPA	M	A	B	C2	C3	T3S2	T3S3	T3S2R4	OTROS	A	B	C	K'	D	LATITUD	LONGITUD
T. C. Santa Ana - Sonoita	0.00	3	0	1272	3.1	89.3	1.0	4.5	1.0	0.8	0.1	0.1	0.1	92.4	1.0	6.6	0.070	0.511	30.722296	-111.831169
Sáric	68.00	1	0	453	2.3	89.3	0.8	6.8	0.7	0.0	0.1	0.0	0.0	91.6	0.8	7.6	0.089	0.517	31.096798	-111.391052

SONORA

22 CARR: Caborca - El Desemboque

CLAVE: 26225

RUTA: SON-037

AÑO: 2023

LUGAR	ESTACION				CLASIFICACION VEHICULAR EN PORCIENTO													COORDENADAS		
	KM	TE	SC	TDPA	M	A	B	C2	C3	T3S2	T3S3	T3S2R4	OTROS	A	B	C	K'	D	LATITUD	LONGITUD
Caborca	0.00	3	1	3676	2.7	93.7	1.2	1.7	0.6	0.1	0.0	0.0	0.0	96.4	1.2	2.4	0.082	0.510	30.709271	-112.177241
Caborca	0.00	3	2	3534	2.5	92.9	1.8	2.3	0.4	0.1	0.0	0.0	0.0	95.4	1.8	2.8	0.074	0.510	30.709165	-112.177224
T. Der. Productora Nal. de Semillas	4.20	3	0	5181	2.5	90.3	2.4	3.2	0.8	0.6	0.1	0.1	0.0	92.8	2.4	4.8	0.087	0.502	30.706299	-112.194059
T. Izq. Ramal El Deseo	6.90	3	0	3835	0.9	86.9	5.2	4.3	1.0	1.3	0.3	0.1	0.0	87.8	5.2	7.0	0.078	0.512	30.702427	-112.214403
T. Der. El Sahuaro	61.20	3	0	1246	3.4	87.8	1.3	5.3	1.1	0.7	0.3	0.1	0.0	91.2	1.3	7.5	0.075	0.515	30.801056	-112.720135
El Desemboque	102.30																			

23 CARR: Calle 36 Norte - Puerto de La Libertad

CLAVE: 26117

RUTA: SON-029

AÑO: 2023

LUGAR	ESTACION				CLASIFICACION VEHICULAR EN PORCIENTO													COORDENADAS		
	KM	TE	SC	TDPA	M	A	B	C2	C3	T3S2	T3S3	T3S2R4	OTROS	A	B	C	K'	D	LATITUD	LONGITUD
T. C. Hermosillo - Bahía Kino	0.00	3	0	286	4.2	80.4	1.4	4.4	3.3	4.3	0.8	0.8	0.4	84.6	1.4	14.0	0.081	0.526	28.904017	-111.714088
Casas Grandes	45.00	3	0	336	2.8	80.6	2.2	6.2	2.4	4.0	0.7	1.1	0.0	83.4	2.2	14.4	0.088	0.507	29.188680	-111.724848
Puerto de La Libertad	156.00																			

24 CARR: Esperanza - Presa Álvaro Obregón

CLAVE: 26242

RUTA: SON-117

AÑO: 2023

LUGAR	ESTACION				CLASIFICACION VEHICULAR EN PORCIENTO													COORDENADAS		
	KM	TE	SC	TDPA	M	A	B	C2	C3	T3S2	T3S3	T3S2R4	OTROS	A	B	C	K'	D	LATITUD	LONGITUD
Esperanza	0.00	3	0	4801	5.3	85.8	1.0	2.3	2.6	1.4	0.8	0.6	0.2	91.1	1.0	7.9	0.173	0.506	27.584137	-109.917671
T. Der. Los Hornos	17.00	3	0	992	7.6	85.4	0.6	2.5	2.7	0.4	0.3	0.3	0.2	93.0	0.6	6.4	0.214	0.502	27.720520	-109.897763
Presa Álvaro Obregón	32.00																			

25 CARR: Hermosillo - Bahía Kino

CLAVE: 26109

RUTA: SON-100

AÑO: 2023

LUGAR	ESTACION				CLASIFICACION VEHICULAR EN PORCIENTO													COORDENADAS		
	KM	TE	SC	TDPA	M	A	B	C2	C3	T3S2	T3S3	T3S2R4	OTROS	A	B	C	K'	D	LATITUD	LONGITUD
Hermosillo	0.00	3	1	27671	4.3	89.1	1.2	2.9	1.0	0.7	0.1	0.4	0.3	93.4	1.2	5.4	0.071	0.535	29.094879	-111.010661
Hermosillo	0.00	3	2	32197	4.3	89.2	1.1	2.9	0.9	0.7	0.2	0.4	0.3	93.5	1.1	5.4	0.077	0.535	29.094736	-111.010681
T. Der. Aeropuerto	11.00	1	1	15448	8.5	80.3	0.8	5.3	2.2	1.8	0.3	0.6	0.2	88.8	0.8	10.4	0.105	0.504	29.090783	-111.043444
T. Der. Aeropuerto	11.00	1	2	15188	8.6	80.5	0.7	5.3	2.2	1.7	0.2	0.6	0.2	89.1	0.7	10.2	0.088	0.504	29.090659	-111.043399
T. Der. Aeropuerto	11.00	3	1	11461	4.9	82.4	0.9	5.2	3.5	1.9	0.4	0.6	0.2	87.3	0.9	11.8	0.113	0.509	29.088377	-111.052986
T. Der. Aeropuerto	11.00	3	2	11076	4.9	82.3	1.0	5.2	3.5	1.9	0.4	0.6	0.2	87.2	1.0	11.8	0.089	0.509	29.088265	-111.052926
T. Izq. Calle 4 Sur	53.00	3	0	7097	1.6	87.9	1.6	4.7	1.7	1.5	0.5	0.3	0.2	89.5	1.6	8.9	0.098	0.533	28.839499	-111.403836
Miguel Alemán	61.20	1	0	7712	2.4	87.0	1.7	4.7	1.5	1.6	0.6	0.3	0.2	89.4	1.7	8.9	0.096	0.527	28.839726	-111.454371

SONORA

25 CARR: Hermosillo - Bahía Kino

CLAVE: 26109

RUTA: SON-100

AÑO: 2023

LUGAR	ESTACION				CLASIFICACION VEHICULAR EN PORCIENTO													COORDENADAS		
	KM	TE	SC	TDPA	M	A	B	C2	C3	T3S2	T3S3	T3S2R4	OTROS	A	B	C	K'	D	LATITUD	LONGITUD
T. Der. Calle 36	84.40	1	0	3957	2.2	88.0	1.7	4.4	1.4	1.3	0.4	0.5	0.1	90.2	1.7	8.1	0.096	0.527	28.831355	-111.702633
T. Der. Calle 36	84.40	3	0	3442	2.6	85.8	2.0	4.5	1.8	1.6	0.7	0.9	0.1	88.4	2.0	9.6	0.101	0.529	28.831009	-111.730805
Bahía Kino	106.50	1	0	3187	0.9	92.4	0.7	3.8	1.6	0.4	0.1	0.0	0.1	93.3	0.7	6.0	0.135	0.506	28.828510	-111.928384

26 CARR: Hermosillo - Sahuaripa

CLAVE: 26230

RUTA: SON-020

AÑO: 2023

LUGAR	ESTACION				CLASIFICACION VEHICULAR EN PORCIENTO													COORDENADAS		
	KM	TE	SC	TDPA	M	A	B	C2	C3	T3S2	T3S3	T3S2R4	OTROS	A	B	C	K'	D	LATITUD	LONGITUD
T. C. Hermosillo - Yecora	0.00	3	1	1933	1.9	76.6	3.2	5.7	4.4	3.8	2.2	1.9	0.3	78.5	3.2	18.3	0.112	0.515	29.030894	-110.873006
T. C. Hermosillo - Yecora	0.00	3	2	1819	1.6	76.4	3.1	6.3	4.5	3.5	2.6	1.7	0.3	78.0	3.1	18.9	0.097	0.515	29.030935	-110.873283
X. C. Libramiento de Hermosillo Cuota	8.70																			
Mazatán	88.00	1	0	826	1.6	87.8	1.1	5.1	1.8	1.2	0.8	0.4	0.2	89.4	1.1	9.5	0.084	0.506	29.005584	-110.152752
Mazatán	88.00	3	0	735	5.3	84.1	1.4	4.3	2.0	1.0	0.5	0.9	0.5	89.4	1.4	9.2	0.124	0.502	28.999124	-110.137686
Sahuaripa	199.00																			

27 CARR: Hornos - San Nicolás

CLAVE: 26243

RUTA: SON-012

AÑO: 2023

LUGAR	ESTACION				CLASIFICACION VEHICULAR EN PORCIENTO													COORDENADAS		
	KM	TE	SC	TDPA	M	A	B	C2	C3	T3S2	T3S3	T3S2R4	OTROS	A	B	C	K'	D	LATITUD	LONGITUD
Hornos	0.00	3	0	1304	4.2	82.7	1.1	6.1	2.6	2.1	0.6	0.4	0.2	86.9	1.1	12.0	0.093	0.506	27.720274	-109.890962
Rosario	58.00	1	0	1204	6.5	84.1	1.4	3.2	1.8	1.9	0.6	0.4	0.1	90.6	1.4	8.0	0.089	0.505	27.842195	-109.383861
San Nicolás	137.20																			

28 CARR: Huatabampo - Bacabachi

CLAVE: 26237

RUTA: SON-176

AÑO: 2023

LUGAR	ESTACION				CLASIFICACION VEHICULAR EN PORCIENTO													COORDENADAS		
	KM	TE	SC	TDPA	M	A	B	C2	C3	T3S2	T3S3	T3S2R4	OTROS	A	B	C	K'	D	LATITUD	LONGITUD
Huatabampo	0.00	3	0	1963	23.4	65.0	1.3	2.5	3.7	2.7	0.5	0.9	0.0	88.4	1.3	10.3	0.076	0.506	26.825247	-109.603496
T. C. Los Mochis - Cd. Obregón (Cuota)	29.00	1	0	1044	23.6	60.2	2.0	5.9	3.7	2.9	1.1	0.6	0.0	83.8	2.0	14.2	0.084	0.512	26.838730	-109.369577

29 CARR: La Alameda - El Sahuaro

CLAVE: 26234

RUTA: SON-037

AÑO: 2023

LUGAR	ESTACION				CLASIFICACION VEHICULAR EN PORCIENTO													COORDENADAS		
	KM	TE	SC	TDPA	M	A	B	C2	C3	T3S2	T3S3	T3S2R4	OTROS	A	B	C	K'	D	LATITUD	LONGITUD
T. C. Caborca - El Desemboque	0.00	3	0	4115	1.6	83.9	3.8	5.2	3.0	1.5	0.4	0.5	0.1	85.5	3.8	10.7	0.081	0.529	30.819790	-112.740798

SONORA

29 CARR: La Alameda - El Sahuaro

CLAVE: 26234

RUTA: SON-037

AÑO: 2023

LUGAR	ESTACION				CLASIFICACION VEHICULAR EN PORCIENTO														COORDENADAS	
	KM	TE	SC	TDPA	M	A	B	C2	C3	T3S2	T3S3	T3S2R4	OTROS	A	B	C	K'	D	LATITUD	LONGITUD
Estación El Sahuaro	47.00	1	0	1554	2.7	58.5	9.1	18.5	5.7	3.9	1.2	0.3	0.1	61.2	9.1	29.7	0.093	0.519	31.039848	-112.944344

30 CARR: Mazocahui - Cananea

CLAVE: 26118

RUTA: SON-118

AÑO: 2023

LUGAR	ESTACION				CLASIFICACION VEHICULAR EN PORCIENTO														COORDENADAS	
	KM	TE	SC	TDPA	M	A	B	C2	C3	T3S2	T3S3	T3S2R4	OTROS	A	B	C	K'	D	LATITUD	LONGITUD
T. C. Hermosillo - Moctezuma	0.00	3	0	1211	1.8	82.2	1.2	9.6	1.7	1.3	0.9	0.7	0.6	84.0	1.2	14.8	0.097	0.510	29.547661	-110.121589
Baviácora	15.20	3	0	1821	0.8	83.6	0.8	13.0	0.9	0.6	0.3	0.0	0.0	84.4	0.8	14.8	0.096	0.505	29.726927	-110.166539
Arizpe	98.00	1	0	507	3.7	77.3	2.3	12.5	2.5	1.1	0.6	0.0	0.0	81.0	2.3	16.7	0.117	0.503	30.329739	-110.181255
T. C. Imuris - Agua Prieta	204.00	1	0	3135	3.6	75.6	2.3	8.4	3.9	2.7	1.5	1.5	0.5	79.2	2.3	18.5	0.096	0.507	30.986741	-110.257836

31 CARR: Navojoa - Álamos

CLAVE: 26240

RUTA: SON-013

AÑO: 2023

LUGAR	ESTACION				CLASIFICACION VEHICULAR EN PORCIENTO														COORDENADAS	
	KM	TE	SC	TDPA	M	A	B	C2	C3	T3S2	T3S3	T3S2R4	OTROS	A	B	C	K'	D	LATITUD	LONGITUD
Navojoa	0.00	3	0	4141	13.5	76.7	1.4	3.7	2.2	1.3	0.3	0.8	0.1	90.2	1.4	8.4	0.116	0.529	27.074138	-109.406965
Álamos	52.80	1	0	2940	8.6	84.7	1.2	3.0	1.3	0.9	0.1	0.2	0.0	93.3	1.2	5.5	0.162	0.507	27.046521	-108.981048

32 CARR: Navojoa - Yavaros

CLAVE: 26229

RUTA: SON-056

AÑO: 2023

LUGAR	ESTACION				CLASIFICACION VEHICULAR EN PORCIENTO														COORDENADAS	
	KM	TE	SC	TDPA	M	A	B	C2	C3	T3S2	T3S3	T3S2R4	OTROS	A	B	C	K'	D	LATITUD	LONGITUD
Navojoa	0.00	3	1	4679	9.1	82.3	2.4	2.0	1.5	0.9	0.7	0.6	0.5	91.4	2.4	6.2	0.082	0.504	27.040766	-109.466262
Navojoa	0.00	3	2	4757	9.5	82.5	2.1	2.1	1.4	0.9	0.6	0.5	0.4	92.0	2.1	5.9	0.074	0.504	27.040688	-109.466173
Yavaros	55.00	1	0	1883	23.0	70.8	2.4	2.7	0.8	0.2	0.1	0.0	0.0	93.8	2.4	3.8	0.127	0.543	26.705858	-109.544692

33 CARR: Nogales - San Antonio

CLAVE: 26110

RUTA: SON

AÑO: 2023

LUGAR	ESTACION				CLASIFICACION VEHICULAR EN PORCIENTO														COORDENADAS	
	KM	TE	SC	TDPA	M	A	B	C2	C3	T3S2	T3S3	T3S2R4	OTROS	A	B	C	K'	D	LATITUD	LONGITUD
Nogales	0.00																			
San Antonio	58.00	1	0	412	1.2	91.5	0.8	4.8	1.5	0.1	0.1	0.0	0.0	92.7	0.8	6.5	0.153	0.520	31.136473	-110.717927



SONORA

34 CARR: Ramal a Aeropuerto de Guaymas

CLAVE: 26568

RUTA: SON

AÑO: 2023

LUGAR	ESTACION				CLASIFICACION VEHICULAR EN PORCIENTO										COORDENADAS					
	KM	TE	SC	TDPA	M	A	B	C2	C3	T3S2	T3S3	T3S2R4	OTROS	A	B	C	K'	D	LATITUD	LONGITUD
T. C. Cd. Obregón - Hermosillo	0.00	3	1	7450	8.5	79.9	2.9	4.2	1.5	1.1	0.7	0.9	0.3	88.4	2.9	8.7	0.096	0.524	27.952569	-110.930433
T. C. Cd. Obregón - Hermosillo	0.00	3	2	8190	8.5	80.0	2.9	4.2	1.4	1.2	0.7	0.8	0.3	88.5	2.9	8.6	0.099	0.524	27.952609	-110.930523
Aeropuerto de Guaymas	3.00	3	0	5441	2.1	79.8	2.1	7.1	2.5	2.8	1.2	2.1	0.3	81.9	2.1	16.0	0.081	0.509	27.978227	-110.914960

35 CARR: San Luis Río Colorado - Golfo de Santa Clara

CLAVE: 26226

RUTA: SON-040

AÑO: 2023

LUGAR	ESTACION				CLASIFICACION VEHICULAR EN PORCIENTO										COORDENADAS					
	KM	TE	SC	TDPA	M	A	B	C2	C3	T3S2	T3S3	T3S2R4	OTROS	A	B	C	K'	D	LATITUD	LONGITUD
San Luis Río Colorado	0.00	3	1	2853	1.6	82.7	1.3	11.2	0.7	1.3	0.6	0.5	0.1	84.3	1.3	14.4	0.078	0.502	32.438819	-114.848747
San Luis Río Colorado	0.00	3	2	2883	1.5	82.4	1.3	11.4	0.9	1.4	0.4	0.6	0.1	83.9	1.3	14.8	0.069	0.502	32.438164	-114.849441
T. Izq. Lagunitas	25.50	3	0	5779	1.2	87.1	1.6	5.9	1.1	2.0	0.7	0.3	0.1	88.3	1.6	10.1	0.074	0.503	32.316740	-114.952360
Golfo de Santa Clara	114.30	1	0	1910	2.6	79.7	2.0	10.9	1.2	1.8	0.8	0.9	0.1	82.3	2.0	15.7	0.089	0.512	31.706603	-114.523896

36 CARR: Sonoita - Pitiquito

CLAVE: 26022

RUTA: SON

AÑO: 2023

LUGAR	ESTACION				CLASIFICACION VEHICULAR EN PORCIENTO										COORDENADAS					
	KM	TE	SC	TDPA	M	A	B	C2	C3	T3S2	T3S3	T3S2R4	OTROS	A	B	C	K'	D	LATITUD	LONGITUD
Sonoita	0.00	3	0	1206	1.5	85.6	1.3	10.0	0.4	1.0	0.2	0.0	0.0	87.1	1.3	11.6	0.074	0.500	31.851651	-112.820111
Pitiquito	170.00	1	0	525	4.0	86.9	3.5	2.9	1.0	1.1	0.1	0.5	0.0	90.9	3.5	5.6	0.096	0.508	30.726186	-112.093256

37 CARR: San Luis Río Colorado - Golfo de Santa Clara (Cuota)

CLAVE:

RUTA: SON-D

AÑO: 2023

LUGAR	ESTACION				CLASIFICACION VEHICULAR EN PORCIENTO										COORDENADAS					
	KM	TE	SC	TDPA	M	A	B	C2	C3	T3S2	T3S3	T3S2R4	OTROS	A	B	C	K'	D	LATITUD	LONGITUD
Libramiento de San Luis Río Colorado	0.00																			
Plaza de Cobro Estación Doctor	0.50	2	0	661	0.4	92.1	0.3	1.8	0.9	2.3	0.6	1.2	0.4	92.5	0.3	7.2	0.090	0.500	32.375135	-114.760664
Golfo de Santa Clara	44.60																			

38 CARR: T. C. (Hermosillo - Nogales) - Huásabas

CLAVE: 26231

RUTA: MEX-014-SON

AÑO: 2023

LUGAR	ESTACION				CLASIFICACION VEHICULAR EN PORCIENTO										COORDENADAS					
	KM	TE	SC	TDPA	M	A	B	C2	C3	T3S2	T3S3	T3S2R4	OTROS	A	B	C	K'	D	LATITUD	LONGITUD
T. C. Hermosillo - Nogales	0.00	3	1	8481	1.9	90.6	1.1	3.0	1.2	1.1	0.5	0.4	0.2	92.5	1.1	6.4	0.094	0.512	29.169307	-110.902202
T. C. Hermosillo - Nogales	0.00	3	2	8906	1.8	91.0	1.0	2.9	1.2	0.9	0.5	0.4	0.3	92.8	1.0	6.2	0.090	0.512	29.169380	-110.902289
Ures	62.00	3	0	3006	2.4	88.7	0.6	6.0	0.7	1.0	0.4	0.1	0.1	91.1	0.6	8.3	0.083	0.504	29.428338	-110.374597

SONORA

38 CARR: T. C. (Hermosillo - Nogales) - Huásabas

CLAVE: 26231

RUTA: MEX-014-SON

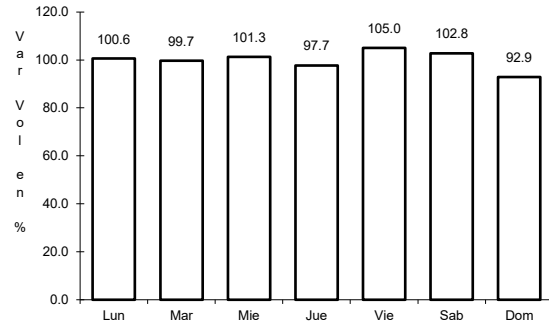
AÑO: 2023

L U G A R	E S T A C I O N				C L A S I F I C A C I O N V E H I C U L A R E N P O R C I E N T O														C O O R D E N A D A S	
	KM	TE	SC	TDPA	M	A	B	C2	C3	T3S2	T3S3	T3S2R4	OTROS	A	B	C	K'	D	LATITUD	LONGITUD
Mazocahui	97.50	3	0	1093	3.8	61.5	3.8	15.2	4.5	5.4	3.8	1.3	0.7	65.3	3.8	30.9	0.087	0.532	29.544240	-110.118770
Moctezuma	165.00	1	0	1432	2.2	85.4	1.0	5.1	1.3	1.9	1.0	1.4	0.7	87.6	1.0	11.4	0.120	0.508	29.799694	-109.690487
Moctezuma	165.00	3	0	1491	3.6	87.7	0.9	4.2	1.8	1.1	0.7	0.0	0.0	91.3	0.9	7.8	0.096	0.522	29.800802	-109.666831
Huásabas	212.50	1	0	459	1.4	89.7	0.9	4.9	1.6	1.2	0.3	0.0	0.0	91.1	0.9	8.0	0.102	0.548	29.917039	-109.310642

1 CARR: Guaymas - Hermosillo

CLAVE: 26444

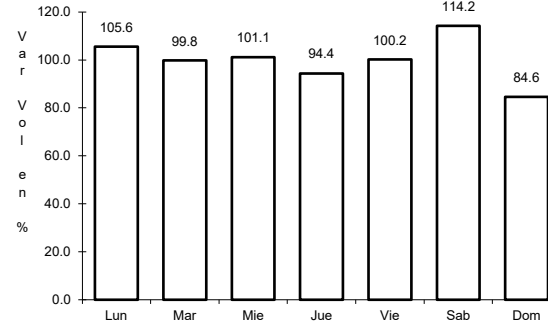
RUTA: MEX-015



Km: 251.00

Tipo: 1

Sent: 1



Km: 251.00

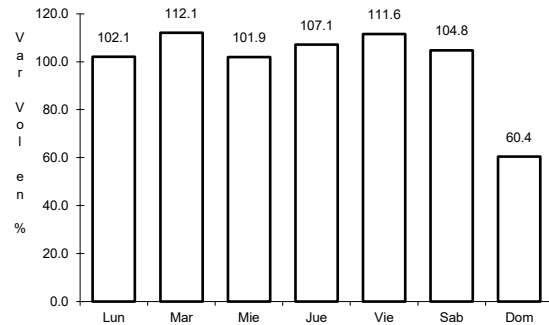
Tipo: 1

Sent: 2

2 CARR: Hermosillo - Yécora

CLAVE: 26251

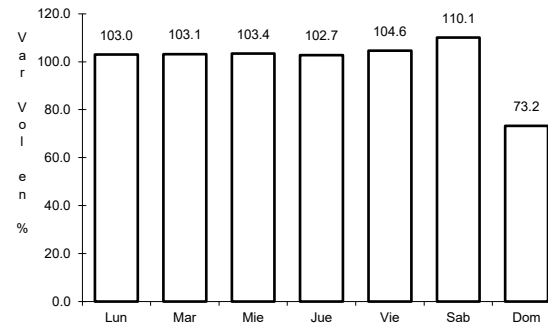
RUTA: MEX-016



Km: 4.00

Tipo: 3

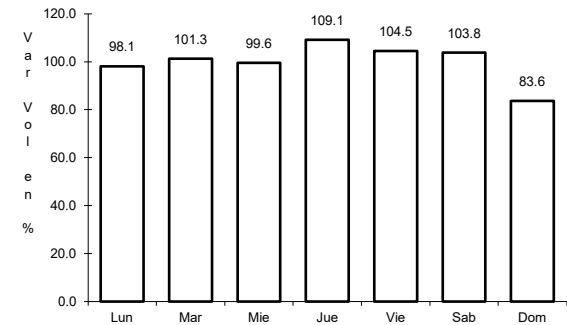
Sent: 1



Km: 4.00

Tipo: 3

Sent: 2



Km: 138.00

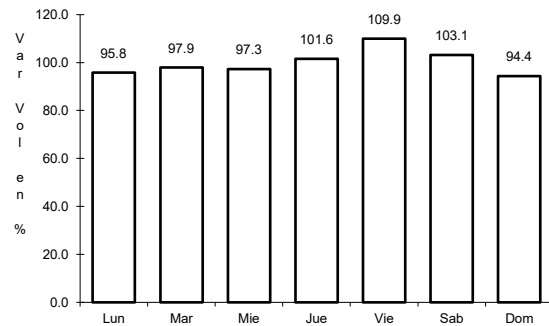
Tipo: 3

Sent: 0

3 CARR: Imuris - Agua Prieta

CLAVE: 26079

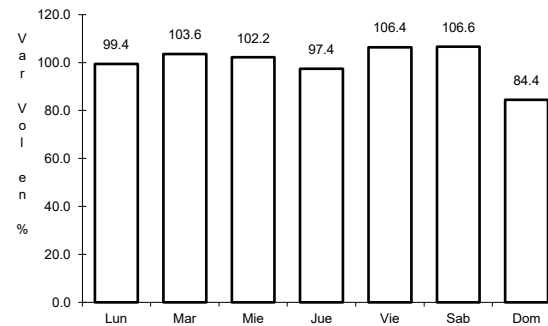
RUTA: MEX-002



Km: 0.00

Tipo: 3

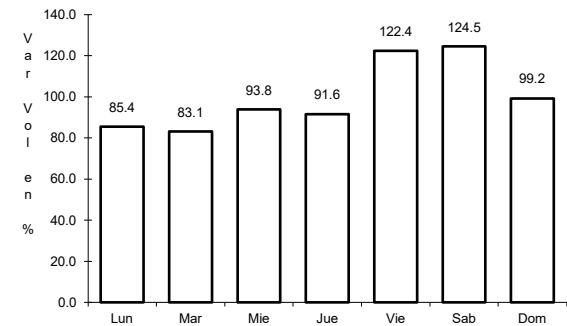
Sent: 0



Km: 164.67

Tipo: 1

Sent: 1



Km: 164.67

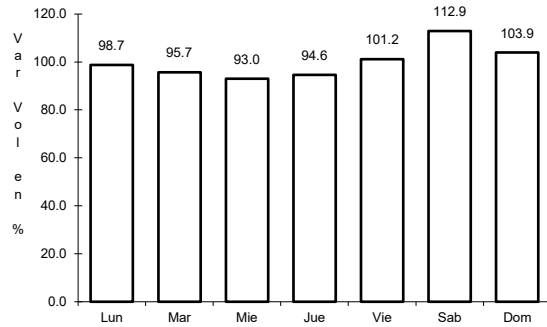
Tipo: 1

Sent: 2

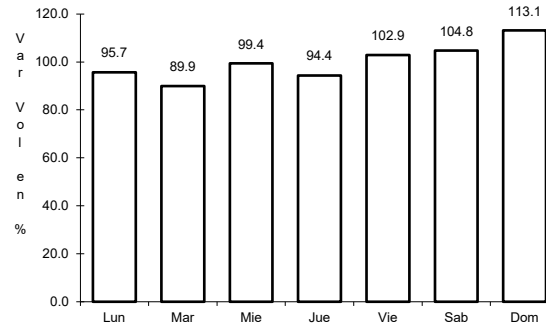
4 CARR: Janos - Agua Prieta

CLAVE: 00220

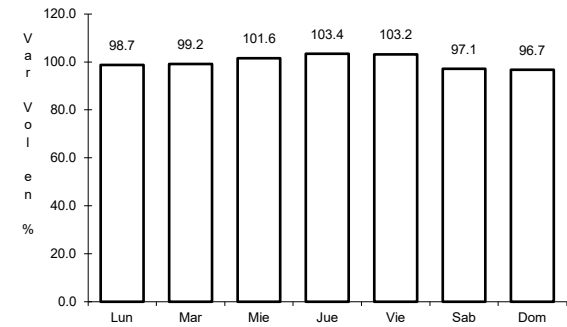
RUTA: MEX-002



Km: 0.00      Tipo: 3      Sent: 0



Km: 56.00      Tipo: 3      Sent: 0

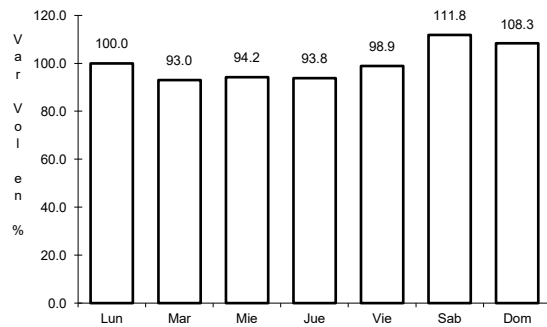


Km: 160.00      Tipo: 1      Sent: 0

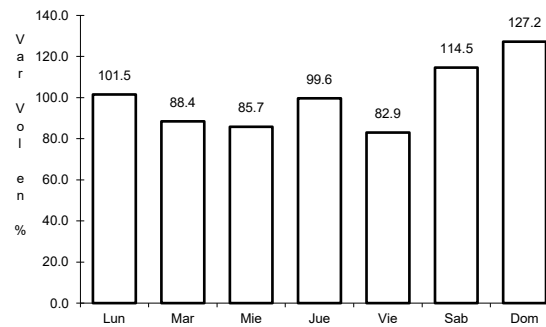
5 CARR: La Junta - Yécora

CLAVE: 00065

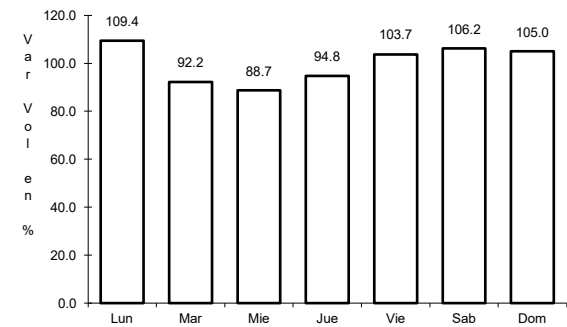
RUTA: MEX-016



Km: 0.00      Tipo: 3      Sent: 0



Km: 70.00      Tipo: 3      Sent: 0

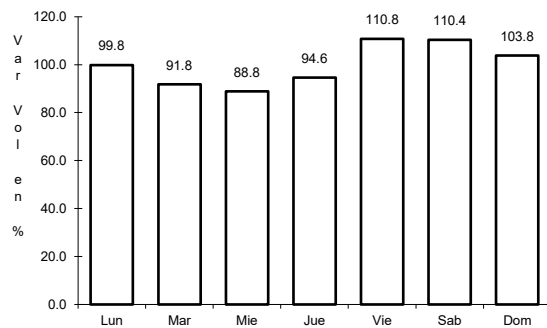


Km: 253.00      Tipo: 1      Sent: 0

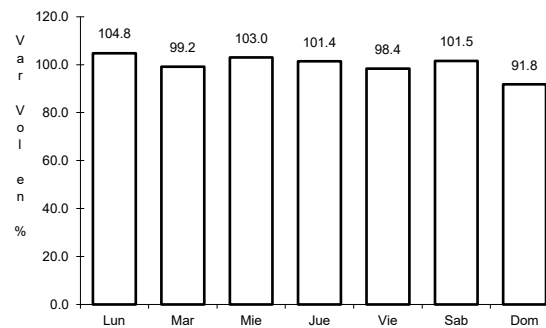
6 CARR: Magdalena de Kino - Nogales

CLAVE: 26444

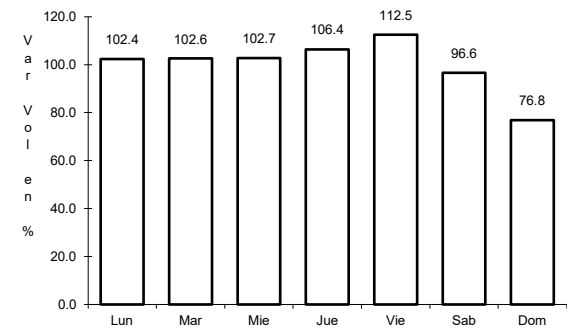
RUTA: MEX-015



Km: 181.30      Tipo: 3      Sent: 1



Km: 181.30      Tipo: 3      Sent: 2

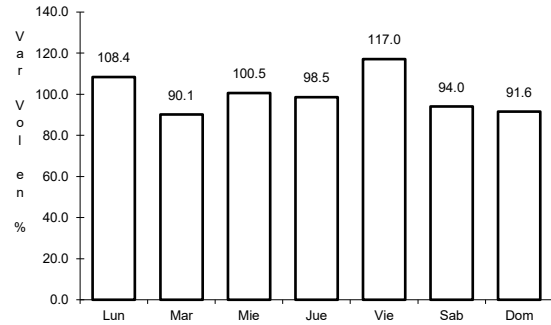


Km: 272.70      Tipo: 1      Sent: 1

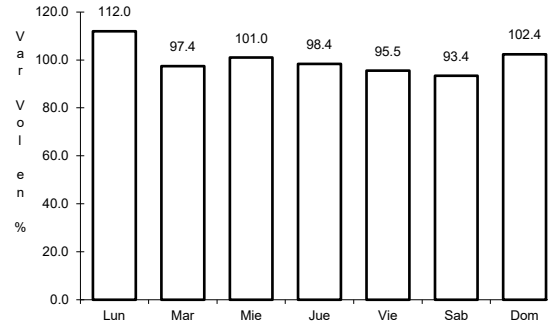
7 CARR: Moctezuma - Agua Prieta

CLAVE: 26027

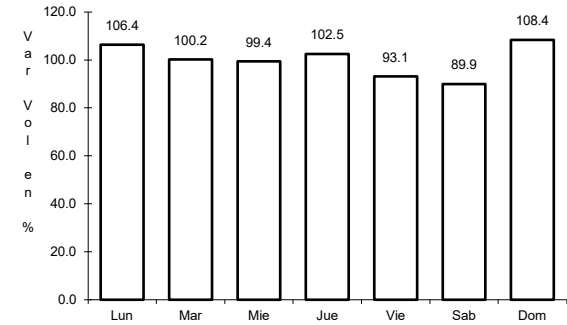
RUTA: MEX-017



Km: 0.00                      Tipo: 3                      Sent: 0



Km: 81.00                      Tipo: 3                      Sent: 0

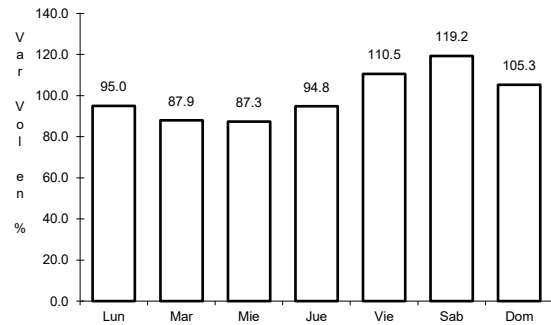


Km: 197.60                      Tipo: 1                      Sent: 0

8 CARR: Ramal a Naco

CLAVE: 26579

RUTA: MEX-002

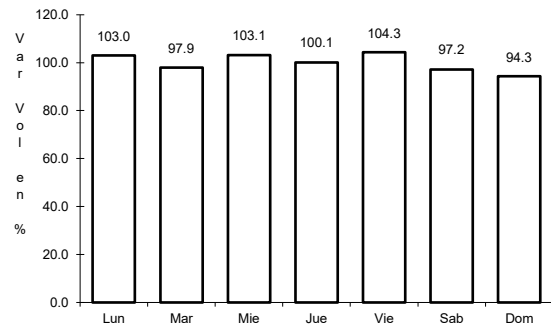


Km: 0.00                      Tipo: 3                      Sent: 0

9 CARR: Ramal a Puerta de México

CLAVE: 26577

RUTA: MEX-002

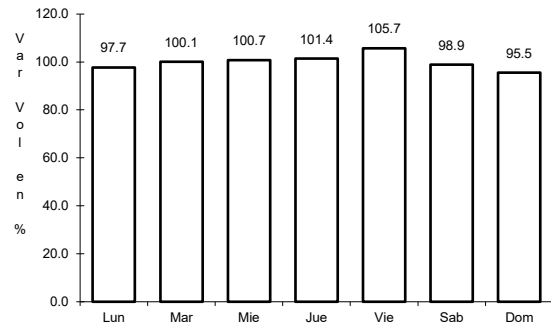


Km: 0.00                      Tipo: 3                      Sent: 0

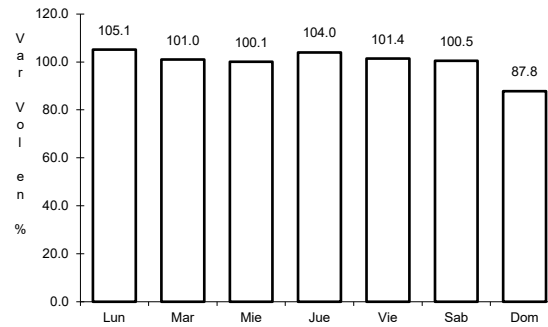
10 CARR: Sonoita - Mexicali

CLAVE: 00081

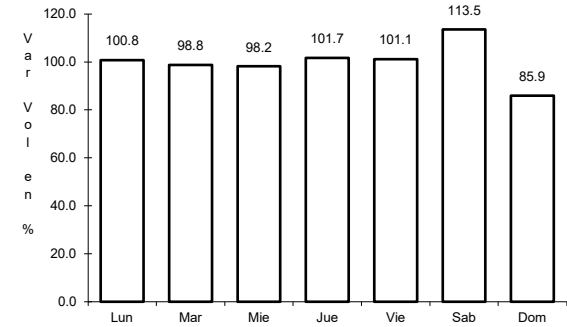
RUTA: MEX-002



Km: 0.00                      Tipo: 3                      Sent: 0



Km: 256.47                      Tipo: 1                      Sent: 1

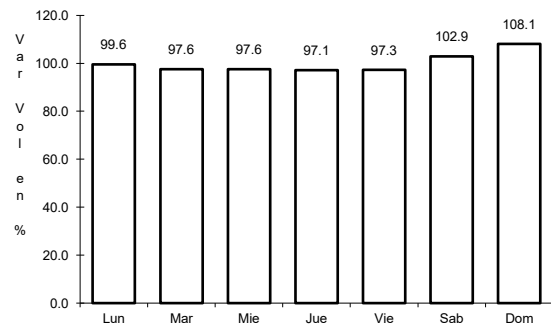


Km: 256.47                      Tipo: 1                      Sent: 2

11 CARR: Sonoita - Puerto Peñasco

CLAVE: 26232

RUTA: MEX-002

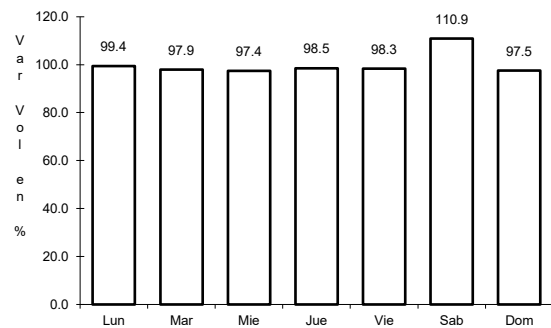


Km: 0.00                      Tipo: 3                      Sent: 0

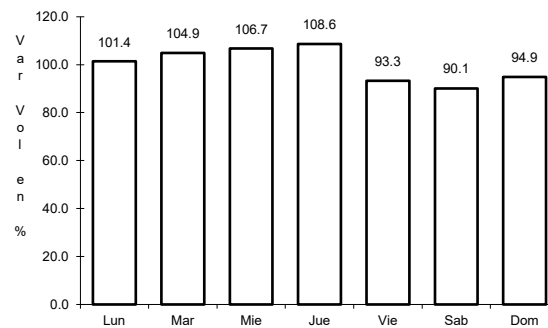
12 CARR: Cd. Obregón - Guaymas (Cuota)

CLAVE: 26444

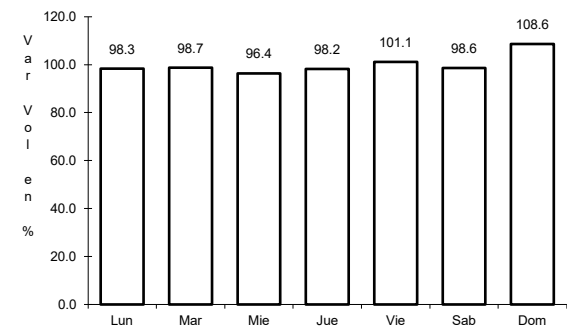
RUTA: MEX-015D



Km: 7.96                      Tipo: 1                      Sent: 1



Km: 7.96                      Tipo: 1                      Sent: 2

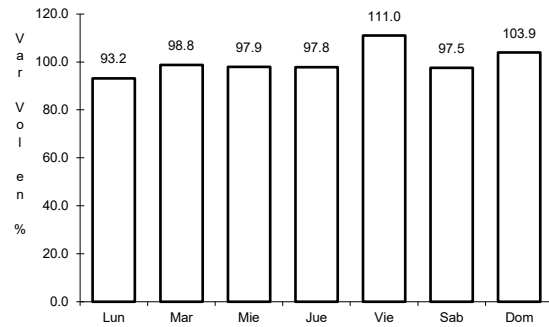


Km: 107.70                      Tipo: 1                      Sent: 1

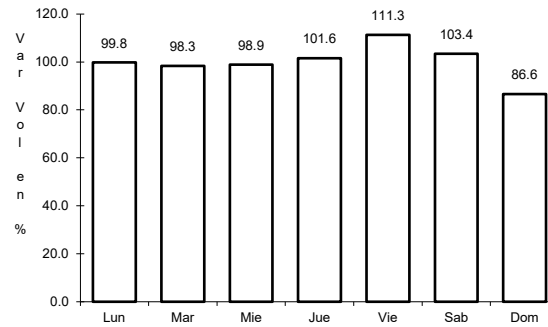
13 CARR: Hermosillo - Magdalena de Kino (Cuota)

CLAVE: 26444

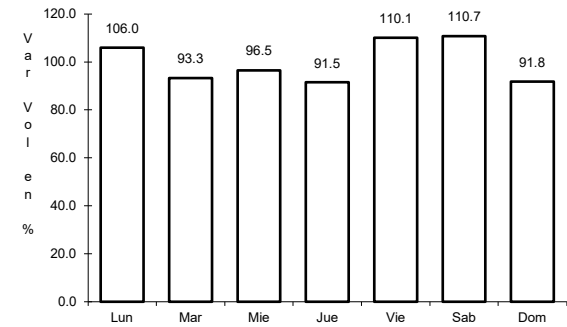
ruta: MEX-015D



Km: 0.00      Tipo: 3      Sent: 1



Km: 0.00      Tipo: 3      Sent: 2

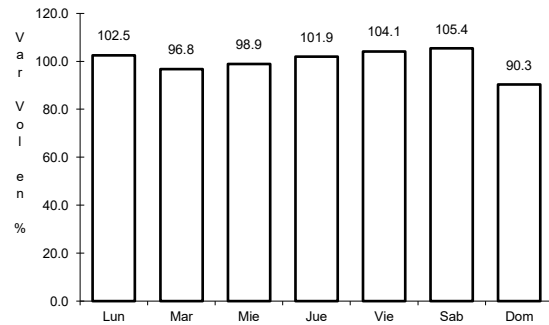


Km: 181.30      Tipo: 1      Sent: 1

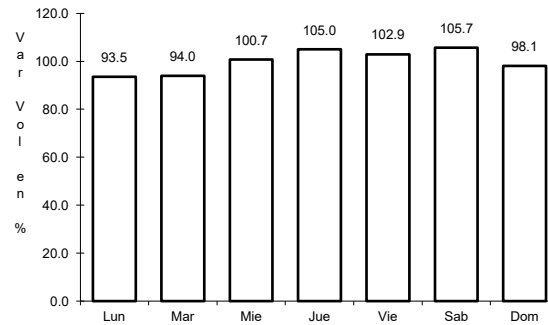
14 CARR: Libramiento de Ciudad Obregón (Cuota)

CLAVE:

ruta: MEX-015D



Km: 31.40      Tipo: 1      Sent: 0

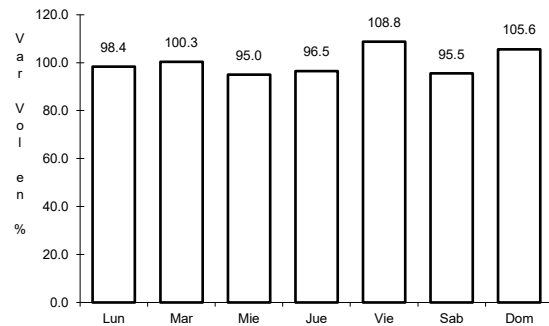


Km: 31.40      Tipo: 3      Sent: 0

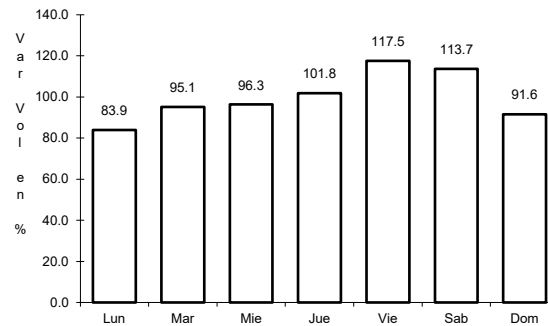
15 CARR: Libramiento de Empalme - Guaymas (Cuota)

CLAVE: 26256

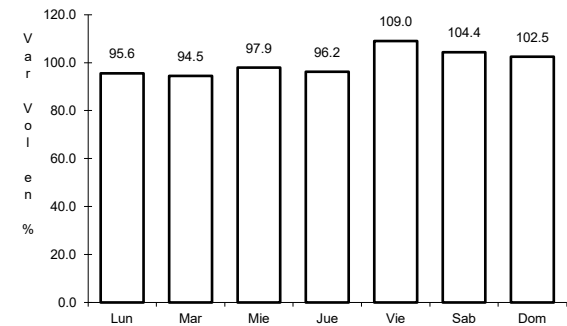
ruta: MEX-015D



Km: 0.00      Tipo: 3      Sent: 1



Km: 0.00      Tipo: 3      Sent: 2

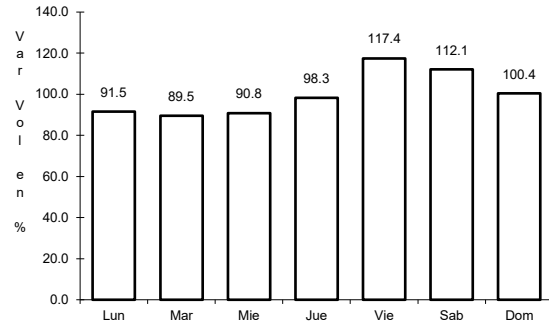


Km: 21.50      Tipo: 1      Sent: 1

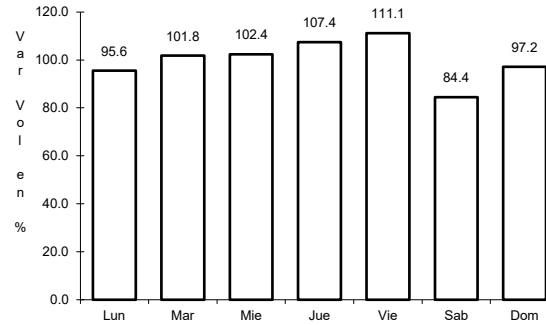
16 CARR: Libramiento de Hermosillo (Cuota)

CLAVE:

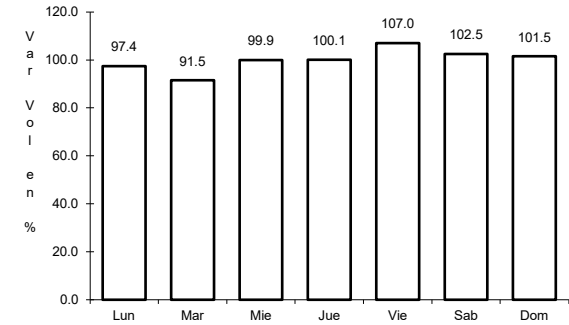
ruta: MEX-015D



Km: 0.00      Tipo: 3      Sent: 0



Km: 20.00      Tipo: 1      Sent: 0

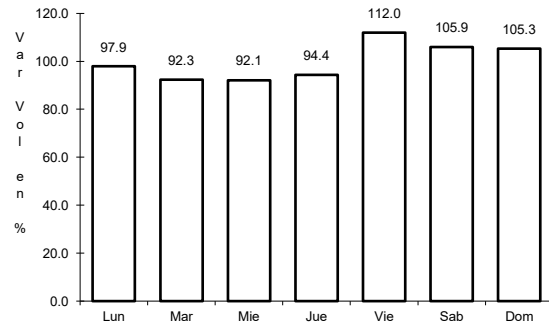


Km: 40.00      Tipo: 1      Sent: 0

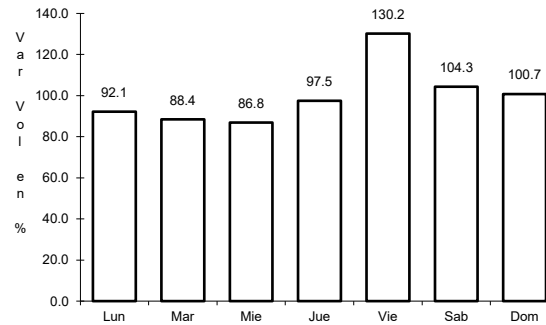
17 CARR: Libramiento de Magdalena de Kino (Cuota)

CLAVE:

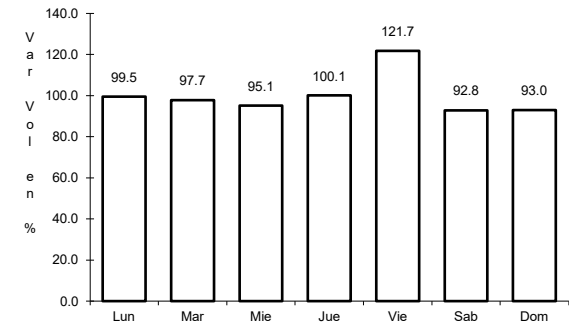
ruta: MEX-015D



Km: 181.30      Tipo: 3      Sent: 1



Km: 181.30      Tipo: 3      Sent: 2

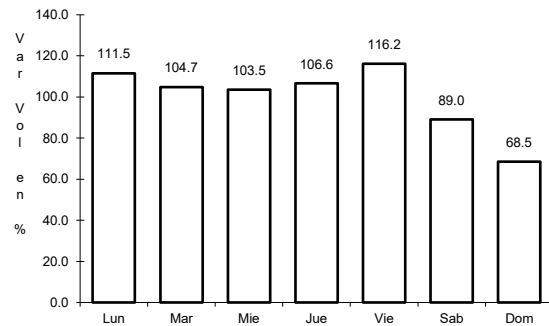


Km: 193.00      Tipo: 1      Sent: 1

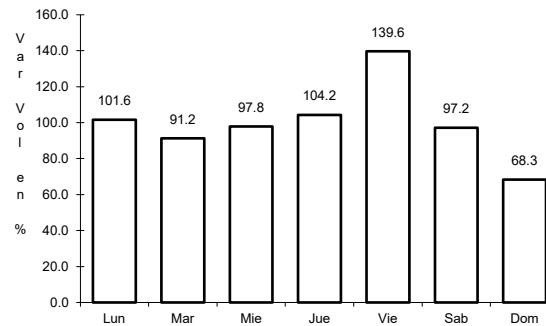
18 CARR: Libramiento de Nogales (Cuota)

CLAVE: 26100

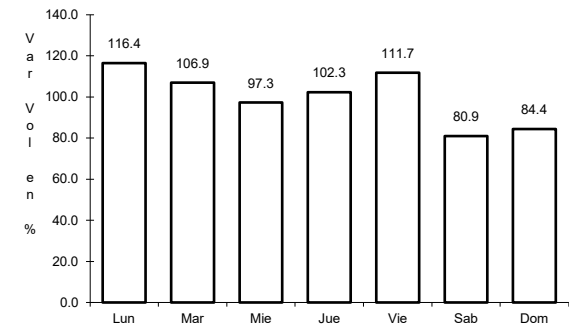
ruta: MEX-15D



Km: 0.00      Tipo: 3      Sent: 1



Km: 0.00      Tipo: 3      Sent: 2



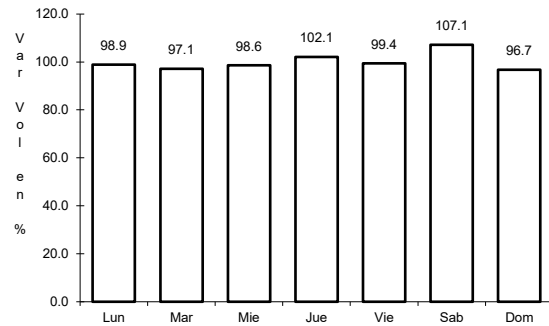
Km: 12.50      Tipo: 1      Sent: 1



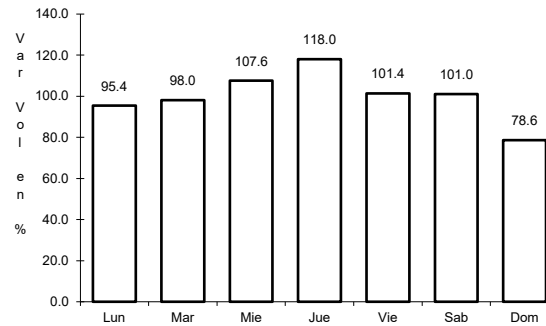
19 CARR: Los Mochis - Cd. Obregón (Cuota)

CLAVE: 26444

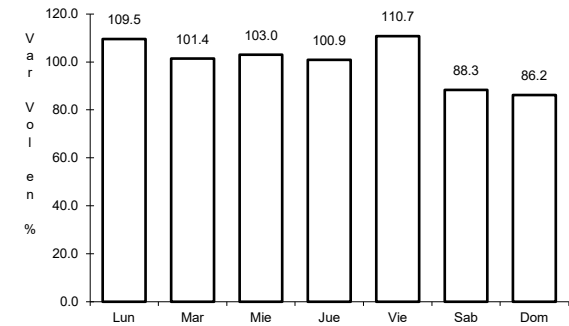
ruta: MEX-015D



Km: 0.00      Tipo: 3      Sent: 1



Km: 0.00      Tipo: 3      Sent: 2

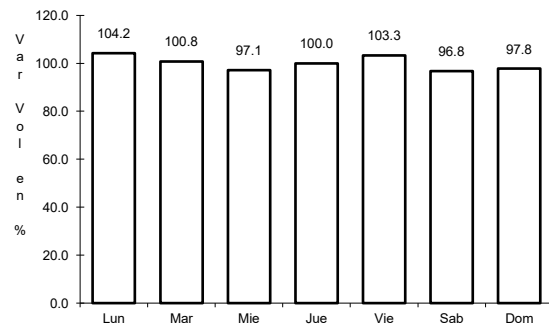


Km: 222.70      Tipo: 1      Sent: 1

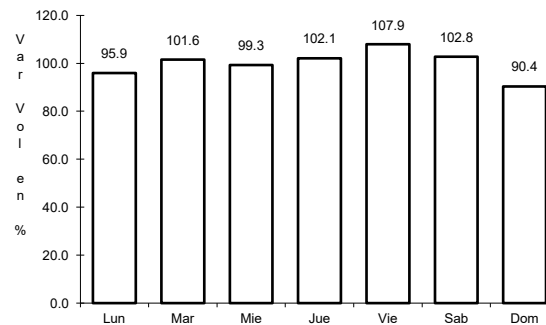
20 CARR: Santa Ana - Sonoita

CLAVE: 26080

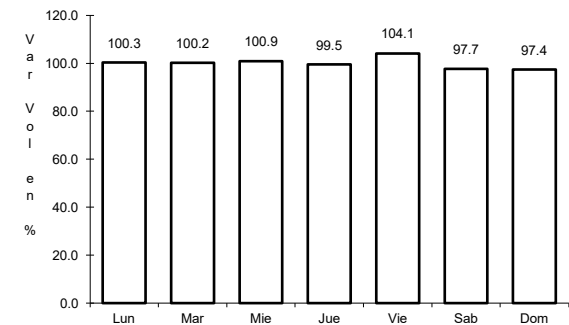
ruta: MEX-002D-MEX



Km: 0.00      Tipo: 3      Sent: 1



Km: 103.83      Tipo: 1      Sent: 0

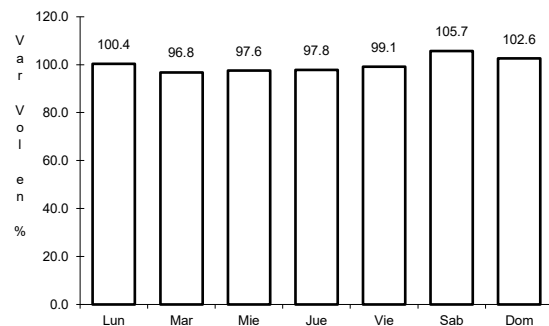


Km: 253.70      Tipo: 1      Sent: 0

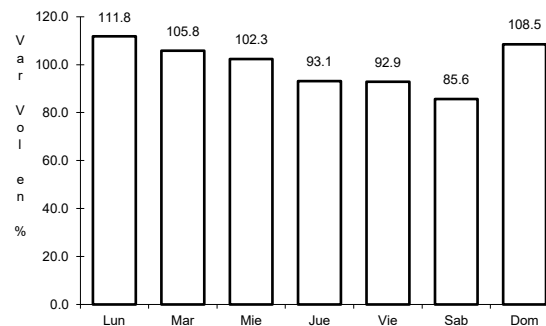
21 CARR: Altar - Sáríc

CLAVE: 26233

ruta: SON-064



Km: 0.00      Tipo: 3      Sent: 0

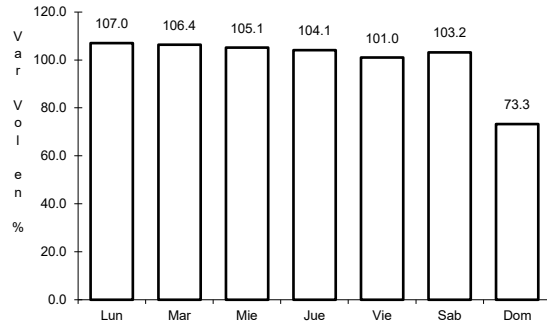


Km: 68.00      Tipo: 1      Sent: 0

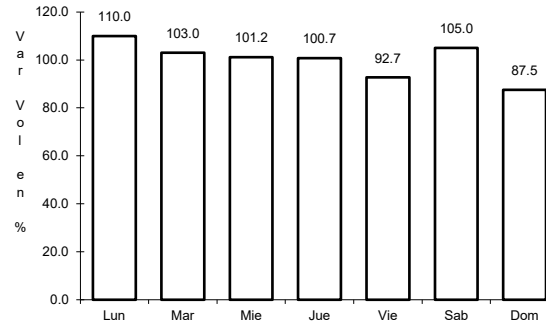
22 CARR: Caborca - El Desemboque

CLAVE: 26225

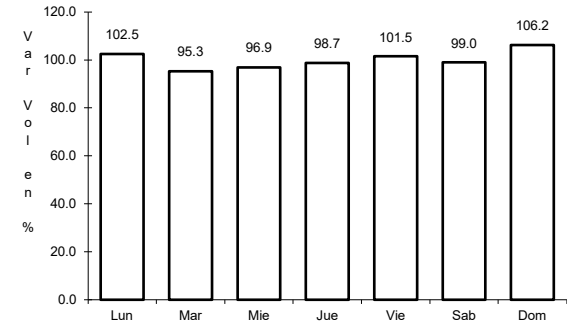
RUTA: SON-037



Km: 0.00      Tipo: 3      Sent: 1



Km: 6.90      Tipo: 3      Sent: 0

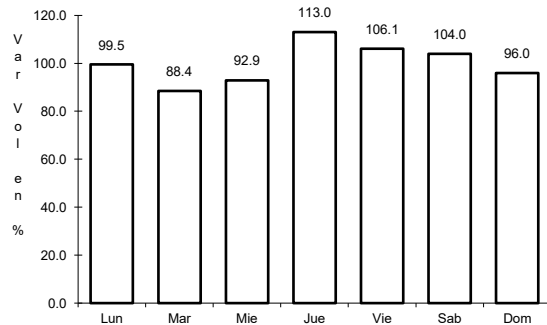


Km: 61.20      Tipo: 3      Sent: 0

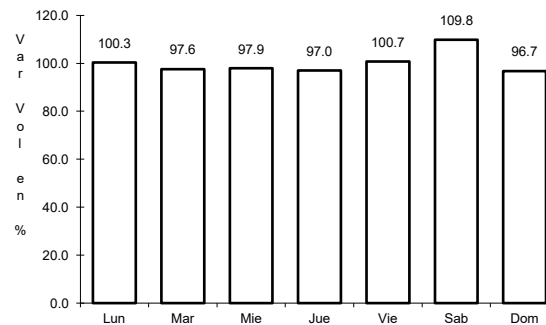
23 CARR: Calle 36 Norte - Puerto de La Libertad

CLAVE: 26117

RUTA: SON-029



Km: 0.00      Tipo: 3      Sent: 0

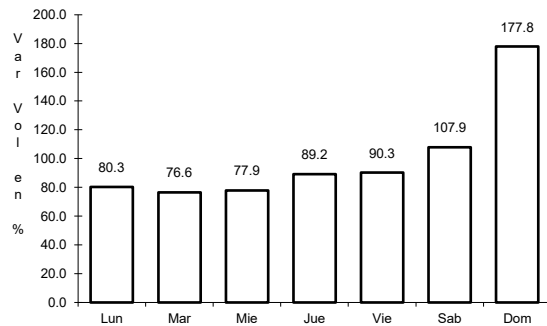


Km: 45.00      Tipo: 3      Sent: 0

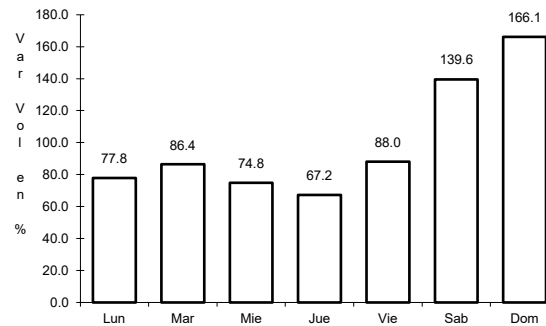
24 CARR: Esperanza - Presa Álvaro Obregón

CLAVE: 26242

RUTA: SON-117



Km: 0.00      Tipo: 3      Sent: 0

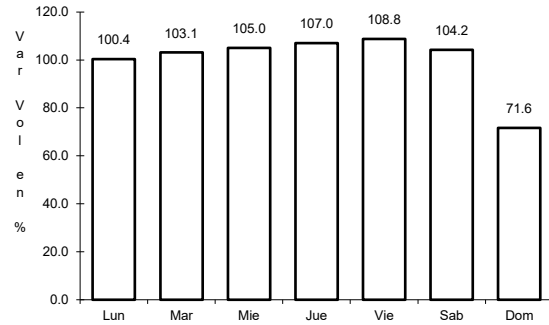


Km: 17.00      Tipo: 3      Sent: 0

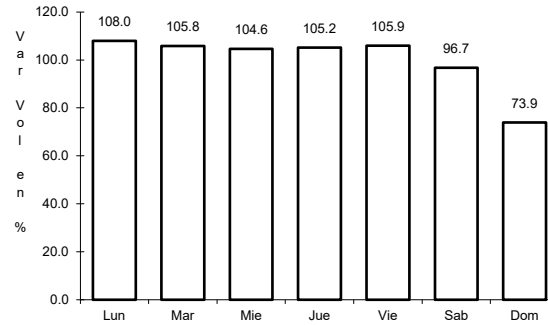
25 CARR: Hermosillo - Bahía Kino

CLAVE: 26109

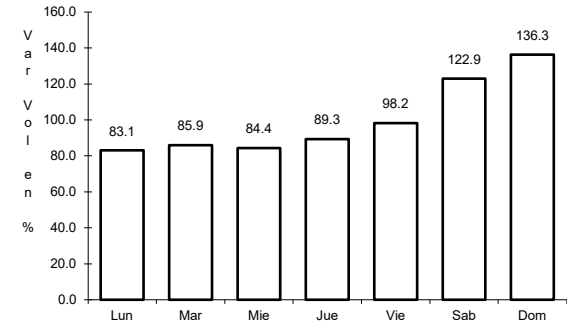
ruta: SON-100



Km: 0.00      Tipo: 3      Sent: 1



Km: 0.00      Tipo: 3      Sent: 2

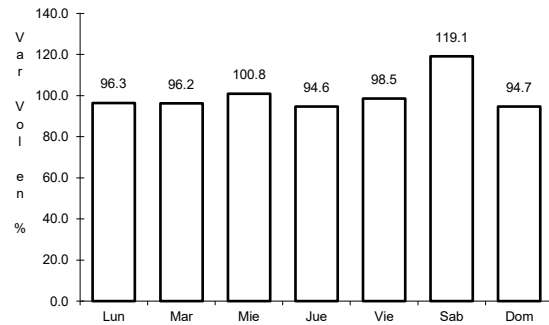


Km: 106.50      Tipo: 1      Sent: 0

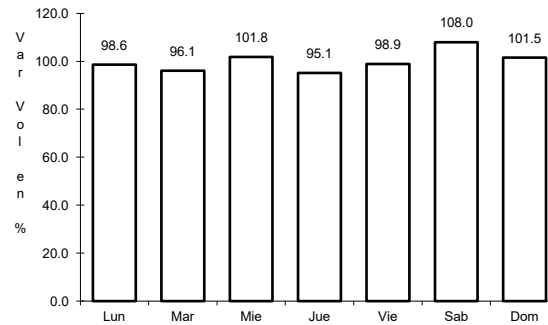
26 CARR: Hermosillo - Sahuaripa

CLAVE: 26230

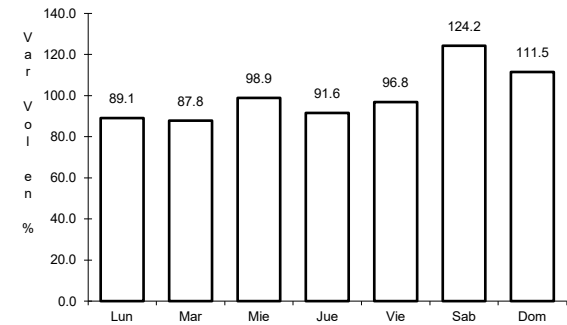
ruta: SON-020



Km: 0.00      Tipo: 3      Sent: 1



Km: 0.00      Tipo: 3      Sent: 2

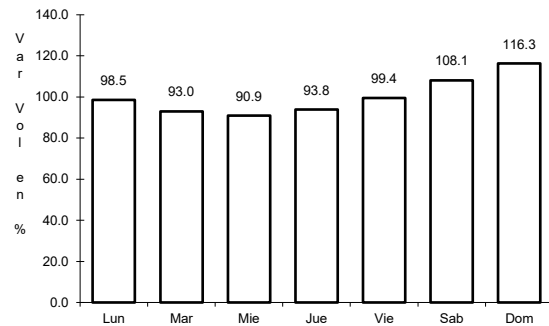


Km: 88.00      Tipo: 3      Sent: 0

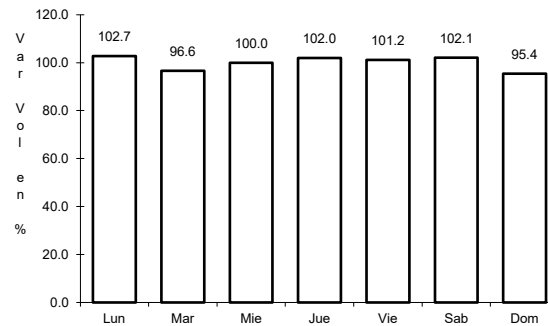
27 CARR: Hornos - San Nicolás

CLAVE: 26243

ruta: SON-012



Km: 0.00      Tipo: 3      Sent: 0

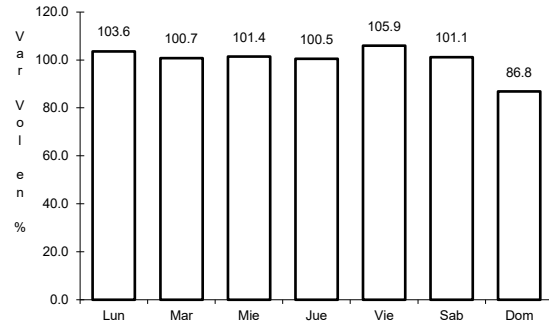


Km: 58.00      Tipo: 1      Sent: 0

28 CARR: Huatabampo - Bacabachi

CLAVE: 26237

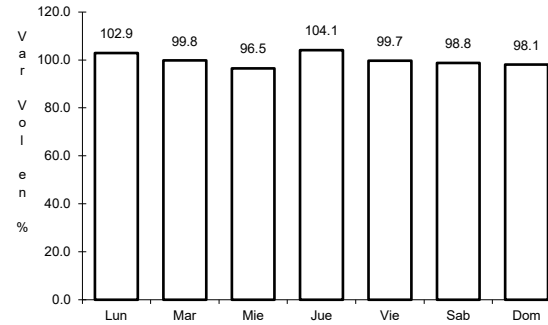
RUTA: SON-176



Km: 0.00

Tipo: 3

Sent: 0



Km: 29.00

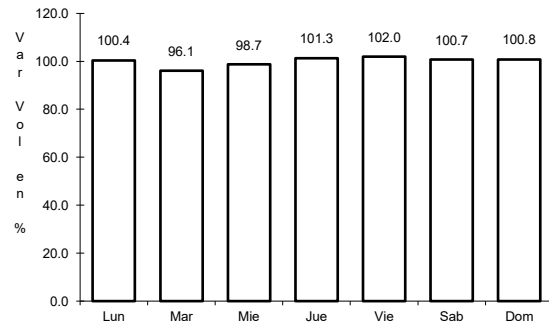
Tipo: 1

Sent: 0

29 CARR: La Alameda - El Sahuaro

CLAVE: 26234

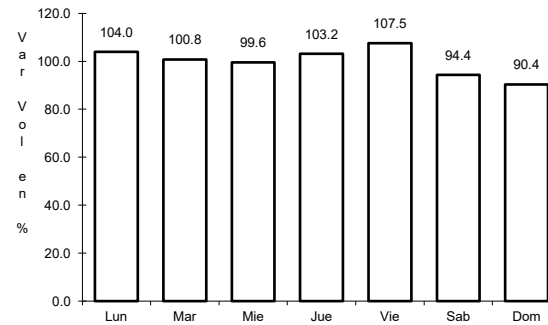
RUTA: SON-037



Km: 0.00

Tipo: 3

Sent: 0



Km: 47.00

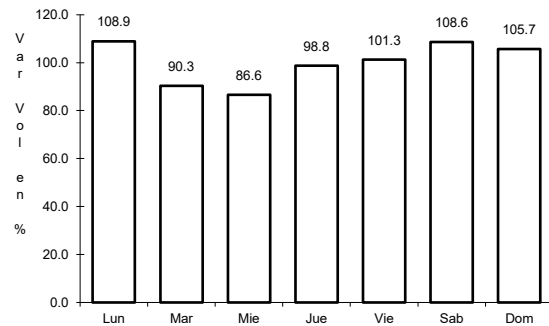
Tipo: 1

Sent: 0

30 CARR: Mazocahui - Cananea

CLAVE: 26118

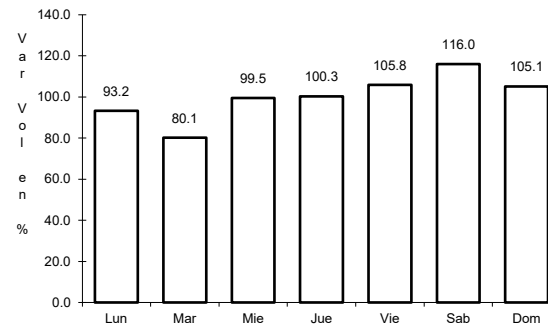
RUTA: SON-118



Km: 0.00

Tipo: 3

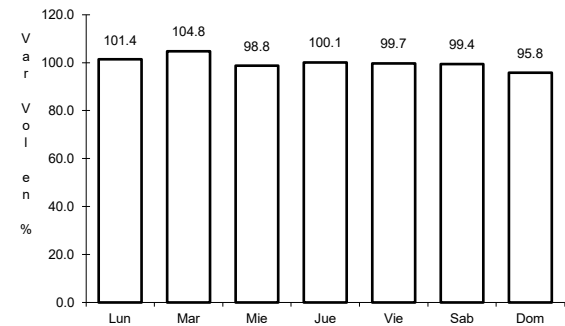
Sent: 0



Km: 98.00

Tipo: 1

Sent: 0



Km: 204.00

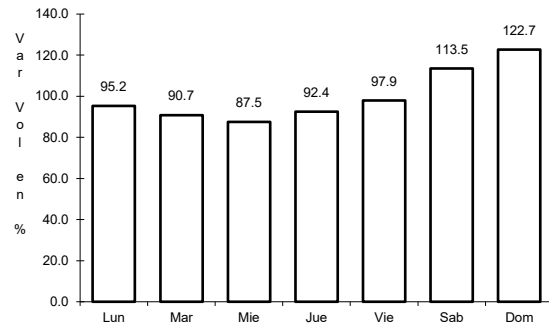
Tipo: 1

Sent: 0

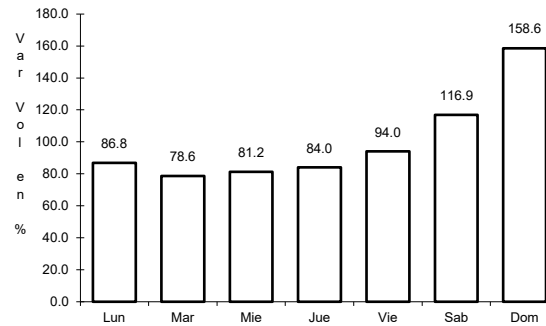
31 CARR: Navojoa - Álamos

CLAVE: 26240

ruta: SON-013



Km: 0.00      Tipo: 3      Sent: 0

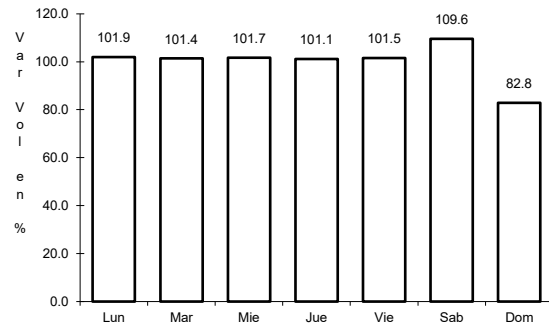


Km: 52.80      Tipo: 1      Sent: 0

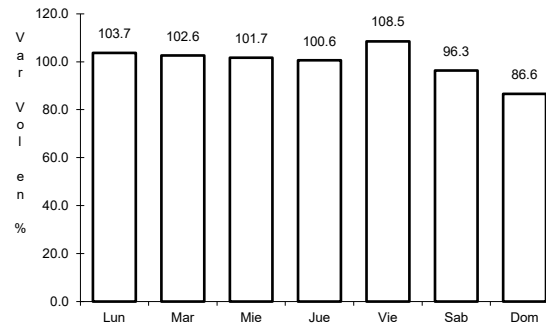
32 CARR: Navojoa - Yavaros

CLAVE: 26229

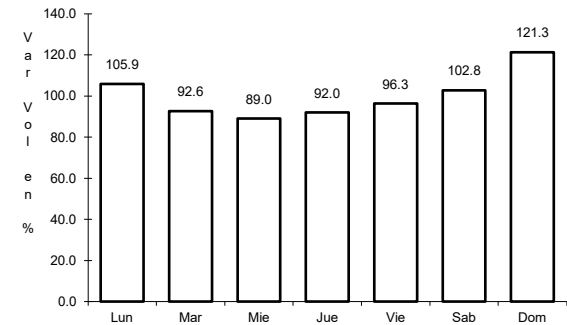
ruta: SON-056



Km: 0.00      Tipo: 3      Sent: 1



Km: 0.00      Tipo: 3      Sent: 2

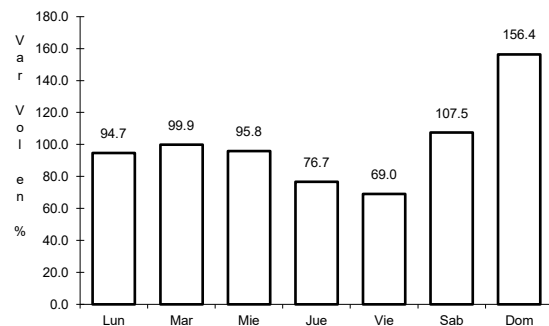


Km: 55.00      Tipo: 1      Sent: 0

33 CARR: Nogales - San Antonio

CLAVE: 26110

ruta: SON

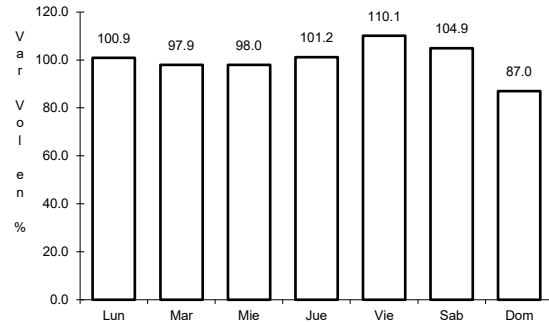


Km: 58.00      Tipo: 1      Sent: 0

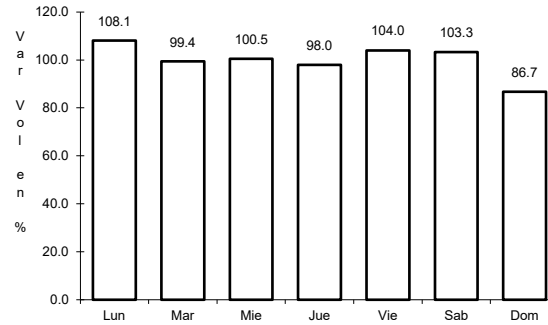
34 CARR: Ramal a Aeropuerto de Guaymas

CLAVE: 26568

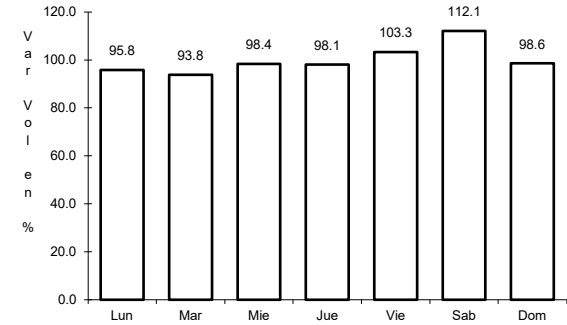
ruta: SON



Km: 0.00      Tipo: 3      Sent: 1



Km: 0.00      Tipo: 3      Sent: 2

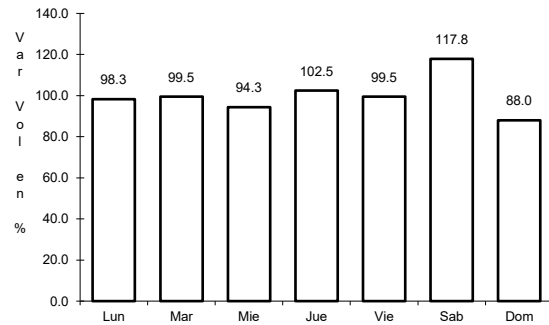


Km: 3.00      Tipo: 3      Sent: 0

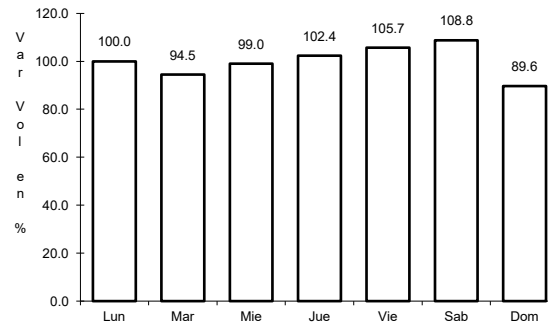
35 CARR: San Luis Río Colorado - Golfo de Santa Clara

CLAVE: 26226

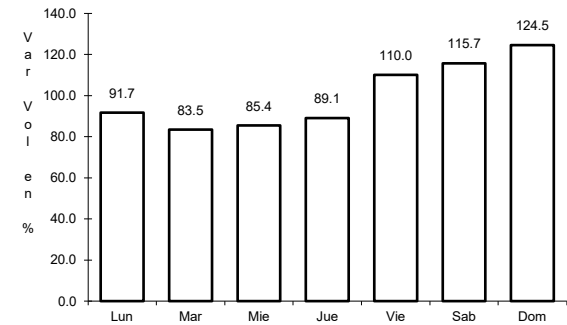
ruta: SON-040



Km: 0.00      Tipo: 3      Sent: 1



Km: 0.00      Tipo: 3      Sent: 2

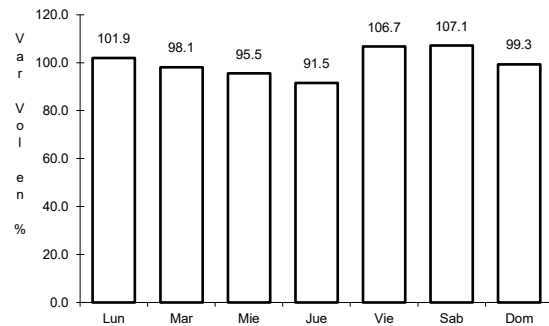


Km: 114.30      Tipo: 1      Sent: 0

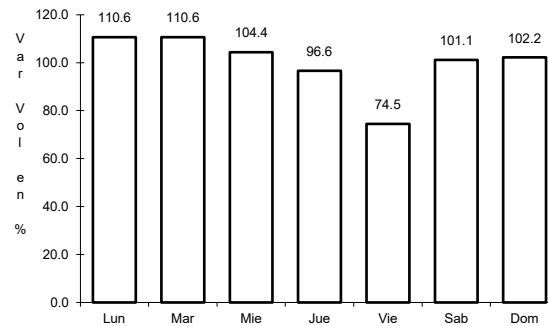
36 CARR: Sonoita - Pitiquito

CLAVE: 26022

ruta: SON

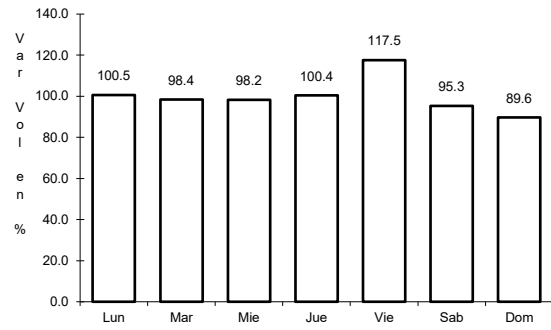


Km: 0.00      Tipo: 3      Sent: 0



Km: 170.00      Tipo: 1      Sent: 0

38 CARR: T. C. (Hermosillo - Nogales) - Huásabas

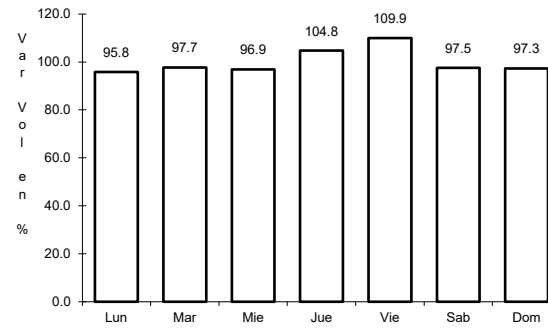


Km: 0.00

Tipo: 3

Sent: 1

CLAVE: 26231

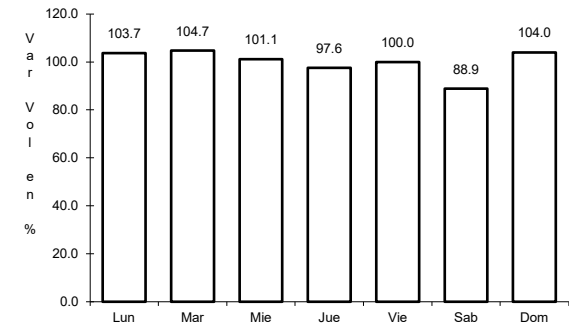


Km: 0.00

Tipo: 3

Sent: 2

RUTA: MEX-014-SON



Km: 212.50

Tipo: 1

Sent: 0

